

Cooper Lighting Solutions Photometric Lab
1121 Highway 74 South
Peachtree City, GA 30269



Scaled data based on original data using
LM-79-2019 Approved Method: Electrical and Photometric Measurements of Solid-
State Lighting Products

Test Report Prepared for
Cooper Lighting Solutions

Brand: METALUX

Report Number: P1444441

Luminaire Tested: EHBR1-18-UNV-TA-L830

Issue Date: 5/1/2026

Test Information

Test Method: LM-79-2019
Report Number: P1444441
TEST IS SCALED FROM IESNA LM-79-08 TEST DATA (C80-8019A)
Test Lab: INNOVATION CENTER
Issue Date: 5/1/2026
Manufacturer: COOPER LIGHTING SOLUTIONS
Product Line: METALUX
Catalog Number: EHBR1-18-UNV-TA-L830
Description: Elevate Round Highbay at, 18000 lumens, 3000K 80CRI LEDs with TA lens
Light Source: -
Ballast/Driver: -

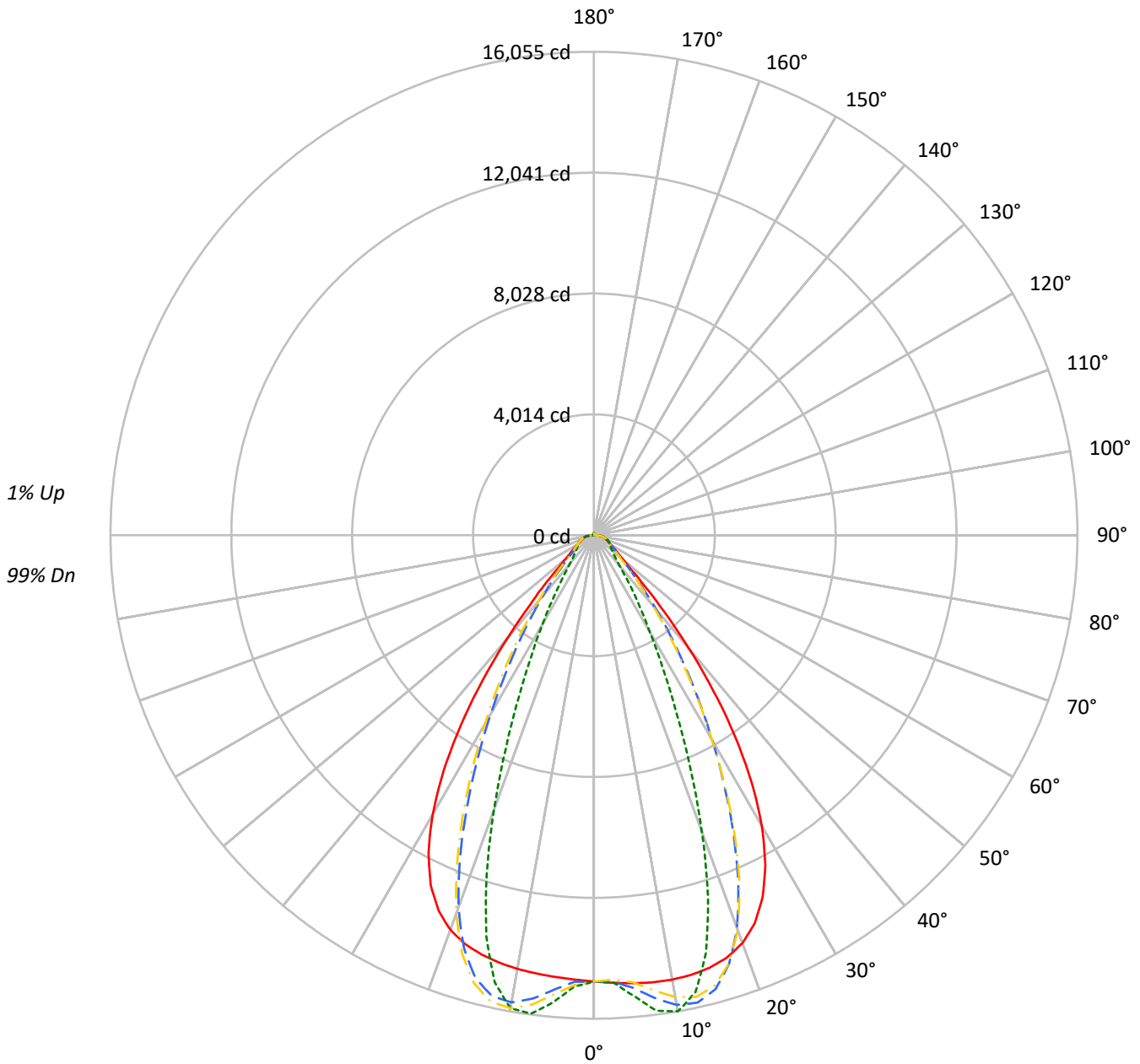
Summary

Lumens per Lamp: N/A
Luminaire Lumens: 17157.7 lumens
Efficiency: N/A
Efficacy: 181.2 lumens/watt
Spacing Criteria (0/90/45): 1.13 / 0.77 / 0.88
Luminous Opening: Circular (Dia: 1.71' x H: 0')
CIE Type: Direct

Input Watts (W): 94.7
Input Voltage (V): NR
Input Current (Ain): NR
Voltage Rise (V): NR
Power Factor: NR
Total Harmonic Distortion (THDi): NR
Frequency (hertz): 60
Stabilization Time: NR
Operation Time: NR
Ambient Temperature (°C): NR
Test Distance: 24 FT

TEST NUMBER: P1444441
CATALOG NUMBER: EHBR1-18-UNV-TA-L830

Luminous Intensity Polar Plot



— 0°-180° - - 45°-225° - - - 90°-270° - · - 135°-315°



TEST NUMBER: P1444441
 CATALOG NUMBER: EHBR1-18-UNV-TA-L830

COEFFICIENT OF UTILIZATION - ZONAL CAVITY METHOD:

RF	20				20				20				20				20				20
RC	80				70				50				30				10				0
RW	70	50	30	10	70	50	30	10	50	30	10	50	30	10	50	30	10	50	30	10	0
RCR																					
0	119	119	119	119	116	116	116	116	111	111	111	106	106	106	101	101	101	99			
1	112	108	105	103	109	106	103	101	102	100	98	98	96	95	94	93	92	90			
2	105	99	94	90	103	97	93	89	94	90	87	91	88	85	88	85	83	81			
3	99	91	85	81	97	90	84	80	87	82	79	84	81	77	82	79	76	74			
4	93	84	78	73	91	83	77	73	81	76	72	79	74	71	77	73	70	68			
5	88	78	72	67	86	77	71	66	75	70	66	73	69	65	72	68	64	63			
6	83	73	66	61	81	72	66	61	70	65	60	69	64	60	67	63	60	58			
7	78	68	61	57	77	67	61	56	66	60	56	65	59	56	63	59	55	54			
8	74	64	57	53	73	63	57	52	62	56	52	61	56	52	60	55	52	50			
9	70	60	53	49	69	59	53	49	58	53	49	57	52	48	56	52	48	47			
10	67	56	50	46	66	56	50	46	55	49	46	54	49	45	53	49	45	44			

AVERAGE LUMINANCE (cd/sqm):

	0°	90°	180°	270°
0°	69595	69595	69595	69595
5°	70388	72441	69403	73389
10°	71443	76557	69729	76051
15°	72277	69866	70077	67053
20°	72032	52414	69674	48495
25°	68687	33395	66417	30300
30°	60483	20228	58140	18487
35°	46957	12805	44256	11342
40°	29997	8111	27444	7622
45°	15635	6390	15377	6285
50°	9289	5759	9004	5670
55°	7231	5537	6963	5487
60°	6244	5772	5978	5697
65°	6025	6192	5794	5980
70°	6114	6736	5809	6482
75°	6935	7579	6561	7243
80°	7986	9341	7242	8527
85°	9790	11730	7915	10044

MAXIMUM LUMINANCE 45°-90°:

Horizontal Angle: 25°
 Vertical Angle: 45°
 Luminance: 23928 cd/sqm



TEST NUMBER: P1444441
 CATALOG NUMBER: EHBR1-18-UNV-TA-L830

ZONAL LUMENS:

Zone	Lumens	% Fixture
0°-10°	1460.5	8.5
10°-20°	4108.6	23.9
20°-30°	4679.4	27.3
30°-40°	3363.3	19.6
40°-50°	1551.2	9.0
50°-60°	742.3	4.3
60°-70°	541.6	3.2
70°-80°	411.5	2.4
80°-90°	187.2	1.1
90°-100°	6.0	0.0
100°-110°	4.4	0.0
110°-120°	7.5	0.0
120°-130°	12.5	0.1
130°-140°	18.4	0.1
140°-150°	21.9	0.1
150°-160°	20.6	0.1
160°-170°	15.1	0.1
170°-180°	5.7	0.0
0°-30°	10248.5	59.7
0°-40°	13611.8	79.3
0°-60°	15905.3	92.7
0°-90°	17045.5	99.3
90°-120°	17.9	0.1
90°-150°	70.8	0.4
90°-180°	112.0	0.7
0°-180°	17157.7	100.0

CANDELA DISTRIBUTION:

	0°	90°	180°	270°	360°	Flux
0°	14820	14820	14820	14820	14820	
5°	14932	15367	14723	15568	14932	1427
15°	14866	14371	14414	13792	14866	4189
25°	13256	6445	12818	5848	13256	6009
35°	8191	2234	7720	1978	8191	5027
45°	2354	962	2315	946	2354	2002
55°	883	676	850	670	883	815
65°	542	557	521	538	542	541
75°	382	418	362	399	382	397
85°	182	218	147	186	182	171
90°	41	54	6	9	41	27
95°	2	2	3	2	2	2
105°	5	3	5	4	5	5
115°	10	5	10	5	10	10
125°	19	8	20	9	19	17
135°	30	16	31	18	30	23
145°	40	29	41	32	40	25
155°	47	42	48	44	47	22
165°	55	51	56	53	55	15
175°	60	60	61	60	60	6
180°	61	61	61	61	61	



TEST NUMBER: P1444441
 CATALOG NUMBER: EHBR1-18-UNV-TA-L830

CANDELA DISTRIBUTION (FULL):

	0°	2.5°	5°	7.5°	10°	12.5°	15°	17.5°	20°	22.5°	25°
0°	14819.8	14819.8	14819.8	14819.8	14819.8	14819.8	14819.8	14819.8	14819.8	14819.8	14819.8
2.5°	14876.4	14875.2	14875.0	14874.0	14873.7	14873.7	14873.2	14871.9	14871.2	14869.5	14867.6
5°	14931.6	14931.0	14931.3	14931.4	14930.4	14928.1	14924.5	14920.0	14914.5	14909.1	14904.4
7.5°	14974.3	14975.4	14976.7	14976.4	14973.1	14967.7	14960.3	14956.1	14958.6	14966.6	14985.1
10°	14982.1	14988.5	14990.9	14990.2	14983.7	14979.0	14980.9	14996.5	15027.8	15069.5	15126.5
12.5°	14951.7	14959.5	14959.2	14956.7	14950.4	14956.8	14979.6	15026.2	15093.3	15175.5	15271.9
15°	14866.4	14876.5	14873.7	14870.3	14866.1	14887.1	14932.5	15013.7	15117.2	15233.1	15351.8
17.5°	14700.8	14713.1	14707.1	14703.3	14699.8	14739.0	14817.0	14935.9	15066.2	15197.4	15309.9
20°	14413.6	14421.8	14407.6	14401.0	14406.6	14483.5	14598.4	14750.2	14887.6	15011.6	15088.5
22.5°	13944.8	13955.0	13928.5	13925.4	13958.1	14076.1	14221.6	14391.3	14520.4	14618.7	14648.3
25°	13256.0	13266.0	13234.6	13253.4	13309.0	13469.8	13643.1	13824.6	13934.7	14007.5	13987.4
27.5°	12326.4	12335.5	12305.6	12344.1	12432.2	12643.4	12847.2	13044.1	13142.3	13193.4	13128.7
30°	11154.0	11172.9	11137.6	11191.2	11325.7	11599.9	11833.4	12054.2	12152.1	12191.0	12090.4
32.5°	9761.4	9788.4	9749.5	9829.3	10016.8	10346.2	10611.6	10858.3	10966.5	11010.9	10897.2
35°	8190.8	8229.5	8184.9	8304.7	8535.9	8902.8	9196.6	9472.1	9600.2	9663.1	9548.6
37.5°	6526.8	6563.7	6539.5	6699.4	6953.4	7333.6	7633.5	7930.6	8075.5	8169.8	8079.5
40°	4893.2	4926.9	4945.2	5128.0	5366.9	5725.3	6013.4	6307.3	6469.3	6587.7	6532.0
42.5°	3453.6	3487.6	3549.8	3726.2	3925.4	4222.0	4468.9	4732.8	4887.6	5013.8	4992.3
45°	2354.2	2393.8	2471.6	2616.0	2760.1	2973.0	3154.2	3359.5	3485.9	3601.6	3602.9
47.5°	1649.7	1677.5	1747.1	1845.7	1939.6	2206.0	2217.0	2317.9	2402.8	2489.3	2500.5
50°	1271.4	1288.2	1325.1	1380.1	1433.3	1502.4	1565.7	1638.9	1691.1	1738.5	1749.9
52.5°	1045.0	1055.7	1074.4	1104.2	1135.1	1172.7	1206.6	1246.8	1275.1	1300.5	1305.9
55°	883.2	892.0	919.9	925.7	961.0	967.7	982.8	1007.2	1023.8	1039.0	1042.7
57.5°	761.2	767.5	773.4	786.1	797.0	812.8	825.5	843.0	853.5	864.5	865.4
60°	664.8	669.4	673.7	682.4	689.9	700.8	709.7	721.5	729.0	737.3	738.2
62.5°	593.1	596.4	599.2	605.0	610.4	618.8	625.7	635.7	642.7	649.0	650.5
65°	542.2	544.6	546.4	550.8	555.4	562.6	568.9	577.0	582.2	587.0	588.1
67.5°	497.0	499.4	501.1	505.2	508.4	513.8	518.0	524.1	527.9	531.9	532.0
70°	445.3	447.4	448.9	452.6	455.1	459.7	463.2	468.6	472.7	477.0	478.1
72.5°	409.4	410.7	412.6	416.1	419.6	424.5	429.1	434.8	439.6	444.1	446.1
75°	382.2	383.7	385.0	387.9	390.3	394.5	397.9	403.2	407.3	412.2	414.5
77.5°	342.9	344.6	345.6	348.6	350.7	354.7	357.3	361.9	365.3	369.7	371.9
80°	295.3	296.9	297.8	300.5	302.2	305.8	308.4	312.9	315.7	320.1	322.7
82.5°	242.7	244.2	244.7	247.3	248.2	251.2	253.0	257.7	261.2	266.9	270.8
85°	181.7	182.3	183.1	182.5	186.2	186.4	190.6	191.4	196.8	198.3	204.6
87.5°	111.1	112.8	113.6	116.2	117.2	119.7	120.5	123.2	124.7	127.8	129.2
90°	41.1	43.3	43.7	46.3	46.6	48.9	49.2	51.7	52.2	54.9	55.3
92.5°	2.4	2.4	2.4	2.6	2.6	2.9	3.1	3.2	3.3	3.6	3.6
95°	2.5	2.5	2.5	2.5	2.5	2.5	2.5	2.5	2.5	2.5	2.4
97.5°	2.8	2.8	2.8	2.8	2.8	2.8	2.8	2.8	2.8	2.8	2.8
100°	3.3	3.3	3.3	3.3	3.3	3.3	3.3	3.3	3.3	3.3	3.2
102.5°	3.8	3.8	3.8	3.8	3.8	3.7	3.8	3.7	3.7	3.7	3.7
105°	4.6	4.5	4.6	4.5	4.5	4.5	4.5	4.4	4.4	4.3	4.3
107.5°	5.4	5.3	5.3	5.3	5.3	5.3	5.3	5.2	5.2	5.2	5.2
110°	6.7	6.6	6.6	6.5	6.5	6.5	6.4	6.2	6.2	6.1	6.0



TEST NUMBER: P1444441
 CATALOG NUMBER: EHBR1-18-UNV-TA-L830

CANDELA DISTRIBUTION (continued):

	0°	2.5°	5°	7.5°	10°	12.5°	15°	17.5°	20°	22.5°	25°
112.5°	8.1	8.0	7.9	7.9	7.8	7.7	7.6	7.5	7.4	7.2	7.1
115°	9.7	9.6	9.6	9.4	9.4	9.2	9.1	8.9	8.8	8.5	8.4
117.5°	11.7	11.5	11.4	11.3	11.1	11.0	10.8	10.6	10.3	10.1	9.9
120°	13.9	13.7	13.6	13.3	13.1	12.8	12.6	12.5	12.2	11.8	11.6
122.5°	16.3	16.0	15.9	15.6	15.4	15.1	14.8	14.4	14.1	13.9	13.5
125°	18.8	18.5	18.5	18.1	17.8	17.4	17.1	16.8	16.4	16.0	15.6
127.5°	21.5	21.4	21.1	20.7	20.4	20.0	19.6	19.2	18.8	18.3	18.0
130°	24.4	24.1	23.8	23.4	23.1	22.7	22.2	21.7	21.4	20.8	20.4
132.5°	27.2	27.0	26.7	26.3	25.9	25.4	25.0	24.4	24.0	23.4	22.9
135°	30.1	29.7	29.5	29.1	28.8	28.2	27.7	27.2	26.6	26.0	25.6
137.5°	32.7	32.5	32.2	31.8	31.4	30.7	30.3	29.7	29.2	28.6	28.1
140°	35.3	35.0	34.8	34.3	33.9	33.4	32.9	32.3	31.8	31.1	30.7
142.5°	37.7	37.4	37.1	36.7	36.3	35.8	35.2	34.7	34.2	33.5	33.2
145°	39.8	39.5	39.2	38.9	38.4	37.9	37.5	36.8	36.4	35.9	35.4
147.5°	41.8	41.5	41.2	40.8	40.6	40.0	39.5	39.0	38.6	38.0	37.7
150°	43.5	43.2	43.0	42.7	42.2	41.9	41.4	40.9	40.6	40.0	39.6
152.5°	44.9	44.6	44.4	44.1	43.7	43.3	43.0	42.5	42.2	41.7	41.3
155°	46.6	46.3	46.0	45.7	45.4	45.1	44.7	44.3	43.9	43.5	43.2
157.5°	48.4	48.1	47.9	47.5	47.3	46.9	46.6	46.2	45.9	45.5	45.2
160°	50.5	50.2	49.9	49.6	49.3	48.9	48.6	48.2	48.0	47.6	47.3
162.5°	52.6	52.3	52.0	51.7	51.4	51.1	50.8	50.5	50.2	49.8	49.6
165°	54.6	54.4	54.1	53.9	53.6	53.3	53.0	52.7	52.5	52.1	51.9
167.5°	56.7	56.4	56.2	55.9	55.7	55.5	55.2	54.9	54.8	54.4	54.2
170°	58.4	58.1	57.9	57.7	57.5	57.3	57.1	56.9	56.7	56.5	56.3
172.5°	59.6	59.3	59.2	59.1	58.9	58.7	58.6	58.5	58.4	58.1	58.1
175°	60.5	60.3	60.2	60.1	60.0	59.9	59.9	59.8	59.8	59.6	59.5
177.5°	61.1	61.0	61.0	61.0	61.0	60.9	60.9	60.8	60.7	60.7	60.6
180°	61.4	61.4	61.4	61.4	61.4	61.4	61.4	61.4	61.4	61.4	61.4



TEST NUMBER: P1444441
 CATALOG NUMBER: EHBR1-18-UNV-TA-L830

CANDELA DISTRIBUTION (continued):

	27.5°	30°	32.5°	35°	37.5°	40°	42.5°	45°	47.5°	50°	52.5°
0°	14819.8	14819.8	14819.8	14819.8	14819.8	14819.8	14819.8	14819.8	14819.8	14819.8	14819.8
2.5°	14866.1	14864.4	14861.9	14858.7	14856.0	14852.9	14845.5	14843.3	14845.8	14847.4	14850.9
5°	14901.4	14902.5	14902.9	14909.7	14915.5	14930.0	15044.0	15089.3	15124.4	15146.7	15180.4
7.5°	15007.9	15042.2	15076.1	15121.8	15161.0	15214.1	15413.6	15498.6	15558.9	15602.3	15655.7
10°	15188.5	15263.3	15333.4	15415.6	15486.2	15567.1	15752.8	15835.5	15887.7	15925.7	15961.2
12.5°	15370.3	15474.0	15567.7	15659.2	15735.7	15805.8	15871.1	15900.1	15902.5	15903.7	15884.9
15°	15465.0	15564.2	15646.7	15707.2	15752.2	15772.0	15659.6	15600.6	15526.0	15464.7	15363.6
17.5°	15405.2	15464.7	15500.4	15496.8	15478.3	15416.1	15097.7	14922.5	14748.6	14592.0	14386.4
20°	15139.6	15135.0	15104.0	15016.0	14910.1	14745.3	14199.3	13884.4	13579.7	13312.3	12987.8
22.5°	14645.3	14567.5	14459.0	14269.4	14058.9	13770.9	12988.6	12525.2	12101.2	11726.8	11307.2
25°	13929.1	13769.2	13569.2	13268.1	12940.8	12521.0	11556.6	10980.4	10471.3	10029.8	9545.7
27.5°	13012.6	12771.6	12478.5	12061.9	11618.5	11080.6	10011.5	9375.4	8829.0	8355.7	7840.4
30°	11927.5	11614.1	11235.6	10718.6	10183.7	9573.6	8489.3	7845.1	7292.0	6805.1	6289.4
32.5°	10701.2	10334.1	9890.7	9310.4	8731.9	8104.7	7057.5	6434.0	5905.6	5437.1	4970.5
35°	9348.8	8955.1	8485.9	7894.0	7319.1	6709.3	5748.4	5186.2	4719.5	4305.5	3928.7
37.5°	7898.0	7511.5	7065.6	6507.7	5974.5	5422.0	4592.9	4121.7	3730.2	3386.5	3095.5
40°	6389.7	6051.4	5665.6	5183.3	4728.2	4268.0	3587.5	3213.5	2904.5	2642.4	2424.4
42.5°	4899.7	4637.6	4341.7	3960.6	3612.4	3262.0	2738.2	2461.1	2232.2	2043.5	1889.3
45°	3555.0	3379.6	3181.2	2916.2	2675.2	2430.9	2058.0	1863.3	1714.3	1592.6	1489.7
47.5°	2485.1	2383.4	2377.2	2132.3	1955.7	1806.2	1566.0	1443.0	1351.7	1278.0	1212.9
50°	1745.2	1696.0	1634.8	1547.4	1465.5	1381.0	1234.7	1160.3	1106.8	1062.1	1021.0
52.5°	1304.6	1279.2	1246.6	1200.2	1155.8	1108.2	1015.7	968.3	951.5	909.9	877.3
55°	1042.1	1027.4	1008.9	981.7	954.6	943.8	864.5	829.3	807.1	790.7	773.1
57.5°	865.6	854.7	843.7	825.2	809.6	790.7	748.5	730.4	717.2	707.6	695.4
60°	738.3	731.9	725.7	714.8	706.4	696.2	669.4	659.3	652.3	646.5	638.7
62.5°	651.7	648.3	645.1	639.4	635.1	629.6	611.2	606.3	602.9	600.0	595.3
65°	589.1	586.7	585.0	581.1	579.0	575.7	560.0	556.7	554.5	553.5	550.8
67.5°	532.2	529.7	528.6	525.9	524.9	523.0	510.0	508.3	507.5	507.9	506.9
70°	479.1	478.1	478.6	478.2	479.4	479.8	472.0	471.9	472.8	474.3	474.5
72.5°	447.3	447.3	447.8	448.1	449.2	449.8	443.3	443.1	443.4	444.7	444.7
75°	416.9	417.4	419.1	419.6	421.0	421.2	412.7	411.7	411.8	412.9	412.5
77.5°	375.0	376.7	379.9	381.5	384.2	384.7	375.1	373.9	373.9	375.2	374.1
80°	327.4	330.8	335.8	339.3	343.3	345.0	335.1	332.7	330.6	330.2	328.2
82.5°	276.8	281.0	287.0	290.1	294.4	295.4	278.9	275.8	273.9	274.1	272.3
85°	211.3	214.5	219.9	221.7	224.3	224.2	205.2	197.2	199.3	196.0	198.6
87.5°	132.5	134.4	137.8	138.3	139.5	139.2	120.3	116.5	115.4	115.5	114.1
90°	57.8	58.5	61.0	60.5	61.9	61.1	45.1	42.8	42.0	43.2	41.8
92.5°	3.7	3.7	3.9	4.0	4.2	4.3	2.6	2.2	2.3	2.2	2.4
95°	2.4	2.4	2.4	2.4	2.4	2.4	2.4	2.4	2.4	2.4	2.4
97.5°	2.8	2.8	2.7	2.7	2.7	2.7	2.7	2.7	2.7	2.6	2.6
100°	3.2	3.2	3.1	3.1	3.1	3.1	3.1	3.1	3.1	3.0	3.0
102.5°	3.7	3.7	3.6	3.6	3.5	3.5	3.6	3.6	3.5	3.4	3.3
105°	4.3	4.2	4.2	4.0	3.9	3.9	4.0	3.9	3.9	3.8	3.7
107.5°	5.0	5.0	4.8	4.7	4.6	4.5	4.7	4.6	4.5	4.3	4.3
110°	5.9	5.8	5.6	5.5	5.3	5.2	5.4	5.3	5.2	5.1	5.0



TEST NUMBER: P1444441
 CATALOG NUMBER: EHBR1-18-UNV-TA-L830

CANDELA DISTRIBUTION (continued):

	27.5°	30°	32.5°	35°	37.5°	40°	42.5°	45°	47.5°	50°	52.5°
112.5°	6.9	6.8	6.7	6.5	6.2	6.0	6.4	6.3	6.1	5.8	5.7
115°	8.1	8.1	7.8	7.6	7.4	7.1	7.5	7.4	7.1	6.8	6.7
117.5°	9.6	9.4	9.2	8.9	8.5	8.3	8.8	8.7	8.3	8.1	7.8
120°	11.3	11.1	10.7	10.4	10.0	9.7	10.3	10.2	9.9	9.5	9.2
122.5°	13.2	12.8	12.5	12.2	11.7	11.3	12.1	12.0	11.5	11.1	10.8
125°	15.3	14.9	14.5	14.1	13.6	13.2	14.1	13.9	13.5	13.1	12.6
127.5°	17.5	17.1	16.7	16.3	15.7	15.4	16.3	16.1	15.6	15.2	14.7
130°	20.0	19.5	19.0	18.5	18.1	17.7	18.6	18.5	18.1	17.5	17.0
132.5°	22.5	22.0	21.5	21.1	20.6	20.1	21.2	21.1	20.6	20.1	19.7
135°	25.0	24.6	24.1	23.6	23.1	22.8	23.9	23.8	23.4	22.9	22.4
137.5°	27.5	27.2	26.6	26.2	25.8	25.3	26.7	26.6	26.2	25.7	25.3
140°	30.2	29.7	29.3	28.9	28.4	28.1	29.5	29.5	29.1	28.8	28.3
142.5°	32.6	32.2	31.8	31.4	31.0	30.6	32.3	32.3	32.0	31.6	31.3
145°	34.8	34.6	34.1	33.8	33.4	33.2	35.0	35.1	34.8	34.5	34.2
147.5°	37.1	36.8	36.4	36.1	35.8	35.6	37.7	37.9	37.7	37.4	37.1
150°	39.2	38.9	38.5	38.2	38.0	37.7	40.3	40.7	40.5	40.2	39.9
152.5°	40.9	40.6	40.3	40.0	39.7	39.5	42.7	43.3	43.1	42.8	42.7
155°	42.8	42.5	42.2	42.0	41.7	41.6	45.2	45.9	45.7	45.5	45.3
157.5°	44.9	44.6	44.2	44.0	43.7	43.6	47.5	48.4	48.1	48.0	47.9
160°	47.0	46.7	46.4	46.2	45.9	45.7	49.8	50.7	50.6	50.4	50.2
162.5°	49.2	49.1	48.7	48.4	48.1	48.0	52.1	53.0	52.8	52.6	52.5
165°	51.6	51.3	51.1	51.0	50.7	50.5	54.4	55.3	55.2	54.9	54.8
167.5°	54.0	53.8	53.5	53.3	53.1	53.0	56.7	57.4	57.3	57.1	57.0
170°	56.1	55.9	55.7	55.6	55.5	55.5	58.5	59.2	59.1	58.9	58.8
172.5°	57.9	57.8	57.7	57.6	57.5	57.4	60.0	60.6	60.6	60.5	60.3
175°	59.4	59.3	59.3	59.3	59.2	59.1	61.2	61.6	61.5	61.4	61.4
177.5°	60.6	60.6	60.6	60.6	60.6	60.6	61.8	62.1	62.0	62.0	61.9
180°	61.4	61.4	61.4	61.4	61.4	61.4	61.4	61.4	61.4	61.4	61.4



TEST NUMBER: P1444441
 CATALOG NUMBER: EHBR1-18-UNV-TA-L830

CANDELA DISTRIBUTION (continued):

	55°	57.5°	60°	62.5°	65°	67.5°	70°	72.5°	75°	77.5°	80°
0°	14819.8	14819.8	14819.8	14819.8	14819.8	14819.8	14819.8	14819.8	14819.8	14819.8	14819.8
2.5°	14851.6	14856.9	14857.6	14863.7	14863.2	14870.4	14869.3	14875.2	14871.8	14876.6	14872.5
5°	15200.4	15232.1	15248.6	15279.5	15289.2	15316.9	15324.7	15349.8	15350.9	15370.9	15366.3
7.5°	15693.6	15740.2	15767.9	15806.0	15825.4	15857.2	15871.2	15894.7	15902.3	15921.0	15922.4
10°	15988.1	16010.7	16026.5	16037.2	16046.9	16051.4	16056.8	16055.4	16056.8	16054.7	16059.3
12.5°	15872.3	15839.2	15817.4	15776.0	15751.9	15706.2	15683.7	15639.7	15623.7	15585.9	15580.5
15°	15285.6	15170.4	15089.0	14970.6	14896.1	14779.7	14711.5	14606.4	14558.4	14474.9	14452.9
17.5°	14216.3	14002.5	13837.0	13624.6	13477.3	13278.8	13154.0	12989.7	12899.8	12767.2	12721.4
20°	12717.3	12400.8	12152.5	11856.8	11645.1	11381.4	11212.5	10999.6	10875.9	10713.2	10647.3
22.5°	10957.3	10563.4	10253.2	9903.8	9648.5	9354.5	9152.2	8921.9	8787.4	8610.6	8532.3
25°	9143.4	8708.9	8364.2	7996.0	7726.2	7431.6	7229.2	7002.8	6863.6	6695.9	6618.1
27.5°	7408.5	6968.7	6635.6	6293.3	6045.7	5779.9	5597.3	5399.7	5276.2	5132.9	5059.7
30°	5877.6	5489.6	5206.0	4922.0	4716.1	4500.2	4348.5	4184.7	4076.4	3953.7	3884.0
32.5°	4630.2	4330.7	4108.7	3883.3	3714.8	3534.4	3403.3	3258.7	3160.9	3051.4	2988.3
35°	3667.0	3434.3	3257.3	3071.7	2926.9	2773.3	2657.7	2533.0	2445.3	2351.0	2296.4
37.5°	2897.3	2712.3	2566.6	2412.5	2293.5	2166.2	2123.3	1980.2	1889.2	1814.0	1761.9
40°	2273.9	2126.7	2006.1	1888.3	1791.3	1694.7	1617.2	1540.8	1482.1	1428.2	1391.0
42.5°	1775.7	1669.1	1581.1	1494.7	1424.0	1353.6	1297.4	1244.8	1205.3	1170.0	1146.1
45°	1411.6	1338.3	1277.1	1216.3	1166.4	1119.4	1081.6	1048.0	1022.4	1001.3	986.4
47.5°	1159.6	1109.4	1066.3	1025.2	991.4	960.6	935.3	927.1	899.6	881.1	874.0
50°	985.5	955.3	922.5	892.2	869.5	847.1	830.6	814.6	804.3	795.7	793.1
52.5°	855.6	832.5	814.2	795.0	780.1	764.1	752.7	742.1	736.3	731.9	731.4
55°	759.0	742.8	730.7	717.9	708.9	699.5	693.6	688.0	685.5	683.2	683.4
57.5°	685.9	675.1	667.2	658.9	654.0	649.5	648.0	646.6	647.4	647.7	649.0
60°	632.7	625.6	620.7	615.9	613.8	612.4	613.5	614.8	617.4	619.4	621.3
62.5°	591.8	587.8	585.3	582.8	582.5	582.7	584.9	587.0	590.3	592.7	594.5
65°	549.8	547.5	546.8	545.1	545.9	546.4	549.0	550.7	553.9	555.8	558.1
67.5°	507.3	506.8	507.3	507.3	508.7	510.0	512.6	514.4	517.2	518.9	520.8
70°	475.9	476.2	477.3	477.5	479.1	480.1	482.2	483.4	485.9	487.4	489.6
72.5°	445.5	445.0	445.3	444.6	445.1	444.8	446.1	446.7	448.8	449.9	452.7
75°	413.0	411.7	411.3	409.8	409.9	408.9	409.3	409.2	410.7	411.2	413.2
77.5°	373.8	371.5	370.4	367.9	367.8	366.9	367.9	368.5	370.9	372.2	374.4
80°	326.9	323.3	321.7	318.8	319.2	319.1	321.5	323.4	326.3	326.8	329.7
82.5°	271.7	268.0	266.3	263.5	264.2	264.2	266.4	266.8	269.3	270.4	273.7
85°	194.6	196.0	192.0	192.3	191.6	193.1	194.6	196.4	198.6	202.1	204.9
87.5°	114.6	114.1	115.5	115.6	117.6	118.7	121.9	123.6	127.2	130.0	135.1
90°	42.2	40.9	42.4	42.2	44.7	44.6	46.6	46.1	48.5	49.1	52.2
92.5°	2.2	2.4	2.2	2.3	2.2	2.4	2.2	2.4	2.2	2.4	2.2
95°	2.4	2.4	2.4	2.4	2.4	2.4	2.4	2.4	2.4	2.4	2.4
97.5°	2.6	2.6	2.6	2.6	2.6	2.6	2.6	2.6	2.6	2.6	2.6
100°	2.9	2.9	2.9	2.8	2.8	2.8	2.8	2.8	2.8	2.8	2.8
102.5°	3.3	3.3	3.3	3.2	3.2	3.1	3.1	3.1	3.1	3.1	3.1
105°	3.7	3.7	3.6	3.6	3.6	3.5	3.5	3.4	3.4	3.4	3.4
107.5°	4.2	4.0	4.0	3.9	3.9	3.8	3.7	3.7	3.7	3.7	3.7
110°	4.7	4.6	4.6	4.4	4.3	4.3	4.2	4.2	4.0	4.0	4.0



TEST NUMBER: P1444441
 CATALOG NUMBER: EHBR1-18-UNV-TA-L830

CANDELA DISTRIBUTION (continued):

	55°	57.5°	60°	62.5°	65°	67.5°	70°	72.5°	75°	77.5°	80°
112.5°	5.5	5.3	5.2	5.0	4.9	4.7	4.7	4.6	4.6	4.5	4.4
115°	6.4	6.2	5.9	5.8	5.6	5.3	5.2	5.2	5.1	5.0	5.0
117.5°	7.5	7.2	6.8	6.7	6.5	6.2	6.0	5.8	5.7	5.6	5.6
120°	8.8	8.4	8.1	7.8	7.5	7.2	6.9	6.7	6.6	6.5	6.4
122.5°	10.3	9.9	9.5	9.2	8.8	8.4	8.1	7.9	7.7	7.5	7.4
125°	12.2	11.7	11.2	10.8	10.3	10.0	9.6	9.3	9.0	8.8	8.5
127.5°	14.2	13.7	13.2	12.7	12.2	11.8	11.3	11.1	10.7	10.4	10.1
130°	16.5	16.0	15.5	15.0	14.4	14.0	13.5	13.1	12.7	12.5	12.1
132.5°	19.1	18.6	18.1	17.5	17.0	16.5	16.0	15.5	15.1	14.7	14.4
135°	21.8	21.5	20.8	20.3	19.7	19.3	18.8	18.3	17.9	17.4	17.0
137.5°	24.8	24.4	23.8	23.4	22.8	22.4	21.7	21.4	20.8	20.5	20.1
140°	27.8	27.4	26.9	26.4	25.9	25.6	25.0	24.6	24.1	23.8	23.4
142.5°	30.7	30.3	30.0	29.5	29.1	28.8	28.2	27.8	27.4	27.1	26.7
145°	33.8	33.4	33.1	32.7	32.3	31.9	31.5	31.1	30.7	30.4	30.2
147.5°	36.7	36.4	36.1	35.8	35.4	35.0	34.7	34.5	34.0	33.8	33.4
150°	39.6	39.3	39.0	38.8	38.4	38.1	37.7	37.5	37.2	37.0	36.7
152.5°	42.3	42.2	41.9	41.6	41.3	41.0	40.7	40.6	40.3	40.0	39.7
155°	45.1	44.8	44.6	44.3	44.0	43.8	43.6	43.3	43.1	42.8	42.5
157.5°	47.6	47.4	47.1	46.9	46.6	46.4	46.2	46.0	45.7	45.5	45.2
160°	50.0	49.8	49.6	49.4	49.1	48.9	48.6	48.4	48.1	48.0	47.8
162.5°	52.3	52.1	51.9	51.7	51.4	51.2	51.0	50.8	50.5	50.3	50.0
165°	54.5	54.3	54.1	53.9	53.7	53.5	53.2	53.0	52.7	52.6	52.4
167.5°	56.8	56.7	56.4	56.2	55.9	55.7	55.5	55.4	55.2	54.9	54.6
170°	58.7	58.5	58.4	58.2	58.0	57.8	57.6	57.4	57.1	57.0	56.8
172.5°	60.2	60.1	59.9	59.9	59.7	59.6	59.4	59.3	59.1	58.9	58.8
175°	61.3	61.3	61.2	61.0	61.0	60.9	60.8	60.7	60.6	60.5	60.3
177.5°	61.9	61.9	61.9	61.8	61.7	61.7	61.6	61.6	61.6	61.5	61.5
180°	61.4	61.4	61.4	61.4	61.4	61.4	61.4	61.4	61.4	61.4	61.4



TEST NUMBER: P1444441
 CATALOG NUMBER: EHBR1-18-UNV-TA-L830

CANDELA DISTRIBUTION (continued):

	82.5°	85°	87.5°	90°	92.5°	95°	97.5°	100°	102.5°	105°	107.5°
0°	14819.8	14819.8	14819.8	14819.8	14819.8	14819.8	14819.8	14819.8	14819.8	14819.8	14819.8
2.5°	14876.8	14873.1	14874.8	14867.8	14869.5	14861.1	14860.3	14850.9	14849.9	14840.9	14837.6
5°	15380.5	15372.2	15381.6	15367.0	15369.9	15350.9	15349.3	15324.8	15316.4	15285.7	15272.5
7.5°	15934.1	15931.0	15936.7	15924.5	15924.1	15907.2	15900.2	15878.2	15864.7	15832.4	15811.9
10°	16055.4	16058.2	16053.6	16054.7	16048.2	16046.3	16039.5	16035.2	16024.2	16015.8	16003.6
12.5°	15551.8	15554.8	15535.6	15547.8	15538.1	15560.6	15558.8	15585.2	15589.4	15622.8	15635.5
15°	14387.8	14384.3	14347.4	14370.6	14358.2	14407.5	14418.6	14484.9	14520.4	14605.5	14657.9
17.5°	12629.6	12620.2	12568.3	12596.6	12582.2	12654.8	12679.3	12785.3	12851.6	12988.8	13086.7
20°	10533.8	10515.6	10454.8	10488.0	10473.2	10555.7	10590.5	10718.8	10804.2	10985.9	11115.3
22.5°	8411.8	8383.1	8323.6	8354.5	8340.5	8426.1	8471.4	8600.1	8697.9	8884.5	9035.5
25°	6506.4	6480.7	6423.2	6444.9	6439.7	6512.1	6552.4	6674.1	6770.2	6947.9	7092.0
27.5°	4962.6	4935.9	4883.9	4899.3	4894.0	4955.7	4993.7	5095.3	5178.0	5327.7	5454.3
30°	3798.1	3765.9	3721.9	3730.3	3726.8	3776.7	3812.2	3897.8	3968.7	4095.2	4204.2
32.5°	2911.2	2879.0	2838.5	2842.4	2837.1	2876.4	2905.6	2980.0	3041.8	3149.3	3244.2
35°	2227.5	2265.2	2178.8	2233.6	2176.5	2260.2	2230.1	2276.7	2329.8	2420.4	2499.5
37.5°	1712.4	1686.1	1663.9	1661.5	1661.4	1680.7	1703.7	1748.5	1795.3	1862.8	1932.5
40°	1357.0	1338.6	1324.1	1323.1	1324.1	1337.9	1354.9	1385.9	1420.1	1468.6	1519.8
42.5°	1125.5	1113.3	1104.6	1104.0	1106.7	1116.5	1128.3	1146.6	1168.9	1200.4	1235.5
45°	974.2	967.3	962.5	962.2	963.5	968.6	975.3	986.8	1001.0	1020.5	1042.7
47.5°	868.0	866.3	863.3	863.4	862.0	864.0	864.9	871.2	878.8	893.5	922.7
50°	790.6	790.6	788.5	788.3	786.4	786.3	784.7	787.2	790.7	799.9	809.1
52.5°	729.4	729.2	727.0	726.5	724.5	724.4	723.0	723.9	724.4	729.0	734.6
55°	681.6	680.2	677.2	676.3	675.6	676.7	676.2	676.2	675.6	677.5	679.2
57.5°	647.4	645.5	642.7	641.9	641.6	643.1	643.1	642.7	640.1	638.4	635.8
60°	620.3	618.4	615.3	614.6	615.0	617.0	616.9	615.2	611.4	608.0	604.2
62.5°	593.6	592.8	591.3	591.1	590.7	591.1	589.7	587.9	584.1	580.6	576.4
65°	557.9	558.3	557.1	557.2	555.8	555.7	553.6	551.9	548.1	544.8	540.5
67.5°	520.7	521.0	520.1	520.1	519.4	519.5	518.2	516.6	513.4	510.7	507.4
70°	490.2	490.9	490.4	490.6	489.6	489.3	487.4	485.8	482.5	480.3	477.3
72.5°	453.5	455.1	455.1	455.5	454.2	453.5	451.1	449.2	446.2	444.5	442.0
75°	413.9	416.1	416.7	417.7	415.8	414.8	412.2	410.7	408.2	407.2	405.6
77.5°	375.3	377.7	379.9	382.1	379.0	376.4	373.1	370.7	367.1	365.8	363.3
80°	332.0	336.2	341.1	345.4	339.9	334.4	329.1	325.1	320.4	318.6	315.5
82.5°	275.5	279.7	282.6	285.3	281.5	277.5	272.3	268.8	263.8	261.9	258.3
85°	209.3	214.6	216.3	217.7	215.3	213.2	208.3	201.8	198.6	193.6	191.0
87.5°	137.6	140.8	141.4	141.9	140.4	139.4	136.3	133.2	127.8	123.8	119.0
90°	52.2	54.4	53.3	54.2	52.3	52.4	49.2	48.1	43.5	41.8	37.7
92.5°	2.3	2.2	2.2	2.2	2.4	2.2	2.4	2.2	2.4	2.2	2.4
95°	2.4	2.4	2.4	2.4	2.4	2.4	2.4	2.4	2.4	2.4	2.4
97.5°	2.6	2.6	2.6	2.6	2.6	2.6	2.6	2.6	2.6	2.6	2.6
100°	2.8	2.8	2.8	2.8	2.8	2.8	2.8	2.8	2.8	2.8	2.8
102.5°	3.1	3.1	3.1	3.1	3.1	3.1	3.1	3.1	3.1	3.1	3.2
105°	3.4	3.4	3.4	3.4	3.4	3.4	3.4	3.4	3.4	3.5	3.5
107.5°	3.7	3.7	3.7	3.7	3.7	3.7	3.7	3.7	3.7	3.7	3.7
110°	4.0	4.0	4.0	4.0	4.0	4.0	4.0	4.0	4.0	4.0	4.2



TEST NUMBER: P1444441
 CATALOG NUMBER: EHBR1-18-UNV-TA-L830

CANDELA DISTRIBUTION (continued):

	82.5°	85°	87.5°	90°	92.5°	95°	97.5°	100°	102.5°	105°	107.5°
112.5°	4.4	4.4	4.4	4.4	4.4	4.4	4.4	4.5	4.5	4.6	4.6
115°	4.9	4.9	4.9	4.9	4.9	4.9	4.9	5.0	5.0	5.0	5.2
117.5°	5.5	5.4	5.4	5.4	5.4	5.4	5.5	5.5	5.6	5.6	5.8
120°	6.3	6.2	6.2	6.2	6.2	6.2	6.2	6.2	6.4	6.5	6.7
122.5°	7.2	7.1	7.1	7.1	7.1	7.1	7.1	7.2	7.4	7.5	7.7
125°	8.5	8.3	8.3	8.2	8.2	8.2	8.3	8.4	8.5	8.7	9.0
127.5°	10.0	9.9	9.7	9.6	9.6	9.6	9.8	9.9	10.0	10.3	10.6
130°	11.9	11.7	11.6	11.5	11.5	11.5	11.6	11.7	12.0	12.2	12.5
132.5°	14.2	14.0	13.9	13.7	13.7	13.7	13.9	14.0	14.2	14.4	14.8
135°	16.9	16.7	16.5	16.4	16.4	16.3	16.4	16.5	16.8	17.0	17.4
137.5°	19.9	19.6	19.5	19.3	19.3	19.3	19.4	19.5	19.7	20.0	20.4
140°	23.1	22.9	22.8	22.5	22.5	22.5	22.6	22.7	22.9	23.1	23.5
142.5°	26.5	26.1	26.0	25.9	25.9	25.9	25.9	26.0	26.2	26.4	26.8
145°	29.9	29.6	29.5	29.3	29.3	29.3	29.3	29.4	29.6	29.7	30.1
147.5°	33.3	33.0	32.9	32.7	32.7	32.7	32.7	32.7	32.9	33.0	33.3
150°	36.6	36.3	36.2	36.1	36.0	35.9	36.0	35.9	36.1	36.1	36.3
152.5°	39.6	39.3	39.2	39.1	39.0	39.0	39.0	38.9	39.0	39.0	39.1
155°	42.4	42.2	42.2	42.0	41.9	41.8	41.8	41.6	41.7	41.6	41.7
157.5°	45.1	45.0	44.8	44.6	44.5	44.3	44.3	44.1	44.1	44.0	44.0
160°	47.6	47.3	47.2	47.0	46.9	46.6	46.6	46.4	46.4	46.3	46.2
162.5°	49.8	49.6	49.5	49.3	49.2	48.9	48.8	48.6	48.5	48.4	48.3
165°	52.1	51.9	51.7	51.4	51.3	51.1	51.1	50.9	50.8	50.6	50.5
167.5°	54.5	54.2	54.1	53.9	53.8	53.6	53.5	53.3	53.2	53.1	53.1
170°	56.7	56.5	56.4	56.2	56.1	55.9	55.8	55.7	55.6	55.5	55.5
172.5°	58.7	58.5	58.5	58.4	58.3	58.1	58.1	58.0	57.9	57.9	57.8
175°	60.3	60.2	60.1	60.0	59.9	59.9	59.9	59.9	59.9	59.9	59.9
177.5°	61.4	61.4	61.4	61.4	61.4	61.4	61.4	61.4	61.4	61.3	61.3
180°	61.4	61.4	61.4	61.4	61.4	61.4	61.4	61.4	61.4	61.4	61.4



TEST NUMBER: P1444441
 CATALOG NUMBER: EHBR1-18-UNV-TA-L830

CANDELA DISTRIBUTION (continued):

	110°	112.5°	115°	117.5°	120°	122.5°	125°	127.5°	130°	132.5°	135°
0°	14819.8	14819.8	14819.8	14819.8	14819.8	14819.8	14819.8	14819.8	14819.8	14819.8	14819.8
2.5°	14828.0	14824.1	14813.8	14808.8	14799.3	14794.5	14787.1	14782.3	14776.3	14771.9	14769.6
5°	15238.8	15219.8	15181.9	15158.5	15117.5	15090.4	15049.6	15019.8	14977.7	14946.7	14906.9
7.5°	15773.3	15744.2	15695.6	15658.7	15601.3	15557.3	15493.0	15441.5	15370.3	15311.2	15238.5
10°	15990.9	15974.0	15952.2	15928.4	15896.6	15865.4	15821.4	15776.6	15716.9	15657.4	15579.7
12.5°	15669.3	15685.3	15716.9	15731.6	15755.6	15763.9	15774.8	15769.7	15759.9	15735.7	15700.5
15°	14758.4	14825.1	14930.6	15003.5	15105.7	15177.5	15272.5	15333.6	15404.0	15446.1	15486.0
17.5°	13260.0	13389.0	13575.2	13723.5	13922.9	14084.9	14283.5	14439.5	14619.6	14757.8	14904.8
20°	11340.7	11521.4	11778.4	11996.5	12285.3	12530.2	12843.9	13106.7	13413.3	13668.8	13944.7
22.5°	9275.1	9487.6	9782.1	10045.2	10390.0	10698.1	11091.1	11438.6	11853.1	12224.3	12635.1
25°	7326.4	7534.7	7834.5	8107.0	8479.4	8818.6	9248.1	9646.7	10127.7	10576.2	11091.1
27.5°	5655.3	5840.4	6103.9	6349.2	6690.2	7023.3	7459.0	7884.2	8397.4	8879.3	9434.3
30°	4367.4	4517.6	4728.8	4926.1	5199.9	5472.3	5860.4	6253.6	6764.3	7263.7	7832.7
32.5°	3384.6	3512.7	3688.9	3849.1	4060.1	4265.5	4551.4	4865.5	5313.5	5791.9	6342.0
35°	2620.1	2729.6	2879.6	3017.6	3191.1	3354.2	3567.5	3791.7	4133.6	4536.0	5028.3
37.5°	2088.9	2133.5	2240.6	2353.7	2497.7	2631.8	2798.6	2964.4	3209.0	3526.5	3928.7
40°	1588.6	1659.5	1746.7	1835.7	1944.7	2052.2	2235.3	2323.4	2484.5	2712.4	3024.5
42.5°	1281.8	1331.6	1393.0	1454.9	1530.9	1605.8	1698.3	1792.7	1913.0	2067.4	2289.4
45°	1072.6	1105.1	1144.7	1185.9	1235.8	1286.9	1349.0	1413.7	1495.3	1590.2	1725.0
47.5°	932.9	950.9	976.6	1004.8	1039.1	1074.4	1114.8	1156.0	1206.7	1263.0	1339.8
50°	823.8	838.8	858.9	877.7	901.3	937.6	953.6	976.3	1006.8	1039.9	1082.8
52.5°	744.9	754.9	767.4	778.3	793.2	806.8	824.6	840.3	861.4	881.3	909.0
55°	683.4	687.1	694.2	701.1	711.5	720.8	733.0	743.2	756.7	768.6	786.1
57.5°	635.9	636.3	639.6	643.2	649.9	655.7	664.1	670.9	680.1	687.7	698.2
60°	601.8	600.1	600.7	601.9	605.7	609.5	614.9	619.3	625.2	629.5	635.3
62.5°	573.5	570.6	570.0	569.6	571.5	572.9	575.8	577.9	581.2	583.1	586.3
65°	537.6	534.2	532.9	531.4	532.0	531.5	532.6	532.6	534.4	534.8	536.5
67.5°	505.1	502.3	500.6	498.5	497.6	496.1	495.4	494.0	493.7	492.5	492.2
70°	475.4	472.7	471.3	469.3	468.4	466.4	465.2	462.7	461.3	459.1	457.8
72.5°	441.1	439.6	439.1	437.8	437.4	436.4	435.9	434.2	433.2	431.3	430.1
75°	405.2	404.0	403.8	402.5	402.4	401.1	400.8	398.9	398.0	396.1	395.3
77.5°	362.5	360.6	360.1	358.6	358.9	358.3	358.9	357.4	356.9	354.9	354.4
80°	314.4	311.9	311.0	308.9	309.5	308.6	309.5	309.4	310.1	308.6	308.3
82.5°	257.4	254.7	254.2	252.8	253.8	253.8	255.9	254.8	255.3	253.8	254.4
85°	187.2	185.3	182.6	182.2	180.4	182.3	179.8	181.4	178.9	180.7	178.3
87.5°	116.2	112.0	109.9	107.0	105.8	103.1	101.9	99.9	100.5	99.6	100.1
90°	36.7	33.1	31.9	28.8	28.2	25.4	25.3	23.2	23.4	21.4	21.7
92.5°	2.2	2.2	2.2	2.3	2.2	2.2	2.2	2.3	2.2	2.3	2.2
95°	2.4	2.4	2.4	2.4	2.4	2.4	2.4	2.4	2.4	2.4	2.4
97.5°	2.6	2.6	2.6	2.6	2.6	2.6	2.6	2.7	2.7	2.7	2.7
100°	2.8	2.9	2.9	2.9	2.9	3.0	3.0	3.0	3.1	3.1	3.1
102.5°	3.2	3.2	3.2	3.3	3.3	3.3	3.3	3.4	3.4	3.5	3.6
105°	3.5	3.6	3.6	3.6	3.6	3.7	3.7	3.7	3.8	3.9	3.9
107.5°	3.7	3.8	3.9	3.9	3.9	4.0	4.2	4.2	4.3	4.4	4.6
110°	4.2	4.2	4.3	4.4	4.5	4.6	4.7	4.8	5.0	5.1	5.2



TEST NUMBER: P1444441
 CATALOG NUMBER: EHBR1-18-UNV-TA-L830

CANDELA DISTRIBUTION (continued):

	110°	112.5°	115°	117.5°	120°	122.5°	125°	127.5°	130°	132.5°	135°
112.5°	4.6	4.7	4.8	5.0	5.1	5.2	5.3	5.5	5.7	5.9	6.1
115°	5.2	5.3	5.3	5.6	5.7	5.9	6.1	6.4	6.7	6.8	7.1
117.5°	5.8	6.0	6.2	6.4	6.6	6.8	7.1	7.4	7.8	8.1	8.3
120°	6.7	6.9	7.1	7.4	7.7	8.0	8.3	8.6	9.0	9.4	9.7
122.5°	7.8	8.1	8.3	8.6	9.0	9.4	9.7	10.2	10.6	11.1	11.4
125°	9.2	9.5	9.8	10.2	10.6	11.1	11.4	12.0	12.5	12.9	13.4
127.5°	10.8	11.1	11.5	12.0	12.5	12.9	13.4	14.0	14.4	15.0	15.5
130°	12.8	13.2	13.6	14.1	14.5	15.1	15.6	16.3	16.7	17.2	17.7
132.5°	15.1	15.6	16.0	16.5	17.0	17.6	18.1	18.6	19.2	19.9	20.2
135°	17.8	18.3	18.6	19.2	19.7	20.3	20.8	21.5	21.8	22.5	22.9
137.5°	20.7	21.2	21.6	22.1	22.6	23.1	23.7	24.3	24.6	25.2	25.7
140°	23.8	24.3	24.6	25.2	25.7	26.1	26.5	27.1	27.4	28.0	28.4
142.5°	27.0	27.4	27.7	28.2	28.6	29.1	29.5	30.0	30.3	30.6	31.0
145°	30.3	30.6	30.9	31.3	31.7	32.0	32.3	32.7	32.9	33.3	33.5
147.5°	33.4	33.7	33.9	34.2	34.5	34.8	35.0	35.2	35.4	35.7	35.9
150°	36.4	36.6	36.7	37.0	37.1	37.4	37.5	37.7	37.7	38.0	38.1
152.5°	39.2	39.2	39.2	39.5	39.5	39.6	39.7	39.9	39.9	40.0	40.2
155°	41.6	41.7	41.7	41.8	41.8	41.8	41.8	42.0	42.1	42.1	42.2
157.5°	43.9	43.8	43.8	43.8	43.8	43.8	43.8	43.9	44.0	44.1	44.3
160°	46.0	46.0	45.9	45.9	45.9	45.9	45.9	46.0	46.1	46.3	46.4
162.5°	48.1	48.1	48.1	48.1	48.1	48.1	48.1	48.3	48.4	48.5	48.7
165°	50.5	50.5	50.4	50.5	50.5	50.5	50.6	50.7	50.9	51.1	51.1
167.5°	53.0	53.0	53.0	53.1	53.1	53.2	53.2	53.5	53.5	53.7	53.8
170°	55.5	55.5	55.5	55.5	55.5	55.6	55.7	55.7	55.8	55.9	56.0
172.5°	57.8	57.8	57.8	57.8	57.8	57.9	57.9	58.0	58.0	58.1	58.1
175°	59.9	59.9	59.9	59.9	59.9	59.8	59.8	59.7	59.7	59.7	59.7
177.5°	61.2	61.1	61.0	61.0	61.0	60.9	60.9	60.9	60.9	60.9	60.8
180°	61.4	61.4	61.4	61.4	61.4	61.4	61.4	61.4	61.4	61.4	61.4



TEST NUMBER: P1444441
 CATALOG NUMBER: EHBR1-18-UNV-TA-L830

CANDELA DISTRIBUTION (continued):

	137.5°	140°	142.5°	145°	147.5°	150°	152.5°	155°	157.5°	160°	162.5°
0°	14819.8	14819.8	14819.8	14819.8	14819.8	14819.8	14819.8	14819.8	14819.8	14819.8	14819.8
2.5°	14766.6	14766.4	14765.0	14765.6	14765.9	14766.9	14768.2	14769.6	14769.8	14770.9	14771.1
5°	14877.1	14840.6	14813.6	14783.8	14761.5	14741.4	14728.0	14717.3	14713.2	14714.2	14716.7
7.5°	15176.7	15101.3	15039.1	14968.3	14909.4	14846.9	14795.1	14746.0	14710.1	14683.3	14668.4
10°	15505.6	15413.7	15325.9	15223.5	15126.3	15022.7	14928.9	14834.4	14755.5	14687.1	14636.8
12.5°	15651.5	15586.6	15510.7	15414.0	15310.1	15190.5	15069.8	14940.3	14820.0	14708.1	14618.0
15°	15497.0	15497.1	15469.5	15423.1	15350.9	15255.3	15140.3	15005.3	14863.3	14718.3	14586.0
17.5°	15006.5	15099.1	15150.5	15183.1	15173.1	15138.0	15064.7	14961.0	14828.7	14674.3	14512.7
20°	14164.3	14382.5	14538.2	14678.1	14756.5	14808.6	14803.5	14761.2	14667.0	14535.7	14367.4
22.5°	12984.4	13350.7	13639.8	13909.4	14098.4	14252.2	14325.3	14356.4	14313.7	14222.1	14064.1
25°	11551.3	12049.4	12474.5	12887.1	13196.4	13462.4	13622.3	13734.9	13743.8	13696.0	13555.0
27.5°	9958.9	10546.9	11084.8	11633.1	12068.3	12450.6	12701.4	12885.1	12943.3	12935.7	12807.6
30°	8368.6	8985.8	9578.8	10218.1	10756.6	11245.0	11576.4	11824.7	11920.4	11938.7	11815.6
32.5°	6866.6	7475.2	8066.7	8735.0	9327.6	9887.3	10278.9	10573.8	10685.0	10711.3	10576.2
35°	5503.4	6065.0	6627.0	7274.8	7864.0	8443.6	8856.1	9164.9	9268.8	9286.3	9130.0
37.5°	4321.4	4799.9	5289.6	5870.7	6411.9	6956.2	7348.2	7638.4	7714.1	7709.4	7532.5
40°	3326.2	3698.1	4091.5	4570.0	5019.9	5480.1	5811.1	6051.0	6090.8	6061.3	5875.4
42.5°	2501.1	2769.7	3055.0	3412.1	3745.9	4090.3	4331.2	4509.2	4514.9	4468.4	4301.5
45°	1863.3	2125.4	2245.0	2461.0	2676.0	2905.0	3052.0	3162.0	3145.0	3104.1	2977.2
47.5°	1420.4	1521.2	1628.0	1761.9	1887.1	2147.0	2127.7	2304.5	2177.2	2263.9	2072.9
50°	1128.0	1184.3	1241.8	1312.9	1378.3	1446.3	1488.7	1520.4	1516.3	1502.7	1466.0
52.5°	959.7	977.1	1005.4	1045.8	1082.4	1119.1	1143.3	1162.9	1163.3	1157.8	1139.3
55°	802.0	824.1	844.5	871.0	915.9	922.8	957.5	950.5	953.2	943.5	953.4
57.5°	707.1	720.0	731.5	747.2	760.2	775.4	784.3	792.9	792.1	790.2	780.8
60°	640.0	647.0	653.4	662.5	669.7	678.3	682.4	686.8	685.3	682.1	673.8
62.5°	588.1	592.6	596.1	602.1	606.4	611.8	613.9	615.8	613.9	610.8	603.4
65°	536.9	539.8	542.1	546.6	549.7	554.2	556.0	557.7	556.0	553.7	548.1
67.5°	490.8	491.1	490.8	492.7	493.6	496.4	497.2	498.4	496.5	494.4	489.6
70°	455.8	455.1	454.2	455.0	455.1	456.5	456.6	456.5	454.0	450.6	445.3
72.5°	428.5	428.1	427.4	428.0	428.0	429.2	428.8	428.3	425.4	421.9	416.7
75°	393.3	393.0	391.7	391.7	390.7	391.1	389.7	388.8	385.5	382.7	378.1
77.5°	352.2	351.5	349.6	348.8	346.8	345.9	343.2	341.9	338.6	336.3	332.3
80°	306.2	305.6	303.0	301.7	298.4	296.3	292.3	290.1	286.4	284.1	280.3
82.5°	253.1	253.4	250.9	249.3	244.5	240.9	235.6	232.8	228.6	226.4	222.5
85°	180.0	177.4	178.8	178.7	175.7	172.6	168.3	165.3	161.8	159.7	156.9
87.5°	98.7	99.4	98.6	98.1	95.9	94.3	91.0	89.3	86.6	85.4	83.3
90°	19.6	20.0	18.0	18.4	16.5	16.0	13.7	13.6	11.5	11.3	9.6
92.5°	2.2	2.2	2.3	2.2	2.3	2.3	2.3	2.3	2.3	2.2	2.3
95°	2.4	2.5	2.5	2.5	2.5	2.5	2.6	2.6	2.6	2.6	2.6
97.5°	2.8	2.8	2.8	2.8	2.8	2.8	2.9	2.9	2.9	2.9	2.9
100°	3.1	3.2	3.2	3.2	3.3	3.3	3.3	3.3	3.4	3.4	3.4
102.5°	3.6	3.6	3.7	3.7	3.7	3.7	3.8	3.8	3.9	3.9	3.9
105°	4.0	4.0	4.2	4.3	4.3	4.4	4.5	4.5	4.6	4.6	4.6
107.5°	4.7	4.7	4.9	5.0	5.1	5.2	5.2	5.3	5.3	5.4	5.5
110°	5.3	5.5	5.7	5.8	6.0	6.1	6.2	6.3	6.5	6.5	6.7



TEST NUMBER: P1444441
 CATALOG NUMBER: EHBR1-18-UNV-TA-L830

CANDELA DISTRIBUTION (continued):

	137.5°	140°	142.5°	145°	147.5°	150°	152.5°	155°	157.5°	160°	162.5°
112.5°	6.3	6.5	6.7	6.8	7.1	7.2	7.4	7.5	7.7	7.8	7.9
115°	7.4	7.7	7.9	8.1	8.3	8.5	8.8	8.9	9.1	9.3	9.4
117.5°	8.7	9.0	9.3	9.6	9.8	10.0	10.3	10.6	10.8	11.0	11.1
120°	10.2	10.6	10.9	11.1	11.5	11.8	12.1	12.4	12.6	12.8	13.1
122.5°	11.9	12.3	12.6	12.9	13.4	13.7	14.1	14.3	14.7	15.0	15.4
125°	13.9	14.2	14.7	15.1	15.5	15.8	16.3	16.5	17.0	17.2	17.7
127.5°	16.0	16.4	16.9	17.2	17.7	18.1	18.5	18.9	19.3	19.7	20.2
130°	18.3	18.6	19.2	19.6	20.1	20.5	21.0	21.5	21.8	22.4	22.9
132.5°	20.8	21.3	21.7	22.1	22.7	23.0	23.6	24.0	24.5	25.0	25.6
135°	23.4	23.8	24.4	24.7	25.3	25.7	26.1	26.6	27.2	27.7	28.2
137.5°	26.1	26.5	27.0	27.4	27.8	28.2	28.8	29.2	29.8	30.3	30.9
140°	28.8	29.1	29.5	30.0	30.3	30.7	31.3	31.8	32.3	32.8	33.4
142.5°	31.4	31.7	32.0	32.3	32.8	33.2	33.6	34.1	34.6	35.1	35.7
145°	33.8	34.1	34.5	34.8	35.0	35.4	35.9	36.3	36.8	37.4	37.9
147.5°	36.2	36.3	36.7	37.0	37.3	37.6	38.0	38.4	39.0	39.4	39.9
150°	38.4	38.6	38.8	39.0	39.3	39.6	40.0	40.5	40.9	41.4	41.9
152.5°	40.4	40.6	40.7	41.0	41.3	41.6	42.1	42.4	42.8	43.2	43.7
155°	42.4	42.5	42.8	43.1	43.4	43.7	44.0	44.3	44.7	45.1	45.5
157.5°	44.5	44.6	44.9	45.1	45.4	45.7	46.1	46.4	46.7	47.1	47.4
160°	46.6	46.8	47.1	47.3	47.6	47.9	48.2	48.5	48.8	49.2	49.5
162.5°	48.9	49.2	49.5	49.6	49.9	50.2	50.5	50.8	51.1	51.3	51.7
165°	51.4	51.6	51.9	52.1	52.4	52.5	52.8	53.0	53.4	53.6	53.9
167.5°	54.0	54.1	54.3	54.5	54.8	54.9	55.2	55.4	55.6	55.8	56.1
170°	56.2	56.3	56.4	56.6	56.8	56.9	57.0	57.1	57.4	57.6	57.8
172.5°	58.2	58.2	58.4	58.4	58.5	58.5	58.7	58.8	58.9	59.1	59.2
175°	59.8	59.8	59.9	59.9	59.9	59.9	60.0	60.1	60.2	60.2	60.3
177.5°	60.8	60.8	60.8	60.8	60.9	60.9	60.9	60.9	61.0	61.0	61.0
180°	61.4	61.4	61.4	61.4	61.4	61.4	61.4	61.4	61.4	61.4	61.4



TEST NUMBER: P1444441
 CATALOG NUMBER: EHBR1-18-UNV-TA-L830

CANDELA DISTRIBUTION (continued):

	165°	167.5°	170°	172.5°	175°	177.5°	180°	182.5°	185°	187.5°	190°
0°	14819.8	14819.8	14819.8	14819.8	14819.8	14819.8	14819.8	14819.8	14819.8	14819.8	14819.8
2.5°	14770.6	14770.4	14769.9	14769.3	14768.6	14769.0	14769.7	14771.3	14774.3	14778.6	14784.2
5°	14718.8	14721.8	14723.5	14723.7	14722.2	14721.2	14722.6	14726.7	14734.9	14748.6	14767.2
7.5°	14664.4	14668.1	14673.8	14678.1	14678.9	14677.9	14678.1	14684.5	14699.6	14726.3	14763.8
10°	14606.3	14595.2	14601.1	14611.7	14620.2	14621.7	14622.8	14630.3	14652.4	14692.8	14753.1
12.5°	14552.7	14517.8	14511.0	14520.7	14533.5	14537.6	14536.4	14539.7	14565.5	14619.0	14703.1
15°	14482.2	14416.4	14393.9	14396.5	14412.3	14418.0	14413.9	14407.5	14432.7	14498.0	14606.7
17.5°	14368.1	14262.0	14220.7	14219.0	14237.5	14242.5	14232.3	14212.5	14237.3	14318.8	14453.7
20°	14194.5	14038.1	13960.3	13948.0	13968.1	13962.2	13941.9	13912.0	13944.6	14043.7	14204.2
22.5°	13882.6	13684.4	13551.5	13508.7	13532.7	13516.7	13486.9	13448.8	13492.2	13604.8	13783.5
25°	13372.9	13143.8	12962.0	12859.9	12879.1	12850.2	12817.9	12771.7	12823.4	12952.6	13149.3
27.5°	12623.7	12359.1	12133.8	11964.8	11971.0	11933.2	11896.0	11836.1	11900.6	12053.6	12275.5
30°	11627.6	11321.3	11046.9	10817.3	10796.7	10760.1	10721.9	10643.4	10724.1	10907.2	11166.5
32.5°	10376.5	10036.6	9719.4	9429.1	9374.3	9338.5	9304.5	9214.1	9319.9	9533.4	9831.3
35°	8913.4	8551.3	8207.4	7875.8	7785.2	7749.4	7719.7	7633.1	7764.9	7997.3	8319.1
37.5°	7307.5	6937.5	6596.1	6256.2	6127.9	6079.5	6057.9	6001.1	6153.3	6383.1	6706.2
40°	5658.8	5314.9	5008.8	4708.6	4562.3	4488.1	4476.8	4466.5	4613.7	4813.0	5106.3
42.5°	4116.6	3839.1	3603.1	3373.6	3241.1	3139.8	3139.8	3170.5	3302.9	3452.3	3678.5
45°	2847.6	2661.4	2510.9	2357.6	2398.6	2196.6	2315.3	2254.4	2319.9	2416.1	2563.1
47.5°	1957.4	1855.8	1773.2	1687.5	1625.0	1565.4	1570.6	1609.1	1670.7	1727.9	1804.4
50°	1426.6	1374.9	1332.7	1288.3	1257.3	1230.9	1232.4	1249.1	1281.5	1311.6	1351.6
52.5°	1117.9	1089.3	1066.4	1041.8	1025.5	1012.5	1013.1	1021.3	1038.8	1056.0	1078.9
55°	921.4	918.0	888.2	866.2	857.7	848.9	850.5	853.7	865.6	875.7	890.9
57.5°	772.1	758.7	749.8	738.2	732.9	726.8	728.1	729.3	737.3	744.0	755.0
60°	666.7	657.3	650.9	643.1	639.5	635.7	636.5	637.2	642.3	646.7	654.6
62.5°	596.7	588.3	582.7	576.6	574.2	571.6	572.1	572.3	575.5	578.8	584.7
65°	543.0	536.3	531.7	526.4	523.9	521.1	521.4	521.4	524.1	526.4	530.9
67.5°	486.2	481.1	478.2	474.0	472.2	469.5	469.4	468.5	470.2	471.2	474.3
70°	440.6	435.5	431.7	427.7	425.5	423.0	423.1	423.1	425.2	427.3	431.2
72.5°	412.4	407.6	404.2	400.6	398.6	396.5	396.1	395.9	397.4	398.6	401.1
75°	375.2	371.2	369.3	366.0	364.3	361.9	361.6	360.4	361.2	361.4	363.3
77.5°	329.9	326.2	324.6	321.3	319.9	317.2	317.0	315.8	316.3	316.0	317.5
80°	278.3	274.9	274.1	271.4	270.7	268.2	267.8	266.3	266.8	265.7	266.1
82.5°	220.8	217.7	217.0	214.5	214.5	212.3	212.1	209.8	209.8	207.9	204.9
85°	155.5	153.2	152.3	150.2	149.6	147.8	146.9	144.7	144.0	142.6	142.1
87.5°	82.1	80.7	79.3	78.4	76.5	73.3	73.1	70.8	71.0	69.4	69.5
90°	9.6	8.1	8.2	6.9	6.8	6.0	6.1	5.7	5.6	5.2	5.2
92.5°	2.3	2.3	2.3	2.3	2.3	2.3	2.3	2.3	2.3	2.3	2.3
95°	2.6	2.6	2.6	2.6	2.6	2.6	2.6	2.6	2.6	2.6	2.6
97.5°	2.9	2.9	2.9	2.9	2.9	2.9	2.9	3.0	3.0	3.0	3.0
100°	3.4	3.4	3.4	3.4	3.4	3.4	3.4	3.5	3.5	3.5	3.5
102.5°	3.9	3.9	3.9	3.9	3.9	3.9	3.9	3.9	3.9	4.0	4.0
105°	4.6	4.7	4.7	4.7	4.7	4.7	4.7	4.7	4.7	4.7	4.8
107.5°	5.5	5.6	5.6	5.6	5.6	5.6	5.6	5.7	5.7	5.7	5.7
110°	6.7	6.7	6.7	6.8	6.8	6.8	6.8	6.9	6.9	6.9	6.9



TEST NUMBER: P1444441
 CATALOG NUMBER: EHBR1-18-UNV-TA-L830

CANDELA DISTRIBUTION (continued):

	165°	167.5°	170°	172.5°	175°	177.5°	180°	182.5°	185°	187.5°	190°
112.5°	8.0	8.1	8.1	8.2	8.2	8.3	8.3	8.4	8.4	8.5	8.4
115°	9.6	9.6	9.8	9.9	10.0	10.1	10.1	10.3	10.3	10.3	10.3
117.5°	11.3	11.5	11.7	11.9	12.0	12.2	12.2	12.3	12.3	12.4	12.3
120°	13.3	13.6	13.9	14.1	14.2	14.4	14.5	14.6	14.6	14.6	14.5
122.5°	15.6	15.9	16.1	16.4	16.7	16.9	17.0	17.0	17.0	17.1	17.0
125°	18.0	18.4	18.6	19.0	19.2	19.6	19.6	19.9	19.9	19.9	19.7
127.5°	20.6	21.0	21.4	21.7	22.0	22.2	22.4	22.6	22.6	22.6	22.5
130°	23.2	23.8	24.1	24.5	24.8	25.1	25.3	25.4	25.4	25.6	25.4
132.5°	25.9	26.5	27.0	27.4	27.7	28.1	28.2	28.4	28.4	28.5	28.3
135°	28.8	29.3	29.7	30.3	30.6	30.9	31.1	31.3	31.3	31.3	31.1
137.5°	31.4	32.0	32.5	32.9	33.3	33.6	33.8	34.0	34.0	34.1	33.9
140°	33.9	34.5	35.0	35.4	35.9	36.3	36.4	36.6	36.6	36.6	36.4
142.5°	36.3	36.8	37.3	37.7	38.1	38.5	38.7	38.9	38.9	38.9	38.8
145°	38.4	39.0	39.4	39.9	40.3	40.6	40.7	40.9	40.9	40.9	40.9
147.5°	40.5	40.9	41.4	41.8	42.2	42.4	42.7	42.8	42.8	42.8	42.8
150°	42.3	42.8	43.2	43.6	43.8	44.1	44.3	44.5	44.6	44.6	44.6
152.5°	44.1	44.5	44.9	45.2	45.5	45.7	45.9	46.1	46.3	46.4	46.4
155°	45.9	46.3	46.6	46.9	47.1	47.4	47.6	47.9	48.0	48.1	48.2
157.5°	47.8	48.1	48.4	48.7	48.9	49.3	49.5	49.7	49.9	50.1	50.3
160°	49.7	50.1	50.4	50.7	51.0	51.2	51.4	51.7	52.0	52.1	52.4
162.5°	52.0	52.3	52.5	52.7	53.0	53.3	53.6	53.9	54.0	54.2	54.4
165°	54.1	54.4	54.6	54.9	55.2	55.5	55.6	55.9	56.1	56.3	56.5
167.5°	56.3	56.6	56.8	57.0	57.1	57.4	57.7	57.9	58.1	58.3	58.4
170°	58.0	58.3	58.5	58.6	58.8	59.0	59.1	59.3	59.5	59.7	59.9
172.5°	59.3	59.6	59.7	59.9	59.9	60.1	60.2	60.5	60.6	60.7	60.8
175°	60.3	60.5	60.6	60.7	60.8	60.9	61.0	61.0	61.2	61.3	61.4
177.5°	61.1	61.2	61.3	61.3	61.3	61.3	61.4	61.4	61.4	61.4	61.4
180°	61.4	61.4	61.4	61.4	61.4	61.4	61.4	61.4	61.4	61.4	61.4



TEST NUMBER: P1444441
 CATALOG NUMBER: EHBR1-18-UNV-TA-L830

CANDELA DISTRIBUTION (continued):

	192.5°	195°	197.5°	200°	202.5°	205°	207.5°	210°	212.5°	215°	217.5°
0°	14819.8	14819.8	14819.8	14819.8	14819.8	14819.8	14819.8	14819.8	14819.8	14819.8	14819.8
2.5°	14792.1	14799.5	14810.9	14821.1	14836.5	14848.7	14867.1	14880.9	14901.5	14915.0	14937.4
5°	14793.4	14822.4	14860.4	14897.6	14942.2	14982.8	15033.1	15076.0	15126.6	15167.9	15219.7
7.5°	14814.3	14870.2	14937.0	15004.5	15080.7	15152.0	15232.3	15305.1	15384.5	15451.9	15525.3
10°	14829.8	14915.9	15014.4	15113.6	15218.1	15315.1	15413.0	15497.7	15576.7	15641.8	15699.3
12.5°	14808.9	14927.5	15053.9	15176.1	15292.2	15392.6	15476.9	15542.0	15586.8	15617.4	15624.5
15°	14737.7	14880.5	15018.0	15139.7	15235.9	15310.3	15348.7	15366.7	15347.4	15315.3	15244.8
17.5°	14604.9	14755.4	14878.3	14974.3	15025.2	15045.4	15013.5	14958.1	14849.8	14729.6	14556.0
20°	14361.3	14501.5	14590.7	14643.1	14629.4	14579.0	14458.8	14312.5	14096.3	13865.9	13561.8
22.5°	13934.0	14056.6	14104.1	14108.1	14025.0	13898.8	13681.9	13431.1	13089.9	12735.3	12299.2
25°	13292.7	13400.1	13407.6	13365.4	13213.3	13008.9	12690.4	12335.6	11872.1	11399.6	10853.0
27.5°	12422.9	12525.9	12500.7	12422.0	12210.8	11937.4	11529.5	11071.2	10499.8	9941.7	9337.0
30°	11329.6	11439.7	11410.1	11309.1	11058.0	10734.8	10254.8	9722.4	9087.9	8491.8	7879.1
32.5°	10021.1	10160.3	10139.9	10044.0	9781.9	9436.0	8915.2	8350.6	7701.3	7113.9	6517.9
35°	8533.9	8703.0	8711.7	8648.9	8405.7	8063.8	7549.6	7002.9	6381.1	5826.9	5276.3
37.5°	6931.6	7127.5	7167.8	7150.8	6949.3	6647.4	6178.9	5688.5	5137.8	4652.0	4181.1
40°	5320.4	5518.7	5587.6	5608.0	5459.2	5225.4	4840.9	4445.2	3996.1	3602.5	3228.6
42.5°	3851.1	4026.9	4093.4	4135.3	4042.4	3886.5	3606.0	3318.6	2989.6	2705.7	2433.5
45°	2674.7	2799.1	2849.7	2891.7	2841.1	2753.3	2576.1	2396.3	2179.2	1993.6	1818.0
47.5°	1870.0	1938.6	1972.0	1992.4	1972.8	1927.0	1830.5	1726.4	1603.8	1495.5	1391.2
50°	1386.0	1422.6	1440.1	1451.9	1437.6	1412.1	1359.9	1303.2	1235.9	1174.5	1114.5
52.5°	1098.4	1119.4	1129.8	1136.1	1127.9	1112.3	1082.0	1048.4	1008.0	970.1	950.1
55°	925.4	924.3	948.2	936.7	948.2	922.4	916.9	880.0	846.5	822.9	797.3
57.5°	763.1	774.0	778.6	783.7	780.4	775.7	762.8	749.6	731.9	717.1	701.3
60°	660.6	669.6	674.6	679.7	679.4	677.6	670.1	662.3	651.2	642.3	632.7
62.5°	589.9	597.7	602.7	607.5	608.0	607.3	601.6	596.1	588.6	583.1	576.5
65°	534.4	539.8	543.2	547.1	546.9	545.8	540.8	536.2	530.0	526.1	521.3
67.5°	476.2	480.3	483.0	486.6	487.4	487.6	484.7	482.6	479.6	478.5	476.9
70°	434.8	439.8	444.1	448.7	451.2	452.4	451.2	450.2	448.4	447.7	446.3
72.5°	403.5	407.7	411.0	415.2	417.7	419.4	418.4	417.8	416.3	416.1	415.1
75°	364.7	367.6	369.4	372.6	373.8	375.4	374.8	375.2	374.6	375.8	375.8
77.5°	317.9	320.1	320.9	323.3	323.4	325.4	325.8	328.0	329.6	333.2	335.1
80°	265.3	266.7	266.7	269.0	270.1	273.3	274.8	278.5	280.3	283.4	283.6
82.5°	206.1	204.5	206.1	205.0	208.1	211.7	212.3	215.3	216.1	218.1	216.5
85°	140.9	140.8	139.5	139.8	138.8	139.2	138.7	139.3	138.7	138.8	137.3
87.5°	67.5	68.1	66.6	67.2	65.7	66.3	65.1	66.0	64.6	64.8	62.6
90°	5.0	4.9	4.7	4.6	4.7	4.6	4.5	4.4	4.5	4.3	4.3
92.5°	2.3	2.4	2.4	2.4	2.4	2.4	2.4	2.4	2.4	2.4	2.4
95°	2.6	2.6	2.6	2.7	2.7	2.7	2.7	2.7	2.7	2.7	2.7
97.5°	3.1	3.1	3.1	3.1	3.1	3.1	3.1	3.1	3.1	3.1	3.1
100°	3.6	3.6	3.6	3.6	3.6	3.6	3.6	3.6	3.6	3.6	3.6
102.5°	4.0	4.0	4.0	4.2	4.2	4.2	4.2	4.2	4.0	4.0	4.0
105°	4.8	4.8	4.9	4.9	4.9	4.9	4.9	4.9	4.8	4.7	4.7
107.5°	5.8	5.8	5.8	5.8	5.8	5.8	5.8	5.7	5.7	5.6	5.5
110°	7.0	6.9	7.0	7.0	7.0	6.9	6.9	6.8	6.7	6.7	6.6



TEST NUMBER: P1444441
 CATALOG NUMBER: EHBR1-18-UNV-TA-L830

CANDELA DISTRIBUTION (continued):

	192.5°	195°	197.5°	200°	202.5°	205°	207.5°	210°	212.5°	215°	217.5°
112.5°	8.5	8.4	8.4	8.3	8.3	8.2	8.2	8.1	8.1	7.9	7.8
115°	10.3	10.1	10.1	10.0	10.0	9.9	9.7	9.6	9.5	9.3	9.2
117.5°	12.2	12.2	12.1	11.9	11.8	11.6	11.5	11.3	11.1	11.0	10.8
120°	14.5	14.3	14.2	14.1	13.9	13.6	13.5	13.2	13.1	12.8	12.6
122.5°	17.0	16.8	16.7	16.4	16.3	15.9	15.7	15.4	15.2	14.9	14.6
125°	19.6	19.4	19.2	18.9	18.6	18.4	18.1	17.8	17.4	17.1	16.8
127.5°	22.4	22.1	22.0	21.6	21.4	21.0	20.6	20.2	20.0	19.6	19.2
130°	25.3	25.0	24.8	24.4	24.2	23.7	23.4	22.9	22.6	22.2	21.8
132.5°	28.2	27.9	27.7	27.3	27.0	26.5	26.2	25.8	25.4	24.9	24.6
135°	31.0	30.7	30.5	30.2	29.8	29.3	29.0	28.6	28.2	27.8	27.4
137.5°	33.8	33.5	33.3	32.9	32.6	32.1	31.8	31.4	31.0	30.6	30.3
140°	36.3	36.1	35.9	35.5	35.2	34.8	34.5	34.1	33.8	33.4	33.1
142.5°	38.6	38.4	38.2	37.8	37.6	37.2	37.0	36.6	36.3	36.0	35.7
145°	40.7	40.6	40.4	40.0	39.9	39.5	39.3	39.0	38.9	38.5	38.3
147.5°	42.7	42.5	42.4	42.2	42.1	41.8	41.7	41.4	41.3	41.0	40.9
150°	44.6	44.5	44.4	44.3	44.1	44.0	43.9	43.7	43.7	43.5	43.5
152.5°	46.4	46.4	46.4	46.3	46.3	46.3	46.2	46.1	46.0	45.9	45.9
155°	48.3	48.4	48.4	48.4	48.4	48.4	48.4	48.4	48.4	48.3	48.3
157.5°	50.4	50.5	50.6	50.7	50.7	50.7	50.7	50.7	50.7	50.7	50.7
160°	52.5	52.6	52.7	52.7	52.9	52.9	53.0	52.9	53.0	52.9	52.8
162.5°	54.6	54.8	54.9	54.9	55.1	55.1	55.2	55.2	55.2	55.1	55.1
165°	56.7	56.8	56.9	57.0	57.0	57.0	57.1	57.1	57.1	57.0	57.0
167.5°	58.5	58.6	58.7	58.8	58.9	58.9	59.1	59.0	59.0	59.0	59.0
170°	59.9	60.0	60.1	60.2	60.3	60.3	60.3	60.3	60.5	60.3	60.3
172.5°	60.9	61.0	61.1	61.2	61.3	61.3	61.3	61.3	61.4	61.4	61.4
175°	61.4	61.4	61.5	61.6	61.6	61.7	61.7	61.8	61.8	61.8	61.8
177.5°	61.5	61.6	61.6	61.6	61.7	61.7	61.8	61.8	61.9	61.9	61.9
180°	61.4	61.4	61.4	61.4	61.4	61.4	61.4	61.4	61.4	61.4	61.4



TEST NUMBER: P1444441
 CATALOG NUMBER: EHBR1-18-UNV-TA-L830

CANDELA DISTRIBUTION (continued):

	220°	222.5°	225°	227.5°	230°	232.5°	235°	237.5°	240°	242.5°	245°
0°	14819.8	14819.8	14819.8	14819.8	14819.8	14819.8	14819.8	14819.8	14819.8	14819.8	14819.8
2.5°	14951.4	14859.0	14846.8	14853.3	14868.8	14874.5	14891.0	14895.6	14912.4	14916.5	14932.6
5°	15259.8	15137.8	15143.9	15173.3	15217.7	15244.2	15287.8	15310.7	15352.4	15371.3	15409.0
7.5°	15585.1	15489.3	15519.2	15568.7	15629.5	15671.5	15724.0	15758.2	15803.3	15831.4	15867.6
10°	15744.9	15718.6	15751.5	15790.5	15825.1	15852.3	15874.5	15892.3	15903.9	15914.9	15919.6
12.5°	15623.4	15664.0	15669.5	15665.8	15642.9	15625.3	15585.9	15559.2	15511.7	15482.8	15426.2
15°	15172.7	15262.1	15212.6	15137.7	15028.1	14936.7	14807.6	14711.5	14577.1	14485.9	14351.0
17.5°	14381.9	14494.7	14365.8	14192.5	13971.9	13783.3	13548.4	13361.9	13128.3	12958.4	12740.5
20°	13268.7	13374.0	13144.1	12856.8	12515.6	12228.5	11890.0	11619.9	11305.2	11071.2	10788.8
22.5°	11882.6	11957.7	11633.6	11246.3	10811.7	10453.0	10048.3	9724.3	9365.4	9097.8	8796.6
25°	10349.1	10369.4	9980.7	9534.4	9050.0	8646.9	8214.8	7874.3	7508.2	7237.0	6941.5
27.5°	8801.3	8771.6	8351.6	7878.4	7368.8	6949.8	6528.4	6209.3	5888.6	5644.3	5389.7
30°	7340.5	7268.5	6832.4	6346.0	5851.3	5475.9	5126.0	4869.8	4614.6	4420.8	4216.5
32.5°	6000.8	5899.3	5474.8	5019.1	4602.3	4312.5	4053.0	3859.1	3653.2	3489.5	3317.9
35°	4814.2	4706.1	4330.0	3943.6	3628.2	3414.6	3210.7	3051.6	2876.7	2738.7	2589.6
37.5°	3795.9	3707.2	3392.2	3088.2	2849.7	2684.0	2517.0	2387.0	2242.5	2181.7	2022.5
40°	2930.4	2868.5	2622.1	2398.1	2218.9	2141.1	1971.5	1850.1	1742.0	1652.9	1566.6
42.5°	2285.8	2263.8	2024.1	1849.3	1723.2	1625.2	1530.7	1454.0	1379.2	1317.9	1259.9
45°	1677.5	1660.0	1553.6	1452.7	1366.8	1298.3	1234.4	1181.7	1132.8	1092.3	1055.5
47.5°	1306.2	1300.6	1239.4	1176.8	1122.6	1078.6	1037.2	1002.2	969.8	942.7	933.9
50°	1062.4	1061.7	1025.7	987.1	948.5	923.1	896.6	875.9	855.1	838.9	821.8
52.5°	902.7	898.8	874.5	850.6	827.8	811.1	794.1	780.9	767.2	757.1	746.5
55°	777.1	781.2	767.2	752.9	738.6	728.2	716.4	707.7	698.2	691.9	685.5
57.5°	689.9	695.3	688.0	679.9	671.2	664.3	656.2	650.2	643.8	639.8	636.1
60°	626.5	632.4	629.5	625.3	620.0	615.9	610.7	607.4	603.2	601.0	598.9
62.5°	572.6	580.0	579.0	577.1	573.6	571.4	568.5	567.0	564.4	563.3	562.4
65°	518.9	527.3	527.1	526.1	524.3	523.6	521.8	521.5	520.2	520.7	520.5
67.5°	476.7	483.9	485.5	486.7	486.6	487.1	486.9	487.7	487.7	488.7	489.3
70°	446.2	451.2	452.4	453.6	454.0	455.0	455.0	455.6	455.4	456.3	456.5
72.5°	415.4	422.1	423.2	424.2	424.2	425.2	424.7	424.5	423.2	422.9	422.0
75°	377.0	385.5	387.4	388.6	388.8	389.7	388.5	387.8	385.5	384.7	383.1
77.5°	337.0	345.8	347.1	347.6	346.9	347.1	344.6	343.0	340.2	339.1	337.6
80°	284.9	297.9	299.0	298.2	296.1	295.7	293.4	291.9	288.5	287.4	286.1
82.5°	216.8	232.0	234.2	235.1	233.5	233.9	231.6	230.7	227.6	227.2	225.1
85°	136.9	152.1	154.7	154.3	152.6	152.2	150.9	151.4	151.1	151.9	152.4
87.5°	62.9	77.7	81.2	80.1	79.9	78.9	76.5	77.4	78.8	79.7	79.8
90°	4.3	8.7	8.5	9.0	8.1	8.3	7.5	8.1	7.5	8.0	7.4
92.5°	2.4	2.4	2.4	2.4	2.4	2.4	2.4	2.3	2.4	2.3	2.4
95°	2.7	2.6	2.6	2.6	2.6	2.6	2.6	2.6	2.6	2.6	2.6
97.5°	3.1	3.0	2.9	2.9	2.9	2.8	2.8	2.8	2.8	2.8	2.8
100°	3.6	3.3	3.3	3.3	3.2	3.2	3.2	3.1	3.1	3.1	3.1
102.5°	3.9	3.7	3.7	3.7	3.6	3.6	3.6	3.5	3.5	3.4	3.4
105°	4.6	4.3	4.2	4.0	4.0	3.9	3.9	3.8	3.7	3.7	3.7
107.5°	5.4	5.0	4.8	4.7	4.6	4.5	4.3	4.3	4.2	4.0	4.0
110°	6.5	5.8	5.6	5.3	5.2	5.1	5.0	4.8	4.7	4.6	4.5



TEST NUMBER: P1444441
 CATALOG NUMBER: EHBR1-18-UNV-TA-L830

CANDELA DISTRIBUTION (continued):

	220°	222.5°	225°	227.5°	230°	232.5°	235°	237.5°	240°	242.5°	245°
112.5°	7.6	6.8	6.5	6.2	6.0	5.8	5.6	5.4	5.3	5.2	5.1
115°	8.9	8.0	7.6	7.2	7.0	6.7	6.5	6.3	6.0	5.8	5.7
117.5°	10.6	9.4	8.9	8.5	8.2	7.9	7.6	7.2	7.0	6.7	6.6
120°	12.3	11.0	10.4	10.0	9.6	9.3	8.9	8.5	8.1	7.9	7.6
122.5°	14.2	12.8	12.2	11.7	11.3	10.9	10.4	10.0	9.6	9.3	8.9
125°	16.5	14.9	14.1	13.7	13.2	12.7	12.3	11.7	11.3	11.0	10.6
127.5°	18.8	17.1	16.4	15.9	15.5	14.9	14.4	13.9	13.4	12.8	12.5
130°	21.5	19.6	18.8	18.3	17.9	17.2	16.8	16.3	15.7	15.2	14.7
132.5°	24.2	22.2	21.5	21.0	20.5	20.0	19.5	18.9	18.4	17.8	17.3
135°	27.0	25.0	24.3	23.7	23.3	22.8	22.2	21.7	21.3	20.6	20.2
137.5°	29.8	27.7	27.0	26.5	26.1	25.7	25.3	24.7	24.3	23.7	23.3
140°	32.7	30.5	29.8	29.4	29.1	28.6	28.2	27.8	27.4	27.0	26.5
142.5°	35.4	33.2	32.5	32.1	31.8	31.5	31.3	30.9	30.5	30.1	29.7
145°	38.0	35.7	35.0	34.8	34.6	34.3	34.0	33.7	33.4	33.2	32.9
147.5°	40.7	38.2	37.5	37.3	37.1	36.8	36.7	36.4	36.3	36.1	35.9
150°	43.2	40.5	39.6	39.5	39.3	39.2	39.1	39.0	38.9	38.7	38.6
152.5°	45.7	42.3	41.4	41.3	41.3	41.1	41.1	41.0	41.0	40.9	40.9
155°	48.1	44.5	43.5	43.3	43.2	43.2	43.1	43.1	43.1	43.1	43.2
157.5°	50.5	46.6	45.5	45.3	45.2	45.2	45.1	45.1	45.1	45.1	45.2
160°	52.7	48.8	47.7	47.5	47.4	47.3	47.2	47.1	47.1	47.1	47.2
162.5°	54.9	51.1	50.0	49.7	49.6	49.5	49.5	49.3	49.3	49.2	49.3
165°	57.0	53.5	52.4	52.2	52.1	51.9	51.8	51.7	51.6	51.6	51.6
167.5°	58.9	55.7	54.9	54.8	54.6	54.4	54.4	54.2	54.2	54.1	54.1
170°	60.3	57.8	57.1	57.0	57.0	56.9	56.8	56.8	56.7	56.6	56.6
172.5°	61.3	59.5	58.9	58.9	58.9	58.8	58.8	58.7	58.7	58.7	58.7
175°	61.8	60.7	60.5	60.3	60.3	60.3	60.3	60.3	60.3	60.3	60.5
177.5°	61.9	61.6	61.5	61.5	61.5	61.5	61.5	61.5	61.5	61.6	61.6
180°	61.4	61.4	61.4	61.4	61.4	61.4	61.4	61.4	61.4	61.4	61.4



TEST NUMBER: P1444441
 CATALOG NUMBER: EHBR1-18-UNV-TA-L830

CANDELA DISTRIBUTION (continued):

	247.5°	250°	252.5°	255°	257.5°	260°	262.5°	265°	267.5°	270°	272.5°
0°	14819.8	14819.8	14819.8	14819.8	14819.8	14819.8	14819.8	14819.8	14819.8	14819.8	14819.8
2.5°	14935.6	14953.1	14951.7	14968.0	14967.2	14982.5	14979.4	14992.7	14989.6	15000.9	14994.3
5°	15425.5	15458.7	15469.7	15499.4	15505.7	15532.4	15533.0	15554.2	15551.7	15568.3	15559.5
7.5°	15889.0	15919.9	15934.6	15957.9	15969.4	15988.7	15996.2	16012.0	16015.8	16025.1	16024.8
10°	15928.1	15928.0	15935.3	15932.0	15938.5	15934.7	15942.7	15939.8	15951.5	15948.5	15957.3
12.5°	15401.8	15349.6	15330.6	15283.6	15273.3	15233.1	15235.9	15210.2	15222.6	15206.7	15233.8
15°	14270.8	14149.6	14089.8	13984.4	13951.3	13868.1	13861.3	13806.1	13821.0	13792.0	13834.3
17.5°	12599.4	12408.7	12304.0	12150.1	12089.1	11971.3	11947.6	11876.4	11887.5	11851.6	11902.8
20°	10606.6	10376.1	10244.1	10066.2	9986.8	9846.4	9809.2	9729.6	9739.5	9703.8	9761.6
22.5°	8591.1	8349.8	8200.8	8014.3	7913.0	7781.0	7741.3	7661.3	7665.9	7632.4	7687.9
25°	6739.0	6507.7	6363.0	6193.6	6105.7	5984.6	5942.9	5871.2	5875.2	5847.6	5897.4
27.5°	5213.1	5023.3	4902.3	4760.3	4681.5	4581.9	4541.4	4480.9	4480.7	4460.5	4502.2
30°	4073.7	3915.3	3806.7	3683.0	3609.0	3519.2	3480.0	3425.9	3423.6	3409.2	3442.3
32.5°	3189.7	3048.8	2949.6	2840.9	2774.3	2697.3	2660.2	2616.7	2612.8	2599.7	2627.0
35°	2479.6	2360.9	2275.6	2184.0	2190.8	2077.2	2096.0	2007.6	1983.8	1978.5	1998.7
37.5°	1916.4	1824.5	1755.3	1686.6	1640.2	1592.1	1566.3	1543.0	1540.4	1538.2	1552.3
40°	1500.0	1435.7	1385.4	1338.3	1306.3	1277.0	1260.8	1248.1	1245.0	1243.3	1251.9
42.5°	1214.1	1170.6	1138.2	1109.4	1090.0	1074.1	1065.2	1058.1	1055.8	1055.8	1060.8
45°	1025.7	999.4	978.5	960.6	948.2	953.7	937.6	946.0	934.9	946.4	938.8
47.5°	903.3	880.9	868.0	855.3	847.7	841.7	841.9	842.0	844.4	844.8	847.3
50°	808.8	795.8	786.8	778.8	774.8	771.7	772.8	773.6	775.9	776.1	777.8
52.5°	738.9	730.4	724.9	720.0	718.2	716.4	717.1	716.8	717.9	717.3	718.8
55°	682.0	678.0	676.3	674.4	674.7	674.1	674.5	672.7	671.6	670.2	671.5
57.5°	635.3	634.7	635.9	636.7	638.8	639.6	640.1	638.0	636.0	634.2	635.3
60°	599.3	600.2	603.1	605.4	608.5	609.9	610.7	609.5	608.1	606.6	607.5
62.5°	563.8	565.2	568.6	571.2	575.0	576.8	579.0	579.1	579.6	579.1	579.7
65°	522.7	524.4	527.5	529.6	533.1	534.8	536.9	537.3	538.5	538.2	539.3
67.5°	491.3	492.9	495.4	497.5	500.6	502.4	504.2	504.3	504.8	504.7	505.7
70°	458.0	458.7	461.0	462.7	465.8	467.6	469.9	470.5	471.8	472.1	473.1
72.5°	422.4	422.1	423.4	424.1	426.5	427.9	430.7	432.3	434.5	435.2	435.9
75°	383.6	383.3	384.9	385.5	387.5	389.0	392.1	394.2	397.7	399.2	398.8
77.5°	338.7	339.5	342.6	344.2	346.9	348.7	352.8	356.0	362.5	365.4	362.5
80°	288.5	289.3	292.5	294.1	297.6	299.7	304.3	308.1	314.0	315.3	313.6
82.5°	226.9	227.1	229.9	231.1	235.6	238.9	244.7	247.7	251.3	250.8	250.3
85°	154.7	156.7	160.4	163.9	169.4	174.7	180.1	184.6	181.4	186.4	180.8
87.5°	82.6	82.4	87.3	86.6	94.2	98.6	103.4	105.7	108.2	107.6	107.7
90°	8.1	7.6	8.2	7.6	8.6	7.9	9.3	8.6	10.3	9.4	11.1
92.5°	2.3	2.4	2.3	2.4	2.3	2.4	2.3	2.3	2.3	2.3	2.3
95°	2.6	2.6	2.6	2.5	2.5	2.5	2.5	2.5	2.5	2.5	2.5
97.5°	2.8	2.8	2.8	2.8	2.8	2.8	2.8	2.8	2.7	2.7	2.7
100°	3.1	3.1	3.1	3.1	3.0	3.0	3.0	3.0	3.0	3.0	3.0
102.5°	3.3	3.3	3.3	3.3	3.3	3.3	3.3	3.3	3.3	3.3	3.3
105°	3.7	3.7	3.6	3.6	3.6	3.6	3.6	3.6	3.6	3.6	3.6
107.5°	4.0	3.9	3.9	3.9	3.8	3.8	3.8	3.8	3.8	3.8	3.8
110°	4.4	4.3	4.3	4.3	4.2	4.2	4.2	4.2	4.2	4.2	4.2



TEST NUMBER: P1444441
 CATALOG NUMBER: EHBR1-18-UNV-TA-L830

CANDELA DISTRIBUTION (continued):

	247.5°	250°	252.5°	255°	257.5°	260°	262.5°	265°	267.5°	270°	272.5°
112.5°	5.0	4.8	4.7	4.7	4.6	4.6	4.6	4.6	4.6	4.6	4.6
115°	5.5	5.4	5.3	5.2	5.2	5.2	5.1	5.1	5.1	5.1	5.1
117.5°	6.3	6.2	6.0	5.9	5.8	5.8	5.7	5.7	5.6	5.7	5.7
120°	7.4	7.1	6.9	6.8	6.7	6.7	6.5	6.5	6.5	6.5	6.5
122.5°	8.5	8.3	8.1	7.9	7.8	7.7	7.5	7.5	7.5	7.5	7.5
125°	10.1	9.8	9.6	9.4	9.1	9.0	8.9	8.9	8.8	8.9	8.9
127.5°	12.0	11.7	11.3	11.1	10.9	10.7	10.6	10.6	10.6	10.6	10.6
130°	14.2	13.9	13.5	13.2	12.9	12.8	12.6	12.6	12.6	12.6	12.6
132.5°	16.8	16.4	16.0	15.7	15.5	15.3	15.1	15.1	15.0	15.1	15.1
135°	19.7	19.3	18.9	18.5	18.3	18.1	17.9	17.9	17.9	17.9	18.1
137.5°	22.8	22.5	22.0	21.7	21.5	21.4	21.1	21.1	21.1	21.1	21.3
140°	26.1	25.7	25.3	25.0	24.8	24.6	24.5	24.5	24.4	24.5	24.6
142.5°	29.3	29.1	28.8	28.5	28.2	28.1	28.0	28.0	27.9	28.1	28.2
145°	32.5	32.3	32.0	31.8	31.7	31.6	31.4	31.4	31.4	31.6	31.7
147.5°	35.7	35.5	35.2	35.1	34.9	34.9	34.8	34.8	34.8	35.0	35.0
150°	38.4	38.4	38.2	38.2	38.0	38.0	38.0	38.0	38.0	38.2	38.2
152.5°	40.8	40.8	40.7	40.7	40.7	40.7	40.7	40.8	40.9	41.0	41.1
155°	43.2	43.2	43.2	43.2	43.2	43.4	43.4	43.6	43.7	43.7	43.8
157.5°	45.2	45.3	45.3	45.5	45.6	45.7	45.7	46.0	46.0	46.3	46.4
160°	47.3	47.4	47.5	47.6	47.8	47.9	48.0	48.1	48.3	48.5	48.6
162.5°	49.3	49.5	49.5	49.6	49.7	49.8	50.0	50.3	50.4	50.6	50.8
165°	51.6	51.6	51.7	51.7	51.9	52.0	52.1	52.4	52.5	52.6	52.8
167.5°	54.0	54.1	54.0	54.1	54.1	54.2	54.3	54.5	54.6	54.8	54.9
170°	56.5	56.5	56.5	56.5	56.5	56.6	56.7	56.7	56.8	56.9	57.0
172.5°	58.7	58.7	58.6	58.7	58.6	58.7	58.7	58.7	58.7	58.8	58.8
175°	60.3	60.5	60.5	60.5	60.5	60.5	60.5	60.5	60.5	60.5	60.5
177.5°	61.6	61.6	61.6	61.6	61.6	61.7	61.7	61.7	61.7	61.6	61.6
180°	61.4	61.4	61.4	61.4	61.4	61.4	61.4	61.4	61.4	61.4	61.4



TEST NUMBER: P1444441
 CATALOG NUMBER: EHBR1-18-UNV-TA-L830

CANDELA DISTRIBUTION (continued):

	275°	277.5°	280°	282.5°	285°	287.5°	290°	292.5°	295°	297.5°	300°
0°	14819.8	14819.8	14819.8	14819.8	14819.8	14819.8	14819.8	14819.8	14819.8	14819.8	14819.8
2.5°	15005.3	14997.8	15005.5	14997.7	15005.5	14996.1	15002.5	14992.4	14994.9	14984.4	14987.2
5°	15572.7	15560.7	15567.1	15551.5	15553.2	15532.4	15532.0	15507.9	15501.5	15474.0	15461.9
7.5°	16031.5	16027.6	16029.8	16019.8	16018.7	16004.4	15997.7	15977.7	15965.2	15939.8	15922.6
10°	15958.9	15970.6	15973.6	15985.5	15987.9	15999.8	16002.3	16014.1	16016.5	16025.3	16025.4
12.5°	15232.5	15272.2	15281.7	15330.7	15351.4	15407.5	15437.6	15499.4	15536.3	15597.9	15635.8
15°	13833.1	13901.9	13929.2	14025.1	14078.1	14189.9	14260.1	14388.5	14479.2	14615.6	14712.8
17.5°	11907.3	12003.3	12046.5	12176.5	12261.2	12426.3	12545.2	12741.0	12890.9	13108.5	13281.0
20°	9771.6	9878.3	9937.1	10085.3	10185.3	10378.1	10526.6	10767.3	10967.8	11243.6	11479.4
22.5°	7705.4	7806.9	7872.3	8023.0	8135.6	8336.7	8502.7	8756.7	8981.5	9292.2	9574.9
25°	5916.3	6009.4	6068.4	6204.8	6310.5	6495.3	6653.8	6898.0	7118.1	7429.7	7719.6
27.5°	4522.9	4600.8	4657.8	4774.0	4867.3	5024.0	5160.2	5362.1	5551.6	5821.3	6079.3
30°	3462.6	3531.8	3587.1	3688.4	3774.8	3910.8	4030.5	4200.0	4356.9	4571.4	4776.7
32.5°	2646.1	2705.6	2754.9	2843.6	2922.0	3044.3	3152.2	3300.8	3435.5	3617.4	3786.4
35°	2017.5	2134.6	2126.2	2248.6	2268.2	2356.0	2452.2	2582.2	2701.5	2856.1	2999.9
37.5°	1565.9	1598.9	1634.1	1688.1	1744.9	1824.8	1906.1	2064.9	2123.1	2240.0	2359.1
40°	1262.8	1285.0	1308.3	1344.8	1384.5	1440.8	1500.0	1575.8	1653.4	1748.3	1845.0
42.5°	1067.6	1080.1	1094.9	1116.5	1140.9	1176.6	1216.2	1267.6	1321.6	1388.3	1456.4
45°	953.9	947.9	952.3	963.8	978.5	1000.2	1025.2	1057.0	1092.2	1135.4	1181.4
47.5°	847.7	850.2	851.5	857.7	865.6	880.2	895.4	916.9	958.6	971.4	996.5
50°	777.7	778.9	778.5	781.7	785.7	795.2	805.0	819.6	834.1	853.5	872.0
52.5°	719.0	720.7	720.4	722.5	724.6	730.6	736.8	747.2	756.8	769.0	779.6
55°	672.7	674.9	675.7	677.5	678.6	681.7	684.2	689.1	693.2	700.2	706.6
57.5°	637.0	640.1	641.6	642.1	640.9	640.7	639.9	640.9	641.7	645.5	649.0
60°	609.0	611.4	611.8	611.4	609.1	607.5	604.8	604.0	603.5	605.4	607.4
62.5°	579.5	580.5	579.8	579.1	576.5	574.9	572.1	571.1	570.2	571.5	572.5
65°	538.9	539.6	538.9	538.5	536.1	534.9	532.5	531.8	530.5	530.7	530.6
67.5°	505.9	506.7	506.1	505.4	503.9	503.0	501.3	500.2	498.6	498.0	496.9
70°	473.0	473.6	472.7	472.1	470.2	469.5	467.9	467.6	466.3	466.0	464.8
72.5°	435.2	435.2	433.9	433.5	432.1	432.1	431.4	432.0	432.0	432.7	432.4
75°	396.4	395.9	394.3	394.0	392.9	393.4	392.7	393.6	393.8	395.2	395.4
77.5°	357.6	355.7	352.5	351.0	348.9	348.6	347.4	348.3	348.0	349.7	350.3
80°	308.6	306.2	302.2	300.3	297.8	297.4	296.3	297.4	296.8	298.8	300.1
82.5°	246.4	244.3	240.2	238.6	235.8	236.1	234.8	236.1	235.9	238.7	240.4
85°	182.3	180.9	176.6	172.8	168.6	166.1	163.6	163.3	162.5	163.6	164.7
87.5°	105.3	104.0	100.6	98.4	91.0	91.3	88.4	88.2	87.6	86.9	88.4
90°	10.1	11.5	10.6	11.9	11.1	12.6	12.2	13.6	12.6	13.8	13.1
92.5°	2.3	2.3	2.3	2.3	2.3	2.3	2.3	2.3	2.3	2.2	2.3
95°	2.5	2.5	2.5	2.5	2.5	2.5	2.5	2.5	2.5	2.5	2.5
97.5°	2.8	2.7	2.7	2.7	2.7	2.7	2.7	2.7	2.8	2.8	2.8
100°	3.0	3.0	3.0	3.0	3.0	3.0	3.0	3.0	3.1	3.1	3.1
102.5°	3.3	3.3	3.3	3.3	3.3	3.3	3.3	3.3	3.4	3.4	3.4
105°	3.6	3.6	3.6	3.6	3.6	3.6	3.7	3.7	3.7	3.7	3.7
107.5°	3.8	3.8	3.8	3.9	3.9	3.9	3.9	4.0	4.0	4.2	4.2
110°	4.2	4.2	4.2	4.3	4.3	4.3	4.4	4.5	4.6	4.7	4.8



TEST NUMBER: P1444441
 CATALOG NUMBER: EHBR1-18-UNV-TA-L830

CANDELA DISTRIBUTION (continued):

	275°	277.5°	280°	282.5°	285°	287.5°	290°	292.5°	295°	297.5°	300°
112.5°	4.6	4.6	4.7	4.7	4.8	4.9	5.0	5.1	5.2	5.3	5.5
115°	5.2	5.2	5.2	5.2	5.3	5.4	5.6	5.8	6.0	6.2	6.4
117.5°	5.8	5.8	5.9	6.0	6.1	6.3	6.5	6.7	6.9	7.1	7.5
120°	6.7	6.7	6.8	6.8	7.1	7.2	7.5	7.8	8.1	8.4	8.8
122.5°	7.7	7.8	7.9	8.1	8.3	8.5	8.9	9.3	9.6	10.0	10.4
125°	9.0	9.2	9.4	9.6	9.9	10.2	10.6	11.0	11.4	11.8	12.4
127.5°	10.8	11.0	11.1	11.4	11.8	12.2	12.6	12.9	13.5	14.1	14.5
130°	12.8	13.1	13.4	13.6	14.1	14.5	14.9	15.4	16.0	16.4	17.0
132.5°	15.4	15.6	15.9	16.3	16.7	17.1	17.7	18.1	18.6	19.2	19.7
135°	18.3	18.5	18.8	19.2	19.7	20.0	20.6	21.1	21.6	22.1	22.7
137.5°	21.5	21.7	22.0	22.4	22.9	23.2	23.8	24.3	24.7	25.2	25.7
140°	24.9	25.0	25.4	25.8	26.1	26.5	27.1	27.4	28.0	28.4	28.9
142.5°	28.5	28.6	28.9	29.2	29.6	30.0	30.3	30.7	31.1	31.5	32.0
145°	31.8	32.0	32.3	32.6	32.9	33.3	33.6	33.9	34.3	34.6	35.0
147.5°	35.2	35.4	35.7	36.0	36.3	36.6	36.8	37.1	37.5	37.7	38.1
150°	38.4	38.6	38.9	39.0	39.3	39.6	39.9	40.2	40.5	40.7	40.9
152.5°	41.4	41.5	41.7	41.9	42.2	42.3	42.5	42.8	43.1	43.3	43.6
155°	44.0	44.2	44.4	44.6	44.9	45.0	45.2	45.4	45.7	45.9	46.2
157.5°	46.6	46.6	46.9	47.1	47.3	47.5	47.8	47.9	48.1	48.3	48.5
160°	48.8	49.1	49.2	49.5	49.6	49.8	50.0	50.3	50.5	50.7	50.9
162.5°	51.0	51.1	51.4	51.6	51.8	52.0	52.2	52.4	52.6	52.7	53.0
165°	53.0	53.2	53.5	53.6	53.9	54.1	54.2	54.5	54.6	54.9	55.1
167.5°	55.2	55.3	55.5	55.7	55.9	56.1	56.3	56.5	56.7	56.8	57.0
170°	57.1	57.3	57.4	57.6	57.8	57.9	58.1	58.3	58.5	58.5	58.7
172.5°	58.9	59.0	59.1	59.2	59.3	59.5	59.6	59.7	59.9	59.9	60.0
175°	60.5	60.5	60.6	60.6	60.7	60.7	60.8	60.9	60.9	61.0	61.0
177.5°	61.6	61.6	61.6	61.6	61.6	61.6	61.6	61.6	61.6	61.6	61.6
180°	61.4	61.4	61.4	61.4	61.4	61.4	61.4	61.4	61.4	61.4	61.4



TEST NUMBER: P1444441
 CATALOG NUMBER: EHBR1-18-UNV-TA-L830

CANDELA DISTRIBUTION (continued):

	302.5°	305°	307.5°	310°	312.5°	315°	317.5°	320°	322.5°	325°	327.5°
0°	14819.8	14819.8	14819.8	14819.8	14819.8	14819.8	14819.8	14819.8	14819.8	14819.8	14819.8
2.5°	14976.7	14977.3	14965.2	14964.6	14953.2	14951.8	14940.8	14937.4	14928.5	14925.2	14916.2
5°	15431.1	15416.4	15382.4	15362.3	15328.8	15306.5	15270.1	15246.4	15211.3	15184.8	15149.5
7.5°	15890.6	15867.8	15829.5	15798.6	15752.1	15714.8	15660.3	15615.5	15556.5	15505.3	15443.2
10°	16025.4	16021.8	16012.1	15998.0	15976.3	15951.9	15914.8	15876.0	15824.3	15768.0	15699.1
12.5°	15693.7	15729.6	15778.4	15807.3	15842.6	15858.0	15872.4	15868.8	15859.3	15830.8	15790.9
15°	14853.7	14954.3	15087.6	15190.8	15309.6	15395.9	15491.3	15550.8	15610.0	15637.3	15654.1
17.5°	13517.4	13707.9	13946.8	14144.8	14373.2	14556.7	14757.8	14909.3	15065.0	15176.6	15277.4
20°	11800.8	12076.8	12414.8	12713.3	13060.3	13362.0	13692.5	13963.9	14243.8	14462.6	14669.7
22.5°	9938.9	10266.8	10675.3	11053.7	11501.2	11903.3	12357.1	12752.0	13164.3	13508.7	13841.8
25°	8108.1	8467.7	8914.3	9336.6	9843.3	10311.1	10849.1	11341.4	11874.3	12336.9	12794.0
27.5°	6436.2	6789.3	7245.3	7694.8	8230.7	8729.1	9305.6	9847.9	10454.7	11014.2	11586.6
30°	5062.2	5361.5	5770.5	6205.8	6734.4	7241.6	7824.3	8382.0	9013.3	9624.3	10269.0
32.5°	4010.6	4238.7	4560.2	4928.3	5416.0	5898.7	6453.7	6992.1	7613.8	8230.9	8901.5
35°	3185.2	3363.1	3608.2	3895.4	4308.4	4724.6	5215.5	5705.0	6285.0	6870.7	7522.4
37.5°	2511.7	2656.0	2848.0	3063.8	3395.0	3736.6	4139.0	4544.9	5048.9	5568.0	6158.8
40°	1961.4	2078.2	2227.7	2388.6	2638.7	2901.9	3213.2	3527.9	3932.8	4357.1	4846.0
42.5°	1540.8	1627.0	1732.5	1850.2	2083.5	2223.3	2434.3	2662.0	2959.6	3267.6	3635.2
45°	1237.4	1296.2	1369.4	1448.2	1556.6	1675.1	1819.7	1971.3	2254.0	2392.7	2616.2
47.5°	1033.4	1072.8	1119.4	1169.1	1233.0	1301.9	1387.6	1475.3	1588.7	1706.1	1843.9
50°	896.0	936.1	952.1	977.8	1014.7	1054.2	1102.5	1150.8	1211.6	1273.3	1344.2
52.5°	794.0	807.0	824.4	840.8	863.6	908.5	923.0	948.2	982.3	1015.7	1053.0
55°	716.0	724.5	735.9	745.7	759.6	772.9	792.0	808.8	831.5	851.6	876.3
57.5°	655.4	660.8	668.7	675.2	684.2	691.6	702.8	711.9	725.0	736.3	751.3
60°	611.4	614.9	620.3	624.5	630.2	634.1	639.7	643.9	650.8	656.6	665.0
62.5°	575.4	577.3	580.7	583.2	586.8	588.8	591.7	593.6	597.4	600.3	605.0
65°	532.2	532.6	535.0	536.0	538.9	539.9	542.4	543.2	546.3	548.4	552.6
67.5°	496.8	495.9	495.9	495.1	495.4	494.7	494.9	494.0	495.2	495.9	499.1
70°	464.5	463.2	462.7	461.2	460.8	459.3	458.8	457.5	457.3	456.8	458.0
72.5°	433.0	432.7	432.8	431.7	431.6	430.6	430.7	430.0	430.7	431.1	432.5
75°	396.9	397.0	397.7	396.8	397.1	396.1	396.5	395.7	396.1	395.9	397.4
77.5°	352.9	353.9	355.8	355.4	356.0	355.0	355.5	354.4	354.6	353.9	354.5
80°	303.3	305.5	308.1	308.0	309.0	308.4	309.3	308.3	308.6	307.3	307.1
82.5°	244.5	246.4	249.1	249.2	251.6	252.1	254.7	254.6	256.3	255.3	254.5
85°	167.1	168.4	170.9	172.2	174.6	176.1	178.7	179.8	177.9	181.3	178.6
87.5°	87.3	90.5	88.7	92.9	92.0	96.2	95.3	99.3	98.4	101.9	101.4
90°	14.9	14.5	16.4	16.1	18.6	18.6	21.3	21.1	23.6	23.5	25.9
92.5°	2.2	2.3	2.3	2.3	2.3	2.4	2.3	2.3	2.3	2.4	2.3
95°	2.5	2.5	2.5	2.5	2.5	2.5	2.5	2.6	2.6	2.6	2.6
97.5°	2.8	2.8	2.8	2.8	2.8	2.8	2.8	2.8	2.8	2.9	2.9
100°	3.1	3.1	3.1	3.1	3.2	3.2	3.3	3.3	3.3	3.3	3.3
102.5°	3.5	3.5	3.6	3.6	3.6	3.7	3.7	3.7	3.7	3.8	3.8
105°	3.8	3.9	3.9	4.0	4.0	4.2	4.3	4.3	4.4	4.5	4.5
107.5°	4.3	4.4	4.6	4.6	4.7	4.9	5.0	5.1	5.2	5.2	5.3
110°	5.0	5.1	5.2	5.3	5.5	5.7	5.8	6.0	6.1	6.2	6.3



TEST NUMBER: P1444441
 CATALOG NUMBER: EHBR1-18-UNV-TA-L830

CANDELA DISTRIBUTION (continued):

	302.5°	305°	307.5°	310°	312.5°	315°	317.5°	320°	322.5°	325°	327.5°
112.5°	5.6	5.9	6.0	6.3	6.5	6.7	6.8	7.1	7.2	7.4	7.5
115°	6.7	6.8	7.1	7.4	7.7	7.9	8.1	8.3	8.5	8.8	8.9
117.5°	7.8	8.1	8.3	8.8	9.0	9.4	9.6	9.9	10.1	10.3	10.6
120°	9.2	9.6	9.9	10.3	10.7	11.0	11.3	11.6	11.9	12.2	12.4
122.5°	10.9	11.3	11.7	12.2	12.5	12.8	13.2	13.6	13.9	14.1	14.4
125°	12.8	13.2	13.7	14.1	14.5	15.0	15.4	15.7	16.0	16.4	16.7
127.5°	15.0	15.5	16.0	16.5	16.9	17.3	17.7	18.1	18.5	18.8	19.2
130°	17.4	18.1	18.5	18.9	19.3	19.9	20.2	20.6	21.1	21.5	21.8
132.5°	20.2	20.7	21.2	21.7	22.1	22.5	22.9	23.4	23.7	24.2	24.5
135°	23.1	23.6	24.0	24.5	24.9	25.3	25.7	26.1	26.5	27.0	27.4
137.5°	26.1	26.6	27.0	27.4	27.8	28.2	28.6	29.0	29.3	29.8	30.2
140°	29.2	29.7	30.0	30.4	30.7	31.1	31.5	31.8	32.2	32.6	32.9
142.5°	32.3	32.7	33.0	33.4	33.7	34.1	34.3	34.7	35.0	35.3	35.6
145°	35.3	35.7	36.0	36.3	36.4	36.8	37.1	37.4	37.6	37.9	38.1
147.5°	38.4	38.7	38.9	39.2	39.3	39.6	39.8	40.0	40.3	40.5	40.6
150°	41.1	41.5	41.6	41.9	42.1	42.2	42.4	42.5	42.7	42.8	43.0
152.5°	43.7	44.0	44.1	44.3	44.5	44.7	44.7	45.0	45.0	45.1	45.1
155°	46.3	46.6	46.6	46.9	46.9	47.1	47.1	47.3	47.3	47.4	47.4
157.5°	48.7	48.9	49.1	49.2	49.4	49.5	49.6	49.6	49.6	49.7	49.7
160°	51.1	51.1	51.3	51.4	51.6	51.7	51.7	51.9	52.0	52.0	52.0
162.5°	53.2	53.4	53.5	53.6	53.8	53.9	54.0	54.0	54.1	54.1	54.1
165°	55.2	55.4	55.5	55.7	55.7	55.9	55.9	56.1	56.1	56.2	56.2
167.5°	57.1	57.3	57.4	57.6	57.7	57.8	57.8	58.0	58.0	58.1	58.1
170°	58.8	58.9	59.1	59.2	59.3	59.3	59.4	59.5	59.5	59.6	59.6
172.5°	60.1	60.2	60.2	60.3	60.3	60.5	60.5	60.5	60.6	60.6	60.6
175°	61.0	61.1	61.2	61.2	61.2	61.3	61.3	61.3	61.3	61.3	61.3
177.5°	61.6	61.6	61.6	61.6	61.6	61.6	61.6	61.6	61.6	61.6	61.5
180°	61.4	61.4	61.4	61.4	61.4	61.4	61.4	61.4	61.4	61.4	61.4



TEST NUMBER: P1444441
 CATALOG NUMBER: EHBR1-18-UNV-TA-L830

CANDELA DISTRIBUTION (continued):

	330°	332.5°	335°	337.5°	340°	342.5°	345°	347.5°	350°	352.5°	355°
0°	14819.8	14819.8	14819.8	14819.8	14819.8	14819.8	14819.8	14819.8	14819.8	14819.8	14819.8
2.5°	14912.9	14906.4	14902.3	14896.9	14893.7	14889.5	14886.6	14883.9	14881.9	14879.9	14878.5
5°	15122.6	15089.3	15063.4	15035.4	15012.4	14989.4	14971.7	14957.1	14947.0	14939.4	14934.9
7.5°	15389.6	15328.6	15274.3	15217.2	15166.0	15115.6	15072.2	15034.8	15006.7	14988.6	14977.5
10°	15628.1	15546.4	15465.5	15380.5	15299.9	15221.7	15149.5	15086.0	15035.8	15002.3	14982.8
12.5°	15734.9	15665.3	15582.8	15490.4	15391.6	15291.7	15194.3	15106.4	15032.7	14983.1	14954.6
15°	15640.8	15612.2	15556.2	15484.5	15390.8	15287.5	15173.0	15065.5	14966.5	14902.4	14865.2
17.5°	15334.6	15374.4	15370.2	15342.7	15275.4	15188.4	15071.7	14951.0	14827.3	14741.5	14694.6
20°	14817.8	14943.1	15006.7	15039.4	15012.9	14956.5	14851.0	14728.3	14584.1	14472.2	14403.9
22.5°	14091.7	14313.0	14450.9	14551.8	14573.2	14553.9	14460.7	14344.2	14183.4	14048.9	13948.0
25°	13156.8	13481.1	13699.0	13869.8	13936.3	13953.4	13874.1	13758.1	13578.9	13422.2	13283.6
27.5°	12055.8	12477.1	12768.1	12997.7	13101.3	13146.2	13073.2	12954.9	12742.9	12555.7	12374.8
30°	10816.3	11316.0	11666.4	11941.6	12068.0	12127.4	12049.8	11917.7	11671.1	11445.8	11217.8
32.5°	9489.5	10036.5	10418.2	10717.2	10842.3	10898.1	10796.7	10648.4	10363.3	10098.0	9832.1
35°	8100.4	8652.5	9037.5	9328.5	9433.3	9467.0	9337.3	9165.9	8849.9	8558.8	8268.8
37.5°	6683.0	7196.6	7546.6	7807.7	7872.7	7878.5	7722.1	7532.8	7200.8	6913.7	6625.0
40°	5277.9	5711.0	5993.5	6202.6	6225.2	6205.0	6035.1	5844.6	5533.9	5276.7	5023.3
42.5°	3954.3	4281.3	4482.9	4626.1	4617.6	4577.9	4422.1	4258.3	4002.0	3806.1	3606.7
45°	2820.4	3036.1	3153.9	3237.7	3210.8	3172.9	3051.7	2936.9	2762.7	2636.2	2502.1
47.5°	1959.4	2216.8	2172.0	2335.9	2194.7	2288.0	2093.7	1986.7	1894.3	1827.1	1751.3
50°	1402.7	1461.7	1490.2	1509.7	1499.4	1485.1	1450.1	1418.9	1376.7	1346.0	1310.1
52.5°	1083.3	1112.8	1128.9	1140.6	1138.4	1133.1	1118.0	1104.0	1084.2	1071.2	1055.5
55°	917.6	918.1	947.8	935.0	953.9	931.7	940.5	916.0	919.9	899.0	884.9
57.5°	762.5	774.6	780.0	785.3	783.8	782.9	777.0	774.0	767.4	765.4	760.6
60°	670.8	677.1	678.4	680.8	678.7	678.0	673.4	671.7	667.3	666.5	663.3
62.5°	607.8	611.0	611.0	611.0	608.4	605.9	600.7	598.1	594.2	593.5	591.6
65°	555.3	558.7	559.2	559.9	558.0	556.0	551.5	548.5	544.7	543.2	541.1
67.5°	501.0	504.6	505.8	507.7	506.6	506.2	503.1	502.0	499.4	498.8	496.8
70°	458.5	460.0	459.9	459.8	457.4	455.2	451.7	450.0	447.3	446.7	445.0
72.5°	433.2	434.3	433.6	432.7	429.5	426.3	422.2	419.1	415.5	413.4	410.8
75°	397.5	398.9	398.0	397.4	394.6	392.6	389.2	387.5	385.0	384.3	382.6
77.5°	353.8	354.5	353.0	352.9	350.7	349.4	346.9	346.4	344.6	344.6	343.0
80°	305.1	304.6	302.4	301.9	299.7	299.2	297.2	297.4	295.9	296.6	295.3
82.5°	251.0	249.6	246.6	245.7	243.3	243.1	241.8	242.8	242.0	243.3	242.5
85°	179.8	180.2	178.9	178.9	178.3	178.4	178.3	179.2	179.3	180.5	180.4
87.5°	100.3	101.7	101.4	102.8	102.7	104.2	104.7	106.9	107.2	109.2	109.2
90°	25.9	28.6	28.5	31.3	31.4	34.0	34.5	37.1	37.4	39.6	39.4
92.5°	2.3	2.3	2.4	2.3	2.3	2.2	2.4	2.2	2.3	2.2	2.2
95°	2.6	2.6	2.6	2.6	2.6	2.5	2.5	2.5	2.5	2.5	2.5
97.5°	2.9	2.9	2.9	2.9	2.9	2.9	2.8	2.8	2.8	2.8	2.8
100°	3.3	3.3	3.4	3.3	3.3	3.3	3.3	3.3	3.3	3.3	3.3
102.5°	3.9	3.9	3.9	3.9	3.9	3.9	3.9	3.8	3.8	3.8	3.8
105°	4.6	4.6	4.6	4.6	4.6	4.6	4.6	4.6	4.6	4.6	4.6
107.5°	5.3	5.3	5.4	5.4	5.5	5.5	5.5	5.4	5.5	5.4	5.4
110°	6.5	6.5	6.6	6.6	6.7	6.7	6.7	6.7	6.7	6.7	6.7



TEST NUMBER: P1444441
 CATALOG NUMBER: EHBR1-18-UNV-TA-L830

CANDELA DISTRIBUTION (continued):

	330°	332.5°	335°	337.5°	340°	342.5°	345°	347.5°	350°	352.5°	355°
112.5°	7.7	7.8	7.9	7.9	8.0	8.0	8.1	8.1	8.1	8.1	8.1
115°	9.1	9.3	9.4	9.4	9.6	9.6	9.7	9.7	9.8	9.8	9.8
117.5°	10.8	11.0	11.1	11.2	11.3	11.5	11.6	11.7	11.7	11.7	11.8
120°	12.6	12.8	13.1	13.2	13.5	13.6	13.8	13.9	14.0	14.0	14.1
122.5°	14.7	14.9	15.3	15.5	15.7	15.9	16.1	16.3	16.4	16.4	16.4
125°	17.0	17.3	17.7	17.9	18.3	18.5	18.6	18.8	18.9	18.9	19.0
127.5°	19.6	19.9	20.2	20.5	20.9	21.1	21.4	21.5	21.7	21.7	21.7
130°	22.2	22.5	22.9	23.3	23.6	23.9	24.3	24.4	24.5	24.5	24.6
132.5°	25.0	25.3	25.8	26.1	26.5	26.8	27.1	27.2	27.4	27.4	27.4
135°	27.8	28.1	28.6	28.9	29.3	29.6	29.9	30.1	30.3	30.3	30.3
137.5°	30.6	30.9	31.3	31.7	32.0	32.3	32.6	32.7	32.9	33.0	33.0
140°	33.3	33.5	34.0	34.3	34.6	34.8	35.1	35.3	35.5	35.5	35.6
142.5°	35.9	36.2	36.6	36.8	37.1	37.3	37.5	37.7	37.8	37.9	37.9
145°	38.4	38.6	38.9	39.1	39.3	39.5	39.7	39.9	39.9	39.9	40.0
147.5°	40.8	40.9	41.1	41.3	41.6	41.7	41.8	41.9	42.1	42.1	42.1
150°	43.1	43.2	43.3	43.4	43.5	43.6	43.7	43.7	43.7	43.7	43.7
152.5°	45.2	45.2	45.3	45.3	45.3	45.3	45.3	45.3	45.3	45.2	45.2
155°	47.5	47.5	47.5	47.4	47.5	47.4	47.3	47.3	47.2	47.1	46.9
157.5°	49.7	49.6	49.7	49.6	49.6	49.6	49.5	49.3	49.2	49.1	48.9
160°	52.0	52.0	52.0	51.9	51.8	51.7	51.6	51.4	51.3	51.1	51.0
162.5°	54.1	54.1	54.1	54.0	54.0	53.9	53.8	53.6	53.5	53.2	53.0
165°	56.2	56.2	56.2	56.1	56.0	55.9	55.8	55.6	55.5	55.3	55.2
167.5°	58.1	58.1	58.0	57.9	57.8	57.8	57.7	57.5	57.4	57.1	57.0
170°	59.6	59.5	59.5	59.4	59.3	59.3	59.1	59.0	58.9	58.7	58.6
172.5°	60.5	60.5	60.5	60.3	60.3	60.3	60.2	60.1	59.9	59.9	59.9
175°	61.2	61.2	61.1	61.1	61.0	61.0	60.9	60.9	60.8	60.7	60.6
177.5°	61.5	61.5	61.4	61.4	61.4	61.4	61.4	61.3	61.3	61.3	61.2
180°	61.4	61.4	61.4	61.4	61.4	61.4	61.4	61.4	61.4	61.4	61.4



TEST NUMBER: P1444441
 CATALOG NUMBER: EHBR1-18-UNV-TA-L830

CANDELA DISTRIBUTION (continued):

	357.5°	360°
0°	14819.8	14819.8
2.5°	14877.2	14876.4
5°	14932.5	14931.6
7.5°	14974.6	14974.3
10°	14979.6	14982.1
12.5°	14949.7	14951.7
15°	14862.4	14866.4
17.5°	14695.5	14700.8
20°	14408.1	14413.6
22.5°	13942.5	13944.8
25°	13265.7	13256.0
27.5°	12342.9	12326.4
30°	11170.0	11154.0
32.5°	9771.4	9761.4
35°	8197.1	8190.8
37.5°	6539.7	6526.8
40°	4930.6	4893.2
42.5°	3519.4	3453.6
45°	2432.2	2354.2
47.5°	1697.9	1649.7
50°	1286.9	1271.4
52.5°	1048.6	1045.0
55°	884.8	883.2
57.5°	761.7	761.2
60°	665.0	664.8
62.5°	592.8	593.1
65°	542.1	542.2
67.5°	497.3	497.0
70°	445.7	445.3
72.5°	410.1	409.4
75°	382.6	382.2
77.5°	343.5	342.9
80°	296.2	295.3
82.5°	243.5	242.7
85°	181.7	181.7
87.5°	111.2	111.1
90°	41.6	41.1
92.5°	2.3	2.4
95°	2.5	2.5
97.5°	2.8	2.8
100°	3.3	3.3
102.5°	3.8	3.8
105°	4.6	4.6
107.5°	5.4	5.4
110°	6.7	6.7



TEST NUMBER: P1444441
CATALOG NUMBER: EHBR1-18-UNV-TA-L830

CANDELA DISTRIBUTION (continued):

	357.5°	360°
112.5°	8.1	8.1
115°	9.7	9.7
117.5°	11.7	11.7
120°	13.9	13.9
122.5°	16.3	16.3
125°	18.9	18.8
127.5°	21.6	21.5
130°	24.4	24.4
132.5°	27.4	27.2
135°	30.2	30.1
137.5°	32.9	32.7
140°	35.4	35.3
142.5°	37.8	37.7
145°	39.9	39.8
147.5°	41.8	41.8
150°	43.6	43.5
152.5°	45.0	44.9
155°	46.7	46.6
157.5°	48.6	48.4
160°	50.7	50.5
162.5°	52.7	52.6
165°	54.9	54.6
167.5°	56.8	56.7
170°	58.5	58.4
172.5°	59.7	59.6
175°	60.5	60.5
177.5°	61.2	61.1
180°	61.4	61.4

Cooper Lighting Solutions Photometric Lab
1121 Highway 74 South
Peachtree City, GA 30269



LM-79-2019: Approved Method: Electrical and Photometric Measurements of Solid-State Lighting Products

Report Prepared for

Cooper Lighting Solutions

Metalux

Report Number: SP1-2506-472-2

Test Date: 07/31/2025

Luminaire Tested: EHBR-60-L830-N

Data in this report applies to families of products including EHBR-60-L830-N

Test Information

Test Method: LM-79-2019
 Report Number: SP1-2506-472-2
 Test Lab: COOPER LIGHTING SOLUTIONS
 Photometer: SP1 - 76IN SPHERE
 Measurement Geometry: 4π
 Issue Date: 08/05/2025
 Manufacturer: COOPER LIGHTING SOLUTIONS
 Product Line: Metalux
 Catalog Number: **EHBR-60-L830-N**
 Description: Elevate Round Highbay at, 60000 lumens, 3000K 80CRI LEDs with N lens

Spectral Parameters

CCT (K): 2983
 CIE u': 0.2516
 CIE v': 0.5201
 Duv: -0.0012
 CIE x: 0.4364
 CIE y: 0.4010
 CIE z: 0.1626
 Peak Wavelength (nm): 630
 Dominant Wavelength (nm): 583
 Purity: 51.34918
 Rf: 81.2
 Rg: 101.5

CRI (Ra):	83.4		
R1:	84.0	R9:	29.4
R2:	87.5	R10:	68.6
R3:	88.9	R11:	82.2
R4:	83.8	R12:	61.6
R5:	81.9	R13:	83.9
R6:	83.1	R14:	92.5
R7:	87.1	R15:	79.8
R8:	70.9		



Test Conditions

Stabilization Time: 38M
 Operation Time: 1H 38M
 Sphere Temperature (°C): 25.0

REPORT NUMBER: SP1-2506-472-2

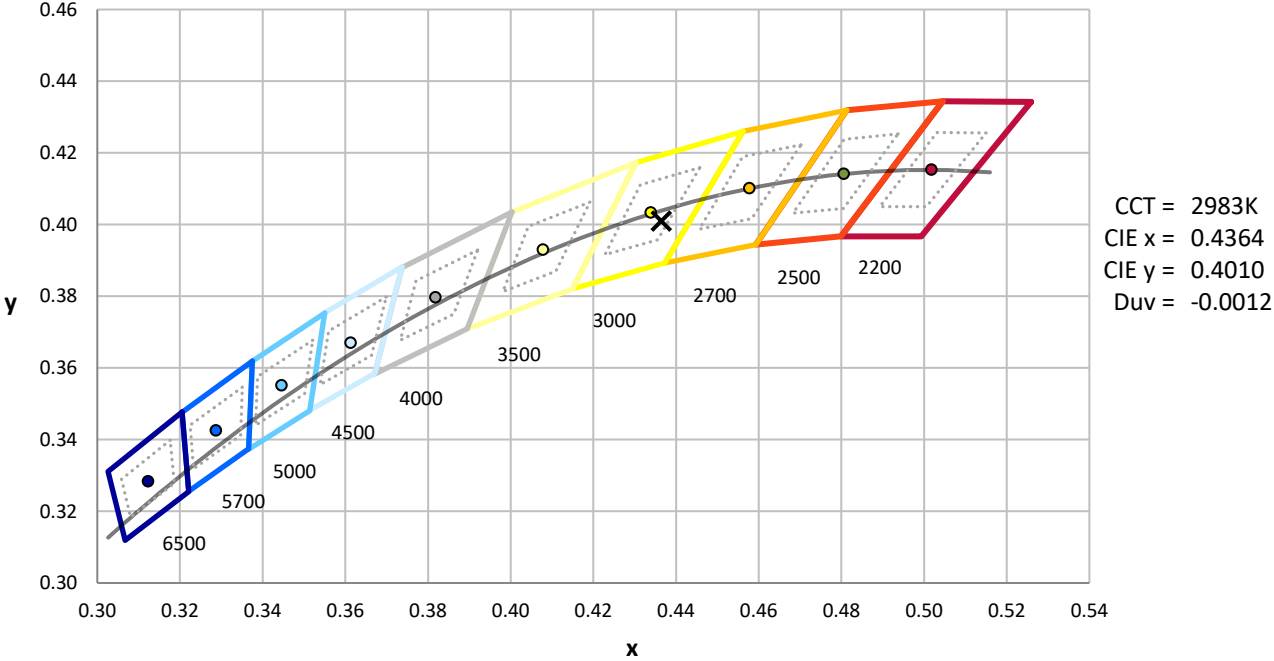
Measurement and Test Equipment			
Instrument	Identification Number	Calibration Date	Calibration Due Date
Photometer	76INCH SPHERE IN0058	6/16/2025	12/16/2025
Power Meter	XITRON INXT2011004	1/21/2025	1/21/2026
AC Power Source	CHROMA 61603 IN0063	10/22/2024	10/22/2025
DC Power Source	AGILENT E3634A IN0208	10/22/2024	10/22/2025
Sphere Thermometer	ONSET IN0085	10/22/2024	10/22/2025
Room Thermometer	ONSET IN0046	10/22/2024	10/22/2025

REPORT NUMBER: SP1-2506-472-2

CIE 1931 Chromaticity Diagram



CIE 1931 Chromaticity Diagram with 2017 ANSI 7-Step and 4-Step Quadrangles

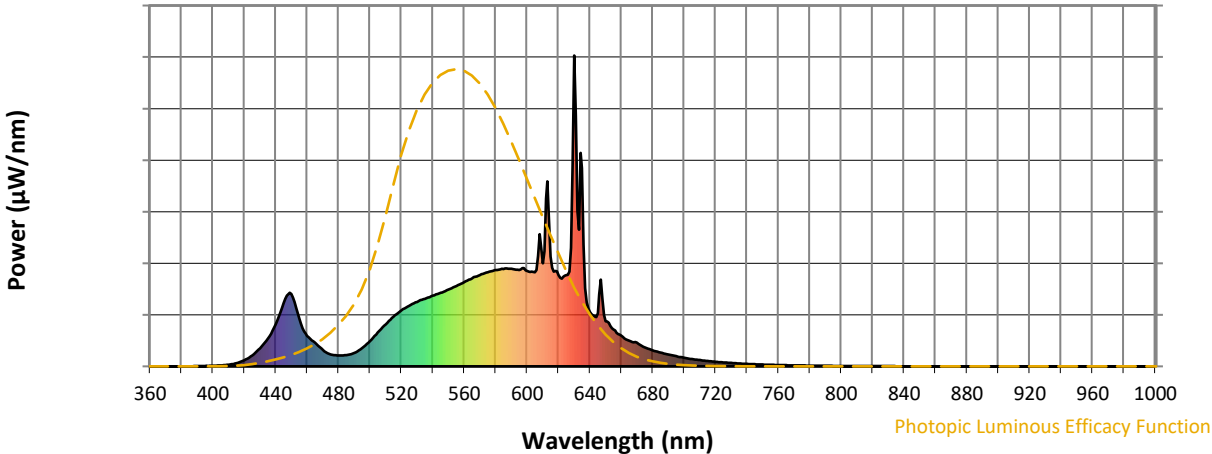


CCT = 2983K
 CIE x = 0.4364
 CIE y = 0.4010
 Duv = -0.0012

Point lies inside the ANSI 3000K 4-step quadrangle

REPORT NUMBER: SP1-2506-472-2

Photopic Flux vs. Wavelength



Photopic Lumens: NR

λ (nm)	Power W [^] /nm	Lumens (φ/nm)	λ (nm)	Power W [^] /nm	Lumens (φ/nm)	λ (nm)	Power W [^] /nm	Lumens (φ/nm)	λ (nm)	Power W [^] /nm	Lumens (φ/nm)	λ (nm)	Power W [^] /nm	Lumens (φ/nm)
360	0	NR	490	43	NR	620	294	NR	750	6	NR	880	0	NR
365	0	NR	495	59	NR	625	294	NR	755	5	NR	885	0	NR
370	0	NR	500	81	NR	630	1000	NR	760	4	NR	890	0	NR
375	0	NR	505	109	NR	635	637	NR	765	4	NR	895	0	NR
380	0	NR	510	135	NR	640	175	NR	770	3	NR	900	0	NR
385	0	NR	515	160	NR	645	171	NR	775	3	NR	905	0	NR
390	1	NR	520	180	NR	650	146	NR	780	2	NR	910	0	NR
395	1	NR	525	195	NR	655	119	NR	785	2	NR	915	0	NR
400	2	NR	530	207	NR	660	99	NR	790	2	NR	920	0	NR
405	3	NR	535	218	NR	665	82	NR	795	2	NR	925	0	NR
410	5	NR	540	227	NR	670	76	NR	800	1	NR	930	0	NR
415	10	NR	545	237	NR	675	61	NR	805	1	NR	935	0	NR
420	20	NR	550	247	NR	680	52	NR	810	1	NR	940	0	NR
425	35	NR	555	259	NR	685	44	NR	815	1	NR	945	0	NR
430	58	NR	560	271	NR	690	38	NR	820	1	NR	950	0	NR
435	90	NR	565	283	NR	695	33	NR	825	1	NR	955	0	NR
440	135	NR	570	293	NR	700	27	NR	830	1	NR	960	0	NR
445	204	NR	575	303	NR	705	24	NR	835	1	NR	965	0	NR
450	233	NR	580	310	NR	710	20	NR	840	0	NR	970	0	NR
455	153	NR	585	313	NR	715	17	NR	845	0	NR	975	0	NR
460	98	NR	590	314	NR	720	15	NR	850	0	NR	980	0	NR
465	76	NR	595	310	NR	725	13	NR	855	0	NR	985	0	NR
470	53	NR	600	307	NR	730	11	NR	860	0	NR	990	0	NR
475	39	NR	605	303	NR	735	9	NR	865	0	NR	995	0	NR
480	35	NR	610	331	NR	740	8	NR	870	0	NR	1000	0	NR
485	36	NR	615	353	NR	745	7	NR	875	0	NR			

REPORT NUMBER: SP1-2506-472-2

Scotopic Flux vs. Wavelength



Scotopic Lumens: NR

S/P: 1.27

λ (nm)	Power W [^] /nm	Lumens (φ/nm)	λ (nm)	Power W [^] /nm	Lumens (φ/nm)	λ (nm)	Power W [^] /nm	Lumens (φ/nm)	λ (nm)	Power W [^] /nm	Lumens (φ/nm)	λ (nm)	Power W [^] /nm	Lumens (φ/nm)
360	0	NR	490	43	NR	620	294	NR	750	6	NR	880	0	NR
365	0	NR	495	59	NR	625	294	NR	755	5	NR	885	0	NR
370	0	NR	500	81	NR	630	1000	NR	760	4	NR	890	0	NR
375	0	NR	505	109	NR	635	637	NR	765	4	NR	895	0	NR
380	0	NR	510	135	NR	640	175	NR	770	3	NR	900	0	NR
385	0	NR	515	160	NR	645	171	NR	775	3	NR	905	0	NR
390	1	NR	520	180	NR	650	146	NR	780	2	NR	910	0	NR
395	1	NR	525	195	NR	655	119	NR	785	2	NR	915	0	NR
400	2	NR	530	207	NR	660	99	NR	790	2	NR	920	0	NR
405	3	NR	535	218	NR	665	82	NR	795	2	NR	925	0	NR
410	5	NR	540	227	NR	670	76	NR	800	1	NR	930	0	NR
415	10	NR	545	237	NR	675	61	NR	805	1	NR	935	0	NR
420	20	NR	550	247	NR	680	52	NR	810	1	NR	940	0	NR
425	35	NR	555	259	NR	685	44	NR	815	1	NR	945	0	NR
430	58	NR	560	271	NR	690	38	NR	820	1	NR	950	0	NR
435	90	NR	565	283	NR	695	33	NR	825	1	NR	955	0	NR
440	135	NR	570	293	NR	700	27	NR	830	1	NR	960	0	NR
445	204	NR	575	303	NR	705	24	NR	835	1	NR	965	0	NR
450	233	NR	580	310	NR	710	20	NR	840	0	NR	970	0	NR
455	153	NR	585	313	NR	715	17	NR	845	0	NR	975	0	NR
460	98	NR	590	314	NR	720	15	NR	850	0	NR	980	0	NR
465	76	NR	595	310	NR	725	13	NR	855	0	NR	985	0	NR
470	53	NR	600	307	NR	730	11	NR	860	0	NR	990	0	NR
475	39	NR	605	303	NR	735	9	NR	865	0	NR	995	0	NR
480	35	NR	610	331	NR	740	8	NR	870	0	NR	1000	0	NR
485	36	NR	615	353	NR	745	7	NR	875	0	NR			

REPORT NUMBER: SP1-2506-472-2

Melanopic Flux vs. Wavelength



Melanopic Lumens: NR

M/P: 2.34

λ (nm)	Power W [^] /nm	Lumens (φ/nm)	λ (nm)	Power W [^] /nm	Lumens (φ/nm)	λ (nm)	Power W [^] /nm	Lumens (φ/nm)	λ (nm)	Power W [^] /nm	Lumens (φ/nm)	λ (nm)	Power W [^] /nm	Lumens (φ/nm)
360	0	NR	490	43	NR	620	294	NR	750	6	NR	880	0	NR
365	0	NR	495	59	NR	625	294	NR	755	5	NR	885	0	NR
370	0	NR	500	81	NR	630	1000	NR	760	4	NR	890	0	NR
375	0	NR	505	109	NR	635	637	NR	765	4	NR	895	0	NR
380	0	NR	510	135	NR	640	175	NR	770	3	NR	900	0	NR
385	0	NR	515	160	NR	645	171	NR	775	3	NR	905	0	NR
390	1	NR	520	180	NR	650	146	NR	780	2	NR	910	0	NR
395	1	NR	525	195	NR	655	119	NR	785	2	NR	915	0	NR
400	2	NR	530	207	NR	660	99	NR	790	2	NR	920	0	NR
405	3	NR	535	218	NR	665	82	NR	795	2	NR	925	0	NR
410	5	NR	540	227	NR	670	76	NR	800	1	NR	930	0	NR
415	10	NR	545	237	NR	675	61	NR	805	1	NR	935	0	NR
420	20	NR	550	247	NR	680	52	NR	810	1	NR	940	0	NR
425	35	NR	555	259	NR	685	44	NR	815	1	NR	945	0	NR
430	58	NR	560	271	NR	690	38	NR	820	1	NR	950	0	NR
435	90	NR	565	283	NR	695	33	NR	825	1	NR	955	0	NR
440	135	NR	570	293	NR	700	27	NR	830	1	NR	960	0	NR
445	204	NR	575	303	NR	705	24	NR	835	1	NR	965	0	NR
450	233	NR	580	310	NR	710	20	NR	840	0	NR	970	0	NR
455	153	NR	585	313	NR	715	17	NR	845	0	NR	975	0	NR
460	98	NR	590	314	NR	720	15	NR	850	0	NR	980	0	NR
465	76	NR	595	310	NR	725	13	NR	855	0	NR	985	0	NR
470	53	NR	600	307	NR	730	11	NR	860	0	NR	990	0	NR
475	39	NR	605	303	NR	735	9	NR	865	0	NR	995	0	NR
480	35	NR	610	331	NR	740	8	NR	870	0	NR	1000	0	NR
485	36	NR	615	353	NR	745	7	NR	875	0	NR			

Summary

$R_f = 81.2$
 $R_g = 101.5$
 CIE $R_a = 83.4$
 $R_9 = 29.4$

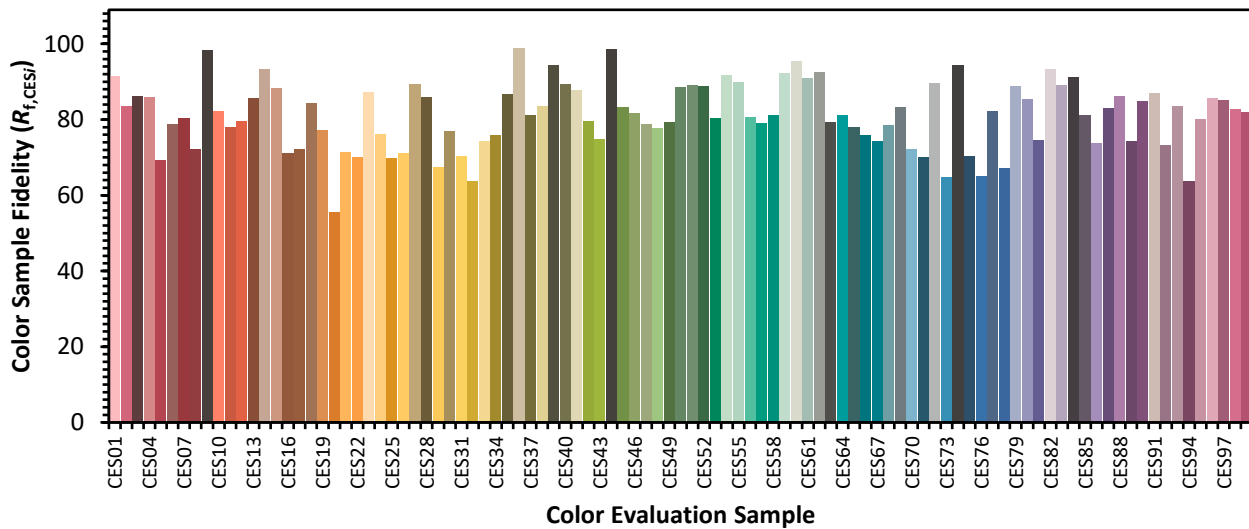


Color Vector Graphics

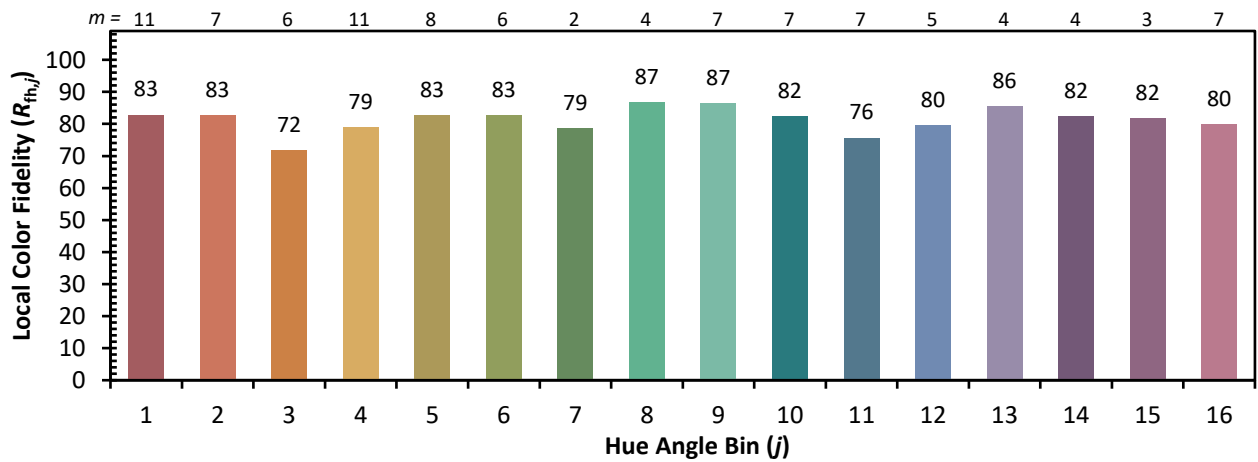
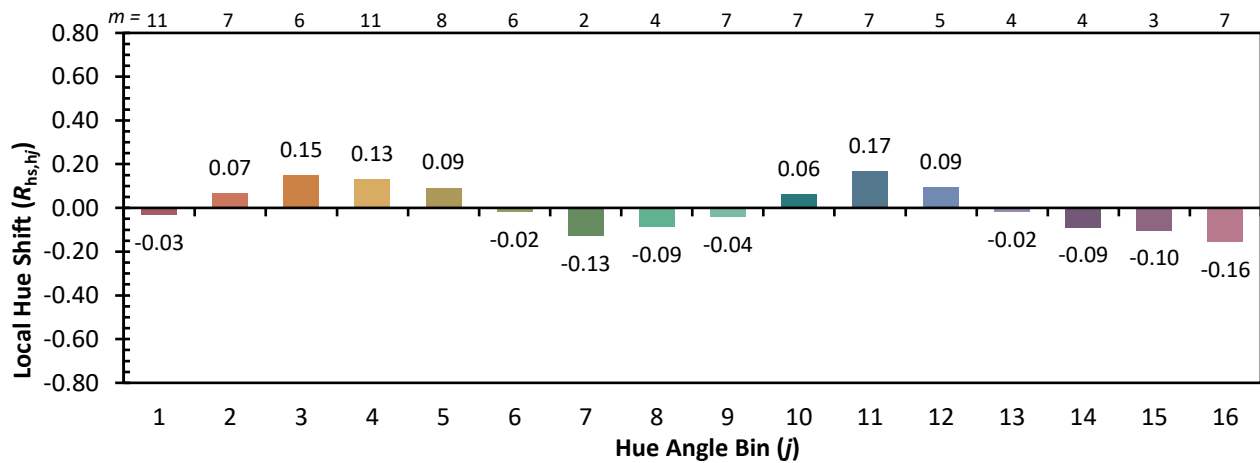
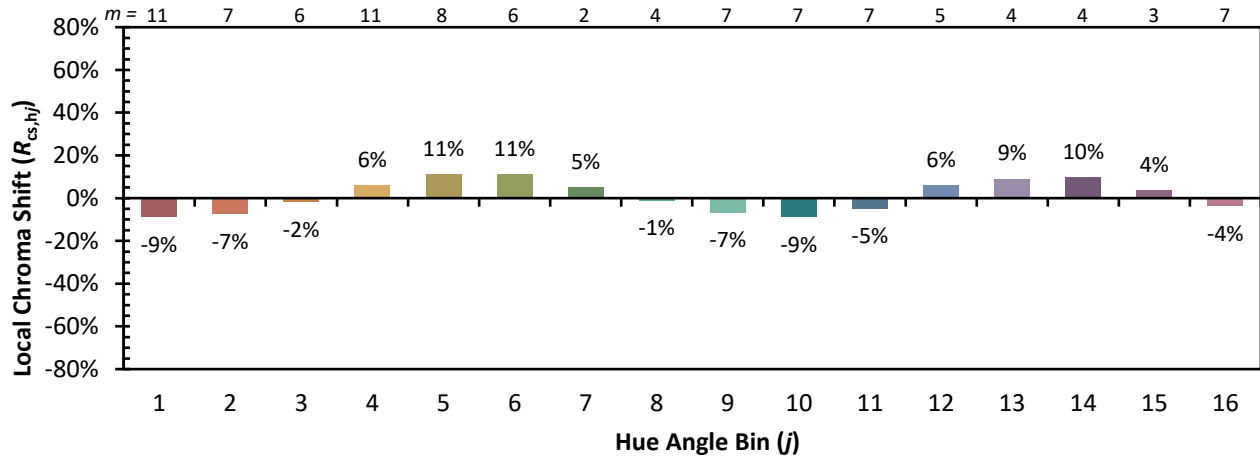


Individual Sample Fidelity Index ($R_{f,i}$)

CES01 = 86	CES26 = 71	CES51 = 89	CES76 = 65
CES02 = 63	CES27 = 89	CES52 = 89	CES77 = 82
CES03 = 31	CES28 = 86	CES53 = 80	CES78 = 67
CES04 = 70	CES29 = 68	CES54 = 92	CES79 = 89
CES05 = 50	CES30 = 77	CES55 = 90	CES80 = 85
CES06 = 51	CES31 = 70	CES56 = 81	CES81 = 75
CES07 = 43	CES32 = 64	CES57 = 79	CES82 = 93
CES08 = 41	CES33 = 74	CES58 = 81	CES83 = 89
CES09 = 29	CES34 = 76	CES59 = 92	CES84 = 91
CES10 = 76	CES35 = 87	CES60 = 96	CES85 = 81
CES11 = 59	CES36 = 99	CES61 = 91	CES86 = 74
CES12 = 65	CES37 = 81	CES62 = 93	CES87 = 83
CES13 = 44	CES38 = 83	CES63 = 79	CES88 = 86
CES14 = 74	CES39 = 94	CES64 = 81	CES89 = 74
CES15 = 72	CES40 = 89	CES65 = 78	CES90 = 85
CES16 = 48	CES41 = 88	CES66 = 76	CES91 = 87
CES17 = 50	CES42 = 80	CES67 = 74	CES92 = 73
CES18 = 57	CES43 = 75	CES68 = 79	CES93 = 84
CES19 = 72	CES44 = 99	CES69 = 83	CES94 = 64
CES20 = 67	CES45 = 83	CES70 = 72	CES95 = 80
CES21 = 87	CES46 = 82	CES71 = 70	CES96 = 86
CES22 = 79	CES47 = 79	CES72 = 90	CES97 = 85
CES23 = 92	CES48 = 78	CES73 = 65	CES98 = 83
CES24 = 91	CES49 = 79	CES74 = 94	CES99 = 82
CES25 = 72	CES50 = 88	CES75 = 70	



Color Rendition by Hue-Angle Bin



Measure Comparisons



(END OF REPORT)