

Cooper Lighting Solutions Photometric Lab
1121 Highway 74 South
Peachtree City, GA 30269



Scaled data based on original data using
LM-79-2019 Approved Method: Electrical and Photometric Measurements of Solid-
State Lighting Products

Test Report Prepared for
Cooper Lighting Solutions

Brand: METALUX

Report Number: P1444449

Luminaire Tested: EHBR1-24-UNV-TA-L830

Issue Date: 5/1/2026

Test Information

Test Method: LM-79-2019
Report Number: P1444449
TEST IS SCALED FROM IESNA LM-79-08 TEST DATA (C80-8019A)
Test Lab: INNOVATION CENTER
Issue Date: 5/1/2026
Manufacturer: COOPER LIGHTING SOLUTIONS
Product Line: METALUX
Catalog Number: EHBR1-24-UNV-TA-L830
Description: Elevate Round Highbay at, 24000 lumens, 3000K 80CRI LEDs with TA lens
Light Source: -
Ballast/Driver: -

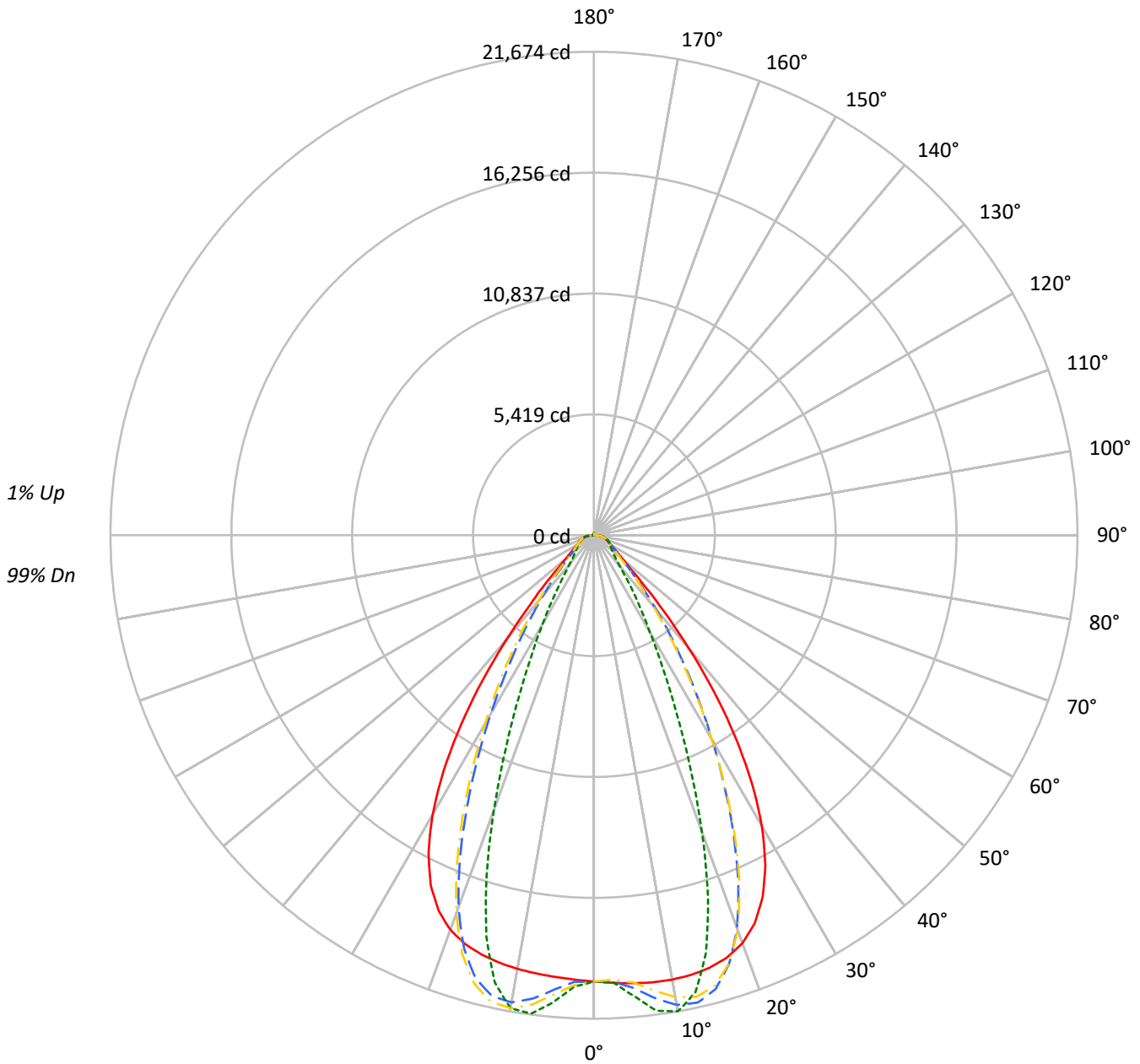
Summary

Lumens per Lamp: N/A
Luminaire Lumens: 23162.9 lumens
Efficiency: N/A
Efficacy: 180.5 lumens/watt
Spacing Criteria (0/90/45): 1.13 / 0.77 / 0.88
Luminous Opening: Circular (Dia: 1.71' x H: 0')
CIE Type: Direct

Input Watts (W): 128.3
Input Voltage (V): NR
Input Current (Ain): NR
Voltage Rise (V): NR
Power Factor: NR
Total Harmonic Distortion (THDi): NR
Frequency (hertz): 60
Stabilization Time: NR
Operation Time: NR
Ambient Temperature (°C): NR
Test Distance: 24 FT

TEST NUMBER: P1444449
CATALOG NUMBER: EHBR1-24-UNV-TA-L830

Luminous Intensity Polar Plot



— 0°-180° - - 45°-225° - · - · 90°-270° - · - · 135°-315°



TEST NUMBER: P1444449
 CATALOG NUMBER: EHBR1-24-UNV-TA-L830

COEFFICIENT OF UTILIZATION - ZONAL CAVITY METHOD:

RF	20				20				20				20				20				20
RC	80				70				50				30				10				0
RW	70	50	30	10	70	50	30	10	50	30	10	50	30	10	50	30	10	50	30	10	0
RCR																					
0	119	119	119	119	116	116	116	116	111	111	111	106	106	106	101	101	101	99			
1	112	108	105	103	109	106	103	101	102	100	98	98	96	95	94	93	92	90			
2	105	99	94	90	103	97	93	89	94	90	87	91	88	85	88	85	83	81			
3	99	91	85	81	97	90	84	80	87	82	79	84	81	77	82	79	76	74			
4	93	84	78	73	91	83	77	73	81	76	72	79	74	71	77	73	70	68			
5	88	78	72	67	86	77	71	66	75	70	66	73	69	65	72	68	64	63			
6	83	73	66	61	81	72	66	61	70	65	60	69	64	60	67	63	60	58			
7	78	68	61	57	77	67	61	56	66	60	56	65	59	56	63	59	55	54			
8	74	64	57	53	73	63	57	52	62	56	52	61	56	52	60	55	52	50			
9	70	60	53	49	69	59	53	49	58	53	49	57	52	48	56	52	48	47			
10	67	56	50	46	66	56	50	46	55	49	46	54	49	45	53	49	45	44			

AVERAGE LUMINANCE (cd/sqm):

	0°	90°	180°	270°
0°	93954	93954	93954	93954
5°	95024	97795	93695	99076
10°	96448	103353	94135	102669
15°	97574	94320	94603	90522
20°	97242	70758	94060	65468
25°	92728	45083	89663	40905
30°	81653	27308	78490	24957
35°	63392	17286	59745	15313
40°	40496	10950	37050	10290
45°	21108	8627	20758	8486
50°	12540	7776	12155	7654
55°	9762	7475	9401	7409
60°	8429	7793	8071	7692
65°	8133	8359	7821	8074
70°	8253	9094	7841	8750
75°	9362	10230	8856	9778
80°	10785	12608	9779	11510
85°	13217	15836	10685	13562

MAXIMUM LUMINANCE 45°-90°:

Horizontal Angle: 25°
 Vertical Angle: 45°
 Luminance: 32303 cd/sqm



TEST NUMBER: P1444449
 CATALOG NUMBER: EHBR1-24-UNV-TA-L830

ZONAL LUMENS:

Zone	Lumens	% Fixture
0°-10°	1971.7	8.5
10°-20°	5546.6	23.9
20°-30°	6317.2	27.3
30°-40°	4540.5	19.6
40°-50°	2094.1	9.0
50°-60°	1002.1	4.3
60°-70°	731.2	3.2
70°-80°	555.5	2.4
80°-90°	252.7	1.1
90°-100°	8.2	0.0
100°-110°	5.9	0.0
110°-120°	10.1	0.0
120°-130°	16.9	0.1
130°-140°	24.9	0.1
140°-150°	29.6	0.1
150°-160°	27.8	0.1
160°-170°	20.3	0.1
170°-180°	7.7	0.0
0°-30°	13835.5	59.7
0°-40°	18376.0	79.3
0°-60°	21472.2	92.7
0°-90°	23011.5	99.3
90°-120°	24.2	0.1
90°-150°	95.6	0.4
90°-180°	151.0	0.7
0°-180°	23162.9	100.0

CANDELA DISTRIBUTION:

	0°	90°	180°	270°	360°	Flux
0°	20007	20007	20007	20007	20007	
5°	20158	20746	19876	21017	20158	1926
15°	20070	19400	19459	18619	20070	5655
25°	17896	8701	17304	7894	17896	8113
35°	11058	3015	10422	2671	11058	6786
45°	3178	1299	3126	1278	3178	2703
55°	1192	913	1148	905	1192	1101
65°	732	752	704	727	732	731
75°	516	564	488	539	516	537
85°	245	294	198	252	245	231
90°	56	73	8	13	56	36
95°	3	3	4	3	3	3
105°	6	4	6	5	6	7
115°	13	7	14	7	13	13
125°	26	11	26	12	26	23
135°	41	22	42	24	41	31
145°	54	40	55	43	54	34
155°	63	57	64	59	63	29
165°	74	70	75	71	74	21
175°	82	81	82	82	82	8
180°	83	83	83	83	83	



TEST NUMBER: P1444449
 CATALOG NUMBER: EHBR1-24-UNV-TA-L830

CANDELA DISTRIBUTION (FULL):

	0°	2.5°	5°	7.5°	10°	12.5°	15°	17.5°	20°	22.5°	25°
0°	20006.8	20006.8	20006.8	20006.8	20006.8	20006.8	20006.8	20006.8	20006.8	20006.8	20006.8
2.5°	20083.2	20081.6	20081.3	20079.9	20079.5	20079.5	20078.8	20077.2	20076.2	20073.9	20071.2
5°	20157.7	20156.9	20157.4	20157.5	20156.1	20153.0	20148.1	20142.1	20134.6	20127.4	20121.1
7.5°	20215.4	20216.8	20218.6	20218.2	20213.8	20206.5	20196.5	20190.9	20194.1	20205.0	20229.9
10°	20225.9	20234.5	20237.8	20236.8	20228.0	20221.8	20224.2	20245.4	20287.6	20343.8	20420.8
12.5°	20184.9	20195.4	20195.1	20191.5	20183.1	20191.7	20222.4	20285.5	20375.9	20486.9	20617.1
15°	20069.7	20083.4	20079.5	20075.0	20069.4	20097.6	20158.9	20268.5	20408.2	20564.7	20725.0
17.5°	19846.1	19862.6	19854.7	19849.5	19844.7	19897.7	20003.0	20163.5	20339.5	20516.5	20668.4
20°	19458.3	19469.4	19450.4	19441.4	19449.0	19552.7	19707.9	19912.8	20098.3	20265.7	20369.5
22.5°	18825.5	18839.3	18803.4	18799.3	18843.5	19002.8	19199.2	19428.3	19602.5	19735.2	19775.2
25°	17895.7	17909.2	17866.7	17892.1	17967.3	18184.3	18418.1	18663.2	18811.9	18910.2	18883.1
27.5°	16640.7	16653.0	16612.6	16664.6	16783.4	17068.6	17343.8	17609.7	17742.2	17811.1	17723.7
30°	15057.9	15083.4	15035.8	15108.2	15289.6	15659.9	15975.2	16273.3	16405.4	16457.9	16322.1
32.5°	13177.9	13214.3	13161.8	13269.6	13522.7	13967.5	14325.7	14658.7	14804.9	14864.7	14711.3
35°	11057.7	11109.8	11049.5	11211.3	11523.6	12018.8	12415.5	12787.3	12960.4	13045.2	12890.6
37.5°	8811.2	8861.0	8828.4	9044.2	9387.0	9900.4	10305.3	10706.5	10901.9	11029.2	10907.3
40°	6605.8	6651.3	6676.0	6922.8	7245.3	7729.2	8118.1	8515.0	8733.6	8893.4	8818.2
42.5°	4662.4	4708.3	4792.2	5030.4	5299.3	5699.8	6033.0	6389.3	6598.2	6768.7	6739.6
45°	3178.3	3231.6	3336.7	3531.7	3726.2	4013.5	4258.2	4535.3	4705.9	4862.1	4864.0
47.5°	2227.2	2264.6	2358.5	2491.7	2618.5	2978.2	2993.0	3129.2	3243.9	3360.6	3375.7
50°	1716.4	1739.0	1788.8	1863.0	1934.9	2028.3	2113.7	2212.4	2283.0	2347.0	2362.3
52.5°	1410.8	1425.1	1450.5	1490.7	1532.4	1583.1	1628.8	1683.1	1721.5	1755.8	1762.9
55°	1192.3	1204.2	1242.0	1249.6	1297.2	1306.5	1326.8	1359.8	1382.1	1402.6	1407.8
57.5°	1027.6	1036.1	1044.1	1061.3	1076.0	1097.4	1114.5	1138.2	1152.2	1167.0	1168.4
60°	897.5	903.7	909.5	921.3	931.3	946.1	958.0	974.1	984.2	995.3	996.6
62.5°	800.7	805.2	808.9	816.8	823.9	835.4	844.7	858.2	867.6	876.2	878.2
65°	731.9	735.1	737.7	743.6	749.7	759.5	768.0	779.0	785.9	792.5	793.9
67.5°	671.0	674.1	676.6	682.0	686.3	693.5	699.3	707.5	712.7	718.0	718.1
70°	601.1	604.0	606.0	611.0	614.5	620.7	625.3	632.7	638.0	643.9	645.4
72.5°	552.8	554.4	557.1	561.7	566.5	573.2	579.4	587.0	593.5	599.6	602.1
75°	516.0	518.0	519.7	523.6	527.0	532.6	537.2	544.2	549.8	556.4	559.6
77.5°	462.9	465.2	466.7	470.6	473.5	478.9	482.3	488.6	493.3	499.2	502.1
80°	398.8	400.9	401.9	405.7	407.9	412.9	416.3	422.4	426.2	432.1	435.7
82.5°	327.7	329.7	330.3	333.8	335.1	339.2	341.6	347.8	352.6	360.3	365.6
85°	245.3	246.1	247.3	246.4	251.3	251.7	257.3	258.3	265.7	267.7	276.1
87.5°	150.0	152.2	153.3	156.7	158.2	161.7	162.7	166.4	168.3	172.4	174.4
90°	55.5	58.5	59.0	62.5	63.0	66.0	66.3	69.9	70.4	74.1	74.7
92.5°	3.4	3.4	3.3	3.5	3.5	3.9	4.1	4.3	4.4	4.8	4.8
95°	3.4	3.4	3.4	3.4	3.4	3.4	3.4	3.4	3.4	3.4	3.4
97.5°	3.8	3.8	3.8	3.8	3.8	3.8	3.8	3.8	3.8	3.7	3.7
100°	4.4	4.4	4.4	4.4	4.4	4.4	4.4	4.4	4.4	4.4	4.3
102.5°	5.2	5.2	5.2	5.2	5.2	5.2	5.2	5.2	5.2	5.2	5.0
105°	6.2	6.1	6.2	6.1	6.1	6.1	6.1	5.9	5.9	5.9	5.9
107.5°	7.3	7.3	7.3	7.3	7.3	7.2	7.2	7.1	7.0	6.9	6.9
110°	9.0	8.8	8.8	8.7	8.7	8.7	8.6	8.3	8.3	8.2	8.1



TEST NUMBER: P1444449
 CATALOG NUMBER: EHBR1-24-UNV-TA-L830

CANDELA DISTRIBUTION (continued):

	0°	2.5°	5°	7.5°	10°	12.5°	15°	17.5°	20°	22.5°	25°
112.5°	10.9	10.8	10.7	10.6	10.5	10.3	10.2	10.1	10.0	9.7	9.6
115°	13.1	13.0	12.9	12.6	12.6	12.4	12.3	12.0	11.9	11.5	11.4
117.5°	15.8	15.5	15.5	15.3	15.0	14.8	14.5	14.2	14.0	13.7	13.4
120°	18.7	18.5	18.4	18.0	17.7	17.3	17.1	16.8	16.4	15.9	15.7
122.5°	21.9	21.6	21.5	21.1	20.8	20.3	20.0	19.4	19.1	18.6	18.3
125°	25.5	25.1	24.9	24.4	24.0	23.6	23.1	22.6	22.2	21.5	21.2
127.5°	29.0	28.8	28.5	27.9	27.5	27.0	26.5	25.9	25.5	24.7	24.3
130°	32.9	32.6	32.2	31.7	31.2	30.6	30.1	29.3	28.9	28.1	27.5
132.5°	36.7	36.4	36.1	35.5	35.0	34.3	33.7	32.9	32.3	31.7	31.0
135°	40.6	40.1	39.8	39.3	38.8	38.0	37.4	36.6	36.0	35.1	34.6
137.5°	44.2	43.8	43.5	42.9	42.3	41.5	40.9	40.1	39.4	38.6	37.9
140°	47.7	47.3	46.8	46.3	45.7	45.1	44.3	43.6	42.9	42.1	41.4
142.5°	51.0	50.5	50.1	49.6	49.0	48.2	47.6	46.7	46.1	45.3	44.7
145°	53.8	53.4	53.0	52.5	51.9	51.1	50.6	49.7	49.2	48.4	47.8
147.5°	56.4	56.0	55.6	55.2	54.7	54.0	53.4	52.6	52.1	51.4	50.9
150°	58.6	58.4	58.1	57.6	57.1	56.5	55.9	55.4	54.7	54.0	53.6
152.5°	60.6	60.2	59.9	59.6	59.1	58.5	58.1	57.4	56.9	56.3	55.7
155°	62.9	62.5	62.1	61.7	61.4	60.8	60.3	59.8	59.3	58.7	58.3
157.5°	65.4	64.9	64.6	64.2	63.9	63.3	62.9	62.4	61.9	61.4	61.0
160°	68.1	67.7	67.4	67.0	66.5	66.0	65.7	65.1	64.8	64.3	63.9
162.5°	71.0	70.6	70.3	69.8	69.4	68.8	68.5	68.1	67.7	67.3	66.9
165°	73.8	73.4	73.1	72.8	72.4	72.0	71.7	71.2	70.8	70.3	70.1
167.5°	76.5	76.2	76.0	75.6	75.2	74.8	74.6	74.2	73.9	73.4	73.2
170°	78.8	78.4	78.1	77.9	77.7	77.4	77.1	76.8	76.5	76.2	76.0
172.5°	80.4	80.1	79.9	79.8	79.5	79.3	79.2	78.9	78.8	78.4	78.4
175°	81.7	81.4	81.3	81.2	81.0	80.9	80.8	80.7	80.7	80.5	80.3
177.5°	82.4	82.3	82.3	82.3	82.3	82.2	82.1	82.0	82.0	82.0	81.9
180°	83.0	83.0	83.0	83.0	83.0	83.0	83.0	83.0	83.0	83.0	83.0



TEST NUMBER: P1444449
 CATALOG NUMBER: EHBR1-24-UNV-TA-L830

CANDELA DISTRIBUTION (continued):

	27.5°	30°	32.5°	35°	37.5°	40°	42.5°	45°	47.5°	50°	52.5°
0°	20006.8	20006.8	20006.8	20006.8	20006.8	20006.8	20006.8	20006.8	20006.8	20006.8	20006.8
2.5°	20069.4	20066.9	20063.6	20059.3	20055.7	20051.5	20041.4	20038.5	20041.8	20044.1	20048.7
5°	20117.0	20118.4	20118.9	20128.1	20136.0	20155.6	20309.5	20370.7	20418.0	20448.0	20493.6
7.5°	20260.8	20307.1	20352.8	20414.4	20467.5	20539.1	20808.4	20923.1	21004.6	21063.1	21135.2
10°	20504.5	20605.4	20700.1	20811.0	20906.4	21015.6	21266.3	21377.9	21448.5	21499.8	21547.7
12.5°	20749.9	20889.9	21016.5	21139.9	21243.2	21337.9	21426.0	21465.2	21468.4	21470.1	21444.6
15°	20877.7	21011.6	21123.2	21204.7	21265.4	21292.2	21140.5	21060.9	20960.3	20877.4	20741.0
17.5°	20797.0	20877.4	20925.5	20920.8	20895.7	20811.8	20381.8	20145.4	19910.7	19699.2	19421.7
20°	20438.4	20432.2	20390.4	20271.6	20128.6	19906.2	19169.1	18743.9	18332.7	17971.6	17533.6
22.5°	19771.1	19666.1	19519.8	19263.8	18979.5	18590.9	17534.6	16909.1	16336.8	15831.1	15264.7
25°	18804.3	18588.3	18318.4	17912.0	17470.1	16903.3	15601.5	14823.5	14136.2	13540.3	12886.8
27.5°	17567.0	17241.6	16846.1	16283.6	15684.9	14958.8	13515.5	12656.9	11919.2	11280.2	10584.6
30°	16102.1	15679.0	15168.1	14470.1	13748.0	12924.4	11460.6	10590.9	9844.2	9186.9	8490.8
32.5°	14446.8	13951.2	13352.5	12569.0	11788.1	10941.3	9527.6	8685.8	7972.5	7340.1	6710.1
35°	12620.9	12089.4	11456.0	10657.0	9880.8	9057.5	7760.4	7001.3	6371.4	5812.5	5303.7
37.5°	10662.4	10140.5	9538.6	8785.5	8065.6	7319.6	6200.4	5564.3	5035.7	4571.8	4178.9
40°	8626.1	8169.4	7648.5	6997.4	6383.1	5761.9	4843.1	4338.2	3921.1	3567.3	3272.9
42.5°	6614.7	6260.8	5861.4	5346.8	4876.8	4403.7	3696.5	3322.5	3013.5	2758.8	2550.7
45°	4799.2	4562.4	4294.5	3936.9	3611.6	3281.7	2778.3	2515.4	2314.2	2149.9	2011.1
47.5°	3354.9	3217.6	3209.2	2878.6	2640.1	2438.3	2114.1	1948.1	1824.8	1725.2	1637.4
50°	2356.0	2289.6	2207.1	2089.1	1978.4	1864.3	1666.9	1566.5	1494.2	1433.9	1378.4
52.5°	1761.3	1726.8	1682.9	1620.2	1560.3	1496.1	1371.2	1307.2	1284.5	1228.4	1184.4
55°	1406.8	1387.0	1362.0	1325.3	1288.7	1274.1	1167.0	1119.6	1089.5	1067.4	1043.7
57.5°	1168.5	1153.8	1138.9	1114.0	1093.0	1067.4	1010.5	986.2	968.3	955.3	938.9
60°	996.8	987.9	979.6	965.0	953.6	939.8	903.7	890.0	880.7	872.8	862.3
62.5°	879.8	875.3	871.0	863.2	857.4	849.9	825.1	818.6	813.9	810.0	803.6
65°	795.3	792.1	789.6	784.5	781.6	777.2	756.0	751.5	748.7	747.2	743.6
67.5°	718.5	715.2	713.6	709.9	708.7	706.0	688.6	686.1	685.2	685.7	684.3
70°	646.8	645.4	646.1	645.5	647.2	647.6	637.1	637.1	638.2	640.4	640.6
72.5°	603.8	603.8	604.6	604.9	606.5	607.3	598.6	598.1	598.6	600.2	600.3
75°	562.9	563.5	565.8	566.5	568.3	568.7	557.2	555.8	555.8	557.4	557.0
77.5°	506.2	508.6	512.8	515.1	518.7	519.3	506.4	504.8	504.9	506.4	505.1
80°	441.9	446.6	453.4	458.1	463.5	465.7	452.3	449.2	446.2	445.8	443.1
82.5°	373.7	379.4	387.4	391.6	397.5	398.9	376.6	372.2	369.8	370.0	367.6
85°	285.2	289.5	296.8	299.3	302.9	302.6	277.1	266.2	269.1	264.5	268.1
87.5°	178.9	181.4	186.0	186.6	188.4	188.0	162.3	157.3	155.8	155.9	154.0
90°	78.1	79.1	82.3	81.7	83.6	82.4	61.0	57.8	56.7	58.3	56.4
92.5°	5.2	5.2	5.3	5.4	5.6	5.8	3.6	3.0	3.2	3.0	3.4
95°	3.4	3.4	3.4	3.4	3.4	3.4	3.4	3.4	3.4	3.3	3.3
97.5°	3.7	3.7	3.7	3.7	3.7	3.7	3.7	3.7	3.7	3.6	3.6
100°	4.3	4.3	4.2	4.2	4.1	4.1	4.1	4.1	4.1	4.0	4.0
102.5°	4.9	4.9	4.8	4.8	4.7	4.7	4.8	4.8	4.7	4.5	4.4
105°	5.8	5.7	5.6	5.4	5.3	5.2	5.4	5.3	5.2	5.2	5.2
107.5°	6.7	6.7	6.5	6.3	6.2	6.1	6.3	6.2	6.1	5.9	5.8
110°	8.0	7.8	7.7	7.4	7.2	7.0	7.3	7.2	7.0	6.8	6.7



TEST NUMBER: P1444449
 CATALOG NUMBER: EHBR1-24-UNV-TA-L830

CANDELA DISTRIBUTION (continued):

	27.5°	30°	32.5°	35°	37.5°	40°	42.5°	45°	47.5°	50°	52.5°
112.5°	9.4	9.2	9.0	8.7	8.3	8.1	8.6	8.5	8.2	7.9	7.7
115°	11.1	10.9	10.5	10.2	9.9	9.6	10.1	10.0	9.6	9.3	9.0
117.5°	13.0	12.6	12.4	12.0	11.5	11.2	11.9	11.7	11.2	10.9	10.5
120°	15.3	14.9	14.4	14.1	13.6	13.1	14.0	13.8	13.3	12.8	12.4
122.5°	17.8	17.3	16.9	16.4	15.8	15.4	16.3	16.2	15.5	15.1	14.5
125°	20.6	20.1	19.6	19.0	18.4	17.9	19.0	18.7	18.3	17.6	17.1
127.5°	23.7	23.1	22.6	22.0	21.3	20.8	21.9	21.7	21.2	20.5	19.9
130°	26.9	26.3	25.7	25.1	24.4	23.9	25.1	25.0	24.4	23.7	23.0
132.5°	30.3	29.7	29.0	28.5	27.8	27.2	28.6	28.4	27.9	27.2	26.5
135°	33.8	33.3	32.6	31.8	31.2	30.7	32.2	32.1	31.6	30.8	30.3
137.5°	37.2	36.6	36.0	35.4	34.8	34.2	36.1	36.0	35.4	34.7	34.2
140°	40.7	40.1	39.5	39.0	38.3	37.8	39.8	39.8	39.3	38.8	38.2
142.5°	43.9	43.5	42.9	42.4	41.8	41.4	43.6	43.7	43.2	42.6	42.2
145°	47.1	46.6	46.1	45.6	45.1	44.7	47.2	47.5	47.1	46.6	46.1
147.5°	50.1	49.6	49.2	48.7	48.2	48.1	50.9	51.1	50.9	50.4	50.0
150°	52.9	52.5	52.0	51.6	51.3	51.1	54.3	54.9	54.6	54.2	53.9
152.5°	55.3	54.8	54.3	54.0	53.6	53.4	57.7	58.5	58.2	57.8	57.6
155°	57.8	57.4	57.0	56.7	56.3	56.1	61.0	61.9	61.7	61.4	61.2
157.5°	60.6	60.1	59.7	59.4	59.1	58.8	64.2	65.3	65.0	64.8	64.5
160°	63.5	63.1	62.7	62.4	62.0	61.7	67.3	68.5	68.3	68.0	67.7
162.5°	66.4	66.2	65.8	65.4	65.0	64.8	70.3	71.7	71.3	71.1	70.9
165°	69.7	69.3	68.9	68.8	68.4	68.1	73.4	74.6	74.5	74.2	73.9
167.5°	72.8	72.6	72.2	72.0	71.7	71.6	76.5	77.6	77.4	77.1	77.0
170°	75.7	75.6	75.2	75.1	74.9	74.8	79.1	79.9	79.9	79.5	79.4
172.5°	78.1	78.1	77.9	77.7	77.7	77.6	81.0	81.9	81.8	81.7	81.4
175°	80.2	80.1	80.0	80.0	79.9	79.9	82.6	83.2	83.1	83.0	82.8
177.5°	81.9	81.8	81.8	81.8	81.8	81.8	83.5	83.7	83.7	83.7	83.6
180°	83.0	83.0	83.0	83.0	83.0	83.0	83.0	83.0	83.0	83.0	83.0



TEST NUMBER: P1444449
 CATALOG NUMBER: EHBR1-24-UNV-TA-L830

CANDELA DISTRIBUTION (continued):

	55°	57.5°	60°	62.5°	65°	67.5°	70°	72.5°	75°	77.5°	80°
0°	20006.8	20006.8	20006.8	20006.8	20006.8	20006.8	20006.8	20006.8	20006.8	20006.8	20006.8
2.5°	20049.7	20056.7	20057.7	20066.0	20065.3	20075.2	20073.6	20081.6	20076.9	20083.5	20078.0
5°	20520.6	20563.3	20585.7	20627.4	20640.5	20677.8	20688.3	20722.3	20723.7	20750.7	20744.6
7.5°	21186.4	21249.3	21286.7	21338.2	21364.4	21407.3	21426.2	21457.9	21468.1	21493.3	21495.3
10°	21583.9	21614.6	21635.8	21650.2	21663.4	21669.5	21676.8	21674.8	21676.8	21673.9	21680.0
12.5°	21427.6	21382.9	21353.4	21297.6	21265.2	21203.3	21173.0	21113.6	21092.1	21041.0	21033.7
15°	20635.6	20480.0	20370.1	20210.3	20109.8	19952.6	19860.6	19718.8	19653.9	19541.2	19511.6
17.5°	19192.1	18903.3	18679.9	18393.2	18194.4	17926.5	17757.9	17536.2	17414.7	17235.9	17174.0
20°	17168.4	16741.1	16406.0	16006.7	15720.9	15364.8	15136.9	14849.5	14682.5	14462.9	14373.9
22.5°	14792.5	14260.5	13841.9	13370.2	13025.4	12628.6	12355.6	12044.5	11862.9	11624.4	11518.7
25°	12343.7	11757.0	11291.7	10794.6	10430.3	10032.6	9759.5	9453.9	9266.0	9039.4	8934.5
27.5°	10001.5	9407.7	8957.9	8495.9	8161.7	7802.9	7556.3	7289.6	7122.8	6929.5	6830.7
30°	7934.7	7411.0	7028.2	6644.7	6366.7	6075.3	5870.4	5649.4	5503.1	5337.5	5243.4
32.5°	6250.8	5846.5	5546.7	5242.5	5015.0	4771.4	4594.4	4399.3	4267.3	4119.5	4034.2
35°	4950.5	4636.3	4397.3	4146.8	3951.4	3743.9	3588.0	3419.6	3301.1	3173.9	3100.2
37.5°	3911.4	3661.6	3464.9	3256.8	3096.3	2924.4	2866.5	2673.3	2550.6	2448.9	2378.6
40°	3069.7	2871.1	2708.3	2549.2	2418.2	2287.9	2183.3	2080.1	2000.8	1928.1	1877.8
42.5°	2397.2	2253.3	2134.4	2017.9	1922.3	1827.3	1751.6	1680.5	1627.1	1579.6	1547.2
45°	1905.6	1806.7	1724.1	1642.0	1574.6	1511.2	1460.1	1414.8	1380.3	1351.8	1331.5
47.5°	1565.5	1497.8	1439.5	1384.1	1338.4	1296.9	1262.7	1251.5	1214.4	1189.4	1180.0
50°	1330.5	1289.6	1245.3	1204.4	1173.9	1143.5	1121.3	1099.6	1085.7	1074.2	1070.8
52.5°	1155.1	1123.8	1099.1	1073.3	1053.1	1031.5	1016.2	1001.7	994.1	988.1	987.4
55°	1024.7	1002.7	986.4	969.1	957.0	944.3	936.4	928.7	925.5	922.4	922.7
57.5°	925.9	911.3	900.7	889.5	882.9	876.9	874.9	872.9	873.9	874.4	876.1
60°	854.0	844.5	837.9	831.4	828.7	826.7	828.2	829.9	833.4	836.2	838.7
62.5°	798.9	793.5	790.3	786.7	786.5	786.6	789.6	792.5	796.9	800.1	802.6
65°	742.2	739.1	738.0	735.9	736.9	737.7	741.2	743.4	747.8	750.4	753.5
67.5°	684.9	684.2	684.8	684.8	686.8	688.6	691.9	694.5	698.1	700.6	703.1
70°	642.6	642.9	644.5	644.7	646.9	648.0	651.0	652.6	656.0	657.9	661.0
72.5°	601.4	600.7	601.1	600.1	600.9	600.6	602.2	603.1	605.9	607.5	611.1
75°	557.6	555.7	555.3	553.3	553.4	551.9	552.7	552.6	554.4	555.2	557.8
77.5°	504.6	501.5	500.0	496.7	496.6	495.4	496.7	497.5	500.8	502.4	505.4
80°	441.3	436.4	434.2	430.3	431.0	430.8	434.1	436.5	440.5	441.3	445.1
82.5°	366.8	361.9	359.5	355.7	356.6	356.6	359.6	360.2	363.6	365.1	369.5
85°	262.7	264.5	259.3	259.7	258.5	260.6	262.7	265.2	268.1	272.9	276.6
87.5°	154.7	154.0	155.9	156.1	158.8	160.2	164.5	166.9	171.7	175.5	182.3
90°	57.1	55.3	57.3	57.1	60.3	60.1	62.9	62.2	65.6	66.3	70.4
92.5°	3.0	3.3	3.0	3.2	3.0	3.4	3.0	3.3	3.0	3.4	3.0
95°	3.3	3.3	3.3	3.3	3.3	3.3	3.3	3.3	3.3	3.3	3.3
97.5°	3.6	3.6	3.6	3.5	3.5	3.5	3.5	3.5	3.5	3.5	3.5
100°	3.9	3.9	3.9	3.8	3.8	3.8	3.8	3.8	3.8	3.8	3.8
102.5°	4.4	4.4	4.4	4.3	4.3	4.2	4.2	4.2	4.2	4.2	4.2
105°	5.0	4.9	4.8	4.8	4.8	4.7	4.7	4.5	4.5	4.5	4.5
107.5°	5.6	5.5	5.4	5.3	5.2	5.2	5.2	5.2	5.0	5.0	5.0
110°	6.4	6.2	6.2	5.9	5.9	5.8	5.6	5.6	5.5	5.4	5.4



TEST NUMBER: P1444449
 CATALOG NUMBER: EHBR1-24-UNV-TA-L830

CANDELA DISTRIBUTION (continued):

	55°	57.5°	60°	62.5°	65°	67.5°	70°	72.5°	75°	77.5°	80°
112.5°	7.4	7.2	6.9	6.7	6.6	6.4	6.3	6.2	6.2	6.1	5.9
115°	8.6	8.3	8.0	7.8	7.6	7.3	7.1	7.0	6.8	6.7	6.7
117.5°	10.1	9.7	9.3	9.0	8.7	8.3	8.1	7.9	7.7	7.7	7.6
120°	11.9	11.4	10.9	10.5	10.1	9.7	9.4	9.1	8.8	8.7	8.6
122.5°	14.0	13.4	12.8	12.4	11.9	11.4	11.0	10.7	10.3	10.1	9.9
125°	16.4	15.8	15.2	14.5	14.0	13.5	13.0	12.6	12.2	11.9	11.5
127.5°	19.2	18.5	17.8	17.2	16.5	15.9	15.4	14.9	14.4	14.1	13.7
130°	22.3	21.6	20.8	20.2	19.4	18.8	18.3	17.7	17.2	16.8	16.3
132.5°	25.8	25.1	24.4	23.7	22.9	22.2	21.5	21.0	20.3	19.9	19.4
135°	29.5	28.9	28.1	27.4	26.6	26.0	25.4	24.7	24.1	23.6	23.0
137.5°	33.5	32.9	32.2	31.6	30.8	30.2	29.3	28.9	28.1	27.7	27.2
140°	37.6	37.0	36.3	35.7	35.0	34.5	33.7	33.3	32.6	32.1	31.6
142.5°	41.5	41.0	40.4	39.9	39.3	38.8	38.1	37.6	37.0	36.5	36.1
145°	45.6	45.1	44.7	44.1	43.6	43.2	42.5	42.1	41.5	41.1	40.7
147.5°	49.6	49.2	48.7	48.2	47.8	47.3	46.7	46.5	45.9	45.6	45.1
150°	53.5	53.1	52.6	52.4	51.8	51.4	51.1	50.7	50.2	50.0	49.6
152.5°	57.1	56.9	56.5	56.2	55.7	55.4	55.0	54.7	54.3	54.0	53.6
155°	60.8	60.5	60.1	59.9	59.4	59.2	58.8	58.5	58.2	57.8	57.4
157.5°	64.3	64.0	63.6	63.4	62.9	62.7	62.4	62.1	61.7	61.4	61.1
160°	67.4	67.3	66.9	66.6	66.3	66.0	65.7	65.4	65.0	64.8	64.4
162.5°	70.6	70.3	70.1	69.8	69.4	69.2	68.8	68.5	68.2	67.9	67.5
165°	73.6	73.3	73.1	72.8	72.5	72.2	71.8	71.7	71.3	71.0	70.6
167.5°	76.6	76.4	76.2	76.0	75.6	75.2	75.0	74.7	74.5	74.2	73.8
170°	79.2	79.0	78.8	78.5	78.3	78.0	77.7	77.5	77.2	77.0	76.6
172.5°	81.3	81.2	80.9	80.8	80.6	80.4	80.2	80.0	79.8	79.5	79.4
175°	82.7	82.7	82.6	82.3	82.3	82.1	82.0	82.0	81.8	81.7	81.5
177.5°	83.6	83.6	83.6	83.5	83.4	83.4	83.3	83.3	83.2	83.1	83.1
180°	83.0	83.0	83.0	83.0	83.0	83.0	83.0	83.0	83.0	83.0	83.0



TEST NUMBER: P1444449
 CATALOG NUMBER: EHBR1-24-UNV-TA-L830

CANDELA DISTRIBUTION (continued):

	82.5°	85°	87.5°	90°	92.5°	95°	97.5°	100°	102.5°	105°	107.5°
0°	20006.8	20006.8	20006.8	20006.8	20006.8	20006.8	20006.8	20006.8	20006.8	20006.8	20006.8
2.5°	20083.7	20078.6	20081.1	20071.6	20073.9	20062.5	20061.5	20048.7	20047.4	20035.4	20030.8
5°	20763.7	20752.5	20765.1	20745.5	20749.3	20723.7	20721.6	20688.5	20677.1	20635.8	20617.9
7.5°	21511.1	21506.8	21514.5	21498.1	21497.6	21474.7	21465.3	21435.6	21417.3	21373.8	21346.1
10°	21674.8	21678.6	21672.4	21673.9	21665.0	21662.5	21653.4	21647.6	21632.7	21621.5	21604.9
12.5°	20994.9	20999.0	20973.1	20989.5	20976.6	21006.9	21004.4	21040.2	21045.7	21090.8	21108.0
15°	19423.7	19418.8	19369.0	19400.4	19383.6	19450.1	19465.1	19554.6	19602.5	19717.5	19788.2
17.5°	17050.1	17037.2	16967.2	17005.4	16985.9	17084.1	17117.0	17260.3	17349.6	17534.9	17667.0
20°	14220.6	14196.0	14114.0	14158.7	14138.8	14250.2	14297.3	14470.4	14585.6	14831.1	15005.7
22.5°	11356.0	11317.2	11236.9	11278.6	11259.7	11375.3	11436.5	11610.1	11742.1	11994.1	12197.9
25°	8783.6	8749.0	8671.4	8700.6	8693.6	8791.3	8845.7	9010.0	9139.7	9379.7	9574.3
27.5°	6699.4	6663.5	6593.3	6614.0	6606.9	6690.2	6741.5	6878.7	6990.3	7192.4	7363.2
30°	5127.5	5084.1	5024.6	5036.0	5031.2	5098.6	5146.5	5262.1	5357.8	5528.5	5675.7
32.5°	3930.1	3886.6	3832.0	3837.3	3830.1	3883.0	3922.5	4023.0	4106.3	4251.5	4379.7
35°	3007.1	3058.1	2941.4	3015.3	2938.4	3051.3	3010.7	3073.5	3145.2	3267.5	3374.4
37.5°	2311.8	2276.3	2246.2	2243.0	2242.9	2269.1	2300.0	2360.5	2423.6	2514.8	2608.9
40°	1831.9	1807.0	1787.6	1786.2	1787.6	1806.3	1829.1	1870.9	1917.2	1982.6	2051.8
42.5°	1519.4	1502.9	1491.1	1490.4	1494.1	1507.3	1523.2	1548.0	1578.1	1620.5	1667.9
45°	1315.0	1305.9	1299.4	1299.0	1300.7	1307.6	1316.7	1332.2	1351.3	1377.7	1407.8
47.5°	1171.6	1169.5	1165.4	1165.5	1163.7	1166.5	1167.5	1176.2	1186.3	1206.3	1245.5
50°	1067.3	1067.3	1064.5	1064.3	1061.7	1061.5	1059.2	1062.7	1067.5	1079.8	1092.3
52.5°	984.8	984.5	981.4	980.8	978.0	977.8	976.0	977.3	977.9	984.2	991.7
55°	920.2	918.3	914.3	913.0	912.0	913.6	912.8	912.9	912.1	914.7	916.9
57.5°	873.9	871.4	867.7	866.5	866.3	868.2	868.2	867.6	864.1	861.8	858.4
60°	837.3	834.8	830.8	829.7	830.3	833.0	832.8	830.6	825.4	820.9	815.6
62.5°	801.4	800.3	798.3	798.0	797.4	797.9	796.0	793.7	788.5	783.7	778.0
65°	753.1	753.7	752.1	752.3	750.5	750.1	747.3	745.1	739.8	735.5	729.6
67.5°	703.0	703.4	702.1	702.1	701.1	701.3	699.6	697.5	693.1	689.5	685.0
70°	661.7	662.7	662.0	662.3	661.0	660.6	657.9	655.8	651.3	648.4	644.3
72.5°	612.2	614.5	614.4	614.9	613.2	612.2	609.0	606.4	602.4	600.0	596.8
75°	558.8	561.7	562.6	563.8	561.3	560.0	556.5	554.4	551.1	549.7	547.5
77.5°	506.8	509.9	512.9	515.8	511.7	508.1	503.7	500.4	495.6	493.7	490.4
80°	448.2	453.8	460.6	466.2	458.9	451.5	444.3	438.9	432.7	430.0	425.9
82.5°	371.9	377.6	381.5	385.1	380.0	374.6	367.7	363.0	356.1	353.6	348.8
85°	282.5	289.7	292.0	293.9	290.7	287.8	281.2	272.4	268.1	261.3	257.9
87.5°	185.8	190.2	190.9	191.6	189.6	188.2	184.0	179.8	172.4	167.1	160.6
90°	70.4	73.4	72.0	73.3	70.6	70.7	66.3	64.9	58.7	56.4	50.9
92.5°	3.2	3.0	3.0	3.0	3.4	3.0	3.4	3.0	3.3	3.0	3.3
95°	3.3	3.3	3.3	3.3	3.3	3.3	3.3	3.3	3.3	3.3	3.3
97.5°	3.5	3.5	3.5	3.5	3.5	3.5	3.5	3.5	3.5	3.5	3.6
100°	3.8	3.8	3.8	3.8	3.8	3.8	3.8	3.8	3.8	3.8	3.8
102.5°	4.2	4.2	4.2	4.2	4.2	4.2	4.2	4.2	4.2	4.2	4.3
105°	4.5	4.5	4.5	4.5	4.5	4.5	4.5	4.5	4.5	4.7	4.7
107.5°	4.9	4.9	4.9	4.9	5.0	5.0	5.0	5.0	5.0	5.0	5.2
110°	5.4	5.4	5.4	5.4	5.4	5.4	5.4	5.4	5.5	5.5	5.6



TEST NUMBER: P1444449
 CATALOG NUMBER: EHBR1-24-UNV-TA-L830

CANDELA DISTRIBUTION (continued):

	82.5°	85°	87.5°	90°	92.5°	95°	97.5°	100°	102.5°	105°	107.5°
112.5°	5.9	5.9	5.9	5.9	5.9	5.9	5.9	6.1	6.1	6.2	6.2
115°	6.6	6.6	6.6	6.6	6.6	6.6	6.6	6.7	6.7	6.7	6.9
117.5°	7.4	7.3	7.3	7.3	7.3	7.3	7.4	7.4	7.6	7.7	7.8
120°	8.5	8.3	8.3	8.3	8.3	8.3	8.3	8.3	8.6	8.7	9.0
122.5°	9.7	9.6	9.6	9.6	9.6	9.6	9.6	9.7	9.9	10.1	10.3
125°	11.5	11.2	11.2	11.1	11.1	11.1	11.2	11.4	11.5	11.7	12.1
127.5°	13.5	13.3	13.1	13.0	13.0	13.0	13.3	13.3	13.6	13.9	14.2
130°	16.0	15.8	15.7	15.5	15.5	15.5	15.7	15.8	16.2	16.4	16.9
132.5°	19.2	18.8	18.6	18.5	18.5	18.5	18.6	18.8	19.2	19.4	20.0
135°	22.8	22.5	22.2	22.1	22.1	22.0	22.2	22.3	22.7	23.0	23.5
137.5°	26.9	26.5	26.3	26.0	26.0	26.0	26.1	26.3	26.6	27.0	27.5
140°	31.2	30.8	30.7	30.4	30.4	30.3	30.4	30.6	30.9	31.3	31.8
142.5°	35.8	35.3	35.1	35.0	34.8	34.8	35.0	35.1	35.4	35.7	36.1
145°	40.4	40.0	39.8	39.6	39.5	39.5	39.6	39.7	40.0	40.1	40.6
147.5°	44.9	44.6	44.4	44.2	44.2	44.1	44.2	44.2	44.4	44.6	44.9
150°	49.4	49.0	48.8	48.6	48.5	48.5	48.5	48.5	48.6	48.7	49.0
152.5°	53.5	53.1	53.0	52.8	52.6	52.5	52.5	52.5	52.5	52.5	52.8
155°	57.3	57.1	56.9	56.7	56.5	56.4	56.4	56.2	56.3	56.2	56.3
157.5°	61.0	60.7	60.5	60.2	60.0	59.9	59.8	59.6	59.6	59.4	59.4
160°	64.3	63.9	63.7	63.5	63.3	63.0	62.9	62.7	62.6	62.5	62.4
162.5°	67.3	67.1	66.8	66.5	66.3	66.0	65.9	65.7	65.5	65.3	65.3
165°	70.3	70.1	69.9	69.5	69.3	69.1	68.8	68.7	68.5	68.3	68.2
167.5°	73.6	73.3	73.1	72.8	72.6	72.3	72.2	72.0	71.8	71.7	71.7
170°	76.5	76.2	76.1	75.9	75.7	75.5	75.4	75.2	75.1	75.0	75.0
172.5°	79.2	79.1	78.9	78.8	78.6	78.4	78.4	78.3	78.1	78.1	78.1
175°	81.4	81.3	81.2	81.0	80.9	80.9	80.9	80.9	80.9	80.8	80.8
177.5°	83.0	82.9	82.9	82.9	82.8	82.8	82.8	82.8	82.8	82.7	82.7
180°	83.0	83.0	83.0	83.0	83.0	83.0	83.0	83.0	83.0	83.0	83.0



TEST NUMBER: P1444449
 CATALOG NUMBER: EHBR1-24-UNV-TA-L830

CANDELA DISTRIBUTION (continued):

	110°	112.5°	115°	117.5°	120°	122.5°	125°	127.5°	130°	132.5°	135°
0°	20006.8	20006.8	20006.8	20006.8	20006.8	20006.8	20006.8	20006.8	20006.8	20006.8	20006.8
2.5°	20017.8	20012.6	19998.7	19991.9	19979.1	19972.6	19962.6	19956.1	19948.1	19942.1	19939.0
5°	20572.5	20546.9	20495.6	20464.0	20408.5	20372.1	20317.1	20276.7	20220.0	20178.0	20124.3
7.5°	21294.0	21254.8	21189.0	21139.3	21061.7	21002.5	20915.5	20846.0	20749.9	20670.1	20571.9
10°	21587.9	21564.9	21535.4	21503.4	21460.5	21418.3	21358.9	21298.4	21217.8	21137.5	21032.7
12.5°	21153.6	21175.1	21217.8	21237.6	21270.1	21281.2	21296.2	21289.1	21275.9	21243.2	21195.7
15°	19923.9	20014.0	20156.3	20254.8	20392.8	20489.7	20617.9	20700.4	20795.5	20852.3	20906.2
17.5°	17901.0	18075.2	18326.4	18526.9	18795.9	19014.7	19282.7	19493.3	19736.5	19923.0	20121.5
20°	15309.9	15554.0	15900.8	16195.3	16585.2	16915.7	17339.3	17694.1	18108.0	18453.0	18825.4
22.5°	12521.4	12808.4	13205.7	13561.0	14026.6	14442.4	14973.0	15442.2	16001.7	16502.9	17057.4
25°	9890.6	10171.9	10576.7	10944.5	11447.1	11905.2	12484.9	13023.2	13672.4	14277.9	14973.0
27.5°	7634.6	7884.5	8240.3	8571.4	9031.7	9481.4	10069.7	10643.6	11336.5	11987.2	12736.3
30°	5896.0	6098.8	6383.9	6650.3	7019.8	7387.5	7911.6	8442.4	9131.8	9806.1	10574.1
32.5°	4569.3	4742.1	4980.1	5196.3	5481.1	5758.3	6144.3	6568.4	7173.2	7819.1	8561.7
35°	3537.1	3685.0	3887.5	4073.8	4307.9	4528.1	4816.1	5118.8	5580.3	6123.6	6788.2
37.5°	2820.0	2880.3	3024.8	3177.4	3372.0	3552.8	3778.1	4002.0	4332.2	4760.8	5303.7
40°	2144.6	2240.3	2358.0	2478.2	2625.4	2770.5	3017.7	3136.7	3354.1	3661.8	4083.1
42.5°	1730.4	1797.7	1880.5	1964.1	2066.8	2167.7	2292.8	2420.1	2582.6	2791.0	3090.8
45°	1448.1	1491.9	1545.3	1601.0	1668.4	1737.3	1821.1	1908.5	2018.6	2146.7	2328.8
47.5°	1259.4	1283.7	1318.5	1356.5	1402.7	1450.5	1504.9	1560.6	1629.0	1705.0	1808.7
50°	1112.2	1132.4	1159.5	1184.8	1216.8	1265.7	1287.3	1318.0	1359.2	1403.9	1461.9
52.5°	1005.6	1019.0	1036.1	1050.7	1070.8	1089.1	1113.2	1134.4	1162.8	1189.7	1227.2
55°	922.7	927.5	937.2	946.5	960.5	973.1	989.5	1003.4	1021.6	1037.6	1061.2
57.5°	858.6	859.0	863.5	868.3	877.3	885.2	896.5	905.6	918.3	928.5	942.6
60°	812.5	810.1	810.9	812.7	817.7	822.8	830.1	836.0	844.0	849.7	857.7
62.5°	774.2	770.3	769.4	768.9	771.5	773.3	777.3	780.2	784.7	787.2	791.4
65°	725.8	721.3	719.5	717.3	718.1	717.5	719.0	719.1	721.4	721.9	724.4
67.5°	681.8	678.1	675.7	672.9	671.7	669.7	668.8	666.8	666.6	665.0	664.6
70°	641.8	638.1	636.2	633.6	632.3	629.6	628.0	624.7	622.7	619.7	618.0
72.5°	595.5	593.4	592.8	591.1	590.6	589.1	588.4	586.1	584.8	582.2	580.8
75°	547.0	545.4	545.2	543.4	543.3	541.5	541.0	538.6	537.4	534.8	533.6
77.5°	489.3	486.8	486.2	484.0	484.6	483.6	484.4	482.6	481.7	479.1	478.3
80°	424.4	421.1	419.8	417.1	417.9	416.6	417.9	417.7	418.6	416.6	416.2
82.5°	347.4	343.9	343.2	341.3	342.6	342.7	345.5	344.0	344.5	342.6	343.5
85°	252.8	250.2	246.4	246.0	243.5	246.0	242.8	244.9	241.5	243.9	240.6
87.5°	156.7	151.3	148.4	144.4	142.9	139.2	137.6	134.9	135.7	134.4	135.2
90°	49.6	44.7	43.2	38.9	38.0	34.3	34.2	31.4	31.7	28.8	29.3
92.5°	3.0	3.0	3.0	3.2	3.0	3.0	3.0	3.2	3.0	3.2	3.0
95°	3.3	3.3	3.3	3.3	3.3	3.3	3.4	3.4	3.4	3.4	3.4
97.5°	3.6	3.6	3.6	3.6	3.6	3.6	3.6	3.7	3.7	3.7	3.7
100°	3.8	3.9	3.9	3.9	3.9	4.0	4.0	4.0	4.1	4.1	4.1
102.5°	4.3	4.3	4.3	4.4	4.4	4.4	4.4	4.5	4.5	4.7	4.8
105°	4.7	4.8	4.8	4.8	4.8	4.9	5.0	5.2	5.2	5.2	5.3
107.5°	5.2	5.2	5.2	5.3	5.3	5.5	5.6	5.7	5.8	5.9	6.2
110°	5.6	5.7	5.8	5.9	6.1	6.2	6.3	6.5	6.7	6.8	7.1



TEST NUMBER: P1444449
 CATALOG NUMBER: EHBR1-24-UNV-TA-L830

CANDELA DISTRIBUTION (continued):

	110°	112.5°	115°	117.5°	120°	122.5°	125°	127.5°	130°	132.5°	135°
112.5°	6.2	6.4	6.5	6.7	6.8	7.0	7.2	7.4	7.7	8.0	8.2
115°	7.0	7.2	7.3	7.6	7.7	8.0	8.2	8.6	9.0	9.3	9.6
117.5°	7.9	8.1	8.3	8.6	8.8	9.3	9.6	10.0	10.5	10.9	11.2
120°	9.1	9.4	9.6	10.0	10.3	10.8	11.2	11.6	12.2	12.6	13.1
122.5°	10.5	10.9	11.2	11.6	12.1	12.6	13.1	13.8	14.3	14.9	15.5
125°	12.4	12.8	13.3	13.8	14.3	14.9	15.5	16.2	16.8	17.4	18.1
127.5°	14.5	15.1	15.5	16.2	16.8	17.4	18.1	18.8	19.4	20.2	20.8
130°	17.2	17.8	18.4	19.0	19.7	20.4	21.2	21.9	22.6	23.3	24.0
132.5°	20.4	21.1	21.5	22.3	22.9	23.7	24.4	25.2	25.9	26.8	27.4
135°	24.0	24.6	25.2	25.9	26.6	27.4	28.1	28.9	29.5	30.3	30.9
137.5°	27.9	28.6	29.2	29.9	30.4	31.3	31.9	32.7	33.3	34.0	34.7
140°	32.2	32.8	33.3	34.0	34.7	35.3	35.8	36.5	37.1	37.8	38.3
142.5°	36.4	37.1	37.5	38.0	38.6	39.3	39.8	40.4	40.8	41.4	41.8
145°	40.8	41.4	41.8	42.2	42.7	43.2	43.6	44.1	44.4	44.9	45.2
147.5°	45.1	45.5	45.7	46.2	46.6	46.8	47.2	47.6	47.9	48.2	48.5
150°	49.2	49.5	49.6	50.0	50.1	50.4	50.6	50.9	51.1	51.3	51.4
152.5°	52.8	53.0	53.0	53.3	53.4	53.6	53.6	53.9	53.9	54.0	54.2
155°	56.2	56.3	56.3	56.4	56.4	56.4	56.4	56.7	56.8	56.8	57.0
157.5°	59.3	59.2	59.2	59.2	59.2	59.2	59.2	59.3	59.4	59.6	59.8
160°	62.1	62.1	62.0	62.0	62.0	62.0	62.0	62.1	62.2	62.5	62.7
162.5°	65.0	64.9	64.9	64.9	64.9	64.9	65.0	65.3	65.3	65.6	65.8
165°	68.1	68.1	68.0	68.1	68.1	68.2	68.3	68.5	68.7	68.8	69.1
167.5°	71.7	71.7	71.7	71.7	71.7	71.8	71.8	72.1	72.2	72.5	72.6
170°	74.9	75.0	74.9	75.0	75.0	75.1	75.2	75.2	75.4	75.6	75.6
172.5°	78.1	78.1	78.1	78.1	78.1	78.1	78.1	78.3	78.3	78.4	78.4
175°	80.7	80.7	80.7	80.7	80.7	80.7	80.7	80.6	80.6	80.6	80.6
177.5°	82.6	82.4	82.3	82.3	82.3	82.2	82.2	82.1	82.1	82.1	82.0
180°	83.0	83.0	83.0	83.0	83.0	83.0	83.0	83.0	83.0	83.0	83.0



TEST NUMBER: P1444449
 CATALOG NUMBER: EHBR1-24-UNV-TA-L830

CANDELA DISTRIBUTION (continued):

	137.5°	140°	142.5°	145°	147.5°	150°	152.5°	155°	157.5°	160°	162.5°
0°	20006.8	20006.8	20006.8	20006.8	20006.8	20006.8	20006.8	20006.8	20006.8	20006.8	20006.8
2.5°	19934.9	19934.7	19932.8	19933.6	19934.0	19935.4	19937.2	19939.0	19939.3	19940.8	19941.0
5°	20084.1	20034.8	19998.4	19958.2	19928.0	19900.8	19882.8	19868.4	19862.8	19864.2	19867.6
7.5°	20488.6	20386.8	20302.9	20207.3	20127.7	20043.4	19973.4	19907.0	19858.6	19822.5	19802.3
10°	20932.5	20808.6	20689.9	20551.8	20420.6	20280.8	20154.0	20026.5	19920.1	19827.6	19759.8
12.5°	21129.6	21041.9	20939.4	20809.0	20668.7	20507.3	20344.2	20169.5	20006.9	19856.1	19734.4
15°	20921.0	20921.2	20883.8	20821.2	20723.7	20594.8	20439.5	20257.3	20065.5	19869.8	19691.0
17.5°	20258.9	20383.8	20453.3	20497.3	20483.8	20436.3	20337.4	20197.5	20018.7	19810.3	19592.1
20°	19121.8	19416.5	19626.6	19815.5	19921.4	19991.7	19984.7	19927.7	19800.4	19623.2	19396.1
22.5°	17529.0	18023.6	18413.8	18777.7	19032.9	19240.6	19339.2	19381.2	19323.5	19200.0	18986.6
25°	15594.3	16266.8	16840.6	17397.5	17815.3	18174.3	18390.0	18542.1	18554.1	18489.6	18299.3
27.5°	13444.6	14238.3	14964.6	15704.8	16292.2	16808.3	17147.0	17394.9	17473.6	17463.3	17290.3
30°	11297.6	12130.8	12931.4	13794.4	14521.4	15180.8	15628.1	15963.4	16092.6	16117.3	15951.0
32.5°	9270.0	10091.6	10890.0	11792.2	12592.3	13347.9	13876.5	14274.7	14424.8	14460.3	14277.9
35°	7429.7	8187.8	8946.5	9821.0	10616.4	11398.9	11955.9	12372.7	12513.0	12536.6	12325.5
37.5°	5833.9	6479.8	7140.9	7925.6	8655.9	9391.0	9920.0	10311.9	10414.0	10407.7	10168.8
40°	4490.3	4992.5	5523.6	6169.6	6776.9	7398.1	7844.9	8168.9	8222.5	8182.8	7931.8
42.5°	3376.5	3739.2	4124.2	4606.5	5057.0	5522.0	5847.0	6087.5	6095.2	6032.3	5807.0
45°	2515.4	2869.3	3030.8	3322.3	3612.5	3921.7	4120.2	4268.8	4245.7	4190.5	4019.2
47.5°	1917.6	2053.5	2197.8	2378.6	2547.7	2898.5	2872.5	3111.0	2939.2	3056.4	2798.5
50°	1522.8	1598.8	1676.5	1772.4	1860.8	1952.5	2009.8	2052.5	2047.0	2028.6	1979.2
52.5°	1295.5	1319.0	1357.3	1411.8	1461.2	1510.7	1543.4	1569.9	1570.5	1563.0	1538.1
55°	1082.7	1112.6	1140.1	1175.8	1236.5	1245.8	1292.7	1283.1	1286.9	1273.8	1287.1
57.5°	954.7	972.0	987.5	1008.7	1026.3	1046.8	1058.9	1070.5	1069.3	1066.8	1054.1
60°	863.9	873.5	882.1	894.5	904.1	915.6	921.3	927.2	925.2	920.9	909.5
62.5°	793.9	799.9	804.8	812.8	818.7	825.9	828.7	831.2	828.7	824.7	814.7
65°	724.8	728.8	731.9	737.8	742.0	748.1	750.6	752.9	750.7	747.5	739.8
67.5°	662.6	662.9	662.6	665.1	666.4	670.0	671.2	672.9	670.2	667.5	661.0
70°	615.3	614.4	613.2	614.2	614.4	616.2	616.4	616.2	613.0	608.2	601.2
72.5°	578.4	577.9	577.0	577.9	577.9	579.4	579.0	578.1	574.2	569.6	562.6
75°	530.9	530.6	528.9	528.9	527.4	527.9	526.0	524.9	520.5	516.7	510.4
77.5°	475.5	474.5	471.9	471.0	468.2	466.9	463.4	461.6	457.1	454.0	448.7
80°	413.5	412.5	409.2	407.3	402.9	400.1	394.7	391.6	386.5	383.5	378.3
82.5°	341.7	342.1	338.8	336.5	330.1	325.2	318.1	314.3	308.6	305.6	300.3
85°	243.1	239.6	241.4	241.3	237.3	233.1	227.2	223.2	218.4	215.6	211.9
87.5°	133.3	134.1	133.2	132.4	129.5	127.4	122.9	120.5	117.0	115.3	112.5
90°	26.4	26.9	24.3	24.8	22.2	21.6	18.5	18.4	15.5	15.3	13.0
92.5°	3.0	3.0	3.2	3.0	3.2	3.2	3.2	3.2	3.2	3.0	3.2
95°	3.4	3.4	3.4	3.4	3.4	3.4	3.5	3.5	3.5	3.5	3.5
97.5°	3.7	3.7	3.7	3.8	3.8	3.8	3.9	3.9	3.9	3.9	3.9
100°	4.2	4.3	4.3	4.3	4.4	4.4	4.4	4.4	4.5	4.5	4.5
102.5°	4.8	4.8	4.9	5.0	5.2	5.2	5.2	5.2	5.2	5.2	5.2
105°	5.4	5.5	5.7	5.8	5.9	5.9	6.1	6.1	6.2	6.2	6.2
107.5°	6.3	6.4	6.6	6.7	6.8	7.0	7.1	7.2	7.3	7.3	7.4
110°	7.3	7.4	7.7	7.9	8.1	8.2	8.3	8.5	8.7	8.7	9.0



TEST NUMBER: P1444449
 CATALOG NUMBER: EHBR1-24-UNV-TA-L830

CANDELA DISTRIBUTION (continued):

	137.5°	140°	142.5°	145°	147.5°	150°	152.5°	155°	157.5°	160°	162.5°
112.5°	8.5	8.7	9.1	9.3	9.6	9.7	10.0	10.1	10.3	10.5	10.7
115°	10.0	10.3	10.7	11.0	11.2	11.5	11.9	12.0	12.3	12.5	12.6
117.5°	11.7	12.1	12.6	12.9	13.3	13.6	14.0	14.2	14.5	14.8	15.1
120°	13.8	14.2	14.6	15.1	15.5	15.9	16.3	16.7	17.0	17.3	17.7
122.5°	16.0	16.6	17.1	17.5	18.1	18.5	19.0	19.4	19.8	20.2	20.7
125°	18.6	19.2	19.8	20.3	20.8	21.4	21.9	22.3	22.9	23.3	23.9
127.5°	21.5	22.1	22.8	23.3	24.0	24.4	25.1	25.5	26.1	26.6	27.3
130°	24.7	25.2	25.9	26.5	27.2	27.7	28.3	28.9	29.5	30.2	30.8
132.5°	28.0	28.7	29.3	29.9	30.6	31.1	31.8	32.4	33.2	33.7	34.5
135°	31.7	32.2	32.9	33.3	34.1	34.7	35.3	36.0	36.7	37.4	38.1
137.5°	35.2	35.8	36.4	36.9	37.6	38.1	38.9	39.4	40.3	40.8	41.8
140°	38.9	39.3	39.9	40.4	41.0	41.5	42.2	42.9	43.6	44.3	45.1
142.5°	42.3	42.7	43.2	43.7	44.3	44.7	45.3	46.1	46.7	47.5	48.2
145°	45.7	46.1	46.5	46.8	47.3	47.9	48.5	49.1	49.7	50.4	51.1
147.5°	48.8	49.1	49.6	49.9	50.3	50.7	51.4	51.9	52.5	53.2	53.9
150°	51.8	52.1	52.4	52.6	53.1	53.6	54.0	54.6	55.4	55.9	56.5
152.5°	54.5	54.7	55.0	55.4	55.7	56.2	56.8	57.2	57.8	58.4	59.0
155°	57.2	57.4	57.8	58.2	58.5	58.9	59.4	59.9	60.3	61.0	61.4
157.5°	60.0	60.2	60.6	61.0	61.4	61.7	62.2	62.6	63.1	63.5	64.0
160°	62.9	63.1	63.5	63.9	64.3	64.6	65.1	65.5	65.9	66.3	66.8
162.5°	66.0	66.3	66.7	67.0	67.4	67.7	68.2	68.5	68.9	69.3	69.8
165°	69.4	69.7	70.1	70.3	70.6	70.9	71.3	71.7	72.0	72.3	72.8
167.5°	73.0	73.1	73.3	73.5	73.9	74.2	74.6	74.7	75.1	75.4	75.7
170°	75.9	76.0	76.2	76.3	76.6	76.8	77.0	77.2	77.6	77.7	78.1
172.5°	78.5	78.5	78.8	78.8	79.0	79.1	79.2	79.4	79.5	79.8	79.9
175°	80.7	80.7	80.7	80.7	80.8	80.9	81.0	81.2	81.3	81.3	81.4
177.5°	82.0	82.0	82.0	82.0	82.1	82.1	82.2	82.2	82.3	82.3	82.3
180°	83.0	83.0	83.0	83.0	83.0	83.0	83.0	83.0	83.0	83.0	83.0



TEST NUMBER: P1444449
 CATALOG NUMBER: EHBR1-24-UNV-TA-L830

CANDELA DISTRIBUTION (continued):

	165°	167.5°	170°	172.5°	175°	177.5°	180°	182.5°	185°	187.5°	190°
0°	20006.8	20006.8	20006.8	20006.8	20006.8	20006.8	20006.8	20006.8	20006.8	20006.8	20006.8
2.5°	19940.4	19940.1	19939.4	19938.6	19937.7	19938.2	19939.1	19941.4	19945.3	19951.1	19958.7
5°	19870.3	19874.4	19876.7	19877.1	19874.9	19873.7	19875.7	19881.1	19892.1	19910.7	19935.7
7.5°	19797.0	19801.9	19809.7	19815.5	19816.5	19815.1	19815.5	19824.0	19844.5	19880.6	19931.2
10°	19718.6	19703.7	19711.5	19725.9	19737.3	19739.4	19740.8	19751.0	19780.8	19835.4	19916.7
12.5°	19646.2	19599.0	19590.0	19602.9	19620.2	19625.8	19624.2	19628.6	19663.6	19735.8	19849.1
15°	19551.0	19462.2	19431.9	19435.2	19456.7	19464.3	19458.7	19450.1	19484.2	19572.3	19719.1
17.5°	19396.9	19253.8	19198.0	19195.6	19220.7	19227.4	19213.6	19186.9	19220.3	19330.4	19512.6
20°	19162.7	18951.4	18846.4	18829.7	18857.0	18849.0	18821.5	18781.2	18825.2	18959.0	19175.6
22.5°	18741.6	18474.0	18294.6	18236.7	18269.3	18247.6	18207.5	18155.9	18214.4	18366.4	18607.7
25°	18053.5	17744.3	17498.7	17360.9	17386.8	17347.9	17304.3	17241.8	17311.6	17486.0	17751.7
27.5°	17042.1	16684.8	16380.6	16152.5	16160.9	16109.9	16059.6	15978.8	16065.9	16272.4	16572.0
30°	15697.3	15283.9	14913.2	14603.4	14575.7	14526.2	14474.6	14368.6	14477.6	14724.8	15074.8
32.5°	14008.3	13549.3	13121.1	12729.3	12655.3	12607.1	12561.2	12439.1	12581.9	12870.1	13272.2
35°	12033.1	11544.3	11080.0	10632.5	10510.0	10461.7	10421.5	10304.6	10482.7	10796.4	11230.8
37.5°	9865.1	9365.7	8904.8	8445.8	8272.8	8207.3	8178.2	8101.6	8307.0	8617.3	9053.4
40°	7639.5	7175.1	6761.9	6356.5	6159.2	6059.0	6043.7	6029.8	6228.5	6497.6	6893.5
42.5°	5557.4	5182.7	4864.1	4554.3	4375.6	4238.7	4238.6	4280.2	4459.0	4660.6	4965.9
45°	3844.3	3592.8	3389.8	3182.7	3238.1	2965.3	3125.6	3043.4	3131.8	3261.7	3460.2
47.5°	2642.5	2505.3	2393.8	2278.1	2193.8	2113.3	2120.3	2172.2	2255.5	2332.6	2435.9
50°	1926.0	1856.1	1799.2	1739.2	1697.2	1661.7	1663.8	1686.3	1730.0	1770.7	1824.7
52.5°	1509.1	1470.5	1439.7	1406.5	1384.5	1366.8	1367.8	1378.7	1402.3	1425.6	1456.6
55°	1243.9	1239.3	1199.1	1169.3	1158.0	1146.1	1148.2	1152.5	1168.6	1182.2	1202.7
57.5°	1042.4	1024.4	1012.3	996.7	989.4	981.1	983.0	984.6	995.3	1004.4	1019.2
60°	900.1	887.3	878.8	868.1	863.4	858.1	859.3	860.3	867.1	873.1	883.7
62.5°	805.6	794.1	786.7	778.5	775.1	771.6	772.4	772.7	777.0	781.4	789.4
65°	733.1	724.0	717.8	710.7	707.2	703.5	703.8	703.8	707.5	710.7	716.7
67.5°	656.4	649.5	645.5	639.9	637.5	633.8	633.7	632.5	634.8	636.1	640.1
70°	594.8	587.9	582.8	577.4	574.4	571.1	571.1	571.2	574.0	576.8	582.2
72.5°	556.8	550.1	545.6	540.9	538.0	535.2	534.8	534.5	536.5	538.0	541.5
75°	506.4	501.1	498.5	494.0	491.9	488.6	488.1	486.6	487.6	487.9	490.5
77.5°	445.3	440.3	438.2	433.7	431.8	428.2	427.9	426.3	427.0	426.5	428.5
80°	375.7	371.2	370.0	366.3	365.4	362.0	361.6	359.5	360.2	358.6	359.3
82.5°	298.0	293.8	293.0	289.5	289.5	286.5	286.4	283.4	283.4	280.7	276.6
85°	209.9	206.8	205.6	202.8	202.0	199.5	198.3	195.4	194.4	192.5	191.9
87.5°	110.8	108.8	107.2	105.8	103.3	99.0	98.6	95.5	95.8	93.7	93.8
90°	13.0	11.1	11.1	9.4	9.3	8.1	8.2	7.7	7.6	7.1	7.0
92.5°	3.2	3.2	3.2	3.2	3.2	3.2	3.2	3.2	3.2	3.2	3.2
95°	3.5	3.5	3.5	3.5	3.5	3.5	3.5	3.5	3.5	3.6	3.6
97.5°	3.9	3.9	3.9	3.9	3.9	3.9	3.9	4.0	4.0	4.0	4.0
100°	4.5	4.5	4.5	4.5	4.5	4.5	4.5	4.7	4.7	4.7	4.7
102.5°	5.3	5.3	5.3	5.3	5.3	5.3	5.3	5.3	5.3	5.4	5.4
105°	6.2	6.3	6.3	6.3	6.3	6.3	6.3	6.4	6.4	6.4	6.5
107.5°	7.4	7.6	7.6	7.7	7.6	7.7	7.7	7.7	7.7	7.7	7.7
110°	9.0	9.1	9.1	9.2	9.2	9.3	9.3	9.4	9.4	9.4	9.4



TEST NUMBER: P1444449
 CATALOG NUMBER: EHBR1-24-UNV-TA-L830

CANDELA DISTRIBUTION (continued):

	165°	167.5°	170°	172.5°	175°	177.5°	180°	182.5°	185°	187.5°	190°
112.5°	10.8	10.9	11.0	11.1	11.1	11.2	11.2	11.4	11.4	11.5	11.4
115°	12.9	13.0	13.3	13.4	13.5	13.7	13.7	13.9	13.9	13.9	13.9
117.5°	15.3	15.5	15.8	16.0	16.2	16.4	16.5	16.6	16.6	16.7	16.6
120°	18.0	18.4	18.6	18.9	19.2	19.4	19.6	19.8	19.8	19.8	19.7
122.5°	21.1	21.5	21.8	22.2	22.5	22.8	22.9	23.0	23.0	23.1	22.9
125°	24.3	24.8	25.2	25.7	25.9	26.4	26.5	26.8	26.8	26.8	26.6
127.5°	27.8	28.3	28.8	29.3	29.7	30.1	30.3	30.4	30.4	30.4	30.3
130°	31.4	32.1	32.6	33.2	33.5	33.9	34.1	34.3	34.3	34.5	34.3
132.5°	35.0	35.8	36.4	37.0	37.4	37.8	38.0	38.3	38.3	38.4	38.2
135°	38.9	39.5	40.1	40.8	41.3	41.8	42.0	42.2	42.2	42.2	42.1
137.5°	42.4	43.2	43.8	44.4	45.0	45.3	45.7	45.9	45.9	46.1	45.8
140°	45.7	46.6	47.2	47.9	48.4	48.9	49.2	49.5	49.5	49.5	49.3
142.5°	48.9	49.6	50.3	51.1	51.4	52.0	52.3	52.5	52.5	52.5	52.4
145°	51.9	52.5	53.2	53.9	54.3	54.8	55.0	55.4	55.4	55.4	55.3
147.5°	54.6	55.4	55.8	56.4	56.9	57.3	57.6	57.8	57.8	57.8	57.8
150°	57.1	57.8	58.3	58.8	59.2	59.6	59.8	60.0	60.1	60.2	60.1
152.5°	59.6	60.0	60.6	61.0	61.4	61.7	62.0	62.2	62.5	62.6	62.6
155°	61.9	62.5	62.9	63.3	63.6	64.0	64.3	64.5	64.8	64.9	65.1
157.5°	64.4	64.9	65.3	65.8	66.0	66.5	66.8	67.2	67.4	67.7	67.8
160°	67.2	67.7	68.0	68.5	68.8	69.2	69.5	69.9	70.2	70.3	70.6
162.5°	70.2	70.6	70.8	71.3	71.7	72.0	72.3	72.7	73.0	73.3	73.4
165°	73.1	73.4	73.8	74.2	74.6	74.8	75.1	75.5	75.7	76.0	76.2
167.5°	76.0	76.3	76.6	77.0	77.2	77.6	77.8	78.1	78.4	78.6	78.8
170°	78.3	78.6	78.9	79.2	79.4	79.7	79.9	80.1	80.3	80.6	80.7
172.5°	80.1	80.4	80.6	80.8	80.9	81.2	81.3	81.7	81.8	82.0	82.0
175°	81.5	81.7	81.8	82.0	82.0	82.1	82.3	82.3	82.6	82.7	82.8
177.5°	82.4	82.6	82.7	82.7	82.7	82.7	82.8	82.8	82.9	83.0	83.0
180°	83.0	83.0	83.0	83.0	83.0	83.0	83.0	83.0	83.0	83.0	83.0



TEST NUMBER: P1444449
 CATALOG NUMBER: EHBR1-24-UNV-TA-L830

CANDELA DISTRIBUTION (continued):

	192.5°	195°	197.5°	200°	202.5°	205°	207.5°	210°	212.5°	215°	217.5°
0°	20006.8	20006.8	20006.8	20006.8	20006.8	20006.8	20006.8	20006.8	20006.8	20006.8	20006.8
2.5°	19969.4	19979.4	19994.7	20008.6	20029.4	20045.9	20070.6	20089.3	20117.1	20135.3	20165.6
5°	19971.2	20010.3	20061.7	20111.8	20172.0	20226.7	20294.7	20352.7	20421.0	20476.8	20546.7
7.5°	19999.4	20074.8	20165.1	20256.0	20359.0	20455.2	20563.7	20661.8	20769.2	20859.9	20959.2
10°	20020.3	20136.4	20269.5	20403.5	20544.5	20675.3	20807.6	20921.9	21028.6	21116.5	21194.1
12.5°	19992.0	20152.1	20322.8	20487.8	20644.5	20780.0	20893.8	20981.6	21042.3	21083.4	21093.1
15°	19896.0	20088.7	20274.3	20438.5	20568.6	20668.9	20720.8	20745.1	20719.1	20675.7	20580.5
17.5°	19716.6	19919.8	20085.8	20215.4	20284.1	20311.3	20268.3	20193.5	20047.3	19884.9	19650.6
20°	19387.8	19577.1	19697.5	19768.2	19749.8	19681.8	19519.4	19322.1	19030.1	18719.0	18308.4
22.5°	18811.0	18976.5	19040.7	19045.9	18933.7	18763.5	18470.6	18132.1	17671.5	17192.7	16603.9
25°	17945.2	18090.1	18100.3	18043.4	17838.0	17562.2	17132.0	16653.2	16027.4	15389.4	14651.5
27.5°	16770.9	16910.0	16875.9	16769.7	16484.7	16115.5	15564.9	14946.2	14174.7	13421.3	12605.0
30°	15295.0	15443.6	15403.6	15267.3	14928.3	14492.0	13844.1	13125.3	12268.7	11463.9	10636.8
32.5°	13528.5	13716.5	13688.9	13559.3	13205.6	12738.6	12035.6	11273.2	10396.9	9603.8	8799.3
35°	11520.8	11749.0	11760.8	11676.1	11347.7	10886.1	10192.0	9454.0	8614.6	7866.3	7123.0
37.5°	9357.6	9622.2	9676.6	9653.7	9381.5	8974.0	8341.6	7679.6	6936.0	6280.2	5644.5
40°	7182.5	7450.3	7543.2	7570.9	7369.9	7054.4	6535.3	6001.0	5394.8	4863.3	4358.6
42.5°	5198.9	5436.4	5526.1	5582.6	5457.3	5246.8	4868.2	4480.2	4036.0	3652.7	3285.2
45°	3610.7	3778.7	3847.0	3903.8	3835.5	3716.9	3477.7	3235.0	2941.9	2691.4	2454.3
47.5°	2524.5	2617.1	2662.2	2689.8	2663.3	2601.4	2471.2	2330.7	2165.2	2018.8	1878.1
50°	1871.2	1920.5	1944.0	1960.0	1940.8	1906.3	1835.9	1759.3	1668.5	1585.6	1504.5
52.5°	1482.9	1511.1	1525.1	1533.8	1522.7	1501.6	1460.6	1415.3	1360.8	1309.5	1282.6
55°	1249.2	1247.8	1280.2	1264.6	1280.2	1245.3	1237.9	1188.0	1142.8	1110.8	1076.4
57.5°	1030.2	1044.9	1051.1	1058.1	1053.5	1047.1	1029.7	1011.9	988.0	968.1	946.8
60°	891.7	903.8	910.7	917.6	917.1	914.8	904.7	894.0	879.1	867.1	854.3
62.5°	796.4	806.9	813.6	820.2	820.8	819.8	812.2	804.8	794.6	787.1	778.2
65°	721.4	728.8	733.3	738.6	738.3	736.9	730.0	723.8	715.5	710.2	703.7
67.5°	642.9	648.4	651.9	656.9	657.9	658.2	654.4	651.6	647.5	646.0	643.7
70°	587.0	593.8	599.5	605.8	609.2	610.8	609.2	607.7	605.3	604.3	602.6
72.5°	544.8	550.5	554.9	560.6	563.8	566.1	564.8	564.1	561.9	561.7	560.5
75°	492.2	496.2	498.7	503.0	504.7	506.9	505.9	506.4	505.7	507.4	507.3
77.5°	429.2	432.1	433.2	436.3	436.7	439.2	439.9	442.9	445.0	449.8	452.3
80°	358.1	360.0	360.0	363.2	364.6	369.0	371.0	376.0	378.3	382.6	382.9
82.5°	278.2	276.0	278.2	276.9	280.9	285.9	286.5	290.8	291.7	294.4	292.3
85°	190.2	190.1	188.4	188.7	187.3	188.0	187.2	188.0	187.3	187.3	185.5
87.5°	91.1	92.0	89.9	90.6	88.7	89.5	87.9	89.2	87.2	87.5	84.5
90°	6.7	6.6	6.3	6.2	6.4	6.2	6.1	5.9	6.1	5.9	5.9
92.5°	3.2	3.3	3.3	3.3	3.3	3.3	3.3	3.3	3.4	3.3	3.3
95°	3.6	3.6	3.6	3.7	3.7	3.7	3.7	3.7	3.7	3.7	3.7
97.5°	4.1	4.1	4.1	4.1	4.2	4.2	4.2	4.2	4.2	4.2	4.1
100°	4.8	4.8	4.8	4.8	4.8	4.8	4.8	4.8	4.8	4.8	4.8
102.5°	5.5	5.5	5.5	5.6	5.6	5.6	5.6	5.6	5.5	5.5	5.4
105°	6.5	6.5	6.6	6.6	6.6	6.6	6.6	6.6	6.5	6.4	6.4
107.5°	7.8	7.8	7.9	7.9	7.9	7.9	7.8	7.7	7.7	7.7	7.4
110°	9.5	9.4	9.5	9.5	9.5	9.4	9.4	9.2	9.1	9.0	8.8



TEST NUMBER: P1444449
 CATALOG NUMBER: EHBR1-24-UNV-TA-L830

CANDELA DISTRIBUTION (continued):

	192.5°	195°	197.5°	200°	202.5°	205°	207.5°	210°	212.5°	215°	217.5°
112.5°	11.5	11.4	11.4	11.2	11.2	11.1	11.1	11.0	10.9	10.6	10.5
115°	13.9	13.7	13.7	13.5	13.5	13.3	13.1	13.0	12.8	12.6	12.4
117.5°	16.5	16.4	16.3	16.0	15.9	15.7	15.5	15.3	15.1	14.8	14.5
120°	19.6	19.4	19.2	18.9	18.7	18.4	18.3	17.9	17.6	17.2	16.9
122.5°	22.9	22.6	22.5	22.2	21.9	21.5	21.2	20.8	20.5	20.1	19.8
125°	26.5	26.1	25.9	25.6	25.2	24.8	24.4	24.0	23.6	23.1	22.7
127.5°	30.3	29.9	29.7	29.2	28.9	28.3	27.9	27.4	27.0	26.4	25.9
130°	34.1	33.7	33.5	32.9	32.6	31.9	31.6	31.0	30.4	30.0	29.4
132.5°	38.0	37.7	37.4	36.8	36.4	35.8	35.4	34.8	34.3	33.6	33.3
135°	41.9	41.5	41.2	40.7	40.3	39.6	39.2	38.6	38.0	37.6	37.0
137.5°	45.7	45.2	44.9	44.4	43.9	43.4	42.9	42.3	41.9	41.3	40.8
140°	49.1	48.7	48.4	48.0	47.5	47.0	46.6	46.1	45.6	45.1	44.7
142.5°	52.1	51.8	51.5	51.1	50.7	50.2	49.9	49.5	49.0	48.5	48.2
145°	55.0	54.7	54.5	54.0	53.9	53.4	53.1	52.6	52.5	52.0	51.7
147.5°	57.7	57.4	57.2	57.0	56.8	56.4	56.3	55.9	55.7	55.4	55.3
150°	60.1	60.0	59.9	59.8	59.6	59.4	59.3	59.1	59.0	58.7	58.6
152.5°	62.6	62.6	62.6	62.5	62.5	62.5	62.4	62.2	62.1	62.0	61.9
155°	65.3	65.3	65.4	65.4	65.4	65.4	65.4	65.3	65.3	65.3	65.3
157.5°	68.0	68.1	68.3	68.4	68.5	68.5	68.5	68.5	68.5	68.4	68.4
160°	70.8	71.0	71.2	71.3	71.4	71.4	71.6	71.4	71.6	71.4	71.3
162.5°	73.7	73.9	74.1	74.2	74.3	74.3	74.5	74.5	74.5	74.3	74.3
165°	76.5	76.6	76.8	76.9	77.0	77.0	77.1	77.1	77.1	77.0	77.0
167.5°	79.1	79.2	79.3	79.4	79.5	79.5	79.8	79.7	79.7	79.7	79.7
170°	80.9	81.0	81.2	81.3	81.4	81.4	81.5	81.5	81.7	81.5	81.5
172.5°	82.2	82.3	82.4	82.6	82.7	82.7	82.7	82.7	82.8	82.8	82.8
175°	82.9	83.0	83.1	83.2	83.3	83.4	83.4	83.5	83.5	83.5	83.5
177.5°	83.1	83.2	83.2	83.3	83.4	83.4	83.5	83.5	83.6	83.6	83.6
180°	83.0	83.0	83.0	83.0	83.0	83.0	83.0	83.0	83.0	83.0	83.0



TEST NUMBER: P1444449
 CATALOG NUMBER: EHBR1-24-UNV-TA-L830

CANDELA DISTRIBUTION (continued):

	220°	222.5°	225°	227.5°	230°	232.5°	235°	237.5°	240°	242.5°	245°
0°	20006.8	20006.8	20006.8	20006.8	20006.8	20006.8	20006.8	20006.8	20006.8	20006.8	20006.8
2.5°	20184.4	20059.7	20043.2	20052.0	20072.8	20080.5	20103.0	20109.2	20131.7	20137.4	20159.1
5°	20600.9	20436.1	20444.3	20483.9	20543.9	20579.7	20638.6	20669.4	20725.7	20751.3	20802.1
7.5°	21040.0	20910.6	20951.0	21017.8	21099.7	21156.6	21227.4	21273.5	21334.6	21372.4	21421.3
10°	21255.6	21220.2	21264.6	21317.2	21364.0	21400.6	21430.6	21454.7	21470.4	21485.1	21491.6
12.5°	21091.6	21146.4	21154.0	21148.8	21117.9	21094.2	21041.0	21004.9	20940.8	20901.7	20825.5
15°	20483.2	20603.8	20537.1	20435.9	20287.9	20164.5	19990.3	19860.6	19679.1	19556.0	19373.9
17.5°	19415.6	19567.9	19393.9	19159.8	18862.1	18607.4	18290.4	18038.6	17723.3	17493.9	17199.7
20°	17912.8	18055.1	17744.6	17356.7	16896.2	16508.6	16051.5	15686.9	15262.2	14946.2	14565.0
22.5°	16041.5	16142.9	15705.5	15182.6	14595.8	14111.6	13565.1	13128.0	12643.2	12282.1	11875.5
25°	13971.3	13998.6	13474.0	12871.5	12217.6	11673.5	11090.0	10630.3	10136.0	9770.0	9371.0
27.5°	11881.9	11841.7	11274.6	10635.8	9947.9	9382.4	8813.3	8382.6	7949.7	7619.9	7276.2
30°	9909.6	9812.5	9223.7	8567.0	7899.4	7392.4	6920.0	6574.1	6229.8	5968.1	5692.2
32.5°	8101.1	7964.1	7390.9	6775.8	6213.1	5821.9	5471.6	5209.9	4931.8	4710.8	4479.2
35°	6499.3	6353.2	5845.5	5324.0	4898.1	4609.7	4334.4	4119.7	3883.6	3697.1	3496.1
37.5°	5124.5	5004.8	4579.5	4169.1	3847.0	3623.5	3397.9	3222.5	3027.3	2945.3	2730.4
40°	3956.1	3872.4	3539.9	3237.4	2995.5	2890.5	2661.6	2497.5	2351.7	2231.4	2115.0
42.5°	3085.8	3056.2	2732.6	2496.6	2326.3	2194.1	2066.4	1962.9	1862.0	1779.1	1700.8
45°	2264.5	2241.1	2097.4	1961.2	1845.1	1752.7	1666.5	1595.2	1529.3	1474.7	1424.9
47.5°	1763.4	1755.9	1673.1	1588.7	1515.6	1456.2	1400.2	1352.9	1309.1	1272.7	1260.8
50°	1434.2	1433.3	1384.7	1332.6	1280.5	1246.2	1210.4	1182.5	1154.4	1132.6	1109.4
52.5°	1218.7	1213.3	1180.5	1148.4	1117.5	1094.9	1072.1	1054.3	1035.6	1022.1	1007.7
55°	1049.1	1054.6	1035.7	1016.5	997.1	983.1	967.2	955.3	942.5	934.0	925.4
57.5°	931.4	938.7	928.7	917.9	906.1	896.9	885.8	877.7	869.2	863.7	858.7
60°	845.8	853.7	849.7	844.3	836.9	831.5	824.5	819.9	814.5	811.4	808.6
62.5°	773.1	783.1	781.7	779.1	774.4	771.4	767.5	765.5	761.8	760.5	759.2
65°	700.6	711.8	711.6	710.3	707.8	706.8	704.5	704.0	702.2	702.9	702.8
67.5°	643.5	653.4	655.5	657.0	656.9	657.6	657.3	658.3	658.3	659.7	660.6
70°	602.4	609.2	610.8	612.4	612.9	614.2	614.2	615.0	614.9	616.0	616.2
72.5°	560.8	569.7	571.4	572.7	572.7	574.0	573.3	573.1	571.3	570.9	569.7
75°	509.0	520.5	523.1	524.7	524.9	526.0	524.5	523.5	520.5	519.3	517.3
77.5°	455.0	466.9	468.7	469.3	468.4	468.5	465.3	463.0	459.3	457.7	455.7
80°	384.6	402.2	403.6	402.5	399.7	399.3	396.1	394.0	389.5	388.0	386.2
82.5°	292.6	313.2	316.1	317.5	315.2	315.8	312.7	311.5	307.3	306.6	303.9
85°	184.8	205.4	208.8	208.3	206.1	205.5	203.7	204.4	204.0	205.0	205.7
87.5°	84.9	104.8	109.7	108.1	107.9	106.5	103.3	104.4	106.4	107.6	107.7
90°	5.8	11.7	11.5	12.2	10.9	11.2	10.1	10.9	10.1	10.8	10.0
92.5°	3.3	3.3	3.3	3.3	3.3	3.3	3.3	3.2	3.3	3.2	3.3
95°	3.7	3.6	3.6	3.6	3.5	3.5	3.5	3.5	3.5	3.5	3.5
97.5°	4.1	4.0	3.9	3.9	3.9	3.8	3.8	3.8	3.8	3.7	3.7
100°	4.8	4.4	4.4	4.4	4.3	4.3	4.3	4.2	4.2	4.2	4.1
102.5°	5.3	5.2	5.0	4.9	4.8	4.8	4.8	4.7	4.7	4.5	4.5
105°	6.2	5.9	5.7	5.5	5.4	5.3	5.2	5.2	5.2	5.0	5.0
107.5°	7.3	6.7	6.5	6.3	6.2	6.1	5.9	5.8	5.6	5.5	5.4
110°	8.7	7.9	7.6	7.3	7.1	6.8	6.7	6.5	6.3	6.2	6.1



TEST NUMBER: P1444449
 CATALOG NUMBER: EHBR1-24-UNV-TA-L830

CANDELA DISTRIBUTION (continued):

	220°	222.5°	225°	227.5°	230°	232.5°	235°	237.5°	240°	242.5°	245°
112.5°	10.2	9.2	8.7	8.3	8.1	7.9	7.7	7.3	7.2	6.9	6.8
115°	12.0	10.8	10.2	9.7	9.5	9.1	8.7	8.5	8.1	7.9	7.7
117.5°	14.2	12.6	12.0	11.5	11.1	10.6	10.2	9.7	9.5	9.1	8.8
120°	16.6	14.8	14.1	13.5	13.0	12.5	12.0	11.5	11.1	10.6	10.2
122.5°	19.3	17.3	16.5	15.8	15.3	14.6	14.1	13.5	13.0	12.5	12.0
125°	22.2	20.1	19.1	18.5	17.9	17.2	16.6	15.8	15.4	14.8	14.2
127.5°	25.5	23.1	22.2	21.5	20.8	20.1	19.4	18.6	18.1	17.3	16.9
130°	28.9	26.5	25.5	24.7	24.1	23.3	22.7	21.9	21.2	20.5	19.9
132.5°	32.6	30.1	29.0	28.3	27.7	26.9	26.3	25.5	24.8	24.0	23.4
135°	36.4	33.7	32.7	31.9	31.5	30.7	30.1	29.3	28.7	27.9	27.4
137.5°	40.3	37.5	36.4	35.8	35.3	34.7	34.1	33.3	32.8	31.9	31.5
140°	44.1	41.2	40.3	39.7	39.3	38.6	38.1	37.6	37.0	36.4	35.8
142.5°	47.8	44.8	43.8	43.4	43.0	42.5	42.2	41.7	41.2	40.6	40.1
145°	51.4	48.2	47.3	46.8	46.6	46.3	45.9	45.5	45.1	44.7	44.3
147.5°	54.9	51.5	50.6	50.3	50.1	49.7	49.6	49.3	49.1	48.7	48.5
150°	58.4	54.6	53.5	53.3	53.1	52.9	52.8	52.5	52.5	52.3	52.1
152.5°	61.7	57.1	55.9	55.7	55.7	55.5	55.5	55.4	55.4	55.4	55.3
155°	65.0	60.0	58.6	58.5	58.4	58.3	58.2	58.2	58.2	58.2	58.3
157.5°	68.2	62.9	61.4	61.2	61.1	61.0	61.0	61.0	61.0	61.0	61.1
160°	71.3	65.9	64.4	64.1	64.0	63.9	63.7	63.6	63.6	63.6	63.7
162.5°	74.2	68.8	67.4	67.2	67.0	66.8	66.7	66.5	66.5	66.4	66.5
165°	76.9	72.1	70.7	70.4	70.3	70.1	69.9	69.8	69.7	69.6	69.6
167.5°	79.5	75.2	74.2	73.9	73.7	73.4	73.4	73.2	73.2	73.1	73.1
170°	81.4	78.1	77.1	77.0	77.0	76.8	76.6	76.6	76.5	76.3	76.3
172.5°	82.7	80.3	79.5	79.5	79.5	79.4	79.4	79.3	79.3	79.3	79.3
175°	83.5	82.0	81.7	81.5	81.5	81.5	81.5	81.5	81.5	81.5	81.7
177.5°	83.6	83.3	83.1	83.1	83.1	83.1	83.1	83.1	83.1	83.2	83.2
180°	83.0	83.0	83.0	83.0	83.0	83.0	83.0	83.0	83.0	83.0	83.0



TEST NUMBER: P1444449
 CATALOG NUMBER: EHBR1-24-UNV-TA-L830

CANDELA DISTRIBUTION (continued):

	247.5°	250°	252.5°	255°	257.5°	260°	262.5°	265°	267.5°	270°	272.5°
0°	20006.8	20006.8	20006.8	20006.8	20006.8	20006.8	20006.8	20006.8	20006.8	20006.8	20006.8
2.5°	20163.1	20186.6	20184.9	20206.8	20205.7	20226.4	20222.2	20240.1	20236.0	20251.3	20242.4
5°	20824.5	20869.2	20884.0	20924.4	20932.7	20968.8	20969.5	20998.3	20994.8	21017.2	21005.3
7.5°	21450.2	21491.9	21511.7	21543.1	21558.7	21584.7	21594.9	21616.2	21621.3	21633.9	21633.6
10°	21503.0	21502.8	21512.6	21508.2	21517.0	21512.0	21522.7	21518.8	21534.6	21530.5	21542.4
12.5°	20792.5	20722.0	20696.3	20633.0	20619.1	20564.7	20568.6	20533.8	20550.5	20529.1	20565.6
15°	19265.6	19102.0	19021.2	18879.0	18834.3	18721.9	18712.8	18638.2	18658.3	18619.2	18676.4
17.5°	17009.2	16751.7	16610.4	16402.7	16320.3	16161.2	16129.4	16033.3	16048.2	15999.7	16068.7
20°	14319.0	14007.8	13829.6	13589.4	13482.2	13292.7	13242.4	13134.9	13148.4	13100.2	13178.3
22.5°	11598.0	11272.4	11071.1	10819.4	10682.6	10504.3	10450.9	10342.9	10348.9	10303.8	10378.8
25°	9097.7	8785.4	8590.1	8361.3	8242.7	8079.3	8023.1	7926.1	7931.6	7894.3	7961.6
27.5°	7037.7	6781.5	6618.0	6426.4	6320.0	6185.7	6130.9	6049.3	6049.0	6021.6	6077.9
30°	5499.6	5285.8	5139.0	4972.1	4872.2	4750.9	4698.0	4625.0	4621.8	4602.4	4647.1
32.5°	4306.1	4115.9	3982.0	3835.2	3745.4	3641.4	3591.2	3532.6	3527.3	3509.7	3546.4
35°	3347.4	3187.2	3072.1	2948.5	2957.6	2804.1	2829.6	2710.4	2678.1	2671.0	2698.3
37.5°	2587.2	2463.1	2369.6	2277.0	2214.3	2149.4	2114.4	2083.1	2079.5	2076.5	2095.6
40°	2025.1	1938.2	1870.2	1806.7	1763.5	1723.9	1702.1	1684.9	1680.7	1678.5	1690.0
42.5°	1639.0	1580.4	1536.6	1497.8	1471.6	1450.0	1438.0	1428.5	1425.3	1425.3	1432.1
45°	1384.7	1349.1	1320.9	1296.9	1280.1	1287.4	1265.8	1277.1	1262.1	1277.7	1267.4
47.5°	1219.4	1189.2	1171.6	1154.6	1144.5	1136.3	1136.6	1136.8	1140.0	1140.4	1143.8
50°	1091.9	1074.4	1062.2	1051.4	1046.1	1041.8	1043.2	1044.3	1047.5	1047.7	1050.1
52.5°	997.5	986.0	978.7	971.9	969.6	967.2	968.2	967.7	969.1	968.4	970.3
55°	920.7	915.3	913.0	910.5	910.9	910.2	910.6	908.1	906.6	904.9	906.5
57.5°	857.7	856.9	858.5	859.5	862.4	863.5	864.1	861.3	858.6	856.2	857.6
60°	809.1	810.3	814.1	817.3	821.4	823.4	824.5	822.9	820.9	819.0	820.2
62.5°	761.2	763.0	767.6	771.1	776.2	778.8	781.7	781.8	782.5	781.8	782.6
65°	705.6	707.9	712.0	714.9	719.6	721.9	724.8	725.4	727.0	726.6	728.0
67.5°	663.3	665.4	668.9	671.6	675.7	678.2	680.7	680.9	681.5	681.4	682.7
70°	618.2	619.3	622.3	624.7	628.8	631.2	634.2	635.2	637.0	637.3	638.7
72.5°	570.2	569.7	571.6	572.6	575.8	577.7	581.5	583.6	586.7	587.5	588.6
75°	517.8	517.4	519.6	520.5	523.2	525.1	529.3	532.1	536.9	538.9	538.4
77.5°	457.3	458.3	462.5	464.8	468.4	470.8	476.2	480.6	489.4	493.3	489.3
80°	389.5	390.6	394.9	397.1	401.8	404.7	410.8	416.0	423.9	425.6	423.4
82.5°	306.2	306.5	310.4	312.0	318.1	322.5	330.3	334.3	339.2	338.5	337.9
85°	208.8	211.6	216.5	221.3	228.7	235.8	243.2	249.2	244.9	251.7	244.1
87.5°	111.6	111.3	117.8	116.8	127.2	133.2	139.6	142.6	146.0	145.3	145.4
90°	11.0	10.2	11.1	10.2	11.6	10.6	12.6	11.6	14.0	12.6	15.1
92.5°	3.2	3.3	3.2	3.3	3.2	3.3	3.2	3.2	3.2	3.2	3.2
95°	3.5	3.5	3.5	3.4	3.4	3.4	3.4	3.4	3.4	3.4	3.4
97.5°	3.7	3.7	3.7	3.7	3.7	3.7	3.7	3.7	3.7	3.7	3.7
100°	4.1	4.1	4.1	4.1	4.0	4.0	4.0	4.0	4.0	4.0	4.0
102.5°	4.4	4.4	4.4	4.4	4.4	4.4	4.4	4.4	4.4	4.4	4.4
105°	4.9	4.9	4.8	4.8	4.8	4.8	4.8	4.8	4.8	4.8	4.8
107.5°	5.4	5.3	5.2	5.2	5.2	5.2	5.2	5.2	5.2	5.2	5.2
110°	5.9	5.9	5.8	5.8	5.7	5.6	5.6	5.6	5.6	5.6	5.6



TEST NUMBER: P1444449
 CATALOG NUMBER: EHBR1-24-UNV-TA-L830

CANDELA DISTRIBUTION (continued):

	247.5°	250°	252.5°	255°	257.5°	260°	262.5°	265°	267.5°	270°	272.5°
112.5°	6.7	6.5	6.4	6.3	6.2	6.2	6.2	6.2	6.2	6.2	6.2
115°	7.4	7.3	7.2	7.1	7.0	6.9	6.8	6.8	6.8	6.8	6.8
117.5°	8.5	8.3	8.1	8.0	7.9	7.8	7.7	7.7	7.7	7.7	7.7
120°	9.9	9.6	9.4	9.2	9.1	9.0	8.7	8.7	8.7	8.7	8.7
122.5°	11.5	11.2	10.9	10.7	10.5	10.3	10.1	10.1	10.1	10.1	10.1
125°	13.7	13.3	12.9	12.6	12.3	12.2	12.0	12.0	11.9	12.0	12.0
127.5°	16.2	15.8	15.3	15.0	14.6	14.4	14.3	14.2	14.2	14.3	14.3
130°	19.2	18.7	18.3	17.9	17.4	17.2	17.1	17.0	16.9	17.0	17.1
132.5°	22.7	22.2	21.6	21.2	20.8	20.6	20.3	20.3	20.2	20.3	20.4
135°	26.5	26.0	25.5	25.1	24.6	24.4	24.2	24.2	24.1	24.2	24.4
137.5°	30.8	30.3	29.7	29.3	28.9	28.8	28.5	28.4	28.4	28.5	28.7
140°	35.2	34.7	34.2	33.8	33.5	33.3	33.1	33.1	32.9	33.2	33.3
142.5°	39.6	39.3	38.8	38.5	38.1	37.9	37.8	37.8	37.7	37.8	38.0
145°	43.9	43.6	43.2	42.9	42.7	42.6	42.3	42.4	42.4	42.6	42.7
147.5°	48.1	48.0	47.6	47.5	47.1	47.1	47.0	47.1	47.1	47.2	47.3
150°	51.9	51.8	51.6	51.5	51.4	51.4	51.3	51.4	51.4	51.5	51.6
152.5°	55.2	55.2	55.0	55.0	55.0	55.0	55.0	55.2	55.3	55.4	55.5
155°	58.3	58.3	58.3	58.4	58.4	58.5	58.5	58.8	58.9	59.1	59.2
157.5°	61.1	61.3	61.3	61.4	61.5	61.7	61.7	62.1	62.1	62.5	62.6
160°	63.9	64.0	64.1	64.3	64.4	64.5	64.8	65.0	65.3	65.5	65.7
162.5°	66.5	66.7	66.8	67.0	67.2	67.3	67.5	67.8	68.0	68.3	68.5
165°	69.6	69.7	69.8	69.9	70.1	70.3	70.3	70.6	70.8	71.1	71.3
167.5°	73.0	73.1	73.0	73.1	73.1	73.3	73.3	73.5	73.7	74.0	74.2
170°	76.2	76.2	76.2	76.2	76.2	76.3	76.4	76.5	76.6	76.8	76.9
172.5°	79.2	79.2	79.2	79.2	79.2	79.2	79.2	79.3	79.3	79.4	79.4
175°	81.5	81.7	81.7	81.7	81.7	81.7	81.7	81.7	81.7	81.7	81.7
177.5°	83.2	83.3	83.3	83.3	83.3	83.4	83.4	83.4	83.4	83.3	83.3
180°	83.0	83.0	83.0	83.0	83.0	83.0	83.0	83.0	83.0	83.0	83.0



TEST NUMBER: P1444449
 CATALOG NUMBER: EHBR1-24-UNV-TA-L830

CANDELA DISTRIBUTION (continued):

	275°	277.5°	280°	282.5°	285°	287.5°	290°	292.5°	295°	297.5°	300°
0°	20006.8	20006.8	20006.8	20006.8	20006.8	20006.8	20006.8	20006.8	20006.8	20006.8	20006.8
2.5°	20257.3	20247.1	20257.5	20247.0	20257.5	20244.9	20253.4	20239.7	20243.2	20229.1	20232.7
5°	21023.2	21007.0	21015.6	20994.6	20996.9	20968.8	20968.3	20935.7	20927.1	20889.9	20873.6
7.5°	21642.6	21637.3	21640.2	21626.7	21625.2	21606.0	21596.9	21570.0	21553.0	21518.8	21495.4
10°	21544.5	21560.3	21564.3	21580.5	21583.8	21599.8	21603.1	21619.1	21622.3	21634.1	21634.3
12.5°	20563.9	20617.5	20630.4	20696.6	20724.4	20800.2	20840.8	20924.4	20973.9	21057.2	21108.4
15°	18674.8	18767.5	18804.5	18933.9	19005.4	19156.4	19251.2	19424.5	19546.9	19731.0	19862.3
17.5°	16074.8	16204.4	16263.0	16438.3	16552.7	16775.5	16936.1	17200.4	17402.8	17696.6	17929.4
20°	13191.6	13335.6	13415.1	13615.2	13750.1	14010.4	14211.0	14535.8	14806.7	15178.9	15497.2
22.5°	10402.3	10539.4	10627.5	10831.1	10983.1	11254.7	11478.7	11821.5	12125.0	12544.5	12926.1
25°	7987.0	8112.6	8192.4	8376.4	8519.2	8768.7	8982.7	9312.4	9609.3	10030.1	10421.4
27.5°	6105.9	6211.2	6288.0	6444.9	6570.9	6782.5	6966.3	7238.8	7494.7	7858.7	8207.2
30°	4674.6	4767.9	4842.7	4979.4	5096.1	5279.5	5441.2	5670.1	5881.8	6171.4	6448.7
32.5°	3572.2	3652.5	3719.1	3838.7	3944.7	4109.8	4255.5	4456.1	4637.8	4883.5	5111.6
35°	2723.7	2881.7	2870.5	3035.5	3062.1	3180.6	3310.5	3486.0	3647.0	3855.8	4050.0
37.5°	2114.1	2158.5	2206.0	2279.0	2355.6	2463.5	2573.3	2787.6	2866.2	3024.1	3184.8
40°	1704.7	1734.8	1766.2	1815.5	1869.2	1945.2	2025.1	2127.4	2232.2	2360.1	2490.8
42.5°	1441.2	1458.2	1478.2	1507.2	1540.2	1588.5	1642.0	1711.3	1784.1	1874.3	1966.2
45°	1287.6	1279.5	1285.5	1301.1	1321.0	1350.3	1384.1	1427.0	1474.4	1532.7	1594.9
47.5°	1144.5	1147.7	1149.5	1158.0	1168.6	1188.3	1208.7	1237.9	1294.2	1311.3	1345.2
50°	1050.0	1051.5	1051.0	1055.3	1060.6	1073.5	1086.7	1106.4	1126.1	1152.2	1177.2
52.5°	970.7	972.9	972.6	975.4	978.3	986.4	994.8	1008.7	1021.6	1038.2	1052.5
55°	908.0	911.1	912.4	914.7	916.1	920.3	923.7	930.3	935.8	945.2	953.9
57.5°	860.0	864.1	866.1	866.8	865.1	865.0	863.8	865.2	866.4	871.4	876.3
60°	822.1	825.4	825.9	825.4	822.3	820.1	816.5	815.4	814.8	817.3	819.9
62.5°	782.4	783.6	782.8	781.8	778.2	776.1	772.4	771.1	769.8	771.5	772.9
65°	727.5	728.6	727.5	727.0	723.8	722.0	718.9	717.9	716.1	716.6	716.3
67.5°	683.0	684.0	683.2	682.4	680.1	679.1	676.8	675.4	673.2	672.4	670.9
70°	638.6	639.4	638.1	637.3	634.8	633.8	631.6	631.2	629.5	629.2	627.4
72.5°	587.5	587.5	585.7	585.3	583.4	583.3	582.4	583.3	583.2	584.0	583.7
75°	535.2	534.5	532.2	531.9	530.5	531.1	530.2	531.4	531.6	533.5	533.7
77.5°	482.9	480.1	475.8	473.9	471.1	470.7	469.1	470.1	469.8	472.0	472.9
80°	416.7	413.4	407.9	405.4	402.0	401.5	400.1	401.5	400.7	403.3	405.2
82.5°	332.7	329.8	324.2	322.1	318.2	318.6	317.0	318.6	318.4	322.2	324.5
85°	246.1	244.2	238.4	233.2	227.5	224.2	221.0	220.4	219.4	221.0	222.3
87.5°	142.1	140.3	135.8	132.9	122.9	123.3	119.3	119.1	118.2	117.3	119.3
90°	13.7	15.5	14.3	16.0	15.1	17.1	16.4	18.4	17.0	18.6	17.7
92.5°	3.2	3.2	3.2	3.2	3.2	3.2	3.2	3.2	3.2	3.0	3.2
95°	3.4	3.4	3.4	3.4	3.4	3.4	3.4	3.4	3.4	3.4	3.4
97.5°	3.7	3.7	3.7	3.7	3.7	3.7	3.7	3.7	3.7	3.7	3.7
100°	4.0	4.0	4.0	4.0	4.0	4.0	4.0	4.0	4.1	4.1	4.1
102.5°	4.4	4.4	4.4	4.4	4.4	4.4	4.4	4.4	4.5	4.5	4.5
105°	4.8	4.8	4.8	4.8	4.8	4.8	4.9	4.9	5.0	5.0	5.2
107.5°	5.2	5.2	5.2	5.2	5.2	5.3	5.3	5.4	5.5	5.6	5.7
110°	5.6	5.7	5.7	5.8	5.8	5.9	5.9	6.1	6.2	6.3	6.5



TEST NUMBER: P1444449
 CATALOG NUMBER: EHBR1-24-UNV-TA-L830

CANDELA DISTRIBUTION (continued):

	275°	277.5°	280°	282.5°	285°	287.5°	290°	292.5°	295°	297.5°	300°
112.5°	6.2	6.2	6.3	6.4	6.5	6.6	6.7	6.8	7.0	7.2	7.4
115°	6.9	6.9	7.0	7.1	7.3	7.3	7.7	7.8	8.1	8.3	8.6
117.5°	7.8	7.9	8.0	8.1	8.2	8.5	8.7	9.1	9.4	9.6	10.1
120°	9.0	9.1	9.2	9.3	9.6	9.7	10.1	10.5	11.0	11.4	11.9
122.5°	10.3	10.5	10.7	10.9	11.2	11.5	12.0	12.5	13.0	13.5	14.1
125°	12.2	12.4	12.6	12.9	13.3	13.8	14.3	14.8	15.5	15.9	16.7
127.5°	14.5	14.8	15.1	15.5	15.9	16.4	17.0	17.5	18.3	18.9	19.7
130°	17.3	17.6	18.1	18.4	19.0	19.6	20.1	20.8	21.5	22.2	22.9
132.5°	20.8	21.1	21.5	21.9	22.6	23.1	23.9	24.4	25.2	25.9	26.6
135°	24.6	24.9	25.5	25.9	26.5	27.1	27.8	28.4	29.2	29.8	30.6
137.5°	29.0	29.3	29.7	30.2	30.8	31.4	32.1	32.7	33.3	34.0	34.7
140°	33.6	33.8	34.3	34.8	35.3	35.8	36.5	37.1	37.8	38.3	39.0
142.5°	38.4	38.6	39.0	39.4	40.0	40.4	41.0	41.4	42.1	42.5	43.2
145°	43.0	43.2	43.7	43.9	44.4	44.9	45.3	45.8	46.4	46.7	47.2
147.5°	47.6	47.9	48.2	48.5	49.0	49.4	49.7	50.1	50.7	51.1	51.4
150°	51.9	52.1	52.5	52.6	53.1	53.5	53.9	54.2	54.6	54.9	55.4
152.5°	55.8	56.0	56.3	56.5	56.9	57.1	57.4	57.8	58.2	58.5	58.8
155°	59.4	59.7	59.9	60.2	60.6	60.7	61.1	61.4	61.7	62.0	62.4
157.5°	62.9	63.0	63.4	63.5	63.9	64.2	64.4	64.6	65.0	65.3	65.6
160°	65.9	66.2	66.4	66.7	67.1	67.3	67.5	67.8	68.1	68.4	68.7
162.5°	68.8	69.1	69.4	69.6	69.9	70.3	70.4	70.7	71.1	71.3	71.7
165°	71.7	71.8	72.2	72.4	72.8	73.1	73.3	73.5	73.8	74.1	74.3
167.5°	74.5	74.6	74.9	75.2	75.5	75.7	76.0	76.2	76.5	76.6	77.0
170°	77.1	77.4	77.6	77.7	78.0	78.1	78.4	78.6	78.9	79.1	79.3
172.5°	79.5	79.7	79.9	79.9	80.1	80.3	80.5	80.6	80.7	80.9	81.0
175°	81.7	81.7	81.8	81.9	82.0	82.0	82.0	82.1	82.2	82.3	82.3
177.5°	83.3	83.3	83.3	83.3	83.3	83.3	83.3	83.3	83.3	83.3	83.3
180°	83.0	83.0	83.0	83.0	83.0	83.0	83.0	83.0	83.0	83.0	83.0



TEST NUMBER: P1444449
 CATALOG NUMBER: EHBR1-24-UNV-TA-L830

CANDELA DISTRIBUTION (continued):

	302.5°	305°	307.5°	310°	312.5°	315°	317.5°	320°	322.5°	325°	327.5°
0°	20006.8	20006.8	20006.8	20006.8	20006.8	20006.8	20006.8	20006.8	20006.8	20006.8	20006.8
2.5°	20218.6	20219.4	20203.1	20202.2	20186.9	20185.0	20170.2	20165.6	20153.5	20149.2	20136.8
5°	20831.9	20812.1	20766.2	20739.2	20693.9	20663.8	20614.7	20582.7	20535.3	20499.6	20451.9
7.5°	21452.3	21421.5	21370.0	21328.2	21265.3	21215.1	21141.3	21081.0	21001.2	20932.2	20848.4
10°	21634.3	21629.5	21616.4	21597.3	21568.0	21535.1	21485.0	21432.7	21362.8	21286.9	21193.7
12.5°	21186.6	21234.9	21300.9	21339.9	21387.5	21408.3	21427.8	21422.9	21410.1	21371.7	21317.8
15°	20052.5	20188.3	20368.3	20507.6	20668.0	20784.5	20913.3	20993.5	21073.5	21110.4	21133.1
17.5°	18248.4	18505.6	18828.2	19095.5	19403.9	19651.6	19923.1	20127.5	20337.7	20488.4	20624.5
20°	15931.1	16303.8	16760.0	17162.9	17631.6	18038.8	18485.0	18851.4	19229.1	19524.5	19804.1
22.5°	13417.6	13860.2	14411.6	14922.5	15526.6	16069.5	16682.0	17215.2	17771.8	18236.9	18686.5
25°	10945.9	11431.3	12034.4	12604.4	13288.5	13920.0	14646.5	15310.9	16030.3	16655.0	17272.0
27.5°	8689.0	9165.5	9781.2	10387.9	11111.3	11784.3	12562.6	13294.6	14113.9	14869.2	15642.0
30°	6833.9	7238.1	7790.1	8377.8	9091.4	9776.1	10562.9	11315.8	12167.9	12992.8	13863.2
32.5°	5414.4	5722.3	6156.2	6653.2	7311.6	7963.3	8712.5	9439.3	10278.5	11111.7	12017.0
35°	4300.0	4540.1	4871.1	5258.9	5816.3	6378.2	7040.9	7701.8	8484.8	9275.4	10155.3
37.5°	3390.8	3585.6	3844.8	4136.1	4583.3	5044.4	5587.7	6135.7	6816.0	7516.8	8314.3
40°	2647.8	2805.6	3007.3	3224.6	3562.3	3917.6	4337.8	4762.7	5309.3	5882.1	6542.1
42.5°	2080.1	2196.5	2339.0	2497.7	2812.7	3001.4	3286.3	3593.7	3995.5	4411.3	4907.5
45°	1670.4	1749.9	1848.7	1955.2	2101.4	2261.4	2456.6	2661.2	3042.9	3230.1	3532.0
47.5°	1395.0	1448.3	1511.2	1578.3	1664.5	1757.5	1873.3	1991.6	2144.7	2303.3	2489.3
50°	1209.5	1263.7	1285.3	1320.0	1369.9	1423.1	1488.3	1553.6	1635.7	1718.9	1814.6
52.5°	1071.8	1089.5	1113.0	1135.0	1166.0	1226.4	1246.0	1280.2	1326.2	1371.2	1421.5
55°	966.7	978.1	993.5	1006.8	1025.4	1043.3	1069.2	1091.8	1122.6	1149.6	1183.1
57.5°	884.8	892.1	902.7	911.5	923.6	933.7	948.8	961.1	978.8	994.1	1014.4
60°	825.3	830.2	837.3	843.0	850.8	856.1	863.6	869.3	878.6	886.4	897.7
62.5°	776.8	779.2	783.9	787.3	792.2	794.9	798.8	801.4	806.5	810.4	816.7
65°	718.5	719.1	722.2	723.6	727.4	728.9	732.1	733.3	737.6	740.5	746.0
67.5°	670.8	669.4	669.5	668.3	668.9	667.8	668.1	666.8	668.6	669.5	673.7
70°	627.1	625.3	624.7	622.7	622.1	620.0	619.4	617.6	617.4	616.7	618.2
72.5°	584.7	584.1	584.3	582.9	582.7	581.3	581.4	580.5	581.5	581.9	583.9
75°	535.8	536.0	536.9	535.6	536.0	534.9	535.2	534.2	534.8	534.5	536.5
77.5°	476.3	477.7	480.3	479.8	480.6	479.3	479.9	478.3	478.8	477.7	478.5
80°	409.4	412.4	415.9	415.7	417.2	416.3	417.6	416.1	416.7	415.0	414.5
82.5°	330.0	332.5	336.3	336.4	339.7	340.3	343.9	343.8	346.0	344.5	343.5
85°	225.7	227.3	230.6	232.4	235.7	237.8	241.3	242.7	240.2	244.8	241.1
87.5°	117.8	122.2	119.7	125.4	124.1	129.9	128.6	133.9	132.9	137.5	136.9
90°	20.1	19.6	22.2	21.8	25.1	25.2	28.7	28.5	31.8	31.8	35.0
92.5°	3.0	3.2	3.2	3.2	3.2	3.3	3.2	3.2	3.2	3.3	3.2
95°	3.4	3.4	3.4	3.4	3.4	3.4	3.4	3.5	3.5	3.5	3.5
97.5°	3.7	3.7	3.7	3.7	3.8	3.8	3.8	3.8	3.8	3.9	3.9
100°	4.1	4.2	4.2	4.2	4.3	4.3	4.4	4.4	4.4	4.4	4.4
102.5°	4.7	4.7	4.8	4.8	4.8	4.9	5.0	5.2	5.2	5.2	5.2
105°	5.2	5.2	5.3	5.4	5.5	5.7	5.8	5.9	5.9	6.1	6.1
107.5°	5.9	5.9	6.2	6.2	6.4	6.6	6.7	6.8	7.0	7.1	7.2
110°	6.7	6.8	7.0	7.3	7.4	7.7	7.9	8.1	8.2	8.3	8.5



TEST NUMBER: P1444449
 CATALOG NUMBER: EHBR1-24-UNV-TA-L830

CANDELA DISTRIBUTION (continued):

	302.5°	305°	307.5°	310°	312.5°	315°	317.5°	320°	322.5°	325°	327.5°
112.5°	7.7	8.0	8.1	8.5	8.7	9.1	9.3	9.6	9.7	10.0	10.1
115°	9.0	9.3	9.6	10.0	10.3	10.7	11.0	11.2	11.5	11.9	12.0
117.5°	10.5	11.0	11.2	11.9	12.2	12.6	13.0	13.3	13.7	14.0	14.2
120°	12.4	12.9	13.4	14.0	14.4	14.8	15.3	15.7	16.0	16.4	16.7
122.5°	14.6	15.3	15.8	16.4	16.9	17.3	17.8	18.4	18.6	19.1	19.4
125°	17.2	17.9	18.5	19.1	19.7	20.2	20.7	21.2	21.6	22.2	22.6
127.5°	20.2	21.0	21.5	22.2	22.8	23.4	23.9	24.4	24.9	25.5	25.9
130°	23.6	24.4	25.0	25.6	26.1	26.9	27.3	27.9	28.4	28.9	29.4
132.5°	27.3	27.9	28.6	29.3	29.8	30.4	30.9	31.6	31.9	32.6	33.2
135°	31.2	31.8	32.4	33.2	33.6	34.2	34.7	35.3	35.8	36.4	36.9
137.5°	35.2	36.0	36.4	37.1	37.6	38.1	38.6	39.2	39.6	40.3	40.7
140°	39.4	40.0	40.5	41.1	41.5	42.1	42.5	43.0	43.5	43.9	44.3
142.5°	43.7	44.2	44.6	45.1	45.5	46.1	46.4	46.7	47.2	47.7	48.1
145°	47.7	48.2	48.5	49.0	49.3	49.7	50.0	50.5	50.7	51.1	51.4
147.5°	51.8	52.3	52.5	52.9	53.1	53.6	53.8	54.0	54.3	54.6	54.8
150°	55.5	56.0	56.2	56.5	56.8	57.1	57.2	57.4	57.6	57.8	58.1
152.5°	59.1	59.4	59.6	59.9	60.0	60.3	60.3	60.7	60.7	60.8	61.0
155°	62.5	62.9	63.0	63.3	63.4	63.6	63.6	63.9	63.9	64.0	64.0
157.5°	65.8	66.0	66.3	66.4	66.6	66.8	66.9	67.1	67.1	67.2	67.2
160°	68.8	69.1	69.3	69.5	69.7	69.8	69.9	70.1	70.2	70.2	70.2
162.5°	71.8	72.0	72.2	72.4	72.6	72.8	72.8	73.0	73.1	73.1	73.1
165°	74.6	74.7	74.9	75.2	75.2	75.5	75.6	75.7	75.7	75.9	75.9
167.5°	77.1	77.4	77.6	77.7	77.8	78.0	78.1	78.3	78.3	78.4	78.4
170°	79.4	79.5	79.8	79.9	80.0	80.1	80.2	80.3	80.3	80.4	80.4
172.5°	81.2	81.3	81.3	81.5	81.5	81.7	81.7	81.7	81.8	81.8	81.8
175°	82.3	82.4	82.6	82.6	82.6	82.7	82.7	82.7	82.7	82.7	82.7
177.5°	83.3	83.3	83.3	83.2	83.2	83.2	83.2	83.2	83.2	83.2	83.1
180°	83.0	83.0	83.0	83.0	83.0	83.0	83.0	83.0	83.0	83.0	83.0



TEST NUMBER: P1444449
 CATALOG NUMBER: EHBR1-24-UNV-TA-L830

CANDELA DISTRIBUTION (continued):

	330°	332.5°	335°	337.5°	340°	342.5°	345°	347.5°	350°	352.5°	355°
0°	20006.8	20006.8	20006.8	20006.8	20006.8	20006.8	20006.8	20006.8	20006.8	20006.8	20006.8
2.5°	20132.5	20123.7	20118.1	20110.9	20106.5	20100.9	20096.9	20093.3	20090.5	20088.0	20086.0
5°	20415.6	20370.5	20335.6	20297.8	20266.7	20235.7	20211.8	20192.1	20178.4	20168.2	20162.1
7.5°	20776.0	20693.6	20620.3	20543.2	20474.1	20406.1	20347.6	20297.1	20259.1	20234.6	20219.7
10°	21097.9	20987.6	20878.5	20763.7	20654.9	20549.3	20451.9	20366.2	20298.3	20253.2	20226.9
12.5°	21242.1	21148.2	21036.8	20912.2	20778.8	20643.8	20512.3	20393.7	20294.1	20227.3	20188.7
15°	21115.0	21076.5	21000.9	20904.2	20777.6	20638.0	20483.6	20338.5	20204.9	20118.3	20068.1
17.5°	20701.6	20755.5	20749.7	20712.7	20621.7	20504.3	20346.9	20183.8	20016.8	19901.0	19837.8
20°	20004.1	20173.3	20259.1	20303.3	20267.5	20191.3	20048.8	19883.3	19688.6	19537.5	19445.2
22.5°	19023.8	19322.5	19508.7	19644.9	19673.9	19647.9	19522.0	19364.7	19147.6	18965.9	18829.7
25°	17761.8	18199.5	18493.7	18724.4	18814.0	18837.1	18730.1	18573.5	18331.6	18120.0	17932.8
27.5°	16275.4	16844.1	17236.9	17546.9	17686.7	17747.4	17648.9	17489.2	17202.9	16950.3	16705.9
30°	14602.0	15276.7	15749.6	16121.3	16291.8	16372.0	16267.3	16089.0	15756.0	15451.9	15144.1
32.5°	12810.8	13549.2	14064.6	14468.2	14637.2	14712.6	14575.7	14375.4	13990.4	13632.3	13273.3
35°	10935.6	11680.9	12200.6	12593.4	12735.0	12780.5	12605.4	12373.9	11947.4	11554.4	11162.9
37.5°	9022.1	9715.5	10187.8	10540.4	10628.1	10636.0	10424.9	10169.3	9721.1	9333.5	8943.8
40°	7125.2	7710.0	8091.4	8373.5	8404.0	8376.8	8147.4	7890.2	7470.8	7123.6	6781.5
42.5°	5338.4	5779.8	6051.9	6245.3	6233.8	6180.2	5969.8	5748.8	5402.7	5138.3	4869.0
45°	3807.6	4098.7	4257.8	4371.0	4334.6	4283.5	4119.7	3964.8	3729.7	3558.8	3378.0
47.5°	2645.2	2992.8	2932.3	3153.5	2962.9	3088.8	2826.6	2682.1	2557.3	2466.5	2364.3
50°	1893.7	1973.4	2011.9	2038.1	2024.1	2004.8	1957.7	1915.6	1858.6	1817.0	1768.6
52.5°	1462.5	1502.3	1524.1	1539.9	1536.8	1529.7	1509.2	1490.4	1463.7	1446.2	1424.9
55°	1238.8	1239.4	1279.5	1262.3	1287.7	1257.9	1269.6	1236.6	1242.0	1213.6	1194.6
57.5°	1029.3	1045.7	1053.0	1060.2	1058.2	1056.9	1048.9	1045.0	1036.0	1033.3	1026.9
60°	905.5	914.0	915.8	919.1	916.3	915.3	909.1	906.8	900.8	899.7	895.5
62.5°	820.6	824.9	824.9	824.9	821.3	817.9	811.0	807.3	802.3	801.2	798.7
65°	749.6	754.1	754.9	755.8	753.3	750.6	744.5	740.6	735.3	733.3	730.5
67.5°	676.5	681.3	682.9	685.4	683.9	683.3	679.2	677.6	674.1	673.3	670.8
70°	619.0	620.9	620.9	620.8	617.5	614.6	609.8	607.5	603.9	603.1	600.7
72.5°	584.8	586.2	585.3	584.0	579.8	575.5	569.9	565.8	561.0	558.0	554.7
75°	536.6	538.5	537.4	536.5	532.7	529.9	525.4	523.2	519.8	518.8	516.5
77.5°	477.6	478.5	476.5	476.3	473.4	471.6	468.3	467.6	465.2	465.3	463.0
80°	411.8	411.3	408.2	407.6	404.7	403.9	401.3	401.5	399.5	400.3	398.8
82.5°	338.8	337.0	332.9	331.8	328.4	328.1	326.3	327.8	326.6	328.4	327.4
85°	242.8	243.4	241.6	241.6	240.6	240.9	240.7	241.9	242.0	243.6	243.5
87.5°	135.4	137.3	136.9	138.7	138.6	140.7	141.3	144.3	144.6	147.4	147.4
90°	35.0	38.6	38.5	42.2	42.3	45.9	46.6	50.1	50.4	53.6	53.2
92.5°	3.2	3.2	3.3	3.2	3.2	3.0	3.4	3.0	3.2	3.0	3.0
95°	3.5	3.5	3.5	3.5	3.5	3.4	3.4	3.4	3.4	3.4	3.4
97.5°	3.9	3.9	3.9	3.9	3.9	3.9	3.8	3.8	3.8	3.8	3.8
100°	4.4	4.4	4.5	4.4	4.4	4.4	4.4	4.4	4.4	4.4	4.4
102.5°	5.2	5.2	5.2	5.2	5.2	5.2	5.2	5.2	5.2	5.2	5.2
105°	6.2	6.2	6.2	6.2	6.2	6.2	6.2	6.2	6.2	6.2	6.2
107.5°	7.3	7.3	7.3	7.3	7.4	7.4	7.4	7.3	7.4	7.3	7.3
110°	8.7	8.7	8.8	8.8	9.0	9.0	9.0	9.0	9.1	9.0	9.0



TEST NUMBER: P1444449
 CATALOG NUMBER: EHBR1-24-UNV-TA-L830

CANDELA DISTRIBUTION (continued):

	330°	332.5°	335°	337.5°	340°	342.5°	345°	347.5°	350°	352.5°	355°
112.5°	10.3	10.5	10.6	10.6	10.8	10.8	10.9	10.9	11.0	10.9	11.0
115°	12.3	12.5	12.6	12.6	12.9	13.0	13.1	13.1	13.3	13.3	13.3
117.5°	14.5	14.8	15.0	15.2	15.4	15.5	15.7	15.8	15.8	15.8	15.9
120°	17.0	17.2	17.6	17.9	18.2	18.4	18.6	18.6	18.8	18.8	18.9
122.5°	19.9	20.1	20.6	20.8	21.2	21.5	21.7	21.9	22.1	22.1	22.2
125°	23.0	23.4	23.9	24.2	24.6	24.9	25.2	25.4	25.6	25.6	25.7
127.5°	26.4	26.9	27.4	27.7	28.3	28.5	28.9	29.0	29.3	29.3	29.3
130°	30.0	30.4	31.0	31.5	31.8	32.2	32.7	32.9	33.2	33.2	33.3
132.5°	33.7	34.2	34.8	35.2	35.8	36.1	36.5	36.7	37.0	37.0	37.1
135°	37.6	37.9	38.6	39.0	39.5	40.0	40.4	40.6	40.8	40.8	40.9
137.5°	41.3	41.8	42.2	42.7	43.2	43.6	43.9	44.2	44.4	44.6	44.6
140°	45.0	45.3	45.9	46.3	46.7	47.1	47.5	47.7	48.0	48.0	48.1
142.5°	48.5	48.8	49.4	49.6	50.0	50.3	50.7	50.9	51.1	51.1	51.1
145°	51.8	52.1	52.5	52.8	53.1	53.3	53.6	53.9	53.9	53.9	54.0
147.5°	55.2	55.4	55.5	55.7	56.1	56.3	56.4	56.5	56.8	56.8	56.8
150°	58.2	58.3	58.5	58.5	58.7	58.8	58.9	59.0	59.1	59.0	59.0
152.5°	61.0	61.1	61.2	61.2	61.3	61.3	61.3	61.2	61.2	61.1	61.0
155°	64.1	64.1	64.1	64.0	64.1	64.0	63.9	63.9	63.7	63.5	63.4
157.5°	67.2	67.1	67.2	67.1	67.0	66.9	66.8	66.5	66.4	66.2	66.0
160°	70.3	70.2	70.2	70.1	69.9	69.8	69.7	69.4	69.2	68.9	68.8
162.5°	73.1	73.1	73.1	73.0	72.8	72.8	72.6	72.3	72.1	71.8	71.7
165°	76.0	75.9	75.9	75.7	75.6	75.5	75.4	75.1	74.9	74.7	74.5
167.5°	78.4	78.4	78.3	78.1	78.1	78.0	77.8	77.7	77.5	77.2	77.0
170°	80.4	80.3	80.3	80.2	80.1	80.0	79.9	79.7	79.5	79.3	79.2
172.5°	81.7	81.7	81.7	81.5	81.5	81.4	81.3	81.2	80.9	80.8	80.7
175°	82.6	82.6	82.4	82.4	82.3	82.3	82.2	82.1	82.0	82.0	81.8
177.5°	83.1	83.1	83.0	83.0	82.9	82.9	82.8	82.7	82.7	82.7	82.6
180°	83.0	83.0	83.0	83.0	83.0	83.0	83.0	83.0	83.0	83.0	83.0



TEST NUMBER: P1444449
 CATALOG NUMBER: EHBR1-24-UNV-TA-L830

CANDELA DISTRIBUTION (continued):

	357.5°	360°
0°	20006.8	20006.8
2.5°	20084.3	20083.2
5°	20158.9	20157.7
7.5°	20215.7	20215.4
10°	20222.4	20225.9
12.5°	20182.0	20184.9
15°	20064.2	20069.7
17.5°	19838.9	19846.1
20°	19450.9	19458.3
22.5°	18822.4	18825.5
25°	17908.7	17895.7
27.5°	16663.0	16640.7
30°	15079.4	15057.9
32.5°	13191.4	13177.9
35°	11066.2	11057.7
37.5°	8828.6	8811.2
40°	6656.3	6605.8
42.5°	4751.2	4662.4
45°	3283.4	3178.3
47.5°	2292.2	2227.2
50°	1737.4	1716.4
52.5°	1415.7	1410.8
55°	1194.5	1192.3
57.5°	1028.3	1027.6
60°	897.7	897.5
62.5°	800.3	800.7
65°	731.8	731.9
67.5°	671.4	671.0
70°	601.6	601.1
72.5°	553.6	552.8
75°	516.5	516.0
77.5°	463.8	462.9
80°	399.8	398.8
82.5°	328.9	327.7
85°	245.3	245.3
87.5°	150.1	150.0
90°	56.2	55.5
92.5°	3.2	3.4
95°	3.4	3.4
97.5°	3.8	3.8
100°	4.4	4.4
102.5°	5.2	5.2
105°	6.2	6.2
107.5°	7.3	7.3
110°	9.0	9.0



TEST NUMBER: P1444449
CATALOG NUMBER: EHBR1-24-UNV-TA-L830

CANDELA DISTRIBUTION (continued):

	357.5°	360°
112.5°	10.9	10.9
115°	13.1	13.1
117.5°	15.8	15.8
120°	18.7	18.7
122.5°	22.0	21.9
125°	25.5	25.5
127.5°	29.2	29.0
130°	32.9	32.9
132.5°	36.9	36.7
135°	40.7	40.6
137.5°	44.3	44.2
140°	47.9	47.7
142.5°	51.1	51.0
145°	53.9	53.8
147.5°	56.4	56.4
150°	58.8	58.6
152.5°	60.7	60.6
155°	63.1	62.9
157.5°	65.7	65.4
160°	68.4	68.1
162.5°	71.3	71.0
165°	74.1	73.8
167.5°	76.6	76.5
170°	78.9	78.8
172.5°	80.6	80.4
175°	81.7	81.7
177.5°	82.6	82.4
180°	83.0	83.0

LM-79-2019: Approved Method: Electrical and Photometric Measurements of Solid-
State Lighting Products

Report Prepared for

Cooper Lighting Solutions

Metalux

Report Number: SP1-2506-472-2

Test Date: 07/31/2025

Luminaire Tested: EHBR-60-L830-N

Data in this report applies to families of products including EHBR-60-L830-N

Test Information

Test Method: LM-79-2019
 Report Number: SP1-2506-472-2
 Test Lab: COOPER LIGHTING SOLUTIONS
 Photometer: SP1 - 76IN SPHERE
 Measurement Geometry: 4π
 Issue Date: 08/05/2025
 Manufacturer: COOPER LIGHTING SOLUTIONS
 Product Line: Metalux
 Catalog Number: **EHBR-60-L830-N**
 Description: Elevate Round Highbay at, 60000 lumens, 3000K 80CRI LEDs with N lens

Spectral Parameters

CCT (K): 2983
 CIE u': 0.2516
 CIE v': 0.5201
 Duv: -0.0012
 CIE x: 0.4364
 CIE y: 0.4010
 CIE z: 0.1626
 Peak Wavelength (nm): 630
 Dominant Wavelength (nm): 583
 Purity: 51.34918
 Rf: 81.2
 Rg: 101.5

CRI (Ra):	83.4		
R1:	84.0	R9:	29.4
R2:	87.5	R10:	68.6
R3:	88.9	R11:	82.2
R4:	83.8	R12:	61.6
R5:	81.9	R13:	83.9
R6:	83.1	R14:	92.5
R7:	87.1	R15:	79.8
R8:	70.9		



Test Conditions

Stabilization Time: 38M
 Operation Time: 1H 38M
 Sphere Temperature (°C): 25.0

REPORT NUMBER: SP1-2506-472-2

Measurement and Test Equipment			
Instrument	Identification Number	Calibration Date	Calibration Due Date
Photometer	76INCH SPHERE IN0058	6/16/2025	12/16/2025
Power Meter	XITRON INXT2011004	1/21/2025	1/21/2026
AC Power Source	CHROMA 61603 IN0063	10/22/2024	10/22/2025
DC Power Source	AGILENT E3634A IN0208	10/22/2024	10/22/2025
Sphere Thermometer	ONSET IN0085	10/22/2024	10/22/2025
Room Thermometer	ONSET IN0046	10/22/2024	10/22/2025

REPORT NUMBER: SP1-2506-472-2

CIE 1931 Chromaticity Diagram



CIE 1931 Chromaticity Diagram with 2017 ANSI 7-Step and 4-Step Quadrangles

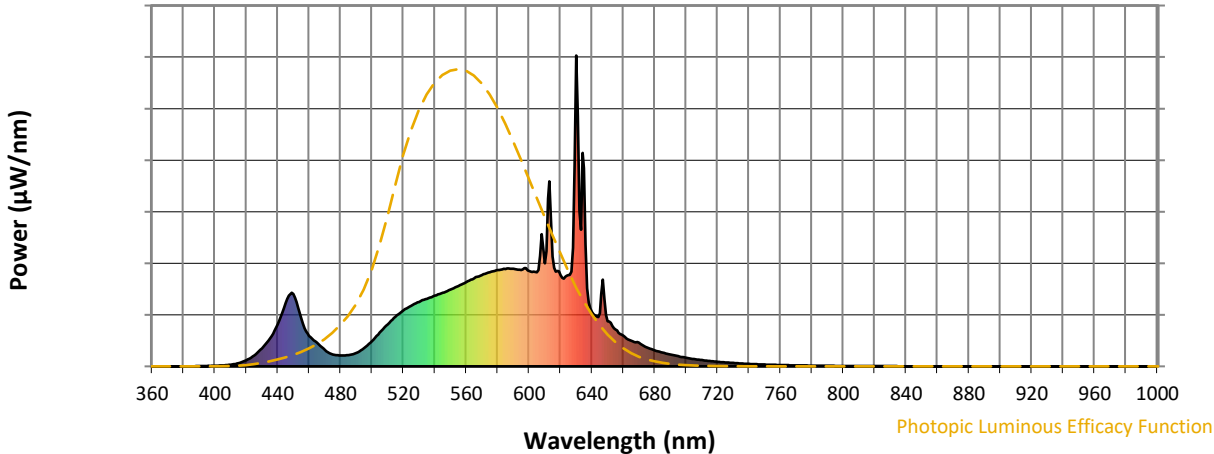


CCT = 2983K
 CIE x = 0.4364
 CIE y = 0.4010
 Duv = -0.0012

Point lies inside the ANSI 3000K 4-step quadrangle

REPORT NUMBER: SP1-2506-472-2

Photopic Flux vs. Wavelength



Photopic Lumens: NR

λ (nm)	Power W [^] /nm	Lumens (φ/nm)	λ (nm)	Power W [^] /nm	Lumens (φ/nm)	λ (nm)	Power W [^] /nm	Lumens (φ/nm)	λ (nm)	Power W [^] /nm	Lumens (φ/nm)	λ (nm)	Power W [^] /nm	Lumens (φ/nm)
360	0	NR	490	43	NR	620	294	NR	750	6	NR	880	0	NR
365	0	NR	495	59	NR	625	294	NR	755	5	NR	885	0	NR
370	0	NR	500	81	NR	630	1000	NR	760	4	NR	890	0	NR
375	0	NR	505	109	NR	635	637	NR	765	4	NR	895	0	NR
380	0	NR	510	135	NR	640	175	NR	770	3	NR	900	0	NR
385	0	NR	515	160	NR	645	171	NR	775	3	NR	905	0	NR
390	1	NR	520	180	NR	650	146	NR	780	2	NR	910	0	NR
395	1	NR	525	195	NR	655	119	NR	785	2	NR	915	0	NR
400	2	NR	530	207	NR	660	99	NR	790	2	NR	920	0	NR
405	3	NR	535	218	NR	665	82	NR	795	2	NR	925	0	NR
410	5	NR	540	227	NR	670	76	NR	800	1	NR	930	0	NR
415	10	NR	545	237	NR	675	61	NR	805	1	NR	935	0	NR
420	20	NR	550	247	NR	680	52	NR	810	1	NR	940	0	NR
425	35	NR	555	259	NR	685	44	NR	815	1	NR	945	0	NR
430	58	NR	560	271	NR	690	38	NR	820	1	NR	950	0	NR
435	90	NR	565	283	NR	695	33	NR	825	1	NR	955	0	NR
440	135	NR	570	293	NR	700	27	NR	830	1	NR	960	0	NR
445	204	NR	575	303	NR	705	24	NR	835	1	NR	965	0	NR
450	233	NR	580	310	NR	710	20	NR	840	0	NR	970	0	NR
455	153	NR	585	313	NR	715	17	NR	845	0	NR	975	0	NR
460	98	NR	590	314	NR	720	15	NR	850	0	NR	980	0	NR
465	76	NR	595	310	NR	725	13	NR	855	0	NR	985	0	NR
470	53	NR	600	307	NR	730	11	NR	860	0	NR	990	0	NR
475	39	NR	605	303	NR	735	9	NR	865	0	NR	995	0	NR
480	35	NR	610	331	NR	740	8	NR	870	0	NR	1000	0	NR
485	36	NR	615	353	NR	745	7	NR	875	0	NR			

REPORT NUMBER: SP1-2506-472-2

Scotopic Flux vs. Wavelength



Scotopic Lumens: NR

S/P: 1.27

λ (nm)	Power W [^] /nm	Lumens (φ/nm)	λ (nm)	Power W [^] /nm	Lumens (φ/nm)	λ (nm)	Power W [^] /nm	Lumens (φ/nm)	λ (nm)	Power W [^] /nm	Lumens (φ/nm)	λ (nm)	Power W [^] /nm	Lumens (φ/nm)
360	0	NR	490	43	NR	620	294	NR	750	6	NR	880	0	NR
365	0	NR	495	59	NR	625	294	NR	755	5	NR	885	0	NR
370	0	NR	500	81	NR	630	1000	NR	760	4	NR	890	0	NR
375	0	NR	505	109	NR	635	637	NR	765	4	NR	895	0	NR
380	0	NR	510	135	NR	640	175	NR	770	3	NR	900	0	NR
385	0	NR	515	160	NR	645	171	NR	775	3	NR	905	0	NR
390	1	NR	520	180	NR	650	146	NR	780	2	NR	910	0	NR
395	1	NR	525	195	NR	655	119	NR	785	2	NR	915	0	NR
400	2	NR	530	207	NR	660	99	NR	790	2	NR	920	0	NR
405	3	NR	535	218	NR	665	82	NR	795	2	NR	925	0	NR
410	5	NR	540	227	NR	670	76	NR	800	1	NR	930	0	NR
415	10	NR	545	237	NR	675	61	NR	805	1	NR	935	0	NR
420	20	NR	550	247	NR	680	52	NR	810	1	NR	940	0	NR
425	35	NR	555	259	NR	685	44	NR	815	1	NR	945	0	NR
430	58	NR	560	271	NR	690	38	NR	820	1	NR	950	0	NR
435	90	NR	565	283	NR	695	33	NR	825	1	NR	955	0	NR
440	135	NR	570	293	NR	700	27	NR	830	1	NR	960	0	NR
445	204	NR	575	303	NR	705	24	NR	835	1	NR	965	0	NR
450	233	NR	580	310	NR	710	20	NR	840	0	NR	970	0	NR
455	153	NR	585	313	NR	715	17	NR	845	0	NR	975	0	NR
460	98	NR	590	314	NR	720	15	NR	850	0	NR	980	0	NR
465	76	NR	595	310	NR	725	13	NR	855	0	NR	985	0	NR
470	53	NR	600	307	NR	730	11	NR	860	0	NR	990	0	NR
475	39	NR	605	303	NR	735	9	NR	865	0	NR	995	0	NR
480	35	NR	610	331	NR	740	8	NR	870	0	NR	1000	0	NR
485	36	NR	615	353	NR	745	7	NR	875	0	NR			

REPORT NUMBER: SP1-2506-472-2

Melanopic Flux vs. Wavelength



Melanopic Lumens: NR

M/P: 2.34

λ (nm)	Power W [^] /nm	Lumens (φ/nm)	λ (nm)	Power W [^] /nm	Lumens (φ/nm)	λ (nm)	Power W [^] /nm	Lumens (φ/nm)	λ (nm)	Power W [^] /nm	Lumens (φ/nm)	λ (nm)	Power W [^] /nm	Lumens (φ/nm)
360	0	NR	490	43	NR	620	294	NR	750	6	NR	880	0	NR
365	0	NR	495	59	NR	625	294	NR	755	5	NR	885	0	NR
370	0	NR	500	81	NR	630	1000	NR	760	4	NR	890	0	NR
375	0	NR	505	109	NR	635	637	NR	765	4	NR	895	0	NR
380	0	NR	510	135	NR	640	175	NR	770	3	NR	900	0	NR
385	0	NR	515	160	NR	645	171	NR	775	3	NR	905	0	NR
390	1	NR	520	180	NR	650	146	NR	780	2	NR	910	0	NR
395	1	NR	525	195	NR	655	119	NR	785	2	NR	915	0	NR
400	2	NR	530	207	NR	660	99	NR	790	2	NR	920	0	NR
405	3	NR	535	218	NR	665	82	NR	795	2	NR	925	0	NR
410	5	NR	540	227	NR	670	76	NR	800	1	NR	930	0	NR
415	10	NR	545	237	NR	675	61	NR	805	1	NR	935	0	NR
420	20	NR	550	247	NR	680	52	NR	810	1	NR	940	0	NR
425	35	NR	555	259	NR	685	44	NR	815	1	NR	945	0	NR
430	58	NR	560	271	NR	690	38	NR	820	1	NR	950	0	NR
435	90	NR	565	283	NR	695	33	NR	825	1	NR	955	0	NR
440	135	NR	570	293	NR	700	27	NR	830	1	NR	960	0	NR
445	204	NR	575	303	NR	705	24	NR	835	1	NR	965	0	NR
450	233	NR	580	310	NR	710	20	NR	840	0	NR	970	0	NR
455	153	NR	585	313	NR	715	17	NR	845	0	NR	975	0	NR
460	98	NR	590	314	NR	720	15	NR	850	0	NR	980	0	NR
465	76	NR	595	310	NR	725	13	NR	855	0	NR	985	0	NR
470	53	NR	600	307	NR	730	11	NR	860	0	NR	990	0	NR
475	39	NR	605	303	NR	735	9	NR	865	0	NR	995	0	NR
480	35	NR	610	331	NR	740	8	NR	870	0	NR	1000	0	NR
485	36	NR	615	353	NR	745	7	NR	875	0	NR			

Summary

$R_f = 81.2$
 $R_g = 101.5$
 CIE $R_a = 83.4$
 $R_9 = 29.4$



Color Vector Graphics

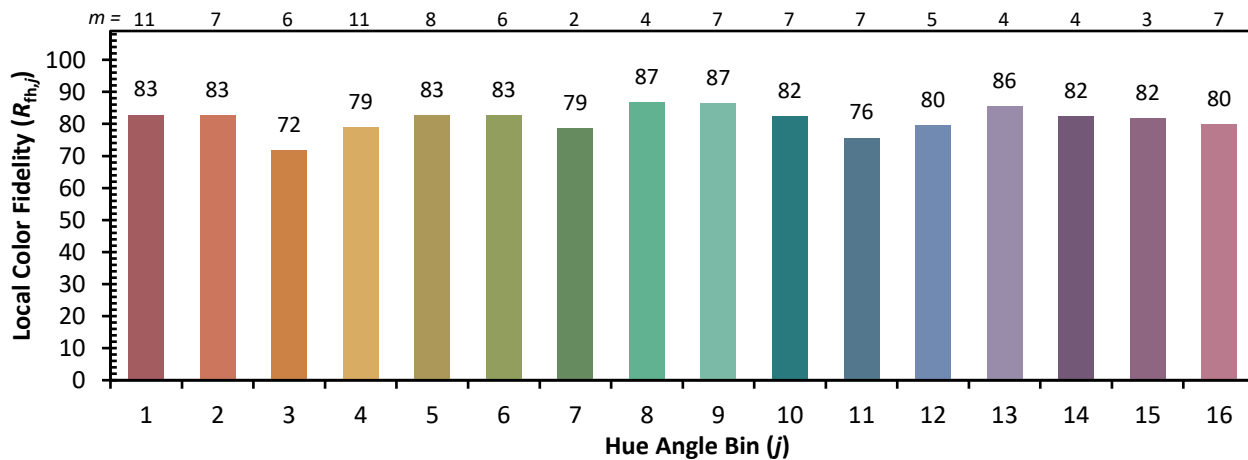
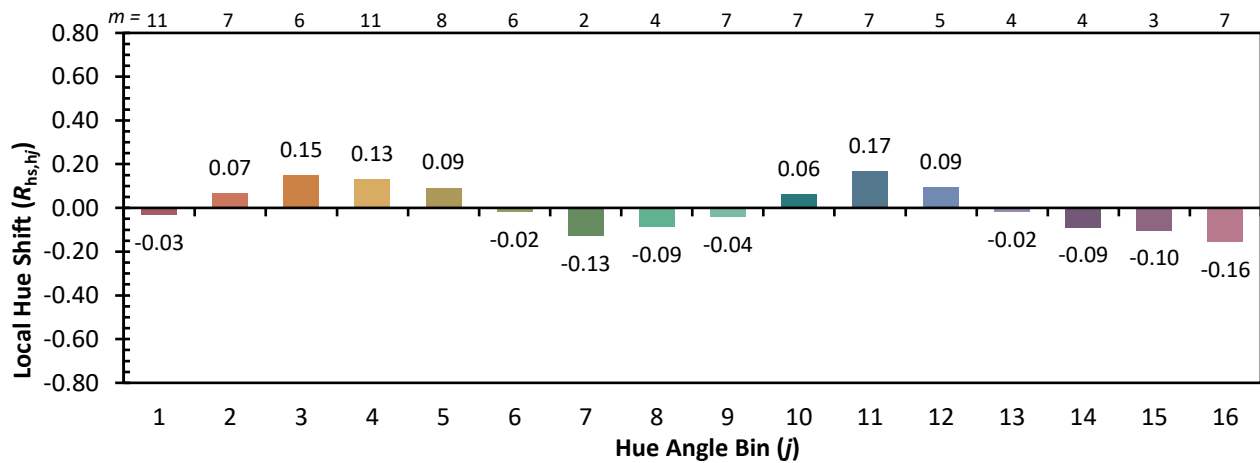
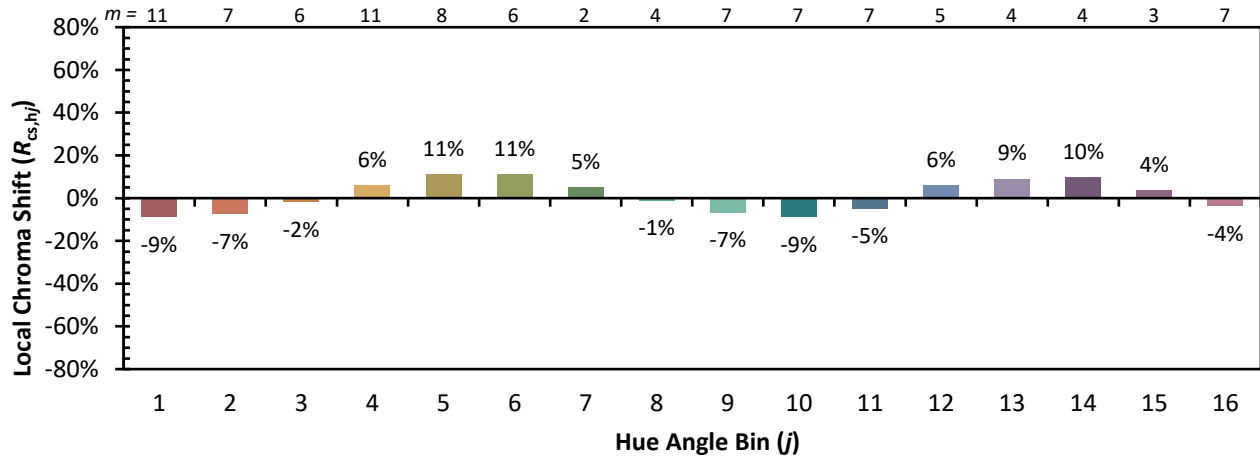


Individual Sample Fidelity Index ($R_{f,i}$)

CES01 = 86	CES26 = 71	CES51 = 89	CES76 = 65
CES02 = 63	CES27 = 89	CES52 = 89	CES77 = 82
CES03 = 31	CES28 = 86	CES53 = 80	CES78 = 67
CES04 = 70	CES29 = 68	CES54 = 92	CES79 = 89
CES05 = 50	CES30 = 77	CES55 = 90	CES80 = 85
CES06 = 51	CES31 = 70	CES56 = 81	CES81 = 75
CES07 = 43	CES32 = 64	CES57 = 79	CES82 = 93
CES08 = 41	CES33 = 74	CES58 = 81	CES83 = 89
CES09 = 29	CES34 = 76	CES59 = 92	CES84 = 91
CES10 = 76	CES35 = 87	CES60 = 96	CES85 = 81
CES11 = 59	CES36 = 99	CES61 = 91	CES86 = 74
CES12 = 65	CES37 = 81	CES62 = 93	CES87 = 83
CES13 = 44	CES38 = 83	CES63 = 79	CES88 = 86
CES14 = 74	CES39 = 94	CES64 = 81	CES89 = 74
CES15 = 72	CES40 = 89	CES65 = 78	CES90 = 85
CES16 = 48	CES41 = 88	CES66 = 76	CES91 = 87
CES17 = 50	CES42 = 80	CES67 = 74	CES92 = 73
CES18 = 57	CES43 = 75	CES68 = 79	CES93 = 84
CES19 = 72	CES44 = 99	CES69 = 83	CES94 = 64
CES20 = 67	CES45 = 83	CES70 = 72	CES95 = 80
CES21 = 87	CES46 = 82	CES71 = 70	CES96 = 86
CES22 = 79	CES47 = 79	CES72 = 90	CES97 = 85
CES23 = 92	CES48 = 78	CES73 = 65	CES98 = 83
CES24 = 91	CES49 = 79	CES74 = 94	CES99 = 82
CES25 = 72	CES50 = 88	CES75 = 70	



Color Rendition by Hue-Angle Bin



Measure Comparisons



(END OF REPORT)