

Cooper Lighting Solutions Photometric Lab  
1121 Highway 74 South  
Peachtree City, GA 30269



Scaled data based on original data using  
LM-79-2019 Approved Method: Electrical and Photometric Measurements of Solid-  
State Lighting Products

Test Report Prepared for  
Cooper Lighting Solutions

Brand: METALUX

Report Number: P1444473

Luminaire Tested: EHBR1-42-UNV-TA-L830

Issue Date: 5/1/2026

**Test Information**

Test Method: LM-79-2019  
Report Number: P1444473  
TEST IS SCALED FROM IESNA LM-79-08 TEST DATA ( C80-8019A)  
Test Lab: INNOVATION CENTER  
Issue Date: 5/1/2026  
Manufacturer: COOPER LIGHTING SOLUTIONS  
Product Line: METALUX  
Catalog Number: EHBR1-42-UNV-TA-L830  
Description: Elevate Round Highbay at, 42000 lumens, 3000K 80CRI LEDs with TA lens  
Light Source: -  
Ballast/Driver: -

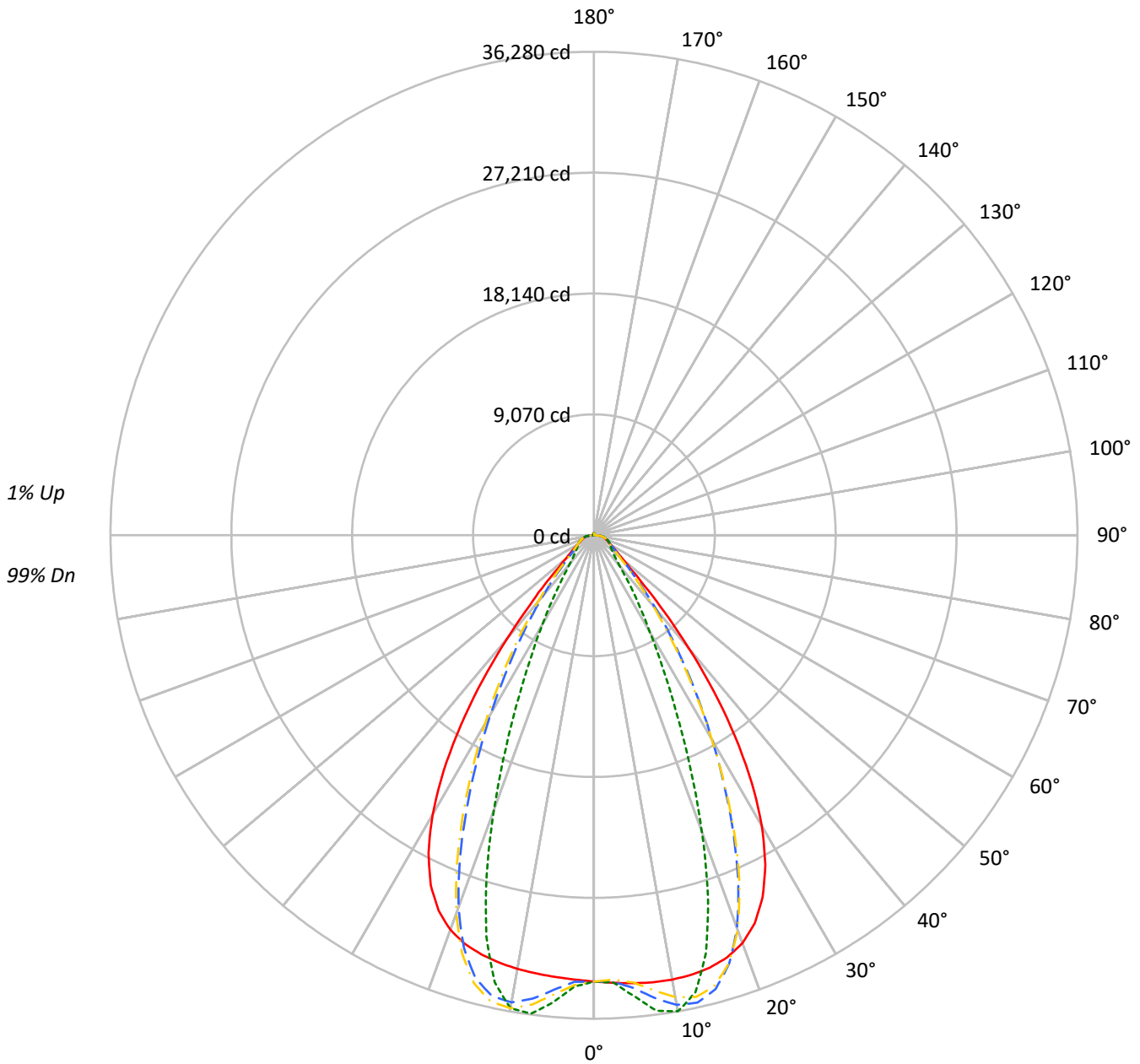
**Summary**

Lumens per Lamp: N/A  
Luminaire Lumens: 38772.2 lumens  
Efficiency: N/A  
Efficacy: 172.8 lumens/watt  
Spacing Criteria (0/90/45): 1.13 / 0.77 / 0.88  
Luminous Opening: Circular (Dia: 1.71' x H: 0')  
CIE Type: Direct

Input Watts (W): 224.4  
Input Voltage (V): NR  
Input Current (Ain): NR  
Voltage Rise (V): NR  
Power Factor: NR  
Total Harmonic Distortion (THDi): NR  
Frequency (hertz): 60  
Stabilization Time: NR  
Operation Time: NR  
Ambient Temperature (°C): NR  
Test Distance: 24 FT

TEST NUMBER: P1444473  
CATALOG NUMBER: EHBR1-42-UNV-TA-L830

### Luminous Intensity Polar Plot



— 0°-180°    - - 45°-225°    ··· 90°-270°    - · 135°-315°



TEST NUMBER: P1444473  
 CATALOG NUMBER: EHBR1-42-UNV-TA-L830

**COEFFICIENT OF UTILIZATION - ZONAL CAVITY METHOD:**

RF	20				20				20				20				20				20
RC	80				70				50				30				10				0
RW	70	50	30	10	70	50	30	10	50	30	10	50	30	10	50	30	10	50	30	10	0
RCR																					
0	119	119	119	119	116	116	116	116	111	111	111	106	106	106	101	101	101	99			
1	112	108	105	103	109	106	103	101	102	100	98	98	96	95	94	93	92	90			
2	105	99	94	90	103	97	93	89	94	90	87	91	88	85	88	85	83	81			
3	99	91	85	81	97	90	84	80	87	82	79	84	81	77	82	79	76	74			
4	93	84	78	73	91	83	77	73	81	76	72	79	74	71	77	73	70	68			
5	88	78	72	67	86	77	71	66	75	70	66	73	69	65	72	68	64	63			
6	83	73	66	61	81	72	66	61	70	65	60	69	64	60	67	63	60	58			
7	78	68	61	57	77	67	61	56	66	60	56	65	59	56	63	59	55	54			
8	74	64	57	53	73	63	57	52	62	56	52	61	56	52	60	55	52	50			
9	70	60	53	49	69	59	53	49	58	53	49	57	52	48	56	52	48	47			
10	67	56	50	46	66	56	50	46	55	49	46	54	49	45	53	49	45	44			

**AVERAGE LUMINANCE (cd/sqm):**

	0°	90°	180°	270°
0°	157268	157268	157268	157268
5°	159060	163699	156834	165843
10°	161443	173002	157572	171857
15°	163329	157882	158356	151524
20°	162774	118441	157447	109587
25°	155216	75464	150087	68470
30°	136677	45711	131384	41776
35°	106111	28936	100008	25632
40°	67785	18329	62018	17224
45°	35332	14441	34747	14203
50°	20991	13015	20347	12812
55°	16340	12513	15736	12401
60°	14110	13045	13510	12876
65°	13613	13993	13092	13515
70°	13816	15220	13128	14646
75°	15671	17123	14826	16368
80°	18052	21108	16367	19269
85°	22129	26510	17883	22695

**MAXIMUM LUMINANCE 45°-90°:**

Horizontal Angle: 25°  
 Vertical Angle: 45°  
 Luminance: 54071 cd/sqm



TEST NUMBER: P1444473  
 CATALOG NUMBER: EHBR1-42-UNV-TA-L830

**ZONAL LUMENS:**

Zone	Lumens	% Fixture
0°-10°	3300.4	8.5
10°-20°	9284.5	23.9
20°-30°	10574.3	27.3
30°-40°	7600.3	19.6
40°-50°	3505.3	9.0
50°-60°	1677.4	4.3
60°-70°	1223.9	3.2
70°-80°	929.8	2.4
80°-90°	422.9	1.1
90°-100°	13.7	0.0
100°-110°	9.9	0.0
110°-120°	16.9	0.0
120°-130°	28.3	0.1
130°-140°	41.6	0.1
140°-150°	49.5	0.1
150°-160°	46.6	0.1
160°-170°	34.0	0.1
170°-180°	12.9	0.0
0°-30°	23159.2	59.7
0°-40°	30759.5	79.3
0°-60°	35942.1	92.7
0°-90°	38518.8	99.3
90°-120°	40.5	0.1
90°-150°	160.0	0.4
90°-180°	253.0	0.7
0°-180°	38772.2	100.0

**CANDELA DISTRIBUTION:**

	0°	90°	180°	270°	360°	Flux
0°	33489	33489	33489	33489	33489	
5°	33742	34726	33270	35181	33742	3224
15°	33595	32474	32572	31167	33595	9465
25°	29956	14564	28966	13214	29956	13579
35°	18509	5047	17445	4471	18509	11360
45°	5320	2174	5232	2139	5320	4525
55°	1996	1528	1922	1515	1996	1842
65°	1225	1259	1178	1216	1225	1224
75°	864	944	817	902	864	898
85°	411	492	332	421	411	386
90°	93	123	14	21	93	61
95°	6	5	6	6	6	5
105°	10	8	11	8	10	11
115°	22	11	23	11	22	22
125°	42	19	44	20	42	38
135°	68	37	70	40	68	52
145°	90	66	92	71	90	56
155°	105	95	108	99	105	49
165°	124	116	126	119	124	35
175°	137	136	138	137	137	13
180°	139	139	139	139	139	



TEST NUMBER: P1444473  
 CATALOG NUMBER: EHBR1-42-UNV-TA-L830

**CANDELA DISTRIBUTION (FULL):**

	0°	2.5°	5°	7.5°	10°	12.5°	15°	17.5°	20°	22.5°	25°
0°	33489.2	33489.2	33489.2	33489.2	33489.2	33489.2	33489.2	33489.2	33489.2	33489.2	33489.2
2.5°	33617.2	33614.5	33613.9	33611.5	33610.9	33610.9	33609.8	33607.1	33605.4	33601.5	33597.1
5°	33741.8	33740.3	33741.3	33741.5	33739.1	33733.9	33725.7	33715.7	33703.1	33691.1	33680.4
7.5°	33838.3	33840.7	33843.7	33843.0	33835.7	33823.4	33806.7	33797.2	33802.8	33821.1	33862.8
10°	33855.9	33870.4	33875.9	33874.2	33859.5	33849.0	33853.1	33888.5	33959.2	34053.4	34182.2
12.5°	33787.3	33804.9	33804.3	33798.4	33784.3	33798.7	33850.1	33955.7	34107.2	34292.9	34510.9
15°	33594.6	33617.4	33610.9	33603.4	33593.9	33641.2	33743.8	33927.3	34161.1	34423.1	34691.4
17.5°	33220.4	33247.9	33234.5	33225.9	33217.9	33306.6	33482.9	33751.6	34046.1	34342.5	34596.7
20°	32571.2	32589.7	32557.8	32542.8	32555.5	32729.1	32988.8	33331.9	33642.4	33922.6	34096.4
22.5°	31511.9	31534.9	31474.9	31468.0	31541.9	31808.7	32137.4	32520.8	32812.5	33034.6	33101.6
25°	29955.5	29978.1	29906.9	29949.4	30075.3	30438.5	30830.0	31240.2	31489.1	31653.6	31608.2
27.5°	27854.7	27875.3	27807.8	27894.7	28093.7	28571.0	29031.7	29476.6	29698.4	29813.8	29667.7
30°	25205.2	25248.1	25168.2	25289.5	25593.2	26213.0	26740.8	27239.8	27460.9	27548.7	27321.3
32.5°	22058.5	22119.3	22031.4	22211.8	22635.6	23380.0	23979.7	24537.2	24781.8	24881.9	24625.1
35°	18509.3	18596.7	18495.7	18766.6	19289.2	20118.2	20782.2	21404.6	21694.3	21836.3	21577.5
37.5°	14749.0	14832.3	14777.7	15139.0	15712.9	16572.2	17250.0	17921.5	18248.6	18461.7	18257.7
40°	11057.4	11133.6	11174.9	11588.1	12127.9	12937.7	13588.7	14253.1	14619.1	14886.6	14760.8
42.5°	7804.4	7881.2	8021.7	8420.4	8870.4	9540.8	10098.5	10695.0	11044.6	11330.0	11281.4
45°	5320.0	5409.3	5585.3	5911.8	6237.3	6718.2	7127.7	7591.7	7877.2	8138.6	8141.7
47.5°	3728.0	3790.7	3947.9	4170.9	4383.1	4985.2	5009.9	5237.9	5429.9	5625.2	5650.6
50°	2873.2	2910.8	2994.3	3118.5	3238.8	3395.0	3538.1	3703.4	3821.5	3928.7	3954.2
52.5°	2361.5	2385.5	2427.9	2495.2	2565.0	2649.9	2726.6	2817.2	2881.6	2938.9	2950.9
55°	1995.8	2015.7	2078.9	2091.7	2171.5	2186.9	2220.9	2276.1	2313.5	2347.9	2356.5
57.5°	1720.0	1734.4	1747.8	1776.5	1801.0	1836.8	1865.5	1905.2	1928.8	1953.6	1955.7
60°	1502.3	1512.7	1522.2	1542.1	1558.9	1583.7	1603.6	1630.5	1647.4	1666.0	1668.1
62.5°	1340.3	1347.7	1354.1	1367.2	1379.2	1398.3	1414.1	1436.5	1452.3	1466.7	1469.9
65°	1225.1	1230.6	1234.7	1244.6	1255.1	1271.3	1285.5	1304.0	1315.5	1326.6	1328.9
67.5°	1123.1	1128.4	1132.6	1141.6	1148.8	1161.0	1170.5	1184.3	1193.0	1201.8	1202.1
70°	1006.2	1011.1	1014.3	1022.7	1028.5	1039.0	1046.7	1059.0	1068.0	1077.8	1080.3
72.5°	925.3	928.1	932.5	940.2	948.2	959.4	969.7	982.6	993.4	1003.6	1007.9
75°	863.7	867.1	869.9	876.5	882.1	891.6	899.2	911.0	920.4	931.4	936.7
77.5°	774.8	778.7	781.2	787.8	792.6	801.6	807.3	817.9	825.6	835.5	840.4
80°	667.5	671.1	672.8	679.0	682.9	691.2	696.8	706.9	713.4	723.3	729.1
82.5°	548.4	551.9	552.9	558.7	560.9	567.7	571.8	582.3	590.1	603.1	612.0
85°	410.7	412.0	413.9	412.4	420.8	421.2	430.7	432.4	444.8	448.0	462.2
87.5°	251.0	254.8	256.7	262.4	264.9	270.6	272.3	278.4	281.8	288.7	291.9
90°	92.9	97.8	98.8	104.6	105.5	110.6	111.1	116.9	117.9	124.0	125.0
92.5°	5.6	5.6	5.4	5.8	5.8	6.6	6.9	7.2	7.3	8.0	8.1
95°	5.7	5.7	5.7	5.7	5.7	5.7	5.7	5.7	5.7	5.7	5.6
97.5°	6.5	6.5	6.5	6.5	6.5	6.5	6.5	6.5	6.5	6.4	6.4
100°	7.3	7.3	7.3	7.3	7.3	7.3	7.3	7.3	7.3	7.3	7.2
102.5°	8.7	8.7	8.7	8.7	8.7	8.5	8.7	8.5	8.5	8.5	8.3
105°	10.3	10.2	10.3	10.2	10.2	10.2	10.2	9.9	9.9	9.8	9.8
107.5°	12.3	12.2	12.2	12.2	12.2	12.1	12.1	11.9	11.8	11.5	11.5
110°	15.0	14.8	14.8	14.6	14.5	14.5	14.4	14.1	14.1	13.8	13.7



TEST NUMBER: P1444473  
 CATALOG NUMBER: EHBR1-42-UNV-TA-L830

**CANDELA DISTRIBUTION (continued):**

	0°	2.5°	5°	7.5°	10°	12.5°	15°	17.5°	20°	22.5°	25°
112.5°	18.3	18.0	17.9	17.7	17.6	17.2	17.1	16.9	16.8	16.4	16.1
115°	22.0	21.7	21.6	21.3	21.1	20.7	20.5	20.1	19.9	19.4	19.1
117.5°	26.4	26.0	25.9	25.6	25.1	24.7	24.4	23.8	23.3	22.9	22.5
120°	31.4	30.9	30.6	30.1	29.7	29.0	28.7	28.0	27.4	26.7	26.3
122.5°	36.7	36.3	36.0	35.2	34.8	34.0	33.5	32.5	32.0	31.3	30.5
125°	42.5	42.0	41.7	40.9	40.2	39.4	38.7	37.8	37.1	36.2	35.4
127.5°	48.6	48.1	47.7	46.8	46.1	45.1	44.3	43.3	42.5	41.3	40.6
130°	55.0	54.5	53.9	53.0	52.3	51.2	50.3	49.2	48.2	47.0	46.1
132.5°	61.4	61.0	60.3	59.5	58.5	57.3	56.5	55.1	54.1	53.0	51.9
135°	67.9	67.2	66.7	65.8	64.9	63.7	62.6	61.4	60.2	58.8	57.8
137.5°	74.0	73.3	72.7	71.8	70.9	69.5	68.5	67.2	66.0	64.6	63.5
140°	79.8	79.2	78.4	77.5	76.6	75.5	74.2	73.0	71.8	70.3	69.4
142.5°	85.2	84.5	83.9	82.9	82.1	80.8	79.7	78.3	77.2	75.9	74.8
145°	90.0	89.4	88.7	87.9	86.9	85.6	84.7	83.3	82.2	81.0	79.9
147.5°	94.3	93.7	93.2	92.4	91.6	90.4	89.4	88.1	87.1	86.0	85.1
150°	98.2	97.7	97.1	96.5	95.5	94.6	93.6	92.5	91.6	90.5	89.6
152.5°	101.4	100.8	100.4	99.7	98.9	97.8	97.1	96.1	95.2	94.2	93.3
155°	105.3	104.6	104.0	103.4	102.7	101.8	100.9	100.0	99.3	98.3	97.5
157.5°	109.5	108.8	108.2	107.3	106.9	106.0	105.3	104.3	103.6	102.9	102.1
160°	114.1	113.4	112.8	112.0	111.4	110.4	109.9	108.9	108.5	107.6	107.0
162.5°	118.9	118.1	117.6	116.8	116.2	115.3	114.7	114.1	113.4	112.6	111.9
165°	123.5	123.0	122.3	121.8	121.1	120.6	119.9	119.1	118.5	117.7	117.3
167.5°	128.0	127.5	127.1	126.5	125.9	125.3	124.8	124.1	123.7	123.0	122.5
170°	131.8	131.2	130.9	130.5	129.9	129.5	129.1	128.6	128.0	127.6	127.2
172.5°	134.5	134.0	133.8	133.6	133.0	132.8	132.5	132.1	131.8	131.3	131.2
175°	136.7	136.3	136.2	135.9	135.6	135.4	135.3	135.1	135.1	134.7	134.4
177.5°	138.0	137.9	137.9	137.8	137.8	137.6	137.5	137.2	137.1	137.1	137.0
180°	138.9	138.9	138.9	138.9	138.9	138.9	138.9	138.9	138.9	138.9	138.9



TEST NUMBER: P1444473  
 CATALOG NUMBER: EHBR1-42-UNV-TA-L830

**CANDELA DISTRIBUTION (continued):**

	27.5°	30°	32.5°	35°	37.5°	40°	42.5°	45°	47.5°	50°	52.5°
0°	33489.2	33489.2	33489.2	33489.2	33489.2	33489.2	33489.2	33489.2	33489.2	33489.2	33489.2
2.5°	33593.9	33589.8	33584.3	33577.2	33571.1	33564.1	33547.3	33542.3	33547.9	33551.6	33559.3
5°	33673.7	33676.1	33676.9	33692.2	33705.4	33738.3	33996.0	34098.4	34177.5	34227.8	34304.2
7.5°	33914.4	33991.9	34068.4	34171.4	34260.3	34380.3	34831.1	35023.0	35159.4	35257.4	35378.1
10°	34322.2	34491.3	34649.8	34835.5	34995.1	35177.9	35597.6	35784.4	35902.5	35988.4	36068.5
12.5°	34733.1	34967.5	35179.4	35386.1	35558.8	35717.3	35864.9	35930.3	35935.8	35938.6	35896.0
15°	34947.0	35171.2	35357.9	35494.5	35596.1	35640.9	35386.9	35253.6	35085.2	34946.5	34718.2
17.5°	34812.0	34946.5	35027.1	35019.1	34977.2	34836.7	34117.1	33721.2	33328.3	32974.2	32509.9
20°	34211.6	34201.3	34131.2	33932.6	33693.1	33320.8	32087.1	31375.3	30687.1	30082.6	29349.3
22.5°	33094.8	32918.9	32674.0	32245.5	31769.6	31119.1	29351.0	28304.1	27346.0	26499.7	25551.5
25°	31476.4	31114.8	30663.0	29982.8	29243.1	28294.3	26115.3	24812.9	23662.7	22665.0	21571.0
27.5°	29405.3	28860.7	28198.4	27257.0	26254.9	25039.4	22623.6	21186.3	19951.4	18881.8	17717.6
30°	26953.3	26245.0	25389.8	24221.4	23012.6	21634.1	19183.8	17728.1	16478.2	15377.9	14212.7
32.5°	24182.3	23352.7	22350.6	21039.2	19732.1	18314.6	15948.3	14539.2	13345.2	12286.6	11232.0
35°	21126.1	20236.5	19176.2	17838.7	16539.3	15161.3	12990.0	11719.4	10665.1	9729.4	8877.8
37.5°	17847.7	16974.2	15966.5	14705.9	13501.0	12252.2	10378.7	9314.1	8429.3	7652.6	6995.2
40°	14439.2	13674.7	12802.8	11713.0	10684.7	9644.7	8106.8	7261.7	6563.4	5971.1	5478.4
42.5°	11072.3	10479.9	9811.3	8950.1	8163.1	7371.3	6187.6	5561.4	5044.3	4618.0	4269.5
45°	8033.3	7637.1	7188.6	6589.8	6045.4	5493.0	4650.6	4210.6	3873.8	3598.8	3366.3
47.5°	5615.7	5385.8	5371.8	4818.5	4419.2	4081.5	3538.8	3260.9	3054.5	2887.9	2740.7
50°	3943.7	3832.5	3694.4	3496.9	3311.6	3120.7	2790.1	2622.0	2501.2	2400.2	2307.2
52.5°	2948.2	2890.5	2816.9	2712.1	2611.7	2504.4	2295.1	2188.2	2150.1	2056.2	1982.5
55°	2354.8	2321.7	2279.9	2218.3	2157.2	2132.8	1953.4	1874.0	1823.8	1786.7	1747.1
57.5°	1956.0	1931.3	1906.5	1864.8	1829.5	1786.7	1691.4	1650.8	1620.8	1599.0	1571.5
60°	1668.5	1653.7	1639.8	1615.4	1596.2	1573.2	1512.7	1489.7	1474.1	1461.0	1443.5
62.5°	1472.6	1465.0	1457.9	1444.8	1435.1	1422.6	1381.3	1370.2	1362.4	1355.8	1345.1
65°	1331.3	1325.8	1321.8	1313.2	1308.3	1301.0	1265.5	1258.0	1253.2	1250.8	1244.6
67.5°	1202.8	1197.1	1194.5	1188.3	1186.2	1181.7	1152.6	1148.6	1146.9	1147.7	1145.5
70°	1082.6	1080.3	1081.5	1080.6	1083.3	1084.1	1066.5	1066.3	1068.2	1072.0	1072.3
72.5°	1010.7	1010.7	1012.0	1012.7	1015.3	1016.5	1001.8	1001.2	1002.0	1004.7	1004.8
75°	942.1	943.3	947.0	948.2	951.3	952.0	932.6	930.3	930.5	933.1	932.2
77.5°	847.3	851.5	858.5	862.2	868.1	869.3	847.5	845.0	845.1	847.7	845.5
80°	739.7	747.6	758.8	766.7	775.9	779.5	757.2	751.9	746.9	746.2	741.7
82.5°	625.4	635.0	648.5	655.6	665.3	667.6	630.2	623.2	619.0	619.4	615.2
85°	477.4	484.7	496.9	501.0	507.0	506.5	463.9	445.6	450.4	442.9	448.8
87.5°	299.5	303.7	311.4	312.4	315.3	314.6	271.6	263.2	260.8	260.9	257.8
90°	130.7	132.3	137.8	136.7	139.9	138.0	102.0	96.9	94.8	97.5	94.3
92.5°	8.5	8.5	8.9	9.1	9.5	9.6	6.0	5.0	5.3	5.1	5.6
95°	5.6	5.6	5.6	5.6	5.6	5.6	5.6	5.6	5.6	5.4	5.4
97.5°	6.4	6.4	6.2	6.2	6.2	6.2	6.2	6.2	6.2	6.0	6.0
100°	7.2	7.2	7.1	7.1	6.9	6.9	6.9	6.9	6.9	6.7	6.7
102.5°	8.1	8.1	8.1	8.0	7.8	7.8	8.0	8.0	7.8	7.6	7.5
105°	9.6	9.6	9.5	9.1	8.9	8.8	9.1	8.9	8.8	8.7	8.5
107.5°	11.3	11.1	10.8	10.6	10.4	10.2	10.6	10.4	10.2	9.8	9.6
110°	13.4	13.0	12.7	12.5	12.1	11.8	12.3	12.1	11.8	11.4	11.1



TEST NUMBER: P1444473  
 CATALOG NUMBER: EHBR1-42-UNV-TA-L830

**CANDELA DISTRIBUTION (continued):**

	27.5°	30°	32.5°	35°	37.5°	40°	42.5°	45°	47.5°	50°	52.5°
112.5°	15.6	15.4	15.0	14.5	14.1	13.7	14.4	14.2	13.8	13.1	12.9
115°	18.5	18.3	17.6	17.1	16.7	16.0	16.9	16.8	16.1	15.5	15.0
117.5°	21.8	21.3	20.7	20.1	19.4	18.7	20.0	19.6	18.8	18.3	17.6
120°	25.6	24.9	24.2	23.6	22.7	22.0	23.3	23.0	22.4	21.5	20.7
122.5°	29.8	29.0	28.2	27.4	26.6	25.7	27.4	27.1	26.0	25.2	24.4
125°	34.5	33.6	32.8	31.9	30.8	29.9	31.9	31.4	30.5	29.5	28.7
127.5°	39.6	38.7	37.7	36.9	35.6	34.8	36.7	36.3	35.4	34.4	33.3
130°	45.1	44.0	42.9	42.0	40.9	40.0	42.1	41.9	40.8	39.6	38.6
132.5°	50.8	49.7	48.5	47.7	46.6	45.4	47.8	47.5	46.6	45.4	44.4
135°	56.6	55.6	54.5	53.4	52.3	51.4	54.0	53.8	52.8	51.6	50.7
137.5°	62.3	61.4	60.2	59.3	58.2	57.2	60.3	60.2	59.3	58.1	57.2
140°	68.3	67.2	66.1	65.3	64.2	63.4	66.7	66.7	65.9	64.9	63.9
142.5°	73.6	72.7	71.8	71.0	70.0	69.2	73.0	73.1	72.3	71.4	70.6
145°	78.8	78.0	77.1	76.3	75.5	74.8	79.1	79.4	78.8	77.9	77.2
147.5°	83.9	83.2	82.2	81.6	80.8	80.5	85.1	85.6	85.1	84.4	83.7
150°	88.6	87.9	87.0	86.4	85.9	85.4	91.0	91.9	91.3	90.9	90.2
152.5°	92.5	91.7	91.0	90.4	89.7	89.4	96.6	97.8	97.4	96.9	96.5
155°	96.9	96.1	95.4	94.8	94.2	94.0	102.1	103.6	103.2	102.9	102.4
157.5°	101.4	100.7	99.9	99.4	98.9	98.4	107.3	109.3	108.8	108.5	108.1
160°	106.2	105.7	104.9	104.3	103.8	103.2	112.7	114.6	114.3	113.8	113.4
162.5°	111.2	110.8	110.1	109.5	108.8	108.5	117.7	119.9	119.4	119.1	118.7
165°	116.7	116.1	115.4	115.0	114.5	114.1	123.0	124.9	124.6	124.1	123.7
167.5°	121.9	121.5	120.9	120.6	120.0	119.8	128.0	129.8	129.5	129.1	128.8
170°	126.7	126.5	126.0	125.7	125.5	125.3	132.3	133.8	133.7	133.2	132.9
172.5°	130.9	130.7	130.5	130.2	129.9	129.8	135.6	137.0	136.9	136.7	136.3
175°	134.3	134.0	133.9	133.9	133.8	133.7	138.3	139.3	139.1	138.9	138.6
177.5°	137.0	136.9	136.9	136.9	136.9	136.9	139.7	140.2	140.1	140.1	140.0
180°	138.9	138.9	138.9	138.9	138.9	138.9	138.9	138.9	138.9	138.9	138.9



TEST NUMBER: P1444473  
 CATALOG NUMBER: EHBR1-42-UNV-TA-L830

**CANDELA DISTRIBUTION (continued):**

	55°	57.5°	60°	62.5°	65°	67.5°	70°	72.5°	75°	77.5°	80°
0°	33489.2	33489.2	33489.2	33489.2	33489.2	33489.2	33489.2	33489.2	33489.2	33489.2	33489.2
2.5°	33561.1	33572.9	33574.5	33588.3	33587.2	33603.6	33601.0	33614.5	33606.6	33617.6	33608.4
5°	34349.3	34420.8	34458.1	34527.9	34549.9	34612.4	34630.0	34687.0	34689.3	34734.6	34724.3
7.5°	35463.7	35569.1	35631.7	35717.9	35761.6	35833.4	35865.1	35918.2	35935.3	35977.6	35980.8
10°	36129.2	36180.4	36216.1	36240.1	36262.2	36272.5	36284.4	36281.3	36284.4	36279.8	36290.1
12.5°	35867.4	35792.8	35743.3	35649.7	35595.5	35492.2	35441.4	35341.9	35305.9	35220.4	35208.2
15°	34541.8	34281.4	34097.4	33829.9	33661.7	33398.4	33244.5	33007.0	32898.5	32709.8	32660.2
17.5°	32125.6	31642.2	31268.2	30788.3	30455.3	30006.9	29724.9	29353.6	29150.4	28851.0	28747.4
20°	28738.0	28022.9	27461.8	26793.4	26315.1	25719.1	25337.6	24856.3	24577.0	24209.3	24060.3
22.5°	24761.1	23870.6	23169.9	22380.3	21803.1	21139.0	20681.9	20161.3	19857.3	19457.9	19281.0
25°	20661.9	19680.1	18901.0	18069.0	17459.2	16793.5	16336.3	15824.8	15510.3	15131.1	14955.3
27.5°	16741.5	15747.6	14994.6	14221.2	13661.8	13061.1	12648.6	12201.9	11922.8	11599.2	11433.8
30°	13281.8	12405.1	11764.5	11122.6	10657.2	10169.4	9826.5	9456.5	9211.6	8934.4	8776.9
32.5°	10463.1	9786.4	9284.7	8775.3	8394.5	7986.8	7690.6	7364.0	7143.0	6895.5	6752.8
35°	8286.7	7760.8	7360.7	6941.4	6614.2	6267.0	6005.9	5724.0	5525.7	5312.6	5189.5
37.5°	6547.3	6129.2	5799.9	5451.6	5182.9	4895.2	4798.3	4474.8	4269.3	4099.2	3981.5
40°	5138.3	4805.9	4533.4	4267.1	4047.9	3829.7	3654.6	3481.8	3349.1	3227.5	3143.3
42.5°	4012.7	3771.8	3572.8	3377.7	3217.8	3058.8	2932.0	2812.9	2723.6	2644.0	2589.8
45°	3189.9	3024.2	2885.9	2748.5	2635.7	2529.6	2444.2	2368.3	2310.5	2262.7	2228.9
47.5°	2620.5	2507.1	2409.6	2316.9	2240.2	2170.7	2113.6	2094.9	2032.8	1991.1	1975.1
50°	2227.1	2158.6	2084.6	2016.1	1965.0	1914.1	1877.0	1840.6	1817.4	1798.2	1792.3
52.5°	1933.5	1881.1	1839.9	1796.6	1762.8	1726.5	1701.0	1676.8	1664.0	1653.9	1652.7
55°	1715.1	1678.5	1651.2	1622.2	1602.0	1580.7	1567.5	1554.7	1549.0	1544.0	1544.4
57.5°	1550.0	1525.5	1507.7	1488.9	1477.9	1467.8	1464.5	1461.2	1463.0	1463.7	1466.5
60°	1429.5	1413.7	1402.5	1391.7	1387.1	1383.9	1386.3	1389.2	1395.0	1399.7	1404.0
62.5°	1337.3	1328.3	1322.8	1317.0	1316.5	1316.7	1321.7	1326.6	1333.9	1339.3	1343.4
65°	1242.4	1237.2	1235.4	1231.7	1233.6	1234.7	1240.7	1244.4	1251.7	1256.0	1261.3
67.5°	1146.4	1145.2	1146.3	1146.3	1149.7	1152.5	1158.2	1162.5	1168.6	1172.7	1176.9
70°	1075.6	1076.1	1078.7	1079.2	1082.7	1084.8	1089.8	1092.5	1098.0	1101.4	1106.4
72.5°	1006.7	1005.6	1006.2	1004.6	1005.8	1005.4	1008.1	1009.4	1014.2	1016.7	1023.0
75°	933.3	930.2	929.5	926.1	926.3	923.9	925.0	924.9	928.0	929.2	933.7
77.5°	844.7	839.5	837.0	831.4	831.3	829.2	831.4	832.8	838.3	840.9	845.9
80°	738.7	730.5	726.8	720.3	721.5	721.1	726.6	730.6	737.4	738.6	745.1
82.5°	614.0	605.7	601.7	595.4	596.9	597.0	601.9	602.9	608.7	611.1	618.6
85°	439.6	442.9	434.1	434.6	432.8	436.2	439.6	443.8	448.7	456.7	462.9
87.5°	258.9	257.8	260.9	261.2	265.7	268.1	275.3	279.4	287.5	293.8	305.2
90°	95.5	92.5	95.9	95.5	100.9	100.7	105.4	104.2	109.7	111.0	117.9
92.5°	5.1	5.4	5.1	5.3	5.1	5.6	5.1	5.4	5.1	5.6	5.1
95°	5.4	5.4	5.4	5.4	5.4	5.4	5.4	5.4	5.4	5.4	5.4
97.5°	6.0	6.0	6.0	5.8	5.8	5.8	5.8	5.8	5.8	5.8	5.8
100°	6.6	6.6	6.6	6.5	6.5	6.5	6.5	6.5	6.5	6.5	6.5
102.5°	7.5	7.3	7.3	7.2	7.2	7.1	7.1	7.1	7.1	7.1	7.1
105°	8.3	8.1	8.1	8.0	8.0	7.8	7.8	7.6	7.6	7.6	7.6
107.5°	9.5	9.2	9.1	8.9	8.8	8.7	8.5	8.5	8.3	8.3	8.3
110°	10.7	10.4	10.3	9.9	9.8	9.6	9.5	9.5	9.2	9.1	9.1



TEST NUMBER: P1444473  
 CATALOG NUMBER: EHBR1-42-UNV-TA-L830

**CANDELA DISTRIBUTION (continued):**

	55°	57.5°	60°	62.5°	65°	67.5°	70°	72.5°	75°	77.5°	80°
112.5°	12.5	12.1	11.5	11.3	11.1	10.7	10.6	10.4	10.3	10.2	9.9
115°	14.4	13.9	13.4	13.0	12.6	12.2	11.9	11.8	11.4	11.3	11.1
117.5°	16.9	16.3	15.5	15.0	14.5	14.1	13.7	13.1	12.9	12.7	12.6
120°	19.9	19.1	18.3	17.6	16.9	16.3	15.6	15.3	14.8	14.6	14.4
122.5°	23.3	22.5	21.5	20.7	19.9	19.1	18.4	17.9	17.2	16.9	16.7
125°	27.4	26.4	25.5	24.4	23.3	22.6	21.7	21.0	20.3	20.0	19.4
127.5°	32.1	30.9	29.8	28.8	27.5	26.7	25.7	24.9	24.1	23.4	22.9
130°	37.4	36.3	34.8	33.9	32.5	31.6	30.5	29.7	28.8	28.0	27.4
132.5°	43.2	42.1	40.8	39.6	38.3	37.3	36.2	35.1	34.0	33.3	32.5
135°	49.4	48.4	47.0	45.9	44.6	43.6	42.4	41.3	40.4	39.4	38.6
137.5°	56.1	55.0	53.9	52.8	51.5	50.5	49.2	48.2	47.0	46.5	45.4
140°	62.8	61.9	60.7	59.7	58.5	57.7	56.5	55.6	54.5	53.8	52.8
142.5°	69.5	68.7	67.6	66.8	65.8	64.9	63.8	62.9	61.9	61.2	60.3
145°	76.3	75.6	74.7	73.8	73.0	72.2	71.1	70.3	69.5	68.8	68.1
147.5°	83.0	82.2	81.6	80.8	79.9	79.2	78.3	77.8	76.8	76.3	75.6
150°	89.5	88.9	88.1	87.6	86.7	86.2	85.4	84.8	84.0	83.6	82.9
152.5°	95.7	95.2	94.6	94.0	93.3	92.7	92.1	91.6	91.0	90.5	89.7
155°	101.8	101.3	100.7	100.1	99.4	99.0	98.4	97.8	97.3	96.9	96.2
157.5°	107.6	107.1	106.5	106.1	105.4	104.9	104.3	103.9	103.2	102.9	102.3
160°	113.0	112.6	111.9	111.5	111.0	110.4	109.9	109.5	108.8	108.5	107.8
162.5°	118.1	117.7	117.3	116.8	116.2	115.8	115.2	114.7	114.2	113.7	113.1
165°	123.3	122.7	122.2	121.8	121.4	120.9	120.3	119.9	119.2	118.9	118.3
167.5°	128.3	128.0	127.5	127.1	126.5	126.0	125.6	125.1	124.6	124.1	123.5
170°	132.6	132.2	131.9	131.4	131.0	130.6	130.2	129.7	129.2	129.0	128.3
172.5°	136.0	135.9	135.5	135.3	134.8	134.5	134.3	133.9	133.6	133.2	132.9
175°	138.5	138.4	138.3	137.9	137.8	137.5	137.2	137.1	136.9	136.8	136.4
177.5°	140.0	139.9	139.9	139.7	139.5	139.5	139.4	139.4	139.3	139.1	139.1
180°	138.9	138.9	138.9	138.9	138.9	138.9	138.9	138.9	138.9	138.9	138.9



TEST NUMBER: P1444473  
 CATALOG NUMBER: EHBR1-42-UNV-TA-L830

**CANDELA DISTRIBUTION (continued):**

	82.5°	85°	87.5°	90°	92.5°	95°	97.5°	100°	102.5°	105°	107.5°
0°	33489.2	33489.2	33489.2	33489.2	33489.2	33489.2	33489.2	33489.2	33489.2	33489.2	33489.2
2.5°	33618.0	33609.5	33613.5	33597.8	33601.5	33582.5	33580.7	33559.3	33557.2	33537.0	33529.4
5°	34756.3	34737.6	34758.6	34725.8	34732.2	34689.3	34685.8	34630.4	34611.3	34542.1	34512.1
7.5°	36007.2	36000.2	36013.1	35985.5	35984.6	35946.4	35930.7	35881.0	35850.2	35777.5	35731.0
10°	36281.3	36287.7	36277.1	36279.8	36264.9	36260.7	36245.5	36235.8	36210.9	36192.0	36164.3
12.5°	35143.3	35150.1	35106.6	35134.2	35112.4	35163.2	35159.2	35218.9	35228.1	35303.9	35332.6
15°	32513.2	32504.9	32421.6	32474.2	32446.0	32557.5	32582.4	32732.4	32812.5	33005.0	33123.2
17.5°	28539.9	28518.5	28401.2	28465.1	28432.6	28597.0	28652.1	28891.8	29041.4	29351.6	29572.6
20°	23803.7	23762.6	23625.4	23700.2	23666.7	23853.4	23932.1	24221.9	24414.8	24825.6	25117.8
22.5°	19008.7	18943.8	18809.4	18879.3	18847.6	19040.9	19143.3	19434.2	19655.1	20076.9	20418.0
25°	14702.8	14645.0	14515.0	14563.9	14552.1	14715.7	14806.7	15081.9	15298.9	15700.6	16026.3
27.5°	11214.2	11154.0	11036.6	11071.1	11059.3	11198.6	11284.5	11514.3	11701.1	12039.2	12325.2
30°	8582.8	8510.2	8410.6	8429.7	8421.6	8534.5	8614.7	8808.2	8968.3	9254.1	9500.5
32.5°	6578.7	6505.7	6414.3	6423.2	6411.1	6499.7	6565.8	6734.1	6873.6	7116.6	7331.1
35°	5033.6	5118.8	4923.5	5047.3	4918.5	5107.6	5039.6	5144.7	5264.7	5469.5	5648.4
37.5°	3869.6	3810.2	3759.9	3754.6	3754.3	3798.2	3849.9	3951.2	4057.0	4209.5	4367.1
40°	3066.5	3024.8	2992.3	2989.9	2992.3	3023.4	3061.6	3131.7	3209.1	3318.7	3434.5
42.5°	2543.4	2515.7	2496.0	2494.7	2500.9	2523.0	2549.5	2591.1	2641.5	2712.5	2792.0
45°	2201.3	2185.9	2174.9	2174.4	2177.2	2188.8	2204.1	2229.9	2261.9	2306.2	2356.5
47.5°	1961.3	1957.5	1950.7	1951.0	1947.9	1952.6	1954.3	1968.9	1985.8	2019.3	2084.9
50°	1786.5	1786.5	1781.8	1781.5	1777.0	1776.8	1773.1	1778.8	1786.8	1807.5	1828.5
52.5°	1648.3	1647.9	1642.8	1641.8	1637.1	1636.8	1633.6	1635.9	1637.0	1647.4	1659.9
55°	1540.4	1537.1	1530.5	1528.3	1526.5	1529.2	1528.0	1528.1	1526.7	1531.1	1534.8
57.5°	1463.0	1458.7	1452.4	1450.5	1450.0	1453.3	1453.4	1452.3	1446.5	1442.4	1436.9
60°	1401.6	1397.4	1390.5	1388.9	1389.8	1394.3	1394.1	1390.4	1381.6	1374.1	1365.3
62.5°	1341.5	1339.7	1336.2	1335.7	1334.8	1335.6	1332.5	1328.5	1319.9	1311.9	1302.3
65°	1260.6	1261.5	1258.9	1259.3	1256.1	1255.7	1251.0	1247.1	1238.4	1231.1	1221.3
67.5°	1176.7	1177.3	1175.3	1175.3	1173.6	1173.9	1171.0	1167.4	1160.1	1154.1	1146.5
70°	1107.6	1109.3	1108.1	1108.5	1106.4	1105.8	1101.3	1097.8	1090.2	1085.3	1078.4
72.5°	1024.9	1028.5	1028.4	1029.3	1026.4	1024.9	1019.5	1015.1	1008.3	1004.3	998.9
75°	935.5	940.3	941.7	943.7	939.5	937.3	931.5	928.0	922.4	920.0	916.5
77.5°	848.2	853.5	858.6	863.4	856.5	850.4	843.1	837.5	829.5	826.5	820.9
80°	750.3	759.7	771.0	780.5	768.1	755.7	743.7	734.8	724.2	719.9	712.9
82.5°	622.4	632.1	638.6	644.6	636.1	627.0	615.3	607.5	596.1	591.9	583.9
85°	472.9	484.9	488.8	492.0	486.5	481.7	470.8	456.0	448.8	437.5	431.6
87.5°	311.0	318.2	319.6	320.7	317.4	315.0	307.9	301.0	288.7	279.8	268.8
90°	117.9	123.0	120.6	122.6	118.1	118.4	111.1	108.6	98.3	94.3	85.1
92.5°	5.3	5.0	5.1	5.0	5.6	5.1	5.6	5.1	5.4	5.1	5.4
95°	5.4	5.4	5.4	5.4	5.4	5.4	5.4	5.4	5.4	5.4	5.4
97.5°	5.8	5.8	5.8	5.8	5.8	5.8	5.8	5.8	5.8	5.8	6.0
100°	6.5	6.5	6.5	6.5	6.5	6.5	6.5	6.5	6.5	6.5	6.5
102.5°	7.1	7.1	7.1	7.1	7.1	7.1	7.1	7.1	7.1	7.1	7.2
105°	7.6	7.6	7.6	7.6	7.6	7.6	7.6	7.6	7.6	7.8	7.8
107.5°	8.1	8.1	8.1	8.1	8.3	8.3	8.3	8.3	8.3	8.3	8.5
110°	9.1	9.1	9.1	9.1	9.1	9.1	9.1	9.1	9.2	9.2	9.5



TEST NUMBER: P1444473  
 CATALOG NUMBER: EHBR1-42-UNV-TA-L830

**CANDELA DISTRIBUTION (continued):**

	82.5°	85°	87.5°	90°	92.5°	95°	97.5°	100°	102.5°	105°	107.5°
112.5°	9.9	9.9	9.9	9.9	9.9	9.9	9.9	10.2	10.2	10.3	10.3
115°	11.1	11.1	11.1	11.1	11.1	11.1	11.1	11.1	11.3	11.3	11.5
117.5°	12.5	12.3	12.3	12.3	12.3	12.3	12.5	12.5	12.6	12.7	13.0
120°	14.2	13.9	13.9	13.9	13.9	13.9	14.1	14.1	14.4	14.5	15.0
122.5°	16.4	16.1	16.1	16.0	16.0	16.0	16.1	16.3	16.7	16.9	17.2
125°	19.2	18.8	18.7	18.6	18.6	18.6	18.7	19.1	19.4	19.6	20.2
127.5°	22.6	22.4	22.0	21.8	21.8	21.8	22.2	22.4	22.7	23.2	23.8
130°	26.8	26.4	26.3	25.9	25.9	25.9	26.3	26.6	27.1	27.4	28.2
132.5°	32.1	31.6	31.3	30.9	30.9	30.9	31.3	31.6	32.1	32.5	33.5
135°	38.1	37.6	37.3	37.0	37.0	36.9	37.1	37.4	37.9	38.6	39.3
137.5°	45.0	44.3	44.0	43.6	43.6	43.6	43.8	44.0	44.6	45.1	46.1
140°	52.3	51.6	51.4	50.9	50.9	50.8	51.1	51.2	51.8	52.4	53.1
142.5°	59.9	59.1	58.8	58.5	58.4	58.4	58.7	58.8	59.3	59.7	60.4
145°	67.5	66.9	66.7	66.3	66.1	66.1	66.3	66.5	66.9	67.2	67.9
147.5°	75.1	74.6	74.4	74.0	74.0	73.8	74.0	74.0	74.4	74.6	75.1
150°	82.6	82.1	81.7	81.4	81.3	81.2	81.3	81.2	81.4	81.6	82.1
152.5°	89.5	88.9	88.7	88.3	88.1	88.0	88.0	87.9	88.0	88.0	88.3
155°	95.9	95.5	95.2	94.8	94.6	94.3	94.3	94.0	94.2	94.0	94.2
157.5°	102.0	101.5	101.3	100.8	100.5	100.1	100.0	99.8	99.8	99.4	99.4
160°	107.6	107.0	106.6	106.2	106.0	105.5	105.4	104.9	104.7	104.5	104.3
162.5°	112.7	112.2	111.8	111.4	111.1	110.6	110.3	109.9	109.6	109.3	109.2
165°	117.7	117.3	116.9	116.3	116.1	115.7	115.3	114.9	114.7	114.3	114.2
167.5°	123.3	122.6	122.2	121.8	121.5	121.0	120.9	120.6	120.3	120.0	120.0
170°	128.0	127.6	127.3	126.9	126.7	126.4	126.3	125.9	125.7	125.6	125.6
172.5°	132.6	132.3	132.1	131.8	131.6	131.3	131.2	131.0	130.9	130.9	130.7
175°	136.3	136.0	135.9	135.6	135.5	135.5	135.4	135.4	135.4	135.3	135.3
177.5°	138.9	138.7	138.7	138.7	138.6	138.6	138.6	138.6	138.6	138.5	138.4
180°	138.9	138.9	138.9	138.9	138.9	138.9	138.9	138.9	138.9	138.9	138.9



TEST NUMBER: P1444473  
 CATALOG NUMBER: EHBR1-42-UNV-TA-L830

**CANDELA DISTRIBUTION (continued):**

	110°	112.5°	115°	117.5°	120°	122.5°	125°	127.5°	130°	132.5°	135°
0°	33489.2	33489.2	33489.2	33489.2	33489.2	33489.2	33489.2	33489.2	33489.2	33489.2	33489.2
2.5°	33507.7	33498.9	33475.6	33464.2	33442.8	33432.0	33415.2	33404.4	33390.9	33380.8	33375.6
5°	34436.0	34393.2	34307.3	34254.5	34161.8	34100.7	34008.6	33941.1	33846.0	33775.8	33686.0
7.5°	35643.9	35578.2	35468.2	35384.7	35255.1	35155.9	35010.3	34893.9	34733.1	34599.5	34435.2
10°	36135.7	36097.3	36047.9	35994.3	35922.4	35852.0	35752.5	35651.2	35516.3	35381.9	35206.4
12.5°	35408.9	35445.0	35516.3	35549.5	35603.9	35622.5	35647.4	35635.8	35613.7	35558.8	35479.3
15°	33350.4	33501.2	33739.5	33904.4	34135.4	34297.5	34512.1	34650.3	34809.4	34904.5	34994.8
17.5°	29964.3	30256.0	30676.5	31012.0	31462.4	31828.5	32277.2	32629.7	33036.7	33348.9	33681.3
20°	25627.2	26035.7	26616.2	27109.2	27761.8	28315.2	29024.1	29618.1	30310.9	30888.3	31511.6
22.5°	20959.4	21439.9	22105.0	22699.6	23479.0	24175.0	25063.2	25848.6	26785.1	27624.1	28552.3
25°	16555.8	17026.7	17704.3	18320.0	19161.2	19928.0	20898.4	21799.3	22886.1	23899.7	25063.2
27.5°	12779.5	13197.8	13793.4	14347.6	15118.1	15870.8	16855.7	17816.3	18976.0	20065.2	21319.2
30°	9869.4	10208.7	10685.9	11131.8	11750.4	12366.0	13243.2	14131.6	15285.6	16414.3	17699.9
32.5°	7648.4	7937.8	8336.1	8698.1	9174.7	9638.9	10284.9	10994.8	12007.1	13088.3	14331.3
35°	5920.7	6168.2	6507.3	6819.1	7211.1	7579.6	8061.6	8568.4	9340.9	10250.3	11362.7
37.5°	4720.4	4821.2	5063.3	5318.7	5644.2	5947.1	6324.2	6698.9	7251.5	7969.1	8877.8
40°	3589.7	3750.0	3947.0	4148.1	4394.7	4637.6	5051.2	5250.4	5614.4	6129.4	6834.8
42.5°	2896.5	3009.2	3147.8	3287.7	3459.5	3628.6	3837.9	4051.0	4323.0	4671.9	5173.6
45°	2423.8	2497.4	2586.7	2679.9	2792.7	2908.1	3048.2	3194.6	3378.9	3593.4	3898.1
47.5°	2108.1	2148.7	2207.0	2270.7	2348.0	2427.9	2519.0	2612.2	2726.8	2854.1	3027.5
50°	1861.6	1895.5	1940.8	1983.4	2036.7	2118.6	2154.8	2206.2	2275.2	2350.0	2447.1
52.5°	1683.3	1705.8	1734.2	1758.7	1792.5	1823.1	1863.3	1898.8	1946.5	1991.4	2054.1
55°	1544.4	1552.6	1568.7	1584.4	1607.8	1628.7	1656.3	1679.5	1710.0	1736.8	1776.4
57.5°	1437.1	1437.8	1445.3	1453.5	1468.6	1481.7	1500.7	1516.0	1537.0	1554.2	1577.9
60°	1360.0	1356.0	1357.5	1360.3	1368.7	1377.3	1389.4	1399.3	1412.7	1422.4	1435.6
62.5°	1295.8	1289.5	1288.0	1287.2	1291.4	1294.5	1301.1	1306.0	1313.5	1317.8	1324.8
65°	1214.8	1207.2	1204.3	1200.8	1202.1	1201.0	1203.6	1203.7	1207.5	1208.4	1212.5
67.5°	1141.4	1135.0	1131.2	1126.5	1124.3	1121.0	1119.6	1116.3	1115.8	1113.1	1112.4
70°	1074.3	1068.1	1064.9	1060.5	1058.3	1053.9	1051.2	1045.6	1042.5	1037.3	1034.5
72.5°	996.8	993.3	992.3	989.4	988.6	986.1	984.9	981.1	978.9	974.6	972.0
75°	915.7	912.8	912.6	909.6	909.4	906.5	905.7	901.6	899.4	895.1	893.2
77.5°	819.2	814.9	813.7	810.3	811.1	809.6	810.8	807.7	806.4	802.0	800.7
80°	710.4	705.0	702.7	698.1	699.3	697.3	699.3	699.2	700.8	697.3	696.6
82.5°	581.6	575.6	574.5	571.3	573.5	573.6	578.2	575.8	576.7	573.5	574.9
85°	423.2	418.8	412.5	411.7	407.7	411.8	406.4	410.1	404.3	408.3	402.9
87.5°	262.4	253.2	248.3	241.8	239.3	233.0	230.3	225.7	227.2	225.0	226.2
90°	82.9	74.7	72.2	65.0	63.7	57.3	57.2	52.5	53.0	48.1	49.0
92.5°	5.1	5.1	5.0	5.3	5.1	5.1	5.0	5.3	5.1	5.3	5.1
95°	5.4	5.4	5.4	5.4	5.4	5.4	5.6	5.6	5.6	5.6	5.6
97.5°	6.0	6.0	6.0	6.0	6.0	6.0	6.0	6.2	6.2	6.2	6.2
100°	6.5	6.6	6.6	6.6	6.6	6.7	6.7	6.7	6.9	6.9	6.9
102.5°	7.2	7.2	7.2	7.3	7.3	7.3	7.5	7.6	7.6	7.8	8.0
105°	7.8	8.0	8.0	8.1	8.1	8.1	8.3	8.5	8.7	8.8	8.9
107.5°	8.5	8.7	8.8	8.9	8.9	9.2	9.5	9.6	9.6	9.9	10.3
110°	9.5	9.6	9.6	9.9	10.2	10.3	10.6	10.8	11.1	11.4	11.9



TEST NUMBER: P1444473  
 CATALOG NUMBER: EHBR1-42-UNV-TA-L830

**CANDELA DISTRIBUTION (continued):**

	110°	112.5°	115°	117.5°	120°	122.5°	125°	127.5°	130°	132.5°	135°
112.5°	10.4	10.7	10.8	11.1	11.4	11.8	12.1	12.5	12.9	13.4	13.8
115°	11.8	12.1	12.2	12.6	12.9	13.4	13.8	14.4	15.0	15.5	16.1
117.5°	13.1	13.7	13.9	14.4	14.8	15.5	16.0	16.8	17.5	18.3	18.7
120°	15.3	15.6	16.1	16.8	17.2	18.0	18.7	19.5	20.3	21.3	22.0
122.5°	17.6	18.3	18.7	19.5	20.2	21.1	22.0	23.0	24.0	24.9	25.9
125°	20.7	21.5	22.2	23.0	24.0	24.9	25.9	27.1	28.0	29.1	30.3
127.5°	24.4	25.2	26.0	27.1	28.0	29.1	30.3	31.6	32.5	33.9	34.8
130°	28.9	29.8	30.6	31.9	32.9	34.1	35.4	36.7	37.7	39.0	40.1
132.5°	34.1	35.2	36.2	37.4	38.5	39.7	40.9	42.2	43.5	44.8	45.8
135°	40.2	41.2	42.2	43.5	44.6	45.9	47.0	48.4	49.4	50.8	51.8
137.5°	46.8	47.8	48.9	50.0	51.1	52.4	53.5	54.7	55.7	57.0	58.0
140°	53.9	54.9	55.7	57.0	58.0	59.1	59.9	61.2	62.1	63.3	64.2
142.5°	61.1	62.1	62.7	63.7	64.5	65.8	66.7	67.6	68.4	69.2	70.0
145°	68.4	69.2	69.9	70.7	71.5	72.3	73.0	73.8	74.4	75.1	75.7
147.5°	75.6	76.2	76.6	77.3	77.9	78.4	79.1	79.7	80.1	80.7	81.2
150°	82.2	82.8	83.0	83.6	83.9	84.4	84.7	85.1	85.4	85.9	86.2
152.5°	88.5	88.7	88.7	89.3	89.4	89.6	89.7	90.1	90.2	90.5	90.9
155°	94.0	94.2	94.2	94.3	94.3	94.4	94.4	94.8	95.0	95.1	95.4
157.5°	99.3	99.2	99.2	99.2	99.0	99.2	99.2	99.3	99.4	99.8	100.0
160°	104.0	103.9	103.8	103.8	103.8	103.8	103.8	104.0	104.2	104.6	104.9
162.5°	108.8	108.8	108.6	108.6	108.6	108.8	108.8	109.2	109.3	109.7	110.1
165°	114.1	114.1	113.8	114.1	114.1	114.2	114.3	114.6	114.9	115.3	115.7
167.5°	119.9	119.9	119.9	120.0	120.0	120.2	120.3	120.7	120.9	121.4	121.5
170°	125.5	125.6	125.5	125.6	125.6	125.7	125.9	126.0	126.3	126.5	126.6
172.5°	130.7	130.7	130.7	130.7	130.7	130.9	130.9	131.0	131.0	131.2	131.2
175°	135.2	135.2	135.2	135.2	135.2	135.1	135.1	134.8	134.8	134.8	134.8
177.5°	138.3	138.0	137.9	137.9	137.8	137.6	137.6	137.5	137.5	137.5	137.2
180°	138.9	138.9	138.9	138.9	138.9	138.9	138.9	138.9	138.9	138.9	138.9



TEST NUMBER: P1444473  
 CATALOG NUMBER: EHBR1-42-UNV-TA-L830

**CANDELA DISTRIBUTION (continued):**

	137.5°	140°	142.5°	145°	147.5°	150°	152.5°	155°	157.5°	160°	162.5°
0°	33489.2	33489.2	33489.2	33489.2	33489.2	33489.2	33489.2	33489.2	33489.2	33489.2	33489.2
2.5°	33368.9	33368.6	33365.3	33366.8	33367.4	33369.8	33372.6	33375.6	33376.2	33378.6	33379.1
5°	33618.7	33536.1	33475.1	33407.9	33357.3	33311.9	33281.6	33257.6	33248.3	33250.6	33256.3
7.5°	34295.8	34125.4	33984.7	33824.9	33691.6	33550.5	33433.5	33322.2	33241.2	33180.8	33147.0
10°	35038.9	34831.3	34632.7	34401.4	34182.0	33947.7	33735.7	33522.1	33343.9	33189.3	33075.8
12.5°	35368.6	35221.9	35050.3	34832.0	34597.2	34326.9	34054.1	33761.5	33489.4	33236.9	33033.1
15°	35019.5	35019.8	34957.2	34852.4	34689.3	34473.4	34213.4	33908.4	33587.5	33259.9	32960.7
17.5°	33911.2	34120.3	34236.6	34310.2	34287.6	34208.0	34042.6	33808.4	33509.2	33160.2	32795.1
20°	32007.9	32501.1	32852.7	33169.0	33346.2	33464.0	33452.2	33356.9	33143.8	32847.1	32466.8
22.5°	29341.7	30169.5	30822.7	31431.8	31859.1	32206.6	32371.8	32441.9	32345.3	32138.7	31781.6
25°	26103.3	27228.8	28189.3	29121.5	29820.9	30421.8	30783.0	31037.4	31057.6	30949.7	30631.0
27.5°	22504.8	23833.4	25049.1	26288.0	27271.4	28135.4	28702.2	29117.1	29248.9	29231.5	28942.2
30°	18910.9	20305.7	21645.7	23090.4	24307.3	25411.0	26159.8	26720.9	26937.1	26978.6	26700.3
32.5°	15516.9	16892.3	18228.6	19739.0	21078.1	22343.0	23227.8	23894.2	24145.6	24204.9	23899.7
35°	12436.6	13705.5	14975.4	16439.2	17770.7	19080.6	20012.8	20710.5	20945.4	20985.0	20631.6
37.5°	9765.4	10846.5	11953.2	13266.5	14489.2	15719.4	16605.0	17260.9	17432.0	17421.4	17021.5
40°	7516.2	8356.8	9246.0	10327.2	11343.7	12383.7	13131.6	13673.7	13763.6	13697.0	13276.9
42.5°	5651.8	6258.9	6903.5	7710.6	8464.9	9243.2	9787.3	10189.8	10202.6	10097.3	9720.3
45°	4210.6	4802.9	5073.2	5561.2	6047.0	6564.5	6896.8	7145.4	7106.9	7014.4	6727.8
47.5°	3209.8	3437.4	3678.9	3981.5	4264.5	4851.8	4808.2	5207.4	4919.9	5116.0	4684.4
50°	2549.0	2676.2	2806.2	2966.8	3114.7	3268.2	3364.1	3435.8	3426.5	3395.7	3313.0
52.5°	2168.6	2207.9	2271.9	2363.3	2445.8	2528.8	2583.4	2627.8	2628.8	2616.3	2574.5
55°	1812.4	1862.4	1908.4	1968.1	2069.8	2085.4	2163.7	2147.8	2154.1	2132.3	2154.5
57.5°	1598.0	1627.1	1652.9	1688.4	1717.8	1752.1	1772.3	1791.8	1790.0	1785.7	1764.4
60°	1446.1	1462.1	1476.4	1497.2	1513.3	1532.7	1542.0	1551.9	1548.7	1541.5	1522.5
62.5°	1328.9	1338.9	1347.2	1360.6	1370.3	1382.4	1387.3	1391.5	1387.3	1380.4	1363.7
65°	1213.3	1219.8	1225.0	1235.1	1242.0	1252.3	1256.4	1260.3	1256.5	1251.2	1238.4
67.5°	1109.1	1109.7	1109.3	1113.3	1115.4	1121.6	1123.5	1126.3	1121.9	1117.3	1106.4
70°	1030.0	1028.4	1026.4	1028.0	1028.4	1031.4	1031.9	1031.4	1026.1	1018.1	1006.3
72.5°	968.2	967.3	965.8	967.2	967.2	970.0	969.1	967.7	961.2	953.5	941.8
75°	888.7	888.2	885.2	885.3	882.8	883.7	880.5	878.6	871.3	864.9	854.4
77.5°	795.8	794.3	790.0	788.3	783.7	781.7	775.6	772.6	765.2	760.0	751.1
80°	692.0	690.4	684.8	681.7	674.3	669.6	660.7	655.6	647.0	641.9	633.2
82.5°	572.0	572.7	567.1	563.2	552.6	544.3	532.4	526.0	516.6	511.6	502.6
85°	406.8	401.0	404.1	403.9	397.2	390.1	380.4	373.6	365.6	360.9	354.6
87.5°	223.1	224.5	222.9	221.5	216.8	213.2	205.7	201.7	195.9	193.0	188.3
90°	44.2	45.1	40.6	41.6	37.3	36.3	30.9	30.8	26.0	25.6	21.8
92.5°	5.1	5.1	5.3	5.1	5.3	5.3	5.3	5.3	5.3	5.1	5.3
95°	5.6	5.7	5.7	5.7	5.7	5.7	5.8	5.8	5.8	5.8	5.8
97.5°	6.4	6.4	6.4	6.5	6.5	6.5	6.6	6.6	6.6	6.6	6.6
100°	7.1	7.2	7.2	7.2	7.3	7.3	7.5	7.5	7.6	7.6	7.6
102.5°	8.0	8.1	8.1	8.3	8.5	8.5	8.7	8.7	8.8	8.8	8.8
105°	9.1	9.2	9.6	9.6	9.8	9.9	10.2	10.2	10.3	10.4	10.4
107.5°	10.6	10.7	11.1	11.3	11.4	11.8	11.9	12.1	12.2	12.3	12.5
110°	12.2	12.5	12.9	13.1	13.5	13.8	14.1	14.2	14.5	14.6	15.0



TEST NUMBER: P1444473  
 CATALOG NUMBER: EHBR1-42-UNV-TA-L830

**CANDELA DISTRIBUTION (continued):**

	137.5°	140°	142.5°	145°	147.5°	150°	152.5°	155°	157.5°	160°	162.5°
112.5°	14.2	14.6	15.3	15.5	16.0	16.3	16.8	17.0	17.2	17.6	17.9
115°	16.8	17.2	17.9	18.4	18.8	19.4	19.9	20.1	20.5	20.9	21.3
117.5°	19.6	20.2	21.0	21.6	22.2	22.7	23.3	23.8	24.4	24.8	25.2
120°	23.0	23.8	24.4	25.2	25.9	26.7	27.4	27.9	28.4	29.0	29.7
122.5°	26.8	27.6	28.7	29.3	30.3	30.9	31.9	32.4	33.2	33.9	34.7
125°	31.3	32.1	33.2	34.0	34.8	35.8	36.7	37.4	38.3	39.0	40.0
127.5°	36.2	37.0	38.1	39.0	40.1	40.9	42.0	42.7	43.7	44.6	45.7
130°	41.3	42.2	43.5	44.3	45.4	46.5	47.4	48.4	49.4	50.5	51.6
132.5°	46.9	48.1	49.2	50.0	51.2	52.2	53.2	54.2	55.5	56.5	57.7
135°	53.0	53.9	55.0	55.8	57.1	58.0	59.1	60.2	61.4	62.6	63.8
137.5°	58.9	59.9	61.0	61.8	62.9	63.8	65.0	66.0	67.3	68.4	69.9
140°	65.0	65.9	66.8	67.6	68.7	69.5	70.7	71.8	73.0	74.1	75.5
142.5°	70.9	71.5	72.3	73.1	74.1	74.8	76.0	77.1	78.2	79.4	80.7
145°	76.4	77.1	77.8	78.4	79.2	80.1	81.2	82.1	83.3	84.4	85.6
147.5°	81.7	82.1	82.9	83.6	84.3	84.9	86.0	86.9	88.0	89.1	90.2
150°	86.7	87.1	87.6	88.1	88.9	89.6	90.5	91.3	92.5	93.6	94.6
152.5°	91.2	91.6	92.1	92.7	93.3	94.0	95.0	95.8	96.9	97.7	98.8
155°	95.8	96.1	96.7	97.3	98.1	98.5	99.4	100.1	101.1	102.0	102.9
157.5°	100.5	100.8	101.4	102.0	102.7	103.2	104.2	104.7	105.7	106.4	107.1
160°	105.4	105.8	106.4	107.0	107.6	108.2	108.9	109.6	110.3	111.1	111.8
162.5°	110.6	111.1	111.7	112.0	112.8	113.4	114.2	114.7	115.4	116.1	116.8
165°	116.2	116.7	117.3	117.7	118.3	118.7	119.4	119.9	120.6	121.0	121.8
167.5°	122.1	122.3	122.7	123.1	123.7	124.1	124.8	125.1	125.7	126.3	126.7
170°	126.9	127.2	127.5	127.9	128.2	128.6	129.0	129.2	129.8	130.2	130.7
172.5°	131.4	131.4	131.8	131.9	132.2	132.3	132.6	132.9	133.2	133.6	133.8
175°	135.1	135.1	135.2	135.2	135.3	135.4	135.6	135.9	136.0	136.2	136.3
177.5°	137.2	137.2	137.2	137.2	137.5	137.5	137.6	137.6	137.8	137.8	137.9
180°	138.9	138.9	138.9	138.9	138.9	138.9	138.9	138.9	138.9	138.9	138.9



TEST NUMBER: P1444473  
 CATALOG NUMBER: EHBR1-42-UNV-TA-L830

**CANDELA DISTRIBUTION (continued):**

	165°	167.5°	170°	172.5°	175°	177.5°	180°	182.5°	185°	187.5°	190°
0°	33489.2	33489.2	33489.2	33489.2	33489.2	33489.2	33489.2	33489.2	33489.2	33489.2	33489.2
2.5°	33377.9	33377.6	33376.4	33375.0	33373.5	33374.4	33375.9	33379.7	33386.4	33396.1	33408.8
5°	33260.8	33267.6	33271.5	33272.0	33268.5	33266.4	33269.7	33278.8	33297.3	33328.3	33370.3
7.5°	33137.9	33146.4	33159.3	33169.0	33170.8	33168.5	33169.0	33183.4	33217.5	33277.9	33362.7
10°	33006.7	32981.8	32994.9	33019.0	33038.1	33041.7	33044.0	33061.0	33110.9	33202.2	33338.4
12.5°	32885.6	32806.6	32791.4	32813.1	32842.1	32851.5	32848.9	32856.2	32914.6	33035.6	33225.3
15°	32726.3	32577.7	32526.9	32532.5	32568.3	32581.3	32571.8	32557.5	32614.4	32762.0	33007.7
17.5°	32468.3	32228.8	32135.5	32131.4	32173.3	32184.5	32161.4	32116.7	32172.9	32357.0	32661.9
20°	32076.3	31722.7	31546.9	31518.9	31564.6	31551.3	31505.2	31437.6	31511.4	31735.3	32098.0
22.5°	31371.4	30923.4	30623.1	30526.3	30580.8	30544.4	30477.3	30391.1	30488.9	30743.3	31147.3
25°	30219.6	29701.9	29290.9	29060.3	29103.7	29038.5	28965.5	28860.9	28977.7	29269.8	29714.4
27.5°	28526.7	27928.7	27419.3	27037.5	27051.6	26966.2	26882.0	26746.8	26892.6	27238.3	27739.7
30°	26275.5	25583.6	24963.2	24444.4	24398.0	24315.2	24229.0	24051.5	24234.0	24647.7	25233.7
32.5°	23448.4	22680.2	21963.4	21307.4	21183.7	21102.9	21026.0	20821.7	21060.7	21543.1	22216.3
35°	20142.2	19323.8	18546.7	17797.6	17592.5	17511.8	17444.6	17248.8	17547.0	18072.0	18799.1
37.5°	16513.2	15677.2	14905.7	14137.5	13847.7	13738.1	13689.3	13561.2	13905.1	14424.4	15154.5
40°	12787.7	12010.4	11318.6	10640.1	10309.9	10142.2	10116.6	10093.2	10425.8	10876.3	11538.9
42.5°	9302.5	8675.4	8142.1	7623.4	7324.1	7095.2	7095.0	7164.5	7463.9	7801.4	8312.4
45°	6434.8	6014.0	5674.1	5327.6	5420.3	4963.7	5231.9	5094.3	5242.2	5459.8	5792.0
47.5°	4423.3	4193.6	4007.0	3813.3	3672.2	3537.4	3549.2	3636.1	3775.4	3904.5	4077.4
50°	3223.9	3106.9	3011.8	2911.2	2840.9	2781.6	2785.0	2822.6	2895.8	2963.8	3054.3
52.5°	2526.1	2461.6	2410.0	2354.3	2317.5	2287.9	2289.5	2307.8	2347.4	2386.3	2438.2
55°	2082.1	2074.3	2007.2	1957.3	1938.3	1918.5	1922.0	1929.2	1956.1	1978.9	2013.3
57.5°	1744.8	1714.6	1694.5	1668.2	1656.2	1642.3	1645.4	1648.1	1666.1	1681.4	1706.1
60°	1506.6	1485.2	1471.0	1453.1	1445.2	1436.3	1438.4	1440.0	1451.5	1461.5	1479.2
62.5°	1348.4	1329.3	1316.8	1303.1	1297.5	1291.5	1292.9	1293.4	1300.6	1307.9	1321.3
65°	1227.0	1211.8	1201.5	1189.6	1183.8	1177.6	1178.2	1178.2	1184.3	1189.6	1199.7
67.5°	1098.7	1087.2	1080.6	1071.1	1067.1	1060.8	1060.7	1058.7	1062.7	1064.8	1071.6
70°	995.6	984.1	975.6	966.5	961.5	955.9	956.1	956.2	960.8	965.7	974.5
72.5°	932.0	921.0	913.4	905.4	900.7	896.0	895.1	894.7	897.9	900.6	906.5
75°	847.7	838.9	834.4	827.0	823.3	817.9	817.1	814.6	816.2	816.7	821.0
77.5°	745.4	737.1	733.5	725.9	722.9	716.8	716.3	713.5	714.8	713.9	717.2
80°	628.9	621.3	619.4	613.2	611.7	606.1	605.2	601.8	602.9	600.2	601.5
82.5°	498.8	491.9	490.4	484.7	484.7	479.6	479.3	474.3	474.3	469.9	462.9
85°	351.4	346.3	344.1	339.5	338.1	334.0	331.9	327.0	325.3	322.2	321.2
87.5°	185.5	182.2	179.4	177.1	173.0	165.7	165.0	160.0	160.4	156.7	157.0
90°	21.8	18.5	18.6	15.6	15.5	13.7	13.8	12.9	12.6	11.9	11.8
92.5°	5.3	5.3	5.3	5.3	5.3	5.3	5.3	5.3	5.3	5.3	5.3
95°	5.8	5.8	5.8	5.8	5.8	5.8	5.8	5.8	5.8	6.0	6.0
97.5°	6.6	6.6	6.6	6.6	6.6	6.6	6.6	6.7	6.7	6.7	6.7
100°	7.6	7.6	7.6	7.6	7.6	7.6	7.6	7.8	7.8	7.8	7.8
102.5°	8.9	8.9	8.9	8.9	8.9	8.9	8.9	8.9	8.9	9.1	9.1
105°	10.4	10.6	10.6	10.6	10.6	10.6	10.6	10.7	10.7	10.7	10.8
107.5°	12.5	12.6	12.6	12.7	12.6	12.7	12.7	12.9	12.9	12.9	12.9
110°	15.0	15.2	15.3	15.4	15.4	15.5	15.5	15.6	15.6	15.6	15.6



TEST NUMBER: P1444473  
 CATALOG NUMBER: EHBR1-42-UNV-TA-L830

**CANDELA DISTRIBUTION (continued):**

	165°	167.5°	170°	172.5°	175°	177.5°	180°	182.5°	185°	187.5°	190°
112.5°	18.0	18.3	18.4	18.6	18.6	18.8	18.8	19.1	19.1	19.2	19.1
115°	21.6	21.8	22.2	22.5	22.6	22.9	22.9	23.2	23.2	23.2	23.2
117.5°	25.6	26.0	26.4	26.8	27.1	27.4	27.5	27.6	27.6	27.9	27.6
120°	30.1	30.8	31.3	31.7	32.1	32.5	32.8	33.0	33.0	33.0	32.9
122.5°	35.2	36.0	36.5	37.1	37.6	38.1	38.3	38.6	38.6	38.7	38.5
125°	40.6	41.6	42.2	42.9	43.5	44.2	44.3	44.8	44.8	44.8	44.6
127.5°	46.6	47.4	48.1	49.2	49.6	50.3	50.7	51.1	51.1	51.1	50.8
130°	52.5	53.8	54.5	55.5	56.1	56.8	57.1	57.4	57.4	57.7	57.3
132.5°	58.7	59.9	61.0	61.9	62.6	63.4	63.7	64.2	64.2	64.3	63.9
135°	65.0	66.1	67.2	68.4	69.1	69.9	70.3	70.7	70.7	70.7	70.3
137.5°	71.0	72.3	73.3	74.4	75.2	76.0	76.4	76.8	76.8	77.1	76.7
140°	76.6	77.9	79.1	80.1	81.0	82.0	82.2	82.8	82.8	82.8	82.4
142.5°	82.0	83.2	84.3	85.4	86.2	87.0	87.5	87.9	87.9	87.9	87.6
145°	86.9	88.0	89.1	90.2	91.0	91.7	92.1	92.5	92.5	92.5	92.5
147.5°	91.3	92.5	93.5	94.4	95.2	95.9	96.5	96.7	96.9	96.9	96.7
150°	95.7	96.7	97.5	98.4	99.2	99.8	100.0	100.5	100.7	100.8	100.7
152.5°	99.7	100.5	101.4	102.1	102.9	103.4	103.8	104.2	104.5	104.7	104.7
155°	103.6	104.5	105.3	106.0	106.5	107.1	107.6	108.1	108.5	108.8	108.9
157.5°	107.8	108.8	109.3	110.1	110.6	111.4	111.8	112.4	112.8	113.3	113.5
160°	112.4	113.3	113.8	114.6	115.2	115.8	116.3	116.9	117.4	117.7	118.3
162.5°	117.4	118.1	118.5	119.2	119.9	120.6	121.0	121.7	122.1	122.6	123.0
165°	122.3	123.0	123.5	124.1	124.8	125.3	125.7	126.4	126.7	127.2	127.6
167.5°	127.2	127.9	128.2	128.8	129.2	129.8	130.3	130.9	131.2	131.6	131.9
170°	131.0	131.6	132.1	132.5	132.9	133.4	133.7	134.0	134.4	134.8	135.2
172.5°	134.0	134.5	134.8	135.3	135.5	135.9	136.2	136.7	136.9	137.1	137.2
175°	136.4	136.8	136.9	137.1	137.2	137.5	137.8	137.9	138.3	138.4	138.6
177.5°	138.0	138.3	138.4	138.4	138.5	138.5	138.6	138.6	138.7	138.9	138.9
180°	138.9	138.9	138.9	138.9	138.9	138.9	138.9	138.9	138.9	138.9	138.9



TEST NUMBER: P1444473  
 CATALOG NUMBER: EHBR1-42-UNV-TA-L830

**CANDELA DISTRIBUTION (continued):**

	192.5°	195°	197.5°	200°	202.5°	205°	207.5°	210°	212.5°	215°	217.5°
0°	33489.2	33489.2	33489.2	33489.2	33489.2	33489.2	33489.2	33489.2	33489.2	33489.2	33489.2
2.5°	33426.6	33443.4	33469.0	33492.1	33527.1	33554.6	33595.9	33627.3	33674.0	33704.3	33755.1
5°	33429.6	33495.0	33581.0	33664.9	33765.8	33857.4	33971.2	34068.2	34182.6	34276.0	34393.0
7.5°	33476.9	33603.0	33754.1	33906.4	34078.7	34239.8	34421.4	34585.7	34765.3	34917.3	35083.4
10°	33511.8	33706.3	33929.0	34153.2	34389.1	34608.3	34829.6	35020.9	35199.6	35346.7	35476.6
12.5°	33464.5	33732.5	34018.3	34294.3	34556.7	34783.6	34974.0	35121.1	35222.6	35291.4	35307.6
15°	33303.7	33626.2	33937.0	34211.9	34429.6	34597.5	34684.4	34725.1	34681.5	34609.0	34449.6
17.5°	33003.5	33343.6	33621.5	33838.3	33953.4	33998.9	33926.9	33801.7	33556.9	33285.3	32892.9
20°	32453.0	32769.9	32971.5	33089.8	33059.0	32945.2	32673.3	32343.0	31854.4	31333.6	30646.3
22.5°	31487.6	31764.6	31872.0	31880.8	31693.0	31408.0	30917.8	30351.1	29580.1	28778.8	27793.2
25°	30038.3	30280.9	30297.9	30202.6	29858.9	29397.1	28677.2	27875.6	26828.1	25760.1	24525.1
27.5°	28072.8	28305.6	28248.5	28070.7	27593.6	26975.6	26054.0	25018.4	23726.9	22465.7	21099.4
30°	25602.0	25850.9	25784.0	25555.9	24988.4	24258.0	23173.5	21970.3	20536.5	19189.4	17804.9
32.5°	22645.2	22959.9	22913.7	22696.9	22104.7	21323.1	20146.4	18870.2	17403.3	16075.7	14729.0
35°	19284.5	19666.5	19686.2	19544.5	18994.8	18222.2	17060.2	15825.0	14419.9	13167.3	11923.2
37.5°	15663.6	16106.5	16197.5	16159.3	15703.6	15021.6	13963.0	12854.8	11610.0	10512.3	9448.2
40°	12022.8	12471.1	12626.6	12672.7	12336.5	11808.2	10939.4	10045.0	9030.2	8140.7	7295.8
42.5°	8702.4	9099.8	9250.2	9344.7	9134.9	8782.6	8148.8	7499.3	6755.8	6114.3	5499.1
45°	6044.0	6325.1	6439.5	6534.7	6420.3	6221.6	5821.4	5415.1	4924.4	4505.1	4108.2
47.5°	4225.8	4380.8	4456.2	4502.4	4458.1	4354.5	4136.6	3901.3	3624.3	3379.3	3143.7
50°	3132.2	3214.7	3254.1	3280.8	3248.6	3191.0	3073.1	2945.0	2792.8	2654.1	2518.4
52.5°	2482.2	2529.5	2552.9	2567.3	2548.8	2513.6	2444.9	2368.9	2277.8	2192.0	2146.9
55°	2091.1	2088.6	2142.8	2116.7	2142.8	2084.4	2072.1	1988.5	1912.9	1859.5	1801.8
57.5°	1724.5	1749.0	1759.4	1771.1	1763.5	1752.9	1723.7	1693.8	1653.9	1620.4	1584.8
60°	1492.7	1513.0	1524.4	1535.9	1535.2	1531.2	1514.3	1496.5	1471.5	1451.5	1429.9
62.5°	1333.1	1350.6	1361.9	1372.9	1374.0	1372.4	1359.5	1347.2	1330.1	1317.6	1302.7
65°	1207.5	1219.8	1227.5	1236.3	1235.8	1233.5	1221.9	1211.6	1197.6	1188.9	1178.0
67.5°	1076.1	1085.4	1091.4	1099.7	1101.3	1101.8	1095.5	1090.6	1083.8	1081.2	1077.6
70°	982.6	993.9	1003.5	1014.0	1019.7	1022.4	1019.7	1017.3	1013.2	1011.6	1008.6
72.5°	911.9	921.4	928.8	938.4	943.7	947.6	945.5	944.1	940.6	940.2	938.2
75°	824.0	830.6	834.8	842.0	844.8	848.5	846.9	847.7	846.6	849.3	849.2
77.5°	718.4	723.2	725.2	730.4	730.9	735.2	736.3	741.3	745.0	752.9	757.1
80°	599.5	602.6	602.6	607.9	610.3	617.6	621.0	629.4	633.2	640.3	640.9
82.5°	465.6	462.1	465.6	463.5	470.2	478.5	479.6	486.6	488.3	492.7	489.2
85°	318.4	318.1	315.3	315.8	313.6	314.6	313.4	314.7	313.5	313.6	310.4
87.5°	152.5	153.9	150.5	151.7	148.5	150.0	147.1	149.3	145.9	146.5	141.5
90°	11.3	11.1	10.6	10.4	10.7	10.3	10.2	9.9	10.2	9.8	9.8
92.5°	5.3	5.4	5.4	5.4	5.4	5.4	5.4	5.4	5.6	5.4	5.4
95°	6.0	6.0	6.0	6.2	6.2	6.2	6.2	6.2	6.2	6.2	6.2
97.5°	6.9	6.9	6.9	6.9	7.1	7.1	7.1	7.1	7.1	7.1	6.9
100°	8.0	8.0	8.0	8.1	8.1	8.1	8.1	8.1	8.1	8.0	8.0
102.5°	9.2	9.2	9.2	9.5	9.5	9.5	9.5	9.5	9.2	9.2	9.1
105°	10.8	10.8	11.1	11.1	11.1	11.1	11.1	11.1	10.8	10.7	10.7
107.5°	13.0	13.0	13.1	13.1	13.1	13.1	13.0	12.9	12.9	12.7	12.5
110°	15.9	15.6	15.9	15.9	15.9	15.6	15.6	15.4	15.3	15.0	14.8



TEST NUMBER: P1444473  
 CATALOG NUMBER: EHBR1-42-UNV-TA-L830

**CANDELA DISTRIBUTION (continued):**

	192.5°	195°	197.5°	200°	202.5°	205°	207.5°	210°	212.5°	215°	217.5°
112.5°	19.2	19.1	19.1	18.8	18.8	18.6	18.6	18.4	18.3	17.7	17.5
115°	23.2	22.9	22.9	22.6	22.6	22.4	22.0	21.7	21.5	21.0	20.7
117.5°	27.5	27.4	27.4	26.8	26.7	26.3	25.9	25.6	25.2	24.8	24.4
120°	32.8	32.4	32.1	31.7	31.4	30.8	30.5	29.9	29.5	28.9	28.3
122.5°	38.3	37.8	37.6	37.1	36.7	36.0	35.5	34.8	34.4	33.6	33.0
125°	44.3	43.8	43.5	42.8	42.2	41.6	40.9	40.2	39.4	38.7	37.9
127.5°	50.7	50.0	49.6	48.9	48.2	47.4	46.6	45.8	45.1	44.2	43.5
130°	57.1	56.5	56.1	55.1	54.6	53.5	52.8	51.9	51.1	50.1	49.3
132.5°	63.7	63.0	62.6	61.5	61.0	59.9	59.3	58.2	57.3	56.4	55.6
135°	70.2	69.5	69.0	68.1	67.3	66.3	65.6	64.5	63.7	62.8	61.9
137.5°	76.4	75.7	75.1	74.4	73.6	72.6	71.8	70.9	70.2	69.1	68.4
140°	82.1	81.6	81.0	80.3	79.5	78.7	77.9	77.1	76.3	75.5	74.7
142.5°	87.2	86.7	86.3	85.5	84.9	84.0	83.6	82.8	82.1	81.3	80.7
145°	92.1	91.6	91.2	90.5	90.1	89.4	88.9	88.1	87.8	87.0	86.6
147.5°	96.6	96.1	95.8	95.4	95.1	94.4	94.2	93.6	93.3	92.7	92.5
150°	100.7	100.5	100.4	100.0	99.8	99.4	99.3	98.9	98.8	98.3	98.2
152.5°	104.7	104.7	104.7	104.6	104.6	104.5	104.3	104.2	104.0	103.8	103.6
155°	109.2	109.3	109.5	109.5	109.5	109.5	109.5	109.3	109.3	109.2	109.2
157.5°	113.8	114.1	114.3	114.5	114.6	114.6	114.6	114.6	114.6	114.5	114.5
160°	118.5	118.9	119.1	119.2	119.5	119.5	119.8	119.5	119.8	119.5	119.4
162.5°	123.4	123.7	124.0	124.1	124.4	124.4	124.6	124.6	124.6	124.4	124.4
165°	128.0	128.2	128.6	128.7	129.0	129.0	129.1	129.1	129.1	129.0	129.0
167.5°	132.3	132.5	132.8	132.9	133.2	133.2	133.6	133.4	133.4	133.4	133.4
170°	135.4	135.6	135.9	136.0	136.3	136.3	136.4	136.4	136.7	136.4	136.4
172.5°	137.6	137.8	138.0	138.3	138.4	138.4	138.5	138.5	138.6	138.6	138.6
175°	138.7	138.9	139.1	139.3	139.4	139.5	139.5	139.7	139.7	139.7	139.7
177.5°	139.1	139.3	139.3	139.4	139.5	139.5	139.7	139.7	139.9	139.9	139.9
180°	138.9	138.9	138.9	138.9	138.9	138.9	138.9	138.9	138.9	138.9	138.9



TEST NUMBER: P1444473  
 CATALOG NUMBER: EHBR1-42-UNV-TA-L830

**CANDELA DISTRIBUTION (continued):**

	220°	222.5°	225°	227.5°	230°	232.5°	235°	237.5°	240°	242.5°	245°
0°	33489.2	33489.2	33489.2	33489.2	33489.2	33489.2	33489.2	33489.2	33489.2	33489.2	33489.2
2.5°	33786.4	33577.8	33550.2	33564.9	33599.7	33612.7	33650.2	33660.5	33698.5	33707.7	33744.1
5°	34483.6	34207.8	34221.5	34287.9	34388.3	34448.1	34546.8	34598.4	34692.6	34735.4	34820.6
7.5°	35218.8	35002.1	35069.6	35181.5	35318.8	35413.9	35532.4	35609.5	35711.7	35775.2	35856.9
10°	35579.7	35520.3	35594.7	35682.6	35761.0	35822.3	35872.6	35912.8	35939.1	35963.8	35974.6
12.5°	35304.9	35396.8	35409.5	35400.9	35349.1	35309.4	35220.4	35160.0	35052.7	34987.2	34859.5
15°	34286.7	34488.7	34376.8	34207.6	33959.8	33753.3	33461.6	33244.5	32940.7	32734.7	32429.9
17.5°	32499.8	32754.6	32463.2	32071.5	31573.2	31146.9	30616.0	30194.6	29666.8	29282.9	28790.3
20°	29984.1	30222.3	29702.6	29053.1	28282.3	27633.6	26868.6	26258.1	25547.1	25018.4	24380.1
22.5°	26851.8	27021.4	26289.3	25413.8	24431.8	23621.3	22706.6	21974.8	21163.4	20558.9	19878.4
25°	23386.4	23432.2	22554.1	21545.5	20450.9	19540.0	18563.5	17794.1	16966.6	16353.9	15686.0
27.5°	19889.0	19821.8	18872.5	17803.2	16651.8	15705.0	14752.5	14031.5	13306.9	12754.9	12179.6
30°	16587.7	16425.1	15439.5	14340.4	13222.7	12374.1	11583.4	11004.4	10427.9	9990.0	9528.2
32.5°	13560.5	13331.1	12371.7	11341.9	10400.1	9745.2	9159.0	8720.9	8255.2	7885.4	7497.8
35°	10879.0	10634.6	9784.8	8911.7	8198.9	7716.2	7255.4	6896.0	6500.7	6188.6	5852.0
37.5°	8577.8	8377.5	7665.6	6978.6	6439.5	6065.4	5687.8	5394.0	5067.4	4930.1	4570.4
40°	6622.1	6482.0	5925.3	5419.0	5014.1	4838.4	4455.1	4180.7	3936.5	3735.2	3540.3
42.5°	5165.3	5115.7	4574.0	4179.0	3894.0	3672.6	3459.0	3285.6	3116.8	2978.0	2846.9
45°	3790.6	3751.3	3510.9	3282.9	3088.6	2933.9	2789.5	2670.2	2559.8	2468.4	2385.2
47.5°	2951.7	2939.2	2800.7	2659.3	2536.9	2437.5	2343.7	2264.6	2191.3	2130.3	2110.4
50°	2400.8	2399.1	2317.9	2230.6	2143.5	2086.0	2026.2	1979.4	1932.3	1895.7	1857.0
52.5°	2039.9	2031.0	1976.2	1922.3	1870.5	1832.8	1794.5	1764.7	1733.5	1710.9	1686.8
55°	1756.1	1765.4	1733.7	1701.5	1669.1	1645.6	1618.8	1599.1	1577.8	1563.5	1548.9
57.5°	1559.0	1571.3	1554.7	1536.4	1516.7	1501.3	1482.8	1469.1	1454.9	1445.8	1437.4
60°	1415.6	1429.0	1422.4	1413.2	1401.0	1391.9	1380.1	1372.5	1363.3	1358.2	1353.5
62.5°	1294.1	1310.7	1308.4	1304.1	1296.2	1291.2	1284.7	1281.3	1275.2	1273.1	1270.8
65°	1172.7	1191.5	1191.1	1189.1	1184.7	1183.2	1179.2	1178.5	1175.4	1176.6	1176.3
67.5°	1077.2	1093.6	1097.2	1099.8	1099.7	1100.6	1100.3	1101.9	1101.9	1104.3	1105.8
70°	1008.3	1019.7	1022.4	1025.2	1026.0	1028.1	1028.1	1029.5	1029.2	1031.1	1031.4
72.5°	938.7	953.7	956.5	958.6	958.6	960.8	959.7	959.3	956.3	955.7	953.6
75°	852.0	871.3	875.5	878.3	878.6	880.5	877.9	876.3	871.3	869.3	865.8
77.5°	761.5	781.6	784.5	785.5	783.9	784.3	778.8	775.1	768.8	766.1	762.9
80°	643.8	673.2	675.6	673.7	669.1	668.3	663.0	659.5	651.9	649.3	646.5
82.5°	489.9	524.4	529.2	531.3	527.6	528.5	523.4	521.4	514.4	513.2	508.6
85°	309.3	343.8	349.5	348.6	344.9	344.1	341.1	342.1	341.4	343.3	344.3
87.5°	142.1	175.5	183.6	181.0	180.6	178.3	172.9	174.9	178.1	180.2	180.3
90°	9.6	19.6	19.2	20.3	18.3	18.8	17.0	18.3	16.9	18.0	16.8
92.5°	5.4	5.4	5.4	5.4	5.4	5.4	5.4	5.3	5.4	5.3	5.4
95°	6.2	6.0	6.0	6.0	5.8	5.8	5.8	5.8	5.8	5.8	5.8
97.5°	6.9	6.7	6.6	6.6	6.6	6.5	6.5	6.5	6.5	6.4	6.4
100°	8.0	7.5	7.3	7.3	7.2	7.2	7.2	7.1	7.1	7.1	6.9
102.5°	8.9	8.5	8.3	8.1	8.1	8.0	8.0	7.8	7.8	7.6	7.6
105°	10.4	9.8	9.6	9.2	9.1	8.9	8.8	8.7	8.5	8.3	8.3
107.5°	12.3	11.3	10.8	10.6	10.3	10.2	9.8	9.6	9.5	9.2	9.1
110°	14.5	13.1	12.6	12.2	11.9	11.4	11.1	10.8	10.6	10.4	10.2



TEST NUMBER: P1444473  
 CATALOG NUMBER: EHBR1-42-UNV-TA-L830

**CANDELA DISTRIBUTION (continued):**

	220°	222.5°	225°	227.5°	230°	232.5°	235°	237.5°	240°	242.5°	245°
112.5°	17.1	15.4	14.6	14.1	13.7	13.1	12.7	12.3	12.1	11.5	11.4
115°	20.1	18.0	17.1	16.4	15.9	15.3	14.6	14.2	13.7	13.1	12.9
117.5°	23.8	21.3	20.1	19.2	18.6	17.7	17.1	16.4	15.9	15.3	14.8
120°	27.6	24.8	23.6	22.6	21.8	20.9	20.1	19.2	18.5	17.7	17.1
122.5°	32.3	29.0	27.5	26.6	25.6	24.4	23.6	22.6	21.7	20.9	20.1
125°	37.3	33.6	32.0	30.9	29.9	28.8	27.6	26.6	25.7	24.7	23.8
127.5°	42.5	38.7	37.1	36.0	34.8	33.6	32.5	31.3	30.3	29.0	28.2
130°	48.4	44.3	42.5	41.3	40.4	39.0	37.9	36.7	35.5	34.4	33.3
132.5°	54.6	50.3	48.5	47.4	46.5	45.1	44.0	42.7	41.6	40.2	39.2
135°	61.0	56.5	54.7	53.5	52.6	51.4	50.3	49.0	48.1	46.6	45.8
137.5°	67.3	62.7	61.1	59.9	59.1	58.0	57.1	55.8	54.9	53.5	52.6
140°	73.8	69.0	67.3	66.5	65.8	64.6	63.8	62.8	61.9	61.0	59.9
142.5°	79.9	74.9	73.3	72.6	72.0	71.1	70.6	69.8	69.0	67.9	67.2
145°	86.0	80.7	79.2	78.4	78.0	77.5	76.8	76.2	75.6	74.8	74.2
147.5°	91.9	86.3	84.7	84.3	83.9	83.3	83.0	82.4	82.1	81.6	81.2
150°	97.7	91.3	89.5	89.3	88.9	88.6	88.3	88.0	87.9	87.5	87.2
152.5°	103.2	95.7	93.6	93.3	93.3	92.9	92.8	92.7	92.7	92.5	92.5
155°	108.8	100.5	98.2	97.8	97.7	97.5	97.4	97.4	97.4	97.4	97.5
157.5°	114.2	105.3	102.9	102.4	102.3	102.1	102.0	102.0	102.0	102.0	102.3
160°	119.2	110.3	107.7	107.3	107.1	106.9	106.6	106.5	106.5	106.5	106.6
162.5°	124.1	115.3	113.0	112.4	112.0	111.8	111.7	111.4	111.4	111.2	111.4
165°	128.7	120.7	118.4	117.9	117.7	117.3	117.0	116.8	116.7	116.5	116.5
167.5°	133.2	126.0	124.1	123.7	123.4	123.0	123.0	122.5	122.5	122.2	122.2
170°	136.3	130.7	129.1	128.8	128.8	128.6	128.3	128.2	128.0	127.9	127.9
172.5°	138.5	134.4	133.2	133.0	133.0	132.9	132.9	132.8	132.8	132.8	132.8
175°	139.7	137.1	136.7	136.4	136.4	136.4	136.4	136.4	136.4	136.4	136.7
177.5°	140.0	139.4	139.1	139.1	139.1	139.1	139.1	139.1	139.1	139.3	139.3
180°	138.9	138.9	138.9	138.9	138.9	138.9	138.9	138.9	138.9	138.9	138.9



TEST NUMBER: P1444473  
 CATALOG NUMBER: EHBR1-42-UNV-TA-L830

**CANDELA DISTRIBUTION (continued):**

	247.5°	250°	252.5°	255°	257.5°	260°	262.5°	265°	267.5°	270°	272.5°
0°	33489.2	33489.2	33489.2	33489.2	33489.2	33489.2	33489.2	33489.2	33489.2	33489.2	33489.2
2.5°	33750.9	33790.3	33787.3	33824.0	33822.2	33856.8	33849.8	33879.7	33873.0	33898.5	33883.5
5°	34858.0	34932.9	34957.6	35025.1	35039.1	35099.6	35100.8	35148.9	35143.0	35180.6	35160.6
7.5°	35905.4	35975.2	36008.3	36060.9	36087.0	36130.5	36147.5	36183.2	36191.8	36212.9	36212.2
10°	35993.7	35993.4	36009.8	36002.5	36017.1	36008.7	36026.6	36020.1	36046.5	36039.8	36059.7
12.5°	34804.4	34686.4	34643.3	34537.3	34514.2	34423.1	34429.6	34371.2	34399.4	34363.5	34424.6
15°	32248.5	31974.7	31839.5	31601.4	31526.7	31338.5	31323.3	31198.3	31232.0	31166.6	31262.2
17.5°	28471.5	28040.6	27804.0	27456.3	27318.3	27052.2	26998.9	26838.0	26862.9	26781.9	26897.3
20°	23968.4	23447.5	23149.2	22747.1	22567.8	22250.6	22166.5	21986.4	22009.0	21928.4	22058.9
22.5°	19413.9	18868.7	18531.8	18110.5	17881.5	17583.1	17493.6	17312.8	17323.1	17247.3	17373.0
25°	15228.5	14705.8	14378.9	13996.0	13797.3	13523.8	13429.7	13267.4	13276.5	13214.2	13326.8
27.5°	11780.3	11351.4	11077.9	10757.1	10578.9	10354.0	10262.3	10125.8	10125.4	10079.6	10173.8
30°	9205.7	8847.8	8602.2	8322.8	8155.5	7952.6	7864.0	7741.8	7736.5	7704.0	7778.8
32.5°	7207.9	6889.5	6665.4	6419.6	6269.4	6095.3	6011.4	5913.2	5904.3	5874.9	5936.3
35°	5603.2	5335.1	5142.4	4935.4	4950.7	4693.8	4736.5	4536.9	4482.8	4471.0	4516.6
37.5°	4330.6	4123.0	3966.5	3811.5	3706.5	3597.8	3539.4	3486.9	3480.9	3475.8	3507.9
40°	3389.7	3244.4	3130.6	3024.2	2951.9	2885.6	2849.1	2820.2	2813.4	2809.6	2829.0
42.5°	2743.4	2645.4	2572.0	2507.1	2463.2	2427.2	2407.1	2391.0	2385.7	2385.9	2397.3
45°	2317.9	2258.4	2211.1	2170.7	2142.7	2155.0	2118.7	2137.8	2112.7	2138.6	2121.5
47.5°	2041.2	1990.6	1961.3	1932.7	1915.8	1902.1	1902.5	1902.8	1908.2	1909.0	1914.6
50°	1827.7	1798.4	1778.1	1759.8	1751.0	1743.8	1746.3	1748.2	1753.3	1753.7	1757.8
52.5°	1669.7	1650.5	1638.2	1626.9	1622.9	1618.8	1620.6	1619.9	1622.2	1621.0	1624.3
55°	1541.2	1532.1	1528.2	1524.0	1524.6	1523.6	1524.2	1520.2	1517.7	1514.6	1517.5
57.5°	1435.6	1434.4	1437.0	1438.8	1443.6	1445.3	1446.5	1441.7	1437.3	1433.2	1435.5
60°	1354.4	1356.4	1362.8	1368.0	1374.9	1378.2	1380.1	1377.4	1374.2	1370.9	1372.8
62.5°	1274.2	1277.3	1285.0	1290.8	1299.2	1303.6	1308.4	1308.7	1309.9	1308.7	1310.0
65°	1181.1	1184.9	1191.9	1196.7	1204.5	1208.4	1213.3	1214.3	1217.0	1216.3	1218.7
67.5°	1110.4	1113.8	1119.6	1124.2	1131.2	1135.2	1139.5	1139.8	1140.7	1140.5	1142.7
70°	1034.9	1036.6	1041.8	1045.6	1052.6	1056.7	1061.7	1063.2	1066.3	1066.7	1069.3
72.5°	954.4	953.7	956.8	958.5	963.8	967.0	973.3	976.8	982.0	983.4	985.2
75°	866.8	866.1	869.8	871.3	875.7	879.0	886.0	890.6	898.7	902.1	901.2
77.5°	765.4	767.2	774.1	777.9	783.9	788.0	797.2	804.5	819.2	825.7	819.2
80°	651.9	653.8	661.0	664.6	672.5	677.4	687.7	696.3	709.6	712.5	708.7
82.5°	512.6	513.1	519.5	522.3	532.4	539.7	552.8	559.6	567.8	566.6	565.6
85°	349.5	354.3	362.3	370.4	382.7	394.7	407.0	417.1	410.0	421.2	408.6
87.5°	186.8	186.3	197.2	195.5	212.8	222.9	233.6	238.7	244.4	243.3	243.4
90°	18.4	17.1	18.6	17.1	19.5	17.7	21.0	19.5	23.3	21.1	25.2
92.5°	5.3	5.4	5.3	5.4	5.3	5.4	5.3	5.3	5.3	5.3	5.3
95°	5.8	5.8	5.8	5.7	5.7	5.7	5.7	5.7	5.7	5.7	5.7
97.5°	6.4	6.4	6.4	6.4	6.4	6.4	6.4	6.4	6.2	6.2	6.2
100°	6.9	6.9	6.9	6.9	6.7	6.7	6.7	6.7	6.7	6.7	6.7
102.5°	7.5	7.5	7.5	7.3	7.3	7.3	7.3	7.3	7.3	7.3	7.3
105°	8.1	8.1	8.1	8.1	8.0	8.0	8.0	8.0	8.0	8.0	8.0
107.5°	9.1	8.9	8.8	8.8	8.7	8.7	8.7	8.7	8.7	8.7	8.7
110°	9.9	9.8	9.6	9.6	9.6	9.5	9.5	9.5	9.5	9.5	9.5



TEST NUMBER: P1444473  
 CATALOG NUMBER: EHBR1-42-UNV-TA-L830

**CANDELA DISTRIBUTION (continued):**

	247.5°	250°	252.5°	255°	257.5°	260°	262.5°	265°	267.5°	270°	272.5°
112.5°	11.1	10.8	10.7	10.6	10.4	10.4	10.3	10.3	10.3	10.3	10.3
115°	12.5	12.3	12.1	11.9	11.8	11.5	11.4	11.4	11.4	11.4	11.4
117.5°	14.2	13.9	13.7	13.4	13.1	13.0	12.9	12.9	12.7	12.9	12.9
120°	16.7	16.1	15.6	15.4	15.2	15.0	14.6	14.6	14.6	14.6	14.6
122.5°	19.4	18.7	18.3	17.9	17.5	17.2	17.0	17.0	17.0	17.0	17.0
125°	22.9	22.2	21.6	21.1	20.5	20.3	20.1	20.1	20.0	20.1	20.1
127.5°	27.2	26.4	25.6	25.1	24.4	24.2	24.0	23.8	23.8	24.0	24.0
130°	32.1	31.4	30.5	29.9	29.1	28.9	28.7	28.4	28.3	28.4	28.7
132.5°	37.9	37.1	36.3	35.5	34.8	34.5	34.0	34.0	33.9	34.0	34.1
135°	44.4	43.6	42.7	42.0	41.2	40.9	40.5	40.5	40.4	40.5	40.8
137.5°	51.5	50.8	49.7	49.2	48.4	48.1	47.7	47.5	47.5	47.7	48.1
140°	58.9	58.1	57.2	56.6	56.1	55.7	55.4	55.4	55.1	55.5	55.6
142.5°	66.3	65.8	64.9	64.4	63.8	63.5	63.3	63.3	63.0	63.4	63.7
145°	73.4	73.0	72.3	71.8	71.5	71.4	70.9	71.0	71.0	71.4	71.5
147.5°	80.6	80.3	79.7	79.4	79.0	79.0	78.7	78.8	78.8	79.1	79.2
150°	86.9	86.7	86.4	86.3	86.0	86.0	85.9	86.0	86.0	86.3	86.4
152.5°	92.4	92.4	92.1	92.1	92.0	92.1	92.1	92.4	92.5	92.7	92.8
155°	97.5	97.5	97.5	97.7	97.7	98.1	98.1	98.4	98.5	98.9	99.0
157.5°	102.3	102.5	102.5	102.9	103.0	103.2	103.4	103.9	104.0	104.5	104.7
160°	106.9	107.1	107.3	107.6	107.8	108.1	108.5	108.8	109.2	109.6	109.9
162.5°	111.4	111.7	111.8	112.0	112.4	112.7	113.1	113.5	113.8	114.3	114.7
165°	116.5	116.7	116.8	116.9	117.3	117.6	117.7	118.3	118.5	119.1	119.4
167.5°	122.1	122.2	122.1	122.2	122.3	122.6	122.7	123.1	123.4	123.8	124.1
170°	127.6	127.6	127.6	127.6	127.6	127.9	128.0	128.0	128.2	128.6	128.7
172.5°	132.6	132.6	132.5	132.6	132.5	132.6	132.6	132.8	132.8	132.9	132.9
175°	136.4	136.7	136.7	136.8	136.7	136.7	136.7	136.7	136.7	136.8	136.8
177.5°	139.3	139.4	139.4	139.4	139.4	139.5	139.5	139.5	139.5	139.4	139.4
180°	138.9	138.9	138.9	138.9	138.9	138.9	138.9	138.9	138.9	138.9	138.9



TEST NUMBER: P1444473  
 CATALOG NUMBER: EHBR1-42-UNV-TA-L830

**CANDELA DISTRIBUTION (continued):**

	275°	277.5°	280°	282.5°	285°	287.5°	290°	292.5°	295°	297.5°	300°
0°	33489.2	33489.2	33489.2	33489.2	33489.2	33489.2	33489.2	33489.2	33489.2	33489.2	33489.2
2.5°	33908.4	33891.4	33908.8	33891.2	33908.8	33887.7	33902.0	33879.2	33885.0	33861.3	33867.4
5°	35190.6	35163.5	35177.9	35142.8	35146.4	35099.6	35098.7	35044.1	35029.7	34967.5	34940.2
7.5°	36227.3	36218.5	36223.5	36200.8	36198.3	36166.2	36151.0	36105.7	36077.3	36020.1	35981.0
10°	36063.2	36089.6	36096.5	36123.4	36129.0	36155.7	36161.3	36188.0	36193.5	36213.3	36213.5
12.5°	34421.8	34511.5	34533.0	34643.8	34690.5	34817.4	34885.4	35025.1	35108.1	35247.5	35333.1
15°	31259.6	31414.9	31476.8	31693.3	31813.0	32065.7	32224.5	32514.7	32719.4	33027.6	33247.4
17.5°	26907.5	27124.5	27222.4	27515.9	27707.4	28080.4	28349.2	28791.7	29130.4	29622.1	30011.9
20°	22081.3	22322.4	22455.3	22790.2	23016.2	23452.0	23787.6	24331.4	24784.8	25407.9	25940.7
22.5°	17412.3	17641.8	17789.4	18130.1	18384.5	18839.0	19214.1	19788.0	20296.0	20998.1	21636.9
25°	13369.4	13579.7	13713.0	14021.2	14260.2	14677.9	15036.1	15588.0	16085.1	16789.3	17444.3
27.5°	10220.7	10396.8	10525.4	10788.2	10998.9	11353.2	11660.8	12117.0	12545.2	13154.6	13737.9
30°	7824.8	7980.9	8106.1	8334.9	8530.3	8837.4	9107.9	9491.1	9845.6	10330.3	10794.4
32.5°	5979.5	6113.9	6225.4	6425.6	6603.0	6879.5	7123.2	7459.0	7763.3	8174.5	8556.3
35°	4559.1	4823.6	4804.8	5081.2	5125.6	5324.1	5541.5	5835.1	6104.6	6454.2	6779.1
37.5°	3538.6	3613.0	3692.7	3814.8	3943.2	4123.7	4307.4	4666.2	4797.8	5062.1	5331.0
40°	2853.5	2903.8	2956.4	3039.0	3128.8	3256.0	3389.9	3561.0	3736.3	3950.6	4169.4
42.5°	2412.4	2440.9	2474.3	2522.8	2578.2	2658.9	2748.4	2864.5	2986.4	3137.2	3291.1
45°	2155.4	2141.9	2151.8	2177.8	2211.2	2260.3	2316.8	2388.6	2468.0	2565.7	2669.7
47.5°	1915.8	1921.2	1924.2	1938.3	1956.1	1989.1	2023.3	2072.1	2166.3	2195.0	2251.7
50°	1757.5	1760.1	1759.2	1766.4	1775.4	1796.8	1819.0	1852.1	1885.0	1928.8	1970.5
52.5°	1624.8	1628.5	1628.0	1632.8	1637.6	1651.1	1665.1	1688.4	1710.1	1737.9	1761.9
55°	1520.0	1525.1	1527.1	1531.1	1533.5	1540.5	1546.1	1557.3	1566.5	1582.2	1596.7
57.5°	1439.4	1446.5	1449.7	1451.1	1448.2	1447.8	1445.9	1448.3	1450.1	1458.6	1466.8
60°	1376.0	1381.6	1382.5	1381.6	1376.4	1372.7	1366.8	1364.9	1363.9	1368.0	1372.5
62.5°	1309.7	1311.7	1310.3	1308.7	1302.7	1299.1	1292.9	1290.7	1288.5	1291.4	1293.8
65°	1217.8	1219.6	1217.8	1216.8	1211.4	1208.6	1203.4	1201.7	1198.7	1199.5	1199.0
67.5°	1143.3	1144.9	1143.6	1142.2	1138.5	1136.8	1132.9	1130.4	1126.9	1125.5	1123.0
70°	1068.9	1070.3	1068.1	1066.7	1062.5	1060.9	1057.4	1056.6	1053.7	1053.1	1050.2
72.5°	983.4	983.5	980.5	979.6	976.5	976.4	974.9	976.3	976.1	977.6	977.0
75°	895.9	894.7	890.9	890.2	887.9	889.0	887.4	889.5	889.8	893.0	893.3
77.5°	808.2	803.6	796.6	793.2	788.5	787.9	785.1	787.0	786.4	790.1	791.6
80°	697.6	691.9	682.9	678.6	672.9	672.1	669.6	672.1	670.9	675.2	678.3
82.5°	556.9	552.1	542.6	539.2	532.7	533.4	530.6	533.4	533.0	539.4	543.1
85°	412.0	408.7	399.0	390.4	380.9	375.3	369.9	368.9	367.3	369.9	372.1
87.5°	237.9	234.9	227.3	222.4	205.7	206.4	199.8	199.4	197.8	196.3	199.8
90°	22.9	26.0	24.0	26.8	25.2	28.7	27.4	30.6	28.4	31.2	29.7
92.5°	5.3	5.3	5.3	5.3	5.3	5.3	5.3	5.3	5.3	5.1	5.3
95°	5.7	5.7	5.7	5.7	5.7	5.7	5.7	5.7	5.7	5.7	5.7
97.5°	6.4	6.2	6.2	6.2	6.2	6.2	6.2	6.2	6.4	6.4	6.4
100°	6.7	6.7	6.7	6.7	6.7	6.7	6.7	6.7	6.9	6.9	6.9
102.5°	7.3	7.3	7.3	7.3	7.5	7.5	7.5	7.5	7.6	7.6	7.6
105°	8.0	8.0	8.1	8.1	8.1	8.1	8.1	8.1	8.3	8.3	8.5
107.5°	8.7	8.7	8.7	8.8	8.8	8.9	8.9	9.1	9.2	9.5	9.6
110°	9.5	9.6	9.6	9.6	9.6	9.8	9.9	10.2	10.4	10.6	10.8



TEST NUMBER: P1444473  
 CATALOG NUMBER: EHBR1-42-UNV-TA-L830

**CANDELA DISTRIBUTION (continued):**

	275°	277.5°	280°	282.5°	285°	287.5°	290°	292.5°	295°	297.5°	300°
112.5°	10.4	10.4	10.6	10.7	10.8	11.1	11.1	11.4	11.8	12.1	12.5
115°	11.5	11.5	11.8	11.9	12.2	12.3	12.7	13.0	13.5	13.9	14.4
117.5°	13.0	13.1	13.4	13.5	13.8	14.2	14.6	15.2	15.6	16.1	16.9
120°	15.0	15.2	15.4	15.5	16.0	16.4	17.0	17.6	18.4	19.1	20.0
122.5°	17.2	17.5	17.9	18.3	18.7	19.4	20.1	20.9	21.7	22.6	23.6
125°	20.3	20.7	21.1	21.6	22.4	23.0	24.0	24.8	25.9	26.7	27.9
127.5°	24.4	24.7	25.2	25.9	26.7	27.4	28.4	29.3	30.5	31.7	32.9
130°	29.0	29.5	30.3	30.8	31.9	32.8	33.7	34.8	36.2	37.1	38.5
132.5°	34.8	35.2	36.0	36.7	37.7	38.7	40.0	40.9	42.2	43.3	44.6
135°	41.2	41.7	42.5	43.3	44.4	45.3	46.6	47.5	48.9	49.9	51.2
137.5°	48.5	49.0	49.7	50.5	51.6	52.5	53.8	54.7	55.8	57.0	58.1
140°	56.2	56.6	57.4	58.2	59.1	59.9	61.2	62.1	63.3	64.2	65.2
142.5°	64.3	64.5	65.3	66.0	66.9	67.6	68.7	69.4	70.3	71.1	72.3
145°	72.0	72.3	73.1	73.6	74.4	75.1	76.0	76.7	77.6	78.2	79.1
147.5°	79.7	80.1	80.7	81.3	82.1	82.6	83.3	83.9	84.8	85.4	86.2
150°	86.9	87.2	87.8	88.1	88.9	89.5	90.2	90.8	91.3	91.9	92.5
152.5°	93.5	93.7	94.2	94.6	95.2	95.7	96.2	96.9	97.4	97.8	98.4
155°	99.4	99.9	100.4	100.8	101.4	101.6	102.3	102.7	103.2	103.8	104.3
157.5°	105.3	105.5	106.1	106.4	107.0	107.3	107.8	108.2	108.8	109.2	109.7
160°	110.3	110.8	111.2	111.7	112.2	112.6	113.1	113.5	114.1	114.5	114.9
162.5°	115.2	115.7	116.2	116.5	117.0	117.6	117.9	118.4	119.1	119.2	119.9
165°	119.9	120.3	120.9	121.1	121.8	122.2	122.6	123.1	123.5	124.0	124.4
167.5°	124.6	124.9	125.5	125.9	126.4	126.7	127.2	127.6	128.0	128.3	128.8
170°	129.1	129.5	129.8	130.2	130.6	130.9	131.3	131.6	132.1	132.3	132.8
172.5°	133.2	133.4	133.7	133.8	134.0	134.4	134.7	134.8	135.2	135.4	135.6
175°	136.8	136.8	136.9	137.0	137.1	137.1	137.2	137.5	137.6	137.8	137.9
177.5°	139.4	139.4	139.4	139.4	139.4	139.4	139.4	139.4	139.4	139.4	139.4
180°	138.9	138.9	138.9	138.9	138.9	138.9	138.9	138.9	138.9	138.9	138.9



TEST NUMBER: P1444473  
 CATALOG NUMBER: EHBR1-42-UNV-TA-L830

**CANDELA DISTRIBUTION (continued):**

	302.5°	305°	307.5°	310°	312.5°	315°	317.5°	320°	322.5°	325°	327.5°
0°	33489.2	33489.2	33489.2	33489.2	33489.2	33489.2	33489.2	33489.2	33489.2	33489.2	33489.2
2.5°	33843.7	33845.2	33817.8	33816.3	33790.7	33787.6	33762.6	33755.1	33734.8	33727.5	33706.9
5°	34870.5	34837.2	34760.3	34715.2	34639.2	34588.9	34506.8	34453.2	34373.8	34314.1	34234.3
7.5°	35908.9	35857.3	35771.0	35701.2	35595.8	35511.7	35388.4	35287.3	35153.8	35038.3	34898.0
10°	36213.5	36205.6	36183.6	36151.5	36102.5	36047.5	35963.5	35876.0	35759.0	35631.9	35476.0
12.5°	35464.1	35545.0	35655.4	35720.7	35800.4	35835.2	35867.8	35859.7	35838.2	35773.8	35683.7
15°	33565.7	33793.2	34094.2	34327.6	34596.0	34791.1	35006.6	35140.9	35274.8	35336.6	35374.4
17.5°	30545.9	30976.5	31516.4	31963.8	32480.0	32894.7	33349.2	33691.4	34043.2	34295.3	34523.3
20°	26667.0	27290.7	28054.3	28728.9	29513.3	30194.9	30941.8	31555.1	32187.5	32682.0	33149.9
22.5°	22459.6	23200.4	24123.6	24978.7	25989.9	26898.7	27923.9	28816.3	29748.1	30526.6	31279.1
25°	18322.3	19134.8	20144.2	21098.2	22243.5	23300.5	24516.6	25628.7	26833.1	27878.5	28911.4
27.5°	14544.4	15342.1	16372.6	17388.2	18599.2	19725.6	21028.5	22253.8	23625.0	24889.5	26183.1
30°	11439.3	12115.9	13039.9	14023.7	15218.0	16364.2	17681.1	18941.4	20367.9	21748.5	23205.6
32.5°	9063.0	9578.4	10304.9	11136.7	12238.8	13329.8	14583.9	15800.4	17205.2	18599.9	20115.2
35°	7197.7	7599.7	8153.6	8802.7	9736.0	10676.5	11785.7	12892.0	14202.6	15526.0	16998.9
37.5°	5675.8	6002.0	6435.8	6923.4	7671.9	8443.8	9353.3	10270.5	11409.3	12582.4	13917.2
40°	4432.1	4696.3	5034.0	5397.6	5962.8	6557.6	7261.0	7972.2	8887.1	9845.9	10950.7
42.5°	3481.8	3676.7	3915.2	4180.9	4708.3	5024.0	5501.0	6015.5	6688.1	7384.1	8214.7
45°	2796.2	2929.1	3094.5	3272.8	3517.5	3785.3	4112.1	4454.6	5093.5	5407.0	5912.1
47.5°	2335.1	2424.3	2529.6	2641.9	2786.2	2942.0	3135.7	3333.8	3590.0	3855.5	4166.8
50°	2024.6	2115.3	2151.4	2209.6	2293.2	2382.1	2491.4	2600.6	2738.0	2877.2	3037.5
52.5°	1794.1	1823.6	1862.9	1899.9	1951.7	2053.0	2085.8	2142.8	2219.9	2295.2	2379.4
55°	1618.1	1637.4	1662.8	1685.2	1716.5	1746.4	1789.6	1827.6	1878.9	1924.4	1980.3
57.5°	1481.0	1493.4	1511.1	1525.7	1545.9	1562.9	1588.2	1608.8	1638.3	1664.0	1697.9
60°	1381.6	1389.7	1401.6	1411.2	1424.1	1432.9	1445.4	1455.1	1470.7	1483.7	1502.7
62.5°	1300.2	1304.5	1312.2	1317.9	1326.0	1330.5	1337.2	1341.5	1350.0	1356.5	1367.1
65°	1202.6	1203.7	1208.9	1211.3	1217.7	1220.1	1225.5	1227.5	1234.6	1239.5	1248.7
67.5°	1122.7	1120.5	1120.7	1118.8	1119.6	1117.8	1118.2	1116.3	1119.2	1120.7	1127.7
70°	1049.8	1046.7	1045.6	1042.3	1041.3	1037.9	1036.8	1033.8	1033.4	1032.3	1034.9
72.5°	978.7	977.7	978.0	975.7	975.4	973.1	973.1	971.7	973.3	974.1	977.3
75°	896.9	897.1	898.7	896.6	897.2	895.2	896.0	894.1	895.1	894.7	897.9
77.5°	797.3	799.7	804.0	803.1	804.5	802.3	803.2	800.7	801.4	799.7	800.9
80°	685.4	690.4	696.2	695.9	698.4	696.8	699.0	696.5	697.6	694.6	693.8
82.5°	552.5	556.7	562.9	563.1	568.6	569.5	575.6	575.4	579.3	576.7	575.0
85°	377.7	380.5	386.0	389.0	394.5	398.0	403.9	406.3	402.0	409.7	403.6
87.5°	197.2	204.6	200.5	210.0	207.8	217.4	215.3	224.2	222.6	230.2	229.2
90°	33.7	32.8	37.1	36.5	42.1	42.2	48.1	47.7	53.2	53.1	58.7
92.5°	5.1	5.3	5.3	5.3	5.3	5.4	5.3	5.3	5.3	5.4	5.3
95°	5.7	5.7	5.7	5.7	5.7	5.7	5.7	5.8	5.8	5.8	5.8
97.5°	6.4	6.4	6.4	6.4	6.5	6.5	6.5	6.5	6.5	6.6	6.6
100°	6.9	7.1	7.1	7.1	7.2	7.2	7.3	7.3	7.5	7.5	7.5
102.5°	7.8	7.8	8.0	8.1	8.1	8.1	8.3	8.5	8.5	8.7	8.7
105°	8.7	8.8	8.9	9.1	9.2	9.6	9.6	9.8	9.9	10.2	10.2
107.5°	9.8	9.9	10.3	10.4	10.7	11.1	11.3	11.4	11.8	11.9	12.1
110°	11.1	11.4	11.8	12.2	12.5	12.9	13.1	13.5	13.8	14.1	14.2



TEST NUMBER: P1444473  
 CATALOG NUMBER: EHBR1-42-UNV-TA-L830

**CANDELA DISTRIBUTION (continued):**

	302.5°	305°	307.5°	310°	312.5°	315°	317.5°	320°	322.5°	325°	327.5°
112.5°	12.7	13.4	13.7	14.2	14.6	15.2	15.5	16.0	16.3	16.8	17.0
115°	15.0	15.5	16.1	16.8	17.2	17.9	18.4	18.8	19.4	19.9	20.1
117.5°	17.5	18.4	18.8	19.9	20.3	21.1	21.7	22.4	22.9	23.3	23.8
120°	20.7	21.6	22.5	23.3	24.1	24.8	25.6	26.3	26.8	27.4	27.9
122.5°	24.4	25.6	26.4	27.4	28.2	29.0	29.8	30.6	31.3	32.0	32.5
125°	28.9	29.9	30.9	32.0	32.9	33.9	34.7	35.5	36.3	37.1	37.7
127.5°	33.9	35.1	36.2	37.3	38.1	39.2	40.0	40.9	41.7	42.5	43.3
130°	39.4	40.8	41.9	42.8	43.7	45.0	45.7	46.6	47.5	48.4	49.3
132.5°	45.7	46.8	47.8	49.0	49.9	50.9	51.8	52.8	53.5	54.6	55.5
135°	52.3	53.4	54.2	55.5	56.2	57.2	58.1	59.1	59.9	61.0	61.8
137.5°	58.9	60.2	61.1	62.1	62.8	63.8	64.5	65.6	66.3	67.3	68.1
140°	66.0	67.1	67.7	68.8	69.5	70.3	71.1	72.0	72.7	73.6	74.2
142.5°	73.1	74.0	74.6	75.6	76.2	77.1	77.6	78.3	79.1	79.8	80.5
145°	79.8	80.7	81.3	82.1	82.4	83.3	83.7	84.5	84.9	85.6	86.2
147.5°	86.7	87.5	87.9	88.6	88.9	89.6	90.0	90.5	91.0	91.3	91.7
150°	92.9	93.7	94.0	94.6	95.0	95.5	95.8	96.2	96.5	96.9	97.1
152.5°	98.9	99.4	99.8	100.1	100.5	100.9	101.1	101.5	101.6	101.8	102.0
155°	104.6	105.3	105.5	106.0	106.1	106.5	106.5	106.9	107.0	107.1	107.1
157.5°	110.1	110.6	111.0	111.2	111.5	111.8	111.9	112.2	112.2	112.4	112.4
160°	115.3	115.7	116.1	116.3	116.7	116.8	116.9	117.3	117.4	117.4	117.4
162.5°	120.2	120.6	120.9	121.1	121.5	121.8	121.9	122.1	122.2	122.3	122.3
165°	124.8	125.1	125.5	125.9	126.0	126.4	126.5	126.7	126.7	126.9	126.9
167.5°	129.1	129.5	129.8	130.2	130.3	130.6	130.7	131.0	131.0	131.2	131.2
170°	132.9	133.2	133.6	133.8	133.9	134.0	134.3	134.4	134.4	134.5	134.5
172.5°	135.9	136.2	136.2	136.4	136.4	136.7	136.8	136.8	136.9	136.9	136.9
175°	137.9	138.0	138.3	138.3	138.3	138.4	138.4	138.4	138.4	138.4	138.4
177.5°	139.4	139.4	139.4	139.3	139.3	139.3	139.3	139.3	139.3	139.3	139.1
180°	138.9	138.9	138.9	138.9	138.9	138.9	138.9	138.9	138.9	138.9	138.9



TEST NUMBER: P1444473  
 CATALOG NUMBER: EHBR1-42-UNV-TA-L830

**CANDELA DISTRIBUTION (continued):**

	330°	332.5°	335°	337.5°	340°	342.5°	345°	347.5°	350°	352.5°	355°
0°	33489.2	33489.2	33489.2	33489.2	33489.2	33489.2	33489.2	33489.2	33489.2	33489.2	33489.2
2.5°	33699.5	33684.9	33675.4	33663.4	33656.1	33646.8	33639.9	33634.1	33629.4	33625.0	33621.9
5°	34173.4	34098.1	34039.6	33976.3	33924.3	33872.4	33832.5	33799.4	33776.5	33759.4	33749.2
7.5°	34776.7	34638.8	34516.2	34387.1	34271.5	34157.7	34059.6	33975.1	33911.7	33870.5	33845.6
10°	35315.5	35131.0	34948.4	34756.3	34574.0	34397.4	34234.3	34090.8	33977.2	33901.7	33857.7
12.5°	35557.1	35399.8	35213.4	35004.7	34781.5	34555.6	34335.3	34136.8	33970.1	33858.3	33793.7
15°	35344.4	35279.7	35153.3	34991.3	34779.4	34545.9	34287.4	34044.3	33820.8	33675.8	33591.8
17.5°	34652.4	34742.5	34732.8	34670.9	34518.6	34321.9	34058.5	33785.6	33505.9	33312.2	33206.3
20°	33484.7	33768.0	33911.7	33985.4	33925.5	33798.1	33559.6	33282.5	32956.6	32703.7	32549.2
22.5°	31843.8	32343.8	32655.5	32883.5	32931.9	32888.5	32677.8	32414.3	32051.1	31746.9	31518.9
25°	29731.3	30464.0	30956.4	31342.7	31492.5	31531.3	31352.0	31090.0	30685.1	30330.8	30017.7
27.5°	27243.2	28195.2	28852.7	29371.5	29605.7	29707.3	29542.3	29275.0	28795.9	28373.0	27963.9
30°	24442.1	25571.5	26363.2	26985.3	27270.8	27404.9	27229.7	26931.3	26373.8	25865.0	25349.6
32.5°	21444.0	22679.9	23542.6	24218.1	24501.0	24627.3	24398.0	24062.9	23418.5	22819.0	22218.1
35°	18305.0	19552.4	20422.5	21080.1	21317.1	21393.2	21100.0	20712.7	19998.7	19340.8	18685.5
37.5°	15102.1	16262.7	17053.3	17643.6	17790.3	17803.4	17450.1	17022.3	16271.9	15623.2	14970.9
40°	11926.8	12905.6	13544.1	14016.4	14067.3	14021.9	13637.8	13207.3	12505.3	11924.1	11351.4
42.5°	8935.9	9674.8	10130.2	10454.0	10434.7	10345.0	9992.9	9622.7	9043.6	8601.0	8150.2
45°	6373.6	6860.7	7127.0	7316.4	7255.7	7170.1	6896.1	6636.7	6243.1	5957.2	5654.3
47.5°	4427.8	5009.5	4908.3	5278.6	4959.5	5170.3	4731.4	4489.5	4280.6	4128.6	3957.5
50°	3169.9	3303.2	3367.7	3411.6	3388.2	3355.9	3277.0	3206.5	3111.1	3041.6	2960.5
52.5°	2448.1	2514.7	2551.2	2577.6	2572.4	2560.6	2526.2	2494.8	2450.1	2420.7	2385.2
55°	2073.6	2074.6	2141.7	2112.9	2155.5	2105.6	2125.2	2070.0	2078.9	2031.5	1999.6
57.5°	1723.1	1750.4	1762.7	1774.6	1771.2	1769.2	1755.9	1749.1	1734.1	1729.5	1718.9
60°	1515.7	1529.9	1532.9	1538.5	1533.8	1532.1	1521.7	1517.9	1507.9	1506.0	1498.9
62.5°	1373.5	1380.8	1380.8	1380.8	1374.8	1369.1	1357.6	1351.5	1343.0	1341.1	1337.0
65°	1254.8	1262.4	1263.6	1265.2	1260.9	1256.4	1246.2	1239.6	1230.8	1227.5	1222.8
67.5°	1132.3	1140.3	1143.1	1147.2	1144.8	1143.8	1136.9	1134.3	1128.5	1127.0	1122.7
70°	1036.1	1039.5	1039.2	1039.1	1033.7	1028.8	1020.7	1016.9	1010.8	1009.6	1005.6
72.5°	978.9	981.3	979.8	977.6	970.6	963.4	953.9	947.0	939.1	934.1	928.5
75°	898.3	901.5	899.4	898.1	891.7	887.1	879.5	875.6	870.0	868.4	864.6
77.5°	799.4	800.9	797.7	797.3	792.5	789.5	783.7	782.8	778.7	778.8	775.1
80°	689.3	688.5	683.2	682.3	677.4	676.2	671.7	672.0	668.7	670.1	667.5
82.5°	567.2	564.1	557.2	555.3	549.7	549.2	546.2	548.7	546.8	549.7	548.0
85°	406.4	407.4	404.4	404.4	402.8	403.3	403.0	404.8	405.1	407.8	407.7
87.5°	226.6	229.9	229.2	232.2	232.1	235.5	236.5	241.5	242.1	246.7	246.7
90°	58.5	64.6	64.4	70.6	70.9	76.8	77.9	83.9	84.4	89.6	89.1
92.5°	5.3	5.3	5.4	5.3	5.3	5.1	5.6	5.1	5.3	5.1	5.1
95°	5.8	5.8	5.8	5.8	5.8	5.7	5.7	5.7	5.7	5.7	5.7
97.5°	6.6	6.6	6.6	6.6	6.6	6.6	6.5	6.5	6.5	6.5	6.5
100°	7.5	7.5	7.6	7.5	7.5	7.5	7.5	7.5	7.5	7.3	7.3
102.5°	8.8	8.8	8.8	8.8	8.8	8.8	8.8	8.7	8.7	8.7	8.7
105°	10.3	10.3	10.4	10.4	10.4	10.4	10.4	10.3	10.3	10.3	10.3
107.5°	12.2	12.2	12.3	12.3	12.5	12.5	12.5	12.3	12.5	12.3	12.3
110°	14.5	14.6	14.8	14.8	15.0	15.0	15.0	15.0	15.2	15.0	15.0



TEST NUMBER: P1444473  
 CATALOG NUMBER: EHBR1-42-UNV-TA-L830

**CANDELA DISTRIBUTION (continued):**

	330°	332.5°	335°	337.5°	340°	342.5°	345°	347.5°	350°	352.5°	355°
112.5°	17.2	17.5	17.7	17.7	18.0	18.0	18.3	18.3	18.4	18.3	18.4
115°	20.5	20.9	21.1	21.3	21.6	21.7	22.0	22.0	22.2	22.2	22.2
117.5°	24.4	24.7	25.1	25.5	25.7	25.9	26.3	26.4	26.6	26.6	26.7
120°	28.4	28.9	29.5	29.9	30.4	30.6	31.2	31.3	31.6	31.6	31.7
122.5°	33.3	33.7	34.5	34.8	35.5	36.0	36.3	36.7	37.0	37.0	37.1
125°	38.6	39.2	40.0	40.5	41.2	41.7	42.2	42.4	42.8	42.8	42.9
127.5°	44.2	45.0	45.8	46.5	47.3	47.7	48.2	48.5	49.0	49.0	49.2
130°	50.1	50.9	51.9	52.6	53.4	54.0	54.7	55.0	55.5	55.5	55.6
132.5°	56.5	57.2	58.2	58.9	59.9	60.4	61.2	61.4	61.9	61.9	62.1
135°	62.8	63.5	64.5	65.3	66.1	66.9	67.5	67.9	68.4	68.4	68.5
137.5°	69.1	69.9	70.7	71.5	72.3	73.0	73.6	74.0	74.4	74.6	74.6
140°	75.2	75.9	76.8	77.5	78.2	78.8	79.4	79.8	80.3	80.3	80.5
142.5°	81.2	81.7	82.6	83.2	83.7	84.3	84.8	85.1	85.5	85.6	85.6
145°	86.7	87.1	87.9	88.3	88.9	89.3	89.7	90.1	90.2	90.2	90.4
147.5°	92.4	92.5	92.9	93.3	94.0	94.2	94.4	94.6	95.0	95.0	95.0
150°	97.4	97.5	97.8	98.1	98.3	98.4	98.5	98.8	98.9	98.8	98.8
152.5°	102.1	102.3	102.4	102.4	102.5	102.5	102.5	102.4	102.4	102.3	102.1
155°	107.3	107.3	107.3	107.1	107.3	107.1	107.0	106.9	106.6	106.4	106.1
157.5°	112.4	112.2	112.4	112.2	112.0	111.9	111.8	111.4	111.2	110.8	110.4
160°	117.6	117.4	117.4	117.3	117.0	116.8	116.7	116.2	116.0	115.4	115.0
162.5°	122.3	122.3	122.2	122.1	121.9	121.8	121.5	121.0	120.7	120.3	119.9
165°	127.1	126.9	126.9	126.7	126.6	126.4	126.3	125.7	125.5	125.0	124.6
167.5°	131.2	131.2	131.0	130.9	130.7	130.6	130.3	129.9	129.7	129.2	129.0
170°	134.5	134.4	134.4	134.3	134.0	133.9	133.7	133.4	133.0	132.8	132.5
172.5°	136.8	136.8	136.7	136.4	136.4	136.3	136.0	135.9	135.5	135.3	135.2
175°	138.3	138.3	138.0	138.0	137.9	137.8	137.6	137.5	137.2	137.1	136.9
177.5°	139.1	139.1	138.9	138.9	138.7	138.7	138.6	138.5	138.5	138.4	138.3
180°	138.9	138.9	138.9	138.9	138.9	138.9	138.9	138.9	138.9	138.9	138.9



TEST NUMBER: P1444473  
 CATALOG NUMBER: EHBR1-42-UNV-TA-L830

**CANDELA DISTRIBUTION (continued):**

	357.5°	360°
0°	33489.2	33489.2
2.5°	33618.9	33617.2
5°	33743.8	33741.8
7.5°	33838.9	33838.3
10°	33850.1	33855.9
12.5°	33782.6	33787.3
15°	33585.3	33594.6
17.5°	33208.3	33220.4
20°	32558.7	32571.2
22.5°	31506.7	31511.9
25°	29977.2	29955.5
27.5°	27892.1	27854.7
30°	25241.4	25205.2
32.5°	22081.0	22058.5
35°	18523.5	18509.3
37.5°	14778.1	14749.0
40°	11142.1	11057.4
42.5°	7952.9	7804.4
45°	5496.1	5320.0
47.5°	3836.9	3728.0
50°	2908.3	2873.2
52.5°	2369.7	2361.5
55°	1999.5	1995.8
57.5°	1721.2	1720.0
60°	1502.7	1502.3
62.5°	1339.7	1340.3
65°	1224.9	1225.1
67.5°	1123.9	1123.1
70°	1007.1	1006.2
72.5°	926.7	925.3
75°	864.6	863.7
77.5°	776.3	774.8
80°	669.2	667.5
82.5°	550.4	548.4
85°	410.6	410.7
87.5°	251.2	251.0
90°	94.0	92.9
92.5°	5.3	5.6
95°	5.7	5.7
97.5°	6.5	6.5
100°	7.3	7.3
102.5°	8.7	8.7
105°	10.3	10.3
107.5°	12.3	12.3
110°	15.0	15.0



TEST NUMBER: P1444473  
CATALOG NUMBER: EHBR1-42-UNV-TA-L830

**CANDELA DISTRIBUTION (continued):**

	357.5°	360°
112.5°	18.3	18.3
115°	22.0	22.0
117.5°	26.6	26.4
120°	31.4	31.4
122.5°	36.9	36.7
125°	42.7	42.5
127.5°	48.9	48.6
130°	55.1	55.0
132.5°	61.8	61.4
135°	68.1	67.9
137.5°	74.2	74.0
140°	80.1	79.8
142.5°	85.5	85.2
145°	90.2	90.0
147.5°	94.4	94.3
150°	98.4	98.2
152.5°	101.6	101.4
155°	105.7	105.3
157.5°	109.9	109.5
160°	114.5	114.1
162.5°	119.2	118.9
165°	124.0	123.5
167.5°	128.3	128.0
170°	132.1	131.8
172.5°	134.8	134.5
175°	136.8	136.7
177.5°	138.3	138.0
180°	138.9	138.9

LM-79-2019: Approved Method: Electrical and Photometric Measurements of Solid-State Lighting Products

Report Prepared for

Cooper Lighting Solutions

Metalux

Report Number: SP1-2506-472-2

Test Date: 07/31/2025

Luminaire Tested: EHBR-60-L830-N

Data in this report applies to families of products including EHBR-60-L830-N

**Test Information**

Test Method: LM-79-2019  
 Report Number: SP1-2506-472-2  
 Test Lab: COOPER LIGHTING SOLUTIONS  
 Photometer: SP1 - 76IN SPHERE  
 Measurement Geometry: 4π  
 Issue Date: 08/05/2025  
 Manufacturer: COOPER LIGHTING SOLUTIONS  
 Product Line: Metalux  
 Catalog Number: **EHBR-60-L830-N**  
 Description: Elevate Round Highbay at, 60000 lumens, 3000K 80CRI LEDs with N lens

**Spectral Parameters**

CCT (K): 2983  
 CIE u': 0.2516  
 CIE v': 0.5201  
 Duv: -0.0012  
 CIE x: 0.4364  
 CIE y: 0.4010  
 CIE z: 0.1626  
 Peak Wavelength (nm): 630  
 Dominant Wavelength (nm): 583  
 Purity: 51.34918  
 Rf: 81.2  
 Rg: 101.5

CRI (Ra):	83.4		
R1:	84.0	R9:	29.4
R2:	87.5	R10:	68.6
R3:	88.9	R11:	82.2
R4:	83.8	R12:	61.6
R5:	81.9	R13:	83.9
R6:	83.1	R14:	92.5
R7:	87.1	R15:	79.8
R8:	70.9		



**Test Conditions**

Stabilization Time: 38M  
 Operation Time: 1H 38M  
 Sphere Temperature (°C): 25.0

REPORT NUMBER: SP1-2506-472-2

Measurement and Test Equipment			
Instrument	Identification Number	Calibration Date	Calibration Due Date
Photometer	76INCH SPHERE IN0058	6/16/2025	12/16/2025
Power Meter	XITRON INXT2011004	1/21/2025	1/21/2026
AC Power Source	CHROMA 61603 IN0063	10/22/2024	10/22/2025
DC Power Source	AGILENT E3634A IN0208	10/22/2024	10/22/2025
Sphere Thermometer	ONSET IN0085	10/22/2024	10/22/2025
Room Thermometer	ONSET IN0046	10/22/2024	10/22/2025

REPORT NUMBER: SP1-2506-472-2

CIE 1931 Chromaticity Diagram



CIE 1931 Chromaticity Diagram with 2017 ANSI 7-Step and 4-Step Quadrangles

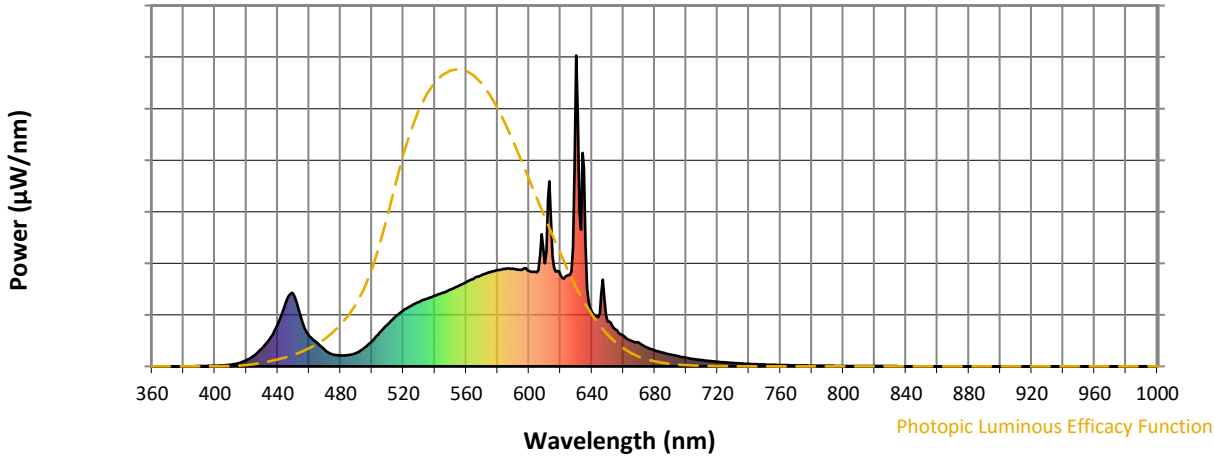


CCT = 2983K  
 CIE x = 0.4364  
 CIE y = 0.4010  
 Duv = -0.0012

Point lies inside the ANSI 3000K 4-step quadrangle

REPORT NUMBER: SP1-2506-472-2

**Photopic Flux vs. Wavelength**



**Photopic Lumens: NR**

λ (nm)	Power W <sup>^</sup> /nm	Lumens (φ/nm)	λ (nm)	Power W <sup>^</sup> /nm	Lumens (φ/nm)	λ (nm)	Power W <sup>^</sup> /nm	Lumens (φ/nm)	λ (nm)	Power W <sup>^</sup> /nm	Lumens (φ/nm)	λ (nm)	Power W <sup>^</sup> /nm	Lumens (φ/nm)
360	0	NR	490	43	NR	620	294	NR	750	6	NR	880	0	NR
365	0	NR	495	59	NR	625	294	NR	755	5	NR	885	0	NR
370	0	NR	500	81	NR	630	1000	NR	760	4	NR	890	0	NR
375	0	NR	505	109	NR	635	637	NR	765	4	NR	895	0	NR
380	0	NR	510	135	NR	640	175	NR	770	3	NR	900	0	NR
385	0	NR	515	160	NR	645	171	NR	775	3	NR	905	0	NR
390	1	NR	520	180	NR	650	146	NR	780	2	NR	910	0	NR
395	1	NR	525	195	NR	655	119	NR	785	2	NR	915	0	NR
400	2	NR	530	207	NR	660	99	NR	790	2	NR	920	0	NR
405	3	NR	535	218	NR	665	82	NR	795	2	NR	925	0	NR
410	5	NR	540	227	NR	670	76	NR	800	1	NR	930	0	NR
415	10	NR	545	237	NR	675	61	NR	805	1	NR	935	0	NR
420	20	NR	550	247	NR	680	52	NR	810	1	NR	940	0	NR
425	35	NR	555	259	NR	685	44	NR	815	1	NR	945	0	NR
430	58	NR	560	271	NR	690	38	NR	820	1	NR	950	0	NR
435	90	NR	565	283	NR	695	33	NR	825	1	NR	955	0	NR
440	135	NR	570	293	NR	700	27	NR	830	1	NR	960	0	NR
445	204	NR	575	303	NR	705	24	NR	835	1	NR	965	0	NR
450	233	NR	580	310	NR	710	20	NR	840	0	NR	970	0	NR
455	153	NR	585	313	NR	715	17	NR	845	0	NR	975	0	NR
460	98	NR	590	314	NR	720	15	NR	850	0	NR	980	0	NR
465	76	NR	595	310	NR	725	13	NR	855	0	NR	985	0	NR
470	53	NR	600	307	NR	730	11	NR	860	0	NR	990	0	NR
475	39	NR	605	303	NR	735	9	NR	865	0	NR	995	0	NR
480	35	NR	610	331	NR	740	8	NR	870	0	NR	1000	0	NR
485	36	NR	615	353	NR	745	7	NR	875	0	NR			

REPORT NUMBER: SP1-2506-472-2

**Scotopic Flux vs. Wavelength**



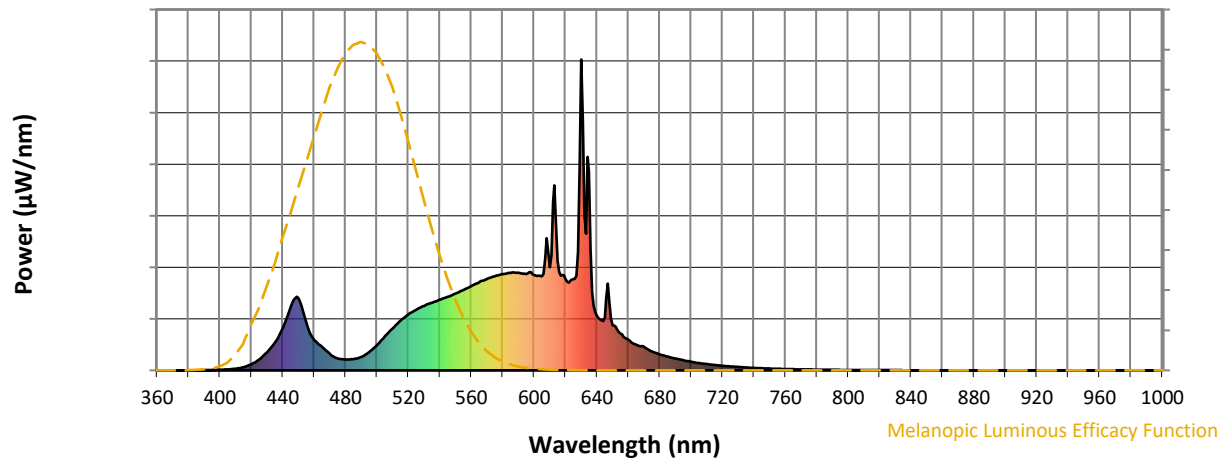
**Scotopic Lumens: NR**

**S/P: 1.27**

$\lambda$ (nm)	Power W <sup>^</sup> /nm	Lumens ( $\phi$ /nm)	$\lambda$ (nm)	Power W <sup>^</sup> /nm	Lumens ( $\phi$ /nm)	$\lambda$ (nm)	Power W <sup>^</sup> /nm	Lumens ( $\phi$ /nm)	$\lambda$ (nm)	Power W <sup>^</sup> /nm	Lumens ( $\phi$ /nm)	$\lambda$ (nm)	Power W <sup>^</sup> /nm	Lumens ( $\phi$ /nm)
360	0	NR	490	43	NR	620	294	NR	750	6	NR	880	0	NR
365	0	NR	495	59	NR	625	294	NR	755	5	NR	885	0	NR
370	0	NR	500	81	NR	630	1000	NR	760	4	NR	890	0	NR
375	0	NR	505	109	NR	635	637	NR	765	4	NR	895	0	NR
380	0	NR	510	135	NR	640	175	NR	770	3	NR	900	0	NR
385	0	NR	515	160	NR	645	171	NR	775	3	NR	905	0	NR
390	1	NR	520	180	NR	650	146	NR	780	2	NR	910	0	NR
395	1	NR	525	195	NR	655	119	NR	785	2	NR	915	0	NR
400	2	NR	530	207	NR	660	99	NR	790	2	NR	920	0	NR
405	3	NR	535	218	NR	665	82	NR	795	2	NR	925	0	NR
410	5	NR	540	227	NR	670	76	NR	800	1	NR	930	0	NR
415	10	NR	545	237	NR	675	61	NR	805	1	NR	935	0	NR
420	20	NR	550	247	NR	680	52	NR	810	1	NR	940	0	NR
425	35	NR	555	259	NR	685	44	NR	815	1	NR	945	0	NR
430	58	NR	560	271	NR	690	38	NR	820	1	NR	950	0	NR
435	90	NR	565	283	NR	695	33	NR	825	1	NR	955	0	NR
440	135	NR	570	293	NR	700	27	NR	830	1	NR	960	0	NR
445	204	NR	575	303	NR	705	24	NR	835	1	NR	965	0	NR
450	233	NR	580	310	NR	710	20	NR	840	0	NR	970	0	NR
455	153	NR	585	313	NR	715	17	NR	845	0	NR	975	0	NR
460	98	NR	590	314	NR	720	15	NR	850	0	NR	980	0	NR
465	76	NR	595	310	NR	725	13	NR	855	0	NR	985	0	NR
470	53	NR	600	307	NR	730	11	NR	860	0	NR	990	0	NR
475	39	NR	605	303	NR	735	9	NR	865	0	NR	995	0	NR
480	35	NR	610	331	NR	740	8	NR	870	0	NR	1000	0	NR
485	36	NR	615	353	NR	745	7	NR	875	0	NR			

REPORT NUMBER: SP1-2506-472-2

**Melanopic Flux vs. Wavelength**



**Melanopic Lumens: NR**

**M/P: 2.34**

λ (nm)	Power W <sup>^</sup> /nm	Lumens (φ/nm)	λ (nm)	Power W <sup>^</sup> /nm	Lumens (φ/nm)	λ (nm)	Power W <sup>^</sup> /nm	Lumens (φ/nm)	λ (nm)	Power W <sup>^</sup> /nm	Lumens (φ/nm)	λ (nm)	Power W <sup>^</sup> /nm	Lumens (φ/nm)
360	0	NR	490	43	NR	620	294	NR	750	6	NR	880	0	NR
365	0	NR	495	59	NR	625	294	NR	755	5	NR	885	0	NR
370	0	NR	500	81	NR	630	1000	NR	760	4	NR	890	0	NR
375	0	NR	505	109	NR	635	637	NR	765	4	NR	895	0	NR
380	0	NR	510	135	NR	640	175	NR	770	3	NR	900	0	NR
385	0	NR	515	160	NR	645	171	NR	775	3	NR	905	0	NR
390	1	NR	520	180	NR	650	146	NR	780	2	NR	910	0	NR
395	1	NR	525	195	NR	655	119	NR	785	2	NR	915	0	NR
400	2	NR	530	207	NR	660	99	NR	790	2	NR	920	0	NR
405	3	NR	535	218	NR	665	82	NR	795	2	NR	925	0	NR
410	5	NR	540	227	NR	670	76	NR	800	1	NR	930	0	NR
415	10	NR	545	237	NR	675	61	NR	805	1	NR	935	0	NR
420	20	NR	550	247	NR	680	52	NR	810	1	NR	940	0	NR
425	35	NR	555	259	NR	685	44	NR	815	1	NR	945	0	NR
430	58	NR	560	271	NR	690	38	NR	820	1	NR	950	0	NR
435	90	NR	565	283	NR	695	33	NR	825	1	NR	955	0	NR
440	135	NR	570	293	NR	700	27	NR	830	1	NR	960	0	NR
445	204	NR	575	303	NR	705	24	NR	835	1	NR	965	0	NR
450	233	NR	580	310	NR	710	20	NR	840	0	NR	970	0	NR
455	153	NR	585	313	NR	715	17	NR	845	0	NR	975	0	NR
460	98	NR	590	314	NR	720	15	NR	850	0	NR	980	0	NR
465	76	NR	595	310	NR	725	13	NR	855	0	NR	985	0	NR
470	53	NR	600	307	NR	730	11	NR	860	0	NR	990	0	NR
475	39	NR	605	303	NR	735	9	NR	865	0	NR	995	0	NR
480	35	NR	610	331	NR	740	8	NR	870	0	NR	1000	0	NR
485	36	NR	615	353	NR	745	7	NR	875	0	NR			

**Summary**

$R_f = 81.2$   
 $R_g = 101.5$   
 CIE  $R_a = 83.4$   
 $R_9 = 29.4$



**Color Vector Graphics**

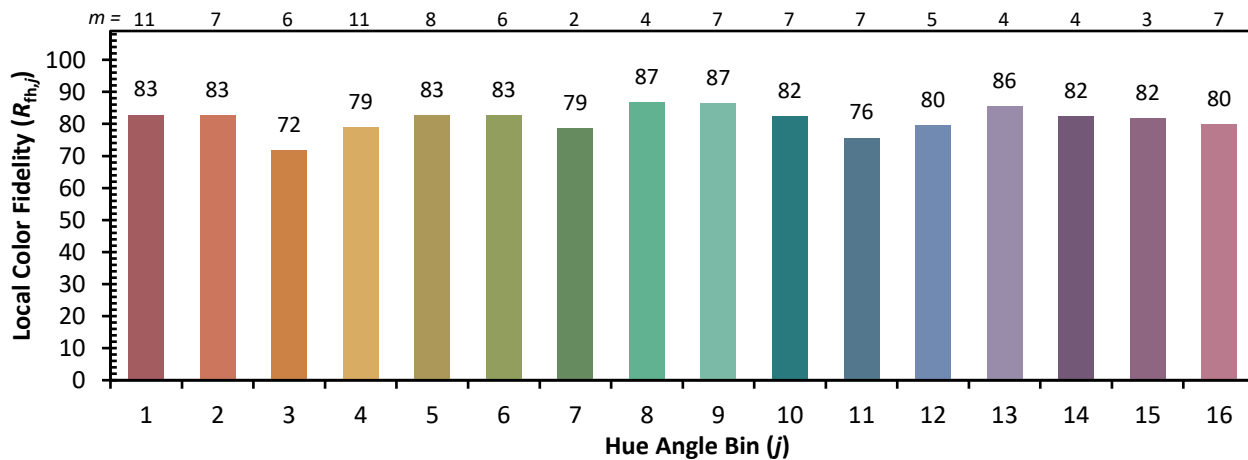
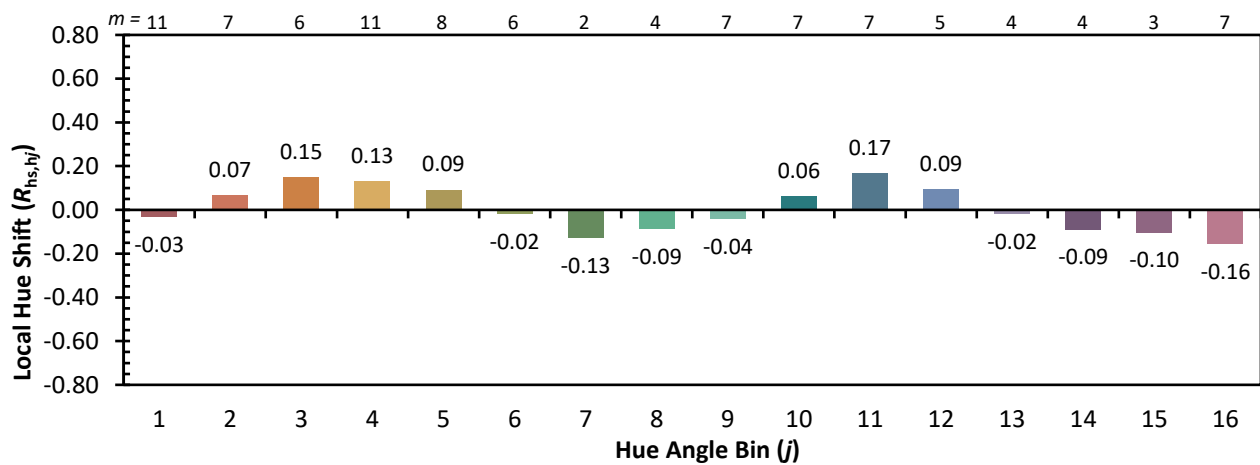
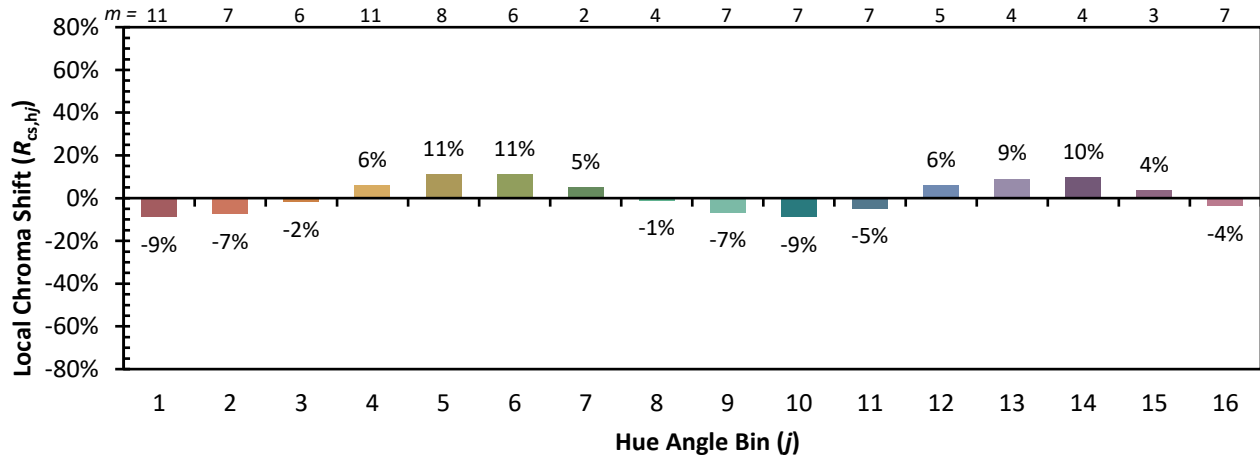


**Individual Sample Fidelity Index ( $R_{f,i}$ )**

CES01 = 86	CES26 = 71	CES51 = 89	CES76 = 65
CES02 = 63	CES27 = 89	CES52 = 89	CES77 = 82
CES03 = 31	CES28 = 86	CES53 = 80	CES78 = 67
CES04 = 70	CES29 = 68	CES54 = 92	CES79 = 89
CES05 = 50	CES30 = 77	CES55 = 90	CES80 = 85
CES06 = 51	CES31 = 70	CES56 = 81	CES81 = 75
CES07 = 43	CES32 = 64	CES57 = 79	CES82 = 93
CES08 = 41	CES33 = 74	CES58 = 81	CES83 = 89
CES09 = 29	CES34 = 76	CES59 = 92	CES84 = 91
CES10 = 76	CES35 = 87	CES60 = 96	CES85 = 81
CES11 = 59	CES36 = 99	CES61 = 91	CES86 = 74
CES12 = 65	CES37 = 81	CES62 = 93	CES87 = 83
CES13 = 44	CES38 = 83	CES63 = 79	CES88 = 86
CES14 = 74	CES39 = 94	CES64 = 81	CES89 = 74
CES15 = 72	CES40 = 89	CES65 = 78	CES90 = 85
CES16 = 48	CES41 = 88	CES66 = 76	CES91 = 87
CES17 = 50	CES42 = 80	CES67 = 74	CES92 = 73
CES18 = 57	CES43 = 75	CES68 = 79	CES93 = 84
CES19 = 72	CES44 = 99	CES69 = 83	CES94 = 64
CES20 = 67	CES45 = 83	CES70 = 72	CES95 = 80
CES21 = 87	CES46 = 82	CES71 = 70	CES96 = 86
CES22 = 79	CES47 = 79	CES72 = 90	CES97 = 85
CES23 = 92	CES48 = 78	CES73 = 65	CES98 = 83
CES24 = 91	CES49 = 79	CES74 = 94	CES99 = 82
CES25 = 72	CES50 = 88	CES75 = 70	



Color Rendition by Hue-Angle Bin



Measure Comparisons



(END OF REPORT)