

Cooper Lighting Solutions Photometric Lab
1121 Highway 74 South
Peachtree City, GA 30269



Scaled data based on original data using
LM-79-2019 Approved Method: Electrical and Photometric Measurements of Solid-
State Lighting Products

Test Report Prepared for
Cooper Lighting Solutions

Brand: METALUX

Report Number: P1444481

Luminaire Tested: EHBR1-48-UNV-TA-L830

Issue Date: 5/1/2026

Test Information

Test Method: LM-79-2019
Report Number: P1444481
TEST IS SCALED FROM IESNA LM-79-08 TEST DATA (C80-8019A)
Test Lab: INNOVATION CENTER
Issue Date: 5/1/2026
Manufacturer: COOPER LIGHTING SOLUTIONS
Product Line: METALUX
Catalog Number: EHBR1-48-UNV-TA-L830
Description: Elevate Round Highbay at, 48000 lumens, 3000K 80CRI LEDs with TA lens
Light Source: -
Ballast/Driver: -

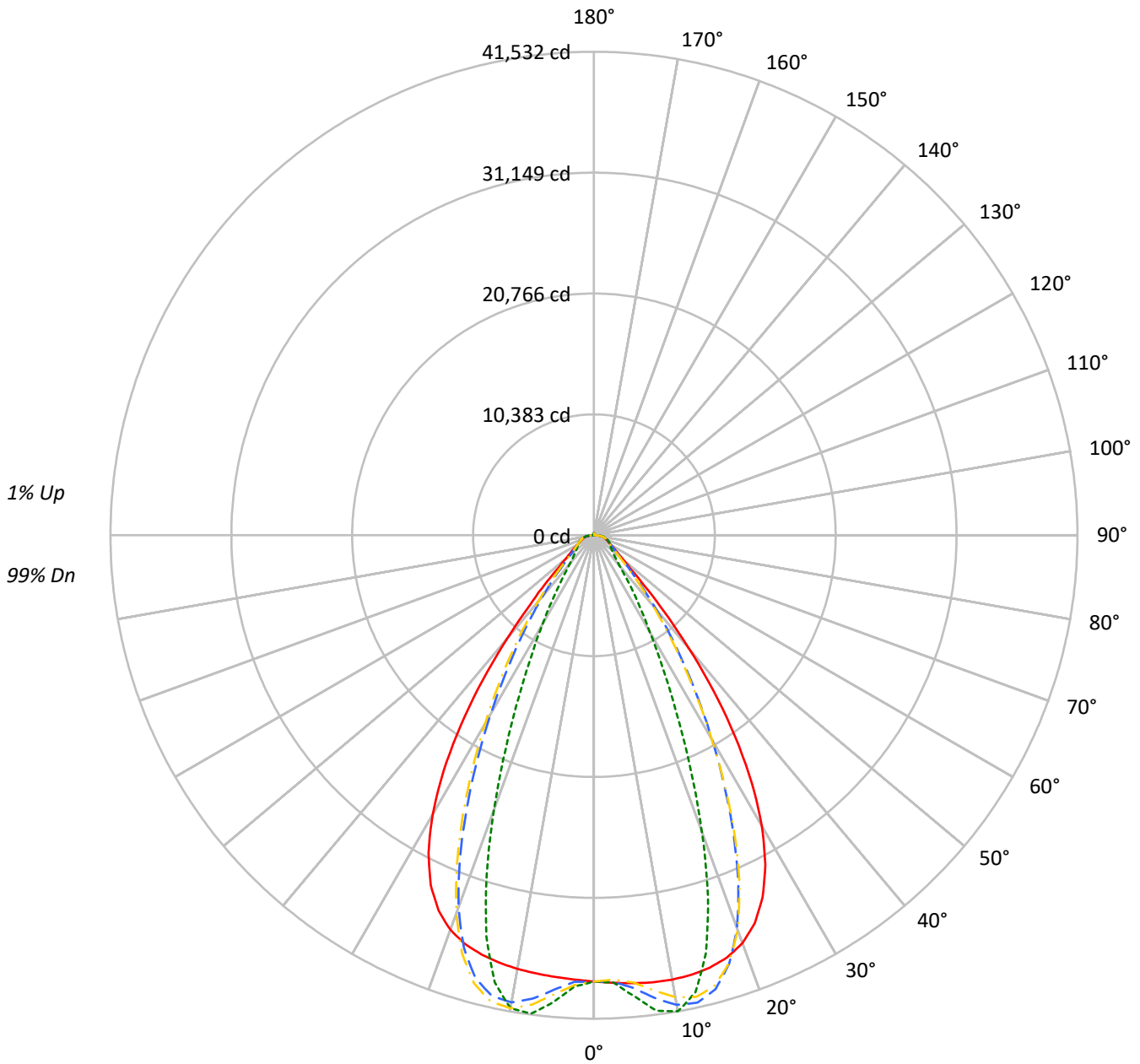
Summary

Lumens per Lamp: N/A
Luminaire Lumens: 44385.0 lumens
Efficiency: N/A
Efficacy: 171.6 lumens/watt
Spacing Criteria (0/90/45): 1.13 / 0.77 / 0.88
Luminous Opening: Circular (Dia: 1.71' x H: 0')
CIE Type: Direct

Input Watts (W): 258.6
Input Voltage (V): NR
Input Current (Ain): NR
Voltage Rise (V): NR
Power Factor: NR
Total Harmonic Distortion (THDi): NR
Frequency (hertz): 60
Stabilization Time: NR
Operation Time: NR
Ambient Temperature (°C): NR
Test Distance: 24 FT

TEST NUMBER: P1444481
CATALOG NUMBER: EHBR1-48-UNV-TA-L830

Luminous Intensity Polar Plot



— 0°-180° - - 45°-225° - - - 90°-270° - · - 135°-315°



TEST NUMBER: P1444481
 CATALOG NUMBER: EHBR1-48-UNV-TA-L830

COEFFICIENT OF UTILIZATION - ZONAL CAVITY METHOD:

RF	20				20				20				20				20				20
RC	80				70				50				30				10				0
RW	70	50	30	10	70	50	30	10	50	30	10	50	30	10	50	30	10	50	30	10	0
RCR																					
0	119	119	119	119	116	116	116	116	111	111	111	106	106	106	101	101	101	99			
1	112	108	105	103	109	106	103	101	102	100	98	98	96	95	94	93	92	90			
2	105	99	94	90	103	97	93	89	94	90	87	91	88	85	88	85	83	81			
3	99	91	85	81	97	90	84	80	87	82	79	84	81	77	82	79	76	74			
4	93	84	78	73	91	83	77	73	81	76	72	79	74	71	77	73	70	68			
5	88	78	72	67	86	77	71	66	75	70	66	73	69	65	72	68	64	63			
6	83	73	66	61	81	72	66	61	70	65	60	69	64	60	67	63	60	58			
7	78	68	61	57	77	67	61	56	66	60	56	65	59	56	63	59	55	54			
8	74	64	57	53	73	63	57	52	62	56	52	61	56	52	60	55	52	50			
9	70	60	53	49	69	59	53	49	58	53	49	57	52	48	56	52	48	47			
10	67	56	50	46	66	56	50	46	55	49	46	54	49	45	53	49	45	44			

AVERAGE LUMINANCE (cd/sqm):

	0°	90°	180°	270°
0°	180035	180035	180035	180035
5°	182086	187396	179538	189850
10°	184814	198046	180382	196736
15°	186972	180737	181280	173460
20°	186338	135587	180239	125451
25°	177686	86388	171814	78382
30°	156463	52328	150403	47823
35°	121472	33124	114485	29342
40°	77598	20982	70996	19717
45°	40447	16531	39777	16259
50°	24030	14900	23292	14667
55°	18707	14325	18015	14195
60°	16153	14933	15464	14739
65°	15584	16019	14988	15472
70°	15816	17424	15028	16768
75°	17941	19603	16970	18736
80°	20664	24161	18736	22057
85°	25330	30346	20470	25982

MAXIMUM LUMINANCE 45°-90°:

Horizontal Angle: 25°
 Vertical Angle: 45°
 Luminance: 61899 cd/sqm



TEST NUMBER: P1444481
 CATALOG NUMBER: EHBR1-48-UNV-TA-L830

ZONAL LUMENS:

Zone	Lumens	% Fixture
0°-10°	3778.2	8.5
10°-20°	10628.5	23.9
20°-30°	12105.0	27.3
30°-40°	8700.5	19.6
40°-50°	4012.7	9.0
50°-60°	1920.2	4.3
60°-70°	1401.1	3.2
70°-80°	1064.4	2.4
80°-90°	484.2	1.1
90°-100°	15.7	0.0
100°-110°	11.3	0.0
110°-120°	19.4	0.0
120°-130°	32.4	0.1
130°-140°	47.6	0.1
140°-150°	56.7	0.1
150°-160°	53.3	0.1
160°-170°	39.0	0.1
170°-180°	14.7	0.0
0°-30°	26511.7	59.7
0°-40°	35212.3	79.3
0°-60°	41145.2	92.7
0°-90°	44094.9	99.3
90°-120°	46.4	0.1
90°-150°	183.2	0.4
90°-180°	290.0	0.7
0°-180°	44385.0	100.0

CANDELA DISTRIBUTION:

	0°	90°	180°	270°	360°	Flux
0°	38337	38337	38337	38337	38337	
5°	38626	39753	38086	40273	38626	3691
15°	38458	37175	37287	35678	38458	10836
25°	34292	16672	33159	15127	34292	15545
35°	21189	5778	19970	5118	21189	13004
45°	6090	2489	5989	2448	6090	5180
55°	2285	1750	2200	1734	2285	2109
65°	1402	1442	1349	1392	1402	1401
75°	989	1080	935	1033	989	1028
85°	470	563	380	482	470	442
90°	106	140	16	24	106	69
95°	7	6	7	7	7	6
105°	12	9	12	9	12	13
115°	25	13	26	13	25	25
125°	49	21	51	23	49	44
135°	78	42	80	46	78	60
145°	103	76	105	82	103	64
155°	120	109	123	113	120	56
165°	141	133	144	136	141	40
175°	156	155	158	157	156	15
180°	159	159	159	159	159	



TEST NUMBER: P1444481
 CATALOG NUMBER: EHBR1-48-UNV-TA-L830

CANDELA DISTRIBUTION (FULL):

	0°	2.5°	5°	7.5°	10°	12.5°	15°	17.5°	20°	22.5°	25°
0°	38337.2	38337.2	38337.2	38337.2	38337.2	38337.2	38337.2	38337.2	38337.2	38337.2	38337.2
2.5°	38483.7	38480.5	38479.9	38477.3	38476.5	38476.5	38475.2	38472.1	38470.2	38465.8	38460.8
5°	38626.4	38624.7	38625.8	38626.0	38623.3	38617.3	38608.0	38596.4	38581.9	38568.3	38556.1
7.5°	38736.8	38739.6	38742.9	38742.2	38733.8	38719.8	38700.6	38689.8	38696.2	38717.1	38764.9
10°	38757.0	38773.5	38779.8	38777.9	38761.1	38749.0	38753.7	38794.4	38875.2	38983.0	39130.5
12.5°	38678.4	38698.6	38697.9	38691.2	38675.0	38691.5	38750.3	38871.3	39044.6	39257.3	39506.7
15°	38457.8	38483.9	38476.5	38467.8	38457.1	38511.2	38628.7	38838.7	39106.4	39406.3	39713.4
17.5°	38029.3	38060.9	38045.6	38035.8	38026.7	38128.2	38330.0	38637.5	38974.7	39314.0	39605.0
20°	37286.4	37307.5	37271.0	37253.8	37268.3	37467.0	37764.4	38157.1	38512.5	38833.3	39032.2
22.5°	36073.6	36099.9	36031.3	36023.3	36108.1	36413.3	36789.6	37228.7	37562.5	37816.8	37893.4
25°	34291.9	34317.8	34236.2	34284.9	34429.0	34844.9	35293.0	35762.6	36047.5	36235.9	36183.8
27.5°	31887.1	31910.7	31833.3	31932.8	32160.6	32707.0	33234.4	33743.8	33997.7	34129.6	33962.4
30°	28854.0	28903.0	28811.7	28950.5	29298.2	30007.6	30611.8	31183.0	31436.2	31536.6	31276.3
32.5°	25251.7	25321.4	25220.7	25427.2	25912.4	26764.6	27451.0	28089.2	28369.3	28483.9	28190.0
35°	21188.7	21288.7	21173.2	21483.2	22081.5	23030.5	23790.6	24503.2	24834.8	24997.4	24701.1
37.5°	16884.2	16979.5	16917.0	17330.6	17987.6	18971.3	19747.1	20515.8	20890.3	21134.3	20900.7
40°	12658.1	12745.3	12792.6	13265.7	13883.5	14810.7	15555.8	16316.4	16735.4	17041.6	16897.6
42.5°	8934.1	9022.1	9182.9	9639.3	10154.6	10922.0	11560.4	12243.3	12643.4	12970.1	12914.6
45°	6090.2	6192.4	6393.8	6767.5	7140.2	7690.8	8159.5	8690.6	9017.5	9316.8	9320.3
47.5°	4267.7	4339.5	4519.5	4774.7	5017.7	5706.9	5735.2	5996.2	6215.9	6439.6	6468.5
50°	3289.1	3332.2	3427.7	3570.0	3707.6	3886.5	4050.3	4239.5	4374.7	4497.3	4526.6
52.5°	2703.4	2730.8	2779.4	2856.4	2936.3	3033.6	3121.3	3225.1	3298.7	3364.4	3378.1
55°	2284.8	2307.6	2379.9	2394.5	2485.8	2503.4	2542.4	2605.6	2648.5	2687.8	2697.5
57.5°	1969.0	1985.4	2000.8	2033.6	2061.8	2102.6	2135.6	2180.9	2207.9	2236.4	2238.8
60°	1719.8	1731.7	1742.7	1765.4	1784.5	1813.0	1835.7	1866.5	1885.9	1907.1	1909.6
62.5°	1534.3	1542.9	1550.2	1565.1	1578.8	1600.7	1618.7	1644.5	1662.5	1679.0	1682.7
65°	1402.5	1408.7	1413.4	1424.8	1436.7	1455.4	1471.7	1492.7	1505.9	1518.6	1521.3
67.5°	1285.7	1291.6	1296.5	1306.9	1315.1	1329.0	1340.0	1355.8	1365.7	1375.7	1376.0
70°	1151.9	1157.4	1161.1	1170.8	1177.4	1189.3	1198.1	1212.4	1222.6	1233.8	1236.6
72.5°	1059.2	1062.5	1067.5	1076.3	1085.6	1098.3	1110.1	1124.9	1137.3	1148.9	1153.8
75°	988.8	992.6	995.8	1003.4	1009.8	1020.5	1029.3	1042.8	1053.7	1066.2	1072.3
77.5°	887.1	891.5	894.3	901.8	907.3	917.7	924.3	936.3	945.1	956.5	962.0
80°	764.1	768.2	770.3	777.4	781.8	791.2	797.6	809.3	816.7	828.1	834.7
82.5°	627.9	631.8	632.9	639.7	642.1	649.9	654.6	666.5	675.6	690.4	700.6
85°	470.1	471.5	473.9	472.1	481.7	482.2	493.0	495.1	509.2	512.9	529.1
87.5°	287.5	291.7	293.8	300.4	303.2	309.8	311.7	318.7	322.5	330.5	334.2
90°	106.4	111.9	113.1	119.8	120.7	126.5	127.2	133.9	135.0	141.9	143.0
92.5°	6.4	6.4	6.3	6.7	6.7	7.5	8.0	8.2	8.3	9.1	9.3
95°	6.6	6.6	6.6	6.6	6.6	6.6	6.6	6.6	6.6	6.6	6.4
97.5°	7.4	7.4	7.4	7.4	7.4	7.4	7.4	7.4	7.4	7.2	7.2
100°	8.3	8.3	8.3	8.3	8.3	8.3	8.3	8.3	8.3	8.3	8.2
102.5°	9.9	9.9	9.9	9.9	9.9	9.8	9.9	9.8	9.8	9.8	9.6
105°	11.8	11.6	11.8	11.6	11.6	11.6	11.6	11.3	11.3	11.2	11.2
107.5°	14.1	14.0	14.0	14.0	14.0	13.8	13.8	13.7	13.5	13.2	13.2
110°	17.2	17.0	17.0	16.8	16.6	16.6	16.5	16.0	16.0	15.7	15.6



TEST NUMBER: P1444481
 CATALOG NUMBER: EHBR1-48-UNV-TA-L830

CANDELA DISTRIBUTION (continued):

	0°	2.5°	5°	7.5°	10°	12.5°	15°	17.5°	20°	22.5°	25°
112.5°	20.9	20.6	20.4	20.3	20.1	19.8	19.6	19.3	19.2	18.7	18.5
115°	25.1	24.8	24.7	24.3	24.2	23.7	23.4	23.0	22.8	22.2	21.9
117.5°	30.3	29.9	29.5	29.2	28.7	28.3	27.8	27.3	26.7	26.1	25.8
120°	36.0	35.4	35.1	34.4	34.0	33.3	32.8	32.1	31.4	30.5	30.2
122.5°	42.1	41.5	41.2	40.4	39.8	39.0	38.4	37.2	36.6	35.8	34.9
125°	48.7	48.1	47.8	46.9	46.0	45.1	44.3	43.4	42.5	41.3	40.5
127.5°	55.7	55.2	54.5	53.6	52.7	51.7	50.8	49.6	48.7	47.3	46.5
130°	62.9	62.4	61.6	60.7	59.9	58.6	57.5	56.3	55.3	53.9	52.7
132.5°	70.3	69.8	69.0	68.1	67.1	65.7	64.6	63.0	61.9	60.7	59.4
135°	77.7	76.9	76.3	75.3	74.3	72.9	71.6	70.2	68.9	67.3	66.2
137.5°	84.7	83.9	83.3	82.1	81.1	79.5	78.4	76.9	75.6	74.0	72.8
140°	91.3	90.7	89.8	88.6	87.7	86.4	85.0	83.6	82.1	80.6	79.4
142.5°	97.6	96.8	96.0	94.9	94.0	92.5	91.2	89.6	88.3	86.8	85.7
145°	103.0	102.3	101.6	100.6	99.5	98.1	96.9	95.4	94.2	92.7	91.5
147.5°	108.0	107.3	106.7	105.8	104.8	103.4	102.3	100.9	99.8	98.4	97.5
150°	112.4	111.8	111.3	110.4	109.4	108.3	107.2	106.0	104.8	103.6	102.6
152.5°	116.1	115.4	114.9	114.1	113.2	111.9	111.3	110.0	108.9	107.8	106.9
155°	120.5	119.8	119.1	118.4	117.5	116.5	115.5	114.6	113.6	112.5	111.7
157.5°	125.3	124.5	123.9	122.9	122.3	121.3	120.5	119.5	118.7	117.7	116.9
160°	130.6	129.8	129.2	128.3	127.5	126.5	125.7	124.8	124.2	123.2	122.5
162.5°	136.1	135.3	134.5	133.7	133.0	132.0	131.3	130.6	129.8	128.9	128.1
165°	141.3	140.8	140.1	139.4	138.6	138.0	137.2	136.4	135.7	134.8	134.2
167.5°	146.6	145.9	145.5	144.8	144.1	143.5	142.8	142.1	141.6	140.8	140.2
170°	150.9	150.2	149.8	149.3	148.7	148.2	147.7	147.2	146.6	146.0	145.7
172.5°	154.0	153.4	153.2	152.9	152.3	152.0	151.6	151.2	150.9	150.3	150.2
175°	156.4	156.0	155.9	155.6	155.3	155.0	154.8	154.6	154.6	154.2	153.9
177.5°	158.0	157.8	157.8	157.7	157.7	157.6	157.5	157.2	157.0	157.0	156.9
180°	159.0	159.0	159.0	159.0	159.0	159.0	159.0	159.0	159.0	159.0	159.0



TEST NUMBER: P1444481
 CATALOG NUMBER: EHBR1-48-UNV-TA-L830

CANDELA DISTRIBUTION (continued):

	27.5°	30°	32.5°	35°	37.5°	40°	42.5°	45°	47.5°	50°	52.5°
0°	38337.2	38337.2	38337.2	38337.2	38337.2	38337.2	38337.2	38337.2	38337.2	38337.2	38337.2
2.5°	38457.1	38452.4	38446.0	38437.8	38430.9	38422.9	38403.7	38397.9	38404.3	38408.6	38417.4
5°	38548.4	38551.1	38552.1	38569.5	38584.6	38622.3	38917.3	39034.4	39125.1	39182.7	39270.0
7.5°	38824.0	38912.6	39000.2	39118.2	39219.9	39357.3	39873.4	40093.0	40249.2	40361.4	40499.5
10°	39290.8	39484.3	39665.8	39878.3	40061.1	40270.3	40750.7	40964.7	41099.8	41198.1	41289.9
12.5°	39761.1	40029.5	40272.0	40508.6	40706.4	40887.8	41056.7	41131.6	41138.0	41141.1	41092.4
15°	40006.1	40262.7	40476.3	40632.7	40749.0	40800.4	40509.6	40357.0	40164.2	40005.3	39744.0
17.5°	39851.4	40005.3	40097.7	40088.6	40040.6	39879.7	39056.0	38602.8	38153.0	37747.7	37216.1
20°	39164.2	39152.4	39072.1	38844.7	38570.6	38144.4	36732.0	35917.2	35129.4	34437.4	33598.0
22.5°	37885.6	37684.5	37403.9	36913.4	36368.6	35624.0	33600.0	32401.4	31304.6	30335.8	29250.4
25°	36033.0	35619.1	35101.8	34323.2	33476.4	32390.3	29895.8	28404.9	27088.1	25946.0	24693.7
27.5°	33662.0	33038.7	32280.5	31202.8	30055.6	28664.2	25898.6	24253.3	22839.7	21615.2	20282.4
30°	30855.1	30044.3	29065.3	27727.7	26344.0	24765.9	21961.0	20294.5	18863.6	17603.9	16270.1
32.5°	27683.0	26733.3	25586.1	24084.9	22588.5	20965.9	18257.0	16643.9	15277.1	14065.2	12858.0
35°	24184.3	23165.9	21952.2	20421.0	18933.6	17356.0	14870.4	13415.9	12209.0	11137.8	10163.0
37.5°	20431.4	19431.5	18277.9	16834.7	15455.4	14025.9	11881.2	10662.4	9649.5	8760.5	8007.7
40°	16529.4	15654.3	14656.2	13408.6	12231.5	11040.9	9280.3	8312.9	7513.6	6835.5	6271.5
42.5°	12675.2	11997.0	11231.6	10245.7	9344.9	8438.4	7083.4	6366.5	5774.5	5286.4	4887.7
45°	9196.2	8742.6	8229.3	7543.9	6920.5	6288.2	5323.8	4820.1	4434.6	4119.8	3853.7
47.5°	6428.6	6165.5	6149.5	5516.1	5059.0	4672.4	4051.1	3732.9	3496.6	3305.9	3137.4
50°	4514.7	4387.4	4229.2	4003.1	3791.0	3572.5	3194.0	3001.6	2863.2	2747.7	2641.1
52.5°	3375.1	3308.9	3224.7	3104.8	2989.8	2866.9	2627.4	2504.9	2461.4	2353.9	2269.5
55°	2695.8	2657.8	2609.9	2539.4	2469.5	2441.5	2236.2	2145.3	2087.7	2045.3	2000.0
57.5°	2239.2	2210.9	2182.5	2134.8	2094.3	2045.3	1936.3	1889.7	1855.4	1830.4	1799.0
60°	1910.0	1893.1	1877.2	1849.2	1827.3	1800.9	1731.7	1705.4	1687.5	1672.5	1652.4
62.5°	1685.8	1677.2	1668.9	1653.9	1642.9	1628.6	1581.3	1568.6	1559.6	1552.1	1539.9
65°	1523.9	1517.7	1513.2	1503.2	1497.7	1489.3	1448.7	1440.2	1434.6	1431.9	1424.8
67.5°	1377.0	1370.4	1367.4	1360.3	1358.0	1352.8	1319.5	1314.9	1313.0	1313.8	1311.3
70°	1239.4	1236.6	1238.1	1236.9	1240.1	1241.0	1220.9	1220.8	1222.9	1227.2	1227.6
72.5°	1156.9	1156.9	1158.5	1159.3	1162.3	1163.7	1146.9	1146.1	1147.0	1150.2	1150.3
75°	1078.5	1079.8	1084.1	1085.6	1089.0	1089.8	1067.6	1065.0	1065.2	1068.1	1067.2
77.5°	970.0	974.6	982.8	987.0	993.8	995.2	970.2	967.3	967.4	970.4	967.9
80°	846.8	855.8	868.7	877.6	888.2	892.4	866.8	860.7	855.0	854.2	849.1
82.5°	715.9	726.9	742.3	750.5	761.7	764.3	721.5	713.4	708.5	709.0	704.3
85°	546.6	554.8	568.9	573.5	580.4	579.8	530.9	510.0	515.7	506.9	513.8
87.5°	342.8	347.7	356.5	357.6	360.9	360.2	311.0	301.3	298.5	298.6	295.1
90°	149.6	151.5	157.7	156.4	160.1	158.0	116.8	110.8	108.6	111.7	108.0
92.5°	9.8	9.8	10.2	10.4	10.8	11.1	6.8	5.7	6.1	5.8	6.4
95°	6.4	6.4	6.4	6.4	6.4	6.4	6.4	6.4	6.4	6.3	6.3
97.5°	7.2	7.2	7.1	7.1	7.1	7.1	7.1	7.1	7.1	6.8	6.8
100°	8.2	8.2	8.1	8.1	8.0	8.0	8.0	8.0	8.0	7.7	7.7
102.5°	9.4	9.4	9.3	9.1	9.0	9.0	9.1	9.1	9.0	8.7	8.5
105°	11.1	11.0	10.8	10.4	10.2	10.1	10.4	10.2	10.1	9.9	9.8
107.5°	12.9	12.8	12.4	12.1	11.9	11.6	12.1	11.9	11.6	11.2	11.1
110°	15.4	14.9	14.6	14.2	13.8	13.5	14.1	13.8	13.5	13.1	12.8



TEST NUMBER: P1444481
 CATALOG NUMBER: EHBR1-48-UNV-TA-L830

CANDELA DISTRIBUTION (continued):

	27.5°	30°	32.5°	35°	37.5°	40°	42.5°	45°	47.5°	50°	52.5°
112.5°	17.9	17.6	17.2	16.6	16.0	15.6	16.5	16.3	15.7	15.1	14.8
115°	21.2	20.9	20.1	19.6	19.0	18.4	19.3	19.2	18.5	17.8	17.2
117.5°	25.0	24.3	23.7	23.0	22.2	21.5	22.9	22.5	21.6	20.9	20.1
120°	29.2	28.6	27.7	27.0	26.0	25.1	26.7	26.4	25.6	24.5	23.7
122.5°	34.1	33.3	32.2	31.4	30.4	29.4	31.3	31.0	29.9	28.9	27.8
125°	39.5	38.5	37.5	36.5	35.2	34.3	36.5	36.0	34.9	33.8	32.8
127.5°	45.3	44.3	43.2	42.2	40.7	39.8	42.1	41.6	40.5	39.3	38.1
130°	51.6	50.4	49.2	48.1	46.9	45.7	48.1	47.9	46.7	45.3	44.2
132.5°	58.1	57.0	55.5	54.5	53.3	52.0	54.7	54.4	53.4	52.0	50.9
135°	64.8	63.7	62.4	61.1	59.9	58.8	61.8	61.5	60.5	59.1	58.0
137.5°	71.3	70.2	68.9	67.9	66.6	65.5	69.0	68.9	67.9	66.5	65.5
140°	78.1	76.9	75.7	74.7	73.4	72.6	76.3	76.3	75.4	74.3	73.2
142.5°	84.2	83.3	82.1	81.3	80.1	79.2	83.6	83.6	82.8	81.7	80.8
145°	90.2	89.4	88.2	87.4	86.4	85.7	90.5	91.0	90.2	89.3	88.3
147.5°	96.0	95.2	94.2	93.4	92.5	92.1	97.5	98.1	97.5	96.6	95.9
150°	101.4	100.6	99.6	98.9	98.4	97.8	104.2	105.1	104.5	104.0	103.3
152.5°	105.8	105.0	104.2	103.4	102.8	102.3	110.5	111.9	111.6	110.8	110.4
155°	110.8	110.0	109.1	108.6	107.8	107.5	116.9	118.7	118.2	117.7	117.2
157.5°	116.1	115.2	114.4	113.8	113.2	112.7	122.9	125.1	124.6	124.2	123.7
160°	121.6	120.9	120.1	119.5	118.8	118.2	129.0	131.1	130.9	130.3	129.8
162.5°	127.3	126.9	126.0	125.3	124.6	124.2	134.8	137.2	136.7	136.3	135.8
165°	133.6	132.8	132.2	131.7	131.0	130.6	140.8	142.9	142.7	142.1	141.6
167.5°	139.6	139.1	138.4	138.0	137.4	137.1	146.6	148.7	148.4	147.7	147.4
170°	145.1	144.8	144.3	144.0	143.7	143.5	151.5	153.2	153.1	152.5	152.2
172.5°	149.8	149.6	149.3	149.0	148.7	148.7	155.3	156.9	156.7	156.4	156.0
175°	153.7	153.4	153.3	153.3	153.2	153.1	158.3	159.4	159.2	159.0	158.7
177.5°	156.9	156.7	156.7	156.7	156.7	156.7	159.8	160.6	160.4	160.4	160.3
180°	159.0	159.0	159.0	159.0	159.0	159.0	159.0	159.0	159.0	159.0	159.0



TEST NUMBER: P1444481
 CATALOG NUMBER: EHBR1-48-UNV-TA-L830

CANDELA DISTRIBUTION (continued):

	55°	57.5°	60°	62.5°	65°	67.5°	70°	72.5°	75°	77.5°	80°
0°	38337.2	38337.2	38337.2	38337.2	38337.2	38337.2	38337.2	38337.2	38337.2	38337.2	38337.2
2.5°	38419.4	38432.9	38434.9	38450.7	38449.4	38468.1	38465.2	38480.5	38471.6	38484.2	38473.5
5°	39321.7	39403.6	39446.4	39526.2	39551.5	39623.0	39643.2	39708.4	39711.1	39762.8	39751.0
7.5°	40597.5	40718.2	40789.7	40888.5	40938.5	41020.8	41057.0	41117.9	41137.4	41185.8	41189.4
10°	41359.3	41417.9	41458.8	41486.4	41511.6	41523.4	41537.1	41533.4	41537.1	41531.7	41543.5
12.5°	41059.7	40974.2	40917.6	40810.5	40748.4	40630.0	40572.0	40458.1	40416.8	40319.0	40305.0
15°	39542.1	39244.1	39033.5	38727.2	38534.6	38233.3	38057.0	37785.1	37660.9	37444.8	37388.2
17.5°	36776.1	36222.8	35794.5	35245.3	34864.1	34350.7	34027.9	33602.9	33370.3	33027.5	32908.9
20°	32898.2	32079.6	31437.3	30672.1	30124.6	29442.3	29005.5	28454.6	28134.8	27713.9	27543.3
22.5°	28345.5	27326.2	26524.0	25620.1	24959.5	24199.1	23675.9	23079.9	22731.9	22274.7	22072.1
25°	23652.9	22529.0	21637.1	20684.7	19986.7	19224.5	18701.1	18115.6	17755.6	17321.5	17120.3
27.5°	19165.1	18027.2	17165.4	16279.9	15639.6	14951.8	14479.6	13968.4	13648.8	13278.3	13089.0
30°	15204.5	14201.0	13467.5	12732.7	12200.0	11641.5	11249.0	10825.4	10545.0	10227.7	10047.5
32.5°	11977.8	11203.0	10628.7	10045.6	9609.7	9142.9	8803.8	8430.0	8177.0	7893.6	7730.4
35°	9486.2	8884.2	8426.2	7946.2	7571.7	7174.2	6875.3	6552.7	6325.6	6081.7	5940.7
37.5°	7495.1	7016.4	6639.5	6240.8	5933.2	5603.9	5492.9	5122.6	4887.4	4692.7	4557.8
40°	5882.2	5501.6	5189.6	4884.7	4633.9	4384.1	4183.6	3985.8	3833.9	3694.7	3598.4
42.5°	4593.5	4317.8	4090.0	3866.6	3683.6	3501.6	3356.4	3220.1	3117.8	3026.8	2964.7
45°	3651.7	3462.0	3303.7	3146.4	3017.2	2895.7	2798.0	2711.0	2645.0	2590.3	2551.5
47.5°	2999.9	2870.1	2758.4	2652.3	2564.6	2485.0	2419.5	2398.2	2327.2	2279.3	2261.1
50°	2549.5	2471.1	2386.3	2308.0	2249.4	2191.1	2148.7	2107.0	2080.5	2058.5	2051.8
52.5°	2213.3	2153.4	2106.2	2056.6	2018.0	1976.5	1947.2	1919.5	1904.9	1893.4	1892.0
55°	1963.4	1921.5	1890.3	1857.0	1833.9	1809.5	1794.4	1779.7	1773.3	1767.5	1767.9
57.5°	1774.3	1746.3	1726.0	1704.4	1691.9	1680.3	1676.4	1672.8	1674.7	1675.6	1678.9
60°	1636.5	1618.4	1605.5	1593.2	1587.9	1584.3	1587.1	1590.3	1597.0	1602.4	1607.2
62.5°	1531.0	1520.6	1514.3	1507.6	1507.1	1507.4	1513.1	1518.6	1526.9	1533.2	1537.9
65°	1422.2	1416.3	1414.2	1410.0	1412.2	1413.4	1420.2	1424.5	1432.9	1437.8	1443.8
67.5°	1312.4	1311.0	1312.2	1312.2	1316.1	1319.4	1325.9	1330.8	1337.8	1342.4	1347.3
70°	1231.3	1231.9	1234.9	1235.4	1239.5	1241.8	1247.5	1250.6	1257.0	1260.8	1266.6
72.5°	1152.4	1151.1	1151.9	1150.0	1151.4	1150.8	1154.0	1155.5	1161.0	1164.0	1171.1
75°	1068.4	1064.9	1064.0	1060.3	1060.4	1057.6	1058.9	1058.8	1062.3	1063.7	1068.9
77.5°	967.0	961.1	958.2	951.8	951.7	949.3	951.8	953.4	959.7	962.6	968.5
80°	845.7	836.3	832.1	824.7	825.9	825.5	831.7	836.5	844.1	845.6	852.9
82.5°	702.9	693.4	688.9	681.5	683.2	683.4	689.1	690.1	696.7	699.6	708.2
85°	503.3	506.9	496.8	497.6	495.4	499.5	503.3	508.1	513.6	522.9	530.0
87.5°	296.4	295.1	298.6	299.1	304.2	306.9	315.1	319.8	329.1	336.3	349.4
90°	109.4	105.8	109.9	109.4	115.5	115.2	120.6	119.2	125.6	127.0	135.0
92.5°	5.8	6.3	5.8	6.1	5.8	6.4	5.8	6.3	5.8	6.4	5.8
95°	6.3	6.3	6.3	6.3	6.3	6.3	6.3	6.3	6.3	6.3	6.3
97.5°	6.8	6.8	6.8	6.7	6.7	6.7	6.7	6.7	6.7	6.7	6.7
100°	7.5	7.5	7.5	7.4	7.4	7.4	7.4	7.4	7.4	7.4	7.4
102.5°	8.5	8.3	8.3	8.2	8.2	8.1	8.1	8.1	8.1	8.1	8.1
105°	9.6	9.4	9.3	9.1	9.1	9.0	9.0	8.7	8.7	8.7	8.7
107.5°	10.8	10.5	10.4	10.2	10.1	9.9	9.8	9.8	9.6	9.6	9.6
110°	12.2	11.9	11.8	11.3	11.2	11.1	10.8	10.8	10.5	10.4	10.4



TEST NUMBER: P1444481
 CATALOG NUMBER: EHBR1-48-UNV-TA-L830

CANDELA DISTRIBUTION (continued):

	55°	57.5°	60°	62.5°	65°	67.5°	70°	72.5°	75°	77.5°	80°
112.5°	14.2	13.8	13.2	12.9	12.6	12.2	12.1	11.9	11.8	11.6	11.3
115°	16.5	15.9	15.4	14.9	14.5	14.0	13.7	13.5	13.1	12.9	12.8
117.5°	19.3	18.6	17.8	17.2	16.6	16.0	15.6	15.1	14.8	14.6	14.5
120°	22.8	21.9	20.9	20.1	19.3	18.6	17.9	17.5	17.0	16.8	16.5
122.5°	26.7	25.8	24.5	23.7	22.8	21.9	21.0	20.4	19.8	19.3	19.0
125°	31.4	30.3	29.1	27.8	26.7	25.9	24.8	24.0	23.3	22.9	22.2
127.5°	36.8	35.4	34.1	33.0	31.6	30.5	29.4	28.6	27.5	26.9	26.1
130°	42.8	41.5	39.9	38.8	37.2	36.1	34.9	34.0	33.0	32.1	31.3
132.5°	49.5	48.1	46.7	45.3	43.9	42.6	41.3	40.2	39.0	38.1	37.2
135°	56.6	55.5	53.9	52.5	51.1	49.8	48.6	47.3	46.2	45.1	44.2
137.5°	64.3	62.9	61.6	60.5	58.9	57.8	56.3	55.3	53.9	53.1	52.0
140°	71.9	70.9	69.5	68.4	67.1	66.0	64.6	63.7	62.4	61.5	60.5
142.5°	79.5	78.6	77.5	76.4	75.3	74.3	73.1	72.0	70.9	70.1	69.0
145°	87.4	86.6	85.5	84.6	83.6	82.7	81.4	80.6	79.5	78.7	78.0
147.5°	95.1	94.2	93.4	92.5	91.5	90.7	89.6	89.1	88.0	87.4	86.6
150°	102.5	101.7	100.9	100.3	99.3	98.6	97.8	97.0	96.2	95.7	94.9
152.5°	109.5	108.9	108.3	107.7	106.9	106.1	105.4	104.8	104.2	103.6	102.8
155°	116.5	116.0	115.2	114.7	113.8	113.3	112.7	111.9	111.4	110.8	110.2
157.5°	123.2	122.6	121.9	121.5	120.6	120.1	119.5	119.0	118.2	117.7	117.1
160°	129.3	128.9	128.1	127.6	127.0	126.5	125.7	125.3	124.6	124.2	123.5
162.5°	135.3	134.7	134.2	133.7	133.0	132.5	131.9	131.3	130.7	130.1	129.5
165°	141.1	140.5	139.9	139.4	138.9	138.4	137.7	137.2	136.6	136.1	135.4
167.5°	146.9	146.5	145.9	145.5	144.8	144.3	143.8	143.2	142.7	142.1	141.3
170°	151.8	151.3	151.0	150.4	150.1	149.5	149.0	148.5	147.9	147.6	146.9
172.5°	155.7	155.6	155.1	154.8	154.3	154.0	153.7	153.3	152.9	152.5	152.2
175°	158.6	158.4	158.3	157.8	157.7	157.5	157.2	157.0	156.7	156.6	156.1
177.5°	160.3	160.1	160.1	159.8	159.7	159.7	159.5	159.5	159.4	159.2	159.2
180°	159.0	159.0	159.0	159.0	159.0	159.0	159.0	159.0	159.0	159.0	159.0



TEST NUMBER: P1444481
 CATALOG NUMBER: EHBR1-48-UNV-TA-L830

CANDELA DISTRIBUTION (continued):

	82.5°	85°	87.5°	90°	92.5°	95°	97.5°	100°	102.5°	105°	107.5°
0°	38337.2	38337.2	38337.2	38337.2	38337.2	38337.2	38337.2	38337.2	38337.2	38337.2	38337.2
2.5°	38484.6	38474.8	38479.5	38461.5	38465.8	38444.0	38442.0	38417.4	38415.0	38391.9	38383.1
5°	39787.6	39766.2	39790.4	39752.7	39760.1	39711.1	39707.0	39643.6	39621.8	39542.4	39508.2
7.5°	41219.7	41211.6	41226.3	41194.9	41193.8	41150.1	41132.0	41075.2	41039.9	40956.8	40903.5
10°	41533.4	41540.8	41528.7	41531.7	41514.7	41510.0	41492.5	41481.4	41452.8	41431.3	41399.4
12.5°	40230.7	40238.5	40188.7	40220.3	40195.4	40253.6	40248.9	40317.4	40327.8	40414.5	40447.4
15°	37219.8	37210.5	37115.1	37175.2	37142.9	37270.5	37299.1	37470.7	37562.5	37782.9	37918.3
17.5°	32671.5	32646.9	32512.6	32585.8	32548.6	32736.7	32799.8	33074.3	33245.5	33600.6	33853.6
20°	27249.6	27202.6	27045.5	27131.1	27092.8	27306.5	27396.6	27728.3	27949.1	28419.4	28754.0
22.5°	21760.4	21686.1	21532.2	21612.2	21576.0	21797.4	21914.6	22247.5	22500.4	22983.2	23373.8
25°	16831.2	16764.9	16616.2	16672.2	16658.7	16846.0	16950.2	17265.1	17513.6	17973.5	18346.4
27.5°	12837.5	12768.7	12634.2	12673.9	12660.2	12819.8	12918.1	13181.1	13394.9	13782.1	14109.5
30°	9825.2	9742.1	9628.1	9650.1	9640.7	9770.0	9861.8	10083.3	10266.6	10593.8	10875.8
32.5°	7531.0	7447.5	7342.8	7353.1	7339.2	7440.7	7516.2	7708.9	7868.6	8146.8	8392.3
35°	5762.3	5859.9	5636.3	5777.9	5630.5	5846.9	5769.1	5889.5	6026.9	6261.2	6466.0
37.5°	4429.8	4361.8	4304.3	4298.1	4297.8	4348.0	4407.2	4523.2	4644.2	4818.9	4999.3
40°	3510.4	3462.6	3425.5	3422.7	3425.5	3461.1	3504.9	3585.0	3673.7	3799.1	3931.6
42.5°	2911.6	2879.8	2857.4	2855.8	2863.0	2888.2	2918.7	2966.3	3024.0	3105.2	3196.1
45°	2519.9	2502.3	2489.9	2489.1	2492.4	2505.6	2523.1	2552.8	2589.3	2640.0	2697.5
47.5°	2245.2	2240.9	2233.1	2233.4	2229.8	2235.3	2237.2	2253.8	2273.3	2311.5	2386.7
50°	2045.1	2045.1	2039.7	2039.4	2034.3	2034.1	2029.8	2036.3	2045.4	2069.1	2093.2
52.5°	1887.0	1886.4	1880.6	1879.5	1874.1	1873.8	1870.0	1872.7	1873.9	1885.9	1900.2
55°	1763.4	1759.7	1752.0	1749.6	1747.4	1750.6	1749.2	1749.3	1747.7	1752.8	1757.0
57.5°	1674.7	1669.9	1662.7	1660.5	1659.9	1663.6	1663.8	1662.5	1655.8	1651.3	1644.9
60°	1604.5	1599.7	1591.8	1589.9	1591.0	1596.2	1595.9	1591.6	1581.6	1573.0	1562.9
62.5°	1535.6	1533.7	1529.6	1529.1	1528.1	1529.0	1525.4	1520.8	1511.0	1501.8	1490.9
65°	1443.1	1444.1	1441.1	1441.6	1438.0	1437.5	1432.0	1427.6	1417.7	1409.3	1398.1
67.5°	1347.1	1347.8	1345.4	1345.4	1343.5	1343.8	1340.5	1336.4	1328.1	1321.2	1312.5
70°	1267.9	1269.9	1268.5	1269.0	1266.6	1265.8	1260.7	1256.7	1248.1	1242.4	1234.6
72.5°	1173.1	1177.4	1177.3	1178.3	1174.9	1173.1	1167.0	1162.1	1154.3	1149.7	1143.4
75°	1070.8	1076.4	1078.0	1080.4	1075.5	1073.0	1066.3	1062.3	1056.0	1053.2	1049.1
77.5°	971.0	977.1	982.9	988.3	980.5	973.5	965.2	958.8	949.6	946.2	939.7
80°	858.9	869.6	882.6	893.4	879.4	865.1	851.4	841.2	829.1	824.1	816.2
82.5°	712.6	723.6	731.0	737.9	728.2	717.8	704.4	695.5	682.4	677.6	668.3
85°	541.3	555.1	559.5	563.2	557.0	551.4	538.9	522.0	513.8	500.9	494.2
87.5°	356.0	364.3	365.9	367.1	363.3	360.6	352.5	344.5	330.5	320.3	307.7
90°	135.0	140.8	138.0	140.4	135.3	135.5	127.2	124.3	112.5	108.0	97.5
92.5°	6.1	5.7	5.8	5.7	6.4	5.8	6.4	5.8	6.3	5.8	6.3
95°	6.3	6.3	6.3	6.3	6.3	6.3	6.3	6.3	6.3	6.3	6.3
97.5°	6.7	6.7	6.7	6.7	6.7	6.7	6.7	6.7	6.7	6.7	6.8
100°	7.4	7.4	7.4	7.4	7.4	7.4	7.4	7.4	7.4	7.4	7.4
102.5°	8.1	8.1	8.1	8.1	8.1	8.1	8.1	8.1	8.1	8.1	8.2
105°	8.7	8.7	8.7	8.7	8.7	8.7	8.7	8.7	8.7	9.0	9.0
107.5°	9.4	9.4	9.4	9.4	9.6	9.6	9.6	9.6	9.6	9.6	9.8
110°	10.4	10.4	10.4	10.4	10.4	10.4	10.4	10.4	10.5	10.5	10.8



TEST NUMBER: P1444481
 CATALOG NUMBER: EHBR1-48-UNV-TA-L830

CANDELA DISTRIBUTION (continued):

	82.5°	85°	87.5°	90°	92.5°	95°	97.5°	100°	102.5°	105°	107.5°
112.5°	11.3	11.3	11.3	11.3	11.3	11.3	11.3	11.6	11.6	11.8	11.8
115°	12.6	12.6	12.6	12.6	12.6	12.6	12.6	12.8	12.9	12.9	13.2
117.5°	14.2	14.1	14.1	14.1	14.1	14.1	14.2	14.2	14.5	14.6	14.9
120°	16.3	15.9	15.9	15.9	15.9	15.9	16.0	16.0	16.5	16.6	17.2
122.5°	18.7	18.5	18.5	18.4	18.4	18.4	18.5	18.6	19.0	19.3	19.8
125°	22.0	21.6	21.5	21.4	21.4	21.4	21.5	21.9	22.2	22.5	23.1
127.5°	25.9	25.6	25.1	25.0	25.0	25.0	25.5	25.6	26.0	26.6	27.3
130°	30.7	30.3	30.2	29.7	29.7	29.7	30.2	30.4	31.0	31.4	32.2
132.5°	36.8	36.1	35.8	35.4	35.4	35.4	35.8	36.1	36.8	37.2	38.4
135°	43.7	43.1	42.6	42.3	42.3	42.2	42.5	42.8	43.5	44.2	45.1
137.5°	51.4	50.8	50.4	49.8	49.8	49.8	50.1	50.4	51.1	51.7	52.7
140°	59.9	59.1	58.8	58.3	58.3	58.1	58.4	58.6	59.3	59.9	60.8
142.5°	68.5	67.6	67.3	67.1	66.8	66.8	67.2	67.3	67.9	68.4	69.2
145°	77.3	76.6	76.3	75.9	75.7	75.7	75.9	76.2	76.6	76.9	77.7
147.5°	86.0	85.4	85.1	84.7	84.7	84.6	84.7	84.7	85.1	85.4	86.0
150°	94.6	94.0	93.5	93.2	93.1	92.9	93.1	92.9	93.2	93.4	94.0
152.5°	102.5	101.7	101.6	101.2	100.9	100.7	100.7	100.6	100.7	100.7	101.2
155°	109.9	109.4	108.9	108.6	108.3	108.0	108.0	107.7	107.8	107.7	107.8
157.5°	116.8	116.2	116.0	115.4	115.1	114.7	114.6	114.3	114.3	113.8	113.8
160°	123.2	122.5	122.1	121.6	121.3	120.7	120.6	120.1	119.9	119.6	119.5
162.5°	129.0	128.4	128.0	127.5	127.2	126.5	126.3	125.7	125.4	125.1	125.1
165°	134.8	134.2	133.9	133.1	132.8	132.5	132.0	131.6	131.3	130.9	130.7
167.5°	141.1	140.4	139.9	139.4	139.1	138.5	138.4	138.0	137.7	137.4	137.4
170°	146.6	146.0	145.8	145.4	145.1	144.6	144.5	144.1	144.0	143.8	143.8
172.5°	151.8	151.5	151.2	150.9	150.6	150.3	150.2	150.1	149.8	149.8	149.6
175°	156.0	155.7	155.6	155.3	155.1	155.1	155.0	155.0	155.0	154.8	154.8
177.5°	159.0	158.9	158.9	158.9	158.7	158.7	158.7	158.7	158.7	158.6	158.4
180°	159.0	159.0	159.0	159.0	159.0	159.0	159.0	159.0	159.0	159.0	159.0



TEST NUMBER: P1444481
 CATALOG NUMBER: EHBR1-48-UNV-TA-L830

CANDELA DISTRIBUTION (continued):

	110°	112.5°	115°	117.5°	120°	122.5°	125°	127.5°	130°	132.5°	135°
0°	38337.2	38337.2	38337.2	38337.2	38337.2	38337.2	38337.2	38337.2	38337.2	38337.2	38337.2
2.5°	38358.3	38348.2	38321.7	38308.6	38284.0	38271.7	38252.5	38240.1	38224.7	38213.1	38207.1
5°	39421.1	39372.0	39273.8	39213.3	39107.1	39037.2	38931.8	38854.5	38745.7	38665.4	38562.5
7.5°	40803.8	40728.6	40602.7	40507.1	40358.7	40245.1	40078.5	39945.2	39761.1	39608.2	39420.1
10°	41366.7	41322.8	41266.3	41204.9	41122.6	41042.0	40928.2	40812.2	40657.7	40503.9	40303.0
12.5°	40534.8	40576.1	40657.7	40695.7	40758.1	40779.2	40807.8	40794.4	40769.1	40706.4	40615.3
15°	38178.3	38350.9	38623.7	38812.4	39076.8	39262.5	39508.2	39666.3	39848.4	39957.3	40060.7
17.5°	34302.0	34635.9	35117.3	35501.4	36016.9	36436.1	36949.7	37353.2	37819.2	38176.6	38557.1
20°	29337.1	29804.7	30469.2	31033.5	31780.7	32414.2	33225.7	33905.6	34698.7	35359.8	36073.3
22.5°	23993.5	24543.6	25304.9	25985.7	26877.8	27674.6	28691.5	29590.4	30662.6	31623.1	32685.5
25°	18952.4	19491.5	20267.2	20972.0	21935.0	22812.8	23923.7	24955.0	26199.2	27359.5	28691.5
27.5°	14629.5	15108.3	15790.1	16424.5	17306.6	18168.3	19295.7	20395.4	21723.0	22970.0	24405.4
30°	11298.1	11686.6	12232.9	12743.2	13451.3	14156.1	15160.3	16177.3	17498.4	18790.5	20262.1
32.5°	8755.7	9086.8	9542.9	9957.2	10502.8	11034.2	11773.8	12586.5	13745.3	14982.9	16405.9
35°	6777.8	7061.2	7449.4	7806.3	8254.9	8676.8	9228.6	9808.7	10693.1	11734.2	13007.6
37.5°	5403.7	5519.2	5796.3	6088.6	6461.3	6808.0	7239.6	7668.6	8301.3	9122.7	10163.0
40°	4109.4	4292.8	4518.3	4748.6	5030.9	5308.9	5782.5	6010.5	6427.0	7016.7	7824.1
42.5°	3315.8	3444.7	3603.5	3763.6	3960.2	4153.9	4393.4	4637.5	4948.8	5348.2	5922.5
45°	2774.7	2858.8	2961.1	3067.8	3197.0	3329.2	3489.5	3657.0	3868.0	4113.6	4462.4
47.5°	2413.2	2459.7	2526.5	2599.4	2687.9	2779.4	2883.7	2990.4	3121.6	3267.1	3465.8
50°	2131.1	2169.9	2221.8	2270.5	2331.6	2425.3	2466.7	2525.6	2604.5	2690.2	2801.3
52.5°	1926.9	1952.8	1985.4	2013.3	2052.0	2087.1	2133.1	2173.7	2228.2	2279.7	2351.4
55°	1767.9	1777.3	1795.8	1813.8	1840.5	1864.5	1896.1	1922.7	1957.4	1988.3	2033.5
57.5°	1645.1	1646.0	1654.5	1663.9	1681.1	1696.2	1717.9	1735.3	1759.5	1779.2	1806.3
60°	1556.9	1552.2	1553.9	1557.2	1566.9	1576.7	1590.6	1602.0	1617.1	1628.3	1643.5
62.5°	1483.5	1476.1	1474.4	1473.5	1478.4	1481.9	1489.5	1495.0	1503.7	1508.5	1516.6
65°	1390.7	1382.0	1378.6	1374.6	1376.0	1374.9	1377.8	1377.9	1382.3	1383.3	1388.0
67.5°	1306.6	1299.3	1294.9	1289.6	1287.1	1283.3	1281.6	1277.9	1277.3	1274.2	1273.5
70°	1229.9	1222.8	1219.0	1214.1	1211.5	1206.4	1203.3	1197.0	1193.4	1187.6	1184.3
72.5°	1141.1	1137.1	1135.9	1132.6	1131.6	1128.8	1127.5	1123.1	1120.6	1115.6	1112.8
75°	1048.3	1045.0	1044.7	1041.3	1041.1	1037.6	1036.7	1032.1	1029.6	1024.7	1022.6
77.5°	937.7	932.9	931.5	927.5	928.5	926.8	928.2	924.6	923.1	918.2	916.6
80°	813.3	807.1	804.4	799.2	800.6	798.3	800.6	800.3	802.2	798.3	797.5
82.5°	665.8	659.0	657.7	654.0	656.4	656.7	662.0	659.2	660.3	656.5	658.1
85°	484.5	479.4	472.3	471.3	466.8	471.4	465.4	469.5	462.7	467.4	461.2
87.5°	300.4	289.8	284.3	276.8	273.9	266.7	263.7	258.4	260.0	257.6	259.0
90°	94.9	85.5	82.7	74.5	72.9	65.7	65.5	60.1	60.7	55.2	56.1
92.5°	5.8	5.8	5.7	6.1	5.8	5.8	5.7	6.1	5.8	6.1	5.8
95°	6.3	6.3	6.3	6.3	6.3	6.3	6.4	6.4	6.4	6.4	6.4
97.5°	6.8	6.8	6.8	6.8	6.8	6.8	6.8	7.1	7.1	7.1	7.1
100°	7.4	7.5	7.5	7.5	7.5	7.7	7.7	7.7	8.0	8.0	8.0
102.5°	8.2	8.2	8.2	8.3	8.3	8.3	8.5	8.7	8.7	9.0	9.1
105°	9.0	9.1	9.1	9.3	9.3	9.4	9.6	9.8	9.9	10.1	10.2
107.5°	9.8	9.9	10.1	10.2	10.2	10.5	10.8	11.0	11.1	11.3	11.8
110°	10.8	11.0	11.1	11.3	11.6	11.8	12.1	12.4	12.8	13.1	13.7



TEST NUMBER: P1444481
 CATALOG NUMBER: EHBR1-48-UNV-TA-L830

CANDELA DISTRIBUTION (continued):

	110°	112.5°	115°	117.5°	120°	122.5°	125°	127.5°	130°	132.5°	135°
112.5°	11.9	12.2	12.4	12.8	13.1	13.5	13.8	14.2	14.8	15.4	15.7
115°	13.5	13.8	14.0	14.5	14.8	15.4	15.7	16.5	17.2	17.8	18.5
117.5°	15.1	15.6	15.9	16.5	17.0	17.8	18.4	19.2	20.0	20.9	21.5
120°	17.5	17.9	18.5	19.2	19.8	20.6	21.5	22.3	23.3	24.3	25.1
122.5°	20.1	20.9	21.5	22.3	23.1	24.2	25.1	26.4	27.4	28.6	29.5
125°	23.7	24.5	25.5	26.4	27.4	28.6	29.5	31.0	32.1	33.3	34.7
127.5°	27.8	28.9	29.9	31.0	32.1	33.3	34.7	36.1	37.2	38.8	39.9
130°	33.1	34.1	35.1	36.5	37.7	39.1	40.5	42.1	43.2	44.6	45.9
132.5°	39.1	40.4	41.3	42.8	44.0	45.4	46.9	48.3	49.7	51.3	52.5
135°	46.0	47.2	48.3	49.7	51.1	52.5	53.9	55.5	56.6	58.1	59.3
137.5°	53.6	54.7	56.0	57.2	58.4	59.9	61.3	62.7	63.8	65.2	66.3
140°	61.6	62.8	63.8	65.2	66.3	67.6	68.7	70.1	71.0	72.5	73.4
142.5°	69.9	71.0	71.8	72.9	73.9	75.3	76.3	77.5	78.3	79.2	80.1
145°	78.3	79.2	80.0	81.0	81.9	82.8	83.6	84.6	85.1	86.0	86.6
147.5°	86.6	87.2	87.7	88.5	89.3	89.8	90.5	91.2	91.6	92.4	92.9
150°	94.2	94.8	95.1	95.7	96.0	96.6	96.9	97.5	97.8	98.4	98.6
152.5°	101.3	101.6	101.6	102.2	102.3	102.6	102.8	103.1	103.3	103.6	104.0
155°	107.7	107.8	107.8	108.0	108.0	108.1	108.1	108.6	108.7	108.8	109.1
157.5°	113.6	113.5	113.5	113.5	113.3	113.5	113.5	113.6	113.8	114.3	114.6
160°	119.1	119.0	118.8	118.8	118.8	118.8	118.8	119.1	119.2	119.8	120.1
162.5°	124.6	124.5	124.3	124.3	124.3	124.5	124.6	125.1	125.1	125.6	126.0
165°	130.6	130.6	130.3	130.6	130.6	130.7	130.9	131.1	131.6	132.0	132.5
167.5°	137.2	137.2	137.2	137.4	137.4	137.5	137.7	138.3	138.4	138.9	139.1
170°	143.7	143.8	143.7	143.8	143.8	144.0	144.1	144.3	144.5	144.8	144.9
172.5°	149.6	149.6	149.6	149.6	149.6	149.8	149.8	150.1	150.1	150.2	150.2
175°	154.7	154.7	154.7	154.7	154.7	154.6	154.6	154.3	154.3	154.3	154.3
177.5°	158.3	158.0	157.8	157.8	157.7	157.6	157.6	157.5	157.5	157.5	157.2
180°	159.0	159.0	159.0	159.0	159.0	159.0	159.0	159.0	159.0	159.0	159.0



TEST NUMBER: P1444481
 CATALOG NUMBER: EHBR1-48-UNV-TA-L830

CANDELA DISTRIBUTION (continued):

	137.5°	140°	142.5°	145°	147.5°	150°	152.5°	155°	157.5°	160°	162.5°
0°	38337.2	38337.2	38337.2	38337.2	38337.2	38337.2	38337.2	38337.2	38337.2	38337.2	38337.2
2.5°	38199.5	38199.1	38195.3	38197.0	38197.8	38200.5	38203.8	38207.1	38207.9	38210.5	38211.1
5°	38485.3	38390.8	38320.9	38244.0	38186.2	38134.3	38099.6	38072.1	38061.4	38064.1	38070.5
7.5°	39260.6	39065.4	38904.5	38721.5	38568.9	38407.3	38273.4	38146.1	38053.2	37984.1	37945.4
10°	40111.2	39873.6	39646.3	39381.5	39130.3	38862.2	38619.3	38374.8	38170.9	37993.8	37863.8
12.5°	40488.7	40320.7	40124.3	39874.3	39605.5	39296.2	38983.8	38648.9	38337.4	38048.3	37815.1
15°	40089.0	40089.3	40017.7	39897.8	39711.1	39463.8	39166.2	38817.1	38449.7	38074.7	37732.1
17.5°	38820.2	39059.6	39192.7	39277.0	39251.2	39160.1	38970.6	38702.6	38360.0	37960.6	37542.6
20°	36641.4	37206.0	37608.6	37970.6	38173.5	38308.3	38294.8	38185.7	37941.8	37602.1	37166.8
22.5°	33589.2	34536.8	35284.7	35982.0	36471.0	36868.9	37058.0	37138.3	37027.7	36791.1	36382.3
25°	29881.9	31170.5	32270.1	33337.3	34137.8	34825.7	35239.2	35530.5	35553.6	35430.0	35065.3
27.5°	25762.6	27283.6	28675.3	30093.6	31219.3	32208.3	32857.2	33332.1	33483.0	33463.2	33132.0
30°	21648.5	23245.2	24779.2	26433.1	27826.1	29089.6	29946.8	30589.2	30836.6	30884.1	30565.6
32.5°	17763.1	19337.6	20867.4	22596.4	24129.3	25577.5	26590.3	27353.2	27641.1	27708.9	27359.5
35°	14236.9	15689.6	17143.4	18819.0	20343.2	21842.7	22909.8	23708.7	23977.5	24022.8	23618.3
37.5°	11179.1	12416.7	13683.5	15187.0	16586.7	17995.0	19008.9	19759.6	19955.5	19943.4	19485.5
40°	8604.3	9566.5	10584.4	11822.2	12985.9	14176.3	15032.6	15653.2	15756.0	15679.9	15198.9
42.5°	6470.0	7164.9	7902.9	8826.9	9690.3	10581.3	11204.2	11664.9	11679.5	11559.1	11127.4
45°	4820.1	5498.1	5807.6	6366.2	6922.4	7514.8	7895.2	8179.8	8135.8	8029.7	7701.7
47.5°	3674.5	3935.1	4211.4	4557.8	4881.8	5554.1	5504.3	5961.3	5632.1	5856.6	5362.5
50°	2917.9	3063.6	3212.4	3396.3	3565.6	3741.3	3851.1	3933.1	3922.5	3887.2	3792.6
52.5°	2482.5	2527.5	2600.8	2705.4	2799.8	2894.9	2957.5	3008.3	3009.3	2995.1	2947.2
55°	2074.8	2131.9	2184.7	2253.0	2369.4	2387.3	2476.9	2458.8	2465.8	2441.0	2466.4
57.5°	1829.3	1862.6	1892.2	1932.9	1966.5	2005.8	2028.9	2051.2	2049.1	2044.3	2019.8
60°	1655.4	1673.7	1690.2	1713.9	1732.4	1754.5	1765.2	1776.6	1772.9	1764.7	1742.9
62.5°	1521.3	1532.7	1542.2	1557.5	1568.7	1582.5	1588.1	1592.9	1588.1	1580.2	1561.0
65°	1389.0	1396.4	1402.3	1413.9	1421.8	1433.6	1438.3	1442.8	1438.4	1432.3	1417.7
67.5°	1269.6	1270.4	1269.8	1274.5	1276.9	1284.0	1286.1	1289.4	1284.3	1279.0	1266.6
70°	1179.1	1177.3	1175.0	1176.9	1177.3	1180.7	1181.3	1180.7	1174.6	1165.5	1152.0
72.5°	1108.4	1107.4	1105.7	1107.3	1107.3	1110.4	1109.3	1107.8	1100.3	1091.5	1078.2
75°	1017.5	1016.7	1013.3	1013.4	1010.6	1011.6	1007.9	1005.8	997.4	990.0	978.1
77.5°	911.0	909.4	904.4	902.5	897.1	894.8	887.9	884.4	875.9	869.9	859.7
80°	792.3	790.4	784.0	780.5	771.9	766.5	756.3	750.5	740.7	734.8	724.9
82.5°	654.9	655.6	649.1	644.7	632.6	623.2	609.5	602.1	591.3	585.6	575.4
85°	465.7	459.1	462.6	462.4	454.7	446.5	435.5	427.7	418.6	413.2	406.0
87.5°	255.4	257.0	255.2	253.7	248.2	244.1	235.4	230.9	224.2	221.0	215.5
90°	50.6	51.6	46.5	47.6	42.6	41.5	35.4	35.2	29.9	29.2	25.0
92.5°	5.8	5.8	6.1	5.8	6.1	6.1	6.1	6.1	6.1	5.8	6.1
95°	6.4	6.6	6.6	6.6	6.6	6.6	6.7	6.7	6.7	6.7	6.7
97.5°	7.2	7.2	7.2	7.4	7.4	7.4	7.5	7.5	7.5	7.5	7.5
100°	8.1	8.2	8.2	8.2	8.3	8.3	8.5	8.5	8.7	8.7	8.7
102.5°	9.1	9.3	9.4	9.6	9.8	9.8	9.9	9.9	10.1	10.1	10.1
105°	10.4	10.5	11.0	11.1	11.2	11.3	11.6	11.6	11.8	11.9	11.9
107.5°	12.1	12.2	12.6	12.9	13.1	13.5	13.7	13.8	14.0	14.1	14.2
110°	14.0	14.2	14.8	15.1	15.5	15.7	16.0	16.3	16.6	16.8	17.2



TEST NUMBER: P1444481
 CATALOG NUMBER: EHBR1-48-UNV-TA-L830

CANDELA DISTRIBUTION (continued):

	137.5°	140°	142.5°	145°	147.5°	150°	152.5°	155°	157.5°	160°	162.5°
112.5°	16.3	16.8	17.5	17.8	18.4	18.6	19.2	19.5	19.8	20.1	20.4
115°	19.2	19.8	20.4	21.0	21.6	22.2	22.8	23.0	23.4	23.9	24.3
117.5°	22.5	23.1	24.0	24.7	25.5	26.0	26.7	27.3	27.8	28.4	28.9
120°	26.4	27.3	28.0	28.9	29.7	30.5	31.3	31.9	32.5	33.3	34.0
122.5°	30.7	31.7	32.8	33.5	34.7	35.4	36.5	37.1	37.9	38.8	39.6
125°	35.8	36.8	37.9	39.0	39.9	40.9	42.1	42.8	43.9	44.6	45.7
127.5°	41.3	42.3	43.7	44.6	45.9	46.9	48.1	48.9	50.0	51.1	52.3
130°	47.3	48.3	49.7	50.8	52.0	53.1	54.2	55.5	56.6	57.8	59.1
132.5°	53.7	55.0	56.3	57.2	58.6	59.7	61.0	62.1	63.5	64.6	66.0
135°	60.7	61.6	62.9	64.0	65.4	66.3	67.6	68.9	70.3	71.6	73.1
137.5°	67.4	68.5	69.8	70.7	72.0	73.1	74.5	75.6	77.2	78.3	80.0
140°	74.5	75.4	76.4	77.5	78.6	79.5	81.0	82.1	83.6	84.9	86.4
142.5°	81.1	81.9	82.8	83.6	84.9	85.7	86.9	88.2	89.5	91.0	92.4
145°	87.5	88.2	89.1	89.8	90.7	91.6	92.9	94.0	95.4	96.6	98.1
147.5°	93.5	94.0	94.9	95.6	96.5	97.2	98.4	99.5	100.7	102.0	103.3
150°	99.3	99.8	100.3	100.9	101.7	102.6	103.6	104.5	106.0	107.2	108.3
152.5°	104.4	104.8	105.4	106.1	106.9	107.7	108.7	109.7	110.8	111.8	113.1
155°	109.7	110.0	110.7	111.4	112.2	112.8	113.8	114.7	115.7	116.8	117.7
157.5°	115.1	115.4	116.1	116.8	117.5	118.2	119.2	119.9	120.9	121.8	122.6
160°	120.6	121.0	121.8	122.5	123.2	123.9	124.8	125.4	126.3	127.2	128.0
162.5°	126.5	127.2	127.9	128.3	129.2	129.8	130.7	131.3	132.2	132.8	133.7
165°	133.0	133.6	134.2	134.7	135.4	135.8	136.7	137.2	138.1	138.5	139.4
167.5°	139.9	140.1	140.5	141.0	141.6	142.1	142.8	143.2	144.0	144.5	145.1
170°	145.4	145.7	145.9	146.3	146.8	147.2	147.6	147.9	148.7	149.0	149.6
172.5°	150.4	150.4	150.9	151.0	151.3	151.5	151.8	152.2	152.5	152.9	153.2
175°	154.6	154.6	154.7	154.7	154.8	155.0	155.3	155.6	155.7	155.9	156.0
177.5°	157.2	157.2	157.2	157.2	157.5	157.5	157.6	157.6	157.7	157.7	157.8
180°	159.0	159.0	159.0	159.0	159.0	159.0	159.0	159.0	159.0	159.0	159.0



TEST NUMBER: P1444481
 CATALOG NUMBER: EHBR1-48-UNV-TA-L830

CANDELA DISTRIBUTION (continued):

	165°	167.5°	170°	172.5°	175°	177.5°	180°	182.5°	185°	187.5°	190°
0°	38337.2	38337.2	38337.2	38337.2	38337.2	38337.2	38337.2	38337.2	38337.2	38337.2	38337.2
2.5°	38209.9	38209.4	38208.2	38206.4	38204.7	38205.7	38207.4	38211.8	38219.5	38230.6	38245.1
5°	38075.7	38083.5	38087.9	38088.5	38084.5	38082.1	38085.8	38096.3	38117.5	38153.0	38201.0
7.5°	37935.0	37944.7	37959.5	37970.6	37972.7	37970.0	37970.6	37987.0	38026.2	38095.3	38192.3
10°	37784.9	37756.3	37771.4	37798.9	37820.8	37824.8	37827.5	37847.0	37904.1	38008.6	38164.5
12.5°	37646.2	37555.8	37538.3	37563.2	37596.5	37607.1	37604.2	37612.5	37679.5	37817.8	38035.1
15°	37463.8	37293.7	37235.6	37242.0	37283.1	37297.8	37287.0	37270.5	37335.7	37504.7	37785.9
17.5°	37168.5	36894.3	36787.5	36782.8	36830.8	36843.6	36817.2	36766.0	36830.3	37041.0	37390.1
20°	36719.6	36314.9	36113.7	36081.7	36133.9	36118.7	36066.0	35988.6	36073.0	36329.4	36744.6
22.5°	35912.8	35399.9	35056.1	34945.3	35007.7	34966.1	34889.2	34790.5	34902.6	35193.8	35656.2
25°	34594.3	34001.7	33531.1	33267.1	33316.9	33242.2	33158.6	33038.9	33172.6	33506.9	34015.8
27.5°	32656.3	31971.7	31388.6	30951.6	30967.6	30869.9	30773.5	30618.7	30785.6	31181.4	31755.4
30°	30079.2	29287.0	28576.9	27983.1	27929.9	27835.1	27736.4	27533.2	27742.1	28215.8	28886.6
32.5°	26842.9	25963.3	25142.9	24391.9	24250.3	24157.8	24069.9	23836.0	24109.5	24661.8	25432.4
35°	23058.0	22121.2	21231.6	20374.0	20139.2	20046.8	19969.9	19745.8	20087.2	20688.2	21520.4
37.5°	18903.7	17946.7	17063.5	16184.0	15852.4	15726.9	15671.0	15524.3	15918.1	16512.5	17348.2
40°	14638.9	13749.0	12957.2	12180.4	11802.3	11610.4	11581.1	11554.4	11935.1	12450.8	13209.4
42.5°	10649.2	9931.3	9320.7	8726.9	8384.4	8122.3	8122.1	8201.7	8544.4	8930.7	9515.7
45°	7366.4	6884.6	6495.6	6098.9	6204.9	5682.3	5989.3	5831.8	6001.1	6250.2	6630.6
47.5°	5063.7	4800.6	4587.0	4365.3	4203.8	4049.5	4063.0	4162.5	4322.0	4469.8	4667.7
50°	3690.5	3556.6	3447.7	3332.7	3252.3	3184.2	3188.2	3231.3	3315.0	3392.9	3496.5
52.5°	2891.8	2817.9	2758.8	2695.2	2652.9	2619.1	2621.0	2641.9	2687.2	2731.6	2791.0
55°	2383.5	2374.7	2297.7	2240.6	2218.9	2196.2	2200.3	2208.5	2239.4	2265.3	2304.7
57.5°	1997.3	1962.9	1939.8	1909.8	1895.9	1880.1	1883.6	1886.7	1907.3	1924.7	1953.0
60°	1724.8	1700.3	1683.9	1663.5	1654.4	1644.3	1646.5	1648.4	1661.6	1673.1	1693.3
62.5°	1543.6	1521.7	1507.4	1491.7	1485.3	1478.5	1480.1	1480.7	1488.9	1497.2	1512.6
65°	1404.6	1387.3	1375.5	1361.9	1355.1	1348.1	1348.8	1348.8	1355.8	1361.9	1373.4
67.5°	1257.7	1244.6	1236.9	1226.2	1221.7	1214.3	1214.3	1211.9	1216.5	1218.9	1226.7
70°	1139.8	1126.6	1116.7	1106.3	1100.7	1094.4	1094.5	1094.6	1099.9	1105.4	1115.5
72.5°	1066.9	1054.3	1045.6	1036.5	1031.1	1025.7	1024.7	1024.1	1027.9	1030.9	1037.6
75°	970.4	960.3	955.3	946.7	942.4	936.3	935.3	932.5	934.4	934.9	939.9
77.5°	853.3	843.8	839.7	831.0	827.5	820.6	820.0	816.8	818.2	817.3	821.1
80°	720.0	711.2	709.0	701.9	700.2	693.8	692.8	688.9	690.1	687.1	688.6
82.5°	571.0	563.1	561.4	554.8	554.8	549.0	548.7	542.9	542.9	538.0	530.0
85°	402.2	396.4	394.0	388.6	387.0	382.4	379.9	374.4	372.4	368.9	367.8
87.5°	212.3	208.6	205.3	202.8	198.0	189.7	188.9	183.1	183.6	179.5	179.8
90°	25.0	21.2	21.4	17.9	17.8	15.6	15.7	14.8	14.5	13.7	13.5
92.5°	6.1	6.1	6.1	6.1	6.1	6.1	6.1	6.1	6.1	6.1	6.1
95°	6.7	6.7	6.7	6.7	6.7	6.7	6.7	6.7	6.7	6.8	6.8
97.5°	7.5	7.5	7.5	7.5	7.5	7.5	7.5	7.7	7.7	7.7	7.7
100°	8.7	8.7	8.7	8.7	8.7	8.7	8.7	9.0	9.0	9.0	9.0
102.5°	10.2	10.2	10.2	10.2	10.2	10.2	10.2	10.2	10.2	10.4	10.4
105°	11.9	12.1	12.1	12.1	12.1	12.1	12.1	12.2	12.2	12.2	12.4
107.5°	14.2	14.5	14.5	14.6	14.5	14.6	14.6	14.8	14.8	14.8	14.8
110°	17.2	17.3	17.5	17.6	17.6	17.8	17.8	17.9	17.9	17.9	17.9



TEST NUMBER: P1444481
 CATALOG NUMBER: EHBR1-48-UNV-TA-L830

CANDELA DISTRIBUTION (continued):

	165°	167.5°	170°	172.5°	175°	177.5°	180°	182.5°	185°	187.5°	190°
112.5°	20.6	20.9	21.0	21.4	21.4	21.6	21.6	21.9	21.9	22.0	21.9
115°	24.7	25.0	25.5	25.8	25.9	26.1	26.1	26.6	26.6	26.6	26.6
117.5°	29.2	29.9	30.3	30.7	31.0	31.4	31.6	31.7	31.7	31.9	31.7
120°	34.4	35.2	35.8	36.3	36.8	37.2	37.5	37.7	37.7	37.7	37.7
122.5°	40.4	41.2	41.8	42.5	43.1	43.7	43.9	44.2	44.2	44.3	44.0
125°	46.5	47.6	48.3	49.2	49.7	50.6	50.8	51.3	51.3	51.3	51.1
127.5°	53.3	54.2	55.2	56.3	56.9	57.5	58.0	58.4	58.4	58.4	58.1
130°	60.1	61.5	62.4	63.5	64.3	64.9	65.4	65.8	65.8	66.0	65.7
132.5°	67.2	68.7	69.8	70.9	71.6	72.6	72.9	73.4	73.4	73.6	73.2
135°	74.5	75.7	76.9	78.3	79.2	80.0	80.5	81.0	81.0	81.0	80.6
137.5°	81.3	82.8	83.9	85.1	86.1	86.9	87.5	88.0	88.0	88.2	87.8
140°	87.7	89.3	90.5	91.6	92.7	93.8	94.2	94.8	94.8	94.8	94.3
142.5°	93.8	95.2	96.5	97.8	98.6	99.6	100.1	100.6	100.6	100.6	100.3
145°	99.5	100.7	102.0	103.3	104.2	105.0	105.4	106.0	106.0	106.0	105.8
147.5°	104.5	106.0	107.0	108.1	108.9	109.9	110.4	110.7	110.8	110.8	110.7
150°	109.5	110.7	111.7	112.7	113.5	114.3	114.6	115.1	115.2	115.4	115.2
152.5°	114.1	115.1	116.1	116.9	117.7	118.4	118.8	119.2	119.6	119.9	119.9
155°	118.7	119.6	120.5	121.3	121.9	122.6	123.2	123.7	124.2	124.5	124.8
157.5°	123.5	124.5	125.1	126.0	126.5	127.5	128.0	128.7	129.2	129.7	130.0
160°	128.7	129.7	130.3	131.1	131.9	132.5	133.1	133.9	134.4	134.8	135.4
162.5°	134.4	135.3	135.7	136.6	137.2	138.0	138.5	139.2	139.9	140.4	140.8
165°	140.1	140.8	141.3	142.1	142.8	143.5	144.0	144.6	145.1	145.7	146.0
167.5°	145.7	146.3	146.8	147.4	147.9	148.7	149.2	149.8	150.2	150.6	151.0
170°	150.1	150.6	151.2	151.6	152.2	152.8	153.1	153.4	153.9	154.3	154.7
172.5°	153.4	154.0	154.3	154.8	155.1	155.6	155.9	156.4	156.7	157.0	157.2
175°	156.1	156.6	156.7	157.0	157.2	157.5	157.7	157.8	158.3	158.4	158.7
177.5°	158.0	158.3	158.4	158.4	158.6	158.6	158.7	158.7	158.9	159.0	159.0
180°	159.0	159.0	159.0	159.0	159.0	159.0	159.0	159.0	159.0	159.0	159.0



TEST NUMBER: P1444481
 CATALOG NUMBER: EHBR1-48-UNV-TA-L830

CANDELA DISTRIBUTION (continued):

	192.5°	195°	197.5°	200°	202.5°	205°	207.5°	210°	212.5°	215°	217.5°
0°	38337.2	38337.2	38337.2	38337.2	38337.2	38337.2	38337.2	38337.2	38337.2	38337.2	38337.2
2.5°	38265.5	38284.7	38314.0	38340.5	38380.5	38412.0	38459.3	38495.3	38548.7	38583.4	38641.5
5°	38269.0	38343.8	38442.3	38538.4	38653.9	38758.7	38889.0	39000.0	39130.9	39237.8	39371.7
7.5°	38323.1	38467.4	38640.5	38814.8	39012.1	39196.5	39404.3	39592.4	39798.0	39972.1	40162.1
10°	38363.0	38585.7	38840.7	39097.3	39367.3	39618.3	39871.7	40090.6	40295.2	40463.6	40612.3
12.5°	38308.9	38615.6	38942.8	39258.9	39559.2	39818.9	40036.9	40205.2	40321.5	40400.3	40418.8
15°	38124.9	38494.0	38849.8	39164.5	39413.7	39605.9	39705.4	39752.0	39702.0	39619.0	39436.6
17.5°	37781.2	38170.5	38488.6	38736.8	38868.5	38920.7	38838.3	38694.9	38414.7	38103.7	37654.6
20°	37151.0	37513.8	37744.5	37879.9	37844.7	37714.4	37403.3	37025.0	36465.6	35869.5	35082.7
22.5°	36045.8	36362.9	36485.8	36495.9	36280.9	35954.7	35393.5	34744.8	33862.3	32944.8	31816.5
25°	34386.7	34664.5	34683.9	34574.8	34181.3	33652.7	32828.6	31911.0	30711.8	29489.3	28075.4
27.5°	32136.7	32403.1	32337.9	32134.3	31588.1	30880.7	29825.6	28640.1	27161.7	25717.8	24153.8
30°	29308.2	29593.2	29516.5	29255.4	28605.8	27769.7	26528.2	25150.8	23509.4	21967.3	20382.4
32.5°	25923.4	26283.6	26230.8	25982.5	25304.6	24409.8	23062.8	21601.9	19922.6	18402.9	16861.1
35°	22076.2	22513.4	22536.1	22373.8	21744.5	20860.0	19529.9	18115.9	16507.3	15073.5	13649.3
37.5°	17931.1	18438.1	18542.2	18498.5	17976.9	17196.2	15984.2	14715.7	13290.8	12034.1	10816.0
40°	13763.2	14276.4	14454.4	14507.3	14122.4	13517.6	12523.0	11499.1	10337.4	9319.1	8352.0
42.5°	9962.2	10417.1	10589.2	10697.5	10457.2	10054.0	9328.4	8584.8	7733.8	6999.4	6295.2
45°	6919.0	7240.8	7371.6	7480.7	7349.8	7122.3	6664.0	6199.0	5637.2	5157.3	4702.9
47.5°	4837.4	5015.0	5101.3	5154.1	5103.5	4984.8	4735.4	4466.0	4149.0	3868.5	3598.8
50°	3585.6	3680.0	3725.3	3755.8	3718.8	3652.9	3518.0	3371.3	3197.2	3038.3	2883.0
52.5°	2841.5	2895.6	2922.5	2938.9	2917.8	2877.5	2798.9	2712.0	2607.5	2509.3	2457.7
55°	2393.8	2390.9	2453.1	2423.1	2453.1	2386.2	2372.0	2276.5	2189.7	2128.7	2062.6
57.5°	1974.1	2002.2	2014.1	2027.5	2018.9	2006.6	1973.3	1939.0	1893.3	1855.1	1814.2
60°	1708.8	1732.0	1745.1	1758.3	1757.5	1752.9	1733.6	1713.1	1684.5	1661.6	1636.9
62.5°	1526.1	1546.1	1559.1	1571.7	1572.8	1571.0	1556.3	1542.2	1522.7	1508.4	1491.3
65°	1382.3	1396.4	1405.2	1415.3	1414.7	1412.0	1398.8	1387.0	1371.0	1361.0	1348.5
67.5°	1231.9	1242.5	1249.3	1258.8	1260.7	1261.3	1254.0	1248.4	1240.7	1237.9	1233.6
70°	1124.9	1137.8	1148.8	1160.8	1167.3	1170.5	1167.3	1164.5	1159.9	1158.0	1154.7
72.5°	1043.9	1054.8	1063.4	1074.3	1080.4	1084.8	1082.4	1080.8	1076.8	1076.3	1074.0
75°	943.3	950.9	955.6	963.9	967.2	971.3	969.4	970.4	969.1	972.3	972.1
77.5°	822.3	828.0	830.2	836.1	836.8	841.7	842.9	848.7	852.8	861.9	866.7
80°	686.2	689.8	689.8	695.9	698.6	707.0	711.0	720.5	724.9	733.0	733.7
82.5°	533.1	529.0	533.1	530.6	538.3	547.7	549.0	557.1	558.9	564.1	560.1
85°	364.5	364.2	360.9	361.5	359.0	360.2	358.8	360.4	358.9	359.0	355.4
87.5°	174.6	176.2	172.4	173.7	169.9	171.6	168.3	170.9	167.1	167.7	162.0
90°	12.9	12.6	12.1	11.9	12.2	11.8	11.6	11.3	11.6	11.2	11.2
92.5°	6.1	6.3	6.3	6.3	6.3	6.3	6.3	6.3	6.4	6.3	6.3
95°	6.8	6.8	6.8	7.1	7.1	7.1	7.1	7.1	7.1	7.1	7.1
97.5°	8.0	8.0	8.0	8.0	8.1	8.1	8.1	8.1	8.1	8.1	8.0
100°	9.1	9.1	9.1	9.3	9.3	9.3	9.3	9.3	9.3	9.1	9.1
102.5°	10.5	10.5	10.5	10.8	10.8	10.8	10.8	10.8	10.5	10.5	10.4
105°	12.4	12.4	12.6	12.6	12.6	12.6	12.6	12.6	12.4	12.2	12.2
107.5°	14.9	14.9	15.1	15.1	15.1	15.1	14.9	14.8	14.8	14.6	14.2
110°	18.2	17.9	18.2	18.2	18.2	17.9	17.9	17.6	17.5	17.2	17.0



TEST NUMBER: P1444481
 CATALOG NUMBER: EHBR1-48-UNV-TA-L830

CANDELA DISTRIBUTION (continued):

	192.5°	195°	197.5°	200°	202.5°	205°	207.5°	210°	212.5°	215°	217.5°
112.5°	22.0	21.9	21.9	21.6	21.6	21.4	21.4	21.0	20.9	20.3	20.0
115°	26.6	26.1	26.1	25.9	25.9	25.6	25.1	24.8	24.5	24.0	23.7
117.5°	31.6	31.4	31.3	30.7	30.5	30.2	29.7	29.2	28.9	28.4	27.8
120°	37.5	37.1	36.8	36.3	36.0	35.2	34.9	34.3	33.8	33.1	32.4
122.5°	43.9	43.4	43.1	42.5	42.1	41.2	40.7	39.8	39.3	38.5	37.7
125°	50.8	50.1	49.7	49.0	48.3	47.6	46.9	46.0	45.1	44.3	43.5
127.5°	58.0	57.2	56.9	56.0	55.3	54.2	53.4	52.5	51.7	50.6	49.7
130°	65.4	64.6	64.3	63.0	62.5	61.3	60.5	59.4	58.4	57.4	56.4
132.5°	72.9	72.2	71.6	70.4	69.8	68.7	67.9	66.6	65.7	64.5	63.7
135°	80.3	79.5	79.0	78.0	77.2	75.9	75.0	73.9	72.9	71.9	70.9
137.5°	87.5	86.6	86.0	85.1	84.2	83.1	82.2	81.1	80.3	79.2	78.3
140°	94.0	93.4	92.7	91.9	91.0	90.1	89.3	88.2	87.4	86.4	85.5
142.5°	99.9	99.3	98.7	97.9	97.2	96.2	95.6	94.8	94.0	93.1	92.4
145°	105.4	104.8	104.4	103.6	103.1	102.3	101.7	100.9	100.4	99.6	99.0
147.5°	110.5	110.0	109.7	109.1	108.8	108.1	107.8	107.2	106.9	106.1	105.8
150°	115.2	115.1	114.9	114.6	114.3	113.8	113.6	113.2	113.1	112.5	112.4
152.5°	119.9	119.9	119.9	119.8	119.8	119.6	119.5	119.2	119.1	118.8	118.7
155°	125.1	125.1	125.3	125.3	125.3	125.3	125.3	125.1	125.1	125.1	125.1
157.5°	130.3	130.6	130.9	131.0	131.1	131.1	131.1	131.1	131.1	131.0	131.0
160°	135.7	136.1	136.4	136.6	136.9	136.9	137.1	136.9	137.1	136.9	136.7
162.5°	141.3	141.6	141.9	142.1	142.4	142.4	142.7	142.7	142.7	142.4	142.4
165°	146.6	146.8	147.2	147.3	147.6	147.6	147.7	147.7	147.7	147.6	147.6
167.5°	151.5	151.6	152.0	152.2	152.5	152.5	152.9	152.8	152.8	152.8	152.8
170°	155.0	155.3	155.6	155.7	156.0	156.0	156.1	156.1	156.4	156.1	156.1
172.5°	157.6	157.7	158.0	158.3	158.4	158.4	158.6	158.6	158.7	158.7	158.7
175°	158.9	159.0	159.2	159.4	159.5	159.7	159.7	159.8	159.8	159.8	159.8
177.5°	159.2	159.4	159.4	159.5	159.7	159.7	159.8	159.8	160.1	160.1	160.1
180°	159.0	159.0	159.0	159.0	159.0	159.0	159.0	159.0	159.0	159.0	159.0



TEST NUMBER: P1444481
 CATALOG NUMBER: EHBR1-48-UNV-TA-L830

CANDELA DISTRIBUTION (continued):

	220°	222.5°	225°	227.5°	230°	232.5°	235°	237.5°	240°	242.5°	245°
0°	38337.2	38337.2	38337.2	38337.2	38337.2	38337.2	38337.2	38337.2	38337.2	38337.2	38337.2
2.5°	38677.5	38438.6	38407.0	38423.8	38463.7	38478.5	38521.6	38533.4	38576.7	38587.3	38628.9
5°	39475.5	39159.8	39175.6	39251.5	39366.4	39434.9	39547.8	39607.0	39714.8	39763.8	39861.3
7.5°	40317.1	40069.1	40146.4	40274.5	40431.5	40540.4	40676.1	40764.4	40881.4	40954.0	41047.6
10°	40730.3	40662.3	40747.4	40848.2	40937.8	41008.0	41065.5	41111.6	41141.7	41169.9	41182.3
12.5°	40415.8	40520.9	40535.4	40525.7	40466.2	40421.0	40319.0	40249.8	40126.9	40052.1	39905.9
15°	39250.2	39481.3	39353.3	39159.5	38875.9	38639.5	38305.6	38057.0	37709.3	37473.4	37124.5
17.5°	37204.5	37496.3	37162.7	36714.3	36143.8	35655.7	35048.1	34565.7	33961.4	33522.0	32958.1
20°	34324.6	34597.2	34002.3	33259.0	32376.5	31633.9	30758.1	30059.3	29245.5	28640.1	27909.4
22.5°	30738.9	30933.1	30095.0	29092.9	27968.5	27040.7	25993.7	25155.9	24227.1	23535.0	22756.0
25°	26772.0	26824.3	25819.0	24664.5	23411.4	22368.7	21250.7	20370.0	19422.8	18721.3	17956.7
27.5°	22768.1	22691.2	21604.5	20380.3	19062.3	17978.5	16888.1	16062.8	15233.2	14601.3	13942.6
30°	18989.0	18802.8	17674.6	16416.3	15136.8	14165.5	13260.2	12597.4	11937.4	11436.2	10907.5
32.5°	15523.4	15260.9	14162.6	12983.7	11905.7	11156.0	10484.8	9983.3	9450.3	9026.9	8583.2
35°	12453.9	12174.1	11201.2	10201.8	9385.8	8833.3	8305.7	7894.2	7441.7	7084.5	6699.2
37.5°	9819.6	9590.2	8775.3	7988.8	7371.6	6943.4	6511.2	6174.9	5800.9	5643.8	5232.0
40°	7580.7	7420.4	6783.2	6203.4	5740.0	5538.8	5100.0	4785.9	4506.4	4276.0	4052.8
42.5°	5913.1	5856.3	5236.1	4784.1	4457.7	4204.2	3959.7	3761.2	3567.9	3409.2	3259.1
45°	4339.3	4294.4	4019.0	3758.1	3535.7	3358.6	3193.3	3056.8	2930.4	2825.8	2730.5
47.5°	3379.0	3364.7	3206.1	3044.2	2904.2	2790.4	2683.1	2592.4	2508.6	2438.7	2416.0
50°	2748.3	2746.4	2653.4	2553.5	2453.8	2388.0	2319.5	2265.9	2212.0	2170.2	2125.9
52.5°	2335.1	2325.0	2262.2	2200.6	2141.3	2098.1	2054.4	2020.1	1984.4	1958.6	1931.0
55°	2010.4	2020.9	1984.6	1947.8	1910.7	1883.9	1853.2	1830.6	1806.2	1789.8	1773.2
57.5°	1784.7	1798.8	1779.7	1758.9	1736.3	1718.6	1697.4	1681.9	1665.5	1655.1	1645.4
60°	1620.6	1636.0	1628.3	1617.8	1603.8	1593.3	1579.9	1571.1	1560.7	1554.8	1549.4
62.5°	1481.3	1500.5	1497.8	1492.8	1483.9	1478.0	1470.7	1466.9	1459.9	1457.3	1454.8
65°	1342.4	1363.9	1363.6	1361.1	1356.2	1354.5	1349.9	1349.0	1345.5	1346.9	1346.6
67.5°	1233.1	1251.9	1256.0	1259.0	1258.8	1260.0	1259.6	1261.4	1261.4	1264.1	1265.8
70°	1154.3	1167.3	1170.5	1173.6	1174.4	1177.0	1177.0	1178.6	1178.1	1180.4	1180.7
72.5°	1074.6	1091.7	1094.9	1097.4	1097.4	1099.9	1098.6	1098.2	1094.7	1094.1	1091.6
75°	975.4	997.4	1002.3	1005.4	1005.8	1007.9	1004.9	1003.1	997.4	995.2	991.1
77.5°	871.8	894.7	898.1	899.2	897.4	897.8	891.6	887.3	880.0	877.0	873.2
80°	737.0	770.6	773.3	771.2	765.9	765.1	759.0	755.0	746.4	743.4	740.1
82.5°	560.8	600.3	605.9	608.3	604.0	605.0	599.1	596.9	588.9	587.5	582.3
85°	354.1	393.6	400.1	399.1	394.8	393.9	390.4	391.5	390.9	393.0	394.2
87.5°	162.7	200.9	210.1	207.2	206.7	204.0	197.9	200.2	203.9	206.3	206.5
90°	11.1	22.5	22.0	23.3	20.9	21.6	19.5	20.9	19.3	20.6	19.2
92.5°	6.3	6.3	6.3	6.3	6.3	6.3	6.3	6.1	6.3	6.1	6.3
95°	7.1	6.8	6.8	6.8	6.7	6.7	6.7	6.7	6.7	6.7	6.7
97.5°	8.0	7.7	7.5	7.5	7.5	7.4	7.4	7.4	7.4	7.2	7.2
100°	9.1	8.5	8.3	8.3	8.2	8.2	8.2	8.1	8.1	8.1	8.0
102.5°	10.2	9.8	9.6	9.4	9.3	9.1	9.1	9.0	9.0	8.7	8.7
105°	11.9	11.2	11.0	10.5	10.4	10.2	10.1	9.9	9.8	9.6	9.6
107.5°	14.1	12.9	12.4	12.1	11.8	11.6	11.2	11.1	10.8	10.5	10.4
110°	16.6	15.1	14.5	14.0	13.7	13.1	12.8	12.4	12.1	11.9	11.6



TEST NUMBER: P1444481
 CATALOG NUMBER: EHBR1-48-UNV-TA-L830

CANDELA DISTRIBUTION (continued):

	220°	222.5°	225°	227.5°	230°	232.5°	235°	237.5°	240°	242.5°	245°
112.5°	19.6	17.6	16.8	16.0	15.6	15.1	14.6	14.1	13.8	13.2	13.1
115°	23.0	20.6	19.6	18.7	18.2	17.5	16.8	16.3	15.6	15.1	14.8
117.5°	27.3	24.3	23.0	22.0	21.4	20.3	19.6	18.7	18.2	17.5	17.0
120°	31.7	28.4	27.0	25.9	25.0	23.9	23.0	22.0	21.2	20.3	19.6
122.5°	36.9	33.3	31.6	30.4	29.2	28.0	27.0	25.9	24.8	23.9	23.0
125°	42.6	38.5	36.6	35.4	34.3	33.0	31.7	30.4	29.4	28.3	27.3
127.5°	48.7	44.3	42.5	41.2	39.9	38.5	37.2	35.8	34.7	33.3	32.2
130°	55.5	50.8	48.7	47.3	46.2	44.6	43.5	42.1	40.7	39.3	38.1
132.5°	62.5	57.5	55.5	54.2	53.1	51.6	50.4	48.9	47.6	46.0	44.9
135°	69.8	64.6	62.7	61.3	60.2	58.8	57.5	56.1	55.0	53.4	52.5
137.5°	77.2	71.8	69.9	68.7	67.6	66.3	65.4	64.0	62.8	61.3	60.2
140°	84.6	79.0	77.2	76.2	75.3	74.0	73.1	71.9	70.9	69.8	68.7
142.5°	91.5	85.8	83.9	83.1	82.4	81.4	80.8	79.8	79.0	77.7	76.9
145°	98.4	92.4	90.7	89.8	89.4	88.6	88.0	87.2	86.6	85.7	85.0
147.5°	105.1	98.7	96.9	96.5	96.0	95.4	95.1	94.3	94.0	93.4	92.9
150°	111.8	104.5	102.5	102.2	101.7	101.4	101.2	100.7	100.6	100.1	99.9
152.5°	118.2	109.5	107.2	106.9	106.9	106.4	106.3	106.1	106.1	106.0	105.8
155°	124.6	115.1	112.4	111.9	111.8	111.7	111.6	111.6	111.6	111.6	111.7
157.5°	130.7	120.5	117.7	117.2	117.1	116.9	116.8	116.8	116.8	116.8	117.1
160°	136.6	126.2	123.4	122.8	122.6	122.3	122.1	121.9	121.9	121.9	122.1
162.5°	142.1	132.0	129.3	128.7	128.3	128.0	127.9	127.5	127.5	127.3	127.5
165°	147.3	138.3	135.5	135.0	134.7	134.2	133.9	133.7	133.6	133.4	133.4
167.5°	152.5	144.3	142.1	141.6	141.3	140.8	140.8	140.2	140.2	139.9	139.9
170°	156.0	149.6	147.7	147.4	147.4	147.2	146.9	146.8	146.6	146.3	146.3
172.5°	158.6	153.9	152.5	152.3	152.3	152.2	152.2	152.0	152.0	152.0	152.0
175°	159.8	157.0	156.4	156.1	156.1	156.1	156.1	156.1	156.1	156.1	156.4
177.5°	160.3	159.5	159.2	159.2	159.2	159.2	159.2	159.2	159.2	159.4	159.4
180°	159.0	159.0	159.0	159.0	159.0	159.0	159.0	159.0	159.0	159.0	159.0



TEST NUMBER: P1444481
 CATALOG NUMBER: EHBR1-48-UNV-TA-L830

CANDELA DISTRIBUTION (continued):

	247.5°	250°	252.5°	255°	257.5°	260°	262.5°	265°	267.5°	270°	272.5°
0°	38337.2	38337.2	38337.2	38337.2	38337.2	38337.2	38337.2	38337.2	38337.2	38337.2	38337.2
2.5°	38636.8	38681.9	38678.4	38720.5	38718.4	38758.0	38750.1	38784.2	38776.5	38805.7	38788.6
5°	39904.2	39989.9	40018.1	40095.4	40111.5	40180.7	40182.1	40237.1	40230.4	40273.4	40250.6
7.5°	41103.1	41183.1	41221.0	41281.0	41311.1	41360.8	41380.2	41421.2	41431.0	41455.2	41454.4
10°	41204.2	41203.9	41222.7	41214.3	41231.1	41221.4	41241.9	41234.5	41264.7	41257.0	41279.8
12.5°	39842.8	39707.7	39658.4	39537.0	39510.5	39406.3	39413.7	39346.9	39379.1	39338.1	39408.0
15°	36916.9	36603.5	36448.6	36176.1	36090.5	35875.1	35857.7	35714.6	35753.2	35678.4	35787.8
17.5°	32593.2	32099.7	31828.9	31431.0	31273.0	30968.3	30907.3	30723.1	30751.7	30658.9	30791.0
20°	27438.2	26841.9	26500.2	26040.1	25834.8	25471.6	25375.3	25169.3	25195.1	25102.8	25252.3
22.5°	22224.4	21600.1	21214.6	20732.2	20470.1	20128.5	20026.0	19819.0	19830.8	19744.1	19887.9
25°	17433.0	16834.6	16460.3	16022.1	15794.7	15481.5	15373.8	15188.0	15198.5	15127.0	15256.1
27.5°	13485.7	12994.7	12681.5	12314.3	12110.3	11852.9	11747.9	11591.6	11591.2	11538.8	11646.6
30°	10538.3	10128.6	9847.4	9527.6	9336.1	9103.8	9002.3	8862.5	8856.4	8819.2	8904.8
32.5°	8251.3	7886.8	7630.3	7348.9	7177.0	6977.6	6881.6	6769.2	6759.0	6725.3	6795.6
35°	6414.3	6107.4	5886.8	5649.9	5667.4	5373.2	5422.1	5193.7	5131.8	5118.2	5170.5
37.5°	4957.5	4719.8	4540.7	4363.2	4243.0	4118.7	4051.7	3991.7	3984.9	3979.0	4015.7
40°	3880.4	3714.1	3583.8	3462.0	3379.3	3303.4	3261.5	3228.6	3220.7	3216.3	3238.5
42.5°	3140.6	3028.4	2944.4	2870.1	2819.8	2778.6	2755.5	2737.3	2731.1	2731.3	2744.3
45°	2653.4	2585.3	2531.2	2485.0	2452.9	2467.0	2425.5	2447.2	2418.5	2448.2	2428.6
47.5°	2336.7	2278.7	2245.2	2212.5	2193.0	2177.4	2177.9	2178.2	2184.4	2185.3	2191.7
50°	2092.3	2058.8	2035.5	2014.6	2004.5	1996.2	1999.1	2001.2	2007.2	2007.6	2012.3
52.5°	1911.4	1889.4	1875.4	1862.4	1857.9	1853.2	1855.2	1854.3	1857.0	1855.6	1859.5
55°	1764.2	1753.9	1749.5	1744.6	1745.4	1744.1	1744.9	1740.2	1737.4	1733.8	1737.1
57.5°	1643.5	1642.1	1645.0	1647.0	1652.5	1654.5	1655.8	1650.4	1645.3	1640.6	1643.4
60°	1550.4	1552.7	1560.1	1566.0	1574.0	1577.7	1579.9	1576.9	1573.1	1569.3	1571.6
62.5°	1458.6	1462.2	1471.0	1477.7	1487.3	1492.3	1497.8	1498.1	1499.6	1498.1	1499.7
65°	1352.0	1356.4	1364.4	1369.9	1378.9	1383.3	1389.0	1390.0	1393.1	1392.4	1395.1
67.5°	1271.0	1275.0	1281.7	1286.9	1294.9	1299.5	1304.5	1304.7	1305.9	1305.6	1308.1
70°	1184.7	1186.6	1192.6	1197.0	1205.0	1209.7	1215.4	1217.1	1220.6	1221.2	1224.0
72.5°	1092.6	1091.7	1095.3	1097.3	1103.3	1107.0	1114.2	1118.1	1124.1	1125.7	1127.9
75°	992.3	991.4	995.7	997.4	1002.6	1006.2	1014.4	1019.6	1028.8	1032.6	1031.7
77.5°	876.2	878.2	886.1	890.5	897.4	902.1	912.6	921.0	937.9	945.2	937.7
80°	746.4	748.5	756.8	760.9	769.8	775.5	787.3	797.0	812.3	815.6	811.3
82.5°	586.8	587.4	594.7	597.9	609.5	617.9	632.8	640.6	650.0	648.6	647.5
85°	400.1	405.5	414.8	424.0	438.2	451.8	465.9	477.5	469.3	482.2	467.7
87.5°	213.9	213.3	225.7	223.8	243.6	255.2	267.4	273.2	279.8	278.5	278.6
90°	21.0	19.6	21.4	19.6	22.3	20.3	24.0	22.3	26.7	24.2	28.9
92.5°	6.1	6.3	6.1	6.3	6.1	6.3	6.1	6.1	6.1	6.1	6.1
95°	6.7	6.7	6.7	6.6	6.6	6.6	6.6	6.6	6.6	6.6	6.6
97.5°	7.2	7.2	7.2	7.2	7.2	7.2	7.2	7.2	7.1	7.1	7.1
100°	8.0	8.0	8.0	8.0	7.7	7.7	7.7	7.7	7.7	7.7	7.7
102.5°	8.5	8.5	8.5	8.3	8.3	8.3	8.3	8.3	8.3	8.3	8.3
105°	9.4	9.4	9.3	9.3	9.1	9.1	9.1	9.1	9.1	9.1	9.1
107.5°	10.4	10.2	10.1	10.1	9.9	9.9	9.9	9.9	9.9	9.9	9.9
110°	11.3	11.2	11.1	11.1	11.0	10.8	10.8	10.8	10.8	10.8	10.8



TEST NUMBER: P1444481
 CATALOG NUMBER: EHBR1-48-UNV-TA-L830

CANDELA DISTRIBUTION (continued):

	247.5°	250°	252.5°	255°	257.5°	260°	262.5°	265°	267.5°	270°	272.5°
112.5°	12.8	12.4	12.2	12.1	11.9	11.9	11.8	11.8	11.8	11.8	11.8
115°	14.2	14.1	13.8	13.7	13.5	13.2	13.1	13.1	13.1	13.1	13.1
117.5°	16.3	15.9	15.6	15.4	15.1	14.9	14.8	14.8	14.6	14.8	14.8
120°	19.0	18.5	17.9	17.6	17.3	17.2	16.8	16.8	16.8	16.8	16.8
122.5°	22.2	21.5	20.9	20.4	20.0	19.8	19.5	19.5	19.5	19.5	19.5
125°	26.1	25.5	24.7	24.2	23.4	23.3	23.0	23.0	22.9	23.0	23.0
127.5°	31.1	30.3	29.2	28.7	28.0	27.7	27.4	27.3	27.3	27.4	27.4
130°	36.8	36.0	34.9	34.3	33.3	33.1	32.8	32.5	32.4	32.5	32.8
132.5°	43.5	42.5	41.5	40.7	39.9	39.5	39.0	39.0	38.8	39.0	39.1
135°	50.9	49.8	48.9	48.1	47.2	46.9	46.3	46.3	46.2	46.3	46.7
137.5°	58.9	58.1	57.0	56.3	55.5	55.2	54.5	54.4	54.4	54.5	55.0
140°	67.4	66.5	65.5	64.8	64.3	63.8	63.4	63.4	63.0	63.5	63.7
142.5°	75.9	75.3	74.3	73.7	73.1	72.8	72.5	72.5	72.2	72.6	72.9
145°	84.1	83.6	82.8	82.2	81.9	81.7	81.1	81.3	81.3	81.7	81.9
147.5°	92.2	91.9	91.2	91.0	90.4	90.4	90.1	90.2	90.2	90.5	90.7
150°	99.5	99.3	98.9	98.7	98.4	98.4	98.4	98.4	98.4	98.7	98.9
152.5°	105.8	105.8	105.4	105.4	105.3	105.4	105.4	105.8	105.8	106.1	106.3
155°	111.7	111.7	111.7	111.8	111.8	112.2	112.2	112.7	112.8	113.2	113.3
157.5°	117.1	117.4	117.4	117.7	117.9	118.2	118.4	119.0	119.1	119.6	119.9
160°	122.3	122.6	122.8	123.2	123.5	123.7	124.2	124.6	125.1	125.4	125.7
162.5°	127.5	127.9	128.0	128.3	128.7	129.0	129.5	130.0	130.3	130.9	131.3
165°	133.4	133.6	133.7	133.9	134.2	134.5	134.8	135.4	135.7	136.3	136.7
167.5°	139.9	139.9	139.9	139.9	140.1	140.4	140.5	141.0	141.3	141.8	142.1
170°	146.0	146.0	146.0	146.0	146.0	146.3	146.5	146.6	146.8	147.2	147.3
172.5°	151.8	151.8	151.6	151.8	151.6	151.8	151.8	152.0	152.0	152.2	152.2
175°	156.1	156.4	156.4	156.6	156.4	156.4	156.4	156.4	156.4	156.6	156.6
177.5°	159.4	159.5	159.5	159.5	159.5	159.7	159.7	159.7	159.7	159.5	159.5
180°	159.0	159.0	159.0	159.0	159.0	159.0	159.0	159.0	159.0	159.0	159.0



TEST NUMBER: P1444481
 CATALOG NUMBER: EHBR1-48-UNV-TA-L830

CANDELA DISTRIBUTION (continued):

	275°	277.5°	280°	282.5°	285°	287.5°	290°	292.5°	295°	297.5°	300°
0°	38337.2	38337.2	38337.2	38337.2	38337.2	38337.2	38337.2	38337.2	38337.2	38337.2	38337.2
2.5°	38817.1	38797.6	38817.5	38797.4	38817.5	38793.3	38809.7	38783.6	38790.2	38763.1	38770.1
5°	40284.9	40253.8	40270.3	40230.1	40234.4	40180.7	40179.7	40117.2	40100.7	40029.5	39998.2
7.5°	41471.7	41461.5	41467.3	41441.3	41438.4	41401.7	41384.3	41332.6	41300.0	41234.5	41189.7
10°	41283.8	41314.0	41321.9	41352.7	41359.1	41389.6	41396.1	41426.6	41433.0	41455.5	41455.8
12.5°	39404.7	39507.5	39532.0	39658.9	39712.3	39857.5	39935.5	40095.4	40190.4	40350.0	40448.0
15°	35784.8	35962.5	36033.4	36281.3	36418.3	36707.6	36889.4	37221.5	37456.0	37808.8	38060.4
17.5°	30802.6	31051.1	31163.2	31499.2	31718.4	32145.3	32453.1	32959.6	33347.4	33910.3	34356.4
20°	25277.8	25553.9	25706.0	26089.4	26348.1	26847.0	27231.2	27853.6	28372.6	29085.9	29695.8
22.5°	19933.0	20195.7	20364.6	20754.7	21045.9	21566.2	21995.6	22652.5	23234.1	24037.8	24769.2
25°	15304.8	15545.5	15698.2	16051.0	16324.5	16802.6	17212.7	17844.5	18413.5	19219.8	19969.6
27.5°	11700.3	11901.9	12049.2	12349.9	12591.1	12996.6	13348.9	13871.1	14361.3	15058.8	15726.6
30°	8957.6	9136.3	9279.5	9541.5	9765.2	10116.6	10426.4	10865.0	11270.8	11825.8	12357.1
32.5°	6845.1	6999.0	7126.6	7355.9	7558.8	7875.3	8154.3	8538.9	8887.1	9357.8	9794.9
35°	5219.1	5521.9	5500.4	5816.7	5867.5	6094.8	6343.7	6679.9	6988.3	7388.6	7760.5
37.5°	4050.9	4136.0	4227.2	4367.0	4513.9	4720.6	4930.9	5341.7	5492.3	5794.9	6102.8
40°	3266.6	3324.2	3384.4	3478.8	3581.8	3727.4	3880.5	4076.5	4277.2	4522.4	4773.0
42.5°	2761.6	2794.2	2832.5	2888.1	2951.5	3043.8	3146.3	3279.1	3418.8	3591.4	3767.6
45°	2467.4	2451.9	2463.3	2493.1	2531.4	2587.5	2652.1	2734.3	2825.3	2937.1	3056.2
47.5°	2193.0	2199.3	2202.7	2218.9	2239.4	2277.0	2316.2	2372.0	2479.9	2512.7	2577.6
50°	2011.9	2014.9	2013.8	2022.1	2032.5	2056.9	2082.4	2120.1	2157.9	2207.9	2255.7
52.5°	1860.0	1864.2	1863.7	1869.1	1874.6	1890.1	1906.2	1932.9	1957.6	1989.5	2016.8
55°	1740.1	1745.9	1748.2	1752.8	1755.4	1763.5	1769.9	1782.7	1793.2	1811.2	1827.9
57.5°	1647.9	1655.8	1659.5	1661.1	1657.8	1657.4	1655.3	1658.0	1660.1	1669.8	1679.1
60°	1575.3	1581.6	1582.7	1581.6	1575.7	1571.4	1564.6	1562.4	1561.3	1566.0	1571.1
62.5°	1499.3	1501.5	1500.0	1498.1	1491.3	1487.2	1480.1	1477.5	1475.1	1478.4	1481.0
65°	1394.1	1396.1	1394.1	1393.0	1386.9	1383.6	1377.6	1375.7	1372.2	1373.1	1372.5
67.5°	1308.7	1310.7	1309.1	1307.6	1303.3	1301.4	1297.0	1294.1	1289.9	1288.4	1285.5
70°	1223.6	1225.2	1222.8	1221.2	1216.4	1214.5	1210.4	1209.6	1206.3	1205.5	1202.3
72.5°	1125.7	1125.8	1122.5	1121.4	1117.9	1117.8	1116.1	1117.6	1117.5	1119.2	1118.4
75°	1025.5	1024.1	1019.9	1019.1	1016.4	1017.7	1015.9	1018.3	1018.6	1022.3	1022.7
77.5°	925.3	919.9	911.9	908.0	902.6	902.0	898.8	900.9	900.3	904.5	906.2
80°	798.5	792.1	781.8	776.7	770.3	769.4	766.5	769.4	767.9	773.0	776.4
82.5°	637.5	632.0	621.2	617.2	609.8	610.5	607.4	610.5	610.1	617.5	621.8
85°	471.5	467.9	456.8	447.0	436.0	429.7	423.4	422.3	420.4	423.4	425.9
87.5°	272.4	268.9	260.3	254.6	235.4	236.2	228.7	228.4	226.5	224.8	228.7
90°	26.1	29.9	27.4	30.7	28.9	32.8	31.4	35.1	32.5	35.7	34.0
92.5°	6.1	6.1	6.1	6.1	6.1	6.1	6.1	6.1	6.1	5.8	6.1
95°	6.6	6.6	6.6	6.6	6.6	6.6	6.6	6.6	6.6	6.6	6.6
97.5°	7.2	7.1	7.1	7.1	7.1	7.1	7.1	7.1	7.2	7.2	7.2
100°	7.7	7.7	7.7	7.7	7.7	7.7	7.7	7.7	8.0	8.0	8.0
102.5°	8.3	8.3	8.3	8.3	8.5	8.5	8.5	8.5	8.7	8.7	8.7
105°	9.1	9.1	9.3	9.3	9.3	9.3	9.4	9.4	9.6	9.6	9.8
107.5°	9.9	9.9	9.9	10.1	10.1	10.2	10.2	10.4	10.5	10.8	11.0
110°	10.8	11.0	11.0	11.1	11.1	11.2	11.3	11.6	11.9	12.1	12.4



TEST NUMBER: P1444481
 CATALOG NUMBER: EHBR1-48-UNV-TA-L830

CANDELA DISTRIBUTION (continued):

	275°	277.5°	280°	282.5°	285°	287.5°	290°	292.5°	295°	297.5°	300°
112.5°	11.9	11.9	12.1	12.2	12.4	12.6	12.8	13.1	13.5	13.8	14.2
115°	13.2	13.2	13.5	13.7	14.0	14.1	14.6	14.9	15.5	15.9	16.5
117.5°	14.9	15.1	15.4	15.5	15.7	16.3	16.8	17.3	17.9	18.5	19.3
120°	17.2	17.3	17.6	17.8	18.4	18.7	19.5	20.1	21.0	21.9	22.9
122.5°	19.8	20.0	20.4	20.9	21.5	22.2	23.0	23.9	24.8	25.9	27.0
125°	23.3	23.7	24.2	24.7	25.6	26.4	27.4	28.4	29.5	30.5	31.9
127.5°	27.8	28.3	28.9	29.5	30.5	31.4	32.5	33.5	34.9	36.3	37.7
130°	33.3	33.8	34.7	35.2	36.5	37.5	38.7	39.8	41.3	42.5	44.0
132.5°	39.8	40.4	41.2	42.1	43.2	44.3	45.7	46.9	48.3	49.6	51.1
135°	47.2	47.8	48.7	49.6	50.9	51.9	53.3	54.4	56.0	57.1	58.6
137.5°	55.5	56.1	57.0	57.8	59.1	60.1	61.5	62.7	64.0	65.2	66.5
140°	64.4	64.8	65.8	66.6	67.6	68.7	70.1	71.0	72.5	73.4	74.6
142.5°	73.6	73.9	74.7	75.6	76.6	77.5	78.6	79.4	80.6	81.4	82.8
145°	82.4	82.8	83.6	84.2	85.1	86.0	86.9	87.8	88.8	89.5	90.5
147.5°	91.2	91.6	92.4	93.1	94.0	94.6	95.4	96.0	97.0	97.8	98.6
150°	99.5	99.9	100.4	100.9	101.7	102.5	103.3	103.9	104.5	105.1	106.0
152.5°	107.0	107.3	107.8	108.3	108.9	109.5	110.2	110.8	111.6	111.9	112.7
155°	113.8	114.4	114.9	115.4	116.1	116.3	117.1	117.5	118.2	118.8	119.5
157.5°	120.5	120.7	121.5	121.8	122.5	122.9	123.5	123.9	124.6	125.1	125.6
160°	126.3	126.9	127.3	127.9	128.4	128.9	129.5	130.0	130.6	131.0	131.6
162.5°	131.9	132.5	133.0	133.4	133.9	134.5	135.0	135.5	136.3	136.6	137.2
165°	137.2	137.7	138.4	138.6	139.4	139.9	140.4	141.0	141.3	141.9	142.4
167.5°	142.7	142.9	143.7	144.1	144.6	145.1	145.7	146.0	146.6	146.9	147.4
170°	147.7	148.2	148.7	149.0	149.5	149.8	150.3	150.6	151.2	151.5	152.0
172.5°	152.5	152.8	153.1	153.2	153.4	153.9	154.2	154.3	154.7	155.0	155.3
175°	156.6	156.6	156.7	156.9	157.0	157.0	157.2	157.5	157.6	157.7	157.8
177.5°	159.5	159.5	159.5	159.5	159.5	159.5	159.5	159.5	159.5	159.5	159.5
180°	159.0	159.0	159.0	159.0	159.0	159.0	159.0	159.0	159.0	159.0	159.0



TEST NUMBER: P1444481
 CATALOG NUMBER: EHBR1-48-UNV-TA-L830

CANDELA DISTRIBUTION (continued):

	302.5°	305°	307.5°	310°	312.5°	315°	317.5°	320°	322.5°	325°	327.5°
0°	38337.2	38337.2	38337.2	38337.2	38337.2	38337.2	38337.2	38337.2	38337.2	38337.2	38337.2
2.5°	38742.9	38744.6	38713.3	38711.6	38682.4	38678.7	38650.1	38641.5	38618.4	38609.9	38586.3
5°	39918.4	39880.3	39792.3	39740.6	39653.7	39596.1	39502.0	39440.7	39349.9	39281.4	39190.0
7.5°	41107.2	41048.1	40949.4	40869.4	40748.7	40652.4	40511.3	40395.7	40242.8	40110.4	39949.9
10°	41455.8	41446.7	41421.6	41384.9	41328.8	41265.8	41169.7	41069.5	40935.6	40790.0	40611.6
12.5°	40598.0	40690.6	40816.9	40891.7	40982.9	41022.8	41060.2	41050.8	41026.2	40952.6	40849.4
15°	38424.8	38685.1	39029.8	39296.9	39604.2	39827.5	40074.3	40228.0	40381.2	40452.1	40495.3
17.5°	34967.8	35460.7	36078.7	36590.9	37181.9	37656.5	38176.9	38568.6	38971.4	39260.0	39521.0
20°	30527.3	31241.4	32115.5	32887.8	33785.7	34566.0	35421.1	36123.1	36846.9	37413.1	37948.8
22.5°	25710.9	26559.0	27615.8	28594.7	29752.3	30792.6	31966.3	32987.9	34054.5	34945.6	35807.2
25°	20974.7	21904.7	23060.4	24152.6	25463.5	26673.6	28065.6	29338.8	30717.4	31914.3	33096.7
27.5°	16649.9	17563.0	18742.8	19905.4	21291.7	22581.1	24072.6	25475.3	27045.0	28492.5	29973.4
30°	13095.3	13869.8	14927.6	16053.7	17421.0	18733.1	20240.7	21683.4	23316.4	24896.9	26564.8
32.5°	10375.0	10965.0	11796.6	12748.9	14010.4	15259.5	16695.1	18087.8	19695.8	21292.4	23027.1
35°	8239.7	8699.9	9333.9	10077.0	11145.3	12222.1	13491.8	14758.3	16258.5	17773.6	19459.7
37.5°	6497.4	6870.8	7367.4	7925.6	8782.5	9666.1	10707.3	11757.3	13060.9	14403.9	15931.9
40°	5073.8	5376.1	5762.7	6179.0	6826.1	7506.9	8312.1	9126.4	10173.7	11271.2	12535.9
42.5°	3985.8	4208.9	4482.0	4786.2	5389.9	5751.3	6297.4	6886.3	7656.2	8453.0	9403.8
45°	3200.9	3353.1	3542.5	3746.6	4026.7	4333.4	4707.3	5099.4	5830.9	6189.7	6767.9
47.5°	2673.1	2775.3	2895.7	3024.4	3189.6	3367.9	3589.7	3816.4	4109.7	4413.7	4770.0
50°	2317.6	2421.5	2462.9	2529.5	2625.1	2726.9	2852.0	2977.0	3134.3	3293.7	3477.2
52.5°	2053.8	2087.6	2132.6	2175.0	2234.2	2350.2	2387.7	2453.1	2541.3	2627.6	2723.9
55°	1852.3	1874.4	1903.6	1929.2	1965.0	1999.2	2048.7	2092.1	2151.0	2203.0	2266.9
57.5°	1695.4	1709.5	1729.8	1746.6	1769.8	1789.1	1818.1	1841.7	1875.5	1904.9	1943.7
60°	1581.5	1590.9	1604.5	1615.4	1630.2	1640.4	1654.7	1665.7	1683.6	1698.6	1720.2
62.5°	1488.4	1493.3	1502.2	1508.7	1518.0	1523.1	1530.8	1535.6	1545.4	1553.0	1565.1
65°	1376.8	1377.9	1383.9	1386.6	1394.0	1396.6	1402.9	1405.2	1413.3	1418.8	1429.5
67.5°	1285.3	1282.7	1282.8	1280.8	1281.7	1279.5	1280.2	1277.9	1281.1	1282.8	1291.0
70°	1201.7	1198.1	1197.0	1193.2	1192.1	1188.1	1187.0	1183.4	1183.0	1181.8	1184.7
72.5°	1120.3	1119.4	1119.6	1116.9	1116.7	1113.9	1114.0	1112.3	1114.2	1115.1	1118.7
75°	1026.7	1027.0	1028.8	1026.4	1027.1	1024.9	1025.7	1023.5	1024.7	1024.3	1027.9
77.5°	912.7	915.4	920.4	919.4	921.0	918.4	919.6	916.6	917.4	915.4	916.9
80°	784.6	790.3	797.0	796.7	799.5	797.6	800.2	797.3	798.5	795.1	794.2
82.5°	632.4	637.2	644.4	644.6	650.9	652.0	659.0	658.7	663.1	660.3	658.2
85°	432.4	435.7	441.8	445.3	451.7	455.6	462.4	465.1	460.2	469.0	462.1
87.5°	225.7	234.2	229.5	240.4	237.8	248.9	246.5	256.8	254.8	263.6	262.5
90°	38.7	37.5	42.5	41.8	48.1	48.3	55.0	54.5	61.0	60.8	67.2
92.5°	5.8	6.1	6.1	6.1	6.1	6.3	6.1	6.1	6.1	6.3	6.1
95°	6.6	6.6	6.6	6.6	6.6	6.6	6.6	6.7	6.7	6.7	6.7
97.5°	7.2	7.2	7.2	7.2	7.4	7.4	7.4	7.4	7.4	7.5	7.5
100°	8.0	8.1	8.1	8.1	8.2	8.2	8.3	8.3	8.5	8.5	8.5
102.5°	9.0	9.0	9.1	9.3	9.3	9.4	9.6	9.8	9.8	9.9	9.9
105°	9.9	10.1	10.2	10.4	10.5	11.0	11.1	11.2	11.3	11.6	11.6
107.5°	11.2	11.3	11.8	11.9	12.2	12.6	12.9	13.1	13.5	13.7	13.8
110°	12.8	13.1	13.5	14.0	14.2	14.8	15.1	15.5	15.7	16.0	16.3



TEST NUMBER: P1444481
 CATALOG NUMBER: EHBR1-48-UNV-TA-L830

CANDELA DISTRIBUTION (continued):

	302.5°	305°	307.5°	310°	312.5°	315°	317.5°	320°	322.5°	325°	327.5°
112.5°	14.6	15.4	15.6	16.3	16.8	17.3	17.8	18.4	18.6	19.2	19.5
115°	17.2	17.8	18.5	19.2	19.8	20.4	21.0	21.6	22.2	22.8	23.0
117.5°	20.0	21.0	21.6	22.8	23.3	24.2	24.8	25.6	26.1	26.7	27.3
120°	23.7	24.7	25.8	26.7	27.5	28.4	29.2	30.2	30.7	31.4	31.9
122.5°	28.0	29.2	30.3	31.4	32.2	33.3	34.1	35.1	35.8	36.6	37.2
125°	33.1	34.3	35.4	36.6	37.7	38.8	39.6	40.7	41.5	42.5	43.2
127.5°	38.8	40.2	41.3	42.6	43.7	44.9	45.7	46.9	47.8	48.7	49.6
130°	45.1	46.7	47.9	49.0	50.0	51.4	52.3	53.4	54.4	55.5	56.4
132.5°	52.3	53.6	54.7	56.1	57.1	58.3	59.3	60.5	61.3	62.5	63.5
135°	59.9	61.1	62.1	63.5	64.4	65.5	66.5	67.6	68.5	69.8	70.7
137.5°	67.4	68.9	69.9	71.0	71.9	73.1	73.9	75.0	75.9	77.2	78.0
140°	75.6	76.7	77.6	78.7	79.5	80.6	81.4	82.4	83.3	84.2	85.0
142.5°	83.6	84.7	85.4	86.6	87.2	88.2	88.8	89.6	90.5	91.3	92.1
145°	91.3	92.4	93.1	94.0	94.3	95.4	95.9	96.8	97.2	98.1	98.6
147.5°	99.3	100.1	100.6	101.4	101.7	102.6	103.0	103.6	104.2	104.5	105.0
150°	106.4	107.3	107.7	108.3	108.7	109.4	109.7	110.2	110.4	110.8	111.3
152.5°	113.2	113.8	114.3	114.7	115.1	115.5	115.7	116.2	116.3	116.5	116.8
155°	119.8	120.5	120.7	121.3	121.5	121.9	121.9	122.3	122.5	122.6	122.6
157.5°	126.0	126.5	127.0	127.3	127.6	128.0	128.1	128.4	128.4	128.7	128.7
160°	132.0	132.5	132.8	133.1	133.6	133.7	133.9	134.2	134.4	134.4	134.4
162.5°	137.5	138.1	138.4	138.6	139.1	139.4	139.6	139.9	139.9	140.1	140.1
165°	142.8	143.2	143.7	144.1	144.3	144.6	144.8	145.1	145.1	145.4	145.4
167.5°	147.7	148.4	148.7	149.0	149.2	149.5	149.6	150.1	150.1	150.2	150.2
170°	152.2	152.5	152.9	153.2	153.3	153.4	153.7	153.9	153.9	154.0	154.0
172.5°	155.6	155.9	155.9	156.1	156.1	156.4	156.6	156.6	156.7	156.7	156.7
175°	157.8	158.0	158.3	158.3	158.3	158.4	158.4	158.4	158.4	158.4	158.4
177.5°	159.5	159.5	159.5	159.4	159.4	159.4	159.4	159.4	159.4	159.4	159.2
180°	159.0	159.0	159.0	159.0	159.0	159.0	159.0	159.0	159.0	159.0	159.0



TEST NUMBER: P1444481
 CATALOG NUMBER: EHBR1-48-UNV-TA-L830

CANDELA DISTRIBUTION (continued):

	330°	332.5°	335°	337.5°	340°	342.5°	345°	347.5°	350°	352.5°	355°
0°	38337.2	38337.2	38337.2	38337.2	38337.2	38337.2	38337.2	38337.2	38337.2	38337.2	38337.2
2.5°	38578.0	38561.2	38550.4	38536.7	38528.2	38517.6	38509.8	38503.1	38497.7	38492.7	38489.0
5°	39120.4	39034.2	38967.3	38894.8	38835.3	38775.9	38730.1	38692.2	38666.0	38646.5	38634.8
7.5°	39811.1	39653.2	39512.9	39365.1	39232.6	39102.4	38990.1	38893.4	38820.8	38773.8	38745.2
10°	40427.9	40216.6	40007.6	39787.6	39579.0	39376.8	39190.0	39025.8	38895.8	38809.4	38759.0
12.5°	40704.4	40524.4	40311.0	40072.1	39816.5	39557.9	39305.9	39078.6	38887.7	38759.7	38685.8
15°	40460.9	40387.0	40242.1	40056.8	39814.2	39546.8	39250.9	38972.7	38716.8	38550.8	38454.6
17.5°	39668.8	39771.9	39760.8	39689.9	39515.5	39290.5	38988.9	38676.4	38356.4	38134.5	38013.3
20°	38332.0	38656.3	38820.8	38905.2	38836.7	38690.8	38417.7	38100.5	37727.4	37437.9	37261.2
22.5°	36453.5	37026.0	37382.7	37643.8	37699.2	37649.5	37408.3	37106.7	36690.9	36342.7	36081.7
25°	34035.3	34874.0	35437.9	35879.8	36051.5	36095.8	35890.7	35590.7	35127.1	34721.5	34363.1
27.5°	31187.0	32276.7	33029.6	33623.4	33891.5	34007.8	33818.9	33512.9	32964.5	32480.4	32012.1
30°	27980.3	29273.3	30179.6	30891.7	31218.5	31372.2	31171.5	30830.0	30191.7	29609.2	29019.2
32.5°	24548.2	25963.0	26950.7	27724.1	28047.9	28192.3	27929.9	27546.3	26808.6	26122.4	25434.4
35°	20954.8	22382.9	23378.8	24131.7	24403.0	24490.2	24154.5	23711.1	22893.8	22140.6	21390.5
37.5°	17288.3	18616.9	19522.0	20197.7	20365.6	20380.6	19976.3	19486.5	18627.5	17884.9	17138.1
40°	13653.4	14773.9	15504.7	16045.4	16103.7	16051.7	15612.1	15119.2	14315.6	13650.3	12994.7
42.5°	10229.5	11075.3	11596.7	11967.3	11945.3	11842.5	11439.5	11015.8	10352.8	9846.0	9330.1
45°	7296.2	7853.8	8158.7	8375.6	8306.0	8208.1	7894.4	7597.4	7146.9	6819.5	6472.8
47.5°	5068.8	5734.7	5618.8	6042.7	5677.5	5918.7	5416.3	5139.3	4900.3	4726.4	4530.4
50°	3628.8	3781.4	3855.1	3905.4	3878.7	3841.6	3751.4	3670.7	3561.5	3481.8	3389.1
52.5°	2802.4	2878.7	2920.5	2950.7	2944.8	2931.3	2891.9	2856.0	2804.9	2771.2	2730.5
55°	2373.8	2374.9	2451.7	2418.8	2467.6	2410.4	2432.9	2369.7	2379.9	2325.6	2289.1
57.5°	1972.5	2003.8	2017.9	2031.5	2027.7	2025.3	2010.0	2002.4	1985.2	1979.9	1967.7
60°	1735.1	1751.5	1754.8	1761.1	1755.9	1753.9	1741.9	1737.7	1726.2	1724.0	1716.0
62.5°	1572.3	1580.7	1580.7	1580.7	1573.9	1567.3	1554.1	1547.2	1537.3	1535.2	1530.5
65°	1436.4	1445.2	1446.6	1448.3	1443.4	1438.3	1426.6	1419.1	1409.0	1405.2	1399.8
67.5°	1296.2	1305.5	1308.6	1313.3	1310.5	1309.4	1301.5	1298.5	1291.8	1290.2	1285.3
70°	1186.1	1189.9	1189.6	1189.5	1183.3	1177.7	1168.5	1164.0	1157.1	1155.7	1151.1
72.5°	1120.6	1123.3	1121.6	1119.2	1111.1	1102.9	1092.0	1084.1	1075.0	1069.3	1062.9
75°	1028.4	1032.0	1029.6	1028.1	1020.8	1015.5	1006.8	1002.4	996.0	994.1	989.7
77.5°	915.2	916.9	913.2	912.7	907.2	903.8	897.3	896.1	891.5	891.6	887.3
80°	789.1	788.1	782.2	781.0	775.5	774.1	768.9	769.2	765.6	767.1	764.1
82.5°	649.3	645.8	638.0	635.7	629.3	628.7	625.3	628.2	625.9	629.3	627.3
85°	465.4	466.3	462.9	462.9	461.0	461.6	461.3	463.5	463.8	466.9	466.8
87.5°	259.5	263.1	262.5	265.8	265.7	269.5	270.8	276.5	277.2	282.4	282.4
90°	67.1	74.0	73.7	80.8	81.1	88.0	89.3	96.0	96.6	102.6	102.0
92.5°	6.1	6.1	6.3	6.1	6.1	5.8	6.4	5.8	6.1	5.8	5.8
95°	6.7	6.7	6.7	6.7	6.7	6.6	6.6	6.6	6.6	6.6	6.6
97.5°	7.5	7.5	7.5	7.5	7.5	7.5	7.4	7.4	7.4	7.4	7.4
100°	8.5	8.5	8.7	8.5	8.5	8.5	8.5	8.5	8.5	8.3	8.3
102.5°	10.1	10.1	10.1	10.1	10.1	10.1	10.1	9.9	9.9	9.9	9.9
105°	11.8	11.8	11.9	11.9	11.9	11.9	11.9	11.8	11.8	11.8	11.8
107.5°	14.0	14.0	14.1	14.1	14.2	14.2	14.2	14.1	14.2	14.1	14.1
110°	16.6	16.8	17.0	17.0	17.2	17.2	17.2	17.2	17.3	17.2	17.2



TEST NUMBER: P1444481
 CATALOG NUMBER: EHBR1-48-UNV-TA-L830

CANDELA DISTRIBUTION (continued):

	330°	332.5°	335°	337.5°	340°	342.5°	345°	347.5°	350°	352.5°	355°
112.5°	19.8	20.0	20.3	20.3	20.6	20.6	20.9	20.9	21.0	20.9	21.0
115°	23.4	23.9	24.2	24.3	24.7	24.8	25.1	25.1	25.5	25.5	25.5
117.5°	27.8	28.3	28.7	29.1	29.4	29.7	30.2	30.3	30.4	30.4	30.5
120°	32.5	33.1	33.8	34.3	34.8	35.1	35.7	35.8	36.1	36.1	36.3
122.5°	38.1	38.7	39.5	39.9	40.7	41.2	41.6	42.1	42.3	42.3	42.5
125°	44.2	44.9	45.7	46.3	47.2	47.8	48.3	48.6	49.0	49.0	49.2
127.5°	50.6	51.4	52.5	53.1	54.1	54.5	55.3	55.5	56.1	56.1	56.3
130°	57.4	58.3	59.4	60.2	61.1	61.8	62.7	62.9	63.5	63.5	63.7
132.5°	64.6	65.5	66.6	67.4	68.5	69.2	70.1	70.3	70.9	70.9	71.0
135°	71.9	72.8	73.9	74.7	75.7	76.6	77.3	77.7	78.3	78.3	78.4
137.5°	79.2	80.0	81.0	81.9	82.8	83.6	84.2	84.7	85.1	85.4	85.4
140°	86.1	86.8	88.0	88.6	89.5	90.2	91.0	91.3	91.9	91.9	92.1
142.5°	92.9	93.5	94.6	95.2	95.9	96.5	97.0	97.5	97.9	98.1	98.1
145°	99.3	99.8	100.6	101.2	101.7	102.2	102.8	103.1	103.3	103.3	103.4
147.5°	105.8	106.0	106.4	106.9	107.5	107.8	108.1	108.3	108.7	108.7	108.7
150°	111.6	111.7	111.9	112.2	112.5	112.7	112.8	113.1	113.2	113.1	113.1
152.5°	116.9	117.1	117.2	117.2	117.4	117.4	117.4	117.2	117.2	117.1	116.9
155°	122.8	122.8	122.8	122.6	122.8	122.6	122.5	122.3	122.1	121.8	121.5
157.5°	128.7	128.4	128.7	128.4	128.3	128.1	128.0	127.5	127.3	126.9	126.5
160°	134.5	134.4	134.4	134.2	133.9	133.7	133.6	133.0	132.7	132.2	131.7
162.5°	140.1	140.1	139.9	139.9	139.6	139.4	139.1	138.5	138.3	137.7	137.2
165°	145.5	145.4	145.4	145.1	144.9	144.6	144.5	144.0	143.7	143.0	142.7
167.5°	150.2	150.2	150.1	149.8	149.6	149.5	149.2	148.7	148.5	147.9	147.6
170°	154.0	153.9	153.9	153.7	153.4	153.3	153.1	152.8	152.3	152.0	151.6
172.5°	156.6	156.6	156.4	156.1	156.1	156.0	155.7	155.6	155.1	154.8	154.7
175°	158.3	158.3	158.0	158.0	157.8	157.7	157.6	157.5	157.2	157.0	156.7
177.5°	159.2	159.2	159.0	159.0	158.9	158.9	158.7	158.6	158.6	158.4	158.3
180°	159.0	159.0	159.0	159.0	159.0	159.0	159.0	159.0	159.0	159.0	159.0



TEST NUMBER: P1444481
CATALOG NUMBER: EHBR1-48-UNV-TA-L830

CANDELA DISTRIBUTION (continued):

	357.5°	360°
0°	38337.2	38337.2
2.5°	38485.6	38483.7
5°	38628.7	38626.4
7.5°	38737.5	38736.8
10°	38750.3	38757.0
12.5°	38673.1	38678.4
15°	38447.2	38457.8
17.5°	38015.6	38029.3
20°	37271.9	37286.4
22.5°	36067.7	36073.6
25°	34316.8	34291.9
27.5°	31929.8	31887.1
30°	28895.4	28854.0
32.5°	25277.6	25251.7
35°	21205.0	21188.7
37.5°	16917.4	16884.2
40°	12755.0	12658.1
42.5°	9104.2	8934.1
45°	6291.8	6090.2
47.5°	4392.3	4267.7
50°	3329.3	3289.1
52.5°	2712.8	2703.4
55°	2288.9	2284.8
57.5°	1970.4	1969.0
60°	1720.2	1719.8
62.5°	1533.7	1534.3
65°	1402.3	1402.5
67.5°	1286.6	1285.7
70°	1152.8	1151.9
72.5°	1060.8	1059.2
75°	989.7	988.8
77.5°	888.6	887.1
80°	766.1	764.1
82.5°	630.1	627.9
85°	470.0	470.1
87.5°	287.6	287.5
90°	107.7	106.4
92.5°	6.1	6.4
95°	6.6	6.6
97.5°	7.4	7.4
100°	8.3	8.3
102.5°	9.9	9.9
105°	11.8	11.8
107.5°	14.1	14.1
110°	17.2	17.2



TEST NUMBER: P1444481
CATALOG NUMBER: EHBR1-48-UNV-TA-L830

CANDELA DISTRIBUTION (continued):

	357.5°	360°
112.5°	20.9	20.9
115°	25.1	25.1
117.5°	30.4	30.3
120°	36.0	36.0
122.5°	42.2	42.1
125°	48.9	48.7
127.5°	56.0	55.7
130°	63.0	62.9
132.5°	70.7	70.3
135°	78.0	77.7
137.5°	85.0	84.7
140°	91.6	91.3
142.5°	97.9	97.6
145°	103.3	103.0
147.5°	108.1	108.0
150°	112.7	112.4
152.5°	116.3	116.1
155°	120.9	120.5
157.5°	125.7	125.3
160°	131.0	130.6
162.5°	136.6	136.1
165°	141.9	141.3
167.5°	146.9	146.6
170°	151.2	150.9
172.5°	154.3	154.0
175°	156.6	156.4
177.5°	158.3	158.0
180°	159.0	159.0

LM-79-2019: Approved Method: Electrical and Photometric Measurements of Solid-State Lighting Products

Report Prepared for

Cooper Lighting Solutions

Metalux

Report Number: SP1-2506-472-2

Test Date: 07/31/2025

Luminaire Tested: EHBR-60-L830-N

Data in this report applies to families of products including EHBR-60-L830-N

Test Information

Test Method: LM-79-2019
 Report Number: SP1-2506-472-2
 Test Lab: COOPER LIGHTING SOLUTIONS
 Photometer: SP1 - 76IN SPHERE
 Measurement Geometry: 4π
 Issue Date: 08/05/2025
 Manufacturer: COOPER LIGHTING SOLUTIONS
 Product Line: Metalux
 Catalog Number: **EHBR-60-L830-N**
 Description: Elevate Round Highbay at, 60000 lumens, 3000K 80CRI LEDs with N lens

Spectral Parameters

CCT (K): 2983
 CIE u': 0.2516
 CIE v': 0.5201
 Duv: -0.0012
 CIE x: 0.4364
 CIE y: 0.4010
 CIE z: 0.1626
 Peak Wavelength (nm): 630
 Dominant Wavelength (nm): 583
 Purity: 51.34918
 Rf: 81.2
 Rg: 101.5

CRI (Ra):	83.4		
R1:	84.0	R9:	29.4
R2:	87.5	R10:	68.6
R3:	88.9	R11:	82.2
R4:	83.8	R12:	61.6
R5:	81.9	R13:	83.9
R6:	83.1	R14:	92.5
R7:	87.1	R15:	79.8
R8:	70.9		



Test Conditions

Stabilization Time: 38M
 Operation Time: 1H 38M
 Sphere Temperature (°C): 25.0

REPORT NUMBER: SP1-2506-472-2

Measurement and Test Equipment			
Instrument	Identification Number	Calibration Date	Calibration Due Date
Photometer	76INCH SPHERE IN0058	6/16/2025	12/16/2025
Power Meter	XITRON INXT2011004	1/21/2025	1/21/2026
AC Power Source	CHROMA 61603 IN0063	10/22/2024	10/22/2025
DC Power Source	AGILENT E3634A IN0208	10/22/2024	10/22/2025
Sphere Thermometer	ONSET IN0085	10/22/2024	10/22/2025
Room Thermometer	ONSET IN0046	10/22/2024	10/22/2025

REPORT NUMBER: SP1-2506-472-2

CIE 1931 Chromaticity Diagram



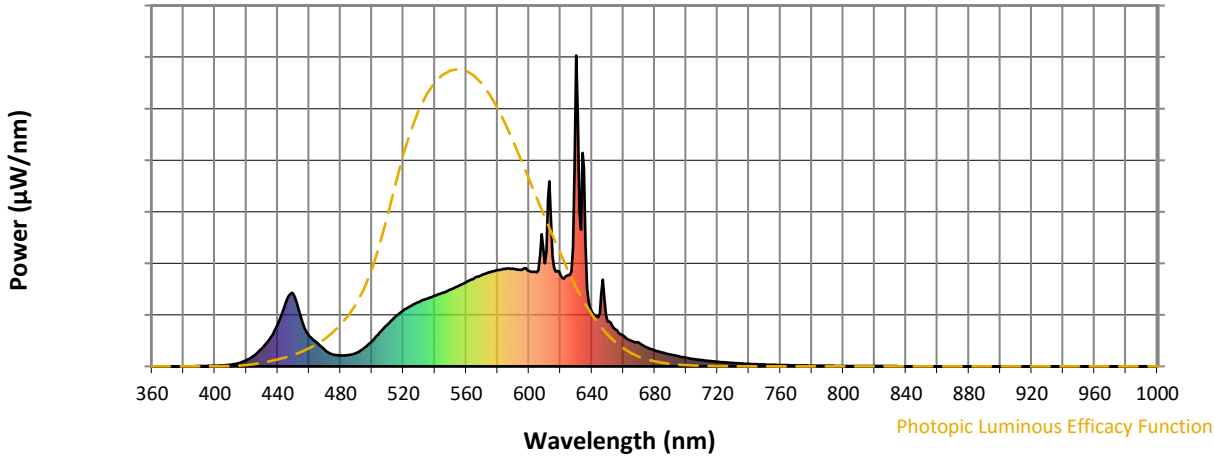
CIE 1931 Chromaticity Diagram with 2017 ANSI 7-Step and 4-Step Quadrangles



Point lies inside the ANSI 3000K 4-step quadrangle

REPORT NUMBER: SP1-2506-472-2

Photopic Flux vs. Wavelength



Photopic Lumens: NR

λ (nm)	Power W [^] /nm	Lumens (φ/nm)	λ (nm)	Power W [^] /nm	Lumens (φ/nm)	λ (nm)	Power W [^] /nm	Lumens (φ/nm)	λ (nm)	Power W [^] /nm	Lumens (φ/nm)	λ (nm)	Power W [^] /nm	Lumens (φ/nm)
360	0	NR	490	43	NR	620	294	NR	750	6	NR	880	0	NR
365	0	NR	495	59	NR	625	294	NR	755	5	NR	885	0	NR
370	0	NR	500	81	NR	630	1000	NR	760	4	NR	890	0	NR
375	0	NR	505	109	NR	635	637	NR	765	4	NR	895	0	NR
380	0	NR	510	135	NR	640	175	NR	770	3	NR	900	0	NR
385	0	NR	515	160	NR	645	171	NR	775	3	NR	905	0	NR
390	1	NR	520	180	NR	650	146	NR	780	2	NR	910	0	NR
395	1	NR	525	195	NR	655	119	NR	785	2	NR	915	0	NR
400	2	NR	530	207	NR	660	99	NR	790	2	NR	920	0	NR
405	3	NR	535	218	NR	665	82	NR	795	2	NR	925	0	NR
410	5	NR	540	227	NR	670	76	NR	800	1	NR	930	0	NR
415	10	NR	545	237	NR	675	61	NR	805	1	NR	935	0	NR
420	20	NR	550	247	NR	680	52	NR	810	1	NR	940	0	NR
425	35	NR	555	259	NR	685	44	NR	815	1	NR	945	0	NR
430	58	NR	560	271	NR	690	38	NR	820	1	NR	950	0	NR
435	90	NR	565	283	NR	695	33	NR	825	1	NR	955	0	NR
440	135	NR	570	293	NR	700	27	NR	830	1	NR	960	0	NR
445	204	NR	575	303	NR	705	24	NR	835	1	NR	965	0	NR
450	233	NR	580	310	NR	710	20	NR	840	0	NR	970	0	NR
455	153	NR	585	313	NR	715	17	NR	845	0	NR	975	0	NR
460	98	NR	590	314	NR	720	15	NR	850	0	NR	980	0	NR
465	76	NR	595	310	NR	725	13	NR	855	0	NR	985	0	NR
470	53	NR	600	307	NR	730	11	NR	860	0	NR	990	0	NR
475	39	NR	605	303	NR	735	9	NR	865	0	NR	995	0	NR
480	35	NR	610	331	NR	740	8	NR	870	0	NR	1000	0	NR
485	36	NR	615	353	NR	745	7	NR	875	0	NR			

REPORT NUMBER: SP1-2506-472-2

Scotopic Flux vs. Wavelength



Scotopic Lumens: NR

S/P: 1.27

λ (nm)	Power W [^] /nm	Lumens (φ/nm)	λ (nm)	Power W [^] /nm	Lumens (φ/nm)	λ (nm)	Power W [^] /nm	Lumens (φ/nm)	λ (nm)	Power W [^] /nm	Lumens (φ/nm)	λ (nm)	Power W [^] /nm	Lumens (φ/nm)
360	0	NR	490	43	NR	620	294	NR	750	6	NR	880	0	NR
365	0	NR	495	59	NR	625	294	NR	755	5	NR	885	0	NR
370	0	NR	500	81	NR	630	1000	NR	760	4	NR	890	0	NR
375	0	NR	505	109	NR	635	637	NR	765	4	NR	895	0	NR
380	0	NR	510	135	NR	640	175	NR	770	3	NR	900	0	NR
385	0	NR	515	160	NR	645	171	NR	775	3	NR	905	0	NR
390	1	NR	520	180	NR	650	146	NR	780	2	NR	910	0	NR
395	1	NR	525	195	NR	655	119	NR	785	2	NR	915	0	NR
400	2	NR	530	207	NR	660	99	NR	790	2	NR	920	0	NR
405	3	NR	535	218	NR	665	82	NR	795	2	NR	925	0	NR
410	5	NR	540	227	NR	670	76	NR	800	1	NR	930	0	NR
415	10	NR	545	237	NR	675	61	NR	805	1	NR	935	0	NR
420	20	NR	550	247	NR	680	52	NR	810	1	NR	940	0	NR
425	35	NR	555	259	NR	685	44	NR	815	1	NR	945	0	NR
430	58	NR	560	271	NR	690	38	NR	820	1	NR	950	0	NR
435	90	NR	565	283	NR	695	33	NR	825	1	NR	955	0	NR
440	135	NR	570	293	NR	700	27	NR	830	1	NR	960	0	NR
445	204	NR	575	303	NR	705	24	NR	835	1	NR	965	0	NR
450	233	NR	580	310	NR	710	20	NR	840	0	NR	970	0	NR
455	153	NR	585	313	NR	715	17	NR	845	0	NR	975	0	NR
460	98	NR	590	314	NR	720	15	NR	850	0	NR	980	0	NR
465	76	NR	595	310	NR	725	13	NR	855	0	NR	985	0	NR
470	53	NR	600	307	NR	730	11	NR	860	0	NR	990	0	NR
475	39	NR	605	303	NR	735	9	NR	865	0	NR	995	0	NR
480	35	NR	610	331	NR	740	8	NR	870	0	NR	1000	0	NR
485	36	NR	615	353	NR	745	7	NR	875	0	NR			

REPORT NUMBER: SP1-2506-472-2

Melanopic Flux vs. Wavelength



Melanopic Lumens: NR

M/P: 2.34

λ (nm)	Power W [^] /nm	Lumens (φ/nm)	λ (nm)	Power W [^] /nm	Lumens (φ/nm)	λ (nm)	Power W [^] /nm	Lumens (φ/nm)	λ (nm)	Power W [^] /nm	Lumens (φ/nm)	λ (nm)	Power W [^] /nm	Lumens (φ/nm)
360	0	NR	490	43	NR	620	294	NR	750	6	NR	880	0	NR
365	0	NR	495	59	NR	625	294	NR	755	5	NR	885	0	NR
370	0	NR	500	81	NR	630	1000	NR	760	4	NR	890	0	NR
375	0	NR	505	109	NR	635	637	NR	765	4	NR	895	0	NR
380	0	NR	510	135	NR	640	175	NR	770	3	NR	900	0	NR
385	0	NR	515	160	NR	645	171	NR	775	3	NR	905	0	NR
390	1	NR	520	180	NR	650	146	NR	780	2	NR	910	0	NR
395	1	NR	525	195	NR	655	119	NR	785	2	NR	915	0	NR
400	2	NR	530	207	NR	660	99	NR	790	2	NR	920	0	NR
405	3	NR	535	218	NR	665	82	NR	795	2	NR	925	0	NR
410	5	NR	540	227	NR	670	76	NR	800	1	NR	930	0	NR
415	10	NR	545	237	NR	675	61	NR	805	1	NR	935	0	NR
420	20	NR	550	247	NR	680	52	NR	810	1	NR	940	0	NR
425	35	NR	555	259	NR	685	44	NR	815	1	NR	945	0	NR
430	58	NR	560	271	NR	690	38	NR	820	1	NR	950	0	NR
435	90	NR	565	283	NR	695	33	NR	825	1	NR	955	0	NR
440	135	NR	570	293	NR	700	27	NR	830	1	NR	960	0	NR
445	204	NR	575	303	NR	705	24	NR	835	1	NR	965	0	NR
450	233	NR	580	310	NR	710	20	NR	840	0	NR	970	0	NR
455	153	NR	585	313	NR	715	17	NR	845	0	NR	975	0	NR
460	98	NR	590	314	NR	720	15	NR	850	0	NR	980	0	NR
465	76	NR	595	310	NR	725	13	NR	855	0	NR	985	0	NR
470	53	NR	600	307	NR	730	11	NR	860	0	NR	990	0	NR
475	39	NR	605	303	NR	735	9	NR	865	0	NR	995	0	NR
480	35	NR	610	331	NR	740	8	NR	870	0	NR	1000	0	NR
485	36	NR	615	353	NR	745	7	NR	875	0	NR			

Summary

$R_f = 81.2$
 $R_g = 101.5$
 CIE $R_a = 83.4$
 $R_9 = 29.4$



Color Vector Graphics

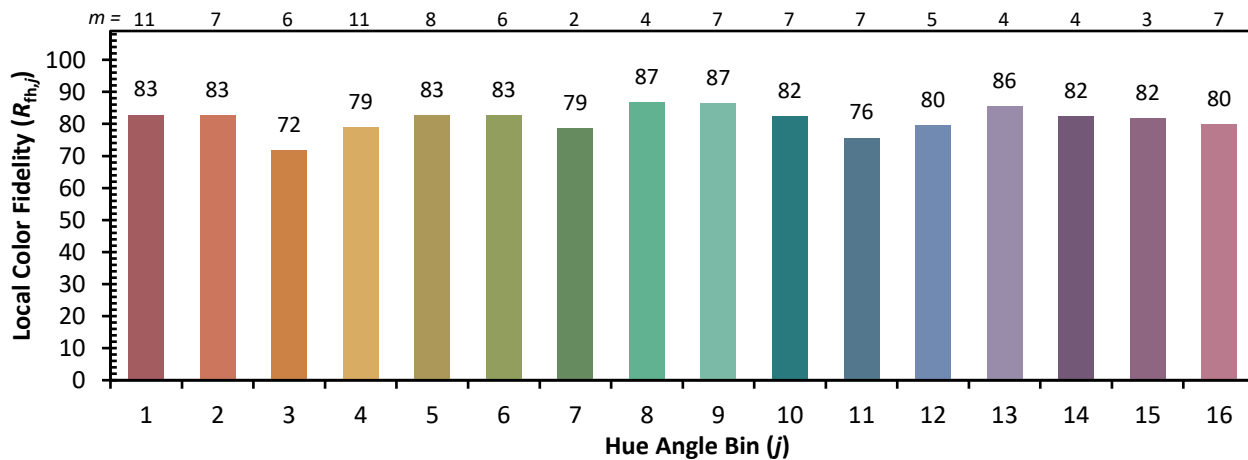
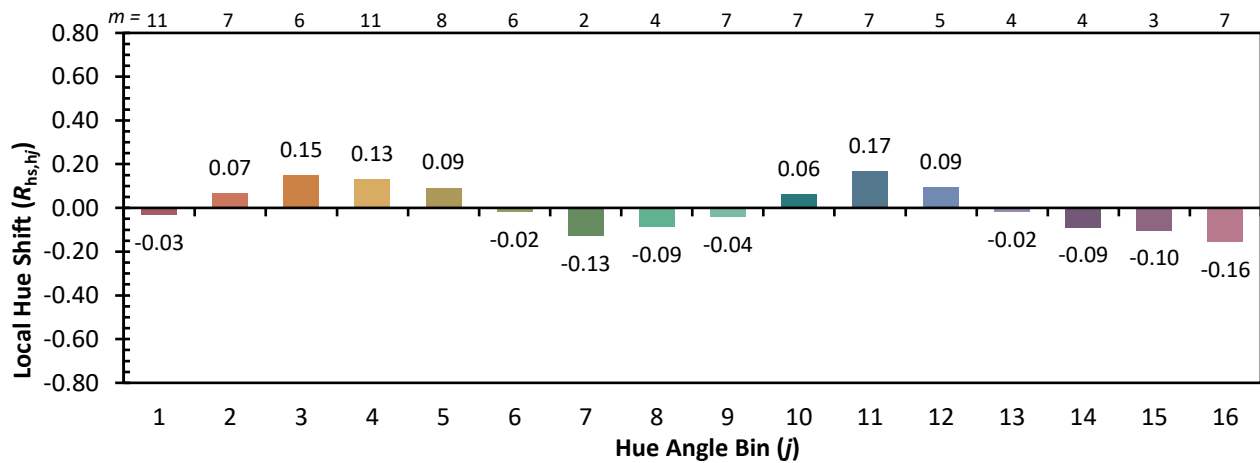
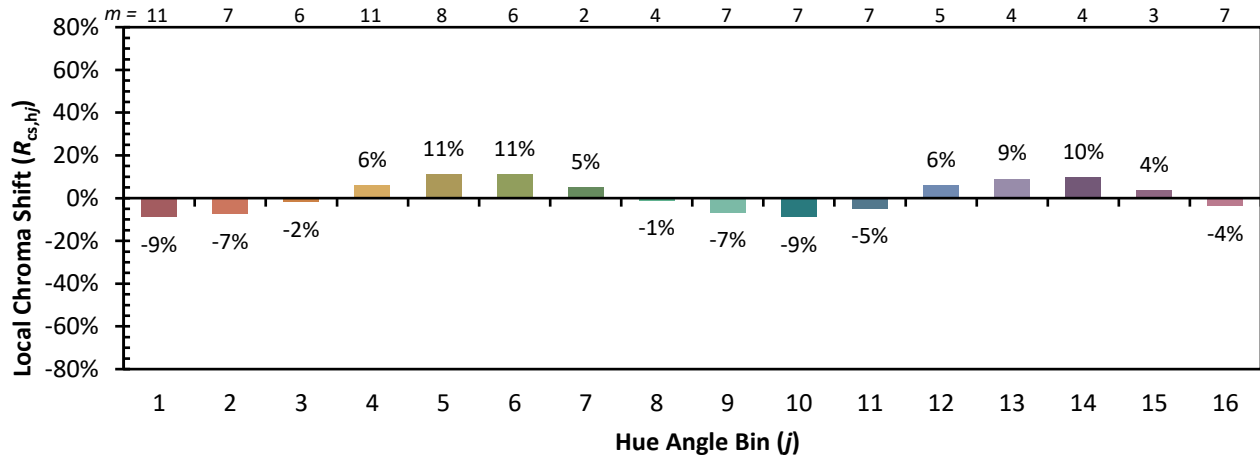


Individual Sample Fidelity Index ($R_{f,i}$)

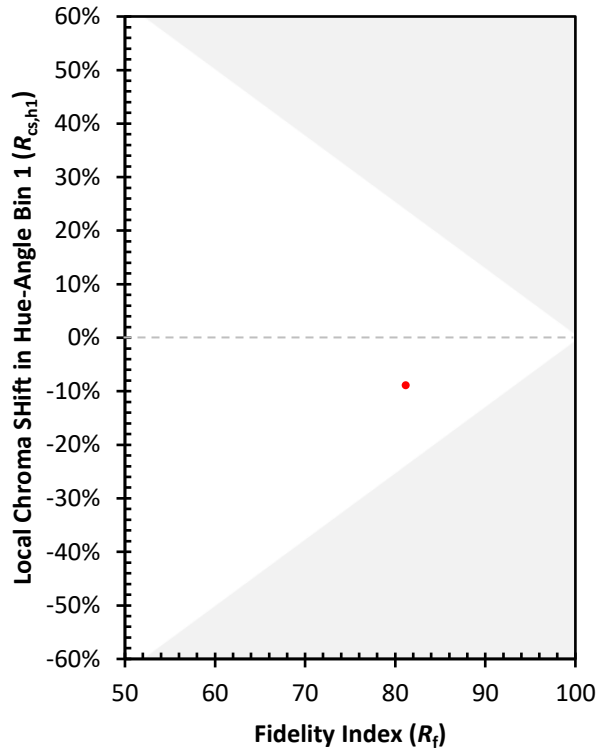
CES01 = 86	CES26 = 71	CES51 = 89	CES76 = 65
CES02 = 63	CES27 = 89	CES52 = 89	CES77 = 82
CES03 = 31	CES28 = 86	CES53 = 80	CES78 = 67
CES04 = 70	CES29 = 68	CES54 = 92	CES79 = 89
CES05 = 50	CES30 = 77	CES55 = 90	CES80 = 85
CES06 = 51	CES31 = 70	CES56 = 81	CES81 = 75
CES07 = 43	CES32 = 64	CES57 = 79	CES82 = 93
CES08 = 41	CES33 = 74	CES58 = 81	CES83 = 89
CES09 = 29	CES34 = 76	CES59 = 92	CES84 = 91
CES10 = 76	CES35 = 87	CES60 = 96	CES85 = 81
CES11 = 59	CES36 = 99	CES61 = 91	CES86 = 74
CES12 = 65	CES37 = 81	CES62 = 93	CES87 = 83
CES13 = 44	CES38 = 83	CES63 = 79	CES88 = 86
CES14 = 74	CES39 = 94	CES64 = 81	CES89 = 74
CES15 = 72	CES40 = 89	CES65 = 78	CES90 = 85
CES16 = 48	CES41 = 88	CES66 = 76	CES91 = 87
CES17 = 50	CES42 = 80	CES67 = 74	CES92 = 73
CES18 = 57	CES43 = 75	CES68 = 79	CES93 = 84
CES19 = 72	CES44 = 99	CES69 = 83	CES94 = 64
CES20 = 67	CES45 = 83	CES70 = 72	CES95 = 80
CES21 = 87	CES46 = 82	CES71 = 70	CES96 = 86
CES22 = 79	CES47 = 79	CES72 = 90	CES97 = 85
CES23 = 92	CES48 = 78	CES73 = 65	CES98 = 83
CES24 = 91	CES49 = 79	CES74 = 94	CES99 = 82
CES25 = 72	CES50 = 88	CES75 = 70	



Color Rendition by Hue-Angle Bin



Measure Comparisons



(END OF REPORT)