

Cooper Lighting Solutions Photometric Lab  
1121 Highway 74 South  
Peachtree City, GA 30269



Scaled data based on original data using  
LM-79-2019 Approved Method: Electrical and Photometric Measurements of Solid-  
State Lighting Products

Test Report Prepared for  
Cooper Lighting Solutions

Brand: METALUX

Report Number: P1444497

Luminaire Tested: EHBR1-60-UNV-TA-L830

Issue Date: 5/1/2026

**Test Information**

Test Method: LM-79-2019  
Report Number: P1444497  
TEST IS SCALED FROM IESNA LM-79-08 TEST DATA ( C80-8019A)  
Test Lab: INNOVATION CENTER  
Issue Date: 5/1/2026  
Manufacturer: COOPER LIGHTING SOLUTIONS  
Product Line: METALUX  
Catalog Number: EHBR1-60-UNV-TA-L830  
Description: Elevate Round Highbay at, 60000 lumens, 3000K 80CRI LEDs with TA lens  
Light Source: -  
Ballast/Driver: -

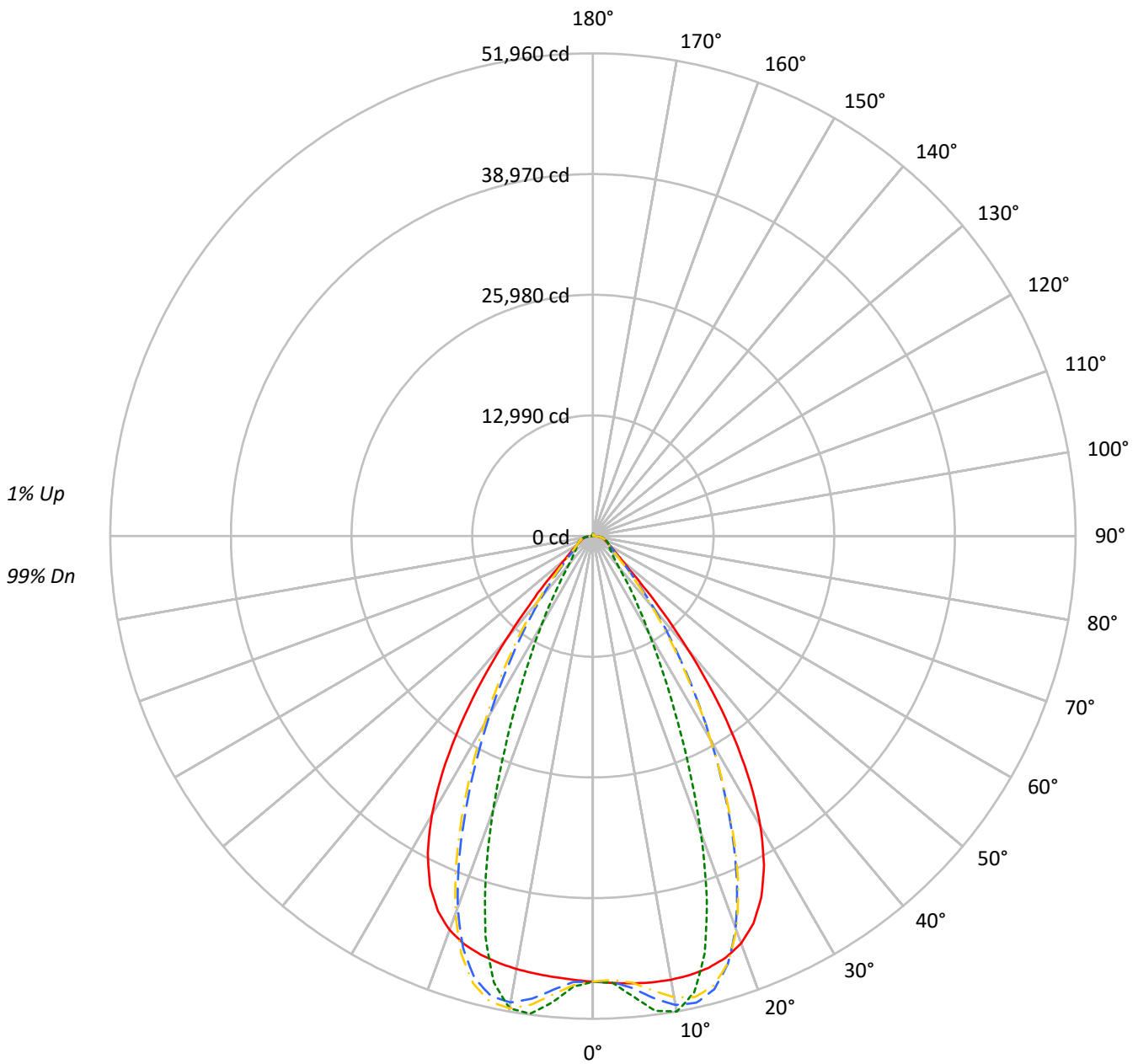
**Summary**

Lumens per Lamp: N/A  
Luminaire Lumens: 55530.0 lumens  
Efficiency: N/A  
Efficacy: 168.1 lumens/watt  
Spacing Criteria (0/90/45): 1.13 / 0.77 / 0.88  
Luminous Opening: Circular (Dia: 1.71' x H: 0')  
CIE Type: Direct

Input Watts (W): 330.4  
Input Voltage (V): NR  
Input Current (A<sub>in</sub>): NR  
Voltage Rise (V): NR  
Power Factor: NR  
Total Harmonic Distortion (THDi): NR  
Frequency (hertz): 60  
Stabilization Time: NR  
Operation Time: NR  
Ambient Temperature (°C): NR  
Test Distance: 24 FT

TEST NUMBER: P1444497  
CATALOG NUMBER: EHBR1-60-UNV-TA-L830

### Luminous Intensity Polar Plot



— 0°-180°    - - 45°-225°    ··· 90°-270°    - · - 135°-315°



TEST NUMBER: P1444497  
 CATALOG NUMBER: EHBR1-60-UNV-TA-L830

**COEFFICIENT OF UTILIZATION - ZONAL CAVITY METHOD:**

RF	20				20				20				20				20				20
RC	80				70				50				30				10				0
RW	70	50	30	10	70	50	30	10	50	30	10	50	30	10	50	30	10	50	30	10	0
RCR																					
0	119	119	119	119	116	116	116	116	111	111	111	106	106	106	101	101	101	99			
1	112	108	105	103	109	106	103	101	102	100	98	98	96	95	94	93	92	90			
2	105	99	94	90	103	97	93	89	94	90	87	91	88	85	88	85	83	81			
3	99	91	85	81	97	90	84	80	87	82	79	84	81	77	82	79	76	74			
4	93	84	78	73	91	83	77	73	81	76	72	79	74	71	77	73	70	68			
5	88	78	72	67	86	77	71	66	75	70	66	73	69	65	72	68	64	63			
6	83	73	66	61	81	72	66	61	70	65	60	69	64	60	67	63	60	58			
7	78	68	61	57	77	67	61	56	66	60	56	65	59	56	63	59	55	54			
8	74	64	57	53	73	63	57	52	62	56	52	61	56	52	60	55	52	50			
9	70	60	53	49	69	59	53	49	58	53	49	57	52	48	56	52	48	47			
10	67	56	50	46	66	56	50	46	55	49	46	54	49	45	53	49	45	44			

**AVERAGE LUMINANCE (cd/sqm):**

	0°	90°	180°	270°
0°	225241	225241	225241	225241
5°	227808	234450	224619	237521
10°	231220	247774	225675	246135
15°	233920	226119	226799	217015
20°	233126	169633	225496	156951
25°	222303	108080	214955	98064
30°	195751	65467	188169	59831
35°	151973	41442	143232	36710
40°	97083	26251	88823	24668
45°	50603	20682	49764	20342
50°	30063	18641	29141	18350
55°	23404	17921	22538	17760
60°	20208	18682	19348	18440
65°	19497	20040	18751	19357
70°	19787	21797	18801	20979
75°	22445	24526	21232	23441
80°	25854	30229	23439	27595
85°	31693	37965	25610	32507

**MAXIMUM LUMINANCE 45°-90°:**

Horizontal Angle: 25°  
 Vertical Angle: 45°  
 Luminance: 77441 cd/sqm



TEST NUMBER: P1444497  
 CATALOG NUMBER: EHBR1-60-UNV-TA-L830

**ZONAL LUMENS:**

Zone	Lumens	% Fixture
0°-10°	4726.9	8.5
10°-20°	13297.3	23.9
20°-30°	15144.6	27.3
30°-40°	10885.2	19.6
40°-50°	5020.3	9.0
50°-60°	2402.4	4.3
60°-70°	1752.9	3.2
70°-80°	1331.7	2.4
80°-90°	605.7	1.1
90°-100°	19.6	0.0
100°-110°	14.2	0.0
110°-120°	24.2	0.0
120°-130°	40.6	0.1
130°-140°	59.6	0.1
140°-150°	70.9	0.1
150°-160°	66.7	0.1
160°-170°	48.7	0.1
170°-180°	18.4	0.0
0°-30°	33168.8	59.7
0°-40°	44054.0	79.3
0°-60°	51476.7	92.7
0°-90°	55167.0	99.3
90°-120°	58.0	0.1
90°-150°	229.1	0.4
90°-180°	363.0	0.7
0°-180°	55530.0	100.0

**CANDELA DISTRIBUTION:**

	0°	90°	180°	270°	360°	Flux
0°	47964	47964	47964	47964	47964	
5°	48325	49734	47649	50386	48325	4618
15°	48114	46510	46650	44637	48114	13556
25°	42903	20858	41485	18926	42903	19449
35°	26509	7229	24984	6403	26509	16269
45°	7620	3114	7493	3063	7620	6480
55°	2859	2189	2753	2169	2859	2639
65°	1755	1804	1688	1742	1755	1752
75°	1237	1352	1170	1292	1237	1286
85°	588	705	475	603	588	553
90°	133	176	20	30	133	87
95°	8	8	8	8	8	7
105°	15	11	15	11	15	16
115°	32	16	33	16	32	32
125°	61	27	63	29	61	55
135°	97	53	101	58	97	75
145°	129	95	132	102	129	80
155°	151	136	154	142	151	70
165°	177	166	180	170	177	50
175°	196	194	197	196	196	18
180°	199	199	199	199	199	



TEST NUMBER: P1444497  
 CATALOG NUMBER: EHBR1-60-UNV-TA-L830

**CANDELA DISTRIBUTION (FULL):**

	0°	2.5°	5°	7.5°	10°	12.5°	15°	17.5°	20°	22.5°	25°
0°	47963.5	47963.5	47963.5	47963.5	47963.5	47963.5	47963.5	47963.5	47963.5	47963.5	47963.5
2.5°	48146.7	48142.9	48142.2	48138.8	48137.8	48137.8	48136.3	48132.4	48129.9	48124.4	48118.2
5°	48325.4	48323.3	48324.5	48324.9	48321.5	48314.0	48302.3	48287.9	48269.8	48252.7	48237.4
7.5°	48463.5	48466.9	48471.2	48470.3	48459.8	48442.2	48418.2	48404.7	48412.7	48438.8	48498.6
10°	48488.7	48509.4	48517.4	48514.9	48494.0	48478.8	48484.7	48535.6	48636.6	48771.6	48956.2
12.5°	48390.5	48415.8	48414.8	48406.5	48386.3	48406.9	48480.4	48631.7	48848.5	49114.6	49426.8
15°	48114.4	48147.1	48137.8	48127.1	48113.5	48181.2	48328.3	48591.0	48925.9	49301.1	49685.3
17.5°	47578.4	47618.0	47598.8	47586.5	47575.1	47702.0	47954.6	48339.3	48761.1	49185.6	49549.7
20°	46648.8	46675.3	46629.6	46608.1	46626.2	46874.9	47246.9	47738.2	48182.9	48584.3	48833.1
22.5°	45131.7	45164.5	45078.6	45068.7	45174.7	45556.6	46027.3	46576.6	46994.4	47312.5	47408.3
25°	42902.6	42934.9	42832.9	42893.9	43074.1	43594.3	44155.1	44742.6	45098.9	45334.6	45269.5
27.5°	39893.8	39923.3	39826.6	39951.0	40236.0	40919.7	41579.5	42216.7	42534.4	42699.5	42490.3
30°	36099.2	36160.5	36046.2	36219.9	36654.8	37542.4	38298.4	39013.0	39329.8	39455.5	39129.8
32.5°	31592.3	31679.6	31553.5	31812.0	32418.8	33485.1	34343.9	35142.3	35492.6	35636.2	35268.3
35°	26509.1	26634.3	26489.8	26877.6	27626.2	28813.4	29764.4	30655.9	31070.7	31274.1	30903.5
37.5°	21123.7	21243.1	21164.8	21682.3	22504.2	23734.9	24705.6	25667.2	26135.9	26441.0	26148.8
40°	15836.5	15945.7	16004.8	16596.6	17369.7	18529.5	19461.9	20413.4	20937.6	21320.7	21140.5
42.5°	11177.5	11287.5	11488.7	12059.7	12704.4	13664.4	14463.2	15317.4	15818.2	16226.9	16157.4
45°	7619.5	7747.2	7999.3	8466.8	8933.1	9621.9	10208.3	10872.8	11281.8	11656.1	11660.6
47.5°	5339.3	5429.1	5654.3	5973.6	6277.5	7139.9	7175.2	7501.7	7776.7	8056.5	8092.8
50°	4115.0	4169.0	4288.4	4466.3	4638.6	4862.4	5067.4	5303.9	5473.2	5626.6	5663.2
52.5°	3382.2	3416.6	3477.3	3573.6	3673.6	3795.4	3905.0	4035.0	4127.0	4209.1	4226.4
55°	2858.6	2886.9	2977.4	2995.8	3110.1	3132.1	3180.8	3259.9	3313.4	3362.7	3375.0
57.5°	2463.4	2484.0	2503.2	2544.3	2579.4	2630.7	2671.9	2728.6	2762.4	2797.9	2800.9
60°	2151.6	2166.5	2180.2	2208.7	2232.6	2268.2	2296.6	2335.2	2359.4	2386.1	2389.1
62.5°	1919.6	1930.3	1939.4	1958.2	1975.2	2002.6	2025.2	2057.4	2080.0	2100.6	2105.2
65°	1754.6	1762.5	1768.3	1782.6	1797.5	1820.8	1841.2	1867.5	1884.1	1899.9	1903.3
67.5°	1608.5	1616.0	1622.0	1635.0	1645.3	1662.8	1676.4	1696.2	1708.7	1721.2	1721.6
70°	1441.1	1448.1	1452.6	1464.7	1473.1	1488.1	1499.0	1516.8	1529.6	1543.7	1547.3
72.5°	1325.2	1329.3	1335.5	1346.5	1358.0	1374.1	1388.9	1407.3	1422.8	1437.4	1443.6
75°	1237.0	1241.8	1245.9	1255.3	1263.3	1276.8	1287.9	1304.7	1318.2	1333.9	1341.6
77.5°	1109.7	1115.2	1118.8	1128.3	1135.2	1148.1	1156.3	1171.4	1182.4	1196.6	1203.6
80°	956.0	961.2	963.6	972.5	978.0	989.9	998.0	1012.5	1021.8	1036.0	1044.3
82.5°	785.5	790.5	791.9	800.2	803.3	813.1	819.0	833.9	845.3	863.7	876.6
85°	588.2	589.9	592.8	590.7	602.6	603.3	616.8	619.4	637.1	641.7	662.0
87.5°	359.6	364.9	367.6	375.8	379.4	387.5	390.0	398.8	403.5	413.5	418.1
90°	133.1	140.0	141.5	149.9	151.1	158.4	159.1	167.5	168.9	177.6	179.0
92.5°	8.0	8.0	7.8	8.3	8.3	9.5	9.9	10.3	10.5	11.3	11.5
95°	8.1	8.1	8.1	8.1	8.1	8.1	8.1	8.1	8.1	8.1	8.0
97.5°	9.3	9.3	9.3	9.3	9.3	9.3	9.3	9.3	9.3	9.1	9.1
100°	10.5	10.5	10.5	10.5	10.5	10.5	10.5	10.5	10.5	10.5	10.3
102.5°	12.5	12.5	12.5	12.5	12.5	12.3	12.5	12.3	12.3	12.3	11.9
105°	14.8	14.6	14.8	14.6	14.6	14.6	14.6	14.2	14.2	14.1	14.1
107.5°	17.6	17.4	17.4	17.4	17.4	17.2	17.2	17.0	16.9	16.5	16.5
110°	21.5	21.2	21.2	21.0	20.8	20.8	20.6	20.0	20.0	19.8	19.6



TEST NUMBER: P1444497  
 CATALOG NUMBER: EHBR1-60-UNV-TA-L830

**CANDELA DISTRIBUTION (continued):**

	0°	2.5°	5°	7.5°	10°	12.5°	15°	17.5°	20°	22.5°	25°
112.5°	26.1	25.8	25.6	25.4	25.2	24.7	24.5	24.2	24.0	23.4	23.1
115°	31.5	31.1	30.9	30.4	30.3	29.7	29.3	28.8	28.5	27.7	27.4
117.5°	37.8	37.4	37.0	36.6	35.9	35.4	34.8	34.1	33.4	32.7	32.1
120°	45.0	44.3	43.9	43.0	42.5	41.6	41.0	40.2	39.2	38.2	37.7
122.5°	52.6	51.9	51.5	50.5	49.7	48.7	48.0	46.6	45.9	44.8	43.7
125°	61.0	60.0	59.8	58.6	57.6	56.5	55.5	54.2	53.1	51.7	50.7
127.5°	69.7	68.9	68.3	67.0	65.9	64.7	63.4	62.0	61.0	59.2	58.2
130°	78.8	78.0	77.2	75.9	74.8	73.4	72.0	70.3	69.1	67.3	65.9
132.5°	88.0	87.3	86.4	85.1	83.9	82.1	80.8	79.0	77.5	75.9	74.3
135°	97.2	96.2	95.5	94.2	92.9	91.2	89.5	87.8	86.2	84.3	82.8
137.5°	105.9	105.1	104.2	102.8	101.5	99.6	98.2	96.2	94.6	92.6	91.0
140°	114.3	113.4	112.3	110.9	109.7	108.1	106.3	104.5	102.8	100.8	99.4
142.5°	122.1	121.0	120.2	118.8	117.5	115.7	114.1	112.1	110.5	108.6	107.2
145°	128.9	128.0	127.1	125.9	124.4	122.6	121.2	119.2	117.8	116.1	114.5
147.5°	135.1	134.2	133.5	132.3	131.1	129.5	128.0	126.2	124.8	123.2	122.0
150°	140.6	139.9	139.2	138.2	136.9	135.4	134.0	132.6	131.1	129.5	128.3
152.5°	145.2	144.3	143.8	142.8	141.6	140.0	139.2	137.6	136.4	134.9	133.7
155°	150.7	149.9	148.9	148.1	147.0	145.8	144.5	143.3	142.2	140.8	139.8
157.5°	156.8	155.7	155.0	153.8	153.1	151.8	150.7	149.5	148.5	147.3	146.3
160°	163.4	162.4	161.6	160.6	159.4	158.2	157.3	156.1	155.4	154.1	153.2
162.5°	170.3	169.3	168.3	167.3	166.4	165.1	164.2	163.4	162.4	161.2	160.4
165°	176.9	176.2	175.3	174.4	173.5	172.6	171.7	170.7	169.7	168.7	168.0
167.5°	183.4	182.6	182.0	181.2	180.2	179.6	178.6	177.8	177.2	176.2	175.4
170°	188.7	187.9	187.3	186.8	186.1	185.4	184.9	184.2	183.4	182.8	182.2
172.5°	192.7	192.0	191.7	191.3	190.5	190.2	189.7	189.1	188.7	188.1	187.9
175°	195.7	195.2	195.0	194.6	194.3	193.9	193.7	193.4	193.4	192.9	192.5
177.5°	197.6	197.5	197.5	197.3	197.3	197.2	197.0	196.6	196.4	196.4	196.2
180°	199.0	199.0	199.0	199.0	199.0	199.0	199.0	199.0	199.0	199.0	199.0



TEST NUMBER: P1444497  
 CATALOG NUMBER: EHBR1-60-UNV-TA-L830

**CANDELA DISTRIBUTION (continued):**

	27.5°	30°	32.5°	35°	37.5°	40°	42.5°	45°	47.5°	50°	52.5°
0°	47963.5	47963.5	47963.5	47963.5	47963.5	47963.5	47963.5	47963.5	47963.5	47963.5	47963.5
2.5°	48113.5	48107.7	48099.6	48089.5	48080.8	48070.7	48046.7	48039.6	48047.5	48052.9	48063.9
5°	48227.9	48231.2	48232.5	48254.3	48273.2	48320.2	48689.3	48836.0	48949.3	49021.3	49130.7
7.5°	48572.5	48683.4	48793.1	48940.6	49067.9	49239.8	49885.5	50160.2	50355.6	50496.0	50668.8
10°	49156.6	49398.7	49625.7	49891.6	50120.2	50382.1	50983.1	51250.8	51419.9	51542.9	51657.7
12.5°	49745.0	50080.8	50384.3	50680.2	50927.6	51154.6	51366.0	51459.7	51467.7	51471.6	51410.6
15°	50051.4	50372.5	50639.8	50835.6	50980.9	51045.3	50681.4	50490.5	50249.3	50050.6	49723.7
17.5°	49858.0	50050.6	50166.1	50154.8	50094.6	49893.4	48862.8	48295.9	47733.1	47226.0	46561.0
20°	48998.2	48983.5	48883.1	48598.4	48255.6	47722.3	45955.4	44935.9	43950.3	43084.6	42034.3
22.5°	47398.6	47146.9	46796.0	46182.4	45500.6	44569.0	42036.9	40537.3	39165.2	37953.0	36595.2
25°	45080.8	44563.0	43915.7	42941.6	41882.2	40523.4	37402.5	35537.3	33889.8	32461.0	30894.3
27.5°	42114.5	41334.5	40386.0	39037.7	37602.5	35861.7	32401.6	30343.2	28574.7	27042.8	25375.2
30°	38602.7	37588.3	36363.5	34690.1	32958.9	30984.5	27475.3	25390.3	23600.3	22024.3	20355.4
32.5°	34634.1	33445.9	32010.7	30132.5	28260.4	26230.4	22841.3	20823.1	19113.2	17597.0	16086.6
35°	30257.0	28982.8	27464.4	25548.7	23687.8	21714.1	18604.3	16784.7	15274.6	13934.5	12714.9
37.5°	25561.7	24310.6	22867.4	21061.9	19336.2	17547.7	14864.5	13339.7	12072.5	10960.2	10018.5
40°	20679.9	19585.1	18336.4	16775.4	15302.7	13813.3	11610.7	10400.3	9400.2	8552.0	7846.2
42.5°	15857.8	15009.4	14051.9	12818.3	11691.3	10557.3	8862.0	7965.2	7224.5	6613.8	6114.9
45°	11505.4	10937.9	10295.6	9438.1	8658.3	7867.2	6660.7	6030.4	5548.0	5154.2	4821.3
47.5°	8042.9	7713.6	7693.6	6901.1	6329.2	5845.6	5068.3	4670.2	4374.6	4136.0	3925.3
50°	5648.3	5489.0	5291.2	5008.3	4742.9	4469.6	3996.0	3755.4	3582.2	3437.6	3304.3
52.5°	4222.5	4139.8	4034.4	3884.3	3740.6	3586.8	3287.1	3133.9	3079.5	2944.9	2839.4
55°	3372.6	3325.1	3265.3	3177.0	3089.6	3054.6	2797.8	2684.0	2612.0	2558.8	2502.1
57.5°	2801.5	2766.1	2730.5	2670.8	2620.2	2558.8	2422.5	2364.2	2321.4	2290.1	2250.8
60°	2389.6	2368.5	2348.5	2313.5	2286.1	2253.1	2166.5	2133.6	2111.2	2092.4	2067.3
62.5°	2109.1	2098.2	2087.9	2069.3	2055.4	2037.4	1978.2	1962.5	1951.3	1941.8	1926.5
65°	1906.7	1898.8	1893.1	1880.7	1873.8	1863.3	1812.4	1801.8	1794.8	1791.5	1782.6
67.5°	1722.7	1714.5	1710.7	1701.9	1699.0	1692.4	1650.9	1645.0	1642.7	1643.7	1640.6
70°	1550.6	1547.3	1548.9	1547.5	1551.5	1552.7	1527.5	1527.3	1529.9	1535.3	1535.8
72.5°	1447.5	1447.5	1449.5	1450.3	1454.1	1455.8	1434.9	1433.8	1435.0	1439.0	1439.2
75°	1349.3	1350.9	1356.3	1358.0	1362.5	1363.4	1335.7	1332.5	1332.7	1336.4	1335.2
77.5°	1213.6	1219.4	1229.5	1234.9	1243.4	1245.0	1213.9	1210.1	1210.3	1214.1	1210.9
80°	1059.4	1070.7	1086.8	1098.0	1111.1	1116.5	1084.5	1076.8	1069.7	1068.7	1062.3
82.5°	895.7	909.5	928.7	939.0	953.0	956.2	902.6	892.5	886.5	887.0	881.2
85°	683.8	694.1	711.7	717.4	726.1	725.4	664.3	638.2	645.1	634.2	642.8
87.5°	428.9	435.0	446.0	447.4	451.5	450.7	389.1	377.0	373.5	373.7	369.3
90°	187.2	189.5	197.3	195.7	200.4	197.6	146.1	138.6	135.8	139.8	135.1
92.5°	12.3	12.3	12.8	13.0	13.5	13.9	8.5	7.1	7.7	7.3	8.0
95°	8.0	8.0	8.0	8.0	8.0	8.0	8.0	8.0	8.0	7.8	7.8
97.5°	9.1	9.1	8.9	8.9	8.9	8.9	8.9	8.9	8.9	8.5	8.5
100°	10.3	10.3	10.1	10.1	9.9	9.9	9.9	9.9	9.9	9.6	9.6
102.5°	11.7	11.7	11.5	11.3	11.2	11.2	11.3	11.3	11.2	10.9	10.7
105°	13.9	13.7	13.5	13.0	12.8	12.6	13.0	12.8	12.6	12.5	12.3
107.5°	16.2	16.0	15.5	15.1	14.9	14.6	15.1	14.9	14.6	14.1	13.9
110°	19.2	18.6	18.3	17.8	17.2	16.9	17.6	17.2	16.9	16.4	16.0



TEST NUMBER: P1444497  
 CATALOG NUMBER: EHBR1-60-UNV-TA-L830

**CANDELA DISTRIBUTION (continued):**

	27.5°	30°	32.5°	35°	37.5°	40°	42.5°	45°	47.5°	50°	52.5°
112.5°	22.4	22.0	21.5	20.8	20.0	19.6	20.6	20.4	19.8	18.8	18.5
115°	26.5	26.1	25.2	24.5	23.8	22.9	24.2	24.0	23.1	22.2	21.5
117.5°	31.3	30.4	29.7	28.8	27.7	26.9	28.7	28.1	27.0	26.1	25.2
120°	36.6	35.7	34.7	33.8	32.5	31.5	33.4	33.1	32.0	30.7	29.7
122.5°	42.6	41.6	40.4	39.2	38.0	36.8	39.1	38.8	37.4	36.1	34.8
125°	49.5	48.1	46.9	45.7	44.1	42.8	45.7	45.0	43.7	42.3	41.0
127.5°	56.7	55.5	54.0	52.8	51.1	49.7	52.6	52.1	50.7	49.3	47.7
130°	64.5	63.1	61.5	60.0	58.6	57.2	60.2	59.9	58.5	56.7	55.3
132.5°	72.7	71.3	69.5	68.3	66.7	65.1	68.5	68.1	66.9	65.1	63.6
135°	81.0	79.6	78.0	76.4	74.8	73.6	77.3	77.0	75.7	73.9	72.5
137.5°	89.3	87.8	86.2	85.0	83.4	82.0	86.4	86.2	85.0	83.2	82.0
140°	97.8	96.2	94.7	93.5	91.9	90.9	95.5	95.5	94.4	92.9	91.5
142.5°	105.4	104.2	102.8	101.6	100.2	99.2	104.5	104.7	103.6	102.2	101.2
145°	112.9	111.8	110.3	109.3	108.1	107.2	113.2	113.8	112.9	111.7	110.5
147.5°	120.2	119.1	117.8	116.8	115.7	115.2	122.0	122.6	122.0	120.8	120.0
150°	126.9	125.9	124.6	123.7	123.0	122.3	130.3	131.5	130.9	130.1	129.3
152.5°	132.5	131.3	130.3	129.5	128.5	128.0	138.3	140.0	139.6	138.6	138.2
155°	138.6	137.6	136.5	135.8	134.9	134.6	146.3	148.5	147.9	147.3	146.7
157.5°	145.2	144.2	143.1	142.4	141.6	141.0	153.8	156.6	155.9	155.4	154.8
160°	152.1	151.3	150.2	149.5	148.6	147.9	161.4	164.1	163.7	163.0	162.4
162.5°	159.2	158.8	157.6	156.8	155.9	155.4	168.7	171.7	171.0	170.5	169.9
165°	167.1	166.2	165.3	164.8	163.9	163.4	176.2	178.8	178.4	177.8	177.2
167.5°	174.6	174.0	173.1	172.6	171.9	171.5	183.4	185.9	185.6	184.9	184.5
170°	181.5	181.2	180.4	180.0	179.8	179.6	189.5	191.7	191.5	190.7	190.3
172.5°	187.3	187.2	186.8	186.5	186.1	185.9	194.3	196.2	196.1	195.7	195.2
175°	192.3	192.0	191.8	191.8	191.7	191.5	198.0	199.4	199.2	199.0	198.6
177.5°	196.2	196.1	196.1	196.1	196.1	196.1	200.0	200.8	200.6	200.6	200.5
180°	199.0	199.0	199.0	199.0	199.0	199.0	199.0	199.0	199.0	199.0	199.0



TEST NUMBER: P1444497  
 CATALOG NUMBER: EHBR1-60-UNV-TA-L830

**CANDELA DISTRIBUTION (continued):**

	55°	57.5°	60°	62.5°	65°	67.5°	70°	72.5°	75°	77.5°	80°
0°	47963.5	47963.5	47963.5	47963.5	47963.5	47963.5	47963.5	47963.5	47963.5	47963.5	47963.5
2.5°	48066.5	48083.3	48085.8	48105.5	48103.9	48127.4	48123.7	48142.9	48131.7	48147.5	48134.2
5°	49195.4	49297.8	49351.3	49451.2	49482.8	49572.2	49597.4	49679.0	49682.4	49747.1	49732.4
7.5°	50791.4	50942.3	51032.0	51155.5	51218.1	51321.0	51366.3	51442.5	51466.9	51527.4	51532.0
10°	51744.6	51817.8	51869.0	51903.5	51935.0	51949.8	51967.0	51962.3	51967.0	51960.2	51975.0
12.5°	51369.7	51262.7	51192.0	51057.9	50980.3	50832.2	50759.5	50617.1	50565.3	50443.1	50425.5
15°	49471.1	49098.2	48834.7	48451.5	48210.6	47833.6	47613.0	47272.9	47117.6	46847.2	46776.2
17.5°	46010.5	45318.3	44782.6	44095.3	43618.4	42976.1	42572.3	42040.6	41749.4	41320.7	41172.2
20°	41158.9	40134.7	39331.0	38373.8	37688.7	36835.1	36288.7	35599.5	35199.4	34672.8	34459.4
22.5°	35463.0	34187.7	33184.1	32053.2	31226.7	30275.5	29620.8	28875.1	28439.8	27867.7	27614.5
25°	29592.1	28185.9	27070.1	25878.6	25005.3	24051.8	23396.9	22664.4	22214.0	21670.9	21419.2
27.5°	23977.3	22553.8	21475.5	20367.7	19566.6	18706.3	18115.4	17475.8	17076.0	16612.4	16375.6
30°	19022.3	17766.7	16849.2	15929.9	15263.4	14564.6	14073.7	13543.6	13192.9	12795.9	12570.4
32.5°	14985.4	14016.1	13297.6	12568.1	12022.7	11438.7	11014.5	10546.8	10230.2	9875.7	9671.5
35°	11868.2	11115.1	10542.0	9941.5	9472.9	8975.5	8601.7	8198.1	7914.0	7608.8	7432.4
37.5°	9377.1	8778.3	8306.6	7807.8	7423.0	7011.0	6872.2	6408.9	6114.6	5871.0	5702.3
40°	7359.2	6883.0	6492.8	6111.4	5797.4	5484.9	5234.1	4986.7	4796.6	4622.5	4501.9
42.5°	5746.9	5401.9	5117.0	4837.5	4608.6	4380.9	4199.2	4028.7	3900.7	3786.8	3709.1
45°	4568.6	4331.2	4133.2	3936.4	3774.8	3622.9	3500.6	3391.8	3309.1	3240.7	3192.2
47.5°	3753.2	3590.7	3451.0	3318.2	3208.5	3109.0	3027.1	3000.4	2911.5	2851.6	2828.9
50°	3189.7	3091.6	2985.5	2887.5	2814.2	2741.4	2688.3	2636.2	2602.9	2575.4	2567.1
52.5°	2769.1	2694.1	2635.1	2573.0	2524.7	2472.8	2436.2	2401.5	2383.2	2368.8	2367.1
55°	2456.4	2404.0	2364.9	2323.3	2294.4	2263.9	2244.9	2226.6	2218.6	2211.3	2211.9
57.5°	2219.8	2184.9	2159.4	2132.4	2116.8	2102.2	2097.4	2092.8	2095.2	2096.3	2100.4
60°	2047.5	2024.7	2008.7	1993.2	1986.7	1982.0	1985.5	1989.7	1998.0	2004.7	2010.8
62.5°	1915.4	1902.4	1894.6	1886.2	1885.5	1885.9	1893.0	1899.9	1910.3	1918.2	1924.1
65°	1779.4	1771.9	1769.4	1764.1	1766.7	1768.3	1776.8	1782.2	1792.7	1798.9	1806.3
67.5°	1642.0	1640.2	1641.8	1641.8	1646.5	1650.7	1658.8	1664.9	1673.8	1679.4	1685.5
70°	1540.4	1541.2	1544.9	1545.6	1550.7	1553.6	1560.7	1564.6	1572.6	1577.4	1584.7
72.5°	1441.8	1440.2	1441.1	1438.8	1440.6	1439.8	1443.7	1445.7	1452.5	1456.2	1465.1
75°	1336.8	1332.3	1331.3	1326.5	1326.6	1323.2	1324.8	1324.7	1329.1	1330.9	1337.2
77.5°	1209.9	1202.4	1198.8	1190.8	1190.7	1187.6	1190.8	1192.8	1200.6	1204.3	1211.6
80°	1058.0	1046.3	1041.0	1031.7	1033.3	1032.8	1040.6	1046.5	1056.0	1057.8	1067.1
82.5°	879.4	867.5	861.8	852.7	854.8	855.0	862.1	863.4	871.7	875.3	885.9
85°	629.7	634.2	621.6	622.5	619.8	624.8	629.7	635.7	642.6	654.2	663.0
87.5°	370.8	369.3	373.7	374.2	380.6	384.0	394.3	400.2	411.7	420.8	437.1
90°	136.9	132.5	137.4	136.9	144.5	144.2	150.9	149.1	157.2	159.0	168.9
92.5°	7.3	7.8	7.3	7.7	7.3	8.0	7.3	7.8	7.3	8.0	7.3
95°	7.8	7.8	7.8	7.8	7.8	7.8	7.8	7.8	7.8	7.8	7.8
97.5°	8.5	8.5	8.5	8.3	8.3	8.3	8.3	8.3	8.3	8.3	8.3
100°	9.5	9.5	9.5	9.3	9.3	9.3	9.3	9.3	9.3	9.3	9.3
102.5°	10.7	10.5	10.5	10.3	10.3	10.1	10.1	10.1	10.1	10.1	10.1
105°	11.9	11.7	11.5	11.3	11.3	11.2	11.2	10.9	10.9	10.9	10.9
107.5°	13.5	13.1	13.0	12.8	12.6	12.5	12.3	12.3	11.9	11.9	11.9
110°	15.3	14.9	14.8	14.2	14.1	13.9	13.5	13.5	13.1	13.0	13.0



TEST NUMBER: P1444497  
 CATALOG NUMBER: EHBR1-60-UNV-TA-L830

**CANDELA DISTRIBUTION (continued):**

	55°	57.5°	60°	62.5°	65°	67.5°	70°	72.5°	75°	77.5°	80°
112.5°	17.8	17.2	16.5	16.2	15.8	15.3	15.1	14.9	14.8	14.6	14.2
115°	20.6	20.0	19.2	18.6	18.2	17.4	17.0	16.9	16.4	16.2	16.0
117.5°	24.2	23.3	22.2	21.5	20.8	20.0	19.6	18.8	18.5	18.3	18.2
120°	28.5	27.4	26.1	25.2	24.2	23.3	22.4	21.8	21.2	21.0	20.6
122.5°	33.4	32.1	30.7	29.7	28.5	27.4	26.3	25.6	24.7	24.2	23.8
125°	39.2	37.8	36.4	34.8	33.4	32.3	31.1	30.1	29.1	28.7	27.7
127.5°	46.1	44.3	42.6	41.2	39.4	38.2	36.8	35.7	34.5	33.6	32.7
130°	53.5	51.9	49.9	48.5	46.6	45.1	43.7	42.5	41.2	40.2	39.1
132.5°	61.8	60.2	58.5	56.7	54.9	53.3	51.7	50.3	48.7	47.7	46.6
135°	70.7	69.3	67.3	65.8	63.8	62.4	60.8	59.2	57.8	56.5	55.3
137.5°	80.4	78.8	77.2	75.7	73.8	72.3	70.3	69.1	67.3	66.5	65.1
140°	89.9	88.7	86.9	85.5	83.9	82.6	80.8	79.6	78.0	77.0	75.7
142.5°	99.6	98.3	96.9	95.6	94.2	92.9	91.3	90.1	88.7	87.7	86.4
145°	109.3	108.3	107.0	105.8	104.5	103.4	101.8	100.8	99.6	98.4	97.6
147.5°	119.0	117.8	116.8	115.7	114.5	113.4	112.1	111.5	110.1	109.3	108.3
150°	128.1	127.3	126.2	125.5	124.2	123.4	122.3	121.4	120.4	119.8	118.8
152.5°	137.0	136.4	135.4	134.7	133.7	132.8	131.9	131.1	130.3	129.5	128.5
155°	145.8	145.1	144.2	143.4	142.4	141.8	141.0	140.0	139.4	138.6	137.8
157.5°	154.1	153.4	152.5	152.0	150.9	150.2	149.5	148.7	147.9	147.3	146.5
160°	161.8	161.2	160.4	159.6	159.0	158.2	157.3	156.8	155.9	155.4	154.5
162.5°	169.3	168.5	168.0	167.3	166.4	165.9	165.0	164.2	163.5	162.8	162.0
165°	176.5	175.8	175.1	174.4	173.9	173.1	172.3	171.7	170.9	170.3	169.5
167.5°	183.8	183.3	182.6	182.0	181.2	180.4	179.8	179.2	178.4	177.8	176.9
170°	190.1	189.3	188.9	188.3	187.7	187.0	186.5	185.7	185.0	184.7	183.8
172.5°	194.8	194.6	194.1	193.7	193.1	192.7	192.3	191.8	191.3	190.7	190.3
175°	198.4	198.2	198.0	197.5	197.3	197.0	196.6	196.4	196.1	195.9	195.4
177.5°	200.5	200.4	200.4	200.0	199.8	199.8	199.6	199.6	199.4	199.2	199.2
180°	199.0	199.0	199.0	199.0	199.0	199.0	199.0	199.0	199.0	199.0	199.0



TEST NUMBER: P1444497  
 CATALOG NUMBER: EHBR1-60-UNV-TA-L830

**CANDELA DISTRIBUTION (continued):**

	82.5°	85°	87.5°	90°	92.5°	95°	97.5°	100°	102.5°	105°	107.5°
0°	47963.5	47963.5	47963.5	47963.5	47963.5	47963.5	47963.5	47963.5	47963.5	47963.5	47963.5
2.5°	48148.1	48135.8	48141.6	48119.0	48124.4	48097.2	48094.7	48063.9	48060.9	48031.9	48021.1
5°	49778.2	49751.4	49781.6	49734.5	49743.7	49682.4	49677.2	49598.0	49570.6	49471.4	49428.6
7.5°	51569.9	51559.7	51578.2	51538.8	51537.5	51482.7	51460.2	51389.1	51345.0	51240.9	51174.4
10°	51962.3	51971.6	51956.5	51960.2	51938.9	51933.0	51911.2	51897.3	51861.5	51834.6	51794.8
12.5°	50332.5	50342.3	50280.1	50319.5	50288.4	50361.1	50355.2	50440.9	50454.0	50562.5	50603.5
15°	46565.6	46553.9	46434.6	46509.7	46469.5	46629.1	46664.8	46879.6	46994.4	47270.1	47439.4
17.5°	40875.2	40844.4	40676.5	40768.0	40721.5	40956.8	41035.7	41379.1	41593.3	42037.5	42354.1
20°	34092.0	34033.1	33836.5	33943.7	33895.7	34163.1	34275.8	34690.8	34967.1	35555.4	35974.0
22.5°	27224.4	27131.5	26938.9	27039.0	26993.7	27270.6	27417.3	27833.7	28150.2	28754.2	29242.8
25°	21057.4	20974.6	20788.5	20858.5	20841.7	21075.9	21206.4	21600.3	21911.2	22486.6	22953.0
27.5°	16061.0	15974.8	15806.7	15856.2	15839.2	16038.8	16161.8	16490.9	16758.4	17242.7	17652.3
30°	12292.3	12188.4	12045.8	12073.1	12061.4	12223.2	12338.0	12615.1	12844.4	13253.9	13606.7
32.5°	9422.1	9317.5	9186.6	9199.3	9182.1	9309.0	9403.6	9644.6	9844.4	10192.5	10499.7
35°	7209.2	7331.3	7051.5	7228.8	7044.2	7315.1	7217.7	7368.2	7540.1	7833.4	8089.6
37.5°	5542.1	5457.0	5385.0	5377.4	5377.0	5439.7	5513.9	5658.9	5810.4	6028.8	6254.6
40°	4391.9	4332.2	4285.5	4282.2	4285.5	4330.2	4384.9	4485.2	4596.1	4753.0	4918.9
42.5°	3642.7	3603.0	3574.9	3573.0	3581.8	3613.4	3651.5	3711.1	3783.3	3884.9	3998.7
45°	3152.7	3130.7	3115.0	3114.2	3118.2	3134.8	3156.6	3193.8	3239.5	3302.9	3375.0
47.5°	2808.9	2803.6	2793.8	2794.2	2789.7	2796.5	2799.0	2819.8	2844.1	2892.0	2985.9
50°	2558.6	2558.6	2551.9	2551.5	2545.1	2544.8	2539.4	2547.7	2559.0	2588.7	2618.8
52.5°	2360.8	2360.1	2352.8	2351.4	2344.7	2344.3	2339.6	2342.9	2344.5	2359.4	2377.4
55°	2206.1	2201.5	2191.9	2188.9	2186.3	2190.1	2188.3	2188.5	2186.7	2192.8	2198.2
57.5°	2095.2	2089.2	2080.1	2077.4	2076.8	2081.4	2081.6	2080.0	2071.6	2065.9	2057.9
60°	2007.5	2001.4	1991.6	1989.1	1990.5	1997.0	1996.6	1991.3	1978.8	1967.9	1955.4
62.5°	1921.2	1918.8	1913.8	1913.0	1911.8	1912.9	1908.5	1902.7	1890.5	1878.9	1865.2
65°	1805.5	1806.7	1803.0	1803.5	1799.1	1798.4	1791.6	1786.1	1773.7	1763.2	1749.1
67.5°	1685.3	1686.3	1683.2	1683.2	1680.9	1681.2	1677.2	1672.0	1661.5	1653.0	1642.1
70°	1586.3	1588.8	1587.1	1587.5	1584.7	1583.7	1577.2	1572.3	1561.4	1554.3	1544.5
72.5°	1467.7	1473.1	1472.9	1474.2	1469.9	1467.7	1460.1	1453.9	1444.1	1438.4	1430.6
75°	1339.8	1346.7	1348.7	1351.7	1345.7	1342.4	1334.1	1329.1	1321.1	1317.8	1312.6
77.5°	1214.8	1222.4	1229.7	1236.5	1226.7	1218.0	1207.5	1199.5	1188.1	1183.7	1175.7
80°	1074.6	1088.1	1104.2	1117.8	1100.2	1082.4	1065.1	1052.3	1037.2	1031.0	1021.0
82.5°	891.5	905.3	914.6	923.3	911.0	898.0	881.3	870.1	853.8	847.7	836.2
85°	677.2	694.5	700.0	704.6	696.8	689.9	674.2	653.1	642.8	626.6	618.2
87.5°	445.5	455.8	457.8	459.4	454.5	451.1	441.0	431.1	413.5	400.6	385.0
90°	168.9	176.2	172.6	175.6	169.3	169.5	159.1	155.5	140.8	135.1	122.0
92.5°	7.7	7.1	7.3	7.1	8.0	7.3	8.0	7.3	7.8	7.3	7.8
95°	7.8	7.8	7.8	7.8	7.8	7.8	7.8	7.8	7.8	7.8	7.8
97.5°	8.3	8.3	8.3	8.3	8.3	8.3	8.3	8.3	8.3	8.3	8.5
100°	9.3	9.3	9.3	9.3	9.3	9.3	9.3	9.3	9.3	9.3	9.3
102.5°	10.1	10.1	10.1	10.1	10.1	10.1	10.1	10.1	10.1	10.1	10.3
105°	10.9	10.9	10.9	10.9	10.9	10.9	10.9	10.9	10.9	11.2	11.2
107.5°	11.7	11.7	11.7	11.7	11.9	11.9	11.9	11.9	11.9	11.9	12.3
110°	13.0	13.0	13.0	13.0	13.0	13.0	13.0	13.0	13.1	13.1	13.5



TEST NUMBER: P1444497  
 CATALOG NUMBER: EHBR1-60-UNV-TA-L830

**CANDELA DISTRIBUTION (continued):**

	82.5°	85°	87.5°	90°	92.5°	95°	97.5°	100°	102.5°	105°	107.5°
112.5°	14.2	14.2	14.2	14.2	14.2	14.2	14.2	14.6	14.6	14.8	14.8
115°	15.8	15.8	15.8	15.8	15.8	15.8	15.8	16.0	16.2	16.2	16.5
117.5°	17.8	17.6	17.6	17.6	17.6	17.6	17.8	17.8	18.2	18.3	18.6
120°	20.4	20.0	20.0	20.0	20.0	20.0	20.0	20.0	20.6	20.8	21.5
122.5°	23.4	23.1	23.1	22.9	22.9	22.9	23.1	23.3	23.8	24.2	24.7
125°	27.5	27.0	26.9	26.7	26.7	26.7	26.9	27.4	27.7	28.1	28.9
127.5°	32.3	32.0	31.5	31.3	31.3	31.3	31.8	32.0	32.5	33.3	34.1
130°	38.4	37.8	37.7	37.2	37.2	37.2	37.7	38.0	38.8	39.2	40.4
132.5°	46.1	45.1	44.8	44.3	44.3	44.3	44.8	45.1	46.1	46.6	48.0
135°	54.6	53.9	53.3	53.0	53.0	52.8	53.1	53.5	54.4	55.3	56.4
137.5°	64.4	63.4	63.1	62.4	62.4	62.4	62.8	63.1	63.8	64.7	65.9
140°	74.8	73.9	73.6	72.9	72.9	72.7	73.1	73.4	74.1	75.0	76.1
142.5°	85.7	84.6	84.3	83.9	83.6	83.6	84.1	84.3	85.0	85.5	86.6
145°	96.7	95.8	95.5	94.9	94.7	94.7	94.9	95.3	95.8	96.2	97.2
147.5°	107.5	106.9	106.5	105.9	105.9	105.8	105.9	105.9	106.5	106.9	107.5
150°	118.4	117.5	117.0	116.6	116.4	116.2	116.4	116.2	116.6	116.8	117.5
152.5°	128.1	127.3	127.1	126.5	126.2	126.0	126.0	125.9	126.0	126.0	126.5
155°	137.4	136.9	136.4	135.8	135.4	135.1	135.1	134.7	134.9	134.7	134.9
157.5°	146.1	145.4	145.1	144.3	144.0	143.4	143.3	142.9	142.9	142.4	142.4
160°	154.1	153.2	152.7	152.1	151.8	151.1	150.9	150.2	150.1	149.7	149.5
162.5°	161.4	160.7	160.2	159.4	159.1	158.4	158.0	157.3	157.0	156.6	156.4
165°	168.7	168.0	167.5	166.5	166.2	165.7	165.1	164.6	164.2	163.7	163.5
167.5°	176.5	175.6	175.1	174.4	174.0	173.3	173.1	172.6	172.3	171.9	171.9
170°	183.4	182.8	182.4	181.8	181.5	181.0	180.8	180.2	180.0	179.8	179.8
172.5°	190.1	189.5	189.1	188.7	188.5	188.1	187.9	187.7	187.3	187.3	187.2
175°	195.2	194.8	194.6	194.3	194.1	194.1	193.9	193.9	193.9	193.7	193.7
177.5°	199.0	198.8	198.8	198.8	198.6	198.6	198.6	198.6	198.6	198.4	198.2
180°	199.0	199.0	199.0	199.0	199.0	199.0	199.0	199.0	199.0	199.0	199.0



TEST NUMBER: P1444497  
 CATALOG NUMBER: EHBR1-60-UNV-TA-L830

**CANDELA DISTRIBUTION (continued):**

	110°	112.5°	115°	117.5°	120°	122.5°	125°	127.5°	130°	132.5°	135°
0°	47963.5	47963.5	47963.5	47963.5	47963.5	47963.5	47963.5	47963.5	47963.5	47963.5	47963.5
2.5°	47990.0	47977.4	47944.1	47927.7	47897.0	47881.6	47857.6	47842.1	47822.7	47808.3	47800.8
5°	49319.6	49258.3	49135.3	49059.6	48926.7	48839.3	48707.5	48610.7	48474.6	48374.1	48245.5
7.5°	51049.6	50955.4	50797.8	50678.4	50492.6	50350.6	50142.1	49975.4	49745.0	49553.8	49318.4
10°	51753.8	51698.9	51628.2	51551.4	51448.5	51347.5	51205.1	51060.1	50866.7	50674.4	50422.9
12.5°	50712.9	50764.7	50866.7	50914.2	50992.4	51018.8	51054.6	51037.8	51006.2	50927.6	50813.6
15°	47764.8	47980.8	48322.0	48558.1	48888.9	49121.2	49428.6	49626.5	49854.4	49990.5	50119.9
17.5°	42915.1	43332.9	43935.1	44415.6	45060.7	45585.1	46227.7	46732.5	47315.4	47762.6	48238.6
20°	36703.5	37288.6	38119.9	38826.0	39760.7	40553.3	41568.6	42419.2	43411.5	44238.6	45131.3
22.5°	30018.2	30706.3	31659.0	32510.6	33626.7	34623.7	35895.8	37020.5	38361.9	39563.5	40892.8
25°	23711.4	24385.8	25356.1	26238.1	27442.9	28541.1	29930.9	31221.2	32777.8	34229.3	35895.8
27.5°	18302.9	18901.9	19755.0	20548.7	21652.2	22730.4	24140.9	25516.7	27177.7	28737.7	30533.6
30°	14135.0	14621.0	15304.5	15943.0	16828.9	17710.6	18967.0	20239.4	21892.2	23508.8	25350.0
32.5°	10954.2	11368.6	11939.1	12457.5	13140.1	13804.9	14730.1	15746.9	17196.8	18745.1	20525.4
35°	8479.7	8834.2	9319.9	9766.4	10327.8	10855.5	11546.0	12271.7	13378.1	14680.6	16273.8
37.5°	6760.5	6905.0	7251.6	7617.5	8083.7	8517.5	9057.5	9594.1	10385.8	11413.3	12714.9
40°	5141.3	5370.8	5652.9	5941.1	6294.0	6641.9	7234.4	7519.7	8040.9	8778.6	9788.8
42.5°	4148.3	4309.8	4508.3	4708.6	4954.6	5197.0	5496.6	5801.9	6191.6	6691.2	7409.6
45°	3471.4	3576.6	3704.7	3838.2	3999.7	4165.1	4365.7	4575.4	4839.3	5146.5	5582.9
47.5°	3019.2	3077.4	3160.9	3252.1	3362.9	3477.3	3607.8	3741.3	3905.3	4087.5	4336.0
50°	2666.2	2714.8	2779.6	2840.6	2917.0	3034.4	3086.1	3159.8	3258.5	3365.7	3504.7
52.5°	2410.7	2443.1	2483.8	2518.8	2567.1	2611.1	2668.7	2719.5	2787.8	2852.1	2941.9
55°	2211.9	2223.6	2246.7	2269.3	2302.7	2332.7	2372.2	2405.5	2448.9	2487.5	2544.1
57.5°	2058.2	2059.4	2070.0	2081.7	2103.2	2122.1	2149.3	2171.1	2201.4	2225.9	2259.8
60°	1947.9	1942.0	1944.1	1948.3	1960.3	1972.6	1990.0	2004.2	2023.3	2037.2	2056.2
62.5°	1856.0	1846.7	1844.6	1843.5	1849.5	1854.0	1863.5	1870.4	1881.2	1887.3	1897.4
65°	1739.9	1729.1	1724.8	1719.8	1721.6	1720.2	1723.7	1723.9	1729.4	1730.7	1736.6
67.5°	1634.7	1625.6	1620.1	1613.3	1610.3	1605.5	1603.4	1598.8	1598.0	1594.2	1593.2
70°	1538.6	1529.8	1525.1	1519.0	1515.8	1509.3	1505.5	1497.6	1493.0	1485.7	1481.6
72.5°	1427.5	1422.6	1421.2	1417.0	1415.8	1412.3	1410.7	1405.2	1402.0	1395.8	1392.2
75°	1311.5	1307.5	1307.1	1302.8	1302.4	1298.2	1297.1	1291.3	1288.3	1282.0	1279.4
77.5°	1173.2	1167.1	1165.4	1160.4	1161.6	1159.6	1161.3	1156.8	1154.9	1148.7	1146.7
80°	1017.5	1009.7	1006.5	999.9	1001.6	998.6	1001.6	1001.3	1003.6	998.6	997.8
82.5°	833.0	824.4	822.8	818.2	821.2	821.6	828.1	824.6	826.1	821.4	823.4
85°	606.1	599.8	590.9	589.7	583.9	589.8	582.2	587.3	579.0	584.8	577.0
87.5°	375.8	362.6	355.7	346.3	342.7	333.7	329.9	323.4	325.3	322.3	324.0
90°	118.8	107.0	103.4	93.1	91.2	82.1	82.0	75.2	75.9	68.9	70.3
92.5°	7.3	7.3	7.1	7.7	7.3	7.3	7.1	7.7	7.3	7.7	7.3
95°	7.8	7.8	7.8	7.8	7.8	7.8	8.0	8.0	8.0	8.0	8.0
97.5°	8.5	8.5	8.5	8.5	8.5	8.5	8.5	8.9	8.9	8.9	8.9
100°	9.3	9.5	9.5	9.5	9.5	9.6	9.6	9.6	9.9	9.9	9.9
102.5°	10.3	10.3	10.3	10.5	10.5	10.5	10.7	10.9	10.9	11.2	11.3
105°	11.2	11.3	11.3	11.5	11.5	11.7	11.9	12.3	12.5	12.6	12.8
107.5°	12.3	12.5	12.6	12.8	12.8	13.1	13.5	13.7	13.9	14.2	14.8
110°	13.5	13.7	13.9	14.2	14.6	14.8	15.1	15.5	16.0	16.4	17.0



TEST NUMBER: P1444497  
 CATALOG NUMBER: EHBR1-60-UNV-TA-L830

**CANDELA DISTRIBUTION (continued):**

	110°	112.5°	115°	117.5°	120°	122.5°	125°	127.5°	130°	132.5°	135°
112.5°	14.9	15.3	15.5	16.0	16.4	16.9	17.2	17.8	18.5	19.2	19.8
115°	16.9	17.2	17.4	18.2	18.5	19.2	19.8	20.6	21.5	22.2	23.1
117.5°	18.8	19.6	20.0	20.6	21.2	22.2	22.9	24.0	25.1	26.1	26.9
120°	21.8	22.4	23.1	24.0	24.7	25.8	26.9	27.9	29.1	30.4	31.5
122.5°	25.2	26.1	26.9	27.9	28.9	30.3	31.5	33.1	34.3	35.7	37.0
125°	29.7	30.7	31.8	33.1	34.3	35.7	37.0	38.8	40.2	41.8	43.4
127.5°	34.8	36.1	37.4	38.8	40.2	41.8	43.4	45.1	46.6	48.5	49.9
130°	41.4	42.6	43.9	45.7	47.1	48.9	50.7	52.6	54.0	55.8	57.4
132.5°	48.9	50.5	51.7	53.5	55.1	56.9	58.6	60.4	62.2	64.2	65.6
135°	57.6	59.0	60.4	62.2	63.8	65.8	67.3	69.3	70.7	72.7	74.1
137.5°	67.0	68.5	70.1	71.7	73.1	75.0	76.6	78.4	79.8	81.6	83.0
140°	77.2	78.6	79.8	81.6	83.0	84.6	85.9	87.7	88.9	90.7	91.9
142.5°	87.5	88.9	89.7	91.2	92.5	94.2	95.5	96.9	98.0	99.2	100.2
145°	98.0	99.2	100.0	101.4	102.4	103.6	104.5	105.8	106.5	107.5	108.5
147.5°	108.3	109.1	109.7	110.7	111.7	112.3	113.2	114.1	114.7	115.5	116.2
150°	117.8	118.6	119.0	119.8	120.2	120.8	121.2	122.0	122.3	123.0	123.4
152.5°	126.7	127.1	127.1	127.8	128.0	128.3	128.5	129.1	129.3	129.5	130.1
155°	134.7	134.9	134.9	135.1	135.1	135.3	135.3	135.8	136.0	136.2	136.5
157.5°	142.2	142.0	142.0	142.0	141.8	142.0	142.0	142.2	142.4	142.9	143.3
160°	148.9	148.7	148.6	148.6	148.6	148.6	148.6	148.9	149.1	149.9	150.2
162.5°	155.9	155.7	155.5	155.5	155.5	155.7	155.9	156.4	156.6	157.2	157.6
165°	163.4	163.4	163.0	163.4	163.4	163.5	163.7	164.1	164.6	165.1	165.7
167.5°	171.7	171.7	171.7	171.9	171.9	172.1	172.3	172.9	173.1	173.9	174.0
170°	179.8	179.8	179.8	179.8	179.8	180.0	180.2	180.4	180.8	181.2	181.3
172.5°	187.2	187.2	187.2	187.2	187.2	187.3	187.3	187.7	187.7	187.9	187.9
175°	193.6	193.6	193.6	193.6	193.6	193.4	193.4	193.1	193.1	193.1	193.1
177.5°	198.0	197.6	197.5	197.5	197.3	197.2	197.2	197.0	197.0	197.0	196.6
180°	199.0	199.0	199.0	199.0	199.0	199.0	199.0	199.0	199.0	199.0	199.0



TEST NUMBER: P1444497  
 CATALOG NUMBER: EHBR1-60-UNV-TA-L830

**CANDELA DISTRIBUTION (continued):**

	137.5°	140°	142.5°	145°	147.5°	150°	152.5°	155°	157.5°	160°	162.5°
0°	47963.5	47963.5	47963.5	47963.5	47963.5	47963.5	47963.5	47963.5	47963.5	47963.5	47963.5
2.5°	47791.3	47790.7	47786.1	47788.3	47789.1	47792.5	47796.6	47800.8	47801.8	47805.1	47805.9
5°	48148.9	48030.7	47943.2	47847.1	47774.7	47709.7	47666.3	47631.8	47618.4	47621.8	47629.9
7.5°	49118.8	48874.7	48673.3	48444.3	48253.4	48051.3	47883.7	47724.4	47608.3	47521.8	47473.4
10°	50183.0	49885.7	49601.4	49270.0	48955.8	48620.3	48316.6	48010.6	47755.5	47534.0	47371.4
12.5°	50655.3	50445.1	50199.4	49886.7	49550.3	49163.4	48772.5	48353.5	47963.9	47602.1	47310.4
15°	50155.2	50155.6	50066.1	49916.0	49682.4	49373.1	49000.7	48564.0	48104.3	47635.2	47206.6
17.5°	48567.9	48867.4	49034.0	49139.4	49107.1	48993.1	48756.2	48420.7	47992.1	47492.5	46969.5
20°	45842.0	46548.3	47051.9	47504.9	47758.8	47927.5	47910.5	47774.0	47468.8	47044.0	46499.4
22.5°	42023.4	43209.0	44144.6	45017.0	45628.9	46126.5	46363.2	46463.6	46325.3	46029.3	45517.9
25°	37385.3	38997.3	40373.0	41708.2	42709.7	43570.4	44087.7	44452.1	44481.0	44326.4	43870.1
27.5°	32231.5	34134.4	35875.6	37650.0	39058.3	40295.7	41107.6	41701.8	41890.6	41865.6	41451.3
30°	27084.4	29082.0	31001.2	33070.3	34813.1	36393.9	37466.3	38270.0	38579.7	38639.0	38240.5
32.5°	22223.3	24193.3	26107.2	28270.3	30188.2	31999.9	33266.9	34221.5	34581.7	34666.5	34229.3
35°	17811.8	19629.2	21448.0	23544.5	25451.3	27327.4	28662.4	29661.8	29998.2	30054.9	29548.8
37.5°	13986.0	15534.5	17119.4	19000.4	20751.6	22513.4	23781.9	24721.2	24966.2	24951.1	24378.3
40°	10764.8	11968.6	13242.2	14790.7	16246.6	17736.0	18807.2	19583.7	19712.4	19617.0	19015.4
42.5°	8094.6	8964.0	9887.2	11043.2	12123.4	13238.2	14017.5	14593.9	14612.3	14461.6	13921.6
45°	6030.4	6878.7	7265.9	7964.8	8660.5	9401.8	9877.7	10233.7	10178.7	10046.0	9635.5
47.5°	4597.2	4923.2	5268.9	5702.3	6107.6	6948.8	6886.4	7458.2	7046.4	7327.2	6709.0
50°	3650.6	3832.8	4019.1	4249.1	4460.9	4680.7	4818.1	4920.7	4907.4	4863.3	4744.9
52.5°	3105.8	3162.1	3253.8	3384.7	3502.9	3621.8	3700.0	3763.7	3764.9	3747.1	3687.3
55°	2595.8	2667.3	2733.2	2818.7	2964.3	2986.7	3098.8	3076.2	3085.0	3053.9	3085.7
57.5°	2288.7	2330.3	2367.3	2418.2	2460.4	2509.4	2538.4	2566.3	2563.7	2557.6	2527.1
60°	2071.1	2094.0	2114.6	2144.3	2167.5	2195.2	2208.5	2222.7	2218.0	2207.7	2180.6
62.5°	1903.3	1917.6	1929.4	1948.5	1962.6	1979.8	1986.9	1992.8	1986.9	1977.0	1953.0
65°	1737.8	1747.1	1754.5	1768.9	1778.8	1793.6	1799.4	1805.1	1799.6	1792.0	1773.7
67.5°	1588.5	1589.3	1588.7	1594.5	1597.6	1606.4	1609.1	1613.2	1606.7	1600.2	1584.7
70°	1475.2	1472.9	1470.1	1472.4	1472.9	1477.2	1477.8	1477.2	1469.5	1458.2	1441.2
72.5°	1386.7	1385.5	1383.3	1385.3	1385.3	1389.1	1387.9	1386.0	1376.6	1365.5	1348.9
75°	1272.9	1272.1	1267.7	1267.9	1264.4	1265.7	1261.0	1258.4	1247.9	1238.6	1223.7
77.5°	1139.8	1137.6	1131.5	1129.1	1122.4	1119.6	1110.8	1106.5	1095.9	1088.5	1075.6
80°	991.2	988.9	980.8	976.4	965.7	959.0	946.2	939.0	926.7	919.4	906.9
82.5°	819.2	820.2	812.2	806.7	791.4	779.6	762.6	753.3	739.8	732.7	720.0
85°	582.7	574.3	578.8	578.4	568.9	558.7	544.8	535.0	523.7	516.9	507.9
87.5°	319.6	321.6	319.2	317.3	310.5	305.4	294.5	288.9	280.5	276.4	269.7
90°	63.3	64.5	58.2	59.6	53.3	51.9	44.3	44.1	37.4	36.6	31.3
92.5°	7.3	7.3	7.7	7.3	7.7	7.7	7.7	7.7	7.7	7.3	7.7
95°	8.0	8.1	8.1	8.1	8.1	8.1	8.3	8.3	8.3	8.3	8.3
97.5°	9.1	9.1	9.1	9.3	9.3	9.3	9.5	9.5	9.5	9.5	9.5
100°	10.1	10.3	10.3	10.3	10.5	10.5	10.7	10.7	10.9	10.9	10.9
102.5°	11.3	11.5	11.7	11.9	12.3	12.3	12.5	12.5	12.6	12.6	12.6
105°	13.0	13.1	13.7	13.9	14.1	14.2	14.6	14.6	14.8	14.9	14.9
107.5°	15.1	15.3	15.8	16.2	16.4	16.9	17.0	17.2	17.4	17.6	17.8
110°	17.4	17.8	18.5	18.8	19.4	19.8	20.0	20.4	20.8	21.0	21.5



TEST NUMBER: P1444497  
 CATALOG NUMBER: EHBR1-60-UNV-TA-L830

**CANDELA DISTRIBUTION (continued):**

	137.5°	140°	142.5°	145°	147.5°	150°	152.5°	155°	157.5°	160°	162.5°
112.5°	20.4	21.0	21.8	22.2	22.9	23.3	24.0	24.4	24.7	25.2	25.6
115°	24.0	24.7	25.6	26.3	27.0	27.7	28.5	28.8	29.3	29.9	30.4
117.5°	28.1	28.9	30.1	30.9	31.8	32.5	33.4	34.1	34.8	35.6	36.1
120°	33.1	34.1	35.0	36.1	37.2	38.2	39.1	40.0	40.7	41.6	42.5
122.5°	38.4	39.6	41.0	42.0	43.4	44.3	45.7	46.4	47.5	48.5	49.6
125°	44.8	46.1	47.5	48.7	49.9	51.2	52.6	53.5	54.9	55.8	57.2
127.5°	51.7	53.0	54.6	55.8	57.4	58.6	60.0	61.2	62.6	63.8	65.4
130°	59.2	60.4	62.2	63.4	65.1	66.5	67.9	69.3	70.7	72.3	73.9
132.5°	67.2	68.8	70.3	71.7	73.4	74.7	76.2	77.7	79.4	80.8	82.6
135°	75.9	77.2	78.8	80.0	81.8	83.0	84.6	86.2	88.0	89.5	91.3
137.5°	84.4	85.7	87.3	88.5	90.1	91.3	93.1	94.6	96.5	98.0	100.0
140°	93.1	94.4	95.6	96.9	98.3	99.6	101.4	102.8	104.5	106.1	108.1
142.5°	101.5	102.4	103.6	104.7	106.1	107.2	108.8	110.3	112.0	113.8	115.5
145°	109.5	110.3	111.5	112.3	113.4	114.7	116.2	117.7	119.2	120.8	122.6
147.5°	117.0	117.7	118.8	119.6	120.7	121.6	123.2	124.4	126.0	127.7	129.3
150°	124.2	124.8	125.5	126.2	127.3	128.3	129.5	130.9	132.6	134.0	135.4
152.5°	130.7	131.1	131.9	132.8	133.7	134.7	136.0	137.2	138.6	139.9	141.5
155°	137.2	137.6	138.4	139.4	140.4	141.2	142.4	143.4	144.7	146.1	147.3
157.5°	144.0	144.3	145.2	146.1	147.0	147.9	149.1	150.1	151.3	152.3	153.4
160°	150.9	151.5	152.3	153.2	154.1	155.0	156.1	157.0	158.0	159.1	160.2
162.5°	158.4	159.1	160.0	160.6	161.6	162.4	163.5	164.2	165.3	166.2	167.3
165°	166.4	167.1	168.0	168.5	169.5	169.9	171.0	171.7	172.8	173.3	174.4
167.5°	174.9	175.3	175.8	176.4	177.2	177.8	178.6	179.2	180.0	180.8	181.5
170°	181.8	182.2	182.6	183.1	183.6	184.2	184.7	185.0	185.9	186.5	187.2
172.5°	188.3	188.3	188.7	188.9	189.3	189.5	190.1	190.3	190.7	191.3	191.7
175°	193.4	193.4	193.6	193.6	193.7	193.9	194.3	194.6	194.8	195.0	195.2
177.5°	196.6	196.6	196.6	196.6	197.0	197.0	197.2	197.2	197.3	197.3	197.5
180°	199.0	199.0	199.0	199.0	199.0	199.0	199.0	199.0	199.0	199.0	199.0



TEST NUMBER: P1444497  
 CATALOG NUMBER: EHBR1-60-UNV-TA-L830

**CANDELA DISTRIBUTION (continued):**

	165°	167.5°	170°	172.5°	175°	177.5°	180°	182.5°	185°	187.5°	190°
0°	47963.5	47963.5	47963.5	47963.5	47963.5	47963.5	47963.5	47963.5	47963.5	47963.5	47963.5
2.5°	47804.2	47803.7	47802.1	47800.0	47797.8	47799.0	47801.2	47806.7	47816.4	47830.2	47848.3
5°	47636.4	47646.2	47651.7	47652.4	47647.5	47644.4	47649.1	47662.2	47688.7	47733.1	47793.2
7.5°	47460.4	47472.5	47491.0	47504.9	47507.5	47504.2	47504.9	47525.5	47574.4	47661.0	47782.4
10°	47272.5	47236.8	47255.7	47290.1	47317.6	47322.5	47325.9	47350.3	47421.7	47552.5	47747.5
12.5°	47099.0	46986.0	46964.1	46995.2	47036.8	47050.1	47046.5	47057.0	47140.6	47313.8	47585.6
15°	46870.9	46658.0	46585.3	46593.3	46644.7	46663.2	46649.7	46629.1	46710.7	46922.0	47273.8
17.5°	46501.4	46158.4	46024.7	46018.8	46078.9	46094.9	46061.8	45997.8	46078.2	46342.0	46778.8
20°	45939.9	45433.5	45181.8	45141.8	45207.0	45188.0	45122.0	45025.3	45130.9	45451.6	45971.0
22.5°	44930.4	44288.7	43858.7	43720.0	43798.1	43746.0	43649.9	43526.3	43666.6	44030.9	44609.4
25°	43280.8	42539.4	41950.6	41620.4	41682.6	41589.2	41484.6	41334.9	41502.2	41920.4	42557.1
27.5°	40856.1	39999.7	39270.2	38723.5	38743.5	38621.3	38500.7	38307.0	38515.8	39010.8	39729.0
30°	37632.0	36641.0	35752.6	35009.5	34943.1	34824.5	34700.9	34446.7	34708.1	35300.7	36139.9
32.5°	33583.0	32482.7	31456.2	30516.7	30339.4	30223.8	30113.7	29821.2	30163.3	30854.3	31818.4
35°	28847.9	27675.7	26562.8	25489.8	25196.2	25080.5	24984.3	24704.0	25131.0	25882.9	26924.2
37.5°	23650.4	22453.0	21348.1	20247.7	19832.8	19675.9	19606.1	19422.4	19915.0	20658.7	21704.3
40°	18314.6	17201.3	16210.7	15238.8	14765.9	14525.7	14489.1	14455.7	14931.9	15577.2	16526.2
42.5°	13323.2	12425.0	11661.1	10918.3	10489.7	10161.7	10161.6	10261.1	10689.8	11173.2	11905.0
45°	9216.1	8613.3	8126.6	7630.2	7762.9	7109.1	7493.2	7296.1	7508.0	7819.6	8295.5
47.5°	6335.1	6006.1	5738.7	5461.5	5259.3	5066.3	5083.1	5207.6	5407.2	5592.1	5839.7
50°	4617.3	4449.6	4313.5	4169.5	4068.9	3983.7	3988.7	4042.6	4147.5	4244.9	4374.4
52.5°	3617.9	3525.5	3451.5	3371.9	3319.1	3276.8	3279.1	3305.3	3361.9	3417.6	3491.9
55°	2982.1	2970.9	2874.7	2803.3	2776.0	2747.6	2752.8	2763.1	2801.7	2834.2	2883.4
57.5°	2499.0	2455.8	2426.9	2389.3	2372.0	2352.1	2356.6	2360.4	2386.3	2408.1	2443.5
60°	2157.8	2127.3	2106.8	2081.2	2069.8	2057.2	2060.0	2062.4	2078.9	2093.1	2118.6
62.5°	1931.2	1903.8	1886.1	1866.3	1858.2	1849.7	1851.7	1852.4	1862.7	1873.2	1892.4
65°	1757.4	1735.6	1720.9	1703.8	1695.4	1686.5	1687.5	1687.5	1696.2	1703.8	1718.2
67.5°	1573.5	1557.2	1547.5	1534.0	1528.3	1519.3	1519.2	1516.3	1522.0	1525.0	1534.8
70°	1426.0	1409.5	1397.2	1384.2	1377.1	1369.1	1369.3	1369.5	1376.0	1383.0	1395.6
72.5°	1334.8	1319.0	1308.1	1296.8	1290.0	1283.2	1282.0	1281.3	1286.1	1289.8	1298.2
75°	1214.1	1201.4	1195.1	1184.4	1179.0	1171.4	1170.2	1166.7	1168.9	1169.7	1175.9
77.5°	1067.7	1055.7	1050.5	1039.7	1035.3	1026.5	1025.9	1021.9	1023.7	1022.5	1027.3
80°	900.7	889.9	887.0	878.2	876.0	868.0	866.7	862.0	863.4	859.6	861.4
82.5°	714.4	704.5	702.3	694.1	694.1	686.9	686.5	679.2	679.2	673.0	663.0
85°	503.2	496.0	492.9	486.2	484.2	478.4	475.3	468.4	465.9	461.4	460.0
87.5°	265.6	261.0	256.8	253.7	247.8	237.3	236.4	229.1	229.7	224.5	224.9
90°	31.3	26.5	26.7	22.4	22.2	19.6	19.8	18.5	18.2	17.0	16.9
92.5°	7.7	7.7	7.7	7.7	7.7	7.7	7.7	7.7	7.7	7.7	7.7
95°	8.3	8.3	8.3	8.3	8.3	8.3	8.3	8.3	8.3	8.5	8.5
97.5°	9.5	9.5	9.5	9.5	9.5	9.5	9.5	9.6	9.6	9.6	9.6
100°	10.9	10.9	10.9	10.9	10.9	10.9	10.9	11.2	11.2	11.2	11.2
102.5°	12.8	12.8	12.8	12.8	12.8	12.8	12.8	12.8	12.8	13.0	13.0
105°	14.9	15.1	15.1	15.1	15.1	15.1	15.1	15.3	15.3	15.3	15.5
107.5°	17.8	18.2	18.2	18.3	18.2	18.3	18.3	18.5	18.5	18.5	18.5
110°	21.5	21.7	21.8	22.0	22.0	22.2	22.2	22.4	22.4	22.4	22.4



TEST NUMBER: P1444497  
 CATALOG NUMBER: EHBR1-60-UNV-TA-L830

**CANDELA DISTRIBUTION (continued):**

	165°	167.5°	170°	172.5°	175°	177.5°	180°	182.5°	185°	187.5°	190°
112.5°	25.8	26.1	26.3	26.7	26.7	27.0	27.0	27.4	27.4	27.5	27.4
115°	30.9	31.3	31.8	32.1	32.3	32.7	32.7	33.3	33.3	33.3	33.3
117.5°	36.6	37.4	37.8	38.4	38.8	39.2	39.4	39.6	39.6	40.0	39.6
120°	43.0	44.1	44.8	45.3	46.1	46.6	46.9	47.3	47.3	47.3	47.1
122.5°	50.5	51.5	52.3	53.1	53.9	54.6	54.9	55.3	55.3	55.5	55.1
125°	58.2	59.6	60.4	61.5	62.2	63.3	63.4	64.2	64.2	64.2	63.8
127.5°	66.7	67.9	68.9	70.3	71.1	72.0	72.5	73.1	73.1	73.1	72.7
130°	75.2	77.0	78.0	79.4	80.4	81.2	81.8	82.3	82.3	82.6	82.1
132.5°	84.1	85.9	87.3	88.7	89.5	90.9	91.2	91.9	91.9	92.1	91.5
135°	93.1	94.7	96.2	98.0	99.0	100.0	100.6	101.4	101.4	101.4	100.8
137.5°	101.6	103.6	105.1	106.5	107.7	108.8	109.5	110.1	110.1	110.3	109.9
140°	109.7	111.7	113.2	114.7	116.1	117.3	117.8	118.6	118.6	118.6	118.0
142.5°	117.3	119.1	120.7	122.3	123.4	124.6	125.3	125.9	125.9	125.9	125.5
145°	124.4	126.0	127.7	129.3	130.3	131.3	131.9	132.6	132.6	132.6	132.5
147.5°	130.9	132.6	133.9	135.3	136.4	137.4	138.2	138.4	138.6	138.6	138.4
150°	137.0	138.4	139.8	141.0	142.0	142.9	143.3	144.0	144.2	144.3	144.2
152.5°	142.8	144.0	145.2	146.3	147.3	148.1	148.6	149.1	149.7	150.1	150.1
155°	148.5	149.7	150.7	151.8	152.5	153.4	154.1	154.8	155.4	155.7	156.1
157.5°	154.5	155.7	156.6	157.6	158.4	159.4	160.2	161.0	161.6	162.3	162.6
160°	161.0	162.3	163.0	164.1	165.0	165.9	166.5	167.5	168.1	168.7	169.5
162.5°	168.1	169.3	169.7	170.9	171.7	172.6	173.3	174.2	174.9	175.6	176.2
165°	175.3	176.2	176.9	177.8	178.6	179.6	180.0	181.0	181.5	182.2	182.8
167.5°	182.2	183.1	183.6	184.5	185.0	185.9	186.7	187.3	187.9	188.5	188.9
170°	187.7	188.5	189.1	189.7	190.3	191.1	191.5	192.0	192.5	193.1	193.6
172.5°	192.0	192.7	193.1	193.7	194.1	194.6	195.0	195.7	196.1	196.4	196.6
175°	195.4	195.9	196.1	196.4	196.6	197.0	197.3	197.5	198.0	198.2	198.6
177.5°	197.6	198.0	198.2	198.2	198.4	198.4	198.6	198.6	198.8	199.0	199.0
180°	199.0	199.0	199.0	199.0	199.0	199.0	199.0	199.0	199.0	199.0	199.0



TEST NUMBER: P1444497  
 CATALOG NUMBER: EHBR1-60-UNV-TA-L830

**CANDELA DISTRIBUTION (continued):**

	192.5°	195°	197.5°	200°	202.5°	205°	207.5°	210°	212.5°	215°	217.5°
0°	47963.5	47963.5	47963.5	47963.5	47963.5	47963.5	47963.5	47963.5	47963.5	47963.5	47963.5
2.5°	47873.9	47898.0	47934.5	47967.7	48017.8	48057.2	48116.4	48161.4	48228.1	48271.5	48344.3
5°	47878.2	47971.9	48095.0	48215.2	48359.7	48490.9	48653.9	48792.8	48956.6	49090.3	49258.0
7.5°	47945.9	48126.5	48343.0	48561.1	48807.9	49038.6	49298.6	49534.0	49791.2	50009.0	50246.8
10°	47995.8	48274.4	48593.5	48914.5	49252.4	49566.3	49883.3	50157.2	50413.2	50623.9	50810.0
12.5°	47928.1	48311.9	48721.3	49116.6	49492.4	49817.4	50090.0	50300.7	50446.1	50544.7	50567.9
15°	47698.0	48159.8	48604.9	48998.6	49310.4	49550.9	49675.4	49733.6	49671.0	49567.3	49339.0
17.5°	47267.9	47755.0	48153.0	48463.5	48628.3	48693.6	48590.5	48411.1	48060.6	47671.5	47109.5
20°	46479.6	46933.4	47222.1	47391.5	47347.4	47184.4	46795.1	46321.9	45622.0	44876.2	43891.9
22.5°	45096.8	45493.5	45647.3	45660.0	45390.9	44982.8	44280.7	43469.1	42365.0	41217.3	39805.6
25°	43021.1	43368.6	43392.9	43256.5	42764.2	42102.8	41071.8	39923.7	38423.4	36894.0	35125.1
27.5°	40206.2	40539.4	40457.9	40203.1	39519.8	38634.7	37314.7	35831.5	33981.9	32175.5	30218.8
30°	36667.5	37023.9	36928.1	36601.3	35788.6	34742.5	33189.3	31466.1	29412.7	27483.2	25500.3
32.5°	32432.7	32883.4	32817.2	32506.7	31658.6	30539.1	28853.7	27026.0	24925.1	23023.8	21095.0
35°	27619.4	28166.6	28194.8	27991.8	27204.6	26097.9	24433.8	22664.7	20652.4	18858.4	17076.6
37.5°	22433.6	23067.9	23198.2	23143.5	22490.8	21514.1	19997.8	18410.8	16628.1	15055.8	13531.9
40°	17219.1	17861.2	18083.9	18150.0	17668.5	16911.9	15667.5	14386.5	12933.1	11659.2	10449.2
42.5°	12463.8	13032.9	13248.2	13383.6	13083.0	12578.5	11670.7	10740.5	9675.7	8756.9	7875.9
45°	8656.3	9058.9	9222.6	9358.9	9195.3	8910.6	8337.4	7755.6	7052.8	6452.2	5883.8
47.5°	6052.2	6274.2	6382.3	6448.4	6384.9	6236.5	5924.5	5587.5	5190.7	4839.8	4502.5
50°	4485.9	4604.1	4660.7	4698.9	4652.6	4570.2	4401.3	4217.8	3999.9	3801.2	3606.9
52.5°	3555.0	3622.7	3656.3	3677.0	3650.4	3600.0	3501.7	3392.9	3262.2	3139.4	3074.8
55°	2994.8	2991.3	3069.0	3031.5	3069.0	2985.3	2967.7	2848.1	2739.6	2663.2	2580.5
57.5°	2469.8	2504.9	2519.9	2536.6	2525.7	2510.5	2468.7	2425.9	2368.7	2320.8	2269.8
60°	2137.9	2166.9	2183.2	2199.8	2198.7	2193.0	2168.9	2143.2	2107.5	2078.9	2047.9
62.5°	1909.3	1934.4	1950.5	1966.3	1967.7	1965.5	1947.1	1929.4	1905.1	1887.1	1865.7
65°	1729.4	1747.1	1758.0	1770.7	1769.9	1766.5	1750.1	1735.3	1715.2	1702.7	1687.1
67.5°	1541.2	1554.5	1563.0	1575.0	1577.2	1578.0	1568.9	1562.0	1552.2	1548.7	1543.3
70°	1407.3	1423.5	1437.2	1452.3	1460.4	1464.4	1460.4	1456.9	1451.2	1448.7	1444.7
72.5°	1306.0	1319.6	1330.3	1344.0	1351.7	1357.2	1354.2	1352.2	1347.3	1346.5	1343.7
75°	1180.2	1189.5	1195.6	1205.9	1210.0	1215.2	1212.9	1214.1	1212.5	1216.4	1216.2
77.5°	1028.9	1035.8	1038.6	1046.1	1046.9	1053.0	1054.5	1061.8	1066.9	1078.2	1084.3
80°	858.6	863.0	863.0	870.7	874.0	884.5	889.5	901.4	906.9	917.0	918.0
82.5°	666.9	661.8	666.9	663.8	673.5	685.3	686.9	697.0	699.3	705.7	700.8
85°	456.0	455.6	451.5	452.2	449.2	450.7	448.9	450.8	449.1	449.2	444.6
87.5°	218.4	220.4	215.6	217.2	212.6	214.7	210.7	213.9	209.1	209.7	202.6
90°	16.2	15.8	15.1	14.9	15.3	14.8	14.6	14.2	14.6	14.1	14.1
92.5°	7.7	7.8	7.8	7.8	7.8	7.8	7.8	7.8	8.0	7.8	7.8
95°	8.5	8.5	8.5	8.9	8.9	8.9	8.9	8.9	8.9	8.9	8.9
97.5°	9.9	9.9	9.9	9.9	10.1	10.1	10.1	10.1	10.1	10.1	9.9
100°	11.3	11.3	11.3	11.5	11.5	11.5	11.5	11.5	11.5	11.3	11.3
102.5°	13.1	13.1	13.1	13.5	13.5	13.5	13.5	13.5	13.1	13.1	13.0
105°	15.5	15.5	15.8	15.8	15.8	15.8	15.8	15.8	15.5	15.3	15.3
107.5°	18.6	18.6	18.8	18.8	18.8	18.8	18.6	18.5	18.5	18.3	17.8
110°	22.8	22.4	22.8	22.8	22.8	22.4	22.4	22.0	21.8	21.5	21.2



TEST NUMBER: P1444497  
 CATALOG NUMBER: EHBR1-60-UNV-TA-L830

**CANDELA DISTRIBUTION (continued):**

	192.5°	195°	197.5°	200°	202.5°	205°	207.5°	210°	212.5°	215°	217.5°
112.5°	27.5	27.4	27.4	27.0	27.0	26.7	26.7	26.3	26.1	25.4	25.1
115°	33.3	32.7	32.7	32.3	32.3	32.0	31.5	31.1	30.7	30.1	29.7
117.5°	39.4	39.2	39.1	38.4	38.2	37.7	37.2	36.6	36.1	35.6	34.8
120°	46.9	46.4	46.1	45.3	45.0	44.1	43.7	42.8	42.3	41.4	40.6
122.5°	54.9	54.2	53.9	53.1	52.6	51.5	50.9	49.7	49.3	48.1	47.3
125°	63.4	62.8	62.2	61.4	60.4	59.6	58.6	57.6	56.5	55.5	54.4
127.5°	72.5	71.7	71.1	70.1	69.1	67.9	66.9	65.6	64.7	63.3	62.2
130°	81.8	80.8	80.4	79.0	78.2	76.6	75.7	74.3	73.1	71.8	70.5
132.5°	91.2	90.3	89.5	88.1	87.3	85.9	85.0	83.4	82.1	80.7	79.6
135°	100.4	99.6	98.8	97.6	96.5	94.9	93.9	92.5	91.2	89.9	88.7
137.5°	109.5	108.5	107.5	106.5	105.4	104.0	102.9	101.5	100.4	99.0	98.0
140°	117.7	116.8	116.1	115.0	113.9	112.7	111.7	110.3	109.3	108.1	107.0
142.5°	125.0	124.2	123.6	122.5	121.6	120.4	119.6	118.6	117.5	116.4	115.5
145°	131.9	131.1	130.7	129.5	129.1	128.0	127.3	126.2	125.7	124.6	123.9
147.5°	138.3	137.6	137.2	136.5	136.2	135.3	134.9	134.0	133.7	132.8	132.5
150°	144.2	144.0	143.8	143.3	142.9	142.4	142.2	141.6	141.5	140.8	140.6
152.5°	150.1	150.1	150.1	149.9	149.9	149.7	149.5	149.1	148.9	148.6	148.5
155°	156.4	156.6	156.8	156.8	156.8	156.8	156.8	156.6	156.6	156.4	156.4
157.5°	163.0	163.4	163.7	163.9	164.1	164.1	164.1	164.1	164.1	163.9	163.9
160°	169.7	170.3	170.7	170.9	171.1	171.1	171.5	171.1	171.5	171.1	171.0
162.5°	176.7	177.2	177.6	177.8	178.1	178.1	178.4	178.4	178.4	178.1	178.1
165°	183.4	183.6	184.2	184.3	184.7	184.7	184.9	184.9	184.9	184.7	184.7
167.5°	189.5	189.7	190.2	190.3	190.7	190.7	191.3	191.1	191.1	191.1	191.1
170°	193.9	194.3	194.6	194.8	195.2	195.2	195.4	195.4	195.7	195.4	195.4
172.5°	197.2	197.3	197.6	198.0	198.2	198.2	198.4	198.4	198.6	198.6	198.6
175°	198.8	199.0	199.2	199.4	199.6	199.8	199.8	200.0	200.0	200.0	200.0
177.5°	199.2	199.4	199.4	199.6	199.8	199.8	200.0	200.0	200.4	200.4	200.4
180°	199.0	199.0	199.0	199.0	199.0	199.0	199.0	199.0	199.0	199.0	199.0



TEST NUMBER: P1444497  
 CATALOG NUMBER: EHBR1-60-UNV-TA-L830

**CANDELA DISTRIBUTION (continued):**

	220°	222.5°	225°	227.5°	230°	232.5°	235°	237.5°	240°	242.5°	245°
0°	47963.5	47963.5	47963.5	47963.5	47963.5	47963.5	47963.5	47963.5	47963.5	47963.5	47963.5
2.5°	48389.3	48090.4	48050.9	48071.9	48121.9	48140.4	48194.2	48209.0	48263.2	48276.6	48328.7
5°	49387.7	48992.7	49012.4	49107.3	49251.2	49336.8	49478.2	49552.1	49687.1	49748.4	49870.3
7.5°	50440.6	50130.4	50227.1	50387.3	50583.9	50720.0	50889.8	51000.3	51146.6	51237.4	51354.6
10°	50957.5	50872.6	50979.0	51105.1	51217.2	51305.0	51377.0	51434.6	51472.2	51507.7	51523.1
12.5°	50564.1	50695.6	50713.8	50701.5	50627.2	50570.5	50443.1	50356.5	50202.7	50109.1	49926.1
15°	49105.7	49395.0	49234.8	48992.4	48637.6	48341.8	47924.1	47613.0	47178.0	46882.9	46446.3
17.5°	46546.4	46911.5	46494.1	45933.1	45219.4	44608.9	43848.6	43245.0	42489.1	41939.3	41233.7
20°	42943.4	43284.6	42540.3	41610.2	40506.2	39577.1	38481.3	37607.1	36588.9	35831.5	34917.4
22.5°	38457.3	38700.3	37651.8	36398.0	34991.4	33830.6	32520.6	31472.5	30310.5	29444.6	28470.0
25°	33494.3	33559.9	32302.1	30857.6	29289.9	27985.4	26586.8	25484.9	24299.7	23422.1	22465.7
27.5°	28485.1	28388.9	27029.4	25497.9	23848.8	22492.8	21128.7	20096.2	19058.2	18267.7	17443.6
30°	23757.1	23524.2	22112.6	20538.4	18937.6	17722.3	16589.9	15760.6	14934.9	14307.8	13646.3
32.5°	19421.3	19092.8	17718.8	16243.9	14895.1	13957.2	13117.5	12490.0	11823.2	11293.5	10738.4
35°	15581.0	15231.1	14013.7	12763.4	11742.6	11051.2	10391.2	9876.5	9310.3	8863.4	8381.3
37.5°	12285.2	11998.3	10978.7	9994.9	9222.6	8686.9	8146.2	7725.4	7257.5	7060.9	6545.8
40°	9484.1	9283.6	8486.4	7761.1	7181.3	6929.6	6380.7	5987.6	5638.0	5349.6	5070.4
42.5°	7397.8	7326.8	6551.0	5985.3	5577.0	5259.9	4954.0	4705.7	4463.9	4265.1	4077.4
45°	5428.9	5372.8	5028.3	4701.7	4423.5	4201.9	3995.2	3824.3	3666.3	3535.2	3416.2
47.5°	4227.5	4209.5	4011.1	3808.7	3633.4	3491.0	3356.8	3243.4	3138.5	3051.0	3022.6
50°	3438.4	3436.0	3319.6	3194.6	3069.9	2987.6	2901.9	2834.9	2767.5	2715.1	2659.6
52.5°	2921.5	2908.9	2830.3	2753.1	2679.0	2624.9	2570.2	2527.3	2482.7	2450.4	2416.0
55°	2515.1	2528.5	2482.9	2436.8	2390.5	2356.9	2318.5	2290.3	2259.6	2239.2	2218.4
57.5°	2232.8	2250.4	2226.6	2200.5	2172.2	2150.1	2123.7	2104.1	2083.7	2070.7	2058.6
60°	2027.5	2046.7	2037.2	2023.9	2006.5	1993.4	1976.5	1965.7	1952.5	1945.2	1938.4
62.5°	1853.3	1877.4	1873.9	1867.7	1856.5	1849.3	1840.0	1835.2	1826.5	1823.3	1820.0
65°	1679.4	1706.5	1705.9	1702.9	1696.7	1694.6	1688.9	1687.9	1683.4	1685.1	1684.8
67.5°	1542.8	1566.3	1571.4	1575.1	1575.0	1576.4	1575.8	1578.2	1578.2	1581.5	1583.7
70°	1444.1	1460.4	1464.4	1468.3	1469.3	1472.5	1472.5	1474.5	1474.0	1476.8	1477.2
72.5°	1344.4	1365.9	1369.8	1373.0	1373.0	1376.0	1374.4	1373.9	1369.7	1368.7	1365.7
75°	1220.3	1247.9	1253.9	1257.8	1258.4	1261.0	1257.3	1255.0	1247.9	1245.0	1240.0
77.5°	1090.7	1119.4	1123.6	1125.0	1122.7	1123.3	1115.4	1110.1	1101.0	1097.3	1092.5
80°	922.0	964.2	967.5	964.9	958.3	957.2	949.5	944.6	933.8	930.1	925.9
82.5°	701.6	751.1	758.0	761.0	755.6	756.9	749.6	746.7	736.8	735.0	728.5
85°	443.0	492.4	500.6	499.4	494.0	492.7	488.5	489.9	489.1	491.7	493.1
87.5°	203.5	251.3	262.9	259.2	258.6	255.3	247.6	250.5	255.1	258.1	258.3
90°	13.9	28.1	27.5	29.1	26.1	27.0	24.4	26.1	24.2	25.8	24.0
92.5°	7.8	7.8	7.8	7.8	7.8	7.8	7.8	7.7	7.8	7.7	7.8
95°	8.9	8.5	8.5	8.5	8.3	8.3	8.3	8.3	8.3	8.3	8.3
97.5°	9.9	9.6	9.5	9.5	9.5	9.3	9.3	9.3	9.3	9.1	9.1
100°	11.3	10.7	10.5	10.5	10.3	10.3	10.3	10.1	10.1	10.1	9.9
102.5°	12.8	12.3	11.9	11.7	11.5	11.3	11.3	11.2	11.2	10.9	10.9
105°	14.9	14.1	13.7	13.1	13.0	12.8	12.6	12.5	12.3	11.9	11.9
107.5°	17.6	16.2	15.5	15.1	14.8	14.6	14.1	13.9	13.5	13.1	13.0
110°	20.8	18.8	18.2	17.4	17.0	16.4	16.0	15.5	15.1	14.9	14.6



TEST NUMBER: P1444497  
 CATALOG NUMBER: EHBR1-60-UNV-TA-L830

**CANDELA DISTRIBUTION (continued):**

	220°	222.5°	225°	227.5°	230°	232.5°	235°	237.5°	240°	242.5°	245°
112.5°	24.5	22.0	21.0	20.0	19.6	18.8	18.3	17.6	17.2	16.5	16.4
115°	28.8	25.8	24.5	23.4	22.8	21.8	21.0	20.4	19.6	18.8	18.5
117.5°	34.1	30.4	28.8	27.5	26.7	25.4	24.5	23.4	22.8	21.8	21.2
120°	39.6	35.6	33.8	32.3	31.3	29.9	28.8	27.5	26.5	25.4	24.5
122.5°	46.2	41.6	39.4	38.0	36.6	35.0	33.8	32.3	31.1	29.9	28.8
125°	53.3	48.1	45.9	44.3	42.8	41.2	39.6	38.0	36.8	35.4	34.1
127.5°	61.0	55.5	53.1	51.5	49.9	48.1	46.6	44.8	43.4	41.6	40.4
130°	69.3	63.4	61.0	59.2	57.8	55.8	54.4	52.6	50.9	49.3	47.7
132.5°	78.2	72.0	69.5	67.9	66.5	64.5	63.1	61.2	59.6	57.6	56.2
135°	87.3	80.8	78.4	76.6	75.4	73.6	72.0	70.3	68.8	66.9	65.6
137.5°	96.5	89.7	87.5	85.9	84.6	83.0	81.8	80.0	78.6	76.6	75.4
140°	105.8	98.8	96.5	95.3	94.2	92.6	91.3	89.9	88.7	87.3	85.9
142.5°	114.5	107.3	105.1	104.0	103.1	101.8	101.2	99.9	98.8	97.2	96.2
145°	123.2	115.5	113.4	112.3	111.8	110.9	110.1	109.1	108.3	107.2	106.3
147.5°	131.5	123.6	121.2	120.7	120.2	119.2	119.0	118.0	117.7	116.8	116.2
150°	139.9	130.9	128.1	127.8	127.3	126.9	126.5	126.0	125.9	125.3	125.0
152.5°	147.9	137.0	134.0	133.7	133.7	133.1	132.9	132.8	132.8	132.6	132.5
155°	155.9	144.0	140.6	140.0	139.9	139.8	139.6	139.6	139.6	139.6	139.8
157.5°	163.5	150.7	147.3	146.7	146.5	146.3	146.1	146.1	146.1	146.1	146.5
160°	170.9	157.8	154.3	153.6	153.4	153.1	152.7	152.5	152.5	152.5	152.7
162.5°	177.8	165.1	161.8	161.0	160.6	160.2	160.0	159.4	159.4	159.2	159.4
165°	184.3	172.9	169.5	168.9	168.5	168.0	167.7	167.3	167.1	166.9	166.9
167.5°	190.7	180.4	177.8	177.2	176.7	176.2	176.2	175.4	175.4	175.1	175.1
170°	195.2	187.2	184.9	184.5	184.5	184.2	183.8	183.6	183.4	183.1	183.1
172.5°	198.4	192.5	190.7	190.5	190.5	190.3	190.3	190.2	190.2	190.2	190.2
175°	200.0	196.4	195.7	195.4	195.4	195.4	195.4	195.4	195.4	195.4	195.7
177.5°	200.5	199.6	199.2	199.2	199.2	199.2	199.2	199.2	199.2	199.4	199.4
180°	199.0	199.0	199.0	199.0	199.0	199.0	199.0	199.0	199.0	199.0	199.0



TEST NUMBER: P1444497  
 CATALOG NUMBER: EHBR1-60-UNV-TA-L830

**CANDELA DISTRIBUTION (continued):**

	247.5°	250°	252.5°	255°	257.5°	260°	262.5°	265°	267.5°	270°	272.5°
0°	47963.5	47963.5	47963.5	47963.5	47963.5	47963.5	47963.5	47963.5	47963.5	47963.5	47963.5
2.5°	48338.4	48394.8	48390.5	48443.1	48440.4	48490.0	48480.0	48522.9	48513.1	48549.7	48528.3
5°	49924.0	50031.2	50066.5	50163.3	50183.3	50269.9	50271.7	50340.5	50332.2	50386.0	50357.4
7.5°	51423.9	51524.0	51571.4	51646.7	51684.1	51746.4	51770.8	51821.9	51834.2	51864.4	51863.5
10°	51550.5	51550.2	51573.6	51563.1	51584.1	51572.0	51597.6	51588.4	51626.2	51616.4	51645.1
12.5°	49847.2	49678.2	49616.4	49464.7	49431.4	49301.1	49310.4	49226.9	49267.1	49215.8	49303.3
15°	46186.6	45794.5	45600.8	45259.8	45152.7	44883.3	44861.4	44682.4	44730.8	44637.1	44774.0
17.5°	40777.3	40159.9	39821.1	39323.2	39125.5	38744.4	38668.0	38437.6	38473.3	38357.3	38522.5
20°	34327.9	33581.8	33154.4	32578.6	32321.8	31867.5	31746.9	31489.2	31521.6	31406.0	31593.0
22.5°	27804.8	27023.9	26541.5	25937.9	25610.0	25182.7	25054.5	24795.5	24810.3	24701.9	24881.7
25°	21810.4	21061.7	20593.5	20045.3	19760.7	19368.9	19234.2	19001.7	19014.8	18925.5	19086.8
27.5°	16871.9	16257.6	15865.8	15406.3	15151.3	14829.1	14697.8	14502.2	14501.8	14436.1	14571.1
30°	13184.6	12671.9	12320.1	11920.0	11680.3	11389.7	11262.8	11087.8	11080.2	11033.7	11140.8
32.5°	10323.2	9867.2	9546.4	9194.2	8979.1	8729.8	8609.6	8469.0	8456.1	8414.0	8502.0
35°	8024.9	7640.9	7365.1	7068.6	7090.4	6722.5	6783.6	6497.8	6420.3	6403.4	6468.8
37.5°	6202.3	5904.9	5680.8	5458.8	5308.4	5152.8	5069.1	4994.0	4985.4	4978.1	5023.9
40°	4854.8	4646.6	4483.6	4331.2	4227.8	4132.9	4080.5	4039.2	4029.4	4023.9	4051.6
42.5°	3929.2	3788.7	3683.7	3590.7	3527.8	3476.2	3447.5	3424.5	3416.8	3417.0	3433.4
45°	3319.6	3234.5	3166.7	3109.0	3068.8	3086.5	3034.5	3061.7	3025.9	3062.9	3038.4
47.5°	2923.4	2850.9	2808.9	2768.1	2743.7	2724.1	2724.9	2725.3	2732.8	2734.1	2742.1
50°	2617.6	2575.8	2546.5	2520.4	2507.9	2497.5	2501.1	2503.7	2511.2	2511.7	2517.6
52.5°	2391.4	2363.9	2346.3	2330.1	2324.3	2318.5	2321.0	2319.9	2323.3	2321.5	2326.3
55°	2207.3	2194.2	2188.7	2182.7	2183.6	2182.0	2183.1	2177.2	2173.6	2169.2	2173.3
57.5°	2056.2	2054.4	2058.0	2060.6	2067.5	2070.0	2071.6	2064.9	2058.4	2052.6	2056.0
60°	1939.7	1942.5	1951.8	1959.2	1969.2	1973.8	1976.6	1972.8	1968.1	1963.3	1966.2
62.5°	1824.9	1829.3	1840.4	1848.7	1860.8	1867.0	1873.9	1874.3	1876.0	1874.3	1876.2
65°	1691.5	1697.0	1707.1	1714.0	1725.1	1730.7	1737.8	1739.0	1742.9	1742.0	1745.4
67.5°	1590.3	1595.2	1603.6	1610.1	1620.1	1625.8	1632.0	1632.4	1633.8	1633.4	1636.6
70°	1482.2	1484.7	1492.1	1497.6	1507.5	1513.4	1520.6	1522.7	1527.1	1527.9	1531.4
72.5°	1366.9	1365.9	1370.3	1372.8	1380.3	1384.9	1394.0	1399.0	1406.5	1408.3	1411.1
75°	1241.4	1240.4	1245.7	1247.9	1254.3	1258.8	1269.1	1275.6	1287.1	1291.9	1290.7
77.5°	1096.2	1098.8	1108.7	1114.2	1122.7	1128.5	1141.8	1152.2	1173.4	1182.6	1173.2
80°	933.8	936.4	946.7	951.9	963.1	970.2	984.9	997.2	1016.2	1020.4	1015.0
82.5°	734.1	734.8	744.1	748.0	762.6	773.1	791.7	801.5	813.3	811.5	810.1
85°	500.6	507.3	518.8	530.5	548.2	565.3	582.9	597.4	587.1	603.3	585.2
87.5°	267.5	266.8	282.4	280.0	304.9	319.2	334.5	341.8	350.0	348.4	348.5
90°	26.3	24.5	26.7	24.5	27.9	25.4	30.1	27.9	33.4	30.3	36.1
92.5°	7.7	7.8	7.7	7.8	7.7	7.8	7.7	7.7	7.7	7.7	7.7
95°	8.3	8.3	8.3	8.1	8.1	8.1	8.1	8.1	8.1	8.1	8.1
97.5°	9.1	9.1	9.1	9.1	9.1	9.1	9.1	9.1	8.9	8.9	8.9
100°	9.9	9.9	9.9	9.9	9.6	9.6	9.6	9.6	9.6	9.6	9.6
102.5°	10.7	10.7	10.7	10.5	10.5	10.5	10.5	10.5	10.5	10.5	10.5
105°	11.7	11.7	11.5	11.5	11.3	11.3	11.3	11.3	11.3	11.3	11.3
107.5°	13.0	12.8	12.6	12.6	12.5	12.5	12.5	12.5	12.5	12.5	12.5
110°	14.2	14.1	13.9	13.9	13.7	13.5	13.5	13.5	13.5	13.5	13.5



TEST NUMBER: P1444497  
 CATALOG NUMBER: EHBR1-60-UNV-TA-L830

**CANDELA DISTRIBUTION (continued):**

	247.5°	250°	252.5°	255°	257.5°	260°	262.5°	265°	267.5°	270°	272.5°
112.5°	16.0	15.5	15.3	15.1	14.9	14.9	14.8	14.8	14.8	14.8	14.8
115°	17.8	17.6	17.2	17.0	16.9	16.5	16.4	16.4	16.4	16.4	16.4
117.5°	20.4	20.0	19.6	19.2	18.8	18.6	18.5	18.5	18.3	18.5	18.5
120°	23.8	23.1	22.4	22.0	21.7	21.5	21.0	21.0	21.0	21.0	21.0
122.5°	27.7	26.9	26.1	25.6	25.1	24.7	24.4	24.4	24.4	24.4	24.4
125°	32.7	31.8	30.9	30.3	29.3	29.1	28.8	28.8	28.7	28.8	28.8
127.5°	39.0	37.8	36.6	35.9	35.0	34.7	34.3	34.1	34.1	34.3	34.3
130°	46.1	45.0	43.7	42.8	41.8	41.4	41.0	40.7	40.6	40.7	41.0
132.5°	54.4	53.1	51.9	50.9	49.9	49.5	48.7	48.7	48.5	48.7	48.9
135°	63.6	62.4	61.2	60.0	59.0	58.6	58.0	58.0	57.8	58.0	58.5
137.5°	73.8	72.7	71.3	70.3	69.3	68.9	68.3	68.1	68.1	68.3	68.8
140°	84.4	83.2	82.0	81.0	80.4	79.8	79.2	79.2	79.0	79.4	79.6
142.5°	94.9	94.2	92.9	92.3	91.3	91.0	90.7	90.7	90.3	90.9	91.2
145°	105.2	104.5	103.6	102.9	102.4	102.2	101.5	101.6	101.6	102.2	102.4
147.5°	115.4	115.0	114.1	113.8	113.1	113.1	112.7	112.9	112.9	113.2	113.4
150°	124.4	124.2	123.7	123.6	123.2	123.2	123.0	123.2	123.2	123.6	123.7
152.5°	132.3	132.3	131.9	131.9	131.7	131.9	131.9	132.3	132.5	132.8	132.9
155°	139.8	139.8	139.8	139.9	139.9	140.4	140.4	141.0	141.2	141.6	141.8
157.5°	146.5	146.8	146.8	147.3	147.5	147.9	148.1	148.7	148.9	149.7	150.1
160°	153.1	153.4	153.6	154.1	154.5	154.8	155.4	155.9	156.4	157.0	157.3
162.5°	159.4	160.0	160.2	160.6	161.0	161.4	162.0	162.6	163.0	163.7	164.2
165°	166.9	167.1	167.3	167.5	168.0	168.3	168.7	169.5	169.7	170.5	171.0
167.5°	174.9	175.1	174.9	175.1	175.3	175.6	175.8	176.4	176.7	177.4	177.8
170°	182.8	182.8	182.8	182.8	182.8	183.1	183.3	183.4	183.6	184.2	184.3
172.5°	190.1	190.1	189.7	190.1	189.7	190.1	190.1	190.2	190.2	190.3	190.3
175°	195.4	195.7	195.7	195.9	195.7	195.7	195.7	195.7	195.7	195.9	195.9
177.5°	199.4	199.6	199.6	199.6	199.6	199.8	199.8	199.8	199.8	199.6	199.6
180°	199.0	199.0	199.0	199.0	199.0	199.0	199.0	199.0	199.0	199.0	199.0



TEST NUMBER: P1444497  
 CATALOG NUMBER: EHBR1-60-UNV-TA-L830

**CANDELA DISTRIBUTION (continued):**

	275°	277.5°	280°	282.5°	285°	287.5°	290°	292.5°	295°	297.5°	300°
0°	47963.5	47963.5	47963.5	47963.5	47963.5	47963.5	47963.5	47963.5	47963.5	47963.5	47963.5
2.5°	48564.0	48539.6	48564.5	48539.2	48564.5	48534.3	48554.8	48522.0	48530.4	48496.4	48505.1
5°	50400.2	50361.5	50382.1	50331.8	50337.1	50269.9	50268.7	50190.5	50169.8	50080.8	50041.7
7.5°	51885.1	51872.4	51879.5	51847.2	51843.5	51797.6	51775.7	51711.0	51670.3	51588.4	51532.4
10°	51650.0	51687.9	51697.7	51736.2	51744.3	51782.5	51790.4	51828.7	51836.7	51864.9	51865.3
12.5°	49299.2	49427.7	49458.4	49617.2	49684.1	49865.7	49963.1	50163.3	50282.2	50481.8	50604.5
15°	44770.3	44992.7	45081.4	45391.3	45562.8	45924.8	46152.1	46567.7	46861.0	47302.4	47617.2
17.5°	38537.1	38847.8	38988.2	39408.6	39682.8	40216.9	40602.0	41235.7	41720.8	42425.0	42983.2
20°	31625.0	31970.4	32160.8	32640.4	32964.1	33588.1	34068.9	34847.6	35497.0	36389.3	37152.4
22.5°	24938.1	25266.8	25478.1	25966.0	26330.5	26981.4	27518.6	28340.6	29068.1	30073.7	30988.7
25°	19147.8	19448.9	19640.0	20081.4	20423.5	21021.7	21534.7	22325.2	23037.1	24045.8	24984.0
27.5°	14638.2	14890.5	15074.6	15450.9	15752.8	16260.1	16700.8	17354.0	17967.5	18840.1	19675.6
30°	11206.8	11430.4	11609.6	11937.3	12217.1	12656.9	13044.4	13593.1	14100.8	14795.2	15459.8
32.5°	8563.9	8756.4	8916.0	9202.9	9456.7	9852.8	10201.9	10682.9	11118.6	11707.5	12254.3
35°	6529.6	6908.4	6881.5	7277.3	7340.9	7625.1	7936.5	8357.1	8743.1	9243.8	9709.2
37.5°	5068.1	5174.6	5288.7	5463.5	5647.4	5906.0	6169.1	6683.0	6871.4	7249.8	7635.1
40°	4086.9	4158.8	4234.2	4352.4	4481.1	4663.3	4855.0	5100.1	5351.2	5658.1	5971.4
42.5°	3455.1	3495.8	3543.8	3613.3	3692.6	3808.1	3936.2	4102.5	4277.2	4493.2	4713.6
45°	3086.9	3067.5	3081.8	3119.1	3166.9	3237.2	3318.0	3421.0	3534.8	3674.6	3823.6
47.5°	2743.7	2751.5	2755.8	2776.0	2801.7	2848.7	2897.8	2967.7	3102.6	3143.7	3224.9
50°	2517.0	2520.8	2519.6	2529.9	2542.8	2573.4	2605.3	2652.5	2699.8	2762.4	2822.1
52.5°	2327.1	2332.4	2331.7	2338.4	2345.3	2364.7	2384.8	2418.2	2449.1	2488.9	2523.3
55°	2177.0	2184.3	2187.1	2192.8	2196.2	2206.3	2214.4	2230.3	2243.5	2266.1	2286.9
57.5°	2061.6	2071.6	2076.2	2078.2	2074.1	2073.6	2070.9	2074.2	2077.0	2089.0	2100.8
60°	1970.8	1978.8	1980.0	1978.8	1971.3	1966.0	1957.4	1954.8	1953.4	1959.2	1965.7
62.5°	1875.7	1878.6	1876.6	1874.3	1865.7	1860.6	1851.7	1848.5	1845.5	1849.5	1853.0
65°	1744.2	1746.7	1744.2	1742.7	1735.1	1731.0	1723.5	1721.0	1716.8	1717.8	1717.2
67.5°	1637.4	1639.8	1637.8	1635.9	1630.6	1628.1	1622.6	1619.0	1613.9	1611.9	1608.3
70°	1530.9	1532.8	1529.8	1527.9	1521.8	1519.4	1514.3	1513.3	1509.1	1508.3	1504.2
72.5°	1408.3	1408.5	1404.3	1403.0	1398.6	1398.4	1396.3	1398.2	1398.0	1400.2	1399.3
75°	1283.1	1281.3	1276.0	1275.0	1271.7	1273.3	1270.9	1274.0	1274.4	1279.0	1279.5
77.5°	1157.6	1151.0	1140.8	1136.0	1129.3	1128.5	1124.5	1127.1	1126.3	1131.6	1133.7
80°	999.0	991.0	978.0	971.8	963.8	962.6	959.0	962.6	960.8	967.0	971.5
82.5°	797.6	790.7	777.2	772.2	762.9	763.8	760.0	763.8	763.3	772.5	777.8
85°	589.9	585.3	571.5	559.2	545.5	537.6	529.7	528.3	526.0	529.7	532.9
87.5°	340.8	336.5	325.7	318.6	294.5	295.6	286.2	285.7	283.4	281.2	286.2
90°	32.7	37.4	34.3	38.4	36.1	41.0	39.2	43.9	40.7	44.6	42.5
92.5°	7.7	7.7	7.7	7.7	7.7	7.7	7.7	7.7	7.7	7.3	7.7
95°	8.1	8.1	8.1	8.1	8.1	8.1	8.1	8.1	8.1	8.1	8.1
97.5°	9.1	8.9	8.9	8.9	8.9	8.9	8.9	8.9	9.1	9.1	9.1
100°	9.6	9.6	9.6	9.6	9.6	9.6	9.6	9.6	9.9	9.9	9.9
102.5°	10.5	10.5	10.5	10.5	10.7	10.7	10.7	10.7	10.9	10.9	10.9
105°	11.3	11.3	11.5	11.5	11.5	11.5	11.7	11.7	11.9	11.9	12.3
107.5°	12.5	12.5	12.5	12.6	12.6	12.8	12.8	13.0	13.1	13.5	13.7
110°	13.5	13.7	13.7	13.9	13.9	14.1	14.2	14.6	14.9	15.1	15.5



TEST NUMBER: P1444497  
 CATALOG NUMBER: EHBR1-60-UNV-TA-L830

**CANDELA DISTRIBUTION (continued):**

	275°	277.5°	280°	282.5°	285°	287.5°	290°	292.5°	295°	297.5°	300°
112.5°	14.9	14.9	15.1	15.3	15.5	15.8	16.0	16.4	16.9	17.2	17.8
115°	16.5	16.5	16.9	17.0	17.4	17.6	18.3	18.6	19.4	20.0	20.6
117.5°	18.6	18.8	19.2	19.4	19.8	20.4	21.0	21.7	22.4	23.1	24.2
120°	21.5	21.7	22.0	22.2	22.9	23.4	24.4	25.2	26.3	27.4	28.7
122.5°	24.7	25.1	25.6	26.1	26.9	27.7	28.8	29.9	31.1	32.3	33.8
125°	29.1	29.7	30.3	30.9	32.0	33.1	34.3	35.6	37.0	38.2	40.0
127.5°	34.8	35.4	36.1	37.0	38.2	39.2	40.7	42.0	43.7	45.3	47.1
130°	41.6	42.3	43.4	44.1	45.7	46.9	48.3	49.7	51.7	53.1	55.1
132.5°	49.7	50.5	51.5	52.6	54.0	55.5	57.2	58.6	60.4	62.0	63.8
135°	59.0	59.8	61.0	62.0	63.6	64.9	66.7	68.1	70.1	71.5	73.4
137.5°	69.5	70.3	71.3	72.3	73.9	75.2	77.0	78.4	80.0	81.6	83.2
140°	80.6	81.0	82.3	83.4	84.6	85.9	87.7	88.9	90.7	91.9	93.3
142.5°	92.1	92.5	93.5	94.6	95.8	96.9	98.3	99.4	100.8	101.8	103.6
145°	103.1	103.6	104.7	105.4	106.5	107.5	108.8	109.9	111.1	112.0	113.2
147.5°	114.1	114.7	115.5	116.4	117.5	118.4	119.2	120.2	121.4	122.3	123.4
150°	124.4	125.0	125.7	126.2	127.3	128.1	129.3	129.9	130.9	131.5	132.6
152.5°	133.9	134.2	134.9	135.4	136.4	137.0	137.8	138.6	139.6	140.0	141.0
155°	142.4	143.1	143.8	144.3	145.2	145.6	146.5	147.0	147.9	148.6	149.5
157.5°	150.7	151.1	152.0	152.3	153.2	153.8	154.5	155.0	155.9	156.4	157.2
160°	158.0	158.8	159.2	160.0	160.7	161.2	162.0	162.6	163.4	163.9	164.6
162.5°	165.0	165.7	166.4	166.9	167.7	168.3	168.9	169.5	170.5	170.9	171.7
165°	171.7	172.3	173.1	173.5	174.4	175.1	175.6	176.4	176.9	177.6	178.1
167.5°	178.4	178.8	179.8	180.2	181.0	181.5	182.2	182.8	183.4	183.8	184.5
170°	184.9	185.4	185.9	186.5	187.0	187.3	188.1	188.5	189.1	189.5	190.2
172.5°	190.7	191.1	191.5	191.7	192.0	192.5	192.9	193.1	193.6	193.9	194.3
175°	195.9	195.9	196.1	196.2	196.4	196.4	196.6	197.0	197.2	197.3	197.5
177.5°	199.6	199.6	199.6	199.6	199.6	199.6	199.6	199.6	199.6	199.6	199.6
180°	199.0	199.0	199.0	199.0	199.0	199.0	199.0	199.0	199.0	199.0	199.0



TEST NUMBER: P1444497  
 CATALOG NUMBER: EHBR1-60-UNV-TA-L830

**CANDELA DISTRIBUTION (continued):**

	302.5°	305°	307.5°	310°	312.5°	315°	317.5°	320°	322.5°	325°	327.5°
0°	47963.5	47963.5	47963.5	47963.5	47963.5	47963.5	47963.5	47963.5	47963.5	47963.5	47963.5
2.5°	48471.2	48473.3	48434.2	48432.1	48395.4	48390.8	48355.1	48344.3	48315.3	48304.8	48275.3
5°	49941.8	49894.2	49784.1	49719.4	49610.6	49538.6	49420.9	49344.1	49230.6	49144.9	49030.6
7.5°	51429.1	51355.2	51231.6	51131.5	50980.6	50860.1	50683.5	50538.9	50347.6	50182.1	49981.2
10°	51865.3	51854.0	51822.5	51776.6	51706.4	51627.5	51507.3	51381.9	51214.4	51032.4	50809.1
12.5°	50792.0	50907.9	51065.9	51159.6	51273.6	51323.5	51370.2	51358.5	51327.8	51235.7	51106.6
15°	48073.2	48398.8	48830.1	49164.3	49548.7	49828.2	50136.8	50329.1	50520.9	50609.4	50663.7
17.5°	43748.1	44364.8	45138.0	45778.8	46518.2	47112.1	47763.0	48253.1	48757.0	49118.0	49444.6
20°	38192.6	39086.1	40179.7	41145.8	42269.2	43245.4	44315.2	45193.5	46099.2	46807.3	47477.7
22.5°	32166.9	33227.9	34550.0	35774.8	37222.9	38524.5	39993.0	41271.1	42605.5	43720.4	44798.3
25°	26241.4	27405.0	28850.7	30217.2	31857.4	33371.3	35112.8	36705.7	38430.4	39928.0	41407.2
27.5°	20830.6	21973.0	23449.0	24903.6	26638.0	28251.1	30117.1	31872.1	33836.0	35647.0	37499.5
30°	16383.5	17352.4	18675.8	20084.7	21795.3	23436.9	25323.1	27128.1	29171.1	31148.5	33235.2
32.5°	12980.1	13718.3	14758.8	15950.1	17528.4	19091.1	20887.1	22629.6	24641.4	26638.9	28809.1
35°	10308.6	10884.4	11677.7	12607.4	13943.9	15290.9	16879.6	18464.1	20341.1	22236.5	24346.0
37.5°	8128.9	8596.1	9217.3	9915.7	10987.8	12093.3	13395.9	14709.5	16340.4	18020.6	19932.4
40°	6347.8	6726.0	7209.7	7730.6	8540.1	9391.9	10399.2	11417.9	12728.2	14101.4	15683.6
42.5°	4986.7	5265.7	5607.4	5988.0	6743.3	7195.5	7878.6	8615.4	9578.7	10575.5	11765.2
45°	4004.7	4195.1	4432.0	4687.3	5037.8	5421.5	5889.3	6379.9	7295.0	7743.9	8467.4
47.5°	3344.3	3472.2	3622.9	3783.7	3990.5	4213.6	4491.1	4774.8	5141.7	5521.9	5967.7
50°	2899.6	3029.5	3081.3	3164.7	3284.3	3411.7	3568.1	3724.5	3921.3	4120.8	4350.3
52.5°	2569.5	2611.8	2668.1	2721.1	2795.2	2940.3	2987.3	3069.0	3179.4	3287.3	3407.8
55°	2317.4	2345.0	2381.6	2413.6	2458.4	2501.2	2563.1	2617.5	2691.1	2756.2	2836.2
57.5°	2121.2	2138.8	2164.2	2185.2	2214.2	2238.4	2274.6	2304.1	2346.5	2383.2	2431.7
60°	1978.6	1990.3	2007.5	2021.1	2039.6	2052.2	2070.2	2084.1	2106.5	2125.1	2152.1
62.5°	1862.2	1868.3	1879.4	1887.5	1899.2	1905.5	1915.2	1921.2	1933.5	1942.9	1958.0
65°	1722.5	1723.9	1731.4	1734.8	1744.0	1747.3	1755.2	1758.0	1768.1	1775.1	1788.5
67.5°	1608.0	1604.8	1605.0	1602.3	1603.6	1600.9	1601.6	1598.8	1602.8	1605.0	1615.1
70°	1503.5	1499.0	1497.6	1492.8	1491.4	1486.4	1485.0	1480.6	1480.0	1478.6	1482.2
72.5°	1401.6	1400.4	1400.8	1397.4	1397.0	1393.6	1393.8	1391.7	1394.0	1395.0	1399.6
75°	1284.5	1284.9	1287.1	1284.1	1285.0	1282.2	1283.2	1280.6	1282.0	1281.4	1286.1
77.5°	1141.9	1145.3	1151.5	1150.3	1152.2	1149.1	1150.5	1146.7	1147.7	1145.3	1147.1
80°	981.6	988.7	997.0	996.7	1000.2	998.0	1001.2	997.6	999.0	994.7	993.7
82.5°	791.2	797.2	806.1	806.5	814.3	815.8	824.4	824.1	829.6	826.1	823.6
85°	540.9	545.0	552.8	557.1	565.1	570.1	578.4	581.8	575.8	586.8	578.0
87.5°	282.4	292.9	287.1	300.8	297.6	311.5	308.4	321.2	318.8	329.7	328.3
90°	48.3	46.9	53.1	52.3	60.2	60.4	68.8	68.3	76.2	76.1	84.1
92.5°	7.3	7.7	7.7	7.7	7.7	7.8	7.7	7.7	7.7	7.8	7.7
95°	8.1	8.1	8.1	8.1	8.1	8.1	8.1	8.3	8.3	8.3	8.3
97.5°	9.1	9.1	9.1	9.1	9.3	9.3	9.3	9.3	9.3	9.5	9.5
100°	9.9	10.1	10.1	10.1	10.3	10.3	10.5	10.5	10.7	10.7	10.7
102.5°	11.2	11.2	11.3	11.5	11.5	11.7	11.9	12.3	12.3	12.5	12.5
105°	12.5	12.6	12.8	13.0	13.1	13.7	13.9	14.1	14.2	14.6	14.6
107.5°	14.1	14.2	14.8	14.9	15.3	15.8	16.2	16.4	16.9	17.0	17.2
110°	16.0	16.4	16.9	17.4	17.8	18.5	18.8	19.4	19.8	20.0	20.4



TEST NUMBER: P1444497  
 CATALOG NUMBER: EHBR1-60-UNV-TA-L830

**CANDELA DISTRIBUTION (continued):**

	302.5°	305°	307.5°	310°	312.5°	315°	317.5°	320°	322.5°	325°	327.5°
112.5°	18.3	19.2	19.6	20.4	21.0	21.7	22.2	22.9	23.3	24.0	24.4
115°	21.5	22.2	23.1	24.0	24.7	25.6	26.3	27.0	27.7	28.5	28.8
117.5°	25.1	26.3	27.0	28.5	29.1	30.3	31.1	32.0	32.7	33.4	34.1
120°	29.7	30.9	32.1	33.4	34.5	35.6	36.6	37.7	38.4	39.2	40.0
122.5°	35.0	36.6	37.8	39.2	40.4	41.6	42.6	43.9	44.8	45.9	46.6
125°	41.4	42.8	44.3	45.9	47.1	48.5	49.6	50.9	51.9	53.1	54.0
127.5°	48.5	50.3	51.7	53.3	54.6	56.2	57.2	58.6	59.8	61.0	62.0
130°	56.5	58.5	59.9	61.4	62.6	64.4	65.4	66.9	68.1	69.3	70.5
132.5°	65.4	67.0	68.5	70.3	71.5	72.9	74.1	75.7	76.6	78.2	79.4
135°	74.8	76.4	77.7	79.4	80.6	82.0	83.2	84.6	85.7	87.3	88.5
137.5°	84.4	86.2	87.5	88.9	89.9	91.3	92.5	93.9	94.9	96.5	97.6
140°	94.6	96.0	97.0	98.4	99.6	100.8	101.8	103.1	104.2	105.4	106.3
142.5°	104.7	105.9	106.9	108.3	109.1	110.3	111.1	112.1	113.2	114.3	115.2
145°	114.3	115.5	116.4	117.5	118.0	119.2	120.0	121.0	121.6	122.6	123.4
147.5°	124.2	125.3	125.9	126.9	127.3	128.3	128.9	129.5	130.3	130.9	131.3
150°	133.1	134.2	134.7	135.4	136.0	136.9	137.2	137.8	138.2	138.6	139.2
152.5°	141.6	142.4	142.9	143.4	144.0	144.5	144.7	145.4	145.6	145.8	146.1
155°	149.9	150.7	151.1	151.8	152.0	152.5	152.5	153.1	153.2	153.4	153.4
157.5°	157.6	158.4	159.0	159.2	159.6	160.2	160.4	160.7	160.7	161.0	161.0
160°	165.1	165.7	166.2	166.5	167.1	167.3	167.5	168.0	168.1	168.1	168.1
162.5°	172.1	172.8	173.1	173.5	174.0	174.4	174.6	174.9	175.1	175.3	175.3
165°	178.6	179.2	179.8	180.2	180.4	181.0	181.2	181.5	181.5	181.8	181.8
167.5°	184.9	185.6	185.9	186.5	186.7	187.0	187.2	187.7	187.7	187.9	187.9
170°	190.3	190.7	191.3	191.7	191.8	192.0	192.3	192.5	192.5	192.7	192.7
172.5°	194.6	195.0	195.0	195.4	195.4	195.7	195.9	195.9	196.1	196.1	196.1
175°	197.5	197.6	198.0	198.0	198.0	198.2	198.2	198.2	198.2	198.2	198.2
177.5°	199.6	199.6	199.6	199.4	199.4	199.4	199.4	199.4	199.4	199.4	199.2
180°	199.0	199.0	199.0	199.0	199.0	199.0	199.0	199.0	199.0	199.0	199.0



TEST NUMBER: P1444497  
 CATALOG NUMBER: EHBR1-60-UNV-TA-L830

**CANDELA DISTRIBUTION (continued):**

	330°	332.5°	335°	337.5°	340°	342.5°	345°	347.5°	350°	352.5°	355°
0°	47963.5	47963.5	47963.5	47963.5	47963.5	47963.5	47963.5	47963.5	47963.5	47963.5	47963.5
2.5°	48264.8	48243.8	48230.3	48213.1	48202.6	48189.3	48179.4	48171.1	48164.4	48158.2	48153.5
5°	48943.5	48835.6	48751.9	48661.2	48586.7	48512.4	48455.2	48407.7	48375.0	48350.5	48335.9
7.5°	49807.5	49610.1	49434.4	49249.6	49083.9	48920.9	48780.5	48659.4	48568.6	48509.7	48474.0
10°	50579.2	50314.8	50053.4	49778.2	49517.3	49264.1	49030.6	48825.1	48662.5	48554.4	48491.3
12.5°	50925.1	50699.9	50433.0	50134.2	49814.4	49490.8	49175.4	48891.1	48652.3	48492.2	48399.7
15°	50620.5	50528.0	50346.9	50115.0	49811.5	49477.0	49106.7	48758.6	48438.4	48230.9	48110.5
17.5°	49629.5	49758.5	49744.7	49656.0	49437.8	49156.2	48778.9	48387.9	47987.5	47710.0	47558.4
20°	47957.1	48362.7	48568.6	48674.2	48588.5	48405.9	48064.3	47667.5	47200.8	46838.4	46617.4
22.5°	45606.9	46323.2	46769.5	47096.0	47165.4	47103.2	46801.5	46424.1	45903.8	45468.3	45141.8
25°	42581.5	43630.8	44336.1	44889.1	45103.9	45159.4	44902.6	44527.4	43947.4	43440.1	42991.6
27.5°	39018.0	40381.4	41323.2	42066.2	42401.6	42547.0	42310.8	41927.9	41241.7	40636.1	40050.2
30°	35006.1	36623.7	37757.7	38648.6	39057.5	39249.6	38998.7	38571.2	37772.8	37043.9	36305.9
32.5°	30712.2	32482.3	33718.0	34685.5	35090.6	35271.4	34943.1	34463.1	33540.2	32681.6	31820.9
35°	26216.5	28003.2	29249.3	30191.1	30530.5	30639.6	30219.6	29664.9	28642.4	27700.1	26761.6
37.5°	21629.3	23291.5	24424.0	25269.2	25479.3	25498.2	24992.3	24379.5	23304.8	22375.7	21441.4
40°	17081.7	18483.5	19397.9	20074.4	20147.3	20082.3	19532.3	18915.6	17910.2	17077.8	16257.6
42.5°	12798.1	13856.3	14508.7	14972.3	14944.7	14816.2	14311.9	13781.8	12952.3	12318.3	11672.9
45°	9128.2	9826.0	10207.4	10478.7	10391.6	10269.1	9876.7	9505.1	8941.4	8531.9	8098.1
47.5°	6341.5	7174.7	7029.6	7560.1	7103.1	7404.9	6776.3	6429.9	6130.7	5913.2	5668.0
50°	4539.9	4730.8	4823.1	4886.1	4852.6	4806.3	4693.4	4592.4	4455.7	4356.2	4240.1
52.5°	3506.1	3601.6	3653.8	3691.7	3684.3	3667.3	3618.1	3573.2	3509.1	3467.0	3416.2
55°	2969.8	2971.2	3067.4	3026.1	3087.1	3015.6	3043.7	2964.7	2977.4	2909.5	2863.9
57.5°	2467.9	2506.9	2524.5	2541.6	2536.8	2533.8	2514.8	2505.1	2483.7	2477.0	2461.8
60°	2170.8	2191.2	2195.5	2203.3	2196.8	2194.2	2179.3	2174.0	2159.6	2157.0	2146.7
62.5°	1967.1	1977.6	1977.6	1977.6	1969.1	1960.8	1944.3	1935.6	1923.3	1920.7	1914.8
65°	1797.2	1807.9	1809.7	1812.1	1805.9	1799.4	1784.9	1775.4	1762.8	1758.0	1751.3
67.5°	1621.7	1633.2	1637.2	1643.0	1639.4	1638.2	1628.3	1624.5	1616.2	1614.2	1608.0
70°	1483.9	1488.7	1488.3	1488.1	1480.4	1473.4	1461.9	1456.4	1447.7	1445.9	1440.2
72.5°	1402.0	1405.3	1403.2	1400.2	1390.1	1379.8	1366.3	1356.3	1344.9	1337.8	1329.8
75°	1286.6	1291.1	1288.3	1286.3	1277.2	1270.5	1259.6	1254.1	1246.1	1243.8	1238.2
77.5°	1144.9	1147.1	1142.4	1141.9	1135.0	1130.7	1122.6	1121.1	1115.2	1115.4	1110.1
80°	987.3	986.0	978.6	977.2	970.2	968.5	962.0	962.4	957.8	959.8	956.0
82.5°	812.3	807.9	798.2	795.3	787.3	786.6	782.3	785.9	783.0	787.3	784.8
85°	582.2	583.4	579.2	579.2	576.8	577.6	577.2	579.8	580.2	584.1	583.9
87.5°	324.6	329.3	328.3	332.6	332.4	337.2	338.8	345.9	346.8	353.4	353.4
90°	83.9	92.6	92.3	101.2	101.5	110.1	111.7	120.2	120.8	128.3	127.7
92.5°	7.7	7.7	7.8	7.7	7.7	7.3	8.0	7.3	7.7	7.3	7.3
95°	8.3	8.3	8.3	8.3	8.3	8.1	8.1	8.1	8.1	8.1	8.1
97.5°	9.5	9.5	9.5	9.5	9.5	9.5	9.3	9.3	9.3	9.3	9.3
100°	10.7	10.7	10.9	10.7	10.7	10.7	10.7	10.7	10.7	10.5	10.5
102.5°	12.6	12.6	12.6	12.6	12.6	12.6	12.6	12.5	12.5	12.5	12.5
105°	14.8	14.8	14.9	14.9	14.9	14.9	14.9	14.8	14.8	14.8	14.8
107.5°	17.4	17.4	17.6	17.6	17.8	17.8	17.8	17.6	17.8	17.6	17.6
110°	20.8	21.0	21.2	21.2	21.5	21.5	21.5	21.5	21.7	21.5	21.5



TEST NUMBER: P1444497  
 CATALOG NUMBER: EHBR1-60-UNV-TA-L830

**CANDELA DISTRIBUTION (continued):**

	330°	332.5°	335°	337.5°	340°	342.5°	345°	347.5°	350°	352.5°	355°
112.5°	24.7	25.1	25.4	25.4	25.8	25.8	26.1	26.1	26.3	26.1	26.3
115°	29.3	29.9	30.3	30.4	30.9	31.1	31.5	31.5	31.8	31.8	31.8
117.5°	34.8	35.4	35.9	36.4	36.8	37.2	37.7	37.8	38.0	38.0	38.2
120°	40.7	41.4	42.3	42.8	43.6	43.9	44.6	44.8	45.1	45.1	45.3
122.5°	47.7	48.3	49.5	49.9	50.9	51.5	52.1	52.6	53.0	53.0	53.1
125°	55.3	56.2	57.2	58.0	59.0	59.8	60.4	60.8	61.4	61.4	61.5
127.5°	63.3	64.4	65.6	66.5	67.7	68.3	69.1	69.5	70.3	70.3	70.3
130°	71.8	72.9	74.3	75.4	76.4	77.3	78.4	78.8	79.4	79.4	79.6
132.5°	80.8	82.0	83.4	84.4	85.7	86.6	87.7	88.0	88.7	88.7	88.9
135°	89.9	91.0	92.5	93.5	94.7	95.8	96.7	97.2	98.0	98.0	98.2
137.5°	99.0	100.0	101.4	102.4	103.6	104.5	105.4	105.9	106.5	106.9	106.9
140°	107.7	108.6	110.1	110.9	112.0	112.9	113.8	114.3	115.0	115.0	115.2
142.5°	116.2	117.0	118.4	119.1	120.0	120.7	121.4	122.0	122.5	122.6	122.6
145°	124.2	124.8	125.9	126.5	127.3	127.8	128.5	129.1	129.3	129.3	129.5
147.5°	132.3	132.6	133.1	133.7	134.6	134.9	135.3	135.4	136.0	136.0	136.0
150°	139.6	139.8	140.0	140.4	140.8	141.0	141.2	141.5	141.6	141.5	141.5
152.5°	146.3	146.5	146.7	146.7	146.8	146.8	146.8	146.7	146.7	146.5	146.3
155°	153.6	153.6	153.6	153.4	153.6	153.4	153.2	153.1	152.7	152.3	152.0
157.5°	161.0	160.7	161.0	160.7	160.6	160.4	160.2	159.4	159.2	158.8	158.2
160°	168.3	168.1	168.1	168.0	167.7	167.3	167.1	166.4	166.0	165.3	164.8
162.5°	175.3	175.3	175.1	174.9	174.6	174.4	174.0	173.3	172.9	172.3	171.7
165°	182.0	181.8	181.8	181.5	181.3	181.0	180.8	180.0	179.8	179.0	178.4
167.5°	187.9	187.9	187.7	187.3	187.2	187.0	186.7	186.1	185.7	185.0	184.7
170°	192.7	192.5	192.5	192.3	192.0	191.8	191.5	191.1	190.5	190.2	189.7
172.5°	195.9	195.9	195.7	195.4	195.4	195.2	194.8	194.6	194.1	193.7	193.6
175°	198.0	198.0	197.6	197.6	197.5	197.3	197.2	197.0	196.6	196.4	196.1
177.5°	199.2	199.2	199.0	199.0	198.8	198.8	198.6	198.4	198.4	198.2	198.0
180°	199.0	199.0	199.0	199.0	199.0	199.0	199.0	199.0	199.0	199.0	199.0



TEST NUMBER: P1444497  
CATALOG NUMBER: EHBR1-60-UNV-TA-L830

**CANDELA DISTRIBUTION (continued):**

	357.5°	360°
0°	47963.5	47963.5
2.5°	48149.3	48146.7
5°	48328.3	48325.4
7.5°	48464.4	48463.5
10°	48480.4	48488.7
12.5°	48383.7	48390.5
15°	48101.3	48114.4
17.5°	47561.2	47578.4
20°	46630.9	46648.8
22.5°	45124.2	45131.7
25°	42933.7	42902.6
27.5°	39947.3	39893.8
30°	36150.9	36099.2
32.5°	31624.7	31592.3
35°	26529.6	26509.1
37.5°	21165.3	21123.7
40°	15957.8	15836.5
42.5°	11390.2	11177.5
45°	7871.6	7619.5
47.5°	5495.2	5339.3
50°	4165.3	4115.0
52.5°	3394.0	3382.2
55°	2863.7	2858.6
57.5°	2465.1	2463.4
60°	2152.1	2151.6
62.5°	1918.8	1919.6
65°	1754.3	1754.6
67.5°	1609.6	1608.5
70°	1442.3	1441.1
72.5°	1327.1	1325.2
75°	1238.2	1237.0
77.5°	1111.7	1109.7
80°	958.4	956.0
82.5°	788.3	785.5
85°	588.1	588.2
87.5°	359.8	359.6
90°	134.7	133.1
92.5°	7.7	8.0
95°	8.1	8.1
97.5°	9.3	9.3
100°	10.5	10.5
102.5°	12.5	12.5
105°	14.8	14.8
107.5°	17.6	17.6
110°	21.5	21.5



TEST NUMBER: P1444497  
CATALOG NUMBER: EHBR1-60-UNV-TA-L830

**CANDELA DISTRIBUTION (continued):**

	357.5°	360°
112.5°	26.1	26.1
115°	31.5	31.5
117.5°	38.0	37.8
120°	45.0	45.0
122.5°	52.8	52.6
125°	61.2	61.0
127.5°	70.1	69.7
130°	79.0	78.8
132.5°	88.5	88.0
135°	97.6	97.2
137.5°	106.3	105.9
140°	114.7	114.3
142.5°	122.5	122.1
145°	129.3	128.9
147.5°	135.3	135.1
150°	141.0	140.6
152.5°	145.6	145.2
155°	151.3	150.7
157.5°	157.3	156.8
160°	163.9	163.4
162.5°	170.9	170.3
165°	177.6	176.9
167.5°	183.8	183.4
170°	189.1	188.7
172.5°	193.1	192.7
175°	195.9	195.7
177.5°	198.0	197.6
180°	199.0	199.0

LM-79-2019: Approved Method: Electrical and Photometric Measurements of Solid-  
State Lighting Products

Report Prepared for

Cooper Lighting Solutions

Metalux

Report Number: SP1-2506-472-2

Test Date: 07/31/2025

Luminaire Tested: EHBR-60-L830-N

Data in this report applies to families of products including EHBR-60-L830-N

**Test Information**

Test Method: LM-79-2019  
 Report Number: SP1-2506-472-2  
 Test Lab: COOPER LIGHTING SOLUTIONS  
 Photometer: SP1 - 76IN SPHERE  
 Measurement Geometry: 4π  
 Issue Date: 08/05/2025  
 Manufacturer: COOPER LIGHTING SOLUTIONS  
 Product Line: Metalux  
 Catalog Number: **EHBR-60-L830-N**  
 Description: Elevate Round Highbay at, 60000 lumens, 3000K 80CRI LEDs with N lens

**Spectral Parameters**

CCT (K): 2983  
 CIE u': 0.2516  
 CIE v': 0.5201  
 Duv: -0.0012  
 CIE x: 0.4364  
 CIE y: 0.4010  
 CIE z: 0.1626  
 Peak Wavelength (nm): 630  
 Dominant Wavelength (nm): 583  
 Purity: 51.34918  
 Rf: 81.2  
 Rg: 101.5

CRI (Ra):	83.4		
R1:	84.0	R9:	29.4
R2:	87.5	R10:	68.6
R3:	88.9	R11:	82.2
R4:	83.8	R12:	61.6
R5:	81.9	R13:	83.9
R6:	83.1	R14:	92.5
R7:	87.1	R15:	79.8
R8:	70.9		



**Test Conditions**

Stabilization Time: 38M  
 Operation Time: 1H 38M  
 Sphere Temperature (°C): 25.0

REPORT NUMBER: SP1-2506-472-2

Measurement and Test Equipment			
Instrument	Identification Number	Calibration Date	Calibration Due Date
Photometer	76INCH SPHERE IN0058	6/16/2025	12/16/2025
Power Meter	XITRON INXT2011004	1/21/2025	1/21/2026
AC Power Source	CHROMA 61603 IN0063	10/22/2024	10/22/2025
DC Power Source	AGILENT E3634A IN0208	10/22/2024	10/22/2025
Sphere Thermometer	ONSET IN0085	10/22/2024	10/22/2025
Room Thermometer	ONSET IN0046	10/22/2024	10/22/2025

REPORT NUMBER: SP1-2506-472-2

CIE 1931 Chromaticity Diagram



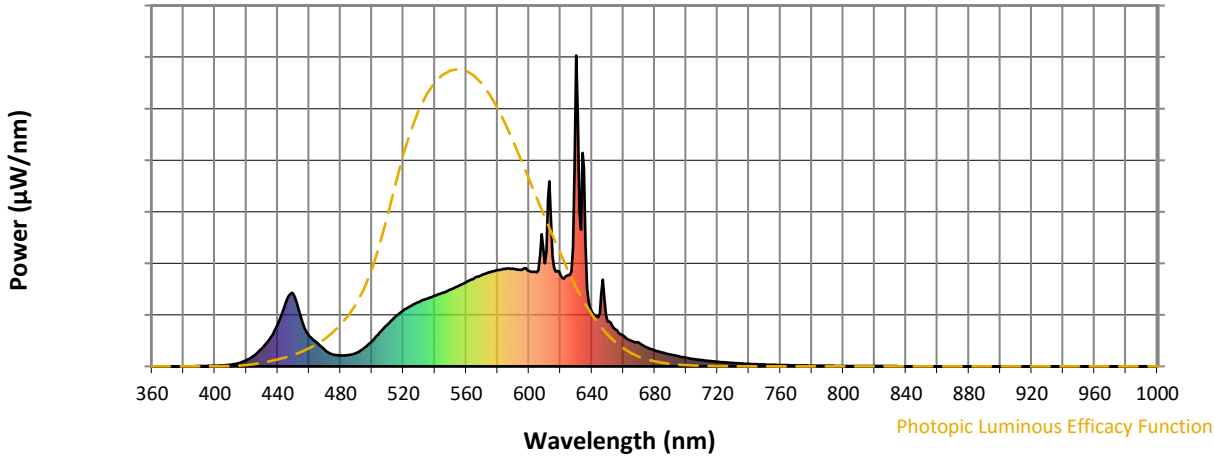
CIE 1931 Chromaticity Diagram with 2017 ANSI 7-Step and 4-Step Quadrangles



Point lies inside the ANSI 3000K 4-step quadrangle

REPORT NUMBER: SP1-2506-472-2

**Photopic Flux vs. Wavelength**



**Photopic Lumens: NR**

$\lambda$ (nm)	Power W <sup>^</sup> /nm	Lumens (φ/nm)	$\lambda$ (nm)	Power W <sup>^</sup> /nm	Lumens (φ/nm)	$\lambda$ (nm)	Power W <sup>^</sup> /nm	Lumens (φ/nm)	$\lambda$ (nm)	Power W <sup>^</sup> /nm	Lumens (φ/nm)	$\lambda$ (nm)	Power W <sup>^</sup> /nm	Lumens (φ/nm)
360	0	NR	490	43	NR	620	294	NR	750	6	NR	880	0	NR
365	0	NR	495	59	NR	625	294	NR	755	5	NR	885	0	NR
370	0	NR	500	81	NR	630	1000	NR	760	4	NR	890	0	NR
375	0	NR	505	109	NR	635	637	NR	765	4	NR	895	0	NR
380	0	NR	510	135	NR	640	175	NR	770	3	NR	900	0	NR
385	0	NR	515	160	NR	645	171	NR	775	3	NR	905	0	NR
390	1	NR	520	180	NR	650	146	NR	780	2	NR	910	0	NR
395	1	NR	525	195	NR	655	119	NR	785	2	NR	915	0	NR
400	2	NR	530	207	NR	660	99	NR	790	2	NR	920	0	NR
405	3	NR	535	218	NR	665	82	NR	795	2	NR	925	0	NR
410	5	NR	540	227	NR	670	76	NR	800	1	NR	930	0	NR
415	10	NR	545	237	NR	675	61	NR	805	1	NR	935	0	NR
420	20	NR	550	247	NR	680	52	NR	810	1	NR	940	0	NR
425	35	NR	555	259	NR	685	44	NR	815	1	NR	945	0	NR
430	58	NR	560	271	NR	690	38	NR	820	1	NR	950	0	NR
435	90	NR	565	283	NR	695	33	NR	825	1	NR	955	0	NR
440	135	NR	570	293	NR	700	27	NR	830	1	NR	960	0	NR
445	204	NR	575	303	NR	705	24	NR	835	1	NR	965	0	NR
450	233	NR	580	310	NR	710	20	NR	840	0	NR	970	0	NR
455	153	NR	585	313	NR	715	17	NR	845	0	NR	975	0	NR
460	98	NR	590	314	NR	720	15	NR	850	0	NR	980	0	NR
465	76	NR	595	310	NR	725	13	NR	855	0	NR	985	0	NR
470	53	NR	600	307	NR	730	11	NR	860	0	NR	990	0	NR
475	39	NR	605	303	NR	735	9	NR	865	0	NR	995	0	NR
480	35	NR	610	331	NR	740	8	NR	870	0	NR	1000	0	NR
485	36	NR	615	353	NR	745	7	NR	875	0	NR			

REPORT NUMBER: SP1-2506-472-2

**Scotopic Flux vs. Wavelength**



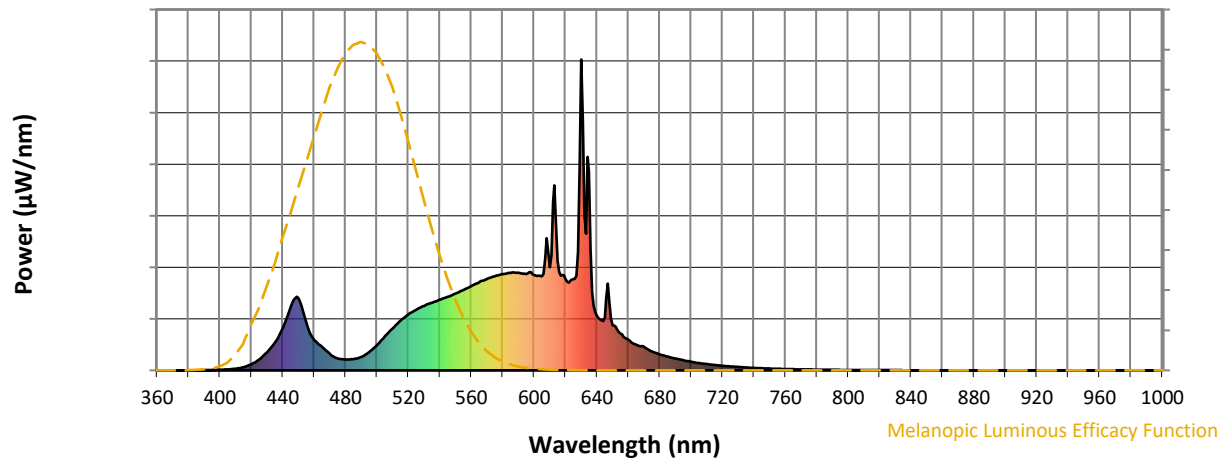
**Scotopic Lumens: NR**

**S/P: 1.27**

λ (nm)	Power W <sup>^</sup> /nm	Lumens (φ/nm)	λ (nm)	Power W <sup>^</sup> /nm	Lumens (φ/nm)	λ (nm)	Power W <sup>^</sup> /nm	Lumens (φ/nm)	λ (nm)	Power W <sup>^</sup> /nm	Lumens (φ/nm)	λ (nm)	Power W <sup>^</sup> /nm	Lumens (φ/nm)
360	0	NR	490	43	NR	620	294	NR	750	6	NR	880	0	NR
365	0	NR	495	59	NR	625	294	NR	755	5	NR	885	0	NR
370	0	NR	500	81	NR	630	1000	NR	760	4	NR	890	0	NR
375	0	NR	505	109	NR	635	637	NR	765	4	NR	895	0	NR
380	0	NR	510	135	NR	640	175	NR	770	3	NR	900	0	NR
385	0	NR	515	160	NR	645	171	NR	775	3	NR	905	0	NR
390	1	NR	520	180	NR	650	146	NR	780	2	NR	910	0	NR
395	1	NR	525	195	NR	655	119	NR	785	2	NR	915	0	NR
400	2	NR	530	207	NR	660	99	NR	790	2	NR	920	0	NR
405	3	NR	535	218	NR	665	82	NR	795	2	NR	925	0	NR
410	5	NR	540	227	NR	670	76	NR	800	1	NR	930	0	NR
415	10	NR	545	237	NR	675	61	NR	805	1	NR	935	0	NR
420	20	NR	550	247	NR	680	52	NR	810	1	NR	940	0	NR
425	35	NR	555	259	NR	685	44	NR	815	1	NR	945	0	NR
430	58	NR	560	271	NR	690	38	NR	820	1	NR	950	0	NR
435	90	NR	565	283	NR	695	33	NR	825	1	NR	955	0	NR
440	135	NR	570	293	NR	700	27	NR	830	1	NR	960	0	NR
445	204	NR	575	303	NR	705	24	NR	835	1	NR	965	0	NR
450	233	NR	580	310	NR	710	20	NR	840	0	NR	970	0	NR
455	153	NR	585	313	NR	715	17	NR	845	0	NR	975	0	NR
460	98	NR	590	314	NR	720	15	NR	850	0	NR	980	0	NR
465	76	NR	595	310	NR	725	13	NR	855	0	NR	985	0	NR
470	53	NR	600	307	NR	730	11	NR	860	0	NR	990	0	NR
475	39	NR	605	303	NR	735	9	NR	865	0	NR	995	0	NR
480	35	NR	610	331	NR	740	8	NR	870	0	NR	1000	0	NR
485	36	NR	615	353	NR	745	7	NR	875	0	NR			

REPORT NUMBER: SP1-2506-472-2

**Melanopic Flux vs. Wavelength**



**Melanopic Lumens: NR**

**M/P: 2.34**

$\lambda$ (nm)	Power W <sup>^</sup> /nm	Lumens ( $\phi$ /nm)	$\lambda$ (nm)	Power W <sup>^</sup> /nm	Lumens ( $\phi$ /nm)	$\lambda$ (nm)	Power W <sup>^</sup> /nm	Lumens ( $\phi$ /nm)	$\lambda$ (nm)	Power W <sup>^</sup> /nm	Lumens ( $\phi$ /nm)	$\lambda$ (nm)	Power W <sup>^</sup> /nm	Lumens ( $\phi$ /nm)
360	0	NR	490	43	NR	620	294	NR	750	6	NR	880	0	NR
365	0	NR	495	59	NR	625	294	NR	755	5	NR	885	0	NR
370	0	NR	500	81	NR	630	1000	NR	760	4	NR	890	0	NR
375	0	NR	505	109	NR	635	637	NR	765	4	NR	895	0	NR
380	0	NR	510	135	NR	640	175	NR	770	3	NR	900	0	NR
385	0	NR	515	160	NR	645	171	NR	775	3	NR	905	0	NR
390	1	NR	520	180	NR	650	146	NR	780	2	NR	910	0	NR
395	1	NR	525	195	NR	655	119	NR	785	2	NR	915	0	NR
400	2	NR	530	207	NR	660	99	NR	790	2	NR	920	0	NR
405	3	NR	535	218	NR	665	82	NR	795	2	NR	925	0	NR
410	5	NR	540	227	NR	670	76	NR	800	1	NR	930	0	NR
415	10	NR	545	237	NR	675	61	NR	805	1	NR	935	0	NR
420	20	NR	550	247	NR	680	52	NR	810	1	NR	940	0	NR
425	35	NR	555	259	NR	685	44	NR	815	1	NR	945	0	NR
430	58	NR	560	271	NR	690	38	NR	820	1	NR	950	0	NR
435	90	NR	565	283	NR	695	33	NR	825	1	NR	955	0	NR
440	135	NR	570	293	NR	700	27	NR	830	1	NR	960	0	NR
445	204	NR	575	303	NR	705	24	NR	835	1	NR	965	0	NR
450	233	NR	580	310	NR	710	20	NR	840	0	NR	970	0	NR
455	153	NR	585	313	NR	715	17	NR	845	0	NR	975	0	NR
460	98	NR	590	314	NR	720	15	NR	850	0	NR	980	0	NR
465	76	NR	595	310	NR	725	13	NR	855	0	NR	985	0	NR
470	53	NR	600	307	NR	730	11	NR	860	0	NR	990	0	NR
475	39	NR	605	303	NR	735	9	NR	865	0	NR	995	0	NR
480	35	NR	610	331	NR	740	8	NR	870	0	NR	1000	0	NR
485	36	NR	615	353	NR	745	7	NR	875	0	NR			

**Summary**

$R_f = 81.2$   
 $R_g = 101.5$   
 CIE  $R_a = 83.4$   
 $R_9 = 29.4$



**Color Vector Graphics**

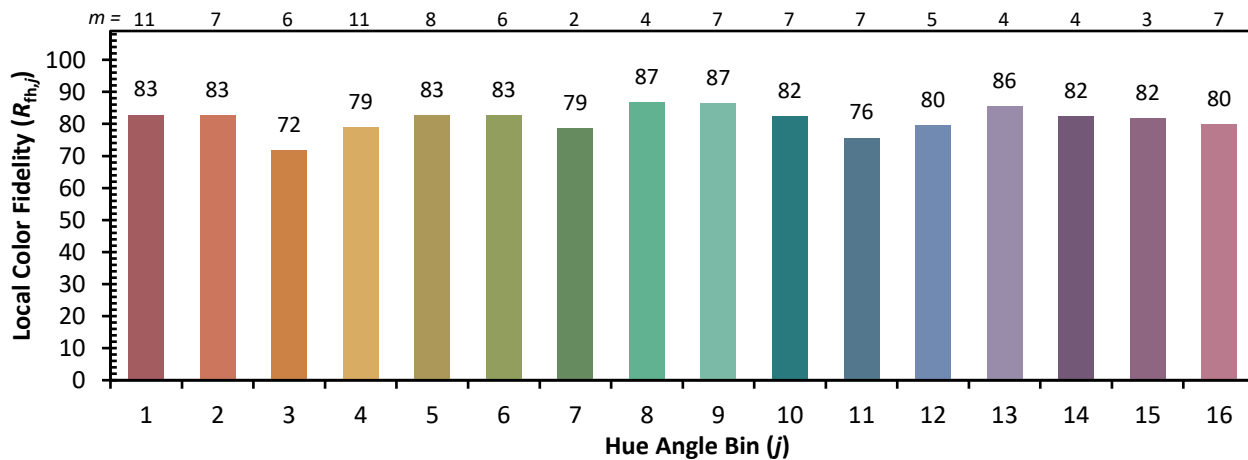
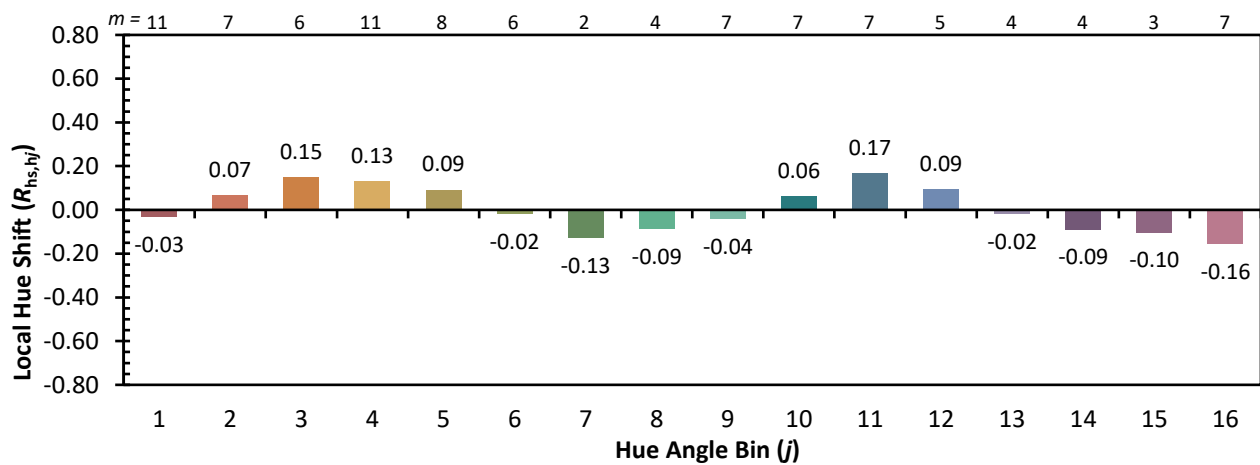
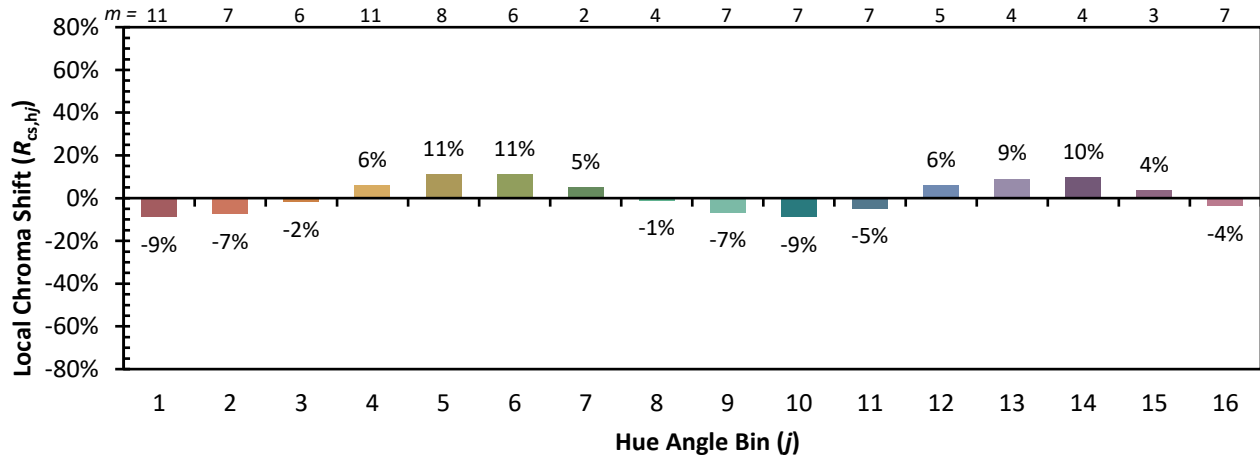


**Individual Sample Fidelity Index ( $R_{f,i}$ )**

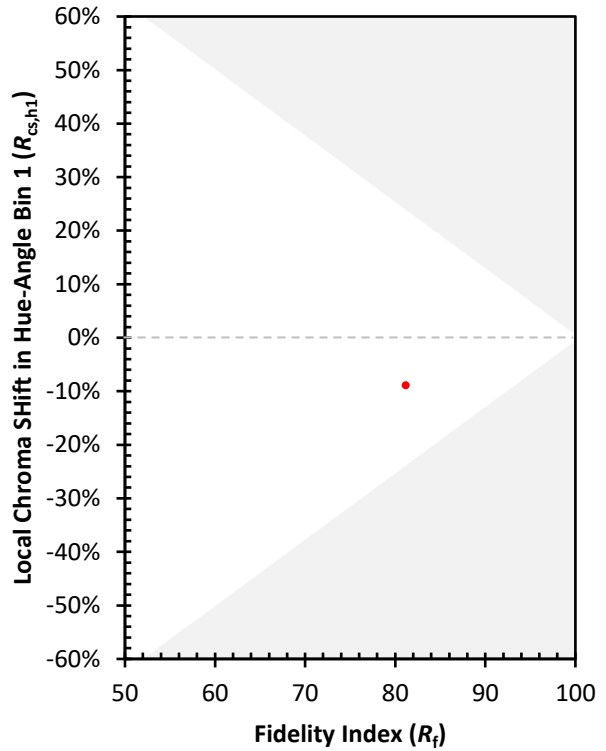
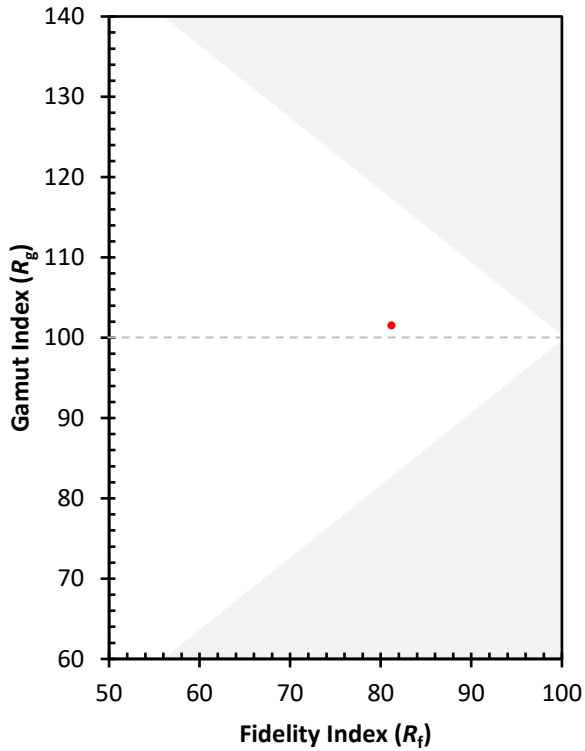
CES01 = 86	CES26 = 71	CES51 = 89	CES76 = 65
CES02 = 63	CES27 = 89	CES52 = 89	CES77 = 82
CES03 = 31	CES28 = 86	CES53 = 80	CES78 = 67
CES04 = 70	CES29 = 68	CES54 = 92	CES79 = 89
CES05 = 50	CES30 = 77	CES55 = 90	CES80 = 85
CES06 = 51	CES31 = 70	CES56 = 81	CES81 = 75
CES07 = 43	CES32 = 64	CES57 = 79	CES82 = 93
CES08 = 41	CES33 = 74	CES58 = 81	CES83 = 89
CES09 = 29	CES34 = 76	CES59 = 92	CES84 = 91
CES10 = 76	CES35 = 87	CES60 = 96	CES85 = 81
CES11 = 59	CES36 = 99	CES61 = 91	CES86 = 74
CES12 = 65	CES37 = 81	CES62 = 93	CES87 = 83
CES13 = 44	CES38 = 83	CES63 = 79	CES88 = 86
CES14 = 74	CES39 = 94	CES64 = 81	CES89 = 74
CES15 = 72	CES40 = 89	CES65 = 78	CES90 = 85
CES16 = 48	CES41 = 88	CES66 = 76	CES91 = 87
CES17 = 50	CES42 = 80	CES67 = 74	CES92 = 73
CES18 = 57	CES43 = 75	CES68 = 79	CES93 = 84
CES19 = 72	CES44 = 99	CES69 = 83	CES94 = 64
CES20 = 67	CES45 = 83	CES70 = 72	CES95 = 80
CES21 = 87	CES46 = 82	CES71 = 70	CES96 = 86
CES22 = 79	CES47 = 79	CES72 = 90	CES97 = 85
CES23 = 92	CES48 = 78	CES73 = 65	CES98 = 83
CES24 = 91	CES49 = 79	CES74 = 94	CES99 = 82
CES25 = 72	CES50 = 88	CES75 = 70	



Color Rendition by Hue-Angle Bin



Measure Comparisons



(END OF REPORT)