

Cooper Lighting Solutions Photometric Lab  
1121 Highway 74 South  
Peachtree City, GA 30269



Scaled data based on original data using  
LM-79-2019 Approved Method: Electrical and Photometric Measurements of Solid-  
State Lighting Products

Test Report Prepared for  
Cooper Lighting Solutions

Brand: METALUX

Report Number: P1444426

Luminaire Tested: EHBR1-12-UNV-TA-L830-UPL12

Issue Date: 5/1/2026

**Test Information**

Test Method: LM-79-2019  
Report Number: P1444426  
REPORT IS A COMBINATION OF REPORTS P1444300 AND P1431635  
Test Lab: INNOVATION CENTER  
Issue Date: 5/1/2026  
Manufacturer: COOPER LIGHTING SOLUTIONS  
Product Line: METALUX  
Catalog Number: EHBR1-12-UNV-TA-L830-UPL12  
Description: Elevate Round Highbay at, 12000 lumens, 3000K 80CRI LEDs with TA lens  
Light Source: -  
Ballast/Driver: -

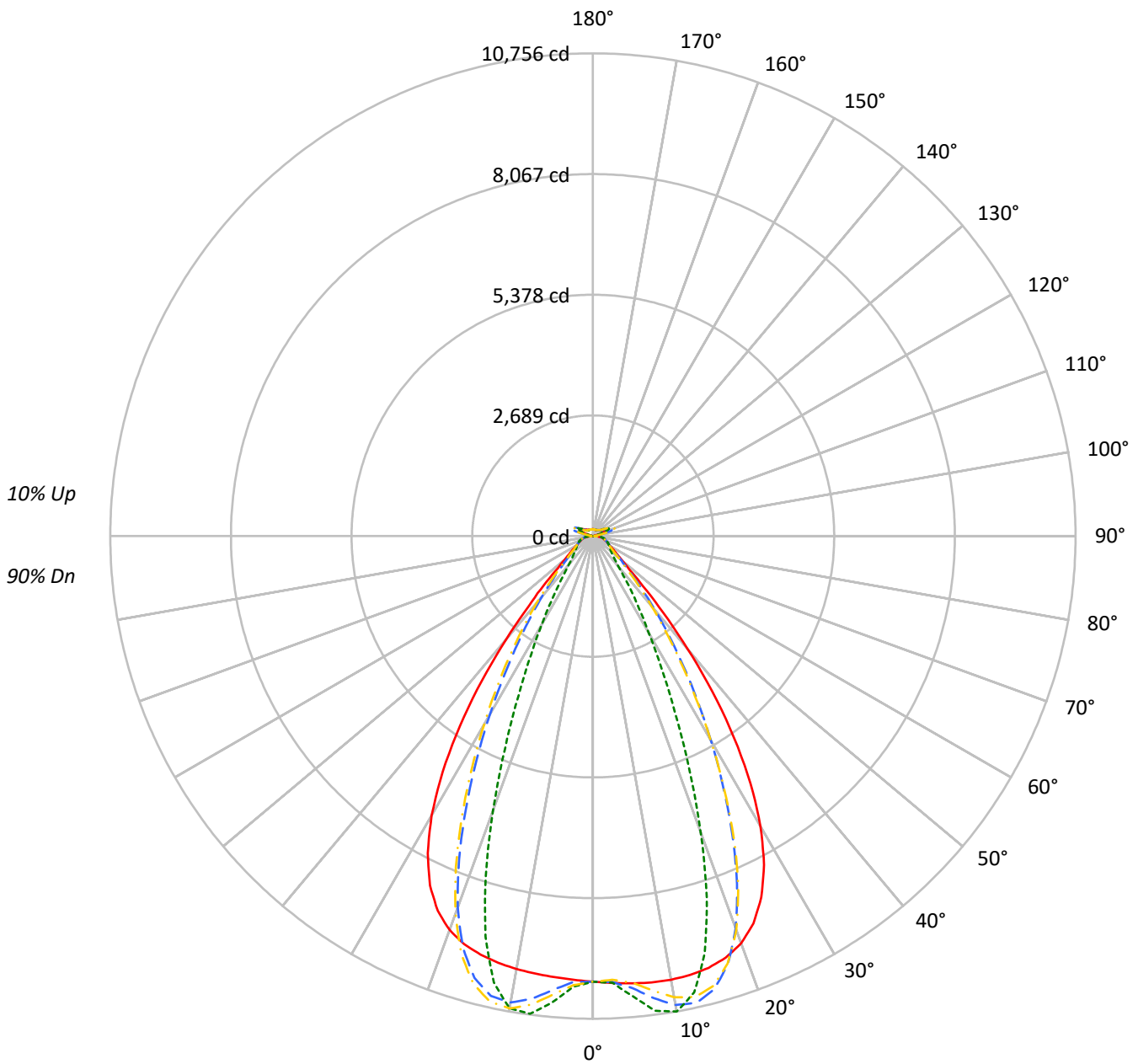
**Summary**

Lumens per Lamp: N/A  
Luminaire Lumens: 12627.8 lumens  
Efficiency: N/A  
Efficacy: 175.1 lumens/watt  
Spacing Criteria (0/90/45): 1.13 / 0.77 / 0.88  
Luminous Opening: Vertical Cylinder (Dia: 1.71' x H: 0.1')  
CIE Type: Direct

Input Watts (W): 72.1  
Input Voltage (V): NR  
Input Current (Ain): NR  
Voltage Rise (V): NR  
Power Factor: NR  
Total Harmonic Distortion (THDi): NR  
Frequency (hertz): 60  
Stabilization Time: NR  
Operation Time: NR  
Ambient Temperature (°C): NR  
Test Distance: 24 FT

TEST NUMBER: P1444426  
CATALOG NUMBER: EHBR1-12-UNV-TA-L830-UPL12

### Luminous Intensity Polar Plot



— 0°-180°    - - 45°-225°    ··· 90°-270°    - · 135°-315°



TEST NUMBER: P1444426  
 CATALOG NUMBER: EHBR1-12-UNV-TA-L830-UPL12

**COEFFICIENT OF UTILIZATION - ZONAL CAVITY METHOD:**

RF	20				20				20				20				20				
RC	80				70				50				30				10			0	
RW	70	50	30	10	70	50	30	10	50	30	10	50	30	10	50	30	10	50	30	10	0
RCR																					
0	117	117	117	117	113	113	113	113	106	106	106	99	99	99	93	93	93	93	93	93	90
1	110	106	103	100	106	103	100	98	97	95	93	92	90	88	87	86	84	84	84	84	82
2	103	97	92	88	100	94	90	86	89	86	83	85	82	79	81	78	76	76	76	76	74
3	96	89	83	78	93	87	81	77	83	78	74	79	75	72	75	72	70	70	70	70	68
4	91	82	75	70	88	80	74	69	76	71	68	73	69	66	70	67	64	64	64	64	62
5	85	76	69	64	83	74	68	63	71	66	62	68	64	60	66	62	59	59	59	59	57
6	80	70	63	59	78	69	63	58	66	61	57	64	59	56	62	58	55	55	55	55	53
7	76	65	59	54	74	64	58	53	62	57	52	60	55	52	58	54	51	51	51	51	49
8	72	61	54	50	70	60	54	50	58	53	49	56	52	48	55	50	47	47	47	47	46
9	68	57	51	46	66	56	50	46	55	49	45	53	48	45	52	47	44	44	44	44	43
10	65	54	48	43	63	53	47	43	52	46	42	50	45	42	49	44	41	41	41	41	40

**AVERAGE LUMINANCE (cd/sqm):**

	0°	90°	180°	270°
0°	46627	46627	46627	46627
5°	46853	48219	46197	48851
10°	47244	50627	46111	50291
15°	47476	45893	46031	44045
20°	46985	34188	45448	31633
25°	44473	21622	43003	19619
30°	38851	12993	37346	11875
35°	29900	8153	28180	7222
40°	18914	5115	17305	4806
45°	9749	3984	9587	3919
50°	5715	3544	5540	3489
55°	4378	3353	4217	3323
60°	3705	3425	3548	3381
65°	3481	3577	3347	3455
70°	3400	3745	3230	3604
75°	3636	3972	3438	3796
80°	3762	4399	3410	4015
85°	3544	4242	2863	3634

**MAXIMUM LUMINANCE 45°-90°:**

Horizontal Angle: 25°  
 Vertical Angle: 45°  
 Luminance: 14919 cd/sqm



TEST NUMBER: P1444426  
 CATALOG NUMBER: EHBR1-12-UNV-TA-L830-UPL12

**ZONAL LUMENS:**

Zone	Lumens	% Fixture
0°-10°	978.5	7.7
10°-20°	2752.7	21.8
20°-30°	3135.1	24.8
30°-40°	2253.4	17.8
40°-50°	1039.2	8.2
50°-60°	497.3	3.9
60°-70°	362.9	2.9
70°-80°	275.7	2.2
80°-90°	127.4	1.0
90°-100°	33.9	0.3
100°-110°	200.3	1.6
110°-120°	370.2	2.9
120°-130°	225.0	1.8
130°-140°	142.7	1.1
140°-150°	104.4	0.8
150°-160°	71.7	0.6
160°-170°	42.8	0.3
170°-180°	14.5	0.1
0°-30°	6866.3	54.4
0°-40°	9119.6	72.2
0°-60°	10656.2	84.4
0°-90°	11422.2	90.5
90°-120°	604.4	4.8
90°-150°	1076.6	8.5
90°-180°	1206.0	9.6
0°-180°	12627.8	100.0

**CANDELA DISTRIBUTION:**

	0°	90°	180°	270°	360°	Flux
0°	9929	9929	9929	9929	9929	
5°	10004	10296	9864	10430	10004	956
15°	9960	9628	9657	9240	9960	2806
25°	8881	4318	8588	3918	8881	4026
35°	5488	1496	5172	1326	5488	3368
45°	1577	645	1551	634	1577	1342
55°	592	453	570	449	592	546
65°	363	373	349	361	363	363
75°	256	280	242	267	256	266
85°	122	146	98	125	122	114
90°	36	44	12	14	36	22
95°	16	17	16	17	16	15
105°	72	93	48	93	72	95
115°	322	392	338	392	322	298
125°	240	254	272	254	240	219
135°	186	167	201	168	186	145
145°	163	160	174	162	163	103
155°	151	152	161	153	151	70
165°	149	149	154	150	149	42
175°	151	153	154	153	151	14
180°	153	153	153	153	153	



TEST NUMBER: P1444426  
 CATALOG NUMBER: EHBR1-12-UNV-TA-L830-UPL12

**CANDELA DISTRIBUTION (FULL):**

	0°	2.5°	5°	7.5°	10°	12.5°	15°	17.5°	20°	22.5°	25°
0°	9928.9	9928.9	9928.9	9928.9	9928.9	9928.9	9928.9	9928.9	9928.9	9928.9	9928.9
2.5°	9966.9	9966.1	9965.9	9965.3	9965.1	9965.1	9964.7	9963.9	9963.4	9962.3	9961.0
5°	10003.9	10003.4	10003.7	10003.8	10003.0	10001.5	9999.1	9996.1	9992.3	9988.8	9985.7
7.5°	10032.4	10033.2	10034.0	10033.8	10031.7	10028.0	10023.1	10020.3	10021.9	10027.4	10039.7
10°	10037.7	10042.0	10043.6	10043.1	10038.8	10035.6	10036.8	10047.3	10068.3	10096.2	10134.4
12.5°	10017.4	10022.6	10022.4	10020.6	10016.4	10020.7	10036.0	10067.3	10112.1	10167.2	10231.9
15°	9960.2	9967.0	9965.1	9962.8	9960.0	9974.0	10004.4	10058.8	10128.2	10205.8	10285.3
17.5°	9849.2	9857.5	9853.4	9850.9	9848.6	9874.8	9927.1	10006.8	10094.1	10181.9	10257.3
20°	9656.8	9662.2	9652.8	9648.4	9652.1	9703.6	9780.6	9882.4	9974.4	10057.4	10109.0
22.5°	9342.7	9349.6	9331.8	9329.7	9351.6	9430.7	9528.1	9641.8	9728.3	9794.2	9814.0
25°	8881.3	8888.0	8866.9	8879.4	8916.8	9024.5	9140.6	9262.2	9336.0	9384.8	9371.3
27.5°	8258.4	8264.6	8244.5	8270.3	8329.3	8470.8	8607.4	8739.3	8805.1	8839.3	8796.0
30°	7472.9	7485.6	7461.9	7497.9	7587.9	7771.7	7928.2	8076.1	8141.7	8167.7	8100.3
32.5°	6539.9	6558.0	6532.0	6585.4	6711.1	6931.7	7109.5	7274.9	7347.4	7377.1	7300.9
35°	5487.7	5513.6	5483.7	5564.0	5718.9	5964.7	6161.6	6346.1	6432.0	6474.1	6397.3
37.5°	4372.8	4397.6	4381.4	4488.4	4658.6	4913.3	5114.3	5313.4	5410.4	5473.6	5413.1
40°	3278.3	3301.0	3313.1	3435.7	3595.7	3835.8	4028.8	4225.8	4334.3	4413.6	4376.3
42.5°	2313.9	2336.6	2378.3	2496.5	2629.9	2828.7	2994.0	3170.9	3274.5	3359.1	3344.7
45°	1577.3	1603.7	1655.9	1752.7	1849.3	1991.8	2113.2	2250.8	2335.5	2413.0	2413.9
47.5°	1105.3	1123.9	1170.5	1236.5	1299.5	1478.0	1485.3	1553.0	1609.8	1667.8	1675.3
50°	851.8	863.0	887.7	924.6	960.2	1006.6	1049.0	1098.0	1133.0	1164.8	1172.4
52.5°	700.2	707.2	719.9	739.8	760.4	785.7	808.4	835.3	854.4	871.3	874.9
55°	591.7	597.6	616.4	620.2	643.8	648.4	658.5	674.8	686.0	696.1	698.7
57.5°	509.9	514.3	518.2	526.7	534.0	544.6	553.1	564.8	571.9	579.2	579.8
60°	445.4	448.5	451.3	457.2	462.2	469.6	475.5	483.4	488.4	493.9	494.6
62.5°	397.4	399.6	401.5	405.4	408.9	414.6	419.3	425.9	430.6	434.8	435.8
65°	363.3	364.8	366.1	369.0	372.1	376.9	381.1	386.6	390.0	393.3	394.0
67.5°	333.0	334.5	335.8	338.4	340.6	344.2	347.1	351.2	353.7	356.3	356.4
70°	298.3	299.7	300.7	303.2	304.9	308.0	310.3	314.0	316.6	319.5	320.3
72.5°	274.4	275.2	276.4	278.8	281.1	284.5	287.5	291.3	294.5	297.6	298.8
75°	256.1	257.0	257.9	259.8	261.5	264.3	266.6	270.1	272.9	276.1	277.7
77.5°	229.8	230.9	231.6	233.5	235.0	237.6	239.3	242.5	244.8	247.8	249.2
80°	197.9	199.0	199.5	201.3	202.4	205.0	206.5	209.6	211.5	214.4	216.2
82.5°	162.6	163.6	163.9	165.7	166.3	168.3	169.5	172.6	175.0	178.8	181.4
85°	121.8	122.1	122.7	122.2	124.8	124.9	127.7	128.2	131.9	132.8	137.0
87.5°	74.5	75.6	76.1	77.7	78.5	80.2	80.7	82.5	83.6	85.6	86.6
90°	35.7	37.7	38.6	40.8	41.7	43.7	44.5	46.7	47.6	49.9	51.3
92.5°	13.7	14.6	15.4	16.4	17.3	18.5	19.5	20.5	21.4	22.5	24.4
95°	15.5	16.6	17.6	18.6	19.7	20.8	21.8	22.9	23.9	24.9	28.0
97.5°	19.5	20.4	21.3	22.2	23.1	24.0	24.9	25.9	26.7	27.6	31.3
100°	25.4	26.1	26.9	27.7	28.5	29.2	30.0	30.8	31.6	32.3	39.1
102.5°	42.2	44.9	47.6	50.3	53.0	55.8	58.5	61.3	64.0	66.7	81.0
105°	71.7	79.0	86.5	93.8	101.2	108.7	116.1	123.4	130.8	138.2	161.5
107.5°	122.5	136.1	149.9	163.5	177.2	191.0	204.7	218.3	232.0	245.7	269.4
110°	226.6	237.5	248.6	259.6	270.6	281.6	292.6	303.5	314.5	325.6	342.8



TEST NUMBER: P1444426  
 CATALOG NUMBER: EHBR1-12-UNV-TA-L830-UPL12

**CANDELA DISTRIBUTION (continued):**

	0°	2.5°	5°	7.5°	10°	12.5°	15°	17.5°	20°	22.5°	25°
112.5°	305.6	310.5	315.5	320.4	325.5	330.4	335.3	340.3	345.3	350.2	362.6
115°	322.4	324.1	325.9	327.6	329.3	331.1	332.8	334.5	336.3	337.9	346.2
117.5°	313.0	312.6	312.4	312.0	311.6	311.4	311.1	310.6	310.3	310.0	314.7
120°	291.8	290.3	288.8	287.2	285.7	284.1	282.6	281.0	279.4	277.7	279.8
122.5°	265.0	263.2	261.4	259.6	257.7	255.9	254.0	252.1	250.2	248.3	249.1
125°	240.4	238.5	236.7	234.8	232.9	231.1	229.2	227.2	225.3	223.3	223.8
127.5°	218.9	217.6	216.4	215.0	213.7	212.3	210.9	209.4	208.1	206.6	206.7
130°	205.0	203.9	202.7	201.6	200.3	199.1	197.7	196.5	195.2	193.9	194.1
132.5°	193.7	193.0	192.1	191.3	190.3	189.3	188.5	187.4	186.5	185.6	185.7
135°	186.2	185.5	184.7	183.9	183.0	182.2	181.3	180.3	179.5	178.4	178.8
137.5°	179.8	179.2	178.5	177.7	176.9	176.1	175.4	174.4	173.6	172.7	173.0
140°	174.0	173.5	172.7	172.1	171.3	170.7	169.8	169.1	168.2	167.5	167.9
142.5°	167.5	167.0	166.5	165.9	165.4	164.8	164.1	163.5	162.8	162.1	162.7
145°	163.2	162.8	162.4	161.9	161.4	160.8	160.4	159.7	159.1	158.7	159.2
147.5°	159.5	159.1	158.9	158.4	158.1	157.6	157.2	156.6	156.2	155.7	156.2
150°	156.2	155.9	155.7	155.2	154.8	154.4	154.0	153.5	153.2	152.6	153.2
152.5°	152.8	152.4	152.2	151.7	151.5	151.0	150.7	150.2	149.8	149.3	149.8
155°	150.7	150.4	150.1	149.8	149.4	149.0	148.6	148.3	147.8	147.4	147.9
157.5°	149.4	149.1	148.9	148.7	148.4	148.0	147.7	147.4	147.2	146.9	147.1
160°	148.9	148.7	148.4	148.2	147.8	147.5	147.3	147.0	146.7	146.4	146.7
162.5°	148.5	148.2	147.9	147.7	147.4	147.1	146.8	146.6	146.3	145.9	146.2
165°	148.6	148.4	148.2	148.0	147.8	147.6	147.4	147.3	147.1	146.9	147.1
167.5°	149.9	149.6	149.5	149.2	148.9	148.8	148.6	148.3	148.2	147.8	148.1
170°	150.4	150.2	150.2	150.1	149.9	149.8	149.7	149.5	149.3	149.2	149.4
172.5°	151.3	151.1	151.0	151.0	150.8	150.7	150.6	150.5	150.4	150.3	150.5
175°	151.3	151.1	151.1	151.0	150.9	150.9	150.8	150.7	150.7	150.6	150.7
177.5°	152.3	152.2	152.2	152.2	152.2	152.2	152.1	152.0	152.0	152.0	152.1
180°	153.2	153.2	153.2	153.2	153.2	153.2	153.2	153.2	153.2	153.2	153.2



TEST NUMBER: P1444426  
 CATALOG NUMBER: EHBR1-12-UNV-TA-L830-UPL12

**CANDELA DISTRIBUTION (continued):**

	27.5°	30°	32.5°	35°	37.5°	40°	42.5°	45°	47.5°	50°	52.5°
0°	9928.9	9928.9	9928.9	9928.9	9928.9	9928.9	9928.9	9928.9	9928.9	9928.9	9928.9
2.5°	9960.0	9958.8	9957.1	9955.1	9953.3	9951.1	9946.2	9944.7	9946.3	9947.5	9949.7
5°	9983.6	9984.4	9984.7	9989.2	9993.1	10002.8	10079.2	10109.5	10133.0	10147.9	10170.6
7.5°	10055.0	10078.0	10100.7	10131.3	10157.6	10193.2	10326.8	10383.7	10424.2	10453.2	10489.0
10°	10175.9	10226.1	10273.1	10328.1	10375.5	10429.6	10554.0	10609.4	10644.5	10670.0	10693.7
12.5°	10297.7	10367.2	10430.1	10491.3	10542.6	10589.6	10633.3	10652.7	10654.3	10655.2	10642.5
15°	10361.2	10427.6	10483.0	10523.5	10553.6	10566.9	10491.6	10452.1	10402.2	10361.0	10293.3
17.5°	10321.1	10361.0	10384.9	10382.6	10370.1	10328.4	10115.1	9997.8	9881.2	9776.2	9638.6
20°	10143.2	10140.1	10119.3	10060.3	9989.4	9879.0	9513.2	9302.2	9098.2	8919.0	8701.6
22.5°	9812.0	9759.9	9687.3	9560.2	9419.1	9226.3	8702.1	8391.6	8107.6	7856.6	7575.5
25°	9332.2	9225.0	9091.0	8889.4	8670.1	8388.8	7742.7	7356.6	7015.6	6719.8	6395.5
27.5°	8718.1	8556.6	8360.3	8081.2	7784.1	7423.8	6707.5	6281.4	5915.2	5598.1	5253.0
30°	7991.2	7781.1	7527.7	7181.2	6822.8	6414.1	5687.7	5256.1	4885.5	4559.2	4213.8
32.5°	7169.7	6923.7	6626.6	6237.7	5850.2	5430.0	4728.4	4310.6	3956.7	3642.8	3330.1
35°	6263.5	5999.7	5685.4	5288.8	4903.6	4495.1	3851.3	3474.6	3162.0	2884.6	2632.2
37.5°	5291.6	5032.6	4733.8	4360.0	4002.8	3632.6	3077.1	2761.4	2499.1	2268.9	2074.0
40°	4280.9	4054.4	3795.8	3472.7	3167.9	2859.5	2403.5	2152.9	1945.9	1770.4	1624.3
42.5°	3282.7	3107.1	2908.9	2653.5	2420.3	2185.4	1834.5	1648.9	1495.5	1369.1	1265.9
45°	2381.8	2264.2	2131.3	1953.8	1792.4	1628.6	1378.8	1248.4	1148.5	1067.0	998.1
47.5°	1665.0	1596.8	1592.7	1428.6	1310.3	1210.1	1049.2	966.8	905.6	856.2	812.6
50°	1169.3	1136.3	1095.3	1036.7	981.9	925.3	827.2	777.4	741.6	711.6	684.1
52.5°	874.1	857.0	835.2	804.1	774.4	742.5	680.4	648.8	637.5	609.6	587.8
55°	698.1	688.4	675.9	657.7	639.6	632.4	579.2	555.7	540.7	529.7	518.0
57.5°	579.9	572.6	565.2	552.8	542.4	529.7	501.5	489.4	480.5	474.1	465.9
60°	494.7	490.3	486.2	478.9	473.2	466.4	448.5	441.7	437.1	433.1	428.0
62.5°	436.6	434.4	432.2	428.4	425.5	421.8	409.5	406.3	403.9	401.9	398.9
65°	394.7	393.0	391.9	389.3	387.9	385.7	375.2	373.0	371.6	370.8	369.0
67.5°	356.6	354.9	354.2	352.3	351.7	350.3	341.7	340.5	340.0	340.3	339.7
70°	321.0	320.3	320.6	320.4	321.2	321.4	316.2	316.1	316.7	317.8	317.9
72.5°	299.7	299.7	300.0	300.2	301.0	301.3	297.0	296.8	297.0	297.9	297.9
75°	279.3	279.7	280.7	281.1	282.0	282.2	276.5	275.9	275.9	276.6	276.4
77.5°	251.2	252.4	254.5	255.6	257.4	257.7	251.3	250.5	250.6	251.3	250.7
80°	219.3	221.6	225.0	227.3	230.1	231.1	224.5	222.9	221.4	221.3	219.9
82.5°	185.5	188.3	192.3	194.4	197.3	197.9	186.9	184.7	183.5	183.6	182.4
85°	141.5	143.7	147.3	148.6	150.3	150.2	137.5	132.1	133.6	131.3	133.1
87.5°	88.8	90.0	92.4	92.6	93.5	93.3	80.6	78.0	77.3	77.4	76.4
90°	54.0	55.6	58.3	59.0	61.0	61.5	51.9	51.3	49.8	49.7	48.0
92.5°	26.3	28.1	30.1	31.9	33.9	35.8	36.5	38.0	36.2	34.1	32.3
95°	31.1	34.2	37.3	40.3	43.4	46.5	49.6	52.6	49.7	46.8	43.9
97.5°	34.9	38.6	42.2	45.8	49.5	53.1	56.8	60.4	57.3	54.1	51.1
100°	45.9	52.6	59.4	66.1	73.0	79.7	86.6	93.3	87.4	81.3	75.4
102.5°	95.5	109.8	124.2	138.5	153.0	167.3	181.7	196.1	182.5	168.8	155.1
105°	184.8	208.1	231.5	254.7	277.9	301.3	324.8	348.0	326.2	304.2	282.5
107.5°	293.0	316.6	340.2	363.7	387.4	411.0	434.8	458.5	437.2	415.8	394.6
110°	360.1	377.3	394.5	411.9	429.1	446.3	463.9	481.1	468.3	455.4	442.6



TEST NUMBER: P1444426  
 CATALOG NUMBER: EHBR1-12-UNV-TA-L830-UPL12

**CANDELA DISTRIBUTION (continued):**

	27.5°	30°	32.5°	35°	37.5°	40°	42.5°	45°	47.5°	50°	52.5°
112.5°	374.9	387.3	399.7	411.9	424.1	436.5	449.2	461.6	455.2	448.8	442.3
115°	354.6	363.0	371.2	379.6	387.9	396.1	404.8	413.3	411.2	409.2	407.1
117.5°	319.3	324.0	328.7	333.4	337.9	342.6	347.7	352.5	352.9	353.2	353.6
120°	281.8	283.7	285.7	287.8	289.6	291.6	294.1	296.2	298.0	299.7	301.4
122.5°	249.8	250.6	251.3	252.1	252.8	253.5	255.0	255.9	257.0	258.3	259.5
125°	224.2	224.4	224.9	225.3	225.6	225.9	227.2	227.6	227.8	227.7	227.9
127.5°	206.8	206.9	206.9	207.1	207.1	207.1	208.0	208.3	207.7	206.9	206.2
130°	194.3	194.5	194.6	194.8	195.0	195.2	196.3	196.7	195.5	194.1	192.9
132.5°	186.0	186.3	186.5	186.8	187.0	187.2	188.5	188.9	187.5	186.0	184.5
135°	179.1	179.4	179.7	180.0	180.3	180.7	182.1	182.7	181.3	179.8	178.3
137.5°	173.2	173.6	173.9	174.2	174.5	174.9	176.4	177.0	175.9	174.7	173.6
140°	168.2	168.6	169.0	169.5	169.8	170.3	172.0	172.6	171.8	170.9	169.9
142.5°	163.2	163.7	164.3	165.0	165.5	166.1	168.0	168.9	168.2	167.6	166.9
145°	159.8	160.5	161.1	161.9	162.5	163.2	165.3	166.4	166.0	165.5	165.0
147.5°	156.8	157.4	157.9	158.6	159.2	160.0	162.1	163.2	162.9	162.6	162.4
150°	153.7	154.4	154.9	155.6	156.3	157.0	159.5	160.6	160.4	160.2	160.0
152.5°	150.3	150.9	151.5	152.0	152.6	153.3	156.2	157.4	157.1	156.8	156.7
155°	148.2	148.7	149.1	149.5	150.0	150.5	153.5	154.7	154.6	154.5	154.3
157.5°	147.4	147.7	147.9	148.4	148.7	149.0	152.2	153.2	153.2	153.0	152.9
160°	146.8	147.1	147.3	147.5	147.7	148.1	151.3	152.3	152.2	152.0	151.9
162.5°	146.5	147.0	147.2	147.4	147.8	148.2	151.5	152.5	152.3	152.1	152.0
165°	147.3	147.3	147.5	147.8	148.0	148.2	151.2	152.1	152.0	151.9	151.8
167.5°	148.2	148.5	148.7	148.7	149.0	149.3	152.0	153.0	152.9	152.8	152.7
170°	149.5	149.7	149.9	150.1	150.2	150.5	152.9	153.5	153.4	153.2	153.2
172.5°	150.7	151.0	151.2	151.4	151.6	151.8	153.8	154.6	154.4	154.3	154.1
175°	150.9	151.1	151.3	151.5	151.6	151.8	153.4	153.9	153.8	153.8	153.7
177.5°	152.3	152.3	152.5	152.6	152.8	152.9	153.9	154.2	154.2	154.2	154.1
180°	153.2	153.2	153.2	153.2	153.2	153.2	153.2	153.2	153.2	153.2	153.2



TEST NUMBER: P1444426  
 CATALOG NUMBER: EHBR1-12-UNV-TA-L830-UPL12

**CANDELA DISTRIBUTION (continued):**

	55°	57.5°	60°	62.5°	65°	67.5°	70°	72.5°	75°	77.5°	80°
0°	9928.9	9928.9	9928.9	9928.9	9928.9	9928.9	9928.9	9928.9	9928.9	9928.9	9928.9
2.5°	9950.3	9953.7	9954.3	9958.3	9958.1	9962.8	9962.1	9966.1	9963.8	9967.1	9964.2
5°	10184.0	10205.2	10216.2	10236.9	10243.5	10261.9	10267.2	10284.1	10284.8	10298.2	10295.1
7.5°	10514.4	10545.7	10564.2	10589.8	10602.7	10624.0	10633.3	10649.2	10654.2	10666.7	10667.7
10°	10711.6	10726.8	10737.4	10744.6	10751.1	10754.2	10757.7	10756.8	10757.7	10756.3	10759.4
12.5°	10634.1	10611.9	10597.3	10569.5	10553.4	10522.8	10507.7	10478.3	10467.5	10442.2	10438.6
15°	10241.0	10163.9	10109.3	10030.0	9980.1	9902.0	9856.4	9786.0	9753.9	9697.8	9683.1
17.5°	9524.6	9381.3	9270.4	9128.2	9029.5	8896.5	8812.9	8702.9	8642.5	8553.8	8523.1
20°	8520.3	8308.3	8142.0	7943.8	7801.9	7625.3	7512.1	7369.5	7286.7	7177.6	7133.4
22.5°	7341.2	7077.2	6869.4	6635.4	6464.2	6267.3	6131.8	5977.4	5887.3	5768.9	5716.5
25°	6125.9	5834.8	5603.8	5357.1	5176.3	4979.0	4843.4	4691.8	4598.5	4486.1	4434.0
27.5°	4963.5	4668.8	4445.6	4216.3	4050.5	3872.4	3750.1	3617.7	3535.0	3438.9	3389.9
30°	3937.8	3677.9	3487.9	3297.7	3159.7	3015.1	2913.4	2803.7	2731.1	2648.9	2602.2
32.5°	3102.1	2901.5	2752.7	2601.7	2488.8	2367.9	2280.1	2183.3	2117.7	2044.4	2002.1
35°	2456.9	2300.9	2182.3	2057.9	1961.0	1858.1	1780.7	1697.0	1638.3	1575.1	1538.6
37.5°	1941.1	1817.2	1719.6	1616.3	1536.7	1451.3	1422.6	1326.8	1265.8	1215.4	1180.4
40°	1523.5	1424.8	1344.1	1265.1	1200.1	1135.5	1083.5	1032.3	992.9	956.8	931.9
42.5°	1189.7	1118.2	1059.2	1001.4	954.0	906.9	869.3	834.0	807.5	783.9	767.8
45°	945.7	896.6	855.6	814.8	781.4	750.0	724.6	702.2	685.0	670.9	660.8
47.5°	776.9	743.3	714.4	686.9	664.2	643.6	626.7	621.1	602.7	590.3	585.6
50°	660.3	640.0	618.0	597.7	582.5	567.5	556.5	545.7	538.8	533.1	531.4
52.5°	573.3	557.7	545.4	532.6	522.7	511.9	504.3	497.1	493.4	490.4	490.0
55°	508.5	497.7	489.5	480.9	474.9	468.6	464.7	461.0	459.3	457.8	457.9
57.5°	459.5	452.2	447.0	441.5	438.2	435.2	434.2	433.2	433.7	434.0	434.8
60°	423.9	419.1	415.8	412.6	411.2	410.3	411.0	411.9	413.7	415.0	416.3
62.5°	396.5	393.8	392.2	390.4	390.3	390.4	391.8	393.3	395.5	397.1	398.3
65°	368.3	366.8	366.3	365.2	365.7	366.1	367.8	369.0	371.1	372.4	373.9
67.5°	339.9	339.6	339.8	339.8	340.9	341.7	343.4	344.6	346.5	347.7	348.9
70°	318.9	319.0	319.8	320.0	321.0	321.6	323.1	323.9	325.5	326.5	328.0
72.5°	298.4	298.2	298.3	297.9	298.2	298.1	298.9	299.3	300.7	301.4	303.3
75°	276.7	275.8	275.6	274.5	274.6	273.9	274.3	274.2	275.1	275.5	276.8
77.5°	250.5	248.9	248.1	246.5	246.4	245.9	246.5	246.9	248.5	249.4	250.9
80°	219.0	216.6	215.4	213.6	213.9	213.8	215.4	216.7	218.6	219.0	220.9
82.5°	182.0	179.6	178.3	176.5	176.9	177.0	178.4	178.7	180.4	181.2	183.4
85°	130.3	131.3	128.7	128.9	128.3	129.4	130.3	131.6	133.0	135.4	137.2
87.5°	76.7	76.4	77.4	77.5	78.8	79.5	81.6	82.8	85.2	87.1	90.5
90°	47.3	45.5	45.6	44.6	45.2	44.3	45.1	43.9	44.9	44.5	45.9
92.5°	30.2	28.3	26.2	24.4	22.3	20.5	19.4	18.6	17.6	16.9	15.8
95°	41.1	38.2	35.4	32.5	29.7	26.8	25.8	24.7	23.6	22.6	21.5
97.5°	48.0	45.0	41.9	38.7	35.6	32.5	31.8	31.1	30.4	29.7	29.0
100°	69.4	63.5	57.5	51.5	45.5	39.6	39.1	38.5	37.9	37.4	36.8
102.5°	141.5	127.8	114.2	100.5	86.9	73.2	70.8	68.4	66.0	63.7	61.3
105°	260.6	238.8	216.9	195.1	173.3	151.5	145.0	138.4	131.9	125.3	118.9
107.5°	373.3	351.9	330.7	309.4	288.1	266.8	256.5	246.3	235.9	225.6	215.3
110°	429.8	417.0	404.3	391.4	378.6	365.9	356.0	346.2	336.4	326.5	316.8



TEST NUMBER: P1444426  
 CATALOG NUMBER: EHBR1-12-UNV-TA-L830-UPL12

**CANDELA DISTRIBUTION (continued):**

	55°	57.5°	60°	62.5°	65°	67.5°	70°	72.5°	75°	77.5°	80°
112.5°	435.9	429.5	423.1	416.6	410.3	403.9	399.0	394.3	389.6	384.7	379.8
115°	405.0	403.0	400.9	398.9	396.9	394.8	394.5	394.2	393.8	393.5	393.2
117.5°	353.9	354.2	354.5	355.0	355.4	355.8	358.3	360.9	363.4	366.1	368.7
120°	303.1	304.7	306.5	308.3	310.0	311.7	315.1	318.6	322.0	325.5	329.2
122.5°	260.7	261.8	263.0	264.3	265.5	266.7	270.1	273.5	276.9	280.3	283.9
125°	227.9	227.9	228.0	228.0	228.0	228.1	230.9	233.6	236.4	239.3	242.2
127.5°	205.4	204.7	203.8	203.2	202.3	201.7	203.3	205.0	206.5	208.2	210.0
130°	191.5	190.2	188.7	187.5	186.1	184.9	185.6	186.1	186.8	187.5	188.1
132.5°	182.9	181.4	179.8	178.3	176.8	175.3	175.2	175.2	175.2	175.2	175.3
135°	176.9	175.4	173.9	172.4	170.9	169.5	169.1	168.8	168.4	168.0	167.8
137.5°	172.4	171.3	170.1	169.0	167.8	166.6	166.1	165.5	165.0	164.6	164.0
140°	169.0	168.1	167.1	166.2	165.2	164.4	163.8	163.5	162.9	162.6	162.1
142.5°	166.2	165.4	164.8	164.0	163.4	162.6	162.2	161.8	161.4	161.0	160.6
145°	164.7	164.1	163.6	163.3	162.7	162.3	161.9	161.7	161.3	161.0	160.8
147.5°	162.1	161.8	161.5	161.3	160.9	160.6	160.4	160.2	159.9	159.8	159.5
150°	159.6	159.3	159.1	158.9	158.6	158.3	158.1	158.0	157.8	157.8	157.6
152.5°	156.4	156.1	155.9	155.8	155.4	155.1	155.0	155.0	154.8	154.7	154.7
155°	154.1	154.0	153.8	153.6	153.4	153.2	153.2	153.0	152.8	152.6	152.4
157.5°	152.8	152.6	152.4	152.3	152.1	151.9	151.7	151.7	151.5	151.4	151.2
160°	151.7	151.7	151.5	151.4	151.2	151.1	150.8	150.5	150.4	150.2	149.9
162.5°	151.7	151.5	151.3	151.2	150.9	150.7	150.5	150.3	150.2	150.1	149.9
165°	151.7	151.6	151.4	151.2	151.1	151.0	150.7	150.4	150.3	150.1	149.8
167.5°	152.5	152.4	152.2	152.1	151.9	151.8	151.7	151.5	151.2	151.0	150.8
170°	153.0	152.7	152.6	152.4	152.2	151.9	151.7	151.6	151.4	151.2	150.9
172.5°	154.0	153.8	153.6	153.5	153.3	153.2	153.0	152.8	152.7	152.5	152.3
175°	153.6	153.6	153.6	153.4	153.4	153.3	153.2	153.2	153.2	153.2	153.1
177.5°	154.1	154.1	154.1	154.0	154.0	154.0	153.8	153.7	153.7	153.5	153.4
180°	153.2	153.2	153.2	153.2	153.2	153.2	153.2	153.2	153.2	153.2	153.2



TEST NUMBER: P1444426  
 CATALOG NUMBER: EHBR1-12-UNV-TA-L830-UPL12

**CANDELA DISTRIBUTION (continued):**

	82.5°	85°	87.5°	90°	92.5°	95°	97.5°	100°	102.5°	105°	107.5°
0°	9928.9	9928.9	9928.9	9928.9	9928.9	9928.9	9928.9	9928.9	9928.9	9928.9	9928.9
2.5°	9967.1	9964.6	9965.8	9961.1	9962.3	9956.7	9956.1	9949.7	9949.2	9943.2	9940.9
5°	10304.6	10299.0	10305.3	10295.6	10297.5	10284.8	10283.8	10267.3	10261.6	10241.1	10232.2
7.5°	10675.5	10673.4	10677.3	10669.1	10668.8	10657.5	10652.8	10638.1	10628.9	10607.4	10593.6
10°	10756.8	10758.7	10755.6	10756.3	10751.9	10750.7	10746.2	10743.3	10735.9	10730.3	10722.0
12.5°	10419.4	10421.4	10408.5	10416.7	10410.2	10425.3	10424.1	10441.8	10444.5	10467.0	10475.5
15°	9639.6	9637.1	9612.4	9628.1	9619.6	9652.7	9660.1	9704.6	9728.3	9785.4	9820.5
17.5°	8461.6	8455.2	8420.5	8439.4	8429.7	8478.5	8494.8	8565.9	8610.2	8702.2	8767.8
20°	7057.4	7045.2	7004.5	7026.7	7016.8	7072.2	7095.5	7181.4	7238.5	7360.4	7447.0
22.5°	5635.7	5616.5	5576.6	5597.4	5587.9	5645.3	5675.7	5761.9	5827.4	5952.4	6053.6
25°	4359.1	4341.9	4303.4	4317.9	4314.5	4362.9	4390.0	4471.5	4535.8	4655.0	4751.5
27.5°	3324.8	3307.0	3272.1	3282.4	3278.9	3320.2	3345.6	3413.7	3469.2	3569.4	3654.2
30°	2544.7	2523.1	2493.6	2499.2	2496.9	2530.3	2554.1	2611.5	2658.9	2743.7	2816.8
32.5°	1950.5	1928.9	1901.7	1904.3	1900.8	1927.1	1946.7	1996.5	2037.9	2109.9	2173.5
35°	1492.4	1517.7	1459.8	1496.4	1458.3	1514.3	1494.1	1525.3	1560.9	1621.6	1674.6
37.5°	1147.3	1129.7	1114.8	1113.2	1113.1	1126.1	1141.5	1171.4	1202.8	1248.1	1294.8
40°	909.2	896.8	887.2	886.5	887.2	896.4	907.8	928.5	951.4	983.9	1018.3
42.5°	754.1	745.9	740.0	739.6	741.5	748.1	755.9	768.2	783.2	804.3	827.8
45°	652.6	648.1	644.8	644.6	645.5	649.0	653.4	661.1	670.6	683.7	698.7
47.5°	581.5	580.4	578.3	578.4	577.5	578.9	579.4	583.8	588.7	598.7	618.1
50°	529.7	529.7	528.3	528.2	526.9	526.8	525.7	527.4	529.7	535.9	542.1
52.5°	488.7	488.6	487.1	486.8	485.4	485.3	484.4	485.0	485.3	488.4	492.1
55°	456.7	455.7	453.7	453.1	452.6	453.4	453.0	453.1	452.6	453.9	455.1
57.5°	433.7	432.5	430.6	430.0	429.9	430.9	430.9	430.6	428.8	427.7	426.0
60°	415.5	414.3	412.2	411.8	412.1	413.4	413.3	412.2	409.6	407.4	404.8
62.5°	397.7	397.2	396.1	396.0	395.8	395.9	395.1	393.9	391.4	388.9	386.1
65°	373.7	374.0	373.3	373.4	372.4	372.2	370.8	369.7	367.2	365.0	362.1
67.5°	348.9	349.1	348.5	348.5	348.0	348.1	347.1	346.1	344.0	342.2	339.9
70°	328.4	328.9	328.5	328.6	328.0	327.8	326.5	325.5	323.3	321.8	319.7
72.5°	303.9	304.9	304.9	305.2	304.2	303.9	302.3	301.0	298.9	297.8	296.2
75°	277.4	278.8	279.1	279.8	278.6	277.9	276.1	275.1	273.5	272.8	271.7
77.5°	251.5	253.1	254.6	256.0	253.9	252.2	250.0	248.3	246.0	245.0	243.4
80°	222.5	225.3	228.6	231.4	227.7	224.1	220.5	217.9	214.7	213.4	211.3
82.5°	184.5	187.4	189.3	191.1	188.6	185.9	182.5	180.1	176.8	175.4	173.1
85°	140.2	143.8	144.9	145.8	144.3	142.8	139.6	135.2	133.1	129.7	128.0
87.5°	92.2	94.3	94.8	95.1	94.0	93.4	91.3	89.3	85.6	82.9	79.7
90°	45.1	46.0	44.5	44.5	43.8	44.6	43.0	42.9	40.5	40.0	37.7
92.5°	15.0	14.0	13.1	12.2	13.3	14.0	15.1	15.8	16.8	17.6	18.6
95°	20.5	19.4	18.4	17.3	18.2	19.0	19.9	20.7	21.5	22.3	23.1
97.5°	28.3	27.6	26.9	26.2	26.7	27.2	27.7	28.2	28.7	29.1	29.8
100°	36.3	35.7	35.1	34.6	34.6	34.6	34.6	34.6	34.6	34.6	34.6
102.5°	58.9	56.6	54.1	51.8	53.4	55.0	56.6	58.2	59.9	61.4	63.1
105°	112.3	105.8	99.3	92.8	99.1	105.4	111.7	118.0	124.3	130.7	137.0
107.5°	205.0	194.7	184.5	174.2	185.7	197.2	208.6	220.0	231.6	243.0	254.5
110°	307.0	297.2	287.4	277.6	289.8	302.0	314.2	326.3	338.4	350.6	362.9



TEST NUMBER: P1444426  
 CATALOG NUMBER: EHBR1-12-UNV-TA-L830-UPL12

**CANDELA DISTRIBUTION (continued):**

	82.5°	85°	87.5°	90°	92.5°	95°	97.5°	100°	102.5°	105°	107.5°
112.5°	375.1	370.4	365.6	360.8	368.7	376.5	384.3	392.3	400.1	408.0	415.9
115°	392.9	392.7	392.4	392.1	395.9	399.5	403.3	406.9	410.7	414.4	418.2
117.5°	371.3	373.9	376.7	379.3	380.5	381.6	382.8	384.1	385.3	386.5	387.8
120°	332.6	336.1	339.7	343.2	342.7	342.3	341.7	341.2	341.0	340.5	340.1
122.5°	287.4	290.8	294.4	298.0	296.9	295.9	294.8	293.8	292.9	291.9	290.9
125°	245.2	248.1	251.0	254.0	253.0	252.0	250.9	249.9	249.0	248.0	247.1
127.5°	211.8	213.7	215.4	217.2	216.8	216.3	215.8	215.4	215.1	214.7	214.3
130°	188.9	189.8	190.5	191.4	191.6	191.7	191.9	192.1	192.5	192.7	193.1
132.5°	175.4	175.5	175.7	175.9	176.5	177.0	177.7	178.3	179.1	179.8	180.6
135°	167.6	167.3	167.2	167.0	167.9	168.7	169.5	170.5	171.4	172.4	173.6
137.5°	163.6	163.3	162.9	162.6	163.5	164.3	165.2	166.1	167.1	168.1	169.3
140°	161.9	161.5	161.4	161.0	161.9	162.7	163.5	164.5	165.5	166.5	167.6
142.5°	160.3	160.0	159.7	159.5	160.3	161.0	162.0	162.7	163.6	164.5	165.5
145°	160.6	160.3	160.2	160.0	160.5	161.0	161.7	162.3	162.9	163.5	164.3
147.5°	159.4	159.2	159.1	159.1	159.4	159.9	160.3	160.7	161.2	161.8	162.3
150°	157.7	157.6	157.5	157.6	157.7	158.0	158.3	158.6	159.0	159.2	159.7
152.5°	154.7	154.5	154.6	154.6	154.7	155.0	155.3	155.5	155.9	156.1	156.5
155°	152.4	152.2	152.1	152.0	152.1	152.2	152.4	152.4	152.6	152.7	152.9
157.5°	151.1	150.9	150.9	150.7	150.7	150.6	150.7	150.7	150.7	150.7	150.8
160°	149.8	149.6	149.3	149.1	149.1	149.2	149.3	149.3	149.4	149.5	149.5
162.5°	149.8	149.6	149.5	149.3	149.3	149.1	149.0	148.9	148.8	148.7	148.7
165°	149.6	149.4	149.2	148.9	148.9	148.9	148.8	148.8	148.8	148.8	148.7
167.5°	150.6	150.3	150.2	150.0	149.9	149.6	149.6	149.3	149.2	149.0	149.0
170°	150.7	150.6	150.4	150.2	150.2	150.1	150.1	149.9	149.9	149.9	149.9
172.5°	152.1	152.0	151.8	151.7	151.6	151.6	151.5	151.5	151.4	151.4	151.4
175°	153.0	153.0	152.9	152.8	152.7	152.6	152.6	152.5	152.4	152.2	152.2
177.5°	153.3	153.2	153.2	153.1	153.1	153.1	153.1	153.1	153.1	153.0	153.0
180°	153.2	153.2	153.2	153.2	153.2	153.2	153.2	153.2	153.2	153.2	153.2



TEST NUMBER: P1444426  
 CATALOG NUMBER: EHBR1-12-UNV-TA-L830-UPL12

**CANDELA DISTRIBUTION (continued):**

	110°	112.5°	115°	117.5°	120°	122.5°	125°	127.5°	130°	132.5°	135°
0°	9928.9	9928.9	9928.9	9928.9	9928.9	9928.9	9928.9	9928.9	9928.9	9928.9	9928.9
2.5°	9934.5	9931.8	9924.9	9921.5	9915.2	9912.0	9907.0	9903.8	9899.8	9896.8	9895.3
5°	10209.7	10197.0	10171.5	10155.9	10128.4	10110.3	10082.9	10063.0	10034.8	10014.0	9987.3
7.5°	10567.8	10548.3	10515.7	10491.0	10452.5	10423.1	10380.0	10345.4	10297.7	10258.2	10209.5
10°	10713.6	10702.2	10687.6	10671.6	10650.4	10629.5	10600.0	10570.0	10529.9	10490.1	10438.1
12.5°	10498.1	10508.8	10529.9	10539.8	10556.0	10561.4	10568.8	10565.3	10558.9	10542.6	10519.0
15°	9887.8	9932.5	10003.2	10052.0	10120.5	10168.6	10232.2	10273.2	10320.4	10348.6	10375.4
17.5°	8883.9	8970.4	9095.1	9194.5	9328.0	9436.6	9569.6	9674.1	9794.8	9887.3	9985.9
20°	7598.0	7719.1	7891.2	8037.4	8230.9	8395.0	8605.2	8781.3	8986.6	9157.8	9342.6
22.5°	6214.1	6356.5	6553.8	6730.1	6961.1	7167.4	7430.8	7663.7	7941.3	8190.1	8465.2
25°	4908.5	5048.1	5249.0	5431.5	5681.0	5908.3	6196.0	6463.1	6785.3	7085.8	7430.8
27.5°	3788.9	3912.9	4089.5	4253.8	4482.2	4705.5	4997.4	5282.2	5626.1	5949.0	6320.8
30°	2926.1	3026.7	3168.2	3300.4	3483.8	3666.3	3926.4	4189.8	4531.9	4866.6	5247.7
32.5°	2267.7	2353.4	2471.5	2578.9	2720.1	2857.8	3049.3	3259.7	3559.9	3880.4	4249.0
35°	1755.4	1828.7	1929.3	2021.8	2137.9	2247.2	2390.1	2540.4	2769.4	3039.1	3368.9
37.5°	1399.5	1429.4	1501.2	1576.9	1673.4	1763.2	1875.0	1986.1	2149.9	2362.7	2632.2
40°	1064.3	1111.8	1170.2	1229.9	1303.0	1375.0	1497.6	1556.6	1664.5	1817.3	2026.4
42.5°	858.8	892.1	933.2	974.7	1025.7	1075.8	1137.8	1201.0	1281.7	1385.1	1533.9
45°	718.6	740.4	766.9	794.5	828.0	862.2	903.7	947.1	1001.8	1065.4	1155.7
47.5°	625.0	637.1	654.4	673.2	696.2	719.9	746.8	774.5	808.5	846.1	897.6
50°	551.9	561.9	575.4	588.1	603.9	628.2	638.8	654.1	674.5	696.7	725.5
52.5°	499.1	505.7	514.2	521.5	531.4	540.5	552.5	563.0	577.1	590.4	609.0
55°	457.9	460.3	465.1	469.8	476.7	482.9	491.0	498.0	506.9	514.9	526.6
57.5°	426.1	426.3	428.5	431.0	435.4	439.3	444.9	449.4	455.7	460.8	467.8
60°	403.3	402.0	402.5	403.3	405.8	408.3	412.0	414.9	418.8	421.7	425.6
62.5°	384.2	382.3	381.9	381.6	382.9	383.8	385.7	387.1	389.4	390.7	392.8
65°	360.2	357.9	357.1	356.0	356.4	356.1	356.8	356.9	358.0	358.3	359.5
67.5°	338.4	336.6	335.3	333.9	333.4	332.3	331.9	330.9	330.8	330.0	329.8
70°	318.5	316.7	315.8	314.5	313.8	312.5	311.6	310.1	309.0	307.5	306.7
72.5°	295.5	294.5	294.2	293.3	293.1	292.3	292.1	290.8	290.2	289.0	288.2
75°	271.5	270.6	270.6	269.7	269.6	268.7	268.6	267.3	266.7	265.4	264.8
77.5°	242.9	241.6	241.2	240.2	240.5	240.1	240.4	239.5	239.0	237.8	237.4
80°	210.7	209.0	208.3	207.0	207.4	206.7	207.4	207.3	207.8	206.7	206.5
82.5°	172.4	170.7	170.3	169.4	170.0	170.1	171.4	170.7	171.0	170.0	170.5
85°	125.5	124.1	122.3	122.1	120.8	122.1	120.6	121.6	119.8	121.0	119.4
87.5°	77.7	75.0	73.6	71.7	70.9	69.0	68.3	67.0	67.3	66.7	67.1
90°	37.7	36.0	36.4	35.4	36.2	35.3	36.3	36.1	37.4	37.0	38.4
92.5°	19.4	20.3	22.0	23.8	25.4	27.1	28.8	30.5	32.1	33.9	35.5
95°	24.0	24.8	27.1	29.3	31.6	33.8	36.1	38.3	40.6	42.8	45.1
97.5°	30.3	30.7	33.0	35.2	37.5	39.7	41.9	44.2	46.5	48.7	51.0
100°	34.6	34.7	41.0	47.4	53.8	60.1	66.4	72.8	79.2	85.6	92.0
102.5°	64.7	66.3	82.4	98.4	114.6	130.7	146.8	162.9	179.0	195.1	211.2
105°	143.3	149.6	174.1	198.8	223.3	247.9	272.3	296.9	321.5	346.1	370.7
107.5°	266.0	277.5	299.7	321.9	344.1	366.3	388.5	410.7	432.9	455.1	477.4
110°	375.1	387.2	402.1	416.9	431.8	446.7	461.6	476.5	491.4	506.3	521.3



TEST NUMBER: P1444426  
 CATALOG NUMBER: EHBR1-12-UNV-TA-L830-UPL12

**CANDELA DISTRIBUTION (continued):**

	110°	112.5°	115°	117.5°	120°	122.5°	125°	127.5°	130°	132.5°	135°
112.5°	423.7	431.6	440.3	449.0	457.6	466.3	475.0	483.7	492.4	501.1	509.9
115°	421.9	425.7	429.0	432.5	435.9	439.2	442.7	446.2	449.6	453.0	456.5
117.5°	389.0	390.3	390.8	391.5	391.9	392.6	393.1	393.8	394.4	395.1	395.6
120°	339.7	339.3	338.8	338.2	337.8	337.2	336.7	336.3	335.8	335.3	335.0
122.5°	290.0	289.2	288.6	288.1	287.7	287.2	286.8	286.4	286.0	285.5	285.1
125°	246.3	245.4	245.9	246.4	247.0	247.6	248.1	248.8	249.4	249.9	250.6
127.5°	214.0	213.9	215.1	216.5	217.9	219.2	220.6	222.0	223.4	224.8	226.1
130°	193.4	193.8	195.5	197.3	199.0	200.7	202.4	204.2	205.9	207.7	209.4
132.5°	181.3	182.3	183.8	185.5	187.2	188.8	190.6	192.3	193.9	195.7	197.3
135°	174.6	175.7	177.3	178.7	180.3	181.9	183.4	185.0	186.5	188.1	189.6
137.5°	170.3	171.4	172.7	173.9	175.1	176.5	177.6	178.9	180.1	181.3	182.6
140°	168.6	169.8	170.4	171.2	171.9	172.7	173.4	174.2	174.8	175.6	176.3
142.5°	166.5	167.5	167.9	168.4	168.9	169.5	169.9	170.4	170.9	171.3	171.8
145°	165.0	165.8	165.9	166.0	166.1	166.2	166.3	166.4	166.4	166.5	166.5
147.5°	162.9	163.5	163.4	163.5	163.4	163.3	163.3	163.3	163.1	163.1	163.1
150°	160.0	160.5	160.3	160.2	160.0	159.8	159.6	159.4	159.2	159.1	159.0
152.5°	156.8	157.2	156.9	156.7	156.5	156.3	156.1	155.9	155.7	155.4	155.3
155°	153.0	153.2	153.0	153.0	152.8	152.7	152.5	152.5	152.4	152.3	152.2
157.5°	150.7	150.8	150.7	150.7	150.5	150.5	150.5	150.4	150.4	150.5	150.5
160°	149.6	149.7	149.5	149.5	149.4	149.3	149.3	149.3	149.3	149.4	149.4
162.5°	148.7	148.6	148.5	148.5	148.4	148.3	148.4	148.4	148.3	148.4	148.4
165°	148.8	148.9	148.7	148.7	148.6	148.4	148.4	148.3	148.3	148.2	148.2
167.5°	148.8	148.7	148.7	148.8	148.8	148.8	148.9	149.0	149.1	149.2	149.3
170°	149.8	149.9	149.7	149.7	149.7	149.6	149.5	149.5	149.6	149.5	149.5
172.5°	151.4	151.4	151.3	151.1	151.0	150.8	150.7	150.6	150.5	150.3	150.2
175°	152.1	152.0	151.9	151.9	151.8	151.7	151.7	151.6	151.5	151.5	151.4
177.5°	153.0	152.9	152.8	152.8	152.8	152.8	152.8	152.7	152.7	152.7	152.6
180°	153.2	153.2	153.2	153.2	153.2	153.2	153.2	153.2	153.2	153.2	153.2



TEST NUMBER: P1444426  
 CATALOG NUMBER: EHBR1-12-UNV-TA-L830-UPL12

**CANDELA DISTRIBUTION (continued):**

	137.5°	140°	142.5°	145°	147.5°	150°	152.5°	155°	157.5°	160°	162.5°
0°	9928.9	9928.9	9928.9	9928.9	9928.9	9928.9	9928.9	9928.9	9928.9	9928.9	9928.9
2.5°	9893.3	9893.1	9892.2	9892.7	9892.9	9893.5	9894.4	9895.3	9895.5	9896.1	9896.3
5°	9967.3	9942.9	9924.7	9904.9	9889.9	9876.4	9867.4	9860.3	9857.5	9858.2	9859.9
7.5°	10168.1	10117.6	10075.9	10028.5	9989.0	9947.1	9912.4	9879.5	9855.4	9837.5	9827.5
10°	10388.4	10326.8	10268.0	10199.4	10134.3	10064.9	10002.0	9938.7	9885.9	9840.0	9806.4
12.5°	10486.2	10442.7	10391.8	10327.0	10257.4	10177.3	10096.4	10009.7	9929.0	9854.2	9793.8
15°	10382.7	10382.8	10364.2	10333.1	10284.8	10220.8	10143.6	10053.2	9958.1	9861.0	9772.3
17.5°	10054.1	10116.1	10150.6	10172.4	10165.6	10142.1	10093.0	10023.6	9934.9	9831.4	9723.1
20°	9489.8	9636.0	9740.3	9834.0	9886.6	9921.5	9918.0	9889.7	9826.5	9738.6	9625.8
22.5°	8699.3	8944.7	9138.3	9319.0	9445.7	9548.7	9597.7	9618.4	9589.8	9528.6	9422.7
25°	7739.2	8072.8	8357.7	8634.0	8841.3	9019.6	9126.6	9202.0	9208.0	9176.0	9081.6
27.5°	6672.3	7066.2	7426.6	7794.0	8085.5	8341.7	8509.7	8632.7	8671.8	8666.6	8580.8
30°	5606.8	6020.3	6417.6	6845.9	7206.7	7533.9	7755.9	7922.3	7986.4	7998.7	7916.2
32.5°	4600.5	5008.3	5404.4	5852.3	6249.3	6624.3	6886.6	7084.2	7158.8	7176.3	7085.8
35°	3687.3	4063.4	4440.0	4874.0	5268.7	5657.1	5933.4	6140.3	6209.9	6221.7	6116.9
37.5°	2895.3	3215.8	3543.9	3933.3	4295.7	4660.5	4923.2	5117.5	5168.3	5165.1	5046.6
40°	2228.4	2477.6	2741.3	3061.8	3363.3	3671.5	3893.2	4054.0	4080.7	4060.9	3936.4
42.5°	1675.7	1855.6	2046.8	2286.0	2509.7	2740.4	2901.7	3021.1	3024.9	2993.7	2881.9
45°	1248.4	1424.0	1504.1	1648.8	1792.9	1946.3	2044.7	2118.5	2107.1	2079.6	1994.6
47.5°	951.7	1019.1	1090.7	1180.4	1264.4	1438.5	1425.6	1543.9	1458.6	1516.8	1388.9
50°	755.7	793.4	832.0	879.7	923.4	968.9	997.4	1018.7	1015.9	1006.8	982.2
52.5°	643.0	654.6	673.6	700.7	725.1	749.7	765.9	779.2	779.3	775.7	763.3
55°	537.4	552.2	565.8	583.5	613.6	618.3	641.5	636.8	638.6	632.2	638.7
57.5°	473.8	482.4	490.1	500.6	509.3	519.5	525.5	531.2	530.7	529.4	523.2
60°	428.7	433.5	437.7	443.9	448.7	454.4	457.2	460.1	459.2	457.0	451.4
62.5°	394.0	397.0	399.4	403.3	406.3	409.8	411.3	412.5	411.3	409.2	404.3
65°	359.7	361.7	363.2	366.2	368.2	371.3	372.5	373.7	372.5	370.9	367.2
67.5°	328.8	329.0	328.9	330.1	330.7	332.5	333.1	333.9	332.6	331.2	328.0
70°	305.4	304.9	304.3	304.8	304.9	305.8	305.9	305.8	304.2	301.8	298.3
72.5°	287.1	286.8	286.4	286.7	286.7	287.6	287.3	286.9	284.9	282.7	279.2
75°	263.5	263.3	262.5	262.5	261.7	262.0	261.1	260.5	258.3	256.4	253.3
77.5°	236.0	235.5	234.2	233.7	232.3	231.7	230.0	229.0	226.9	225.3	222.7
80°	205.1	204.7	203.1	202.1	199.9	198.5	195.9	194.4	191.8	190.3	187.7
82.5°	169.6	169.8	168.1	167.0	163.8	161.4	157.8	156.0	153.2	151.7	149.0
85°	120.6	118.9	119.8	119.7	117.7	115.7	112.8	110.7	108.4	107.0	105.1
87.5°	66.1	66.6	66.1	65.7	64.3	63.2	61.0	59.8	58.1	57.2	55.8
90°	35.8	34.8	32.1	31.2	28.7	27.1	24.3	22.9	20.2	19.7	18.1
92.5°	33.6	31.8	29.9	27.9	26.1	24.3	22.3	20.4	18.5	17.8	17.3
95°	42.3	39.6	36.9	34.2	31.4	28.7	25.9	23.2	20.5	20.0	19.4
97.5°	47.8	44.5	41.3	38.1	34.8	31.7	28.6	25.3	22.1	21.7	21.4
100°	84.6	77.3	69.9	62.5	55.0	47.6	40.3	32.9	25.5	25.1	24.6
102.5°	193.2	175.4	157.5	139.5	121.6	103.6	85.7	67.7	49.8	47.2	44.7
105°	343.6	316.3	289.3	262.2	234.9	207.8	180.7	153.4	126.4	117.7	108.9
107.5°	451.9	426.4	400.9	375.4	349.8	324.3	298.8	273.2	247.7	232.4	217.0
110°	501.0	480.7	460.6	440.3	420.0	399.8	379.5	359.2	339.0	325.7	312.6



TEST NUMBER: P1444426  
 CATALOG NUMBER: EHBR1-12-UNV-TA-L830-UPL12

**CANDELA DISTRIBUTION (continued):**

	137.5°	140°	142.5°	145°	147.5°	150°	152.5°	155°	157.5°	160°	162.5°
112.5°	495.1	480.3	465.5	450.6	435.9	420.9	406.1	391.3	376.4	368.3	360.4
115°	447.6	438.7	429.8	420.8	411.9	402.9	394.0	385.0	376.0	371.8	367.6
117.5°	391.1	386.5	382.0	377.4	372.8	368.2	363.7	359.0	354.5	353.0	351.5
120°	333.7	332.3	330.8	329.4	328.0	326.6	325.1	323.7	322.3	322.5	322.7
122.5°	285.7	286.3	286.8	287.3	287.9	288.3	288.9	289.3	289.8	290.9	292.1
125°	251.9	253.2	254.6	255.9	257.1	258.4	259.8	261.1	262.4	263.5	264.6
127.5°	227.7	229.1	230.7	232.1	233.6	235.1	236.6	237.9	239.4	240.5	241.6
130°	210.8	212.1	213.3	214.6	215.9	217.2	218.4	219.8	221.0	221.8	222.6
132.5°	198.4	199.6	200.8	201.9	203.1	204.2	205.4	206.5	207.8	208.3	209.0
135°	190.5	191.3	192.2	193.1	194.0	194.7	195.7	196.6	197.5	197.9	198.4
137.5°	183.4	184.0	184.8	185.5	186.2	186.9	187.7	188.4	189.2	189.3	189.7
140°	177.0	177.8	178.5	179.3	180.0	180.8	181.7	182.5	183.3	183.6	183.8
142.5°	172.4	172.8	173.5	174.0	174.7	175.3	175.9	176.6	177.2	177.5	177.7
145°	167.2	167.9	168.6	169.3	170.0	170.7	171.6	172.4	173.2	173.3	173.5
147.5°	163.6	164.2	164.9	165.4	166.2	166.7	167.5	168.1	169.0	169.1	169.2
150°	159.6	160.2	160.8	161.5	162.1	162.9	163.6	164.4	165.2	165.4	165.6
152.5°	156.0	156.6	157.3	158.0	158.8	159.6	160.5	161.2	162.1	162.2	162.5
155°	152.9	153.5	154.3	155.0	155.8	156.5	157.4	158.1	159.0	159.2	159.5
157.5°	151.1	151.7	152.4	153.1	153.7	154.4	155.2	155.9	156.5	156.8	157.0
160°	150.0	150.5	151.1	151.7	152.3	153.0	153.5	154.2	154.7	155.0	155.2
162.5°	148.9	149.6	150.2	150.7	151.3	151.9	152.5	153.2	153.7	153.9	154.2
165°	148.7	149.0	149.5	149.9	150.2	150.7	151.2	151.6	152.1	152.3	152.6
167.5°	149.7	149.9	150.3	150.6	151.0	151.3	151.7	152.0	152.4	152.7	152.9
170°	149.8	150.2	150.3	150.7	151.1	151.4	151.7	152.0	152.4	152.6	152.8
172.5°	150.4	150.6	150.8	151.1	151.2	151.5	151.7	151.9	152.1	152.4	152.5
175°	151.5	151.5	151.7	151.7	151.7	151.9	152.0	152.1	152.3	152.5	152.6
177.5°	152.7	152.8	152.8	152.9	153.1	153.2	153.2	153.3	153.4	153.6	153.8
180°	153.2	153.2	153.2	153.2	153.2	153.2	153.2	153.2	153.2	153.2	153.2



TEST NUMBER: P1444426  
 CATALOG NUMBER: EHBR1-12-UNV-TA-L830-UPL12

**CANDELA DISTRIBUTION (continued):**

	165°	167.5°	170°	172.5°	175°	177.5°	180°	182.5°	185°	187.5°	190°
0°	9928.9	9928.9	9928.9	9928.9	9928.9	9928.9	9928.9	9928.9	9928.9	9928.9	9928.9
2.5°	9896.0	9895.9	9895.6	9895.1	9894.6	9894.9	9895.4	9896.5	9898.5	9901.4	9905.1
5°	9861.2	9863.3	9864.4	9864.6	9863.5	9862.9	9863.8	9866.5	9872.1	9881.2	9893.7
7.5°	9824.9	9827.3	9831.1	9834.0	9834.6	9833.9	9834.0	9838.3	9848.4	9866.4	9891.5
10°	9785.9	9778.5	9782.4	9789.5	9795.3	9796.3	9796.9	9802.0	9816.8	9843.9	9884.2
12.5°	9750.0	9726.6	9722.1	9728.5	9737.1	9739.9	9739.1	9741.3	9758.6	9794.4	9850.7
15°	9702.7	9658.7	9643.7	9645.3	9656.0	9659.8	9657.0	9652.7	9669.6	9713.4	9786.2
17.5°	9626.3	9555.3	9527.6	9526.4	9538.8	9542.2	9535.3	9522.0	9538.7	9593.3	9683.7
20°	9510.0	9405.2	9353.1	9344.8	9358.3	9354.3	9340.8	9320.7	9342.5	9409.0	9516.5
22.5°	9301.1	9168.2	9079.2	9050.5	9066.7	9055.9	9036.0	9010.4	9039.4	9114.8	9234.6
25°	8959.6	8806.1	8684.2	8615.8	8628.8	8609.4	8587.7	8556.7	8591.4	8678.0	8809.7
27.5°	8457.6	8280.4	8129.3	8016.2	8020.3	7995.0	7970.1	7930.0	7973.2	8075.6	8224.3
30°	7790.2	7585.1	7401.1	7247.3	7233.5	7209.0	7183.4	7130.9	7184.9	7307.6	7481.3
32.5°	6952.1	6724.3	6511.7	6317.3	6280.6	6256.7	6233.9	6173.3	6244.1	6387.1	6586.7
35°	5971.8	5729.2	5498.8	5276.7	5215.9	5191.9	5172.0	5114.0	5202.4	5358.1	5573.6
37.5°	4895.9	4648.0	4419.3	4191.5	4105.6	4073.1	4058.7	4020.6	4122.6	4276.5	4493.0
40°	3791.3	3560.9	3355.8	3154.6	3056.7	3006.9	2999.4	2992.5	3091.0	3224.6	3421.1
42.5°	2758.0	2572.1	2414.0	2260.2	2171.5	2103.6	2103.6	2124.2	2212.9	2312.9	2464.5
45°	1907.8	1783.0	1682.3	1579.6	1607.0	1471.7	1551.2	1510.3	1554.2	1618.7	1717.3
47.5°	1311.5	1243.3	1188.0	1130.6	1088.7	1048.7	1052.3	1078.1	1119.4	1157.6	1208.9
50°	955.8	921.2	893.0	863.2	842.3	824.7	825.7	836.9	858.6	878.7	905.5
52.5°	749.0	729.8	714.5	698.0	687.1	678.4	678.8	684.3	696.0	707.5	722.9
55°	617.3	615.0	595.1	580.3	574.7	568.8	569.9	572.0	580.0	586.7	596.9
57.5°	517.3	508.4	502.4	494.6	491.0	486.9	487.8	488.7	494.0	498.5	505.8
60°	446.7	440.3	436.1	430.8	428.5	425.8	426.5	427.0	430.3	433.3	438.6
62.5°	399.8	394.1	390.4	386.3	384.7	382.9	383.3	383.5	385.6	387.8	391.7
65°	363.8	359.3	356.2	352.7	351.0	349.1	349.3	349.3	351.2	352.7	355.7
67.5°	325.7	322.3	320.4	317.5	316.4	314.5	314.5	313.9	315.1	315.7	317.7
70°	295.2	291.8	289.3	286.5	285.0	283.4	283.4	283.4	284.9	286.3	288.9
72.5°	276.3	273.1	270.8	268.5	267.1	265.7	265.4	265.3	266.2	267.0	268.7
75°	251.3	248.7	247.4	245.2	244.1	242.5	242.2	241.5	242.0	242.1	243.5
77.5°	221.0	218.5	217.5	215.3	214.3	212.5	212.4	211.5	211.9	211.7	212.6
80°	186.5	184.3	183.6	181.8	181.3	179.7	179.4	178.4	178.7	178.0	178.3
82.5°	147.9	145.8	145.4	143.7	143.7	142.2	142.1	140.6	140.6	139.3	137.2
85°	104.2	102.7	102.0	100.6	100.2	99.0	98.4	96.9	96.5	95.5	95.3
87.5°	55.0	54.0	53.2	52.5	51.3	49.1	48.9	47.4	47.6	46.5	46.6
90°	17.5	16.1	15.6	14.2	13.7	12.6	12.3	12.5	12.8	13.2	13.6
92.5°	16.7	16.0	15.5	14.8	14.1	13.6	12.9	13.6	14.1	14.8	15.5
95°	18.8	18.3	17.8	17.2	16.7	16.1	15.5	16.1	16.7	17.3	17.9
97.5°	21.1	20.7	20.3	20.0	19.7	19.3	18.9	19.3	19.7	20.0	20.3
100°	24.3	23.8	23.4	22.9	22.6	22.1	21.7	22.2	22.7	23.0	23.5
102.5°	42.1	39.4	36.9	34.3	31.7	29.1	26.5	29.1	31.7	34.4	37.0
105°	100.1	91.4	82.7	74.0	65.2	56.5	47.8	56.6	65.3	74.1	82.8
107.5°	201.6	186.3	170.9	155.6	140.1	124.8	109.4	124.9	140.2	155.7	171.0
110°	299.4	286.1	272.8	259.6	246.4	233.1	219.8	233.1	246.4	259.6	272.9



TEST NUMBER: P1444426  
 CATALOG NUMBER: EHBR1-12-UNV-TA-L830-UPL12

**CANDELA DISTRIBUTION (continued):**

	165°	167.5°	170°	172.5°	175°	177.5°	180°	182.5°	185°	187.5°	190°
112.5°	352.2	344.1	336.1	328.0	319.9	311.9	303.8	311.9	320.0	328.2	336.3
115°	363.3	359.0	354.8	350.6	346.2	342.0	337.7	342.1	346.4	350.8	355.1
117.5°	350.0	348.5	347.1	345.6	344.1	342.6	341.0	342.6	344.2	345.8	347.4
120°	322.8	323.0	323.2	323.3	323.4	323.5	323.6	323.6	323.6	323.6	323.6
122.5°	293.2	294.3	295.3	296.4	297.5	298.5	299.5	298.6	297.8	296.9	295.9
125°	265.7	267.1	268.1	269.2	270.2	271.4	272.3	271.6	270.7	269.8	268.7
127.5°	242.6	243.6	244.6	245.7	246.6	247.6	248.4	247.8	247.0	246.2	245.4
130°	223.4	224.2	224.9	225.7	226.5	227.2	227.7	227.3	226.9	226.4	225.7
132.5°	209.5	210.2	210.8	211.3	211.8	212.4	212.7	212.5	212.3	212.0	211.6
135°	198.8	199.1	199.6	200.0	200.3	200.5	200.7	200.8	200.7	200.7	200.5
137.5°	189.9	190.2	190.2	190.4	190.5	190.6	190.6	190.9	191.0	191.3	191.3
140°	184.0	184.3	184.4	184.5	184.8	184.8	184.8	185.1	185.3	185.4	185.5
142.5°	178.0	178.2	178.4	178.5	178.7	178.7	178.8	179.0	179.2	179.3	179.4
145°	173.6	173.8	173.9	174.0	173.9	173.9	173.9	174.2	174.4	174.7	174.9
147.5°	169.3	169.5	169.5	169.5	169.5	169.5	169.5	169.7	170.0	170.2	170.4
150°	166.0	166.2	166.4	166.5	166.7	166.8	166.8	167.0	167.2	167.2	167.3
152.5°	162.7	162.9	163.1	163.2	163.5	163.5	163.5	163.7	163.9	164.0	164.1
155°	159.7	160.0	160.2	160.4	160.6	160.7	160.9	161.0	161.1	161.2	161.3
157.5°	157.2	157.5	157.6	157.8	158.0	158.2	158.4	158.6	158.7	158.9	158.9
160°	155.4	155.7	155.8	156.1	156.2	156.4	156.5	156.7	156.9	157.0	157.1
162.5°	154.4	154.6	154.7	154.9	155.0	155.2	155.4	155.6	155.8	155.9	156.0
165°	152.8	153.1	153.3	153.6	153.8	154.1	154.3	154.4	154.4	154.6	154.6
167.5°	153.1	153.3	153.5	153.8	153.9	154.2	154.4	154.5	154.5	154.6	154.7
170°	153.0	153.2	153.3	153.5	153.8	153.9	154.1	154.1	154.2	154.3	154.3
172.5°	152.8	153.1	153.3	153.5	153.8	154.0	154.3	154.3	154.2	154.1	154.0
175°	152.9	153.1	153.2	153.4	153.6	153.8	154.1	153.9	154.0	153.8	153.8
177.5°	154.2	154.5	154.7	154.8	155.1	155.3	155.6	155.4	155.2	155.0	154.8
180°	153.2	153.2	153.2	153.2	153.2	153.2	153.2	153.2	153.2	153.2	153.2



TEST NUMBER: P1444426  
 CATALOG NUMBER: EHBR1-12-UNV-TA-L830-UPL12

**CANDELA DISTRIBUTION (continued):**

	192.5°	195°	197.5°	200°	202.5°	205°	207.5°	210°	212.5°	215°	217.5°
0°	9928.9	9928.9	9928.9	9928.9	9928.9	9928.9	9928.9	9928.9	9928.9	9928.9	9928.9
2.5°	9910.4	9915.3	9922.9	9929.9	9940.2	9948.3	9960.6	9969.9	9983.7	9992.7	10007.8
5°	9911.3	9930.7	9956.2	9981.1	10011.0	10038.1	10071.9	10100.6	10134.5	10162.2	10196.9
7.5°	9925.3	9962.7	10007.5	10052.7	10103.7	10151.5	10205.3	10254.1	10307.3	10352.4	10401.6
10°	9935.7	9993.3	10059.3	10125.8	10195.8	10260.8	10326.4	10383.0	10436.1	10479.7	10518.2
12.5°	9921.6	10001.1	10085.8	10167.7	10245.4	10312.7	10369.2	10412.7	10442.9	10463.3	10468.1
15°	9873.9	9969.6	10061.8	10143.2	10207.8	10257.5	10283.3	10295.4	10282.4	10260.9	10213.7
17.5°	9785.0	9885.7	9968.2	10032.4	10066.5	10080.1	10058.8	10021.6	9949.1	9868.5	9752.2
20°	9621.8	9715.7	9775.5	9810.5	9801.4	9767.6	9687.1	9589.1	9444.3	9289.8	9086.1
22.5°	9335.5	9417.7	9449.5	9452.0	9396.4	9311.9	9166.5	8998.6	8770.0	8532.4	8240.2
25°	8905.9	8977.8	8982.9	8954.6	8852.6	8715.7	8502.3	8264.6	7954.1	7637.5	7271.3
27.5°	8323.1	8392.1	8375.2	8322.5	8181.0	7997.8	7724.6	7417.5	7034.6	6660.7	6255.6
30°	7590.5	7664.3	7644.5	7576.9	7408.6	7192.1	6870.6	6513.8	6088.7	5689.3	5278.8
32.5°	6714.0	6807.2	6793.5	6729.2	6553.7	6321.9	5973.0	5594.7	5159.8	4766.2	4366.8
35°	5717.5	5830.7	5836.6	5794.6	5631.6	5402.6	5058.0	4691.9	4275.2	3903.9	3535.0
37.5°	4644.0	4775.3	4802.2	4790.9	4655.8	4453.7	4139.8	3811.2	3442.2	3116.7	2801.2
40°	3564.6	3697.5	3743.6	3757.2	3657.6	3500.9	3243.4	2978.2	2677.3	2413.6	2163.0
42.5°	2580.2	2697.9	2742.5	2770.5	2708.3	2603.9	2416.0	2223.4	2003.0	1812.8	1630.4
45°	1791.9	1875.3	1909.2	1937.4	1903.5	1844.6	1725.9	1605.5	1460.0	1335.7	1218.0
47.5°	1252.8	1298.8	1321.2	1334.9	1321.8	1291.0	1226.4	1156.6	1074.5	1001.9	932.0
50°	928.7	953.1	964.8	972.7	963.1	946.1	911.1	873.1	828.1	786.9	746.7
52.5°	735.9	749.9	756.9	761.2	755.6	745.2	724.9	702.3	675.3	649.9	636.5
55°	620.0	619.3	635.3	627.6	635.3	617.9	614.4	589.6	567.1	551.3	534.2
57.5°	511.3	518.6	521.7	525.1	522.9	519.7	511.1	502.2	490.4	480.4	469.9
60°	442.6	448.6	452.0	455.3	455.1	453.9	449.0	443.6	436.3	430.3	424.0
62.5°	395.3	400.4	403.8	407.1	407.4	406.9	403.1	399.4	394.4	390.6	386.2
65°	358.0	361.7	363.9	366.5	366.4	365.7	362.3	359.2	355.1	352.5	349.2
67.5°	319.0	321.8	323.5	326.1	326.5	326.6	324.8	323.4	321.3	320.5	319.5
70°	291.3	294.7	297.5	300.7	302.4	303.1	302.4	301.6	300.4	299.9	299.1
72.5°	270.3	273.1	275.4	278.2	279.8	280.9	280.4	279.9	278.9	278.8	278.1
75°	244.3	246.3	247.5	249.6	250.5	251.5	251.0	251.3	251.0	251.8	251.8
77.5°	213.0	214.4	215.0	216.6	216.7	218.0	218.3	219.8	220.9	223.2	224.4
80°	177.7	178.6	178.6	180.2	181.0	183.1	184.2	186.6	187.7	189.9	190.1
82.5°	138.1	137.0	138.1	137.4	139.4	141.8	142.2	144.3	144.7	146.1	145.1
85°	94.4	94.3	93.5	93.6	93.0	93.3	92.9	93.3	92.9	93.0	92.0
87.5°	45.2	45.6	44.7	45.0	44.0	44.5	43.7	44.3	43.3	43.5	42.0
90°	14.0	14.3	14.7	15.2	15.7	16.9	18.1	19.2	20.6	21.7	23.0
92.5°	16.0	16.7	17.3	17.9	18.5	20.4	22.3	24.3	26.2	28.0	29.9
95°	18.4	18.9	19.5	20.1	20.7	23.4	26.1	28.9	31.6	34.4	37.1
97.5°	20.8	21.2	21.5	21.8	22.2	25.4	28.7	31.8	35.0	38.3	41.5
100°	23.9	24.4	24.7	25.3	25.7	33.1	40.5	47.9	55.3	62.7	70.1
102.5°	39.5	42.2	44.8	47.4	50.0	68.0	86.0	103.9	121.8	139.8	157.7
105°	91.5	100.2	109.1	117.8	126.5	153.7	181.0	208.1	235.2	262.5	289.6
107.5°	186.4	201.8	217.3	232.7	248.0	273.6	299.1	324.7	350.2	375.8	401.3
110°	286.3	299.5	312.8	326.1	339.4	359.6	379.9	400.3	420.5	440.9	461.1



TEST NUMBER: P1444426  
 CATALOG NUMBER: EHBR1-12-UNV-TA-L830-UPL12

**CANDELA DISTRIBUTION (continued):**

	192.5°	195°	197.5°	200°	202.5°	205°	207.5°	210°	212.5°	215°	217.5°
112.5°	344.4	352.5	360.6	368.7	376.8	391.7	406.6	421.5	436.5	451.2	466.1
115°	359.4	363.6	368.0	372.2	376.6	385.6	394.6	403.6	412.6	421.5	430.6
117.5°	349.0	350.6	352.1	353.6	355.1	359.8	364.5	369.1	373.7	378.4	383.0
120°	323.6	323.5	323.4	323.3	323.2	324.6	326.2	327.7	329.1	330.6	332.0
122.5°	295.0	293.9	292.9	291.9	290.8	290.4	289.9	289.4	289.1	288.5	288.0
125°	267.8	266.8	265.7	264.7	263.6	262.4	261.2	259.7	258.5	257.3	256.0
127.5°	244.6	243.6	242.7	241.8	240.8	239.3	238.0	236.5	235.1	233.7	232.2
130°	225.3	224.6	224.0	223.1	222.6	221.3	220.0	218.8	217.5	216.4	215.1
132.5°	211.3	210.9	210.4	209.8	209.4	208.2	207.2	206.0	204.9	203.7	202.7
135°	200.4	200.1	199.9	199.6	199.2	198.4	197.6	196.7	196.0	195.1	194.3
137.5°	191.4	191.3	191.3	191.1	191.1	190.3	189.7	188.9	188.4	187.6	187.0
140°	185.5	185.5	185.5	185.4	185.3	184.5	183.9	183.0	182.4	181.6	180.9
142.5°	179.4	179.5	179.4	179.4	179.3	178.6	178.2	177.6	177.0	176.5	175.9
145°	174.9	175.0	175.2	175.1	175.2	174.5	173.9	173.1	172.5	171.8	171.2
147.5°	170.7	170.7	170.8	170.9	171.0	170.4	169.9	169.3	168.8	168.1	167.8
150°	167.4	167.4	167.4	167.4	167.4	166.8	166.3	165.6	165.1	164.5	164.0
152.5°	164.2	164.3	164.3	164.3	164.4	163.8	163.2	162.6	162.0	161.3	160.7
155°	161.4	161.4	161.4	161.4	161.4	160.8	160.3	159.7	159.1	158.6	158.0
157.5°	159.0	159.1	159.1	159.1	159.2	158.8	158.3	157.7	157.3	156.7	156.2
160°	157.2	157.3	157.4	157.5	157.5	157.1	156.7	156.2	155.9	155.4	154.9
162.5°	156.1	156.2	156.2	156.3	156.4	156.1	155.6	155.2	154.7	154.4	153.9
165°	154.6	154.6	154.7	154.6	154.6	154.3	154.1	153.8	153.5	153.2	153.0
167.5°	154.7	154.6	154.7	154.7	154.7	154.5	154.4	154.0	153.8	153.6	153.4
170°	154.4	154.3	154.3	154.4	154.3	154.1	153.9	153.7	153.6	153.2	153.1
172.5°	154.0	153.9	153.8	153.8	153.6	153.5	153.3	153.2	153.2	153.1	152.9
175°	153.6	153.6	153.4	153.4	153.2	153.2	153.2	153.2	153.1	153.1	153.0
177.5°	154.7	154.6	154.3	154.1	154.0	153.9	153.8	153.8	153.8	153.7	153.6
180°	153.2	153.2	153.2	153.2	153.2	153.2	153.2	153.2	153.2	153.2	153.2



TEST NUMBER: P1444426  
 CATALOG NUMBER: EHBR1-12-UNV-TA-L830-UPL12

**CANDELA DISTRIBUTION (continued):**

	220°	222.5°	225°	227.5°	230°	232.5°	235°	237.5°	240°	242.5°	245°
0°	9928.9	9928.9	9928.9	9928.9	9928.9	9928.9	9928.9	9928.9	9928.9	9928.9	9928.9
2.5°	10017.1	9955.2	9947.1	9951.4	9961.7	9965.6	9976.7	9979.8	9991.0	9993.7	10004.5
5°	10223.8	10142.0	10146.1	10165.7	10195.5	10213.2	10242.5	10257.8	10285.7	10298.5	10323.7
7.5°	10441.8	10377.5	10397.6	10430.7	10471.4	10499.6	10534.7	10557.6	10587.9	10606.7	10631.0
10°	10548.7	10531.1	10553.1	10579.3	10602.5	10620.7	10635.6	10647.5	10655.3	10662.7	10665.8
12.5°	10467.3	10494.5	10498.3	10495.7	10480.4	10468.7	10442.2	10424.4	10392.5	10373.1	10335.3
15°	10165.4	10225.3	10192.1	10141.9	10068.5	10007.2	9920.8	9856.4	9766.3	9705.2	9614.8
17.5°	9635.6	9711.1	9624.8	9508.6	9360.9	9234.5	9077.1	8952.2	8795.7	8681.9	8535.9
20°	8889.7	8960.4	8806.3	8613.8	8385.2	8192.8	7966.1	7785.1	7574.3	7417.5	7228.3
22.5°	7961.1	8011.4	7794.3	7534.8	7243.6	7003.3	6732.1	6515.2	6274.5	6095.4	5893.6
25°	6933.7	6947.3	6686.9	6387.9	6063.3	5793.3	5503.7	5275.6	5030.3	4848.6	4650.7
27.5°	5896.7	5876.8	5595.3	5278.4	4936.9	4656.3	4373.9	4160.1	3945.2	3781.6	3611.0
30°	4918.0	4869.8	4577.5	4251.6	3920.3	3668.7	3434.3	3262.7	3091.7	2961.9	2824.9
32.5°	4020.4	3952.4	3668.0	3362.7	3083.5	2889.3	2715.4	2585.6	2447.5	2337.8	2223.0
35°	3225.5	3153.0	2901.0	2642.2	2430.9	2287.7	2151.1	2044.6	1927.4	1834.8	1735.1
37.5°	2543.2	2483.8	2272.7	2069.0	1909.2	1798.3	1686.4	1599.2	1502.4	1461.6	1355.0
40°	1963.3	1921.8	1756.8	1606.6	1486.6	1434.5	1320.9	1239.5	1167.1	1107.5	1049.6
42.5°	1531.4	1516.7	1356.1	1239.0	1154.5	1088.8	1025.5	974.1	924.1	882.9	844.1
45°	1123.9	1112.2	1040.9	973.3	915.7	869.8	827.0	791.7	758.9	731.9	707.2
47.5°	875.2	871.4	830.3	788.4	752.2	722.7	694.9	671.4	649.7	631.6	625.7
50°	711.8	711.3	687.2	661.3	635.5	618.4	600.7	586.8	572.9	562.0	550.6
52.5°	604.7	602.1	585.9	569.9	554.6	543.4	532.1	523.2	514.0	507.2	500.1
55°	520.6	523.4	514.0	504.4	494.9	487.9	480.0	474.1	467.8	463.6	459.3
57.5°	462.2	465.8	461.0	455.5	449.7	445.1	439.6	435.6	431.4	428.6	426.2
60°	419.7	423.7	421.7	419.0	415.3	412.6	409.2	406.9	404.2	402.7	401.3
62.5°	383.7	388.6	387.9	386.7	384.3	382.8	380.9	379.9	378.1	377.4	376.7
65°	347.7	353.2	353.1	352.5	351.3	350.8	349.6	349.4	348.5	348.8	348.7
67.5°	319.3	324.2	325.3	326.1	326.1	326.3	326.3	326.7	326.7	327.4	327.8
70°	298.9	302.4	303.1	304.0	304.1	304.8	304.8	305.3	305.1	305.7	305.8
72.5°	278.3	282.8	283.5	284.2	284.2	284.9	284.5	284.4	283.5	283.4	282.7
75°	252.6	258.3	259.6	260.4	260.5	261.1	260.3	259.7	258.3	257.7	256.7
77.5°	225.7	231.7	232.6	232.9	232.4	232.5	230.9	229.8	227.9	227.2	226.1
80°	190.9	199.6	200.3	199.7	198.4	198.1	196.6	195.6	193.3	192.5	191.7
82.5°	145.3	155.5	156.9	157.6	156.4	156.7	155.2	154.6	152.5	152.1	150.8
85°	91.7	101.9	103.6	103.3	102.3	102.0	101.2	101.4	101.3	101.8	102.1
87.5°	42.2	52.0	54.4	53.7	53.6	52.8	51.2	51.9	52.8	53.4	53.5
90°	24.3	28.5	29.6	28.8	27.1	26.1	24.4	23.8	22.2	21.5	20.0
92.5°	31.8	33.7	35.6	33.9	32.2	30.5	28.9	27.2	25.5	23.8	22.1
95°	39.8	42.4	45.1	42.9	40.6	38.3	36.1	33.9	31.7	29.4	27.2
97.5°	44.7	47.9	51.1	48.8	46.6	44.2	42.0	39.8	37.6	35.3	33.1
100°	77.5	84.8	92.1	85.7	79.3	73.0	66.6	60.2	53.9	47.5	41.1
102.5°	175.5	193.4	211.3	195.2	179.2	163.0	146.9	130.9	114.7	98.5	82.5
105°	316.7	343.8	370.8	346.2	321.7	297.0	272.5	247.9	223.4	198.8	174.2
107.5°	426.9	452.1	477.5	455.2	433.1	410.8	388.6	366.4	344.2	321.9	299.8
110°	481.4	501.3	521.5	506.5	491.7	476.7	461.8	446.8	431.9	417.1	402.2



TEST NUMBER: P1444426  
 CATALOG NUMBER: EHBR1-12-UNV-TA-L830-UPL12

**CANDELA DISTRIBUTION (continued):**

	220°	222.5°	225°	227.5°	230°	232.5°	235°	237.5°	240°	242.5°	245°
112.5°	481.0	495.4	510.1	501.3	492.6	484.0	475.2	466.5	457.8	449.2	440.4
115°	439.5	447.9	456.7	453.3	449.8	446.3	442.9	439.5	436.0	432.7	429.3
117.5°	387.5	391.5	396.0	395.4	394.7	394.1	393.4	392.9	392.2	391.6	391.1
120°	333.5	334.2	335.4	335.7	336.3	336.7	337.2	337.6	338.2	338.5	339.1
122.5°	287.6	286.4	285.6	286.0	286.4	286.7	287.3	287.6	288.1	288.5	289.1
125°	254.7	252.5	251.0	250.5	249.9	249.3	248.7	248.0	247.5	246.9	246.4
127.5°	230.8	228.6	226.8	225.5	224.1	222.6	221.3	219.8	218.5	217.0	215.7
130°	213.9	211.6	210.2	208.4	206.7	204.9	203.2	201.5	199.7	198.0	196.2
132.5°	201.6	199.4	198.1	196.4	194.8	193.1	191.5	189.7	188.1	186.3	184.7
135°	193.4	191.6	190.4	188.8	187.5	185.9	184.3	182.8	181.3	179.8	178.3
137.5°	186.2	184.4	183.5	182.3	181.2	179.8	178.7	177.5	176.3	174.9	173.9
140°	180.1	178.2	177.2	176.7	175.9	175.3	174.5	173.9	173.1	172.4	171.7
142.5°	175.4	173.6	172.7	172.4	172.0	171.4	171.1	170.7	170.2	169.6	169.3
145°	170.5	168.4	167.6	167.4	167.5	167.4	167.4	167.3	167.3	167.2	167.2
147.5°	167.1	165.0	164.1	164.2	164.3	164.4	164.5	164.5	164.6	164.7	164.8
150°	163.3	160.9	159.9	160.1	160.3	160.5	160.7	160.9	161.1	161.3	161.5
152.5°	160.1	157.3	156.1	156.2	156.5	156.7	157.0	157.2	157.5	157.7	158.0
155°	157.4	154.3	153.1	153.2	153.2	153.3	153.3	153.5	153.6	153.8	154.0
157.5°	155.6	152.5	151.4	151.3	151.3	151.3	151.4	151.4	151.5	151.6	151.7
160°	154.6	151.4	150.2	150.2	150.2	150.2	150.2	150.2	150.2	150.3	150.3
162.5°	153.4	150.3	149.2	149.2	149.1	149.1	149.2	149.0	149.1	149.2	149.2
165°	152.6	150.0	149.0	148.9	149.0	149.0	149.1	149.2	149.3	149.4	149.6
167.5°	153.2	150.8	150.1	150.0	149.8	149.7	149.7	149.6	149.6	149.5	149.5
170°	152.8	150.9	150.2	150.2	150.3	150.2	150.2	150.3	150.3	150.3	150.4
172.5°	152.7	151.3	150.9	150.9	151.1	151.2	151.4	151.4	151.6	151.7	151.8
175°	152.9	152.1	151.9	151.9	151.9	152.0	152.1	152.1	152.2	152.3	152.4
177.5°	153.6	153.3	153.2	153.2	153.2	153.2	153.2	153.2	153.2	153.2	153.2
180°	153.2	153.2	153.2	153.2	153.2	153.2	153.2	153.2	153.2	153.2	153.2



TEST NUMBER: P1444426  
 CATALOG NUMBER: EHBR1-12-UNV-TA-L830-UPL12

**CANDELA DISTRIBUTION (continued):**

	247.5°	250°	252.5°	255°	257.5°	260°	262.5°	265°	267.5°	270°	272.5°
0°	9928.9	9928.9	9928.9	9928.9	9928.9	9928.9	9928.9	9928.9	9928.9	9928.9	9928.9
2.5°	10006.6	10018.2	10017.4	10028.2	10027.7	10038.0	10035.9	10044.8	10042.7	10050.3	10045.8
5°	10334.8	10357.0	10364.3	10384.4	10388.5	10406.4	10406.7	10421.0	10419.3	10430.4	10424.5
7.5°	10645.3	10666.0	10675.9	10691.4	10699.2	10712.0	10717.1	10727.7	10730.2	10736.5	10736.3
10°	10671.5	10671.5	10676.2	10674.1	10678.5	10676.0	10681.3	10679.3	10687.2	10685.1	10691.0
12.5°	10318.9	10283.9	10271.1	10239.7	10232.8	10205.8	10207.8	10190.5	10198.8	10188.2	10206.3
15°	9561.1	9480.0	9439.9	9369.2	9347.1	9291.3	9286.8	9249.7	9259.7	9240.4	9268.6
17.5°	8441.3	8313.5	8243.4	8140.3	8099.4	8020.5	8004.6	7957.0	7964.4	7940.4	7974.6
20°	7106.2	6951.8	6863.4	6744.1	6691.0	6596.9	6571.9	6518.6	6525.3	6501.4	6540.1
22.5°	5755.9	5594.2	5494.4	5369.4	5301.6	5213.1	5186.6	5133.0	5136.0	5113.6	5150.8
25°	4515.0	4360.0	4263.1	4149.6	4090.7	4009.6	3981.7	3933.5	3936.2	3917.8	3951.1
27.5°	3492.7	3365.5	3284.4	3189.3	3136.5	3069.8	3042.6	3002.2	3002.0	2988.5	3016.4
30°	2729.4	2623.3	2550.4	2467.6	2417.9	2357.8	2331.5	2295.3	2293.7	2284.1	2306.3
32.5°	2137.0	2042.6	1976.2	1903.3	1858.8	1807.1	1782.3	1753.1	1750.5	1741.8	1760.0
35°	1661.3	1581.7	1524.7	1463.2	1467.8	1391.7	1404.3	1345.1	1329.1	1325.5	1339.1
37.5°	1283.9	1222.4	1175.9	1130.0	1098.9	1066.7	1049.4	1033.8	1032.1	1030.6	1040.0
40°	1005.0	961.9	928.2	896.6	875.2	855.6	844.7	836.2	834.1	833.0	838.7
42.5°	813.3	784.3	762.6	743.3	730.3	719.6	713.7	708.9	707.3	707.4	710.8
45°	687.2	669.6	655.5	643.6	635.3	638.9	628.2	633.8	626.4	634.1	629.0
47.5°	605.2	590.1	581.5	573.0	568.0	563.9	564.1	564.2	565.8	566.0	567.6
50°	541.9	533.2	527.2	521.7	519.1	517.0	517.7	518.3	519.9	520.0	521.2
52.5°	495.1	489.3	485.7	482.3	481.2	480.0	480.4	480.3	480.9	480.6	481.6
55°	456.9	454.2	453.1	451.9	452.1	451.7	451.9	450.7	450.0	449.1	449.9
57.5°	425.6	425.3	426.0	426.6	428.0	428.5	428.8	427.4	426.1	424.9	425.6
60°	401.6	402.1	404.0	405.6	407.7	408.6	409.2	408.4	407.5	406.4	407.0
62.5°	377.8	378.7	381.0	382.7	385.2	386.5	387.9	388.0	388.4	388.0	388.4
65°	350.1	351.3	353.3	354.8	357.2	358.3	359.7	360.0	360.8	360.6	361.3
67.5°	329.2	330.2	332.0	333.3	335.3	336.6	337.9	337.9	338.2	338.2	338.8
70°	306.9	307.3	308.9	310.1	312.1	313.3	314.7	315.2	316.1	316.2	317.0
72.5°	283.0	282.8	283.6	284.2	285.7	286.7	288.6	289.6	291.1	291.5	292.1
75°	257.0	256.8	257.9	258.3	259.7	260.6	262.7	264.1	266.5	267.4	267.1
77.5°	227.0	227.4	229.5	230.6	232.4	233.6	236.3	238.5	242.9	244.9	242.9
80°	193.3	193.8	196.0	197.1	199.3	200.8	203.9	206.5	210.4	211.2	210.1
82.5°	151.9	152.1	154.0	154.8	157.8	160.0	163.9	165.9	168.3	168.0	167.7
85°	103.6	105.0	107.4	109.8	113.5	117.0	120.6	123.6	121.6	124.9	121.1
87.5°	55.4	55.3	58.5	58.0	63.1	66.1	69.2	70.7	72.5	72.1	72.1
90°	19.3	18.3	18.1	17.0	17.1	15.9	16.2	15.3	15.7	14.4	16.3
92.5°	20.4	19.5	18.6	17.7	16.8	15.9	15.0	14.1	13.2	12.3	13.2
95°	24.9	24.1	23.2	22.4	21.5	20.8	20.0	19.1	18.3	17.4	18.5
97.5°	30.8	30.3	29.9	29.3	28.9	28.4	27.9	27.4	26.9	26.4	27.1
100°	34.8	34.8	34.8	34.8	34.7	34.7	34.7	34.7	34.7	34.7	35.2
102.5°	66.4	64.8	63.2	61.5	59.9	58.3	56.7	55.1	53.5	51.9	54.2
105°	149.7	143.4	137.1	130.8	124.4	118.1	111.8	105.5	99.2	92.9	99.4
107.5°	277.6	266.1	254.6	243.2	231.6	220.1	208.7	197.3	185.7	174.3	184.6
110°	387.3	375.2	363.0	350.8	338.5	326.4	314.3	302.1	289.9	277.7	287.5



TEST NUMBER: P1444426  
 CATALOG NUMBER: EHBR1-12-UNV-TA-L830-UPL12

**CANDELA DISTRIBUTION (continued):**

	247.5°	250°	252.5°	255°	257.5°	260°	262.5°	265°	267.5°	270°	272.5°
112.5°	431.7	423.8	416.0	408.0	400.2	392.4	384.5	376.7	368.9	361.0	365.8
115°	425.8	422.1	418.3	414.6	410.8	407.1	403.3	399.6	395.9	392.2	392.5
117.5°	390.5	389.2	388.0	386.7	385.5	384.2	383.0	381.8	380.6	379.5	376.8
120°	339.7	339.9	340.2	340.8	341.1	341.6	341.9	342.5	342.9	343.4	339.8
122.5°	289.4	290.3	291.2	292.3	293.1	294.1	295.1	296.2	297.2	298.2	294.7
125°	245.8	246.6	247.5	248.5	249.4	250.3	251.3	252.4	253.4	254.5	251.5
127.5°	214.4	214.7	214.9	215.3	215.5	216.0	216.4	216.8	217.3	217.9	216.0
130°	194.6	194.1	193.8	193.4	193.1	192.9	192.7	192.4	192.3	192.1	191.3
132.5°	183.0	182.2	181.4	180.6	179.8	179.2	178.5	178.0	177.3	176.9	176.6
135°	176.8	175.6	174.5	173.5	172.4	171.6	170.6	169.7	168.9	168.0	168.2
137.5°	172.5	171.5	170.4	169.4	168.2	167.3	166.4	165.4	164.6	163.8	164.1
140°	171.0	169.9	168.8	167.8	166.8	165.8	164.9	164.0	163.1	162.4	162.6
142.5°	168.8	167.9	166.8	165.9	165.0	164.1	163.3	162.4	161.7	161.0	161.2
145°	167.1	166.4	165.6	164.9	164.2	163.7	163.0	162.5	162.0	161.5	161.6
147.5°	164.8	164.3	163.6	163.2	162.6	162.2	161.7	161.3	160.8	160.6	160.6
150°	161.7	161.4	160.9	160.6	160.3	160.0	159.7	159.4	159.1	159.0	158.9
152.5°	158.2	157.9	157.6	157.3	157.0	156.7	156.4	156.2	156.1	155.8	155.8
155°	154.2	154.0	153.9	153.7	153.6	153.5	153.4	153.4	153.3	153.2	153.2
157.5°	151.7	151.7	151.7	151.7	151.7	151.7	151.7	151.7	151.7	151.8	151.9
160°	150.5	150.5	150.3	150.4	150.2	150.2	150.2	150.2	150.2	150.2	150.3
162.5°	149.3	149.5	149.5	149.6	149.7	149.8	149.9	150.0	150.1	150.2	150.3
165°	149.7	149.6	149.6	149.6	149.6	149.6	149.6	149.7	149.7	149.8	150.0
167.5°	149.5	149.6	149.7	149.7	149.8	150.0	150.2	150.2	150.3	150.6	150.8
170°	150.4	150.4	150.4	150.4	150.4	150.5	150.5	150.5	150.6	150.7	150.8
172.5°	151.9	151.9	151.8	151.9	151.8	151.9	151.9	151.9	151.9	152.0	152.1
175°	152.4	152.6	152.7	152.7	152.8	152.9	153.0	153.0	153.1	153.2	153.2
177.5°	153.2	153.2	153.2	153.2	153.2	153.3	153.3	153.3	153.3	153.2	153.3
180°	153.2	153.2	153.2	153.2	153.2	153.2	153.2	153.2	153.2	153.2	153.2



TEST NUMBER: P1444426  
 CATALOG NUMBER: EHBR1-12-UNV-TA-L830-UPL12

**CANDELA DISTRIBUTION (continued):**

	275°	277.5°	280°	282.5°	285°	287.5°	290°	292.5°	295°	297.5°	300°
0°	9928.9	9928.9	9928.9	9928.9	9928.9	9928.9	9928.9	9928.9	9928.9	9928.9	9928.9
2.5°	10053.2	10048.2	10053.3	10048.2	10053.3	10047.1	10051.4	10044.6	10046.3	10039.3	10041.1
5°	10433.3	10425.4	10429.6	10419.2	10420.3	10406.4	10406.2	10390.0	10385.7	10367.2	10359.2
7.5°	10740.8	10738.1	10739.6	10732.9	10732.2	10722.6	10718.1	10704.7	10696.3	10679.3	10667.7
10°	10692.1	10699.9	10702.0	10710.0	10711.6	10719.5	10721.2	10729.1	10730.7	10736.6	10736.7
12.5°	10205.4	10232.0	10238.4	10271.3	10285.2	10322.7	10342.9	10384.4	10408.9	10450.3	10475.7
15°	9267.9	9314.0	9332.3	9396.5	9432.0	9506.9	9554.0	9640.0	9700.7	9792.1	9857.3
17.5°	7977.6	8041.9	8071.0	8158.0	8214.7	8325.4	8405.0	8536.2	8636.6	8782.4	8898.0
20°	6546.8	6618.2	6657.7	6756.9	6823.9	6953.1	7052.6	7213.8	7348.2	7533.0	7690.9
22.5°	5162.5	5230.5	5274.2	5375.2	5450.7	5585.4	5696.7	5866.8	6017.4	6225.6	6415.0
25°	3963.8	4026.2	4065.7	4157.0	4227.9	4351.8	4457.9	4621.5	4769.0	4977.8	5171.9
27.5°	3030.3	3082.5	3120.6	3198.5	3261.0	3366.0	3457.2	3592.5	3719.5	3900.1	4073.1
30°	2319.9	2366.2	2403.3	2471.1	2529.1	2620.2	2700.3	2814.0	2919.1	3062.8	3200.4
32.5°	1772.8	1812.6	1845.7	1905.1	1957.6	2039.6	2111.9	2211.5	2301.7	2423.5	2536.8
35°	1351.7	1430.1	1424.5	1506.5	1519.6	1578.4	1643.0	1730.0	1809.9	1913.6	2009.9
37.5°	1049.1	1071.2	1094.8	1131.0	1169.1	1222.6	1277.1	1383.4	1422.5	1500.8	1580.5
40°	846.0	860.9	876.6	901.0	927.6	965.4	1005.0	1055.8	1107.8	1171.3	1236.2
42.5°	715.3	723.7	733.6	748.0	764.4	788.3	814.8	849.2	885.5	930.2	975.8
45°	639.0	635.0	638.0	645.7	655.6	670.1	686.9	708.2	731.8	760.7	791.5
47.5°	568.0	569.6	570.5	574.7	580.0	589.8	599.9	614.4	642.3	650.7	667.6
50°	521.1	521.8	521.6	523.7	526.4	532.7	539.3	549.1	558.8	571.9	584.2
52.5°	481.7	482.8	482.7	484.1	485.5	489.5	493.6	500.6	507.0	515.3	522.3
55°	450.7	452.1	452.8	453.9	454.7	456.7	458.4	461.7	464.4	469.1	473.4
57.5°	426.8	428.8	429.8	430.2	429.4	429.3	428.7	429.4	429.9	432.5	434.9
60°	407.9	409.6	409.9	409.6	408.1	407.0	405.2	404.7	404.4	405.6	406.9
62.5°	388.3	388.9	388.5	388.0	386.2	385.2	383.3	382.6	382.0	382.9	383.6
65°	361.1	361.6	361.1	360.7	359.2	358.3	356.8	356.2	355.4	355.6	355.5
67.5°	338.9	339.5	339.1	338.6	337.6	337.0	335.9	335.2	334.1	333.7	332.9
70°	316.9	317.3	316.7	316.2	315.0	314.5	313.5	313.2	312.4	312.2	311.4
72.5°	291.5	291.6	290.7	290.5	289.5	289.4	289.1	289.4	289.4	289.8	289.6
75°	265.7	265.3	264.2	264.0	263.2	263.6	263.1	263.8	263.8	264.7	264.9
77.5°	239.6	238.3	236.1	235.2	233.8	233.6	232.8	233.3	233.1	234.3	234.7
80°	206.8	205.1	202.4	201.2	199.5	199.2	198.5	199.2	198.9	200.2	201.1
82.5°	165.1	163.6	160.9	159.9	157.9	158.1	157.3	158.1	158.0	159.9	161.0
85°	122.1	121.2	118.3	115.8	113.0	111.3	109.7	109.4	108.8	109.7	110.3
87.5°	70.5	69.7	67.4	65.9	61.0	61.2	59.2	59.1	58.6	58.2	59.2
90°	16.3	17.9	18.1	19.6	19.9	21.5	21.9	23.5	23.8	25.6	25.9
92.5°	14.1	15.0	15.9	16.8	17.7	18.6	19.5	20.4	22.4	24.3	26.3
95°	19.5	20.6	21.6	22.7	23.7	24.8	25.9	26.9	29.8	32.6	35.5
97.5°	27.8	28.5	29.2	29.9	30.6	31.3	32.0	32.7	35.8	38.9	42.0
100°	35.8	36.3	36.9	37.5	38.0	38.6	39.2	39.7	45.7	51.7	57.6
102.5°	56.7	59.0	61.4	63.8	66.2	68.6	71.0	73.3	87.0	100.6	114.3
105°	105.9	112.4	119.1	125.5	132.1	138.5	145.1	151.6	173.4	195.2	217.0
107.5°	194.8	205.1	215.4	225.7	236.1	246.4	256.6	267.0	288.2	309.6	330.8
110°	297.3	307.1	316.9	326.7	336.6	346.3	356.1	366.0	378.8	391.5	404.4



TEST NUMBER: P1444426  
 CATALOG NUMBER: EHBR1-12-UNV-TA-L830-UPL12

**CANDELA DISTRIBUTION (continued):**

	275°	277.5°	280°	282.5°	285°	287.5°	290°	292.5°	295°	297.5°	300°
112.5°	370.6	375.2	380.0	384.9	389.7	394.4	399.2	404.1	410.5	416.8	423.3
115°	392.9	393.1	393.4	393.7	394.0	394.4	394.7	395.1	397.2	399.1	401.3
117.5°	374.1	371.6	368.9	366.3	363.7	361.2	358.6	356.1	355.7	355.3	354.9
120°	336.5	332.9	329.4	325.8	322.4	318.9	315.6	312.2	310.4	308.6	307.0
122.5°	291.2	287.7	284.3	280.7	277.3	273.9	270.6	267.2	266.0	264.8	263.7
125°	248.5	245.7	242.8	239.8	237.1	234.3	231.6	228.8	228.7	228.7	228.7
127.5°	214.2	212.4	210.8	209.0	207.3	205.7	204.1	202.5	203.3	204.0	204.8
130°	190.5	189.7	189.0	188.3	187.7	187.1	186.5	185.8	187.2	188.5	189.9
132.5°	176.5	176.4	176.3	176.2	176.2	176.3	176.3	176.4	178.0	179.4	181.0
135°	168.3	168.6	169.0	169.2	169.6	169.9	170.3	170.7	172.3	173.7	175.2
137.5°	164.6	164.9	165.3	165.8	166.3	166.7	167.4	167.9	169.1	170.2	171.4
140°	162.9	163.2	163.5	163.9	164.3	164.8	165.2	165.6	166.6	167.5	168.4
142.5°	161.5	161.7	162.1	162.4	162.9	163.2	163.6	164.0	164.8	165.3	166.2
145°	161.8	162.0	162.2	162.4	162.7	163.1	163.3	163.6	164.1	164.5	165.0
147.5°	160.7	160.8	161.0	161.2	161.5	161.7	161.9	162.1	162.3	162.6	162.9
150°	159.0	159.1	159.1	159.1	159.2	159.4	159.6	159.6	159.9	160.2	160.4
152.5°	155.9	156.0	156.0	156.0	156.1	156.2	156.2	156.3	156.6	156.9	157.1
155°	153.4	153.5	153.7	153.8	154.0	154.1	154.3	154.4	154.6	154.7	154.8
157.5°	152.0	152.1	152.3	152.4	152.6	152.7	152.8	153.0	153.2	153.2	153.3
160°	150.5	150.7	150.9	151.2	151.4	151.5	151.7	151.9	152.1	152.2	152.4
162.5°	150.5	150.6	150.8	150.9	151.0	151.2	151.3	151.5	151.7	151.9	152.0
165°	150.2	150.3	150.6	150.7	151.0	151.2	151.4	151.7	151.7	151.8	152.0
167.5°	150.9	151.1	151.4	151.5	151.7	151.9	152.1	152.3	152.4	152.5	152.7
170°	151.1	151.2	151.4	151.6	151.7	151.8	152.1	152.2	152.5	152.7	152.8
172.5°	152.3	152.3	152.5	152.6	152.8	152.9	153.1	153.2	153.4	153.6	153.6
175°	153.2	153.2	153.2	153.2	153.2	153.2	153.2	153.3	153.4	153.4	153.4
177.5°	153.4	153.4	153.5	153.6	153.7	153.7	153.8	153.9	153.9	153.9	153.9
180°	153.2	153.2	153.2	153.2	153.2	153.2	153.2	153.2	153.2	153.2	153.2



TEST NUMBER: P1444426  
 CATALOG NUMBER: EHBR1-12-UNV-TA-L830-UPL12

**CANDELA DISTRIBUTION (continued):**

	302.5°	305°	307.5°	310°	312.5°	315°	317.5°	320°	322.5°	325°	327.5°
0°	9928.9	9928.9	9928.9	9928.9	9928.9	9928.9	9928.9	9928.9	9928.9	9928.9	9928.9
2.5°	10034.0	10034.5	10026.4	10026.0	10018.4	10017.4	10010.0	10007.8	10001.8	9999.6	9993.5
5°	10338.5	10328.6	10305.9	10292.5	10269.9	10255.0	10230.6	10214.7	10191.2	10173.5	10149.8
7.5°	10646.4	10631.1	10605.5	10584.7	10553.5	10528.6	10492.1	10462.1	10422.5	10388.2	10346.6
10°	10736.7	10734.3	10727.8	10718.3	10703.8	10687.5	10662.6	10636.6	10602.0	10564.2	10518.0
12.5°	10514.5	10538.4	10571.2	10590.6	10614.1	10624.5	10634.2	10631.7	10625.4	10606.4	10579.7
15°	9951.7	10019.0	10108.3	10177.5	10257.1	10314.9	10378.8	10418.6	10458.4	10476.7	10488.0
17.5°	9056.3	9184.0	9344.0	9476.7	9629.7	9752.7	9887.4	9988.9	10093.2	10168.0	10235.5
20°	7906.3	8091.2	8317.6	8517.6	8750.2	8952.2	9173.8	9355.6	9543.0	9689.6	9828.4
22.5°	6658.9	6878.5	7152.2	7405.7	7705.6	7975.0	8279.0	8543.5	8819.8	9050.6	9273.7
25°	5432.3	5673.1	5972.4	6255.2	6594.8	6908.2	7268.8	7598.5	7955.6	8265.5	8571.7
27.5°	4312.1	4548.7	4854.2	5155.3	5514.3	5848.2	6234.5	6597.9	7004.4	7379.3	7762.8
30°	3391.5	3592.1	3866.1	4157.8	4511.8	4851.7	5242.2	5615.8	6038.7	6448.0	6880.0
32.5°	2687.0	2839.8	3055.3	3301.8	3628.5	3952.1	4323.8	4684.6	5101.0	5514.5	5963.8
35°	2134.0	2253.2	2417.4	2609.9	2886.6	3165.4	3494.3	3822.2	4210.8	4603.2	5039.9
37.5°	1682.8	1779.5	1908.1	2052.7	2274.6	2503.4	2773.1	3045.1	3382.6	3730.4	4126.2
40°	1314.0	1392.3	1492.5	1600.3	1767.9	1944.2	2152.7	2363.6	2634.9	2919.2	3246.6
42.5°	1032.3	1090.0	1160.8	1239.5	1395.9	1489.6	1631.0	1783.5	1982.9	2189.3	2435.5
45°	829.0	868.4	917.5	970.3	1042.9	1122.3	1219.1	1320.8	1510.2	1603.1	1752.9
47.5°	692.3	718.7	750.0	783.3	826.1	872.3	929.7	988.4	1064.4	1143.1	1235.3
50°	600.2	627.1	637.9	655.1	679.9	706.3	738.7	771.0	811.8	853.1	900.6
52.5°	532.0	540.7	552.4	563.3	578.6	608.7	618.4	635.3	658.1	680.5	705.4
55°	479.7	485.4	493.0	499.6	508.9	517.8	530.6	541.9	557.1	570.5	587.1
57.5°	439.1	442.8	448.0	452.3	458.3	463.4	470.9	477.0	485.8	493.4	503.4
60°	409.6	412.1	415.5	418.4	422.2	424.8	428.5	431.4	436.0	439.9	445.5
62.5°	385.5	386.8	389.1	390.7	393.1	394.4	396.4	397.7	400.3	402.2	405.3
65°	356.6	356.9	358.4	359.1	361.0	361.8	363.3	363.9	366.1	367.5	370.2
67.5°	332.9	332.3	332.3	331.7	332.0	331.4	331.6	330.9	331.8	332.3	334.3
70°	311.3	310.3	310.1	309.0	308.7	307.7	307.4	306.5	306.4	306.1	306.9
72.5°	290.2	289.9	290.0	289.3	289.2	288.5	288.5	288.1	288.6	288.8	289.7
75°	265.9	265.9	266.5	265.8	266.0	265.5	265.7	265.1	265.4	265.3	266.2
77.5°	236.4	237.1	238.4	238.1	238.5	237.8	238.1	237.4	237.6	237.1	237.5
80°	203.2	204.7	206.4	206.4	207.1	206.5	207.2	206.5	206.8	205.9	205.7
82.5°	163.8	165.0	166.9	166.9	168.6	168.9	170.7	170.6	171.7	171.0	170.5
85°	111.9	112.8	114.5	115.3	117.0	118.0	119.7	120.5	119.1	121.5	119.7
87.5°	58.5	60.6	59.4	62.3	61.6	64.4	63.9	66.5	65.9	68.3	68.0
90°	28.1	28.8	30.9	31.6	34.2	35.2	35.9	34.8	35.3	34.2	34.8
92.5°	28.2	30.3	32.2	34.2	36.2	38.1	36.3	34.5	32.7	30.8	29.0
95°	38.3	41.2	44.0	46.9	49.7	52.6	49.6	46.5	43.4	40.3	37.3
97.5°	45.1	48.1	51.1	54.2	57.3	60.4	56.8	53.1	49.5	45.9	42.3
100°	63.6	69.5	75.5	81.4	87.5	93.4	86.6	79.8	73.2	66.3	59.6
102.5°	128.0	141.6	155.2	169.0	182.6	196.2	181.8	167.5	153.2	138.7	124.3
105°	238.9	260.8	282.6	304.4	326.3	348.2	324.9	301.6	278.2	255.0	231.6
107.5°	352.1	373.4	394.8	416.0	437.3	458.7	435.1	411.4	387.8	364.2	340.6
110°	417.2	429.9	442.8	455.6	468.4	481.4	464.1	446.9	429.7	412.3	395.0



TEST NUMBER: P1444426  
 CATALOG NUMBER: EHBR1-12-UNV-TA-L830-UPL12

**CANDELA DISTRIBUTION (continued):**

	302.5°	305°	307.5°	310°	312.5°	315°	317.5°	320°	322.5°	325°	327.5°
112.5°	429.7	436.1	442.5	449.1	455.4	461.9	449.5	437.3	424.8	412.5	400.3
115°	403.3	405.3	407.4	409.5	411.6	413.7	405.3	397.0	388.6	380.4	372.0
117.5°	354.5	354.4	354.0	353.7	353.2	353.0	348.3	343.7	338.9	334.3	329.5
120°	305.3	303.6	301.9	300.2	298.4	296.7	294.8	292.8	290.8	288.9	286.7
122.5°	262.4	261.3	260.1	258.9	257.7	256.5	255.7	255.0	254.2	253.4	252.6
125°	228.7	228.7	228.6	228.5	228.5	228.4	228.0	227.5	227.2	226.8	226.3
127.5°	205.5	206.3	207.0	207.8	208.5	209.2	209.0	209.0	208.9	208.8	208.6
130°	191.2	192.5	193.8	195.1	196.3	197.6	197.5	197.3	196.9	196.7	196.5
132.5°	182.6	184.0	185.5	187.1	188.5	190.0	189.7	189.4	189.0	188.8	188.6
135°	176.6	178.1	179.5	181.0	182.3	183.7	183.3	182.9	182.6	182.3	181.9
137.5°	172.5	173.7	174.7	175.8	176.9	178.1	177.6	177.3	176.9	176.6	176.3
140°	169.4	170.2	171.0	172.1	172.8	173.8	173.3	172.8	172.4	171.9	171.4
142.5°	166.7	167.5	168.0	168.8	169.4	170.1	169.5	168.8	168.1	167.6	166.9
145°	165.4	165.9	166.3	166.7	167.1	167.6	166.7	166.1	165.3	164.6	163.8
147.5°	163.2	163.5	163.6	163.8	164.0	164.4	163.6	162.9	162.2	161.5	160.7
150°	160.6	160.9	161.1	161.2	161.5	161.7	160.9	160.2	159.4	158.7	158.0
152.5°	157.3	157.6	157.7	157.8	158.0	158.2	157.6	156.9	156.1	155.4	154.7
155°	154.9	155.1	155.2	155.3	155.4	155.5	154.8	154.4	153.8	153.2	152.6
157.5°	153.4	153.6	153.7	153.8	153.9	154.0	153.5	153.1	152.6	152.2	151.7
160°	152.5	152.6	152.7	152.8	152.9	153.0	152.5	152.2	151.8	151.5	151.0
162.5°	152.2	152.5	152.7	152.7	153.0	153.1	152.7	152.3	151.7	151.3	150.8
165°	152.1	152.2	152.3	152.4	152.5	152.6	152.2	151.9	151.7	151.4	151.0
167.5°	152.8	152.9	153.0	153.1	153.1	153.2	152.9	152.7	152.3	151.9	151.7
170°	153.0	153.2	153.3	153.3	153.5	153.6	153.4	153.2	152.9	152.7	152.4
172.5°	153.8	154.0	154.1	154.2	154.3	154.5	154.2	153.9	153.6	153.3	153.1
175°	153.4	153.5	153.6	153.6	153.6	153.6	153.4	153.2	153.0	152.8	152.6
177.5°	153.9	153.9	153.9	153.9	153.9	153.9	153.8	153.6	153.5	153.3	153.2
180°	153.2	153.2	153.2	153.2	153.2	153.2	153.2	153.2	153.2	153.2	153.2



TEST NUMBER: P1444426  
 CATALOG NUMBER: EHBR1-12-UNV-TA-L830-UPL12

**CANDELA DISTRIBUTION (continued):**

	330°	332.5°	335°	337.5°	340°	342.5°	345°	347.5°	350°	352.5°	355°
0°	9928.9	9928.9	9928.9	9928.9	9928.9	9928.9	9928.9	9928.9	9928.9	9928.9	9928.9
2.5°	9991.3	9987.0	9984.2	9980.6	9978.5	9975.7	9973.7	9971.9	9970.5	9969.2	9968.3
5°	10131.8	10109.5	10092.2	10073.4	10058.0	10042.5	10030.7	10020.9	10014.2	10009.0	10006.0
7.5°	10310.7	10269.8	10233.5	10195.1	10160.9	10127.1	10098.1	10073.0	10054.2	10042.0	10034.7
10°	10470.4	10415.7	10361.6	10304.6	10250.6	10198.2	10149.8	10107.3	10073.6	10051.3	10038.2
12.5°	10542.0	10495.4	10440.2	10378.3	10312.1	10245.2	10179.9	10121.0	10071.6	10038.4	10019.2
15°	10479.0	10459.9	10422.3	10374.3	10311.5	10242.3	10165.6	10093.5	10027.3	9984.3	9959.4
17.5°	10273.8	10300.5	10297.7	10279.3	10234.1	10175.8	10097.7	10016.8	9933.9	9876.5	9845.1
20°	9927.6	10011.6	10054.2	10076.1	10058.3	10020.5	9949.8	9867.7	9771.1	9696.1	9650.3
22.5°	9441.1	9589.4	9681.8	9749.4	9763.7	9750.9	9688.4	9610.3	9502.5	9412.4	9344.8
25°	8814.8	9032.0	9178.1	9292.5	9337.0	9348.4	9295.3	9217.7	9097.6	8992.6	8899.7
27.5°	8077.1	8359.4	8554.3	8708.1	8777.6	8807.7	8758.8	8679.5	8537.4	8412.1	8290.8
30°	7246.7	7581.5	7816.3	8000.7	8085.3	8125.1	8073.1	7984.7	7819.4	7668.5	7515.7
32.5°	6357.7	6724.2	6980.0	7180.2	7264.1	7301.6	7233.5	7134.3	6943.2	6765.5	6587.2
35°	5427.1	5796.9	6054.9	6249.9	6320.2	6342.7	6255.8	6141.0	5929.3	5734.3	5539.9
37.5°	4477.5	4821.6	5056.1	5231.0	5274.5	5278.4	5173.6	5046.8	4824.3	4632.0	4438.6
40°	3536.1	3826.3	4015.6	4155.6	4170.7	4157.2	4043.4	3915.7	3707.6	3535.3	3365.5
42.5°	2649.3	2868.4	3003.5	3099.4	3093.7	3067.1	2962.7	2852.9	2681.2	2550.0	2416.4
45°	1889.6	2034.1	2113.0	2169.2	2151.2	2125.8	2044.6	1967.7	1850.9	1766.2	1676.4
47.5°	1312.8	1485.2	1455.2	1565.1	1470.4	1532.9	1402.8	1331.1	1269.1	1224.1	1173.3
50°	939.8	979.3	998.4	1011.5	1004.5	995.0	971.6	950.7	922.4	901.8	877.7
52.5°	725.8	745.5	756.4	764.3	762.7	759.2	749.0	739.7	726.4	717.7	707.2
55°	614.8	615.0	635.0	626.5	639.0	624.3	630.1	613.7	616.4	602.3	592.8
57.5°	510.9	518.9	522.6	526.1	525.1	524.6	520.6	518.6	514.2	512.8	509.6
60°	449.3	453.6	454.5	456.1	454.8	454.2	451.1	450.0	447.1	446.5	444.4
62.5°	407.2	409.3	409.3	409.3	407.7	405.9	402.5	400.7	398.2	397.6	396.4
65°	372.1	374.3	374.7	375.2	373.8	372.5	369.5	367.6	364.9	363.9	362.5
67.5°	335.7	338.1	338.9	340.1	339.4	339.1	337.0	336.3	334.6	334.1	332.9
70°	307.1	308.2	308.1	308.1	306.5	305.0	302.7	301.5	299.7	299.3	298.2
72.5°	290.2	290.9	290.5	289.8	287.8	285.6	282.8	280.7	278.4	277.0	275.3
75°	266.3	267.2	266.7	266.3	264.4	263.0	260.8	259.7	258.0	257.5	256.4
77.5°	237.0	237.5	236.5	236.4	234.9	234.1	232.4	232.1	230.9	230.9	229.8
80°	204.4	204.1	202.6	202.2	200.8	200.5	199.1	199.2	198.3	198.7	197.9
82.5°	168.1	167.2	165.2	164.7	163.0	162.8	162.0	162.7	162.1	163.0	162.4
85°	120.6	120.7	119.9	119.9	119.4	119.5	119.5	120.0	120.1	120.9	120.8
87.5°	67.2	68.2	68.0	68.8	68.8	69.8	70.2	71.6	71.8	73.2	73.2
90°	33.7	34.5	33.3	34.2	33.6	34.8	34.7	35.9	35.4	36.4	35.7
92.5°	27.2	25.4	23.5	21.7	20.8	19.9	19.1	18.0	17.2	16.2	15.3
95°	34.2	31.1	28.0	24.9	23.9	22.9	21.8	20.8	19.7	18.6	17.6
97.5°	38.7	35.0	31.4	27.7	26.8	25.9	24.9	24.0	23.1	22.2	21.3
100°	52.7	46.0	39.2	32.4	31.7	30.9	30.1	29.3	28.6	27.7	26.9
102.5°	110.0	95.6	81.2	66.8	64.1	61.4	58.6	55.8	53.0	50.3	47.6
105°	208.4	185.0	161.7	138.4	131.0	123.6	116.2	108.8	101.3	93.9	86.5
107.5°	316.9	293.2	269.6	245.9	232.2	218.4	204.8	191.1	177.3	163.6	150.0
110°	377.8	360.4	343.2	325.9	314.9	303.9	292.8	281.8	270.8	259.7	248.7



TEST NUMBER: P1444426  
 CATALOG NUMBER: EHBR1-12-UNV-TA-L830-UPL12

**CANDELA DISTRIBUTION (continued):**

	330°	332.5°	335°	337.5°	340°	342.5°	345°	347.5°	350°	352.5°	355°
112.5°	387.9	375.4	363.1	350.6	345.6	340.7	335.7	330.7	325.7	320.6	315.6
115°	363.6	355.3	346.9	338.4	336.7	335.0	333.3	331.5	329.6	327.8	326.1
117.5°	324.9	320.2	315.5	310.8	311.0	311.3	311.6	311.9	312.1	312.3	312.6
120°	284.8	282.8	280.7	278.8	280.3	281.8	283.4	284.8	286.3	287.7	289.1
122.5°	251.8	251.0	250.2	249.4	251.2	253.1	254.9	256.7	258.3	260.0	261.7
125°	225.9	225.6	225.1	224.6	226.5	228.4	230.2	231.9	233.7	235.4	237.1
127.5°	208.5	208.4	208.3	208.1	209.5	210.8	212.1	213.3	214.5	215.6	216.8
130°	196.3	196.0	195.8	195.6	196.7	197.9	199.1	200.2	201.3	202.3	203.3
132.5°	188.3	187.9	187.6	187.3	188.2	189.0	189.9	190.5	191.4	192.0	192.6
135°	181.5	181.2	180.8	180.4	181.2	182.0	182.8	183.4	184.1	184.6	185.3
137.5°	175.9	175.4	175.2	174.7	175.4	176.1	176.9	177.4	178.0	178.5	179.1
140°	170.9	170.5	170.0	169.5	170.1	170.8	171.3	172.0	172.4	172.9	173.4
142.5°	166.3	165.5	165.0	164.3	164.8	165.2	165.6	166.0	166.5	166.7	167.0
145°	163.1	162.3	161.6	160.8	161.1	161.4	161.9	162.1	162.4	162.6	162.9
147.5°	160.1	159.3	158.6	157.8	158.2	158.4	158.7	158.8	159.1	159.2	159.4
150°	157.2	156.4	155.7	154.8	155.1	155.3	155.5	155.7	155.9	156.0	156.1
152.5°	154.0	153.2	152.5	151.7	151.9	152.0	152.2	152.3	152.5	152.6	152.7
155°	151.9	151.3	150.7	150.1	150.2	150.3	150.4	150.5	150.5	150.7	150.7
157.5°	151.2	150.6	150.2	149.6	149.7	149.7	149.7	149.6	149.7	149.7	149.6
160°	150.6	150.2	149.8	149.2	149.2	149.3	149.2	149.2	149.2	149.1	149.0
162.5°	150.3	149.8	149.3	148.8	148.8	148.8	148.8	148.7	148.7	148.7	148.6
165°	150.6	150.3	150.0	149.5	149.5	149.4	149.4	149.2	149.1	149.0	148.8
167.5°	151.3	150.9	150.6	150.2	150.2	150.2	150.2	150.2	150.2	150.1	150.1
170°	152.1	151.7	151.5	151.2	151.1	151.1	151.0	150.9	150.8	150.7	150.6
172.5°	152.8	152.5	152.2	151.8	151.8	151.7	151.7	151.7	151.6	151.5	151.5
175°	152.4	152.1	151.8	151.7	151.6	151.6	151.6	151.5	151.4	151.4	151.3
177.5°	153.0	152.9	152.7	152.6	152.5	152.5	152.5	152.4	152.4	152.4	152.4
180°	153.2	153.2	153.2	153.2	153.2	153.2	153.2	153.2	153.2	153.2	153.2



TEST NUMBER: P1444426  
 CATALOG NUMBER: EHBR1-12-UNV-TA-L830-UPL12

**CANDELA DISTRIBUTION (continued):**

	357.5°	360°
0°	9928.9	9928.9
2.5°	9967.4	9966.9
5°	10004.4	10003.9
7.5°	10032.6	10032.4
10°	10036.0	10037.7
12.5°	10015.9	10017.4
15°	9957.5	9960.2
17.5°	9845.7	9849.2
20°	9653.1	9656.8
22.5°	9341.1	9342.7
25°	8887.7	8881.3
27.5°	8269.5	8258.4
30°	7483.6	7472.9
32.5°	6546.7	6539.9
35°	5491.9	5487.7
37.5°	4381.5	4372.8
40°	3303.4	3278.3
42.5°	2357.9	2313.9
45°	1629.5	1577.3
47.5°	1137.5	1105.3
50°	862.2	851.8
52.5°	702.6	700.2
55°	592.8	591.7
57.5°	510.3	509.9
60°	445.5	445.4
62.5°	397.2	397.4
65°	363.2	363.3
67.5°	333.2	333.0
70°	298.6	298.3
72.5°	274.7	274.4
75°	256.4	256.1
77.5°	230.1	229.8
80°	198.4	197.9
82.5°	163.2	162.6
85°	121.8	121.8
87.5°	74.5	74.5
90°	36.6	35.7
92.5°	14.5	13.7
95°	16.6	15.5
97.5°	20.4	19.5
100°	26.1	25.4
102.5°	44.9	42.2
105°	79.1	71.7
107.5°	136.2	122.5
110°	237.6	226.6



TEST NUMBER: P1444426  
CATALOG NUMBER: EHBR1-12-UNV-TA-L830-UPL12

**CANDELA DISTRIBUTION (continued):**

	357.5°	360°
112.5°	310.6	305.6
115°	324.2	322.4
117.5°	312.8	313.0
120°	290.4	291.8
122.5°	263.4	265.0
125°	238.7	240.4
127.5°	217.9	218.9
130°	204.1	205.0
132.5°	193.2	193.7
135°	185.7	186.2
137.5°	179.5	179.8
140°	173.7	174.0
142.5°	167.3	167.5
145°	163.1	163.2
147.5°	159.3	159.5
150°	156.1	156.2
152.5°	152.7	152.8
155°	150.7	150.7
157.5°	149.5	149.4
160°	148.9	148.9
162.5°	148.6	148.5
165°	148.7	148.6
167.5°	149.9	149.9
170°	150.5	150.4
172.5°	151.4	151.3
175°	151.3	151.3
177.5°	152.4	152.3
180°	153.2	153.2

LM-79-2019: Approved Method: Electrical and Photometric Measurements of Solid-  
State Lighting Products

Report Prepared for

Cooper Lighting Solutions

Metalux

Report Number: SP1-2506-472-2

Test Date: 07/31/2025

Luminaire Tested: EHBR-60-L830-N

Data in this report applies to families of products including EHBR-60-L830-N

**Test Information**

Test Method: LM-79-2019  
 Report Number: SP1-2506-472-2  
 Test Lab: COOPER LIGHTING SOLUTIONS  
 Photometer: SP1 - 76IN SPHERE  
 Measurement Geometry: 4π  
 Issue Date: 08/05/2025  
 Manufacturer: COOPER LIGHTING SOLUTIONS  
 Product Line: Metalux  
 Catalog Number: **EHBR-60-L830-N**  
 Description: Elevate Round Highbay at, 60000 lumens, 3000K 80CRI LEDs with N lens

**Spectral Parameters**

CCT (K): 2983  
 CIE u': 0.2516  
 CIE v': 0.5201  
 Duv: -0.0012  
 CIE x: 0.4364  
 CIE y: 0.4010  
 CIE z: 0.1626  
 Peak Wavelength (nm): 630  
 Dominant Wavelength (nm): 583  
 Purity: 51.34918  
 Rf: 81.2  
 Rg: 101.5

CRI (Ra):	83.4		
R1:	84.0	R9:	29.4
R2:	87.5	R10:	68.6
R3:	88.9	R11:	82.2
R4:	83.8	R12:	61.6
R5:	81.9	R13:	83.9
R6:	83.1	R14:	92.5
R7:	87.1	R15:	79.8
R8:	70.9		



**Test Conditions**

Stabilization Time: 38M  
 Operation Time: 1H 38M  
 Sphere Temperature (°C): 25.0

REPORT NUMBER: SP1-2506-472-2

Measurement and Test Equipment			
Instrument	Identification Number	Calibration Date	Calibration Due Date
Photometer	76INCH SPHERE IN0058	6/16/2025	12/16/2025
Power Meter	XITRON INXT2011004	1/21/2025	1/21/2026
AC Power Source	CHROMA 61603 IN0063	10/22/2024	10/22/2025
DC Power Source	AGILENT E3634A IN0208	10/22/2024	10/22/2025
Sphere Thermometer	ONSET IN0085	10/22/2024	10/22/2025
Room Thermometer	ONSET IN0046	10/22/2024	10/22/2025

REPORT NUMBER: SP1-2506-472-2

CIE 1931 Chromaticity Diagram



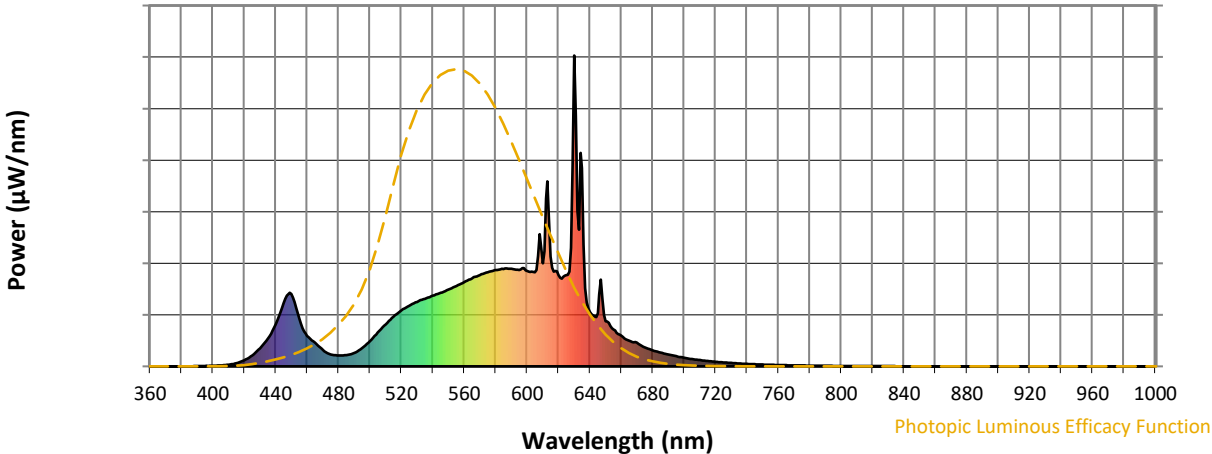
CIE 1931 Chromaticity Diagram with 2017 ANSI 7-Step and 4-Step Quadrangles



Point lies inside the ANSI 3000K 4-step quadrangle

REPORT NUMBER: SP1-2506-472-2

**Photopic Flux vs. Wavelength**



**Photopic Lumens: NR**

λ (nm)	Power W <sup>^</sup> /nm	Lumens (φ/nm)	λ (nm)	Power W <sup>^</sup> /nm	Lumens (φ/nm)	λ (nm)	Power W <sup>^</sup> /nm	Lumens (φ/nm)	λ (nm)	Power W <sup>^</sup> /nm	Lumens (φ/nm)	λ (nm)	Power W <sup>^</sup> /nm	Lumens (φ/nm)
360	0	NR	490	43	NR	620	294	NR	750	6	NR	880	0	NR
365	0	NR	495	59	NR	625	294	NR	755	5	NR	885	0	NR
370	0	NR	500	81	NR	630	1000	NR	760	4	NR	890	0	NR
375	0	NR	505	109	NR	635	637	NR	765	4	NR	895	0	NR
380	0	NR	510	135	NR	640	175	NR	770	3	NR	900	0	NR
385	0	NR	515	160	NR	645	171	NR	775	3	NR	905	0	NR
390	1	NR	520	180	NR	650	146	NR	780	2	NR	910	0	NR
395	1	NR	525	195	NR	655	119	NR	785	2	NR	915	0	NR
400	2	NR	530	207	NR	660	99	NR	790	2	NR	920	0	NR
405	3	NR	535	218	NR	665	82	NR	795	2	NR	925	0	NR
410	5	NR	540	227	NR	670	76	NR	800	1	NR	930	0	NR
415	10	NR	545	237	NR	675	61	NR	805	1	NR	935	0	NR
420	20	NR	550	247	NR	680	52	NR	810	1	NR	940	0	NR
425	35	NR	555	259	NR	685	44	NR	815	1	NR	945	0	NR
430	58	NR	560	271	NR	690	38	NR	820	1	NR	950	0	NR
435	90	NR	565	283	NR	695	33	NR	825	1	NR	955	0	NR
440	135	NR	570	293	NR	700	27	NR	830	1	NR	960	0	NR
445	204	NR	575	303	NR	705	24	NR	835	1	NR	965	0	NR
450	233	NR	580	310	NR	710	20	NR	840	0	NR	970	0	NR
455	153	NR	585	313	NR	715	17	NR	845	0	NR	975	0	NR
460	98	NR	590	314	NR	720	15	NR	850	0	NR	980	0	NR
465	76	NR	595	310	NR	725	13	NR	855	0	NR	985	0	NR
470	53	NR	600	307	NR	730	11	NR	860	0	NR	990	0	NR
475	39	NR	605	303	NR	735	9	NR	865	0	NR	995	0	NR
480	35	NR	610	331	NR	740	8	NR	870	0	NR	1000	0	NR
485	36	NR	615	353	NR	745	7	NR	875	0	NR			

REPORT NUMBER: SP1-2506-472-2

**Scotopic Flux vs. Wavelength**



**Scotopic Lumens: NR**

**S/P: 1.27**

λ (nm)	Power W <sup>^</sup> /nm	Lumens (φ/nm)	λ (nm)	Power W <sup>^</sup> /nm	Lumens (φ/nm)	λ (nm)	Power W <sup>^</sup> /nm	Lumens (φ/nm)	λ (nm)	Power W <sup>^</sup> /nm	Lumens (φ/nm)	λ (nm)	Power W <sup>^</sup> /nm	Lumens (φ/nm)
360	0	NR	490	43	NR	620	294	NR	750	6	NR	880	0	NR
365	0	NR	495	59	NR	625	294	NR	755	5	NR	885	0	NR
370	0	NR	500	81	NR	630	1000	NR	760	4	NR	890	0	NR
375	0	NR	505	109	NR	635	637	NR	765	4	NR	895	0	NR
380	0	NR	510	135	NR	640	175	NR	770	3	NR	900	0	NR
385	0	NR	515	160	NR	645	171	NR	775	3	NR	905	0	NR
390	1	NR	520	180	NR	650	146	NR	780	2	NR	910	0	NR
395	1	NR	525	195	NR	655	119	NR	785	2	NR	915	0	NR
400	2	NR	530	207	NR	660	99	NR	790	2	NR	920	0	NR
405	3	NR	535	218	NR	665	82	NR	795	2	NR	925	0	NR
410	5	NR	540	227	NR	670	76	NR	800	1	NR	930	0	NR
415	10	NR	545	237	NR	675	61	NR	805	1	NR	935	0	NR
420	20	NR	550	247	NR	680	52	NR	810	1	NR	940	0	NR
425	35	NR	555	259	NR	685	44	NR	815	1	NR	945	0	NR
430	58	NR	560	271	NR	690	38	NR	820	1	NR	950	0	NR
435	90	NR	565	283	NR	695	33	NR	825	1	NR	955	0	NR
440	135	NR	570	293	NR	700	27	NR	830	1	NR	960	0	NR
445	204	NR	575	303	NR	705	24	NR	835	1	NR	965	0	NR
450	233	NR	580	310	NR	710	20	NR	840	0	NR	970	0	NR
455	153	NR	585	313	NR	715	17	NR	845	0	NR	975	0	NR
460	98	NR	590	314	NR	720	15	NR	850	0	NR	980	0	NR
465	76	NR	595	310	NR	725	13	NR	855	0	NR	985	0	NR
470	53	NR	600	307	NR	730	11	NR	860	0	NR	990	0	NR
475	39	NR	605	303	NR	735	9	NR	865	0	NR	995	0	NR
480	35	NR	610	331	NR	740	8	NR	870	0	NR	1000	0	NR
485	36	NR	615	353	NR	745	7	NR	875	0	NR			

REPORT NUMBER: SP1-2506-472-2

**Melanopic Flux vs. Wavelength**



**Melanopic Lumens: NR**

**M/P: 2.34**

λ (nm)	Power W <sup>^</sup> /nm	Lumens (φ/nm)	λ (nm)	Power W <sup>^</sup> /nm	Lumens (φ/nm)	λ (nm)	Power W <sup>^</sup> /nm	Lumens (φ/nm)	λ (nm)	Power W <sup>^</sup> /nm	Lumens (φ/nm)	λ (nm)	Power W <sup>^</sup> /nm	Lumens (φ/nm)
360	0	NR	490	43	NR	620	294	NR	750	6	NR	880	0	NR
365	0	NR	495	59	NR	625	294	NR	755	5	NR	885	0	NR
370	0	NR	500	81	NR	630	1000	NR	760	4	NR	890	0	NR
375	0	NR	505	109	NR	635	637	NR	765	4	NR	895	0	NR
380	0	NR	510	135	NR	640	175	NR	770	3	NR	900	0	NR
385	0	NR	515	160	NR	645	171	NR	775	3	NR	905	0	NR
390	1	NR	520	180	NR	650	146	NR	780	2	NR	910	0	NR
395	1	NR	525	195	NR	655	119	NR	785	2	NR	915	0	NR
400	2	NR	530	207	NR	660	99	NR	790	2	NR	920	0	NR
405	3	NR	535	218	NR	665	82	NR	795	2	NR	925	0	NR
410	5	NR	540	227	NR	670	76	NR	800	1	NR	930	0	NR
415	10	NR	545	237	NR	675	61	NR	805	1	NR	935	0	NR
420	20	NR	550	247	NR	680	52	NR	810	1	NR	940	0	NR
425	35	NR	555	259	NR	685	44	NR	815	1	NR	945	0	NR
430	58	NR	560	271	NR	690	38	NR	820	1	NR	950	0	NR
435	90	NR	565	283	NR	695	33	NR	825	1	NR	955	0	NR
440	135	NR	570	293	NR	700	27	NR	830	1	NR	960	0	NR
445	204	NR	575	303	NR	705	24	NR	835	1	NR	965	0	NR
450	233	NR	580	310	NR	710	20	NR	840	0	NR	970	0	NR
455	153	NR	585	313	NR	715	17	NR	845	0	NR	975	0	NR
460	98	NR	590	314	NR	720	15	NR	850	0	NR	980	0	NR
465	76	NR	595	310	NR	725	13	NR	855	0	NR	985	0	NR
470	53	NR	600	307	NR	730	11	NR	860	0	NR	990	0	NR
475	39	NR	605	303	NR	735	9	NR	865	0	NR	995	0	NR
480	35	NR	610	331	NR	740	8	NR	870	0	NR	1000	0	NR
485	36	NR	615	353	NR	745	7	NR	875	0	NR			

**Summary**

$R_f = 81.2$   
 $R_g = 101.5$   
 CIE  $R_a = 83.4$   
 $R_9 = 29.4$



**Color Vector Graphics**

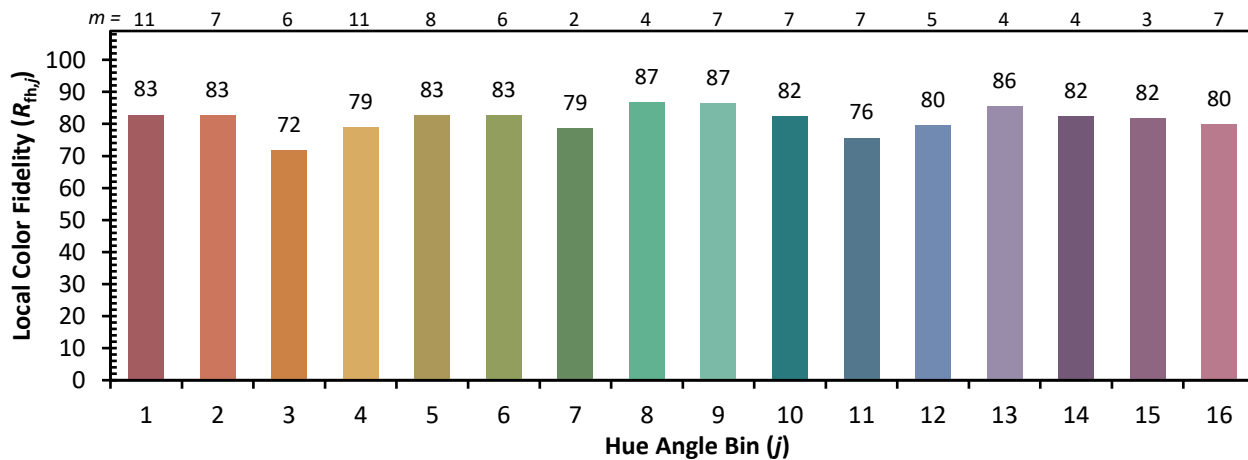
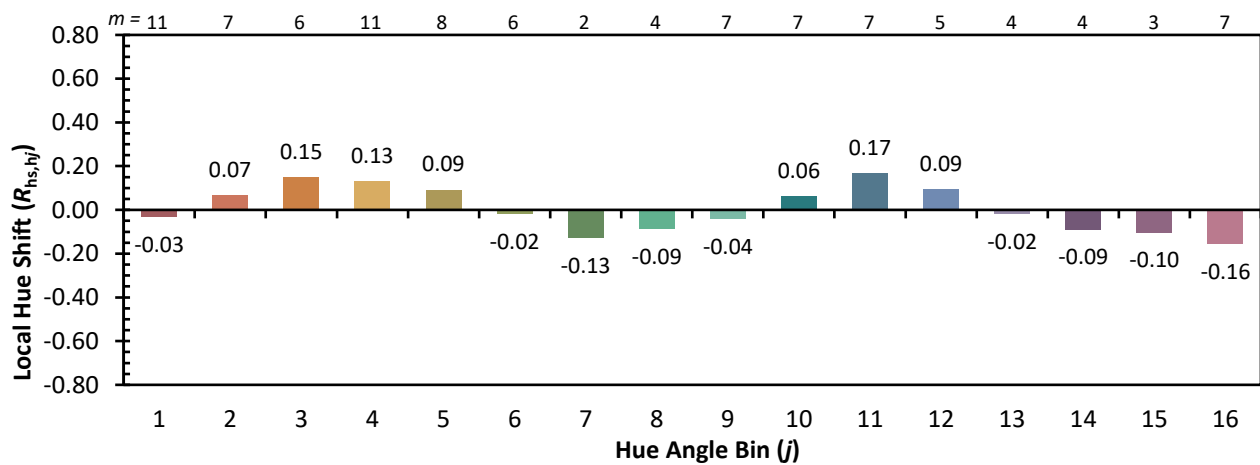
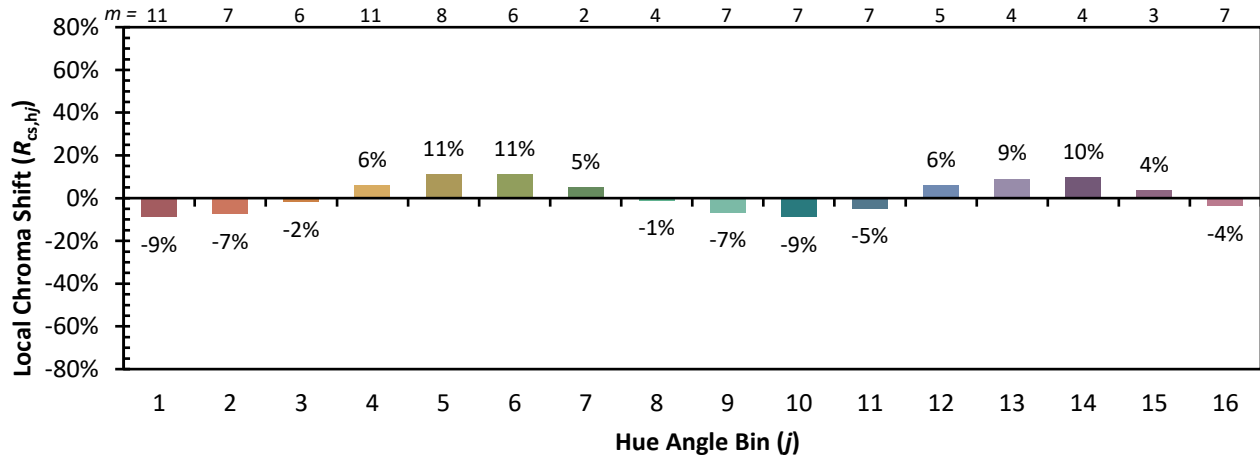


**Individual Sample Fidelity Index ( $R_{f,i}$ )**

CES01 = 86	CES26 = 71	CES51 = 89	CES76 = 65
CES02 = 63	CES27 = 89	CES52 = 89	CES77 = 82
CES03 = 31	CES28 = 86	CES53 = 80	CES78 = 67
CES04 = 70	CES29 = 68	CES54 = 92	CES79 = 89
CES05 = 50	CES30 = 77	CES55 = 90	CES80 = 85
CES06 = 51	CES31 = 70	CES56 = 81	CES81 = 75
CES07 = 43	CES32 = 64	CES57 = 79	CES82 = 93
CES08 = 41	CES33 = 74	CES58 = 81	CES83 = 89
CES09 = 29	CES34 = 76	CES59 = 92	CES84 = 91
CES10 = 76	CES35 = 87	CES60 = 96	CES85 = 81
CES11 = 59	CES36 = 99	CES61 = 91	CES86 = 74
CES12 = 65	CES37 = 81	CES62 = 93	CES87 = 83
CES13 = 44	CES38 = 83	CES63 = 79	CES88 = 86
CES14 = 74	CES39 = 94	CES64 = 81	CES89 = 74
CES15 = 72	CES40 = 89	CES65 = 78	CES90 = 85
CES16 = 48	CES41 = 88	CES66 = 76	CES91 = 87
CES17 = 50	CES42 = 80	CES67 = 74	CES92 = 73
CES18 = 57	CES43 = 75	CES68 = 79	CES93 = 84
CES19 = 72	CES44 = 99	CES69 = 83	CES94 = 64
CES20 = 67	CES45 = 83	CES70 = 72	CES95 = 80
CES21 = 87	CES46 = 82	CES71 = 70	CES96 = 86
CES22 = 79	CES47 = 79	CES72 = 90	CES97 = 85
CES23 = 92	CES48 = 78	CES73 = 65	CES98 = 83
CES24 = 91	CES49 = 79	CES74 = 94	CES99 = 82
CES25 = 72	CES50 = 88	CES75 = 70	



Color Rendition by Hue-Angle Bin



Measure Comparisons



(END OF REPORT)