

Cooper Lighting Solutions Photometric Lab
1121 Highway 74 South
Peachtree City, GA 30269



Scaled data based on original data using
LM-79-2019 Approved Method: Electrical and Photometric Measurements of Solid-
State Lighting Products

Test Report Prepared for
Cooper Lighting Solutions

Brand: METALUX

Report Number: P1444450

Luminaire Tested: EHBR1-30-UNV-TA-L830-UPL12

Issue Date: 5/1/2026

Test Information

Test Method: LM-79-2019
Report Number: P1444450
REPORT IS A COMBINATION OF REPORTS P1444303 AND P1431635
Test Lab: INNOVATION CENTER
Issue Date: 5/1/2026
Manufacturer: COOPER LIGHTING SOLUTIONS
Product Line: METALUX
Catalog Number: EHBR1-30-UNV-TA-L830-UPL12
Description: Elevate Round Highbay at, 30000 lumens, 3000K 80CRI LEDs with TA lens
Light Source: -
Ballast/Driver: -

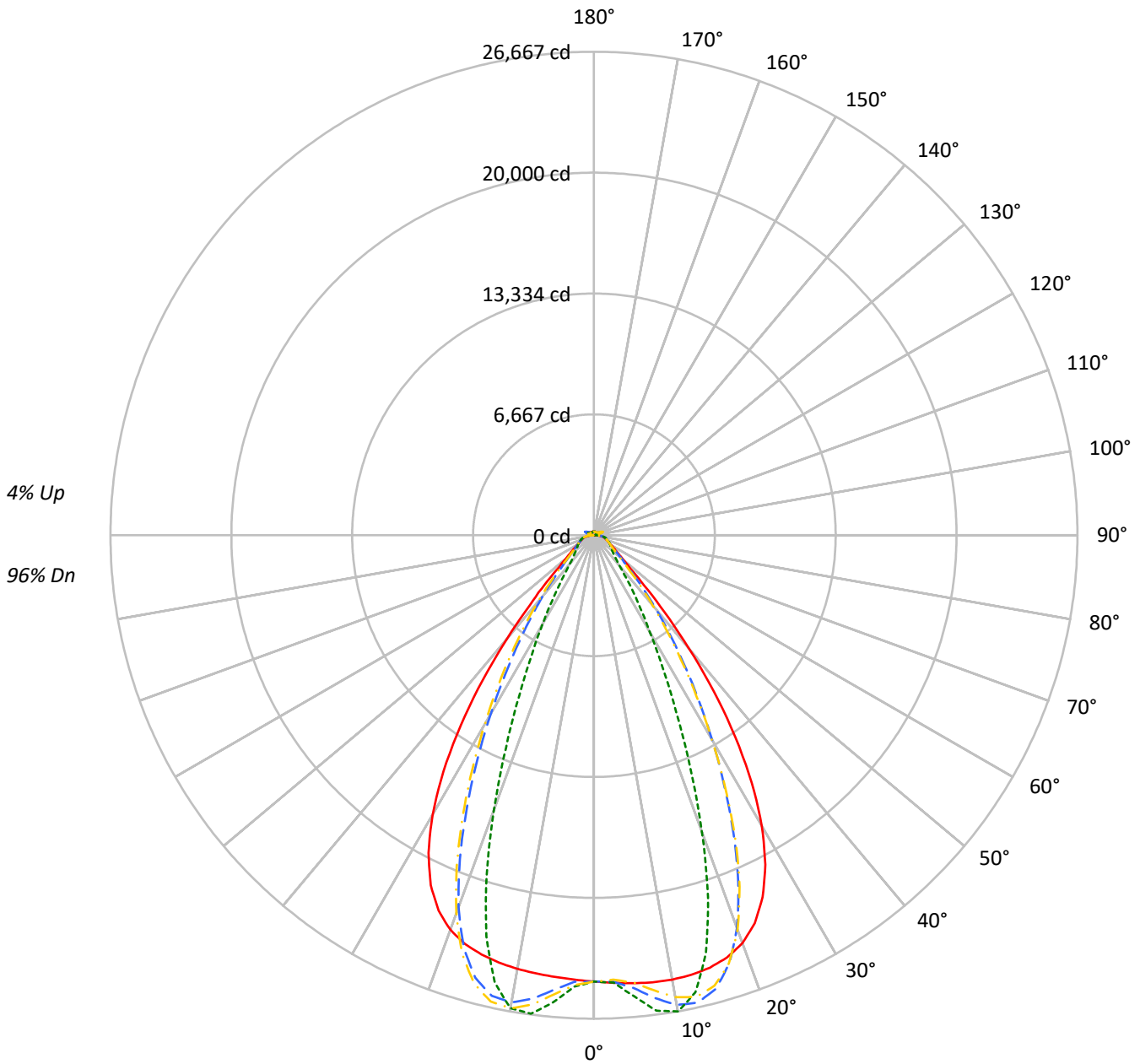
Summary

Lumens per Lamp: N/A
Luminaire Lumens: 29631.9 lumens
Efficiency: N/A
Efficacy: 177.2 lumens/watt
Spacing Criteria (0/90/45): 1.13 / 0.77 / 0.88
Luminous Opening: Vertical Cylinder (Dia: 1.71' x H: 0.1')
CIE Type: Direct

Input Watts (W): 167.2
Input Voltage (V): NR
Input Current (Ain): NR
Voltage Rise (V): NR
Power Factor: NR
Total Harmonic Distortion (THDi): NR
Frequency (hertz): 60
Stabilization Time: NR
Operation Time: NR
Ambient Temperature (°C): NR
Test Distance: 24 FT

TEST NUMBER: P1444450
CATALOG NUMBER: EHBR1-30-UNV-TA-L830-UPL12

Luminous Intensity Polar Plot



— 0°-180° - - 45°-225° - · - · 90°-270° - · - · 135°-315°



TEST NUMBER: P1444450
 CATALOG NUMBER: EHBR1-30-UNV-TA-L830-UPL12

COEFFICIENT OF UTILIZATION - ZONAL CAVITY METHOD:

RF	20				20				20				20				20				
RC	80				70				50				30				10			0	
RW	70	50	30	10	70	50	30	10	50	30	10	50	30	10	50	30	10	50	30	10	0
RCR																					
0	118	118	118	118	115	115	115	115	109	109	109	103	103	103	98	98	98	98	98	98	96
1	111	107	104	102	108	105	102	100	100	98	96	95	94	92	91	90	89	89	89	89	86
2	104	98	93	89	101	96	92	88	92	88	85	88	85	83	85	82	80	80	80	80	78
3	98	90	84	80	95	88	83	79	85	81	77	82	78	75	79	76	73	73	73	73	71
4	92	83	77	72	90	82	76	71	79	74	70	76	72	69	74	70	67	67	67	67	65
5	87	77	70	65	85	76	70	65	73	68	64	71	67	63	69	65	62	62	62	62	60
6	82	72	65	60	80	71	64	60	69	63	59	67	62	58	65	61	57	57	57	57	56
7	77	67	60	55	76	66	60	55	64	59	55	63	58	54	61	57	53	53	53	53	52
8	73	63	56	51	72	62	56	51	60	55	51	59	54	50	58	53	50	50	50	50	48
9	69	59	52	48	68	58	52	48	57	51	47	56	50	47	54	50	46	46	46	46	45
10	66	55	49	45	65	55	49	45	54	48	44	52	47	44	51	47	44	44	44	44	42

AVERAGE LUMINANCE (cd/sqm):

	0°	90°	180°	270°
0°	115600	115600	115600	115600
5°	116159	119546	114533	121112
10°	117129	125515	114320	124684
15°	117703	113778	114120	109197
20°	116486	84760	112674	78423
25°	110259	53606	106615	48638
30°	96320	32213	92589	29440
35°	74128	20213	69864	17906
40°	46893	12680	42903	11915
45°	24169	9879	23769	9716
50°	14171	8787	13736	8650
55°	10856	8313	10454	8238
60°	9186	8491	8795	8382
65°	8628	8869	8298	8566
70°	8429	9285	8008	8936
75°	9013	9848	8525	9413
80°	9326	10904	8455	9953
85°	8784	10524	7096	9011

MAXIMUM LUMINANCE 45°-90°:

Horizontal Angle: 25°
 Vertical Angle: 45°
 Luminance: 36988 cd/sqm



TEST NUMBER: P1444450
 CATALOG NUMBER: EHBR1-30-UNV-TA-L830-UPL12

ZONAL LUMENS:

Zone	Lumens	% Fixture
0°-10°	2426.0	8.2
10°-20°	6824.5	23.0
20°-30°	7772.6	26.2
30°-40°	5586.6	18.9
40°-50°	2576.5	8.7
50°-60°	1233.0	4.2
60°-70°	899.6	3.0
70°-80°	683.5	2.3
80°-90°	312.9	1.1
90°-100°	39.9	0.1
100°-110°	204.7	0.7
110°-120°	377.6	1.3
120°-130°	237.5	0.8
130°-140°	161.0	0.5
140°-150°	126.1	0.4
150°-160°	92.2	0.3
160°-170°	57.7	0.2
170°-180°	20.2	0.1
0°-30°	17023.0	57.4
0°-40°	22609.6	76.3
0°-60°	26419.1	89.2
0°-90°	28315.1	95.6
90°-120°	622.2	2.1
90°-150°	1146.7	3.9
90°-180°	1317.0	4.4
0°-180°	29631.9	100.0

CANDELA DISTRIBUTION:

	0°	90°	180°	270°	360°	Flux
0°	24616	24616	24616	24616	24616	
5°	24802	25525	24455	25859	24802	2370
15°	24694	23870	23942	22909	24694	6958
25°	22019	10705	21291	9713	22019	9982
35°	13605	3710	12823	3286	13605	8350
45°	3910	1598	3846	1572	3910	3326
55°	1467	1123	1413	1113	1467	1354
65°	901	926	866	894	901	899
75°	635	694	600	663	635	660
85°	302	362	244	310	302	284
90°	76	98	18	24	76	48
95°	18	20	18	20	18	17
105°	76	96	52	96	76	100
115°	332	397	348	397	332	307
125°	259	262	292	263	259	236
135°	216	183	232	186	216	168
145°	203	189	214	193	203	128
155°	197	194	208	197	197	92
165°	203	200	209	202	203	57
175°	211	212	214	213	211	20
180°	214	214	214	214	214	



TEST NUMBER: P1444450
 CATALOG NUMBER: EHBR1-30-UNV-TA-L830-UPL12

CANDELA DISTRIBUTION (FULL):

	0°	2.5°	5°	7.5°	10°	12.5°	15°	17.5°	20°	22.5°	25°
0°	24616.1	24616.1	24616.1	24616.1	24616.1	24616.1	24616.1	24616.1	24616.1	24616.1	24616.1
2.5°	24710.1	24708.1	24707.8	24706.0	24705.6	24705.6	24704.8	24702.7	24701.5	24698.7	24695.4
5°	24801.8	24800.7	24801.3	24801.5	24799.8	24796.0	24789.9	24782.6	24773.2	24764.5	24756.7
7.5°	24872.7	24874.4	24876.6	24876.2	24870.7	24861.8	24849.4	24842.5	24846.6	24860.0	24890.7
10°	24885.6	24896.2	24900.3	24899.0	24888.3	24880.6	24883.6	24909.6	24961.5	25030.8	25125.5
12.5°	24835.2	24848.2	24847.7	24843.4	24833.0	24843.6	24881.3	24959.0	25070.3	25206.8	25367.1
15°	24693.5	24710.3	24705.6	24700.0	24693.1	24727.8	24803.3	24938.1	25110.0	25302.6	25499.7
17.5°	24418.5	24438.7	24428.9	24422.5	24416.7	24481.8	24611.5	24808.9	25025.4	25243.3	25430.1
20°	23941.3	23954.9	23931.5	23920.5	23929.7	24057.4	24248.3	24500.5	24728.6	24934.6	25062.4
22.5°	23162.7	23179.5	23135.5	23130.3	23184.8	23380.8	23622.4	23904.2	24118.7	24282.0	24331.2
25°	22018.7	22035.2	21982.9	22014.2	22106.7	22373.8	22661.4	22962.9	23145.9	23266.8	23233.5
27.5°	20474.5	20489.7	20440.0	20503.9	20650.1	21001.0	21339.6	21666.7	21829.7	21914.5	21807.1
30°	18527.0	18558.5	18499.8	18589.0	18812.2	19267.7	19655.7	20022.4	20185.0	20249.5	20082.4
32.5°	16214.0	16258.7	16194.1	16326.7	16638.2	17185.3	17626.1	18036.0	18215.7	18289.3	18100.6
35°	13605.1	13669.4	13595.2	13794.3	14178.4	14787.7	15275.8	15733.3	15946.3	16050.7	15860.4
37.5°	10841.3	10902.4	10862.3	11127.9	11549.7	12181.3	12679.5	13173.0	13413.6	13570.2	13420.2
40°	8127.7	8183.7	8214.1	8517.8	8914.6	9509.8	9988.3	10476.7	10745.7	10942.4	10849.8
42.5°	5736.6	5793.0	5896.3	6189.3	6520.2	7013.0	7422.9	7861.3	8118.3	8328.0	8292.4
45°	3910.5	3976.0	4105.4	4345.4	4584.7	4938.2	5239.2	5580.2	5790.1	5982.2	5984.5
47.5°	2740.2	2786.3	2901.9	3065.8	3221.8	3664.3	3682.5	3850.1	3991.2	4134.8	4153.5
50°	2111.9	2139.6	2200.9	2292.2	2380.6	2495.5	2600.7	2722.2	2809.0	2887.7	2906.5
52.5°	1735.8	1753.4	1784.6	1834.1	1885.4	1947.9	2004.2	2070.9	2118.1	2160.2	2169.0
55°	1467.1	1481.7	1528.1	1537.5	1596.2	1607.5	1632.5	1673.1	1700.5	1725.8	1732.1
57.5°	1264.3	1274.9	1284.7	1305.8	1323.9	1350.1	1371.2	1400.4	1417.7	1436.0	1437.5
60°	1104.3	1111.9	1118.9	1133.5	1145.9	1164.1	1178.7	1198.5	1210.9	1224.6	1226.2
62.5°	985.2	990.7	995.3	1005.0	1013.7	1027.8	1039.4	1055.9	1067.5	1078.1	1080.4
65°	900.6	904.6	907.6	914.9	922.6	934.5	945.0	958.4	967.0	975.0	976.8
67.5°	825.5	829.4	832.5	839.1	844.4	853.3	860.4	870.5	876.9	883.4	883.6
70°	739.6	743.2	745.5	751.7	756.0	763.7	769.3	778.5	785.1	792.3	794.0
72.5°	680.1	682.2	685.4	691.1	697.0	705.2	712.7	722.3	730.2	737.7	740.8
75°	634.9	637.3	639.4	644.3	648.4	655.3	660.9	669.7	676.6	684.5	688.5
77.5°	569.5	572.4	574.2	579.1	582.6	589.3	593.4	601.2	606.9	614.2	617.8
80°	490.6	493.3	494.6	499.1	502.0	508.1	512.2	519.7	524.4	531.7	536.0
82.5°	403.2	405.7	406.4	410.7	412.2	417.3	420.3	428.0	433.8	443.3	449.9
85°	301.9	302.8	304.2	303.1	309.3	309.7	316.6	317.8	327.0	329.3	339.7
87.5°	184.5	187.3	188.7	192.9	194.6	198.9	200.2	204.7	207.1	212.2	214.6
90°	76.4	80.6	81.9	86.7	88.0	92.3	93.2	98.0	99.3	104.3	106.1
92.5°	16.1	17.0	17.8	19.0	20.0	21.4	22.6	23.6	24.5	25.9	27.8
95°	18.1	19.1	20.1	21.2	22.2	23.3	24.4	25.4	26.4	27.4	30.4
97.5°	22.4	23.3	24.2	25.1	26.0	26.9	27.8	28.8	29.6	30.4	34.1
100°	28.6	29.3	30.1	30.9	31.7	32.4	33.2	34.0	34.8	35.5	42.2
102.5°	46.0	48.7	51.4	54.1	56.9	59.6	62.4	65.0	67.7	70.4	84.7
105°	76.2	83.5	91.0	98.3	105.7	113.2	120.6	127.8	135.2	142.5	165.8
107.5°	127.9	141.4	155.2	168.9	182.6	196.2	209.9	223.5	237.3	250.8	274.5
110°	233.1	244.0	255.1	266.0	277.0	287.9	298.9	309.7	320.7	331.6	348.8



TEST NUMBER: P1444450
 CATALOG NUMBER: EHBR1-30-UNV-TA-L830-UPL12

CANDELA DISTRIBUTION (continued):

	0°	2.5°	5°	7.5°	10°	12.5°	15°	17.5°	20°	22.5°	25°
112.5°	313.5	318.4	323.3	328.2	333.2	337.9	342.8	347.7	352.6	357.4	369.7
115°	332.0	333.6	335.3	336.9	338.6	340.2	341.8	343.3	345.0	346.4	354.6
117.5°	324.5	324.1	323.7	323.3	322.7	322.2	321.8	321.1	320.5	320.0	324.6
120°	305.6	303.9	302.3	300.4	298.7	296.8	295.2	293.3	291.4	289.4	291.3
122.5°	281.1	279.0	277.2	275.0	273.0	270.8	268.7	266.3	264.2	262.0	262.5
125°	259.0	256.8	255.0	252.7	250.6	248.4	246.2	243.8	241.6	239.1	239.3
127.5°	240.3	238.8	237.3	235.5	233.8	232.1	230.3	228.5	226.8	224.7	224.5
130°	229.1	227.9	226.4	224.8	223.2	221.5	219.8	218.1	216.4	214.5	214.2
132.5°	220.7	219.7	218.5	217.4	216.1	214.5	213.2	211.6	210.3	208.8	208.5
135°	216.0	214.9	213.9	212.7	211.5	210.1	208.7	207.2	205.8	204.3	204.2
137.5°	212.3	211.4	210.5	209.2	208.0	206.5	205.4	203.8	202.5	201.0	200.9
140°	209.0	208.1	207.2	206.1	205.0	203.7	202.3	201.1	199.7	198.3	198.2
142.5°	204.9	204.0	203.3	202.3	201.4	200.2	199.1	197.8	196.7	195.4	195.5
145°	202.6	202.0	201.3	200.5	199.5	198.4	197.5	196.2	195.3	194.2	194.3
147.5°	200.8	200.2	199.7	199.0	198.3	197.2	196.3	195.2	194.5	193.4	193.6
150°	199.2	198.7	198.3	197.6	196.8	195.9	195.0	194.2	193.3	192.3	192.5
152.5°	197.3	196.6	196.2	195.5	194.8	193.8	193.3	192.3	191.6	190.6	190.7
155°	196.9	196.3	195.7	195.1	194.4	193.7	192.9	192.1	191.4	190.5	190.7
157.5°	197.5	196.8	196.3	195.7	195.3	194.6	193.9	193.2	192.6	191.9	191.9
160°	199.0	198.4	197.8	197.3	196.7	196.0	195.4	194.7	194.3	193.5	193.6
162.5°	200.6	200.0	199.4	198.9	198.4	197.6	197.1	196.6	196.1	195.3	195.3
165°	202.7	202.3	201.9	201.4	201.0	200.5	200.1	199.5	199.1	198.5	198.5
167.5°	206.1	205.5	205.2	204.7	204.2	203.8	203.3	202.7	202.4	201.8	201.8
170°	208.2	207.8	207.6	207.3	206.9	206.5	206.3	205.9	205.5	205.1	205.1
172.5°	210.3	209.9	209.7	209.5	209.2	209.0	208.7	208.4	208.2	207.9	208.0
175°	211.1	210.9	210.8	210.6	210.5	210.3	210.2	210.0	210.0	209.7	209.7
177.5°	212.8	212.7	212.7	212.6	212.6	212.5	212.4	212.3	212.2	212.2	212.2
180°	214.0	214.0	214.0	214.0	214.0	214.0	214.0	214.0	214.0	214.0	214.0



TEST NUMBER: P1444450
 CATALOG NUMBER: EHBR1-30-UNV-TA-L830-UPL12

CANDELA DISTRIBUTION (continued):

	27.5°	30°	32.5°	35°	37.5°	40°	42.5°	45°	47.5°	50°	52.5°
0°	24616.1	24616.1	24616.1	24616.1	24616.1	24616.1	24616.1	24616.1	24616.1	24616.1	24616.1
2.5°	24693.1	24690.1	24685.9	24680.8	24676.3	24671.0	24658.8	24655.1	24659.2	24662.0	24667.6
5°	24751.7	24753.5	24754.1	24765.3	24775.0	24799.2	24988.6	25063.8	25122.1	25159.0	25215.1
7.5°	24928.6	24985.6	25041.9	25117.6	25182.9	25271.1	25602.4	25743.5	25843.7	25915.8	26004.5
10°	25228.4	25352.7	25469.1	25605.6	25723.0	25857.4	26165.7	26303.2	26389.9	26453.0	26512.0
12.5°	25530.4	25702.7	25858.4	26010.3	26137.4	26253.8	26362.3	26410.4	26414.4	26416.5	26385.2
15°	25687.6	25852.4	25989.6	26090.1	26164.7	26197.7	26011.0	25913.0	25789.2	25687.2	25519.4
17.5°	25588.4	25687.2	25746.5	25740.7	25709.8	25606.5	25077.6	24786.6	24497.8	24237.5	23896.3
20°	25147.1	25139.6	25088.0	24941.9	24765.9	24492.2	23585.4	23062.2	22556.3	22112.0	21573.1
22.5°	24326.1	24197.0	24016.8	23701.9	23352.1	22874.0	21574.4	20804.8	20100.6	19478.5	18781.6
25°	23136.6	22870.9	22538.6	22038.7	21495.0	20797.7	19195.9	18238.7	17393.1	16659.8	15855.7
27.5°	21614.3	21213.9	20727.1	20035.2	19298.5	18405.1	16629.3	15572.9	14665.2	13879.0	13023.2
30°	19811.9	19291.2	18662.7	17803.8	16915.4	15902.0	14100.9	13030.9	12112.2	11303.5	10446.9
32.5°	17775.1	17165.3	16428.7	15464.8	14503.9	13462.1	11722.7	10687.0	9809.3	9031.2	8256.1
35°	15528.7	14874.7	14095.4	13112.2	12157.2	11144.2	9548.2	8614.3	7839.3	7151.5	6525.6
37.5°	13118.9	12476.8	11736.1	10809.5	9923.9	9006.0	7628.8	6846.3	6195.9	5625.0	5141.7
40°	10613.5	10051.5	9410.6	8609.6	7853.7	7089.3	5958.9	5337.6	4824.4	4389.0	4026.9
42.5°	8138.6	7703.2	7211.7	6578.7	6000.3	5418.2	4548.2	4087.9	3707.8	3394.4	3138.3
45°	5904.8	5613.6	5284.0	4843.8	4443.7	4037.7	3418.4	3095.0	2847.4	2645.3	2474.4
47.5°	4127.8	3958.8	3948.5	3541.8	3248.3	3000.1	2601.1	2396.9	2245.2	2122.8	2014.6
50°	2898.8	2817.1	2715.5	2570.4	2434.2	2293.9	2050.8	1927.4	1838.5	1764.3	1695.9
52.5°	2167.1	2124.6	2070.6	1993.6	1919.8	1840.8	1687.0	1608.4	1580.5	1511.4	1457.2
55°	1730.9	1706.6	1675.8	1630.5	1585.7	1567.7	1435.9	1377.5	1340.5	1313.3	1284.1
57.5°	1437.8	1419.7	1401.4	1370.7	1344.7	1313.3	1243.3	1213.3	1191.4	1175.3	1155.1
60°	1226.4	1215.6	1205.4	1187.4	1173.3	1156.4	1111.9	1095.0	1083.6	1073.8	1061.0
62.5°	1082.5	1076.8	1071.6	1062.0	1054.9	1045.6	1015.3	1007.1	1001.4	996.6	988.8
65°	978.6	974.6	971.6	965.2	961.6	956.3	930.2	924.7	921.2	919.4	914.9
67.5°	884.1	879.9	878.0	873.5	872.0	868.6	847.3	844.3	843.0	843.6	842.0
70°	795.8	794.0	795.0	794.2	796.3	796.9	783.9	783.8	785.2	788.0	788.2
72.5°	742.9	742.9	743.9	744.3	746.3	747.2	736.4	735.9	736.5	738.5	738.6
75°	692.5	693.4	696.1	697.0	699.3	699.7	685.5	683.9	684.0	685.9	685.2
77.5°	622.8	625.8	631.1	633.8	638.2	638.9	623.0	621.1	621.2	623.1	621.4
80°	543.8	549.5	557.8	563.5	570.3	573.0	556.6	552.7	549.0	548.4	545.2
82.5°	459.7	466.8	476.7	481.8	489.1	490.7	463.3	458.1	455.0	455.2	452.2
85°	351.0	356.2	365.3	368.2	372.7	372.3	341.0	327.5	331.0	325.5	329.9
87.5°	220.1	223.2	228.9	229.6	231.7	231.3	199.7	193.5	191.7	191.7	189.5
90°	111.4	113.6	118.7	118.9	122.3	122.1	96.7	93.9	91.4	92.5	89.3
92.5°	30.1	31.8	34.0	35.9	38.0	40.0	39.2	40.2	38.5	36.3	34.8
95°	33.5	36.6	39.7	42.7	45.8	48.9	52.0	55.1	52.2	49.3	46.4
97.5°	37.7	41.4	45.0	48.5	52.2	55.8	59.5	63.1	60.0	56.8	53.7
100°	49.0	55.7	62.6	69.3	76.1	82.8	89.6	96.4	90.5	84.3	78.4
102.5°	99.0	113.3	127.7	142.0	156.3	170.7	185.2	199.6	185.8	172.1	158.3
105°	189.0	212.4	235.6	258.6	281.9	305.2	328.7	351.9	330.0	308.1	286.3
107.5°	298.0	321.6	345.0	368.4	392.0	415.5	439.5	463.1	441.7	420.1	398.9
110°	366.0	383.0	400.2	417.3	434.4	451.6	469.2	486.3	473.5	460.5	447.6



TEST NUMBER: P1444450
 CATALOG NUMBER: EHBR1-30-UNV-TA-L830-UPL12

CANDELA DISTRIBUTION (continued):

	27.5°	30°	32.5°	35°	37.5°	40°	42.5°	45°	47.5°	50°	52.5°
112.5°	381.8	394.1	406.3	418.2	430.3	442.5	455.5	467.9	461.2	454.5	447.9
115°	362.7	370.9	378.9	387.0	395.2	403.2	412.2	420.6	418.3	416.0	413.7
117.5°	328.9	333.4	337.8	342.2	346.4	350.8	356.5	361.1	361.1	361.2	361.3
120°	293.0	294.7	296.3	298.1	299.6	301.2	304.3	306.3	307.7	309.0	310.5
122.5°	262.9	263.3	263.7	264.1	264.4	264.8	267.0	267.7	268.6	269.3	270.1
125°	239.3	239.2	239.2	239.2	239.1	239.0	241.1	241.4	241.2	240.7	240.5
127.5°	224.2	223.9	223.5	223.2	222.7	222.4	224.2	224.2	223.2	222.0	220.8
130°	214.0	213.9	213.5	213.2	212.9	212.8	214.8	215.1	213.4	211.5	209.8
132.5°	208.2	208.1	207.8	207.7	207.4	207.1	209.4	209.8	207.9	205.9	204.0
135°	203.9	203.7	203.6	203.5	203.3	203.2	205.8	206.3	204.5	202.4	200.5
137.5°	200.5	200.5	200.3	200.3	200.1	200.0	202.8	203.4	202.0	200.2	198.7
140°	198.2	198.0	198.0	198.0	198.0	198.1	201.2	201.9	200.6	199.3	198.0
142.5°	195.5	195.7	195.8	196.1	196.1	196.4	200.1	201.0	200.0	198.9	197.8
145°	194.4	194.7	194.9	195.3	195.6	196.0	200.0	201.2	200.5	199.7	199.0
147.5°	193.5	193.9	194.1	194.4	194.6	195.2	199.5	200.7	200.3	199.6	199.1
150°	192.6	193.0	193.1	193.5	194.0	194.5	199.4	200.9	200.5	200.0	199.5
152.5°	190.9	191.2	191.4	191.7	191.9	192.5	198.6	200.2	199.9	199.3	199.1
155°	190.7	190.8	190.9	191.1	191.3	191.7	198.4	200.1	199.8	199.5	199.2
157.5°	191.9	191.8	191.7	191.9	192.0	192.1	199.2	201.2	200.8	200.5	200.3
160°	193.4	193.4	193.2	193.3	193.2	193.3	200.6	202.5	202.3	202.0	201.7
162.5°	195.3	195.6	195.5	195.5	195.5	195.8	203.1	205.1	204.7	204.3	204.0
165°	198.5	198.3	198.2	198.3	198.2	198.2	205.1	206.9	206.7	206.4	206.1
167.5°	201.6	201.7	201.7	201.7	201.7	201.9	208.2	209.9	209.7	209.4	209.2
170°	205.0	205.1	205.1	205.2	205.3	205.5	210.9	212.3	212.1	211.6	211.4
172.5°	208.1	208.3	208.4	208.5	208.6	208.8	213.4	214.6	214.4	214.1	213.9
175°	209.8	209.9	210.0	210.2	210.3	210.5	214.0	215.0	214.9	214.7	214.5
177.5°	212.4	212.4	212.5	212.6	212.8	212.9	215.2	215.7	215.6	215.6	215.5
180°	214.0	214.0	214.0	214.0	214.0	214.0	214.0	214.0	214.0	214.0	214.0



TEST NUMBER: P1444450
 CATALOG NUMBER: EHBR1-30-UNV-TA-L830-UPL12

CANDELA DISTRIBUTION (continued):

	55°	57.5°	60°	62.5°	65°	67.5°	70°	72.5°	75°	77.5°	80°
0°	24616.1	24616.1	24616.1	24616.1	24616.1	24616.1	24616.1	24616.1	24616.1	24616.1	24616.1
2.5°	24668.9	24677.6	24678.8	24688.9	24688.2	24700.2	24698.3	24708.1	24702.3	24710.5	24703.6
5°	25248.3	25300.9	25328.3	25379.6	25395.8	25441.7	25454.7	25496.6	25498.2	25531.5	25523.9
7.5°	26067.5	26144.9	26190.8	26254.3	26286.4	26339.2	26362.5	26401.5	26414.2	26445.2	26447.5
10°	26556.6	26594.2	26620.5	26638.2	26654.3	26661.9	26670.7	26668.4	26670.7	26667.3	26674.8
12.5°	26364.2	26309.3	26273.0	26204.2	26164.3	26088.4	26051.0	25977.9	25951.4	25888.7	25879.6
15°	25389.8	25198.4	25063.1	24866.5	24742.9	24549.4	24436.2	24261.6	24181.9	24043.2	24006.7
17.5°	23613.7	23258.5	22983.5	22630.8	22386.0	22056.4	21849.1	21576.2	21426.8	21206.8	21130.7
20°	21123.8	20598.1	20185.7	19694.4	19342.8	18904.7	18624.3	18270.6	18065.2	17794.9	17685.4
22.5°	18200.5	17546.0	17031.0	16450.5	16026.3	15538.1	15202.1	14819.4	14596.0	14302.4	14172.4
25°	15187.4	14465.7	13893.1	13281.6	12833.4	12343.9	12007.9	11632.0	11400.8	11122.0	10992.8
27.5°	12305.7	11575.2	11021.8	10453.2	10042.1	9600.5	9297.3	8969.0	8763.8	8525.9	8404.4
30°	9762.8	9118.4	8647.4	8175.6	7833.6	7474.9	7223.0	6950.9	6770.9	6567.2	6451.4
32.5°	7690.8	7193.4	6824.7	6450.3	6170.4	5870.6	5652.9	5412.9	5250.3	5068.4	4963.6
35°	6091.0	5704.6	5410.4	5102.3	4861.7	4606.5	4414.6	4207.4	4061.7	3905.0	3814.5
37.5°	4812.5	4505.2	4263.1	4007.1	3809.7	3598.2	3527.0	3289.3	3138.2	3013.1	2926.6
40°	3776.9	3532.5	3332.2	3136.5	2975.4	2815.0	2686.3	2559.3	2461.8	2372.3	2310.5
42.5°	2949.5	2772.4	2626.2	2482.7	2365.2	2248.4	2155.1	2067.6	2001.9	1943.5	1903.6
45°	2344.7	2222.9	2121.3	2020.3	1937.4	1859.4	1796.6	1740.8	1698.3	1663.2	1638.3
47.5°	1926.2	1842.9	1771.1	1703.0	1646.7	1595.6	1553.5	1539.9	1494.2	1463.5	1451.8
50°	1637.0	1586.7	1532.2	1482.0	1444.3	1406.9	1379.7	1353.0	1335.8	1321.7	1317.5
52.5°	1421.2	1382.7	1352.4	1320.6	1295.7	1269.1	1250.3	1232.5	1223.2	1215.8	1214.8
55°	1260.7	1233.8	1213.7	1192.3	1177.5	1161.9	1152.2	1142.8	1138.7	1134.9	1135.2
57.5°	1139.3	1121.3	1108.2	1094.4	1086.4	1078.9	1076.5	1074.0	1075.3	1075.9	1078.0
60°	1050.8	1039.1	1030.9	1023.0	1019.6	1017.2	1019.0	1021.1	1025.4	1028.9	1032.0
62.5°	983.0	976.3	972.3	968.1	967.7	967.9	971.6	975.0	980.5	984.5	987.5
65°	913.2	909.4	908.1	905.3	906.7	907.6	912.0	914.7	920.0	923.2	927.1
67.5°	842.7	841.8	842.6	842.6	845.1	847.2	851.4	854.5	859.1	862.0	865.1
70°	790.6	791.0	792.9	793.2	795.9	797.3	801.0	803.0	807.1	809.6	813.3
72.5°	740.0	739.2	739.6	738.4	739.3	739.0	740.9	742.0	745.4	747.4	751.9
75°	686.0	683.8	683.2	680.8	680.9	679.1	680.0	679.9	682.1	683.0	686.3
77.5°	620.9	617.1	615.2	611.1	611.0	609.5	611.1	612.1	616.2	618.0	621.8
80°	543.0	537.0	534.2	529.5	530.4	530.1	534.0	537.1	542.0	542.9	547.7
82.5°	451.3	445.2	442.3	437.6	438.8	438.8	442.5	443.1	447.4	449.2	454.7
85°	323.2	325.5	319.0	319.5	318.1	320.6	323.2	326.3	329.8	335.7	340.3
87.5°	190.3	189.5	191.7	192.0	195.3	197.1	202.3	205.3	211.3	215.9	224.3
90°	89.3	86.1	87.7	86.6	89.5	88.4	91.2	89.5	93.0	93.2	97.6
92.5°	32.4	30.7	28.5	26.7	24.5	22.9	21.6	21.1	19.9	19.3	18.1
95°	43.6	40.7	37.8	34.9	32.1	29.2	28.2	27.2	26.0	25.0	24.0
97.5°	50.6	47.6	44.5	41.3	38.2	35.1	34.5	33.7	33.1	32.3	31.7
100°	72.3	66.4	60.4	54.4	48.4	42.5	42.0	41.4	40.8	40.3	39.7
102.5°	144.7	131.0	117.4	103.6	90.0	76.3	74.0	71.6	69.2	66.9	64.4
105°	264.2	242.3	220.4	198.6	176.8	154.8	148.4	141.6	135.2	128.6	122.1
107.5°	377.4	355.9	334.6	313.3	292.0	270.6	260.2	250.0	239.5	229.2	219.0
110°	434.4	421.6	408.8	395.8	382.9	370.1	360.2	350.3	340.4	330.5	320.7



TEST NUMBER: P1444450
 CATALOG NUMBER: EHBR1-30-UNV-TA-L830-UPL12

CANDELA DISTRIBUTION (continued):

	55°	57.5°	60°	62.5°	65°	67.5°	70°	72.5°	75°	77.5°	80°
112.5°	441.3	434.7	428.2	421.6	415.1	408.6	403.7	398.9	394.1	389.2	384.2
115°	411.3	409.1	406.8	404.6	402.4	400.2	399.7	399.4	398.9	398.5	398.2
117.5°	361.3	361.4	361.4	361.6	361.8	361.9	364.3	366.6	369.1	371.7	374.2
120°	311.8	313.1	314.5	316.0	317.4	318.9	322.0	325.3	328.5	332.0	335.4
122.5°	270.9	271.6	272.4	273.4	274.2	275.1	278.1	281.3	284.4	287.7	291.2
125°	239.9	239.4	239.1	238.7	238.2	238.0	240.4	242.9	245.4	248.1	250.8
127.5°	219.5	218.3	216.9	215.8	214.4	213.4	214.6	215.9	217.1	218.5	220.0
130°	207.9	206.1	204.1	202.4	200.4	198.7	199.0	199.1	199.4	199.8	200.1
132.5°	201.9	199.9	197.7	195.7	193.6	191.6	191.0	190.6	190.1	189.8	189.5
135°	198.6	196.7	194.6	192.6	190.5	188.7	187.7	186.9	186.1	185.4	184.7
137.5°	197.0	195.4	193.8	192.2	190.3	188.7	187.6	186.7	185.6	184.9	183.9
140°	196.5	195.3	193.7	192.3	191.0	189.7	188.6	187.8	186.9	186.2	185.4
142.5°	196.6	195.6	194.5	193.3	192.2	191.1	190.2	189.4	188.6	187.8	187.1
145°	198.1	197.3	196.4	195.6	194.7	194.0	193.1	192.5	191.7	191.2	190.7
147.5°	198.6	197.9	197.3	196.7	196.0	195.3	194.7	194.4	193.6	193.2	192.7
150°	198.9	198.3	197.6	197.4	196.6	196.1	195.6	195.2	194.6	194.5	194.1
152.5°	198.4	197.9	197.4	197.0	196.3	195.9	195.5	195.2	194.7	194.5	194.0
155°	198.8	198.4	197.9	197.6	197.0	196.7	196.2	195.8	195.5	195.1	194.6
157.5°	199.9	199.6	199.1	198.9	198.3	197.9	197.6	197.2	196.7	196.4	196.1
160°	201.3	201.0	200.5	200.3	199.9	199.5	199.0	198.6	198.1	197.7	197.2
162.5°	203.5	203.1	202.7	202.3	201.9	201.5	201.0	200.6	200.3	199.9	199.4
165°	205.7	205.3	205.0	204.6	204.4	204.0	203.5	203.1	202.6	202.2	201.7
167.5°	208.8	208.5	208.1	207.9	207.4	207.1	206.7	206.4	205.9	205.4	205.0
170°	211.1	210.7	210.4	210.0	209.6	209.3	208.9	208.4	208.0	207.8	207.2
172.5°	213.6	213.4	213.1	212.9	212.4	212.2	211.9	211.5	211.2	210.9	210.6
175°	214.4	214.3	214.2	213.9	213.9	213.7	213.5	213.4	213.2	213.1	212.8
177.5°	215.5	215.4	215.4	215.3	215.2	215.2	215.0	214.9	214.8	214.6	214.5
180°	214.0	214.0	214.0	214.0	214.0	214.0	214.0	214.0	214.0	214.0	214.0



TEST NUMBER: P1444450
 CATALOG NUMBER: EHBR1-30-UNV-TA-L830-UPL12

CANDELA DISTRIBUTION (continued):

	82.5°	85°	87.5°	90°	92.5°	95°	97.5°	100°	102.5°	105°	107.5°
0°	24616.1	24616.1	24616.1	24616.1	24616.1	24616.1	24616.1	24616.1	24616.1	24616.1	24616.1
2.5°	24710.8	24704.5	24707.5	24695.9	24698.7	24684.7	24683.4	24667.6	24666.1	24651.2	24645.7
5°	25547.4	25533.7	25549.2	25525.0	25529.7	25498.2	25495.6	25455.0	25440.9	25390.0	25367.9
7.5°	26466.9	26461.7	26471.2	26451.0	26450.3	26422.2	26410.7	26374.2	26351.5	26298.1	26263.9
10°	26668.4	26673.2	26665.4	26667.3	26656.3	26653.3	26642.1	26634.9	26616.7	26602.8	26582.4
12.5°	25831.9	25836.9	25805.0	25825.3	25809.2	25846.6	25843.6	25887.5	25894.3	25949.9	25971.0
15°	23898.6	23892.6	23831.4	23870.0	23849.3	23931.2	23949.5	24059.7	24118.7	24260.2	24347.1
17.5°	20978.2	20962.4	20876.1	20923.2	20899.3	21020.0	21060.6	21236.8	21346.8	21574.7	21737.2
20°	17496.9	17466.6	17365.7	17420.7	17396.1	17533.3	17591.2	17804.2	17945.9	18247.9	18462.8
22.5°	13972.2	13924.6	13825.7	13877.1	13853.8	13995.9	14071.2	14285.0	14447.4	14757.4	15008.1
25°	10807.2	10764.7	10669.2	10705.1	10696.5	10816.7	10883.6	11085.9	11245.4	11540.7	11780.1
27.5°	8242.9	8198.6	8112.4	8137.8	8129.0	8231.5	8294.7	8463.5	8600.8	8849.4	9059.6
30°	6308.7	6255.3	6182.2	6196.2	6190.2	6273.2	6332.2	6474.4	6592.1	6802.2	6983.3
32.5°	4835.7	4782.0	4714.7	4721.3	4712.5	4777.6	4826.2	4949.9	5052.4	5231.1	5388.7
35°	3699.9	3762.6	3619.0	3709.9	3615.2	3754.3	3704.3	3781.6	3869.8	4020.4	4151.8
37.5°	2844.4	2800.7	2763.8	2759.8	2759.6	2791.9	2829.9	2904.3	2982.0	3094.1	3210.0
40°	2254.0	2223.4	2199.5	2197.7	2199.5	2222.3	2250.4	2302.0	2358.8	2439.4	2524.5
42.5°	1869.5	1849.2	1834.7	1833.7	1838.3	1854.5	1874.1	1904.6	1941.6	1993.9	2052.2
45°	1618.1	1606.7	1598.7	1598.3	1600.4	1608.8	1620.0	1639.1	1662.6	1695.2	1732.1
47.5°	1441.6	1438.9	1433.8	1434.0	1431.8	1435.2	1436.5	1447.2	1459.7	1484.2	1532.5
50°	1313.2	1313.2	1309.7	1309.5	1306.2	1306.1	1303.3	1307.6	1313.4	1328.6	1344.0
52.5°	1211.6	1211.3	1207.5	1206.8	1203.3	1203.1	1200.8	1202.5	1203.2	1210.9	1220.2
55°	1132.3	1129.9	1125.0	1123.4	1122.1	1124.1	1123.1	1123.2	1122.2	1125.5	1128.2
57.5°	1075.3	1072.3	1067.6	1066.2	1065.9	1068.2	1068.3	1067.5	1063.2	1060.3	1056.1
60°	1030.3	1027.2	1022.1	1020.8	1021.6	1024.9	1024.7	1021.9	1015.6	1010.1	1003.5
62.5°	986.0	984.8	982.1	981.9	981.2	981.8	979.4	976.5	970.2	964.3	957.3
65°	926.6	927.2	925.4	925.7	923.3	922.9	919.5	916.7	910.3	905.0	897.7
67.5°	865.0	865.4	863.8	863.8	862.7	862.9	860.7	858.1	852.7	848.4	842.8
70°	814.1	815.4	814.5	814.7	813.3	812.8	809.5	807.0	801.4	797.7	792.7
72.5°	753.3	756.0	755.9	756.6	754.4	753.3	749.4	746.2	741.1	738.2	734.2
75°	687.6	691.2	692.1	693.7	690.6	688.9	684.6	682.1	678.0	676.3	673.7
77.5°	623.5	627.4	631.2	634.6	629.6	625.1	619.7	615.6	609.8	607.5	603.4
80°	551.4	558.5	566.7	573.6	564.6	555.5	546.7	540.1	532.3	529.1	524.0
82.5°	457.5	464.6	469.4	473.9	467.5	460.9	452.3	446.5	438.2	435.1	429.1
85°	347.6	356.4	359.2	361.7	357.6	354.1	346.0	335.2	329.9	321.6	317.3
87.5°	228.7	233.9	234.9	235.8	233.2	231.6	226.3	221.3	212.2	205.6	197.6
90°	96.9	99.9	97.4	98.3	95.6	96.5	91.7	90.5	83.6	81.3	75.1
92.5°	17.3	16.1	15.4	14.3	15.7	16.2	17.5	18.1	19.2	19.9	21.1
95°	22.9	21.8	20.8	19.8	20.6	21.5	22.3	23.1	23.9	24.7	25.6
97.5°	30.9	30.3	29.5	28.9	29.3	29.8	30.3	30.8	31.3	31.8	32.4
100°	39.2	38.6	38.0	37.5	37.5	37.5	37.5	37.5	37.5	37.5	37.5
102.5°	62.1	59.8	57.3	55.0	56.6	58.2	59.8	61.4	63.0	64.6	66.2
105°	115.6	109.1	102.6	96.1	102.4	108.7	115.0	121.3	127.6	134.0	140.4
107.5°	208.6	198.3	188.1	177.8	189.3	200.8	212.3	223.7	235.2	246.6	258.3
110°	310.9	301.2	291.3	281.6	293.8	305.9	318.1	330.3	342.5	354.6	367.0



TEST NUMBER: P1444450
 CATALOG NUMBER: EHBR1-30-UNV-TA-L830-UPL12

CANDELA DISTRIBUTION (continued):

	82.5°	85°	87.5°	90°	92.5°	95°	97.5°	100°	102.5°	105°	107.5°
112.5°	379.5	374.8	370.0	365.2	373.1	380.9	388.7	396.8	404.6	412.5	420.4
115°	397.8	397.5	397.3	397.0	400.7	404.4	408.1	411.9	415.7	419.4	423.3
117.5°	376.7	379.3	382.0	384.6	385.8	387.0	388.3	389.5	390.8	392.1	393.5
120°	338.9	342.2	345.7	349.3	348.8	348.4	347.9	347.4	347.2	346.9	346.7
122.5°	294.6	298.0	301.5	305.0	304.0	302.9	301.9	301.0	300.2	299.3	298.4
125°	253.7	256.4	259.3	262.2	261.2	260.1	259.1	258.3	257.5	256.7	256.0
127.5°	221.7	223.4	225.0	226.8	226.3	225.8	225.6	225.2	225.0	224.9	224.8
130°	200.6	201.3	202.0	202.8	203.0	203.1	203.5	203.7	204.3	204.7	205.4
132.5°	189.5	189.3	189.4	189.5	190.1	190.6	191.4	192.1	193.1	194.0	195.3
135°	184.3	183.8	183.5	183.2	184.1	184.8	185.8	186.9	188.1	189.4	190.8
137.5°	183.4	182.8	182.3	181.7	182.6	183.4	184.4	185.5	186.7	188.0	189.4
140°	184.8	184.2	183.9	183.3	184.2	184.9	185.9	187.0	188.2	189.5	190.9
142.5°	186.5	185.9	185.6	185.3	185.8	186.6	187.7	188.6	189.7	190.6	192.0
145°	190.2	189.6	189.4	189.0	189.5	190.1	190.7	191.5	192.2	193.0	194.1
147.5°	192.3	191.9	191.7	191.5	191.8	192.2	192.7	193.1	193.8	194.5	195.2
150°	194.0	193.5	193.3	193.2	193.4	193.6	194.0	194.2	194.6	195.0	195.7
152.5°	193.9	193.4	193.4	193.2	193.3	193.6	193.9	194.1	194.5	194.7	195.2
155°	194.5	194.2	193.9	193.6	193.6	193.5	193.7	193.6	193.9	193.9	194.2
157.5°	195.9	195.5	195.3	194.9	194.8	194.6	194.6	194.5	194.5	194.3	194.4
160°	196.9	196.5	196.1	195.8	195.7	195.5	195.5	195.3	195.3	195.3	195.3
162.5°	199.1	198.8	198.6	198.2	198.0	197.6	197.5	197.1	196.9	196.7	196.6
165°	201.2	200.8	200.5	200.0	199.9	199.7	199.4	199.2	199.1	199.0	198.9
167.5°	204.7	204.1	203.8	203.4	203.1	202.7	202.6	202.2	202.0	201.7	201.7
170°	206.9	206.5	206.3	205.9	205.7	205.4	205.3	205.1	205.0	205.0	205.0
172.5°	210.3	210.0	209.7	209.4	209.3	209.1	209.0	208.9	208.8	208.8	208.7
175°	212.7	212.5	212.4	212.4	212.2	212.1	212.0	211.9	211.8	211.6	211.6
177.5°	214.2	214.1	214.0	213.9	213.9	213.9	213.9	213.9	213.9	213.8	213.7
180°	214.0	214.0	214.0	214.0	214.0	214.0	214.0	214.0	214.0	214.0	214.0



TEST NUMBER: P1444450
 CATALOG NUMBER: EHBR1-30-UNV-TA-L830-UPL12

CANDELA DISTRIBUTION (continued):

	110°	112.5°	115°	117.5°	120°	122.5°	125°	127.5°	130°	132.5°	135°
0°	24616.1	24616.1	24616.1	24616.1	24616.1	24616.1	24616.1	24616.1	24616.1	24616.1	24616.1
2.5°	24629.6	24623.2	24606.1	24597.7	24582.0	24574.0	24561.7	24553.8	24543.8	24536.4	24532.6
5°	25312.0	25280.6	25217.4	25178.5	25110.4	25065.6	24997.9	24948.2	24878.3	24826.8	24760.8
7.5°	26199.9	26151.6	26070.8	26009.4	25914.1	25841.2	25734.2	25648.6	25530.4	25432.2	25311.5
10°	26561.4	26533.2	26496.9	26457.4	26404.6	26352.8	26279.7	26205.3	26106.1	26007.3	25878.4
12.5°	26027.1	26053.7	26106.1	26130.5	26170.5	26184.1	26202.5	26193.8	26177.6	26137.4	26078.8
15°	24514.0	24625.0	24800.1	24921.2	25091.0	25210.2	25367.9	25469.5	25586.5	25656.4	25722.8
17.5°	22025.1	22239.5	22548.6	22795.2	23126.3	23395.4	23725.2	23984.3	24283.4	24513.0	24757.3
20°	18837.2	19137.4	19564.1	19926.5	20406.2	20812.9	21334.1	21770.6	22279.8	22704.3	23162.5
22.5°	15406.1	15759.3	16248.2	16685.2	17258.1	17769.7	18422.6	18999.8	19688.3	20304.9	20987.2
25°	12169.3	12515.4	13013.4	13466.0	14084.4	14648.0	15361.3	16023.4	16822.4	17567.3	18422.6
27.5°	9393.5	9700.9	10138.7	10546.1	11112.5	11665.8	12389.7	13095.8	13948.3	14748.9	15670.6
30°	7254.4	7503.9	7854.7	8182.3	8637.0	9089.5	9734.4	10387.4	11235.6	12065.3	13010.2
32.5°	5621.9	5834.7	6127.5	6393.5	6743.8	7085.0	7559.9	8081.7	8825.8	9620.5	10534.1
35°	4352.0	4534.0	4783.2	5012.3	5300.5	5571.4	5925.7	6298.1	6866.0	7534.4	8352.1
37.5°	3469.7	3543.9	3721.7	3909.4	4148.8	4371.3	4648.5	4924.0	5330.2	5857.6	6525.6
40°	2638.6	2756.5	2901.2	3049.1	3230.2	3408.8	3712.9	3859.3	4126.8	4505.4	5023.9
42.5°	2129.0	2211.9	2313.8	2416.6	2542.9	2667.2	2821.0	2977.7	3177.6	3434.1	3802.9
45°	1781.6	1835.7	1901.3	1969.8	2052.8	2137.6	2240.6	2348.1	2483.7	2641.3	2865.3
47.5°	1549.5	1579.4	1622.3	1669.0	1725.9	1784.6	1851.6	1920.2	2004.4	2097.9	2225.3
50°	1368.3	1393.3	1426.6	1457.9	1497.0	1557.3	1583.9	1621.7	1672.3	1727.4	1798.7
52.5°	1237.3	1253.9	1274.8	1292.8	1317.6	1340.1	1369.7	1395.7	1430.7	1463.8	1509.9
55°	1135.2	1141.2	1153.1	1164.6	1181.8	1197.2	1217.4	1234.5	1256.9	1276.6	1305.7
57.5°	1056.3	1056.9	1062.4	1068.4	1079.5	1089.1	1103.1	1114.3	1129.8	1142.4	1159.8
60°	999.7	996.7	997.8	999.8	1006.1	1012.4	1021.3	1028.6	1038.3	1045.5	1055.3
62.5°	952.5	947.8	946.7	946.2	949.3	951.5	956.4	959.9	965.5	968.6	973.8
65°	893.0	887.4	885.2	882.7	883.6	882.8	884.6	884.7	887.5	888.2	891.2
67.5°	838.9	834.3	831.5	828.1	826.5	824.0	822.9	820.6	820.2	818.1	817.7
70°	789.6	785.1	782.7	779.5	777.9	774.7	772.6	768.6	766.2	762.5	760.4
72.5°	732.7	730.1	729.4	727.2	726.6	724.8	724.0	721.2	719.5	716.3	714.5
75°	673.1	671.0	670.8	668.6	668.4	666.3	665.7	662.7	661.1	657.9	656.5
77.5°	602.1	599.0	598.1	595.6	596.2	595.1	596.0	593.7	592.7	589.6	588.5
80°	522.2	518.2	516.5	513.1	514.1	512.6	514.1	513.9	515.1	512.6	512.1
82.5°	427.5	423.1	422.3	419.9	421.5	421.7	425.1	423.2	424.0	421.6	422.5
85°	311.1	307.8	303.2	302.7	299.7	302.7	298.8	301.4	297.1	300.1	296.1
87.5°	192.9	186.1	182.6	177.7	175.9	171.2	169.4	166.0	166.9	165.4	166.3
90°	74.2	68.8	68.1	63.9	64.1	60.5	61.4	59.1	60.6	58.2	59.9
92.5°	21.6	22.6	24.2	26.1	27.6	29.3	30.9	32.9	34.4	36.3	37.7
95°	26.4	27.3	29.5	31.8	34.0	36.3	38.5	40.7	43.0	45.2	47.5
97.5°	32.9	33.3	35.6	37.8	40.1	42.3	44.5	46.9	49.2	51.4	53.7
100°	37.5	37.6	43.9	50.3	56.7	63.1	69.4	75.8	82.3	88.7	95.1
102.5°	67.8	69.4	85.5	101.6	117.7	133.9	150.0	166.2	182.3	198.5	214.7
105°	146.7	153.1	177.6	202.2	226.8	251.4	276.0	300.7	325.3	350.0	374.6
107.5°	269.8	281.3	303.6	325.8	348.0	370.3	392.7	414.9	437.2	459.5	481.9
110°	379.2	391.5	406.3	421.3	436.3	451.2	466.3	481.3	496.4	511.3	526.4



TEST NUMBER: P1444450
 CATALOG NUMBER: EHBR1-30-UNV-TA-L830-UPL12

CANDELA DISTRIBUTION (continued):

	110°	112.5°	115°	117.5°	120°	122.5°	125°	127.5°	130°	132.5°	135°
112.5°	428.3	436.3	445.0	453.9	462.6	471.5	480.3	489.1	498.0	507.0	515.9
115°	427.1	431.0	434.4	438.0	441.5	445.1	448.7	452.4	456.2	459.8	463.6
117.5°	394.7	396.3	396.9	397.7	398.4	399.4	400.2	401.1	402.0	403.1	403.8
120°	346.4	346.2	345.9	345.6	345.3	345.1	345.0	344.8	344.8	344.7	344.5
122.5°	297.7	297.1	296.8	296.7	296.6	296.5	296.4	296.5	296.5	296.5	296.5
125°	255.3	254.8	255.6	256.6	257.5	258.5	259.5	260.6	261.6	262.7	263.9
127.5°	224.7	224.9	226.6	228.3	230.1	232.0	233.9	235.8	237.6	239.7	241.5
130°	206.1	206.9	209.0	211.2	213.4	215.7	218.0	220.3	222.5	224.8	227.1
132.5°	196.3	197.7	199.6	201.9	204.0	206.3	208.5	210.8	213.0	215.3	217.3
135°	192.3	193.8	195.8	197.8	199.9	202.0	204.0	206.3	208.2	210.3	212.3
137.5°	190.8	192.4	194.2	195.8	197.5	199.4	201.1	203.0	204.6	206.4	208.0
140°	192.3	193.8	194.8	196.2	197.4	198.7	199.6	201.0	202.0	203.5	204.5
142.5°	193.2	194.7	195.4	196.3	197.2	198.3	199.1	200.1	200.9	201.7	202.4
145°	195.0	196.1	196.5	197.0	197.5	197.9	198.3	198.7	199.0	199.3	199.7
147.5°	196.1	196.9	197.0	197.4	197.6	197.7	197.9	198.2	198.2	198.5	198.7
150°	196.1	196.8	196.7	196.8	196.7	196.8	196.7	196.8	196.7	196.8	196.7
152.5°	195.6	196.1	195.8	195.9	195.7	195.6	195.4	195.4	195.2	195.1	195.1
155°	194.2	194.5	194.3	194.3	194.1	194.1	193.9	194.1	194.0	194.0	194.0
157.5°	194.3	194.3	194.2	194.2	194.0	194.0	194.0	194.0	194.0	194.3	194.4
160°	195.2	195.2	195.0	195.0	194.9	194.8	194.8	194.9	194.9	195.3	195.4
162.5°	196.3	196.2	196.1	196.1	196.0	196.0	196.1	196.2	196.2	196.5	196.7
165°	198.9	199.0	198.7	198.7	198.6	198.5	198.5	198.5	198.7	198.8	199.0
167.5°	201.5	201.4	201.4	201.5	201.5	201.6	201.7	202.0	202.1	202.5	202.5
170°	204.9	205.0	204.8	204.8	204.8	204.8	204.8	204.8	204.9	205.0	205.0
172.5°	208.7	208.7	208.6	208.4	208.3	208.2	208.1	208.0	207.9	207.9	207.8
175°	211.4	211.3	211.2	211.2	211.1	210.9	210.9	210.7	210.6	210.6	210.5
177.5°	213.6	213.4	213.3	213.3	213.2	213.1	213.1	213.0	213.0	213.0	212.8
180°	214.0	214.0	214.0	214.0	214.0	214.0	214.0	214.0	214.0	214.0	214.0



TEST NUMBER: P1444450
 CATALOG NUMBER: EHBR1-30-UNV-TA-L830-UPL12

CANDELA DISTRIBUTION (continued):

	137.5°	140°	142.5°	145°	147.5°	150°	152.5°	155°	157.5°	160°	162.5°
0°	24616.1	24616.1	24616.1	24616.1	24616.1	24616.1	24616.1	24616.1	24616.1	24616.1	24616.1
2.5°	24527.6	24527.3	24525.0	24526.1	24526.6	24528.3	24530.4	24532.6	24533.1	24534.7	24535.1
5°	24711.2	24650.5	24605.7	24556.3	24519.2	24485.8	24463.6	24445.9	24439.0	24440.7	24444.8
7.5°	25209.0	25083.8	24980.3	24862.9	24764.9	24661.1	24575.1	24493.3	24433.8	24389.4	24364.5
10°	25755.2	25602.6	25456.7	25286.6	25125.3	24953.2	24797.2	24640.2	24509.4	24395.6	24312.2
12.5°	25997.6	25889.7	25763.5	25603.1	25430.5	25231.8	25031.3	24816.2	24616.2	24430.6	24280.9
15°	25740.9	25741.1	25695.1	25618.1	25498.2	25339.5	25148.4	24924.2	24688.3	24447.5	24227.6
17.5°	24926.3	25080.0	25165.4	25219.6	25202.9	25144.5	25022.9	24850.7	24630.8	24374.3	24105.9
20°	23527.2	23889.8	24148.3	24380.7	24511.0	24597.5	24588.9	24518.8	24362.2	24144.1	23864.6
22.5°	21567.4	22175.9	22656.1	23103.8	23417.8	23673.3	23794.7	23846.3	23775.3	23623.4	23361.0
25°	19187.1	20014.4	20720.5	21405.7	21919.6	22361.4	22626.9	22813.9	22828.8	22749.4	22515.2
27.5°	16542.0	17518.6	18412.2	19322.9	20045.8	20680.8	21097.4	21402.4	21499.2	21486.5	21273.9
30°	13900.4	14925.6	15910.7	16972.5	17867.0	18678.3	19228.7	19641.1	19800.1	19830.5	19625.9
32.5°	11405.6	12416.6	13398.9	14509.1	15493.4	16423.1	17073.4	17563.4	17748.2	17791.7	17567.3
35°	9141.4	10074.2	11007.6	12083.6	13062.2	14025.1	14710.3	15223.2	15395.8	15424.9	15165.2
37.5°	7178.0	7972.7	8786.1	9751.5	10650.2	11554.5	12205.5	12687.5	12813.2	12805.5	12511.5
40°	5524.8	6142.7	6796.2	7591.0	8338.1	9102.6	9652.3	10050.8	10116.8	10067.9	9759.2
42.5°	4154.3	4600.6	5074.4	5667.7	6222.1	6794.1	7194.1	7490.0	7499.4	7422.0	7144.8
45°	3095.0	3530.4	3729.0	4087.7	4444.8	4825.3	5069.5	5252.2	5223.9	5155.8	4945.3
47.5°	2359.4	2526.7	2704.2	2926.6	3134.6	3566.2	3534.3	3827.8	3616.4	3760.5	3443.2
50°	1873.6	1967.1	2062.7	2180.8	2289.4	2402.3	2472.8	2525.5	2518.6	2496.0	2435.2
52.5°	1594.0	1622.8	1670.0	1737.1	1797.8	1858.8	1899.0	1931.6	1932.2	1923.2	1892.3
55°	1332.2	1368.9	1402.7	1446.7	1521.3	1532.8	1590.4	1578.7	1583.3	1567.3	1583.7
57.5°	1174.6	1195.9	1215.0	1241.1	1262.7	1287.9	1302.8	1317.1	1315.7	1312.6	1297.0
60°	1062.9	1074.7	1085.3	1100.5	1112.3	1126.6	1133.4	1140.7	1138.4	1133.0	1119.1
62.5°	976.8	984.2	990.2	1000.0	1007.2	1016.1	1019.7	1022.8	1019.7	1014.6	1002.4
65°	891.8	896.6	900.5	907.9	912.9	920.5	923.5	926.4	923.6	919.7	910.3
67.5°	815.2	815.7	815.3	818.3	819.9	824.5	825.8	828.0	824.6	821.2	813.3
70°	757.1	755.9	754.5	755.6	755.9	758.1	758.5	758.1	754.2	748.3	739.7
72.5°	711.7	711.1	709.9	711.0	711.0	712.9	712.4	711.3	706.5	700.8	692.2
75°	653.3	652.9	650.6	650.7	649.0	649.5	647.2	645.9	640.4	635.7	628.1
77.5°	585.0	583.9	580.7	579.4	576.0	574.6	570.1	567.9	562.4	558.6	552.0
80°	508.7	507.5	503.4	501.1	495.6	492.1	485.6	481.8	475.6	471.8	465.5
82.5°	420.5	421.0	416.8	414.0	406.2	400.2	391.4	386.7	379.7	376.1	369.4
85°	299.1	294.8	297.0	296.8	292.0	286.7	279.6	274.6	268.7	265.3	260.7
87.5°	164.0	165.0	163.8	162.8	159.3	156.7	151.2	148.3	144.0	141.8	138.4
90°	55.2	54.5	49.9	49.4	45.0	42.9	37.8	36.4	31.8	30.9	27.6
92.5°	35.9	34.0	32.2	30.2	28.5	26.6	24.6	22.8	20.9	20.0	19.7
95°	44.8	42.2	39.4	36.7	33.9	31.2	28.6	25.9	23.1	22.6	22.0
97.5°	50.6	47.3	44.1	41.0	37.7	34.6	31.5	28.2	25.0	24.6	24.3
100°	87.8	80.4	73.0	65.6	58.2	50.8	43.5	36.1	28.8	28.4	27.9
102.5°	196.7	178.8	161.0	143.1	125.3	107.3	89.5	71.6	53.7	51.1	48.5
105°	347.5	320.4	293.5	266.4	239.2	212.2	185.2	157.9	130.9	122.2	113.5
107.5°	456.6	431.1	405.8	380.4	354.8	329.5	304.0	278.5	253.0	237.7	222.5
110°	506.3	486.2	466.2	446.1	425.9	405.8	385.6	365.5	345.4	332.2	319.1



TEST NUMBER: P1444450
 CATALOG NUMBER: EHBR1-30-UNV-TA-L830-UPL12

CANDELA DISTRIBUTION (continued):

	137.5°	140°	142.5°	145°	147.5°	150°	152.5°	155°	157.5°	160°	162.5°
112.5°	501.3	486.7	472.2	457.4	442.9	428.1	413.4	398.7	383.9	376.0	368.1
115°	454.9	446.2	437.5	428.8	420.1	411.4	402.7	393.8	385.0	381.0	376.9
117.5°	399.7	395.4	391.3	386.9	382.6	378.1	373.9	369.5	365.1	363.9	362.6
120°	343.8	342.7	341.5	340.5	339.5	338.3	337.1	336.0	334.8	335.2	335.7
122.5°	297.4	298.3	299.4	300.1	301.2	301.9	302.8	303.5	304.3	305.8	307.2
125°	265.6	267.2	269.1	270.8	272.5	274.1	276.0	277.5	279.2	280.6	282.2
127.5°	243.5	245.3	247.4	249.3	251.2	253.0	255.0	256.7	258.6	260.0	261.5
130°	228.8	230.5	232.4	234.1	235.8	237.5	239.2	241.0	242.7	243.9	245.2
132.5°	219.0	220.7	222.4	223.8	225.6	227.1	228.7	230.3	232.0	233.1	234.3
135°	213.8	215.0	216.3	217.5	219.0	220.2	221.6	222.9	224.4	225.4	226.4
137.5°	209.3	210.2	211.5	212.5	213.9	214.9	216.2	217.3	218.8	219.4	220.3
140°	205.5	206.6	207.9	209.0	210.2	211.2	212.7	213.9	215.3	216.0	216.8
142.5°	203.5	204.2	205.2	206.2	207.1	208.0	209.3	210.4	211.6	212.4	213.1
145°	200.7	201.7	202.8	203.7	204.7	205.8	207.2	208.4	209.7	210.3	211.0
147.5°	199.5	200.3	201.3	202.0	203.1	203.9	205.2	206.3	207.6	208.1	208.7
150°	197.6	198.4	199.3	200.1	201.1	202.1	203.4	204.5	205.9	206.5	207.1
152.5°	196.0	196.8	197.7	198.8	199.7	200.8	202.0	203.3	204.6	205.0	205.8
155°	194.9	195.7	196.7	197.7	198.8	199.7	200.9	202.0	203.3	204.0	204.6
157.5°	195.2	195.9	196.9	197.8	198.7	199.6	200.8	201.8	202.9	203.5	204.0
160°	196.1	196.9	197.7	198.7	199.4	200.4	201.3	202.2	203.2	203.7	204.3
162.5°	197.5	198.3	199.1	199.8	200.7	201.7	202.6	203.5	204.4	204.9	205.3
165°	199.6	200.3	200.9	201.5	202.1	202.7	203.5	204.2	205.0	205.4	206.0
167.5°	203.2	203.5	204.1	204.6	205.2	205.7	206.5	206.9	207.6	207.9	208.4
170°	205.4	205.9	206.3	206.7	207.3	207.8	208.2	208.7	209.4	209.7	210.1
172.5°	208.0	208.2	208.6	208.9	209.2	209.4	209.8	210.2	210.5	210.9	211.2
175°	210.8	210.8	210.9	211.0	211.1	211.3	211.6	211.7	211.9	212.2	212.4
177.5°	212.9	213.0	213.0	213.1	213.4	213.5	213.6	213.7	213.9	214.0	214.3
180°	214.0	214.0	214.0	214.0	214.0	214.0	214.0	214.0	214.0	214.0	214.0



TEST NUMBER: P1444450
 CATALOG NUMBER: EHBR1-30-UNV-TA-L830-UPL12

CANDELA DISTRIBUTION (continued):

	165°	167.5°	170°	172.5°	175°	177.5°	180°	182.5°	185°	187.5°	190°
0°	24616.1	24616.1	24616.1	24616.1	24616.1	24616.1	24616.1	24616.1	24616.1	24616.1	24616.1
2.5°	24534.3	24534.1	24533.2	24532.1	24531.0	24531.7	24532.8	24535.6	24540.6	24547.7	24556.9
5°	24448.2	24453.3	24456.1	24456.4	24453.8	24452.3	24454.7	24461.4	24475.0	24497.8	24528.7
7.5°	24357.9	24364.1	24373.5	24380.7	24382.1	24380.3	24380.7	24391.2	24416.3	24460.7	24523.1
10°	24261.4	24243.1	24252.8	24270.5	24284.6	24287.1	24288.9	24301.3	24338.0	24405.1	24505.2
12.5°	24172.4	24114.4	24103.2	24119.1	24140.5	24147.3	24145.5	24150.8	24193.8	24282.6	24422.2
15°	24055.2	23946.0	23908.7	23912.9	23939.2	23948.7	23941.8	23931.2	23973.1	24081.6	24262.1
17.5°	23865.7	23689.6	23621.0	23618.0	23648.8	23657.1	23640.1	23607.2	23648.4	23783.9	24008.0
20°	23577.5	23317.6	23188.4	23167.9	23201.3	23191.6	23157.8	23108.1	23162.3	23326.9	23593.4
22.5°	23059.4	22730.1	22509.4	22438.2	22478.3	22451.5	22402.1	22338.8	22410.8	22597.8	22894.7
25°	22212.8	21832.2	21530.2	21360.6	21392.6	21344.7	21290.9	21214.1	21299.9	21514.6	21841.4
27.5°	20968.4	20528.9	20154.4	19873.9	19884.2	19821.4	19759.5	19660.1	19767.3	20021.3	20389.9
30°	19313.7	18805.1	18349.1	17967.8	17933.7	17872.8	17809.4	17679.0	17813.0	18117.2	18547.9
32.5°	17235.6	16670.9	16144.1	15662.0	15571.0	15511.6	15455.1	15305.0	15480.5	15835.2	16330.0
35°	14805.4	14203.9	13632.7	13082.0	12931.4	12872.0	12822.6	12678.7	12897.8	13283.7	13818.1
37.5°	12138.0	11523.5	10956.4	10391.7	10178.7	10098.2	10062.3	9968.1	10220.9	10602.6	11139.2
40°	9399.5	8828.1	8319.8	7821.0	7578.3	7455.0	7436.2	7419.0	7663.4	7994.6	8481.6
42.5°	6837.8	6376.8	5984.8	5603.6	5383.5	5215.2	5215.1	5266.3	5486.3	5734.3	6110.0
45°	4729.9	4420.5	4170.8	3916.0	3984.1	3648.6	3845.8	3744.5	3853.2	4013.2	4257.4
47.5°	3251.3	3082.5	2945.3	2802.9	2699.2	2600.1	2608.8	2672.7	2775.1	2870.0	2997.1
50°	2369.7	2283.7	2213.8	2139.9	2088.3	2044.6	2047.1	2074.7	2128.6	2178.6	2245.1
52.5°	1856.8	1809.3	1771.4	1730.6	1703.4	1681.8	1682.9	1696.3	1725.4	1754.0	1792.1
55°	1530.5	1524.8	1475.4	1438.7	1424.7	1410.1	1412.7	1418.1	1437.8	1454.6	1479.8
57.5°	1282.5	1260.3	1245.5	1226.2	1217.3	1207.1	1209.5	1211.4	1224.7	1235.9	1254.1
60°	1107.5	1091.7	1081.2	1068.1	1062.3	1055.8	1057.3	1058.5	1066.9	1074.2	1087.2
62.5°	991.1	977.1	968.0	957.8	953.8	949.4	950.4	950.7	956.0	961.3	971.3
65°	901.9	890.8	883.2	874.4	870.1	865.6	866.1	866.1	870.5	874.4	881.8
67.5°	807.5	799.2	794.2	787.3	784.4	779.7	779.6	778.2	781.1	782.6	787.7
70°	731.9	723.3	717.1	710.4	706.7	702.6	702.7	702.8	706.2	709.7	716.2
72.5°	685.0	677.0	671.3	665.5	662.1	658.6	657.9	657.6	660.0	662.0	666.3
75°	623.1	616.6	613.4	607.8	605.1	601.2	600.5	598.7	600.0	600.3	603.5
77.5°	548.0	541.8	539.2	533.6	531.3	526.9	526.5	524.5	525.4	524.7	527.2
80°	462.3	456.7	455.2	450.7	449.6	445.5	444.8	442.4	443.1	441.2	442.1
82.5°	366.6	361.6	360.4	356.2	356.2	352.5	352.3	348.5	348.5	345.4	340.3
85°	258.3	254.5	253.0	249.5	248.5	245.5	243.9	240.4	239.1	236.8	236.1
87.5°	136.3	133.9	131.8	130.2	127.2	121.8	121.3	117.6	117.8	115.2	115.4
90°	27.1	24.2	23.8	21.2	20.5	18.6	18.3	18.1	18.4	18.4	18.8
92.5°	19.0	18.4	17.8	17.1	16.5	15.9	15.3	15.9	16.5	17.1	17.8
95°	21.5	20.9	20.4	19.9	19.3	18.7	18.2	18.7	19.3	20.0	20.5
97.5°	24.0	23.6	23.2	22.9	22.6	22.2	21.8	22.3	22.7	22.9	23.3
100°	27.5	27.1	26.7	26.2	25.9	25.4	25.0	25.6	26.0	26.4	26.9
102.5°	46.0	43.4	40.8	38.2	35.6	33.1	30.4	33.1	35.6	38.3	40.9
105°	104.7	96.1	87.4	78.7	69.9	61.2	52.5	61.3	70.0	78.8	87.6
107.5°	207.0	191.8	176.5	161.2	145.7	130.4	115.0	130.5	145.8	161.3	176.7
110°	305.9	292.7	279.5	266.3	253.1	239.9	226.6	240.0	253.3	266.5	279.8



TEST NUMBER: P1444450
 CATALOG NUMBER: EHBR1-30-UNV-TA-L830-UPL12

CANDELA DISTRIBUTION (continued):

	165°	167.5°	170°	172.5°	175°	177.5°	180°	182.5°	185°	187.5°	190°
112.5°	360.1	352.1	344.1	336.2	328.0	320.2	312.0	320.4	328.4	336.7	344.7
115°	372.7	368.6	364.6	360.4	356.1	352.0	347.7	352.3	356.6	361.0	365.3
117.5°	361.3	360.1	358.6	357.3	355.9	354.5	353.0	354.7	356.3	358.1	359.5
120°	336.0	336.6	336.8	337.1	337.5	337.8	338.0	338.2	338.2	338.2	338.1
122.5°	308.6	310.1	311.3	312.7	314.0	315.2	316.3	315.6	314.7	313.9	312.8
125°	283.5	285.2	286.5	288.0	289.3	290.8	291.8	291.2	290.4	289.4	288.3
127.5°	263.0	264.4	265.7	267.2	268.5	269.6	270.6	270.1	269.4	268.6	267.6
130°	246.4	247.9	248.9	250.0	251.0	252.0	252.7	252.5	252.1	251.7	250.9
132.5°	235.3	236.4	237.5	238.5	239.2	240.2	240.6	240.7	240.5	240.3	239.7
135°	227.2	228.2	229.0	230.1	230.5	231.2	231.6	231.8	231.7	231.7	231.4
137.5°	221.0	221.9	222.5	223.0	223.5	224.0	224.2	224.6	224.7	225.1	224.9
140°	217.6	218.4	219.1	219.7	220.3	220.8	221.0	221.4	221.6	221.7	221.6
142.5°	213.9	214.7	215.3	216.0	216.5	216.9	217.2	217.6	217.8	217.9	217.9
145°	211.7	212.4	212.9	213.6	213.9	214.2	214.3	214.9	215.1	215.3	215.4
147.5°	209.4	210.1	210.4	210.9	211.3	211.6	211.8	212.2	212.5	212.7	212.8
150°	207.9	208.6	209.2	209.6	210.2	210.6	210.7	211.1	211.3	211.4	211.4
152.5°	206.5	207.0	207.6	208.0	208.5	208.8	209.0	209.4	209.7	209.9	210.0
155°	205.1	205.8	206.4	206.9	207.3	207.8	208.0	208.4	208.7	208.9	209.1
157.5°	204.5	205.1	205.6	206.2	206.5	207.1	207.5	207.9	208.1	208.5	208.7
160°	204.7	205.3	205.7	206.3	206.7	207.2	207.6	207.9	208.3	208.6	209.0
162.5°	205.8	206.4	206.6	207.2	207.7	208.1	208.5	208.9	209.3	209.6	209.9
165°	206.5	207.0	207.5	208.0	208.5	209.1	209.4	209.7	209.9	210.3	210.5
167.5°	208.8	209.4	209.7	210.3	210.6	211.1	211.6	211.9	212.0	212.3	212.4
170°	210.4	210.9	211.2	211.6	212.1	212.4	212.7	212.9	213.2	213.4	213.6
172.5°	211.6	212.1	212.4	212.9	213.3	213.6	213.9	214.1	214.2	214.2	214.2
175°	212.6	213.0	213.3	213.6	213.9	214.1	214.5	214.4	214.6	214.5	214.6
177.5°	214.7	215.1	215.3	215.5	215.9	216.1	216.4	216.2	216.1	215.9	215.7
180°	214.0	214.0	214.0	214.0	214.0	214.0	214.0	214.0	214.0	214.0	214.0



TEST NUMBER: P1444450
 CATALOG NUMBER: EHBR1-30-UNV-TA-L830-UPL12

CANDELA DISTRIBUTION (continued):

	192.5°	195°	197.5°	200°	202.5°	205°	207.5°	210°	212.5°	215°	217.5°
0°	24616.1	24616.1	24616.1	24616.1	24616.1	24616.1	24616.1	24616.1	24616.1	24616.1	24616.1
2.5°	24570.1	24582.4	24601.2	24618.2	24643.9	24664.1	24694.5	24717.6	24751.9	24774.2	24811.5
5°	24572.3	24620.4	24683.6	24745.2	24819.4	24886.8	24970.4	25041.7	25125.8	25194.4	25280.4
7.5°	24607.1	24699.7	24810.8	24922.8	25049.4	25167.9	25301.3	25422.1	25554.1	25665.8	25787.9
10°	24632.6	24775.7	24939.4	25104.2	25277.6	25438.7	25601.4	25742.0	25873.3	25981.4	26076.9
12.5°	24597.9	24794.9	25005.0	25207.9	25400.7	25567.5	25707.4	25815.6	25890.2	25940.8	25952.6
15°	24479.8	24716.7	24945.2	25147.3	25307.3	25430.7	25494.6	25524.6	25492.4	25439.1	25322.0
17.5°	24259.1	24509.1	24713.3	24872.7	24957.3	24990.7	24937.8	24845.8	24665.9	24466.2	24177.8
20°	23854.5	24087.4	24235.6	24322.5	24299.8	24216.2	24016.4	23773.6	23414.3	23031.6	22526.4
22.5°	23144.8	23348.4	23427.4	23433.8	23295.8	23086.3	22726.0	22309.4	21742.8	21153.7	20429.2
25°	22079.5	22257.9	22270.3	22200.3	21947.7	21608.2	21079.0	20489.9	19719.9	18934.9	18027.1
27.5°	20634.8	20805.8	20763.9	20633.3	20282.6	19828.3	19150.8	18389.7	17440.4	16513.2	15509.0
30°	18818.7	19001.6	18952.4	18784.8	18367.6	17830.7	17033.6	16149.1	15095.3	14105.1	13087.4
32.5°	16645.3	16876.6	16842.6	16683.3	16248.0	15673.4	14808.4	13870.4	12792.2	11816.4	10826.5
35°	14174.9	14455.8	14470.3	14366.1	13962.0	13394.1	12540.0	11632.1	10599.3	9678.6	8764.1
37.5°	11513.5	11839.1	11905.9	11877.7	11542.9	11041.5	10263.4	9448.9	8534.0	7727.0	6944.9
40°	8837.3	9166.8	9281.1	9315.0	9067.9	8679.6	8040.9	7383.5	6637.6	5983.8	5362.8
42.5°	6396.7	6688.9	6799.3	6868.8	6714.5	6455.6	5989.7	5512.3	4965.9	4494.2	4042.1
45°	4442.6	4649.3	4733.3	4803.3	4719.2	4573.2	4279.0	3980.4	3619.6	3311.5	3019.8
47.5°	3106.1	3220.0	3275.5	3309.5	3276.9	3200.7	3040.7	2867.6	2664.0	2484.0	2310.8
50°	2302.2	2362.9	2392.0	2411.6	2387.9	2345.5	2258.9	2164.7	2052.9	1950.9	1851.1
52.5°	1824.5	1859.3	1876.5	1887.1	1873.5	1847.6	1797.2	1741.3	1674.3	1611.2	1578.1
55°	1537.0	1535.3	1575.1	1555.9	1575.1	1532.1	1523.1	1461.7	1406.0	1366.8	1324.4
57.5°	1267.6	1285.6	1293.3	1301.8	1296.3	1288.4	1267.0	1245.0	1215.7	1191.1	1164.9
60°	1097.3	1112.1	1120.5	1129.0	1128.5	1125.5	1113.1	1100.0	1081.6	1066.9	1051.1
62.5°	979.9	992.7	1001.1	1009.2	1010.0	1008.7	999.4	990.2	977.7	968.5	957.6
65°	887.5	896.6	902.2	908.7	908.4	906.6	898.1	890.6	880.3	873.9	865.9
67.5°	791.0	797.8	802.2	808.3	809.5	809.9	805.2	801.6	796.6	794.8	792.1
70°	722.3	730.5	737.6	745.3	749.6	751.5	749.6	747.7	744.8	743.6	741.4
72.5°	670.3	677.3	682.8	689.8	693.7	696.5	694.9	694.0	691.5	691.1	689.6
75°	605.7	610.5	613.6	618.9	621.0	623.7	622.4	623.1	622.3	624.3	624.2
77.5°	528.0	531.6	533.1	536.9	537.3	540.5	541.1	544.9	547.6	553.4	556.5
80°	440.6	442.9	442.9	446.8	448.6	453.9	456.6	462.6	465.5	470.7	471.1
82.5°	342.3	339.7	342.3	340.7	345.6	351.7	352.5	357.7	358.9	362.2	359.6
85°	234.0	233.8	231.7	232.1	230.5	231.3	230.3	231.4	230.4	230.5	228.2
87.5°	112.1	113.2	110.6	111.5	109.1	110.3	108.1	109.8	107.3	107.6	104.0
90°	18.9	19.2	19.4	19.8	20.4	21.4	22.6	23.6	25.1	26.0	27.4
92.5°	18.4	19.1	19.8	20.3	21.0	22.9	24.7	26.7	28.7	30.4	32.3
95°	21.0	21.5	22.1	22.9	23.4	26.1	28.9	31.6	34.3	37.1	39.8
97.5°	23.9	24.3	24.5	24.9	25.4	28.6	31.8	35.0	38.2	41.5	44.6
100°	27.4	27.8	28.2	28.8	29.1	36.5	43.9	51.3	58.7	66.1	73.5
102.5°	43.6	46.2	48.8	51.5	54.1	72.1	90.1	108.0	125.8	143.8	161.7
105°	96.3	105.0	114.0	122.7	131.4	158.6	185.8	213.0	240.0	267.1	294.3
107.5°	192.1	207.5	223.0	238.4	253.8	279.3	304.8	330.3	355.9	381.4	406.7
110°	293.3	306.4	319.8	333.1	346.4	366.5	386.9	407.0	427.2	447.5	467.6



TEST NUMBER: P1444450
 CATALOG NUMBER: EHBR1-30-UNV-TA-L830-UPL12

CANDELA DISTRIBUTION (continued):

	192.5°	195°	197.5°	200°	202.5°	205°	207.5°	210°	212.5°	215°	217.5°
112.5°	352.9	360.9	369.1	376.9	385.1	399.9	414.8	429.6	444.5	459.0	473.8
115°	369.6	373.7	378.1	382.2	386.5	395.4	404.2	413.1	422.0	430.8	439.7
117.5°	361.1	362.6	364.1	365.3	366.8	371.3	375.9	380.3	384.8	389.3	393.7
120°	338.0	337.7	337.5	337.1	336.9	338.2	339.6	340.8	342.1	343.2	344.3
122.5°	311.8	310.5	309.4	308.2	307.0	306.1	305.6	304.7	304.1	303.3	302.6
125°	287.3	286.0	284.8	283.4	282.0	280.5	279.0	277.5	275.9	274.3	272.7
127.5°	266.8	265.6	264.5	263.2	262.0	260.1	258.4	256.6	255.0	253.1	251.3
130°	250.3	249.4	248.5	247.3	246.5	244.8	243.3	241.6	239.9	238.3	236.7
132.5°	239.2	238.5	237.8	236.8	236.1	234.5	233.2	231.6	230.1	228.5	227.1
135°	231.1	230.5	230.2	229.5	228.8	227.4	226.3	225.0	223.9	222.7	221.4
137.5°	224.9	224.4	224.2	223.7	223.4	222.2	221.3	220.0	219.1	217.9	217.0
140°	221.5	221.3	221.0	220.6	220.1	219.0	218.1	216.8	215.8	214.7	213.7
142.5°	217.7	217.5	217.2	216.8	216.5	215.4	214.8	213.9	213.0	212.2	211.3
145°	215.3	215.2	215.2	214.8	214.7	213.7	212.8	211.7	211.0	210.0	209.2
147.5°	213.0	212.8	212.8	212.7	212.7	211.8	211.2	210.3	209.7	208.9	208.3
150°	211.5	211.5	211.4	211.2	211.1	210.4	209.8	209.0	208.4	207.6	207.0
152.5°	210.1	210.2	210.2	210.2	210.3	209.6	209.0	208.2	207.6	206.8	206.2
155°	209.3	209.4	209.4	209.4	209.4	208.9	208.3	207.7	207.1	206.5	205.9
157.5°	208.9	209.1	209.3	209.4	209.4	209.0	208.5	207.9	207.5	206.9	206.5
160°	209.2	209.4	209.6	209.7	209.9	209.5	209.3	208.7	208.4	207.9	207.3
162.5°	210.2	210.5	210.7	210.8	210.9	210.6	210.3	209.9	209.4	208.9	208.4
165°	210.8	210.8	211.0	211.0	211.1	210.9	210.7	210.4	210.1	209.8	209.5
167.5°	212.6	212.6	212.9	212.9	213.0	212.8	212.9	212.5	212.4	212.2	212.0
170°	213.8	213.9	213.9	213.9	214.0	213.9	213.7	213.5	213.5	213.0	212.8
172.5°	214.3	214.3	214.3	214.4	214.3	214.2	214.1	214.0	213.9	213.9	213.7
175°	214.5	214.5	214.5	214.5	214.4	214.4	214.4	214.4	214.3	214.3	214.2
177.5°	215.7	215.6	215.3	215.3	215.2	215.1	215.1	215.1	215.2	215.1	215.0
180°	214.0	214.0	214.0	214.0	214.0	214.0	214.0	214.0	214.0	214.0	214.0



TEST NUMBER: P1444450
 CATALOG NUMBER: EHBR1-30-UNV-TA-L830-UPL12

CANDELA DISTRIBUTION (continued):

	220°	222.5°	225°	227.5°	230°	232.5°	235°	237.5°	240°	242.5°	245°
0°	24616.1	24616.1	24616.1	24616.1	24616.1	24616.1	24616.1	24616.1	24616.1	24616.1	24616.1
2.5°	24834.6	24681.2	24660.9	24671.7	24697.4	24706.8	24734.5	24742.0	24769.9	24776.7	24803.5
5°	25347.0	25144.3	25154.4	25203.1	25276.9	25320.9	25393.4	25431.4	25500.6	25532.1	25594.7
7.5°	25887.4	25728.1	25777.8	25860.0	25960.9	26030.8	26117.9	26174.6	26249.8	26296.3	26356.5
10°	26152.6	26109.1	26163.7	26228.4	26285.9	26331.0	26368.0	26397.5	26416.9	26435.0	26442.9
12.5°	25950.8	26018.3	26027.6	26021.3	25983.2	25954.0	25888.7	25844.2	25765.3	25717.2	25623.3
15°	25202.3	25350.7	25268.6	25144.1	24962.0	24810.2	24595.8	24436.2	24212.9	24061.5	23837.5
17.5°	23888.8	24076.1	23862.0	23574.1	23207.7	22894.4	22504.1	22194.5	21806.5	21524.3	21162.2
20°	22039.6	22214.7	21832.7	21355.4	20788.8	20311.9	19749.6	19300.9	18778.4	18389.7	17920.6
22.5°	19737.3	19862.0	19323.8	18680.3	17958.5	17362.7	16690.4	16152.5	15556.1	15111.7	14611.5
25°	17190.1	17223.8	16578.2	15836.9	15032.3	14362.8	13645.0	13079.5	12471.2	12020.9	11529.9
27.5°	14619.2	14569.9	13872.2	13086.1	12239.8	11543.9	10843.8	10313.8	9781.1	9375.4	8952.5
30°	12192.7	12073.2	11348.8	10540.8	9719.3	9095.5	8514.3	8088.8	7665.0	7343.1	7003.7
32.5°	9967.5	9798.9	9093.8	8336.8	7644.6	7163.2	6732.2	6410.2	6068.0	5796.2	5511.2
35°	7996.6	7816.9	7192.2	6550.5	6026.6	5671.8	5333.1	5068.8	4778.2	4548.9	4301.5
37.5°	6305.1	6157.8	5634.6	5129.6	4733.3	4458.4	4180.8	3964.9	3724.7	3623.8	3359.4
40°	4867.5	4764.6	4355.4	3983.2	3685.6	3556.4	3274.7	3073.0	2893.6	2745.6	2602.3
42.5°	3796.8	3760.3	3362.1	3071.8	2862.2	2699.5	2542.5	2415.0	2291.0	2189.0	2092.6
45°	2786.2	2757.4	2580.6	2413.1	2270.3	2156.5	2050.4	1962.7	1881.7	1814.4	1753.2
47.5°	2169.6	2160.4	2058.6	1954.7	1864.7	1791.6	1722.8	1664.6	1610.8	1565.9	1551.3
50°	1764.7	1763.4	1703.7	1639.6	1575.5	1533.3	1489.4	1454.9	1420.3	1393.4	1365.0
52.5°	1499.4	1492.9	1452.6	1412.9	1374.9	1347.2	1319.1	1297.2	1274.2	1257.6	1239.9
55°	1290.8	1297.6	1274.3	1250.7	1226.9	1209.7	1189.9	1175.4	1159.7	1149.2	1138.6
57.5°	1146.0	1155.0	1142.8	1129.3	1114.9	1103.5	1090.0	1079.9	1069.4	1062.7	1056.5
60°	1040.6	1050.4	1045.5	1038.7	1029.8	1023.1	1014.4	1008.8	1002.1	998.3	994.9
62.5°	951.1	963.5	961.7	958.5	952.8	949.1	944.3	941.9	937.4	935.8	934.1
65°	862.0	875.8	875.5	873.9	870.8	869.7	866.7	866.3	863.9	864.9	864.7
67.5°	791.8	803.8	806.5	808.4	808.3	809.0	808.8	810.0	810.0	811.7	812.8
70°	741.1	749.6	751.5	753.6	754.1	755.7	755.7	756.8	756.5	758.0	758.1
72.5°	690.0	701.0	703.0	704.7	704.7	706.2	705.4	705.2	702.9	702.4	700.9
75°	626.3	640.4	643.5	645.6	645.9	647.2	645.3	644.1	640.4	638.9	636.4
77.5°	559.8	574.5	576.6	577.4	576.2	576.5	572.4	569.7	565.1	563.1	560.7
80°	473.2	494.9	496.5	495.2	491.9	491.3	487.4	484.8	479.2	477.3	475.2
82.5°	360.1	385.5	389.0	390.5	387.8	388.5	384.7	383.3	378.1	377.2	373.8
85°	227.3	252.7	256.9	256.3	253.6	252.9	250.7	251.4	250.9	252.3	253.1
87.5°	104.4	129.0	134.9	133.0	132.7	131.0	127.1	128.5	131.0	132.5	132.5
90°	28.5	37.1	38.0	37.7	35.0	34.4	31.8	31.8	29.6	29.3	27.3
92.5°	34.3	36.2	38.0	36.3	34.7	33.0	31.3	29.5	27.9	26.1	24.5
95°	42.5	45.1	47.8	45.5	43.2	40.9	38.7	36.5	34.3	32.0	29.8
97.5°	47.8	50.9	54.0	51.7	49.5	47.1	44.9	42.7	40.5	38.1	35.9
100°	80.9	88.0	95.3	88.9	82.4	76.1	69.7	63.4	57.0	50.7	44.2
102.5°	179.5	197.2	215.0	198.8	182.7	166.5	150.3	134.2	118.1	101.8	85.8
105°	321.3	348.1	375.1	350.2	325.6	301.0	276.3	251.8	227.2	202.4	177.9
107.5°	432.2	457.1	482.3	459.9	437.6	415.3	392.9	370.7	348.4	326.0	303.8
110°	487.7	507.0	527.0	511.8	496.8	481.7	466.8	451.6	436.6	421.7	406.7



TEST NUMBER: P1444450
 CATALOG NUMBER: EHBR1-30-UNV-TA-L830-UPL12

CANDELA DISTRIBUTION (continued):

	220°	222.5°	225°	227.5°	230°	232.5°	235°	237.5°	240°	242.5°	245°
112.5°	488.5	502.2	516.6	507.5	498.6	489.7	480.8	471.8	463.0	454.2	445.5
115°	448.3	455.8	464.2	460.5	456.8	453.1	449.3	445.8	442.0	438.4	434.9
117.5°	398.0	400.9	404.8	403.8	402.9	401.8	400.9	400.1	399.2	398.4	397.5
120°	345.6	345.1	345.7	345.6	345.8	345.8	346.0	346.0	346.2	346.3	346.6
122.5°	301.7	299.1	297.7	297.6	297.7	297.5	297.6	297.5	297.6	297.7	297.9
125°	271.0	267.3	265.1	264.1	263.0	261.9	260.8	259.7	258.8	257.8	256.8
127.5°	249.4	245.5	243.1	241.2	239.4	237.4	235.5	233.5	231.8	229.8	228.1
130°	235.1	231.1	228.8	226.5	224.4	222.0	219.8	217.6	215.3	213.1	210.9
132.5°	225.6	221.4	219.4	217.2	215.2	212.9	210.9	208.4	206.3	204.0	202.0
135°	220.1	216.3	214.5	212.4	210.6	208.4	206.4	204.4	202.4	200.2	198.4
137.5°	215.8	212.0	210.3	208.5	207.1	205.3	203.7	202.0	200.3	198.4	196.9
140°	212.4	208.5	206.8	205.8	204.8	203.5	202.5	201.4	200.3	199.1	197.9
142.5°	210.4	206.5	205.0	204.2	203.5	202.6	202.0	201.2	200.5	199.4	198.7
145°	208.2	203.8	202.2	201.9	201.8	201.4	201.1	200.7	200.5	200.0	199.7
147.5°	207.4	202.9	201.2	201.1	201.0	200.9	200.9	200.6	200.6	200.5	200.4
150°	206.1	201.0	199.1	199.2	199.2	199.3	199.4	199.5	199.7	199.7	199.8
152.5°	205.3	199.2	197.1	197.2	197.5	197.5	197.7	197.9	198.2	198.4	198.6
155°	205.0	198.4	196.1	196.0	196.0	196.1	196.1	196.3	196.4	196.6	196.8
157.5°	205.7	198.7	196.4	196.2	196.1	196.1	196.1	196.1	196.2	196.3	196.5
160°	206.8	199.7	197.5	197.2	197.2	197.1	197.0	196.9	197.0	197.1	197.2
162.5°	207.9	200.9	198.8	198.5	198.2	198.2	198.2	197.9	198.0	198.0	198.1
165°	209.1	203.0	200.9	200.6	200.6	200.5	200.5	200.4	200.5	200.5	200.7
167.5°	211.5	206.1	204.5	204.2	203.9	203.6	203.6	203.3	203.3	203.1	203.1
170°	212.5	208.2	206.8	206.7	206.8	206.6	206.5	206.5	206.5	206.4	206.5
172.5°	213.5	210.3	209.3	209.3	209.4	209.4	209.6	209.6	209.8	209.9	210.1
175°	214.1	212.3	211.8	211.7	211.7	211.8	211.9	211.9	212.0	212.1	212.3
177.5°	215.1	214.5	214.2	214.2	214.2	214.2	214.2	214.2	214.2	214.3	214.3
180°	214.0	214.0	214.0	214.0	214.0	214.0	214.0	214.0	214.0	214.0	214.0



TEST NUMBER: P1444450
 CATALOG NUMBER: EHBR1-30-UNV-TA-L830-UPL12

CANDELA DISTRIBUTION (continued):

	247.5°	250°	252.5°	255°	257.5°	260°	262.5°	265°	267.5°	270°	272.5°
0°	24616.1	24616.1	24616.1	24616.1	24616.1	24616.1	24616.1	24616.1	24616.1	24616.1	24616.1
2.5°	24808.5	24837.4	24835.2	24862.2	24860.8	24886.3	24881.1	24903.2	24898.2	24916.9	24905.9
5°	25622.3	25677.3	25695.4	25745.1	25755.4	25799.8	25800.7	25836.0	25831.7	25859.3	25844.6
7.5°	26392.1	26443.4	26467.7	26506.3	26525.6	26557.6	26570.0	26596.3	26602.6	26618.1	26617.6
10°	26457.0	26456.8	26468.9	26463.4	26474.2	26468.0	26481.1	26476.5	26495.8	26490.9	26505.5
12.5°	25582.8	25496.1	25464.4	25386.5	25369.4	25302.6	25307.3	25264.4	25285.1	25258.8	25303.7
15°	23704.2	23502.9	23403.4	23228.4	23173.5	23035.3	23024.0	22932.1	22957.0	22908.9	22979.2
17.5°	20927.9	20611.1	20437.2	20181.7	20080.2	19884.6	19845.4	19727.2	19745.4	19685.9	19770.7
20°	17617.9	17235.0	17015.7	16720.2	16588.4	16355.2	16293.3	16161.0	16177.6	16118.3	16214.3
22.5°	14270.1	13869.4	13621.7	13312.0	13143.7	12924.4	12858.6	12725.7	12733.2	12677.6	12770.0
25°	11193.7	10809.4	10569.1	10287.8	10141.7	9940.6	9871.4	9752.2	9758.9	9713.0	9795.8
27.5°	8659.1	8343.8	8142.7	7906.9	7776.0	7610.7	7543.2	7442.9	7442.6	7409.0	7478.2
30°	6766.6	6503.5	6323.0	6117.6	5994.7	5845.4	5780.3	5690.6	5686.7	5662.8	5717.8
32.5°	5298.1	5064.1	4899.5	4718.7	4608.3	4480.3	4418.6	4346.5	4339.9	4318.3	4363.5
35°	4118.6	3921.5	3779.9	3627.8	3639.0	3450.2	3481.6	3334.9	3295.1	3286.3	3320.0
37.5°	3183.2	3030.5	2915.5	2801.6	2724.4	2644.6	2601.6	2563.0	2558.6	2554.9	2578.5
40°	2491.6	2384.8	2301.1	2222.9	2169.8	2121.1	2094.2	2073.0	2068.0	2065.2	2079.4
42.5°	2016.5	1944.5	1890.6	1842.9	1810.6	1784.1	1769.3	1757.5	1753.6	1753.7	1762.1
45°	1703.7	1660.0	1625.3	1595.6	1575.0	1584.1	1557.4	1571.3	1552.9	1572.0	1559.4
47.5°	1500.3	1463.1	1441.6	1420.6	1408.2	1398.1	1398.5	1398.7	1402.5	1403.2	1407.3
50°	1343.4	1321.9	1307.0	1293.6	1287.0	1281.8	1283.6	1285.0	1288.8	1289.1	1292.1
52.5°	1227.3	1213.1	1204.1	1195.8	1192.9	1189.9	1191.2	1190.7	1192.3	1191.5	1193.9
55°	1132.8	1126.1	1123.3	1120.2	1120.7	1119.8	1120.4	1117.4	1115.5	1113.3	1115.3
57.5°	1055.3	1054.4	1056.2	1057.5	1061.1	1062.4	1063.2	1059.7	1056.4	1053.4	1055.2
60°	995.5	996.9	1001.7	1005.6	1010.6	1013.1	1014.5	1012.5	1010.1	1007.6	1009.1
62.5°	936.5	938.9	944.5	948.8	955.0	958.2	961.7	961.9	962.8	961.9	962.9
65°	868.1	871.0	876.1	879.7	885.4	888.2	891.8	892.5	894.6	894.1	895.8
67.5°	816.2	818.7	823.0	826.4	831.5	834.4	837.6	837.8	838.5	838.4	839.9
70°	760.7	761.9	765.8	768.6	773.7	776.7	780.4	781.5	783.7	784.1	786.0
72.5°	701.6	701.0	703.3	704.6	708.4	710.8	715.5	718.0	721.8	722.9	724.2
75°	637.1	636.6	639.3	640.4	643.7	646.0	651.3	654.7	660.6	663.1	662.4
77.5°	562.6	563.9	569.0	571.9	576.2	579.3	586.0	591.3	602.2	607.0	602.1
80°	479.2	480.6	485.9	488.5	494.3	498.0	505.5	511.8	521.6	523.6	520.9
82.5°	376.7	377.1	381.9	383.9	391.4	396.8	406.3	411.4	417.4	416.5	415.7
85°	256.9	260.4	266.3	272.2	281.4	290.1	299.2	306.6	301.3	309.7	300.3
87.5°	137.3	136.9	145.0	143.7	156.4	163.8	171.7	175.4	179.7	178.8	178.9
90°	27.4	25.8	26.2	24.5	25.7	23.7	25.5	23.8	25.9	23.7	27.4
92.5°	22.8	21.9	21.0	20.1	19.1	18.4	17.3	16.4	15.5	14.6	15.5
95°	27.5	26.7	25.9	24.9	24.1	23.3	22.5	21.6	20.8	20.0	21.0
97.5°	33.6	33.2	32.7	32.1	31.7	31.2	30.7	30.2	29.6	29.1	29.8
100°	37.8	37.8	37.8	37.8	37.7	37.7	37.7	37.7	37.7	37.7	38.2
102.5°	69.6	68.0	66.4	64.7	63.1	61.4	59.9	58.3	56.7	55.1	57.4
105°	153.2	147.0	140.6	134.2	127.9	121.6	115.3	108.9	102.7	96.4	102.9
107.5°	281.6	270.1	258.4	247.0	235.5	224.0	212.5	201.1	189.6	178.2	188.5
110°	391.7	379.5	367.2	355.0	342.7	330.6	318.4	306.2	294.0	281.9	291.6



TEST NUMBER: P1444450
 CATALOG NUMBER: EHBR1-30-UNV-TA-L830-UPL12

CANDELA DISTRIBUTION (continued):

	247.5°	250°	252.5°	255°	257.5°	260°	262.5°	265°	267.5°	270°	272.5°
112.5°	436.7	428.5	420.7	412.7	404.8	397.0	389.0	381.1	373.4	365.5	370.3
115°	431.3	427.4	423.6	419.7	416.1	412.2	408.4	404.7	401.0	397.3	397.5
117.5°	396.8	395.3	394.0	392.6	391.2	390.0	388.6	387.4	386.2	385.1	382.5
120°	347.0	347.1	347.1	347.5	347.8	348.2	348.4	348.9	349.4	349.9	346.3
122.5°	298.0	298.5	299.2	300.0	300.8	301.6	302.5	303.6	304.6	305.6	302.1
125°	255.8	256.4	256.9	257.8	258.3	259.3	260.1	261.2	262.2	263.3	260.3
127.5°	226.3	226.2	226.1	226.3	226.3	226.6	226.9	227.3	227.8	228.4	226.5
130°	208.6	207.9	207.2	206.5	205.9	205.5	205.2	204.9	204.7	204.6	203.8
132.5°	199.7	198.5	197.3	196.2	195.2	194.4	193.4	192.9	192.2	191.7	191.6
135°	196.2	194.7	193.2	191.8	190.4	189.5	188.4	187.5	186.6	185.8	186.1
137.5°	195.1	193.7	192.2	190.9	189.5	188.5	187.2	186.3	185.5	184.7	185.2
140°	196.9	195.4	193.9	192.6	191.4	190.2	189.1	188.3	187.2	186.7	187.0
142.5°	197.8	196.7	195.3	194.1	193.0	192.0	191.1	190.2	189.3	188.8	189.1
145°	199.3	198.4	197.4	196.4	195.6	195.0	194.1	193.6	193.1	192.8	193.0
147.5°	200.1	199.5	198.6	198.0	197.2	196.8	196.1	195.9	195.4	195.2	195.3
150°	199.8	199.4	198.9	198.5	198.0	197.7	197.4	197.2	196.9	196.8	196.8
152.5°	198.8	198.5	198.0	197.7	197.4	197.2	196.9	196.8	196.6	196.5	196.5
155°	197.0	196.8	196.7	196.5	196.4	196.5	196.4	196.5	196.5	196.6	196.7
157.5°	196.6	196.6	196.6	196.8	196.8	197.0	197.0	197.3	197.4	197.6	197.8
160°	197.5	197.6	197.4	197.6	197.6	197.6	197.7	197.9	198.0	198.2	198.5
162.5°	198.2	198.5	198.6	198.7	199.0	199.1	199.4	199.8	200.0	200.4	200.6
165°	200.8	200.8	200.7	200.8	201.0	201.1	201.2	201.6	201.7	202.0	202.3
167.5°	203.0	203.2	203.2	203.3	203.5	203.7	203.9	204.2	204.5	205.0	205.2
170°	206.4	206.4	206.4	206.4	206.4	206.5	206.6	206.7	206.8	207.1	207.3
172.5°	210.1	210.1	209.9	210.1	209.9	210.1	210.1	210.2	210.2	210.3	210.4
175°	212.2	212.4	212.5	212.6	212.6	212.7	212.8	212.8	212.9	213.1	213.1
177.5°	214.3	214.4	214.4	214.4	214.4	214.5	214.5	214.5	214.5	214.4	214.5
180°	214.0	214.0	214.0	214.0	214.0	214.0	214.0	214.0	214.0	214.0	214.0



TEST NUMBER: P1444450
 CATALOG NUMBER: EHBR1-30-UNV-TA-L830-UPL12

CANDELA DISTRIBUTION (continued):

	275°	277.5°	280°	282.5°	285°	287.5°	290°	292.5°	295°	297.5°	300°
0°	24616.1	24616.1	24616.1	24616.1	24616.1	24616.1	24616.1	24616.1	24616.1	24616.1	24616.1
2.5°	24924.2	24911.8	24924.5	24911.6	24924.5	24909.0	24919.5	24902.7	24907.0	24889.6	24894.1
5°	25866.7	25846.8	25857.4	25831.5	25834.2	25799.8	25799.1	25759.0	25748.4	25702.7	25682.6
7.5°	26628.7	26622.2	26625.9	26609.3	26607.3	26583.8	26572.6	26539.4	26518.5	26476.5	26447.7
10°	26508.1	26527.5	26532.6	26552.3	26556.4	26576.0	26580.1	26599.8	26603.8	26618.4	26618.5
12.5°	25301.5	25367.5	25383.3	25464.8	25499.1	25592.3	25642.3	25745.1	25806.0	25908.5	25971.5
15°	22977.2	23091.4	23136.9	23295.9	23384.0	23569.7	23686.5	23899.8	24050.3	24276.8	24438.4
17.5°	19778.2	19937.7	20009.7	20225.4	20366.2	20640.4	20837.9	21163.2	21412.1	21773.6	22060.1
20°	16230.7	16408.0	16505.7	16751.8	16918.0	17238.3	17485.0	17884.7	18218.0	18675.9	19067.6
22.5°	12798.8	12967.5	13076.0	13326.5	13513.4	13847.6	14123.2	14545.1	14918.5	15434.6	15904.1
25°	9827.1	9981.7	10079.7	10306.2	10481.9	10788.8	11052.1	11457.8	11823.2	12340.9	12822.4
27.5°	7512.7	7642.1	7736.7	7929.8	8084.7	8345.0	8571.3	8906.5	9221.3	9669.2	10098.0
30°	5751.6	5866.3	5958.3	6126.5	6270.1	6495.9	6694.8	6976.3	7236.9	7593.2	7934.4
32.5°	4395.2	4494.0	4575.9	4723.2	4853.5	5056.7	5235.9	5482.7	5706.3	6008.6	6289.3
35°	3351.2	3545.5	3531.8	3734.8	3767.5	3913.4	4073.3	4289.1	4487.1	4744.1	4983.0
37.5°	2601.1	2655.7	2714.3	2804.0	2898.4	3031.1	3166.2	3429.9	3526.6	3720.8	3918.5
40°	2097.5	2134.4	2173.1	2233.8	2299.8	2393.3	2491.6	2617.4	2746.4	2903.9	3064.7
42.5°	1773.3	1794.2	1818.8	1854.4	1895.1	1954.4	2020.2	2105.5	2195.2	2306.0	2419.1
45°	1584.3	1574.3	1581.6	1600.8	1625.4	1661.3	1702.9	1755.8	1814.1	1885.9	1962.4
47.5°	1408.2	1412.2	1414.3	1424.7	1437.8	1462.0	1487.2	1523.1	1592.3	1613.4	1655.1
50°	1291.8	1293.7	1293.1	1298.4	1305.0	1320.8	1337.1	1361.3	1385.6	1417.7	1448.3
52.5°	1194.3	1197.0	1196.6	1200.1	1203.7	1213.6	1223.9	1241.1	1257.0	1277.4	1295.0
55°	1117.3	1121.1	1122.5	1125.5	1127.1	1132.4	1136.4	1144.7	1151.4	1163.0	1173.7
57.5°	1058.1	1063.2	1065.6	1066.5	1064.5	1064.2	1062.8	1064.6	1066.0	1072.2	1078.2
60°	1011.5	1015.6	1016.2	1015.6	1011.7	1009.0	1004.6	1003.2	1002.6	1005.6	1008.8
62.5°	962.7	964.2	963.1	961.9	957.6	954.9	950.4	948.7	947.1	949.3	950.9
65°	895.1	896.4	895.1	894.5	890.5	888.4	884.5	883.3	881.1	881.6	881.3
67.5°	840.3	841.6	840.6	839.6	836.9	835.5	832.7	831.0	828.2	827.3	825.4
70°	785.7	786.6	785.1	784.1	781.0	779.8	777.2	776.6	774.6	774.1	772.0
72.5°	722.9	723.0	720.7	720.0	717.8	717.7	716.6	717.6	717.5	718.6	718.2
75°	658.5	657.6	654.9	654.4	652.7	653.4	652.3	653.8	654.0	656.4	656.6
77.5°	594.1	590.7	585.5	583.0	579.5	579.2	577.1	578.5	578.0	580.8	581.9
80°	512.8	508.6	502.0	498.8	494.7	494.0	492.1	494.0	493.1	496.3	498.6
82.5°	409.3	405.8	398.9	396.3	391.5	392.0	390.0	392.0	391.7	396.5	399.2
85°	302.8	300.4	293.3	287.0	280.0	275.9	271.8	271.2	270.0	271.8	273.5
87.5°	174.9	172.7	167.1	163.5	151.2	151.7	146.9	146.6	145.4	144.3	146.9
90°	26.3	29.4	28.6	31.3	30.9	34.1	33.9	37.0	36.3	39.2	39.0
92.5°	16.4	17.3	18.3	19.1	20.0	21.0	21.8	22.8	24.7	26.5	28.7
95°	22.0	23.1	24.2	25.2	26.2	27.4	28.4	29.4	32.3	35.1	38.0
97.5°	30.6	31.2	31.9	32.6	33.3	34.0	34.8	35.4	38.6	41.7	44.8
100°	38.8	39.3	39.9	40.5	41.0	41.6	42.2	42.7	48.8	54.8	60.7
102.5°	59.9	62.2	64.5	67.0	69.4	71.8	74.2	76.5	90.3	103.9	117.6
105°	109.4	115.9	122.5	129.0	135.5	142.0	148.7	155.1	177.0	198.9	220.8
107.5°	198.7	209.0	219.3	229.6	239.9	250.3	260.5	270.9	292.3	313.7	335.0
110°	301.4	311.3	321.1	330.9	340.8	350.6	360.5	370.5	383.4	396.2	409.2



TEST NUMBER: P1444450
 CATALOG NUMBER: EHBR1-30-UNV-TA-L830-UPL12

CANDELA DISTRIBUTION (continued):

	275°	277.5°	280°	282.5°	285°	287.5°	290°	292.5°	295°	297.5°	300°
112.5°	375.2	379.8	384.7	389.6	394.4	399.3	404.2	409.2	415.7	422.1	428.7
115°	397.9	398.2	398.7	398.9	399.3	399.7	400.3	400.8	403.1	405.2	407.6
117.5°	379.8	377.3	374.8	372.2	369.7	367.5	365.0	362.8	362.6	362.4	362.3
120°	343.0	339.6	336.2	332.6	329.4	326.2	323.0	319.9	318.5	317.1	315.8
122.5°	298.7	295.3	292.1	288.7	285.5	282.4	279.4	276.4	275.5	274.7	274.0
125°	257.5	254.8	252.1	249.3	246.8	244.4	242.0	239.7	240.1	240.4	240.9
127.5°	224.9	223.3	221.8	220.3	219.0	217.7	216.6	215.3	216.7	217.9	219.2
130°	203.3	202.7	202.3	201.9	201.7	201.4	201.3	201.1	203.0	204.8	206.7
132.5°	191.7	191.8	192.0	192.3	192.8	193.2	193.9	194.3	196.4	198.4	200.5
135°	186.4	186.9	187.6	188.2	189.1	189.8	190.7	191.6	193.7	195.6	197.6
137.5°	185.8	186.4	187.2	187.9	188.9	189.8	191.0	191.9	193.5	195.2	196.9
140°	187.5	188.0	188.7	189.5	190.2	191.0	192.0	192.9	194.5	195.7	197.0
142.5°	189.8	190.0	190.7	191.4	192.2	192.9	193.8	194.4	195.6	196.5	197.9
145°	193.3	193.7	194.4	194.7	195.3	196.0	196.6	197.3	198.1	198.9	199.6
147.5°	195.7	196.0	196.4	196.9	197.5	197.9	198.4	198.8	199.5	200.1	200.6
150°	197.1	197.4	197.6	197.7	198.2	198.7	199.1	199.4	200.0	200.5	201.0
152.5°	196.8	197.0	197.3	197.5	197.8	198.2	198.5	198.9	199.4	199.7	200.2
155°	197.0	197.4	197.7	198.0	198.5	198.7	199.1	199.3	199.8	200.2	200.6
157.5°	198.2	198.4	198.9	199.1	199.5	199.7	200.1	200.4	200.8	201.1	201.5
160°	199.0	199.3	199.7	200.2	200.5	200.8	201.3	201.8	202.1	202.4	202.8
162.5°	201.0	201.4	201.8	202.0	202.3	202.7	203.0	203.4	203.9	204.2	204.7
165°	202.8	203.1	203.6	203.9	204.4	204.8	205.1	205.6	205.9	206.3	206.5
167.5°	205.6	205.9	206.5	206.7	207.1	207.5	207.9	208.2	208.6	208.8	209.2
170°	207.7	207.9	208.3	208.7	209.1	209.3	209.6	209.9	210.4	210.7	211.0
172.5°	210.7	210.9	211.1	211.3	211.6	211.9	212.2	212.4	212.7	213.0	213.2
175°	213.1	213.1	213.2	213.3	213.4	213.4	213.5	213.7	213.8	213.9	213.9
177.5°	214.6	214.6	214.7	214.8	214.9	214.9	215.0	215.1	215.1	215.1	215.1
180°	214.0	214.0	214.0	214.0	214.0	214.0	214.0	214.0	214.0	214.0	214.0



TEST NUMBER: P1444450
 CATALOG NUMBER: EHBR1-30-UNV-TA-L830-UPL12

CANDELA DISTRIBUTION (continued):

	302.5°	305°	307.5°	310°	312.5°	315°	317.5°	320°	322.5°	325°	327.5°
0°	24616.1	24616.1	24616.1	24616.1	24616.1	24616.1	24616.1	24616.1	24616.1	24616.1	24616.1
2.5°	24876.6	24877.7	24857.6	24856.5	24837.8	24835.3	24817.1	24811.5	24796.7	24791.2	24776.0
5°	25631.4	25606.9	25550.4	25517.3	25461.4	25424.4	25364.0	25324.7	25266.3	25222.4	25163.7
7.5°	26394.7	26356.7	26293.3	26242.0	26164.5	26102.7	26012.0	25937.8	25839.7	25754.7	25651.6
10°	26618.5	26612.7	26596.5	26573.0	26537.0	26496.5	26434.9	26370.5	26284.5	26191.0	26076.5
12.5°	26067.8	26127.2	26208.3	26256.4	26314.9	26340.5	26364.5	26358.4	26342.7	26295.4	26229.2
15°	24672.3	24839.5	25060.8	25232.3	25429.7	25573.1	25731.5	25830.1	25928.6	25974.0	26001.8
17.5°	22452.6	22769.1	23165.9	23494.8	23874.3	24179.1	24513.2	24764.7	25023.3	25208.6	25376.2
20°	19601.4	20059.9	20621.2	21117.1	21693.6	22194.7	22743.7	23194.4	23659.2	24022.7	24366.7
22.5°	16508.8	17053.3	17731.9	18360.5	19103.8	19771.8	20525.4	21181.3	21866.3	22438.4	22991.6
25°	13467.7	14065.0	14806.9	15508.2	16350.0	17127.0	18020.8	18838.2	19723.5	20492.0	21251.2
27.5°	10690.8	11277.1	12034.6	12781.1	13671.3	14499.2	15456.8	16357.6	17365.5	18295.0	19245.7
30°	8408.4	8905.7	9584.9	10308.0	11185.9	12028.4	12996.5	13922.8	14971.3	15986.2	17057.1
32.5°	6661.7	7040.6	7574.6	8186.0	8996.1	9798.0	10719.8	11614.1	12646.6	13671.7	14785.6
35°	5290.6	5586.1	5993.3	6470.4	7156.4	7847.7	8663.1	9476.2	10439.5	11412.3	12494.9
37.5°	4171.9	4411.7	4730.6	5089.0	5639.2	6206.5	6875.1	7549.3	8386.4	9248.6	10229.8
40°	3257.8	3452.0	3700.2	3967.5	4383.0	4820.1	5337.2	5860.0	6532.4	7237.2	8049.2
42.5°	2559.3	2702.5	2877.9	3073.2	3460.9	3692.9	4043.5	4421.6	4916.0	5427.7	6038.1
45°	2055.3	2153.0	2274.6	2405.7	2585.6	2782.4	3022.6	3274.4	3744.0	3974.4	4345.7
47.5°	1716.4	1782.0	1859.4	1941.9	2048.0	2162.5	2305.0	2450.5	2638.8	2834.0	3062.8
50°	1488.1	1554.8	1581.4	1624.2	1685.6	1751.0	1831.3	1911.5	2012.5	2114.9	2232.6
52.5°	1318.7	1340.4	1369.4	1396.5	1434.6	1509.0	1533.1	1575.1	1631.7	1687.1	1748.9
55°	1189.3	1203.5	1222.3	1238.7	1261.7	1283.7	1315.4	1343.3	1381.2	1414.5	1455.6
57.5°	1088.6	1097.6	1110.7	1121.5	1136.3	1148.8	1167.4	1182.5	1204.2	1223.2	1248.1
60°	1015.5	1021.5	1030.3	1037.3	1046.8	1053.2	1062.5	1069.6	1081.1	1090.6	1104.6
62.5°	955.7	958.8	964.5	968.7	974.7	978.0	982.9	986.0	992.3	997.1	1004.9
65°	884.1	884.7	888.6	890.3	895.0	896.8	900.8	902.2	907.5	911.0	917.9
67.5°	825.2	823.6	823.7	822.3	823.0	821.6	822.0	820.6	822.6	823.7	828.9
70°	771.7	769.3	768.6	766.1	765.4	762.9	762.1	759.9	759.6	758.8	760.7
72.5°	719.4	718.7	718.9	717.1	717.0	715.3	715.4	714.2	715.5	716.0	718.4
75°	659.3	659.4	660.6	659.1	659.5	658.0	658.6	657.2	657.9	657.7	660.0
77.5°	586.1	587.8	591.0	590.3	591.3	589.8	590.4	588.5	589.1	587.8	588.7
80°	503.8	507.4	511.7	511.5	513.3	512.2	513.8	512.0	512.8	510.5	509.9
82.5°	406.1	409.2	413.7	413.9	418.0	418.6	423.1	422.9	425.7	424.0	422.6
85°	277.6	279.7	283.7	285.9	290.0	292.5	296.8	298.6	295.5	301.2	296.7
87.5°	145.0	150.3	147.3	154.4	152.7	159.8	158.3	164.9	163.5	169.3	168.5
90°	42.9	43.1	47.2	47.6	52.6	53.7	57.0	55.6	58.6	57.5	60.6
92.5°	30.4	32.6	34.6	36.5	38.5	40.6	38.7	36.8	35.0	33.3	31.4
95°	40.8	43.7	46.6	49.5	52.3	55.2	52.1	49.1	46.0	42.9	39.9
97.5°	47.9	50.9	54.0	57.0	60.2	63.3	59.7	56.0	52.4	48.8	45.2
100°	66.7	72.7	78.7	84.6	90.6	96.5	89.8	83.0	76.3	69.5	62.8
102.5°	131.3	145.0	158.7	172.4	186.0	199.8	185.5	171.2	156.9	142.6	128.1
105°	242.7	264.6	286.5	308.4	330.3	352.4	329.2	305.9	282.6	259.5	236.1
107.5°	356.4	377.8	399.3	420.6	442.0	463.6	440.1	416.5	393.0	369.3	345.8
110°	422.2	435.0	448.0	461.0	473.9	487.0	469.9	452.8	435.7	418.5	401.3



TEST NUMBER: P1444450
 CATALOG NUMBER: EHBR1-30-UNV-TA-L830-UPL12

CANDELA DISTRIBUTION (continued):

	302.5°	305°	307.5°	310°	312.5°	315°	317.5°	320°	322.5°	325°	327.5°
112.5°	435.3	442.0	448.5	455.3	461.9	468.5	456.4	444.3	432.0	419.8	407.7
115°	409.9	412.2	414.5	416.8	419.1	421.4	413.4	405.2	397.2	389.1	380.8
117.5°	362.2	362.4	362.2	362.4	362.2	362.2	357.7	353.4	348.9	344.5	340.0
120°	314.4	313.0	311.7	310.4	309.0	307.6	306.0	304.3	302.6	300.9	299.0
122.5°	273.1	272.6	271.6	270.9	270.1	269.2	268.8	268.5	267.9	267.4	266.9
125°	241.3	241.8	242.1	242.5	242.9	243.3	243.2	243.2	243.1	243.1	242.9
127.5°	220.4	221.7	222.8	224.1	225.2	226.4	226.6	226.9	227.2	227.4	227.6
130°	208.5	210.4	212.2	213.9	215.5	217.4	217.4	217.7	217.8	218.0	218.2
132.5°	202.5	204.5	206.5	208.6	210.4	212.3	212.4	212.6	212.5	212.8	212.8
135°	199.5	201.5	203.3	205.2	206.9	208.8	208.8	208.9	208.8	209.0	209.0
137.5°	198.4	200.0	201.5	203.1	204.5	206.1	205.9	206.1	206.0	206.2	206.2
140°	198.3	199.6	200.8	202.2	203.3	204.6	204.5	204.4	204.3	204.2	203.9
142.5°	198.9	199.9	200.7	202.0	202.8	203.9	203.5	203.2	202.8	202.5	202.1
145°	200.4	201.3	202.0	202.7	203.3	204.1	203.5	203.1	202.5	202.1	201.6
147.5°	201.2	201.9	202.2	202.7	203.0	203.6	203.1	202.6	202.1	201.6	201.0
150°	201.3	202.0	202.3	202.7	203.1	203.6	203.0	202.4	201.8	201.2	200.6
152.5°	200.6	201.1	201.5	201.8	202.1	202.5	201.9	201.5	200.7	200.1	199.5
155°	200.8	201.3	201.5	201.9	202.0	202.2	201.6	201.3	200.7	200.2	199.6
157.5°	201.8	202.1	202.4	202.6	202.8	203.1	202.6	202.2	201.8	201.5	200.9
160°	203.1	203.4	203.6	203.8	204.1	204.1	203.7	203.6	203.3	202.9	202.4
162.5°	205.0	205.4	205.7	205.9	206.2	206.5	206.1	205.8	205.3	205.0	204.5
165°	206.8	207.1	207.4	207.7	207.8	207.9	207.7	207.5	207.2	207.0	206.6
167.5°	209.4	209.7	209.9	210.2	210.3	210.5	210.2	210.1	209.7	209.4	209.2
170°	211.2	211.5	211.9	212.1	212.3	212.4	212.4	212.2	211.9	211.7	211.4
172.5°	213.4	213.7	213.8	213.9	214.0	214.3	214.1	213.9	213.7	213.4	213.1
175°	213.9	214.0	214.2	214.2	214.2	214.3	214.1	213.9	213.7	213.5	213.3
177.5°	215.1	215.1	215.1	215.0	215.0	215.0	214.9	214.7	214.6	214.4	214.2
180°	214.0	214.0	214.0	214.0	214.0	214.0	214.0	214.0	214.0	214.0	214.0



TEST NUMBER: P1444450
 CATALOG NUMBER: EHBR1-30-UNV-TA-L830-UPL12

CANDELA DISTRIBUTION (continued):

	330°	332.5°	335°	337.5°	340°	342.5°	345°	347.5°	350°	352.5°	355°
0°	24616.1	24616.1	24616.1	24616.1	24616.1	24616.1	24616.1	24616.1	24616.1	24616.1	24616.1
2.5°	24770.7	24759.9	24753.0	24744.2	24738.8	24731.9	24726.9	24722.7	24719.2	24716.0	24713.6
5°	25119.0	25063.6	25020.7	24974.2	24935.9	24897.8	24868.4	24844.0	24827.3	24814.6	24807.2
7.5°	25562.5	25461.2	25370.9	25276.2	25191.1	25107.5	25035.3	24973.2	24926.6	24896.4	24878.1
10°	25958.5	25822.8	25688.7	25547.4	25413.5	25283.6	25163.7	25058.3	24974.8	24919.4	24886.9
12.5°	26136.1	26020.5	25883.4	25730.1	25566.0	25399.9	25238.0	25092.1	24969.6	24887.4	24839.9
15°	25979.7	25932.2	25839.3	25720.2	25564.5	25392.8	25202.8	25024.2	24859.8	24753.3	24691.6
17.5°	25471.1	25537.3	25530.2	25484.7	25372.7	25228.2	25034.6	24833.9	24628.4	24485.9	24408.2
20°	24612.8	24821.0	24926.6	24980.8	24936.9	24843.1	24667.8	24464.2	24224.6	24038.7	23925.1
22.5°	23406.7	23774.2	24003.3	24170.8	24206.4	24174.5	24019.7	23826.0	23559.0	23335.5	23167.9
25°	21853.9	22392.4	22754.4	23038.3	23148.4	23176.9	23045.2	22852.6	22554.9	22294.5	22064.4
27.5°	20025.0	20724.8	21208.1	21589.5	21761.5	21836.2	21715.0	21518.5	21166.2	20855.4	20554.8
30°	17966.1	18796.2	19378.2	19835.5	20045.3	20143.8	20015.0	19795.7	19385.9	19011.9	18633.1
32.5°	15762.3	16670.7	17304.9	17801.5	18009.4	18102.2	17933.7	17687.3	17213.6	16773.0	16331.2
35°	13455.0	14371.9	15011.4	15494.8	15669.1	15725.0	15509.5	15224.7	14700.0	14216.3	13734.7
37.5°	11100.7	11953.8	12535.0	12968.8	13076.6	13086.3	12826.6	12512.2	11960.6	11483.8	11004.3
40°	8766.8	9486.2	9955.5	10302.7	10340.1	10306.7	10024.5	9708.0	9192.0	8764.8	8343.8
42.5°	6568.3	7111.4	7446.2	7684.1	7670.0	7604.0	7345.2	7073.2	6647.4	6322.0	5990.8
45°	4684.9	5043.0	5238.7	5377.9	5333.2	5270.4	5068.9	4878.3	4588.9	4378.7	4156.2
47.5°	3254.6	3682.2	3607.8	3880.0	3645.5	3800.4	3477.8	3299.9	3146.4	3034.7	2908.9
50°	2330.0	2428.0	2475.3	2507.7	2490.5	2466.6	2408.7	2356.9	2286.8	2235.6	2176.1
52.5°	1799.4	1848.4	1875.2	1894.7	1890.8	1882.1	1856.9	1833.8	1801.0	1779.4	1753.2
55°	1524.2	1524.9	1574.2	1553.1	1584.3	1547.7	1562.1	1521.5	1528.1	1493.2	1469.8
57.5°	1266.5	1286.7	1295.7	1304.4	1301.9	1300.4	1290.6	1285.7	1274.7	1271.3	1263.4
60°	1114.1	1124.6	1126.8	1130.8	1127.4	1126.1	1118.5	1115.7	1108.3	1107.0	1101.8
62.5°	1009.6	1014.9	1014.9	1014.9	1010.5	1006.4	997.9	993.4	987.1	985.7	982.7
65°	922.4	927.9	928.8	930.0	926.8	923.5	916.0	911.2	904.8	902.2	898.8
67.5°	832.3	838.3	840.2	843.2	841.4	840.8	835.6	833.8	829.5	828.4	825.2
70°	761.5	764.1	763.9	763.8	759.8	756.2	750.3	747.5	743.0	742.1	739.2
72.5°	719.5	721.3	720.1	718.6	713.4	708.2	701.2	696.1	690.3	686.6	682.5
75°	660.3	662.6	661.1	660.1	655.5	652.0	646.4	643.6	639.5	638.4	635.5
77.5°	587.6	588.7	586.4	586.1	582.5	580.3	576.1	575.4	572.4	572.4	569.7
80°	506.7	506.0	502.3	501.5	498.0	497.0	493.7	493.9	491.6	492.5	490.6
82.5°	416.9	414.7	409.6	408.1	404.1	403.7	401.5	403.3	401.8	404.1	402.8
85°	298.8	299.4	297.2	297.2	296.0	296.4	296.2	297.6	297.8	299.7	299.7
87.5°	166.5	169.0	168.5	170.7	170.6	173.1	173.9	177.5	178.0	181.3	181.3
90°	59.5	62.8	61.5	65.1	64.7	68.6	68.8	72.6	72.4	75.7	74.7
92.5°	29.5	27.7	25.9	24.1	23.1	22.1	21.5	20.2	19.6	18.5	17.5
95°	36.8	33.7	30.6	27.5	26.5	25.4	24.4	23.3	22.2	21.2	20.1
97.5°	41.6	37.9	34.3	30.6	29.7	28.9	27.8	26.9	26.0	25.1	24.2
100°	55.9	49.2	42.4	35.6	34.8	34.1	33.3	32.5	31.8	30.9	30.1
102.5°	113.8	99.5	85.1	70.6	67.9	65.2	62.5	59.7	56.9	54.1	51.4
105°	212.9	189.5	166.3	142.9	135.5	128.1	120.7	113.2	105.8	98.4	91.0
107.5°	322.2	298.5	274.9	251.2	237.6	223.9	210.2	196.4	182.8	169.0	155.3
110°	384.1	366.9	349.7	332.3	321.5	310.4	299.4	288.3	277.5	266.3	255.3



TEST NUMBER: P1444450
 CATALOG NUMBER: EHBR1-30-UNV-TA-L830-UPL12

CANDELA DISTRIBUTION (continued):

	330°	332.5°	335°	337.5°	340°	342.5°	345°	347.5°	350°	352.5°	355°
112.5°	395.4	383.1	370.8	358.4	353.5	348.5	343.7	338.6	333.7	328.6	323.6
115°	372.6	364.5	356.1	347.8	346.2	344.4	342.8	341.1	339.4	337.6	335.8
117.5°	335.6	331.0	326.5	321.9	322.3	322.7	323.2	323.4	323.7	323.9	324.3
120°	297.2	295.4	293.8	291.9	293.7	295.3	296.9	298.4	300.0	301.4	302.9
122.5°	266.4	265.8	265.4	264.7	266.9	268.8	270.8	272.8	274.5	276.2	278.0
125°	242.9	242.8	242.7	242.4	244.6	246.6	248.7	250.6	252.4	254.1	255.9
127.5°	227.9	228.2	228.4	228.5	230.2	231.6	233.2	234.6	236.1	237.2	238.4
130°	218.3	218.3	218.5	218.6	220.1	221.6	223.1	224.2	225.6	226.6	227.6
132.5°	213.0	213.0	213.2	213.2	214.4	215.5	216.7	217.5	218.5	219.2	219.8
135°	209.1	209.1	209.1	209.0	210.2	211.3	212.4	213.2	214.1	214.7	215.3
137.5°	206.2	206.1	206.2	206.1	207.2	208.1	209.2	209.8	210.6	211.2	211.8
140°	203.9	203.7	203.7	203.5	204.5	205.3	206.2	206.9	207.7	208.1	208.6
142.5°	201.9	201.4	201.3	200.8	201.5	202.1	202.8	203.4	203.9	204.3	204.6
145°	201.1	200.5	200.2	199.5	200.1	200.5	201.2	201.7	202.0	202.1	202.5
147.5°	200.6	200.0	199.3	198.8	199.4	199.7	200.1	200.3	200.7	200.8	201.0
150°	200.0	199.2	198.5	197.8	198.2	198.4	198.7	199.0	199.2	199.2	199.4
152.5°	198.9	198.1	197.5	196.7	196.9	197.0	197.2	197.3	197.5	197.5	197.6
155°	199.0	198.3	197.7	197.1	197.2	197.4	197.4	197.5	197.4	197.4	197.3
157.5°	200.5	199.8	199.4	198.8	198.8	198.8	198.8	198.5	198.5	198.3	198.0
160°	202.1	201.6	201.2	200.6	200.5	200.5	200.5	200.2	200.1	199.8	199.5
162.5°	204.0	203.5	202.9	202.3	202.2	202.2	202.0	201.9	201.8	201.5	201.2
165°	206.4	206.0	205.6	205.0	205.0	204.8	204.7	204.4	204.2	203.8	203.5
167.5°	208.8	208.4	208.0	207.6	207.6	207.5	207.4	207.2	207.0	206.7	206.6
170°	211.1	210.8	210.5	210.1	209.9	209.8	209.6	209.4	209.2	209.0	208.7
172.5°	212.7	212.4	212.1	211.6	211.6	211.5	211.3	211.2	211.0	210.9	210.8
175°	213.0	212.7	212.4	212.2	212.1	212.0	211.9	211.8	211.6	211.5	211.3
177.5°	214.0	213.9	213.6	213.5	213.4	213.4	213.3	213.2	213.2	213.1	213.0
180°	214.0	214.0	214.0	214.0	214.0	214.0	214.0	214.0	214.0	214.0	214.0



TEST NUMBER: P1444450
 CATALOG NUMBER: EHBR1-30-UNV-TA-L830-UPL12

CANDELA DISTRIBUTION (continued):

	357.5°	360°
0°	24616.1	24616.1
2.5°	24711.4	24710.1
5°	24803.3	24801.8
7.5°	24873.2	24872.7
10°	24881.3	24885.6
12.5°	24831.8	24835.2
15°	24686.8	24693.5
17.5°	24409.6	24418.5
20°	23932.1	23941.3
22.5°	23158.8	23162.7
25°	22034.6	22018.7
27.5°	20501.9	20474.5
30°	18553.6	18527.0
32.5°	16230.5	16214.0
35°	13615.6	13605.1
37.5°	10862.5	10841.3
40°	8189.9	8127.7
42.5°	5845.7	5736.6
45°	4039.9	3910.5
47.5°	2820.2	2740.2
50°	2137.7	2111.9
52.5°	1741.8	1735.8
55°	1469.7	1467.1
57.5°	1265.2	1264.3
60°	1104.6	1104.3
62.5°	984.8	985.2
65°	900.4	900.6
67.5°	826.1	825.5
70°	740.3	739.6
72.5°	681.1	680.1
75°	635.5	634.9
77.5°	570.5	569.5
80°	491.9	490.6
82.5°	404.6	403.2
85°	301.8	301.9
87.5°	184.6	184.5
90°	77.8	76.4
92.5°	16.9	16.1
95°	19.1	18.1
97.5°	23.3	22.4
100°	29.3	28.6
102.5°	48.7	46.0
105°	83.6	76.2
107.5°	141.5	127.9
110°	244.2	233.1



TEST NUMBER: P1444450
CATALOG NUMBER: EHBR1-30-UNV-TA-L830-UPL12

CANDELA DISTRIBUTION (continued):

	357.5°	360°
112.5°	318.6	313.5
115°	333.7	332.0
117.5°	324.4	324.5
120°	304.1	305.6
122.5°	279.5	281.1
125°	257.4	259.0
127.5°	239.3	240.3
130°	228.3	229.1
132.5°	220.3	220.7
135°	215.6	216.0
137.5°	212.0	212.3
140°	208.8	209.0
142.5°	204.8	204.9
145°	202.6	202.6
147.5°	200.7	200.8
150°	199.2	199.2
152.5°	197.3	197.3
155°	197.1	196.9
157.5°	197.6	197.5
160°	199.1	199.0
162.5°	200.8	200.6
165°	203.1	202.7
167.5°	206.2	206.1
170°	208.4	208.2
172.5°	210.5	210.3
175°	211.2	211.1
177.5°	213.0	212.8
180°	214.0	214.0

LM-79-2019: Approved Method: Electrical and Photometric Measurements of Solid-
State Lighting Products

Report Prepared for

Cooper Lighting Solutions

Metalux

Report Number: SP1-2506-472-2

Test Date: 07/31/2025

Luminaire Tested: EHBR-60-L830-N

Data in this report applies to families of products including EHBR-60-L830-N

Test Information

Test Method: LM-79-2019
 Report Number: SP1-2506-472-2
 Test Lab: COOPER LIGHTING SOLUTIONS
 Photometer: SP1 - 76IN SPHERE
 Measurement Geometry: 4π
 Issue Date: 08/05/2025
 Manufacturer: COOPER LIGHTING SOLUTIONS
 Product Line: Metalux
 Catalog Number: **EHBR-60-L830-N**
 Description: Elevate Round Highbay at, 60000 lumens, 3000K 80CRI LEDs with N lens

Spectral Parameters

CCT (K): 2983
 CIE u': 0.2516
 CIE v': 0.5201
 Duv: -0.0012
 CIE x: 0.4364
 CIE y: 0.4010
 CIE z: 0.1626
 Peak Wavelength (nm): 630
 Dominant Wavelength (nm): 583
 Purity: 51.34918
 Rf: 81.2
 Rg: 101.5

CRI (Ra):	83.4		
R1:	84.0	R9:	29.4
R2:	87.5	R10:	68.6
R3:	88.9	R11:	82.2
R4:	83.8	R12:	61.6
R5:	81.9	R13:	83.9
R6:	83.1	R14:	92.5
R7:	87.1	R15:	79.8
R8:	70.9		



Test Conditions

Stabilization Time: 38M
 Operation Time: 1H 38M
 Sphere Temperature (°C): 25.0

REPORT NUMBER: SP1-2506-472-2

Measurement and Test Equipment			
Instrument	Identification Number	Calibration Date	Calibration Due Date
Photometer	76INCH SPHERE IN0058	6/16/2025	12/16/2025
Power Meter	XITRON INXT2011004	1/21/2025	1/21/2026
AC Power Source	CHROMA 61603 IN0063	10/22/2024	10/22/2025
DC Power Source	AGILENT E3634A IN0208	10/22/2024	10/22/2025
Sphere Thermometer	ONSET IN0085	10/22/2024	10/22/2025
Room Thermometer	ONSET IN0046	10/22/2024	10/22/2025

REPORT NUMBER: SP1-2506-472-2

CIE 1931 Chromaticity Diagram



CIE 1931 Chromaticity Diagram with 2017 ANSI 7-Step and 4-Step Quadrangles

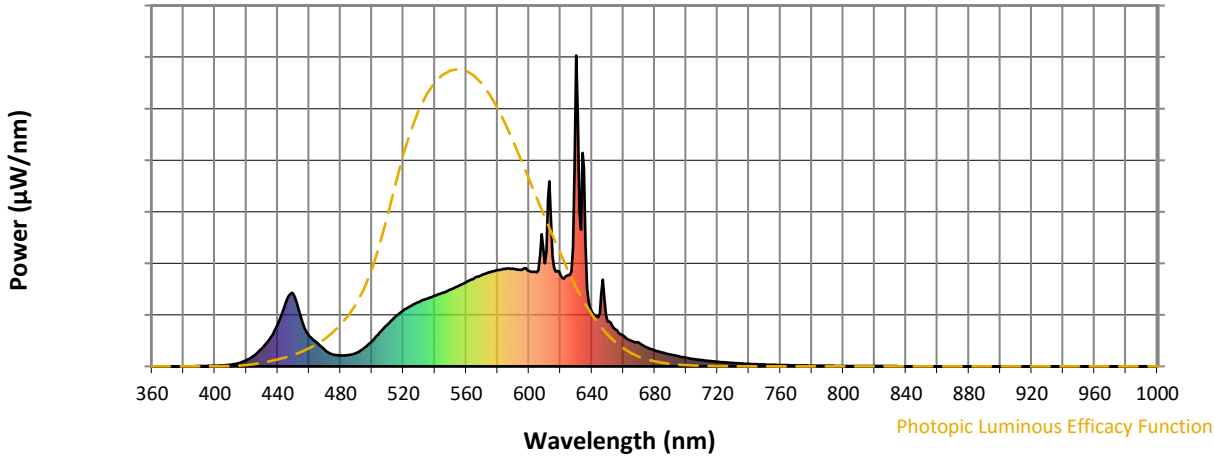


CCT = 2983K
 CIE x = 0.4364
 CIE y = 0.4010
 Duv = -0.0012

Point lies inside the ANSI 3000K 4-step quadrangle

REPORT NUMBER: SP1-2506-472-2

Photopic Flux vs. Wavelength



Photopic Lumens: NR

λ (nm)	Power W [^] /nm	Lumens (φ/nm)	λ (nm)	Power W [^] /nm	Lumens (φ/nm)	λ (nm)	Power W [^] /nm	Lumens (φ/nm)	λ (nm)	Power W [^] /nm	Lumens (φ/nm)	λ (nm)	Power W [^] /nm	Lumens (φ/nm)
360	0	NR	490	43	NR	620	294	NR	750	6	NR	880	0	NR
365	0	NR	495	59	NR	625	294	NR	755	5	NR	885	0	NR
370	0	NR	500	81	NR	630	1000	NR	760	4	NR	890	0	NR
375	0	NR	505	109	NR	635	637	NR	765	4	NR	895	0	NR
380	0	NR	510	135	NR	640	175	NR	770	3	NR	900	0	NR
385	0	NR	515	160	NR	645	171	NR	775	3	NR	905	0	NR
390	1	NR	520	180	NR	650	146	NR	780	2	NR	910	0	NR
395	1	NR	525	195	NR	655	119	NR	785	2	NR	915	0	NR
400	2	NR	530	207	NR	660	99	NR	790	2	NR	920	0	NR
405	3	NR	535	218	NR	665	82	NR	795	2	NR	925	0	NR
410	5	NR	540	227	NR	670	76	NR	800	1	NR	930	0	NR
415	10	NR	545	237	NR	675	61	NR	805	1	NR	935	0	NR
420	20	NR	550	247	NR	680	52	NR	810	1	NR	940	0	NR
425	35	NR	555	259	NR	685	44	NR	815	1	NR	945	0	NR
430	58	NR	560	271	NR	690	38	NR	820	1	NR	950	0	NR
435	90	NR	565	283	NR	695	33	NR	825	1	NR	955	0	NR
440	135	NR	570	293	NR	700	27	NR	830	1	NR	960	0	NR
445	204	NR	575	303	NR	705	24	NR	835	1	NR	965	0	NR
450	233	NR	580	310	NR	710	20	NR	840	0	NR	970	0	NR
455	153	NR	585	313	NR	715	17	NR	845	0	NR	975	0	NR
460	98	NR	590	314	NR	720	15	NR	850	0	NR	980	0	NR
465	76	NR	595	310	NR	725	13	NR	855	0	NR	985	0	NR
470	53	NR	600	307	NR	730	11	NR	860	0	NR	990	0	NR
475	39	NR	605	303	NR	735	9	NR	865	0	NR	995	0	NR
480	35	NR	610	331	NR	740	8	NR	870	0	NR	1000	0	NR
485	36	NR	615	353	NR	745	7	NR	875	0	NR			

REPORT NUMBER: SP1-2506-472-2

Scotopic Flux vs. Wavelength



Scotopic Lumens: NR

S/P: 1.27

λ (nm)	Power W [^] /nm	Lumens (φ/nm)	λ (nm)	Power W [^] /nm	Lumens (φ/nm)	λ (nm)	Power W [^] /nm	Lumens (φ/nm)	λ (nm)	Power W [^] /nm	Lumens (φ/nm)	λ (nm)	Power W [^] /nm	Lumens (φ/nm)
360	0	NR	490	43	NR	620	294	NR	750	6	NR	880	0	NR
365	0	NR	495	59	NR	625	294	NR	755	5	NR	885	0	NR
370	0	NR	500	81	NR	630	1000	NR	760	4	NR	890	0	NR
375	0	NR	505	109	NR	635	637	NR	765	4	NR	895	0	NR
380	0	NR	510	135	NR	640	175	NR	770	3	NR	900	0	NR
385	0	NR	515	160	NR	645	171	NR	775	3	NR	905	0	NR
390	1	NR	520	180	NR	650	146	NR	780	2	NR	910	0	NR
395	1	NR	525	195	NR	655	119	NR	785	2	NR	915	0	NR
400	2	NR	530	207	NR	660	99	NR	790	2	NR	920	0	NR
405	3	NR	535	218	NR	665	82	NR	795	2	NR	925	0	NR
410	5	NR	540	227	NR	670	76	NR	800	1	NR	930	0	NR
415	10	NR	545	237	NR	675	61	NR	805	1	NR	935	0	NR
420	20	NR	550	247	NR	680	52	NR	810	1	NR	940	0	NR
425	35	NR	555	259	NR	685	44	NR	815	1	NR	945	0	NR
430	58	NR	560	271	NR	690	38	NR	820	1	NR	950	0	NR
435	90	NR	565	283	NR	695	33	NR	825	1	NR	955	0	NR
440	135	NR	570	293	NR	700	27	NR	830	1	NR	960	0	NR
445	204	NR	575	303	NR	705	24	NR	835	1	NR	965	0	NR
450	233	NR	580	310	NR	710	20	NR	840	0	NR	970	0	NR
455	153	NR	585	313	NR	715	17	NR	845	0	NR	975	0	NR
460	98	NR	590	314	NR	720	15	NR	850	0	NR	980	0	NR
465	76	NR	595	310	NR	725	13	NR	855	0	NR	985	0	NR
470	53	NR	600	307	NR	730	11	NR	860	0	NR	990	0	NR
475	39	NR	605	303	NR	735	9	NR	865	0	NR	995	0	NR
480	35	NR	610	331	NR	740	8	NR	870	0	NR	1000	0	NR
485	36	NR	615	353	NR	745	7	NR	875	0	NR			

REPORT NUMBER: SP1-2506-472-2

Melanopic Flux vs. Wavelength



Melanopic Lumens: NR

M/P: 2.34

λ (nm)	Power W [^] /nm	Lumens (φ/nm)	λ (nm)	Power W [^] /nm	Lumens (φ/nm)	λ (nm)	Power W [^] /nm	Lumens (φ/nm)	λ (nm)	Power W [^] /nm	Lumens (φ/nm)	λ (nm)	Power W [^] /nm	Lumens (φ/nm)
360	0	NR	490	43	NR	620	294	NR	750	6	NR	880	0	NR
365	0	NR	495	59	NR	625	294	NR	755	5	NR	885	0	NR
370	0	NR	500	81	NR	630	1000	NR	760	4	NR	890	0	NR
375	0	NR	505	109	NR	635	637	NR	765	4	NR	895	0	NR
380	0	NR	510	135	NR	640	175	NR	770	3	NR	900	0	NR
385	0	NR	515	160	NR	645	171	NR	775	3	NR	905	0	NR
390	1	NR	520	180	NR	650	146	NR	780	2	NR	910	0	NR
395	1	NR	525	195	NR	655	119	NR	785	2	NR	915	0	NR
400	2	NR	530	207	NR	660	99	NR	790	2	NR	920	0	NR
405	3	NR	535	218	NR	665	82	NR	795	2	NR	925	0	NR
410	5	NR	540	227	NR	670	76	NR	800	1	NR	930	0	NR
415	10	NR	545	237	NR	675	61	NR	805	1	NR	935	0	NR
420	20	NR	550	247	NR	680	52	NR	810	1	NR	940	0	NR
425	35	NR	555	259	NR	685	44	NR	815	1	NR	945	0	NR
430	58	NR	560	271	NR	690	38	NR	820	1	NR	950	0	NR
435	90	NR	565	283	NR	695	33	NR	825	1	NR	955	0	NR
440	135	NR	570	293	NR	700	27	NR	830	1	NR	960	0	NR
445	204	NR	575	303	NR	705	24	NR	835	1	NR	965	0	NR
450	233	NR	580	310	NR	710	20	NR	840	0	NR	970	0	NR
455	153	NR	585	313	NR	715	17	NR	845	0	NR	975	0	NR
460	98	NR	590	314	NR	720	15	NR	850	0	NR	980	0	NR
465	76	NR	595	310	NR	725	13	NR	855	0	NR	985	0	NR
470	53	NR	600	307	NR	730	11	NR	860	0	NR	990	0	NR
475	39	NR	605	303	NR	735	9	NR	865	0	NR	995	0	NR
480	35	NR	610	331	NR	740	8	NR	870	0	NR	1000	0	NR
485	36	NR	615	353	NR	745	7	NR	875	0	NR			

Summary

$R_f = 81.2$
 $R_g = 101.5$
 CIE $R_a = 83.4$
 $R_9 = 29.4$



Color Vector Graphics

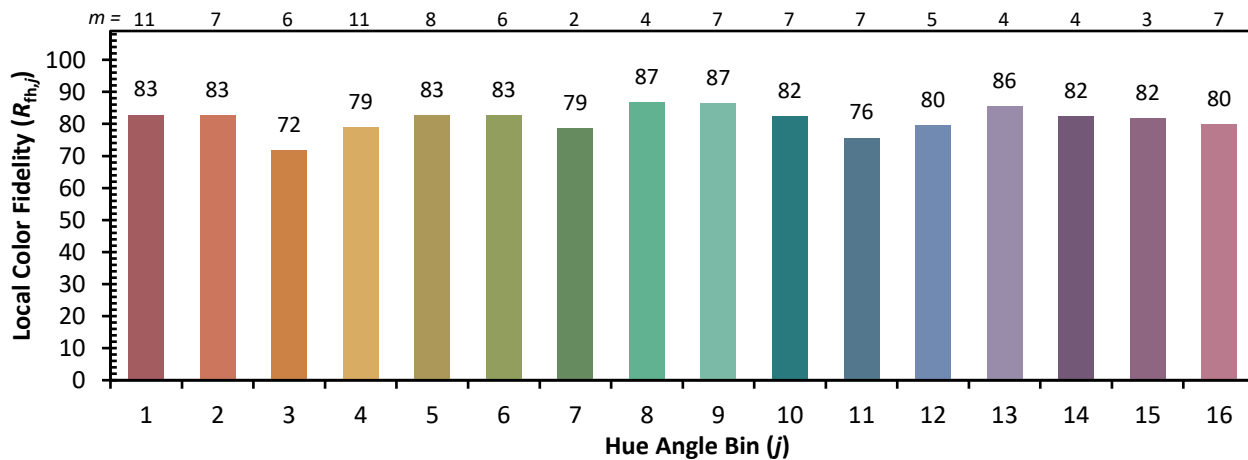
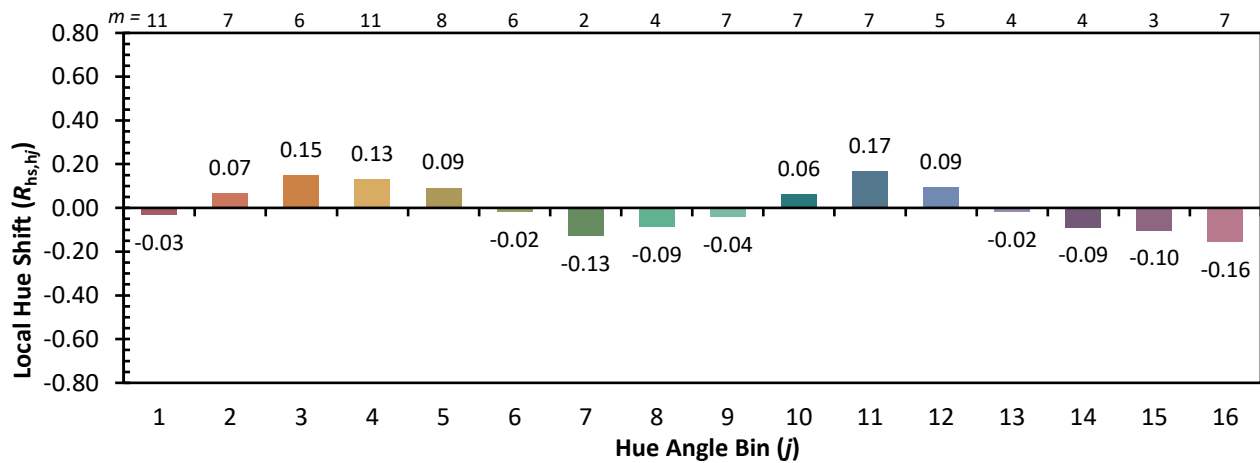
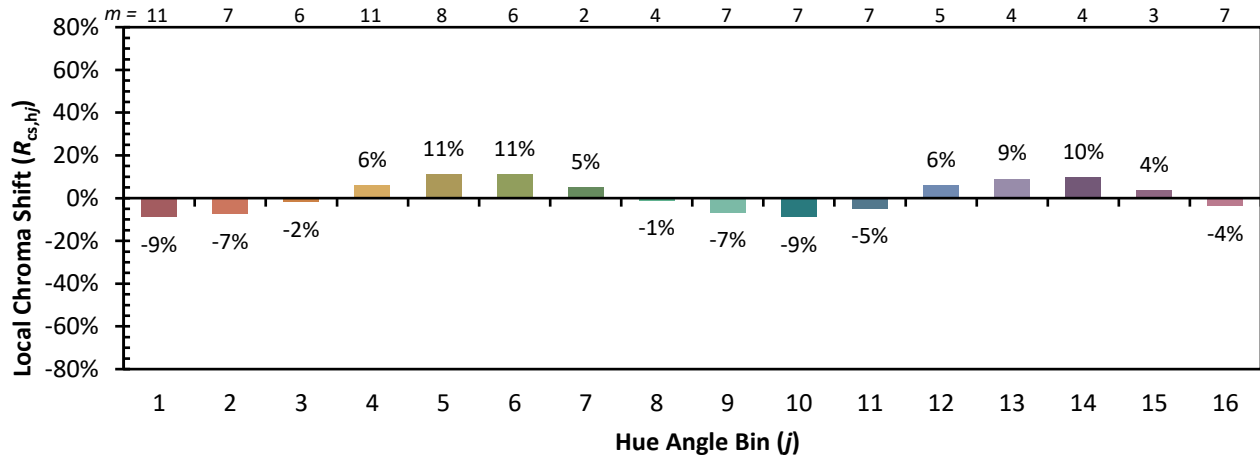


Individual Sample Fidelity Index ($R_{f,i}$)

CES01 = 86	CES26 = 71	CES51 = 89	CES76 = 65
CES02 = 63	CES27 = 89	CES52 = 89	CES77 = 82
CES03 = 31	CES28 = 86	CES53 = 80	CES78 = 67
CES04 = 70	CES29 = 68	CES54 = 92	CES79 = 89
CES05 = 50	CES30 = 77	CES55 = 90	CES80 = 85
CES06 = 51	CES31 = 70	CES56 = 81	CES81 = 75
CES07 = 43	CES32 = 64	CES57 = 79	CES82 = 93
CES08 = 41	CES33 = 74	CES58 = 81	CES83 = 89
CES09 = 29	CES34 = 76	CES59 = 92	CES84 = 91
CES10 = 76	CES35 = 87	CES60 = 96	CES85 = 81
CES11 = 59	CES36 = 99	CES61 = 91	CES86 = 74
CES12 = 65	CES37 = 81	CES62 = 93	CES87 = 83
CES13 = 44	CES38 = 83	CES63 = 79	CES88 = 86
CES14 = 74	CES39 = 94	CES64 = 81	CES89 = 74
CES15 = 72	CES40 = 89	CES65 = 78	CES90 = 85
CES16 = 48	CES41 = 88	CES66 = 76	CES91 = 87
CES17 = 50	CES42 = 80	CES67 = 74	CES92 = 73
CES18 = 57	CES43 = 75	CES68 = 79	CES93 = 84
CES19 = 72	CES44 = 99	CES69 = 83	CES94 = 64
CES20 = 67	CES45 = 83	CES70 = 72	CES95 = 80
CES21 = 87	CES46 = 82	CES71 = 70	CES96 = 86
CES22 = 79	CES47 = 79	CES72 = 90	CES97 = 85
CES23 = 92	CES48 = 78	CES73 = 65	CES98 = 83
CES24 = 91	CES49 = 79	CES74 = 94	CES99 = 82
CES25 = 72	CES50 = 88	CES75 = 70	



Color Rendition by Hue-Angle Bin



Measure Comparisons



(END OF REPORT)