

Cooper Lighting Solutions Photometric Lab  
1121 Highway 74 South  
Peachtree City, GA 30269



Scaled data based on original data using  
LM-79-2019 Approved Method: Electrical and Photometric Measurements of Solid-  
State Lighting Products

Test Report Prepared for  
Cooper Lighting Solutions

Brand: METALUX

Report Number: P1444458

Luminaire Tested: EHBR1-36-UNV-TA-L830-UPL12

Issue Date: 5/1/2026

**Test Information**

Test Method: LM-79-2019  
Report Number: P1444458  
REPORT IS A COMBINATION OF REPORTS P1444304 AND P1431635  
Test Lab: INNOVATION CENTER  
Issue Date: 5/1/2026  
Manufacturer: COOPER LIGHTING SOLUTIONS  
Product Line: METALUX  
Catalog Number: EHBR1-36-UNV-TA-L830-UPL12  
Description: Elevate Round Highbay at, 36000 lumens, 3000K 80CRI LEDs with TA lens  
Light Source: -  
Ballast/Driver: -

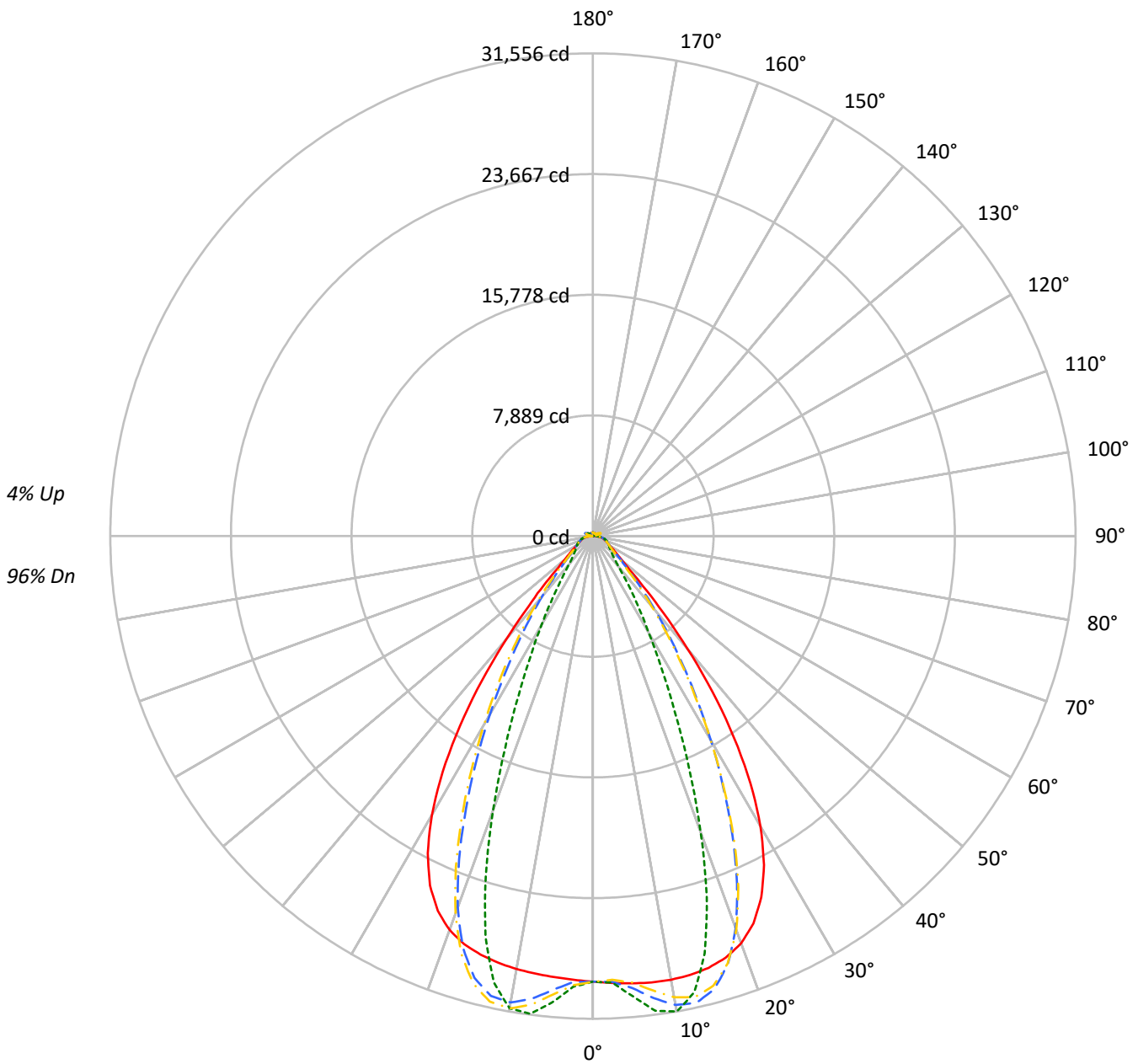
**Summary**

Lumens per Lamp: N/A  
Luminaire Lumens: 34856.8 lumens  
Efficiency: N/A  
Efficacy: 175.3 lumens/watt  
Spacing Criteria (0/90/45): 1.13 / 0.77 / 0.88  
Luminous Opening: Vertical Cylinder (Dia: 1.71' x H: 0.1')  
CIE Type: Direct

Input Watts (W): 198.8  
Input Voltage (V): NR  
Input Current (Ain): NR  
Voltage Rise (V): NR  
Power Factor: NR  
Total Harmonic Distortion (THDi): NR  
Frequency (hertz): 60  
Stabilization Time: NR  
Operation Time: NR  
Ambient Temperature (°C): NR  
Test Distance: 24 FT

TEST NUMBER: P1444458  
CATALOG NUMBER: EHBR1-36-UNV-TA-L830-UPL12

### Luminous Intensity Polar Plot



— 0°-180°    - - 45°-225°    - · - · 90°-270°    - · - · 135°-315°



TEST NUMBER: P1444458  
 CATALOG NUMBER: EHBR1-36-UNV-TA-L830-UPL12

**COEFFICIENT OF UTILIZATION - ZONAL CAVITY METHOD:**

RF	20				20				20				20				20				
RC	80				70				50				30				10			0	
RW	70	50	30	10	70	50	30	10	50	30	10	50	30	10	50	30	10	50	30	10	0
RCR																					
0	118	118	118	118	115	115	115	115	109	109	109	103	103	103	98	98	98	98	98	98	96
1	111	108	105	102	108	105	102	100	100	98	96	96	94	92	92	90	89	89	89	89	87
2	104	98	93	89	102	96	92	88	92	89	86	89	86	83	85	83	81	81	81	81	79
3	98	90	84	80	96	89	83	79	85	81	77	82	79	75	80	76	74	74	74	74	72
4	92	83	77	72	90	82	76	71	79	74	70	77	72	69	74	71	68	68	68	68	66
5	87	77	71	66	85	76	70	65	74	68	64	72	67	63	70	66	62	62	62	62	61
6	82	72	65	60	80	71	64	60	69	63	59	67	62	58	65	61	58	58	58	58	56
7	77	67	60	56	76	66	60	55	64	59	55	63	58	54	61	57	54	54	54	54	52
8	73	63	56	52	72	62	56	51	61	55	51	59	54	50	58	53	50	50	50	50	48
9	70	59	52	48	68	58	52	48	57	51	47	56	51	47	55	50	47	47	47	47	45
10	66	55	49	45	65	55	49	45	54	48	44	53	48	44	52	47	44	44	44	44	42

**AVERAGE LUMINANCE (cd/sqm):**

	0°	90°	180°	270°
0°	136793	136793	136793	136793
5°	137455	141463	135531	143316
10°	138603	148526	135279	147543
15°	139282	134637	135042	129216
20°	137843	100300	133331	92802
25°	130474	63434	126161	57555
30°	113979	38120	109564	34837
35°	87719	23920	82673	21189
40°	55490	15005	50768	14099
45°	28600	11689	28127	11497
50°	16768	10398	16254	10235
55°	12846	9837	12371	9748
60°	10870	10049	10407	9918
65°	10209	10494	9819	10136
70°	9974	10989	9478	10575
75°	10664	11653	10089	11138
80°	11037	12903	10006	11778
85°	10396	12453	8400	10661

**MAXIMUM LUMINANCE 45°-90°:**

Horizontal Angle: 25°  
 Vertical Angle: 45°  
 Luminance: 43769 cd/sqm



TEST NUMBER: P1444458  
 CATALOG NUMBER: EHBR1-36-UNV-TA-L830-UPL12

**ZONAL LUMENS:**

Zone	Lumens	% Fixture
0°-10°	2870.7	8.2
10°-20°	8075.7	23.2
20°-30°	9197.6	26.4
30°-40°	6610.8	19.0
40°-50°	3048.9	8.7
50°-60°	1459.0	4.2
60°-70°	1064.6	3.1
70°-80°	808.8	2.3
80°-90°	369.9	1.1
90°-100°	41.7	0.1
100°-110°	206.0	0.6
110°-120°	379.9	1.1
120°-130°	241.3	0.7
130°-140°	166.6	0.5
140°-150°	132.7	0.4
150°-160°	98.4	0.3
160°-170°	62.3	0.2
170°-180°	21.9	0.1
0°-30°	20144.0	57.8
0°-40°	26754.8	76.8
0°-60°	31262.7	89.7
0°-90°	33505.9	96.1
90°-120°	627.7	1.8
90°-150°	1168.3	3.4
90°-180°	1351.0	3.9
0°-180°	34856.8	100.0

**CANDELA DISTRIBUTION:**

	0°	90°	180°	270°	360°	Flux
0°	29129	29129	29129	29129	29129	
5°	29349	30205	28938	30600	29349	2805
15°	29221	28246	28331	27109	29221	8233
25°	26056	12668	25194	11494	26056	11812
35°	16100	4390	15173	3889	16100	9881
45°	4627	1891	4551	1860	4627	3936
55°	1736	1329	1672	1317	1736	1602
65°	1066	1095	1025	1058	1066	1064
75°	751	821	711	785	751	781
85°	357	428	289	366	357	336
90°	89	115	20	26	89	57
95°	19	20	19	21	19	18
105°	78	97	54	98	78	102
115°	335	398	351	399	335	310
125°	265	265	298	266	265	241
135°	225	188	241	191	225	175
145°	215	198	227	202	215	135
155°	211	206	223	210	211	98
165°	219	216	226	218	219	62
175°	230	231	233	232	230	22
180°	233	233	233	233	233	



TEST NUMBER: P1444458  
 CATALOG NUMBER: EHBR1-36-UNV-TA-L830-UPL12

**CANDELA DISTRIBUTION (FULL):**

	0°	2.5°	5°	7.5°	10°	12.5°	15°	17.5°	20°	22.5°	25°
0°	29129.1	29129.1	29129.1	29129.1	29129.1	29129.1	29129.1	29129.1	29129.1	29129.1	29129.1
2.5°	29240.4	29238.0	29237.6	29235.5	29235.0	29235.0	29234.0	29231.6	29230.1	29226.8	29223.0
5°	29348.9	29347.6	29348.3	29348.6	29346.5	29341.9	29334.8	29326.1	29315.1	29304.7	29295.5
7.5°	29432.8	29434.8	29437.4	29436.8	29430.5	29419.8	29405.3	29397.0	29401.9	29417.7	29454.1
10°	29448.1	29460.6	29465.5	29464.0	29451.3	29442.1	29445.6	29476.4	29537.9	29619.9	29731.9
12.5°	29388.4	29403.8	29403.2	29398.1	29385.8	29398.3	29443.0	29534.9	29666.6	29828.2	30017.8
15°	29220.7	29240.6	29235.0	29228.4	29220.2	29261.3	29350.6	29510.2	29713.5	29941.4	30174.8
17.5°	28895.2	28919.2	28907.6	28900.1	28893.2	28970.3	29123.7	29357.3	29613.5	29871.3	30092.3
20°	28330.7	28346.7	28319.0	28305.9	28316.9	28468.0	28693.9	28992.3	29262.3	29506.0	29657.2
22.5°	27409.2	27429.2	27377.1	27371.0	27435.4	27667.4	27953.3	28286.8	28540.5	28733.7	28791.9
25°	26055.5	26075.1	26013.2	26050.2	26159.7	26475.6	26816.1	27172.9	27389.4	27532.5	27493.0
27.5°	24228.2	24246.1	24187.4	24263.0	24436.0	24851.3	25252.0	25638.9	25831.9	25932.2	25805.1
30°	21923.7	21961.0	21891.5	21997.0	22261.2	22800.1	23259.3	23693.3	23885.7	23961.9	23764.2
32.5°	19186.5	19239.5	19163.0	19320.0	19688.6	20336.0	20857.6	21342.5	21555.4	21642.5	21419.1
35°	16099.5	16175.5	16087.7	16323.3	16777.9	17498.8	18076.4	18617.8	18869.8	18993.4	18768.3
37.5°	12828.8	12901.3	12853.8	13168.1	13667.2	14414.5	15004.1	15588.1	15872.7	16058.1	15880.6
40°	9617.8	9684.1	9720.0	10079.4	10548.9	11253.3	11819.6	12397.4	12715.8	12948.4	12839.0
42.5°	6788.2	6855.1	6977.3	7324.0	7715.6	8298.7	8783.7	9302.5	9606.7	9854.8	9812.7
45°	4627.4	4705.0	4858.1	5142.1	5425.2	5843.6	6199.7	6603.2	6851.7	7079.0	7081.7
47.5°	3242.7	3297.2	3434.0	3627.9	3812.5	4336.1	4357.7	4556.0	4723.0	4892.9	4914.9
50°	2499.0	2531.9	2604.4	2712.5	2817.2	2953.1	3077.5	3221.2	3324.0	3417.1	3439.4
52.5°	2054.1	2074.9	2111.8	2170.4	2231.1	2305.0	2371.6	2450.5	2506.4	2556.3	2566.8
55°	1736.0	1753.3	1808.2	1819.4	1888.8	1902.2	1931.8	1979.8	2012.3	2042.2	2049.6
57.5°	1496.0	1508.6	1520.3	1545.2	1566.6	1597.7	1622.7	1657.1	1677.6	1699.2	1701.1
60°	1306.7	1315.8	1324.0	1341.4	1355.9	1377.5	1394.8	1418.2	1432.9	1449.1	1451.0
62.5°	1165.8	1172.3	1177.8	1189.2	1199.6	1216.2	1229.9	1249.5	1263.2	1275.7	1278.5
65°	1065.6	1070.4	1073.9	1082.6	1091.6	1105.8	1118.2	1134.2	1144.2	1153.8	1155.9
67.5°	976.9	981.4	985.1	993.0	999.3	1009.8	1018.1	1030.1	1037.7	1045.4	1045.6
70°	875.2	879.4	882.2	889.6	894.7	903.7	910.4	921.2	928.9	937.5	939.6
72.5°	804.8	807.3	811.1	817.7	824.8	834.5	843.4	854.7	864.1	872.9	876.7
75°	751.2	754.1	756.7	762.4	767.3	775.4	782.2	792.4	800.6	810.1	814.7
77.5°	674.0	677.3	679.5	685.2	689.4	697.3	702.3	711.4	718.1	726.8	731.0
80°	580.6	583.8	585.3	590.6	594.0	601.2	606.1	614.9	620.6	629.2	634.2
82.5°	477.1	480.1	480.9	486.1	487.8	493.8	497.4	506.4	513.3	524.6	532.3
85°	357.3	358.3	360.1	358.8	366.0	366.4	374.6	376.1	387.0	389.8	402.0
87.5°	218.4	221.6	223.2	228.2	230.3	235.3	236.9	242.1	245.0	251.1	253.9
90°	89.0	93.8	95.2	100.9	102.2	107.2	108.1	113.8	115.2	121.0	123.0
92.5°	16.9	17.8	18.5	19.8	20.7	22.2	23.5	24.6	25.6	27.1	28.9
95°	18.8	19.9	20.9	21.9	22.9	24.1	25.1	26.1	27.2	28.2	31.2
97.5°	23.2	24.2	25.0	25.9	26.9	27.7	28.7	29.6	30.4	31.3	34.9
100°	29.6	30.3	31.1	31.9	32.7	33.4	34.2	35.0	35.8	36.5	43.2
102.5°	47.2	49.9	52.6	55.4	58.1	60.8	63.6	66.2	68.9	71.7	85.8
105°	77.6	84.9	92.4	99.7	107.1	114.6	122.0	129.1	136.5	143.8	167.1
107.5°	129.5	143.1	156.9	170.6	184.3	197.9	211.6	225.2	238.8	252.3	276.0
110°	235.1	246.0	257.0	268.0	279.0	289.9	300.9	311.5	322.6	333.5	350.7



TEST NUMBER: P1444458  
 CATALOG NUMBER: EHBR1-36-UNV-TA-L830-UPL12

**CANDELA DISTRIBUTION (continued):**

	0°	2.5°	5°	7.5°	10°	12.5°	15°	17.5°	20°	22.5°	25°
112.5°	316.0	320.8	325.7	330.7	335.6	340.2	345.2	350.0	354.9	359.6	371.9
115°	335.0	336.6	338.3	339.7	341.4	342.9	344.5	346.0	347.6	349.0	357.2
117.5°	328.0	327.6	327.2	326.6	326.1	325.5	325.0	324.3	323.7	323.1	327.7
120°	309.9	308.0	306.4	304.4	302.7	300.8	299.0	297.0	295.2	293.1	294.9
122.5°	286.1	284.0	282.0	279.7	277.6	275.4	273.2	270.7	268.6	266.2	266.6
125°	264.7	262.6	260.6	258.3	255.9	253.7	251.4	249.0	246.6	244.0	244.0
127.5°	246.8	245.2	243.7	241.8	240.1	238.2	236.2	234.3	232.5	230.3	230.1
130°	236.6	235.2	233.6	231.9	230.2	228.5	226.6	224.6	222.8	220.9	220.5
132.5°	228.9	227.9	226.7	225.4	224.0	222.2	220.8	219.1	217.5	215.9	215.5
135°	225.1	224.0	222.9	221.6	220.3	218.6	217.1	215.4	213.9	212.2	212.0
137.5°	222.3	221.3	220.2	218.8	217.6	215.9	214.6	212.9	211.4	209.7	209.4
140°	219.8	218.8	217.7	216.5	215.3	213.9	212.4	210.9	209.4	207.8	207.6
142.5°	216.4	215.4	214.6	213.5	212.4	211.0	209.8	208.3	207.1	205.6	205.6
145°	214.8	214.0	213.3	212.3	211.2	209.9	208.9	207.4	206.4	205.1	205.0
147.5°	213.6	212.8	212.4	211.3	210.7	209.4	208.4	207.1	206.2	205.0	205.1
150°	212.5	211.9	211.3	210.5	209.6	208.6	207.7	206.6	205.7	204.5	204.6
152.5°	210.9	210.2	209.7	208.9	208.2	207.0	206.4	205.2	204.4	203.4	203.4
155°	211.0	210.5	209.7	209.1	208.2	207.4	206.5	205.6	204.8	203.8	203.8
157.5°	212.3	211.5	210.9	210.2	209.6	208.8	208.0	207.3	206.5	205.8	205.7
160°	214.3	213.7	213.1	212.4	211.7	210.9	210.2	209.4	208.9	208.0	207.9
162.5°	216.7	215.9	215.3	214.7	214.0	213.2	212.5	212.0	211.3	210.5	210.5
165°	219.4	218.9	218.3	217.9	217.3	216.8	216.2	215.5	215.1	214.4	214.3
167.5°	223.3	222.7	222.4	221.7	221.2	220.7	220.0	219.5	219.1	218.3	218.3
170°	226.0	225.5	225.2	224.8	224.4	224.0	223.7	223.2	222.7	222.4	222.3
172.5°	228.4	228.0	227.7	227.5	227.1	226.9	226.6	226.2	226.0	225.6	225.7
175°	229.6	229.2	229.1	228.9	228.7	228.5	228.4	228.2	228.2	227.8	227.8
177.5°	231.5	231.3	231.3	231.2	231.2	231.1	231.0	230.8	230.7	230.7	230.6
180°	232.8	232.8	232.8	232.8	232.8	232.8	232.8	232.8	232.8	232.8	232.8



TEST NUMBER: P1444458  
 CATALOG NUMBER: EHBR1-36-UNV-TA-L830-UPL12

**CANDELA DISTRIBUTION (continued):**

	27.5°	30°	32.5°	35°	37.5°	40°	42.5°	45°	47.5°	50°	52.5°
0°	29129.1	29129.1	29129.1	29129.1	29129.1	29129.1	29129.1	29129.1	29129.1	29129.1	29129.1
2.5°	29220.2	29216.6	29211.7	29205.6	29200.3	29194.2	29179.6	29175.3	29180.2	29183.4	29190.1
5°	29289.6	29291.6	29292.4	29305.7	29317.1	29345.8	29569.8	29658.9	29727.8	29771.5	29837.9
7.5°	29498.9	29566.3	29632.9	29722.5	29799.8	29904.2	30296.3	30463.2	30581.9	30667.1	30772.1
10°	29853.7	30000.7	30138.6	30300.1	30438.9	30598.0	30962.9	31125.5	31228.2	31302.8	31372.6
12.5°	30211.0	30414.9	30599.2	30778.9	30929.3	31067.1	31195.5	31252.4	31257.2	31259.6	31222.6
15°	30397.1	30592.1	30754.5	30873.4	30961.6	31000.8	30779.7	30663.8	30517.3	30396.6	30198.1
17.5°	30279.7	30396.6	30466.7	30459.8	30423.4	30301.1	29675.2	29331.0	28989.2	28681.2	28277.3
20°	29757.5	29748.6	29687.5	29514.7	29306.4	28982.6	27909.5	27290.4	26691.8	26166.0	25528.2
22.5°	28786.0	28633.1	28420.0	28047.4	27633.4	27067.5	25529.7	24619.1	23785.7	23049.5	22224.8
25°	27378.3	27063.9	26670.8	26079.2	25435.8	24610.6	22715.2	21582.4	20581.9	19714.2	18762.7
27.5°	25576.9	25103.1	24527.2	23708.3	22836.7	21779.4	19678.1	18428.0	17353.9	16423.5	15410.8
30°	23444.1	22828.1	22084.2	21067.9	20016.5	18817.5	16686.2	15420.0	14332.9	13375.7	12362.2
32.5°	21033.9	20312.3	19440.6	18300.0	17163.0	15930.1	13871.9	12646.2	11607.7	10687.0	9769.7
35°	18375.6	17601.8	16679.6	15516.2	14386.0	13187.4	11298.8	10193.6	9276.5	8462.7	7721.9
37.5°	15524.1	14764.2	13887.7	12791.2	11743.2	10657.0	9027.4	8101.4	7331.8	6656.3	6084.4
40°	12559.3	11894.3	11136.0	10188.0	9293.6	8389.1	7051.4	6316.3	5709.0	5193.8	4765.1
42.5°	9630.8	9115.5	8533.9	7784.8	7100.3	6411.6	5382.0	4837.4	4387.5	4016.7	3713.7
45°	6987.5	6642.8	6252.7	5731.9	5258.3	4777.9	4045.1	3662.4	3369.4	3130.3	2928.1
47.5°	4884.6	4684.7	4672.4	4191.2	3843.9	3550.1	3078.0	2836.4	2656.8	2511.9	2383.9
50°	3430.3	3333.6	3213.4	3041.7	2880.5	2714.4	2426.8	2280.7	2175.5	2087.7	2006.8
52.5°	2564.4	2514.2	2450.1	2359.0	2271.7	2178.3	1996.3	1903.3	1870.2	1788.5	1724.4
55°	2048.2	2019.5	1983.0	1929.5	1876.4	1855.2	1699.1	1630.1	1586.3	1554.0	1519.6
57.5°	1701.3	1679.9	1658.3	1622.0	1591.3	1554.0	1471.2	1435.8	1409.8	1390.8	1366.9
60°	1451.2	1438.4	1426.3	1405.1	1388.4	1368.3	1315.8	1295.7	1282.2	1270.7	1255.6
62.5°	1280.9	1274.3	1268.0	1256.7	1248.3	1237.4	1201.4	1191.9	1185.0	1179.3	1170.0
65°	1158.0	1153.2	1149.7	1142.1	1138.0	1131.6	1100.7	1094.3	1090.0	1088.0	1082.6
67.5°	1046.2	1041.2	1039.0	1033.6	1031.9	1027.9	1002.6	999.0	997.6	998.3	996.3
70°	941.7	939.6	940.7	939.9	942.2	943.0	927.6	927.5	929.2	932.4	932.8
72.5°	879.1	879.1	880.2	880.8	883.0	884.2	871.4	870.8	871.5	873.9	874.0
75°	819.5	820.5	823.7	824.8	827.5	828.1	811.2	809.2	809.3	811.7	810.8
77.5°	737.0	740.6	746.7	749.9	755.2	756.1	737.2	734.9	735.0	737.4	735.4
80°	643.4	650.3	660.0	666.8	674.8	678.1	658.6	654.0	649.7	649.0	645.1
82.5°	543.9	552.3	564.1	570.3	578.8	580.7	548.2	542.1	538.4	538.7	535.1
85°	415.3	421.6	432.3	435.7	441.0	440.5	403.4	387.5	391.7	385.2	390.3
87.5°	260.5	264.2	270.9	271.7	274.2	273.7	236.3	228.9	226.8	227.0	224.2
90°	129.0	131.5	137.2	137.3	141.2	140.7	110.3	106.9	104.3	105.7	102.0
92.5°	31.3	33.1	35.2	37.1	39.3	41.3	39.9	40.8	39.2	37.0	35.5
95°	34.3	37.4	40.5	43.5	46.6	49.6	52.7	55.8	52.9	50.0	47.1
97.5°	38.6	42.2	45.8	49.4	53.0	56.7	60.3	64.0	60.9	57.5	54.4
100°	50.0	56.8	63.5	70.3	77.0	83.7	90.6	97.3	91.4	85.1	79.2
102.5°	100.1	114.5	128.8	143.1	157.5	171.8	186.3	200.7	187.0	173.1	159.3
105°	190.3	213.7	236.9	259.8	283.1	306.4	329.9	353.1	331.2	309.3	287.5
107.5°	299.5	323.1	346.4	369.8	393.4	416.9	440.9	464.5	443.1	421.4	400.2
110°	367.8	384.8	401.9	419.0	436.0	453.1	470.9	488.0	475.0	462.0	449.1



TEST NUMBER: P1444458  
 CATALOG NUMBER: EHBR1-36-UNV-TA-L830-UPL12

**CANDELA DISTRIBUTION (continued):**

	27.5°	30°	32.5°	35°	37.5°	40°	42.5°	45°	47.5°	50°	52.5°
112.5°	383.9	396.1	408.2	420.2	432.2	444.4	457.5	469.9	463.1	456.3	449.7
115°	365.2	373.4	381.3	389.4	397.4	405.3	414.6	422.9	420.5	418.1	415.6
117.5°	331.9	336.2	340.5	344.9	349.0	353.3	359.2	363.7	363.6	363.6	363.7
120°	296.4	298.1	299.6	301.2	302.7	304.1	307.5	309.4	310.7	311.9	313.2
122.5°	267.0	267.2	267.5	267.8	268.1	268.3	270.7	271.4	272.0	272.7	273.4
125°	243.9	243.7	243.6	243.5	243.3	243.1	245.4	245.7	245.3	244.7	244.3
127.5°	229.6	229.1	228.6	228.2	227.5	227.1	229.1	229.2	227.9	226.6	225.3
130°	220.0	219.8	219.3	218.9	218.4	218.2	220.5	220.7	218.9	216.8	215.0
132.5°	215.1	214.8	214.3	214.1	213.7	213.3	215.9	216.2	214.2	212.1	210.0
135°	211.6	211.2	210.9	210.7	210.3	210.1	213.0	213.5	211.6	209.4	207.4
137.5°	209.0	208.7	208.4	208.2	207.9	207.7	210.9	211.5	209.9	207.9	206.4
140°	207.4	207.1	206.9	206.8	206.6	206.6	210.2	210.9	209.5	208.1	206.6
142.5°	205.3	205.4	205.4	205.6	205.6	205.8	209.9	210.9	209.7	208.5	207.4
145°	205.0	205.2	205.3	205.6	205.8	206.1	210.7	212.0	211.2	210.2	209.4
147.5°	204.9	205.0	205.1	205.3	205.5	206.1	211.0	212.3	211.8	211.0	210.5
150°	204.6	204.8	204.9	205.1	205.6	206.0	211.7	213.3	212.7	212.3	211.7
152.5°	203.4	203.5	203.6	203.8	204.0	204.6	211.6	213.4	213.0	212.4	212.0
155°	203.7	203.7	203.7	203.9	204.0	204.4	212.2	214.0	213.8	213.4	213.0
157.5°	205.6	205.4	205.2	205.3	205.4	205.4	213.8	215.9	215.5	215.2	214.9
160°	207.8	207.7	207.4	207.4	207.2	207.3	215.8	218.0	217.7	217.3	216.9
162.5°	210.3	210.5	210.3	210.3	210.2	210.4	219.0	221.3	220.8	220.3	220.0
165°	214.1	213.9	213.8	213.8	213.7	213.6	221.7	223.7	223.5	223.1	222.7
167.5°	218.1	218.1	218.0	217.9	217.8	218.0	225.5	227.4	227.2	226.8	226.5
170°	222.2	222.2	222.1	222.1	222.2	222.4	228.7	230.2	230.1	229.6	229.3
172.5°	225.7	225.9	225.9	226.0	226.1	226.3	231.6	233.1	232.9	232.6	232.2
175°	227.9	228.0	228.1	228.3	228.3	228.5	232.7	233.7	233.6	233.4	233.1
177.5°	230.8	230.8	231.0	231.1	231.3	231.4	234.0	234.6	234.5	234.5	234.4
180°	232.8	232.8	232.8	232.8	232.8	232.8	232.8	232.8	232.8	232.8	232.8



TEST NUMBER: P1444458  
 CATALOG NUMBER: EHBR1-36-UNV-TA-L830-UPL12

**CANDELA DISTRIBUTION (continued):**

	55°	57.5°	60°	62.5°	65°	67.5°	70°	72.5°	75°	77.5°	80°
0°	29129.1	29129.1	29129.1	29129.1	29129.1	29129.1	29129.1	29129.1	29129.1	29129.1	29129.1
2.5°	29191.6	29201.8	29203.4	29215.3	29214.4	29228.6	29226.3	29238.0	29231.2	29240.8	29232.7
5°	29877.2	29939.4	29971.9	30032.6	30051.8	30106.1	30121.4	30170.9	30173.0	30212.3	30203.3
7.5°	30846.6	30938.2	30992.6	31067.6	31105.7	31168.1	31195.7	31241.9	31256.8	31293.5	31296.3
10°	31425.4	31469.9	31501.0	31521.9	31541.0	31549.9	31560.4	31557.6	31560.4	31556.3	31565.3
12.5°	31197.7	31132.7	31089.7	31008.3	30961.2	30871.3	30827.1	30740.6	30709.3	30635.0	30624.3
15°	30044.7	29818.2	29658.2	29425.4	29279.2	29050.2	28916.2	28709.7	28615.3	28451.1	28408.0
17.5°	27943.0	27522.6	27197.2	26779.9	26490.2	26100.2	25854.9	25532.0	25355.1	25094.8	25004.6
20°	24996.5	24374.5	23886.5	23305.0	22889.0	22370.6	22038.8	21620.2	21377.2	21057.4	20927.8
22.5°	21537.3	20762.8	20153.3	19466.5	18964.5	18386.8	17989.2	17536.3	17272.0	16924.5	16770.7
25°	17971.9	17117.8	16440.2	15716.6	15186.1	14607.0	14209.4	13764.5	13490.9	13161.1	13008.3
27.5°	14561.8	13697.3	13042.5	12369.7	11883.1	11360.6	11001.7	10613.4	10370.6	10089.0	9945.2
30°	11552.5	10790.0	10232.8	9674.4	9269.8	8845.3	8547.2	8225.2	8012.2	7771.2	7634.2
32.5°	9100.9	8512.2	8075.8	7632.8	7301.6	6946.9	6689.2	6405.2	6213.0	5997.7	5873.6
35°	7207.8	6750.4	6402.3	6037.7	5753.1	5451.0	5224.0	4978.8	4806.3	4621.0	4513.8
37.5°	5694.9	5331.2	5044.7	4741.8	4508.1	4257.9	4173.6	3892.2	3713.5	3565.6	3463.1
40°	4469.4	4180.2	3943.2	3711.5	3520.9	3331.1	3178.7	3028.5	2913.1	2807.3	2734.1
42.5°	3490.2	3280.6	3107.6	2937.9	2798.9	2660.5	2550.3	2446.7	2368.9	2299.8	2252.6
45°	2774.5	2630.5	2510.2	2390.7	2292.6	2200.2	2126.0	2059.9	2009.7	1968.1	1938.7
47.5°	2279.4	2180.8	2095.9	2015.2	1948.6	1888.1	1838.4	1822.2	1768.2	1731.8	1718.0
50°	1937.1	1877.5	1813.1	1753.6	1709.1	1664.9	1632.6	1601.0	1580.8	1564.0	1559.0
52.5°	1681.8	1636.1	1600.4	1562.6	1533.3	1501.7	1479.5	1458.5	1447.4	1438.6	1437.6
55°	1491.8	1460.0	1436.3	1411.0	1393.4	1374.9	1363.4	1352.2	1347.4	1343.0	1343.3
57.5°	1348.1	1326.8	1311.5	1295.0	1285.5	1276.6	1273.7	1270.9	1272.5	1273.1	1275.6
60°	1243.5	1229.6	1219.9	1210.5	1206.5	1203.7	1205.8	1208.4	1213.4	1217.5	1221.2
62.5°	1163.2	1155.3	1150.6	1145.5	1145.1	1145.3	1149.6	1153.8	1160.2	1165.0	1168.5
65°	1080.7	1076.1	1074.6	1071.3	1073.0	1073.9	1079.1	1082.4	1088.7	1092.5	1097.1
67.5°	997.2	996.1	997.1	997.1	1000.0	1002.5	1007.4	1011.1	1016.5	1020.0	1023.6
70°	935.6	936.0	938.2	938.7	941.8	943.5	947.9	950.2	955.1	958.0	962.5
72.5°	875.6	874.7	875.2	873.8	874.9	874.4	876.9	878.0	882.1	884.3	889.8
75°	811.8	809.1	808.5	805.6	805.7	803.6	804.6	804.4	807.2	808.3	812.1
77.5°	734.8	730.3	728.0	723.2	723.0	721.3	723.2	724.4	729.1	731.4	735.8
80°	642.6	635.5	632.2	626.6	627.5	627.2	632.0	635.6	641.4	642.5	648.0
82.5°	534.0	526.8	523.3	517.9	519.1	519.3	523.6	524.4	529.4	531.6	538.0
85°	382.4	385.2	377.5	378.1	376.5	379.5	382.4	386.0	390.2	397.3	402.7
87.5°	225.2	224.2	227.0	227.2	231.2	233.1	239.4	243.0	250.0	255.5	265.5
90°	102.1	98.5	100.6	99.4	103.1	102.0	105.4	103.6	107.8	108.1	113.5
92.5°	33.1	31.5	29.1	27.4	25.2	23.7	22.3	21.8	20.5	20.0	18.7
95°	44.3	41.4	38.6	35.7	32.9	30.0	28.9	27.9	26.8	25.8	24.7
97.5°	51.3	48.3	45.2	42.1	39.0	35.9	35.2	34.5	33.8	33.1	32.4
100°	73.2	67.3	61.3	55.3	49.3	43.4	42.8	42.2	41.7	41.1	40.6
102.5°	145.8	132.0	118.4	104.6	91.0	77.3	74.9	72.5	70.2	67.8	65.4
105°	265.4	243.5	221.5	199.7	177.9	156.0	149.5	142.7	136.2	129.6	123.2
107.5°	378.7	357.2	335.8	314.5	293.2	271.8	261.4	251.2	240.6	230.3	220.1
110°	435.9	423.0	410.2	397.1	384.2	371.4	361.5	351.6	341.6	331.7	321.9



TEST NUMBER: P1444458  
 CATALOG NUMBER: EHBR1-36-UNV-TA-L830-UPL12

**CANDELA DISTRIBUTION (continued):**

	55°	57.5°	60°	62.5°	65°	67.5°	70°	72.5°	75°	77.5°	80°
112.5°	443.0	436.4	429.7	423.1	416.6	410.0	405.1	400.3	395.5	390.6	385.5
115°	413.3	410.9	408.6	406.3	404.2	401.8	401.4	400.9	400.3	400.0	399.7
117.5°	363.6	363.5	363.4	363.5	363.7	363.8	366.2	368.4	370.8	373.5	376.0
120°	314.5	315.7	316.9	318.4	319.7	321.1	324.1	327.4	330.5	333.9	337.4
122.5°	274.1	274.7	275.3	276.1	276.8	277.6	280.6	283.7	286.7	290.0	293.4
125°	243.6	243.0	242.5	242.0	241.4	241.1	243.4	245.7	248.1	250.9	253.4
127.5°	223.8	222.4	221.0	219.7	218.2	217.0	218.1	219.3	220.4	221.7	223.1
130°	212.9	211.0	208.8	207.0	204.8	203.0	203.1	203.1	203.3	203.5	203.8
132.5°	207.7	205.6	203.3	201.0	198.8	196.6	195.9	195.3	194.6	194.3	193.9
135°	205.2	203.2	200.9	198.8	196.5	194.6	193.4	192.5	191.6	190.6	189.9
137.5°	204.6	202.9	201.0	199.3	197.3	195.6	194.2	193.1	191.9	191.2	190.1
140°	205.0	203.6	202.0	200.4	198.9	197.5	196.1	195.3	194.2	193.4	192.5
142.5°	206.0	204.8	203.5	202.3	201.1	199.9	198.8	197.8	196.9	196.1	195.2
145°	208.4	207.5	206.5	205.6	204.6	203.7	202.6	202.0	201.1	200.4	199.9
147.5°	209.7	209.0	208.2	207.6	206.7	206.0	205.2	204.9	203.9	203.5	202.9
150°	210.9	210.3	209.5	209.2	208.3	207.7	207.1	206.6	206.0	205.8	205.2
152.5°	211.3	210.8	210.1	209.7	209.0	208.3	207.9	207.6	207.0	206.6	206.1
155°	212.4	212.0	211.5	211.0	210.4	210.1	209.5	209.0	208.6	208.1	207.6
157.5°	214.4	214.0	213.5	213.1	212.4	212.1	211.6	211.2	210.7	210.3	209.8
160°	216.6	216.2	215.7	215.3	214.8	214.4	213.8	213.4	212.8	212.4	211.8
162.5°	219.5	219.0	218.5	218.2	217.5	217.0	216.6	216.1	215.6	215.3	214.7
165°	222.3	221.9	221.4	221.1	220.7	220.3	219.7	219.2	218.7	218.3	217.6
167.5°	226.1	225.7	225.4	225.0	224.4	224.1	223.6	223.2	222.7	222.2	221.6
170°	229.0	228.5	228.2	227.7	227.3	226.8	226.4	225.8	225.5	225.1	224.5
172.5°	231.9	231.7	231.4	231.1	230.6	230.2	230.0	229.6	229.2	228.8	228.5
175°	233.1	233.0	232.9	232.5	232.4	232.2	232.0	231.9	231.6	231.6	231.3
177.5°	234.4	234.3	234.3	234.1	233.9	233.9	233.7	233.6	233.5	233.3	233.2
180°	232.8	232.8	232.8	232.8	232.8	232.8	232.8	232.8	232.8	232.8	232.8



TEST NUMBER: P1444458  
 CATALOG NUMBER: EHBR1-36-UNV-TA-L830-UPL12

**CANDELA DISTRIBUTION (continued):**

	82.5°	85°	87.5°	90°	92.5°	95°	97.5°	100°	102.5°	105°	107.5°
0°	29129.1	29129.1	29129.1	29129.1	29129.1	29129.1	29129.1	29129.1	29129.1	29129.1	29129.1
2.5°	29241.1	29233.7	29237.2	29223.5	29226.8	29210.2	29208.7	29190.1	29188.2	29170.6	29164.1
5°	30231.2	30214.9	30233.2	30204.6	30210.3	30173.0	30169.9	30121.7	30105.1	30044.8	30018.9
7.5°	31319.3	31313.1	31324.4	31300.4	31299.7	31266.4	31252.6	31209.5	31182.8	31119.4	31079.1
10°	31557.6	31563.2	31554.1	31556.3	31543.4	31539.8	31526.5	31518.1	31496.5	31480.1	31455.8
12.5°	30567.8	30573.7	30536.0	30559.9	30541.0	30585.2	30581.6	30633.7	30641.6	30707.5	30732.5
15°	28280.1	28273.0	28200.6	28246.2	28221.7	28318.7	28340.3	28470.8	28540.5	28708.0	28810.8
17.5°	24824.2	24805.5	24703.5	24759.1	24730.9	24873.7	24921.7	25130.3	25260.4	25530.2	25722.4
20°	20704.6	20668.9	20549.5	20614.6	20585.5	20747.8	20816.3	21068.4	21236.1	21593.5	21847.7
22.5°	16533.8	16477.4	16360.5	16421.3	16393.7	16561.9	16651.0	16903.9	17096.1	17463.0	17759.7
25°	12788.5	12738.2	12625.2	12667.8	12657.5	12799.8	12879.0	13118.2	13307.1	13656.6	13939.8
27.5°	9754.1	9701.8	9599.7	9629.7	9619.4	9740.6	9815.3	10015.2	10177.6	10471.8	10720.5
30°	7465.4	7402.2	7315.6	7332.3	7325.2	7423.3	7493.1	7661.4	7800.6	8049.3	8263.6
32.5°	5722.2	5658.8	5579.1	5586.9	5576.4	5653.5	5710.9	5857.3	5978.7	6190.1	6376.6
35°	4378.3	4452.5	4282.5	4390.2	4278.0	4442.6	4383.4	4474.8	4579.3	4757.4	4912.9
37.5°	3365.9	3314.2	3270.4	3265.7	3265.6	3303.7	3348.6	3436.8	3528.8	3661.4	3798.5
40°	2667.3	2631.0	2602.7	2600.7	2602.7	2629.8	2663.1	2723.9	2791.3	2886.7	2987.4
42.5°	2212.2	2188.2	2171.1	2169.9	2175.3	2194.5	2217.7	2253.8	2297.7	2359.4	2428.5
45°	1914.7	1901.3	1891.8	1891.3	1893.7	1903.8	1917.1	1939.6	1967.4	2006.0	2049.6
47.5°	1705.9	1702.7	1696.8	1696.9	1694.2	1698.3	1699.8	1712.5	1727.3	1756.3	1813.5
50°	1553.9	1553.9	1549.8	1549.6	1545.8	1545.5	1542.3	1547.3	1554.1	1572.2	1590.4
52.5°	1433.7	1433.4	1428.9	1428.0	1423.9	1423.7	1420.9	1422.9	1423.8	1432.9	1443.8
55°	1339.9	1337.1	1331.2	1329.4	1327.8	1330.1	1329.0	1329.2	1328.0	1331.7	1335.0
57.5°	1272.5	1268.8	1263.3	1261.7	1261.3	1264.1	1264.2	1263.2	1258.1	1254.6	1249.9
60°	1219.1	1215.5	1209.6	1208.0	1208.9	1212.8	1212.6	1209.3	1201.8	1195.1	1187.6
62.5°	1166.8	1165.3	1162.3	1161.8	1161.1	1161.7	1159.0	1155.5	1148.1	1141.1	1132.8
65°	1096.5	1097.3	1095.0	1095.3	1092.6	1092.2	1088.1	1084.7	1077.2	1070.8	1062.3
67.5°	1023.5	1024.1	1022.2	1022.2	1020.8	1021.0	1018.6	1015.4	1009.0	1003.9	997.3
70°	963.4	964.9	963.9	964.2	962.5	961.8	957.9	954.9	948.3	943.9	938.0
72.5°	891.4	894.7	894.6	895.3	892.7	891.4	886.8	882.9	877.0	873.6	868.8
75°	813.6	817.8	819.1	820.9	817.2	815.3	810.3	807.2	802.3	800.2	797.1
77.5°	737.8	742.4	746.8	751.0	745.0	739.7	733.3	728.5	721.5	718.9	714.1
80°	652.6	660.8	670.6	678.8	668.2	657.4	646.9	639.1	629.9	626.2	620.1
82.5°	541.4	549.8	555.5	560.7	553.3	545.4	535.2	528.4	518.5	514.8	507.8
85°	411.3	421.8	425.2	428.0	423.2	419.0	409.4	396.6	390.3	380.6	375.4
87.5°	270.5	276.8	278.0	279.0	276.0	274.0	267.8	261.8	251.1	243.4	233.8
90°	112.8	116.5	113.6	114.8	111.6	112.4	106.6	105.1	96.9	94.0	86.6
92.5°	18.1	16.8	16.0	15.0	16.5	16.9	18.3	18.7	20.0	20.5	21.8
95°	23.7	22.6	21.5	20.5	21.4	22.2	23.0	23.9	24.6	25.5	26.3
97.5°	31.7	31.0	30.3	29.6	30.1	30.5	31.1	31.6	32.0	32.5	33.2
100°	40.0	39.4	38.9	38.3	38.3	38.3	38.3	38.3	38.3	38.3	38.3
102.5°	63.0	60.7	58.3	55.9	57.5	59.1	60.7	62.3	64.0	65.6	67.3
105°	116.6	110.2	103.6	97.1	103.4	109.7	116.1	122.3	128.6	135.2	141.5
107.5°	209.7	199.4	189.2	178.9	190.4	202.0	213.4	224.8	236.3	247.8	259.5
110°	312.1	302.4	292.5	282.8	295.0	307.1	319.3	331.5	343.7	355.9	368.3



TEST NUMBER: P1444458  
 CATALOG NUMBER: EHBR1-36-UNV-TA-L830-UPL12

**CANDELA DISTRIBUTION (continued):**

	82.5°	85°	87.5°	90°	92.5°	95°	97.5°	100°	102.5°	105°	107.5°
112.5°	380.8	376.1	371.3	366.5	374.4	382.2	390.0	398.2	406.0	413.9	421.8
115°	399.3	399.0	398.8	398.5	402.2	405.9	409.6	413.4	417.2	420.9	424.8
117.5°	378.4	381.0	383.7	386.3	387.5	388.6	390.0	391.2	392.6	393.9	395.3
120°	340.9	344.1	347.6	351.2	350.7	350.2	349.8	349.3	349.2	348.8	348.6
122.5°	296.7	300.1	303.7	307.1	306.1	305.1	304.1	303.1	302.4	301.6	300.8
125°	256.3	258.9	261.8	264.7	263.7	262.7	261.6	260.9	260.1	259.3	258.7
127.5°	224.8	226.4	228.0	229.8	229.3	228.8	228.6	228.2	228.1	228.1	228.0
130°	204.3	204.9	205.6	206.3	206.5	206.5	207.0	207.4	207.9	208.4	209.3
132.5°	193.8	193.6	193.6	193.6	194.2	194.7	195.6	196.4	197.5	198.4	199.8
135°	189.4	188.8	188.6	188.2	189.0	189.8	190.9	191.9	193.2	194.6	196.1
137.5°	189.4	188.7	188.2	187.6	188.5	189.3	190.3	191.4	192.7	194.1	195.7
140°	191.8	191.1	190.8	190.2	191.1	191.7	192.9	193.9	195.2	196.5	198.0
142.5°	194.6	193.9	193.4	193.1	193.7	194.5	195.6	196.4	197.6	198.7	200.2
145°	199.2	198.6	198.4	197.9	198.4	199.0	199.6	200.5	201.2	202.0	203.2
147.5°	202.4	202.0	201.8	201.5	201.9	202.2	202.7	203.2	203.8	204.6	205.3
150°	205.1	204.6	204.3	204.2	204.4	204.6	205.0	205.1	205.6	206.0	206.7
152.5°	206.0	205.4	205.4	205.2	205.2	205.4	205.7	205.9	206.3	206.5	207.2
155°	207.4	207.0	206.7	206.5	206.4	206.3	206.5	206.4	206.6	206.6	206.9
157.5°	209.5	209.2	208.9	208.5	208.4	208.0	208.0	207.9	207.9	207.7	207.8
160°	211.4	210.9	210.5	210.1	209.9	209.7	209.6	209.4	209.4	209.4	209.4
162.5°	214.3	213.9	213.6	213.2	212.9	212.5	212.4	211.9	211.7	211.4	211.3
165°	217.1	216.7	216.3	215.6	215.5	215.3	215.0	214.7	214.6	214.3	214.2
167.5°	221.3	220.7	220.3	219.8	219.5	219.0	218.9	218.4	218.2	217.8	217.8
170°	224.2	223.8	223.4	223.0	222.8	222.5	222.4	222.1	221.9	221.8	221.8
172.5°	228.2	227.9	227.5	227.2	227.1	226.8	226.7	226.6	226.4	226.4	226.3
175°	231.1	230.9	230.8	230.6	230.4	230.3	230.1	230.1	230.0	229.8	229.8
177.5°	233.0	232.8	232.7	232.6	232.5	232.5	232.5	232.5	232.5	232.4	232.3
180°	232.8	232.8	232.8	232.8	232.8	232.8	232.8	232.8	232.8	232.8	232.8



TEST NUMBER: P1444458  
 CATALOG NUMBER: EHBR1-36-UNV-TA-L830-UPL12

**CANDELA DISTRIBUTION (continued):**

	110°	112.5°	115°	117.5°	120°	122.5°	125°	127.5°	130°	132.5°	135°
0°	29129.1	29129.1	29129.1	29129.1	29129.1	29129.1	29129.1	29129.1	29129.1	29129.1	29129.1
2.5°	29145.1	29137.5	29117.3	29107.4	29088.7	29079.3	29064.8	29055.3	29043.6	29034.8	29030.3
5°	29952.7	29915.4	29840.7	29794.7	29714.1	29661.0	29580.9	29522.2	29439.4	29378.5	29300.3
7.5°	31003.3	30946.1	30850.4	30777.9	30665.0	30578.9	30452.2	30351.0	30211.0	30094.9	29951.9
10°	31431.0	31397.6	31354.7	31308.1	31245.5	31184.3	31097.8	31009.7	30892.2	30775.4	30622.8
12.5°	30798.8	30830.3	30892.2	30921.1	30968.5	30984.6	31006.3	30996.2	30977.0	30929.3	30860.1
15°	29008.4	29139.5	29346.8	29490.2	29691.1	29832.2	30018.9	30139.0	30277.4	30360.1	30438.7
17.5°	26063.2	26316.8	26682.6	26974.4	27366.1	27684.6	28074.9	28381.5	28735.5	29007.1	29296.2
20°	22290.8	22646.0	23150.9	23579.7	24147.3	24628.7	25245.3	25761.9	26364.5	26866.9	27409.0
22.5°	18230.6	18648.5	19227.1	19744.2	20422.1	21027.5	21800.2	22483.2	23297.8	24027.6	24835.0
25°	14400.3	14809.9	15399.2	15934.8	16666.6	17333.5	18177.6	18961.1	19906.6	20788.1	21800.2
27.5°	11115.6	11479.5	11997.6	12479.6	13149.8	13804.6	14661.2	15496.7	16505.5	17452.9	18543.6
30°	8584.5	8879.6	9294.7	9682.5	10220.5	10755.9	11519.0	12291.8	13295.6	14277.2	15395.5
32.5°	6652.7	6904.3	7250.9	7565.6	7980.2	8383.9	8945.9	9563.4	10443.8	11384.3	12465.4
35°	5149.9	5365.2	5660.2	5931.3	6272.2	6592.7	7012.0	7452.8	8124.7	8915.8	9883.4
37.5°	4105.8	4193.6	4404.0	4626.2	4909.4	5172.8	5500.8	5826.7	6307.4	6931.6	7721.9
40°	3122.4	3261.8	3433.1	3608.1	3822.5	4033.7	4393.6	4566.8	4883.3	5331.4	5944.9
42.5°	2519.4	2617.4	2738.0	2859.7	3009.1	3156.2	3338.2	3523.5	3760.2	4063.6	4500.0
45°	2108.3	2172.1	2249.9	2331.0	2429.1	2529.5	2651.4	2778.7	2939.0	3125.5	3390.6
47.5°	1833.6	1868.9	1919.7	1975.1	2042.3	2111.8	2191.1	2272.2	2371.7	2482.5	2633.4
50°	1619.2	1648.7	1688.1	1725.1	1771.6	1842.8	1874.3	1919.0	1979.0	2044.0	2128.5
52.5°	1464.1	1483.7	1508.5	1529.7	1559.1	1585.8	1620.8	1651.6	1693.1	1732.2	1786.7
55°	1343.3	1350.5	1364.4	1378.2	1398.5	1416.7	1440.7	1460.9	1487.3	1510.7	1545.1
57.5°	1250.0	1250.7	1257.2	1264.3	1277.3	1288.8	1305.3	1318.6	1337.0	1351.9	1372.5
60°	1183.0	1179.4	1180.7	1183.2	1190.6	1198.0	1208.5	1217.2	1228.8	1237.2	1248.7
62.5°	1127.1	1121.5	1120.3	1119.6	1123.3	1126.0	1131.7	1135.9	1142.5	1146.2	1152.3
65°	1056.7	1050.1	1047.5	1044.4	1045.6	1044.7	1046.9	1047.0	1050.3	1051.1	1054.6
67.5°	992.7	987.3	983.9	979.8	978.0	975.0	973.8	971.0	970.5	968.2	967.6
70°	934.5	929.0	926.2	922.5	920.5	916.7	914.3	909.5	906.7	902.3	899.8
72.5°	867.0	863.9	863.1	860.6	859.9	857.7	856.7	853.4	851.5	847.6	845.5
75°	796.5	794.0	793.8	791.2	791.0	788.4	787.8	784.2	782.3	778.6	777.0
77.5°	712.6	708.8	707.8	704.8	705.5	704.2	705.2	702.5	701.4	697.6	696.4
80°	617.9	613.2	611.2	607.3	608.3	606.5	608.3	608.1	609.5	606.5	606.0
82.5°	505.9	500.7	499.7	496.9	498.8	499.0	503.0	500.8	501.7	498.9	500.0
85°	368.1	364.3	358.9	358.1	354.6	358.2	353.5	356.7	351.6	355.2	350.4
87.5°	228.2	220.2	216.0	210.3	208.1	202.6	200.4	196.3	197.6	195.7	196.8
90°	85.3	78.9	77.8	72.7	72.6	68.2	69.1	66.2	67.7	64.6	66.5
92.5°	22.3	23.2	24.8	26.9	28.3	30.0	31.6	33.6	35.0	37.0	38.4
95°	27.2	28.0	30.3	32.5	34.8	37.0	39.2	41.5	43.7	46.0	48.2
97.5°	33.6	34.1	36.3	38.6	40.8	43.1	45.2	47.8	50.0	52.3	54.5
100°	38.3	38.4	44.8	51.1	57.5	64.0	70.3	76.6	83.3	89.6	96.0
102.5°	68.8	70.4	86.6	102.7	118.8	134.9	151.0	167.2	183.3	199.6	215.8
105°	147.8	154.2	178.7	203.4	227.9	252.5	277.1	301.9	326.5	351.2	375.8
107.5°	271.0	282.5	304.8	327.0	349.2	371.5	394.0	416.2	438.5	460.8	483.3
110°	380.5	392.8	407.7	422.6	437.7	452.6	467.7	482.7	497.9	512.8	528.1



TEST NUMBER: P1444458  
 CATALOG NUMBER: EHBR1-36-UNV-TA-L830-UPL12

**CANDELA DISTRIBUTION (continued):**

	110°	112.5°	115°	117.5°	120°	122.5°	125°	127.5°	130°	132.5°	135°
112.5°	429.7	437.7	446.4	455.4	464.1	473.0	481.9	490.8	499.8	508.8	517.8
115°	428.6	432.7	436.0	439.8	443.3	446.9	450.6	454.4	458.1	461.9	465.7
117.5°	396.5	398.2	398.8	399.7	400.3	401.5	402.3	403.4	404.5	405.5	406.3
120°	348.5	348.3	348.1	347.9	347.6	347.5	347.5	347.4	347.5	347.5	347.5
122.5°	300.1	299.6	299.4	299.3	299.3	299.3	299.4	299.6	299.7	299.8	299.9
125°	258.1	257.7	258.6	259.7	260.7	261.9	262.9	264.2	265.4	266.7	267.9
127.5°	228.0	228.3	230.1	231.9	233.9	236.0	237.9	240.1	242.0	244.3	246.2
130°	210.0	210.9	213.1	215.5	217.8	220.3	222.7	225.3	227.5	230.1	232.4
132.5°	200.9	202.4	204.5	206.9	209.2	211.6	214.0	216.5	218.8	221.3	223.5
135°	197.6	199.4	201.5	203.6	205.9	208.2	210.4	212.7	214.9	217.1	219.3
137.5°	197.1	198.9	200.7	202.5	204.4	206.5	208.3	210.3	212.1	214.0	215.8
140°	199.5	201.2	202.3	203.9	205.1	206.6	207.8	209.3	210.4	212.0	213.1
142.5°	201.5	203.1	203.8	204.9	205.9	207.2	208.1	209.2	210.1	211.0	211.9
145°	204.2	205.5	206.0	206.5	207.1	207.7	208.1	208.7	209.0	209.4	209.9
147.5°	206.3	207.2	207.3	207.8	208.0	208.2	208.6	209.0	209.0	209.4	209.6
150°	207.2	207.9	207.9	208.1	208.0	208.2	208.1	208.3	208.2	208.4	208.3
152.5°	207.6	208.0	207.8	207.9	207.8	207.7	207.5	207.6	207.4	207.3	207.4
155°	206.9	207.2	207.0	207.0	206.8	206.8	206.6	206.9	206.8	206.8	206.8
157.5°	207.7	207.7	207.6	207.6	207.4	207.4	207.4	207.4	207.4	207.8	207.9
160°	209.3	209.3	209.0	209.0	208.9	208.8	208.8	209.0	209.0	209.4	209.5
162.5°	211.0	210.9	210.7	210.7	210.6	210.7	210.8	210.9	210.9	211.3	211.5
165°	214.2	214.3	214.0	214.0	213.9	213.9	213.9	213.9	214.1	214.3	214.5
167.5°	217.6	217.5	217.5	217.6	217.6	217.8	217.9	218.3	218.4	218.8	218.9
170°	221.7	221.8	221.6	221.6	221.6	221.6	221.7	221.7	221.9	222.0	222.1
172.5°	226.3	226.3	226.2	226.0	225.9	225.8	225.7	225.7	225.7	225.6	225.5
175°	229.6	229.5	229.4	229.4	229.3	229.1	229.1	228.8	228.7	228.7	228.7
177.5°	232.2	232.0	231.8	231.8	231.7	231.6	231.6	231.6	231.6	231.6	231.4
180°	232.8	232.8	232.8	232.8	232.8	232.8	232.8	232.8	232.8	232.8	232.8



TEST NUMBER: P1444458  
 CATALOG NUMBER: EHBR1-36-UNV-TA-L830-UPL12

**CANDELA DISTRIBUTION (continued):**

	137.5°	140°	142.5°	145°	147.5°	150°	152.5°	155°	157.5°	160°	162.5°
0°	29129.1	29129.1	29129.1	29129.1	29129.1	29129.1	29129.1	29129.1	29129.1	29129.1	29129.1
2.5°	29024.5	29024.1	29021.3	29022.6	29023.2	29025.2	29027.7	29030.3	29030.9	29032.9	29033.3
5°	29241.7	29169.9	29116.8	29058.4	29014.5	28974.9	28948.6	28927.6	28919.6	28921.5	28926.4
7.5°	29830.7	29682.4	29560.2	29421.1	29305.1	29182.4	29080.6	28983.8	28913.4	28860.8	28831.4
10°	30477.0	30296.5	30123.8	29922.5	29731.7	29528.0	29343.4	29157.7	29002.8	28868.2	28769.5
12.5°	30763.9	30636.3	30487.0	30297.0	30092.8	29857.8	29620.4	29365.9	29129.3	28909.6	28732.4
15°	30460.2	30460.4	30405.9	30314.9	30173.0	29985.2	29759.0	29493.8	29214.5	28929.7	28669.4
17.5°	29496.1	29678.0	29779.2	29843.2	29823.6	29754.4	29610.5	29406.8	29146.4	28843.0	28525.4
20°	27840.6	28269.7	28575.5	28850.5	29004.7	29107.2	29096.9	29014.0	28828.6	28570.7	28239.8
22.5°	25521.5	26241.6	26809.7	27339.6	27711.2	28013.5	28157.2	28218.2	28134.1	27954.4	27643.8
25°	22704.7	23683.7	24519.3	25330.1	25938.3	26461.1	26775.2	26996.5	27014.1	26920.2	26643.1
27.5°	19574.8	20730.4	21787.8	22865.4	23720.8	24472.3	24965.4	25326.3	25440.9	25425.7	25174.1
30°	16448.8	17662.0	18827.6	20084.3	21142.6	22102.7	22754.0	23242.0	23430.1	23466.1	23224.1
32.5°	13496.7	14693.0	15855.4	17169.1	18333.8	19434.1	20203.6	20783.3	21002.0	21053.6	20788.1
35°	10817.4	11921.1	13025.8	14299.0	15457.0	16596.4	17407.2	18014.1	18218.4	18252.9	17945.5
37.5°	8494.0	9434.3	10396.9	11539.3	12602.8	13672.9	14443.2	15013.7	15162.4	15153.2	14805.4
40°	6537.7	7268.8	8042.2	8982.7	9866.8	10771.4	11421.9	11893.5	11971.7	11913.8	11548.4
42.5°	4915.9	5444.0	6004.7	6706.7	7362.8	8039.8	8513.1	8863.1	8874.3	8782.8	8454.7
45°	3662.4	4177.5	4412.7	4837.2	5259.7	5709.9	5998.9	6215.2	6181.6	6101.2	5851.8
47.5°	2792.0	2990.0	3199.9	3463.1	3709.3	4220.1	4182.2	4529.5	4279.4	4449.9	4074.5
50°	2217.1	2327.7	2440.9	2580.5	2709.1	2842.7	2926.2	2988.5	2980.3	2953.5	2881.7
52.5°	1886.3	1920.4	1976.2	2055.6	2127.4	2199.6	2247.1	2285.8	2286.5	2275.7	2239.3
55°	1576.5	1619.9	1659.9	1711.8	1800.3	1813.8	1882.0	1868.2	1873.6	1854.7	1874.0
57.5°	1389.9	1415.2	1437.8	1468.7	1494.2	1524.0	1541.6	1558.6	1556.9	1553.3	1534.7
60°	1257.8	1271.7	1284.2	1302.3	1316.3	1333.1	1341.3	1349.9	1347.1	1340.8	1324.3
62.5°	1155.9	1164.6	1171.7	1183.4	1192.0	1202.5	1206.7	1210.3	1206.7	1200.7	1186.2
65°	1055.4	1061.0	1065.5	1074.3	1080.3	1089.3	1092.9	1096.3	1093.0	1088.3	1077.2
67.5°	964.7	965.3	964.8	968.4	970.2	975.6	977.2	979.7	975.8	971.8	962.5
70°	896.0	894.6	892.8	894.2	894.6	897.1	897.6	897.1	892.5	885.6	875.3
72.5°	842.2	841.4	840.1	841.3	841.3	843.7	842.9	841.7	836.0	829.4	819.2
75°	773.1	772.5	770.0	770.1	767.9	768.7	765.9	764.3	757.9	752.3	743.2
77.5°	692.2	690.9	687.2	685.8	681.6	679.9	674.6	672.0	665.5	661.0	653.3
80°	601.9	600.5	595.7	593.0	586.6	582.4	574.7	570.3	562.8	558.4	550.8
82.5°	497.6	498.1	493.3	489.9	480.6	473.5	463.1	457.5	449.3	445.0	437.3
85°	353.9	348.8	351.5	351.3	345.5	339.3	330.8	324.9	318.0	313.9	308.5
87.5°	194.1	195.3	193.9	192.7	188.6	185.5	178.9	175.4	170.4	167.9	163.7
90°	61.1	60.5	55.5	55.0	50.0	47.9	42.0	40.6	35.2	34.3	30.6
92.5°	36.5	34.7	33.0	30.8	29.2	27.4	25.4	23.5	21.6	20.7	20.4
95°	45.5	42.9	40.2	37.5	34.7	31.9	29.3	26.6	23.9	23.3	22.8
97.5°	51.4	48.1	45.0	41.9	38.6	35.4	32.3	29.0	25.9	25.5	25.1
100°	88.7	81.4	74.0	66.6	59.2	51.8	44.5	37.1	29.8	29.4	28.9
102.5°	197.8	179.9	162.1	144.3	126.5	108.6	90.8	72.8	54.9	52.3	49.7
105°	348.7	321.6	294.8	267.7	240.5	213.5	186.6	159.3	132.3	123.6	114.9
107.5°	458.0	432.5	407.3	381.9	356.3	331.0	305.6	280.2	254.7	239.4	224.2
110°	508.0	487.8	468.0	447.8	427.8	407.7	387.5	367.5	347.3	334.1	321.1



TEST NUMBER: P1444458  
 CATALOG NUMBER: EHBR1-36-UNV-TA-L830-UPL12

**CANDELA DISTRIBUTION (continued):**

	137.5°	140°	142.5°	145°	147.5°	150°	152.5°	155°	157.5°	160°	162.5°
112.5°	503.3	488.7	474.3	459.5	445.0	430.2	415.7	401.0	386.2	378.4	370.6
115°	457.2	448.5	440.0	431.4	422.6	414.0	405.3	396.5	387.7	383.8	379.7
117.5°	402.3	398.1	394.1	389.9	385.5	381.2	377.1	372.7	368.4	367.3	366.0
120°	346.9	345.9	344.8	343.9	342.9	342.0	340.9	339.7	338.6	339.2	339.7
122.5°	301.1	302.1	303.2	304.1	305.2	306.0	307.1	307.9	308.8	310.4	311.9
125°	269.8	271.6	273.6	275.4	277.2	279.0	280.9	282.5	284.4	285.9	287.6
127.5°	248.4	250.3	252.5	254.5	256.6	258.5	260.7	262.4	264.5	266.0	267.7
130°	234.5	236.2	238.2	240.0	242.0	243.8	245.6	247.5	249.4	250.8	252.2
132.5°	225.4	227.2	228.9	230.5	232.5	234.1	235.9	237.6	239.5	240.6	242.0
135°	220.9	222.2	223.8	225.1	226.7	228.0	229.6	231.1	232.7	233.8	234.9
137.5°	217.1	218.3	219.8	220.9	222.3	223.4	225.0	226.2	227.9	228.6	229.8
140°	214.3	215.5	216.8	218.1	219.4	220.6	222.3	223.6	225.2	226.0	227.1
142.5°	213.0	213.9	215.0	216.0	217.1	218.2	219.5	220.8	222.1	223.1	224.0
145°	211.0	212.1	213.3	214.2	215.3	216.6	218.2	219.5	220.9	221.7	222.6
147.5°	210.5	211.3	212.4	213.4	214.5	215.3	216.8	218.0	219.4	220.1	220.9
150°	209.4	210.1	211.1	212.0	213.1	214.2	215.5	216.8	218.3	219.1	219.8
152.5°	208.2	209.2	210.1	211.2	212.4	213.6	214.9	216.2	217.6	218.3	219.1
155°	207.9	208.6	209.7	210.9	212.0	213.0	214.3	215.5	216.8	217.7	218.4
157.5°	208.8	209.4	210.6	211.5	212.5	213.6	214.9	215.9	217.1	217.8	218.4
160°	210.3	211.1	212.1	213.0	213.9	215.0	216.0	217.0	218.1	218.6	219.3
162.5°	212.4	213.2	214.1	215.0	216.0	216.9	218.0	218.9	219.9	220.5	221.2
165°	215.3	215.9	216.8	217.4	218.1	218.7	219.7	220.3	221.3	221.7	222.5
167.5°	219.7	220.0	220.7	221.2	221.9	222.5	223.2	223.8	224.4	225.0	225.6
170°	222.6	223.0	223.5	224.0	224.6	225.1	225.6	226.1	226.9	227.2	227.7
172.5°	225.7	225.9	226.4	226.7	227.0	227.3	227.7	228.1	228.5	228.9	229.2
175°	228.9	228.9	229.1	229.2	229.3	229.5	229.9	230.1	230.2	230.5	230.7
177.5°	231.5	231.6	231.6	231.6	231.9	232.0	232.1	232.2	232.4	232.6	232.9
180°	232.8	232.8	232.8	232.8	232.8	232.8	232.8	232.8	232.8	232.8	232.8



TEST NUMBER: P1444458  
 CATALOG NUMBER: EHBR1-36-UNV-TA-L830-UPL12

**CANDELA DISTRIBUTION (continued):**

	165°	167.5°	170°	172.5°	175°	177.5°	180°	182.5°	185°	187.5°	190°
0°	29129.1	29129.1	29129.1	29129.1	29129.1	29129.1	29129.1	29129.1	29129.1	29129.1	29129.1
2.5°	29032.4	29032.0	29031.0	29029.7	29028.4	29029.3	29030.5	29033.9	29039.7	29048.1	29059.1
5°	28930.4	28936.3	28939.7	28940.2	28937.1	28935.3	28938.1	28946.1	28962.2	28989.2	29025.6
7.5°	28823.6	28830.9	28842.1	28850.5	28852.1	28850.2	28850.5	28863.1	28892.8	28945.3	29019.1
10°	28709.5	28687.7	28699.2	28720.1	28736.7	28739.8	28741.9	28756.6	28800.1	28879.5	28997.9
12.5°	28604.1	28535.4	28522.1	28541.1	28566.3	28574.4	28572.1	28578.5	28629.4	28734.5	28899.5
15°	28465.5	28336.3	28292.1	28296.9	28328.1	28339.4	28331.1	28318.7	28368.2	28496.6	28710.2
17.5°	28241.1	28032.8	27951.6	27948.0	27984.6	27994.2	27974.2	27935.3	27984.1	28144.3	28409.5
20°	27900.2	27592.5	27439.7	27415.4	27455.0	27443.4	27403.4	27344.7	27408.8	27603.6	27919.0
22.5°	27287.0	26897.3	26636.2	26551.9	26599.3	26567.7	26509.3	26434.3	26519.4	26740.8	27092.1
25°	26285.2	25834.9	25477.4	25276.8	25314.6	25257.9	25194.3	25103.4	25205.0	25459.0	25845.7
27.5°	24812.7	24292.5	23849.5	23517.4	23529.7	23455.4	23382.1	23264.5	23391.3	23692.0	24128.1
30°	22854.6	22252.7	21713.2	21261.9	21221.5	21149.5	21074.5	20920.1	21078.9	21438.7	21948.4
32.5°	20395.5	19727.3	19103.9	18533.3	18425.7	18355.4	18288.6	18110.9	18318.7	18738.3	19323.8
35°	17519.8	16807.9	16132.1	15480.4	15302.1	15231.8	15173.4	15003.2	15262.5	15719.1	16351.6
37.5°	14363.3	13636.1	12965.1	12296.8	12044.9	11949.5	11907.1	11795.6	12094.7	12546.4	13181.4
40°	11122.8	10446.6	9845.0	9254.9	8967.6	8821.7	8799.4	8779.2	9068.4	9460.3	10036.6
42.5°	8091.4	7545.9	7082.0	6630.9	6370.6	6171.4	6171.3	6231.7	6492.1	6785.7	7230.1
45°	5597.1	5231.0	4935.4	4634.0	4714.5	4317.5	4550.8	4431.0	4559.7	4749.0	5038.0
47.5°	3847.4	3647.6	3485.2	3316.8	3194.1	3076.8	3087.1	3162.7	3283.9	3396.2	3546.6
50°	2804.1	2702.3	2619.7	2532.2	2471.1	2419.4	2422.4	2455.1	2518.8	2578.0	2656.7
52.5°	2197.2	2141.1	2096.2	2047.8	2015.8	1990.0	1991.4	2007.4	2041.7	2075.6	2120.7
55°	1811.0	1804.3	1745.8	1702.5	1686.0	1668.7	1671.8	1678.0	1701.5	1721.2	1751.2
57.5°	1517.7	1491.4	1473.9	1451.1	1440.6	1428.5	1431.2	1433.5	1449.2	1462.5	1483.9
60°	1310.5	1291.9	1279.5	1263.9	1257.1	1249.4	1251.1	1252.5	1262.6	1271.2	1286.7
62.5°	1172.9	1156.2	1145.4	1133.4	1128.5	1123.4	1124.6	1125.0	1131.3	1137.6	1149.3
65°	1067.3	1054.1	1045.1	1034.8	1029.7	1024.3	1024.9	1024.9	1030.1	1034.8	1043.5
67.5°	955.6	945.7	939.9	931.7	928.2	922.7	922.6	920.9	924.3	926.1	932.1
70°	866.0	856.0	848.6	840.7	836.3	831.5	831.6	831.7	835.7	839.9	847.5
72.5°	810.6	801.1	794.4	787.5	783.5	779.3	778.6	778.1	781.0	783.4	788.4
75°	737.4	729.7	725.8	719.3	716.1	711.4	710.7	708.5	709.9	710.3	714.1
77.5°	648.4	641.2	638.0	631.4	628.7	623.5	623.0	620.7	621.7	620.9	623.8
80°	547.0	540.4	538.7	533.3	532.1	527.2	526.4	523.4	524.4	522.0	523.2
82.5°	433.9	427.8	426.6	421.6	421.6	417.1	416.9	412.5	412.5	408.7	402.7
85°	305.6	301.2	299.4	295.3	294.0	290.5	288.7	284.5	283.0	280.3	279.4
87.5°	161.3	158.5	156.0	154.1	150.5	144.2	143.6	139.2	139.5	136.4	136.6
90°	30.1	26.7	26.3	23.2	22.6	20.5	20.1	19.9	20.1	20.0	20.3
92.5°	19.8	19.1	18.5	17.9	17.2	16.7	16.0	16.7	17.2	17.9	18.5
95°	22.2	21.6	21.2	20.6	20.0	19.5	18.9	19.5	20.0	20.7	21.3
97.5°	24.8	24.4	24.1	23.7	23.4	23.0	22.7	23.1	23.5	23.8	24.2
100°	28.6	28.1	27.7	27.3	26.9	26.4	26.0	26.7	27.2	27.5	28.0
102.5°	47.2	44.6	42.1	39.4	36.8	34.3	31.7	34.3	36.8	39.5	42.2
105°	106.1	97.5	88.8	80.1	71.3	62.6	53.9	62.7	71.4	80.2	89.0
107.5°	208.7	193.6	178.3	163.0	147.4	132.2	116.8	132.3	147.6	163.1	178.4
110°	307.9	294.8	281.6	268.4	255.2	242.0	228.7	242.0	255.3	268.6	281.9



TEST NUMBER: P1444458  
 CATALOG NUMBER: EHBR1-36-UNV-TA-L830-UPL12

**CANDELA DISTRIBUTION (continued):**

	165°	167.5°	170°	172.5°	175°	177.5°	180°	182.5°	185°	187.5°	190°
112.5°	362.5	354.5	346.7	338.7	330.6	322.7	314.5	322.9	330.9	339.3	347.2
115°	375.7	371.6	367.6	363.5	359.2	355.1	350.8	355.5	359.8	364.2	368.5
117.5°	364.7	363.5	362.1	360.9	359.5	358.3	356.8	358.5	360.1	361.9	363.3
120°	340.0	340.7	341.1	341.4	341.8	342.2	342.4	342.6	342.6	342.6	342.5
122.5°	313.3	314.9	316.2	317.7	319.0	320.4	321.5	320.7	319.9	319.1	317.9
125°	289.1	290.8	292.3	293.8	295.2	296.7	297.7	297.2	296.4	295.4	294.3
127.5°	269.3	270.8	272.2	273.8	275.1	276.4	277.5	277.1	276.3	275.5	274.5
130°	253.6	255.1	256.2	257.5	258.6	259.7	260.4	260.3	259.8	259.5	258.6
132.5°	243.2	244.6	245.7	246.8	247.7	248.7	249.2	249.4	249.1	248.9	248.3
135°	236.1	237.1	238.1	239.2	239.9	240.6	241.0	241.4	241.3	241.3	240.8
137.5°	230.5	231.6	232.3	233.1	233.6	234.2	234.5	234.9	235.0	235.5	235.2
140°	227.9	228.9	229.8	230.4	231.3	231.8	232.0	232.6	232.8	232.9	232.7
142.5°	225.0	225.8	226.8	227.5	228.1	228.7	229.0	229.4	229.6	229.7	229.7
145°	223.4	224.2	224.9	225.7	226.1	226.6	226.7	227.3	227.5	227.8	227.9
147.5°	221.6	222.6	223.0	223.7	224.2	224.5	224.7	225.2	225.6	225.7	225.8
150°	220.9	221.6	222.3	222.9	223.6	224.1	224.2	224.7	224.9	225.0	225.0
152.5°	219.8	220.6	221.3	221.8	222.4	222.7	222.9	223.4	223.8	224.1	224.2
155°	219.1	219.8	220.5	221.2	221.6	222.2	222.6	223.0	223.3	223.6	223.8
157.5°	219.1	219.8	220.3	221.0	221.4	222.1	222.5	223.0	223.4	223.8	224.1
160°	219.8	220.6	221.1	221.7	222.3	222.7	223.2	223.8	224.2	224.5	224.9
162.5°	221.6	222.3	222.7	223.3	223.8	224.3	224.8	225.3	225.7	226.2	226.5
165°	222.9	223.6	224.2	224.8	225.3	225.9	226.3	226.8	227.1	227.4	227.7
167.5°	225.9	226.6	227.1	227.6	228.0	228.7	229.1	229.5	229.7	230.1	230.2
170°	228.1	228.7	229.0	229.5	230.0	230.4	230.7	231.0	231.3	231.6	231.7
172.5°	229.7	230.1	230.6	231.1	231.6	231.9	232.3	232.6	232.7	232.8	232.8
175°	231.1	231.5	231.7	232.1	232.4	232.7	233.1	233.0	233.2	233.1	233.2
177.5°	233.3	233.7	234.0	234.2	234.6	234.7	235.0	234.8	234.7	234.6	234.5
180°	232.8	232.8	232.8	232.8	232.8	232.8	232.8	232.8	232.8	232.8	232.8



TEST NUMBER: P1444458  
 CATALOG NUMBER: EHBR1-36-UNV-TA-L830-UPL12

**CANDELA DISTRIBUTION (continued):**

	192.5°	195°	197.5°	200°	202.5°	205°	207.5°	210°	212.5°	215°	217.5°
0°	29129.1	29129.1	29129.1	29129.1	29129.1	29129.1	29129.1	29129.1	29129.1	29129.1	29129.1
2.5°	29074.7	29089.2	29111.5	29131.6	29162.0	29186.0	29221.9	29249.2	29289.9	29316.2	29360.3
5°	29077.2	29134.2	29208.9	29282.0	29369.8	29449.4	29548.4	29632.7	29732.3	29813.4	29915.2
7.5°	29118.3	29228.0	29359.5	29492.0	29641.9	29782.0	29939.9	30082.9	30239.1	30371.3	30515.7
10°	29148.7	29317.9	29511.7	29706.6	29911.8	30102.5	30295.0	30461.4	30616.8	30744.8	30857.8
12.5°	29107.6	29340.6	29589.3	29829.4	30057.6	30254.9	30420.6	30548.5	30636.7	30696.7	30710.7
15°	28967.8	29248.3	29518.6	29757.7	29947.1	30093.1	30168.7	30204.1	30166.1	30103.0	29964.5
17.5°	28706.7	29002.5	29244.1	29432.8	29532.8	29572.5	29509.8	29400.9	29188.0	28951.7	28610.5
20°	28227.8	28503.5	28678.7	28781.7	28754.9	28655.9	28419.5	28132.1	27707.1	27254.1	26656.4
22.5°	27388.1	27629.1	27722.4	27730.0	27566.8	27318.8	26892.4	26399.5	25729.1	25032.0	24174.7
25°	26127.4	26338.6	26353.3	26270.4	25971.5	25569.8	24943.6	24246.3	23335.2	22406.4	21332.0
27.5°	24417.8	24620.3	24570.7	24416.1	24001.1	23463.5	22661.9	21761.1	20637.9	19540.8	18352.4
30°	22268.8	22485.2	22427.1	22228.7	21735.1	21099.7	20156.5	19109.9	17862.9	16691.0	15486.8
32.5°	19697.0	19970.6	19930.4	19741.9	19226.8	18546.9	17523.4	16413.4	15137.5	13982.7	12811.4
35°	16773.7	17106.0	17123.2	17000.0	16521.8	15849.8	14839.1	13764.7	12542.5	11453.0	10370.9
37.5°	13624.3	14009.5	14088.7	14055.4	13659.1	13065.9	12145.0	11181.2	10098.5	9143.7	8218.1
40°	10457.5	10847.4	10982.6	11022.8	10730.4	10270.9	9515.1	8737.2	7854.6	7080.9	6345.9
42.5°	7569.5	7915.1	8045.9	8128.1	7945.5	7639.1	7087.8	6522.9	5876.3	5318.3	4783.2
45°	5257.1	5501.7	5601.1	5683.9	5584.5	5411.6	5063.5	4710.1	4283.3	3918.6	3573.4
47.5°	3675.6	3810.4	3876.0	3916.2	3877.7	3787.5	3598.1	3393.4	3152.4	2939.3	2734.4
50°	2724.4	2796.2	2830.5	2853.7	2825.7	2775.6	2673.0	2561.6	2429.3	2308.5	2190.5
52.5°	2159.0	2200.1	2220.6	2233.0	2217.0	2186.3	2126.6	2060.6	1981.2	1906.6	1867.4
55°	1818.8	1816.7	1863.9	1841.1	1863.9	1813.0	1802.3	1729.6	1663.8	1617.4	1567.2
57.5°	1500.0	1521.3	1530.4	1540.5	1534.0	1524.7	1499.3	1473.3	1438.5	1409.5	1378.5
60°	1298.4	1316.0	1325.9	1335.9	1335.3	1331.8	1317.2	1301.7	1279.9	1262.6	1243.8
62.5°	1159.6	1174.8	1184.6	1194.2	1195.1	1193.6	1182.6	1171.7	1156.9	1146.1	1133.1
65°	1050.3	1061.0	1067.7	1075.3	1074.9	1072.9	1062.8	1053.9	1041.6	1034.1	1024.6
67.5°	936.0	944.1	949.3	956.5	957.9	958.3	952.8	948.6	942.7	940.5	937.3
70°	854.7	864.5	872.8	882.0	887.0	889.3	887.0	884.8	881.3	879.9	877.3
72.5°	793.1	801.4	807.9	816.2	820.9	824.2	822.4	821.2	818.2	817.7	816.1
75°	716.7	722.5	726.1	732.4	734.8	738.0	736.6	737.4	736.3	738.8	738.6
77.5°	624.9	629.1	630.8	635.3	635.7	639.5	640.4	644.8	647.9	654.9	658.5
80°	521.5	524.1	524.1	528.8	530.8	537.2	540.2	547.4	550.8	557.0	557.5
82.5°	405.0	401.9	405.0	403.1	409.1	416.2	417.1	423.3	424.7	428.5	425.5
85°	276.9	276.7	274.2	274.6	272.8	273.7	272.6	273.8	272.7	272.8	270.0
87.5°	132.6	133.9	131.0	131.9	129.1	130.4	128.0	129.8	126.9	127.4	123.1
90°	20.4	20.7	20.8	21.2	21.8	22.8	24.0	24.9	26.5	27.4	28.7
92.5°	19.1	19.9	20.5	21.1	21.7	23.6	25.5	27.4	29.4	31.2	33.1
95°	21.7	22.3	22.9	23.7	24.3	27.0	29.7	32.4	35.1	37.9	40.7
97.5°	24.8	25.2	25.5	25.9	26.3	29.5	32.8	36.0	39.2	42.4	45.5
100°	28.5	28.9	29.3	29.9	30.3	37.7	45.1	52.5	59.9	67.3	74.7
102.5°	44.8	47.4	50.0	52.8	55.5	73.4	91.4	109.3	127.0	145.0	162.9
105°	97.7	106.4	115.5	124.2	132.9	160.1	187.3	214.5	241.4	268.6	295.7
107.5°	193.9	209.3	224.8	240.2	255.5	281.1	306.6	332.1	357.6	383.2	408.4
110°	295.4	308.5	321.9	335.2	348.5	368.6	388.9	409.1	429.3	449.4	469.6



TEST NUMBER: P1444458  
 CATALOG NUMBER: EHBR1-36-UNV-TA-L830-UPL12

**CANDELA DISTRIBUTION (continued):**

	192.5°	195°	197.5°	200°	202.5°	205°	207.5°	210°	212.5°	215°	217.5°
112.5°	355.5	363.4	371.6	379.5	387.6	402.4	417.3	432.1	446.9	461.4	476.2
115°	372.8	376.7	381.1	385.3	389.6	398.4	407.2	416.1	424.9	433.6	442.4
117.5°	364.8	366.3	367.8	369.0	370.5	374.9	379.4	383.7	388.2	392.7	397.0
120°	342.4	342.1	341.8	341.4	341.2	342.3	343.7	344.8	346.0	347.1	348.2
122.5°	317.0	315.7	314.5	313.2	311.9	311.0	310.3	309.4	308.7	307.8	307.1
125°	293.2	291.9	290.6	289.3	287.8	286.2	284.6	282.8	281.1	279.5	277.8
127.5°	273.6	272.3	271.2	269.8	268.5	266.5	264.7	262.7	261.1	259.0	257.1
130°	258.0	256.9	256.1	254.8	253.8	252.0	250.4	248.6	246.8	245.1	243.4
132.5°	247.8	246.9	246.3	245.1	244.3	242.6	241.2	239.4	237.7	236.1	234.6
135°	240.5	239.9	239.5	238.7	237.9	236.3	235.2	233.7	232.4	231.1	229.8
137.5°	235.2	234.6	234.3	233.7	233.2	231.9	230.9	229.6	228.6	227.2	226.2
140°	232.6	232.2	231.9	231.5	230.9	229.7	228.6	227.2	226.1	224.9	223.8
142.5°	229.4	229.2	228.8	228.4	227.9	226.8	226.1	225.1	224.1	223.1	222.2
145°	227.7	227.5	227.4	227.0	226.9	225.7	224.8	223.6	222.8	221.7	220.8
147.5°	226.0	225.7	225.7	225.6	225.6	224.5	224.0	222.9	222.4	221.3	220.8
150°	225.1	225.1	224.9	224.7	224.6	223.8	223.2	222.4	221.7	220.9	220.3
152.5°	224.2	224.3	224.3	224.3	224.4	223.7	223.0	222.3	221.6	220.8	220.1
155°	224.0	224.1	224.2	224.2	224.2	223.7	223.1	222.4	221.8	221.2	220.6
157.5°	224.2	224.4	224.6	224.8	224.9	224.4	224.0	223.4	222.9	222.4	221.9
160°	225.2	225.5	225.7	225.8	226.0	225.7	225.4	224.8	224.5	224.0	223.4
162.5°	226.9	227.2	227.3	227.5	227.7	227.3	227.1	226.7	226.2	225.7	225.2
165°	228.0	228.1	228.4	228.4	228.5	228.2	228.1	227.8	227.5	227.2	226.9
167.5°	230.5	230.5	230.8	230.8	231.0	230.8	230.9	230.5	230.3	230.1	230.0
170°	231.9	232.1	232.2	232.3	232.4	232.2	232.1	231.9	231.9	231.5	231.3
172.5°	232.9	232.9	233.0	233.1	233.0	232.9	232.8	232.7	232.6	232.5	232.3
175°	233.1	233.2	233.2	233.2	233.1	233.1	233.1	233.2	233.1	233.1	233.1
177.5°	234.5	234.4	234.1	234.0	233.9	233.8	233.9	233.9	234.0	233.9	233.8
180°	232.8	232.8	232.8	232.8	232.8	232.8	232.8	232.8	232.8	232.8	232.8



TEST NUMBER: P1444458  
 CATALOG NUMBER: EHBR1-36-UNV-TA-L830-UPL12

**CANDELA DISTRIBUTION (continued):**

	220°	222.5°	225°	227.5°	230°	232.5°	235°	237.5°	240°	242.5°	245°
0°	29129.1	29129.1	29129.1	29129.1	29129.1	29129.1	29129.1	29129.1	29129.1	29129.1	29129.1
2.5°	29387.6	29206.1	29182.2	29195.0	29225.2	29236.5	29269.2	29278.1	29311.1	29319.2	29350.8
5°	29994.0	29754.2	29766.1	29823.8	29911.1	29963.2	30049.0	30093.8	30175.8	30213.1	30287.1
7.5°	30633.5	30445.1	30503.8	30601.1	30720.5	30803.1	30906.2	30973.4	31062.2	31117.4	31188.6
10°	30947.4	30895.7	30960.5	31037.0	31105.1	31158.4	31202.1	31237.1	31260.0	31281.5	31290.9
12.5°	30708.5	30788.4	30799.4	30792.0	30746.8	30712.3	30635.0	30582.4	30489.0	30432.1	30321.0
15°	29822.8	29998.5	29901.2	29753.9	29538.5	29358.8	29105.1	28916.2	28652.1	28472.9	28207.7
17.5°	28268.5	28490.2	28236.7	27896.0	27462.5	27091.8	26630.0	26263.5	25804.4	25470.4	25042.0
20°	26080.3	26287.4	25835.5	25270.6	24600.1	24035.9	23370.4	22839.5	22221.1	21761.1	21206.0
22.5°	23355.8	23503.4	22866.6	22105.1	21250.9	20546.0	19750.3	19113.8	18408.1	17882.2	17290.3
25°	20341.7	20381.6	19617.6	18740.4	17788.3	16996.0	16146.6	15477.4	14757.7	14224.7	13643.8
27.5°	17299.5	17241.1	16415.4	15485.3	14483.8	13660.3	12831.9	12204.8	11574.3	11094.3	10593.8
30°	14428.1	14286.7	13429.4	12473.3	11501.2	10763.1	10075.3	9571.7	9070.2	8689.4	8287.6
32.5°	11794.9	11595.4	10760.9	9865.2	9046.1	8476.5	7966.5	7585.4	7180.4	6858.8	6521.6
35°	9462.6	9250.1	8510.8	7751.5	7131.4	6711.6	6310.8	5998.1	5654.3	5382.9	5090.1
37.5°	7461.1	7286.8	6667.6	6070.1	5601.1	5275.7	4947.3	4691.8	4407.6	4288.3	3975.4
40°	5759.9	5638.1	5154.0	4713.4	4361.3	4208.4	3875.1	3636.4	3424.0	3249.0	3079.3
42.5°	4492.8	4449.7	3978.5	3635.0	3387.0	3194.5	3008.6	2857.8	2711.0	2590.3	2476.3
45°	3297.1	3262.9	3053.8	2855.5	2686.5	2551.9	2426.3	2322.6	2226.6	2147.0	2074.7
47.5°	2567.4	2556.5	2436.0	2313.0	2206.6	2120.1	2038.7	1969.8	1906.1	1853.0	1835.7
50°	2088.2	2086.8	2016.1	1940.2	1864.4	1814.4	1762.4	1721.7	1680.7	1648.9	1615.3
52.5°	1774.2	1766.6	1718.9	1672.0	1627.0	1594.2	1560.9	1534.9	1507.8	1488.1	1467.3
55°	1527.5	1535.5	1507.9	1480.0	1451.8	1431.4	1408.1	1390.9	1372.4	1359.9	1347.3
57.5°	1356.1	1366.8	1352.2	1336.4	1319.3	1305.9	1289.8	1277.9	1265.5	1257.5	1250.2
60°	1231.3	1243.0	1237.2	1229.1	1218.6	1210.6	1200.4	1193.7	1185.8	1181.4	1177.3
62.5°	1125.5	1140.2	1138.1	1134.3	1127.5	1123.0	1117.5	1114.5	1109.3	1107.3	1105.3
65°	1020.0	1036.4	1036.1	1034.2	1030.5	1029.2	1025.7	1025.0	1022.3	1023.4	1023.2
67.5°	937.0	951.2	954.3	956.6	956.5	957.3	957.0	958.4	958.4	960.5	961.8
70°	877.0	887.0	889.3	891.7	892.4	894.3	894.3	895.5	895.2	896.9	897.1
72.5°	816.4	829.5	831.9	833.9	833.9	835.7	834.7	834.4	831.8	831.2	829.5
75°	741.1	757.9	761.5	763.9	764.3	765.9	763.6	762.2	757.9	756.1	753.1
77.5°	662.4	679.8	682.4	683.2	681.8	682.2	677.4	674.1	668.7	666.4	663.5
80°	560.0	585.5	587.6	586.0	582.0	581.3	576.7	573.6	567.1	564.8	562.3
82.5°	426.1	456.1	460.3	462.2	458.9	459.6	455.2	453.6	447.5	446.4	442.4
85°	269.0	299.0	304.0	303.2	300.0	299.3	296.7	297.5	297.0	298.6	299.5
87.5°	123.6	152.7	159.7	157.4	157.1	155.0	150.3	152.1	154.9	156.7	156.9
90°	29.8	39.7	40.7	40.5	37.5	36.9	34.2	34.2	31.9	31.8	29.6
92.5°	35.0	36.9	38.8	37.1	35.4	33.7	32.0	30.3	28.7	26.9	25.3
95°	43.4	45.8	48.5	46.3	43.9	41.7	39.4	37.3	35.0	32.8	30.5
97.5°	48.7	51.7	54.8	52.5	50.3	48.0	45.7	43.6	41.3	39.0	36.7
100°	82.1	89.0	96.3	89.9	83.5	77.1	70.7	64.4	58.0	51.6	45.1
102.5°	180.7	198.4	216.1	199.9	183.8	167.6	151.5	135.4	119.2	102.9	86.8
105°	322.7	349.4	376.4	351.5	326.8	302.2	277.5	253.0	228.4	203.5	179.0
107.5°	433.9	458.6	483.7	461.3	439.0	416.7	394.3	372.0	349.7	327.2	305.0
110°	489.7	508.8	528.8	513.5	498.5	483.2	468.3	453.0	438.0	423.1	408.1



TEST NUMBER: P1444458  
 CATALOG NUMBER: EHBR1-36-UNV-TA-L830-UPL12

**CANDELA DISTRIBUTION (continued):**

	220°	222.5°	225°	227.5°	230°	232.5°	235°	237.5°	240°	242.5°	245°
112.5°	490.8	504.2	518.6	509.4	500.5	491.5	482.6	473.5	464.7	455.7	447.0
115°	451.0	458.2	466.6	462.6	459.0	455.1	451.3	447.7	443.9	440.2	436.7
117.5°	401.2	403.7	407.6	406.4	405.4	404.3	403.3	402.2	401.4	400.4	399.5
120°	349.3	348.5	348.9	348.7	348.8	348.6	348.7	348.6	348.7	348.7	348.9
122.5°	306.1	303.0	301.4	301.2	301.1	300.8	300.8	300.6	300.6	300.5	300.6
125°	276.0	271.8	269.4	268.2	267.1	265.7	264.5	263.3	262.3	261.1	260.0
127.5°	255.2	250.8	248.1	246.1	244.1	241.9	239.9	237.7	235.9	233.7	231.9
130°	241.6	237.0	234.6	232.1	229.9	227.2	225.0	222.6	220.1	217.7	215.3
132.5°	232.9	228.3	225.9	223.6	221.4	218.9	216.8	214.1	211.9	209.4	207.2
135°	228.4	223.9	221.8	219.6	217.7	215.3	213.2	210.9	208.9	206.5	204.6
137.5°	224.9	220.4	218.5	216.7	215.1	213.1	211.4	209.5	207.7	205.6	204.0
140°	222.5	217.8	215.9	214.8	213.7	212.3	211.0	209.8	208.6	207.4	206.1
142.5°	221.2	216.6	214.8	213.9	213.2	212.2	211.6	210.7	209.8	208.5	207.8
145°	219.8	214.7	212.9	212.4	212.3	211.8	211.4	211.0	210.7	210.1	209.7
147.5°	219.8	214.5	212.6	212.5	212.4	212.1	212.1	211.7	211.7	211.4	211.3
150°	219.3	213.3	211.2	211.3	211.2	211.3	211.4	211.3	211.5	211.5	211.5
152.5°	219.3	212.2	209.7	209.8	210.1	210.0	210.2	210.4	210.7	210.9	211.0
155°	219.8	212.0	209.4	209.2	209.2	209.3	209.3	209.4	209.5	209.7	209.9
157.5°	221.1	212.8	210.3	210.0	209.9	209.9	209.8	209.8	209.9	210.0	210.3
160°	222.9	214.5	212.0	211.7	211.6	211.4	211.3	211.2	211.3	211.4	211.5
162.5°	224.6	216.5	214.0	213.7	213.4	213.2	213.2	212.9	213.0	213.0	213.1
165°	226.4	219.2	216.8	216.6	216.6	216.3	216.3	216.2	216.2	216.2	216.4
167.5°	229.5	223.0	221.3	220.9	220.6	220.2	220.2	219.8	219.8	219.6	219.6
170°	230.9	225.8	224.2	224.1	224.2	224.0	223.9	223.9	223.8	223.6	223.7
172.5°	232.1	228.4	227.2	227.2	227.3	227.3	227.5	227.5	227.7	227.8	228.0
175°	233.0	230.8	230.2	230.1	230.1	230.2	230.3	230.3	230.4	230.5	230.7
177.5°	233.9	233.2	233.0	233.0	233.0	233.0	233.0	233.0	233.0	233.1	233.1
180°	232.8	232.8	232.8	232.8	232.8	232.8	232.8	232.8	232.8	232.8	232.8



TEST NUMBER: P1444458  
 CATALOG NUMBER: EHBR1-36-UNV-TA-L830-UPL12

**CANDELA DISTRIBUTION (continued):**

	247.5°	250°	252.5°	255°	257.5°	260°	262.5°	265°	267.5°	270°	272.5°
0°	29129.1	29129.1	29129.1	29129.1	29129.1	29129.1	29129.1	29129.1	29129.1	29129.1	29129.1
2.5°	29356.7	29391.0	29388.4	29420.3	29418.7	29448.8	29442.8	29468.9	29462.9	29485.2	29472.0
5°	30319.8	30384.8	30406.3	30465.1	30477.2	30529.8	30530.9	30572.7	30567.6	30600.3	30582.9
7.5°	31230.6	31291.4	31320.3	31365.9	31388.7	31426.5	31441.3	31472.4	31479.8	31498.1	31497.6
10°	31307.5	31307.3	31321.6	31315.2	31327.9	31320.5	31336.1	31330.5	31353.5	31347.5	31364.9
12.5°	30273.1	30170.5	30133.0	30040.7	30020.6	29941.4	29947.1	29896.3	29920.8	29889.6	29942.7
15°	28049.9	27811.8	27694.2	27487.1	27422.1	27258.4	27245.1	27136.5	27165.8	27108.9	27192.0
17.5°	24764.7	24389.8	24184.0	23881.7	23761.6	23530.1	23483.8	23343.8	23365.5	23295.0	23395.4
20°	20847.9	20394.8	20135.3	19785.6	19629.6	19353.7	19280.5	19123.9	19143.6	19073.5	19187.0
22.5°	16886.3	16412.1	16119.1	15752.6	15553.4	15293.9	15216.1	15058.7	15067.7	15001.9	15111.1
25°	13245.8	12791.1	12506.7	12173.8	12001.0	11763.1	11681.2	11540.1	11548.0	11493.7	11591.8
27.5°	10246.7	9873.6	9635.6	9356.5	9201.6	9006.0	8926.2	8807.5	8807.1	8767.3	8849.3
30°	8007.2	7695.8	7482.2	7239.2	7093.7	6917.1	6840.0	6733.8	6729.2	6700.9	6766.0
32.5°	6269.4	5992.5	5797.7	5583.8	5453.1	5301.7	5228.7	5143.4	5135.6	5110.0	5163.4
35°	4873.7	4640.5	4473.0	4292.8	4306.1	4082.6	4119.8	3946.3	3899.1	3888.9	3928.7
37.5°	3766.8	3586.2	3450.1	3315.2	3223.9	3129.5	3078.6	3032.9	3027.7	3023.3	3051.1
40°	2948.4	2821.9	2723.0	2630.5	2567.6	2510.0	2478.2	2453.1	2447.2	2443.8	2460.6
42.5°	2386.3	2300.9	2237.1	2180.8	2142.5	2111.2	2093.7	2079.8	2075.1	2075.3	2085.2
45°	2016.1	1964.4	1923.3	1888.1	1863.8	1874.4	1842.9	1859.5	1837.6	1860.2	1845.3
47.5°	1775.4	1731.4	1705.9	1681.1	1666.3	1654.4	1654.9	1655.1	1659.8	1660.5	1665.3
50°	1589.8	1564.3	1546.6	1530.7	1523.0	1516.8	1519.0	1520.6	1525.1	1525.4	1529.0
52.5°	1452.4	1435.6	1424.9	1415.1	1411.6	1408.1	1409.6	1408.9	1411.0	1409.9	1412.8
55°	1340.5	1332.6	1329.3	1325.6	1326.1	1325.2	1325.8	1322.3	1320.1	1317.4	1319.8
57.5°	1248.7	1247.6	1249.9	1251.4	1255.7	1257.2	1258.1	1254.0	1250.1	1246.6	1248.6
60°	1178.0	1179.8	1185.3	1189.9	1195.9	1198.7	1200.5	1198.1	1195.2	1192.3	1194.1
62.5°	1108.3	1110.9	1117.7	1122.7	1130.0	1133.9	1138.1	1138.3	1139.4	1138.3	1139.5
65°	1027.3	1030.7	1036.7	1040.9	1047.7	1051.1	1055.4	1056.1	1058.5	1058.0	1060.0
67.5°	965.7	968.8	973.9	977.8	983.9	987.4	991.1	991.3	992.3	992.0	993.9
70°	900.2	901.7	906.2	909.5	915.5	919.1	923.4	924.7	927.4	927.9	930.1
72.5°	830.2	829.5	832.3	833.8	838.3	841.1	846.6	849.6	854.2	855.3	857.0
75°	754.0	753.3	756.6	757.9	761.7	764.5	770.7	774.7	781.7	784.6	783.8
77.5°	665.7	667.3	673.3	676.7	681.8	685.4	693.4	699.8	712.6	718.3	712.6
80°	567.1	568.7	575.0	578.1	584.9	589.2	598.2	605.7	617.2	619.6	616.4
82.5°	445.9	446.2	451.9	454.3	463.1	469.5	480.8	486.8	493.9	492.8	492.0
85°	304.0	308.1	315.1	322.1	332.9	343.3	354.0	362.9	356.6	366.4	355.4
87.5°	162.5	162.1	171.5	170.0	185.2	193.9	203.2	207.6	212.5	211.6	211.7
90°	29.9	28.1	28.8	26.9	28.3	26.1	28.3	26.4	29.1	26.5	30.7
92.5°	23.5	22.7	21.7	20.9	19.9	19.1	18.1	17.1	16.3	15.4	16.3
95°	28.3	27.4	26.6	25.7	24.8	24.1	23.2	22.4	21.5	20.7	21.7
97.5°	34.5	34.0	33.5	33.0	32.5	32.0	31.6	31.0	30.4	30.0	30.6
100°	38.8	38.8	38.8	38.8	38.5	38.5	38.5	38.5	38.5	38.5	39.1
102.5°	70.6	69.0	67.4	65.8	64.2	62.5	60.9	59.3	57.7	56.1	58.5
105°	154.4	148.1	141.7	135.4	129.0	122.7	116.4	110.1	103.8	97.5	104.0
107.5°	282.8	271.3	259.7	248.2	236.7	225.2	213.8	202.3	190.8	179.4	189.7
110°	393.0	380.8	368.5	356.3	344.1	331.9	319.7	307.5	295.3	283.2	292.9



TEST NUMBER: P1444458  
 CATALOG NUMBER: EHBR1-36-UNV-TA-L830-UPL12

**CANDELA DISTRIBUTION (continued):**

	247.5°	250°	252.5°	255°	257.5°	260°	262.5°	265°	267.5°	270°	272.5°
112.5°	438.2	429.9	422.1	414.1	406.2	398.4	390.4	382.6	374.8	366.9	371.7
115°	432.9	429.1	425.3	421.4	417.6	413.7	409.9	406.2	402.5	398.8	399.0
117.5°	398.8	397.2	395.9	394.4	392.9	391.7	390.4	389.2	388.0	386.9	384.2
120°	349.1	349.2	349.2	349.6	349.9	350.1	350.3	350.9	351.4	351.8	348.3
122.5°	300.6	301.1	301.6	302.5	303.2	304.0	304.8	305.9	307.0	308.0	304.4
125°	258.9	259.4	259.9	260.6	261.1	262.0	262.8	264.0	264.9	266.0	263.0
127.5°	230.0	229.8	229.5	229.7	229.6	229.9	230.1	230.5	231.0	231.6	229.7
130°	212.9	212.2	211.3	210.6	209.8	209.4	209.1	208.7	208.5	208.4	207.7
132.5°	204.9	203.5	202.2	201.0	199.9	199.0	198.0	197.5	196.8	196.3	196.1
135°	202.2	200.6	199.0	197.6	196.1	195.0	193.8	193.0	192.0	191.3	191.7
137.5°	202.0	200.5	198.9	197.5	196.0	194.9	193.7	192.7	191.8	191.2	191.7
140°	204.8	203.2	201.6	200.3	199.0	197.7	196.6	195.8	194.7	194.2	194.5
142.5°	206.7	205.6	204.1	202.8	201.5	200.5	199.6	198.8	197.7	197.4	197.6
145°	209.2	208.2	207.1	206.1	205.2	204.7	203.6	203.2	202.6	202.4	202.6
147.5°	210.9	210.4	209.4	208.8	207.9	207.5	206.8	206.5	206.1	205.9	206.0
150°	211.5	211.1	210.5	210.1	209.6	209.4	209.0	208.8	208.5	208.4	208.4
152.5°	211.1	210.9	210.4	210.1	209.7	209.5	209.3	209.2	209.1	209.0	209.0
155°	210.1	209.9	209.8	209.7	209.6	209.7	209.6	209.8	209.8	210.0	210.1
157.5°	210.4	210.5	210.5	210.7	210.8	210.9	210.9	211.3	211.4	211.7	212.0
160°	211.8	212.0	211.9	212.1	212.2	212.3	212.4	212.6	212.7	213.0	213.3
162.5°	213.2	213.5	213.6	213.9	214.1	214.3	214.7	215.2	215.3	215.7	216.1
165°	216.5	216.5	216.6	216.7	216.8	216.9	217.1	217.5	217.7	218.0	218.4
167.5°	219.5	219.7	219.7	219.8	219.9	220.3	220.5	220.8	221.2	221.6	222.0
170°	223.6	223.6	223.6	223.6	223.6	223.8	223.9	224.0	224.2	224.4	224.6
172.5°	228.0	228.0	227.8	228.0	227.8	228.0	228.0	228.1	228.1	228.2	228.3
175°	230.6	230.9	231.0	231.1	231.1	231.2	231.3	231.3	231.4	231.6	231.6
177.5°	233.1	233.1	233.1	233.1	233.1	233.2	233.2	233.2	233.2	233.1	233.2
180°	232.8	232.8	232.8	232.8	232.8	232.8	232.8	232.8	232.8	232.8	232.8



TEST NUMBER: P1444458  
 CATALOG NUMBER: EHBR1-36-UNV-TA-L830-UPL12

**CANDELA DISTRIBUTION (continued):**

	275°	277.5°	280°	282.5°	285°	287.5°	290°	292.5°	295°	297.5°	300°
0°	29129.1	29129.1	29129.1	29129.1	29129.1	29129.1	29129.1	29129.1	29129.1	29129.1	29129.1
2.5°	29493.8	29479.0	29494.1	29478.8	29494.1	29475.7	29488.2	29468.3	29473.4	29452.7	29458.0
5°	30608.9	30585.4	30598.0	30567.3	30570.6	30529.8	30529.0	30481.5	30469.0	30414.9	30391.1
7.5°	31510.7	31503.0	31507.3	31487.7	31485.4	31457.6	31444.3	31405.0	31380.3	31330.5	31296.5
10°	31367.9	31391.0	31396.9	31420.3	31425.2	31448.4	31453.3	31476.5	31481.3	31498.5	31498.7
12.5°	29940.2	30018.3	30037.0	30133.4	30174.0	30284.4	30343.5	30465.1	30537.3	30658.5	30732.9
15°	27189.8	27324.8	27378.7	27567.0	27671.1	27891.0	28029.0	28281.4	28459.6	28727.5	28918.8
17.5°	23404.3	23593.0	23678.1	23933.5	24100.0	24424.5	24658.3	25043.2	25337.8	25765.5	26104.5
20°	19206.5	19416.2	19531.8	19823.1	20019.6	20398.7	20690.6	21163.5	21557.9	22099.9	22563.3
22.5°	15145.4	15345.0	15473.3	15769.7	15990.9	16386.3	16712.6	17211.7	17653.6	18264.3	18820.0
25°	11628.8	11811.7	11927.7	12195.8	12403.6	12766.9	13078.4	13558.5	13990.9	14603.4	15173.2
27.5°	8890.0	9043.3	9155.1	9383.7	9567.0	9875.1	10142.7	10539.4	10912.0	11441.9	11949.3
30°	6806.0	6941.9	7050.7	7249.8	7419.7	7686.8	7922.1	8255.4	8563.7	8985.4	9389.0
32.5°	5201.0	5317.9	5414.8	5589.1	5743.2	5983.8	6195.8	6487.9	6752.5	7110.2	7442.2
35°	3965.6	4195.6	4179.3	4419.6	4458.3	4630.9	4820.0	5075.5	5309.8	5613.9	5896.6
37.5°	3077.9	3142.6	3211.9	3318.1	3429.8	3586.8	3746.6	4058.7	4173.1	4403.0	4636.9
40°	2482.0	2525.7	2571.5	2643.3	2721.4	2832.1	2948.5	3097.3	3249.9	3436.2	3626.6
42.5°	2098.3	2123.1	2152.2	2194.4	2242.6	2312.7	2390.6	2491.6	2597.6	2728.8	2862.7
45°	1874.7	1863.0	1871.6	1894.3	1923.3	1966.0	2015.1	2077.6	2146.7	2231.7	2322.1
47.5°	1666.3	1671.1	1673.6	1686.0	1701.5	1730.1	1759.9	1802.3	1884.3	1909.2	1958.6
50°	1528.6	1531.0	1530.2	1536.4	1544.4	1562.9	1582.2	1611.0	1639.6	1677.6	1713.9
52.5°	1413.2	1416.5	1416.0	1420.1	1424.4	1436.2	1448.3	1468.7	1487.4	1511.6	1532.5
55°	1322.2	1326.6	1328.3	1331.7	1333.8	1340.0	1344.8	1354.5	1362.5	1376.2	1388.9
57.5°	1252.1	1258.1	1260.9	1262.1	1259.6	1259.3	1257.7	1259.8	1261.4	1268.7	1275.8
60°	1196.9	1201.8	1202.5	1201.8	1197.2	1194.0	1188.8	1187.2	1186.3	1189.9	1193.7
62.5°	1139.1	1140.9	1139.7	1138.3	1133.1	1130.0	1124.6	1122.6	1120.8	1123.3	1125.4
65°	1059.2	1060.7	1059.2	1058.4	1053.8	1051.3	1046.8	1045.3	1042.7	1043.3	1042.8
67.5°	994.4	995.9	994.7	993.5	990.3	988.8	985.4	983.3	980.2	979.0	976.8
70°	929.7	930.9	929.0	927.9	924.3	922.8	919.7	919.0	916.6	916.0	913.5
72.5°	855.3	855.4	852.9	852.1	849.4	849.3	848.0	849.2	849.0	850.3	849.8
75°	779.2	778.1	774.9	774.4	772.3	773.3	771.8	773.7	773.9	776.7	777.1
77.5°	703.0	699.0	692.9	690.0	685.9	685.3	683.0	684.5	684.0	687.3	688.6
80°	606.7	601.8	594.0	590.2	585.3	584.6	582.4	584.6	583.5	587.3	589.9
82.5°	484.4	480.2	472.0	468.9	463.4	463.9	461.5	463.9	463.6	469.2	472.4
85°	358.3	355.5	347.1	339.7	331.3	326.4	321.7	320.8	319.4	321.7	323.6
87.5°	206.9	204.4	197.7	193.4	178.9	179.6	173.9	173.5	172.1	170.8	173.9
90°	29.4	32.9	31.8	34.9	34.3	37.9	37.7	41.1	40.1	43.4	42.9
92.5°	17.1	18.1	19.0	19.9	20.8	21.7	22.6	23.5	25.5	27.2	29.4
95°	22.8	23.9	24.9	25.9	27.0	28.1	29.1	30.2	33.1	35.9	38.8
97.5°	31.5	32.0	32.8	33.4	34.2	34.8	35.6	36.3	39.4	42.5	45.6
100°	39.6	40.2	40.7	41.3	41.9	42.4	43.0	43.6	49.7	55.7	61.6
102.5°	60.9	63.2	65.6	68.0	70.4	72.8	75.2	77.6	91.3	104.9	118.6
105°	110.5	117.0	123.6	130.1	136.7	143.1	149.8	156.2	178.2	200.0	222.0
107.5°	199.9	210.2	220.5	230.8	241.1	251.5	261.7	272.1	293.5	315.0	336.3
110°	302.7	312.6	322.4	332.3	342.1	351.9	361.9	371.9	384.8	397.6	410.6



TEST NUMBER: P1444458  
 CATALOG NUMBER: EHBR1-36-UNV-TA-L830-UPL12

**CANDELA DISTRIBUTION (continued):**

	275°	277.5°	280°	282.5°	285°	287.5°	290°	292.5°	295°	297.5°	300°
112.5°	376.6	381.2	386.1	391.0	395.9	400.8	405.7	410.7	417.2	423.8	430.4
115°	399.4	399.7	400.2	400.5	401.0	401.4	402.1	402.6	404.9	407.1	409.5
117.5°	381.6	379.1	376.6	374.1	371.6	369.4	367.0	364.8	364.7	364.6	364.7
120°	345.0	341.6	338.2	334.7	331.6	328.3	325.3	322.3	321.0	319.6	318.5
122.5°	301.1	297.8	294.5	291.1	288.0	285.0	282.1	279.2	278.5	277.8	277.2
125°	260.2	257.5	254.9	252.3	249.8	247.5	245.2	243.1	243.5	244.0	244.7
127.5°	228.2	226.6	225.2	223.8	222.7	221.4	220.4	219.3	220.8	222.2	223.6
130°	207.2	206.6	206.4	206.0	206.0	205.8	205.8	205.8	207.9	209.8	211.9
132.5°	196.4	196.5	196.9	197.3	197.8	198.5	199.2	199.8	202.1	204.2	206.5
135°	192.0	192.5	193.3	194.0	195.1	196.0	197.0	197.9	200.3	202.2	204.6
137.5°	192.4	193.0	193.8	194.7	195.9	196.9	198.2	199.2	201.1	202.9	204.7
140°	195.1	195.7	196.5	197.4	198.2	199.1	200.3	201.2	203.0	204.3	205.8
142.5°	198.4	198.7	199.5	200.3	201.2	202.0	203.0	203.7	205.0	206.1	207.7
145°	203.0	203.5	204.2	204.6	205.3	206.1	206.8	207.6	208.5	209.4	210.3
147.5°	206.5	206.7	207.3	207.9	208.5	209.1	209.5	210.1	210.9	211.6	212.3
150°	208.8	209.1	209.4	209.6	210.2	210.8	211.3	211.6	212.3	212.8	213.5
152.5°	209.4	209.6	210.0	210.2	210.7	211.1	211.4	211.9	212.5	212.9	213.5
155°	210.4	210.9	211.2	211.6	212.2	212.4	212.9	213.2	213.8	214.1	214.7
157.5°	212.4	212.6	213.1	213.4	213.9	214.2	214.7	215.0	215.5	215.8	216.3
160°	213.9	214.2	214.7	215.2	215.7	216.0	216.6	217.1	217.5	217.9	218.3
162.5°	216.6	216.9	217.4	217.7	218.2	218.5	218.9	219.3	219.9	220.3	220.8
165°	218.9	219.3	219.9	220.2	220.9	221.3	221.7	222.2	222.6	222.9	223.3
167.5°	222.4	222.7	223.3	223.7	224.2	224.6	225.0	225.5	225.8	226.1	226.5
170°	225.1	225.4	225.8	226.2	226.6	226.9	227.3	227.7	228.2	228.6	228.9
172.5°	228.7	228.8	229.1	229.3	229.7	230.0	230.2	230.5	230.9	231.2	231.5
175°	231.6	231.6	231.6	231.7	231.9	231.9	232.0	232.2	232.3	232.4	232.5
177.5°	233.3	233.3	233.4	233.5	233.6	233.6	233.7	233.8	233.8	233.8	233.8
180°	232.8	232.8	232.8	232.8	232.8	232.8	232.8	232.8	232.8	232.8	232.8



TEST NUMBER: P1444458  
 CATALOG NUMBER: EHBR1-36-UNV-TA-L830-UPL12

**CANDELA DISTRIBUTION (continued):**

	302.5°	305°	307.5°	310°	312.5°	315°	317.5°	320°	322.5°	325°	327.5°
0°	29129.1	29129.1	29129.1	29129.1	29129.1	29129.1	29129.1	29129.1	29129.1	29129.1	29129.1
2.5°	29437.4	29438.7	29414.9	29413.7	29391.4	29388.6	29366.9	29360.3	29342.7	29336.3	29318.4
5°	30330.5	30301.6	30234.8	30195.5	30129.4	30085.7	30014.2	29967.6	29898.6	29846.5	29777.1
7.5°	31233.8	31188.8	31113.8	31053.0	30961.4	30888.3	30781.0	30693.1	30577.0	30476.5	30354.5
10°	31498.7	31491.8	31472.7	31444.8	31402.2	31354.3	31281.3	31205.1	31103.4	30992.8	30857.3
12.5°	30846.9	30917.3	31013.2	31070.2	31139.3	31169.6	31198.0	31190.9	31172.3	31116.3	31037.9
15°	29195.7	29393.5	29655.4	29858.3	30091.9	30261.5	30448.9	30565.7	30682.3	30736.0	30768.9
17.5°	26569.0	26943.5	27413.2	27802.3	28251.3	28612.0	29007.3	29304.9	29611.0	29830.2	30028.5
20°	23195.1	23737.7	24401.8	24988.6	25670.8	26263.7	26913.4	27446.8	27996.8	28427.0	28834.1
22.5°	19535.4	20179.9	20982.8	21726.7	22606.2	23396.6	24288.5	25064.6	25875.1	26552.1	27206.8
25°	15936.9	16643.5	17521.5	18351.4	19347.5	20267.0	21324.6	22292.0	23339.5	24249.0	25147.4
27.5°	12650.8	13344.6	14241.0	15124.4	16177.7	17157.4	18290.6	19356.5	20549.1	21649.0	22774.1
30°	9950.0	10538.4	11342.1	12197.8	13236.7	14233.7	15379.2	16475.4	17716.1	18917.0	20184.3
32.5°	7883.1	8331.4	8963.3	9686.8	10645.3	11594.4	12685.1	13743.3	14965.1	16178.3	17496.3
35°	6260.6	6610.3	7092.0	7656.7	8468.4	9286.4	10251.2	11213.6	12353.5	13504.6	14785.8
37.5°	4936.8	5220.6	5597.9	6022.0	6673.1	7344.5	8135.6	8933.4	9923.9	10944.2	12105.3
40°	3855.1	4084.8	4378.6	4694.9	5186.6	5703.8	6315.7	6934.4	7730.1	8564.0	9524.9
42.5°	3028.5	3198.0	3405.5	3636.6	4095.3	4369.9	4784.8	5232.3	5817.3	6422.7	7145.1
45°	2432.2	2547.8	2691.6	2846.7	3059.6	3292.5	3576.7	3874.6	4430.4	4703.0	5142.3
47.5°	2031.1	2108.7	2200.2	2297.9	2423.5	2559.0	2727.5	2899.8	3122.6	3353.5	3624.3
50°	1761.0	1839.9	1871.3	1921.9	1994.6	2072.0	2167.0	2262.0	2381.5	2502.6	2642.0
52.5°	1560.5	1586.2	1620.4	1652.5	1697.6	1785.7	1814.2	1863.9	1930.9	1996.4	2069.7
55°	1407.4	1424.2	1446.4	1465.9	1493.0	1519.1	1556.6	1589.7	1634.4	1673.9	1722.4
57.5°	1288.3	1298.9	1314.4	1327.1	1344.7	1359.4	1381.4	1399.3	1425.0	1447.4	1476.8
60°	1201.6	1208.8	1219.1	1227.5	1238.7	1246.4	1257.3	1265.7	1279.3	1290.6	1307.0
62.5°	1131.0	1134.6	1141.4	1146.3	1153.4	1157.3	1163.1	1166.8	1174.3	1180.0	1189.2
65°	1046.1	1047.0	1051.5	1053.5	1059.1	1061.2	1066.0	1067.7	1073.8	1078.1	1086.1
67.5°	976.6	974.6	974.7	973.1	973.9	972.2	972.7	971.0	973.4	974.7	980.9
70°	913.1	910.4	909.5	906.6	905.7	902.7	901.9	899.1	898.9	898.0	900.2
72.5°	851.2	850.4	850.7	848.7	848.5	846.4	846.5	845.2	846.6	847.3	850.1
75°	780.1	780.3	781.7	779.9	780.4	778.7	779.3	777.7	778.6	778.2	781.0
77.5°	693.5	695.6	699.3	698.6	699.8	697.8	698.7	696.4	697.1	695.6	696.6
80°	596.1	600.4	605.5	605.3	607.5	606.1	608.0	605.9	606.7	604.1	603.4
82.5°	480.5	484.2	489.6	489.8	494.6	495.4	500.7	500.5	503.9	501.7	500.2
85°	328.5	331.0	335.7	338.3	343.2	346.2	351.3	353.3	349.7	356.3	351.1
87.5°	171.5	177.9	174.3	182.7	180.7	189.1	187.3	195.1	193.5	200.3	199.4
90°	47.4	47.5	52.3	52.5	58.4	59.4	63.4	62.1	65.8	64.6	68.5
92.5°	31.1	33.3	35.3	37.3	39.2	41.3	39.4	37.6	35.8	34.0	32.1
95°	41.6	44.5	47.3	50.2	53.0	55.9	52.8	49.8	46.7	43.7	40.7
97.5°	48.7	51.7	54.8	57.9	61.1	64.2	60.5	56.9	53.2	49.6	46.1
100°	67.6	73.6	79.6	85.5	91.6	97.5	90.9	84.0	77.4	70.5	63.8
102.5°	132.5	146.1	159.8	173.6	187.2	200.9	186.6	172.4	158.1	143.8	129.4
105°	243.9	265.8	287.8	309.6	331.5	353.7	330.5	307.2	283.9	260.9	237.5
107.5°	357.7	379.1	400.7	422.0	443.4	465.1	441.6	418.0	394.5	371.0	347.5
110°	423.7	436.5	449.5	462.6	475.6	488.8	471.6	454.7	437.5	420.4	403.3



TEST NUMBER: P1444458  
 CATALOG NUMBER: EHBR1-36-UNV-TA-L830-UPL12

**CANDELA DISTRIBUTION (continued):**

	302.5°	305°	307.5°	310°	312.5°	315°	317.5°	320°	322.5°	325°	327.5°
112.5°	437.1	443.8	450.4	457.3	463.9	470.6	458.4	446.4	434.2	422.2	410.0
115°	411.9	414.2	416.6	419.2	421.4	423.9	415.9	407.7	399.8	391.7	383.5
117.5°	364.7	364.9	364.8	365.0	364.9	365.0	360.7	356.4	352.0	347.7	343.2
120°	317.1	316.0	314.8	313.6	312.3	311.0	309.4	307.9	306.2	304.6	302.7
122.5°	276.4	276.0	275.2	274.6	273.9	273.1	272.9	272.6	272.1	271.7	271.3
125°	245.2	245.8	246.3	246.8	247.3	247.9	247.9	247.9	248.0	248.1	247.9
127.5°	225.0	226.4	227.7	229.1	230.3	231.6	231.9	232.4	232.8	233.1	233.4
130°	213.8	215.9	217.8	219.7	221.4	223.4	223.6	224.0	224.2	224.4	224.8
132.5°	208.7	210.8	212.9	215.2	217.0	219.2	219.4	219.8	219.8	220.1	220.3
135°	206.5	208.7	210.6	212.7	214.5	216.5	216.6	216.8	216.9	217.2	217.3
137.5°	206.3	208.1	209.7	211.4	212.9	214.6	214.6	215.0	214.9	215.3	215.3
140°	207.2	208.6	209.9	211.4	212.6	214.0	214.0	214.0	214.0	214.0	213.9
142.5°	208.7	209.9	210.9	212.2	213.1	214.3	213.9	213.7	213.5	213.3	213.0
145°	211.1	212.2	212.9	213.8	214.3	215.3	214.8	214.5	213.9	213.7	213.2
147.5°	212.9	213.7	214.0	214.7	215.0	215.7	215.3	214.8	214.4	213.9	213.4
150°	213.9	214.6	215.1	215.4	215.9	216.5	215.9	215.3	214.7	214.2	213.7
152.5°	214.0	214.5	215.0	215.3	215.7	216.1	215.4	215.2	214.4	213.8	213.2
155°	215.0	215.4	215.7	216.1	216.2	216.6	215.9	215.6	215.1	214.6	214.0
157.5°	216.6	217.0	217.3	217.6	217.8	218.1	217.8	217.4	216.9	216.7	216.1
160°	218.6	218.9	219.3	219.5	219.8	219.9	219.6	219.5	219.1	218.7	218.3
162.5°	221.2	221.6	222.0	222.2	222.6	222.9	222.6	222.3	221.8	221.4	221.0
165°	223.6	224.0	224.2	224.6	224.7	225.0	224.7	224.6	224.3	224.2	223.8
167.5°	226.8	227.2	227.4	227.7	227.8	228.0	227.8	227.8	227.4	227.2	226.9
170°	229.1	229.5	229.9	230.1	230.3	230.5	230.4	230.2	230.0	229.8	229.5
172.5°	231.7	232.0	232.1	232.4	232.5	232.8	232.6	232.3	232.1	231.8	231.6
175°	232.5	232.7	232.9	232.9	232.9	233.0	232.8	232.6	232.3	232.1	231.9
177.5°	233.8	233.8	233.8	233.7	233.7	233.7	233.6	233.4	233.3	233.1	233.0
180°	232.8	232.8	232.8	232.8	232.8	232.8	232.8	232.8	232.8	232.8	232.8



TEST NUMBER: P1444458  
 CATALOG NUMBER: EHBR1-36-UNV-TA-L830-UPL12

**CANDELA DISTRIBUTION (continued):**

	330°	332.5°	335°	337.5°	340°	342.5°	345°	347.5°	350°	352.5°	355°
0°	29129.1	29129.1	29129.1	29129.1	29129.1	29129.1	29129.1	29129.1	29129.1	29129.1	29129.1
2.5°	29312.1	29299.3	29291.1	29280.7	29274.3	29266.2	29260.3	29255.2	29251.1	29247.3	29244.5
5°	29724.2	29658.7	29607.9	29552.8	29507.5	29462.5	29427.6	29398.9	29379.0	29364.1	29355.2
7.5°	30249.0	30129.1	30022.5	29910.1	29809.5	29710.5	29625.2	29551.8	29496.6	29460.8	29439.2
10°	30717.7	30557.1	30398.4	30231.2	30072.8	29918.9	29777.1	29652.4	29553.5	29487.9	29449.6
12.5°	30927.7	30790.9	30628.8	30447.3	30253.1	30056.6	29865.1	29692.4	29547.5	29450.1	29394.0
15°	30742.7	30686.6	30576.5	30435.6	30251.4	30048.2	29823.3	29612.0	29417.5	29291.4	29218.4
17.5°	30140.9	30219.3	30210.8	30157.0	30024.4	29853.5	29624.3	29386.9	29143.6	28975.1	28883.0
20°	29125.2	29371.5	29496.6	29560.7	29508.7	29397.8	29190.3	28949.4	28665.8	28445.8	28311.6
22.5°	27697.9	28132.8	28403.9	28602.2	28644.4	28606.5	28423.4	28194.2	27878.2	27613.7	27415.4
25°	25860.5	26497.8	26926.2	27262.0	27392.4	27426.1	27270.2	27042.3	26690.0	26381.9	26109.5
27.5°	23696.3	24524.3	25096.3	25547.5	25751.3	25839.6	25696.1	25463.6	25046.8	24679.0	24323.2
30°	21259.8	22242.2	22930.9	23472.0	23720.3	23837.0	23684.5	23425.0	22940.1	22497.5	22049.2
32.5°	18652.0	19727.1	20477.5	21065.1	21311.2	21420.9	21221.5	20930.0	20369.6	19848.1	19325.4
35°	15921.8	17006.8	17763.6	18335.5	18541.8	18607.9	18352.9	18016.0	17395.1	16822.7	16252.7
37.5°	13135.8	14145.3	14833.2	15346.5	15474.1	15485.5	15178.2	14806.2	14153.5	13589.1	13021.8
40°	10374.1	11225.3	11780.7	12191.5	12235.9	12196.3	11862.3	11487.8	10877.2	10371.6	9873.6
42.5°	7772.5	8415.1	8811.3	9092.9	9076.1	8998.1	8691.8	8370.0	7866.2	7481.1	7089.1
45°	5543.7	5967.5	6199.1	6363.9	6311.0	6236.6	5998.2	5772.7	5430.3	5181.6	4918.2
47.5°	3851.3	4357.3	4269.2	4591.4	4313.8	4497.1	4115.4	3905.0	3723.3	3591.2	3442.3
50°	2757.2	2873.2	2929.2	2967.4	2947.1	2918.9	2850.3	2789.1	2706.1	2645.5	2575.1
52.5°	2129.3	2187.3	2219.1	2242.0	2237.5	2227.2	2197.3	2170.0	2131.2	2105.5	2074.7
55°	1803.6	1804.5	1862.9	1837.8	1874.8	1831.5	1848.5	1800.4	1808.2	1767.0	1739.3
57.5°	1498.7	1522.5	1533.2	1543.5	1540.6	1538.8	1527.2	1521.4	1508.4	1504.4	1495.1
60°	1318.3	1330.8	1333.4	1338.1	1334.2	1332.6	1323.6	1320.3	1311.6	1309.9	1303.8
62.5°	1194.7	1201.0	1201.0	1201.0	1195.8	1190.8	1180.8	1175.6	1168.1	1166.5	1162.9
65°	1091.5	1098.0	1099.1	1100.5	1096.7	1092.9	1084.0	1078.2	1070.6	1067.7	1063.5
67.5°	984.9	991.9	994.3	997.9	995.7	994.9	988.9	986.6	981.6	980.4	976.6
70°	901.2	904.1	903.9	903.8	899.1	894.8	887.8	884.4	879.2	878.1	874.7
72.5°	851.5	853.5	852.2	850.3	844.3	838.0	829.7	823.7	816.8	812.5	807.6
75°	781.4	784.1	782.3	781.2	775.7	771.6	765.0	761.6	756.8	755.4	752.0
77.5°	695.3	696.6	693.8	693.5	689.3	686.7	681.7	680.9	677.3	677.4	674.1
80°	599.6	598.8	594.3	593.4	589.2	588.2	584.2	584.5	581.7	582.8	580.6
82.5°	493.4	490.6	484.7	483.0	478.1	477.7	475.1	477.3	475.6	478.1	476.6
85°	353.5	354.4	351.7	351.7	350.3	350.7	350.5	352.1	352.4	354.7	354.6
87.5°	197.1	199.9	199.4	202.0	201.9	204.8	205.8	210.1	210.7	214.6	214.6
90°	67.3	71.5	70.3	74.7	74.3	78.9	79.3	83.9	83.8	87.8	86.7
92.5°	30.3	28.5	26.7	24.8	23.9	22.8	22.3	20.9	20.3	19.1	18.2
95°	37.6	34.5	31.4	28.3	27.3	26.1	25.1	24.1	22.9	21.9	20.9
97.5°	42.4	38.8	35.1	31.5	30.5	29.7	28.7	27.7	26.9	25.9	25.0
100°	57.0	50.2	43.5	36.6	35.9	35.1	34.3	33.5	32.8	31.9	31.1
102.5°	115.0	100.7	86.3	71.8	69.1	66.4	63.7	60.9	58.1	55.4	52.6
105°	214.3	190.9	167.7	144.3	136.9	129.5	122.1	114.7	107.2	99.8	92.4
107.5°	323.9	300.2	276.6	252.9	239.3	225.6	211.9	198.1	184.4	170.7	157.0
110°	386.1	368.9	351.6	334.3	323.4	312.4	301.3	290.3	279.5	268.3	257.2



TEST NUMBER: P1444458  
 CATALOG NUMBER: EHBR1-36-UNV-TA-L830-UPL12

**CANDELA DISTRIBUTION (continued):**

	330°	332.5°	335°	337.5°	340°	342.5°	345°	347.5°	350°	352.5°	355°
112.5°	397.7	385.5	373.3	360.8	355.9	351.0	346.1	341.1	336.3	331.0	326.2
115°	375.3	367.3	358.9	350.6	349.2	347.4	345.8	344.1	342.4	340.6	338.8
117.5°	338.9	334.3	329.9	325.3	325.8	326.2	326.7	327.0	327.4	327.6	327.9
120°	301.1	299.4	297.7	295.9	297.7	299.4	301.2	302.7	304.3	305.7	307.2
122.5°	270.9	270.3	270.0	269.4	271.6	273.7	275.8	277.7	279.5	281.2	283.1
125°	248.0	248.0	248.0	247.9	250.2	252.3	254.4	256.3	258.3	259.9	261.7
127.5°	233.8	234.2	234.6	234.7	236.6	238.1	239.7	241.1	242.6	243.7	244.9
130°	225.1	225.2	225.6	225.7	227.3	228.8	230.4	231.7	233.1	234.1	235.1
132.5°	220.6	220.7	221.1	221.1	222.6	223.7	224.9	225.7	226.9	227.5	228.2
135°	217.5	217.6	217.8	217.8	219.1	220.3	221.4	222.3	223.3	223.9	224.5
137.5°	215.5	215.5	215.7	215.7	216.9	218.0	219.0	219.8	220.6	221.3	221.9
140°	214.0	213.9	214.0	213.9	215.0	216.0	216.9	217.7	218.5	219.0	219.5
142.5°	212.8	212.4	212.4	212.0	212.8	213.6	214.2	214.9	215.4	215.8	216.1
145°	212.8	212.3	212.0	211.5	212.1	212.6	213.3	213.9	214.1	214.3	214.7
147.5°	213.0	212.4	211.9	211.4	212.1	212.4	212.8	213.0	213.6	213.7	213.9
150°	213.1	212.4	211.7	211.0	211.5	211.7	212.0	212.3	212.6	212.5	212.7
152.5°	212.6	211.9	211.2	210.5	210.8	210.9	211.0	211.0	211.2	211.2	211.3
155°	213.5	212.8	212.3	211.5	211.7	211.8	211.7	211.8	211.7	211.7	211.5
157.5°	215.6	215.0	214.6	213.9	213.9	213.9	213.8	213.5	213.5	213.2	212.9
160°	218.0	217.4	217.0	216.5	216.4	216.3	216.1	215.8	215.6	215.3	215.0
162.5°	220.5	219.9	219.4	218.8	218.7	218.7	218.4	218.2	218.0	217.7	217.3
165°	223.5	223.1	222.7	222.2	222.1	221.8	221.7	221.3	221.1	220.7	220.3
167.5°	226.5	226.1	225.7	225.2	225.2	225.0	224.9	224.7	224.4	224.2	224.0
170°	229.2	228.8	228.6	228.2	228.0	227.9	227.6	227.4	227.1	226.9	226.6
172.5°	231.2	230.9	230.5	230.1	230.1	229.9	229.7	229.6	229.3	229.0	228.9
175°	231.6	231.4	231.0	230.8	230.6	230.5	230.4	230.3	230.1	230.1	229.8
177.5°	232.8	232.7	232.3	232.2	232.0	232.0	231.9	231.8	231.8	231.7	231.6
180°	232.8	232.8	232.8	232.8	232.8	232.8	232.8	232.8	232.8	232.8	232.8



TEST NUMBER: P1444458  
CATALOG NUMBER: EHBR1-36-UNV-TA-L830-UPL12

**CANDELA DISTRIBUTION (continued):**

	357.5°	360°
0°	29129.1	29129.1
2.5°	29241.9	29240.4
5°	29350.6	29348.9
7.5°	29433.3	29432.8
10°	29443.0	29448.1
12.5°	29384.3	29388.4
15°	29212.8	29220.7
17.5°	28884.7	28895.2
20°	28319.7	28330.7
22.5°	27404.7	27409.2
25°	26074.3	26055.5
27.5°	24260.7	24228.2
30°	21955.1	21923.7
32.5°	19206.2	19186.5
35°	16111.9	16099.5
37.5°	12854.1	12828.8
40°	9691.4	9617.8
42.5°	6917.5	6788.2
45°	4780.6	4627.4
47.5°	3337.3	3242.7
50°	2529.6	2499.0
52.5°	2061.2	2054.1
55°	1739.2	1736.0
57.5°	1497.1	1496.0
60°	1307.0	1306.7
62.5°	1165.3	1165.8
65°	1065.4	1065.6
67.5°	977.5	976.9
70°	875.9	875.2
72.5°	806.0	804.8
75°	752.0	751.2
77.5°	675.2	674.0
80°	582.1	580.6
82.5°	478.8	477.1
85°	357.1	357.3
87.5°	218.5	218.4
90°	90.6	89.0
92.5°	17.6	16.9
95°	19.9	18.8
97.5°	24.2	23.2
100°	30.3	29.6
102.5°	49.9	47.2
105°	85.0	77.6
107.5°	143.2	129.5
110°	246.2	235.1



TEST NUMBER: P1444458  
CATALOG NUMBER: EHBR1-36-UNV-TA-L830-UPL12

**CANDELA DISTRIBUTION (continued):**

	357.5°	360°
112.5°	321.0	316.0
115°	336.7	335.0
117.5°	328.0	328.0
120°	308.5	309.9
122.5°	284.5	286.1
125°	263.1	264.7
127.5°	245.9	246.8
130°	235.8	236.6
132.5°	228.7	228.9
135°	224.8	225.1
137.5°	222.0	222.3
140°	219.6	219.8
142.5°	216.3	216.4
145°	214.8	214.8
147.5°	213.5	213.6
150°	212.5	212.5
152.5°	210.9	210.9
155°	211.3	211.0
157.5°	212.4	212.3
160°	214.6	214.3
162.5°	216.9	216.7
165°	219.8	219.4
167.5°	223.5	223.3
170°	226.2	226.0
172.5°	228.7	228.4
175°	229.7	229.6
177.5°	231.6	231.5
180°	232.8	232.8

LM-79-2019: Approved Method: Electrical and Photometric Measurements of Solid-  
State Lighting Products

Report Prepared for

Cooper Lighting Solutions

Metalux

Report Number: SP1-2506-472-2

Test Date: 07/31/2025

Luminaire Tested: EHBR-60-L830-N

Data in this report applies to families of products including EHBR-60-L830-N

**Test Information**

Test Method: LM-79-2019  
 Report Number: SP1-2506-472-2  
 Test Lab: COOPER LIGHTING SOLUTIONS  
 Photometer: SP1 - 76IN SPHERE  
 Measurement Geometry: 4π  
 Issue Date: 08/05/2025  
 Manufacturer: COOPER LIGHTING SOLUTIONS  
 Product Line: Metalux  
 Catalog Number: **EHBR-60-L830-N**  
 Description: Elevate Round Highbay at, 60000 lumens, 3000K 80CRI LEDs with N lens

**Spectral Parameters**

CCT (K): 2983  
 CIE u': 0.2516  
 CIE v': 0.5201  
 Duv: -0.0012  
 CIE x: 0.4364  
 CIE y: 0.4010  
 CIE z: 0.1626  
 Peak Wavelength (nm): 630  
 Dominant Wavelength (nm): 583  
 Purity: 51.34918  
 Rf: 81.2  
 Rg: 101.5

CRI (Ra):	83.4		
R1:	84.0	R9:	29.4
R2:	87.5	R10:	68.6
R3:	88.9	R11:	82.2
R4:	83.8	R12:	61.6
R5:	81.9	R13:	83.9
R6:	83.1	R14:	92.5
R7:	87.1	R15:	79.8
R8:	70.9		



**Test Conditions**

Stabilization Time: 38M  
 Operation Time: 1H 38M  
 Sphere Temperature (°C): 25.0

REPORT NUMBER: SP1-2506-472-2

Measurement and Test Equipment			
Instrument	Identification Number	Calibration Date	Calibration Due Date
Photometer	76INCH SPHERE IN0058	6/16/2025	12/16/2025
Power Meter	XITRON INXT2011004	1/21/2025	1/21/2026
AC Power Source	CHROMA 61603 IN0063	10/22/2024	10/22/2025
DC Power Source	AGILENT E3634A IN0208	10/22/2024	10/22/2025
Sphere Thermometer	ONSET IN0085	10/22/2024	10/22/2025
Room Thermometer	ONSET IN0046	10/22/2024	10/22/2025

REPORT NUMBER: SP1-2506-472-2

CIE 1931 Chromaticity Diagram



CIE 1931 Chromaticity Diagram with 2017 ANSI 7-Step and 4-Step Quadrangles

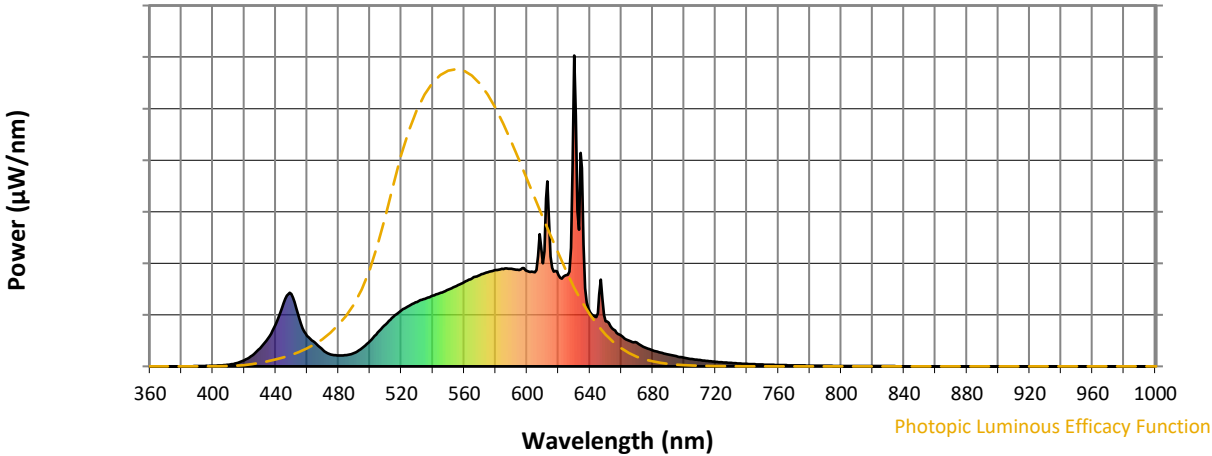


CCT = 2983K  
 CIE x = 0.4364  
 CIE y = 0.4010  
 Duv = -0.0012

Point lies inside the ANSI 3000K 4-step quadrangle

REPORT NUMBER: SP1-2506-472-2

**Photopic Flux vs. Wavelength**



**Photopic Lumens: NR**

λ (nm)	Power W <sup>^</sup> /nm	Lumens (φ/nm)	λ (nm)	Power W <sup>^</sup> /nm	Lumens (φ/nm)	λ (nm)	Power W <sup>^</sup> /nm	Lumens (φ/nm)	λ (nm)	Power W <sup>^</sup> /nm	Lumens (φ/nm)	λ (nm)	Power W <sup>^</sup> /nm	Lumens (φ/nm)
360	0	NR	490	43	NR	620	294	NR	750	6	NR	880	0	NR
365	0	NR	495	59	NR	625	294	NR	755	5	NR	885	0	NR
370	0	NR	500	81	NR	630	1000	NR	760	4	NR	890	0	NR
375	0	NR	505	109	NR	635	637	NR	765	4	NR	895	0	NR
380	0	NR	510	135	NR	640	175	NR	770	3	NR	900	0	NR
385	0	NR	515	160	NR	645	171	NR	775	3	NR	905	0	NR
390	1	NR	520	180	NR	650	146	NR	780	2	NR	910	0	NR
395	1	NR	525	195	NR	655	119	NR	785	2	NR	915	0	NR
400	2	NR	530	207	NR	660	99	NR	790	2	NR	920	0	NR
405	3	NR	535	218	NR	665	82	NR	795	2	NR	925	0	NR
410	5	NR	540	227	NR	670	76	NR	800	1	NR	930	0	NR
415	10	NR	545	237	NR	675	61	NR	805	1	NR	935	0	NR
420	20	NR	550	247	NR	680	52	NR	810	1	NR	940	0	NR
425	35	NR	555	259	NR	685	44	NR	815	1	NR	945	0	NR
430	58	NR	560	271	NR	690	38	NR	820	1	NR	950	0	NR
435	90	NR	565	283	NR	695	33	NR	825	1	NR	955	0	NR
440	135	NR	570	293	NR	700	27	NR	830	1	NR	960	0	NR
445	204	NR	575	303	NR	705	24	NR	835	1	NR	965	0	NR
450	233	NR	580	310	NR	710	20	NR	840	0	NR	970	0	NR
455	153	NR	585	313	NR	715	17	NR	845	0	NR	975	0	NR
460	98	NR	590	314	NR	720	15	NR	850	0	NR	980	0	NR
465	76	NR	595	310	NR	725	13	NR	855	0	NR	985	0	NR
470	53	NR	600	307	NR	730	11	NR	860	0	NR	990	0	NR
475	39	NR	605	303	NR	735	9	NR	865	0	NR	995	0	NR
480	35	NR	610	331	NR	740	8	NR	870	0	NR	1000	0	NR
485	36	NR	615	353	NR	745	7	NR	875	0	NR			

REPORT NUMBER: SP1-2506-472-2

**Scotopic Flux vs. Wavelength**



**Scotopic Lumens: NR**

**S/P: 1.27**

$\lambda$ (nm)	Power $W^{\wedge}/nm$	Lumens ( $\phi/nm$ )	$\lambda$ (nm)	Power $W^{\wedge}/nm$	Lumens ( $\phi/nm$ )	$\lambda$ (nm)	Power $W^{\wedge}/nm$	Lumens ( $\phi/nm$ )	$\lambda$ (nm)	Power $W^{\wedge}/nm$	Lumens ( $\phi/nm$ )	$\lambda$ (nm)	Power $W^{\wedge}/nm$	Lumens ( $\phi/nm$ )
360	0	NR	490	43	NR	620	294	NR	750	6	NR	880	0	NR
365	0	NR	495	59	NR	625	294	NR	755	5	NR	885	0	NR
370	0	NR	500	81	NR	630	1000	NR	760	4	NR	890	0	NR
375	0	NR	505	109	NR	635	637	NR	765	4	NR	895	0	NR
380	0	NR	510	135	NR	640	175	NR	770	3	NR	900	0	NR
385	0	NR	515	160	NR	645	171	NR	775	3	NR	905	0	NR
390	1	NR	520	180	NR	650	146	NR	780	2	NR	910	0	NR
395	1	NR	525	195	NR	655	119	NR	785	2	NR	915	0	NR
400	2	NR	530	207	NR	660	99	NR	790	2	NR	920	0	NR
405	3	NR	535	218	NR	665	82	NR	795	2	NR	925	0	NR
410	5	NR	540	227	NR	670	76	NR	800	1	NR	930	0	NR
415	10	NR	545	237	NR	675	61	NR	805	1	NR	935	0	NR
420	20	NR	550	247	NR	680	52	NR	810	1	NR	940	0	NR
425	35	NR	555	259	NR	685	44	NR	815	1	NR	945	0	NR
430	58	NR	560	271	NR	690	38	NR	820	1	NR	950	0	NR
435	90	NR	565	283	NR	695	33	NR	825	1	NR	955	0	NR
440	135	NR	570	293	NR	700	27	NR	830	1	NR	960	0	NR
445	204	NR	575	303	NR	705	24	NR	835	1	NR	965	0	NR
450	233	NR	580	310	NR	710	20	NR	840	0	NR	970	0	NR
455	153	NR	585	313	NR	715	17	NR	845	0	NR	975	0	NR
460	98	NR	590	314	NR	720	15	NR	850	0	NR	980	0	NR
465	76	NR	595	310	NR	725	13	NR	855	0	NR	985	0	NR
470	53	NR	600	307	NR	730	11	NR	860	0	NR	990	0	NR
475	39	NR	605	303	NR	735	9	NR	865	0	NR	995	0	NR
480	35	NR	610	331	NR	740	8	NR	870	0	NR	1000	0	NR
485	36	NR	615	353	NR	745	7	NR	875	0	NR			

REPORT NUMBER: SP1-2506-472-2

**Melanopic Flux vs. Wavelength**



**Melanopic Lumens: NR**

**M/P: 2.34**

λ (nm)	Power W <sup>^</sup> /nm	Lumens (φ/nm)	λ (nm)	Power W <sup>^</sup> /nm	Lumens (φ/nm)	λ (nm)	Power W <sup>^</sup> /nm	Lumens (φ/nm)	λ (nm)	Power W <sup>^</sup> /nm	Lumens (φ/nm)	λ (nm)	Power W <sup>^</sup> /nm	Lumens (φ/nm)
360	0	NR	490	43	NR	620	294	NR	750	6	NR	880	0	NR
365	0	NR	495	59	NR	625	294	NR	755	5	NR	885	0	NR
370	0	NR	500	81	NR	630	1000	NR	760	4	NR	890	0	NR
375	0	NR	505	109	NR	635	637	NR	765	4	NR	895	0	NR
380	0	NR	510	135	NR	640	175	NR	770	3	NR	900	0	NR
385	0	NR	515	160	NR	645	171	NR	775	3	NR	905	0	NR
390	1	NR	520	180	NR	650	146	NR	780	2	NR	910	0	NR
395	1	NR	525	195	NR	655	119	NR	785	2	NR	915	0	NR
400	2	NR	530	207	NR	660	99	NR	790	2	NR	920	0	NR
405	3	NR	535	218	NR	665	82	NR	795	2	NR	925	0	NR
410	5	NR	540	227	NR	670	76	NR	800	1	NR	930	0	NR
415	10	NR	545	237	NR	675	61	NR	805	1	NR	935	0	NR
420	20	NR	550	247	NR	680	52	NR	810	1	NR	940	0	NR
425	35	NR	555	259	NR	685	44	NR	815	1	NR	945	0	NR
430	58	NR	560	271	NR	690	38	NR	820	1	NR	950	0	NR
435	90	NR	565	283	NR	695	33	NR	825	1	NR	955	0	NR
440	135	NR	570	293	NR	700	27	NR	830	1	NR	960	0	NR
445	204	NR	575	303	NR	705	24	NR	835	1	NR	965	0	NR
450	233	NR	580	310	NR	710	20	NR	840	0	NR	970	0	NR
455	153	NR	585	313	NR	715	17	NR	845	0	NR	975	0	NR
460	98	NR	590	314	NR	720	15	NR	850	0	NR	980	0	NR
465	76	NR	595	310	NR	725	13	NR	855	0	NR	985	0	NR
470	53	NR	600	307	NR	730	11	NR	860	0	NR	990	0	NR
475	39	NR	605	303	NR	735	9	NR	865	0	NR	995	0	NR
480	35	NR	610	331	NR	740	8	NR	870	0	NR	1000	0	NR
485	36	NR	615	353	NR	745	7	NR	875	0	NR			

**Summary**

$R_f = 81.2$   
 $R_g = 101.5$   
 CIE  $R_a = 83.4$   
 $R_9 = 29.4$



**Color Vector Graphics**

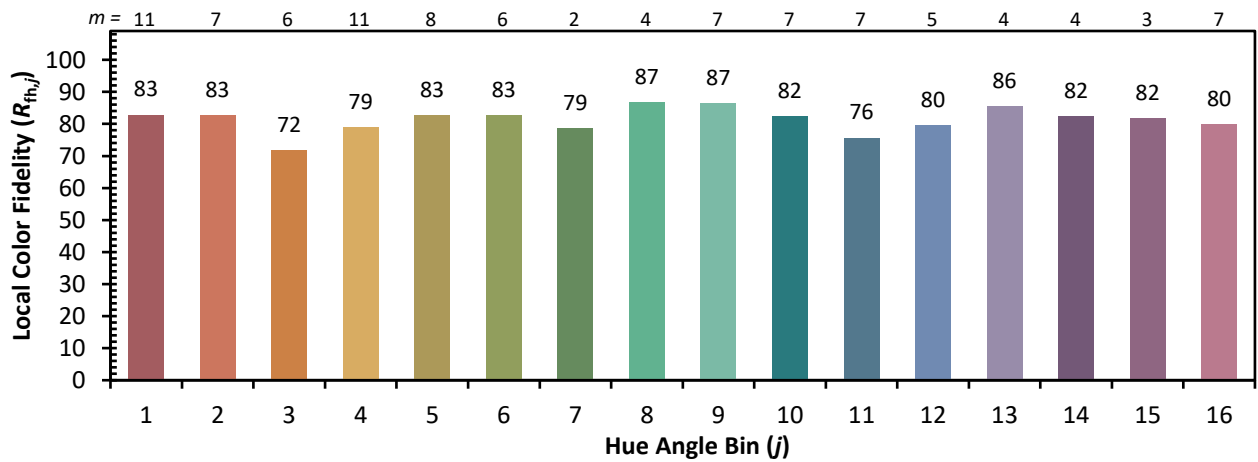
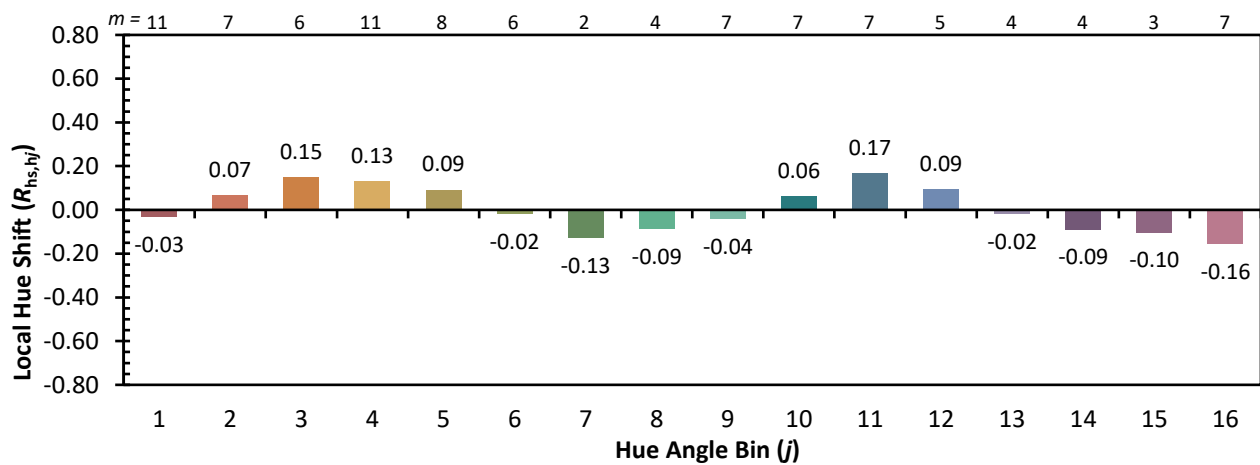
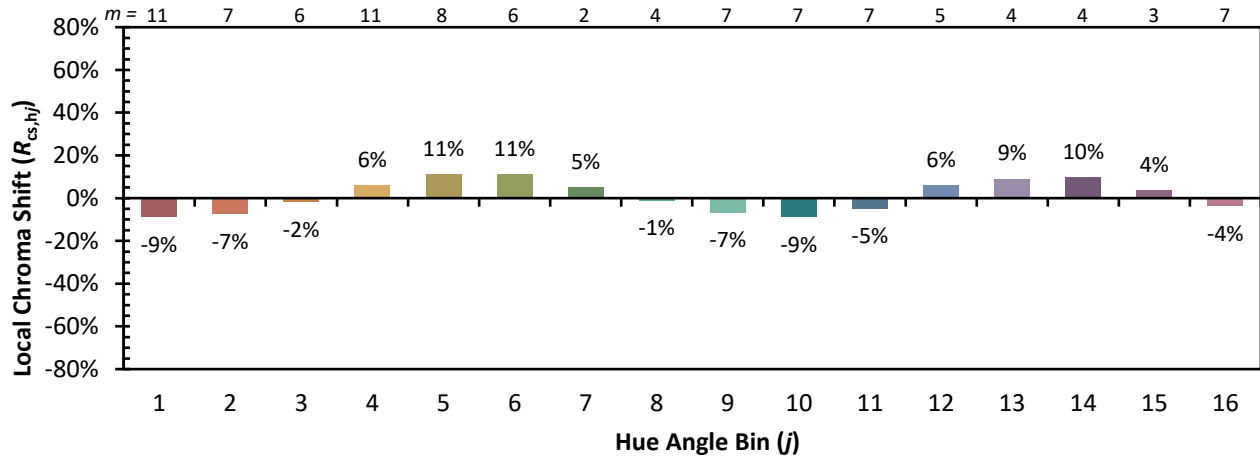


**Individual Sample Fidelity Index ( $R_{f,i}$ )**

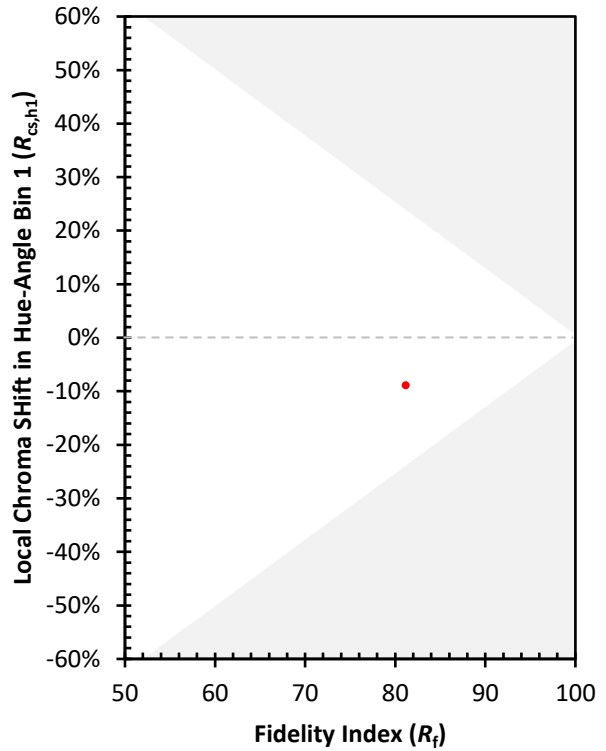
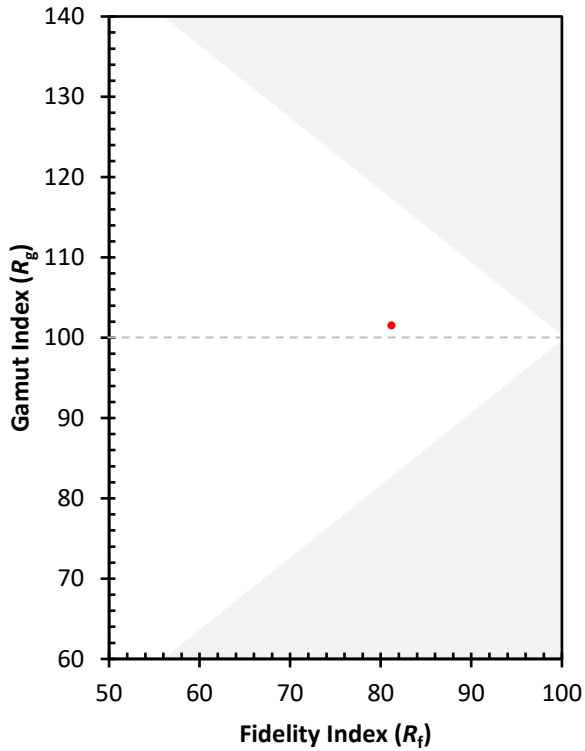
CES01 = 86	CES26 = 71	CES51 = 89	CES76 = 65
CES02 = 63	CES27 = 89	CES52 = 89	CES77 = 82
CES03 = 31	CES28 = 86	CES53 = 80	CES78 = 67
CES04 = 70	CES29 = 68	CES54 = 92	CES79 = 89
CES05 = 50	CES30 = 77	CES55 = 90	CES80 = 85
CES06 = 51	CES31 = 70	CES56 = 81	CES81 = 75
CES07 = 43	CES32 = 64	CES57 = 79	CES82 = 93
CES08 = 41	CES33 = 74	CES58 = 81	CES83 = 89
CES09 = 29	CES34 = 76	CES59 = 92	CES84 = 91
CES10 = 76	CES35 = 87	CES60 = 96	CES85 = 81
CES11 = 59	CES36 = 99	CES61 = 91	CES86 = 74
CES12 = 65	CES37 = 81	CES62 = 93	CES87 = 83
CES13 = 44	CES38 = 83	CES63 = 79	CES88 = 86
CES14 = 74	CES39 = 94	CES64 = 81	CES89 = 74
CES15 = 72	CES40 = 89	CES65 = 78	CES90 = 85
CES16 = 48	CES41 = 88	CES66 = 76	CES91 = 87
CES17 = 50	CES42 = 80	CES67 = 74	CES92 = 73
CES18 = 57	CES43 = 75	CES68 = 79	CES93 = 84
CES19 = 72	CES44 = 99	CES69 = 83	CES94 = 64
CES20 = 67	CES45 = 83	CES70 = 72	CES95 = 80
CES21 = 87	CES46 = 82	CES71 = 70	CES96 = 86
CES22 = 79	CES47 = 79	CES72 = 90	CES97 = 85
CES23 = 92	CES48 = 78	CES73 = 65	CES98 = 83
CES24 = 91	CES49 = 79	CES74 = 94	CES99 = 82
CES25 = 72	CES50 = 88	CES75 = 70	



Color Rendition by Hue-Angle Bin



Measure Comparisons



(END OF REPORT)