

Cooper Lighting Solutions Photometric Lab
1121 Highway 74 South
Peachtree City, GA 30269



Scaled data based on original data using
LM-79-2019 Approved Method: Electrical and Photometric Measurements of Solid-
State Lighting Products

Test Report Prepared for
Cooper Lighting Solutions

Brand: METALUX

Report Number: P1444490

Luminaire Tested: EHBR1-60-UNV-TA-L830-UPL12

Issue Date: 5/1/2026

Test Information

Test Method: LM-79-2019
Report Number: P1444490
REPORT IS A COMBINATION OF REPORTS P1444308 AND P1431635
Test Lab: INNOVATION CENTER
Issue Date: 5/1/2026
Manufacturer: COOPER LIGHTING SOLUTIONS
Product Line: METALUX
Catalog Number: EHBR1-60-UNV-TA-L830-UPL12
Description: Elevate Round Highbay at, 60000 lumens, 3000K 80CRI LEDs with TA lens
Light Source: -
Ballast/Driver: -

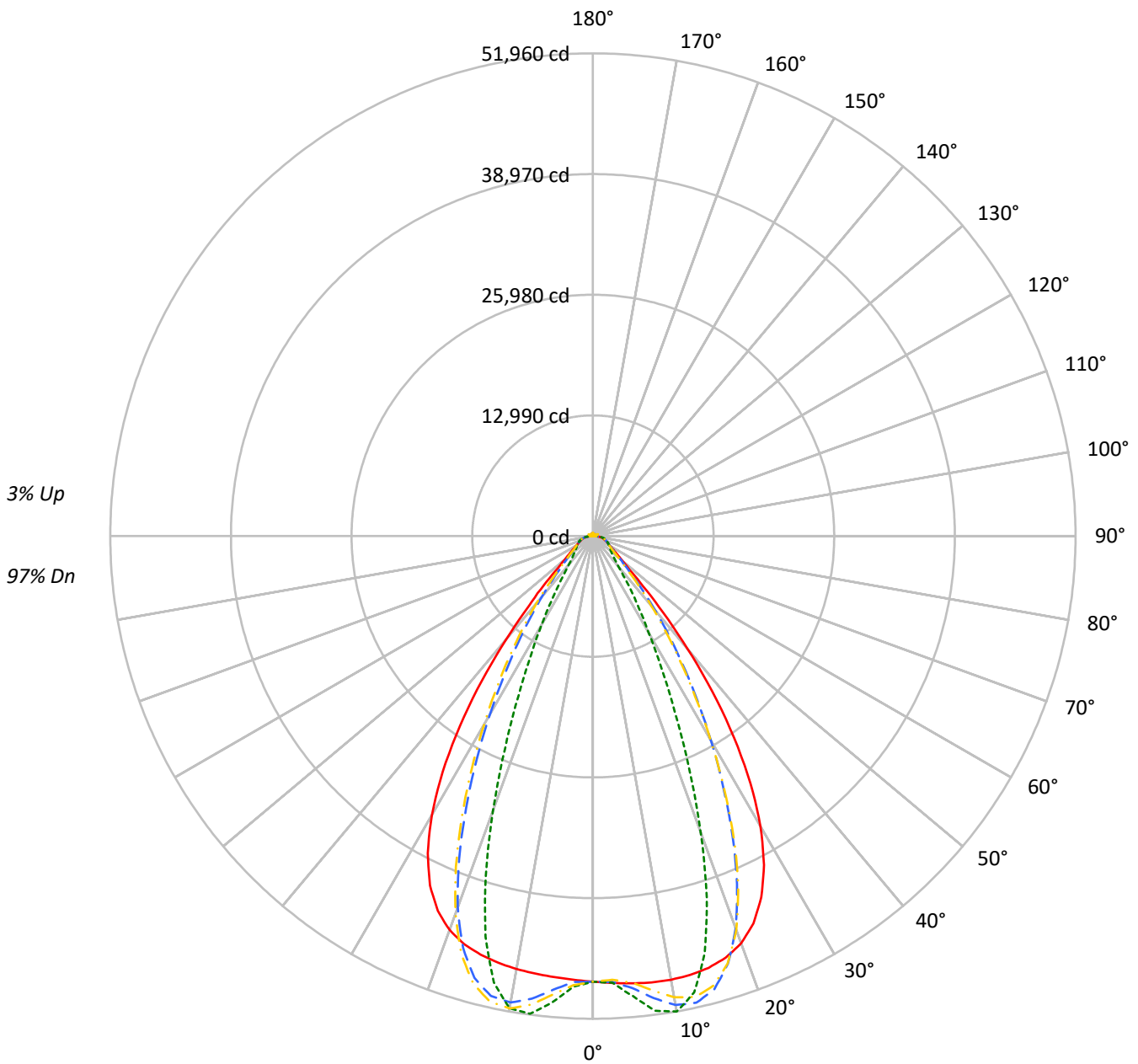
Summary

Lumens per Lamp: N/A
Luminaire Lumens: 56662.5 lumens
Efficiency: N/A
Efficacy: 167.7 lumens/watt
Spacing Criteria (0/90/45): 1.13 / 0.77 / 0.88
Luminous Opening: Vertical Cylinder (Dia: 1.71' x H: 0.1')
CIE Type: Direct

Input Watts (W): 337.8
Input Voltage (V): NR
Input Current (Ain): NR
Voltage Rise (V): NR
Power Factor: NR
Total Harmonic Distortion (THDi): NR
Frequency (hertz): 60
Stabilization Time: NR
Operation Time: NR
Ambient Temperature (°C): NR
Test Distance: 24 FT

TEST NUMBER: P1444490
CATALOG NUMBER: EHBR1-60-UNV-TA-L830-UPL12

Luminous Intensity Polar Plot



— 0°-180° - - 45°-225° - · - · 90°-270° - · - · 135°-315°



TEST NUMBER: P1444490
 CATALOG NUMBER: EHBR1-60-UNV-TA-L830-UPL12

COEFFICIENT OF UTILIZATION - ZONAL CAVITY METHOD:

| | | | | | | | | | | | | | | | | | | | | | |
|-----|-----|-----|-----|-----|-----|-----|-----|-----|-----|-----|-----|-----|-----|-----|-----|-----|-----|----|----|----|----|
| RF | 20 | | | | 20 | | | | 20 | | | | 20 | | | | 20 | | | | |
| RC | 80 | | | | 70 | | | | 50 | | | | 30 | | | | 10 | | | 0 | |
| RW | 70 | 50 | 30 | 10 | 70 | 50 | 30 | 10 | 50 | 30 | 10 | 50 | 30 | 10 | 50 | 30 | 10 | 50 | 30 | 10 | 0 |
| RCR | | | | | | | | | | | | | | | | | | | | | |
| 0 | 118 | 118 | 118 | 118 | 115 | 115 | 115 | 115 | 110 | 110 | 110 | 104 | 104 | 104 | 100 | 100 | 100 | 97 | | | 97 |
| 1 | 111 | 108 | 105 | 102 | 109 | 105 | 103 | 100 | 101 | 99 | 97 | 97 | 95 | 93 | 93 | 91 | 90 | 88 | | | 88 |
| 2 | 105 | 99 | 94 | 90 | 102 | 97 | 92 | 89 | 93 | 89 | 86 | 90 | 87 | 84 | 86 | 84 | 82 | 80 | | | 80 |
| 3 | 98 | 91 | 85 | 80 | 96 | 89 | 84 | 79 | 86 | 81 | 78 | 83 | 79 | 76 | 80 | 77 | 75 | 73 | | | 73 |
| 4 | 93 | 84 | 77 | 72 | 90 | 82 | 76 | 72 | 80 | 75 | 71 | 77 | 73 | 70 | 75 | 71 | 68 | 67 | | | 67 |
| 5 | 87 | 78 | 71 | 66 | 85 | 77 | 70 | 66 | 74 | 69 | 65 | 72 | 68 | 64 | 70 | 66 | 63 | 61 | | | 61 |
| 6 | 82 | 72 | 65 | 61 | 81 | 71 | 65 | 60 | 69 | 64 | 60 | 68 | 63 | 59 | 66 | 62 | 58 | 57 | | | 57 |
| 7 | 78 | 67 | 61 | 56 | 76 | 67 | 60 | 56 | 65 | 59 | 55 | 64 | 58 | 55 | 62 | 58 | 54 | 53 | | | 53 |
| 8 | 74 | 63 | 57 | 52 | 72 | 62 | 56 | 52 | 61 | 55 | 51 | 60 | 55 | 51 | 59 | 54 | 51 | 49 | | | 49 |
| 9 | 70 | 59 | 53 | 48 | 69 | 59 | 52 | 48 | 57 | 52 | 48 | 56 | 51 | 48 | 55 | 51 | 47 | 46 | | | 46 |
| 10 | 66 | 56 | 49 | 45 | 65 | 55 | 49 | 45 | 54 | 49 | 45 | 53 | 48 | 45 | 52 | 48 | 44 | 43 | | | 43 |

AVERAGE LUMINANCE (cd/sqm):

| | 0° | 90° | 180° | 270° |
|-----|--------|--------|--------|--------|
| 0° | 225241 | 225241 | 225241 | 225241 |
| 5° | 226332 | 232931 | 223164 | 235983 |
| 10° | 228221 | 244560 | 222748 | 242942 |
| 15° | 229340 | 221691 | 222359 | 212766 |
| 20° | 226969 | 165153 | 219541 | 152806 |
| 25° | 214836 | 104450 | 207736 | 94770 |
| 30° | 187675 | 62767 | 180406 | 57363 |
| 35° | 144436 | 39386 | 136128 | 34889 |
| 40° | 91369 | 24706 | 83595 | 23216 |
| 45° | 47093 | 19248 | 46313 | 18931 |
| 50° | 27611 | 17120 | 26764 | 16853 |
| 55° | 21153 | 16197 | 20370 | 16052 |
| 60° | 17898 | 16546 | 17136 | 16331 |
| 65° | 16810 | 17279 | 16167 | 16689 |
| 70° | 16424 | 18092 | 15606 | 17413 |
| 75° | 17560 | 19188 | 16612 | 18339 |
| 80° | 18173 | 21248 | 16475 | 19397 |
| 85° | 17114 | 20501 | 13829 | 17553 |

MAXIMUM LUMINANCE 45°-90°:

Horizontal Angle: 25°
 Vertical Angle: 45°
 Luminance: 72070 cd/sqm



TEST NUMBER: P1444490
 CATALOG NUMBER: EHBR1-60-UNV-TA-L830-UPL12

ZONAL LUMENS:

| Zone | Lumens | % Fixture |
|-----------|---------|-----------|
| 0°-10° | 4726.9 | 8.3 |
| 10°-20° | 13297.3 | 23.5 |
| 20°-30° | 15144.6 | 26.7 |
| 30°-40° | 10885.2 | 19.2 |
| 40°-50° | 5020.3 | 8.9 |
| 50°-60° | 2402.4 | 4.2 |
| 60°-70° | 1752.9 | 3.1 |
| 70°-80° | 1331.7 | 2.4 |
| 80°-90° | 607.7 | 1.1 |
| 90°-100° | 49.4 | 0.1 |
| 100°-110° | 211.6 | 0.4 |
| 110°-120° | 389.5 | 0.7 |
| 120°-130° | 257.2 | 0.5 |
| 130°-140° | 190.0 | 0.3 |
| 140°-150° | 160.6 | 0.3 |
| 150°-160° | 124.6 | 0.2 |
| 160°-170° | 81.4 | 0.1 |
| 170°-180° | 29.1 | 0.1 |
| 0°-30° | 33168.8 | 58.5 |
| 0°-40° | 44054.0 | 77.7 |
| 0°-60° | 51476.7 | 90.8 |
| 0°-90° | 55169.0 | 97.4 |
| 90°-120° | 650.5 | 1.1 |
| 90°-150° | 1258.3 | 2.2 |
| 90°-180° | 1493.0 | 2.6 |
| 0°-180° | 56662.5 | 100.0 |

CANDELA DISTRIBUTION:

| | 0° | 90° | 180° | 270° | 360° | Flux |
|------|-------|-------|-------|-------|-------|-------|
| 0° | 47964 | 47964 | 47964 | 47964 | 47964 | |
| 5° | 48325 | 49734 | 47649 | 50386 | 48325 | 4618 |
| 15° | 48114 | 46510 | 46650 | 44637 | 48114 | 13556 |
| 25° | 42903 | 20858 | 41485 | 18926 | 42903 | 19449 |
| 35° | 26509 | 7229 | 24984 | 6403 | 26509 | 16269 |
| 45° | 7620 | 3114 | 7493 | 3063 | 7620 | 6480 |
| 55° | 2859 | 2189 | 2753 | 2169 | 2859 | 2639 |
| 65° | 1755 | 1804 | 1688 | 1742 | 1755 | 1752 |
| 75° | 1237 | 1352 | 1170 | 1292 | 1237 | 1286 |
| 85° | 588 | 705 | 475 | 603 | 588 | 553 |
| 90° | 141 | 184 | 28 | 38 | 141 | 91 |
| 95° | 22 | 24 | 22 | 24 | 22 | 21 |
| 105° | 83 | 101 | 60 | 102 | 83 | 108 |
| 115° | 347 | 405 | 364 | 405 | 347 | 323 |
| 125° | 289 | 275 | 323 | 277 | 289 | 262 |
| 135° | 263 | 209 | 280 | 214 | 263 | 205 |
| 145° | 265 | 235 | 278 | 242 | 265 | 167 |
| 155° | 270 | 260 | 283 | 266 | 270 | 125 |
| 165° | 289 | 281 | 297 | 285 | 289 | 82 |
| 175° | 306 | 307 | 310 | 308 | 306 | 29 |
| 180° | 311 | 311 | 311 | 311 | 311 | |



TEST NUMBER: P1444490
 CATALOG NUMBER: EHBR1-60-UNV-TA-L830-UPL12

CANDELA DISTRIBUTION (FULL):

| | 0° | 2.5° | 5° | 7.5° | 10° | 12.5° | 15° | 17.5° | 20° | 22.5° | 25° |
|--------|---------|---------|---------|---------|---------|---------|---------|---------|---------|---------|---------|
| 0° | 47963.5 | 47963.5 | 47963.5 | 47963.5 | 47963.5 | 47963.5 | 47963.5 | 47963.5 | 47963.5 | 47963.5 | 47963.5 |
| 2.5° | 48146.7 | 48142.9 | 48142.2 | 48138.8 | 48137.8 | 48137.8 | 48136.3 | 48132.4 | 48129.9 | 48124.4 | 48118.2 |
| 5° | 48325.4 | 48323.3 | 48324.5 | 48324.9 | 48321.5 | 48314.0 | 48302.3 | 48287.9 | 48269.8 | 48252.7 | 48237.4 |
| 7.5° | 48463.5 | 48466.9 | 48471.2 | 48470.3 | 48459.8 | 48442.2 | 48418.2 | 48404.7 | 48412.7 | 48438.8 | 48498.6 |
| 10° | 48488.7 | 48509.4 | 48517.4 | 48514.9 | 48494.0 | 48478.8 | 48484.7 | 48535.6 | 48636.6 | 48771.6 | 48956.2 |
| 12.5° | 48390.5 | 48415.8 | 48414.8 | 48406.5 | 48386.3 | 48406.9 | 48480.4 | 48631.7 | 48848.5 | 49114.6 | 49426.8 |
| 15° | 48114.4 | 48147.1 | 48137.8 | 48127.1 | 48113.5 | 48181.2 | 48328.3 | 48591.0 | 48925.9 | 49301.1 | 49685.3 |
| 17.5° | 47578.4 | 47618.0 | 47598.8 | 47586.5 | 47575.1 | 47702.0 | 47954.6 | 48339.3 | 48761.1 | 49185.6 | 49549.7 |
| 20° | 46648.8 | 46675.3 | 46629.6 | 46608.1 | 46626.2 | 46874.9 | 47246.9 | 47738.2 | 48182.9 | 48584.3 | 48833.1 |
| 22.5° | 45131.7 | 45164.5 | 45078.6 | 45068.7 | 45174.7 | 45556.6 | 46027.3 | 46576.6 | 46994.4 | 47312.5 | 47408.3 |
| 25° | 42902.6 | 42934.9 | 42832.9 | 42893.9 | 43074.1 | 43594.3 | 44155.1 | 44742.6 | 45098.9 | 45334.6 | 45269.5 |
| 27.5° | 39893.8 | 39923.3 | 39826.6 | 39951.0 | 40236.0 | 40919.7 | 41579.5 | 42216.7 | 42534.4 | 42699.5 | 42490.3 |
| 30° | 36099.2 | 36160.5 | 36046.2 | 36219.9 | 36654.8 | 37542.4 | 38298.4 | 39013.0 | 39329.8 | 39455.5 | 39129.8 |
| 32.5° | 31592.3 | 31679.6 | 31553.5 | 31812.0 | 32418.8 | 33485.1 | 34343.9 | 35142.3 | 35492.6 | 35636.2 | 35268.3 |
| 35° | 26509.1 | 26634.3 | 26489.8 | 26877.6 | 27626.2 | 28813.4 | 29764.4 | 30655.9 | 31070.7 | 31274.1 | 30903.5 |
| 37.5° | 21123.7 | 21243.1 | 21164.8 | 21682.3 | 22504.2 | 23734.9 | 24705.6 | 25667.2 | 26135.9 | 26441.0 | 26148.8 |
| 40° | 15836.5 | 15945.7 | 16004.8 | 16596.6 | 17369.7 | 18529.5 | 19461.9 | 20413.4 | 20937.6 | 21320.7 | 21140.5 |
| 42.5° | 11177.5 | 11287.5 | 11488.7 | 12059.7 | 12704.4 | 13664.4 | 14463.2 | 15317.4 | 15818.2 | 16226.9 | 16157.4 |
| 45° | 7619.5 | 7747.2 | 7999.3 | 8466.8 | 8933.1 | 9621.9 | 10208.3 | 10872.8 | 11281.8 | 11656.1 | 11660.6 |
| 47.5° | 5339.3 | 5429.1 | 5654.3 | 5973.6 | 6277.5 | 7139.9 | 7175.2 | 7501.7 | 7776.7 | 8056.5 | 8092.8 |
| 50° | 4115.0 | 4169.0 | 4288.4 | 4466.3 | 4638.6 | 4862.4 | 5067.4 | 5303.9 | 5473.2 | 5626.6 | 5663.2 |
| 52.5° | 3382.2 | 3416.6 | 3477.3 | 3573.6 | 3673.6 | 3795.4 | 3905.0 | 4035.0 | 4127.0 | 4209.1 | 4226.4 |
| 55° | 2858.6 | 2886.9 | 2977.4 | 2995.8 | 3110.1 | 3132.1 | 3180.8 | 3259.9 | 3313.4 | 3362.7 | 3375.0 |
| 57.5° | 2463.4 | 2484.0 | 2503.2 | 2544.3 | 2579.4 | 2630.7 | 2671.9 | 2728.6 | 2762.4 | 2797.9 | 2800.9 |
| 60° | 2151.6 | 2166.5 | 2180.2 | 2208.7 | 2232.6 | 2268.2 | 2296.6 | 2335.2 | 2359.4 | 2386.1 | 2389.1 |
| 62.5° | 1919.6 | 1930.3 | 1939.4 | 1958.2 | 1975.2 | 2002.6 | 2025.2 | 2057.4 | 2080.0 | 2100.6 | 2105.2 |
| 65° | 1754.6 | 1762.5 | 1768.3 | 1782.6 | 1797.5 | 1820.8 | 1841.2 | 1867.5 | 1884.1 | 1899.9 | 1903.3 |
| 67.5° | 1608.5 | 1616.0 | 1622.0 | 1635.0 | 1645.3 | 1662.8 | 1676.4 | 1696.2 | 1708.7 | 1721.2 | 1721.6 |
| 70° | 1441.1 | 1448.1 | 1452.6 | 1464.7 | 1473.1 | 1488.1 | 1499.0 | 1516.8 | 1529.6 | 1543.7 | 1547.3 |
| 72.5° | 1325.2 | 1329.3 | 1335.5 | 1346.5 | 1358.0 | 1374.1 | 1388.9 | 1407.3 | 1422.8 | 1437.4 | 1443.6 |
| 75° | 1237.0 | 1241.8 | 1245.9 | 1255.3 | 1263.3 | 1276.8 | 1287.9 | 1304.7 | 1318.2 | 1333.9 | 1341.6 |
| 77.5° | 1109.7 | 1115.2 | 1118.8 | 1128.3 | 1135.2 | 1148.1 | 1156.3 | 1171.4 | 1182.4 | 1196.6 | 1203.6 |
| 80° | 956.0 | 961.2 | 963.6 | 972.5 | 978.0 | 989.9 | 998.0 | 1012.5 | 1021.8 | 1036.0 | 1044.3 |
| 82.5° | 785.5 | 790.5 | 791.9 | 800.2 | 803.3 | 813.1 | 819.0 | 833.9 | 845.3 | 863.7 | 876.6 |
| 85° | 588.2 | 589.9 | 592.8 | 590.7 | 602.6 | 603.3 | 616.8 | 619.4 | 637.1 | 641.7 | 662.0 |
| 87.5° | 359.6 | 364.9 | 367.6 | 375.8 | 379.4 | 387.5 | 390.0 | 398.8 | 403.5 | 413.5 | 418.1 |
| 90° | 141.3 | 148.7 | 150.8 | 159.7 | 161.5 | 169.4 | 170.6 | 179.6 | 181.5 | 190.8 | 193.2 |
| 92.5° | 20.0 | 20.9 | 21.5 | 23.0 | 24.0 | 25.9 | 27.4 | 28.7 | 29.7 | 31.5 | 33.4 |
| 95° | 22.0 | 23.0 | 24.1 | 25.1 | 26.1 | 27.3 | 28.3 | 29.3 | 30.3 | 31.4 | 34.3 |
| 97.5° | 26.9 | 27.8 | 28.7 | 29.6 | 30.5 | 31.4 | 32.3 | 33.3 | 34.1 | 34.8 | 38.5 |
| 100° | 33.7 | 34.5 | 35.2 | 36.1 | 36.8 | 37.6 | 38.3 | 39.2 | 39.9 | 40.7 | 47.2 |
| 102.5° | 52.1 | 54.8 | 57.5 | 60.2 | 62.9 | 65.6 | 68.5 | 71.0 | 73.7 | 76.4 | 90.5 |
| 105° | 83.4 | 90.6 | 98.2 | 105.4 | 112.8 | 120.3 | 127.7 | 134.7 | 142.1 | 149.3 | 172.6 |
| 107.5° | 136.5 | 150.0 | 163.7 | 177.4 | 191.1 | 204.7 | 218.3 | 231.8 | 245.4 | 258.7 | 282.4 |
| 110° | 243.6 | 254.3 | 265.4 | 276.2 | 287.1 | 298.1 | 308.9 | 319.4 | 330.5 | 341.2 | 358.4 |



TEST NUMBER: P1444490
 CATALOG NUMBER: EHBR1-60-UNV-TA-L830-UPL12

CANDELA DISTRIBUTION (continued):

| | 0° | 2.5° | 5° | 7.5° | 10° | 12.5° | 15° | 17.5° | 20° | 22.5° | 25° |
|--------|-------|-------|-------|-------|-------|-------|-------|-------|-------|-------|-------|
| 112.5° | 326.3 | 330.9 | 335.7 | 340.6 | 345.5 | 350.0 | 354.8 | 359.5 | 364.3 | 368.8 | 381.0 |
| 115° | 347.3 | 348.7 | 350.4 | 351.7 | 353.3 | 354.6 | 356.0 | 357.3 | 358.9 | 359.9 | 367.9 |
| 117.5° | 342.9 | 342.3 | 341.7 | 341.1 | 340.1 | 339.5 | 338.7 | 337.7 | 336.8 | 335.9 | 340.2 |
| 120° | 327.5 | 325.4 | 323.6 | 321.3 | 319.4 | 317.1 | 315.1 | 312.9 | 310.5 | 308.1 | 309.7 |
| 122.5° | 306.8 | 304.3 | 302.3 | 299.6 | 297.1 | 294.5 | 292.1 | 289.0 | 286.6 | 283.8 | 283.7 |
| 125° | 288.7 | 286.1 | 284.1 | 281.3 | 278.6 | 275.9 | 273.1 | 270.2 | 267.4 | 264.3 | 264.0 |
| 127.5° | 274.2 | 272.3 | 270.5 | 268.1 | 265.9 | 263.6 | 261.2 | 258.6 | 256.5 | 253.6 | 252.9 |
| 130° | 267.5 | 265.8 | 264.0 | 261.7 | 259.7 | 257.3 | 254.9 | 252.3 | 250.0 | 247.3 | 246.4 |
| 132.5° | 263.5 | 262.2 | 260.6 | 258.8 | 256.9 | 254.5 | 252.5 | 250.1 | 247.9 | 245.7 | 244.7 |
| 135° | 263.3 | 261.7 | 260.4 | 258.6 | 256.8 | 254.5 | 252.3 | 249.9 | 247.8 | 245.3 | 244.5 |
| 137.5° | 263.9 | 262.6 | 261.2 | 259.2 | 257.5 | 255.1 | 253.2 | 250.7 | 248.6 | 246.2 | 245.2 |
| 140° | 264.6 | 263.4 | 261.8 | 260.0 | 258.3 | 256.4 | 254.1 | 252.0 | 249.7 | 247.4 | 246.6 |
| 142.5° | 264.3 | 262.9 | 261.8 | 260.1 | 258.5 | 256.5 | 254.6 | 252.3 | 250.5 | 248.2 | 247.7 |
| 145° | 265.4 | 264.2 | 263.2 | 261.7 | 260.0 | 258.1 | 256.5 | 254.2 | 252.6 | 250.7 | 250.0 |
| 147.5° | 266.6 | 265.6 | 264.7 | 263.3 | 262.1 | 260.2 | 258.6 | 256.7 | 255.2 | 253.4 | 253.0 |
| 150° | 267.7 | 266.8 | 266.0 | 264.8 | 263.4 | 261.8 | 260.3 | 258.7 | 257.1 | 255.3 | 255.0 |
| 152.5° | 267.9 | 266.9 | 266.2 | 265.0 | 263.8 | 262.0 | 261.1 | 259.3 | 258.0 | 256.3 | 255.8 |
| 155° | 270.2 | 269.3 | 268.2 | 267.2 | 265.9 | 264.6 | 263.2 | 261.9 | 260.6 | 259.1 | 258.7 |
| 157.5° | 273.8 | 272.6 | 271.8 | 270.6 | 269.8 | 268.5 | 267.2 | 266.0 | 264.9 | 263.7 | 263.1 |
| 160° | 278.5 | 277.5 | 276.5 | 275.5 | 274.3 | 273.0 | 271.9 | 270.7 | 270.0 | 268.6 | 268.2 |
| 162.5° | 283.5 | 282.4 | 281.4 | 280.4 | 279.3 | 278.0 | 277.0 | 276.1 | 275.1 | 273.8 | 273.4 |
| 165° | 288.8 | 288.1 | 287.2 | 286.4 | 285.4 | 284.6 | 283.6 | 282.6 | 281.7 | 280.6 | 280.3 |
| 167.5° | 295.3 | 294.4 | 293.8 | 292.9 | 291.9 | 291.2 | 290.2 | 289.3 | 288.7 | 287.6 | 287.2 |
| 170° | 300.1 | 299.3 | 298.7 | 298.2 | 297.5 | 296.7 | 296.3 | 295.5 | 294.8 | 294.1 | 293.8 |
| 172.5° | 304.1 | 303.4 | 303.0 | 302.7 | 301.9 | 301.6 | 301.1 | 300.5 | 300.1 | 299.5 | 299.6 |
| 175° | 306.4 | 305.9 | 305.7 | 305.4 | 305.0 | 304.6 | 304.4 | 304.1 | 304.1 | 303.6 | 303.4 |
| 177.5° | 309.0 | 308.8 | 308.8 | 308.6 | 308.6 | 308.6 | 308.4 | 308.0 | 307.8 | 307.8 | 307.7 |
| 180° | 310.9 | 310.9 | 310.9 | 310.9 | 310.9 | 310.9 | 310.9 | 310.9 | 310.9 | 310.9 | 310.9 |



TEST NUMBER: P1444490
 CATALOG NUMBER: EHBR1-60-UNV-TA-L830-UPL12

CANDELA DISTRIBUTION (continued):

| | 27.5° | 30° | 32.5° | 35° | 37.5° | 40° | 42.5° | 45° | 47.5° | 50° | 52.5° |
|--------|---------|---------|---------|---------|---------|---------|---------|---------|---------|---------|---------|
| 0° | 47963.5 | 47963.5 | 47963.5 | 47963.5 | 47963.5 | 47963.5 | 47963.5 | 47963.5 | 47963.5 | 47963.5 | 47963.5 |
| 2.5° | 48113.5 | 48107.7 | 48099.6 | 48089.5 | 48080.8 | 48070.7 | 48046.7 | 48039.6 | 48047.5 | 48052.9 | 48063.9 |
| 5° | 48227.9 | 48231.2 | 48232.5 | 48254.3 | 48273.2 | 48320.2 | 48689.3 | 48836.0 | 48949.3 | 49021.3 | 49130.7 |
| 7.5° | 48572.5 | 48683.4 | 48793.1 | 48940.6 | 49067.9 | 49239.8 | 49885.5 | 50160.2 | 50355.6 | 50496.0 | 50668.8 |
| 10° | 49156.6 | 49398.7 | 49625.7 | 49891.6 | 50120.2 | 50382.1 | 50983.1 | 51250.8 | 51419.9 | 51542.9 | 51657.7 |
| 12.5° | 49745.0 | 50080.8 | 50384.3 | 50680.2 | 50927.6 | 51154.6 | 51366.0 | 51459.7 | 51467.7 | 51471.6 | 51410.6 |
| 15° | 50051.4 | 50372.5 | 50639.8 | 50835.6 | 50980.9 | 51045.3 | 50681.4 | 50490.5 | 50249.3 | 50050.6 | 49723.7 |
| 17.5° | 49858.0 | 50050.6 | 50166.1 | 50154.8 | 50094.6 | 49893.4 | 48862.8 | 48295.9 | 47733.1 | 47226.0 | 46561.0 |
| 20° | 48998.2 | 48983.5 | 48883.1 | 48598.4 | 48255.6 | 47722.3 | 45955.4 | 44935.9 | 43950.3 | 43084.6 | 42034.3 |
| 22.5° | 47398.6 | 47146.9 | 46796.0 | 46182.4 | 45500.6 | 44569.0 | 42036.9 | 40537.3 | 39165.2 | 37953.0 | 36595.2 |
| 25° | 45080.8 | 44563.0 | 43915.7 | 42941.6 | 41882.2 | 40523.4 | 37402.5 | 35537.3 | 33889.8 | 32461.0 | 30894.3 |
| 27.5° | 42114.5 | 41334.5 | 40386.0 | 39037.7 | 37602.5 | 35861.7 | 32401.6 | 30343.2 | 28574.7 | 27042.8 | 25375.2 |
| 30° | 38602.7 | 37588.3 | 36363.5 | 34690.1 | 32958.9 | 30984.5 | 27475.3 | 25390.3 | 23600.3 | 22024.3 | 20355.4 |
| 32.5° | 34634.1 | 33445.9 | 32010.7 | 30132.5 | 28260.4 | 26230.4 | 22841.3 | 20823.1 | 19113.2 | 17597.0 | 16086.6 |
| 35° | 30257.0 | 28982.8 | 27464.4 | 25548.7 | 23687.8 | 21714.1 | 18604.3 | 16784.7 | 15274.6 | 13934.5 | 12714.9 |
| 37.5° | 25561.7 | 24310.6 | 22867.4 | 21061.9 | 19336.2 | 17547.7 | 14864.5 | 13339.7 | 12072.5 | 10960.2 | 10018.5 |
| 40° | 20679.9 | 19585.1 | 18336.4 | 16775.4 | 15302.7 | 13813.3 | 11610.7 | 10400.3 | 9400.2 | 8552.0 | 7846.2 |
| 42.5° | 15857.8 | 15009.4 | 14051.9 | 12818.3 | 11691.3 | 10557.3 | 8862.0 | 7965.2 | 7224.5 | 6613.8 | 6114.9 |
| 45° | 11505.4 | 10937.9 | 10295.6 | 9438.1 | 8658.3 | 7867.2 | 6660.7 | 6030.4 | 5548.0 | 5154.2 | 4821.3 |
| 47.5° | 8042.9 | 7713.6 | 7693.6 | 6901.1 | 6329.2 | 5845.6 | 5068.3 | 4670.2 | 4374.6 | 4136.0 | 3925.3 |
| 50° | 5648.3 | 5489.0 | 5291.2 | 5008.3 | 4742.9 | 4469.6 | 3996.0 | 3755.4 | 3582.2 | 3437.6 | 3304.3 |
| 52.5° | 4222.5 | 4139.8 | 4034.4 | 3884.3 | 3740.6 | 3586.8 | 3287.1 | 3133.9 | 3079.5 | 2944.9 | 2839.4 |
| 55° | 3372.6 | 3325.1 | 3265.3 | 3177.0 | 3089.6 | 3054.6 | 2797.8 | 2684.0 | 2612.0 | 2558.8 | 2502.1 |
| 57.5° | 2801.5 | 2766.1 | 2730.5 | 2670.8 | 2620.2 | 2558.8 | 2422.5 | 2364.2 | 2321.4 | 2290.1 | 2250.8 |
| 60° | 2389.6 | 2368.5 | 2348.5 | 2313.5 | 2286.1 | 2253.1 | 2166.5 | 2133.6 | 2111.2 | 2092.4 | 2067.3 |
| 62.5° | 2109.1 | 2098.2 | 2087.9 | 2069.3 | 2055.4 | 2037.4 | 1978.2 | 1962.5 | 1951.3 | 1941.8 | 1926.5 |
| 65° | 1906.7 | 1898.8 | 1893.1 | 1880.7 | 1873.8 | 1863.3 | 1812.4 | 1801.8 | 1794.8 | 1791.5 | 1782.6 |
| 67.5° | 1722.7 | 1714.5 | 1710.7 | 1701.9 | 1699.0 | 1692.4 | 1650.9 | 1645.0 | 1642.7 | 1643.7 | 1640.6 |
| 70° | 1550.6 | 1547.3 | 1548.9 | 1547.5 | 1551.5 | 1552.7 | 1527.5 | 1527.3 | 1529.9 | 1535.3 | 1535.8 |
| 72.5° | 1447.5 | 1447.5 | 1449.5 | 1450.3 | 1454.1 | 1455.8 | 1434.9 | 1433.8 | 1435.0 | 1439.0 | 1439.2 |
| 75° | 1349.3 | 1350.9 | 1356.3 | 1358.0 | 1362.5 | 1363.4 | 1335.7 | 1332.5 | 1332.7 | 1336.4 | 1335.2 |
| 77.5° | 1213.6 | 1219.4 | 1229.5 | 1234.9 | 1243.4 | 1245.0 | 1213.9 | 1210.1 | 1210.3 | 1214.1 | 1210.9 |
| 80° | 1059.4 | 1070.7 | 1086.8 | 1098.0 | 1111.1 | 1116.5 | 1084.5 | 1076.8 | 1069.7 | 1068.7 | 1062.3 |
| 82.5° | 895.7 | 909.5 | 928.7 | 939.0 | 953.0 | 956.2 | 902.6 | 892.5 | 886.5 | 887.0 | 881.2 |
| 85° | 683.8 | 694.1 | 711.7 | 717.4 | 726.1 | 725.4 | 664.3 | 638.2 | 645.1 | 634.2 | 642.8 |
| 87.5° | 428.9 | 435.0 | 446.0 | 447.4 | 451.5 | 450.7 | 389.1 | 377.0 | 373.5 | 373.7 | 369.3 |
| 90° | 202.4 | 205.9 | 214.7 | 214.1 | 219.8 | 218.3 | 167.8 | 161.3 | 157.6 | 160.6 | 155.0 |
| 92.5° | 36.1 | 37.8 | 40.3 | 42.2 | 44.6 | 46.7 | 43.3 | 43.7 | 42.2 | 39.9 | 38.6 |
| 95° | 37.4 | 40.5 | 43.6 | 46.6 | 49.6 | 52.7 | 55.8 | 58.9 | 56.0 | 53.0 | 50.1 |
| 97.5° | 42.2 | 45.8 | 49.3 | 52.8 | 56.5 | 60.1 | 63.8 | 67.4 | 64.4 | 60.9 | 57.8 |
| 100° | 54.0 | 60.8 | 67.4 | 74.2 | 80.8 | 87.6 | 94.4 | 101.2 | 95.3 | 88.9 | 83.0 |
| 102.5° | 104.7 | 119.1 | 133.3 | 147.5 | 161.9 | 176.2 | 190.7 | 205.1 | 191.4 | 177.4 | 163.5 |
| 105° | 195.8 | 219.0 | 242.1 | 265.0 | 288.1 | 311.4 | 335.1 | 358.2 | 336.2 | 314.2 | 292.3 |
| 107.5° | 305.8 | 329.3 | 352.5 | 375.7 | 399.2 | 422.6 | 446.8 | 470.3 | 448.8 | 427.0 | 405.6 |
| 110° | 375.3 | 392.1 | 409.1 | 426.0 | 442.8 | 459.7 | 477.8 | 494.8 | 481.7 | 468.4 | 455.3 |



TEST NUMBER: P1444490
 CATALOG NUMBER: EHBR1-60-UNV-TA-L830-UPL12

CANDELA DISTRIBUTION (continued):

| | 27.5° | 30° | 32.5° | 35° | 37.5° | 40° | 42.5° | 45° | 47.5° | 50° | 52.5° |
|--------|-------|-------|-------|-------|-------|-------|-------|-------|-------|-------|-------|
| 112.5° | 392.7 | 404.8 | 416.7 | 428.4 | 440.1 | 452.1 | 465.5 | 477.8 | 470.9 | 463.7 | 456.9 |
| 115° | 375.6 | 383.7 | 391.2 | 399.0 | 406.7 | 414.3 | 424.0 | 432.3 | 429.6 | 426.8 | 424.1 |
| 117.5° | 344.1 | 348.2 | 352.2 | 356.1 | 359.9 | 363.9 | 370.5 | 374.8 | 374.2 | 373.9 | 373.6 |
| 120° | 310.8 | 312.0 | 313.1 | 314.5 | 315.4 | 316.5 | 320.6 | 322.4 | 323.4 | 324.0 | 324.9 |
| 122.5° | 283.6 | 283.5 | 283.4 | 283.2 | 283.0 | 282.7 | 286.0 | 286.6 | 286.7 | 286.8 | 287.1 |
| 125° | 263.4 | 262.7 | 262.1 | 261.5 | 260.6 | 259.8 | 263.4 | 263.3 | 262.5 | 261.3 | 260.4 |
| 127.5° | 251.8 | 250.9 | 249.8 | 249.0 | 247.6 | 246.5 | 249.8 | 249.6 | 247.9 | 246.0 | 244.0 |
| 130° | 245.4 | 244.6 | 243.5 | 242.4 | 241.5 | 240.6 | 244.1 | 244.3 | 241.9 | 239.0 | 236.7 |
| 132.5° | 243.6 | 242.8 | 241.6 | 240.9 | 239.9 | 238.9 | 242.8 | 243.0 | 240.5 | 237.6 | 234.9 |
| 135° | 243.4 | 242.5 | 241.6 | 240.6 | 239.7 | 239.0 | 243.4 | 243.7 | 241.3 | 238.4 | 235.9 |
| 137.5° | 244.0 | 243.2 | 242.2 | 241.6 | 240.6 | 239.9 | 244.9 | 245.3 | 243.3 | 240.6 | 238.6 |
| 140° | 245.8 | 244.9 | 244.1 | 243.5 | 242.7 | 242.3 | 247.7 | 248.3 | 246.6 | 244.6 | 242.5 |
| 142.5° | 246.7 | 246.4 | 245.8 | 245.5 | 244.9 | 244.8 | 250.9 | 252.0 | 250.4 | 248.6 | 247.1 |
| 145° | 249.4 | 249.2 | 248.6 | 248.5 | 248.2 | 248.1 | 255.2 | 256.7 | 255.5 | 254.0 | 252.7 |
| 147.5° | 252.1 | 251.8 | 251.4 | 251.2 | 250.9 | 251.3 | 258.9 | 260.4 | 259.7 | 258.4 | 257.6 |
| 150° | 254.4 | 254.2 | 253.8 | 253.8 | 253.8 | 254.0 | 262.8 | 264.9 | 264.2 | 263.3 | 262.5 |
| 152.5° | 255.3 | 255.1 | 254.8 | 254.7 | 254.5 | 254.8 | 265.8 | 268.4 | 267.8 | 266.8 | 266.3 |
| 155° | 258.2 | 257.8 | 257.3 | 257.2 | 256.9 | 257.3 | 269.6 | 272.4 | 271.8 | 271.3 | 270.6 |
| 157.5° | 262.6 | 262.0 | 261.4 | 261.2 | 261.0 | 260.8 | 274.2 | 277.5 | 276.7 | 276.2 | 275.7 |
| 160° | 267.4 | 267.1 | 266.4 | 266.1 | 265.6 | 265.4 | 279.2 | 282.4 | 282.0 | 281.3 | 280.7 |
| 162.5° | 272.8 | 272.9 | 272.2 | 271.8 | 271.4 | 271.5 | 285.2 | 288.7 | 287.9 | 287.3 | 286.7 |
| 165° | 279.8 | 279.1 | 278.7 | 278.5 | 278.0 | 277.7 | 290.9 | 293.9 | 293.6 | 292.9 | 292.3 |
| 167.5° | 286.6 | 286.4 | 285.9 | 285.7 | 285.3 | 285.3 | 297.5 | 300.4 | 300.0 | 299.4 | 299.0 |
| 170° | 293.5 | 293.4 | 292.9 | 292.8 | 292.8 | 292.9 | 303.1 | 305.6 | 305.3 | 304.4 | 304.1 |
| 172.5° | 299.3 | 299.4 | 299.3 | 299.3 | 299.2 | 299.3 | 307.9 | 310.1 | 309.9 | 309.4 | 308.9 |
| 175° | 303.4 | 303.4 | 303.4 | 303.6 | 303.6 | 303.7 | 310.4 | 312.0 | 311.8 | 311.5 | 311.2 |
| 177.5° | 307.9 | 307.8 | 308.0 | 308.1 | 308.3 | 308.4 | 312.5 | 313.4 | 313.2 | 313.2 | 313.1 |
| 180° | 310.9 | 310.9 | 310.9 | 310.9 | 310.9 | 310.9 | 310.9 | 310.9 | 310.9 | 310.9 | 310.9 |



TEST NUMBER: P1444490
 CATALOG NUMBER: EHBR1-60-UNV-TA-L830-UPL12

CANDELA DISTRIBUTION (continued):

| | 55° | 57.5° | 60° | 62.5° | 65° | 67.5° | 70° | 72.5° | 75° | 77.5° | 80° |
|--------|---------|---------|---------|---------|---------|---------|---------|---------|---------|---------|---------|
| 0° | 47963.5 | 47963.5 | 47963.5 | 47963.5 | 47963.5 | 47963.5 | 47963.5 | 47963.5 | 47963.5 | 47963.5 | 47963.5 |
| 2.5° | 48066.5 | 48083.3 | 48085.8 | 48105.5 | 48103.9 | 48127.4 | 48123.7 | 48142.9 | 48131.7 | 48147.5 | 48134.2 |
| 5° | 49195.4 | 49297.8 | 49351.3 | 49451.2 | 49482.8 | 49572.2 | 49597.4 | 49679.0 | 49682.4 | 49747.1 | 49732.4 |
| 7.5° | 50791.4 | 50942.3 | 51032.0 | 51155.5 | 51218.1 | 51321.0 | 51366.3 | 51442.5 | 51466.9 | 51527.4 | 51532.0 |
| 10° | 51744.6 | 51817.8 | 51869.0 | 51903.5 | 51935.0 | 51949.8 | 51967.0 | 51962.3 | 51967.0 | 51960.2 | 51975.0 |
| 12.5° | 51369.7 | 51262.7 | 51192.0 | 51057.9 | 50980.3 | 50832.2 | 50759.5 | 50617.1 | 50565.3 | 50443.1 | 50425.5 |
| 15° | 49471.1 | 49098.2 | 48834.7 | 48451.5 | 48210.6 | 47833.6 | 47613.0 | 47272.9 | 47117.6 | 46847.2 | 46776.2 |
| 17.5° | 46010.5 | 45318.3 | 44782.6 | 44095.3 | 43618.4 | 42976.1 | 42572.3 | 42040.6 | 41749.4 | 41320.7 | 41172.2 |
| 20° | 41158.9 | 40134.7 | 39331.0 | 38373.8 | 37688.7 | 36835.1 | 36288.7 | 35599.5 | 35199.4 | 34672.8 | 34459.4 |
| 22.5° | 35463.0 | 34187.7 | 33184.1 | 32053.2 | 31226.7 | 30275.5 | 29620.8 | 28875.1 | 28439.8 | 27867.7 | 27614.5 |
| 25° | 29592.1 | 28185.9 | 27070.1 | 25878.6 | 25005.3 | 24051.8 | 23396.9 | 22664.4 | 22214.0 | 21670.9 | 21419.2 |
| 27.5° | 23977.3 | 22553.8 | 21475.5 | 20367.7 | 19566.6 | 18706.3 | 18115.4 | 17475.8 | 17076.0 | 16612.4 | 16375.6 |
| 30° | 19022.3 | 17766.7 | 16849.2 | 15929.9 | 15263.4 | 14564.6 | 14073.7 | 13543.6 | 13192.9 | 12795.9 | 12570.4 |
| 32.5° | 14985.4 | 14016.1 | 13297.6 | 12568.1 | 12022.7 | 11438.7 | 11014.5 | 10546.8 | 10230.2 | 9875.7 | 9671.5 |
| 35° | 11868.2 | 11115.1 | 10542.0 | 9941.5 | 9472.9 | 8975.5 | 8601.7 | 8198.1 | 7914.0 | 7608.8 | 7432.4 |
| 37.5° | 9377.1 | 8778.3 | 8306.6 | 7807.8 | 7423.0 | 7011.0 | 6872.2 | 6408.9 | 6114.6 | 5871.0 | 5702.3 |
| 40° | 7359.2 | 6883.0 | 6492.8 | 6111.4 | 5797.4 | 5484.9 | 5234.1 | 4986.7 | 4796.6 | 4622.5 | 4501.9 |
| 42.5° | 5746.9 | 5401.9 | 5117.0 | 4837.5 | 4608.6 | 4380.9 | 4199.2 | 4028.7 | 3900.7 | 3786.8 | 3709.1 |
| 45° | 4568.6 | 4331.2 | 4133.2 | 3936.4 | 3774.8 | 3622.9 | 3500.6 | 3391.8 | 3309.1 | 3240.7 | 3192.2 |
| 47.5° | 3753.2 | 3590.7 | 3451.0 | 3318.2 | 3208.5 | 3109.0 | 3027.1 | 3000.4 | 2911.5 | 2851.6 | 2828.9 |
| 50° | 3189.7 | 3091.6 | 2985.5 | 2887.5 | 2814.2 | 2741.4 | 2688.3 | 2636.2 | 2602.9 | 2575.4 | 2567.1 |
| 52.5° | 2769.1 | 2694.1 | 2635.1 | 2573.0 | 2524.7 | 2472.8 | 2436.2 | 2401.5 | 2383.2 | 2368.8 | 2367.1 |
| 55° | 2456.4 | 2404.0 | 2364.9 | 2323.3 | 2294.4 | 2263.9 | 2244.9 | 2226.6 | 2218.6 | 2211.3 | 2211.9 |
| 57.5° | 2219.8 | 2184.9 | 2159.4 | 2132.4 | 2116.8 | 2102.2 | 2097.4 | 2092.8 | 2095.2 | 2096.3 | 2100.4 |
| 60° | 2047.5 | 2024.7 | 2008.7 | 1993.2 | 1986.7 | 1982.0 | 1985.5 | 1989.7 | 1998.0 | 2004.7 | 2010.8 |
| 62.5° | 1915.4 | 1902.4 | 1894.6 | 1886.2 | 1885.5 | 1885.9 | 1893.0 | 1899.9 | 1910.3 | 1918.2 | 1924.1 |
| 65° | 1779.4 | 1771.9 | 1769.4 | 1764.1 | 1766.7 | 1768.3 | 1776.8 | 1782.2 | 1792.7 | 1798.9 | 1806.3 |
| 67.5° | 1642.0 | 1640.2 | 1641.8 | 1641.8 | 1646.5 | 1650.7 | 1658.8 | 1664.9 | 1673.8 | 1679.4 | 1685.5 |
| 70° | 1540.4 | 1541.2 | 1544.9 | 1545.6 | 1550.7 | 1553.6 | 1560.7 | 1564.6 | 1572.6 | 1577.4 | 1584.7 |
| 72.5° | 1441.8 | 1440.2 | 1441.1 | 1438.8 | 1440.6 | 1439.8 | 1443.7 | 1445.7 | 1452.5 | 1456.2 | 1465.1 |
| 75° | 1336.8 | 1332.3 | 1331.3 | 1326.5 | 1326.6 | 1323.2 | 1324.8 | 1324.7 | 1329.1 | 1330.9 | 1337.2 |
| 77.5° | 1209.9 | 1202.4 | 1198.8 | 1190.8 | 1190.7 | 1187.6 | 1190.8 | 1192.8 | 1200.6 | 1204.3 | 1211.6 |
| 80° | 1058.0 | 1046.3 | 1041.0 | 1031.7 | 1033.3 | 1032.8 | 1040.6 | 1046.5 | 1056.0 | 1057.8 | 1067.1 |
| 82.5° | 879.4 | 867.5 | 861.8 | 852.7 | 854.8 | 855.0 | 862.1 | 863.4 | 871.7 | 875.3 | 885.9 |
| 85° | 629.7 | 634.2 | 621.6 | 622.5 | 619.8 | 624.8 | 629.7 | 635.7 | 642.6 | 654.2 | 663.0 |
| 87.5° | 370.8 | 369.3 | 373.7 | 374.2 | 380.6 | 384.0 | 394.3 | 400.2 | 411.7 | 420.8 | 437.1 |
| 90° | 155.9 | 150.5 | 154.6 | 153.2 | 159.9 | 158.6 | 164.7 | 162.1 | 169.5 | 170.6 | 179.8 |
| 92.5° | 36.0 | 34.5 | 32.0 | 30.4 | 28.1 | 26.8 | 25.2 | 24.8 | 23.4 | 23.1 | 21.6 |
| 95° | 47.3 | 44.4 | 41.6 | 38.7 | 35.9 | 33.0 | 31.9 | 30.9 | 29.8 | 28.8 | 27.7 |
| 97.5° | 54.7 | 51.7 | 48.6 | 45.3 | 42.2 | 39.2 | 38.5 | 37.7 | 37.1 | 36.3 | 35.7 |
| 100° | 76.9 | 71.0 | 65.0 | 58.9 | 52.9 | 47.0 | 46.5 | 45.9 | 45.3 | 44.8 | 44.2 |
| 102.5° | 150.0 | 136.1 | 122.5 | 108.7 | 95.1 | 81.2 | 78.9 | 76.4 | 74.1 | 71.8 | 69.3 |
| 105° | 270.1 | 248.0 | 226.0 | 204.1 | 182.3 | 160.4 | 153.9 | 147.0 | 140.5 | 133.9 | 127.5 |
| 107.5° | 384.0 | 362.3 | 341.0 | 319.6 | 298.2 | 276.7 | 266.2 | 256.0 | 245.3 | 235.0 | 224.8 |
| 110° | 441.8 | 428.8 | 416.0 | 402.7 | 389.8 | 376.8 | 366.7 | 356.9 | 346.8 | 336.8 | 327.1 |



TEST NUMBER: P1444490
 CATALOG NUMBER: EHBR1-60-UNV-TA-L830-UPL12

CANDELA DISTRIBUTION (continued):

| | 55° | 57.5° | 60° | 62.5° | 65° | 67.5° | 70° | 72.5° | 75° | 77.5° | 80° |
|--------|-------|-------|-------|-------|-------|-------|-------|-------|-------|-------|-------|
| 112.5° | 450.0 | 443.2 | 436.1 | 429.5 | 422.8 | 416.0 | 411.0 | 406.1 | 401.3 | 396.3 | 391.2 |
| 115° | 421.3 | 418.8 | 416.2 | 413.7 | 411.3 | 408.7 | 408.0 | 407.6 | 406.8 | 406.3 | 406.0 |
| 117.5° | 373.1 | 372.7 | 372.2 | 372.1 | 371.9 | 371.7 | 373.8 | 375.8 | 378.1 | 380.6 | 383.1 |
| 120° | 325.7 | 326.4 | 327.2 | 328.2 | 329.2 | 330.3 | 332.9 | 335.9 | 338.8 | 342.2 | 345.5 |
| 122.5° | 287.2 | 287.3 | 287.4 | 287.9 | 288.0 | 288.4 | 290.9 | 293.8 | 296.5 | 299.5 | 302.7 |
| 125° | 259.0 | 257.9 | 256.8 | 255.6 | 254.5 | 253.8 | 255.5 | 257.5 | 259.6 | 262.1 | 264.2 |
| 127.5° | 242.0 | 239.8 | 237.6 | 235.9 | 233.6 | 232.0 | 232.5 | 233.2 | 233.9 | 234.9 | 236.0 |
| 130° | 233.9 | 231.4 | 228.4 | 226.0 | 223.0 | 220.7 | 220.2 | 219.8 | 219.5 | 219.4 | 219.1 |
| 132.5° | 231.9 | 229.2 | 226.2 | 223.2 | 220.3 | 217.5 | 216.2 | 215.1 | 213.8 | 213.0 | 212.2 |
| 135° | 233.0 | 230.4 | 227.3 | 224.6 | 221.5 | 219.0 | 217.3 | 215.7 | 214.2 | 212.8 | 211.6 |
| 137.5° | 236.1 | 233.8 | 231.4 | 229.0 | 226.3 | 224.0 | 221.8 | 220.3 | 218.3 | 217.3 | 215.6 |
| 140° | 240.3 | 238.5 | 236.1 | 234.0 | 231.8 | 229.9 | 227.9 | 226.6 | 224.8 | 223.7 | 222.2 |
| 142.5° | 245.1 | 243.4 | 241.6 | 239.9 | 238.1 | 236.3 | 234.6 | 233.2 | 231.7 | 230.5 | 229.1 |
| 145° | 251.3 | 250.0 | 248.5 | 247.1 | 245.6 | 244.3 | 242.6 | 241.6 | 240.3 | 239.0 | 238.2 |
| 147.5° | 256.5 | 255.3 | 254.1 | 253.0 | 251.7 | 250.6 | 249.3 | 248.6 | 247.2 | 246.4 | 245.4 |
| 150° | 261.2 | 260.3 | 259.1 | 258.4 | 257.0 | 256.1 | 255.2 | 254.3 | 253.3 | 252.8 | 251.9 |
| 152.5° | 265.1 | 264.3 | 263.3 | 262.6 | 261.4 | 260.5 | 259.7 | 259.0 | 258.2 | 257.5 | 256.6 |
| 155° | 269.7 | 269.0 | 268.1 | 267.3 | 266.3 | 265.7 | 264.9 | 264.0 | 263.3 | 262.6 | 261.7 |
| 157.5° | 274.9 | 274.3 | 273.3 | 272.9 | 271.7 | 271.1 | 270.3 | 269.6 | 268.7 | 268.2 | 267.3 |
| 160° | 280.1 | 279.5 | 278.7 | 277.9 | 277.3 | 276.5 | 275.5 | 274.9 | 274.0 | 273.4 | 272.4 |
| 162.5° | 286.0 | 285.1 | 284.5 | 283.8 | 282.8 | 282.2 | 281.3 | 280.5 | 279.9 | 279.1 | 278.3 |
| 165° | 291.6 | 290.9 | 290.2 | 289.5 | 289.0 | 288.2 | 287.3 | 286.6 | 285.8 | 285.1 | 284.2 |
| 167.5° | 298.2 | 297.8 | 297.0 | 296.5 | 295.6 | 294.9 | 294.2 | 293.6 | 292.7 | 292.0 | 291.0 |
| 170° | 303.7 | 302.8 | 302.4 | 301.7 | 301.1 | 300.2 | 299.7 | 298.8 | 298.1 | 297.7 | 296.7 |
| 172.5° | 308.5 | 308.2 | 307.5 | 307.1 | 306.4 | 305.9 | 305.5 | 304.9 | 304.3 | 303.7 | 303.2 |
| 175° | 311.0 | 310.8 | 310.6 | 310.1 | 309.9 | 309.6 | 309.2 | 309.0 | 308.6 | 308.5 | 308.0 |
| 177.5° | 313.1 | 313.0 | 313.0 | 312.6 | 312.4 | 312.4 | 312.1 | 312.0 | 311.8 | 311.5 | 311.5 |
| 180° | 310.9 | 310.9 | 310.9 | 310.9 | 310.9 | 310.9 | 310.9 | 310.9 | 310.9 | 310.9 | 310.9 |



TEST NUMBER: P1444490
 CATALOG NUMBER: EHBR1-60-UNV-TA-L830-UPL12

CANDELA DISTRIBUTION (continued):

| | 82.5° | 85° | 87.5° | 90° | 92.5° | 95° | 97.5° | 100° | 102.5° | 105° | 107.5° |
|--------|---------|---------|---------|---------|---------|---------|---------|---------|---------|---------|---------|
| 0° | 47963.5 | 47963.5 | 47963.5 | 47963.5 | 47963.5 | 47963.5 | 47963.5 | 47963.5 | 47963.5 | 47963.5 | 47963.5 |
| 2.5° | 48148.1 | 48135.8 | 48141.6 | 48119.0 | 48124.4 | 48097.2 | 48094.7 | 48063.9 | 48060.9 | 48031.9 | 48021.1 |
| 5° | 49778.2 | 49751.4 | 49781.6 | 49734.5 | 49743.7 | 49682.4 | 49677.2 | 49598.0 | 49570.6 | 49471.4 | 49428.6 |
| 7.5° | 51569.9 | 51559.7 | 51578.2 | 51538.8 | 51537.5 | 51482.7 | 51460.2 | 51389.1 | 51345.0 | 51240.9 | 51174.4 |
| 10° | 51962.3 | 51971.6 | 51956.5 | 51960.2 | 51938.9 | 51933.0 | 51911.2 | 51897.3 | 51861.5 | 51834.6 | 51794.8 |
| 12.5° | 50332.5 | 50342.3 | 50280.1 | 50319.5 | 50288.4 | 50361.1 | 50355.2 | 50440.9 | 50454.0 | 50562.5 | 50603.5 |
| 15° | 46565.6 | 46553.9 | 46434.6 | 46509.7 | 46469.5 | 46629.1 | 46664.8 | 46879.6 | 46994.4 | 47270.1 | 47439.4 |
| 17.5° | 40875.2 | 40844.4 | 40676.5 | 40768.0 | 40721.5 | 40956.8 | 41035.7 | 41379.1 | 41593.3 | 42037.5 | 42354.1 |
| 20° | 34092.0 | 34033.1 | 33836.5 | 33943.7 | 33895.7 | 34163.1 | 34275.8 | 34690.8 | 34967.1 | 35555.4 | 35974.0 |
| 22.5° | 27224.4 | 27131.5 | 26938.9 | 27039.0 | 26993.7 | 27270.6 | 27417.3 | 27833.7 | 28150.2 | 28754.2 | 29242.8 |
| 25° | 21057.4 | 20974.6 | 20788.5 | 20858.5 | 20841.7 | 21075.9 | 21206.4 | 21600.3 | 21911.2 | 22486.6 | 22953.0 |
| 27.5° | 16061.0 | 15974.8 | 15806.7 | 15856.2 | 15839.2 | 16038.8 | 16161.8 | 16490.9 | 16758.4 | 17242.7 | 17652.3 |
| 30° | 12292.3 | 12188.4 | 12045.8 | 12073.1 | 12061.4 | 12223.2 | 12338.0 | 12615.1 | 12844.4 | 13253.9 | 13606.7 |
| 32.5° | 9422.1 | 9317.5 | 9186.6 | 9199.3 | 9182.1 | 9309.0 | 9403.6 | 9644.6 | 9844.4 | 10192.5 | 10499.7 |
| 35° | 7209.2 | 7331.3 | 7051.5 | 7228.8 | 7044.2 | 7315.1 | 7217.7 | 7368.2 | 7540.1 | 7833.4 | 8089.6 |
| 37.5° | 5542.1 | 5457.0 | 5385.0 | 5377.4 | 5377.0 | 5439.7 | 5513.9 | 5658.9 | 5810.4 | 6028.8 | 6254.6 |
| 40° | 4391.9 | 4332.2 | 4285.5 | 4282.2 | 4285.5 | 4330.2 | 4384.9 | 4485.2 | 4596.1 | 4753.0 | 4918.9 |
| 42.5° | 3642.7 | 3603.0 | 3574.9 | 3573.0 | 3581.8 | 3613.4 | 3651.5 | 3711.1 | 3783.3 | 3884.9 | 3998.7 |
| 45° | 3152.7 | 3130.7 | 3115.0 | 3114.2 | 3118.2 | 3134.8 | 3156.6 | 3193.8 | 3239.5 | 3302.9 | 3375.0 |
| 47.5° | 2808.9 | 2803.6 | 2793.8 | 2794.2 | 2789.7 | 2796.5 | 2799.0 | 2819.8 | 2844.1 | 2892.0 | 2985.9 |
| 50° | 2558.6 | 2558.6 | 2551.9 | 2551.5 | 2545.1 | 2544.8 | 2539.4 | 2547.7 | 2559.0 | 2588.7 | 2618.8 |
| 52.5° | 2360.8 | 2360.1 | 2352.8 | 2351.4 | 2344.7 | 2344.3 | 2339.6 | 2342.9 | 2344.5 | 2359.4 | 2377.4 |
| 55° | 2206.1 | 2201.5 | 2191.9 | 2188.9 | 2186.3 | 2190.1 | 2188.3 | 2188.5 | 2186.7 | 2192.8 | 2198.2 |
| 57.5° | 2095.2 | 2089.2 | 2080.1 | 2077.4 | 2076.8 | 2081.4 | 2081.6 | 2080.0 | 2071.6 | 2065.9 | 2057.9 |
| 60° | 2007.5 | 2001.4 | 1991.6 | 1989.1 | 1990.5 | 1997.0 | 1996.6 | 1991.3 | 1978.8 | 1967.9 | 1955.4 |
| 62.5° | 1921.2 | 1918.8 | 1913.8 | 1913.0 | 1911.8 | 1912.9 | 1908.5 | 1902.7 | 1890.5 | 1878.9 | 1865.2 |
| 65° | 1805.5 | 1806.7 | 1803.0 | 1803.5 | 1799.1 | 1798.4 | 1791.6 | 1786.1 | 1773.7 | 1763.2 | 1749.1 |
| 67.5° | 1685.3 | 1686.3 | 1683.2 | 1683.2 | 1680.9 | 1681.2 | 1677.2 | 1672.0 | 1661.5 | 1653.0 | 1642.1 |
| 70° | 1586.3 | 1588.8 | 1587.1 | 1587.5 | 1584.7 | 1583.7 | 1577.2 | 1572.3 | 1561.4 | 1554.3 | 1544.5 |
| 72.5° | 1467.7 | 1473.1 | 1472.9 | 1474.2 | 1469.9 | 1467.7 | 1460.1 | 1453.9 | 1444.1 | 1438.4 | 1430.6 |
| 75° | 1339.8 | 1346.7 | 1348.7 | 1351.7 | 1345.7 | 1342.4 | 1334.1 | 1329.1 | 1321.1 | 1317.8 | 1312.6 |
| 77.5° | 1214.8 | 1222.4 | 1229.7 | 1236.5 | 1226.7 | 1218.0 | 1207.5 | 1199.5 | 1188.1 | 1183.7 | 1175.7 |
| 80° | 1074.6 | 1088.1 | 1104.2 | 1117.8 | 1100.2 | 1082.4 | 1065.1 | 1052.3 | 1037.2 | 1031.0 | 1021.0 |
| 82.5° | 891.5 | 905.3 | 914.6 | 923.3 | 911.0 | 898.0 | 881.3 | 870.1 | 853.8 | 847.7 | 836.2 |
| 85° | 677.2 | 694.5 | 700.0 | 704.6 | 696.8 | 689.9 | 674.2 | 653.1 | 642.8 | 626.6 | 618.2 |
| 87.5° | 445.5 | 455.8 | 457.8 | 459.4 | 454.5 | 451.1 | 441.0 | 431.1 | 413.5 | 400.6 | 385.0 |
| 90° | 179.1 | 185.7 | 181.4 | 183.8 | 178.1 | 179.0 | 169.1 | 166.2 | 152.1 | 147.1 | 134.5 |
| 92.5° | 21.1 | 19.6 | 18.9 | 17.8 | 19.6 | 19.8 | 21.4 | 21.6 | 22.9 | 23.4 | 24.8 |
| 95° | 26.7 | 25.6 | 24.5 | 23.5 | 24.4 | 25.2 | 26.0 | 26.9 | 27.6 | 28.5 | 29.3 |
| 97.5° | 34.9 | 34.3 | 33.5 | 32.9 | 33.3 | 33.8 | 34.4 | 34.8 | 35.3 | 35.8 | 36.5 |
| 100° | 43.7 | 43.1 | 42.5 | 42.0 | 42.0 | 42.0 | 42.0 | 42.0 | 42.0 | 42.0 | 42.0 |
| 102.5° | 67.0 | 64.6 | 62.2 | 59.9 | 61.4 | 63.0 | 64.6 | 66.2 | 67.9 | 69.5 | 71.3 |
| 105° | 120.9 | 114.5 | 107.9 | 101.4 | 107.7 | 114.0 | 120.4 | 126.6 | 132.9 | 139.6 | 145.9 |
| 107.5° | 214.3 | 204.0 | 193.8 | 183.5 | 195.1 | 206.6 | 218.1 | 229.5 | 241.0 | 252.4 | 264.2 |
| 110° | 317.3 | 307.5 | 297.7 | 287.9 | 300.1 | 312.3 | 324.5 | 336.7 | 348.8 | 361.0 | 373.6 |



TEST NUMBER: P1444490
 CATALOG NUMBER: EHBR1-60-UNV-TA-L830-UPL12

CANDELA DISTRIBUTION (continued):

| | 82.5° | 85° | 87.5° | 90° | 92.5° | 95° | 97.5° | 100° | 102.5° | 105° | 107.5° |
|--------|-------|-------|-------|-------|-------|-------|-------|-------|--------|-------|--------|
| 112.5° | 386.4 | 381.7 | 376.9 | 372.2 | 380.0 | 387.8 | 395.7 | 403.9 | 411.7 | 419.7 | 427.6 |
| 115° | 405.5 | 405.2 | 404.9 | 404.7 | 408.4 | 412.1 | 415.8 | 419.6 | 423.6 | 427.2 | 431.3 |
| 117.5° | 385.5 | 387.9 | 390.6 | 393.2 | 394.4 | 395.6 | 397.0 | 398.2 | 399.7 | 401.0 | 402.6 |
| 120° | 348.8 | 351.9 | 355.5 | 359.0 | 358.6 | 358.1 | 357.6 | 357.2 | 357.3 | 357.0 | 357.2 |
| 122.5° | 305.9 | 309.2 | 312.8 | 316.1 | 315.1 | 314.1 | 313.1 | 312.3 | 311.7 | 311.1 | 310.5 |
| 125° | 267.1 | 269.5 | 272.4 | 275.2 | 274.2 | 273.1 | 272.2 | 271.6 | 271.0 | 270.3 | 270.1 |
| 127.5° | 237.5 | 239.0 | 240.4 | 242.0 | 241.6 | 241.1 | 241.1 | 240.8 | 240.8 | 241.1 | 241.4 |
| 130° | 219.4 | 219.8 | 220.4 | 220.9 | 221.1 | 221.2 | 221.8 | 222.3 | 223.2 | 223.8 | 225.1 |
| 132.5° | 212.0 | 211.3 | 211.2 | 211.0 | 211.6 | 212.2 | 213.2 | 214.1 | 215.6 | 216.7 | 218.6 |
| 135° | 210.9 | 210.0 | 209.4 | 209.1 | 209.9 | 210.6 | 211.7 | 212.9 | 214.6 | 216.3 | 218.3 |
| 137.5° | 214.7 | 213.6 | 213.0 | 212.1 | 212.9 | 213.8 | 215.0 | 216.2 | 217.7 | 219.5 | 221.5 |
| 140° | 221.3 | 220.1 | 219.8 | 218.8 | 219.7 | 220.3 | 221.5 | 222.7 | 224.2 | 226.0 | 227.9 |
| 142.5° | 228.3 | 227.1 | 226.6 | 226.1 | 226.5 | 227.2 | 228.7 | 229.6 | 231.0 | 232.3 | 234.2 |
| 145° | 237.2 | 236.2 | 235.9 | 235.2 | 235.6 | 236.1 | 236.9 | 237.8 | 238.9 | 239.8 | 241.4 |
| 147.5° | 244.7 | 244.0 | 243.6 | 243.1 | 243.5 | 243.7 | 244.3 | 244.8 | 245.7 | 246.5 | 247.6 |
| 150° | 251.6 | 250.7 | 250.3 | 250.0 | 250.1 | 250.2 | 250.7 | 250.8 | 251.4 | 251.9 | 252.8 |
| 152.5° | 256.3 | 255.4 | 255.3 | 254.9 | 254.8 | 254.9 | 255.2 | 255.3 | 255.7 | 256.0 | 256.8 |
| 155° | 261.3 | 260.8 | 260.3 | 259.7 | 259.6 | 259.3 | 259.5 | 259.2 | 259.6 | 259.5 | 259.8 |
| 157.5° | 267.0 | 266.2 | 265.9 | 265.2 | 264.9 | 264.3 | 264.3 | 264.1 | 264.1 | 263.6 | 263.7 |
| 160° | 271.9 | 271.1 | 270.4 | 269.8 | 269.6 | 269.0 | 268.9 | 268.5 | 268.4 | 268.2 | 268.1 |
| 162.5° | 277.7 | 277.1 | 276.5 | 275.8 | 275.4 | 274.7 | 274.4 | 273.6 | 273.3 | 273.0 | 272.8 |
| 165° | 283.4 | 282.6 | 282.0 | 281.0 | 280.7 | 280.4 | 279.8 | 279.3 | 279.0 | 278.7 | 278.5 |
| 167.5° | 290.6 | 289.6 | 289.1 | 288.3 | 287.9 | 287.0 | 286.8 | 286.3 | 285.8 | 285.3 | 285.3 |
| 170° | 296.2 | 295.5 | 295.1 | 294.4 | 294.1 | 293.6 | 293.4 | 292.8 | 292.6 | 292.4 | 292.4 |
| 172.5° | 302.8 | 302.3 | 301.8 | 301.3 | 301.1 | 300.7 | 300.5 | 300.3 | 299.9 | 299.9 | 299.7 |
| 175° | 307.8 | 307.4 | 307.2 | 306.9 | 306.6 | 306.5 | 306.3 | 306.2 | 306.1 | 305.8 | 305.8 |
| 177.5° | 311.1 | 310.9 | 310.8 | 310.7 | 310.5 | 310.5 | 310.5 | 310.5 | 310.5 | 310.3 | 310.1 |
| 180° | 310.9 | 310.9 | 310.9 | 310.9 | 310.9 | 310.9 | 310.9 | 310.9 | 310.9 | 310.9 | 310.9 |



TEST NUMBER: P1444490
 CATALOG NUMBER: EHBR1-60-UNV-TA-L830-UPL12

CANDELA DISTRIBUTION (continued):

| | 110° | 112.5° | 115° | 117.5° | 120° | 122.5° | 125° | 127.5° | 130° | 132.5° | 135° |
|--------|---------|---------|---------|---------|---------|---------|---------|---------|---------|---------|---------|
| 0° | 47963.5 | 47963.5 | 47963.5 | 47963.5 | 47963.5 | 47963.5 | 47963.5 | 47963.5 | 47963.5 | 47963.5 | 47963.5 |
| 2.5° | 47990.0 | 47977.4 | 47944.1 | 47927.7 | 47897.0 | 47881.6 | 47857.6 | 47842.1 | 47822.7 | 47808.3 | 47800.8 |
| 5° | 49319.6 | 49258.3 | 49135.3 | 49059.6 | 48926.7 | 48839.3 | 48707.5 | 48610.7 | 48474.6 | 48374.1 | 48245.5 |
| 7.5° | 51049.6 | 50955.4 | 50797.8 | 50678.4 | 50492.6 | 50350.6 | 50142.1 | 49975.4 | 49745.0 | 49553.8 | 49318.4 |
| 10° | 51753.8 | 51698.9 | 51628.2 | 51551.4 | 51448.5 | 51347.5 | 51205.1 | 51060.1 | 50866.7 | 50674.4 | 50422.9 |
| 12.5° | 50712.9 | 50764.7 | 50866.7 | 50914.2 | 50992.4 | 51018.8 | 51054.6 | 51037.8 | 51006.2 | 50927.6 | 50813.6 |
| 15° | 47764.8 | 47980.8 | 48322.0 | 48558.1 | 48888.9 | 49121.2 | 49428.6 | 49626.5 | 49854.4 | 49990.5 | 50119.9 |
| 17.5° | 42915.1 | 43332.9 | 43935.1 | 44415.6 | 45060.7 | 45585.1 | 46227.7 | 46732.5 | 47315.4 | 47762.6 | 48238.6 |
| 20° | 36703.5 | 37288.6 | 38119.9 | 38826.0 | 39760.7 | 40553.3 | 41568.6 | 42419.2 | 43411.5 | 44238.6 | 45131.3 |
| 22.5° | 30018.2 | 30706.3 | 31659.0 | 32510.6 | 33626.7 | 34623.7 | 35895.8 | 37020.5 | 38361.9 | 39563.5 | 40892.8 |
| 25° | 23711.4 | 24385.8 | 25356.1 | 26238.1 | 27442.9 | 28541.1 | 29930.9 | 31221.2 | 32777.8 | 34229.3 | 35895.8 |
| 27.5° | 18302.9 | 18901.9 | 19755.0 | 20548.7 | 21652.2 | 22730.4 | 24140.9 | 25516.7 | 27177.7 | 28737.7 | 30533.6 |
| 30° | 14135.0 | 14621.0 | 15304.5 | 15943.0 | 16828.9 | 17710.6 | 18967.0 | 20239.4 | 21892.2 | 23508.8 | 25350.0 |
| 32.5° | 10954.2 | 11368.6 | 11939.1 | 12457.5 | 13140.1 | 13804.9 | 14730.1 | 15746.9 | 17196.8 | 18745.1 | 20525.4 |
| 35° | 8479.7 | 8834.2 | 9319.9 | 9766.4 | 10327.8 | 10855.5 | 11546.0 | 12271.7 | 13378.1 | 14680.6 | 16273.8 |
| 37.5° | 6760.5 | 6905.0 | 7251.6 | 7617.5 | 8083.7 | 8517.5 | 9057.5 | 9594.1 | 10385.8 | 11413.3 | 12714.9 |
| 40° | 5141.3 | 5370.8 | 5652.9 | 5941.1 | 6294.0 | 6641.9 | 7234.4 | 7519.7 | 8040.9 | 8778.6 | 9788.8 |
| 42.5° | 4148.3 | 4309.8 | 4508.3 | 4708.6 | 4954.6 | 5197.0 | 5496.6 | 5801.9 | 6191.6 | 6691.2 | 7409.6 |
| 45° | 3471.4 | 3576.6 | 3704.7 | 3838.2 | 3999.7 | 4165.1 | 4365.7 | 4575.4 | 4839.3 | 5146.5 | 5582.9 |
| 47.5° | 3019.2 | 3077.4 | 3160.9 | 3252.1 | 3362.9 | 3477.3 | 3607.8 | 3741.3 | 3905.3 | 4087.5 | 4336.0 |
| 50° | 2666.2 | 2714.8 | 2779.6 | 2840.6 | 2917.0 | 3034.4 | 3086.1 | 3159.8 | 3258.5 | 3365.7 | 3504.7 |
| 52.5° | 2410.7 | 2443.1 | 2483.8 | 2518.8 | 2567.1 | 2611.1 | 2668.7 | 2719.5 | 2787.8 | 2852.1 | 2941.9 |
| 55° | 2211.9 | 2223.6 | 2246.7 | 2269.3 | 2302.7 | 2332.7 | 2372.2 | 2405.5 | 2448.9 | 2487.5 | 2544.1 |
| 57.5° | 2058.2 | 2059.4 | 2070.0 | 2081.7 | 2103.2 | 2122.1 | 2149.3 | 2171.1 | 2201.4 | 2225.9 | 2259.8 |
| 60° | 1947.9 | 1942.0 | 1944.1 | 1948.3 | 1960.3 | 1972.6 | 1990.0 | 2004.2 | 2023.3 | 2037.2 | 2056.2 |
| 62.5° | 1856.0 | 1846.7 | 1844.6 | 1843.5 | 1849.5 | 1854.0 | 1863.5 | 1870.4 | 1881.2 | 1887.3 | 1897.4 |
| 65° | 1739.9 | 1729.1 | 1724.8 | 1719.8 | 1721.6 | 1720.2 | 1723.7 | 1723.9 | 1729.4 | 1730.7 | 1736.6 |
| 67.5° | 1634.7 | 1625.6 | 1620.1 | 1613.3 | 1610.3 | 1605.5 | 1603.4 | 1598.8 | 1598.0 | 1594.2 | 1593.2 |
| 70° | 1538.6 | 1529.8 | 1525.1 | 1519.0 | 1515.8 | 1509.3 | 1505.5 | 1497.6 | 1493.0 | 1485.7 | 1481.6 |
| 72.5° | 1427.5 | 1422.6 | 1421.2 | 1417.0 | 1415.8 | 1412.3 | 1410.7 | 1405.2 | 1402.0 | 1395.8 | 1392.2 |
| 75° | 1311.5 | 1307.5 | 1307.1 | 1302.8 | 1302.4 | 1298.2 | 1297.1 | 1291.3 | 1288.3 | 1282.0 | 1279.4 |
| 77.5° | 1173.2 | 1167.1 | 1165.4 | 1160.4 | 1161.6 | 1159.6 | 1161.3 | 1156.8 | 1154.9 | 1148.7 | 1146.7 |
| 80° | 1017.5 | 1009.7 | 1006.5 | 999.9 | 1001.6 | 998.6 | 1001.6 | 1001.3 | 1003.6 | 998.6 | 997.8 |
| 82.5° | 833.0 | 824.4 | 822.8 | 818.2 | 821.2 | 821.6 | 828.1 | 824.6 | 826.1 | 821.4 | 823.4 |
| 85° | 606.1 | 599.8 | 590.9 | 589.7 | 583.9 | 589.8 | 582.2 | 587.3 | 579.0 | 584.8 | 577.0 |
| 87.5° | 375.8 | 362.6 | 355.7 | 346.3 | 342.7 | 333.7 | 329.9 | 323.4 | 325.3 | 322.3 | 324.0 |
| 90° | 132.0 | 120.8 | 118.4 | 109.2 | 108.5 | 100.5 | 101.4 | 95.7 | 97.5 | 91.7 | 94.1 |
| 92.5° | 25.2 | 26.1 | 27.6 | 29.9 | 31.2 | 32.9 | 34.4 | 36.6 | 37.9 | 40.0 | 41.3 |
| 95° | 30.2 | 31.0 | 33.3 | 35.5 | 37.7 | 40.0 | 42.3 | 44.6 | 46.8 | 49.1 | 51.3 |
| 97.5° | 37.0 | 37.5 | 39.7 | 42.0 | 44.2 | 46.5 | 48.6 | 51.2 | 53.5 | 55.7 | 58.0 |
| 100° | 42.0 | 42.2 | 48.5 | 54.9 | 61.3 | 67.7 | 74.0 | 80.4 | 87.1 | 93.5 | 99.9 |
| 102.5° | 72.9 | 74.5 | 90.6 | 106.8 | 122.9 | 139.0 | 155.2 | 171.5 | 187.6 | 204.0 | 220.2 |
| 105° | 152.2 | 158.6 | 183.1 | 207.9 | 232.4 | 257.1 | 281.8 | 306.7 | 331.4 | 356.1 | 380.9 |
| 107.5° | 275.8 | 287.4 | 309.8 | 332.1 | 354.3 | 376.7 | 399.2 | 421.5 | 443.9 | 466.4 | 489.1 |
| 110° | 385.7 | 398.1 | 413.1 | 428.3 | 443.4 | 458.4 | 473.6 | 488.8 | 504.1 | 519.3 | 534.8 |



TEST NUMBER: P1444490
 CATALOG NUMBER: EHBR1-60-UNV-TA-L830-UPL12

CANDELA DISTRIBUTION (continued):

| | 110° | 112.5° | 115° | 117.5° | 120° | 122.5° | 125° | 127.5° | 130° | 132.5° | 135° |
|--------|-------|--------|-------|--------|-------|--------|-------|--------|-------|--------|-------|
| 112.5° | 435.5 | 443.7 | 452.5 | 461.7 | 470.6 | 479.7 | 488.7 | 497.9 | 507.0 | 516.4 | 525.6 |
| 115° | 435.3 | 439.4 | 442.9 | 446.9 | 450.5 | 454.5 | 458.3 | 462.5 | 466.7 | 470.6 | 474.8 |
| 117.5° | 403.9 | 405.9 | 406.6 | 407.7 | 408.7 | 410.2 | 411.3 | 412.8 | 414.3 | 415.8 | 416.9 |
| 120° | 357.0 | 357.1 | 357.2 | 357.3 | 357.4 | 357.6 | 358.1 | 358.4 | 358.9 | 359.5 | 359.9 |
| 122.5° | 310.0 | 309.9 | 310.0 | 310.2 | 310.6 | 311.2 | 311.7 | 312.6 | 313.1 | 313.8 | 314.5 |
| 125° | 269.8 | 269.8 | 271.2 | 272.7 | 274.2 | 275.9 | 277.5 | 279.5 | 281.2 | 283.1 | 284.9 |
| 127.5° | 241.7 | 242.4 | 244.8 | 247.2 | 249.7 | 252.3 | 255.0 | 257.8 | 260.3 | 263.3 | 265.7 |
| 130° | 226.2 | 227.6 | 230.3 | 233.5 | 236.3 | 239.5 | 242.6 | 246.0 | 248.8 | 252.0 | 255.0 |
| 132.5° | 220.1 | 222.3 | 224.8 | 227.9 | 230.8 | 233.9 | 237.1 | 240.2 | 243.3 | 246.5 | 249.3 |
| 135° | 220.3 | 222.6 | 225.2 | 228.1 | 230.9 | 234.1 | 236.8 | 240.0 | 242.6 | 245.7 | 248.3 |
| 137.5° | 223.4 | 225.7 | 228.3 | 230.7 | 233.1 | 236.0 | 238.4 | 241.1 | 243.5 | 246.1 | 248.4 |
| 140° | 229.9 | 232.1 | 233.7 | 236.0 | 237.7 | 239.8 | 241.5 | 243.7 | 245.3 | 247.6 | 249.2 |
| 142.5° | 235.9 | 238.0 | 239.0 | 240.7 | 242.2 | 244.2 | 245.6 | 247.2 | 248.6 | 250.0 | 251.2 |
| 145° | 242.7 | 244.5 | 245.2 | 246.4 | 247.3 | 248.3 | 249.2 | 250.2 | 250.9 | 251.7 | 252.5 |
| 147.5° | 248.8 | 250.0 | 250.4 | 251.2 | 251.9 | 252.3 | 253.1 | 253.8 | 254.0 | 254.7 | 255.3 |
| 150° | 253.5 | 254.5 | 254.6 | 255.2 | 255.3 | 255.6 | 255.7 | 256.2 | 256.3 | 256.7 | 256.8 |
| 152.5° | 257.3 | 258.0 | 257.7 | 258.1 | 258.0 | 258.1 | 258.0 | 258.3 | 258.2 | 258.2 | 258.4 |
| 155° | 259.7 | 260.1 | 259.9 | 260.0 | 259.8 | 259.9 | 259.7 | 260.2 | 260.2 | 260.3 | 260.4 |
| 157.5° | 263.5 | 263.4 | 263.3 | 263.3 | 263.0 | 263.1 | 263.1 | 263.2 | 263.3 | 263.9 | 264.2 |
| 160° | 267.7 | 267.6 | 267.3 | 267.3 | 267.2 | 267.1 | 267.1 | 267.4 | 267.5 | 268.3 | 268.6 |
| 162.5° | 272.2 | 272.0 | 271.7 | 271.7 | 271.6 | 271.7 | 271.9 | 272.4 | 272.5 | 273.1 | 273.4 |
| 165° | 278.4 | 278.5 | 278.0 | 278.2 | 278.1 | 278.1 | 278.2 | 278.4 | 278.8 | 279.1 | 279.6 |
| 167.5° | 285.0 | 284.9 | 284.9 | 285.1 | 285.1 | 285.3 | 285.5 | 286.2 | 286.4 | 287.1 | 287.3 |
| 170° | 292.3 | 292.4 | 292.3 | 292.3 | 292.3 | 292.3 | 292.4 | 292.5 | 292.9 | 293.2 | 293.3 |
| 172.5° | 299.7 | 299.7 | 299.7 | 299.5 | 299.4 | 299.4 | 299.3 | 299.5 | 299.4 | 299.4 | 299.3 |
| 175° | 305.6 | 305.6 | 305.5 | 305.5 | 305.4 | 305.1 | 305.1 | 304.6 | 304.5 | 304.5 | 304.4 |
| 177.5° | 310.0 | 309.6 | 309.4 | 309.4 | 309.2 | 309.1 | 309.1 | 308.9 | 308.9 | 308.9 | 308.6 |
| 180° | 310.9 | 310.9 | 310.9 | 310.9 | 310.9 | 310.9 | 310.9 | 310.9 | 310.9 | 310.9 | 310.9 |



TEST NUMBER: P1444490
 CATALOG NUMBER: EHBR1-60-UNV-TA-L830-UPL12

CANDELA DISTRIBUTION (continued):

| | 137.5° | 140° | 142.5° | 145° | 147.5° | 150° | 152.5° | 155° | 157.5° | 160° | 162.5° |
|--------|---------|---------|---------|---------|---------|---------|---------|---------|---------|---------|---------|
| 0° | 47963.5 | 47963.5 | 47963.5 | 47963.5 | 47963.5 | 47963.5 | 47963.5 | 47963.5 | 47963.5 | 47963.5 | 47963.5 |
| 2.5° | 47791.3 | 47790.7 | 47786.1 | 47788.3 | 47789.1 | 47792.5 | 47796.6 | 47800.8 | 47801.8 | 47805.1 | 47805.9 |
| 5° | 48148.9 | 48030.7 | 47943.2 | 47847.1 | 47774.7 | 47709.7 | 47666.3 | 47631.8 | 47618.4 | 47621.8 | 47629.9 |
| 7.5° | 49118.8 | 48874.7 | 48673.3 | 48444.3 | 48253.4 | 48051.3 | 47883.7 | 47724.4 | 47608.3 | 47521.8 | 47473.4 |
| 10° | 50183.0 | 49885.7 | 49601.4 | 49270.0 | 48955.8 | 48620.3 | 48316.6 | 48010.6 | 47755.5 | 47534.0 | 47371.4 |
| 12.5° | 50655.3 | 50445.1 | 50199.4 | 49886.7 | 49550.3 | 49163.4 | 48772.5 | 48353.5 | 47963.9 | 47602.1 | 47310.4 |
| 15° | 50155.2 | 50155.6 | 50066.1 | 49916.0 | 49682.4 | 49373.1 | 49000.7 | 48564.0 | 48104.3 | 47635.2 | 47206.6 |
| 17.5° | 48567.9 | 48867.4 | 49034.0 | 49139.4 | 49107.1 | 48993.1 | 48756.2 | 48420.7 | 47992.1 | 47492.5 | 46969.5 |
| 20° | 45842.0 | 46548.3 | 47051.9 | 47504.9 | 47758.8 | 47927.5 | 47910.5 | 47774.0 | 47468.8 | 47044.0 | 46499.4 |
| 22.5° | 42023.4 | 43209.0 | 44144.6 | 45017.0 | 45628.9 | 46126.5 | 46363.2 | 46463.6 | 46325.3 | 46029.3 | 45517.9 |
| 25° | 37385.3 | 38997.3 | 40373.0 | 41708.2 | 42709.7 | 43570.4 | 44087.7 | 44452.1 | 44481.0 | 44326.4 | 43870.1 |
| 27.5° | 32231.5 | 34134.4 | 35875.6 | 37650.0 | 39058.3 | 40295.7 | 41107.6 | 41701.8 | 41890.6 | 41865.6 | 41451.3 |
| 30° | 27084.4 | 29082.0 | 31001.2 | 33070.3 | 34813.1 | 36393.9 | 37466.3 | 38270.0 | 38579.7 | 38639.0 | 38240.5 |
| 32.5° | 22223.3 | 24193.3 | 26107.2 | 28270.3 | 30188.2 | 31999.9 | 33266.9 | 34221.5 | 34581.7 | 34666.5 | 34229.3 |
| 35° | 17811.8 | 19629.2 | 21448.0 | 23544.5 | 25451.3 | 27327.4 | 28662.4 | 29661.8 | 29998.2 | 30054.9 | 29548.8 |
| 37.5° | 13986.0 | 15534.5 | 17119.4 | 19000.4 | 20751.6 | 22513.4 | 23781.9 | 24721.2 | 24966.2 | 24951.1 | 24378.3 |
| 40° | 10764.8 | 11968.6 | 13242.2 | 14790.7 | 16246.6 | 17736.0 | 18807.2 | 19583.7 | 19712.4 | 19617.0 | 19015.4 |
| 42.5° | 8094.6 | 8964.0 | 9887.2 | 11043.2 | 12123.4 | 13238.2 | 14017.5 | 14593.9 | 14612.3 | 14461.6 | 13921.6 |
| 45° | 6030.4 | 6878.7 | 7265.9 | 7964.8 | 8660.5 | 9401.8 | 9877.7 | 10233.7 | 10178.7 | 10046.0 | 9635.5 |
| 47.5° | 4597.2 | 4923.2 | 5268.9 | 5702.3 | 6107.6 | 6948.8 | 6886.4 | 7458.2 | 7046.4 | 7327.2 | 6709.0 |
| 50° | 3650.6 | 3832.8 | 4019.1 | 4249.1 | 4460.9 | 4680.7 | 4818.1 | 4920.7 | 4907.4 | 4863.3 | 4744.9 |
| 52.5° | 3105.8 | 3162.1 | 3253.8 | 3384.7 | 3502.9 | 3621.8 | 3700.0 | 3763.7 | 3764.9 | 3747.1 | 3687.3 |
| 55° | 2595.8 | 2667.3 | 2733.2 | 2818.7 | 2964.3 | 2986.7 | 3098.8 | 3076.2 | 3085.0 | 3053.9 | 3085.7 |
| 57.5° | 2288.7 | 2330.3 | 2367.3 | 2418.2 | 2460.4 | 2509.4 | 2538.4 | 2566.3 | 2563.7 | 2557.6 | 2527.1 |
| 60° | 2071.1 | 2094.0 | 2114.6 | 2144.3 | 2167.5 | 2195.2 | 2208.5 | 2222.7 | 2218.0 | 2207.7 | 2180.6 |
| 62.5° | 1903.3 | 1917.6 | 1929.4 | 1948.5 | 1962.6 | 1979.8 | 1986.9 | 1992.8 | 1986.9 | 1977.0 | 1953.0 |
| 65° | 1737.8 | 1747.1 | 1754.5 | 1768.9 | 1778.8 | 1793.6 | 1799.4 | 1805.1 | 1799.6 | 1792.0 | 1773.7 |
| 67.5° | 1588.5 | 1589.3 | 1588.7 | 1594.5 | 1597.6 | 1606.4 | 1609.1 | 1613.2 | 1606.7 | 1600.2 | 1584.7 |
| 70° | 1475.2 | 1472.9 | 1470.1 | 1472.4 | 1472.9 | 1477.2 | 1477.8 | 1477.2 | 1469.5 | 1458.2 | 1441.2 |
| 72.5° | 1386.7 | 1385.5 | 1383.3 | 1385.3 | 1385.3 | 1389.1 | 1387.9 | 1386.0 | 1376.6 | 1365.5 | 1348.9 |
| 75° | 1272.9 | 1272.1 | 1267.7 | 1267.9 | 1264.4 | 1265.7 | 1261.0 | 1258.4 | 1247.9 | 1238.6 | 1223.7 |
| 77.5° | 1139.8 | 1137.6 | 1131.5 | 1129.1 | 1122.4 | 1119.6 | 1110.8 | 1106.5 | 1095.9 | 1088.5 | 1075.6 |
| 80° | 991.2 | 988.9 | 980.8 | 976.4 | 965.7 | 959.0 | 946.2 | 939.0 | 926.7 | 919.4 | 906.9 |
| 82.5° | 819.2 | 820.2 | 812.2 | 806.7 | 791.4 | 779.6 | 762.6 | 753.3 | 739.8 | 732.7 | 720.0 |
| 85° | 582.7 | 574.3 | 578.8 | 578.4 | 568.9 | 558.7 | 544.8 | 535.0 | 523.7 | 516.9 | 507.9 |
| 87.5° | 319.6 | 321.6 | 319.2 | 317.3 | 310.5 | 305.4 | 294.5 | 288.9 | 280.5 | 276.4 | 269.7 |
| 90° | 86.0 | 85.9 | 78.3 | 78.4 | 70.9 | 68.2 | 59.4 | 57.9 | 49.9 | 48.7 | 42.9 |
| 92.5° | 39.4 | 37.6 | 36.0 | 33.7 | 32.2 | 30.3 | 28.4 | 26.5 | 24.6 | 23.6 | 23.4 |
| 95° | 48.6 | 46.1 | 43.4 | 40.7 | 37.8 | 35.1 | 32.6 | 29.9 | 27.2 | 26.6 | 26.0 |
| 97.5° | 55.0 | 51.7 | 48.5 | 45.5 | 42.2 | 39.1 | 36.1 | 32.8 | 29.6 | 29.2 | 28.9 |
| 100° | 92.6 | 85.4 | 78.0 | 70.6 | 63.3 | 55.9 | 48.7 | 41.3 | 34.1 | 33.7 | 33.3 |
| 102.5° | 202.2 | 184.4 | 166.7 | 148.9 | 131.3 | 113.3 | 95.6 | 77.7 | 59.9 | 57.2 | 54.7 |
| 105° | 353.9 | 326.7 | 300.1 | 273.1 | 246.1 | 219.1 | 192.3 | 165.0 | 138.1 | 129.5 | 120.7 |
| 107.5° | 463.9 | 438.5 | 413.5 | 388.3 | 362.8 | 337.7 | 312.3 | 286.9 | 261.5 | 246.4 | 231.2 |
| 110° | 514.8 | 494.9 | 475.2 | 455.2 | 435.4 | 415.4 | 395.4 | 375.4 | 355.5 | 342.4 | 329.6 |



TEST NUMBER: P1444490
 CATALOG NUMBER: EHBR1-60-UNV-TA-L830-UPL12

CANDELA DISTRIBUTION (continued):

| | 137.5° | 140° | 142.5° | 145° | 147.5° | 150° | 152.5° | 155° | 157.5° | 160° | 162.5° |
|--------|--------|-------|--------|-------|--------|-------|--------|-------|--------|-------|--------|
| 112.5° | 511.3 | 496.9 | 482.8 | 468.2 | 454.0 | 439.4 | 425.1 | 410.6 | 395.9 | 388.3 | 380.6 |
| 115° | 466.6 | 458.2 | 450.0 | 441.7 | 433.2 | 424.9 | 416.6 | 407.7 | 399.2 | 395.5 | 391.7 |
| 117.5° | 413.4 | 409.4 | 405.9 | 401.9 | 398.1 | 394.0 | 390.2 | 386.1 | 382.1 | 381.2 | 380.1 |
| 120° | 359.9 | 359.3 | 358.6 | 358.0 | 357.5 | 357.0 | 356.1 | 355.5 | 354.6 | 355.5 | 356.4 |
| 122.5° | 316.1 | 317.6 | 319.3 | 320.5 | 322.2 | 323.4 | 325.1 | 326.1 | 327.5 | 329.4 | 331.3 |
| 125° | 287.4 | 289.7 | 292.3 | 294.5 | 296.7 | 299.1 | 301.6 | 303.5 | 305.9 | 307.8 | 310.1 |
| 127.5° | 268.7 | 271.2 | 274.0 | 276.4 | 279.1 | 281.6 | 284.2 | 286.4 | 289.1 | 291.0 | 293.4 |
| 130° | 257.7 | 259.9 | 262.7 | 264.9 | 267.5 | 270.0 | 272.3 | 274.7 | 277.1 | 279.1 | 281.2 |
| 132.5° | 251.7 | 254.1 | 256.6 | 258.7 | 261.3 | 263.4 | 265.8 | 268.1 | 270.7 | 272.4 | 274.5 |
| 135° | 250.7 | 252.5 | 254.7 | 256.5 | 258.8 | 260.6 | 262.7 | 264.9 | 267.2 | 268.9 | 270.8 |
| 137.5° | 250.3 | 252.0 | 254.0 | 255.6 | 257.7 | 259.3 | 261.5 | 263.4 | 265.7 | 267.1 | 269.0 |
| 140° | 250.9 | 252.6 | 254.4 | 256.1 | 258.0 | 259.7 | 262.1 | 264.0 | 266.2 | 267.7 | 269.5 |
| 142.5° | 252.9 | 254.0 | 255.6 | 257.1 | 258.8 | 260.2 | 262.2 | 264.1 | 266.1 | 267.8 | 269.3 |
| 145° | 254.0 | 255.3 | 257.0 | 258.3 | 259.9 | 261.6 | 263.8 | 265.7 | 267.7 | 269.1 | 270.7 |
| 147.5° | 256.5 | 257.5 | 259.1 | 260.3 | 261.9 | 263.1 | 265.2 | 266.8 | 268.8 | 270.3 | 271.6 |
| 150° | 258.1 | 259.1 | 260.4 | 261.5 | 263.1 | 264.6 | 266.4 | 268.2 | 270.4 | 271.7 | 273.1 |
| 152.5° | 259.6 | 260.6 | 261.9 | 263.4 | 264.8 | 266.4 | 268.3 | 270.1 | 272.0 | 273.1 | 274.7 |
| 155° | 261.7 | 262.7 | 264.1 | 265.6 | 267.1 | 268.5 | 270.2 | 271.8 | 273.7 | 275.1 | 276.3 |
| 157.5° | 265.3 | 266.1 | 267.5 | 268.9 | 270.2 | 271.6 | 273.4 | 274.8 | 276.5 | 277.5 | 278.7 |
| 160° | 269.6 | 270.6 | 271.8 | 273.2 | 274.5 | 275.9 | 277.3 | 278.7 | 280.1 | 281.1 | 282.2 |
| 162.5° | 274.5 | 275.7 | 277.0 | 278.0 | 279.4 | 280.7 | 282.2 | 283.4 | 284.9 | 285.7 | 286.8 |
| 165° | 280.5 | 281.6 | 282.7 | 283.5 | 284.7 | 285.4 | 286.8 | 287.8 | 289.2 | 289.7 | 290.9 |
| 167.5° | 288.3 | 288.9 | 289.7 | 290.5 | 291.5 | 292.3 | 293.4 | 294.1 | 295.2 | 296.0 | 296.8 |
| 170° | 293.9 | 294.6 | 295.2 | 295.9 | 296.7 | 297.4 | 298.2 | 298.7 | 299.8 | 300.5 | 301.2 |
| 172.5° | 299.7 | 299.9 | 300.5 | 300.9 | 301.3 | 301.7 | 302.4 | 302.8 | 303.3 | 304.1 | 304.5 |
| 175° | 304.9 | 304.9 | 305.2 | 305.3 | 305.4 | 305.6 | 306.1 | 306.5 | 306.8 | 307.1 | 307.4 |
| 177.5° | 308.6 | 308.7 | 308.7 | 308.8 | 309.3 | 309.4 | 309.6 | 309.7 | 309.9 | 310.1 | 310.4 |
| 180° | 310.9 | 310.9 | 310.9 | 310.9 | 310.9 | 310.9 | 310.9 | 310.9 | 310.9 | 310.9 | 310.9 |



TEST NUMBER: P1444490
 CATALOG NUMBER: EHBR1-60-UNV-TA-L830-UPL12

CANDELA DISTRIBUTION (continued):

| | 165° | 167.5° | 170° | 172.5° | 175° | 177.5° | 180° | 182.5° | 185° | 187.5° | 190° |
|--------|---------|---------|---------|---------|---------|---------|---------|---------|---------|---------|---------|
| 0° | 47963.5 | 47963.5 | 47963.5 | 47963.5 | 47963.5 | 47963.5 | 47963.5 | 47963.5 | 47963.5 | 47963.5 | 47963.5 |
| 2.5° | 47804.2 | 47803.7 | 47802.1 | 47800.0 | 47797.8 | 47799.0 | 47801.2 | 47806.7 | 47816.4 | 47830.2 | 47848.3 |
| 5° | 47636.4 | 47646.2 | 47651.7 | 47652.4 | 47647.5 | 47644.4 | 47649.1 | 47662.2 | 47688.7 | 47733.1 | 47793.2 |
| 7.5° | 47460.4 | 47472.5 | 47491.0 | 47504.9 | 47507.5 | 47504.2 | 47504.9 | 47525.5 | 47574.4 | 47661.0 | 47782.4 |
| 10° | 47272.5 | 47236.8 | 47255.7 | 47290.1 | 47317.6 | 47322.5 | 47325.9 | 47350.3 | 47421.7 | 47552.5 | 47747.5 |
| 12.5° | 47099.0 | 46986.0 | 46964.1 | 46995.2 | 47036.8 | 47050.1 | 47046.5 | 47057.0 | 47140.6 | 47313.8 | 47585.6 |
| 15° | 46870.9 | 46658.0 | 46585.3 | 46593.3 | 46644.7 | 46663.2 | 46649.7 | 46629.1 | 46710.7 | 46922.0 | 47273.8 |
| 17.5° | 46501.4 | 46158.4 | 46024.7 | 46018.8 | 46078.9 | 46094.9 | 46061.8 | 45997.8 | 46078.2 | 46342.0 | 46778.8 |
| 20° | 45939.9 | 45433.5 | 45181.8 | 45141.8 | 45207.0 | 45188.0 | 45122.0 | 45025.3 | 45130.9 | 45451.6 | 45971.0 |
| 22.5° | 44930.4 | 44288.7 | 43858.7 | 43720.0 | 43798.1 | 43746.0 | 43649.9 | 43526.3 | 43666.6 | 44030.9 | 44609.4 |
| 25° | 43280.8 | 42539.4 | 41950.6 | 41620.4 | 41682.6 | 41589.2 | 41484.6 | 41334.9 | 41502.2 | 41920.4 | 42557.1 |
| 27.5° | 40856.1 | 39999.7 | 39270.2 | 38723.5 | 38743.5 | 38621.3 | 38500.7 | 38307.0 | 38515.8 | 39010.8 | 39729.0 |
| 30° | 37632.0 | 36641.0 | 35752.6 | 35009.5 | 34943.1 | 34824.5 | 34700.9 | 34446.7 | 34708.1 | 35300.7 | 36139.9 |
| 32.5° | 33583.0 | 32482.7 | 31456.2 | 30516.7 | 30339.4 | 30223.8 | 30113.7 | 29821.2 | 30163.3 | 30854.3 | 31818.4 |
| 35° | 28847.9 | 27675.7 | 26562.8 | 25489.8 | 25196.2 | 25080.5 | 24984.3 | 24704.0 | 25131.0 | 25882.9 | 26924.2 |
| 37.5° | 23650.4 | 22453.0 | 21348.1 | 20247.7 | 19832.8 | 19675.9 | 19606.1 | 19422.4 | 19915.0 | 20658.7 | 21704.3 |
| 40° | 18314.6 | 17201.3 | 16210.7 | 15238.8 | 14765.9 | 14525.7 | 14489.1 | 14455.7 | 14931.9 | 15577.2 | 16526.2 |
| 42.5° | 13323.2 | 12425.0 | 11661.1 | 10918.3 | 10489.7 | 10161.7 | 10161.6 | 10261.1 | 10689.8 | 11173.2 | 11905.0 |
| 45° | 9216.1 | 8613.3 | 8126.6 | 7630.2 | 7762.9 | 7109.1 | 7493.2 | 7296.1 | 7508.0 | 7819.6 | 8295.5 |
| 47.5° | 6335.1 | 6006.1 | 5738.7 | 5461.5 | 5259.3 | 5066.3 | 5083.1 | 5207.6 | 5407.2 | 5592.1 | 5839.7 |
| 50° | 4617.3 | 4449.6 | 4313.5 | 4169.5 | 4068.9 | 3983.7 | 3988.7 | 4042.6 | 4147.5 | 4244.9 | 4374.4 |
| 52.5° | 3617.9 | 3525.5 | 3451.5 | 3371.9 | 3319.1 | 3276.8 | 3279.1 | 3305.3 | 3361.9 | 3417.6 | 3491.9 |
| 55° | 2982.1 | 2970.9 | 2874.7 | 2803.3 | 2776.0 | 2747.6 | 2752.8 | 2763.1 | 2801.7 | 2834.2 | 2883.4 |
| 57.5° | 2499.0 | 2455.8 | 2426.9 | 2389.3 | 2372.0 | 2352.1 | 2356.6 | 2360.4 | 2386.3 | 2408.1 | 2443.5 |
| 60° | 2157.8 | 2127.3 | 2106.8 | 2081.2 | 2069.8 | 2057.2 | 2060.0 | 2062.4 | 2078.9 | 2093.1 | 2118.6 |
| 62.5° | 1931.2 | 1903.8 | 1886.1 | 1866.3 | 1858.2 | 1849.7 | 1851.7 | 1852.4 | 1862.7 | 1873.2 | 1892.4 |
| 65° | 1757.4 | 1735.6 | 1720.9 | 1703.8 | 1695.4 | 1686.5 | 1687.5 | 1687.5 | 1696.2 | 1703.8 | 1718.2 |
| 67.5° | 1573.5 | 1557.2 | 1547.5 | 1534.0 | 1528.3 | 1519.3 | 1519.2 | 1516.3 | 1522.0 | 1525.0 | 1534.8 |
| 70° | 1426.0 | 1409.5 | 1397.2 | 1384.2 | 1377.1 | 1369.1 | 1369.3 | 1369.5 | 1376.0 | 1383.0 | 1395.6 |
| 72.5° | 1334.8 | 1319.0 | 1308.1 | 1296.8 | 1290.0 | 1283.2 | 1282.0 | 1281.3 | 1286.1 | 1289.8 | 1298.2 |
| 75° | 1214.1 | 1201.4 | 1195.1 | 1184.4 | 1179.0 | 1171.4 | 1170.2 | 1166.7 | 1168.9 | 1169.7 | 1175.9 |
| 77.5° | 1067.7 | 1055.7 | 1050.5 | 1039.7 | 1035.3 | 1026.5 | 1025.9 | 1021.9 | 1023.7 | 1022.5 | 1027.3 |
| 80° | 900.7 | 889.9 | 887.0 | 878.2 | 876.0 | 868.0 | 866.7 | 862.0 | 863.4 | 859.6 | 861.4 |
| 82.5° | 714.4 | 704.5 | 702.3 | 694.1 | 694.1 | 686.9 | 686.5 | 679.2 | 679.2 | 673.0 | 663.0 |
| 85° | 503.2 | 496.0 | 492.9 | 486.2 | 484.2 | 478.4 | 475.3 | 468.4 | 465.9 | 461.4 | 460.0 |
| 87.5° | 265.6 | 261.0 | 256.8 | 253.7 | 247.8 | 237.3 | 236.4 | 229.1 | 229.7 | 224.5 | 224.9 |
| 90° | 42.3 | 37.1 | 36.8 | 32.0 | 31.3 | 28.2 | 27.9 | 27.1 | 27.3 | 26.7 | 27.0 |
| 92.5° | 22.8 | 22.1 | 21.5 | 20.9 | 20.2 | 19.7 | 19.0 | 19.7 | 20.2 | 20.9 | 21.5 |
| 95° | 25.5 | 24.9 | 24.4 | 23.9 | 23.3 | 22.8 | 22.2 | 22.8 | 23.3 | 24.1 | 24.6 |
| 97.5° | 28.6 | 28.2 | 27.8 | 27.4 | 27.2 | 26.8 | 26.4 | 26.9 | 27.3 | 27.5 | 27.9 |
| 100° | 32.9 | 32.4 | 32.0 | 31.6 | 31.2 | 30.7 | 30.3 | 31.1 | 31.6 | 31.9 | 32.4 |
| 102.5° | 52.3 | 49.6 | 47.1 | 44.5 | 41.9 | 39.3 | 36.7 | 39.3 | 41.9 | 44.7 | 47.3 |
| 105° | 111.9 | 103.4 | 94.7 | 86.0 | 77.2 | 68.5 | 59.8 | 68.7 | 77.4 | 86.2 | 95.1 |
| 107.5° | 215.7 | 200.7 | 185.4 | 170.1 | 154.6 | 139.3 | 123.9 | 139.5 | 154.8 | 170.3 | 185.7 |
| 110° | 316.4 | 303.3 | 290.1 | 277.0 | 263.8 | 250.7 | 237.4 | 250.9 | 264.2 | 277.4 | 290.7 |



TEST NUMBER: P1444490
 CATALOG NUMBER: EHBR1-60-UNV-TA-L830-UPL12

CANDELA DISTRIBUTION (continued):

| | 165° | 167.5° | 170° | 172.5° | 175° | 177.5° | 180° | 182.5° | 185° | 187.5° | 190° |
|--------|-------|--------|-------|--------|-------|--------|-------|--------|-------|--------|-------|
| 112.5° | 372.6 | 364.8 | 357.0 | 349.2 | 341.1 | 333.3 | 325.1 | 333.7 | 341.7 | 350.0 | 358.0 |
| 115° | 387.8 | 383.9 | 380.1 | 376.1 | 371.9 | 367.9 | 363.6 | 368.5 | 372.8 | 377.2 | 381.5 |
| 117.5° | 379.1 | 378.2 | 377.0 | 376.0 | 374.8 | 373.7 | 372.2 | 374.0 | 375.6 | 377.6 | 378.8 |
| 120° | 356.9 | 358.0 | 358.7 | 359.2 | 360.0 | 360.4 | 360.8 | 361.2 | 361.2 | 361.2 | 361.0 |
| 122.5° | 333.2 | 335.2 | 336.7 | 338.5 | 340.2 | 341.8 | 343.0 | 342.5 | 341.6 | 340.9 | 339.6 |
| 125° | 311.9 | 314.3 | 316.0 | 318.0 | 319.6 | 321.6 | 322.6 | 322.4 | 321.6 | 320.6 | 319.3 |
| 127.5° | 295.5 | 297.5 | 299.3 | 301.4 | 303.0 | 304.7 | 305.9 | 305.7 | 305.0 | 304.1 | 303.0 |
| 130° | 283.1 | 285.3 | 286.8 | 288.7 | 290.2 | 291.5 | 292.5 | 292.6 | 292.2 | 291.9 | 290.9 |
| 132.5° | 276.2 | 278.3 | 280.0 | 281.7 | 282.8 | 284.4 | 285.0 | 285.4 | 285.1 | 285.0 | 284.2 |
| 135° | 272.6 | 274.3 | 275.9 | 277.7 | 278.8 | 279.9 | 280.5 | 281.2 | 281.1 | 281.1 | 280.5 |
| 137.5° | 270.4 | 272.3 | 273.6 | 274.9 | 276.0 | 276.9 | 277.5 | 278.2 | 278.3 | 278.8 | 278.4 |
| 140° | 271.0 | 272.8 | 274.3 | 275.5 | 276.8 | 277.8 | 278.3 | 279.1 | 279.3 | 279.4 | 279.0 |
| 142.5° | 271.0 | 272.6 | 274.2 | 275.6 | 276.5 | 277.5 | 278.2 | 278.9 | 279.0 | 279.1 | 279.0 |
| 145° | 272.2 | 273.6 | 275.1 | 276.5 | 277.3 | 278.1 | 278.5 | 279.4 | 279.6 | 279.9 | 279.9 |
| 147.5° | 273.1 | 274.6 | 275.6 | 276.8 | 277.7 | 278.5 | 279.0 | 279.5 | 280.0 | 280.2 | 280.2 |
| 150° | 274.6 | 276.0 | 277.2 | 278.3 | 279.3 | 280.2 | 280.5 | 281.2 | 281.5 | 281.7 | 281.6 |
| 152.5° | 276.0 | 277.1 | 278.2 | 279.2 | 280.3 | 280.9 | 281.3 | 281.9 | 282.6 | 283.0 | 283.1 |
| 155° | 277.5 | 278.7 | 279.7 | 280.8 | 281.5 | 282.4 | 283.1 | 283.8 | 284.4 | 284.7 | 285.0 |
| 157.5° | 279.7 | 280.9 | 281.9 | 282.9 | 283.6 | 284.7 | 285.4 | 286.3 | 286.8 | 287.6 | 287.9 |
| 160° | 283.1 | 284.4 | 285.0 | 286.2 | 287.0 | 287.9 | 288.6 | 289.5 | 290.2 | 290.8 | 291.5 |
| 162.5° | 287.7 | 288.8 | 289.3 | 290.4 | 291.2 | 292.2 | 292.8 | 293.8 | 294.4 | 295.2 | 295.7 |
| 165° | 291.8 | 292.8 | 293.6 | 294.6 | 295.4 | 296.5 | 297.0 | 297.9 | 298.3 | 299.0 | 299.5 |
| 167.5° | 297.5 | 298.5 | 299.1 | 300.1 | 300.6 | 301.6 | 302.5 | 303.0 | 303.5 | 304.1 | 304.4 |
| 170° | 301.8 | 302.7 | 303.3 | 304.0 | 304.7 | 305.5 | 305.9 | 306.4 | 306.9 | 307.3 | 307.8 |
| 172.5° | 305.1 | 305.8 | 306.4 | 307.1 | 307.7 | 308.4 | 308.9 | 309.4 | 309.7 | 309.9 | 310.0 |
| 175° | 307.8 | 308.4 | 308.7 | 309.2 | 309.6 | 310.1 | 310.5 | 310.5 | 311.0 | 311.0 | 311.3 |
| 177.5° | 310.9 | 311.5 | 311.8 | 312.0 | 312.5 | 312.7 | 313.0 | 312.9 | 312.9 | 312.8 | 312.6 |
| 180° | 310.9 | 310.9 | 310.9 | 310.9 | 310.9 | 310.9 | 310.9 | 310.9 | 310.9 | 310.9 | 310.9 |



TEST NUMBER: P1444490
 CATALOG NUMBER: EHBR1-60-UNV-TA-L830-UPL12

CANDELA DISTRIBUTION (continued):

| | 192.5° | 195° | 197.5° | 200° | 202.5° | 205° | 207.5° | 210° | 212.5° | 215° | 217.5° |
|--------|---------|---------|---------|---------|---------|---------|---------|---------|---------|---------|---------|
| 0° | 47963.5 | 47963.5 | 47963.5 | 47963.5 | 47963.5 | 47963.5 | 47963.5 | 47963.5 | 47963.5 | 47963.5 | 47963.5 |
| 2.5° | 47873.9 | 47898.0 | 47934.5 | 47967.7 | 48017.8 | 48057.2 | 48116.4 | 48161.4 | 48228.1 | 48271.5 | 48344.3 |
| 5° | 47878.2 | 47971.9 | 48095.0 | 48215.2 | 48359.7 | 48490.9 | 48653.9 | 48792.8 | 48956.6 | 49090.3 | 49258.0 |
| 7.5° | 47945.9 | 48126.5 | 48343.0 | 48561.1 | 48807.9 | 49038.6 | 49298.6 | 49534.0 | 49791.2 | 50009.0 | 50246.8 |
| 10° | 47995.8 | 48274.4 | 48593.5 | 48914.5 | 49252.4 | 49566.3 | 49883.3 | 50157.2 | 50413.2 | 50623.9 | 50810.0 |
| 12.5° | 47928.1 | 48311.9 | 48721.3 | 49116.6 | 49492.4 | 49817.4 | 50090.0 | 50300.7 | 50446.1 | 50544.7 | 50567.9 |
| 15° | 47698.0 | 48159.8 | 48604.9 | 48998.6 | 49310.4 | 49550.9 | 49675.4 | 49733.6 | 49671.0 | 49567.3 | 49339.0 |
| 17.5° | 47267.9 | 47755.0 | 48153.0 | 48463.5 | 48628.3 | 48693.6 | 48590.5 | 48411.1 | 48060.6 | 47671.5 | 47109.5 |
| 20° | 46479.6 | 46933.4 | 47222.1 | 47391.5 | 47347.4 | 47184.4 | 46795.1 | 46321.9 | 45622.0 | 44876.2 | 43891.9 |
| 22.5° | 45096.8 | 45493.5 | 45647.3 | 45660.0 | 45390.9 | 44982.8 | 44280.7 | 43469.1 | 42365.0 | 41217.3 | 39805.6 |
| 25° | 43021.1 | 43368.6 | 43392.9 | 43256.5 | 42764.2 | 42102.8 | 41071.8 | 39923.7 | 38423.4 | 36894.0 | 35125.1 |
| 27.5° | 40206.2 | 40539.4 | 40457.9 | 40203.1 | 39519.8 | 38634.7 | 37314.7 | 35831.5 | 33981.9 | 32175.5 | 30218.8 |
| 30° | 36667.5 | 37023.9 | 36928.1 | 36601.3 | 35788.6 | 34742.5 | 33189.3 | 31466.1 | 29412.7 | 27483.2 | 25500.3 |
| 32.5° | 32432.7 | 32883.4 | 32817.2 | 32506.7 | 31658.6 | 30539.1 | 28853.7 | 27026.0 | 24925.1 | 23023.8 | 21095.0 |
| 35° | 27619.4 | 28166.6 | 28194.8 | 27991.8 | 27204.6 | 26097.9 | 24433.8 | 22664.7 | 20652.4 | 18858.4 | 17076.6 |
| 37.5° | 22433.6 | 23067.9 | 23198.2 | 23143.5 | 22490.8 | 21514.1 | 19997.8 | 18410.8 | 16628.1 | 15055.8 | 13531.9 |
| 40° | 17219.1 | 17861.2 | 18083.9 | 18150.0 | 17668.5 | 16911.9 | 15667.5 | 14386.5 | 12933.1 | 11659.2 | 10449.2 |
| 42.5° | 12463.8 | 13032.9 | 13248.2 | 13383.6 | 13083.0 | 12578.5 | 11670.7 | 10740.5 | 9675.7 | 8756.9 | 7875.9 |
| 45° | 8656.3 | 9058.9 | 9222.6 | 9358.9 | 9195.3 | 8910.6 | 8337.4 | 7755.6 | 7052.8 | 6452.2 | 5883.8 |
| 47.5° | 6052.2 | 6274.2 | 6382.3 | 6448.4 | 6384.9 | 6236.5 | 5924.5 | 5587.5 | 5190.7 | 4839.8 | 4502.5 |
| 50° | 4485.9 | 4604.1 | 4660.7 | 4698.9 | 4652.6 | 4570.2 | 4401.3 | 4217.8 | 3999.9 | 3801.2 | 3606.9 |
| 52.5° | 3555.0 | 3622.7 | 3656.3 | 3677.0 | 3650.4 | 3600.0 | 3501.7 | 3392.9 | 3262.2 | 3139.4 | 3074.8 |
| 55° | 2994.8 | 2991.3 | 3069.0 | 3031.5 | 3069.0 | 2985.3 | 2967.7 | 2848.1 | 2739.6 | 2663.2 | 2580.5 |
| 57.5° | 2469.8 | 2504.9 | 2519.9 | 2536.6 | 2525.7 | 2510.5 | 2468.7 | 2425.9 | 2368.7 | 2320.8 | 2269.8 |
| 60° | 2137.9 | 2166.9 | 2183.2 | 2199.8 | 2198.7 | 2193.0 | 2168.9 | 2143.2 | 2107.5 | 2078.9 | 2047.9 |
| 62.5° | 1909.3 | 1934.4 | 1950.5 | 1966.3 | 1967.7 | 1965.5 | 1947.1 | 1929.4 | 1905.1 | 1887.1 | 1865.7 |
| 65° | 1729.4 | 1747.1 | 1758.0 | 1770.7 | 1769.9 | 1766.5 | 1750.1 | 1735.3 | 1715.2 | 1702.7 | 1687.1 |
| 67.5° | 1541.2 | 1554.5 | 1563.0 | 1575.0 | 1577.2 | 1578.0 | 1568.9 | 1562.0 | 1552.2 | 1548.7 | 1543.3 |
| 70° | 1407.3 | 1423.5 | 1437.2 | 1452.3 | 1460.4 | 1464.4 | 1460.4 | 1456.9 | 1451.2 | 1448.7 | 1444.7 |
| 72.5° | 1306.0 | 1319.6 | 1330.3 | 1344.0 | 1351.7 | 1357.2 | 1354.2 | 1352.2 | 1347.3 | 1346.5 | 1343.7 |
| 75° | 1180.2 | 1189.5 | 1195.6 | 1205.9 | 1210.0 | 1215.2 | 1212.9 | 1214.1 | 1212.5 | 1216.4 | 1216.2 |
| 77.5° | 1028.9 | 1035.8 | 1038.6 | 1046.1 | 1046.9 | 1053.0 | 1054.5 | 1061.8 | 1066.9 | 1078.2 | 1084.3 |
| 80° | 858.6 | 863.0 | 863.0 | 870.7 | 874.0 | 884.5 | 889.5 | 901.4 | 906.9 | 917.0 | 918.0 |
| 82.5° | 666.9 | 661.8 | 666.9 | 663.8 | 673.5 | 685.3 | 686.9 | 697.0 | 699.3 | 705.7 | 700.8 |
| 85° | 456.0 | 455.6 | 451.5 | 452.2 | 449.2 | 450.7 | 448.9 | 450.8 | 449.1 | 449.2 | 444.6 |
| 87.5° | 218.4 | 220.4 | 215.6 | 217.2 | 212.6 | 214.7 | 210.7 | 213.9 | 209.1 | 209.7 | 202.6 |
| 90° | 26.8 | 26.9 | 26.7 | 27.0 | 27.8 | 28.6 | 29.7 | 30.5 | 32.2 | 32.9 | 34.2 |
| 92.5° | 22.1 | 22.9 | 23.5 | 24.1 | 24.7 | 26.6 | 28.5 | 30.4 | 32.5 | 34.2 | 36.1 |
| 95° | 25.1 | 25.7 | 26.2 | 27.2 | 27.7 | 30.4 | 33.2 | 35.9 | 38.6 | 41.4 | 44.1 |
| 97.5° | 28.7 | 29.0 | 29.3 | 29.7 | 30.3 | 33.4 | 36.7 | 39.9 | 43.1 | 46.4 | 49.4 |
| 100° | 32.9 | 33.3 | 33.7 | 34.4 | 34.8 | 42.2 | 49.6 | 57.0 | 64.4 | 71.7 | 79.1 |
| 102.5° | 49.9 | 52.5 | 55.2 | 58.1 | 60.7 | 78.7 | 96.7 | 114.6 | 132.2 | 150.2 | 168.0 |
| 105° | 103.8 | 112.5 | 121.7 | 130.4 | 139.1 | 166.3 | 193.5 | 220.7 | 247.5 | 274.5 | 301.7 |
| 107.5° | 201.2 | 216.6 | 232.2 | 247.6 | 262.9 | 288.5 | 313.9 | 339.3 | 364.8 | 390.3 | 415.4 |
| 110° | 304.3 | 317.3 | 330.8 | 344.1 | 357.4 | 377.4 | 397.7 | 417.7 | 437.8 | 458.0 | 477.9 |



TEST NUMBER: P1444490
 CATALOG NUMBER: EHBR1-60-UNV-TA-L830-UPL12

CANDELA DISTRIBUTION (continued):

| | 192.5° | 195° | 197.5° | 200° | 202.5° | 205° | 207.5° | 210° | 212.5° | 215° | 217.5° |
|--------|--------|-------|--------|-------|--------|-------|--------|-------|--------|-------|--------|
| 112.5° | 366.3 | 374.2 | 382.4 | 390.0 | 398.2 | 412.9 | 427.8 | 442.4 | 457.2 | 471.4 | 486.1 |
| 115° | 385.8 | 389.6 | 394.0 | 397.9 | 402.2 | 411.0 | 419.6 | 428.3 | 437.0 | 445.4 | 454.1 |
| 117.5° | 380.3 | 381.7 | 383.1 | 384.1 | 385.5 | 389.7 | 394.0 | 398.1 | 402.3 | 406.6 | 410.7 |
| 120° | 360.8 | 360.3 | 360.0 | 359.2 | 358.9 | 359.6 | 360.8 | 361.6 | 362.7 | 363.3 | 364.1 |
| 122.5° | 338.5 | 336.9 | 335.6 | 334.0 | 332.6 | 331.2 | 330.3 | 328.9 | 328.1 | 326.7 | 325.6 |
| 125° | 318.1 | 316.5 | 315.0 | 313.3 | 311.5 | 309.6 | 307.6 | 305.5 | 303.3 | 301.2 | 299.2 |
| 127.5° | 302.1 | 300.5 | 299.1 | 297.3 | 295.6 | 293.2 | 291.0 | 288.5 | 286.4 | 283.9 | 281.6 |
| 130° | 290.1 | 288.7 | 287.7 | 285.8 | 284.6 | 282.0 | 280.1 | 277.7 | 275.5 | 273.3 | 271.0 |
| 132.5° | 283.6 | 282.4 | 281.4 | 279.7 | 278.6 | 276.3 | 274.5 | 272.1 | 270.1 | 267.8 | 265.8 |
| 135° | 280.0 | 279.0 | 278.3 | 277.0 | 275.8 | 273.6 | 272.0 | 270.1 | 268.3 | 266.4 | 264.6 |
| 137.5° | 278.2 | 277.3 | 276.5 | 275.6 | 274.6 | 272.8 | 271.4 | 269.5 | 268.0 | 266.1 | 264.7 |
| 140° | 278.8 | 278.1 | 277.5 | 276.6 | 275.6 | 273.9 | 272.4 | 270.5 | 269.0 | 267.3 | 265.7 |
| 142.5° | 278.5 | 277.9 | 277.4 | 276.5 | 275.7 | 274.1 | 273.1 | 271.6 | 270.1 | 268.8 | 267.5 |
| 145° | 279.5 | 279.0 | 278.8 | 277.8 | 277.5 | 276.0 | 274.8 | 273.1 | 272.2 | 270.6 | 269.5 |
| 147.5° | 280.3 | 279.8 | 279.6 | 279.1 | 279.0 | 277.6 | 276.9 | 275.6 | 274.8 | 273.5 | 272.8 |
| 150° | 281.7 | 281.6 | 281.4 | 281.0 | 280.7 | 279.7 | 279.0 | 277.9 | 277.4 | 276.1 | 275.5 |
| 152.5° | 283.2 | 283.3 | 283.3 | 283.2 | 283.3 | 282.5 | 281.8 | 280.8 | 280.1 | 279.1 | 278.5 |
| 155° | 285.4 | 285.6 | 285.8 | 285.8 | 285.8 | 285.2 | 284.7 | 283.9 | 283.4 | 282.6 | 282.0 |
| 157.5° | 288.2 | 288.6 | 289.0 | 289.2 | 289.3 | 288.9 | 288.4 | 287.9 | 287.4 | 286.7 | 286.3 |
| 160° | 291.8 | 292.3 | 292.7 | 292.9 | 293.2 | 292.8 | 292.7 | 292.0 | 291.9 | 291.1 | 290.6 |
| 162.5° | 296.2 | 296.7 | 297.1 | 297.3 | 297.6 | 297.2 | 297.1 | 296.7 | 296.3 | 295.5 | 295.1 |
| 165° | 300.0 | 300.1 | 300.7 | 300.8 | 301.1 | 300.8 | 300.7 | 300.4 | 300.1 | 299.7 | 299.5 |
| 167.5° | 304.9 | 305.0 | 305.6 | 305.6 | 305.8 | 305.6 | 306.0 | 305.6 | 305.4 | 305.2 | 305.0 |
| 170° | 308.1 | 308.4 | 308.6 | 308.8 | 309.1 | 308.9 | 308.8 | 308.6 | 308.7 | 308.2 | 308.0 |
| 172.5° | 310.3 | 310.3 | 310.5 | 310.8 | 310.8 | 310.7 | 310.7 | 310.6 | 310.6 | 310.5 | 310.3 |
| 175° | 311.3 | 311.4 | 311.5 | 311.5 | 311.5 | 311.6 | 311.6 | 311.7 | 311.6 | 311.6 | 311.5 |
| 177.5° | 312.7 | 312.7 | 312.4 | 312.4 | 312.4 | 312.3 | 312.4 | 312.4 | 312.7 | 312.6 | 312.5 |
| 180° | 310.9 | 310.9 | 310.9 | 310.9 | 310.9 | 310.9 | 310.9 | 310.9 | 310.9 | 310.9 | 310.9 |



TEST NUMBER: P1444490
 CATALOG NUMBER: EHBR1-60-UNV-TA-L830-UPL12

CANDELA DISTRIBUTION (continued):

| | 220° | 222.5° | 225° | 227.5° | 230° | 232.5° | 235° | 237.5° | 240° | 242.5° | 245° |
|--------|---------|---------|---------|---------|---------|---------|---------|---------|---------|---------|---------|
| 0° | 47963.5 | 47963.5 | 47963.5 | 47963.5 | 47963.5 | 47963.5 | 47963.5 | 47963.5 | 47963.5 | 47963.5 | 47963.5 |
| 2.5° | 48389.3 | 48090.4 | 48050.9 | 48071.9 | 48121.9 | 48140.4 | 48194.2 | 48209.0 | 48263.2 | 48276.6 | 48328.7 |
| 5° | 49387.7 | 48992.7 | 49012.4 | 49107.3 | 49251.2 | 49336.8 | 49478.2 | 49552.1 | 49687.1 | 49748.4 | 49870.3 |
| 7.5° | 50440.6 | 50130.4 | 50227.1 | 50387.3 | 50583.9 | 50720.0 | 50889.8 | 51000.3 | 51146.6 | 51237.4 | 51354.6 |
| 10° | 50957.5 | 50872.6 | 50979.0 | 51105.1 | 51217.2 | 51305.0 | 51377.0 | 51434.6 | 51472.2 | 51507.7 | 51523.1 |
| 12.5° | 50564.1 | 50695.6 | 50713.8 | 50701.5 | 50627.2 | 50570.5 | 50443.1 | 50356.5 | 50202.7 | 50109.1 | 49926.1 |
| 15° | 49105.7 | 49395.0 | 49234.8 | 48992.4 | 48637.6 | 48341.8 | 47924.1 | 47613.0 | 47178.0 | 46882.9 | 46446.3 |
| 17.5° | 46546.4 | 46911.5 | 46494.1 | 45933.1 | 45219.4 | 44608.9 | 43848.6 | 43245.0 | 42489.1 | 41939.3 | 41233.7 |
| 20° | 42943.4 | 43284.6 | 42540.3 | 41610.2 | 40506.2 | 39577.1 | 38481.3 | 37607.1 | 36588.9 | 35831.5 | 34917.4 |
| 22.5° | 38457.3 | 38700.3 | 37651.8 | 36398.0 | 34991.4 | 33830.6 | 32520.6 | 31472.5 | 30310.5 | 29444.6 | 28470.0 |
| 25° | 33494.3 | 33559.9 | 32302.1 | 30857.6 | 29289.9 | 27985.4 | 26586.8 | 25484.9 | 24299.7 | 23422.1 | 22465.7 |
| 27.5° | 28485.1 | 28388.9 | 27029.4 | 25497.9 | 23848.8 | 22492.8 | 21128.7 | 20096.2 | 19058.2 | 18267.7 | 17443.6 |
| 30° | 23757.1 | 23524.2 | 22112.6 | 20538.4 | 18937.6 | 17722.3 | 16589.9 | 15760.6 | 14934.9 | 14307.8 | 13646.3 |
| 32.5° | 19421.3 | 19092.8 | 17718.8 | 16243.9 | 14895.1 | 13957.2 | 13117.5 | 12490.0 | 11823.2 | 11293.5 | 10738.4 |
| 35° | 15581.0 | 15231.1 | 14013.7 | 12763.4 | 11742.6 | 11051.2 | 10391.2 | 9876.5 | 9310.3 | 8863.4 | 8381.3 |
| 37.5° | 12285.2 | 11998.3 | 10978.7 | 9994.9 | 9222.6 | 8686.9 | 8146.2 | 7725.4 | 7257.5 | 7060.9 | 6545.8 |
| 40° | 9484.1 | 9283.6 | 8486.4 | 7761.1 | 7181.3 | 6929.6 | 6380.7 | 5987.6 | 5638.0 | 5349.6 | 5070.4 |
| 42.5° | 7397.8 | 7326.8 | 6551.0 | 5985.3 | 5577.0 | 5259.9 | 4954.0 | 4705.7 | 4463.9 | 4265.1 | 4077.4 |
| 45° | 5428.9 | 5372.8 | 5028.3 | 4701.7 | 4423.5 | 4201.9 | 3995.2 | 3824.3 | 3666.3 | 3535.2 | 3416.2 |
| 47.5° | 4227.5 | 4209.5 | 4011.1 | 3808.7 | 3633.4 | 3491.0 | 3356.8 | 3243.4 | 3138.5 | 3051.0 | 3022.6 |
| 50° | 3438.4 | 3436.0 | 3319.6 | 3194.6 | 3069.9 | 2987.6 | 2901.9 | 2834.9 | 2767.5 | 2715.1 | 2659.6 |
| 52.5° | 2921.5 | 2908.9 | 2830.3 | 2753.1 | 2679.0 | 2624.9 | 2570.2 | 2527.3 | 2482.7 | 2450.4 | 2416.0 |
| 55° | 2515.1 | 2528.5 | 2482.9 | 2436.8 | 2390.5 | 2356.9 | 2318.5 | 2290.3 | 2259.6 | 2239.2 | 2218.4 |
| 57.5° | 2232.8 | 2250.4 | 2226.6 | 2200.5 | 2172.2 | 2150.1 | 2123.7 | 2104.1 | 2083.7 | 2070.7 | 2058.6 |
| 60° | 2027.5 | 2046.7 | 2037.2 | 2023.9 | 2006.5 | 1993.4 | 1976.5 | 1965.7 | 1952.5 | 1945.2 | 1938.4 |
| 62.5° | 1853.3 | 1877.4 | 1873.9 | 1867.7 | 1856.5 | 1849.3 | 1840.0 | 1835.2 | 1826.5 | 1823.3 | 1820.0 |
| 65° | 1679.4 | 1706.5 | 1705.9 | 1702.9 | 1696.7 | 1694.6 | 1688.9 | 1687.9 | 1683.4 | 1685.1 | 1684.8 |
| 67.5° | 1542.8 | 1566.3 | 1571.4 | 1575.1 | 1575.0 | 1576.4 | 1575.8 | 1578.2 | 1578.2 | 1581.5 | 1583.7 |
| 70° | 1444.1 | 1460.4 | 1464.4 | 1468.3 | 1469.3 | 1472.5 | 1472.5 | 1474.5 | 1474.0 | 1476.8 | 1477.2 |
| 72.5° | 1344.4 | 1365.9 | 1369.8 | 1373.0 | 1373.0 | 1376.0 | 1374.4 | 1373.9 | 1369.7 | 1368.7 | 1365.7 |
| 75° | 1220.3 | 1247.9 | 1253.9 | 1257.8 | 1258.4 | 1261.0 | 1257.3 | 1255.0 | 1247.9 | 1245.0 | 1240.0 |
| 77.5° | 1090.7 | 1119.4 | 1123.6 | 1125.0 | 1122.7 | 1123.3 | 1115.4 | 1110.1 | 1101.0 | 1097.3 | 1092.5 |
| 80° | 922.0 | 964.2 | 967.5 | 964.9 | 958.3 | 957.2 | 949.5 | 944.6 | 933.8 | 930.1 | 925.9 |
| 82.5° | 701.6 | 751.1 | 758.0 | 761.0 | 755.6 | 756.9 | 749.6 | 746.7 | 736.8 | 735.0 | 728.5 |
| 85° | 443.0 | 492.4 | 500.6 | 499.4 | 494.0 | 492.7 | 488.5 | 489.9 | 489.1 | 491.7 | 493.1 |
| 87.5° | 203.5 | 251.3 | 262.9 | 259.2 | 258.6 | 255.3 | 247.6 | 250.5 | 255.1 | 258.1 | 258.3 |
| 90° | 35.2 | 50.8 | 51.4 | 51.9 | 47.8 | 47.5 | 43.7 | 44.5 | 41.4 | 41.9 | 39.0 |
| 92.5° | 38.0 | 39.9 | 41.8 | 40.1 | 38.4 | 36.7 | 35.0 | 33.3 | 31.7 | 29.9 | 28.3 |
| 95° | 46.8 | 49.2 | 51.9 | 49.6 | 47.2 | 45.0 | 42.7 | 40.6 | 38.3 | 36.1 | 33.8 |
| 97.5° | 52.5 | 55.5 | 58.5 | 56.3 | 54.0 | 51.6 | 49.4 | 47.2 | 45.0 | 42.5 | 40.3 |
| 100° | 86.5 | 93.2 | 100.4 | 94.0 | 87.5 | 81.1 | 74.7 | 68.3 | 61.9 | 55.5 | 49.0 |
| 102.5° | 185.7 | 203.2 | 220.8 | 204.5 | 188.3 | 172.0 | 155.9 | 139.8 | 123.6 | 107.2 | 91.1 |
| 105° | 328.5 | 354.9 | 381.7 | 356.6 | 332.0 | 307.2 | 282.5 | 257.9 | 233.1 | 208.2 | 183.7 |
| 107.5° | 440.8 | 465.0 | 489.8 | 467.2 | 444.8 | 422.5 | 399.8 | 377.4 | 354.9 | 332.3 | 310.1 |
| 110° | 497.9 | 516.2 | 535.9 | 520.3 | 505.2 | 489.7 | 474.5 | 459.1 | 443.9 | 428.9 | 413.8 |



TEST NUMBER: P1444490
 CATALOG NUMBER: EHBR1-60-UNV-TA-L830-UPL12

CANDELA DISTRIBUTION (continued):

| | 220° | 222.5° | 225° | 227.5° | 230° | 232.5° | 235° | 237.5° | 240° | 242.5° | 245° |
|--------|-------|--------|-------|--------|-------|--------|-------|--------|-------|--------|-------|
| 112.5° | 500.5 | 512.8 | 526.8 | 517.3 | 508.2 | 498.9 | 489.7 | 480.4 | 471.4 | 462.2 | 453.5 |
| 115° | 462.3 | 468.4 | 476.2 | 471.8 | 467.9 | 463.7 | 459.5 | 455.7 | 451.6 | 447.6 | 443.9 |
| 117.5° | 414.6 | 415.7 | 418.8 | 417.2 | 415.9 | 414.2 | 412.9 | 411.4 | 410.3 | 409.0 | 407.8 |
| 120° | 364.8 | 362.4 | 362.2 | 361.4 | 361.1 | 360.4 | 360.0 | 359.4 | 359.1 | 358.7 | 358.6 |
| 122.5° | 324.2 | 319.3 | 316.9 | 316.1 | 315.5 | 314.5 | 314.1 | 313.2 | 312.8 | 312.2 | 311.8 |
| 125° | 296.9 | 290.8 | 287.5 | 285.6 | 283.8 | 281.9 | 280.1 | 278.2 | 276.7 | 275.0 | 273.4 |
| 127.5° | 279.1 | 272.5 | 268.9 | 266.3 | 263.7 | 260.8 | 258.2 | 255.3 | 252.9 | 250.0 | 247.8 |
| 130° | 268.8 | 261.9 | 258.5 | 255.3 | 252.5 | 249.2 | 246.4 | 243.3 | 240.1 | 237.1 | 234.1 |
| 132.5° | 263.6 | 256.6 | 253.2 | 250.3 | 247.6 | 244.3 | 241.6 | 238.2 | 235.3 | 232.0 | 229.3 |
| 135° | 262.7 | 255.6 | 252.6 | 249.6 | 247.3 | 244.3 | 241.5 | 238.6 | 235.9 | 232.8 | 230.3 |
| 137.5° | 262.7 | 255.6 | 252.9 | 250.4 | 248.2 | 245.7 | 243.5 | 240.9 | 238.6 | 235.7 | 233.6 |
| 140° | 264.0 | 256.6 | 253.8 | 252.2 | 250.7 | 248.7 | 246.9 | 245.1 | 243.5 | 241.7 | 239.8 |
| 142.5° | 266.1 | 258.7 | 256.1 | 254.8 | 253.8 | 252.2 | 251.3 | 249.9 | 248.6 | 246.7 | 245.5 |
| 145° | 268.2 | 260.0 | 257.5 | 256.5 | 256.2 | 255.3 | 254.7 | 253.8 | 253.2 | 252.2 | 251.5 |
| 147.5° | 271.4 | 263.0 | 260.2 | 259.9 | 259.6 | 258.9 | 258.8 | 258.1 | 257.9 | 257.3 | 256.9 |
| 150° | 274.2 | 264.7 | 261.5 | 261.4 | 261.2 | 261.2 | 261.1 | 260.8 | 261.0 | 260.7 | 260.6 |
| 152.5° | 277.4 | 265.9 | 262.4 | 262.3 | 262.6 | 262.3 | 262.4 | 262.6 | 262.8 | 262.9 | 263.0 |
| 155° | 280.9 | 268.5 | 264.5 | 264.2 | 264.1 | 264.2 | 264.1 | 264.2 | 264.3 | 264.5 | 264.8 |
| 157.5° | 285.3 | 272.0 | 268.2 | 267.6 | 267.4 | 267.3 | 267.2 | 267.2 | 267.3 | 267.4 | 267.8 |
| 160° | 290.0 | 276.5 | 272.6 | 272.0 | 271.8 | 271.6 | 271.3 | 271.1 | 271.2 | 271.3 | 271.5 |
| 162.5° | 294.4 | 281.3 | 277.5 | 276.9 | 276.4 | 276.1 | 276.0 | 275.5 | 275.6 | 275.5 | 275.7 |
| 165° | 298.8 | 287.1 | 283.4 | 282.9 | 282.7 | 282.2 | 282.1 | 281.9 | 281.9 | 281.8 | 281.9 |
| 167.5° | 304.3 | 293.8 | 291.0 | 290.5 | 289.9 | 289.4 | 289.4 | 288.7 | 288.7 | 288.3 | 288.3 |
| 170° | 307.6 | 299.3 | 296.8 | 296.6 | 296.7 | 296.3 | 296.0 | 295.9 | 295.8 | 295.5 | 295.6 |
| 172.5° | 310.1 | 304.0 | 302.1 | 302.0 | 302.2 | 302.1 | 302.3 | 302.3 | 302.5 | 302.6 | 302.7 |
| 175° | 311.5 | 307.9 | 307.1 | 306.9 | 306.9 | 307.0 | 307.1 | 307.1 | 307.1 | 307.2 | 307.5 |
| 177.5° | 312.7 | 311.6 | 311.2 | 311.2 | 311.2 | 311.2 | 311.2 | 311.2 | 311.2 | 311.4 | 311.4 |
| 180° | 310.9 | 310.9 | 310.9 | 310.9 | 310.9 | 310.9 | 310.9 | 310.9 | 310.9 | 310.9 | 310.9 |



TEST NUMBER: P1444490
 CATALOG NUMBER: EHBR1-60-UNV-TA-L830-UPL12

CANDELA DISTRIBUTION (continued):

| | 247.5° | 250° | 252.5° | 255° | 257.5° | 260° | 262.5° | 265° | 267.5° | 270° | 272.5° |
|--------|---------|---------|---------|---------|---------|---------|---------|---------|---------|---------|---------|
| 0° | 47963.5 | 47963.5 | 47963.5 | 47963.5 | 47963.5 | 47963.5 | 47963.5 | 47963.5 | 47963.5 | 47963.5 | 47963.5 |
| 2.5° | 48338.4 | 48394.8 | 48390.5 | 48443.1 | 48440.4 | 48490.0 | 48480.0 | 48522.9 | 48513.1 | 48549.7 | 48528.3 |
| 5° | 49924.0 | 50031.2 | 50066.5 | 50163.3 | 50183.3 | 50269.9 | 50271.7 | 50340.5 | 50332.2 | 50386.0 | 50357.4 |
| 7.5° | 51423.9 | 51524.0 | 51571.4 | 51646.7 | 51684.1 | 51746.4 | 51770.8 | 51821.9 | 51834.2 | 51864.4 | 51863.5 |
| 10° | 51550.5 | 51550.2 | 51573.6 | 51563.1 | 51584.1 | 51572.0 | 51597.6 | 51588.4 | 51626.2 | 51616.4 | 51645.1 |
| 12.5° | 49847.2 | 49678.2 | 49616.4 | 49464.7 | 49431.4 | 49301.1 | 49310.4 | 49226.9 | 49267.1 | 49215.8 | 49303.3 |
| 15° | 46186.6 | 45794.5 | 45600.8 | 45259.8 | 45152.7 | 44883.3 | 44861.4 | 44682.4 | 44730.8 | 44637.1 | 44774.0 |
| 17.5° | 40777.3 | 40159.9 | 39821.1 | 39323.2 | 39125.5 | 38744.4 | 38668.0 | 38437.6 | 38473.3 | 38357.3 | 38522.5 |
| 20° | 34327.9 | 33581.8 | 33154.4 | 32578.6 | 32321.8 | 31867.5 | 31746.9 | 31489.2 | 31521.6 | 31406.0 | 31593.0 |
| 22.5° | 27804.8 | 27023.9 | 26541.5 | 25937.9 | 25610.0 | 25182.7 | 25054.5 | 24795.5 | 24810.3 | 24701.9 | 24881.7 |
| 25° | 21810.4 | 21061.7 | 20593.5 | 20045.3 | 19760.7 | 19368.9 | 19234.2 | 19001.7 | 19014.8 | 18925.5 | 19086.8 |
| 27.5° | 16871.9 | 16257.6 | 15865.8 | 15406.3 | 15151.3 | 14829.1 | 14697.8 | 14502.2 | 14501.8 | 14436.1 | 14571.1 |
| 30° | 13184.6 | 12671.9 | 12320.1 | 11920.0 | 11680.3 | 11389.7 | 11262.8 | 11087.8 | 11080.2 | 11033.7 | 11140.8 |
| 32.5° | 10323.2 | 9867.2 | 9546.4 | 9194.2 | 8979.1 | 8729.8 | 8609.6 | 8469.0 | 8456.1 | 8414.0 | 8502.0 |
| 35° | 8024.9 | 7640.9 | 7365.1 | 7068.6 | 7090.4 | 6722.5 | 6783.6 | 6497.8 | 6420.3 | 6403.4 | 6468.8 |
| 37.5° | 6202.3 | 5904.9 | 5680.8 | 5458.8 | 5308.4 | 5152.8 | 5069.1 | 4994.0 | 4985.4 | 4978.1 | 5023.9 |
| 40° | 4854.8 | 4646.6 | 4483.6 | 4331.2 | 4227.8 | 4132.9 | 4080.5 | 4039.2 | 4029.4 | 4023.9 | 4051.6 |
| 42.5° | 3929.2 | 3788.7 | 3683.7 | 3590.7 | 3527.8 | 3476.2 | 3447.5 | 3424.5 | 3416.8 | 3417.0 | 3433.4 |
| 45° | 3319.6 | 3234.5 | 3166.7 | 3109.0 | 3068.8 | 3086.5 | 3034.5 | 3061.7 | 3025.9 | 3062.9 | 3038.4 |
| 47.5° | 2923.4 | 2850.9 | 2808.9 | 2768.1 | 2743.7 | 2724.1 | 2724.9 | 2725.3 | 2732.8 | 2734.1 | 2742.1 |
| 50° | 2617.6 | 2575.8 | 2546.5 | 2520.4 | 2507.9 | 2497.5 | 2501.1 | 2503.7 | 2511.2 | 2511.7 | 2517.6 |
| 52.5° | 2391.4 | 2363.9 | 2346.3 | 2330.1 | 2324.3 | 2318.5 | 2321.0 | 2319.9 | 2323.3 | 2321.5 | 2326.3 |
| 55° | 2207.3 | 2194.2 | 2188.7 | 2182.7 | 2183.6 | 2182.0 | 2183.1 | 2177.2 | 2173.6 | 2169.2 | 2173.3 |
| 57.5° | 2056.2 | 2054.4 | 2058.0 | 2060.6 | 2067.5 | 2070.0 | 2071.6 | 2064.9 | 2058.4 | 2052.6 | 2056.0 |
| 60° | 1939.7 | 1942.5 | 1951.8 | 1959.2 | 1969.2 | 1973.8 | 1976.6 | 1972.8 | 1968.1 | 1963.3 | 1966.2 |
| 62.5° | 1824.9 | 1829.3 | 1840.4 | 1848.7 | 1860.8 | 1867.0 | 1873.9 | 1874.3 | 1876.0 | 1874.3 | 1876.2 |
| 65° | 1691.5 | 1697.0 | 1707.1 | 1714.0 | 1725.1 | 1730.7 | 1737.8 | 1739.0 | 1742.9 | 1742.0 | 1745.4 |
| 67.5° | 1590.3 | 1595.2 | 1603.6 | 1610.1 | 1620.1 | 1625.8 | 1632.0 | 1632.4 | 1633.8 | 1633.4 | 1636.6 |
| 70° | 1482.2 | 1484.7 | 1492.1 | 1497.6 | 1507.5 | 1513.4 | 1520.6 | 1522.7 | 1527.1 | 1527.9 | 1531.4 |
| 72.5° | 1366.9 | 1365.9 | 1370.3 | 1372.8 | 1380.3 | 1384.9 | 1394.0 | 1399.0 | 1406.5 | 1408.3 | 1411.1 |
| 75° | 1241.4 | 1240.4 | 1245.7 | 1247.9 | 1254.3 | 1258.8 | 1269.1 | 1275.6 | 1287.1 | 1291.9 | 1290.7 |
| 77.5° | 1096.2 | 1098.8 | 1108.7 | 1114.2 | 1122.7 | 1128.5 | 1141.8 | 1152.2 | 1173.4 | 1182.6 | 1173.2 |
| 80° | 933.8 | 936.4 | 946.7 | 951.9 | 963.1 | 970.2 | 984.9 | 997.2 | 1016.2 | 1020.4 | 1015.0 |
| 82.5° | 734.1 | 734.8 | 744.1 | 748.0 | 762.6 | 773.1 | 791.7 | 801.5 | 813.3 | 811.5 | 810.1 |
| 85° | 500.6 | 507.3 | 518.8 | 530.5 | 548.2 | 565.3 | 582.9 | 597.4 | 587.1 | 603.3 | 585.2 |
| 87.5° | 267.5 | 266.8 | 282.4 | 280.0 | 304.9 | 319.2 | 334.5 | 341.8 | 350.0 | 348.4 | 348.5 |
| 90° | 40.2 | 37.7 | 39.2 | 36.5 | 39.2 | 36.1 | 40.1 | 37.4 | 42.2 | 38.4 | 44.9 |
| 92.5° | 26.5 | 25.7 | 24.7 | 23.9 | 22.9 | 22.1 | 21.1 | 20.1 | 19.3 | 18.4 | 19.3 |
| 95° | 31.6 | 30.7 | 29.9 | 28.9 | 28.0 | 27.3 | 26.4 | 25.6 | 24.7 | 23.9 | 24.9 |
| 97.5° | 38.0 | 37.6 | 37.1 | 36.5 | 36.1 | 35.6 | 35.1 | 34.6 | 33.9 | 33.4 | 34.1 |
| 100° | 42.6 | 42.6 | 42.6 | 42.6 | 42.2 | 42.2 | 42.2 | 42.2 | 42.2 | 42.2 | 42.8 |
| 102.5° | 74.8 | 73.3 | 71.7 | 69.9 | 68.3 | 66.6 | 65.0 | 63.4 | 61.8 | 60.2 | 62.6 |
| 105° | 159.0 | 152.7 | 146.2 | 139.9 | 133.4 | 127.1 | 120.8 | 114.5 | 108.2 | 101.9 | 108.4 |
| 107.5° | 287.9 | 276.3 | 264.6 | 253.2 | 241.6 | 230.1 | 218.6 | 207.2 | 195.7 | 184.3 | 194.6 |
| 110° | 398.7 | 386.3 | 373.9 | 361.8 | 349.4 | 337.1 | 324.9 | 312.8 | 300.6 | 288.4 | 298.2 |



TEST NUMBER: P1444490
 CATALOG NUMBER: EHBR1-60-UNV-TA-L830-UPL12

CANDELA DISTRIBUTION (continued):

| | 247.5° | 250° | 252.5° | 255° | 257.5° | 260° | 262.5° | 265° | 267.5° | 270° | 272.5° |
|--------|--------|-------|--------|-------|--------|-------|--------|-------|--------|-------|--------|
| 112.5° | 444.5 | 436.0 | 428.1 | 420.0 | 412.0 | 404.2 | 396.2 | 388.4 | 380.6 | 372.7 | 377.5 |
| 115° | 440.0 | 436.0 | 432.0 | 428.1 | 424.2 | 420.1 | 416.4 | 412.6 | 409.0 | 405.2 | 405.5 |
| 117.5° | 406.7 | 405.0 | 403.5 | 401.9 | 400.3 | 399.0 | 397.6 | 396.4 | 395.1 | 394.1 | 391.5 |
| 120° | 358.5 | 358.3 | 358.0 | 358.2 | 358.4 | 358.7 | 358.6 | 359.1 | 359.6 | 360.1 | 356.5 |
| 122.5° | 311.5 | 311.6 | 311.9 | 312.5 | 313.0 | 313.7 | 314.4 | 315.5 | 316.5 | 317.5 | 314.0 |
| 125° | 271.7 | 271.9 | 272.0 | 272.5 | 272.6 | 273.4 | 274.1 | 275.2 | 276.1 | 277.3 | 274.3 |
| 127.5° | 245.3 | 244.7 | 243.9 | 243.7 | 243.4 | 243.5 | 243.5 | 243.9 | 244.4 | 245.0 | 243.2 |
| 130° | 231.1 | 229.8 | 228.5 | 227.3 | 226.2 | 225.7 | 225.2 | 224.7 | 224.4 | 224.4 | 223.8 |
| 132.5° | 226.2 | 224.3 | 222.6 | 221.0 | 219.5 | 218.4 | 217.1 | 216.6 | 215.8 | 215.4 | 215.3 |
| 135° | 227.2 | 225.1 | 223.0 | 221.1 | 219.2 | 218.1 | 216.6 | 215.7 | 214.7 | 214.0 | 214.6 |
| 137.5° | 231.1 | 229.1 | 226.9 | 225.1 | 223.2 | 222.0 | 220.5 | 219.5 | 218.6 | 218.0 | 218.6 |
| 140° | 237.9 | 235.9 | 233.8 | 232.0 | 230.5 | 229.1 | 227.7 | 226.9 | 225.7 | 225.4 | 225.7 |
| 142.5° | 244.0 | 242.6 | 240.5 | 239.0 | 237.4 | 236.3 | 235.2 | 234.4 | 233.2 | 233.1 | 233.5 |
| 145° | 250.5 | 249.3 | 247.8 | 246.5 | 245.4 | 244.8 | 243.5 | 243.1 | 242.5 | 242.5 | 242.8 |
| 147.5° | 256.3 | 255.5 | 254.1 | 253.5 | 252.3 | 251.9 | 251.0 | 250.9 | 250.4 | 250.4 | 250.6 |
| 150° | 260.3 | 259.8 | 259.1 | 258.6 | 258.0 | 257.7 | 257.2 | 257.1 | 256.8 | 256.9 | 257.0 |
| 152.5° | 263.1 | 262.8 | 262.2 | 261.9 | 261.4 | 261.3 | 261.1 | 261.2 | 261.1 | 261.2 | 261.2 |
| 155° | 265.0 | 264.8 | 264.7 | 264.6 | 264.5 | 264.9 | 264.8 | 265.2 | 265.3 | 265.6 | 265.7 |
| 157.5° | 267.9 | 268.1 | 268.1 | 268.6 | 268.6 | 269.0 | 269.1 | 269.7 | 269.9 | 270.5 | 270.9 |
| 160° | 271.9 | 272.2 | 272.2 | 272.6 | 272.8 | 273.1 | 273.4 | 273.8 | 274.2 | 274.6 | 275.0 |
| 162.5° | 275.8 | 276.3 | 276.5 | 276.9 | 277.4 | 277.7 | 278.3 | 279.0 | 279.3 | 280.1 | 280.5 |
| 165° | 282.0 | 282.1 | 282.2 | 282.4 | 282.8 | 283.1 | 283.4 | 284.1 | 284.3 | 284.9 | 285.6 |
| 167.5° | 288.1 | 288.4 | 288.3 | 288.5 | 288.8 | 289.3 | 289.5 | 290.1 | 290.5 | 291.3 | 291.8 |
| 170° | 295.3 | 295.3 | 295.3 | 295.3 | 295.3 | 295.7 | 295.9 | 296.0 | 296.2 | 296.7 | 297.0 |
| 172.5° | 302.7 | 302.7 | 302.3 | 302.7 | 302.3 | 302.7 | 302.7 | 302.8 | 302.8 | 302.9 | 303.0 |
| 175° | 307.3 | 307.7 | 307.8 | 308.0 | 307.9 | 308.0 | 308.1 | 308.1 | 308.2 | 308.5 | 308.5 |
| 177.5° | 311.4 | 311.5 | 311.5 | 311.5 | 311.5 | 311.7 | 311.7 | 311.7 | 311.7 | 311.5 | 311.6 |
| 180° | 310.9 | 310.9 | 310.9 | 310.9 | 310.9 | 310.9 | 310.9 | 310.9 | 310.9 | 310.9 | 310.9 |



TEST NUMBER: P1444490
 CATALOG NUMBER: EHBR1-60-UNV-TA-L830-UPL12

CANDELA DISTRIBUTION (continued):

| | 275° | 277.5° | 280° | 282.5° | 285° | 287.5° | 290° | 292.5° | 295° | 297.5° | 300° |
|--------|---------|---------|---------|---------|---------|---------|---------|---------|---------|---------|---------|
| 0° | 47963.5 | 47963.5 | 47963.5 | 47963.5 | 47963.5 | 47963.5 | 47963.5 | 47963.5 | 47963.5 | 47963.5 | 47963.5 |
| 2.5° | 48564.0 | 48539.6 | 48564.5 | 48539.2 | 48564.5 | 48534.3 | 48554.8 | 48522.0 | 48530.4 | 48496.4 | 48505.1 |
| 5° | 50400.2 | 50361.5 | 50382.1 | 50331.8 | 50337.1 | 50269.9 | 50268.7 | 50190.5 | 50169.8 | 50080.8 | 50041.7 |
| 7.5° | 51885.1 | 51872.4 | 51879.5 | 51847.2 | 51843.5 | 51797.6 | 51775.7 | 51711.0 | 51670.3 | 51588.4 | 51532.4 |
| 10° | 51650.0 | 51687.9 | 51697.7 | 51736.2 | 51744.3 | 51782.5 | 51790.4 | 51828.7 | 51836.7 | 51864.9 | 51865.3 |
| 12.5° | 49299.2 | 49427.7 | 49458.4 | 49617.2 | 49684.1 | 49865.7 | 49963.1 | 50163.3 | 50282.2 | 50481.8 | 50604.5 |
| 15° | 44770.3 | 44992.7 | 45081.4 | 45391.3 | 45562.8 | 45924.8 | 46152.1 | 46567.7 | 46861.0 | 47302.4 | 47617.2 |
| 17.5° | 38537.1 | 38847.8 | 38988.2 | 39408.6 | 39682.8 | 40216.9 | 40602.0 | 41235.7 | 41720.8 | 42425.0 | 42983.2 |
| 20° | 31625.0 | 31970.4 | 32160.8 | 32640.4 | 32964.1 | 33588.1 | 34068.9 | 34847.6 | 35497.0 | 36389.3 | 37152.4 |
| 22.5° | 24938.1 | 25266.8 | 25478.1 | 25966.0 | 26330.5 | 26981.4 | 27518.6 | 28340.6 | 29068.1 | 30073.7 | 30988.7 |
| 25° | 19147.8 | 19448.9 | 19640.0 | 20081.4 | 20423.5 | 21021.7 | 21534.7 | 22325.2 | 23037.1 | 24045.8 | 24984.0 |
| 27.5° | 14638.2 | 14890.5 | 15074.6 | 15450.9 | 15752.8 | 16260.1 | 16700.8 | 17354.0 | 17967.5 | 18840.1 | 19675.6 |
| 30° | 11206.8 | 11430.4 | 11609.6 | 11937.3 | 12217.1 | 12656.9 | 13044.4 | 13593.1 | 14100.8 | 14795.2 | 15459.8 |
| 32.5° | 8563.9 | 8756.4 | 8916.0 | 9202.9 | 9456.7 | 9852.8 | 10201.9 | 10682.9 | 11118.6 | 11707.5 | 12254.3 |
| 35° | 6529.6 | 6908.4 | 6881.5 | 7277.3 | 7340.9 | 7625.1 | 7936.5 | 8357.1 | 8743.1 | 9243.8 | 9709.2 |
| 37.5° | 5068.1 | 5174.6 | 5288.7 | 5463.5 | 5647.4 | 5906.0 | 6169.1 | 6683.0 | 6871.4 | 7249.8 | 7635.1 |
| 40° | 4086.9 | 4158.8 | 4234.2 | 4352.4 | 4481.1 | 4663.3 | 4855.0 | 5100.1 | 5351.2 | 5658.1 | 5971.4 |
| 42.5° | 3455.1 | 3495.8 | 3543.8 | 3613.3 | 3692.6 | 3808.1 | 3936.2 | 4102.5 | 4277.2 | 4493.2 | 4713.6 |
| 45° | 3086.9 | 3067.5 | 3081.8 | 3119.1 | 3166.9 | 3237.2 | 3318.0 | 3421.0 | 3534.8 | 3674.6 | 3823.6 |
| 47.5° | 2743.7 | 2751.5 | 2755.8 | 2776.0 | 2801.7 | 2848.7 | 2897.8 | 2967.7 | 3102.6 | 3143.7 | 3224.9 |
| 50° | 2517.0 | 2520.8 | 2519.6 | 2529.9 | 2542.8 | 2573.4 | 2605.3 | 2652.5 | 2699.8 | 2762.4 | 2822.1 |
| 52.5° | 2327.1 | 2332.4 | 2331.7 | 2338.4 | 2345.3 | 2364.7 | 2384.8 | 2418.2 | 2449.1 | 2488.9 | 2523.3 |
| 55° | 2177.0 | 2184.3 | 2187.1 | 2192.8 | 2196.2 | 2206.3 | 2214.4 | 2230.3 | 2243.5 | 2266.1 | 2286.9 |
| 57.5° | 2061.6 | 2071.6 | 2076.2 | 2078.2 | 2074.1 | 2073.6 | 2070.9 | 2074.2 | 2077.0 | 2089.0 | 2100.8 |
| 60° | 1970.8 | 1978.8 | 1980.0 | 1978.8 | 1971.3 | 1966.0 | 1957.4 | 1954.8 | 1953.4 | 1959.2 | 1965.7 |
| 62.5° | 1875.7 | 1878.6 | 1876.6 | 1874.3 | 1865.7 | 1860.6 | 1851.7 | 1848.5 | 1845.5 | 1849.5 | 1853.0 |
| 65° | 1744.2 | 1746.7 | 1744.2 | 1742.7 | 1735.1 | 1731.0 | 1723.5 | 1721.0 | 1716.8 | 1717.8 | 1717.2 |
| 67.5° | 1637.4 | 1639.8 | 1637.8 | 1635.9 | 1630.6 | 1628.1 | 1622.6 | 1619.0 | 1613.9 | 1611.9 | 1608.3 |
| 70° | 1530.9 | 1532.8 | 1529.8 | 1527.9 | 1521.8 | 1519.4 | 1514.3 | 1513.3 | 1509.1 | 1508.3 | 1504.2 |
| 72.5° | 1408.3 | 1408.5 | 1404.3 | 1403.0 | 1398.6 | 1398.4 | 1396.3 | 1398.2 | 1398.0 | 1400.2 | 1399.3 |
| 75° | 1283.1 | 1281.3 | 1276.0 | 1275.0 | 1271.7 | 1273.3 | 1270.9 | 1274.0 | 1274.4 | 1279.0 | 1279.5 |
| 77.5° | 1157.6 | 1151.0 | 1140.8 | 1136.0 | 1129.3 | 1128.5 | 1124.5 | 1127.1 | 1126.3 | 1131.6 | 1133.7 |
| 80° | 999.0 | 991.0 | 978.0 | 971.8 | 963.8 | 962.6 | 959.0 | 962.6 | 960.8 | 967.0 | 971.5 |
| 82.5° | 797.6 | 790.7 | 777.2 | 772.2 | 762.9 | 763.8 | 760.0 | 763.8 | 763.3 | 772.5 | 777.8 |
| 85° | 589.9 | 585.3 | 571.5 | 559.2 | 545.5 | 537.6 | 529.7 | 528.3 | 526.0 | 529.7 | 532.9 |
| 87.5° | 340.8 | 336.5 | 325.7 | 318.6 | 294.5 | 295.6 | 286.2 | 285.7 | 283.4 | 281.2 | 286.2 |
| 90° | 42.2 | 47.6 | 45.2 | 50.0 | 48.4 | 54.0 | 53.0 | 58.4 | 56.1 | 60.9 | 59.7 |
| 92.5° | 20.1 | 21.1 | 22.0 | 22.9 | 23.8 | 24.7 | 25.6 | 26.5 | 28.5 | 30.1 | 32.4 |
| 95° | 25.9 | 27.1 | 28.1 | 29.1 | 30.2 | 31.3 | 32.3 | 33.3 | 36.3 | 39.1 | 42.0 |
| 97.5° | 35.0 | 35.5 | 36.3 | 36.9 | 37.7 | 38.3 | 39.1 | 39.7 | 43.0 | 46.1 | 49.2 |
| 100° | 43.4 | 43.9 | 44.5 | 45.1 | 45.6 | 46.2 | 46.7 | 47.3 | 53.6 | 59.6 | 65.5 |
| 102.5° | 65.0 | 67.3 | 69.7 | 72.1 | 74.7 | 77.0 | 79.4 | 81.8 | 95.6 | 109.2 | 122.9 |
| 105° | 114.9 | 121.4 | 128.1 | 134.6 | 141.2 | 147.6 | 154.4 | 160.8 | 182.8 | 204.7 | 226.8 |
| 107.5° | 204.8 | 215.1 | 225.4 | 235.8 | 246.1 | 256.6 | 266.8 | 277.3 | 298.6 | 320.3 | 341.6 |
| 110° | 308.0 | 317.9 | 327.8 | 337.7 | 347.5 | 357.4 | 367.5 | 377.6 | 390.6 | 403.5 | 416.6 |



TEST NUMBER: P1444490
 CATALOG NUMBER: EHBR1-60-UNV-TA-L830-UPL12

CANDELA DISTRIBUTION (continued):

| | 275° | 277.5° | 280° | 282.5° | 285° | 287.5° | 290° | 292.5° | 295° | 297.5° | 300° |
|--------|-------|--------|-------|--------|-------|--------|-------|--------|-------|--------|-------|
| 112.5° | 382.4 | 387.0 | 392.0 | 397.0 | 401.9 | 407.0 | 412.0 | 417.1 | 423.9 | 430.5 | 437.4 |
| 115° | 405.9 | 406.2 | 406.8 | 407.2 | 407.8 | 408.3 | 409.2 | 409.9 | 412.5 | 415.0 | 417.6 |
| 117.5° | 388.9 | 386.5 | 384.1 | 381.7 | 379.4 | 377.4 | 375.2 | 373.4 | 373.5 | 373.7 | 374.1 |
| 120° | 353.5 | 350.1 | 346.9 | 343.4 | 340.6 | 337.5 | 334.9 | 332.2 | 331.3 | 330.4 | 329.7 |
| 122.5° | 310.8 | 307.6 | 304.5 | 301.4 | 298.6 | 295.9 | 293.4 | 290.9 | 290.7 | 290.5 | 290.5 |
| 125° | 271.6 | 269.2 | 266.8 | 264.3 | 262.5 | 260.5 | 258.7 | 257.0 | 258.1 | 259.0 | 260.4 |
| 127.5° | 241.9 | 240.5 | 239.3 | 238.3 | 237.6 | 236.8 | 236.4 | 235.8 | 237.9 | 240.0 | 242.1 |
| 130° | 223.5 | 223.3 | 223.4 | 223.3 | 224.0 | 224.2 | 224.8 | 225.3 | 228.2 | 230.6 | 233.5 |
| 132.5° | 215.9 | 216.4 | 217.1 | 218.0 | 219.1 | 220.2 | 221.7 | 222.8 | 225.8 | 228.6 | 231.6 |
| 135° | 215.2 | 216.0 | 217.3 | 218.3 | 220.0 | 221.4 | 223.2 | 224.7 | 227.8 | 230.3 | 233.4 |
| 137.5° | 219.7 | 220.6 | 221.8 | 223.1 | 224.9 | 226.4 | 228.5 | 230.1 | 232.5 | 234.9 | 237.4 |
| 140° | 226.8 | 227.4 | 228.8 | 230.1 | 231.4 | 232.9 | 234.7 | 236.1 | 238.6 | 240.4 | 242.4 |
| 142.5° | 234.6 | 235.0 | 236.2 | 237.5 | 238.9 | 240.0 | 241.6 | 242.8 | 244.7 | 246.1 | 248.3 |
| 145° | 243.5 | 244.1 | 245.3 | 246.0 | 247.2 | 248.3 | 249.5 | 250.8 | 252.2 | 253.4 | 254.8 |
| 147.5° | 251.2 | 251.8 | 252.6 | 253.6 | 254.6 | 255.5 | 256.4 | 257.3 | 258.6 | 259.7 | 260.7 |
| 150° | 257.6 | 258.2 | 258.8 | 259.2 | 260.2 | 261.1 | 262.1 | 262.7 | 263.7 | 264.4 | 265.6 |
| 152.5° | 262.0 | 262.4 | 262.9 | 263.4 | 264.2 | 264.9 | 265.6 | 266.3 | 267.3 | 267.9 | 268.8 |
| 155° | 266.3 | 267.1 | 267.7 | 268.3 | 269.1 | 269.5 | 270.4 | 270.9 | 271.8 | 272.5 | 273.4 |
| 157.5° | 271.6 | 271.9 | 272.9 | 273.1 | 274.1 | 274.6 | 275.3 | 275.9 | 276.7 | 277.3 | 278.0 |
| 160° | 275.9 | 276.6 | 277.2 | 278.0 | 278.9 | 279.3 | 280.2 | 280.9 | 281.7 | 282.2 | 282.9 |
| 162.5° | 281.3 | 282.0 | 282.7 | 283.3 | 284.0 | 284.7 | 285.2 | 285.9 | 286.9 | 287.4 | 288.2 |
| 165° | 286.4 | 286.9 | 287.9 | 288.3 | 289.3 | 290.0 | 290.7 | 291.5 | 292.0 | 292.7 | 293.2 |
| 167.5° | 292.4 | 292.9 | 293.9 | 294.4 | 295.3 | 295.9 | 296.6 | 297.2 | 297.9 | 298.2 | 299.0 |
| 170° | 297.7 | 298.2 | 298.8 | 299.5 | 300.0 | 300.4 | 301.2 | 301.7 | 302.5 | 302.9 | 303.7 |
| 172.5° | 303.5 | 303.9 | 304.3 | 304.6 | 305.1 | 305.6 | 306.0 | 306.3 | 307.0 | 307.3 | 307.7 |
| 175° | 308.5 | 308.5 | 308.6 | 308.8 | 309.0 | 309.0 | 309.2 | 309.6 | 309.8 | 309.9 | 310.1 |
| 177.5° | 311.7 | 311.7 | 311.8 | 311.9 | 312.0 | 312.0 | 312.1 | 312.2 | 312.2 | 312.2 | 312.2 |
| 180° | 310.9 | 310.9 | 310.9 | 310.9 | 310.9 | 310.9 | 310.9 | 310.9 | 310.9 | 310.9 | 310.9 |



TEST NUMBER: P1444490
 CATALOG NUMBER: EHBR1-60-UNV-TA-L830-UPL12

CANDELA DISTRIBUTION (continued):

| | 302.5° | 305° | 307.5° | 310° | 312.5° | 315° | 317.5° | 320° | 322.5° | 325° | 327.5° |
|--------|---------|---------|---------|---------|---------|---------|---------|---------|---------|---------|---------|
| 0° | 47963.5 | 47963.5 | 47963.5 | 47963.5 | 47963.5 | 47963.5 | 47963.5 | 47963.5 | 47963.5 | 47963.5 | 47963.5 |
| 2.5° | 48471.2 | 48473.3 | 48434.2 | 48432.1 | 48395.4 | 48390.8 | 48355.1 | 48344.3 | 48315.3 | 48304.8 | 48275.3 |
| 5° | 49941.8 | 49894.2 | 49784.1 | 49719.4 | 49610.6 | 49538.6 | 49420.9 | 49344.1 | 49230.6 | 49144.9 | 49030.6 |
| 7.5° | 51429.1 | 51355.2 | 51231.6 | 51131.5 | 50980.6 | 50860.1 | 50683.5 | 50538.9 | 50347.6 | 50182.1 | 49981.2 |
| 10° | 51865.3 | 51854.0 | 51822.5 | 51776.6 | 51706.4 | 51627.5 | 51507.3 | 51381.9 | 51214.4 | 51032.4 | 50809.1 |
| 12.5° | 50792.0 | 50907.9 | 51065.9 | 51159.6 | 51273.6 | 51323.5 | 51370.2 | 51358.5 | 51327.8 | 51235.7 | 51106.6 |
| 15° | 48073.2 | 48398.8 | 48830.1 | 49164.3 | 49548.7 | 49828.2 | 50136.8 | 50329.1 | 50520.9 | 50609.4 | 50663.7 |
| 17.5° | 43748.1 | 44364.8 | 45138.0 | 45778.8 | 46518.2 | 47112.1 | 47763.0 | 48253.1 | 48757.0 | 49118.0 | 49444.6 |
| 20° | 38192.6 | 39086.1 | 40179.7 | 41145.8 | 42269.2 | 43245.4 | 44315.2 | 45193.5 | 46099.2 | 46807.3 | 47477.7 |
| 22.5° | 32166.9 | 33227.9 | 34550.0 | 35774.8 | 37222.9 | 38524.5 | 39993.0 | 41271.1 | 42605.5 | 43720.4 | 44798.3 |
| 25° | 26241.4 | 27405.0 | 28850.7 | 30217.2 | 31857.4 | 33371.3 | 35112.8 | 36705.7 | 38430.4 | 39928.0 | 41407.2 |
| 27.5° | 20830.6 | 21973.0 | 23449.0 | 24903.6 | 26638.0 | 28251.1 | 30117.1 | 31872.1 | 33836.0 | 35647.0 | 37499.5 |
| 30° | 16383.5 | 17352.4 | 18675.8 | 20084.7 | 21795.3 | 23436.9 | 25323.1 | 27128.1 | 29171.1 | 31148.5 | 33235.2 |
| 32.5° | 12980.1 | 13718.3 | 14758.8 | 15950.1 | 17528.4 | 19091.1 | 20887.1 | 22629.6 | 24641.4 | 26638.9 | 28809.1 |
| 35° | 10308.6 | 10884.4 | 11677.7 | 12607.4 | 13943.9 | 15290.9 | 16879.6 | 18464.1 | 20341.1 | 22236.5 | 24346.0 |
| 37.5° | 8128.9 | 8596.1 | 9217.3 | 9915.7 | 10987.8 | 12093.3 | 13395.9 | 14709.5 | 16340.4 | 18020.6 | 19932.4 |
| 40° | 6347.8 | 6726.0 | 7209.7 | 7730.6 | 8540.1 | 9391.9 | 10399.2 | 11417.9 | 12728.2 | 14101.4 | 15683.6 |
| 42.5° | 4986.7 | 5265.7 | 5607.4 | 5988.0 | 6743.3 | 7195.5 | 7878.6 | 8615.4 | 9578.7 | 10575.5 | 11765.2 |
| 45° | 4004.7 | 4195.1 | 4432.0 | 4687.3 | 5037.8 | 5421.5 | 5889.3 | 6379.9 | 7295.0 | 7743.9 | 8467.4 |
| 47.5° | 3344.3 | 3472.2 | 3622.9 | 3783.7 | 3990.5 | 4213.6 | 4491.1 | 4774.8 | 5141.7 | 5521.9 | 5967.7 |
| 50° | 2899.6 | 3029.5 | 3081.3 | 3164.7 | 3284.3 | 3411.7 | 3568.1 | 3724.5 | 3921.3 | 4120.8 | 4350.3 |
| 52.5° | 2569.5 | 2611.8 | 2668.1 | 2721.1 | 2795.2 | 2940.3 | 2987.3 | 3069.0 | 3179.4 | 3287.3 | 3407.8 |
| 55° | 2317.4 | 2345.0 | 2381.6 | 2413.6 | 2458.4 | 2501.2 | 2563.1 | 2617.5 | 2691.1 | 2756.2 | 2836.2 |
| 57.5° | 2121.2 | 2138.8 | 2164.2 | 2185.2 | 2214.2 | 2238.4 | 2274.6 | 2304.1 | 2346.5 | 2383.2 | 2431.7 |
| 60° | 1978.6 | 1990.3 | 2007.5 | 2021.1 | 2039.6 | 2052.2 | 2070.2 | 2084.1 | 2106.5 | 2125.1 | 2152.1 |
| 62.5° | 1862.2 | 1868.3 | 1879.4 | 1887.5 | 1899.2 | 1905.5 | 1915.2 | 1921.2 | 1933.5 | 1942.9 | 1958.0 |
| 65° | 1722.5 | 1723.9 | 1731.4 | 1734.8 | 1744.0 | 1747.3 | 1755.2 | 1758.0 | 1768.1 | 1775.1 | 1788.5 |
| 67.5° | 1608.0 | 1604.8 | 1605.0 | 1602.3 | 1603.6 | 1600.9 | 1601.6 | 1598.8 | 1602.8 | 1605.0 | 1615.1 |
| 70° | 1503.5 | 1499.0 | 1497.6 | 1492.8 | 1491.4 | 1486.4 | 1485.0 | 1480.6 | 1480.0 | 1478.6 | 1482.2 |
| 72.5° | 1401.6 | 1400.4 | 1400.8 | 1397.4 | 1397.0 | 1393.6 | 1393.8 | 1391.7 | 1394.0 | 1395.0 | 1399.6 |
| 75° | 1284.5 | 1284.9 | 1287.1 | 1284.1 | 1285.0 | 1282.2 | 1283.2 | 1280.6 | 1282.0 | 1281.4 | 1286.1 |
| 77.5° | 1141.9 | 1145.3 | 1151.5 | 1150.3 | 1152.2 | 1149.1 | 1150.5 | 1146.7 | 1147.7 | 1145.3 | 1147.1 |
| 80° | 981.6 | 988.7 | 997.0 | 996.7 | 1000.2 | 998.0 | 1001.2 | 997.6 | 999.0 | 994.7 | 993.7 |
| 82.5° | 791.2 | 797.2 | 806.1 | 806.5 | 814.3 | 815.8 | 824.4 | 824.1 | 829.6 | 826.1 | 823.6 |
| 85° | 540.9 | 545.0 | 552.8 | 557.1 | 565.1 | 570.1 | 578.4 | 581.8 | 575.8 | 586.8 | 578.0 |
| 87.5° | 282.4 | 292.9 | 287.1 | 300.8 | 297.6 | 311.5 | 308.4 | 321.2 | 318.8 | 329.7 | 328.3 |
| 90° | 66.4 | 65.9 | 73.1 | 73.1 | 82.0 | 83.1 | 90.4 | 88.9 | 95.7 | 94.5 | 101.5 |
| 92.5° | 34.0 | 36.3 | 38.3 | 40.3 | 42.2 | 44.3 | 42.4 | 40.6 | 38.8 | 37.0 | 35.1 |
| 95° | 44.8 | 47.7 | 50.5 | 53.4 | 56.2 | 59.1 | 56.0 | 53.1 | 50.0 | 46.9 | 43.9 |
| 97.5° | 52.3 | 55.3 | 58.4 | 61.4 | 64.7 | 67.8 | 64.2 | 60.5 | 56.9 | 53.4 | 49.8 |
| 100° | 71.5 | 77.6 | 83.6 | 89.5 | 95.6 | 101.5 | 95.0 | 88.1 | 81.6 | 74.7 | 68.0 |
| 102.5° | 136.9 | 150.5 | 164.2 | 178.1 | 191.7 | 205.5 | 191.3 | 177.2 | 162.9 | 148.7 | 134.2 |
| 105° | 248.8 | 270.8 | 292.8 | 314.7 | 336.7 | 359.0 | 335.9 | 312.8 | 289.5 | 266.6 | 243.3 |
| 107.5° | 363.3 | 384.7 | 406.5 | 427.8 | 449.4 | 471.3 | 447.9 | 424.4 | 401.2 | 377.7 | 354.3 |
| 110° | 429.9 | 443.0 | 456.2 | 469.5 | 482.6 | 496.0 | 479.0 | 462.3 | 445.3 | 428.3 | 411.2 |



TEST NUMBER: P1444490
 CATALOG NUMBER: EHBR1-60-UNV-TA-L830-UPL12

CANDELA DISTRIBUTION (continued):

| | 302.5° | 305° | 307.5° | 310° | 312.5° | 315° | 317.5° | 320° | 322.5° | 325° | 327.5° |
|--------|--------|-------|--------|-------|--------|-------|--------|-------|--------|-------|--------|
| 112.5° | 444.2 | 451.4 | 458.1 | 465.3 | 472.1 | 479.1 | 467.1 | 455.4 | 443.3 | 431.5 | 419.6 |
| 115° | 420.4 | 422.9 | 425.7 | 428.5 | 431.2 | 433.9 | 426.2 | 418.3 | 410.7 | 403.0 | 394.7 |
| 117.5° | 374.5 | 375.2 | 375.3 | 376.3 | 376.4 | 376.9 | 372.9 | 369.1 | 364.8 | 360.8 | 356.6 |
| 120° | 328.8 | 328.1 | 327.4 | 326.7 | 325.8 | 324.9 | 323.8 | 322.7 | 321.3 | 320.0 | 318.5 |
| 122.5° | 290.2 | 290.4 | 290.1 | 290.0 | 289.7 | 289.4 | 289.5 | 289.8 | 289.7 | 289.8 | 289.5 |
| 125° | 261.4 | 262.6 | 263.7 | 264.9 | 265.8 | 266.9 | 267.2 | 267.9 | 268.4 | 268.9 | 269.2 |
| 127.5° | 244.0 | 246.2 | 248.0 | 250.0 | 251.8 | 253.8 | 254.4 | 255.4 | 256.3 | 257.1 | 257.8 |
| 130° | 236.0 | 238.9 | 241.4 | 243.7 | 246.0 | 248.7 | 249.3 | 250.3 | 250.9 | 251.7 | 252.4 |
| 132.5° | 234.4 | 237.1 | 239.8 | 242.8 | 245.1 | 247.8 | 248.4 | 249.4 | 249.8 | 250.9 | 251.5 |
| 135° | 236.0 | 238.7 | 241.0 | 243.9 | 246.2 | 248.7 | 249.3 | 250.0 | 250.6 | 251.5 | 252.1 |
| 137.5° | 239.4 | 242.0 | 244.1 | 246.4 | 248.2 | 250.5 | 250.9 | 251.8 | 252.2 | 253.1 | 253.7 |
| 140° | 244.4 | 246.4 | 248.0 | 250.1 | 251.8 | 253.7 | 254.0 | 254.6 | 255.0 | 255.4 | 255.7 |
| 142.5° | 249.8 | 251.5 | 252.8 | 254.7 | 255.9 | 257.6 | 257.5 | 257.7 | 258.0 | 258.2 | 258.3 |
| 145° | 256.0 | 257.5 | 258.6 | 259.8 | 260.7 | 262.1 | 261.9 | 262.0 | 261.7 | 261.8 | 261.6 |
| 147.5° | 261.6 | 262.8 | 263.5 | 264.5 | 265.0 | 266.1 | 265.8 | 265.7 | 265.6 | 265.3 | 264.9 |
| 150° | 266.1 | 267.3 | 267.9 | 268.6 | 269.3 | 270.2 | 269.8 | 269.5 | 269.0 | 268.6 | 268.4 |
| 152.5° | 269.6 | 270.4 | 271.1 | 271.6 | 272.2 | 272.9 | 272.3 | 272.2 | 271.6 | 271.0 | 270.6 |
| 155° | 273.8 | 274.6 | 275.0 | 275.8 | 276.0 | 276.4 | 275.8 | 275.8 | 275.3 | 274.8 | 274.3 |
| 157.5° | 278.5 | 279.2 | 279.8 | 280.1 | 280.5 | 281.0 | 280.7 | 280.5 | 280.1 | 279.9 | 279.3 |
| 160° | 283.4 | 284.0 | 284.5 | 284.9 | 285.4 | 285.6 | 285.3 | 285.4 | 285.1 | 284.8 | 284.3 |
| 162.5° | 288.7 | 289.5 | 289.9 | 290.3 | 290.9 | 291.4 | 291.1 | 290.9 | 290.6 | 290.3 | 289.8 |
| 165° | 293.8 | 294.3 | 294.9 | 295.3 | 295.5 | 296.1 | 295.9 | 295.9 | 295.6 | 295.5 | 295.2 |
| 167.5° | 299.4 | 300.0 | 300.4 | 301.0 | 301.2 | 301.4 | 301.2 | 301.5 | 301.2 | 301.0 | 300.7 |
| 170° | 303.9 | 304.3 | 305.0 | 305.4 | 305.6 | 305.9 | 305.9 | 305.8 | 305.6 | 305.5 | 305.2 |
| 172.5° | 308.2 | 308.6 | 308.7 | 309.1 | 309.2 | 309.6 | 309.5 | 309.2 | 309.1 | 308.8 | 308.6 |
| 175° | 310.1 | 310.2 | 310.6 | 310.6 | 310.6 | 310.8 | 310.6 | 310.4 | 310.1 | 310.0 | 309.8 |
| 177.5° | 312.2 | 312.2 | 312.2 | 312.0 | 312.0 | 312.0 | 311.9 | 311.7 | 311.6 | 311.5 | 311.2 |
| 180° | 310.9 | 310.9 | 310.9 | 310.9 | 310.9 | 310.9 | 310.9 | 310.9 | 310.9 | 310.9 | 310.9 |



TEST NUMBER: P1444490
 CATALOG NUMBER: EHBR1-60-UNV-TA-L830-UPL12

CANDELA DISTRIBUTION (continued):

| | 330° | 332.5° | 335° | 337.5° | 340° | 342.5° | 345° | 347.5° | 350° | 352.5° | 355° |
|--------|---------|---------|---------|---------|---------|---------|---------|---------|---------|---------|---------|
| 0° | 47963.5 | 47963.5 | 47963.5 | 47963.5 | 47963.5 | 47963.5 | 47963.5 | 47963.5 | 47963.5 | 47963.5 | 47963.5 |
| 2.5° | 48264.8 | 48243.8 | 48230.3 | 48213.1 | 48202.6 | 48189.3 | 48179.4 | 48171.1 | 48164.4 | 48158.2 | 48153.5 |
| 5° | 48943.5 | 48835.6 | 48751.9 | 48661.2 | 48586.7 | 48512.4 | 48455.2 | 48407.7 | 48375.0 | 48350.5 | 48335.9 |
| 7.5° | 49807.5 | 49610.1 | 49434.4 | 49249.6 | 49083.9 | 48920.9 | 48780.5 | 48659.4 | 48568.6 | 48509.7 | 48474.0 |
| 10° | 50579.2 | 50314.8 | 50053.4 | 49778.2 | 49517.3 | 49264.1 | 49030.6 | 48825.1 | 48662.5 | 48554.4 | 48491.3 |
| 12.5° | 50925.1 | 50699.9 | 50433.0 | 50134.2 | 49814.4 | 49490.8 | 49175.4 | 48891.1 | 48652.3 | 48492.2 | 48399.7 |
| 15° | 50620.5 | 50528.0 | 50346.9 | 50115.0 | 49811.5 | 49477.0 | 49106.7 | 48758.6 | 48438.4 | 48230.9 | 48110.5 |
| 17.5° | 49629.5 | 49758.5 | 49744.7 | 49656.0 | 49437.8 | 49156.2 | 48778.9 | 48387.9 | 47987.5 | 47710.0 | 47558.4 |
| 20° | 47957.1 | 48362.7 | 48568.6 | 48674.2 | 48588.5 | 48405.9 | 48064.3 | 47667.5 | 47200.8 | 46838.4 | 46617.4 |
| 22.5° | 45606.9 | 46323.2 | 46769.5 | 47096.0 | 47165.4 | 47103.2 | 46801.5 | 46424.1 | 45903.8 | 45468.3 | 45141.8 |
| 25° | 42581.5 | 43630.8 | 44336.1 | 44889.1 | 45103.9 | 45159.4 | 44902.6 | 44527.4 | 43947.4 | 43440.1 | 42991.6 |
| 27.5° | 39018.0 | 40381.4 | 41323.2 | 42066.2 | 42401.6 | 42547.0 | 42310.8 | 41927.9 | 41241.7 | 40636.1 | 40050.2 |
| 30° | 35006.1 | 36623.7 | 37757.7 | 38648.6 | 39057.5 | 39249.6 | 38998.7 | 38571.2 | 37772.8 | 37043.9 | 36305.9 |
| 32.5° | 30712.2 | 32482.3 | 33718.0 | 34685.5 | 35090.6 | 35271.4 | 34943.1 | 34463.1 | 33540.2 | 32681.6 | 31820.9 |
| 35° | 26216.5 | 28003.2 | 29249.3 | 30191.1 | 30530.5 | 30639.6 | 30219.6 | 29664.9 | 28642.4 | 27700.1 | 26761.6 |
| 37.5° | 21629.3 | 23291.5 | 24424.0 | 25269.2 | 25479.3 | 25498.2 | 24992.3 | 24379.5 | 23304.8 | 22375.7 | 21441.4 |
| 40° | 17081.7 | 18483.5 | 19397.9 | 20074.4 | 20147.3 | 20082.3 | 19532.3 | 18915.6 | 17910.2 | 17077.8 | 16257.6 |
| 42.5° | 12798.1 | 13856.3 | 14508.7 | 14972.3 | 14944.7 | 14816.2 | 14311.9 | 13781.8 | 12952.3 | 12318.3 | 11672.9 |
| 45° | 9128.2 | 9826.0 | 10207.4 | 10478.7 | 10391.6 | 10269.1 | 9876.7 | 9505.1 | 8941.4 | 8531.9 | 8098.1 |
| 47.5° | 6341.5 | 7174.7 | 7029.6 | 7560.1 | 7103.1 | 7404.9 | 6776.3 | 6429.9 | 6130.7 | 5913.2 | 5668.0 |
| 50° | 4539.9 | 4730.8 | 4823.1 | 4886.1 | 4852.6 | 4806.3 | 4693.4 | 4592.4 | 4455.7 | 4356.2 | 4240.1 |
| 52.5° | 3506.1 | 3601.6 | 3653.8 | 3691.7 | 3684.3 | 3667.3 | 3618.1 | 3573.2 | 3509.1 | 3467.0 | 3416.2 |
| 55° | 2969.8 | 2971.2 | 3067.4 | 3026.1 | 3087.1 | 3015.6 | 3043.7 | 2964.7 | 2977.4 | 2909.5 | 2863.9 |
| 57.5° | 2467.9 | 2506.9 | 2524.5 | 2541.6 | 2536.8 | 2533.8 | 2514.8 | 2505.1 | 2483.7 | 2477.0 | 2461.8 |
| 60° | 2170.8 | 2191.2 | 2195.5 | 2203.3 | 2196.8 | 2194.2 | 2179.3 | 2174.0 | 2159.6 | 2157.0 | 2146.7 |
| 62.5° | 1967.1 | 1977.6 | 1977.6 | 1977.6 | 1969.1 | 1960.8 | 1944.3 | 1935.6 | 1923.3 | 1920.7 | 1914.8 |
| 65° | 1797.2 | 1807.9 | 1809.7 | 1812.1 | 1805.9 | 1799.4 | 1784.9 | 1775.4 | 1762.8 | 1758.0 | 1751.3 |
| 67.5° | 1621.7 | 1633.2 | 1637.2 | 1643.0 | 1639.4 | 1638.2 | 1628.3 | 1624.5 | 1616.2 | 1614.2 | 1608.0 |
| 70° | 1483.9 | 1488.7 | 1488.3 | 1488.1 | 1480.4 | 1473.4 | 1461.9 | 1456.4 | 1447.7 | 1445.9 | 1440.2 |
| 72.5° | 1402.0 | 1405.3 | 1403.2 | 1400.2 | 1390.1 | 1379.8 | 1366.3 | 1356.3 | 1344.9 | 1337.8 | 1329.8 |
| 75° | 1286.6 | 1291.1 | 1288.3 | 1286.3 | 1277.2 | 1270.5 | 1259.6 | 1254.1 | 1246.1 | 1243.8 | 1238.2 |
| 77.5° | 1144.9 | 1147.1 | 1142.4 | 1141.9 | 1135.0 | 1130.7 | 1122.6 | 1121.1 | 1115.2 | 1115.4 | 1110.1 |
| 80° | 987.3 | 986.0 | 978.6 | 977.2 | 970.2 | 968.5 | 962.0 | 962.4 | 957.8 | 959.8 | 956.0 |
| 82.5° | 812.3 | 807.9 | 798.2 | 795.3 | 787.3 | 786.6 | 782.3 | 785.9 | 783.0 | 787.3 | 784.8 |
| 85° | 582.2 | 583.4 | 579.2 | 579.2 | 576.8 | 577.6 | 577.2 | 579.8 | 580.2 | 584.1 | 583.9 |
| 87.5° | 324.6 | 329.3 | 328.3 | 332.6 | 332.4 | 337.2 | 338.8 | 345.9 | 346.8 | 353.4 | 353.4 |
| 90° | 100.3 | 107.9 | 106.5 | 114.4 | 114.2 | 122.1 | 123.2 | 131.1 | 131.2 | 138.2 | 136.9 |
| 92.5° | 33.3 | 31.5 | 29.7 | 27.8 | 26.9 | 25.7 | 25.4 | 23.8 | 23.3 | 22.0 | 21.1 |
| 95° | 40.8 | 37.7 | 34.7 | 31.6 | 30.5 | 29.3 | 28.3 | 27.3 | 26.1 | 25.1 | 24.1 |
| 97.5° | 46.2 | 42.5 | 38.9 | 35.2 | 34.3 | 33.4 | 32.3 | 31.4 | 30.5 | 29.6 | 28.7 |
| 100° | 61.2 | 54.4 | 47.8 | 40.8 | 40.1 | 39.3 | 38.5 | 37.7 | 37.0 | 36.1 | 35.2 |
| 102.5° | 120.0 | 105.7 | 91.2 | 76.8 | 74.1 | 71.4 | 68.7 | 65.8 | 62.9 | 60.2 | 57.5 |
| 105° | 220.1 | 196.7 | 173.5 | 150.2 | 142.8 | 135.4 | 128.0 | 120.5 | 113.0 | 105.6 | 98.2 |
| 107.5° | 330.8 | 307.1 | 283.5 | 259.8 | 246.4 | 232.6 | 218.9 | 205.0 | 191.5 | 177.6 | 163.9 |
| 110° | 394.3 | 377.1 | 360.0 | 342.6 | 332.0 | 320.9 | 309.9 | 298.8 | 288.0 | 276.8 | 265.7 |



TEST NUMBER: P1444490
 CATALOG NUMBER: EHBR1-60-UNV-TA-L830-UPL12

CANDELA DISTRIBUTION (continued):

| | 330° | 332.5° | 335° | 337.5° | 340° | 342.5° | 345° | 347.5° | 350° | 352.5° | 355° |
|--------|-------|--------|-------|--------|-------|--------|-------|--------|-------|--------|-------|
| 112.5° | 407.5 | 395.4 | 383.2 | 370.7 | 366.1 | 361.1 | 356.4 | 351.4 | 346.6 | 341.3 | 336.5 |
| 115° | 386.9 | 379.0 | 370.8 | 362.6 | 361.3 | 359.6 | 358.2 | 356.4 | 354.9 | 353.1 | 351.4 |
| 117.5° | 352.6 | 348.3 | 344.0 | 339.7 | 340.2 | 340.8 | 341.5 | 341.9 | 342.3 | 342.5 | 342.9 |
| 120° | 317.1 | 315.6 | 314.4 | 312.7 | 314.8 | 316.6 | 318.7 | 320.3 | 322.0 | 323.4 | 325.0 |
| 122.5° | 289.6 | 289.3 | 289.4 | 289.0 | 291.6 | 293.9 | 296.2 | 298.4 | 300.4 | 302.1 | 303.9 |
| 125° | 269.8 | 270.1 | 270.5 | 270.6 | 273.3 | 275.8 | 278.1 | 280.2 | 282.3 | 284.0 | 285.9 |
| 127.5° | 258.7 | 259.5 | 260.3 | 260.9 | 263.2 | 264.9 | 266.9 | 268.4 | 270.2 | 271.4 | 272.6 |
| 130° | 253.3 | 253.8 | 254.7 | 255.3 | 257.3 | 259.2 | 261.2 | 262.7 | 264.2 | 265.3 | 266.4 |
| 132.5° | 252.3 | 252.9 | 253.8 | 254.2 | 256.2 | 257.7 | 259.4 | 260.3 | 261.7 | 262.4 | 263.1 |
| 135° | 252.8 | 253.4 | 254.1 | 254.5 | 256.3 | 258.0 | 259.4 | 260.5 | 261.8 | 262.4 | 263.1 |
| 137.5° | 254.4 | 254.8 | 255.5 | 255.9 | 257.6 | 259.0 | 260.4 | 261.4 | 262.5 | 263.3 | 263.9 |
| 140° | 256.4 | 256.6 | 257.3 | 257.5 | 259.0 | 260.3 | 261.6 | 262.6 | 263.7 | 264.2 | 264.7 |
| 142.5° | 258.4 | 258.3 | 258.9 | 258.7 | 259.9 | 261.0 | 261.9 | 262.7 | 263.6 | 264.0 | 264.2 |
| 145° | 261.5 | 261.2 | 261.4 | 261.2 | 262.1 | 262.7 | 263.8 | 264.5 | 264.9 | 265.1 | 265.6 |
| 147.5° | 265.0 | 264.5 | 264.2 | 263.9 | 265.0 | 265.4 | 265.9 | 266.2 | 267.0 | 267.1 | 267.2 |
| 150° | 267.9 | 267.2 | 266.7 | 266.2 | 266.8 | 267.1 | 267.4 | 267.9 | 268.2 | 268.2 | 268.4 |
| 152.5° | 270.1 | 269.4 | 268.8 | 268.1 | 268.4 | 268.5 | 268.6 | 268.6 | 268.8 | 268.7 | 268.7 |
| 155° | 273.8 | 273.1 | 272.6 | 271.7 | 272.0 | 272.0 | 271.9 | 271.9 | 271.6 | 271.5 | 271.3 |
| 157.5° | 278.9 | 278.1 | 277.8 | 277.1 | 277.0 | 276.9 | 276.7 | 276.0 | 276.0 | 275.6 | 275.0 |
| 160° | 284.1 | 283.4 | 283.1 | 282.4 | 282.2 | 281.9 | 281.8 | 281.1 | 280.8 | 280.3 | 279.7 |
| 162.5° | 289.3 | 288.8 | 288.1 | 287.5 | 287.3 | 287.2 | 286.8 | 286.2 | 285.9 | 285.3 | 284.8 |
| 165° | 295.0 | 294.5 | 294.1 | 293.5 | 293.3 | 292.9 | 292.7 | 292.0 | 291.7 | 290.9 | 290.4 |
| 167.5° | 300.3 | 299.9 | 299.5 | 298.7 | 298.6 | 298.4 | 298.2 | 297.8 | 297.4 | 296.7 | 296.6 |
| 170° | 304.9 | 304.4 | 304.1 | 303.7 | 303.4 | 303.2 | 302.8 | 302.5 | 301.9 | 301.6 | 301.1 |
| 172.5° | 308.1 | 307.8 | 307.3 | 306.8 | 306.8 | 306.6 | 306.2 | 306.0 | 305.5 | 305.1 | 305.0 |
| 175° | 309.4 | 309.1 | 308.6 | 308.4 | 308.2 | 308.0 | 307.9 | 307.7 | 307.3 | 307.1 | 306.8 |
| 177.5° | 311.0 | 310.9 | 310.4 | 310.3 | 310.1 | 310.1 | 310.0 | 309.8 | 309.8 | 309.6 | 309.4 |
| 180° | 310.9 | 310.9 | 310.9 | 310.9 | 310.9 | 310.9 | 310.9 | 310.9 | 310.9 | 310.9 | 310.9 |



TEST NUMBER: P1444490
CATALOG NUMBER: EHBR1-60-UNV-TA-L830-UPL12

CANDELA DISTRIBUTION (continued):

| | 357.5° | 360° |
|--------|---------|---------|
| 0° | 47963.5 | 47963.5 |
| 2.5° | 48149.3 | 48146.7 |
| 5° | 48328.3 | 48325.4 |
| 7.5° | 48464.4 | 48463.5 |
| 10° | 48480.4 | 48488.7 |
| 12.5° | 48383.7 | 48390.5 |
| 15° | 48101.3 | 48114.4 |
| 17.5° | 47561.2 | 47578.4 |
| 20° | 46630.9 | 46648.8 |
| 22.5° | 45124.2 | 45131.7 |
| 25° | 42933.7 | 42902.6 |
| 27.5° | 39947.3 | 39893.8 |
| 30° | 36150.9 | 36099.2 |
| 32.5° | 31624.7 | 31592.3 |
| 35° | 26529.6 | 26509.1 |
| 37.5° | 21165.3 | 21123.7 |
| 40° | 15957.8 | 15836.5 |
| 42.5° | 11390.2 | 11177.5 |
| 45° | 7871.6 | 7619.5 |
| 47.5° | 5495.2 | 5339.3 |
| 50° | 4165.3 | 4115.0 |
| 52.5° | 3394.0 | 3382.2 |
| 55° | 2863.7 | 2858.6 |
| 57.5° | 2465.1 | 2463.4 |
| 60° | 2152.1 | 2151.6 |
| 62.5° | 1918.8 | 1919.6 |
| 65° | 1754.3 | 1754.6 |
| 67.5° | 1609.6 | 1608.5 |
| 70° | 1442.3 | 1441.1 |
| 72.5° | 1327.1 | 1325.2 |
| 75° | 1238.2 | 1237.0 |
| 77.5° | 1111.7 | 1109.7 |
| 80° | 958.4 | 956.0 |
| 82.5° | 788.3 | 785.5 |
| 85° | 588.1 | 588.2 |
| 87.5° | 359.8 | 359.6 |
| 90° | 143.4 | 141.3 |
| 92.5° | 20.6 | 20.0 |
| 95° | 23.0 | 22.0 |
| 97.5° | 27.8 | 26.9 |
| 100° | 34.5 | 33.7 |
| 102.5° | 54.8 | 52.1 |
| 105° | 90.8 | 83.4 |
| 107.5° | 150.2 | 136.5 |
| 110° | 254.7 | 243.6 |



TEST NUMBER: P1444490
CATALOG NUMBER: EHBR1-60-UNV-TA-L830-UPL12

CANDELA DISTRIBUTION (continued):

| | 357.5° | 360° |
|--------|--------|-------|
| 112.5° | 331.3 | 326.3 |
| 115° | 349.1 | 347.3 |
| 117.5° | 342.9 | 342.9 |
| 120° | 326.1 | 327.5 |
| 122.5° | 305.3 | 306.8 |
| 125° | 287.2 | 288.7 |
| 127.5° | 273.4 | 274.2 |
| 130° | 266.8 | 267.5 |
| 132.5° | 263.4 | 263.5 |
| 135° | 263.1 | 263.3 |
| 137.5° | 263.8 | 263.9 |
| 140° | 264.6 | 264.6 |
| 142.5° | 264.4 | 264.3 |
| 145° | 265.6 | 265.4 |
| 147.5° | 266.6 | 266.6 |
| 150° | 267.9 | 267.7 |
| 152.5° | 268.1 | 267.9 |
| 155° | 270.7 | 270.2 |
| 157.5° | 274.2 | 273.8 |
| 160° | 279.0 | 278.5 |
| 162.5° | 284.0 | 283.5 |
| 165° | 289.5 | 288.8 |
| 167.5° | 295.6 | 295.3 |
| 170° | 300.5 | 300.1 |
| 172.5° | 304.4 | 304.1 |
| 175° | 306.6 | 306.4 |
| 177.5° | 309.4 | 309.0 |
| 180° | 310.9 | 310.9 |

LM-79-2019: Approved Method: Electrical and Photometric Measurements of Solid-
State Lighting Products

Report Prepared for

Cooper Lighting Solutions

Metalux

Report Number: SP1-2506-472-2

Test Date: 07/31/2025

Luminaire Tested: EHBR-60-L830-N

Data in this report applies to families of products including EHBR-60-L830-N

Test Information

Test Method: LM-79-2019
 Report Number: SP1-2506-472-2
 Test Lab: COOPER LIGHTING SOLUTIONS
 Photometer: SP1 - 76IN SPHERE
 Measurement Geometry: 4π
 Issue Date: 08/05/2025
 Manufacturer: COOPER LIGHTING SOLUTIONS
 Product Line: Metalux
 Catalog Number: **EHBR-60-L830-N**
 Description: Elevate Round Highbay at, 60000 lumens, 3000K 80CRI LEDs with N lens

Spectral Parameters

CCT (K): 2983
 CIE u': 0.2516
 CIE v': 0.5201
 Duv: -0.0012
 CIE x: 0.4364
 CIE y: 0.4010
 CIE z: 0.1626
 Peak Wavelength (nm): 630
 Dominant Wavelength (nm): 583
 Purity: 51.34918
 Rf: 81.2
 Rg: 101.5

| | | | |
|-----------|------|------|------|
| CRI (Ra): | 83.4 | | |
| R1: | 84.0 | R9: | 29.4 |
| R2: | 87.5 | R10: | 68.6 |
| R3: | 88.9 | R11: | 82.2 |
| R4: | 83.8 | R12: | 61.6 |
| R5: | 81.9 | R13: | 83.9 |
| R6: | 83.1 | R14: | 92.5 |
| R7: | 87.1 | R15: | 79.8 |
| R8: | 70.9 | | |



Test Conditions

Stabilization Time: 38M
 Operation Time: 1H 38M
 Sphere Temperature (°C): 25.0

REPORT NUMBER: SP1-2506-472-2

| Measurement and Test Equipment | | | |
|--------------------------------|-----------------------|------------------|----------------------|
| Instrument | Identification Number | Calibration Date | Calibration Due Date |
| Photometer | 76INCH SPHERE IN0058 | 6/16/2025 | 12/16/2025 |
| Power Meter | XITRON INXT2011004 | 1/21/2025 | 1/21/2026 |
| AC Power Source | CHROMA 61603 IN0063 | 10/22/2024 | 10/22/2025 |
| DC Power Source | AGILENT E3634A IN0208 | 10/22/2024 | 10/22/2025 |
| Sphere Thermometer | ONSET IN0085 | 10/22/2024 | 10/22/2025 |
| Room Thermometer | ONSET IN0046 | 10/22/2024 | 10/22/2025 |

REPORT NUMBER: SP1-2506-472-2

CIE 1931 Chromaticity Diagram



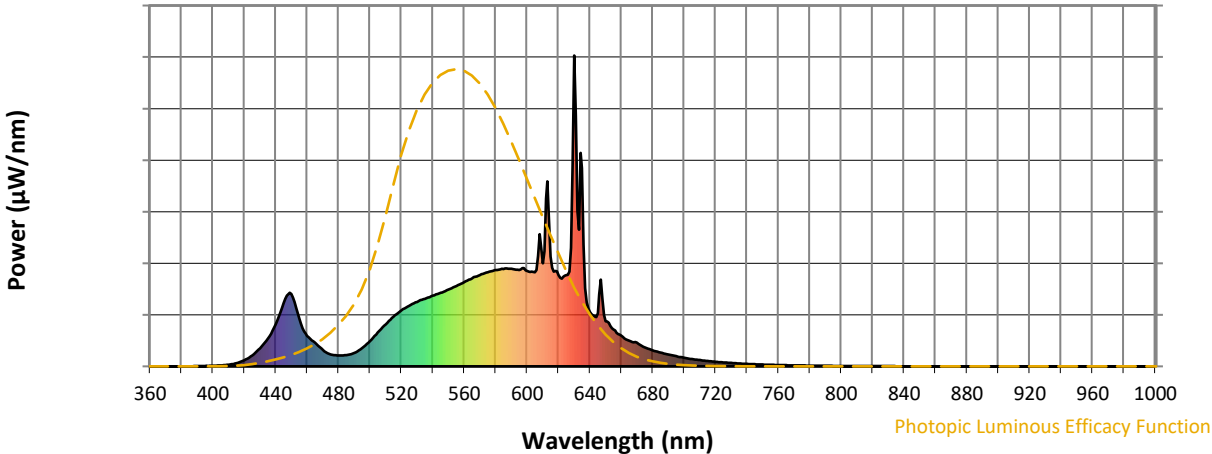
CIE 1931 Chromaticity Diagram with 2017 ANSI 7-Step and 4-Step Quadrangles



Point lies inside the ANSI 3000K 4-step quadrangle

REPORT NUMBER: SP1-2506-472-2

Photopic Flux vs. Wavelength



Photopic Lumens: NR

| λ (nm) | Power W [^] /nm | Lumens (φ/nm) | λ (nm) | Power W [^] /nm | Lumens (φ/nm) | λ (nm) | Power W [^] /nm | Lumens (φ/nm) | λ (nm) | Power W [^] /nm | Lumens (φ/nm) | λ (nm) | Power W [^] /nm | Lumens (φ/nm) |
|--------|--------------------------|---------------|--------|--------------------------|---------------|--------|--------------------------|---------------|--------|--------------------------|---------------|--------|--------------------------|---------------|
| 360 | 0 | NR | 490 | 43 | NR | 620 | 294 | NR | 750 | 6 | NR | 880 | 0 | NR |
| 365 | 0 | NR | 495 | 59 | NR | 625 | 294 | NR | 755 | 5 | NR | 885 | 0 | NR |
| 370 | 0 | NR | 500 | 81 | NR | 630 | 1000 | NR | 760 | 4 | NR | 890 | 0 | NR |
| 375 | 0 | NR | 505 | 109 | NR | 635 | 637 | NR | 765 | 4 | NR | 895 | 0 | NR |
| 380 | 0 | NR | 510 | 135 | NR | 640 | 175 | NR | 770 | 3 | NR | 900 | 0 | NR |
| 385 | 0 | NR | 515 | 160 | NR | 645 | 171 | NR | 775 | 3 | NR | 905 | 0 | NR |
| 390 | 1 | NR | 520 | 180 | NR | 650 | 146 | NR | 780 | 2 | NR | 910 | 0 | NR |
| 395 | 1 | NR | 525 | 195 | NR | 655 | 119 | NR | 785 | 2 | NR | 915 | 0 | NR |
| 400 | 2 | NR | 530 | 207 | NR | 660 | 99 | NR | 790 | 2 | NR | 920 | 0 | NR |
| 405 | 3 | NR | 535 | 218 | NR | 665 | 82 | NR | 795 | 2 | NR | 925 | 0 | NR |
| 410 | 5 | NR | 540 | 227 | NR | 670 | 76 | NR | 800 | 1 | NR | 930 | 0 | NR |
| 415 | 10 | NR | 545 | 237 | NR | 675 | 61 | NR | 805 | 1 | NR | 935 | 0 | NR |
| 420 | 20 | NR | 550 | 247 | NR | 680 | 52 | NR | 810 | 1 | NR | 940 | 0 | NR |
| 425 | 35 | NR | 555 | 259 | NR | 685 | 44 | NR | 815 | 1 | NR | 945 | 0 | NR |
| 430 | 58 | NR | 560 | 271 | NR | 690 | 38 | NR | 820 | 1 | NR | 950 | 0 | NR |
| 435 | 90 | NR | 565 | 283 | NR | 695 | 33 | NR | 825 | 1 | NR | 955 | 0 | NR |
| 440 | 135 | NR | 570 | 293 | NR | 700 | 27 | NR | 830 | 1 | NR | 960 | 0 | NR |
| 445 | 204 | NR | 575 | 303 | NR | 705 | 24 | NR | 835 | 1 | NR | 965 | 0 | NR |
| 450 | 233 | NR | 580 | 310 | NR | 710 | 20 | NR | 840 | 0 | NR | 970 | 0 | NR |
| 455 | 153 | NR | 585 | 313 | NR | 715 | 17 | NR | 845 | 0 | NR | 975 | 0 | NR |
| 460 | 98 | NR | 590 | 314 | NR | 720 | 15 | NR | 850 | 0 | NR | 980 | 0 | NR |
| 465 | 76 | NR | 595 | 310 | NR | 725 | 13 | NR | 855 | 0 | NR | 985 | 0 | NR |
| 470 | 53 | NR | 600 | 307 | NR | 730 | 11 | NR | 860 | 0 | NR | 990 | 0 | NR |
| 475 | 39 | NR | 605 | 303 | NR | 735 | 9 | NR | 865 | 0 | NR | 995 | 0 | NR |
| 480 | 35 | NR | 610 | 331 | NR | 740 | 8 | NR | 870 | 0 | NR | 1000 | 0 | NR |
| 485 | 36 | NR | 615 | 353 | NR | 745 | 7 | NR | 875 | 0 | NR | | | |

REPORT NUMBER: SP1-2506-472-2

Scotopic Flux vs. Wavelength



Scotopic Lumens: NR

S/P: 1.27

| λ (nm) | Power W [^] /nm | Lumens (ϕ /nm) | λ (nm) | Power W [^] /nm | Lumens (ϕ /nm) | λ (nm) | Power W [^] /nm | Lumens (ϕ /nm) | λ (nm) | Power W [^] /nm | Lumens (ϕ /nm) | λ (nm) | Power W [^] /nm | Lumens (ϕ /nm) |
|----------------|--------------------------|----------------------|----------------|--------------------------|----------------------|----------------|--------------------------|----------------------|----------------|--------------------------|----------------------|----------------|--------------------------|----------------------|
| 360 | 0 | NR | 490 | 43 | NR | 620 | 294 | NR | 750 | 6 | NR | 880 | 0 | NR |
| 365 | 0 | NR | 495 | 59 | NR | 625 | 294 | NR | 755 | 5 | NR | 885 | 0 | NR |
| 370 | 0 | NR | 500 | 81 | NR | 630 | 1000 | NR | 760 | 4 | NR | 890 | 0 | NR |
| 375 | 0 | NR | 505 | 109 | NR | 635 | 637 | NR | 765 | 4 | NR | 895 | 0 | NR |
| 380 | 0 | NR | 510 | 135 | NR | 640 | 175 | NR | 770 | 3 | NR | 900 | 0 | NR |
| 385 | 0 | NR | 515 | 160 | NR | 645 | 171 | NR | 775 | 3 | NR | 905 | 0 | NR |
| 390 | 1 | NR | 520 | 180 | NR | 650 | 146 | NR | 780 | 2 | NR | 910 | 0 | NR |
| 395 | 1 | NR | 525 | 195 | NR | 655 | 119 | NR | 785 | 2 | NR | 915 | 0 | NR |
| 400 | 2 | NR | 530 | 207 | NR | 660 | 99 | NR | 790 | 2 | NR | 920 | 0 | NR |
| 405 | 3 | NR | 535 | 218 | NR | 665 | 82 | NR | 795 | 2 | NR | 925 | 0 | NR |
| 410 | 5 | NR | 540 | 227 | NR | 670 | 76 | NR | 800 | 1 | NR | 930 | 0 | NR |
| 415 | 10 | NR | 545 | 237 | NR | 675 | 61 | NR | 805 | 1 | NR | 935 | 0 | NR |
| 420 | 20 | NR | 550 | 247 | NR | 680 | 52 | NR | 810 | 1 | NR | 940 | 0 | NR |
| 425 | 35 | NR | 555 | 259 | NR | 685 | 44 | NR | 815 | 1 | NR | 945 | 0 | NR |
| 430 | 58 | NR | 560 | 271 | NR | 690 | 38 | NR | 820 | 1 | NR | 950 | 0 | NR |
| 435 | 90 | NR | 565 | 283 | NR | 695 | 33 | NR | 825 | 1 | NR | 955 | 0 | NR |
| 440 | 135 | NR | 570 | 293 | NR | 700 | 27 | NR | 830 | 1 | NR | 960 | 0 | NR |
| 445 | 204 | NR | 575 | 303 | NR | 705 | 24 | NR | 835 | 1 | NR | 965 | 0 | NR |
| 450 | 233 | NR | 580 | 310 | NR | 710 | 20 | NR | 840 | 0 | NR | 970 | 0 | NR |
| 455 | 153 | NR | 585 | 313 | NR | 715 | 17 | NR | 845 | 0 | NR | 975 | 0 | NR |
| 460 | 98 | NR | 590 | 314 | NR | 720 | 15 | NR | 850 | 0 | NR | 980 | 0 | NR |
| 465 | 76 | NR | 595 | 310 | NR | 725 | 13 | NR | 855 | 0 | NR | 985 | 0 | NR |
| 470 | 53 | NR | 600 | 307 | NR | 730 | 11 | NR | 860 | 0 | NR | 990 | 0 | NR |
| 475 | 39 | NR | 605 | 303 | NR | 735 | 9 | NR | 865 | 0 | NR | 995 | 0 | NR |
| 480 | 35 | NR | 610 | 331 | NR | 740 | 8 | NR | 870 | 0 | NR | 1000 | 0 | NR |
| 485 | 36 | NR | 615 | 353 | NR | 745 | 7 | NR | 875 | 0 | NR | | | |

REPORT NUMBER: SP1-2506-472-2

Melanopic Flux vs. Wavelength



Melanopic Lumens: NR

M/P: 2.34

| λ (nm) | Power W [^] /nm | Lumens (φ/nm) | λ (nm) | Power W [^] /nm | Lumens (φ/nm) | λ (nm) | Power W [^] /nm | Lumens (φ/nm) | λ (nm) | Power W [^] /nm | Lumens (φ/nm) | λ (nm) | Power W [^] /nm | Lumens (φ/nm) |
|--------|--------------------------|---------------|--------|--------------------------|---------------|--------|--------------------------|---------------|--------|--------------------------|---------------|--------|--------------------------|---------------|
| 360 | 0 | NR | 490 | 43 | NR | 620 | 294 | NR | 750 | 6 | NR | 880 | 0 | NR |
| 365 | 0 | NR | 495 | 59 | NR | 625 | 294 | NR | 755 | 5 | NR | 885 | 0 | NR |
| 370 | 0 | NR | 500 | 81 | NR | 630 | 1000 | NR | 760 | 4 | NR | 890 | 0 | NR |
| 375 | 0 | NR | 505 | 109 | NR | 635 | 637 | NR | 765 | 4 | NR | 895 | 0 | NR |
| 380 | 0 | NR | 510 | 135 | NR | 640 | 175 | NR | 770 | 3 | NR | 900 | 0 | NR |
| 385 | 0 | NR | 515 | 160 | NR | 645 | 171 | NR | 775 | 3 | NR | 905 | 0 | NR |
| 390 | 1 | NR | 520 | 180 | NR | 650 | 146 | NR | 780 | 2 | NR | 910 | 0 | NR |
| 395 | 1 | NR | 525 | 195 | NR | 655 | 119 | NR | 785 | 2 | NR | 915 | 0 | NR |
| 400 | 2 | NR | 530 | 207 | NR | 660 | 99 | NR | 790 | 2 | NR | 920 | 0 | NR |
| 405 | 3 | NR | 535 | 218 | NR | 665 | 82 | NR | 795 | 2 | NR | 925 | 0 | NR |
| 410 | 5 | NR | 540 | 227 | NR | 670 | 76 | NR | 800 | 1 | NR | 930 | 0 | NR |
| 415 | 10 | NR | 545 | 237 | NR | 675 | 61 | NR | 805 | 1 | NR | 935 | 0 | NR |
| 420 | 20 | NR | 550 | 247 | NR | 680 | 52 | NR | 810 | 1 | NR | 940 | 0 | NR |
| 425 | 35 | NR | 555 | 259 | NR | 685 | 44 | NR | 815 | 1 | NR | 945 | 0 | NR |
| 430 | 58 | NR | 560 | 271 | NR | 690 | 38 | NR | 820 | 1 | NR | 950 | 0 | NR |
| 435 | 90 | NR | 565 | 283 | NR | 695 | 33 | NR | 825 | 1 | NR | 955 | 0 | NR |
| 440 | 135 | NR | 570 | 293 | NR | 700 | 27 | NR | 830 | 1 | NR | 960 | 0 | NR |
| 445 | 204 | NR | 575 | 303 | NR | 705 | 24 | NR | 835 | 1 | NR | 965 | 0 | NR |
| 450 | 233 | NR | 580 | 310 | NR | 710 | 20 | NR | 840 | 0 | NR | 970 | 0 | NR |
| 455 | 153 | NR | 585 | 313 | NR | 715 | 17 | NR | 845 | 0 | NR | 975 | 0 | NR |
| 460 | 98 | NR | 590 | 314 | NR | 720 | 15 | NR | 850 | 0 | NR | 980 | 0 | NR |
| 465 | 76 | NR | 595 | 310 | NR | 725 | 13 | NR | 855 | 0 | NR | 985 | 0 | NR |
| 470 | 53 | NR | 600 | 307 | NR | 730 | 11 | NR | 860 | 0 | NR | 990 | 0 | NR |
| 475 | 39 | NR | 605 | 303 | NR | 735 | 9 | NR | 865 | 0 | NR | 995 | 0 | NR |
| 480 | 35 | NR | 610 | 331 | NR | 740 | 8 | NR | 870 | 0 | NR | 1000 | 0 | NR |
| 485 | 36 | NR | 615 | 353 | NR | 745 | 7 | NR | 875 | 0 | NR | | | |

Summary

$R_f = 81.2$
 $R_g = 101.5$
 CIE $R_a = 83.4$
 $R_9 = 29.4$

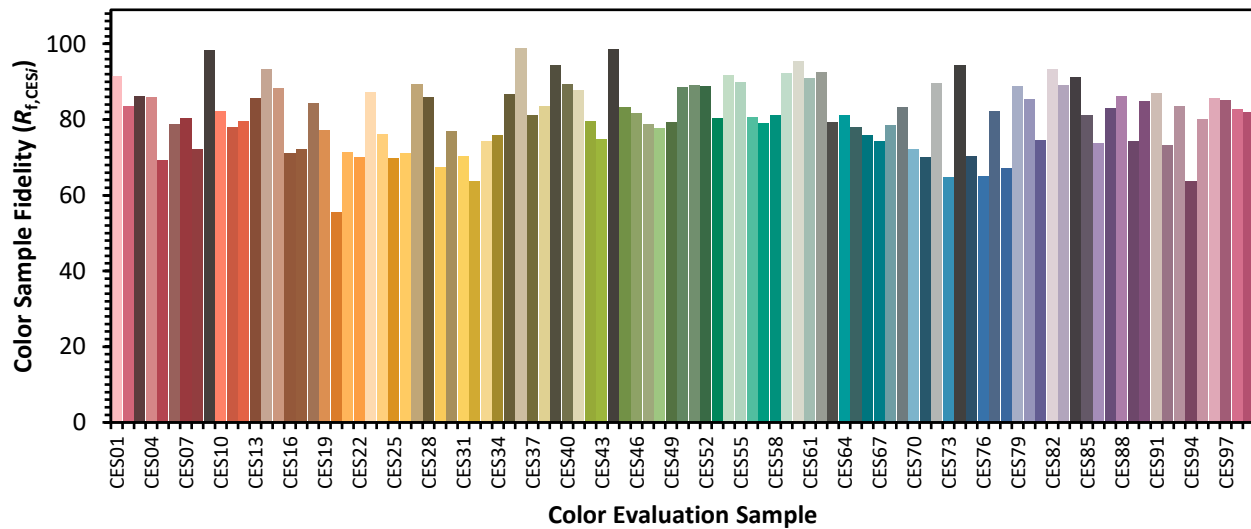


Color Vector Graphics

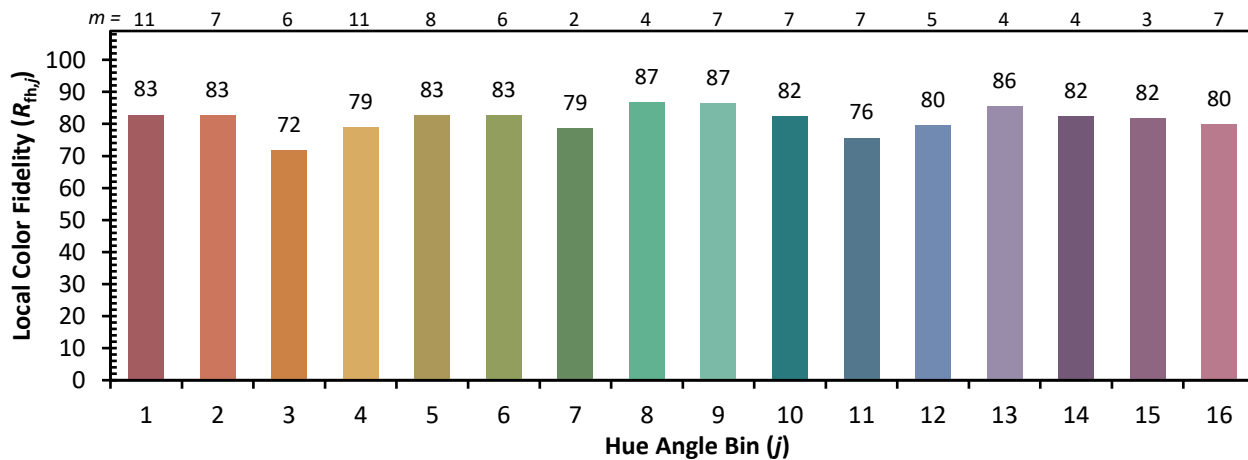
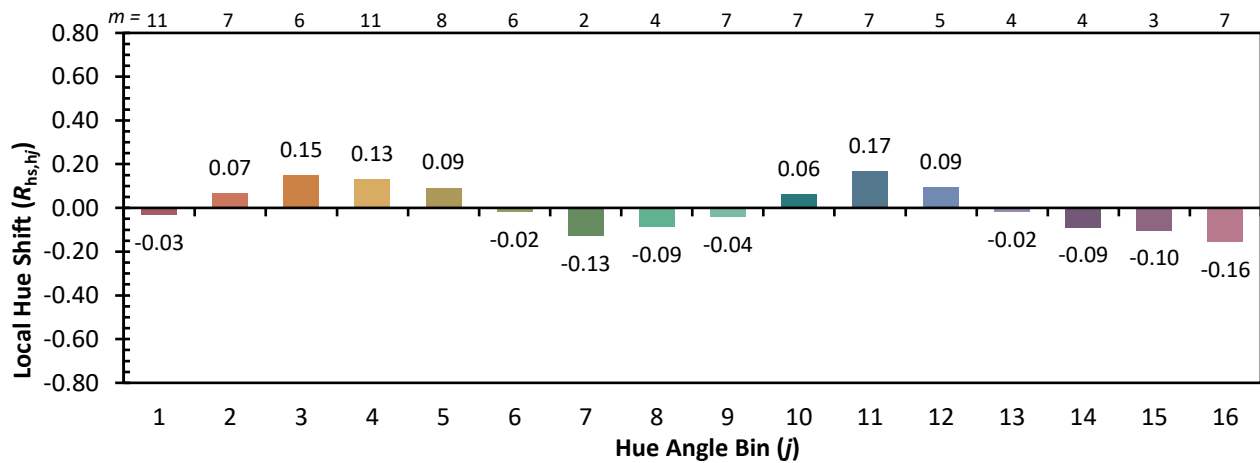
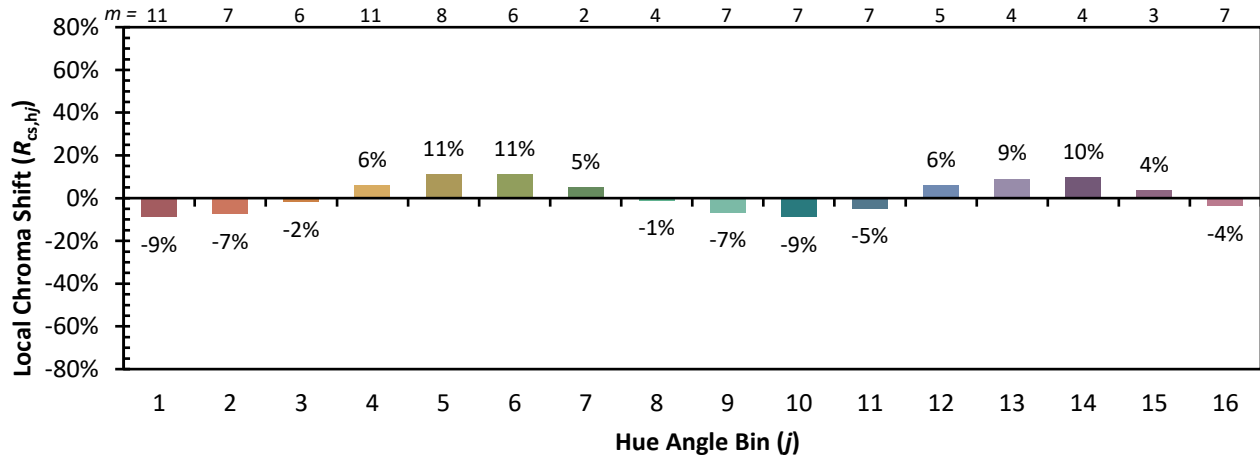


Individual Sample Fidelity Index ($R_{f,i}$)

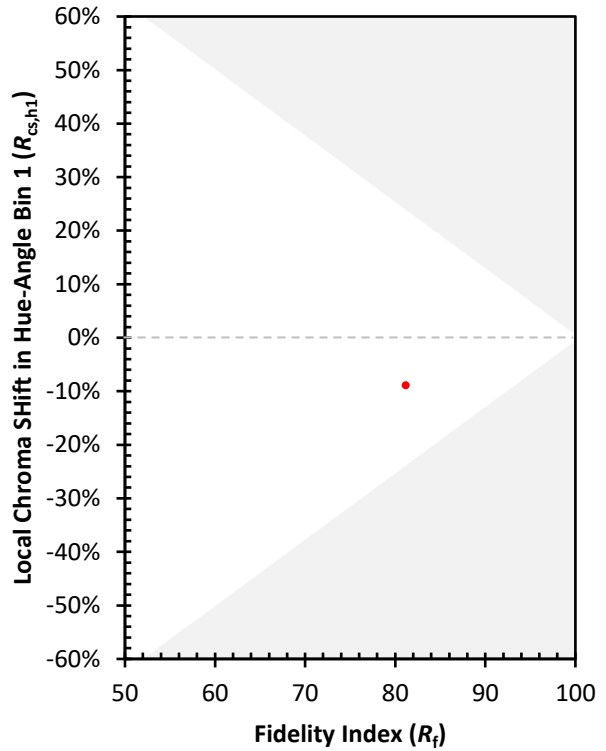
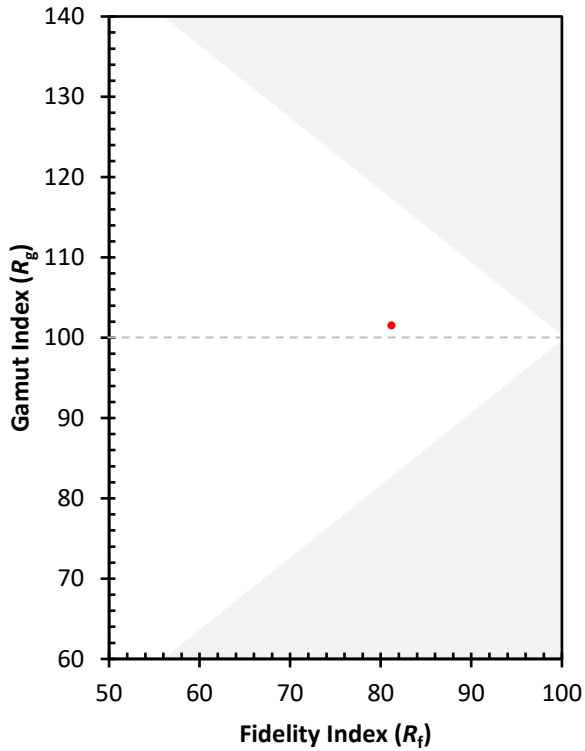
| | | | |
|------------|------------|------------|------------|
| CES01 = 86 | CES26 = 71 | CES51 = 89 | CES76 = 65 |
| CES02 = 63 | CES27 = 89 | CES52 = 89 | CES77 = 82 |
| CES03 = 31 | CES28 = 86 | CES53 = 80 | CES78 = 67 |
| CES04 = 70 | CES29 = 68 | CES54 = 92 | CES79 = 89 |
| CES05 = 50 | CES30 = 77 | CES55 = 90 | CES80 = 85 |
| CES06 = 51 | CES31 = 70 | CES56 = 81 | CES81 = 75 |
| CES07 = 43 | CES32 = 64 | CES57 = 79 | CES82 = 93 |
| CES08 = 41 | CES33 = 74 | CES58 = 81 | CES83 = 89 |
| CES09 = 29 | CES34 = 76 | CES59 = 92 | CES84 = 91 |
| CES10 = 76 | CES35 = 87 | CES60 = 96 | CES85 = 81 |
| CES11 = 59 | CES36 = 99 | CES61 = 91 | CES86 = 74 |
| CES12 = 65 | CES37 = 81 | CES62 = 93 | CES87 = 83 |
| CES13 = 44 | CES38 = 83 | CES63 = 79 | CES88 = 86 |
| CES14 = 74 | CES39 = 94 | CES64 = 81 | CES89 = 74 |
| CES15 = 72 | CES40 = 89 | CES65 = 78 | CES90 = 85 |
| CES16 = 48 | CES41 = 88 | CES66 = 76 | CES91 = 87 |
| CES17 = 50 | CES42 = 80 | CES67 = 74 | CES92 = 73 |
| CES18 = 57 | CES43 = 75 | CES68 = 79 | CES93 = 84 |
| CES19 = 72 | CES44 = 99 | CES69 = 83 | CES94 = 64 |
| CES20 = 67 | CES45 = 83 | CES70 = 72 | CES95 = 80 |
| CES21 = 87 | CES46 = 82 | CES71 = 70 | CES96 = 86 |
| CES22 = 79 | CES47 = 79 | CES72 = 90 | CES97 = 85 |
| CES23 = 92 | CES48 = 78 | CES73 = 65 | CES98 = 83 |
| CES24 = 91 | CES49 = 79 | CES74 = 94 | CES99 = 82 |
| CES25 = 72 | CES50 = 88 | CES75 = 70 | |



Color Rendition by Hue-Angle Bin



Measure Comparisons



(END OF REPORT)