

Cooper Lighting Solutions Photometric Lab
1121 Highway 74 South
Peachtree City, GA 30269



Scaled data based on original data using
LM-79-2019 Approved Method: Electrical and Photometric Measurements of Solid-
State Lighting Products

Test Report Prepared for
Cooper Lighting Solutions

Brand: METALUX

Report Number: P1444451

Luminaire Tested: EHBR1-30-UNV-TA-L830-UPL15

Issue Date: 5/1/2026

Test Information

Test Method: LM-79-2019
Report Number: P1444451
REPORT IS A COMBINATION OF REPORTS P1444312 AND P1431635
Test Lab: INNOVATION CENTER
Issue Date: 5/1/2026
Manufacturer: COOPER LIGHTING SOLUTIONS
Product Line: METALUX
Catalog Number: EHBR1-30-UNV-TA-L830-UPL15
Description: Elevate Round Highbay at, 30000 lumens, 3000K 80CRI LEDs with TA lens
Light Source: -
Ballast/Driver: -

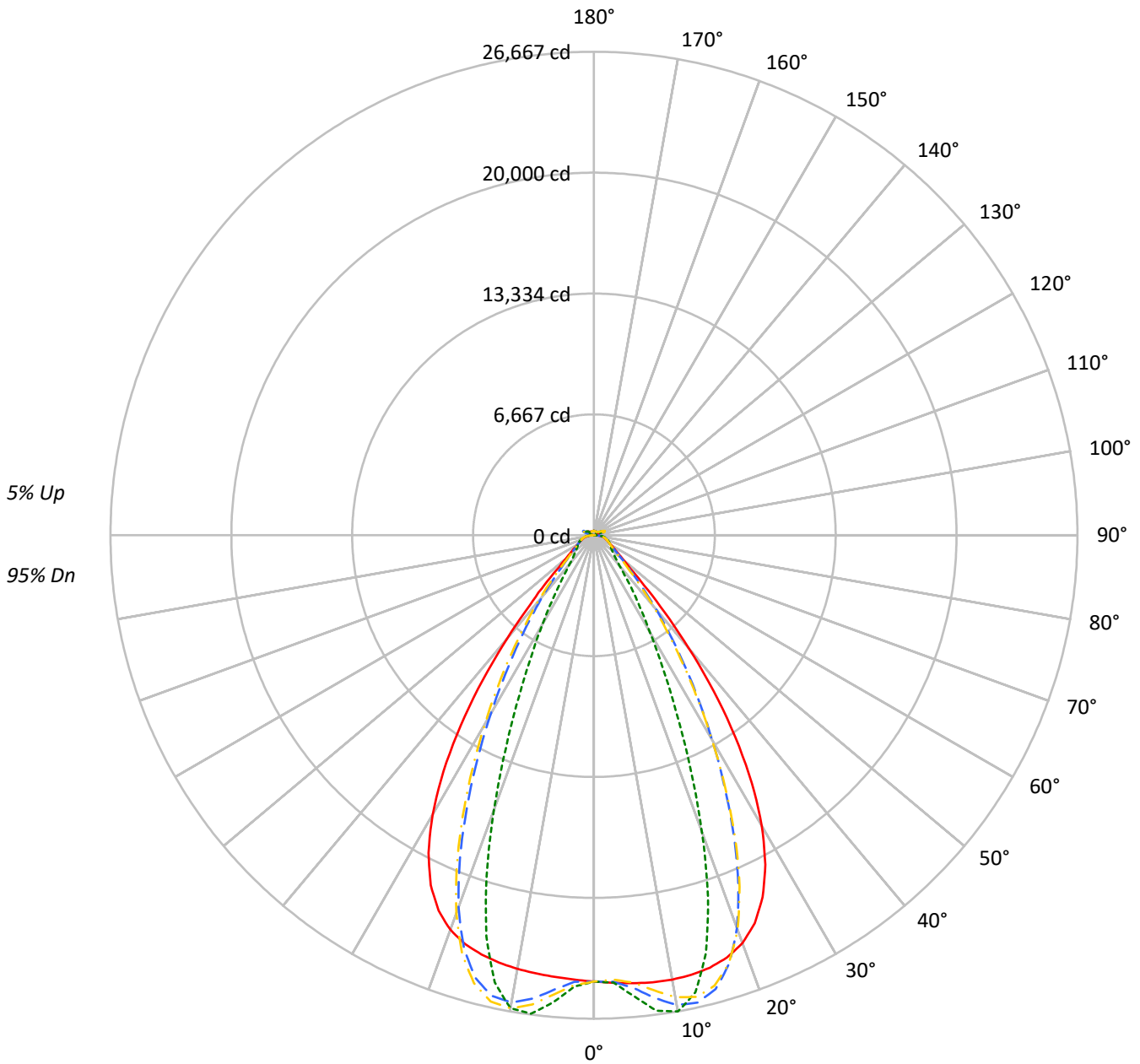
Summary

Lumens per Lamp: N/A
Luminaire Lumens: 29893.2 lumens
Efficiency: N/A
Efficacy: 176.8 lumens/watt
Spacing Criteria (0/90/45): 1.13 / 0.77 / 0.88
Luminous Opening: Vertical Cylinder (Dia: 1.71' x H: 0.1')
CIE Type: Direct

Input Watts (W): 169.1
Input Voltage (V): NR
Input Current (Ain): NR
Voltage Rise (V): NR
Power Factor: NR
Total Harmonic Distortion (THDi): NR
Frequency (hertz): 60
Stabilization Time: NR
Operation Time: NR
Ambient Temperature (°C): NR
Test Distance: 24 FT

TEST NUMBER: P1444451
CATALOG NUMBER: EHBR1-30-UNV-TA-L830-UPL15

Luminous Intensity Polar Plot



— 0°-180° - - 45°-225° - · - · 90°-270° - · - · 135°-315°



TEST NUMBER: P1444451
 CATALOG NUMBER: EHBR1-30-UNV-TA-L830-UPL15

COEFFICIENT OF UTILIZATION - ZONAL CAVITY METHOD:

RF	20				20				20				20				20				
RC	80				70				50				30				10			0	
RW	70	50	30	10	70	50	30	10	50	30	10	50	30	10	50	30	10	50	30	10	0
RCR																					
0	118	118	118	118	114	114	114	114	108	108	108	102	102	102	97	97	97	97	97	97	95
1	111	107	104	101	108	105	102	99	99	97	95	95	93	91	90	89	88	88	88	88	86
2	104	98	93	89	101	96	91	88	92	88	85	88	85	82	84	82	80	80	80	80	78
3	98	90	84	79	95	88	83	78	85	80	76	81	78	75	78	75	73	73	73	73	71
4	92	83	77	72	89	81	75	71	79	73	69	76	72	68	73	70	67	67	67	67	65
5	86	77	70	65	84	76	69	65	73	68	64	71	66	63	69	65	61	61	61	61	60
6	82	71	65	60	80	70	64	59	68	63	59	66	61	58	64	60	57	57	57	57	55
7	77	67	60	55	75	66	59	55	64	58	54	62	57	54	61	56	53	53	53	53	51
8	73	62	56	51	71	62	55	51	60	54	50	58	53	50	57	53	49	49	49	49	48
9	69	59	52	48	68	58	52	47	56	51	47	55	50	47	54	49	46	46	46	46	45
10	66	55	49	45	64	54	48	44	53	48	44	52	47	44	51	46	43	43	43	43	42

AVERAGE LUMINANCE (cd/sqm):

	0°	90°	180°	270°
0°	115600	115600	115600	115600
5°	116159	119546	114533	121112
10°	117129	125515	114320	124684
15°	117703	113778	114120	109197
20°	116486	84760	112674	78423
25°	110259	53606	106615	48638
30°	96320	32213	92589	29440
35°	74128	20213	69864	17906
40°	46893	12680	42903	11915
45°	24169	9879	23769	9716
50°	14171	8787	13736	8650
55°	10856	8313	10454	8238
60°	9186	8491	8795	8382
65°	8628	8869	8298	8566
70°	8429	9285	8008	8936
75°	9013	9848	8525	9413
80°	9326	10904	8455	9953
85°	8784	10524	7096	9011

MAXIMUM LUMINANCE 45°-90°:

Horizontal Angle: 25°
 Vertical Angle: 45°
 Luminance: 36988 cd/sqm



TEST NUMBER: P1444451
 CATALOG NUMBER: EHBR1-30-UNV-TA-L830-UPL15

ZONAL LUMENS:

Zone	Lumens	% Fixture
0°-10°	2426.0	8.1
10°-20°	6824.5	22.8
20°-30°	7772.6	26.0
30°-40°	5586.6	18.7
40°-50°	2576.5	8.6
50°-60°	1233.0	4.1
60°-70°	899.6	3.0
70°-80°	683.5	2.3
80°-90°	313.3	1.0
90°-100°	46.8	0.2
100°-110°	250.2	0.8
110°-120°	461.9	1.5
120°-130°	287.4	1.0
130°-140°	191.1	0.6
140°-150°	146.8	0.5
150°-160°	105.5	0.4
160°-170°	65.2	0.2
170°-180°	22.7	0.1
0°-30°	17023.0	56.9
0°-40°	22609.6	75.6
0°-60°	26419.1	88.4
0°-90°	28315.5	94.7
90°-120°	758.9	2.5
90°-150°	1384.2	4.6
90°-180°	1578.0	5.3
0°-180°	29893.2	100.0

CANDELA DISTRIBUTION:

	0°	90°	180°	270°	360°	Flux
0°	24616	24616	24616	24616	24616	
5°	24802	25525	24455	25859	24802	2370
15°	24694	23870	23942	22909	24694	6958
25°	22019	10705	21291	9713	22019	9982
35°	13605	3710	12823	3286	13605	8350
45°	3910	1598	3846	1572	3910	3326
55°	1467	1123	1413	1113	1467	1354
65°	901	926	866	894	901	899
75°	635	694	600	663	635	660
85°	302	362	244	310	302	284
90°	78	100	20	26	78	49
95°	21	23	21	24	21	20
105°	92	117	63	117	92	121
115°	405	487	424	487	405	374
125°	312	320	352	321	312	284
135°	254	219	273	222	254	198
145°	234	221	248	225	234	148
155°	224	222	238	225	224	104
165°	229	226	236	228	229	65
175°	237	238	241	239	237	23
180°	240	240	240	240	240	



TEST NUMBER: P1444451
 CATALOG NUMBER: EHBR1-30-UNV-TA-L830-UPL15

CANDELA DISTRIBUTION (FULL):

	0°	2.5°	5°	7.5°	10°	12.5°	15°	17.5°	20°	22.5°	25°
0°	24616.1	24616.1	24616.1	24616.1	24616.1	24616.1	24616.1	24616.1	24616.1	24616.1	24616.1
2.5°	24710.1	24708.1	24707.8	24706.0	24705.6	24705.6	24704.8	24702.7	24701.5	24698.7	24695.4
5°	24801.8	24800.7	24801.3	24801.5	24799.8	24796.0	24789.9	24782.6	24773.2	24764.5	24756.7
7.5°	24872.7	24874.4	24876.6	24876.2	24870.7	24861.8	24849.4	24842.5	24846.6	24860.0	24890.7
10°	24885.6	24896.2	24900.3	24899.0	24888.3	24880.6	24883.6	24909.6	24961.5	25030.8	25125.5
12.5°	24835.2	24848.2	24847.7	24843.4	24833.0	24843.6	24881.3	24959.0	25070.3	25206.8	25367.1
15°	24693.5	24710.3	24705.6	24700.0	24693.1	24727.8	24803.3	24938.1	25110.0	25302.6	25499.7
17.5°	24418.5	24438.7	24428.9	24422.5	24416.7	24481.8	24611.5	24808.9	25025.4	25243.3	25430.1
20°	23941.3	23954.9	23931.5	23920.5	23929.7	24057.4	24248.3	24500.5	24728.6	24934.6	25062.4
22.5°	23162.7	23179.5	23135.5	23130.3	23184.8	23380.8	23622.4	23904.2	24118.7	24282.0	24331.2
25°	22018.7	22035.2	21982.9	22014.2	22106.7	22373.8	22661.4	22962.9	23145.9	23266.8	23233.5
27.5°	20474.5	20489.7	20440.0	20503.9	20650.1	21001.0	21339.6	21666.7	21829.7	21914.5	21807.1
30°	18527.0	18558.5	18499.8	18589.0	18812.2	19267.7	19655.7	20022.4	20185.0	20249.5	20082.4
32.5°	16214.0	16258.7	16194.1	16326.7	16638.2	17185.3	17626.1	18036.0	18215.7	18289.3	18100.6
35°	13605.1	13669.4	13595.2	13794.3	14178.4	14787.7	15275.8	15733.3	15946.3	16050.7	15860.4
37.5°	10841.3	10902.4	10862.3	11127.9	11549.7	12181.3	12679.5	13173.0	13413.6	13570.2	13420.2
40°	8127.7	8183.7	8214.1	8517.8	8914.6	9509.8	9988.3	10476.7	10745.7	10942.4	10849.8
42.5°	5736.6	5793.0	5896.3	6189.3	6520.2	7013.0	7422.9	7861.3	8118.3	8328.0	8292.4
45°	3910.5	3976.0	4105.4	4345.4	4584.7	4938.2	5239.2	5580.2	5790.1	5982.2	5984.5
47.5°	2740.2	2786.3	2901.9	3065.8	3221.8	3664.3	3682.5	3850.1	3991.2	4134.8	4153.5
50°	2111.9	2139.6	2200.9	2292.2	2380.6	2495.5	2600.7	2722.2	2809.0	2887.7	2906.5
52.5°	1735.8	1753.4	1784.6	1834.1	1885.4	1947.9	2004.2	2070.9	2118.1	2160.2	2169.0
55°	1467.1	1481.7	1528.1	1537.5	1596.2	1607.5	1632.5	1673.1	1700.5	1725.8	1732.1
57.5°	1264.3	1274.9	1284.7	1305.8	1323.9	1350.1	1371.2	1400.4	1417.7	1436.0	1437.5
60°	1104.3	1111.9	1118.9	1133.5	1145.9	1164.1	1178.7	1198.5	1210.9	1224.6	1226.2
62.5°	985.2	990.7	995.3	1005.0	1013.7	1027.8	1039.4	1055.9	1067.5	1078.1	1080.4
65°	900.6	904.6	907.6	914.9	922.6	934.5	945.0	958.4	967.0	975.0	976.8
67.5°	825.5	829.4	832.5	839.1	844.4	853.3	860.4	870.5	876.9	883.4	883.6
70°	739.6	743.2	745.5	751.7	756.0	763.7	769.3	778.5	785.1	792.3	794.0
72.5°	680.1	682.2	685.4	691.1	697.0	705.2	712.7	722.3	730.2	737.7	740.8
75°	634.9	637.3	639.4	644.3	648.4	655.3	660.9	669.7	676.6	684.5	688.5
77.5°	569.5	572.4	574.2	579.1	582.6	589.3	593.4	601.2	606.9	614.2	617.8
80°	490.6	493.3	494.6	499.1	502.0	508.1	512.2	519.7	524.4	531.7	536.0
82.5°	403.2	405.7	406.4	410.7	412.2	417.3	420.3	428.0	433.8	443.3	449.9
85°	301.9	302.8	304.2	303.1	309.3	309.7	316.6	317.8	327.0	329.3	339.7
87.5°	184.5	187.3	188.7	192.9	194.6	198.9	200.2	204.7	207.1	212.2	214.6
90°	78.3	82.5	84.0	89.0	90.4	94.8	95.9	100.8	102.3	107.4	109.5
92.5°	18.8	20.0	21.0	22.4	23.5	25.2	26.6	27.8	29.0	30.6	33.0
95°	21.3	22.6	23.9	25.1	26.4	27.7	29.0	30.3	31.6	32.9	36.5
97.5°	26.4	27.5	28.7	29.8	30.9	32.0	33.2	34.3	35.4	36.4	40.9
100°	34.0	34.9	35.9	36.8	37.7	38.8	39.7	40.7	41.6	42.5	50.8
102.5°	55.2	58.5	61.9	65.2	68.6	71.8	75.3	78.5	81.9	85.2	102.8
105°	92.0	101.0	110.3	119.2	128.3	137.5	146.6	155.5	164.7	173.7	202.4
107.5°	155.3	172.1	188.9	205.8	222.7	239.4	256.3	273.1	289.9	306.6	335.7
110°	284.4	297.8	311.4	324.9	338.3	352.0	365.5	378.8	392.4	405.8	427.0



TEST NUMBER: P1444451
 CATALOG NUMBER: EHBR1-30-UNV-TA-L830-UPL15

CANDELA DISTRIBUTION (continued):

	0°	2.5°	5°	7.5°	10°	12.5°	15°	17.5°	20°	22.5°	25°
112.5°	382.7	388.7	394.8	400.9	407.0	413.0	419.1	425.1	431.2	437.2	452.2
115°	404.8	406.9	409.1	411.0	413.2	415.1	417.2	419.1	421.1	423.0	433.2
117.5°	394.9	394.4	394.0	393.6	392.9	392.4	391.8	391.3	390.6	390.0	395.6
120°	370.7	368.7	366.7	364.6	362.6	360.4	358.4	356.2	354.0	351.7	354.1
122.5°	339.7	337.3	335.1	332.5	330.1	327.5	325.0	322.2	319.8	317.2	317.9
125°	311.5	309.0	306.8	304.1	301.6	299.0	296.4	293.7	291.0	288.2	288.5
127.5°	287.4	285.6	283.9	281.9	279.9	278.0	276.0	273.8	271.9	269.6	269.5
130°	272.7	271.2	269.5	267.6	265.8	264.0	262.0	260.0	258.2	256.0	255.8
132.5°	261.2	260.0	258.8	257.4	256.0	254.3	252.9	251.0	249.6	248.0	247.9
135°	254.3	253.1	252.0	250.7	249.4	247.8	246.3	244.7	243.1	241.5	241.5
137.5°	248.7	247.8	246.6	245.3	244.0	242.4	241.1	239.5	238.0	236.4	236.4
140°	243.7	242.7	241.8	240.5	239.3	237.9	236.5	235.1	233.7	232.1	232.2
142.5°	237.6	236.7	236.0	234.9	233.9	232.7	231.5	230.1	229.0	227.6	227.9
145°	234.2	233.4	232.7	231.9	230.9	229.7	228.7	227.5	226.5	225.3	225.6
147.5°	231.2	230.5	230.0	229.2	228.5	227.4	226.5	225.4	224.5	223.5	223.9
150°	228.6	228.0	227.5	226.8	225.9	225.1	224.2	223.3	222.4	221.3	221.7
152.5°	225.6	224.9	224.4	223.7	222.9	222.0	221.4	220.4	219.6	218.6	218.9
155°	224.5	223.9	223.2	222.6	221.8	221.2	220.3	219.5	218.7	217.8	218.1
157.5°	224.4	223.8	223.3	222.6	222.2	221.5	220.9	220.1	219.5	218.8	218.9
160°	225.6	225.0	224.4	223.8	223.2	222.5	221.9	221.2	220.7	219.9	220.1
162.5°	226.8	226.1	225.6	224.9	224.4	223.8	223.2	222.7	222.1	221.3	221.4
165°	228.6	228.2	227.7	227.2	226.9	226.4	225.9	225.4	224.9	224.3	224.4
167.5°	231.9	231.4	231.0	230.4	230.0	229.6	229.0	228.5	228.1	227.4	227.5
170°	233.9	233.4	233.2	233.0	232.6	232.2	231.9	231.6	231.2	230.8	230.9
172.5°	236.0	235.6	235.4	235.2	234.8	234.6	234.4	234.1	233.9	233.5	233.8
175°	236.7	236.4	236.3	236.1	236.1	235.9	235.8	235.6	235.6	235.3	235.4
177.5°	238.5	238.4	238.4	238.3	238.3	238.2	238.1	237.9	237.8	237.8	237.9
180°	239.9	239.9	239.9	239.9	239.9	239.9	239.9	239.9	239.9	239.9	239.9



TEST NUMBER: P1444451
 CATALOG NUMBER: EHBR1-30-UNV-TA-L830-UPL15

CANDELA DISTRIBUTION (continued):

	27.5°	30°	32.5°	35°	37.5°	40°	42.5°	45°	47.5°	50°	52.5°
0°	24616.1	24616.1	24616.1	24616.1	24616.1	24616.1	24616.1	24616.1	24616.1	24616.1	24616.1
2.5°	24693.1	24690.1	24685.9	24680.8	24676.3	24671.0	24658.8	24655.1	24659.2	24662.0	24667.6
5°	24751.7	24753.5	24754.1	24765.3	24775.0	24799.2	24988.6	25063.8	25122.1	25159.0	25215.1
7.5°	24928.6	24985.6	25041.9	25117.6	25182.9	25271.1	25602.4	25743.5	25843.7	25915.8	26004.5
10°	25228.4	25352.7	25469.1	25605.6	25723.0	25857.4	26165.7	26303.2	26389.9	26453.0	26512.0
12.5°	25530.4	25702.7	25858.4	26010.3	26137.4	26253.8	26362.3	26410.4	26414.4	26416.5	26385.2
15°	25687.6	25852.4	25989.6	26090.1	26164.7	26197.7	26011.0	25913.0	25789.2	25687.2	25519.4
17.5°	25588.4	25687.2	25746.5	25740.7	25709.8	25606.5	25077.6	24786.6	24497.8	24237.5	23896.3
20°	25147.1	25139.6	25088.0	24941.9	24765.9	24492.2	23585.4	23062.2	22556.3	22112.0	21573.1
22.5°	24326.1	24197.0	24016.8	23701.9	23352.1	22874.0	21574.4	20804.8	20100.6	19478.5	18781.6
25°	23136.6	22870.9	22538.6	22038.7	21495.0	20797.7	19195.9	18238.7	17393.1	16659.8	15855.7
27.5°	21614.3	21213.9	20727.1	20035.2	19298.5	18405.1	16629.3	15572.9	14665.2	13879.0	13023.2
30°	19811.9	19291.2	18662.7	17803.8	16915.4	15902.0	14100.9	13030.9	12112.2	11303.5	10446.9
32.5°	17775.1	17165.3	16428.7	15464.8	14503.9	13462.1	11722.7	10687.0	9809.3	9031.2	8256.1
35°	15528.7	14874.7	14095.4	13112.2	12157.2	11144.2	9548.2	8614.3	7839.3	7151.5	6525.6
37.5°	13118.9	12476.8	11736.1	10809.5	9923.9	9006.0	7628.8	6846.3	6195.9	5625.0	5141.7
40°	10613.5	10051.5	9410.6	8609.6	7853.7	7089.3	5958.9	5337.6	4824.4	4389.0	4026.9
42.5°	8138.6	7703.2	7211.7	6578.7	6000.3	5418.2	4548.2	4087.9	3707.8	3394.4	3138.3
45°	5904.8	5613.6	5284.0	4843.8	4443.7	4037.7	3418.4	3095.0	2847.4	2645.3	2474.4
47.5°	4127.8	3958.8	3948.5	3541.8	3248.3	3000.1	2601.1	2396.9	2245.2	2122.8	2014.6
50°	2898.8	2817.1	2715.5	2570.4	2434.2	2293.9	2050.8	1927.4	1838.5	1764.3	1695.9
52.5°	2167.1	2124.6	2070.6	1993.6	1919.8	1840.8	1687.0	1608.4	1580.5	1511.4	1457.2
55°	1730.9	1706.6	1675.8	1630.5	1585.7	1567.7	1435.9	1377.5	1340.5	1313.3	1284.1
57.5°	1437.8	1419.7	1401.4	1370.7	1344.7	1313.3	1243.3	1213.3	1191.4	1175.3	1155.1
60°	1226.4	1215.6	1205.4	1187.4	1173.3	1156.4	1111.9	1095.0	1083.6	1073.8	1061.0
62.5°	1082.5	1076.8	1071.6	1062.0	1054.9	1045.6	1015.3	1007.1	1001.4	996.6	988.8
65°	978.6	974.6	971.6	965.2	961.6	956.3	930.2	924.7	921.2	919.4	914.9
67.5°	884.1	879.9	878.0	873.5	872.0	868.6	847.3	844.3	843.0	843.6	842.0
70°	795.8	794.0	795.0	794.2	796.3	796.9	783.9	783.8	785.2	788.0	788.2
72.5°	742.9	742.9	743.9	744.3	746.3	747.2	736.4	735.9	736.5	738.5	738.6
75°	692.5	693.4	696.1	697.0	699.3	699.7	685.5	683.9	684.0	685.9	685.2
77.5°	622.8	625.8	631.1	633.8	638.2	638.9	623.0	621.1	621.2	623.1	621.4
80°	543.8	549.5	557.8	563.5	570.3	573.0	556.6	552.7	549.0	548.4	545.2
82.5°	459.7	466.8	476.7	481.8	489.1	490.7	463.3	458.1	455.0	455.2	452.2
85°	351.0	356.2	365.3	368.2	372.7	372.3	341.0	327.5	331.0	325.5	329.9
87.5°	220.1	223.2	228.9	229.6	231.7	231.3	199.7	193.5	191.7	191.7	189.5
90°	115.0	117.4	122.7	123.2	126.9	126.7	101.6	99.1	96.5	97.4	93.9
92.5°	35.6	37.7	40.3	42.6	45.1	47.5	47.0	48.5	46.4	43.8	41.8
95°	40.4	44.1	48.0	51.7	55.5	59.3	63.1	66.9	63.3	59.8	56.2
97.5°	45.4	49.8	54.2	58.7	63.2	67.6	72.1	76.6	72.9	68.8	65.1
100°	59.1	67.4	75.8	84.2	92.5	100.8	109.1	117.5	110.2	102.7	95.4
102.5°	120.4	138.2	155.8	173.4	191.0	208.8	226.6	244.3	227.4	210.5	193.6
105°	231.1	259.7	288.3	316.8	345.5	374.0	403.0	431.6	404.7	377.8	350.8
107.5°	364.8	393.8	422.7	451.7	480.8	509.8	539.3	568.3	542.0	515.6	489.2
110°	448.2	469.2	490.4	511.4	532.5	553.7	575.3	596.5	580.8	564.8	548.9



TEST NUMBER: P1444451
 CATALOG NUMBER: EHBR1-30-UNV-TA-L830-UPL15

CANDELA DISTRIBUTION (continued):

	27.5°	30°	32.5°	35°	37.5°	40°	42.5°	45°	47.5°	50°	52.5°
112.5°	467.2	482.3	497.4	512.3	527.3	542.3	558.2	573.4	565.2	557.1	549.1
115°	443.2	453.5	463.4	473.4	483.5	493.6	504.5	514.8	512.1	509.3	506.6
117.5°	401.1	406.6	412.2	417.7	423.1	428.5	435.5	441.1	441.2	441.5	441.7
120°	356.3	358.5	360.6	362.8	364.8	366.9	370.7	373.1	375.0	376.7	378.6
122.5°	318.6	319.2	319.8	320.4	320.9	321.6	323.9	324.9	326.1	327.2	328.4
125°	288.6	288.8	288.9	289.0	289.0	289.2	291.3	291.7	291.6	291.2	291.0
127.5°	269.2	269.0	268.7	268.5	268.1	267.9	269.7	269.9	268.6	267.4	266.0
130°	255.8	255.6	255.4	255.3	255.2	255.1	257.2	257.6	255.6	253.6	251.6
132.5°	247.8	247.8	247.5	247.6	247.4	247.2	249.7	250.2	248.0	245.7	243.5
135°	241.3	241.4	241.4	241.3	241.2	241.4	244.1	244.7	242.6	240.4	238.2
137.5°	236.2	236.3	236.2	236.4	236.3	236.4	239.4	240.1	238.5	236.5	234.8
140°	232.3	232.4	232.5	232.7	232.8	233.1	236.3	237.2	235.9	234.3	232.9
142.5°	228.1	228.5	228.7	229.2	229.5	230.0	233.8	234.9	233.9	232.6	231.6
145°	225.8	226.5	226.9	227.3	227.8	228.5	232.7	234.1	233.3	232.6	231.7
147.5°	224.0	224.5	224.9	225.4	225.8	226.6	231.1	232.5	232.0	231.4	230.8
150°	222.0	222.6	222.9	223.5	224.2	224.8	230.0	231.6	231.2	230.7	230.1
152.5°	219.3	219.7	220.0	220.6	221.1	221.7	228.0	229.8	229.5	228.9	228.6
155°	218.3	218.5	218.7	219.1	219.4	220.0	226.9	228.7	228.4	228.1	227.8
157.5°	219.0	219.0	219.1	219.3	219.6	219.8	227.0	229.0	228.7	228.4	228.1
160°	220.0	220.1	220.0	220.2	220.2	220.4	227.8	229.8	229.6	229.2	228.9
162.5°	221.6	221.9	221.9	222.1	222.2	222.5	230.0	232.1	231.6	231.3	230.9
165°	224.4	224.4	224.4	224.5	224.5	224.7	231.6	233.5	233.3	233.0	232.7
167.5°	227.4	227.6	227.6	227.8	227.8	228.1	234.6	236.3	236.1	235.8	235.6
170°	230.8	231.0	231.1	231.2	231.4	231.6	237.0	238.5	238.3	237.8	237.5
172.5°	233.9	234.2	234.4	234.5	234.6	234.9	239.5	240.8	240.6	240.4	240.0
175°	235.6	235.6	235.8	236.1	236.2	236.3	240.0	241.0	240.9	240.7	240.5
177.5°	238.1	238.2	238.4	238.5	238.7	238.9	241.1	241.8	241.7	241.7	241.6
180°	239.9	239.9	239.9	239.9	239.9	239.9	239.9	239.9	239.9	239.9	239.9



TEST NUMBER: P1444451
 CATALOG NUMBER: EHBR1-30-UNV-TA-L830-UPL15

CANDELA DISTRIBUTION (continued):

	55°	57.5°	60°	62.5°	65°	67.5°	70°	72.5°	75°	77.5°	80°
0°	24616.1	24616.1	24616.1	24616.1	24616.1	24616.1	24616.1	24616.1	24616.1	24616.1	24616.1
2.5°	24668.9	24677.6	24678.8	24688.9	24688.2	24700.2	24698.3	24708.1	24702.3	24710.5	24703.6
5°	25248.3	25300.9	25328.3	25379.6	25395.8	25441.7	25454.7	25496.6	25498.2	25531.5	25523.9
7.5°	26067.5	26144.9	26190.8	26254.3	26286.4	26339.2	26362.5	26401.5	26414.2	26445.2	26447.5
10°	26556.6	26594.2	26620.5	26638.2	26654.3	26661.9	26670.7	26668.4	26670.7	26667.3	26674.8
12.5°	26364.2	26309.3	26273.0	26204.2	26164.3	26088.4	26051.0	25977.9	25951.4	25888.7	25879.6
15°	25389.8	25198.4	25063.1	24866.5	24742.9	24549.4	24436.2	24261.6	24181.9	24043.2	24006.7
17.5°	23613.7	23258.5	22983.5	22630.8	22386.0	22056.4	21849.1	21576.2	21426.8	21206.8	21130.7
20°	21123.8	20598.1	20185.7	19694.4	19342.8	18904.7	18624.3	18270.6	18065.2	17794.9	17685.4
22.5°	18200.5	17546.0	17031.0	16450.5	16026.3	15538.1	15202.1	14819.4	14596.0	14302.4	14172.4
25°	15187.4	14465.7	13893.1	13281.6	12833.4	12343.9	12007.9	11632.0	11400.8	11122.0	10992.8
27.5°	12305.7	11575.2	11021.8	10453.2	10042.1	9600.5	9297.3	8969.0	8763.8	8525.9	8404.4
30°	9762.8	9118.4	8647.4	8175.6	7833.6	7474.9	7223.0	6950.9	6770.9	6567.2	6451.4
32.5°	7690.8	7193.4	6824.7	6450.3	6170.4	5870.6	5652.9	5412.9	5250.3	5068.4	4963.6
35°	6091.0	5704.6	5410.4	5102.3	4861.7	4606.5	4414.6	4207.4	4061.7	3905.0	3814.5
37.5°	4812.5	4505.2	4263.1	4007.1	3809.7	3598.2	3527.0	3289.3	3138.2	3013.1	2926.6
40°	3776.9	3532.5	3332.2	3136.5	2975.4	2815.0	2686.3	2559.3	2461.8	2372.3	2310.5
42.5°	2949.5	2772.4	2626.2	2482.7	2365.2	2248.4	2155.1	2067.6	2001.9	1943.5	1903.6
45°	2344.7	2222.9	2121.3	2020.3	1937.4	1859.4	1796.6	1740.8	1698.3	1663.2	1638.3
47.5°	1926.2	1842.9	1771.1	1703.0	1646.7	1595.6	1553.5	1539.9	1494.2	1463.5	1451.8
50°	1637.0	1586.7	1532.2	1482.0	1444.3	1406.9	1379.7	1353.0	1335.8	1321.7	1317.5
52.5°	1421.2	1382.7	1352.4	1320.6	1295.7	1269.1	1250.3	1232.5	1223.2	1215.8	1214.8
55°	1260.7	1233.8	1213.7	1192.3	1177.5	1161.9	1152.2	1142.8	1138.7	1134.9	1135.2
57.5°	1139.3	1121.3	1108.2	1094.4	1086.4	1078.9	1076.5	1074.0	1075.3	1075.9	1078.0
60°	1050.8	1039.1	1030.9	1023.0	1019.6	1017.2	1019.0	1021.1	1025.4	1028.9	1032.0
62.5°	983.0	976.3	972.3	968.1	967.7	967.9	971.6	975.0	980.5	984.5	987.5
65°	913.2	909.4	908.1	905.3	906.7	907.6	912.0	914.7	920.0	923.2	927.1
67.5°	842.7	841.8	842.6	842.6	845.1	847.2	851.4	854.5	859.1	862.0	865.1
70°	790.6	791.0	792.9	793.2	795.9	797.3	801.0	803.0	807.1	809.6	813.3
72.5°	740.0	739.2	739.6	738.4	739.3	739.0	740.9	742.0	745.4	747.4	751.9
75°	686.0	683.8	683.2	680.8	680.9	679.1	680.0	679.9	682.1	683.0	686.3
77.5°	620.9	617.1	615.2	611.1	611.0	609.5	611.1	612.1	616.2	618.0	621.8
80°	543.0	537.0	534.2	529.5	530.4	530.1	534.0	537.1	542.0	542.9	547.7
82.5°	451.3	445.2	442.3	437.6	438.8	438.8	442.5	443.1	447.4	449.2	454.7
85°	323.2	325.5	319.0	319.5	318.1	320.6	323.2	326.3	329.8	335.7	340.3
87.5°	190.3	189.5	191.7	192.0	195.3	197.1	202.3	205.3	211.3	215.9	224.3
90°	93.7	90.3	91.7	90.3	93.1	91.8	94.4	92.6	95.8	95.9	100.1
92.5°	39.0	36.9	34.2	31.9	29.4	27.4	25.9	25.0	23.6	22.9	21.5
95°	52.6	49.2	45.6	42.1	38.6	35.0	33.7	32.4	31.2	29.9	28.6
97.5°	61.3	57.5	53.7	49.8	46.0	42.2	41.4	40.6	39.6	38.8	37.9
100°	88.0	80.6	73.3	65.9	58.5	51.2	50.6	49.8	49.2	48.5	47.8
102.5°	176.9	159.9	143.1	126.3	109.5	92.7	89.8	86.9	83.9	81.0	78.1
105°	323.8	296.8	270.0	243.0	216.2	189.2	181.3	173.0	165.0	157.0	149.0
107.5°	462.9	436.6	410.4	384.1	357.8	331.6	318.9	306.2	293.4	280.7	268.1
110°	532.9	517.1	501.3	485.3	469.6	453.8	441.6	429.6	417.3	405.2	393.1



TEST NUMBER: P1444451
 CATALOG NUMBER: EHBR1-30-UNV-TA-L830-UPL15

CANDELA DISTRIBUTION (continued):

	55°	57.5°	60°	62.5°	65°	67.5°	70°	72.5°	75°	77.5°	80°
112.5°	540.9	533.0	524.9	517.0	509.1	501.0	495.1	489.1	483.2	477.3	471.3
115°	503.8	501.1	498.4	495.8	493.2	490.5	489.9	489.6	489.0	488.5	488.1
117.5°	441.8	442.1	442.2	442.5	442.9	443.2	446.2	449.1	452.1	455.3	458.4
120°	380.4	382.3	384.1	385.9	387.8	389.9	393.8	397.9	401.8	406.2	410.4
122.5°	329.4	330.6	331.6	333.0	334.1	335.3	339.2	343.2	347.1	351.3	355.5
125°	290.6	290.2	290.0	289.6	289.3	289.2	292.2	295.4	298.6	302.1	305.3
127.5°	264.7	263.3	262.0	260.7	259.3	258.1	259.7	261.5	263.1	265.0	266.9
130°	249.4	247.5	245.3	243.4	241.1	239.1	239.6	240.1	240.5	241.1	241.7
132.5°	241.1	238.9	236.4	234.1	231.7	229.4	228.9	228.6	228.1	227.9	227.6
135°	236.0	233.9	231.5	229.2	227.0	224.8	223.9	222.9	222.2	221.4	220.8
137.5°	233.0	231.1	229.3	227.5	225.5	223.7	222.5	221.5	220.4	219.7	218.6
140°	231.3	229.8	228.1	226.6	225.0	223.6	222.5	221.6	220.8	220.0	219.2
142.5°	230.1	229.1	227.8	226.7	225.4	224.2	223.3	222.5	221.5	220.8	220.0
145°	230.8	230.1	229.1	228.2	227.4	226.6	225.7	225.0	224.2	223.7	223.1
147.5°	230.2	229.7	229.0	228.4	227.6	227.0	226.4	226.0	225.3	224.9	224.3
150°	229.5	229.0	228.4	228.0	227.2	226.7	226.2	225.8	225.4	225.2	224.7
152.5°	227.9	227.5	227.0	226.5	225.8	225.4	225.0	224.7	224.3	224.1	223.5
155°	227.3	227.0	226.5	226.1	225.6	225.3	224.8	224.3	224.1	223.7	223.2
157.5°	227.7	227.4	227.0	226.7	226.1	225.7	225.4	225.0	224.5	224.2	223.9
160°	228.6	228.3	227.8	227.5	227.2	226.8	226.2	225.8	225.3	224.9	224.4
162.5°	230.4	230.1	229.7	229.2	228.7	228.4	227.9	227.5	227.2	226.8	226.3
165°	232.3	231.9	231.6	231.2	231.0	230.6	230.1	229.7	229.1	228.7	228.2
167.5°	235.2	234.9	234.6	234.3	233.8	233.5	233.1	232.7	232.2	231.7	231.3
170°	237.3	236.9	236.6	236.1	235.8	235.4	235.0	234.6	234.1	233.8	233.3
172.5°	239.7	239.6	239.3	239.0	238.6	238.3	238.0	237.6	237.3	236.9	236.7
175°	240.5	240.4	240.3	240.0	239.9	239.7	239.5	239.4	239.2	239.1	238.9
177.5°	241.6	241.5	241.5	241.3	241.2	241.2	241.0	240.9	240.7	240.5	240.5
180°	239.9	239.9	239.9	239.9	239.9	239.9	239.9	239.9	239.9	239.9	239.9



TEST NUMBER: P1444451
 CATALOG NUMBER: EHBR1-30-UNV-TA-L830-UPL15

CANDELA DISTRIBUTION (continued):

	82.5°	85°	87.5°	90°	92.5°	95°	97.5°	100°	102.5°	105°	107.5°
0°	24616.1	24616.1	24616.1	24616.1	24616.1	24616.1	24616.1	24616.1	24616.1	24616.1	24616.1
2.5°	24710.8	24704.5	24707.5	24695.9	24698.7	24684.7	24683.4	24667.6	24666.1	24651.2	24645.7
5°	25547.4	25533.7	25549.2	25525.0	25529.7	25498.2	25495.6	25455.0	25440.9	25390.0	25367.9
7.5°	26466.9	26461.7	26471.2	26451.0	26450.3	26422.2	26410.7	26374.2	26351.5	26298.1	26263.9
10°	26668.4	26673.2	26665.4	26667.3	26656.3	26653.3	26642.1	26634.9	26616.7	26602.8	26582.4
12.5°	25831.9	25836.9	25805.0	25825.3	25809.2	25846.6	25843.6	25887.5	25894.3	25949.9	25971.0
15°	23898.6	23892.6	23831.4	23870.0	23849.3	23931.2	23949.5	24059.7	24118.7	24260.2	24347.1
17.5°	20978.2	20962.4	20876.1	20923.2	20899.3	21020.0	21060.6	21236.8	21346.8	21574.7	21737.2
20°	17496.9	17466.6	17365.7	17420.7	17396.1	17533.3	17591.2	17804.2	17945.9	18247.9	18462.8
22.5°	13972.2	13924.6	13825.7	13877.1	13853.8	13995.9	14071.2	14285.0	14447.4	14757.4	15008.1
25°	10807.2	10764.7	10669.2	10705.1	10696.5	10816.7	10883.6	11085.9	11245.4	11540.7	11780.1
27.5°	8242.9	8198.6	8112.4	8137.8	8129.0	8231.5	8294.7	8463.5	8600.8	8849.4	9059.6
30°	6308.7	6255.3	6182.2	6196.2	6190.2	6273.2	6332.2	6474.4	6592.1	6802.2	6983.3
32.5°	4835.7	4782.0	4714.7	4721.3	4712.5	4777.6	4826.2	4949.9	5052.4	5231.1	5388.7
35°	3699.9	3762.6	3619.0	3709.9	3615.2	3754.3	3704.3	3781.6	3869.8	4020.4	4151.8
37.5°	2844.4	2800.7	2763.8	2759.8	2759.6	2791.9	2829.9	2904.3	2982.0	3094.1	3210.0
40°	2254.0	2223.4	2199.5	2197.7	2199.5	2222.3	2250.4	2302.0	2358.8	2439.4	2524.5
42.5°	1869.5	1849.2	1834.7	1833.7	1838.3	1854.5	1874.1	1904.6	1941.6	1993.9	2052.2
45°	1618.1	1606.7	1598.7	1598.3	1600.4	1608.8	1620.0	1639.1	1662.6	1695.2	1732.1
47.5°	1441.6	1438.9	1433.8	1434.0	1431.8	1435.2	1436.5	1447.2	1459.7	1484.2	1532.5
50°	1313.2	1313.2	1309.7	1309.5	1306.2	1306.1	1303.3	1307.6	1313.4	1328.6	1344.0
52.5°	1211.6	1211.3	1207.5	1206.8	1203.3	1203.1	1200.8	1202.5	1203.2	1210.9	1220.2
55°	1132.3	1129.9	1125.0	1123.4	1122.1	1124.1	1123.1	1123.2	1122.2	1125.5	1128.2
57.5°	1075.3	1072.3	1067.6	1066.2	1065.9	1068.2	1068.3	1067.5	1063.2	1060.3	1056.1
60°	1030.3	1027.2	1022.1	1020.8	1021.6	1024.9	1024.7	1021.9	1015.6	1010.1	1003.5
62.5°	986.0	984.8	982.1	981.9	981.2	981.8	979.4	976.5	970.2	964.3	957.3
65°	926.6	927.2	925.4	925.7	923.3	922.9	919.5	916.7	910.3	905.0	897.7
67.5°	865.0	865.4	863.8	863.8	862.7	862.9	860.7	858.1	852.7	848.4	842.8
70°	814.1	815.4	814.5	814.7	813.3	812.8	809.5	807.0	801.4	797.7	792.7
72.5°	753.3	756.0	755.9	756.6	754.4	753.3	749.4	746.2	741.1	738.2	734.2
75°	687.6	691.2	692.1	693.7	690.6	688.9	684.6	682.1	678.0	676.3	673.7
77.5°	623.5	627.4	631.2	634.6	629.6	625.1	619.7	615.6	609.8	607.5	603.4
80°	551.4	558.5	566.7	573.6	564.6	555.5	546.7	540.1	532.3	529.1	524.0
82.5°	457.5	464.6	469.4	473.9	467.5	460.9	452.3	446.5	438.2	435.1	429.1
85°	347.6	356.4	359.2	361.7	357.6	354.1	346.0	335.2	329.9	321.6	317.3
87.5°	228.7	233.9	234.9	235.8	233.2	231.6	226.3	221.3	212.2	205.6	197.6
90°	99.3	102.1	99.5	100.1	97.6	98.6	94.0	92.9	86.2	84.0	78.0
92.5°	20.5	19.1	18.1	16.9	18.5	19.2	20.7	21.5	22.8	23.6	25.0
95°	27.3	26.0	24.7	23.4	24.4	25.5	26.5	27.5	28.6	29.6	30.6
97.5°	37.1	36.2	35.3	34.5	35.0	35.7	36.3	36.9	37.5	38.1	38.8
100°	47.1	46.5	45.7	45.1	45.1	45.1	45.1	45.1	45.1	45.1	45.1
102.5°	75.2	72.2	69.3	66.4	68.4	70.3	72.3	74.3	76.3	78.3	80.3
105°	141.0	133.0	125.0	117.0	124.8	132.5	140.2	148.0	155.7	163.6	171.4
107.5°	255.3	242.7	230.1	217.4	231.6	245.7	259.8	273.9	288.0	302.1	316.4
110°	381.1	369.1	357.1	345.0	360.0	375.0	390.0	404.9	419.9	434.9	450.1



TEST NUMBER: P1444451
 CATALOG NUMBER: EHBR1-30-UNV-TA-L830-UPL15

CANDELA DISTRIBUTION (continued):

	82.5°	85°	87.5°	90°	92.5°	95°	97.5°	100°	102.5°	105°	107.5°
112.5°	465.4	459.5	453.6	447.8	457.5	467.1	476.8	486.6	496.2	505.9	515.6
115°	487.7	487.3	487.0	486.6	491.2	495.8	500.3	505.0	509.7	514.3	518.9
117.5°	461.5	464.7	468.0	471.3	472.8	474.2	475.8	477.2	478.8	480.3	482.0
120°	414.7	418.7	423.1	427.5	427.0	426.3	425.8	425.3	424.9	424.4	424.2
122.5°	359.7	363.9	368.3	372.6	371.3	370.0	368.9	367.7	366.6	365.4	364.5
125°	308.9	312.3	316.0	319.5	318.2	316.9	315.8	314.7	313.6	312.5	311.7
127.5°	269.0	271.1	273.1	275.4	274.8	274.2	273.9	273.3	273.1	272.8	272.7
130°	242.4	243.3	244.3	245.2	245.4	245.6	245.9	246.3	246.8	247.3	247.9
132.5°	227.7	227.6	227.7	227.9	228.6	229.3	230.1	231.1	232.2	233.2	234.6
135°	220.3	219.8	219.5	219.2	220.2	221.2	222.4	223.6	225.1	226.6	228.2
137.5°	218.1	217.4	216.9	216.3	217.3	218.3	219.6	220.8	222.3	223.8	225.4
140°	218.5	218.0	217.6	217.0	218.1	219.0	220.2	221.4	222.8	224.3	225.9
142.5°	219.5	218.8	218.4	218.1	218.8	219.8	221.0	222.0	223.4	224.5	226.0
145°	222.6	222.0	221.7	221.3	221.9	222.7	223.4	224.2	225.3	226.1	227.3
147.5°	224.0	223.6	223.4	223.1	223.7	224.1	224.7	225.2	226.0	226.7	227.6
150°	224.6	224.2	224.1	224.0	224.2	224.4	224.9	225.2	225.7	226.1	226.9
152.5°	223.4	223.0	223.0	222.8	223.0	223.3	223.7	224.0	224.3	224.7	225.3
155°	223.0	222.7	222.5	222.2	222.2	222.2	222.4	222.4	222.6	222.7	222.9
157.5°	223.7	223.3	223.1	222.7	222.7	222.5	222.5	222.4	222.4	222.2	222.3
160°	224.2	223.7	223.3	222.9	222.9	222.7	222.7	222.6	222.7	222.7	222.7
162.5°	226.0	225.7	225.5	225.1	224.9	224.5	224.3	224.0	223.8	223.6	223.5
165°	227.7	227.2	226.9	226.4	226.3	226.1	225.9	225.7	225.7	225.5	225.5
167.5°	231.0	230.4	230.1	229.6	229.3	228.9	228.7	228.4	228.2	227.9	227.8
170°	233.1	232.6	232.3	231.9	231.7	231.5	231.4	231.2	231.1	231.0	231.0
172.5°	236.4	236.1	235.8	235.5	235.3	235.1	235.0	234.9	234.8	234.8	234.7
175°	238.8	238.6	238.5	238.4	238.2	238.1	237.9	237.8	237.7	237.5	237.5
177.5°	240.2	240.0	239.9	239.8	239.7	239.7	239.7	239.7	239.7	239.6	239.5
180°	239.9	239.9	239.9	239.9	239.9	239.9	239.9	239.9	239.9	239.9	239.9



TEST NUMBER: P1444451
 CATALOG NUMBER: EHBR1-30-UNV-TA-L830-UPL15

CANDELA DISTRIBUTION (continued):

	110°	112.5°	115°	117.5°	120°	122.5°	125°	127.5°	130°	132.5°	135°
0°	24616.1	24616.1	24616.1	24616.1	24616.1	24616.1	24616.1	24616.1	24616.1	24616.1	24616.1
2.5°	24629.6	24623.2	24606.1	24597.7	24582.0	24574.0	24561.7	24553.8	24543.8	24536.4	24532.6
5°	25312.0	25280.6	25217.4	25178.5	25110.4	25065.6	24997.9	24948.2	24878.3	24826.8	24760.8
7.5°	26199.9	26151.6	26070.8	26009.4	25914.1	25841.2	25734.2	25648.6	25530.4	25432.2	25311.5
10°	26561.4	26533.2	26496.9	26457.4	26404.6	26352.8	26279.7	26205.3	26106.1	26007.3	25878.4
12.5°	26027.1	26053.7	26106.1	26130.5	26170.5	26184.1	26202.5	26193.8	26177.6	26137.4	26078.8
15°	24514.0	24625.0	24800.1	24921.2	25091.0	25210.2	25367.9	25469.5	25586.5	25656.4	25722.8
17.5°	22025.1	22239.5	22548.6	22795.2	23126.3	23395.4	23725.2	23984.3	24283.4	24513.0	24757.3
20°	18837.2	19137.4	19564.1	19926.5	20406.2	20812.9	21334.1	21770.6	22279.8	22704.3	23162.5
22.5°	15406.1	15759.3	16248.2	16685.2	17258.1	17769.7	18422.6	18999.8	19688.3	20304.9	20987.2
25°	12169.3	12515.4	13013.4	13466.0	14084.4	14648.0	15361.3	16023.4	16822.4	17567.3	18422.6
27.5°	9393.5	9700.9	10138.7	10546.1	11112.5	11665.8	12389.7	13095.8	13948.3	14748.9	15670.6
30°	7254.4	7503.9	7854.7	8182.3	8637.0	9089.5	9734.4	10387.4	11235.6	12065.3	13010.2
32.5°	5621.9	5834.7	6127.5	6393.5	6743.8	7085.0	7559.9	8081.7	8825.8	9620.5	10534.1
35°	4352.0	4534.0	4783.2	5012.3	5300.5	5571.4	5925.7	6298.1	6866.0	7534.4	8352.1
37.5°	3469.7	3543.9	3721.7	3909.4	4148.8	4371.3	4648.5	4924.0	5330.2	5857.6	6525.6
40°	2638.6	2756.5	2901.2	3049.1	3230.2	3408.8	3712.9	3859.3	4126.8	4505.4	5023.9
42.5°	2129.0	2211.9	2313.8	2416.6	2542.9	2667.2	2821.0	2977.7	3177.6	3434.1	3802.9
45°	1781.6	1835.7	1901.3	1969.8	2052.8	2137.6	2240.6	2348.1	2483.7	2641.3	2865.3
47.5°	1549.5	1579.4	1622.3	1669.0	1725.9	1784.6	1851.6	1920.2	2004.4	2097.9	2225.3
50°	1368.3	1393.3	1426.6	1457.9	1497.0	1557.3	1583.9	1621.7	1672.3	1727.4	1798.7
52.5°	1237.3	1253.9	1274.8	1292.8	1317.6	1340.1	1369.7	1395.7	1430.7	1463.8	1509.9
55°	1135.2	1141.2	1153.1	1164.6	1181.8	1197.2	1217.4	1234.5	1256.9	1276.6	1305.7
57.5°	1056.3	1056.9	1062.4	1068.4	1079.5	1089.1	1103.1	1114.3	1129.8	1142.4	1159.8
60°	999.7	996.7	997.8	999.8	1006.1	1012.4	1021.3	1028.6	1038.3	1045.5	1055.3
62.5°	952.5	947.8	946.7	946.2	949.3	951.5	956.4	959.9	965.5	968.6	973.8
65°	893.0	887.4	885.2	882.7	883.6	882.8	884.6	884.7	887.5	888.2	891.2
67.5°	838.9	834.3	831.5	828.1	826.5	824.0	822.9	820.6	820.2	818.1	817.7
70°	789.6	785.1	782.7	779.5	777.9	774.7	772.6	768.6	766.2	762.5	760.4
72.5°	732.7	730.1	729.4	727.2	726.6	724.8	724.0	721.2	719.5	716.3	714.5
75°	673.1	671.0	670.8	668.6	668.4	666.3	665.7	662.7	661.1	657.9	656.5
77.5°	602.1	599.0	598.1	595.6	596.2	595.1	596.0	593.7	592.7	589.6	588.5
80°	522.2	518.2	516.5	513.1	514.1	512.6	514.1	513.9	515.1	512.6	512.1
82.5°	427.5	423.1	422.3	419.9	421.5	421.7	425.1	423.2	424.0	421.6	422.5
85°	311.1	307.8	303.2	302.7	299.7	302.7	298.8	301.4	297.1	300.1	296.1
87.5°	192.9	186.1	182.6	177.7	175.9	171.2	169.4	166.0	166.9	165.4	166.3
90°	77.3	71.9	71.6	67.5	68.0	64.7	65.9	63.9	65.7	63.4	65.5
92.5°	25.9	27.0	28.9	31.3	33.2	35.2	37.2	39.5	41.4	43.7	45.5
95°	31.7	32.7	35.4	38.2	40.9	43.7	46.6	49.3	52.0	54.8	57.5
97.5°	39.4	40.0	42.7	45.5	48.2	51.1	53.8	56.8	59.5	62.3	65.0
100°	45.1	45.1	53.0	60.8	68.7	76.5	84.4	92.2	100.2	108.0	115.9
102.5°	82.2	84.2	104.0	123.8	143.7	163.5	183.3	203.2	223.0	243.0	262.8
105°	179.1	187.0	217.1	247.5	277.6	308.0	338.2	368.7	398.9	429.3	459.5
107.5°	330.5	344.7	372.1	399.4	426.8	454.2	481.7	509.0	536.5	563.9	591.4
110°	465.1	480.2	498.5	516.9	535.3	553.7	572.0	590.5	609.0	627.4	646.0



TEST NUMBER: P1444451
 CATALOG NUMBER: EHBR1-30-UNV-TA-L830-UPL15

CANDELA DISTRIBUTION (continued):

	110°	112.5°	115°	117.5°	120°	122.5°	125°	127.5°	130°	132.5°	135°
112.5°	525.3	535.1	545.8	556.7	567.5	578.3	589.0	599.9	610.8	621.8	632.7
115°	523.7	528.4	532.5	536.9	541.1	545.5	549.9	554.4	558.9	563.3	567.8
117.5°	483.5	485.4	486.2	487.0	487.8	488.9	489.8	490.7	491.9	492.9	493.8
120°	423.8	423.5	423.0	422.5	422.0	421.7	421.4	421.1	420.9	420.7	420.3
122.5°	363.4	362.6	362.1	361.9	361.5	361.3	361.0	361.0	360.7	360.6	360.4
125°	310.8	310.0	310.9	311.8	312.9	314.0	314.9	316.1	317.3	318.4	319.6
127.5°	272.4	272.5	274.5	276.4	278.4	280.5	282.7	284.9	286.8	289.2	291.2
130°	248.7	249.5	251.9	254.5	256.9	259.7	262.3	265.0	267.4	270.1	272.7
132.5°	235.9	237.4	239.5	242.1	244.6	247.2	249.6	252.3	254.8	257.5	259.7
135°	229.9	231.6	233.8	236.1	238.5	240.9	243.2	245.7	247.9	250.3	252.5
137.5°	227.0	228.7	230.7	232.6	234.5	236.6	238.5	240.5	242.3	244.4	246.3
140°	227.5	229.2	230.4	231.8	233.1	234.5	235.6	237.0	238.2	239.6	240.8
142.5°	227.4	229.1	229.9	230.9	231.6	232.9	233.8	234.8	235.6	236.4	237.3
145°	228.5	229.7	230.0	230.4	230.9	231.4	231.6	232.0	232.3	232.7	233.0
147.5°	228.5	229.5	229.5	229.8	230.1	230.1	230.2	230.4	230.5	230.7	230.8
150°	227.3	228.1	227.9	228.0	227.8	227.8	227.7	227.7	227.5	227.6	227.4
152.5°	225.7	226.2	225.8	225.9	225.7	225.5	225.3	225.2	224.9	224.8	224.7
155°	223.0	223.3	223.1	223.0	222.8	222.7	222.7	222.7	222.7	222.6	222.6
157.5°	222.3	222.3	222.2	222.1	221.9	221.9	221.9	221.9	221.9	222.1	222.2
160°	222.6	222.7	222.5	222.4	222.3	222.2	222.2	222.3	222.3	222.6	222.7
162.5°	223.2	223.1	222.9	222.8	222.7	222.7	222.8	223.0	223.0	223.2	223.4
165°	225.5	225.6	225.2	225.2	225.0	224.9	224.9	224.9	225.0	225.1	225.2
167.5°	227.6	227.5	227.5	227.6	227.6	227.7	227.8	228.2	228.3	228.7	228.7
170°	230.9	231.0	230.8	230.8	230.7	230.7	230.7	230.7	230.7	230.8	230.8
172.5°	234.7	234.7	234.6	234.4	234.2	234.1	234.0	233.9	233.7	233.6	233.4
175°	237.3	237.2	237.1	237.0	236.9	236.7	236.7	236.4	236.3	236.2	236.1
177.5°	239.4	239.2	239.1	239.1	239.0	239.0	239.0	238.9	238.9	238.9	238.7
180°	239.9	239.9	239.9	239.9	239.9	239.9	239.9	239.9	239.9	239.9	239.9



TEST NUMBER: P1444451
 CATALOG NUMBER: EHBR1-30-UNV-TA-L830-UPL15

CANDELA DISTRIBUTION (continued):

	137.5°	140°	142.5°	145°	147.5°	150°	152.5°	155°	157.5°	160°	162.5°
0°	24616.1	24616.1	24616.1	24616.1	24616.1	24616.1	24616.1	24616.1	24616.1	24616.1	24616.1
2.5°	24527.6	24527.3	24525.0	24526.1	24526.6	24528.3	24530.4	24532.6	24533.1	24534.7	24535.1
5°	24711.2	24650.5	24605.7	24556.3	24519.2	24485.8	24463.6	24445.9	24439.0	24440.7	24444.8
7.5°	25209.0	25083.8	24980.3	24862.9	24764.9	24661.1	24575.1	24493.3	24433.8	24389.4	24364.5
10°	25755.2	25602.6	25456.7	25286.6	25125.3	24953.2	24797.2	24640.2	24509.4	24395.6	24312.2
12.5°	25997.6	25889.7	25763.5	25603.1	25430.5	25231.8	25031.3	24816.2	24616.2	24430.6	24280.9
15°	25740.9	25741.1	25695.1	25618.1	25498.2	25339.5	25148.4	24924.2	24688.3	24447.5	24227.6
17.5°	24926.3	25080.0	25165.4	25219.6	25202.9	25144.5	25022.9	24850.7	24630.8	24374.3	24105.9
20°	23527.2	23889.8	24148.3	24380.7	24511.0	24597.5	24588.9	24518.8	24362.2	24144.1	23864.6
22.5°	21567.4	22175.9	22656.1	23103.8	23417.8	23673.3	23794.7	23846.3	23775.3	23623.4	23361.0
25°	19187.1	20014.4	20720.5	21405.7	21919.6	22361.4	22626.9	22813.9	22828.8	22749.4	22515.2
27.5°	16542.0	17518.6	18412.2	19322.9	20045.8	20680.8	21097.4	21402.4	21499.2	21486.5	21273.9
30°	13900.4	14925.6	15910.7	16972.5	17867.0	18678.3	19228.7	19641.1	19800.1	19830.5	19625.9
32.5°	11405.6	12416.6	13398.9	14509.1	15493.4	16423.1	17073.4	17563.4	17748.2	17791.7	17567.3
35°	9141.4	10074.2	11007.6	12083.6	13062.2	14025.1	14710.3	15223.2	15395.8	15424.9	15165.2
37.5°	7178.0	7972.7	8786.1	9751.5	10650.2	11554.5	12205.5	12687.5	12813.2	12805.5	12511.5
40°	5524.8	6142.7	6796.2	7591.0	8338.1	9102.6	9652.3	10050.8	10116.8	10067.9	9759.2
42.5°	4154.3	4600.6	5074.4	5667.7	6222.1	6794.1	7194.1	7490.0	7499.4	7422.0	7144.8
45°	3095.0	3530.4	3729.0	4087.7	4444.8	4825.3	5069.5	5252.2	5223.9	5155.8	4945.3
47.5°	2359.4	2526.7	2704.2	2926.6	3134.6	3566.2	3534.3	3827.8	3616.4	3760.5	3443.2
50°	1873.6	1967.1	2062.7	2180.8	2289.4	2402.3	2472.8	2525.5	2518.6	2496.0	2435.2
52.5°	1594.0	1622.8	1670.0	1737.1	1797.8	1858.8	1899.0	1931.6	1932.2	1923.2	1892.3
55°	1332.2	1368.9	1402.7	1446.7	1521.3	1532.8	1590.4	1578.7	1583.3	1567.3	1583.7
57.5°	1174.6	1195.9	1215.0	1241.1	1262.7	1287.9	1302.8	1317.1	1315.7	1312.6	1297.0
60°	1062.9	1074.7	1085.3	1100.5	1112.3	1126.6	1133.4	1140.7	1138.4	1133.0	1119.1
62.5°	976.8	984.2	990.2	1000.0	1007.2	1016.1	1019.7	1022.8	1019.7	1014.6	1002.4
65°	891.8	896.6	900.5	907.9	912.9	920.5	923.5	926.4	923.6	919.7	910.3
67.5°	815.2	815.7	815.3	818.3	819.9	824.5	825.8	828.0	824.6	821.2	813.3
70°	757.1	755.9	754.5	755.6	755.9	758.1	758.5	758.1	754.2	748.3	739.7
72.5°	711.7	711.1	709.9	711.0	711.0	712.9	712.4	711.3	706.5	700.8	692.2
75°	653.3	652.9	650.6	650.7	649.0	649.5	647.2	645.9	640.4	635.7	628.1
77.5°	585.0	583.9	580.7	579.4	576.0	574.6	570.1	567.9	562.4	558.6	552.0
80°	508.7	507.5	503.4	501.1	495.6	492.1	485.6	481.8	475.6	471.8	465.5
82.5°	420.5	421.0	416.8	414.0	406.2	400.2	391.4	386.7	379.7	376.1	369.4
85°	299.1	294.8	297.0	296.8	292.0	286.7	279.6	274.6	268.7	265.3	260.7
87.5°	164.0	165.0	163.8	162.8	159.3	156.7	151.2	148.3	144.0	141.8	138.4
90°	60.3	59.5	54.5	53.8	49.0	46.7	41.3	39.7	34.7	33.7	30.3
92.5°	43.2	40.8	38.8	36.3	34.1	31.8	29.5	27.2	24.8	23.9	23.3
95°	54.1	50.9	47.6	44.2	40.8	37.5	34.3	30.9	27.5	26.9	26.1
97.5°	61.2	57.2	53.2	49.4	45.4	41.5	37.6	33.6	29.7	29.2	28.9
100°	106.9	97.7	88.6	79.5	70.4	61.4	52.4	43.2	34.2	33.6	33.2
102.5°	240.7	218.7	196.7	174.7	152.8	130.7	108.7	86.6	64.5	61.4	58.2
105°	426.2	392.8	359.6	326.3	292.8	259.5	226.2	192.7	159.3	148.7	137.9
107.5°	560.2	528.8	497.5	466.2	434.8	403.6	372.1	340.7	309.3	290.5	271.6
110°	621.1	596.3	571.6	546.8	522.0	497.2	472.3	447.5	422.6	406.3	390.3



TEST NUMBER: P1444451
 CATALOG NUMBER: EHBR1-30-UNV-TA-L830-UPL15

CANDELA DISTRIBUTION (continued):

	137.5°	140°	142.5°	145°	147.5°	150°	152.5°	155°	157.5°	160°	162.5°
112.5°	614.6	596.5	578.5	560.3	542.3	524.1	505.9	487.7	469.5	459.7	450.0
115°	557.1	546.2	535.5	524.7	513.9	503.0	492.2	481.2	470.3	465.3	460.2
117.5°	488.7	483.2	478.0	472.5	467.1	461.6	456.3	450.7	445.3	443.7	442.0
120°	419.2	417.8	416.3	414.9	413.4	411.9	410.4	408.9	407.3	407.7	408.2
122.5°	361.5	362.4	363.5	364.4	365.4	366.3	367.3	367.9	368.9	370.6	372.2
125°	321.6	323.5	325.5	327.5	329.4	331.3	333.3	335.1	337.1	338.7	340.6
127.5°	293.6	295.6	298.0	300.1	302.4	304.4	306.7	308.6	310.9	312.5	314.2
130°	274.7	276.6	278.7	280.5	282.5	284.5	286.4	288.3	290.3	291.6	293.1
132.5°	261.6	263.5	265.4	267.0	268.9	270.6	272.5	274.3	276.1	277.3	278.5
135°	254.1	255.5	256.9	258.3	259.9	261.2	262.7	264.2	265.8	266.8	267.8
137.5°	247.6	248.6	250.0	251.1	252.5	253.7	255.1	256.3	257.9	258.4	259.3
140°	242.0	243.3	244.5	245.7	247.1	248.2	249.7	251.1	252.6	253.2	254.0
142.5°	238.4	239.2	240.4	241.3	242.4	243.4	244.7	245.9	247.2	247.9	248.6
145°	234.1	235.2	236.3	237.5	238.5	239.8	241.2	242.6	244.0	244.5	245.1
147.5°	231.6	232.6	233.6	234.6	235.6	236.6	237.9	239.1	240.5	240.9	241.6
150°	228.5	229.4	230.3	231.3	232.4	233.6	234.8	236.1	237.6	238.2	238.9
152.5°	225.7	226.7	227.7	228.8	230.0	231.2	232.5	233.9	235.3	235.8	236.5
155°	223.6	224.5	225.7	226.9	228.0	229.1	230.4	231.7	233.1	233.8	234.4
157.5°	223.1	224.0	225.0	226.1	227.1	228.2	229.4	230.5	231.7	232.3	232.9
160°	223.6	224.3	225.4	226.3	227.2	228.2	229.3	230.2	231.4	231.9	232.5
162.5°	224.3	225.2	226.2	226.9	228.0	228.9	230.1	230.9	232.0	232.5	233.0
165°	225.9	226.6	227.3	228.0	228.7	229.4	230.3	231.0	231.9	232.3	232.9
167.5°	229.4	229.9	230.3	230.9	231.6	232.2	232.9	233.4	234.2	234.6	235.0
170°	231.4	231.8	232.2	232.8	233.3	233.9	234.4	234.8	235.6	236.0	236.4
172.5°	233.8	234.0	234.5	234.7	235.0	235.3	235.8	236.1	236.5	237.0	237.4
175°	236.4	236.5	236.7	236.8	236.9	237.1	237.4	237.5	237.7	238.0	238.3
177.5°	238.8	238.9	239.0	239.0	239.3	239.4	239.6	239.7	239.9	240.2	240.5
180°	239.9	239.9	239.9	239.9	239.9	239.9	239.9	239.9	239.9	239.9	239.9



TEST NUMBER: P1444451
 CATALOG NUMBER: EHBR1-30-UNV-TA-L830-UPL15

CANDELA DISTRIBUTION (continued):

	165°	167.5°	170°	172.5°	175°	177.5°	180°	182.5°	185°	187.5°	190°
0°	24616.1	24616.1	24616.1	24616.1	24616.1	24616.1	24616.1	24616.1	24616.1	24616.1	24616.1
2.5°	24534.3	24534.1	24533.2	24532.1	24531.0	24531.7	24532.8	24535.6	24540.6	24547.7	24556.9
5°	24448.2	24453.3	24456.1	24456.4	24453.8	24452.3	24454.7	24461.4	24475.0	24497.8	24528.7
7.5°	24357.9	24364.1	24373.5	24380.7	24382.1	24380.3	24380.7	24391.2	24416.3	24460.7	24523.1
10°	24261.4	24243.1	24252.8	24270.5	24284.6	24287.1	24288.9	24301.3	24338.0	24405.1	24505.2
12.5°	24172.4	24114.4	24103.2	24119.1	24140.5	24147.3	24145.5	24150.8	24193.8	24282.6	24422.2
15°	24055.2	23946.0	23908.7	23912.9	23939.2	23948.7	23941.8	23931.2	23973.1	24081.6	24262.1
17.5°	23865.7	23689.6	23621.0	23618.0	23648.8	23657.1	23640.1	23607.2	23648.4	23783.9	24008.0
20°	23577.5	23317.6	23188.4	23167.9	23201.3	23191.6	23157.8	23108.1	23162.3	23326.9	23593.4
22.5°	23059.4	22730.1	22509.4	22438.2	22478.3	22451.5	22402.1	22338.8	22410.8	22597.8	22894.7
25°	22212.8	21832.2	21530.2	21360.6	21392.6	21344.7	21290.9	21214.1	21299.9	21514.6	21841.4
27.5°	20968.4	20528.9	20154.4	19873.9	19884.2	19821.4	19759.5	19660.1	19767.3	20021.3	20389.9
30°	19313.7	18805.1	18349.1	17967.8	17933.7	17872.8	17809.4	17679.0	17813.0	18117.2	18547.9
32.5°	17235.6	16670.9	16144.1	15662.0	15571.0	15511.6	15455.1	15305.0	15480.5	15835.2	16330.0
35°	14805.4	14203.9	13632.7	13082.0	12931.4	12872.0	12822.6	12678.7	12897.8	13283.7	13818.1
37.5°	12138.0	11523.5	10956.4	10391.7	10178.7	10098.2	10062.3	9968.1	10220.9	10602.6	11139.2
40°	9399.5	8828.1	8319.8	7821.0	7578.3	7455.0	7436.2	7419.0	7663.4	7994.6	8481.6
42.5°	6837.8	6376.8	5984.8	5603.6	5383.5	5215.2	5215.1	5266.3	5486.3	5734.3	6110.0
45°	4729.9	4420.5	4170.8	3916.0	3984.1	3648.6	3845.8	3744.5	3853.2	4013.2	4257.4
47.5°	3251.3	3082.5	2945.3	2802.9	2699.2	2600.1	2608.8	2672.7	2775.1	2870.0	2997.1
50°	2369.7	2283.7	2213.8	2139.9	2088.3	2044.6	2047.1	2074.7	2128.6	2178.6	2245.1
52.5°	1856.8	1809.3	1771.4	1730.6	1703.4	1681.8	1682.9	1696.3	1725.4	1754.0	1792.1
55°	1530.5	1524.8	1475.4	1438.7	1424.7	1410.1	1412.7	1418.1	1437.8	1454.6	1479.8
57.5°	1282.5	1260.3	1245.5	1226.2	1217.3	1207.1	1209.5	1211.4	1224.7	1235.9	1254.1
60°	1107.5	1091.7	1081.2	1068.1	1062.3	1055.8	1057.3	1058.5	1066.9	1074.2	1087.2
62.5°	991.1	977.1	968.0	957.8	953.8	949.4	950.4	950.7	956.0	961.3	971.3
65°	901.9	890.8	883.2	874.4	870.1	865.6	866.1	866.1	870.5	874.4	881.8
67.5°	807.5	799.2	794.2	787.3	784.4	779.7	779.6	778.2	781.1	782.6	787.7
70°	731.9	723.3	717.1	710.4	706.7	702.6	702.7	702.8	706.2	709.7	716.2
72.5°	685.0	677.0	671.3	665.5	662.1	658.6	657.9	657.6	660.0	662.0	666.3
75°	623.1	616.6	613.4	607.8	605.1	601.2	600.5	598.7	600.0	600.3	603.5
77.5°	548.0	541.8	539.2	533.6	531.3	526.9	526.5	524.5	525.4	524.7	527.2
80°	462.3	456.7	455.2	450.7	449.6	445.5	444.8	442.4	443.1	441.2	442.1
82.5°	366.6	361.6	360.4	356.2	356.2	352.5	352.3	348.5	348.5	345.4	340.3
85°	258.3	254.5	253.0	249.5	248.5	245.5	243.9	240.4	239.1	236.8	236.1
87.5°	136.3	133.9	131.8	130.2	127.2	121.8	121.3	117.6	117.8	115.2	115.4
90°	29.7	26.6	26.1	23.3	22.7	20.6	20.1	20.0	20.5	20.5	21.2
92.5°	22.5	21.7	21.0	20.2	19.4	18.6	17.9	18.6	19.4	20.2	21.0
95°	25.5	24.8	24.1	23.4	22.8	22.0	21.4	22.0	22.8	23.5	24.2
97.5°	28.4	27.9	27.5	27.1	26.6	26.2	25.8	26.3	26.7	27.2	27.6
100°	32.6	32.1	31.6	31.1	30.5	30.1	29.5	30.3	30.7	31.3	31.8
102.5°	55.1	51.9	48.7	45.5	42.3	39.2	36.0	39.2	42.3	45.6	48.8
105°	127.2	116.5	105.8	95.0	84.3	73.5	62.8	73.6	84.4	95.1	105.9
107.5°	252.7	234.0	215.1	196.2	177.2	158.4	139.5	158.5	177.4	196.3	215.3
110°	373.9	357.7	341.4	325.2	308.8	292.6	276.2	292.7	309.0	325.4	341.7



TEST NUMBER: P1444451
 CATALOG NUMBER: EHBR1-30-UNV-TA-L830-UPL15

CANDELA DISTRIBUTION (continued):

	165°	167.5°	170°	172.5°	175°	177.5°	180°	182.5°	185°	187.5°	190°
112.5°	440.1	430.3	420.4	410.7	400.6	390.9	380.9	391.1	401.0	411.1	421.0
115°	455.1	449.9	444.9	439.8	434.5	429.4	424.0	429.7	435.0	440.3	445.7
117.5°	440.3	438.8	436.9	435.2	433.4	431.7	429.9	431.9	433.9	436.0	437.8
120°	408.5	409.1	409.3	409.6	410.0	410.3	410.5	410.7	410.7	410.7	410.6
122.5°	373.8	375.4	376.9	378.5	380.0	381.5	382.8	381.9	380.8	379.7	378.4
125°	342.1	344.0	345.6	347.2	348.7	350.4	351.6	350.9	349.8	348.6	347.3
127.5°	315.8	317.4	318.9	320.6	321.9	323.3	324.5	323.8	322.9	321.9	320.8
130°	294.3	295.9	297.0	298.3	299.4	300.5	301.3	301.1	300.4	300.0	299.1
132.5°	279.6	280.8	281.9	283.0	283.8	284.8	285.3	285.3	285.0	284.8	284.1
135°	268.7	269.7	270.4	271.5	272.0	272.7	273.1	273.3	273.2	273.1	272.8
137.5°	259.9	260.8	261.4	261.9	262.4	262.7	262.9	263.4	263.6	264.0	263.9
140°	254.8	255.6	256.2	256.8	257.4	257.9	258.0	258.5	258.7	258.8	258.7
142.5°	249.4	250.2	250.8	251.4	251.9	252.3	252.5	253.0	253.2	253.3	253.3
145°	245.9	246.4	246.9	247.5	247.9	248.1	248.1	248.8	249.1	249.3	249.4
147.5°	242.1	242.8	243.2	243.6	243.9	244.3	244.4	244.9	245.1	245.4	245.6
150°	239.6	240.3	240.9	241.4	241.9	242.2	242.3	242.8	243.0	243.2	243.2
152.5°	237.1	237.6	238.3	238.8	239.1	239.4	239.6	240.0	240.4	240.6	240.7
155°	234.9	235.6	236.1	236.7	237.1	237.5	237.8	238.2	238.5	238.7	238.9
157.5°	233.3	234.0	234.5	235.0	235.4	236.0	236.3	236.7	237.0	237.4	237.5
160°	232.9	233.5	233.9	234.5	234.9	235.4	235.8	236.1	236.5	236.8	237.2
162.5°	233.4	234.0	234.3	234.8	235.3	235.8	236.1	236.5	236.9	237.3	237.5
165°	233.4	234.0	234.4	234.9	235.5	236.1	236.4	236.7	236.9	237.2	237.4
167.5°	235.5	236.1	236.3	236.9	237.3	237.8	238.3	238.6	238.7	238.9	239.0
170°	236.7	237.2	237.5	237.9	238.4	238.9	239.1	239.3	239.5	239.7	239.9
172.5°	237.6	238.2	238.6	239.1	239.4	239.8	240.2	240.4	240.4	240.5	240.4
175°	238.6	239.0	239.2	239.6	239.9	240.3	240.6	240.5	240.6	240.5	240.5
177.5°	240.8	241.3	241.6	241.9	242.2	242.4	242.8	242.5	242.4	242.2	242.0
180°	239.9	239.9	239.9	239.9	239.9	239.9	239.9	239.9	239.9	239.9	239.9



TEST NUMBER: P1444451
 CATALOG NUMBER: EHBR1-30-UNV-TA-L830-UPL15

CANDELA DISTRIBUTION (continued):

	192.5°	195°	197.5°	200°	202.5°	205°	207.5°	210°	212.5°	215°	217.5°
0°	24616.1	24616.1	24616.1	24616.1	24616.1	24616.1	24616.1	24616.1	24616.1	24616.1	24616.1
2.5°	24570.1	24582.4	24601.2	24618.2	24643.9	24664.1	24694.5	24717.6	24751.9	24774.2	24811.5
5°	24572.3	24620.4	24683.6	24745.2	24819.4	24886.8	24970.4	25041.7	25125.8	25194.4	25280.4
7.5°	24607.1	24699.7	24810.8	24922.8	25049.4	25167.9	25301.3	25422.1	25554.1	25665.8	25787.9
10°	24632.6	24775.7	24939.4	25104.2	25277.6	25438.7	25601.4	25742.0	25873.3	25981.4	26076.9
12.5°	24597.9	24794.9	25005.0	25207.9	25400.7	25567.5	25707.4	25815.6	25890.2	25940.8	25952.6
15°	24479.8	24716.7	24945.2	25147.3	25307.3	25430.7	25494.6	25524.6	25492.4	25439.1	25322.0
17.5°	24259.1	24509.1	24713.3	24872.7	24957.3	24990.7	24937.8	24845.8	24665.9	24466.2	24177.8
20°	23854.5	24087.4	24235.6	24322.5	24299.8	24216.2	24016.4	23773.6	23414.3	23031.6	22526.4
22.5°	23144.8	23348.4	23427.4	23433.8	23295.8	23086.3	22726.0	22309.4	21742.8	21153.7	20429.2
25°	22079.5	22257.9	22270.3	22200.3	21947.7	21608.2	21079.0	20489.9	19719.9	18934.9	18027.1
27.5°	20634.8	20805.8	20763.9	20633.3	20282.6	19828.3	19150.8	18389.7	17440.4	16513.2	15509.0
30°	18818.7	19001.6	18952.4	18784.8	18367.6	17830.7	17033.6	16149.1	15095.3	14105.1	13087.4
32.5°	16645.3	16876.6	16842.6	16683.3	16248.0	15673.4	14808.4	13870.4	12792.2	11816.4	10826.5
35°	14174.9	14455.8	14470.3	14366.1	13962.0	13394.1	12540.0	11632.1	10599.3	9678.6	8764.1
37.5°	11513.5	11839.1	11905.9	11877.7	11542.9	11041.5	10263.4	9448.9	8534.0	7727.0	6944.9
40°	8837.3	9166.8	9281.1	9315.0	9067.9	8679.6	8040.9	7383.5	6637.6	5983.8	5362.8
42.5°	6396.7	6688.9	6799.3	6868.8	6714.5	6455.6	5989.7	5512.3	4965.9	4494.2	4042.1
45°	4442.6	4649.3	4733.3	4803.3	4719.2	4573.2	4279.0	3980.4	3619.6	3311.5	3019.8
47.5°	3106.1	3220.0	3275.5	3309.5	3276.9	3200.7	3040.7	2867.6	2664.0	2484.0	2310.8
50°	2302.2	2362.9	2392.0	2411.6	2387.9	2345.5	2258.9	2164.7	2052.9	1950.9	1851.1
52.5°	1824.5	1859.3	1876.5	1887.1	1873.5	1847.6	1797.2	1741.3	1674.3	1611.2	1578.1
55°	1537.0	1535.3	1575.1	1555.9	1575.1	1532.1	1523.1	1461.7	1406.0	1366.8	1324.4
57.5°	1267.6	1285.6	1293.3	1301.8	1296.3	1288.4	1267.0	1245.0	1215.7	1191.1	1164.9
60°	1097.3	1112.1	1120.5	1129.0	1128.5	1125.5	1113.1	1100.0	1081.6	1066.9	1051.1
62.5°	979.9	992.7	1001.1	1009.2	1010.0	1008.7	999.4	990.2	977.7	968.5	957.6
65°	887.5	896.6	902.2	908.7	908.4	906.6	898.1	890.6	880.3	873.9	865.9
67.5°	791.0	797.8	802.2	808.3	809.5	809.9	805.2	801.6	796.6	794.8	792.1
70°	722.3	730.5	737.6	745.3	749.6	751.5	749.6	747.7	744.8	743.6	741.4
72.5°	670.3	677.3	682.8	689.8	693.7	696.5	694.9	694.0	691.5	691.1	689.6
75°	605.7	610.5	613.6	618.9	621.0	623.7	622.4	623.1	622.3	624.3	624.2
77.5°	528.0	531.6	533.1	536.9	537.3	540.5	541.1	544.9	547.6	553.4	556.5
80°	440.6	442.9	442.9	446.8	448.6	453.9	456.6	462.6	465.5	470.7	471.1
82.5°	342.3	339.7	342.3	340.7	345.6	351.7	352.5	357.7	358.9	362.2	359.6
85°	234.0	233.8	231.7	232.1	230.5	231.3	230.3	231.4	230.4	230.5	228.2
87.5°	112.1	113.2	110.6	111.5	109.1	110.3	108.1	109.8	107.3	107.6	104.0
90°	21.4	21.8	22.0	22.6	23.3	24.6	26.0	27.4	29.1	30.4	31.9
92.5°	21.7	22.6	23.4	24.2	24.9	27.3	29.6	31.8	34.3	36.5	38.9
95°	24.9	25.6	26.2	27.2	27.8	31.2	34.6	37.8	41.2	44.6	48.0
97.5°	28.2	28.7	29.1	29.5	30.1	34.0	37.9	42.0	45.9	49.8	53.7
100°	32.4	32.9	33.4	34.0	34.6	43.7	52.8	61.9	71.0	80.1	89.2
102.5°	52.1	55.3	58.5	61.8	65.0	87.1	109.2	131.3	153.2	175.4	197.4
105°	116.7	127.5	138.4	149.1	159.9	193.3	226.9	260.3	293.6	327.0	360.4
107.5°	234.3	253.2	272.2	291.1	310.1	341.5	372.9	404.4	435.9	467.2	498.4
110°	358.3	374.4	391.0	407.3	423.7	448.5	473.5	498.4	523.3	548.2	573.0



TEST NUMBER: P1444451
 CATALOG NUMBER: EHBR1-30-UNV-TA-L830-UPL15

CANDELA DISTRIBUTION (continued):

	192.5°	195°	197.5°	200°	202.5°	205°	207.5°	210°	212.5°	215°	217.5°
112.5°	431.1	440.9	450.9	460.7	470.7	489.0	507.3	525.6	543.9	561.9	580.1
115°	450.9	456.0	461.3	466.5	471.8	482.8	493.7	504.7	515.8	526.6	537.7
117.5°	439.8	441.7	443.5	445.1	447.0	452.5	458.2	463.8	469.4	474.9	480.4
120°	410.5	410.2	410.0	409.6	409.4	411.0	412.8	414.3	416.0	417.6	419.1
122.5°	377.2	375.7	374.4	372.9	371.5	370.6	370.0	369.1	368.4	367.6	366.7
125°	346.0	344.5	343.1	341.5	339.9	338.2	336.4	334.7	332.8	330.9	329.1
127.5°	319.7	318.3	317.2	315.7	314.3	312.1	310.1	308.0	306.1	304.0	301.9
130°	298.3	297.2	296.4	295.0	294.1	292.1	290.4	288.5	286.6	284.8	283.0
132.5°	283.6	282.8	282.0	281.0	280.2	278.4	277.0	275.1	273.4	271.6	270.1
135°	272.6	272.0	271.6	270.9	270.2	268.7	267.4	266.0	264.8	263.4	262.1
137.5°	263.8	263.4	263.1	262.7	262.5	261.2	260.1	258.8	257.8	256.5	255.5
140°	258.7	258.4	258.2	257.8	257.4	256.2	255.1	253.8	252.7	251.4	250.3
142.5°	253.2	253.0	252.7	252.3	252.1	250.9	250.2	249.3	248.3	247.3	246.4
145°	249.4	249.4	249.3	249.0	249.0	247.9	246.8	245.7	244.9	243.7	242.7
147.5°	245.7	245.6	245.7	245.5	245.6	244.7	243.9	243.0	242.2	241.4	240.6
150°	243.2	243.2	243.2	243.0	242.9	242.0	241.3	240.5	239.7	238.8	238.0
152.5°	240.7	240.8	240.9	240.9	241.0	240.3	239.4	238.6	237.8	236.9	236.1
155°	239.0	239.1	239.2	239.2	239.2	238.6	237.8	237.1	236.3	235.6	234.8
157.5°	237.7	237.9	238.1	238.2	238.3	237.7	237.1	236.5	235.9	235.2	234.6
160°	237.4	237.6	237.8	237.9	238.1	237.5	237.3	236.5	236.2	235.5	234.9
162.5°	237.8	238.1	238.3	238.4	238.6	238.0	237.7	237.2	236.7	236.0	235.5
165°	237.7	237.7	237.9	237.9	238.0	237.6	237.5	237.1	236.7	236.3	236.0
167.5°	239.3	239.3	239.5	239.5	239.6	239.3	239.3	239.0	238.8	238.5	238.2
170°	240.1	240.2	240.2	240.2	240.3	240.0	239.8	239.6	239.5	239.0	238.8
172.5°	240.5	240.4	240.5	240.5	240.4	240.2	240.1	239.9	239.8	239.7	239.5
175°	240.5	240.5	240.5	240.4	240.3	240.3	240.2	240.2	240.1	240.1	240.0
177.5°	242.0	241.8	241.5	241.4	241.2	241.1	241.1	241.0	241.1	241.0	240.9
180°	239.9	239.9	239.9	239.9	239.9	239.9	239.9	239.9	239.9	239.9	239.9



TEST NUMBER: P1444451
 CATALOG NUMBER: EHBR1-30-UNV-TA-L830-UPL15

CANDELA DISTRIBUTION (continued):

	220°	222.5°	225°	227.5°	230°	232.5°	235°	237.5°	240°	242.5°	245°
0°	24616.1	24616.1	24616.1	24616.1	24616.1	24616.1	24616.1	24616.1	24616.1	24616.1	24616.1
2.5°	24834.6	24681.2	24660.9	24671.7	24697.4	24706.8	24734.5	24742.0	24769.9	24776.7	24803.5
5°	25347.0	25144.3	25154.4	25203.1	25276.9	25320.9	25393.4	25431.4	25500.6	25532.1	25594.7
7.5°	25887.4	25728.1	25777.8	25860.0	25960.9	26030.8	26117.9	26174.6	26249.8	26296.3	26356.5
10°	26152.6	26109.1	26163.7	26228.4	26285.9	26331.0	26368.0	26397.5	26416.9	26435.0	26442.9
12.5°	25950.8	26018.3	26027.6	26021.3	25983.2	25954.0	25888.7	25844.2	25765.3	25717.2	25623.3
15°	25202.3	25350.7	25268.6	25144.1	24962.0	24810.2	24595.8	24436.2	24212.9	24061.5	23837.5
17.5°	23888.8	24076.1	23862.0	23574.1	23207.7	22894.4	22504.1	22194.5	21806.5	21524.3	21162.2
20°	22039.6	22214.7	21832.7	21355.4	20788.8	20311.9	19749.6	19300.9	18778.4	18389.7	17920.6
22.5°	19737.3	19862.0	19323.8	18680.3	17958.5	17362.7	16690.4	16152.5	15556.1	15111.7	14611.5
25°	17190.1	17223.8	16578.2	15836.9	15032.3	14362.8	13645.0	13079.5	12471.2	12020.9	11529.9
27.5°	14619.2	14569.9	13872.2	13086.1	12239.8	11543.9	10843.8	10313.8	9781.1	9375.4	8952.5
30°	12192.7	12073.2	11348.8	10540.8	9719.3	9095.5	8514.3	8088.8	7665.0	7343.1	7003.7
32.5°	9967.5	9798.9	9093.8	8336.8	7644.6	7163.2	6732.2	6410.2	6068.0	5796.2	5511.2
35°	7996.6	7816.9	7192.2	6550.5	6026.6	5671.8	5333.1	5068.8	4778.2	4548.9	4301.5
37.5°	6305.1	6157.8	5634.6	5129.6	4733.3	4458.4	4180.8	3964.9	3724.7	3623.8	3359.4
40°	4867.5	4764.6	4355.4	3983.2	3685.6	3556.4	3274.7	3073.0	2893.6	2745.6	2602.3
42.5°	3796.8	3760.3	3362.1	3071.8	2862.2	2699.5	2542.5	2415.0	2291.0	2189.0	2092.6
45°	2786.2	2757.4	2580.6	2413.1	2270.3	2156.5	2050.4	1962.7	1881.7	1814.4	1753.2
47.5°	2169.6	2160.4	2058.6	1954.7	1864.7	1791.6	1722.8	1664.6	1610.8	1565.9	1551.3
50°	1764.7	1763.4	1703.7	1639.6	1575.5	1533.3	1489.4	1454.9	1420.3	1393.4	1365.0
52.5°	1499.4	1492.9	1452.6	1412.9	1374.9	1347.2	1319.1	1297.2	1274.2	1257.6	1239.9
55°	1290.8	1297.6	1274.3	1250.7	1226.9	1209.7	1189.9	1175.4	1159.7	1149.2	1138.6
57.5°	1146.0	1155.0	1142.8	1129.3	1114.9	1103.5	1090.0	1079.9	1069.4	1062.7	1056.5
60°	1040.6	1050.4	1045.5	1038.7	1029.8	1023.1	1014.4	1008.8	1002.1	998.3	994.9
62.5°	951.1	963.5	961.7	958.5	952.8	949.1	944.3	941.9	937.4	935.8	934.1
65°	862.0	875.8	875.5	873.9	870.8	869.7	866.7	866.3	863.9	864.9	864.7
67.5°	791.8	803.8	806.5	808.4	808.3	809.0	808.8	810.0	810.0	811.7	812.8
70°	741.1	749.6	751.5	753.6	754.1	755.7	755.7	756.8	756.5	758.0	758.1
72.5°	690.0	701.0	703.0	704.7	704.7	706.2	705.4	705.2	702.9	702.4	700.9
75°	626.3	640.4	643.5	645.6	645.9	647.2	645.3	644.1	640.4	638.9	636.4
77.5°	559.8	574.5	576.6	577.4	576.2	576.5	572.4	569.7	565.1	563.1	560.7
80°	473.2	494.9	496.5	495.2	491.9	491.3	487.4	484.8	479.2	477.3	475.2
82.5°	360.1	385.5	389.0	390.5	387.8	388.5	384.7	383.3	378.1	377.2	373.8
85°	227.3	252.7	256.9	256.3	253.6	252.9	250.7	251.4	250.9	252.3	253.1
87.5°	104.4	129.0	134.9	133.0	132.7	131.0	127.1	128.5	131.0	132.5	132.5
90°	33.4	42.2	43.6	43.0	40.1	39.2	36.3	36.0	33.5	33.0	30.7
92.5°	41.1	43.5	45.8	43.7	41.7	39.6	37.6	35.4	33.4	31.3	29.3
95°	51.2	54.4	57.8	55.1	52.2	49.5	46.7	43.9	41.2	38.5	35.7
97.5°	57.7	61.4	65.3	62.6	59.8	57.0	54.1	51.4	48.6	45.8	43.0
100°	98.3	107.1	116.1	108.2	100.3	92.5	84.7	76.8	69.0	61.2	53.3
102.5°	219.4	241.2	263.1	243.3	223.4	203.5	183.7	163.8	144.1	124.0	104.3
105°	393.7	426.8	460.0	429.6	399.2	369.0	338.6	308.4	278.0	247.7	217.4
107.5°	529.9	560.7	591.8	564.4	536.9	509.5	481.9	454.6	427.1	399.6	372.2
110°	597.9	621.9	646.5	627.9	609.5	591.0	572.5	554.1	535.6	517.3	498.9



TEST NUMBER: P1444451
 CATALOG NUMBER: EHBR1-30-UNV-TA-L830-UPL15

CANDELA DISTRIBUTION (continued):

	220°	222.5°	225°	227.5°	230°	232.5°	235°	237.5°	240°	242.5°	245°
112.5°	598.3	615.4	633.3	622.3	611.4	600.4	589.6	578.6	567.8	557.0	546.3
115°	548.3	558.0	568.5	564.0	559.6	555.1	550.6	546.2	541.7	537.3	533.1
117.5°	485.9	489.9	494.9	493.6	492.7	491.5	490.6	489.5	488.7	487.7	486.8
120°	420.6	420.5	421.5	421.6	421.9	422.2	422.5	422.6	422.9	423.3	423.7
122.5°	365.8	363.2	361.7	361.8	361.9	362.0	362.2	362.3	362.5	362.9	363.2
125°	327.3	323.4	320.8	319.7	318.7	317.5	316.2	315.1	314.2	313.0	312.1
127.5°	299.7	295.5	292.8	290.7	288.6	286.4	284.3	282.0	280.1	277.9	276.0
130°	281.2	277.0	274.5	271.8	269.4	266.7	264.2	261.5	258.9	256.4	253.8
132.5°	268.4	264.1	261.8	259.4	256.9	254.4	252.0	249.4	246.8	244.3	241.9
135°	260.7	256.7	254.8	252.3	250.3	247.9	245.5	243.3	241.0	238.5	236.4
137.5°	254.2	250.3	248.5	246.5	244.9	242.9	241.1	239.1	237.3	235.2	233.4
140°	249.1	244.9	243.2	242.0	240.9	239.5	238.5	237.2	236.1	234.7	233.5
142.5°	245.4	241.4	239.8	239.0	238.2	237.4	236.7	235.8	235.0	234.0	233.1
145°	241.8	237.2	235.5	235.2	235.1	234.7	234.5	234.2	233.9	233.4	233.1
147.5°	239.7	235.0	233.3	233.3	233.3	233.1	233.2	233.1	233.1	232.9	232.9
150°	237.1	231.8	229.9	230.1	230.1	230.2	230.4	230.5	230.8	230.9	231.0
152.5°	235.2	228.9	226.7	226.9	227.2	227.2	227.6	227.8	228.2	228.5	228.7
155°	233.9	227.1	224.6	224.5	224.6	224.8	224.9	225.0	225.2	225.4	225.7
157.5°	233.8	226.6	224.2	224.1	224.1	224.1	224.1	224.1	224.2	224.2	224.5
160°	234.3	227.2	224.7	224.4	224.5	224.4	224.3	224.2	224.3	224.4	224.6
162.5°	234.7	227.8	225.5	225.2	225.0	225.0	225.0	224.7	224.8	224.8	225.0
165°	235.4	229.3	227.2	227.0	227.0	226.9	226.9	226.8	227.0	227.1	227.2
167.5°	237.8	232.3	230.6	230.3	230.1	229.8	229.8	229.4	229.4	229.2	229.2
170°	238.5	234.2	232.7	232.6	232.7	232.6	232.5	232.5	232.5	232.4	232.5
172.5°	239.2	236.1	234.9	235.0	235.2	235.3	235.5	235.5	235.7	235.9	236.1
175°	239.9	237.9	237.5	237.4	237.5	237.5	237.6	237.6	237.7	237.8	238.1
177.5°	240.9	240.4	240.1	240.1	240.1	240.1	240.1	240.1	240.1	240.2	240.2
180°	239.9	239.9	239.9	239.9	239.9	239.9	239.9	239.9	239.9	239.9	239.9



TEST NUMBER: P1444451
 CATALOG NUMBER: EHBR1-30-UNV-TA-L830-UPL15

CANDELA DISTRIBUTION (continued):

	247.5°	250°	252.5°	255°	257.5°	260°	262.5°	265°	267.5°	270°	272.5°
0°	24616.1	24616.1	24616.1	24616.1	24616.1	24616.1	24616.1	24616.1	24616.1	24616.1	24616.1
2.5°	24808.5	24837.4	24835.2	24862.2	24860.8	24886.3	24881.1	24903.2	24898.2	24916.9	24905.9
5°	25622.3	25677.3	25695.4	25745.1	25755.4	25799.8	25800.7	25836.0	25831.7	25859.3	25844.6
7.5°	26392.1	26443.4	26467.7	26506.3	26525.6	26557.6	26570.0	26596.3	26602.6	26618.1	26617.6
10°	26457.0	26456.8	26468.9	26463.4	26474.2	26468.0	26481.1	26476.5	26495.8	26490.9	26505.5
12.5°	25582.8	25496.1	25464.4	25386.5	25369.4	25302.6	25307.3	25264.4	25285.1	25258.8	25303.7
15°	23704.2	23502.9	23403.4	23228.4	23173.5	23035.3	23024.0	22932.1	22957.0	22908.9	22979.2
17.5°	20927.9	20611.1	20437.2	20181.7	20080.2	19884.6	19845.4	19727.2	19745.4	19685.9	19770.7
20°	17617.9	17235.0	17015.7	16720.2	16588.4	16355.2	16293.3	16161.0	16177.6	16118.3	16214.3
22.5°	14270.1	13869.4	13621.7	13312.0	13143.7	12924.4	12858.6	12725.7	12733.2	12677.6	12770.0
25°	11193.7	10809.4	10569.1	10287.8	10141.7	9940.6	9871.4	9752.2	9758.9	9713.0	9795.8
27.5°	8659.1	8343.8	8142.7	7906.9	7776.0	7610.7	7543.2	7442.9	7442.6	7409.0	7478.2
30°	6766.6	6503.5	6323.0	6117.6	5994.7	5845.4	5780.3	5690.6	5686.7	5662.8	5717.8
32.5°	5298.1	5064.1	4899.5	4718.7	4608.3	4480.3	4418.6	4346.5	4339.9	4318.3	4363.5
35°	4118.6	3921.5	3779.9	3627.8	3639.0	3450.2	3481.6	3334.9	3295.1	3286.3	3320.0
37.5°	3183.2	3030.5	2915.5	2801.6	2724.4	2644.6	2601.6	2563.0	2558.6	2554.9	2578.5
40°	2491.6	2384.8	2301.1	2222.9	2169.8	2121.1	2094.2	2073.0	2068.0	2065.2	2079.4
42.5°	2016.5	1944.5	1890.6	1842.9	1810.6	1784.1	1769.3	1757.5	1753.6	1753.7	1762.1
45°	1703.7	1660.0	1625.3	1595.6	1575.0	1584.1	1557.4	1571.3	1552.9	1572.0	1559.4
47.5°	1500.3	1463.1	1441.6	1420.6	1408.2	1398.1	1398.5	1398.7	1402.5	1403.2	1407.3
50°	1343.4	1321.9	1307.0	1293.6	1287.0	1281.8	1283.6	1285.0	1288.8	1289.1	1292.1
52.5°	1227.3	1213.1	1204.1	1195.8	1192.9	1189.9	1191.2	1190.7	1192.3	1191.5	1193.9
55°	1132.8	1126.1	1123.3	1120.2	1120.7	1119.8	1120.4	1117.4	1115.5	1113.3	1115.3
57.5°	1055.3	1054.4	1056.2	1057.5	1061.1	1062.4	1063.2	1059.7	1056.4	1053.4	1055.2
60°	995.5	996.9	1001.7	1005.6	1010.6	1013.1	1014.5	1012.5	1010.1	1007.6	1009.1
62.5°	936.5	938.9	944.5	948.8	955.0	958.2	961.7	961.9	962.8	961.9	962.9
65°	868.1	871.0	876.1	879.7	885.4	888.2	891.8	892.5	894.6	894.1	895.8
67.5°	816.2	818.7	823.0	826.4	831.5	834.4	837.6	837.8	838.5	838.4	839.9
70°	760.7	761.9	765.8	768.6	773.7	776.7	780.4	781.5	783.7	784.1	786.0
72.5°	701.6	701.0	703.3	704.6	708.4	710.8	715.5	718.0	721.8	722.9	724.2
75°	637.1	636.6	639.3	640.4	643.7	646.0	651.3	654.7	660.6	663.1	662.4
77.5°	562.6	563.9	569.0	571.9	576.2	579.3	586.0	591.3	602.2	607.0	602.1
80°	479.2	480.6	485.9	488.5	494.3	498.0	505.5	511.8	521.6	523.6	520.9
82.5°	376.7	377.1	381.9	383.9	391.4	396.8	406.3	411.4	417.4	416.5	415.7
85°	256.9	260.4	266.3	272.2	281.4	290.1	299.2	306.6	301.3	309.7	300.3
87.5°	137.3	136.9	145.0	143.7	156.4	163.8	171.7	175.4	179.7	178.8	178.9
90°	30.5	28.9	29.1	27.3	28.3	26.1	27.8	25.9	27.9	25.6	29.4
92.5°	27.2	26.1	24.9	23.9	22.7	21.7	20.5	19.4	18.3	17.1	18.3
95°	33.0	31.9	30.9	29.8	28.8	27.7	26.7	25.7	24.6	23.6	24.9
97.5°	40.3	39.7	39.1	38.5	37.8	37.3	36.6	36.1	35.3	34.8	35.6
100°	45.4	45.4	45.4	45.4	45.2	45.2	45.2	45.2	45.2	45.2	45.9
102.5°	84.4	82.4	80.5	78.4	76.4	74.4	72.4	70.4	68.5	66.5	69.4
105°	187.2	179.4	171.6	163.8	156.0	148.3	140.5	132.7	125.1	117.3	125.2
107.5°	345.0	330.8	316.6	302.5	288.3	274.2	260.1	246.0	231.9	217.8	230.4
110°	480.4	465.4	450.3	435.3	420.2	405.2	390.2	375.2	360.3	345.3	357.4



TEST NUMBER: P1444451
 CATALOG NUMBER: EHBR1-30-UNV-TA-L830-UPL15

CANDELA DISTRIBUTION (continued):

	247.5°	250°	252.5°	255°	257.5°	260°	262.5°	265°	267.5°	270°	272.5°
112.5°	535.5	525.6	515.8	506.1	496.4	486.8	477.1	467.4	457.8	448.1	453.9
115°	528.7	524.0	519.2	514.6	510.0	505.3	500.6	496.1	491.5	486.9	487.3
117.5°	485.9	484.1	482.5	480.8	479.2	477.6	476.1	474.6	473.1	471.7	468.4
120°	424.2	424.4	424.7	425.1	425.5	426.0	426.3	426.9	427.5	428.1	423.7
122.5°	363.4	364.3	365.2	366.2	367.2	368.3	369.4	370.7	372.0	373.3	368.9
125°	311.0	311.8	312.7	313.6	314.5	315.7	316.8	318.0	319.2	320.6	317.0
127.5°	273.9	273.9	274.0	274.2	274.4	274.7	275.2	275.7	276.3	277.0	274.6
130°	251.2	250.5	249.7	249.2	248.4	248.0	247.7	247.4	247.1	247.0	246.1
132.5°	239.3	238.0	236.6	235.5	234.3	233.3	232.2	231.6	230.7	230.1	229.9
135°	234.0	232.3	230.6	229.0	227.4	226.2	224.9	223.9	222.7	221.8	222.1
137.5°	231.5	229.9	228.2	226.7	225.1	223.8	222.4	221.3	220.2	219.3	219.8
140°	232.3	230.6	228.9	227.4	226.0	224.7	223.4	222.4	221.2	220.4	220.7
142.5°	232.2	230.9	229.3	228.0	226.7	225.5	224.3	223.4	222.3	221.6	222.0
145°	232.9	231.8	230.6	229.6	228.7	227.8	226.8	226.2	225.5	225.1	225.3
147.5°	232.7	231.9	231.0	230.2	229.4	228.8	228.2	227.7	227.2	226.9	227.0
150°	231.1	230.6	230.1	229.6	229.0	228.7	228.3	228.0	227.7	227.5	227.5
152.5°	228.9	228.6	228.1	227.7	227.2	227.1	226.7	226.5	226.3	226.1	226.1
155°	225.8	225.7	225.5	225.3	225.1	225.3	225.1	225.2	225.1	225.2	225.3
157.5°	224.6	224.6	224.5	224.7	224.7	224.9	224.9	225.2	225.2	225.5	225.7
160°	224.9	224.9	224.7	224.9	224.9	224.9	225.0	225.2	225.3	225.4	225.7
162.5°	225.1	225.4	225.5	225.6	225.8	226.0	226.3	226.7	226.9	227.2	227.5
165°	227.4	227.4	227.3	227.3	227.5	227.6	227.7	228.0	228.1	228.4	228.7
167.5°	229.1	229.3	229.3	229.5	229.7	229.9	230.1	230.4	230.7	231.2	231.5
170°	232.4	232.4	232.4	232.4	232.4	232.6	232.7	232.8	232.9	233.1	233.3
172.5°	236.1	236.1	236.0	236.1	236.0	236.1	236.1	236.2	236.2	236.3	236.4
175°	238.0	238.3	238.4	238.6	238.6	238.7	238.8	238.9	239.0	239.1	239.1
177.5°	240.2	240.3	240.3	240.3	240.3	240.4	240.4	240.4	240.4	240.3	240.4
180°	239.9	239.9	239.9	239.9	239.9	239.9	239.9	239.9	239.9	239.9	239.9



TEST NUMBER: P1444451
 CATALOG NUMBER: EHBR1-30-UNV-TA-L830-UPL15

CANDELA DISTRIBUTION (continued):

	275°	277.5°	280°	282.5°	285°	287.5°	290°	292.5°	295°	297.5°	300°
0°	24616.1	24616.1	24616.1	24616.1	24616.1	24616.1	24616.1	24616.1	24616.1	24616.1	24616.1
2.5°	24924.2	24911.8	24924.5	24911.6	24924.5	24909.0	24919.5	24902.7	24907.0	24889.6	24894.1
5°	25866.7	25846.8	25857.4	25831.5	25834.2	25799.8	25799.1	25759.0	25748.4	25702.7	25682.6
7.5°	26628.7	26622.2	26625.9	26609.3	26607.3	26583.8	26572.6	26539.4	26518.5	26476.5	26447.7
10°	26508.1	26527.5	26532.6	26552.3	26556.4	26576.0	26580.1	26599.8	26603.8	26618.4	26618.5
12.5°	25301.5	25367.5	25383.3	25464.8	25499.1	25592.3	25642.3	25745.1	25806.0	25908.5	25971.5
15°	22977.2	23091.4	23136.9	23295.9	23384.0	23569.7	23686.5	23899.8	24050.3	24276.8	24438.4
17.5°	19778.2	19937.7	20009.7	20225.4	20366.2	20640.4	20837.9	21163.2	21412.1	21773.6	22060.1
20°	16230.7	16408.0	16505.7	16751.8	16918.0	17238.3	17485.0	17884.7	18218.0	18675.9	19067.6
22.5°	12798.8	12967.5	13076.0	13326.5	13513.4	13847.6	14123.2	14545.1	14918.5	15434.6	15904.1
25°	9827.1	9981.7	10079.7	10306.2	10481.9	10788.8	11052.1	11457.8	11823.2	12340.9	12822.4
27.5°	7512.7	7642.1	7736.7	7929.8	8084.7	8345.0	8571.3	8906.5	9221.3	9669.2	10098.0
30°	5751.6	5866.3	5958.3	6126.5	6270.1	6495.9	6694.8	6976.3	7236.9	7593.2	7934.4
32.5°	4395.2	4494.0	4575.9	4723.2	4853.5	5056.7	5235.9	5482.7	5706.3	6008.6	6289.3
35°	3351.2	3545.5	3531.8	3734.8	3767.5	3913.4	4073.3	4289.1	4487.1	4744.1	4983.0
37.5°	2601.1	2655.7	2714.3	2804.0	2898.4	3031.1	3166.2	3429.9	3526.6	3720.8	3918.5
40°	2097.5	2134.4	2173.1	2233.8	2299.8	2393.3	2491.6	2617.4	2746.4	2903.9	3064.7
42.5°	1773.3	1794.2	1818.8	1854.4	1895.1	1954.4	2020.2	2105.5	2195.2	2306.0	2419.1
45°	1584.3	1574.3	1581.6	1600.8	1625.4	1661.3	1702.9	1755.8	1814.1	1885.9	1962.4
47.5°	1408.2	1412.2	1414.3	1424.7	1437.8	1462.0	1487.2	1523.1	1592.3	1613.4	1655.1
50°	1291.8	1293.7	1293.1	1298.4	1305.0	1320.8	1337.1	1361.3	1385.6	1417.7	1448.3
52.5°	1194.3	1197.0	1196.6	1200.1	1203.7	1213.6	1223.9	1241.1	1257.0	1277.4	1295.0
55°	1117.3	1121.1	1122.5	1125.5	1127.1	1132.4	1136.4	1144.7	1151.4	1163.0	1173.7
57.5°	1058.1	1063.2	1065.6	1066.5	1064.5	1064.2	1062.8	1064.6	1066.0	1072.2	1078.2
60°	1011.5	1015.6	1016.2	1015.6	1011.7	1009.0	1004.6	1003.2	1002.6	1005.6	1008.8
62.5°	962.7	964.2	963.1	961.9	957.6	954.9	950.4	948.7	947.1	949.3	950.9
65°	895.1	896.4	895.1	894.5	890.5	888.4	884.5	883.3	881.1	881.6	881.3
67.5°	840.3	841.6	840.6	839.6	836.9	835.5	832.7	831.0	828.2	827.3	825.4
70°	785.7	786.6	785.1	784.1	781.0	779.8	777.2	776.6	774.6	774.1	772.0
72.5°	722.9	723.0	720.7	720.0	717.8	717.7	716.6	717.6	717.5	718.6	718.2
75°	658.5	657.6	654.9	654.4	652.7	653.4	652.3	653.8	654.0	656.4	656.6
77.5°	594.1	590.7	585.5	583.0	579.5	579.2	577.1	578.5	578.0	580.8	581.9
80°	512.8	508.6	502.0	498.8	494.7	494.0	492.1	494.0	493.1	496.3	498.6
82.5°	409.3	405.8	398.9	396.3	391.5	392.0	390.0	392.0	391.7	396.5	399.2
85°	302.8	300.4	293.3	287.0	280.0	275.9	271.8	271.2	270.0	271.8	273.5
87.5°	174.9	172.7	167.1	163.5	151.2	151.7	146.9	146.6	145.4	144.3	146.9
90°	28.5	31.8	31.1	34.0	33.7	37.2	37.1	40.4	39.8	42.9	43.0
92.5°	19.4	20.5	21.6	22.7	23.8	24.9	26.0	27.2	29.6	31.8	34.4
95°	26.2	27.4	28.8	30.1	31.4	32.6	33.9	35.2	38.8	42.2	45.8
97.5°	36.5	37.4	38.2	39.1	39.9	40.8	41.7	42.5	46.4	50.2	54.0
100°	46.6	47.3	48.0	48.7	49.4	50.0	50.8	51.4	58.9	66.2	73.5
102.5°	72.3	75.3	78.2	81.1	84.1	87.1	90.0	92.9	109.8	126.5	143.3
105°	133.3	141.3	149.4	157.4	165.4	173.4	181.5	189.5	216.5	243.3	270.3
107.5°	243.1	255.7	268.4	281.1	293.8	306.5	319.1	331.9	358.1	384.4	410.7
110°	369.3	381.5	393.5	405.7	417.7	429.9	441.9	454.2	470.0	485.8	501.7



TEST NUMBER: P1444451
 CATALOG NUMBER: EHBR1-30-UNV-TA-L830-UPL15

CANDELA DISTRIBUTION (continued):

	275°	277.5°	280°	282.5°	285°	287.5°	290°	292.5°	295°	297.5°	300°
112.5°	459.9	465.7	471.7	477.6	483.6	489.6	495.6	501.6	509.7	517.4	525.5
115°	487.7	488.0	488.6	488.9	489.4	489.9	490.6	491.1	493.8	496.5	499.2
117.5°	465.3	462.1	459.0	455.9	452.8	449.9	446.9	444.0	443.7	443.3	443.2
120°	419.6	415.3	411.1	406.8	402.8	398.8	394.7	390.8	388.9	387.0	385.4
122.5°	364.7	360.4	356.3	352.3	348.3	344.3	340.5	336.7	335.4	334.3	333.2
125°	313.4	310.1	306.6	303.2	300.0	296.9	293.8	290.8	291.1	291.3	291.8
127.5°	272.6	270.6	268.6	266.8	265.0	263.3	261.7	260.0	261.5	262.7	264.2
130°	245.2	244.5	243.9	243.2	242.8	242.3	242.0	241.6	243.7	245.7	247.9
132.5°	230.1	230.1	230.1	230.4	230.8	231.2	231.8	232.1	234.6	236.8	239.2
135°	222.5	222.9	223.7	224.2	225.2	225.8	226.9	227.7	230.1	232.2	234.6
137.5°	220.5	221.1	221.9	222.7	223.8	224.6	225.8	226.9	228.7	230.5	232.4
140°	221.3	221.7	222.6	223.3	224.2	224.8	225.9	226.8	228.5	230.0	231.4
142.5°	222.7	222.9	223.7	224.3	225.2	225.9	226.9	227.5	228.7	229.9	231.3
145°	225.7	226.1	226.8	227.2	227.8	228.5	229.2	229.9	230.8	231.5	232.3
147.5°	227.3	227.6	228.1	228.6	229.1	229.6	230.1	230.4	231.2	231.7	232.4
150°	227.8	228.0	228.3	228.5	228.9	229.3	229.8	230.1	230.6	231.1	231.7
152.5°	226.4	226.5	226.8	227.1	227.4	227.7	228.0	228.4	228.9	229.2	229.8
155°	225.6	225.9	226.3	226.6	227.1	227.2	227.7	227.9	228.4	228.7	229.2
157.5°	226.0	226.2	226.7	226.9	227.3	227.5	227.9	228.2	228.7	228.9	229.3
160°	226.1	226.6	227.0	227.3	227.7	228.1	228.6	229.0	229.4	229.7	230.1
162.5°	227.9	228.3	228.7	228.9	229.2	229.6	229.9	230.2	230.8	231.1	231.6
165°	229.2	229.6	230.1	230.4	230.9	231.4	231.7	232.2	232.5	232.9	233.1
167.5°	231.9	232.2	232.8	233.1	233.4	233.8	234.3	234.6	235.0	235.2	235.6
170°	233.7	234.1	234.5	234.7	235.1	235.4	235.8	236.1	236.5	236.8	237.3
172.5°	236.7	237.0	237.3	237.4	237.6	238.0	238.3	238.5	238.9	239.1	239.4
175°	239.1	239.1	239.2	239.3	239.4	239.4	239.5	239.7	239.8	239.9	240.0
177.5°	240.5	240.5	240.6	240.7	240.8	240.9	241.0	241.1	241.1	241.1	241.1
180°	239.9	239.9	239.9	239.9	239.9	239.9	239.9	239.9	239.9	239.9	239.9



TEST NUMBER: P1444451
 CATALOG NUMBER: EHBR1-30-UNV-TA-L830-UPL15

CANDELA DISTRIBUTION (continued):

	302.5°	305°	307.5°	310°	312.5°	315°	317.5°	320°	322.5°	325°	327.5°
0°	24616.1	24616.1	24616.1	24616.1	24616.1	24616.1	24616.1	24616.1	24616.1	24616.1	24616.1
2.5°	24876.6	24877.7	24857.6	24856.5	24837.8	24835.3	24817.1	24811.5	24796.7	24791.2	24776.0
5°	25631.4	25606.9	25550.4	25517.3	25461.4	25424.4	25364.0	25324.7	25266.3	25222.4	25163.7
7.5°	26394.7	26356.7	26293.3	26242.0	26164.5	26102.7	26012.0	25937.8	25839.7	25754.7	25651.6
10°	26618.5	26612.7	26596.5	26573.0	26537.0	26496.5	26434.9	26370.5	26284.5	26191.0	26076.5
12.5°	26067.8	26127.2	26208.3	26256.4	26314.9	26340.5	26364.5	26358.4	26342.7	26295.4	26229.2
15°	24672.3	24839.5	25060.8	25232.3	25429.7	25573.1	25731.5	25830.1	25928.6	25974.0	26001.8
17.5°	22452.6	22769.1	23165.9	23494.8	23874.3	24179.1	24513.2	24764.7	25023.3	25208.6	25376.2
20°	19601.4	20059.9	20621.2	21117.1	21693.6	22194.7	22743.7	23194.4	23659.2	24022.7	24366.7
22.5°	16508.8	17053.3	17731.9	18360.5	19103.8	19771.8	20525.4	21181.3	21866.3	22438.4	22991.6
25°	13467.7	14065.0	14806.9	15508.2	16350.0	17127.0	18020.8	18838.2	19723.5	20492.0	21251.2
27.5°	10690.8	11277.1	12034.6	12781.1	13671.3	14499.2	15456.8	16357.6	17365.5	18295.0	19245.7
30°	8408.4	8905.7	9584.9	10308.0	11185.9	12028.4	12996.5	13922.8	14971.3	15986.2	17057.1
32.5°	6661.7	7040.6	7574.6	8186.0	8996.1	9798.0	10719.8	11614.1	12646.6	13671.7	14785.6
35°	5290.6	5586.1	5993.3	6470.4	7156.4	7847.7	8663.1	9476.2	10439.5	11412.3	12494.9
37.5°	4171.9	4411.7	4730.6	5089.0	5639.2	6206.5	6875.1	7549.3	8386.4	9248.6	10229.8
40°	3257.8	3452.0	3700.2	3967.5	4383.0	4820.1	5337.2	5860.0	6532.4	7237.2	8049.2
42.5°	2559.3	2702.5	2877.9	3073.2	3460.9	3692.9	4043.5	4421.6	4916.0	5427.7	6038.1
45°	2055.3	2153.0	2274.6	2405.7	2585.6	2782.4	3022.6	3274.4	3744.0	3974.4	4345.7
47.5°	1716.4	1782.0	1859.4	1941.9	2048.0	2162.5	2305.0	2450.5	2638.8	2834.0	3062.8
50°	1488.1	1554.8	1581.4	1624.2	1685.6	1751.0	1831.3	1911.5	2012.5	2114.9	2232.6
52.5°	1318.7	1340.4	1369.4	1396.5	1434.6	1509.0	1533.1	1575.1	1631.7	1687.1	1748.9
55°	1189.3	1203.5	1222.3	1238.7	1261.7	1283.7	1315.4	1343.3	1381.2	1414.5	1455.6
57.5°	1088.6	1097.6	1110.7	1121.5	1136.3	1148.8	1167.4	1182.5	1204.2	1223.2	1248.1
60°	1015.5	1021.5	1030.3	1037.3	1046.8	1053.2	1062.5	1069.6	1081.1	1090.6	1104.6
62.5°	955.7	958.8	964.5	968.7	974.7	978.0	982.9	986.0	992.3	997.1	1004.9
65°	884.1	884.7	888.6	890.3	895.0	896.8	900.8	902.2	907.5	911.0	917.9
67.5°	825.2	823.6	823.7	822.3	823.0	821.6	822.0	820.6	822.6	823.7	828.9
70°	771.7	769.3	768.6	766.1	765.4	762.9	762.1	759.9	759.6	758.8	760.7
72.5°	719.4	718.7	718.9	717.1	717.0	715.3	715.4	714.2	715.5	716.0	718.4
75°	659.3	659.4	660.6	659.1	659.5	658.0	658.6	657.2	657.9	657.7	660.0
77.5°	586.1	587.8	591.0	590.3	591.3	589.8	590.4	588.5	589.1	587.8	588.7
80°	503.8	507.4	511.7	511.5	513.3	512.2	513.8	512.0	512.8	510.5	509.9
82.5°	406.1	409.2	413.7	413.9	418.0	418.6	423.1	422.9	425.7	424.0	422.6
85°	277.6	279.7	283.7	285.9	290.0	292.5	296.8	298.6	295.5	301.2	296.7
87.5°	145.0	150.3	147.3	154.4	152.7	159.8	158.3	164.9	163.5	169.3	168.5
90°	47.1	47.5	51.8	52.5	57.7	58.9	61.9	60.3	63.2	61.8	64.6
92.5°	36.6	39.2	41.6	44.0	46.4	48.9	46.6	44.3	42.2	40.0	37.7
95°	49.4	52.8	56.4	59.9	63.4	67.0	63.2	59.5	55.7	51.9	48.1
97.5°	57.8	61.5	65.4	69.1	73.1	76.8	72.3	67.8	63.4	59.0	54.5
100°	80.8	88.3	95.6	102.9	110.3	117.6	109.3	101.0	92.7	84.4	76.0
102.5°	160.3	177.1	194.0	210.9	227.6	244.5	226.9	209.4	191.6	173.9	156.2
105°	297.2	324.2	351.1	378.1	404.9	432.1	403.4	374.8	346.2	317.6	288.9
107.5°	437.1	463.3	489.7	516.0	542.4	568.8	539.8	510.7	481.8	452.6	423.6
110°	517.6	533.5	549.4	565.3	581.1	597.2	576.0	554.9	533.8	512.7	491.5



TEST NUMBER: P1444451
 CATALOG NUMBER: EHBR1-30-UNV-TA-L830-UPL15

CANDELA DISTRIBUTION (continued):

	302.5°	305°	307.5°	310°	312.5°	315°	317.5°	320°	322.5°	325°	327.5°
112.5°	533.5	541.7	549.7	557.9	565.9	574.0	559.0	544.0	529.0	513.9	498.8
115°	502.0	504.6	507.4	510.1	512.8	515.7	505.6	495.6	485.5	475.5	465.3
117.5°	443.0	442.9	442.6	442.7	442.3	442.2	436.7	431.2	425.6	420.0	414.5
120°	383.5	381.6	379.8	378.1	376.3	374.4	372.3	370.1	367.8	365.6	363.3
122.5°	332.1	331.1	329.9	328.8	327.6	326.4	325.8	325.2	324.4	323.7	323.0
125°	292.1	292.4	292.7	293.0	293.3	293.6	293.4	293.3	292.9	292.8	292.5
127.5°	265.5	267.0	268.1	269.5	270.6	272.0	272.1	272.4	272.5	272.7	272.9
130°	249.9	252.0	253.9	255.9	257.8	259.9	259.8	259.9	260.0	260.0	260.1
132.5°	241.5	243.7	246.0	248.4	250.5	252.6	252.6	252.7	252.5	252.7	252.5
135°	236.7	238.9	240.9	243.2	245.0	247.2	247.1	247.1	246.7	246.8	246.7
137.5°	234.1	236.0	237.6	239.4	241.0	242.8	242.5	242.5	242.2	242.3	242.1
140°	232.8	234.4	235.7	237.2	238.5	239.9	239.6	239.4	239.0	238.9	238.4
142.5°	232.4	233.4	234.5	235.7	236.7	237.8	237.2	236.7	236.1	235.7	235.1
145°	233.1	234.0	234.7	235.6	236.1	237.0	236.1	235.6	234.7	234.2	233.5
147.5°	233.0	233.5	233.9	234.5	234.7	235.4	234.6	234.0	233.3	232.6	231.8
150°	232.0	232.6	233.0	233.4	233.8	234.4	233.5	232.8	231.9	231.2	230.4
152.5°	230.2	230.6	231.0	231.4	231.7	232.1	231.3	230.7	229.9	229.0	228.2
155°	229.4	229.9	230.1	230.4	230.5	230.8	230.1	229.6	228.8	228.2	227.4
157.5°	229.6	230.0	230.2	230.4	230.6	230.9	230.3	229.9	229.3	228.8	228.3
160°	230.3	230.6	230.9	231.1	231.4	231.4	230.9	230.7	230.2	229.8	229.2
162.5°	231.9	232.3	232.6	232.9	233.1	233.4	233.0	232.5	232.0	231.6	230.9
165°	233.4	233.7	234.0	234.3	234.4	234.6	234.2	234.0	233.5	233.2	232.9
167.5°	235.8	236.1	236.3	236.6	236.7	236.9	236.5	236.3	235.9	235.6	235.1
170°	237.5	237.6	238.0	238.3	238.5	238.7	238.5	238.3	237.9	237.6	237.4
172.5°	239.6	239.8	239.9	240.2	240.3	240.5	240.3	240.0	239.7	239.3	239.0
175°	240.0	240.1	240.3	240.3	240.3	240.4	240.1	239.8	239.6	239.3	239.0
177.5°	241.1	241.1	241.1	241.0	241.0	241.0	240.8	240.6	240.5	240.3	240.1
180°	239.9	239.9	239.9	239.9	239.9	239.9	239.9	239.9	239.9	239.9	239.9



TEST NUMBER: P1444451
 CATALOG NUMBER: EHBR1-30-UNV-TA-L830-UPL15

CANDELA DISTRIBUTION (continued):

	330°	332.5°	335°	337.5°	340°	342.5°	345°	347.5°	350°	352.5°	355°
0°	24616.1	24616.1	24616.1	24616.1	24616.1	24616.1	24616.1	24616.1	24616.1	24616.1	24616.1
2.5°	24770.7	24759.9	24753.0	24744.2	24738.8	24731.9	24726.9	24722.7	24719.2	24716.0	24713.6
5°	25119.0	25063.6	25020.7	24974.2	24935.9	24897.8	24868.4	24844.0	24827.3	24814.6	24807.2
7.5°	25562.5	25461.2	25370.9	25276.2	25191.1	25107.5	25035.3	24973.2	24926.6	24896.4	24878.1
10°	25958.5	25822.8	25688.7	25547.4	25413.5	25283.6	25163.7	25058.3	24974.8	24919.4	24886.9
12.5°	26136.1	26020.5	25883.4	25730.1	25566.0	25399.9	25238.0	25092.1	24969.6	24887.4	24839.9
15°	25979.7	25932.2	25839.3	25720.2	25564.5	25392.8	25202.8	25024.2	24859.8	24753.3	24691.6
17.5°	25471.1	25537.3	25530.2	25484.7	25372.7	25228.2	25034.6	24833.9	24628.4	24485.9	24408.2
20°	24612.8	24821.0	24926.6	24980.8	24936.9	24843.1	24667.8	24464.2	24224.6	24038.7	23925.1
22.5°	23406.7	23774.2	24003.3	24170.8	24206.4	24174.5	24019.7	23826.0	23559.0	23335.5	23167.9
25°	21853.9	22392.4	22754.4	23038.3	23148.4	23176.9	23045.2	22852.6	22554.9	22294.5	22064.4
27.5°	20025.0	20724.8	21208.1	21589.5	21761.5	21836.2	21715.0	21518.5	21166.2	20855.4	20554.8
30°	17966.1	18796.2	19378.2	19835.5	20045.3	20143.8	20015.0	19795.7	19385.9	19011.9	18633.1
32.5°	15762.3	16670.7	17304.9	17801.5	18009.4	18102.2	17933.7	17687.3	17213.6	16773.0	16331.2
35°	13455.0	14371.9	15011.4	15494.8	15669.1	15725.0	15509.5	15224.7	14700.0	14216.3	13734.7
37.5°	11100.7	11953.8	12535.0	12968.8	13076.6	13086.3	12826.6	12512.2	11960.6	11483.8	11004.3
40°	8766.8	9486.2	9955.5	10302.7	10340.1	10306.7	10024.5	9708.0	9192.0	8764.8	8343.8
42.5°	6568.3	7111.4	7446.2	7684.1	7670.0	7604.0	7345.2	7073.2	6647.4	6322.0	5990.8
45°	4684.9	5043.0	5238.7	5377.9	5333.2	5270.4	5068.9	4878.3	4588.9	4378.7	4156.2
47.5°	3254.6	3682.2	3607.8	3880.0	3645.5	3800.4	3477.8	3299.9	3146.4	3034.7	2908.9
50°	2330.0	2428.0	2475.3	2507.7	2490.5	2466.6	2408.7	2356.9	2286.8	2235.6	2176.1
52.5°	1799.4	1848.4	1875.2	1894.7	1890.8	1882.1	1856.9	1833.8	1801.0	1779.4	1753.2
55°	1524.2	1524.9	1574.2	1553.1	1584.3	1547.7	1562.1	1521.5	1528.1	1493.2	1469.8
57.5°	1266.5	1286.7	1295.7	1304.4	1301.9	1300.4	1290.6	1285.7	1274.7	1271.3	1263.4
60°	1114.1	1124.6	1126.8	1130.8	1127.4	1126.1	1118.5	1115.7	1108.3	1107.0	1101.8
62.5°	1009.6	1014.9	1014.9	1014.9	1010.5	1006.4	997.9	993.4	987.1	985.7	982.7
65°	922.4	927.9	928.8	930.0	926.8	923.5	916.0	911.2	904.8	902.2	898.8
67.5°	832.3	838.3	840.2	843.2	841.4	840.8	835.6	833.8	829.5	828.4	825.2
70°	761.5	764.1	763.9	763.8	759.8	756.2	750.3	747.5	743.0	742.1	739.2
72.5°	719.5	721.3	720.1	718.6	713.4	708.2	701.2	696.1	690.3	686.6	682.5
75°	660.3	662.6	661.1	660.1	655.5	652.0	646.4	643.6	639.5	638.4	635.5
77.5°	587.6	588.7	586.4	586.1	582.5	580.3	576.1	575.4	572.4	572.4	569.7
80°	506.7	506.0	502.3	501.5	498.0	497.0	493.7	493.9	491.6	492.5	490.6
82.5°	416.9	414.7	409.6	408.1	404.1	403.7	401.5	403.3	401.8	404.1	402.8
85°	298.8	299.4	297.2	297.2	296.0	296.4	296.2	297.6	297.8	299.7	299.7
87.5°	166.5	169.0	168.5	170.7	170.6	173.1	173.9	177.5	178.0	181.3	181.3
90°	63.2	66.4	64.9	68.2	67.7	71.4	71.6	75.1	74.8	77.9	76.9
92.5°	35.4	33.3	31.1	28.8	27.6	26.3	25.6	24.1	23.1	21.8	20.7
95°	44.3	40.6	36.7	33.0	31.7	30.3	29.0	27.7	26.4	25.1	23.9
97.5°	50.0	45.6	41.1	36.6	35.5	34.4	33.2	32.0	30.9	29.8	28.7
100°	67.6	59.3	51.1	42.6	41.7	40.7	39.8	38.9	37.8	36.8	35.9
102.5°	138.6	120.8	103.1	85.4	82.1	78.7	75.4	71.9	68.6	65.2	61.9
105°	260.2	231.6	202.9	174.1	165.0	155.9	146.8	137.6	128.4	119.3	110.3
107.5°	394.4	365.3	336.2	307.1	290.3	273.4	256.6	239.6	222.8	205.9	189.0
110°	470.3	449.2	427.9	406.5	393.1	379.6	366.0	352.4	338.8	325.1	311.5



TEST NUMBER: P1444451
 CATALOG NUMBER: EHBR1-30-UNV-TA-L830-UPL15

CANDELA DISTRIBUTION (continued):

	330°	332.5°	335°	337.5°	340°	342.5°	345°	347.5°	350°	352.5°	355°
112.5°	483.6	468.5	453.4	438.1	432.1	425.9	419.9	413.7	407.6	401.3	395.2
115°	455.1	444.9	434.7	424.4	422.4	420.2	418.2	416.0	413.9	411.7	409.5
117.5°	408.9	403.3	397.5	391.9	392.4	392.9	393.2	393.6	394.0	394.3	394.5
120°	361.0	358.8	356.5	354.2	356.2	358.2	360.2	361.9	363.9	365.6	367.4
122.5°	322.3	321.5	320.8	319.9	322.4	324.8	327.1	329.4	331.7	333.7	335.9
125°	292.4	292.1	291.9	291.5	294.0	296.5	298.9	301.2	303.5	305.6	307.7
127.5°	273.1	273.1	273.3	273.3	275.4	277.0	278.9	280.5	282.1	283.5	285.0
130°	260.0	260.0	260.1	260.1	261.9	263.6	265.4	266.7	268.2	269.4	270.7
132.5°	252.6	252.5	252.5	252.4	253.8	255.0	256.4	257.3	258.4	259.2	260.1
135°	246.7	246.4	246.4	246.2	247.5	248.8	249.9	250.9	252.0	252.6	253.4
137.5°	242.0	241.8	241.7	241.5	242.7	243.8	244.9	245.7	246.5	247.4	247.9
140°	238.3	237.8	237.7	237.4	238.5	239.3	240.4	241.1	242.0	242.5	243.2
142.5°	234.6	234.0	233.7	233.1	233.8	234.5	235.2	235.9	236.4	236.9	237.3
145°	232.9	232.0	231.5	230.6	231.3	231.8	232.4	233.0	233.3	233.6	233.9
147.5°	231.3	230.4	229.6	228.8	229.5	229.9	230.2	230.5	230.9	231.1	231.3
150°	229.6	228.7	227.7	226.9	227.2	227.5	227.8	228.2	228.4	228.5	228.7
152.5°	227.3	226.5	225.7	224.7	224.9	225.1	225.3	225.5	225.6	225.7	225.7
155°	226.7	225.8	225.1	224.3	224.5	224.7	224.8	224.9	224.8	224.8	224.8
157.5°	227.6	226.9	226.4	225.7	225.7	225.7	225.7	225.5	225.4	225.2	225.0
160°	228.8	228.2	227.7	227.1	227.0	226.9	227.0	226.7	226.6	226.3	226.1
162.5°	230.3	229.8	229.0	228.4	228.3	228.3	228.2	228.0	227.8	227.5	227.3
165°	232.5	231.9	231.6	230.9	230.8	230.6	230.5	230.2	230.1	229.7	229.4
167.5°	234.7	234.3	233.8	233.2	233.2	233.2	233.1	233.0	232.8	232.5	232.4
170°	237.0	236.5	236.2	235.8	235.6	235.5	235.3	235.1	234.8	234.6	234.4
172.5°	238.6	238.2	237.8	237.3	237.3	237.2	237.0	236.9	236.7	236.5	236.4
175°	238.7	238.5	238.0	237.7	237.6	237.5	237.5	237.4	237.2	237.1	236.9
177.5°	239.9	239.7	239.3	239.1	239.0	239.0	239.0	238.9	238.9	238.8	238.7
180°	239.9	239.9	239.9	239.9	239.9	239.9	239.9	239.9	239.9	239.9	239.9



TEST NUMBER: P1444451
CATALOG NUMBER: EHBR1-30-UNV-TA-L830-UPL15

CANDELA DISTRIBUTION (continued):

	357.5°	360°
0°	24616.1	24616.1
2.5°	24711.4	24710.1
5°	24803.3	24801.8
7.5°	24873.2	24872.7
10°	24881.3	24885.6
12.5°	24831.8	24835.2
15°	24686.8	24693.5
17.5°	24409.6	24418.5
20°	23932.1	23941.3
22.5°	23158.8	23162.7
25°	22034.6	22018.7
27.5°	20501.9	20474.5
30°	18553.6	18527.0
32.5°	16230.5	16214.0
35°	13615.6	13605.1
37.5°	10862.5	10841.3
40°	8189.9	8127.7
42.5°	5845.7	5736.6
45°	4039.9	3910.5
47.5°	2820.2	2740.2
50°	2137.7	2111.9
52.5°	1741.8	1735.8
55°	1469.7	1467.1
57.5°	1265.2	1264.3
60°	1104.6	1104.3
62.5°	984.8	985.2
65°	900.4	900.6
67.5°	826.1	825.5
70°	740.3	739.6
72.5°	681.1	680.1
75°	635.5	634.9
77.5°	570.5	569.5
80°	491.9	490.6
82.5°	404.6	403.2
85°	301.8	301.9
87.5°	184.6	184.5
90°	79.8	78.3
92.5°	19.8	18.8
95°	22.6	21.3
97.5°	27.5	26.4
100°	34.9	34.0
102.5°	58.5	55.2
105°	101.1	92.0
107.5°	172.2	155.3
110°	298.0	284.4



TEST NUMBER: P1444451
CATALOG NUMBER: EHBR1-30-UNV-TA-L830-UPL15

CANDELA DISTRIBUTION (continued):

	357.5°	360°
112.5°	388.9	382.7
115°	407.1	404.8
117.5°	394.7	394.9
120°	369.0	370.7
122.5°	337.8	339.7
125°	309.6	311.5
127.5°	286.2	287.4
130°	271.6	272.7
132.5°	260.7	261.2
135°	253.8	254.3
137.5°	248.3	248.7
140°	243.4	243.7
142.5°	237.5	237.6
145°	234.1	234.2
147.5°	231.1	231.2
150°	228.6	228.6
152.5°	225.6	225.6
155°	224.6	224.5
157.5°	224.6	224.4
160°	225.7	225.6
162.5°	227.0	226.8
165°	228.9	228.6
167.5°	232.0	231.9
170°	234.1	233.9
172.5°	236.1	236.0
175°	236.8	236.7
177.5°	238.7	238.5
180°	239.9	239.9

LM-79-2019: Approved Method: Electrical and Photometric Measurements of Solid-
State Lighting Products

Report Prepared for

Cooper Lighting Solutions

Metalux

Report Number: SP1-2506-472-2

Test Date: 07/31/2025

Luminaire Tested: EHBR-60-L830-N

Data in this report applies to families of products including EHBR-60-L830-N

Test Information

Test Method: LM-79-2019
 Report Number: SP1-2506-472-2
 Test Lab: COOPER LIGHTING SOLUTIONS
 Photometer: SP1 - 76IN SPHERE
 Measurement Geometry: 4π
 Issue Date: 08/05/2025
 Manufacturer: COOPER LIGHTING SOLUTIONS
 Product Line: Metalux
 Catalog Number: **EHBR-60-L830-N**
 Description: Elevate Round Highbay at, 60000 lumens, 3000K 80CRI LEDs with N lens

Spectral Parameters

CCT (K): 2983
 CIE u': 0.2516
 CIE v': 0.5201
 Duv: -0.0012
 CIE x: 0.4364
 CIE y: 0.4010
 CIE z: 0.1626
 Peak Wavelength (nm): 630
 Dominant Wavelength (nm): 583
 Purity: 51.34918
 Rf: 81.2
 Rg: 101.5

CRI (Ra):	83.4		
R1:	84.0	R9:	29.4
R2:	87.5	R10:	68.6
R3:	88.9	R11:	82.2
R4:	83.8	R12:	61.6
R5:	81.9	R13:	83.9
R6:	83.1	R14:	92.5
R7:	87.1	R15:	79.8
R8:	70.9		



Test Conditions

Stabilization Time: 38M
 Operation Time: 1H 38M
 Sphere Temperature (°C): 25.0

REPORT NUMBER: SP1-2506-472-2

Measurement and Test Equipment			
Instrument	Identification Number	Calibration Date	Calibration Due Date
Photometer	76INCH SPHERE IN0058	6/16/2025	12/16/2025
Power Meter	XITRON INXT2011004	1/21/2025	1/21/2026
AC Power Source	CHROMA 61603 IN0063	10/22/2024	10/22/2025
DC Power Source	AGILENT E3634A IN0208	10/22/2024	10/22/2025
Sphere Thermometer	ONSET IN0085	10/22/2024	10/22/2025
Room Thermometer	ONSET IN0046	10/22/2024	10/22/2025

REPORT NUMBER: SP1-2506-472-2

CIE 1931 Chromaticity Diagram



CIE 1931 Chromaticity Diagram with 2017 ANSI 7-Step and 4-Step Quadrangles

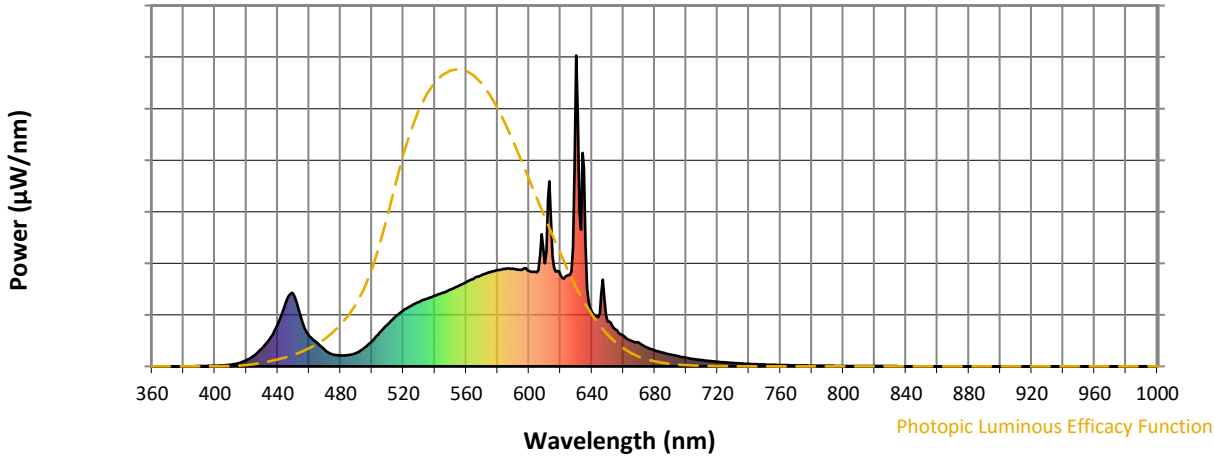


CCT = 2983K
 CIE x = 0.4364
 CIE y = 0.4010
 Duv = -0.0012

Point lies inside the ANSI 3000K 4-step quadrangle

REPORT NUMBER: SP1-2506-472-2

Photopic Flux vs. Wavelength



Photopic Lumens: NR

λ (nm)	Power W [^] /nm	Lumens (φ/nm)	λ (nm)	Power W [^] /nm	Lumens (φ/nm)	λ (nm)	Power W [^] /nm	Lumens (φ/nm)	λ (nm)	Power W [^] /nm	Lumens (φ/nm)	λ (nm)	Power W [^] /nm	Lumens (φ/nm)
360	0	NR	490	43	NR	620	294	NR	750	6	NR	880	0	NR
365	0	NR	495	59	NR	625	294	NR	755	5	NR	885	0	NR
370	0	NR	500	81	NR	630	1000	NR	760	4	NR	890	0	NR
375	0	NR	505	109	NR	635	637	NR	765	4	NR	895	0	NR
380	0	NR	510	135	NR	640	175	NR	770	3	NR	900	0	NR
385	0	NR	515	160	NR	645	171	NR	775	3	NR	905	0	NR
390	1	NR	520	180	NR	650	146	NR	780	2	NR	910	0	NR
395	1	NR	525	195	NR	655	119	NR	785	2	NR	915	0	NR
400	2	NR	530	207	NR	660	99	NR	790	2	NR	920	0	NR
405	3	NR	535	218	NR	665	82	NR	795	2	NR	925	0	NR
410	5	NR	540	227	NR	670	76	NR	800	1	NR	930	0	NR
415	10	NR	545	237	NR	675	61	NR	805	1	NR	935	0	NR
420	20	NR	550	247	NR	680	52	NR	810	1	NR	940	0	NR
425	35	NR	555	259	NR	685	44	NR	815	1	NR	945	0	NR
430	58	NR	560	271	NR	690	38	NR	820	1	NR	950	0	NR
435	90	NR	565	283	NR	695	33	NR	825	1	NR	955	0	NR
440	135	NR	570	293	NR	700	27	NR	830	1	NR	960	0	NR
445	204	NR	575	303	NR	705	24	NR	835	1	NR	965	0	NR
450	233	NR	580	310	NR	710	20	NR	840	0	NR	970	0	NR
455	153	NR	585	313	NR	715	17	NR	845	0	NR	975	0	NR
460	98	NR	590	314	NR	720	15	NR	850	0	NR	980	0	NR
465	76	NR	595	310	NR	725	13	NR	855	0	NR	985	0	NR
470	53	NR	600	307	NR	730	11	NR	860	0	NR	990	0	NR
475	39	NR	605	303	NR	735	9	NR	865	0	NR	995	0	NR
480	35	NR	610	331	NR	740	8	NR	870	0	NR	1000	0	NR
485	36	NR	615	353	NR	745	7	NR	875	0	NR			

REPORT NUMBER: SP1-2506-472-2

Scotopic Flux vs. Wavelength



Scotopic Lumens: NR

S/P: 1.27

λ (nm)	Power W [^] /nm	Lumens (φ/nm)	λ (nm)	Power W [^] /nm	Lumens (φ/nm)	λ (nm)	Power W [^] /nm	Lumens (φ/nm)	λ (nm)	Power W [^] /nm	Lumens (φ/nm)	λ (nm)	Power W [^] /nm	Lumens (φ/nm)
360	0	NR	490	43	NR	620	294	NR	750	6	NR	880	0	NR
365	0	NR	495	59	NR	625	294	NR	755	5	NR	885	0	NR
370	0	NR	500	81	NR	630	1000	NR	760	4	NR	890	0	NR
375	0	NR	505	109	NR	635	637	NR	765	4	NR	895	0	NR
380	0	NR	510	135	NR	640	175	NR	770	3	NR	900	0	NR
385	0	NR	515	160	NR	645	171	NR	775	3	NR	905	0	NR
390	1	NR	520	180	NR	650	146	NR	780	2	NR	910	0	NR
395	1	NR	525	195	NR	655	119	NR	785	2	NR	915	0	NR
400	2	NR	530	207	NR	660	99	NR	790	2	NR	920	0	NR
405	3	NR	535	218	NR	665	82	NR	795	2	NR	925	0	NR
410	5	NR	540	227	NR	670	76	NR	800	1	NR	930	0	NR
415	10	NR	545	237	NR	675	61	NR	805	1	NR	935	0	NR
420	20	NR	550	247	NR	680	52	NR	810	1	NR	940	0	NR
425	35	NR	555	259	NR	685	44	NR	815	1	NR	945	0	NR
430	58	NR	560	271	NR	690	38	NR	820	1	NR	950	0	NR
435	90	NR	565	283	NR	695	33	NR	825	1	NR	955	0	NR
440	135	NR	570	293	NR	700	27	NR	830	1	NR	960	0	NR
445	204	NR	575	303	NR	705	24	NR	835	1	NR	965	0	NR
450	233	NR	580	310	NR	710	20	NR	840	0	NR	970	0	NR
455	153	NR	585	313	NR	715	17	NR	845	0	NR	975	0	NR
460	98	NR	590	314	NR	720	15	NR	850	0	NR	980	0	NR
465	76	NR	595	310	NR	725	13	NR	855	0	NR	985	0	NR
470	53	NR	600	307	NR	730	11	NR	860	0	NR	990	0	NR
475	39	NR	605	303	NR	735	9	NR	865	0	NR	995	0	NR
480	35	NR	610	331	NR	740	8	NR	870	0	NR	1000	0	NR
485	36	NR	615	353	NR	745	7	NR	875	0	NR			

REPORT NUMBER: SP1-2506-472-2

Melanopic Flux vs. Wavelength



Melanopic Lumens: NR

M/P: 2.34

λ (nm)	Power W [^] /nm	Lumens (φ/nm)	λ (nm)	Power W [^] /nm	Lumens (φ/nm)	λ (nm)	Power W [^] /nm	Lumens (φ/nm)	λ (nm)	Power W [^] /nm	Lumens (φ/nm)	λ (nm)	Power W [^] /nm	Lumens (φ/nm)
360	0	NR	490	43	NR	620	294	NR	750	6	NR	880	0	NR
365	0	NR	495	59	NR	625	294	NR	755	5	NR	885	0	NR
370	0	NR	500	81	NR	630	1000	NR	760	4	NR	890	0	NR
375	0	NR	505	109	NR	635	637	NR	765	4	NR	895	0	NR
380	0	NR	510	135	NR	640	175	NR	770	3	NR	900	0	NR
385	0	NR	515	160	NR	645	171	NR	775	3	NR	905	0	NR
390	1	NR	520	180	NR	650	146	NR	780	2	NR	910	0	NR
395	1	NR	525	195	NR	655	119	NR	785	2	NR	915	0	NR
400	2	NR	530	207	NR	660	99	NR	790	2	NR	920	0	NR
405	3	NR	535	218	NR	665	82	NR	795	2	NR	925	0	NR
410	5	NR	540	227	NR	670	76	NR	800	1	NR	930	0	NR
415	10	NR	545	237	NR	675	61	NR	805	1	NR	935	0	NR
420	20	NR	550	247	NR	680	52	NR	810	1	NR	940	0	NR
425	35	NR	555	259	NR	685	44	NR	815	1	NR	945	0	NR
430	58	NR	560	271	NR	690	38	NR	820	1	NR	950	0	NR
435	90	NR	565	283	NR	695	33	NR	825	1	NR	955	0	NR
440	135	NR	570	293	NR	700	27	NR	830	1	NR	960	0	NR
445	204	NR	575	303	NR	705	24	NR	835	1	NR	965	0	NR
450	233	NR	580	310	NR	710	20	NR	840	0	NR	970	0	NR
455	153	NR	585	313	NR	715	17	NR	845	0	NR	975	0	NR
460	98	NR	590	314	NR	720	15	NR	850	0	NR	980	0	NR
465	76	NR	595	310	NR	725	13	NR	855	0	NR	985	0	NR
470	53	NR	600	307	NR	730	11	NR	860	0	NR	990	0	NR
475	39	NR	605	303	NR	735	9	NR	865	0	NR	995	0	NR
480	35	NR	610	331	NR	740	8	NR	870	0	NR	1000	0	NR
485	36	NR	615	353	NR	745	7	NR	875	0	NR			

Summary

$R_f = 81.2$
 $R_g = 101.5$
 CIE $R_a = 83.4$
 $R_9 = 29.4$



Color Vector Graphics

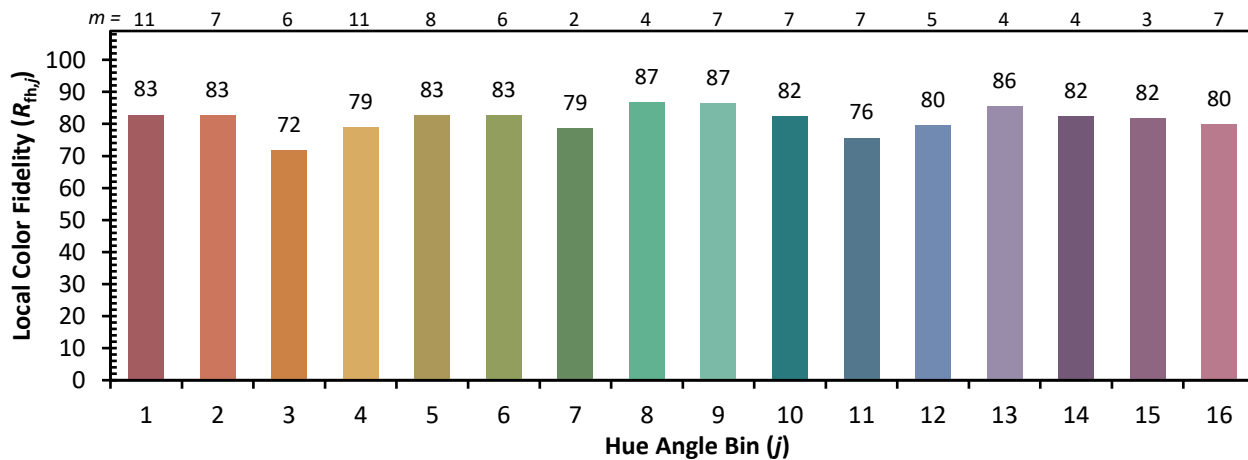
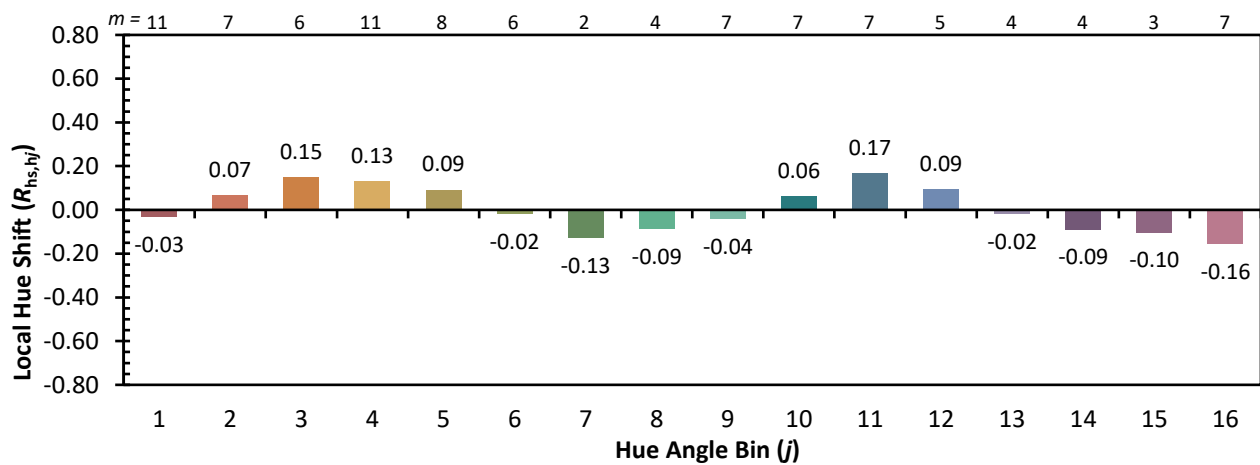
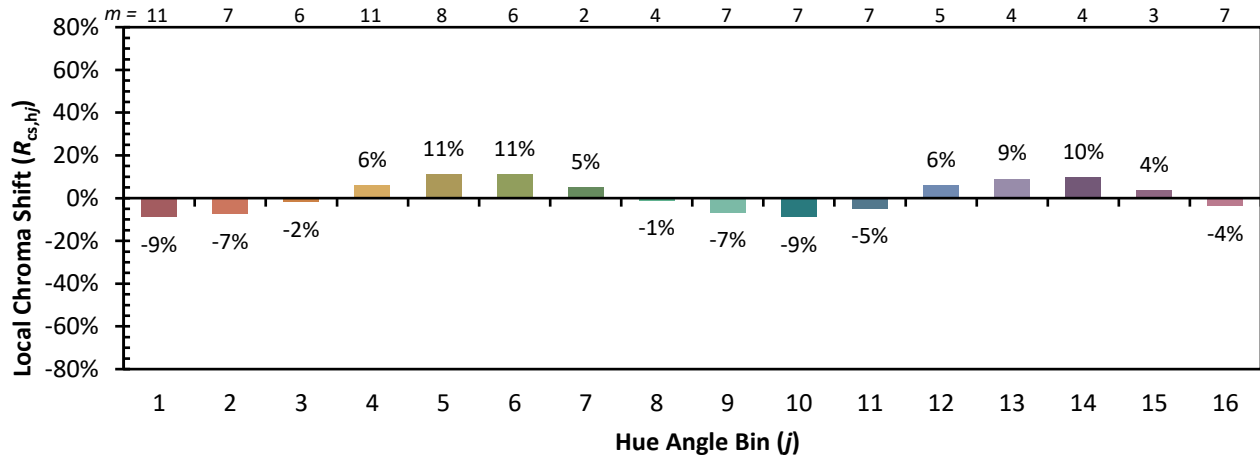


Individual Sample Fidelity Index ($R_{f,i}$)

CES01 = 86	CES26 = 71	CES51 = 89	CES76 = 65
CES02 = 63	CES27 = 89	CES52 = 89	CES77 = 82
CES03 = 31	CES28 = 86	CES53 = 80	CES78 = 67
CES04 = 70	CES29 = 68	CES54 = 92	CES79 = 89
CES05 = 50	CES30 = 77	CES55 = 90	CES80 = 85
CES06 = 51	CES31 = 70	CES56 = 81	CES81 = 75
CES07 = 43	CES32 = 64	CES57 = 79	CES82 = 93
CES08 = 41	CES33 = 74	CES58 = 81	CES83 = 89
CES09 = 29	CES34 = 76	CES59 = 92	CES84 = 91
CES10 = 76	CES35 = 87	CES60 = 96	CES85 = 81
CES11 = 59	CES36 = 99	CES61 = 91	CES86 = 74
CES12 = 65	CES37 = 81	CES62 = 93	CES87 = 83
CES13 = 44	CES38 = 83	CES63 = 79	CES88 = 86
CES14 = 74	CES39 = 94	CES64 = 81	CES89 = 74
CES15 = 72	CES40 = 89	CES65 = 78	CES90 = 85
CES16 = 48	CES41 = 88	CES66 = 76	CES91 = 87
CES17 = 50	CES42 = 80	CES67 = 74	CES92 = 73
CES18 = 57	CES43 = 75	CES68 = 79	CES93 = 84
CES19 = 72	CES44 = 99	CES69 = 83	CES94 = 64
CES20 = 67	CES45 = 83	CES70 = 72	CES95 = 80
CES21 = 87	CES46 = 82	CES71 = 70	CES96 = 86
CES22 = 79	CES47 = 79	CES72 = 90	CES97 = 85
CES23 = 92	CES48 = 78	CES73 = 65	CES98 = 83
CES24 = 91	CES49 = 79	CES74 = 94	CES99 = 82
CES25 = 72	CES50 = 88	CES75 = 70	



Color Rendition by Hue-Angle Bin



Measure Comparisons



(END OF REPORT)