

Cooper Lighting Solutions Photometric Lab  
1121 Highway 74 South  
Peachtree City, GA 30269



Scaled data based on original data using  
LM-79-2019 Approved Method: Electrical and Photometric Measurements of Solid-  
State Lighting Products

Test Report Prepared for  
Cooper Lighting Solutions

Brand: METALUX

Report Number: P1444467

Luminaire Tested: EHBR1-42-UNV-TA-L830-UPL15

Issue Date: 5/1/2026

**Test Information**

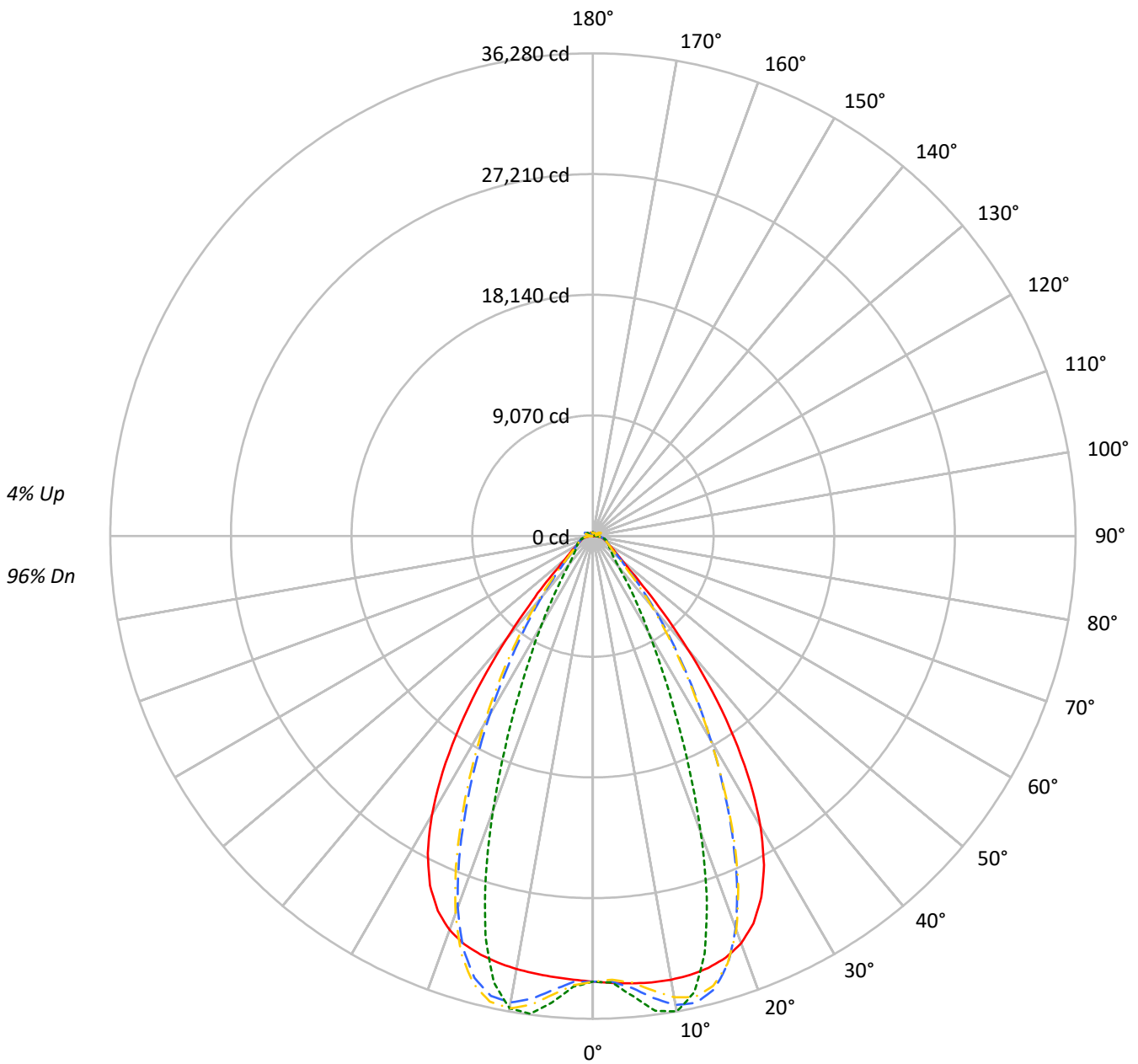
Test Method: LM-79-2019  
Report Number: P1444467  
REPORT IS A COMBINATION OF REPORTS P1444314 AND P1431635  
Test Lab: INNOVATION CENTER  
Issue Date: 5/1/2026  
Manufacturer: COOPER LIGHTING SOLUTIONS  
Product Line: METALUX  
Catalog Number: EHBR1-42-UNV-TA-L830-UPL15  
Description: Elevate Round Highbay at, 42000 lumens, 3000K 80CRI LEDs with TA lens  
Light Source: -  
Ballast/Driver: -

**Summary**

Lumens per Lamp: N/A  
Luminaire Lumens: 40166.1 lumens  
Efficiency: N/A  
Efficacy: 171.9 lumens/watt  
Spacing Criteria (0/90/45): 1.13 / 0.77 / 0.88  
Luminous Opening: Vertical Cylinder (Dia: 1.71' x H: 0.1')  
CIE Type: Direct  
  
Input Watts (W): 233.7  
Input Voltage (V): NR  
Input Current (Ain): NR  
Voltage Rise (V): NR  
Power Factor: NR  
Total Harmonic Distortion (THDi): NR  
Frequency (hertz): 60  
Stabilization Time: NR  
Operation Time: NR  
Ambient Temperature (°C): NR  
Test Distance: 24 FT

TEST NUMBER: P1444467  
CATALOG NUMBER: EHBR1-42-UNV-TA-L830-UPL15

### Luminous Intensity Polar Plot



— 0°-180°    - - 45°-225°    - - - 90°-270°    - · - 135°-315°



TEST NUMBER: P1444467  
 CATALOG NUMBER: EHBR1-42-UNV-TA-L830-UPL15

**COEFFICIENT OF UTILIZATION - ZONAL CAVITY METHOD:**

RF	20				20				20				20				20			
RC	80				70				50				30				10		0	
RW	70	50	30	10	70	50	30	10	50	30	10	50	30	10	50	30	10	50	30	10
RCR																				
0	118	118	118	118	115	115	115	115	109	109	109	103	103	103	98	98	98	98	96	
1	111	108	104	102	108	105	102	100	100	98	96	96	94	92	92	90	89	89	87	
2	104	98	93	89	101	96	92	88	92	89	85	89	86	83	85	83	81	81	79	
3	98	90	84	80	95	89	83	79	85	81	77	82	78	75	79	76	74	74	72	
4	92	83	77	72	90	82	76	71	79	74	70	77	72	69	74	70	67	67	66	
5	87	77	71	66	85	76	70	65	74	68	64	71	67	63	69	65	62	62	60	
6	82	72	65	60	80	71	64	60	69	63	59	67	62	58	65	61	58	58	56	
7	77	67	60	56	76	66	60	55	64	59	55	63	58	54	61	57	53	53	52	
8	73	63	56	52	72	62	56	51	60	55	51	59	54	50	58	53	50	50	48	
9	70	59	52	48	68	58	52	48	57	51	47	56	51	47	55	50	47	47	45	
10	66	55	49	45	65	55	49	45	54	48	44	53	48	44	52	47	44	44	42	

**AVERAGE LUMINANCE (cd/sqm):**

	0°	90°	180°	270°
0°	157268	157268	157268	157268
5°	158030	162638	155818	164768
10°	159349	170758	155528	169628
15°	160131	154790	155256	148558
20°	158475	115313	153288	106692
25°	150003	72929	145046	66171
30°	131039	43825	125963	40052
35°	100848	27500	95047	24360
40°	63796	17250	58368	16210
45°	32881	13439	32336	13218
50°	19279	11954	18687	11767
55°	14768	11309	14222	11208
60°	12497	11553	11965	11404
65°	11737	12065	11288	11653
70°	11467	12633	10896	12157
75°	12261	13396	11599	12806
80°	12688	14836	11504	13544
85°	11949	14315	9657	12255

**MAXIMUM LUMINANCE 45°-90°:**

Horizontal Angle: 25°  
 Vertical Angle: 45°  
 Luminance: 50321 cd/sqm



TEST NUMBER: P1444467  
 CATALOG NUMBER: EHBR1-42-UNV-TA-L830-UPL15

**ZONAL LUMENS:**

Zone	Lumens	% Fixture
0°-10°	3300.4	8.2
10°-20°	9284.5	23.1
20°-30°	10574.3	26.3
30°-40°	7600.3	18.9
40°-50°	3505.3	8.7
50°-60°	1677.4	4.2
60°-70°	1223.9	3.0
70°-80°	929.8	2.3
80°-90°	425.4	1.1
90°-100°	50.4	0.1
100°-110°	252.9	0.6
110°-120°	466.4	1.2
120°-130°	294.9	0.7
130°-140°	202.1	0.5
140°-150°	159.9	0.4
150°-160°	117.8	0.3
160°-170°	74.3	0.2
170°-180°	26.1	0.1
0°-30°	23159.2	57.7
0°-40°	30759.5	76.6
0°-60°	35942.1	89.5
0°-90°	38521.3	95.9
90°-120°	769.7	1.9
90°-150°	1426.6	3.6
90°-180°	1645.0	4.1
0°-180°	40166.1	100.0

**CANDELA DISTRIBUTION:**

	0°	90°	180°	270°	360°	Flux
0°	33489	33489	33489	33489	33489	
5°	33742	34726	33270	35181	33742	3224
15°	33595	32474	32572	31167	33595	9465
25°	29956	14564	28966	13214	29956	13579
35°	18509	5047	17445	4471	18509	11360
45°	5320	2174	5232	2139	5320	4525
55°	1996	1528	1922	1515	1996	1842
65°	1225	1259	1178	1216	1225	1224
75°	864	944	817	902	864	898
85°	411	492	332	421	411	386
90°	103	133	24	31	103	65
95°	23	25	23	25	23	22
105°	95	119	66	119	95	124
115°	411	490	430	490	411	380
125°	323	324	363	326	323	294
135°	272	229	292	232	272	212
145°	258	239	272	244	258	163
155°	252	247	266	251	252	117
165°	261	257	270	260	261	74
175°	273	274	277	275	273	26
180°	277	277	277	277	277	



TEST NUMBER: P1444467  
 CATALOG NUMBER: EHBR1-42-UNV-TA-L830-UPL15

**CANDELA DISTRIBUTION (FULL):**

	0°	2.5°	5°	7.5°	10°	12.5°	15°	17.5°	20°	22.5°	25°
0°	33489.2	33489.2	33489.2	33489.2	33489.2	33489.2	33489.2	33489.2	33489.2	33489.2	33489.2
2.5°	33617.2	33614.5	33613.9	33611.5	33610.9	33610.9	33609.8	33607.1	33605.4	33601.5	33597.1
5°	33741.8	33740.3	33741.3	33741.5	33739.1	33733.9	33725.7	33715.7	33703.1	33691.1	33680.4
7.5°	33838.3	33840.7	33843.7	33843.0	33835.7	33823.4	33806.7	33797.2	33802.8	33821.1	33862.8
10°	33855.9	33870.4	33875.9	33874.2	33859.5	33849.0	33853.1	33888.5	33959.2	34053.4	34182.2
12.5°	33787.3	33804.9	33804.3	33798.4	33784.3	33798.7	33850.1	33955.7	34107.2	34292.9	34510.9
15°	33594.6	33617.4	33610.9	33603.4	33593.9	33641.2	33743.8	33927.3	34161.1	34423.1	34691.4
17.5°	33220.4	33247.9	33234.5	33225.9	33217.9	33306.6	33482.9	33751.6	34046.1	34342.5	34596.7
20°	32571.2	32589.7	32557.8	32542.8	32555.5	32729.1	32988.8	33331.9	33642.4	33922.6	34096.4
22.5°	31511.9	31534.9	31474.9	31468.0	31541.9	31808.7	32137.4	32520.8	32812.5	33034.6	33101.6
25°	29955.5	29978.1	29906.9	29949.4	30075.3	30438.5	30830.0	31240.2	31489.1	31653.6	31608.2
27.5°	27854.7	27875.3	27807.8	27894.7	28093.7	28571.0	29031.7	29476.6	29698.4	29813.8	29667.7
30°	25205.2	25248.1	25168.2	25289.5	25593.2	26213.0	26740.8	27239.8	27460.9	27548.7	27321.3
32.5°	22058.5	22119.3	22031.4	22211.8	22635.6	23380.0	23979.7	24537.2	24781.8	24881.9	24625.1
35°	18509.3	18596.7	18495.7	18766.6	19289.2	20118.2	20782.2	21404.6	21694.3	21836.3	21577.5
37.5°	14749.0	14832.3	14777.7	15139.0	15712.9	16572.2	17250.0	17921.5	18248.6	18461.7	18257.7
40°	11057.4	11133.6	11174.9	11588.1	12127.9	12937.7	13588.7	14253.1	14619.1	14886.6	14760.8
42.5°	7804.4	7881.2	8021.7	8420.4	8870.4	9540.8	10098.5	10695.0	11044.6	11330.0	11281.4
45°	5320.0	5409.3	5585.3	5911.8	6237.3	6718.2	7127.7	7591.7	7877.2	8138.6	8141.7
47.5°	3728.0	3790.7	3947.9	4170.9	4383.1	4985.2	5009.9	5237.9	5429.9	5625.2	5650.6
50°	2873.2	2910.8	2994.3	3118.5	3238.8	3395.0	3538.1	3703.4	3821.5	3928.7	3954.2
52.5°	2361.5	2385.5	2427.9	2495.2	2565.0	2649.9	2726.6	2817.2	2881.6	2938.9	2950.9
55°	1995.8	2015.7	2078.9	2091.7	2171.5	2186.9	2220.9	2276.1	2313.5	2347.9	2356.5
57.5°	1720.0	1734.4	1747.8	1776.5	1801.0	1836.8	1865.5	1905.2	1928.8	1953.6	1955.7
60°	1502.3	1512.7	1522.2	1542.1	1558.9	1583.7	1603.6	1630.5	1647.4	1666.0	1668.1
62.5°	1340.3	1347.7	1354.1	1367.2	1379.2	1398.3	1414.1	1436.5	1452.3	1466.7	1469.9
65°	1225.1	1230.6	1234.7	1244.6	1255.1	1271.3	1285.5	1304.0	1315.5	1326.6	1328.9
67.5°	1123.1	1128.4	1132.6	1141.6	1148.8	1161.0	1170.5	1184.3	1193.0	1201.8	1202.1
70°	1006.2	1011.1	1014.3	1022.7	1028.5	1039.0	1046.7	1059.0	1068.0	1077.8	1080.3
72.5°	925.3	928.1	932.5	940.2	948.2	959.4	969.7	982.6	993.4	1003.6	1007.9
75°	863.7	867.1	869.9	876.5	882.1	891.6	899.2	911.0	920.4	931.4	936.7
77.5°	774.8	778.7	781.2	787.8	792.6	801.6	807.3	817.9	825.6	835.5	840.4
80°	667.5	671.1	672.8	679.0	682.9	691.2	696.8	706.9	713.4	723.3	729.1
82.5°	548.4	551.9	552.9	558.7	560.9	567.7	571.8	582.3	590.1	603.1	612.0
85°	410.7	412.0	413.9	412.4	420.8	421.2	430.7	432.4	444.8	448.0	462.2
87.5°	251.0	254.8	256.7	262.4	264.9	270.6	272.3	278.4	281.8	288.7	291.9
90°	102.9	108.5	110.3	116.7	118.3	124.1	125.3	131.8	133.6	140.3	142.6
92.5°	20.3	21.5	22.4	23.9	25.0	26.9	28.4	29.8	31.0	32.8	35.1
95°	22.8	24.1	25.4	26.6	27.9	29.2	30.5	31.8	33.1	34.4	38.0
97.5°	28.1	29.2	30.3	31.5	32.6	33.7	34.8	36.0	37.1	38.1	42.6
100°	36.0	36.9	37.8	38.8	39.7	40.7	41.7	42.6	43.6	44.5	52.7
102.5°	57.5	60.9	64.3	67.5	70.9	74.1	77.7	80.7	84.1	87.5	105.0
105°	94.7	103.7	113.0	122.0	131.0	140.2	149.3	158.1	167.3	176.3	205.0
107.5°	158.6	175.4	192.2	209.1	225.9	242.7	259.6	276.2	293.0	309.6	338.7
110°	288.3	301.7	315.3	328.7	342.2	355.9	369.3	382.6	396.1	409.4	430.7



TEST NUMBER: P1444467  
 CATALOG NUMBER: EHBR1-42-UNV-TA-L830-UPL15

**CANDELA DISTRIBUTION (continued):**

	0°	2.5°	5°	7.5°	10°	12.5°	15°	17.5°	20°	22.5°	25°
112.5°	387.6	393.5	399.6	405.6	411.7	417.6	423.7	429.6	435.7	441.5	456.5
115°	410.7	412.7	414.9	416.6	418.7	420.6	422.6	424.4	426.4	428.2	438.3
117.5°	401.9	401.3	400.8	400.3	399.6	398.9	398.3	397.5	396.8	396.0	401.6
120°	379.0	376.8	374.8	372.5	370.5	368.0	366.0	363.6	361.3	358.9	361.1
122.5°	349.5	347.0	344.6	341.8	339.3	336.5	333.9	330.8	328.3	325.5	326.0
125°	322.8	320.2	317.8	315.0	312.2	309.4	306.6	303.7	300.9	297.9	297.9
127.5°	300.2	298.3	296.6	294.3	292.2	289.9	287.7	285.2	283.2	280.5	280.3
130°	287.3	285.6	283.7	281.7	279.7	277.5	275.4	273.1	270.9	268.5	268.1
132.5°	277.5	276.2	274.8	273.1	271.5	269.5	267.9	265.7	264.0	262.1	261.6
135°	272.3	270.9	269.7	268.1	266.6	264.6	262.8	261.0	259.1	257.0	256.8
137.5°	268.4	267.1	265.8	264.3	262.8	260.9	259.2	257.3	255.5	253.6	253.2
140°	264.9	263.7	262.5	261.0	259.7	258.0	256.2	254.4	252.7	250.8	250.7
142.5°	260.2	259.1	258.3	256.8	255.6	254.1	252.6	250.9	249.4	247.8	247.8
145°	258.1	257.1	256.2	255.2	253.9	252.3	251.1	249.5	248.2	246.7	246.7
147.5°	256.2	255.3	254.7	253.7	252.7	251.4	250.2	248.8	247.6	246.3	246.4
150°	254.6	253.9	253.2	252.3	251.2	250.2	249.0	247.8	246.6	245.3	245.5
152.5°	252.4	251.6	251.0	250.1	249.2	247.9	247.1	245.9	244.8	243.6	243.6
155°	252.4	251.6	250.8	250.0	249.1	248.1	247.0	246.0	245.0	243.8	243.8
157.5°	253.5	252.6	252.0	251.0	250.5	249.6	248.8	247.8	246.9	246.1	245.9
160°	255.8	255.1	254.3	253.5	252.7	251.7	251.0	250.0	249.4	248.5	248.4
162.5°	258.3	257.4	256.8	255.9	255.2	254.3	253.6	252.9	252.2	251.2	251.1
165°	261.2	260.8	260.1	259.6	258.9	258.3	257.7	256.9	256.3	255.5	255.5
167.5°	265.8	265.2	264.7	264.0	263.3	262.7	262.1	261.3	260.9	260.0	260.0
170°	268.8	268.3	267.9	267.5	267.0	266.5	266.1	265.7	265.1	264.6	264.6
172.5°	271.6	271.1	270.8	270.6	270.1	269.9	269.5	269.1	268.8	268.4	268.6
175°	273.0	272.6	272.5	272.2	271.9	271.7	271.6	271.4	271.4	271.0	271.0
177.5°	275.0	274.9	274.9	274.8	274.8	274.6	274.5	274.3	274.2	274.2	274.3
180°	276.7	276.7	276.7	276.7	276.7	276.7	276.7	276.7	276.7	276.7	276.7



TEST NUMBER: P1444467  
 CATALOG NUMBER: EHBR1-42-UNV-TA-L830-UPL15

**CANDELA DISTRIBUTION (continued):**

	27.5°	30°	32.5°	35°	37.5°	40°	42.5°	45°	47.5°	50°	52.5°
0°	33489.2	33489.2	33489.2	33489.2	33489.2	33489.2	33489.2	33489.2	33489.2	33489.2	33489.2
2.5°	33593.9	33589.8	33584.3	33577.2	33571.1	33564.1	33547.3	33542.3	33547.9	33551.6	33559.3
5°	33673.7	33676.1	33676.9	33692.2	33705.4	33738.3	33996.0	34098.4	34177.5	34227.8	34304.2
7.5°	33914.4	33991.9	34068.4	34171.4	34260.3	34380.3	34831.1	35023.0	35159.4	35257.4	35378.1
10°	34322.2	34491.3	34649.8	34835.5	34995.1	35177.9	35597.6	35784.4	35902.5	35988.4	36068.5
12.5°	34733.1	34967.5	35179.4	35386.1	35558.8	35717.3	35864.9	35930.3	35935.8	35938.6	35896.0
15°	34947.0	35171.2	35357.9	35494.5	35596.1	35640.9	35386.9	35253.6	35085.2	34946.5	34718.2
17.5°	34812.0	34946.5	35027.1	35019.1	34977.2	34836.7	34117.1	33721.2	33328.3	32974.2	32509.9
20°	34211.6	34201.3	34131.2	33932.6	33693.1	33320.8	32087.1	31375.3	30687.1	30082.6	29349.3
22.5°	33094.8	32918.9	32674.0	32245.5	31769.6	31119.1	29351.0	28304.1	27346.0	26499.7	25551.5
25°	31476.4	31114.8	30663.0	29982.8	29243.1	28294.3	26115.3	24812.9	23662.7	22665.0	21571.0
27.5°	29405.3	28860.7	28198.4	27257.0	26254.9	25039.4	22623.6	21186.3	19951.4	18881.8	17717.6
30°	26953.3	26245.0	25389.8	24221.4	23012.6	21634.1	19183.8	17728.1	16478.2	15377.9	14212.7
32.5°	24182.3	23352.7	22350.6	21039.2	19732.1	18314.6	15948.3	14539.2	13345.2	12286.6	11232.0
35°	21126.1	20236.5	19176.2	17838.7	16539.3	15161.3	12990.0	11719.4	10665.1	9729.4	8877.8
37.5°	17847.7	16974.2	15966.5	14705.9	13501.0	12252.2	10378.7	9314.1	8429.3	7652.6	6995.2
40°	14439.2	13674.7	12802.8	11713.0	10684.7	9644.7	8106.8	7261.7	6563.4	5971.1	5478.4
42.5°	11072.3	10479.9	9811.3	8950.1	8163.1	7371.3	6187.6	5561.4	5044.3	4618.0	4269.5
45°	8033.3	7637.1	7188.6	6589.8	6045.4	5493.0	4650.6	4210.6	3873.8	3598.8	3366.3
47.5°	5615.7	5385.8	5371.8	4818.5	4419.2	4081.5	3538.8	3260.9	3054.5	2887.9	2740.7
50°	3943.7	3832.5	3694.4	3496.9	3311.6	3120.7	2790.1	2622.0	2501.2	2400.2	2307.2
52.5°	2948.2	2890.5	2816.9	2712.1	2611.7	2504.4	2295.1	2188.2	2150.1	2056.2	1982.5
55°	2354.8	2321.7	2279.9	2218.3	2157.2	2132.8	1953.4	1874.0	1823.8	1786.7	1747.1
57.5°	1956.0	1931.3	1906.5	1864.8	1829.5	1786.7	1691.4	1650.8	1620.8	1599.0	1571.5
60°	1668.5	1653.7	1639.8	1615.4	1596.2	1573.2	1512.7	1489.7	1474.1	1461.0	1443.5
62.5°	1472.6	1465.0	1457.9	1444.8	1435.1	1422.6	1381.3	1370.2	1362.4	1355.8	1345.1
65°	1331.3	1325.8	1321.8	1313.2	1308.3	1301.0	1265.5	1258.0	1253.2	1250.8	1244.6
67.5°	1202.8	1197.1	1194.5	1188.3	1186.2	1181.7	1152.6	1148.6	1146.9	1147.7	1145.5
70°	1082.6	1080.3	1081.5	1080.6	1083.3	1084.1	1066.5	1066.3	1068.2	1072.0	1072.3
72.5°	1010.7	1010.7	1012.0	1012.7	1015.3	1016.5	1001.8	1001.2	1002.0	1004.7	1004.8
75°	942.1	943.3	947.0	948.2	951.3	952.0	932.6	930.3	930.5	933.1	932.2
77.5°	847.3	851.5	858.5	862.2	868.1	869.3	847.5	845.0	845.1	847.7	845.5
80°	739.7	747.6	758.8	766.7	775.9	779.5	757.2	751.9	746.9	746.2	741.7
82.5°	625.4	635.0	648.5	655.6	665.3	667.6	630.2	623.2	619.0	619.4	615.2
85°	477.4	484.7	496.9	501.0	507.0	506.5	463.9	445.6	450.4	442.9	448.8
87.5°	299.5	303.7	311.4	312.4	315.3	314.6	271.6	263.2	260.8	260.9	257.8
90°	149.6	152.4	159.2	159.4	163.9	163.3	128.6	124.8	121.6	123.2	118.9
92.5°	37.8	40.0	42.6	45.1	47.7	50.0	48.6	49.8	47.8	45.1	43.3
95°	41.9	45.6	49.5	53.2	57.0	60.8	64.6	68.4	64.8	61.2	57.6
97.5°	47.1	51.5	55.8	60.3	64.8	69.2	73.7	78.2	74.5	70.4	66.7
100°	61.1	69.4	77.7	86.1	94.2	102.6	110.9	119.2	111.9	104.4	97.1
102.5°	122.5	140.3	157.9	175.5	193.1	210.9	228.7	246.4	229.5	212.5	195.7
105°	233.6	262.2	290.8	319.2	347.8	376.4	405.4	434.0	407.0	380.1	353.0
107.5°	367.8	396.7	425.5	454.5	483.5	512.5	542.1	571.0	544.7	518.2	491.8
110°	451.8	472.7	493.7	514.8	535.8	556.8	578.6	599.8	583.9	567.8	551.8



TEST NUMBER: P1444467  
 CATALOG NUMBER: EHBR1-42-UNV-TA-L830-UPL15

**CANDELA DISTRIBUTION (continued):**

	27.5°	30°	32.5°	35°	37.5°	40°	42.5°	45°	47.5°	50°	52.5°
112.5°	471.4	486.3	501.3	516.1	531.0	545.9	562.0	577.1	568.9	560.5	552.6
115°	448.0	458.3	468.1	478.0	487.9	497.8	509.0	519.3	516.3	513.4	510.5
117.5°	406.9	412.2	417.7	423.0	428.3	433.5	440.7	446.2	446.2	446.3	446.3
120°	363.1	365.0	367.0	369.1	370.8	372.8	376.8	379.2	381.0	382.5	384.1
122.5°	326.4	326.9	327.3	327.7	328.0	328.3	331.2	332.2	332.9	333.8	334.9
125°	297.7	297.7	297.6	297.5	297.1	297.0	299.8	300.0	299.7	299.0	298.6
127.5°	279.7	279.2	278.8	278.3	277.5	277.1	279.4	279.5	278.0	276.5	274.8
130°	267.7	267.2	266.8	266.4	266.0	265.7	268.4	268.7	266.5	264.1	261.8
132.5°	261.2	260.9	260.3	260.2	259.7	259.3	262.4	262.7	260.4	257.8	255.3
135°	256.3	256.2	255.8	255.4	255.1	255.1	258.3	258.9	256.6	254.0	251.7
137.5°	252.7	252.6	252.3	252.1	251.7	251.6	255.4	256.1	254.1	251.9	250.0
140°	250.4	250.2	250.0	250.0	249.7	249.9	254.0	254.9	253.4	251.5	249.7
142.5°	247.6	247.7	247.8	248.0	248.0	248.3	253.1	254.2	253.0	251.5	250.3
145°	246.7	247.1	247.3	247.6	247.9	248.3	253.7	255.2	254.2	253.2	252.2
147.5°	246.3	246.5	246.6	247.0	247.3	247.9	253.7	255.2	254.6	253.8	253.0
150°	245.5	245.8	246.0	246.4	246.9	247.5	254.0	256.0	255.3	254.8	254.0
152.5°	243.7	243.9	244.1	244.6	244.9	245.4	253.6	255.7	255.3	254.6	254.1
155°	243.9	244.0	244.0	244.2	244.4	244.9	253.8	256.1	255.7	255.3	254.9
157.5°	245.9	245.7	245.6	245.6	245.8	245.9	255.4	258.0	257.5	257.1	256.8
160°	248.1	248.1	247.9	247.9	247.8	247.8	257.7	260.1	259.8	259.4	259.0
162.5°	251.0	251.2	251.0	251.1	251.0	251.2	261.2	263.9	263.3	262.8	262.4
165°	255.3	255.2	255.0	255.0	254.9	255.0	264.2	266.6	266.3	265.8	265.5
167.5°	259.7	259.8	259.7	259.7	259.6	259.8	268.5	270.7	270.4	270.0	269.7
170°	264.4	264.5	264.4	264.4	264.6	264.8	272.0	273.9	273.7	273.1	272.8
172.5°	268.6	268.7	268.9	268.9	269.0	269.3	275.4	277.2	276.9	276.6	276.1
175°	271.2	271.1	271.3	271.6	271.6	271.7	276.6	277.9	277.7	277.5	277.3
177.5°	274.5	274.5	274.6	274.7	274.9	275.1	278.1	278.9	278.8	278.8	278.7
180°	276.7	276.7	276.7	276.7	276.7	276.7	276.7	276.7	276.7	276.7	276.7



TEST NUMBER: P1444467  
 CATALOG NUMBER: EHBR1-42-UNV-TA-L830-UPL15

**CANDELA DISTRIBUTION (continued):**

	55°	57.5°	60°	62.5°	65°	67.5°	70°	72.5°	75°	77.5°	80°
0°	33489.2	33489.2	33489.2	33489.2	33489.2	33489.2	33489.2	33489.2	33489.2	33489.2	33489.2
2.5°	33561.1	33572.9	33574.5	33588.3	33587.2	33603.6	33601.0	33614.5	33606.6	33617.6	33608.4
5°	34349.3	34420.8	34458.1	34527.9	34549.9	34612.4	34630.0	34687.0	34689.3	34734.6	34724.3
7.5°	35463.7	35569.1	35631.7	35717.9	35761.6	35833.4	35865.1	35918.2	35935.3	35977.6	35980.8
10°	36129.2	36180.4	36216.1	36240.1	36262.2	36272.5	36284.4	36281.3	36284.4	36279.8	36290.1
12.5°	35867.4	35792.8	35743.3	35649.7	35595.5	35492.2	35441.4	35341.9	35305.9	35220.4	35208.2
15°	34541.8	34281.4	34097.4	33829.9	33661.7	33398.4	33244.5	33007.0	32898.5	32709.8	32660.2
17.5°	32125.6	31642.2	31268.2	30788.3	30455.3	30006.9	29724.9	29353.6	29150.4	28851.0	28747.4
20°	28738.0	28022.9	27461.8	26793.4	26315.1	25719.1	25337.6	24856.3	24577.0	24209.3	24060.3
22.5°	24761.1	23870.6	23169.9	22380.3	21803.1	21139.0	20681.9	20161.3	19857.3	19457.9	19281.0
25°	20661.9	19680.1	18901.0	18069.0	17459.2	16793.5	16336.3	15824.8	15510.3	15131.1	14955.3
27.5°	16741.5	15747.6	14994.6	14221.2	13661.8	13061.1	12648.6	12201.9	11922.8	11599.2	11433.8
30°	13281.8	12405.1	11764.5	11122.6	10657.2	10169.4	9826.5	9456.5	9211.6	8934.4	8776.9
32.5°	10463.1	9786.4	9284.7	8775.3	8394.5	7986.8	7690.6	7364.0	7143.0	6895.5	6752.8
35°	8286.7	7760.8	7360.7	6941.4	6614.2	6267.0	6005.9	5724.0	5525.7	5312.6	5189.5
37.5°	6547.3	6129.2	5799.9	5451.6	5182.9	4895.2	4798.3	4474.8	4269.3	4099.2	3981.5
40°	5138.3	4805.9	4533.4	4267.1	4047.9	3829.7	3654.6	3481.8	3349.1	3227.5	3143.3
42.5°	4012.7	3771.8	3572.8	3377.7	3217.8	3058.8	2932.0	2812.9	2723.6	2644.0	2589.8
45°	3189.9	3024.2	2885.9	2748.5	2635.7	2529.6	2444.2	2368.3	2310.5	2262.7	2228.9
47.5°	2620.5	2507.1	2409.6	2316.9	2240.2	2170.7	2113.6	2094.9	2032.8	1991.1	1975.1
50°	2227.1	2158.6	2084.6	2016.1	1965.0	1914.1	1877.0	1840.6	1817.4	1798.2	1792.3
52.5°	1933.5	1881.1	1839.9	1796.6	1762.8	1726.5	1701.0	1676.8	1664.0	1653.9	1652.7
55°	1715.1	1678.5	1651.2	1622.2	1602.0	1580.7	1567.5	1554.7	1549.0	1544.0	1544.4
57.5°	1550.0	1525.5	1507.7	1488.9	1477.9	1467.8	1464.5	1461.2	1463.0	1463.7	1466.5
60°	1429.5	1413.7	1402.5	1391.7	1387.1	1383.9	1386.3	1389.2	1395.0	1399.7	1404.0
62.5°	1337.3	1328.3	1322.8	1317.0	1316.5	1316.7	1321.7	1326.6	1333.9	1339.3	1343.4
65°	1242.4	1237.2	1235.4	1231.7	1233.6	1234.7	1240.7	1244.4	1251.7	1256.0	1261.3
67.5°	1146.4	1145.2	1146.3	1146.3	1149.7	1152.5	1158.2	1162.5	1168.6	1172.7	1176.9
70°	1075.6	1076.1	1078.7	1079.2	1082.7	1084.8	1089.8	1092.5	1098.0	1101.4	1106.4
72.5°	1006.7	1005.6	1006.2	1004.6	1005.8	1005.4	1008.1	1009.4	1014.2	1016.7	1023.0
75°	933.3	930.2	929.5	926.1	926.3	923.9	925.0	924.9	928.0	929.2	933.7
77.5°	844.7	839.5	837.0	831.4	831.3	829.2	831.4	832.8	838.3	840.9	845.9
80°	738.7	730.5	726.8	720.3	721.5	721.1	726.6	730.6	737.4	738.6	745.1
82.5°	614.0	605.7	601.7	595.4	596.9	597.0	601.9	602.9	608.7	611.1	618.6
85°	439.6	442.9	434.1	434.6	432.8	436.2	439.6	443.8	448.7	456.7	462.9
87.5°	258.9	257.8	260.9	261.2	265.7	268.1	275.3	279.4	287.5	293.8	305.2
90°	119.0	114.7	117.1	115.6	119.8	118.5	122.3	120.3	124.9	125.3	131.4
92.5°	40.3	38.3	35.5	33.3	30.7	28.9	27.2	26.4	24.9	24.4	22.8
95°	54.0	50.6	47.0	43.5	40.0	36.4	35.1	33.8	32.6	31.3	30.0
97.5°	62.9	59.1	55.3	51.3	47.5	43.7	42.9	42.1	41.1	40.3	39.4
100°	89.6	82.2	74.9	67.5	60.2	52.9	52.3	51.5	50.9	50.2	49.5
102.5°	178.9	161.9	145.1	128.2	111.5	94.6	91.7	88.8	85.8	82.9	80.0
105°	326.1	299.0	272.1	245.1	218.3	191.3	183.3	175.1	167.1	159.1	151.1
107.5°	465.5	439.0	412.8	386.4	360.2	333.9	321.1	308.5	295.6	283.0	270.3
110°	535.7	519.8	504.0	487.9	472.2	456.4	444.1	432.1	419.7	407.7	395.6



TEST NUMBER: P1444467  
 CATALOG NUMBER: EHBR1-42-UNV-TA-L830-UPL15

**CANDELA DISTRIBUTION (continued):**

	55°	57.5°	60°	62.5°	65°	67.5°	70°	72.5°	75°	77.5°	80°
112.5°	544.3	536.3	527.9	520.0	512.0	503.9	498.0	491.9	486.0	480.0	473.9
115°	507.6	504.8	502.0	499.3	496.5	493.7	493.1	492.7	492.0	491.5	491.0
117.5°	446.2	446.4	446.3	446.4	446.7	446.9	449.8	452.5	455.6	458.7	461.8
120°	385.6	387.3	388.9	390.6	392.3	394.2	397.9	401.9	405.8	410.0	414.2
122.5°	335.6	336.6	337.3	338.4	339.4	340.4	344.1	348.0	351.7	355.8	359.9
125°	297.9	297.2	296.7	296.1	295.4	295.2	298.0	301.0	304.0	307.3	310.4
127.5°	273.2	271.5	269.9	268.3	266.6	265.2	266.5	268.1	269.5	271.2	273.0
130°	259.4	257.1	254.5	252.3	249.7	247.6	247.7	247.9	248.1	248.5	249.0
132.5°	252.5	250.0	247.3	244.6	241.9	239.3	238.6	237.8	237.1	236.7	236.2
135°	249.0	246.7	243.9	241.4	238.8	236.3	235.1	233.9	232.9	231.8	231.0
137.5°	247.9	245.7	243.5	241.5	239.1	237.1	235.5	234.3	232.9	232.0	230.7
140°	247.9	246.2	244.2	242.4	240.5	238.9	237.5	236.4	235.2	234.3	233.1
142.5°	248.6	247.3	245.7	244.4	242.8	241.5	240.2	239.1	237.9	237.0	236.1
145°	251.0	250.1	249.0	247.8	246.7	245.7	244.5	243.6	242.7	241.9	241.1
147.5°	252.2	251.4	250.7	249.8	248.8	247.9	247.1	246.6	245.6	245.1	244.4
150°	253.2	252.6	251.8	251.1	250.2	249.5	248.9	248.3	247.7	247.4	246.6
152.5°	253.3	252.7	252.1	251.4	250.6	249.9	249.4	249.0	248.4	248.0	247.3
155°	254.3	253.8	253.2	252.6	251.9	251.5	250.9	250.3	249.8	249.4	248.7
157.5°	256.3	255.7	255.2	254.8	254.0	253.6	253.0	252.5	251.9	251.5	250.9
160°	258.5	258.2	257.5	257.0	256.6	256.0	255.3	254.9	254.1	253.7	253.0
162.5°	261.7	261.2	260.8	260.2	259.5	259.0	258.4	257.9	257.4	256.9	256.3
165°	265.0	264.4	264.0	263.5	263.1	262.7	261.9	261.4	260.7	260.2	259.6
167.5°	269.2	268.8	268.4	268.0	267.3	266.9	266.4	265.8	265.2	264.6	264.0
170°	272.4	271.9	271.6	271.0	270.5	270.0	269.5	268.9	268.3	268.0	267.3
172.5°	275.8	275.7	275.2	274.8	274.3	273.9	273.6	273.1	272.7	272.2	271.9
175°	277.2	277.0	276.9	276.5	276.4	276.1	275.9	275.8	275.5	275.4	275.0
177.5°	278.7	278.5	278.5	278.3	278.1	278.1	277.9	277.8	277.6	277.4	277.3
180°	276.7	276.7	276.7	276.7	276.7	276.7	276.7	276.7	276.7	276.7	276.7



TEST NUMBER: P1444467  
 CATALOG NUMBER: EHBR1-42-UNV-TA-L830-UPL15

**CANDELA DISTRIBUTION (continued):**

	82.5°	85°	87.5°	90°	92.5°	95°	97.5°	100°	102.5°	105°	107.5°
0°	33489.2	33489.2	33489.2	33489.2	33489.2	33489.2	33489.2	33489.2	33489.2	33489.2	33489.2
2.5°	33618.0	33609.5	33613.5	33597.8	33601.5	33582.5	33580.7	33559.3	33557.2	33537.0	33529.4
5°	34756.3	34737.6	34758.6	34725.8	34732.2	34689.3	34685.8	34630.4	34611.3	34542.1	34512.1
7.5°	36007.2	36000.2	36013.1	35985.5	35984.6	35946.4	35930.7	35881.0	35850.2	35777.5	35731.0
10°	36281.3	36287.7	36277.1	36279.8	36264.9	36260.7	36245.5	36235.8	36210.9	36192.0	36164.3
12.5°	35143.3	35150.1	35106.6	35134.2	35112.4	35163.2	35159.2	35218.9	35228.1	35303.9	35332.6
15°	32513.2	32504.9	32421.6	32474.2	32446.0	32557.5	32582.4	32732.4	32812.5	33005.0	33123.2
17.5°	28539.9	28518.5	28401.2	28465.1	28432.6	28597.0	28652.1	28891.8	29041.4	29351.6	29572.6
20°	23803.7	23762.6	23625.4	23700.2	23666.7	23853.4	23932.1	24221.9	24414.8	24825.6	25117.8
22.5°	19008.7	18943.8	18809.4	18879.3	18847.6	19040.9	19143.3	19434.2	19655.1	20076.9	20418.0
25°	14702.8	14645.0	14515.0	14563.9	14552.1	14715.7	14806.7	15081.9	15298.9	15700.6	16026.3
27.5°	11214.2	11154.0	11036.6	11071.1	11059.3	11198.6	11284.5	11514.3	11701.1	12039.2	12325.2
30°	8582.8	8510.2	8410.6	8429.7	8421.6	8534.5	8614.7	8808.2	8968.3	9254.1	9500.5
32.5°	6578.7	6505.7	6414.3	6423.2	6411.1	6499.7	6565.8	6734.1	6873.6	7116.6	7331.1
35°	5033.6	5118.8	4923.5	5047.3	4918.5	5107.6	5039.6	5144.7	5264.7	5469.5	5648.4
37.5°	3869.6	3810.2	3759.9	3754.6	3754.3	3798.2	3849.9	3951.2	4057.0	4209.5	4367.1
40°	3066.5	3024.8	2992.3	2989.9	2992.3	3023.4	3061.6	3131.7	3209.1	3318.7	3434.5
42.5°	2543.4	2515.7	2496.0	2494.7	2500.9	2523.0	2549.5	2591.1	2641.5	2712.5	2792.0
45°	2201.3	2185.9	2174.9	2174.4	2177.2	2188.8	2204.1	2229.9	2261.9	2306.2	2356.5
47.5°	1961.3	1957.5	1950.7	1951.0	1947.9	1952.6	1954.3	1968.9	1985.8	2019.3	2084.9
50°	1786.5	1786.5	1781.8	1781.5	1777.0	1776.8	1773.1	1778.8	1786.8	1807.5	1828.5
52.5°	1648.3	1647.9	1642.8	1641.8	1637.1	1636.8	1633.6	1635.9	1637.0	1647.4	1659.9
55°	1540.4	1537.1	1530.5	1528.3	1526.5	1529.2	1528.0	1528.1	1526.7	1531.1	1534.8
57.5°	1463.0	1458.7	1452.4	1450.5	1450.0	1453.3	1453.4	1452.3	1446.5	1442.4	1436.9
60°	1401.6	1397.4	1390.5	1388.9	1389.8	1394.3	1394.1	1390.4	1381.6	1374.1	1365.3
62.5°	1341.5	1339.7	1336.2	1335.7	1334.8	1335.6	1332.5	1328.5	1319.9	1311.9	1302.3
65°	1260.6	1261.5	1258.9	1259.3	1256.1	1255.7	1251.0	1247.1	1238.4	1231.1	1221.3
67.5°	1176.7	1177.3	1175.3	1175.3	1173.6	1173.9	1171.0	1167.4	1160.1	1154.1	1146.5
70°	1107.6	1109.3	1108.1	1108.5	1106.4	1105.8	1101.3	1097.8	1090.2	1085.3	1078.4
72.5°	1024.9	1028.5	1028.4	1029.3	1026.4	1024.9	1019.5	1015.1	1008.3	1004.3	998.9
75°	935.5	940.3	941.7	943.7	939.5	937.3	931.5	928.0	922.4	920.0	916.5
77.5°	848.2	853.5	858.6	863.4	856.5	850.4	843.1	837.5	829.5	826.5	820.9
80°	750.3	759.7	771.0	780.5	768.1	755.7	743.7	734.8	724.2	719.9	712.9
82.5°	622.4	632.1	638.6	644.6	636.1	627.0	615.3	607.5	596.1	591.9	583.9
85°	472.9	484.9	488.8	492.0	486.5	481.7	470.8	456.0	448.8	437.5	431.6
87.5°	311.0	318.2	319.6	320.7	317.4	315.0	307.9	301.0	288.7	279.8	268.8
90°	130.6	134.7	131.4	132.6	128.9	130.0	123.5	121.7	112.2	109.0	100.6
92.5°	21.9	20.4	19.4	18.2	20.0	20.5	22.2	22.8	24.2	24.9	26.4
95°	28.7	27.4	26.1	24.8	25.9	26.9	27.9	28.9	30.0	31.0	32.0
97.5°	38.6	37.7	36.8	36.0	36.5	37.2	37.7	38.4	39.0	39.6	40.4
100°	48.8	48.1	47.4	46.7	46.7	46.7	46.7	46.7	46.7	46.7	46.7
102.5°	77.1	74.1	71.2	68.3	70.3	72.2	74.2	76.2	78.2	80.2	82.2
105°	143.0	135.1	127.0	119.1	126.8	134.5	142.3	150.1	157.7	165.7	173.5
107.5°	257.5	244.9	232.2	219.6	233.9	247.9	262.1	276.1	290.3	304.3	318.7
110°	383.6	371.5	359.5	347.4	362.4	377.4	392.4	407.4	422.4	437.3	452.6



TEST NUMBER: P1444467  
 CATALOG NUMBER: EHBR1-42-UNV-TA-L830-UPL15

**CANDELA DISTRIBUTION (continued):**

	82.5°	85°	87.5°	90°	92.5°	95°	97.5°	100°	102.5°	105°	107.5°
112.5°	468.0	462.2	456.3	450.5	460.1	469.8	479.4	489.3	498.9	508.6	518.3
115°	490.6	490.2	489.9	489.5	494.1	498.7	503.2	507.9	512.7	517.3	521.9
117.5°	464.9	468.0	471.3	474.5	476.0	477.4	479.1	480.5	482.2	483.7	485.5
120°	418.4	422.4	426.8	431.2	430.6	429.9	429.6	429.0	428.7	428.3	428.2
122.5°	364.0	368.1	372.5	376.8	375.5	374.2	373.1	372.0	371.0	369.9	369.1
125°	314.0	317.3	320.9	324.5	323.2	321.9	320.7	319.8	318.8	317.6	317.1
127.5°	275.0	277.1	279.0	281.2	280.6	280.0	279.8	279.3	279.0	279.0	279.0
130°	249.5	250.3	251.3	252.1	252.3	252.4	252.9	253.4	254.0	254.6	255.4
132.5°	236.2	236.1	236.1	236.1	236.7	237.5	238.5	239.5	240.7	241.9	243.5
135°	230.4	229.8	229.4	229.0	230.1	231.0	232.2	233.5	235.1	236.8	238.6
137.5°	230.0	229.1	228.6	227.8	228.8	229.9	231.2	232.4	234.1	235.7	237.6
140°	232.4	231.6	231.3	230.5	231.6	232.5	233.8	235.0	236.6	238.2	240.0
142.5°	235.4	234.5	234.0	233.5	234.3	235.2	236.5	237.5	239.0	240.4	242.0
145°	240.5	239.7	239.4	239.0	239.4	240.2	241.0	241.9	243.0	243.9	245.3
147.5°	243.9	243.4	243.2	242.8	243.4	243.6	244.4	244.9	245.8	246.4	247.6
150°	246.4	246.0	245.7	245.5	245.8	246.0	246.4	246.7	247.2	247.8	248.6
152.5°	247.1	246.6	246.5	246.3	246.4	246.5	246.9	247.2	247.6	247.9	248.7
155°	248.4	248.0	247.7	247.3	247.3	247.2	247.4	247.3	247.6	247.6	247.9
157.5°	250.7	250.2	249.9	249.4	249.3	249.0	249.0	248.8	248.8	248.5	248.6
160°	252.7	252.0	251.5	251.0	251.0	250.7	250.7	250.4	250.4	250.4	250.3
162.5°	255.9	255.4	255.1	254.6	254.3	253.8	253.6	253.1	252.8	252.5	252.4
165°	258.9	258.3	257.9	257.2	257.0	256.8	256.5	256.2	256.0	255.7	255.7
167.5°	263.7	262.9	262.5	261.9	261.5	261.0	260.8	260.3	260.0	259.7	259.6
170°	267.0	266.4	266.0	265.6	265.4	265.0	264.9	264.5	264.3	264.2	264.2
172.5°	271.6	271.1	270.8	270.4	270.2	270.0	269.9	269.7	269.5	269.5	269.3
175°	274.9	274.6	274.5	274.3	274.1	274.0	273.8	273.7	273.6	273.3	273.2
177.5°	277.0	276.7	276.6	276.5	276.4	276.4	276.4	276.4	276.4	276.3	276.1
180°	276.7	276.7	276.7	276.7	276.7	276.7	276.7	276.7	276.7	276.7	276.7



TEST NUMBER: P1444467  
 CATALOG NUMBER: EHBR1-42-UNV-TA-L830-UPL15

**CANDELA DISTRIBUTION (continued):**

	110°	112.5°	115°	117.5°	120°	122.5°	125°	127.5°	130°	132.5°	135°
0°	33489.2	33489.2	33489.2	33489.2	33489.2	33489.2	33489.2	33489.2	33489.2	33489.2	33489.2
2.5°	33507.7	33498.9	33475.6	33464.2	33442.8	33432.0	33415.2	33404.4	33390.9	33380.8	33375.6
5°	34436.0	34393.2	34307.3	34254.5	34161.8	34100.7	34008.6	33941.1	33846.0	33775.8	33686.0
7.5°	35643.9	35578.2	35468.2	35384.7	35255.1	35155.9	35010.3	34893.9	34733.1	34599.5	34435.2
10°	36135.7	36097.3	36047.9	35994.3	35922.4	35852.0	35752.5	35651.2	35516.3	35381.9	35206.4
12.5°	35408.9	35445.0	35516.3	35549.5	35603.9	35622.5	35647.4	35635.8	35613.7	35558.8	35479.3
15°	33350.4	33501.2	33739.5	33904.4	34135.4	34297.5	34512.1	34650.3	34809.4	34904.5	34994.8
17.5°	29964.3	30256.0	30676.5	31012.0	31462.4	31828.5	32277.2	32629.7	33036.7	33348.9	33681.3
20°	25627.2	26035.7	26616.2	27109.2	27761.8	28315.2	29024.1	29618.1	30310.9	30888.3	31511.6
22.5°	20959.4	21439.9	22105.0	22699.6	23479.0	24175.0	25063.2	25848.6	26785.1	27624.1	28552.3
25°	16555.8	17026.7	17704.3	18320.0	19161.2	19928.0	20898.4	21799.3	22886.1	23899.7	25063.2
27.5°	12779.5	13197.8	13793.4	14347.6	15118.1	15870.8	16855.7	17816.3	18976.0	20065.2	21319.2
30°	9869.4	10208.7	10685.9	11131.8	11750.4	12366.0	13243.2	14131.6	15285.6	16414.3	17699.9
32.5°	7648.4	7937.8	8336.1	8698.1	9174.7	9638.9	10284.9	10994.8	12007.1	13088.3	14331.3
35°	5920.7	6168.2	6507.3	6819.1	7211.1	7579.6	8061.6	8568.4	9340.9	10250.3	11362.7
37.5°	4720.4	4821.2	5063.3	5318.7	5644.2	5947.1	6324.2	6698.9	7251.5	7969.1	8877.8
40°	3589.7	3750.0	3947.0	4148.1	4394.7	4637.6	5051.2	5250.4	5614.4	6129.4	6834.8
42.5°	2896.5	3009.2	3147.8	3287.7	3459.5	3628.6	3837.9	4051.0	4323.0	4671.9	5173.6
45°	2423.8	2497.4	2586.7	2679.9	2792.7	2908.1	3048.2	3194.6	3378.9	3593.4	3898.1
47.5°	2108.1	2148.7	2207.0	2270.7	2348.0	2427.9	2519.0	2612.2	2726.8	2854.1	3027.5
50°	1861.6	1895.5	1940.8	1983.4	2036.7	2118.6	2154.8	2206.2	2275.2	2350.0	2447.1
52.5°	1683.3	1705.8	1734.2	1758.7	1792.5	1823.1	1863.3	1898.8	1946.5	1991.4	2054.1
55°	1544.4	1552.6	1568.7	1584.4	1607.8	1628.7	1656.3	1679.5	1710.0	1736.8	1776.4
57.5°	1437.1	1437.8	1445.3	1453.5	1468.6	1481.7	1500.7	1516.0	1537.0	1554.2	1577.9
60°	1360.0	1356.0	1357.5	1360.3	1368.7	1377.3	1389.4	1399.3	1412.7	1422.4	1435.6
62.5°	1295.8	1289.5	1288.0	1287.2	1291.4	1294.5	1301.1	1306.0	1313.5	1317.8	1324.8
65°	1214.8	1207.2	1204.3	1200.8	1202.1	1201.0	1203.6	1203.7	1207.5	1208.4	1212.5
67.5°	1141.4	1135.0	1131.2	1126.5	1124.3	1121.0	1119.6	1116.3	1115.8	1113.1	1112.4
70°	1074.3	1068.1	1064.9	1060.5	1058.3	1053.9	1051.2	1045.6	1042.5	1037.3	1034.5
72.5°	996.8	993.3	992.3	989.4	988.6	986.1	984.9	981.1	978.9	974.6	972.0
75°	915.7	912.8	912.6	909.6	909.4	906.5	905.7	901.6	899.4	895.1	893.2
77.5°	819.2	814.9	813.7	810.3	811.1	809.6	810.8	807.7	806.4	802.0	800.7
80°	710.4	705.0	702.7	698.1	699.3	697.3	699.3	699.2	700.8	697.3	696.6
82.5°	581.6	575.6	574.5	571.3	573.5	573.6	578.2	575.8	576.7	573.5	574.9
85°	423.2	418.8	412.5	411.7	407.7	411.8	406.4	410.1	404.3	408.3	402.9
87.5°	262.4	253.2	248.3	241.8	239.3	233.0	230.3	225.7	227.2	225.0	226.2
90°	99.2	91.8	90.7	84.8	84.9	79.9	81.1	77.7	79.7	76.2	78.4
92.5°	27.2	28.3	30.3	32.7	34.5	36.5	38.5	40.9	42.7	45.1	46.8
95°	33.1	34.1	36.8	39.6	42.3	45.1	48.1	50.8	53.5	56.3	59.0
97.5°	41.0	41.6	44.3	47.1	49.8	52.6	55.4	58.4	61.1	63.9	66.6
100°	46.7	46.8	54.7	62.5	70.3	78.3	86.2	94.0	102.0	109.8	117.7
102.5°	84.2	86.2	105.9	125.8	145.7	165.4	185.4	205.2	225.1	245.0	265.0
105°	181.2	189.1	219.3	249.6	279.8	310.1	340.5	370.9	401.3	431.6	461.9
107.5°	332.7	347.1	374.4	401.8	429.1	456.6	484.2	511.5	539.0	566.5	594.2
110°	467.6	482.7	501.0	519.5	538.0	556.4	574.9	593.3	612.0	630.4	649.1



TEST NUMBER: P1444467  
 CATALOG NUMBER: EHBR1-42-UNV-TA-L830-UPL15

**CANDELA DISTRIBUTION (continued):**

	110°	112.5°	115°	117.5°	120°	122.5°	125°	127.5°	130°	132.5°	135°
112.5°	528.0	538.0	548.6	559.6	570.5	581.4	592.3	603.2	614.3	625.3	636.3
115°	526.8	531.7	535.8	540.3	544.6	549.1	553.6	558.3	562.9	567.5	572.0
117.5°	487.0	489.1	489.8	490.8	491.8	493.0	494.0	495.2	496.5	497.8	498.8
120°	427.8	427.6	427.2	427.0	426.6	426.5	426.4	426.3	426.2	426.3	426.2
122.5°	368.1	367.5	367.1	367.0	366.8	366.8	366.9	367.1	367.1	367.2	367.3
125°	316.2	315.7	316.8	317.9	319.2	320.5	321.8	323.4	324.7	326.1	327.6
127.5°	278.9	279.1	281.3	283.6	285.8	288.2	290.7	293.3	295.4	298.2	300.4
130°	256.4	257.4	259.9	263.0	265.7	268.6	271.6	274.7	277.5	280.5	283.3
132.5°	244.9	246.6	249.2	252.1	254.8	257.7	260.5	263.5	266.3	269.3	271.9
135°	240.5	242.5	245.0	247.7	250.3	253.1	255.6	258.5	261.0	263.8	266.3
137.5°	239.4	241.4	243.6	245.9	248.0	250.5	252.6	255.0	257.1	259.5	261.6
140°	241.8	243.8	245.2	246.9	248.5	250.1	251.5	253.2	254.7	256.4	257.8
142.5°	243.6	245.6	246.4	247.8	248.8	250.3	251.5	252.7	253.7	254.8	255.8
145°	246.5	248.0	248.5	249.2	249.8	250.5	250.9	251.6	252.1	252.6	253.0
147.5°	248.5	249.7	249.8	250.2	250.7	250.9	251.2	251.6	251.8	252.1	252.3
150°	249.1	250.0	249.8	250.2	250.1	250.2	250.2	250.3	250.2	250.4	250.3
152.5°	249.2	249.7	249.4	249.6	249.4	249.3	249.1	249.1	248.8	248.8	248.8
155°	247.9	248.3	248.1	248.0	247.9	247.8	247.7	247.9	247.9	247.8	247.9
157.5°	248.6	248.6	248.5	248.4	248.1	248.2	248.2	248.2	248.2	248.5	248.7
160°	250.1	250.2	250.0	249.9	249.8	249.7	249.7	249.8	249.9	250.3	250.5
162.5°	252.1	252.0	251.7	251.6	251.5	251.6	251.7	252.0	252.0	252.3	252.5
165°	255.7	255.8	255.3	255.4	255.3	255.2	255.2	255.3	255.4	255.6	255.8
167.5°	259.4	259.3	259.3	259.4	259.4	259.6	259.7	260.1	260.3	260.8	260.9
170°	264.2	264.2	264.1	264.1	264.0	264.0	264.1	264.1	264.2	264.3	264.4
172.5°	269.3	269.3	269.1	268.9	268.7	268.7	268.6	268.6	268.5	268.5	268.3
175°	273.1	273.0	272.9	272.8	272.7	272.5	272.5	272.1	272.0	271.9	271.8
177.5°	276.0	275.8	275.7	275.7	275.6	275.4	275.4	275.3	275.3	275.3	275.0
180°	276.7	276.7	276.7	276.7	276.7	276.7	276.7	276.7	276.7	276.7	276.7



TEST NUMBER: P1444467  
 CATALOG NUMBER: EHBR1-42-UNV-TA-L830-UPL15

**CANDELA DISTRIBUTION (continued):**

	137.5°	140°	142.5°	145°	147.5°	150°	152.5°	155°	157.5°	160°	162.5°
0°	33489.2	33489.2	33489.2	33489.2	33489.2	33489.2	33489.2	33489.2	33489.2	33489.2	33489.2
2.5°	33368.9	33368.6	33365.3	33366.8	33367.4	33369.8	33372.6	33375.6	33376.2	33378.6	33379.1
5°	33618.7	33536.1	33475.1	33407.9	33357.3	33311.9	33281.6	33257.6	33248.3	33250.6	33256.3
7.5°	34295.8	34125.4	33984.7	33824.9	33691.6	33550.5	33433.5	33322.2	33241.2	33180.8	33147.0
10°	35038.9	34831.3	34632.7	34401.4	34182.0	33947.7	33735.7	33522.1	33343.9	33189.3	33075.8
12.5°	35368.6	35221.9	35050.3	34832.0	34597.2	34326.9	34054.1	33761.5	33489.4	33236.9	33033.1
15°	35019.5	35019.8	34957.2	34852.4	34689.3	34473.4	34213.4	33908.4	33587.5	33259.9	32960.7
17.5°	33911.2	34120.3	34236.6	34310.2	34287.6	34208.0	34042.6	33808.4	33509.2	33160.2	32795.1
20°	32007.9	32501.1	32852.7	33169.0	33346.2	33464.0	33452.2	33356.9	33143.8	32847.1	32466.8
22.5°	29341.7	30169.5	30822.7	31431.8	31859.1	32206.6	32371.8	32441.9	32345.3	32138.7	31781.6
25°	26103.3	27228.8	28189.3	29121.5	29820.9	30421.8	30783.0	31037.4	31057.6	30949.7	30631.0
27.5°	22504.8	23833.4	25049.1	26288.0	27271.4	28135.4	28702.2	29117.1	29248.9	29231.5	28942.2
30°	18910.9	20305.7	21645.7	23090.4	24307.3	25411.0	26159.8	26720.9	26937.1	26978.6	26700.3
32.5°	15516.9	16892.3	18228.6	19739.0	21078.1	22343.0	23227.8	23894.2	24145.6	24204.9	23899.7
35°	12436.6	13705.5	14975.4	16439.2	17770.7	19080.6	20012.8	20710.5	20945.4	20985.0	20631.6
37.5°	9765.4	10846.5	11953.2	13266.5	14489.2	15719.4	16605.0	17260.9	17432.0	17421.4	17021.5
40°	7516.2	8356.8	9246.0	10327.2	11343.7	12383.7	13131.6	13673.7	13763.6	13697.0	13276.9
42.5°	5651.8	6258.9	6903.5	7710.6	8464.9	9243.2	9787.3	10189.8	10202.6	10097.3	9720.3
45°	4210.6	4802.9	5073.2	5561.2	6047.0	6564.5	6896.8	7145.4	7106.9	7014.4	6727.8
47.5°	3209.8	3437.4	3678.9	3981.5	4264.5	4851.8	4808.2	5207.4	4919.9	5116.0	4684.4
50°	2549.0	2676.2	2806.2	2966.8	3114.7	3268.2	3364.1	3435.8	3426.5	3395.7	3313.0
52.5°	2168.6	2207.9	2271.9	2363.3	2445.8	2528.8	2583.4	2627.8	2628.8	2616.3	2574.5
55°	1812.4	1862.4	1908.4	1968.1	2069.8	2085.4	2163.7	2147.8	2154.1	2132.3	2154.5
57.5°	1598.0	1627.1	1652.9	1688.4	1717.8	1752.1	1772.3	1791.8	1790.0	1785.7	1764.4
60°	1446.1	1462.1	1476.4	1497.2	1513.3	1532.7	1542.0	1551.9	1548.7	1541.5	1522.5
62.5°	1328.9	1338.9	1347.2	1360.6	1370.3	1382.4	1387.3	1391.5	1387.3	1380.4	1363.7
65°	1213.3	1219.8	1225.0	1235.1	1242.0	1252.3	1256.4	1260.3	1256.5	1251.2	1238.4
67.5°	1109.1	1109.7	1109.3	1113.3	1115.4	1121.6	1123.5	1126.3	1121.9	1117.3	1106.4
70°	1030.0	1028.4	1026.4	1028.0	1028.4	1031.4	1031.9	1031.4	1026.1	1018.1	1006.3
72.5°	968.2	967.3	965.8	967.2	967.2	970.0	969.1	967.7	961.2	953.5	941.8
75°	888.7	888.2	885.2	885.3	882.8	883.7	880.5	878.6	871.3	864.9	854.4
77.5°	795.8	794.3	790.0	788.3	783.7	781.7	775.6	772.6	765.2	760.0	751.1
80°	692.0	690.4	684.8	681.7	674.3	669.6	660.7	655.6	647.0	641.9	633.2
82.5°	572.0	572.7	567.1	563.2	552.6	544.3	532.4	526.0	516.6	511.6	502.6
85°	406.8	401.0	404.1	403.9	397.2	390.1	380.4	373.6	365.6	360.9	354.6
87.5°	223.1	224.5	222.9	221.5	216.8	213.2	205.7	201.7	195.9	193.0	188.3
90°	72.0	71.4	65.3	64.8	58.9	56.4	49.5	47.9	41.5	40.5	36.1
92.5°	44.5	42.2	40.2	37.6	35.5	33.2	30.9	28.6	26.2	25.2	24.7
95°	55.6	52.4	49.1	45.7	42.3	39.0	35.8	32.4	29.0	28.4	27.6
97.5°	62.9	58.9	54.9	51.1	47.1	43.2	39.2	35.3	31.4	30.9	30.5
100°	108.8	99.7	90.6	81.5	72.4	63.3	54.4	45.2	36.3	35.7	35.2
102.5°	242.9	220.9	198.9	176.9	155.0	132.9	111.0	88.9	66.9	63.7	60.5
105°	428.6	395.2	362.1	328.8	295.4	262.1	228.9	195.4	162.1	151.4	140.6
107.5°	563.0	531.6	500.4	469.2	437.8	406.7	375.2	344.0	312.6	293.8	275.0
110°	624.4	599.7	575.0	550.2	525.6	500.9	476.0	451.2	426.5	410.2	394.3



TEST NUMBER: P1444467  
 CATALOG NUMBER: EHBR1-42-UNV-TA-L830-UPL15

**CANDELA DISTRIBUTION (continued):**

	137.5°	140°	142.5°	145°	147.5°	150°	152.5°	155°	157.5°	160°	162.5°
112.5°	618.3	600.3	582.5	564.5	546.5	528.4	510.4	492.3	474.1	464.4	454.8
115°	561.6	550.8	540.3	529.5	518.8	508.2	497.5	486.5	475.8	470.8	465.8
117.5°	493.8	488.6	483.5	478.3	473.0	467.6	462.5	457.0	451.8	450.3	448.7
120°	425.3	424.0	422.7	421.5	420.2	419.0	417.7	416.3	414.8	415.4	416.1
122.5°	368.6	369.7	371.1	372.2	373.4	374.4	375.8	376.6	377.7	379.6	381.4
125°	329.9	332.1	334.3	336.5	338.6	340.9	343.0	345.0	347.2	349.0	351.2
127.5°	303.2	305.5	308.1	310.4	313.0	315.3	317.8	320.0	322.4	324.3	326.3
130°	285.7	287.9	290.2	292.3	294.6	296.8	298.9	301.2	303.3	305.0	306.8
132.5°	274.1	276.2	278.4	280.3	282.5	284.5	286.5	288.6	290.8	292.3	293.8
135°	268.2	269.8	271.6	273.1	275.1	276.6	278.4	280.3	282.1	283.4	284.7
137.5°	263.1	264.5	266.2	267.5	269.2	270.5	272.3	273.8	275.7	276.5	277.8
140°	259.2	260.8	262.2	263.6	265.3	266.7	268.5	270.1	271.9	272.9	274.1
142.5°	257.2	258.2	259.5	260.6	262.1	263.2	264.8	266.3	267.9	268.9	270.0
145°	254.3	255.6	256.9	258.2	259.5	261.1	262.7	264.3	266.0	266.9	267.8
147.5°	253.3	254.3	255.5	256.8	258.0	259.1	260.7	262.2	263.7	264.5	265.5
150°	251.4	252.4	253.5	254.7	256.0	257.4	258.8	260.3	262.1	263.0	264.0
152.5°	249.8	250.9	252.1	253.4	254.7	256.1	257.7	259.3	261.0	261.7	262.7
155°	249.0	250.0	251.2	252.6	254.0	255.3	256.8	258.3	259.8	260.8	261.6
157.5°	249.7	250.7	251.9	253.1	254.3	255.5	257.0	258.3	259.7	260.5	261.2
160°	251.5	252.3	253.6	254.6	255.8	256.8	258.2	259.3	260.6	261.3	262.1
162.5°	253.7	254.6	255.8	256.6	257.9	259.0	260.3	261.2	262.6	263.2	264.0
165°	256.7	257.5	258.4	259.2	260.1	260.9	262.0	262.7	263.9	264.3	265.2
167.5°	261.8	262.3	262.8	263.5	264.4	265.1	265.9	266.6	267.4	268.1	268.6
170°	265.0	265.6	266.0	266.7	267.3	268.0	268.6	269.0	270.0	270.4	271.0
172.5°	268.6	268.8	269.4	269.7	270.1	270.3	270.9	271.4	271.8	272.4	272.8
175°	272.2	272.3	272.5	272.6	272.7	273.0	273.2	273.6	273.8	274.2	274.5
177.5°	275.1	275.2	275.3	275.4	275.8	275.9	276.0	276.1	276.4	276.7	277.0
180°	276.7	276.7	276.7	276.7	276.7	276.7	276.7	276.7	276.7	276.7	276.7



TEST NUMBER: P1444467  
 CATALOG NUMBER: EHBR1-42-UNV-TA-L830-UPL15

**CANDELA DISTRIBUTION (continued):**

	165°	167.5°	170°	172.5°	175°	177.5°	180°	182.5°	185°	187.5°	190°
0°	33489.2	33489.2	33489.2	33489.2	33489.2	33489.2	33489.2	33489.2	33489.2	33489.2	33489.2
2.5°	33377.9	33377.6	33376.4	33375.0	33373.5	33374.4	33375.9	33379.7	33386.4	33396.1	33408.8
5°	33260.8	33267.6	33271.5	33272.0	33268.5	33266.4	33269.7	33278.8	33297.3	33328.3	33370.3
7.5°	33137.9	33146.4	33159.3	33169.0	33170.8	33168.5	33169.0	33183.4	33217.5	33277.9	33362.7
10°	33006.7	32981.8	32994.9	33019.0	33038.1	33041.7	33044.0	33061.0	33110.9	33202.2	33338.4
12.5°	32885.6	32806.6	32791.4	32813.1	32842.1	32851.5	32848.9	32856.2	32914.6	33035.6	33225.3
15°	32726.3	32577.7	32526.9	32532.5	32568.3	32581.3	32571.8	32557.5	32614.4	32762.0	33007.7
17.5°	32468.3	32228.8	32135.5	32131.4	32173.3	32184.5	32161.4	32116.7	32172.9	32357.0	32661.9
20°	32076.3	31722.7	31546.9	31518.9	31564.6	31551.3	31505.2	31437.6	31511.4	31735.3	32098.0
22.5°	31371.4	30923.4	30623.1	30526.3	30580.8	30544.4	30477.3	30391.1	30488.9	30743.3	31147.3
25°	30219.6	29701.9	29290.9	29060.3	29103.7	29038.5	28965.5	28860.9	28977.7	29269.8	29714.4
27.5°	28526.7	27928.7	27419.3	27037.5	27051.6	26966.2	26882.0	26746.8	26892.6	27238.3	27739.7
30°	26275.5	25583.6	24963.2	24444.4	24398.0	24315.2	24229.0	24051.5	24234.0	24647.7	25233.7
32.5°	23448.4	22680.2	21963.4	21307.4	21183.7	21102.9	21026.0	20821.7	21060.7	21543.1	22216.3
35°	20142.2	19323.8	18546.7	17797.6	17592.5	17511.8	17444.6	17248.8	17547.0	18072.0	18799.1
37.5°	16513.2	15677.2	14905.7	14137.5	13847.7	13738.1	13689.3	13561.2	13905.1	14424.4	15154.5
40°	12787.7	12010.4	11318.6	10640.1	10309.9	10142.2	10116.6	10093.2	10425.8	10876.3	11538.9
42.5°	9302.5	8675.4	8142.1	7623.4	7324.1	7095.2	7095.0	7164.5	7463.9	7801.4	8312.4
45°	6434.8	6014.0	5674.1	5327.6	5420.3	4963.7	5231.9	5094.3	5242.2	5459.8	5792.0
47.5°	4423.3	4193.6	4007.0	3813.3	3672.2	3537.4	3549.2	3636.1	3775.4	3904.5	4077.4
50°	3223.9	3106.9	3011.8	2911.2	2840.9	2781.6	2785.0	2822.6	2895.8	2963.8	3054.3
52.5°	2526.1	2461.6	2410.0	2354.3	2317.5	2287.9	2289.5	2307.8	2347.4	2386.3	2438.2
55°	2082.1	2074.3	2007.2	1957.3	1938.3	1918.5	1922.0	1929.2	1956.1	1978.9	2013.3
57.5°	1744.8	1714.6	1694.5	1668.2	1656.2	1642.3	1645.4	1648.1	1666.1	1681.4	1706.1
60°	1506.6	1485.2	1471.0	1453.1	1445.2	1436.3	1438.4	1440.0	1451.5	1461.5	1479.2
62.5°	1348.4	1329.3	1316.8	1303.1	1297.5	1291.5	1292.9	1293.4	1300.6	1307.9	1321.3
65°	1227.0	1211.8	1201.5	1189.6	1183.8	1177.6	1178.2	1178.2	1184.3	1189.6	1199.7
67.5°	1098.7	1087.2	1080.6	1071.1	1067.1	1060.8	1060.7	1058.7	1062.7	1064.8	1071.6
70°	995.6	984.1	975.6	966.5	961.5	955.9	956.1	956.2	960.8	965.7	974.5
72.5°	932.0	921.0	913.4	905.4	900.7	896.0	895.1	894.7	897.9	900.6	906.5
75°	847.7	838.9	834.4	827.0	823.3	817.9	817.1	814.6	816.2	816.7	821.0
77.5°	745.4	737.1	733.5	725.9	722.9	716.8	716.3	713.5	714.8	713.9	717.2
80°	628.9	621.3	619.4	613.2	611.7	606.1	605.2	601.8	602.9	600.2	601.5
82.5°	498.8	491.9	490.4	484.7	484.7	479.6	479.3	474.3	474.3	469.9	462.9
85°	351.4	346.3	344.1	339.5	338.1	334.0	331.9	327.0	325.3	322.2	321.2
87.5°	185.5	182.2	179.4	177.1	173.0	165.7	165.0	160.0	160.4	156.7	157.0
90°	35.5	31.5	31.1	27.4	26.8	24.3	23.8	23.5	23.9	23.7	24.3
92.5°	23.9	23.1	22.4	21.6	20.8	20.0	19.3	20.0	20.8	21.6	22.4
95°	27.0	26.3	25.6	24.9	24.3	23.5	22.9	23.5	24.3	25.1	25.8
97.5°	30.1	29.6	29.2	28.8	28.3	27.9	27.4	28.1	28.5	28.9	29.4
100°	34.7	34.2	33.6	33.2	32.6	32.1	31.6	32.3	32.8	33.3	33.8
102.5°	57.4	54.2	51.1	47.9	44.7	41.5	38.3	41.5	44.7	48.1	51.2
105°	129.9	119.3	108.6	97.8	87.1	76.3	65.6	76.4	87.2	97.9	108.8
107.5°	256.1	237.4	218.4	199.6	180.6	161.8	142.8	162.0	180.9	199.8	218.7
110°	377.9	361.8	345.5	329.3	312.9	296.7	280.4	296.8	313.1	329.5	345.8



TEST NUMBER: P1444467  
 CATALOG NUMBER: EHBR1-42-UNV-TA-L830-UPL15

**CANDELA DISTRIBUTION (continued):**

	165°	167.5°	170°	172.5°	175°	177.5°	180°	182.5°	185°	187.5°	190°
112.5°	444.8	435.2	425.3	415.6	405.6	395.9	385.8	396.1	406.1	416.2	426.0
115°	460.9	455.7	450.8	445.8	440.5	435.5	430.1	435.9	441.2	446.5	451.9
117.5°	447.1	445.6	443.9	442.3	440.6	439.0	437.2	439.2	441.2	443.4	445.1
120°	416.5	417.2	417.7	418.1	418.5	418.9	419.2	419.4	419.4	419.4	419.3
122.5°	383.1	385.0	386.7	388.4	390.0	391.6	392.9	392.1	391.0	390.0	388.6
125°	352.9	355.0	356.8	358.6	360.3	362.1	363.3	362.7	361.6	360.4	359.1
127.5°	328.1	329.9	331.7	333.7	335.1	336.7	338.0	337.4	336.5	335.5	334.3
130°	308.2	310.1	311.5	313.0	314.3	315.6	316.5	316.2	315.6	315.3	314.3
132.5°	295.2	296.7	298.1	299.4	300.4	301.5	302.2	302.3	302.0	301.7	301.0
135°	286.0	287.2	288.2	289.5	290.4	291.2	291.7	292.1	292.0	291.9	291.4
137.5°	278.8	279.9	280.8	281.7	282.3	282.9	283.2	283.7	283.9	284.4	284.2
140°	275.1	276.2	277.2	278.0	278.9	279.6	279.7	280.5	280.6	280.7	280.5
142.5°	271.2	272.2	273.1	274.1	274.7	275.4	275.7	276.2	276.4	276.5	276.4
145°	268.9	269.7	270.5	271.4	271.9	272.4	272.5	273.2	273.5	273.7	273.9
147.5°	266.3	267.2	268.0	268.6	269.1	269.7	270.0	270.4	270.8	271.1	271.2
150°	265.0	265.8	266.7	267.5	268.2	268.6	268.8	269.4	269.7	269.9	269.9
152.5°	263.5	264.2	265.2	265.7	266.4	266.9	267.1	267.6	268.1	268.4	268.5
155°	262.4	263.3	264.1	264.8	265.3	265.8	266.4	266.9	267.2	267.5	267.7
157.5°	261.9	262.8	263.4	264.2	264.7	265.5	265.9	266.5	266.9	267.4	267.6
160°	262.7	263.6	264.1	264.8	265.5	266.0	266.6	267.1	267.6	268.0	268.6
162.5°	264.5	265.3	265.7	266.4	267.1	267.7	268.2	268.8	269.3	269.8	270.1
165°	265.8	266.6	267.1	267.8	268.6	269.2	269.7	270.2	270.5	270.9	271.2
167.5°	269.2	270.0	270.3	271.0	271.5	272.2	272.8	273.2	273.5	273.8	274.0
170°	271.5	272.1	272.6	273.1	273.6	274.2	274.5	274.8	275.1	275.4	275.7
172.5°	273.1	273.8	274.3	274.9	275.3	275.9	276.3	276.6	276.6	276.8	276.7
175°	274.7	275.3	275.5	276.0	276.2	276.7	277.2	277.1	277.3	277.2	277.3
177.5°	277.4	277.9	278.2	278.5	279.0	279.1	279.5	279.2	279.1	279.0	278.8
180°	276.7	276.7	276.7	276.7	276.7	276.7	276.7	276.7	276.7	276.7	276.7



TEST NUMBER: P1444467  
 CATALOG NUMBER: EHBR1-42-UNV-TA-L830-UPL15

**CANDELA DISTRIBUTION (continued):**

	192.5°	195°	197.5°	200°	202.5°	205°	207.5°	210°	212.5°	215°	217.5°
0°	33489.2	33489.2	33489.2	33489.2	33489.2	33489.2	33489.2	33489.2	33489.2	33489.2	33489.2
2.5°	33426.6	33443.4	33469.0	33492.1	33527.1	33554.6	33595.9	33627.3	33674.0	33704.3	33755.1
5°	33429.6	33495.0	33581.0	33664.9	33765.8	33857.4	33971.2	34068.2	34182.6	34276.0	34393.0
7.5°	33476.9	33603.0	33754.1	33906.4	34078.7	34239.8	34421.4	34585.7	34765.3	34917.3	35083.4
10°	33511.8	33706.3	33929.0	34153.2	34389.1	34608.3	34829.6	35020.9	35199.6	35346.7	35476.6
12.5°	33464.5	33732.5	34018.3	34294.3	34556.7	34783.6	34974.0	35121.1	35222.6	35291.4	35307.6
15°	33303.7	33626.2	33937.0	34211.9	34429.6	34597.5	34684.4	34725.1	34681.5	34609.0	34449.6
17.5°	33003.5	33343.6	33621.5	33838.3	33953.4	33998.9	33926.9	33801.7	33556.9	33285.3	32892.9
20°	32453.0	32769.9	32971.5	33089.8	33059.0	32945.2	32673.3	32343.0	31854.4	31333.6	30646.3
22.5°	31487.6	31764.6	31872.0	31880.8	31693.0	31408.0	30917.8	30351.1	29580.1	28778.8	27793.2
25°	30038.3	30280.9	30297.9	30202.6	29858.9	29397.1	28677.2	27875.6	26828.1	25760.1	24525.1
27.5°	28072.8	28305.6	28248.5	28070.7	27593.6	26975.6	26054.0	25018.4	23726.9	22465.7	21099.4
30°	25602.0	25850.9	25784.0	25555.9	24988.4	24258.0	23173.5	21970.3	20536.5	19189.4	17804.9
32.5°	22645.2	22959.9	22913.7	22696.9	22104.7	21323.1	20146.4	18870.2	17403.3	16075.7	14729.0
35°	19284.5	19666.5	19686.2	19544.5	18994.8	18222.2	17060.2	15825.0	14419.9	13167.3	11923.2
37.5°	15663.6	16106.5	16197.5	16159.3	15703.6	15021.6	13963.0	12854.8	11610.0	10512.3	9448.2
40°	12022.8	12471.1	12626.6	12672.7	12336.5	11808.2	10939.4	10045.0	9030.2	8140.7	7295.8
42.5°	8702.4	9099.8	9250.2	9344.7	9134.9	8782.6	8148.8	7499.3	6755.8	6114.3	5499.1
45°	6044.0	6325.1	6439.5	6534.7	6420.3	6221.6	5821.4	5415.1	4924.4	4505.1	4108.2
47.5°	4225.8	4380.8	4456.2	4502.4	4458.1	4354.5	4136.6	3901.3	3624.3	3379.3	3143.7
50°	3132.2	3214.7	3254.1	3280.8	3248.6	3191.0	3073.1	2945.0	2792.8	2654.1	2518.4
52.5°	2482.2	2529.5	2552.9	2567.3	2548.8	2513.6	2444.9	2368.9	2277.8	2192.0	2146.9
55°	2091.1	2088.6	2142.8	2116.7	2142.8	2084.4	2072.1	1988.5	1912.9	1859.5	1801.8
57.5°	1724.5	1749.0	1759.4	1771.1	1763.5	1752.9	1723.7	1693.8	1653.9	1620.4	1584.8
60°	1492.7	1513.0	1524.4	1535.9	1535.2	1531.2	1514.3	1496.5	1471.5	1451.5	1429.9
62.5°	1333.1	1350.6	1361.9	1372.9	1374.0	1372.4	1359.5	1347.2	1330.1	1317.6	1302.7
65°	1207.5	1219.8	1227.5	1236.3	1235.8	1233.5	1221.9	1211.6	1197.6	1188.9	1178.0
67.5°	1076.1	1085.4	1091.4	1099.7	1101.3	1101.8	1095.5	1090.6	1083.8	1081.2	1077.6
70°	982.6	993.9	1003.5	1014.0	1019.7	1022.4	1019.7	1017.3	1013.2	1011.6	1008.6
72.5°	911.9	921.4	928.8	938.4	943.7	947.6	945.5	944.1	940.6	940.2	938.2
75°	824.0	830.6	834.8	842.0	844.8	848.5	846.9	847.7	846.6	849.3	849.2
77.5°	718.4	723.2	725.2	730.4	730.9	735.2	736.3	741.3	745.0	752.9	757.1
80°	599.5	602.6	602.6	607.9	610.3	617.6	621.0	629.4	633.2	640.3	640.9
82.5°	465.6	462.1	465.6	463.5	470.2	478.5	479.6	486.6	488.3	492.7	489.2
85°	318.4	318.1	315.3	315.8	313.6	314.6	313.4	314.7	313.5	313.6	310.4
87.5°	152.5	153.9	150.5	151.7	148.5	150.0	147.1	149.3	145.9	146.5	141.5
90°	24.4	24.7	24.8	25.3	26.1	27.4	28.8	30.1	31.8	33.1	34.6
92.5°	23.1	24.0	24.8	25.6	26.3	28.7	31.0	33.3	35.8	37.9	40.3
95°	26.5	27.2	27.8	28.8	29.4	32.8	36.2	39.4	42.8	46.2	49.6
97.5°	30.0	30.4	30.9	31.3	31.9	35.9	39.8	43.8	47.8	51.7	55.5
100°	34.6	35.0	35.6	36.2	36.7	45.8	55.0	64.1	73.2	82.2	91.3
102.5°	54.5	57.7	60.9	64.4	67.5	89.6	111.7	133.9	155.7	177.8	199.8
105°	119.5	130.3	141.3	152.0	162.8	196.2	229.8	263.2	296.4	329.8	363.3
107.5°	237.7	256.7	275.7	294.6	313.5	345.0	376.4	407.8	439.3	470.6	501.8
110°	362.5	378.5	395.2	411.5	427.9	452.6	477.6	502.5	527.4	552.1	576.9



TEST NUMBER: P1444467  
 CATALOG NUMBER: EHBR1-42-UNV-TA-L830-UPL15

**CANDELA DISTRIBUTION (continued):**

	192.5°	195°	197.5°	200°	202.5°	205°	207.5°	210°	212.5°	215°	217.5°
112.5°	436.1	446.0	456.0	465.6	475.7	493.9	512.3	530.5	548.7	566.6	584.8
115°	457.1	462.1	467.4	472.5	477.8	488.8	499.6	510.5	521.5	532.1	543.1
117.5°	447.1	449.0	450.8	452.2	454.1	459.5	465.1	470.5	476.0	481.5	486.9
120°	419.2	418.8	418.5	418.1	417.8	419.2	420.9	422.2	423.8	425.3	426.6
122.5°	387.3	385.7	384.3	382.7	381.2	380.1	379.4	378.2	377.5	376.5	375.4
125°	357.7	356.1	354.6	352.9	351.2	349.2	347.2	345.3	343.2	341.1	339.1
127.5°	333.2	331.6	330.3	328.6	327.0	324.7	322.5	320.2	318.0	315.7	313.4
130°	313.5	312.2	311.3	309.6	308.6	306.2	304.3	302.3	300.2	298.1	296.0
132.5°	300.5	299.5	298.6	297.3	296.4	294.3	292.6	290.5	288.6	286.6	284.9
135°	291.2	290.5	289.9	288.9	288.0	286.4	284.9	283.2	281.7	280.0	278.5
137.5°	284.0	283.4	283.1	282.5	281.9	280.4	279.1	277.6	276.4	274.8	273.6
140°	280.5	280.1	279.6	279.0	278.5	277.1	275.7	274.3	273.0	271.5	270.1
142.5°	276.2	276.0	275.6	275.0	274.5	273.2	272.4	271.2	270.1	268.8	267.8
145°	273.8	273.6	273.4	273.0	272.9	271.6	270.4	269.1	268.1	266.8	265.7
147.5°	271.3	271.1	271.1	270.8	270.8	269.7	268.9	267.8	267.0	265.9	265.1
150°	269.9	269.8	269.8	269.5	269.3	268.4	267.6	266.7	265.9	264.8	264.1
152.5°	268.5	268.6	268.6	268.6	268.7	268.0	267.1	266.2	265.4	264.4	263.6
155°	268.0	268.1	268.3	268.3	268.3	267.6	266.9	266.0	265.3	264.5	263.8
157.5°	267.9	268.2	268.4	268.6	268.6	268.1	267.4	266.9	266.2	265.6	264.9
160°	268.7	269.1	269.4	269.5	269.8	269.2	269.0	268.2	268.0	267.1	266.6
162.5°	270.5	270.9	271.2	271.3	271.6	271.0	270.7	270.1	269.7	268.9	268.5
165°	271.6	271.7	272.0	272.0	272.2	271.8	271.6	271.3	270.9	270.5	270.1
167.5°	274.4	274.5	274.7	274.7	274.9	274.6	274.7	274.4	274.1	273.8	273.5
170°	276.0	276.0	276.2	276.2	276.4	276.1	276.0	275.8	275.8	275.2	274.9
172.5°	276.9	276.9	277.0	277.1	277.0	276.8	276.8	276.6	276.5	276.4	276.2
175°	277.3	277.3	277.3	277.3	277.2	277.2	277.1	277.2	277.1	277.1	277.0
177.5°	278.8	278.7	278.4	278.3	278.1	278.0	278.1	278.0	278.1	278.0	277.9
180°	276.7	276.7	276.7	276.7	276.7	276.7	276.7	276.7	276.7	276.7	276.7



TEST NUMBER: P1444467  
 CATALOG NUMBER: EHBR1-42-UNV-TA-L830-UPL15

**CANDELA DISTRIBUTION (continued):**

	220°	222.5°	225°	227.5°	230°	232.5°	235°	237.5°	240°	242.5°	245°
0°	33489.2	33489.2	33489.2	33489.2	33489.2	33489.2	33489.2	33489.2	33489.2	33489.2	33489.2
2.5°	33786.4	33577.8	33550.2	33564.9	33599.7	33612.7	33650.2	33660.5	33698.5	33707.7	33744.1
5°	34483.6	34207.8	34221.5	34287.9	34388.3	34448.1	34546.8	34598.4	34692.6	34735.4	34820.6
7.5°	35218.8	35002.1	35069.6	35181.5	35318.8	35413.9	35532.4	35609.5	35711.7	35775.2	35856.9
10°	35579.7	35520.3	35594.7	35682.6	35761.0	35822.3	35872.6	35912.8	35939.1	35963.8	35974.6
12.5°	35304.9	35396.8	35409.5	35400.9	35349.1	35309.4	35220.4	35160.0	35052.7	34987.2	34859.5
15°	34286.7	34488.7	34376.8	34207.6	33959.8	33753.3	33461.6	33244.5	32940.7	32734.7	32429.9
17.5°	32499.8	32754.6	32463.2	32071.5	31573.2	31146.9	30616.0	30194.6	29666.8	29282.9	28790.3
20°	29984.1	30222.3	29702.6	29053.1	28282.3	27633.6	26868.6	26258.1	25547.1	25018.4	24380.1
22.5°	26851.8	27021.4	26289.3	25413.8	24431.8	23621.3	22706.6	21974.8	21163.4	20558.9	19878.4
25°	23386.4	23432.2	22554.1	21545.5	20450.9	19540.0	18563.5	17794.1	16966.6	16353.9	15686.0
27.5°	19889.0	19821.8	18872.5	17803.2	16651.8	15705.0	14752.5	14031.5	13306.9	12754.9	12179.6
30°	16587.7	16425.1	15439.5	14340.4	13222.7	12374.1	11583.4	11004.4	10427.9	9990.0	9528.2
32.5°	13560.5	13331.1	12371.7	11341.9	10400.1	9745.2	9159.0	8720.9	8255.2	7885.4	7497.8
35°	10879.0	10634.6	9784.8	8911.7	8198.9	7716.2	7255.4	6896.0	6500.7	6188.6	5852.0
37.5°	8577.8	8377.5	7665.6	6978.6	6439.5	6065.4	5687.8	5394.0	5067.4	4930.1	4570.4
40°	6622.1	6482.0	5925.3	5419.0	5014.1	4838.4	4455.1	4180.7	3936.5	3735.2	3540.3
42.5°	5165.3	5115.7	4574.0	4179.0	3894.0	3672.6	3459.0	3285.6	3116.8	2978.0	2846.9
45°	3790.6	3751.3	3510.9	3282.9	3088.6	2933.9	2789.5	2670.2	2559.8	2468.4	2385.2
47.5°	2951.7	2939.2	2800.7	2659.3	2536.9	2437.5	2343.7	2264.6	2191.3	2130.3	2110.4
50°	2400.8	2399.1	2317.9	2230.6	2143.5	2086.0	2026.2	1979.4	1932.3	1895.7	1857.0
52.5°	2039.9	2031.0	1976.2	1922.3	1870.5	1832.8	1794.5	1764.7	1733.5	1710.9	1686.8
55°	1756.1	1765.4	1733.7	1701.5	1669.1	1645.6	1618.8	1599.1	1577.8	1563.5	1548.9
57.5°	1559.0	1571.3	1554.7	1536.4	1516.7	1501.3	1482.8	1469.1	1454.9	1445.8	1437.4
60°	1415.6	1429.0	1422.4	1413.2	1401.0	1391.9	1380.1	1372.5	1363.3	1358.2	1353.5
62.5°	1294.1	1310.7	1308.4	1304.1	1296.2	1291.2	1284.7	1281.3	1275.2	1273.1	1270.8
65°	1172.7	1191.5	1191.1	1189.1	1184.7	1183.2	1179.2	1178.5	1175.4	1176.6	1176.3
67.5°	1077.2	1093.6	1097.2	1099.8	1099.7	1100.6	1100.3	1101.9	1101.9	1104.3	1105.8
70°	1008.3	1019.7	1022.4	1025.2	1026.0	1028.1	1028.1	1029.5	1029.2	1031.1	1031.4
72.5°	938.7	953.7	956.5	958.6	958.6	960.8	959.7	959.3	956.3	955.7	953.6
75°	852.0	871.3	875.5	878.3	878.6	880.5	877.9	876.3	871.3	869.3	865.8
77.5°	761.5	781.6	784.5	785.5	783.9	784.3	778.8	775.1	768.8	766.1	762.9
80°	643.8	673.2	675.6	673.7	669.1	668.3	663.0	659.5	651.9	649.3	646.5
82.5°	489.9	524.4	529.2	531.3	527.6	528.5	523.4	521.4	514.4	513.2	508.6
85°	309.3	343.8	349.5	348.6	344.9	344.1	341.1	342.1	341.4	343.3	344.3
87.5°	142.1	175.5	183.6	181.0	180.6	178.3	172.9	174.9	178.1	180.2	180.3
90°	36.0	47.4	48.6	48.3	45.0	44.1	40.9	40.8	38.0	37.7	35.2
92.5°	42.5	44.9	47.2	45.1	43.1	41.0	39.0	36.8	34.8	32.7	30.7
95°	52.8	56.0	59.4	56.7	53.7	51.0	48.2	45.4	42.7	40.0	37.2
97.5°	59.5	63.2	67.0	64.3	61.4	58.6	55.8	53.1	50.3	47.5	44.7
100°	100.4	109.1	118.0	110.2	102.3	94.4	86.6	78.7	70.9	63.0	55.1
102.5°	221.7	243.5	265.4	245.4	225.6	205.6	185.8	165.9	146.1	126.1	106.3
105°	396.4	429.4	462.5	432.0	401.7	371.3	341.0	310.7	280.3	249.9	219.7
107.5°	533.2	563.7	594.6	567.2	539.6	512.2	484.6	457.1	429.7	402.0	374.7
110°	601.7	625.3	649.9	631.2	612.7	594.0	575.4	556.9	538.4	520.0	501.6



TEST NUMBER: P1444467  
 CATALOG NUMBER: EHBR1-42-UNV-TA-L830-UPL15

**CANDELA DISTRIBUTION (continued):**

	220°	222.5°	225°	227.5°	230°	232.5°	235°	237.5°	240°	242.5°	245°
112.5°	602.9	619.4	637.1	626.0	615.0	603.9	592.9	581.9	571.1	560.0	549.3
115°	553.7	562.8	573.1	568.3	563.8	559.1	554.4	549.9	545.4	540.8	536.5
117.5°	492.1	495.5	500.2	498.7	497.7	496.2	495.1	493.8	492.9	491.7	490.7
120°	427.9	427.0	427.8	427.6	427.7	427.7	427.8	427.7	427.8	428.0	428.3
122.5°	374.4	370.8	369.0	368.9	368.7	368.5	368.5	368.3	368.3	368.4	368.5
125°	337.2	332.3	329.3	327.8	326.5	325.0	323.5	322.2	320.9	319.6	318.4
127.5°	311.0	305.7	302.7	300.2	297.8	295.3	292.9	290.4	288.0	285.6	283.4
130°	294.0	288.7	285.7	282.8	280.1	277.0	274.2	271.3	268.3	265.5	262.6
132.5°	282.8	277.5	274.6	271.9	269.3	266.3	263.6	260.7	257.9	254.9	252.3
135°	276.9	271.6	269.2	266.5	264.2	261.5	258.9	256.2	253.8	250.9	248.6
137.5°	272.0	266.9	264.7	262.5	260.5	258.3	256.3	253.9	251.9	249.4	247.4
140°	268.6	263.2	261.0	259.6	258.3	256.7	255.3	253.8	252.4	250.9	249.4
142.5°	266.6	261.2	259.2	258.2	257.3	256.2	255.4	254.3	253.3	252.0	250.9
145°	264.5	258.5	256.5	255.9	255.7	255.3	254.8	254.4	253.9	253.3	252.8
147.5°	264.1	257.9	255.8	255.7	255.6	255.2	255.2	254.9	254.9	254.5	254.4
150°	263.0	256.0	253.6	253.8	253.7	253.8	253.8	253.8	254.0	254.0	254.0
152.5°	262.6	254.3	251.5	251.6	251.9	251.9	252.2	252.3	252.7	252.9	253.1
155°	262.7	253.7	250.7	250.5	250.6	250.6	250.7	250.8	250.9	251.1	251.4
157.5°	264.1	254.5	251.5	251.1	251.1	251.0	251.0	251.0	251.1	251.2	251.6
160°	265.8	256.4	253.3	252.9	252.8	252.7	252.5	252.4	252.5	252.6	252.8
162.5°	267.6	258.3	255.4	255.0	254.7	254.6	254.6	254.2	254.3	254.2	254.5
165°	269.5	261.2	258.5	258.3	258.2	258.0	257.9	257.8	257.9	257.9	258.1
167.5°	273.1	265.7	263.5	263.1	262.7	262.4	262.4	261.9	261.9	261.6	261.6
170°	274.6	268.7	266.9	266.7	266.8	266.7	266.5	266.5	266.4	266.3	266.4
172.5°	276.0	271.6	270.2	270.2	270.4	270.5	270.7	270.7	270.9	271.1	271.3
175°	276.9	274.3	273.7	273.5	273.6	273.7	273.8	273.8	273.9	274.0	274.4
177.5°	278.0	277.3	276.9	276.9	276.9	276.9	276.9	276.9	276.9	277.1	277.1
180°	276.7	276.7	276.7	276.7	276.7	276.7	276.7	276.7	276.7	276.7	276.7



TEST NUMBER: P1444467  
 CATALOG NUMBER: EHBR1-42-UNV-TA-L830-UPL15

**CANDELA DISTRIBUTION (continued):**

	247.5°	250°	252.5°	255°	257.5°	260°	262.5°	265°	267.5°	270°	272.5°
0°	33489.2	33489.2	33489.2	33489.2	33489.2	33489.2	33489.2	33489.2	33489.2	33489.2	33489.2
2.5°	33750.9	33790.3	33787.3	33824.0	33822.2	33856.8	33849.8	33879.7	33873.0	33898.5	33883.5
5°	34858.0	34932.9	34957.6	35025.1	35039.1	35099.6	35100.8	35148.9	35143.0	35180.6	35160.6
7.5°	35905.4	35975.2	36008.3	36060.9	36087.0	36130.5	36147.5	36183.2	36191.8	36212.9	36212.2
10°	35993.7	35993.4	36009.8	36002.5	36017.1	36008.7	36026.6	36020.1	36046.5	36039.8	36059.7
12.5°	34804.4	34686.4	34643.3	34537.3	34514.2	34423.1	34429.6	34371.2	34399.4	34363.5	34424.6
15°	32248.5	31974.7	31839.5	31601.4	31526.7	31338.5	31323.3	31198.3	31232.0	31166.6	31262.2
17.5°	28471.5	28040.6	27804.0	27456.3	27318.3	27052.2	26998.9	26838.0	26862.9	26781.9	26897.3
20°	23968.4	23447.5	23149.2	22747.1	22567.8	22250.6	22166.5	21986.4	22009.0	21928.4	22058.9
22.5°	19413.9	18868.7	18531.8	18110.5	17881.5	17583.1	17493.6	17312.8	17323.1	17247.3	17373.0
25°	15228.5	14705.8	14378.9	13996.0	13797.3	13523.8	13429.7	13267.4	13276.5	13214.2	13326.8
27.5°	11780.3	11351.4	11077.9	10757.1	10578.9	10354.0	10262.3	10125.8	10125.4	10079.6	10173.8
30°	9205.7	8847.8	8602.2	8322.8	8155.5	7952.6	7864.0	7741.8	7736.5	7704.0	7778.8
32.5°	7207.9	6889.5	6665.4	6419.6	6269.4	6095.3	6011.4	5913.2	5904.3	5874.9	5936.3
35°	5603.2	5335.1	5142.4	4935.4	4950.7	4693.8	4736.5	4536.9	4482.8	4471.0	4516.6
37.5°	4330.6	4123.0	3966.5	3811.5	3706.5	3597.8	3539.4	3486.9	3480.9	3475.8	3507.9
40°	3389.7	3244.4	3130.6	3024.2	2951.9	2885.6	2849.1	2820.2	2813.4	2809.6	2829.0
42.5°	2743.4	2645.4	2572.0	2507.1	2463.2	2427.2	2407.1	2391.0	2385.7	2385.9	2397.3
45°	2317.9	2258.4	2211.1	2170.7	2142.7	2155.0	2118.7	2137.8	2112.7	2138.6	2121.5
47.5°	2041.2	1990.6	1961.3	1932.7	1915.8	1902.1	1902.5	1902.8	1908.2	1909.0	1914.6
50°	1827.7	1798.4	1778.1	1759.8	1751.0	1743.8	1746.3	1748.2	1753.3	1753.7	1757.8
52.5°	1669.7	1650.5	1638.2	1626.9	1622.9	1618.8	1620.6	1619.9	1622.2	1621.0	1624.3
55°	1541.2	1532.1	1528.2	1524.0	1524.6	1523.6	1524.2	1520.2	1517.7	1514.6	1517.5
57.5°	1435.6	1434.4	1437.0	1438.8	1443.6	1445.3	1446.5	1441.7	1437.3	1433.2	1435.5
60°	1354.4	1356.4	1362.8	1368.0	1374.9	1378.2	1380.1	1377.4	1374.2	1370.9	1372.8
62.5°	1274.2	1277.3	1285.0	1290.8	1299.2	1303.6	1308.4	1308.7	1309.9	1308.7	1310.0
65°	1181.1	1184.9	1191.9	1196.7	1204.5	1208.4	1213.3	1214.3	1217.0	1216.3	1218.7
67.5°	1110.4	1113.8	1119.6	1124.2	1131.2	1135.2	1139.5	1139.8	1140.7	1140.5	1142.7
70°	1034.9	1036.6	1041.8	1045.6	1052.6	1056.7	1061.7	1063.2	1066.3	1066.7	1069.3
72.5°	954.4	953.7	956.8	958.5	963.8	967.0	973.3	976.8	982.0	983.4	985.2
75°	866.8	866.1	869.8	871.3	875.7	879.0	886.0	890.6	898.7	902.1	901.2
77.5°	765.4	767.2	774.1	777.9	783.9	788.0	797.2	804.5	819.2	825.7	819.2
80°	651.9	653.8	661.0	664.6	672.5	677.4	687.7	696.3	709.6	712.5	708.7
82.5°	512.6	513.1	519.5	522.3	532.4	539.7	552.8	559.6	567.8	566.6	565.6
85°	349.5	354.3	362.3	370.4	382.7	394.7	407.0	417.1	410.0	421.2	408.6
87.5°	186.8	186.3	197.2	195.5	212.8	222.9	233.6	238.7	244.4	243.3	243.4
90°	35.4	33.4	34.1	31.8	33.4	30.8	33.3	31.1	34.1	31.1	36.1
92.5°	28.6	27.5	26.3	25.3	24.1	23.1	21.9	20.8	19.7	18.5	19.7
95°	34.5	33.4	32.4	31.3	30.3	29.2	28.2	27.2	26.1	25.1	26.4
97.5°	42.0	41.4	40.7	40.2	39.5	39.0	38.3	37.7	36.9	36.3	37.2
100°	47.2	47.2	47.2	47.2	47.0	47.0	47.0	47.0	47.0	47.0	47.7
102.5°	86.5	84.5	82.5	80.4	78.4	76.3	74.4	72.4	70.4	68.5	71.4
105°	189.3	181.5	173.8	166.0	158.1	150.4	142.7	134.9	127.2	119.4	127.4
107.5°	347.4	333.1	318.9	304.8	290.7	276.5	262.5	248.3	234.3	220.1	232.8
110°	483.1	468.0	452.8	437.8	422.7	407.7	392.8	377.8	362.8	347.8	359.9



TEST NUMBER: P1444467  
 CATALOG NUMBER: EHBR1-42-UNV-TA-L830-UPL15

**CANDELA DISTRIBUTION (continued):**

	247.5°	250°	252.5°	255°	257.5°	260°	262.5°	265°	267.5°	270°	272.5°
112.5°	538.4	528.4	518.7	508.9	499.1	489.5	479.8	470.1	460.5	450.8	456.6
115°	532.1	527.3	522.5	517.8	513.1	508.3	503.6	499.1	494.5	489.9	490.3
117.5°	489.6	487.7	486.2	484.4	482.7	481.1	479.6	478.1	476.5	475.2	471.9
120°	428.6	428.6	428.8	429.1	429.5	429.9	430.1	430.7	431.4	431.9	427.5
122.5°	368.6	369.3	370.1	370.9	371.9	372.9	374.0	375.2	376.6	377.9	373.5
125°	317.1	317.7	318.5	319.1	319.9	321.0	322.1	323.4	324.5	326.0	322.3
127.5°	281.1	280.9	280.7	280.8	280.8	281.1	281.6	281.9	282.6	283.4	281.0
130°	259.7	258.8	257.8	257.0	256.1	255.7	255.3	254.9	254.6	254.5	253.7
132.5°	249.4	247.9	246.3	244.9	243.5	242.4	241.2	240.5	239.7	239.1	238.9
135°	245.7	243.8	242.0	240.2	238.4	237.1	235.6	234.6	233.4	232.5	233.0
137.5°	245.1	243.4	241.3	239.7	237.9	236.5	235.0	233.8	232.8	231.9	232.6
140°	247.9	246.0	244.1	242.4	240.9	239.5	238.1	237.1	235.8	235.1	235.5
142.5°	249.8	248.3	246.5	245.1	243.5	242.2	241.1	240.2	239.0	238.4	238.9
145°	252.3	251.1	249.7	248.6	247.6	246.7	245.6	245.0	244.3	244.0	244.2
147.5°	254.0	253.2	252.2	251.3	250.4	249.8	249.1	248.6	248.1	247.9	247.9
150°	254.1	253.6	252.9	252.4	251.8	251.5	251.0	250.8	250.5	250.4	250.4
152.5°	253.4	253.0	252.4	252.1	251.6	251.4	251.0	250.9	250.8	250.7	250.7
155°	251.6	251.4	251.2	251.2	251.0	251.3	251.1	251.3	251.2	251.4	251.5
157.5°	251.7	251.8	251.7	252.0	252.1	252.3	252.3	252.7	252.7	253.2	253.4
160°	253.2	253.2	253.2	253.5	253.5	253.6	253.8	254.0	254.2	254.4	254.8
162.5°	254.6	255.0	255.1	255.3	255.6	255.9	256.3	256.8	257.0	257.5	257.9
165°	258.3	258.3	258.3	258.3	258.6	258.8	258.9	259.4	259.5	259.9	260.4
167.5°	261.5	261.7	261.7	261.9	262.1	262.4	262.6	263.0	263.4	264.0	264.3
170°	266.2	266.2	266.2	266.2	266.2	266.5	266.6	266.7	266.9	267.2	267.4
172.5°	271.3	271.3	271.1	271.3	271.1	271.3	271.3	271.5	271.5	271.6	271.6
175°	274.2	274.5	274.6	274.8	274.8	274.9	275.0	275.1	275.2	275.4	275.4
177.5°	277.1	277.2	277.2	277.2	277.2	277.3	277.3	277.3	277.3	277.2	277.3
180°	276.7	276.7	276.7	276.7	276.7	276.7	276.7	276.7	276.7	276.7	276.7



TEST NUMBER: P1444467  
 CATALOG NUMBER: EHBR1-42-UNV-TA-L830-UPL15

**CANDELA DISTRIBUTION (continued):**

	275°	277.5°	280°	282.5°	285°	287.5°	290°	292.5°	295°	297.5°	300°
0°	33489.2	33489.2	33489.2	33489.2	33489.2	33489.2	33489.2	33489.2	33489.2	33489.2	33489.2
2.5°	33908.4	33891.4	33908.8	33891.2	33908.8	33887.7	33902.0	33879.2	33885.0	33861.3	33867.4
5°	35190.6	35163.5	35177.9	35142.8	35146.4	35099.6	35098.7	35044.1	35029.7	34967.5	34940.2
7.5°	36227.3	36218.5	36223.5	36200.8	36198.3	36166.2	36151.0	36105.7	36077.3	36020.1	35981.0
10°	36063.2	36089.6	36096.5	36123.4	36129.0	36155.7	36161.3	36188.0	36193.5	36213.3	36213.5
12.5°	34421.8	34511.5	34533.0	34643.8	34690.5	34817.4	34885.4	35025.1	35108.1	35247.5	35333.1
15°	31259.6	31414.9	31476.8	31693.3	31813.0	32065.7	32224.5	32514.7	32719.4	33027.6	33247.4
17.5°	26907.5	27124.5	27222.4	27515.9	27707.4	28080.4	28349.2	28791.7	29130.4	29622.1	30011.9
20°	22081.3	22322.4	22455.3	22790.2	23016.2	23452.0	23787.6	24331.4	24784.8	25407.9	25940.7
22.5°	17412.3	17641.8	17789.4	18130.1	18384.5	18839.0	19214.1	19788.0	20296.0	20998.1	21636.9
25°	13369.4	13579.7	13713.0	14021.2	14260.2	14677.9	15036.1	15588.0	16085.1	16789.3	17444.3
27.5°	10220.7	10396.8	10525.4	10788.2	10998.9	11353.2	11660.8	12117.0	12545.2	13154.6	13737.9
30°	7824.8	7980.9	8106.1	8334.9	8530.3	8837.4	9107.9	9491.1	9845.6	10330.3	10794.4
32.5°	5979.5	6113.9	6225.4	6425.6	6603.0	6879.5	7123.2	7459.0	7763.3	8174.5	8556.3
35°	4559.1	4823.6	4804.8	5081.2	5125.6	5324.1	5541.5	5835.1	6104.6	6454.2	6779.1
37.5°	3538.6	3613.0	3692.7	3814.8	3943.2	4123.7	4307.4	4666.2	4797.8	5062.1	5331.0
40°	2853.5	2903.8	2956.4	3039.0	3128.8	3256.0	3389.9	3561.0	3736.3	3950.6	4169.4
42.5°	2412.4	2440.9	2474.3	2522.8	2578.2	2658.9	2748.4	2864.5	2986.4	3137.2	3291.1
45°	2155.4	2141.9	2151.8	2177.8	2211.2	2260.3	2316.8	2388.6	2468.0	2565.7	2669.7
47.5°	1915.8	1921.2	1924.2	1938.3	1956.1	1989.1	2023.3	2072.1	2166.3	2195.0	2251.7
50°	1757.5	1760.1	1759.2	1766.4	1775.4	1796.8	1819.0	1852.1	1885.0	1928.8	1970.5
52.5°	1624.8	1628.5	1628.0	1632.8	1637.6	1651.1	1665.1	1688.4	1710.1	1737.9	1761.9
55°	1520.0	1525.1	1527.1	1531.1	1533.5	1540.5	1546.1	1557.3	1566.5	1582.2	1596.7
57.5°	1439.4	1446.5	1449.7	1451.1	1448.2	1447.8	1445.9	1448.3	1450.1	1458.6	1466.8
60°	1376.0	1381.6	1382.5	1381.6	1376.4	1372.7	1366.8	1364.9	1363.9	1368.0	1372.5
62.5°	1309.7	1311.7	1310.3	1308.7	1302.7	1299.1	1292.9	1290.7	1288.5	1291.4	1293.8
65°	1217.8	1219.6	1217.8	1216.8	1211.4	1208.6	1203.4	1201.7	1198.7	1199.5	1199.0
67.5°	1143.3	1144.9	1143.6	1142.2	1138.5	1136.8	1132.9	1130.4	1126.9	1125.5	1123.0
70°	1068.9	1070.3	1068.1	1066.7	1062.5	1060.9	1057.4	1056.6	1053.7	1053.1	1050.2
72.5°	983.4	983.5	980.5	979.6	976.5	976.4	974.9	976.3	976.1	977.6	977.0
75°	895.9	894.7	890.9	890.2	887.9	889.0	887.4	889.5	889.8	893.0	893.3
77.5°	808.2	803.6	796.6	793.2	788.5	787.9	785.1	787.0	786.4	790.1	791.6
80°	697.6	691.9	682.9	678.6	672.9	672.1	669.6	672.1	670.9	675.2	678.3
82.5°	556.9	552.1	542.6	539.2	532.7	533.4	530.6	533.4	533.0	539.4	543.1
85°	412.0	408.7	399.0	390.4	380.9	375.3	369.9	368.9	367.3	369.9	372.1
87.5°	237.9	234.9	227.3	222.4	205.7	206.4	199.8	199.4	197.8	196.3	199.8
90°	34.6	38.7	37.5	41.1	40.4	44.8	44.4	48.4	47.3	51.2	50.9
92.5°	20.8	21.9	23.0	24.1	25.2	26.3	27.4	28.6	31.0	33.1	35.8
95°	27.7	28.9	30.3	31.6	32.9	34.1	35.4	36.7	40.3	43.7	47.3
97.5°	38.2	39.0	39.8	40.7	41.5	42.4	43.3	44.1	48.1	51.9	55.6
100°	48.4	49.1	49.7	50.5	51.1	51.8	52.5	53.2	60.7	68.0	75.3
102.5°	74.3	77.3	80.2	83.1	86.2	89.2	92.1	95.0	111.8	128.6	145.4
105°	135.4	143.4	151.6	159.5	167.6	175.5	183.7	191.7	218.7	245.5	272.6
107.5°	245.4	258.1	270.7	283.4	296.1	308.8	321.5	334.3	360.5	387.0	413.3
110°	371.9	384.1	396.0	408.2	420.2	432.5	444.6	456.9	472.8	488.6	504.5



TEST NUMBER: P1444467  
 CATALOG NUMBER: EHBR1-42-UNV-TA-L830-UPL15

**CANDELA DISTRIBUTION (continued):**

	275°	277.5°	280°	282.5°	285°	287.5°	290°	292.5°	295°	297.5°	300°
112.5°	462.6	468.4	474.5	480.4	486.4	492.5	498.5	504.6	512.8	520.7	528.9
115°	490.6	491.0	491.7	492.1	492.7	493.2	493.9	494.6	497.4	500.1	503.0
117.5°	468.7	465.5	462.5	459.5	456.5	453.6	450.7	448.0	447.8	447.6	447.7
120°	423.5	419.4	415.1	410.9	407.0	403.1	399.3	395.5	393.8	392.1	390.6
122.5°	369.3	365.1	361.1	357.2	353.2	349.5	345.8	342.2	341.2	340.3	339.5
125°	318.8	315.5	312.1	309.0	306.0	303.0	300.2	297.4	298.0	298.4	299.2
127.5°	279.0	277.2	275.3	273.6	272.1	270.6	269.2	267.8	269.6	271.2	273.0
130°	252.9	252.3	251.9	251.3	251.3	251.0	250.9	250.8	253.4	255.5	258.2
132.5°	239.2	239.3	239.7	240.2	240.8	241.4	242.4	243.0	245.8	248.2	251.0
135°	233.4	234.0	234.9	235.7	236.9	237.9	239.2	240.3	243.1	245.4	248.1
137.5°	233.3	234.0	235.0	236.1	237.5	238.5	240.1	241.3	243.5	245.6	247.8
140°	236.2	236.7	237.7	238.7	239.8	240.7	242.1	243.3	245.2	246.9	248.7
142.5°	239.6	240.1	241.0	241.9	242.9	243.8	245.0	246.0	247.4	248.7	250.4
145°	244.9	245.2	246.1	246.7	247.6	248.4	249.4	250.2	251.3	252.2	253.3
147.5°	248.5	248.9	249.4	250.1	250.9	251.4	252.1	252.7	253.7	254.4	255.3
150°	250.9	251.0	251.5	251.9	252.5	253.0	253.7	254.1	254.8	255.4	256.2
152.5°	251.2	251.3	251.8	252.2	252.6	253.1	253.5	254.0	254.7	255.2	255.9
155°	251.9	252.4	252.9	253.3	253.9	254.1	254.8	255.2	255.7	256.3	256.8
157.5°	253.9	254.1	254.8	255.1	255.6	256.0	256.5	256.8	257.5	257.9	258.3
160°	255.3	255.9	256.4	256.9	257.5	258.0	258.5	259.1	259.7	260.0	260.5
162.5°	258.4	258.9	259.4	259.7	260.2	260.8	261.2	261.6	262.4	262.7	263.4
165°	261.0	261.4	262.2	262.5	263.2	263.8	264.2	264.8	265.2	265.7	266.1
167.5°	264.9	265.3	266.0	266.4	267.0	267.4	268.0	268.5	268.9	269.2	269.7
170°	267.9	268.4	268.8	269.2	269.7	270.1	270.6	271.0	271.6	271.8	272.5
172.5°	272.0	272.3	272.7	272.8	273.1	273.6	274.0	274.2	274.6	275.0	275.3
175°	275.4	275.4	275.5	275.7	275.8	275.8	275.9	276.1	276.2	276.4	276.5
177.5°	277.4	277.5	277.5	277.6	277.7	277.8	277.9	278.0	278.0	278.0	278.0
180°	276.7	276.7	276.7	276.7	276.7	276.7	276.7	276.7	276.7	276.7	276.7



TEST NUMBER: P1444467  
 CATALOG NUMBER: EHBR1-42-UNV-TA-L830-UPL15

**CANDELA DISTRIBUTION (continued):**

	302.5°	305°	307.5°	310°	312.5°	315°	317.5°	320°	322.5°	325°	327.5°
0°	33489.2	33489.2	33489.2	33489.2	33489.2	33489.2	33489.2	33489.2	33489.2	33489.2	33489.2
2.5°	33843.7	33845.2	33817.8	33816.3	33790.7	33787.6	33762.6	33755.1	33734.8	33727.5	33706.9
5°	34870.5	34837.2	34760.3	34715.2	34639.2	34588.9	34506.8	34453.2	34373.8	34314.1	34234.3
7.5°	35908.9	35857.3	35771.0	35701.2	35595.8	35511.7	35388.4	35287.3	35153.8	35038.3	34898.0
10°	36213.5	36205.6	36183.6	36151.5	36102.5	36047.5	35963.5	35876.0	35759.0	35631.9	35476.0
12.5°	35464.1	35545.0	35655.4	35720.7	35800.4	35835.2	35867.8	35859.7	35838.2	35773.8	35683.7
15°	33565.7	33793.2	34094.2	34327.6	34596.0	34791.1	35006.6	35140.9	35274.8	35336.6	35374.4
17.5°	30545.9	30976.5	31516.4	31963.8	32480.0	32894.7	33349.2	33691.4	34043.2	34295.3	34523.3
20°	26667.0	27290.7	28054.3	28728.9	29513.3	30194.9	30941.8	31555.1	32187.5	32682.0	33149.9
22.5°	22459.6	23200.4	24123.6	24978.7	25989.9	26898.7	27923.9	28816.3	29748.1	30526.6	31279.1
25°	18322.3	19134.8	20144.2	21098.2	22243.5	23300.5	24516.6	25628.7	26833.1	27878.5	28911.4
27.5°	14544.4	15342.1	16372.6	17388.2	18599.2	19725.6	21028.5	22253.8	23625.0	24889.5	26183.1
30°	11439.3	12115.9	13039.9	14023.7	15218.0	16364.2	17681.1	18941.4	20367.9	21748.5	23205.6
32.5°	9063.0	9578.4	10304.9	11136.7	12238.8	13329.8	14583.9	15800.4	17205.2	18599.9	20115.2
35°	7197.7	7599.7	8153.6	8802.7	9736.0	10676.5	11785.7	12892.0	14202.6	15526.0	16998.9
37.5°	5675.8	6002.0	6435.8	6923.4	7671.9	8443.8	9353.3	10270.5	11409.3	12582.4	13917.2
40°	4432.1	4696.3	5034.0	5397.6	5962.8	6557.6	7261.0	7972.2	8887.1	9845.9	10950.7
42.5°	3481.8	3676.7	3915.2	4180.9	4708.3	5024.0	5501.0	6015.5	6688.1	7384.1	8214.7
45°	2796.2	2929.1	3094.5	3272.8	3517.5	3785.3	4112.1	4454.6	5093.5	5407.0	5912.1
47.5°	2335.1	2424.3	2529.6	2641.9	2786.2	2942.0	3135.7	3333.8	3590.0	3855.5	4166.8
50°	2024.6	2115.3	2151.4	2209.6	2293.2	2382.1	2491.4	2600.6	2738.0	2877.2	3037.5
52.5°	1794.1	1823.6	1862.9	1899.9	1951.7	2053.0	2085.8	2142.8	2219.9	2295.2	2379.4
55°	1618.1	1637.4	1662.8	1685.2	1716.5	1746.4	1789.6	1827.6	1878.9	1924.4	1980.3
57.5°	1481.0	1493.4	1511.1	1525.7	1545.9	1562.9	1588.2	1608.8	1638.3	1664.0	1697.9
60°	1381.6	1389.7	1401.6	1411.2	1424.1	1432.9	1445.4	1455.1	1470.7	1483.7	1502.7
62.5°	1300.2	1304.5	1312.2	1317.9	1326.0	1330.5	1337.2	1341.5	1350.0	1356.5	1367.1
65°	1202.6	1203.7	1208.9	1211.3	1217.7	1220.1	1225.5	1227.5	1234.6	1239.5	1248.7
67.5°	1122.7	1120.5	1120.7	1118.8	1119.6	1117.8	1118.2	1116.3	1119.2	1120.7	1127.7
70°	1049.8	1046.7	1045.6	1042.3	1041.3	1037.9	1036.8	1033.8	1033.4	1032.3	1034.9
72.5°	978.7	977.7	978.0	975.7	975.4	973.1	973.1	971.7	973.3	974.1	977.3
75°	896.9	897.1	898.7	896.6	897.2	895.2	896.0	894.1	895.1	894.7	897.9
77.5°	797.3	799.7	804.0	803.1	804.5	802.3	803.2	800.7	801.4	799.7	800.9
80°	685.4	690.4	696.2	695.9	698.4	696.8	699.0	696.5	697.6	694.6	693.8
82.5°	552.5	556.7	562.9	563.1	568.6	569.5	575.6	575.4	579.3	576.7	575.0
85°	377.7	380.5	386.0	389.0	394.5	398.0	403.9	406.3	402.0	409.7	403.6
87.5°	197.2	204.6	200.5	210.0	207.8	217.4	215.3	224.2	222.6	230.2	229.2
90°	56.0	56.2	61.6	62.2	68.8	70.2	74.7	73.0	77.3	75.9	80.2
92.5°	37.9	40.6	43.0	45.4	47.8	50.3	48.0	45.7	43.6	41.4	39.1
95°	50.9	54.3	57.9	61.4	64.9	68.5	64.7	61.0	57.2	53.4	49.6
97.5°	59.5	63.2	67.1	70.8	74.7	78.5	74.0	69.5	65.1	60.7	56.2
100°	82.6	90.2	97.5	104.8	112.2	119.5	111.3	102.9	94.8	86.5	78.0
102.5°	162.3	179.2	196.1	213.0	229.8	246.6	229.1	211.6	193.8	176.3	158.6
105°	299.6	326.5	353.4	380.5	407.4	434.6	406.0	377.4	348.8	320.4	291.6
107.5°	439.7	465.9	492.4	518.7	545.2	571.7	542.8	513.7	484.9	455.8	426.9
110°	520.5	536.5	552.5	568.6	584.5	600.6	579.4	558.5	537.5	516.4	495.2



TEST NUMBER: P1444467  
 CATALOG NUMBER: EHBR1-42-UNV-TA-L830-UPL15

**CANDELA DISTRIBUTION (continued):**

	302.5°	305°	307.5°	310°	312.5°	315°	317.5°	320°	322.5°	325°	327.5°
112.5°	536.9	545.3	553.3	561.7	569.7	578.0	563.1	548.3	533.3	518.4	503.4
115°	505.9	508.7	511.6	514.6	517.4	520.4	510.5	500.6	490.6	480.7	470.6
117.5°	447.7	447.7	447.6	447.9	447.7	447.7	442.5	437.2	431.7	426.2	420.8
120°	388.9	387.4	385.8	384.3	382.6	381.0	379.1	377.1	375.0	372.9	370.7
122.5°	338.5	337.9	336.9	336.1	335.1	334.1	333.7	333.3	332.7	332.3	331.6
125°	299.7	300.3	300.9	301.5	302.0	302.6	302.6	302.7	302.6	302.7	302.6
127.5°	274.5	276.2	277.7	279.4	280.7	282.4	282.7	283.3	283.5	283.9	284.3
130°	260.3	262.8	265.1	267.2	269.3	271.8	272.0	272.3	272.6	272.9	273.1
132.5°	253.7	256.2	258.6	261.3	263.7	266.1	266.4	266.7	266.7	267.1	267.2
135°	250.6	253.0	255.3	257.9	259.9	262.4	262.5	262.7	262.7	263.0	263.1
137.5°	249.6	252.0	253.8	255.9	257.6	259.7	259.7	259.9	259.8	260.1	260.1
140°	250.3	252.2	253.6	255.3	256.9	258.5	258.4	258.5	258.3	258.3	258.1
142.5°	251.7	253.1	254.2	255.7	256.9	258.3	257.7	257.4	257.1	256.8	256.5
145°	254.3	255.3	256.3	257.3	257.9	259.0	258.3	258.0	257.2	256.8	256.4
147.5°	255.9	256.7	257.1	258.0	258.3	259.2	258.5	258.0	257.4	256.8	256.1
150°	256.7	257.4	257.9	258.5	259.0	259.7	258.9	258.3	257.5	256.8	256.1
152.5°	256.5	256.9	257.4	257.9	258.3	258.8	258.1	257.6	256.8	256.0	255.2
155°	257.1	257.8	258.0	258.5	258.6	259.0	258.3	257.9	257.1	256.5	255.7
157.5°	258.7	259.3	259.7	259.8	260.1	260.5	260.0	259.7	259.1	258.6	258.1
160°	260.9	261.2	261.6	261.9	262.3	262.4	261.9	261.8	261.3	260.9	260.3
162.5°	263.8	264.2	264.6	264.9	265.4	265.7	265.3	264.9	264.4	264.0	263.3
165°	266.5	266.9	267.2	267.6	267.7	268.1	267.7	267.6	267.1	266.9	266.5
167.5°	270.0	270.4	270.7	271.1	271.2	271.5	271.1	271.1	270.6	270.4	270.0
170°	272.7	273.0	273.4	273.7	274.0	274.2	274.1	273.9	273.5	273.2	273.0
172.5°	275.7	276.0	276.0	276.3	276.4	276.8	276.5	276.2	276.0	275.6	275.3
175°	276.5	276.6	276.9	276.9	276.9	277.0	276.7	276.4	276.2	276.0	275.7
177.5°	278.0	278.0	278.0	277.9	277.9	277.9	277.7	277.5	277.4	277.2	276.9
180°	276.7	276.7	276.7	276.7	276.7	276.7	276.7	276.7	276.7	276.7	276.7



TEST NUMBER: P1444467  
 CATALOG NUMBER: EHBR1-42-UNV-TA-L830-UPL15

**CANDELA DISTRIBUTION (continued):**

	330°	332.5°	335°	337.5°	340°	342.5°	345°	347.5°	350°	352.5°	355°
0°	33489.2	33489.2	33489.2	33489.2	33489.2	33489.2	33489.2	33489.2	33489.2	33489.2	33489.2
2.5°	33699.5	33684.9	33675.4	33663.4	33656.1	33646.8	33639.9	33634.1	33629.4	33625.0	33621.9
5°	34173.4	34098.1	34039.6	33976.3	33924.3	33872.4	33832.5	33799.4	33776.5	33759.4	33749.2
7.5°	34776.7	34638.8	34516.2	34387.1	34271.5	34157.7	34059.6	33975.1	33911.7	33870.5	33845.6
10°	35315.5	35131.0	34948.4	34756.3	34574.0	34397.4	34234.3	34090.8	33977.2	33901.7	33857.7
12.5°	35557.1	35399.8	35213.4	35004.7	34781.5	34555.6	34335.3	34136.8	33970.1	33858.3	33793.7
15°	35344.4	35279.7	35153.3	34991.3	34779.4	34545.9	34287.4	34044.3	33820.8	33675.8	33591.8
17.5°	34652.4	34742.5	34732.8	34670.9	34518.6	34321.9	34058.5	33785.6	33505.9	33312.2	33206.3
20°	33484.7	33768.0	33911.7	33985.4	33925.5	33798.1	33559.6	33282.5	32956.6	32703.7	32549.2
22.5°	31843.8	32343.8	32655.5	32883.5	32931.9	32888.5	32677.8	32414.3	32051.1	31746.9	31518.9
25°	29731.3	30464.0	30956.4	31342.7	31492.5	31531.3	31352.0	31090.0	30685.1	30330.8	30017.7
27.5°	27243.2	28195.2	28852.7	29371.5	29605.7	29707.3	29542.3	29275.0	28795.9	28373.0	27963.9
30°	24442.1	25571.5	26363.2	26985.3	27270.8	27404.9	27229.7	26931.3	26373.8	25865.0	25349.6
32.5°	21444.0	22679.9	23542.6	24218.1	24501.0	24627.3	24398.0	24062.9	23418.5	22819.0	22218.1
35°	18305.0	19552.4	20422.5	21080.1	21317.1	21393.2	21100.0	20712.7	19998.7	19340.8	18685.5
37.5°	15102.1	16262.7	17053.3	17643.6	17790.3	17803.4	17450.1	17022.3	16271.9	15623.2	14970.9
40°	11926.8	12905.6	13544.1	14016.4	14067.3	14021.9	13637.8	13207.3	12505.3	11924.1	11351.4
42.5°	8935.9	9674.8	10130.2	10454.0	10434.7	10345.0	9992.9	9622.7	9043.6	8601.0	8150.2
45°	6373.6	6860.7	7127.0	7316.4	7255.7	7170.1	6896.1	6636.7	6243.1	5957.2	5654.3
47.5°	4427.8	5009.5	4908.3	5278.6	4959.5	5170.3	4731.4	4489.5	4280.6	4128.6	3957.5
50°	3169.9	3303.2	3367.7	3411.6	3388.2	3355.9	3277.0	3206.5	3111.1	3041.6	2960.5
52.5°	2448.1	2514.7	2551.2	2577.6	2572.4	2560.6	2526.2	2494.8	2450.1	2420.7	2385.2
55°	2073.6	2074.6	2141.7	2112.9	2155.5	2105.6	2125.2	2070.0	2078.9	2031.5	1999.6
57.5°	1723.1	1750.4	1762.7	1774.6	1771.2	1769.2	1755.9	1749.1	1734.1	1729.5	1718.9
60°	1515.7	1529.9	1532.9	1538.5	1533.8	1532.1	1521.7	1517.9	1507.9	1506.0	1498.9
62.5°	1373.5	1380.8	1380.8	1380.8	1374.8	1369.1	1357.6	1351.5	1343.0	1341.1	1337.0
65°	1254.8	1262.4	1263.6	1265.2	1260.9	1256.4	1246.2	1239.6	1230.8	1227.5	1222.8
67.5°	1132.3	1140.3	1143.1	1147.2	1144.8	1143.8	1136.9	1134.3	1128.5	1127.0	1122.7
70°	1036.1	1039.5	1039.2	1039.1	1033.7	1028.8	1020.7	1016.9	1010.8	1009.6	1005.6
72.5°	978.9	981.3	979.8	977.6	970.6	963.4	953.9	947.0	939.1	934.1	928.5
75°	898.3	901.5	899.4	898.1	891.7	887.1	879.5	875.6	870.0	868.4	864.6
77.5°	799.4	800.9	797.7	797.3	792.5	789.5	783.7	782.8	778.7	778.8	775.1
80°	689.3	688.5	683.2	682.3	677.4	676.2	671.7	672.0	668.7	670.1	667.5
82.5°	567.2	564.1	557.2	555.3	549.7	549.2	546.2	548.7	546.8	549.7	548.0
85°	406.4	407.4	404.4	404.4	402.8	403.3	403.0	404.8	405.1	407.8	407.7
87.5°	226.6	229.9	229.2	232.2	232.1	235.5	236.5	241.5	242.1	246.7	246.7
90°	78.7	83.6	82.1	86.9	86.6	91.7	92.2	97.4	97.2	101.7	100.5
92.5°	36.8	34.7	32.5	30.2	29.0	27.6	27.1	25.4	24.5	23.1	22.0
95°	45.8	42.1	38.2	34.5	33.2	31.8	30.5	29.2	27.9	26.6	25.4
97.5°	51.7	47.3	42.8	38.3	37.2	36.1	34.8	33.7	32.6	31.5	30.3
100°	69.7	61.4	53.1	44.7	43.7	42.8	41.9	40.9	39.9	38.8	37.8
102.5°	141.0	123.2	105.5	87.8	84.4	81.0	77.7	74.3	70.9	67.5	64.3
105°	262.9	234.3	205.6	176.9	167.8	158.6	149.5	140.3	131.1	122.1	113.0
107.5°	397.7	368.6	339.5	310.3	293.7	276.8	259.9	242.9	226.2	209.2	192.3
110°	474.2	453.0	431.8	410.5	397.1	383.5	369.9	356.3	342.8	329.1	315.5



TEST NUMBER: P1444467  
 CATALOG NUMBER: EHBR1-42-UNV-TA-L830-UPL15

**CANDELA DISTRIBUTION (continued):**

	330°	332.5°	335°	337.5°	340°	342.5°	345°	347.5°	350°	352.5°	355°
112.5°	488.2	473.2	458.1	442.8	436.9	430.7	424.8	418.6	412.4	406.2	400.1
115°	460.6	450.5	440.3	430.0	428.2	426.0	424.1	421.9	419.8	417.6	415.4
117.5°	415.3	409.8	404.2	398.7	399.1	399.7	400.3	400.6	401.1	401.4	401.7
120°	368.5	366.4	364.3	362.0	364.3	366.3	368.5	370.3	372.3	374.0	375.8
122.5°	331.1	330.4	329.9	329.1	331.8	334.3	336.7	339.2	341.5	343.6	345.7
125°	302.7	302.5	302.5	302.2	305.0	307.5	310.1	312.4	314.8	316.9	319.0
127.5°	284.8	285.0	285.5	285.7	287.9	289.6	291.6	293.3	295.1	296.5	298.1
130°	273.3	273.5	273.9	274.1	276.0	277.8	279.8	281.3	282.9	284.1	285.5
132.5°	267.6	267.7	267.9	268.0	269.7	271.0	272.6	273.6	274.8	275.6	276.6
135°	263.3	263.2	263.5	263.5	265.0	266.5	267.8	268.8	270.1	270.7	271.5
137.5°	260.4	260.3	260.4	260.4	261.8	263.1	264.3	265.4	266.3	267.1	267.7
140°	258.3	258.0	258.1	257.9	259.2	260.2	261.4	262.3	263.3	263.8	264.5
142.5°	256.2	255.6	255.5	255.1	256.0	256.8	257.7	258.4	259.1	259.6	259.9
145°	255.8	255.1	254.7	254.0	254.9	255.5	256.2	256.8	257.2	257.5	257.9
147.5°	255.7	254.9	254.2	253.6	254.4	254.9	255.3	255.6	256.1	256.3	256.5
150°	255.3	254.4	253.7	252.9	253.3	253.7	253.9	254.4	254.6	254.7	254.9
152.5°	254.3	253.6	252.7	251.8	252.1	252.3	252.4	252.5	252.6	252.7	252.7
155°	255.2	254.3	253.6	252.6	253.0	253.0	253.1	253.2	253.0	253.0	252.9
157.5°	257.4	256.7	256.2	255.4	255.3	255.3	255.3	255.0	254.8	254.5	254.2
160°	260.0	259.3	258.8	258.2	258.0	257.9	257.9	257.4	257.3	256.8	256.6
162.5°	262.7	262.2	261.4	260.8	260.6	260.6	260.4	260.0	259.7	259.4	259.1
165°	266.2	265.6	265.2	264.5	264.4	264.2	264.1	263.5	263.3	262.7	262.4
167.5°	269.6	269.1	268.6	267.9	267.8	267.8	267.6	267.3	267.1	266.7	266.6
170°	272.6	272.1	271.8	271.4	271.1	271.0	270.7	270.4	270.1	269.9	269.5
172.5°	274.8	274.5	274.1	273.4	273.4	273.3	273.1	273.0	272.6	272.3	272.2
175°	275.3	275.1	274.5	274.3	274.2	274.1	273.9	273.8	273.5	273.4	273.1
177.5°	276.7	276.5	276.1	276.0	275.8	275.8	275.7	275.6	275.6	275.4	275.3
180°	276.7	276.7	276.7	276.7	276.7	276.7	276.7	276.7	276.7	276.7	276.7



TEST NUMBER: P1444467  
CATALOG NUMBER: EHBR1-42-UNV-TA-L830-UPL15

**CANDELA DISTRIBUTION (continued):**

	357.5°	360°
0°	33489.2	33489.2
2.5°	33618.9	33617.2
5°	33743.8	33741.8
7.5°	33838.9	33838.3
10°	33850.1	33855.9
12.5°	33782.6	33787.3
15°	33585.3	33594.6
17.5°	33208.3	33220.4
20°	32558.7	32571.2
22.5°	31506.7	31511.9
25°	29977.2	29955.5
27.5°	27892.1	27854.7
30°	25241.4	25205.2
32.5°	22081.0	22058.5
35°	18523.5	18509.3
37.5°	14778.1	14749.0
40°	11142.1	11057.4
42.5°	7952.9	7804.4
45°	5496.1	5320.0
47.5°	3836.9	3728.0
50°	2908.3	2873.2
52.5°	2369.7	2361.5
55°	1999.5	1995.8
57.5°	1721.2	1720.0
60°	1502.7	1502.3
62.5°	1339.7	1340.3
65°	1224.9	1225.1
67.5°	1123.9	1123.1
70°	1007.1	1006.2
72.5°	926.7	925.3
75°	864.6	863.7
77.5°	776.3	774.8
80°	669.2	667.5
82.5°	550.4	548.4
85°	410.6	410.7
87.5°	251.2	251.0
90°	104.7	102.9
92.5°	21.2	20.3
95°	24.1	22.8
97.5°	29.2	28.1
100°	36.9	36.0
102.5°	60.9	57.5
105°	103.8	94.7
107.5°	175.4	158.6
110°	301.9	288.3



TEST NUMBER: P1444467  
CATALOG NUMBER: EHBR1-42-UNV-TA-L830-UPL15

**CANDELA DISTRIBUTION (continued):**

	357.5°	360°
112.5°	393.8	387.6
115°	413.0	410.7
117.5°	401.8	401.9
120°	377.3	379.0
122.5°	347.6	349.5
125°	320.9	322.8
127.5°	299.1	300.2
130°	286.2	287.3
132.5°	277.1	277.5
135°	271.8	272.3
137.5°	268.0	268.4
140°	264.6	264.9
142.5°	260.1	260.2
145°	258.0	258.1
147.5°	256.1	256.2
150°	254.7	254.6
152.5°	252.4	252.4
155°	252.6	252.4
157.5°	253.8	253.5
160°	256.1	255.8
162.5°	258.5	258.3
165°	261.8	261.2
167.5°	266.0	265.8
170°	269.1	268.8
172.5°	271.8	271.6
175°	273.1	273.0
177.5°	275.3	275.0
180°	276.7	276.7

LM-79-2019: Approved Method: Electrical and Photometric Measurements of Solid-  
State Lighting Products

Report Prepared for

Cooper Lighting Solutions

Metalux

Report Number: SP1-2506-472-2

Test Date: 07/31/2025

Luminaire Tested: EHBR-60-L830-N

Data in this report applies to families of products including EHBR-60-L830-N

**Test Information**

Test Method: LM-79-2019  
 Report Number: SP1-2506-472-2  
 Test Lab: COOPER LIGHTING SOLUTIONS  
 Photometer: SP1 - 76IN SPHERE  
 Measurement Geometry: 4π  
 Issue Date: 08/05/2025  
 Manufacturer: COOPER LIGHTING SOLUTIONS  
 Product Line: Metalux  
 Catalog Number: **EHBR-60-L830-N**  
 Description: Elevate Round Highbay at, 60000 lumens, 3000K 80CRI LEDs with N lens

**Spectral Parameters**

CCT (K): 2983  
 CIE u': 0.2516  
 CIE v': 0.5201  
 Duv: -0.0012  
 CIE x: 0.4364  
 CIE y: 0.4010  
 CIE z: 0.1626  
 Peak Wavelength (nm): 630  
 Dominant Wavelength (nm): 583  
 Purity: 51.34918  
 Rf: 81.2  
 Rg: 101.5

CRI (Ra):	83.4		
R1:	84.0	R9:	29.4
R2:	87.5	R10:	68.6
R3:	88.9	R11:	82.2
R4:	83.8	R12:	61.6
R5:	81.9	R13:	83.9
R6:	83.1	R14:	92.5
R7:	87.1	R15:	79.8
R8:	70.9		



**Test Conditions**

Stabilization Time: 38M  
 Operation Time: 1H 38M  
 Sphere Temperature (°C): 25.0

REPORT NUMBER: SP1-2506-472-2

Measurement and Test Equipment			
Instrument	Identification Number	Calibration Date	Calibration Due Date
Photometer	76INCH SPHERE IN0058	6/16/2025	12/16/2025
Power Meter	XITRON INXT2011004	1/21/2025	1/21/2026
AC Power Source	CHROMA 61603 IN0063	10/22/2024	10/22/2025
DC Power Source	AGILENT E3634A IN0208	10/22/2024	10/22/2025
Sphere Thermometer	ONSET IN0085	10/22/2024	10/22/2025
Room Thermometer	ONSET IN0046	10/22/2024	10/22/2025

REPORT NUMBER: SP1-2506-472-2

CIE 1931 Chromaticity Diagram



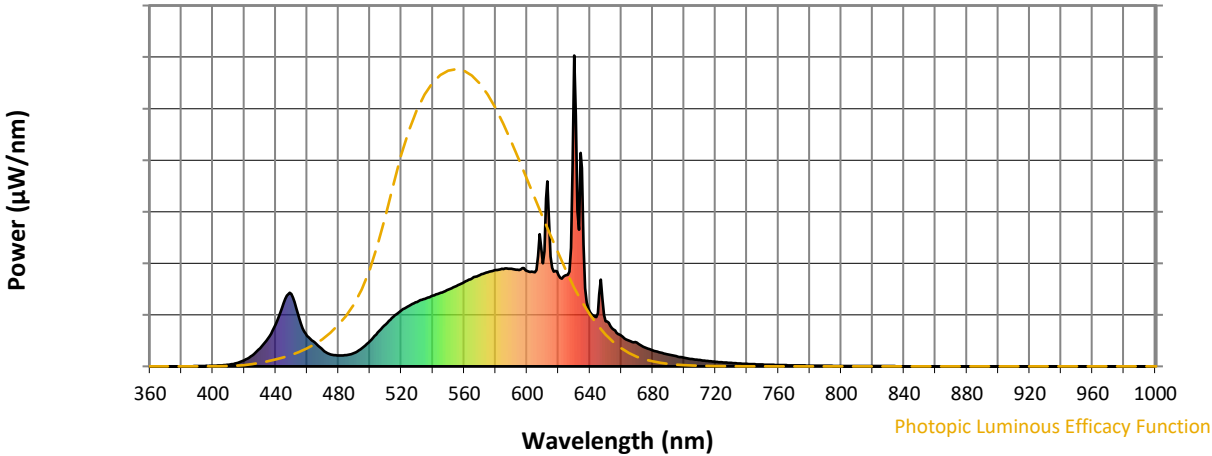
CIE 1931 Chromaticity Diagram with 2017 ANSI 7-Step and 4-Step Quadrangles



Point lies inside the ANSI 3000K 4-step quadrangle

REPORT NUMBER: SP1-2506-472-2

**Photopic Flux vs. Wavelength**



**Photopic Lumens: NR**

λ (nm)	Power W <sup>^</sup> /nm	Lumens (φ/nm)	λ (nm)	Power W <sup>^</sup> /nm	Lumens (φ/nm)	λ (nm)	Power W <sup>^</sup> /nm	Lumens (φ/nm)	λ (nm)	Power W <sup>^</sup> /nm	Lumens (φ/nm)	λ (nm)	Power W <sup>^</sup> /nm	Lumens (φ/nm)
360	0	NR	490	43	NR	620	294	NR	750	6	NR	880	0	NR
365	0	NR	495	59	NR	625	294	NR	755	5	NR	885	0	NR
370	0	NR	500	81	NR	630	1000	NR	760	4	NR	890	0	NR
375	0	NR	505	109	NR	635	637	NR	765	4	NR	895	0	NR
380	0	NR	510	135	NR	640	175	NR	770	3	NR	900	0	NR
385	0	NR	515	160	NR	645	171	NR	775	3	NR	905	0	NR
390	1	NR	520	180	NR	650	146	NR	780	2	NR	910	0	NR
395	1	NR	525	195	NR	655	119	NR	785	2	NR	915	0	NR
400	2	NR	530	207	NR	660	99	NR	790	2	NR	920	0	NR
405	3	NR	535	218	NR	665	82	NR	795	2	NR	925	0	NR
410	5	NR	540	227	NR	670	76	NR	800	1	NR	930	0	NR
415	10	NR	545	237	NR	675	61	NR	805	1	NR	935	0	NR
420	20	NR	550	247	NR	680	52	NR	810	1	NR	940	0	NR
425	35	NR	555	259	NR	685	44	NR	815	1	NR	945	0	NR
430	58	NR	560	271	NR	690	38	NR	820	1	NR	950	0	NR
435	90	NR	565	283	NR	695	33	NR	825	1	NR	955	0	NR
440	135	NR	570	293	NR	700	27	NR	830	1	NR	960	0	NR
445	204	NR	575	303	NR	705	24	NR	835	1	NR	965	0	NR
450	233	NR	580	310	NR	710	20	NR	840	0	NR	970	0	NR
455	153	NR	585	313	NR	715	17	NR	845	0	NR	975	0	NR
460	98	NR	590	314	NR	720	15	NR	850	0	NR	980	0	NR
465	76	NR	595	310	NR	725	13	NR	855	0	NR	985	0	NR
470	53	NR	600	307	NR	730	11	NR	860	0	NR	990	0	NR
475	39	NR	605	303	NR	735	9	NR	865	0	NR	995	0	NR
480	35	NR	610	331	NR	740	8	NR	870	0	NR	1000	0	NR
485	36	NR	615	353	NR	745	7	NR	875	0	NR			

REPORT NUMBER: SP1-2506-472-2

**Scotopic Flux vs. Wavelength**



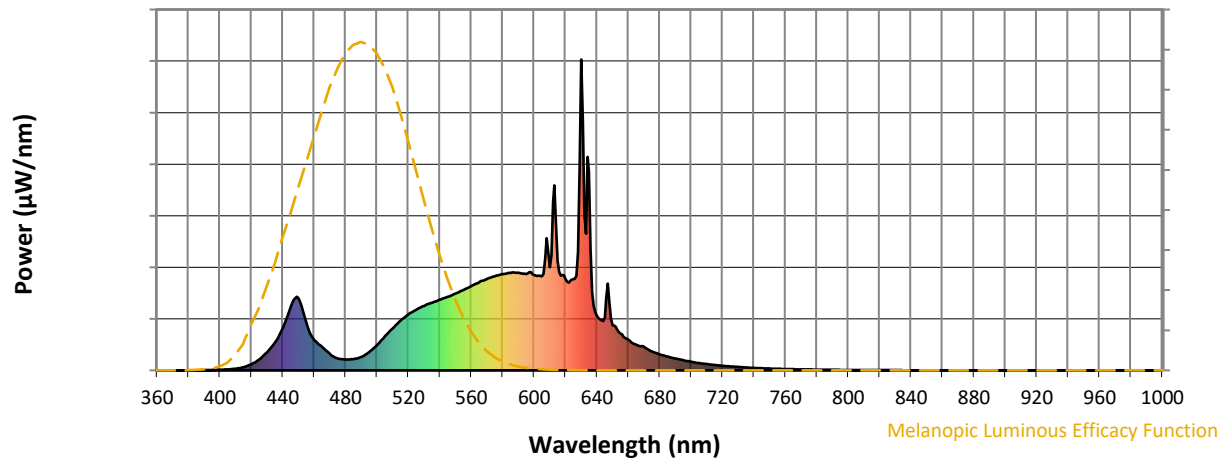
**Scotopic Lumens: NR**

**S/P: 1.27**

λ (nm)	Power W <sup>^</sup> /nm	Lumens (φ/nm)	λ (nm)	Power W <sup>^</sup> /nm	Lumens (φ/nm)	λ (nm)	Power W <sup>^</sup> /nm	Lumens (φ/nm)	λ (nm)	Power W <sup>^</sup> /nm	Lumens (φ/nm)	λ (nm)	Power W <sup>^</sup> /nm	Lumens (φ/nm)
360	0	NR	490	43	NR	620	294	NR	750	6	NR	880	0	NR
365	0	NR	495	59	NR	625	294	NR	755	5	NR	885	0	NR
370	0	NR	500	81	NR	630	1000	NR	760	4	NR	890	0	NR
375	0	NR	505	109	NR	635	637	NR	765	4	NR	895	0	NR
380	0	NR	510	135	NR	640	175	NR	770	3	NR	900	0	NR
385	0	NR	515	160	NR	645	171	NR	775	3	NR	905	0	NR
390	1	NR	520	180	NR	650	146	NR	780	2	NR	910	0	NR
395	1	NR	525	195	NR	655	119	NR	785	2	NR	915	0	NR
400	2	NR	530	207	NR	660	99	NR	790	2	NR	920	0	NR
405	3	NR	535	218	NR	665	82	NR	795	2	NR	925	0	NR
410	5	NR	540	227	NR	670	76	NR	800	1	NR	930	0	NR
415	10	NR	545	237	NR	675	61	NR	805	1	NR	935	0	NR
420	20	NR	550	247	NR	680	52	NR	810	1	NR	940	0	NR
425	35	NR	555	259	NR	685	44	NR	815	1	NR	945	0	NR
430	58	NR	560	271	NR	690	38	NR	820	1	NR	950	0	NR
435	90	NR	565	283	NR	695	33	NR	825	1	NR	955	0	NR
440	135	NR	570	293	NR	700	27	NR	830	1	NR	960	0	NR
445	204	NR	575	303	NR	705	24	NR	835	1	NR	965	0	NR
450	233	NR	580	310	NR	710	20	NR	840	0	NR	970	0	NR
455	153	NR	585	313	NR	715	17	NR	845	0	NR	975	0	NR
460	98	NR	590	314	NR	720	15	NR	850	0	NR	980	0	NR
465	76	NR	595	310	NR	725	13	NR	855	0	NR	985	0	NR
470	53	NR	600	307	NR	730	11	NR	860	0	NR	990	0	NR
475	39	NR	605	303	NR	735	9	NR	865	0	NR	995	0	NR
480	35	NR	610	331	NR	740	8	NR	870	0	NR	1000	0	NR
485	36	NR	615	353	NR	745	7	NR	875	0	NR			

REPORT NUMBER: SP1-2506-472-2

**Melanopic Flux vs. Wavelength**



**Melanopic Lumens: NR**

**M/P: 2.34**

λ (nm)	Power W <sup>^</sup> /nm	Lumens (φ/nm)	λ (nm)	Power W <sup>^</sup> /nm	Lumens (φ/nm)	λ (nm)	Power W <sup>^</sup> /nm	Lumens (φ/nm)	λ (nm)	Power W <sup>^</sup> /nm	Lumens (φ/nm)	λ (nm)	Power W <sup>^</sup> /nm	Lumens (φ/nm)
360	0	NR	490	43	NR	620	294	NR	750	6	NR	880	0	NR
365	0	NR	495	59	NR	625	294	NR	755	5	NR	885	0	NR
370	0	NR	500	81	NR	630	1000	NR	760	4	NR	890	0	NR
375	0	NR	505	109	NR	635	637	NR	765	4	NR	895	0	NR
380	0	NR	510	135	NR	640	175	NR	770	3	NR	900	0	NR
385	0	NR	515	160	NR	645	171	NR	775	3	NR	905	0	NR
390	1	NR	520	180	NR	650	146	NR	780	2	NR	910	0	NR
395	1	NR	525	195	NR	655	119	NR	785	2	NR	915	0	NR
400	2	NR	530	207	NR	660	99	NR	790	2	NR	920	0	NR
405	3	NR	535	218	NR	665	82	NR	795	2	NR	925	0	NR
410	5	NR	540	227	NR	670	76	NR	800	1	NR	930	0	NR
415	10	NR	545	237	NR	675	61	NR	805	1	NR	935	0	NR
420	20	NR	550	247	NR	680	52	NR	810	1	NR	940	0	NR
425	35	NR	555	259	NR	685	44	NR	815	1	NR	945	0	NR
430	58	NR	560	271	NR	690	38	NR	820	1	NR	950	0	NR
435	90	NR	565	283	NR	695	33	NR	825	1	NR	955	0	NR
440	135	NR	570	293	NR	700	27	NR	830	1	NR	960	0	NR
445	204	NR	575	303	NR	705	24	NR	835	1	NR	965	0	NR
450	233	NR	580	310	NR	710	20	NR	840	0	NR	970	0	NR
455	153	NR	585	313	NR	715	17	NR	845	0	NR	975	0	NR
460	98	NR	590	314	NR	720	15	NR	850	0	NR	980	0	NR
465	76	NR	595	310	NR	725	13	NR	855	0	NR	985	0	NR
470	53	NR	600	307	NR	730	11	NR	860	0	NR	990	0	NR
475	39	NR	605	303	NR	735	9	NR	865	0	NR	995	0	NR
480	35	NR	610	331	NR	740	8	NR	870	0	NR	1000	0	NR
485	36	NR	615	353	NR	745	7	NR	875	0	NR			

**Summary**

$R_f = 81.2$   
 $R_g = 101.5$   
 CIE  $R_a = 83.4$   
 $R_9 = 29.4$

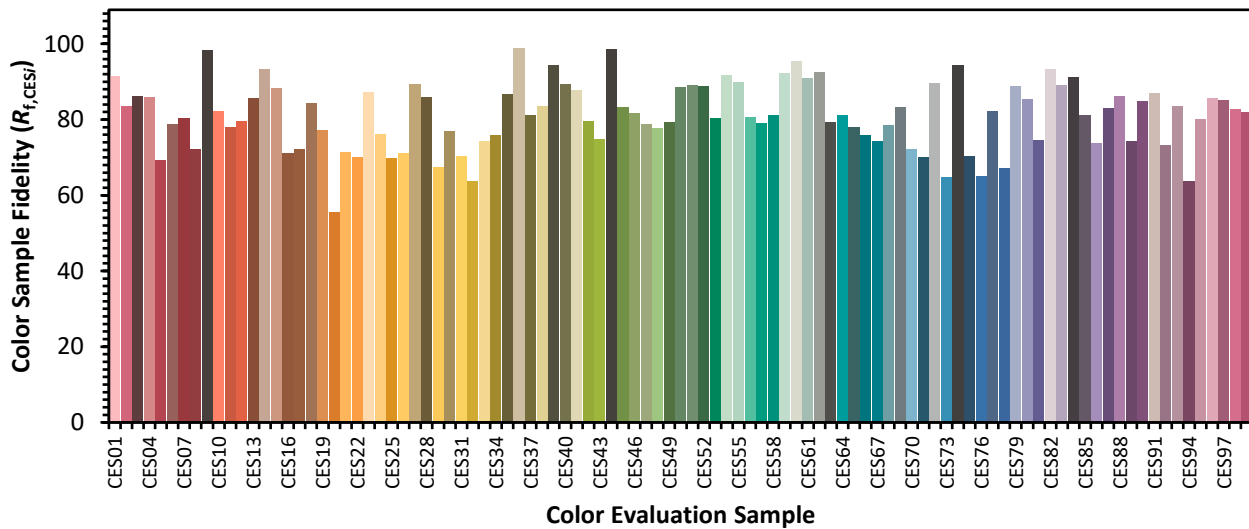


**Color Vector Graphics**

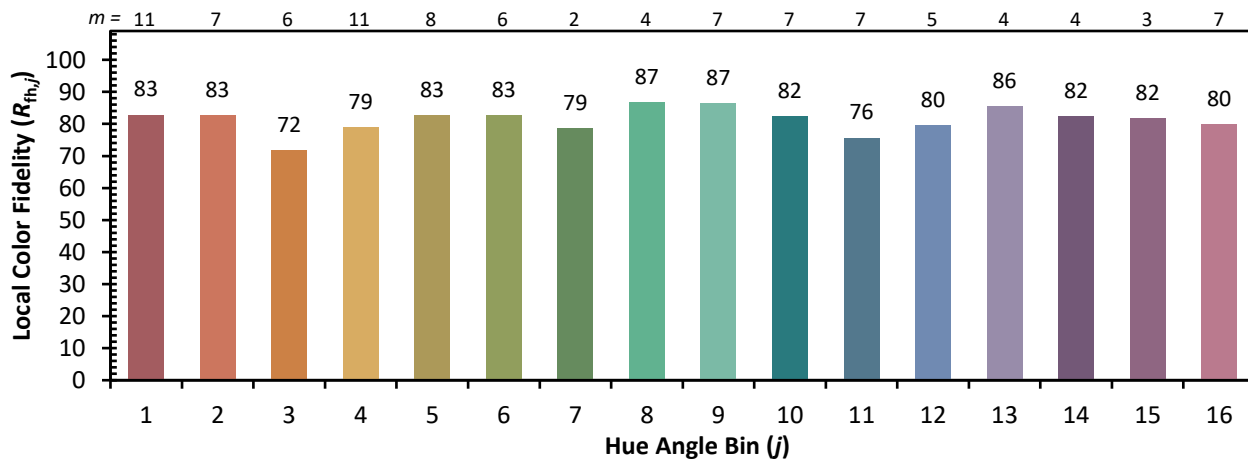
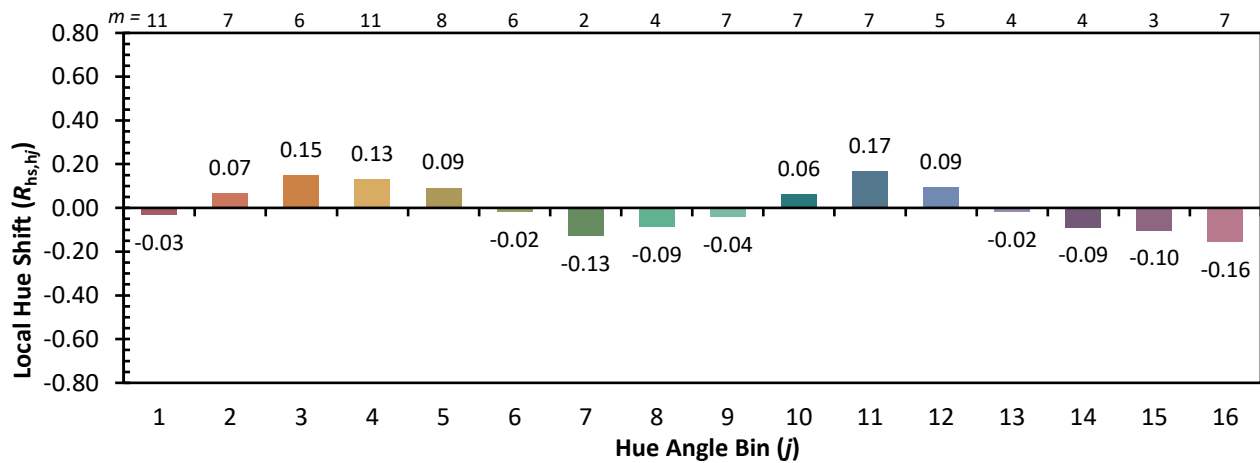
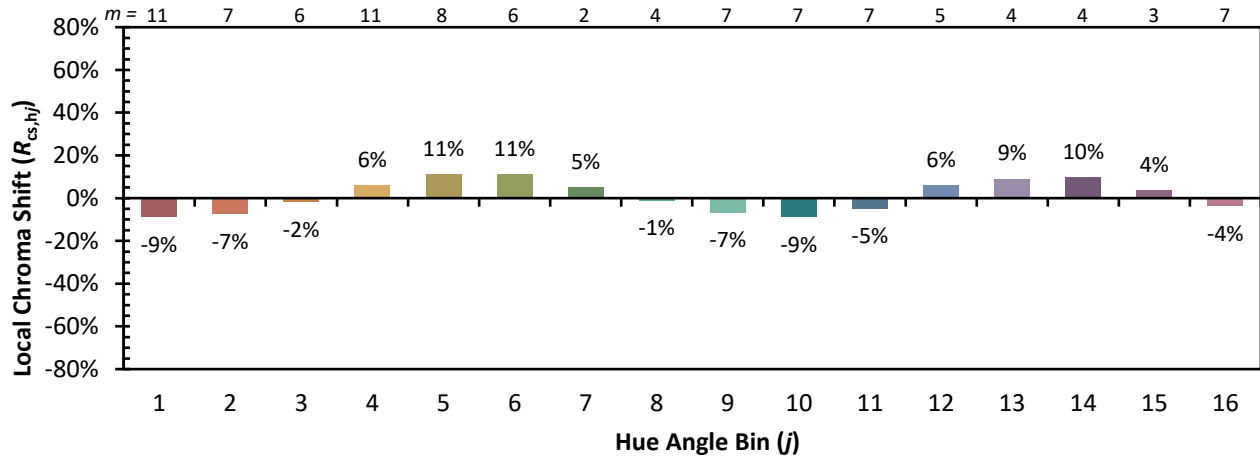


**Individual Sample Fidelity Index ( $R_{f,i}$ )**

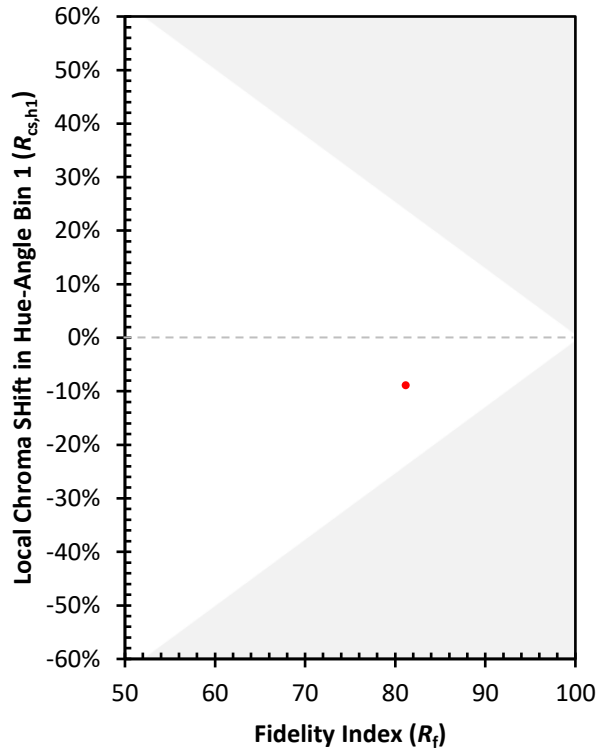
CES01 = 86	CES26 = 71	CES51 = 89	CES76 = 65
CES02 = 63	CES27 = 89	CES52 = 89	CES77 = 82
CES03 = 31	CES28 = 86	CES53 = 80	CES78 = 67
CES04 = 70	CES29 = 68	CES54 = 92	CES79 = 89
CES05 = 50	CES30 = 77	CES55 = 90	CES80 = 85
CES06 = 51	CES31 = 70	CES56 = 81	CES81 = 75
CES07 = 43	CES32 = 64	CES57 = 79	CES82 = 93
CES08 = 41	CES33 = 74	CES58 = 81	CES83 = 89
CES09 = 29	CES34 = 76	CES59 = 92	CES84 = 91
CES10 = 76	CES35 = 87	CES60 = 96	CES85 = 81
CES11 = 59	CES36 = 99	CES61 = 91	CES86 = 74
CES12 = 65	CES37 = 81	CES62 = 93	CES87 = 83
CES13 = 44	CES38 = 83	CES63 = 79	CES88 = 86
CES14 = 74	CES39 = 94	CES64 = 81	CES89 = 74
CES15 = 72	CES40 = 89	CES65 = 78	CES90 = 85
CES16 = 48	CES41 = 88	CES66 = 76	CES91 = 87
CES17 = 50	CES42 = 80	CES67 = 74	CES92 = 73
CES18 = 57	CES43 = 75	CES68 = 79	CES93 = 84
CES19 = 72	CES44 = 99	CES69 = 83	CES94 = 64
CES20 = 67	CES45 = 83	CES70 = 72	CES95 = 80
CES21 = 87	CES46 = 82	CES71 = 70	CES96 = 86
CES22 = 79	CES47 = 79	CES72 = 90	CES97 = 85
CES23 = 92	CES48 = 78	CES73 = 65	CES98 = 83
CES24 = 91	CES49 = 79	CES74 = 94	CES99 = 82
CES25 = 72	CES50 = 88	CES75 = 70	



Color Rendition by Hue-Angle Bin



Measure Comparisons



(END OF REPORT)