

Cooper Lighting Solutions Photometric Lab
1121 Highway 74 South
Peachtree City, GA 30269



Scaled data based on original data using
LM-79-2019 Approved Method: Electrical and Photometric Measurements of Solid-
State Lighting Products

Test Report Prepared for
Cooper Lighting Solutions

Brand: METALUX

Report Number: P1444460

Luminaire Tested: EHBR1-36-UNV-TA-L830-UPL18

Issue Date: 5/1/2026

Test Information

Test Method: LM-79-2019
Report Number: P1444460
REPORT IS A COMBINATION OF REPORTS P1444322 AND P1431635
Test Lab: INNOVATION CENTER
Issue Date: 5/1/2026
Manufacturer: COOPER LIGHTING SOLUTIONS
Product Line: METALUX
Catalog Number: EHBR1-36-UNV-TA-L830-UPL18
Description: Elevate Round Highbay at, 36000 lumens, 3000K 80CRI LEDs with TA lens
Light Source: -
Ballast/Driver: -

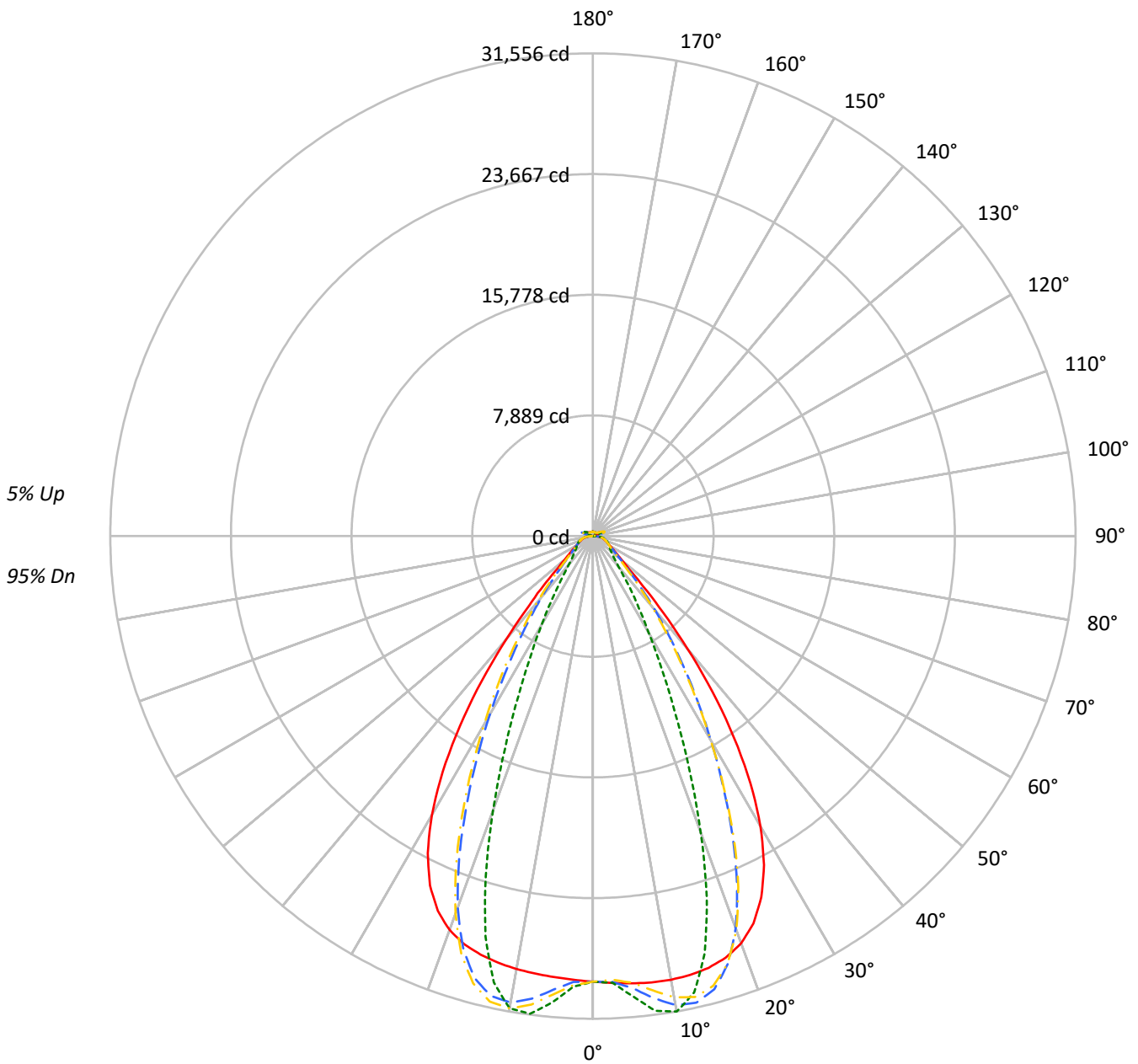
Summary

Lumens per Lamp: N/A
Luminaire Lumens: 35452.6 lumens
Efficiency: N/A
Efficacy: 174.4 lumens/watt
Spacing Criteria (0/90/45): 1.13 / 0.77 / 0.88
Luminous Opening: Vertical Cylinder (Dia: 1.71' x H: 0.1')
CIE Type: Direct

Input Watts (W): 203.3
Input Voltage (V): NR
Input Current (Ain): NR
Voltage Rise (V): NR
Power Factor: NR
Total Harmonic Distortion (THDi): NR
Frequency (hertz): 60
Stabilization Time: NR
Operation Time: NR
Ambient Temperature (°C): NR
Test Distance: 24 FT

TEST NUMBER: P1444460
CATALOG NUMBER: EHBR1-36-UNV-TA-L830-UPL18

Luminous Intensity Polar Plot



— 0°-180° - - 45°-225° - · - · 90°-270° - · - · 135°-315°



TEST NUMBER: P1444460
 CATALOG NUMBER: EHBR1-36-UNV-TA-L830-UPL18

COEFFICIENT OF UTILIZATION - ZONAL CAVITY METHOD:

RF	20				20				20				20				20				
RC	80				70				50				30				10			0	
RW	70	50	30	10	70	50	30	10	50	30	10	50	30	10	50	30	10	50	30	10	0
RCR																					
0	118	118	118	118	114	114	114	114	108	108	108	102	102	102	97	97	97	97	97	97	95
1	111	107	104	101	108	104	102	99	99	97	95	95	93	91	90	89	88	88	88	88	85
2	104	98	93	89	101	96	91	87	91	88	85	88	85	82	84	82	80	84	82	80	77
3	98	90	84	79	95	88	83	78	85	80	76	81	78	74	78	75	73	78	75	73	71
4	92	83	76	72	89	81	75	71	78	73	69	76	71	68	73	70	67	73	70	67	65
5	86	77	70	65	84	75	69	65	73	68	63	71	66	62	69	65	61	69	65	61	60
6	82	71	65	60	80	70	64	59	68	63	58	66	61	58	64	60	57	64	60	57	55
7	77	67	60	55	75	66	59	55	64	58	54	62	57	53	60	56	53	60	56	53	51
8	73	62	56	51	71	61	55	51	60	54	50	58	53	50	57	53	49	57	53	49	48
9	69	58	52	48	68	58	52	47	56	51	47	55	50	46	54	49	46	54	49	46	44
10	66	55	49	44	64	54	48	44	53	48	44	52	47	44	51	46	43	51	46	43	42

AVERAGE LUMINANCE (cd/sqm):

	0°	90°	180°	270°
0°	136793	136793	136793	136793
5°	137455	141463	135531	143316
10°	138603	148526	135279	147543
15°	139282	134637	135042	129216
20°	137843	100300	133331	92802
25°	130474	63434	126161	57555
30°	113979	38120	109564	34837
35°	87719	23920	82673	21189
40°	55490	15005	50768	14099
45°	28600	11689	28127	11497
50°	16768	10398	16254	10235
55°	12846	9837	12371	9748
60°	10870	10049	10407	9918
65°	10209	10494	9819	10136
70°	9974	10989	9478	10575
75°	10664	11653	10089	11138
80°	11037	12903	10006	11778
85°	10396	12453	8400	10661

MAXIMUM LUMINANCE 45°-90°:

Horizontal Angle: 25°
 Vertical Angle: 45°
 Luminance: 43769 cd/sqm



TEST NUMBER: P1444460
 CATALOG NUMBER: EHBR1-36-UNV-TA-L830-UPL18

ZONAL LUMENS:

Zone	Lumens	% Fixture
0°-10°	2870.7	8.1
10°-20°	8075.7	22.8
20°-30°	9197.6	25.9
30°-40°	6610.8	18.6
40°-50°	3048.9	8.6
50°-60°	1459.0	4.1
60°-70°	1064.6	3.0
70°-80°	808.8	2.3
80°-90°	370.9	1.0
90°-100°	57.4	0.2
100°-110°	309.9	0.9
110°-120°	572.1	1.6
120°-130°	355.2	1.0
130°-140°	235.2	0.7
140°-150°	179.9	0.5
150°-160°	128.9	0.4
160°-170°	79.5	0.2
170°-180°	27.6	0.1
0°-30°	20144.0	56.8
0°-40°	26754.8	75.5
0°-60°	31262.7	88.2
0°-90°	33507.0	94.5
90°-120°	939.3	2.6
90°-150°	1709.7	4.8
90°-180°	1946.0	5.5
0°-180°	35452.6	100.0

CANDELA DISTRIBUTION:

	0°	90°	180°	270°	360°	Flux
0°	29129	29129	29129	29129	29129	
5°	29349	30205	28938	30600	29349	2805
15°	29221	28246	28331	27109	29221	8233
25°	26056	12668	25194	11494	26056	11812
35°	16100	4390	15173	3889	16100	9881
45°	4627	1891	4551	1860	4627	3936
55°	1736	1329	1672	1317	1736	1602
65°	1066	1095	1025	1058	1066	1064
75°	751	821	711	785	751	781
85°	357	428	289	366	357	336
90°	93	119	24	31	93	59
95°	26	29	26	29	26	25
105°	114	145	77	145	114	150
115°	501	603	525	603	501	463
125°	384	395	434	397	384	350
135°	312	270	336	273	312	244
145°	287	272	304	276	287	181
155°	274	272	290	275	274	127
165°	278	276	288	278	278	79
175°	288	290	293	291	288	27
180°	292	292	292	292	292	



TEST NUMBER: P1444460
 CATALOG NUMBER: EHBR1-36-UNV-TA-L830-UPL18

CANDELA DISTRIBUTION (FULL):

	0°	2.5°	5°	7.5°	10°	12.5°	15°	17.5°	20°	22.5°	25°
0°	29129.1	29129.1	29129.1	29129.1	29129.1	29129.1	29129.1	29129.1	29129.1	29129.1	29129.1
2.5°	29240.4	29238.0	29237.6	29235.5	29235.0	29235.0	29234.0	29231.6	29230.1	29226.8	29223.0
5°	29348.9	29347.6	29348.3	29348.6	29346.5	29341.9	29334.8	29326.1	29315.1	29304.7	29295.5
7.5°	29432.8	29434.8	29437.4	29436.8	29430.5	29419.8	29405.3	29397.0	29401.9	29417.7	29454.1
10°	29448.1	29460.6	29465.5	29464.0	29451.3	29442.1	29445.6	29476.4	29537.9	29619.9	29731.9
12.5°	29388.4	29403.8	29403.2	29398.1	29385.8	29398.3	29443.0	29534.9	29666.6	29828.2	30017.8
15°	29220.7	29240.6	29235.0	29228.4	29220.2	29261.3	29350.6	29510.2	29713.5	29941.4	30174.8
17.5°	28895.2	28919.2	28907.6	28900.1	28893.2	28970.3	29123.7	29357.3	29613.5	29871.3	30092.3
20°	28330.7	28346.7	28319.0	28305.9	28316.9	28468.0	28693.9	28992.3	29262.3	29506.0	29657.2
22.5°	27409.2	27429.2	27377.1	27371.0	27435.4	27667.4	27953.3	28286.8	28540.5	28733.7	28791.9
25°	26055.5	26075.1	26013.2	26050.2	26159.7	26475.6	26816.1	27172.9	27389.4	27532.5	27493.0
27.5°	24228.2	24246.1	24187.4	24263.0	24436.0	24851.3	25252.0	25638.9	25831.9	25932.2	25805.1
30°	21923.7	21961.0	21891.5	21997.0	22261.2	22800.1	23259.3	23693.3	23885.7	23961.9	23764.2
32.5°	19186.5	19239.5	19163.0	19320.0	19688.6	20336.0	20857.6	21342.5	21555.4	21642.5	21419.1
35°	16099.5	16175.5	16087.7	16323.3	16777.9	17498.8	18076.4	18617.8	18869.8	18993.4	18768.3
37.5°	12828.8	12901.3	12853.8	13168.1	13667.2	14414.5	15004.1	15588.1	15872.7	16058.1	15880.6
40°	9617.8	9684.1	9720.0	10079.4	10548.9	11253.3	11819.6	12397.4	12715.8	12948.4	12839.0
42.5°	6788.2	6855.1	6977.3	7324.0	7715.6	8298.7	8783.7	9302.5	9606.7	9854.8	9812.7
45°	4627.4	4705.0	4858.1	5142.1	5425.2	5843.6	6199.7	6603.2	6851.7	7079.0	7081.7
47.5°	3242.7	3297.2	3434.0	3627.9	3812.5	4336.1	4357.7	4556.0	4723.0	4892.9	4914.9
50°	2499.0	2531.9	2604.4	2712.5	2817.2	2953.1	3077.5	3221.2	3324.0	3417.1	3439.4
52.5°	2054.1	2074.9	2111.8	2170.4	2231.1	2305.0	2371.6	2450.5	2506.4	2556.3	2566.8
55°	1736.0	1753.3	1808.2	1819.4	1888.8	1902.2	1931.8	1979.8	2012.3	2042.2	2049.6
57.5°	1496.0	1508.6	1520.3	1545.2	1566.6	1597.7	1622.7	1657.1	1677.6	1699.2	1701.1
60°	1306.7	1315.8	1324.0	1341.4	1355.9	1377.5	1394.8	1418.2	1432.9	1449.1	1451.0
62.5°	1165.8	1172.3	1177.8	1189.2	1199.6	1216.2	1229.9	1249.5	1263.2	1275.7	1278.5
65°	1065.6	1070.4	1073.9	1082.6	1091.6	1105.8	1118.2	1134.2	1144.2	1153.8	1155.9
67.5°	976.9	981.4	985.1	993.0	999.3	1009.8	1018.1	1030.1	1037.7	1045.4	1045.6
70°	875.2	879.4	882.2	889.6	894.7	903.7	910.4	921.2	928.9	937.5	939.6
72.5°	804.8	807.3	811.1	817.7	824.8	834.5	843.4	854.7	864.1	872.9	876.7
75°	751.2	754.1	756.7	762.4	767.3	775.4	782.2	792.4	800.6	810.1	814.7
77.5°	674.0	677.3	679.5	685.2	689.4	697.3	702.3	711.4	718.1	726.8	731.0
80°	580.6	583.8	585.3	590.6	594.0	601.2	606.1	614.9	620.6	629.2	634.2
82.5°	477.1	480.1	480.9	486.1	487.8	493.8	497.4	506.4	513.3	524.6	532.3
85°	357.3	358.3	360.1	358.8	366.0	366.4	374.6	376.1	387.0	389.8	402.0
87.5°	218.4	221.6	223.2	228.2	230.3	235.3	236.9	242.1	245.0	251.1	253.9
90°	93.3	98.4	100.0	106.0	107.6	113.0	114.2	120.2	121.9	128.0	130.5
92.5°	23.1	24.5	25.9	27.4	28.9	30.9	32.7	34.2	35.7	37.7	40.6
95°	26.0	27.6	29.2	30.8	32.4	34.1	35.7	37.3	38.9	40.5	45.1
97.5°	32.5	33.9	35.3	36.6	38.0	39.4	40.8	42.2	43.6	44.9	50.4
100°	41.9	43.1	44.2	45.4	46.6	47.8	48.9	50.1	51.2	52.5	62.7
102.5°	68.1	72.2	76.4	80.6	84.7	88.8	93.0	97.0	101.3	105.4	127.1
105°	113.6	124.9	136.3	147.4	158.8	170.1	181.4	192.4	203.7	215.0	250.6
107.5°	192.1	212.9	233.8	254.8	275.7	296.5	317.4	338.2	358.9	379.6	415.8
110°	351.9	368.6	385.5	402.2	419.0	435.8	452.5	469.0	485.9	502.5	528.9



TEST NUMBER: P1444460
 CATALOG NUMBER: EHBR1-36-UNV-TA-L830-UPL18

CANDELA DISTRIBUTION (continued):

	0°	2.5°	5°	7.5°	10°	12.5°	15°	17.5°	20°	22.5°	25°
112.5°	473.8	481.3	488.9	496.5	504.0	511.3	518.9	526.4	534.0	541.3	560.2
115°	501.0	503.7	506.3	508.7	511.4	513.8	516.4	518.9	521.4	523.8	536.5
117.5°	488.6	488.0	487.5	486.9	486.2	485.5	484.8	484.1	483.3	482.6	489.7
120°	458.4	455.8	453.5	450.8	448.3	445.7	443.2	440.5	437.9	435.1	438.0
122.5°	419.8	416.9	414.0	410.8	407.9	404.7	401.7	398.3	395.2	392.0	392.9
125°	384.5	381.5	378.6	375.4	372.2	369.0	365.9	362.6	359.3	355.9	356.1
127.5°	354.4	352.2	350.1	347.5	345.3	342.8	340.3	337.7	335.3	332.6	332.5
130°	335.9	333.9	331.9	329.6	327.5	325.1	322.8	320.3	318.0	315.5	315.4
132.5°	321.3	320.0	318.4	316.7	315.0	312.9	311.2	309.1	307.1	305.3	305.2
135°	312.5	311.1	309.8	308.2	306.6	304.5	302.7	300.8	299.0	296.9	297.0
137.5°	305.4	304.1	302.7	301.2	299.7	297.7	296.1	294.2	292.4	290.5	290.5
140°	298.9	297.7	296.4	294.9	293.5	292.0	290.2	288.5	286.7	284.9	285.0
142.5°	291.1	290.0	289.1	287.8	286.6	285.0	283.7	282.0	280.7	279.0	279.5
145°	286.6	285.8	284.9	283.8	282.6	281.2	280.0	278.5	277.3	276.0	276.3
147.5°	282.7	281.9	281.4	280.3	279.5	278.2	277.2	275.8	274.7	273.6	274.2
150°	279.3	278.7	278.0	277.1	276.1	275.1	274.1	273.0	271.9	270.7	271.3
152.5°	275.5	274.7	274.1	273.2	272.5	271.2	270.4	269.3	268.3	267.2	267.7
155°	273.9	273.2	272.5	271.6	270.8	269.9	268.9	267.9	267.1	266.0	266.3
157.5°	273.8	273.1	272.5	271.6	271.1	270.1	269.4	268.6	267.8	267.1	267.2
160°	274.9	274.3	273.7	272.9	272.1	271.3	270.6	269.7	269.1	268.3	268.4
162.5°	276.2	275.5	274.8	274.2	273.5	272.6	271.9	271.3	270.6	269.8	270.1
165°	278.3	277.8	277.3	276.8	276.2	275.7	275.1	274.5	274.0	273.3	273.4
167.5°	282.2	281.7	281.2	280.5	280.0	279.3	278.7	278.1	277.6	276.9	277.1
170°	284.6	284.0	283.7	283.4	283.0	282.5	282.2	281.8	281.3	280.9	281.0
172.5°	286.9	286.5	286.3	286.1	285.6	285.4	285.1	284.8	284.6	284.1	284.5
175°	287.9	287.5	287.4	287.2	287.0	286.7	286.6	286.4	286.4	286.1	286.2
177.5°	290.0	289.8	289.8	289.7	289.7	289.6	289.5	289.3	289.3	289.3	289.3
180°	291.7	291.7	291.7	291.7	291.7	291.7	291.7	291.7	291.7	291.7	291.7



TEST NUMBER: P1444460
 CATALOG NUMBER: EHBR1-36-UNV-TA-L830-UPL18

CANDELA DISTRIBUTION (continued):

	27.5°	30°	32.5°	35°	37.5°	40°	42.5°	45°	47.5°	50°	52.5°
0°	29129.1	29129.1	29129.1	29129.1	29129.1	29129.1	29129.1	29129.1	29129.1	29129.1	29129.1
2.5°	29220.2	29216.6	29211.7	29205.6	29200.3	29194.2	29179.6	29175.3	29180.2	29183.4	29190.1
5°	29289.6	29291.6	29292.4	29305.7	29317.1	29345.8	29569.8	29658.9	29727.8	29771.5	29837.9
7.5°	29498.9	29566.3	29632.9	29722.5	29799.8	29904.2	30296.3	30463.2	30581.9	30667.1	30772.1
10°	29853.7	30000.7	30138.6	30300.1	30438.9	30598.0	30962.9	31125.5	31228.2	31302.8	31372.6
12.5°	30211.0	30414.9	30599.2	30778.9	30929.3	31067.1	31195.5	31252.4	31257.2	31259.6	31222.6
15°	30397.1	30592.1	30754.5	30873.4	30961.6	31000.8	30779.7	30663.8	30517.3	30396.6	30198.1
17.5°	30279.7	30396.6	30466.7	30459.8	30423.4	30301.1	29675.2	29331.0	28989.2	28681.2	28277.3
20°	29757.5	29748.6	29687.5	29514.7	29306.4	28982.6	27909.5	27290.4	26691.8	26166.0	25528.2
22.5°	28786.0	28633.1	28420.0	28047.4	27633.4	27067.5	25529.7	24619.1	23785.7	23049.5	22224.8
25°	27378.3	27063.9	26670.8	26079.2	25435.8	24610.6	22715.2	21582.4	20581.9	19714.2	18762.7
27.5°	25576.9	25103.1	24527.2	23708.3	22836.7	21779.4	19678.1	18428.0	17353.9	16423.5	15410.8
30°	23444.1	22828.1	22084.2	21067.9	20016.5	18817.5	16686.2	15420.0	14332.9	13375.7	12362.2
32.5°	21033.9	20312.3	19440.6	18300.0	17163.0	15930.1	13871.9	12646.2	11607.7	10687.0	9769.7
35°	18375.6	17601.8	16679.6	15516.2	14386.0	13187.4	11298.8	10193.6	9276.5	8462.7	7721.9
37.5°	15524.1	14764.2	13887.7	12791.2	11743.2	10657.0	9027.4	8101.4	7331.8	6656.3	6084.4
40°	12559.3	11894.3	11136.0	10188.0	9293.6	8389.1	7051.4	6316.3	5709.0	5193.8	4765.1
42.5°	9630.8	9115.5	8533.9	7784.8	7100.3	6411.6	5382.0	4837.4	4387.5	4016.7	3713.7
45°	6987.5	6642.8	6252.7	5731.9	5258.3	4777.9	4045.1	3662.4	3369.4	3130.3	2928.1
47.5°	4884.6	4684.7	4672.4	4191.2	3843.9	3550.1	3078.0	2836.4	2656.8	2511.9	2383.9
50°	3430.3	3333.6	3213.4	3041.7	2880.5	2714.4	2426.8	2280.7	2175.5	2087.7	2006.8
52.5°	2564.4	2514.2	2450.1	2359.0	2271.7	2178.3	1996.3	1903.3	1870.2	1788.5	1724.4
55°	2048.2	2019.5	1983.0	1929.5	1876.4	1855.2	1699.1	1630.1	1586.3	1554.0	1519.6
57.5°	1701.3	1679.9	1658.3	1622.0	1591.3	1554.0	1471.2	1435.8	1409.8	1390.8	1366.9
60°	1451.2	1438.4	1426.3	1405.1	1388.4	1368.3	1315.8	1295.7	1282.2	1270.7	1255.6
62.5°	1280.9	1274.3	1268.0	1256.7	1248.3	1237.4	1201.4	1191.9	1185.0	1179.3	1170.0
65°	1158.0	1153.2	1149.7	1142.1	1138.0	1131.6	1100.7	1094.3	1090.0	1088.0	1082.6
67.5°	1046.2	1041.2	1039.0	1033.6	1031.9	1027.9	1002.6	999.0	997.6	998.3	996.3
70°	941.7	939.6	940.7	939.9	942.2	943.0	927.6	927.5	929.2	932.4	932.8
72.5°	879.1	879.1	880.2	880.8	883.0	884.2	871.4	870.8	871.5	873.9	874.0
75°	819.5	820.5	823.7	824.8	827.5	828.1	811.2	809.2	809.3	811.7	810.8
77.5°	737.0	740.6	746.7	749.9	755.2	756.1	737.2	734.9	735.0	737.4	735.4
80°	643.4	650.3	660.0	666.8	674.8	678.1	658.6	654.0	649.7	649.0	645.1
82.5°	543.9	552.3	564.1	570.3	578.8	580.7	548.2	542.1	538.4	538.7	535.1
85°	415.3	421.6	432.3	435.7	441.0	440.5	403.4	387.5	391.7	385.2	390.3
87.5°	260.5	264.2	270.9	271.7	274.2	273.7	236.3	228.9	226.8	227.0	224.2
90°	137.0	140.0	146.3	147.1	151.5	151.5	121.7	118.8	115.7	116.6	112.5
92.5°	43.7	46.6	49.6	52.5	55.5	58.5	58.0	59.9	57.3	54.0	51.5
95°	49.7	54.4	59.1	63.9	68.6	73.3	77.9	82.6	78.2	73.8	69.4
97.5°	55.9	61.5	67.0	72.5	78.0	83.6	89.2	94.7	90.0	85.1	80.4
100°	73.1	83.4	93.7	104.0	114.3	124.6	135.0	145.3	136.2	126.8	117.8
102.5°	148.9	170.9	192.9	214.7	236.6	258.6	280.6	302.7	281.8	260.7	239.8
105°	286.2	321.7	357.2	392.5	428.0	463.5	499.4	534.9	501.5	468.1	434.7
107.5°	451.8	487.8	523.6	559.6	595.7	631.6	668.1	704.1	671.5	638.7	606.2
110°	555.1	581.2	607.5	633.6	659.8	686.0	712.9	739.2	719.5	699.8	680.1



TEST NUMBER: P1444460
 CATALOG NUMBER: EHBR1-36-UNV-TA-L830-UPL18

CANDELA DISTRIBUTION (continued):

	27.5°	30°	32.5°	35°	37.5°	40°	42.5°	45°	47.5°	50°	52.5°
112.5°	578.6	597.4	616.1	634.6	653.2	671.9	691.5	710.4	700.4	690.2	680.4
115°	548.9	561.5	573.9	586.4	598.8	611.2	624.9	637.7	634.2	630.8	627.5
117.5°	496.5	503.3	510.1	517.1	523.7	530.6	539.0	546.0	546.2	546.5	546.9
120°	440.7	443.5	446.2	449.0	451.5	454.1	458.7	461.7	464.0	466.3	468.6
122.5°	393.8	394.6	395.4	396.1	396.9	397.6	400.5	401.8	403.2	404.7	406.2
125°	356.3	356.6	356.8	357.0	357.0	357.3	359.9	360.4	360.3	359.9	359.6
127.5°	332.2	332.0	331.6	331.3	330.8	330.7	332.8	333.1	331.5	330.0	328.5
130°	315.2	315.1	314.9	314.8	314.6	314.5	317.2	317.6	315.3	312.8	310.3
132.5°	305.0	305.0	304.8	305.0	304.8	304.7	307.6	308.2	305.6	302.7	300.1
135°	296.9	297.0	297.0	297.0	296.9	297.2	300.4	301.2	298.7	295.9	293.3
137.5°	290.4	290.5	290.5	290.7	290.7	290.8	294.4	295.3	293.2	290.8	288.8
140°	285.2	285.3	285.5	285.8	286.0	286.4	290.3	291.3	289.7	287.9	286.1
142.5°	279.6	280.2	280.6	281.2	281.7	282.3	286.8	288.2	286.9	285.4	284.2
145°	276.8	277.5	278.1	278.8	279.4	280.3	285.3	287.1	286.3	285.1	284.2
147.5°	274.3	274.9	275.5	276.0	276.7	277.7	283.1	284.8	284.3	283.5	282.8
150°	271.6	272.3	272.9	273.5	274.5	275.3	281.4	283.4	282.9	282.4	281.8
152.5°	268.1	268.6	269.1	269.8	270.3	271.3	278.7	280.9	280.5	279.9	279.4
155°	266.6	267.0	267.2	267.8	268.2	268.9	277.1	279.2	279.0	278.6	278.2
157.5°	267.3	267.4	267.5	267.8	268.2	268.5	277.0	279.4	279.0	278.7	278.4
160°	268.5	268.6	268.6	268.6	268.7	269.0	277.8	280.2	279.9	279.5	279.1
162.5°	270.1	270.5	270.6	270.8	271.0	271.4	280.3	282.8	282.3	281.9	281.5
165°	273.4	273.4	273.4	273.6	273.7	273.8	282.1	284.3	284.1	283.7	283.4
167.5°	277.0	277.2	277.3	277.4	277.5	277.8	285.5	287.7	287.4	287.0	286.7
170°	281.0	281.2	281.2	281.4	281.6	281.9	288.4	290.1	289.9	289.4	289.1
172.5°	284.6	284.9	285.0	285.3	285.5	285.9	291.3	292.9	292.7	292.4	292.0
175°	286.4	286.5	286.8	287.1	287.3	287.5	291.9	293.0	292.9	292.7	292.4
177.5°	289.5	289.6	289.8	290.1	290.3	290.5	293.2	293.8	293.8	293.8	293.7
180°	291.7	291.7	291.7	291.7	291.7	291.7	291.7	291.7	291.7	291.7	291.7



TEST NUMBER: P1444460
 CATALOG NUMBER: EHBR1-36-UNV-TA-L830-UPL18

CANDELA DISTRIBUTION (continued):

	55°	57.5°	60°	62.5°	65°	67.5°	70°	72.5°	75°	77.5°	80°
0°	29129.1	29129.1	29129.1	29129.1	29129.1	29129.1	29129.1	29129.1	29129.1	29129.1	29129.1
2.5°	29191.6	29201.8	29203.4	29215.3	29214.4	29228.6	29226.3	29238.0	29231.2	29240.8	29232.7
5°	29877.2	29939.4	29971.9	30032.6	30051.8	30106.1	30121.4	30170.9	30173.0	30212.3	30203.3
7.5°	30846.6	30938.2	30992.6	31067.6	31105.7	31168.1	31195.7	31241.9	31256.8	31293.5	31296.3
10°	31425.4	31469.9	31501.0	31521.9	31541.0	31549.9	31560.4	31557.6	31560.4	31556.3	31565.3
12.5°	31197.7	31132.7	31089.7	31008.3	30961.2	30871.3	30827.1	30740.6	30709.3	30635.0	30624.3
15°	30044.7	29818.2	29658.2	29425.4	29279.2	29050.2	28916.2	28709.7	28615.3	28451.1	28408.0
17.5°	27943.0	27522.6	27197.2	26779.9	26490.2	26100.2	25854.9	25532.0	25355.1	25094.8	25004.6
20°	24996.5	24374.5	23886.5	23305.0	22889.0	22370.6	22038.8	21620.2	21377.2	21057.4	20927.8
22.5°	21537.3	20762.8	20153.3	19466.5	18964.5	18386.8	17989.2	17536.3	17272.0	16924.5	16770.7
25°	17971.9	17117.8	16440.2	15716.6	15186.1	14607.0	14209.4	13764.5	13490.9	13161.1	13008.3
27.5°	14561.8	13697.3	13042.5	12369.7	11883.1	11360.6	11001.7	10613.4	10370.6	10089.0	9945.2
30°	11552.5	10790.0	10232.8	9674.4	9269.8	8845.3	8547.2	8225.2	8012.2	7771.2	7634.2
32.5°	9100.9	8512.2	8075.8	7632.8	7301.6	6946.9	6689.2	6405.2	6213.0	5997.7	5873.6
35°	7207.8	6750.4	6402.3	6037.7	5753.1	5451.0	5224.0	4978.8	4806.3	4621.0	4513.8
37.5°	5694.9	5331.2	5044.7	4741.8	4508.1	4257.9	4173.6	3892.2	3713.5	3565.6	3463.1
40°	4469.4	4180.2	3943.2	3711.5	3520.9	3331.1	3178.7	3028.5	2913.1	2807.3	2734.1
42.5°	3490.2	3280.6	3107.6	2937.9	2798.9	2660.5	2550.3	2446.7	2368.9	2299.8	2252.6
45°	2774.5	2630.5	2510.2	2390.7	2292.6	2200.2	2126.0	2059.9	2009.7	1968.1	1938.7
47.5°	2279.4	2180.8	2095.9	2015.2	1948.6	1888.1	1838.4	1822.2	1768.2	1731.8	1718.0
50°	1937.1	1877.5	1813.1	1753.6	1709.1	1664.9	1632.6	1601.0	1580.8	1564.0	1559.0
52.5°	1681.8	1636.1	1600.4	1562.6	1533.3	1501.7	1479.5	1458.5	1447.4	1438.6	1437.6
55°	1491.8	1460.0	1436.3	1411.0	1393.4	1374.9	1363.4	1352.2	1347.4	1343.0	1343.3
57.5°	1348.1	1326.8	1311.5	1295.0	1285.5	1276.6	1273.7	1270.9	1272.5	1273.1	1275.6
60°	1243.5	1229.6	1219.9	1210.5	1206.5	1203.7	1205.8	1208.4	1213.4	1217.5	1221.2
62.5°	1163.2	1155.3	1150.6	1145.5	1145.1	1145.3	1149.6	1153.8	1160.2	1165.0	1168.5
65°	1080.7	1076.1	1074.6	1071.3	1073.0	1073.9	1079.1	1082.4	1088.7	1092.5	1097.1
67.5°	997.2	996.1	997.1	997.1	1000.0	1002.5	1007.4	1011.1	1016.5	1020.0	1023.6
70°	935.6	936.0	938.2	938.7	941.8	943.5	947.9	950.2	955.1	958.0	962.5
72.5°	875.6	874.7	875.2	873.8	874.9	874.4	876.9	878.0	882.1	884.3	889.8
75°	811.8	809.1	808.5	805.6	805.7	803.6	804.6	804.4	807.2	808.3	812.1
77.5°	734.8	730.3	728.0	723.2	723.0	721.3	723.2	724.4	729.1	731.4	735.8
80°	642.6	635.5	632.2	626.6	627.5	627.2	632.0	635.6	641.4	642.5	648.0
82.5°	534.0	526.8	523.3	517.9	519.1	519.3	523.6	524.4	529.4	531.6	538.0
85°	382.4	385.2	377.5	378.1	376.5	379.5	382.4	386.0	390.2	397.3	402.7
87.5°	225.2	224.2	227.0	227.2	231.2	233.1	239.4	243.0	250.0	255.5	265.5
90°	112.1	108.1	109.7	108.0	111.3	109.7	112.7	110.5	114.4	114.3	119.3
92.5°	48.1	45.5	42.2	39.4	36.2	33.6	31.8	30.7	29.0	28.1	26.2
95°	65.0	60.7	56.3	51.9	47.6	43.2	41.6	40.0	38.4	36.8	35.1
97.5°	75.7	70.9	66.2	61.4	56.8	52.1	51.1	49.9	48.9	47.9	46.7
100°	108.7	99.6	90.5	81.4	72.3	63.2	62.4	61.5	60.7	59.9	58.9
102.5°	219.0	198.0	177.2	156.3	135.5	114.7	111.0	107.4	103.8	100.1	96.6
105°	401.2	367.8	334.4	301.1	267.7	234.4	224.4	214.2	204.3	194.4	184.5
107.5°	573.6	540.9	508.4	475.8	443.3	410.8	395.1	379.4	363.4	347.7	332.1
110°	660.3	640.7	621.2	601.4	581.9	562.4	547.3	532.3	517.2	502.1	487.2



TEST NUMBER: P1444460
 CATALOG NUMBER: EHBR1-36-UNV-TA-L830-UPL18

CANDELA DISTRIBUTION (continued):

	55°	57.5°	60°	62.5°	65°	67.5°	70°	72.5°	75°	77.5°	80°
112.5°	670.3	660.5	650.4	640.6	630.8	620.9	613.5	606.1	598.8	591.4	583.9
115°	624.1	620.8	617.4	614.3	611.1	607.7	607.1	606.5	605.8	605.3	604.7
117.5°	547.0	547.4	547.6	548.0	548.4	548.8	552.6	556.2	560.1	564.0	568.0
120°	470.9	473.1	475.4	477.9	480.3	482.7	487.6	492.7	497.7	503.0	508.3
122.5°	407.6	409.0	410.3	411.9	413.4	415.0	419.8	424.8	429.7	434.8	440.1
125°	359.1	358.8	358.5	358.0	357.7	357.6	361.5	365.4	369.4	373.7	377.7
127.5°	326.8	325.1	323.5	322.0	320.4	318.9	321.0	323.2	325.3	327.7	329.9
130°	307.8	305.5	302.7	300.4	297.7	295.3	295.9	296.5	297.0	297.8	298.6
132.5°	297.2	294.4	291.5	288.7	285.7	283.0	282.4	281.9	281.5	281.2	281.0
135°	290.6	287.9	285.1	282.3	279.5	277.0	275.9	274.8	273.9	273.0	272.0
137.5°	286.5	284.4	282.0	279.9	277.5	275.3	273.8	272.7	271.4	270.4	269.3
140°	284.1	282.3	280.4	278.5	276.5	274.8	273.5	272.6	271.4	270.5	269.6
142.5°	282.5	281.1	279.6	278.3	276.8	275.4	274.2	273.1	272.1	271.3	270.2
145°	283.1	282.1	281.0	280.0	278.9	277.9	276.8	276.0	275.2	274.5	273.8
147.5°	282.0	281.3	280.5	279.7	278.9	278.1	277.4	277.0	276.0	275.7	275.0
150°	281.0	280.3	279.5	279.0	278.2	277.5	277.0	276.5	276.0	275.8	275.3
152.5°	278.8	278.1	277.5	277.0	276.2	275.6	275.1	274.8	274.4	274.0	273.5
155°	277.6	277.2	276.7	276.2	275.6	275.3	274.7	274.2	273.8	273.3	272.8
157.5°	277.9	277.5	277.0	276.6	276.0	275.6	275.1	274.7	274.2	273.8	273.3
160°	278.8	278.4	277.9	277.5	277.0	276.6	276.0	275.6	274.9	274.5	273.8
162.5°	280.9	280.4	279.9	279.4	278.8	278.3	277.8	277.4	276.9	276.5	276.0
165°	282.9	282.5	282.0	281.7	281.3	280.9	280.3	279.8	279.1	278.7	278.0
167.5°	286.4	286.0	285.6	285.2	284.7	284.3	283.8	283.4	282.8	282.3	281.6
170°	288.8	288.1	287.9	287.3	286.9	286.4	286.0	285.4	284.9	284.6	283.9
172.5°	291.7	291.4	291.0	290.7	290.2	289.8	289.5	289.2	288.7	288.3	287.9
175°	292.3	292.3	292.2	291.8	291.7	291.5	291.3	291.2	290.9	290.8	290.6
177.5°	293.7	293.6	293.6	293.4	293.2	293.2	293.0	292.9	292.6	292.4	292.3
180°	291.7	291.7	291.7	291.7	291.7	291.7	291.7	291.7	291.7	291.7	291.7



TEST NUMBER: P1444460
 CATALOG NUMBER: EHBR1-36-UNV-TA-L830-UPL18

CANDELA DISTRIBUTION (continued):

	82.5°	85°	87.5°	90°	92.5°	95°	97.5°	100°	102.5°	105°	107.5°
0°	29129.1	29129.1	29129.1	29129.1	29129.1	29129.1	29129.1	29129.1	29129.1	29129.1	29129.1
2.5°	29241.1	29233.7	29237.2	29223.5	29226.8	29210.2	29208.7	29190.1	29188.2	29170.6	29164.1
5°	30231.2	30214.9	30233.2	30204.6	30210.3	30173.0	30169.9	30121.7	30105.1	30044.8	30018.9
7.5°	31319.3	31313.1	31324.4	31300.4	31299.7	31266.4	31252.6	31209.5	31182.8	31119.4	31079.1
10°	31557.6	31563.2	31554.1	31556.3	31543.4	31539.8	31526.5	31518.1	31496.5	31480.1	31455.8
12.5°	30567.8	30573.7	30536.0	30559.9	30541.0	30585.2	30581.6	30633.7	30641.6	30707.5	30732.5
15°	28280.1	28273.0	28200.6	28246.2	28221.7	28318.7	28340.3	28470.8	28540.5	28708.0	28810.8
17.5°	24824.2	24805.5	24703.5	24759.1	24730.9	24873.7	24921.7	25130.3	25260.4	25530.2	25722.4
20°	20704.6	20668.9	20549.5	20614.6	20585.5	20747.8	20816.3	21068.4	21236.1	21593.5	21847.7
22.5°	16533.8	16477.4	16360.5	16421.3	16393.7	16561.9	16651.0	16903.9	17096.1	17463.0	17759.7
25°	12788.5	12738.2	12625.2	12667.8	12657.5	12799.8	12879.0	13118.2	13307.1	13656.6	13939.8
27.5°	9754.1	9701.8	9599.7	9629.7	9619.4	9740.6	9815.3	10015.2	10177.6	10471.8	10720.5
30°	7465.4	7402.2	7315.6	7332.3	7325.2	7423.3	7493.1	7661.4	7800.6	8049.3	8263.6
32.5°	5722.2	5658.8	5579.1	5586.9	5576.4	5653.5	5710.9	5857.3	5978.7	6190.1	6376.6
35°	4378.3	4452.5	4282.5	4390.2	4278.0	4442.6	4383.4	4474.8	4579.3	4757.4	4912.9
37.5°	3365.9	3314.2	3270.4	3265.7	3265.6	3303.7	3348.6	3436.8	3528.8	3661.4	3798.5
40°	2667.3	2631.0	2602.7	2600.7	2602.7	2629.8	2663.1	2723.9	2791.3	2886.7	2987.4
42.5°	2212.2	2188.2	2171.1	2169.9	2175.3	2194.5	2217.7	2253.8	2297.7	2359.4	2428.5
45°	1914.7	1901.3	1891.8	1891.3	1893.7	1903.8	1917.1	1939.6	1967.4	2006.0	2049.6
47.5°	1705.9	1702.7	1696.8	1696.9	1694.2	1698.3	1699.8	1712.5	1727.3	1756.3	1813.5
50°	1553.9	1553.9	1549.8	1549.6	1545.8	1545.5	1542.3	1547.3	1554.1	1572.2	1590.4
52.5°	1433.7	1433.4	1428.9	1428.0	1423.9	1423.7	1420.9	1422.9	1423.8	1432.9	1443.8
55°	1339.9	1337.1	1331.2	1329.4	1327.8	1330.1	1329.0	1329.2	1328.0	1331.7	1335.0
57.5°	1272.5	1268.8	1263.3	1261.7	1261.3	1264.1	1264.2	1263.2	1258.1	1254.6	1249.9
60°	1219.1	1215.5	1209.6	1208.0	1208.9	1212.8	1212.6	1209.3	1201.8	1195.1	1187.6
62.5°	1166.8	1165.3	1162.3	1161.8	1161.1	1161.7	1159.0	1155.5	1148.1	1141.1	1132.8
65°	1096.5	1097.3	1095.0	1095.3	1092.6	1092.2	1088.1	1084.7	1077.2	1070.8	1062.3
67.5°	1023.5	1024.1	1022.2	1022.2	1020.8	1021.0	1018.6	1015.4	1009.0	1003.9	997.3
70°	963.4	964.9	963.9	964.2	962.5	961.8	957.9	954.9	948.3	943.9	938.0
72.5°	891.4	894.7	894.6	895.3	892.7	891.4	886.8	882.9	877.0	873.6	868.8
75°	813.6	817.8	819.1	820.9	817.2	815.3	810.3	807.2	802.3	800.2	797.1
77.5°	737.8	742.4	746.8	751.0	745.0	739.7	733.3	728.5	721.5	718.9	714.1
80°	652.6	660.8	670.6	678.8	668.2	657.4	646.9	639.1	629.9	626.2	620.1
82.5°	541.4	549.8	555.5	560.7	553.3	545.4	535.2	528.4	518.5	514.8	507.8
85°	411.3	421.8	425.2	428.0	423.2	419.0	409.4	396.6	390.3	380.6	375.4
87.5°	270.5	276.8	278.0	279.0	276.0	274.0	267.8	261.8	251.1	243.4	233.8
90°	118.2	121.6	118.3	119.1	116.2	117.3	111.9	110.7	102.8	100.2	93.3
92.5°	25.1	23.4	22.1	20.6	22.6	23.5	25.3	26.2	28.0	29.0	30.7
95°	33.5	31.9	30.3	28.8	30.1	31.3	32.6	33.9	35.1	36.4	37.7
97.5°	45.7	44.7	43.6	42.5	43.3	44.0	44.8	45.5	46.2	46.9	47.8
100°	58.1	57.2	56.4	55.5	55.5	55.5	55.5	55.5	55.5	55.5	55.5
102.5°	92.9	89.3	85.7	82.1	84.5	86.9	89.4	91.8	94.3	96.8	99.3
105°	174.6	164.7	154.7	144.8	154.4	164.0	173.6	183.2	192.8	202.7	212.3
107.5°	316.2	300.6	284.9	269.2	286.8	304.3	321.8	339.3	356.8	374.3	392.0
110°	472.2	457.3	442.3	427.4	446.0	464.5	483.1	501.6	520.3	538.9	557.7



TEST NUMBER: P1444460
 CATALOG NUMBER: EHBR1-36-UNV-TA-L830-UPL18

CANDELA DISTRIBUTION (continued):

	82.5°	85°	87.5°	90°	92.5°	95°	97.5°	100°	102.5°	105°	107.5°
112.5°	576.6	569.4	562.1	554.9	566.9	578.8	590.8	603.0	614.9	626.9	638.9
115°	604.3	603.8	603.4	603.0	608.6	614.3	619.9	625.6	631.4	637.1	642.9
117.5°	571.8	575.7	579.8	583.9	585.6	587.5	589.4	591.2	593.3	595.2	597.2
120°	513.6	518.7	524.1	529.5	528.8	528.0	527.4	526.6	526.3	525.7	525.3
122.5°	445.3	450.6	456.0	461.3	459.7	458.1	456.6	455.1	453.7	452.4	451.1
125°	382.2	386.4	390.9	395.4	393.8	392.2	390.7	389.4	388.1	386.7	385.6
127.5°	332.6	335.2	337.8	340.6	339.8	339.1	338.6	338.0	337.7	337.4	337.1
130°	299.6	300.5	301.8	302.9	303.1	303.3	303.9	304.3	304.9	305.5	306.4
132.5°	281.0	281.0	281.1	281.3	282.1	283.0	284.1	285.2	286.6	287.9	289.5
135°	271.6	271.0	270.6	270.2	271.6	272.7	274.3	275.8	277.5	279.3	281.3
137.5°	268.5	267.6	267.1	266.4	267.7	268.9	270.4	271.9	273.6	275.5	277.5
140°	268.8	268.0	267.6	267.1	268.4	269.4	271.0	272.5	274.2	276.0	277.9
142.5°	269.7	268.8	268.3	267.9	268.9	270.1	271.6	272.8	274.5	275.9	277.7
145°	273.1	272.5	272.2	271.7	272.5	273.3	274.3	275.4	276.6	277.7	279.1
147.5°	274.5	274.2	273.9	273.6	274.3	274.8	275.6	276.2	277.1	278.0	279.0
150°	275.2	274.7	274.5	274.4	274.7	275.0	275.6	275.9	276.5	277.0	277.9
152.5°	273.4	273.0	273.0	272.8	273.0	273.2	273.7	274.0	274.5	274.9	275.8
155°	272.6	272.2	271.9	271.6	271.6	271.6	271.8	271.8	272.2	272.3	272.6
157.5°	273.1	272.7	272.4	272.0	271.9	271.6	271.6	271.6	271.7	271.5	271.6
160°	273.4	272.8	272.4	272.0	271.9	271.7	271.8	271.6	271.7	271.6	271.8
162.5°	275.6	275.2	274.8	274.5	274.2	273.8	273.6	273.1	273.0	272.7	272.6
165°	277.5	276.9	276.5	275.9	275.8	275.5	275.4	275.1	275.0	274.7	274.8
167.5°	281.2	280.6	280.2	279.7	279.3	278.9	278.7	278.2	277.8	277.5	277.4
170°	283.5	283.1	282.7	282.3	282.1	281.8	281.7	281.4	281.2	281.1	281.1
172.5°	287.6	287.2	286.8	286.5	286.4	286.1	286.0	285.9	285.7	285.7	285.6
175°	290.4	290.2	290.1	289.9	289.7	289.6	289.3	289.2	289.1	288.9	288.7
177.5°	292.1	291.7	291.6	291.5	291.4	291.4	291.4	291.4	291.4	291.3	291.2
180°	291.7	291.7	291.7	291.7	291.7	291.7	291.7	291.7	291.7	291.7	291.7



TEST NUMBER: P1444460
 CATALOG NUMBER: EHBR1-36-UNV-TA-L830-UPL18

CANDELA DISTRIBUTION (continued):

	110°	112.5°	115°	117.5°	120°	122.5°	125°	127.5°	130°	132.5°	135°
0°	29129.1	29129.1	29129.1	29129.1	29129.1	29129.1	29129.1	29129.1	29129.1	29129.1	29129.1
2.5°	29145.1	29137.5	29117.3	29107.4	29088.7	29079.3	29064.8	29055.3	29043.6	29034.8	29030.3
5°	29952.7	29915.4	29840.7	29794.7	29714.1	29661.0	29580.9	29522.2	29439.4	29378.5	29300.3
7.5°	31003.3	30946.1	30850.4	30777.9	30665.0	30578.9	30452.2	30351.0	30211.0	30094.9	29951.9
10°	31431.0	31397.6	31354.7	31308.1	31245.5	31184.3	31097.8	31009.7	30892.2	30775.4	30622.8
12.5°	30798.8	30830.3	30892.2	30921.1	30968.5	30984.6	31006.3	30996.2	30977.0	30929.3	30860.1
15°	29008.4	29139.5	29346.8	29490.2	29691.1	29832.2	30018.9	30139.0	30277.4	30360.1	30438.7
17.5°	26063.2	26316.8	26682.6	26974.4	27366.1	27684.6	28074.9	28381.5	28735.5	29007.1	29296.2
20°	22290.8	22646.0	23150.9	23579.7	24147.3	24628.7	25245.3	25761.9	26364.5	26866.9	27409.0
22.5°	18230.6	18648.5	19227.1	19744.2	20422.1	21027.5	21800.2	22483.2	23297.8	24027.6	24835.0
25°	14400.3	14809.9	15399.2	15934.8	16666.6	17333.5	18177.6	18961.1	19906.6	20788.1	21800.2
27.5°	11115.6	11479.5	11997.6	12479.6	13149.8	13804.6	14661.2	15496.7	16505.5	17452.9	18543.6
30°	8584.5	8879.6	9294.7	9682.5	10220.5	10755.9	11519.0	12291.8	13295.6	14277.2	15395.5
32.5°	6652.7	6904.3	7250.9	7565.6	7980.2	8383.9	8945.9	9563.4	10443.8	11384.3	12465.4
35°	5149.9	5365.2	5660.2	5931.3	6272.2	6592.7	7012.0	7452.8	8124.7	8915.8	9883.4
37.5°	4105.8	4193.6	4404.0	4626.2	4909.4	5172.8	5500.8	5826.7	6307.4	6931.6	7721.9
40°	3122.4	3261.8	3433.1	3608.1	3822.5	4033.7	4393.6	4566.8	4883.3	5331.4	5944.9
42.5°	2519.4	2617.4	2738.0	2859.7	3009.1	3156.2	3338.2	3523.5	3760.2	4063.6	4500.0
45°	2108.3	2172.1	2249.9	2331.0	2429.1	2529.5	2651.4	2778.7	2939.0	3125.5	3390.6
47.5°	1833.6	1868.9	1919.7	1975.1	2042.3	2111.8	2191.1	2272.2	2371.7	2482.5	2633.4
50°	1619.2	1648.7	1688.1	1725.1	1771.6	1842.8	1874.3	1919.0	1979.0	2044.0	2128.5
52.5°	1464.1	1483.7	1508.5	1529.7	1559.1	1585.8	1620.8	1651.6	1693.1	1732.2	1786.7
55°	1343.3	1350.5	1364.4	1378.2	1398.5	1416.7	1440.7	1460.9	1487.3	1510.7	1545.1
57.5°	1250.0	1250.7	1257.2	1264.3	1277.3	1288.8	1305.3	1318.6	1337.0	1351.9	1372.5
60°	1183.0	1179.4	1180.7	1183.2	1190.6	1198.0	1208.5	1217.2	1228.8	1237.2	1248.7
62.5°	1127.1	1121.5	1120.3	1119.6	1123.3	1126.0	1131.7	1135.9	1142.5	1146.2	1152.3
65°	1056.7	1050.1	1047.5	1044.4	1045.6	1044.7	1046.9	1047.0	1050.3	1051.1	1054.6
67.5°	992.7	987.3	983.9	979.8	978.0	975.0	973.8	971.0	970.5	968.2	967.6
70°	934.5	929.0	926.2	922.5	920.5	916.7	914.3	909.5	906.7	902.3	899.8
72.5°	867.0	863.9	863.1	860.6	859.9	857.7	856.7	853.4	851.5	847.6	845.5
75°	796.5	794.0	793.8	791.2	791.0	788.4	787.8	784.2	782.3	778.6	777.0
77.5°	712.6	708.8	707.8	704.8	705.5	704.2	705.2	702.5	701.4	697.6	696.4
80°	617.9	613.2	611.2	607.3	608.3	606.5	608.3	608.1	609.5	606.5	606.0
82.5°	505.9	500.7	499.7	496.9	498.8	499.0	503.0	500.8	501.7	498.9	500.0
85°	368.1	364.3	358.9	358.1	354.6	358.2	353.5	356.7	351.6	355.2	350.4
87.5°	228.2	220.2	216.0	210.3	208.1	202.6	200.4	196.3	197.6	195.7	196.8
90°	92.3	86.1	85.6	81.0	81.6	77.7	79.3	77.0	79.2	76.6	79.1
92.5°	31.8	33.2	35.6	38.6	40.8	43.4	45.9	48.8	51.1	54.0	56.2
95°	39.0	40.3	43.7	47.1	50.5	54.0	57.4	60.9	64.3	67.7	71.1
97.5°	48.5	49.3	52.6	56.1	59.5	62.9	66.3	70.1	73.4	76.9	80.3
100°	55.5	55.6	65.4	75.0	84.8	94.6	104.3	114.0	124.0	133.7	143.4
102.5°	101.7	104.2	128.7	153.3	177.9	202.4	227.1	251.7	276.2	301.1	325.7
105°	221.9	231.6	269.0	306.6	344.0	381.5	419.1	456.8	494.3	531.9	569.4
107.5°	409.5	427.1	461.0	495.0	528.8	562.8	596.9	630.8	664.7	698.7	732.9
110°	576.3	594.9	617.6	640.4	663.3	686.0	708.8	731.7	754.6	777.5	800.5



TEST NUMBER: P1444460
 CATALOG NUMBER: EHBR1-36-UNV-TA-L830-UPL18

CANDELA DISTRIBUTION (continued):

	110°	112.5°	115°	117.5°	120°	122.5°	125°	127.5°	130°	132.5°	135°
112.5°	650.9	663.1	676.3	689.8	703.1	716.5	729.9	743.3	756.9	770.3	783.8
115°	648.8	654.7	659.8	665.3	670.5	675.8	681.3	686.8	692.3	697.8	703.4
117.5°	599.1	601.4	602.2	603.3	604.3	605.6	606.6	607.9	609.2	610.5	611.6
120°	524.8	524.4	523.8	523.2	522.6	522.1	521.7	521.3	521.0	520.6	520.2
122.5°	449.9	448.8	448.2	447.7	447.4	447.1	446.7	446.6	446.3	446.2	445.9
125°	384.4	383.5	384.6	385.7	387.0	388.3	389.5	390.9	392.2	393.6	395.0
127.5°	336.8	336.8	339.2	341.6	344.1	346.7	349.2	351.9	354.4	357.2	359.6
130°	307.2	308.2	311.1	314.3	317.2	320.4	323.6	327.0	329.9	333.2	336.3
132.5°	290.9	292.7	295.5	298.6	301.6	304.8	307.8	311.0	314.1	317.3	320.2
135°	283.3	285.5	288.1	291.0	293.8	296.7	299.7	302.6	305.3	308.3	311.0
137.5°	279.3	281.6	283.9	286.3	288.6	291.1	293.5	295.9	298.2	300.7	302.9
140°	279.8	281.9	283.4	285.1	286.5	288.2	289.6	291.3	292.6	294.4	295.8
142.5°	279.4	281.5	282.3	283.5	284.6	286.1	287.1	288.3	289.3	290.4	291.3
145°	280.5	282.0	282.4	282.9	283.4	283.9	284.2	284.8	284.9	285.3	285.7
147.5°	280.2	281.4	281.4	281.7	281.9	281.9	282.2	282.4	282.4	282.6	282.8
150°	278.5	279.4	279.1	279.3	279.0	279.1	278.9	279.0	278.7	278.8	278.5
152.5°	276.2	276.9	276.4	276.5	276.1	276.0	275.6	275.6	275.2	275.0	274.9
155°	272.8	273.1	272.9	272.7	272.5	272.4	272.1	272.3	272.2	272.0	272.0
157.5°	271.6	271.6	271.5	271.4	271.2	271.2	271.0	271.0	271.0	271.3	271.4
160°	271.7	271.8	271.6	271.5	271.4	271.3	271.1	271.3	271.3	271.6	271.7
162.5°	272.3	272.2	271.9	271.8	271.7	271.8	271.7	271.9	271.9	272.2	272.4
165°	274.8	274.9	274.5	274.5	274.3	274.2	274.0	274.1	274.2	274.3	274.4
167.5°	277.2	277.1	277.1	277.2	277.2	277.4	277.5	277.8	278.0	278.4	278.5
170°	281.0	281.1	280.9	280.9	280.7	280.7	280.8	280.8	280.8	280.9	281.0
172.5°	285.6	285.6	285.4	285.1	284.9	284.9	284.6	284.6	284.4	284.2	284.0
175°	288.5	288.4	288.3	288.2	288.1	287.9	287.8	287.5	287.4	287.3	287.2
177.5°	291.1	290.9	290.8	290.8	290.7	290.6	290.6	290.5	290.5	290.5	290.3
180°	291.7	291.7	291.7	291.7	291.7	291.7	291.7	291.7	291.7	291.7	291.7



TEST NUMBER: P1444460
 CATALOG NUMBER: EHBR1-36-UNV-TA-L830-UPL18

CANDELA DISTRIBUTION (continued):

	137.5°	140°	142.5°	145°	147.5°	150°	152.5°	155°	157.5°	160°	162.5°
0°	29129.1	29129.1	29129.1	29129.1	29129.1	29129.1	29129.1	29129.1	29129.1	29129.1	29129.1
2.5°	29024.5	29024.1	29021.3	29022.6	29023.2	29025.2	29027.7	29030.3	29030.9	29032.9	29033.3
5°	29241.7	29169.9	29116.8	29058.4	29014.5	28974.9	28948.6	28927.6	28919.6	28921.5	28926.4
7.5°	29830.7	29682.4	29560.2	29421.1	29305.1	29182.4	29080.6	28983.8	28913.4	28860.8	28831.4
10°	30477.0	30296.5	30123.8	29922.5	29731.7	29528.0	29343.4	29157.7	29002.8	28868.2	28769.5
12.5°	30763.9	30636.3	30487.0	30297.0	30092.8	29857.8	29620.4	29365.9	29129.3	28909.6	28732.4
15°	30460.2	30460.4	30405.9	30314.9	30173.0	29985.2	29759.0	29493.8	29214.5	28929.7	28669.4
17.5°	29496.1	29678.0	29779.2	29843.2	29823.6	29754.4	29610.5	29406.8	29146.4	28843.0	28525.4
20°	27840.6	28269.7	28575.5	28850.5	29004.7	29107.2	29096.9	29014.0	28828.6	28570.7	28239.8
22.5°	25521.5	26241.6	26809.7	27339.6	27711.2	28013.5	28157.2	28218.2	28134.1	27954.4	27643.8
25°	22704.7	23683.7	24519.3	25330.1	25938.3	26461.1	26775.2	26996.5	27014.1	26920.2	26643.1
27.5°	19574.8	20730.4	21787.8	22865.4	23720.8	24472.3	24965.4	25326.3	25440.9	25425.7	25174.1
30°	16448.8	17662.0	18827.6	20084.3	21142.6	22102.7	22754.0	23242.0	23430.1	23466.1	23224.1
32.5°	13496.7	14693.0	15855.4	17169.1	18333.8	19434.1	20203.6	20783.3	21002.0	21053.6	20788.1
35°	10817.4	11921.1	13025.8	14299.0	15457.0	16596.4	17407.2	18014.1	18218.4	18252.9	17945.5
37.5°	8494.0	9434.3	10396.9	11539.3	12602.8	13672.9	14443.2	15013.7	15162.4	15153.2	14805.4
40°	6537.7	7268.8	8042.2	8982.7	9866.8	10771.4	11421.9	11893.5	11971.7	11913.8	11548.4
42.5°	4915.9	5444.0	6004.7	6706.7	7362.8	8039.8	8513.1	8863.1	8874.3	8782.8	8454.7
45°	3662.4	4177.5	4412.7	4837.2	5259.7	5709.9	5998.9	6215.2	6181.6	6101.2	5851.8
47.5°	2792.0	2990.0	3199.9	3463.1	3709.3	4220.1	4182.2	4529.5	4279.4	4449.9	4074.5
50°	2217.1	2327.7	2440.9	2580.5	2709.1	2842.7	2926.2	2988.5	2980.3	2953.5	2881.7
52.5°	1886.3	1920.4	1976.2	2055.6	2127.4	2199.6	2247.1	2285.8	2286.5	2275.7	2239.3
55°	1576.5	1619.9	1659.9	1711.8	1800.3	1813.8	1882.0	1868.2	1873.6	1854.7	1874.0
57.5°	1389.9	1415.2	1437.8	1468.7	1494.2	1524.0	1541.6	1558.6	1556.9	1553.3	1534.7
60°	1257.8	1271.7	1284.2	1302.3	1316.3	1333.1	1341.3	1349.9	1347.1	1340.8	1324.3
62.5°	1155.9	1164.6	1171.7	1183.4	1192.0	1202.5	1206.7	1210.3	1206.7	1200.7	1186.2
65°	1055.4	1061.0	1065.5	1074.3	1080.3	1089.3	1092.9	1096.3	1093.0	1088.3	1077.2
67.5°	964.7	965.3	964.8	968.4	970.2	975.6	977.2	979.7	975.8	971.8	962.5
70°	896.0	894.6	892.8	894.2	894.6	897.1	897.6	897.1	892.5	885.6	875.3
72.5°	842.2	841.4	840.1	841.3	841.3	843.7	842.9	841.7	836.0	829.4	819.2
75°	773.1	772.5	770.0	770.1	767.9	768.7	765.9	764.3	757.9	752.3	743.2
77.5°	692.2	690.9	687.2	685.8	681.6	679.9	674.6	672.0	665.5	661.0	653.3
80°	601.9	600.5	595.7	593.0	586.6	582.4	574.7	570.3	562.8	558.4	550.8
82.5°	497.6	498.1	493.3	489.9	480.6	473.5	463.1	457.5	449.3	445.0	437.3
85°	353.9	348.8	351.5	351.3	345.5	339.3	330.8	324.9	318.0	313.9	308.5
87.5°	194.1	195.3	193.9	192.7	188.6	185.5	178.9	175.4	170.4	167.9	163.7
90°	73.0	71.8	66.0	64.9	59.3	56.5	49.9	47.9	41.9	40.7	36.7
92.5°	53.3	50.5	47.9	44.7	42.2	39.2	36.3	33.5	30.6	29.4	28.7
95°	67.0	62.9	58.7	54.5	50.4	46.2	42.2	37.9	33.8	33.0	32.1
97.5°	75.5	70.5	65.7	60.9	55.9	51.1	46.3	41.3	36.4	35.9	35.4
100°	132.2	120.9	109.7	98.4	87.1	75.8	64.6	53.3	42.1	41.4	40.7
102.5°	298.2	271.0	243.6	216.3	189.2	161.8	134.4	107.1	79.7	75.8	71.8
105°	528.0	486.6	445.5	404.1	362.7	321.3	280.1	238.6	197.2	184.0	170.6
107.5°	694.0	655.0	616.4	577.6	538.6	499.8	461.0	422.1	383.1	359.7	336.4
110°	769.7	738.8	708.2	677.4	646.7	615.9	585.1	554.3	523.4	503.3	483.2



TEST NUMBER: P1444460
 CATALOG NUMBER: EHBR1-36-UNV-TA-L830-UPL18

CANDELA DISTRIBUTION (continued):

	137.5°	140°	142.5°	145°	147.5°	150°	152.5°	155°	157.5°	160°	162.5°
112.5°	761.5	739.0	716.7	694.0	671.7	649.0	626.7	604.1	581.4	569.4	557.2
115°	690.1	676.6	663.3	649.9	636.4	623.0	609.5	595.9	582.4	576.1	569.8
117.5°	605.1	598.4	591.8	585.1	578.3	571.5	564.8	557.9	551.2	549.2	547.0
120°	518.7	517.0	515.0	513.2	511.4	509.7	507.7	505.7	503.8	504.3	504.8
122.5°	447.2	448.3	449.6	450.6	451.9	452.8	454.1	455.0	456.1	458.1	460.2
125°	397.4	399.8	402.3	404.7	407.0	409.3	411.8	413.9	416.4	418.3	420.6
127.5°	362.4	365.0	367.8	370.5	373.2	375.8	378.5	381.0	383.7	385.5	387.7
130°	338.9	341.1	343.7	345.9	348.5	350.8	353.1	355.5	357.9	359.6	361.3
132.5°	322.5	324.7	326.9	329.0	331.3	333.4	335.6	337.8	340.1	341.4	342.9
135°	312.9	314.5	316.3	317.9	319.9	321.5	323.4	325.1	327.0	328.1	329.3
137.5°	304.4	305.9	307.4	308.8	310.4	311.8	313.5	315.0	316.9	317.5	318.7
140°	297.3	298.8	300.3	301.8	303.4	304.9	306.8	308.4	310.2	311.0	312.0
142.5°	292.6	293.7	295.0	296.2	297.5	298.7	300.2	301.7	303.2	304.1	305.0
145°	287.1	288.4	289.8	291.0	292.4	293.9	295.7	297.3	299.0	299.7	300.4
147.5°	283.8	284.9	286.3	287.5	288.7	289.8	291.5	292.9	294.5	295.2	295.8
150°	279.8	280.8	282.0	283.2	284.6	286.0	287.5	289.0	290.8	291.6	292.3
152.5°	276.0	277.3	278.5	279.9	281.4	282.9	284.5	286.1	287.8	288.4	289.3
155°	273.3	274.4	275.8	277.2	278.7	280.0	281.6	283.1	284.7	285.5	286.3
157.5°	272.6	273.5	274.8	276.0	277.4	278.7	280.2	281.5	283.0	283.6	284.3
160°	272.8	273.8	274.9	276.0	277.3	278.5	279.7	280.9	282.2	282.8	283.4
162.5°	273.5	274.5	275.7	276.7	278.0	279.1	280.4	281.5	282.8	283.4	284.0
165°	275.3	276.0	277.1	277.8	278.8	279.5	280.6	281.4	282.5	283.0	283.7
167.5°	279.3	279.9	280.5	281.2	282.0	282.8	283.5	284.3	285.0	285.6	286.2
170°	281.6	282.1	282.7	283.4	284.0	284.7	285.2	285.9	286.7	287.1	287.7
172.5°	284.4	284.7	285.2	285.5	286.0	286.4	286.8	287.3	287.8	288.2	288.6
175°	287.5	287.6	287.8	287.9	288.1	288.3	288.7	289.0	289.2	289.4	289.8
177.5°	290.4	290.5	290.7	290.8	291.0	291.1	291.4	291.5	291.7	292.0	292.4
180°	291.7	291.7	291.7	291.7	291.7	291.7	291.7	291.7	291.7	291.7	291.7



TEST NUMBER: P1444460
 CATALOG NUMBER: EHBR1-36-UNV-TA-L830-UPL18

CANDELA DISTRIBUTION (continued):

	165°	167.5°	170°	172.5°	175°	177.5°	180°	182.5°	185°	187.5°	190°
0°	29129.1	29129.1	29129.1	29129.1	29129.1	29129.1	29129.1	29129.1	29129.1	29129.1	29129.1
2.5°	29032.4	29032.0	29031.0	29029.7	29028.4	29029.3	29030.5	29033.9	29039.7	29048.1	29059.1
5°	28930.4	28936.3	28939.7	28940.2	28937.1	28935.3	28938.1	28946.1	28962.2	28989.2	29025.6
7.5°	28823.6	28830.9	28842.1	28850.5	28852.1	28850.2	28850.5	28863.1	28892.8	28945.3	29019.1
10°	28709.5	28687.7	28699.2	28720.1	28736.7	28739.8	28741.9	28756.6	28800.1	28879.5	28997.9
12.5°	28604.1	28535.4	28522.1	28541.1	28566.3	28574.4	28572.1	28578.5	28629.4	28734.5	28899.5
15°	28465.5	28336.3	28292.1	28296.9	28328.1	28339.4	28331.1	28318.7	28368.2	28496.6	28710.2
17.5°	28241.1	28032.8	27951.6	27948.0	27984.6	27994.2	27974.2	27935.3	27984.1	28144.3	28409.5
20°	27900.2	27592.5	27439.7	27415.4	27455.0	27443.4	27403.4	27344.7	27408.8	27603.6	27919.0
22.5°	27287.0	26897.3	26636.2	26551.9	26599.3	26567.7	26509.3	26434.3	26519.4	26740.8	27092.1
25°	26285.2	25834.9	25477.4	25276.8	25314.6	25257.9	25194.3	25103.4	25205.0	25459.0	25845.7
27.5°	24812.7	24292.5	23849.5	23517.4	23529.7	23455.4	23382.1	23264.5	23391.3	23692.0	24128.1
30°	22854.6	22252.7	21713.2	21261.9	21221.5	21149.5	21074.5	20920.1	21078.9	21438.7	21948.4
32.5°	20395.5	19727.3	19103.9	18533.3	18425.7	18355.4	18288.6	18110.9	18318.7	18738.3	19323.8
35°	17519.8	16807.9	16132.1	15480.4	15302.1	15231.8	15173.4	15003.2	15262.5	15719.1	16351.6
37.5°	14363.3	13636.1	12965.1	12296.8	12044.9	11949.5	11907.1	11795.6	12094.7	12546.4	13181.4
40°	11122.8	10446.6	9845.0	9254.9	8967.6	8821.7	8799.4	8779.2	9068.4	9460.3	10036.6
42.5°	8091.4	7545.9	7082.0	6630.9	6370.6	6171.4	6171.3	6231.7	6492.1	6785.7	7230.1
45°	5597.1	5231.0	4935.4	4634.0	4714.5	4317.5	4550.8	4431.0	4559.7	4749.0	5038.0
47.5°	3847.4	3647.6	3485.2	3316.8	3194.1	3076.8	3087.1	3162.7	3283.9	3396.2	3546.6
50°	2804.1	2702.3	2619.7	2532.2	2471.1	2419.4	2422.4	2455.1	2518.8	2578.0	2656.7
52.5°	2197.2	2141.1	2096.2	2047.8	2015.8	1990.0	1991.4	2007.4	2041.7	2075.6	2120.7
55°	1811.0	1804.3	1745.8	1702.5	1686.0	1668.7	1671.8	1678.0	1701.5	1721.2	1751.2
57.5°	1517.7	1491.4	1473.9	1451.1	1440.6	1428.5	1431.2	1433.5	1449.2	1462.5	1483.9
60°	1310.5	1291.9	1279.5	1263.9	1257.1	1249.4	1251.1	1252.5	1262.6	1271.2	1286.7
62.5°	1172.9	1156.2	1145.4	1133.4	1128.5	1123.4	1124.6	1125.0	1131.3	1137.6	1149.3
65°	1067.3	1054.1	1045.1	1034.8	1029.7	1024.3	1024.9	1024.9	1030.1	1034.8	1043.5
67.5°	955.6	945.7	939.9	931.7	928.2	922.7	922.6	920.9	924.3	926.1	932.1
70°	866.0	856.0	848.6	840.7	836.3	831.5	831.6	831.7	835.7	839.9	847.5
72.5°	810.6	801.1	794.4	787.5	783.5	779.3	778.6	778.1	781.0	783.4	788.4
75°	737.4	729.7	725.8	719.3	716.1	711.4	710.7	708.5	709.9	710.3	714.1
77.5°	648.4	641.2	638.0	631.4	628.7	623.5	623.0	620.7	621.7	620.9	623.8
80°	547.0	540.4	538.7	533.3	532.1	527.2	526.4	523.4	524.4	522.0	523.2
82.5°	433.9	427.8	426.6	421.6	421.6	417.1	416.9	412.5	412.5	408.7	402.7
85°	305.6	301.2	299.4	295.3	294.0	290.5	288.7	284.5	283.0	280.3	279.4
87.5°	161.3	158.5	156.0	154.1	150.5	144.2	143.6	139.2	139.5	136.4	136.6
90°	36.0	32.3	31.7	28.3	27.4	25.1	24.4	24.4	25.0	25.1	25.7
92.5°	27.7	26.8	25.8	24.8	23.9	22.9	21.9	22.9	23.9	24.8	25.8
95°	31.3	30.4	29.5	28.7	27.8	27.0	26.1	27.0	27.8	28.8	29.6
97.5°	34.8	34.3	33.8	33.3	32.7	32.2	31.7	32.3	32.8	33.3	33.9
100°	40.2	39.5	38.9	38.2	37.7	37.0	36.3	37.3	37.9	38.5	39.2
102.5°	67.9	64.0	60.0	56.1	52.1	48.1	44.2	48.1	52.1	56.2	60.1
105°	157.3	144.1	130.7	117.4	104.1	90.7	77.4	90.8	104.2	117.5	130.9
107.5°	312.9	289.7	266.2	242.9	219.3	196.0	172.4	196.1	219.5	243.0	266.4
110°	463.0	442.9	422.7	402.5	382.3	362.0	341.8	362.1	382.5	402.7	423.0



TEST NUMBER: P1444460
 CATALOG NUMBER: EHBR1-36-UNV-TA-L830-UPL18

CANDELA DISTRIBUTION (continued):

	165°	167.5°	170°	172.5°	175°	177.5°	180°	182.5°	185°	187.5°	190°
112.5°	545.0	532.8	520.5	508.4	496.0	483.8	471.4	484.0	496.4	508.9	521.1
115°	563.5	557.1	550.8	544.4	537.9	531.5	524.8	531.9	538.4	545.1	551.7
117.5°	544.8	542.8	540.7	538.6	536.3	534.2	531.9	534.4	536.8	539.5	541.8
120°	505.2	505.8	506.2	506.6	506.9	507.3	507.5	507.8	507.8	507.8	507.6
122.5°	462.0	464.0	465.9	467.9	469.6	471.4	473.0	471.8	470.4	469.3	467.6
125°	422.5	424.8	426.7	428.7	430.5	432.6	434.1	433.1	431.7	430.3	428.7
127.5°	389.6	391.5	393.3	395.4	397.0	398.8	400.2	399.4	398.2	397.1	395.6
130°	362.9	364.7	366.0	367.6	368.9	370.2	371.2	370.8	370.1	369.5	368.4
132.5°	344.2	345.7	347.1	348.3	349.3	350.4	351.1	351.1	350.7	350.3	349.7
135°	330.5	331.5	332.6	333.7	334.5	335.2	335.6	336.0	335.9	335.8	335.3
137.5°	319.3	320.4	321.0	321.7	322.1	322.6	322.9	323.4	323.5	324.1	323.9
140°	312.7	313.7	314.5	315.1	315.8	316.3	316.4	317.1	317.3	317.5	317.4
142.5°	305.8	306.7	307.5	308.3	308.6	309.2	309.5	310.0	310.1	310.4	310.4
145°	301.2	301.8	302.5	303.1	303.5	303.8	303.8	304.5	304.9	305.2	305.5
147.5°	296.5	297.2	297.7	298.2	298.5	298.8	298.9	299.5	299.9	300.2	300.5
150°	293.2	293.9	294.6	295.3	295.7	296.2	296.3	296.8	297.0	297.3	297.3
152.5°	289.9	290.7	291.2	291.8	292.3	292.6	292.8	293.3	293.7	294.0	294.1
155°	286.9	287.7	288.3	289.0	289.4	290.0	290.4	290.8	291.1	291.4	291.6
157.5°	284.9	285.7	286.2	286.8	287.3	287.9	288.3	288.9	289.3	289.6	289.9
160°	284.0	284.8	285.2	285.9	286.4	286.9	287.4	287.9	288.3	288.7	289.1
162.5°	284.5	285.1	285.5	286.2	286.6	287.2	287.7	288.1	288.6	289.1	289.3
165°	284.3	284.9	285.6	286.3	286.8	287.5	287.9	288.3	288.6	288.9	289.2
167.5°	286.6	287.3	287.9	288.4	288.9	289.5	290.0	290.4	290.6	290.8	291.0
170°	288.0	288.6	289.2	289.6	290.1	290.7	290.9	291.2	291.4	291.7	291.9
172.5°	289.2	289.7	290.2	290.8	291.3	291.8	292.2	292.4	292.4	292.4	292.3
175°	290.2	290.7	291.0	291.5	291.8	292.3	292.6	292.5	292.6	292.5	292.5
177.5°	292.9	293.4	293.8	294.1	294.5	294.9	295.3	295.0	294.7	294.6	294.3
180°	291.7	291.7	291.7	291.7	291.7	291.7	291.7	291.7	291.7	291.7	291.7



TEST NUMBER: P1444460
 CATALOG NUMBER: EHBR1-36-UNV-TA-L830-UPL18

CANDELA DISTRIBUTION (continued):

	192.5°	195°	197.5°	200°	202.5°	205°	207.5°	210°	212.5°	215°	217.5°
0°	29129.1	29129.1	29129.1	29129.1	29129.1	29129.1	29129.1	29129.1	29129.1	29129.1	29129.1
2.5°	29074.7	29089.2	29111.5	29131.6	29162.0	29186.0	29221.9	29249.2	29289.9	29316.2	29360.3
5°	29077.2	29134.2	29208.9	29282.0	29369.8	29449.4	29548.4	29632.7	29732.3	29813.4	29915.2
7.5°	29118.3	29228.0	29359.5	29492.0	29641.9	29782.0	29939.9	30082.9	30239.1	30371.3	30515.7
10°	29148.7	29317.9	29511.7	29706.6	29911.8	30102.5	30295.0	30461.4	30616.8	30744.8	30857.8
12.5°	29107.6	29340.6	29589.3	29829.4	30057.6	30254.9	30420.6	30548.5	30636.7	30696.7	30710.7
15°	28967.8	29248.3	29518.6	29757.7	29947.1	30093.1	30168.7	30204.1	30166.1	30103.0	29964.5
17.5°	28706.7	29002.5	29244.1	29432.8	29532.8	29572.5	29509.8	29400.9	29188.0	28951.7	28610.5
20°	28227.8	28503.5	28678.7	28781.7	28754.9	28655.9	28419.5	28132.1	27707.1	27254.1	26656.4
22.5°	27388.1	27629.1	27722.4	27730.0	27566.8	27318.8	26892.4	26399.5	25729.1	25032.0	24174.7
25°	26127.4	26338.6	26353.3	26270.4	25971.5	25569.8	24943.6	24246.3	23335.2	22406.4	21332.0
27.5°	24417.8	24620.3	24570.7	24416.1	24001.1	23463.5	22661.9	21761.1	20637.9	19540.8	18352.4
30°	22268.8	22485.2	22427.1	22228.7	21735.1	21099.7	20156.5	19109.9	17862.9	16691.0	15486.8
32.5°	19697.0	19970.6	19930.4	19741.9	19226.8	18546.9	17523.4	16413.4	15137.5	13982.7	12811.4
35°	16773.7	17106.0	17123.2	17000.0	16521.8	15849.8	14839.1	13764.7	12542.5	11453.0	10370.9
37.5°	13624.3	14009.5	14088.7	14055.4	13659.1	13065.9	12145.0	11181.2	10098.5	9143.7	8218.1
40°	10457.5	10847.4	10982.6	11022.8	10730.4	10270.9	9515.1	8737.2	7854.6	7080.9	6345.9
42.5°	7569.5	7915.1	8045.9	8128.1	7945.5	7639.1	7087.8	6522.9	5876.3	5318.3	4783.2
45°	5257.1	5501.7	5601.1	5683.9	5584.5	5411.6	5063.5	4710.1	4283.3	3918.6	3573.4
47.5°	3675.6	3810.4	3876.0	3916.2	3877.7	3787.5	3598.1	3393.4	3152.4	2939.3	2734.4
50°	2724.4	2796.2	2830.5	2853.7	2825.7	2775.6	2673.0	2561.6	2429.3	2308.5	2190.5
52.5°	2159.0	2200.1	2220.6	2233.0	2217.0	2186.3	2126.6	2060.6	1981.2	1906.6	1867.4
55°	1818.8	1816.7	1863.9	1841.1	1863.9	1813.0	1802.3	1729.6	1663.8	1617.4	1567.2
57.5°	1500.0	1521.3	1530.4	1540.5	1534.0	1524.7	1499.3	1473.3	1438.5	1409.5	1378.5
60°	1298.4	1316.0	1325.9	1335.9	1335.3	1331.8	1317.2	1301.7	1279.9	1262.6	1243.8
62.5°	1159.6	1174.8	1184.6	1194.2	1195.1	1193.6	1182.6	1171.7	1156.9	1146.1	1133.1
65°	1050.3	1061.0	1067.7	1075.3	1074.9	1072.9	1062.8	1053.9	1041.6	1034.1	1024.6
67.5°	936.0	944.1	949.3	956.5	957.9	958.3	952.8	948.6	942.7	940.5	937.3
70°	854.7	864.5	872.8	882.0	887.0	889.3	887.0	884.8	881.3	879.9	877.3
72.5°	793.1	801.4	807.9	816.2	820.9	824.2	822.4	821.2	818.2	817.7	816.1
75°	716.7	722.5	726.1	732.4	734.8	738.0	736.6	737.4	736.3	738.8	738.6
77.5°	624.9	629.1	630.8	635.3	635.7	639.5	640.4	644.8	647.9	654.9	658.5
80°	521.5	524.1	524.1	528.8	530.8	537.2	540.2	547.4	550.8	557.0	557.5
82.5°	405.0	401.9	405.0	403.1	409.1	416.2	417.1	423.3	424.7	428.5	425.5
85°	276.9	276.7	274.2	274.6	272.8	273.7	272.6	273.8	272.7	272.8	270.0
87.5°	132.6	133.9	131.0	131.9	129.1	130.4	128.0	129.8	126.9	127.4	123.1
90°	26.0	26.6	26.9	27.5	28.5	30.1	31.9	33.5	35.8	37.3	39.2
92.5°	26.8	27.8	28.8	29.8	30.7	33.6	36.4	39.3	42.3	45.1	48.0
95°	30.5	31.4	32.2	33.3	34.2	38.3	42.5	46.6	50.9	55.0	59.2
97.5°	34.7	35.2	35.8	36.3	36.9	41.8	46.7	51.6	56.5	61.4	66.2
100°	39.9	40.6	41.1	41.9	42.5	53.9	65.2	76.4	87.8	99.0	110.3
102.5°	64.2	68.1	72.1	76.3	80.3	107.7	135.1	162.5	189.7	217.0	244.4
105°	144.3	157.6	171.1	184.5	197.8	239.3	280.8	322.3	363.5	404.9	446.4
107.5°	290.0	313.4	337.0	360.4	384.0	423.0	462.0	500.9	539.9	578.9	617.6
110°	443.5	463.6	484.1	504.4	524.7	555.4	586.5	617.3	648.2	679.0	709.8



TEST NUMBER: P1444460
 CATALOG NUMBER: EHBR1-36-UNV-TA-L830-UPL18

CANDELA DISTRIBUTION (continued):

	192.5°	195°	197.5°	200°	202.5°	205°	207.5°	210°	212.5°	215°	217.5°
112.5°	533.7	545.9	558.3	570.5	582.8	605.5	628.3	650.9	673.6	696.0	718.6
115°	558.3	564.6	571.2	577.6	584.2	597.8	611.4	625.1	638.6	652.1	665.7
117.5°	544.1	546.5	548.9	550.9	553.2	560.1	567.1	573.9	580.9	587.9	594.7
120°	507.5	507.2	506.9	506.6	506.4	508.3	510.5	512.5	514.5	516.5	518.4
122.5°	466.1	464.3	462.7	461.0	459.2	458.1	457.3	456.2	455.4	454.3	453.5
125°	427.1	425.4	423.6	421.7	419.7	417.6	415.4	413.2	410.9	408.8	406.5
127.5°	394.4	392.6	391.2	389.3	387.6	385.1	382.6	380.0	377.7	375.0	372.4
130°	367.6	366.3	365.2	363.6	362.4	360.0	357.9	355.6	353.3	351.1	348.8
132.5°	348.9	348.0	347.1	345.9	344.9	342.7	341.0	338.7	336.6	334.5	332.5
135°	335.0	334.3	333.8	333.0	332.3	330.4	329.0	327.2	325.6	323.9	322.3
137.5°	323.9	323.4	323.2	322.7	322.2	320.7	319.4	318.0	316.7	315.2	313.9
140°	317.4	317.0	316.9	316.4	316.0	314.5	313.0	311.5	310.1	308.6	307.2
142.5°	310.2	310.1	309.9	309.4	309.0	307.7	306.9	305.6	304.4	303.3	302.2
145°	305.4	305.4	305.3	305.0	305.0	303.6	302.4	301.0	299.9	298.5	297.3
147.5°	300.7	300.6	300.7	300.6	300.7	299.5	298.6	297.4	296.6	295.4	294.6
150°	297.4	297.4	297.4	297.2	297.1	296.0	295.2	294.1	293.2	292.1	291.2
152.5°	294.3	294.4	294.5	294.5	294.6	293.6	292.6	291.6	290.7	289.4	288.5
155°	291.8	291.9	292.1	292.1	292.1	291.2	290.4	289.3	288.5	287.5	286.6
157.5°	290.1	290.3	290.5	290.7	290.8	290.0	289.3	288.5	287.8	286.9	286.2
160°	289.3	289.6	289.8	290.0	290.2	289.5	289.1	288.3	287.9	287.0	286.3
162.5°	289.7	290.0	290.2	290.4	290.6	289.9	289.4	288.9	288.2	287.4	286.7
165°	289.3	289.4	289.6	289.6	289.7	289.3	289.1	288.6	288.2	287.6	287.2
167.5°	291.2	291.2	291.4	291.4	291.6	291.3	291.2	290.8	290.5	290.2	289.8
170°	291.9	292.1	292.2	292.2	292.3	292.0	291.8	291.5	291.3	290.8	290.5
172.5°	292.4	292.3	292.3	292.3	292.3	292.1	291.9	291.7	291.6	291.3	291.1
175°	292.3	292.3	292.3	292.2	292.1	292.1	292.0	292.1	292.0	291.8	291.7
177.5°	294.1	293.9	293.7	293.4	293.2	293.1	293.2	293.0	293.1	293.0	292.9
180°	291.7	291.7	291.7	291.7	291.7	291.7	291.7	291.7	291.7	291.7	291.7



TEST NUMBER: P1444460
 CATALOG NUMBER: EHBR1-36-UNV-TA-L830-UPL18

CANDELA DISTRIBUTION (continued):

	220°	222.5°	225°	227.5°	230°	232.5°	235°	237.5°	240°	242.5°	245°
0°	29129.1	29129.1	29129.1	29129.1	29129.1	29129.1	29129.1	29129.1	29129.1	29129.1	29129.1
2.5°	29387.6	29206.1	29182.2	29195.0	29225.2	29236.5	29269.2	29278.1	29311.1	29319.2	29350.8
5°	29994.0	29754.2	29766.1	29823.8	29911.1	29963.2	30049.0	30093.8	30175.8	30213.1	30287.1
7.5°	30633.5	30445.1	30503.8	30601.1	30720.5	30803.1	30906.2	30973.4	31062.2	31117.4	31188.6
10°	30947.4	30895.7	30960.5	31037.0	31105.1	31158.4	31202.1	31237.1	31260.0	31281.5	31290.9
12.5°	30708.5	30788.4	30799.4	30792.0	30746.8	30712.3	30635.0	30582.4	30489.0	30432.1	30321.0
15°	29822.8	29998.5	29901.2	29753.9	29538.5	29358.8	29105.1	28916.2	28652.1	28472.9	28207.7
17.5°	28268.5	28490.2	28236.7	27896.0	27462.5	27091.8	26630.0	26263.5	25804.4	25470.4	25042.0
20°	26080.3	26287.4	25835.5	25270.6	24600.1	24035.9	23370.4	22839.5	22221.1	21761.1	21206.0
22.5°	23355.8	23503.4	22866.6	22105.1	21250.9	20546.0	19750.3	19113.8	18408.1	17882.2	17290.3
25°	20341.7	20381.6	19617.6	18740.4	17788.3	16996.0	16146.6	15477.4	14757.7	14224.7	13643.8
27.5°	17299.5	17241.1	16415.4	15485.3	14483.8	13660.3	12831.9	12204.8	11574.3	11094.3	10593.8
30°	14428.1	14286.7	13429.4	12473.3	11501.2	10763.1	10075.3	9571.7	9070.2	8689.4	8287.6
32.5°	11794.9	11595.4	10760.9	9865.2	9046.1	8476.5	7966.5	7585.4	7180.4	6858.8	6521.6
35°	9462.6	9250.1	8510.8	7751.5	7131.4	6711.6	6310.8	5998.1	5654.3	5382.9	5090.1
37.5°	7461.1	7286.8	6667.6	6070.1	5601.1	5275.7	4947.3	4691.8	4407.6	4288.3	3975.4
40°	5759.9	5638.1	5154.0	4713.4	4361.3	4208.4	3875.1	3636.4	3424.0	3249.0	3079.3
42.5°	4492.8	4449.7	3978.5	3635.0	3387.0	3194.5	3008.6	2857.8	2711.0	2590.3	2476.3
45°	3297.1	3262.9	3053.8	2855.5	2686.5	2551.9	2426.3	2322.6	2226.6	2147.0	2074.7
47.5°	2567.4	2556.5	2436.0	2313.0	2206.6	2120.1	2038.7	1969.8	1906.1	1853.0	1835.7
50°	2088.2	2086.8	2016.1	1940.2	1864.4	1814.4	1762.4	1721.7	1680.7	1648.9	1615.3
52.5°	1774.2	1766.6	1718.9	1672.0	1627.0	1594.2	1560.9	1534.9	1507.8	1488.1	1467.3
55°	1527.5	1535.5	1507.9	1480.0	1451.8	1431.4	1408.1	1390.9	1372.4	1359.9	1347.3
57.5°	1356.1	1366.8	1352.2	1336.4	1319.3	1305.9	1289.8	1277.9	1265.5	1257.5	1250.2
60°	1231.3	1243.0	1237.2	1229.1	1218.6	1210.6	1200.4	1193.7	1185.8	1181.4	1177.3
62.5°	1125.5	1140.2	1138.1	1134.3	1127.5	1123.0	1117.5	1114.5	1109.3	1107.3	1105.3
65°	1020.0	1036.4	1036.1	1034.2	1030.5	1029.2	1025.7	1025.0	1022.3	1023.4	1023.2
67.5°	937.0	951.2	954.3	956.6	956.5	957.3	957.0	958.4	958.4	960.5	961.8
70°	877.0	887.0	889.3	891.7	892.4	894.3	894.3	895.5	895.2	896.9	897.1
72.5°	816.4	829.5	831.9	833.9	833.9	835.7	834.7	834.4	831.8	831.2	829.5
75°	741.1	757.9	761.5	763.9	764.3	765.9	763.6	762.2	757.9	756.1	753.1
77.5°	662.4	679.8	682.4	683.2	681.8	682.2	677.4	674.1	668.7	666.4	663.5
80°	560.0	585.5	587.6	586.0	582.0	581.3	576.7	573.6	567.1	564.8	562.3
82.5°	426.1	456.1	460.3	462.2	458.9	459.6	455.2	453.6	447.5	446.4	442.4
85°	269.0	299.0	304.0	303.2	300.0	299.3	296.7	297.5	297.0	298.6	299.5
87.5°	123.6	152.7	159.7	157.4	157.1	155.0	150.3	152.1	154.9	156.7	156.9
90°	41.0	51.6	53.2	52.5	48.9	47.7	44.4	43.7	40.9	40.1	37.4
92.5°	50.9	53.7	56.6	54.0	51.4	48.9	46.4	43.7	41.2	38.6	36.1
95°	63.3	67.3	71.4	68.0	64.4	61.1	57.6	54.2	50.8	47.4	43.9
97.5°	71.1	75.8	80.6	77.2	73.7	70.3	66.8	63.4	59.9	56.5	53.0
100°	121.6	132.5	143.7	133.9	124.2	114.5	104.7	95.0	85.2	75.5	65.8
102.5°	271.7	298.8	326.0	301.3	276.7	252.1	227.5	202.9	178.3	153.5	129.0
105°	487.7	528.7	570.0	532.1	494.6	457.1	419.6	382.0	344.4	306.8	269.3
107.5°	656.4	694.7	733.3	699.3	665.3	631.3	597.2	563.2	529.2	495.1	461.2
110°	740.7	770.5	801.2	778.1	755.3	732.2	709.4	686.4	663.6	640.9	618.0



TEST NUMBER: P1444460
 CATALOG NUMBER: EHBR1-36-UNV-TA-L830-UPL18

CANDELA DISTRIBUTION (continued):

	220°	222.5°	225°	227.5°	230°	232.5°	235°	237.5°	240°	242.5°	245°
112.5°	741.1	762.4	784.6	770.9	757.5	743.9	730.5	717.0	703.7	690.1	676.9
115°	679.1	691.1	704.2	698.5	693.2	687.5	682.0	676.7	671.2	665.6	660.5
117.5°	601.5	606.5	612.8	611.4	610.2	608.8	607.5	606.3	605.3	604.1	603.0
120°	520.3	520.3	521.7	521.8	522.3	522.5	523.0	523.2	523.7	524.1	524.7
122.5°	452.3	449.2	447.4	447.6	447.7	447.8	448.1	448.4	448.7	449.0	449.4
125°	404.3	399.5	396.5	395.1	393.9	392.4	391.1	389.7	388.5	387.1	386.0
127.5°	369.9	364.8	361.6	358.9	356.4	353.7	351.2	348.5	346.0	343.4	341.1
130°	346.5	341.4	338.4	335.2	332.3	329.0	326.0	322.7	319.5	316.4	313.3
132.5°	330.4	325.4	322.6	319.5	316.7	313.4	310.5	307.3	304.3	301.1	298.2
135°	320.6	315.9	313.5	310.7	308.1	305.2	302.5	299.5	296.8	293.8	291.2
137.5°	312.5	307.7	305.6	303.3	301.2	298.7	296.6	294.2	291.9	289.3	287.2
140°	305.7	300.8	298.6	297.2	295.9	294.3	292.9	291.4	290.0	288.6	287.1
142.5°	301.0	296.2	294.2	293.3	292.3	291.3	290.6	289.5	288.5	287.2	286.3
145°	296.2	290.8	288.7	288.2	288.2	287.9	287.5	287.3	286.9	286.4	286.2
147.5°	293.4	287.9	285.8	285.8	285.8	285.5	285.7	285.4	285.6	285.3	285.4
150°	290.0	283.7	281.4	281.7	281.7	281.9	282.1	282.2	282.5	282.7	282.8
152.5°	287.4	280.0	277.3	277.5	277.9	278.0	278.3	278.7	279.0	279.4	279.7
155°	285.5	277.5	274.5	274.4	274.5	274.6	274.7	275.0	275.2	275.4	275.8
157.5°	285.1	276.6	273.8	273.5	273.5	273.5	273.4	273.6	273.7	273.8	274.2
160°	285.6	277.0	274.2	273.9	273.9	273.7	273.6	273.7	273.8	273.9	274.1
162.5°	286.0	277.6	274.9	274.5	274.4	274.2	274.2	274.1	274.2	274.2	274.4
165°	286.5	279.2	276.7	276.5	276.6	276.4	276.4	276.5	276.5	276.6	276.9
167.5°	289.3	282.7	280.8	280.5	280.2	279.8	279.8	279.4	279.4	279.1	279.1
170°	290.0	284.9	283.2	283.0	283.1	283.1	283.0	283.0	282.9	282.9	283.0
172.5°	290.8	287.0	285.8	285.8	286.1	286.2	286.4	286.5	286.7	286.9	287.2
175°	291.6	289.3	288.8	288.7	288.8	288.9	289.0	289.2	289.3	289.3	289.6
177.5°	292.8	292.2	291.9	291.9	291.9	291.9	291.9	291.9	291.9	292.0	292.0
180°	291.7	291.7	291.7	291.7	291.7	291.7	291.7	291.7	291.7	291.7	291.7



TEST NUMBER: P1444460
 CATALOG NUMBER: EHBR1-36-UNV-TA-L830-UPL18

CANDELA DISTRIBUTION (continued):

	247.5°	250°	252.5°	255°	257.5°	260°	262.5°	265°	267.5°	270°	272.5°
0°	29129.1	29129.1	29129.1	29129.1	29129.1	29129.1	29129.1	29129.1	29129.1	29129.1	29129.1
2.5°	29356.7	29391.0	29388.4	29420.3	29418.7	29448.8	29442.8	29468.9	29462.9	29485.2	29472.0
5°	30319.8	30384.8	30406.3	30465.1	30477.2	30529.8	30530.9	30572.7	30567.6	30600.3	30582.9
7.5°	31230.6	31291.4	31320.3	31365.9	31388.7	31426.5	31441.3	31472.4	31479.8	31498.1	31497.6
10°	31307.5	31307.3	31321.6	31315.2	31327.9	31320.5	31336.1	31330.5	31353.5	31347.5	31364.9
12.5°	30273.1	30170.5	30133.0	30040.7	30020.6	29941.4	29947.1	29896.3	29920.8	29889.6	29942.7
15°	28049.9	27811.8	27694.2	27487.1	27422.1	27258.4	27245.1	27136.5	27165.8	27108.9	27192.0
17.5°	24764.7	24389.8	24184.0	23881.7	23761.6	23530.1	23483.8	23343.8	23365.5	23295.0	23395.4
20°	20847.9	20394.8	20135.3	19785.6	19629.6	19353.7	19280.5	19123.9	19143.6	19073.5	19187.0
22.5°	16886.3	16412.1	16119.1	15752.6	15553.4	15293.9	15216.1	15058.7	15067.7	15001.9	15111.1
25°	13245.8	12791.1	12506.7	12173.8	12001.0	11763.1	11681.2	11540.1	11548.0	11493.7	11591.8
27.5°	10246.7	9873.6	9635.6	9356.5	9201.6	9006.0	8926.2	8807.5	8807.1	8767.3	8849.3
30°	8007.2	7695.8	7482.2	7239.2	7093.7	6917.1	6840.0	6733.8	6729.2	6700.9	6766.0
32.5°	6269.4	5992.5	5797.7	5583.8	5453.1	5301.7	5228.7	5143.4	5135.6	5110.0	5163.4
35°	4873.7	4640.5	4473.0	4292.8	4306.1	4082.6	4119.8	3946.3	3899.1	3888.9	3928.7
37.5°	3766.8	3586.2	3450.1	3315.2	3223.9	3129.5	3078.6	3032.9	3027.7	3023.3	3051.1
40°	2948.4	2821.9	2723.0	2630.5	2567.6	2510.0	2478.2	2453.1	2447.2	2443.8	2460.6
42.5°	2386.3	2300.9	2237.1	2180.8	2142.5	2111.2	2093.7	2079.8	2075.1	2075.3	2085.2
45°	2016.1	1964.4	1923.3	1888.1	1863.8	1874.4	1842.9	1859.5	1837.6	1860.2	1845.3
47.5°	1775.4	1731.4	1705.9	1681.1	1666.3	1654.4	1654.9	1655.1	1659.8	1660.5	1665.3
50°	1589.8	1564.3	1546.6	1530.7	1523.0	1516.8	1519.0	1520.6	1525.1	1525.4	1529.0
52.5°	1452.4	1435.6	1424.9	1415.1	1411.6	1408.1	1409.6	1408.9	1411.0	1409.9	1412.8
55°	1340.5	1332.6	1329.3	1325.6	1326.1	1325.2	1325.8	1322.3	1320.1	1317.4	1319.8
57.5°	1248.7	1247.6	1249.9	1251.4	1255.7	1257.2	1258.1	1254.0	1250.1	1246.6	1248.6
60°	1178.0	1179.8	1185.3	1189.9	1195.9	1198.7	1200.5	1198.1	1195.2	1192.3	1194.1
62.5°	1108.3	1110.9	1117.7	1122.7	1130.0	1133.9	1138.1	1138.3	1139.4	1138.3	1139.5
65°	1027.3	1030.7	1036.7	1040.9	1047.7	1051.1	1055.4	1056.1	1058.5	1058.0	1060.0
67.5°	965.7	968.8	973.9	977.8	983.9	987.4	991.1	991.3	992.3	992.0	993.9
70°	900.2	901.7	906.2	909.5	915.5	919.1	923.4	924.7	927.4	927.9	930.1
72.5°	830.2	829.5	832.3	833.8	838.3	841.1	846.6	849.6	854.2	855.3	857.0
75°	754.0	753.3	756.6	757.9	761.7	764.5	770.7	774.7	781.7	784.6	783.8
77.5°	665.7	667.3	673.3	676.7	681.8	685.4	693.4	699.8	712.6	718.3	712.6
80°	567.1	568.7	575.0	578.1	584.9	589.2	598.2	605.7	617.2	619.6	616.4
82.5°	445.9	446.2	451.9	454.3	463.1	469.5	480.8	486.8	493.9	492.8	492.0
85°	304.0	308.1	315.1	322.1	332.9	343.3	354.0	362.9	356.6	366.4	355.4
87.5°	162.5	162.1	171.5	170.0	185.2	193.9	203.2	207.6	212.5	211.6	211.7
90°	37.1	35.0	35.4	33.1	34.2	31.8	33.6	31.3	33.7	30.8	35.4
92.5°	33.4	32.1	30.6	29.4	27.9	26.6	25.1	23.8	22.4	21.0	22.4
95°	40.6	39.2	38.0	36.6	35.3	34.1	32.8	31.5	30.3	28.9	30.5
97.5°	49.6	48.9	48.1	47.4	46.6	46.0	45.2	44.5	43.7	42.9	43.9
100°	56.0	56.0	56.0	56.0	55.7	55.7	55.7	55.7	55.7	55.7	56.6
102.5°	104.3	101.9	99.5	96.9	94.5	92.0	89.5	87.1	84.7	82.2	85.9
105°	231.7	222.2	212.4	202.9	193.1	183.6	173.9	164.4	154.7	145.2	155.1
107.5°	427.4	409.8	392.2	374.8	357.2	339.7	322.1	304.7	287.2	269.7	285.3
110°	595.2	576.5	557.9	539.4	520.7	502.0	483.4	464.9	446.3	427.8	442.7



TEST NUMBER: P1444460
 CATALOG NUMBER: EHBR1-36-UNV-TA-L830-UPL18

CANDELA DISTRIBUTION (continued):

	247.5°	250°	252.5°	255°	257.5°	260°	262.5°	265°	267.5°	270°	272.5°
112.5°	663.6	651.2	639.2	627.1	615.1	603.1	591.2	579.2	567.3	555.3	562.5
115°	654.9	649.2	643.3	637.6	631.8	625.9	620.2	614.6	608.9	603.2	603.7
117.5°	601.9	599.8	597.7	595.7	593.7	591.7	589.8	588.1	586.1	584.4	580.4
120°	525.2	525.6	525.9	526.4	527.0	527.5	527.9	528.7	529.4	530.2	524.7
122.5°	449.8	450.8	452.0	453.3	454.6	456.0	457.4	459.0	460.6	462.2	456.7
125°	384.7	385.7	386.9	388.0	389.0	390.5	391.9	393.5	395.0	396.7	392.1
127.5°	338.5	338.6	338.6	339.0	339.2	339.7	340.1	340.8	341.5	342.4	339.5
130°	310.1	309.4	308.5	307.6	306.8	306.4	305.9	305.5	305.2	305.1	303.9
132.5°	295.2	293.6	292.0	290.5	289.1	287.8	286.5	285.7	284.8	284.0	283.6
135°	288.3	286.3	284.2	282.3	280.4	278.9	277.2	275.9	274.5	273.3	273.7
137.5°	284.8	282.8	280.7	278.9	276.9	275.5	273.8	272.3	271.1	270.0	270.5
140°	285.5	283.4	281.5	279.7	277.9	276.3	274.7	273.4	272.0	271.0	271.3
142.5°	285.1	283.5	281.7	280.0	278.3	276.9	275.6	274.4	273.0	272.1	272.5
145°	285.7	284.5	283.1	281.8	280.6	279.6	278.3	277.5	276.7	276.2	276.4
147.5°	285.1	284.3	283.1	282.2	281.1	280.5	279.7	279.1	278.5	278.0	278.1
150°	283.0	282.4	281.7	281.1	280.5	280.1	279.6	279.2	278.9	278.6	278.6
152.5°	280.0	279.5	279.0	278.5	278.0	277.6	277.3	277.0	276.8	276.5	276.5
155°	276.0	275.8	275.5	275.4	275.2	275.2	275.0	275.2	275.0	275.2	275.3
157.5°	274.3	274.4	274.3	274.5	274.5	274.5	274.5	274.9	274.9	275.2	275.5
160°	274.4	274.5	274.4	274.4	274.5	274.5	274.5	274.6	274.7	274.9	275.2
162.5°	274.5	274.7	274.8	275.1	275.4	275.6	276.0	276.4	276.6	277.0	277.4
165°	277.1	277.1	277.2	277.1	277.3	277.4	277.5	277.7	277.9	278.2	278.7
167.5°	279.0	279.2	279.2	279.4	279.6	280.1	280.3	280.6	281.0	281.5	281.9
170°	282.9	282.9	282.9	282.9	282.9	283.1	283.2	283.3	283.4	283.7	283.9
172.5°	287.3	287.3	287.1	287.3	287.1	287.3	287.3	287.4	287.4	287.5	287.6
175°	289.5	289.8	289.9	290.2	290.2	290.3	290.4	290.6	290.7	290.8	290.8
177.5°	292.0	292.1	292.1	292.1	292.1	292.2	292.2	292.2	292.2	292.1	292.2
180°	291.7	291.7	291.7	291.7	291.7	291.7	291.7	291.7	291.7	291.7	291.7



TEST NUMBER: P1444460
 CATALOG NUMBER: EHBR1-36-UNV-TA-L830-UPL18

CANDELA DISTRIBUTION (continued):

	275°	277.5°	280°	282.5°	285°	287.5°	290°	292.5°	295°	297.5°	300°
0°	29129.1	29129.1	29129.1	29129.1	29129.1	29129.1	29129.1	29129.1	29129.1	29129.1	29129.1
2.5°	29493.8	29479.0	29494.1	29478.8	29494.1	29475.7	29488.2	29468.3	29473.4	29452.7	29458.0
5°	30608.9	30585.4	30598.0	30567.3	30570.6	30529.8	30529.0	30481.5	30469.0	30414.9	30391.1
7.5°	31510.7	31503.0	31507.3	31487.7	31485.4	31457.6	31444.3	31405.0	31380.3	31330.5	31296.5
10°	31367.9	31391.0	31396.9	31420.3	31425.2	31448.4	31453.3	31476.5	31481.3	31498.5	31498.7
12.5°	29940.2	30018.3	30037.0	30133.4	30174.0	30284.4	30343.5	30465.1	30537.3	30658.5	30732.9
15°	27189.8	27324.8	27378.7	27567.0	27671.1	27891.0	28029.0	28281.4	28459.6	28727.5	28918.8
17.5°	23404.3	23593.0	23678.1	23933.5	24100.0	24424.5	24658.3	25043.2	25337.8	25765.5	26104.5
20°	19206.5	19416.2	19531.8	19823.1	20019.6	20398.7	20690.6	21163.5	21557.9	22099.9	22563.3
22.5°	15145.4	15345.0	15473.3	15769.7	15990.9	16386.3	16712.6	17211.7	17653.6	18264.3	18820.0
25°	11628.8	11811.7	11927.7	12195.8	12403.6	12766.9	13078.4	13558.5	13990.9	14603.4	15173.2
27.5°	8890.0	9043.3	9155.1	9383.7	9567.0	9875.1	10142.7	10539.4	10912.0	11441.9	11949.3
30°	6806.0	6941.9	7050.7	7249.8	7419.7	7686.8	7922.1	8255.4	8563.7	8985.4	9389.0
32.5°	5201.0	5317.9	5414.8	5589.1	5743.2	5983.8	6195.8	6487.9	6752.5	7110.2	7442.2
35°	3965.6	4195.6	4179.3	4419.6	4458.3	4630.9	4820.0	5075.5	5309.8	5613.9	5896.6
37.5°	3077.9	3142.6	3211.9	3318.1	3429.8	3586.8	3746.6	4058.7	4173.1	4403.0	4636.9
40°	2482.0	2525.7	2571.5	2643.3	2721.4	2832.1	2948.5	3097.3	3249.9	3436.2	3626.6
42.5°	2098.3	2123.1	2152.2	2194.4	2242.6	2312.7	2390.6	2491.6	2597.6	2728.8	2862.7
45°	1874.7	1863.0	1871.6	1894.3	1923.3	1966.0	2015.1	2077.6	2146.7	2231.7	2322.1
47.5°	1666.3	1671.1	1673.6	1686.0	1701.5	1730.1	1759.9	1802.3	1884.3	1909.2	1958.6
50°	1528.6	1531.0	1530.2	1536.4	1544.4	1562.9	1582.2	1611.0	1639.6	1677.6	1713.9
52.5°	1413.2	1416.5	1416.0	1420.1	1424.4	1436.2	1448.3	1468.7	1487.4	1511.6	1532.5
55°	1322.2	1326.6	1328.3	1331.7	1333.8	1340.0	1344.8	1354.5	1362.5	1376.2	1388.9
57.5°	1252.1	1258.1	1260.9	1262.1	1259.6	1259.3	1257.7	1259.8	1261.4	1268.7	1275.8
60°	1196.9	1201.8	1202.5	1201.8	1197.2	1194.0	1188.8	1187.2	1186.3	1189.9	1193.7
62.5°	1139.1	1140.9	1139.7	1138.3	1133.1	1130.0	1124.6	1122.6	1120.8	1123.3	1125.4
65°	1059.2	1060.7	1059.2	1058.4	1053.8	1051.3	1046.8	1045.3	1042.7	1043.3	1042.8
67.5°	994.4	995.9	994.7	993.5	990.3	988.8	985.4	983.3	980.2	979.0	976.8
70°	929.7	930.9	929.0	927.9	924.3	922.8	919.7	919.0	916.6	916.0	913.5
72.5°	855.3	855.4	852.9	852.1	849.4	849.3	848.0	849.2	849.0	850.3	849.8
75°	779.2	778.1	774.9	774.4	772.3	773.3	771.8	773.7	773.9	776.7	777.1
77.5°	703.0	699.0	692.9	690.0	685.9	685.3	683.0	684.5	684.0	687.3	688.6
80°	606.7	601.8	594.0	590.2	585.3	584.6	582.4	584.6	583.5	587.3	589.9
82.5°	484.4	480.2	472.0	468.9	463.4	463.9	461.5	463.9	463.6	469.2	472.4
85°	358.3	355.5	347.1	339.7	331.3	326.4	321.7	320.8	319.4	321.7	323.6
87.5°	206.9	204.4	197.7	193.4	178.9	179.6	173.9	173.5	172.1	170.8	173.9
90°	34.5	38.3	37.6	41.1	40.8	44.9	45.0	48.8	48.2	52.0	52.0
92.5°	23.8	25.1	26.5	27.9	29.3	30.6	32.0	33.4	36.4	39.2	42.4
95°	32.1	33.7	35.3	37.0	38.6	40.2	41.8	43.4	47.8	52.1	56.5
97.5°	45.1	46.1	47.1	48.2	49.3	50.3	51.4	52.5	57.2	61.9	66.6
100°	57.4	58.3	59.1	60.0	60.9	61.7	62.6	63.4	72.8	81.9	90.9
102.5°	89.5	93.1	96.8	100.3	104.1	107.7	111.3	114.9	135.8	156.6	177.4
105°	165.0	175.0	185.0	194.8	204.8	214.7	224.7	234.6	268.0	301.3	334.9
107.5°	301.1	316.7	332.4	348.2	363.9	379.6	395.4	411.1	443.6	476.3	508.8
110°	457.7	472.7	487.7	502.6	517.6	532.6	547.7	562.9	582.4	601.9	621.6



TEST NUMBER: P1444460
 CATALOG NUMBER: EHBR1-36-UNV-TA-L830-UPL18

CANDELA DISTRIBUTION (continued):

	275°	277.5°	280°	282.5°	285°	287.5°	290°	292.5°	295°	297.5°	300°
112.5°	569.9	577.1	584.5	591.8	599.2	606.7	614.1	621.5	631.3	641.3	651.1
115°	604.2	604.6	605.2	605.9	606.4	607.0	607.8	608.5	611.9	615.0	618.3
117.5°	576.4	572.4	568.6	564.6	560.8	557.2	553.4	549.8	549.4	549.0	548.8
120°	519.6	514.3	509.1	503.8	498.8	493.6	488.8	483.9	481.6	479.1	477.0
122.5°	451.5	446.3	441.2	435.9	431.0	426.1	421.3	416.6	415.1	413.6	412.2
125°	387.7	383.4	379.2	375.2	371.1	367.2	363.3	359.6	359.9	360.1	360.6
127.5°	337.0	334.4	332.0	329.7	327.6	325.3	323.4	321.2	323.0	324.6	326.2
130°	302.8	301.9	301.2	300.2	299.7	299.2	298.6	298.2	300.8	303.2	305.8
132.5°	283.8	283.7	284.0	284.2	284.7	285.1	285.8	286.2	289.1	291.9	294.8
135°	274.2	274.6	275.5	276.3	277.5	278.3	279.4	280.4	283.3	285.8	288.8
137.5°	271.4	272.0	273.1	274.0	275.3	276.4	277.8	279.0	281.3	283.4	285.7
140°	272.0	272.7	273.6	274.5	275.4	276.4	277.6	278.6	280.6	282.4	284.2
142.5°	273.3	273.7	274.5	275.5	276.4	277.3	278.4	279.2	280.7	282.0	283.7
145°	276.9	277.4	278.1	278.7	279.4	280.2	281.0	281.8	282.8	283.7	284.8
147.5°	278.6	278.9	279.4	280.0	280.6	281.2	281.7	282.2	283.1	283.7	284.6
150°	279.0	279.1	279.5	279.6	280.2	280.6	281.2	281.5	282.1	282.7	283.4
152.5°	277.0	277.1	277.5	277.5	278.0	278.4	278.7	279.1	279.8	280.2	280.8
155°	275.6	276.0	276.4	276.8	277.4	277.5	278.1	278.4	279.0	279.3	279.9
157.5°	275.9	276.1	276.6	276.9	277.4	277.7	278.2	278.5	279.0	279.3	279.8
160°	275.8	276.2	276.7	277.3	277.8	278.2	278.8	279.3	279.7	280.1	280.5
162.5°	277.8	278.2	278.7	279.0	279.4	279.8	280.2	280.5	281.2	281.6	282.1
165°	279.1	279.7	280.4	280.6	281.3	281.9	282.3	282.8	283.2	283.5	283.9
167.5°	282.3	282.6	283.3	283.8	284.3	284.8	285.2	285.7	286.1	286.4	286.7
170°	284.4	284.8	285.2	285.7	286.1	286.4	286.9	287.3	287.8	288.1	288.6
172.5°	287.9	288.2	288.5	288.8	289.2	289.5	289.8	290.1	290.5	290.8	291.1
175°	290.8	290.8	290.9	291.0	291.2	291.2	291.3	291.5	291.6	291.7	291.8
177.5°	292.3	292.4	292.5	292.6	292.7	292.9	293.0	293.1	293.1	293.1	293.1
180°	291.7	291.7	291.7	291.7	291.7	291.7	291.7	291.7	291.7	291.7	291.7



TEST NUMBER: P1444460
 CATALOG NUMBER: EHBR1-36-UNV-TA-L830-UPL18

CANDELA DISTRIBUTION (continued):

	302.5°	305°	307.5°	310°	312.5°	315°	317.5°	320°	322.5°	325°	327.5°
0°	29129.1	29129.1	29129.1	29129.1	29129.1	29129.1	29129.1	29129.1	29129.1	29129.1	29129.1
2.5°	29437.4	29438.7	29414.9	29413.7	29391.4	29388.6	29366.9	29360.3	29342.7	29336.3	29318.4
5°	30330.5	30301.6	30234.8	30195.5	30129.4	30085.7	30014.2	29967.6	29898.6	29846.5	29777.1
7.5°	31233.8	31188.8	31113.8	31053.0	30961.4	30888.3	30781.0	30693.1	30577.0	30476.5	30354.5
10°	31498.7	31491.8	31472.7	31444.8	31402.2	31354.3	31281.3	31205.1	31103.4	30992.8	30857.3
12.5°	30846.9	30917.3	31013.2	31070.2	31139.3	31169.6	31198.0	31190.9	31172.3	31116.3	31037.9
15°	29195.7	29393.5	29655.4	29858.3	30091.9	30261.5	30448.9	30565.7	30682.3	30736.0	30768.9
17.5°	26569.0	26943.5	27413.2	27802.3	28251.3	28612.0	29007.3	29304.9	29611.0	29830.2	30028.5
20°	23195.1	23737.7	24401.8	24988.6	25670.8	26263.7	26913.4	27446.8	27996.8	28427.0	28834.1
22.5°	19535.4	20179.9	20982.8	21726.7	22606.2	23396.6	24288.5	25064.6	25875.1	26552.1	27206.8
25°	15936.9	16643.5	17521.5	18351.4	19347.5	20267.0	21324.6	22292.0	23339.5	24249.0	25147.4
27.5°	12650.8	13344.6	14241.0	15124.4	16177.7	17157.4	18290.6	19356.5	20549.1	21649.0	22774.1
30°	9950.0	10538.4	11342.1	12197.8	13236.7	14233.7	15379.2	16475.4	17716.1	18917.0	20184.3
32.5°	7883.1	8331.4	8963.3	9686.8	10645.3	11594.4	12685.1	13743.3	14965.1	16178.3	17496.3
35°	6260.6	6610.3	7092.0	7656.7	8468.4	9286.4	10251.2	11213.6	12353.5	13504.6	14785.8
37.5°	4936.8	5220.6	5597.9	6022.0	6673.1	7344.5	8135.6	8933.4	9923.9	10944.2	12105.3
40°	3855.1	4084.8	4378.6	4694.9	5186.6	5703.8	6315.7	6934.4	7730.1	8564.0	9524.9
42.5°	3028.5	3198.0	3405.5	3636.6	4095.3	4369.9	4784.8	5232.3	5817.3	6422.7	7145.1
45°	2432.2	2547.8	2691.6	2846.7	3059.6	3292.5	3576.7	3874.6	4430.4	4703.0	5142.3
47.5°	2031.1	2108.7	2200.2	2297.9	2423.5	2559.0	2727.5	2899.8	3122.6	3353.5	3624.3
50°	1761.0	1839.9	1871.3	1921.9	1994.6	2072.0	2167.0	2262.0	2381.5	2502.6	2642.0
52.5°	1560.5	1586.2	1620.4	1652.5	1697.6	1785.7	1814.2	1863.9	1930.9	1996.4	2069.7
55°	1407.4	1424.2	1446.4	1465.9	1493.0	1519.1	1556.6	1589.7	1634.4	1673.9	1722.4
57.5°	1288.3	1298.9	1314.4	1327.1	1344.7	1359.4	1381.4	1399.3	1425.0	1447.4	1476.8
60°	1201.6	1208.8	1219.1	1227.5	1238.7	1246.4	1257.3	1265.7	1279.3	1290.6	1307.0
62.5°	1131.0	1134.6	1141.4	1146.3	1153.4	1157.3	1163.1	1166.8	1174.3	1180.0	1189.2
65°	1046.1	1047.0	1051.5	1053.5	1059.1	1061.2	1066.0	1067.7	1073.8	1078.1	1086.1
67.5°	976.6	974.6	974.7	973.1	973.9	972.2	972.7	971.0	973.4	974.7	980.9
70°	913.1	910.4	909.5	906.6	905.7	902.7	901.9	899.1	898.9	898.0	900.2
72.5°	851.2	850.4	850.7	848.7	848.5	846.4	846.5	845.2	846.6	847.3	850.1
75°	780.1	780.3	781.7	779.9	780.4	778.7	779.3	777.7	778.6	778.2	781.0
77.5°	693.5	695.6	699.3	698.6	699.8	697.8	698.7	696.4	697.1	695.6	696.6
80°	596.1	600.4	605.5	605.3	607.5	606.1	608.0	605.9	606.7	604.1	603.4
82.5°	480.5	484.2	489.6	489.8	494.6	495.4	500.7	500.5	503.9	501.7	500.2
85°	328.5	331.0	335.7	338.3	343.2	346.2	351.3	353.3	349.7	356.3	351.1
87.5°	171.5	177.9	174.3	182.7	180.7	189.1	187.3	195.1	193.5	200.3	199.4
90°	57.0	57.5	62.8	63.5	69.8	71.3	74.7	72.9	76.1	74.4	77.6
92.5°	45.1	48.3	51.3	54.3	57.3	60.4	57.5	54.8	52.0	49.4	46.5
95°	60.9	65.2	69.6	74.0	78.3	82.7	78.0	73.4	68.8	64.1	59.3
97.5°	71.3	76.1	80.7	85.4	90.2	94.9	89.4	83.8	78.2	72.8	67.3
100°	99.9	109.1	118.2	127.2	136.4	145.5	135.3	124.9	114.7	104.3	94.0
102.5°	198.5	219.4	240.3	261.2	281.9	302.8	280.9	259.3	237.3	215.3	193.4
105°	368.2	401.7	435.0	468.4	501.8	535.4	499.9	464.3	428.8	393.5	357.8
107.5°	541.4	574.0	606.8	639.3	671.9	704.7	668.7	632.7	596.8	560.8	524.7
110°	641.4	660.9	680.6	700.5	720.0	739.9	713.7	687.5	661.3	635.0	608.9



TEST NUMBER: P1444460
 CATALOG NUMBER: EHBR1-36-UNV-TA-L830-UPL18

CANDELA DISTRIBUTION (continued):

	302.5°	305°	307.5°	310°	312.5°	315°	317.5°	320°	322.5°	325°	327.5°
112.5°	661.1	671.2	681.1	691.2	701.1	711.1	692.4	674.0	655.1	636.6	617.9
115°	621.7	625.1	628.5	631.9	635.2	638.6	626.2	613.6	601.3	588.7	576.1
117.5°	548.5	548.3	547.9	547.9	547.5	547.3	540.5	533.6	526.7	519.9	512.8
120°	474.5	472.5	470.2	468.0	465.6	463.3	460.6	457.9	455.1	452.3	449.3
122.5°	410.7	409.4	407.9	406.6	405.0	403.5	402.7	401.9	400.9	400.1	399.1
125°	361.0	361.3	361.6	362.0	362.2	362.6	362.3	362.1	361.8	361.6	361.1
127.5°	327.8	329.4	330.9	332.5	333.9	335.5	335.6	336.0	336.1	336.3	336.5
130°	308.2	310.8	313.1	315.6	317.8	320.4	320.3	320.4	320.4	320.4	320.4
132.5°	297.5	300.3	303.0	305.8	308.5	311.2	311.1	311.2	310.9	311.0	310.8
135°	291.3	294.0	296.5	299.3	301.6	304.1	304.0	304.0	303.6	303.6	303.4
137.5°	287.8	290.1	292.2	294.3	296.2	298.3	298.1	298.1	297.6	297.7	297.4
140°	285.9	287.8	289.3	291.1	292.8	294.5	294.1	293.8	293.4	293.0	292.5
142.5°	285.0	286.4	287.7	289.1	290.3	291.7	290.8	290.2	289.5	288.9	288.2
145°	285.8	286.8	287.8	288.7	289.3	290.4	289.4	288.7	287.6	286.8	286.0
147.5°	285.2	286.0	286.4	287.2	287.5	288.2	287.3	286.4	285.6	284.6	283.7
150°	283.8	284.7	285.1	285.6	286.1	286.6	285.6	284.7	283.5	282.6	281.7
152.5°	281.4	281.9	282.4	282.8	283.3	283.6	282.5	281.9	280.7	279.7	278.7
155°	280.2	280.6	280.9	281.3	281.4	281.8	280.8	280.2	279.2	278.5	277.5
157.5°	280.1	280.5	280.8	281.1	281.3	281.6	281.0	280.5	279.7	279.1	278.4
160°	280.8	281.1	281.5	281.7	281.9	282.1	281.6	281.2	280.6	280.0	279.4
162.5°	282.5	283.1	283.4	283.7	284.1	284.5	283.8	283.3	282.6	281.9	281.3
165°	284.2	284.6	284.9	285.2	285.3	285.6	285.1	284.9	284.4	284.0	283.4
167.5°	287.0	287.4	287.7	287.9	288.0	288.2	287.9	287.7	287.1	286.6	286.2
170°	288.8	289.3	289.6	289.9	290.2	290.4	290.1	289.8	289.3	289.1	288.6
172.5°	291.4	291.8	291.9	292.3	292.3	292.6	292.3	291.9	291.5	291.1	290.7
175°	291.8	292.0	292.2	292.2	292.2	292.3	292.0	291.6	291.3	290.9	290.7
177.5°	293.1	293.1	293.1	293.0	293.0	293.0	292.8	292.5	292.3	292.2	291.8
180°	291.7	291.7	291.7	291.7	291.7	291.7	291.7	291.7	291.7	291.7	291.7



TEST NUMBER: P1444460
 CATALOG NUMBER: EHBR1-36-UNV-TA-L830-UPL18

CANDELA DISTRIBUTION (continued):

	330°	332.5°	335°	337.5°	340°	342.5°	345°	347.5°	350°	352.5°	355°
0°	29129.1	29129.1	29129.1	29129.1	29129.1	29129.1	29129.1	29129.1	29129.1	29129.1	29129.1
2.5°	29312.1	29299.3	29291.1	29280.7	29274.3	29266.2	29260.3	29255.2	29251.1	29247.3	29244.5
5°	29724.2	29658.7	29607.9	29552.8	29507.5	29462.5	29427.6	29398.9	29379.0	29364.1	29355.2
7.5°	30249.0	30129.1	30022.5	29910.1	29809.5	29710.5	29625.2	29551.8	29496.6	29460.8	29439.2
10°	30717.7	30557.1	30398.4	30231.2	30072.8	29918.9	29777.1	29652.4	29553.5	29487.9	29449.6
12.5°	30927.7	30790.9	30628.8	30447.3	30253.1	30056.6	29865.1	29692.4	29547.5	29450.1	29394.0
15°	30742.7	30686.6	30576.5	30435.6	30251.4	30048.2	29823.3	29612.0	29417.5	29291.4	29218.4
17.5°	30140.9	30219.3	30210.8	30157.0	30024.4	29853.5	29624.3	29386.9	29143.6	28975.1	28883.0
20°	29125.2	29371.5	29496.6	29560.7	29508.7	29397.8	29190.3	28949.4	28665.8	28445.8	28311.6
22.5°	27697.9	28132.8	28403.9	28602.2	28644.4	28606.5	28423.4	28194.2	27878.2	27613.7	27415.4
25°	25860.5	26497.8	26926.2	27262.0	27392.4	27426.1	27270.2	27042.3	26690.0	26381.9	26109.5
27.5°	23696.3	24524.3	25096.3	25547.5	25751.3	25839.6	25696.1	25463.6	25046.8	24679.0	24323.2
30°	21259.8	22242.2	22930.9	23472.0	23720.3	23837.0	23684.5	23425.0	22940.1	22497.5	22049.2
32.5°	18652.0	19727.1	20477.5	21065.1	21311.2	21420.9	21221.5	20930.0	20369.6	19848.1	19325.4
35°	15921.8	17006.8	17763.6	18335.5	18541.8	18607.9	18352.9	18016.0	17395.1	16822.7	16252.7
37.5°	13135.8	14145.3	14833.2	15346.5	15474.1	15485.5	15178.2	14806.2	14153.5	13589.1	13021.8
40°	10374.1	11225.3	11780.7	12191.5	12235.9	12196.3	11862.3	11487.8	10877.2	10371.6	9873.6
42.5°	7772.5	8415.1	8811.3	9092.9	9076.1	8998.1	8691.8	8370.0	7866.2	7481.1	7089.1
45°	5543.7	5967.5	6199.1	6363.9	6311.0	6236.6	5998.2	5772.7	5430.3	5181.6	4918.2
47.5°	3851.3	4357.3	4269.2	4591.4	4313.8	4497.1	4115.4	3905.0	3723.3	3591.2	3442.3
50°	2757.2	2873.2	2929.2	2967.4	2947.1	2918.9	2850.3	2789.1	2706.1	2645.5	2575.1
52.5°	2129.3	2187.3	2219.1	2242.0	2237.5	2227.2	2197.3	2170.0	2131.2	2105.5	2074.7
55°	1803.6	1804.5	1862.9	1837.8	1874.8	1831.5	1848.5	1800.4	1808.2	1767.0	1739.3
57.5°	1498.7	1522.5	1533.2	1543.5	1540.6	1538.8	1527.2	1521.4	1508.4	1504.4	1495.1
60°	1318.3	1330.8	1333.4	1338.1	1334.2	1332.6	1323.6	1320.3	1311.6	1309.9	1303.8
62.5°	1194.7	1201.0	1201.0	1201.0	1195.8	1190.8	1180.8	1175.6	1168.1	1166.5	1162.9
65°	1091.5	1098.0	1099.1	1100.5	1096.7	1092.9	1084.0	1078.2	1070.6	1067.7	1063.5
67.5°	984.9	991.9	994.3	997.9	995.7	994.9	988.9	986.6	981.6	980.4	976.6
70°	901.2	904.1	903.9	903.8	899.1	894.8	887.8	884.4	879.2	878.1	874.7
72.5°	851.5	853.5	852.2	850.3	844.3	838.0	829.7	823.7	816.8	812.5	807.6
75°	781.4	784.1	782.3	781.2	775.7	771.6	765.0	761.6	756.8	755.4	752.0
77.5°	695.3	696.6	693.8	693.5	689.3	686.7	681.7	680.9	677.3	677.4	674.1
80°	599.6	598.8	594.3	593.4	589.2	588.2	584.2	584.5	581.7	582.8	580.6
82.5°	493.4	490.6	484.7	483.0	478.1	477.7	475.1	477.3	475.6	478.1	476.6
85°	353.5	354.4	351.7	351.7	350.3	350.7	350.5	352.1	352.4	354.7	354.6
87.5°	197.1	199.9	199.4	202.0	201.9	204.8	205.8	210.1	210.7	214.6	214.6
90°	75.9	79.5	77.7	81.6	80.9	85.2	85.4	89.7	89.3	92.9	91.6
92.5°	43.7	40.9	38.3	35.4	34.0	32.3	31.5	29.6	28.5	26.8	25.5
95°	54.6	49.9	45.2	40.6	39.0	37.3	35.7	34.1	32.4	30.8	29.2
97.5°	61.7	56.1	50.6	45.1	43.7	42.2	40.8	39.4	38.0	36.6	35.3
100°	83.6	73.3	62.9	52.5	51.3	50.2	49.0	47.9	46.6	45.4	44.2
102.5°	171.5	149.5	127.6	105.6	101.4	97.2	93.1	88.9	84.7	80.6	76.4
105°	322.3	286.7	251.1	215.5	204.2	192.9	181.6	170.2	158.9	147.5	136.3
107.5°	488.7	452.5	416.5	380.3	359.5	338.6	317.6	296.7	275.9	254.9	233.9
110°	582.5	556.2	529.8	503.4	486.7	469.9	453.0	436.1	419.6	402.5	385.6



TEST NUMBER: P1444460
 CATALOG NUMBER: EHBR1-36-UNV-TA-L830-UPL18

CANDELA DISTRIBUTION (continued):

	330°	332.5°	335°	337.5°	340°	342.5°	345°	347.5°	350°	352.5°	355°
112.5°	599.0	580.3	561.6	542.5	535.0	527.4	519.9	512.2	504.7	496.8	489.3
115°	563.4	551.0	538.2	525.4	523.0	520.3	517.7	514.9	512.4	509.6	506.8
117.5°	506.0	498.9	492.0	484.8	485.4	486.0	486.5	487.0	487.5	487.8	488.2
120°	446.5	443.7	440.8	437.9	440.4	442.9	445.3	447.6	450.0	452.1	454.3
122.5°	398.3	397.2	396.3	395.2	398.3	401.3	404.2	407.0	409.8	412.3	415.1
125°	360.9	360.4	360.2	359.7	362.9	365.9	368.9	371.6	374.6	377.1	379.7
127.5°	336.7	336.7	337.0	337.0	339.5	341.5	343.8	345.7	347.8	349.5	351.4
130°	320.4	320.4	320.4	320.4	322.5	324.5	326.6	328.4	330.3	331.8	333.4
132.5°	310.8	310.6	310.7	310.4	312.2	313.7	315.3	316.4	317.9	318.9	319.9
135°	303.3	302.9	302.8	302.6	304.1	305.6	307.1	308.2	309.6	310.4	311.4
137.5°	297.3	296.9	296.7	296.5	298.0	299.3	300.5	301.6	302.7	303.7	304.4
140°	292.3	291.8	291.5	291.0	292.3	293.6	294.8	295.7	296.7	297.4	298.2
142.5°	287.6	286.6	286.4	285.4	286.4	287.3	288.1	288.9	289.6	290.1	290.6
145°	285.1	284.0	283.3	282.3	283.0	283.7	284.4	285.1	285.5	285.9	286.3
147.5°	282.9	281.9	280.9	280.0	280.6	281.1	281.6	281.9	282.4	282.6	282.9
150°	280.6	279.4	278.4	277.3	277.7	278.0	278.4	278.8	279.1	279.1	279.4
152.5°	277.7	276.6	275.6	274.4	274.6	274.9	275.1	275.2	275.5	275.6	275.7
155°	276.7	275.7	274.7	273.7	274.0	274.1	274.2	274.3	274.3	274.3	274.3
157.5°	277.6	276.7	276.1	275.2	275.2	275.2	275.1	274.8	274.9	274.6	274.5
160°	278.9	278.1	277.5	276.7	276.6	276.5	276.5	276.2	276.0	275.8	275.6
162.5°	280.5	279.8	279.0	278.1	278.0	278.0	277.8	277.5	277.5	277.2	276.9
165°	283.0	282.4	281.9	281.1	281.0	280.7	280.6	280.2	280.0	279.6	279.2
167.5°	285.6	285.0	284.5	283.7	283.7	283.6	283.5	283.4	283.3	283.0	282.8
170°	288.2	287.7	287.3	286.7	286.5	286.4	286.2	286.0	285.6	285.4	285.1
172.5°	290.2	289.7	289.3	288.6	288.6	288.4	288.2	288.1	287.9	287.6	287.5
175°	290.2	289.9	289.3	289.1	288.9	288.8	288.7	288.6	288.4	288.3	288.0
177.5°	291.6	291.4	290.9	290.8	290.6	290.6	290.5	290.4	290.4	290.3	290.2
180°	291.7	291.7	291.7	291.7	291.7	291.7	291.7	291.7	291.7	291.7	291.7



TEST NUMBER: P1444460
CATALOG NUMBER: EHBR1-36-UNV-TA-L830-UPL18

CANDELA DISTRIBUTION (continued):

	357.5°	360°
0°	29129.1	29129.1
2.5°	29241.9	29240.4
5°	29350.6	29348.9
7.5°	29433.3	29432.8
10°	29443.0	29448.1
12.5°	29384.3	29388.4
15°	29212.8	29220.7
17.5°	28884.7	28895.2
20°	28319.7	28330.7
22.5°	27404.7	27409.2
25°	26074.3	26055.5
27.5°	24260.7	24228.2
30°	21955.1	21923.7
32.5°	19206.2	19186.5
35°	16111.9	16099.5
37.5°	12854.1	12828.8
40°	9691.4	9617.8
42.5°	6917.5	6788.2
45°	4780.6	4627.4
47.5°	3337.3	3242.7
50°	2529.6	2499.0
52.5°	2061.2	2054.1
55°	1739.2	1736.0
57.5°	1497.1	1496.0
60°	1307.0	1306.7
62.5°	1165.3	1165.8
65°	1065.4	1065.6
67.5°	977.5	976.9
70°	875.9	875.2
72.5°	806.0	804.8
75°	752.0	751.2
77.5°	675.2	674.0
80°	582.1	580.6
82.5°	478.8	477.1
85°	357.1	357.3
87.5°	218.5	218.4
90°	95.2	93.3
92.5°	24.4	23.1
95°	27.6	26.0
97.5°	33.9	32.5
100°	43.1	41.9
102.5°	72.2	68.1
105°	125.0	113.6
107.5°	213.0	192.1
110°	368.8	351.9



TEST NUMBER: P1444460
CATALOG NUMBER: EHBR1-36-UNV-TA-L830-UPL18

CANDELA DISTRIBUTION (continued):

	357.5°	360°
112.5°	481.5	473.8
115°	503.9	501.0
117.5°	488.5	488.6
120°	456.3	458.4
122.5°	417.4	419.8
125°	382.1	384.5
127.5°	352.9	354.4
130°	334.5	335.9
132.5°	320.7	321.3
135°	311.9	312.5
137.5°	304.8	305.4
140°	298.4	298.9
142.5°	290.8	291.1
145°	286.5	286.6
147.5°	282.6	282.7
150°	279.3	279.3
152.5°	275.5	275.5
155°	274.1	273.9
157.5°	274.0	273.8
160°	275.2	274.9
162.5°	276.5	276.2
165°	278.7	278.3
167.5°	282.4	282.2
170°	284.8	284.6
172.5°	287.2	286.9
175°	287.9	287.9
177.5°	290.2	290.0
180°	291.7	291.7

LM-79-2019: Approved Method: Electrical and Photometric Measurements of Solid-
State Lighting Products

Report Prepared for

Cooper Lighting Solutions

Metalux

Report Number: SP1-2506-472-2

Test Date: 07/31/2025

Luminaire Tested: EHBR-60-L830-N

Data in this report applies to families of products including EHBR-60-L830-N

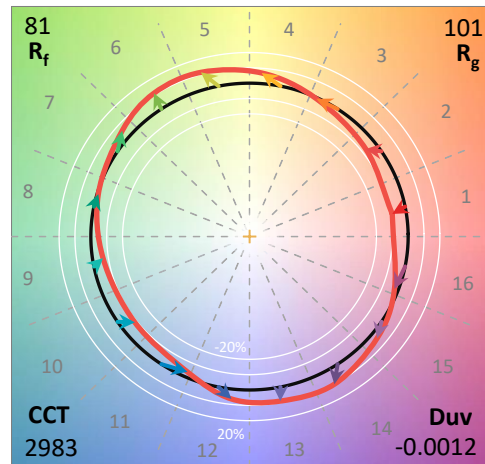
Test Information

Test Method: LM-79-2019
 Report Number: SP1-2506-472-2
 Test Lab: COOPER LIGHTING SOLUTIONS
 Photometer: SP1 - 76IN SPHERE
 Measurement Geometry: 4π
 Issue Date: 08/05/2025
 Manufacturer: COOPER LIGHTING SOLUTIONS
 Product Line: Metalux
 Catalog Number: **EHBR-60-L830-N**
 Description: Elevate Round Highbay at, 60000 lumens, 3000K 80CRI LEDs with N lens

Spectral Parameters

CCT (K): 2983
 CIE u': 0.2516
 CIE v': 0.5201
 Duv: -0.0012
 CIE x: 0.4364
 CIE y: 0.4010
 CIE z: 0.1626
 Peak Wavelength (nm): 630
 Dominant Wavelength (nm): 583
 Purity: 51.34918
 Rf: 81.2
 Rg: 101.5

CRI (Ra):	83.4		
R1:	84.0	R9:	29.4
R2:	87.5	R10:	68.6
R3:	88.9	R11:	82.2
R4:	83.8	R12:	61.6
R5:	81.9	R13:	83.9
R6:	83.1	R14:	92.5
R7:	87.1	R15:	79.8
R8:	70.9		



Test Conditions

Stabilization Time: 38M
 Operation Time: 1H 38M
 Sphere Temperature (°C): 25.0

REPORT NUMBER: SP1-2506-472-2

Measurement and Test Equipment			
Instrument	Identification Number	Calibration Date	Calibration Due Date
Photometer	76INCH SPHERE IN0058	6/16/2025	12/16/2025
Power Meter	XITRON INXT2011004	1/21/2025	1/21/2026
AC Power Source	CHROMA 61603 IN0063	10/22/2024	10/22/2025
DC Power Source	AGILENT E3634A IN0208	10/22/2024	10/22/2025
Sphere Thermometer	ONSET IN0085	10/22/2024	10/22/2025
Room Thermometer	ONSET IN0046	10/22/2024	10/22/2025

REPORT NUMBER: SP1-2506-472-2

CIE 1931 Chromaticity Diagram



CIE 1931 Chromaticity Diagram with 2017 ANSI 7-Step and 4-Step Quadrangles

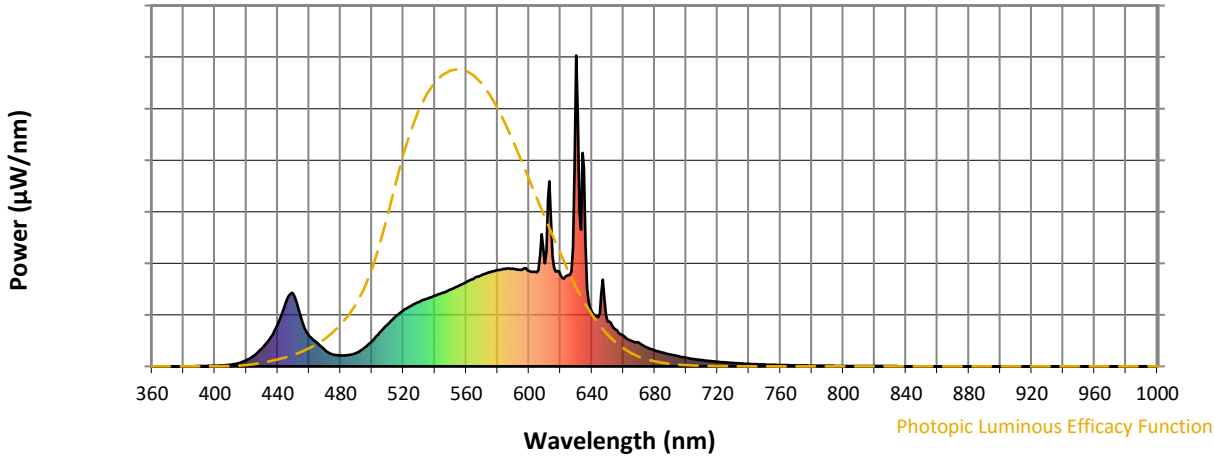


CCT = 2983K
 CIE x = 0.4364
 CIE y = 0.4010
 Duv = -0.0012

Point lies inside the ANSI 3000K 4-step quadrangle

REPORT NUMBER: SP1-2506-472-2

Photopic Flux vs. Wavelength



Photopic Lumens: NR

λ (nm)	Power W [^] /nm	Lumens (φ/nm)	λ (nm)	Power W [^] /nm	Lumens (φ/nm)	λ (nm)	Power W [^] /nm	Lumens (φ/nm)	λ (nm)	Power W [^] /nm	Lumens (φ/nm)	λ (nm)	Power W [^] /nm	Lumens (φ/nm)
360	0	NR	490	43	NR	620	294	NR	750	6	NR	880	0	NR
365	0	NR	495	59	NR	625	294	NR	755	5	NR	885	0	NR
370	0	NR	500	81	NR	630	1000	NR	760	4	NR	890	0	NR
375	0	NR	505	109	NR	635	637	NR	765	4	NR	895	0	NR
380	0	NR	510	135	NR	640	175	NR	770	3	NR	900	0	NR
385	0	NR	515	160	NR	645	171	NR	775	3	NR	905	0	NR
390	1	NR	520	180	NR	650	146	NR	780	2	NR	910	0	NR
395	1	NR	525	195	NR	655	119	NR	785	2	NR	915	0	NR
400	2	NR	530	207	NR	660	99	NR	790	2	NR	920	0	NR
405	3	NR	535	218	NR	665	82	NR	795	2	NR	925	0	NR
410	5	NR	540	227	NR	670	76	NR	800	1	NR	930	0	NR
415	10	NR	545	237	NR	675	61	NR	805	1	NR	935	0	NR
420	20	NR	550	247	NR	680	52	NR	810	1	NR	940	0	NR
425	35	NR	555	259	NR	685	44	NR	815	1	NR	945	0	NR
430	58	NR	560	271	NR	690	38	NR	820	1	NR	950	0	NR
435	90	NR	565	283	NR	695	33	NR	825	1	NR	955	0	NR
440	135	NR	570	293	NR	700	27	NR	830	1	NR	960	0	NR
445	204	NR	575	303	NR	705	24	NR	835	1	NR	965	0	NR
450	233	NR	580	310	NR	710	20	NR	840	0	NR	970	0	NR
455	153	NR	585	313	NR	715	17	NR	845	0	NR	975	0	NR
460	98	NR	590	314	NR	720	15	NR	850	0	NR	980	0	NR
465	76	NR	595	310	NR	725	13	NR	855	0	NR	985	0	NR
470	53	NR	600	307	NR	730	11	NR	860	0	NR	990	0	NR
475	39	NR	605	303	NR	735	9	NR	865	0	NR	995	0	NR
480	35	NR	610	331	NR	740	8	NR	870	0	NR	1000	0	NR
485	36	NR	615	353	NR	745	7	NR	875	0	NR			

REPORT NUMBER: SP1-2506-472-2

Scotopic Flux vs. Wavelength



Scotopic Lumens: NR

S/P: 1.27

λ (nm)	Power W [^] /nm	Lumens (φ/nm)	λ (nm)	Power W [^] /nm	Lumens (φ/nm)	λ (nm)	Power W [^] /nm	Lumens (φ/nm)	λ (nm)	Power W [^] /nm	Lumens (φ/nm)	λ (nm)	Power W [^] /nm	Lumens (φ/nm)
360	0	NR	490	43	NR	620	294	NR	750	6	NR	880	0	NR
365	0	NR	495	59	NR	625	294	NR	755	5	NR	885	0	NR
370	0	NR	500	81	NR	630	1000	NR	760	4	NR	890	0	NR
375	0	NR	505	109	NR	635	637	NR	765	4	NR	895	0	NR
380	0	NR	510	135	NR	640	175	NR	770	3	NR	900	0	NR
385	0	NR	515	160	NR	645	171	NR	775	3	NR	905	0	NR
390	1	NR	520	180	NR	650	146	NR	780	2	NR	910	0	NR
395	1	NR	525	195	NR	655	119	NR	785	2	NR	915	0	NR
400	2	NR	530	207	NR	660	99	NR	790	2	NR	920	0	NR
405	3	NR	535	218	NR	665	82	NR	795	2	NR	925	0	NR
410	5	NR	540	227	NR	670	76	NR	800	1	NR	930	0	NR
415	10	NR	545	237	NR	675	61	NR	805	1	NR	935	0	NR
420	20	NR	550	247	NR	680	52	NR	810	1	NR	940	0	NR
425	35	NR	555	259	NR	685	44	NR	815	1	NR	945	0	NR
430	58	NR	560	271	NR	690	38	NR	820	1	NR	950	0	NR
435	90	NR	565	283	NR	695	33	NR	825	1	NR	955	0	NR
440	135	NR	570	293	NR	700	27	NR	830	1	NR	960	0	NR
445	204	NR	575	303	NR	705	24	NR	835	1	NR	965	0	NR
450	233	NR	580	310	NR	710	20	NR	840	0	NR	970	0	NR
455	153	NR	585	313	NR	715	17	NR	845	0	NR	975	0	NR
460	98	NR	590	314	NR	720	15	NR	850	0	NR	980	0	NR
465	76	NR	595	310	NR	725	13	NR	855	0	NR	985	0	NR
470	53	NR	600	307	NR	730	11	NR	860	0	NR	990	0	NR
475	39	NR	605	303	NR	735	9	NR	865	0	NR	995	0	NR
480	35	NR	610	331	NR	740	8	NR	870	0	NR	1000	0	NR
485	36	NR	615	353	NR	745	7	NR	875	0	NR			

REPORT NUMBER: SP1-2506-472-2

Melanopic Flux vs. Wavelength



Melanopic Lumens: NR

M/P: 2.34

λ (nm)	Power W [^] /nm	Lumens (φ/nm)	λ (nm)	Power W [^] /nm	Lumens (φ/nm)	λ (nm)	Power W [^] /nm	Lumens (φ/nm)	λ (nm)	Power W [^] /nm	Lumens (φ/nm)	λ (nm)	Power W [^] /nm	Lumens (φ/nm)
360	0	NR	490	43	NR	620	294	NR	750	6	NR	880	0	NR
365	0	NR	495	59	NR	625	294	NR	755	5	NR	885	0	NR
370	0	NR	500	81	NR	630	1000	NR	760	4	NR	890	0	NR
375	0	NR	505	109	NR	635	637	NR	765	4	NR	895	0	NR
380	0	NR	510	135	NR	640	175	NR	770	3	NR	900	0	NR
385	0	NR	515	160	NR	645	171	NR	775	3	NR	905	0	NR
390	1	NR	520	180	NR	650	146	NR	780	2	NR	910	0	NR
395	1	NR	525	195	NR	655	119	NR	785	2	NR	915	0	NR
400	2	NR	530	207	NR	660	99	NR	790	2	NR	920	0	NR
405	3	NR	535	218	NR	665	82	NR	795	2	NR	925	0	NR
410	5	NR	540	227	NR	670	76	NR	800	1	NR	930	0	NR
415	10	NR	545	237	NR	675	61	NR	805	1	NR	935	0	NR
420	20	NR	550	247	NR	680	52	NR	810	1	NR	940	0	NR
425	35	NR	555	259	NR	685	44	NR	815	1	NR	945	0	NR
430	58	NR	560	271	NR	690	38	NR	820	1	NR	950	0	NR
435	90	NR	565	283	NR	695	33	NR	825	1	NR	955	0	NR
440	135	NR	570	293	NR	700	27	NR	830	1	NR	960	0	NR
445	204	NR	575	303	NR	705	24	NR	835	1	NR	965	0	NR
450	233	NR	580	310	NR	710	20	NR	840	0	NR	970	0	NR
455	153	NR	585	313	NR	715	17	NR	845	0	NR	975	0	NR
460	98	NR	590	314	NR	720	15	NR	850	0	NR	980	0	NR
465	76	NR	595	310	NR	725	13	NR	855	0	NR	985	0	NR
470	53	NR	600	307	NR	730	11	NR	860	0	NR	990	0	NR
475	39	NR	605	303	NR	735	9	NR	865	0	NR	995	0	NR
480	35	NR	610	331	NR	740	8	NR	870	0	NR	1000	0	NR
485	36	NR	615	353	NR	745	7	NR	875	0	NR			

Summary

$R_f = 81.2$
 $R_g = 101.5$
 CIE $R_a = 83.4$
 $R_9 = 29.4$



Color Vector Graphics

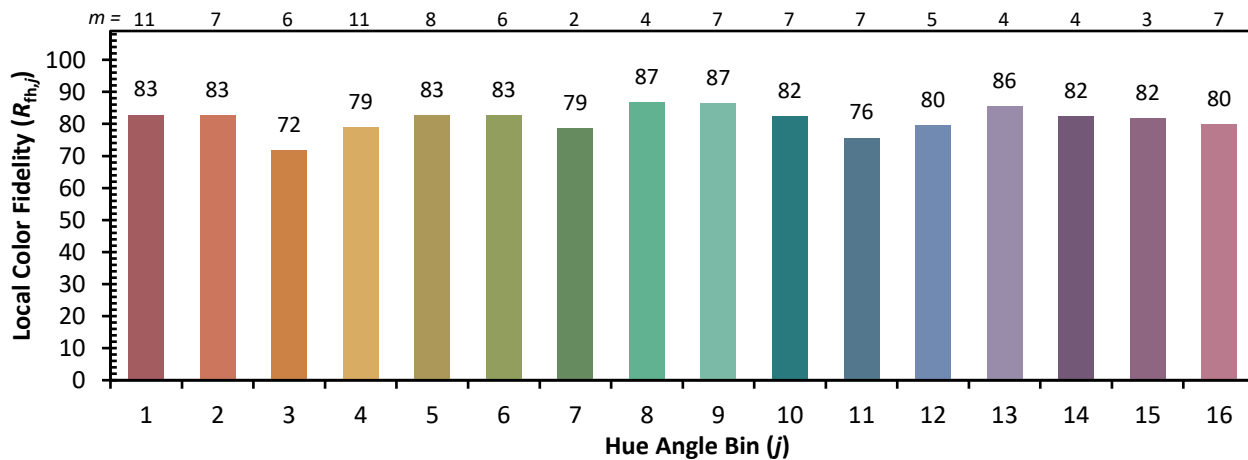
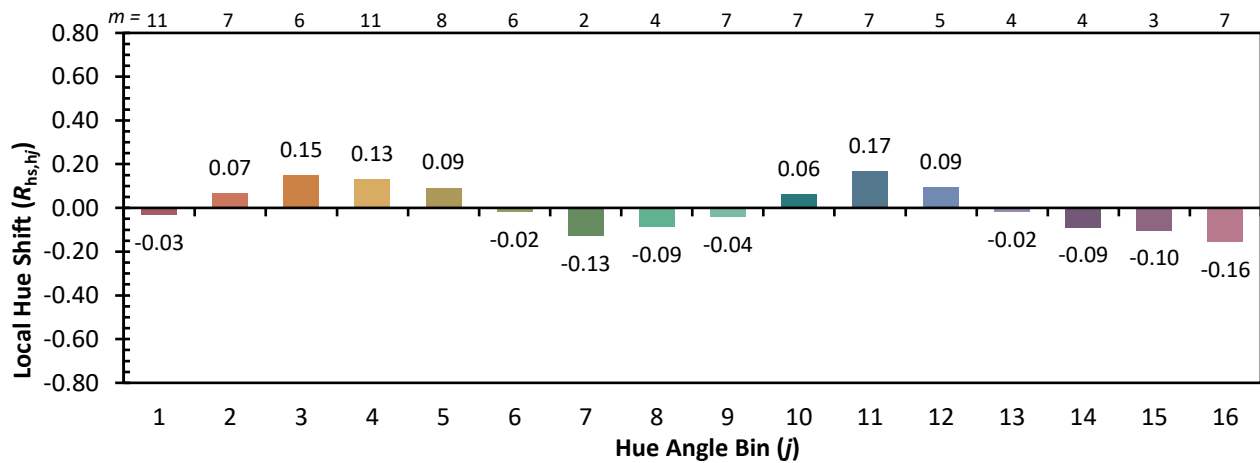
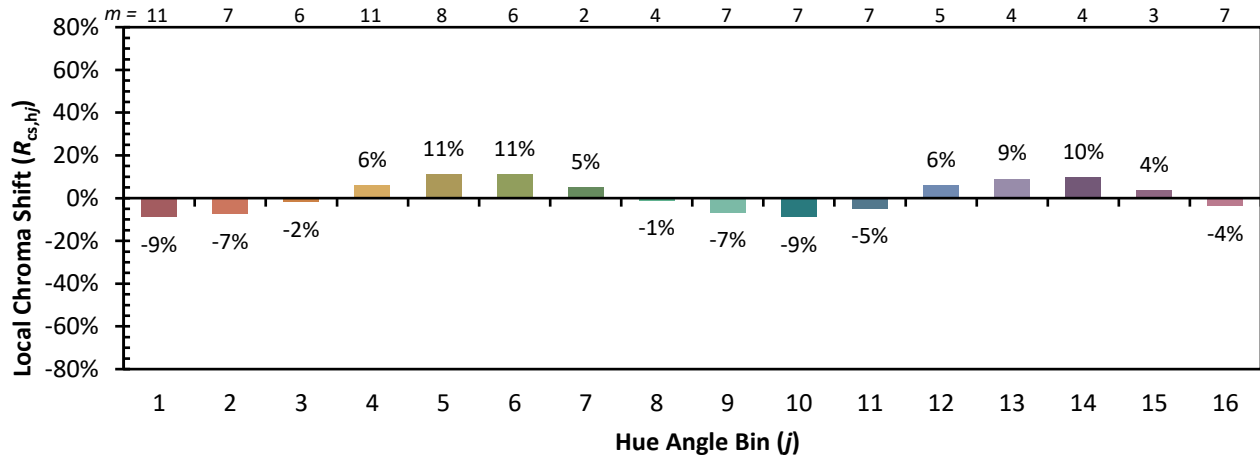


Individual Sample Fidelity Index ($R_{f,i}$)

CES01 = 86	CES26 = 71	CES51 = 89	CES76 = 65
CES02 = 63	CES27 = 89	CES52 = 89	CES77 = 82
CES03 = 31	CES28 = 86	CES53 = 80	CES78 = 67
CES04 = 70	CES29 = 68	CES54 = 92	CES79 = 89
CES05 = 50	CES30 = 77	CES55 = 90	CES80 = 85
CES06 = 51	CES31 = 70	CES56 = 81	CES81 = 75
CES07 = 43	CES32 = 64	CES57 = 79	CES82 = 93
CES08 = 41	CES33 = 74	CES58 = 81	CES83 = 89
CES09 = 29	CES34 = 76	CES59 = 92	CES84 = 91
CES10 = 76	CES35 = 87	CES60 = 96	CES85 = 81
CES11 = 59	CES36 = 99	CES61 = 91	CES86 = 74
CES12 = 65	CES37 = 81	CES62 = 93	CES87 = 83
CES13 = 44	CES38 = 83	CES63 = 79	CES88 = 86
CES14 = 74	CES39 = 94	CES64 = 81	CES89 = 74
CES15 = 72	CES40 = 89	CES65 = 78	CES90 = 85
CES16 = 48	CES41 = 88	CES66 = 76	CES91 = 87
CES17 = 50	CES42 = 80	CES67 = 74	CES92 = 73
CES18 = 57	CES43 = 75	CES68 = 79	CES93 = 84
CES19 = 72	CES44 = 99	CES69 = 83	CES94 = 64
CES20 = 67	CES45 = 83	CES70 = 72	CES95 = 80
CES21 = 87	CES46 = 82	CES71 = 70	CES96 = 86
CES22 = 79	CES47 = 79	CES72 = 90	CES97 = 85
CES23 = 92	CES48 = 78	CES73 = 65	CES98 = 83
CES24 = 91	CES49 = 79	CES74 = 94	CES99 = 82
CES25 = 72	CES50 = 88	CES75 = 70	



Color Rendition by Hue-Angle Bin



Measure Comparisons



(END OF REPORT)