

Cooper Lighting Solutions Photometric Lab  
1121 Highway 74 South  
Peachtree City, GA 30269



Scaled data based on original data using  
LM-79-2019 Approved Method: Electrical and Photometric Measurements of Solid-  
State Lighting Products

Test Report Prepared for  
Cooper Lighting Solutions

Brand: METALUX

Report Number: P1444476

Luminaire Tested: EHBR1-48-UNV-TA-L830-UPL18

Issue Date: 5/1/2026

**Test Information**

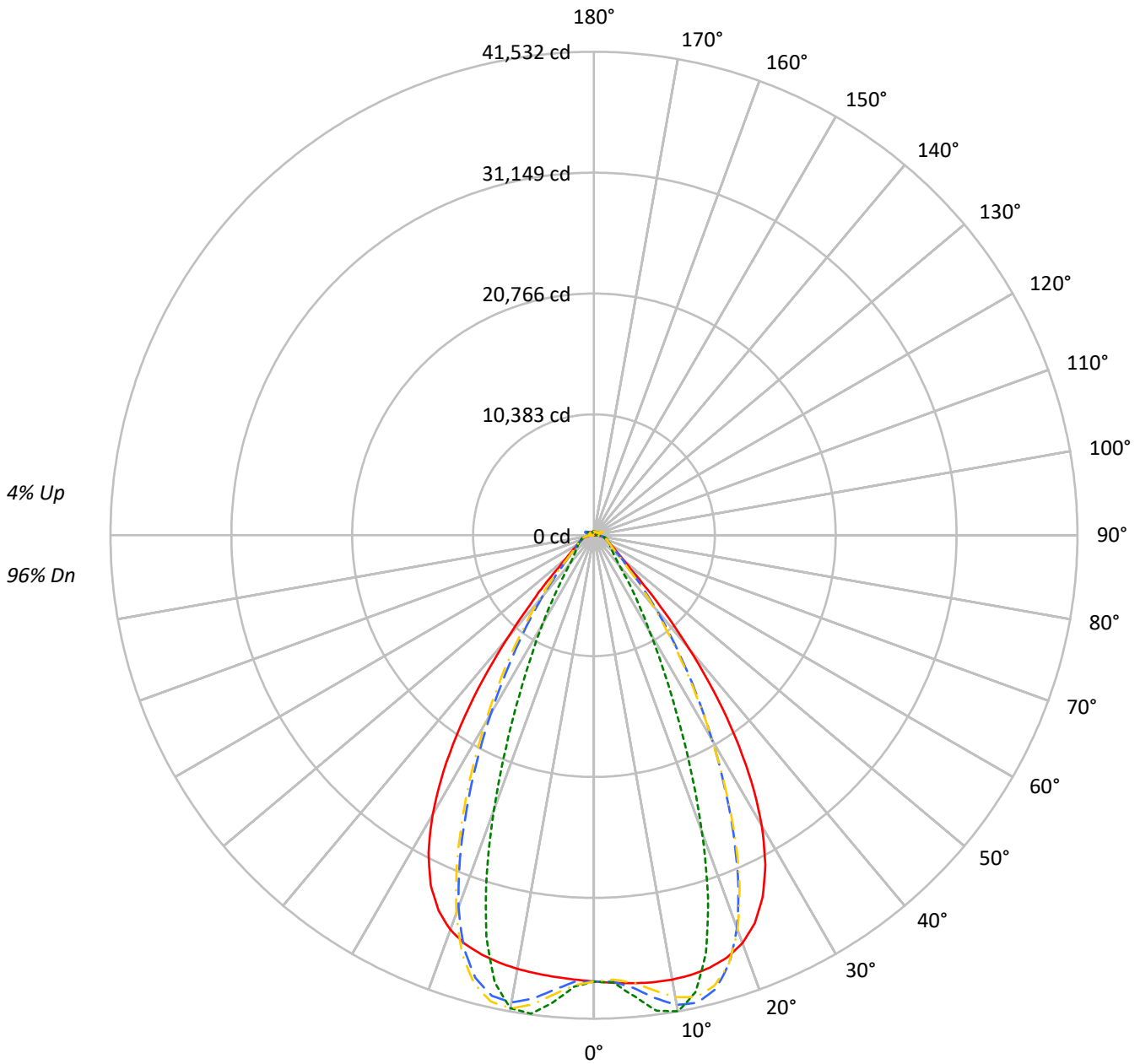
Test Method: LM-79-2019  
Report Number: P1444476  
REPORT IS A COMBINATION OF REPORTS P1444324 AND P1431635  
Test Lab: INNOVATION CENTER  
Issue Date: 5/1/2026  
Manufacturer: COOPER LIGHTING SOLUTIONS  
Product Line: METALUX  
Catalog Number: EHBR1-48-UNV-TA-L830-UPL18  
Description: Elevate Round Highbay at, 48000 lumens, 3000K 80CRI LEDs with TA lens  
Light Source: -  
Ballast/Driver: -

**Summary**

Lumens per Lamp: N/A  
Luminaire Lumens: 46113.2 lumens  
Efficiency: N/A  
Efficacy: 170.5 lumens/watt  
Spacing Criteria (0/90/45): 1.13 / 0.77 / 0.88  
Luminous Opening: Vertical Cylinder (Dia: 1.71' x H: 0.1')  
CIE Type: Direct  
  
Input Watts (W): 270.5  
Input Voltage (V): NR  
Input Current (Ain): NR  
Voltage Rise (V): NR  
Power Factor: NR  
Total Harmonic Distortion (THDi): NR  
Frequency (hertz): 60  
Stabilization Time: NR  
Operation Time: NR  
Ambient Temperature (°C): NR  
Test Distance: 24 FT

TEST NUMBER: P1444476  
CATALOG NUMBER: EHBR1-48-UNV-TA-L830-UPL18

### Luminous Intensity Polar Plot



— 0°-180°    - - 45°-225°    - · - · 90°-270°    - · - · 135°-315°



TEST NUMBER: P1444476  
 CATALOG NUMBER: EHBR1-48-UNV-TA-L830-UPL18

**COEFFICIENT OF UTILIZATION - ZONAL CAVITY METHOD:**

RF	20				20				20				20				20				
RC	80				70				50				30				10			0	
RW	70	50	30	10	70	50	30	10	50	30	10	50	30	10	50	30	10	50	30	10	0
RCR																					
0	118	118	118	118	115	115	115	115	109	109	109	103	103	103	98	98	98	98	98	98	96
1	111	107	104	102	108	105	102	100	100	98	96	95	94	92	91	90	89	89	89	89	86
2	104	98	93	89	101	96	92	88	92	88	85	88	85	83	85	83	80	80	80	80	78
3	98	90	84	80	95	88	83	79	85	81	77	82	78	75	79	76	73	73	73	73	71
4	92	83	77	72	90	82	76	71	79	74	70	76	72	69	74	70	67	67	67	67	65
5	87	77	70	65	85	76	70	65	74	68	64	71	67	63	69	65	62	62	62	62	60
6	82	72	65	60	80	71	64	60	69	63	59	67	62	58	65	61	57	57	57	57	56
7	77	67	60	55	76	66	60	55	64	59	55	63	58	54	61	57	53	53	53	53	52
8	73	63	56	51	72	62	56	51	60	55	51	59	54	50	58	53	50	50	50	50	48
9	69	59	52	48	68	58	52	48	57	51	47	56	51	47	54	50	46	46	46	46	45
10	66	55	49	45	65	55	49	45	54	48	44	52	47	44	51	47	44	44	44	44	42

**AVERAGE LUMINANCE (cd/sqm):**

	0°	90°	180°	270°
0°	180035	180035	180035	180035
5°	180906	186182	178375	188620
10°	182417	195477	178042	194184
15°	183312	177198	177731	170063
20°	181417	132006	175479	122137
25°	171718	83487	166043	75749
30°	150008	50170	144198	45850
35°	115447	31481	108807	27887
40°	73031	19747	66817	18556
45°	37641	15384	37018	15131
50°	22069	13684	21392	13471
55°	16907	12947	16282	12830
60°	14306	13225	13696	13054
65°	13437	13811	12922	13340
70°	13128	14462	12474	13918
75°	14037	15337	13277	14658
80°	14525	16983	13169	15504
85°	13678	16387	11053	14030

**MAXIMUM LUMINANCE 45°-90°:**

Horizontal Angle: 25°  
 Vertical Angle: 45°  
 Luminance: 57605 cd/sqm



TEST NUMBER: P1444476  
 CATALOG NUMBER: EHBR1-48-UNV-TA-L830-UPL18

**ZONAL LUMENS:**

Zone	Lumens	% Fixture
0°-10°	3778.2	8.2
10°-20°	10628.5	23.0
20°-30°	12105.0	26.3
30°-40°	8700.5	18.9
40°-50°	4012.7	8.7
50°-60°	1920.2	4.2
60°-70°	1401.1	3.0
70°-80°	1064.4	2.3
80°-90°	487.2	1.1
90°-100°	61.1	0.1
100°-110°	312.6	0.7
110°-120°	576.7	1.3
120°-130°	363.0	0.8
130°-140°	246.7	0.5
140°-150°	193.5	0.4
150°-160°	141.7	0.3
160°-170°	88.8	0.2
170°-180°	31.1	0.1
0°-30°	26511.7	57.5
0°-40°	35212.3	76.4
0°-60°	41145.2	89.2
0°-90°	44097.9	95.6
90°-120°	950.4	2.1
90°-150°	1753.6	3.8
90°-180°	2015.0	4.4
0°-180°	46113.2	100.0

**CANDELA DISTRIBUTION:**

	0°	90°	180°	270°	360°	Flux
0°	38337	38337	38337	38337	38337	
5°	38626	39753	38086	40273	38626	3691
15°	38458	37175	37287	35678	38458	10836
25°	34292	16672	33159	15127	34292	15545
35°	21189	5778	19970	5118	21189	13004
45°	6090	2489	5989	2448	6090	5180
55°	2285	1750	2200	1734	2285	2109
65°	1402	1442	1349	1392	1402	1401
75°	989	1080	935	1033	989	1028
85°	470	563	380	482	470	442
90°	119	153	28	37	119	75
95°	28	30	28	30	28	26
105°	116	147	80	147	116	153
115°	507	606	531	606	507	469
125°	396	400	446	402	396	361
135°	331	280	355	284	331	258
145°	311	290	329	296	311	196
155°	303	298	320	302	303	141
165°	312	308	322	311	312	89
175°	325	327	331	328	325	31
180°	330	330	330	330	330	



TEST NUMBER: P1444476  
 CATALOG NUMBER: EHBR1-48-UNV-TA-L830-UPL18

**CANDELA DISTRIBUTION (FULL):**

	0°	2.5°	5°	7.5°	10°	12.5°	15°	17.5°	20°	22.5°	25°
0°	38337.2	38337.2	38337.2	38337.2	38337.2	38337.2	38337.2	38337.2	38337.2	38337.2	38337.2
2.5°	38483.7	38480.5	38479.9	38477.3	38476.5	38476.5	38475.2	38472.1	38470.2	38465.8	38460.8
5°	38626.4	38624.7	38625.8	38626.0	38623.3	38617.3	38608.0	38596.4	38581.9	38568.3	38556.1
7.5°	38736.8	38739.6	38742.9	38742.2	38733.8	38719.8	38700.6	38689.8	38696.2	38717.1	38764.9
10°	38757.0	38773.5	38779.8	38777.9	38761.1	38749.0	38753.7	38794.4	38875.2	38983.0	39130.5
12.5°	38678.4	38698.6	38697.9	38691.2	38675.0	38691.5	38750.3	38871.3	39044.6	39257.3	39506.7
15°	38457.8	38483.9	38476.5	38467.8	38457.1	38511.2	38628.7	38838.7	39106.4	39406.3	39713.4
17.5°	38029.3	38060.9	38045.6	38035.8	38026.7	38128.2	38330.0	38637.5	38974.7	39314.0	39605.0
20°	37286.4	37307.5	37271.0	37253.8	37268.3	37467.0	37764.4	38157.1	38512.5	38833.3	39032.2
22.5°	36073.6	36099.9	36031.3	36023.3	36108.1	36413.3	36789.6	37228.7	37562.5	37816.8	37893.4
25°	34291.9	34317.8	34236.2	34284.9	34429.0	34844.9	35293.0	35762.6	36047.5	36235.9	36183.8
27.5°	31887.1	31910.7	31833.3	31932.8	32160.6	32707.0	33234.4	33743.8	33997.7	34129.6	33962.4
30°	28854.0	28903.0	28811.7	28950.5	29298.2	30007.6	30611.8	31183.0	31436.2	31536.6	31276.3
32.5°	25251.7	25321.4	25220.7	25427.2	25912.4	26764.6	27451.0	28089.2	28369.3	28483.9	28190.0
35°	21188.7	21288.7	21173.2	21483.2	22081.5	23030.5	23790.6	24503.2	24834.8	24997.4	24701.1
37.5°	16884.2	16979.5	16917.0	17330.6	17987.6	18971.3	19747.1	20515.8	20890.3	21134.3	20900.7
40°	12658.1	12745.3	12792.6	13265.7	13883.5	14810.7	15555.8	16316.4	16735.4	17041.6	16897.6
42.5°	8934.1	9022.1	9182.9	9639.3	10154.6	10922.0	11560.4	12243.3	12643.4	12970.1	12914.6
45°	6090.2	6192.4	6393.8	6767.5	7140.2	7690.8	8159.5	8690.6	9017.5	9316.8	9320.3
47.5°	4267.7	4339.5	4519.5	4774.7	5017.7	5706.9	5735.2	5996.2	6215.9	6439.6	6468.5
50°	3289.1	3332.2	3427.7	3570.0	3707.6	3886.5	4050.3	4239.5	4374.7	4497.3	4526.6
52.5°	2703.4	2730.8	2779.4	2856.4	2936.3	3033.6	3121.3	3225.1	3298.7	3364.4	3378.1
55°	2284.8	2307.6	2379.9	2394.5	2485.8	2503.4	2542.4	2605.6	2648.5	2687.8	2697.5
57.5°	1969.0	1985.4	2000.8	2033.6	2061.8	2102.6	2135.6	2180.9	2207.9	2236.4	2238.8
60°	1719.8	1731.7	1742.7	1765.4	1784.5	1813.0	1835.7	1866.5	1885.9	1907.1	1909.6
62.5°	1534.3	1542.9	1550.2	1565.1	1578.8	1600.7	1618.7	1644.5	1662.5	1679.0	1682.7
65°	1402.5	1408.7	1413.4	1424.8	1436.7	1455.4	1471.7	1492.7	1505.9	1518.6	1521.3
67.5°	1285.7	1291.6	1296.5	1306.9	1315.1	1329.0	1340.0	1355.8	1365.7	1375.7	1376.0
70°	1151.9	1157.4	1161.1	1170.8	1177.4	1189.3	1198.1	1212.4	1222.6	1233.8	1236.6
72.5°	1059.2	1062.5	1067.5	1076.3	1085.6	1098.3	1110.1	1124.9	1137.3	1148.9	1153.8
75°	988.8	992.6	995.8	1003.4	1009.8	1020.5	1029.3	1042.8	1053.7	1066.2	1072.3
77.5°	887.1	891.5	894.3	901.8	907.3	917.7	924.3	936.3	945.1	956.5	962.0
80°	764.1	768.2	770.3	777.4	781.8	791.2	797.6	809.3	816.7	828.1	834.7
82.5°	627.9	631.8	632.9	639.7	642.1	649.9	654.6	666.5	675.6	690.4	700.6
85°	470.1	471.5	473.9	472.1	481.7	482.2	493.0	495.1	509.2	512.9	529.1
87.5°	287.5	291.7	293.8	300.4	303.2	309.8	311.7	318.7	322.5	330.5	334.2
90°	118.9	125.2	127.2	134.8	136.6	143.3	144.8	152.3	154.3	162.1	164.8
92.5°	24.6	26.0	27.4	29.0	30.4	32.7	34.6	36.2	37.7	39.8	42.8
95°	27.6	29.2	30.8	32.4	34.0	35.7	37.3	38.9	40.5	42.1	46.6
97.5°	34.3	35.7	37.1	38.4	39.8	41.2	42.6	43.9	45.3	46.6	52.1
100°	43.8	45.1	46.2	47.4	48.5	49.7	50.9	52.1	53.2	54.4	64.6
102.5°	70.4	74.6	78.8	82.9	87.0	91.1	95.4	99.4	103.6	107.7	129.5
105°	116.4	127.6	139.1	150.2	161.5	172.8	184.2	195.1	206.5	217.7	253.3
107.5°	195.5	216.3	237.2	258.2	279.0	299.7	320.6	341.5	362.2	382.8	419.0
110°	356.1	372.7	389.6	406.3	422.9	439.7	456.5	472.9	489.7	506.3	532.6



TEST NUMBER: P1444476  
 CATALOG NUMBER: EHBR1-48-UNV-TA-L830-UPL18

**CANDELA DISTRIBUTION (continued):**

	0°	2.5°	5°	7.5°	10°	12.5°	15°	17.5°	20°	22.5°	25°
112.5°	478.8	486.2	493.7	501.3	508.8	516.1	523.6	531.0	538.6	545.8	564.6
115°	507.0	509.6	512.2	514.5	517.3	519.5	522.0	524.5	526.9	529.1	541.8
117.5°	495.9	495.2	494.5	493.9	493.0	492.3	491.5	490.6	489.7	488.9	495.9
120°	467.0	464.3	461.9	459.1	456.6	453.6	451.0	448.3	445.4	442.4	445.3
122.5°	429.9	426.9	424.0	420.6	417.5	414.0	410.9	407.2	404.0	400.6	401.3
125°	396.2	393.0	390.1	386.8	383.3	379.8	376.5	373.0	369.5	365.8	365.9
127.5°	367.8	365.5	363.2	360.4	357.9	355.2	352.6	349.6	347.1	344.0	343.7
130°	351.0	348.9	346.7	344.2	341.9	339.2	336.6	333.8	331.3	328.4	328.0
132.5°	338.2	336.7	335.0	333.1	331.1	328.7	326.7	324.2	322.0	319.9	319.4
135°	331.2	329.5	328.1	326.3	324.4	322.0	319.9	317.6	315.6	313.1	313.0
137.5°	325.7	324.2	322.8	320.9	319.1	316.8	314.9	312.7	310.6	308.3	308.0
140°	320.8	319.5	318.0	316.1	314.5	312.7	310.6	308.6	306.5	304.2	304.1
142.5°	314.5	313.2	312.1	310.5	309.2	307.2	305.6	303.6	301.9	299.9	300.1
145°	311.4	310.3	309.3	308.0	306.5	304.8	303.2	301.4	299.9	298.2	298.3
147.5°	308.6	307.7	307.0	305.7	304.6	303.0	301.7	300.0	298.7	297.2	297.6
150°	306.3	305.6	304.8	303.7	302.5	301.2	299.8	298.4	297.0	295.6	295.9
152.5°	303.3	302.5	301.7	300.7	299.7	298.1	297.2	295.7	294.4	293.1	293.4
155°	302.8	302.0	301.1	300.1	299.0	297.9	296.7	295.4	294.3	293.0	293.1
157.5°	303.9	302.9	302.3	301.2	300.5	299.3	298.3	297.3	296.4	295.3	295.3
160°	306.3	305.5	304.7	303.7	302.7	301.6	300.8	299.7	299.0	297.9	297.9
162.5°	308.9	308.0	307.1	306.2	305.5	304.2	303.5	302.7	301.8	300.8	300.8
165°	312.2	311.6	311.0	310.2	309.5	308.8	308.1	307.2	306.6	305.6	305.6
167.5°	317.5	316.7	316.1	315.4	314.5	313.8	313.0	312.2	311.6	310.7	310.7
170°	320.8	320.1	319.7	319.2	318.7	318.1	317.6	317.1	316.5	316.0	316.0
172.5°	323.9	323.4	323.1	322.8	322.2	321.9	321.5	321.1	320.8	320.3	320.5
175°	325.4	324.9	324.9	324.6	324.3	324.0	323.8	323.5	323.5	323.2	323.2
177.5°	327.9	327.8	327.8	327.7	327.7	327.5	327.4	327.1	326.9	326.9	327.0
180°	329.8	329.8	329.8	329.8	329.8	329.8	329.8	329.8	329.8	329.8	329.8



TEST NUMBER: P1444476  
 CATALOG NUMBER: EHBR1-48-UNV-TA-L830-UPL18

**CANDELA DISTRIBUTION (continued):**

	27.5°	30°	32.5°	35°	37.5°	40°	42.5°	45°	47.5°	50°	52.5°
0°	38337.2	38337.2	38337.2	38337.2	38337.2	38337.2	38337.2	38337.2	38337.2	38337.2	38337.2
2.5°	38457.1	38452.4	38446.0	38437.8	38430.9	38422.9	38403.7	38397.9	38404.3	38408.6	38417.4
5°	38548.4	38551.1	38552.1	38569.5	38584.6	38622.3	38917.3	39034.4	39125.1	39182.7	39270.0
7.5°	38824.0	38912.6	39000.2	39118.2	39219.9	39357.3	39873.4	40093.0	40249.2	40361.4	40499.5
10°	39290.8	39484.3	39665.8	39878.3	40061.1	40270.3	40750.7	40964.7	41099.8	41198.1	41289.9
12.5°	39761.1	40029.5	40272.0	40508.6	40706.4	40887.8	41056.7	41131.6	41138.0	41141.1	41092.4
15°	40006.1	40262.7	40476.3	40632.7	40749.0	40800.4	40509.6	40357.0	40164.2	40005.3	39744.0
17.5°	39851.4	40005.3	40097.7	40088.6	40040.6	39879.7	39056.0	38602.8	38153.0	37747.7	37216.1
20°	39164.2	39152.4	39072.1	38844.7	38570.6	38144.4	36732.0	35917.2	35129.4	34437.4	33598.0
22.5°	37885.6	37684.5	37403.9	36913.4	36368.6	35624.0	33600.0	32401.4	31304.6	30335.8	29250.4
25°	36033.0	35619.1	35101.8	34323.2	33476.4	32390.3	29895.8	28404.9	27088.1	25946.0	24693.7
27.5°	33662.0	33038.7	32280.5	31202.8	30055.6	28664.2	25898.6	24253.3	22839.7	21615.2	20282.4
30°	30855.1	30044.3	29065.3	27727.7	26344.0	24765.9	21961.0	20294.5	18863.6	17603.9	16270.1
32.5°	27683.0	26733.3	25586.1	24084.9	22588.5	20965.9	18257.0	16643.9	15277.1	14065.2	12858.0
35°	24184.3	23165.9	21952.2	20421.0	18933.6	17356.0	14870.4	13415.9	12209.0	11137.8	10163.0
37.5°	20431.4	19431.5	18277.9	16834.7	15455.4	14025.9	11881.2	10662.4	9649.5	8760.5	8007.7
40°	16529.4	15654.3	14656.2	13408.6	12231.5	11040.9	9280.3	8312.9	7513.6	6835.5	6271.5
42.5°	12675.2	11997.0	11231.6	10245.7	9344.9	8438.4	7083.4	6366.5	5774.5	5286.4	4887.7
45°	9196.2	8742.6	8229.3	7543.9	6920.5	6288.2	5323.8	4820.1	4434.6	4119.8	3853.7
47.5°	6428.6	6165.5	6149.5	5516.1	5059.0	4672.4	4051.1	3732.9	3496.6	3305.9	3137.4
50°	4514.7	4387.4	4229.2	4003.1	3791.0	3572.5	3194.0	3001.6	2863.2	2747.7	2641.1
52.5°	3375.1	3308.9	3224.7	3104.8	2989.8	2866.9	2627.4	2504.9	2461.4	2353.9	2269.5
55°	2695.8	2657.8	2609.9	2539.4	2469.5	2441.5	2236.2	2145.3	2087.7	2045.3	2000.0
57.5°	2239.2	2210.9	2182.5	2134.8	2094.3	2045.3	1936.3	1889.7	1855.4	1830.4	1799.0
60°	1910.0	1893.1	1877.2	1849.2	1827.3	1800.9	1731.7	1705.4	1687.5	1672.5	1652.4
62.5°	1685.8	1677.2	1668.9	1653.9	1642.9	1628.6	1581.3	1568.6	1559.6	1552.1	1539.9
65°	1523.9	1517.7	1513.2	1503.2	1497.7	1489.3	1448.7	1440.2	1434.6	1431.9	1424.8
67.5°	1377.0	1370.4	1367.4	1360.3	1358.0	1352.8	1319.5	1314.9	1313.0	1313.8	1311.3
70°	1239.4	1236.6	1238.1	1236.9	1240.1	1241.0	1220.9	1220.8	1222.9	1227.2	1227.6
72.5°	1156.9	1156.9	1158.5	1159.3	1162.3	1163.7	1146.9	1146.1	1147.0	1150.2	1150.3
75°	1078.5	1079.8	1084.1	1085.6	1089.0	1089.8	1067.6	1065.0	1065.2	1068.1	1067.2
77.5°	970.0	974.6	982.8	987.0	993.8	995.2	970.2	967.3	967.4	970.4	967.9
80°	846.8	855.8	868.7	877.6	888.2	892.4	866.8	860.7	855.0	854.2	849.1
82.5°	715.9	726.9	742.3	750.5	761.7	764.3	721.5	713.4	708.5	709.0	704.3
85°	546.6	554.8	568.9	573.5	580.4	579.8	530.9	510.0	515.7	506.9	513.8
87.5°	342.8	347.7	356.5	357.6	360.9	360.2	311.0	301.3	298.5	298.6	295.1
90°	172.9	176.4	184.3	184.6	189.9	189.4	149.8	145.4	141.7	143.4	138.4
92.5°	46.1	48.9	52.0	55.0	58.1	61.2	59.7	61.4	58.7	55.5	53.0
95°	51.2	55.9	60.6	65.4	70.1	74.7	79.4	84.1	79.7	75.3	70.9
97.5°	57.6	63.2	68.7	74.2	79.7	85.3	90.9	96.4	91.7	86.7	82.1
100°	75.0	85.3	95.5	105.8	116.2	126.5	136.9	147.2	138.1	128.7	119.7
102.5°	151.2	173.2	195.1	216.8	238.8	260.8	282.8	304.8	283.9	262.8	241.9
105°	288.8	324.3	359.7	395.0	430.4	465.9	501.9	537.3	503.9	470.4	437.1
107.5°	454.9	490.9	526.6	562.5	598.5	634.3	671.0	706.9	674.2	641.5	608.9
110°	558.8	584.8	611.0	637.1	663.1	689.2	716.3	742.4	722.8	703.0	683.2



TEST NUMBER: P1444476  
 CATALOG NUMBER: EHBR1-48-UNV-TA-L830-UPL18

**CANDELA DISTRIBUTION (continued):**

	27.5°	30°	32.5°	35°	37.5°	40°	42.5°	45°	47.5°	50°	52.5°
112.5°	582.9	601.6	620.3	638.6	657.0	675.6	695.4	714.2	704.1	693.8	684.0
115°	554.0	566.5	578.7	591.1	603.4	615.6	629.5	642.3	638.6	635.1	631.7
117.5°	502.5	509.1	515.8	522.6	529.1	535.7	544.4	551.4	551.4	551.5	551.6
120°	447.7	450.4	452.8	455.4	457.8	460.1	465.1	468.1	470.2	472.2	474.3
122.5°	401.9	402.6	403.1	403.6	404.2	404.7	408.0	409.2	410.4	411.6	412.8
125°	365.9	365.9	365.8	365.8	365.4	365.5	368.7	369.1	368.6	368.0	367.5
127.5°	343.0	342.6	342.0	341.4	340.6	340.2	342.9	343.0	341.2	339.5	337.7
130°	327.7	327.2	326.7	326.3	326.0	325.5	328.7	329.2	326.5	323.6	321.0
132.5°	318.9	318.7	318.1	318.0	317.6	317.2	320.7	321.3	318.5	315.2	312.3
135°	312.5	312.4	312.0	311.6	311.4	311.4	315.3	316.0	313.2	310.1	307.2
137.5°	307.4	307.3	307.1	307.0	306.6	306.5	311.0	311.8	309.5	306.9	304.5
140°	304.0	303.8	303.7	303.8	303.6	303.8	308.6	309.7	307.8	305.6	303.6
142.5°	299.8	300.2	300.4	300.8	300.9	301.3	306.9	308.3	306.8	305.0	303.6
145°	298.4	299.0	299.3	299.7	300.1	300.9	307.1	308.9	307.9	306.6	305.4
147.5°	297.3	297.8	298.2	298.5	298.9	299.8	306.5	308.4	307.7	306.7	305.8
150°	296.0	296.5	296.7	297.3	298.1	298.8	306.4	308.6	308.0	307.3	306.6
152.5°	293.5	293.8	294.1	294.6	295.1	295.8	305.2	307.8	307.3	306.5	306.0
155°	293.2	293.4	293.5	293.8	294.0	294.8	305.1	307.8	307.3	306.9	306.3
157.5°	295.2	295.1	295.0	295.2	295.3	295.5	306.5	309.5	308.9	308.6	308.1
160°	297.6	297.6	297.4	297.4	297.3	297.4	308.8	311.6	311.4	310.8	310.3
162.5°	300.7	301.1	300.9	300.9	300.9	301.2	312.6	315.8	315.1	314.6	314.1
165°	305.6	305.3	305.2	305.3	305.2	305.2	316.0	318.7	318.4	317.8	317.4
167.5°	310.5	310.6	310.4	310.5	310.5	310.8	320.7	323.4	323.1	322.4	322.1
170°	315.9	316.0	315.9	316.0	316.1	316.4	324.8	326.9	326.7	326.1	325.7
172.5°	320.5	320.8	320.9	321.1	321.2	321.6	328.6	330.7	330.4	330.0	329.4
175°	323.4	323.4	323.6	323.9	324.1	324.3	329.9	331.3	331.1	330.8	330.6
177.5°	327.3	327.3	327.5	327.8	327.9	328.1	331.5	332.4	332.3	332.3	332.2
180°	329.8	329.8	329.8	329.8	329.8	329.8	329.8	329.8	329.8	329.8	329.8



TEST NUMBER: P1444476  
 CATALOG NUMBER: EHBR1-48-UNV-TA-L830-UPL18

**CANDELA DISTRIBUTION (continued):**

	55°	57.5°	60°	62.5°	65°	67.5°	70°	72.5°	75°	77.5°	80°
0°	38337.2	38337.2	38337.2	38337.2	38337.2	38337.2	38337.2	38337.2	38337.2	38337.2	38337.2
2.5°	38419.4	38432.9	38434.9	38450.7	38449.4	38468.1	38465.2	38480.5	38471.6	38484.2	38473.5
5°	39321.7	39403.6	39446.4	39526.2	39551.5	39623.0	39643.2	39708.4	39711.1	39762.8	39751.0
7.5°	40597.5	40718.2	40789.7	40888.5	40938.5	41020.8	41057.0	41117.9	41137.4	41185.8	41189.4
10°	41359.3	41417.9	41458.8	41486.4	41511.6	41523.4	41537.1	41533.4	41537.1	41531.7	41543.5
12.5°	41059.7	40974.2	40917.6	40810.5	40748.4	40630.0	40572.0	40458.1	40416.8	40319.0	40305.0
15°	39542.1	39244.1	39033.5	38727.2	38534.6	38233.3	38057.0	37785.1	37660.9	37444.8	37388.2
17.5°	36776.1	36222.8	35794.5	35245.3	34864.1	34350.7	34027.9	33602.9	33370.3	33027.5	32908.9
20°	32898.2	32079.6	31437.3	30672.1	30124.6	29442.3	29005.5	28454.6	28134.8	27713.9	27543.3
22.5°	28345.5	27326.2	26524.0	25620.1	24959.5	24199.1	23675.9	23079.9	22731.9	22274.7	22072.1
25°	23652.9	22529.0	21637.1	20684.7	19986.7	19224.5	18701.1	18115.6	17755.6	17321.5	17120.3
27.5°	19165.1	18027.2	17165.4	16279.9	15639.6	14951.8	14479.6	13968.4	13648.8	13278.3	13089.0
30°	15204.5	14201.0	13467.5	12732.7	12200.0	11641.5	11249.0	10825.4	10545.0	10227.7	10047.5
32.5°	11977.8	11203.0	10628.7	10045.6	9609.7	9142.9	8803.8	8430.0	8177.0	7893.6	7730.4
35°	9486.2	8884.2	8426.2	7946.2	7571.7	7174.2	6875.3	6552.7	6325.6	6081.7	5940.7
37.5°	7495.1	7016.4	6639.5	6240.8	5933.2	5603.9	5492.9	5122.6	4887.4	4692.7	4557.8
40°	5882.2	5501.6	5189.6	4884.7	4633.9	4384.1	4183.6	3985.8	3833.9	3694.7	3598.4
42.5°	4593.5	4317.8	4090.0	3866.6	3683.6	3501.6	3356.4	3220.1	3117.8	3026.8	2964.7
45°	3651.7	3462.0	3303.7	3146.4	3017.2	2895.7	2798.0	2711.0	2645.0	2590.3	2551.5
47.5°	2999.9	2870.1	2758.4	2652.3	2564.6	2485.0	2419.5	2398.2	2327.2	2279.3	2261.1
50°	2549.5	2471.1	2386.3	2308.0	2249.4	2191.1	2148.7	2107.0	2080.5	2058.5	2051.8
52.5°	2213.3	2153.4	2106.2	2056.6	2018.0	1976.5	1947.2	1919.5	1904.9	1893.4	1892.0
55°	1963.4	1921.5	1890.3	1857.0	1833.9	1809.5	1794.4	1779.7	1773.3	1767.5	1767.9
57.5°	1774.3	1746.3	1726.0	1704.4	1691.9	1680.3	1676.4	1672.8	1674.7	1675.6	1678.9
60°	1636.5	1618.4	1605.5	1593.2	1587.9	1584.3	1587.1	1590.3	1597.0	1602.4	1607.2
62.5°	1531.0	1520.6	1514.3	1507.6	1507.1	1507.4	1513.1	1518.6	1526.9	1533.2	1537.9
65°	1422.2	1416.3	1414.2	1410.0	1412.2	1413.4	1420.2	1424.5	1432.9	1437.8	1443.8
67.5°	1312.4	1311.0	1312.2	1312.2	1316.1	1319.4	1325.9	1330.8	1337.8	1342.4	1347.3
70°	1231.3	1231.9	1234.9	1235.4	1239.5	1241.8	1247.5	1250.6	1257.0	1260.8	1266.6
72.5°	1152.4	1151.1	1151.9	1150.0	1151.4	1150.8	1154.0	1155.5	1161.0	1164.0	1171.1
75°	1068.4	1064.9	1064.0	1060.3	1060.4	1057.6	1058.9	1058.8	1062.3	1063.7	1068.9
77.5°	967.0	961.1	958.2	951.8	951.7	949.3	951.8	953.4	959.7	962.6	968.5
80°	845.7	836.3	832.1	824.7	825.9	825.5	831.7	836.5	844.1	845.6	852.9
82.5°	702.9	693.4	688.9	681.5	683.2	683.4	689.1	690.1	696.7	699.6	708.2
85°	503.3	506.9	496.8	497.6	495.4	499.5	503.3	508.1	513.6	522.9	530.0
87.5°	296.4	295.1	298.6	299.1	304.2	306.9	315.1	319.8	329.1	336.3	349.4
90°	138.4	133.5	136.1	134.3	139.0	137.3	141.7	139.2	144.5	144.8	151.7
92.5°	49.5	47.0	43.6	40.8	37.6	35.1	33.2	32.2	30.4	29.6	27.6
95°	66.5	62.2	57.8	53.4	49.1	44.7	43.1	41.5	39.9	38.3	36.6
97.5°	77.4	72.6	67.9	63.0	58.4	53.7	52.6	51.5	50.5	49.5	48.3
100°	110.4	101.4	92.3	83.2	74.1	65.0	64.2	63.3	62.5	61.6	60.7
102.5°	221.1	200.0	179.2	158.3	137.5	116.5	112.9	109.3	105.7	102.0	98.4
105°	403.5	370.0	336.7	303.2	269.9	236.5	226.6	216.4	206.5	196.5	186.7
107.5°	576.2	543.4	510.9	478.3	445.8	413.2	397.4	381.7	365.8	350.0	334.4
110°	663.2	643.5	624.0	604.1	584.6	565.0	549.8	534.9	519.7	504.6	489.7



TEST NUMBER: P1444476  
 CATALOG NUMBER: EHBR1-48-UNV-TA-L830-UPL18

**CANDELA DISTRIBUTION (continued):**

	55°	57.5°	60°	62.5°	65°	67.5°	70°	72.5°	75°	77.5°	80°
112.5°	673.8	663.8	653.5	643.7	633.8	623.8	616.4	609.0	601.6	594.2	586.7
115°	628.1	624.6	621.1	617.9	614.6	611.1	610.4	609.8	609.0	608.4	607.8
117.5°	551.6	551.9	551.9	552.2	552.4	552.7	556.3	559.9	563.6	567.5	571.5
120°	476.4	478.5	480.4	482.7	484.8	487.2	491.9	496.9	501.8	507.0	512.2
122.5°	413.9	415.1	416.2	417.6	418.9	420.3	424.8	429.7	434.4	439.4	444.7
125°	366.6	366.1	365.5	364.7	364.1	363.8	367.4	371.1	375.1	379.2	383.0
127.5°	335.7	333.7	331.7	330.0	327.9	326.3	328.0	330.0	331.9	334.1	336.2
130°	318.1	315.4	312.3	309.7	306.6	304.0	304.2	304.7	305.0	305.6	306.1
132.5°	309.1	305.9	302.7	299.6	296.3	293.2	292.3	291.6	290.8	290.4	289.9
135°	304.1	301.3	298.1	295.0	291.8	288.9	287.6	286.2	284.9	283.8	282.7
137.5°	302.0	299.5	296.8	294.4	291.6	289.2	287.4	286.0	284.3	283.2	281.8
140°	301.4	299.4	297.0	295.0	292.6	290.7	289.1	287.9	286.4	285.3	284.1
142.5°	301.6	300.0	298.2	296.7	294.9	293.2	291.8	290.5	289.2	288.1	286.8
145°	304.1	302.9	301.5	300.3	298.9	297.8	296.4	295.4	294.3	293.4	292.5
147.5°	304.9	304.0	303.0	301.9	300.9	299.9	298.9	298.3	297.2	296.7	295.8
150°	305.6	304.7	303.8	303.1	302.0	301.2	300.5	299.8	299.1	298.7	298.1
152.5°	305.0	304.2	303.5	302.8	301.9	301.1	300.4	299.9	299.4	298.9	298.2
155°	305.6	305.1	304.3	303.8	302.9	302.5	301.8	301.1	300.5	299.9	299.3
157.5°	307.5	307.0	306.2	305.8	305.0	304.4	303.9	303.3	302.6	302.1	301.4
160°	309.8	309.4	308.6	308.1	307.5	307.0	306.1	305.6	304.8	304.3	303.4
162.5°	313.4	312.7	312.1	311.5	310.7	310.1	309.5	308.9	308.3	307.7	307.1
165°	316.8	316.2	315.7	315.1	314.6	314.1	313.3	312.8	311.9	311.4	310.6
167.5°	321.6	321.2	320.6	320.2	319.5	318.9	318.4	317.7	317.1	316.4	315.5
170°	325.2	324.5	324.1	323.4	323.0	322.3	321.8	321.1	320.4	320.1	319.1
172.5°	329.1	328.8	328.2	327.8	327.2	326.8	326.4	326.0	325.4	324.9	324.5
175°	330.5	330.3	330.2	329.7	329.6	329.3	329.1	328.9	328.6	328.5	328.0
177.5°	332.2	332.0	332.0	331.7	331.6	331.6	331.3	331.2	330.9	330.7	330.6
180°	329.8	329.8	329.8	329.8	329.8	329.8	329.8	329.8	329.8	329.8	329.8



TEST NUMBER: P1444476  
 CATALOG NUMBER: EHBR1-48-UNV-TA-L830-UPL18

**CANDELA DISTRIBUTION (continued):**

	82.5°	85°	87.5°	90°	92.5°	95°	97.5°	100°	102.5°	105°	107.5°
0°	38337.2	38337.2	38337.2	38337.2	38337.2	38337.2	38337.2	38337.2	38337.2	38337.2	38337.2
2.5°	38484.6	38474.8	38479.5	38461.5	38465.8	38444.0	38442.0	38417.4	38415.0	38391.9	38383.1
5°	39787.6	39766.2	39790.4	39752.7	39760.1	39711.1	39707.0	39643.6	39621.8	39542.4	39508.2
7.5°	41219.7	41211.6	41226.3	41194.9	41193.8	41150.1	41132.0	41075.2	41039.9	40956.8	40903.5
10°	41533.4	41540.8	41528.7	41531.7	41514.7	41510.0	41492.5	41481.4	41452.8	41431.3	41399.4
12.5°	40230.7	40238.5	40188.7	40220.3	40195.4	40253.6	40248.9	40317.4	40327.8	40414.5	40447.4
15°	37219.8	37210.5	37115.1	37175.2	37142.9	37270.5	37299.1	37470.7	37562.5	37782.9	37918.3
17.5°	32671.5	32646.9	32512.6	32585.8	32548.6	32736.7	32799.8	33074.3	33245.5	33600.6	33853.6
20°	27249.6	27202.6	27045.5	27131.1	27092.8	27306.5	27396.6	27728.3	27949.1	28419.4	28754.0
22.5°	21760.4	21686.1	21532.2	21612.2	21576.0	21797.4	21914.6	22247.5	22500.4	22983.2	23373.8
25°	16831.2	16764.9	16616.2	16672.2	16658.7	16846.0	16950.2	17265.1	17513.6	17973.5	18346.4
27.5°	12837.5	12768.7	12634.2	12673.9	12660.2	12819.8	12918.1	13181.1	13394.9	13782.1	14109.5
30°	9825.2	9742.1	9628.1	9650.1	9640.7	9770.0	9861.8	10083.3	10266.6	10593.8	10875.8
32.5°	7531.0	7447.5	7342.8	7353.1	7339.2	7440.7	7516.2	7708.9	7868.6	8146.8	8392.3
35°	5762.3	5859.9	5636.3	5777.9	5630.5	5846.9	5769.1	5889.5	6026.9	6261.2	6466.0
37.5°	4429.8	4361.8	4304.3	4298.1	4297.8	4348.0	4407.2	4523.2	4644.2	4818.9	4999.3
40°	3510.4	3462.6	3425.5	3422.7	3425.5	3461.1	3504.9	3585.0	3673.7	3799.1	3931.6
42.5°	2911.6	2879.8	2857.4	2855.8	2863.0	2888.2	2918.7	2966.3	3024.0	3105.2	3196.1
45°	2519.9	2502.3	2489.9	2489.1	2492.4	2505.6	2523.1	2552.8	2589.3	2640.0	2697.5
47.5°	2245.2	2240.9	2233.1	2233.4	2229.8	2235.3	2237.2	2253.8	2273.3	2311.5	2386.7
50°	2045.1	2045.1	2039.7	2039.4	2034.3	2034.1	2029.8	2036.3	2045.4	2069.1	2093.2
52.5°	1887.0	1886.4	1880.6	1879.5	1874.1	1873.8	1870.0	1872.7	1873.9	1885.9	1900.2
55°	1763.4	1759.7	1752.0	1749.6	1747.4	1750.6	1749.2	1749.3	1747.7	1752.8	1757.0
57.5°	1674.7	1669.9	1662.7	1660.5	1659.9	1663.6	1663.8	1662.5	1655.8	1651.3	1644.9
60°	1604.5	1599.7	1591.8	1589.9	1591.0	1596.2	1595.9	1591.6	1581.6	1573.0	1562.9
62.5°	1535.6	1533.7	1529.6	1529.1	1528.1	1529.0	1525.4	1520.8	1511.0	1501.8	1490.9
65°	1443.1	1444.1	1441.1	1441.6	1438.0	1437.5	1432.0	1427.6	1417.7	1409.3	1398.1
67.5°	1347.1	1347.8	1345.4	1345.4	1343.5	1343.8	1340.5	1336.4	1328.1	1321.2	1312.5
70°	1267.9	1269.9	1268.5	1269.0	1266.6	1265.8	1260.7	1256.7	1248.1	1242.4	1234.6
72.5°	1173.1	1177.4	1177.3	1178.3	1174.9	1173.1	1167.0	1162.1	1154.3	1149.7	1143.4
75°	1070.8	1076.4	1078.0	1080.4	1075.5	1073.0	1066.3	1062.3	1056.0	1053.2	1049.1
77.5°	971.0	977.1	982.9	988.3	980.5	973.5	965.2	958.8	949.6	946.2	939.7
80°	858.9	869.6	882.6	893.4	879.4	865.1	851.4	841.2	829.1	824.1	816.2
82.5°	712.6	723.6	731.0	737.9	728.2	717.8	704.4	695.5	682.4	677.6	668.3
85°	541.3	555.1	559.5	563.2	557.0	551.4	538.9	522.0	513.8	500.9	494.2
87.5°	356.0	364.3	365.9	367.1	363.3	360.6	352.5	344.5	330.5	320.3	307.7
90°	150.6	155.4	151.5	152.9	148.7	149.9	142.6	140.6	129.7	126.2	116.7
92.5°	26.5	24.8	23.5	22.0	24.1	24.9	26.8	27.6	29.5	30.4	32.2
95°	35.0	33.4	31.8	30.3	31.6	32.8	34.1	35.4	36.6	37.9	39.2
97.5°	47.3	46.3	45.1	44.1	44.9	45.6	46.4	47.1	47.8	48.5	49.5
100°	59.9	59.0	58.2	57.3	57.3	57.3	57.3	57.3	57.3	57.3	57.3
102.5°	94.8	91.1	87.6	83.9	86.4	88.8	91.2	93.7	96.2	98.6	101.3
105°	176.8	166.8	156.9	147.0	156.5	166.2	175.7	185.4	194.9	204.9	214.4
107.5°	318.5	302.8	287.1	271.5	289.2	306.7	324.1	341.6	359.1	376.7	394.4
110°	474.7	459.8	444.8	429.9	448.5	467.0	485.6	504.1	522.9	541.4	560.2



TEST NUMBER: P1444476  
 CATALOG NUMBER: EHBR1-48-UNV-TA-L830-UPL18

**CANDELA DISTRIBUTION (continued):**

	82.5°	85°	87.5°	90°	92.5°	95°	97.5°	100°	102.5°	105°	107.5°
112.5°	579.4	572.1	564.8	557.6	569.6	581.5	593.5	605.7	617.7	629.7	641.7
115°	607.3	606.8	606.4	606.0	611.6	617.3	622.9	628.7	634.5	640.1	646.0
117.5°	575.2	579.1	583.2	587.2	589.0	590.9	592.8	594.6	596.8	598.7	600.7
120°	517.4	522.5	527.9	533.4	532.6	531.9	531.2	530.5	530.3	529.6	529.5
122.5°	449.8	455.0	460.4	465.7	464.1	462.5	461.0	459.6	458.3	457.0	455.9
125°	387.4	391.6	396.0	400.5	398.9	397.4	395.9	394.7	393.4	392.1	391.2
127.5°	338.8	341.4	343.8	346.6	345.8	345.1	344.8	344.1	344.0	343.8	343.7
130°	307.0	307.8	309.1	310.1	310.2	310.4	311.2	311.6	312.4	313.0	314.1
132.5°	289.9	289.6	289.7	289.8	290.7	291.5	292.7	293.8	295.5	296.7	298.8
135°	282.0	281.4	280.8	280.5	281.8	282.8	284.5	286.1	287.9	290.0	292.2
137.5°	280.8	279.9	279.1	278.3	279.6	280.8	282.4	284.0	285.9	287.9	290.2
140°	283.3	282.2	281.8	281.0	282.3	283.4	284.9	286.5	288.4	290.4	292.5
142.5°	286.1	285.0	284.5	284.0	284.9	286.1	287.7	289.0	290.8	292.3	294.4
145°	291.7	290.9	290.6	290.0	290.7	291.5	292.5	293.7	295.1	296.2	297.9
147.5°	295.3	294.7	294.4	293.9	294.6	295.2	295.9	296.6	297.6	298.5	299.7
150°	297.9	297.3	296.9	296.7	297.1	297.3	298.0	298.2	298.9	299.5	300.5
152.5°	298.1	297.4	297.4	297.0	297.2	297.4	297.9	298.2	298.7	299.1	300.0
155°	299.0	298.5	298.1	297.7	297.6	297.6	297.8	297.7	298.1	298.2	298.4
157.5°	301.2	300.6	300.3	299.7	299.6	299.2	299.2	299.0	299.2	298.8	298.9
160°	303.0	302.3	301.7	301.2	301.1	300.7	300.9	300.5	300.5	300.4	300.6
162.5°	306.6	306.0	305.6	305.1	304.8	304.1	303.9	303.3	303.0	302.7	302.7
165°	309.9	309.1	308.6	307.8	307.6	307.3	307.1	306.8	306.6	306.2	306.2
167.5°	315.1	314.4	313.8	313.1	312.8	312.1	311.8	311.4	310.9	310.5	310.4
170°	318.8	318.1	317.7	317.3	317.0	316.5	316.4	316.0	315.9	315.7	315.7
172.5°	324.0	323.5	323.2	322.8	322.5	322.2	322.0	321.9	321.7	321.7	321.5
175°	327.8	327.6	327.5	327.2	326.9	326.8	326.5	326.4	326.3	326.1	325.9
177.5°	330.2	329.9	329.8	329.7	329.5	329.5	329.5	329.5	329.5	329.4	329.3
180°	329.8	329.8	329.8	329.8	329.8	329.8	329.8	329.8	329.8	329.8	329.8



TEST NUMBER: P1444476  
 CATALOG NUMBER: EHBR1-48-UNV-TA-L830-UPL18

**CANDELA DISTRIBUTION (continued):**

	110°	112.5°	115°	117.5°	120°	122.5°	125°	127.5°	130°	132.5°	135°
0°	38337.2	38337.2	38337.2	38337.2	38337.2	38337.2	38337.2	38337.2	38337.2	38337.2	38337.2
2.5°	38358.3	38348.2	38321.7	38308.6	38284.0	38271.7	38252.5	38240.1	38224.7	38213.1	38207.1
5°	39421.1	39372.0	39273.8	39213.3	39107.1	39037.2	38931.8	38854.5	38745.7	38665.4	38562.5
7.5°	40803.8	40728.6	40602.7	40507.1	40358.7	40245.1	40078.5	39945.2	39761.1	39608.2	39420.1
10°	41366.7	41322.8	41266.3	41204.9	41122.6	41042.0	40928.2	40812.2	40657.7	40503.9	40303.0
12.5°	40534.8	40576.1	40657.7	40695.7	40758.1	40779.2	40807.8	40794.4	40769.1	40706.4	40615.3
15°	38178.3	38350.9	38623.7	38812.4	39076.8	39262.5	39508.2	39666.3	39848.4	39957.3	40060.7
17.5°	34302.0	34635.9	35117.3	35501.4	36016.9	36436.1	36949.7	37353.2	37819.2	38176.6	38557.1
20°	29337.1	29804.7	30469.2	31033.5	31780.7	32414.2	33225.7	33905.6	34698.7	35359.8	36073.3
22.5°	23993.5	24543.6	25304.9	25985.7	26877.8	27674.6	28691.5	29590.4	30662.6	31623.1	32685.5
25°	18952.4	19491.5	20267.2	20972.0	21935.0	22812.8	23923.7	24955.0	26199.2	27359.5	28691.5
27.5°	14629.5	15108.3	15790.1	16424.5	17306.6	18168.3	19295.7	20395.4	21723.0	22970.0	24405.4
30°	11298.1	11686.6	12232.9	12743.2	13451.3	14156.1	15160.3	16177.3	17498.4	18790.5	20262.1
32.5°	8755.7	9086.8	9542.9	9957.2	10502.8	11034.2	11773.8	12586.5	13745.3	14982.9	16405.9
35°	6777.8	7061.2	7449.4	7806.3	8254.9	8676.8	9228.6	9808.7	10693.1	11734.2	13007.6
37.5°	5403.7	5519.2	5796.3	6088.6	6461.3	6808.0	7239.6	7668.6	8301.3	9122.7	10163.0
40°	4109.4	4292.8	4518.3	4748.6	5030.9	5308.9	5782.5	6010.5	6427.0	7016.7	7824.1
42.5°	3315.8	3444.7	3603.5	3763.6	3960.2	4153.9	4393.4	4637.5	4948.8	5348.2	5922.5
45°	2774.7	2858.8	2961.1	3067.8	3197.0	3329.2	3489.5	3657.0	3868.0	4113.6	4462.4
47.5°	2413.2	2459.7	2526.5	2599.4	2687.9	2779.4	2883.7	2990.4	3121.6	3267.1	3465.8
50°	2131.1	2169.9	2221.8	2270.5	2331.6	2425.3	2466.7	2525.6	2604.5	2690.2	2801.3
52.5°	1926.9	1952.8	1985.4	2013.3	2052.0	2087.1	2133.1	2173.7	2228.2	2279.7	2351.4
55°	1767.9	1777.3	1795.8	1813.8	1840.5	1864.5	1896.1	1922.7	1957.4	1988.3	2033.5
57.5°	1645.1	1646.0	1654.5	1663.9	1681.1	1696.2	1717.9	1735.3	1759.5	1779.2	1806.3
60°	1556.9	1552.2	1553.9	1557.2	1566.9	1576.7	1590.6	1602.0	1617.1	1628.3	1643.5
62.5°	1483.5	1476.1	1474.4	1473.5	1478.4	1481.9	1489.5	1495.0	1503.7	1508.5	1516.6
65°	1390.7	1382.0	1378.6	1374.6	1376.0	1374.9	1377.8	1377.9	1382.3	1383.3	1388.0
67.5°	1306.6	1299.3	1294.9	1289.6	1287.1	1283.3	1281.6	1277.9	1277.3	1274.2	1273.5
70°	1229.9	1222.8	1219.0	1214.1	1211.5	1206.4	1203.3	1197.0	1193.4	1187.6	1184.3
72.5°	1141.1	1137.1	1135.9	1132.6	1131.6	1128.8	1127.5	1123.1	1120.6	1115.6	1112.8
75°	1048.3	1045.0	1044.7	1041.3	1041.1	1037.6	1036.7	1032.1	1029.6	1024.7	1022.6
77.5°	937.7	932.9	931.5	927.5	928.5	926.8	928.2	924.6	923.1	918.2	916.6
80°	813.3	807.1	804.4	799.2	800.6	798.3	800.6	800.3	802.2	798.3	797.5
82.5°	665.8	659.0	657.7	654.0	656.4	656.7	662.0	659.2	660.3	656.5	658.1
85°	484.5	479.4	472.3	471.3	466.8	471.4	465.4	469.5	462.7	467.4	461.2
87.5°	300.4	289.8	284.3	276.8	273.9	266.7	263.7	258.4	260.0	257.6	259.0
90°	115.0	106.6	105.5	98.9	99.1	93.6	95.1	91.4	93.8	89.9	92.5
92.5°	33.2	34.6	37.0	40.0	42.2	44.8	47.3	50.2	52.5	55.4	57.6
95°	40.5	41.8	45.1	48.6	52.0	55.5	58.9	62.4	65.8	69.2	72.6
97.5°	50.2	51.0	54.3	57.8	61.2	64.6	68.0	71.8	75.1	78.6	82.0
100°	57.3	57.4	67.2	76.8	86.6	96.5	106.1	115.9	125.9	135.5	145.3
102.5°	103.7	106.1	130.7	155.3	179.8	204.4	229.1	253.8	278.4	303.2	327.8
105°	224.1	233.7	271.2	308.8	346.2	383.8	421.4	459.2	496.6	534.3	571.9
107.5°	411.9	429.5	463.5	497.4	531.2	565.3	599.4	633.4	667.3	701.4	735.7
110°	578.8	597.5	620.2	643.1	666.0	688.9	711.7	734.7	757.7	780.7	803.8



TEST NUMBER: P1444476  
 CATALOG NUMBER: EHBR1-48-UNV-TA-L830-UPL18

**CANDELA DISTRIBUTION (continued):**

	110°	112.5°	115°	117.5°	120°	122.5°	125°	127.5°	130°	132.5°	135°
112.5°	653.7	666.0	679.3	692.9	706.3	719.8	733.2	746.7	760.4	774.1	787.6
115°	652.0	657.9	663.2	668.7	674.1	679.6	685.0	690.7	696.5	702.1	707.8
117.5°	602.8	605.1	606.1	607.3	608.4	609.9	611.0	612.5	614.0	615.5	616.7
120°	529.1	528.7	528.2	527.8	527.4	527.1	526.9	526.6	526.6	526.4	526.2
122.5°	454.7	453.8	453.4	453.1	452.9	452.9	452.7	453.0	453.0	453.0	452.9
125°	390.1	389.4	390.8	392.1	393.6	395.1	396.5	398.4	400.0	401.6	403.3
127.5°	343.5	343.8	346.4	349.1	351.8	354.6	357.5	360.5	363.3	366.4	369.2
130°	315.1	316.3	319.5	323.1	326.3	329.8	333.4	337.1	340.3	343.9	347.3
132.5°	300.3	302.5	305.5	308.9	312.2	315.7	319.1	322.6	326.1	329.6	332.8
135°	294.3	296.8	299.7	303.0	306.1	309.4	312.6	316.0	318.9	322.2	325.2
137.5°	292.3	294.7	297.4	300.0	302.6	305.6	308.2	311.0	313.5	316.3	318.9
140°	294.6	297.0	298.7	300.8	302.5	304.4	306.1	308.2	309.7	311.8	313.4
142.5°	296.2	298.5	299.6	301.1	302.4	304.1	305.5	307.0	308.1	309.4	310.5
145°	299.3	301.1	301.6	302.4	303.0	303.8	304.2	305.1	305.5	306.0	306.5
147.5°	301.0	302.3	302.5	302.9	303.4	303.6	304.0	304.3	304.4	304.8	305.1
150°	301.2	302.2	302.0	302.3	302.1	302.3	302.1	302.4	302.2	302.4	302.2
152.5°	300.5	301.3	300.9	301.1	300.7	300.6	300.3	300.3	300.0	299.9	299.8
155°	298.6	298.9	298.7	298.6	298.4	298.3	298.1	298.3	298.2	298.2	298.2
157.5°	298.8	298.8	298.7	298.6	298.3	298.4	298.2	298.2	298.3	298.7	298.9
160°	300.3	300.4	300.1	300.0	299.9	299.8	299.7	299.8	299.9	300.4	300.6
162.5°	302.2	302.1	301.8	301.7	301.6	301.7	301.6	302.0	302.0	302.4	302.7
165°	306.2	306.3	305.8	305.8	305.6	305.6	305.5	305.6	305.8	305.9	306.2
167.5°	310.1	310.1	310.1	310.2	310.2	310.3	310.5	311.1	311.2	311.7	311.9
170°	315.6	315.7	315.5	315.5	315.3	315.4	315.4	315.5	315.6	315.8	315.8
172.5°	321.5	321.5	321.3	321.0	320.8	320.8	320.5	320.6	320.4	320.3	320.1
175°	325.7	325.6	325.5	325.4	325.3	325.0	324.9	324.5	324.4	324.3	324.2
177.5°	329.2	328.9	328.7	328.7	328.6	328.4	328.4	328.3	328.3	328.3	328.0
180°	329.8	329.8	329.8	329.8	329.8	329.8	329.8	329.8	329.8	329.8	329.8



TEST NUMBER: P1444476  
 CATALOG NUMBER: EHBR1-48-UNV-TA-L830-UPL18

**CANDELA DISTRIBUTION (continued):**

	137.5°	140°	142.5°	145°	147.5°	150°	152.5°	155°	157.5°	160°	162.5°
0°	38337.2	38337.2	38337.2	38337.2	38337.2	38337.2	38337.2	38337.2	38337.2	38337.2	38337.2
2.5°	38199.5	38199.1	38195.3	38197.0	38197.8	38200.5	38203.8	38207.1	38207.9	38210.5	38211.1
5°	38485.3	38390.8	38320.9	38244.0	38186.2	38134.3	38099.6	38072.1	38061.4	38064.1	38070.5
7.5°	39260.6	39065.4	38904.5	38721.5	38568.9	38407.3	38273.4	38146.1	38053.2	37984.1	37945.4
10°	40111.2	39873.6	39646.3	39381.5	39130.3	38862.2	38619.3	38374.8	38170.9	37993.8	37863.8
12.5°	40488.7	40320.7	40124.3	39874.3	39605.5	39296.2	38983.8	38648.9	38337.4	38048.3	37815.1
15°	40089.0	40089.3	40017.7	39897.8	39711.1	39463.8	39166.2	38817.1	38449.7	38074.7	37732.1
17.5°	38820.2	39059.6	39192.7	39277.0	39251.2	39160.1	38970.6	38702.6	38360.0	37960.6	37542.6
20°	36641.4	37206.0	37608.6	37970.6	38173.5	38308.3	38294.8	38185.7	37941.8	37602.1	37166.8
22.5°	33589.2	34536.8	35284.7	35982.0	36471.0	36868.9	37058.0	37138.3	37027.7	36791.1	36382.3
25°	29881.9	31170.5	32270.1	33337.3	34137.8	34825.7	35239.2	35530.5	35553.6	35430.0	35065.3
27.5°	25762.6	27283.6	28675.3	30093.6	31219.3	32208.3	32857.2	33332.1	33483.0	33463.2	33132.0
30°	21648.5	23245.2	24779.2	26433.1	27826.1	29089.6	29946.8	30589.2	30836.6	30884.1	30565.6
32.5°	17763.1	19337.6	20867.4	22596.4	24129.3	25577.5	26590.3	27353.2	27641.1	27708.9	27359.5
35°	14236.9	15689.6	17143.4	18819.0	20343.2	21842.7	22909.8	23708.7	23977.5	24022.8	23618.3
37.5°	11179.1	12416.7	13683.5	15187.0	16586.7	17995.0	19008.9	19759.6	19955.5	19943.4	19485.5
40°	8604.3	9566.5	10584.4	11822.2	12985.9	14176.3	15032.6	15653.2	15756.0	15679.9	15198.9
42.5°	6470.0	7164.9	7902.9	8826.9	9690.3	10581.3	11204.2	11664.9	11679.5	11559.1	11127.4
45°	4820.1	5498.1	5807.6	6366.2	6922.4	7514.8	7895.2	8179.8	8135.8	8029.7	7701.7
47.5°	3674.5	3935.1	4211.4	4557.8	4881.8	5554.1	5504.3	5961.3	5632.1	5856.6	5362.5
50°	2917.9	3063.6	3212.4	3396.3	3565.6	3741.3	3851.1	3933.1	3922.5	3887.2	3792.6
52.5°	2482.5	2527.5	2600.8	2705.4	2799.8	2894.9	2957.5	3008.3	3009.3	2995.1	2947.2
55°	2074.8	2131.9	2184.7	2253.0	2369.4	2387.3	2476.9	2458.8	2465.8	2441.0	2466.4
57.5°	1829.3	1862.6	1892.2	1932.9	1966.5	2005.8	2028.9	2051.2	2049.1	2044.3	2019.8
60°	1655.4	1673.7	1690.2	1713.9	1732.4	1754.5	1765.2	1776.6	1772.9	1764.7	1742.9
62.5°	1521.3	1532.7	1542.2	1557.5	1568.7	1582.5	1588.1	1592.9	1588.1	1580.2	1561.0
65°	1389.0	1396.4	1402.3	1413.9	1421.8	1433.6	1438.3	1442.8	1438.4	1432.3	1417.7
67.5°	1269.6	1270.4	1269.8	1274.5	1276.9	1284.0	1286.1	1289.4	1284.3	1279.0	1266.6
70°	1179.1	1177.3	1175.0	1176.9	1177.3	1180.7	1181.3	1180.7	1174.6	1165.5	1152.0
72.5°	1108.4	1107.4	1105.7	1107.3	1107.3	1110.4	1109.3	1107.8	1100.3	1091.5	1078.2
75°	1017.5	1016.7	1013.3	1013.4	1010.6	1011.6	1007.9	1005.8	997.4	990.0	978.1
77.5°	911.0	909.4	904.4	902.5	897.1	894.8	887.9	884.4	875.9	869.9	859.7
80°	792.3	790.4	784.0	780.5	771.9	766.5	756.3	750.5	740.7	734.8	724.9
82.5°	654.9	655.6	649.1	644.7	632.6	623.2	609.5	602.1	591.3	585.6	575.4
85°	465.7	459.1	462.6	462.4	454.7	446.5	435.5	427.7	418.6	413.2	406.0
87.5°	255.4	257.0	255.2	253.7	248.2	244.1	235.4	230.9	224.2	221.0	215.5
90°	85.1	84.2	77.2	76.3	69.5	66.4	58.5	56.3	49.1	47.7	42.7
92.5°	54.7	51.9	49.3	46.1	43.6	40.7	37.7	34.9	32.0	30.8	30.1
95°	68.5	64.4	60.3	56.1	52.0	47.8	43.7	39.5	35.4	34.6	33.7
97.5°	77.2	72.2	67.3	62.7	57.7	52.8	48.1	43.1	38.2	37.7	37.2
100°	134.0	122.9	111.7	100.3	89.1	77.7	66.7	55.4	44.2	43.6	42.9
102.5°	300.4	273.2	245.9	218.6	191.6	164.1	136.8	109.4	82.1	78.2	74.3
105°	530.6	489.1	448.1	406.7	365.4	324.0	282.8	241.3	200.0	186.8	173.4
107.5°	696.9	657.9	619.4	580.7	541.8	503.1	464.3	425.4	386.5	363.1	339.8
110°	773.1	742.2	711.8	681.1	650.4	619.6	588.9	558.1	527.4	507.3	487.5



TEST NUMBER: P1444476  
 CATALOG NUMBER: EHBR1-48-UNV-TA-L830-UPL18

**CANDELA DISTRIBUTION (continued):**

	137.5°	140°	142.5°	145°	147.5°	150°	152.5°	155°	157.5°	160°	162.5°
112.5°	765.3	743.0	720.9	698.3	676.1	653.5	631.2	608.8	586.2	574.2	562.1
115°	694.7	681.4	668.2	654.9	641.6	628.3	615.0	601.5	588.0	581.8	575.6
117.5°	610.5	603.9	597.5	591.0	584.5	577.8	571.2	564.5	557.8	555.9	554.0
120°	525.1	523.5	521.7	520.2	518.6	517.0	515.2	513.4	511.5	512.3	513.0
122.5°	454.6	455.9	457.5	458.6	460.2	461.3	462.9	463.9	465.2	467.4	469.7
125°	406.1	408.7	411.4	414.0	416.6	419.2	421.9	424.2	427.0	429.0	431.5
127.5°	372.3	375.2	378.3	381.1	384.2	387.1	390.0	392.8	395.7	397.8	400.3
130°	350.2	352.8	355.7	358.2	360.9	363.5	366.2	368.9	371.5	373.5	375.5
132.5°	335.3	337.9	340.5	342.7	345.4	347.7	350.3	352.7	355.4	357.0	358.8
135°	327.5	329.3	331.4	333.3	335.6	337.4	339.6	341.7	344.0	345.3	346.9
137.5°	320.6	322.3	324.2	325.8	327.8	329.4	331.4	333.2	335.4	336.4	337.9
140°	315.2	316.9	318.7	320.4	322.3	324.0	326.3	328.1	330.3	331.4	332.7
142.5°	312.1	313.3	314.8	316.2	317.9	319.3	321.1	322.9	324.8	326.0	327.2
145°	308.1	309.6	311.2	312.7	314.3	316.0	318.0	319.9	321.9	322.9	324.0
147.5°	306.3	307.5	309.0	310.4	311.8	313.2	315.1	316.8	318.7	319.7	320.6
150°	303.6	304.8	306.1	307.4	309.0	310.6	312.4	314.1	316.3	317.4	318.4
152.5°	301.2	302.4	303.8	305.4	307.1	308.7	310.5	312.4	314.4	315.3	316.4
155°	299.7	300.8	302.4	303.9	305.6	307.1	308.9	310.6	312.5	313.6	314.5
157.5°	300.2	301.2	302.7	304.1	305.6	307.1	308.8	310.2	312.0	312.9	313.7
160°	301.8	302.8	304.1	305.6	306.9	308.3	309.7	311.0	312.5	313.4	314.3
162.5°	303.9	305.2	306.4	307.5	309.0	310.3	311.7	313.0	314.5	315.2	316.0
165°	307.2	308.2	309.3	310.1	311.4	312.1	313.4	314.4	315.7	316.2	317.2
167.5°	313.0	313.6	314.3	315.1	316.0	316.9	317.8	318.7	319.7	320.4	321.0
170°	316.5	317.2	317.7	318.5	319.2	320.0	320.7	321.4	322.4	322.9	323.5
172.5°	320.5	320.8	321.5	321.8	322.3	322.7	323.3	323.9	324.4	324.9	325.4
175°	324.6	324.7	324.9	325.0	325.3	325.6	326.0	326.3	326.5	326.9	327.3
177.5°	328.1	328.2	328.4	328.5	328.9	329.0	329.3	329.3	329.6	329.9	330.4
180°	329.8	329.8	329.8	329.8	329.8	329.8	329.8	329.8	329.8	329.8	329.8



TEST NUMBER: P1444476  
 CATALOG NUMBER: EHBR1-48-UNV-TA-L830-UPL18

**CANDELA DISTRIBUTION (continued):**

	165°	167.5°	170°	172.5°	175°	177.5°	180°	182.5°	185°	187.5°	190°
0°	38337.2	38337.2	38337.2	38337.2	38337.2	38337.2	38337.2	38337.2	38337.2	38337.2	38337.2
2.5°	38209.9	38209.4	38208.2	38206.4	38204.7	38205.7	38207.4	38211.8	38219.5	38230.6	38245.1
5°	38075.7	38083.5	38087.9	38088.5	38084.5	38082.1	38085.8	38096.3	38117.5	38153.0	38201.0
7.5°	37935.0	37944.7	37959.5	37970.6	37972.7	37970.0	37970.6	37987.0	38026.2	38095.3	38192.3
10°	37784.9	37756.3	37771.4	37798.9	37820.8	37824.8	37827.5	37847.0	37904.1	38008.6	38164.5
12.5°	37646.2	37555.8	37538.3	37563.2	37596.5	37607.1	37604.2	37612.5	37679.5	37817.8	38035.1
15°	37463.8	37293.7	37235.6	37242.0	37283.1	37297.8	37287.0	37270.5	37335.7	37504.7	37785.9
17.5°	37168.5	36894.3	36787.5	36782.8	36830.8	36843.6	36817.2	36766.0	36830.3	37041.0	37390.1
20°	36719.6	36314.9	36113.7	36081.7	36133.9	36118.7	36066.0	35988.6	36073.0	36329.4	36744.6
22.5°	35912.8	35399.9	35056.1	34945.3	35007.7	34966.1	34889.2	34790.5	34902.6	35193.8	35656.2
25°	34594.3	34001.7	33531.1	33267.1	33316.9	33242.2	33158.6	33038.9	33172.6	33506.9	34015.8
27.5°	32656.3	31971.7	31388.6	30951.6	30967.6	30869.9	30773.5	30618.7	30785.6	31181.4	31755.4
30°	30079.2	29287.0	28576.9	27983.1	27929.9	27835.1	27736.4	27533.2	27742.1	28215.8	28886.6
32.5°	26842.9	25963.3	25142.9	24391.9	24250.3	24157.8	24069.9	23836.0	24109.5	24661.8	25432.4
35°	23058.0	22121.2	21231.6	20374.0	20139.2	20046.8	19969.9	19745.8	20087.2	20688.2	21520.4
37.5°	18903.7	17946.7	17063.5	16184.0	15852.4	15726.9	15671.0	15524.3	15918.1	16512.5	17348.2
40°	14638.9	13749.0	12957.2	12180.4	11802.3	11610.4	11581.1	11554.4	11935.1	12450.8	13209.4
42.5°	10649.2	9931.3	9320.7	8726.9	8384.4	8122.3	8122.1	8201.7	8544.4	8930.7	9515.7
45°	7366.4	6884.6	6495.6	6098.9	6204.9	5682.3	5989.3	5831.8	6001.1	6250.2	6630.6
47.5°	5063.7	4800.6	4587.0	4365.3	4203.8	4049.5	4063.0	4162.5	4322.0	4469.8	4667.7
50°	3690.5	3556.6	3447.7	3332.7	3252.3	3184.2	3188.2	3231.3	3315.0	3392.9	3496.5
52.5°	2891.8	2817.9	2758.8	2695.2	2652.9	2619.1	2621.0	2641.9	2687.2	2731.6	2791.0
55°	2383.5	2374.7	2297.7	2240.6	2218.9	2196.2	2200.3	2208.5	2239.4	2265.3	2304.7
57.5°	1997.3	1962.9	1939.8	1909.8	1895.9	1880.1	1883.6	1886.7	1907.3	1924.7	1953.0
60°	1724.8	1700.3	1683.9	1663.5	1654.4	1644.3	1646.5	1648.4	1661.6	1673.1	1693.3
62.5°	1543.6	1521.7	1507.4	1491.7	1485.3	1478.5	1480.1	1480.7	1488.9	1497.2	1512.6
65°	1404.6	1387.3	1375.5	1361.9	1355.1	1348.1	1348.8	1348.8	1355.8	1361.9	1373.4
67.5°	1257.7	1244.6	1236.9	1226.2	1221.7	1214.3	1214.3	1211.9	1216.5	1218.9	1226.7
70°	1139.8	1126.6	1116.7	1106.3	1100.7	1094.4	1094.5	1094.6	1099.9	1105.4	1115.5
72.5°	1066.9	1054.3	1045.6	1036.5	1031.1	1025.7	1024.7	1024.1	1027.9	1030.9	1037.6
75°	970.4	960.3	955.3	946.7	942.4	936.3	935.3	932.5	934.4	934.9	939.9
77.5°	853.3	843.8	839.7	831.0	827.5	820.6	820.0	816.8	818.2	817.3	821.1
80°	720.0	711.2	709.0	701.9	700.2	693.8	692.8	688.9	690.1	687.1	688.6
82.5°	571.0	563.1	561.4	554.8	554.8	549.0	548.7	542.9	542.9	538.0	530.0
85°	402.2	396.4	394.0	388.6	387.0	382.4	379.9	374.4	372.4	368.9	367.8
87.5°	212.3	208.6	205.3	202.8	198.0	189.7	188.9	183.1	183.6	179.5	179.8
90°	42.0	37.4	36.8	32.6	31.8	28.9	28.2	28.0	28.5	28.4	28.9
92.5°	29.1	28.2	27.2	26.2	25.3	24.3	23.3	24.3	25.3	26.2	27.2
95°	32.9	32.0	31.1	30.3	29.4	28.6	27.7	28.6	29.4	30.4	31.3
97.5°	36.6	36.1	35.6	35.0	34.5	34.0	33.4	34.2	34.7	35.2	35.8
100°	42.3	41.7	41.0	40.4	39.8	39.2	38.5	39.4	40.1	40.7	41.3
102.5°	70.3	66.4	62.5	58.5	54.5	50.6	46.6	50.6	54.5	58.7	62.7
105°	160.1	147.0	133.6	120.3	107.0	93.6	80.3	93.7	107.1	120.4	133.9
107.5°	316.3	293.2	269.7	246.4	222.7	199.4	175.9	199.6	223.0	246.5	270.0
110°	467.2	447.0	427.0	406.7	386.5	366.3	346.1	366.4	386.8	407.0	427.3



TEST NUMBER: P1444476  
 CATALOG NUMBER: EHBR1-48-UNV-TA-L830-UPL18

**CANDELA DISTRIBUTION (continued):**

	165°	167.5°	170°	172.5°	175°	177.5°	180°	182.5°	185°	187.5°	190°
112.5°	549.9	537.9	525.5	513.5	501.1	489.1	476.7	489.3	501.7	514.2	526.4
115°	569.4	563.1	557.0	550.6	544.0	537.8	531.1	538.2	544.8	551.4	558.1
117.5°	551.8	550.0	548.0	546.0	543.8	541.7	539.5	542.0	544.4	547.2	549.4
120°	513.4	514.3	514.8	515.3	515.8	516.2	516.5	516.8	516.8	516.8	516.7
122.5°	471.7	474.0	475.9	478.1	480.0	481.9	483.6	482.5	481.1	479.9	478.2
125°	433.7	436.2	438.3	440.5	442.5	444.7	446.3	445.5	444.1	442.7	441.0
127.5°	402.4	404.6	406.6	409.0	410.7	412.5	414.1	413.4	412.2	411.0	409.5
130°	377.3	379.5	381.0	382.8	384.3	385.7	387.0	386.6	385.8	385.4	384.2
132.5°	360.4	362.2	363.8	365.3	366.4	367.8	368.6	368.7	368.3	368.0	367.2
135°	348.4	349.7	351.1	352.6	353.5	354.5	355.0	355.5	355.4	355.3	354.7
137.5°	338.9	340.2	341.1	342.2	342.8	343.5	343.9	344.5	344.7	345.3	345.0
140°	333.7	335.2	336.2	337.1	338.0	338.8	339.1	339.8	340.0	340.3	340.0
142.5°	328.3	329.5	330.7	331.8	332.3	333.1	333.5	334.1	334.3	334.6	334.5
145°	325.1	326.0	327.0	327.9	328.5	329.0	329.1	330.0	330.4	330.7	330.8
147.5°	321.6	322.7	323.4	324.1	324.7	325.2	325.5	326.1	326.5	326.8	327.1
150°	319.4	320.5	321.4	322.3	323.0	323.6	323.8	324.5	324.7	325.0	324.9
152.5°	317.4	318.3	319.0	319.8	320.5	321.1	321.4	321.9	322.4	322.8	322.9
155°	315.5	316.4	317.3	318.1	318.7	319.4	320.0	320.5	321.0	321.3	321.6
157.5°	314.5	315.6	316.2	317.1	317.6	318.6	319.1	319.8	320.3	320.8	321.1
160°	314.9	316.0	316.5	317.4	318.1	318.8	319.3	320.1	320.6	321.0	321.7
162.5°	316.8	317.6	318.1	318.9	319.6	320.4	320.9	321.6	322.2	322.8	323.2
165°	318.0	318.8	319.5	320.4	321.1	321.9	322.5	323.1	323.4	323.9	324.2
167.5°	321.7	322.4	323.1	323.8	324.4	325.2	325.9	326.3	326.6	327.0	327.3
170°	324.1	324.8	325.5	326.0	326.7	327.4	327.8	328.0	328.4	328.7	329.1
172.5°	326.0	326.7	327.2	327.9	328.5	329.2	329.6	330.0	330.1	330.1	330.1
175°	327.7	328.3	328.7	329.2	329.5	330.1	330.6	330.5	330.7	330.6	330.7
177.5°	330.8	331.4	331.9	332.2	332.6	333.0	333.4	333.1	332.9	332.7	332.4
180°	329.8	329.8	329.8	329.8	329.8	329.8	329.8	329.8	329.8	329.8	329.8



TEST NUMBER: P1444476  
 CATALOG NUMBER: EHBR1-48-UNV-TA-L830-UPL18

**CANDELA DISTRIBUTION (continued):**

	192.5°	195°	197.5°	200°	202.5°	205°	207.5°	210°	212.5°	215°	217.5°
0°	38337.2	38337.2	38337.2	38337.2	38337.2	38337.2	38337.2	38337.2	38337.2	38337.2	38337.2
2.5°	38265.5	38284.7	38314.0	38340.5	38380.5	38412.0	38459.3	38495.3	38548.7	38583.4	38641.5
5°	38269.0	38343.8	38442.3	38538.4	38653.9	38758.7	38889.0	39000.0	39130.9	39237.8	39371.7
7.5°	38323.1	38467.4	38640.5	38814.8	39012.1	39196.5	39404.3	39592.4	39798.0	39972.1	40162.1
10°	38363.0	38585.7	38840.7	39097.3	39367.3	39618.3	39871.7	40090.6	40295.2	40463.6	40612.3
12.5°	38308.9	38615.6	38942.8	39258.9	39559.2	39818.9	40036.9	40205.2	40321.5	40400.3	40418.8
15°	38124.9	38494.0	38849.8	39164.5	39413.7	39605.9	39705.4	39752.0	39702.0	39619.0	39436.6
17.5°	37781.2	38170.5	38488.6	38736.8	38868.5	38920.7	38838.3	38694.9	38414.7	38103.7	37654.6
20°	37151.0	37513.8	37744.5	37879.9	37844.7	37714.4	37403.3	37025.0	36465.6	35869.5	35082.7
22.5°	36045.8	36362.9	36485.8	36495.9	36280.9	35954.7	35393.5	34744.8	33862.3	32944.8	31816.5
25°	34386.7	34664.5	34683.9	34574.8	34181.3	33652.7	32828.6	31911.0	30711.8	29489.3	28075.4
27.5°	32136.7	32403.1	32337.9	32134.3	31588.1	30880.7	29825.6	28640.1	27161.7	25717.8	24153.8
30°	29308.2	29593.2	29516.5	29255.4	28605.8	27769.7	26528.2	25150.8	23509.4	21967.3	20382.4
32.5°	25923.4	26283.6	26230.8	25982.5	25304.6	24409.8	23062.8	21601.9	19922.6	18402.9	16861.1
35°	22076.2	22513.4	22536.1	22373.8	21744.5	20860.0	19529.9	18115.9	16507.3	15073.5	13649.3
37.5°	17931.1	18438.1	18542.2	18498.5	17976.9	17196.2	15984.2	14715.7	13290.8	12034.1	10816.0
40°	13763.2	14276.4	14454.4	14507.3	14122.4	13517.6	12523.0	11499.1	10337.4	9319.1	8352.0
42.5°	9962.2	10417.1	10589.2	10697.5	10457.2	10054.0	9328.4	8584.8	7733.8	6999.4	6295.2
45°	6919.0	7240.8	7371.6	7480.7	7349.8	7122.3	6664.0	6199.0	5637.2	5157.3	4702.9
47.5°	4837.4	5015.0	5101.3	5154.1	5103.5	4984.8	4735.4	4466.0	4149.0	3868.5	3598.8
50°	3585.6	3680.0	3725.3	3755.8	3718.8	3652.9	3518.0	3371.3	3197.2	3038.3	2883.0
52.5°	2841.5	2895.6	2922.5	2938.9	2917.8	2877.5	2798.9	2712.0	2607.5	2509.3	2457.7
55°	2393.8	2390.9	2453.1	2423.1	2453.1	2386.2	2372.0	2276.5	2189.7	2128.7	2062.6
57.5°	1974.1	2002.2	2014.1	2027.5	2018.9	2006.6	1973.3	1939.0	1893.3	1855.1	1814.2
60°	1708.8	1732.0	1745.1	1758.3	1757.5	1752.9	1733.6	1713.1	1684.5	1661.6	1636.9
62.5°	1526.1	1546.1	1559.1	1571.7	1572.8	1571.0	1556.3	1542.2	1522.7	1508.4	1491.3
65°	1382.3	1396.4	1405.2	1415.3	1414.7	1412.0	1398.8	1387.0	1371.0	1361.0	1348.5
67.5°	1231.9	1242.5	1249.3	1258.8	1260.7	1261.3	1254.0	1248.4	1240.7	1237.9	1233.6
70°	1124.9	1137.8	1148.8	1160.8	1167.3	1170.5	1167.3	1164.5	1159.9	1158.0	1154.7
72.5°	1043.9	1054.8	1063.4	1074.3	1080.4	1084.8	1082.4	1080.8	1076.8	1076.3	1074.0
75°	943.3	950.9	955.6	963.9	967.2	971.3	969.4	970.4	969.1	972.3	972.1
77.5°	822.3	828.0	830.2	836.1	836.8	841.7	842.9	848.7	852.8	861.9	866.7
80°	686.2	689.8	689.8	695.9	698.6	707.0	711.0	720.5	724.9	733.0	733.7
82.5°	533.1	529.0	533.1	530.6	538.3	547.7	549.0	557.1	558.9	564.1	560.1
85°	364.5	364.2	360.9	361.5	359.0	360.2	358.8	360.4	358.9	359.0	355.4
87.5°	174.6	176.2	172.4	173.7	169.9	171.6	168.3	170.9	167.1	167.7	162.0
90°	29.1	29.6	29.8	30.3	31.4	32.9	34.7	36.3	38.5	40.0	42.0
92.5°	28.2	29.3	30.3	31.3	32.2	35.1	37.9	40.8	43.8	46.6	49.5
95°	32.2	33.1	33.9	35.0	35.9	40.0	44.2	48.3	52.5	56.7	60.9
97.5°	36.5	37.1	37.7	38.1	38.8	43.7	48.6	53.5	58.4	63.3	68.1
100°	42.1	42.7	43.3	44.1	44.8	56.1	67.4	78.7	90.0	101.2	112.5
102.5°	66.7	70.6	74.7	78.9	82.8	110.3	137.6	165.0	192.2	219.6	246.9
105°	147.3	160.6	174.1	187.5	200.8	242.3	283.8	325.3	366.5	407.8	449.3
107.5°	293.6	317.0	340.7	364.1	387.6	426.7	465.5	504.4	543.5	582.4	621.0
110°	447.8	467.9	488.4	508.7	529.0	559.7	590.8	621.5	652.4	683.2	714.0



TEST NUMBER: P1444476  
 CATALOG NUMBER: EHBR1-48-UNV-TA-L830-UPL18

**CANDELA DISTRIBUTION (continued):**

	192.5°	195°	197.5°	200°	202.5°	205°	207.5°	210°	212.5°	215°	217.5°
112.5°	539.0	551.3	563.6	575.7	588.1	610.6	633.4	655.9	678.6	700.8	723.4
115°	564.6	570.8	577.5	583.8	590.4	604.0	617.4	631.0	644.5	657.9	671.4
117.5°	551.7	554.0	556.4	558.3	560.5	567.4	574.2	580.9	587.9	594.6	601.4
120°	516.5	516.1	515.8	515.3	515.0	516.7	518.8	520.7	522.7	524.4	526.1
122.5°	476.7	474.7	473.1	471.2	469.3	468.0	467.0	465.7	464.9	463.6	462.5
125°	439.4	437.3	435.6	433.4	431.4	429.0	426.8	424.2	421.8	419.4	416.9
127.5°	408.3	406.3	404.8	402.8	400.9	398.1	395.4	392.7	390.0	387.1	384.4
130°	383.3	381.8	380.7	378.7	377.4	374.7	372.4	369.8	367.3	364.8	362.3
132.5°	366.4	365.4	364.3	362.8	361.7	359.2	357.3	354.6	352.4	350.0	347.9
135°	354.3	353.4	352.8	351.7	350.8	348.6	347.0	345.0	343.1	341.2	339.4
137.5°	344.9	344.2	343.9	343.2	342.5	340.7	339.2	337.5	336.0	334.2	332.7
140°	339.9	339.5	339.1	338.4	337.8	336.1	334.5	332.7	331.1	329.3	327.8
142.5°	334.2	333.8	333.6	332.9	332.4	330.8	329.8	328.4	327.0	325.7	324.4
145°	330.7	330.5	330.4	329.9	329.7	328.1	326.8	325.2	324.0	322.4	321.1
147.5°	327.2	327.0	327.0	326.8	326.8	325.4	324.5	323.2	322.2	320.9	320.0
150°	325.0	325.0	325.0	324.8	324.6	323.4	322.4	321.3	320.4	319.0	318.2
152.5°	323.1	323.2	323.3	323.3	323.4	322.3	321.4	320.3	319.2	318.0	317.1
155°	321.9	321.9	322.1	322.1	322.1	321.3	320.4	319.4	318.6	317.5	316.7
157.5°	321.4	321.7	321.9	322.1	322.2	321.5	320.7	320.0	319.2	318.4	317.6
160°	321.9	322.3	322.6	322.8	323.1	322.4	322.0	321.2	320.8	319.9	319.0
162.5°	323.6	324.0	324.3	324.5	324.8	324.1	323.7	323.2	322.5	321.6	320.9
165°	324.6	324.7	324.9	325.0	325.2	324.8	324.5	324.0	323.6	323.1	322.7
167.5°	327.6	327.6	327.9	328.0	328.2	327.9	327.9	327.6	327.2	326.9	326.5
170°	329.2	329.3	329.5	329.5	329.7	329.4	329.3	329.0	328.9	328.3	327.9
172.5°	330.3	330.3	330.3	330.4	330.3	330.1	330.0	329.8	329.7	329.4	329.3
175°	330.6	330.5	330.6	330.5	330.4	330.5	330.4	330.4	330.3	330.1	330.0
177.5°	332.3	332.3	332.0	331.7	331.6	331.5	331.5	331.3	331.5	331.4	331.3
180°	329.8	329.8	329.8	329.8	329.8	329.8	329.8	329.8	329.8	329.8	329.8



TEST NUMBER: P1444476  
 CATALOG NUMBER: EHBR1-48-UNV-TA-L830-UPL18

**CANDELA DISTRIBUTION (continued):**

	220°	222.5°	225°	227.5°	230°	232.5°	235°	237.5°	240°	242.5°	245°
0°	38337.2	38337.2	38337.2	38337.2	38337.2	38337.2	38337.2	38337.2	38337.2	38337.2	38337.2
2.5°	38677.5	38438.6	38407.0	38423.8	38463.7	38478.5	38521.6	38533.4	38576.7	38587.3	38628.9
5°	39475.5	39159.8	39175.6	39251.5	39366.4	39434.9	39547.8	39607.0	39714.8	39763.8	39861.3
7.5°	40317.1	40069.1	40146.4	40274.5	40431.5	40540.4	40676.1	40764.4	40881.4	40954.0	41047.6
10°	40730.3	40662.3	40747.4	40848.2	40937.8	41008.0	41065.5	41111.6	41141.7	41169.9	41182.3
12.5°	40415.8	40520.9	40535.4	40525.7	40466.2	40421.0	40319.0	40249.8	40126.9	40052.1	39905.9
15°	39250.2	39481.3	39353.3	39159.5	38875.9	38639.5	38305.6	38057.0	37709.3	37473.4	37124.5
17.5°	37204.5	37496.3	37162.7	36714.3	36143.8	35655.7	35048.1	34565.7	33961.4	33522.0	32958.1
20°	34324.6	34597.2	34002.3	33259.0	32376.5	31633.9	30758.1	30059.3	29245.5	28640.1	27909.4
22.5°	30738.9	30933.1	30095.0	29092.9	27968.5	27040.7	25993.7	25155.9	24227.1	23535.0	22756.0
25°	26772.0	26824.3	25819.0	24664.5	23411.4	22368.7	21250.7	20370.0	19422.8	18721.3	17956.7
27.5°	22768.1	22691.2	21604.5	20380.3	19062.3	17978.5	16888.1	16062.8	15233.2	14601.3	13942.6
30°	18989.0	18802.8	17674.6	16416.3	15136.8	14165.5	13260.2	12597.4	11937.4	11436.2	10907.5
32.5°	15523.4	15260.9	14162.6	12983.7	11905.7	11156.0	10484.8	9983.3	9450.3	9026.9	8583.2
35°	12453.9	12174.1	11201.2	10201.8	9385.8	8833.3	8305.7	7894.2	7441.7	7084.5	6699.2
37.5°	9819.6	9590.2	8775.3	7988.8	7371.6	6943.4	6511.2	6174.9	5800.9	5643.8	5232.0
40°	7580.7	7420.4	6783.2	6203.4	5740.0	5538.8	5100.0	4785.9	4506.4	4276.0	4052.8
42.5°	5913.1	5856.3	5236.1	4784.1	4457.7	4204.2	3959.7	3761.2	3567.9	3409.2	3259.1
45°	4339.3	4294.4	4019.0	3758.1	3535.7	3358.6	3193.3	3056.8	2930.4	2825.8	2730.5
47.5°	3379.0	3364.7	3206.1	3044.2	2904.2	2790.4	2683.1	2592.4	2508.6	2438.7	2416.0
50°	2748.3	2746.4	2653.4	2553.5	2453.8	2388.0	2319.5	2265.9	2212.0	2170.2	2125.9
52.5°	2335.1	2325.0	2262.2	2200.6	2141.3	2098.1	2054.4	2020.1	1984.4	1958.6	1931.0
55°	2010.4	2020.9	1984.6	1947.8	1910.7	1883.9	1853.2	1830.6	1806.2	1789.8	1773.2
57.5°	1784.7	1798.8	1779.7	1758.9	1736.3	1718.6	1697.4	1681.9	1665.5	1655.1	1645.4
60°	1620.6	1636.0	1628.3	1617.8	1603.8	1593.3	1579.9	1571.1	1560.7	1554.8	1549.4
62.5°	1481.3	1500.5	1497.8	1492.8	1483.9	1478.0	1470.7	1466.9	1459.9	1457.3	1454.8
65°	1342.4	1363.9	1363.6	1361.1	1356.2	1354.5	1349.9	1349.0	1345.5	1346.9	1346.6
67.5°	1233.1	1251.9	1256.0	1259.0	1258.8	1260.0	1259.6	1261.4	1261.4	1264.1	1265.8
70°	1154.3	1167.3	1170.5	1173.6	1174.4	1177.0	1177.0	1178.6	1178.1	1180.4	1180.7
72.5°	1074.6	1091.7	1094.9	1097.4	1097.4	1099.9	1098.6	1098.2	1094.7	1094.1	1091.6
75°	975.4	997.4	1002.3	1005.4	1005.8	1007.9	1004.9	1003.1	997.4	995.2	991.1
77.5°	871.8	894.7	898.1	899.2	897.4	897.8	891.6	887.3	880.0	877.0	873.2
80°	737.0	770.6	773.3	771.2	765.9	765.1	759.0	755.0	746.4	743.4	740.1
82.5°	560.8	600.3	605.9	608.3	604.0	605.0	599.1	596.9	588.9	587.5	582.3
85°	354.1	393.6	400.1	399.1	394.8	393.9	390.4	391.5	390.9	393.0	394.2
87.5°	162.7	200.9	210.1	207.2	206.7	204.0	197.9	200.2	203.9	206.3	206.5
90°	43.7	57.0	58.5	58.1	54.0	52.9	49.1	48.8	45.5	45.1	42.0
92.5°	52.4	55.2	58.1	55.5	52.9	50.4	47.9	45.1	42.7	40.0	37.6
95°	65.0	68.9	73.1	69.7	66.0	62.7	59.2	55.8	52.4	49.0	45.5
97.5°	73.0	77.7	82.3	79.0	75.5	72.0	68.6	65.2	61.7	58.2	54.7
100°	123.7	134.5	145.7	135.9	126.2	116.4	106.7	96.9	87.1	77.4	67.6
102.5°	274.2	301.2	328.3	303.6	279.0	254.2	229.7	205.0	180.5	155.7	131.1
105°	490.6	531.4	572.6	534.7	497.1	459.5	422.0	384.3	346.8	309.1	271.6
107.5°	659.8	697.8	736.3	702.2	668.1	634.1	599.9	565.9	531.8	497.7	463.8
110°	744.6	774.2	804.6	781.5	758.5	735.4	712.5	689.4	666.5	643.7	620.8



TEST NUMBER: P1444476  
 CATALOG NUMBER: EHBR1-48-UNV-TA-L830-UPL18

**CANDELA DISTRIBUTION (continued):**

	220°	222.5°	225°	227.5°	230°	232.5°	235°	237.5°	240°	242.5°	245°
112.5°	745.8	766.6	788.6	774.8	761.3	747.6	734.0	720.3	706.9	693.3	680.1
115°	684.6	696.1	708.9	703.0	697.5	691.8	686.0	680.5	674.9	669.3	664.0
117.5°	608.0	612.3	618.3	616.6	615.3	613.6	612.2	610.8	609.6	608.3	607.1
120°	527.9	527.1	528.1	528.0	528.3	528.2	528.5	528.5	528.8	529.0	529.3
122.5°	461.1	457.1	455.0	454.9	454.8	454.6	454.6	454.6	454.6	454.7	455.0
125°	414.5	408.8	405.3	403.6	402.1	400.3	398.7	397.0	395.6	394.0	392.6
127.5°	381.6	375.3	371.8	368.9	366.0	363.0	360.1	357.1	354.4	351.4	348.7
130°	359.9	353.7	350.1	346.6	343.3	339.7	336.4	332.8	329.3	325.9	322.5
132.5°	345.4	339.2	335.9	332.5	329.4	325.9	322.6	319.1	315.8	312.1	309.0
135°	337.4	331.4	328.6	325.4	322.5	319.3	316.2	313.0	310.1	306.7	303.9
137.5°	331.0	324.9	322.4	319.8	317.4	314.6	312.3	309.6	307.0	304.1	301.6
140°	326.1	319.7	317.2	315.5	314.0	312.1	310.5	308.7	307.1	305.4	303.6
142.5°	323.0	316.8	314.4	313.2	312.2	310.9	310.0	308.6	307.4	305.9	304.7
145°	319.8	313.0	310.5	309.9	309.7	309.1	308.6	308.2	307.7	307.1	306.6
147.5°	318.6	311.5	309.0	308.9	308.8	308.5	308.6	308.1	308.2	307.8	307.7
150°	316.9	308.8	306.0	306.2	306.1	306.3	306.4	306.4	306.7	306.7	306.8
152.5°	315.8	306.2	303.0	303.2	303.6	303.6	303.9	304.1	304.5	304.9	305.1
155°	315.4	305.1	301.5	301.2	301.4	301.4	301.5	301.8	302.0	302.2	302.6
157.5°	316.5	305.6	302.1	301.6	301.6	301.5	301.5	301.7	301.8	301.9	302.3
160°	318.4	307.3	303.9	303.4	303.3	303.1	302.9	302.9	303.0	303.1	303.4
162.5°	320.1	309.3	305.9	305.5	305.2	305.0	304.9	304.7	304.8	304.7	305.0
165°	321.9	312.5	309.3	308.9	308.9	308.6	308.6	308.6	308.6	308.6	308.9
167.5°	326.0	317.4	314.9	314.5	314.1	313.6	313.6	313.0	313.0	312.8	312.8
170°	327.5	320.7	318.6	318.4	318.5	318.4	318.2	318.2	318.1	318.0	318.1
172.5°	329.0	324.0	322.4	322.4	322.7	322.8	323.0	323.1	323.3	323.4	323.7
175°	329.9	327.0	326.3	326.2	326.3	326.3	326.4	326.6	326.7	326.8	327.2
177.5°	331.3	330.5	330.1	330.1	330.1	330.1	330.1	330.1	330.1	330.3	330.3
180°	329.8	329.8	329.8	329.8	329.8	329.8	329.8	329.8	329.8	329.8	329.8



TEST NUMBER: P1444476  
 CATALOG NUMBER: EHBR1-48-UNV-TA-L830-UPL18

**CANDELA DISTRIBUTION (continued):**

	247.5°	250°	252.5°	255°	257.5°	260°	262.5°	265°	267.5°	270°	272.5°
0°	38337.2	38337.2	38337.2	38337.2	38337.2	38337.2	38337.2	38337.2	38337.2	38337.2	38337.2
2.5°	38636.8	38681.9	38678.4	38720.5	38718.4	38758.0	38750.1	38784.2	38776.5	38805.7	38788.6
5°	39904.2	39989.9	40018.1	40095.4	40111.5	40180.7	40182.1	40237.1	40230.4	40273.4	40250.6
7.5°	41103.1	41183.1	41221.0	41281.0	41311.1	41360.8	41380.2	41421.2	41431.0	41455.2	41454.4
10°	41204.2	41203.9	41222.7	41214.3	41231.1	41221.4	41241.9	41234.5	41264.7	41257.0	41279.8
12.5°	39842.8	39707.7	39658.4	39537.0	39510.5	39406.3	39413.7	39346.9	39379.1	39338.1	39408.0
15°	36916.9	36603.5	36448.6	36176.1	36090.5	35875.1	35857.7	35714.6	35753.2	35678.4	35787.8
17.5°	32593.2	32099.7	31828.9	31431.0	31273.0	30968.3	30907.3	30723.1	30751.7	30658.9	30791.0
20°	27438.2	26841.9	26500.2	26040.1	25834.8	25471.6	25375.3	25169.3	25195.1	25102.8	25252.3
22.5°	22224.4	21600.1	21214.6	20732.2	20470.1	20128.5	20026.0	19819.0	19830.8	19744.1	19887.9
25°	17433.0	16834.6	16460.3	16022.1	15794.7	15481.5	15373.8	15188.0	15198.5	15127.0	15256.1
27.5°	13485.7	12994.7	12681.5	12314.3	12110.3	11852.9	11747.9	11591.6	11591.2	11538.8	11646.6
30°	10538.3	10128.6	9847.4	9527.6	9336.1	9103.8	9002.3	8862.5	8856.4	8819.2	8904.8
32.5°	8251.3	7886.8	7630.3	7348.9	7177.0	6977.6	6881.6	6769.2	6759.0	6725.3	6795.6
35°	6414.3	6107.4	5886.8	5649.9	5667.4	5373.2	5422.1	5193.7	5131.8	5118.2	5170.5
37.5°	4957.5	4719.8	4540.7	4363.2	4243.0	4118.7	4051.7	3991.7	3984.9	3979.0	4015.7
40°	3880.4	3714.1	3583.8	3462.0	3379.3	3303.4	3261.5	3228.6	3220.7	3216.3	3238.5
42.5°	3140.6	3028.4	2944.4	2870.1	2819.8	2778.6	2755.5	2737.3	2731.1	2731.3	2744.3
45°	2653.4	2585.3	2531.2	2485.0	2452.9	2467.0	2425.5	2447.2	2418.5	2448.2	2428.6
47.5°	2336.7	2278.7	2245.2	2212.5	2193.0	2177.4	2177.9	2178.2	2184.4	2185.3	2191.7
50°	2092.3	2058.8	2035.5	2014.6	2004.5	1996.2	1999.1	2001.2	2007.2	2007.6	2012.3
52.5°	1911.4	1889.4	1875.4	1862.4	1857.9	1853.2	1855.2	1854.3	1857.0	1855.6	1859.5
55°	1764.2	1753.9	1749.5	1744.6	1745.4	1744.1	1744.9	1740.2	1737.4	1733.8	1737.1
57.5°	1643.5	1642.1	1645.0	1647.0	1652.5	1654.5	1655.8	1650.4	1645.3	1640.6	1643.4
60°	1550.4	1552.7	1560.1	1566.0	1574.0	1577.7	1579.9	1576.9	1573.1	1569.3	1571.6
62.5°	1458.6	1462.2	1471.0	1477.7	1487.3	1492.3	1497.8	1498.1	1499.6	1498.1	1499.7
65°	1352.0	1356.4	1364.4	1369.9	1378.9	1383.3	1389.0	1390.0	1393.1	1392.4	1395.1
67.5°	1271.0	1275.0	1281.7	1286.9	1294.9	1299.5	1304.5	1304.7	1305.9	1305.6	1308.1
70°	1184.7	1186.6	1192.6	1197.0	1205.0	1209.7	1215.4	1217.1	1220.6	1221.2	1224.0
72.5°	1092.6	1091.7	1095.3	1097.3	1103.3	1107.0	1114.2	1118.1	1124.1	1125.7	1127.9
75°	992.3	991.4	995.7	997.4	1002.6	1006.2	1014.4	1019.6	1028.8	1032.6	1031.7
77.5°	876.2	878.2	886.1	890.5	897.4	902.1	912.6	921.0	937.9	945.2	937.7
80°	746.4	748.5	756.8	760.9	769.8	775.5	787.3	797.0	812.3	815.6	811.3
82.5°	586.8	587.4	594.7	597.9	609.5	617.9	632.8	640.6	650.0	648.6	647.5
85°	400.1	405.5	414.8	424.0	438.2	451.8	465.9	477.5	469.3	482.2	467.7
87.5°	213.9	213.3	225.7	223.8	243.6	255.2	267.4	273.2	279.8	278.5	278.6
90°	42.1	39.7	40.6	37.7	39.5	36.6	39.3	36.6	40.1	36.6	42.3
92.5°	34.8	33.6	32.0	30.9	29.3	28.1	26.5	25.2	23.8	22.4	23.8
95°	42.2	40.8	39.6	38.2	36.9	35.7	34.4	33.1	31.8	30.5	32.1
97.5°	51.3	50.6	49.8	49.1	48.3	47.7	46.9	46.2	45.3	44.6	45.6
100°	57.9	57.9	57.9	57.9	57.6	57.6	57.6	57.6	57.6	57.6	58.5
102.5°	106.4	104.0	101.5	98.9	96.5	94.0	91.5	89.1	86.6	84.2	87.9
105°	234.0	224.4	214.7	205.1	195.3	185.7	176.1	166.5	156.9	147.3	157.3
107.5°	429.9	412.2	394.6	377.2	359.5	342.0	324.5	307.1	289.5	272.0	287.7
110°	597.9	579.3	560.5	542.0	523.3	504.5	486.0	467.4	448.9	430.3	445.2



TEST NUMBER: P1444476  
 CATALOG NUMBER: EHBR1-48-UNV-TA-L830-UPL18

**CANDELA DISTRIBUTION (continued):**

	247.5°	250°	252.5°	255°	257.5°	260°	262.5°	265°	267.5°	270°	272.5°
112.5°	666.7	654.2	642.1	630.0	617.9	606.0	594.0	582.0	570.1	558.1	565.3
115°	658.4	652.6	646.6	640.9	635.1	629.1	623.4	617.8	612.0	606.4	606.9
117.5°	605.8	603.6	601.5	599.4	597.3	595.3	593.4	591.6	589.6	588.0	583.9
120°	529.8	530.0	530.2	530.6	531.1	531.7	532.0	532.7	533.5	534.2	528.8
122.5°	455.1	456.0	457.0	458.1	459.4	460.8	462.1	463.7	465.3	466.9	461.4
125°	391.0	391.9	392.8	393.8	394.6	396.1	397.4	399.0	400.4	402.2	397.6
127.5°	346.0	345.9	345.6	345.8	345.9	346.3	346.8	347.3	348.1	349.0	346.1
130°	319.0	318.0	316.8	315.9	314.7	314.3	313.8	313.2	313.0	312.9	311.7
132.5°	305.6	303.8	301.9	300.2	298.6	297.3	295.9	295.1	294.0	293.4	293.0
135°	300.5	298.2	296.0	293.8	291.7	290.2	288.2	286.9	285.6	284.4	284.9
137.5°	298.9	296.7	294.4	292.4	290.3	288.8	286.8	285.4	284.2	283.0	283.7
140°	301.7	299.5	297.2	295.3	293.4	291.7	290.0	288.7	287.1	286.3	286.6
142.5°	303.4	301.6	299.5	297.7	295.9	294.4	293.0	291.8	290.4	289.5	290.0
145°	305.9	304.5	302.9	301.5	300.3	299.2	297.8	297.1	296.3	295.8	296.1
147.5°	307.2	306.3	305.0	304.1	302.8	302.3	301.3	300.8	300.1	299.7	299.9
150°	306.9	306.2	305.5	304.8	304.1	303.7	303.2	302.8	302.5	302.3	302.4
152.5°	305.5	305.0	304.2	303.8	303.3	302.9	302.6	302.5	302.2	302.0	302.1
155°	302.7	302.6	302.3	302.3	302.1	302.2	302.0	302.3	302.1	302.4	302.5
157.5°	302.4	302.6	302.5	302.7	302.8	302.9	303.0	303.5	303.5	304.0	304.2
160°	303.8	303.9	303.9	304.0	304.1	304.1	304.4	304.5	304.8	305.0	305.4
162.5°	305.1	305.5	305.6	305.9	306.3	306.6	307.1	307.6	307.9	308.5	308.9
165°	309.1	309.2	309.2	309.2	309.5	309.7	309.9	310.3	310.5	311.0	311.5
167.5°	312.7	312.9	312.9	313.0	313.3	313.8	314.0	314.5	314.9	315.6	316.0
170°	317.9	317.9	317.9	317.9	317.9	318.2	318.4	318.5	318.7	319.0	319.3
172.5°	323.7	323.7	323.4	323.7	323.4	323.7	323.7	323.9	323.9	324.1	324.2
175°	327.0	327.4	327.5	327.8	327.8	327.8	327.9	328.1	328.2	328.5	328.5
177.5°	330.3	330.4	330.4	330.4	330.4	330.6	330.6	330.6	330.6	330.4	330.5
180°	329.8	329.8	329.8	329.8	329.8	329.8	329.8	329.8	329.8	329.8	329.8



TEST NUMBER: P1444476  
 CATALOG NUMBER: EHBR1-48-UNV-TA-L830-UPL18

**CANDELA DISTRIBUTION (continued):**

	275°	277.5°	280°	282.5°	285°	287.5°	290°	292.5°	295°	297.5°	300°
0°	38337.2	38337.2	38337.2	38337.2	38337.2	38337.2	38337.2	38337.2	38337.2	38337.2	38337.2
2.5°	38817.1	38797.6	38817.5	38797.4	38817.5	38793.3	38809.7	38783.6	38790.2	38763.1	38770.1
5°	40284.9	40253.8	40270.3	40230.1	40234.4	40180.7	40179.7	40117.2	40100.7	40029.5	39998.2
7.5°	41471.7	41461.5	41467.3	41441.3	41438.4	41401.7	41384.3	41332.6	41300.0	41234.5	41189.7
10°	41283.8	41314.0	41321.9	41352.7	41359.1	41389.6	41396.1	41426.6	41433.0	41455.5	41455.8
12.5°	39404.7	39507.5	39532.0	39658.9	39712.3	39857.5	39935.5	40095.4	40190.4	40350.0	40448.0
15°	35784.8	35962.5	36033.4	36281.3	36418.3	36707.6	36889.4	37221.5	37456.0	37808.8	38060.4
17.5°	30802.6	31051.1	31163.2	31499.2	31718.4	32145.3	32453.1	32959.6	33347.4	33910.3	34356.4
20°	25277.8	25553.9	25706.0	26089.4	26348.1	26847.0	27231.2	27853.6	28372.6	29085.9	29695.8
22.5°	19933.0	20195.7	20364.6	20754.7	21045.9	21566.2	21995.6	22652.5	23234.1	24037.8	24769.2
25°	15304.8	15545.5	15698.2	16051.0	16324.5	16802.6	17212.7	17844.5	18413.5	19219.8	19969.6
27.5°	11700.3	11901.9	12049.2	12349.9	12591.1	12996.6	13348.9	13871.1	14361.3	15058.8	15726.6
30°	8957.6	9136.3	9279.5	9541.5	9765.2	10116.6	10426.4	10865.0	11270.8	11825.8	12357.1
32.5°	6845.1	6999.0	7126.6	7355.9	7558.8	7875.3	8154.3	8538.9	8887.1	9357.8	9794.9
35°	5219.1	5521.9	5500.4	5816.7	5867.5	6094.8	6343.7	6679.9	6988.3	7388.6	7760.5
37.5°	4050.9	4136.0	4227.2	4367.0	4513.9	4720.6	4930.9	5341.7	5492.3	5794.9	6102.8
40°	3266.6	3324.2	3384.4	3478.8	3581.8	3727.4	3880.5	4076.5	4277.2	4522.4	4773.0
42.5°	2761.6	2794.2	2832.5	2888.1	2951.5	3043.8	3146.3	3279.1	3418.8	3591.4	3767.6
45°	2467.4	2451.9	2463.3	2493.1	2531.4	2587.5	2652.1	2734.3	2825.3	2937.1	3056.2
47.5°	2193.0	2199.3	2202.7	2218.9	2239.4	2277.0	2316.2	2372.0	2479.9	2512.7	2577.6
50°	2011.9	2014.9	2013.8	2022.1	2032.5	2056.9	2082.4	2120.1	2157.9	2207.9	2255.7
52.5°	1860.0	1864.2	1863.7	1869.1	1874.6	1890.1	1906.2	1932.9	1957.6	1989.5	2016.8
55°	1740.1	1745.9	1748.2	1752.8	1755.4	1763.5	1769.9	1782.7	1793.2	1811.2	1827.9
57.5°	1647.9	1655.8	1659.5	1661.1	1657.8	1657.4	1655.3	1658.0	1660.1	1669.8	1679.1
60°	1575.3	1581.6	1582.7	1581.6	1575.7	1571.4	1564.6	1562.4	1561.3	1566.0	1571.1
62.5°	1499.3	1501.5	1500.0	1498.1	1491.3	1487.2	1480.1	1477.5	1475.1	1478.4	1481.0
65°	1394.1	1396.1	1394.1	1393.0	1386.9	1383.6	1377.6	1375.7	1372.2	1373.1	1372.5
67.5°	1308.7	1310.7	1309.1	1307.6	1303.3	1301.4	1297.0	1294.1	1289.9	1288.4	1285.5
70°	1223.6	1225.2	1222.8	1221.2	1216.4	1214.5	1210.4	1209.6	1206.3	1205.5	1202.3
72.5°	1125.7	1125.8	1122.5	1121.4	1117.9	1117.8	1116.1	1117.6	1117.5	1119.2	1118.4
75°	1025.5	1024.1	1019.9	1019.1	1016.4	1017.7	1015.9	1018.3	1018.6	1022.3	1022.7
77.5°	925.3	919.9	911.9	908.0	902.6	902.0	898.8	900.9	900.3	904.5	906.2
80°	798.5	792.1	781.8	776.7	770.3	769.4	766.5	769.4	767.9	773.0	776.4
82.5°	637.5	632.0	621.2	617.2	609.8	610.5	607.4	610.5	610.1	617.5	621.8
85°	471.5	467.9	456.8	447.0	436.0	429.7	423.4	422.3	420.4	423.4	425.9
87.5°	272.4	268.9	260.3	254.6	235.4	236.2	228.7	228.4	226.5	224.8	228.7
90°	40.7	45.5	44.2	48.5	47.8	52.7	52.5	57.2	56.0	60.6	60.2
92.5°	25.2	26.5	27.9	29.3	30.7	32.0	33.4	34.8	37.8	40.6	43.8
95°	33.7	35.3	36.9	38.6	40.2	41.8	43.4	45.0	49.4	53.7	58.1
97.5°	46.8	47.8	48.8	49.9	51.0	52.0	53.1	54.1	58.9	63.6	68.3
100°	59.3	60.1	61.0	61.9	62.8	63.6	64.4	65.3	74.7	83.7	92.7
102.5°	91.4	95.1	98.7	102.3	106.1	109.8	113.3	117.0	138.0	158.8	179.6
105°	167.2	177.1	187.2	197.1	207.0	216.9	227.0	236.9	270.3	303.7	337.2
107.5°	303.4	319.0	334.8	350.6	366.3	382.1	397.8	413.7	446.2	478.8	511.4
110°	460.2	475.3	490.3	505.3	520.2	535.3	550.4	565.6	585.3	604.8	624.6



TEST NUMBER: P1444476  
 CATALOG NUMBER: EHBR1-48-UNV-TA-L830-UPL18

**CANDELA DISTRIBUTION (continued):**

	275°	277.5°	280°	282.5°	285°	287.5°	290°	292.5°	295°	297.5°	300°
112.5°	572.7	579.9	587.4	594.7	602.2	609.7	617.2	624.7	634.6	644.5	654.6
115°	607.4	607.8	608.5	609.1	609.8	610.4	611.3	612.0	615.5	618.9	622.3
117.5°	579.9	576.1	572.3	568.3	564.6	561.1	557.4	554.0	553.7	553.4	553.4
120°	523.8	518.5	513.3	508.1	503.2	498.1	493.5	488.7	486.5	484.5	482.4
122.5°	456.3	451.1	446.1	441.0	436.1	431.4	426.9	422.3	421.0	419.7	418.6
125°	393.3	389.1	385.0	381.1	377.3	373.6	370.0	366.3	366.9	367.4	368.3
127.5°	343.7	341.2	338.9	336.7	334.9	332.8	331.1	329.3	331.3	333.3	335.2
130°	310.8	310.1	309.5	308.6	308.6	308.2	308.0	307.7	310.7	313.4	316.4
132.5°	293.4	293.5	293.9	294.3	295.1	295.7	296.7	297.5	300.7	303.8	307.1
135°	285.5	286.2	287.2	288.2	289.6	290.8	292.3	293.5	296.7	299.6	302.8
137.5°	284.7	285.5	286.7	287.9	289.5	290.8	292.6	294.0	296.7	299.1	301.7
140°	287.5	288.2	289.3	290.4	291.6	292.9	294.5	295.6	298.1	300.0	302.1
142.5°	291.0	291.5	292.5	293.7	294.9	295.9	297.3	298.3	300.1	301.6	303.6
145°	296.7	297.2	298.2	298.9	299.9	300.9	301.9	302.8	304.1	305.3	306.5
147.5°	300.5	300.9	301.6	302.4	303.2	303.9	304.6	305.3	306.4	307.2	308.3
150°	302.8	303.1	303.6	303.9	304.6	305.3	306.0	306.5	307.2	307.9	308.9
152.5°	302.7	302.8	303.3	303.6	304.1	304.6	305.2	305.7	306.6	307.1	307.9
155°	302.9	303.5	304.1	304.5	305.2	305.5	306.2	306.6	307.3	307.9	308.6
157.5°	304.8	305.1	305.8	306.1	306.9	307.2	307.8	308.3	308.9	309.4	310.0
160°	306.0	306.8	307.2	308.0	308.6	309.2	309.9	310.5	311.1	311.5	312.1
162.5°	309.5	310.1	310.6	311.0	311.5	312.1	312.6	313.1	314.0	314.4	315.1
165°	312.1	312.8	313.5	313.9	314.7	315.5	316.0	316.7	317.1	317.6	318.1
167.5°	316.6	317.0	317.8	318.4	319.0	319.6	320.3	320.7	321.3	321.6	322.1
170°	319.8	320.4	320.9	321.5	322.0	322.4	323.1	323.4	324.1	324.5	325.1
172.5°	324.6	324.9	325.3	325.6	326.0	326.5	326.9	327.1	327.7	328.0	328.4
175°	328.5	328.5	328.6	328.8	328.9	328.9	329.1	329.3	329.4	329.6	329.7
177.5°	330.6	330.8	330.8	330.9	331.0	331.2	331.3	331.4	331.4	331.4	331.4
180°	329.8	329.8	329.8	329.8	329.8	329.8	329.8	329.8	329.8	329.8	329.8



TEST NUMBER: P1444476  
 CATALOG NUMBER: EHBR1-48-UNV-TA-L830-UPL18

**CANDELA DISTRIBUTION (continued):**

	302.5°	305°	307.5°	310°	312.5°	315°	317.5°	320°	322.5°	325°	327.5°
0°	38337.2	38337.2	38337.2	38337.2	38337.2	38337.2	38337.2	38337.2	38337.2	38337.2	38337.2
2.5°	38742.9	38744.6	38713.3	38711.6	38682.4	38678.7	38650.1	38641.5	38618.4	38609.9	38586.3
5°	39918.4	39880.3	39792.3	39740.6	39653.7	39596.1	39502.0	39440.7	39349.9	39281.4	39190.0
7.5°	41107.2	41048.1	40949.4	40869.4	40748.7	40652.4	40511.3	40395.7	40242.8	40110.4	39949.9
10°	41455.8	41446.7	41421.6	41384.9	41328.8	41265.8	41169.7	41069.5	40935.6	40790.0	40611.6
12.5°	40598.0	40690.6	40816.9	40891.7	40982.9	41022.8	41060.2	41050.8	41026.2	40952.6	40849.4
15°	38424.8	38685.1	39029.8	39296.9	39604.2	39827.5	40074.3	40228.0	40381.2	40452.1	40495.3
17.5°	34967.8	35460.7	36078.7	36590.9	37181.9	37656.5	38176.9	38568.6	38971.4	39260.0	39521.0
20°	30527.3	31241.4	32115.5	32887.8	33785.7	34566.0	35421.1	36123.1	36846.9	37413.1	37948.8
22.5°	25710.9	26559.0	27615.8	28594.7	29752.3	30792.6	31966.3	32987.9	34054.5	34945.6	35807.2
25°	20974.7	21904.7	23060.4	24152.6	25463.5	26673.6	28065.6	29338.8	30717.4	31914.3	33096.7
27.5°	16649.9	17563.0	18742.8	19905.4	21291.7	22581.1	24072.6	25475.3	27045.0	28492.5	29973.4
30°	13095.3	13869.8	14927.6	16053.7	17421.0	18733.1	20240.7	21683.4	23316.4	24896.9	26564.8
32.5°	10375.0	10965.0	11796.6	12748.9	14010.4	15259.5	16695.1	18087.8	19695.8	21292.4	23027.1
35°	8239.7	8699.9	9333.9	10077.0	11145.3	12222.1	13491.8	14758.3	16258.5	17773.6	19459.7
37.5°	6497.4	6870.8	7367.4	7925.6	8782.5	9666.1	10707.3	11757.3	13060.9	14403.9	15931.9
40°	5073.8	5376.1	5762.7	6179.0	6826.1	7506.9	8312.1	9126.4	10173.7	11271.2	12535.9
42.5°	3985.8	4208.9	4482.0	4786.2	5389.9	5751.3	6297.4	6886.3	7656.2	8453.0	9403.8
45°	3200.9	3353.1	3542.5	3746.6	4026.7	4333.4	4707.3	5099.4	5830.9	6189.7	6767.9
47.5°	2673.1	2775.3	2895.7	3024.4	3189.6	3367.9	3589.7	3816.4	4109.7	4413.7	4770.0
50°	2317.6	2421.5	2462.9	2529.5	2625.1	2726.9	2852.0	2977.0	3134.3	3293.7	3477.2
52.5°	2053.8	2087.6	2132.6	2175.0	2234.2	2350.2	2387.7	2453.1	2541.3	2627.6	2723.9
55°	1852.3	1874.4	1903.6	1929.2	1965.0	1999.2	2048.7	2092.1	2151.0	2203.0	2266.9
57.5°	1695.4	1709.5	1729.8	1746.6	1769.8	1789.1	1818.1	1841.7	1875.5	1904.9	1943.7
60°	1581.5	1590.9	1604.5	1615.4	1630.2	1640.4	1654.7	1665.7	1683.6	1698.6	1720.2
62.5°	1488.4	1493.3	1502.2	1508.7	1518.0	1523.1	1530.8	1535.6	1545.4	1553.0	1565.1
65°	1376.8	1377.9	1383.9	1386.6	1394.0	1396.6	1402.9	1405.2	1413.3	1418.8	1429.5
67.5°	1285.3	1282.7	1282.8	1280.8	1281.7	1279.5	1280.2	1277.9	1281.1	1282.8	1291.0
70°	1201.7	1198.1	1197.0	1193.2	1192.1	1188.1	1187.0	1183.4	1183.0	1181.8	1184.7
72.5°	1120.3	1119.4	1119.6	1116.9	1116.7	1113.9	1114.0	1112.3	1114.2	1115.1	1118.7
75°	1026.7	1027.0	1028.8	1026.4	1027.1	1024.9	1025.7	1023.5	1024.7	1024.3	1027.9
77.5°	912.7	915.4	920.4	919.4	921.0	918.4	919.6	916.6	917.4	915.4	916.9
80°	784.6	790.3	797.0	796.7	799.5	797.6	800.2	797.3	798.5	795.1	794.2
82.5°	632.4	637.2	644.4	644.6	650.9	652.0	659.0	658.7	663.1	660.3	658.2
85°	432.4	435.7	441.8	445.3	451.7	455.6	462.4	465.1	460.2	469.0	462.1
87.5°	225.7	234.2	229.5	240.4	237.8	248.9	246.5	256.8	254.8	263.6	262.5
90°	66.3	66.5	73.0	73.5	81.3	82.9	88.0	85.9	90.8	89.0	93.7
92.5°	46.6	49.7	52.7	55.7	58.7	61.9	58.9	56.2	53.4	50.9	47.9
95°	62.5	66.8	71.2	75.6	79.9	84.3	79.6	75.0	70.3	65.7	60.9
97.5°	73.0	77.7	82.4	87.1	92.0	96.7	91.1	85.6	80.0	74.6	69.0
100°	101.8	111.0	120.1	129.1	138.4	147.4	137.2	126.8	116.7	106.3	96.0
102.5°	200.6	221.5	242.4	263.4	284.2	305.1	283.3	261.6	239.6	217.7	195.8
105°	370.6	404.1	437.4	470.9	504.3	538.0	502.5	467.0	431.5	396.2	360.5
107.5°	544.1	576.7	609.6	642.1	674.8	707.7	671.8	635.8	600.1	564.1	528.0
110°	644.5	664.1	683.9	703.8	723.5	743.5	717.3	691.2	665.1	638.8	612.7



TEST NUMBER: P1444476  
 CATALOG NUMBER: EHBR1-48-UNV-TA-L830-UPL18

**CANDELA DISTRIBUTION (continued):**

	302.5°	305°	307.5°	310°	312.5°	315°	317.5°	320°	322.5°	325°	327.5°
112.5°	664.6	674.9	684.8	695.0	705.2	715.3	696.7	678.4	659.6	641.2	622.5
115°	625.9	629.4	632.9	636.5	640.0	643.5	631.2	618.9	606.6	594.2	581.6
117.5°	553.3	553.3	553.1	553.4	553.1	553.1	546.4	539.8	533.0	526.2	519.4
120°	480.3	478.4	476.4	474.3	472.2	470.0	467.6	465.2	462.5	459.8	457.0
122.5°	417.4	416.5	415.2	414.1	412.7	411.5	410.8	410.4	409.5	408.9	408.0
125°	368.9	369.5	370.1	370.8	371.3	371.9	371.8	371.9	371.7	371.8	371.5
127.5°	337.0	339.1	340.9	342.7	344.4	346.3	346.6	347.3	347.6	348.0	348.4
130°	319.0	322.0	324.7	327.3	329.8	332.7	332.8	333.2	333.5	333.7	333.9
132.5°	310.1	313.2	316.1	319.3	322.2	325.1	325.3	325.7	325.6	326.0	326.1
135°	305.7	308.6	311.4	314.5	317.1	319.9	320.0	320.2	320.0	320.4	320.4
137.5°	304.0	306.7	308.9	311.4	313.5	316.0	315.9	316.0	315.9	316.2	316.1
140°	304.1	306.2	308.0	310.1	311.9	313.9	313.7	313.6	313.4	313.2	313.0
142.5°	305.1	306.8	308.2	309.9	311.2	312.9	312.1	311.7	311.3	310.8	310.3
145°	307.7	309.0	310.1	311.3	312.0	313.3	312.5	311.9	311.0	310.4	309.7
147.5°	309.0	310.0	310.5	311.5	311.9	312.9	312.0	311.4	310.6	309.7	308.9
150°	309.4	310.4	311.0	311.6	312.1	313.0	311.9	311.2	310.1	309.2	308.5
152.5°	308.6	309.3	309.9	310.3	310.9	311.4	310.3	309.8	308.6	307.7	306.8
155°	308.9	309.6	309.9	310.4	310.6	311.0	310.1	309.6	308.7	307.9	307.0
157.5°	310.3	310.9	311.4	311.6	311.9	312.4	311.7	311.3	310.5	310.1	309.3
160°	312.5	313.0	313.3	313.6	314.1	314.2	313.7	313.4	313.0	312.3	311.7
162.5°	315.5	316.2	316.6	317.0	317.5	317.9	317.4	316.9	316.2	315.7	315.0
165°	318.5	318.9	319.4	319.8	320.0	320.4	320.0	319.7	319.2	318.9	318.4
167.5°	322.4	323.1	323.4	323.7	323.9	324.2	323.7	323.7	323.2	322.7	322.2
170°	325.4	325.9	326.3	326.7	327.0	327.2	327.0	326.8	326.3	326.1	325.6
172.5°	328.8	329.3	329.3	329.7	329.8	330.2	329.9	329.5	329.2	328.8	328.3
175°	329.7	329.9	330.2	330.2	330.2	330.3	330.0	329.6	329.3	329.0	328.7
177.5°	331.4	331.4	331.4	331.3	331.3	331.3	331.1	330.8	330.7	330.5	330.0
180°	329.8	329.8	329.8	329.8	329.8	329.8	329.8	329.8	329.8	329.8	329.8



TEST NUMBER: P1444476  
 CATALOG NUMBER: EHBR1-48-UNV-TA-L830-UPL18

**CANDELA DISTRIBUTION (continued):**

	330°	332.5°	335°	337.5°	340°	342.5°	345°	347.5°	350°	352.5°	355°
0°	38337.2	38337.2	38337.2	38337.2	38337.2	38337.2	38337.2	38337.2	38337.2	38337.2	38337.2
2.5°	38578.0	38561.2	38550.4	38536.7	38528.2	38517.6	38509.8	38503.1	38497.7	38492.7	38489.0
5°	39120.4	39034.2	38967.3	38894.8	38835.3	38775.9	38730.1	38692.2	38666.0	38646.5	38634.8
7.5°	39811.1	39653.2	39512.9	39365.1	39232.6	39102.4	38990.1	38893.4	38820.8	38773.8	38745.2
10°	40427.9	40216.6	40007.6	39787.6	39579.0	39376.8	39190.0	39025.8	38895.8	38809.4	38759.0
12.5°	40704.4	40524.4	40311.0	40072.1	39816.5	39557.9	39305.9	39078.6	38887.7	38759.7	38685.8
15°	40460.9	40387.0	40242.1	40056.8	39814.2	39546.8	39250.9	38972.7	38716.8	38550.8	38454.6
17.5°	39668.8	39771.9	39760.8	39689.9	39515.5	39290.5	38988.9	38676.4	38356.4	38134.5	38013.3
20°	38332.0	38656.3	38820.8	38905.2	38836.7	38690.8	38417.7	38100.5	37727.4	37437.9	37261.2
22.5°	36453.5	37026.0	37382.7	37643.8	37699.2	37649.5	37408.3	37106.7	36690.9	36342.7	36081.7
25°	34035.3	34874.0	35437.9	35879.8	36051.5	36095.8	35890.7	35590.7	35127.1	34721.5	34363.1
27.5°	31187.0	32276.7	33029.6	33623.4	33891.5	34007.8	33818.9	33512.9	32964.5	32480.4	32012.1
30°	27980.3	29273.3	30179.6	30891.7	31218.5	31372.2	31171.5	30830.0	30191.7	29609.2	29019.2
32.5°	24548.2	25963.0	26950.7	27724.1	28047.9	28192.3	27929.9	27546.3	26808.6	26122.4	25434.4
35°	20954.8	22382.9	23378.8	24131.7	24403.0	24490.2	24154.5	23711.1	22893.8	22140.6	21390.5
37.5°	17288.3	18616.9	19522.0	20197.7	20365.6	20380.6	19976.3	19486.5	18627.5	17884.9	17138.1
40°	13653.4	14773.9	15504.7	16045.4	16103.7	16051.7	15612.1	15119.2	14315.6	13650.3	12994.7
42.5°	10229.5	11075.3	11596.7	11967.3	11945.3	11842.5	11439.5	11015.8	10352.8	9846.0	9330.1
45°	7296.2	7853.8	8158.7	8375.6	8306.0	8208.1	7894.4	7597.4	7146.9	6819.5	6472.8
47.5°	5068.8	5734.7	5618.8	6042.7	5677.5	5918.7	5416.3	5139.3	4900.3	4726.4	4530.4
50°	3628.8	3781.4	3855.1	3905.4	3878.7	3841.6	3751.4	3670.7	3561.5	3481.8	3389.1
52.5°	2802.4	2878.7	2920.5	2950.7	2944.8	2931.3	2891.9	2856.0	2804.9	2771.2	2730.5
55°	2373.8	2374.9	2451.7	2418.8	2467.6	2410.4	2432.9	2369.7	2379.9	2325.6	2289.1
57.5°	1972.5	2003.8	2017.9	2031.5	2027.7	2025.3	2010.0	2002.4	1985.2	1979.9	1967.7
60°	1735.1	1751.5	1754.8	1761.1	1755.9	1753.9	1741.9	1737.7	1726.2	1724.0	1716.0
62.5°	1572.3	1580.7	1580.7	1580.7	1573.9	1567.3	1554.1	1547.2	1537.3	1535.2	1530.5
65°	1436.4	1445.2	1446.6	1448.3	1443.4	1438.3	1426.6	1419.1	1409.0	1405.2	1399.8
67.5°	1296.2	1305.5	1308.6	1313.3	1310.5	1309.4	1301.5	1298.5	1291.8	1290.2	1285.3
70°	1186.1	1189.9	1189.6	1189.5	1183.3	1177.7	1168.5	1164.0	1157.1	1155.7	1151.1
72.5°	1120.6	1123.3	1121.6	1119.2	1111.1	1102.9	1092.0	1084.1	1075.0	1069.3	1062.9
75°	1028.4	1032.0	1029.6	1028.1	1020.8	1015.5	1006.8	1002.4	996.0	994.1	989.7
77.5°	915.2	916.9	913.2	912.7	907.2	903.8	897.3	896.1	891.5	891.6	887.3
80°	789.1	788.1	782.2	781.0	775.5	774.1	768.9	769.2	765.6	767.1	764.1
82.5°	649.3	645.8	638.0	635.7	629.3	628.7	625.3	628.2	625.9	629.3	627.3
85°	465.4	466.3	462.9	462.9	461.0	461.6	461.3	463.5	463.8	466.9	466.8
87.5°	259.5	263.1	262.5	265.8	265.7	269.5	270.8	276.5	277.2	282.4	282.4
90°	92.0	97.3	95.5	101.0	100.4	106.4	106.9	112.8	112.4	117.6	116.2
92.5°	45.1	42.3	39.8	36.8	35.4	33.7	33.0	31.0	29.9	28.2	26.9
95°	56.2	51.5	46.8	42.2	40.6	38.9	37.3	35.7	34.0	32.4	30.8
97.5°	63.5	57.9	52.4	46.8	45.4	44.0	42.6	41.2	39.8	38.4	37.1
100°	85.6	75.3	65.1	54.6	53.4	52.3	51.1	49.9	48.7	47.4	46.2
102.5°	173.9	151.9	130.0	108.0	103.9	99.7	95.5	91.2	87.0	82.9	78.8
105°	325.1	289.5	253.9	218.3	207.0	195.7	184.4	173.0	161.7	150.3	139.1
107.5°	492.1	455.9	419.8	383.7	363.0	342.1	321.1	300.0	279.3	258.3	237.3
110°	586.5	560.2	533.9	507.5	490.9	474.1	457.2	440.3	423.7	406.7	389.9



TEST NUMBER: P1444476  
 CATALOG NUMBER: EHBR1-48-UNV-TA-L830-UPL18

**CANDELA DISTRIBUTION (continued):**

	330°	332.5°	335°	337.5°	340°	342.5°	345°	347.5°	350°	352.5°	355°
112.5°	603.8	585.1	566.4	547.4	540.0	532.3	524.9	517.3	509.7	501.9	494.3
115°	569.1	556.7	544.0	531.2	528.9	526.2	523.7	520.9	518.6	515.8	512.9
117.5°	512.7	505.7	498.8	491.9	492.4	493.1	493.8	494.3	494.8	495.1	495.5
120°	454.3	451.6	449.0	446.2	448.9	451.3	453.9	456.2	458.6	460.8	463.0
122.5°	407.5	406.5	405.9	404.8	408.0	411.2	414.1	417.1	420.0	422.5	425.3
125°	371.6	371.2	371.1	370.7	374.2	377.4	380.5	383.3	386.3	388.8	391.5
127.5°	348.8	349.1	349.7	349.8	352.5	354.5	357.1	359.0	361.3	363.0	364.9
130°	334.2	334.3	334.7	334.8	337.1	339.4	341.7	343.5	345.6	347.1	348.7
132.5°	326.3	326.3	326.6	326.6	328.6	330.4	332.2	333.4	335.0	335.9	336.9
135°	320.6	320.4	320.6	320.5	322.3	324.1	325.6	326.9	328.4	329.3	330.2
137.5°	316.3	316.1	316.2	316.1	317.8	319.3	320.7	321.9	323.2	324.2	324.9
140°	313.0	312.7	312.7	312.3	313.9	315.2	316.6	317.6	318.8	319.4	320.3
142.5°	309.9	309.1	309.0	308.3	309.5	310.4	311.5	312.3	313.1	313.7	314.2
145°	308.9	308.0	307.4	306.6	307.4	308.3	309.1	309.9	310.3	310.7	311.1
147.5°	308.4	307.3	306.5	305.6	306.5	307.0	307.5	307.9	308.5	308.6	308.9
150°	307.4	306.2	305.3	304.2	304.7	305.1	305.5	305.9	306.3	306.3	306.6
152.5°	305.7	304.7	303.7	302.5	302.8	303.1	303.3	303.3	303.6	303.7	303.7
155°	306.2	305.2	304.2	303.1	303.5	303.5	303.7	303.7	303.6	303.5	303.5
157.5°	308.6	307.5	307.1	306.0	306.0	305.9	305.9	305.5	305.5	305.2	304.8
160°	311.2	310.4	309.8	308.9	308.7	308.6	308.6	308.2	308.0	307.5	307.2
162.5°	314.3	313.5	312.6	311.7	311.5	311.5	311.3	310.8	310.7	310.2	309.9
165°	317.9	317.4	316.8	316.0	315.8	315.5	315.4	314.8	314.5	313.9	313.5
167.5°	321.7	321.1	320.5	319.7	319.6	319.6	319.4	319.0	318.9	318.5	318.3
170°	325.2	324.7	324.3	323.6	323.4	323.3	323.0	322.7	322.2	321.9	321.5
172.5°	327.8	327.4	326.8	326.1	326.1	325.9	325.6	325.5	325.0	324.8	324.7
175°	328.2	327.9	327.3	327.0	326.8	326.7	326.5	326.4	326.2	326.0	325.7
177.5°	329.8	329.6	329.1	328.9	328.8	328.8	328.8	328.5	328.5	328.3	328.2
180°	329.8	329.8	329.8	329.8	329.8	329.8	329.8	329.8	329.8	329.8	329.8



TEST NUMBER: P1444476  
 CATALOG NUMBER: EHBR1-48-UNV-TA-L830-UPL18

**CANDELA DISTRIBUTION (continued):**

	357.5°	360°
0°	38337.2	38337.2
2.5°	38485.6	38483.7
5°	38628.7	38626.4
7.5°	38737.5	38736.8
10°	38750.3	38757.0
12.5°	38673.1	38678.4
15°	38447.2	38457.8
17.5°	38015.6	38029.3
20°	37271.9	37286.4
22.5°	36067.7	36073.6
25°	34316.8	34291.9
27.5°	31929.8	31887.1
30°	28895.4	28854.0
32.5°	25277.6	25251.7
35°	21205.0	21188.7
37.5°	16917.4	16884.2
40°	12755.0	12658.1
42.5°	9104.2	8934.1
45°	6291.8	6090.2
47.5°	4392.3	4267.7
50°	3329.3	3289.1
52.5°	2712.8	2703.4
55°	2288.9	2284.8
57.5°	1970.4	1969.0
60°	1720.2	1719.8
62.5°	1533.7	1534.3
65°	1402.3	1402.5
67.5°	1286.6	1285.7
70°	1152.8	1151.9
72.5°	1060.8	1059.2
75°	989.7	988.8
77.5°	888.6	887.1
80°	766.1	764.1
82.5°	630.1	627.9
85°	470.0	470.1
87.5°	287.6	287.5
90°	121.0	118.9
92.5°	25.8	24.6
95°	29.2	27.6
97.5°	35.7	34.3
100°	45.1	43.8
102.5°	74.6	70.4
105°	127.8	116.4
107.5°	216.4	195.5
110°	373.0	356.1



TEST NUMBER: P1444476  
CATALOG NUMBER: EHBR1-48-UNV-TA-L830-UPL18

**CANDELA DISTRIBUTION (continued):**

	357.5°	360°
112.5°	486.5	478.8
115°	509.9	507.0
117.5°	495.8	495.9
120°	464.9	467.0
122.5°	427.5	429.9
125°	393.9	396.2
127.5°	366.3	367.8
130°	349.6	351.0
132.5°	337.7	338.2
135°	330.7	331.2
137.5°	325.2	325.7
140°	320.4	320.8
142.5°	314.4	314.5
145°	311.4	311.4
147.5°	308.6	308.6
150°	306.4	306.3
152.5°	303.4	303.3
155°	303.1	302.8
157.5°	304.1	303.9
160°	306.7	306.3
162.5°	309.3	308.9
165°	312.8	312.2
167.5°	317.6	317.5
170°	321.1	320.8
172.5°	324.2	323.9
175°	325.6	325.4
177.5°	328.2	327.9
180°	329.8	329.8

LM-79-2019: Approved Method: Electrical and Photometric Measurements of Solid-  
State Lighting Products

Report Prepared for

Cooper Lighting Solutions

Metalux

Report Number: SP1-2506-472-2

Test Date: 07/31/2025

Luminaire Tested: EHBR-60-L830-N

Data in this report applies to families of products including EHBR-60-L830-N

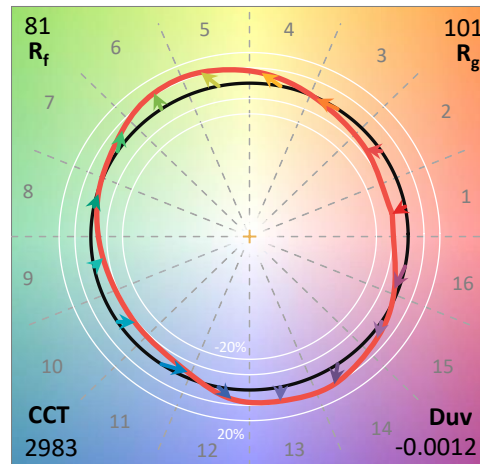
**Test Information**

Test Method: LM-79-2019  
 Report Number: SP1-2506-472-2  
 Test Lab: COOPER LIGHTING SOLUTIONS  
 Photometer: SP1 - 76IN SPHERE  
 Measurement Geometry: 4π  
 Issue Date: 08/05/2025  
 Manufacturer: COOPER LIGHTING SOLUTIONS  
 Product Line: Metalux  
 Catalog Number: **EHBR-60-L830-N**  
 Description: Elevate Round Highbay at, 60000 lumens, 3000K 80CRI LEDs with N lens

**Spectral Parameters**

CCT (K): 2983  
 CIE u': 0.2516  
 CIE v': 0.5201  
 Duv: -0.0012  
 CIE x: 0.4364  
 CIE y: 0.4010  
 CIE z: 0.1626  
 Peak Wavelength (nm): 630  
 Dominant Wavelength (nm): 583  
 Purity: 51.34918  
 Rf: 81.2  
 Rg: 101.5

CRI (Ra):	83.4		
R1:	84.0	R9:	29.4
R2:	87.5	R10:	68.6
R3:	88.9	R11:	82.2
R4:	83.8	R12:	61.6
R5:	81.9	R13:	83.9
R6:	83.1	R14:	92.5
R7:	87.1	R15:	79.8
R8:	70.9		



**Test Conditions**

Stabilization Time: 38M  
 Operation Time: 1H 38M  
 Sphere Temperature (°C): 25.0

REPORT NUMBER: SP1-2506-472-2

Measurement and Test Equipment			
Instrument	Identification Number	Calibration Date	Calibration Due Date
Photometer	76INCH SPHERE IN0058	6/16/2025	12/16/2025
Power Meter	XITRON INXT2011004	1/21/2025	1/21/2026
AC Power Source	CHROMA 61603 IN0063	10/22/2024	10/22/2025
DC Power Source	AGILENT E3634A IN0208	10/22/2024	10/22/2025
Sphere Thermometer	ONSET IN0085	10/22/2024	10/22/2025
Room Thermometer	ONSET IN0046	10/22/2024	10/22/2025

REPORT NUMBER: SP1-2506-472-2

CIE 1931 Chromaticity Diagram



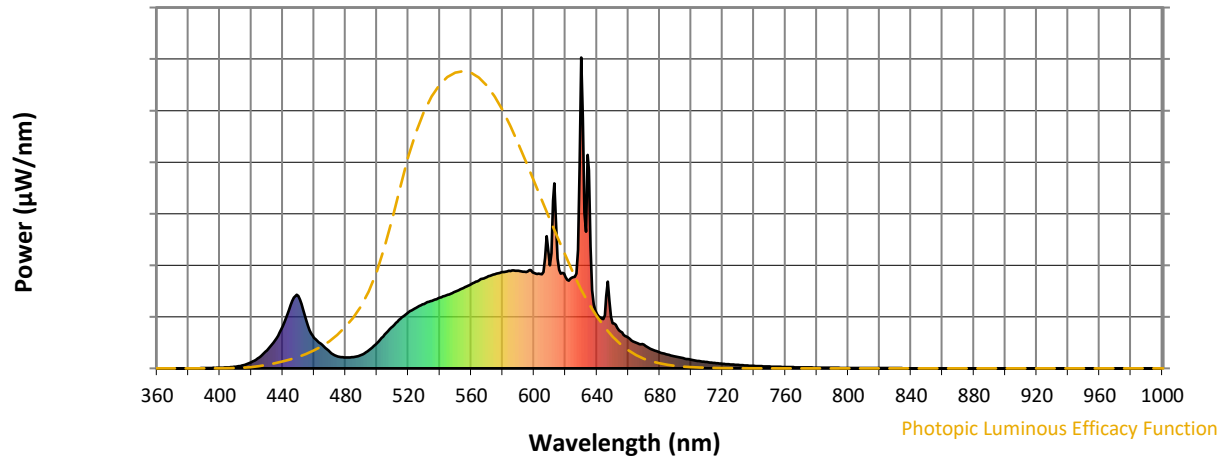
CIE 1931 Chromaticity Diagram with 2017 ANSI 7-Step and 4-Step Quadrangles



Point lies inside the ANSI 3000K 4-step quadrangle

REPORT NUMBER: SP1-2506-472-2

**Photopic Flux vs. Wavelength**



**Photopic Lumens: NR**

λ (nm)	Power W <sup>^</sup> /nm	Lumens (φ/nm)	λ (nm)	Power W <sup>^</sup> /nm	Lumens (φ/nm)	λ (nm)	Power W <sup>^</sup> /nm	Lumens (φ/nm)	λ (nm)	Power W <sup>^</sup> /nm	Lumens (φ/nm)	λ (nm)	Power W <sup>^</sup> /nm	Lumens (φ/nm)
360	0	NR	490	43	NR	620	294	NR	750	6	NR	880	0	NR
365	0	NR	495	59	NR	625	294	NR	755	5	NR	885	0	NR
370	0	NR	500	81	NR	630	1000	NR	760	4	NR	890	0	NR
375	0	NR	505	109	NR	635	637	NR	765	4	NR	895	0	NR
380	0	NR	510	135	NR	640	175	NR	770	3	NR	900	0	NR
385	0	NR	515	160	NR	645	171	NR	775	3	NR	905	0	NR
390	1	NR	520	180	NR	650	146	NR	780	2	NR	910	0	NR
395	1	NR	525	195	NR	655	119	NR	785	2	NR	915	0	NR
400	2	NR	530	207	NR	660	99	NR	790	2	NR	920	0	NR
405	3	NR	535	218	NR	665	82	NR	795	2	NR	925	0	NR
410	5	NR	540	227	NR	670	76	NR	800	1	NR	930	0	NR
415	10	NR	545	237	NR	675	61	NR	805	1	NR	935	0	NR
420	20	NR	550	247	NR	680	52	NR	810	1	NR	940	0	NR
425	35	NR	555	259	NR	685	44	NR	815	1	NR	945	0	NR
430	58	NR	560	271	NR	690	38	NR	820	1	NR	950	0	NR
435	90	NR	565	283	NR	695	33	NR	825	1	NR	955	0	NR
440	135	NR	570	293	NR	700	27	NR	830	1	NR	960	0	NR
445	204	NR	575	303	NR	705	24	NR	835	1	NR	965	0	NR
450	233	NR	580	310	NR	710	20	NR	840	0	NR	970	0	NR
455	153	NR	585	313	NR	715	17	NR	845	0	NR	975	0	NR
460	98	NR	590	314	NR	720	15	NR	850	0	NR	980	0	NR
465	76	NR	595	310	NR	725	13	NR	855	0	NR	985	0	NR
470	53	NR	600	307	NR	730	11	NR	860	0	NR	990	0	NR
475	39	NR	605	303	NR	735	9	NR	865	0	NR	995	0	NR
480	35	NR	610	331	NR	740	8	NR	870	0	NR	1000	0	NR
485	36	NR	615	353	NR	745	7	NR	875	0	NR			

REPORT NUMBER: SP1-2506-472-2

**Scotopic Flux vs. Wavelength**



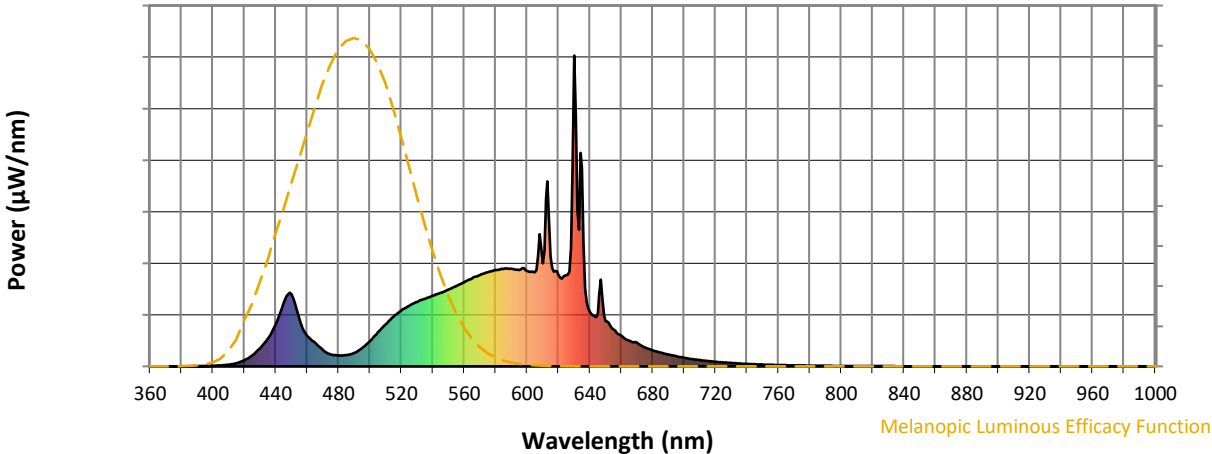
**Scotopic Lumens: NR**

**S/P: 1.27**

$\lambda$ (nm)	Power W <sup>^</sup> /nm	Lumens ( $\phi$ /nm)	$\lambda$ (nm)	Power W <sup>^</sup> /nm	Lumens ( $\phi$ /nm)	$\lambda$ (nm)	Power W <sup>^</sup> /nm	Lumens ( $\phi$ /nm)	$\lambda$ (nm)	Power W <sup>^</sup> /nm	Lumens ( $\phi$ /nm)	$\lambda$ (nm)	Power W <sup>^</sup> /nm	Lumens ( $\phi$ /nm)
360	0	NR	490	43	NR	620	294	NR	750	6	NR	880	0	NR
365	0	NR	495	59	NR	625	294	NR	755	5	NR	885	0	NR
370	0	NR	500	81	NR	630	1000	NR	760	4	NR	890	0	NR
375	0	NR	505	109	NR	635	637	NR	765	4	NR	895	0	NR
380	0	NR	510	135	NR	640	175	NR	770	3	NR	900	0	NR
385	0	NR	515	160	NR	645	171	NR	775	3	NR	905	0	NR
390	1	NR	520	180	NR	650	146	NR	780	2	NR	910	0	NR
395	1	NR	525	195	NR	655	119	NR	785	2	NR	915	0	NR
400	2	NR	530	207	NR	660	99	NR	790	2	NR	920	0	NR
405	3	NR	535	218	NR	665	82	NR	795	2	NR	925	0	NR
410	5	NR	540	227	NR	670	76	NR	800	1	NR	930	0	NR
415	10	NR	545	237	NR	675	61	NR	805	1	NR	935	0	NR
420	20	NR	550	247	NR	680	52	NR	810	1	NR	940	0	NR
425	35	NR	555	259	NR	685	44	NR	815	1	NR	945	0	NR
430	58	NR	560	271	NR	690	38	NR	820	1	NR	950	0	NR
435	90	NR	565	283	NR	695	33	NR	825	1	NR	955	0	NR
440	135	NR	570	293	NR	700	27	NR	830	1	NR	960	0	NR
445	204	NR	575	303	NR	705	24	NR	835	1	NR	965	0	NR
450	233	NR	580	310	NR	710	20	NR	840	0	NR	970	0	NR
455	153	NR	585	313	NR	715	17	NR	845	0	NR	975	0	NR
460	98	NR	590	314	NR	720	15	NR	850	0	NR	980	0	NR
465	76	NR	595	310	NR	725	13	NR	855	0	NR	985	0	NR
470	53	NR	600	307	NR	730	11	NR	860	0	NR	990	0	NR
475	39	NR	605	303	NR	735	9	NR	865	0	NR	995	0	NR
480	35	NR	610	331	NR	740	8	NR	870	0	NR	1000	0	NR
485	36	NR	615	353	NR	745	7	NR	875	0	NR			

REPORT NUMBER: SP1-2506-472-2

Melanopic Flux vs. Wavelength



Melanopic Lumens: NR M/P: 2.34

λ (nm)	Power W <sup>^</sup> /nm	Lumens (φ/nm)	λ (nm)	Power W <sup>^</sup> /nm	Lumens (φ/nm)	λ (nm)	Power W <sup>^</sup> /nm	Lumens (φ/nm)	λ (nm)	Power W <sup>^</sup> /nm	Lumens (φ/nm)	λ (nm)	Power W <sup>^</sup> /nm	Lumens (φ/nm)
360	0	NR	490	43	NR	620	294	NR	750	6	NR	880	0	NR
365	0	NR	495	59	NR	625	294	NR	755	5	NR	885	0	NR
370	0	NR	500	81	NR	630	1000	NR	760	4	NR	890	0	NR
375	0	NR	505	109	NR	635	637	NR	765	4	NR	895	0	NR
380	0	NR	510	135	NR	640	175	NR	770	3	NR	900	0	NR
385	0	NR	515	160	NR	645	171	NR	775	3	NR	905	0	NR
390	1	NR	520	180	NR	650	146	NR	780	2	NR	910	0	NR
395	1	NR	525	195	NR	655	119	NR	785	2	NR	915	0	NR
400	2	NR	530	207	NR	660	99	NR	790	2	NR	920	0	NR
405	3	NR	535	218	NR	665	82	NR	795	2	NR	925	0	NR
410	5	NR	540	227	NR	670	76	NR	800	1	NR	930	0	NR
415	10	NR	545	237	NR	675	61	NR	805	1	NR	935	0	NR
420	20	NR	550	247	NR	680	52	NR	810	1	NR	940	0	NR
425	35	NR	555	259	NR	685	44	NR	815	1	NR	945	0	NR
430	58	NR	560	271	NR	690	38	NR	820	1	NR	950	0	NR
435	90	NR	565	283	NR	695	33	NR	825	1	NR	955	0	NR
440	135	NR	570	293	NR	700	27	NR	830	1	NR	960	0	NR
445	204	NR	575	303	NR	705	24	NR	835	1	NR	965	0	NR
450	233	NR	580	310	NR	710	20	NR	840	0	NR	970	0	NR
455	153	NR	585	313	NR	715	17	NR	845	0	NR	975	0	NR
460	98	NR	590	314	NR	720	15	NR	850	0	NR	980	0	NR
465	76	NR	595	310	NR	725	13	NR	855	0	NR	985	0	NR
470	53	NR	600	307	NR	730	11	NR	860	0	NR	990	0	NR
475	39	NR	605	303	NR	735	9	NR	865	0	NR	995	0	NR
480	35	NR	610	331	NR	740	8	NR	870	0	NR	1000	0	NR
485	36	NR	615	353	NR	745	7	NR	875	0	NR			

**Summary**

$R_f = 81.2$   
 $R_g = 101.5$   
 CIE  $R_a = 83.4$   
 $R_9 = 29.4$

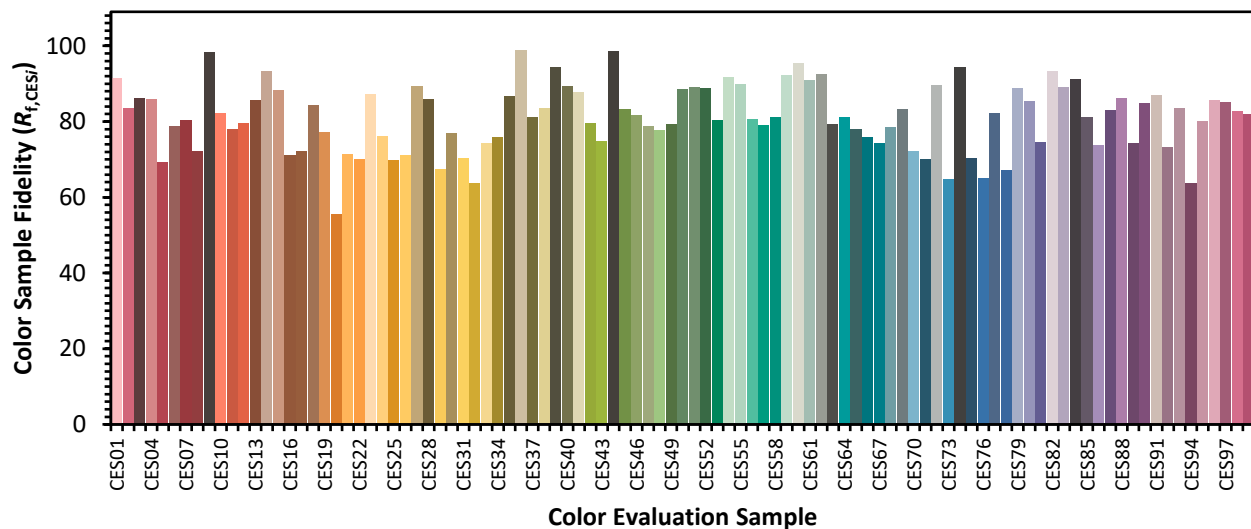


**Color Vector Graphics**

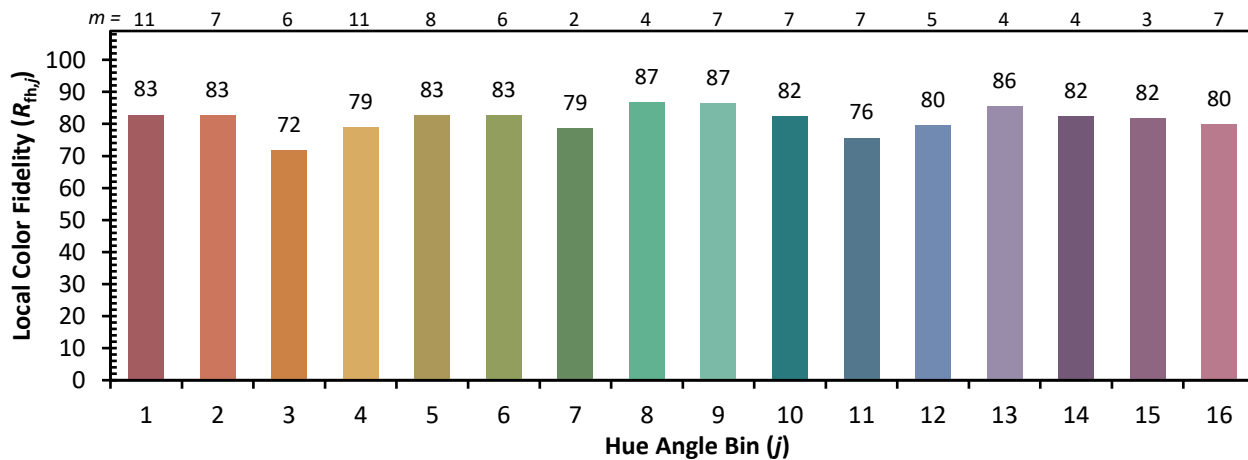
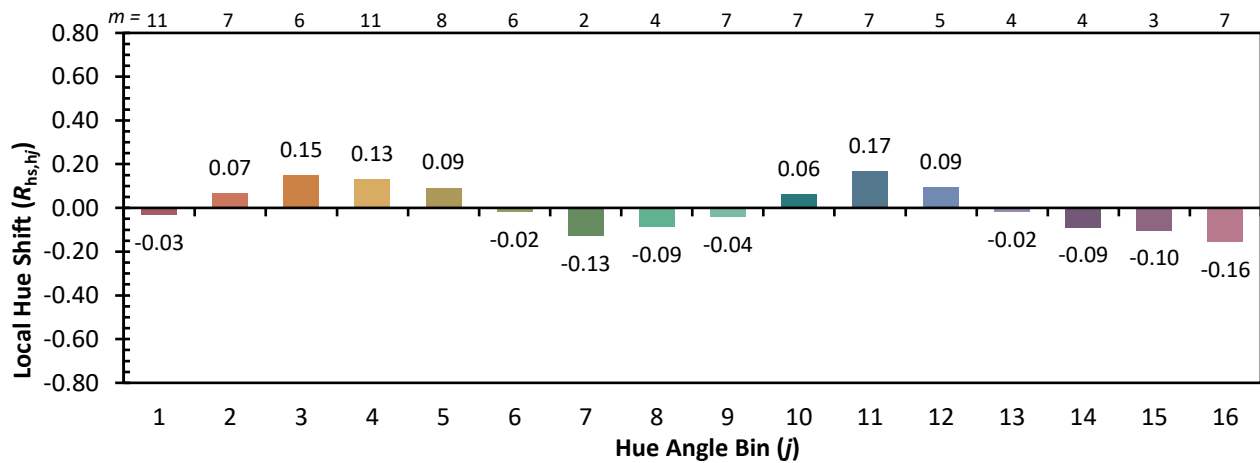
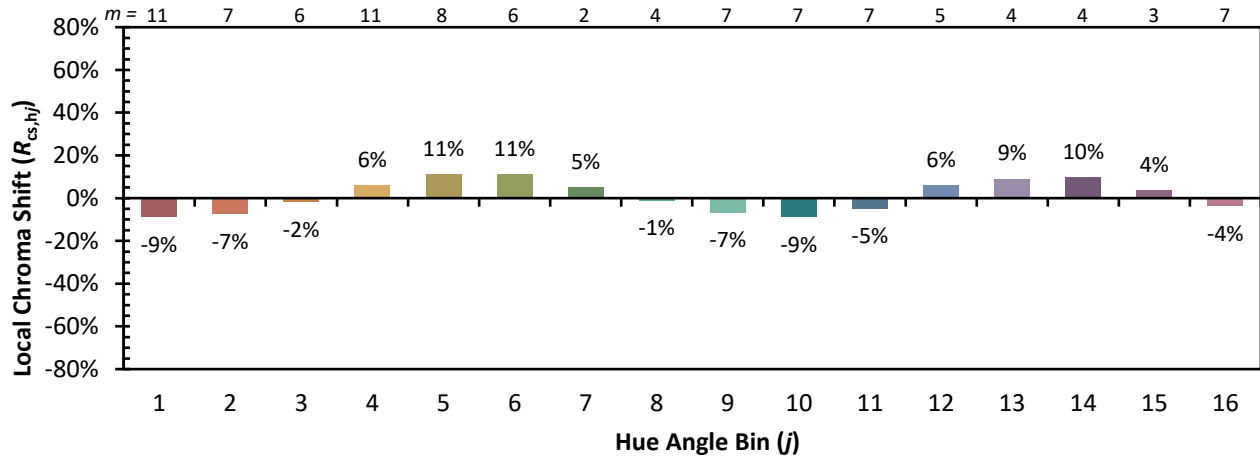


**Individual Sample Fidelity Index ( $R_{f,i}$ )**

CES01 = 86	CES26 = 71	CES51 = 89	CES76 = 65
CES02 = 63	CES27 = 89	CES52 = 89	CES77 = 82
CES03 = 31	CES28 = 86	CES53 = 80	CES78 = 67
CES04 = 70	CES29 = 68	CES54 = 92	CES79 = 89
CES05 = 50	CES30 = 77	CES55 = 90	CES80 = 85
CES06 = 51	CES31 = 70	CES56 = 81	CES81 = 75
CES07 = 43	CES32 = 64	CES57 = 79	CES82 = 93
CES08 = 41	CES33 = 74	CES58 = 81	CES83 = 89
CES09 = 29	CES34 = 76	CES59 = 92	CES84 = 91
CES10 = 76	CES35 = 87	CES60 = 96	CES85 = 81
CES11 = 59	CES36 = 99	CES61 = 91	CES86 = 74
CES12 = 65	CES37 = 81	CES62 = 93	CES87 = 83
CES13 = 44	CES38 = 83	CES63 = 79	CES88 = 86
CES14 = 74	CES39 = 94	CES64 = 81	CES89 = 74
CES15 = 72	CES40 = 89	CES65 = 78	CES90 = 85
CES16 = 48	CES41 = 88	CES66 = 76	CES91 = 87
CES17 = 50	CES42 = 80	CES67 = 74	CES92 = 73
CES18 = 57	CES43 = 75	CES68 = 79	CES93 = 84
CES19 = 72	CES44 = 99	CES69 = 83	CES94 = 64
CES20 = 67	CES45 = 83	CES70 = 72	CES95 = 80
CES21 = 87	CES46 = 82	CES71 = 70	CES96 = 86
CES22 = 79	CES47 = 79	CES72 = 90	CES97 = 85
CES23 = 92	CES48 = 78	CES73 = 65	CES98 = 83
CES24 = 91	CES49 = 79	CES74 = 94	CES99 = 82
CES25 = 72	CES50 = 88	CES75 = 70	



Color Rendition by Hue-Angle Bin



Measure Comparisons



(END OF REPORT)