

Cooper Lighting Solutions Photometric Lab
1121 Highway 74 South
Peachtree City, GA 30269



Scaled data based on original data using
LM-79-2019 Approved Method: Electrical and Photometric Measurements of Solid-
State Lighting Products

Test Report Prepared for
Cooper Lighting Solutions

Brand: METALUX

Report Number: P1444492

Luminaire Tested: EHBR1-60-UNV-TA-L830-UPL18

Issue Date: 5/1/2026

Test Information

Test Method: LM-79-2019
Report Number: P1444492
REPORT IS A COMBINATION OF REPORTS P1444326 AND P1431635
Test Lab: INNOVATION CENTER
Issue Date: 5/1/2026
Manufacturer: COOPER LIGHTING SOLUTIONS
Product Line: METALUX
Catalog Number: EHBR1-60-UNV-TA-L830-UPL18
Description: Elevate Round Highbay at, 60000 lumens, 3000K 80CRI LEDs with TA lens
Light Source: -
Ballast/Driver: -

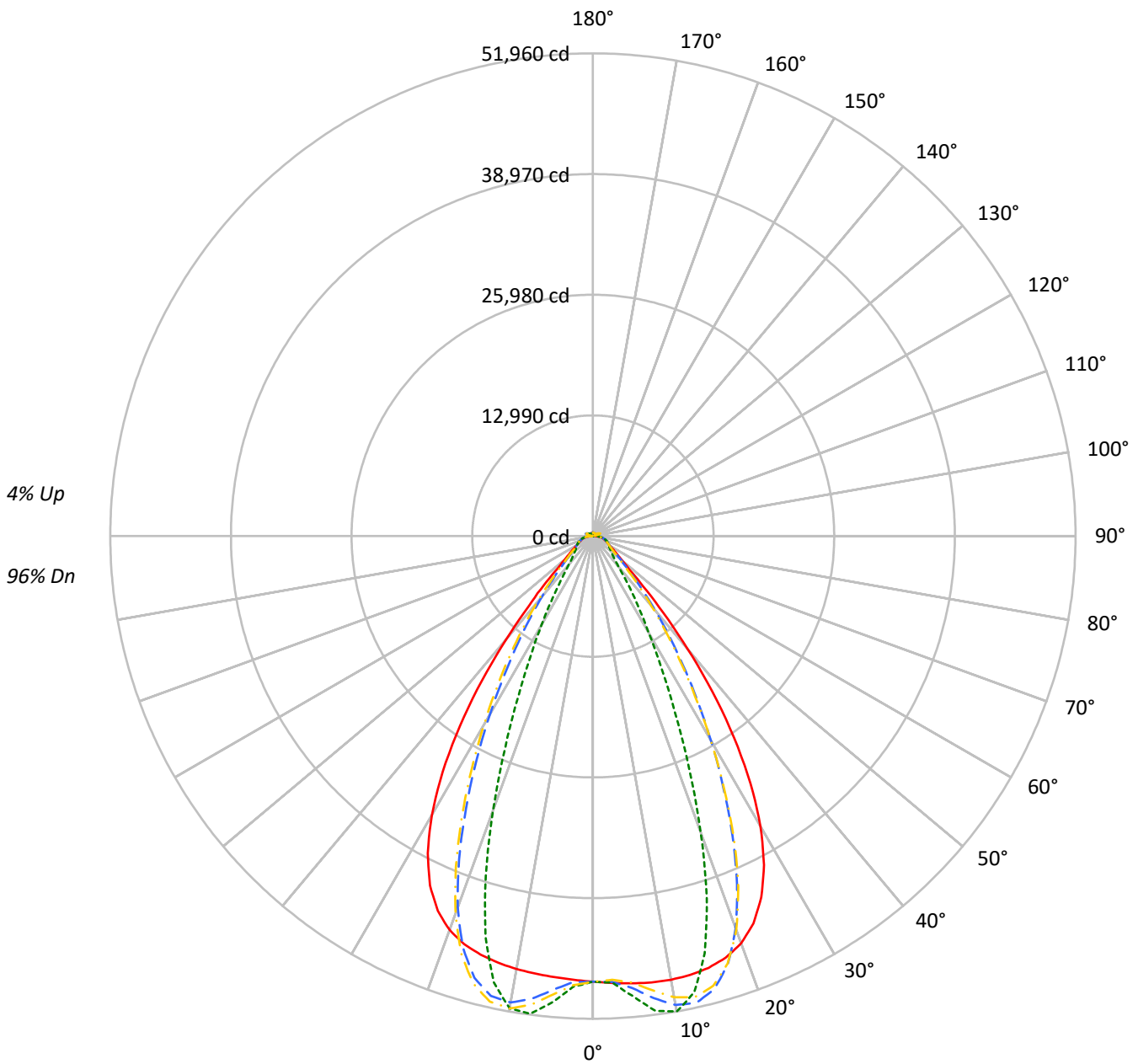
Summary

Lumens per Lamp: N/A
Luminaire Lumens: 57258.2 lumens
Efficiency: N/A
Efficacy: 167.3 lumens/watt
Spacing Criteria (0/90/45): 1.13 / 0.77 / 0.88
Luminous Opening: Vertical Cylinder (Dia: 1.71' x H: 0.1')
CIE Type: Direct

Input Watts (W): 342.3
Input Voltage (V): NR
Input Current (Ain): NR
Voltage Rise (V): NR
Power Factor: NR
Total Harmonic Distortion (THDi): NR
Frequency (hertz): 60
Stabilization Time: NR
Operation Time: NR
Ambient Temperature (°C): NR
Test Distance: 24 FT

TEST NUMBER: P1444492
CATALOG NUMBER: EHBR1-60-UNV-TA-L830-UPL18

Luminous Intensity Polar Plot



— 0°-180° - - 45°-225° - · - · 90°-270° - · - · 135°-315°



TEST NUMBER: P1444492
 CATALOG NUMBER: EHBR1-60-UNV-TA-L830-UPL18

COEFFICIENT OF UTILIZATION - ZONAL CAVITY METHOD:

RF	20				20				20				20				20				
RC	80				70				50				30				10			0	
RW	70	50	30	10	70	50	30	10	50	30	10	50	30	10	50	30	10	50	30	10	0
RCR																					
0	118	118	118	118	115	115	115	115	109	109	109	104	104	104	99	99	99	99	99	99	96
1	111	108	105	102	108	105	102	100	100	98	96	96	94	93	92	91	89	89	89	89	87
2	104	98	94	89	102	96	92	88	92	89	86	89	86	83	85	83	81	81	81	81	79
3	98	90	85	80	96	89	83	79	85	81	77	82	79	76	80	77	74	74	74	74	72
4	92	83	77	72	90	82	76	71	79	74	70	77	72	69	74	71	68	68	68	68	66
5	87	77	71	66	85	76	70	65	74	68	64	72	67	63	70	66	62	62	62	62	61
6	82	72	65	60	80	71	65	60	69	63	59	67	62	59	65	61	58	58	58	58	56
7	78	67	60	56	76	66	60	55	65	59	55	63	58	54	62	57	54	54	54	54	52
8	73	63	56	52	72	62	56	51	61	55	51	59	54	51	58	53	50	50	50	50	49
9	70	59	53	48	68	58	52	48	57	51	48	56	51	47	55	50	47	47	47	47	45
10	66	56	49	45	65	55	49	45	54	48	45	53	48	44	52	47	44	44	44	44	42

AVERAGE LUMINANCE (cd/sqm):

	0°	90°	180°	270°
0°	225241	225241	225241	225241
5°	226332	232931	223164	235983
10°	228221	244560	222748	242942
15°	229340	221691	222359	212766
20°	226969	165153	219541	152806
25°	214836	104450	207736	94770
30°	187675	62767	180406	57363
35°	144436	39386	136128	34889
40°	91369	24706	83595	23216
45°	47093	19248	46313	18931
50°	27611	17120	26764	16853
55°	21153	16197	20370	16052
60°	17898	16546	17136	16331
65°	16810	17279	16167	16689
70°	16424	18092	15606	17413
75°	17560	19188	16612	18339
80°	18173	21248	16475	19397
85°	17114	20501	13829	17553

MAXIMUM LUMINANCE 45°-90°:

Horizontal Angle: 25°
 Vertical Angle: 45°
 Luminance: 72070 cd/sqm



TEST NUMBER: P1444492
 CATALOG NUMBER: EHBR1-60-UNV-TA-L830-UPL18

ZONAL LUMENS:

Zone	Lumens	% Fixture
0°-10°	4726.9	8.3
10°-20°	13297.3	23.2
20°-30°	15144.6	26.4
30°-40°	10885.2	19.0
40°-50°	5020.3	8.8
50°-60°	2402.4	4.2
60°-70°	1752.9	3.1
70°-80°	1331.7	2.3
80°-90°	608.8	1.1
90°-100°	65.1	0.1
100°-110°	315.4	0.6
110°-120°	581.6	1.0
120°-130°	371.2	0.6
130°-140°	258.6	0.5
140°-150°	207.8	0.4
150°-160°	155.1	0.3
160°-170°	98.6	0.2
170°-180°	34.8	0.1
0°-30°	33168.8	57.9
0°-40°	44054.0	76.9
0°-60°	51476.7	89.9
0°-90°	55170.1	96.4
90°-120°	962.1	1.7
90°-150°	1799.6	3.1
90°-180°	2088.0	3.6
0°-180°	57258.2	100.0

CANDELA DISTRIBUTION:

	0°	90°	180°	270°	360°	Flux
0°	47964	47964	47964	47964	47964	
5°	48325	49734	47649	50386	48325	4618
15°	48114	46510	46650	44637	48114	13556
25°	42903	20858	41485	18926	42903	19449
35°	26509	7229	24984	6403	26509	16269
45°	7620	3114	7493	3063	7620	6480
55°	2859	2189	2753	2169	2859	2639
65°	1755	1804	1688	1742	1755	1752
75°	1237	1352	1170	1292	1237	1286
85°	588	705	475	603	588	553
90°	146	188	32	43	146	93
95°	29	32	29	32	29	28
105°	119	149	83	150	119	156
115°	513	609	538	610	513	476
125°	408	406	459	408	408	372
135°	351	291	375	296	351	273
145°	337	309	356	316	337	212
155°	333	325	351	331	333	155
165°	348	341	359	345	348	98
175°	365	366	370	368	365	35
180°	370	370	370	370	370	



TEST NUMBER: P1444492
 CATALOG NUMBER: EHBR1-60-UNV-TA-L830-UPL18

CANDELA DISTRIBUTION (FULL):

	0°	2.5°	5°	7.5°	10°	12.5°	15°	17.5°	20°	22.5°	25°
0°	47963.5	47963.5	47963.5	47963.5	47963.5	47963.5	47963.5	47963.5	47963.5	47963.5	47963.5
2.5°	48146.7	48142.9	48142.2	48138.8	48137.8	48137.8	48136.3	48132.4	48129.9	48124.4	48118.2
5°	48325.4	48323.3	48324.5	48324.9	48321.5	48314.0	48302.3	48287.9	48269.8	48252.7	48237.4
7.5°	48463.5	48466.9	48471.2	48470.3	48459.8	48442.2	48418.2	48404.7	48412.7	48438.8	48498.6
10°	48488.7	48509.4	48517.4	48514.9	48494.0	48478.8	48484.7	48535.6	48636.6	48771.6	48956.2
12.5°	48390.5	48415.8	48414.8	48406.5	48386.3	48406.9	48480.4	48631.7	48848.5	49114.6	49426.8
15°	48114.4	48147.1	48137.8	48127.1	48113.5	48181.2	48328.3	48591.0	48925.9	49301.1	49685.3
17.5°	47578.4	47618.0	47598.8	47586.5	47575.1	47702.0	47954.6	48339.3	48761.1	49185.6	49549.7
20°	46648.8	46675.3	46629.6	46608.1	46626.2	46874.9	47246.9	47738.2	48182.9	48584.3	48833.1
22.5°	45131.7	45164.5	45078.6	45068.7	45174.7	45556.6	46027.3	46576.6	46994.4	47312.5	47408.3
25°	42902.6	42934.9	42832.9	42893.9	43074.1	43594.3	44155.1	44742.6	45098.9	45334.6	45269.5
27.5°	39893.8	39923.3	39826.6	39951.0	40236.0	40919.7	41579.5	42216.7	42534.4	42699.5	42490.3
30°	36099.2	36160.5	36046.2	36219.9	36654.8	37542.4	38298.4	39013.0	39329.8	39455.5	39129.8
32.5°	31592.3	31679.6	31553.5	31812.0	32418.8	33485.1	34343.9	35142.3	35492.6	35636.2	35268.3
35°	26509.1	26634.3	26489.8	26877.6	27626.2	28813.4	29764.4	30655.9	31070.7	31274.1	30903.5
37.5°	21123.7	21243.1	21164.8	21682.3	22504.2	23734.9	24705.6	25667.2	26135.9	26441.0	26148.8
40°	15836.5	15945.7	16004.8	16596.6	17369.7	18529.5	19461.9	20413.4	20937.6	21320.7	21140.5
42.5°	11177.5	11287.5	11488.7	12059.7	12704.4	13664.4	14463.2	15317.4	15818.2	16226.9	16157.4
45°	7619.5	7747.2	7999.3	8466.8	8933.1	9621.9	10208.3	10872.8	11281.8	11656.1	11660.6
47.5°	5339.3	5429.1	5654.3	5973.6	6277.5	7139.9	7175.2	7501.7	7776.7	8056.5	8092.8
50°	4115.0	4169.0	4288.4	4466.3	4638.6	4862.4	5067.4	5303.9	5473.2	5626.6	5663.2
52.5°	3382.2	3416.6	3477.3	3573.6	3673.6	3795.4	3905.0	4035.0	4127.0	4209.1	4226.4
55°	2858.6	2886.9	2977.4	2995.8	3110.1	3132.1	3180.8	3259.9	3313.4	3362.7	3375.0
57.5°	2463.4	2484.0	2503.2	2544.3	2579.4	2630.7	2671.9	2728.6	2762.4	2797.9	2800.9
60°	2151.6	2166.5	2180.2	2208.7	2232.6	2268.2	2296.6	2335.2	2359.4	2386.1	2389.1
62.5°	1919.6	1930.3	1939.4	1958.2	1975.2	2002.6	2025.2	2057.4	2080.0	2100.6	2105.2
65°	1754.6	1762.5	1768.3	1782.6	1797.5	1820.8	1841.2	1867.5	1884.1	1899.9	1903.3
67.5°	1608.5	1616.0	1622.0	1635.0	1645.3	1662.8	1676.4	1696.2	1708.7	1721.2	1721.6
70°	1441.1	1448.1	1452.6	1464.7	1473.1	1488.1	1499.0	1516.8	1529.6	1543.7	1547.3
72.5°	1325.2	1329.3	1335.5	1346.5	1358.0	1374.1	1388.9	1407.3	1422.8	1437.4	1443.6
75°	1237.0	1241.8	1245.9	1255.3	1263.3	1276.8	1287.9	1304.7	1318.2	1333.9	1341.6
77.5°	1109.7	1115.2	1118.8	1128.3	1135.2	1148.1	1156.3	1171.4	1182.4	1196.6	1203.6
80°	956.0	961.2	963.6	972.5	978.0	989.9	998.0	1012.5	1021.8	1036.0	1044.3
82.5°	785.5	790.5	791.9	800.2	803.3	813.1	819.0	833.9	845.3	863.7	876.6
85°	588.2	589.9	592.8	590.7	602.6	603.3	616.8	619.4	637.1	641.7	662.0
87.5°	359.6	364.9	367.6	375.8	379.4	387.5	390.0	398.8	403.5	413.5	418.1
90°	145.6	153.3	155.7	164.9	166.9	175.2	176.7	185.9	188.2	197.7	200.7
92.5°	26.2	27.6	28.9	30.7	32.1	34.7	36.5	38.2	39.8	42.1	45.1
95°	29.2	30.8	32.4	34.0	35.6	37.3	38.9	40.5	42.1	43.7	48.1
97.5°	36.2	37.6	39.0	40.3	41.7	43.1	44.5	45.8	47.2	48.4	54.0
100°	46.0	47.2	48.3	49.6	50.7	51.9	53.0	54.2	55.4	56.6	66.7
102.5°	73.0	77.1	81.3	85.4	89.5	93.6	97.9	101.8	106.0	110.2	131.8
105°	119.4	130.6	142.1	153.2	164.5	175.8	187.2	198.0	209.4	220.5	256.1
107.5°	199.1	219.8	240.6	261.6	282.5	303.2	324.1	344.9	365.6	386.1	422.3
110°	360.4	376.9	393.8	410.5	427.1	443.9	460.6	476.9	493.7	510.3	536.5



TEST NUMBER: P1444492
 CATALOG NUMBER: EHBR1-60-UNV-TA-L830-UPL18

CANDELA DISTRIBUTION (continued):

	0°	2.5°	5°	7.5°	10°	12.5°	15°	17.5°	20°	22.5°	25°
112.5°	484.1	491.4	498.9	506.4	513.9	521.1	528.6	535.9	543.4	550.5	569.2
115°	513.4	515.8	518.4	520.7	523.3	525.5	527.9	530.2	532.6	534.7	547.2
117.5°	503.5	502.7	502.0	501.3	500.2	499.5	498.5	497.5	496.5	495.4	502.3
120°	476.0	473.2	470.7	467.7	465.1	462.0	459.3	456.4	453.3	450.1	452.8
122.5°	440.5	437.3	434.3	430.7	427.4	423.8	420.5	416.6	413.3	409.6	410.1
125°	408.5	405.0	402.1	398.5	394.9	391.2	387.6	383.9	380.1	376.2	376.1
127.5°	381.7	379.3	376.9	373.8	371.1	368.2	365.2	362.0	359.3	355.9	355.4
130°	366.8	364.6	362.2	359.4	356.9	354.0	351.1	347.9	345.2	341.9	341.2
132.5°	355.9	354.3	352.3	350.1	348.0	345.2	342.9	340.1	337.6	335.1	334.3
135°	350.7	348.8	347.2	345.2	343.0	340.4	337.9	335.2	332.8	330.1	329.5
137.5°	347.0	345.4	343.7	341.5	339.6	336.8	334.7	332.0	329.6	326.9	326.3
140°	343.8	342.3	340.5	338.4	336.6	334.4	332.0	329.5	327.1	324.5	324.1
142.5°	339.1	337.5	336.3	334.4	332.7	330.5	328.5	326.1	324.1	321.7	321.6
145°	337.2	336.0	334.8	333.3	331.4	329.3	327.6	325.3	323.5	321.5	321.3
147.5°	335.7	334.7	333.7	332.3	330.9	329.1	327.4	325.3	323.7	321.9	322.0
150°	334.5	333.6	332.7	331.4	329.9	328.3	326.7	325.0	323.4	321.6	321.7
152.5°	332.4	331.4	330.6	329.3	328.0	326.2	325.1	323.4	321.9	320.2	320.2
155°	333.1	332.1	330.9	329.8	328.5	327.1	325.7	324.2	322.9	321.3	321.2
157.5°	335.3	334.1	333.4	332.1	331.2	329.8	328.6	327.3	326.2	324.9	324.7
160°	339.1	338.1	337.1	335.9	334.7	333.4	332.3	330.9	330.2	328.8	328.6
162.5°	343.1	342.0	341.0	339.8	338.8	337.4	336.4	335.4	334.4	333.1	333.0
165°	347.7	347.1	346.1	345.3	344.3	343.5	342.6	341.5	340.6	339.6	339.4
167.5°	354.3	353.3	352.7	351.7	350.7	349.9	348.8	347.9	347.2	346.1	345.9
170°	358.7	357.8	357.3	356.7	356.0	355.3	354.8	354.1	353.3	352.7	352.6
172.5°	362.6	361.9	361.6	361.2	360.4	360.2	359.6	359.0	358.7	358.0	358.3
175°	364.7	364.2	364.0	363.6	363.3	362.9	362.7	362.4	362.4	361.9	361.8
177.5°	367.6	367.4	367.4	367.2	367.2	367.1	366.9	366.5	366.3	366.3	366.3
180°	369.8	369.8	369.8	369.8	369.8	369.8	369.8	369.8	369.8	369.8	369.8



TEST NUMBER: P1444492
 CATALOG NUMBER: EHBR1-60-UNV-TA-L830-UPL18

CANDELA DISTRIBUTION (continued):

	27.5°	30°	32.5°	35°	37.5°	40°	42.5°	45°	47.5°	50°	52.5°
0°	47963.5	47963.5	47963.5	47963.5	47963.5	47963.5	47963.5	47963.5	47963.5	47963.5	47963.5
2.5°	48113.5	48107.7	48099.6	48089.5	48080.8	48070.7	48046.7	48039.6	48047.5	48052.9	48063.9
5°	48227.9	48231.2	48232.5	48254.3	48273.2	48320.2	48689.3	48836.0	48949.3	49021.3	49130.7
7.5°	48572.5	48683.4	48793.1	48940.6	49067.9	49239.8	49885.5	50160.2	50355.6	50496.0	50668.8
10°	49156.6	49398.7	49625.7	49891.6	50120.2	50382.1	50983.1	51250.8	51419.9	51542.9	51657.7
12.5°	49745.0	50080.8	50384.3	50680.2	50927.6	51154.6	51366.0	51459.7	51467.7	51471.6	51410.6
15°	50051.4	50372.5	50639.8	50835.6	50980.9	51045.3	50681.4	50490.5	50249.3	50050.6	49723.7
17.5°	49858.0	50050.6	50166.1	50154.8	50094.6	49893.4	48862.8	48295.9	47733.1	47226.0	46561.0
20°	48998.2	48983.5	48883.1	48598.4	48255.6	47722.3	45955.4	44935.9	43950.3	43084.6	42034.3
22.5°	47398.6	47146.9	46796.0	46182.4	45500.6	44569.0	42036.9	40537.3	39165.2	37953.0	36595.2
25°	45080.8	44563.0	43915.7	42941.6	41882.2	40523.4	37402.5	35537.3	33889.8	32461.0	30894.3
27.5°	42114.5	41334.5	40386.0	39037.7	37602.5	35861.7	32401.6	30343.2	28574.7	27042.8	25375.2
30°	38602.7	37588.3	36363.5	34690.1	32958.9	30984.5	27475.3	25390.3	23600.3	22024.3	20355.4
32.5°	34634.1	33445.9	32010.7	30132.5	28260.4	26230.4	22841.3	20823.1	19113.2	17597.0	16086.6
35°	30257.0	28982.8	27464.4	25548.7	23687.8	21714.1	18604.3	16784.7	15274.6	13934.5	12714.9
37.5°	25561.7	24310.6	22867.4	21061.9	19336.2	17547.7	14864.5	13339.7	12072.5	10960.2	10018.5
40°	20679.9	19585.1	18336.4	16775.4	15302.7	13813.3	11610.7	10400.3	9400.2	8552.0	7846.2
42.5°	15857.8	15009.4	14051.9	12818.3	11691.3	10557.3	8862.0	7965.2	7224.5	6613.8	6114.9
45°	11505.4	10937.9	10295.6	9438.1	8658.3	7867.2	6660.7	6030.4	5548.0	5154.2	4821.3
47.5°	8042.9	7713.6	7693.6	6901.1	6329.2	5845.6	5068.3	4670.2	4374.6	4136.0	3925.3
50°	5648.3	5489.0	5291.2	5008.3	4742.9	4469.6	3996.0	3755.4	3582.2	3437.6	3304.3
52.5°	4222.5	4139.8	4034.4	3884.3	3740.6	3586.8	3287.1	3133.9	3079.5	2944.9	2839.4
55°	3372.6	3325.1	3265.3	3177.0	3089.6	3054.6	2797.8	2684.0	2612.0	2558.8	2502.1
57.5°	2801.5	2766.1	2730.5	2670.8	2620.2	2558.8	2422.5	2364.2	2321.4	2290.1	2250.8
60°	2389.6	2368.5	2348.5	2313.5	2286.1	2253.1	2166.5	2133.6	2111.2	2092.4	2067.3
62.5°	2109.1	2098.2	2087.9	2069.3	2055.4	2037.4	1978.2	1962.5	1951.3	1941.8	1926.5
65°	1906.7	1898.8	1893.1	1880.7	1873.8	1863.3	1812.4	1801.8	1794.8	1791.5	1782.6
67.5°	1722.7	1714.5	1710.7	1701.9	1699.0	1692.4	1650.9	1645.0	1642.7	1643.7	1640.6
70°	1550.6	1547.3	1548.9	1547.5	1551.5	1552.7	1527.5	1527.3	1529.9	1535.3	1535.8
72.5°	1447.5	1447.5	1449.5	1450.3	1454.1	1455.8	1434.9	1433.8	1435.0	1439.0	1439.2
75°	1349.3	1350.9	1356.3	1358.0	1362.5	1363.4	1335.7	1332.5	1332.7	1336.4	1335.2
77.5°	1213.6	1219.4	1229.5	1234.9	1243.4	1245.0	1213.9	1210.1	1210.3	1214.1	1210.9
80°	1059.4	1070.7	1086.8	1098.0	1111.1	1116.5	1084.5	1076.8	1069.7	1068.7	1062.3
82.5°	895.7	909.5	928.7	939.0	953.0	956.2	902.6	892.5	886.5	887.0	881.2
85°	683.8	694.1	711.7	717.4	726.1	725.4	664.3	638.2	645.1	634.2	642.8
87.5°	428.9	435.0	446.0	447.4	451.5	450.7	389.1	377.0	373.5	373.7	369.3
90°	210.5	214.4	223.8	223.9	230.1	229.0	179.1	173.2	169.0	171.5	165.5
92.5°	48.5	51.3	54.6	57.6	60.8	64.0	61.4	62.8	60.3	57.0	54.6
95°	52.8	57.5	62.2	67.0	71.7	76.3	81.0	85.7	81.3	76.8	72.4
97.5°	59.5	65.1	70.4	76.0	81.5	87.1	92.6	98.2	93.5	88.4	83.7
100°	77.1	87.4	97.6	107.9	118.1	128.4	138.8	149.1	140.0	130.6	121.6
102.5°	153.5	175.5	197.4	219.1	241.0	263.0	285.0	307.1	286.2	265.0	244.0
105°	291.6	327.0	362.4	397.6	433.0	468.4	504.5	539.9	506.5	472.9	439.5
107.5°	458.1	494.1	529.7	565.5	601.5	637.3	674.0	709.9	677.2	644.3	611.7
110°	562.7	588.5	614.7	640.6	666.6	692.6	719.9	745.9	726.1	706.3	686.4



TEST NUMBER: P1444492
 CATALOG NUMBER: EHBR1-60-UNV-TA-L830-UPL18

CANDELA DISTRIBUTION (continued):

	27.5°	30°	32.5°	35°	37.5°	40°	42.5°	45°	47.5°	50°	52.5°
112.5°	587.4	606.1	624.6	642.8	661.0	679.6	699.5	718.4	708.2	697.6	687.6
115°	559.3	571.8	583.8	596.0	608.2	620.2	634.3	647.1	643.3	639.5	636.0
117.5°	508.7	515.3	521.8	528.3	534.6	541.1	550.2	557.1	556.8	556.8	556.7
120°	455.1	457.5	459.7	462.3	464.2	466.5	471.8	474.7	476.7	478.4	480.3
122.5°	410.5	410.9	411.2	411.5	411.8	412.1	415.8	417.0	417.9	418.8	419.8
125°	375.8	375.5	375.2	375.0	374.3	374.0	377.9	378.1	377.4	376.6	375.7
127.5°	354.4	353.7	352.9	352.1	350.9	350.1	353.5	353.5	351.5	349.4	347.2
130°	340.6	339.9	339.1	338.3	337.7	337.0	340.8	341.2	338.2	335.0	332.1
132.5°	333.6	333.0	332.1	331.8	331.0	330.3	334.5	335.0	332.0	328.3	325.0
135°	328.7	328.3	327.7	327.0	326.3	326.2	330.8	331.4	328.4	324.9	321.8
137.5°	325.4	324.9	324.3	324.0	323.4	323.0	328.3	329.1	326.5	323.5	321.0
140°	323.6	323.1	322.7	322.5	322.0	322.0	327.8	328.8	326.8	324.3	321.9
142.5°	321.0	321.1	321.0	321.1	321.0	321.3	327.8	329.3	327.6	325.5	323.9
145°	321.1	321.5	321.4	321.7	321.9	322.3	329.8	331.8	330.6	329.0	327.6
147.5°	321.5	321.7	321.8	321.9	322.1	323.0	330.9	332.9	332.2	330.9	329.9
150°	321.5	321.8	321.8	322.1	322.7	323.4	332.5	335.1	334.3	333.5	332.5
152.5°	320.1	320.2	320.3	320.6	320.8	321.5	332.9	335.9	335.3	334.3	333.7
155°	321.0	321.0	320.8	321.1	321.1	321.9	334.5	337.6	337.0	336.5	335.8
157.5°	324.3	324.0	323.7	323.7	323.7	323.8	337.4	341.0	340.2	339.7	339.2
160°	328.1	327.9	327.6	327.4	327.1	327.1	341.2	344.6	344.2	343.5	342.9
162.5°	332.6	332.9	332.5	332.3	332.2	332.4	346.5	350.2	349.5	348.8	348.2
165°	339.1	338.6	338.3	338.3	338.1	338.0	351.4	354.5	354.2	353.5	353.0
167.5°	345.6	345.6	345.2	345.2	345.0	345.2	357.5	360.6	360.3	359.6	359.2
170°	352.3	352.4	352.0	352.1	352.2	352.5	362.8	365.4	365.1	364.3	363.8
172.5°	358.1	358.4	358.4	358.6	358.6	358.9	367.6	370.0	369.7	369.3	368.7
175°	361.9	361.9	362.1	362.4	362.6	362.7	369.6	371.3	371.1	370.8	370.5
177.5°	366.6	366.6	366.8	367.1	367.3	367.5	371.7	372.7	372.5	372.5	372.4
180°	369.8	369.8	369.8	369.8	369.8	369.8	369.8	369.8	369.8	369.8	369.8



TEST NUMBER: P1444492
 CATALOG NUMBER: EHBR1-60-UNV-TA-L830-UPL18

CANDELA DISTRIBUTION (continued):

	55°	57.5°	60°	62.5°	65°	67.5°	70°	72.5°	75°	77.5°	80°
0°	47963.5	47963.5	47963.5	47963.5	47963.5	47963.5	47963.5	47963.5	47963.5	47963.5	47963.5
2.5°	48066.5	48083.3	48085.8	48105.5	48103.9	48127.4	48123.7	48142.9	48131.7	48147.5	48134.2
5°	49195.4	49297.8	49351.3	49451.2	49482.8	49572.2	49597.4	49679.0	49682.4	49747.1	49732.4
7.5°	50791.4	50942.3	51032.0	51155.5	51218.1	51321.0	51366.3	51442.5	51466.9	51527.4	51532.0
10°	51744.6	51817.8	51869.0	51903.5	51935.0	51949.8	51967.0	51962.3	51967.0	51960.2	51975.0
12.5°	51369.7	51262.7	51192.0	51057.9	50980.3	50832.2	50759.5	50617.1	50565.3	50443.1	50425.5
15°	49471.1	49098.2	48834.7	48451.5	48210.6	47833.6	47613.0	47272.9	47117.6	46847.2	46776.2
17.5°	46010.5	45318.3	44782.6	44095.3	43618.4	42976.1	42572.3	42040.6	41749.4	41320.7	41172.2
20°	41158.9	40134.7	39331.0	38373.8	37688.7	36835.1	36288.7	35599.5	35199.4	34672.8	34459.4
22.5°	35463.0	34187.7	33184.1	32053.2	31226.7	30275.5	29620.8	28875.1	28439.8	27867.7	27614.5
25°	29592.1	28185.9	27070.1	25878.6	25005.3	24051.8	23396.9	22664.4	22214.0	21670.9	21419.2
27.5°	23977.3	22553.8	21475.5	20367.7	19566.6	18706.3	18115.4	17475.8	17076.0	16612.4	16375.6
30°	19022.3	17766.7	16849.2	15929.9	15263.4	14564.6	14073.7	13543.6	13192.9	12795.9	12570.4
32.5°	14985.4	14016.1	13297.6	12568.1	12022.7	11438.7	11014.5	10546.8	10230.2	9875.7	9671.5
35°	11868.2	11115.1	10542.0	9941.5	9472.9	8975.5	8601.7	8198.1	7914.0	7608.8	7432.4
37.5°	9377.1	8778.3	8306.6	7807.8	7423.0	7011.0	6872.2	6408.9	6114.6	5871.0	5702.3
40°	7359.2	6883.0	6492.8	6111.4	5797.4	5484.9	5234.1	4986.7	4796.6	4622.5	4501.9
42.5°	5746.9	5401.9	5117.0	4837.5	4608.6	4380.9	4199.2	4028.7	3900.7	3786.8	3709.1
45°	4568.6	4331.2	4133.2	3936.4	3774.8	3622.9	3500.6	3391.8	3309.1	3240.7	3192.2
47.5°	3753.2	3590.7	3451.0	3318.2	3208.5	3109.0	3027.1	3000.4	2911.5	2851.6	2828.9
50°	3189.7	3091.6	2985.5	2887.5	2814.2	2741.4	2688.3	2636.2	2602.9	2575.4	2567.1
52.5°	2769.1	2694.1	2635.1	2573.0	2524.7	2472.8	2436.2	2401.5	2383.2	2368.8	2367.1
55°	2456.4	2404.0	2364.9	2323.3	2294.4	2263.9	2244.9	2226.6	2218.6	2211.3	2211.9
57.5°	2219.8	2184.9	2159.4	2132.4	2116.8	2102.2	2097.4	2092.8	2095.2	2096.3	2100.4
60°	2047.5	2024.7	2008.7	1993.2	1986.7	1982.0	1985.5	1989.7	1998.0	2004.7	2010.8
62.5°	1915.4	1902.4	1894.6	1886.2	1885.5	1885.9	1893.0	1899.9	1910.3	1918.2	1924.1
65°	1779.4	1771.9	1769.4	1764.1	1766.7	1768.3	1776.8	1782.2	1792.7	1798.9	1806.3
67.5°	1642.0	1640.2	1641.8	1641.8	1646.5	1650.7	1658.8	1664.9	1673.8	1679.4	1685.5
70°	1540.4	1541.2	1544.9	1545.6	1550.7	1553.6	1560.7	1564.6	1572.6	1577.4	1584.7
72.5°	1441.8	1440.2	1441.1	1438.8	1440.6	1439.8	1443.7	1445.7	1452.5	1456.2	1465.1
75°	1336.8	1332.3	1331.3	1326.5	1326.6	1323.2	1324.8	1324.7	1329.1	1330.9	1337.2
77.5°	1209.9	1202.4	1198.8	1190.8	1190.7	1187.6	1190.8	1192.8	1200.6	1204.3	1211.6
80°	1058.0	1046.3	1041.0	1031.7	1033.3	1032.8	1040.6	1046.5	1056.0	1057.8	1067.1
82.5°	879.4	867.5	861.8	852.7	854.8	855.0	862.1	863.4	871.7	875.3	885.9
85°	629.7	634.2	621.6	622.5	619.8	624.8	629.7	635.7	642.6	654.2	663.0
87.5°	370.8	369.3	373.7	374.2	380.6	384.0	394.3	400.2	411.7	420.8	437.1
90°	165.9	160.1	163.6	161.8	168.0	166.3	172.0	169.1	176.1	176.8	185.7
92.5°	51.0	48.5	45.1	42.4	39.1	36.7	34.7	33.7	31.9	31.2	29.1
95°	68.0	63.7	59.3	54.9	50.6	46.2	44.6	43.0	41.4	39.8	38.1
97.5°	79.1	74.3	69.6	64.7	60.0	55.4	54.3	53.2	52.2	51.1	50.0
100°	112.4	103.3	94.2	85.1	76.0	66.9	66.0	65.2	64.4	63.5	62.6
102.5°	223.2	202.1	181.3	160.4	139.6	118.6	114.9	111.4	107.7	104.1	100.5
105°	405.9	372.3	338.9	305.5	272.1	238.8	228.8	218.5	208.6	198.7	188.8
107.5°	578.9	546.0	513.5	480.9	448.3	415.7	399.9	384.1	368.1	352.4	336.7
110°	666.3	646.5	627.0	607.0	587.4	567.8	552.6	537.6	522.3	507.2	492.3



TEST NUMBER: P1444492
 CATALOG NUMBER: EHBR1-60-UNV-TA-L830-UPL18

CANDELA DISTRIBUTION (continued):

	55°	57.5°	60°	62.5°	65°	67.5°	70°	72.5°	75°	77.5°	80°
112.5°	677.3	667.2	656.8	647.0	637.0	626.8	619.4	612.0	604.6	597.2	589.6
115°	632.2	628.6	625.0	621.6	618.2	614.6	613.7	613.2	612.2	611.7	611.0
117.5°	556.5	556.6	556.3	556.5	556.6	556.7	560.2	563.6	567.3	571.1	575.1
120°	482.1	483.9	485.7	487.7	489.7	491.9	496.4	501.2	506.0	511.3	516.3
122.5°	420.7	421.5	422.4	423.6	424.6	425.7	430.1	434.8	439.4	444.3	449.4
125°	374.5	373.7	372.8	371.7	370.8	370.3	373.7	377.2	380.9	385.0	388.5
127.5°	345.0	342.6	340.2	338.2	335.8	333.9	335.4	337.1	338.8	340.9	342.7
130°	328.8	325.8	322.3	319.4	316.0	313.0	313.0	313.2	313.2	313.6	313.9
132.5°	321.5	318.0	314.5	310.9	307.2	303.9	302.7	301.7	300.6	299.9	299.3
135°	318.3	315.2	311.5	308.2	304.5	301.4	299.7	298.1	296.6	295.2	293.8
137.5°	318.1	315.3	312.4	309.6	306.5	303.7	301.4	299.8	297.8	296.6	294.9
140°	319.4	317.2	314.5	312.1	309.5	307.2	305.3	303.9	302.0	300.8	299.3
142.5°	321.7	319.7	317.6	315.9	313.8	311.8	310.1	308.6	307.0	305.7	304.1
145°	326.0	324.7	323.0	321.5	319.9	318.5	316.8	315.7	314.4	313.1	312.1
147.5°	328.8	327.6	326.4	325.1	323.8	322.7	321.4	320.7	319.3	318.6	317.5
150°	331.3	330.3	329.1	328.3	326.9	326.0	325.0	324.2	323.3	322.8	321.9
152.5°	332.5	331.7	330.7	329.8	328.7	327.8	326.9	326.3	325.5	324.9	324.0
155°	334.9	334.2	333.3	332.5	331.5	330.9	330.1	329.2	328.5	327.8	326.9
157.5°	338.4	337.8	336.8	336.4	335.2	334.6	333.8	333.1	332.3	331.7	330.8
160°	342.3	341.7	340.9	340.1	339.5	338.7	337.7	337.1	336.1	335.5	334.4
162.5°	347.4	346.5	345.8	345.1	344.1	343.5	342.6	341.8	341.1	340.4	339.6
165°	352.2	351.5	350.8	350.1	349.6	348.8	347.9	347.2	346.2	345.6	344.6
167.5°	358.5	358.0	357.3	356.7	355.9	355.1	354.5	353.7	352.9	352.1	351.0
170°	363.4	362.5	362.0	361.3	360.6	359.8	359.2	358.4	357.5	357.2	356.0
172.5°	368.2	367.8	367.2	366.7	366.0	365.5	365.0	364.5	363.8	363.2	362.6
175°	370.3	370.1	369.9	369.3	369.2	368.9	368.5	368.3	367.9	367.8	367.3
177.5°	372.4	372.2	372.2	371.9	371.7	371.7	371.4	371.3	370.9	370.7	370.6
180°	369.8	369.8	369.8	369.8	369.8	369.8	369.8	369.8	369.8	369.8	369.8



TEST NUMBER: P1444492
 CATALOG NUMBER: EHBR1-60-UNV-TA-L830-UPL18

CANDELA DISTRIBUTION (continued):

	82.5°	85°	87.5°	90°	92.5°	95°	97.5°	100°	102.5°	105°	107.5°
0°	47963.5	47963.5	47963.5	47963.5	47963.5	47963.5	47963.5	47963.5	47963.5	47963.5	47963.5
2.5°	48148.1	48135.8	48141.6	48119.0	48124.4	48097.2	48094.7	48063.9	48060.9	48031.9	48021.1
5°	49778.2	49751.4	49781.6	49734.5	49743.7	49682.4	49677.2	49598.0	49570.6	49471.4	49428.6
7.5°	51569.9	51559.7	51578.2	51538.8	51537.5	51482.7	51460.2	51389.1	51345.0	51240.9	51174.4
10°	51962.3	51971.6	51956.5	51960.2	51938.9	51933.0	51911.2	51897.3	51861.5	51834.6	51794.8
12.5°	50332.5	50342.3	50280.1	50319.5	50288.4	50361.1	50355.2	50440.9	50454.0	50562.5	50603.5
15°	46565.6	46553.9	46434.6	46509.7	46469.5	46629.1	46664.8	46879.6	46994.4	47270.1	47439.4
17.5°	40875.2	40844.4	40676.5	40768.0	40721.5	40956.8	41035.7	41379.1	41593.3	42037.5	42354.1
20°	34092.0	34033.1	33836.5	33943.7	33895.7	34163.1	34275.8	34690.8	34967.1	35555.4	35974.0
22.5°	27224.4	27131.5	26938.9	27039.0	26993.7	27270.6	27417.3	27833.7	28150.2	28754.2	29242.8
25°	21057.4	20974.6	20788.5	20858.5	20841.7	21075.9	21206.4	21600.3	21911.2	22486.6	22953.0
27.5°	16061.0	15974.8	15806.7	15856.2	15839.2	16038.8	16161.8	16490.9	16758.4	17242.7	17652.3
30°	12292.3	12188.4	12045.8	12073.1	12061.4	12223.2	12338.0	12615.1	12844.4	13253.9	13606.7
32.5°	9422.1	9317.5	9186.6	9199.3	9182.1	9309.0	9403.6	9644.6	9844.4	10192.5	10499.7
35°	7209.2	7331.3	7051.5	7228.8	7044.2	7315.1	7217.7	7368.2	7540.1	7833.4	8089.6
37.5°	5542.1	5457.0	5385.0	5377.4	5377.0	5439.7	5513.9	5658.9	5810.4	6028.8	6254.6
40°	4391.9	4332.2	4285.5	4282.2	4285.5	4330.2	4384.9	4485.2	4596.1	4753.0	4918.9
42.5°	3642.7	3603.0	3574.9	3573.0	3581.8	3613.4	3651.5	3711.1	3783.3	3884.9	3998.7
45°	3152.7	3130.7	3115.0	3114.2	3118.2	3134.8	3156.6	3193.8	3239.5	3302.9	3375.0
47.5°	2808.9	2803.6	2793.8	2794.2	2789.7	2796.5	2799.0	2819.8	2844.1	2892.0	2985.9
50°	2558.6	2558.6	2551.9	2551.5	2545.1	2544.8	2539.4	2547.7	2559.0	2588.7	2618.8
52.5°	2360.8	2360.1	2352.8	2351.4	2344.7	2344.3	2339.6	2342.9	2344.5	2359.4	2377.4
55°	2206.1	2201.5	2191.9	2188.9	2186.3	2190.1	2188.3	2188.5	2186.7	2192.8	2198.2
57.5°	2095.2	2089.2	2080.1	2077.4	2076.8	2081.4	2081.6	2080.0	2071.6	2065.9	2057.9
60°	2007.5	2001.4	1991.6	1989.1	1990.5	1997.0	1996.6	1991.3	1978.8	1967.9	1955.4
62.5°	1921.2	1918.8	1913.8	1913.0	1911.8	1912.9	1908.5	1902.7	1890.5	1878.9	1865.2
65°	1805.5	1806.7	1803.0	1803.5	1799.1	1798.4	1791.6	1786.1	1773.7	1763.2	1749.1
67.5°	1685.3	1686.3	1683.2	1683.2	1680.9	1681.2	1677.2	1672.0	1661.5	1653.0	1642.1
70°	1586.3	1588.8	1587.1	1587.5	1584.7	1583.7	1577.2	1572.3	1561.4	1554.3	1544.5
72.5°	1467.7	1473.1	1472.9	1474.2	1469.9	1467.7	1460.1	1453.9	1444.1	1438.4	1430.6
75°	1339.8	1346.7	1348.7	1351.7	1345.7	1342.4	1334.1	1329.1	1321.1	1317.8	1312.6
77.5°	1214.8	1222.4	1229.7	1236.5	1226.7	1218.0	1207.5	1199.5	1188.1	1183.7	1175.7
80°	1074.6	1088.1	1104.2	1117.8	1100.2	1082.4	1065.1	1052.3	1037.2	1031.0	1021.0
82.5°	891.5	905.3	914.6	923.3	911.0	898.0	881.3	870.1	853.8	847.7	836.2
85°	677.2	694.5	700.0	704.6	696.8	689.9	674.2	653.1	642.8	626.6	618.2
87.5°	445.5	455.8	457.8	459.4	454.5	451.1	441.0	431.1	413.5	400.6	385.0
90°	184.5	190.8	186.1	188.1	182.7	183.9	174.4	171.8	158.0	153.2	141.2
92.5°	28.1	26.2	25.0	23.4	25.7	26.4	28.4	29.1	31.0	31.9	33.7
95°	36.5	34.9	33.3	31.8	33.1	34.3	35.6	36.9	38.1	39.4	40.7
97.5°	49.0	48.0	46.8	45.8	46.6	47.3	48.1	48.8	49.5	50.2	51.1
100°	61.7	60.9	60.0	59.2	59.2	59.2	59.2	59.2	59.2	59.2	59.2
102.5°	96.9	93.2	89.6	86.0	88.4	90.9	93.3	95.7	98.3	100.7	103.3
105°	178.9	169.0	159.1	149.1	158.7	168.3	177.9	187.5	197.1	207.1	216.7
107.5°	320.8	305.2	289.4	273.8	291.5	309.0	326.4	344.0	361.5	379.0	396.8
110°	477.3	462.5	447.5	432.6	451.1	469.7	488.2	506.8	525.5	544.0	563.0



TEST NUMBER: P1444492
 CATALOG NUMBER: EHBR1-60-UNV-TA-L830-UPL18

CANDELA DISTRIBUTION (continued):

	82.5°	85°	87.5°	90°	92.5°	95°	97.5°	100°	102.5°	105°	107.5°
112.5°	582.3	575.0	567.7	560.5	572.5	584.4	596.4	608.7	620.7	632.7	644.7
115°	610.5	610.0	609.6	609.1	614.8	620.5	626.1	631.9	637.8	643.4	649.3
117.5°	578.8	582.6	586.8	590.8	592.6	594.4	596.4	598.2	600.4	602.3	604.5
120°	521.6	526.5	532.0	537.4	536.6	535.9	535.2	534.5	534.4	533.8	533.8
122.5°	454.5	459.6	465.1	470.3	468.7	467.1	465.7	464.3	463.1	461.9	460.9
125°	392.9	397.0	401.5	405.9	404.3	402.7	401.3	400.2	398.9	397.7	397.0
127.5°	345.3	347.9	350.1	352.9	352.1	351.4	351.2	350.6	350.4	350.4	350.5
130°	314.6	315.4	316.6	317.5	317.7	317.9	318.7	319.2	320.2	320.8	322.2
132.5°	299.2	298.7	298.7	298.7	299.6	300.4	301.7	302.9	304.8	306.1	308.4
135°	293.0	292.2	291.5	291.1	292.4	293.5	295.1	296.7	298.9	301.1	303.5
137.5°	293.8	292.5	291.9	290.8	292.2	293.4	295.1	296.7	298.6	300.9	303.4
140°	298.2	297.0	296.6	295.6	296.9	298.0	299.7	301.3	303.2	305.5	307.8
142.5°	303.3	302.0	301.4	300.9	301.7	302.8	304.6	305.9	307.8	309.5	311.7
145°	311.1	310.1	309.7	309.0	309.7	310.5	311.5	312.8	314.3	315.5	317.4
147.5°	316.8	316.1	315.8	315.2	315.9	316.3	317.2	317.8	318.9	320.0	321.3
150°	321.7	320.8	320.4	320.2	320.4	320.6	321.3	321.5	322.3	322.9	324.0
152.5°	323.7	323.0	322.9	322.4	322.5	322.7	323.2	323.4	324.0	324.4	325.4
155°	326.5	326.0	325.5	324.9	324.8	324.7	324.9	324.7	325.1	325.1	325.5
157.5°	330.5	329.7	329.4	328.7	328.4	327.9	327.9	327.7	327.8	327.4	327.5
160°	333.9	333.0	332.3	331.7	331.6	331.0	331.1	330.7	330.7	330.5	330.6
162.5°	339.0	338.3	337.8	337.0	336.7	336.0	335.6	334.9	334.6	334.2	334.0
165°	343.8	342.8	342.3	341.2	341.0	340.6	340.2	339.7	339.5	339.1	339.1
167.5°	350.5	349.6	348.9	348.2	347.7	346.9	346.6	346.0	345.5	345.0	344.9
170°	355.6	354.8	354.4	353.7	353.4	352.9	352.7	352.1	351.9	351.7	351.7
172.5°	362.2	361.6	361.1	360.6	360.4	360.0	359.8	359.6	359.2	359.2	359.0
175°	367.1	366.7	366.5	366.2	365.9	365.8	365.4	365.3	365.2	364.9	364.8
177.5°	370.2	369.8	369.7	369.6	369.4	369.4	369.4	369.4	369.4	369.3	369.1
180°	369.8	369.8	369.8	369.8	369.8	369.8	369.8	369.8	369.8	369.8	369.8



TEST NUMBER: P1444492
 CATALOG NUMBER: EHBR1-60-UNV-TA-L830-UPL18

CANDELA DISTRIBUTION (continued):

	110°	112.5°	115°	117.5°	120°	122.5°	125°	127.5°	130°	132.5°	135°
0°	47963.5	47963.5	47963.5	47963.5	47963.5	47963.5	47963.5	47963.5	47963.5	47963.5	47963.5
2.5°	47990.0	47977.4	47944.1	47927.7	47897.0	47881.6	47857.6	47842.1	47822.7	47808.3	47800.8
5°	49319.6	49258.3	49135.3	49059.6	48926.7	48839.3	48707.5	48610.7	48474.6	48374.1	48245.5
7.5°	51049.6	50955.4	50797.8	50678.4	50492.6	50350.6	50142.1	49975.4	49745.0	49553.8	49318.4
10°	51753.8	51698.9	51628.2	51551.4	51448.5	51347.5	51205.1	51060.1	50866.7	50674.4	50422.9
12.5°	50712.9	50764.7	50866.7	50914.2	50992.4	51018.8	51054.6	51037.8	51006.2	50927.6	50813.6
15°	47764.8	47980.8	48322.0	48558.1	48888.9	49121.2	49428.6	49626.5	49854.4	49990.5	50119.9
17.5°	42915.1	43332.9	43935.1	44415.6	45060.7	45585.1	46227.7	46732.5	47315.4	47762.6	48238.6
20°	36703.5	37288.6	38119.9	38826.0	39760.7	40553.3	41568.6	42419.2	43411.5	44238.6	45131.3
22.5°	30018.2	30706.3	31659.0	32510.6	33626.7	34623.7	35895.8	37020.5	38361.9	39563.5	40892.8
25°	23711.4	24385.8	25356.1	26238.1	27442.9	28541.1	29930.9	31221.2	32777.8	34229.3	35895.8
27.5°	18302.9	18901.9	19755.0	20548.7	21652.2	22730.4	24140.9	25516.7	27177.7	28737.7	30533.6
30°	14135.0	14621.0	15304.5	15943.0	16828.9	17710.6	18967.0	20239.4	21892.2	23508.8	25350.0
32.5°	10954.2	11368.6	11939.1	12457.5	13140.1	13804.9	14730.1	15746.9	17196.8	18745.1	20525.4
35°	8479.7	8834.2	9319.9	9766.4	10327.8	10855.5	11546.0	12271.7	13378.1	14680.6	16273.8
37.5°	6760.5	6905.0	7251.6	7617.5	8083.7	8517.5	9057.5	9594.1	10385.8	11413.3	12714.9
40°	5141.3	5370.8	5652.9	5941.1	6294.0	6641.9	7234.4	7519.7	8040.9	8778.6	9788.8
42.5°	4148.3	4309.8	4508.3	4708.6	4954.6	5197.0	5496.6	5801.9	6191.6	6691.2	7409.6
45°	3471.4	3576.6	3704.7	3838.2	3999.7	4165.1	4365.7	4575.4	4839.3	5146.5	5582.9
47.5°	3019.2	3077.4	3160.9	3252.1	3362.9	3477.3	3607.8	3741.3	3905.3	4087.5	4336.0
50°	2666.2	2714.8	2779.6	2840.6	2917.0	3034.4	3086.1	3159.8	3258.5	3365.7	3504.7
52.5°	2410.7	2443.1	2483.8	2518.8	2567.1	2611.1	2668.7	2719.5	2787.8	2852.1	2941.9
55°	2211.9	2223.6	2246.7	2269.3	2302.7	2332.7	2372.2	2405.5	2448.9	2487.5	2544.1
57.5°	2058.2	2059.4	2070.0	2081.7	2103.2	2122.1	2149.3	2171.1	2201.4	2225.9	2259.8
60°	1947.9	1942.0	1944.1	1948.3	1960.3	1972.6	1990.0	2004.2	2023.3	2037.2	2056.2
62.5°	1856.0	1846.7	1844.6	1843.5	1849.5	1854.0	1863.5	1870.4	1881.2	1887.3	1897.4
65°	1739.9	1729.1	1724.8	1719.8	1721.6	1720.2	1723.7	1723.9	1729.4	1730.7	1736.6
67.5°	1634.7	1625.6	1620.1	1613.3	1610.3	1605.5	1603.4	1598.8	1598.0	1594.2	1593.2
70°	1538.6	1529.8	1525.1	1519.0	1515.8	1509.3	1505.5	1497.6	1493.0	1485.7	1481.6
72.5°	1427.5	1422.6	1421.2	1417.0	1415.8	1412.3	1410.7	1405.2	1402.0	1395.8	1392.2
75°	1311.5	1307.5	1307.1	1302.8	1302.4	1298.2	1297.1	1291.3	1288.3	1282.0	1279.4
77.5°	1173.2	1167.1	1165.4	1160.4	1161.6	1159.6	1161.3	1156.8	1154.9	1148.7	1146.7
80°	1017.5	1009.7	1006.5	999.9	1001.6	998.6	1001.6	1001.3	1003.6	998.6	997.8
82.5°	833.0	824.4	822.8	818.2	821.2	821.6	828.1	824.6	826.1	821.4	823.4
85°	606.1	599.8	590.9	589.7	583.9	589.8	582.2	587.3	579.0	584.8	577.0
87.5°	375.8	362.6	355.7	346.3	342.7	333.7	329.9	323.4	325.3	322.3	324.0
90°	138.9	128.0	126.2	117.6	117.5	110.1	111.6	106.5	108.9	103.7	106.7
92.5°	34.7	36.1	38.4	41.6	43.7	46.3	48.7	51.8	54.0	57.0	59.1
95°	42.0	43.3	46.6	50.1	53.5	57.0	60.5	64.0	67.3	70.8	74.2
97.5°	51.9	52.6	56.0	59.5	62.9	66.3	69.7	73.5	76.9	80.4	83.7
100°	59.2	59.4	69.1	78.8	88.5	98.4	108.0	117.7	127.9	137.5	147.3
102.5°	105.8	108.2	132.7	157.5	182.0	206.5	231.3	256.0	280.5	305.5	330.1
105°	226.3	236.0	273.4	311.1	348.5	386.1	423.8	461.6	499.2	536.8	574.5
107.5°	414.3	432.0	466.0	500.0	533.8	567.9	602.1	636.1	670.1	704.3	738.7
110°	581.5	600.2	623.0	646.0	669.0	691.9	714.7	737.8	760.9	783.9	807.2



TEST NUMBER: P1444492
 CATALOG NUMBER: EHBR1-60-UNV-TA-L830-UPL18

CANDELA DISTRIBUTION (continued):

	110°	112.5°	115°	117.5°	120°	122.5°	125°	127.5°	130°	132.5°	135°
112.5°	656.7	669.1	682.4	696.1	709.6	723.1	736.6	750.3	764.1	777.9	791.6
115°	655.4	661.4	666.7	672.4	677.7	683.4	689.0	694.9	700.8	706.5	712.5
117.5°	606.5	609.0	610.1	611.4	612.6	614.3	615.6	617.3	619.1	620.8	622.2
120°	533.4	533.2	532.9	532.6	532.3	532.2	532.3	532.2	532.4	532.6	532.6
122.5°	459.7	459.1	458.8	458.7	458.7	459.0	459.1	459.6	459.8	460.1	460.4
125°	396.1	395.6	397.2	398.8	400.4	402.2	404.0	406.2	408.0	410.0	412.1
127.5°	350.5	351.0	353.9	356.9	359.9	363.1	366.3	369.6	372.6	376.2	379.2
130°	323.4	324.9	328.3	332.3	335.7	339.7	343.6	347.7	351.2	355.1	358.9
132.5°	310.1	312.6	315.9	319.6	323.3	327.1	330.8	334.7	338.5	342.5	345.9
135°	305.9	308.6	311.8	315.5	318.9	322.6	326.1	329.8	333.0	336.8	340.0
137.5°	305.6	308.5	311.5	314.5	317.3	320.6	323.5	326.7	329.5	332.7	335.5
140°	310.1	312.9	314.7	317.2	319.1	321.4	323.4	325.8	327.6	330.0	331.9
142.5°	313.8	316.4	317.5	319.4	320.9	323.1	324.6	326.3	327.8	329.3	330.7
145°	318.9	321.0	321.7	322.7	323.5	324.6	325.2	326.3	326.8	327.6	328.3
147.5°	322.7	324.2	324.5	325.1	325.8	326.1	326.7	327.2	327.5	327.9	328.4
150°	324.8	326.0	325.9	326.3	326.3	326.5	326.4	326.8	326.7	327.0	326.9
152.5°	326.0	326.8	326.3	326.6	326.3	326.3	326.1	326.3	326.0	325.9	326.0
155°	325.6	326.0	325.8	325.7	325.5	325.5	325.2	325.6	325.6	325.5	325.6
157.5°	327.4	327.3	327.2	327.1	326.8	326.9	326.7	326.8	326.9	327.4	327.7
160°	330.2	330.2	329.9	329.8	329.7	329.6	329.4	329.7	329.8	330.5	330.8
162.5°	333.5	333.3	333.0	332.9	332.8	332.9	332.9	333.4	333.5	333.9	334.3
165°	339.0	339.1	338.5	338.6	338.4	338.4	338.3	338.5	338.8	339.1	339.5
167.5°	344.6	344.5	344.5	344.7	344.7	344.9	345.1	345.7	345.9	346.7	346.9
170°	351.6	351.7	351.5	351.5	351.4	351.5	351.5	351.6	351.8	352.1	352.2
172.5°	359.0	359.0	358.9	358.6	358.4	358.4	358.1	358.3	358.1	358.0	357.8
175°	364.6	364.5	364.4	364.3	364.2	363.9	363.7	363.3	363.2	363.1	363.0
177.5°	368.9	368.5	368.3	368.3	368.1	368.0	368.0	367.8	367.8	367.8	367.5
180°	369.8	369.8	369.8	369.8	369.8	369.8	369.8	369.8	369.8	369.8	369.8



TEST NUMBER: P1444492
 CATALOG NUMBER: EHBR1-60-UNV-TA-L830-UPL18

CANDELA DISTRIBUTION (continued):

	137.5°	140°	142.5°	145°	147.5°	150°	152.5°	155°	157.5°	160°	162.5°
0°	47963.5	47963.5	47963.5	47963.5	47963.5	47963.5	47963.5	47963.5	47963.5	47963.5	47963.5
2.5°	47791.3	47790.7	47786.1	47788.3	47789.1	47792.5	47796.6	47800.8	47801.8	47805.1	47805.9
5°	48148.9	48030.7	47943.2	47847.1	47774.7	47709.7	47666.3	47631.8	47618.4	47621.8	47629.9
7.5°	49118.8	48874.7	48673.3	48444.3	48253.4	48051.3	47883.7	47724.4	47608.3	47521.8	47473.4
10°	50183.0	49885.7	49601.4	49270.0	48955.8	48620.3	48316.6	48010.6	47755.5	47534.0	47371.4
12.5°	50655.3	50445.1	50199.4	49886.7	49550.3	49163.4	48772.5	48353.5	47963.9	47602.1	47310.4
15°	50155.2	50155.6	50066.1	49916.0	49682.4	49373.1	49000.7	48564.0	48104.3	47635.2	47206.6
17.5°	48567.9	48867.4	49034.0	49139.4	49107.1	48993.1	48756.2	48420.7	47992.1	47492.5	46969.5
20°	45842.0	46548.3	47051.9	47504.9	47758.8	47927.5	47910.5	47774.0	47468.8	47044.0	46499.4
22.5°	42023.4	43209.0	44144.6	45017.0	45628.9	46126.5	46363.2	46463.6	46325.3	46029.3	45517.9
25°	37385.3	38997.3	40373.0	41708.2	42709.7	43570.4	44087.7	44452.1	44481.0	44326.4	43870.1
27.5°	32231.5	34134.4	35875.6	37650.0	39058.3	40295.7	41107.6	41701.8	41890.6	41865.6	41451.3
30°	27084.4	29082.0	31001.2	33070.3	34813.1	36393.9	37466.3	38270.0	38579.7	38639.0	38240.5
32.5°	22223.3	24193.3	26107.2	28270.3	30188.2	31999.9	33266.9	34221.5	34581.7	34666.5	34229.3
35°	17811.8	19629.2	21448.0	23544.5	25451.3	27327.4	28662.4	29661.8	29998.2	30054.9	29548.8
37.5°	13986.0	15534.5	17119.4	19000.4	20751.6	22513.4	23781.9	24721.2	24966.2	24951.1	24378.3
40°	10764.8	11968.6	13242.2	14790.7	16246.6	17736.0	18807.2	19583.7	19712.4	19617.0	19015.4
42.5°	8094.6	8964.0	9887.2	11043.2	12123.4	13238.2	14017.5	14593.9	14612.3	14461.6	13921.6
45°	6030.4	6878.7	7265.9	7964.8	8660.5	9401.8	9877.7	10233.7	10178.7	10046.0	9635.5
47.5°	4597.2	4923.2	5268.9	5702.3	6107.6	6948.8	6886.4	7458.2	7046.4	7327.2	6709.0
50°	3650.6	3832.8	4019.1	4249.1	4460.9	4680.7	4818.1	4920.7	4907.4	4863.3	4744.9
52.5°	3105.8	3162.1	3253.8	3384.7	3502.9	3621.8	3700.0	3763.7	3764.9	3747.1	3687.3
55°	2595.8	2667.3	2733.2	2818.7	2964.3	2986.7	3098.8	3076.2	3085.0	3053.9	3085.7
57.5°	2288.7	2330.3	2367.3	2418.2	2460.4	2509.4	2538.4	2566.3	2563.7	2557.6	2527.1
60°	2071.1	2094.0	2114.6	2144.3	2167.5	2195.2	2208.5	2222.7	2218.0	2207.7	2180.6
62.5°	1903.3	1917.6	1929.4	1948.5	1962.6	1979.8	1986.9	1992.8	1986.9	1977.0	1953.0
65°	1737.8	1747.1	1754.5	1768.9	1778.8	1793.6	1799.4	1805.1	1799.6	1792.0	1773.7
67.5°	1588.5	1589.3	1588.7	1594.5	1597.6	1606.4	1609.1	1613.2	1606.7	1600.2	1584.7
70°	1475.2	1472.9	1470.1	1472.4	1472.9	1477.2	1477.8	1477.2	1469.5	1458.2	1441.2
72.5°	1386.7	1385.5	1383.3	1385.3	1385.3	1389.1	1387.9	1386.0	1376.6	1365.5	1348.9
75°	1272.9	1272.1	1267.7	1267.9	1264.4	1265.7	1261.0	1258.4	1247.9	1238.6	1223.7
77.5°	1139.8	1137.6	1131.5	1129.1	1122.4	1119.6	1110.8	1106.5	1095.9	1088.5	1075.6
80°	991.2	988.9	980.8	976.4	965.7	959.0	946.2	939.0	926.7	919.4	906.9
82.5°	819.2	820.2	812.2	806.7	791.4	779.6	762.6	753.3	739.8	732.7	720.0
85°	582.7	574.3	578.8	578.4	568.9	558.7	544.8	535.0	523.7	516.9	507.9
87.5°	319.6	321.6	319.2	317.3	310.5	305.4	294.5	288.9	280.5	276.4	269.7
90°	97.9	97.1	88.9	88.3	80.2	76.8	67.3	65.2	56.6	55.1	49.0
92.5°	56.2	53.4	50.9	47.6	45.1	42.2	39.3	36.5	33.6	32.3	31.7
95°	70.1	66.0	61.9	57.7	53.6	49.4	45.4	41.2	37.1	36.3	35.4
97.5°	79.1	74.1	69.2	64.5	59.6	54.7	50.0	45.1	40.2	39.6	39.2
100°	136.1	125.0	113.7	102.4	91.2	79.9	68.8	57.5	46.4	45.7	45.1
102.5°	302.7	275.5	248.2	221.0	194.0	166.5	139.3	111.9	84.7	80.7	76.8
105°	533.2	491.8	450.8	409.5	368.2	326.9	285.8	244.3	203.0	189.8	176.4
107.5°	699.9	661.0	622.6	583.9	545.1	506.5	467.7	428.8	390.0	366.6	343.4
110°	776.5	745.8	715.5	684.8	654.3	623.7	592.9	562.2	531.6	511.5	491.8



TEST NUMBER: P1444492
 CATALOG NUMBER: EHBR1-60-UNV-TA-L830-UPL18

CANDELA DISTRIBUTION (continued):

	137.5°	140°	142.5°	145°	147.5°	150°	152.5°	155°	157.5°	160°	162.5°
112.5°	769.4	747.2	725.2	702.7	680.7	658.2	636.0	613.6	591.2	579.3	567.3
115°	699.4	686.3	673.3	660.2	647.0	633.9	620.8	607.2	593.9	587.8	581.8
117.5°	616.2	609.7	603.6	597.2	590.9	584.2	577.9	571.3	564.8	563.1	561.2
120°	531.8	530.4	528.8	527.4	526.1	524.7	523.0	521.5	519.8	520.6	521.6
122.5°	462.3	463.9	465.7	467.0	468.9	470.2	472.1	473.1	474.7	477.2	479.6
125°	415.1	418.0	421.0	423.8	426.6	429.5	432.5	434.9	437.9	440.3	443.1
127.5°	382.7	385.9	389.3	392.4	395.8	398.9	402.0	405.0	408.2	410.6	413.4
130°	362.1	364.8	368.1	370.8	374.0	376.9	379.8	382.7	385.6	388.0	390.3
132.5°	348.8	351.6	354.5	357.2	360.2	362.7	365.6	368.2	371.3	373.2	375.3
135°	342.6	344.8	347.2	349.3	352.0	354.1	356.5	358.9	361.6	363.3	365.1
137.5°	337.6	339.6	341.7	343.6	345.8	347.7	350.0	352.2	354.7	356.0	357.9
140°	333.8	335.9	337.9	339.8	342.0	344.1	346.6	348.7	351.3	352.7	354.5
142.5°	332.5	333.8	335.6	337.3	339.2	340.8	342.9	345.0	347.2	348.8	350.3
145°	330.1	331.7	333.6	335.2	337.0	339.0	341.3	343.5	345.8	347.1	348.5
147.5°	329.8	331.1	332.9	334.4	336.1	337.6	339.8	341.7	344.0	345.4	346.6
150°	328.5	329.8	331.3	332.7	334.6	336.4	338.3	340.4	342.9	344.2	345.6
152.5°	327.4	328.7	330.3	332.1	333.8	335.7	337.9	339.9	342.2	343.3	344.9
155°	327.2	328.4	330.1	331.9	333.8	335.4	337.5	339.4	341.5	342.9	344.1
157.5°	329.1	330.2	331.8	333.5	335.1	336.7	338.7	340.4	342.4	343.4	344.5
160°	332.1	333.3	334.7	336.3	337.8	339.4	341.0	342.6	344.2	345.3	346.4
162.5°	335.7	337.0	338.5	339.7	341.4	342.9	344.6	345.9	347.7	348.5	349.7
165°	340.6	341.7	343.0	344.0	345.4	346.2	347.8	348.8	350.4	351.0	352.2
167.5°	348.0	348.7	349.6	350.5	351.6	352.6	353.7	354.6	355.8	356.6	357.4
170°	353.0	353.7	354.4	355.3	356.0	357.0	357.8	358.5	359.7	360.4	361.1
172.5°	358.4	358.7	359.3	359.7	360.4	360.7	361.5	362.0	362.6	363.3	363.9
175°	363.4	363.5	363.8	363.9	364.2	364.5	364.9	365.4	365.7	366.1	366.5
177.5°	367.6	367.7	367.8	367.9	368.4	368.5	368.9	369.0	369.2	369.4	370.0
180°	369.8	369.8	369.8	369.8	369.8	369.8	369.8	369.8	369.8	369.8	369.8



TEST NUMBER: P1444492
 CATALOG NUMBER: EHBR1-60-UNV-TA-L830-UPL18

CANDELA DISTRIBUTION (continued):

	165°	167.5°	170°	172.5°	175°	177.5°	180°	182.5°	185°	187.5°	190°
0°	47963.5	47963.5	47963.5	47963.5	47963.5	47963.5	47963.5	47963.5	47963.5	47963.5	47963.5
2.5°	47804.2	47803.7	47802.1	47800.0	47797.8	47799.0	47801.2	47806.7	47816.4	47830.2	47848.3
5°	47636.4	47646.2	47651.7	47652.4	47647.5	47644.4	47649.1	47662.2	47688.7	47733.1	47793.2
7.5°	47460.4	47472.5	47491.0	47504.9	47507.5	47504.2	47504.9	47525.5	47574.4	47661.0	47782.4
10°	47272.5	47236.8	47255.7	47290.1	47317.6	47322.5	47325.9	47350.3	47421.7	47552.5	47747.5
12.5°	47099.0	46986.0	46964.1	46995.2	47036.8	47050.1	47046.5	47057.0	47140.6	47313.8	47585.6
15°	46870.9	46658.0	46585.3	46593.3	46644.7	46663.2	46649.7	46629.1	46710.7	46922.0	47273.8
17.5°	46501.4	46158.4	46024.7	46018.8	46078.9	46094.9	46061.8	45997.8	46078.2	46342.0	46778.8
20°	45939.9	45433.5	45181.8	45141.8	45207.0	45188.0	45122.0	45025.3	45130.9	45451.6	45971.0
22.5°	44930.4	44288.7	43858.7	43720.0	43798.1	43746.0	43649.9	43526.3	43666.6	44030.9	44609.4
25°	43280.8	42539.4	41950.6	41620.4	41682.6	41589.2	41484.6	41334.9	41502.2	41920.4	42557.1
27.5°	40856.1	39999.7	39270.2	38723.5	38743.5	38621.3	38500.7	38307.0	38515.8	39010.8	39729.0
30°	37632.0	36641.0	35752.6	35009.5	34943.1	34824.5	34700.9	34446.7	34708.1	35300.7	36139.9
32.5°	33583.0	32482.7	31456.2	30516.7	30339.4	30223.8	30113.7	29821.2	30163.3	30854.3	31818.4
35°	28847.9	27675.7	26562.8	25489.8	25196.2	25080.5	24984.3	24704.0	25131.0	25882.9	26924.2
37.5°	23650.4	22453.0	21348.1	20247.7	19832.8	19675.9	19606.1	19422.4	19915.0	20658.7	21704.3
40°	18314.6	17201.3	16210.7	15238.8	14765.9	14525.7	14489.1	14455.7	14931.9	15577.2	16526.2
42.5°	13323.2	12425.0	11661.1	10918.3	10489.7	10161.7	10161.6	10261.1	10689.8	11173.2	11905.0
45°	9216.1	8613.3	8126.6	7630.2	7762.9	7109.1	7493.2	7296.1	7508.0	7819.6	8295.5
47.5°	6335.1	6006.1	5738.7	5461.5	5259.3	5066.3	5083.1	5207.6	5407.2	5592.1	5839.7
50°	4617.3	4449.6	4313.5	4169.5	4068.9	3983.7	3988.7	4042.6	4147.5	4244.9	4374.4
52.5°	3617.9	3525.5	3451.5	3371.9	3319.1	3276.8	3279.1	3305.3	3361.9	3417.6	3491.9
55°	2982.1	2970.9	2874.7	2803.3	2776.0	2747.6	2752.8	2763.1	2801.7	2834.2	2883.4
57.5°	2499.0	2455.8	2426.9	2389.3	2372.0	2352.1	2356.6	2360.4	2386.3	2408.1	2443.5
60°	2157.8	2127.3	2106.8	2081.2	2069.8	2057.2	2060.0	2062.4	2078.9	2093.1	2118.6
62.5°	1931.2	1903.8	1886.1	1866.3	1858.2	1849.7	1851.7	1852.4	1862.7	1873.2	1892.4
65°	1757.4	1735.6	1720.9	1703.8	1695.4	1686.5	1687.5	1687.5	1696.2	1703.8	1718.2
67.5°	1573.5	1557.2	1547.5	1534.0	1528.3	1519.3	1519.2	1516.3	1522.0	1525.0	1534.8
70°	1426.0	1409.5	1397.2	1384.2	1377.1	1369.1	1369.3	1369.5	1376.0	1383.0	1395.6
72.5°	1334.8	1319.0	1308.1	1296.8	1290.0	1283.2	1282.0	1281.3	1286.1	1289.8	1298.2
75°	1214.1	1201.4	1195.1	1184.4	1179.0	1171.4	1170.2	1166.7	1168.9	1169.7	1175.9
77.5°	1067.7	1055.7	1050.5	1039.7	1035.3	1026.5	1025.9	1021.9	1023.7	1022.5	1027.3
80°	900.7	889.9	887.0	878.2	876.0	868.0	866.7	862.0	863.4	859.6	861.4
82.5°	714.4	704.5	702.3	694.1	694.1	686.9	686.5	679.2	679.2	673.0	663.0
85°	503.2	496.0	492.9	486.2	484.2	478.4	475.3	468.4	465.9	461.4	460.0
87.5°	265.6	261.0	256.8	253.7	247.8	237.3	236.4	229.1	229.7	224.5	224.9
90°	48.2	42.7	42.2	37.1	36.2	32.8	32.2	31.7	32.1	31.8	32.3
92.5°	30.7	29.8	28.8	27.8	26.9	25.9	24.9	25.9	26.9	27.8	28.8
95°	34.6	33.7	32.8	31.9	31.1	30.3	29.4	30.3	31.1	32.1	33.0
97.5°	38.6	38.0	37.6	37.0	36.4	36.0	35.4	36.1	36.5	37.1	37.7
100°	44.5	43.8	43.2	42.5	42.0	41.3	40.7	41.7	42.3	42.9	43.6
102.5°	73.0	69.0	65.1	61.2	57.1	53.2	49.3	53.2	57.1	61.4	65.3
105°	163.1	150.0	136.6	123.3	110.0	96.6	83.3	96.8	110.2	123.5	136.9
107.5°	319.9	296.8	273.3	250.0	226.4	203.1	179.6	203.3	226.7	250.2	273.6
110°	471.5	451.4	431.3	411.1	390.9	370.7	350.5	370.9	391.3	411.5	431.8



TEST NUMBER: P1444492
 CATALOG NUMBER: EHBR1-60-UNV-TA-L830-UPL18

CANDELA DISTRIBUTION (continued):

	165°	167.5°	170°	172.5°	175°	177.5°	180°	182.5°	185°	187.5°	190°
112.5°	555.1	543.1	530.8	518.8	506.5	494.4	482.0	494.8	507.1	519.7	531.9
115°	575.6	569.3	563.3	557.0	550.5	544.3	537.7	544.9	551.4	558.1	564.7
117.5°	559.2	557.5	555.6	553.7	551.5	549.6	547.3	549.9	552.4	555.3	557.3
120°	522.0	523.2	523.8	524.4	525.1	525.6	526.0	526.3	526.3	526.3	526.1
122.5°	481.8	484.3	486.4	488.7	490.7	492.9	494.6	493.6	492.1	491.0	489.2
125°	445.4	448.2	450.4	452.9	455.0	457.5	459.0	458.3	456.9	455.5	453.7
127.5°	415.8	418.2	420.4	423.0	424.9	427.0	428.6	428.1	426.9	425.7	424.1
130°	392.4	394.9	396.6	398.8	400.4	402.0	403.3	403.2	402.4	401.9	400.7
132.5°	377.3	379.5	381.3	383.1	384.4	386.1	387.0	387.1	386.8	386.5	385.5
135°	367.0	368.7	370.4	372.2	373.4	374.5	375.2	375.8	375.7	375.6	375.0
137.5°	359.2	361.0	362.3	363.5	364.5	365.3	365.9	366.6	366.8	367.4	367.1
140°	355.8	357.5	358.9	360.2	361.3	362.3	362.7	363.6	363.8	364.1	363.7
142.5°	351.8	353.4	354.9	356.3	357.1	358.1	358.7	359.4	359.6	359.9	359.7
145°	350.0	351.3	352.7	353.9	354.6	355.3	355.6	356.6	357.0	357.3	357.4
147.5°	347.9	349.3	350.2	351.3	352.1	352.8	353.2	353.8	354.4	354.6	354.8
150°	347.0	348.3	349.5	350.6	351.5	352.3	352.6	353.3	353.6	354.0	353.9
152.5°	346.0	347.1	348.2	349.2	350.1	350.8	351.2	351.8	352.5	353.0	353.0
155°	345.3	346.5	347.5	348.6	349.3	350.2	350.9	351.6	352.2	352.5	352.9
157.5°	345.6	346.8	347.7	348.7	349.5	350.5	351.3	352.1	352.7	353.4	353.7
160°	347.2	348.5	349.2	350.3	351.2	352.1	352.8	353.7	354.4	354.9	355.7
162.5°	350.5	351.6	352.1	353.2	354.1	355.0	355.7	356.6	357.3	358.0	358.6
165°	353.1	354.2	355.0	356.0	357.0	358.0	358.6	359.4	359.9	360.4	360.9
167.5°	358.2	359.2	359.9	360.9	361.5	362.5	363.3	363.9	364.4	364.8	365.2
170°	361.8	362.6	363.4	364.1	364.8	365.7	366.2	366.6	367.0	367.5	367.9
172.5°	364.6	365.4	366.0	366.8	367.5	368.2	368.8	369.3	369.4	369.5	369.5
175°	366.9	367.6	368.0	368.6	369.0	369.6	370.1	370.1	370.4	370.4	370.6
177.5°	370.5	371.1	371.7	372.0	372.4	372.8	373.3	373.0	372.8	372.7	372.4
180°	369.8	369.8	369.8	369.8	369.8	369.8	369.8	369.8	369.8	369.8	369.8



TEST NUMBER: P1444492
 CATALOG NUMBER: EHBR1-60-UNV-TA-L830-UPL18

CANDELA DISTRIBUTION (continued):

	192.5°	195°	197.5°	200°	202.5°	205°	207.5°	210°	212.5°	215°	217.5°
0°	47963.5	47963.5	47963.5	47963.5	47963.5	47963.5	47963.5	47963.5	47963.5	47963.5	47963.5
2.5°	47873.9	47898.0	47934.5	47967.7	48017.8	48057.2	48116.4	48161.4	48228.1	48271.5	48344.3
5°	47878.2	47971.9	48095.0	48215.2	48359.7	48490.9	48653.9	48792.8	48956.6	49090.3	49258.0
7.5°	47945.9	48126.5	48343.0	48561.1	48807.9	49038.6	49298.6	49534.0	49791.2	50009.0	50246.8
10°	47995.8	48274.4	48593.5	48914.5	49252.4	49566.3	49883.3	50157.2	50413.2	50623.9	50810.0
12.5°	47928.1	48311.9	48721.3	49116.6	49492.4	49817.4	50090.0	50300.7	50446.1	50544.7	50567.9
15°	47698.0	48159.8	48604.9	48998.6	49310.4	49550.9	49675.4	49733.6	49671.0	49567.3	49339.0
17.5°	47267.9	47755.0	48153.0	48463.5	48628.3	48693.6	48590.5	48411.1	48060.6	47671.5	47109.5
20°	46479.6	46933.4	47222.1	47391.5	47347.4	47184.4	46795.1	46321.9	45622.0	44876.2	43891.9
22.5°	45096.8	45493.5	45647.3	45660.0	45390.9	44982.8	44280.7	43469.1	42365.0	41217.3	39805.6
25°	43021.1	43368.6	43392.9	43256.5	42764.2	42102.8	41071.8	39923.7	38423.4	36894.0	35125.1
27.5°	40206.2	40539.4	40457.9	40203.1	39519.8	38634.7	37314.7	35831.5	33981.9	32175.5	30218.8
30°	36667.5	37023.9	36928.1	36601.3	35788.6	34742.5	33189.3	31466.1	29412.7	27483.2	25500.3
32.5°	32432.7	32883.4	32817.2	32506.7	31658.6	30539.1	28853.7	27026.0	24925.1	23023.8	21095.0
35°	27619.4	28166.6	28194.8	27991.8	27204.6	26097.9	24433.8	22664.7	20652.4	18858.4	17076.6
37.5°	22433.6	23067.9	23198.2	23143.5	22490.8	21514.1	19997.8	18410.8	16628.1	15055.8	13531.9
40°	17219.1	17861.2	18083.9	18150.0	17668.5	16911.9	15667.5	14386.5	12933.1	11659.2	10449.2
42.5°	12463.8	13032.9	13248.2	13383.6	13083.0	12578.5	11670.7	10740.5	9675.7	8756.9	7875.9
45°	8656.3	9058.9	9222.6	9358.9	9195.3	8910.6	8337.4	7755.6	7052.8	6452.2	5883.8
47.5°	6052.2	6274.2	6382.3	6448.4	6384.9	6236.5	5924.5	5587.5	5190.7	4839.8	4502.5
50°	4485.9	4604.1	4660.7	4698.9	4652.6	4570.2	4401.3	4217.8	3999.9	3801.2	3606.9
52.5°	3555.0	3622.7	3656.3	3677.0	3650.4	3600.0	3501.7	3392.9	3262.2	3139.4	3074.8
55°	2994.8	2991.3	3069.0	3031.5	3069.0	2985.3	2967.7	2848.1	2739.6	2663.2	2580.5
57.5°	2469.8	2504.9	2519.9	2536.6	2525.7	2510.5	2468.7	2425.9	2368.7	2320.8	2269.8
60°	2137.9	2166.9	2183.2	2199.8	2198.7	2193.0	2168.9	2143.2	2107.5	2078.9	2047.9
62.5°	1909.3	1934.4	1950.5	1966.3	1967.7	1965.5	1947.1	1929.4	1905.1	1887.1	1865.7
65°	1729.4	1747.1	1758.0	1770.7	1769.9	1766.5	1750.1	1735.3	1715.2	1702.7	1687.1
67.5°	1541.2	1554.5	1563.0	1575.0	1577.2	1578.0	1568.9	1562.0	1552.2	1548.7	1543.3
70°	1407.3	1423.5	1437.2	1452.3	1460.4	1464.4	1460.4	1456.9	1451.2	1448.7	1444.7
72.5°	1306.0	1319.6	1330.3	1344.0	1351.7	1357.2	1354.2	1352.2	1347.3	1346.5	1343.7
75°	1180.2	1189.5	1195.6	1205.9	1210.0	1215.2	1212.9	1214.1	1212.5	1216.4	1216.2
77.5°	1028.9	1035.8	1038.6	1046.1	1046.9	1053.0	1054.5	1061.8	1066.9	1078.2	1084.3
80°	858.6	863.0	863.0	870.7	874.0	884.5	889.5	901.4	906.9	917.0	918.0
82.5°	666.9	661.8	666.9	663.8	673.5	685.3	686.9	697.0	699.3	705.7	700.8
85°	456.0	455.6	451.5	452.2	449.2	450.7	448.9	450.8	449.1	449.2	444.6
87.5°	218.4	220.4	215.6	217.2	212.6	214.7	210.7	213.9	209.1	209.7	202.6
90°	32.4	32.8	32.8	33.3	34.5	35.9	37.7	39.2	41.5	42.8	44.8
92.5°	29.8	30.8	31.8	32.8	33.7	36.6	39.4	42.3	45.4	48.1	51.0
95°	33.9	34.8	35.6	36.8	37.7	41.8	46.0	50.1	54.3	58.5	62.7
97.5°	38.5	39.1	39.6	40.1	40.8	45.7	50.7	55.5	60.4	65.4	70.1
100°	44.3	45.0	45.5	46.4	47.0	58.4	69.7	80.9	92.3	103.4	114.7
102.5°	69.3	73.3	77.3	81.6	85.5	113.0	140.3	167.8	194.8	222.2	249.5
105°	150.3	163.6	177.3	190.7	204.0	245.5	287.0	328.5	369.6	410.9	452.4
107.5°	297.3	320.7	344.4	367.8	391.4	430.4	469.3	508.1	547.1	586.0	624.6
110°	452.4	472.4	493.0	513.3	533.5	564.2	595.3	625.9	656.7	687.5	718.2



TEST NUMBER: P1444492
 CATALOG NUMBER: EHBR1-60-UNV-TA-L830-UPL18

CANDELA DISTRIBUTION (continued):

	192.5°	195°	197.5°	200°	202.5°	205°	207.5°	210°	212.5°	215°	217.5°
112.5°	544.5	556.7	569.1	581.0	593.4	616.0	638.7	661.2	683.9	705.9	728.5
115°	571.3	577.4	584.0	590.2	596.9	610.5	623.8	637.2	650.7	663.9	677.4
117.5°	559.6	561.8	564.2	566.0	568.2	574.9	581.7	588.3	595.1	601.8	608.4
120°	526.0	525.4	525.1	524.4	524.0	525.6	527.6	529.2	531.2	532.7	534.3
122.5°	487.7	485.6	483.9	481.7	479.9	478.3	477.3	475.7	474.8	473.2	472.0
125°	452.1	450.0	448.0	445.8	443.4	441.0	438.5	435.9	433.1	430.5	427.9
127.5°	422.8	420.8	419.1	416.8	414.8	411.8	408.9	405.8	403.1	399.9	396.9
130°	399.7	398.0	396.8	394.6	393.1	390.0	387.6	384.7	382.0	379.3	376.5
132.5°	384.8	383.5	382.3	380.5	379.2	376.5	374.3	371.4	368.9	366.3	363.8
135°	374.4	373.5	372.6	371.3	370.1	367.7	365.8	363.5	361.5	359.2	357.2
137.5°	366.9	366.1	365.4	364.6	363.6	361.6	359.9	357.9	356.1	354.1	352.4
140°	363.5	362.9	362.4	361.6	360.6	358.7	356.9	354.8	353.0	351.1	349.2
142.5°	359.3	358.8	358.4	357.5	356.8	355.0	353.8	352.2	350.5	349.0	347.5
145°	357.2	356.8	356.6	355.9	355.7	353.8	352.4	350.5	349.3	347.4	346.0
147.5°	354.9	354.6	354.5	354.2	354.2	352.6	351.5	350.0	349.0	347.6	346.6
150°	354.0	353.9	353.9	353.5	353.2	351.9	351.0	349.7	348.8	347.3	346.4
152.5°	353.2	353.3	353.4	353.3	353.4	352.4	351.4	350.1	349.1	347.8	346.9
155°	353.2	353.4	353.6	353.6	353.6	352.8	351.9	350.9	350.0	348.9	348.1
157.5°	354.1	354.5	354.8	355.0	355.2	354.5	353.7	353.0	352.2	351.3	350.5
160°	355.9	356.5	356.9	357.1	357.4	356.7	356.4	355.5	355.2	354.2	353.4
162.5°	359.0	359.6	360.0	360.2	360.4	359.8	359.5	358.9	358.3	357.3	356.6
165°	361.4	361.5	361.9	362.0	362.3	361.9	361.7	361.2	360.8	360.2	359.8
167.5°	365.6	365.7	366.2	366.2	366.4	366.2	366.3	365.9	365.5	365.2	364.8
170°	368.0	368.3	368.6	368.7	369.0	368.7	368.5	368.2	368.1	367.6	367.2
172.5°	369.9	369.8	369.9	370.1	370.1	369.9	369.8	369.6	369.6	369.3	369.2
175°	370.5	370.5	370.6	370.5	370.5	370.6	370.5	370.6	370.5	370.3	370.2
177.5°	372.3	372.2	372.0	371.8	371.7	371.6	371.7	371.5	371.8	371.7	371.6
180°	369.8	369.8	369.8	369.8	369.8	369.8	369.8	369.8	369.8	369.8	369.8



TEST NUMBER: P1444492
 CATALOG NUMBER: EHBR1-60-UNV-TA-L830-UPL18

CANDELA DISTRIBUTION (continued):

	220°	222.5°	225°	227.5°	230°	232.5°	235°	237.5°	240°	242.5°	245°
0°	47963.5	47963.5	47963.5	47963.5	47963.5	47963.5	47963.5	47963.5	47963.5	47963.5	47963.5
2.5°	48389.3	48090.4	48050.9	48071.9	48121.9	48140.4	48194.2	48209.0	48263.2	48276.6	48328.7
5°	49387.7	48992.7	49012.4	49107.3	49251.2	49336.8	49478.2	49552.1	49687.1	49748.4	49870.3
7.5°	50440.6	50130.4	50227.1	50387.3	50583.9	50720.0	50889.8	51000.3	51146.6	51237.4	51354.6
10°	50957.5	50872.6	50979.0	51105.1	51217.2	51305.0	51377.0	51434.6	51472.2	51507.7	51523.1
12.5°	50564.1	50695.6	50713.8	50701.5	50627.2	50570.5	50443.1	50356.5	50202.7	50109.1	49926.1
15°	49105.7	49395.0	49234.8	48992.4	48637.6	48341.8	47924.1	47613.0	47178.0	46882.9	46446.3
17.5°	46546.4	46911.5	46494.1	45933.1	45219.4	44608.9	43848.6	43245.0	42489.1	41939.3	41233.7
20°	42943.4	43284.6	42540.3	41610.2	40506.2	39577.1	38481.3	37607.1	36588.9	35831.5	34917.4
22.5°	38457.3	38700.3	37651.8	36398.0	34991.4	33830.6	32520.6	31472.5	30310.5	29444.6	28470.0
25°	33494.3	33559.9	32302.1	30857.6	29289.9	27985.4	26586.8	25484.9	24299.7	23422.1	22465.7
27.5°	28485.1	28388.9	27029.4	25497.9	23848.8	22492.8	21128.7	20096.2	19058.2	18267.7	17443.6
30°	23757.1	23524.2	22112.6	20538.4	18937.6	17722.3	16589.9	15760.6	14934.9	14307.8	13646.3
32.5°	19421.3	19092.8	17718.8	16243.9	14895.1	13957.2	13117.5	12490.0	11823.2	11293.5	10738.4
35°	15581.0	15231.1	14013.7	12763.4	11742.6	11051.2	10391.2	9876.5	9310.3	8863.4	8381.3
37.5°	12285.2	11998.3	10978.7	9994.9	9222.6	8686.9	8146.2	7725.4	7257.5	7060.9	6545.8
40°	9484.1	9283.6	8486.4	7761.1	7181.3	6929.6	6380.7	5987.6	5638.0	5349.6	5070.4
42.5°	7397.8	7326.8	6551.0	5985.3	5577.0	5259.9	4954.0	4705.7	4463.9	4265.1	4077.4
45°	5428.9	5372.8	5028.3	4701.7	4423.5	4201.9	3995.2	3824.3	3666.3	3535.2	3416.2
47.5°	4227.5	4209.5	4011.1	3808.7	3633.4	3491.0	3356.8	3243.4	3138.5	3051.0	3022.6
50°	3438.4	3436.0	3319.6	3194.6	3069.9	2987.6	2901.9	2834.9	2767.5	2715.1	2659.6
52.5°	2921.5	2908.9	2830.3	2753.1	2679.0	2624.9	2570.2	2527.3	2482.7	2450.4	2416.0
55°	2515.1	2528.5	2482.9	2436.8	2390.5	2356.9	2318.5	2290.3	2259.6	2239.2	2218.4
57.5°	2232.8	2250.4	2226.6	2200.5	2172.2	2150.1	2123.7	2104.1	2083.7	2070.7	2058.6
60°	2027.5	2046.7	2037.2	2023.9	2006.5	1993.4	1976.5	1965.7	1952.5	1945.2	1938.4
62.5°	1853.3	1877.4	1873.9	1867.7	1856.5	1849.3	1840.0	1835.2	1826.5	1823.3	1820.0
65°	1679.4	1706.5	1705.9	1702.9	1696.7	1694.6	1688.9	1687.9	1683.4	1685.1	1684.8
67.5°	1542.8	1566.3	1571.4	1575.1	1575.0	1576.4	1575.8	1578.2	1578.2	1581.5	1583.7
70°	1444.1	1460.4	1464.4	1468.3	1469.3	1472.5	1472.5	1474.5	1474.0	1476.8	1477.2
72.5°	1344.4	1365.9	1369.8	1373.0	1373.0	1376.0	1374.4	1373.9	1369.7	1368.7	1365.7
75°	1220.3	1247.9	1253.9	1257.8	1258.4	1261.0	1257.3	1255.0	1247.9	1245.0	1240.0
77.5°	1090.7	1119.4	1123.6	1125.0	1122.7	1123.3	1115.4	1110.1	1101.0	1097.3	1092.5
80°	922.0	964.2	967.5	964.9	958.3	957.2	949.5	944.6	933.8	930.1	925.9
82.5°	701.6	751.1	758.0	761.0	755.6	756.9	749.6	746.7	736.8	735.0	728.5
85°	443.0	492.4	500.6	499.4	494.0	492.7	488.5	489.9	489.1	491.7	493.1
87.5°	203.5	251.3	262.9	259.2	258.6	255.3	247.6	250.5	255.1	258.1	258.3
90°	46.5	62.7	64.0	63.9	59.2	58.3	54.0	54.0	50.4	50.2	46.7
92.5°	53.9	56.7	59.6	57.0	54.4	51.9	49.4	46.6	44.2	41.6	39.1
95°	66.8	70.6	74.7	71.4	67.7	64.4	60.9	57.5	54.0	50.7	47.2
97.5°	74.9	79.5	84.3	80.9	77.5	73.9	70.4	67.1	63.6	60.0	56.6
100°	126.0	136.7	147.8	138.1	128.2	118.5	108.8	98.9	89.2	79.4	69.6
102.5°	276.8	303.6	330.7	305.9	281.2	256.5	231.9	207.3	182.8	157.8	133.3
105°	493.6	534.2	575.3	537.3	499.7	462.2	424.5	386.9	349.2	311.5	274.0
107.5°	663.4	701.0	739.3	705.2	671.1	637.1	602.7	568.7	534.5	500.3	466.4
110°	748.8	777.9	808.3	785.0	761.9	738.7	715.6	692.5	669.5	646.7	623.8



TEST NUMBER: P1444492
 CATALOG NUMBER: EHBR1-60-UNV-TA-L830-UPL18

CANDELA DISTRIBUTION (continued):

	220°	222.5°	225°	227.5°	230°	232.5°	235°	237.5°	240°	242.5°	245°
112.5°	750.8	771.0	792.8	778.8	765.2	751.3	737.7	723.9	710.4	696.5	683.3
115°	690.4	701.2	713.9	707.7	702.1	696.1	690.3	684.6	678.8	673.0	667.7
117.5°	614.9	618.5	624.0	622.2	620.7	618.7	617.2	615.5	614.2	612.6	611.3
120°	535.9	534.3	535.0	534.5	534.6	534.2	534.2	534.0	534.1	534.0	534.3
122.5°	470.4	465.5	462.8	462.5	462.2	461.6	461.4	461.0	460.9	460.7	460.7
125°	425.2	418.4	414.6	412.5	410.7	408.6	406.6	404.6	403.0	401.1	399.4
127.5°	393.9	386.5	382.4	379.2	376.0	372.6	369.4	366.1	363.1	359.7	356.9
130°	373.7	366.3	362.4	358.5	354.9	350.9	347.3	343.4	339.5	335.8	332.1
132.5°	361.1	353.7	349.9	346.2	342.8	338.8	335.3	331.4	327.8	323.7	320.4
135°	354.9	347.6	344.3	340.8	337.7	334.1	330.8	327.1	323.8	320.2	317.0
137.5°	350.3	342.9	340.0	337.0	334.3	331.3	328.7	325.6	322.8	319.4	316.8
140°	347.2	339.6	336.5	334.6	332.9	330.8	328.8	326.7	324.9	322.9	320.8
142.5°	345.9	338.3	335.5	334.1	332.9	331.3	330.3	328.8	327.3	325.4	324.0
145°	344.5	336.1	333.3	332.3	332.2	331.4	330.8	330.1	329.4	328.5	327.9
147.5°	345.0	336.4	333.4	333.2	333.0	332.3	332.4	331.8	331.8	331.2	331.0
150°	344.9	335.2	331.7	331.8	331.7	331.8	331.8	331.7	332.0	331.9	331.9
152.5°	345.5	333.7	329.9	330.0	330.4	330.3	330.5	330.8	331.2	331.5	331.7
155°	346.7	333.9	329.7	329.3	329.4	329.5	329.5	329.8	330.0	330.2	330.7
157.5°	349.4	335.8	331.7	331.1	331.0	330.9	330.8	331.0	331.1	331.2	331.7
160°	352.7	339.0	334.8	334.2	334.1	333.8	333.6	333.6	333.7	333.7	334.0
162.5°	355.8	342.5	338.4	337.8	337.4	337.1	337.0	336.7	336.7	336.7	336.9
165°	358.9	347.1	343.3	342.8	342.7	342.4	342.3	342.2	342.2	342.2	342.5
167.5°	364.2	353.5	350.6	350.0	349.5	349.0	349.0	348.3	348.3	347.9	347.9
170°	366.7	358.3	355.8	355.5	355.6	355.4	355.1	355.0	354.9	354.8	354.9
172.5°	368.8	362.6	360.6	360.6	360.9	360.9	361.1	361.3	361.5	361.7	361.9
175°	370.1	366.4	365.6	365.4	365.5	365.6	365.7	365.9	366.0	366.1	366.4
177.5°	371.6	370.6	370.1	370.1	370.1	370.1	370.1	370.1	370.1	370.3	370.3
180°	369.8	369.8	369.8	369.8	369.8	369.8	369.8	369.8	369.8	369.8	369.8



TEST NUMBER: P1444492
 CATALOG NUMBER: EHBR1-60-UNV-TA-L830-UPL18

CANDELA DISTRIBUTION (continued):

	247.5°	250°	252.5°	255°	257.5°	260°	262.5°	265°	267.5°	270°	272.5°
0°	47963.5	47963.5	47963.5	47963.5	47963.5	47963.5	47963.5	47963.5	47963.5	47963.5	47963.5
2.5°	48338.4	48394.8	48390.5	48443.1	48440.4	48490.0	48480.0	48522.9	48513.1	48549.7	48528.3
5°	49924.0	50031.2	50066.5	50163.3	50183.3	50269.9	50271.7	50340.5	50332.2	50386.0	50357.4
7.5°	51423.9	51524.0	51571.4	51646.7	51684.1	51746.4	51770.8	51821.9	51834.2	51864.4	51863.5
10°	51550.5	51550.2	51573.6	51563.1	51584.1	51572.0	51597.6	51588.4	51626.2	51616.4	51645.1
12.5°	49847.2	49678.2	49616.4	49464.7	49431.4	49301.1	49310.4	49226.9	49267.1	49215.8	49303.3
15°	46186.6	45794.5	45600.8	45259.8	45152.7	44883.3	44861.4	44682.4	44730.8	44637.1	44774.0
17.5°	40777.3	40159.9	39821.1	39323.2	39125.5	38744.4	38668.0	38437.6	38473.3	38357.3	38522.5
20°	34327.9	33581.8	33154.4	32578.6	32321.8	31867.5	31746.9	31489.2	31521.6	31406.0	31593.0
22.5°	27804.8	27023.9	26541.5	25937.9	25610.0	25182.7	25054.5	24795.5	24810.3	24701.9	24881.7
25°	21810.4	21061.7	20593.5	20045.3	19760.7	19368.9	19234.2	19001.7	19014.8	18925.5	19086.8
27.5°	16871.9	16257.6	15865.8	15406.3	15151.3	14829.1	14697.8	14502.2	14501.8	14436.1	14571.1
30°	13184.6	12671.9	12320.1	11920.0	11680.3	11389.7	11262.8	11087.8	11080.2	11033.7	11140.8
32.5°	10323.2	9867.2	9546.4	9194.2	8979.1	8729.8	8609.6	8469.0	8456.1	8414.0	8502.0
35°	8024.9	7640.9	7365.1	7068.6	7090.4	6722.5	6783.6	6497.8	6420.3	6403.4	6468.8
37.5°	6202.3	5904.9	5680.8	5458.8	5308.4	5152.8	5069.1	4994.0	4985.4	4978.1	5023.9
40°	4854.8	4646.6	4483.6	4331.2	4227.8	4132.9	4080.5	4039.2	4029.4	4023.9	4051.6
42.5°	3929.2	3788.7	3683.7	3590.7	3527.8	3476.2	3447.5	3424.5	3416.8	3417.0	3433.4
45°	3319.6	3234.5	3166.7	3109.0	3068.8	3086.5	3034.5	3061.7	3025.9	3062.9	3038.4
47.5°	2923.4	2850.9	2808.9	2768.1	2743.7	2724.1	2724.9	2725.3	2732.8	2734.1	2742.1
50°	2617.6	2575.8	2546.5	2520.4	2507.9	2497.5	2501.1	2503.7	2511.2	2511.7	2517.6
52.5°	2391.4	2363.9	2346.3	2330.1	2324.3	2318.5	2321.0	2319.9	2323.3	2321.5	2326.3
55°	2207.3	2194.2	2188.7	2182.7	2183.6	2182.0	2183.1	2177.2	2173.6	2169.2	2173.3
57.5°	2056.2	2054.4	2058.0	2060.6	2067.5	2070.0	2071.6	2064.9	2058.4	2052.6	2056.0
60°	1939.7	1942.5	1951.8	1959.2	1969.2	1973.8	1976.6	1972.8	1968.1	1963.3	1966.2
62.5°	1824.9	1829.3	1840.4	1848.7	1860.8	1867.0	1873.9	1874.3	1876.0	1874.3	1876.2
65°	1691.5	1697.0	1707.1	1714.0	1725.1	1730.7	1737.8	1739.0	1742.9	1742.0	1745.4
67.5°	1590.3	1595.2	1603.6	1610.1	1620.1	1625.8	1632.0	1632.4	1633.8	1633.4	1636.6
70°	1482.2	1484.7	1492.1	1497.6	1507.5	1513.4	1520.6	1522.7	1527.1	1527.9	1531.4
72.5°	1366.9	1365.9	1370.3	1372.8	1380.3	1384.9	1394.0	1399.0	1406.5	1408.3	1411.1
75°	1241.4	1240.4	1245.7	1247.9	1254.3	1258.8	1269.1	1275.6	1287.1	1291.9	1290.7
77.5°	1096.2	1098.8	1108.7	1114.2	1122.7	1128.5	1141.8	1152.2	1173.4	1182.6	1173.2
80°	933.8	936.4	946.7	951.9	963.1	970.2	984.9	997.2	1016.2	1020.4	1015.0
82.5°	734.1	734.8	744.1	748.0	762.6	773.1	791.7	801.5	813.3	811.5	810.1
85°	500.6	507.3	518.8	530.5	548.2	565.3	582.9	597.4	587.1	603.3	585.2
87.5°	267.5	266.8	282.4	280.0	304.9	319.2	334.5	341.8	350.0	348.4	348.5
90°	47.4	44.7	45.9	42.7	45.1	41.7	45.4	42.2	46.8	42.7	49.6
92.5°	36.4	35.1	33.6	32.4	30.9	29.6	28.1	26.8	25.4	24.0	25.4
95°	43.8	42.5	41.3	39.8	38.5	37.3	36.0	34.7	33.4	32.1	33.7
97.5°	53.2	52.5	51.7	51.0	50.2	49.6	48.8	48.1	47.1	46.4	47.4
100°	59.9	59.9	59.9	59.9	59.5	59.5	59.5	59.5	59.5	59.5	60.3
102.5°	108.6	106.1	103.7	101.1	98.6	96.1	93.7	91.2	88.8	86.4	90.0
105°	236.3	226.8	216.9	207.4	197.6	188.0	178.3	168.8	159.1	149.6	159.5
107.5°	432.6	414.9	397.2	379.7	362.0	344.5	327.0	309.6	292.1	274.5	290.2
110°	600.8	582.1	563.3	544.8	526.1	507.2	488.7	470.1	451.6	433.0	447.9



TEST NUMBER: P1444492
 CATALOG NUMBER: EHBR1-60-UNV-TA-L830-UPL18

CANDELA DISTRIBUTION (continued):

	247.5°	250°	252.5°	255°	257.5°	260°	262.5°	265°	267.5°	270°	272.5°
112.5°	669.8	657.3	645.2	633.0	620.9	609.0	597.0	585.0	573.1	561.1	568.3
115°	662.0	656.2	650.1	644.3	638.5	632.4	626.7	621.0	615.3	609.7	610.2
117.5°	609.9	607.6	605.4	603.2	601.1	599.0	597.1	595.3	593.2	591.6	587.6
120°	534.6	534.7	534.7	535.0	535.5	536.0	536.2	536.9	537.7	538.4	533.0
122.5°	460.7	461.4	462.3	463.3	464.4	465.7	466.9	468.5	470.1	471.7	466.3
125°	397.5	398.3	398.9	399.9	400.5	401.9	403.2	404.8	406.3	407.9	403.3
127.5°	353.9	353.5	353.0	353.0	353.0	353.2	353.6	354.2	354.9	355.9	353.0
130°	328.3	327.0	325.6	324.4	323.2	322.6	322.0	321.5	321.1	321.1	320.0
132.5°	316.5	314.4	312.3	310.4	308.6	307.2	305.6	304.8	303.8	303.1	302.8
135°	313.2	310.7	308.3	305.8	303.5	301.9	299.9	298.6	297.2	296.1	296.7
137.5°	313.8	311.4	308.7	306.5	304.1	302.6	300.6	299.1	297.9	296.7	297.5
140°	318.7	316.1	313.7	311.5	309.5	307.7	305.8	304.5	303.0	302.2	302.6
142.5°	322.4	320.5	318.1	316.2	314.2	312.7	311.2	310.0	308.5	307.8	308.4
145°	327.0	325.5	323.7	322.2	320.8	319.7	318.2	317.5	316.6	316.3	316.6
147.5°	330.5	329.4	327.8	326.9	325.5	324.9	323.9	323.4	322.8	322.5	322.7
150°	331.8	331.1	330.3	329.6	328.9	328.4	327.8	327.6	327.2	327.1	327.2
152.5°	332.0	331.5	330.8	330.3	329.7	329.4	329.1	329.0	328.8	328.7	328.7
155°	330.8	330.7	330.4	330.3	330.1	330.4	330.2	330.6	330.5	330.8	330.9
157.5°	331.8	332.0	331.9	332.3	332.4	332.6	332.7	333.3	333.4	334.0	334.4
160°	334.5	334.7	334.7	334.9	335.1	335.2	335.6	335.8	336.2	336.6	336.9
162.5°	337.0	337.6	337.8	338.2	338.6	339.0	339.6	340.2	340.6	341.3	341.8
165°	342.6	342.7	342.8	342.8	343.2	343.5	343.8	344.3	344.5	345.2	345.8
167.5°	347.7	348.0	347.9	348.2	348.5	349.0	349.3	350.0	350.3	351.2	351.6
170°	354.6	354.6	354.6	354.6	354.6	355.0	355.2	355.3	355.5	356.0	356.3
172.5°	361.9	361.9	361.6	361.9	361.6	361.9	361.9	362.1	362.1	362.2	362.3
175°	366.3	366.6	366.7	367.1	367.0	367.1	367.2	367.4	367.5	367.8	367.8
177.5°	370.3	370.5	370.5	370.5	370.5	370.7	370.7	370.7	370.7	370.5	370.6
180°	369.8	369.8	369.8	369.8	369.8	369.8	369.8	369.8	369.8	369.8	369.8



TEST NUMBER: P1444492
 CATALOG NUMBER: EHBR1-60-UNV-TA-L830-UPL18

CANDELA DISTRIBUTION (continued):

	275°	277.5°	280°	282.5°	285°	287.5°	290°	292.5°	295°	297.5°	300°
0°	47963.5	47963.5	47963.5	47963.5	47963.5	47963.5	47963.5	47963.5	47963.5	47963.5	47963.5
2.5°	48564.0	48539.6	48564.5	48539.2	48564.5	48534.3	48554.8	48522.0	48530.4	48496.4	48505.1
5°	50400.2	50361.5	50382.1	50331.8	50337.1	50269.9	50268.7	50190.5	50169.8	50080.8	50041.7
7.5°	51885.1	51872.4	51879.5	51847.2	51843.5	51797.6	51775.7	51711.0	51670.3	51588.4	51532.4
10°	51650.0	51687.9	51697.7	51736.2	51744.3	51782.5	51790.4	51828.7	51836.7	51864.9	51865.3
12.5°	49299.2	49427.7	49458.4	49617.2	49684.1	49865.7	49963.1	50163.3	50282.2	50481.8	50604.5
15°	44770.3	44992.7	45081.4	45391.3	45562.8	45924.8	46152.1	46567.7	46861.0	47302.4	47617.2
17.5°	38537.1	38847.8	38988.2	39408.6	39682.8	40216.9	40602.0	41235.7	41720.8	42425.0	42983.2
20°	31625.0	31970.4	32160.8	32640.4	32964.1	33588.1	34068.9	34847.6	35497.0	36389.3	37152.4
22.5°	24938.1	25266.8	25478.1	25966.0	26330.5	26981.4	27518.6	28340.6	29068.1	30073.7	30988.7
25°	19147.8	19448.9	19640.0	20081.4	20423.5	21021.7	21534.7	22325.2	23037.1	24045.8	24984.0
27.5°	14638.2	14890.5	15074.6	15450.9	15752.8	16260.1	16700.8	17354.0	17967.5	18840.1	19675.6
30°	11206.8	11430.4	11609.6	11937.3	12217.1	12656.9	13044.4	13593.1	14100.8	14795.2	15459.8
32.5°	8563.9	8756.4	8916.0	9202.9	9456.7	9852.8	10201.9	10682.9	11118.6	11707.5	12254.3
35°	6529.6	6908.4	6881.5	7277.3	7340.9	7625.1	7936.5	8357.1	8743.1	9243.8	9709.2
37.5°	5068.1	5174.6	5288.7	5463.5	5647.4	5906.0	6169.1	6683.0	6871.4	7249.8	7635.1
40°	4086.9	4158.8	4234.2	4352.4	4481.1	4663.3	4855.0	5100.1	5351.2	5658.1	5971.4
42.5°	3455.1	3495.8	3543.8	3613.3	3692.6	3808.1	3936.2	4102.5	4277.2	4493.2	4713.6
45°	3086.9	3067.5	3081.8	3119.1	3166.9	3237.2	3318.0	3421.0	3534.8	3674.6	3823.6
47.5°	2743.7	2751.5	2755.8	2776.0	2801.7	2848.7	2897.8	2967.7	3102.6	3143.7	3224.9
50°	2517.0	2520.8	2519.6	2529.9	2542.8	2573.4	2605.3	2652.5	2699.8	2762.4	2822.1
52.5°	2327.1	2332.4	2331.7	2338.4	2345.3	2364.7	2384.8	2418.2	2449.1	2488.9	2523.3
55°	2177.0	2184.3	2187.1	2192.8	2196.2	2206.3	2214.4	2230.3	2243.5	2266.1	2286.9
57.5°	2061.6	2071.6	2076.2	2078.2	2074.1	2073.6	2070.9	2074.2	2077.0	2089.0	2100.8
60°	1970.8	1978.8	1980.0	1978.8	1971.3	1966.0	1957.4	1954.8	1953.4	1959.2	1965.7
62.5°	1875.7	1878.6	1876.6	1874.3	1865.7	1860.6	1851.7	1848.5	1845.5	1849.5	1853.0
65°	1744.2	1746.7	1744.2	1742.7	1735.1	1731.0	1723.5	1721.0	1716.8	1717.8	1717.2
67.5°	1637.4	1639.8	1637.8	1635.9	1630.6	1628.1	1622.6	1619.0	1613.9	1611.9	1608.3
70°	1530.9	1532.8	1529.8	1527.9	1521.8	1519.4	1514.3	1513.3	1509.1	1508.3	1504.2
72.5°	1408.3	1408.5	1404.3	1403.0	1398.6	1398.4	1396.3	1398.2	1398.0	1400.2	1399.3
75°	1283.1	1281.3	1276.0	1275.0	1271.7	1273.3	1270.9	1274.0	1274.4	1279.0	1279.5
77.5°	1157.6	1151.0	1140.8	1136.0	1129.3	1128.5	1124.5	1127.1	1126.3	1131.6	1133.7
80°	999.0	991.0	978.0	971.8	963.8	962.6	959.0	962.6	960.8	967.0	971.5
82.5°	797.6	790.7	777.2	772.2	762.9	763.8	760.0	763.8	763.3	772.5	777.8
85°	589.9	585.3	571.5	559.2	545.5	537.6	529.7	528.3	526.0	529.7	532.9
87.5°	340.8	336.5	325.7	318.6	294.5	295.6	286.2	285.7	283.4	281.2	286.2
90°	47.3	53.0	51.1	56.2	55.0	61.0	60.3	66.0	64.3	69.5	68.8
92.5°	26.8	28.1	29.5	30.9	32.3	33.6	35.0	36.4	39.4	42.1	45.4
95°	35.3	36.9	38.5	40.2	41.8	43.4	45.0	46.6	51.0	55.3	59.7
97.5°	48.7	49.6	50.6	51.7	52.7	53.8	54.9	55.9	60.8	65.5	70.2
100°	61.2	62.0	62.9	63.8	64.6	65.5	66.3	67.2	76.6	85.7	94.7
102.5°	93.6	97.2	100.9	104.4	108.3	111.9	115.5	119.1	140.1	160.9	181.7
105°	169.5	179.4	189.5	199.3	209.3	219.2	229.3	239.2	272.7	306.0	339.7
107.5°	305.9	321.6	337.3	353.1	368.9	384.7	400.4	416.3	448.8	481.6	514.2
110°	462.9	478.0	493.0	508.1	523.1	538.1	553.3	568.6	588.3	607.8	627.7



TEST NUMBER: P1444492
 CATALOG NUMBER: EHBR1-60-UNV-TA-L830-UPL18

CANDELA DISTRIBUTION (continued):

	275°	277.5°	280°	282.5°	285°	287.5°	290°	292.5°	295°	297.5°	300°
112.5°	575.7	582.9	590.4	597.8	605.3	612.9	620.4	628.0	638.0	648.0	658.1
115°	610.6	611.1	611.9	612.5	613.3	613.9	614.9	615.8	619.4	622.9	626.4
117.5°	583.7	579.8	576.2	572.2	568.6	565.2	561.7	558.4	558.2	558.1	558.3
120°	528.1	522.9	517.7	512.5	507.8	502.8	498.3	493.7	491.9	489.9	488.2
122.5°	461.2	456.2	451.2	446.2	441.6	437.0	432.6	428.3	427.2	426.2	425.5
125°	399.1	395.1	391.1	387.2	383.8	380.2	376.8	373.6	374.4	375.1	376.4
127.5°	350.7	348.4	346.1	344.2	342.6	340.7	339.4	337.7	340.1	342.4	344.7
130°	319.1	318.6	318.2	317.5	317.7	317.6	317.6	317.6	321.1	324.0	327.5
132.5°	303.3	303.6	304.2	304.9	305.9	306.9	308.3	309.2	312.8	316.2	319.8
135°	297.3	298.2	299.5	300.7	302.4	303.8	305.6	307.1	310.8	313.9	317.6
137.5°	298.6	299.7	301.1	302.4	304.3	305.9	308.1	309.8	312.7	315.5	318.4
140°	303.7	304.4	305.9	307.1	308.6	310.1	312.1	313.5	316.2	318.5	320.8
142.5°	309.5	310.1	311.3	312.7	314.1	315.3	317.0	318.3	320.4	322.0	324.4
145°	317.5	318.0	319.2	320.1	321.3	322.4	323.7	324.9	326.4	327.8	329.3
147.5°	323.4	323.9	324.8	325.7	326.7	327.7	328.5	329.4	330.8	331.8	333.0
150°	327.8	328.2	328.9	329.2	330.2	330.9	332.0	332.5	333.6	334.3	335.5
152.5°	329.5	329.8	330.4	330.8	331.6	332.2	332.8	333.6	334.6	335.2	336.2
155°	331.5	332.3	332.9	333.5	334.3	334.7	335.6	336.1	337.0	337.7	338.6
157.5°	335.1	335.4	336.4	336.7	337.6	338.2	338.8	339.4	340.2	340.8	341.5
160°	337.8	338.6	339.2	340.1	341.0	341.5	342.4	343.1	343.9	344.4	345.1
162.5°	342.6	343.3	344.0	344.5	345.3	345.9	346.5	347.1	348.2	348.6	349.6
165°	346.6	347.3	348.3	348.7	349.8	350.6	351.3	352.1	352.6	353.3	353.8
167.5°	352.4	352.9	353.9	354.5	355.4	356.0	356.8	357.4	358.1	358.5	359.2
170°	357.0	357.5	358.2	358.9	359.5	360.0	360.8	361.3	362.0	362.5	363.3
172.5°	362.8	363.3	363.7	364.1	364.6	365.1	365.6	365.9	366.5	366.9	367.4
175°	367.8	367.8	367.9	368.1	368.3	368.3	368.5	368.9	369.1	369.2	369.3
177.5°	370.7	370.8	370.9	371.0	371.1	371.3	371.4	371.5	371.5	371.5	371.5
180°	369.8	369.8	369.8	369.8	369.8	369.8	369.8	369.8	369.8	369.8	369.8



TEST NUMBER: P1444492
 CATALOG NUMBER: EHBR1-60-UNV-TA-L830-UPL18

CANDELA DISTRIBUTION (continued):

	302.5°	305°	307.5°	310°	312.5°	315°	317.5°	320°	322.5°	325°	327.5°
0°	47963.5	47963.5	47963.5	47963.5	47963.5	47963.5	47963.5	47963.5	47963.5	47963.5	47963.5
2.5°	48471.2	48473.3	48434.2	48432.1	48395.4	48390.8	48355.1	48344.3	48315.3	48304.8	48275.3
5°	49941.8	49894.2	49784.1	49719.4	49610.6	49538.6	49420.9	49344.1	49230.6	49144.9	49030.6
7.5°	51429.1	51355.2	51231.6	51131.5	50980.6	50860.1	50683.5	50538.9	50347.6	50182.1	49981.2
10°	51865.3	51854.0	51822.5	51776.6	51706.4	51627.5	51507.3	51381.9	51214.4	51032.4	50809.1
12.5°	50792.0	50907.9	51065.9	51159.6	51273.6	51323.5	51370.2	51358.5	51327.8	51235.7	51106.6
15°	48073.2	48398.8	48830.1	49164.3	49548.7	49828.2	50136.8	50329.1	50520.9	50609.4	50663.7
17.5°	43748.1	44364.8	45138.0	45778.8	46518.2	47112.1	47763.0	48253.1	48757.0	49118.0	49444.6
20°	38192.6	39086.1	40179.7	41145.8	42269.2	43245.4	44315.2	45193.5	46099.2	46807.3	47477.7
22.5°	32166.9	33227.9	34550.0	35774.8	37222.9	38524.5	39993.0	41271.1	42605.5	43720.4	44798.3
25°	26241.4	27405.0	28850.7	30217.2	31857.4	33371.3	35112.8	36705.7	38430.4	39928.0	41407.2
27.5°	20830.6	21973.0	23449.0	24903.6	26638.0	28251.1	30117.1	31872.1	33836.0	35647.0	37499.5
30°	16383.5	17352.4	18675.8	20084.7	21795.3	23436.9	25323.1	27128.1	29171.1	31148.5	33235.2
32.5°	12980.1	13718.3	14758.8	15950.1	17528.4	19091.1	20887.1	22629.6	24641.4	26638.9	28809.1
35°	10308.6	10884.4	11677.7	12607.4	13943.9	15290.9	16879.6	18464.1	20341.1	22236.5	24346.0
37.5°	8128.9	8596.1	9217.3	9915.7	10987.8	12093.3	13395.9	14709.5	16340.4	18020.6	19932.4
40°	6347.8	6726.0	7209.7	7730.6	8540.1	9391.9	10399.2	11417.9	12728.2	14101.4	15683.6
42.5°	4986.7	5265.7	5607.4	5988.0	6743.3	7195.5	7878.6	8615.4	9578.7	10575.5	11765.2
45°	4004.7	4195.1	4432.0	4687.3	5037.8	5421.5	5889.3	6379.9	7295.0	7743.9	8467.4
47.5°	3344.3	3472.2	3622.9	3783.7	3990.5	4213.6	4491.1	4774.8	5141.7	5521.9	5967.7
50°	2899.6	3029.5	3081.3	3164.7	3284.3	3411.7	3568.1	3724.5	3921.3	4120.8	4350.3
52.5°	2569.5	2611.8	2668.1	2721.1	2795.2	2940.3	2987.3	3069.0	3179.4	3287.3	3407.8
55°	2317.4	2345.0	2381.6	2413.6	2458.4	2501.2	2563.1	2617.5	2691.1	2756.2	2836.2
57.5°	2121.2	2138.8	2164.2	2185.2	2214.2	2238.4	2274.6	2304.1	2346.5	2383.2	2431.7
60°	1978.6	1990.3	2007.5	2021.1	2039.6	2052.2	2070.2	2084.1	2106.5	2125.1	2152.1
62.5°	1862.2	1868.3	1879.4	1887.5	1899.2	1905.5	1915.2	1921.2	1933.5	1942.9	1958.0
65°	1722.5	1723.9	1731.4	1734.8	1744.0	1747.3	1755.2	1758.0	1768.1	1775.1	1788.5
67.5°	1608.0	1604.8	1605.0	1602.3	1603.6	1600.9	1601.6	1598.8	1602.8	1605.0	1615.1
70°	1503.5	1499.0	1497.6	1492.8	1491.4	1486.4	1485.0	1480.6	1480.0	1478.6	1482.2
72.5°	1401.6	1400.4	1400.8	1397.4	1397.0	1393.6	1393.8	1391.7	1394.0	1395.0	1399.6
75°	1284.5	1284.9	1287.1	1284.1	1285.0	1282.2	1283.2	1280.6	1282.0	1281.4	1286.1
77.5°	1141.9	1145.3	1151.5	1150.3	1152.2	1149.1	1150.5	1146.7	1147.7	1145.3	1147.1
80°	981.6	988.7	997.0	996.7	1000.2	998.0	1001.2	997.6	999.0	994.7	993.7
82.5°	791.2	797.2	806.1	806.5	814.3	815.8	824.4	824.1	829.6	826.1	823.6
85°	540.9	545.0	552.8	557.1	565.1	570.1	578.4	581.8	575.8	586.8	578.0
87.5°	282.4	292.9	287.1	300.8	297.6	311.5	308.4	321.2	318.8	329.7	328.3
90°	76.0	76.0	83.6	84.0	93.4	95.0	101.7	99.7	106.0	104.3	110.6
92.5°	48.1	51.3	54.3	57.3	60.3	63.4	60.5	57.8	55.0	52.4	49.5
95°	64.1	68.4	72.8	77.2	81.5	85.9	81.2	76.7	72.0	67.3	62.6
97.5°	74.8	79.6	84.3	89.0	93.9	98.5	93.0	87.5	81.9	76.5	71.0
100°	103.8	113.1	122.1	131.1	140.4	149.5	139.4	129.0	118.9	108.5	98.2
102.5°	202.9	223.8	244.7	265.7	286.4	307.4	285.6	264.1	242.0	220.2	198.3
105°	373.1	406.6	440.1	473.5	506.9	540.8	505.4	469.9	434.4	399.2	363.5
107.5°	546.9	579.6	612.6	645.1	677.9	710.9	675.1	639.1	603.4	567.5	531.5
110°	647.6	667.4	687.3	707.3	727.1	747.1	721.1	695.1	669.1	642.9	616.8



TEST NUMBER: P1444492
 CATALOG NUMBER: EHBR1-60-UNV-TA-L830-UPL18

CANDELA DISTRIBUTION (continued):

	302.5°	305°	307.5°	310°	312.5°	315°	317.5°	320°	322.5°	325°	327.5°
112.5°	668.2	678.7	688.8	699.2	709.4	719.7	701.1	683.0	664.3	646.0	627.4
115°	630.2	633.8	637.6	641.3	644.9	648.7	636.5	624.2	612.1	600.0	587.3
117.5°	558.4	558.7	558.5	559.1	558.9	559.2	552.7	546.3	539.5	533.0	526.2
120°	486.2	484.6	482.8	481.1	479.1	477.3	475.0	472.7	470.1	467.7	465.1
122.5°	424.4	423.9	422.8	422.0	420.9	419.8	419.4	419.2	418.5	418.1	417.4
125°	377.2	378.1	379.0	380.1	380.8	381.6	381.7	382.1	382.1	382.4	382.4
127.5°	346.8	349.2	351.3	353.4	355.4	357.6	358.1	359.0	359.6	360.3	360.8
130°	330.4	333.7	336.7	339.7	342.4	345.6	345.9	346.7	347.1	347.6	348.1
132.5°	323.2	326.6	329.9	333.5	336.6	339.7	340.1	340.9	341.0	341.7	342.0
135°	320.7	324.0	326.9	330.5	333.3	336.4	336.7	337.1	337.2	337.9	338.2
137.5°	320.9	323.9	326.5	329.3	331.5	334.2	334.4	334.9	334.9	335.5	335.7
140°	323.1	325.5	327.5	329.8	332.0	334.1	334.1	334.3	334.3	334.4	334.3
142.5°	326.2	328.0	329.6	331.6	333.1	335.0	334.4	334.2	334.0	333.7	333.5
145°	330.7	332.2	333.5	334.8	335.7	337.2	336.6	336.2	335.3	335.0	334.4
147.5°	333.9	335.2	335.8	337.0	337.5	338.6	337.9	337.3	336.7	336.0	335.2
150°	336.1	337.4	338.0	338.8	339.5	340.4	339.5	338.8	337.9	337.0	336.4
152.5°	336.9	337.9	338.5	339.1	339.7	340.4	339.4	338.9	337.9	336.9	336.1
155°	339.0	339.8	340.2	341.0	341.1	341.6	340.7	340.3	339.5	338.7	337.8
157.5°	342.0	342.7	343.3	343.6	344.0	344.5	344.0	343.6	342.8	342.4	341.6
160°	345.6	346.2	346.7	347.1	347.6	347.8	347.3	347.1	346.7	346.0	345.5
162.5°	350.0	351.0	351.4	351.8	352.5	353.0	352.4	351.9	351.4	350.8	350.1
165°	354.4	354.9	355.5	355.9	356.1	356.7	356.3	356.1	355.7	355.4	354.8
167.5°	359.6	360.3	360.6	361.2	361.4	361.7	361.3	361.4	360.8	360.4	360.0
170°	363.5	364.1	364.8	365.2	365.5	365.8	365.6	365.4	364.9	364.8	364.3
172.5°	367.8	368.4	368.5	369.0	369.1	369.4	369.2	368.8	368.5	368.1	367.7
175°	369.3	369.5	369.9	369.9	369.9	370.1	369.8	369.4	369.2	368.8	368.5
177.5°	371.5	371.5	371.5	371.3	371.3	371.3	371.1	370.8	370.7	370.5	370.0
180°	369.8	369.8	369.8	369.8	369.8	369.8	369.8	369.8	369.8	369.8	369.8



TEST NUMBER: P1444492
 CATALOG NUMBER: EHBR1-60-UNV-TA-L830-UPL18

CANDELA DISTRIBUTION (continued):

	330°	332.5°	335°	337.5°	340°	342.5°	345°	347.5°	350°	352.5°	355°
0°	47963.5	47963.5	47963.5	47963.5	47963.5	47963.5	47963.5	47963.5	47963.5	47963.5	47963.5
2.5°	48264.8	48243.8	48230.3	48213.1	48202.6	48189.3	48179.4	48171.1	48164.4	48158.2	48153.5
5°	48943.5	48835.6	48751.9	48661.2	48586.7	48512.4	48455.2	48407.7	48375.0	48350.5	48335.9
7.5°	49807.5	49610.1	49434.4	49249.6	49083.9	48920.9	48780.5	48659.4	48568.6	48509.7	48474.0
10°	50579.2	50314.8	50053.4	49778.2	49517.3	49264.1	49030.6	48825.1	48662.5	48554.4	48491.3
12.5°	50925.1	50699.9	50433.0	50134.2	49814.4	49490.8	49175.4	48891.1	48652.3	48492.2	48399.7
15°	50620.5	50528.0	50346.9	50115.0	49811.5	49477.0	49106.7	48758.6	48438.4	48230.9	48110.5
17.5°	49629.5	49758.5	49744.7	49656.0	49437.8	49156.2	48778.9	48387.9	47987.5	47710.0	47558.4
20°	47957.1	48362.7	48568.6	48674.2	48588.5	48405.9	48064.3	47667.5	47200.8	46838.4	46617.4
22.5°	45606.9	46323.2	46769.5	47096.0	47165.4	47103.2	46801.5	46424.1	45903.8	45468.3	45141.8
25°	42581.5	43630.8	44336.1	44889.1	45103.9	45159.4	44902.6	44527.4	43947.4	43440.1	42991.6
27.5°	39018.0	40381.4	41323.2	42066.2	42401.6	42547.0	42310.8	41927.9	41241.7	40636.1	40050.2
30°	35006.1	36623.7	37757.7	38648.6	39057.5	39249.6	38998.7	38571.2	37772.8	37043.9	36305.9
32.5°	30712.2	32482.3	33718.0	34685.5	35090.6	35271.4	34943.1	34463.1	33540.2	32681.6	31820.9
35°	26216.5	28003.2	29249.3	30191.1	30530.5	30639.6	30219.6	29664.9	28642.4	27700.1	26761.6
37.5°	21629.3	23291.5	24424.0	25269.2	25479.3	25498.2	24992.3	24379.5	23304.8	22375.7	21441.4
40°	17081.7	18483.5	19397.9	20074.4	20147.3	20082.3	19532.3	18915.6	17910.2	17077.8	16257.6
42.5°	12798.1	13856.3	14508.7	14972.3	14944.7	14816.2	14311.9	13781.8	12952.3	12318.3	11672.9
45°	9128.2	9826.0	10207.4	10478.7	10391.6	10269.1	9876.7	9505.1	8941.4	8531.9	8098.1
47.5°	6341.5	7174.7	7029.6	7560.1	7103.1	7404.9	6776.3	6429.9	6130.7	5913.2	5668.0
50°	4539.9	4730.8	4823.1	4886.1	4852.6	4806.3	4693.4	4592.4	4455.7	4356.2	4240.1
52.5°	3506.1	3601.6	3653.8	3691.7	3684.3	3667.3	3618.1	3573.2	3509.1	3467.0	3416.2
55°	2969.8	2971.2	3067.4	3026.1	3087.1	3015.6	3043.7	2964.7	2977.4	2909.5	2863.9
57.5°	2467.9	2506.9	2524.5	2541.6	2536.8	2533.8	2514.8	2505.1	2483.7	2477.0	2461.8
60°	2170.8	2191.2	2195.5	2203.3	2196.8	2194.2	2179.3	2174.0	2159.6	2157.0	2146.7
62.5°	1967.1	1977.6	1977.6	1977.6	1969.1	1960.8	1944.3	1935.6	1923.3	1920.7	1914.8
65°	1797.2	1807.9	1809.7	1812.1	1805.9	1799.4	1784.9	1775.4	1762.8	1758.0	1751.3
67.5°	1621.7	1633.2	1637.2	1643.0	1639.4	1638.2	1628.3	1624.5	1616.2	1614.2	1608.0
70°	1483.9	1488.7	1488.3	1488.1	1480.4	1473.4	1461.9	1456.4	1447.7	1445.9	1440.2
72.5°	1402.0	1405.3	1403.2	1400.2	1390.1	1379.8	1366.3	1356.3	1344.9	1337.8	1329.8
75°	1286.6	1291.1	1288.3	1286.3	1277.2	1270.5	1259.6	1254.1	1246.1	1243.8	1238.2
77.5°	1144.9	1147.1	1142.4	1141.9	1135.0	1130.7	1122.6	1121.1	1115.2	1115.4	1110.1
80°	987.3	986.0	978.6	977.2	970.2	968.5	962.0	962.4	957.8	959.8	956.0
82.5°	812.3	807.9	798.2	795.3	787.3	786.6	782.3	785.9	783.0	787.3	784.8
85°	582.2	583.4	579.2	579.2	576.8	577.6	577.2	579.8	580.2	584.1	583.9
87.5°	324.6	329.3	328.3	332.6	332.4	337.2	338.8	345.9	346.8	353.4	353.4
90°	108.8	116.0	114.0	121.3	120.8	128.5	129.3	136.9	136.7	143.3	141.8
92.5°	46.7	43.9	41.3	38.4	37.0	35.2	34.6	32.5	31.5	29.7	28.4
95°	57.9	53.2	48.5	43.8	42.2	40.5	38.9	37.3	35.6	34.0	32.4
97.5°	65.5	59.9	54.3	48.8	47.4	46.0	44.5	43.1	41.7	40.3	39.0
100°	87.8	77.5	67.3	56.8	55.5	54.4	53.2	52.1	50.9	49.6	48.3
102.5°	176.5	154.5	132.5	110.5	106.4	102.2	98.1	93.8	89.5	85.4	81.3
105°	328.1	292.5	256.9	221.3	210.0	198.7	187.4	176.0	164.7	153.3	142.1
107.5°	495.5	459.4	423.4	387.2	366.5	345.6	324.7	303.6	282.9	261.8	240.8
110°	590.7	564.5	538.1	511.7	495.2	478.4	461.5	444.7	428.1	411.0	394.2



TEST NUMBER: P1444492
 CATALOG NUMBER: EHBR1-60-UNV-TA-L830-UPL18

CANDELA DISTRIBUTION (continued):

	330°	332.5°	335°	337.5°	340°	342.5°	345°	347.5°	350°	352.5°	355°
112.5°	608.8	590.1	571.5	552.5	545.2	537.5	530.2	522.5	515.0	507.1	499.6
115°	575.0	562.7	550.1	537.4	535.0	532.5	530.1	527.3	524.9	522.1	519.3
117.5°	519.7	512.8	506.0	499.2	499.8	500.6	501.3	501.9	502.4	502.7	503.2
120°	462.5	459.9	457.5	454.7	457.6	460.1	462.8	465.2	467.7	469.9	472.1
122.5°	417.0	416.2	415.8	414.8	418.2	421.5	424.6	427.7	430.7	433.2	435.9
125°	382.6	382.6	382.6	382.5	386.0	389.4	392.6	395.5	398.7	401.2	403.9
127.5°	361.6	362.0	362.8	363.2	366.1	368.3	370.9	373.0	375.4	377.1	379.0
130°	348.6	348.9	349.6	350.0	352.5	354.8	357.4	359.3	361.5	363.0	364.7
132.5°	342.6	342.8	343.4	343.6	345.8	347.7	349.8	351.0	352.8	353.7	354.8
135°	338.6	338.7	339.2	339.3	341.3	343.3	345.0	346.4	348.1	348.9	350.0
137.5°	336.2	336.2	336.6	336.7	338.6	340.3	341.9	343.2	344.5	345.6	346.4
140°	334.6	334.4	334.8	334.6	336.4	337.9	339.5	340.6	341.9	342.6	343.4
142.5°	333.2	332.6	332.8	332.2	333.6	334.7	335.8	336.7	337.8	338.2	338.7
145°	333.8	333.0	332.7	332.0	333.0	333.8	334.9	335.8	336.3	336.7	337.1
147.5°	334.9	333.9	333.2	332.4	333.6	334.0	334.7	335.1	335.8	336.0	336.3
150°	335.4	334.3	333.4	332.4	333.0	333.4	333.8	334.4	334.7	334.8	335.1
152.5°	335.2	334.1	333.2	332.0	332.3	332.5	332.7	332.8	333.1	333.1	333.1
155°	337.0	336.0	335.1	333.9	334.3	334.3	334.4	334.4	334.2	334.0	334.0
157.5°	340.9	339.8	339.4	338.3	338.2	338.2	338.1	337.4	337.4	337.0	336.6
160°	345.0	344.1	343.5	342.6	342.5	342.2	342.2	341.5	341.2	340.7	340.3
162.5°	349.4	348.6	347.7	346.8	346.6	346.5	346.2	345.6	345.4	344.8	344.3
165°	354.5	353.8	353.2	352.4	352.2	351.8	351.6	350.9	350.6	349.9	349.3
167.5°	359.4	358.9	358.2	357.3	357.2	357.1	356.9	356.4	356.2	355.6	355.4
170°	363.9	363.3	362.9	362.2	361.9	361.8	361.4	361.0	360.4	360.2	359.6
172.5°	367.1	366.6	366.1	365.3	365.3	365.1	364.8	364.6	364.0	363.6	363.5
175°	367.9	367.7	366.9	366.6	366.4	366.3	366.2	366.0	365.6	365.4	365.0
177.5°	369.8	369.6	369.1	368.9	368.7	368.7	368.5	368.3	368.3	368.1	367.9
180°	369.8	369.8	369.8	369.8	369.8	369.8	369.8	369.8	369.8	369.8	369.8



TEST NUMBER: P1444492
CATALOG NUMBER: EHBR1-60-UNV-TA-L830-UPL18

CANDELA DISTRIBUTION (continued):

	357.5°	360°
0°	47963.5	47963.5
2.5°	48149.3	48146.7
5°	48328.3	48325.4
7.5°	48464.4	48463.5
10°	48480.4	48488.7
12.5°	48383.7	48390.5
15°	48101.3	48114.4
17.5°	47561.2	47578.4
20°	46630.9	46648.8
22.5°	45124.2	45131.7
25°	42933.7	42902.6
27.5°	39947.3	39893.8
30°	36150.9	36099.2
32.5°	31624.7	31592.3
35°	26529.6	26509.1
37.5°	21165.3	21123.7
40°	15957.8	15836.5
42.5°	11390.2	11177.5
45°	7871.6	7619.5
47.5°	5495.2	5339.3
50°	4165.3	4115.0
52.5°	3394.0	3382.2
55°	2863.7	2858.6
57.5°	2465.1	2463.4
60°	2152.1	2151.6
62.5°	1918.8	1919.6
65°	1754.3	1754.6
67.5°	1609.6	1608.5
70°	1442.3	1441.1
72.5°	1327.1	1325.2
75°	1238.2	1237.0
77.5°	1111.7	1109.7
80°	958.4	956.0
82.5°	788.3	785.5
85°	588.1	588.2
87.5°	359.8	359.6
90°	148.0	145.6
92.5°	27.4	26.2
95°	30.8	29.2
97.5°	37.6	36.2
100°	47.2	46.0
102.5°	77.1	73.0
105°	130.8	119.4
107.5°	219.9	199.1
110°	377.3	360.4



TEST NUMBER: P1444492
CATALOG NUMBER: EHBR1-60-UNV-TA-L830-UPL18

CANDELA DISTRIBUTION (continued):

	357.5°	360°
112.5°	491.8	484.1
115°	516.2	513.4
117.5°	503.4	503.5
120°	473.9	476.0
122.5°	438.2	440.5
125°	406.2	408.5
127.5°	380.4	381.7
130°	365.5	366.8
132.5°	355.5	355.9
135°	350.2	350.7
137.5°	346.6	347.0
140°	343.5	343.8
142.5°	339.0	339.1
145°	337.3	337.2
147.5°	335.7	335.7
150°	334.7	334.5
152.5°	332.6	332.4
155°	333.5	333.1
157.5°	335.7	335.3
160°	339.6	339.1
162.5°	343.6	343.1
165°	348.5	347.7
167.5°	354.5	354.3
170°	359.0	358.7
172.5°	363.0	362.6
175°	364.8	364.7
177.5°	367.9	367.6
180°	369.8	369.8

LM-79-2019: Approved Method: Electrical and Photometric Measurements of Solid-
State Lighting Products

Report Prepared for

Cooper Lighting Solutions

Metalux

Report Number: SP1-2506-472-2

Test Date: 07/31/2025

Luminaire Tested: EHBR-60-L830-N

Data in this report applies to families of products including EHBR-60-L830-N

Test Information

Test Method: LM-79-2019
 Report Number: SP1-2506-472-2
 Test Lab: COOPER LIGHTING SOLUTIONS
 Photometer: SP1 - 76IN SPHERE
 Measurement Geometry: 4π
 Issue Date: 08/05/2025
 Manufacturer: COOPER LIGHTING SOLUTIONS
 Product Line: Metalux
 Catalog Number: **EHBR-60-L830-N**
 Description: Elevate Round Highbay at, 60000 lumens, 3000K 80CRI LEDs with N lens

Spectral Parameters

CCT (K): 2983
 CIE u': 0.2516
 CIE v': 0.5201
 Duv: -0.0012
 CIE x: 0.4364
 CIE y: 0.4010
 CIE z: 0.1626
 Peak Wavelength (nm): 630
 Dominant Wavelength (nm): 583
 Purity: 51.34918
 Rf: 81.2
 Rg: 101.5

CRI (Ra):	83.4		
R1:	84.0	R9:	29.4
R2:	87.5	R10:	68.6
R3:	88.9	R11:	82.2
R4:	83.8	R12:	61.6
R5:	81.9	R13:	83.9
R6:	83.1	R14:	92.5
R7:	87.1	R15:	79.8
R8:	70.9		



Test Conditions

Stabilization Time: 38M
 Operation Time: 1H 38M
 Sphere Temperature (°C): 25.0

REPORT NUMBER: SP1-2506-472-2

Measurement and Test Equipment			
Instrument	Identification Number	Calibration Date	Calibration Due Date
Photometer	76INCH SPHERE IN0058	6/16/2025	12/16/2025
Power Meter	XITRON INXT2011004	1/21/2025	1/21/2026
AC Power Source	CHROMA 61603 IN0063	10/22/2024	10/22/2025
DC Power Source	AGILENT E3634A IN0208	10/22/2024	10/22/2025
Sphere Thermometer	ONSET IN0085	10/22/2024	10/22/2025
Room Thermometer	ONSET IN0046	10/22/2024	10/22/2025

REPORT NUMBER: SP1-2506-472-2

CIE 1931 Chromaticity Diagram



CIE 1931 Chromaticity Diagram with 2017 ANSI 7-Step and 4-Step Quadrangles

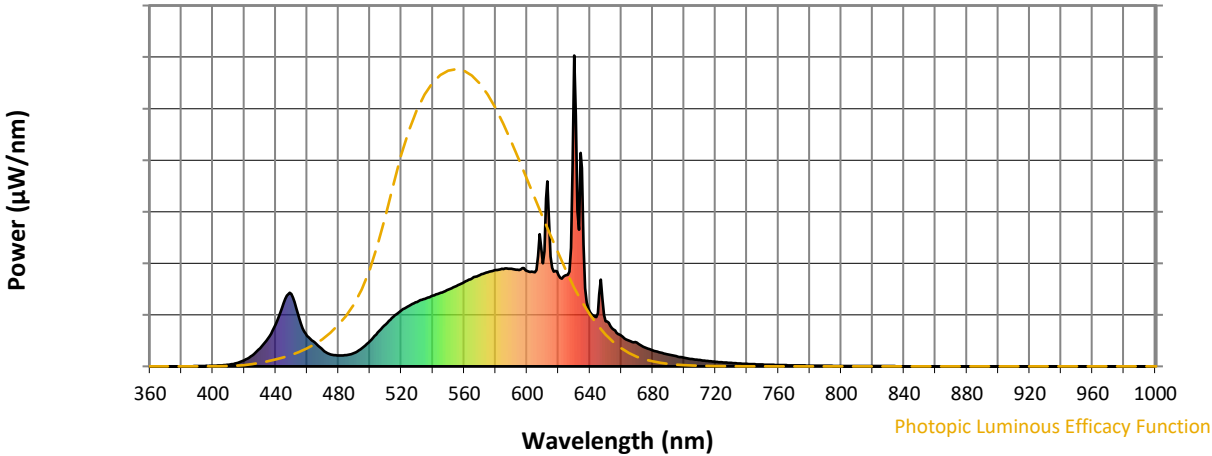


CCT = 2983K
 CIE x = 0.4364
 CIE y = 0.4010
 Duv = -0.0012

Point lies inside the ANSI 3000K 4-step quadrangle

REPORT NUMBER: SP1-2506-472-2

Photopic Flux vs. Wavelength

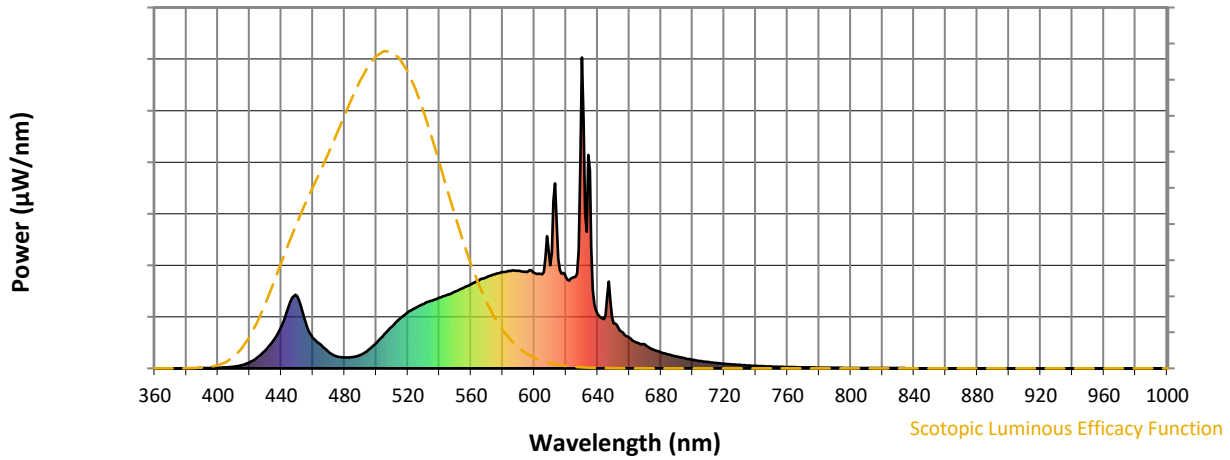


Photopic Lumens: NR

λ (nm)	Power W [^] /nm	Lumens (φ/nm)	λ (nm)	Power W [^] /nm	Lumens (φ/nm)	λ (nm)	Power W [^] /nm	Lumens (φ/nm)	λ (nm)	Power W [^] /nm	Lumens (φ/nm)	λ (nm)	Power W [^] /nm	Lumens (φ/nm)
360	0	NR	490	43	NR	620	294	NR	750	6	NR	880	0	NR
365	0	NR	495	59	NR	625	294	NR	755	5	NR	885	0	NR
370	0	NR	500	81	NR	630	1000	NR	760	4	NR	890	0	NR
375	0	NR	505	109	NR	635	637	NR	765	4	NR	895	0	NR
380	0	NR	510	135	NR	640	175	NR	770	3	NR	900	0	NR
385	0	NR	515	160	NR	645	171	NR	775	3	NR	905	0	NR
390	1	NR	520	180	NR	650	146	NR	780	2	NR	910	0	NR
395	1	NR	525	195	NR	655	119	NR	785	2	NR	915	0	NR
400	2	NR	530	207	NR	660	99	NR	790	2	NR	920	0	NR
405	3	NR	535	218	NR	665	82	NR	795	2	NR	925	0	NR
410	5	NR	540	227	NR	670	76	NR	800	1	NR	930	0	NR
415	10	NR	545	237	NR	675	61	NR	805	1	NR	935	0	NR
420	20	NR	550	247	NR	680	52	NR	810	1	NR	940	0	NR
425	35	NR	555	259	NR	685	44	NR	815	1	NR	945	0	NR
430	58	NR	560	271	NR	690	38	NR	820	1	NR	950	0	NR
435	90	NR	565	283	NR	695	33	NR	825	1	NR	955	0	NR
440	135	NR	570	293	NR	700	27	NR	830	1	NR	960	0	NR
445	204	NR	575	303	NR	705	24	NR	835	1	NR	965	0	NR
450	233	NR	580	310	NR	710	20	NR	840	0	NR	970	0	NR
455	153	NR	585	313	NR	715	17	NR	845	0	NR	975	0	NR
460	98	NR	590	314	NR	720	15	NR	850	0	NR	980	0	NR
465	76	NR	595	310	NR	725	13	NR	855	0	NR	985	0	NR
470	53	NR	600	307	NR	730	11	NR	860	0	NR	990	0	NR
475	39	NR	605	303	NR	735	9	NR	865	0	NR	995	0	NR
480	35	NR	610	331	NR	740	8	NR	870	0	NR	1000	0	NR
485	36	NR	615	353	NR	745	7	NR	875	0	NR			

REPORT NUMBER: SP1-2506-472-2

Scotopic Flux vs. Wavelength



Scotopic Lumens: NR

S/P: 1.27

λ (nm)	Power W [^] /nm	Lumens (φ/nm)	λ (nm)	Power W [^] /nm	Lumens (φ/nm)	λ (nm)	Power W [^] /nm	Lumens (φ/nm)	λ (nm)	Power W [^] /nm	Lumens (φ/nm)	λ (nm)	Power W [^] /nm	Lumens (φ/nm)
360	0	NR	490	43	NR	620	294	NR	750	6	NR	880	0	NR
365	0	NR	495	59	NR	625	294	NR	755	5	NR	885	0	NR
370	0	NR	500	81	NR	630	1000	NR	760	4	NR	890	0	NR
375	0	NR	505	109	NR	635	637	NR	765	4	NR	895	0	NR
380	0	NR	510	135	NR	640	175	NR	770	3	NR	900	0	NR
385	0	NR	515	160	NR	645	171	NR	775	3	NR	905	0	NR
390	1	NR	520	180	NR	650	146	NR	780	2	NR	910	0	NR
395	1	NR	525	195	NR	655	119	NR	785	2	NR	915	0	NR
400	2	NR	530	207	NR	660	99	NR	790	2	NR	920	0	NR
405	3	NR	535	218	NR	665	82	NR	795	2	NR	925	0	NR
410	5	NR	540	227	NR	670	76	NR	800	1	NR	930	0	NR
415	10	NR	545	237	NR	675	61	NR	805	1	NR	935	0	NR
420	20	NR	550	247	NR	680	52	NR	810	1	NR	940	0	NR
425	35	NR	555	259	NR	685	44	NR	815	1	NR	945	0	NR
430	58	NR	560	271	NR	690	38	NR	820	1	NR	950	0	NR
435	90	NR	565	283	NR	695	33	NR	825	1	NR	955	0	NR
440	135	NR	570	293	NR	700	27	NR	830	1	NR	960	0	NR
445	204	NR	575	303	NR	705	24	NR	835	1	NR	965	0	NR
450	233	NR	580	310	NR	710	20	NR	840	0	NR	970	0	NR
455	153	NR	585	313	NR	715	17	NR	845	0	NR	975	0	NR
460	98	NR	590	314	NR	720	15	NR	850	0	NR	980	0	NR
465	76	NR	595	310	NR	725	13	NR	855	0	NR	985	0	NR
470	53	NR	600	307	NR	730	11	NR	860	0	NR	990	0	NR
475	39	NR	605	303	NR	735	9	NR	865	0	NR	995	0	NR
480	35	NR	610	331	NR	740	8	NR	870	0	NR	1000	0	NR
485	36	NR	615	353	NR	745	7	NR	875	0	NR			

REPORT NUMBER: SP1-2506-472-2

Melanopic Flux vs. Wavelength



Melanopic Lumens: NR

M/P: 2.34

λ (nm)	Power W [^] /nm	Lumens (φ/nm)	λ (nm)	Power W [^] /nm	Lumens (φ/nm)	λ (nm)	Power W [^] /nm	Lumens (φ/nm)	λ (nm)	Power W [^] /nm	Lumens (φ/nm)	λ (nm)	Power W [^] /nm	Lumens (φ/nm)
360	0	NR	490	43	NR	620	294	NR	750	6	NR	880	0	NR
365	0	NR	495	59	NR	625	294	NR	755	5	NR	885	0	NR
370	0	NR	500	81	NR	630	1000	NR	760	4	NR	890	0	NR
375	0	NR	505	109	NR	635	637	NR	765	4	NR	895	0	NR
380	0	NR	510	135	NR	640	175	NR	770	3	NR	900	0	NR
385	0	NR	515	160	NR	645	171	NR	775	3	NR	905	0	NR
390	1	NR	520	180	NR	650	146	NR	780	2	NR	910	0	NR
395	1	NR	525	195	NR	655	119	NR	785	2	NR	915	0	NR
400	2	NR	530	207	NR	660	99	NR	790	2	NR	920	0	NR
405	3	NR	535	218	NR	665	82	NR	795	2	NR	925	0	NR
410	5	NR	540	227	NR	670	76	NR	800	1	NR	930	0	NR
415	10	NR	545	237	NR	675	61	NR	805	1	NR	935	0	NR
420	20	NR	550	247	NR	680	52	NR	810	1	NR	940	0	NR
425	35	NR	555	259	NR	685	44	NR	815	1	NR	945	0	NR
430	58	NR	560	271	NR	690	38	NR	820	1	NR	950	0	NR
435	90	NR	565	283	NR	695	33	NR	825	1	NR	955	0	NR
440	135	NR	570	293	NR	700	27	NR	830	1	NR	960	0	NR
445	204	NR	575	303	NR	705	24	NR	835	1	NR	965	0	NR
450	233	NR	580	310	NR	710	20	NR	840	0	NR	970	0	NR
455	153	NR	585	313	NR	715	17	NR	845	0	NR	975	0	NR
460	98	NR	590	314	NR	720	15	NR	850	0	NR	980	0	NR
465	76	NR	595	310	NR	725	13	NR	855	0	NR	985	0	NR
470	53	NR	600	307	NR	730	11	NR	860	0	NR	990	0	NR
475	39	NR	605	303	NR	735	9	NR	865	0	NR	995	0	NR
480	35	NR	610	331	NR	740	8	NR	870	0	NR	1000	0	NR
485	36	NR	615	353	NR	745	7	NR	875	0	NR			

Summary

$R_f = 81.2$
 $R_g = 101.5$
 CIE $R_a = 83.4$
 $R_9 = 29.4$

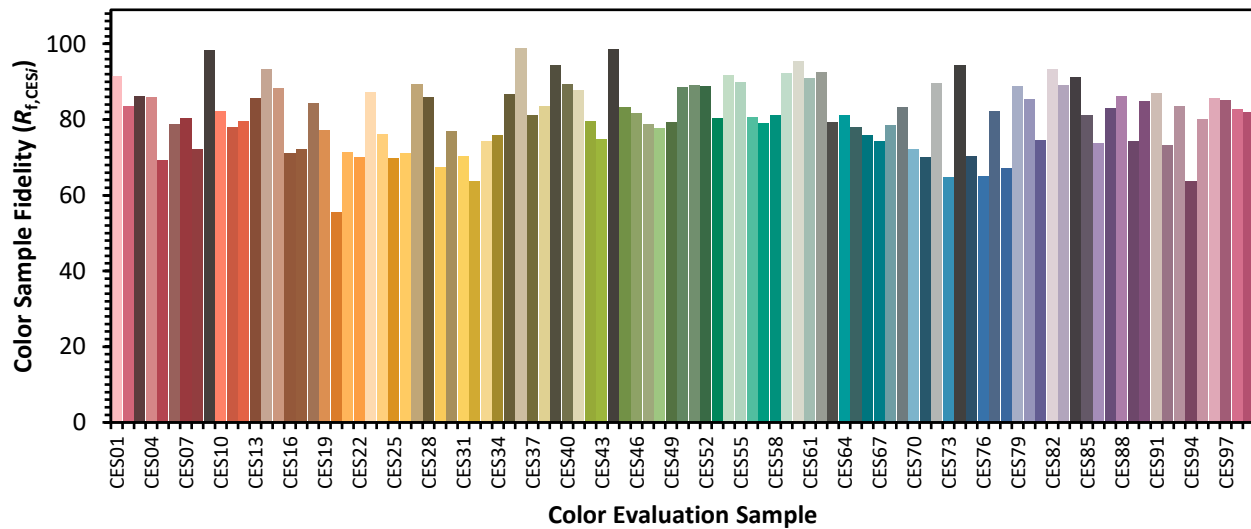


Color Vector Graphics

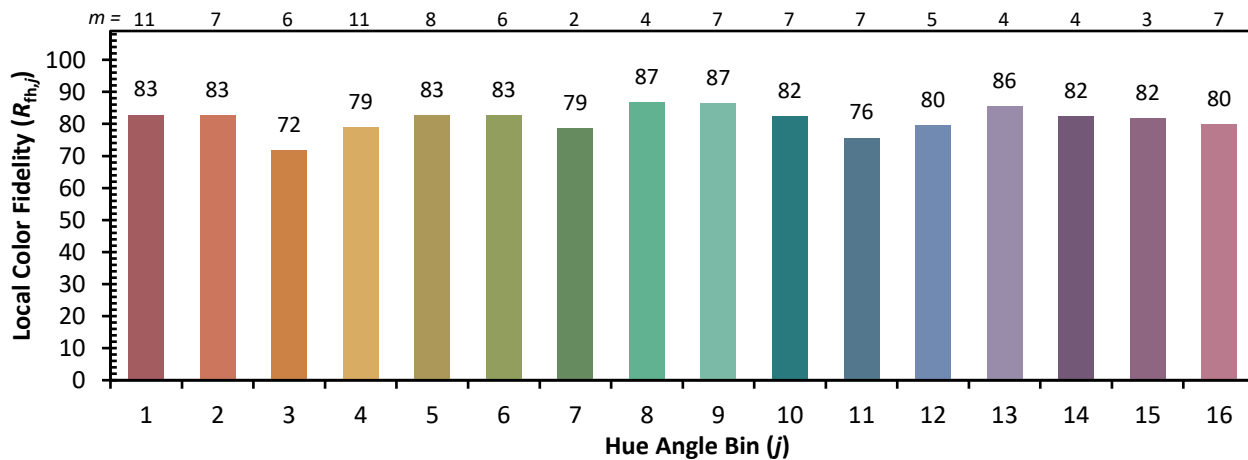
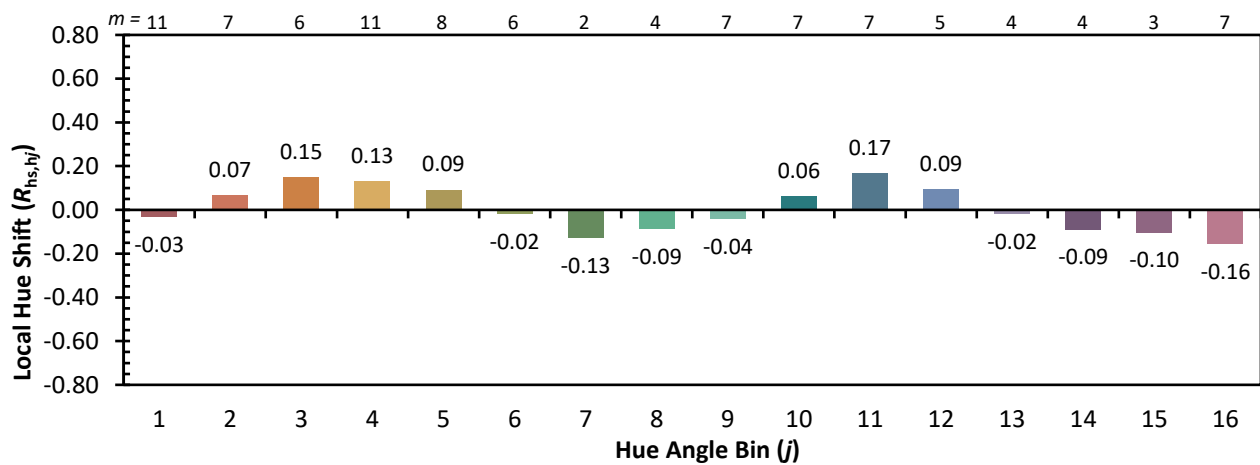
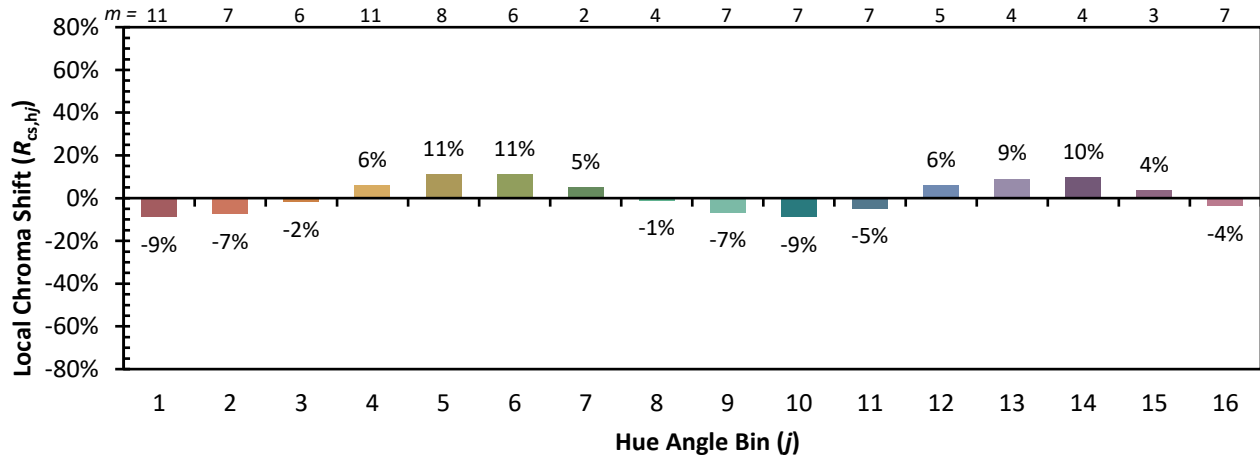


Individual Sample Fidelity Index ($R_{f,i}$)

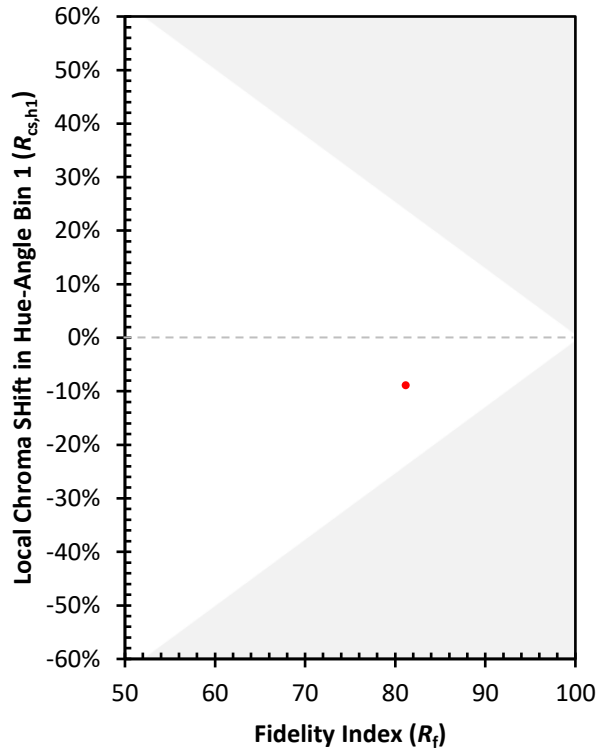
CES01 = 86	CES26 = 71	CES51 = 89	CES76 = 65
CES02 = 63	CES27 = 89	CES52 = 89	CES77 = 82
CES03 = 31	CES28 = 86	CES53 = 80	CES78 = 67
CES04 = 70	CES29 = 68	CES54 = 92	CES79 = 89
CES05 = 50	CES30 = 77	CES55 = 90	CES80 = 85
CES06 = 51	CES31 = 70	CES56 = 81	CES81 = 75
CES07 = 43	CES32 = 64	CES57 = 79	CES82 = 93
CES08 = 41	CES33 = 74	CES58 = 81	CES83 = 89
CES09 = 29	CES34 = 76	CES59 = 92	CES84 = 91
CES10 = 76	CES35 = 87	CES60 = 96	CES85 = 81
CES11 = 59	CES36 = 99	CES61 = 91	CES86 = 74
CES12 = 65	CES37 = 81	CES62 = 93	CES87 = 83
CES13 = 44	CES38 = 83	CES63 = 79	CES88 = 86
CES14 = 74	CES39 = 94	CES64 = 81	CES89 = 74
CES15 = 72	CES40 = 89	CES65 = 78	CES90 = 85
CES16 = 48	CES41 = 88	CES66 = 76	CES91 = 87
CES17 = 50	CES42 = 80	CES67 = 74	CES92 = 73
CES18 = 57	CES43 = 75	CES68 = 79	CES93 = 84
CES19 = 72	CES44 = 99	CES69 = 83	CES94 = 64
CES20 = 67	CES45 = 83	CES70 = 72	CES95 = 80
CES21 = 87	CES46 = 82	CES71 = 70	CES96 = 86
CES22 = 79	CES47 = 79	CES72 = 90	CES97 = 85
CES23 = 92	CES48 = 78	CES73 = 65	CES98 = 83
CES24 = 91	CES49 = 79	CES74 = 94	CES99 = 82
CES25 = 72	CES50 = 88	CES75 = 70	



Color Rendition by Hue-Angle Bin



Measure Comparisons



(END OF REPORT)