

Cooper Lighting Solutions Photometric Lab  
1121 Highway 74 South  
Peachtree City, GA 30269



Scaled data based on original data using  
LM-79-2019 Approved Method: Electrical and Photometric Measurements of Solid-  
State Lighting Products

Test Report Prepared for  
Cooper Lighting Solutions

Brand: METALUX

Report Number: P1444429

Luminaire Tested: EHBR1-12-UNV-TA-L830-UPL24

Issue Date: 5/1/2026

**Test Information**

Test Method: LM-79-2019  
Report Number: P1444429  
REPORT IS A COMBINATION OF REPORTS P1444327 AND P1431635  
Test Lab: INNOVATION CENTER  
Issue Date: 5/1/2026  
Manufacturer: COOPER LIGHTING SOLUTIONS  
Product Line: METALUX  
Catalog Number: EHBR1-12-UNV-TA-L830-UPL24  
Description: Elevate Round Highbay at, 12000 lumens, 3000K 80CRI LEDs with TA lens  
Light Source: -  
Ballast/Driver: -

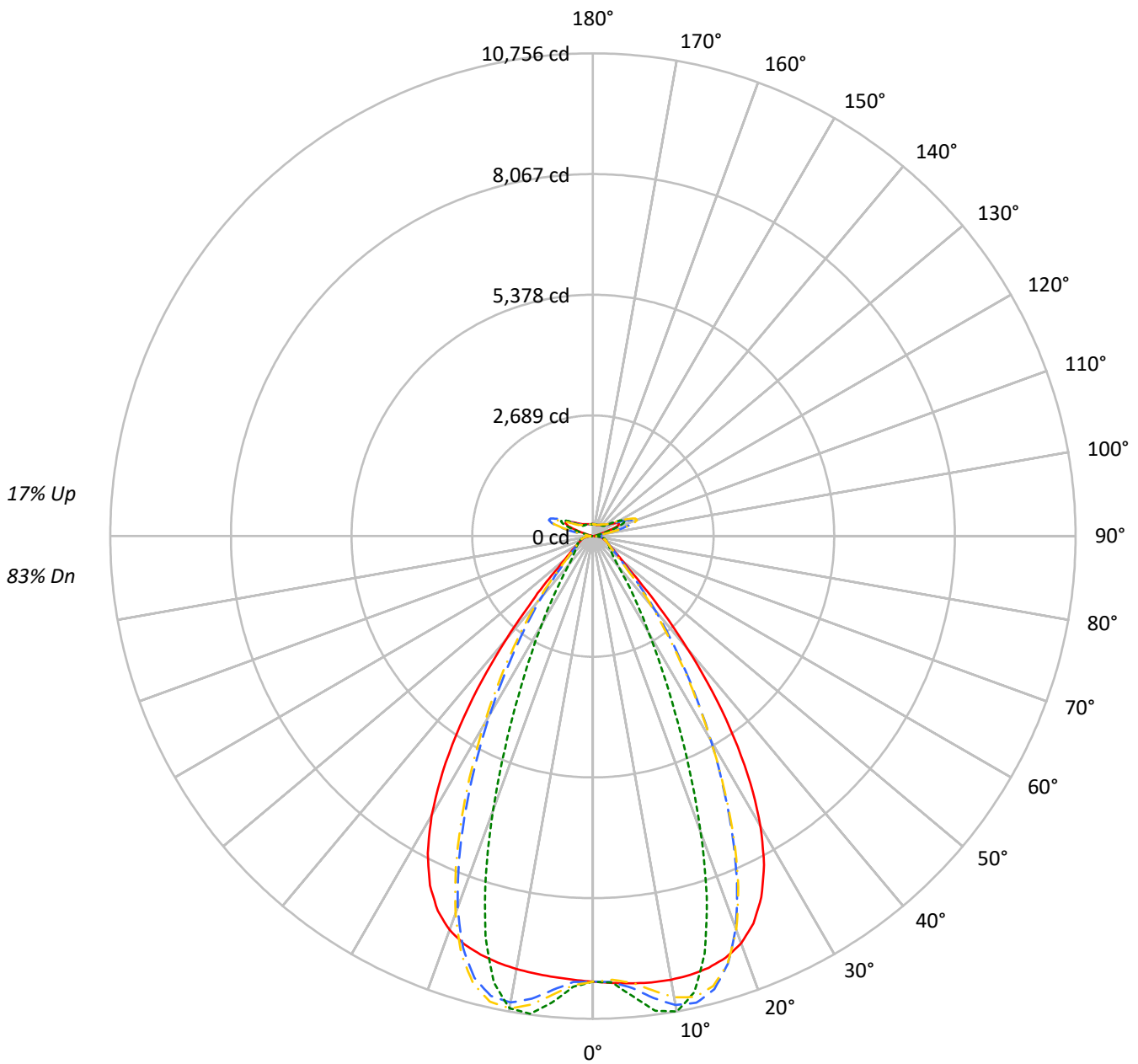
**Summary**

Lumens per Lamp: N/A  
Luminaire Lumens: 13774.3 lumens  
Efficiency: N/A  
Efficacy: 169.6 lumens/watt  
Spacing Criteria (0/90/45): 1.13 / 0.77 / 0.88  
Luminous Opening: Vertical Cylinder (Dia: 1.71' x H: 0.1')  
CIE Type: Semi-Direct

Input Watts (W): 81.2  
Input Voltage (V): NR  
Input Current (A<sub>in</sub>): NR  
Voltage Rise (V): NR  
Power Factor: NR  
Total Harmonic Distortion (THDi): NR  
Frequency (hertz): 60  
Stabilization Time: NR  
Operation Time: NR  
Ambient Temperature (°C): NR  
Test Distance: 24 FT

TEST NUMBER: P1444429  
CATALOG NUMBER: EHBR1-12-UNV-TA-L830-UPL24

### Luminous Intensity Polar Plot



— 0°-180°    - - 45°-225°    - · - 90°-270°    - · - 135°-315°



TEST NUMBER: P1444429  
 CATALOG NUMBER: EHBR1-12-UNV-TA-L830-UPL24

**COEFFICIENT OF UTILIZATION - ZONAL CAVITY METHOD:**

RF	20				20				20				20				20				
RC	80				70				50				30				10			0	
RW	70	50	30	10	70	50	30	10	50	30	10	50	30	10	50	30	10	50	30	10	0
RCR																					
0	115	115	115	115	110	110	110	110	102	102	102	94	94	94	86	86	86	86	86	86	83
1	108	104	101	98	103	100	98	95	93	91	89	86	85	83	80	79	78	78	78	78	75
2	101	95	90	86	97	92	87	83	85	82	79	80	77	75	75	73	71	71	71	71	68
3	94	87	81	76	91	84	78	74	79	74	71	74	70	68	70	67	64	64	64	64	62
4	89	80	73	68	85	77	71	67	73	68	64	69	65	62	65	62	59	59	59	59	57
5	83	73	67	62	80	71	65	61	68	62	58	64	60	56	61	57	54	54	54	54	52
6	78	68	61	56	76	66	60	55	63	58	54	60	55	52	57	53	50	50	50	50	48
7	74	63	56	52	71	62	55	51	59	53	49	56	52	48	54	50	47	47	47	47	45
8	70	59	52	48	67	58	51	47	55	50	46	53	48	45	50	46	43	43	43	43	42
9	66	55	49	44	64	54	48	44	52	46	43	50	45	42	48	44	41	41	41	41	39
10	63	52	45	41	61	51	45	41	49	43	40	47	42	39	45	41	38	38	38	38	37

**AVERAGE LUMINANCE (cd/sqm):**

	0°	90°	180°	270°
0°	46627	46627	46627	46627
5°	46853	48219	46197	48851
10°	47244	50627	46111	50291
15°	47476	45893	46031	44045
20°	46985	34188	45448	31633
25°	44473	21622	43003	19619
30°	38851	12993	37346	11875
35°	29900	8153	28180	7222
40°	18914	5115	17305	4806
45°	9749	3984	9587	3919
50°	5715	3544	5540	3489
55°	4378	3353	4217	3323
60°	3705	3425	3548	3381
65°	3481	3577	3347	3455
70°	3400	3745	3230	3604
75°	3636	3972	3438	3796
80°	3762	4399	3410	4015
85°	3544	4242	2863	3634

**MAXIMUM LUMINANCE 45°-90°:**

Horizontal Angle: 25°  
 Vertical Angle: 45°  
 Luminance: 14919 cd/sqm



TEST NUMBER: P1444429  
 CATALOG NUMBER: EHBR1-12-UNV-TA-L830-UPL24

**ZONAL LUMENS:**

Zone	Lumens	% Fixture
0°-10°	978.5	7.1
10°-20°	2752.7	20.0
20°-30°	3135.1	22.8
30°-40°	2253.4	16.4
40°-50°	1039.2	7.5
50°-60°	497.3	3.6
60°-70°	362.9	2.6
70°-80°	275.7	2.0
80°-90°	129.4	0.9
90°-100°	64.0	0.5
100°-110°	400.2	2.9
110°-120°	740.0	5.4
120°-130°	444.3	3.2
130°-140°	274.8	2.0
140°-150°	195.1	1.4
150°-160°	130.4	0.9
160°-170°	75.9	0.6
170°-180°	25.4	0.2
0°-30°	6866.3	49.8
0°-40°	9119.6	66.2
0°-60°	10656.2	77.4
0°-90°	11424.2	82.9
90°-120°	1204.2	8.7
90°-150°	2118.5	15.4
90°-180°	2350.0	17.1
0°-180°	13774.3	100.0

**CANDELA DISTRIBUTION:**

	0°	90°	180°	270°	360°	Flux
0°	9929	9929	9929	9929	9929	
5°	10004	10296	9864	10430	10004	956
15°	9960	9628	9657	9240	9960	2806
25°	8881	4318	8588	3918	8881	4026
35°	5488	1496	5172	1326	5488	3368
45°	1577	645	1551	634	1577	1342
55°	592	453	570	449	592	546
65°	363	373	349	361	363	363
75°	256	280	242	267	256	266
85°	122	146	98	125	122	114
90°	44	53	21	23	44	26
95°	30	33	30	33	30	28
105°	141	184	93	185	141	188
115°	642	786	673	786	642	592
125°	471	506	535	506	471	429
135°	354	325	383	326	354	277
145°	301	302	322	304	301	191
155°	272	278	292	279	272	127
165°	262	265	273	266	262	75
175°	263	267	269	267	263	25
180°	267	267	267	267	267	



TEST NUMBER: P1444429  
 CATALOG NUMBER: EHBR1-12-UNV-TA-L830-UPL24

**CANDELA DISTRIBUTION (FULL):**

	0°	2.5°	5°	7.5°	10°	12.5°	15°	17.5°	20°	22.5°	25°
0°	9928.9	9928.9	9928.9	9928.9	9928.9	9928.9	9928.9	9928.9	9928.9	9928.9	9928.9
2.5°	9966.9	9966.1	9965.9	9965.3	9965.1	9965.1	9964.7	9963.9	9963.4	9962.3	9961.0
5°	10003.9	10003.4	10003.7	10003.8	10003.0	10001.5	9999.1	9996.1	9992.3	9988.8	9985.7
7.5°	10032.4	10033.2	10034.0	10033.8	10031.7	10028.0	10023.1	10020.3	10021.9	10027.4	10039.7
10°	10037.7	10042.0	10043.6	10043.1	10038.8	10035.6	10036.8	10047.3	10068.3	10096.2	10134.4
12.5°	10017.4	10022.6	10022.4	10020.6	10016.4	10020.7	10036.0	10067.3	10112.1	10167.2	10231.9
15°	9960.2	9967.0	9965.1	9962.8	9960.0	9974.0	10004.4	10058.8	10128.2	10205.8	10285.3
17.5°	9849.2	9857.5	9853.4	9850.9	9848.6	9874.8	9927.1	10006.8	10094.1	10181.9	10257.3
20°	9656.8	9662.2	9652.8	9648.4	9652.1	9703.6	9780.6	9882.4	9974.4	10057.4	10109.0
22.5°	9342.7	9349.6	9331.8	9329.7	9351.6	9430.7	9528.1	9641.8	9728.3	9794.2	9814.0
25°	8881.3	8888.0	8866.9	8879.4	8916.8	9024.5	9140.6	9262.2	9336.0	9384.8	9371.3
27.5°	8258.4	8264.6	8244.5	8270.3	8329.3	8470.8	8607.4	8739.3	8805.1	8839.3	8796.0
30°	7472.9	7485.6	7461.9	7497.9	7587.9	7771.7	7928.2	8076.1	8141.7	8167.7	8100.3
32.5°	6539.9	6558.0	6532.0	6585.4	6711.1	6931.7	7109.5	7274.9	7347.4	7377.1	7300.9
35°	5487.7	5513.6	5483.7	5564.0	5718.9	5964.7	6161.6	6346.1	6432.0	6474.1	6397.3
37.5°	4372.8	4397.6	4381.4	4488.4	4658.6	4913.3	5114.3	5313.4	5410.4	5473.6	5413.1
40°	3278.3	3301.0	3313.1	3435.7	3595.7	3835.8	4028.8	4225.8	4334.3	4413.6	4376.3
42.5°	2313.9	2336.6	2378.3	2496.5	2629.9	2828.7	2994.0	3170.9	3274.5	3359.1	3344.7
45°	1577.3	1603.7	1655.9	1752.7	1849.3	1991.8	2113.2	2250.8	2335.5	2413.0	2413.9
47.5°	1105.3	1123.9	1170.5	1236.5	1299.5	1478.0	1485.3	1553.0	1609.8	1667.8	1675.3
50°	851.8	863.0	887.7	924.6	960.2	1006.6	1049.0	1098.0	1133.0	1164.8	1172.4
52.5°	700.2	707.2	719.9	739.8	760.4	785.7	808.4	835.3	854.4	871.3	874.9
55°	591.7	597.6	616.4	620.2	643.8	648.4	658.5	674.8	686.0	696.1	698.7
57.5°	509.9	514.3	518.2	526.7	534.0	544.6	553.1	564.8	571.9	579.2	579.8
60°	445.4	448.5	451.3	457.2	462.2	469.6	475.5	483.4	488.4	493.9	494.6
62.5°	397.4	399.6	401.5	405.4	408.9	414.6	419.3	425.9	430.6	434.8	435.8
65°	363.3	364.8	366.1	369.0	372.1	376.9	381.1	386.6	390.0	393.3	394.0
67.5°	333.0	334.5	335.8	338.4	340.6	344.2	347.1	351.2	353.7	356.3	356.4
70°	298.3	299.7	300.7	303.2	304.9	308.0	310.3	314.0	316.6	319.5	320.3
72.5°	274.4	275.2	276.4	278.8	281.1	284.5	287.5	291.3	294.5	297.6	298.8
75°	256.1	257.0	257.9	259.8	261.5	264.3	266.6	270.1	272.9	276.1	277.7
77.5°	229.8	230.9	231.6	233.5	235.0	237.6	239.3	242.5	244.8	247.8	249.2
80°	197.9	199.0	199.5	201.3	202.4	205.0	206.5	209.6	211.5	214.4	216.2
82.5°	162.6	163.6	163.9	165.7	166.3	168.3	169.5	172.6	175.0	178.8	181.4
85°	121.8	122.1	122.7	122.2	124.8	124.9	127.7	128.2	131.9	132.8	137.0
87.5°	74.5	75.6	76.1	77.7	78.5	80.2	80.7	82.5	83.6	85.6	86.6
90°	44.0	46.6	48.1	50.9	52.3	54.9	56.2	59.0	60.4	63.3	65.9
92.5°	25.8	27.6	29.3	31.3	33.1	35.2	37.1	39.1	40.8	42.9	46.6
95°	29.5	31.7	33.7	35.9	37.9	40.1	42.2	44.3	46.4	48.5	54.7
97.5°	37.3	39.2	40.9	42.8	44.6	46.5	48.2	50.1	51.9	53.8	61.1
100°	49.0	50.6	52.1	53.7	55.2	56.8	58.3	59.9	61.4	62.9	76.6
102.5°	82.2	87.8	93.2	98.7	104.3	109.7	115.2	120.7	126.2	131.7	160.6
105°	141.1	155.9	170.9	185.7	200.6	215.5	230.4	245.3	260.2	275.1	322.1
107.5°	242.9	270.3	298.0	325.5	353.1	380.7	408.3	435.9	463.4	490.9	538.6
110°	451.4	473.5	495.7	517.9	540.1	562.3	584.5	606.6	628.8	651.0	685.8



TEST NUMBER: P1444429  
 CATALOG NUMBER: EHBR1-12-UNV-TA-L830-UPL24

**CANDELA DISTRIBUTION (continued):**

	0°	2.5°	5°	7.5°	10°	12.5°	15°	17.5°	20°	22.5°	25°
112.5°	609.3	619.4	629.5	639.5	649.6	659.7	669.7	679.8	689.9	699.9	724.8
115°	642.1	645.7	649.2	652.8	656.4	660.0	663.6	667.1	670.7	674.1	691.1
117.5°	621.9	621.3	620.9	620.4	619.7	619.3	618.7	618.1	617.6	617.0	626.7
120°	577.8	574.9	572.0	569.0	566.1	563.0	560.1	557.1	554.1	551.0	555.3
122.5°	522.3	518.8	515.4	511.8	508.3	504.7	501.1	497.5	493.9	490.4	492.1
125°	471.0	467.4	464.0	460.4	456.7	453.1	449.5	445.9	442.2	438.6	439.7
127.5°	425.9	423.5	421.1	418.6	416.2	413.6	411.0	408.5	406.1	403.4	403.9
130°	396.1	394.0	391.8	389.7	387.4	385.1	382.8	380.6	378.3	376.0	376.7
132.5°	371.4	370.0	368.6	367.0	365.5	363.8	362.4	360.6	359.1	357.5	358.3
135°	354.4	353.0	351.7	350.3	348.9	347.5	346.0	344.5	343.1	341.5	342.6
137.5°	339.7	338.5	337.3	336.1	334.8	333.5	332.2	330.8	329.4	328.1	329.0
140°	326.3	325.2	324.1	323.0	321.9	320.7	319.5	318.3	317.1	315.9	317.0
142.5°	311.5	310.7	310.0	309.0	308.3	307.2	306.3	305.4	304.4	303.5	304.9
145°	301.4	300.8	300.2	299.5	298.8	298.0	297.3	296.5	295.7	295.0	296.5
147.5°	292.6	292.2	291.7	291.1	290.7	290.0	289.4	288.8	288.2	287.6	289.0
150°	284.9	284.4	284.0	283.4	282.9	282.3	281.8	281.2	280.6	280.0	281.5
152.5°	277.0	276.5	276.1	275.6	275.1	274.5	274.1	273.4	272.9	272.3	273.5
155°	271.7	271.3	270.8	270.3	269.9	269.3	268.7	268.3	267.7	267.1	268.3
157.5°	267.9	267.5	267.3	266.9	266.6	266.1	265.8	265.4	265.1	264.7	265.5
160°	265.5	265.2	264.8	264.5	264.1	263.8	263.4	263.0	262.7	262.4	263.0
162.5°	263.1	262.7	262.5	262.1	261.8	261.3	261.1	260.7	260.4	259.9	260.8
165°	262.0	261.8	261.6	261.4	261.2	261.1	260.9	260.7	260.5	260.3	260.8
167.5°	263.3	262.9	262.7	262.4	262.1	261.8	261.5	261.2	261.0	260.5	261.2
170°	263.1	262.9	262.8	262.7	262.6	262.5	262.4	262.2	262.0	261.9	262.4
172.5°	264.0	263.8	263.7	263.7	263.5	263.4	263.3	263.2	263.1	263.0	263.5
175°	263.4	263.2	263.2	263.1	263.0	263.0	262.9	262.8	262.8	262.7	263.0
177.5°	265.0	264.9	264.9	264.9	264.9	264.9	264.8	264.7	264.7	264.7	265.0
180°	266.6	266.6	266.6	266.6	266.6	266.6	266.6	266.6	266.6	266.6	266.6



TEST NUMBER: P1444429  
 CATALOG NUMBER: EHBR1-12-UNV-TA-L830-UPL24

**CANDELA DISTRIBUTION (continued):**

	27.5°	30°	32.5°	35°	37.5°	40°	42.5°	45°	47.5°	50°	52.5°
0°	9928.9	9928.9	9928.9	9928.9	9928.9	9928.9	9928.9	9928.9	9928.9	9928.9	9928.9
2.5°	9960.0	9958.8	9957.1	9955.1	9953.3	9951.1	9946.2	9944.7	9946.3	9947.5	9949.7
5°	9983.6	9984.4	9984.7	9989.2	9993.1	10002.8	10079.2	10109.5	10133.0	10147.9	10170.6
7.5°	10055.0	10078.0	10100.7	10131.3	10157.6	10193.2	10326.8	10383.7	10424.2	10453.2	10489.0
10°	10175.9	10226.1	10273.1	10328.1	10375.5	10429.6	10554.0	10609.4	10644.5	10670.0	10693.7
12.5°	10297.7	10367.2	10430.1	10491.3	10542.6	10589.6	10633.3	10652.7	10654.3	10655.2	10642.5
15°	10361.2	10427.6	10483.0	10523.5	10553.6	10566.9	10491.6	10452.1	10402.2	10361.0	10293.3
17.5°	10321.1	10361.0	10384.9	10382.6	10370.1	10328.4	10115.1	9997.8	9881.2	9776.2	9638.6
20°	10143.2	10140.1	10119.3	10060.3	9989.4	9879.0	9513.2	9302.2	9098.2	8919.0	8701.6
22.5°	9812.0	9759.9	9687.3	9560.2	9419.1	9226.3	8702.1	8391.6	8107.6	7856.6	7575.5
25°	9332.2	9225.0	9091.0	8889.4	8670.1	8388.8	7742.7	7356.6	7015.6	6719.8	6395.5
27.5°	8718.1	8556.6	8360.3	8081.2	7784.1	7423.8	6707.5	6281.4	5915.2	5598.1	5253.0
30°	7991.2	7781.1	7527.7	7181.2	6822.8	6414.1	5687.7	5256.1	4885.5	4559.2	4213.8
32.5°	7169.7	6923.7	6626.6	6237.7	5850.2	5430.0	4728.4	4310.6	3956.7	3642.8	3330.1
35°	6263.5	5999.7	5685.4	5288.8	4903.6	4495.1	3851.3	3474.6	3162.0	2884.6	2632.2
37.5°	5291.6	5032.6	4733.8	4360.0	4002.8	3632.6	3077.1	2761.4	2499.1	2268.9	2074.0
40°	4280.9	4054.4	3795.8	3472.7	3167.9	2859.5	2403.5	2152.9	1945.9	1770.4	1624.3
42.5°	3282.7	3107.1	2908.9	2653.5	2420.3	2185.4	1834.5	1648.9	1495.5	1369.1	1265.9
45°	2381.8	2264.2	2131.3	1953.8	1792.4	1628.6	1378.8	1248.4	1148.5	1067.0	998.1
47.5°	1665.0	1596.8	1592.7	1428.6	1310.3	1210.1	1049.2	966.8	905.6	856.2	812.6
50°	1169.3	1136.3	1095.3	1036.7	981.9	925.3	827.2	777.4	741.6	711.6	684.1
52.5°	874.1	857.0	835.2	804.1	774.4	742.5	680.4	648.8	637.5	609.6	587.8
55°	698.1	688.4	675.9	657.7	639.6	632.4	579.2	555.7	540.7	529.7	518.0
57.5°	579.9	572.6	565.2	552.8	542.4	529.7	501.5	489.4	480.5	474.1	465.9
60°	494.7	490.3	486.2	478.9	473.2	466.4	448.5	441.7	437.1	433.1	428.0
62.5°	436.6	434.4	432.2	428.4	425.5	421.8	409.5	406.3	403.9	401.9	398.9
65°	394.7	393.0	391.9	389.3	387.9	385.7	375.2	373.0	371.6	370.8	369.0
67.5°	356.6	354.9	354.2	352.3	351.7	350.3	341.7	340.5	340.0	340.3	339.7
70°	321.0	320.3	320.6	320.4	321.2	321.4	316.2	316.1	316.7	317.8	317.9
72.5°	299.7	299.7	300.0	300.2	301.0	301.3	297.0	296.8	297.0	297.9	297.9
75°	279.3	279.7	280.7	281.1	282.0	282.2	276.5	275.9	275.9	276.6	276.4
77.5°	251.2	252.4	254.5	255.6	257.4	257.7	251.3	250.5	250.6	251.3	250.7
80°	219.3	221.6	225.0	227.3	230.1	231.1	224.5	222.9	221.4	221.3	219.9
82.5°	185.5	188.3	192.3	194.4	197.3	197.9	186.9	184.7	183.5	183.6	182.4
85°	141.5	143.7	147.3	148.6	150.3	150.2	137.5	132.1	133.6	131.3	133.1
87.5°	88.8	90.0	92.4	92.6	93.5	93.3	80.6	78.0	77.3	77.4	76.4
90°	69.6	72.2	75.9	77.7	80.7	82.3	73.7	74.3	71.8	70.9	68.1
92.5°	50.4	54.0	57.8	61.5	65.3	69.0	71.6	74.9	71.1	67.1	63.3
95°	60.9	67.1	73.3	79.5	85.7	91.9	98.1	104.3	98.4	92.6	86.8
97.5°	68.4	75.7	83.0	90.4	97.7	105.0	112.3	119.6	113.4	107.2	101.0
100°	90.2	103.9	117.5	131.0	144.7	158.4	172.0	185.7	173.7	161.7	149.7
102.5°	189.6	218.5	247.5	276.4	305.4	334.3	363.3	392.3	364.8	337.3	309.9
105°	369.1	416.0	462.9	509.9	556.7	603.7	650.7	697.7	653.7	609.8	565.9
107.5°	586.2	633.8	681.4	728.9	776.6	824.2	872.0	919.7	876.9	834.0	791.2
110°	720.6	755.4	790.2	825.0	859.8	894.6	929.7	964.4	938.8	913.1	887.3



TEST NUMBER: P1444429  
 CATALOG NUMBER: EHBR1-12-UNV-TA-L830-UPL24

**CANDELA DISTRIBUTION (continued):**

	27.5°	30°	32.5°	35°	37.5°	40°	42.5°	45°	47.5°	50°	52.5°
112.5°	749.7	774.8	799.7	824.6	849.4	874.3	899.7	924.6	911.9	899.1	886.2
115°	708.1	724.9	741.8	758.6	775.6	792.4	809.6	826.6	822.6	818.7	814.7
117.5°	636.1	645.7	655.2	664.8	674.1	683.7	693.7	703.4	704.3	705.2	706.2
120°	559.4	563.6	567.7	572.0	576.0	580.2	584.9	589.2	592.9	596.6	600.3
122.5°	493.8	495.6	497.3	499.1	500.8	502.5	504.9	506.9	509.5	512.2	514.9
125°	440.6	441.7	442.7	443.7	444.6	445.7	447.5	448.6	449.2	449.4	450.0
127.5°	404.3	404.8	405.1	405.7	406.0	406.4	407.7	408.3	407.2	406.1	404.8
130°	377.4	378.1	378.7	379.5	380.1	380.8	382.4	383.3	381.1	378.7	376.5
132.5°	359.1	360.0	360.7	361.6	362.3	363.2	364.9	366.0	363.4	360.6	358.0
135°	343.4	344.4	345.3	346.3	347.1	348.3	350.2	351.5	348.9	346.3	343.8
137.5°	329.9	330.8	331.9	332.8	333.7	334.7	336.9	338.2	336.2	334.1	332.2
140°	318.0	319.1	320.2	321.4	322.4	323.6	326.0	327.4	326.0	324.3	322.8
142.5°	306.2	307.6	309.0	310.6	312.0	313.4	316.2	317.9	316.9	315.8	314.7
145°	297.9	299.6	301.1	302.7	304.2	305.9	308.9	310.9	310.3	309.7	309.0
147.5°	290.4	291.8	293.2	294.7	296.2	297.8	300.8	302.7	302.3	302.0	301.6
150°	282.8	284.3	285.7	287.2	288.8	290.3	293.7	295.6	295.3	295.1	294.8
152.5°	274.9	276.1	277.5	278.9	280.3	281.7	285.4	287.3	287.0	286.6	286.4
155°	269.2	270.3	271.4	272.5	273.5	274.7	278.4	280.2	280.1	280.0	279.8
157.5°	266.2	267.1	267.7	268.6	269.4	270.3	273.9	275.5	275.4	275.2	275.1
160°	263.6	264.2	264.9	265.6	266.2	267.0	270.6	272.0	271.9	271.7	271.6
162.5°	261.5	262.5	263.1	264.0	264.8	265.7	269.4	271.0	270.7	270.5	270.2
165°	261.3	261.8	262.4	262.9	263.5	264.1	267.4	268.6	268.6	268.5	268.4
167.5°	261.6	262.3	262.7	263.3	263.9	264.5	267.6	268.9	268.8	268.7	268.6
170°	262.7	263.2	263.7	264.2	264.6	265.2	267.8	268.7	268.6	268.4	268.2
172.5°	264.0	264.5	265.0	265.5	265.9	266.5	268.7	269.8	269.6	269.4	269.1
175°	263.5	263.8	264.2	264.6	265.0	265.4	267.2	267.9	267.8	267.8	267.7
177.5°	265.3	265.5	265.7	266.0	266.3	266.6	267.7	268.2	268.2	268.2	268.1
180°	266.6	266.6	266.6	266.6	266.6	266.6	266.6	266.6	266.6	266.6	266.6



TEST NUMBER: P1444429  
 CATALOG NUMBER: EHBR1-12-UNV-TA-L830-UPL24

**CANDELA DISTRIBUTION (continued):**

	55°	57.5°	60°	62.5°	65°	67.5°	70°	72.5°	75°	77.5°	80°
0°	9928.9	9928.9	9928.9	9928.9	9928.9	9928.9	9928.9	9928.9	9928.9	9928.9	9928.9
2.5°	9950.3	9953.7	9954.3	9958.3	9958.1	9962.8	9962.1	9966.1	9963.8	9967.1	9964.2
5°	10184.0	10205.2	10216.2	10236.9	10243.5	10261.9	10267.2	10284.1	10284.8	10298.2	10295.1
7.5°	10514.4	10545.7	10564.2	10589.8	10602.7	10624.0	10633.3	10649.2	10654.2	10666.7	10667.7
10°	10711.6	10726.8	10737.4	10744.6	10751.1	10754.2	10757.7	10756.8	10757.7	10756.3	10759.4
12.5°	10634.1	10611.9	10597.3	10569.5	10553.4	10522.8	10507.7	10478.3	10467.5	10442.2	10438.6
15°	10241.0	10163.9	10109.3	10030.0	9980.1	9902.0	9856.4	9786.0	9753.9	9697.8	9683.1
17.5°	9524.6	9381.3	9270.4	9128.2	9029.5	8896.5	8812.9	8702.9	8642.5	8553.8	8523.1
20°	8520.3	8308.3	8142.0	7943.8	7801.9	7625.3	7512.1	7369.5	7286.7	7177.6	7133.4
22.5°	7341.2	7077.2	6869.4	6635.4	6464.2	6267.3	6131.8	5977.4	5887.3	5768.9	5716.5
25°	6125.9	5834.8	5603.8	5357.1	5176.3	4979.0	4843.4	4691.8	4598.5	4486.1	4434.0
27.5°	4963.5	4668.8	4445.6	4216.3	4050.5	3872.4	3750.1	3617.7	3535.0	3438.9	3389.9
30°	3937.8	3677.9	3487.9	3297.7	3159.7	3015.1	2913.4	2803.7	2731.1	2648.9	2602.2
32.5°	3102.1	2901.5	2752.7	2601.7	2488.8	2367.9	2280.1	2183.3	2117.7	2044.4	2002.1
35°	2456.9	2300.9	2182.3	2057.9	1961.0	1858.1	1780.7	1697.0	1638.3	1575.1	1538.6
37.5°	1941.1	1817.2	1719.6	1616.3	1536.7	1451.3	1422.6	1326.8	1265.8	1215.4	1180.4
40°	1523.5	1424.8	1344.1	1265.1	1200.1	1135.5	1083.5	1032.3	992.9	956.8	931.9
42.5°	1189.7	1118.2	1059.2	1001.4	954.0	906.9	869.3	834.0	807.5	783.9	767.8
45°	945.7	896.6	855.6	814.8	781.4	750.0	724.6	702.2	685.0	670.9	660.8
47.5°	776.9	743.3	714.4	686.9	664.2	643.6	626.7	621.1	602.7	590.3	585.6
50°	660.3	640.0	618.0	597.7	582.5	567.5	556.5	545.7	538.8	533.1	531.4
52.5°	573.3	557.7	545.4	532.6	522.7	511.9	504.3	497.1	493.4	490.4	490.0
55°	508.5	497.7	489.5	480.9	474.9	468.6	464.7	461.0	459.3	457.8	457.9
57.5°	459.5	452.2	447.0	441.5	438.2	435.2	434.2	433.2	433.7	434.0	434.8
60°	423.9	419.1	415.8	412.6	411.2	410.3	411.0	411.9	413.7	415.0	416.3
62.5°	396.5	393.8	392.2	390.4	390.3	390.4	391.8	393.3	395.5	397.1	398.3
65°	368.3	366.8	366.3	365.2	365.7	366.1	367.8	369.0	371.1	372.4	373.9
67.5°	339.9	339.6	339.8	339.8	340.9	341.7	343.4	344.6	346.5	347.7	348.9
70°	318.9	319.0	319.8	320.0	321.0	321.6	323.1	323.9	325.5	326.5	328.0
72.5°	298.4	298.2	298.3	297.9	298.2	298.1	298.9	299.3	300.7	301.4	303.3
75°	276.7	275.8	275.6	274.5	274.6	273.9	274.3	274.2	275.1	275.5	276.8
77.5°	250.5	248.9	248.1	246.5	246.4	245.9	246.5	246.9	248.5	249.4	250.9
80°	219.0	216.6	215.4	213.6	213.9	213.8	215.4	216.7	218.6	219.0	220.9
82.5°	182.0	179.6	178.3	176.5	176.9	177.0	178.4	178.7	180.4	181.2	183.4
85°	130.3	131.3	128.7	128.9	128.3	129.4	130.3	131.6	133.0	135.4	137.2
87.5°	76.7	76.4	77.4	77.5	78.8	79.5	81.6	82.8	85.2	87.1	90.5
90°	66.6	63.9	63.1	61.1	60.9	59.0	59.0	57.2	57.4	56.4	57.0
92.5°	59.2	55.3	51.2	47.4	43.4	39.6	37.7	35.9	34.0	32.3	30.3
95°	81.1	75.3	69.6	63.8	58.1	52.3	50.1	48.1	45.9	43.8	41.7
97.5°	94.8	88.5	82.3	76.1	69.9	63.7	62.3	60.9	59.5	58.1	56.7
100°	137.7	125.8	113.8	101.7	89.8	77.8	76.7	75.6	74.5	73.3	72.2
102.5°	282.4	255.0	227.5	200.1	172.6	145.1	140.3	135.5	130.8	126.0	121.2
105°	521.9	478.0	434.2	390.1	346.3	302.4	289.3	276.1	263.0	249.9	236.9
107.5°	748.3	705.5	662.7	619.9	577.1	534.3	513.6	492.9	472.2	451.5	430.8
110°	861.7	836.0	810.4	784.6	759.0	733.4	713.7	693.9	674.1	654.5	634.7



TEST NUMBER: P1444429  
 CATALOG NUMBER: EHBR1-12-UNV-TA-L830-UPL24

**CANDELA DISTRIBUTION (continued):**

	55°	57.5°	60°	62.5°	65°	67.5°	70°	72.5°	75°	77.5°	80°
112.5°	873.4	860.6	847.9	835.1	822.3	809.6	799.9	790.4	780.8	771.2	761.5
115°	810.8	806.8	802.9	798.9	795.1	791.1	790.5	789.8	789.2	788.6	788.0
117.5°	707.0	708.0	708.9	709.9	710.9	711.8	717.1	722.3	727.5	732.8	738.2
120°	604.0	607.7	611.5	615.2	618.9	622.6	629.7	636.7	643.8	650.8	658.0
122.5°	517.5	520.2	522.9	525.7	528.3	531.0	538.0	545.1	552.1	559.0	566.2
125°	450.3	450.7	451.1	451.5	451.9	452.3	458.2	464.0	469.9	475.8	481.7
127.5°	403.7	402.5	401.3	400.2	398.9	397.8	401.4	404.9	408.5	412.1	415.7
130°	374.1	371.9	369.4	367.2	364.8	362.6	364.2	365.7	367.3	368.9	370.5
132.5°	355.2	352.5	349.7	347.0	344.1	341.5	341.7	342.0	342.3	342.6	342.9
135°	341.1	338.5	335.9	333.3	330.7	328.1	327.7	327.2	326.8	326.3	326.0
137.5°	330.2	328.1	326.1	324.1	322.0	320.1	319.3	318.6	317.8	317.2	316.5
140°	321.2	319.7	318.0	316.5	314.8	313.4	312.8	312.2	311.5	311.1	310.5
142.5°	313.5	312.4	311.3	310.1	309.0	307.9	307.3	306.8	306.2	305.7	305.2
145°	308.4	307.7	307.0	306.4	305.6	305.1	304.5	304.2	303.8	303.5	303.1
147.5°	301.3	300.9	300.6	300.2	299.8	299.5	299.2	299.0	298.7	298.6	298.3
150°	294.3	294.0	293.7	293.4	293.0	292.7	292.5	292.5	292.4	292.5	292.3
152.5°	286.1	285.8	285.4	285.2	284.8	284.5	284.4	284.5	284.4	284.4	284.3
155°	279.6	279.5	279.3	279.1	279.0	278.8	278.7	278.5	278.3	278.1	277.9
157.5°	275.0	274.8	274.6	274.5	274.4	274.2	274.0	273.9	273.7	273.6	273.4
160°	271.5	271.4	271.2	271.1	270.9	270.8	270.4	270.1	269.9	269.6	269.2
162.5°	270.0	269.6	269.4	269.1	268.8	268.6	268.4	268.2	268.0	267.9	267.7
165°	268.2	268.1	267.9	267.7	267.6	267.5	267.2	266.9	266.7	266.3	266.0
167.5°	268.5	268.4	268.2	268.1	267.9	267.8	267.5	267.2	266.9	266.7	266.3
170°	267.9	267.6	267.4	267.1	266.9	266.6	266.3	266.1	265.7	265.6	265.2
172.5°	268.9	268.7	268.5	268.3	268.0	267.8	267.5	267.3	267.1	266.9	266.6
175°	267.6	267.6	267.6	267.4	267.4	267.3	267.2	267.2	267.1	267.1	267.1
177.5°	268.1	268.1	268.1	268.0	268.0	268.0	267.8	267.6	267.5	267.2	267.1
180°	266.6	266.6	266.6	266.6	266.6	266.6	266.6	266.6	266.6	266.6	266.6



TEST NUMBER: P1444429  
 CATALOG NUMBER: EHBR1-12-UNV-TA-L830-UPL24

**CANDELA DISTRIBUTION (continued):**

	82.5°	85°	87.5°	90°	92.5°	95°	97.5°	100°	102.5°	105°	107.5°
0°	9928.9	9928.9	9928.9	9928.9	9928.9	9928.9	9928.9	9928.9	9928.9	9928.9	9928.9
2.5°	9967.1	9964.6	9965.8	9961.1	9962.3	9956.7	9956.1	9949.7	9949.2	9943.2	9940.9
5°	10304.6	10299.0	10305.3	10295.6	10297.5	10284.8	10283.8	10267.3	10261.6	10241.1	10232.2
7.5°	10675.5	10673.4	10677.3	10669.1	10668.8	10657.5	10652.8	10638.1	10628.9	10607.4	10593.6
10°	10756.8	10758.7	10755.6	10756.3	10751.9	10750.7	10746.2	10743.3	10735.9	10730.3	10722.0
12.5°	10419.4	10421.4	10408.5	10416.7	10410.2	10425.3	10424.1	10441.8	10444.5	10467.0	10475.5
15°	9639.6	9637.1	9612.4	9628.1	9619.6	9652.7	9660.1	9704.6	9728.3	9785.4	9820.5
17.5°	8461.6	8455.2	8420.5	8439.4	8429.7	8478.5	8494.8	8565.9	8610.2	8702.2	8767.8
20°	7057.4	7045.2	7004.5	7026.7	7016.8	7072.2	7095.5	7181.4	7238.5	7360.4	7447.0
22.5°	5635.7	5616.5	5576.6	5597.4	5587.9	5645.3	5675.7	5761.9	5827.4	5952.4	6053.6
25°	4359.1	4341.9	4303.4	4317.9	4314.5	4362.9	4390.0	4471.5	4535.8	4655.0	4751.5
27.5°	3324.8	3307.0	3272.1	3282.4	3278.9	3320.2	3345.6	3413.7	3469.2	3569.4	3654.2
30°	2544.7	2523.1	2493.6	2499.2	2496.9	2530.3	2554.1	2611.5	2658.9	2743.7	2816.8
32.5°	1950.5	1928.9	1901.7	1904.3	1900.8	1927.1	1946.7	1996.5	2037.9	2109.9	2173.5
35°	1492.4	1517.7	1459.8	1496.4	1458.3	1514.3	1494.1	1525.3	1560.9	1621.6	1674.6
37.5°	1147.3	1129.7	1114.8	1113.2	1113.1	1126.1	1141.5	1171.4	1202.8	1248.1	1294.8
40°	909.2	896.8	887.2	886.5	887.2	896.4	907.8	928.5	951.4	983.9	1018.3
42.5°	754.1	745.9	740.0	739.6	741.5	748.1	755.9	768.2	783.2	804.3	827.8
45°	652.6	648.1	644.8	644.6	645.5	649.0	653.4	661.1	670.6	683.7	698.7
47.5°	581.5	580.4	578.3	578.4	577.5	578.9	579.4	583.8	588.7	598.7	618.1
50°	529.7	529.7	528.3	528.2	526.9	526.8	525.7	527.4	529.7	535.9	542.1
52.5°	488.7	488.6	487.1	486.8	485.4	485.3	484.4	485.0	485.3	488.4	492.1
55°	456.7	455.7	453.7	453.1	452.6	453.4	453.0	453.1	452.6	453.9	455.1
57.5°	433.7	432.5	430.6	430.0	429.9	430.9	430.9	430.6	428.8	427.7	426.0
60°	415.5	414.3	412.2	411.8	412.1	413.4	413.3	412.2	409.6	407.4	404.8
62.5°	397.7	397.2	396.1	396.0	395.8	395.9	395.1	393.9	391.4	388.9	386.1
65°	373.7	374.0	373.3	373.4	372.4	372.2	370.8	369.7	367.2	365.0	362.1
67.5°	348.9	349.1	348.5	348.5	348.0	348.1	347.1	346.1	344.0	342.2	339.9
70°	328.4	328.9	328.5	328.6	328.0	327.8	326.5	325.5	323.3	321.8	319.7
72.5°	303.9	304.9	304.9	305.2	304.2	303.9	302.3	301.0	298.9	297.8	296.2
75°	277.4	278.8	279.1	279.8	278.6	277.9	276.1	275.1	273.5	272.8	271.7
77.5°	251.5	253.1	254.6	256.0	253.9	252.2	250.0	248.3	246.0	245.0	243.4
80°	222.5	225.3	228.6	231.4	227.7	224.1	220.5	217.9	214.7	213.4	211.3
82.5°	184.5	187.4	189.3	191.1	188.6	185.9	182.5	180.1	176.8	175.4	173.1
85°	140.2	143.8	144.9	145.8	144.3	142.8	139.6	135.2	133.1	129.7	128.0
87.5°	92.2	94.3	94.8	95.1	94.0	93.4	91.3	89.3	85.6	82.9	79.7
90°	55.6	55.7	53.6	52.8	52.7	54.1	53.2	53.8	51.9	52.1	50.5
92.5°	28.6	26.7	24.8	23.0	25.0	26.7	28.7	30.3	32.2	34.0	35.9
95°	39.6	37.5	35.4	33.3	34.9	36.6	38.3	40.0	41.7	43.4	45.1
97.5°	55.3	53.9	52.5	51.1	52.1	53.0	54.0	55.0	56.0	57.0	58.1
100°	71.1	70.0	68.8	67.7	67.7	67.7	67.7	67.7	67.7	67.7	67.7
102.5°	116.4	111.7	106.9	102.1	105.4	108.6	111.8	115.0	118.3	121.5	124.9
105°	223.8	210.7	197.6	184.5	197.2	209.8	222.6	235.2	247.9	260.6	273.3
107.5°	410.1	389.5	368.8	348.1	371.1	394.2	417.3	440.3	463.4	486.4	509.7
110°	615.0	595.4	575.6	555.9	580.4	604.9	629.4	653.8	678.4	702.8	727.4



TEST NUMBER: P1444429  
 CATALOG NUMBER: EHBR1-12-UNV-TA-L830-UPL24

**CANDELA DISTRIBUTION (continued):**

	82.5°	85°	87.5°	90°	92.5°	95°	97.5°	100°	102.5°	105°	107.5°
112.5°	751.9	742.3	732.8	723.2	739.0	754.7	770.5	786.4	802.1	817.9	833.8
115°	787.4	786.8	786.3	785.7	793.2	800.6	808.1	815.5	823.1	830.5	838.1
117.5°	743.5	748.8	754.1	759.5	761.9	764.3	766.7	769.0	771.6	773.9	776.4
120°	665.1	672.2	679.3	686.5	685.5	684.5	683.5	682.6	681.7	680.8	680.0
122.5°	573.3	580.4	587.5	594.7	592.7	590.5	588.4	586.3	584.4	582.3	580.4
125°	487.7	493.6	499.5	505.6	503.5	501.4	499.3	497.3	495.2	493.3	491.3
127.5°	419.4	423.2	426.9	430.6	429.6	428.6	427.7	426.9	425.9	425.1	424.2
130°	372.2	373.9	375.6	377.4	377.7	378.0	378.3	378.7	379.2	379.6	380.0
132.5°	343.4	343.8	344.2	344.7	345.8	347.0	348.2	349.4	350.7	351.9	353.3
135°	325.7	325.4	325.1	324.9	326.6	328.3	330.0	331.8	333.7	335.5	337.5
137.5°	315.9	315.3	314.7	314.3	316.0	317.6	319.4	321.1	323.0	324.9	326.8
140°	310.1	309.6	309.3	308.8	310.5	312.2	313.9	315.7	317.5	319.4	321.3
142.5°	304.7	304.2	303.9	303.5	305.0	306.6	308.2	309.8	311.5	313.1	314.8
145°	302.8	302.5	302.3	302.0	303.0	304.1	305.4	306.6	307.8	309.0	310.3
147.5°	298.2	298.1	298.0	297.9	298.7	299.6	300.4	301.2	302.3	303.2	304.2
150°	292.5	292.4	292.4	292.5	293.0	293.6	294.1	294.7	295.3	295.9	296.7
152.5°	284.4	284.3	284.5	284.5	284.9	285.5	286.1	286.5	287.2	287.8	288.4
155°	277.9	277.7	277.6	277.5	277.7	278.0	278.3	278.5	278.8	279.0	279.3
157.5°	273.3	273.1	273.1	273.0	273.1	273.1	273.2	273.2	273.4	273.4	273.6
160°	269.1	268.7	268.5	268.2	268.4	268.6	268.8	268.9	269.2	269.4	269.6
162.5°	267.6	267.4	267.3	267.1	267.1	267.0	266.9	266.8	266.7	266.6	266.6
165°	265.7	265.5	265.2	264.9	264.9	265.0	265.0	265.1	265.1	265.2	265.2
167.5°	266.1	265.7	265.6	265.2	265.1	264.7	264.6	264.2	264.2	263.9	263.8
170°	265.0	264.7	264.5	264.2	264.2	264.1	264.1	263.9	263.9	263.9	263.9
172.5°	266.4	266.1	265.9	265.7	265.6	265.6	265.5	265.5	265.4	265.4	265.4
175°	267.0	267.0	266.9	266.8	266.7	266.5	266.4	266.2	266.1	265.8	265.7
177.5°	267.0	266.8	266.6	266.5	266.5	266.5	266.5	266.5	266.5	266.4	266.4
180°	266.6	266.6	266.6	266.6	266.6	266.6	266.6	266.6	266.6	266.6	266.6



TEST NUMBER: P1444429  
 CATALOG NUMBER: EHBR1-12-UNV-TA-L830-UPL24

**CANDELA DISTRIBUTION (continued):**

	110°	112.5°	115°	117.5°	120°	122.5°	125°	127.5°	130°	132.5°	135°
0°	9928.9	9928.9	9928.9	9928.9	9928.9	9928.9	9928.9	9928.9	9928.9	9928.9	9928.9
2.5°	9934.5	9931.8	9924.9	9921.5	9915.2	9912.0	9907.0	9903.8	9899.8	9896.8	9895.3
5°	10209.7	10197.0	10171.5	10155.9	10128.4	10110.3	10082.9	10063.0	10034.8	10014.0	9987.3
7.5°	10567.8	10548.3	10515.7	10491.0	10452.5	10423.1	10380.0	10345.4	10297.7	10258.2	10209.5
10°	10713.6	10702.2	10687.6	10671.6	10650.4	10629.5	10600.0	10570.0	10529.9	10490.1	10438.1
12.5°	10498.1	10508.8	10529.9	10539.8	10556.0	10561.4	10568.8	10565.3	10558.9	10542.6	10519.0
15°	9887.8	9932.5	10003.2	10052.0	10120.5	10168.6	10232.2	10273.2	10320.4	10348.6	10375.4
17.5°	8883.9	8970.4	9095.1	9194.5	9328.0	9436.6	9569.6	9674.1	9794.8	9887.3	9985.9
20°	7598.0	7719.1	7891.2	8037.4	8230.9	8395.0	8605.2	8781.3	8986.6	9157.8	9342.6
22.5°	6214.1	6356.5	6553.8	6730.1	6961.1	7167.4	7430.8	7663.7	7941.3	8190.1	8465.2
25°	4908.5	5048.1	5249.0	5431.5	5681.0	5908.3	6196.0	6463.1	6785.3	7085.8	7430.8
27.5°	3788.9	3912.9	4089.5	4253.8	4482.2	4705.5	4997.4	5282.2	5626.1	5949.0	6320.8
30°	2926.1	3026.7	3168.2	3300.4	3483.8	3666.3	3926.4	4189.8	4531.9	4866.6	5247.7
32.5°	2267.7	2353.4	2471.5	2578.9	2720.1	2857.8	3049.3	3259.7	3559.9	3880.4	4249.0
35°	1755.4	1828.7	1929.3	2021.8	2137.9	2247.2	2390.1	2540.4	2769.4	3039.1	3368.9
37.5°	1399.5	1429.4	1501.2	1576.9	1673.4	1763.2	1875.0	1986.1	2149.9	2362.7	2632.2
40°	1064.3	1111.8	1170.2	1229.9	1303.0	1375.0	1497.6	1556.6	1664.5	1817.3	2026.4
42.5°	858.8	892.1	933.2	974.7	1025.7	1075.8	1137.8	1201.0	1281.7	1385.1	1533.9
45°	718.6	740.4	766.9	794.5	828.0	862.2	903.7	947.1	1001.8	1065.4	1155.7
47.5°	625.0	637.1	654.4	673.2	696.2	719.9	746.8	774.5	808.5	846.1	897.6
50°	551.9	561.9	575.4	588.1	603.9	628.2	638.8	654.1	674.5	696.7	725.5
52.5°	499.1	505.7	514.2	521.5	531.4	540.5	552.5	563.0	577.1	590.4	609.0
55°	457.9	460.3	465.1	469.8	476.7	482.9	491.0	498.0	506.9	514.9	526.6
57.5°	426.1	426.3	428.5	431.0	435.4	439.3	444.9	449.4	455.7	460.8	467.8
60°	403.3	402.0	402.5	403.3	405.8	408.3	412.0	414.9	418.8	421.7	425.6
62.5°	384.2	382.3	381.9	381.6	382.9	383.8	385.7	387.1	389.4	390.7	392.8
65°	360.2	357.9	357.1	356.0	356.4	356.1	356.8	356.9	358.0	358.3	359.5
67.5°	338.4	336.6	335.3	333.9	333.4	332.3	331.9	330.9	330.8	330.0	329.8
70°	318.5	316.7	315.8	314.5	313.8	312.5	311.6	310.1	309.0	307.5	306.7
72.5°	295.5	294.5	294.2	293.3	293.1	292.3	292.1	290.8	290.2	289.0	288.2
75°	271.5	270.6	270.6	269.7	269.6	268.7	268.6	267.3	266.7	265.4	264.8
77.5°	242.9	241.6	241.2	240.2	240.5	240.1	240.4	239.5	239.0	237.8	237.4
80°	210.7	209.0	208.3	207.0	207.4	206.7	207.4	207.3	207.8	206.7	206.5
82.5°	172.4	170.7	170.3	169.4	170.0	170.1	171.4	170.7	171.0	170.0	170.5
85°	125.5	124.1	122.3	122.1	120.8	122.1	120.6	121.6	119.8	121.0	119.4
87.5°	77.7	75.0	73.6	71.7	70.9	69.0	68.3	67.0	67.3	66.7	67.1
90°	51.1	49.9	51.5	51.6	53.5	53.8	56.1	57.0	59.4	60.1	62.7
92.5°	37.7	39.4	42.8	46.3	49.6	52.9	56.4	59.9	63.1	66.6	69.9
95°	46.7	48.4	52.9	57.4	61.9	66.4	71.1	75.6	80.1	84.6	89.1
97.5°	59.0	60.0	64.5	69.0	73.5	78.0	82.5	87.1	91.6	96.1	100.6
100°	67.7	67.8	80.7	93.4	106.2	119.1	131.8	144.6	157.6	170.3	183.1
102.5°	128.0	131.3	163.6	196.1	228.4	260.7	293.2	325.5	357.8	390.3	422.6
105°	286.0	298.6	348.0	397.4	446.8	496.2	545.6	595.1	644.5	693.9	743.3
107.5°	532.7	555.7	600.4	645.0	689.6	734.3	779.1	823.6	868.3	912.9	957.7
110°	751.9	776.3	806.2	836.1	866.0	895.9	925.7	955.6	985.5	1015.5	1045.5



TEST NUMBER: P1444429  
 CATALOG NUMBER: EHBR1-12-UNV-TA-L830-UPL24

**CANDELA DISTRIBUTION (continued):**

	110°	112.5°	115°	117.5°	120°	122.5°	125°	127.5°	130°	132.5°	135°
112.5°	849.5	865.3	882.7	900.1	917.4	934.8	952.3	969.7	987.1	1004.5	1022.0
115°	845.5	853.1	859.7	866.5	873.2	879.9	886.7	893.4	900.3	906.9	913.8
117.5°	778.9	781.4	782.3	783.4	784.3	785.3	786.4	787.4	788.4	789.6	790.5
120°	679.0	678.1	676.9	675.6	674.4	673.2	672.0	670.9	669.7	668.5	667.4
122.5°	578.3	576.5	575.1	574.0	572.8	571.7	570.5	569.3	568.2	567.1	566.0
125°	489.4	487.5	488.2	489.1	489.9	490.7	491.6	492.5	493.4	494.2	495.1
127.5°	423.5	422.7	425.1	427.5	429.9	432.3	434.8	437.3	439.7	442.1	444.6
130°	380.6	381.1	384.1	387.3	390.4	393.6	396.8	400.0	403.1	406.3	409.4
132.5°	354.6	356.1	359.0	362.0	365.1	368.1	371.2	374.2	377.2	380.3	383.3
135°	339.4	341.3	344.1	346.8	349.6	352.3	355.1	357.8	360.5	363.3	366.1
137.5°	328.7	330.7	332.9	335.0	337.1	339.4	341.5	343.7	345.8	348.0	350.1
140°	323.2	325.2	326.3	327.5	328.6	329.8	330.9	332.2	333.2	334.4	335.5
142.5°	316.6	318.4	319.0	319.8	320.4	321.2	321.9	322.6	323.3	323.9	324.7
145°	311.5	313.0	312.9	312.9	312.8	312.8	312.7	312.7	312.5	312.5	312.4
147.5°	305.2	306.2	305.8	305.7	305.5	305.2	304.9	304.7	304.3	304.1	303.9
150°	297.2	298.0	297.5	297.1	296.7	296.2	295.7	295.3	294.8	294.4	293.9
152.5°	289.0	289.6	289.1	288.6	288.1	287.7	287.1	286.6	286.2	285.6	285.2
155°	279.6	279.9	279.6	279.4	279.1	278.9	278.6	278.4	278.2	277.9	277.7
157.5°	273.6	273.8	273.6	273.5	273.2	273.2	273.1	273.0	272.9	272.9	272.8
160°	269.8	270.1	269.9	269.7	269.6	269.4	269.3	269.2	269.2	269.1	269.1
162.5°	266.5	266.4	266.3	266.1	266.0	265.8	265.8	265.7	265.7	265.6	265.6
165°	265.4	265.5	265.1	264.9	264.6	264.3	264.2	264.0	263.8	263.6	263.4
167.5°	263.5	263.4	263.4	263.5	263.5	263.5	263.6	263.7	263.8	263.9	264.0
170°	263.8	263.9	263.7	263.6	263.5	263.3	263.2	263.1	263.1	262.9	262.9
172.5°	265.4	265.4	265.1	264.8	264.5	264.2	264.0	263.8	263.5	263.2	262.9
175°	265.6	265.5	265.3	265.2	265.0	264.8	264.6	264.5	264.3	264.2	264.1
177.5°	266.4	266.3	266.2	266.2	266.2	266.2	266.2	266.1	266.1	266.1	266.0
180°	266.6	266.6	266.6	266.6	266.6	266.6	266.6	266.6	266.6	266.6	266.6



TEST NUMBER: P1444429  
 CATALOG NUMBER: EHBR1-12-UNV-TA-L830-UPL24

**CANDELA DISTRIBUTION (continued):**

	137.5°	140°	142.5°	145°	147.5°	150°	152.5°	155°	157.5°	160°	162.5°
0°	9928.9	9928.9	9928.9	9928.9	9928.9	9928.9	9928.9	9928.9	9928.9	9928.9	9928.9
2.5°	9893.3	9893.1	9892.2	9892.7	9892.9	9893.5	9894.4	9895.3	9895.5	9896.1	9896.3
5°	9967.3	9942.9	9924.7	9904.9	9889.9	9876.4	9867.4	9860.3	9857.5	9858.2	9859.9
7.5°	10168.1	10117.6	10075.9	10028.5	9989.0	9947.1	9912.4	9879.5	9855.4	9837.5	9827.5
10°	10388.4	10326.8	10268.0	10199.4	10134.3	10064.9	10002.0	9938.7	9885.9	9840.0	9806.4
12.5°	10486.2	10442.7	10391.8	10327.0	10257.4	10177.3	10096.4	10009.7	9929.0	9854.2	9793.8
15°	10382.7	10382.8	10364.2	10333.1	10284.8	10220.8	10143.6	10053.2	9958.1	9861.0	9772.3
17.5°	10054.1	10116.1	10150.6	10172.4	10165.6	10142.1	10093.0	10023.6	9934.9	9831.4	9723.1
20°	9489.8	9636.0	9740.3	9834.0	9886.6	9921.5	9918.0	9889.7	9826.5	9738.6	9625.8
22.5°	8699.3	8944.7	9138.3	9319.0	9445.7	9548.7	9597.7	9618.4	9589.8	9528.6	9422.7
25°	7739.2	8072.8	8357.7	8634.0	8841.3	9019.6	9126.6	9202.0	9208.0	9176.0	9081.6
27.5°	6672.3	7066.2	7426.6	7794.0	8085.5	8341.7	8509.7	8632.7	8671.8	8666.6	8580.8
30°	5606.8	6020.3	6417.6	6845.9	7206.7	7533.9	7755.9	7922.3	7986.4	7998.7	7916.2
32.5°	4600.5	5008.3	5404.4	5852.3	6249.3	6624.3	6886.6	7084.2	7158.8	7176.3	7085.8
35°	3687.3	4063.4	4440.0	4874.0	5268.7	5657.1	5933.4	6140.3	6209.9	6221.7	6116.9
37.5°	2895.3	3215.8	3543.9	3933.3	4295.7	4660.5	4923.2	5117.5	5168.3	5165.1	5046.6
40°	2228.4	2477.6	2741.3	3061.8	3363.3	3671.5	3893.2	4054.0	4080.7	4060.9	3936.4
42.5°	1675.7	1855.6	2046.8	2286.0	2509.7	2740.4	2901.7	3021.1	3024.9	2993.7	2881.9
45°	1248.4	1424.0	1504.1	1648.8	1792.9	1946.3	2044.7	2118.5	2107.1	2079.6	1994.6
47.5°	951.7	1019.1	1090.7	1180.4	1264.4	1438.5	1425.6	1543.9	1458.6	1516.8	1388.9
50°	755.7	793.4	832.0	879.7	923.4	968.9	997.4	1018.7	1015.9	1006.8	982.2
52.5°	643.0	654.6	673.6	700.7	725.1	749.7	765.9	779.2	779.3	775.7	763.3
55°	537.4	552.2	565.8	583.5	613.6	618.3	641.5	636.8	638.6	632.2	638.7
57.5°	473.8	482.4	490.1	500.6	509.3	519.5	525.5	531.2	530.7	529.4	523.2
60°	428.7	433.5	437.7	443.9	448.7	454.4	457.2	460.1	459.2	457.0	451.4
62.5°	394.0	397.0	399.4	403.3	406.3	409.8	411.3	412.5	411.3	409.2	404.3
65°	359.7	361.7	363.2	366.2	368.2	371.3	372.5	373.7	372.5	370.9	367.2
67.5°	328.8	329.0	328.9	330.1	330.7	332.5	333.1	333.9	332.6	331.2	328.0
70°	305.4	304.9	304.3	304.8	304.9	305.8	305.9	305.8	304.2	301.8	298.3
72.5°	287.1	286.8	286.4	286.7	286.7	287.6	287.3	286.9	284.9	282.7	279.2
75°	263.5	263.3	262.5	262.5	261.7	262.0	261.1	260.5	258.3	256.4	253.3
77.5°	236.0	235.5	234.2	233.7	232.3	231.7	230.0	229.0	226.9	225.3	222.7
80°	205.1	204.7	203.1	202.1	199.9	198.5	195.9	194.4	191.8	190.3	187.7
82.5°	169.6	169.8	168.1	167.0	163.8	161.4	157.8	156.0	153.2	151.7	149.0
85°	120.6	118.9	119.8	119.7	117.7	115.7	112.8	110.7	108.4	107.0	105.1
87.5°	66.1	66.6	66.1	65.7	64.3	63.2	61.0	59.8	58.1	57.2	55.8
90°	58.7	56.5	52.5	50.4	46.5	43.7	39.5	36.9	33.0	31.9	29.8
92.5°	66.0	62.3	58.5	54.7	51.0	47.2	43.4	39.6	35.8	34.4	33.3
95°	83.6	78.1	72.6	67.1	61.6	56.1	50.6	45.1	39.6	38.5	37.4
97.5°	94.1	87.7	81.2	74.7	68.3	61.8	55.5	49.0	42.5	41.8	41.1
100°	168.2	153.4	138.4	123.6	108.7	93.8	78.9	64.0	49.1	48.2	47.4
102.5°	386.5	350.4	314.3	278.1	242.1	206.0	169.8	133.7	97.6	92.4	87.2
105°	688.7	634.0	579.3	524.7	469.9	415.2	360.5	305.8	251.2	233.6	216.1
107.5°	906.2	854.8	803.4	752.0	700.6	649.1	597.7	546.3	494.8	464.0	432.9
110°	1004.5	963.7	922.9	882.1	841.3	800.4	759.5	718.6	677.8	651.1	624.5



TEST NUMBER: P1444429  
 CATALOG NUMBER: EHBR1-12-UNV-TA-L830-UPL24

**CANDELA DISTRIBUTION (continued):**

	137.5°	140°	142.5°	145°	147.5°	150°	152.5°	155°	157.5°	160°	162.5°
112.5°	992.1	962.0	932.1	902.1	872.2	842.0	812.1	782.1	752.1	735.9	719.7
115°	895.7	877.6	859.4	841.3	823.2	805.0	786.8	768.7	750.5	741.9	733.3
117.5°	781.2	771.8	762.5	753.1	743.7	734.3	724.9	715.5	706.1	703.0	699.9
120°	664.4	661.4	658.3	655.4	652.3	649.3	646.2	643.2	640.1	640.3	640.5
122.5°	566.8	567.6	568.5	569.2	570.1	570.8	571.7	572.4	573.2	575.2	577.3
125°	497.6	499.9	502.4	504.7	507.0	509.4	511.8	514.1	516.5	518.5	520.6
127.5°	447.4	450.0	452.8	455.3	458.1	460.8	463.5	466.0	468.7	470.5	472.5
130°	411.8	414.0	416.3	418.5	420.9	423.1	425.4	427.6	429.9	431.3	432.5
132.5°	385.3	387.3	389.4	391.3	393.3	395.3	397.4	399.3	401.4	402.2	403.2
135°	367.6	368.9	370.4	371.8	373.3	374.6	376.1	377.6	379.0	379.5	380.0
137.5°	351.4	352.4	353.6	354.7	355.9	357.0	358.2	359.3	360.5	360.5	360.7
140°	336.8	338.1	339.3	340.5	341.8	343.0	344.4	345.6	347.1	347.1	347.2
142.5°	325.5	326.4	327.4	328.3	329.3	330.3	331.2	332.3	333.3	333.4	333.5
145°	313.6	314.7	316.0	317.1	318.4	319.5	320.9	322.1	323.5	323.4	323.4
147.5°	304.8	305.8	306.9	307.9	309.0	310.1	311.2	312.3	313.5	313.4	313.3
150°	295.2	296.2	297.3	298.4	299.7	300.9	302.1	303.3	304.7	304.8	305.0
152.5°	286.4	287.7	288.9	290.2	291.5	292.9	294.3	295.6	297.0	297.2	297.4
155°	279.0	280.2	281.5	282.8	284.1	285.4	286.8	288.1	289.5	289.8	290.1
157.5°	273.9	274.9	276.1	277.3	278.5	279.6	280.9	282.0	283.3	283.5	283.7
160°	270.1	271.1	272.1	273.1	274.2	275.2	276.2	277.3	278.3	278.6	278.8
162.5°	266.6	267.6	268.6	269.6	270.6	271.6	272.7	273.7	274.7	274.9	275.2
165°	264.2	264.8	265.6	266.2	267.0	267.7	268.5	269.1	270.0	270.2	270.5
167.5°	264.5	265.0	265.6	266.1	266.7	267.2	267.8	268.4	268.9	269.3	269.5
170°	263.4	264.0	264.3	265.0	265.5	266.0	266.5	267.1	267.6	267.9	268.2
172.5°	263.3	263.6	264.0	264.3	264.6	265.0	265.4	265.7	266.1	266.5	266.8
175°	264.2	264.3	264.6	264.7	264.9	265.1	265.3	265.5	265.7	266.0	266.3
177.5°	266.1	266.3	266.4	266.6	266.8	267.0	267.1	267.3	267.4	267.9	268.3
180°	266.6	266.6	266.6	266.6	266.6	266.6	266.6	266.6	266.6	266.6	266.6



TEST NUMBER: P1444429  
 CATALOG NUMBER: EHBR1-12-UNV-TA-L830-UPL24

**CANDELA DISTRIBUTION (continued):**

	165°	167.5°	170°	172.5°	175°	177.5°	180°	182.5°	185°	187.5°	190°
0°	9928.9	9928.9	9928.9	9928.9	9928.9	9928.9	9928.9	9928.9	9928.9	9928.9	9928.9
2.5°	9896.0	9895.9	9895.6	9895.1	9894.6	9894.9	9895.4	9896.5	9898.5	9901.4	9905.1
5°	9861.2	9863.3	9864.4	9864.6	9863.5	9862.9	9863.8	9866.5	9872.1	9881.2	9893.7
7.5°	9824.9	9827.3	9831.1	9834.0	9834.6	9833.9	9834.0	9838.3	9848.4	9866.4	9891.5
10°	9785.9	9778.5	9782.4	9789.5	9795.3	9796.3	9796.9	9802.0	9816.8	9843.9	9884.2
12.5°	9750.0	9726.6	9722.1	9728.5	9737.1	9739.9	9739.1	9741.3	9758.6	9794.4	9850.7
15°	9702.7	9658.7	9643.7	9645.3	9656.0	9659.8	9657.0	9652.7	9669.6	9713.4	9786.2
17.5°	9626.3	9555.3	9527.6	9526.4	9538.8	9542.2	9535.3	9522.0	9538.7	9593.3	9683.7
20°	9510.0	9405.2	9353.1	9344.8	9358.3	9354.3	9340.8	9320.7	9342.5	9409.0	9516.5
22.5°	9301.1	9168.2	9079.2	9050.5	9066.7	9055.9	9036.0	9010.4	9039.4	9114.8	9234.6
25°	8959.6	8806.1	8684.2	8615.8	8628.8	8609.4	8587.7	8556.7	8591.4	8678.0	8809.7
27.5°	8457.6	8280.4	8129.3	8016.2	8020.3	7995.0	7970.1	7930.0	7973.2	8075.6	8224.3
30°	7790.2	7585.1	7401.1	7247.3	7233.5	7209.0	7183.4	7130.9	7184.9	7307.6	7481.3
32.5°	6952.1	6724.3	6511.7	6317.3	6280.6	6256.7	6233.9	6173.3	6244.1	6387.1	6586.7
35°	5971.8	5729.2	5498.8	5276.7	5215.9	5191.9	5172.0	5114.0	5202.4	5358.1	5573.6
37.5°	4895.9	4648.0	4419.3	4191.5	4105.6	4073.1	4058.7	4020.6	4122.6	4276.5	4493.0
40°	3791.3	3560.9	3355.8	3154.6	3056.7	3006.9	2999.4	2992.5	3091.0	3224.6	3421.1
42.5°	2758.0	2572.1	2414.0	2260.2	2171.5	2103.6	2103.6	2124.2	2212.9	2312.9	2464.5
45°	1907.8	1783.0	1682.3	1579.6	1607.0	1471.7	1551.2	1510.3	1554.2	1618.7	1717.3
47.5°	1311.5	1243.3	1188.0	1130.6	1088.7	1048.7	1052.3	1078.1	1119.4	1157.6	1208.9
50°	955.8	921.2	893.0	863.2	842.3	824.7	825.7	836.9	858.6	878.7	905.5
52.5°	749.0	729.8	714.5	698.0	687.1	678.4	678.8	684.3	696.0	707.5	722.9
55°	617.3	615.0	595.1	580.3	574.7	568.8	569.9	572.0	580.0	586.7	596.9
57.5°	517.3	508.4	502.4	494.6	491.0	486.9	487.8	488.7	494.0	498.5	505.8
60°	446.7	440.3	436.1	430.8	428.5	425.8	426.5	427.0	430.3	433.3	438.6
62.5°	399.8	394.1	390.4	386.3	384.7	382.9	383.3	383.5	385.6	387.8	391.7
65°	363.8	359.3	356.2	352.7	351.0	349.1	349.3	349.3	351.2	352.7	355.7
67.5°	325.7	322.3	320.4	317.5	316.4	314.5	314.5	313.9	315.1	315.7	317.7
70°	295.2	291.8	289.3	286.5	285.0	283.4	283.4	283.4	284.9	286.3	288.9
72.5°	276.3	273.1	270.8	268.5	267.1	265.7	265.4	265.3	266.2	267.0	268.7
75°	251.3	248.7	247.4	245.2	244.1	242.5	242.2	241.5	242.0	242.1	243.5
77.5°	221.0	218.5	217.5	215.3	214.3	212.5	212.4	211.5	211.9	211.7	212.6
80°	186.5	184.3	183.6	181.8	181.3	179.7	179.4	178.4	178.7	178.0	178.3
82.5°	147.9	145.8	145.4	143.7	143.7	142.2	142.1	140.6	140.6	139.3	137.2
85°	104.2	102.7	102.0	100.6	100.2	99.0	98.4	96.9	96.5	95.5	95.3
87.5°	55.0	54.0	53.2	52.5	51.3	49.1	48.9	47.4	47.6	46.5	46.6
90°	28.9	26.9	25.9	24.0	23.0	21.5	20.6	21.3	22.2	22.9	23.9
92.5°	31.9	30.7	29.4	28.2	26.9	25.7	24.4	25.7	26.9	28.2	29.4
95°	36.3	35.1	34.0	32.9	31.8	30.6	29.5	30.6	31.8	33.0	34.1
97.5°	40.4	39.7	39.0	38.3	37.6	36.9	36.2	36.9	37.6	38.3	39.0
100°	46.6	45.7	44.9	44.0	43.2	42.3	41.5	42.4	43.3	44.1	45.0
102.5°	82.0	76.8	71.6	66.4	61.2	56.0	50.8	56.0	61.2	66.5	71.7
105°	198.5	180.9	163.4	145.8	128.1	110.6	93.0	110.7	128.2	145.8	163.5
107.5°	402.0	371.2	340.2	309.3	278.4	247.4	216.5	247.5	278.5	309.4	340.3
110°	597.8	571.1	544.3	517.7	491.0	464.2	437.5	464.2	491.0	517.7	544.4



TEST NUMBER: P1444429  
 CATALOG NUMBER: EHBR1-12-UNV-TA-L830-UPL24

**CANDELA DISTRIBUTION (continued):**

	165°	167.5°	170°	172.5°	175°	177.5°	180°	182.5°	185°	187.5°	190°
112.5°	703.3	687.1	670.8	654.6	638.2	622.0	605.7	622.0	638.3	654.8	671.0
115°	724.6	716.0	707.3	698.7	690.0	681.4	672.7	681.5	690.2	698.9	707.6
117.5°	696.7	693.6	690.5	687.5	684.3	681.2	677.9	681.3	684.5	687.7	690.9
120°	640.6	640.8	641.0	641.1	641.3	641.4	641.5	641.5	641.5	641.5	641.5
122.5°	579.4	581.3	583.3	585.3	587.3	589.3	591.2	589.4	587.6	585.8	583.9
125°	522.6	524.8	526.8	528.9	530.7	532.9	534.7	533.1	531.2	529.4	527.5
127.5°	474.2	476.0	477.7	479.7	481.3	483.1	484.7	483.2	481.7	480.2	478.6
130°	433.8	435.1	436.3	437.6	438.8	440.0	441.1	440.2	439.2	438.3	437.2
132.5°	404.0	404.9	405.8	406.6	407.4	408.2	408.9	408.4	407.8	407.3	406.6
135°	380.5	381.0	381.4	381.9	382.3	382.6	382.8	382.9	382.7	382.6	382.4
137.5°	360.8	360.9	360.9	360.9	360.9	360.8	360.7	361.1	361.4	361.8	361.9
140°	347.2	347.4	347.3	347.3	347.4	347.3	347.1	347.6	347.9	348.2	348.4
142.5°	333.6	333.7	333.7	333.7	333.7	333.7	333.6	333.9	334.2	334.5	334.7
145°	323.3	323.3	323.1	323.1	322.8	322.6	322.2	322.9	323.3	323.7	324.1
147.5°	313.2	313.1	313.0	312.9	312.7	312.5	312.2	312.7	313.1	313.5	314.0
150°	305.2	305.4	305.5	305.6	305.6	305.7	305.6	305.9	306.1	306.3	306.4
152.5°	297.5	297.6	297.8	297.8	298.0	297.9	297.9	298.2	298.4	298.6	298.8
155°	290.3	290.6	290.8	290.9	291.1	291.3	291.5	291.6	291.7	291.8	291.9
157.5°	283.9	284.2	284.4	284.6	284.8	284.9	285.1	285.3	285.4	285.6	285.6
160°	279.0	279.2	279.3	279.6	279.8	280.0	280.1	280.3	280.5	280.5	280.6
162.5°	275.4	275.6	275.7	276.0	276.0	276.2	276.4	276.6	276.8	276.9	277.0
165°	270.9	271.2	271.6	271.8	272.2	272.5	272.8	272.8	272.8	272.8	272.8
167.5°	269.9	270.1	270.4	270.7	271.0	271.3	271.6	271.6	271.6	271.5	271.6
170°	268.5	268.6	269.0	269.2	269.6	269.8	270.1	270.0	270.0	270.0	270.0
172.5°	267.1	267.6	268.0	268.4	268.7	269.1	269.5	269.4	269.1	268.9	268.6
175°	266.7	267.1	267.3	267.7	268.0	268.4	268.7	268.5	268.4	268.1	267.9
177.5°	268.8	269.3	269.8	270.1	270.6	271.0	271.6	271.1	270.7	270.3	270.0
180°	266.6	266.6	266.6	266.6	266.6	266.6	266.6	266.6	266.6	266.6	266.6



TEST NUMBER: P1444429  
 CATALOG NUMBER: EHBR1-12-UNV-TA-L830-UPL24

**CANDELA DISTRIBUTION (continued):**

	192.5°	195°	197.5°	200°	202.5°	205°	207.5°	210°	212.5°	215°	217.5°
0°	9928.9	9928.9	9928.9	9928.9	9928.9	9928.9	9928.9	9928.9	9928.9	9928.9	9928.9
2.5°	9910.4	9915.3	9922.9	9929.9	9940.2	9948.3	9960.6	9969.9	9983.7	9992.7	10007.8
5°	9911.3	9930.7	9956.2	9981.1	10011.0	10038.1	10071.9	10100.6	10134.5	10162.2	10196.9
7.5°	9925.3	9962.7	10007.5	10052.7	10103.7	10151.5	10205.3	10254.1	10307.3	10352.4	10401.6
10°	9935.7	9993.3	10059.3	10125.8	10195.8	10260.8	10326.4	10383.0	10436.1	10479.7	10518.2
12.5°	9921.6	10001.1	10085.8	10167.7	10245.4	10312.7	10369.2	10412.7	10442.9	10463.3	10468.1
15°	9873.9	9969.6	10061.8	10143.2	10207.8	10257.5	10283.3	10295.4	10282.4	10260.9	10213.7
17.5°	9785.0	9885.7	9968.2	10032.4	10066.5	10080.1	10058.8	10021.6	9949.1	9868.5	9752.2
20°	9621.8	9715.7	9775.5	9810.5	9801.4	9767.6	9687.1	9589.1	9444.3	9289.8	9086.1
22.5°	9335.5	9417.7	9449.5	9452.0	9396.4	9311.9	9166.5	8998.6	8770.0	8532.4	8240.2
25°	8905.9	8977.8	8982.9	8954.6	8852.6	8715.7	8502.3	8264.6	7954.1	7637.5	7271.3
27.5°	8323.1	8392.1	8375.2	8322.5	8181.0	7997.8	7724.6	7417.5	7034.6	6660.7	6255.6
30°	7590.5	7664.3	7644.5	7576.9	7408.6	7192.1	6870.6	6513.8	6088.7	5689.3	5278.8
32.5°	6714.0	6807.2	6793.5	6729.2	6553.7	6321.9	5973.0	5594.7	5159.8	4766.2	4366.8
35°	5717.5	5830.7	5836.6	5794.6	5631.6	5402.6	5058.0	4691.9	4275.2	3903.9	3535.0
37.5°	4644.0	4775.3	4802.2	4790.9	4655.8	4453.7	4139.8	3811.2	3442.2	3116.7	2801.2
40°	3564.6	3697.5	3743.6	3757.2	3657.6	3500.9	3243.4	2978.2	2677.3	2413.6	2163.0
42.5°	2580.2	2697.9	2742.5	2770.5	2708.3	2603.9	2416.0	2223.4	2003.0	1812.8	1630.4
45°	1791.9	1875.3	1909.2	1937.4	1903.5	1844.6	1725.9	1605.5	1460.0	1335.7	1218.0
47.5°	1252.8	1298.8	1321.2	1334.9	1321.8	1291.0	1226.4	1156.6	1074.5	1001.9	932.0
50°	928.7	953.1	964.8	972.7	963.1	946.1	911.1	873.1	828.1	786.9	746.7
52.5°	735.9	749.9	756.9	761.2	755.6	745.2	724.9	702.3	675.3	649.9	636.5
55°	620.0	619.3	635.3	627.6	635.3	617.9	614.4	589.6	567.1	551.3	534.2
57.5°	511.3	518.6	521.7	525.1	522.9	519.7	511.1	502.2	490.4	480.4	469.9
60°	442.6	448.6	452.0	455.3	455.1	453.9	449.0	443.6	436.3	430.3	424.0
62.5°	395.3	400.4	403.8	407.1	407.4	406.9	403.1	399.4	394.4	390.6	386.2
65°	358.0	361.7	363.9	366.5	366.4	365.7	362.3	359.2	355.1	352.5	349.2
67.5°	319.0	321.8	323.5	326.1	326.5	326.6	324.8	323.4	321.3	320.5	319.5
70°	291.3	294.7	297.5	300.7	302.4	303.1	302.4	301.6	300.4	299.9	299.1
72.5°	270.3	273.1	275.4	278.2	279.8	280.9	280.4	279.9	278.9	278.8	278.1
75°	244.3	246.3	247.5	249.6	250.5	251.5	251.0	251.3	251.0	251.8	251.8
77.5°	213.0	214.4	215.0	216.6	216.7	218.0	218.3	219.8	220.9	223.2	224.4
80°	177.7	178.6	178.6	180.2	181.0	183.1	184.2	186.6	187.7	189.9	190.1
82.5°	138.1	137.0	138.1	137.4	139.4	141.8	142.2	144.3	144.7	146.1	145.1
85°	94.4	94.3	93.5	93.6	93.0	93.3	92.9	93.3	92.9	93.0	92.0
87.5°	45.2	45.6	44.7	45.0	44.0	44.5	43.7	44.3	43.3	43.5	42.0
90°	24.7	25.7	26.4	27.4	28.5	30.9	33.3	35.8	38.4	40.9	43.5
92.5°	30.7	31.9	33.3	34.5	35.8	39.6	43.4	47.2	51.1	54.8	58.5
95°	35.2	36.3	37.5	38.7	39.8	45.3	50.8	56.3	61.8	67.3	72.8
97.5°	39.8	40.5	41.2	41.9	42.6	49.1	55.5	62.0	68.5	74.9	81.4
100°	45.8	46.6	47.5	48.4	49.3	64.2	79.1	94.0	108.9	123.7	138.6
102.5°	76.9	82.1	87.3	92.5	97.8	133.9	170.1	206.3	242.3	278.4	314.5
105°	181.0	198.6	216.3	233.8	251.4	306.1	360.8	415.6	470.2	524.9	579.6
107.5°	371.3	402.2	433.2	464.2	495.1	546.7	598.0	649.5	701.0	752.4	803.8
110°	571.3	597.9	624.7	651.5	678.2	719.0	760.0	800.9	841.7	882.7	923.5



TEST NUMBER: P1444429  
 CATALOG NUMBER: EHBR1-12-UNV-TA-L830-UPL24

**CANDELA DISTRIBUTION (continued):**

	192.5°	195°	197.5°	200°	202.5°	205°	207.5°	210°	212.5°	215°	217.5°
112.5°	687.4	703.6	720.0	736.3	752.6	782.5	812.7	842.7	872.8	902.7	932.8
115°	716.4	725.0	733.7	742.3	751.1	769.3	787.5	805.8	823.9	842.0	860.3
117.5°	694.1	697.3	700.5	703.6	706.7	716.2	725.7	735.1	744.6	754.1	763.5
120°	641.5	641.4	641.3	641.1	641.0	644.1	647.3	650.4	653.4	656.5	659.5
122.5°	582.0	580.1	578.1	576.2	574.2	573.5	572.7	572.0	571.3	570.5	569.7
125°	525.6	523.6	521.7	519.7	517.7	515.4	513.1	510.7	508.4	506.1	503.8
127.5°	477.0	475.2	473.6	471.8	470.1	467.4	464.9	462.2	459.6	456.9	454.3
130°	436.1	435.0	433.9	432.6	431.4	429.1	427.0	424.7	422.5	420.3	418.1
132.5°	406.1	405.3	404.6	403.7	403.0	401.0	399.1	397.1	395.1	393.1	391.3
135°	382.2	381.8	381.5	381.1	380.8	379.4	378.0	376.6	375.2	373.8	372.4
137.5°	362.1	362.2	362.3	362.3	362.4	361.3	360.2	359.0	358.0	356.9	355.8
140°	348.6	348.7	348.9	348.9	349.0	347.7	346.6	345.3	344.1	342.8	341.6
142.5°	334.9	335.1	335.2	335.2	335.3	334.4	333.5	332.6	331.7	330.8	329.8
145°	324.4	324.7	325.0	325.1	325.5	324.3	323.2	321.9	320.9	319.6	318.6
147.5°	314.4	314.6	314.9	315.3	315.6	314.5	313.6	312.6	311.6	310.6	309.8
150°	306.6	306.6	306.8	306.8	306.9	305.7	304.7	303.6	302.7	301.4	300.5
152.5°	298.9	299.1	299.2	299.3	299.4	298.2	297.0	295.9	294.7	293.5	292.3
155°	292.0	292.0	292.0	292.0	292.0	290.8	289.7	288.6	287.5	286.4	285.2
157.5°	285.7	285.8	285.9	285.9	286.0	284.9	284.0	283.0	282.0	280.9	280.0
160°	280.7	280.8	280.9	281.0	281.0	280.2	279.4	278.5	277.7	276.8	276.0
162.5°	277.1	277.3	277.3	277.4	277.5	276.6	275.8	274.9	274.1	273.2	272.4
165°	272.7	272.7	272.6	272.5	272.4	271.8	271.4	270.8	270.2	269.6	269.0
167.5°	271.5	271.4	271.3	271.3	271.2	270.8	270.4	270.0	269.5	269.1	268.6
170°	269.9	269.8	269.7	269.7	269.5	269.1	268.7	268.4	268.0	267.5	267.1
172.5°	268.6	268.3	268.1	267.9	267.6	267.3	267.1	266.8	266.6	266.3	266.0
175°	267.6	267.4	267.1	267.0	266.7	266.6	266.5	266.3	266.2	266.0	265.9
177.5°	269.5	269.2	268.7	268.4	268.0	267.9	267.7	267.6	267.5	267.4	267.2
180°	266.6	266.6	266.6	266.6	266.6	266.6	266.6	266.6	266.6	266.6	266.6



TEST NUMBER: P1444429  
 CATALOG NUMBER: EHBR1-12-UNV-TA-L830-UPL24

**CANDELA DISTRIBUTION (continued):**

	220°	222.5°	225°	227.5°	230°	232.5°	235°	237.5°	240°	242.5°	245°
0°	9928.9	9928.9	9928.9	9928.9	9928.9	9928.9	9928.9	9928.9	9928.9	9928.9	9928.9
2.5°	10017.1	9955.2	9947.1	9951.4	9961.7	9965.6	9976.7	9979.8	9991.0	9993.7	10004.5
5°	10223.8	10142.0	10146.1	10165.7	10195.5	10213.2	10242.5	10257.8	10285.7	10298.5	10323.7
7.5°	10441.8	10377.5	10397.6	10430.7	10471.4	10499.6	10534.7	10557.6	10587.9	10606.7	10631.0
10°	10548.7	10531.1	10553.1	10579.3	10602.5	10620.7	10635.6	10647.5	10655.3	10662.7	10665.8
12.5°	10467.3	10494.5	10498.3	10495.7	10480.4	10468.7	10442.2	10424.4	10392.5	10373.1	10335.3
15°	10165.4	10225.3	10192.1	10141.9	10068.5	10007.2	9920.8	9856.4	9766.3	9705.2	9614.8
17.5°	9635.6	9711.1	9624.8	9508.6	9360.9	9234.5	9077.1	8952.2	8795.7	8681.9	8535.9
20°	8889.7	8960.4	8806.3	8613.8	8385.2	8192.8	7966.1	7785.1	7574.3	7417.5	7228.3
22.5°	7961.1	8011.4	7794.3	7534.8	7243.6	7003.3	6732.1	6515.2	6274.5	6095.4	5893.6
25°	6933.7	6947.3	6686.9	6387.9	6063.3	5793.3	5503.7	5275.6	5030.3	4848.6	4650.7
27.5°	5896.7	5876.8	5595.3	5278.4	4936.9	4656.3	4373.9	4160.1	3945.2	3781.6	3611.0
30°	4918.0	4869.8	4577.5	4251.6	3920.3	3668.7	3434.3	3262.7	3091.7	2961.9	2824.9
32.5°	4020.4	3952.4	3668.0	3362.7	3083.5	2889.3	2715.4	2585.6	2447.5	2337.8	2223.0
35°	3225.5	3153.0	2901.0	2642.2	2430.9	2287.7	2151.1	2044.6	1927.4	1834.8	1735.1
37.5°	2543.2	2483.8	2272.7	2069.0	1909.2	1798.3	1686.4	1599.2	1502.4	1461.6	1355.0
40°	1963.3	1921.8	1756.8	1606.6	1486.6	1434.5	1320.9	1239.5	1167.1	1107.5	1049.6
42.5°	1531.4	1516.7	1356.1	1239.0	1154.5	1088.8	1025.5	974.1	924.1	882.9	844.1
45°	1123.9	1112.2	1040.9	973.3	915.7	869.8	827.0	791.7	758.9	731.9	707.2
47.5°	875.2	871.4	830.3	788.4	752.2	722.7	694.9	671.4	649.7	631.6	625.7
50°	711.8	711.3	687.2	661.3	635.5	618.4	600.7	586.8	572.9	562.0	550.6
52.5°	604.7	602.1	585.9	569.9	554.6	543.4	532.1	523.2	514.0	507.2	500.1
55°	520.6	523.4	514.0	504.4	494.9	487.9	480.0	474.1	467.8	463.6	459.3
57.5°	462.2	465.8	461.0	455.5	449.7	445.1	439.6	435.6	431.4	428.6	426.2
60°	419.7	423.7	421.7	419.0	415.3	412.6	409.2	406.9	404.2	402.7	401.3
62.5°	383.7	388.6	387.9	386.7	384.3	382.8	380.9	379.9	378.1	377.4	376.7
65°	347.7	353.2	353.1	352.5	351.3	350.8	349.6	349.4	348.5	348.8	348.7
67.5°	319.3	324.2	325.3	326.1	326.1	326.3	326.3	326.7	326.7	327.4	327.8
70°	298.9	302.4	303.1	304.0	304.1	304.8	304.8	305.3	305.1	305.7	305.8
72.5°	278.3	282.8	283.5	284.2	284.2	284.9	284.5	284.4	283.5	283.4	282.7
75°	252.6	258.3	259.6	260.4	260.5	261.1	260.3	259.7	258.3	257.7	256.7
77.5°	225.7	231.7	232.6	232.9	232.4	232.5	230.9	229.8	227.9	227.2	226.1
80°	190.9	199.6	200.3	199.7	198.4	198.1	196.6	195.6	193.3	192.5	191.7
82.5°	145.3	155.5	156.9	157.6	156.4	156.7	155.2	154.6	152.5	152.1	150.8
85°	91.7	101.9	103.6	103.3	102.3	102.0	101.2	101.4	101.3	101.8	102.1
87.5°	42.2	52.0	54.4	53.7	53.6	52.8	51.2	51.9	52.8	53.4	53.5
90°	46.0	51.4	53.9	51.9	49.1	47.0	44.2	42.2	39.5	37.7	35.0
92.5°	62.4	66.1	70.0	66.6	63.2	59.9	56.5	53.0	49.6	46.3	42.9
95°	78.3	83.6	89.2	84.7	80.1	75.6	71.1	66.5	62.0	57.5	53.0
97.5°	87.9	94.2	100.7	96.2	91.7	87.1	82.6	78.1	73.6	69.1	64.6
100°	153.6	168.4	183.2	170.4	157.6	144.8	132.0	119.1	106.3	93.5	80.7
102.5°	350.6	386.7	422.7	390.4	358.0	325.6	293.3	260.9	228.6	196.1	163.7
105°	634.3	688.9	743.5	694.0	644.6	595.2	545.8	496.3	446.9	397.4	348.1
107.5°	855.3	906.5	957.8	913.1	868.5	823.8	779.2	734.5	689.8	645.1	600.5
110°	964.3	1004.9	1045.6	1015.7	985.8	955.8	925.9	896.0	866.1	836.3	806.3



TEST NUMBER: P1444429  
 CATALOG NUMBER: EHBR1-12-UNV-TA-L830-UPL24

**CANDELA DISTRIBUTION (continued):**

	220°	222.5°	225°	227.5°	230°	232.5°	235°	237.5°	240°	242.5°	245°
112.5°	962.7	992.4	1022.2	1004.7	987.3	970.0	952.4	935.0	917.6	900.3	882.8
115°	878.4	896.1	914.0	907.2	900.5	893.6	886.9	880.1	873.4	866.6	860.0
117.5°	772.9	781.7	791.0	789.8	788.8	787.7	786.6	785.6	784.6	783.6	782.6
120°	662.6	665.0	667.9	668.9	670.1	671.2	672.5	673.6	674.8	675.9	677.1
122.5°	569.0	567.5	566.4	567.6	568.7	569.7	570.9	572.0	573.3	574.4	575.6
125°	501.4	498.2	495.6	494.8	493.9	493.0	492.1	491.2	490.4	489.5	488.7
127.5°	451.7	448.2	445.2	442.8	440.3	437.8	435.5	432.9	430.6	428.1	425.7
130°	415.8	412.6	410.2	407.0	403.9	400.6	397.5	394.4	391.2	388.1	384.9
132.5°	389.3	386.3	384.1	381.1	378.1	375.1	372.1	369.0	366.1	362.9	360.0
135°	371.0	368.6	366.9	364.1	361.6	358.8	356.0	353.2	350.6	347.8	345.2
137.5°	354.6	352.4	351.1	348.9	346.9	344.6	342.6	340.4	338.3	336.0	334.0
140°	340.4	338.0	336.5	335.4	334.3	333.2	332.1	330.9	329.8	328.7	327.6
142.5°	329.0	326.7	325.6	324.9	324.4	323.6	323.2	322.4	321.8	321.0	320.4
145°	317.4	314.8	313.4	313.4	313.6	313.7	313.8	313.9	314.0	314.1	314.2
147.5°	308.7	306.2	304.9	305.3	305.6	305.8	306.1	306.4	306.7	307.0	307.2
150°	299.3	296.5	294.9	295.3	295.8	296.3	296.8	297.3	297.8	298.2	298.7
152.5°	291.1	287.8	286.0	286.4	287.0	287.5	288.0	288.5	289.1	289.6	290.2
155°	284.0	280.4	278.6	278.8	279.0	279.2	279.4	279.7	280.0	280.3	280.6
157.5°	278.9	275.3	273.6	273.6	273.7	273.8	273.9	274.1	274.2	274.4	274.5
160°	275.1	271.6	270.0	269.9	270.1	270.1	270.1	270.2	270.4	270.5	270.7
162.5°	271.5	268.0	266.4	266.4	266.5	266.5	266.7	266.6	266.8	266.9	267.1
165°	268.4	265.5	264.2	264.3	264.5	264.7	264.9	265.2	265.4	265.7	265.9
167.5°	268.3	265.7	264.7	264.6	264.4	264.3	264.3	264.2	264.2	264.2	264.2
170°	266.6	264.5	263.7	263.7	263.9	263.9	264.0	264.1	264.2	264.2	264.4
172.5°	265.7	264.2	263.6	263.8	264.1	264.3	264.6	264.8	265.1	265.4	265.7
175°	265.7	264.9	264.6	264.7	264.8	265.0	265.1	265.3	265.4	265.6	265.7
177.5°	267.1	266.8	266.6	266.6	266.6	266.6	266.6	266.6	266.6	266.7	266.7
180°	266.6	266.6	266.6	266.6	266.6	266.6	266.6	266.6	266.6	266.6	266.6



TEST NUMBER: P1444429  
 CATALOG NUMBER: EHBR1-12-UNV-TA-L830-UPL24

**CANDELA DISTRIBUTION (continued):**

	247.5°	250°	252.5°	255°	257.5°	260°	262.5°	265°	267.5°	270°	272.5°
0°	9928.9	9928.9	9928.9	9928.9	9928.9	9928.9	9928.9	9928.9	9928.9	9928.9	9928.9
2.5°	10006.6	10018.2	10017.4	10028.2	10027.7	10038.0	10035.9	10044.8	10042.7	10050.3	10045.8
5°	10334.8	10357.0	10364.3	10384.4	10388.5	10406.4	10406.7	10421.0	10419.3	10430.4	10424.5
7.5°	10645.3	10666.0	10675.9	10691.4	10699.2	10712.0	10717.1	10727.7	10730.2	10736.5	10736.3
10°	10671.5	10671.5	10676.2	10674.1	10678.5	10676.0	10681.3	10679.3	10687.2	10685.1	10691.0
12.5°	10318.9	10283.9	10271.1	10239.7	10232.8	10205.8	10207.8	10190.5	10198.8	10188.2	10206.3
15°	9561.1	9480.0	9439.9	9369.2	9347.1	9291.3	9286.8	9249.7	9259.7	9240.4	9268.6
17.5°	8441.3	8313.5	8243.4	8140.3	8099.4	8020.5	8004.6	7957.0	7964.4	7940.4	7974.6
20°	7106.2	6951.8	6863.4	6744.1	6691.0	6596.9	6571.9	6518.6	6525.3	6501.4	6540.1
22.5°	5755.9	5594.2	5494.4	5369.4	5301.6	5213.1	5186.6	5133.0	5136.0	5113.6	5150.8
25°	4515.0	4360.0	4263.1	4149.6	4090.7	4009.6	3981.7	3933.5	3936.2	3917.8	3951.1
27.5°	3492.7	3365.5	3284.4	3189.3	3136.5	3069.8	3042.6	3002.2	3002.0	2988.5	3016.4
30°	2729.4	2623.3	2550.4	2467.6	2417.9	2357.8	2331.5	2295.3	2293.7	2284.1	2306.3
32.5°	2137.0	2042.6	1976.2	1903.3	1858.8	1807.1	1782.3	1753.1	1750.5	1741.8	1760.0
35°	1661.3	1581.7	1524.7	1463.2	1467.8	1391.7	1404.3	1345.1	1329.1	1325.5	1339.1
37.5°	1283.9	1222.4	1175.9	1130.0	1098.9	1066.7	1049.4	1033.8	1032.1	1030.6	1040.0
40°	1005.0	961.9	928.2	896.6	875.2	855.6	844.7	836.2	834.1	833.0	838.7
42.5°	813.3	784.3	762.6	743.3	730.3	719.6	713.7	708.9	707.3	707.4	710.8
45°	687.2	669.6	655.5	643.6	635.3	638.9	628.2	633.8	626.4	634.1	629.0
47.5°	605.2	590.1	581.5	573.0	568.0	563.9	564.1	564.2	565.8	566.0	567.6
50°	541.9	533.2	527.2	521.7	519.1	517.0	517.7	518.3	519.9	520.0	521.2
52.5°	495.1	489.3	485.7	482.3	481.2	480.0	480.4	480.3	480.9	480.6	481.6
55°	456.9	454.2	453.1	451.9	452.1	451.7	451.9	450.7	450.0	449.1	449.9
57.5°	425.6	425.3	426.0	426.6	428.0	428.5	428.8	427.4	426.1	424.9	425.6
60°	401.6	402.1	404.0	405.6	407.7	408.6	409.2	408.4	407.5	406.4	407.0
62.5°	377.8	378.7	381.0	382.7	385.2	386.5	387.9	388.0	388.4	388.0	388.4
65°	350.1	351.3	353.3	354.8	357.2	358.3	359.7	360.0	360.8	360.6	361.3
67.5°	329.2	330.2	332.0	333.3	335.3	336.6	337.9	337.9	338.2	338.2	338.8
70°	306.9	307.3	308.9	310.1	312.1	313.3	314.7	315.2	316.1	316.2	317.0
72.5°	283.0	282.8	283.6	284.2	285.7	286.7	288.6	289.6	291.1	291.5	292.1
75°	257.0	256.8	257.9	258.3	259.7	260.6	262.7	264.1	266.5	267.4	267.1
77.5°	227.0	227.4	229.5	230.6	232.4	233.6	236.3	238.5	242.9	244.9	242.9
80°	193.3	193.8	196.0	197.1	199.3	200.8	203.9	206.5	210.4	211.2	210.1
82.5°	151.9	152.1	154.0	154.8	157.8	160.0	163.9	165.9	168.3	168.0	167.7
85°	103.6	105.0	107.4	109.8	113.5	117.0	120.6	123.6	121.6	124.9	121.1
87.5°	55.4	55.3	58.5	58.0	63.1	66.1	69.2	70.7	72.5	72.1	72.1
90°	33.3	31.7	30.8	29.1	28.6	26.8	26.4	24.8	24.6	22.8	25.4
92.5°	39.5	37.7	35.9	34.1	32.2	30.4	28.6	26.8	24.9	23.1	24.9
95°	48.5	46.8	45.1	43.5	41.8	40.1	38.4	36.7	35.0	33.3	35.5
97.5°	60.1	59.1	58.2	57.1	56.2	55.2	54.2	53.2	52.3	51.2	52.6
100°	67.9	67.9	67.9	67.9	67.8	67.8	67.8	67.8	67.8	67.8	68.9
102.5°	131.4	128.1	125.0	121.6	118.4	115.1	111.9	108.7	105.5	102.2	107.0
105°	298.7	286.1	273.4	260.7	247.9	235.3	222.7	209.9	197.3	184.6	197.7
107.5°	555.9	532.8	509.8	486.6	463.5	440.4	417.4	394.3	371.2	348.2	368.9
110°	776.4	752.0	727.4	703.0	678.5	653.9	629.5	605.0	580.5	556.0	575.7



TEST NUMBER: P1444429  
 CATALOG NUMBER: EHBR1-12-UNV-TA-L830-UPL24

**CANDELA DISTRIBUTION (continued):**

	247.5°	250°	252.5°	255°	257.5°	260°	262.5°	265°	267.5°	270°	272.5°
112.5°	865.4	849.6	833.9	817.9	802.2	786.5	770.7	754.9	739.2	723.4	733.0
115°	853.2	845.7	838.2	830.7	823.2	815.7	808.2	800.7	793.3	785.8	786.4
117.5°	781.6	779.1	776.6	774.1	771.8	769.2	766.9	764.4	762.0	759.7	754.3
120°	678.5	679.3	680.1	681.1	681.9	683.0	683.7	684.7	685.7	686.7	679.5
122.5°	576.7	578.6	580.7	582.6	584.6	586.7	588.7	590.8	592.9	595.0	587.8
125°	487.8	489.8	491.7	493.7	495.6	497.7	499.7	501.9	503.9	506.1	500.0
127.5°	423.3	424.1	424.8	425.6	426.4	427.4	428.3	429.2	430.1	431.3	427.4
130°	381.8	381.2	380.8	380.3	379.7	379.5	379.1	378.7	378.4	378.1	376.4
132.5°	356.9	355.5	354.2	352.8	351.5	350.2	349.0	347.9	346.7	345.6	345.1
135°	342.4	340.4	338.4	336.6	334.6	332.9	331.0	329.3	327.7	326.0	326.2
137.5°	331.8	329.9	327.9	326.1	324.1	322.3	320.5	318.8	317.1	315.5	316.0
140°	326.4	324.5	322.5	320.6	318.9	317.0	315.2	313.5	311.7	310.2	310.5
142.5°	319.7	318.0	316.1	314.5	312.8	311.2	309.5	308.0	306.4	305.0	305.4
145°	314.3	313.0	311.6	310.3	309.1	308.0	306.7	305.6	304.5	303.5	303.7
147.5°	307.5	306.6	305.6	304.6	303.7	302.7	301.8	301.0	300.1	299.4	299.5
150°	299.2	298.6	297.9	297.3	296.7	296.1	295.5	295.0	294.4	293.9	293.8
152.5°	290.7	290.1	289.4	288.9	288.3	287.8	287.2	286.7	286.3	285.7	285.7
155°	280.9	280.6	280.4	280.1	279.8	279.6	279.3	279.2	279.0	278.8	278.8
157.5°	274.7	274.5	274.5	274.5	274.4	274.3	274.2	274.2	274.1	274.1	274.2
160°	270.9	270.7	270.4	270.3	270.1	269.9	269.7	269.6	269.4	269.2	269.5
162.5°	267.1	267.3	267.3	267.4	267.5	267.6	267.7	267.8	267.9	268.1	268.2
165°	266.2	266.1	266.0	265.9	265.8	265.8	265.7	265.7	265.7	265.7	265.9
167.5°	264.2	264.2	264.4	264.5	264.7	264.9	265.2	265.4	265.6	265.8	266.1
170°	264.4	264.4	264.4	264.4	264.4	264.5	264.5	264.5	264.6	264.7	264.9
172.5°	265.9	265.9	265.8	265.9	265.8	265.9	265.9	265.9	265.9	266.0	266.2
175°	265.8	266.0	266.2	266.3	266.5	266.6	266.8	266.9	267.1	267.1	267.1
177.5°	266.7	266.7	266.7	266.7	266.7	266.8	266.8	266.8	266.8	266.7	266.8
180°	266.6	266.6	266.6	266.6	266.6	266.6	266.6	266.6	266.6	266.6	266.6



TEST NUMBER: P1444429  
 CATALOG NUMBER: EHBR1-12-UNV-TA-L830-UPL24

**CANDELA DISTRIBUTION (continued):**

	275°	277.5°	280°	282.5°	285°	287.5°	290°	292.5°	295°	297.5°	300°
0°	9928.9	9928.9	9928.9	9928.9	9928.9	9928.9	9928.9	9928.9	9928.9	9928.9	9928.9
2.5°	10053.2	10048.2	10053.3	10048.2	10053.3	10047.1	10051.4	10044.6	10046.3	10039.3	10041.1
5°	10433.3	10425.4	10429.6	10419.2	10420.3	10406.4	10406.2	10390.0	10385.7	10367.2	10359.2
7.5°	10740.8	10738.1	10739.6	10732.9	10732.2	10722.6	10718.1	10704.7	10696.3	10679.3	10667.7
10°	10692.1	10699.9	10702.0	10710.0	10711.6	10719.5	10721.2	10729.1	10730.7	10736.6	10736.7
12.5°	10205.4	10232.0	10238.4	10271.3	10285.2	10322.7	10342.9	10384.4	10408.9	10450.3	10475.7
15°	9267.9	9314.0	9332.3	9396.5	9432.0	9506.9	9554.0	9640.0	9700.7	9792.1	9857.3
17.5°	7977.6	8041.9	8071.0	8158.0	8214.7	8325.4	8405.0	8536.2	8636.6	8782.4	8898.0
20°	6546.8	6618.2	6657.7	6756.9	6823.9	6953.1	7052.6	7213.8	7348.2	7533.0	7690.9
22.5°	5162.5	5230.5	5274.2	5375.2	5450.7	5585.4	5696.7	5866.8	6017.4	6225.6	6415.0
25°	3963.8	4026.2	4065.7	4157.0	4227.9	4351.8	4457.9	4621.5	4769.0	4977.8	5171.9
27.5°	3030.3	3082.5	3120.6	3198.5	3261.0	3366.0	3457.2	3592.5	3719.5	3900.1	4073.1
30°	2319.9	2366.2	2403.3	2471.1	2529.1	2620.2	2700.3	2814.0	2919.1	3062.8	3200.4
32.5°	1772.8	1812.6	1845.7	1905.1	1957.6	2039.6	2111.9	2211.5	2301.7	2423.5	2536.8
35°	1351.7	1430.1	1424.5	1506.5	1519.6	1578.4	1643.0	1730.0	1809.9	1913.6	2009.9
37.5°	1049.1	1071.2	1094.8	1131.0	1169.1	1222.6	1277.1	1383.4	1422.5	1500.8	1580.5
40°	846.0	860.9	876.6	901.0	927.6	965.4	1005.0	1055.8	1107.8	1171.3	1236.2
42.5°	715.3	723.7	733.6	748.0	764.4	788.3	814.8	849.2	885.5	930.2	975.8
45°	639.0	635.0	638.0	645.7	655.6	670.1	686.9	708.2	731.8	760.7	791.5
47.5°	568.0	569.6	570.5	574.7	580.0	589.8	599.9	614.4	642.3	650.7	667.6
50°	521.1	521.8	521.6	523.7	526.4	532.7	539.3	549.1	558.8	571.9	584.2
52.5°	481.7	482.8	482.7	484.1	485.5	489.5	493.6	500.6	507.0	515.3	522.3
55°	450.7	452.1	452.8	453.9	454.7	456.7	458.4	461.7	464.4	469.1	473.4
57.5°	426.8	428.8	429.8	430.2	429.4	429.3	428.7	429.4	429.9	432.5	434.9
60°	407.9	409.6	409.9	409.6	408.1	407.0	405.2	404.7	404.4	405.6	406.9
62.5°	388.3	388.9	388.5	388.0	386.2	385.2	383.3	382.6	382.0	382.9	383.6
65°	361.1	361.6	361.1	360.7	359.2	358.3	356.8	356.2	355.4	355.6	355.5
67.5°	338.9	339.5	339.1	338.6	337.6	337.0	335.9	335.2	334.1	333.7	332.9
70°	316.9	317.3	316.7	316.2	315.0	314.5	313.5	313.2	312.4	312.2	311.4
72.5°	291.5	291.6	290.7	290.5	289.5	289.4	289.1	289.4	289.4	289.8	289.6
75°	265.7	265.3	264.2	264.0	263.2	263.6	263.1	263.8	263.8	264.7	264.9
77.5°	239.6	238.3	236.1	235.2	233.8	233.6	232.8	233.3	233.1	234.3	234.7
80°	206.8	205.1	202.4	201.2	199.5	199.2	198.5	199.2	198.9	200.2	201.1
82.5°	165.1	163.6	160.9	159.9	157.9	158.1	157.3	158.1	158.0	159.9	161.0
85°	122.1	121.2	118.3	115.8	113.0	111.3	109.7	109.4	108.8	109.7	110.3
87.5°	70.5	69.7	67.4	65.9	61.0	61.2	59.2	59.1	58.6	58.2	59.2
90°	26.0	28.4	29.2	31.5	32.4	34.8	35.9	38.2	39.4	42.1	43.5
92.5°	26.8	28.6	30.4	32.2	34.1	35.9	37.7	39.5	43.5	47.3	51.3
95°	37.6	39.7	41.8	43.9	46.0	48.1	50.2	52.4	58.2	63.9	69.7
97.5°	54.0	55.5	56.9	58.3	59.7	61.1	62.5	63.9	70.1	76.2	82.4
100°	70.1	71.2	72.3	73.4	74.6	75.7	76.8	77.9	90.0	101.9	113.9
102.5°	111.7	116.5	121.3	126.1	131.0	135.7	140.5	145.3	172.7	200.2	227.6
105°	210.8	223.9	237.1	250.1	263.2	276.3	289.3	302.5	346.4	390.2	434.3
107.5°	389.6	410.2	430.9	451.7	472.4	493.0	513.7	534.5	577.2	620.1	662.8
110°	595.5	615.1	634.8	654.7	674.3	694.0	713.8	733.5	759.2	784.8	810.5



TEST NUMBER: P1444429  
 CATALOG NUMBER: EHBR1-12-UNV-TA-L830-UPL24

**CANDELA DISTRIBUTION (continued):**

	275°	277.5°	280°	282.5°	285°	287.5°	290°	292.5°	295°	297.5°	300°
112.5°	742.5	752.1	761.6	771.4	780.9	790.6	800.1	809.8	822.5	835.3	848.1
115°	787.0	787.6	788.1	788.8	789.4	790.0	790.7	791.3	795.4	799.2	803.2
117.5°	749.0	743.7	738.4	733.1	727.8	722.6	717.3	712.2	711.1	710.2	709.3
120°	672.6	665.3	658.3	651.1	644.2	637.1	630.1	623.1	619.4	615.6	612.0
122.5°	580.8	573.5	566.6	559.5	552.5	545.4	538.6	531.6	528.9	526.1	523.5
125°	494.0	488.1	482.2	476.2	470.5	464.6	458.9	453.1	452.6	452.1	451.8
127.5°	423.8	420.0	416.5	412.8	409.2	405.7	402.2	398.7	399.9	401.0	402.2
130°	374.7	372.9	371.4	369.6	368.2	366.6	365.1	363.5	365.9	368.1	370.6
132.5°	344.7	344.3	344.0	343.6	343.3	343.1	342.8	342.6	345.4	348.1	350.8
135°	326.4	326.7	327.2	327.5	328.0	328.3	328.9	329.3	332.0	334.5	337.1
137.5°	316.6	317.1	317.8	318.4	319.1	319.8	320.6	321.3	323.4	325.3	327.4
140°	311.0	311.4	311.9	312.4	313.0	313.5	314.2	314.6	316.2	317.8	319.3
142.5°	305.7	306.1	306.7	307.1	307.7	308.2	308.7	309.3	310.4	311.5	312.7
145°	304.0	304.2	304.5	304.9	305.2	305.6	305.9	306.4	307.1	307.6	308.3
147.5°	299.6	299.7	299.8	300.0	300.3	300.5	300.7	300.9	301.2	301.5	302.0
150°	293.8	293.8	293.8	293.8	293.8	293.9	294.0	294.0	294.3	294.7	295.0
152.5°	285.7	285.7	285.6	285.6	285.6	285.7	285.6	285.7	286.0	286.4	286.6
155°	279.0	279.0	279.2	279.3	279.5	279.6	279.8	279.9	280.1	280.2	280.4
157.5°	274.3	274.4	274.5	274.6	274.8	274.9	275.0	275.2	275.4	275.5	275.6
160°	269.7	270.1	270.2	270.6	270.8	271.1	271.4	271.6	271.8	271.9	272.1
162.5°	268.4	268.5	268.6	268.7	268.8	269.0	269.1	269.3	269.7	269.9	270.1
165°	266.2	266.5	266.9	267.0	267.3	267.6	267.9	268.2	268.3	268.4	268.6
167.5°	266.3	266.6	266.9	267.1	267.4	267.7	268.0	268.3	268.4	268.5	268.6
170°	265.2	265.5	265.7	265.9	266.1	266.4	266.7	266.9	267.1	267.4	267.6
172.5°	266.4	266.6	266.8	267.0	267.1	267.4	267.6	267.9	268.1	268.4	268.5
175°	267.1	267.1	267.1	267.2	267.2	267.2	267.2	267.3	267.4	267.4	267.4
177.5°	267.0	267.1	267.2	267.3	267.5	267.6	267.8	267.9	267.9	267.9	267.9
180°	266.6	266.6	266.6	266.6	266.6	266.6	266.6	266.6	266.6	266.6	266.6



TEST NUMBER: P1444429  
 CATALOG NUMBER: EHBR1-12-UNV-TA-L830-UPL24

**CANDELA DISTRIBUTION (continued):**

	302.5°	305°	307.5°	310°	312.5°	315°	317.5°	320°	322.5°	325°	327.5°
0°	9928.9	9928.9	9928.9	9928.9	9928.9	9928.9	9928.9	9928.9	9928.9	9928.9	9928.9
2.5°	10034.0	10034.5	10026.4	10026.0	10018.4	10017.4	10010.0	10007.8	10001.8	9999.6	9993.5
5°	10338.5	10328.6	10305.9	10292.5	10269.9	10255.0	10230.6	10214.7	10191.2	10173.5	10149.8
7.5°	10646.4	10631.1	10605.5	10584.7	10553.5	10528.6	10492.1	10462.1	10422.5	10388.2	10346.6
10°	10736.7	10734.3	10727.8	10718.3	10703.8	10687.5	10662.6	10636.6	10602.0	10564.2	10518.0
12.5°	10514.5	10538.4	10571.2	10590.6	10614.1	10624.5	10634.2	10631.7	10625.4	10606.4	10579.7
15°	9951.7	10019.0	10108.3	10177.5	10257.1	10314.9	10378.8	10418.6	10458.4	10476.7	10488.0
17.5°	9056.3	9184.0	9344.0	9476.7	9629.7	9752.7	9887.4	9988.9	10093.2	10168.0	10235.5
20°	7906.3	8091.2	8317.6	8517.6	8750.2	8952.2	9173.8	9355.6	9543.0	9689.6	9828.4
22.5°	6658.9	6878.5	7152.2	7405.7	7705.6	7975.0	8279.0	8543.5	8819.8	9050.6	9273.7
25°	5432.3	5673.1	5972.4	6255.2	6594.8	6908.2	7268.8	7598.5	7955.6	8265.5	8571.7
27.5°	4312.1	4548.7	4854.2	5155.3	5514.3	5848.2	6234.5	6597.9	7004.4	7379.3	7762.8
30°	3391.5	3592.1	3866.1	4157.8	4511.8	4851.7	5242.2	5615.8	6038.7	6448.0	6880.0
32.5°	2687.0	2839.8	3055.3	3301.8	3628.5	3952.1	4323.8	4684.6	5101.0	5514.5	5963.8
35°	2134.0	2253.2	2417.4	2609.9	2886.6	3165.4	3494.3	3822.2	4210.8	4603.2	5039.9
37.5°	1682.8	1779.5	1908.1	2052.7	2274.6	2503.4	2773.1	3045.1	3382.6	3730.4	4126.2
40°	1314.0	1392.3	1492.5	1600.3	1767.9	1944.2	2152.7	2363.6	2634.9	2919.2	3246.6
42.5°	1032.3	1090.0	1160.8	1239.5	1395.9	1489.6	1631.0	1783.5	1982.9	2189.3	2435.5
45°	829.0	868.4	917.5	970.3	1042.9	1122.3	1219.1	1320.8	1510.2	1603.1	1752.9
47.5°	692.3	718.7	750.0	783.3	826.1	872.3	929.7	988.4	1064.4	1143.1	1235.3
50°	600.2	627.1	637.9	655.1	679.9	706.3	738.7	771.0	811.8	853.1	900.6
52.5°	532.0	540.7	552.4	563.3	578.6	608.7	618.4	635.3	658.1	680.5	705.4
55°	479.7	485.4	493.0	499.6	508.9	517.8	530.6	541.9	557.1	570.5	587.1
57.5°	439.1	442.8	448.0	452.3	458.3	463.4	470.9	477.0	485.8	493.4	503.4
60°	409.6	412.1	415.5	418.4	422.2	424.8	428.5	431.4	436.0	439.9	445.5
62.5°	385.5	386.8	389.1	390.7	393.1	394.4	396.4	397.7	400.3	402.2	405.3
65°	356.6	356.9	358.4	359.1	361.0	361.8	363.3	363.9	366.1	367.5	370.2
67.5°	332.9	332.3	332.3	331.7	332.0	331.4	331.6	330.9	331.8	332.3	334.3
70°	311.3	310.3	310.1	309.0	308.7	307.7	307.4	306.5	306.4	306.1	306.9
72.5°	290.2	289.9	290.0	289.3	289.2	288.5	288.5	288.1	288.6	288.8	289.7
75°	265.9	265.9	266.5	265.8	266.0	265.5	265.7	265.1	265.4	265.3	266.2
77.5°	236.4	237.1	238.4	238.1	238.5	237.8	238.1	237.4	237.6	237.1	237.5
80°	203.2	204.7	206.4	206.4	207.1	206.5	207.2	206.5	206.8	205.9	205.7
82.5°	163.8	165.0	166.9	166.9	168.6	168.9	170.7	170.6	171.7	171.0	170.5
85°	111.9	112.8	114.5	115.3	117.0	118.0	119.7	120.5	119.1	121.5	119.7
87.5°	58.5	60.6	59.4	62.3	61.6	64.4	63.9	66.5	65.9	68.3	68.0
90°	46.5	48.1	51.1	52.7	56.2	58.2	57.7	55.5	55.1	52.9	52.5
92.5°	55.2	59.3	63.2	67.2	71.1	75.0	71.4	67.7	64.1	60.4	56.8
95°	75.4	81.2	86.9	92.7	98.4	104.3	98.1	91.9	85.7	79.5	73.3
97.5°	88.6	94.9	101.1	107.3	113.4	119.6	112.3	105.0	97.7	90.5	83.1
100°	125.9	137.8	149.8	161.8	173.8	185.7	172.1	158.5	144.9	131.2	117.7
102.5°	255.2	282.5	310.0	337.5	364.9	392.4	363.4	334.5	305.6	276.6	247.6
105°	478.1	522.1	566.0	610.0	653.8	697.8	650.9	604.0	557.0	510.1	463.1
107.5°	705.7	748.4	791.4	834.1	877.0	919.8	872.3	824.6	777.0	729.4	681.7
110°	836.2	861.9	887.5	913.3	939.0	964.7	930.0	895.1	860.4	825.4	790.7



TEST NUMBER: P1444429  
 CATALOG NUMBER: EHBR1-12-UNV-TA-L830-UPL24

**CANDELA DISTRIBUTION (continued):**

	302.5°	305°	307.5°	310°	312.5°	315°	317.5°	320°	322.5°	325°	327.5°
112.5°	860.8	873.7	886.4	899.3	912.1	924.9	900.0	875.1	850.1	825.2	800.2
115°	807.2	811.1	815.0	819.1	823.0	827.0	810.1	793.2	776.3	759.5	742.5
117.5°	708.3	707.5	706.6	705.7	704.7	703.8	694.3	684.8	675.2	665.7	656.1
120°	608.3	604.5	600.8	597.2	593.4	589.8	585.5	581.4	577.2	573.1	568.8
122.5°	520.8	518.2	515.6	512.8	510.1	507.4	505.6	503.9	502.2	500.4	498.6
125°	451.5	451.0	450.7	450.2	449.8	449.3	448.3	447.3	446.2	445.2	444.1
127.5°	403.3	404.6	405.7	406.9	408.0	409.2	408.6	408.3	407.7	407.4	406.8
130°	372.8	375.2	377.4	379.7	381.9	384.2	383.5	382.8	382.0	381.3	380.6
132.5°	353.6	356.2	358.9	361.7	364.4	367.0	366.2	365.3	364.4	363.6	362.8
135°	339.7	342.4	344.9	347.5	350.0	352.5	351.5	350.5	349.4	348.5	347.5
137.5°	329.3	331.4	333.3	335.2	337.2	339.2	338.2	337.1	336.2	335.2	334.2
140°	320.9	322.4	323.9	325.5	327.0	328.5	327.3	326.2	324.9	323.8	322.6
142.5°	313.7	314.8	315.9	317.0	318.0	319.1	317.6	316.1	314.6	313.2	311.6
145°	309.0	309.6	310.2	310.9	311.5	312.1	310.3	308.8	307.1	305.5	303.8
147.5°	302.3	302.7	302.8	303.2	303.4	303.9	302.3	300.7	299.2	297.6	296.0
150°	295.3	295.6	295.9	296.1	296.5	296.7	295.1	293.5	291.9	290.3	288.8
152.5°	286.9	287.2	287.5	287.7	287.9	288.1	286.7	285.2	283.8	282.2	280.8
155°	280.5	280.6	280.7	280.8	280.9	281.0	279.7	278.6	277.4	276.1	274.8
157.5°	275.7	275.9	276.0	276.0	276.1	276.2	275.2	274.4	273.3	272.5	271.5
160°	272.2	272.3	272.4	272.5	272.6	272.7	271.8	271.1	270.3	269.5	268.6
162.5°	270.3	270.7	270.9	271.1	271.4	271.6	270.6	269.8	268.7	267.8	266.8
165°	268.6	268.7	268.8	268.9	269.0	269.1	268.5	267.8	267.1	266.5	265.8
167.5°	268.7	268.8	268.9	269.0	269.0	269.1	268.5	267.9	267.1	266.5	265.7
170°	267.9	268.1	268.4	268.5	268.7	268.8	268.4	267.8	267.2	266.8	266.2
172.5°	268.7	268.9	269.1	269.3	269.5	269.7	269.1	268.6	268.0	267.4	266.9
175°	267.4	267.5	267.6	267.6	267.6	267.6	267.2	266.8	266.4	265.9	265.6
177.5°	267.9	267.9	267.9	267.9	267.9	267.9	267.6	267.3	267.1	266.8	266.4
180°	266.6	266.6	266.6	266.6	266.6	266.6	266.6	266.6	266.6	266.6	266.6



TEST NUMBER: P1444429  
 CATALOG NUMBER: EHBR1-12-UNV-TA-L830-UPL24

**CANDELA DISTRIBUTION (continued):**

	330°	332.5°	335°	337.5°	340°	342.5°	345°	347.5°	350°	352.5°	355°
0°	9928.9	9928.9	9928.9	9928.9	9928.9	9928.9	9928.9	9928.9	9928.9	9928.9	9928.9
2.5°	9991.3	9987.0	9984.2	9980.6	9978.5	9975.7	9973.7	9971.9	9970.5	9969.2	9968.3
5°	10131.8	10109.5	10092.2	10073.4	10058.0	10042.5	10030.7	10020.9	10014.2	10009.0	10006.0
7.5°	10310.7	10269.8	10233.5	10195.1	10160.9	10127.1	10098.1	10073.0	10054.2	10042.0	10034.7
10°	10470.4	10415.7	10361.6	10304.6	10250.6	10198.2	10149.8	10107.3	10073.6	10051.3	10038.2
12.5°	10542.0	10495.4	10440.2	10378.3	10312.1	10245.2	10179.9	10121.0	10071.6	10038.4	10019.2
15°	10479.0	10459.9	10422.3	10374.3	10311.5	10242.3	10165.6	10093.5	10027.3	9984.3	9959.4
17.5°	10273.8	10300.5	10297.7	10279.3	10234.1	10175.8	10097.7	10016.8	9933.9	9876.5	9845.1
20°	9927.6	10011.6	10054.2	10076.1	10058.3	10020.5	9949.8	9867.7	9771.1	9696.1	9650.3
22.5°	9441.1	9589.4	9681.8	9749.4	9763.7	9750.9	9688.4	9610.3	9502.5	9412.4	9344.8
25°	8814.8	9032.0	9178.1	9292.5	9337.0	9348.4	9295.3	9217.7	9097.6	8992.6	8899.7
27.5°	8077.1	8359.4	8554.3	8708.1	8777.6	8807.7	8758.8	8679.5	8537.4	8412.1	8290.8
30°	7246.7	7581.5	7816.3	8000.7	8085.3	8125.1	8073.1	7984.7	7819.4	7668.5	7515.7
32.5°	6357.7	6724.2	6980.0	7180.2	7264.1	7301.6	7233.5	7134.3	6943.2	6765.5	6587.2
35°	5427.1	5796.9	6054.9	6249.9	6320.2	6342.7	6255.8	6141.0	5929.3	5734.3	5539.9
37.5°	4477.5	4821.6	5056.1	5231.0	5274.5	5278.4	5173.6	5046.8	4824.3	4632.0	4438.6
40°	3536.1	3826.3	4015.6	4155.6	4170.7	4157.2	4043.4	3915.7	3707.6	3535.3	3365.5
42.5°	2649.3	2868.4	3003.5	3099.4	3093.7	3067.1	2962.7	2852.9	2681.2	2550.0	2416.4
45°	1889.6	2034.1	2113.0	2169.2	2151.2	2125.8	2044.6	1967.7	1850.9	1766.2	1676.4
47.5°	1312.8	1485.2	1455.2	1565.1	1470.4	1532.9	1402.8	1331.1	1269.1	1224.1	1173.3
50°	939.8	979.3	998.4	1011.5	1004.5	995.0	971.6	950.7	922.4	901.8	877.7
52.5°	725.8	745.5	756.4	764.3	762.7	759.2	749.0	739.7	726.4	717.7	707.2
55°	614.8	615.0	635.0	626.5	639.0	624.3	630.1	613.7	616.4	602.3	592.8
57.5°	510.9	518.9	522.6	526.1	525.1	524.6	520.6	518.6	514.2	512.8	509.6
60°	449.3	453.6	454.5	456.1	454.8	454.2	451.1	450.0	447.1	446.5	444.4
62.5°	407.2	409.3	409.3	409.3	407.7	405.9	402.5	400.7	398.2	397.6	396.4
65°	372.1	374.3	374.7	375.2	373.8	372.5	369.5	367.6	364.9	363.9	362.5
67.5°	335.7	338.1	338.9	340.1	339.4	339.1	337.0	336.3	334.6	334.1	332.9
70°	307.1	308.2	308.1	308.1	306.5	305.0	302.7	301.5	299.7	299.3	298.2
72.5°	290.2	290.9	290.5	289.8	287.8	285.6	282.8	280.7	278.4	277.0	275.3
75°	266.3	267.2	266.7	266.3	264.4	263.0	260.8	259.7	258.0	257.5	256.4
77.5°	237.0	237.5	236.5	236.4	234.9	234.1	232.4	232.1	230.9	230.9	229.8
80°	204.4	204.1	202.6	202.2	200.8	200.5	199.1	199.2	198.3	198.7	197.9
82.5°	168.1	167.2	165.2	164.7	163.0	162.8	162.0	162.7	162.1	163.0	162.4
85°	120.6	120.7	119.9	119.9	119.4	119.5	119.5	120.0	120.1	120.9	120.8
87.5°	67.2	68.2	68.0	68.8	68.8	69.8	70.2	71.6	71.8	73.2	73.2
90°	50.3	50.0	47.9	47.6	46.5	47.1	46.4	47.0	46.0	46.5	45.1
92.5°	53.1	49.5	45.8	42.2	40.3	38.4	36.7	34.8	33.0	31.1	29.2
95°	67.1	60.9	54.7	48.5	46.4	44.3	42.2	40.1	37.9	35.9	33.7
97.5°	75.8	68.5	61.2	53.9	52.0	50.2	48.2	46.5	44.6	42.8	40.9
100°	104.0	90.3	76.7	63.0	61.4	59.9	58.4	56.9	55.3	53.7	52.1
102.5°	218.7	189.8	160.7	131.8	126.3	120.8	115.3	109.7	104.3	98.7	93.2
105°	416.3	369.3	322.3	275.3	260.4	245.5	230.5	215.6	200.7	185.8	170.9
107.5°	634.1	586.4	538.8	491.1	463.6	435.9	408.4	380.8	353.2	325.6	298.1
110°	755.8	721.0	686.1	651.3	629.2	607.0	584.7	562.5	540.3	518.1	495.8



TEST NUMBER: P1444429  
 CATALOG NUMBER: EHBR1-12-UNV-TA-L830-UPL24

**CANDELA DISTRIBUTION (continued):**

	330°	332.5°	335°	337.5°	340°	342.5°	345°	347.5°	350°	352.5°	355°
112.5°	775.3	750.3	725.3	700.3	690.3	680.1	670.1	660.0	649.8	639.7	629.6
115°	725.6	708.7	691.8	674.7	671.2	667.6	664.0	660.4	656.7	653.1	649.4
117.5°	646.6	637.0	627.4	617.9	618.2	618.8	619.3	619.8	620.2	620.7	621.0
120°	564.6	560.4	556.2	552.0	554.9	557.8	560.8	563.6	566.6	569.4	572.2
122.5°	496.8	495.1	493.3	491.4	495.0	498.5	502.0	505.4	508.9	512.3	515.7
125°	443.2	442.0	441.0	439.9	443.4	447.0	450.6	453.9	457.6	461.0	464.3
127.5°	406.4	405.9	405.5	404.9	407.5	409.8	412.2	414.6	417.0	419.3	421.6
130°	379.9	379.1	378.4	377.7	379.8	382.0	384.1	386.2	388.5	390.4	392.4
132.5°	361.9	361.0	360.2	359.3	360.8	362.2	363.8	365.0	366.5	367.8	369.1
135°	346.6	345.5	344.5	343.5	344.8	346.2	347.5	348.7	350.0	351.1	352.3
137.5°	333.2	332.2	331.1	330.1	331.3	332.5	333.7	334.8	335.8	336.9	337.9
140°	321.5	320.3	319.1	317.9	318.9	320.0	321.0	322.0	323.0	323.8	324.8
142.5°	310.1	308.6	307.2	305.6	306.4	307.1	307.8	308.5	309.3	309.9	310.4
145°	302.2	300.4	298.8	297.1	297.7	298.2	298.8	299.3	299.8	300.2	300.7
147.5°	294.5	292.9	291.3	289.7	290.2	290.6	290.9	291.2	291.7	292.0	292.3
150°	287.1	285.5	283.9	282.2	282.6	283.0	283.3	283.6	283.9	284.2	284.5
152.5°	279.2	277.8	276.2	274.7	275.0	275.3	275.6	275.9	276.1	276.4	276.6
155°	273.6	272.3	271.1	269.8	270.1	270.3	270.6	270.8	271.0	271.3	271.5
157.5°	270.5	269.4	268.6	267.4	267.6	267.6	267.8	267.7	267.9	267.9	268.0
160°	267.8	267.0	266.1	265.2	265.2	265.4	265.4	265.5	265.5	265.5	265.5
162.5°	265.8	264.8	263.9	262.8	262.9	262.9	263.1	263.0	263.1	263.1	263.1
165°	265.1	264.4	263.7	262.9	262.9	262.8	262.8	262.7	262.6	262.5	262.3
167.5°	265.1	264.3	263.7	262.8	263.0	263.0	263.1	263.1	263.3	263.2	263.3
170°	265.7	265.0	264.4	263.9	263.8	263.8	263.7	263.6	263.5	263.4	263.3
172.5°	266.3	265.7	265.2	264.5	264.5	264.4	264.4	264.3	264.2	264.2	264.2
175°	265.1	264.7	264.2	263.8	263.7	263.7	263.7	263.6	263.5	263.5	263.4
177.5°	266.1	265.8	265.6	265.3	265.2	265.2	265.2	265.1	265.1	265.1	265.1
180°	266.6	266.6	266.6	266.6	266.6	266.6	266.6	266.6	266.6	266.6	266.6



TEST NUMBER: P1444429  
 CATALOG NUMBER: EHBR1-12-UNV-TA-L830-UPL24

**CANDELA DISTRIBUTION (continued):**

	357.5°	360°
0°	9928.9	9928.9
2.5°	9967.4	9966.9
5°	10004.4	10003.9
7.5°	10032.6	10032.4
10°	10036.0	10037.7
12.5°	10015.9	10017.4
15°	9957.5	9960.2
17.5°	9845.7	9849.2
20°	9653.1	9656.8
22.5°	9341.1	9342.7
25°	8887.7	8881.3
27.5°	8269.5	8258.4
30°	7483.6	7472.9
32.5°	6546.7	6539.9
35°	5491.9	5487.7
37.5°	4381.5	4372.8
40°	3303.4	3278.3
42.5°	2357.9	2313.9
45°	1629.5	1577.3
47.5°	1137.5	1105.3
50°	862.2	851.8
52.5°	702.6	700.2
55°	592.8	591.7
57.5°	510.3	509.9
60°	445.5	445.4
62.5°	397.2	397.4
65°	363.2	363.3
67.5°	333.2	333.0
70°	298.6	298.3
72.5°	274.7	274.4
75°	256.4	256.1
77.5°	230.1	229.8
80°	198.4	197.9
82.5°	163.2	162.6
85°	121.8	121.8
87.5°	74.5	74.5
90°	45.5	44.0
92.5°	27.5	25.8
95°	31.7	29.5
97.5°	39.2	37.3
100°	50.6	49.0
102.5°	87.8	82.2
105°	156.0	141.1
107.5°	270.4	242.9
110°	473.6	451.4



TEST NUMBER: P1444429  
CATALOG NUMBER: EHBR1-12-UNV-TA-L830-UPL24

**CANDELA DISTRIBUTION (continued):**

	357.5°	360°
112.5°	619.4	609.3
115°	645.8	642.1
117.5°	621.5	621.9
120°	575.0	577.8
122.5°	519.0	522.3
125°	467.6	471.0
127.5°	423.8	425.9
130°	394.2	396.1
132.5°	370.3	371.4
135°	353.3	354.4
137.5°	338.8	339.7
140°	325.4	326.3
142.5°	311.0	311.5
145°	301.1	301.4
147.5°	292.3	292.6
150°	284.7	284.9
152.5°	276.8	277.0
155°	271.6	271.7
157.5°	267.9	267.9
160°	265.5	265.5
162.5°	263.1	263.1
165°	262.1	262.0
167.5°	263.2	263.3
170°	263.2	263.1
172.5°	264.1	264.0
175°	263.4	263.4
177.5°	265.1	265.0
180°	266.6	266.6

LM-79-2019: Approved Method: Electrical and Photometric Measurements of Solid-  
State Lighting Products

Report Prepared for

Cooper Lighting Solutions

Metalux

Report Number: SP1-2506-472-2

Test Date: 07/31/2025

Luminaire Tested: EHBR-60-L830-N

Data in this report applies to families of products including EHBR-60-L830-N

**Test Information**

Test Method: LM-79-2019  
 Report Number: SP1-2506-472-2  
 Test Lab: COOPER LIGHTING SOLUTIONS  
 Photometer: SP1 - 76IN SPHERE  
 Measurement Geometry: 4π  
 Issue Date: 08/05/2025  
 Manufacturer: COOPER LIGHTING SOLUTIONS  
 Product Line: Metalux  
 Catalog Number: **EHBR-60-L830-N**  
 Description: Elevate Round Highbay at, 60000 lumens, 3000K 80CRI LEDs with N lens

**Spectral Parameters**

CCT (K): 2983  
 CIE u': 0.2516  
 CIE v': 0.5201  
 Duv: -0.0012  
 CIE x: 0.4364  
 CIE y: 0.4010  
 CIE z: 0.1626  
 Peak Wavelength (nm): 630  
 Dominant Wavelength (nm): 583  
 Purity: 51.34918  
 Rf: 81.2  
 Rg: 101.5

CRI (Ra):	83.4		
R1:	84.0	R9:	29.4
R2:	87.5	R10:	68.6
R3:	88.9	R11:	82.2
R4:	83.8	R12:	61.6
R5:	81.9	R13:	83.9
R6:	83.1	R14:	92.5
R7:	87.1	R15:	79.8
R8:	70.9		



**Test Conditions**

Stabilization Time: 38M  
 Operation Time: 1H 38M  
 Sphere Temperature (°C): 25.0

REPORT NUMBER: SP1-2506-472-2

Measurement and Test Equipment			
Instrument	Identification Number	Calibration Date	Calibration Due Date
Photometer	76INCH SPHERE IN0058	6/16/2025	12/16/2025
Power Meter	XITRON INXT2011004	1/21/2025	1/21/2026
AC Power Source	CHROMA 61603 IN0063	10/22/2024	10/22/2025
DC Power Source	AGILENT E3634A IN0208	10/22/2024	10/22/2025
Sphere Thermometer	ONSET IN0085	10/22/2024	10/22/2025
Room Thermometer	ONSET IN0046	10/22/2024	10/22/2025

REPORT NUMBER: SP1-2506-472-2

CIE 1931 Chromaticity Diagram



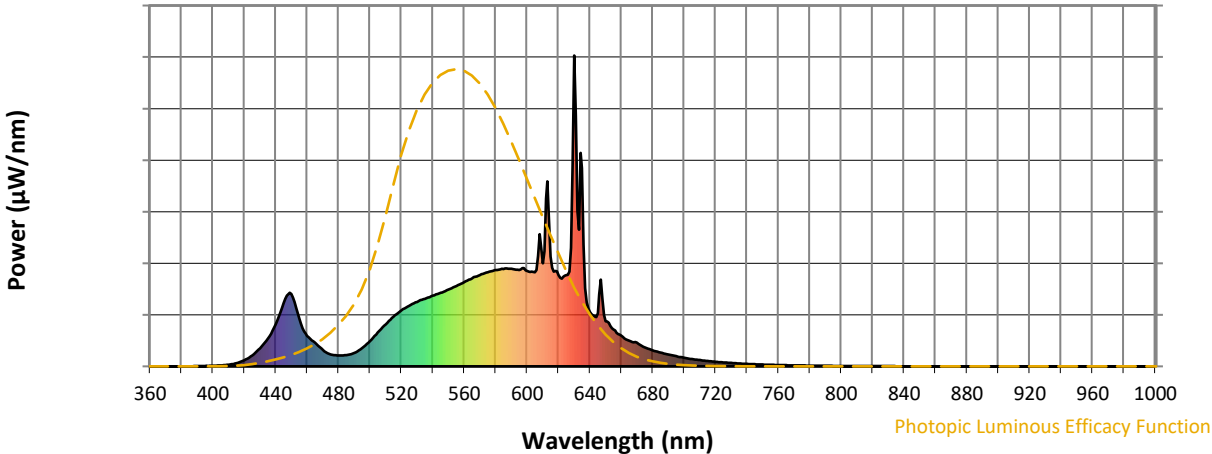
CIE 1931 Chromaticity Diagram with 2017 ANSI 7-Step and 4-Step Quadrangles



Point lies inside the ANSI 3000K 4-step quadrangle

REPORT NUMBER: SP1-2506-472-2

**Photopic Flux vs. Wavelength**



**Photopic Lumens: NR**

λ (nm)	Power W <sup>^</sup> /nm	Lumens (φ/nm)	λ (nm)	Power W <sup>^</sup> /nm	Lumens (φ/nm)	λ (nm)	Power W <sup>^</sup> /nm	Lumens (φ/nm)	λ (nm)	Power W <sup>^</sup> /nm	Lumens (φ/nm)	λ (nm)	Power W <sup>^</sup> /nm	Lumens (φ/nm)
360	0	NR	490	43	NR	620	294	NR	750	6	NR	880	0	NR
365	0	NR	495	59	NR	625	294	NR	755	5	NR	885	0	NR
370	0	NR	500	81	NR	630	1000	NR	760	4	NR	890	0	NR
375	0	NR	505	109	NR	635	637	NR	765	4	NR	895	0	NR
380	0	NR	510	135	NR	640	175	NR	770	3	NR	900	0	NR
385	0	NR	515	160	NR	645	171	NR	775	3	NR	905	0	NR
390	1	NR	520	180	NR	650	146	NR	780	2	NR	910	0	NR
395	1	NR	525	195	NR	655	119	NR	785	2	NR	915	0	NR
400	2	NR	530	207	NR	660	99	NR	790	2	NR	920	0	NR
405	3	NR	535	218	NR	665	82	NR	795	2	NR	925	0	NR
410	5	NR	540	227	NR	670	76	NR	800	1	NR	930	0	NR
415	10	NR	545	237	NR	675	61	NR	805	1	NR	935	0	NR
420	20	NR	550	247	NR	680	52	NR	810	1	NR	940	0	NR
425	35	NR	555	259	NR	685	44	NR	815	1	NR	945	0	NR
430	58	NR	560	271	NR	690	38	NR	820	1	NR	950	0	NR
435	90	NR	565	283	NR	695	33	NR	825	1	NR	955	0	NR
440	135	NR	570	293	NR	700	27	NR	830	1	NR	960	0	NR
445	204	NR	575	303	NR	705	24	NR	835	1	NR	965	0	NR
450	233	NR	580	310	NR	710	20	NR	840	0	NR	970	0	NR
455	153	NR	585	313	NR	715	17	NR	845	0	NR	975	0	NR
460	98	NR	590	314	NR	720	15	NR	850	0	NR	980	0	NR
465	76	NR	595	310	NR	725	13	NR	855	0	NR	985	0	NR
470	53	NR	600	307	NR	730	11	NR	860	0	NR	990	0	NR
475	39	NR	605	303	NR	735	9	NR	865	0	NR	995	0	NR
480	35	NR	610	331	NR	740	8	NR	870	0	NR	1000	0	NR
485	36	NR	615	353	NR	745	7	NR	875	0	NR			

REPORT NUMBER: SP1-2506-472-2

**Scotopic Flux vs. Wavelength**



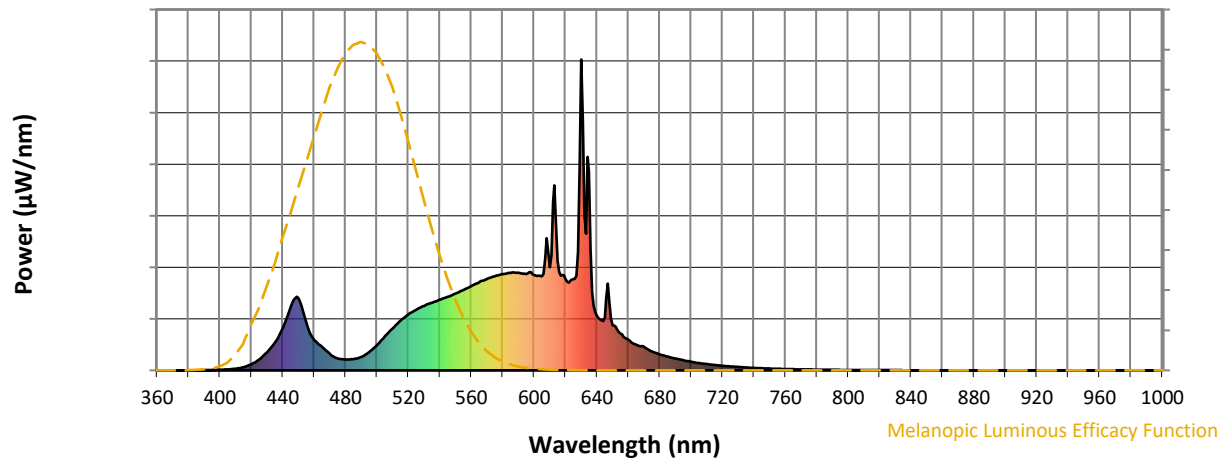
**Scotopic Lumens: NR**

**S/P: 1.27**

λ (nm)	Power W <sup>^</sup> /nm	Lumens (φ/nm)	λ (nm)	Power W <sup>^</sup> /nm	Lumens (φ/nm)	λ (nm)	Power W <sup>^</sup> /nm	Lumens (φ/nm)	λ (nm)	Power W <sup>^</sup> /nm	Lumens (φ/nm)	λ (nm)	Power W <sup>^</sup> /nm	Lumens (φ/nm)
360	0	NR	490	43	NR	620	294	NR	750	6	NR	880	0	NR
365	0	NR	495	59	NR	625	294	NR	755	5	NR	885	0	NR
370	0	NR	500	81	NR	630	1000	NR	760	4	NR	890	0	NR
375	0	NR	505	109	NR	635	637	NR	765	4	NR	895	0	NR
380	0	NR	510	135	NR	640	175	NR	770	3	NR	900	0	NR
385	0	NR	515	160	NR	645	171	NR	775	3	NR	905	0	NR
390	1	NR	520	180	NR	650	146	NR	780	2	NR	910	0	NR
395	1	NR	525	195	NR	655	119	NR	785	2	NR	915	0	NR
400	2	NR	530	207	NR	660	99	NR	790	2	NR	920	0	NR
405	3	NR	535	218	NR	665	82	NR	795	2	NR	925	0	NR
410	5	NR	540	227	NR	670	76	NR	800	1	NR	930	0	NR
415	10	NR	545	237	NR	675	61	NR	805	1	NR	935	0	NR
420	20	NR	550	247	NR	680	52	NR	810	1	NR	940	0	NR
425	35	NR	555	259	NR	685	44	NR	815	1	NR	945	0	NR
430	58	NR	560	271	NR	690	38	NR	820	1	NR	950	0	NR
435	90	NR	565	283	NR	695	33	NR	825	1	NR	955	0	NR
440	135	NR	570	293	NR	700	27	NR	830	1	NR	960	0	NR
445	204	NR	575	303	NR	705	24	NR	835	1	NR	965	0	NR
450	233	NR	580	310	NR	710	20	NR	840	0	NR	970	0	NR
455	153	NR	585	313	NR	715	17	NR	845	0	NR	975	0	NR
460	98	NR	590	314	NR	720	15	NR	850	0	NR	980	0	NR
465	76	NR	595	310	NR	725	13	NR	855	0	NR	985	0	NR
470	53	NR	600	307	NR	730	11	NR	860	0	NR	990	0	NR
475	39	NR	605	303	NR	735	9	NR	865	0	NR	995	0	NR
480	35	NR	610	331	NR	740	8	NR	870	0	NR	1000	0	NR
485	36	NR	615	353	NR	745	7	NR	875	0	NR			

REPORT NUMBER: SP1-2506-472-2

**Melanopic Flux vs. Wavelength**



**Melanopic Lumens: NR**

**M/P: 2.34**

$\lambda$ (nm)	Power W <sup>^</sup> /nm	Lumens ( $\phi$ /nm)	$\lambda$ (nm)	Power W <sup>^</sup> /nm	Lumens ( $\phi$ /nm)	$\lambda$ (nm)	Power W <sup>^</sup> /nm	Lumens ( $\phi$ /nm)	$\lambda$ (nm)	Power W <sup>^</sup> /nm	Lumens ( $\phi$ /nm)	$\lambda$ (nm)	Power W <sup>^</sup> /nm	Lumens ( $\phi$ /nm)
360	0	NR	490	43	NR	620	294	NR	750	6	NR	880	0	NR
365	0	NR	495	59	NR	625	294	NR	755	5	NR	885	0	NR
370	0	NR	500	81	NR	630	1000	NR	760	4	NR	890	0	NR
375	0	NR	505	109	NR	635	637	NR	765	4	NR	895	0	NR
380	0	NR	510	135	NR	640	175	NR	770	3	NR	900	0	NR
385	0	NR	515	160	NR	645	171	NR	775	3	NR	905	0	NR
390	1	NR	520	180	NR	650	146	NR	780	2	NR	910	0	NR
395	1	NR	525	195	NR	655	119	NR	785	2	NR	915	0	NR
400	2	NR	530	207	NR	660	99	NR	790	2	NR	920	0	NR
405	3	NR	535	218	NR	665	82	NR	795	2	NR	925	0	NR
410	5	NR	540	227	NR	670	76	NR	800	1	NR	930	0	NR
415	10	NR	545	237	NR	675	61	NR	805	1	NR	935	0	NR
420	20	NR	550	247	NR	680	52	NR	810	1	NR	940	0	NR
425	35	NR	555	259	NR	685	44	NR	815	1	NR	945	0	NR
430	58	NR	560	271	NR	690	38	NR	820	1	NR	950	0	NR
435	90	NR	565	283	NR	695	33	NR	825	1	NR	955	0	NR
440	135	NR	570	293	NR	700	27	NR	830	1	NR	960	0	NR
445	204	NR	575	303	NR	705	24	NR	835	1	NR	965	0	NR
450	233	NR	580	310	NR	710	20	NR	840	0	NR	970	0	NR
455	153	NR	585	313	NR	715	17	NR	845	0	NR	975	0	NR
460	98	NR	590	314	NR	720	15	NR	850	0	NR	980	0	NR
465	76	NR	595	310	NR	725	13	NR	855	0	NR	985	0	NR
470	53	NR	600	307	NR	730	11	NR	860	0	NR	990	0	NR
475	39	NR	605	303	NR	735	9	NR	865	0	NR	995	0	NR
480	35	NR	610	331	NR	740	8	NR	870	0	NR	1000	0	NR
485	36	NR	615	353	NR	745	7	NR	875	0	NR			

**Summary**

$R_f = 81.2$   
 $R_g = 101.5$   
 CIE  $R_a = 83.4$   
 $R_9 = 29.4$

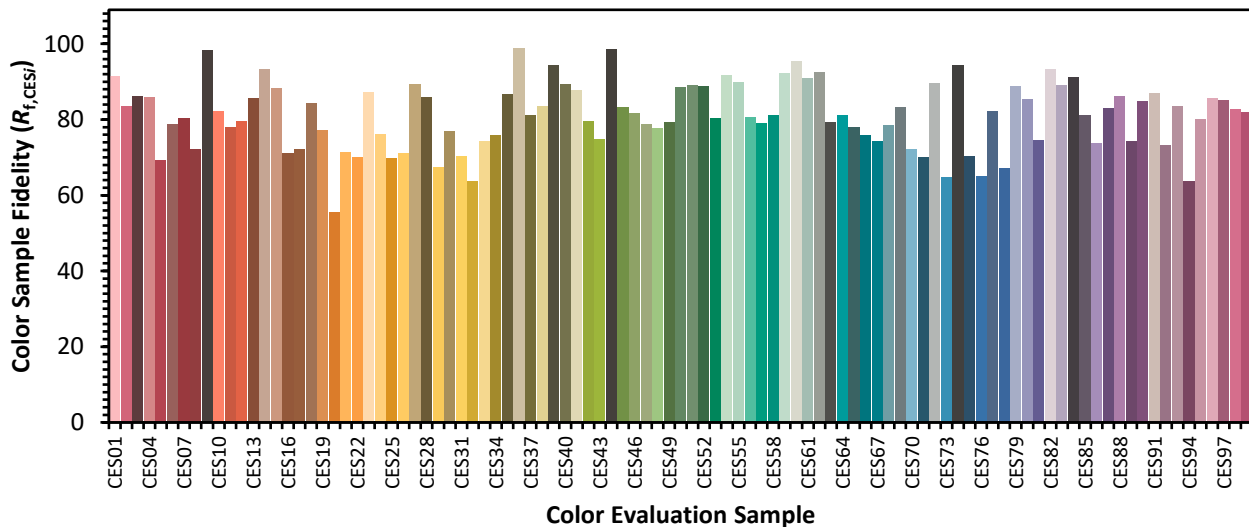


**Color Vector Graphics**

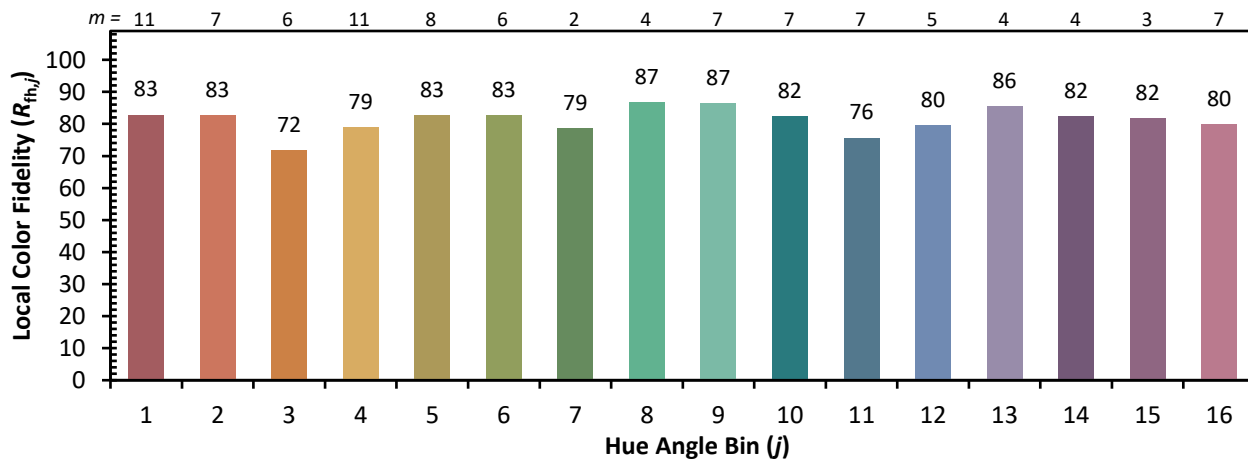
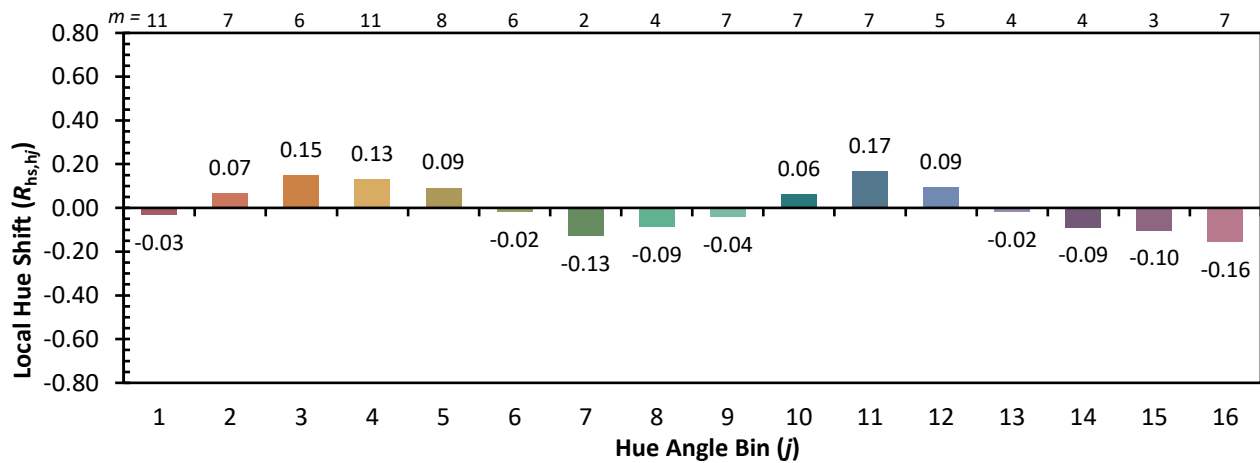
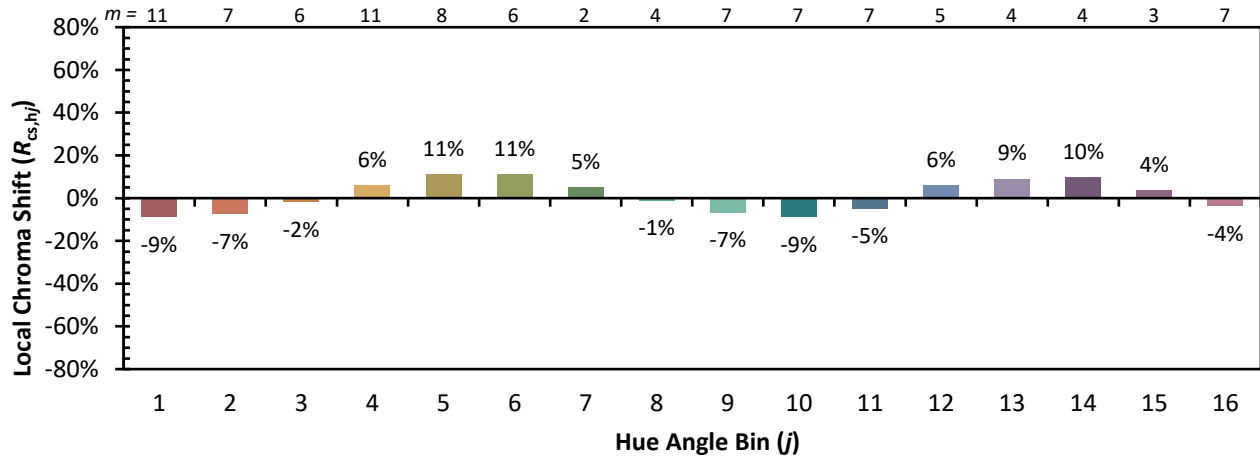


**Individual Sample Fidelity Index ( $R_{f,i}$ )**

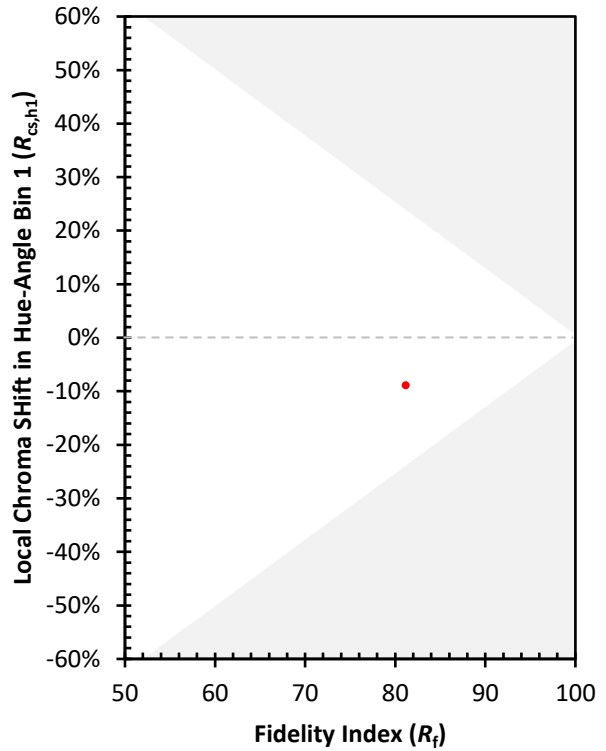
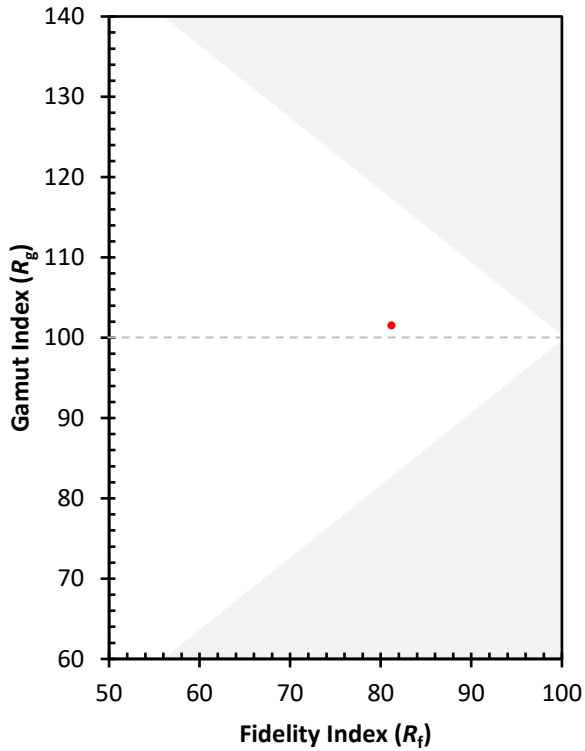
CES01 = 86	CES26 = 71	CES51 = 89	CES76 = 65
CES02 = 63	CES27 = 89	CES52 = 89	CES77 = 82
CES03 = 31	CES28 = 86	CES53 = 80	CES78 = 67
CES04 = 70	CES29 = 68	CES54 = 92	CES79 = 89
CES05 = 50	CES30 = 77	CES55 = 90	CES80 = 85
CES06 = 51	CES31 = 70	CES56 = 81	CES81 = 75
CES07 = 43	CES32 = 64	CES57 = 79	CES82 = 93
CES08 = 41	CES33 = 74	CES58 = 81	CES83 = 89
CES09 = 29	CES34 = 76	CES59 = 92	CES84 = 91
CES10 = 76	CES35 = 87	CES60 = 96	CES85 = 81
CES11 = 59	CES36 = 99	CES61 = 91	CES86 = 74
CES12 = 65	CES37 = 81	CES62 = 93	CES87 = 83
CES13 = 44	CES38 = 83	CES63 = 79	CES88 = 86
CES14 = 74	CES39 = 94	CES64 = 81	CES89 = 74
CES15 = 72	CES40 = 89	CES65 = 78	CES90 = 85
CES16 = 48	CES41 = 88	CES66 = 76	CES91 = 87
CES17 = 50	CES42 = 80	CES67 = 74	CES92 = 73
CES18 = 57	CES43 = 75	CES68 = 79	CES93 = 84
CES19 = 72	CES44 = 99	CES69 = 83	CES94 = 64
CES20 = 67	CES45 = 83	CES70 = 72	CES95 = 80
CES21 = 87	CES46 = 82	CES71 = 70	CES96 = 86
CES22 = 79	CES47 = 79	CES72 = 90	CES97 = 85
CES23 = 92	CES48 = 78	CES73 = 65	CES98 = 83
CES24 = 91	CES49 = 79	CES74 = 94	CES99 = 82
CES25 = 72	CES50 = 88	CES75 = 70	



Color Rendition by Hue-Angle Bin



Measure Comparisons



(END OF REPORT)