

Cooper Lighting Solutions Photometric Lab  
1121 Highway 74 South  
Peachtree City, GA 30269



Scaled data based on original data using  
LM-79-2019 Approved Method: Electrical and Photometric Measurements of Solid-  
State Lighting Products

Test Report Prepared for  
Cooper Lighting Solutions

Brand: METALUX

Report Number: P1444430

Luminaire Tested: EHBR1-12-UNV-TA-L830-UPL30

Issue Date: 5/1/2026

**Test Information**

Test Method: LM-79-2019  
Report Number: P1444430  
REPORT IS A COMBINATION OF REPORTS P1444336 AND P1431635  
Test Lab: INNOVATION CENTER  
Issue Date: 5/1/2026  
Manufacturer: COOPER LIGHTING SOLUTIONS  
Product Line: METALUX  
Catalog Number: EHBR1-12-UNV-TA-L830-UPL30  
Description: Elevate Round Highbay at, 12000 lumens, 3000K 80CRI LEDs with TA lens  
Light Source: -  
Ballast/Driver: -

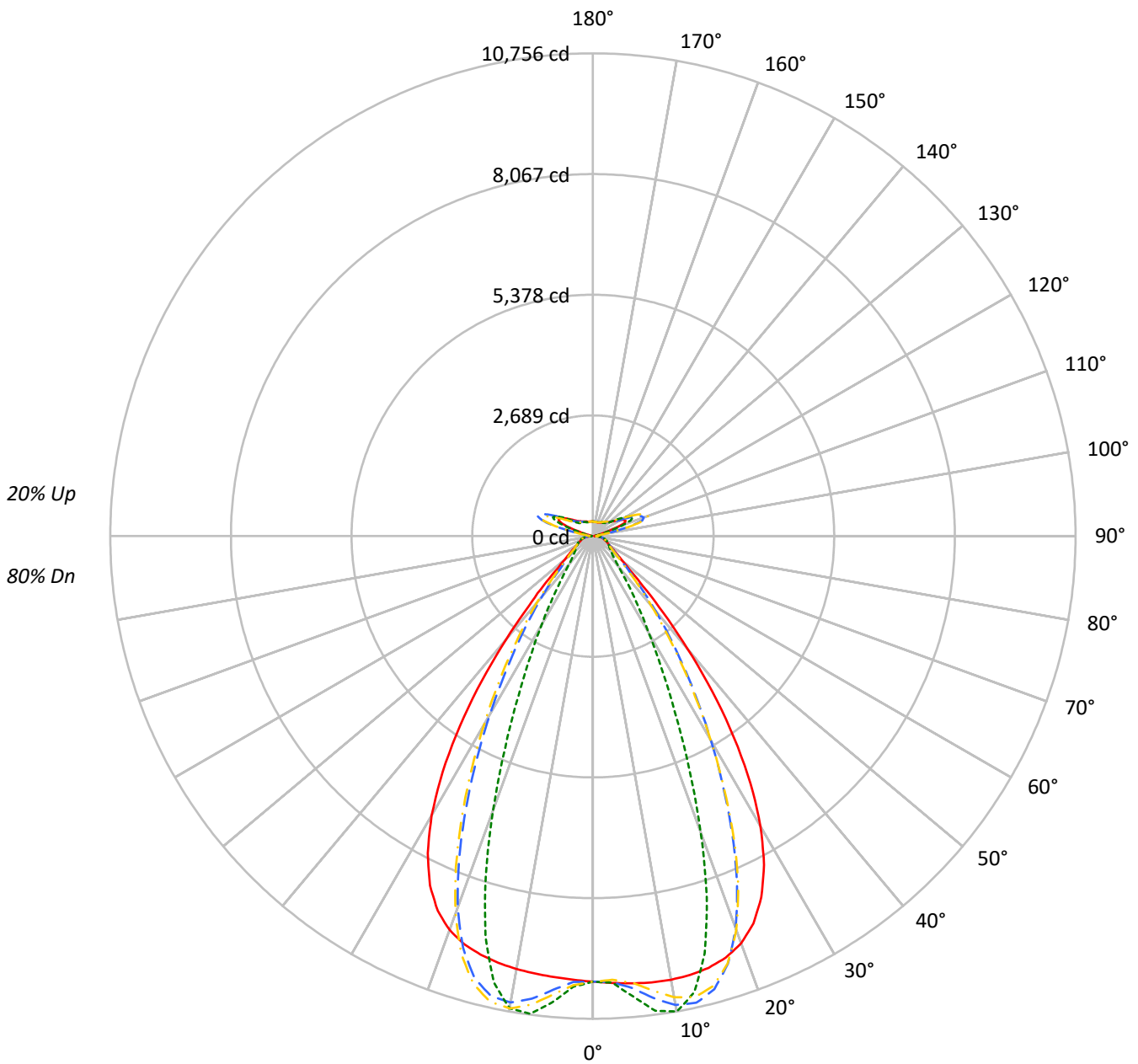
**Summary**

Lumens per Lamp: N/A  
Luminaire Lumens: 14352.2 lumens  
Efficiency: N/A  
Efficacy: 165.5 lumens/watt  
Spacing Criteria (0/90/45): 1.13 / 0.77 / 0.88  
Luminous Opening: Vertical Cylinder (Dia: 1.71' x H: 0.1')  
CIE Type: Semi-Direct

Input Watts (W): 86.7  
Input Voltage (V): NR  
Input Current (Ain): NR  
Voltage Rise (V): NR  
Power Factor: NR  
Total Harmonic Distortion (THDi): NR  
Frequency (hertz): 60  
Stabilization Time: NR  
Operation Time: NR  
Ambient Temperature (°C): NR  
Test Distance: 24 FT

TEST NUMBER: P1444430  
CATALOG NUMBER: EHBR1-12-UNV-TA-L830-UPL30

### Luminous Intensity Polar Plot



— 0°-180°    - - 45°-225°    ··· 90°-270°    - · 135°-315°



TEST NUMBER: P1444430  
 CATALOG NUMBER: EHBR1-12-UNV-TA-L830-UPL30

**COEFFICIENT OF UTILIZATION - ZONAL CAVITY METHOD:**

RF	20				20				20				20				20				
RC	80				70				50				30				10			0	
RW	70	50	30	10	70	50	30	10	50	30	10	50	30	10	50	30	10	50	30	10	0
RCR																					
0	114	114	114	114	109	109	109	109	100	100	100	91	91	91	83	83	83	83	83	83	80
1	107	103	100	97	102	99	96	94	91	89	87	84	82	81	77	76	75	75	75	75	72
2	100	94	89	85	96	90	86	82	84	80	77	78	75	73	72	70	68	68	68	68	65
3	93	86	80	75	90	83	77	73	77	73	69	72	68	66	67	64	62	62	62	62	59
4	88	79	72	67	84	76	70	66	71	66	63	67	63	60	63	59	57	57	57	57	54
5	82	72	66	61	79	70	64	59	66	61	57	62	58	55	59	55	52	52	52	52	50
6	77	67	60	55	74	65	59	54	61	56	52	58	54	50	55	51	48	48	48	48	46
7	73	62	55	51	70	61	54	50	57	52	48	54	50	47	52	48	45	45	45	45	43
8	69	58	51	47	66	57	50	46	54	48	45	51	47	43	49	45	42	42	42	42	40
9	65	54	48	43	63	53	47	43	50	45	41	48	44	40	46	42	39	39	39	39	37
10	62	51	45	40	60	50	44	40	47	42	39	45	41	38	43	39	37	37	37	37	35

**AVERAGE LUMINANCE (cd/sqm):**

	0°	90°	180°	270°
0°	46627	46627	46627	46627
5°	46853	48219	46197	48851
10°	47244	50627	46111	50291
15°	47476	45893	46031	44045
20°	46985	34188	45448	31633
25°	44473	21622	43003	19619
30°	38851	12993	37346	11875
35°	29900	8153	28180	7222
40°	18914	5115	17305	4806
45°	9749	3984	9587	3919
50°	5715	3544	5540	3489
55°	4378	3353	4217	3323
60°	3705	3425	3548	3381
65°	3481	3577	3347	3455
70°	3400	3745	3230	3604
75°	3636	3972	3438	3796
80°	3762	4399	3410	4015
85°	3544	4242	2863	3634

**MAXIMUM LUMINANCE 45°-90°:**

Horizontal Angle: 25°  
 Vertical Angle: 45°  
 Luminance: 14919 cd/sqm



TEST NUMBER: P1444430  
 CATALOG NUMBER: EHBR1-12-UNV-TA-L830-UPL30

**ZONAL LUMENS:**

Zone	Lumens	% Fixture
0°-10°	978.5	6.8
10°-20°	2752.7	19.2
20°-30°	3135.1	21.8
30°-40°	2253.4	15.7
40°-50°	1039.2	7.2
50°-60°	497.3	3.5
60°-70°	362.9	2.5
70°-80°	275.7	1.9
80°-90°	130.4	0.9
90°-100°	79.3	0.6
100°-110°	500.9	3.5
110°-120°	926.3	6.5
120°-130°	554.9	3.9
130°-140°	341.3	2.4
140°-150°	240.9	1.7
150°-160°	159.9	1.1
160°-170°	92.6	0.6
170°-180°	30.9	0.2
0°-30°	6866.3	47.8
0°-40°	9119.6	63.5
0°-60°	10656.2	74.2
0°-90°	11425.2	79.6
90°-120°	1506.5	10.5
90°-150°	2643.6	18.4
90°-180°	2927.0	20.4
0°-180°	14352.2	100.0

**CANDELA DISTRIBUTION:**

	0°	90°	180°	270°	360°	Flux
0°	9929	9929	9929	9929	9929	
5°	10004	10296	9864	10430	10004	956
15°	9960	9628	9657	9240	9960	2806
25°	8881	4318	8588	3918	8881	4026
35°	5488	1496	5172	1326	5488	3368
45°	1577	645	1551	634	1577	1342
55°	592	453	570	449	592	546
65°	363	373	349	361	363	363
75°	256	280	242	267	256	266
85°	122	146	98	125	122	114
90°	48	57	25	27	48	28
95°	37	41	37	41	37	35
105°	176	231	116	231	176	235
115°	803	984	842	984	803	740
125°	587	632	667	633	587	535
135°	439	405	475	406	439	343
145°	371	374	397	375	371	235
155°	333	341	357	342	333	155
165°	319	323	332	324	319	91
175°	320	324	326	325	320	31
180°	324	324	324	324	324	



TEST NUMBER: P1444430  
 CATALOG NUMBER: EHBR1-12-UNV-TA-L830-UPL30

**CANDELA DISTRIBUTION (FULL):**

	0°	2.5°	5°	7.5°	10°	12.5°	15°	17.5°	20°	22.5°	25°
0°	9928.9	9928.9	9928.9	9928.9	9928.9	9928.9	9928.9	9928.9	9928.9	9928.9	9928.9
2.5°	9966.9	9966.1	9965.9	9965.3	9965.1	9965.1	9964.7	9963.9	9963.4	9962.3	9961.0
5°	10003.9	10003.4	10003.7	10003.8	10003.0	10001.5	9999.1	9996.1	9992.3	9988.8	9985.7
7.5°	10032.4	10033.2	10034.0	10033.8	10031.7	10028.0	10023.1	10020.3	10021.9	10027.4	10039.7
10°	10037.7	10042.0	10043.6	10043.1	10038.8	10035.6	10036.8	10047.3	10068.3	10096.2	10134.4
12.5°	10017.4	10022.6	10022.4	10020.6	10016.4	10020.7	10036.0	10067.3	10112.1	10167.2	10231.9
15°	9960.2	9967.0	9965.1	9962.8	9960.0	9974.0	10004.4	10058.8	10128.2	10205.8	10285.3
17.5°	9849.2	9857.5	9853.4	9850.9	9848.6	9874.8	9927.1	10006.8	10094.1	10181.9	10257.3
20°	9656.8	9662.2	9652.8	9648.4	9652.1	9703.6	9780.6	9882.4	9974.4	10057.4	10109.0
22.5°	9342.7	9349.6	9331.8	9329.7	9351.6	9430.7	9528.1	9641.8	9728.3	9794.2	9814.0
25°	8881.3	8888.0	8866.9	8879.4	8916.8	9024.5	9140.6	9262.2	9336.0	9384.8	9371.3
27.5°	8258.4	8264.6	8244.5	8270.3	8329.3	8470.8	8607.4	8739.3	8805.1	8839.3	8796.0
30°	7472.9	7485.6	7461.9	7497.9	7587.9	7771.7	7928.2	8076.1	8141.7	8167.7	8100.3
32.5°	6539.9	6558.0	6532.0	6585.4	6711.1	6931.7	7109.5	7274.9	7347.4	7377.1	7300.9
35°	5487.7	5513.6	5483.7	5564.0	5718.9	5964.7	6161.6	6346.1	6432.0	6474.1	6397.3
37.5°	4372.8	4397.6	4381.4	4488.4	4658.6	4913.3	5114.3	5313.4	5410.4	5473.6	5413.1
40°	3278.3	3301.0	3313.1	3435.7	3595.7	3835.8	4028.8	4225.8	4334.3	4413.6	4376.3
42.5°	2313.9	2336.6	2378.3	2496.5	2629.9	2828.7	2994.0	3170.9	3274.5	3359.1	3344.7
45°	1577.3	1603.7	1655.9	1752.7	1849.3	1991.8	2113.2	2250.8	2335.5	2413.0	2413.9
47.5°	1105.3	1123.9	1170.5	1236.5	1299.5	1478.0	1485.3	1553.0	1609.8	1667.8	1675.3
50°	851.8	863.0	887.7	924.6	960.2	1006.6	1049.0	1098.0	1133.0	1164.8	1172.4
52.5°	700.2	707.2	719.9	739.8	760.4	785.7	808.4	835.3	854.4	871.3	874.9
55°	591.7	597.6	616.4	620.2	643.8	648.4	658.5	674.8	686.0	696.1	698.7
57.5°	509.9	514.3	518.2	526.7	534.0	544.6	553.1	564.8	571.9	579.2	579.8
60°	445.4	448.5	451.3	457.2	462.2	469.6	475.5	483.4	488.4	493.9	494.6
62.5°	397.4	399.6	401.5	405.4	408.9	414.6	419.3	425.9	430.6	434.8	435.8
65°	363.3	364.8	366.1	369.0	372.1	376.9	381.1	386.6	390.0	393.3	394.0
67.5°	333.0	334.5	335.8	338.4	340.6	344.2	347.1	351.2	353.7	356.3	356.4
70°	298.3	299.7	300.7	303.2	304.9	308.0	310.3	314.0	316.6	319.5	320.3
72.5°	274.4	275.2	276.4	278.8	281.1	284.5	287.5	291.3	294.5	297.6	298.8
75°	256.1	257.0	257.9	259.8	261.5	264.3	266.6	270.1	272.9	276.1	277.7
77.5°	229.8	230.9	231.6	233.5	235.0	237.6	239.3	242.5	244.8	247.8	249.2
80°	197.9	199.0	199.5	201.3	202.4	205.0	206.5	209.6	211.5	214.4	216.2
82.5°	162.6	163.6	163.9	165.7	166.3	168.3	169.5	172.6	175.0	178.8	181.4
85°	121.8	122.1	122.7	122.2	124.8	124.9	127.7	128.2	131.9	132.8	137.0
87.5°	74.5	75.6	76.1	77.7	78.5	80.2	80.7	82.5	83.6	85.6	86.6
90°	48.1	51.1	52.7	55.8	57.5	60.5	62.1	65.2	66.9	70.1	73.1
92.5°	31.8	34.1	36.3	38.7	41.0	43.6	46.0	48.3	50.7	53.1	57.8
95°	36.6	39.2	41.9	44.6	47.2	49.8	52.5	55.2	57.8	60.4	68.2
97.5°	46.3	48.6	50.9	53.2	55.5	57.8	60.0	62.4	64.6	67.0	76.2
100°	60.9	62.9	64.7	66.7	68.7	70.5	72.5	74.5	76.3	78.3	95.5
102.5°	102.5	109.3	116.2	123.1	130.0	136.9	143.8	150.6	157.6	164.4	200.6
105°	176.1	194.7	213.5	232.1	250.8	269.5	288.1	306.8	325.4	344.1	403.1
107.5°	303.6	338.1	372.6	407.2	441.8	476.3	510.9	545.4	579.9	614.5	674.2
110°	564.7	592.5	620.4	648.1	676.0	703.8	731.8	759.4	787.3	815.1	858.8



TEST NUMBER: P1444430  
 CATALOG NUMBER: EHBR1-12-UNV-TA-L830-UPL30

**CANDELA DISTRIBUTION (continued):**

	0°	2.5°	5°	7.5°	10°	12.5°	15°	17.5°	20°	22.5°	25°
112.5°	762.5	775.1	787.8	800.4	813.1	825.7	838.3	850.9	863.6	876.2	907.5
115°	803.2	807.7	812.2	816.7	821.3	825.8	830.3	834.8	839.3	843.7	865.0
117.5°	777.6	776.8	776.3	775.7	775.0	774.4	773.8	773.1	772.5	771.8	783.8
120°	721.8	718.2	714.6	710.9	707.3	703.6	700.0	696.3	692.6	688.8	694.1
122.5°	652.0	647.7	643.4	638.9	634.5	630.1	625.7	621.1	616.7	612.3	614.6
125°	587.1	582.7	578.4	574.0	569.5	565.0	560.6	556.1	551.6	547.1	548.5
127.5°	530.3	527.3	524.4	521.2	518.2	515.1	512.0	508.8	505.8	502.6	503.2
130°	492.4	489.8	487.1	484.5	481.7	478.9	476.2	473.5	470.7	467.9	468.8
132.5°	461.0	459.3	457.5	455.6	453.7	451.9	450.1	448.0	446.2	444.3	445.3
135°	439.1	437.5	435.9	434.3	432.6	430.8	429.0	427.2	425.5	423.7	425.0
137.5°	420.3	418.9	417.5	415.9	414.4	412.8	411.3	409.6	408.0	406.4	407.7
140°	403.0	401.8	400.4	399.0	397.7	396.4	395.0	393.5	392.1	390.7	392.2
142.5°	384.0	383.0	382.2	381.1	380.2	379.1	378.1	376.9	375.9	374.8	376.7
145°	371.1	370.4	369.7	368.9	368.0	367.2	366.3	365.4	364.6	363.7	365.6
147.5°	359.7	359.1	358.6	358.0	357.4	356.7	356.0	355.4	354.7	354.0	355.9
150°	349.8	349.2	348.7	348.2	347.5	346.9	346.2	345.6	345.0	344.2	346.2
152.5°	339.6	339.0	338.5	338.0	337.4	336.7	336.2	335.5	334.9	334.2	335.9
155°	332.7	332.2	331.6	331.1	330.6	329.9	329.3	328.8	328.1	327.5	328.9
157.5°	327.6	327.2	326.9	326.4	326.1	325.7	325.3	324.9	324.5	324.1	325.0
160°	324.3	323.9	323.5	323.2	322.7	322.4	322.0	321.6	321.2	320.8	321.7
162.5°	320.9	320.5	320.2	319.8	319.4	319.0	318.7	318.3	317.9	317.5	318.5
165°	319.1	318.9	318.8	318.6	318.4	318.2	318.0	317.8	317.6	317.5	318.1
167.5°	320.4	320.1	319.8	319.4	319.0	318.9	318.5	318.1	317.8	317.4	318.1
170°	320.0	319.8	319.7	319.6	319.4	319.3	319.2	319.0	318.9	318.8	319.4
172.5°	320.8	320.6	320.5	320.5	320.4	320.3	320.2	320.1	320.0	319.9	320.5
175°	319.9	319.7	319.7	319.6	319.5	319.5	319.4	319.3	319.3	319.2	319.7
177.5°	321.9	321.8	321.8	321.8	321.8	321.8	321.7	321.6	321.6	321.6	321.9
180°	323.7	323.7	323.7	323.7	323.7	323.7	323.7	323.7	323.7	323.7	323.7



TEST NUMBER: P1444430  
 CATALOG NUMBER: EHBR1-12-UNV-TA-L830-UPL30

**CANDELA DISTRIBUTION (continued):**

	27.5°	30°	32.5°	35°	37.5°	40°	42.5°	45°	47.5°	50°	52.5°
0°	9928.9	9928.9	9928.9	9928.9	9928.9	9928.9	9928.9	9928.9	9928.9	9928.9	9928.9
2.5°	9960.0	9958.8	9957.1	9955.1	9953.3	9951.1	9946.2	9944.7	9946.3	9947.5	9949.7
5°	9983.6	9984.4	9984.7	9989.2	9993.1	10002.8	10079.2	10109.5	10133.0	10147.9	10170.6
7.5°	10055.0	10078.0	10100.7	10131.3	10157.6	10193.2	10326.8	10383.7	10424.2	10453.2	10489.0
10°	10175.9	10226.1	10273.1	10328.1	10375.5	10429.6	10554.0	10609.4	10644.5	10670.0	10693.7
12.5°	10297.7	10367.2	10430.1	10491.3	10542.6	10589.6	10633.3	10652.7	10654.3	10655.2	10642.5
15°	10361.2	10427.6	10483.0	10523.5	10553.6	10566.9	10491.6	10452.1	10402.2	10361.0	10293.3
17.5°	10321.1	10361.0	10384.9	10382.6	10370.1	10328.4	10115.1	9997.8	9881.2	9776.2	9638.6
20°	10143.2	10140.1	10119.3	10060.3	9989.4	9879.0	9513.2	9302.2	9098.2	8919.0	8701.6
22.5°	9812.0	9759.9	9687.3	9560.2	9419.1	9226.3	8702.1	8391.6	8107.6	7856.6	7575.5
25°	9332.2	9225.0	9091.0	8889.4	8670.1	8388.8	7742.7	7356.6	7015.6	6719.8	6395.5
27.5°	8718.1	8556.6	8360.3	8081.2	7784.1	7423.8	6707.5	6281.4	5915.2	5598.1	5253.0
30°	7991.2	7781.1	7527.7	7181.2	6822.8	6414.1	5687.7	5256.1	4885.5	4559.2	4213.8
32.5°	7169.7	6923.7	6626.6	6237.7	5850.2	5430.0	4728.4	4310.6	3956.7	3642.8	3330.1
35°	6263.5	5999.7	5685.4	5288.8	4903.6	4495.1	3851.3	3474.6	3162.0	2884.6	2632.2
37.5°	5291.6	5032.6	4733.8	4360.0	4002.8	3632.6	3077.1	2761.4	2499.1	2268.9	2074.0
40°	4280.9	4054.4	3795.8	3472.7	3167.9	2859.5	2403.5	2152.9	1945.9	1770.4	1624.3
42.5°	3282.7	3107.1	2908.9	2653.5	2420.3	2185.4	1834.5	1648.9	1495.5	1369.1	1265.9
45°	2381.8	2264.2	2131.3	1953.8	1792.4	1628.6	1378.8	1248.4	1148.5	1067.0	998.1
47.5°	1665.0	1596.8	1592.7	1428.6	1310.3	1210.1	1049.2	966.8	905.6	856.2	812.6
50°	1169.3	1136.3	1095.3	1036.7	981.9	925.3	827.2	777.4	741.6	711.6	684.1
52.5°	874.1	857.0	835.2	804.1	774.4	742.5	680.4	648.8	637.5	609.6	587.8
55°	698.1	688.4	675.9	657.7	639.6	632.4	579.2	555.7	540.7	529.7	518.0
57.5°	579.9	572.6	565.2	552.8	542.4	529.7	501.5	489.4	480.5	474.1	465.9
60°	494.7	490.3	486.2	478.9	473.2	466.4	448.5	441.7	437.1	433.1	428.0
62.5°	436.6	434.4	432.2	428.4	425.5	421.8	409.5	406.3	403.9	401.9	398.9
65°	394.7	393.0	391.9	389.3	387.9	385.7	375.2	373.0	371.6	370.8	369.0
67.5°	356.6	354.9	354.2	352.3	351.7	350.3	341.7	340.5	340.0	340.3	339.7
70°	321.0	320.3	320.6	320.4	321.2	321.4	316.2	316.1	316.7	317.8	317.9
72.5°	299.7	299.7	300.0	300.2	301.0	301.3	297.0	296.8	297.0	297.9	297.9
75°	279.3	279.7	280.7	281.1	282.0	282.2	276.5	275.9	275.9	276.6	276.4
77.5°	251.2	252.4	254.5	255.6	257.4	257.7	251.3	250.5	250.6	251.3	250.7
80°	219.3	221.6	225.0	227.3	230.1	231.1	224.5	222.9	221.4	221.3	219.9
82.5°	185.5	188.3	192.3	194.4	197.3	197.9	186.9	184.7	183.5	183.6	182.4
85°	141.5	143.7	147.3	148.6	150.3	150.2	137.5	132.1	133.6	131.3	133.1
87.5°	88.8	90.0	92.4	92.6	93.5	93.3	80.6	78.0	77.3	77.4	76.4
90°	77.4	80.6	84.8	87.1	90.7	92.8	84.8	85.8	83.0	81.5	78.3
92.5°	62.5	67.1	71.8	76.4	81.1	85.8	89.3	93.6	88.7	83.6	79.0
95°	76.0	83.6	91.4	99.2	107.0	114.7	122.4	130.2	123.0	115.7	108.5
97.5°	85.3	94.5	103.7	112.8	122.0	131.1	140.3	149.5	141.7	133.9	126.1
100°	112.5	129.6	146.7	163.7	180.9	198.0	215.1	232.2	217.2	202.1	187.2
102.5°	237.0	273.2	309.6	345.8	382.2	418.4	454.8	491.1	456.7	422.3	387.9
105°	462.0	520.7	579.6	638.5	697.3	756.1	815.1	873.9	819.0	763.8	708.8
107.5°	733.9	793.7	853.3	913.0	972.8	1032.5	1092.4	1152.2	1098.5	1044.7	991.1
110°	902.4	946.1	989.7	1033.3	1076.9	1120.6	1164.5	1208.2	1175.9	1143.8	1111.6



TEST NUMBER: P1444430  
 CATALOG NUMBER: EHBR1-12-UNV-TA-L830-UPL30

**CANDELA DISTRIBUTION (continued):**

	27.5°	30°	32.5°	35°	37.5°	40°	42.5°	45°	47.5°	50°	52.5°
112.5°	938.7	970.1	1001.3	1032.6	1063.8	1095.1	1126.8	1158.1	1142.1	1126.0	1110.1
115°	886.2	907.4	928.6	949.7	971.0	992.1	1013.6	1035.0	1030.0	1025.0	1020.3
117.5°	795.8	807.8	819.9	831.8	843.7	855.7	868.2	880.3	881.5	882.8	884.0
120°	699.4	704.7	709.9	715.3	720.4	725.7	731.6	736.9	741.7	746.3	751.1
122.5°	616.8	619.1	621.3	623.6	625.8	628.0	631.0	633.4	636.7	640.2	643.6
125°	549.8	551.2	552.6	553.8	555.0	556.4	558.6	560.0	560.6	561.2	561.8
127.5°	503.9	504.5	505.1	505.7	506.3	506.9	508.4	509.1	507.8	506.4	505.0
130°	469.8	470.6	471.5	472.6	473.5	474.3	476.2	477.3	474.6	471.7	469.0
132.5°	446.4	447.6	448.6	449.7	450.7	451.9	453.9	455.2	452.1	448.7	445.4
135°	426.2	427.5	428.7	430.0	431.3	432.7	435.0	436.5	433.4	430.2	427.1
137.5°	408.9	410.2	411.5	412.8	414.0	415.3	417.9	419.5	417.0	414.6	412.2
140°	393.6	395.0	396.4	398.0	399.4	400.9	403.6	405.4	403.6	401.7	399.8
142.5°	378.3	380.2	382.1	384.0	385.8	387.7	390.9	393.0	391.8	390.4	389.2
145°	367.6	369.6	371.7	373.7	375.8	377.9	381.4	383.8	383.0	382.4	381.5
147.5°	357.6	359.5	361.4	363.3	365.2	367.3	370.7	373.0	372.6	372.2	371.9
150°	347.9	349.9	351.6	353.6	355.6	357.5	361.3	363.7	363.3	363.1	362.7
152.5°	337.6	339.3	341.1	342.7	344.5	346.4	350.4	352.8	352.4	352.0	351.7
155°	330.2	331.6	333.0	334.4	335.8	337.3	341.3	343.4	343.3	343.2	343.0
157.5°	326.1	327.2	328.1	329.3	330.3	331.5	335.3	337.1	337.0	336.8	336.7
160°	322.4	323.4	324.2	325.0	325.9	326.9	330.8	332.3	332.3	332.1	332.0
162.5°	319.5	320.6	321.6	322.7	323.8	324.9	328.9	330.7	330.4	330.1	329.8
165°	318.9	319.5	320.3	321.0	321.8	322.5	326.1	327.5	327.4	327.3	327.2
167.5°	318.9	319.6	320.4	321.0	321.9	322.6	326.0	327.4	327.3	327.2	327.1
170°	319.9	320.5	321.1	321.8	322.3	323.1	325.8	326.9	326.7	326.4	326.2
172.5°	321.1	321.9	322.4	323.1	323.6	324.4	326.7	327.9	327.7	327.5	327.1
175°	320.2	320.6	321.2	321.7	322.1	322.7	324.6	325.4	325.3	325.3	325.2
177.5°	322.3	322.5	322.9	323.3	323.6	323.9	325.1	325.7	325.7	325.7	325.6
180°	323.7	323.7	323.7	323.7	323.7	323.7	323.7	323.7	323.7	323.7	323.7



TEST NUMBER: P1444430  
 CATALOG NUMBER: EHBR1-12-UNV-TA-L830-UPL30

**CANDELA DISTRIBUTION (continued):**

	55°	57.5°	60°	62.5°	65°	67.5°	70°	72.5°	75°	77.5°	80°
0°	9928.9	9928.9	9928.9	9928.9	9928.9	9928.9	9928.9	9928.9	9928.9	9928.9	9928.9
2.5°	9950.3	9953.7	9954.3	9958.3	9958.1	9962.8	9962.1	9966.1	9963.8	9967.1	9964.2
5°	10184.0	10205.2	10216.2	10236.9	10243.5	10261.9	10267.2	10284.1	10284.8	10298.2	10295.1
7.5°	10514.4	10545.7	10564.2	10589.8	10602.7	10624.0	10633.3	10649.2	10654.2	10666.7	10667.7
10°	10711.6	10726.8	10737.4	10744.6	10751.1	10754.2	10757.7	10756.8	10757.7	10756.3	10759.4
12.5°	10634.1	10611.9	10597.3	10569.5	10553.4	10522.8	10507.7	10478.3	10467.5	10442.2	10438.6
15°	10241.0	10163.9	10109.3	10030.0	9980.1	9902.0	9856.4	9786.0	9753.9	9697.8	9683.1
17.5°	9524.6	9381.3	9270.4	9128.2	9029.5	8896.5	8812.9	8702.9	8642.5	8553.8	8523.1
20°	8520.3	8308.3	8142.0	7943.8	7801.9	7625.3	7512.1	7369.5	7286.7	7177.6	7133.4
22.5°	7341.2	7077.2	6869.4	6635.4	6464.2	6267.3	6131.8	5977.4	5887.3	5768.9	5716.5
25°	6125.9	5834.8	5603.8	5357.1	5176.3	4979.0	4843.4	4691.8	4598.5	4486.1	4434.0
27.5°	4963.5	4668.8	4445.6	4216.3	4050.5	3872.4	3750.1	3617.7	3535.0	3438.9	3389.9
30°	3937.8	3677.9	3487.9	3297.7	3159.7	3015.1	2913.4	2803.7	2731.1	2648.9	2602.2
32.5°	3102.1	2901.5	2752.7	2601.7	2488.8	2367.9	2280.1	2183.3	2117.7	2044.4	2002.1
35°	2456.9	2300.9	2182.3	2057.9	1961.0	1858.1	1780.7	1697.0	1638.3	1575.1	1538.6
37.5°	1941.1	1817.2	1719.6	1616.3	1536.7	1451.3	1422.6	1326.8	1265.8	1215.4	1180.4
40°	1523.5	1424.8	1344.1	1265.1	1200.1	1135.5	1083.5	1032.3	992.9	956.8	931.9
42.5°	1189.7	1118.2	1059.2	1001.4	954.0	906.9	869.3	834.0	807.5	783.9	767.8
45°	945.7	896.6	855.6	814.8	781.4	750.0	724.6	702.2	685.0	670.9	660.8
47.5°	776.9	743.3	714.4	686.9	664.2	643.6	626.7	621.1	602.7	590.3	585.6
50°	660.3	640.0	618.0	597.7	582.5	567.5	556.5	545.7	538.8	533.1	531.4
52.5°	573.3	557.7	545.4	532.6	522.7	511.9	504.3	497.1	493.4	490.4	490.0
55°	508.5	497.7	489.5	480.9	474.9	468.6	464.7	461.0	459.3	457.8	457.9
57.5°	459.5	452.2	447.0	441.5	438.2	435.2	434.2	433.2	433.7	434.0	434.8
60°	423.9	419.1	415.8	412.6	411.2	410.3	411.0	411.9	413.7	415.0	416.3
62.5°	396.5	393.8	392.2	390.4	390.3	390.4	391.8	393.3	395.5	397.1	398.3
65°	368.3	366.8	366.3	365.2	365.7	366.1	367.8	369.0	371.1	372.4	373.9
67.5°	339.9	339.6	339.8	339.8	340.9	341.7	343.4	344.6	346.5	347.7	348.9
70°	318.9	319.0	319.8	320.0	321.0	321.6	323.1	323.9	325.5	326.5	328.0
72.5°	298.4	298.2	298.3	297.9	298.2	298.1	298.9	299.3	300.7	301.4	303.3
75°	276.7	275.8	275.6	274.5	274.6	273.9	274.3	274.2	275.1	275.5	276.8
77.5°	250.5	248.9	248.1	246.5	246.4	245.9	246.5	246.9	248.5	249.4	250.9
80°	219.0	216.6	215.4	213.6	213.9	213.8	215.4	216.7	218.6	219.0	220.9
82.5°	182.0	179.6	178.3	176.5	176.9	177.0	178.4	178.7	180.4	181.2	183.4
85°	130.3	131.3	128.7	128.9	128.3	129.4	130.3	131.6	133.0	135.4	137.2
87.5°	76.7	76.4	77.4	77.5	78.8	79.5	81.6	82.8	85.2	87.1	90.5
90°	76.2	73.2	71.8	69.4	68.7	66.4	66.0	63.9	63.7	62.3	62.7
92.5°	73.8	68.9	63.9	59.1	54.0	49.3	46.8	44.6	42.2	40.1	37.7
95°	101.3	94.0	86.7	79.5	72.3	65.1	62.5	59.9	57.1	54.5	51.9
97.5°	118.3	110.6	102.9	95.0	87.2	79.4	77.7	75.9	74.2	72.4	70.6
100°	172.2	157.2	142.2	127.1	112.1	97.1	95.7	94.3	92.9	91.5	90.0
102.5°	353.5	319.0	284.7	250.3	215.9	181.4	175.4	169.5	163.5	157.5	151.5
105°	653.7	598.7	543.7	488.6	433.5	378.5	362.1	345.6	329.3	312.9	296.4
107.5°	937.5	883.7	830.1	776.4	722.8	669.1	643.1	617.2	591.3	565.3	539.4
110°	1079.4	1047.2	1015.1	982.8	950.8	918.6	893.8	869.2	844.3	819.7	795.0



TEST NUMBER: P1444430  
 CATALOG NUMBER: EHBR1-12-UNV-TA-L830-UPL30

**CANDELA DISTRIBUTION (continued):**

	55°	57.5°	60°	62.5°	65°	67.5°	70°	72.5°	75°	77.5°	80°
112.5°	1094.0	1078.1	1062.0	1046.1	1030.1	1014.2	1002.1	990.1	978.1	966.0	953.9
115°	1015.3	1010.3	1005.4	1000.6	995.7	990.8	990.0	989.3	988.4	987.8	986.9
117.5°	885.1	886.3	887.5	888.8	890.1	891.3	897.9	904.5	911.1	917.7	924.4
120°	755.7	760.3	765.1	769.9	774.5	779.2	788.1	797.0	805.9	814.7	823.7
122.5°	647.1	650.5	653.9	657.4	660.8	664.2	673.0	681.9	690.7	699.5	708.6
125°	562.4	563.0	563.6	564.1	564.7	565.3	572.7	580.0	587.4	594.9	602.3
127.5°	503.7	502.2	500.8	499.5	498.0	496.6	501.1	505.7	510.2	514.8	519.3
130°	466.2	463.4	460.5	457.8	454.9	452.1	454.1	456.2	458.1	460.3	462.3
132.5°	442.0	438.7	435.3	431.9	428.5	425.3	425.6	426.0	426.5	426.9	427.4
135°	424.0	420.8	417.6	414.4	411.2	408.1	407.6	407.1	406.6	406.2	405.8
137.5°	409.7	407.3	404.8	402.3	399.9	397.4	396.5	395.8	394.8	394.1	393.3
140°	397.9	396.1	394.2	392.3	390.3	388.5	387.8	387.1	386.5	385.9	385.3
142.5°	387.8	386.4	385.1	383.8	382.4	381.1	380.4	379.7	379.2	378.6	378.0
145°	380.8	380.0	379.2	378.4	377.7	376.9	376.4	376.0	375.5	375.2	374.9
147.5°	371.5	371.1	370.7	370.4	369.9	369.5	369.3	369.1	368.8	368.7	368.4
150°	362.2	361.9	361.6	361.2	360.8	360.4	360.4	360.4	360.4	360.4	360.3
152.5°	351.4	351.1	350.7	350.4	350.0	349.6	349.6	349.7	349.7	349.7	349.6
155°	342.8	342.7	342.6	342.4	342.2	342.0	341.9	341.7	341.5	341.3	341.1
157.5°	336.7	336.5	336.3	336.2	336.0	335.8	335.6	335.5	335.3	335.2	335.1
160°	331.8	331.7	331.5	331.4	331.2	331.1	330.8	330.4	330.1	329.7	329.4
162.5°	329.4	329.2	328.9	328.6	328.2	327.9	327.8	327.6	327.4	327.3	327.1
165°	327.0	326.9	326.7	326.5	326.4	326.3	326.0	325.6	325.3	324.9	324.7
167.5°	326.9	326.8	326.6	326.5	326.3	326.3	326.0	325.6	325.2	324.9	324.7
170°	325.9	325.6	325.4	325.0	324.8	324.4	324.1	323.8	323.4	323.2	322.9
172.5°	326.9	326.7	326.4	326.2	325.9	325.6	325.3	325.0	324.8	324.5	324.3
175°	325.1	325.1	325.1	324.9	324.9	324.9	324.8	324.8	324.7	324.7	324.6
177.5°	325.6	325.6	325.6	325.5	325.5	325.5	325.2	325.0	324.9	324.6	324.5
180°	323.7	323.7	323.7	323.7	323.7	323.7	323.7	323.7	323.7	323.7	323.7



TEST NUMBER: P1444430  
 CATALOG NUMBER: EHBR1-12-UNV-TA-L830-UPL30

**CANDELA DISTRIBUTION (continued):**

	82.5°	85°	87.5°	90°	92.5°	95°	97.5°	100°	102.5°	105°	107.5°
0°	9928.9	9928.9	9928.9	9928.9	9928.9	9928.9	9928.9	9928.9	9928.9	9928.9	9928.9
2.5°	9967.1	9964.6	9965.8	9961.1	9962.3	9956.7	9956.1	9949.7	9949.2	9943.2	9940.9
5°	10304.6	10299.0	10305.3	10295.6	10297.5	10284.8	10283.8	10267.3	10261.6	10241.1	10232.2
7.5°	10675.5	10673.4	10677.3	10669.1	10668.8	10657.5	10652.8	10638.1	10628.9	10607.4	10593.6
10°	10756.8	10758.7	10755.6	10756.3	10751.9	10750.7	10746.2	10743.3	10735.9	10730.3	10722.0
12.5°	10419.4	10421.4	10408.5	10416.7	10410.2	10425.3	10424.1	10441.8	10444.5	10467.0	10475.5
15°	9639.6	9637.1	9612.4	9628.1	9619.6	9652.7	9660.1	9704.6	9728.3	9785.4	9820.5
17.5°	8461.6	8455.2	8420.5	8439.4	8429.7	8478.5	8494.8	8565.9	8610.2	8702.2	8767.8
20°	7057.4	7045.2	7004.5	7026.7	7016.8	7072.2	7095.5	7181.4	7238.5	7360.4	7447.0
22.5°	5635.7	5616.5	5576.6	5597.4	5587.9	5645.3	5675.7	5761.9	5827.4	5952.4	6053.6
25°	4359.1	4341.9	4303.4	4317.9	4314.5	4362.9	4390.0	4471.5	4535.8	4655.0	4751.5
27.5°	3324.8	3307.0	3272.1	3282.4	3278.9	3320.2	3345.6	3413.7	3469.2	3569.4	3654.2
30°	2544.7	2523.1	2493.6	2499.2	2496.9	2530.3	2554.1	2611.5	2658.9	2743.7	2816.8
32.5°	1950.5	1928.9	1901.7	1904.3	1900.8	1927.1	1946.7	1996.5	2037.9	2109.9	2173.5
35°	1492.4	1517.7	1459.8	1496.4	1458.3	1514.3	1494.1	1525.3	1560.9	1621.6	1674.6
37.5°	1147.3	1129.7	1114.8	1113.2	1113.1	1126.1	1141.5	1171.4	1202.8	1248.1	1294.8
40°	909.2	896.8	887.2	886.5	887.2	896.4	907.8	928.5	951.4	983.9	1018.3
42.5°	754.1	745.9	740.0	739.6	741.5	748.1	755.9	768.2	783.2	804.3	827.8
45°	652.6	648.1	644.8	644.6	645.5	649.0	653.4	661.1	670.6	683.7	698.7
47.5°	581.5	580.4	578.3	578.4	577.5	578.9	579.4	583.8	588.7	598.7	618.1
50°	529.7	529.7	528.3	528.2	526.9	526.8	525.7	527.4	529.7	535.9	542.1
52.5°	488.7	488.6	487.1	486.8	485.4	485.3	484.4	485.0	485.3	488.4	492.1
55°	456.7	455.7	453.7	453.1	452.6	453.4	453.0	453.1	452.6	453.9	455.1
57.5°	433.7	432.5	430.6	430.0	429.9	430.9	430.9	430.6	428.8	427.7	426.0
60°	415.5	414.3	412.2	411.8	412.1	413.4	413.3	412.2	409.6	407.4	404.8
62.5°	397.7	397.2	396.1	396.0	395.8	395.9	395.1	393.9	391.4	388.9	386.1
65°	373.7	374.0	373.3	373.4	372.4	372.2	370.8	369.7	367.2	365.0	362.1
67.5°	348.9	349.1	348.5	348.5	348.0	348.1	347.1	346.1	344.0	342.2	339.9
70°	328.4	328.9	328.5	328.6	328.0	327.8	326.5	325.5	323.3	321.8	319.7
72.5°	303.9	304.9	304.9	305.2	304.2	303.9	302.3	301.0	298.9	297.8	296.2
75°	277.4	278.8	279.1	279.8	278.6	277.9	276.1	275.1	273.5	272.8	271.7
77.5°	251.5	253.1	254.6	256.0	253.9	252.2	250.0	248.3	246.0	245.0	243.4
80°	222.5	225.3	228.6	231.4	227.7	224.1	220.5	217.9	214.7	213.4	211.3
82.5°	184.5	187.4	189.3	191.1	188.6	185.9	182.5	180.1	176.8	175.4	173.1
85°	140.2	143.8	144.9	145.8	144.3	142.8	139.6	135.2	133.1	129.7	128.0
87.5°	92.2	94.3	94.8	95.1	94.0	93.4	91.3	89.3	85.6	82.9	79.7
90°	60.9	60.6	58.1	57.0	57.2	58.9	58.4	59.2	57.7	58.2	57.0
92.5°	35.4	33.1	30.7	28.5	30.9	33.1	35.5	37.7	40.0	42.2	44.6
95°	49.3	46.6	43.9	41.3	43.5	45.5	47.7	49.7	51.9	54.0	56.1
97.5°	68.8	67.2	65.4	63.6	64.8	66.0	67.3	68.5	69.8	71.0	72.3
100°	88.6	87.2	85.8	84.4	84.4	84.4	84.4	84.4	84.4	84.4	84.4
102.5°	145.5	139.5	133.5	127.5	131.5	135.5	139.7	143.7	147.7	151.7	156.0
105°	280.0	263.6	247.2	230.8	246.6	262.6	278.4	294.3	310.1	326.2	342.0
107.5°	513.4	487.6	461.6	435.7	464.6	493.6	522.4	551.3	580.3	609.2	638.2
110°	770.3	745.6	721.0	696.3	727.0	757.6	788.3	819.0	849.7	880.3	911.1



TEST NUMBER: P1444430  
 CATALOG NUMBER: EHBR1-12-UNV-TA-L830-UPL30

**CANDELA DISTRIBUTION (continued):**

	82.5°	85°	87.5°	90°	92.5°	95°	97.5°	100°	102.5°	105°	107.5°
112.5°	942.0	930.0	918.0	906.0	925.7	945.5	965.2	985.0	1004.8	1024.7	1044.3
115°	986.3	985.5	984.9	984.1	993.5	1002.8	1012.1	1021.5	1030.9	1040.3	1049.7
117.5°	931.0	937.7	944.4	951.1	954.1	957.1	960.1	963.1	966.2	969.2	972.3
120°	832.6	841.5	850.5	859.5	858.3	857.1	855.9	854.7	853.5	852.3	851.3
122.5°	717.5	726.4	735.4	744.4	741.8	739.1	736.4	733.8	731.3	728.7	726.2
125°	609.9	617.4	624.9	632.5	629.8	627.1	624.5	622.0	619.4	616.8	614.4
127.5°	524.0	528.8	533.5	538.1	536.9	535.7	534.5	533.4	532.2	531.1	530.0
130°	464.5	466.7	468.9	471.1	471.4	471.8	472.2	472.7	473.2	473.7	474.2
132.5°	428.0	428.5	429.1	429.8	431.2	432.6	434.1	435.6	437.2	438.7	440.3
135°	405.5	405.1	404.8	404.6	406.7	408.8	410.9	413.1	415.4	417.7	420.1
137.5°	392.6	391.8	391.3	390.6	392.8	394.8	397.1	399.2	401.5	403.8	406.3
140°	384.7	384.2	383.9	383.3	385.5	387.5	389.7	391.8	394.2	396.4	398.8
142.5°	377.4	376.9	376.5	376.0	378.0	379.9	381.9	383.9	386.0	388.1	390.1
145°	374.5	374.1	373.8	373.6	374.9	376.3	377.8	379.3	380.9	382.4	384.0
147.5°	368.3	368.1	368.0	367.9	369.0	370.0	371.1	372.2	373.3	374.4	375.7
150°	360.4	360.4	360.4	360.6	361.3	361.9	362.7	363.3	364.2	364.8	365.8
152.5°	349.7	349.7	349.9	350.0	350.6	351.3	352.0	352.6	353.4	354.1	354.9
155°	341.1	341.0	340.9	340.8	341.1	341.4	341.7	342.0	342.4	342.7	343.0
157.5°	335.0	334.8	334.8	334.6	334.7	334.8	335.0	335.1	335.2	335.2	335.4
160°	329.3	328.9	328.5	328.2	328.5	328.8	329.1	329.3	329.6	329.9	330.1
162.5°	327.0	326.8	326.7	326.5	326.5	326.3	326.3	326.2	326.1	326.0	326.0
165°	324.4	324.0	323.7	323.4	323.4	323.5	323.6	323.7	323.7	323.8	323.9
167.5°	324.4	324.0	323.7	323.4	323.2	322.8	322.6	322.2	322.1	321.9	321.7
170°	322.6	322.3	322.0	321.8	321.7	321.6	321.6	321.4	321.4	321.4	321.4
172.5°	324.0	323.7	323.4	323.2	323.1	323.1	323.0	323.0	322.9	322.9	322.9
175°	324.5	324.5	324.4	324.3	324.1	323.9	323.7	323.5	323.4	323.2	323.0
177.5°	324.3	324.0	323.8	323.6	323.6	323.6	323.6	323.6	323.6	323.5	323.5
180°	323.7	323.7	323.7	323.7	323.7	323.7	323.7	323.7	323.7	323.7	323.7



TEST NUMBER: P1444430  
 CATALOG NUMBER: EHBR1-12-UNV-TA-L830-UPL30

**CANDELA DISTRIBUTION (continued):**

	110°	112.5°	115°	117.5°	120°	122.5°	125°	127.5°	130°	132.5°	135°
0°	9928.9	9928.9	9928.9	9928.9	9928.9	9928.9	9928.9	9928.9	9928.9	9928.9	9928.9
2.5°	9934.5	9931.8	9924.9	9921.5	9915.2	9912.0	9907.0	9903.8	9899.8	9896.8	9895.3
5°	10209.7	10197.0	10171.5	10155.9	10128.4	10110.3	10082.9	10063.0	10034.8	10014.0	9987.3
7.5°	10567.8	10548.3	10515.7	10491.0	10452.5	10423.1	10380.0	10345.4	10297.7	10258.2	10209.5
10°	10713.6	10702.2	10687.6	10671.6	10650.4	10629.5	10600.0	10570.0	10529.9	10490.1	10438.1
12.5°	10498.1	10508.8	10529.9	10539.8	10556.0	10561.4	10568.8	10565.3	10558.9	10542.6	10519.0
15°	9887.8	9932.5	10003.2	10052.0	10120.5	10168.6	10232.2	10273.2	10320.4	10348.6	10375.4
17.5°	8883.9	8970.4	9095.1	9194.5	9328.0	9436.6	9569.6	9674.1	9794.8	9887.3	9985.9
20°	7598.0	7719.1	7891.2	8037.4	8230.9	8395.0	8605.2	8781.3	8986.6	9157.8	9342.6
22.5°	6214.1	6356.5	6553.8	6730.1	6961.1	7167.4	7430.8	7663.7	7941.3	8190.1	8465.2
25°	4908.5	5048.1	5249.0	5431.5	5681.0	5908.3	6196.0	6463.1	6785.3	7085.8	7430.8
27.5°	3788.9	3912.9	4089.5	4253.8	4482.2	4705.5	4997.4	5282.2	5626.1	5949.0	6320.8
30°	2926.1	3026.7	3168.2	3300.4	3483.8	3666.3	3926.4	4189.8	4531.9	4866.6	5247.7
32.5°	2267.7	2353.4	2471.5	2578.9	2720.1	2857.8	3049.3	3259.7	3559.9	3880.4	4249.0
35°	1755.4	1828.7	1929.3	2021.8	2137.9	2247.2	2390.1	2540.4	2769.4	3039.1	3368.9
37.5°	1399.5	1429.4	1501.2	1576.9	1673.4	1763.2	1875.0	1986.1	2149.9	2362.7	2632.2
40°	1064.3	1111.8	1170.2	1229.9	1303.0	1375.0	1497.6	1556.6	1664.5	1817.3	2026.4
42.5°	858.8	892.1	933.2	974.7	1025.7	1075.8	1137.8	1201.0	1281.7	1385.1	1533.9
45°	718.6	740.4	766.9	794.5	828.0	862.2	903.7	947.1	1001.8	1065.4	1155.7
47.5°	625.0	637.1	654.4	673.2	696.2	719.9	746.8	774.5	808.5	846.1	897.6
50°	551.9	561.9	575.4	588.1	603.9	628.2	638.8	654.1	674.5	696.7	725.5
52.5°	499.1	505.7	514.2	521.5	531.4	540.5	552.5	563.0	577.1	590.4	609.0
55°	457.9	460.3	465.1	469.8	476.7	482.9	491.0	498.0	506.9	514.9	526.6
57.5°	426.1	426.3	428.5	431.0	435.4	439.3	444.9	449.4	455.7	460.8	467.8
60°	403.3	402.0	402.5	403.3	405.8	408.3	412.0	414.9	418.8	421.7	425.6
62.5°	384.2	382.3	381.9	381.6	382.9	383.8	385.7	387.1	389.4	390.7	392.8
65°	360.2	357.9	357.1	356.0	356.4	356.1	356.8	356.9	358.0	358.3	359.5
67.5°	338.4	336.6	335.3	333.9	333.4	332.3	331.9	330.9	330.8	330.0	329.8
70°	318.5	316.7	315.8	314.5	313.8	312.5	311.6	310.1	309.0	307.5	306.7
72.5°	295.5	294.5	294.2	293.3	293.1	292.3	292.1	290.8	290.2	289.0	288.2
75°	271.5	270.6	270.6	269.7	269.6	268.7	268.6	267.3	266.7	265.4	264.8
77.5°	242.9	241.6	241.2	240.2	240.5	240.1	240.4	239.5	239.0	237.8	237.4
80°	210.7	209.0	208.3	207.0	207.4	206.7	207.4	207.3	207.8	206.7	206.5
82.5°	172.4	170.7	170.3	169.4	170.0	170.1	171.4	170.7	171.0	170.0	170.5
85°	125.5	124.1	122.3	122.1	120.8	122.1	120.6	121.6	119.8	121.0	119.4
87.5°	77.7	75.0	73.6	71.7	70.9	69.0	68.3	67.0	67.3	66.7	67.1
90°	57.9	57.0	59.2	59.9	62.3	63.1	66.0	67.4	70.4	71.8	74.8
92.5°	46.8	49.1	53.3	57.6	61.8	66.0	70.3	74.6	78.8	83.1	87.2
95°	58.2	60.3	65.9	71.6	77.3	82.9	88.6	94.2	99.9	105.6	111.2
97.5°	73.5	74.7	80.4	86.1	91.7	97.3	103.0	108.8	114.4	120.1	125.7
100°	84.4	84.5	100.5	116.6	132.6	148.7	164.8	180.8	196.9	213.0	229.0
102.5°	160.0	164.0	204.6	245.1	285.7	326.3	366.9	407.5	448.0	488.7	529.2
105°	357.9	373.7	435.7	497.7	559.5	621.4	683.3	745.3	807.2	869.2	931.1
107.5°	667.1	696.1	752.1	808.0	863.8	919.8	975.9	1031.8	1087.7	1143.6	1199.7
110°	941.8	972.5	1010.0	1047.3	1084.8	1122.3	1159.7	1197.2	1234.7	1272.1	1309.7



TEST NUMBER: P1444430  
 CATALOG NUMBER: EHBR1-12-UNV-TA-L830-UPL30

**CANDELA DISTRIBUTION (continued):**

	110°	112.5°	115°	117.5°	120°	122.5°	125°	127.5°	130°	132.5°	135°
112.5°	1064.1	1084.0	1105.7	1127.4	1149.2	1171.0	1192.8	1214.5	1236.5	1258.2	1280.1
115°	1059.0	1068.5	1076.7	1085.3	1093.6	1102.0	1110.5	1119.0	1127.4	1135.9	1144.3
117.5°	975.4	978.5	979.6	980.9	982.0	983.3	984.6	985.8	987.0	988.4	989.5
120°	850.1	848.9	847.3	845.8	844.2	842.6	841.1	839.6	838.0	836.5	835.0
122.5°	723.6	721.2	719.5	718.0	716.5	715.0	713.5	712.0	710.6	709.1	707.6
125°	611.9	609.4	610.4	611.3	612.3	613.3	614.3	615.3	616.4	617.3	618.4
127.5°	529.0	528.0	530.8	533.8	536.8	539.7	542.7	545.7	548.7	551.7	554.6
130°	474.8	475.4	479.2	483.1	486.9	490.8	494.7	498.6	502.5	506.3	510.2
132.5°	441.9	443.7	447.3	451.0	454.7	458.4	462.2	465.9	469.5	473.3	477.0
135°	422.4	424.8	428.2	431.4	434.8	438.2	441.6	444.9	448.2	451.7	455.0
137.5°	408.5	410.9	413.6	416.2	418.7	421.5	424.0	426.8	429.3	432.0	434.5
140°	401.0	403.5	404.8	406.3	407.6	409.0	410.4	411.8	413.0	414.5	415.8
142.5°	392.3	394.5	395.3	396.1	396.9	397.7	398.6	399.3	400.1	400.8	401.7
145°	385.5	387.1	387.0	386.9	386.8	386.7	386.5	386.4	386.2	386.1	385.9
147.5°	376.8	378.1	377.6	377.4	377.0	376.6	376.3	375.9	375.4	375.2	374.8
150°	366.4	367.4	366.7	366.3	365.6	365.0	364.4	363.8	363.2	362.7	362.0
152.5°	355.6	356.4	355.7	355.1	354.5	353.9	353.1	352.6	351.9	351.3	350.7
155°	343.4	343.8	343.4	343.1	342.8	342.5	342.1	341.8	341.6	341.2	341.0
157.5°	335.5	335.7	335.5	335.3	335.1	335.0	334.9	334.7	334.6	334.5	334.4
160°	330.4	330.8	330.5	330.3	330.1	329.9	329.8	329.7	329.6	329.5	329.4
162.5°	325.9	325.8	325.6	325.4	325.3	325.1	325.0	324.9	324.9	324.8	324.7
165°	324.1	324.3	323.8	323.5	323.3	322.9	322.6	322.3	322.1	321.9	321.6
167.5°	321.4	321.2	321.2	321.3	321.3	321.3	321.4	321.5	321.6	321.7	321.8
170°	321.3	321.4	321.1	321.0	320.8	320.6	320.5	320.4	320.4	320.2	320.1
172.5°	322.9	322.9	322.5	322.1	321.9	321.5	321.1	320.8	320.5	320.2	319.8
175°	322.8	322.6	322.4	322.2	322.0	321.8	321.7	321.5	321.3	321.1	320.9
177.5°	323.5	323.4	323.4	323.4	323.4	323.4	323.4	323.3	323.3	323.3	323.2
180°	323.7	323.7	323.7	323.7	323.7	323.7	323.7	323.7	323.7	323.7	323.7



TEST NUMBER: P1444430  
 CATALOG NUMBER: EHBR1-12-UNV-TA-L830-UPL30

**CANDELA DISTRIBUTION (continued):**

	137.5°	140°	142.5°	145°	147.5°	150°	152.5°	155°	157.5°	160°	162.5°
0°	9928.9	9928.9	9928.9	9928.9	9928.9	9928.9	9928.9	9928.9	9928.9	9928.9	9928.9
2.5°	9893.3	9893.1	9892.2	9892.7	9892.9	9893.5	9894.4	9895.3	9895.5	9896.1	9896.3
5°	9967.3	9942.9	9924.7	9904.9	9889.9	9876.4	9867.4	9860.3	9857.5	9858.2	9859.9
7.5°	10168.1	10117.6	10075.9	10028.5	9989.0	9947.1	9912.4	9879.5	9855.4	9837.5	9827.5
10°	10388.4	10326.8	10268.0	10199.4	10134.3	10064.9	10002.0	9938.7	9885.9	9840.0	9806.4
12.5°	10486.2	10442.7	10391.8	10327.0	10257.4	10177.3	10096.4	10009.7	9929.0	9854.2	9793.8
15°	10382.7	10382.8	10364.2	10333.1	10284.8	10220.8	10143.6	10053.2	9958.1	9861.0	9772.3
17.5°	10054.1	10116.1	10150.6	10172.4	10165.6	10142.1	10093.0	10023.6	9934.9	9831.4	9723.1
20°	9489.8	9636.0	9740.3	9834.0	9886.6	9921.5	9918.0	9889.7	9826.5	9738.6	9625.8
22.5°	8699.3	8944.7	9138.3	9319.0	9445.7	9548.7	9597.7	9618.4	9589.8	9528.6	9422.7
25°	7739.2	8072.8	8357.7	8634.0	8841.3	9019.6	9126.6	9202.0	9208.0	9176.0	9081.6
27.5°	6672.3	7066.2	7426.6	7794.0	8085.5	8341.7	8509.7	8632.7	8671.8	8666.6	8580.8
30°	5606.8	6020.3	6417.6	6845.9	7206.7	7533.9	7755.9	7922.3	7986.4	7998.7	7916.2
32.5°	4600.5	5008.3	5404.4	5852.3	6249.3	6624.3	6886.6	7084.2	7158.8	7176.3	7085.8
35°	3687.3	4063.4	4440.0	4874.0	5268.7	5657.1	5933.4	6140.3	6209.9	6221.7	6116.9
37.5°	2895.3	3215.8	3543.9	3933.3	4295.7	4660.5	4923.2	5117.5	5168.3	5165.1	5046.6
40°	2228.4	2477.6	2741.3	3061.8	3363.3	3671.5	3893.2	4054.0	4080.7	4060.9	3936.4
42.5°	1675.7	1855.6	2046.8	2286.0	2509.7	2740.4	2901.7	3021.1	3024.9	2993.7	2881.9
45°	1248.4	1424.0	1504.1	1648.8	1792.9	1946.3	2044.7	2118.5	2107.1	2079.6	1994.6
47.5°	951.7	1019.1	1090.7	1180.4	1264.4	1438.5	1425.6	1543.9	1458.6	1516.8	1388.9
50°	755.7	793.4	832.0	879.7	923.4	968.9	997.4	1018.7	1015.9	1006.8	982.2
52.5°	643.0	654.6	673.6	700.7	725.1	749.7	765.9	779.2	779.3	775.7	763.3
55°	537.4	552.2	565.8	583.5	613.6	618.3	641.5	636.8	638.6	632.2	638.7
57.5°	473.8	482.4	490.1	500.6	509.3	519.5	525.5	531.2	530.7	529.4	523.2
60°	428.7	433.5	437.7	443.9	448.7	454.4	457.2	460.1	459.2	457.0	451.4
62.5°	394.0	397.0	399.4	403.3	406.3	409.8	411.3	412.5	411.3	409.2	404.3
65°	359.7	361.7	363.2	366.2	368.2	371.3	372.5	373.7	372.5	370.9	367.2
67.5°	328.8	329.0	328.9	330.1	330.7	332.5	333.1	333.9	332.6	331.2	328.0
70°	305.4	304.9	304.3	304.8	304.9	305.8	305.9	305.8	304.2	301.8	298.3
72.5°	287.1	286.8	286.4	286.7	286.7	287.6	287.3	286.9	284.9	282.7	279.2
75°	263.5	263.3	262.5	262.5	261.7	262.0	261.1	260.5	258.3	256.4	253.3
77.5°	236.0	235.5	234.2	233.7	232.3	231.7	230.0	229.0	226.9	225.3	222.7
80°	205.1	204.7	203.1	202.1	199.9	198.5	195.9	194.4	191.8	190.3	187.7
82.5°	169.6	169.8	168.1	167.0	163.8	161.4	157.8	156.0	153.2	151.7	149.0
85°	120.6	118.9	119.8	119.7	117.7	115.7	112.8	110.7	108.4	107.0	105.1
87.5°	66.1	66.6	66.1	65.7	64.3	63.2	61.0	59.8	58.1	57.2	55.8
90°	70.3	67.3	62.8	59.9	55.5	52.1	47.3	44.0	39.4	38.1	35.8
92.5°	82.4	77.7	73.0	68.1	63.5	58.7	54.0	49.2	44.4	42.7	41.2
95°	104.3	97.4	90.6	83.6	76.8	69.9	63.0	56.1	49.3	47.9	46.5
97.5°	117.6	109.5	101.4	93.2	85.1	77.0	68.9	60.9	52.7	51.9	51.0
100°	210.3	191.7	173.0	154.4	135.6	117.0	98.4	79.7	61.0	59.9	58.8
102.5°	483.9	438.7	393.4	348.1	302.8	257.5	212.3	166.9	121.7	115.1	108.7
105°	862.6	794.0	725.5	657.0	588.3	519.8	451.3	382.6	314.2	292.2	270.1
107.5°	1135.2	1070.8	1006.3	941.9	877.3	812.9	748.4	683.9	619.4	580.7	541.9
110°	1258.4	1207.1	1156.1	1104.8	1053.6	1002.4	951.1	899.9	848.7	815.1	781.9



TEST NUMBER: P1444430  
 CATALOG NUMBER: EHBR1-12-UNV-TA-L830-UPL30

**CANDELA DISTRIBUTION (continued):**

	137.5°	140°	142.5°	145°	147.5°	150°	152.5°	155°	157.5°	160°	162.5°
112.5°	1242.5	1204.8	1167.2	1129.6	1092.1	1054.4	1016.8	979.1	941.5	921.2	900.7
115°	1121.5	1098.9	1076.1	1053.2	1030.6	1007.7	984.9	962.2	939.3	928.5	917.6
117.5°	977.8	966.0	954.2	942.4	930.6	918.8	907.0	895.1	883.3	879.5	875.4
120°	831.2	827.4	823.5	819.7	815.9	812.0	808.1	804.3	800.4	800.6	800.8
122.5°	708.6	709.6	710.6	711.4	712.5	713.3	714.3	715.2	716.1	718.5	721.2
125°	621.3	624.2	627.2	630.1	632.9	635.8	638.8	641.6	644.5	647.1	649.6
127.5°	558.0	561.3	564.6	567.8	571.3	574.6	577.9	581.0	584.3	586.6	588.8
130°	513.0	515.8	518.6	521.3	524.2	526.9	529.6	532.4	535.1	536.7	538.2
132.5°	479.4	481.8	484.4	486.7	489.1	491.6	494.1	496.5	499.0	499.9	501.0
135°	456.7	458.3	460.1	461.8	463.7	465.3	467.0	468.8	470.5	471.1	471.6
137.5°	435.9	437.3	438.7	440.0	441.4	442.7	444.1	445.5	446.9	446.8	446.9
140°	417.3	418.8	420.2	421.7	423.3	424.8	426.4	427.9	429.5	429.5	429.6
142.5°	402.7	403.8	404.9	406.1	407.3	408.4	409.5	410.8	412.0	412.0	412.0
145°	387.3	388.7	390.2	391.6	393.1	394.5	396.2	397.7	399.3	399.0	398.9
147.5°	375.9	377.2	378.4	379.6	381.1	382.3	383.6	385.0	386.4	386.1	386.0
150°	363.4	364.8	366.2	367.6	369.0	370.5	372.0	373.5	375.1	375.2	375.2
152.5°	352.2	353.7	355.2	356.8	358.5	360.2	361.9	363.4	365.1	365.2	365.4
155°	342.5	344.0	345.6	347.1	348.7	350.3	352.0	353.6	355.3	355.6	355.9
157.5°	335.7	337.0	338.5	339.9	341.3	342.7	344.3	345.7	347.1	347.4	347.6
160°	330.7	331.9	333.1	334.3	335.6	336.8	338.1	339.4	340.6	340.9	341.1
162.5°	325.9	327.1	328.4	329.5	330.8	332.0	333.3	334.5	335.7	335.9	336.2
165°	322.4	323.3	324.1	324.9	325.8	326.7	327.6	328.4	329.3	329.6	330.0
167.5°	322.5	323.0	323.7	324.4	325.0	325.7	326.4	327.0	327.8	328.1	328.4
170°	320.7	321.3	321.9	322.6	323.2	323.8	324.5	325.0	325.8	326.1	326.4
172.5°	320.3	320.6	321.0	321.5	321.9	322.3	322.7	323.2	323.6	324.1	324.5
175°	321.1	321.3	321.6	321.8	321.9	322.1	322.3	322.6	322.9	323.3	323.6
177.5°	323.4	323.5	323.7	323.9	324.1	324.3	324.6	324.8	324.9	325.5	326.0
180°	323.7	323.7	323.7	323.7	323.7	323.7	323.7	323.7	323.7	323.7	323.7



TEST NUMBER: P1444430  
 CATALOG NUMBER: EHBR1-12-UNV-TA-L830-UPL30

**CANDELA DISTRIBUTION (continued):**

	165°	167.5°	170°	172.5°	175°	177.5°	180°	182.5°	185°	187.5°	190°
0°	9928.9	9928.9	9928.9	9928.9	9928.9	9928.9	9928.9	9928.9	9928.9	9928.9	9928.9
2.5°	9896.0	9895.9	9895.6	9895.1	9894.6	9894.9	9895.4	9896.5	9898.5	9901.4	9905.1
5°	9861.2	9863.3	9864.4	9864.6	9863.5	9862.9	9863.8	9866.5	9872.1	9881.2	9893.7
7.5°	9824.9	9827.3	9831.1	9834.0	9834.6	9833.9	9834.0	9838.3	9848.4	9866.4	9891.5
10°	9785.9	9778.5	9782.4	9789.5	9795.3	9796.3	9796.9	9802.0	9816.8	9843.9	9884.2
12.5°	9750.0	9726.6	9722.1	9728.5	9737.1	9739.9	9739.1	9741.3	9758.6	9794.4	9850.7
15°	9702.7	9658.7	9643.7	9645.3	9656.0	9659.8	9657.0	9652.7	9669.6	9713.4	9786.2
17.5°	9626.3	9555.3	9527.6	9526.4	9538.8	9542.2	9535.3	9522.0	9538.7	9593.3	9683.7
20°	9510.0	9405.2	9353.1	9344.8	9358.3	9354.3	9340.8	9320.7	9342.5	9409.0	9516.5
22.5°	9301.1	9168.2	9079.2	9050.5	9066.7	9055.9	9036.0	9010.4	9039.4	9114.8	9234.6
25°	8959.6	8806.1	8684.2	8615.8	8628.8	8609.4	8587.7	8556.7	8591.4	8678.0	8809.7
27.5°	8457.6	8280.4	8129.3	8016.2	8020.3	7995.0	7970.1	7930.0	7973.2	8075.6	8224.3
30°	7790.2	7585.1	7401.1	7247.3	7233.5	7209.0	7183.4	7130.9	7184.9	7307.6	7481.3
32.5°	6952.1	6724.3	6511.7	6317.3	6280.6	6256.7	6233.9	6173.3	6244.1	6387.1	6586.7
35°	5971.8	5729.2	5498.8	5276.7	5215.9	5191.9	5172.0	5114.0	5202.4	5358.1	5573.6
37.5°	4895.9	4648.0	4419.3	4191.5	4105.6	4073.1	4058.7	4020.6	4122.6	4276.5	4493.0
40°	3791.3	3560.9	3355.8	3154.6	3056.7	3006.9	2999.4	2992.5	3091.0	3224.6	3421.1
42.5°	2758.0	2572.1	2414.0	2260.2	2171.5	2103.6	2103.6	2124.2	2212.9	2312.9	2464.5
45°	1907.8	1783.0	1682.3	1579.6	1607.0	1471.7	1551.2	1510.3	1554.2	1618.7	1717.3
47.5°	1311.5	1243.3	1188.0	1130.6	1088.7	1048.7	1052.3	1078.1	1119.4	1157.6	1208.9
50°	955.8	921.2	893.0	863.2	842.3	824.7	825.7	836.9	858.6	878.7	905.5
52.5°	749.0	729.8	714.5	698.0	687.1	678.4	678.8	684.3	696.0	707.5	722.9
55°	617.3	615.0	595.1	580.3	574.7	568.8	569.9	572.0	580.0	586.7	596.9
57.5°	517.3	508.4	502.4	494.6	491.0	486.9	487.8	488.7	494.0	498.5	505.8
60°	446.7	440.3	436.1	430.8	428.5	425.8	426.5	427.0	430.3	433.3	438.6
62.5°	399.8	394.1	390.4	386.3	384.7	382.9	383.3	383.5	385.6	387.8	391.7
65°	363.8	359.3	356.2	352.7	351.0	349.1	349.3	349.3	351.2	352.7	355.7
67.5°	325.7	322.3	320.4	317.5	316.4	314.5	314.5	313.9	315.1	315.7	317.7
70°	295.2	291.8	289.3	286.5	285.0	283.4	283.4	283.4	284.9	286.3	288.9
72.5°	276.3	273.1	270.8	268.5	267.1	265.7	265.4	265.3	266.2	267.0	268.7
75°	251.3	248.7	247.4	245.2	244.1	242.5	242.2	241.5	242.0	242.1	243.5
77.5°	221.0	218.5	217.5	215.3	214.3	212.5	212.4	211.5	211.9	211.7	212.6
80°	186.5	184.3	183.6	181.8	181.3	179.7	179.4	178.4	178.7	178.0	178.3
82.5°	147.9	145.8	145.4	143.7	143.7	142.2	142.1	140.6	140.6	139.3	137.2
85°	104.2	102.7	102.0	100.6	100.2	99.0	98.4	96.9	96.5	95.5	95.3
87.5°	55.0	54.0	53.2	52.5	51.3	49.1	48.9	47.4	47.6	46.5	46.6
90°	34.5	32.3	31.1	28.9	27.6	25.9	24.7	25.7	26.8	27.9	29.0
92.5°	39.6	38.0	36.5	34.9	33.3	31.8	30.2	31.8	33.3	34.9	36.5
95°	45.1	43.7	42.2	40.8	39.4	38.0	36.6	38.0	39.4	40.9	42.3
97.5°	50.1	49.2	48.3	47.4	46.6	45.6	44.8	45.6	46.6	47.4	48.3
100°	57.8	56.8	55.6	54.6	53.6	52.5	51.4	52.5	53.7	54.7	55.7
102.5°	102.1	95.5	89.1	82.5	76.0	69.5	62.9	69.5	76.0	82.6	89.2
105°	248.0	226.0	203.9	181.9	159.9	137.8	115.8	137.9	160.0	182.0	204.0
107.5°	503.0	464.3	425.5	386.8	347.9	309.1	270.3	309.2	348.0	386.9	425.6
110°	748.3	714.8	681.4	647.9	614.4	580.9	547.4	580.9	614.4	647.9	681.5



TEST NUMBER: P1444430  
 CATALOG NUMBER: EHBR1-12-UNV-TA-L830-UPL30

**CANDELA DISTRIBUTION (continued):**

	165°	167.5°	170°	172.5°	175°	177.5°	180°	182.5°	185°	187.5°	190°
112.5°	880.3	860.0	839.5	819.2	798.7	778.3	757.9	778.3	798.8	819.3	839.7
115°	906.8	896.0	885.1	874.2	863.4	852.5	841.5	852.6	863.6	874.4	885.4
117.5°	871.5	867.6	863.6	859.7	855.8	851.7	847.7	851.8	856.0	860.0	864.0
120°	800.9	801.1	801.3	801.4	801.5	801.6	801.7	801.7	801.7	801.7	801.7
122.5°	723.6	726.1	728.5	731.0	733.4	736.0	738.2	736.1	733.7	731.6	729.1
125°	652.1	654.8	657.3	659.7	662.2	664.7	667.0	664.9	662.6	660.3	657.9
127.5°	591.0	593.2	595.3	597.6	599.7	601.7	603.8	601.9	600.1	598.1	596.1
130°	539.8	541.4	542.8	544.4	545.9	547.3	548.6	547.5	546.3	545.1	543.7
132.5°	502.0	503.1	504.0	505.1	505.9	506.9	507.7	507.1	506.4	505.7	504.9
135°	472.2	472.7	473.1	473.6	474.1	474.4	474.7	474.7	474.5	474.3	474.1
137.5°	447.0	447.0	446.9	446.8	446.8	446.6	446.4	446.9	447.3	447.7	447.9
140°	429.5	429.6	429.6	429.5	429.5	429.4	429.1	429.7	429.9	430.3	430.6
142.5°	412.1	412.1	412.1	412.0	412.0	411.8	411.6	412.1	412.4	412.7	413.0
145°	398.8	398.6	398.4	398.2	397.8	397.5	397.1	397.8	398.3	398.9	399.4
147.5°	385.7	385.5	385.4	385.1	384.7	384.5	384.1	384.7	385.2	385.7	386.3
150°	375.4	375.5	375.7	375.8	375.8	375.8	375.7	376.0	376.3	376.5	376.7
152.5°	365.4	365.5	365.7	365.7	365.8	365.7	365.6	366.0	366.3	366.5	366.7
155°	356.0	356.3	356.5	356.7	356.9	357.1	357.3	357.4	357.4	357.5	357.6
157.5°	347.8	348.1	348.3	348.5	348.6	348.8	349.0	349.2	349.3	349.5	349.5
160°	341.2	341.5	341.6	341.9	342.1	342.3	342.4	342.6	342.7	342.8	342.9
162.5°	336.4	336.6	336.7	336.9	337.0	337.2	337.4	337.6	337.8	337.9	338.0
165°	330.4	330.8	331.0	331.4	331.8	332.2	332.4	332.4	332.3	332.3	332.3
167.5°	328.8	329.2	329.3	329.7	330.0	330.4	330.7	330.7	330.6	330.5	330.5
170°	326.7	327.0	327.3	327.6	327.9	328.2	328.5	328.4	328.3	328.3	328.2
172.5°	324.9	325.4	325.9	326.3	326.7	327.2	327.7	327.5	327.1	326.9	326.5
175°	324.0	324.5	324.9	325.3	325.6	326.1	326.5	326.2	326.0	325.7	325.4
177.5°	326.6	327.3	327.8	328.3	328.9	329.3	330.0	329.4	329.0	328.5	327.9
180°	323.7	323.7	323.7	323.7	323.7	323.7	323.7	323.7	323.7	323.7	323.7



TEST NUMBER: P1444430  
 CATALOG NUMBER: EHBR1-12-UNV-TA-L830-UPL30

**CANDELA DISTRIBUTION (continued):**

	192.5°	195°	197.5°	200°	202.5°	205°	207.5°	210°	212.5°	215°	217.5°
0°	9928.9	9928.9	9928.9	9928.9	9928.9	9928.9	9928.9	9928.9	9928.9	9928.9	9928.9
2.5°	9910.4	9915.3	9922.9	9929.9	9940.2	9948.3	9960.6	9969.9	9983.7	9992.7	10007.8
5°	9911.3	9930.7	9956.2	9981.1	10011.0	10038.1	10071.9	10100.6	10134.5	10162.2	10196.9
7.5°	9925.3	9962.7	10007.5	10052.7	10103.7	10151.5	10205.3	10254.1	10307.3	10352.4	10401.6
10°	9935.7	9993.3	10059.3	10125.8	10195.8	10260.8	10326.4	10383.0	10436.1	10479.7	10518.2
12.5°	9921.6	10001.1	10085.8	10167.7	10245.4	10312.7	10369.2	10412.7	10442.9	10463.3	10468.1
15°	9873.9	9969.6	10061.8	10143.2	10207.8	10257.5	10283.3	10295.4	10282.4	10260.9	10213.7
17.5°	9785.0	9885.7	9968.2	10032.4	10066.5	10080.1	10058.8	10021.6	9949.1	9868.5	9752.2
20°	9621.8	9715.7	9775.5	9810.5	9801.4	9767.6	9687.1	9589.1	9444.3	9289.8	9086.1
22.5°	9335.5	9417.7	9449.5	9452.0	9396.4	9311.9	9166.5	8998.6	8770.0	8532.4	8240.2
25°	8905.9	8977.8	8982.9	8954.6	8852.6	8715.7	8502.3	8264.6	7954.1	7637.5	7271.3
27.5°	8323.1	8392.1	8375.2	8322.5	8181.0	7997.8	7724.6	7417.5	7034.6	6660.7	6255.6
30°	7590.5	7664.3	7644.5	7576.9	7408.6	7192.1	6870.6	6513.8	6088.7	5689.3	5278.8
32.5°	6714.0	6807.2	6793.5	6729.2	6553.7	6321.9	5973.0	5594.7	5159.8	4766.2	4366.8
35°	5717.5	5830.7	5836.6	5794.6	5631.6	5402.6	5058.0	4691.9	4275.2	3903.9	3535.0
37.5°	4644.0	4775.3	4802.2	4790.9	4655.8	4453.7	4139.8	3811.2	3442.2	3116.7	2801.2
40°	3564.6	3697.5	3743.6	3757.2	3657.6	3500.9	3243.4	2978.2	2677.3	2413.6	2163.0
42.5°	2580.2	2697.9	2742.5	2770.5	2708.3	2603.9	2416.0	2223.4	2003.0	1812.8	1630.4
45°	1791.9	1875.3	1909.2	1937.4	1903.5	1844.6	1725.9	1605.5	1460.0	1335.7	1218.0
47.5°	1252.8	1298.8	1321.2	1334.9	1321.8	1291.0	1226.4	1156.6	1074.5	1001.9	932.0
50°	928.7	953.1	964.8	972.7	963.1	946.1	911.1	873.1	828.1	786.9	746.7
52.5°	735.9	749.9	756.9	761.2	755.6	745.2	724.9	702.3	675.3	649.9	636.5
55°	620.0	619.3	635.3	627.6	635.3	617.9	614.4	589.6	567.1	551.3	534.2
57.5°	511.3	518.6	521.7	525.1	522.9	519.7	511.1	502.2	490.4	480.4	469.9
60°	442.6	448.6	452.0	455.3	455.1	453.9	449.0	443.6	436.3	430.3	424.0
62.5°	395.3	400.4	403.8	407.1	407.4	406.9	403.1	399.4	394.4	390.6	386.2
65°	358.0	361.7	363.9	366.5	366.4	365.7	362.3	359.2	355.1	352.5	349.2
67.5°	319.0	321.8	323.5	326.1	326.5	326.6	324.8	323.4	321.3	320.5	319.5
70°	291.3	294.7	297.5	300.7	302.4	303.1	302.4	301.6	300.4	299.9	299.1
72.5°	270.3	273.1	275.4	278.2	279.8	280.9	280.4	279.9	278.9	278.8	278.1
75°	244.3	246.3	247.5	249.6	250.5	251.5	251.0	251.3	251.0	251.8	251.8
77.5°	213.0	214.4	215.0	216.6	216.7	218.0	218.3	219.8	220.9	223.2	224.4
80°	177.7	178.6	178.6	180.2	181.0	183.1	184.2	186.6	187.7	189.9	190.1
82.5°	138.1	137.0	138.1	137.4	139.4	141.8	142.2	144.3	144.7	146.1	145.1
85°	94.4	94.3	93.5	93.6	93.0	93.3	92.9	93.3	92.9	93.0	92.0
87.5°	45.2	45.6	44.7	45.0	44.0	44.5	43.7	44.3	43.3	43.5	42.0
90°	30.2	31.3	32.4	33.6	34.9	38.0	41.1	44.2	47.5	50.5	53.7
92.5°	38.0	39.6	41.2	42.8	44.4	49.2	54.0	58.7	63.6	68.2	73.0
95°	43.7	45.1	46.6	48.1	49.5	56.3	63.2	70.1	77.0	83.8	90.8
97.5°	49.3	50.2	51.1	52.0	52.8	61.0	69.0	77.2	85.3	93.4	101.5
100°	56.9	57.9	58.9	60.1	61.2	79.9	98.5	117.3	135.9	154.6	173.2
102.5°	95.6	102.2	108.8	115.3	121.9	167.2	212.5	257.8	303.0	348.4	393.7
105°	226.1	248.1	270.2	292.3	314.4	382.9	451.6	520.2	588.6	657.3	725.9
107.5°	464.4	503.2	542.2	580.9	619.7	684.3	748.7	813.3	877.8	942.2	1006.7
110°	715.0	748.4	782.1	815.5	849.0	900.3	951.6	1002.8	1054.1	1105.4	1156.6



TEST NUMBER: P1444430  
 CATALOG NUMBER: EHBR1-12-UNV-TA-L830-UPL30

**CANDELA DISTRIBUTION (continued):**

	192.5°	195°	197.5°	200°	202.5°	205°	207.5°	210°	212.5°	215°	217.5°
112.5°	860.3	880.6	901.0	921.5	942.0	979.6	1017.4	1055.0	1092.8	1130.2	1167.9
115°	896.3	907.2	918.1	928.9	939.9	962.8	985.6	1008.5	1031.3	1054.0	1076.9
117.5°	868.0	872.1	876.0	880.0	884.0	895.9	907.8	919.7	931.6	943.5	955.3
120°	801.7	801.6	801.5	801.4	801.3	805.1	809.1	813.1	816.9	820.8	824.7
122.5°	726.8	724.4	722.0	719.5	717.1	716.2	715.4	714.4	713.7	712.6	711.8
125°	655.5	653.2	650.6	648.3	645.8	643.0	640.1	637.1	634.3	631.5	628.6
127.5°	594.2	592.0	589.9	587.9	585.7	582.4	579.3	576.0	572.8	569.4	566.1
130°	542.4	541.0	539.6	538.0	536.7	533.9	531.2	528.5	525.8	523.1	520.3
132.5°	504.2	503.3	502.5	501.4	500.6	498.1	495.9	493.4	490.9	488.6	486.2
135°	473.9	473.5	473.1	472.8	472.3	470.6	468.9	467.2	465.6	463.9	462.2
137.5°	448.2	448.4	448.5	448.6	448.8	447.5	446.1	444.7	443.5	442.1	440.8
140°	430.8	431.0	431.3	431.3	431.4	429.9	428.5	427.0	425.6	424.0	422.5
142.5°	413.3	413.6	413.7	413.8	414.0	412.9	411.8	410.7	409.6	408.5	407.4
145°	399.7	400.2	400.6	400.8	401.3	399.9	398.5	397.0	395.7	394.2	392.9
147.5°	386.8	387.1	387.6	388.0	388.5	387.2	386.0	384.8	383.7	382.4	381.3
150°	376.7	376.8	377.0	377.1	377.2	375.9	374.6	373.2	372.0	370.6	369.3
152.5°	366.8	367.0	367.2	367.3	367.5	366.1	364.6	363.2	361.7	360.1	358.7
155°	357.7	357.7	357.7	357.7	357.7	356.3	354.9	353.5	352.1	350.7	349.3
157.5°	349.6	349.7	349.8	349.8	349.9	348.6	347.4	346.1	344.9	343.6	342.4
160°	343.0	343.1	343.2	343.3	343.3	342.3	341.2	340.1	339.2	338.0	336.9
162.5°	338.1	338.2	338.2	338.3	338.4	337.4	336.4	335.2	334.2	333.2	332.2
165°	332.3	332.2	332.1	331.9	331.8	331.1	330.5	329.8	329.1	328.3	327.6
167.5°	330.5	330.3	330.2	330.1	330.0	329.4	329.1	328.4	327.8	327.4	326.8
170°	328.2	328.0	327.9	327.8	327.7	327.1	326.7	326.2	325.7	325.1	324.6
172.5°	326.3	326.0	325.8	325.5	325.1	324.8	324.4	324.1	323.8	323.4	323.1
175°	325.0	324.8	324.5	324.2	323.8	323.7	323.5	323.4	323.2	323.1	322.9
177.5°	327.5	327.0	326.4	326.0	325.5	325.3	325.1	324.9	324.9	324.8	324.6
180°	323.7	323.7	323.7	323.7	323.7	323.7	323.7	323.7	323.7	323.7	323.7



TEST NUMBER: P1444430  
 CATALOG NUMBER: EHBR1-12-UNV-TA-L830-UPL30

**CANDELA DISTRIBUTION (continued):**

	220°	222.5°	225°	227.5°	230°	232.5°	235°	237.5°	240°	242.5°	245°
0°	9928.9	9928.9	9928.9	9928.9	9928.9	9928.9	9928.9	9928.9	9928.9	9928.9	9928.9
2.5°	10017.1	9955.2	9947.1	9951.4	9961.7	9965.6	9976.7	9979.8	9991.0	9993.7	10004.5
5°	10223.8	10142.0	10146.1	10165.7	10195.5	10213.2	10242.5	10257.8	10285.7	10298.5	10323.7
7.5°	10441.8	10377.5	10397.6	10430.7	10471.4	10499.6	10534.7	10557.6	10587.9	10606.7	10631.0
10°	10548.7	10531.1	10553.1	10579.3	10602.5	10620.7	10635.6	10647.5	10655.3	10662.7	10665.8
12.5°	10467.3	10494.5	10498.3	10495.7	10480.4	10468.7	10442.2	10424.4	10392.5	10373.1	10335.3
15°	10165.4	10225.3	10192.1	10141.9	10068.5	10007.2	9920.8	9856.4	9766.3	9705.2	9614.8
17.5°	9635.6	9711.1	9624.8	9508.6	9360.9	9234.5	9077.1	8952.2	8795.7	8681.9	8535.9
20°	8889.7	8960.4	8806.3	8613.8	8385.2	8192.8	7966.1	7785.1	7574.3	7417.5	7228.3
22.5°	7961.1	8011.4	7794.3	7534.8	7243.6	7003.3	6732.1	6515.2	6274.5	6095.4	5893.6
25°	6933.7	6947.3	6686.9	6387.9	6063.3	5793.3	5503.7	5275.6	5030.3	4848.6	4650.7
27.5°	5896.7	5876.8	5595.3	5278.4	4936.9	4656.3	4373.9	4160.1	3945.2	3781.6	3611.0
30°	4918.0	4869.8	4577.5	4251.6	3920.3	3668.7	3434.3	3262.7	3091.7	2961.9	2824.9
32.5°	4020.4	3952.4	3668.0	3362.7	3083.5	2889.3	2715.4	2585.6	2447.5	2337.8	2223.0
35°	3225.5	3153.0	2901.0	2642.2	2430.9	2287.7	2151.1	2044.6	1927.4	1834.8	1735.1
37.5°	2543.2	2483.8	2272.7	2069.0	1909.2	1798.3	1686.4	1599.2	1502.4	1461.6	1355.0
40°	1963.3	1921.8	1756.8	1606.6	1486.6	1434.5	1320.9	1239.5	1167.1	1107.5	1049.6
42.5°	1531.4	1516.7	1356.1	1239.0	1154.5	1088.8	1025.5	974.1	924.1	882.9	844.1
45°	1123.9	1112.2	1040.9	973.3	915.7	869.8	827.0	791.7	758.9	731.9	707.2
47.5°	875.2	871.4	830.3	788.4	752.2	722.7	694.9	671.4	649.7	631.6	625.7
50°	711.8	711.3	687.2	661.3	635.5	618.4	600.7	586.8	572.9	562.0	550.6
52.5°	604.7	602.1	585.9	569.9	554.6	543.4	532.1	523.2	514.0	507.2	500.1
55°	520.6	523.4	514.0	504.4	494.9	487.9	480.0	474.1	467.8	463.6	459.3
57.5°	462.2	465.8	461.0	455.5	449.7	445.1	439.6	435.6	431.4	428.6	426.2
60°	419.7	423.7	421.7	419.0	415.3	412.6	409.2	406.9	404.2	402.7	401.3
62.5°	383.7	388.6	387.9	386.7	384.3	382.8	380.9	379.9	378.1	377.4	376.7
65°	347.7	353.2	353.1	352.5	351.3	350.8	349.6	349.4	348.5	348.8	348.7
67.5°	319.3	324.2	325.3	326.1	326.1	326.3	326.3	326.7	326.7	327.4	327.8
70°	298.9	302.4	303.1	304.0	304.1	304.8	304.8	305.3	305.1	305.7	305.8
72.5°	278.3	282.8	283.5	284.2	284.2	284.9	284.5	284.4	283.5	283.4	282.7
75°	252.6	258.3	259.6	260.4	260.5	261.1	260.3	259.7	258.3	257.7	256.7
77.5°	225.7	231.7	232.6	232.9	232.4	232.5	230.9	229.8	227.9	227.2	226.1
80°	190.9	199.6	200.3	199.7	198.4	198.1	196.6	195.6	193.3	192.5	191.7
82.5°	145.3	155.5	156.9	157.6	156.4	156.7	155.2	154.6	152.5	152.1	150.8
85°	91.7	101.9	103.6	103.3	102.3	102.0	101.2	101.4	101.3	101.8	102.1
87.5°	42.2	52.0	54.4	53.7	53.6	52.8	51.2	51.9	52.8	53.4	53.5
90°	56.9	62.9	66.0	63.5	60.1	57.5	54.1	51.6	48.3	45.9	42.7
92.5°	77.7	82.5	87.3	83.1	78.9	74.6	70.3	66.1	61.9	57.6	53.4
95°	97.6	104.4	111.3	105.7	99.9	94.2	88.6	83.0	77.4	71.7	66.0
97.5°	109.7	117.7	125.8	120.2	114.5	108.8	103.1	97.4	91.8	86.2	80.5
100°	191.9	210.5	229.1	213.1	197.0	181.0	165.0	148.7	132.7	116.7	100.6
102.5°	438.8	484.1	529.3	488.8	448.2	407.6	367.0	326.4	285.9	245.2	204.7
105°	794.3	862.8	931.3	869.3	807.3	745.4	683.5	621.5	559.6	497.7	435.8
107.5°	1071.2	1135.5	1199.8	1143.8	1087.9	1032.0	976.0	920.0	864.0	808.1	752.2
110°	1207.8	1258.7	1309.9	1272.3	1235.0	1197.4	1159.9	1122.4	1084.9	1047.5	1010.1



TEST NUMBER: P1444430  
 CATALOG NUMBER: EHBR1-12-UNV-TA-L830-UPL30

**CANDELA DISTRIBUTION (continued):**

	220°	222.5°	225°	227.5°	230°	232.5°	235°	237.5°	240°	242.5°	245°
112.5°	1205.5	1242.8	1280.3	1258.4	1236.6	1214.8	1193.0	1171.2	1149.4	1127.6	1105.9
115°	1099.7	1121.9	1144.6	1136.1	1127.6	1119.2	1110.7	1102.3	1093.8	1085.5	1077.0
117.5°	967.1	978.3	990.0	988.7	987.4	986.1	984.9	983.5	982.3	981.1	979.9
120°	828.6	831.8	835.5	836.9	838.4	839.9	841.5	842.9	844.5	846.0	847.6
122.5°	710.9	709.3	708.1	709.6	711.1	712.4	714.0	715.4	717.0	718.4	720.0
125°	625.7	622.0	618.9	617.9	616.9	615.8	614.9	613.7	612.8	611.8	610.8
127.5°	563.0	558.8	555.3	552.4	549.4	546.3	543.4	540.4	537.5	534.4	531.5
130°	517.6	513.9	511.0	507.0	503.3	499.3	495.4	491.6	487.7	483.8	480.0
132.5°	483.8	480.4	477.8	474.1	470.4	466.8	463.0	459.3	455.6	451.9	448.2
135°	460.5	457.8	455.8	452.4	449.2	445.9	442.5	439.1	435.9	432.5	429.2
137.5°	439.5	437.0	435.5	432.9	430.3	427.7	425.2	422.5	419.9	417.2	414.7
140°	421.1	418.4	416.7	415.5	414.1	412.8	411.5	410.1	408.8	407.5	406.1
142.5°	406.3	403.9	402.6	401.8	401.2	400.3	399.8	398.9	398.2	397.4	396.7
145°	391.4	388.5	387.0	387.0	387.3	387.4	387.6	387.8	388.0	388.1	388.3
147.5°	380.1	377.3	375.8	376.3	376.7	377.0	377.5	377.8	378.2	378.6	379.0
150°	367.8	364.8	363.0	363.6	364.2	364.8	365.5	366.2	366.7	367.4	367.9
152.5°	357.2	353.5	351.5	352.1	352.8	353.4	354.1	354.7	355.4	356.1	356.8
155°	347.8	343.9	341.8	342.1	342.4	342.6	342.9	343.3	343.7	344.0	344.4
157.5°	341.0	337.1	335.2	335.2	335.4	335.5	335.7	335.8	336.0	336.2	336.5
160°	335.9	332.1	330.3	330.3	330.5	330.6	330.7	330.8	330.9	331.1	331.3
162.5°	330.9	327.3	325.5	325.6	325.7	325.7	325.9	325.9	326.1	326.2	326.3
165°	326.8	323.7	322.4	322.6	322.9	323.1	323.4	323.7	324.0	324.3	324.7
167.5°	326.3	323.6	322.5	322.4	322.2	322.1	322.1	322.0	322.0	321.9	321.9
170°	323.9	321.9	320.8	320.9	321.1	321.2	321.3	321.4	321.5	321.7	321.9
172.5°	322.7	321.1	320.4	320.7	321.1	321.4	321.8	322.0	322.4	322.7	323.1
175°	322.7	321.8	321.5	321.6	321.8	321.9	322.1	322.2	322.4	322.6	322.9
177.5°	324.4	324.0	323.7	323.7	323.7	323.7	323.7	323.7	323.7	323.8	323.8
180°	323.7	323.7	323.7	323.7	323.7	323.7	323.7	323.7	323.7	323.7	323.7



TEST NUMBER: P1444430  
 CATALOG NUMBER: EHBR1-12-UNV-TA-L830-UPL30

**CANDELA DISTRIBUTION (continued):**

	247.5°	250°	252.5°	255°	257.5°	260°	262.5°	265°	267.5°	270°	272.5°
0°	9928.9	9928.9	9928.9	9928.9	9928.9	9928.9	9928.9	9928.9	9928.9	9928.9	9928.9
2.5°	10006.6	10018.2	10017.4	10028.2	10027.7	10038.0	10035.9	10044.8	10042.7	10050.3	10045.8
5°	10334.8	10357.0	10364.3	10384.4	10388.5	10406.4	10406.7	10421.0	10419.3	10430.4	10424.5
7.5°	10645.3	10666.0	10675.9	10691.4	10699.2	10712.0	10717.1	10727.7	10730.2	10736.5	10736.3
10°	10671.5	10671.5	10676.2	10674.1	10678.5	10676.0	10681.3	10679.3	10687.2	10685.1	10691.0
12.5°	10318.9	10283.9	10271.1	10239.7	10232.8	10205.8	10207.8	10190.5	10198.8	10188.2	10206.3
15°	9561.1	9480.0	9439.9	9369.2	9347.1	9291.3	9286.8	9249.7	9259.7	9240.4	9268.6
17.5°	8441.3	8313.5	8243.4	8140.3	8099.4	8020.5	8004.6	7957.0	7964.4	7940.4	7974.6
20°	7106.2	6951.8	6863.4	6744.1	6691.0	6596.9	6571.9	6518.6	6525.3	6501.4	6540.1
22.5°	5755.9	5594.2	5494.4	5369.4	5301.6	5213.1	5186.6	5133.0	5136.0	5113.6	5150.8
25°	4515.0	4360.0	4263.1	4149.6	4090.7	4009.6	3981.7	3933.5	3936.2	3917.8	3951.1
27.5°	3492.7	3365.5	3284.4	3189.3	3136.5	3069.8	3042.6	3002.2	3002.0	2988.5	3016.4
30°	2729.4	2623.3	2550.4	2467.6	2417.9	2357.8	2331.5	2295.3	2293.7	2284.1	2306.3
32.5°	2137.0	2042.6	1976.2	1903.3	1858.8	1807.1	1782.3	1753.1	1750.5	1741.8	1760.0
35°	1661.3	1581.7	1524.7	1463.2	1467.8	1391.7	1404.3	1345.1	1329.1	1325.5	1339.1
37.5°	1283.9	1222.4	1175.9	1130.0	1098.9	1066.7	1049.4	1033.8	1032.1	1030.6	1040.0
40°	1005.0	961.9	928.2	896.6	875.2	855.6	844.7	836.2	834.1	833.0	838.7
42.5°	813.3	784.3	762.6	743.3	730.3	719.6	713.7	708.9	707.3	707.4	710.8
45°	687.2	669.6	655.5	643.6	635.3	638.9	628.2	633.8	626.4	634.1	629.0
47.5°	605.2	590.1	581.5	573.0	568.0	563.9	564.1	564.2	565.8	566.0	567.6
50°	541.9	533.2	527.2	521.7	519.1	517.0	517.7	518.3	519.9	520.0	521.2
52.5°	495.1	489.3	485.7	482.3	481.2	480.0	480.4	480.3	480.9	480.6	481.6
55°	456.9	454.2	453.1	451.9	452.1	451.7	451.9	450.7	450.0	449.1	449.9
57.5°	425.6	425.3	426.0	426.6	428.0	428.5	428.8	427.4	426.1	424.9	425.6
60°	401.6	402.1	404.0	405.6	407.7	408.6	409.2	408.4	407.5	406.4	407.0
62.5°	377.8	378.7	381.0	382.7	385.2	386.5	387.9	388.0	388.4	388.0	388.4
65°	350.1	351.3	353.3	354.8	357.2	358.3	359.7	360.0	360.8	360.6	361.3
67.5°	329.2	330.2	332.0	333.3	335.3	336.6	337.9	337.9	338.2	338.2	338.8
70°	306.9	307.3	308.9	310.1	312.1	313.3	314.7	315.2	316.1	316.2	317.0
72.5°	283.0	282.8	283.6	284.2	285.7	286.7	288.6	289.6	291.1	291.5	292.1
75°	257.0	256.8	257.9	258.3	259.7	260.6	262.7	264.1	266.5	267.4	267.1
77.5°	227.0	227.4	229.5	230.6	232.4	233.6	236.3	238.5	242.9	244.9	242.9
80°	193.3	193.8	196.0	197.1	199.3	200.8	203.9	206.5	210.4	211.2	210.1
82.5°	151.9	152.1	154.0	154.8	157.8	160.0	163.9	165.9	168.3	168.0	167.7
85°	103.6	105.0	107.4	109.8	113.5	117.0	120.6	123.6	121.6	124.9	121.1
87.5°	55.4	55.3	58.5	58.0	63.1	66.1	69.2	70.7	72.5	72.1	72.1
90°	40.4	38.4	37.3	35.2	34.4	32.2	31.6	29.6	29.1	26.9	29.9
92.5°	49.2	46.9	44.6	42.3	40.0	37.7	35.4	33.2	30.8	28.6	30.8
95°	60.4	58.3	56.2	54.0	52.0	49.8	47.8	45.6	43.6	41.4	44.0
97.5°	74.8	73.6	72.4	71.2	70.0	68.7	67.4	66.2	65.0	63.8	65.6
100°	84.6	84.6	84.6	84.6	84.5	84.5	84.5	84.5	84.5	84.5	85.9
102.5°	164.1	160.1	156.1	151.8	147.8	143.8	139.8	135.6	131.6	127.6	133.6
105°	373.8	358.0	342.1	326.3	310.2	294.4	278.5	262.7	246.7	230.9	247.3
107.5°	696.3	667.2	638.3	609.4	580.4	551.4	522.5	493.6	464.7	435.8	461.7
110°	972.6	941.9	911.2	880.5	849.8	819.1	788.4	757.7	727.1	696.3	721.1



TEST NUMBER: P1444430  
 CATALOG NUMBER: EHBR1-12-UNV-TA-L830-UPL30

**CANDELA DISTRIBUTION (continued):**

	247.5°	250°	252.5°	255°	257.5°	260°	262.5°	265°	267.5°	270°	272.5°
112.5°	1084.1	1064.2	1044.4	1024.7	1004.9	985.1	965.4	945.7	925.9	906.2	918.2
115°	1068.6	1059.2	1049.8	1040.5	1031.0	1021.7	1012.2	1002.9	993.6	984.2	984.9
117.5°	978.7	975.6	972.5	969.4	966.4	963.3	960.3	957.3	954.2	951.3	944.6
120°	849.3	850.3	851.4	852.6	853.7	855.0	856.1	857.3	858.5	859.7	850.7
122.5°	721.5	723.9	726.5	729.0	731.5	734.2	736.7	739.3	742.1	744.7	735.7
125°	609.8	612.2	614.8	617.3	619.7	622.3	625.0	627.6	630.2	632.9	625.3
127.5°	528.6	529.6	530.6	531.7	532.7	533.9	535.0	536.3	537.5	538.8	534.0
130°	476.1	475.5	474.9	474.4	473.8	473.4	472.9	472.6	472.2	471.8	469.7
132.5°	444.5	442.8	441.2	439.5	437.9	436.4	434.9	433.5	432.0	430.7	429.9
135°	425.8	423.4	421.1	418.7	416.4	414.2	412.0	409.8	407.7	405.6	405.9
137.5°	412.1	409.7	407.4	405.0	402.6	400.4	398.2	395.9	393.9	391.8	392.5
140°	404.8	402.3	400.0	397.6	395.5	393.1	391.0	388.8	386.7	384.7	385.1
142.5°	395.9	393.7	391.5	389.5	387.3	385.3	383.2	381.3	379.4	377.5	378.0
145°	388.5	386.9	385.3	383.7	382.2	380.7	379.1	377.8	376.4	375.1	375.2
147.5°	379.4	378.2	377.0	375.8	374.7	373.7	372.5	371.4	370.4	369.4	369.5
150°	368.6	367.8	367.0	366.3	365.5	364.8	364.1	363.3	362.7	362.0	361.9
152.5°	357.4	356.7	355.9	355.2	354.5	353.8	353.1	352.5	351.9	351.2	351.1
155°	344.8	344.4	344.1	343.8	343.4	343.1	342.7	342.6	342.3	342.0	342.0
157.5°	336.7	336.5	336.3	336.3	336.1	336.1	335.9	335.9	335.7	335.7	335.8
160°	331.6	331.3	330.9	330.8	330.5	330.2	329.9	329.8	329.5	329.3	329.5
162.5°	326.5	326.7	326.7	326.8	326.9	327.0	327.1	327.2	327.3	327.5	327.6
165°	325.0	324.9	324.8	324.6	324.5	324.5	324.4	324.3	324.2	324.2	324.5
167.5°	321.9	322.1	322.3	322.5	322.7	322.9	323.2	323.4	323.6	324.0	324.3
170°	321.9	321.9	321.9	321.9	321.9	322.0	322.0	322.0	322.1	322.2	322.4
172.5°	323.4	323.4	323.4	323.4	323.4	323.4	323.4	323.4	323.4	323.5	323.7
175°	323.0	323.3	323.4	323.6	323.8	323.9	324.1	324.3	324.5	324.7	324.7
177.5°	323.8	323.8	323.8	323.8	323.8	323.9	323.9	323.9	323.9	323.8	324.0
180°	323.7	323.7	323.7	323.7	323.7	323.7	323.7	323.7	323.7	323.7	323.7



TEST NUMBER: P1444430  
 CATALOG NUMBER: EHBR1-12-UNV-TA-L830-UPL30

**CANDELA DISTRIBUTION (continued):**

	275°	277.5°	280°	282.5°	285°	287.5°	290°	292.5°	295°	297.5°	300°
0°	9928.9	9928.9	9928.9	9928.9	9928.9	9928.9	9928.9	9928.9	9928.9	9928.9	9928.9
2.5°	10053.2	10048.2	10053.3	10048.2	10053.3	10047.1	10051.4	10044.6	10046.3	10039.3	10041.1
5°	10433.3	10425.4	10429.6	10419.2	10420.3	10406.4	10406.2	10390.0	10385.7	10367.2	10359.2
7.5°	10740.8	10738.1	10739.6	10732.9	10732.2	10722.6	10718.1	10704.7	10696.3	10679.3	10667.7
10°	10692.1	10699.9	10702.0	10710.0	10711.6	10719.5	10721.2	10729.1	10730.7	10736.6	10736.7
12.5°	10205.4	10232.0	10238.4	10271.3	10285.2	10322.7	10342.9	10384.4	10408.9	10450.3	10475.7
15°	9267.9	9314.0	9332.3	9396.5	9432.0	9506.9	9554.0	9640.0	9700.7	9792.1	9857.3
17.5°	7977.6	8041.9	8071.0	8158.0	8214.7	8325.4	8405.0	8536.2	8636.6	8782.4	8898.0
20°	6546.8	6618.2	6657.7	6756.9	6823.9	6953.1	7052.6	7213.8	7348.2	7533.0	7690.9
22.5°	5162.5	5230.5	5274.2	5375.2	5450.7	5585.4	5696.7	5866.8	6017.4	6225.6	6415.0
25°	3963.8	4026.2	4065.7	4157.0	4227.9	4351.8	4457.9	4621.5	4769.0	4977.8	5171.9
27.5°	3030.3	3082.5	3120.6	3198.5	3261.0	3366.0	3457.2	3592.5	3719.5	3900.1	4073.1
30°	2319.9	2366.2	2403.3	2471.1	2529.1	2620.2	2700.3	2814.0	2919.1	3062.8	3200.4
32.5°	1772.8	1812.6	1845.7	1905.1	1957.6	2039.6	2111.9	2211.5	2301.7	2423.5	2536.8
35°	1351.7	1430.1	1424.5	1506.5	1519.6	1578.4	1643.0	1730.0	1809.9	1913.6	2009.9
37.5°	1049.1	1071.2	1094.8	1131.0	1169.1	1222.6	1277.1	1383.4	1422.5	1500.8	1580.5
40°	846.0	860.9	876.6	901.0	927.6	965.4	1005.0	1055.8	1107.8	1171.3	1236.2
42.5°	715.3	723.7	733.6	748.0	764.4	788.3	814.8	849.2	885.5	930.2	975.8
45°	639.0	635.0	638.0	645.7	655.6	670.1	686.9	708.2	731.8	760.7	791.5
47.5°	568.0	569.6	570.5	574.7	580.0	589.8	599.9	614.4	642.3	650.7	667.6
50°	521.1	521.8	521.6	523.7	526.4	532.7	539.3	549.1	558.8	571.9	584.2
52.5°	481.7	482.8	482.7	484.1	485.5	489.5	493.6	500.6	507.0	515.3	522.3
55°	450.7	452.1	452.8	453.9	454.7	456.7	458.4	461.7	464.4	469.1	473.4
57.5°	426.8	428.8	429.8	430.2	429.4	429.3	428.7	429.4	429.9	432.5	434.9
60°	407.9	409.6	409.9	409.6	408.1	407.0	405.2	404.7	404.4	405.6	406.9
62.5°	388.3	388.9	388.5	388.0	386.2	385.2	383.3	382.6	382.0	382.9	383.6
65°	361.1	361.6	361.1	360.7	359.2	358.3	356.8	356.2	355.4	355.6	355.5
67.5°	338.9	339.5	339.1	338.6	337.6	337.0	335.9	335.2	334.1	333.7	332.9
70°	316.9	317.3	316.7	316.2	315.0	314.5	313.5	313.2	312.4	312.2	311.4
72.5°	291.5	291.6	290.7	290.5	289.5	289.4	289.1	289.4	289.4	289.8	289.6
75°	265.7	265.3	264.2	264.0	263.2	263.6	263.1	263.8	263.8	264.7	264.9
77.5°	239.6	238.3	236.1	235.2	233.8	233.6	232.8	233.3	233.1	234.3	234.7
80°	206.8	205.1	202.4	201.2	199.5	199.2	198.5	199.2	198.9	200.2	201.1
82.5°	165.1	163.6	160.9	159.9	157.9	158.1	157.3	158.1	158.0	159.9	161.0
85°	122.1	121.2	118.3	115.8	113.0	111.3	109.7	109.4	108.8	109.7	110.3
87.5°	70.5	69.7	67.4	65.9	61.0	61.2	59.2	59.1	58.6	58.2	59.2
90°	30.9	33.6	34.8	37.4	38.7	41.5	42.9	45.6	47.2	50.4	52.2
92.5°	33.2	35.4	37.7	40.0	42.3	44.6	46.9	49.2	54.1	59.0	64.0
95°	46.6	49.4	52.0	54.6	57.2	59.9	62.6	65.2	72.4	79.6	86.8
97.5°	67.3	69.0	70.8	72.6	74.4	76.1	77.8	79.6	87.4	95.2	102.9
100°	87.3	88.7	90.1	91.6	93.0	94.4	95.8	97.2	112.3	127.3	142.3
102.5°	139.6	145.6	151.6	157.6	163.6	169.6	175.6	181.6	216.0	250.4	284.8
105°	263.7	280.1	296.6	313.0	329.4	345.8	362.2	378.6	433.6	488.7	543.8
107.5°	487.7	513.5	539.5	565.5	591.4	617.3	643.2	669.3	722.9	776.6	830.2
110°	745.7	770.4	795.1	819.9	844.5	869.3	893.9	918.7	950.9	983.0	1015.2



TEST NUMBER: P1444430  
 CATALOG NUMBER: EHBR1-12-UNV-TA-L830-UPL30

**CANDELA DISTRIBUTION (continued):**

	275°	277.5°	280°	282.5°	285°	287.5°	290°	292.5°	295°	297.5°	300°
112.5°	930.2	942.1	954.1	966.2	978.2	990.3	1002.3	1014.4	1030.3	1046.3	1062.2
115°	985.7	986.4	987.1	987.9	988.6	989.4	990.2	991.0	996.0	1000.9	1005.7
117.5°	937.9	931.3	924.6	918.0	911.4	904.8	898.2	891.7	890.3	889.1	887.9
120°	841.9	832.9	824.0	815.0	806.2	797.3	788.5	779.7	774.9	770.3	765.6
122.5°	726.8	717.8	709.0	700.0	691.1	682.3	673.6	664.8	661.4	657.9	654.6
125°	617.8	610.4	602.9	595.4	588.1	580.7	573.4	566.1	565.5	564.7	564.3
127.5°	529.3	524.7	520.1	515.6	511.0	506.5	502.0	497.5	498.9	500.3	501.7
130°	467.4	465.3	463.2	461.0	459.1	457.1	455.1	453.1	455.9	458.7	461.6
132.5°	429.5	428.9	428.5	427.9	427.5	427.1	426.8	426.4	429.8	433.0	436.4
135°	406.2	406.5	407.0	407.3	407.8	408.2	408.8	409.2	412.5	415.6	418.8
137.5°	393.1	393.8	394.6	395.3	396.1	397.0	397.8	398.7	401.2	403.5	406.1
140°	385.6	386.0	386.7	387.2	387.9	388.5	389.2	389.8	391.7	393.6	395.5
142.5°	378.4	378.8	379.5	380.0	380.7	381.1	381.8	382.5	383.8	385.1	386.5
145°	375.6	375.9	376.3	376.6	376.9	377.4	377.8	378.2	379.1	379.6	380.5
147.5°	369.6	369.7	369.9	370.1	370.4	370.6	370.7	370.9	371.3	371.7	372.2
150°	361.9	361.8	361.8	361.8	361.8	361.8	361.9	361.8	362.1	362.5	362.9
152.5°	351.1	351.0	350.9	350.9	350.9	350.9	350.8	350.8	351.2	351.5	351.9
155°	342.2	342.3	342.5	342.6	342.7	342.8	343.0	343.1	343.3	343.4	343.6
157.5°	335.9	336.0	336.2	336.3	336.5	336.6	336.7	336.8	337.0	337.1	337.2
160°	329.8	330.2	330.5	330.8	331.0	331.3	331.7	332.0	332.2	332.3	332.4
162.5°	327.8	327.8	328.0	328.1	328.2	328.4	328.5	328.7	329.1	329.3	329.6
165°	324.8	325.1	325.5	325.6	326.0	326.3	326.6	327.0	327.1	327.2	327.4
167.5°	324.6	324.9	325.2	325.4	325.8	326.1	326.4	326.7	326.8	326.9	327.1
170°	322.8	323.1	323.4	323.5	323.8	324.1	324.5	324.7	325.0	325.3	325.6
172.5°	324.0	324.2	324.5	324.6	324.9	325.1	325.4	325.7	326.0	326.3	326.4
175°	324.7	324.7	324.7	324.8	324.8	324.8	324.8	324.9	324.9	324.9	324.9
177.5°	324.2	324.4	324.6	324.7	324.9	325.0	325.2	325.4	325.4	325.4	325.4
180°	323.7	323.7	323.7	323.7	323.7	323.7	323.7	323.7	323.7	323.7	323.7



TEST NUMBER: P1444430  
 CATALOG NUMBER: EHBR1-12-UNV-TA-L830-UPL30

**CANDELA DISTRIBUTION (continued):**

	302.5°	305°	307.5°	310°	312.5°	315°	317.5°	320°	322.5°	325°	327.5°
0°	9928.9	9928.9	9928.9	9928.9	9928.9	9928.9	9928.9	9928.9	9928.9	9928.9	9928.9
2.5°	10034.0	10034.5	10026.4	10026.0	10018.4	10017.4	10010.0	10007.8	10001.8	9999.6	9993.5
5°	10338.5	10328.6	10305.9	10292.5	10269.9	10255.0	10230.6	10214.7	10191.2	10173.5	10149.8
7.5°	10646.4	10631.1	10605.5	10584.7	10553.5	10528.6	10492.1	10462.1	10422.5	10388.2	10346.6
10°	10736.7	10734.3	10727.8	10718.3	10703.8	10687.5	10662.6	10636.6	10602.0	10564.2	10518.0
12.5°	10514.5	10538.4	10571.2	10590.6	10614.1	10624.5	10634.2	10631.7	10625.4	10606.4	10579.7
15°	9951.7	10019.0	10108.3	10177.5	10257.1	10314.9	10378.8	10418.6	10458.4	10476.7	10488.0
17.5°	9056.3	9184.0	9344.0	9476.7	9629.7	9752.7	9887.4	9988.9	10093.2	10168.0	10235.5
20°	7906.3	8091.2	8317.6	8517.6	8750.2	8952.2	9173.8	9355.6	9543.0	9689.6	9828.4
22.5°	6658.9	6878.5	7152.2	7405.7	7705.6	7975.0	8279.0	8543.5	8819.8	9050.6	9273.7
25°	5432.3	5673.1	5972.4	6255.2	6594.8	6908.2	7268.8	7598.5	7955.6	8265.5	8571.7
27.5°	4312.1	4548.7	4854.2	5155.3	5514.3	5848.2	6234.5	6597.9	7004.4	7379.3	7762.8
30°	3391.5	3592.1	3866.1	4157.8	4511.8	4851.7	5242.2	5615.8	6038.7	6448.0	6880.0
32.5°	2687.0	2839.8	3055.3	3301.8	3628.5	3952.1	4323.8	4684.6	5101.0	5514.5	5963.8
35°	2134.0	2253.2	2417.4	2609.9	2886.6	3165.4	3494.3	3822.2	4210.8	4603.2	5039.9
37.5°	1682.8	1779.5	1908.1	2052.7	2274.6	2503.4	2773.1	3045.1	3382.6	3730.4	4126.2
40°	1314.0	1392.3	1492.5	1600.3	1767.9	1944.2	2152.7	2363.6	2634.9	2919.2	3246.6
42.5°	1032.3	1090.0	1160.8	1239.5	1395.9	1489.6	1631.0	1783.5	1982.9	2189.3	2435.5
45°	829.0	868.4	917.5	970.3	1042.9	1122.3	1219.1	1320.8	1510.2	1603.1	1752.9
47.5°	692.3	718.7	750.0	783.3	826.1	872.3	929.7	988.4	1064.4	1143.1	1235.3
50°	600.2	627.1	637.9	655.1	679.9	706.3	738.7	771.0	811.8	853.1	900.6
52.5°	532.0	540.7	552.4	563.3	578.6	608.7	618.4	635.3	658.1	680.5	705.4
55°	479.7	485.4	493.0	499.6	508.9	517.8	530.6	541.9	557.1	570.5	587.1
57.5°	439.1	442.8	448.0	452.3	458.3	463.4	470.9	477.0	485.8	493.4	503.4
60°	409.6	412.1	415.5	418.4	422.2	424.8	428.5	431.4	436.0	439.9	445.5
62.5°	385.5	386.8	389.1	390.7	393.1	394.4	396.4	397.7	400.3	402.2	405.3
65°	356.6	356.9	358.4	359.1	361.0	361.8	363.3	363.9	366.1	367.5	370.2
67.5°	332.9	332.3	332.3	331.7	332.0	331.4	331.6	330.9	331.8	332.3	334.3
70°	311.3	310.3	310.1	309.0	308.7	307.7	307.4	306.5	306.4	306.1	306.9
72.5°	290.2	289.9	290.0	289.3	289.2	288.5	288.5	288.1	288.6	288.8	289.7
75°	265.9	265.9	266.5	265.8	266.0	265.5	265.7	265.1	265.4	265.3	266.2
77.5°	236.4	237.1	238.4	238.1	238.5	237.8	238.1	237.4	237.6	237.1	237.5
80°	203.2	204.7	206.4	206.4	207.1	206.5	207.2	206.5	206.8	205.9	205.7
82.5°	163.8	165.0	166.9	166.9	168.6	168.9	170.7	170.6	171.7	171.0	170.5
85°	111.9	112.8	114.5	115.3	117.0	118.0	119.7	120.5	119.1	121.5	119.7
87.5°	58.5	60.6	59.4	62.3	61.6	64.4	63.9	66.5	65.9	68.3	68.0
90°	55.7	57.7	61.3	63.3	67.3	69.7	68.8	66.0	65.0	62.3	61.4
92.5°	68.8	73.9	78.9	83.7	88.7	93.7	89.1	84.5	79.9	75.3	70.7
95°	94.0	101.4	108.6	115.8	123.0	130.2	122.4	114.7	107.0	99.2	91.4
97.5°	110.7	118.4	126.2	133.9	141.7	149.5	140.3	131.1	122.0	112.9	103.8
100°	157.3	172.3	187.2	202.2	217.3	232.3	215.2	198.1	181.1	163.9	146.9
102.5°	319.2	353.6	388.0	422.5	456.8	491.2	454.9	418.6	382.4	346.0	309.7
105°	598.7	653.9	708.9	764.0	819.1	874.1	815.3	756.4	697.6	638.7	579.8
107.5°	883.9	937.6	991.3	1044.9	1098.7	1152.3	1092.7	1032.9	973.1	913.5	853.7
110°	1047.4	1079.6	1111.8	1144.0	1176.1	1208.4	1164.8	1121.1	1077.5	1033.8	990.2



TEST NUMBER: P1444430  
 CATALOG NUMBER: EHBR1-12-UNV-TA-L830-UPL30

**CANDELA DISTRIBUTION (continued):**

	302.5°	305°	307.5°	310°	312.5°	315°	317.5°	320°	322.5°	325°	327.5°
112.5°	1078.2	1094.3	1110.3	1126.3	1142.3	1158.3	1127.0	1095.9	1064.5	1033.3	1001.9
115°	1010.7	1015.6	1020.5	1025.4	1030.4	1035.3	1014.1	992.9	971.7	950.6	929.3
117.5°	886.7	885.6	884.3	883.2	881.9	880.8	868.8	856.8	844.7	832.7	820.7
120°	760.9	756.2	751.5	746.8	742.2	737.5	732.2	726.9	721.6	716.4	711.0
122.5°	651.0	647.7	644.3	640.9	637.3	634.0	631.7	629.5	627.2	624.9	622.6
125°	563.7	563.1	562.5	561.9	561.3	560.7	559.4	558.0	556.7	555.3	554.0
127.5°	503.0	504.5	505.8	507.2	508.6	509.9	509.3	508.7	508.1	507.4	506.8
130°	464.3	467.2	469.9	472.8	475.5	478.3	477.3	476.4	475.4	474.4	473.4
132.5°	439.8	443.1	446.3	449.7	453.0	456.3	455.1	454.0	452.8	451.8	450.7
135°	421.9	425.2	428.3	431.4	434.4	437.5	436.2	434.9	433.5	432.3	431.0
137.5°	408.5	410.9	413.3	415.7	418.1	420.5	419.1	417.8	416.5	415.1	413.8
140°	397.4	399.1	400.9	402.9	404.7	406.5	404.9	403.4	401.9	400.4	398.9
142.5°	387.7	389.1	390.3	391.6	392.9	394.3	392.3	390.4	388.5	386.6	384.7
145°	381.3	382.0	382.7	383.6	384.1	385.0	382.8	380.8	378.6	376.5	374.4
147.5°	372.5	372.8	373.1	373.5	373.7	374.2	372.2	370.2	368.2	366.2	364.2
150°	363.2	363.5	363.8	364.1	364.5	364.8	362.7	360.7	358.7	356.7	354.7
152.5°	352.2	352.5	352.8	353.0	353.3	353.6	351.7	350.0	348.1	346.1	344.3
155°	343.7	343.9	344.0	344.1	344.1	344.2	342.6	341.1	339.7	338.1	336.5
157.5°	337.3	337.5	337.6	337.7	337.8	337.9	336.7	335.5	334.2	333.1	331.9
160°	332.5	332.6	332.7	332.8	332.9	333.0	332.0	331.0	330.0	329.0	327.9
162.5°	329.9	330.2	330.5	330.7	331.0	331.2	330.1	329.0	327.8	326.5	325.2
165°	327.5	327.6	327.7	327.8	327.8	327.9	327.1	326.3	325.4	324.6	323.7
167.5°	327.2	327.3	327.4	327.5	327.5	327.6	326.8	326.0	325.1	324.2	323.4
170°	325.9	326.1	326.3	326.5	326.8	327.0	326.3	325.7	324.9	324.4	323.6
172.5°	326.7	326.9	327.1	327.4	327.6	327.8	327.1	326.4	325.7	325.0	324.3
175°	324.9	325.0	325.1	325.1	325.1	325.1	324.6	324.1	323.5	323.0	322.5
177.5°	325.4	325.4	325.4	325.4	325.4	325.4	325.0	324.7	324.4	324.0	323.5
180°	323.7	323.7	323.7	323.7	323.7	323.7	323.7	323.7	323.7	323.7	323.7



TEST NUMBER: P1444430  
 CATALOG NUMBER: EHBR1-12-UNV-TA-L830-UPL30

**CANDELA DISTRIBUTION (continued):**

	330°	332.5°	335°	337.5°	340°	342.5°	345°	347.5°	350°	352.5°	355°
0°	9928.9	9928.9	9928.9	9928.9	9928.9	9928.9	9928.9	9928.9	9928.9	9928.9	9928.9
2.5°	9991.3	9987.0	9984.2	9980.6	9978.5	9975.7	9973.7	9971.9	9970.5	9969.2	9968.3
5°	10131.8	10109.5	10092.2	10073.4	10058.0	10042.5	10030.7	10020.9	10014.2	10009.0	10006.0
7.5°	10310.7	10269.8	10233.5	10195.1	10160.9	10127.1	10098.1	10073.0	10054.2	10042.0	10034.7
10°	10470.4	10415.7	10361.6	10304.6	10250.6	10198.2	10149.8	10107.3	10073.6	10051.3	10038.2
12.5°	10542.0	10495.4	10440.2	10378.3	10312.1	10245.2	10179.9	10121.0	10071.6	10038.4	10019.2
15°	10479.0	10459.9	10422.3	10374.3	10311.5	10242.3	10165.6	10093.5	10027.3	9984.3	9959.4
17.5°	10273.8	10300.5	10297.7	10279.3	10234.1	10175.8	10097.7	10016.8	9933.9	9876.5	9845.1
20°	9927.6	10011.6	10054.2	10076.1	10058.3	10020.5	9949.8	9867.7	9771.1	9696.1	9650.3
22.5°	9441.1	9589.4	9681.8	9749.4	9763.7	9750.9	9688.4	9610.3	9502.5	9412.4	9344.8
25°	8814.8	9032.0	9178.1	9292.5	9337.0	9348.4	9295.3	9217.7	9097.6	8992.6	8899.7
27.5°	8077.1	8359.4	8554.3	8708.1	8777.6	8807.7	8758.8	8679.5	8537.4	8412.1	8290.8
30°	7246.7	7581.5	7816.3	8000.7	8085.3	8125.1	8073.1	7984.7	7819.4	7668.5	7515.7
32.5°	6357.7	6724.2	6980.0	7180.2	7264.1	7301.6	7233.5	7134.3	6943.2	6765.5	6587.2
35°	5427.1	5796.9	6054.9	6249.9	6320.2	6342.7	6255.8	6141.0	5929.3	5734.3	5539.9
37.5°	4477.5	4821.6	5056.1	5231.0	5274.5	5278.4	5173.6	5046.8	4824.3	4632.0	4438.6
40°	3536.1	3826.3	4015.6	4155.6	4170.7	4157.2	4043.4	3915.7	3707.6	3535.3	3365.5
42.5°	2649.3	2868.4	3003.5	3099.4	3093.7	3067.1	2962.7	2852.9	2681.2	2550.0	2416.4
45°	1889.6	2034.1	2113.0	2169.2	2151.2	2125.8	2044.6	1967.7	1850.9	1766.2	1676.4
47.5°	1312.8	1485.2	1455.2	1565.1	1470.4	1532.9	1402.8	1331.1	1269.1	1224.1	1173.3
50°	939.8	979.3	998.4	1011.5	1004.5	995.0	971.6	950.7	922.4	901.8	877.7
52.5°	725.8	745.5	756.4	764.3	762.7	759.2	749.0	739.7	726.4	717.7	707.2
55°	614.8	615.0	635.0	626.5	639.0	624.3	630.1	613.7	616.4	602.3	592.8
57.5°	510.9	518.9	522.6	526.1	525.1	524.6	520.6	518.6	514.2	512.8	509.6
60°	449.3	453.6	454.5	456.1	454.8	454.2	451.1	450.0	447.1	446.5	444.4
62.5°	407.2	409.3	409.3	409.3	407.7	405.9	402.5	400.7	398.2	397.6	396.4
65°	372.1	374.3	374.7	375.2	373.8	372.5	369.5	367.6	364.9	363.9	362.5
67.5°	335.7	338.1	338.9	340.1	339.4	339.1	337.0	336.3	334.6	334.1	332.9
70°	307.1	308.2	308.1	308.1	306.5	305.0	302.7	301.5	299.7	299.3	298.2
72.5°	290.2	290.9	290.5	289.8	287.8	285.6	282.8	280.7	278.4	277.0	275.3
75°	266.3	267.2	266.7	266.3	264.4	263.0	260.8	259.7	258.0	257.5	256.4
77.5°	237.0	237.5	236.5	236.4	234.9	234.1	232.4	232.1	230.9	230.9	229.8
80°	204.4	204.1	202.6	202.2	200.8	200.5	199.1	199.2	198.3	198.7	197.9
82.5°	168.1	167.2	165.2	164.7	163.0	162.8	162.0	162.7	162.1	163.0	162.4
85°	120.6	120.7	119.9	119.9	119.4	119.5	119.5	120.0	120.1	120.9	120.8
87.5°	67.2	68.2	68.0	68.8	68.8	69.8	70.2	71.6	71.8	73.2	73.2
90°	58.6	57.8	55.1	54.3	52.9	53.3	52.3	52.6	51.2	51.4	49.8
92.5°	66.1	61.5	57.0	52.4	50.1	47.7	45.6	43.1	40.9	38.5	36.3
95°	83.6	76.0	68.2	60.4	57.8	55.2	52.5	49.8	47.2	44.6	41.9
97.5°	94.6	85.4	76.2	67.1	64.7	62.5	60.0	57.8	55.5	53.2	50.9
100°	129.7	112.6	95.5	78.4	76.4	74.6	72.6	70.6	68.8	66.7	64.7
102.5°	273.4	237.2	200.8	164.5	157.6	150.7	143.9	136.9	130.0	123.1	116.2
105°	521.0	462.2	403.3	344.3	325.6	307.0	288.2	269.6	250.9	232.2	213.5
107.5°	794.0	734.1	674.4	614.7	580.1	545.5	511.0	476.4	441.8	407.3	372.7
110°	946.5	902.8	859.1	815.4	787.7	759.8	731.9	704.0	676.2	648.3	620.5



TEST NUMBER: P1444430  
 CATALOG NUMBER: EHBR1-12-UNV-TA-L830-UPL30

**CANDELA DISTRIBUTION (continued):**

	330°	332.5°	335°	337.5°	340°	342.5°	345°	347.5°	350°	352.5°	355°
112.5°	970.6	939.2	908.0	876.6	863.9	851.3	838.6	826.0	813.3	800.6	787.9
115°	908.0	886.9	865.6	844.3	839.8	835.3	830.8	826.2	821.6	817.0	812.4
117.5°	808.8	796.7	784.6	772.6	773.2	773.7	774.4	774.9	775.5	776.0	776.5
120°	705.7	700.5	695.0	689.8	693.4	697.0	700.8	704.2	707.9	711.3	714.9
122.5°	620.3	618.0	615.7	613.4	617.8	622.2	626.6	630.9	635.2	639.4	643.7
125°	552.7	551.3	549.8	548.4	552.8	557.2	561.7	565.9	570.4	574.6	578.8
127.5°	506.1	505.4	504.8	504.1	507.2	510.1	513.2	516.1	519.0	521.8	524.8
130°	472.5	471.4	470.5	469.6	472.2	474.9	477.5	480.1	482.8	485.2	487.7
132.5°	449.5	448.3	447.2	446.1	447.8	449.6	451.5	453.1	454.8	456.4	458.0
135°	429.7	428.3	427.0	425.6	427.2	428.9	430.5	432.0	433.6	435.0	436.5
137.5°	412.5	411.1	409.8	408.4	409.9	411.3	412.8	414.1	415.4	416.7	418.1
140°	397.4	395.9	394.4	392.8	394.0	395.2	396.5	397.7	398.9	399.9	401.1
142.5°	382.7	380.7	379.0	376.9	377.9	378.7	379.6	380.3	381.2	381.9	382.6
145°	372.2	370.1	367.9	365.9	366.5	367.1	367.8	368.5	369.1	369.6	370.2
147.5°	362.2	360.2	358.2	356.1	356.7	357.2	357.5	357.9	358.5	358.9	359.1
150°	352.7	350.6	348.6	346.5	347.0	347.4	347.7	348.2	348.5	348.9	349.2
152.5°	342.4	340.5	338.6	336.7	337.0	337.4	337.7	338.1	338.4	338.8	339.0
155°	334.9	333.3	331.7	330.1	330.5	330.8	331.1	331.4	331.7	332.1	332.3
157.5°	330.7	329.3	328.1	326.8	327.0	327.1	327.3	327.3	327.4	327.5	327.6
160°	326.9	325.8	324.8	323.6	323.7	323.9	324.0	324.1	324.1	324.1	324.2
162.5°	324.0	322.8	321.6	320.4	320.4	320.5	320.7	320.7	320.7	320.8	320.8
165°	322.8	321.9	321.0	320.1	320.1	320.0	320.0	319.8	319.7	319.6	319.4
167.5°	322.4	321.6	320.6	319.7	319.9	320.0	320.1	320.2	320.3	320.3	320.4
170°	323.0	322.1	321.5	320.7	320.6	320.6	320.5	320.4	320.4	320.3	320.2
172.5°	323.6	322.9	322.2	321.4	321.4	321.3	321.3	321.2	321.1	321.0	321.0
175°	321.9	321.4	320.8	320.3	320.2	320.2	320.2	320.1	320.0	320.0	319.9
177.5°	323.2	322.9	322.5	322.1	322.0	322.0	322.0	321.9	321.9	321.9	321.9
180°	323.7	323.7	323.7	323.7	323.7	323.7	323.7	323.7	323.7	323.7	323.7



TEST NUMBER: P1444430  
 CATALOG NUMBER: EHBR1-12-UNV-TA-L830-UPL30

**CANDELA DISTRIBUTION (continued):**

	357.5°	360°
0°	9928.9	9928.9
2.5°	9967.4	9966.9
5°	10004.4	10003.9
7.5°	10032.6	10032.4
10°	10036.0	10037.7
12.5°	10015.9	10017.4
15°	9957.5	9960.2
17.5°	9845.7	9849.2
20°	9653.1	9656.8
22.5°	9341.1	9342.7
25°	8887.7	8881.3
27.5°	8269.5	8258.4
30°	7483.6	7472.9
32.5°	6546.7	6539.9
35°	5491.9	5487.7
37.5°	4381.5	4372.8
40°	3303.4	3278.3
42.5°	2357.9	2313.9
45°	1629.5	1577.3
47.5°	1137.5	1105.3
50°	862.2	851.8
52.5°	702.6	700.2
55°	592.8	591.7
57.5°	510.3	509.9
60°	445.5	445.4
62.5°	397.2	397.4
65°	363.2	363.3
67.5°	333.2	333.0
70°	298.6	298.3
72.5°	274.7	274.4
75°	256.4	256.1
77.5°	230.1	229.8
80°	198.4	197.9
82.5°	163.2	162.6
85°	121.8	121.8
87.5°	74.5	74.5
90°	49.9	48.1
92.5°	34.0	31.8
95°	39.2	36.6
97.5°	48.6	46.3
100°	62.9	60.9
102.5°	109.3	102.5
105°	194.8	176.1
107.5°	338.2	303.6
110°	592.6	564.7



TEST NUMBER: P1444430  
CATALOG NUMBER: EHBR1-12-UNV-TA-L830-UPL30

**CANDELA DISTRIBUTION (continued):**

	357.5°	360°
112.5°	775.2	762.5
115°	807.8	803.2
117.5°	777.0	777.6
120°	718.3	721.8
122.5°	647.9	652.0
125°	582.9	587.1
127.5°	527.6	530.3
130°	490.0	492.4
132.5°	459.5	461.0
135°	437.8	439.1
137.5°	419.2	420.3
140°	401.9	403.0
142.5°	383.3	384.0
145°	370.7	371.1
147.5°	359.3	359.7
150°	349.5	349.8
152.5°	339.3	339.6
155°	332.4	332.7
157.5°	327.6	327.6
160°	324.2	324.3
162.5°	320.9	320.9
165°	319.2	319.1
167.5°	320.4	320.4
170°	320.1	320.0
172.5°	320.9	320.8
175°	319.9	319.9
177.5°	321.9	321.9
180°	323.7	323.7

LM-79-2019: Approved Method: Electrical and Photometric Measurements of Solid-  
State Lighting Products

Report Prepared for

Cooper Lighting Solutions

Metalux

Report Number: SP1-2506-472-2

Test Date: 07/31/2025

Luminaire Tested: EHBR-60-L830-N

Data in this report applies to families of products including EHBR-60-L830-N

**Test Information**

Test Method: LM-79-2019  
 Report Number: SP1-2506-472-2  
 Test Lab: COOPER LIGHTING SOLUTIONS  
 Photometer: SP1 - 76IN SPHERE  
 Measurement Geometry: 4π  
 Issue Date: 08/05/2025  
 Manufacturer: COOPER LIGHTING SOLUTIONS  
 Product Line: Metalux  
 Catalog Number: **EHBR-60-L830-N**  
 Description: Elevate Round Highbay at, 60000 lumens, 3000K 80CRI LEDs with N lens

**Spectral Parameters**

CCT (K): 2983  
 CIE u': 0.2516  
 CIE v': 0.5201  
 Duv: -0.0012  
 CIE x: 0.4364  
 CIE y: 0.4010  
 CIE z: 0.1626  
 Peak Wavelength (nm): 630  
 Dominant Wavelength (nm): 583  
 Purity: 51.34918  
 Rf: 81.2  
 Rg: 101.5

CRI (Ra):	83.4		
R1:	84.0	R9:	29.4
R2:	87.5	R10:	68.6
R3:	88.9	R11:	82.2
R4:	83.8	R12:	61.6
R5:	81.9	R13:	83.9
R6:	83.1	R14:	92.5
R7:	87.1	R15:	79.8
R8:	70.9		



**Test Conditions**

Stabilization Time: 38M  
 Operation Time: 1H 38M  
 Sphere Temperature (°C): 25.0

REPORT NUMBER: SP1-2506-472-2

Measurement and Test Equipment			
Instrument	Identification Number	Calibration Date	Calibration Due Date
Photometer	76INCH SPHERE IN0058	6/16/2025	12/16/2025
Power Meter	XITRON INXT2011004	1/21/2025	1/21/2026
AC Power Source	CHROMA 61603 IN0063	10/22/2024	10/22/2025
DC Power Source	AGILENT E3634A IN0208	10/22/2024	10/22/2025
Sphere Thermometer	ONSET IN0085	10/22/2024	10/22/2025
Room Thermometer	ONSET IN0046	10/22/2024	10/22/2025

REPORT NUMBER: SP1-2506-472-2

CIE 1931 Chromaticity Diagram



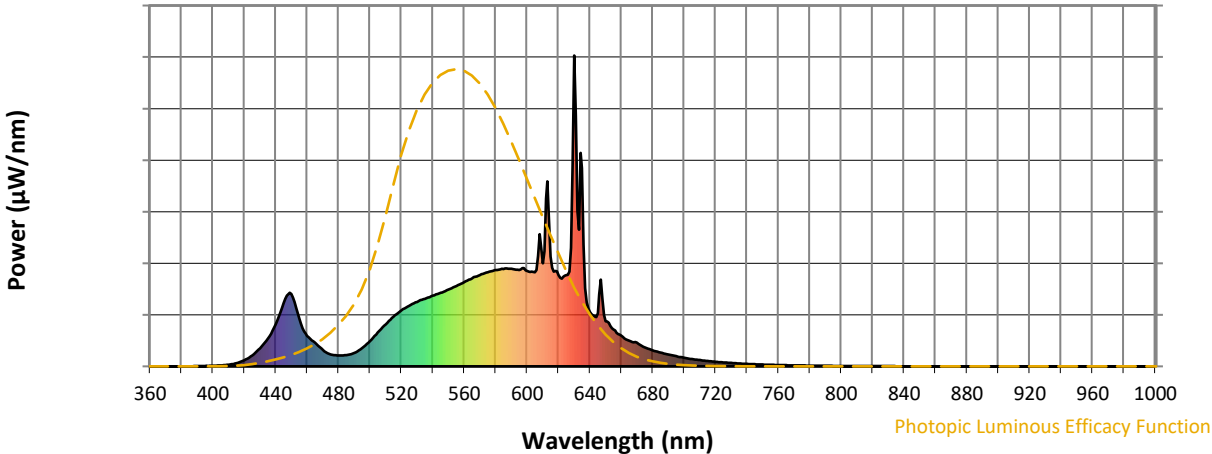
CIE 1931 Chromaticity Diagram with 2017 ANSI 7-Step and 4-Step Quadrangles



Point lies inside the ANSI 3000K 4-step quadrangle

REPORT NUMBER: SP1-2506-472-2

**Photopic Flux vs. Wavelength**



**Photopic Lumens: NR**

$\lambda$ (nm)	Power W <sup>^</sup> /nm	Lumens ( $\phi$ /nm)	$\lambda$ (nm)	Power W <sup>^</sup> /nm	Lumens ( $\phi$ /nm)	$\lambda$ (nm)	Power W <sup>^</sup> /nm	Lumens ( $\phi$ /nm)	$\lambda$ (nm)	Power W <sup>^</sup> /nm	Lumens ( $\phi$ /nm)	$\lambda$ (nm)	Power W <sup>^</sup> /nm	Lumens ( $\phi$ /nm)
360	0	NR	490	43	NR	620	294	NR	750	6	NR	880	0	NR
365	0	NR	495	59	NR	625	294	NR	755	5	NR	885	0	NR
370	0	NR	500	81	NR	630	1000	NR	760	4	NR	890	0	NR
375	0	NR	505	109	NR	635	637	NR	765	4	NR	895	0	NR
380	0	NR	510	135	NR	640	175	NR	770	3	NR	900	0	NR
385	0	NR	515	160	NR	645	171	NR	775	3	NR	905	0	NR
390	1	NR	520	180	NR	650	146	NR	780	2	NR	910	0	NR
395	1	NR	525	195	NR	655	119	NR	785	2	NR	915	0	NR
400	2	NR	530	207	NR	660	99	NR	790	2	NR	920	0	NR
405	3	NR	535	218	NR	665	82	NR	795	2	NR	925	0	NR
410	5	NR	540	227	NR	670	76	NR	800	1	NR	930	0	NR
415	10	NR	545	237	NR	675	61	NR	805	1	NR	935	0	NR
420	20	NR	550	247	NR	680	52	NR	810	1	NR	940	0	NR
425	35	NR	555	259	NR	685	44	NR	815	1	NR	945	0	NR
430	58	NR	560	271	NR	690	38	NR	820	1	NR	950	0	NR
435	90	NR	565	283	NR	695	33	NR	825	1	NR	955	0	NR
440	135	NR	570	293	NR	700	27	NR	830	1	NR	960	0	NR
445	204	NR	575	303	NR	705	24	NR	835	1	NR	965	0	NR
450	233	NR	580	310	NR	710	20	NR	840	0	NR	970	0	NR
455	153	NR	585	313	NR	715	17	NR	845	0	NR	975	0	NR
460	98	NR	590	314	NR	720	15	NR	850	0	NR	980	0	NR
465	76	NR	595	310	NR	725	13	NR	855	0	NR	985	0	NR
470	53	NR	600	307	NR	730	11	NR	860	0	NR	990	0	NR
475	39	NR	605	303	NR	735	9	NR	865	0	NR	995	0	NR
480	35	NR	610	331	NR	740	8	NR	870	0	NR	1000	0	NR
485	36	NR	615	353	NR	745	7	NR	875	0	NR			

REPORT NUMBER: SP1-2506-472-2

**Scotopic Flux vs. Wavelength**



**Scotopic Lumens: NR**

**S/P: 1.27**

λ (nm)	Power W <sup>^</sup> /nm	Lumens (φ/nm)	λ (nm)	Power W <sup>^</sup> /nm	Lumens (φ/nm)	λ (nm)	Power W <sup>^</sup> /nm	Lumens (φ/nm)	λ (nm)	Power W <sup>^</sup> /nm	Lumens (φ/nm)	λ (nm)	Power W <sup>^</sup> /nm	Lumens (φ/nm)
360	0	NR	490	43	NR	620	294	NR	750	6	NR	880	0	NR
365	0	NR	495	59	NR	625	294	NR	755	5	NR	885	0	NR
370	0	NR	500	81	NR	630	1000	NR	760	4	NR	890	0	NR
375	0	NR	505	109	NR	635	637	NR	765	4	NR	895	0	NR
380	0	NR	510	135	NR	640	175	NR	770	3	NR	900	0	NR
385	0	NR	515	160	NR	645	171	NR	775	3	NR	905	0	NR
390	1	NR	520	180	NR	650	146	NR	780	2	NR	910	0	NR
395	1	NR	525	195	NR	655	119	NR	785	2	NR	915	0	NR
400	2	NR	530	207	NR	660	99	NR	790	2	NR	920	0	NR
405	3	NR	535	218	NR	665	82	NR	795	2	NR	925	0	NR
410	5	NR	540	227	NR	670	76	NR	800	1	NR	930	0	NR
415	10	NR	545	237	NR	675	61	NR	805	1	NR	935	0	NR
420	20	NR	550	247	NR	680	52	NR	810	1	NR	940	0	NR
425	35	NR	555	259	NR	685	44	NR	815	1	NR	945	0	NR
430	58	NR	560	271	NR	690	38	NR	820	1	NR	950	0	NR
435	90	NR	565	283	NR	695	33	NR	825	1	NR	955	0	NR
440	135	NR	570	293	NR	700	27	NR	830	1	NR	960	0	NR
445	204	NR	575	303	NR	705	24	NR	835	1	NR	965	0	NR
450	233	NR	580	310	NR	710	20	NR	840	0	NR	970	0	NR
455	153	NR	585	313	NR	715	17	NR	845	0	NR	975	0	NR
460	98	NR	590	314	NR	720	15	NR	850	0	NR	980	0	NR
465	76	NR	595	310	NR	725	13	NR	855	0	NR	985	0	NR
470	53	NR	600	307	NR	730	11	NR	860	0	NR	990	0	NR
475	39	NR	605	303	NR	735	9	NR	865	0	NR	995	0	NR
480	35	NR	610	331	NR	740	8	NR	870	0	NR	1000	0	NR
485	36	NR	615	353	NR	745	7	NR	875	0	NR			

REPORT NUMBER: SP1-2506-472-2

**Melanopic Flux vs. Wavelength**



**Melanopic Lumens: NR**

**M/P: 2.34**

λ (nm)	Power W <sup>^</sup> /nm	Lumens (φ/nm)	λ (nm)	Power W <sup>^</sup> /nm	Lumens (φ/nm)	λ (nm)	Power W <sup>^</sup> /nm	Lumens (φ/nm)	λ (nm)	Power W <sup>^</sup> /nm	Lumens (φ/nm)	λ (nm)	Power W <sup>^</sup> /nm	Lumens (φ/nm)
360	0	NR	490	43	NR	620	294	NR	750	6	NR	880	0	NR
365	0	NR	495	59	NR	625	294	NR	755	5	NR	885	0	NR
370	0	NR	500	81	NR	630	1000	NR	760	4	NR	890	0	NR
375	0	NR	505	109	NR	635	637	NR	765	4	NR	895	0	NR
380	0	NR	510	135	NR	640	175	NR	770	3	NR	900	0	NR
385	0	NR	515	160	NR	645	171	NR	775	3	NR	905	0	NR
390	1	NR	520	180	NR	650	146	NR	780	2	NR	910	0	NR
395	1	NR	525	195	NR	655	119	NR	785	2	NR	915	0	NR
400	2	NR	530	207	NR	660	99	NR	790	2	NR	920	0	NR
405	3	NR	535	218	NR	665	82	NR	795	2	NR	925	0	NR
410	5	NR	540	227	NR	670	76	NR	800	1	NR	930	0	NR
415	10	NR	545	237	NR	675	61	NR	805	1	NR	935	0	NR
420	20	NR	550	247	NR	680	52	NR	810	1	NR	940	0	NR
425	35	NR	555	259	NR	685	44	NR	815	1	NR	945	0	NR
430	58	NR	560	271	NR	690	38	NR	820	1	NR	950	0	NR
435	90	NR	565	283	NR	695	33	NR	825	1	NR	955	0	NR
440	135	NR	570	293	NR	700	27	NR	830	1	NR	960	0	NR
445	204	NR	575	303	NR	705	24	NR	835	1	NR	965	0	NR
450	233	NR	580	310	NR	710	20	NR	840	0	NR	970	0	NR
455	153	NR	585	313	NR	715	17	NR	845	0	NR	975	0	NR
460	98	NR	590	314	NR	720	15	NR	850	0	NR	980	0	NR
465	76	NR	595	310	NR	725	13	NR	855	0	NR	985	0	NR
470	53	NR	600	307	NR	730	11	NR	860	0	NR	990	0	NR
475	39	NR	605	303	NR	735	9	NR	865	0	NR	995	0	NR
480	35	NR	610	331	NR	740	8	NR	870	0	NR	1000	0	NR
485	36	NR	615	353	NR	745	7	NR	875	0	NR			

**Summary**

$R_f = 81.2$   
 $R_g = 101.5$   
 CIE  $R_a = 83.4$   
 $R_9 = 29.4$



**Color Vector Graphics**

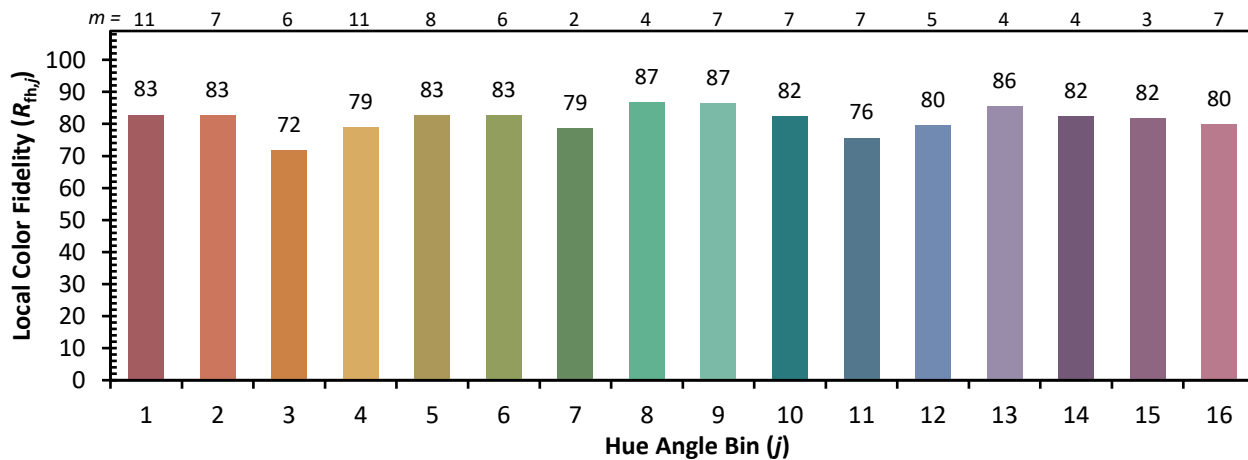
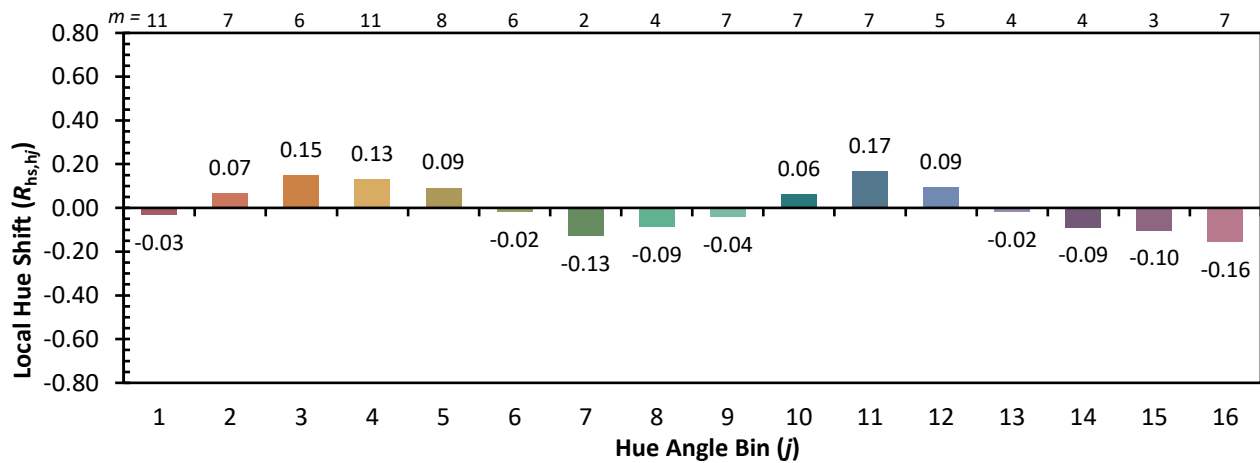
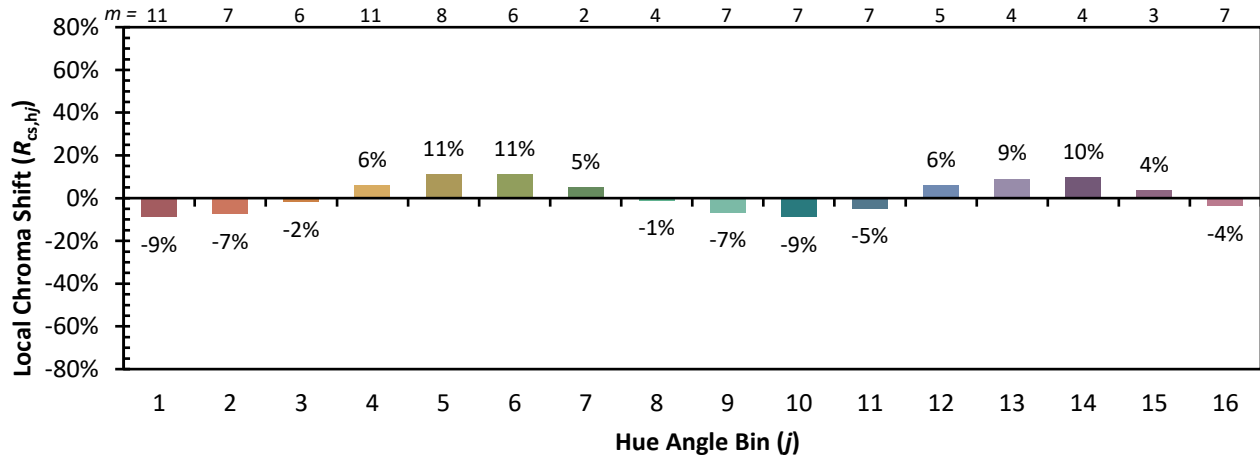


**Individual Sample Fidelity Index ( $R_{f,i}$ )**

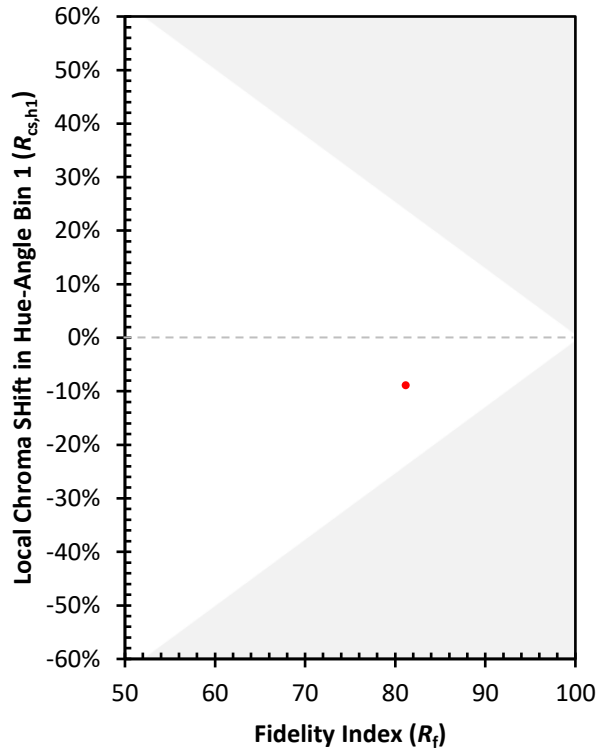
CES01 = 86	CES26 = 71	CES51 = 89	CES76 = 65
CES02 = 63	CES27 = 89	CES52 = 89	CES77 = 82
CES03 = 31	CES28 = 86	CES53 = 80	CES78 = 67
CES04 = 70	CES29 = 68	CES54 = 92	CES79 = 89
CES05 = 50	CES30 = 77	CES55 = 90	CES80 = 85
CES06 = 51	CES31 = 70	CES56 = 81	CES81 = 75
CES07 = 43	CES32 = 64	CES57 = 79	CES82 = 93
CES08 = 41	CES33 = 74	CES58 = 81	CES83 = 89
CES09 = 29	CES34 = 76	CES59 = 92	CES84 = 91
CES10 = 76	CES35 = 87	CES60 = 96	CES85 = 81
CES11 = 59	CES36 = 99	CES61 = 91	CES86 = 74
CES12 = 65	CES37 = 81	CES62 = 93	CES87 = 83
CES13 = 44	CES38 = 83	CES63 = 79	CES88 = 86
CES14 = 74	CES39 = 94	CES64 = 81	CES89 = 74
CES15 = 72	CES40 = 89	CES65 = 78	CES90 = 85
CES16 = 48	CES41 = 88	CES66 = 76	CES91 = 87
CES17 = 50	CES42 = 80	CES67 = 74	CES92 = 73
CES18 = 57	CES43 = 75	CES68 = 79	CES93 = 84
CES19 = 72	CES44 = 99	CES69 = 83	CES94 = 64
CES20 = 67	CES45 = 83	CES70 = 72	CES95 = 80
CES21 = 87	CES46 = 82	CES71 = 70	CES96 = 86
CES22 = 79	CES47 = 79	CES72 = 90	CES97 = 85
CES23 = 92	CES48 = 78	CES73 = 65	CES98 = 83
CES24 = 91	CES49 = 79	CES74 = 94	CES99 = 82
CES25 = 72	CES50 = 88	CES75 = 70	



Color Rendition by Hue-Angle Bin



Measure Comparisons



(END OF REPORT)