

Cooper Lighting Solutions Photometric Lab
1121 Highway 74 South
Peachtree City, GA 30269



Scaled data based on original data using
LM-79-2019 Approved Method: Electrical and Photometric Measurements of Solid-
State Lighting Products

Test Report Prepared for
Cooper Lighting Solutions

Brand: METALUX

Report Number: P1444455

Luminaire Tested: EHBR1-30-UNV-TA-L830-UPL36

Issue Date: 5/1/2026

Test Information

Test Method: LM-79-2019
Report Number: P1444455
REPORT IS A COMBINATION OF REPORTS P1444348 AND P1431635
Test Lab: INNOVATION CENTER
Issue Date: 5/1/2026
Manufacturer: COOPER LIGHTING SOLUTIONS
Product Line: METALUX
Catalog Number: EHBR1-30-UNV-TA-L830-UPL36
Description: Elevate Round Highbay at, 30000 lumens, 3000K 80CRI LEDs with TA lens
Light Source: -
Ballast/Driver: -

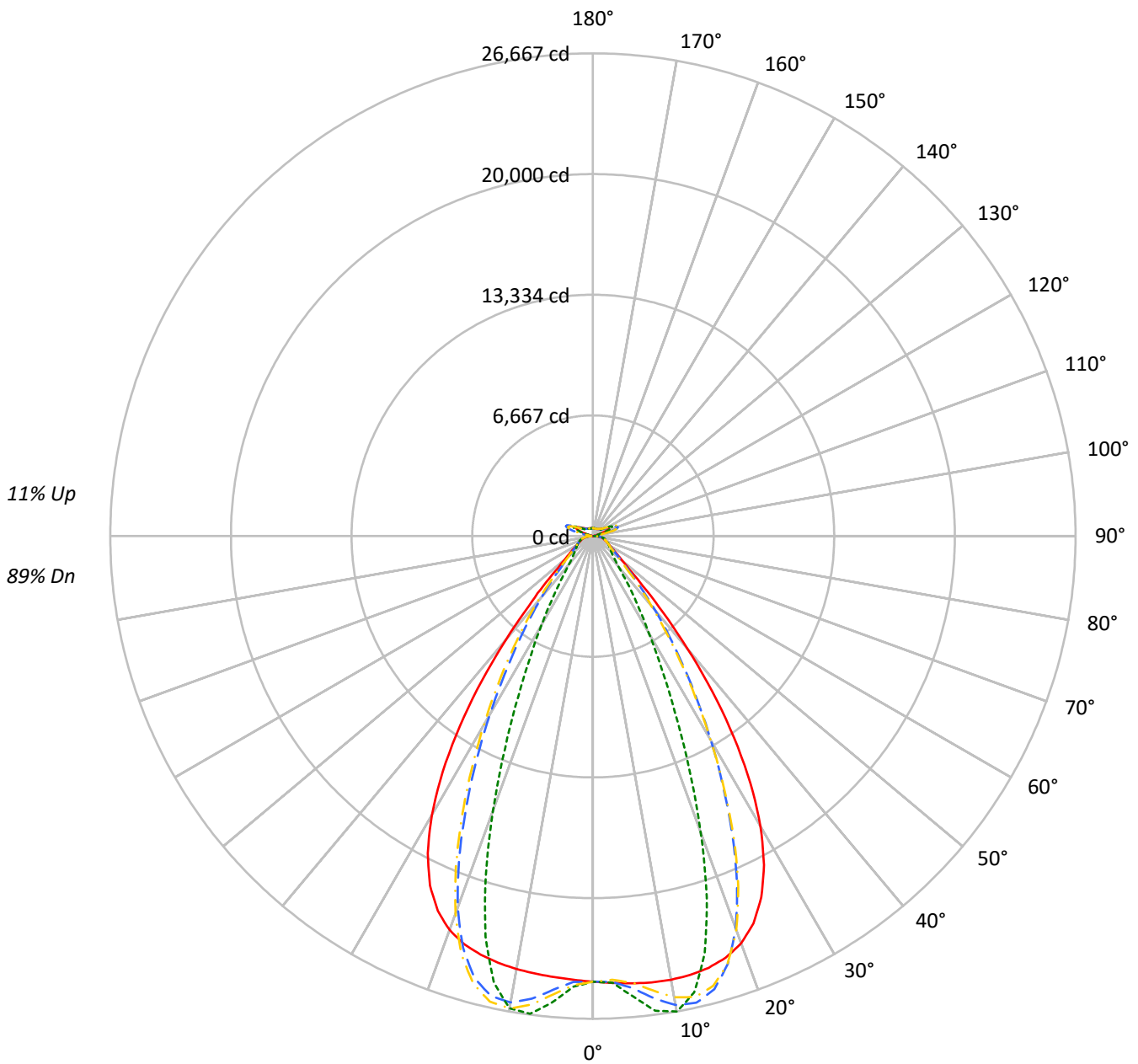
Summary

Lumens per Lamp: N/A
Luminaire Lumens: 31948.3 lumens
Efficiency: N/A
Efficacy: 169.8 lumens/watt
Spacing Criteria (0/90/45): 1.13 / 0.77 / 0.88
Luminous Opening: Vertical Cylinder (Dia: 1.71' x H: 0.1')
CIE Type: Semi-Direct

Input Watts (W): 188.2
Input Voltage (V): NR
Input Current (Ain): NR
Voltage Rise (V): NR
Power Factor: NR
Total Harmonic Distortion (THDi): NR
Frequency (hertz): 60
Stabilization Time: NR
Operation Time: NR
Ambient Temperature (°C): NR
Test Distance: 24 FT

TEST NUMBER: P1444455
CATALOG NUMBER: EHBR1-30-UNV-TA-L830-UPL36

Luminous Intensity Polar Plot



— 0°-180° - - 45°-225° - · - 90°-270° - · - 135°-315°



TEST NUMBER: P1444455
 CATALOG NUMBER: EHBR1-30-UNV-TA-L830-UPL36

COEFFICIENT OF UTILIZATION - ZONAL CAVITY METHOD:

RF	20				20				20				20				20				
RC	80				70				50				30				10			0	
RW	70	50	30	10	70	50	30	10	50	30	10	50	30	10	50	30	10	50	30	10	0
RCR																					
0	116	116	116	116	112	112	112	112	105	105	105	98	98	98	92	92	92	89			89
1	109	106	103	100	105	102	100	97	96	94	92	90	89	87	85	84	83	80			80
2	102	96	91	87	99	94	89	85	88	85	82	84	81	78	79	77	75	73			73
3	96	88	82	78	93	86	81	76	82	77	74	78	74	71	74	71	68	66			66
4	90	81	75	70	87	79	73	69	76	71	67	72	68	65	69	66	63	61			61
5	85	75	68	63	82	73	67	63	70	65	61	67	63	59	65	61	58	56			56
6	80	70	63	58	78	68	62	57	66	60	56	63	58	55	61	57	53	52			52
7	75	65	58	53	73	64	57	53	61	56	52	59	54	51	57	53	50	48			48
8	71	61	54	49	69	60	53	49	57	52	48	56	51	47	54	49	46	45			45
9	68	57	50	46	66	56	50	46	54	49	45	52	47	44	51	46	43	42			42
10	64	53	47	43	62	53	47	42	51	46	42	49	45	41	48	44	41	39			39

AVERAGE LUMINANCE (cd/sqm):

	0°	90°	180°	270°
0°	115600	115600	115600	115600
5°	116159	119546	114533	121112
10°	117129	125515	114320	124684
15°	117703	113778	114120	109197
20°	116486	84760	112674	78423
25°	110259	53606	106615	48638
30°	96320	32213	92589	29440
35°	74128	20213	69864	17906
40°	46893	12680	42903	11915
45°	24169	9879	23769	9716
50°	14171	8787	13736	8650
55°	10856	8313	10454	8238
60°	9186	8491	8795	8382
65°	8628	8869	8298	8566
70°	8429	9285	8008	8936
75°	9013	9848	8525	9413
80°	9326	10904	8455	9953
85°	8784	10524	7096	9011

MAXIMUM LUMINANCE 45°-90°:

Horizontal Angle: 25°
 Vertical Angle: 45°
 Luminance: 36988 cd/sqm



TEST NUMBER: P1444455
 CATALOG NUMBER: EHBR1-30-UNV-TA-L830-UPL36

ZONAL LUMENS:

Zone	Lumens	% Fixture
0°-10°	2426.0	7.6
10°-20°	6824.5	21.4
20°-30°	7772.6	24.3
30°-40°	5586.6	17.5
40°-50°	2576.5	8.1
50°-60°	1233.0	3.9
60°-70°	899.6	2.8
70°-80°	683.5	2.1
80°-90°	317.0	1.0
90°-100°	100.9	0.3
100°-110°	608.5	1.9
110°-120°	1124.7	3.5
120°-130°	680.6	2.1
130°-140°	427.7	1.3
140°-150°	309.5	1.0
150°-160°	210.6	0.7
160°-170°	124.6	0.4
170°-180°	42.1	0.1
0°-30°	17023.0	53.3
0°-40°	22609.6	70.8
0°-60°	26419.1	82.7
0°-90°	28319.2	88.6
90°-120°	1834.0	5.7
90°-150°	3251.8	10.2
90°-180°	3629.0	11.4
0°-180°	31948.3	100.0

CANDELA DISTRIBUTION:

	0°	90°	180°	270°	360°	Flux
0°	24616	24616	24616	24616	24616	
5°	24802	25525	24455	25859	24802	2370
15°	24694	23870	23942	22909	24694	6958
25°	22019	10705	21291	9713	22019	9982
35°	13605	3710	12823	3286	13605	8350
45°	3910	1598	3846	1572	3910	3326
55°	1467	1123	1413	1113	1467	1354
65°	901	926	866	894	901	899
75°	635	694	600	663	635	660
85°	302	362	244	310	302	284
90°	93	115	35	40	93	56
95°	46	52	46	52	46	44
105°	216	281	144	282	216	288
115°	978	1192	1025	1192	978	902
125°	725	770	822	772	725	660
135°	556	502	600	505	556	434
145°	482	476	514	480	482	305
155°	441	447	472	450	441	206
165°	432	434	449	436	432	123
175°	438	443	446	443	438	42
180°	443	443	443	443	443	



TEST NUMBER: P1444455
 CATALOG NUMBER: EHBR1-30-UNV-TA-L830-UPL36

CANDELA DISTRIBUTION (FULL):

	0°	2.5°	5°	7.5°	10°	12.5°	15°	17.5°	20°	22.5°	25°
0°	24616.1	24616.1	24616.1	24616.1	24616.1	24616.1	24616.1	24616.1	24616.1	24616.1	24616.1
2.5°	24710.1	24708.1	24707.8	24706.0	24705.6	24705.6	24704.8	24702.7	24701.5	24698.7	24695.4
5°	24801.8	24800.7	24801.3	24801.5	24799.8	24796.0	24789.9	24782.6	24773.2	24764.5	24756.7
7.5°	24872.7	24874.4	24876.6	24876.2	24870.7	24861.8	24849.4	24842.5	24846.6	24860.0	24890.7
10°	24885.6	24896.2	24900.3	24899.0	24888.3	24880.6	24883.6	24909.6	24961.5	25030.8	25125.5
12.5°	24835.2	24848.2	24847.7	24843.4	24833.0	24843.6	24881.3	24959.0	25070.3	25206.8	25367.1
15°	24693.5	24710.3	24705.6	24700.0	24693.1	24727.8	24803.3	24938.1	25110.0	25302.6	25499.7
17.5°	24418.5	24438.7	24428.9	24422.5	24416.7	24481.8	24611.5	24808.9	25025.4	25243.3	25430.1
20°	23941.3	23954.9	23931.5	23920.5	23929.7	24057.4	24248.3	24500.5	24728.6	24934.6	25062.4
22.5°	23162.7	23179.5	23135.5	23130.3	23184.8	23380.8	23622.4	23904.2	24118.7	24282.0	24331.2
25°	22018.7	22035.2	21982.9	22014.2	22106.7	22373.8	22661.4	22962.9	23145.9	23266.8	23233.5
27.5°	20474.5	20489.7	20440.0	20503.9	20650.1	21001.0	21339.6	21666.7	21829.7	21914.5	21807.1
30°	18527.0	18558.5	18499.8	18589.0	18812.2	19267.7	19655.7	20022.4	20185.0	20249.5	20082.4
32.5°	16214.0	16258.7	16194.1	16326.7	16638.2	17185.3	17626.1	18036.0	18215.7	18289.3	18100.6
35°	13605.1	13669.4	13595.2	13794.3	14178.4	14787.7	15275.8	15733.3	15946.3	16050.7	15860.4
37.5°	10841.3	10902.4	10862.3	11127.9	11549.7	12181.3	12679.5	13173.0	13413.6	13570.2	13420.2
40°	8127.7	8183.7	8214.1	8517.8	8914.6	9509.8	9988.3	10476.7	10745.7	10942.4	10849.8
42.5°	5736.6	5793.0	5896.3	6189.3	6520.2	7013.0	7422.9	7861.3	8118.3	8328.0	8292.4
45°	3910.5	3976.0	4105.4	4345.4	4584.7	4938.2	5239.2	5580.2	5790.1	5982.2	5984.5
47.5°	2740.2	2786.3	2901.9	3065.8	3221.8	3664.3	3682.5	3850.1	3991.2	4134.8	4153.5
50°	2111.9	2139.6	2200.9	2292.2	2380.6	2495.5	2600.7	2722.2	2809.0	2887.7	2906.5
52.5°	1735.8	1753.4	1784.6	1834.1	1885.4	1947.9	2004.2	2070.9	2118.1	2160.2	2169.0
55°	1467.1	1481.7	1528.1	1537.5	1596.2	1607.5	1632.5	1673.1	1700.5	1725.8	1732.1
57.5°	1264.3	1274.9	1284.7	1305.8	1323.9	1350.1	1371.2	1400.4	1417.7	1436.0	1437.5
60°	1104.3	1111.9	1118.9	1133.5	1145.9	1164.1	1178.7	1198.5	1210.9	1224.6	1226.2
62.5°	985.2	990.7	995.3	1005.0	1013.7	1027.8	1039.4	1055.9	1067.5	1078.1	1080.4
65°	900.6	904.6	907.6	914.9	922.6	934.5	945.0	958.4	967.0	975.0	976.8
67.5°	825.5	829.4	832.5	839.1	844.4	853.3	860.4	870.5	876.9	883.4	883.6
70°	739.6	743.2	745.5	751.7	756.0	763.7	769.3	778.5	785.1	792.3	794.0
72.5°	680.1	682.2	685.4	691.1	697.0	705.2	712.7	722.3	730.2	737.7	740.8
75°	634.9	637.3	639.4	644.3	648.4	655.3	660.9	669.7	676.6	684.5	688.5
77.5°	569.5	572.4	574.2	579.1	582.6	589.3	593.4	601.2	606.9	614.2	617.8
80°	490.6	493.3	494.6	499.1	502.0	508.1	512.2	519.7	524.4	531.7	536.0
82.5°	403.2	405.7	406.4	410.7	412.2	417.3	420.3	428.0	433.8	443.3	449.9
85°	301.9	302.8	304.2	303.1	309.3	309.7	316.6	317.8	327.0	329.3	339.7
87.5°	184.5	187.3	188.7	192.9	194.6	198.9	200.2	204.7	207.1	212.2	214.6
90°	93.2	98.4	100.9	107.0	109.3	114.7	116.8	122.8	125.2	131.4	135.4
92.5°	40.6	43.4	46.0	49.1	51.8	55.2	58.2	61.1	63.9	67.2	72.8
95°	46.4	49.6	52.7	55.9	59.1	62.4	65.6	68.8	71.9	75.1	84.4
97.5°	58.5	61.3	64.0	66.8	69.5	72.3	75.0	77.8	80.6	83.3	94.3
100°	76.2	78.6	80.9	83.3	85.6	88.0	90.3	92.6	95.0	97.3	117.8
102.5°	127.1	135.4	143.7	152.0	160.3	168.5	176.9	185.1	193.3	201.7	245.3
105°	216.4	238.9	261.5	284.0	306.6	329.2	351.7	374.1	396.7	419.2	490.3
107.5°	371.1	412.7	454.5	496.2	538.0	579.5	621.3	662.9	704.7	746.2	818.3
110°	687.4	720.8	754.4	788.0	821.5	855.2	888.7	922.1	955.7	989.2	1041.9



TEST NUMBER: P1444455
 CATALOG NUMBER: EHBR1-30-UNV-TA-L830-UPL36

CANDELA DISTRIBUTION (continued):

	0°	2.5°	5°	7.5°	10°	12.5°	15°	17.5°	20°	22.5°	25°
112.5°	927.3	942.5	957.7	973.0	988.1	1003.2	1018.4	1033.6	1048.7	1063.9	1101.7
115°	977.9	983.3	988.7	994.0	999.5	1004.8	1010.1	1015.4	1020.7	1025.9	1051.5
117.5°	948.6	947.8	946.9	946.2	945.1	944.2	943.3	942.3	941.3	940.3	954.7
120°	883.3	878.8	874.3	869.6	865.1	860.4	855.8	851.1	846.3	841.5	847.8
122.5°	801.0	795.5	790.2	784.7	779.2	773.5	768.0	762.2	756.7	751.1	753.6
125°	724.8	719.2	714.0	708.2	702.7	697.0	691.4	685.6	680.0	674.1	675.6
127.5°	658.5	654.8	650.9	646.9	642.9	638.9	634.8	630.7	626.7	622.3	622.8
130°	615.1	611.9	608.4	604.8	601.3	597.5	593.8	590.1	586.5	582.5	583.3
132.5°	579.7	577.5	575.0	572.6	570.0	567.2	564.6	561.7	559.0	556.3	557.2
135°	555.7	553.5	551.4	549.0	546.7	544.1	541.6	538.9	536.4	533.7	534.9
137.5°	535.2	533.4	531.4	529.1	527.0	524.6	522.4	519.9	517.5	515.0	516.1
140°	516.6	514.8	513.1	511.1	509.1	507.0	504.8	502.6	500.5	498.1	499.5
142.5°	495.7	494.3	493.0	491.5	490.0	488.1	486.4	484.7	483.0	481.1	482.9
145°	481.9	480.8	479.7	478.5	477.1	475.6	474.2	472.6	471.2	469.6	471.5
147.5°	469.8	468.8	468.1	467.0	466.1	464.7	463.6	462.2	461.1	459.8	461.7
150°	459.2	458.3	457.7	456.6	455.6	454.4	453.3	452.1	451.0	449.7	451.6
152.5°	448.2	447.3	446.6	445.6	444.7	443.3	442.6	441.3	440.3	439.0	440.7
155°	441.4	440.4	439.6	438.7	437.7	436.7	435.7	434.5	433.6	432.4	433.8
157.5°	436.8	436.0	435.5	434.5	434.1	433.2	432.5	431.5	430.8	430.0	431.1
160°	434.4	433.8	433.1	432.3	431.6	430.8	430.1	429.2	428.6	427.8	428.7
162.5°	432.3	431.5	430.8	430.0	429.5	428.5	427.9	427.2	426.5	425.6	426.7
165°	431.8	431.4	431.0	430.5	430.1	429.7	429.2	428.6	428.2	427.6	428.3
167.5°	435.2	434.5	434.0	433.3	432.8	432.1	431.4	430.8	430.2	429.5	430.1
170°	435.9	435.5	435.3	435.0	434.6	434.3	434.0	433.6	433.2	432.9	433.4
172.5°	438.0	437.6	437.4	437.3	436.9	436.7	436.4	436.1	435.9	435.6	436.3
175°	437.6	437.3	437.3	437.1	437.0	436.8	436.7	436.5	436.5	436.2	436.7
177.5°	440.5	440.4	440.4	440.3	440.3	440.3	440.2	440.0	439.9	439.9	440.3
180°	443.2	443.2	443.2	443.2	443.2	443.2	443.2	443.2	443.2	443.2	443.2



TEST NUMBER: P1444455
 CATALOG NUMBER: EHBR1-30-UNV-TA-L830-UPL36

CANDELA DISTRIBUTION (continued):

	27.5°	30°	32.5°	35°	37.5°	40°	42.5°	45°	47.5°	50°	52.5°
0°	24616.1	24616.1	24616.1	24616.1	24616.1	24616.1	24616.1	24616.1	24616.1	24616.1	24616.1
2.5°	24693.1	24690.1	24685.9	24680.8	24676.3	24671.0	24658.8	24655.1	24659.2	24662.0	24667.6
5°	24751.7	24753.5	24754.1	24765.3	24775.0	24799.2	24988.6	25063.8	25122.1	25159.0	25215.1
7.5°	24928.6	24985.6	25041.9	25117.6	25182.9	25271.1	25602.4	25743.5	25843.7	25915.8	26004.5
10°	25228.4	25352.7	25469.1	25605.6	25723.0	25857.4	26165.7	26303.2	26389.9	26453.0	26512.0
12.5°	25530.4	25702.7	25858.4	26010.3	26137.4	26253.8	26362.3	26410.4	26414.4	26416.5	26385.2
15°	25687.6	25852.4	25989.6	26090.1	26164.7	26197.7	26011.0	25913.0	25789.2	25687.2	25519.4
17.5°	25588.4	25687.2	25746.5	25740.7	25709.8	25606.5	25077.6	24786.6	24497.8	24237.5	23896.3
20°	25147.1	25139.6	25088.0	24941.9	24765.9	24492.2	23585.4	23062.2	22556.3	22112.0	21573.1
22.5°	24326.1	24197.0	24016.8	23701.9	23352.1	22874.0	21574.4	20804.8	20100.6	19478.5	18781.6
25°	23136.6	22870.9	22538.6	22038.7	21495.0	20797.7	19195.9	18238.7	17393.1	16659.8	15855.7
27.5°	21614.3	21213.9	20727.1	20035.2	19298.5	18405.1	16629.3	15572.9	14665.2	13879.0	13023.2
30°	19811.9	19291.2	18662.7	17803.8	16915.4	15902.0	14100.9	13030.9	12112.2	11303.5	10446.9
32.5°	17775.1	17165.3	16428.7	15464.8	14503.9	13462.1	11722.7	10687.0	9809.3	9031.2	8256.1
35°	15528.7	14874.7	14095.4	13112.2	12157.2	11144.2	9548.2	8614.3	7839.3	7151.5	6525.6
37.5°	13118.9	12476.8	11736.1	10809.5	9923.9	9006.0	7628.8	6846.3	6195.9	5625.0	5141.7
40°	10613.5	10051.5	9410.6	8609.6	7853.7	7089.3	5958.9	5337.6	4824.4	4389.0	4026.9
42.5°	8138.6	7703.2	7211.7	6578.7	6000.3	5418.2	4548.2	4087.9	3707.8	3394.4	3138.3
45°	5904.8	5613.6	5284.0	4843.8	4443.7	4037.7	3418.4	3095.0	2847.4	2645.3	2474.4
47.5°	4127.8	3958.8	3948.5	3541.8	3248.3	3000.1	2601.1	2396.9	2245.2	2122.8	2014.6
50°	2898.8	2817.1	2715.5	2570.4	2434.2	2293.9	2050.8	1927.4	1838.5	1764.3	1695.9
52.5°	2167.1	2124.6	2070.6	1993.6	1919.8	1840.8	1687.0	1608.4	1580.5	1511.4	1457.2
55°	1730.9	1706.6	1675.8	1630.5	1585.7	1567.7	1435.9	1377.5	1340.5	1313.3	1284.1
57.5°	1437.8	1419.7	1401.4	1370.7	1344.7	1313.3	1243.3	1213.3	1191.4	1175.3	1155.1
60°	1226.4	1215.6	1205.4	1187.4	1173.3	1156.4	1111.9	1095.0	1083.6	1073.8	1061.0
62.5°	1082.5	1076.8	1071.6	1062.0	1054.9	1045.6	1015.3	1007.1	1001.4	996.6	988.8
65°	978.6	974.6	971.6	965.2	961.6	956.3	930.2	924.7	921.2	919.4	914.9
67.5°	884.1	879.9	878.0	873.5	872.0	868.6	847.3	844.3	843.0	843.6	842.0
70°	795.8	794.0	795.0	794.2	796.3	796.9	783.9	783.8	785.2	788.0	788.2
72.5°	742.9	742.9	743.9	744.3	746.3	747.2	736.4	735.9	736.5	738.5	738.6
75°	692.5	693.4	696.1	697.0	699.3	699.7	685.5	683.9	684.0	685.9	685.2
77.5°	622.8	625.8	631.1	633.8	638.2	638.9	623.0	621.1	621.2	623.1	621.4
80°	543.8	549.5	557.8	563.5	570.3	573.0	556.6	552.7	549.0	548.4	545.2
82.5°	459.7	466.8	476.7	481.8	489.1	490.7	463.3	458.1	455.0	455.2	452.2
85°	351.0	356.2	365.3	368.2	372.7	372.3	341.0	327.5	331.0	325.5	329.9
87.5°	220.1	223.2	228.9	229.6	231.7	231.3	199.7	193.5	191.7	191.7	189.5
90°	142.8	147.1	154.3	156.6	162.2	164.0	140.8	140.1	135.8	135.2	129.9
92.5°	78.7	84.2	90.0	95.6	101.4	107.2	110.0	114.7	109.0	102.9	97.3
95°	93.8	103.1	112.5	121.9	131.2	140.6	150.0	159.3	150.6	141.8	133.0
97.5°	105.4	116.4	127.4	138.5	149.6	160.6	171.7	182.8	173.4	163.8	154.5
100°	138.5	159.1	179.8	200.5	221.1	241.7	262.4	283.0	264.9	246.6	228.5
102.5°	289.1	333.0	376.7	420.5	464.2	508.2	552.1	595.9	554.3	512.7	471.0
105°	561.3	632.3	703.3	774.1	845.1	916.1	987.4	1058.4	991.9	925.4	858.9
107.5°	890.3	962.4	1034.3	1106.3	1178.4	1250.3	1322.8	1394.9	1329.9	1264.9	1200.1
110°	1094.5	1147.0	1199.6	1252.1	1304.6	1357.4	1410.4	1463.0	1424.2	1385.2	1346.2



TEST NUMBER: P1444455
 CATALOG NUMBER: EHBR1-30-UNV-TA-L830-UPL36

CANDELA DISTRIBUTION (continued):

	27.5°	30°	32.5°	35°	37.5°	40°	42.5°	45°	47.5°	50°	52.5°
112.5°	1139.1	1176.9	1214.4	1252.0	1289.5	1327.1	1365.5	1403.4	1383.8	1364.2	1344.8
115°	1076.7	1102.3	1127.6	1153.0	1178.5	1203.8	1230.1	1255.8	1249.7	1243.4	1237.3
117.5°	968.9	983.2	997.5	1011.7	1025.9	1040.0	1055.7	1070.1	1071.2	1072.4	1073.7
120°	854.0	860.1	866.2	872.3	878.3	884.3	891.9	898.3	903.7	909.0	914.5
122.5°	756.0	758.4	760.7	763.1	765.5	767.8	771.9	774.8	778.6	782.3	786.2
125°	676.8	678.1	679.3	680.6	681.7	683.0	686.3	687.9	688.4	688.8	689.1
127.5°	623.3	623.7	624.0	624.4	624.7	625.1	627.6	628.3	626.4	624.4	622.3
130°	584.1	584.9	585.5	586.2	586.9	587.8	590.8	592.1	588.3	584.5	580.9
132.5°	558.0	559.0	559.8	560.9	561.7	562.6	566.1	567.6	563.2	558.7	554.4
135°	535.9	537.0	538.2	539.3	540.4	541.6	545.5	547.2	543.2	538.8	534.7
137.5°	517.2	518.3	519.4	520.7	521.8	523.0	527.2	529.0	525.9	522.3	519.1
140°	500.9	502.2	503.6	505.0	506.4	508.0	512.4	514.5	512.1	509.4	506.9
142.5°	484.6	486.5	488.3	490.3	492.1	494.1	499.5	502.1	500.2	498.2	496.4
145°	473.4	475.8	477.7	480.0	482.0	484.4	490.2	493.3	492.1	490.9	489.8
147.5°	463.3	465.5	467.3	469.3	471.3	473.6	479.6	482.5	481.9	481.2	480.4
150°	453.4	455.5	457.4	459.5	461.6	463.9	470.5	473.7	473.1	472.6	471.8
152.5°	442.5	444.3	446.1	447.9	449.8	451.9	459.5	462.7	462.4	461.6	461.1
155°	435.2	436.5	437.9	439.4	440.9	442.6	450.7	453.6	453.3	453.0	452.7
157.5°	432.0	432.9	433.9	434.9	436.0	437.2	445.2	448.2	447.8	447.6	447.3
160°	429.4	430.2	430.9	431.8	432.6	433.5	441.7	444.4	444.2	443.8	443.5
162.5°	427.7	428.9	429.9	430.8	431.8	433.0	441.4	444.5	443.9	443.4	442.9
165°	429.0	429.6	430.1	431.0	431.5	432.3	440.0	442.4	442.2	441.8	441.6
167.5°	430.8	431.5	432.3	433.0	433.8	434.6	441.8	444.2	444.0	443.6	443.4
170°	433.9	434.5	435.1	435.9	436.5	437.3	443.2	445.1	444.8	444.3	443.8
172.5°	437.0	437.7	438.4	439.1	439.8	440.5	445.7	447.5	447.2	446.8	446.2
175°	437.3	437.6	438.2	438.8	439.4	439.9	443.9	445.3	445.2	445.0	444.8
177.5°	440.6	441.0	441.4	441.8	442.2	442.7	445.1	446.1	446.0	446.0	445.9
180°	443.2	443.2	443.2	443.2	443.2	443.2	443.2	443.2	443.2	443.2	443.2



TEST NUMBER: P1444455
 CATALOG NUMBER: EHBR1-30-UNV-TA-L830-UPL36

CANDELA DISTRIBUTION (continued):

	55°	57.5°	60°	62.5°	65°	67.5°	70°	72.5°	75°	77.5°	80°
0°	24616.1	24616.1	24616.1	24616.1	24616.1	24616.1	24616.1	24616.1	24616.1	24616.1	24616.1
2.5°	24668.9	24677.6	24678.8	24688.9	24688.2	24700.2	24698.3	24708.1	24702.3	24710.5	24703.6
5°	25248.3	25300.9	25328.3	25379.6	25395.8	25441.7	25454.7	25496.6	25498.2	25531.5	25523.9
7.5°	26067.5	26144.9	26190.8	26254.3	26286.4	26339.2	26362.5	26401.5	26414.2	26445.2	26447.5
10°	26556.6	26594.2	26620.5	26638.2	26654.3	26661.9	26670.7	26668.4	26670.7	26667.3	26674.8
12.5°	26364.2	26309.3	26273.0	26204.2	26164.3	26088.4	26051.0	25977.9	25951.4	25888.7	25879.6
15°	25389.8	25198.4	25063.1	24866.5	24742.9	24549.4	24436.2	24261.6	24181.9	24043.2	24006.7
17.5°	23613.7	23258.5	22983.5	22630.8	22386.0	22056.4	21849.1	21576.2	21426.8	21206.8	21130.7
20°	21123.8	20598.1	20185.7	19694.4	19342.8	18904.7	18624.3	18270.6	18065.2	17794.9	17685.4
22.5°	18200.5	17546.0	17031.0	16450.5	16026.3	15538.1	15202.1	14819.4	14596.0	14302.4	14172.4
25°	15187.4	14465.7	13893.1	13281.6	12833.4	12343.9	12007.9	11632.0	11400.8	11122.0	10992.8
27.5°	12305.7	11575.2	11021.8	10453.2	10042.1	9600.5	9297.3	8969.0	8763.8	8525.9	8404.4
30°	9762.8	9118.4	8647.4	8175.6	7833.6	7474.9	7223.0	6950.9	6770.9	6567.2	6451.4
32.5°	7690.8	7193.4	6824.7	6450.3	6170.4	5870.6	5652.9	5412.9	5250.3	5068.4	4963.6
35°	6091.0	5704.6	5410.4	5102.3	4861.7	4606.5	4414.6	4207.4	4061.7	3905.0	3814.5
37.5°	4812.5	4505.2	4263.1	4007.1	3809.7	3598.2	3527.0	3289.3	3138.2	3013.1	2926.6
40°	3776.9	3532.5	3332.2	3136.5	2975.4	2815.0	2686.3	2559.3	2461.8	2372.3	2310.5
42.5°	2949.5	2772.4	2626.2	2482.7	2365.2	2248.4	2155.1	2067.6	2001.9	1943.5	1903.6
45°	2344.7	2222.9	2121.3	2020.3	1937.4	1859.4	1796.6	1740.8	1698.3	1663.2	1638.3
47.5°	1926.2	1842.9	1771.1	1703.0	1646.7	1595.6	1553.5	1539.9	1494.2	1463.5	1451.8
50°	1637.0	1586.7	1532.2	1482.0	1444.3	1406.9	1379.7	1353.0	1335.8	1321.7	1317.5
52.5°	1421.2	1382.7	1352.4	1320.6	1295.7	1269.1	1250.3	1232.5	1223.2	1215.8	1214.8
55°	1260.7	1233.8	1213.7	1192.3	1177.5	1161.9	1152.2	1142.8	1138.7	1134.9	1135.2
57.5°	1139.3	1121.3	1108.2	1094.4	1086.4	1078.9	1076.5	1074.0	1075.3	1075.9	1078.0
60°	1050.8	1039.1	1030.9	1023.0	1019.6	1017.2	1019.0	1021.1	1025.4	1028.9	1032.0
62.5°	983.0	976.3	972.3	968.1	967.7	967.9	971.6	975.0	980.5	984.5	987.5
65°	913.2	909.4	908.1	905.3	906.7	907.6	912.0	914.7	920.0	923.2	927.1
67.5°	842.7	841.8	842.6	842.6	845.1	847.2	851.4	854.5	859.1	862.0	865.1
70°	790.6	791.0	792.9	793.2	795.9	797.3	801.0	803.0	807.1	809.6	813.3
72.5°	740.0	739.2	739.6	738.4	739.3	739.0	740.9	742.0	745.4	747.4	751.9
75°	686.0	683.8	683.2	680.8	680.9	679.1	680.0	679.9	682.1	683.0	686.3
77.5°	620.9	617.1	615.2	611.1	611.0	609.5	611.1	612.1	616.2	618.0	621.8
80°	543.0	537.0	534.2	529.5	530.4	530.1	534.0	537.1	542.0	542.9	547.7
82.5°	451.3	445.2	442.3	437.6	438.8	438.8	442.5	443.1	447.4	449.2	454.7
85°	323.2	325.5	319.0	319.5	318.1	320.6	323.2	326.3	329.8	335.7	340.3
87.5°	190.3	189.5	191.7	192.0	195.3	197.1	202.3	205.3	211.3	215.9	224.3
90°	128.1	123.1	122.9	119.8	121.0	118.0	119.3	116.3	118.3	117.1	120.1
92.5°	91.0	85.3	79.2	73.3	67.3	61.6	58.5	56.0	52.9	50.6	47.4
95°	124.3	115.6	106.9	98.1	89.4	80.7	77.5	74.3	71.1	67.9	64.6
97.5°	145.1	135.7	126.4	116.9	107.5	98.2	96.0	94.0	91.8	89.6	87.6
100°	210.3	192.2	174.1	155.9	137.8	119.7	118.0	116.3	114.7	113.0	111.2
102.5°	429.5	387.9	346.4	304.7	263.2	221.7	214.5	207.3	200.0	192.8	185.6
105°	792.3	725.8	659.3	592.7	526.3	459.8	440.1	420.0	400.3	380.4	360.6
107.5°	1135.2	1070.4	1005.6	940.7	875.9	811.1	779.7	748.4	717.0	685.7	654.3
110°	1307.1	1268.2	1229.3	1190.3	1151.5	1112.6	1082.6	1052.9	1022.8	992.9	963.1



TEST NUMBER: P1444455
 CATALOG NUMBER: EHBR1-30-UNV-TA-L830-UPL36

CANDELA DISTRIBUTION (continued):

	55°	57.5°	60°	62.5°	65°	67.5°	70°	72.5°	75°	77.5°	80°
112.5°	1325.3	1305.9	1286.5	1267.1	1247.8	1228.3	1213.7	1199.2	1184.6	1170.0	1155.3
115°	1231.0	1224.9	1218.8	1212.8	1206.7	1200.6	1199.5	1198.7	1197.6	1196.6	1195.7
117.5°	1074.9	1076.2	1077.3	1078.7	1080.0	1081.3	1089.1	1096.9	1104.8	1112.7	1120.8
120°	919.8	925.2	930.5	936.1	941.4	947.0	957.4	968.0	978.5	989.3	999.8
122.5°	789.9	793.7	797.4	801.4	805.2	809.1	819.4	829.9	840.3	850.9	861.7
125°	689.2	689.6	690.0	690.2	690.5	691.0	699.5	708.2	716.9	725.8	734.4
127.5°	620.1	618.0	615.9	613.8	611.7	609.7	614.8	620.0	625.1	630.3	635.7
130°	576.9	573.1	569.1	565.5	561.5	557.7	559.9	561.9	564.1	566.2	568.5
132.5°	549.8	545.4	540.9	536.4	531.9	527.4	527.4	527.6	527.6	527.8	528.2
135°	530.5	526.2	521.8	517.6	513.2	509.1	508.1	507.0	506.1	505.3	504.4
137.5°	515.8	512.3	509.0	505.7	502.1	498.8	497.2	495.9	494.4	493.3	491.9
140°	504.0	501.5	498.6	496.0	493.3	490.7	489.3	488.3	487.1	486.2	485.0
142.5°	494.3	492.4	490.5	488.5	486.5	484.6	483.3	482.3	481.1	480.2	479.0
145°	488.5	487.3	486.0	484.7	483.5	482.3	481.3	480.4	479.6	478.9	478.2
147.5°	479.8	479.0	478.3	477.4	476.6	475.8	475.3	474.9	474.2	473.8	473.2
150°	471.1	470.4	469.7	469.1	468.3	467.6	467.2	466.9	466.7	466.6	466.3
152.5°	460.4	459.7	459.1	458.5	457.7	457.1	456.8	456.7	456.5	456.3	456.0
155°	452.2	451.9	451.4	451.0	450.5	450.2	449.7	449.2	449.0	448.6	448.1
157.5°	446.9	446.6	446.2	445.9	445.3	444.9	444.6	444.2	443.7	443.4	443.1
160°	443.2	442.9	442.4	442.1	441.8	441.4	440.7	440.3	439.5	439.0	438.4
162.5°	442.3	441.8	441.3	440.6	440.1	439.6	439.1	438.8	438.4	438.0	437.5
165°	441.2	440.8	440.4	440.1	439.9	439.5	438.8	438.4	437.6	437.2	436.5
167.5°	443.1	442.8	442.4	442.1	441.7	441.4	440.9	440.3	439.7	439.1	438.4
170°	443.4	442.9	442.5	441.8	441.4	440.9	440.4	439.8	439.2	438.8	438.1
172.5°	445.9	445.6	445.2	444.7	444.2	443.8	443.4	442.9	442.4	441.9	441.5
175°	444.7	444.7	444.6	444.3	444.2	444.0	443.8	443.7	443.5	443.4	443.2
177.5°	445.9	445.8	445.8	445.6	445.5	445.5	445.2	445.0	444.7	444.4	444.2
180°	443.2	443.2	443.2	443.2	443.2	443.2	443.2	443.2	443.2	443.2	443.2



TEST NUMBER: P1444455
 CATALOG NUMBER: EHBR1-30-UNV-TA-L830-UPL36

CANDELA DISTRIBUTION (continued):

	82.5°	85°	87.5°	90°	92.5°	95°	97.5°	100°	102.5°	105°	107.5°
0°	24616.1	24616.1	24616.1	24616.1	24616.1	24616.1	24616.1	24616.1	24616.1	24616.1	24616.1
2.5°	24710.8	24704.5	24707.5	24695.9	24698.7	24684.7	24683.4	24667.6	24666.1	24651.2	24645.7
5°	25547.4	25533.7	25549.2	25525.0	25529.7	25498.2	25495.6	25455.0	25440.9	25390.0	25367.9
7.5°	26466.9	26461.7	26471.2	26451.0	26450.3	26422.2	26410.7	26374.2	26351.5	26298.1	26263.9
10°	26668.4	26673.2	26665.4	26667.3	26656.3	26653.3	26642.1	26634.9	26616.7	26602.8	26582.4
12.5°	25831.9	25836.9	25805.0	25825.3	25809.2	25846.6	25843.6	25887.5	25894.3	25949.9	25971.0
15°	23898.6	23892.6	23831.4	23870.0	23849.3	23931.2	23949.5	24059.7	24118.7	24260.2	24347.1
17.5°	20978.2	20962.4	20876.1	20923.2	20899.3	21020.0	21060.6	21236.8	21346.8	21574.7	21737.2
20°	17496.9	17466.6	17365.7	17420.7	17396.1	17533.3	17591.2	17804.2	17945.9	18247.9	18462.8
22.5°	13972.2	13924.6	13825.7	13877.1	13853.8	13995.9	14071.2	14285.0	14447.4	14757.4	15008.1
25°	10807.2	10764.7	10669.2	10705.1	10696.5	10816.7	10883.6	11085.9	11245.4	11540.7	11780.1
27.5°	8242.9	8198.6	8112.4	8137.8	8129.0	8231.5	8294.7	8463.5	8600.8	8849.4	9059.6
30°	6308.7	6255.3	6182.2	6196.2	6190.2	6273.2	6332.2	6474.4	6592.1	6802.2	6983.3
32.5°	4835.7	4782.0	4714.7	4721.3	4712.5	4777.6	4826.2	4949.9	5052.4	5231.1	5388.7
35°	3699.9	3762.6	3619.0	3709.9	3615.2	3754.3	3704.3	3781.6	3869.8	4020.4	4151.8
37.5°	2844.4	2800.7	2763.8	2759.8	2759.6	2791.9	2829.9	2904.3	2982.0	3094.1	3210.0
40°	2254.0	2223.4	2199.5	2197.7	2199.5	2222.3	2250.4	2302.0	2358.8	2439.4	2524.5
42.5°	1869.5	1849.2	1834.7	1833.7	1838.3	1854.5	1874.1	1904.6	1941.6	1993.9	2052.2
45°	1618.1	1606.7	1598.7	1598.3	1600.4	1608.8	1620.0	1639.1	1662.6	1695.2	1732.1
47.5°	1441.6	1438.9	1433.8	1434.0	1431.8	1435.2	1436.5	1447.2	1459.7	1484.2	1532.5
50°	1313.2	1313.2	1309.7	1309.5	1306.2	1306.1	1303.3	1307.6	1313.4	1328.6	1344.0
52.5°	1211.6	1211.3	1207.5	1206.8	1203.3	1203.1	1200.8	1202.5	1203.2	1210.9	1220.2
55°	1132.3	1129.9	1125.0	1123.4	1122.1	1124.1	1123.1	1123.2	1122.2	1125.5	1128.2
57.5°	1075.3	1072.3	1067.6	1066.2	1065.9	1068.2	1068.3	1067.5	1063.2	1060.3	1056.1
60°	1030.3	1027.2	1022.1	1020.8	1021.6	1024.9	1024.7	1021.9	1015.6	1010.1	1003.5
62.5°	986.0	984.8	982.1	981.9	981.2	981.8	979.4	976.5	970.2	964.3	957.3
65°	926.6	927.2	925.4	925.7	923.3	922.9	919.5	916.7	910.3	905.0	897.7
67.5°	865.0	865.4	863.8	863.8	862.7	862.9	860.7	858.1	852.7	848.4	842.8
70°	814.1	815.4	814.5	814.7	813.3	812.8	809.5	807.0	801.4	797.7	792.7
72.5°	753.3	756.0	755.9	756.6	754.4	753.3	749.4	746.2	741.1	738.2	734.2
75°	687.6	691.2	692.1	693.7	690.6	688.9	684.6	682.1	678.0	676.3	673.7
77.5°	623.5	627.4	631.2	634.6	629.6	625.1	619.7	615.6	609.8	607.5	603.4
80°	551.4	558.5	566.7	573.6	564.6	555.5	546.7	540.1	532.3	529.1	524.0
82.5°	457.5	464.6	469.4	473.9	467.5	460.9	452.3	446.5	438.2	435.1	429.1
85°	347.6	356.4	359.2	361.7	357.6	354.1	346.0	335.2	329.9	321.6	317.3
87.5°	228.7	233.9	234.9	235.8	233.2	231.6	226.3	221.3	212.2	205.6	197.6
90°	117.9	119.5	115.7	115.0	113.6	115.8	112.3	112.4	106.7	105.8	100.9
92.5°	44.9	41.8	39.2	36.3	39.5	41.9	45.1	47.4	50.5	52.9	56.0
95°	61.4	58.3	55.1	51.9	54.4	57.0	59.6	62.1	64.7	67.3	69.8
97.5°	85.4	83.3	81.2	79.1	80.6	82.1	83.6	85.1	86.5	88.0	89.5
100°	109.5	107.8	106.1	104.4	104.4	104.4	104.4	104.4	104.4	104.4	104.4
102.5°	178.3	171.0	163.8	156.6	161.5	166.4	171.3	176.2	181.1	185.9	190.9
105°	340.8	321.0	301.2	281.4	300.6	319.7	338.9	358.0	377.2	396.5	415.7
107.5°	622.9	591.6	560.3	529.1	564.1	598.9	633.9	668.8	703.7	738.6	773.7
110°	933.3	903.5	873.7	843.9	880.9	918.0	955.0	992.1	1029.2	1066.3	1103.4



TEST NUMBER: P1444455
 CATALOG NUMBER: EHBR1-30-UNV-TA-L830-UPL36

CANDELA DISTRIBUTION (continued):

	82.5°	85°	87.5°	90°	92.5°	95°	97.5°	100°	102.5°	105°	107.5°
112.5°	1140.9	1126.4	1112.0	1097.4	1121.3	1145.1	1169.0	1193.0	1216.9	1240.8	1264.7
115°	1194.8	1193.9	1193.1	1192.2	1203.5	1214.8	1226.1	1237.5	1248.8	1260.2	1271.6
117.5°	1128.6	1136.6	1144.8	1152.8	1156.5	1160.0	1163.8	1167.4	1171.2	1174.9	1178.8
120°	1010.6	1021.2	1032.1	1042.9	1041.4	1039.9	1038.5	1037.0	1035.9	1034.5	1033.4
122.5°	872.4	883.0	893.9	904.7	901.5	898.3	895.2	892.1	889.1	886.0	883.1
125°	743.5	752.4	761.4	770.4	767.3	764.1	761.0	758.1	755.1	752.1	749.4
127.5°	641.2	646.7	652.2	657.9	656.4	654.9	653.6	652.2	651.1	650.0	649.0
130°	570.8	573.4	576.0	578.6	579.0	579.4	580.0	580.7	581.4	582.2	583.1
132.5°	528.8	529.1	529.8	530.5	532.1	533.8	535.8	537.7	539.8	541.8	544.3
135°	503.9	503.2	502.7	502.4	504.9	507.3	510.1	512.8	515.8	518.8	522.0
137.5°	490.9	489.9	489.1	488.0	490.6	493.1	495.9	498.6	501.5	504.5	507.7
140°	484.2	483.2	482.7	481.8	484.4	486.9	489.6	492.3	495.3	498.3	501.4
142.5°	478.3	477.3	476.8	476.1	478.3	480.6	483.2	485.7	488.4	490.9	493.8
145°	477.5	476.9	476.4	475.9	477.5	479.2	481.1	483.0	484.9	486.8	489.1
147.5°	472.9	472.5	472.3	472.0	473.3	474.4	475.8	477.2	478.7	480.2	481.8
150°	466.3	466.1	466.0	466.0	466.8	467.5	468.4	469.2	470.3	471.3	472.5
152.5°	456.0	455.7	455.9	455.8	456.5	457.3	458.1	458.9	459.8	460.7	461.7
155°	447.9	447.7	447.4	447.1	447.4	447.6	448.0	448.2	448.8	449.1	449.6
157.5°	442.9	442.5	442.3	441.9	441.9	441.9	442.0	442.0	442.3	442.2	442.4
160°	438.0	437.3	436.9	436.4	436.7	436.7	437.1	437.1	437.4	437.6	438.0
162.5°	437.3	436.9	436.7	436.3	436.1	435.8	435.6	435.2	435.0	434.8	434.7
165°	435.9	435.3	434.8	434.3	434.3	434.2	434.2	434.1	434.1	434.0	434.2
167.5°	438.0	437.3	436.8	436.2	435.9	435.4	435.0	434.5	434.2	433.8	433.5
170°	437.7	437.2	436.7	436.2	436.0	435.8	435.7	435.5	435.4	435.3	435.3
172.5°	441.1	440.6	440.2	439.8	439.6	439.4	439.3	439.2	439.1	439.1	439.0
175°	443.1	442.9	442.8	442.7	442.4	442.2	441.8	441.7	441.5	441.2	440.9
177.5°	443.8	443.4	443.3	443.1	443.0	443.0	443.0	443.0	443.0	442.9	442.8
180°	443.2	443.2	443.2	443.2	443.2	443.2	443.2	443.2	443.2	443.2	443.2



TEST NUMBER: P1444455
 CATALOG NUMBER: EHBR1-30-UNV-TA-L830-UPL36

CANDELA DISTRIBUTION (continued):

	110°	112.5°	115°	117.5°	120°	122.5°	125°	127.5°	130°	132.5°	135°
0°	24616.1	24616.1	24616.1	24616.1	24616.1	24616.1	24616.1	24616.1	24616.1	24616.1	24616.1
2.5°	24629.6	24623.2	24606.1	24597.7	24582.0	24574.0	24561.7	24553.8	24543.8	24536.4	24532.6
5°	25312.0	25280.6	25217.4	25178.5	25110.4	25065.6	24997.9	24948.2	24878.3	24826.8	24760.8
7.5°	26199.9	26151.6	26070.8	26009.4	25914.1	25841.2	25734.2	25648.6	25530.4	25432.2	25311.5
10°	26561.4	26533.2	26496.9	26457.4	26404.6	26352.8	26279.7	26205.3	26106.1	26007.3	25878.4
12.5°	26027.1	26053.7	26106.1	26130.5	26170.5	26184.1	26202.5	26193.8	26177.6	26137.4	26078.8
15°	24514.0	24625.0	24800.1	24921.2	25091.0	25210.2	25367.9	25469.5	25586.5	25656.4	25722.8
17.5°	22025.1	22239.5	22548.6	22795.2	23126.3	23395.4	23725.2	23984.3	24283.4	24513.0	24757.3
20°	18837.2	19137.4	19564.1	19926.5	20406.2	20812.9	21334.1	21770.6	22279.8	22704.3	23162.5
22.5°	15406.1	15759.3	16248.2	16685.2	17258.1	17769.7	18422.6	18999.8	19688.3	20304.9	20987.2
25°	12169.3	12515.4	13013.4	13466.0	14084.4	14648.0	15361.3	16023.4	16822.4	17567.3	18422.6
27.5°	9393.5	9700.9	10138.7	10546.1	11112.5	11665.8	12389.7	13095.8	13948.3	14748.9	15670.6
30°	7254.4	7503.9	7854.7	8182.3	8637.0	9089.5	9734.4	10387.4	11235.6	12065.3	13010.2
32.5°	5621.9	5834.7	6127.5	6393.5	6743.8	7085.0	7559.9	8081.7	8825.8	9620.5	10534.1
35°	4352.0	4534.0	4783.2	5012.3	5300.5	5571.4	5925.7	6298.1	6866.0	7534.4	8352.1
37.5°	3469.7	3543.9	3721.7	3909.4	4148.8	4371.3	4648.5	4924.0	5330.2	5857.6	6525.6
40°	2638.6	2756.5	2901.2	3049.1	3230.2	3408.8	3712.9	3859.3	4126.8	4505.4	5023.9
42.5°	2129.0	2211.9	2313.8	2416.6	2542.9	2667.2	2821.0	2977.7	3177.6	3434.1	3802.9
45°	1781.6	1835.7	1901.3	1969.8	2052.8	2137.6	2240.6	2348.1	2483.7	2641.3	2865.3
47.5°	1549.5	1579.4	1622.3	1669.0	1725.9	1784.6	1851.6	1920.2	2004.4	2097.9	2225.3
50°	1368.3	1393.3	1426.6	1457.9	1497.0	1557.3	1583.9	1621.7	1672.3	1727.4	1798.7
52.5°	1237.3	1253.9	1274.8	1292.8	1317.6	1340.1	1369.7	1395.7	1430.7	1463.8	1509.9
55°	1135.2	1141.2	1153.1	1164.6	1181.8	1197.2	1217.4	1234.5	1256.9	1276.6	1305.7
57.5°	1056.3	1056.9	1062.4	1068.4	1079.5	1089.1	1103.1	1114.3	1129.8	1142.4	1159.8
60°	999.7	996.7	997.8	999.8	1006.1	1012.4	1021.3	1028.6	1038.3	1045.5	1055.3
62.5°	952.5	947.8	946.7	946.2	949.3	951.5	956.4	959.9	965.5	968.6	973.8
65°	893.0	887.4	885.2	882.7	883.6	882.8	884.6	884.7	887.5	888.2	891.2
67.5°	838.9	834.3	831.5	828.1	826.5	824.0	822.9	820.6	820.2	818.1	817.7
70°	789.6	785.1	782.7	779.5	777.9	774.7	772.6	768.6	766.2	762.5	760.4
72.5°	732.7	730.1	729.4	727.2	726.6	724.8	724.0	721.2	719.5	716.3	714.5
75°	673.1	671.0	670.8	668.6	668.4	666.3	665.7	662.7	661.1	657.9	656.5
77.5°	602.1	599.0	598.1	595.6	596.2	595.1	596.0	593.7	592.7	589.6	588.5
80°	522.2	518.2	516.5	513.1	514.1	512.6	514.1	513.9	515.1	512.6	512.1
82.5°	427.5	423.1	422.3	419.9	421.5	421.7	425.1	423.2	424.0	421.6	422.5
85°	311.1	307.8	303.2	302.7	299.7	302.7	298.8	301.4	297.1	300.1	296.1
87.5°	192.9	186.1	182.6	177.7	175.9	171.2	169.4	166.0	166.9	165.4	166.3
90°	101.3	97.0	98.6	96.8	99.2	97.9	101.3	101.2	104.9	104.8	108.8
92.5°	58.5	61.3	66.3	71.7	76.6	81.7	86.7	92.1	97.0	102.3	107.3
95°	72.4	74.9	81.8	88.5	95.4	102.2	109.0	115.9	122.7	129.5	136.3
97.5°	91.0	92.5	99.4	106.1	113.0	119.8	126.5	133.6	140.4	147.2	154.0
100°	104.4	104.5	123.9	143.3	162.6	182.1	201.5	220.9	240.4	259.7	279.1
102.5°	195.8	200.6	249.6	298.7	347.6	396.6	445.7	494.8	543.7	592.8	641.9
105°	434.8	454.1	528.9	603.7	678.4	753.2	828.1	903.0	977.7	1052.6	1127.4
107.5°	808.6	843.6	911.1	978.8	1046.2	1113.9	1181.6	1249.2	1316.7	1384.5	1452.2
110°	1140.5	1177.6	1222.9	1268.2	1313.5	1358.8	1404.0	1449.4	1494.8	1540.1	1585.6



TEST NUMBER: P1444455
 CATALOG NUMBER: EHBR1-30-UNV-TA-L830-UPL36

CANDELA DISTRIBUTION (continued):

	110°	112.5°	115°	117.5°	120°	122.5°	125°	127.5°	130°	132.5°	135°
112.5°	1288.5	1312.6	1338.9	1365.3	1391.8	1418.2	1444.5	1470.9	1497.5	1524.0	1550.5
115°	1283.1	1294.4	1304.6	1315.0	1325.1	1335.5	1345.8	1356.3	1366.7	1377.1	1387.5
117.5°	1182.4	1186.4	1187.9	1189.5	1191.1	1192.9	1194.6	1196.3	1198.1	1199.9	1201.6
120°	1032.1	1030.8	1029.1	1027.3	1025.6	1024.0	1022.4	1020.8	1019.4	1017.9	1016.2
122.5°	880.2	877.5	875.7	874.1	872.6	871.1	869.5	868.2	866.8	865.4	863.9
125°	746.6	743.8	745.2	746.7	748.2	749.8	751.3	753.0	754.6	756.3	758.0
127.5°	647.8	647.0	650.8	654.7	658.6	662.6	666.7	670.8	674.7	678.9	682.9
130°	584.1	585.2	590.1	595.2	600.2	605.4	610.6	615.8	620.9	626.0	631.2
132.5°	546.5	549.0	553.6	558.6	563.5	568.5	573.4	578.3	583.4	588.4	593.1
135°	525.2	528.4	532.8	537.3	541.8	546.4	550.8	555.5	559.9	564.4	568.8
137.5°	510.8	514.1	517.7	521.2	524.7	528.5	532.1	535.8	539.3	542.9	546.5
140°	504.6	507.8	509.8	511.9	514.0	516.0	517.9	520.1	522.0	524.2	526.1
142.5°	496.6	499.7	500.9	502.3	503.4	505.0	506.3	507.7	508.8	510.0	511.3
145°	491.2	493.5	493.5	493.7	493.8	494.1	494.1	494.3	494.2	494.4	494.4
147.5°	483.4	485.2	484.8	484.7	484.6	484.3	484.1	483.9	483.5	483.3	483.1
150°	473.5	474.7	474.1	473.6	472.9	472.5	471.7	471.3	470.6	470.1	469.5
152.5°	462.6	463.7	462.8	462.4	461.6	461.0	460.2	459.6	458.9	458.2	457.7
155°	449.9	450.5	450.0	449.7	449.2	449.0	448.5	448.4	448.0	447.7	447.5
157.5°	442.6	442.7	442.5	442.2	441.9	441.8	441.6	441.5	441.4	441.4	441.4
160°	438.1	438.5	438.2	437.9	437.7	437.5	437.3	437.3	437.2	437.3	437.3
162.5°	434.4	434.4	434.1	433.9	433.6	433.5	433.4	433.5	433.3	433.4	433.5
165°	434.3	434.4	433.8	433.6	433.1	432.9	432.5	432.3	432.1	432.0	431.8
167.5°	433.2	433.0	433.0	433.1	433.1	433.2	433.3	433.7	433.8	434.2	434.2
170°	435.2	435.3	435.0	434.9	434.6	434.5	434.4	434.4	434.2	434.2	434.1
172.5°	439.0	439.0	438.6	438.2	437.7	437.4	437.0	436.7	436.2	435.9	435.5
175°	440.6	440.4	440.3	440.0	439.8	439.5	439.2	438.8	438.7	438.4	438.2
177.5°	442.7	442.5	442.4	442.4	442.3	442.2	442.2	442.1	442.1	442.1	441.9
180°	443.2	443.2	443.2	443.2	443.2	443.2	443.2	443.2	443.2	443.2	443.2



TEST NUMBER: P1444455
 CATALOG NUMBER: EHBR1-30-UNV-TA-L830-UPL36

CANDELA DISTRIBUTION (continued):

	137.5°	140°	142.5°	145°	147.5°	150°	152.5°	155°	157.5°	160°	162.5°
0°	24616.1	24616.1	24616.1	24616.1	24616.1	24616.1	24616.1	24616.1	24616.1	24616.1	24616.1
2.5°	24527.6	24527.3	24525.0	24526.1	24526.6	24528.3	24530.4	24532.6	24533.1	24534.7	24535.1
5°	24711.2	24650.5	24605.7	24556.3	24519.2	24485.8	24463.6	24445.9	24439.0	24440.7	24444.8
7.5°	25209.0	25083.8	24980.3	24862.9	24764.9	24661.1	24575.1	24493.3	24433.8	24389.4	24364.5
10°	25755.2	25602.6	25456.7	25286.6	25125.3	24953.2	24797.2	24640.2	24509.4	24395.6	24312.2
12.5°	25997.6	25889.7	25763.5	25603.1	25430.5	25231.8	25031.3	24816.2	24616.2	24430.6	24280.9
15°	25740.9	25741.1	25695.1	25618.1	25498.2	25339.5	25148.4	24924.2	24688.3	24447.5	24227.6
17.5°	24926.3	25080.0	25165.4	25219.6	25202.9	25144.5	25022.9	24850.7	24630.8	24374.3	24105.9
20°	23527.2	23889.8	24148.3	24380.7	24511.0	24597.5	24588.9	24518.8	24362.2	24144.1	23864.6
22.5°	21567.4	22175.9	22656.1	23103.8	23417.8	23673.3	23794.7	23846.3	23775.3	23623.4	23361.0
25°	19187.1	20014.4	20720.5	21405.7	21919.6	22361.4	22626.9	22813.9	22828.8	22749.4	22515.2
27.5°	16542.0	17518.6	18412.2	19322.9	20045.8	20680.8	21097.4	21402.4	21499.2	21486.5	21273.9
30°	13900.4	14925.6	15910.7	16972.5	17867.0	18678.3	19228.7	19641.1	19800.1	19830.5	19625.9
32.5°	11405.6	12416.6	13398.9	14509.1	15493.4	16423.1	17073.4	17563.4	17748.2	17791.7	17567.3
35°	9141.4	10074.2	11007.6	12083.6	13062.2	14025.1	14710.3	15223.2	15395.8	15424.9	15165.2
37.5°	7178.0	7972.7	8786.1	9751.5	10650.2	11554.5	12205.5	12687.5	12813.2	12805.5	12511.5
40°	5524.8	6142.7	6796.2	7591.0	8338.1	9102.6	9652.3	10050.8	10116.8	10067.9	9759.2
42.5°	4154.3	4600.6	5074.4	5667.7	6222.1	6794.1	7194.1	7490.0	7499.4	7422.0	7144.8
45°	3095.0	3530.4	3729.0	4087.7	4444.8	4825.3	5069.5	5252.2	5223.9	5155.8	4945.3
47.5°	2359.4	2526.7	2704.2	2926.6	3134.6	3566.2	3534.3	3827.8	3616.4	3760.5	3443.2
50°	1873.6	1967.1	2062.7	2180.8	2289.4	2402.3	2472.8	2525.5	2518.6	2496.0	2435.2
52.5°	1594.0	1622.8	1670.0	1737.1	1797.8	1858.8	1899.0	1931.6	1932.2	1923.2	1892.3
55°	1332.2	1368.9	1402.7	1446.7	1521.3	1532.8	1590.4	1578.7	1583.3	1567.3	1583.7
57.5°	1174.6	1195.9	1215.0	1241.1	1262.7	1287.9	1302.8	1317.1	1315.7	1312.6	1297.0
60°	1062.9	1074.7	1085.3	1100.5	1112.3	1126.6	1133.4	1140.7	1138.4	1133.0	1119.1
62.5°	976.8	984.2	990.2	1000.0	1007.2	1016.1	1019.7	1022.8	1019.7	1014.6	1002.4
65°	891.8	896.6	900.5	907.9	912.9	920.5	923.5	926.4	923.6	919.7	910.3
67.5°	815.2	815.7	815.3	818.3	819.9	824.5	825.8	828.0	824.6	821.2	813.3
70°	757.1	755.9	754.5	755.6	755.9	758.1	758.5	758.1	754.2	748.3	739.7
72.5°	711.7	711.1	709.9	711.0	711.0	712.9	712.4	711.3	706.5	700.8	692.2
75°	653.3	652.9	650.6	650.7	649.0	649.5	647.2	645.9	640.4	635.7	628.1
77.5°	585.0	583.9	580.7	579.4	576.0	574.6	570.1	567.9	562.4	558.6	552.0
80°	508.7	507.5	503.4	501.1	495.6	492.1	485.6	481.8	475.6	471.8	465.5
82.5°	420.5	421.0	416.8	414.0	406.2	400.2	391.4	386.7	379.7	376.1	369.4
85°	299.1	294.8	297.0	296.8	292.0	286.7	279.6	274.6	268.7	265.3	260.7
87.5°	164.0	165.0	163.8	162.8	159.3	156.7	151.2	148.3	144.0	141.8	138.4
90°	101.4	98.3	91.0	88.0	81.0	76.4	68.8	64.8	57.5	55.6	51.3
92.5°	101.5	95.7	90.2	84.2	78.7	72.9	67.2	61.4	55.6	53.6	51.8
95°	128.0	119.8	111.5	103.2	94.9	86.6	78.4	70.2	61.8	60.1	58.5
97.5°	144.3	134.5	124.8	115.0	105.3	95.5	85.8	76.0	66.2	65.2	64.1
100°	256.7	234.1	211.5	188.9	166.5	144.0	121.5	98.9	76.4	75.1	73.9
102.5°	587.2	532.6	478.0	423.4	368.8	314.1	259.5	204.8	150.2	142.3	134.4
105°	1044.7	962.0	879.5	796.8	714.0	631.2	548.6	465.8	383.1	356.6	330.0
107.5°	1374.4	1296.6	1219.0	1141.3	1063.4	985.8	908.0	830.1	752.3	705.5	658.8
110°	1523.8	1462.0	1400.5	1338.7	1277.0	1215.3	1153.6	1091.7	1030.0	989.6	949.4



TEST NUMBER: P1444455
 CATALOG NUMBER: EHBR1-30-UNV-TA-L830-UPL36

CANDELA DISTRIBUTION (continued):

	137.5°	140°	142.5°	145°	147.5°	150°	152.5°	155°	157.5°	160°	162.5°
112.5°	1505.4	1460.0	1415.0	1369.7	1324.4	1279.1	1233.8	1188.4	1143.1	1118.6	1094.2
115°	1360.3	1332.9	1305.8	1278.4	1251.2	1223.8	1196.6	1169.0	1141.7	1128.7	1115.8
117.5°	1187.8	1173.8	1159.9	1145.8	1131.8	1117.7	1103.7	1089.6	1075.5	1071.0	1066.3
120°	1012.2	1007.9	1003.4	999.1	994.8	990.4	985.9	981.5	977.0	977.5	977.9
122.5°	865.4	866.9	868.5	869.8	871.5	872.8	874.3	875.5	876.9	880.3	883.6
125°	761.8	765.7	769.6	773.4	777.4	781.1	785.1	788.7	792.6	795.9	799.4
127.5°	687.4	691.6	696.1	700.3	704.8	708.9	713.3	717.4	721.8	724.8	727.9
130°	635.0	638.6	642.5	646.1	649.9	653.6	657.3	661.0	664.8	667.0	669.4
132.5°	596.5	599.9	603.3	606.4	609.9	613.1	616.5	619.8	623.2	624.8	626.6
135°	571.4	573.7	576.2	578.5	581.2	583.6	586.1	588.5	591.2	592.2	593.4
137.5°	548.5	550.3	552.5	554.4	556.5	558.5	560.6	562.6	564.9	565.2	565.9
140°	528.2	530.4	532.5	534.7	536.9	539.0	541.4	543.7	546.1	546.4	547.0
142.5°	512.9	514.5	516.2	517.8	519.6	521.2	523.1	525.0	526.9	527.3	527.8
145°	496.5	498.4	500.5	502.5	504.3	506.5	508.8	511.1	513.4	513.5	513.8
147.5°	484.7	486.3	488.2	489.9	491.7	493.5	495.6	497.5	499.6	499.7	499.9
150°	471.4	473.2	475.1	476.9	478.8	480.9	483.1	485.2	487.7	488.1	488.7
152.5°	459.6	461.6	463.7	465.8	468.0	470.2	472.6	474.9	477.3	477.7	478.4
155°	449.5	451.4	453.6	455.8	458.0	460.0	462.5	464.7	467.0	467.8	468.4
157.5°	443.3	444.9	446.9	448.9	450.7	452.6	454.8	456.7	458.9	459.5	460.0
160°	438.9	440.4	442.2	444.0	445.6	447.4	449.2	450.9	452.8	453.4	453.9
162.5°	435.2	436.8	438.6	440.0	441.8	443.5	445.4	447.0	448.9	449.3	449.8
165°	433.0	434.3	435.5	436.6	438.0	439.1	440.5	441.8	443.2	443.6	444.3
167.5°	435.3	436.1	437.0	437.9	439.0	440.0	441.0	441.9	443.1	443.5	444.2
170°	435.0	435.9	436.6	437.5	438.5	439.4	440.3	441.1	442.2	442.7	443.3
172.5°	436.1	436.5	437.3	437.7	438.4	438.8	439.6	440.2	440.8	441.6	442.1
175°	438.6	438.8	439.1	439.3	439.7	440.0	440.3	440.7	441.0	441.6	442.0
177.5°	442.1	442.3	442.6	442.8	443.2	443.3	443.7	443.9	444.2	444.8	445.6
180°	443.2	443.2	443.2	443.2	443.2	443.2	443.2	443.2	443.2	443.2	443.2



TEST NUMBER: P1444455
 CATALOG NUMBER: EHBR1-30-UNV-TA-L830-UPL36

CANDELA DISTRIBUTION (continued):

	165°	167.5°	170°	172.5°	175°	177.5°	180°	182.5°	185°	187.5°	190°
0°	24616.1	24616.1	24616.1	24616.1	24616.1	24616.1	24616.1	24616.1	24616.1	24616.1	24616.1
2.5°	24534.3	24534.1	24533.2	24532.1	24531.0	24531.7	24532.8	24535.6	24540.6	24547.7	24556.9
5°	24448.2	24453.3	24456.1	24456.4	24453.8	24452.3	24454.7	24461.4	24475.0	24497.8	24528.7
7.5°	24357.9	24364.1	24373.5	24380.7	24382.1	24380.3	24380.7	24391.2	24416.3	24460.7	24523.1
10°	24261.4	24243.1	24252.8	24270.5	24284.6	24287.1	24288.9	24301.3	24338.0	24405.1	24505.2
12.5°	24172.4	24114.4	24103.2	24119.1	24140.5	24147.3	24145.5	24150.8	24193.8	24282.6	24422.2
15°	24055.2	23946.0	23908.7	23912.9	23939.2	23948.7	23941.8	23931.2	23973.1	24081.6	24262.1
17.5°	23865.7	23689.6	23621.0	23618.0	23648.8	23657.1	23640.1	23607.2	23648.4	23783.9	24008.0
20°	23577.5	23317.6	23188.4	23167.9	23201.3	23191.6	23157.8	23108.1	23162.3	23326.9	23593.4
22.5°	23059.4	22730.1	22509.4	22438.2	22478.3	22451.5	22402.1	22338.8	22410.8	22597.8	22894.7
25°	22212.8	21832.2	21530.2	21360.6	21392.6	21344.7	21290.9	21214.1	21299.9	21514.6	21841.4
27.5°	20968.4	20528.9	20154.4	19873.9	19884.2	19821.4	19759.5	19660.1	19767.3	20021.3	20389.9
30°	19313.7	18805.1	18349.1	17967.8	17933.7	17872.8	17809.4	17679.0	17813.0	18117.2	18547.9
32.5°	17235.6	16670.9	16144.1	15662.0	15571.0	15511.6	15455.1	15305.0	15480.5	15835.2	16330.0
35°	14805.4	14203.9	13632.7	13082.0	12931.4	12872.0	12822.6	12678.7	12897.8	13283.7	13818.1
37.5°	12138.0	11523.5	10956.4	10391.7	10178.7	10098.2	10062.3	9968.1	10220.9	10602.6	11139.2
40°	9399.5	8828.1	8319.8	7821.0	7578.3	7455.0	7436.2	7419.0	7663.4	7994.6	8481.6
42.5°	6837.8	6376.8	5984.8	5603.6	5383.5	5215.2	5215.1	5266.3	5486.3	5734.3	6110.0
45°	4729.9	4420.5	4170.8	3916.0	3984.1	3648.6	3845.8	3744.5	3853.2	4013.2	4257.4
47.5°	3251.3	3082.5	2945.3	2802.9	2699.2	2600.1	2608.8	2672.7	2775.1	2870.0	2997.1
50°	2369.7	2283.7	2213.8	2139.9	2088.3	2044.6	2047.1	2074.7	2128.6	2178.6	2245.1
52.5°	1856.8	1809.3	1771.4	1730.6	1703.4	1681.8	1682.9	1696.3	1725.4	1754.0	1792.1
55°	1530.5	1524.8	1475.4	1438.7	1424.7	1410.1	1412.7	1418.1	1437.8	1454.6	1479.8
57.5°	1282.5	1260.3	1245.5	1226.2	1217.3	1207.1	1209.5	1211.4	1224.7	1235.9	1254.1
60°	1107.5	1091.7	1081.2	1068.1	1062.3	1055.8	1057.3	1058.5	1066.9	1074.2	1087.2
62.5°	991.1	977.1	968.0	957.8	953.8	949.4	950.4	950.7	956.0	961.3	971.3
65°	901.9	890.8	883.2	874.4	870.1	865.6	866.1	866.1	870.5	874.4	881.8
67.5°	807.5	799.2	794.2	787.3	784.4	779.7	779.6	778.2	781.1	782.6	787.7
70°	731.9	723.3	717.1	710.4	706.7	702.6	702.7	702.8	706.2	709.7	716.2
72.5°	685.0	677.0	671.3	665.5	662.1	658.6	657.9	657.6	660.0	662.0	666.3
75°	623.1	616.6	613.4	607.8	605.1	601.2	600.5	598.7	600.0	600.3	603.5
77.5°	548.0	541.8	539.2	533.6	531.3	526.9	526.5	524.5	525.4	524.7	527.2
80°	462.3	456.7	455.2	450.7	449.6	445.5	444.8	442.4	443.1	441.2	442.1
82.5°	366.6	361.6	360.4	356.2	356.2	352.5	352.3	348.5	348.5	345.4	340.3
85°	258.3	254.5	253.0	249.5	248.5	245.5	243.9	240.4	239.1	236.8	236.1
87.5°	136.3	133.9	131.8	130.2	127.2	121.8	121.3	117.6	117.8	115.2	115.4
90°	49.8	45.9	44.6	40.9	39.3	36.4	35.0	35.9	37.2	38.1	39.6
92.5°	49.9	48.0	46.1	44.1	42.2	40.3	38.4	40.3	42.2	44.1	46.1
95°	56.7	55.0	53.3	51.6	49.8	48.1	46.5	48.1	49.8	51.7	53.4
97.5°	63.0	61.9	60.9	59.8	58.7	57.6	56.6	57.7	58.8	59.9	61.0
100°	72.6	71.3	70.1	68.8	67.4	66.2	64.9	66.4	67.6	68.9	70.3
102.5°	126.6	118.8	110.8	102.9	95.1	87.2	79.3	87.2	95.1	103.0	110.9
105°	303.4	276.9	250.2	223.6	197.0	170.4	143.8	170.5	197.1	223.7	250.4
107.5°	612.0	565.3	518.5	471.7	424.8	378.1	331.2	378.1	425.0	471.8	518.7
110°	909.0	868.6	828.3	788.0	747.5	707.1	666.7	707.2	747.7	788.1	828.6



TEST NUMBER: P1444455
 CATALOG NUMBER: EHBR1-30-UNV-TA-L830-UPL36

CANDELA DISTRIBUTION (continued):

	165°	167.5°	170°	172.5°	175°	177.5°	180°	182.5°	185°	187.5°	190°
112.5°	1069.5	1045.0	1020.5	995.9	971.2	946.7	922.0	946.9	971.6	996.4	1021.0
115°	1102.8	1089.8	1076.9	1063.9	1050.8	1037.8	1024.6	1038.1	1051.3	1064.5	1077.7
117.5°	1061.8	1057.3	1052.5	1047.9	1043.2	1038.5	1033.8	1038.7	1043.7	1048.7	1053.4
120°	978.2	978.8	979.0	979.3	979.7	980.0	980.2	980.4	980.4	980.4	980.3
122.5°	886.9	890.1	893.2	896.4	899.6	902.7	905.7	903.1	900.4	897.6	894.7
125°	802.6	806.0	809.3	812.6	815.8	819.1	822.0	819.5	816.8	814.0	811.1
127.5°	730.9	733.9	736.8	739.9	742.6	745.3	748.0	745.9	743.6	741.2	738.7
130°	671.5	674.0	675.9	678.1	680.1	682.0	683.8	682.6	681.1	679.8	678.0
132.5°	628.2	629.8	631.5	633.1	634.4	635.9	637.0	636.5	635.7	634.9	633.8
135°	594.4	595.5	596.5	597.6	598.3	599.1	599.6	599.8	599.5	599.3	598.8
137.5°	566.2	566.9	567.2	567.5	567.6	567.8	567.7	568.5	568.9	569.5	569.6
140°	547.4	548.1	548.3	548.7	549.0	549.3	549.1	549.9	550.3	550.8	550.9
142.5°	528.3	528.9	529.1	529.6	529.7	530.0	529.9	530.6	531.0	531.5	531.7
145°	514.2	514.3	514.4	514.6	514.6	514.5	514.2	515.2	515.8	516.4	517.0
147.5°	500.2	500.5	500.4	500.5	500.5	500.4	500.1	501.0	501.7	502.3	502.8
150°	489.2	489.8	490.3	490.6	490.9	491.2	491.2	491.8	492.1	492.4	492.5
152.5°	478.8	479.2	479.7	480.1	480.3	480.4	480.5	481.0	481.5	481.9	482.1
155°	468.9	469.6	470.1	470.7	471.1	471.5	471.8	472.2	472.5	472.7	472.9
157.5°	460.5	461.1	461.6	462.2	462.5	463.1	463.5	463.9	464.1	464.5	464.7
160°	454.3	455.0	455.3	455.9	456.4	456.8	457.2	457.6	458.0	458.2	458.6
162.5°	450.3	450.8	451.1	451.7	452.1	452.6	453.0	453.4	453.7	454.1	454.4
165°	445.0	445.7	446.2	446.9	447.7	448.3	448.8	449.0	449.1	449.2	449.2
167.5°	444.7	445.4	446.0	446.6	447.1	447.8	448.4	448.6	448.5	448.6	448.7
170°	443.7	444.3	444.9	445.4	446.0	446.6	447.0	447.1	447.1	447.2	447.3
172.5°	442.8	443.5	444.2	444.9	445.6	446.2	446.8	446.7	446.5	446.2	446.0
175°	442.6	443.3	443.8	444.4	444.9	445.5	446.2	445.8	445.7	445.3	445.1
177.5°	446.3	447.2	447.8	448.5	449.2	449.9	450.7	450.0	449.4	448.9	448.2
180°	443.2	443.2	443.2	443.2	443.2	443.2	443.2	443.2	443.2	443.2	443.2



TEST NUMBER: P1444455
 CATALOG NUMBER: EHBR1-30-UNV-TA-L830-UPL36

CANDELA DISTRIBUTION (continued):

	192.5°	195°	197.5°	200°	202.5°	205°	207.5°	210°	212.5°	215°	217.5°
0°	24616.1	24616.1	24616.1	24616.1	24616.1	24616.1	24616.1	24616.1	24616.1	24616.1	24616.1
2.5°	24570.1	24582.4	24601.2	24618.2	24643.9	24664.1	24694.5	24717.6	24751.9	24774.2	24811.5
5°	24572.3	24620.4	24683.6	24745.2	24819.4	24886.8	24970.4	25041.7	25125.8	25194.4	25280.4
7.5°	24607.1	24699.7	24810.8	24922.8	25049.4	25167.9	25301.3	25422.1	25554.1	25665.8	25787.9
10°	24632.6	24775.7	24939.4	25104.2	25277.6	25438.7	25601.4	25742.0	25873.3	25981.4	26076.9
12.5°	24597.9	24794.9	25005.0	25207.9	25400.7	25567.5	25707.4	25815.6	25890.2	25940.8	25952.6
15°	24479.8	24716.7	24945.2	25147.3	25307.3	25430.7	25494.6	25524.6	25492.4	25439.1	25322.0
17.5°	24259.1	24509.1	24713.3	24872.7	24957.3	24990.7	24937.8	24845.8	24665.9	24466.2	24177.8
20°	23854.5	24087.4	24235.6	24322.5	24299.8	24216.2	24016.4	23773.6	23414.3	23031.6	22526.4
22.5°	23144.8	23348.4	23427.4	23433.8	23295.8	23086.3	22726.0	22309.4	21742.8	21153.7	20429.2
25°	22079.5	22257.9	22270.3	22200.3	21947.7	21608.2	21079.0	20489.9	19719.9	18934.9	18027.1
27.5°	20634.8	20805.8	20763.9	20633.3	20282.6	19828.3	19150.8	18389.7	17440.4	16513.2	15509.0
30°	18818.7	19001.6	18952.4	18784.8	18367.6	17830.7	17033.6	16149.1	15095.3	14105.1	13087.4
32.5°	16645.3	16876.6	16842.6	16683.3	16248.0	15673.4	14808.4	13870.4	12792.2	11816.4	10826.5
35°	14174.9	14455.8	14470.3	14366.1	13962.0	13394.1	12540.0	11632.1	10599.3	9678.6	8764.1
37.5°	11513.5	11839.1	11905.9	11877.7	11542.9	11041.5	10263.4	9448.9	8534.0	7727.0	6944.9
40°	8837.3	9166.8	9281.1	9315.0	9067.9	8679.6	8040.9	7383.5	6637.6	5983.8	5362.8
42.5°	6396.7	6688.9	6799.3	6868.8	6714.5	6455.6	5989.7	5512.3	4965.9	4494.2	4042.1
45°	4442.6	4649.3	4733.3	4803.3	4719.2	4573.2	4279.0	3980.4	3619.6	3311.5	3019.8
47.5°	3106.1	3220.0	3275.5	3309.5	3276.9	3200.7	3040.7	2867.6	2664.0	2484.0	2310.8
50°	2302.2	2362.9	2392.0	2411.6	2387.9	2345.5	2258.9	2164.7	2052.9	1950.9	1851.1
52.5°	1824.5	1859.3	1876.5	1887.1	1873.5	1847.6	1797.2	1741.3	1674.3	1611.2	1578.1
55°	1537.0	1535.3	1575.1	1555.9	1575.1	1532.1	1523.1	1461.7	1406.0	1366.8	1324.4
57.5°	1267.6	1285.6	1293.3	1301.8	1296.3	1288.4	1267.0	1245.0	1215.7	1191.1	1164.9
60°	1097.3	1112.1	1120.5	1129.0	1128.5	1125.5	1113.1	1100.0	1081.6	1066.9	1051.1
62.5°	979.9	992.7	1001.1	1009.2	1010.0	1008.7	999.4	990.2	977.7	968.5	957.6
65°	887.5	896.6	902.2	908.7	908.4	906.6	898.1	890.6	880.3	873.9	865.9
67.5°	791.0	797.8	802.2	808.3	809.5	809.9	805.2	801.6	796.6	794.8	792.1
70°	722.3	730.5	737.6	745.3	749.6	751.5	749.6	747.7	744.8	743.6	741.4
72.5°	670.3	677.3	682.8	689.8	693.7	696.5	694.9	694.0	691.5	691.1	689.6
75°	605.7	610.5	613.6	618.9	621.0	623.7	622.4	623.1	622.3	624.3	624.2
77.5°	528.0	531.6	533.1	536.9	537.3	540.5	541.1	544.9	547.6	553.4	556.5
80°	440.6	442.9	442.9	446.8	448.6	453.9	456.6	462.6	465.5	470.7	471.1
82.5°	342.3	339.7	342.3	340.7	345.6	351.7	352.5	357.7	358.9	362.2	359.6
85°	234.0	233.8	231.7	232.1	230.5	231.3	230.3	231.4	230.4	230.5	228.2
87.5°	112.1	113.2	110.6	111.5	109.1	110.3	108.1	109.8	107.3	107.6	104.0
90°	40.7	42.0	43.1	44.5	46.2	49.7	53.5	57.1	61.2	64.6	68.5
92.5°	48.0	50.0	51.9	53.9	55.7	61.4	67.3	73.0	78.9	84.5	90.3
95°	55.1	56.8	58.5	60.4	62.1	70.4	78.7	87.0	95.3	103.6	111.8
97.5°	62.2	63.3	64.4	65.5	66.6	76.3	86.2	95.9	105.8	115.5	125.2
100°	71.6	72.9	74.2	75.5	76.8	99.4	122.0	144.5	167.1	189.5	212.1
102.5°	119.0	126.8	134.7	142.8	150.6	205.3	260.0	314.7	369.3	424.0	478.7
105°	277.1	303.7	330.5	357.1	383.7	466.5	549.3	632.1	714.7	797.5	880.3
107.5°	565.6	612.4	659.3	706.2	753.0	831.0	908.8	986.5	1064.5	1142.3	1220.0
110°	869.2	909.5	950.1	990.6	1031.0	1092.8	1154.8	1216.5	1278.3	1340.1	1401.9



TEST NUMBER: P1444455
 CATALOG NUMBER: EHBR1-30-UNV-TA-L830-UPL36

CANDELA DISTRIBUTION (continued):

	192.5°	195°	197.5°	200°	202.5°	205°	207.5°	210°	212.5°	215°	217.5°
112.5°	1045.7	1070.4	1095.1	1119.6	1144.3	1189.6	1235.2	1280.6	1326.0	1371.2	1416.6
115°	1090.8	1103.7	1116.9	1130.0	1143.2	1170.6	1198.1	1225.5	1253.0	1280.4	1307.9
117.5°	1058.3	1063.1	1067.8	1072.4	1077.2	1091.4	1105.7	1119.8	1134.1	1148.2	1162.4
120°	980.2	979.9	979.7	979.3	979.1	983.6	988.3	992.8	997.4	1001.8	1006.2
122.5°	891.8	888.7	885.8	882.7	879.6	878.2	877.0	875.6	874.5	873.0	871.7
125°	808.1	805.0	801.9	798.7	795.5	791.8	788.1	784.5	780.7	776.9	773.2
127.5°	736.3	733.4	730.9	728.0	725.2	720.9	716.8	712.5	708.5	704.1	700.0
130°	676.4	674.4	672.7	670.4	668.6	664.8	661.3	657.7	654.0	650.4	646.8
132.5°	632.7	631.3	630.1	628.5	627.2	623.9	621.0	617.6	614.4	611.1	608.0
135°	598.4	597.7	597.2	596.3	595.6	593.0	590.8	588.3	586.1	583.7	581.3
137.5°	569.9	569.7	569.7	569.5	569.5	567.5	565.7	563.6	561.7	559.8	558.0
140°	551.2	551.1	551.2	551.0	550.9	548.7	546.8	544.6	542.5	540.4	538.3
142.5°	531.9	531.9	532.0	531.8	531.8	530.1	528.6	527.1	525.5	523.8	522.3
145°	517.3	517.6	517.9	518.0	518.4	516.3	514.4	512.4	510.7	508.7	506.9
147.5°	503.4	503.7	504.0	504.3	504.8	503.0	501.6	499.8	498.3	496.7	495.2
150°	492.7	492.8	493.0	492.9	492.9	491.1	489.5	487.7	486.2	484.4	482.8
152.5°	482.3	482.5	482.8	482.9	483.1	481.3	479.5	477.6	475.8	473.9	472.1
155°	473.0	473.1	473.2	473.2	473.2	471.5	469.9	468.0	466.3	464.5	462.8
157.5°	464.9	465.1	465.3	465.4	465.5	464.0	462.5	461.0	459.5	458.0	456.5
160°	458.8	459.1	459.3	459.4	459.5	458.2	457.2	455.7	454.6	453.2	451.8
162.5°	454.7	455.0	455.1	455.2	455.4	454.1	453.1	451.8	450.6	449.1	447.8
165°	449.4	449.3	449.3	449.2	449.2	448.4	447.7	446.8	446.0	444.9	444.1
167.5°	448.7	448.6	448.7	448.5	448.5	447.8	447.5	446.8	446.2	445.5	444.8
170°	447.2	447.2	447.1	446.9	446.9	446.2	445.7	445.1	444.7	443.8	443.2
172.5°	445.8	445.5	445.2	445.0	444.7	444.2	443.9	443.4	443.2	442.7	442.3
175°	444.7	444.5	444.2	443.9	443.5	443.4	443.2	443.1	442.9	442.6	442.4
177.5°	447.8	447.3	446.6	446.1	445.5	445.3	445.2	444.9	444.9	444.7	444.6
180°	443.2	443.2	443.2	443.2	443.2	443.2	443.2	443.2	443.2	443.2	443.2



TEST NUMBER: P1444455
 CATALOG NUMBER: EHBR1-30-UNV-TA-L830-UPL36

CANDELA DISTRIBUTION (continued):

	220°	222.5°	225°	227.5°	230°	232.5°	235°	237.5°	240°	242.5°	245°
0°	24616.1	24616.1	24616.1	24616.1	24616.1	24616.1	24616.1	24616.1	24616.1	24616.1	24616.1
2.5°	24834.6	24681.2	24660.9	24671.7	24697.4	24706.8	24734.5	24742.0	24769.9	24776.7	24803.5
5°	25347.0	25144.3	25154.4	25203.1	25276.9	25320.9	25393.4	25431.4	25500.6	25532.1	25594.7
7.5°	25887.4	25728.1	25777.8	25860.0	25960.9	26030.8	26117.9	26174.6	26249.8	26296.3	26356.5
10°	26152.6	26109.1	26163.7	26228.4	26285.9	26331.0	26368.0	26397.5	26416.9	26435.0	26442.9
12.5°	25950.8	26018.3	26027.6	26021.3	25983.2	25954.0	25888.7	25844.2	25765.3	25717.2	25623.3
15°	25202.3	25350.7	25268.6	25144.1	24962.0	24810.2	24595.8	24436.2	24212.9	24061.5	23837.5
17.5°	23888.8	24076.1	23862.0	23574.1	23207.7	22894.4	22504.1	22194.5	21806.5	21524.3	21162.2
20°	22039.6	22214.7	21832.7	21355.4	20788.8	20311.9	19749.6	19300.9	18778.4	18389.7	17920.6
22.5°	19737.3	19862.0	19323.8	18680.3	17958.5	17362.7	16690.4	16152.5	15556.1	15111.7	14611.5
25°	17190.1	17223.8	16578.2	15836.9	15032.3	14362.8	13645.0	13079.5	12471.2	12020.9	11529.9
27.5°	14619.2	14569.9	13872.2	13086.1	12239.8	11543.9	10843.8	10313.8	9781.1	9375.4	8952.5
30°	12192.7	12073.2	11348.8	10540.8	9719.3	9095.5	8514.3	8088.8	7665.0	7343.1	7003.7
32.5°	9967.5	9798.9	9093.8	8336.8	7644.6	7163.2	6732.2	6410.2	6068.0	5796.2	5511.2
35°	7996.6	7816.9	7192.2	6550.5	6026.6	5671.8	5333.1	5068.8	4778.2	4548.9	4301.5
37.5°	6305.1	6157.8	5634.6	5129.6	4733.3	4458.4	4180.8	3964.9	3724.7	3623.8	3359.4
40°	4867.5	4764.6	4355.4	3983.2	3685.6	3556.4	3274.7	3073.0	2893.6	2745.6	2602.3
42.5°	3796.8	3760.3	3362.1	3071.8	2862.2	2699.5	2542.5	2415.0	2291.0	2189.0	2092.6
45°	2786.2	2757.4	2580.6	2413.1	2270.3	2156.5	2050.4	1962.7	1881.7	1814.4	1753.2
47.5°	2169.6	2160.4	2058.6	1954.7	1864.7	1791.6	1722.8	1664.6	1610.8	1565.9	1551.3
50°	1764.7	1763.4	1703.7	1639.6	1575.5	1533.3	1489.4	1454.9	1420.3	1393.4	1365.0
52.5°	1499.4	1492.9	1452.6	1412.9	1374.9	1347.2	1319.1	1297.2	1274.2	1257.6	1239.9
55°	1290.8	1297.6	1274.3	1250.7	1226.9	1209.7	1189.9	1175.4	1159.7	1149.2	1138.6
57.5°	1146.0	1155.0	1142.8	1129.3	1114.9	1103.5	1090.0	1079.9	1069.4	1062.7	1056.5
60°	1040.6	1050.4	1045.5	1038.7	1029.8	1023.1	1014.4	1008.8	1002.1	998.3	994.9
62.5°	951.1	963.5	961.7	958.5	952.8	949.1	944.3	941.9	937.4	935.8	934.1
65°	862.0	875.8	875.5	873.9	870.8	869.7	866.7	866.3	863.9	864.9	864.7
67.5°	791.8	803.8	806.5	808.4	808.3	809.0	808.8	810.0	810.0	811.7	812.8
70°	741.1	749.6	751.5	753.6	754.1	755.7	755.7	756.8	756.5	758.0	758.1
72.5°	690.0	701.0	703.0	704.7	704.7	706.2	705.4	705.2	702.9	702.4	700.9
75°	626.3	640.4	643.5	645.6	645.9	647.2	645.3	644.1	640.4	638.9	636.4
77.5°	559.8	574.5	576.6	577.4	576.2	576.5	572.4	569.7	565.1	563.1	560.7
80°	473.2	494.9	496.5	495.2	491.9	491.3	487.4	484.8	479.2	477.3	475.2
82.5°	360.1	385.5	389.0	390.5	387.8	388.5	384.7	383.3	378.1	377.2	373.8
85°	227.3	252.7	256.9	256.3	253.6	252.9	250.7	251.4	250.9	252.3	253.1
87.5°	104.4	129.0	134.9	133.0	132.7	131.0	127.1	128.5	131.0	132.5	132.5
90°	72.2	83.4	86.9	84.4	79.3	76.4	71.7	69.1	64.7	62.2	57.8
92.5°	96.0	101.8	107.5	102.4	97.3	92.2	87.1	81.9	76.9	71.7	66.7
95°	120.2	128.2	136.6	129.7	122.9	116.1	109.2	102.5	95.6	88.8	82.1
97.5°	135.0	144.6	154.3	147.4	140.7	133.8	126.9	120.2	113.3	106.4	99.7
100°	234.6	256.8	279.3	259.9	240.5	221.2	201.8	182.4	163.0	143.7	124.2
102.5°	533.3	587.7	642.2	593.1	544.0	495.1	446.1	397.0	348.0	298.9	249.9
105°	962.9	1045.3	1127.9	1052.9	978.0	903.3	828.4	753.6	678.7	603.9	529.1
107.5°	1297.7	1375.0	1452.6	1384.9	1317.2	1249.7	1181.8	1114.3	1046.6	979.0	911.3
110°	1463.6	1524.6	1586.1	1540.6	1495.3	1449.8	1404.5	1359.2	1313.8	1268.6	1223.2



TEST NUMBER: P1444455
 CATALOG NUMBER: EHBR1-30-UNV-TA-L830-UPL36

CANDELA DISTRIBUTION (continued):

	220°	222.5°	225°	227.5°	230°	232.5°	235°	237.5°	240°	242.5°	245°
112.5°	1461.8	1506.2	1551.2	1524.5	1498.1	1471.5	1445.1	1418.5	1392.1	1365.6	1339.4
115°	1335.1	1361.2	1388.2	1377.7	1367.3	1356.9	1346.4	1336.1	1325.6	1315.3	1305.1
117.5°	1176.4	1189.1	1202.6	1200.7	1199.0	1197.0	1195.3	1193.6	1192.0	1190.2	1188.6
120°	1010.7	1013.5	1017.5	1018.9	1020.5	1021.9	1023.4	1024.9	1026.5	1028.0	1029.7
122.5°	870.3	867.1	865.1	866.5	868.0	869.3	870.8	872.2	873.7	875.2	876.8
125°	769.4	763.6	759.2	757.6	756.0	754.3	752.6	751.0	749.6	748.0	746.5
127.5°	695.7	689.3	684.5	680.4	676.5	672.4	668.3	664.1	660.3	656.2	652.3
130°	643.2	637.2	632.9	627.7	622.8	617.5	612.5	607.3	602.2	597.1	592.0
132.5°	604.7	598.9	595.2	590.3	585.5	580.5	575.7	570.6	565.8	560.7	555.9
135°	578.9	573.9	571.0	566.4	562.2	557.6	553.1	548.7	544.3	539.6	535.4
137.5°	555.9	551.3	548.7	545.1	541.8	538.1	534.8	531.0	527.6	523.8	520.4
140°	536.2	531.2	528.5	526.5	524.7	522.6	520.8	518.7	516.9	514.8	512.8
142.5°	520.7	515.9	513.8	512.6	511.4	510.2	509.2	507.9	506.8	505.4	504.1
145°	505.0	499.5	496.9	496.9	497.0	497.0	496.9	496.9	496.8	496.7	496.6
147.5°	493.5	488.1	485.6	486.0	486.3	486.6	487.1	487.2	487.7	487.8	488.2
150°	480.9	474.8	471.9	472.6	473.1	473.8	474.4	475.2	475.9	476.5	477.2
152.5°	470.1	462.9	459.6	460.3	461.1	461.7	462.5	463.3	464.1	464.9	465.6
155°	460.8	453.0	449.5	449.7	450.0	450.5	450.7	451.2	451.6	452.1	452.5
157.5°	454.8	446.7	443.4	443.3	443.5	443.6	443.7	444.0	444.2	444.4	444.8
160°	450.4	442.5	439.3	439.1	439.4	439.4	439.4	439.6	439.8	440.0	440.3
162.5°	446.3	438.7	435.6	435.4	435.3	435.5	435.6	435.5	435.7	435.9	436.1
165°	443.1	436.4	433.8	433.9	434.1	434.3	434.4	434.7	435.1	435.5	435.9
167.5°	444.1	438.2	436.1	435.9	435.6	435.3	435.3	434.9	434.9	434.7	434.7
170°	442.5	437.8	435.9	435.9	436.1	436.2	436.2	436.3	436.4	436.5	436.7
172.5°	441.8	438.4	437.0	437.3	437.7	438.1	438.5	438.8	439.2	439.7	440.1
175°	442.2	440.1	439.5	439.5	439.8	440.0	440.2	440.4	440.6	440.8	441.3
177.5°	444.4	443.7	443.3	443.3	443.3	443.3	443.3	443.3	443.3	443.4	443.4
180°	443.2	443.2	443.2	443.2	443.2	443.2	443.2	443.2	443.2	443.2	443.2



TEST NUMBER: P1444455
 CATALOG NUMBER: EHBR1-30-UNV-TA-L830-UPL36

CANDELA DISTRIBUTION (continued):

	247.5°	250°	252.5°	255°	257.5°	260°	262.5°	265°	267.5°	270°	272.5°
0°	24616.1	24616.1	24616.1	24616.1	24616.1	24616.1	24616.1	24616.1	24616.1	24616.1	24616.1
2.5°	24808.5	24837.4	24835.2	24862.2	24860.8	24886.3	24881.1	24903.2	24898.2	24916.9	24905.9
5°	25622.3	25677.3	25695.4	25745.1	25755.4	25799.8	25800.7	25836.0	25831.7	25859.3	25844.6
7.5°	26392.1	26443.4	26467.7	26506.3	26525.6	26557.6	26570.0	26596.3	26602.6	26618.1	26617.6
10°	26457.0	26456.8	26468.9	26463.4	26474.2	26468.0	26481.1	26476.5	26495.8	26490.9	26505.5
12.5°	25582.8	25496.1	25464.4	25386.5	25369.4	25302.6	25307.3	25264.4	25285.1	25258.8	25303.7
15°	23704.2	23502.9	23403.4	23228.4	23173.5	23035.3	23024.0	22932.1	22957.0	22908.9	22979.2
17.5°	20927.9	20611.1	20437.2	20181.7	20080.2	19884.6	19845.4	19727.2	19745.4	19685.9	19770.7
20°	17617.9	17235.0	17015.7	16720.2	16588.4	16355.2	16293.3	16161.0	16177.6	16118.3	16214.3
22.5°	14270.1	13869.4	13621.7	13312.0	13143.7	12924.4	12858.6	12725.7	12733.2	12677.6	12770.0
25°	11193.7	10809.4	10569.1	10287.8	10141.7	9940.6	9871.4	9752.2	9758.9	9713.0	9795.8
27.5°	8659.1	8343.8	8142.7	7906.9	7776.0	7610.7	7543.2	7442.9	7442.6	7409.0	7478.2
30°	6766.6	6503.5	6323.0	6117.6	5994.7	5845.4	5780.3	5690.6	5686.7	5662.8	5717.8
32.5°	5298.1	5064.1	4899.5	4718.7	4608.3	4480.3	4418.6	4346.5	4339.9	4318.3	4363.5
35°	4118.6	3921.5	3779.9	3627.8	3639.0	3450.2	3481.6	3334.9	3295.1	3286.3	3320.0
37.5°	3183.2	3030.5	2915.5	2801.6	2724.4	2644.6	2601.6	2563.0	2558.6	2554.9	2578.5
40°	2491.6	2384.8	2301.1	2222.9	2169.8	2121.1	2094.2	2073.0	2068.0	2065.2	2079.4
42.5°	2016.5	1944.5	1890.6	1842.9	1810.6	1784.1	1769.3	1757.5	1753.6	1753.7	1762.1
45°	1703.7	1660.0	1625.3	1595.6	1575.0	1584.1	1557.4	1571.3	1552.9	1572.0	1559.4
47.5°	1500.3	1463.1	1441.6	1420.6	1408.2	1398.1	1398.5	1398.7	1402.5	1403.2	1407.3
50°	1343.4	1321.9	1307.0	1293.6	1287.0	1281.8	1283.6	1285.0	1288.8	1289.1	1292.1
52.5°	1227.3	1213.1	1204.1	1195.8	1192.9	1189.9	1191.2	1190.7	1192.3	1191.5	1193.9
55°	1132.8	1126.1	1123.3	1120.2	1120.7	1119.8	1120.4	1117.4	1115.5	1113.3	1115.3
57.5°	1055.3	1054.4	1056.2	1057.5	1061.1	1062.4	1063.2	1059.7	1056.4	1053.4	1055.2
60°	995.5	996.9	1001.7	1005.6	1010.6	1013.1	1014.5	1012.5	1010.1	1007.6	1009.1
62.5°	936.5	938.9	944.5	948.8	955.0	958.2	961.7	961.9	962.8	961.9	962.9
65°	868.1	871.0	876.1	879.7	885.4	888.2	891.8	892.5	894.6	894.1	895.8
67.5°	816.2	818.7	823.0	826.4	831.5	834.4	837.6	837.8	838.5	838.4	839.9
70°	760.7	761.9	765.8	768.6	773.7	776.7	780.4	781.5	783.7	784.1	786.0
72.5°	701.6	701.0	703.3	704.6	708.4	710.8	715.5	718.0	721.8	722.9	724.2
75°	637.1	636.6	639.3	640.4	643.7	646.0	651.3	654.7	660.6	663.1	662.4
77.5°	562.6	563.9	569.0	571.9	576.2	579.3	586.0	591.3	602.2	607.0	602.1
80°	479.2	480.6	485.9	488.5	494.3	498.0	505.5	511.8	521.6	523.6	520.9
82.5°	376.7	377.1	381.9	383.9	391.4	396.8	406.3	411.4	417.4	416.5	415.7
85°	256.9	260.4	266.3	272.2	281.4	290.1	299.2	306.6	301.3	309.7	300.3
87.5°	137.3	136.9	145.0	143.7	156.4	163.8	171.7	175.4	179.7	178.8	178.9
90°	55.6	52.8	52.0	49.0	48.8	45.6	46.1	43.1	43.9	40.5	45.6
92.5°	61.4	58.7	55.9	53.2	50.4	47.7	44.9	42.1	39.3	36.5	39.3
95°	75.2	72.7	70.1	67.4	64.9	62.3	59.8	57.2	54.6	52.1	55.3
97.5°	92.8	91.3	89.8	88.3	86.8	85.4	83.9	82.4	80.8	79.3	81.5
100°	104.8	104.8	104.8	104.8	104.6	104.6	104.6	104.6	104.6	104.6	106.3
102.5°	200.8	196.0	191.1	186.0	181.2	176.3	171.4	166.5	161.6	156.7	163.9
105°	454.3	435.1	415.9	396.7	377.5	358.3	339.2	320.0	300.9	281.7	301.4
107.5°	843.9	808.8	773.9	739.0	703.9	669.1	634.2	599.2	564.4	529.4	560.7
110°	1177.9	1140.8	1103.6	1066.6	1029.4	992.3	955.3	918.3	881.2	844.2	873.9



TEST NUMBER: P1444455
 CATALOG NUMBER: EHBR1-30-UNV-TA-L830-UPL36

CANDELA DISTRIBUTION (continued):

	247.5°	250°	252.5°	255°	257.5°	260°	262.5°	265°	267.5°	270°	272.5°
112.5°	1313.0	1288.8	1264.9	1241.0	1217.1	1193.2	1169.3	1145.4	1121.6	1097.7	1112.2
115°	1294.7	1283.4	1271.9	1260.5	1249.2	1237.8	1226.3	1215.1	1203.8	1192.5	1193.4
117.5°	1186.9	1183.0	1179.2	1175.4	1171.5	1167.9	1164.1	1160.5	1156.8	1153.3	1145.2
120°	1031.6	1032.7	1033.8	1035.2	1036.5	1037.8	1039.0	1040.5	1042.0	1043.5	1032.6
122.5°	878.4	881.1	883.9	886.8	889.7	892.8	895.8	899.0	902.1	905.3	894.5
125°	744.9	747.6	750.3	753.2	755.9	759.0	762.0	765.2	768.3	771.6	762.4
127.5°	648.4	649.3	650.3	651.4	652.4	653.6	654.9	656.4	657.9	659.4	653.7
130°	586.8	585.9	584.9	584.0	583.0	582.4	581.8	581.2	580.7	580.4	577.8
132.5°	551.0	548.6	546.3	544.0	541.9	539.9	537.9	536.1	534.3	532.7	532.0
135°	530.8	527.6	524.5	521.3	518.2	515.5	512.7	510.0	507.4	505.0	505.4
137.5°	516.8	513.7	510.5	507.4	504.3	501.6	498.7	496.0	493.5	491.0	492.0
140°	510.9	507.7	504.4	501.4	498.5	495.6	492.8	490.3	487.5	485.2	485.8
142.5°	502.8	500.1	497.1	494.4	491.7	489.1	486.6	484.3	481.7	479.7	480.3
145°	496.6	494.6	492.4	490.3	488.3	486.5	484.5	482.8	481.1	479.7	480.0
147.5°	488.4	486.9	485.2	483.7	482.0	480.8	479.3	478.1	476.9	475.8	475.8
150°	477.7	476.8	475.7	474.7	473.7	472.8	471.8	471.1	470.2	469.6	469.5
152.5°	466.4	465.5	464.5	463.7	462.7	462.0	461.1	460.5	459.7	459.1	459.0
155°	453.0	452.5	452.1	451.7	451.3	451.1	450.7	450.6	450.3	450.1	450.2
157.5°	445.0	444.9	444.7	444.7	444.7	444.6	444.5	444.7	444.5	444.7	444.8
160°	440.7	440.4	440.1	439.9	439.7	439.4	439.3	439.1	439.0	438.8	439.2
162.5°	436.3	436.6	436.7	436.8	437.1	437.3	437.5	437.9	438.1	438.5	438.8
165°	436.3	436.2	436.0	435.9	435.9	435.9	435.9	436.0	436.0	436.2	436.7
167.5°	434.6	434.9	435.0	435.4	435.7	436.0	436.3	436.9	437.3	437.8	438.2
170°	436.7	436.7	436.7	436.7	436.7	436.9	437.0	437.1	437.2	437.4	437.7
172.5°	440.4	440.4	440.3	440.4	440.3	440.4	440.4	440.5	440.5	440.6	440.8
175°	441.3	441.7	441.8	442.2	442.3	442.5	442.7	443.0	443.2	443.4	443.4
177.5°	443.4	443.5	443.5	443.5	443.5	443.6	443.6	443.6	443.6	443.5	443.7
180°	443.2	443.2	443.2	443.2	443.2	443.2	443.2	443.2	443.2	443.2	443.2



TEST NUMBER: P1444455
 CATALOG NUMBER: EHBR1-30-UNV-TA-L830-UPL36

CANDELA DISTRIBUTION (continued):

	275°	277.5°	280°	282.5°	285°	287.5°	290°	292.5°	295°	297.5°	300°
0°	24616.1	24616.1	24616.1	24616.1	24616.1	24616.1	24616.1	24616.1	24616.1	24616.1	24616.1
2.5°	24924.2	24911.8	24924.5	24911.6	24924.5	24909.0	24919.5	24902.7	24907.0	24889.6	24894.1
5°	25866.7	25846.8	25857.4	25831.5	25834.2	25799.8	25799.1	25759.0	25748.4	25702.7	25682.6
7.5°	26628.7	26622.2	26625.9	26609.3	26607.3	26583.8	26572.6	26539.4	26518.5	26476.5	26447.7
10°	26508.1	26527.5	26532.6	26552.3	26556.4	26576.0	26580.1	26599.8	26603.8	26618.4	26618.5
12.5°	25301.5	25367.5	25383.3	25464.8	25499.1	25592.3	25642.3	25745.1	25806.0	25908.5	25971.5
15°	22977.2	23091.4	23136.9	23295.9	23384.0	23569.7	23686.5	23899.8	24050.3	24276.8	24438.4
17.5°	19778.2	19937.7	20009.7	20225.4	20366.2	20640.4	20837.9	21163.2	21412.1	21773.6	22060.1
20°	16230.7	16408.0	16505.7	16751.8	16918.0	17238.3	17485.0	17884.7	18218.0	18675.9	19067.6
22.5°	12798.8	12967.5	13076.0	13326.5	13513.4	13847.6	14123.2	14545.1	14918.5	15434.6	15904.1
25°	9827.1	9981.7	10079.7	10306.2	10481.9	10788.8	11052.1	11457.8	11823.2	12340.9	12822.4
27.5°	7512.7	7642.1	7736.7	7929.8	8084.7	8345.0	8571.3	8906.5	9221.3	9669.2	10098.0
30°	5751.6	5866.3	5958.3	6126.5	6270.1	6495.9	6694.8	6976.3	7236.9	7593.2	7934.4
32.5°	4395.2	4494.0	4575.9	4723.2	4853.5	5056.7	5235.9	5482.7	5706.3	6008.6	6289.3
35°	3351.2	3545.5	3531.8	3734.8	3767.5	3913.4	4073.3	4289.1	4487.1	4744.1	4983.0
37.5°	2601.1	2655.7	2714.3	2804.0	2898.4	3031.1	3166.2	3429.9	3526.6	3720.8	3918.5
40°	2097.5	2134.4	2173.1	2233.8	2299.8	2393.3	2491.6	2617.4	2746.4	2903.9	3064.7
42.5°	1773.3	1794.2	1818.8	1854.4	1895.1	1954.4	2020.2	2105.5	2195.2	2306.0	2419.1
45°	1584.3	1574.3	1581.6	1600.8	1625.4	1661.3	1702.9	1755.8	1814.1	1885.9	1962.4
47.5°	1408.2	1412.2	1414.3	1424.7	1437.8	1462.0	1487.2	1523.1	1592.3	1613.4	1655.1
50°	1291.8	1293.7	1293.1	1298.4	1305.0	1320.8	1337.1	1361.3	1385.6	1417.7	1448.3
52.5°	1194.3	1197.0	1196.6	1200.1	1203.7	1213.6	1223.9	1241.1	1257.0	1277.4	1295.0
55°	1117.3	1121.1	1122.5	1125.5	1127.1	1132.4	1136.4	1144.7	1151.4	1163.0	1173.7
57.5°	1058.1	1063.2	1065.6	1066.5	1064.5	1064.2	1062.8	1064.6	1066.0	1072.2	1078.2
60°	1011.5	1015.6	1016.2	1015.6	1011.7	1009.0	1004.6	1003.2	1002.6	1005.6	1008.8
62.5°	962.7	964.2	963.1	961.9	957.6	954.9	950.4	948.7	947.1	949.3	950.9
65°	895.1	896.4	895.1	894.5	890.5	888.4	884.5	883.3	881.1	881.6	881.3
67.5°	840.3	841.6	840.6	839.6	836.9	835.5	832.7	831.0	828.2	827.3	825.4
70°	785.7	786.6	785.1	784.1	781.0	779.8	777.2	776.6	774.6	774.1	772.0
72.5°	722.9	723.0	720.7	720.0	717.8	717.7	716.6	717.6	717.5	718.6	718.2
75°	658.5	657.6	654.9	654.4	652.7	653.4	652.3	653.8	654.0	656.4	656.6
77.5°	594.1	590.7	585.5	583.0	579.5	579.2	577.1	578.5	578.0	580.8	581.9
80°	512.8	508.6	502.0	498.8	494.7	494.0	492.1	494.0	493.1	496.3	498.6
82.5°	409.3	405.8	398.9	396.3	391.5	392.0	390.0	392.0	391.7	396.5	399.2
85°	302.8	300.4	293.3	287.0	280.0	275.9	271.8	271.2	270.0	271.8	273.5
87.5°	174.9	172.7	167.1	163.5	151.2	151.7	146.9	146.6	145.4	144.3	146.9
90°	45.9	50.5	51.1	55.2	56.2	60.9	62.0	66.6	67.7	72.4	74.2
92.5°	42.1	44.9	47.6	50.4	53.1	55.9	58.6	61.4	67.4	73.2	79.3
95°	58.5	61.6	64.8	68.1	71.3	74.5	77.7	80.8	89.5	98.3	107.1
97.5°	83.6	85.7	87.9	89.9	92.1	94.2	96.3	98.4	107.9	117.3	126.6
100°	108.0	109.7	111.4	113.2	114.8	116.5	118.2	119.9	138.2	156.2	174.4
102.5°	171.1	178.4	185.7	192.9	200.2	207.5	214.7	221.9	263.5	305.0	346.6
105°	321.3	341.1	361.0	380.8	400.6	420.4	440.3	460.1	526.6	593.0	659.6
107.5°	592.0	623.3	654.6	686.0	717.3	748.7	780.0	811.4	876.2	941.1	1005.9
110°	903.7	933.7	963.5	993.4	1023.2	1053.1	1083.0	1113.0	1152.0	1190.7	1229.7



TEST NUMBER: P1444455
 CATALOG NUMBER: EHBR1-30-UNV-TA-L830-UPL36

CANDELA DISTRIBUTION (continued):

	275°	277.5°	280°	282.5°	285°	287.5°	290°	292.5°	295°	297.5°	300°
112.5°	1126.8	1141.3	1155.8	1170.4	1184.9	1199.6	1214.2	1228.9	1248.4	1267.6	1287.0
115°	1194.3	1195.1	1196.2	1197.0	1198.1	1199.0	1200.2	1201.2	1207.3	1213.4	1219.5
117.5°	1137.2	1129.2	1121.3	1113.3	1105.4	1097.7	1089.9	1082.2	1080.9	1079.6	1078.2
120°	1022.0	1011.3	1000.6	989.9	979.4	968.8	958.3	947.9	942.5	937.2	931.8
122.5°	883.8	873.1	862.5	851.9	841.4	831.0	820.7	810.4	806.5	802.8	799.0
125°	753.5	744.6	735.7	726.9	718.3	709.7	701.2	692.7	692.4	691.9	691.8
127.5°	648.2	642.8	637.4	632.1	626.9	621.8	616.7	611.7	613.9	615.9	618.1
130°	575.3	572.9	570.7	568.3	566.3	564.2	562.2	560.2	564.1	567.8	571.8
132.5°	531.6	531.1	530.7	530.4	530.3	530.2	530.3	530.1	534.7	539.1	543.7
135°	505.8	506.5	507.3	508.1	509.1	509.9	511.1	512.0	516.4	520.6	524.9
137.5°	493.0	493.9	495.1	496.3	497.8	499.0	500.6	502.0	505.3	508.7	512.1
140°	486.6	487.4	488.4	489.4	490.5	491.5	492.8	493.9	496.7	499.4	501.9
142.5°	481.2	481.7	482.7	483.7	484.7	485.8	486.9	487.8	489.9	491.7	493.9
145°	480.6	481.1	481.8	482.5	483.2	483.9	484.8	485.6	486.9	488.0	489.1
147.5°	476.2	476.5	477.0	477.4	478.0	478.5	478.9	479.3	480.2	480.8	481.7
150°	469.7	469.7	469.9	469.9	470.2	470.4	470.8	471.0	471.6	472.2	473.0
152.5°	459.1	459.1	459.3	459.3	459.5	459.7	459.8	460.1	460.8	461.2	461.9
155°	450.5	450.8	451.2	451.5	452.0	452.1	452.6	452.8	453.3	453.6	454.1
157.5°	445.2	445.4	445.9	446.1	446.5	446.7	447.1	447.4	447.8	448.1	448.5
160°	439.8	440.4	440.9	441.5	441.9	442.5	443.1	443.6	444.0	444.3	444.7
162.5°	439.1	439.5	439.9	440.2	440.4	440.8	441.1	441.5	442.1	442.5	443.3
165°	437.3	437.8	438.5	438.8	439.4	440.1	440.5	441.1	441.4	441.8	442.0
167.5°	438.8	439.2	439.9	440.4	440.9	441.4	442.0	442.5	442.9	443.1	443.4
170°	438.3	438.8	439.2	439.8	440.3	440.6	441.2	441.6	442.1	442.5	443.2
172.5°	441.3	441.7	442.0	442.4	442.8	443.3	443.7	444.0	444.5	444.8	445.3
175°	443.4	443.4	443.5	443.6	443.7	443.7	443.8	444.0	444.1	444.2	444.3
177.5°	443.9	444.2	444.4	444.6	444.7	445.0	445.2	445.4	445.4	445.4	445.4
180°	443.2	443.2	443.2	443.2	443.2	443.2	443.2	443.2	443.2	443.2	443.2



TEST NUMBER: P1444455
 CATALOG NUMBER: EHBR1-30-UNV-TA-L830-UPL36

CANDELA DISTRIBUTION (continued):

	302.5°	305°	307.5°	310°	312.5°	315°	317.5°	320°	322.5°	325°	327.5°
0°	24616.1	24616.1	24616.1	24616.1	24616.1	24616.1	24616.1	24616.1	24616.1	24616.1	24616.1
2.5°	24876.6	24877.7	24857.6	24856.5	24837.8	24835.3	24817.1	24811.5	24796.7	24791.2	24776.0
5°	25631.4	25606.9	25550.4	25517.3	25461.4	25424.4	25364.0	25324.7	25266.3	25222.4	25163.7
7.5°	26394.7	26356.7	26293.3	26242.0	26164.5	26102.7	26012.0	25937.8	25839.7	25754.7	25651.6
10°	26618.5	26612.7	26596.5	26573.0	26537.0	26496.5	26434.9	26370.5	26284.5	26191.0	26076.5
12.5°	26067.8	26127.2	26208.3	26256.4	26314.9	26340.5	26364.5	26358.4	26342.7	26295.4	26229.2
15°	24672.3	24839.5	25060.8	25232.3	25429.7	25573.1	25731.5	25830.1	25928.6	25974.0	26001.8
17.5°	22452.6	22769.1	23165.9	23494.8	23874.3	24179.1	24513.2	24764.7	25023.3	25208.6	25376.2
20°	19601.4	20059.9	20621.2	21117.1	21693.6	22194.7	22743.7	23194.4	23659.2	24022.7	24366.7
22.5°	16508.8	17053.3	17731.9	18360.5	19103.8	19771.8	20525.4	21181.3	21866.3	22438.4	22991.6
25°	13467.7	14065.0	14806.9	15508.2	16350.0	17127.0	18020.8	18838.2	19723.5	20492.0	21251.2
27.5°	10690.8	11277.1	12034.6	12781.1	13671.3	14499.2	15456.8	16357.6	17365.5	18295.0	19245.7
30°	8408.4	8905.7	9584.9	10308.0	11185.9	12028.4	12996.5	13922.8	14971.3	15986.2	17057.1
32.5°	6661.7	7040.6	7574.6	8186.0	8996.1	9798.0	10719.8	11614.1	12646.6	13671.7	14785.6
35°	5290.6	5586.1	5993.3	6470.4	7156.4	7847.7	8663.1	9476.2	10439.5	11412.3	12494.9
37.5°	4171.9	4411.7	4730.6	5089.0	5639.2	6206.5	6875.1	7549.3	8386.4	9248.6	10229.8
40°	3257.8	3452.0	3700.2	3967.5	4383.0	4820.1	5337.2	5860.0	6532.4	7237.2	8049.2
42.5°	2559.3	2702.5	2877.9	3073.2	3460.9	3692.9	4043.5	4421.6	4916.0	5427.7	6038.1
45°	2055.3	2153.0	2274.6	2405.7	2585.6	2782.4	3022.6	3274.4	3744.0	3974.4	4345.7
47.5°	1716.4	1782.0	1859.4	1941.9	2048.0	2162.5	2305.0	2450.5	2638.8	2834.0	3062.8
50°	1488.1	1554.8	1581.4	1624.2	1685.6	1751.0	1831.3	1911.5	2012.5	2114.9	2232.6
52.5°	1318.7	1340.4	1369.4	1396.5	1434.6	1509.0	1533.1	1575.1	1631.7	1687.1	1748.9
55°	1189.3	1203.5	1222.3	1238.7	1261.7	1283.7	1315.4	1343.3	1381.2	1414.5	1455.6
57.5°	1088.6	1097.6	1110.7	1121.5	1136.3	1148.8	1167.4	1182.5	1204.2	1223.2	1248.1
60°	1015.5	1021.5	1030.3	1037.3	1046.8	1053.2	1062.5	1069.6	1081.1	1090.6	1104.6
62.5°	955.7	958.8	964.5	968.7	974.7	978.0	982.9	986.0	992.3	997.1	1004.9
65°	884.1	884.7	888.6	890.3	895.0	896.8	900.8	902.2	907.5	911.0	917.9
67.5°	825.2	823.6	823.7	822.3	823.0	821.6	822.0	820.6	822.6	823.7	828.9
70°	771.7	769.3	768.6	766.1	765.4	762.9	762.1	759.9	759.6	758.8	760.7
72.5°	719.4	718.7	718.9	717.1	717.0	715.3	715.4	714.2	715.5	716.0	718.4
75°	659.3	659.4	660.6	659.1	659.5	658.0	658.6	657.2	657.9	657.7	660.0
77.5°	586.1	587.8	591.0	590.3	591.3	589.8	590.4	588.5	589.1	587.8	588.7
80°	503.8	507.4	511.7	511.5	513.3	512.2	513.8	512.0	512.8	510.5	509.9
82.5°	406.1	409.2	413.7	413.9	418.0	418.6	423.1	422.9	425.7	424.0	422.6
85°	277.6	279.7	283.7	285.9	290.0	292.5	296.8	298.6	295.5	301.2	296.7
87.5°	145.0	150.3	147.3	154.4	152.7	159.8	158.3	164.9	163.5	169.3	168.5
90°	79.9	82.0	87.9	90.2	97.0	99.9	101.1	97.6	98.5	95.3	96.2
92.5°	85.1	91.2	97.1	103.1	109.0	115.1	109.5	104.0	98.4	93.0	87.4
95°	115.8	124.5	133.2	142.0	150.7	159.4	150.1	140.8	131.4	122.1	112.7
97.5°	136.0	145.4	154.7	164.1	173.6	182.9	171.9	160.8	149.8	138.8	127.7
100°	192.5	210.7	228.7	246.9	265.0	283.1	262.6	241.9	221.3	200.6	180.0
102.5°	388.3	429.8	471.4	513.0	554.5	596.1	552.4	508.7	464.8	421.1	377.2
105°	726.1	792.6	859.1	925.7	992.2	1058.9	987.9	916.9	845.8	774.9	703.8
107.5°	1070.8	1135.6	1200.6	1265.4	1330.3	1395.3	1323.4	1251.3	1179.4	1107.2	1035.2
110°	1268.8	1307.6	1346.7	1385.7	1424.5	1463.7	1411.1	1358.6	1306.0	1253.3	1200.8



TEST NUMBER: P1444455
 CATALOG NUMBER: EHBR1-30-UNV-TA-L830-UPL36

CANDELA DISTRIBUTION (continued):

	302.5°	305°	307.5°	310°	312.5°	315°	317.5°	320°	322.5°	325°	327.5°
112.5°	1306.4	1326.1	1345.4	1365.1	1384.5	1404.0	1366.4	1328.9	1291.2	1253.6	1215.8
115°	1225.8	1231.9	1238.1	1244.2	1250.4	1256.6	1231.2	1205.8	1180.4	1155.1	1129.5
117.5°	1077.0	1076.0	1074.7	1073.7	1072.3	1071.2	1056.9	1042.7	1028.4	1014.1	999.7
120°	926.4	921.1	915.7	910.4	905.0	899.6	893.6	887.4	881.3	875.1	868.9
122.5°	795.2	791.6	787.7	783.9	780.1	776.3	773.8	771.5	768.9	766.5	763.9
125°	691.5	691.1	690.8	690.5	690.1	689.8	688.4	687.2	685.7	684.5	683.0
127.5°	620.2	622.3	624.3	626.5	628.3	630.5	630.0	629.6	629.1	628.6	628.2
130°	575.5	579.4	583.2	586.8	590.5	594.4	593.4	592.7	591.8	591.0	590.2
132.5°	548.1	552.5	556.9	561.5	565.7	570.0	569.0	568.1	566.9	566.1	564.8
135°	529.1	533.4	537.4	541.6	545.6	549.8	548.5	547.3	545.9	544.8	543.6
137.5°	515.3	518.7	521.9	525.2	528.4	531.7	530.3	529.1	527.7	526.6	525.3
140°	504.5	507.1	509.7	512.3	514.7	517.3	515.7	514.3	512.7	511.2	509.5
142.5°	495.7	497.6	499.3	501.3	503.0	505.0	502.8	500.9	498.7	496.7	494.7
145°	490.4	491.7	492.8	493.9	494.9	496.2	493.6	491.5	489.0	486.8	484.4
147.5°	482.3	483.1	483.5	484.3	484.7	485.4	483.2	481.0	478.8	476.5	474.3
150°	473.4	474.2	474.6	475.3	475.8	476.4	474.1	471.8	469.4	467.1	464.9
152.5°	462.5	463.1	463.6	464.0	464.6	465.1	462.8	460.9	458.6	456.4	454.2
155°	454.3	454.8	455.0	455.3	455.4	455.7	453.8	452.1	450.4	448.5	446.6
157.5°	448.8	449.2	449.4	449.6	449.8	450.1	448.6	447.3	445.8	444.5	443.1
160°	444.9	445.2	445.5	445.7	446.0	446.0	444.7	443.8	442.6	441.4	440.1
162.5°	443.6	444.2	444.6	445.0	445.4	445.8	444.4	443.1	441.7	440.3	438.8
165°	442.3	442.6	442.9	443.2	443.3	443.4	442.5	441.6	440.5	439.7	438.6
167.5°	443.6	444.0	444.2	444.5	444.6	444.7	443.8	442.9	441.8	440.8	439.8
170°	443.4	443.8	444.3	444.7	445.0	445.3	444.7	443.9	443.1	442.3	441.4
172.5°	445.6	446.0	446.2	446.6	446.8	447.2	446.4	445.6	444.8	444.0	443.1
175°	444.3	444.4	444.6	444.6	444.6	444.7	444.0	443.3	442.8	442.1	441.5
177.5°	445.4	445.4	445.4	445.3	445.3	445.3	444.8	444.5	444.0	443.6	443.1
180°	443.2	443.2	443.2	443.2	443.2	443.2	443.2	443.2	443.2	443.2	443.2



TEST NUMBER: P1444455
 CATALOG NUMBER: EHBR1-30-UNV-TA-L830-UPL36

CANDELA DISTRIBUTION (continued):

	330°	332.5°	335°	337.5°	340°	342.5°	345°	347.5°	350°	352.5°	355°
0°	24616.1	24616.1	24616.1	24616.1	24616.1	24616.1	24616.1	24616.1	24616.1	24616.1	24616.1
2.5°	24770.7	24759.9	24753.0	24744.2	24738.8	24731.9	24726.9	24722.7	24719.2	24716.0	24713.6
5°	25119.0	25063.6	25020.7	24974.2	24935.9	24897.8	24868.4	24844.0	24827.3	24814.6	24807.2
7.5°	25562.5	25461.2	25370.9	25276.2	25191.1	25107.5	25035.3	24973.2	24926.6	24896.4	24878.1
10°	25958.5	25822.8	25688.7	25547.4	25413.5	25283.6	25163.7	25058.3	24974.8	24919.4	24886.9
12.5°	26136.1	26020.5	25883.4	25730.1	25566.0	25399.9	25238.0	25092.1	24969.6	24887.4	24839.9
15°	25979.7	25932.2	25839.3	25720.2	25564.5	25392.8	25202.8	25024.2	24859.8	24753.3	24691.6
17.5°	25471.1	25537.3	25530.2	25484.7	25372.7	25228.2	25034.6	24833.9	24628.4	24485.9	24408.2
20°	24612.8	24821.0	24926.6	24980.8	24936.9	24843.1	24667.8	24464.2	24224.6	24038.7	23925.1
22.5°	23406.7	23774.2	24003.3	24170.8	24206.4	24174.5	24019.7	23826.0	23559.0	23335.5	23167.9
25°	21853.9	22392.4	22754.4	23038.3	23148.4	23176.9	23045.2	22852.6	22554.9	22294.5	22064.4
27.5°	20025.0	20724.8	21208.1	21589.5	21761.5	21836.2	21715.0	21518.5	21166.2	20855.4	20554.8
30°	17966.1	18796.2	19378.2	19835.5	20045.3	20143.8	20015.0	19795.7	19385.9	19011.9	18633.1
32.5°	15762.3	16670.7	17304.9	17801.5	18009.4	18102.2	17933.7	17687.3	17213.6	16773.0	16331.2
35°	13455.0	14371.9	15011.4	15494.8	15669.1	15725.0	15509.5	15224.7	14700.0	14216.3	13734.7
37.5°	11100.7	11953.8	12535.0	12968.8	13076.6	13086.3	12826.6	12512.2	11960.6	11483.8	11004.3
40°	8766.8	9486.2	9955.5	10302.7	10340.1	10306.7	10024.5	9708.0	9192.0	8764.8	8343.8
42.5°	6568.3	7111.4	7446.2	7684.1	7670.0	7604.0	7345.2	7073.2	6647.4	6322.0	5990.8
45°	4684.9	5043.0	5238.7	5377.9	5333.2	5270.4	5068.9	4878.3	4588.9	4378.7	4156.2
47.5°	3254.6	3682.2	3607.8	3880.0	3645.5	3800.4	3477.8	3299.9	3146.4	3034.7	2908.9
50°	2330.0	2428.0	2475.3	2507.7	2490.5	2466.6	2408.7	2356.9	2286.8	2235.6	2176.1
52.5°	1799.4	1848.4	1875.2	1894.7	1890.8	1882.1	1856.9	1833.8	1801.0	1779.4	1753.2
55°	1524.2	1524.9	1574.2	1553.1	1584.3	1547.7	1562.1	1521.5	1528.1	1493.2	1469.8
57.5°	1266.5	1286.7	1295.7	1304.4	1301.9	1300.4	1290.6	1285.7	1274.7	1271.3	1263.4
60°	1114.1	1124.6	1126.8	1130.8	1127.4	1126.1	1118.5	1115.7	1108.3	1107.0	1101.8
62.5°	1009.6	1014.9	1014.9	1014.9	1010.5	1006.4	997.9	993.4	987.1	985.7	982.7
65°	922.4	927.9	928.8	930.0	926.8	923.5	916.0	911.2	904.8	902.2	898.8
67.5°	832.3	838.3	840.2	843.2	841.4	840.8	835.6	833.8	829.5	828.4	825.2
70°	761.5	764.1	763.9	763.8	759.8	756.2	750.3	747.5	743.0	742.1	739.2
72.5°	719.5	721.3	720.1	718.6	713.4	708.2	701.2	696.1	690.3	686.6	682.5
75°	660.3	662.6	661.1	660.1	655.5	652.0	646.4	643.6	639.5	638.4	635.5
77.5°	587.6	588.7	586.4	586.1	582.5	580.3	576.1	575.4	572.4	572.4	569.7
80°	506.7	506.0	502.3	501.5	498.0	497.0	493.7	493.9	491.6	492.5	490.6
82.5°	416.9	414.7	409.6	408.1	404.1	403.7	401.5	403.3	401.8	404.1	402.8
85°	298.8	299.4	297.2	297.2	296.0	296.4	296.2	297.6	297.8	299.7	299.7
87.5°	166.5	169.0	168.5	170.7	170.6	173.1	173.9	177.5	178.0	181.3	181.3
90°	92.9	94.1	90.8	92.2	90.7	93.4	92.5	95.1	93.8	95.9	93.8
92.5°	81.9	76.3	70.9	65.3	62.5	59.6	57.1	54.0	51.4	48.5	45.7
95°	103.3	94.0	84.6	75.2	72.0	68.8	65.6	62.4	59.1	55.9	52.7
97.5°	116.6	105.6	94.5	83.5	80.7	77.9	75.0	72.3	69.5	66.8	64.0
100°	159.3	138.7	118.1	97.4	95.1	92.7	90.4	88.1	85.7	83.3	80.9
102.5°	333.5	289.5	245.7	201.9	193.5	185.3	176.9	168.6	160.3	152.0	143.7
105°	632.8	561.7	490.7	419.6	397.1	374.5	351.9	329.3	306.7	284.1	261.5
107.5°	963.0	890.9	818.8	746.7	705.1	663.3	621.6	579.7	538.1	496.3	454.6
110°	1148.1	1095.4	1042.7	989.9	956.5	922.8	889.2	855.6	822.0	788.2	754.6



TEST NUMBER: P1444455
 CATALOG NUMBER: EHBR1-30-UNV-TA-L830-UPL36

CANDELA DISTRIBUTION (continued):

	330°	332.5°	335°	337.5°	340°	342.5°	345°	347.5°	350°	352.5°	355°
112.5°	1178.2	1140.4	1102.8	1064.9	1049.7	1034.4	1019.2	1004.0	988.7	973.3	958.1
115°	1104.0	1078.5	1053.0	1027.3	1021.9	1016.5	1011.2	1005.7	1000.2	994.7	989.2
117.5°	985.4	971.1	956.7	942.2	943.1	943.9	944.7	945.4	946.2	946.8	947.5
120°	862.6	856.4	850.3	844.0	848.6	853.1	857.6	862.0	866.4	870.7	875.0
122.5°	761.5	758.9	756.5	753.8	759.3	764.7	770.1	775.5	780.7	785.9	791.1
125°	681.7	680.2	678.9	677.3	683.0	688.4	693.9	699.2	704.6	709.7	714.9
127.5°	627.7	627.2	626.7	626.1	630.1	633.9	637.7	641.4	645.1	648.6	652.0
130°	589.3	588.3	587.6	586.7	590.2	593.7	597.2	600.2	603.6	606.6	609.6
132.5°	563.9	562.8	561.8	560.7	563.1	565.6	568.0	570.2	572.4	574.4	576.4
135°	542.4	541.0	539.7	538.4	540.8	543.0	545.3	547.2	549.3	551.0	552.8
137.5°	524.0	522.7	521.4	520.1	522.2	524.2	526.1	527.8	529.5	531.2	532.7
140°	508.1	506.4	505.1	503.4	505.3	506.9	508.6	510.2	511.8	513.1	514.5
142.5°	492.7	490.5	488.7	486.5	487.7	489.0	490.2	491.3	492.5	493.5	494.3
145°	482.1	479.6	477.4	474.9	475.9	476.9	477.9	478.8	479.5	480.2	480.9
147.5°	472.2	469.8	467.4	465.2	466.1	466.7	467.3	467.8	468.5	468.9	469.4
150°	462.5	460.0	457.6	455.2	455.9	456.4	456.9	457.5	458.1	458.3	458.8
152.5°	452.0	449.7	447.5	445.1	445.6	446.0	446.4	446.8	447.3	447.6	447.9
155°	444.7	442.8	440.8	438.9	439.4	439.8	440.2	440.4	440.7	440.9	441.2
157.5°	441.6	439.9	438.6	436.9	437.0	437.1	437.3	437.2	437.3	437.2	437.2
160°	438.9	437.5	436.3	434.9	434.9	434.9	435.2	435.0	435.0	434.8	434.8
162.5°	437.3	435.9	434.3	432.7	432.7	432.9	432.9	432.8	432.9	432.7	432.6
165°	437.6	436.5	435.4	434.2	434.1	433.9	433.8	433.5	433.3	432.9	432.7
167.5°	438.7	437.6	436.4	435.3	435.4	435.6	435.6	435.5	435.6	435.4	435.4
170°	440.5	439.6	438.8	437.8	437.6	437.5	437.3	437.2	436.9	436.7	436.4
172.5°	442.1	441.3	440.3	439.3	439.3	439.2	439.0	438.9	438.8	438.6	438.5
175°	440.7	440.2	439.3	438.7	438.6	438.5	438.4	438.3	438.1	438.0	437.8
177.5°	442.7	442.2	441.7	441.2	441.1	441.1	441.0	440.9	440.9	440.8	440.7
180°	443.2	443.2	443.2	443.2	443.2	443.2	443.2	443.2	443.2	443.2	443.2



TEST NUMBER: P1444455
 CATALOG NUMBER: EHBR1-30-UNV-TA-L830-UPL36

CANDELA DISTRIBUTION (continued):

	357.5°	360°
0°	24616.1	24616.1
2.5°	24711.4	24710.1
5°	24803.3	24801.8
7.5°	24873.2	24872.7
10°	24881.3	24885.6
12.5°	24831.8	24835.2
15°	24686.8	24693.5
17.5°	24409.6	24418.5
20°	23932.1	23941.3
22.5°	23158.8	23162.7
25°	22034.6	22018.7
27.5°	20501.9	20474.5
30°	18553.6	18527.0
32.5°	16230.5	16214.0
35°	13615.6	13605.1
37.5°	10862.5	10841.3
40°	8189.9	8127.7
42.5°	5845.7	5736.6
45°	4039.9	3910.5
47.5°	2820.2	2740.2
50°	2137.7	2111.9
52.5°	1741.8	1735.8
55°	1469.7	1467.1
57.5°	1265.2	1264.3
60°	1104.6	1104.3
62.5°	984.8	985.2
65°	900.4	900.6
67.5°	826.1	825.5
70°	740.3	739.6
72.5°	681.1	680.1
75°	635.5	634.9
77.5°	570.5	569.5
80°	491.9	490.6
82.5°	404.6	403.2
85°	301.8	301.9
87.5°	184.6	184.5
90°	95.7	93.2
92.5°	43.2	40.6
95°	49.6	46.4
97.5°	61.3	58.5
100°	78.6	76.2
102.5°	135.4	127.1
105°	239.0	216.4
107.5°	412.8	371.1
110°	721.0	687.4



TEST NUMBER: P1444455
CATALOG NUMBER: EHBR1-30-UNV-TA-L830-UPL36

CANDELA DISTRIBUTION (continued):

	357.5°	360°
112.5°	942.7	927.3
115°	983.5	977.9
117.5°	948.0	948.6
120°	879.1	883.3
122.5°	796.0	801.0
125°	719.8	724.8
127.5°	655.3	658.5
130°	612.2	615.1
132.5°	578.1	579.7
135°	554.3	555.7
137.5°	533.9	535.2
140°	515.5	516.6
142.5°	495.1	495.7
145°	481.5	481.9
147.5°	469.4	469.8
150°	458.9	459.2
152.5°	447.9	448.2
155°	441.2	441.4
157.5°	436.9	436.8
160°	434.5	434.4
162.5°	432.4	432.3
165°	432.2	431.8
167.5°	435.2	435.2
170°	436.1	435.9
172.5°	438.2	438.0
175°	437.7	437.6
177.5°	440.7	440.5
180°	443.2	443.2

LM-79-2019: Approved Method: Electrical and Photometric Measurements of Solid-
State Lighting Products

Report Prepared for

Cooper Lighting Solutions

Metalux

Report Number: SP1-2506-472-2

Test Date: 07/31/2025

Luminaire Tested: EHBR-60-L830-N

Data in this report applies to families of products including EHBR-60-L830-N

Test Information

Test Method: LM-79-2019
 Report Number: SP1-2506-472-2
 Test Lab: COOPER LIGHTING SOLUTIONS
 Photometer: SP1 - 76IN SPHERE
 Measurement Geometry: 4π
 Issue Date: 08/05/2025
 Manufacturer: COOPER LIGHTING SOLUTIONS
 Product Line: Metalux
 Catalog Number: **EHBR-60-L830-N**
 Description: Elevate Round Highbay at, 60000 lumens, 3000K 80CRI LEDs with N lens

Spectral Parameters

CCT (K): 2983
 CIE u': 0.2516
 CIE v': 0.5201
 Duv: -0.0012
 CIE x: 0.4364
 CIE y: 0.4010
 CIE z: 0.1626
 Peak Wavelength (nm): 630
 Dominant Wavelength (nm): 583
 Purity: 51.34918
 Rf: 81.2
 Rg: 101.5

CRI (Ra):	83.4		
R1:	84.0	R9:	29.4
R2:	87.5	R10:	68.6
R3:	88.9	R11:	82.2
R4:	83.8	R12:	61.6
R5:	81.9	R13:	83.9
R6:	83.1	R14:	92.5
R7:	87.1	R15:	79.8
R8:	70.9		



Test Conditions

Stabilization Time: 38M
 Operation Time: 1H 38M
 Sphere Temperature (°C): 25.0

REPORT NUMBER: SP1-2506-472-2

Measurement and Test Equipment			
Instrument	Identification Number	Calibration Date	Calibration Due Date
Photometer	76INCH SPHERE IN0058	6/16/2025	12/16/2025
Power Meter	XITRON INXT2011004	1/21/2025	1/21/2026
AC Power Source	CHROMA 61603 IN0063	10/22/2024	10/22/2025
DC Power Source	AGILENT E3634A IN0208	10/22/2024	10/22/2025
Sphere Thermometer	ONSET IN0085	10/22/2024	10/22/2025
Room Thermometer	ONSET IN0046	10/22/2024	10/22/2025

REPORT NUMBER: SP1-2506-472-2

CIE 1931 Chromaticity Diagram



CIE 1931 Chromaticity Diagram with 2017 ANSI 7-Step and 4-Step Quadrangles

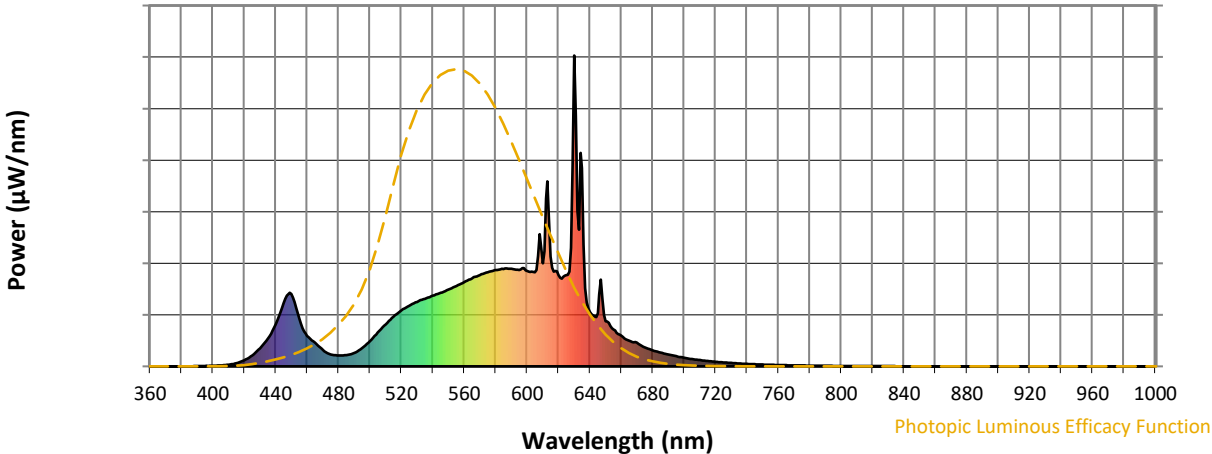


CCT = 2983K
 CIE x = 0.4364
 CIE y = 0.4010
 Duv = -0.0012

Point lies inside the ANSI 3000K 4-step quadrangle

REPORT NUMBER: SP1-2506-472-2

Photopic Flux vs. Wavelength



Photopic Lumens: NR

λ (nm)	Power W [^] /nm	Lumens (φ/nm)	λ (nm)	Power W [^] /nm	Lumens (φ/nm)	λ (nm)	Power W [^] /nm	Lumens (φ/nm)	λ (nm)	Power W [^] /nm	Lumens (φ/nm)	λ (nm)	Power W [^] /nm	Lumens (φ/nm)
360	0	NR	490	43	NR	620	294	NR	750	6	NR	880	0	NR
365	0	NR	495	59	NR	625	294	NR	755	5	NR	885	0	NR
370	0	NR	500	81	NR	630	1000	NR	760	4	NR	890	0	NR
375	0	NR	505	109	NR	635	637	NR	765	4	NR	895	0	NR
380	0	NR	510	135	NR	640	175	NR	770	3	NR	900	0	NR
385	0	NR	515	160	NR	645	171	NR	775	3	NR	905	0	NR
390	1	NR	520	180	NR	650	146	NR	780	2	NR	910	0	NR
395	1	NR	525	195	NR	655	119	NR	785	2	NR	915	0	NR
400	2	NR	530	207	NR	660	99	NR	790	2	NR	920	0	NR
405	3	NR	535	218	NR	665	82	NR	795	2	NR	925	0	NR
410	5	NR	540	227	NR	670	76	NR	800	1	NR	930	0	NR
415	10	NR	545	237	NR	675	61	NR	805	1	NR	935	0	NR
420	20	NR	550	247	NR	680	52	NR	810	1	NR	940	0	NR
425	35	NR	555	259	NR	685	44	NR	815	1	NR	945	0	NR
430	58	NR	560	271	NR	690	38	NR	820	1	NR	950	0	NR
435	90	NR	565	283	NR	695	33	NR	825	1	NR	955	0	NR
440	135	NR	570	293	NR	700	27	NR	830	1	NR	960	0	NR
445	204	NR	575	303	NR	705	24	NR	835	1	NR	965	0	NR
450	233	NR	580	310	NR	710	20	NR	840	0	NR	970	0	NR
455	153	NR	585	313	NR	715	17	NR	845	0	NR	975	0	NR
460	98	NR	590	314	NR	720	15	NR	850	0	NR	980	0	NR
465	76	NR	595	310	NR	725	13	NR	855	0	NR	985	0	NR
470	53	NR	600	307	NR	730	11	NR	860	0	NR	990	0	NR
475	39	NR	605	303	NR	735	9	NR	865	0	NR	995	0	NR
480	35	NR	610	331	NR	740	8	NR	870	0	NR	1000	0	NR
485	36	NR	615	353	NR	745	7	NR	875	0	NR			

REPORT NUMBER: SP1-2506-472-2

Scotopic Flux vs. Wavelength



Scotopic Lumens: NR

S/P: 1.27

λ (nm)	Power W [^] /nm	Lumens (φ/nm)	λ (nm)	Power W [^] /nm	Lumens (φ/nm)	λ (nm)	Power W [^] /nm	Lumens (φ/nm)	λ (nm)	Power W [^] /nm	Lumens (φ/nm)	λ (nm)	Power W [^] /nm	Lumens (φ/nm)
360	0	NR	490	43	NR	620	294	NR	750	6	NR	880	0	NR
365	0	NR	495	59	NR	625	294	NR	755	5	NR	885	0	NR
370	0	NR	500	81	NR	630	1000	NR	760	4	NR	890	0	NR
375	0	NR	505	109	NR	635	637	NR	765	4	NR	895	0	NR
380	0	NR	510	135	NR	640	175	NR	770	3	NR	900	0	NR
385	0	NR	515	160	NR	645	171	NR	775	3	NR	905	0	NR
390	1	NR	520	180	NR	650	146	NR	780	2	NR	910	0	NR
395	1	NR	525	195	NR	655	119	NR	785	2	NR	915	0	NR
400	2	NR	530	207	NR	660	99	NR	790	2	NR	920	0	NR
405	3	NR	535	218	NR	665	82	NR	795	2	NR	925	0	NR
410	5	NR	540	227	NR	670	76	NR	800	1	NR	930	0	NR
415	10	NR	545	237	NR	675	61	NR	805	1	NR	935	0	NR
420	20	NR	550	247	NR	680	52	NR	810	1	NR	940	0	NR
425	35	NR	555	259	NR	685	44	NR	815	1	NR	945	0	NR
430	58	NR	560	271	NR	690	38	NR	820	1	NR	950	0	NR
435	90	NR	565	283	NR	695	33	NR	825	1	NR	955	0	NR
440	135	NR	570	293	NR	700	27	NR	830	1	NR	960	0	NR
445	204	NR	575	303	NR	705	24	NR	835	1	NR	965	0	NR
450	233	NR	580	310	NR	710	20	NR	840	0	NR	970	0	NR
455	153	NR	585	313	NR	715	17	NR	845	0	NR	975	0	NR
460	98	NR	590	314	NR	720	15	NR	850	0	NR	980	0	NR
465	76	NR	595	310	NR	725	13	NR	855	0	NR	985	0	NR
470	53	NR	600	307	NR	730	11	NR	860	0	NR	990	0	NR
475	39	NR	605	303	NR	735	9	NR	865	0	NR	995	0	NR
480	35	NR	610	331	NR	740	8	NR	870	0	NR	1000	0	NR
485	36	NR	615	353	NR	745	7	NR	875	0	NR			

REPORT NUMBER: SP1-2506-472-2

Melanopic Flux vs. Wavelength



Melanopic Lumens: NR

M/P: 2.34

λ (nm)	Power W [^] /nm	Lumens (ϕ /nm)	λ (nm)	Power W [^] /nm	Lumens (ϕ /nm)	λ (nm)	Power W [^] /nm	Lumens (ϕ /nm)	λ (nm)	Power W [^] /nm	Lumens (ϕ /nm)	λ (nm)	Power W [^] /nm	Lumens (ϕ /nm)
360	0	NR	490	43	NR	620	294	NR	750	6	NR	880	0	NR
365	0	NR	495	59	NR	625	294	NR	755	5	NR	885	0	NR
370	0	NR	500	81	NR	630	1000	NR	760	4	NR	890	0	NR
375	0	NR	505	109	NR	635	637	NR	765	4	NR	895	0	NR
380	0	NR	510	135	NR	640	175	NR	770	3	NR	900	0	NR
385	0	NR	515	160	NR	645	171	NR	775	3	NR	905	0	NR
390	1	NR	520	180	NR	650	146	NR	780	2	NR	910	0	NR
395	1	NR	525	195	NR	655	119	NR	785	2	NR	915	0	NR
400	2	NR	530	207	NR	660	99	NR	790	2	NR	920	0	NR
405	3	NR	535	218	NR	665	82	NR	795	2	NR	925	0	NR
410	5	NR	540	227	NR	670	76	NR	800	1	NR	930	0	NR
415	10	NR	545	237	NR	675	61	NR	805	1	NR	935	0	NR
420	20	NR	550	247	NR	680	52	NR	810	1	NR	940	0	NR
425	35	NR	555	259	NR	685	44	NR	815	1	NR	945	0	NR
430	58	NR	560	271	NR	690	38	NR	820	1	NR	950	0	NR
435	90	NR	565	283	NR	695	33	NR	825	1	NR	955	0	NR
440	135	NR	570	293	NR	700	27	NR	830	1	NR	960	0	NR
445	204	NR	575	303	NR	705	24	NR	835	1	NR	965	0	NR
450	233	NR	580	310	NR	710	20	NR	840	0	NR	970	0	NR
455	153	NR	585	313	NR	715	17	NR	845	0	NR	975	0	NR
460	98	NR	590	314	NR	720	15	NR	850	0	NR	980	0	NR
465	76	NR	595	310	NR	725	13	NR	855	0	NR	985	0	NR
470	53	NR	600	307	NR	730	11	NR	860	0	NR	990	0	NR
475	39	NR	605	303	NR	735	9	NR	865	0	NR	995	0	NR
480	35	NR	610	331	NR	740	8	NR	870	0	NR	1000	0	NR
485	36	NR	615	353	NR	745	7	NR	875	0	NR			

Summary

$R_f = 81.2$
 $R_g = 101.5$
 CIE $R_a = 83.4$
 $R_9 = 29.4$



Color Vector Graphics

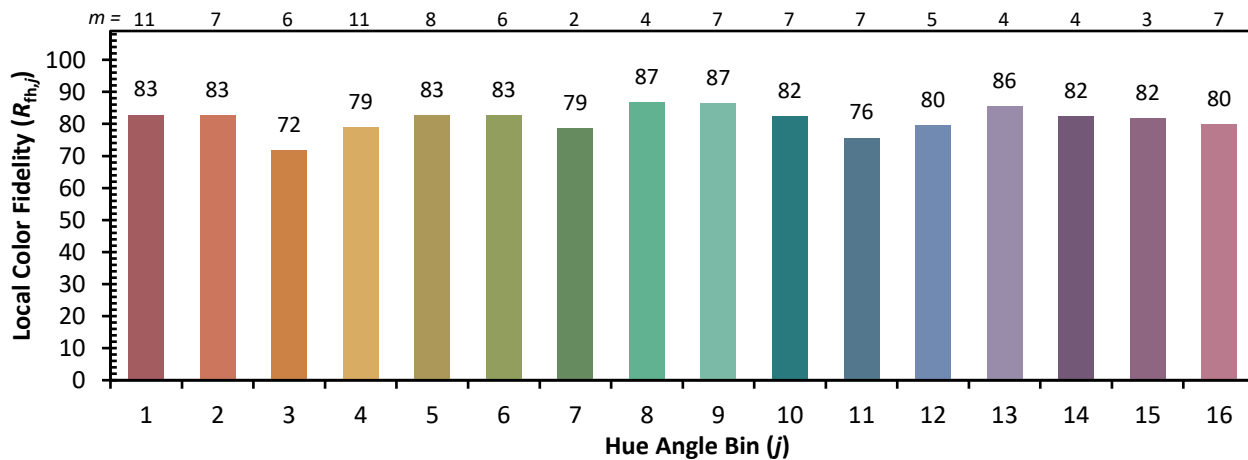
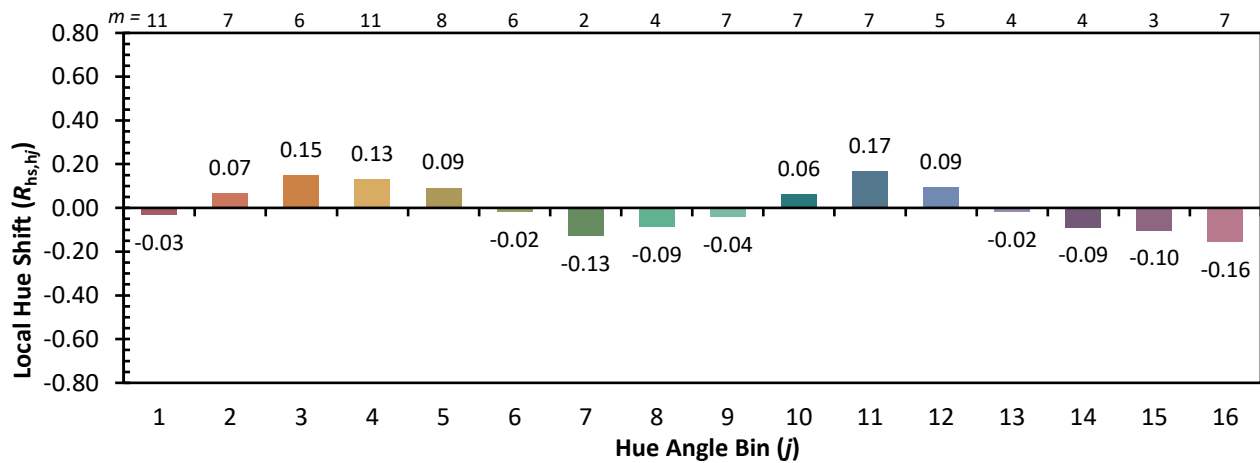
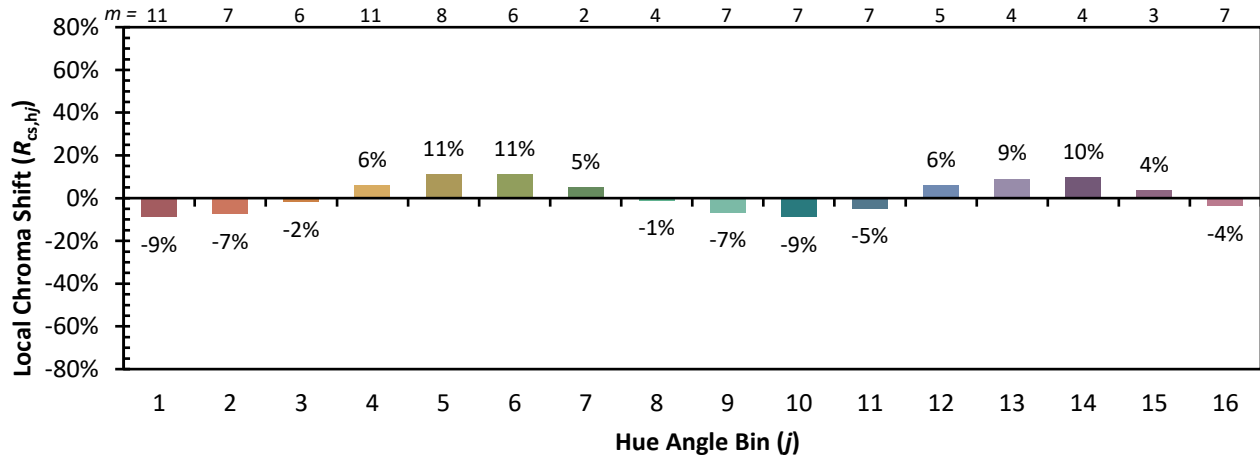


Individual Sample Fidelity Index ($R_{f,i}$)

CES01 = 86	CES26 = 71	CES51 = 89	CES76 = 65
CES02 = 63	CES27 = 89	CES52 = 89	CES77 = 82
CES03 = 31	CES28 = 86	CES53 = 80	CES78 = 67
CES04 = 70	CES29 = 68	CES54 = 92	CES79 = 89
CES05 = 50	CES30 = 77	CES55 = 90	CES80 = 85
CES06 = 51	CES31 = 70	CES56 = 81	CES81 = 75
CES07 = 43	CES32 = 64	CES57 = 79	CES82 = 93
CES08 = 41	CES33 = 74	CES58 = 81	CES83 = 89
CES09 = 29	CES34 = 76	CES59 = 92	CES84 = 91
CES10 = 76	CES35 = 87	CES60 = 96	CES85 = 81
CES11 = 59	CES36 = 99	CES61 = 91	CES86 = 74
CES12 = 65	CES37 = 81	CES62 = 93	CES87 = 83
CES13 = 44	CES38 = 83	CES63 = 79	CES88 = 86
CES14 = 74	CES39 = 94	CES64 = 81	CES89 = 74
CES15 = 72	CES40 = 89	CES65 = 78	CES90 = 85
CES16 = 48	CES41 = 88	CES66 = 76	CES91 = 87
CES17 = 50	CES42 = 80	CES67 = 74	CES92 = 73
CES18 = 57	CES43 = 75	CES68 = 79	CES93 = 84
CES19 = 72	CES44 = 99	CES69 = 83	CES94 = 64
CES20 = 67	CES45 = 83	CES70 = 72	CES95 = 80
CES21 = 87	CES46 = 82	CES71 = 70	CES96 = 86
CES22 = 79	CES47 = 79	CES72 = 90	CES97 = 85
CES23 = 92	CES48 = 78	CES73 = 65	CES98 = 83
CES24 = 91	CES49 = 79	CES74 = 94	CES99 = 82
CES25 = 72	CES50 = 88	CES75 = 70	



Color Rendition by Hue-Angle Bin



Measure Comparisons



(END OF REPORT)