

Cooper Lighting Solutions Photometric Lab
1121 Highway 74 South
Peachtree City, GA 30269



Scaled data based on original data using
LM-79-2019 Approved Method: Electrical and Photometric Measurements of Solid-
State Lighting Products

Test Report Prepared for
Cooper Lighting Solutions

Brand: METALUX

Report Number: P1444463

Luminaire Tested: EHBR1-36-UNV-TA-L830-UPL36

Issue Date: 5/1/2026

Test Information

Test Method: LM-79-2019
Report Number: P1444463
REPORT IS A COMBINATION OF REPORTS P1444349 AND P1431635
Test Lab: INNOVATION CENTER
Issue Date: 5/1/2026
Manufacturer: COOPER LIGHTING SOLUTIONS
Product Line: METALUX
Catalog Number: EHBR1-36-UNV-TA-L830-UPL36
Description: Elevate Round Highbay at, 36000 lumens, 3000K 80CRI LEDs with TA lens
Light Source: -
Ballast/Driver: -

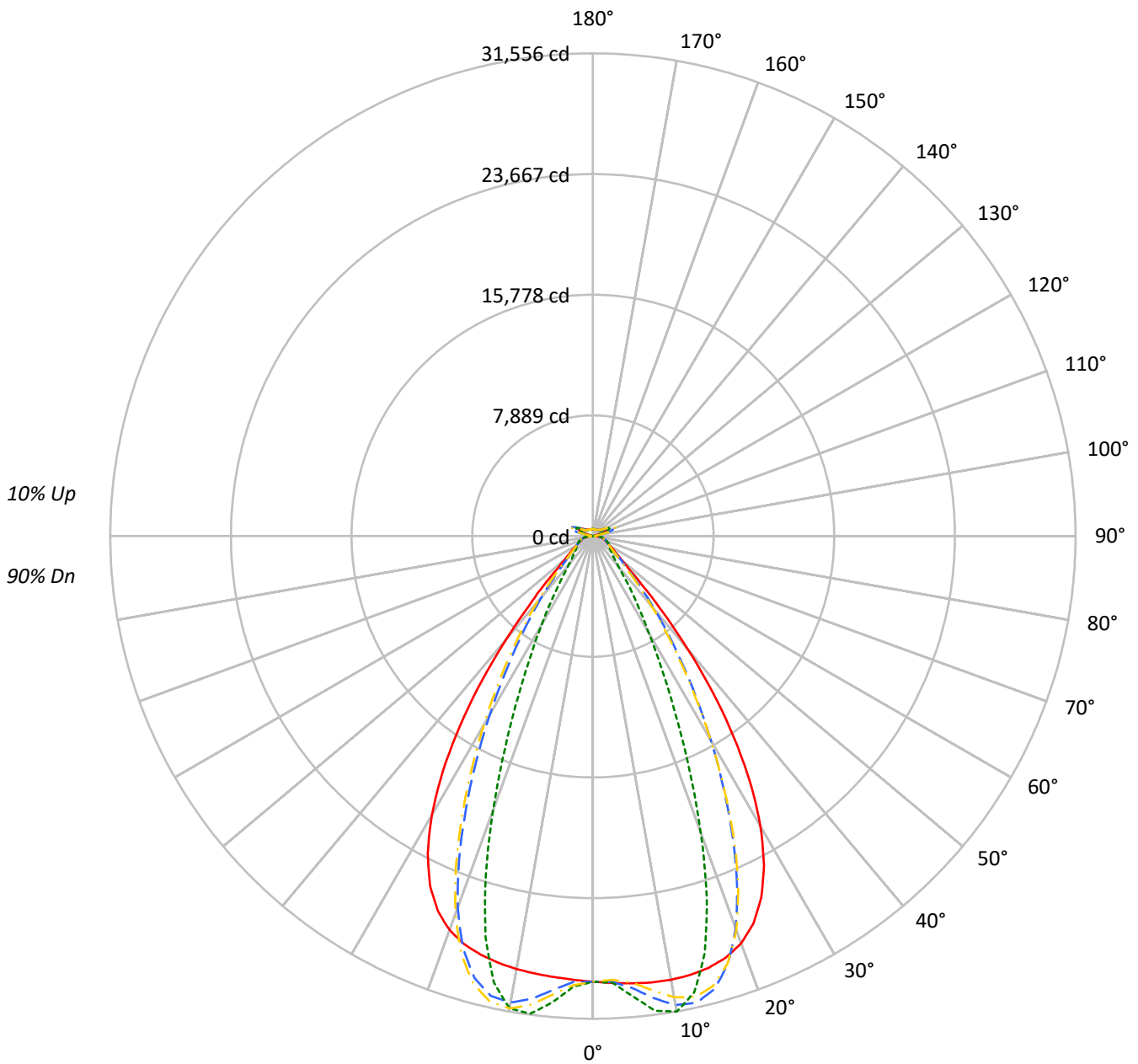
Summary

Lumens per Lamp: N/A
Luminaire Lumens: 37173.3 lumens
Efficiency: N/A
Efficacy: 169.1 lumens/watt
Spacing Criteria (0/90/45): 1.13 / 0.77 / 0.88
Luminous Opening: Vertical Cylinder (Dia: 1.71' x H: 0.1')
CIE Type: Direct

Input Watts (W): 219.8
Input Voltage (V): NR
Input Current (Ain): NR
Voltage Rise (V): NR
Power Factor: NR
Total Harmonic Distortion (THDi): NR
Frequency (hertz): 60
Stabilization Time: NR
Operation Time: NR
Ambient Temperature (°C): NR
Test Distance: 24 FT

TEST NUMBER: P1444463
CATALOG NUMBER: EHBR1-36-UNV-TA-L830-UPL36

Luminous Intensity Polar Plot



— 0°-180° - - 45°-225° - · - · 90°-270° - · - · 135°-315°



TEST NUMBER: P1444463
 CATALOG NUMBER: EHBR1-36-UNV-TA-L830-UPL36

COEFFICIENT OF UTILIZATION - ZONAL CAVITY METHOD:

RF	20				20				20				20				20				
RC	80				70				50				30				10			0	
RW	70	50	30	10	70	50	30	10	50	30	10	50	30	10	50	30	10	50	30	10	0
RCR																					
0	117	117	117	117	113	113	113	113	106	106	106	99	99	99	93	93	93	93	93	93	90
1	109	106	103	100	106	103	100	98	97	95	93	92	90	88	87	85	84	84	84	84	82
2	103	97	92	88	99	94	90	86	89	86	83	85	82	79	80	78	76	76	76	76	74
3	96	89	83	78	93	86	81	77	82	78	74	79	75	72	75	72	69	69	69	69	67
4	91	82	75	70	88	80	74	69	76	71	67	73	69	66	70	67	64	64	64	64	62
5	85	76	69	64	83	74	68	63	71	66	62	68	64	60	66	62	59	59	59	59	57
6	80	70	63	58	78	69	62	58	66	61	57	64	59	55	62	57	54	54	54	54	53
7	76	65	59	54	74	64	58	53	62	56	52	60	55	51	58	54	50	50	50	50	49
8	72	61	54	50	70	60	54	49	58	53	49	56	51	48	55	50	47	47	47	47	45
9	68	57	51	46	66	56	50	46	55	49	45	53	48	45	51	47	44	44	44	44	42
10	64	54	47	43	63	53	47	43	51	46	42	50	45	42	49	44	41	41	41	41	40

AVERAGE LUMINANCE (cd/sqm):

	0°	90°	180°	270°
0°	136793	136793	136793	136793
5°	137455	141463	135531	143316
10°	138603	148526	135279	147543
15°	139282	134637	135042	129216
20°	137843	100300	133331	92802
25°	130474	63434	126161	57555
30°	113979	38120	109564	34837
35°	87719	23920	82673	21189
40°	55490	15005	50768	14099
45°	28600	11689	28127	11497
50°	16768	10398	16254	10235
55°	12846	9837	12371	9748
60°	10870	10049	10407	9918
65°	10209	10494	9819	10136
70°	9974	10989	9478	10575
75°	10664	11653	10089	11138
80°	11037	12903	10006	11778
85°	10396	12453	8400	10661

MAXIMUM LUMINANCE 45°-90°:

Horizontal Angle: 25°
 Vertical Angle: 45°
 Luminance: 43769 cd/sqm



TEST NUMBER: P1444463
 CATALOG NUMBER: EHBR1-36-UNV-TA-L830-UPL36

ZONAL LUMENS:

Zone	Lumens	% Fixture
0°-10°	2870.7	7.7
10°-20°	8075.7	21.7
20°-30°	9197.6	24.7
30°-40°	6610.8	17.8
40°-50°	3048.9	8.2
50°-60°	1459.0	3.9
60°-70°	1064.6	2.9
70°-80°	808.8	2.2
80°-90°	374.0	1.0
90°-100°	102.7	0.3
100°-110°	609.8	1.6
110°-120°	1127.0	3.0
120°-130°	684.4	1.8
130°-140°	433.3	1.2
140°-150°	316.2	0.9
150°-160°	216.9	0.6
160°-170°	129.1	0.3
170°-180°	43.9	0.1
0°-30°	20144.0	54.2
0°-40°	26754.8	72.0
0°-60°	31262.7	84.1
0°-90°	33510.0	90.1
90°-120°	1839.5	4.9
90°-150°	3273.4	8.8
90°-180°	3663.0	9.9
0°-180°	37173.3	100.0

CANDELA DISTRIBUTION:

	0°	90°	180°	270°	360°	Flux
0°	29129	29129	29129	29129	29129	
5°	29349	30205	28938	30600	29349	2805
15°	29221	28246	28331	27109	29221	8233
25°	26056	12668	25194	11494	26056	11812
35°	16100	4390	15173	3889	16100	9881
45°	4627	1891	4551	1860	4627	3936
55°	1736	1329	1672	1317	1736	1602
65°	1066	1095	1025	1058	1066	1064
75°	751	821	711	785	751	781
85°	357	428	289	366	357	336
90°	106	132	37	43	106	65
95°	47	53	47	53	47	45
105°	218	282	145	283	218	289
115°	981	1194	1028	1194	981	905
125°	730	773	828	774	730	665
135°	565	507	609	510	565	441
145°	494	485	526	489	494	312
155°	456	460	486	464	456	212
165°	448	450	466	452	448	128
175°	456	461	465	462	456	44
180°	462	462	462	462	462	



TEST NUMBER: P1444463
 CATALOG NUMBER: EHBR1-36-UNV-TA-L830-UPL36

CANDELA DISTRIBUTION (FULL):

	0°	2.5°	5°	7.5°	10°	12.5°	15°	17.5°	20°	22.5°	25°
0°	29129.1	29129.1	29129.1	29129.1	29129.1	29129.1	29129.1	29129.1	29129.1	29129.1	29129.1
2.5°	29240.4	29238.0	29237.6	29235.5	29235.0	29235.0	29234.0	29231.6	29230.1	29226.8	29223.0
5°	29348.9	29347.6	29348.3	29348.6	29346.5	29341.9	29334.8	29326.1	29315.1	29304.7	29295.5
7.5°	29432.8	29434.8	29437.4	29436.8	29430.5	29419.8	29405.3	29397.0	29401.9	29417.7	29454.1
10°	29448.1	29460.6	29465.5	29464.0	29451.3	29442.1	29445.6	29476.4	29537.9	29619.9	29731.9
12.5°	29388.4	29403.8	29403.2	29398.1	29385.8	29398.3	29443.0	29534.9	29666.6	29828.2	30017.8
15°	29220.7	29240.6	29235.0	29228.4	29220.2	29261.3	29350.6	29510.2	29713.5	29941.4	30174.8
17.5°	28895.2	28919.2	28907.6	28900.1	28893.2	28970.3	29123.7	29357.3	29613.5	29871.3	30092.3
20°	28330.7	28346.7	28319.0	28305.9	28316.9	28468.0	28693.9	28992.3	29262.3	29506.0	29657.2
22.5°	27409.2	27429.2	27377.1	27371.0	27435.4	27667.4	27953.3	28286.8	28540.5	28733.7	28791.9
25°	26055.5	26075.1	26013.2	26050.2	26159.7	26475.6	26816.1	27172.9	27389.4	27532.5	27493.0
27.5°	24228.2	24246.1	24187.4	24263.0	24436.0	24851.3	25252.0	25638.9	25831.9	25932.2	25805.1
30°	21923.7	21961.0	21891.5	21997.0	22261.2	22800.1	23259.3	23693.3	23885.7	23961.9	23764.2
32.5°	19186.5	19239.5	19163.0	19320.0	19688.6	20336.0	20857.6	21342.5	21555.4	21642.5	21419.1
35°	16099.5	16175.5	16087.7	16323.3	16777.9	17498.8	18076.4	18617.8	18869.8	18993.4	18768.3
37.5°	12828.8	12901.3	12853.8	13168.1	13667.2	14414.5	15004.1	15588.1	15872.7	16058.1	15880.6
40°	9617.8	9684.1	9720.0	10079.4	10548.9	11253.3	11819.6	12397.4	12715.8	12948.4	12839.0
42.5°	6788.2	6855.1	6977.3	7324.0	7715.6	8298.7	8783.7	9302.5	9606.7	9854.8	9812.7
45°	4627.4	4705.0	4858.1	5142.1	5425.2	5843.6	6199.7	6603.2	6851.7	7079.0	7081.7
47.5°	3242.7	3297.2	3434.0	3627.9	3812.5	4336.1	4357.7	4556.0	4723.0	4892.9	4914.9
50°	2499.0	2531.9	2604.4	2712.5	2817.2	2953.1	3077.5	3221.2	3324.0	3417.1	3439.4
52.5°	2054.1	2074.9	2111.8	2170.4	2231.1	2305.0	2371.6	2450.5	2506.4	2556.3	2566.8
55°	1736.0	1753.3	1808.2	1819.4	1888.8	1902.2	1931.8	1979.8	2012.3	2042.2	2049.6
57.5°	1496.0	1508.6	1520.3	1545.2	1566.6	1597.7	1622.7	1657.1	1677.6	1699.2	1701.1
60°	1306.7	1315.8	1324.0	1341.4	1355.9	1377.5	1394.8	1418.2	1432.9	1449.1	1451.0
62.5°	1165.8	1172.3	1177.8	1189.2	1199.6	1216.2	1229.9	1249.5	1263.2	1275.7	1278.5
65°	1065.6	1070.4	1073.9	1082.6	1091.6	1105.8	1118.2	1134.2	1144.2	1153.8	1155.9
67.5°	976.9	981.4	985.1	993.0	999.3	1009.8	1018.1	1030.1	1037.7	1045.4	1045.6
70°	875.2	879.4	882.2	889.6	894.7	903.7	910.4	921.2	928.9	937.5	939.6
72.5°	804.8	807.3	811.1	817.7	824.8	834.5	843.4	854.7	864.1	872.9	876.7
75°	751.2	754.1	756.7	762.4	767.3	775.4	782.2	792.4	800.6	810.1	814.7
77.5°	674.0	677.3	679.5	685.2	689.4	697.3	702.3	711.4	718.1	726.8	731.0
80°	580.6	583.8	585.3	590.6	594.0	601.2	606.1	614.9	620.6	629.2	634.2
82.5°	477.1	480.1	480.9	486.1	487.8	493.8	497.4	506.4	513.3	524.6	532.3
85°	357.3	358.3	360.1	358.8	366.0	366.4	374.6	376.1	387.0	389.8	402.0
87.5°	218.4	221.6	223.2	228.2	230.3	235.3	236.9	242.1	245.0	251.1	253.9
90°	105.8	111.7	114.2	121.1	123.6	129.6	131.7	138.6	141.2	148.1	152.2
92.5°	41.3	44.1	46.7	49.8	52.5	56.0	59.1	62.1	64.9	68.3	73.9
95°	47.1	50.3	53.5	56.7	59.9	63.1	66.3	69.5	72.7	75.9	85.1
97.5°	59.3	62.1	64.8	67.6	70.3	73.2	75.9	78.7	81.4	84.1	95.2
100°	77.3	79.6	82.0	84.3	86.6	89.0	91.3	93.7	96.0	98.4	118.9
102.5°	128.3	136.7	144.9	153.2	161.5	169.7	178.1	186.3	194.6	202.9	246.4
105°	217.8	240.3	262.9	285.4	308.0	330.6	353.1	375.4	398.0	420.5	491.6
107.5°	372.8	414.4	456.2	497.9	539.6	581.2	623.0	664.6	706.2	747.7	819.8
110°	689.3	722.8	756.4	789.9	823.5	857.2	890.7	924.0	957.6	991.0	1043.8



TEST NUMBER: P1444463
 CATALOG NUMBER: EHBR1-36-UNV-TA-L830-UPL36

CANDELA DISTRIBUTION (continued):

	0°	2.5°	5°	7.5°	10°	12.5°	15°	17.5°	20°	22.5°	25°
112.5°	929.8	945.0	960.1	975.4	990.6	1005.6	1020.7	1035.9	1051.1	1066.1	1103.8
115°	980.9	986.3	991.7	996.8	1002.3	1007.5	1012.9	1018.1	1023.4	1028.5	1054.0
117.5°	952.2	951.2	950.4	949.5	948.5	947.5	946.5	945.5	944.5	943.4	957.8
120°	887.6	882.9	878.4	873.7	869.0	864.3	859.6	854.8	850.1	845.2	851.4
122.5°	805.9	800.5	795.1	789.4	783.8	778.1	772.5	766.6	761.0	755.3	757.7
125°	730.5	724.9	719.6	713.8	708.1	702.3	696.6	690.7	685.0	678.9	680.2
127.5°	665.1	661.2	657.4	653.2	649.1	645.0	640.7	636.5	632.4	628.0	628.3
130°	622.6	619.2	615.6	612.0	608.3	604.5	600.6	596.7	592.9	588.9	589.6
132.5°	588.0	585.7	583.2	580.6	577.9	574.9	572.1	569.1	566.2	563.4	564.2
135°	564.8	562.6	560.4	557.9	555.5	552.7	550.0	547.1	544.5	541.6	542.6
137.5°	545.3	543.2	541.1	538.8	536.5	533.9	531.6	529.0	526.4	523.7	524.7
140°	527.4	525.5	523.6	521.5	519.4	517.3	514.8	512.5	510.1	507.6	508.9
142.5°	507.2	505.7	504.3	502.6	501.0	499.0	497.2	495.1	493.4	491.3	493.0
145°	494.1	492.9	491.7	490.3	488.8	487.1	485.6	483.7	482.2	480.5	482.3
147.5°	482.5	481.5	480.7	479.4	478.5	476.9	475.7	474.1	472.9	471.4	473.2
150°	472.5	471.5	470.7	469.6	468.4	467.1	465.9	464.6	463.4	461.9	463.7
152.5°	461.9	460.9	460.1	459.0	458.1	456.6	455.6	454.2	453.1	451.8	453.4
155°	455.5	454.6	453.6	452.6	451.6	450.4	449.2	448.0	447.0	445.7	446.9
157.5°	451.6	450.7	450.1	449.1	448.4	447.5	446.6	445.6	444.7	443.9	444.8
160°	449.8	449.1	448.4	447.5	446.6	445.7	444.9	443.9	443.3	442.3	443.1
162.5°	448.3	447.5	446.6	445.9	445.1	444.1	443.3	442.6	441.8	440.8	441.8
165°	448.5	448.0	447.5	447.0	446.4	445.9	445.3	444.7	444.2	443.5	444.1
167.5°	452.4	451.8	451.1	450.4	449.7	449.0	448.2	447.6	446.9	446.1	446.7
170°	453.7	453.2	452.9	452.5	452.1	451.7	451.4	450.9	450.5	450.1	450.6
172.5°	456.1	455.7	455.4	455.2	454.8	454.6	454.3	453.9	453.7	453.3	454.0
175°	456.1	455.7	455.6	455.4	455.2	455.0	454.9	454.7	454.7	454.3	454.8
177.5°	459.2	459.0	459.0	458.9	458.9	458.8	458.7	458.5	458.4	458.4	458.7
180°	461.9	461.9	461.9	461.9	461.9	461.9	461.9	461.9	461.9	461.9	461.9



TEST NUMBER: P1444463
 CATALOG NUMBER: EHBR1-36-UNV-TA-L830-UPL36

CANDELA DISTRIBUTION (continued):

	27.5°	30°	32.5°	35°	37.5°	40°	42.5°	45°	47.5°	50°	52.5°
0°	29129.1	29129.1	29129.1	29129.1	29129.1	29129.1	29129.1	29129.1	29129.1	29129.1	29129.1
2.5°	29220.2	29216.6	29211.7	29205.6	29200.3	29194.2	29179.6	29175.3	29180.2	29183.4	29190.1
5°	29289.6	29291.6	29292.4	29305.7	29317.1	29345.8	29569.8	29658.9	29727.8	29771.5	29837.9
7.5°	29498.9	29566.3	29632.9	29722.5	29799.8	29904.2	30296.3	30463.2	30581.9	30667.1	30772.1
10°	29853.7	30000.7	30138.6	30300.1	30438.9	30598.0	30962.9	31125.5	31228.2	31302.8	31372.6
12.5°	30211.0	30414.9	30599.2	30778.9	30929.3	31067.1	31195.5	31252.4	31257.2	31259.6	31222.6
15°	30397.1	30592.1	30754.5	30873.4	30961.6	31000.8	30779.7	30663.8	30517.3	30396.6	30198.1
17.5°	30279.7	30396.6	30466.7	30459.8	30423.4	30301.1	29675.2	29331.0	28989.2	28681.2	28277.3
20°	29757.5	29748.6	29687.5	29514.7	29306.4	28982.6	27909.5	27290.4	26691.8	26166.0	25528.2
22.5°	28786.0	28633.1	28420.0	28047.4	27633.4	27067.5	25529.7	24619.1	23785.7	23049.5	22224.8
25°	27378.3	27063.9	26670.8	26079.2	25435.8	24610.6	22715.2	21582.4	20581.9	19714.2	18762.7
27.5°	25576.9	25103.1	24527.2	23708.3	22836.7	21779.4	19678.1	18428.0	17353.9	16423.5	15410.8
30°	23444.1	22828.1	22084.2	21067.9	20016.5	18817.5	16686.2	15420.0	14332.9	13375.7	12362.2
32.5°	21033.9	20312.3	19440.6	18300.0	17163.0	15930.1	13871.9	12646.2	11607.7	10687.0	9769.7
35°	18375.6	17601.8	16679.6	15516.2	14386.0	13187.4	11298.8	10193.6	9276.5	8462.7	7721.9
37.5°	15524.1	14764.2	13887.7	12791.2	11743.2	10657.0	9027.4	8101.4	7331.8	6656.3	6084.4
40°	12559.3	11894.3	11136.0	10188.0	9293.6	8389.1	7051.4	6316.3	5709.0	5193.8	4765.1
42.5°	9630.8	9115.5	8533.9	7784.8	7100.3	6411.6	5382.0	4837.4	4387.5	4016.7	3713.7
45°	6987.5	6642.8	6252.7	5731.9	5258.3	4777.9	4045.1	3662.4	3369.4	3130.3	2928.1
47.5°	4884.6	4684.7	4672.4	4191.2	3843.9	3550.1	3078.0	2836.4	2656.8	2511.9	2383.9
50°	3430.3	3333.6	3213.4	3041.7	2880.5	2714.4	2426.8	2280.7	2175.5	2087.7	2006.8
52.5°	2564.4	2514.2	2450.1	2359.0	2271.7	2178.3	1996.3	1903.3	1870.2	1788.5	1724.4
55°	2048.2	2019.5	1983.0	1929.5	1876.4	1855.2	1699.1	1630.1	1586.3	1554.0	1519.6
57.5°	1701.3	1679.9	1658.3	1622.0	1591.3	1554.0	1471.2	1435.8	1409.8	1390.8	1366.9
60°	1451.2	1438.4	1426.3	1405.1	1388.4	1368.3	1315.8	1295.7	1282.2	1270.7	1255.6
62.5°	1280.9	1274.3	1268.0	1256.7	1248.3	1237.4	1201.4	1191.9	1185.0	1179.3	1170.0
65°	1158.0	1153.2	1149.7	1142.1	1138.0	1131.6	1100.7	1094.3	1090.0	1088.0	1082.6
67.5°	1046.2	1041.2	1039.0	1033.6	1031.9	1027.9	1002.6	999.0	997.6	998.3	996.3
70°	941.7	939.6	940.7	939.9	942.2	943.0	927.6	927.5	929.2	932.4	932.8
72.5°	879.1	879.1	880.2	880.8	883.0	884.2	871.4	870.8	871.5	873.9	874.0
75°	819.5	820.5	823.7	824.8	827.5	828.1	811.2	809.2	809.3	811.7	810.8
77.5°	737.0	740.6	746.7	749.9	755.2	756.1	737.2	734.9	735.0	737.4	735.4
80°	643.4	650.3	660.0	666.8	674.8	678.1	658.6	654.0	649.7	649.0	645.1
82.5°	543.9	552.3	564.1	570.3	578.8	580.7	548.2	542.1	538.4	538.7	535.1
85°	415.3	421.6	432.3	435.7	441.0	440.5	403.4	387.5	391.7	385.2	390.3
87.5°	260.5	264.2	270.9	271.7	274.2	273.7	236.3	228.9	226.8	227.0	224.2
90°	160.4	165.0	172.8	175.1	181.1	182.7	154.5	153.2	148.7	148.3	142.7
92.5°	79.9	85.4	91.2	96.9	102.8	108.5	110.7	115.4	109.8	103.6	98.1
95°	94.5	103.9	113.2	122.6	132.0	141.3	150.7	160.1	151.4	142.6	133.8
97.5°	106.2	117.3	128.2	139.4	150.4	161.5	172.5	183.6	174.2	164.6	155.2
100°	139.6	160.2	180.8	201.4	222.0	242.6	263.3	283.9	265.8	247.5	229.3
102.5°	290.2	334.1	377.9	421.6	465.4	509.3	553.2	597.1	555.5	513.7	472.0
105°	562.6	633.6	704.6	775.3	846.3	917.3	988.6	1059.6	993.1	926.6	860.1
107.5°	891.8	963.9	1035.7	1107.7	1179.8	1251.7	1324.2	1396.3	1331.3	1266.2	1201.4
110°	1096.2	1148.8	1201.4	1253.8	1306.3	1358.9	1412.1	1464.7	1425.7	1386.7	1347.7



TEST NUMBER: P1444463
 CATALOG NUMBER: EHBR1-36-UNV-TA-L830-UPL36

CANDELA DISTRIBUTION (continued):

	27.5°	30°	32.5°	35°	37.5°	40°	42.5°	45°	47.5°	50°	52.5°
112.5°	1141.2	1178.9	1216.4	1254.0	1291.3	1329.0	1367.5	1405.3	1385.7	1366.0	1346.6
115°	1079.3	1104.8	1130.0	1155.3	1180.6	1205.9	1232.4	1258.1	1251.8	1245.4	1239.3
117.5°	971.9	986.0	1000.2	1014.5	1028.5	1042.6	1058.4	1072.7	1073.7	1074.9	1076.2
120°	857.4	863.5	869.5	875.4	881.3	887.3	895.1	901.4	906.7	911.9	917.2
122.5°	760.0	762.3	764.5	766.9	769.1	771.3	775.7	778.4	782.1	785.7	789.5
125°	681.4	682.6	683.7	684.9	685.9	687.1	690.6	692.2	692.5	692.7	693.0
127.5°	628.6	628.9	629.1	629.4	629.5	629.7	632.6	633.3	631.1	629.0	626.8
130°	590.1	590.8	591.3	591.9	592.5	593.1	596.5	597.7	593.9	589.8	586.0
132.5°	564.8	565.7	566.3	567.4	568.0	568.8	572.5	573.9	569.5	564.9	560.4
135°	543.6	544.5	545.5	546.5	547.4	548.5	552.8	554.4	550.3	545.7	541.5
137.5°	525.6	526.5	527.6	528.7	529.7	530.6	535.3	537.1	533.8	530.1	526.8
140°	510.0	511.3	512.5	513.8	515.0	516.5	521.4	523.5	521.0	518.2	515.5
142.5°	494.4	496.3	498.0	499.8	501.5	503.5	509.3	511.9	509.9	507.9	505.9
145°	484.1	486.2	488.1	490.3	492.2	494.5	500.9	504.0	502.8	501.4	500.2
147.5°	474.6	476.6	478.4	480.3	482.1	484.5	491.1	494.0	493.5	492.6	491.8
150°	465.4	467.3	469.1	471.1	473.2	475.4	482.8	486.1	485.4	484.8	484.0
152.5°	455.0	456.6	458.3	460.1	461.9	464.0	472.6	475.9	475.5	474.6	474.1
155°	448.2	449.4	450.7	452.2	453.6	455.2	464.4	467.5	467.2	466.9	466.5
157.5°	445.7	446.5	447.4	448.3	449.4	450.5	459.7	462.9	462.5	462.2	461.9
160°	443.7	444.5	445.0	445.9	446.5	447.5	456.8	459.8	459.5	459.2	458.8
162.5°	442.7	443.8	444.7	445.6	446.5	447.7	457.3	460.6	460.0	459.5	458.9
165°	444.7	445.2	445.7	446.4	447.0	447.7	456.6	459.2	459.0	458.6	458.2
167.5°	447.3	447.9	448.6	449.2	449.9	450.7	459.1	461.7	461.4	461.0	460.8
170°	451.0	451.6	452.1	452.7	453.4	454.1	461.0	463.1	462.8	462.3	461.7
172.5°	454.6	455.3	455.9	456.6	457.3	458.1	464.0	465.9	465.6	465.3	464.6
175°	455.3	455.7	456.3	456.9	457.4	457.9	462.5	464.0	464.0	463.8	463.5
177.5°	459.1	459.5	459.8	460.3	460.7	461.1	464.0	464.9	464.8	464.8	464.7
180°	461.9	461.9	461.9	461.9	461.9	461.9	461.9	461.9	461.9	461.9	461.9



TEST NUMBER: P1444463
 CATALOG NUMBER: EHBR1-36-UNV-TA-L830-UPL36

CANDELA DISTRIBUTION (continued):

	55°	57.5°	60°	62.5°	65°	67.5°	70°	72.5°	75°	77.5°	80°
0°	29129.1	29129.1	29129.1	29129.1	29129.1	29129.1	29129.1	29129.1	29129.1	29129.1	29129.1
2.5°	29191.6	29201.8	29203.4	29215.3	29214.4	29228.6	29226.3	29238.0	29231.2	29240.8	29232.7
5°	29877.2	29939.4	29971.9	30032.6	30051.8	30106.1	30121.4	30170.9	30173.0	30212.3	30203.3
7.5°	30846.6	30938.2	30992.6	31067.6	31105.7	31168.1	31195.7	31241.9	31256.8	31293.5	31296.3
10°	31425.4	31469.9	31501.0	31521.9	31541.0	31549.9	31560.4	31557.6	31560.4	31556.3	31565.3
12.5°	31197.7	31132.7	31089.7	31008.3	30961.2	30871.3	30827.1	30740.6	30709.3	30635.0	30624.3
15°	30044.7	29818.2	29658.2	29425.4	29279.2	29050.2	28916.2	28709.7	28615.3	28451.1	28408.0
17.5°	27943.0	27522.6	27197.2	26779.9	26490.2	26100.2	25854.9	25532.0	25355.1	25094.8	25004.6
20°	24996.5	24374.5	23886.5	23305.0	22889.0	22370.6	22038.8	21620.2	21377.2	21057.4	20927.8
22.5°	21537.3	20762.8	20153.3	19466.5	18964.5	18386.8	17989.2	17536.3	17272.0	16924.5	16770.7
25°	17971.9	17117.8	16440.2	15716.6	15186.1	14607.0	14209.4	13764.5	13490.9	13161.1	13008.3
27.5°	14561.8	13697.3	13042.5	12369.7	11883.1	11360.6	11001.7	10613.4	10370.6	10089.0	9945.2
30°	11552.5	10790.0	10232.8	9674.4	9269.8	8845.3	8547.2	8225.2	8012.2	7771.2	7634.2
32.5°	9100.9	8512.2	8075.8	7632.8	7301.6	6946.9	6689.2	6405.2	6213.0	5997.7	5873.6
35°	7207.8	6750.4	6402.3	6037.7	5753.1	5451.0	5224.0	4978.8	4806.3	4621.0	4513.8
37.5°	5694.9	5331.2	5044.7	4741.8	4508.1	4257.9	4173.6	3892.2	3713.5	3565.6	3463.1
40°	4469.4	4180.2	3943.2	3711.5	3520.9	3331.1	3178.7	3028.5	2913.1	2807.3	2734.1
42.5°	3490.2	3280.6	3107.6	2937.9	2798.9	2660.5	2550.3	2446.7	2368.9	2299.8	2252.6
45°	2774.5	2630.5	2510.2	2390.7	2292.6	2200.2	2126.0	2059.9	2009.7	1968.1	1938.7
47.5°	2279.4	2180.8	2095.9	2015.2	1948.6	1888.1	1838.4	1822.2	1768.2	1731.8	1718.0
50°	1937.1	1877.5	1813.1	1753.6	1709.1	1664.9	1632.6	1601.0	1580.8	1564.0	1559.0
52.5°	1681.8	1636.1	1600.4	1562.6	1533.3	1501.7	1479.5	1458.5	1447.4	1438.6	1437.6
55°	1491.8	1460.0	1436.3	1411.0	1393.4	1374.9	1363.4	1352.2	1347.4	1343.0	1343.3
57.5°	1348.1	1326.8	1311.5	1295.0	1285.5	1276.6	1273.7	1270.9	1272.5	1273.1	1275.6
60°	1243.5	1229.6	1219.9	1210.5	1206.5	1203.7	1205.8	1208.4	1213.4	1217.5	1221.2
62.5°	1163.2	1155.3	1150.6	1145.5	1145.1	1145.3	1149.6	1153.8	1160.2	1165.0	1168.5
65°	1080.7	1076.1	1074.6	1071.3	1073.0	1073.9	1079.1	1082.4	1088.7	1092.5	1097.1
67.5°	997.2	996.1	997.1	997.1	1000.0	1002.5	1007.4	1011.1	1016.5	1020.0	1023.6
70°	935.6	936.0	938.2	938.7	941.8	943.5	947.9	950.2	955.1	958.0	962.5
72.5°	875.6	874.7	875.2	873.8	874.9	874.4	876.9	878.0	882.1	884.3	889.8
75°	811.8	809.1	808.5	805.6	805.7	803.6	804.6	804.4	807.2	808.3	812.1
77.5°	734.8	730.3	728.0	723.2	723.0	721.3	723.2	724.4	729.1	731.4	735.8
80°	642.6	635.5	632.2	626.6	627.5	627.2	632.0	635.6	641.4	642.5	648.0
82.5°	534.0	526.8	523.3	517.9	519.1	519.3	523.6	524.4	529.4	531.6	538.0
85°	382.4	385.2	377.5	378.1	376.5	379.5	382.4	386.0	390.2	397.3	402.7
87.5°	225.2	224.2	227.0	227.2	231.2	233.1	239.4	243.0	250.0	255.5	265.5
90°	141.0	135.5	135.8	132.6	134.6	131.6	133.5	130.4	133.1	132.0	136.0
92.5°	91.7	86.1	79.8	74.1	67.9	62.4	59.1	56.8	53.6	51.3	48.1
95°	125.1	116.3	107.6	98.8	90.1	81.4	78.2	75.0	71.8	68.7	65.4
97.5°	145.8	136.5	127.1	117.7	108.3	98.9	96.8	94.7	92.5	90.4	88.3
100°	211.1	193.1	175.0	156.7	138.6	120.6	118.9	117.2	115.5	113.8	112.0
102.5°	430.5	388.9	347.4	305.7	264.2	222.7	215.4	208.2	200.9	193.7	186.5
105°	793.4	726.9	660.4	593.9	527.5	461.0	441.2	421.1	401.3	381.4	361.7
107.5°	1136.5	1071.6	1006.8	942.0	877.1	812.3	780.9	749.6	718.1	686.8	655.4
110°	1308.5	1269.6	1230.7	1191.6	1152.8	1113.9	1084.0	1054.2	1024.0	994.1	964.3



TEST NUMBER: P1444463
 CATALOG NUMBER: EHBR1-36-UNV-TA-L830-UPL36

CANDELA DISTRIBUTION (continued):

	55°	57.5°	60°	62.5°	65°	67.5°	70°	72.5°	75°	77.5°	80°
112.5°	1327.0	1307.6	1288.0	1268.6	1249.3	1229.7	1215.1	1200.6	1186.0	1171.4	1156.6
115°	1233.0	1226.8	1220.5	1214.5	1208.4	1202.3	1201.2	1200.2	1199.1	1198.1	1197.2
117.5°	1077.2	1078.3	1079.4	1080.7	1082.0	1083.2	1091.0	1098.7	1106.5	1114.5	1122.6
120°	922.5	927.7	933.0	938.5	943.7	949.2	959.5	970.1	980.5	991.2	1001.8
122.5°	793.1	796.8	800.3	804.2	807.8	811.7	822.0	832.4	842.7	853.2	863.8
125°	693.0	693.2	693.4	693.4	693.7	694.1	702.5	711.0	719.6	728.5	737.0
127.5°	624.4	622.2	619.9	617.7	615.4	613.4	618.2	623.4	628.3	633.5	638.7
130°	582.0	578.0	573.8	570.1	565.9	562.0	564.0	565.9	567.9	570.0	572.2
132.5°	555.7	551.2	546.4	541.7	537.0	532.4	532.2	532.2	532.1	532.3	532.6
135°	537.1	532.7	528.2	523.8	519.2	515.0	513.8	512.7	511.5	510.5	509.6
137.5°	523.3	519.8	516.2	512.8	509.0	505.6	503.8	502.4	500.8	499.5	498.0
140°	512.5	509.9	506.9	504.0	501.1	498.5	496.9	495.8	494.4	493.4	492.1
142.5°	503.7	501.6	499.5	497.5	495.4	493.4	491.9	490.7	489.4	488.4	487.2
145°	498.8	497.5	496.1	494.8	493.4	492.1	490.8	489.9	489.0	488.1	487.4
147.5°	490.9	490.1	489.2	488.3	487.4	486.5	485.8	485.4	484.5	484.1	483.4
150°	483.2	482.4	481.6	480.9	480.0	479.2	478.8	478.4	478.0	477.9	477.4
152.5°	473.3	472.6	471.8	471.3	470.3	469.6	469.2	469.1	468.7	468.4	468.1
155°	465.9	465.5	465.0	464.5	463.9	463.6	463.0	462.5	462.1	461.6	461.0
157.5°	461.4	461.0	460.5	460.1	459.5	459.1	458.6	458.2	457.7	457.3	456.8
160°	458.4	458.1	457.6	457.1	456.6	456.3	455.5	455.1	454.2	453.6	453.0
162.5°	458.2	457.7	457.1	456.5	455.7	455.1	454.7	454.2	453.7	453.4	452.8
165°	457.8	457.4	456.9	456.6	456.2	455.8	455.1	454.5	453.7	453.2	452.4
167.5°	460.4	460.0	459.6	459.3	458.7	458.3	457.8	457.1	456.5	455.9	455.1
170°	461.3	460.7	460.3	459.5	459.1	458.4	458.0	457.2	456.6	456.2	455.4
172.5°	464.2	464.0	463.5	462.9	462.4	461.9	461.5	461.0	460.4	459.9	459.4
175°	463.4	463.3	463.2	462.8	462.7	462.5	462.4	462.3	462.0	461.9	461.6
177.5°	464.7	464.6	464.6	464.4	464.2	464.2	464.0	463.8	463.4	463.1	462.9
180°	461.9	461.9	461.9	461.9	461.9	461.9	461.9	461.9	461.9	461.9	461.9



TEST NUMBER: P1444463
 CATALOG NUMBER: EHBR1-36-UNV-TA-L830-UPL36

CANDELA DISTRIBUTION (continued):

	82.5°	85°	87.5°	90°	92.5°	95°	97.5°	100°	102.5°	105°	107.5°
0°	29129.1	29129.1	29129.1	29129.1	29129.1	29129.1	29129.1	29129.1	29129.1	29129.1	29129.1
2.5°	29241.1	29233.7	29237.2	29223.5	29226.8	29210.2	29208.7	29190.1	29188.2	29170.6	29164.1
5°	30231.2	30214.9	30233.2	30204.6	30210.3	30173.0	30169.9	30121.7	30105.1	30044.8	30018.9
7.5°	31319.3	31313.1	31324.4	31300.4	31299.7	31266.4	31252.6	31209.5	31182.8	31119.4	31079.1
10°	31557.6	31563.2	31554.1	31556.3	31543.4	31539.8	31526.5	31518.1	31496.5	31480.1	31455.8
12.5°	30567.8	30573.7	30536.0	30559.9	30541.0	30585.2	30581.6	30633.7	30641.6	30707.5	30732.5
15°	28280.1	28273.0	28200.6	28246.2	28221.7	28318.7	28340.3	28470.8	28540.5	28708.0	28810.8
17.5°	24824.2	24805.5	24703.5	24759.1	24730.9	24873.7	24921.7	25130.3	25260.4	25530.2	25722.4
20°	20704.6	20668.9	20549.5	20614.6	20585.5	20747.8	20816.3	21068.4	21236.1	21593.5	21847.7
22.5°	16533.8	16477.4	16360.5	16421.3	16393.7	16561.9	16651.0	16903.9	17096.1	17463.0	17759.7
25°	12788.5	12738.2	12625.2	12667.8	12657.5	12799.8	12879.0	13118.2	13307.1	13656.6	13939.8
27.5°	9754.1	9701.8	9599.7	9629.7	9619.4	9740.6	9815.3	10015.2	10177.6	10471.8	10720.5
30°	7465.4	7402.2	7315.6	7332.3	7325.2	7423.3	7493.1	7661.4	7800.6	8049.3	8263.6
32.5°	5722.2	5658.8	5579.1	5586.9	5576.4	5653.5	5710.9	5857.3	5978.7	6190.1	6376.6
35°	4378.3	4452.5	4282.5	4390.2	4278.0	4442.6	4383.4	4474.8	4579.3	4757.4	4912.9
37.5°	3365.9	3314.2	3270.4	3265.7	3265.6	3303.7	3348.6	3436.8	3528.8	3661.4	3798.5
40°	2667.3	2631.0	2602.7	2600.7	2602.7	2629.8	2663.1	2723.9	2791.3	2886.7	2987.4
42.5°	2212.2	2188.2	2171.1	2169.9	2175.3	2194.5	2217.7	2253.8	2297.7	2359.4	2428.5
45°	1914.7	1901.3	1891.8	1891.3	1893.7	1903.8	1917.1	1939.6	1967.4	2006.0	2049.6
47.5°	1705.9	1702.7	1696.8	1696.9	1694.2	1698.3	1699.8	1712.5	1727.3	1756.3	1813.5
50°	1553.9	1553.9	1549.8	1549.6	1545.8	1545.5	1542.3	1547.3	1554.1	1572.2	1590.4
52.5°	1433.7	1433.4	1428.9	1428.0	1423.9	1423.7	1420.9	1422.9	1423.8	1432.9	1443.8
55°	1339.9	1337.1	1331.2	1329.4	1327.8	1330.1	1329.0	1329.2	1328.0	1331.7	1335.0
57.5°	1272.5	1268.8	1263.3	1261.7	1261.3	1264.1	1264.2	1263.2	1258.1	1254.6	1249.9
60°	1219.1	1215.5	1209.6	1208.0	1208.9	1212.8	1212.6	1209.3	1201.8	1195.1	1187.6
62.5°	1166.8	1165.3	1162.3	1161.8	1161.1	1161.7	1159.0	1155.5	1148.1	1141.1	1132.8
65°	1096.5	1097.3	1095.0	1095.3	1092.6	1092.2	1088.1	1084.7	1077.2	1070.8	1062.3
67.5°	1023.5	1024.1	1022.2	1022.2	1020.8	1021.0	1018.6	1015.4	1009.0	1003.9	997.3
70°	963.4	964.9	963.9	964.2	962.5	961.8	957.9	954.9	948.3	943.9	938.0
72.5°	891.4	894.7	894.6	895.3	892.7	891.4	886.8	882.9	877.0	873.6	868.8
75°	813.6	817.8	819.1	820.9	817.2	815.3	810.3	807.2	802.3	800.2	797.1
77.5°	737.8	742.4	746.8	751.0	745.0	739.7	733.3	728.5	721.5	718.9	714.1
80°	652.6	660.8	670.6	678.8	668.2	657.4	646.9	639.1	629.9	626.2	620.1
82.5°	541.4	549.8	555.5	560.7	553.3	545.4	535.2	528.4	518.5	514.8	507.8
85°	411.3	421.8	425.2	428.0	423.2	419.0	409.4	396.6	390.3	380.6	375.4
87.5°	270.5	276.8	278.0	279.0	276.0	274.0	267.8	261.8	251.1	243.4	233.8
90°	133.9	136.1	131.9	131.6	129.5	131.7	127.2	127.0	120.0	118.5	112.4
92.5°	45.6	42.4	39.8	36.9	40.3	42.5	45.8	48.1	51.2	53.6	56.8
95°	62.2	59.0	55.8	52.6	55.2	57.8	60.3	62.9	65.5	68.0	70.5
97.5°	86.2	84.0	82.0	79.8	81.3	82.8	84.3	85.8	87.2	88.7	90.3
100°	110.3	108.7	107.0	105.3	105.3	105.3	105.3	105.3	105.3	105.3	105.3
102.5°	179.3	172.0	164.8	157.6	162.4	167.3	172.3	177.1	182.0	186.9	191.9
105°	341.8	322.0	302.2	282.4	301.6	320.7	339.9	359.0	378.2	397.6	416.8
107.5°	624.0	592.7	561.5	530.2	565.2	600.1	635.0	669.9	704.8	739.7	774.9
110°	934.6	904.7	874.9	845.1	882.1	919.2	956.2	993.3	1030.4	1067.5	1104.8



TEST NUMBER: P1444463
 CATALOG NUMBER: EHBR1-36-UNV-TA-L830-UPL36

CANDELA DISTRIBUTION (continued):

	82.5°	85°	87.5°	90°	92.5°	95°	97.5°	100°	102.5°	105°	107.5°
112.5°	1142.2	1127.7	1113.3	1098.8	1122.6	1146.4	1170.3	1194.4	1218.3	1242.2	1266.1
115°	1196.3	1195.4	1194.6	1193.7	1205.0	1216.3	1227.6	1239.0	1250.3	1261.7	1273.1
117.5°	1130.3	1138.3	1146.4	1154.5	1158.1	1161.7	1165.5	1169.1	1172.9	1176.7	1180.5
120°	1012.6	1023.1	1033.9	1044.8	1043.3	1041.8	1040.4	1038.9	1037.9	1036.5	1035.3
122.5°	874.5	885.2	896.1	906.8	903.6	900.5	897.4	894.3	891.3	888.4	885.5
125°	746.1	754.9	763.9	773.0	769.8	766.6	763.5	760.6	757.7	754.7	752.1
127.5°	644.3	649.7	655.2	660.8	659.3	657.9	656.6	655.2	654.2	653.2	652.1
130°	574.5	576.9	579.5	582.1	582.4	582.9	583.6	584.3	585.1	585.9	586.9
132.5°	533.1	533.5	534.0	534.6	536.3	538.0	540.0	542.0	544.1	546.2	548.8
135°	509.0	508.3	507.8	507.3	509.9	512.3	515.2	517.9	521.0	524.0	527.3
137.5°	496.9	495.8	495.0	493.9	496.5	499.0	501.8	504.5	507.5	510.6	514.0
140°	491.2	490.2	489.6	488.8	491.3	493.7	496.5	499.3	502.4	505.4	508.5
142.5°	486.4	485.3	484.7	484.0	486.2	488.5	491.1	493.6	496.4	499.0	502.0
145°	486.6	485.9	485.4	484.8	486.4	488.1	490.0	492.0	493.9	495.9	498.2
147.5°	483.0	482.6	482.3	482.0	483.3	484.5	485.9	487.2	488.7	490.3	492.0
150°	477.4	477.2	477.0	477.0	477.7	478.5	479.4	480.2	481.3	482.2	483.5
152.5°	468.1	467.7	467.9	467.8	468.4	469.1	469.9	470.7	471.6	472.5	473.7
155°	460.9	460.5	460.2	459.9	460.1	460.3	460.8	461.0	461.5	461.8	462.4
157.5°	456.6	456.2	455.9	455.5	455.5	455.4	455.5	455.5	455.8	455.6	455.8
160°	452.5	451.7	451.2	450.7	450.9	450.9	451.2	451.2	451.6	451.7	452.1
162.5°	452.4	452.1	451.7	451.3	451.0	450.7	450.5	450.0	449.8	449.5	449.4
165°	451.9	451.1	450.7	449.9	449.9	449.7	449.7	449.5	449.5	449.3	449.5
167.5°	454.6	453.9	453.3	452.7	452.2	451.7	451.3	450.7	450.4	449.9	449.6
170°	455.0	454.4	453.8	453.4	453.2	452.8	452.7	452.4	452.2	452.1	452.1
172.5°	459.0	458.5	458.0	457.6	457.4	457.1	457.0	456.9	456.7	456.7	456.6
175°	461.4	461.2	461.1	461.0	460.7	460.5	460.0	459.8	459.6	459.4	459.1
177.5°	462.5	462.1	461.9	461.7	461.6	461.6	461.6	461.6	461.6	461.5	461.4
180°	461.9	461.9	461.9	461.9	461.9	461.9	461.9	461.9	461.9	461.9	461.9



TEST NUMBER: P1444463
 CATALOG NUMBER: EHBR1-36-UNV-TA-L830-UPL36

CANDELA DISTRIBUTION (continued):

	110°	112.5°	115°	117.5°	120°	122.5°	125°	127.5°	130°	132.5°	135°
0°	29129.1	29129.1	29129.1	29129.1	29129.1	29129.1	29129.1	29129.1	29129.1	29129.1	29129.1
2.5°	29145.1	29137.5	29117.3	29107.4	29088.7	29079.3	29064.8	29055.3	29043.6	29034.8	29030.3
5°	29952.7	29915.4	29840.7	29794.7	29714.1	29661.0	29580.9	29522.2	29439.4	29378.5	29300.3
7.5°	31003.3	30946.1	30850.4	30777.9	30665.0	30578.9	30452.2	30351.0	30211.0	30094.9	29951.9
10°	31431.0	31397.6	31354.7	31308.1	31245.5	31184.3	31097.8	31009.7	30892.2	30775.4	30622.8
12.5°	30798.8	30830.3	30892.2	30921.1	30968.5	30984.6	31006.3	30996.2	30977.0	30929.3	30860.1
15°	29008.4	29139.5	29346.8	29490.2	29691.1	29832.2	30018.9	30139.0	30277.4	30360.1	30438.7
17.5°	26063.2	26316.8	26682.6	26974.4	27366.1	27684.6	28074.9	28381.5	28735.5	29007.1	29296.2
20°	22290.8	22646.0	23150.9	23579.7	24147.3	24628.7	25245.3	25761.9	26364.5	26866.9	27409.0
22.5°	18230.6	18648.5	19227.1	19744.2	20422.1	21027.5	21800.2	22483.2	23297.8	24027.6	24835.0
25°	14400.3	14809.9	15399.2	15934.8	16666.6	17333.5	18177.6	18961.1	19906.6	20788.1	21800.2
27.5°	11115.6	11479.5	11997.6	12479.6	13149.8	13804.6	14661.2	15496.7	16505.5	17452.9	18543.6
30°	8584.5	8879.6	9294.7	9682.5	10220.5	10755.9	11519.0	12291.8	13295.6	14277.2	15395.5
32.5°	6652.7	6904.3	7250.9	7565.6	7980.2	8383.9	8945.9	9563.4	10443.8	11384.3	12465.4
35°	5149.9	5365.2	5660.2	5931.3	6272.2	6592.7	7012.0	7452.8	8124.7	8915.8	9883.4
37.5°	4105.8	4193.6	4404.0	4626.2	4909.4	5172.8	5500.8	5826.7	6307.4	6931.6	7721.9
40°	3122.4	3261.8	3433.1	3608.1	3822.5	4033.7	4393.6	4566.8	4883.3	5331.4	5944.9
42.5°	2519.4	2617.4	2738.0	2859.7	3009.1	3156.2	3338.2	3523.5	3760.2	4063.6	4500.0
45°	2108.3	2172.1	2249.9	2331.0	2429.1	2529.5	2651.4	2778.7	2939.0	3125.5	3390.6
47.5°	1833.6	1868.9	1919.7	1975.1	2042.3	2111.8	2191.1	2272.2	2371.7	2482.5	2633.4
50°	1619.2	1648.7	1688.1	1725.1	1771.6	1842.8	1874.3	1919.0	1979.0	2044.0	2128.5
52.5°	1464.1	1483.7	1508.5	1529.7	1559.1	1585.8	1620.8	1651.6	1693.1	1732.2	1786.7
55°	1343.3	1350.5	1364.4	1378.2	1398.5	1416.7	1440.7	1460.9	1487.3	1510.7	1545.1
57.5°	1250.0	1250.7	1257.2	1264.3	1277.3	1288.8	1305.3	1318.6	1337.0	1351.9	1372.5
60°	1183.0	1179.4	1180.7	1183.2	1190.6	1198.0	1208.5	1217.2	1228.8	1237.2	1248.7
62.5°	1127.1	1121.5	1120.3	1119.6	1123.3	1126.0	1131.7	1135.9	1142.5	1146.2	1152.3
65°	1056.7	1050.1	1047.5	1044.4	1045.6	1044.7	1046.9	1047.0	1050.3	1051.1	1054.6
67.5°	992.7	987.3	983.9	979.8	978.0	975.0	973.8	971.0	970.5	968.2	967.6
70°	934.5	929.0	926.2	922.5	920.5	916.7	914.3	909.5	906.7	902.3	899.8
72.5°	867.0	863.9	863.1	860.6	859.9	857.7	856.7	853.4	851.5	847.6	845.5
75°	796.5	794.0	793.8	791.2	791.0	788.4	787.8	784.2	782.3	778.6	777.0
77.5°	712.6	708.8	707.8	704.8	705.5	704.2	705.2	702.5	701.4	697.6	696.4
80°	617.9	613.2	611.2	607.3	608.3	606.5	608.3	608.1	609.5	606.5	606.0
82.5°	505.9	500.7	499.7	496.9	498.8	499.0	503.0	500.8	501.7	498.9	500.0
85°	368.1	364.3	358.9	358.1	354.6	358.2	353.5	356.7	351.6	355.2	350.4
87.5°	228.2	220.2	216.0	210.3	208.1	202.6	200.4	196.3	197.6	195.7	196.8
90°	112.4	107.2	108.4	105.6	107.7	105.6	108.9	108.3	112.0	111.3	115.4
92.5°	59.1	61.9	67.0	72.4	77.3	82.3	87.4	92.8	97.7	103.0	107.9
95°	73.2	75.7	82.5	89.3	96.1	102.9	109.8	116.6	123.5	130.2	137.0
97.5°	91.8	93.3	100.1	106.9	113.7	120.6	127.3	134.4	141.3	148.0	154.8
100°	105.3	105.4	124.8	144.2	163.5	182.9	202.3	221.7	241.3	260.7	280.1
102.5°	196.8	201.7	250.7	299.7	348.6	397.6	446.7	495.8	544.7	594.0	643.1
105°	435.9	455.2	530.0	604.8	679.5	754.3	829.2	904.2	979.0	1053.8	1128.6
107.5°	809.8	844.8	912.4	980.0	1047.4	1115.2	1182.9	1250.5	1318.0	1385.8	1453.6
110°	1141.8	1178.9	1224.2	1269.5	1315.0	1360.2	1405.4	1450.8	1496.3	1541.6	1587.3



TEST NUMBER: P1444463
 CATALOG NUMBER: EHBR1-36-UNV-TA-L830-UPL36

CANDELA DISTRIBUTION (continued):

	110°	112.5°	115°	117.5°	120°	122.5°	125°	127.5°	130°	132.5°	135°
112.5°	1289.9	1314.0	1340.3	1366.8	1393.3	1419.7	1446.2	1472.6	1499.3	1525.8	1552.4
115°	1284.6	1296.1	1306.2	1316.7	1326.8	1337.2	1347.6	1358.2	1368.6	1379.1	1389.7
117.5°	1184.2	1188.3	1189.8	1191.5	1193.1	1195.0	1196.7	1198.6	1200.6	1202.4	1204.1
120°	1034.1	1032.9	1031.2	1029.6	1027.9	1026.4	1024.9	1023.4	1022.1	1020.7	1019.2
122.5°	882.7	879.9	878.3	876.8	875.4	873.9	872.5	871.3	870.0	868.8	867.4
125°	749.3	746.7	748.2	749.8	751.4	753.2	754.8	756.7	758.4	760.2	762.0
127.5°	651.1	650.4	654.3	658.3	662.3	666.6	670.8	675.1	679.1	683.5	687.5
130°	588.1	589.2	594.2	599.5	604.6	610.0	615.3	620.8	625.9	631.2	636.5
132.5°	551.1	553.7	558.5	563.6	568.7	573.8	578.9	584.0	589.2	594.4	599.3
135°	530.6	534.0	538.5	543.1	547.8	552.6	557.2	561.9	566.5	571.2	575.8
137.5°	517.1	520.5	524.3	527.9	531.7	535.5	539.4	543.1	546.8	550.6	554.3
140°	511.8	515.2	517.3	519.6	521.7	524.0	526.1	528.3	530.4	532.7	534.8
142.5°	504.9	508.1	509.3	510.8	512.1	513.9	515.3	516.8	518.0	519.4	520.7
145°	500.4	502.8	502.9	503.3	503.5	503.9	503.9	504.3	504.2	504.5	504.6
147.5°	493.6	495.5	495.1	495.1	495.1	494.8	494.8	494.7	494.3	494.2	494.0
150°	484.6	485.9	485.2	484.9	484.3	483.9	483.2	482.8	482.1	481.7	481.1
152.5°	474.6	475.7	474.8	474.4	473.7	473.0	472.3	471.8	471.1	470.4	469.9
155°	462.6	463.2	462.7	462.5	462.0	461.7	461.2	461.2	460.9	460.6	460.3
157.5°	456.0	456.1	455.9	455.6	455.3	455.2	455.0	454.9	454.8	454.9	454.9
160°	452.1	452.5	452.1	451.9	451.7	451.5	451.2	451.3	451.2	451.4	451.4
162.5°	449.2	449.1	448.7	448.5	448.2	448.2	448.1	448.2	448.0	448.2	448.3
165°	449.6	449.8	449.2	449.0	448.5	448.2	447.8	447.7	447.6	447.6	447.4
167.5°	449.3	449.2	449.2	449.2	449.2	449.4	449.5	449.9	450.1	450.5	450.6
170°	452.1	452.1	451.9	451.8	451.5	451.4	451.4	451.3	451.2	451.2	451.2
172.5°	456.6	456.6	456.2	455.8	455.3	455.1	454.6	454.4	453.9	453.6	453.2
175°	458.8	458.6	458.4	458.1	458.0	457.7	457.4	457.0	456.8	456.6	456.4
177.5°	461.3	461.1	461.0	461.0	460.9	460.8	460.8	460.7	460.7	460.7	460.5
180°	461.9	461.9	461.9	461.9	461.9	461.9	461.9	461.9	461.9	461.9	461.9



TEST NUMBER: P1444463
 CATALOG NUMBER: EHBR1-36-UNV-TA-L830-UPL36

CANDELA DISTRIBUTION (continued):

	137.5°	140°	142.5°	145°	147.5°	150°	152.5°	155°	157.5°	160°	162.5°
0°	29129.1	29129.1	29129.1	29129.1	29129.1	29129.1	29129.1	29129.1	29129.1	29129.1	29129.1
2.5°	29024.5	29024.1	29021.3	29022.6	29023.2	29025.2	29027.7	29030.3	29030.9	29032.9	29033.3
5°	29241.7	29169.9	29116.8	29058.4	29014.5	28974.9	28948.6	28927.6	28919.6	28921.5	28926.4
7.5°	29830.7	29682.4	29560.2	29421.1	29305.1	29182.4	29080.6	28983.8	28913.4	28860.8	28831.4
10°	30477.0	30296.5	30123.8	29922.5	29731.7	29528.0	29343.4	29157.7	29002.8	28868.2	28769.5
12.5°	30763.9	30636.3	30487.0	30297.0	30092.8	29857.8	29620.4	29365.9	29129.3	28909.6	28732.4
15°	30460.2	30460.4	30405.9	30314.9	30173.0	29985.2	29759.0	29493.8	29214.5	28929.7	28669.4
17.5°	29496.1	29678.0	29779.2	29843.2	29823.6	29754.4	29610.5	29406.8	29146.4	28843.0	28525.4
20°	27840.6	28269.7	28575.5	28850.5	29004.7	29107.2	29096.9	29014.0	28828.6	28570.7	28239.8
22.5°	25521.5	26241.6	26809.7	27339.6	27711.2	28013.5	28157.2	28218.2	28134.1	27954.4	27643.8
25°	22704.7	23683.7	24519.3	25330.1	25938.3	26461.1	26775.2	26996.5	27014.1	26920.2	26643.1
27.5°	19574.8	20730.4	21787.8	22865.4	23720.8	24472.3	24965.4	25326.3	25440.9	25425.7	25174.1
30°	16448.8	17662.0	18827.6	20084.3	21142.6	22102.7	22754.0	23242.0	23430.1	23466.1	23224.1
32.5°	13496.7	14693.0	15855.4	17169.1	18333.8	19434.1	20203.6	20783.3	21002.0	21053.6	20788.1
35°	10817.4	11921.1	13025.8	14299.0	15457.0	16596.4	17407.2	18014.1	18218.4	18252.9	17945.5
37.5°	8494.0	9434.3	10396.9	11539.3	12602.8	13672.9	14443.2	15013.7	15162.4	15153.2	14805.4
40°	6537.7	7268.8	8042.2	8982.7	9866.8	10771.4	11421.9	11893.5	11971.7	11913.8	11548.4
42.5°	4915.9	5444.0	6004.7	6706.7	7362.8	8039.8	8513.1	8863.1	8874.3	8782.8	8454.7
45°	3662.4	4177.5	4412.7	4837.2	5259.7	5709.9	5998.9	6215.2	6181.6	6101.2	5851.8
47.5°	2792.0	2990.0	3199.9	3463.1	3709.3	4220.1	4182.2	4529.5	4279.4	4449.9	4074.5
50°	2217.1	2327.7	2440.9	2580.5	2709.1	2842.7	2926.2	2988.5	2980.3	2953.5	2881.7
52.5°	1886.3	1920.4	1976.2	2055.6	2127.4	2199.6	2247.1	2285.8	2286.5	2275.7	2239.3
55°	1576.5	1619.9	1659.9	1711.8	1800.3	1813.8	1882.0	1868.2	1873.6	1854.7	1874.0
57.5°	1389.9	1415.2	1437.8	1468.7	1494.2	1524.0	1541.6	1558.6	1556.9	1553.3	1534.7
60°	1257.8	1271.7	1284.2	1302.3	1316.3	1333.1	1341.3	1349.9	1347.1	1340.8	1324.3
62.5°	1155.9	1164.6	1171.7	1183.4	1192.0	1202.5	1206.7	1210.3	1206.7	1200.7	1186.2
65°	1055.4	1061.0	1065.5	1074.3	1080.3	1089.3	1092.9	1096.3	1093.0	1088.3	1077.2
67.5°	964.7	965.3	964.8	968.4	970.2	975.6	977.2	979.7	975.8	971.8	962.5
70°	896.0	894.6	892.8	894.2	894.6	897.1	897.6	897.1	892.5	885.6	875.3
72.5°	842.2	841.4	840.1	841.3	841.3	843.7	842.9	841.7	836.0	829.4	819.2
75°	773.1	772.5	770.0	770.1	767.9	768.7	765.9	764.3	757.9	752.3	743.2
77.5°	692.2	690.9	687.2	685.8	681.6	679.9	674.6	672.0	665.5	661.0	653.3
80°	601.9	600.5	595.7	593.0	586.6	582.4	574.7	570.3	562.8	558.4	550.8
82.5°	497.6	498.1	493.3	489.9	480.6	473.5	463.1	457.5	449.3	445.0	437.3
85°	353.9	348.8	351.5	351.3	345.5	339.3	330.8	324.9	318.0	313.9	308.5
87.5°	194.1	195.3	193.9	192.7	188.6	185.5	178.9	175.4	170.4	167.9	163.7
90°	107.3	104.3	96.6	93.6	86.1	81.4	72.9	68.9	61.0	59.0	54.3
92.5°	102.2	96.4	91.0	84.9	79.4	73.6	67.9	62.1	56.4	54.2	52.5
95°	128.7	120.6	112.2	104.0	95.6	87.4	79.2	70.9	62.6	60.9	59.2
97.5°	145.2	135.4	125.6	115.9	106.1	96.3	86.6	76.8	67.1	66.0	64.9
100°	257.6	235.1	212.5	190.0	167.6	145.0	122.5	99.9	77.5	76.2	74.9
102.5°	588.3	533.7	479.1	424.5	370.0	315.3	260.7	206.0	151.4	143.5	135.6
105°	1045.9	963.2	880.8	798.1	715.3	632.6	550.0	467.2	384.5	358.0	331.4
107.5°	1375.8	1298.0	1220.5	1142.8	1064.9	987.3	909.6	831.8	754.0	707.2	660.5
110°	1525.5	1463.7	1402.3	1340.5	1278.9	1217.2	1155.4	1093.7	1032.0	991.6	951.4



TEST NUMBER: P1444463
 CATALOG NUMBER: EHBR1-36-UNV-TA-L830-UPL36

CANDELA DISTRIBUTION (continued):

	137.5°	140°	142.5°	145°	147.5°	150°	152.5°	155°	157.5°	160°	162.5°
112.5°	1507.4	1462.0	1417.1	1371.7	1326.6	1281.2	1236.2	1190.7	1145.4	1121.1	1096.6
115°	1362.6	1335.3	1308.2	1280.9	1253.7	1226.4	1199.2	1171.7	1144.4	1131.5	1118.6
117.5°	1190.5	1176.5	1162.7	1148.8	1134.8	1120.8	1106.9	1092.8	1078.8	1074.4	1069.7
120°	1015.3	1011.1	1006.7	1002.5	998.3	994.0	989.6	985.2	980.8	981.4	981.9
122.5°	869.1	870.7	872.4	873.8	875.5	876.9	878.6	879.9	881.4	884.9	888.3
125°	766.0	770.0	774.1	778.0	782.1	786.0	790.0	793.8	797.8	801.2	804.7
127.5°	692.2	696.5	701.2	705.5	710.1	714.4	719.0	723.1	727.7	730.8	734.1
130°	640.6	644.4	648.3	652.0	656.1	659.9	663.7	667.5	671.4	673.9	676.3
132.5°	602.9	606.3	609.9	613.2	616.8	620.1	623.7	627.1	630.7	632.4	634.3
135°	578.5	580.9	583.7	586.1	588.9	591.3	594.1	596.7	599.4	600.6	601.9
137.5°	556.4	558.5	560.7	562.8	564.9	567.0	569.4	571.5	574.0	574.4	575.3
140°	537.0	539.3	541.5	543.8	546.1	548.3	551.0	553.3	555.9	556.4	557.2
142.5°	522.5	524.2	526.0	527.6	529.6	531.3	533.3	535.4	537.4	538.0	538.7
145°	506.8	508.8	511.0	512.9	515.0	517.3	519.8	522.1	524.6	524.9	525.3
147.5°	495.7	497.4	499.4	501.2	503.1	504.9	507.2	509.2	511.4	511.7	512.1
150°	483.2	484.9	486.9	488.8	490.8	493.0	495.2	497.5	500.1	500.8	501.4
152.5°	471.9	474.0	476.0	478.3	480.6	483.0	485.4	487.8	490.4	490.9	491.7
155°	462.5	464.3	466.7	468.9	471.2	473.3	475.8	478.2	480.6	481.5	482.2
157.5°	456.8	458.5	460.6	462.5	464.5	466.6	468.8	470.9	473.1	473.8	474.4
160°	453.1	454.7	456.6	458.3	460.1	462.0	464.0	465.7	467.7	468.3	468.9
162.5°	450.1	451.7	453.6	455.1	457.1	458.8	460.8	462.5	464.4	465.0	465.6
165°	448.7	449.9	451.3	452.5	453.9	455.1	456.6	457.9	459.4	459.9	460.8
167.5°	451.8	452.6	453.6	454.5	455.7	456.7	457.8	458.8	459.9	460.6	461.3
170°	452.1	453.0	453.8	454.8	455.8	456.7	457.6	458.5	459.7	460.2	461.0
172.5°	453.8	454.2	455.1	455.5	456.2	456.7	457.5	458.1	458.8	459.5	460.1
175°	456.7	457.0	457.3	457.5	457.9	458.1	458.6	459.1	459.4	459.9	460.4
177.5°	460.7	460.9	461.1	461.3	461.7	461.9	462.3	462.5	462.7	463.4	464.1
180°	461.9	461.9	461.9	461.9	461.9	461.9	461.9	461.9	461.9	461.9	461.9



TEST NUMBER: P1444463
 CATALOG NUMBER: EHBR1-36-UNV-TA-L830-UPL36

CANDELA DISTRIBUTION (continued):

	165°	167.5°	170°	172.5°	175°	177.5°	180°	182.5°	185°	187.5°	190°
0°	29129.1	29129.1	29129.1	29129.1	29129.1	29129.1	29129.1	29129.1	29129.1	29129.1	29129.1
2.5°	29032.4	29032.0	29031.0	29029.7	29028.4	29029.3	29030.5	29033.9	29039.7	29048.1	29059.1
5°	28930.4	28936.3	28939.7	28940.2	28937.1	28935.3	28938.1	28946.1	28962.2	28989.2	29025.6
7.5°	28823.6	28830.9	28842.1	28850.5	28852.1	28850.2	28850.5	28863.1	28892.8	28945.3	29019.1
10°	28709.5	28687.7	28699.2	28720.1	28736.7	28739.8	28741.9	28756.6	28800.1	28879.5	28997.9
12.5°	28604.1	28535.4	28522.1	28541.1	28566.3	28574.4	28572.1	28578.5	28629.4	28734.5	28899.5
15°	28465.5	28336.3	28292.1	28296.9	28328.1	28339.4	28331.1	28318.7	28368.2	28496.6	28710.2
17.5°	28241.1	28032.8	27951.6	27948.0	27984.6	27994.2	27974.2	27935.3	27984.1	28144.3	28409.5
20°	27900.2	27592.5	27439.7	27415.4	27455.0	27443.4	27403.4	27344.7	27408.8	27603.6	27919.0
22.5°	27287.0	26897.3	26636.2	26551.9	26599.3	26567.7	26509.3	26434.3	26519.4	26740.8	27092.1
25°	26285.2	25834.9	25477.4	25276.8	25314.6	25257.9	25194.3	25103.4	25205.0	25459.0	25845.7
27.5°	24812.7	24292.5	23849.5	23517.4	23529.7	23455.4	23382.1	23264.5	23391.3	23692.0	24128.1
30°	22854.6	22252.7	21713.2	21261.9	21221.5	21149.5	21074.5	20920.1	21078.9	21438.7	21948.4
32.5°	20395.5	19727.3	19103.9	18533.3	18425.7	18355.4	18288.6	18110.9	18318.7	18738.3	19323.8
35°	17519.8	16807.9	16132.1	15480.4	15302.1	15231.8	15173.4	15003.2	15262.5	15719.1	16351.6
37.5°	14363.3	13636.1	12965.1	12296.8	12044.9	11949.5	11907.1	11795.6	12094.7	12546.4	13181.4
40°	11122.8	10446.6	9845.0	9254.9	8967.6	8821.7	8799.4	8779.2	9068.4	9460.3	10036.6
42.5°	8091.4	7545.9	7082.0	6630.9	6370.6	6171.4	6171.3	6231.7	6492.1	6785.7	7230.1
45°	5597.1	5231.0	4935.4	4634.0	4714.5	4317.5	4550.8	4431.0	4559.7	4749.0	5038.0
47.5°	3847.4	3647.6	3485.2	3316.8	3194.1	3076.8	3087.1	3162.7	3283.9	3396.2	3546.6
50°	2804.1	2702.3	2619.7	2532.2	2471.1	2419.4	2422.4	2455.1	2518.8	2578.0	2656.7
52.5°	2197.2	2141.1	2096.2	2047.8	2015.8	1990.0	1991.4	2007.4	2041.7	2075.6	2120.7
55°	1811.0	1804.3	1745.8	1702.5	1686.0	1668.7	1671.8	1678.0	1701.5	1721.2	1751.2
57.5°	1517.7	1491.4	1473.9	1451.1	1440.6	1428.5	1431.2	1433.5	1449.2	1462.5	1483.9
60°	1310.5	1291.9	1279.5	1263.9	1257.1	1249.4	1251.1	1252.5	1262.6	1271.2	1286.7
62.5°	1172.9	1156.2	1145.4	1133.4	1128.5	1123.4	1124.6	1125.0	1131.3	1137.6	1149.3
65°	1067.3	1054.1	1045.1	1034.8	1029.7	1024.3	1024.9	1024.9	1030.1	1034.8	1043.5
67.5°	955.6	945.7	939.9	931.7	928.2	922.7	922.6	920.9	924.3	926.1	932.1
70°	866.0	856.0	848.6	840.7	836.3	831.5	831.6	831.7	835.7	839.9	847.5
72.5°	810.6	801.1	794.4	787.5	783.5	779.3	778.6	778.1	781.0	783.4	788.4
75°	737.4	729.7	725.8	719.3	716.1	711.4	710.7	708.5	709.9	710.3	714.1
77.5°	648.4	641.2	638.0	631.4	628.7	623.5	623.0	620.7	621.7	620.9	623.8
80°	547.0	540.4	538.7	533.3	532.1	527.2	526.4	523.4	524.4	522.0	523.2
82.5°	433.9	427.8	426.6	421.6	421.6	417.1	416.9	412.5	412.5	408.7	402.7
85°	305.6	301.2	299.4	295.3	294.0	290.5	288.7	284.5	283.0	280.3	279.4
87.5°	161.3	158.5	156.0	154.1	150.5	144.2	143.6	139.2	139.5	136.4	136.6
90°	52.8	48.4	47.1	43.0	41.4	38.3	36.9	37.7	39.0	39.8	41.1
92.5°	50.7	48.7	46.8	44.9	43.0	41.0	39.2	41.0	43.0	44.9	46.8
95°	57.4	55.7	54.0	52.4	50.6	48.9	47.2	48.9	50.6	52.5	54.1
97.5°	63.9	62.8	61.7	60.6	59.6	58.5	57.4	58.5	59.7	60.7	61.8
100°	73.6	72.3	71.1	69.8	68.5	67.3	65.9	67.5	68.8	70.1	71.4
102.5°	127.9	120.0	112.0	104.2	96.3	88.4	80.6	88.4	96.3	104.3	112.1
105°	304.8	278.3	251.6	225.0	198.4	171.8	145.2	171.9	198.5	225.1	251.8
107.5°	613.6	567.1	520.2	473.5	426.6	379.8	333.0	379.9	426.8	473.6	520.4
110°	910.9	870.7	830.4	790.0	749.6	709.2	668.7	709.3	749.7	790.2	830.7



TEST NUMBER: P1444463
 CATALOG NUMBER: EHBR1-36-UNV-TA-L830-UPL36

CANDELA DISTRIBUTION (continued):

	165°	167.5°	170°	172.5°	175°	177.5°	180°	182.5°	185°	187.5°	190°
112.5°	1072.0	1047.4	1023.0	998.4	973.7	949.3	924.5	949.4	974.1	999.0	1023.5
115°	1105.8	1092.8	1079.9	1067.0	1053.9	1040.9	1027.7	1041.2	1054.5	1067.7	1080.9
117.5°	1065.1	1060.7	1056.0	1051.5	1046.9	1042.3	1037.5	1042.5	1047.4	1052.5	1057.2
120°	982.2	982.9	983.3	983.6	984.0	984.4	984.6	984.9	984.9	984.9	984.7
122.5°	891.6	894.9	898.2	901.5	904.7	907.9	910.9	908.2	905.5	902.9	899.9
125°	808.1	811.7	815.0	818.4	821.6	825.0	827.9	825.5	822.8	820.0	817.1
127.5°	737.2	740.3	743.3	746.5	749.3	752.2	754.8	752.8	750.5	748.1	745.5
130°	678.6	681.2	683.2	685.6	687.6	689.7	691.5	690.4	688.9	687.5	685.7
132.5°	636.0	638.0	639.8	641.5	642.9	644.5	645.5	645.1	644.3	643.5	642.4
135°	603.2	604.4	605.6	606.8	607.6	608.6	609.0	609.3	609.0	608.9	608.3
137.5°	575.8	576.6	577.0	577.5	577.8	578.0	578.0	578.8	579.2	579.9	579.9
140°	557.7	558.6	559.0	559.5	560.0	560.3	560.2	561.1	561.5	561.9	561.9
142.5°	539.4	540.0	540.6	541.1	541.3	541.7	541.7	542.4	542.8	543.3	543.5
145°	525.9	526.1	526.4	526.8	526.9	526.9	526.5	527.6	528.3	528.9	529.4
147.5°	512.5	512.9	513.0	513.2	513.3	513.3	513.0	514.0	514.7	515.3	515.8
150°	502.2	502.8	503.4	503.9	504.3	504.7	504.7	505.4	505.6	506.0	506.1
152.5°	492.1	492.8	493.4	493.8	494.1	494.4	494.5	495.1	495.5	496.1	496.3
155°	482.9	483.6	484.3	484.9	485.4	486.0	486.3	486.8	487.1	487.4	487.6
157.5°	475.1	475.8	476.3	477.0	477.4	478.1	478.5	479.0	479.4	479.8	480.1
160°	469.5	470.2	470.7	471.4	471.9	472.4	472.9	473.4	473.8	474.2	474.5
162.5°	466.1	466.8	467.1	467.8	468.3	468.8	469.3	469.8	470.2	470.7	471.0
165°	461.5	462.3	462.9	463.7	464.4	465.2	465.6	466.0	466.2	466.3	466.5
167.5°	461.9	462.6	463.3	464.0	464.5	465.4	465.9	466.2	466.2	466.4	466.5
170°	461.4	462.1	462.7	463.3	463.9	464.6	465.0	465.2	465.2	465.4	465.5
172.5°	460.9	461.6	462.4	463.1	463.9	464.5	465.2	465.2	465.0	464.8	464.5
175°	461.0	461.7	462.3	462.9	463.5	464.0	464.7	464.3	464.3	464.0	463.8
177.5°	465.0	465.8	466.5	467.1	467.9	468.5	469.3	468.6	468.1	467.6	466.9
180°	461.9	461.9	461.9	461.9	461.9	461.9	461.9	461.9	461.9	461.9	461.9



TEST NUMBER: P1444463
 CATALOG NUMBER: EHBR1-36-UNV-TA-L830-UPL36

CANDELA DISTRIBUTION (continued):

	192.5°	195°	197.5°	200°	202.5°	205°	207.5°	210°	212.5°	215°	217.5°
0°	29129.1	29129.1	29129.1	29129.1	29129.1	29129.1	29129.1	29129.1	29129.1	29129.1	29129.1
2.5°	29074.7	29089.2	29111.5	29131.6	29162.0	29186.0	29221.9	29249.2	29289.9	29316.2	29360.3
5°	29077.2	29134.2	29208.9	29282.0	29369.8	29449.4	29548.4	29632.7	29732.3	29813.4	29915.2
7.5°	29118.3	29228.0	29359.5	29492.0	29641.9	29782.0	29939.9	30082.9	30239.1	30371.3	30515.7
10°	29148.7	29317.9	29511.7	29706.6	29911.8	30102.5	30295.0	30461.4	30616.8	30744.8	30857.8
12.5°	29107.6	29340.6	29589.3	29829.4	30057.6	30254.9	30420.6	30548.5	30636.7	30696.7	30710.7
15°	28967.8	29248.3	29518.6	29757.7	29947.1	30093.1	30168.7	30204.1	30166.1	30103.0	29964.5
17.5°	28706.7	29002.5	29244.1	29432.8	29532.8	29572.5	29509.8	29400.9	29188.0	28951.7	28610.5
20°	28227.8	28503.5	28678.7	28781.7	28754.9	28655.9	28419.5	28132.1	27707.1	27254.1	26656.4
22.5°	27388.1	27629.1	27722.4	27730.0	27566.8	27318.8	26892.4	26399.5	25729.1	25032.0	24174.7
25°	26127.4	26338.6	26353.3	26270.4	25971.5	25569.8	24943.6	24246.3	23335.2	22406.4	21332.0
27.5°	24417.8	24620.3	24570.7	24416.1	24001.1	23463.5	22661.9	21761.1	20637.9	19540.8	18352.4
30°	22268.8	22485.2	22427.1	22228.7	21735.1	21099.7	20156.5	19109.9	17862.9	16691.0	15486.8
32.5°	19697.0	19970.6	19930.4	19741.9	19226.8	18546.9	17523.4	16413.4	15137.5	13982.7	12811.4
35°	16773.7	17106.0	17123.2	17000.0	16521.8	15849.8	14839.1	13764.7	12542.5	11453.0	10370.9
37.5°	13624.3	14009.5	14088.7	14055.4	13659.1	13065.9	12145.0	11181.2	10098.5	9143.7	8218.1
40°	10457.5	10847.4	10982.6	11022.8	10730.4	10270.9	9515.1	8737.2	7854.6	7080.9	6345.9
42.5°	7569.5	7915.1	8045.9	8128.1	7945.5	7639.1	7087.8	6522.9	5876.3	5318.3	4783.2
45°	5257.1	5501.7	5601.1	5683.9	5584.5	5411.6	5063.5	4710.1	4283.3	3918.6	3573.4
47.5°	3675.6	3810.4	3876.0	3916.2	3877.7	3787.5	3598.1	3393.4	3152.4	2939.3	2734.4
50°	2724.4	2796.2	2830.5	2853.7	2825.7	2775.6	2673.0	2561.6	2429.3	2308.5	2190.5
52.5°	2159.0	2200.1	2220.6	2233.0	2217.0	2186.3	2126.6	2060.6	1981.2	1906.6	1867.4
55°	1818.8	1816.7	1863.9	1841.1	1863.9	1813.0	1802.3	1729.6	1663.8	1617.4	1567.2
57.5°	1500.0	1521.3	1530.4	1540.5	1534.0	1524.7	1499.3	1473.3	1438.5	1409.5	1378.5
60°	1298.4	1316.0	1325.9	1335.9	1335.3	1331.8	1317.2	1301.7	1279.9	1262.6	1243.8
62.5°	1159.6	1174.8	1184.6	1194.2	1195.1	1193.6	1182.6	1171.7	1156.9	1146.1	1133.1
65°	1050.3	1061.0	1067.7	1075.3	1074.9	1072.9	1062.8	1053.9	1041.6	1034.1	1024.6
67.5°	936.0	944.1	949.3	956.5	957.9	958.3	952.8	948.6	942.7	940.5	937.3
70°	854.7	864.5	872.8	882.0	887.0	889.3	887.0	884.8	881.3	879.9	877.3
72.5°	793.1	801.4	807.9	816.2	820.9	824.2	822.4	821.2	818.2	817.7	816.1
75°	716.7	722.5	726.1	732.4	734.8	738.0	736.6	737.4	736.3	738.8	738.6
77.5°	624.9	629.1	630.8	635.3	635.7	639.5	640.4	644.8	647.9	654.9	658.5
80°	521.5	524.1	524.1	528.8	530.8	537.2	540.2	547.4	550.8	557.0	557.5
82.5°	405.0	401.9	405.0	403.1	409.1	416.2	417.1	423.3	424.7	428.5	425.5
85°	276.9	276.7	274.2	274.6	272.8	273.7	272.6	273.8	272.7	272.8	270.0
87.5°	132.6	133.9	131.0	131.9	129.1	130.4	128.0	129.8	126.9	127.4	123.1
90°	42.2	43.5	44.5	45.9	47.6	51.1	54.9	58.5	62.6	65.9	69.8
92.5°	48.7	50.8	52.6	54.6	56.5	62.2	68.0	73.7	79.6	85.2	91.0
95°	55.8	57.5	59.3	61.3	62.9	71.3	79.5	87.9	96.1	104.4	112.7
97.5°	63.1	64.3	65.3	66.4	67.5	77.3	87.1	96.9	106.7	116.4	126.2
100°	72.7	74.0	75.3	76.6	77.9	100.5	123.1	145.7	168.2	190.6	213.2
102.5°	120.2	128.0	135.9	144.1	151.9	206.6	261.3	316.0	370.5	425.3	479.9
105°	278.5	305.1	332.0	358.6	385.2	468.0	550.8	633.6	716.1	798.9	881.7
107.5°	567.4	614.2	661.1	708.0	754.8	832.7	910.6	988.3	1066.3	1144.1	1221.7
110°	871.3	911.5	952.3	992.7	1033.2	1094.8	1156.8	1218.6	1280.4	1342.1	1403.8



TEST NUMBER: P1444463
 CATALOG NUMBER: EHBR1-36-UNV-TA-L830-UPL36

CANDELA DISTRIBUTION (continued):

	192.5°	195°	197.5°	200°	202.5°	205°	207.5°	210°	212.5°	215°	217.5°
112.5°	1048.4	1072.9	1097.6	1122.1	1146.8	1192.1	1237.8	1283.1	1328.4	1373.7	1419.0
115°	1094.0	1106.8	1120.0	1133.0	1146.3	1173.6	1201.0	1228.5	1255.9	1283.2	1310.6
117.5°	1062.0	1066.8	1071.6	1076.1	1080.9	1094.9	1109.2	1123.2	1137.4	1151.6	1165.6
120°	984.6	984.3	984.0	983.6	983.5	987.8	992.4	996.8	1001.3	1005.7	1010.1
122.5°	897.0	893.9	890.8	887.7	884.5	883.0	881.8	880.3	879.1	877.5	876.2
125°	814.0	810.9	807.7	804.5	801.2	797.4	793.7	789.8	786.0	782.2	778.3
127.5°	743.1	740.2	737.6	734.6	731.7	727.3	723.0	718.6	714.6	710.0	705.8
130°	684.1	682.0	680.2	677.9	675.9	672.0	668.4	664.7	660.9	657.2	653.4
132.5°	641.2	639.8	638.6	636.9	635.5	632.1	629.0	625.4	622.1	618.7	615.5
135°	607.8	607.1	606.5	605.5	604.6	601.9	599.7	597.1	594.6	592.1	589.7
137.5°	580.2	579.9	579.8	579.5	579.4	577.2	575.3	573.2	571.2	569.1	567.2
140°	562.2	562.0	562.1	561.8	561.7	559.4	557.2	555.0	552.8	550.6	548.4
142.5°	543.6	543.6	543.6	543.3	543.2	541.4	539.9	538.2	536.5	534.8	533.2
145°	529.7	530.0	530.2	530.2	530.6	528.4	526.4	524.3	522.5	520.4	518.5
147.5°	516.4	516.6	517.0	517.2	517.6	515.8	514.3	512.5	511.0	509.2	507.7
150°	506.3	506.4	506.5	506.4	506.4	504.5	502.9	501.1	499.5	497.7	496.1
152.5°	496.5	496.6	496.9	497.0	497.2	495.3	493.6	491.7	489.9	487.8	486.1
155°	487.7	487.8	488.0	488.0	488.0	486.3	484.7	482.7	481.0	479.2	477.5
157.5°	480.3	480.4	480.6	480.8	480.9	479.4	477.9	476.4	474.9	473.4	471.9
160°	474.8	475.1	475.3	475.5	475.7	474.3	473.3	471.8	470.7	469.3	467.9
162.5°	471.4	471.6	471.8	472.0	472.2	470.9	469.9	468.5	467.3	465.8	464.6
165°	466.7	466.7	466.7	466.6	466.6	465.7	465.1	464.2	463.4	462.3	461.4
167.5°	466.6	466.5	466.6	466.4	466.5	465.8	465.5	464.8	464.1	463.5	462.8
170°	465.4	465.5	465.5	465.3	465.3	464.6	464.1	463.6	463.1	462.3	461.6
172.5°	464.3	464.0	463.9	463.7	463.3	462.8	462.5	462.1	461.8	461.3	461.0
175°	463.4	463.2	462.9	462.6	462.3	462.2	461.9	461.9	461.7	461.4	461.2
177.5°	466.6	466.0	465.4	464.8	464.2	464.0	464.0	463.8	463.8	463.6	463.4
180°	461.9	461.9	461.9	461.9	461.9	461.9	461.9	461.9	461.9	461.9	461.9



TEST NUMBER: P1444463
 CATALOG NUMBER: EHBR1-36-UNV-TA-L830-UPL36

CANDELA DISTRIBUTION (continued):

	220°	222.5°	225°	227.5°	230°	232.5°	235°	237.5°	240°	242.5°	245°
0°	29129.1	29129.1	29129.1	29129.1	29129.1	29129.1	29129.1	29129.1	29129.1	29129.1	29129.1
2.5°	29387.6	29206.1	29182.2	29195.0	29225.2	29236.5	29269.2	29278.1	29311.1	29319.2	29350.8
5°	29994.0	29754.2	29766.1	29823.8	29911.1	29963.2	30049.0	30093.8	30175.8	30213.1	30287.1
7.5°	30633.5	30445.1	30503.8	30601.1	30720.5	30803.1	30906.2	30973.4	31062.2	31117.4	31188.6
10°	30947.4	30895.7	30960.5	31037.0	31105.1	31158.4	31202.1	31237.1	31260.0	31281.5	31290.9
12.5°	30708.5	30788.4	30799.4	30792.0	30746.8	30712.3	30635.0	30582.4	30489.0	30432.1	30321.0
15°	29822.8	29998.5	29901.2	29753.9	29538.5	29358.8	29105.1	28916.2	28652.1	28472.9	28207.7
17.5°	28268.5	28490.2	28236.7	27896.0	27462.5	27091.8	26630.0	26263.5	25804.4	25470.4	25042.0
20°	26080.3	26287.4	25835.5	25270.6	24600.1	24035.9	23370.4	22839.5	22221.1	21761.1	21206.0
22.5°	23355.8	23503.4	22866.6	22105.1	21250.9	20546.0	19750.3	19113.8	18408.1	17882.2	17290.3
25°	20341.7	20381.6	19617.6	18740.4	17788.3	16996.0	16146.6	15477.4	14757.7	14224.7	13643.8
27.5°	17299.5	17241.1	16415.4	15485.3	14483.8	13660.3	12831.9	12204.8	11574.3	11094.3	10593.8
30°	14428.1	14286.7	13429.4	12473.3	11501.2	10763.1	10075.3	9571.7	9070.2	8689.4	8287.6
32.5°	11794.9	11595.4	10760.9	9865.2	9046.1	8476.5	7966.5	7585.4	7180.4	6858.8	6521.6
35°	9462.6	9250.1	8510.8	7751.5	7131.4	6711.6	6310.8	5998.1	5654.3	5382.9	5090.1
37.5°	7461.1	7286.8	6667.6	6070.1	5601.1	5275.7	4947.3	4691.8	4407.6	4288.3	3975.4
40°	5759.9	5638.1	5154.0	4713.4	4361.3	4208.4	3875.1	3636.4	3424.0	3249.0	3079.3
42.5°	4492.8	4449.7	3978.5	3635.0	3387.0	3194.5	3008.6	2857.8	2711.0	2590.3	2476.3
45°	3297.1	3262.9	3053.8	2855.5	2686.5	2551.9	2426.3	2322.6	2226.6	2147.0	2074.7
47.5°	2567.4	2556.5	2436.0	2313.0	2206.6	2120.1	2038.7	1969.8	1906.1	1853.0	1835.7
50°	2088.2	2086.8	2016.1	1940.2	1864.4	1814.4	1762.4	1721.7	1680.7	1648.9	1615.3
52.5°	1774.2	1766.6	1718.9	1672.0	1627.0	1594.2	1560.9	1534.9	1507.8	1488.1	1467.3
55°	1527.5	1535.5	1507.9	1480.0	1451.8	1431.4	1408.1	1390.9	1372.4	1359.9	1347.3
57.5°	1356.1	1366.8	1352.2	1336.4	1319.3	1305.9	1289.8	1277.9	1265.5	1257.5	1250.2
60°	1231.3	1243.0	1237.2	1229.1	1218.6	1210.6	1200.4	1193.7	1185.8	1181.4	1177.3
62.5°	1125.5	1140.2	1138.1	1134.3	1127.5	1123.0	1117.5	1114.5	1109.3	1107.3	1105.3
65°	1020.0	1036.4	1036.1	1034.2	1030.5	1029.2	1025.7	1025.0	1022.3	1023.4	1023.2
67.5°	937.0	951.2	954.3	956.6	956.5	957.3	957.0	958.4	958.4	960.5	961.8
70°	877.0	887.0	889.3	891.7	892.4	894.3	894.3	895.5	895.2	896.9	897.1
72.5°	816.4	829.5	831.9	833.9	833.9	835.7	834.7	834.4	831.8	831.2	829.5
75°	741.1	757.9	761.5	763.9	764.3	765.9	763.6	762.2	757.9	756.1	753.1
77.5°	662.4	679.8	682.4	683.2	681.8	682.2	677.4	674.1	668.7	666.4	663.5
80°	560.0	585.5	587.6	586.0	582.0	581.3	576.7	573.6	567.1	564.8	562.3
82.5°	426.1	456.1	460.3	462.2	458.9	459.6	455.2	453.6	447.5	446.4	442.4
85°	269.0	299.0	304.0	303.2	300.0	299.3	296.7	297.5	297.0	298.6	299.5
87.5°	123.6	152.7	159.7	157.4	157.1	155.0	150.3	152.1	154.9	156.7	156.9
90°	73.5	86.0	89.5	87.1	81.8	79.0	74.0	71.6	67.1	64.6	60.1
92.5°	96.8	102.6	108.3	103.1	98.1	92.9	87.9	82.6	77.7	72.4	67.4
95°	121.0	129.0	137.3	130.5	123.6	116.8	110.0	103.2	96.4	89.5	82.8
97.5°	135.9	145.5	155.1	148.3	141.5	134.6	127.8	121.0	114.2	107.3	100.5
100°	235.8	257.9	280.4	261.0	241.5	222.2	202.8	183.3	163.9	144.6	125.1
102.5°	534.5	588.9	643.3	594.2	545.2	496.2	447.2	398.1	349.1	299.9	250.9
105°	964.3	1046.6	1129.2	1054.1	979.2	904.5	829.6	754.8	680.0	605.0	530.3
107.5°	1299.4	1376.5	1454.0	1386.3	1318.6	1251.1	1183.2	1115.6	1047.9	980.2	912.5
110°	1465.6	1526.4	1587.9	1542.3	1497.0	1451.3	1406.0	1360.6	1315.2	1270.0	1224.7



TEST NUMBER: P1444463
 CATALOG NUMBER: EHBR1-36-UNV-TA-L830-UPL36

CANDELA DISTRIBUTION (continued):

	220°	222.5°	225°	227.5°	230°	232.5°	235°	237.5°	240°	242.5°	245°
112.5°	1464.2	1508.3	1553.2	1526.4	1500.0	1473.3	1446.8	1420.1	1393.8	1367.1	1340.9
115°	1337.8	1363.7	1390.5	1379.9	1369.5	1359.0	1348.4	1338.1	1327.5	1317.1	1306.9
117.5°	1179.6	1191.9	1205.4	1203.3	1201.5	1199.5	1197.7	1195.7	1194.1	1192.2	1190.6
120°	1014.5	1016.9	1020.6	1021.9	1023.4	1024.7	1026.2	1027.6	1029.1	1030.5	1032.1
122.5°	874.7	871.0	868.9	870.2	871.4	872.5	873.9	875.3	876.7	878.0	879.5
125°	774.5	768.1	763.5	761.7	760.0	758.2	756.4	754.6	753.0	751.2	749.6
127.5°	701.4	694.6	689.5	685.3	681.2	676.9	672.7	668.3	664.3	660.1	656.2
130°	649.7	643.1	638.6	633.3	628.3	622.7	617.7	612.2	607.0	601.6	596.5
132.5°	612.0	605.8	601.7	596.7	591.8	586.5	581.6	576.4	571.4	566.1	561.2
135°	587.1	581.5	578.3	573.6	569.3	564.6	560.0	555.3	550.8	545.9	541.6
137.5°	565.0	559.7	557.0	553.2	549.8	545.9	542.4	538.6	535.0	531.0	527.6
140°	546.2	540.5	537.6	535.5	533.6	531.3	529.3	527.2	525.2	523.1	521.0
142.5°	531.5	526.1	523.6	522.3	521.1	519.8	518.7	517.3	516.0	514.4	513.2
145°	516.6	510.4	507.6	507.4	507.5	507.4	507.2	507.2	507.0	506.9	506.7
147.5°	505.8	499.7	497.0	497.4	497.7	497.8	498.2	498.2	498.7	498.8	499.2
150°	494.1	487.1	484.0	484.7	485.1	485.8	486.4	487.0	487.7	488.3	488.9
152.5°	484.1	475.8	472.3	472.9	473.8	474.3	475.0	475.8	476.6	477.3	478.1
155°	475.5	466.6	462.8	462.9	463.2	463.6	463.9	464.3	464.7	465.2	465.6
157.5°	470.1	460.9	457.3	457.1	457.3	457.4	457.4	457.7	457.9	458.1	458.6
160°	466.5	457.3	453.8	453.6	453.8	453.7	453.7	453.9	454.1	454.3	454.7
162.5°	463.1	454.2	450.8	450.6	450.5	450.5	450.6	450.5	450.7	450.8	451.1
165°	460.4	452.6	449.7	449.8	450.0	450.1	450.3	450.6	450.7	451.1	451.5
167.5°	462.1	455.1	452.9	452.5	452.2	451.9	451.9	451.5	451.5	451.2	451.2
170°	460.9	455.4	453.4	453.3	453.5	453.6	453.6	453.6	453.6	453.7	453.9
172.5°	460.4	456.5	455.0	455.2	455.6	456.0	456.4	456.7	457.1	457.6	458.0
175°	461.0	458.6	458.0	458.0	458.2	458.4	458.6	458.9	459.1	459.3	459.7
177.5°	463.2	462.5	462.1	462.1	462.1	462.1	462.1	462.1	462.1	462.2	462.2
180°	461.9	461.9	461.9	461.9	461.9	461.9	461.9	461.9	461.9	461.9	461.9



TEST NUMBER: P1444463
 CATALOG NUMBER: EHBR1-36-UNV-TA-L830-UPL36

CANDELA DISTRIBUTION (continued):

	247.5°	250°	252.5°	255°	257.5°	260°	262.5°	265°	267.5°	270°	272.5°
0°	29129.1	29129.1	29129.1	29129.1	29129.1	29129.1	29129.1	29129.1	29129.1	29129.1	29129.1
2.5°	29356.7	29391.0	29388.4	29420.3	29418.7	29448.8	29442.8	29468.9	29462.9	29485.2	29472.0
5°	30319.8	30384.8	30406.3	30465.1	30477.2	30529.8	30530.9	30572.7	30567.6	30600.3	30582.9
7.5°	31230.6	31291.4	31320.3	31365.9	31388.7	31426.5	31441.3	31472.4	31479.8	31498.1	31497.6
10°	31307.5	31307.3	31321.6	31315.2	31327.9	31320.5	31336.1	31330.5	31353.5	31347.5	31364.9
12.5°	30273.1	30170.5	30133.0	30040.7	30020.6	29941.4	29947.1	29896.3	29920.8	29889.6	29942.7
15°	28049.9	27811.8	27694.2	27487.1	27422.1	27258.4	27245.1	27136.5	27165.8	27108.9	27192.0
17.5°	24764.7	24389.8	24184.0	23881.7	23761.6	23530.1	23483.8	23343.8	23365.5	23295.0	23395.4
20°	20847.9	20394.8	20135.3	19785.6	19629.6	19353.7	19280.5	19123.9	19143.6	19073.5	19187.0
22.5°	16886.3	16412.1	16119.1	15752.6	15553.4	15293.9	15216.1	15058.7	15067.7	15001.9	15111.1
25°	13245.8	12791.1	12506.7	12173.8	12001.0	11763.1	11681.2	11540.1	11548.0	11493.7	11591.8
27.5°	10246.7	9873.6	9635.6	9356.5	9201.6	9006.0	8926.2	8807.5	8807.1	8767.3	8849.3
30°	8007.2	7695.8	7482.2	7239.2	7093.7	6917.1	6840.0	6733.8	6729.2	6700.9	6766.0
32.5°	6269.4	5992.5	5797.7	5583.8	5453.1	5301.7	5228.7	5143.4	5135.6	5110.0	5163.4
35°	4873.7	4640.5	4473.0	4292.8	4306.1	4082.6	4119.8	3946.3	3899.1	3888.9	3928.7
37.5°	3766.8	3586.2	3450.1	3315.2	3223.9	3129.5	3078.6	3032.9	3027.7	3023.3	3051.1
40°	2948.4	2821.9	2723.0	2630.5	2567.6	2510.0	2478.2	2453.1	2447.2	2443.8	2460.6
42.5°	2386.3	2300.9	2237.1	2180.8	2142.5	2111.2	2093.7	2079.8	2075.1	2075.3	2085.2
45°	2016.1	1964.4	1923.3	1888.1	1863.8	1874.4	1842.9	1859.5	1837.6	1860.2	1845.3
47.5°	1775.4	1731.4	1705.9	1681.1	1666.3	1654.4	1654.9	1655.1	1659.8	1660.5	1665.3
50°	1589.8	1564.3	1546.6	1530.7	1523.0	1516.8	1519.0	1520.6	1525.1	1525.4	1529.0
52.5°	1452.4	1435.6	1424.9	1415.1	1411.6	1408.1	1409.6	1408.9	1411.0	1409.9	1412.8
55°	1340.5	1332.6	1329.3	1325.6	1326.1	1325.2	1325.8	1322.3	1320.1	1317.4	1319.8
57.5°	1248.7	1247.6	1249.9	1251.4	1255.7	1257.2	1258.1	1254.0	1250.1	1246.6	1248.6
60°	1178.0	1179.8	1185.3	1189.9	1195.9	1198.7	1200.5	1198.1	1195.2	1192.3	1194.1
62.5°	1108.3	1110.9	1117.7	1122.7	1130.0	1133.9	1138.1	1138.3	1139.4	1138.3	1139.5
65°	1027.3	1030.7	1036.7	1040.9	1047.7	1051.1	1055.4	1056.1	1058.5	1058.0	1060.0
67.5°	965.7	968.8	973.9	977.8	983.9	987.4	991.1	991.3	992.3	992.0	993.9
70°	900.2	901.7	906.2	909.5	915.5	919.1	923.4	924.7	927.4	927.9	930.1
72.5°	830.2	829.5	832.3	833.8	838.3	841.1	846.6	849.6	854.2	855.3	857.0
75°	754.0	753.3	756.6	757.9	761.7	764.5	770.7	774.7	781.7	784.6	783.8
77.5°	665.7	667.3	673.3	676.7	681.8	685.4	693.4	699.8	712.6	718.3	712.6
80°	567.1	568.7	575.0	578.1	584.9	589.2	598.2	605.7	617.2	619.6	616.4
82.5°	445.9	446.2	451.9	454.3	463.1	469.5	480.8	486.8	493.9	492.8	492.0
85°	304.0	308.1	315.1	322.1	332.9	343.3	354.0	362.9	356.6	366.4	355.4
87.5°	162.5	162.1	171.5	170.0	185.2	193.9	203.2	207.6	212.5	211.6	211.7
90°	58.2	55.2	54.5	51.3	51.4	48.1	48.9	45.7	47.1	43.3	49.0
92.5°	62.2	59.5	56.7	54.0	51.1	48.4	45.6	42.8	40.1	37.3	40.1
95°	76.0	73.4	70.8	68.2	65.7	63.0	60.5	58.0	55.4	52.8	56.0
97.5°	93.7	92.2	90.7	89.2	87.7	86.3	84.8	83.3	81.7	80.2	82.3
100°	105.8	105.8	105.8	105.8	105.5	105.5	105.5	105.5	105.5	105.5	107.2
102.5°	201.9	197.0	192.1	187.1	182.2	177.3	172.4	167.5	162.6	157.7	165.0
105°	455.4	436.2	417.0	397.8	378.6	359.4	340.3	321.1	302.0	282.8	302.6
107.5°	845.1	810.1	775.1	740.2	705.2	670.3	635.4	600.4	565.6	530.6	561.9
110°	1179.2	1142.1	1104.9	1067.9	1030.8	993.7	956.6	919.6	882.5	845.5	875.3



TEST NUMBER: P1444463
 CATALOG NUMBER: EHBR1-36-UNV-TA-L830-UPL36

CANDELA DISTRIBUTION (continued):

	247.5°	250°	252.5°	255°	257.5°	260°	262.5°	265°	267.5°	270°	272.5°
112.5°	1314.5	1290.2	1266.3	1242.4	1218.5	1194.6	1170.7	1146.8	1123.0	1099.1	1113.7
115°	1296.4	1285.1	1273.5	1262.2	1250.7	1239.3	1227.8	1216.6	1205.3	1194.0	1194.9
117.5°	1188.9	1184.8	1181.1	1177.2	1173.3	1169.7	1165.9	1162.3	1158.6	1155.1	1147.0
120°	1033.8	1034.9	1035.9	1037.2	1038.5	1039.7	1041.0	1042.5	1044.0	1045.5	1034.6
122.5°	881.0	883.6	886.3	889.2	892.1	895.1	898.1	901.3	904.5	907.7	896.8
125°	748.0	750.6	753.3	756.0	758.6	761.7	764.7	767.9	771.0	774.3	765.1
127.5°	652.0	652.9	653.6	654.8	655.7	656.9	658.1	659.5	661.0	662.6	656.9
130°	591.2	590.2	589.0	588.1	586.9	586.4	585.6	585.1	584.5	584.2	581.6
132.5°	556.1	553.7	551.3	548.8	546.6	544.5	542.4	540.7	538.9	537.3	536.5
135°	536.8	533.5	530.2	527.0	523.8	521.0	518.1	515.5	512.8	510.4	510.9
137.5°	523.7	520.5	517.2	514.0	510.8	508.1	505.2	502.4	499.8	497.5	498.4
140°	518.7	515.5	512.1	509.1	506.1	503.1	500.3	497.8	495.0	492.7	493.3
142.5°	511.7	509.0	505.9	503.1	500.2	497.7	495.1	492.8	490.2	488.2	488.9
145°	506.5	504.4	502.2	499.9	498.0	496.2	494.0	492.3	490.6	489.3	489.6
147.5°	499.3	497.8	496.0	494.5	492.7	491.5	490.0	488.8	487.6	486.4	486.5
150°	489.4	488.5	487.3	486.3	485.3	484.4	483.4	482.7	481.8	481.2	481.1
152.5°	478.8	477.9	476.9	476.0	475.1	474.3	473.5	472.9	472.2	471.5	471.4
155°	466.1	465.6	465.3	464.9	464.5	464.3	464.0	463.9	463.6	463.5	463.6
157.5°	458.8	458.8	458.5	458.6	458.6	458.5	458.4	458.7	458.5	458.7	459.0
160°	455.1	454.9	454.6	454.4	454.3	454.0	453.9	453.8	453.7	453.6	454.0
162.5°	451.3	451.6	451.7	452.0	452.2	452.4	452.8	453.3	453.5	453.8	454.2
165°	452.0	451.9	451.9	451.7	451.8	451.8	451.9	452.0	452.1	452.2	452.8
167.5°	451.1	451.4	451.5	451.9	452.1	452.6	452.9	453.5	453.9	454.5	455.0
170°	453.9	453.9	453.9	453.9	453.9	454.1	454.2	454.3	454.5	454.8	455.1
172.5°	458.3	458.3	458.1	458.3	458.1	458.3	458.3	458.4	458.4	458.5	458.7
175°	459.7	460.1	460.3	460.7	460.8	461.0	461.1	461.4	461.6	461.9	461.9
177.5°	462.2	462.3	462.3	462.3	462.3	462.4	462.4	462.4	462.4	462.3	462.5
180°	461.9	461.9	461.9	461.9	461.9	461.9	461.9	461.9	461.9	461.9	461.9



TEST NUMBER: P1444463
 CATALOG NUMBER: EHBR1-36-UNV-TA-L830-UPL36

CANDELA DISTRIBUTION (continued):

	275°	277.5°	280°	282.5°	285°	287.5°	290°	292.5°	295°	297.5°	300°
0°	29129.1	29129.1	29129.1	29129.1	29129.1	29129.1	29129.1	29129.1	29129.1	29129.1	29129.1
2.5°	29493.8	29479.0	29494.1	29478.8	29494.1	29475.7	29488.2	29468.3	29473.4	29452.7	29458.0
5°	30608.9	30585.4	30598.0	30567.3	30570.6	30529.8	30529.0	30481.5	30469.0	30414.9	30391.1
7.5°	31510.7	31503.0	31507.3	31487.7	31485.4	31457.6	31444.3	31405.0	31380.3	31330.5	31296.5
10°	31367.9	31391.0	31396.9	31420.3	31425.2	31448.4	31453.3	31476.5	31481.3	31498.5	31498.7
12.5°	29940.2	30018.3	30037.0	30133.4	30174.0	30284.4	30343.5	30465.1	30537.3	30658.5	30732.9
15°	27189.8	27324.8	27378.7	27567.0	27671.1	27891.0	28029.0	28281.4	28459.6	28727.5	28918.8
17.5°	23404.3	23593.0	23678.1	23933.5	24100.0	24424.5	24658.3	25043.2	25337.8	25765.5	26104.5
20°	19206.5	19416.2	19531.8	19823.1	20019.6	20398.7	20690.6	21163.5	21557.9	22099.9	22563.3
22.5°	15145.4	15345.0	15473.3	15769.7	15990.9	16386.3	16712.6	17211.7	17653.6	18264.3	18820.0
25°	11628.8	11811.7	11927.7	12195.8	12403.6	12766.9	13078.4	13558.5	13990.9	14603.4	15173.2
27.5°	8890.0	9043.3	9155.1	9383.7	9567.0	9875.1	10142.7	10539.4	10912.0	11441.9	11949.3
30°	6806.0	6941.9	7050.7	7249.8	7419.7	7686.8	7922.1	8255.4	8563.7	8985.4	9389.0
32.5°	5201.0	5317.9	5414.8	5589.1	5743.2	5983.8	6195.8	6487.9	6752.5	7110.2	7442.2
35°	3965.6	4195.6	4179.3	4419.6	4458.3	4630.9	4820.0	5075.5	5309.8	5613.9	5896.6
37.5°	3077.9	3142.6	3211.9	3318.1	3429.8	3586.8	3746.6	4058.7	4173.1	4403.0	4636.9
40°	2482.0	2525.7	2571.5	2643.3	2721.4	2832.1	2948.5	3097.3	3249.9	3436.2	3626.6
42.5°	2098.3	2123.1	2152.2	2194.4	2242.6	2312.7	2390.6	2491.6	2597.6	2728.8	2862.7
45°	1874.7	1863.0	1871.6	1894.3	1923.3	1966.0	2015.1	2077.6	2146.7	2231.7	2322.1
47.5°	1666.3	1671.1	1673.6	1686.0	1701.5	1730.1	1759.9	1802.3	1884.3	1909.2	1958.6
50°	1528.6	1531.0	1530.2	1536.4	1544.4	1562.9	1582.2	1611.0	1639.6	1677.6	1713.9
52.5°	1413.2	1416.5	1416.0	1420.1	1424.4	1436.2	1448.3	1468.7	1487.4	1511.6	1532.5
55°	1322.2	1326.6	1328.3	1331.7	1333.8	1340.0	1344.8	1354.5	1362.5	1376.2	1388.9
57.5°	1252.1	1258.1	1260.9	1262.1	1259.6	1259.3	1257.7	1259.8	1261.4	1268.7	1275.8
60°	1196.9	1201.8	1202.5	1201.8	1197.2	1194.0	1188.8	1187.2	1186.3	1189.9	1193.7
62.5°	1139.1	1140.9	1139.7	1138.3	1133.1	1130.0	1124.6	1122.6	1120.8	1123.3	1125.4
65°	1059.2	1060.7	1059.2	1058.4	1053.8	1051.3	1046.8	1045.3	1042.7	1043.3	1042.8
67.5°	994.4	995.9	994.7	993.5	990.3	988.8	985.4	983.3	980.2	979.0	976.8
70°	929.7	930.9	929.0	927.9	924.3	922.8	919.7	919.0	916.6	916.0	913.5
72.5°	855.3	855.4	852.9	852.1	849.4	849.3	848.0	849.2	849.0	850.3	849.8
75°	779.2	778.1	774.9	774.4	772.3	773.3	771.8	773.7	773.9	776.7	777.1
77.5°	703.0	699.0	692.9	690.0	685.9	685.3	683.0	684.5	684.0	687.3	688.6
80°	606.7	601.8	594.0	590.2	585.3	584.6	582.4	584.6	583.5	587.3	589.9
82.5°	484.4	480.2	472.0	468.9	463.4	463.9	461.5	463.9	463.6	469.2	472.4
85°	358.3	355.5	347.1	339.7	331.3	326.4	321.7	320.8	319.4	321.7	323.6
87.5°	206.9	204.4	197.7	193.4	178.9	179.6	173.9	173.5	172.1	170.8	173.9
90°	49.0	54.0	54.2	58.8	59.6	64.7	65.8	70.7	71.6	76.6	78.1
92.5°	42.8	45.6	48.3	51.1	53.9	56.7	59.4	62.2	68.2	73.8	80.1
95°	59.2	62.4	65.6	68.8	72.0	75.2	78.4	81.6	90.3	99.0	107.8
97.5°	84.5	86.6	88.7	90.8	92.9	95.1	97.1	99.3	108.8	118.1	127.5
100°	108.8	110.5	112.2	114.0	115.7	117.4	119.1	120.7	139.1	157.2	175.4
102.5°	172.2	179.5	186.7	193.9	201.2	208.5	215.7	222.9	264.5	306.0	347.6
105°	322.4	342.2	362.1	381.9	401.8	421.5	441.5	461.2	527.7	594.2	660.8
107.5°	593.2	624.5	655.8	687.3	718.5	749.9	781.2	812.6	877.4	942.4	1007.2
110°	905.0	935.0	964.8	994.7	1024.5	1054.5	1084.3	1114.4	1153.4	1192.1	1231.1



TEST NUMBER: P1444463
 CATALOG NUMBER: EHBR1-36-UNV-TA-L830-UPL36

CANDELA DISTRIBUTION (continued):

	275°	277.5°	280°	282.5°	285°	287.5°	290°	292.5°	295°	297.5°	300°
112.5°	1128.2	1142.7	1157.2	1171.8	1186.3	1201.1	1215.7	1230.4	1249.9	1269.2	1288.7
115°	1195.8	1196.6	1197.7	1198.7	1199.7	1200.7	1202.0	1203.0	1209.2	1215.3	1221.5
117.5°	1138.9	1131.0	1123.1	1115.2	1107.3	1099.7	1091.8	1084.2	1082.9	1081.7	1080.6
120°	1024.0	1013.3	1002.7	992.0	981.6	971.0	960.7	950.4	945.0	939.7	934.6
122.5°	886.1	875.5	865.0	854.4	844.0	833.7	823.5	813.3	809.5	805.9	802.2
125°	756.2	747.3	738.5	729.9	721.3	712.7	704.4	696.1	695.9	695.5	695.5
127.5°	651.5	646.0	640.8	635.6	630.6	625.5	620.6	615.6	618.0	620.2	622.5
130°	579.3	576.8	574.8	572.4	570.6	568.6	566.7	564.8	569.0	572.9	576.9
132.5°	536.3	535.8	535.6	535.3	535.3	535.4	535.6	535.6	540.4	544.9	549.7
135°	511.4	512.1	513.0	513.9	515.1	516.1	517.3	518.4	523.0	527.3	531.9
137.5°	499.5	500.5	501.8	503.1	504.7	506.1	507.8	509.3	512.8	516.4	519.9
140°	494.2	495.1	496.2	497.3	498.4	499.6	501.0	502.3	505.3	508.0	510.7
142.5°	489.8	490.5	491.5	492.6	493.7	494.9	496.1	497.2	499.4	501.2	503.7
145°	490.3	490.8	491.7	492.3	493.2	494.0	495.1	495.9	497.3	498.5	499.8
147.5°	487.0	487.3	487.8	488.4	489.1	489.6	490.1	490.6	491.6	492.3	493.3
150°	481.4	481.4	481.7	481.7	482.2	482.5	483.0	483.2	483.9	484.6	485.5
152.5°	471.7	471.7	472.0	472.0	472.4	472.7	472.8	473.1	473.9	474.4	475.2
155°	463.9	464.3	464.7	465.1	465.6	465.8	466.4	466.7	467.2	467.6	468.2
157.5°	459.4	459.6	460.1	460.4	460.9	461.2	461.7	462.0	462.5	462.8	463.3
160°	454.7	455.3	455.9	456.5	457.1	457.7	458.3	459.0	459.4	459.7	460.1
162.5°	454.7	455.1	455.5	455.8	456.3	456.6	457.0	457.4	458.1	458.6	459.4
165°	453.4	454.0	454.8	455.1	455.9	456.6	457.1	457.7	458.1	458.4	458.8
167.5°	455.6	456.0	456.7	457.4	458.0	458.5	459.2	459.7	460.1	460.4	460.8
170°	455.7	456.2	456.7	457.3	457.8	458.2	458.9	459.4	459.9	460.4	461.0
172.5°	459.3	459.6	460.0	460.4	460.9	461.3	461.8	462.2	462.6	463.0	463.6
175°	461.9	461.9	462.0	462.1	462.3	462.3	462.4	462.5	462.6	462.7	462.8
177.5°	462.6	462.9	463.1	463.3	463.5	463.8	464.0	464.1	464.1	464.1	464.1
180°	461.9	461.9	461.9	461.9	461.9	461.9	461.9	461.9	461.9	461.9	461.9



TEST NUMBER: P1444463
 CATALOG NUMBER: EHBR1-36-UNV-TA-L830-UPL36

CANDELA DISTRIBUTION (continued):

	302.5°	305°	307.5°	310°	312.5°	315°	317.5°	320°	322.5°	325°	327.5°
0°	29129.1	29129.1	29129.1	29129.1	29129.1	29129.1	29129.1	29129.1	29129.1	29129.1	29129.1
2.5°	29437.4	29438.7	29414.9	29413.7	29391.4	29388.6	29366.9	29360.3	29342.7	29336.3	29318.4
5°	30330.5	30301.6	30234.8	30195.5	30129.4	30085.7	30014.2	29967.6	29898.6	29846.5	29777.1
7.5°	31233.8	31188.8	31113.8	31053.0	30961.4	30888.3	30781.0	30693.1	30577.0	30476.5	30354.5
10°	31498.7	31491.8	31472.7	31444.8	31402.2	31354.3	31281.3	31205.1	31103.4	30992.8	30857.3
12.5°	30846.9	30917.3	31013.2	31070.2	31139.3	31169.6	31198.0	31190.9	31172.3	31116.3	31037.9
15°	29195.7	29393.5	29655.4	29858.3	30091.9	30261.5	30448.9	30565.7	30682.3	30736.0	30768.9
17.5°	26569.0	26943.5	27413.2	27802.3	28251.3	28612.0	29007.3	29304.9	29611.0	29830.2	30028.5
20°	23195.1	23737.7	24401.8	24988.6	25670.8	26263.7	26913.4	27446.8	27996.8	28427.0	28834.1
22.5°	19535.4	20179.9	20982.8	21726.7	22606.2	23396.6	24288.5	25064.6	25875.1	26552.1	27206.8
25°	15936.9	16643.5	17521.5	18351.4	19347.5	20267.0	21324.6	22292.0	23339.5	24249.0	25147.4
27.5°	12650.8	13344.6	14241.0	15124.4	16177.7	17157.4	18290.6	19356.5	20549.1	21649.0	22774.1
30°	9950.0	10538.4	11342.1	12197.8	13236.7	14233.7	15379.2	16475.4	17716.1	18917.0	20184.3
32.5°	7883.1	8331.4	8963.3	9686.8	10645.3	11594.4	12685.1	13743.3	14965.1	16178.3	17496.3
35°	6260.6	6610.3	7092.0	7656.7	8468.4	9286.4	10251.2	11213.6	12353.5	13504.6	14785.8
37.5°	4936.8	5220.6	5597.9	6022.0	6673.1	7344.5	8135.6	8933.4	9923.9	10944.2	12105.3
40°	3855.1	4084.8	4378.6	4694.9	5186.6	5703.8	6315.7	6934.4	7730.1	8564.0	9524.9
42.5°	3028.5	3198.0	3405.5	3636.6	4095.3	4369.9	4784.8	5232.3	5817.3	6422.7	7145.1
45°	2432.2	2547.8	2691.6	2846.7	3059.6	3292.5	3576.7	3874.6	4430.4	4703.0	5142.3
47.5°	2031.1	2108.7	2200.2	2297.9	2423.5	2559.0	2727.5	2899.8	3122.6	3353.5	3624.3
50°	1761.0	1839.9	1871.3	1921.9	1994.6	2072.0	2167.0	2262.0	2381.5	2502.6	2642.0
52.5°	1560.5	1586.2	1620.4	1652.5	1697.6	1785.7	1814.2	1863.9	1930.9	1996.4	2069.7
55°	1407.4	1424.2	1446.4	1465.9	1493.0	1519.1	1556.6	1589.7	1634.4	1673.9	1722.4
57.5°	1288.3	1298.9	1314.4	1327.1	1344.7	1359.4	1381.4	1399.3	1425.0	1447.4	1476.8
60°	1201.6	1208.8	1219.1	1227.5	1238.7	1246.4	1257.3	1265.7	1279.3	1290.6	1307.0
62.5°	1131.0	1134.6	1141.4	1146.3	1153.4	1157.3	1163.1	1166.8	1174.3	1180.0	1189.2
65°	1046.1	1047.0	1051.5	1053.5	1059.1	1061.2	1066.0	1067.7	1073.8	1078.1	1086.1
67.5°	976.6	974.6	974.7	973.1	973.9	972.2	972.7	971.0	973.4	974.7	980.9
70°	913.1	910.4	909.5	906.6	905.7	902.7	901.9	899.1	898.9	898.0	900.2
72.5°	851.2	850.4	850.7	848.7	848.5	846.4	846.5	845.2	846.6	847.3	850.1
75°	780.1	780.3	781.7	779.9	780.4	778.7	779.3	777.7	778.6	778.2	781.0
77.5°	693.5	695.6	699.3	698.6	699.8	697.8	698.7	696.4	697.1	695.6	696.6
80°	596.1	600.4	605.5	605.3	607.5	606.1	608.0	605.9	606.7	604.1	603.4
82.5°	480.5	484.2	489.6	489.8	494.6	495.4	500.7	500.5	503.9	501.7	500.2
85°	328.5	331.0	335.7	338.3	343.2	346.2	351.3	353.3	349.7	356.3	351.1
87.5°	171.5	177.9	174.3	182.7	180.7	189.1	187.3	195.1	193.5	200.3	199.4
90°	84.4	86.4	92.9	95.2	102.8	105.7	107.5	104.1	105.7	102.4	104.1
92.5°	85.7	92.0	97.9	103.9	109.8	115.9	110.3	104.7	99.2	93.8	88.1
95°	116.5	125.2	133.9	142.8	151.5	160.2	150.8	141.5	132.2	122.8	113.4
97.5°	136.9	146.2	155.6	165.0	174.4	183.8	172.7	161.7	150.6	139.7	128.5
100°	193.4	211.6	229.7	247.9	266.0	284.1	263.6	242.9	222.4	201.7	181.1
102.5°	389.4	430.9	472.5	514.2	555.7	597.2	553.5	509.9	466.0	422.3	378.4
105°	727.4	793.9	860.4	926.9	993.4	1060.2	989.2	918.2	847.2	776.3	705.2
107.5°	1072.2	1136.9	1202.0	1266.8	1331.7	1396.8	1324.9	1252.8	1180.9	1108.9	1036.8
110°	1270.3	1309.1	1348.2	1387.4	1426.2	1465.5	1412.8	1360.5	1307.8	1255.2	1202.7



TEST NUMBER: P1444463
 CATALOG NUMBER: EHBR1-36-UNV-TA-L830-UPL36

CANDELA DISTRIBUTION (continued):

	302.5°	305°	307.5°	310°	312.5°	315°	317.5°	320°	322.5°	325°	327.5°
112.5°	1308.2	1327.9	1347.3	1367.0	1386.4	1406.1	1368.4	1331.1	1293.3	1255.9	1218.2
115°	1227.7	1233.9	1240.3	1246.6	1252.8	1259.0	1233.7	1208.4	1183.1	1157.7	1132.2
117.5°	1079.5	1078.5	1077.2	1076.3	1075.1	1074.0	1059.9	1045.6	1031.5	1017.3	1002.9
120°	929.1	924.1	918.8	913.6	908.3	903.0	897.0	891.0	884.9	878.8	872.6
122.5°	798.5	795.0	791.2	787.7	783.9	780.2	777.8	775.6	773.2	770.8	768.3
125°	695.4	695.1	694.9	694.9	694.5	694.4	693.1	691.9	690.6	689.5	688.0
127.5°	624.8	627.0	629.2	631.5	633.5	635.7	635.4	635.1	634.7	634.3	634.0
130°	580.8	585.0	588.8	592.7	596.4	600.4	599.6	598.9	598.2	597.4	596.9
132.5°	554.3	558.7	563.3	568.0	572.3	576.9	576.0	575.2	574.1	573.4	572.3
135°	536.1	540.6	544.7	549.1	553.2	557.4	556.3	555.3	554.1	553.0	551.9
137.5°	523.2	526.9	530.2	533.5	536.8	540.2	539.0	538.0	536.6	535.7	534.5
140°	513.4	516.1	518.7	521.5	524.1	526.7	525.2	523.9	522.4	521.0	519.5
142.5°	505.5	507.6	509.4	511.5	513.3	515.4	513.2	511.3	509.4	507.5	505.5
145°	501.1	502.5	503.8	505.0	505.9	507.3	505.0	502.9	500.4	498.3	496.0
147.5°	494.0	494.9	495.3	496.3	496.6	497.5	495.3	493.2	491.0	488.8	486.6
150°	486.0	486.8	487.4	488.0	488.6	489.2	487.0	484.7	482.3	480.2	477.9
152.5°	475.8	476.5	477.1	477.5	478.2	478.7	476.4	474.5	472.3	470.0	467.9
155°	468.4	468.9	469.2	469.6	469.7	470.0	468.2	466.5	464.7	462.9	461.0
157.5°	463.6	464.0	464.3	464.6	464.8	465.1	463.8	462.5	461.0	459.6	458.2
160°	460.5	460.8	461.1	461.3	461.6	461.8	460.6	459.6	458.4	457.2	455.9
162.5°	459.8	460.4	460.9	461.3	461.8	462.3	460.9	459.5	458.1	456.7	455.3
165°	459.1	459.5	459.7	460.1	460.2	460.5	459.5	458.7	457.7	456.8	455.7
167.5°	461.0	461.4	461.7	462.0	462.1	462.3	461.4	460.6	459.5	458.5	457.5
170°	461.3	461.8	462.3	462.7	463.1	463.4	462.7	462.0	461.1	460.4	459.5
172.5°	464.0	464.3	464.5	465.1	465.3	465.6	464.9	464.0	463.3	462.5	461.5
175°	462.8	463.0	463.2	463.2	463.2	463.3	462.6	462.0	461.4	460.8	460.1
177.5°	464.1	464.1	464.1	464.0	464.0	464.0	463.6	463.2	462.7	462.4	461.8
180°	461.9	461.9	461.9	461.9	461.9	461.9	461.9	461.9	461.9	461.9	461.9



TEST NUMBER: P1444463
 CATALOG NUMBER: EHBR1-36-UNV-TA-L830-UPL36

CANDELA DISTRIBUTION (continued):

	330°	332.5°	335°	337.5°	340°	342.5°	345°	347.5°	350°	352.5°	355°
0°	29129.1	29129.1	29129.1	29129.1	29129.1	29129.1	29129.1	29129.1	29129.1	29129.1	29129.1
2.5°	29312.1	29299.3	29291.1	29280.7	29274.3	29266.2	29260.3	29255.2	29251.1	29247.3	29244.5
5°	29724.2	29658.7	29607.9	29552.8	29507.5	29462.5	29427.6	29398.9	29379.0	29364.1	29355.2
7.5°	30249.0	30129.1	30022.5	29910.1	29809.5	29710.5	29625.2	29551.8	29496.6	29460.8	29439.2
10°	30717.7	30557.1	30398.4	30231.2	30072.8	29918.9	29777.1	29652.4	29553.5	29487.9	29449.6
12.5°	30927.7	30790.9	30628.8	30447.3	30253.1	30056.6	29865.1	29692.4	29547.5	29450.1	29394.0
15°	30742.7	30686.6	30576.5	30435.6	30251.4	30048.2	29823.3	29612.0	29417.5	29291.4	29218.4
17.5°	30140.9	30219.3	30210.8	30157.0	30024.4	29853.5	29624.3	29386.9	29143.6	28975.1	28883.0
20°	29125.2	29371.5	29496.6	29560.7	29508.7	29397.8	29190.3	28949.4	28665.8	28445.8	28311.6
22.5°	27697.9	28132.8	28403.9	28602.2	28644.4	28606.5	28423.4	28194.2	27878.2	27613.7	27415.4
25°	25860.5	26497.8	26926.2	27262.0	27392.4	27426.1	27270.2	27042.3	26690.0	26381.9	26109.5
27.5°	23696.3	24524.3	25096.3	25547.5	25751.3	25839.6	25696.1	25463.6	25046.8	24679.0	24323.2
30°	21259.8	22242.2	22930.9	23472.0	23720.3	23837.0	23684.5	23425.0	22940.1	22497.5	22049.2
32.5°	18652.0	19727.1	20477.5	21065.1	21311.2	21420.9	21221.5	20930.0	20369.6	19848.1	19325.4
35°	15921.8	17006.8	17763.6	18335.5	18541.8	18607.9	18352.9	18016.0	17395.1	16822.7	16252.7
37.5°	13135.8	14145.3	14833.2	15346.5	15474.1	15485.5	15178.2	14806.2	14153.5	13589.1	13021.8
40°	10374.1	11225.3	11780.7	12191.5	12235.9	12196.3	11862.3	11487.8	10877.2	10371.6	9873.6
42.5°	7772.5	8415.1	8811.3	9092.9	9076.1	8998.1	8691.8	8370.0	7866.2	7481.1	7089.1
45°	5543.7	5967.5	6199.1	6363.9	6311.0	6236.6	5998.2	5772.7	5430.3	5181.6	4918.2
47.5°	3851.3	4357.3	4269.2	4591.4	4313.8	4497.1	4115.4	3905.0	3723.3	3591.2	3442.3
50°	2757.2	2873.2	2929.2	2967.4	2947.1	2918.9	2850.3	2789.1	2706.1	2645.5	2575.1
52.5°	2129.3	2187.3	2219.1	2242.0	2237.5	2227.2	2197.3	2170.0	2131.2	2105.5	2074.7
55°	1803.6	1804.5	1862.9	1837.8	1874.8	1831.5	1848.5	1800.4	1808.2	1767.0	1739.3
57.5°	1498.7	1522.5	1533.2	1543.5	1540.6	1538.8	1527.2	1521.4	1508.4	1504.4	1495.1
60°	1318.3	1330.8	1333.4	1338.1	1334.2	1332.6	1323.6	1320.3	1311.6	1309.9	1303.8
62.5°	1194.7	1201.0	1201.0	1201.0	1195.8	1190.8	1180.8	1175.6	1168.1	1166.5	1162.9
65°	1091.5	1098.0	1099.1	1100.5	1096.7	1092.9	1084.0	1078.2	1070.6	1067.7	1063.5
67.5°	984.9	991.9	994.3	997.9	995.7	994.9	988.9	986.6	981.6	980.4	976.6
70°	901.2	904.1	903.9	903.8	899.1	894.8	887.8	884.4	879.2	878.1	874.7
72.5°	851.5	853.5	852.2	850.3	844.3	838.0	829.7	823.7	816.8	812.5	807.6
75°	781.4	784.1	782.3	781.2	775.7	771.6	765.0	761.6	756.8	755.4	752.0
77.5°	695.3	696.6	693.8	693.5	689.3	686.7	681.7	680.9	677.3	677.4	674.1
80°	599.6	598.8	594.3	593.4	589.2	588.2	584.2	584.5	581.7	582.8	580.6
82.5°	493.4	490.6	484.7	483.0	478.1	477.7	475.1	477.3	475.6	478.1	476.6
85°	353.5	354.4	351.7	351.7	350.3	350.7	350.5	352.1	352.4	354.7	354.6
87.5°	197.1	199.9	199.4	202.0	201.9	204.8	205.8	210.1	210.7	214.6	214.6
90°	100.8	102.9	99.5	101.7	100.2	103.7	102.9	106.4	105.2	108.0	105.8
92.5°	82.6	77.1	71.7	66.0	63.2	60.2	57.9	54.7	52.2	49.2	46.4
95°	104.1	94.7	85.3	76.0	72.8	69.5	66.3	63.1	59.9	56.7	53.5
97.5°	117.5	106.4	95.4	84.3	81.5	78.8	75.9	73.2	70.3	67.6	64.8
100°	160.4	139.8	119.1	98.4	96.1	93.8	91.4	89.1	86.7	84.3	82.0
102.5°	334.7	290.8	246.9	203.1	194.7	186.5	178.2	169.8	161.5	153.2	144.9
105°	634.2	563.1	492.1	421.1	398.5	375.9	353.3	330.7	308.1	285.5	262.9
107.5°	964.7	892.6	820.5	748.3	706.7	665.0	623.3	581.4	539.8	498.0	456.3
110°	1150.1	1097.4	1044.7	991.9	958.4	924.8	891.2	857.6	824.0	790.2	756.6



TEST NUMBER: P1444463
 CATALOG NUMBER: EHBR1-36-UNV-TA-L830-UPL36

CANDELA DISTRIBUTION (continued):

	330°	332.5°	335°	337.5°	340°	342.5°	345°	347.5°	350°	352.5°	355°
112.5°	1180.5	1142.9	1105.2	1067.3	1052.1	1036.8	1021.7	1006.4	991.2	975.8	960.6
115°	1106.7	1081.3	1055.8	1030.1	1024.9	1019.5	1014.2	1008.6	1003.2	997.7	992.2
117.5°	988.7	974.4	960.0	945.6	946.5	947.4	948.2	949.0	949.8	950.5	951.1
120°	866.5	860.4	854.2	848.0	852.6	857.2	861.8	866.2	870.7	875.0	879.3
122.5°	765.9	763.4	761.1	758.5	764.1	769.6	775.0	780.5	785.7	790.9	796.1
125°	686.9	685.5	684.3	682.8	688.6	694.0	699.6	704.9	710.4	715.5	720.7
127.5°	633.6	633.2	632.8	632.4	636.5	640.3	644.2	647.9	651.7	655.1	658.6
130°	596.1	595.3	594.6	593.8	597.4	600.9	604.5	607.7	611.1	614.1	617.1
132.5°	571.5	570.5	569.7	568.6	571.3	573.7	576.3	578.4	580.8	582.7	584.7
135°	550.8	549.6	548.4	547.2	549.7	552.0	554.3	556.3	558.5	560.2	562.0
137.5°	533.4	532.1	530.9	529.7	532.0	534.0	536.0	537.9	539.5	541.3	542.8
140°	518.2	516.6	515.4	513.8	515.8	517.5	519.4	521.0	522.7	524.0	525.4
142.5°	503.7	501.4	499.8	497.7	499.1	500.4	501.6	502.8	504.0	505.0	505.8
145°	493.8	491.3	489.2	486.9	487.9	489.0	490.0	491.0	491.7	492.3	493.1
147.5°	484.6	482.2	480.0	477.8	478.8	479.4	480.1	480.5	481.4	481.7	482.2
150°	475.7	473.1	470.8	468.4	469.2	469.7	470.2	470.8	471.4	471.6	472.1
152.5°	465.7	463.5	461.2	458.9	459.5	459.8	460.3	460.6	461.0	461.3	461.7
155°	459.2	457.3	455.3	453.4	453.9	454.2	454.5	454.8	455.1	455.2	455.4
157.5°	456.7	455.1	453.7	452.1	452.1	452.2	452.3	452.1	452.2	452.1	452.1
160°	454.8	453.4	452.1	450.7	450.7	450.7	450.8	450.7	450.6	450.4	450.3
162.5°	453.8	452.3	450.7	449.2	449.2	449.3	449.2	449.1	449.1	448.9	448.7
165°	454.8	453.6	452.5	451.3	451.2	450.9	450.8	450.4	450.2	449.8	449.4
167.5°	456.4	455.3	454.1	452.9	453.0	453.1	453.1	453.0	453.0	452.8	452.7
170°	458.6	457.7	456.8	455.9	455.7	455.6	455.3	455.1	454.8	454.6	454.3
172.5°	460.6	459.7	458.8	457.8	457.8	457.6	457.4	457.3	457.0	456.7	456.6
175°	459.4	458.8	458.0	457.3	457.1	457.0	456.9	456.8	456.6	456.6	456.3
177.5°	461.4	461.0	460.4	459.9	459.7	459.7	459.6	459.5	459.5	459.5	459.4
180°	461.9	461.9	461.9	461.9	461.9	461.9	461.9	461.9	461.9	461.9	461.9



TEST NUMBER: P1444463
CATALOG NUMBER: EHBR1-36-UNV-TA-L830-UPL36

CANDELA DISTRIBUTION (continued):

	357.5°	360°
0°	29129.1	29129.1
2.5°	29241.9	29240.4
5°	29350.6	29348.9
7.5°	29433.3	29432.8
10°	29443.0	29448.1
12.5°	29384.3	29388.4
15°	29212.8	29220.7
17.5°	28884.7	28895.2
20°	28319.7	28330.7
22.5°	27404.7	27409.2
25°	26074.3	26055.5
27.5°	24260.7	24228.2
30°	21955.1	21923.7
32.5°	19206.2	19186.5
35°	16111.9	16099.5
37.5°	12854.1	12828.8
40°	9691.4	9617.8
42.5°	6917.5	6788.2
45°	4780.6	4627.4
47.5°	3337.3	3242.7
50°	2529.6	2499.0
52.5°	2061.2	2054.1
55°	1739.2	1736.0
57.5°	1497.1	1496.0
60°	1307.0	1306.7
62.5°	1165.3	1165.8
65°	1065.4	1065.6
67.5°	977.5	976.9
70°	875.9	875.2
72.5°	806.0	804.8
75°	752.0	751.2
77.5°	675.2	674.0
80°	582.1	580.6
82.5°	478.8	477.1
85°	357.1	357.3
87.5°	218.5	218.4
90°	108.5	105.8
92.5°	43.9	41.3
95°	50.3	47.1
97.5°	62.1	59.3
100°	79.6	77.3
102.5°	136.7	128.3
105°	240.4	217.8
107.5°	414.5	372.8
110°	723.0	689.3



TEST NUMBER: P1444463
CATALOG NUMBER: EHBR1-36-UNV-TA-L830-UPL36

CANDELA DISTRIBUTION (continued):

	357.5°	360°
112.5°	945.1	929.8
115°	986.4	980.9
117.5°	951.7	952.2
120°	883.4	887.6
122.5°	801.0	805.9
125°	725.5	730.5
127.5°	661.9	665.1
130°	619.7	622.6
132.5°	586.5	588.0
135°	563.4	564.8
137.5°	543.9	545.3
140°	526.2	527.4
142.5°	506.6	507.2
145°	493.6	494.1
147.5°	482.1	482.5
150°	472.2	472.5
152.5°	461.6	461.9
155°	455.4	455.5
157.5°	451.7	451.6
160°	450.0	449.8
162.5°	448.5	448.3
165°	448.9	448.5
167.5°	452.5	452.4
170°	453.9	453.7
172.5°	456.4	456.1
175°	456.2	456.1
177.5°	459.4	459.2
180°	461.9	461.9

LM-79-2019: Approved Method: Electrical and Photometric Measurements of Solid-
State Lighting Products

Report Prepared for

Cooper Lighting Solutions

Metalux

Report Number: SP1-2506-472-2

Test Date: 07/31/2025

Luminaire Tested: EHBR-60-L830-N

Data in this report applies to families of products including EHBR-60-L830-N

Test Information

Test Method: LM-79-2019
 Report Number: SP1-2506-472-2
 Test Lab: COOPER LIGHTING SOLUTIONS
 Photometer: SP1 - 76IN SPHERE
 Measurement Geometry: 4π
 Issue Date: 08/05/2025
 Manufacturer: COOPER LIGHTING SOLUTIONS
 Product Line: Metalux
 Catalog Number: **EHBR-60-L830-N**
 Description: Elevate Round Highbay at, 60000 lumens, 3000K 80CRI LEDs with N lens

Spectral Parameters

CCT (K): 2983
 CIE u': 0.2516
 CIE v': 0.5201
 Duv: -0.0012
 CIE x: 0.4364
 CIE y: 0.4010
 CIE z: 0.1626
 Peak Wavelength (nm): 630
 Dominant Wavelength (nm): 583
 Purity: 51.34918
 Rf: 81.2
 Rg: 101.5

CRI (Ra):	83.4		
R1:	84.0	R9:	29.4
R2:	87.5	R10:	68.6
R3:	88.9	R11:	82.2
R4:	83.8	R12:	61.6
R5:	81.9	R13:	83.9
R6:	83.1	R14:	92.5
R7:	87.1	R15:	79.8
R8:	70.9		



Test Conditions

Stabilization Time: 38M
 Operation Time: 1H 38M
 Sphere Temperature (°C): 25.0

REPORT NUMBER: SP1-2506-472-2

Measurement and Test Equipment			
Instrument	Identification Number	Calibration Date	Calibration Due Date
Photometer	76INCH SPHERE IN0058	6/16/2025	12/16/2025
Power Meter	XITRON INXT2011004	1/21/2025	1/21/2026
AC Power Source	CHROMA 61603 IN0063	10/22/2024	10/22/2025
DC Power Source	AGILENT E3634A IN0208	10/22/2024	10/22/2025
Sphere Thermometer	ONSET IN0085	10/22/2024	10/22/2025
Room Thermometer	ONSET IN0046	10/22/2024	10/22/2025

REPORT NUMBER: SP1-2506-472-2

CIE 1931 Chromaticity Diagram



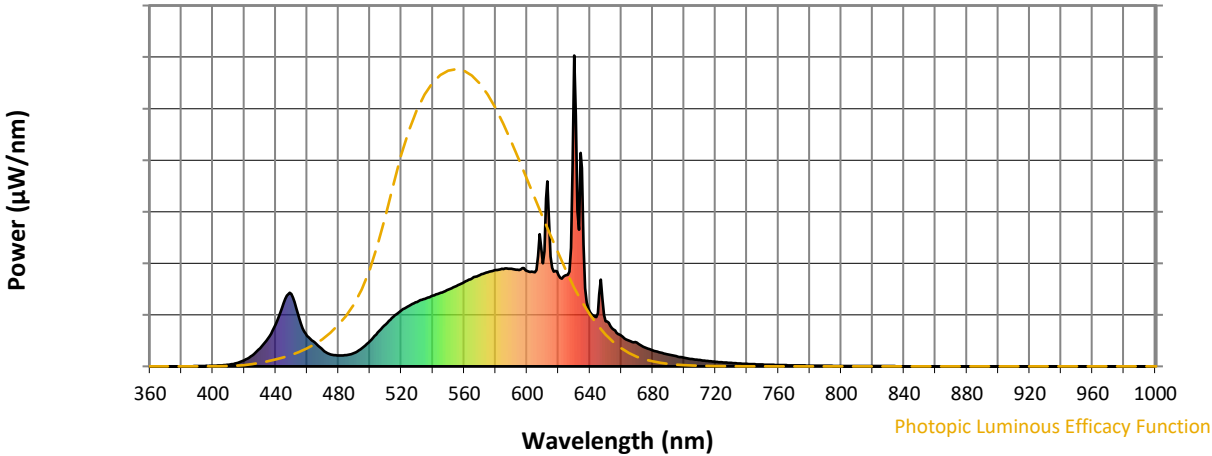
CIE 1931 Chromaticity Diagram with 2017 ANSI 7-Step and 4-Step Quadrangles



Point lies inside the ANSI 3000K 4-step quadrangle

REPORT NUMBER: SP1-2506-472-2

Photopic Flux vs. Wavelength



Photopic Lumens: NR

λ (nm)	Power W [^] /nm	Lumens (φ/nm)	λ (nm)	Power W [^] /nm	Lumens (φ/nm)	λ (nm)	Power W [^] /nm	Lumens (φ/nm)	λ (nm)	Power W [^] /nm	Lumens (φ/nm)	λ (nm)	Power W [^] /nm	Lumens (φ/nm)
360	0	NR	490	43	NR	620	294	NR	750	6	NR	880	0	NR
365	0	NR	495	59	NR	625	294	NR	755	5	NR	885	0	NR
370	0	NR	500	81	NR	630	1000	NR	760	4	NR	890	0	NR
375	0	NR	505	109	NR	635	637	NR	765	4	NR	895	0	NR
380	0	NR	510	135	NR	640	175	NR	770	3	NR	900	0	NR
385	0	NR	515	160	NR	645	171	NR	775	3	NR	905	0	NR
390	1	NR	520	180	NR	650	146	NR	780	2	NR	910	0	NR
395	1	NR	525	195	NR	655	119	NR	785	2	NR	915	0	NR
400	2	NR	530	207	NR	660	99	NR	790	2	NR	920	0	NR
405	3	NR	535	218	NR	665	82	NR	795	2	NR	925	0	NR
410	5	NR	540	227	NR	670	76	NR	800	1	NR	930	0	NR
415	10	NR	545	237	NR	675	61	NR	805	1	NR	935	0	NR
420	20	NR	550	247	NR	680	52	NR	810	1	NR	940	0	NR
425	35	NR	555	259	NR	685	44	NR	815	1	NR	945	0	NR
430	58	NR	560	271	NR	690	38	NR	820	1	NR	950	0	NR
435	90	NR	565	283	NR	695	33	NR	825	1	NR	955	0	NR
440	135	NR	570	293	NR	700	27	NR	830	1	NR	960	0	NR
445	204	NR	575	303	NR	705	24	NR	835	1	NR	965	0	NR
450	233	NR	580	310	NR	710	20	NR	840	0	NR	970	0	NR
455	153	NR	585	313	NR	715	17	NR	845	0	NR	975	0	NR
460	98	NR	590	314	NR	720	15	NR	850	0	NR	980	0	NR
465	76	NR	595	310	NR	725	13	NR	855	0	NR	985	0	NR
470	53	NR	600	307	NR	730	11	NR	860	0	NR	990	0	NR
475	39	NR	605	303	NR	735	9	NR	865	0	NR	995	0	NR
480	35	NR	610	331	NR	740	8	NR	870	0	NR	1000	0	NR
485	36	NR	615	353	NR	745	7	NR	875	0	NR			

REPORT NUMBER: SP1-2506-472-2

Scotopic Flux vs. Wavelength



Scotopic Lumens: NR

S/P: 1.27

λ (nm)	Power W [^] /nm	Lumens (φ/nm)	λ (nm)	Power W [^] /nm	Lumens (φ/nm)	λ (nm)	Power W [^] /nm	Lumens (φ/nm)	λ (nm)	Power W [^] /nm	Lumens (φ/nm)	λ (nm)	Power W [^] /nm	Lumens (φ/nm)
360	0	NR	490	43	NR	620	294	NR	750	6	NR	880	0	NR
365	0	NR	495	59	NR	625	294	NR	755	5	NR	885	0	NR
370	0	NR	500	81	NR	630	1000	NR	760	4	NR	890	0	NR
375	0	NR	505	109	NR	635	637	NR	765	4	NR	895	0	NR
380	0	NR	510	135	NR	640	175	NR	770	3	NR	900	0	NR
385	0	NR	515	160	NR	645	171	NR	775	3	NR	905	0	NR
390	1	NR	520	180	NR	650	146	NR	780	2	NR	910	0	NR
395	1	NR	525	195	NR	655	119	NR	785	2	NR	915	0	NR
400	2	NR	530	207	NR	660	99	NR	790	2	NR	920	0	NR
405	3	NR	535	218	NR	665	82	NR	795	2	NR	925	0	NR
410	5	NR	540	227	NR	670	76	NR	800	1	NR	930	0	NR
415	10	NR	545	237	NR	675	61	NR	805	1	NR	935	0	NR
420	20	NR	550	247	NR	680	52	NR	810	1	NR	940	0	NR
425	35	NR	555	259	NR	685	44	NR	815	1	NR	945	0	NR
430	58	NR	560	271	NR	690	38	NR	820	1	NR	950	0	NR
435	90	NR	565	283	NR	695	33	NR	825	1	NR	955	0	NR
440	135	NR	570	293	NR	700	27	NR	830	1	NR	960	0	NR
445	204	NR	575	303	NR	705	24	NR	835	1	NR	965	0	NR
450	233	NR	580	310	NR	710	20	NR	840	0	NR	970	0	NR
455	153	NR	585	313	NR	715	17	NR	845	0	NR	975	0	NR
460	98	NR	590	314	NR	720	15	NR	850	0	NR	980	0	NR
465	76	NR	595	310	NR	725	13	NR	855	0	NR	985	0	NR
470	53	NR	600	307	NR	730	11	NR	860	0	NR	990	0	NR
475	39	NR	605	303	NR	735	9	NR	865	0	NR	995	0	NR
480	35	NR	610	331	NR	740	8	NR	870	0	NR	1000	0	NR
485	36	NR	615	353	NR	745	7	NR	875	0	NR			

REPORT NUMBER: SP1-2506-472-2

Melanopic Flux vs. Wavelength



Melanopic Lumens: NR

M/P: 2.34

λ (nm)	Power W [^] /nm	Lumens (φ/nm)	λ (nm)	Power W [^] /nm	Lumens (φ/nm)	λ (nm)	Power W [^] /nm	Lumens (φ/nm)	λ (nm)	Power W [^] /nm	Lumens (φ/nm)	λ (nm)	Power W [^] /nm	Lumens (φ/nm)
360	0	NR	490	43	NR	620	294	NR	750	6	NR	880	0	NR
365	0	NR	495	59	NR	625	294	NR	755	5	NR	885	0	NR
370	0	NR	500	81	NR	630	1000	NR	760	4	NR	890	0	NR
375	0	NR	505	109	NR	635	637	NR	765	4	NR	895	0	NR
380	0	NR	510	135	NR	640	175	NR	770	3	NR	900	0	NR
385	0	NR	515	160	NR	645	171	NR	775	3	NR	905	0	NR
390	1	NR	520	180	NR	650	146	NR	780	2	NR	910	0	NR
395	1	NR	525	195	NR	655	119	NR	785	2	NR	915	0	NR
400	2	NR	530	207	NR	660	99	NR	790	2	NR	920	0	NR
405	3	NR	535	218	NR	665	82	NR	795	2	NR	925	0	NR
410	5	NR	540	227	NR	670	76	NR	800	1	NR	930	0	NR
415	10	NR	545	237	NR	675	61	NR	805	1	NR	935	0	NR
420	20	NR	550	247	NR	680	52	NR	810	1	NR	940	0	NR
425	35	NR	555	259	NR	685	44	NR	815	1	NR	945	0	NR
430	58	NR	560	271	NR	690	38	NR	820	1	NR	950	0	NR
435	90	NR	565	283	NR	695	33	NR	825	1	NR	955	0	NR
440	135	NR	570	293	NR	700	27	NR	830	1	NR	960	0	NR
445	204	NR	575	303	NR	705	24	NR	835	1	NR	965	0	NR
450	233	NR	580	310	NR	710	20	NR	840	0	NR	970	0	NR
455	153	NR	585	313	NR	715	17	NR	845	0	NR	975	0	NR
460	98	NR	590	314	NR	720	15	NR	850	0	NR	980	0	NR
465	76	NR	595	310	NR	725	13	NR	855	0	NR	985	0	NR
470	53	NR	600	307	NR	730	11	NR	860	0	NR	990	0	NR
475	39	NR	605	303	NR	735	9	NR	865	0	NR	995	0	NR
480	35	NR	610	331	NR	740	8	NR	870	0	NR	1000	0	NR
485	36	NR	615	353	NR	745	7	NR	875	0	NR			

Summary

$R_f = 81.2$
 $R_g = 101.5$
 CIE $R_a = 83.4$
 $R_9 = 29.4$

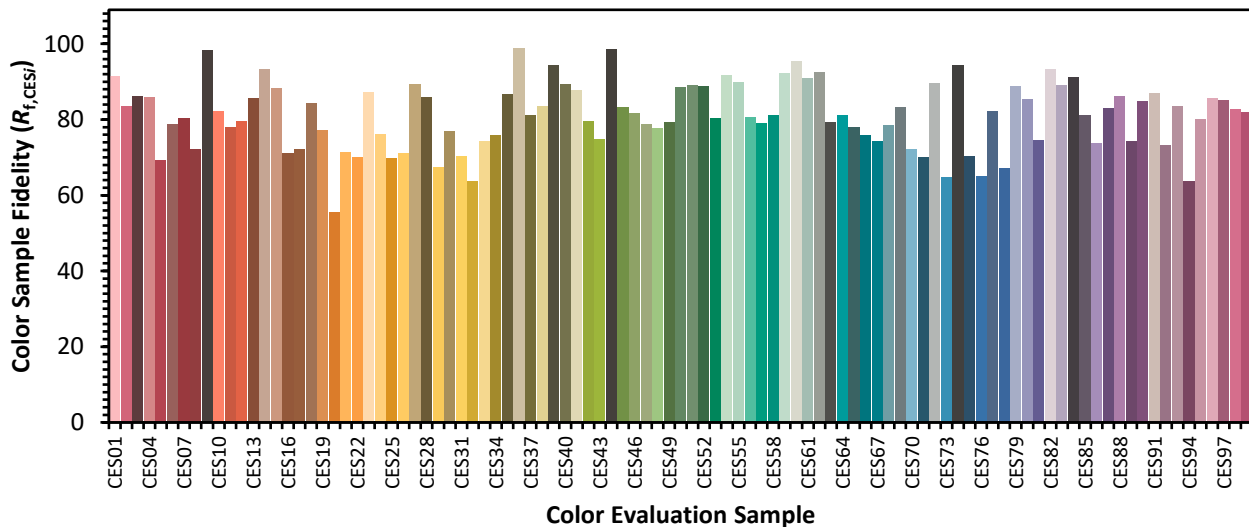


Color Vector Graphics

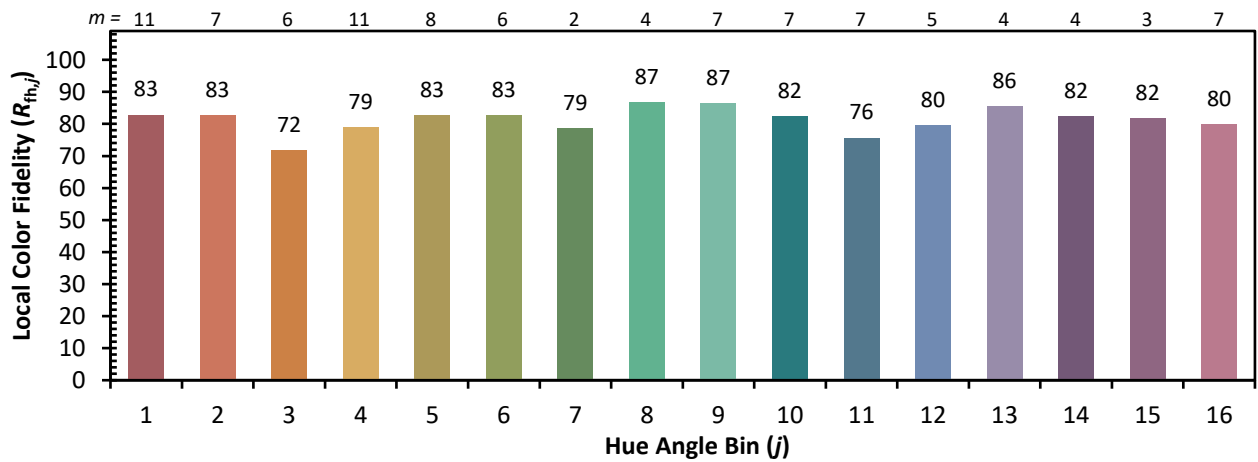
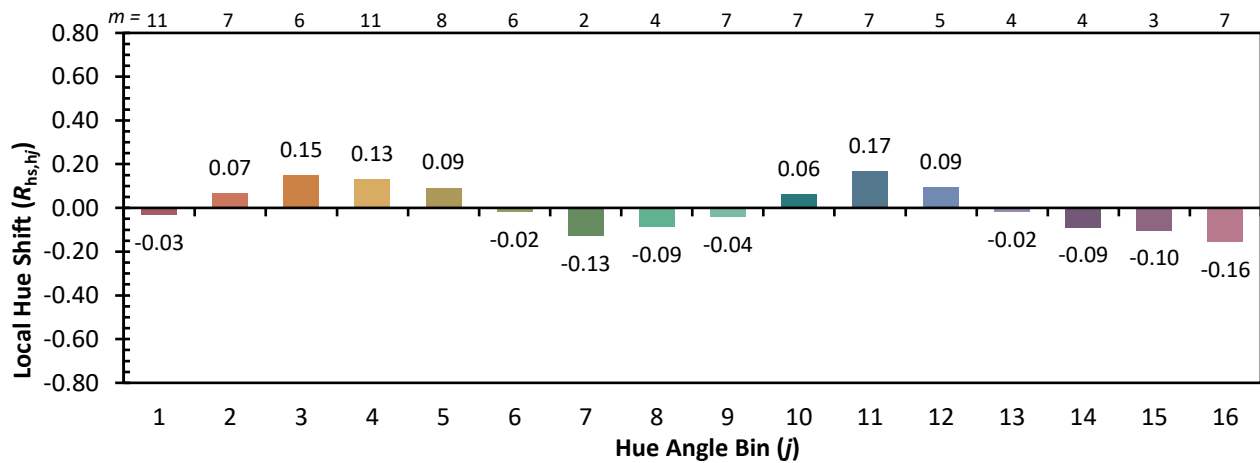
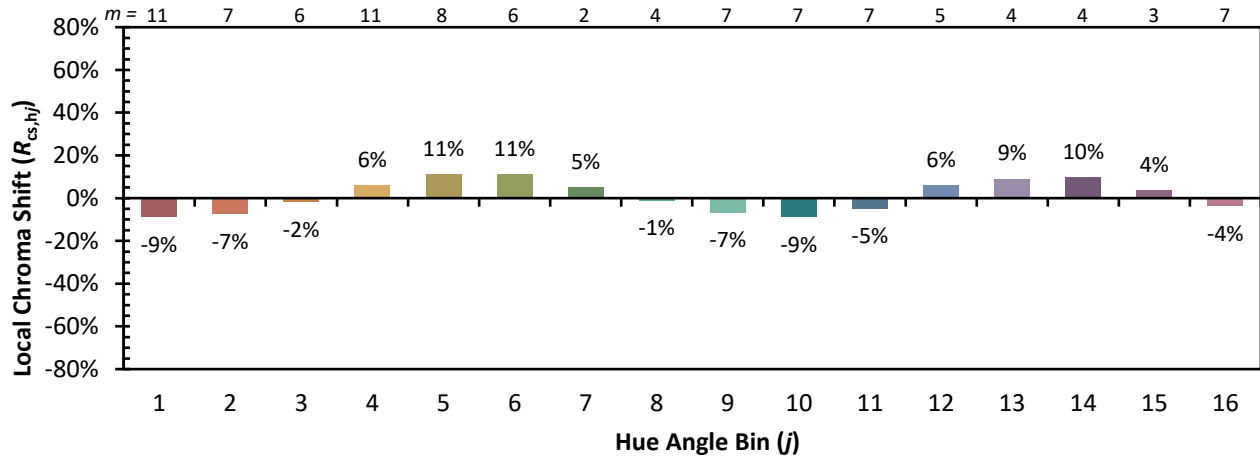


Individual Sample Fidelity Index ($R_{f,i}$)

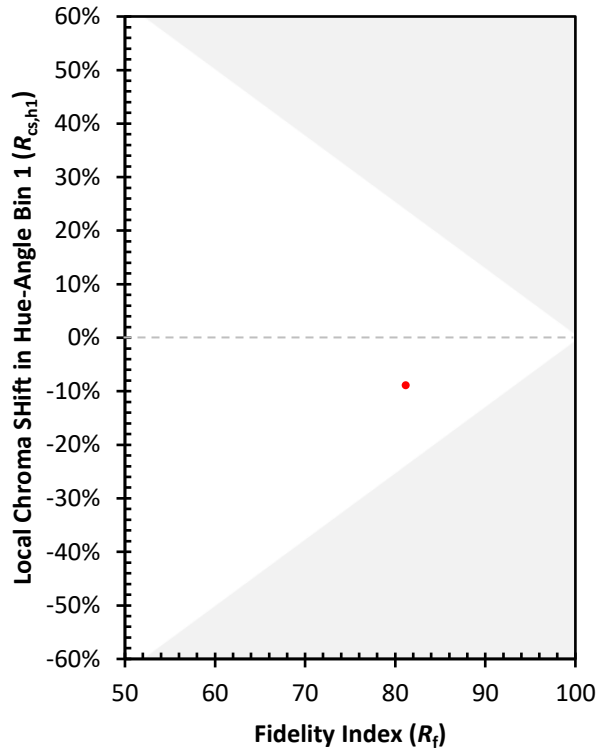
CES01 = 86	CES26 = 71	CES51 = 89	CES76 = 65
CES02 = 63	CES27 = 89	CES52 = 89	CES77 = 82
CES03 = 31	CES28 = 86	CES53 = 80	CES78 = 67
CES04 = 70	CES29 = 68	CES54 = 92	CES79 = 89
CES05 = 50	CES30 = 77	CES55 = 90	CES80 = 85
CES06 = 51	CES31 = 70	CES56 = 81	CES81 = 75
CES07 = 43	CES32 = 64	CES57 = 79	CES82 = 93
CES08 = 41	CES33 = 74	CES58 = 81	CES83 = 89
CES09 = 29	CES34 = 76	CES59 = 92	CES84 = 91
CES10 = 76	CES35 = 87	CES60 = 96	CES85 = 81
CES11 = 59	CES36 = 99	CES61 = 91	CES86 = 74
CES12 = 65	CES37 = 81	CES62 = 93	CES87 = 83
CES13 = 44	CES38 = 83	CES63 = 79	CES88 = 86
CES14 = 74	CES39 = 94	CES64 = 81	CES89 = 74
CES15 = 72	CES40 = 89	CES65 = 78	CES90 = 85
CES16 = 48	CES41 = 88	CES66 = 76	CES91 = 87
CES17 = 50	CES42 = 80	CES67 = 74	CES92 = 73
CES18 = 57	CES43 = 75	CES68 = 79	CES93 = 84
CES19 = 72	CES44 = 99	CES69 = 83	CES94 = 64
CES20 = 67	CES45 = 83	CES70 = 72	CES95 = 80
CES21 = 87	CES46 = 82	CES71 = 70	CES96 = 86
CES22 = 79	CES47 = 79	CES72 = 90	CES97 = 85
CES23 = 92	CES48 = 78	CES73 = 65	CES98 = 83
CES24 = 91	CES49 = 79	CES74 = 94	CES99 = 82
CES25 = 72	CES50 = 88	CES75 = 70	



Color Rendition by Hue-Angle Bin



Measure Comparisons



(END OF REPORT)