

Cooper Lighting Solutions Photometric Lab
1121 Highway 74 South
Peachtree City, GA 30269



Scaled data based on original data using
LM-79-2019 Approved Method: Electrical and Photometric Measurements of Solid-
State Lighting Products

Test Report Prepared for
Cooper Lighting Solutions

Brand: METALUX

Report Number: P1444479

Luminaire Tested: EHBR1-48-UNV-TA-L830-UPL36

Issue Date: 5/1/2026

Test Information

Test Method: LM-79-2019
Report Number: P1444479
REPORT IS A COMBINATION OF REPORTS P1444351 AND P1431635
Test Lab: INNOVATION CENTER
Issue Date: 5/1/2026
Manufacturer: COOPER LIGHTING SOLUTIONS
Product Line: METALUX
Catalog Number: EHBR1-48-UNV-TA-L830-UPL36
Description: Elevate Round Highbay at, 48000 lumens, 3000K 80CRI LEDs with TA lens
Light Source: -
Ballast/Driver: -

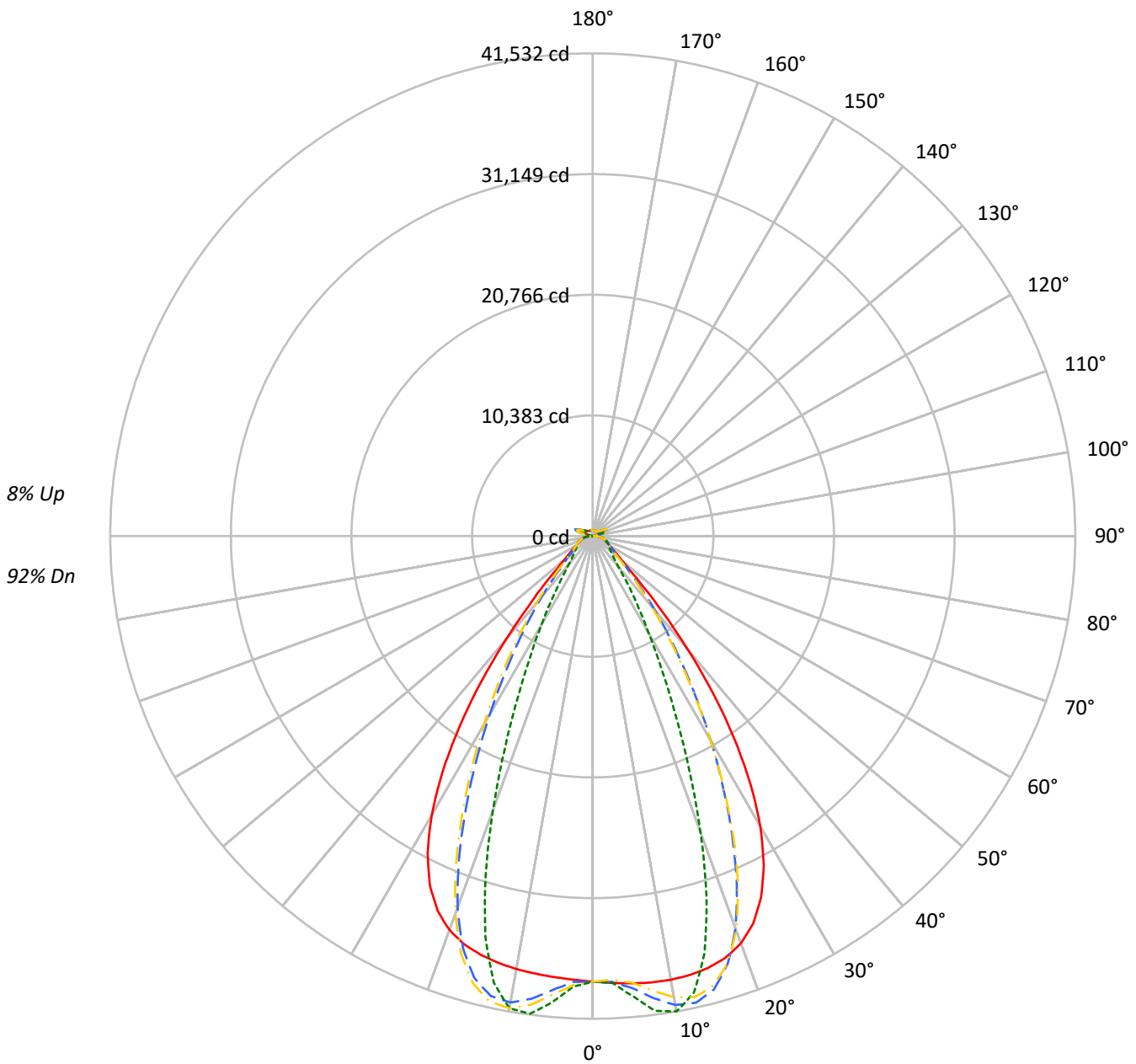
Summary

Lumens per Lamp: N/A
Luminaire Lumens: 47834.0 lumens
Efficiency: N/A
Efficacy: 166.7 lumens/watt
Spacing Criteria (0/90/45): 1.13 / 0.77 / 0.88
Luminous Opening: Vertical Cylinder (Dia: 1.71' x H: 0.1')
CIE Type: Direct

Input Watts (W): 287
Input Voltage (V): NR
Input Current (Ain): NR
Voltage Rise (V): NR
Power Factor: NR
Total Harmonic Distortion (THDi): NR
Frequency (hertz): 60
Stabilization Time: NR
Operation Time: NR
Ambient Temperature (°C): NR
Test Distance: 24 FT

TEST NUMBER: P1444479
CATALOG NUMBER: EHBR1-48-UNV-TA-L830-UPL36

Luminous Intensity Polar Plot



— 0°-180° - - 45°-225° - · - · 90°-270° - · - · 135°-315°



TEST NUMBER: P1444479
 CATALOG NUMBER: EHBR1-48-UNV-TA-L830-UPL36

COEFFICIENT OF UTILIZATION - ZONAL CAVITY METHOD:

RF	20				20				20				20				20				20
RC	80				70				50				30				10				0
RW	70	50	30	10	70	50	30	10	50	30	10	50	30	10	50	30	10	50	30	10	0
RCR																					
0	117	117	117	117	114	114	114	114	107	107	107	101	101	101	95	95	95	95	95	95	92
1	110	107	103	101	107	104	101	98	98	96	94	93	91	90	88	87	86	88	87	86	83
2	103	97	92	88	100	95	90	87	90	87	84	86	83	81	82	80	78	82	80	78	76
3	97	89	83	79	94	87	82	77	83	79	75	80	76	73	77	74	71	77	74	71	69
4	91	82	76	71	89	81	75	70	77	72	68	74	70	67	72	68	65	72	68	65	63
5	86	76	69	64	83	75	68	64	72	67	62	69	65	61	67	63	60	67	63	60	58
6	81	71	64	59	79	69	63	59	67	62	57	65	60	56	63	59	55	63	59	55	54
7	76	66	59	54	74	65	59	54	63	57	53	61	56	52	59	55	52	59	55	52	50
8	72	62	55	50	71	61	54	50	59	53	49	57	52	49	56	51	48	56	51	48	46
9	68	58	51	47	67	57	51	47	55	50	46	54	49	45	53	48	45	53	48	45	43
10	65	54	48	44	64	54	48	44	52	47	43	51	46	43	50	45	42	50	45	42	41

AVERAGE LUMINANCE (cd/sqm):

	0°	90°	180°	270°
0°	180035	180035	180035	180035
5°	180906	186182	178375	188620
10°	182417	195477	178042	194184
15°	183312	177198	177731	170063
20°	181417	132006	175479	122137
25°	171718	83487	166043	75749
30°	150008	50170	144198	45850
35°	115447	31481	108807	27887
40°	73031	19747	66817	18556
45°	37641	15384	37018	15131
50°	22069	13684	21392	13471
55°	16907	12947	16282	12830
60°	14306	13225	13696	13054
65°	13437	13811	12922	13340
70°	13128	14462	12474	13918
75°	14037	15337	13277	14658
80°	14525	16983	13169	15504
85°	13678	16387	11053	14030

MAXIMUM LUMINANCE 45°-90°:

Horizontal Angle: 25°
 Vertical Angle: 45°
 Luminance: 57605 cd/sqm



TEST NUMBER: P1444479
 CATALOG NUMBER: EHBR1-48-UNV-TA-L830-UPL36

ZONAL LUMENS:

Zone	Lumens	% Fixture
0°-10°	3778.2	7.9
10°-20°	10628.5	22.2
20°-30°	12105.0	25.3
30°-40°	8700.5	18.2
40°-50°	4012.7	8.4
50°-60°	1920.2	4.0
60°-70°	1401.1	2.9
70°-80°	1064.4	2.2
80°-90°	490.3	1.0
90°-100°	106.5	0.2
100°-110°	612.5	1.3
110°-120°	1131.6	2.4
120°-130°	692.2	1.4
130°-140°	444.8	0.9
140°-150°	329.8	0.7
150°-160°	229.7	0.5
160°-170°	138.5	0.3
170°-180°	47.4	0.1
0°-30°	26511.7	55.4
0°-40°	35212.3	73.6
0°-60°	41145.2	86.0
0°-90°	44101.0	92.2
90°-120°	1850.6	3.9
90°-150°	3317.4	6.9
90°-180°	3733.0	7.8
0°-180°	47834.0	100.0

CANDELA DISTRIBUTION:

	0°	90°	180°	270°	360°	Flux
0°	38337	38337	38337	38337	38337	
5°	38626	39753	38086	40273	38626	3691
15°	38458	37175	37287	35678	38458	10836
25°	34292	16672	33159	15127	34292	15545
35°	21189	5778	19970	5118	21189	13004
45°	6090	2489	5989	2448	6090	5180
55°	2285	1750	2200	1734	2285	2109
65°	1402	1442	1349	1392	1402	1401
75°	989	1080	935	1033	989	1028
85°	470	563	380	482	470	442
90°	131	165	41	49	131	81
95°	49	54	49	54	49	46
105°	221	285	148	285	221	292
115°	987	1197	1034	1197	987	911
125°	742	778	840	780	742	676
135°	584	518	628	522	584	455
145°	519	503	552	509	519	328
155°	484	486	516	491	484	225
165°	482	482	500	485	482	137
175°	494	498	503	500	494	47
180°	500	500	500	500	500	



TEST NUMBER: P1444479
 CATALOG NUMBER: EHBR1-48-UNV-TA-L830-UPL36

CANDELA DISTRIBUTION (FULL):

	0°	2.5°	5°	7.5°	10°	12.5°	15°	17.5°	20°	22.5°	25°
0°	38337.2	38337.2	38337.2	38337.2	38337.2	38337.2	38337.2	38337.2	38337.2	38337.2	38337.2
2.5°	38483.7	38480.5	38479.9	38477.3	38476.5	38476.5	38475.2	38472.1	38470.2	38465.8	38460.8
5°	38626.4	38624.7	38625.8	38626.0	38623.3	38617.3	38608.0	38596.4	38581.9	38568.3	38556.1
7.5°	38736.8	38739.6	38742.9	38742.2	38733.8	38719.8	38700.6	38689.8	38696.2	38717.1	38764.9
10°	38757.0	38773.5	38779.8	38777.9	38761.1	38749.0	38753.7	38794.4	38875.2	38983.0	39130.5
12.5°	38678.4	38698.6	38697.9	38691.2	38675.0	38691.5	38750.3	38871.3	39044.6	39257.3	39506.7
15°	38457.8	38483.9	38476.5	38467.8	38457.1	38511.2	38628.7	38838.7	39106.4	39406.3	39713.4
17.5°	38029.3	38060.9	38045.6	38035.8	38026.7	38128.2	38330.0	38637.5	38974.7	39314.0	39605.0
20°	37286.4	37307.5	37271.0	37253.8	37268.3	37467.0	37764.4	38157.1	38512.5	38833.3	39032.2
22.5°	36073.6	36099.9	36031.3	36023.3	36108.1	36413.3	36789.6	37228.7	37562.5	37816.8	37893.4
25°	34291.9	34317.8	34236.2	34284.9	34429.0	34844.9	35293.0	35762.6	36047.5	36235.9	36183.8
27.5°	31887.1	31910.7	31833.3	31932.8	32160.6	32707.0	33234.4	33743.8	33997.7	34129.6	33962.4
30°	28854.0	28903.0	28811.7	28950.5	29298.2	30007.6	30611.8	31183.0	31436.2	31536.6	31276.3
32.5°	25251.7	25321.4	25220.7	25427.2	25912.4	26764.6	27451.0	28089.2	28369.3	28483.9	28190.0
35°	21188.7	21288.7	21173.2	21483.2	22081.5	23030.5	23790.6	24503.2	24834.8	24997.4	24701.1
37.5°	16884.2	16979.5	16917.0	17330.6	17987.6	18971.3	19747.1	20515.8	20890.3	21134.3	20900.7
40°	12658.1	12745.3	12792.6	13265.7	13883.5	14810.7	15555.8	16316.4	16735.4	17041.6	16897.6
42.5°	8934.1	9022.1	9182.9	9639.3	10154.6	10922.0	11560.4	12243.3	12643.4	12970.1	12914.6
45°	6090.2	6192.4	6393.8	6767.5	7140.2	7690.8	8159.5	8690.6	9017.5	9316.8	9320.3
47.5°	4267.7	4339.5	4519.5	4774.7	5017.7	5706.9	5735.2	5996.2	6215.9	6439.6	6468.5
50°	3289.1	3332.2	3427.7	3570.0	3707.6	3886.5	4050.3	4239.5	4374.7	4497.3	4526.6
52.5°	2703.4	2730.8	2779.4	2856.4	2936.3	3033.6	3121.3	3225.1	3298.7	3364.4	3378.1
55°	2284.8	2307.6	2379.9	2394.5	2485.8	2503.4	2542.4	2605.6	2648.5	2687.8	2697.5
57.5°	1969.0	1985.4	2000.8	2033.6	2061.8	2102.6	2135.6	2180.9	2207.9	2236.4	2238.8
60°	1719.8	1731.7	1742.7	1765.4	1784.5	1813.0	1835.7	1866.5	1885.9	1907.1	1909.6
62.5°	1534.3	1542.9	1550.2	1565.1	1578.8	1600.7	1618.7	1644.5	1662.5	1679.0	1682.7
65°	1402.5	1408.7	1413.4	1424.8	1436.7	1455.4	1471.7	1492.7	1505.9	1518.6	1521.3
67.5°	1285.7	1291.6	1296.5	1306.9	1315.1	1329.0	1340.0	1355.8	1365.7	1375.7	1376.0
70°	1151.9	1157.4	1161.1	1170.8	1177.4	1189.3	1198.1	1212.4	1222.6	1233.8	1236.6
72.5°	1059.2	1062.5	1067.5	1076.3	1085.6	1098.3	1110.1	1124.9	1137.3	1148.9	1153.8
75°	988.8	992.6	995.8	1003.4	1009.8	1020.5	1029.3	1042.8	1053.7	1066.2	1072.3
77.5°	887.1	891.5	894.3	901.8	907.3	917.7	924.3	936.3	945.1	956.5	962.0
80°	764.1	768.2	770.3	777.4	781.8	791.2	797.6	809.3	816.7	828.1	834.7
82.5°	627.9	631.8	632.9	639.7	642.1	649.9	654.6	666.5	675.6	690.4	700.6
85°	470.1	471.5	473.9	472.1	481.7	482.2	493.0	495.1	509.2	512.9	529.1
87.5°	287.5	291.7	293.8	300.4	303.2	309.8	311.7	318.7	322.5	330.5	334.2
90°	131.3	138.5	141.3	149.9	152.5	160.0	162.3	170.8	173.6	182.2	186.5
92.5°	42.8	45.6	48.2	51.4	54.1	57.8	61.0	64.1	66.9	70.4	76.2
95°	48.7	51.9	55.1	58.3	61.4	64.7	67.9	71.1	74.3	77.5	86.6
97.5°	61.1	63.9	66.6	69.4	72.1	74.9	77.7	80.5	83.2	85.8	96.9
100°	79.2	81.6	83.9	86.3	88.6	91.0	93.3	95.6	98.0	100.3	120.8
102.5°	130.7	139.0	147.3	155.6	163.8	172.1	180.4	188.7	196.9	205.2	248.8
105°	220.6	243.0	265.7	288.1	310.7	333.3	355.9	378.1	400.7	423.2	494.3
107.5°	376.2	417.8	459.5	501.2	543.0	584.5	626.3	667.9	709.5	750.9	823.0
110°	693.5	726.9	760.5	794.0	827.4	861.1	894.7	927.8	961.4	994.8	1047.5



TEST NUMBER: P1444479
 CATALOG NUMBER: EHBR1-48-UNV-TA-L830-UPL36

CANDELA DISTRIBUTION (continued):

	0°	2.5°	5°	7.5°	10°	12.5°	15°	17.5°	20°	22.5°	25°
112.5°	934.8	949.9	965.0	980.3	995.3	1010.3	1025.4	1040.5	1055.7	1070.6	1108.2
115°	986.9	992.2	997.6	1002.7	1008.1	1013.2	1018.5	1023.6	1028.9	1033.8	1059.3
117.5°	959.5	958.4	957.4	956.6	955.3	954.3	953.2	952.1	950.9	949.6	964.0
120°	896.2	891.5	886.9	881.9	877.2	872.3	867.5	862.6	857.6	852.5	858.7
122.5°	816.1	810.4	805.0	799.1	793.4	787.5	781.8	775.5	769.8	763.9	766.0
125°	742.2	736.4	731.1	725.1	719.1	713.1	707.2	701.1	695.2	688.9	690.0
127.5°	678.5	674.5	670.4	666.1	661.8	657.4	653.0	648.4	644.1	639.3	639.5
130°	637.7	634.2	630.4	626.6	622.7	618.5	614.4	610.3	606.2	601.8	602.2
132.5°	604.9	602.5	599.8	597.0	594.0	590.7	587.7	584.2	581.1	578.0	578.4
135°	583.6	581.0	578.8	576.0	573.3	570.2	567.2	564.0	561.1	557.8	558.6
137.5°	565.6	563.3	561.2	558.6	556.0	553.0	550.4	547.4	544.6	541.5	542.2
140°	549.3	547.3	545.3	542.7	540.5	538.0	535.2	532.5	529.9	527.0	528.0
142.5°	530.6	529.0	527.4	525.4	523.6	521.2	519.1	516.7	514.5	512.2	513.6
145°	518.8	517.4	516.1	514.4	512.7	510.7	508.8	506.7	504.9	502.7	504.3
147.5°	508.4	507.2	506.3	504.9	503.6	501.7	500.2	498.3	496.8	495.1	496.6
150°	499.5	498.4	497.5	496.2	494.8	493.2	491.7	490.1	488.5	486.8	488.3
152.5°	489.7	488.6	487.7	486.4	485.2	483.4	482.4	480.6	479.2	477.6	479.0
155°	484.5	483.3	482.2	481.1	479.8	478.4	477.0	475.6	474.3	472.7	473.7
157.5°	481.7	480.6	479.9	478.6	477.8	476.6	475.6	474.3	473.3	472.2	472.9
160°	481.2	480.3	479.4	478.3	477.3	476.0	475.1	473.9	473.1	471.9	472.6
162.5°	481.0	480.0	478.9	477.9	477.1	475.8	474.9	474.0	472.9	471.8	472.6
165°	482.4	481.8	481.2	480.4	479.7	479.0	478.3	477.4	476.8	475.8	476.3
167.5°	487.7	486.8	486.1	485.2	484.3	483.4	482.5	481.7	480.9	479.9	480.3
170°	490.0	489.2	488.9	488.4	487.8	487.3	486.8	486.2	485.7	485.1	485.6
172.5°	493.1	492.5	492.2	492.0	491.4	491.1	490.6	490.3	490.0	489.4	490.1
175°	493.6	493.2	493.1	492.8	492.5	492.2	492.1	491.8	491.8	491.4	491.8
177.5°	497.1	496.9	496.9	496.8	496.8	496.6	496.5	496.3	496.1	496.1	496.5
180°	500.0	500.0	500.0	500.0	500.0	500.0	500.0	500.0	500.0	500.0	500.0



TEST NUMBER: P1444479
 CATALOG NUMBER: EHBR1-48-UNV-TA-L830-UPL36

CANDELA DISTRIBUTION (continued):

	27.5°	30°	32.5°	35°	37.5°	40°	42.5°	45°	47.5°	50°	52.5°
0°	38337.2	38337.2	38337.2	38337.2	38337.2	38337.2	38337.2	38337.2	38337.2	38337.2	38337.2
2.5°	38457.1	38452.4	38446.0	38437.8	38430.9	38422.9	38403.7	38397.9	38404.3	38408.6	38417.4
5°	38548.4	38551.1	38552.1	38569.5	38584.6	38622.3	38917.3	39034.4	39125.1	39182.7	39270.0
7.5°	38824.0	38912.6	39000.2	39118.2	39219.9	39357.3	39873.4	40093.0	40249.2	40361.4	40499.5
10°	39290.8	39484.3	39665.8	39878.3	40061.1	40270.3	40750.7	40964.7	41099.8	41198.1	41289.9
12.5°	39761.1	40029.5	40272.0	40508.6	40706.4	40887.8	41056.7	41131.6	41138.0	41141.1	41092.4
15°	40006.1	40262.7	40476.3	40632.7	40749.0	40800.4	40509.6	40357.0	40164.2	40005.3	39744.0
17.5°	39851.4	40005.3	40097.7	40088.6	40040.6	39879.7	39056.0	38602.8	38153.0	37747.7	37216.1
20°	39164.2	39152.4	39072.1	38844.7	38570.6	38144.4	36732.0	35917.2	35129.4	34437.4	33598.0
22.5°	37885.6	37684.5	37403.9	36913.4	36368.6	35624.0	33600.0	32401.4	31304.6	30335.8	29250.4
25°	36033.0	35619.1	35101.8	34323.2	33476.4	32390.3	29895.8	28404.9	27088.1	25946.0	24693.7
27.5°	33662.0	33038.7	32280.5	31202.8	30055.6	28664.2	25898.6	24253.3	22839.7	21615.2	20282.4
30°	30855.1	30044.3	29065.3	27727.7	26344.0	24765.9	21961.0	20294.5	18863.6	17603.9	16270.1
32.5°	27683.0	26733.3	25586.1	24084.9	22588.5	20965.9	18257.0	16643.9	15277.1	14065.2	12858.0
35°	24184.3	23165.9	21952.2	20421.0	18933.6	17356.0	14870.4	13415.9	12209.0	11137.8	10163.0
37.5°	20431.4	19431.5	18277.9	16834.7	15455.4	14025.9	11881.2	10662.4	9649.5	8760.5	8007.7
40°	16529.4	15654.3	14656.2	13408.6	12231.5	11040.9	9280.3	8312.9	7513.6	6835.5	6271.5
42.5°	12675.2	11997.0	11231.6	10245.7	9344.9	8438.4	7083.4	6366.5	5774.5	5286.4	4887.7
45°	9196.2	8742.6	8229.3	7543.9	6920.5	6288.2	5323.8	4820.1	4434.6	4119.8	3853.7
47.5°	6428.6	6165.5	6149.5	5516.1	5059.0	4672.4	4051.1	3732.9	3496.6	3305.9	3137.4
50°	4514.7	4387.4	4229.2	4003.1	3791.0	3572.5	3194.0	3001.6	2863.2	2747.7	2641.1
52.5°	3375.1	3308.9	3224.7	3104.8	2989.8	2866.9	2627.4	2504.9	2461.4	2353.9	2269.5
55°	2695.8	2657.8	2609.9	2539.4	2469.5	2441.5	2236.2	2145.3	2087.7	2045.3	2000.0
57.5°	2239.2	2210.9	2182.5	2134.8	2094.3	2045.3	1936.3	1889.7	1855.4	1830.4	1799.0
60°	1910.0	1893.1	1877.2	1849.2	1827.3	1800.9	1731.7	1705.4	1687.5	1672.5	1652.4
62.5°	1685.8	1677.2	1668.9	1653.9	1642.9	1628.6	1581.3	1568.6	1559.6	1552.1	1539.9
65°	1523.9	1517.7	1513.2	1503.2	1497.7	1489.3	1448.7	1440.2	1434.6	1431.9	1424.8
67.5°	1377.0	1370.4	1367.4	1360.3	1358.0	1352.8	1319.5	1314.9	1313.0	1313.8	1311.3
70°	1239.4	1236.6	1238.1	1236.9	1240.1	1241.0	1220.9	1220.8	1222.9	1227.2	1227.6
72.5°	1156.9	1156.9	1158.5	1159.3	1162.3	1163.7	1146.9	1146.1	1147.0	1150.2	1150.3
75°	1078.5	1079.8	1084.1	1085.6	1089.0	1089.8	1067.6	1065.0	1065.2	1068.1	1067.2
77.5°	970.0	974.6	982.8	987.0	993.8	995.2	970.2	967.3	967.4	970.4	967.9
80°	846.8	855.8	868.7	877.6	888.2	892.4	866.8	860.7	855.0	854.2	849.1
82.5°	715.9	726.9	742.3	750.5	761.7	764.3	721.5	713.4	708.5	709.0	704.3
85°	546.6	554.8	568.9	573.5	580.4	579.8	530.9	510.0	515.7	506.9	513.8
87.5°	342.8	347.7	356.5	357.6	360.9	360.2	311.0	301.3	298.5	298.6	295.1
90°	196.2	201.3	210.8	212.6	219.5	220.6	182.6	179.8	174.7	175.1	168.6
92.5°	82.2	87.8	93.7	99.4	105.3	111.1	112.4	116.8	111.2	105.0	99.6
95°	96.0	105.4	114.7	124.1	133.5	142.8	152.2	161.6	152.9	144.1	135.3
97.5°	107.9	119.0	129.9	141.1	152.1	163.2	174.2	185.3	175.9	166.3	156.9
100°	141.5	162.1	182.7	203.3	223.9	244.5	265.2	285.8	267.7	249.4	231.2
102.5°	292.4	336.4	380.1	423.8	467.5	511.4	555.4	599.2	557.6	515.8	474.1
105°	565.2	636.2	707.1	777.8	848.8	919.8	991.1	1062.0	995.5	928.9	862.4
107.5°	894.9	967.0	1038.7	1110.6	1182.6	1254.4	1327.1	1399.1	1334.1	1269.0	1204.0
110°	1100.0	1152.3	1204.9	1257.3	1309.6	1362.2	1415.5	1468.0	1428.9	1389.9	1350.8



TEST NUMBER: P1444479
 CATALOG NUMBER: EHBR1-48-UNV-TA-L830-UPL36

CANDELA DISTRIBUTION (continued):

	27.5°	30°	32.5°	35°	37.5°	40°	42.5°	45°	47.5°	50°	52.5°
112.5°	1145.5	1183.2	1220.6	1257.9	1295.2	1332.7	1371.4	1409.2	1389.4	1369.7	1350.2
115°	1084.3	1109.8	1134.8	1160.0	1185.2	1210.3	1237.0	1262.7	1256.2	1249.8	1243.5
117.5°	977.9	991.8	1005.9	1020.0	1033.8	1047.7	1063.8	1078.2	1079.0	1079.9	1081.0
120°	864.4	870.3	876.1	881.9	887.6	893.2	901.5	907.8	912.9	917.8	922.9
122.5°	768.2	770.3	772.2	774.4	776.4	778.3	783.2	785.9	789.3	792.6	796.1
125°	690.9	691.9	692.7	693.7	694.3	695.3	699.4	700.8	700.8	700.8	700.8
127.5°	639.5	639.5	639.5	639.5	639.2	639.3	642.7	643.2	640.8	638.5	635.9
130°	602.6	602.9	603.1	603.4	603.8	604.1	608.0	609.2	605.1	600.7	596.7
132.5°	578.8	579.4	579.6	580.4	580.9	581.2	585.6	587.0	582.4	577.4	572.6
135°	559.1	559.9	560.5	561.1	561.8	562.7	567.6	569.2	564.8	560.0	555.5
137.5°	542.6	543.4	544.1	545.0	545.6	546.4	551.9	553.7	550.1	546.1	542.5
140°	528.8	529.7	530.6	531.8	532.6	533.9	539.7	541.9	539.1	536.0	533.0
142.5°	514.6	516.3	517.7	519.4	520.7	522.5	529.3	532.0	529.8	527.5	525.3
145°	505.7	507.7	509.3	511.3	512.9	515.1	522.6	525.9	524.5	522.9	521.4
147.5°	497.7	499.5	501.0	502.7	504.3	506.6	514.5	517.6	516.9	515.8	514.8
150°	489.7	491.5	493.0	494.9	496.8	498.9	507.8	511.3	510.5	509.8	508.8
152.5°	480.3	481.8	483.3	484.9	486.6	488.5	499.1	502.8	502.3	501.2	500.7
155°	474.8	475.8	477.0	478.3	479.5	481.1	492.4	496.1	495.6	495.1	494.6
157.5°	473.5	474.2	474.8	475.7	476.6	477.5	489.2	493.0	492.4	492.1	491.6
160°	472.9	473.5	473.9	474.6	475.1	475.8	487.8	491.3	491.0	490.5	490.0
162.5°	473.2	474.3	474.9	475.7	476.4	477.5	489.6	493.6	492.8	492.2	491.5
165°	476.8	477.1	477.4	478.1	478.5	479.0	490.4	493.6	493.3	492.7	492.2
167.5°	480.8	481.4	481.7	482.4	483.0	483.7	494.3	497.4	497.1	496.5	496.2
170°	485.9	486.4	486.7	487.4	487.9	488.6	497.4	499.9	499.6	498.9	498.3
172.5°	490.6	491.2	491.8	492.4	493.0	493.7	501.2	503.7	503.3	502.8	502.1
175°	492.2	492.5	493.1	493.7	494.2	494.7	500.6	502.4	502.2	501.9	501.6
177.5°	496.8	497.1	497.5	498.0	498.3	498.8	502.3	503.5	503.3	503.3	503.2
180°	500.0	500.0	500.0	500.0	500.0	500.0	500.0	500.0	500.0	500.0	500.0



TEST NUMBER: P1444479
 CATALOG NUMBER: EHBR1-48-UNV-TA-L830-UPL36

CANDELA DISTRIBUTION (continued):

	55°	57.5°	60°	62.5°	65°	67.5°	70°	72.5°	75°	77.5°	80°
0°	38337.2	38337.2	38337.2	38337.2	38337.2	38337.2	38337.2	38337.2	38337.2	38337.2	38337.2
2.5°	38419.4	38432.9	38434.9	38450.7	38449.4	38468.1	38465.2	38480.5	38471.6	38484.2	38473.5
5°	39321.7	39403.6	39446.4	39526.2	39551.5	39623.0	39643.2	39708.4	39711.1	39762.8	39751.0
7.5°	40597.5	40718.2	40789.7	40888.5	40938.5	41020.8	41057.0	41117.9	41137.4	41185.8	41189.4
10°	41359.3	41417.9	41458.8	41486.4	41511.6	41523.4	41537.1	41533.4	41537.1	41531.7	41543.5
12.5°	41059.7	40974.2	40917.6	40810.5	40748.4	40630.0	40572.0	40458.1	40416.8	40319.0	40305.0
15°	39542.1	39244.1	39033.5	38727.2	38534.6	38233.3	38057.0	37785.1	37660.9	37444.8	37388.2
17.5°	36776.1	36222.8	35794.5	35245.3	34864.1	34350.7	34027.9	33602.9	33370.3	33027.5	32908.9
20°	32898.2	32079.6	31437.3	30672.1	30124.6	29442.3	29005.5	28454.6	28134.8	27713.9	27543.3
22.5°	28345.5	27326.2	26524.0	25620.1	24959.5	24199.1	23675.9	23079.9	22731.9	22274.7	22072.1
25°	23652.9	22529.0	21637.1	20684.7	19986.7	19224.5	18701.1	18115.6	17755.6	17321.5	17120.3
27.5°	19165.1	18027.2	17165.4	16279.9	15639.6	14951.8	14479.6	13968.4	13648.8	13278.3	13089.0
30°	15204.5	14201.0	13467.5	12732.7	12200.0	11641.5	11249.0	10825.4	10545.0	10227.7	10047.5
32.5°	11977.8	11203.0	10628.7	10045.6	9609.7	9142.9	8803.8	8430.0	8177.0	7893.6	7730.4
35°	9486.2	8884.2	8426.2	7946.2	7571.7	7174.2	6875.3	6552.7	6325.6	6081.7	5940.7
37.5°	7495.1	7016.4	6639.5	6240.8	5933.2	5603.9	5492.9	5122.6	4887.4	4692.7	4557.8
40°	5882.2	5501.6	5189.6	4884.7	4633.9	4384.1	4183.6	3985.8	3833.9	3694.7	3598.4
42.5°	4593.5	4317.8	4090.0	3866.6	3683.6	3501.6	3356.4	3220.1	3117.8	3026.8	2964.7
45°	3651.7	3462.0	3303.7	3146.4	3017.2	2895.7	2798.0	2711.0	2645.0	2590.3	2551.5
47.5°	2999.9	2870.1	2758.4	2652.3	2564.6	2485.0	2419.5	2398.2	2327.2	2279.3	2261.1
50°	2549.5	2471.1	2386.3	2308.0	2249.4	2191.1	2148.7	2107.0	2080.5	2058.5	2051.8
52.5°	2213.3	2153.4	2106.2	2056.6	2018.0	1976.5	1947.2	1919.5	1904.9	1893.4	1892.0
55°	1963.4	1921.5	1890.3	1857.0	1833.9	1809.5	1794.4	1779.7	1773.3	1767.5	1767.9
57.5°	1774.3	1746.3	1726.0	1704.4	1691.9	1680.3	1676.4	1672.8	1674.7	1675.6	1678.9
60°	1636.5	1618.4	1605.5	1593.2	1587.9	1584.3	1587.1	1590.3	1597.0	1602.4	1607.2
62.5°	1531.0	1520.6	1514.3	1507.6	1507.1	1507.4	1513.1	1518.6	1526.9	1533.2	1537.9
65°	1422.2	1416.3	1414.2	1410.0	1412.2	1413.4	1420.2	1424.5	1432.9	1437.8	1443.8
67.5°	1312.4	1311.0	1312.2	1312.2	1316.1	1319.4	1325.9	1330.8	1337.8	1342.4	1347.3
70°	1231.3	1231.9	1234.9	1235.4	1239.5	1241.8	1247.5	1250.6	1257.0	1260.8	1266.6
72.5°	1152.4	1151.1	1151.9	1150.0	1151.4	1150.8	1154.0	1155.5	1161.0	1164.0	1171.1
75°	1068.4	1064.9	1064.0	1060.3	1060.4	1057.6	1058.9	1058.8	1062.3	1063.7	1068.9
77.5°	967.0	961.1	958.2	951.8	951.7	949.3	951.8	953.4	959.7	962.6	968.5
80°	845.7	836.3	832.1	824.7	825.9	825.5	831.7	836.5	844.1	845.6	852.9
82.5°	702.9	693.4	688.9	681.5	683.2	683.4	689.1	690.1	696.7	699.6	708.2
85°	503.3	506.9	496.8	497.6	495.4	499.5	503.3	508.1	513.6	522.9	530.0
87.5°	296.4	295.1	298.6	299.1	304.2	306.9	315.1	319.8	329.1	336.3	349.4
90°	167.3	160.9	162.2	159.0	162.3	159.2	162.5	159.1	163.3	162.5	168.4
92.5°	93.1	87.6	81.2	75.5	69.3	63.9	60.5	58.3	55.0	52.8	49.5
95°	126.5	117.8	109.1	100.3	91.6	82.9	79.7	76.5	73.3	70.2	66.9
97.5°	147.5	138.2	128.8	119.2	109.9	100.5	98.4	96.3	94.1	92.0	89.9
100°	212.9	194.8	176.8	158.5	140.4	122.3	120.6	119.0	117.3	115.6	113.8
102.5°	432.6	390.9	349.4	307.7	266.2	224.5	217.3	210.1	202.8	195.6	188.4
105°	795.7	729.1	662.6	596.0	529.6	463.1	443.3	423.2	403.4	383.6	363.8
107.5°	1139.0	1074.1	1009.3	944.4	879.6	814.7	783.3	752.0	720.4	689.1	657.8
110°	1311.4	1272.4	1233.6	1194.3	1155.5	1116.6	1086.5	1056.7	1026.5	996.7	966.9



TEST NUMBER: P1444479
 CATALOG NUMBER: EHBR1-48-UNV-TA-L830-UPL36

CANDELA DISTRIBUTION (continued):

	55°	57.5°	60°	62.5°	65°	67.5°	70°	72.5°	75°	77.5°	80°
112.5°	1330.5	1310.8	1291.2	1271.7	1252.3	1232.6	1218.0	1203.4	1188.8	1174.2	1159.4
115°	1236.9	1230.6	1224.3	1218.1	1211.9	1205.6	1204.5	1203.5	1202.3	1201.2	1200.3
117.5°	1081.8	1082.8	1083.7	1084.9	1085.9	1087.1	1094.7	1102.3	1110.1	1118.0	1126.0
120°	928.0	933.1	938.0	943.3	948.3	953.7	963.8	974.3	984.6	995.3	1005.7
122.5°	799.5	802.9	806.2	809.9	813.3	817.0	826.9	837.2	847.4	857.8	868.4
125°	700.5	700.5	700.4	700.1	700.1	700.3	708.4	716.7	725.2	733.9	742.3
127.5°	633.3	630.7	628.1	625.6	623.0	620.7	625.3	630.2	634.9	640.0	645.0
130°	592.3	588.0	583.4	579.4	574.8	570.6	572.3	574.1	575.9	577.8	579.7
132.5°	567.6	562.7	557.6	552.6	547.6	542.6	542.2	541.9	541.5	541.5	541.5
135°	550.7	546.1	541.1	536.5	531.5	526.9	525.5	524.0	522.6	521.4	520.2
137.5°	538.8	534.9	531.0	527.4	523.2	519.5	517.3	515.7	513.7	512.3	510.5
140°	529.8	526.9	523.5	520.5	517.3	514.3	512.5	511.2	509.4	508.2	506.7
142.5°	522.8	520.5	518.2	515.8	513.5	511.2	509.5	508.1	506.5	505.3	503.8
145°	519.8	518.3	516.6	515.1	513.4	511.9	510.4	509.3	508.1	507.0	506.1
147.5°	513.8	512.8	511.7	510.5	509.4	508.4	507.3	506.8	505.6	505.1	504.2
150°	507.8	506.9	505.8	505.0	503.8	502.9	502.3	501.7	501.1	500.9	500.2
152.5°	499.5	498.7	497.9	497.1	496.0	495.1	494.5	494.2	493.7	493.4	492.8
155°	493.9	493.4	492.6	492.1	491.2	490.7	490.1	489.3	488.8	488.2	487.6
157.5°	491.0	490.5	489.7	489.3	488.5	487.9	487.4	486.8	486.1	485.6	484.9
160°	489.4	489.1	488.3	487.7	487.2	486.6	485.7	485.1	484.1	483.5	482.6
162.5°	490.7	490.0	489.3	488.5	487.7	487.0	486.3	485.8	485.1	484.6	483.9
165°	491.7	491.1	490.6	490.0	489.5	489.0	488.1	487.5	486.5	485.9	485.0
167.5°	495.6	495.2	494.7	494.2	493.6	493.0	492.3	491.5	490.7	490.0	489.0
170°	497.8	497.0	496.5	495.7	495.1	494.4	493.7	492.9	492.1	491.7	490.6
172.5°	501.6	501.3	500.7	500.1	499.4	498.9	498.4	497.8	497.1	496.5	496.0
175°	501.5	501.3	501.2	500.8	500.7	500.4	500.1	499.9	499.6	499.5	499.1
177.5°	503.2	503.0	503.0	502.7	502.6	502.6	502.3	502.1	501.7	501.3	501.1
180°	500.0	500.0	500.0	500.0	500.0	500.0	500.0	500.0	500.0	500.0	500.0



TEST NUMBER: P1444479
 CATALOG NUMBER: EHBR1-48-UNV-TA-L830-UPL36

CANDELA DISTRIBUTION (continued):

	82.5°	85°	87.5°	90°	92.5°	95°	97.5°	100°	102.5°	105°	107.5°
0°	38337.2	38337.2	38337.2	38337.2	38337.2	38337.2	38337.2	38337.2	38337.2	38337.2	38337.2
2.5°	38484.6	38474.8	38479.5	38461.5	38465.8	38444.0	38442.0	38417.4	38415.0	38391.9	38383.1
5°	39787.6	39766.2	39790.4	39752.7	39760.1	39711.1	39707.0	39643.6	39621.8	39542.4	39508.2
7.5°	41219.7	41211.6	41226.3	41194.9	41193.8	41150.1	41132.0	41075.2	41039.9	40956.8	40903.5
10°	41533.4	41540.8	41528.7	41531.7	41514.7	41510.0	41492.5	41481.4	41452.8	41431.3	41399.4
12.5°	40230.7	40238.5	40188.7	40220.3	40195.4	40253.6	40248.9	40317.4	40327.8	40414.5	40447.4
15°	37219.8	37210.5	37115.1	37175.2	37142.9	37270.5	37299.1	37470.7	37562.5	37782.9	37918.3
17.5°	32671.5	32646.9	32512.6	32585.8	32548.6	32736.7	32799.8	33074.3	33245.5	33600.6	33853.6
20°	27249.6	27202.6	27045.5	27131.1	27092.8	27306.5	27396.6	27728.3	27949.1	28419.4	28754.0
22.5°	21760.4	21686.1	21532.2	21612.2	21576.0	21797.4	21914.6	22247.5	22500.4	22983.2	23373.8
25°	16831.2	16764.9	16616.2	16672.2	16658.7	16846.0	16950.2	17265.1	17513.6	17973.5	18346.4
27.5°	12837.5	12768.7	12634.2	12673.9	12660.2	12819.8	12918.1	13181.1	13394.9	13782.1	14109.5
30°	9825.2	9742.1	9628.1	9650.1	9640.7	9770.0	9861.8	10083.3	10266.6	10593.8	10875.8
32.5°	7531.0	7447.5	7342.8	7353.1	7339.2	7440.7	7516.2	7708.9	7868.6	8146.8	8392.3
35°	5762.3	5859.9	5636.3	5777.9	5630.5	5846.9	5769.1	5889.5	6026.9	6261.2	6466.0
37.5°	4429.8	4361.8	4304.3	4298.1	4297.8	4348.0	4407.2	4523.2	4644.2	4818.9	4999.3
40°	3510.4	3462.6	3425.5	3422.7	3425.5	3461.1	3504.9	3585.0	3673.7	3799.1	3931.6
42.5°	2911.6	2879.8	2857.4	2855.8	2863.0	2888.2	2918.7	2966.3	3024.0	3105.2	3196.1
45°	2519.9	2502.3	2489.9	2489.1	2492.4	2505.6	2523.1	2552.8	2589.3	2640.0	2697.5
47.5°	2245.2	2240.9	2233.1	2233.4	2229.8	2235.3	2237.2	2253.8	2273.3	2311.5	2386.7
50°	2045.1	2045.1	2039.7	2039.4	2034.3	2034.1	2029.8	2036.3	2045.4	2069.1	2093.2
52.5°	1887.0	1886.4	1880.6	1879.5	1874.1	1873.8	1870.0	1872.7	1873.9	1885.9	1900.2
55°	1763.4	1759.7	1752.0	1749.6	1747.4	1750.6	1749.2	1749.3	1747.7	1752.8	1757.0
57.5°	1674.7	1669.9	1662.7	1660.5	1659.9	1663.6	1663.8	1662.5	1655.8	1651.3	1644.9
60°	1604.5	1599.7	1591.8	1589.9	1591.0	1596.2	1595.9	1591.6	1581.6	1573.0	1562.9
62.5°	1535.6	1533.7	1529.6	1529.1	1528.1	1529.0	1525.4	1520.8	1511.0	1501.8	1490.9
65°	1443.1	1444.1	1441.1	1441.6	1438.0	1437.5	1432.0	1427.6	1417.7	1409.3	1398.1
67.5°	1347.1	1347.8	1345.4	1345.4	1343.5	1343.8	1340.5	1336.4	1328.1	1321.2	1312.5
70°	1267.9	1269.9	1268.5	1269.0	1266.6	1265.8	1260.7	1256.7	1248.1	1242.4	1234.6
72.5°	1173.1	1177.4	1177.3	1178.3	1174.9	1173.1	1167.0	1162.1	1154.3	1149.7	1143.4
75°	1070.8	1076.4	1078.0	1080.4	1075.5	1073.0	1066.3	1062.3	1056.0	1053.2	1049.1
77.5°	971.0	977.1	982.9	988.3	980.5	973.5	965.2	958.8	949.6	946.2	939.7
80°	858.9	869.6	882.6	893.4	879.4	865.1	851.4	841.2	829.1	824.1	816.2
82.5°	712.6	723.6	731.0	737.9	728.2	717.8	704.4	695.5	682.4	677.6	668.3
85°	541.3	555.1	559.5	563.2	557.0	551.4	538.9	522.0	513.8	500.9	494.2
87.5°	356.0	364.3	365.9	367.1	363.3	360.6	352.5	344.5	330.5	320.3	307.7
90°	166.3	169.9	165.0	165.3	162.1	164.3	157.8	156.9	147.0	144.4	135.8
92.5°	47.0	43.8	41.2	38.3	41.8	43.9	47.3	49.5	52.7	55.0	58.3
95°	63.7	60.5	57.3	54.1	56.7	59.3	61.8	64.4	67.0	69.5	72.0
97.5°	87.8	85.6	83.6	81.4	82.9	84.4	85.9	87.4	88.8	90.3	92.0
100°	112.1	110.4	108.8	107.1	107.1	107.1	107.1	107.1	107.1	107.1	107.1
102.5°	181.2	173.9	166.6	159.4	164.3	169.2	174.1	179.0	183.9	188.7	193.9
105°	344.0	324.2	304.3	284.6	303.8	322.9	342.1	361.2	380.4	399.8	419.0
107.5°	626.3	595.0	563.7	532.4	567.6	602.4	637.3	672.3	707.1	742.1	777.3
110°	937.1	907.2	877.4	847.6	884.6	921.7	958.7	995.8	1032.9	1070.0	1107.3



TEST NUMBER: P1444479
 CATALOG NUMBER: EHBR1-48-UNV-TA-L830-UPL36

CANDELA DISTRIBUTION (continued):

	82.5°	85°	87.5°	90°	92.5°	95°	97.5°	100°	102.5°	105°	107.5°
112.5°	1144.9	1130.4	1116.0	1101.5	1125.4	1149.2	1173.0	1197.1	1221.0	1245.0	1268.9
115°	1199.3	1198.4	1197.6	1196.7	1208.0	1219.3	1230.6	1242.1	1253.4	1264.7	1276.3
117.5°	1133.8	1141.7	1149.8	1157.9	1161.5	1165.1	1168.9	1172.6	1176.4	1180.2	1184.1
120°	1016.4	1026.9	1037.8	1048.6	1047.1	1045.6	1044.2	1042.7	1041.8	1040.4	1039.6
122.5°	879.0	889.6	900.5	911.2	908.0	904.9	901.8	898.8	895.9	893.0	890.2
125°	751.3	760.1	769.0	778.1	774.9	771.8	768.7	765.9	763.0	760.1	757.6
127.5°	650.5	655.9	661.2	666.8	665.3	663.8	662.8	661.4	660.5	659.5	658.7
130°	581.9	584.2	586.8	589.2	589.6	590.0	590.9	591.6	592.6	593.4	594.6
132.5°	542.0	542.1	542.6	543.1	544.8	546.5	548.6	550.6	553.0	555.1	558.1
135°	519.5	518.7	518.0	517.5	520.1	522.4	525.4	528.2	531.4	534.7	538.1
137.5°	509.3	508.1	507.0	505.8	508.4	510.9	513.8	516.6	519.8	523.0	526.6
140°	505.6	504.4	503.8	502.7	505.3	507.7	510.5	513.3	516.6	519.8	523.2
142.5°	502.8	501.5	500.9	500.1	502.2	504.5	507.2	509.8	512.7	515.5	518.7
145°	505.2	504.3	503.8	503.1	504.6	506.3	508.3	510.2	512.4	514.3	517.0
147.5°	503.7	503.1	502.8	502.4	503.7	504.8	506.2	507.5	509.2	510.8	512.7
150°	500.1	499.7	499.5	499.4	500.1	500.8	501.8	502.5	503.7	504.7	506.1
152.5°	492.7	492.1	492.3	492.1	492.6	493.3	494.1	494.9	495.8	496.6	498.0
155°	487.3	486.8	486.3	486.0	486.2	486.2	486.7	486.8	487.4	487.7	488.2
157.5°	484.7	484.1	483.8	483.2	483.2	483.0	483.1	483.0	483.2	483.0	483.2
160°	482.1	481.2	480.5	479.9	480.1	479.9	480.3	480.1	480.3	480.4	480.8
162.5°	483.4	482.9	482.5	481.9	481.7	481.0	480.7	480.2	479.9	479.6	479.5
165°	484.2	483.3	482.8	481.8	481.7	481.6	481.4	481.2	481.1	480.8	480.9
167.5°	488.5	487.7	486.9	486.2	485.7	484.9	484.5	483.9	483.4	483.0	482.7
170°	490.2	489.4	488.9	488.3	488.0	487.6	487.5	487.0	486.9	486.7	486.7
172.5°	495.4	494.9	494.3	493.8	493.6	493.3	493.1	493.0	492.7	492.7	492.5
175°	498.9	498.6	498.5	498.2	497.9	497.7	497.3	497.1	496.9	496.5	496.3
177.5°	500.7	500.3	500.1	499.9	499.7	499.7	499.7	499.7	499.7	499.6	499.5
180°	500.0	500.0	500.0	500.0	500.0	500.0	500.0	500.0	500.0	500.0	500.0



TEST NUMBER: P1444479
 CATALOG NUMBER: EHBR1-48-UNV-TA-L830-UPL36

CANDELA DISTRIBUTION (continued):

	110°	112.5°	115°	117.5°	120°	122.5°	125°	127.5°	130°	132.5°	135°
0°	38337.2	38337.2	38337.2	38337.2	38337.2	38337.2	38337.2	38337.2	38337.2	38337.2	38337.2
2.5°	38358.3	38348.2	38321.7	38308.6	38284.0	38271.7	38252.5	38240.1	38224.7	38213.1	38207.1
5°	39421.1	39372.0	39273.8	39213.3	39107.1	39037.2	38931.8	38854.5	38745.7	38665.4	38562.5
7.5°	40803.8	40728.6	40602.7	40507.1	40358.7	40245.1	40078.5	39945.2	39761.1	39608.2	39420.1
10°	41366.7	41322.8	41266.3	41204.9	41122.6	41042.0	40928.2	40812.2	40657.7	40503.9	40303.0
12.5°	40534.8	40576.1	40657.7	40695.7	40758.1	40779.2	40807.8	40794.4	40769.1	40706.4	40615.3
15°	38178.3	38350.9	38623.7	38812.4	39076.8	39262.5	39508.2	39666.3	39848.4	39957.3	40060.7
17.5°	34302.0	34635.9	35117.3	35501.4	36016.9	36436.1	36949.7	37353.2	37819.2	38176.6	38557.1
20°	29337.1	29804.7	30469.2	31033.5	31780.7	32414.2	33225.7	33905.6	34698.7	35359.8	36073.3
22.5°	23993.5	24543.6	25304.9	25985.7	26877.8	27674.6	28691.5	29590.4	30662.6	31623.1	32685.5
25°	18952.4	19491.5	20267.2	20972.0	21935.0	22812.8	23923.7	24955.0	26199.2	27359.5	28691.5
27.5°	14629.5	15108.3	15790.1	16424.5	17306.6	18168.3	19295.7	20395.4	21723.0	22970.0	24405.4
30°	11298.1	11686.6	12232.9	12743.2	13451.3	14156.1	15160.3	16177.3	17498.4	18790.5	20262.1
32.5°	8755.7	9086.8	9542.9	9957.2	10502.8	11034.2	11773.8	12586.5	13745.3	14982.9	16405.9
35°	6777.8	7061.2	7449.4	7806.3	8254.9	8676.8	9228.6	9808.7	10693.1	11734.2	13007.6
37.5°	5403.7	5519.2	5796.3	6088.6	6461.3	6808.0	7239.6	7668.6	8301.3	9122.7	10163.0
40°	4109.4	4292.8	4518.3	4748.6	5030.9	5308.9	5782.5	6010.5	6427.0	7016.7	7824.1
42.5°	3315.8	3444.7	3603.5	3763.6	3960.2	4153.9	4393.4	4637.5	4948.8	5348.2	5922.5
45°	2774.7	2858.8	2961.1	3067.8	3197.0	3329.2	3489.5	3657.0	3868.0	4113.6	4462.4
47.5°	2413.2	2459.7	2526.5	2599.4	2687.9	2779.4	2883.7	2990.4	3121.6	3267.1	3465.8
50°	2131.1	2169.9	2221.8	2270.5	2331.6	2425.3	2466.7	2525.6	2604.5	2690.2	2801.3
52.5°	1926.9	1952.8	1985.4	2013.3	2052.0	2087.1	2133.1	2173.7	2228.2	2279.7	2351.4
55°	1767.9	1777.3	1795.8	1813.8	1840.5	1864.5	1896.1	1922.7	1957.4	1988.3	2033.5
57.5°	1645.1	1646.0	1654.5	1663.9	1681.1	1696.2	1717.9	1735.3	1759.5	1779.2	1806.3
60°	1556.9	1552.2	1553.9	1557.2	1566.9	1576.7	1590.6	1602.0	1617.1	1628.3	1643.5
62.5°	1483.5	1476.1	1474.4	1473.5	1478.4	1481.9	1489.5	1495.0	1503.7	1508.5	1516.6
65°	1390.7	1382.0	1378.6	1374.6	1376.0	1374.9	1377.8	1377.9	1382.3	1383.3	1388.0
67.5°	1306.6	1299.3	1294.9	1289.6	1287.1	1283.3	1281.6	1277.9	1277.3	1274.2	1273.5
70°	1229.9	1222.8	1219.0	1214.1	1211.5	1206.4	1203.3	1197.0	1193.4	1187.6	1184.3
72.5°	1141.1	1137.1	1135.9	1132.6	1131.6	1128.8	1127.5	1123.1	1120.6	1115.6	1112.8
75°	1048.3	1045.0	1044.7	1041.3	1041.1	1037.6	1036.7	1032.1	1029.6	1024.7	1022.6
77.5°	937.7	932.9	931.5	927.5	928.5	926.8	928.2	924.6	923.1	918.2	916.6
80°	813.3	807.1	804.4	799.2	800.6	798.3	800.6	800.3	802.2	798.3	797.5
82.5°	665.8	659.0	657.7	654.0	656.4	656.7	662.0	659.2	660.3	656.5	658.1
85°	484.5	479.4	472.3	471.3	466.8	471.4	465.4	469.5	462.7	467.4	461.2
87.5°	300.4	289.8	284.3	276.8	273.9	266.7	263.7	258.4	260.0	257.6	259.0
90°	135.2	127.7	128.2	123.5	125.2	121.4	124.7	122.7	126.6	124.6	128.9
92.5°	60.5	63.3	68.4	73.8	78.7	83.7	88.8	94.2	99.1	104.4	109.3
95°	74.7	77.2	84.0	90.8	97.6	104.4	111.3	118.1	125.0	131.7	138.5
97.5°	93.5	95.0	101.8	108.6	115.4	122.2	129.0	136.1	142.9	149.7	156.5
100°	107.1	107.2	126.5	145.9	165.2	184.8	204.2	223.6	243.2	262.6	281.9
102.5°	198.8	203.6	252.6	301.7	350.6	399.6	448.8	498.0	546.9	596.1	645.2
105°	438.1	457.4	532.1	607.1	681.7	756.6	831.5	906.5	981.3	1056.2	1131.1
107.5°	812.1	847.2	914.8	982.4	1049.9	1117.7	1185.4	1253.1	1320.7	1388.5	1456.4
110°	1144.4	1181.6	1226.8	1272.2	1317.7	1363.0	1408.3	1453.8	1499.4	1544.8	1590.5



TEST NUMBER: P1444479
 CATALOG NUMBER: EHBR1-48-UNV-TA-L830-UPL36

CANDELA DISTRIBUTION (continued):

	110°	112.5°	115°	117.5°	120°	122.5°	125°	127.5°	130°	132.5°	135°
112.5°	1292.8	1316.9	1343.3	1369.9	1396.4	1423.0	1449.5	1476.1	1502.9	1529.6	1556.2
115°	1287.9	1299.4	1309.6	1320.2	1330.4	1341.0	1351.4	1362.2	1372.8	1383.4	1394.1
117.5°	1187.8	1192.1	1193.6	1195.4	1197.2	1199.3	1201.1	1203.2	1205.4	1207.4	1209.3
120°	1038.3	1037.2	1035.6	1034.2	1032.7	1031.4	1030.1	1028.8	1027.8	1026.5	1025.2
122.5°	887.4	885.0	883.4	882.1	880.9	879.8	878.5	877.7	876.7	875.6	874.4
125°	755.0	752.6	754.4	756.2	758.1	760.0	761.8	764.2	766.1	768.2	770.3
127.5°	657.8	657.3	661.5	665.8	670.1	674.5	679.1	683.7	688.0	692.8	697.1
130°	595.9	597.3	602.7	608.3	613.7	619.4	625.1	630.9	636.3	641.9	647.5
132.5°	560.4	563.4	568.4	573.9	579.3	584.7	590.2	595.7	601.2	606.8	612.0
135°	541.6	545.4	550.1	555.1	560.1	565.2	570.1	575.3	580.1	585.2	590.0
137.5°	530.0	533.6	537.8	541.7	545.6	549.9	554.1	558.2	562.1	566.2	570.2
140°	526.6	530.3	532.6	535.2	537.7	540.2	542.5	545.2	547.4	550.1	552.4
142.5°	521.7	525.1	526.5	528.3	529.9	532.0	533.6	535.4	536.8	538.4	539.9
145°	519.2	521.8	522.1	522.8	523.2	523.7	524.0	524.7	524.7	525.2	525.4
147.5°	514.4	516.4	516.2	516.4	516.5	516.4	516.5	516.6	516.3	516.4	516.3
150°	507.2	508.6	508.1	507.9	507.3	507.0	506.4	506.2	505.6	505.4	504.8
152.5°	498.9	500.1	499.3	499.0	498.2	497.7	497.0	496.5	495.9	495.3	494.9
155°	488.5	489.1	488.6	488.4	487.9	487.7	487.2	487.3	486.9	486.7	486.5
157.5°	483.2	483.3	483.2	482.9	482.5	482.5	482.2	482.1	482.1	482.3	482.4
160°	480.7	481.1	480.7	480.4	480.3	480.1	479.8	479.9	479.9	480.2	480.3
162.5°	479.0	478.9	478.6	478.4	478.1	478.1	478.0	478.3	478.1	478.4	478.6
165°	481.0	481.2	480.4	480.3	479.9	479.6	479.3	479.2	479.2	479.2	479.2
167.5°	482.3	482.1	482.1	482.3	482.3	482.4	482.6	483.2	483.2	483.8	484.0
170°	486.6	486.7	486.4	486.3	486.1	486.1	486.0	486.0	486.0	486.1	486.0
172.5°	492.5	492.5	492.1	491.7	491.2	491.0	490.6	490.5	490.0	489.7	489.2
175°	496.0	495.8	495.6	495.3	495.1	494.8	494.5	494.0	493.8	493.6	493.4
177.5°	499.4	499.1	498.9	498.9	498.8	498.6	498.6	498.5	498.5	498.5	498.2
180°	500.0	500.0	500.0	500.0	500.0	500.0	500.0	500.0	500.0	500.0	500.0



TEST NUMBER: P1444479
 CATALOG NUMBER: EHBR1-48-UNV-TA-L830-UPL36

CANDELA DISTRIBUTION (continued):

	137.5°	140°	142.5°	145°	147.5°	150°	152.5°	155°	157.5°	160°	162.5°
0°	38337.2	38337.2	38337.2	38337.2	38337.2	38337.2	38337.2	38337.2	38337.2	38337.2	38337.2
2.5°	38199.5	38199.1	38195.3	38197.0	38197.8	38200.5	38203.8	38207.1	38207.9	38210.5	38211.1
5°	38485.3	38390.8	38320.9	38244.0	38186.2	38134.3	38099.6	38072.1	38061.4	38064.1	38070.5
7.5°	39260.6	39065.4	38904.5	38721.5	38568.9	38407.3	38273.4	38146.1	38053.2	37984.1	37945.4
10°	40111.2	39873.6	39646.3	39381.5	39130.3	38862.2	38619.3	38374.8	38170.9	37993.8	37863.8
12.5°	40488.7	40320.7	40124.3	39874.3	39605.5	39296.2	38983.8	38648.9	38337.4	38048.3	37815.1
15°	40089.0	40089.3	40017.7	39897.8	39711.1	39463.8	39166.2	38817.1	38449.7	38074.7	37732.1
17.5°	38820.2	39059.6	39192.7	39277.0	39251.2	39160.1	38970.6	38702.6	38360.0	37960.6	37542.6
20°	36641.4	37206.0	37608.6	37970.6	38173.5	38308.3	38294.8	38185.7	37941.8	37602.1	37166.8
22.5°	33589.2	34536.8	35284.7	35982.0	36471.0	36868.9	37058.0	37138.3	37027.7	36791.1	36382.3
25°	29881.9	31170.5	32270.1	33337.3	34137.8	34825.7	35239.2	35530.5	35553.6	35430.0	35065.3
27.5°	25762.6	27283.6	28675.3	30093.6	31219.3	32208.3	32857.2	33332.1	33483.0	33463.2	33132.0
30°	21648.5	23245.2	24779.2	26433.1	27826.1	29089.6	29946.8	30589.2	30836.6	30884.1	30565.6
32.5°	17763.1	19337.6	20867.4	22596.4	24129.3	25577.5	26590.3	27353.2	27641.1	27708.9	27359.5
35°	14236.9	15689.6	17143.4	18819.0	20343.2	21842.7	22909.8	23708.7	23977.5	24022.8	23618.3
37.5°	11179.1	12416.7	13683.5	15187.0	16586.7	17995.0	19008.9	19759.6	19955.5	19943.4	19485.5
40°	8604.3	9566.5	10584.4	11822.2	12985.9	14176.3	15032.6	15653.2	15756.0	15679.9	15198.9
42.5°	6470.0	7164.9	7902.9	8826.9	9690.3	10581.3	11204.2	11664.9	11679.5	11559.1	11127.4
45°	4820.1	5498.1	5807.6	6366.2	6922.4	7514.8	7895.2	8179.8	8135.8	8029.7	7701.7
47.5°	3674.5	3935.1	4211.4	4557.8	4881.8	5554.1	5504.3	5961.3	5632.1	5856.6	5362.5
50°	2917.9	3063.6	3212.4	3396.3	3565.6	3741.3	3851.1	3933.1	3922.5	3887.2	3792.6
52.5°	2482.5	2527.5	2600.8	2705.4	2799.8	2894.9	2957.5	3008.3	3009.3	2995.1	2947.2
55°	2074.8	2131.9	2184.7	2253.0	2369.4	2387.3	2476.9	2458.8	2465.8	2441.0	2466.4
57.5°	1829.3	1862.6	1892.2	1932.9	1966.5	2005.8	2028.9	2051.2	2049.1	2044.3	2019.8
60°	1655.4	1673.7	1690.2	1713.9	1732.4	1754.5	1765.2	1776.6	1772.9	1764.7	1742.9
62.5°	1521.3	1532.7	1542.2	1557.5	1568.7	1582.5	1588.1	1592.9	1588.1	1580.2	1561.0
65°	1389.0	1396.4	1402.3	1413.9	1421.8	1433.6	1438.3	1442.8	1438.4	1432.3	1417.7
67.5°	1269.6	1270.4	1269.8	1274.5	1276.9	1284.0	1286.1	1289.4	1284.3	1279.0	1266.6
70°	1179.1	1177.3	1175.0	1176.9	1177.3	1180.7	1181.3	1180.7	1174.6	1165.5	1152.0
72.5°	1108.4	1107.4	1105.7	1107.3	1107.3	1110.4	1109.3	1107.8	1100.3	1091.5	1078.2
75°	1017.5	1016.7	1013.3	1013.4	1010.6	1011.6	1007.9	1005.8	997.4	990.0	978.1
77.5°	911.0	909.4	904.4	902.5	897.1	894.8	887.9	884.4	875.9	869.9	859.7
80°	792.3	790.4	784.0	780.5	771.9	766.5	756.3	750.5	740.7	734.8	724.9
82.5°	654.9	655.6	649.1	644.7	632.6	623.2	609.5	602.1	591.3	585.6	575.4
85°	465.7	459.1	462.6	462.4	454.7	446.5	435.5	427.7	418.6	413.2	406.0
87.5°	255.4	257.0	255.2	253.7	248.2	244.1	235.4	230.9	224.2	221.0	215.5
90°	119.5	116.7	107.7	105.0	96.3	91.3	81.4	77.4	68.2	66.0	60.3
92.5°	103.6	97.8	92.4	86.3	80.8	75.0	69.3	63.5	57.8	55.6	54.0
95°	130.2	122.1	113.8	105.6	97.2	89.0	80.7	72.5	64.2	62.5	60.8
97.5°	146.9	137.0	127.3	117.7	107.9	98.1	88.4	78.6	68.8	67.8	66.7
100°	259.5	237.1	214.5	191.9	169.5	147.0	124.6	102.0	79.6	78.3	77.1
102.5°	590.5	536.0	481.4	426.9	372.3	317.6	263.0	208.3	153.8	145.9	138.1
105°	1048.5	965.7	883.4	800.7	718.0	635.3	552.8	469.9	387.3	360.8	334.2
107.5°	1378.7	1300.9	1223.5	1145.9	1068.1	990.6	912.9	835.1	757.3	710.6	663.9
110°	1528.9	1467.2	1405.8	1344.2	1282.5	1220.9	1159.3	1097.5	1035.9	995.6	955.6



TEST NUMBER: P1444479
 CATALOG NUMBER: EHBR1-48-UNV-TA-L830-UPL36

CANDELA DISTRIBUTION (continued):

	137.5°	140°	142.5°	145°	147.5°	150°	152.5°	155°	157.5°	160°	162.5°
112.5°	1511.2	1466.0	1421.3	1376.0	1331.0	1285.7	1240.8	1195.4	1150.2	1125.8	1101.5
115°	1367.2	1340.1	1313.1	1285.9	1258.9	1231.8	1204.7	1177.3	1150.0	1137.3	1124.4
117.5°	1195.9	1182.0	1168.5	1154.7	1141.0	1127.0	1113.3	1099.3	1085.5	1081.1	1076.7
120°	1021.7	1017.6	1013.4	1009.4	1005.4	1001.3	997.1	992.9	988.6	989.4	990.1
122.5°	876.5	878.3	880.2	881.8	883.9	885.5	887.4	888.8	890.5	894.2	897.7
125°	774.7	778.9	783.2	787.4	791.6	795.8	800.1	804.1	808.4	811.8	815.7
127.5°	702.2	706.7	711.7	716.2	721.2	725.8	730.5	734.9	739.7	743.1	746.7
130°	651.9	656.0	660.3	664.3	668.5	672.7	676.7	680.9	685.0	687.7	690.5
132.5°	615.7	619.5	623.5	626.9	630.9	634.4	638.4	642.0	646.0	647.9	650.2
135°	593.1	595.7	598.7	601.5	604.6	607.3	610.3	613.3	616.4	617.8	619.5
137.5°	572.6	574.9	577.5	579.7	582.3	584.6	587.3	589.7	592.6	593.2	594.5
140°	554.9	557.3	559.9	562.4	565.0	567.5	570.5	573.1	576.0	576.8	577.9
142.5°	542.0	543.9	545.8	547.7	550.0	551.9	554.2	556.6	558.9	559.9	560.9
145°	527.7	530.0	532.3	534.6	536.8	539.3	542.1	544.7	547.5	548.1	548.9
147.5°	518.2	520.0	522.1	524.2	526.2	528.3	530.8	533.1	535.6	536.3	536.9
150°	506.9	508.9	511.0	513.0	515.3	517.6	520.2	522.6	525.6	526.5	527.5
152.5°	497.0	499.1	501.3	503.8	506.3	508.8	511.4	514.2	517.0	517.8	518.8
155°	488.8	490.7	493.3	495.6	498.1	500.4	503.2	505.7	508.4	509.6	510.5
157.5°	484.5	486.2	488.4	490.6	492.7	495.0	497.5	499.6	502.2	503.0	503.9
160°	482.1	483.7	485.8	487.8	489.7	491.8	493.9	495.8	498.0	498.9	499.7
162.5°	480.4	482.3	484.3	486.0	488.1	490.0	492.1	494.0	496.2	496.8	497.7
165°	480.6	482.0	483.5	484.8	486.5	487.7	489.4	490.8	492.5	493.2	494.2
167.5°	485.4	486.3	487.3	488.4	489.7	490.8	492.1	493.2	494.6	495.3	496.2
170°	487.1	488.0	488.9	489.9	491.0	492.1	493.1	494.0	495.4	496.0	496.8
172.5°	490.0	490.4	491.3	491.8	492.5	493.1	493.9	494.7	495.4	496.3	496.9
175°	493.8	494.1	494.5	494.7	495.1	495.4	495.9	496.5	496.7	497.4	497.9
177.5°	498.4	498.6	498.9	499.1	499.5	499.7	500.1	500.3	500.7	501.3	502.1
180°	500.0	500.0	500.0	500.0	500.0	500.0	500.0	500.0	500.0	500.0	500.0



TEST NUMBER: P1444479
 CATALOG NUMBER: EHBR1-48-UNV-TA-L830-UPL36

CANDELA DISTRIBUTION (continued):

	165°	167.5°	170°	172.5°	175°	177.5°	180°	182.5°	185°	187.5°	190°
0°	38337.2	38337.2	38337.2	38337.2	38337.2	38337.2	38337.2	38337.2	38337.2	38337.2	38337.2
2.5°	38209.9	38209.4	38208.2	38206.4	38204.7	38205.7	38207.4	38211.8	38219.5	38230.6	38245.1
5°	38075.7	38083.5	38087.9	38088.5	38084.5	38082.1	38085.8	38096.3	38117.5	38153.0	38201.0
7.5°	37935.0	37944.7	37959.5	37970.6	37972.7	37970.0	37970.6	37987.0	38026.2	38095.3	38192.3
10°	37784.9	37756.3	37771.4	37798.9	37820.8	37824.8	37827.5	37847.0	37904.1	38008.6	38164.5
12.5°	37646.2	37555.8	37538.3	37563.2	37596.5	37607.1	37604.2	37612.5	37679.5	37817.8	38035.1
15°	37463.8	37293.7	37235.6	37242.0	37283.1	37297.8	37287.0	37270.5	37335.7	37504.7	37785.9
17.5°	37168.5	36894.3	36787.5	36782.8	36830.8	36843.6	36817.2	36766.0	36830.3	37041.0	37390.1
20°	36719.6	36314.9	36113.7	36081.7	36133.9	36118.7	36066.0	35988.6	36073.0	36329.4	36744.6
22.5°	35912.8	35399.9	35056.1	34945.3	35007.7	34966.1	34889.2	34790.5	34902.6	35193.8	35656.2
25°	34594.3	34001.7	33531.1	33267.1	33316.9	33242.2	33158.6	33038.9	33172.6	33506.9	34015.8
27.5°	32656.3	31971.7	31388.6	30951.6	30967.6	30869.9	30773.5	30618.7	30785.6	31181.4	31755.4
30°	30079.2	29287.0	28576.9	27983.1	27929.9	27835.1	27736.4	27533.2	27742.1	28215.8	28886.6
32.5°	26842.9	25963.3	25142.9	24391.9	24250.3	24157.8	24069.9	23836.0	24109.5	24661.8	25432.4
35°	23058.0	22121.2	21231.6	20374.0	20139.2	20046.8	19969.9	19745.8	20087.2	20688.2	21520.4
37.5°	18903.7	17946.7	17063.5	16184.0	15852.4	15726.9	15671.0	15524.3	15918.1	16512.5	17348.2
40°	14638.9	13749.0	12957.2	12180.4	11802.3	11610.4	11581.1	11554.4	11935.1	12450.8	13209.4
42.5°	10649.2	9931.3	9320.7	8726.9	8384.4	8122.3	8122.1	8201.7	8544.4	8930.7	9515.7
45°	7366.4	6884.6	6495.6	6098.9	6204.9	5682.3	5989.3	5831.8	6001.1	6250.2	6630.6
47.5°	5063.7	4800.6	4587.0	4365.3	4203.8	4049.5	4063.0	4162.5	4322.0	4469.8	4667.7
50°	3690.5	3556.6	3447.7	3332.7	3252.3	3184.2	3188.2	3231.3	3315.0	3392.9	3496.5
52.5°	2891.8	2817.9	2758.8	2695.2	2652.9	2619.1	2621.0	2641.9	2687.2	2731.6	2791.0
55°	2383.5	2374.7	2297.7	2240.6	2218.9	2196.2	2200.3	2208.5	2239.4	2265.3	2304.7
57.5°	1997.3	1962.9	1939.8	1909.8	1895.9	1880.1	1883.6	1886.7	1907.3	1924.7	1953.0
60°	1724.8	1700.3	1683.9	1663.5	1654.4	1644.3	1646.5	1648.4	1661.6	1673.1	1693.3
62.5°	1543.6	1521.7	1507.4	1491.7	1485.3	1478.5	1480.1	1480.7	1488.9	1497.2	1512.6
65°	1404.6	1387.3	1375.5	1361.9	1355.1	1348.1	1348.8	1348.8	1355.8	1361.9	1373.4
67.5°	1257.7	1244.6	1236.9	1226.2	1221.7	1214.3	1214.3	1211.9	1216.5	1218.9	1226.7
70°	1139.8	1126.6	1116.7	1106.3	1100.7	1094.4	1094.5	1094.6	1099.9	1105.4	1115.5
72.5°	1066.9	1054.3	1045.6	1036.5	1031.1	1025.7	1024.7	1024.1	1027.9	1030.9	1037.6
75°	970.4	960.3	955.3	946.7	942.4	936.3	935.3	932.5	934.4	934.9	939.9
77.5°	853.3	843.8	839.7	831.0	827.5	820.6	820.0	816.8	818.2	817.3	821.1
80°	720.0	711.2	709.0	701.9	700.2	693.8	692.8	688.9	690.1	687.1	688.6
82.5°	571.0	563.1	561.4	554.8	554.8	549.0	548.7	542.9	542.9	538.0	530.0
85°	402.2	396.4	394.0	388.6	387.0	382.4	379.9	374.4	372.4	368.9	367.8
87.5°	212.3	208.6	205.3	202.8	198.0	189.7	188.9	183.1	183.6	179.5	179.8
90°	58.8	53.5	52.3	47.3	45.7	42.1	40.7	41.2	42.4	43.1	44.4
92.5°	52.1	50.1	48.2	46.3	44.4	42.4	40.6	42.4	44.4	46.3	48.2
95°	59.0	57.3	55.6	54.0	52.2	50.5	48.8	50.5	52.2	54.1	55.8
97.5°	65.7	64.5	63.5	62.4	61.4	60.2	59.2	60.4	61.5	62.6	63.7
100°	75.8	74.5	73.3	71.9	70.6	69.4	68.1	69.7	70.9	72.2	73.5
102.5°	130.3	122.4	114.5	106.6	98.7	90.9	83.0	90.9	98.7	106.8	114.7
105°	307.6	281.2	254.5	227.9	201.3	174.7	148.1	174.8	201.4	228.0	254.8
107.5°	617.1	570.5	523.7	477.0	430.0	383.3	336.5	383.5	430.3	477.2	524.0
110°	915.2	874.8	834.6	794.2	753.8	713.5	673.0	713.6	754.1	794.5	835.0



TEST NUMBER: P1444479
 CATALOG NUMBER: EHBR1-48-UNV-TA-L830-UPL36

CANDELA DISTRIBUTION (continued):

	165°	167.5°	170°	172.5°	175°	177.5°	180°	182.5°	185°	187.5°	190°
112.5°	1076.9	1052.5	1027.9	1003.6	978.9	954.5	929.8	954.8	979.4	1004.2	1028.9
115°	1111.7	1098.8	1086.1	1073.2	1060.1	1047.1	1033.9	1047.6	1060.8	1074.0	1087.2
117.5°	1072.2	1067.9	1063.4	1058.9	1054.4	1049.8	1045.1	1050.1	1055.0	1060.2	1064.8
120°	990.5	991.3	991.9	992.3	992.9	993.3	993.6	993.8	993.8	993.8	993.8
122.5°	901.3	904.9	908.2	911.7	915.1	918.3	921.4	918.9	916.2	913.5	910.5
125°	819.2	823.1	826.6	830.2	833.6	837.1	840.1	837.9	835.2	832.4	829.4
127.5°	750.0	753.3	756.6	760.0	762.9	765.9	768.8	766.8	764.4	762.1	759.5
130°	693.1	696.0	698.2	700.8	703.1	705.2	707.2	706.1	704.6	703.4	701.5
132.5°	652.1	654.5	656.5	658.5	660.0	661.9	663.0	662.7	661.9	661.2	659.9
135°	621.1	622.5	624.0	625.6	626.7	627.8	628.4	628.8	628.5	628.3	627.7
137.5°	595.4	596.5	597.2	598.0	598.5	598.9	599.0	600.0	600.3	601.1	601.0
140°	578.8	580.0	580.8	581.5	582.2	582.8	582.8	583.9	584.2	584.7	584.6
142.5°	561.8	562.9	563.7	564.6	565.0	565.6	565.7	566.6	567.0	567.5	567.6
145°	549.8	550.3	551.0	551.6	551.9	552.1	551.8	553.1	553.8	554.3	554.8
147.5°	537.6	538.4	538.7	539.2	539.5	539.7	539.6	540.6	541.3	541.9	542.4
150°	528.4	529.4	530.2	531.0	531.6	532.1	532.2	533.0	533.3	533.7	533.7
152.5°	519.6	520.4	521.2	521.8	522.4	522.9	523.1	523.7	524.3	524.8	525.0
155°	511.4	512.4	513.2	514.1	514.6	515.4	515.9	516.5	517.0	517.3	517.5
157.5°	504.7	505.7	506.4	507.2	507.8	508.7	509.3	509.9	510.4	511.0	511.3
160°	500.4	501.4	502.0	502.8	503.6	504.2	504.8	505.5	506.1	506.5	507.1
162.5°	498.4	499.3	499.7	500.6	501.2	502.0	502.5	503.2	503.9	504.4	504.8
165°	495.2	496.1	496.8	497.8	498.7	499.6	500.3	500.8	501.0	501.3	501.5
167.5°	496.9	497.8	498.5	499.4	500.0	501.0	501.8	502.2	502.3	502.5	502.7
170°	497.5	498.2	499.1	499.6	500.5	501.3	501.8	502.0	502.2	502.4	502.6
172.5°	497.7	498.6	499.4	500.3	501.0	501.9	502.6	502.7	502.6	502.5	502.3
175°	498.5	499.4	499.9	500.6	501.2	501.9	502.6	502.3	502.4	502.0	501.9
177.5°	502.9	503.9	504.5	505.2	506.0	506.7	507.4	506.8	506.3	505.7	505.1
180°	500.0	500.0	500.0	500.0	500.0	500.0	500.0	500.0	500.0	500.0	500.0



TEST NUMBER: P1444479
 CATALOG NUMBER: EHBR1-48-UNV-TA-L830-UPL36

CANDELA DISTRIBUTION (continued):

	192.5°	195°	197.5°	200°	202.5°	205°	207.5°	210°	212.5°	215°	217.5°
0°	38337.2	38337.2	38337.2	38337.2	38337.2	38337.2	38337.2	38337.2	38337.2	38337.2	38337.2
2.5°	38265.5	38284.7	38314.0	38340.5	38380.5	38412.0	38459.3	38495.3	38548.7	38583.4	38641.5
5°	38269.0	38343.8	38442.3	38538.4	38653.9	38758.7	38889.0	39000.0	39130.9	39237.8	39371.7
7.5°	38323.1	38467.4	38640.5	38814.8	39012.1	39196.5	39404.3	39592.4	39798.0	39972.1	40162.1
10°	38363.0	38585.7	38840.7	39097.3	39367.3	39618.3	39871.7	40090.6	40295.2	40463.6	40612.3
12.5°	38308.9	38615.6	38942.8	39258.9	39559.2	39818.9	40036.9	40205.2	40321.5	40400.3	40418.8
15°	38124.9	38494.0	38849.8	39164.5	39413.7	39605.9	39705.4	39752.0	39702.0	39619.0	39436.6
17.5°	37781.2	38170.5	38488.6	38736.8	38868.5	38920.7	38838.3	38694.9	38414.7	38103.7	37654.6
20°	37151.0	37513.8	37744.5	37879.9	37844.7	37714.4	37403.3	37025.0	36465.6	35869.5	35082.7
22.5°	36045.8	36362.9	36485.8	36495.9	36280.9	35954.7	35393.5	34744.8	33862.3	32944.8	31816.5
25°	34386.7	34664.5	34683.9	34574.8	34181.3	33652.7	32828.6	31911.0	30711.8	29489.3	28075.4
27.5°	32136.7	32403.1	32337.9	32134.3	31588.1	30880.7	29825.6	28640.1	27161.7	25717.8	24153.8
30°	29308.2	29593.2	29516.5	29255.4	28605.8	27769.7	26528.2	25150.8	23509.4	21967.3	20382.4
32.5°	25923.4	26283.6	26230.8	25982.5	25304.6	24409.8	23062.8	21601.9	19922.6	18402.9	16861.1
35°	22076.2	22513.4	22536.1	22373.8	21744.5	20860.0	19529.9	18115.9	16507.3	15073.5	13649.3
37.5°	17931.1	18438.1	18542.2	18498.5	17976.9	17196.2	15984.2	14715.7	13290.8	12034.1	10816.0
40°	13763.2	14276.4	14454.4	14507.3	14122.4	13517.6	12523.0	11499.1	10337.4	9319.1	8352.0
42.5°	9962.2	10417.1	10589.2	10697.5	10457.2	10054.0	9328.4	8584.8	7733.8	6999.4	6295.2
45°	6919.0	7240.8	7371.6	7480.7	7349.8	7122.3	6664.0	6199.0	5637.2	5157.3	4702.9
47.5°	4837.4	5015.0	5101.3	5154.1	5103.5	4984.8	4735.4	4466.0	4149.0	3868.5	3598.8
50°	3585.6	3680.0	3725.3	3755.8	3718.8	3652.9	3518.0	3371.3	3197.2	3038.3	2883.0
52.5°	2841.5	2895.6	2922.5	2938.9	2917.8	2877.5	2798.9	2712.0	2607.5	2509.3	2457.7
55°	2393.8	2390.9	2453.1	2423.1	2453.1	2386.2	2372.0	2276.5	2189.7	2128.7	2062.6
57.5°	1974.1	2002.2	2014.1	2027.5	2018.9	2006.6	1973.3	1939.0	1893.3	1855.1	1814.2
60°	1708.8	1732.0	1745.1	1758.3	1757.5	1752.9	1733.6	1713.1	1684.5	1661.6	1636.9
62.5°	1526.1	1546.1	1559.1	1571.7	1572.8	1571.0	1556.3	1542.2	1522.7	1508.4	1491.3
65°	1382.3	1396.4	1405.2	1415.3	1414.7	1412.0	1398.8	1387.0	1371.0	1361.0	1348.5
67.5°	1231.9	1242.5	1249.3	1258.8	1260.7	1261.3	1254.0	1248.4	1240.7	1237.9	1233.6
70°	1124.9	1137.8	1148.8	1160.8	1167.3	1170.5	1167.3	1164.5	1159.9	1158.0	1154.7
72.5°	1043.9	1054.8	1063.4	1074.3	1080.4	1084.8	1082.4	1080.8	1076.8	1076.3	1074.0
75°	943.3	950.9	955.6	963.9	967.2	971.3	969.4	970.4	969.1	972.3	972.1
77.5°	822.3	828.0	830.2	836.1	836.8	841.7	842.9	848.7	852.8	861.9	866.7
80°	686.2	689.8	689.8	695.9	698.6	707.0	711.0	720.5	724.9	733.0	733.7
82.5°	533.1	529.0	533.1	530.6	538.3	547.7	549.0	557.1	558.9	564.1	560.1
85°	364.5	364.2	360.9	361.5	359.0	360.2	358.8	360.4	358.9	359.0	355.4
87.5°	174.6	176.2	172.4	173.7	169.9	171.6	168.3	170.9	167.1	167.7	162.0
90°	45.2	46.5	47.4	48.7	50.5	54.0	57.6	61.2	65.3	68.7	72.5
92.5°	50.1	52.3	54.1	56.1	58.0	63.7	69.5	75.2	81.1	86.7	92.5
95°	57.5	59.2	61.0	62.9	64.6	73.0	81.2	89.5	97.8	106.1	114.4
97.5°	65.0	66.1	67.2	68.3	69.4	79.2	89.0	98.7	108.6	118.3	128.0
100°	74.8	76.2	77.5	78.9	80.2	102.8	125.3	147.9	170.5	192.8	215.3
102.5°	122.7	130.6	138.4	146.6	154.5	209.2	263.9	318.6	373.0	427.8	482.4
105°	281.5	308.1	335.0	361.6	388.2	471.0	553.8	636.6	719.1	801.8	884.6
107.5°	570.9	617.8	664.8	711.6	758.5	836.4	914.1	991.9	1069.8	1147.6	1225.1
110°	875.6	915.8	956.6	997.0	1037.5	1099.1	1161.1	1222.8	1284.6	1346.3	1408.0



TEST NUMBER: P1444479
 CATALOG NUMBER: EHBR1-48-UNV-TA-L830-UPL36

CANDELA DISTRIBUTION (continued):

	192.5°	195°	197.5°	200°	202.5°	205°	207.5°	210°	212.5°	215°	217.5°
112.5°	1053.6	1078.2	1103.0	1127.3	1152.1	1197.3	1242.9	1288.1	1333.5	1378.6	1423.8
115°	1100.4	1113.1	1126.3	1139.2	1152.4	1179.8	1207.0	1234.4	1261.8	1288.9	1316.4
117.5°	1069.6	1074.3	1079.1	1083.5	1088.2	1102.2	1116.3	1130.2	1144.4	1158.3	1172.3
120°	993.6	993.2	992.9	992.3	992.1	996.2	1000.8	1005.1	1009.5	1013.6	1017.8
122.5°	907.6	904.3	901.2	897.9	894.7	893.0	891.6	889.9	888.6	886.8	885.2
125°	826.3	822.9	819.7	816.2	812.8	808.8	805.0	800.9	796.9	792.7	788.7
127.5°	757.0	754.0	751.2	748.1	745.0	740.3	735.9	731.3	727.0	722.2	717.8
130°	699.8	697.6	695.7	693.0	690.9	686.7	683.0	678.9	674.9	671.0	666.9
132.5°	658.7	657.2	655.7	653.7	652.2	648.6	645.3	641.4	637.9	634.2	630.9
135°	627.1	626.2	625.4	624.2	623.2	620.2	617.7	614.9	612.1	609.4	606.7
137.5°	601.2	600.7	600.5	600.1	599.6	597.2	595.1	592.7	590.5	588.2	586.0
140°	584.8	584.5	584.3	583.9	583.5	581.0	578.7	576.2	573.8	571.3	569.0
142.5°	567.6	567.4	567.3	566.8	566.6	564.6	562.9	561.0	559.1	557.2	555.4
145°	555.0	555.1	555.3	555.1	555.3	552.9	550.9	548.5	546.6	544.3	542.3
147.5°	542.9	543.0	543.3	543.4	543.8	541.7	540.2	538.2	536.6	534.7	533.1
150°	533.9	534.0	534.1	533.9	533.8	531.9	530.2	528.3	526.6	524.7	523.1
152.5°	525.2	525.4	525.7	525.8	526.0	524.1	522.3	520.3	518.5	516.4	514.6
155°	517.8	517.9	518.1	518.1	518.1	516.4	514.7	512.8	511.1	509.3	507.6
157.5°	511.5	511.8	512.1	512.3	512.4	510.9	509.4	507.9	506.4	504.9	503.4
160°	507.4	507.8	508.1	508.3	508.5	507.2	506.3	504.7	503.7	502.2	500.7
162.5°	505.3	505.6	505.9	506.1	506.4	505.1	504.1	502.8	501.6	500.0	498.8
165°	501.9	501.9	502.0	502.0	502.1	501.2	500.5	499.6	498.8	497.8	496.9
167.5°	502.9	502.8	503.1	503.0	503.1	502.5	502.2	501.5	500.9	500.2	499.5
170°	502.6	502.7	502.8	502.6	502.7	502.1	501.6	501.0	500.7	499.7	499.1
172.5°	502.2	502.0	501.8	501.7	501.3	500.9	500.7	500.2	499.9	499.5	499.1
175°	501.6	501.3	501.1	501.0	500.6	500.6	500.3	500.2	500.0	499.7	499.5
177.5°	504.8	504.3	503.7	503.1	502.6	502.5	502.4	502.1	502.2	502.0	501.8
180°	500.0	500.0	500.0	500.0	500.0	500.0	500.0	500.0	500.0	500.0	500.0



TEST NUMBER: P1444479
 CATALOG NUMBER: EHBR1-48-UNV-TA-L830-UPL36

CANDELA DISTRIBUTION (continued):

	220°	222.5°	225°	227.5°	230°	232.5°	235°	237.5°	240°	242.5°	245°
0°	38337.2	38337.2	38337.2	38337.2	38337.2	38337.2	38337.2	38337.2	38337.2	38337.2	38337.2
2.5°	38677.5	38438.6	38407.0	38423.8	38463.7	38478.5	38521.6	38533.4	38576.7	38587.3	38628.9
5°	39475.5	39159.8	39175.6	39251.5	39366.4	39434.9	39547.8	39607.0	39714.8	39763.8	39861.3
7.5°	40317.1	40069.1	40146.4	40274.5	40431.5	40540.4	40676.1	40764.4	40881.4	40954.0	41047.6
10°	40730.3	40662.3	40747.4	40848.2	40937.8	41008.0	41065.5	41111.6	41141.7	41169.9	41182.3
12.5°	40415.8	40520.9	40535.4	40525.7	40466.2	40421.0	40319.0	40249.8	40126.9	40052.1	39905.9
15°	39250.2	39481.3	39353.3	39159.5	38875.9	38639.5	38305.6	38057.0	37709.3	37473.4	37124.5
17.5°	37204.5	37496.3	37162.7	36714.3	36143.8	35655.7	35048.1	34565.7	33961.4	33522.0	32958.1
20°	34324.6	34597.2	34002.3	33259.0	32376.5	31633.9	30758.1	30059.3	29245.5	28640.1	27909.4
22.5°	30738.9	30933.1	30095.0	29092.9	27968.5	27040.7	25993.7	25155.9	24227.1	23535.0	22756.0
25°	26772.0	26824.3	25819.0	24664.5	23411.4	22368.7	21250.7	20370.0	19422.8	18721.3	17956.7
27.5°	22768.1	22691.2	21604.5	20380.3	19062.3	17978.5	16888.1	16062.8	15233.2	14601.3	13942.6
30°	18989.0	18802.8	17674.6	16416.3	15136.8	14165.5	13260.2	12597.4	11937.4	11436.2	10907.5
32.5°	15523.4	15260.9	14162.6	12983.7	11905.7	11156.0	10484.8	9983.3	9450.3	9026.9	8583.2
35°	12453.9	12174.1	11201.2	10201.8	9385.8	8833.3	8305.7	7894.2	7441.7	7084.5	6699.2
37.5°	9819.6	9590.2	8775.3	7988.8	7371.6	6943.4	6511.2	6174.9	5800.9	5643.8	5232.0
40°	7580.7	7420.4	6783.2	6203.4	5740.0	5538.8	5100.0	4785.9	4506.4	4276.0	4052.8
42.5°	5913.1	5856.3	5236.1	4784.1	4457.7	4204.2	3959.7	3761.2	3567.9	3409.2	3259.1
45°	4339.3	4294.4	4019.0	3758.1	3535.7	3358.6	3193.3	3056.8	2930.4	2825.8	2730.5
47.5°	3379.0	3364.7	3206.1	3044.2	2904.2	2790.4	2683.1	2592.4	2508.6	2438.7	2416.0
50°	2748.3	2746.4	2653.4	2553.5	2453.8	2388.0	2319.5	2265.9	2212.0	2170.2	2125.9
52.5°	2335.1	2325.0	2262.2	2200.6	2141.3	2098.1	2054.4	2020.1	1984.4	1958.6	1931.0
55°	2010.4	2020.9	1984.6	1947.8	1910.7	1883.9	1853.2	1830.6	1806.2	1789.8	1773.2
57.5°	1784.7	1798.8	1779.7	1758.9	1736.3	1718.6	1697.4	1681.9	1665.5	1655.1	1645.4
60°	1620.6	1636.0	1628.3	1617.8	1603.8	1593.3	1579.9	1571.1	1560.7	1554.8	1549.4
62.5°	1481.3	1500.5	1497.8	1492.8	1483.9	1478.0	1470.7	1466.9	1459.9	1457.3	1454.8
65°	1342.4	1363.9	1363.6	1361.1	1356.2	1354.5	1349.9	1349.0	1345.5	1346.9	1346.6
67.5°	1233.1	1251.9	1256.0	1259.0	1258.8	1260.0	1259.6	1261.4	1261.4	1264.1	1265.8
70°	1154.3	1167.3	1170.5	1173.6	1174.4	1177.0	1177.0	1178.6	1178.1	1180.4	1180.7
72.5°	1074.6	1091.7	1094.9	1097.4	1097.4	1099.9	1098.6	1098.2	1094.7	1094.1	1091.6
75°	975.4	997.4	1002.3	1005.4	1005.8	1007.9	1004.9	1003.1	997.4	995.2	991.1
77.5°	871.8	894.7	898.1	899.2	897.4	897.8	891.6	887.3	880.0	877.0	873.2
80°	737.0	770.6	773.3	771.2	765.9	765.1	759.0	755.0	746.4	743.4	740.1
82.5°	560.8	600.3	605.9	608.3	604.0	605.0	599.1	596.9	588.9	587.5	582.3
85°	354.1	393.6	400.1	399.1	394.8	393.9	390.4	391.5	390.9	393.0	394.2
87.5°	162.7	200.9	210.1	207.2	206.7	204.0	197.9	200.2	203.9	206.3	206.5
90°	76.2	91.4	94.8	92.7	86.8	84.2	78.7	76.6	71.7	69.6	64.7
92.5°	98.3	104.1	109.8	104.6	99.6	94.4	89.4	84.0	79.2	73.8	68.9
95°	122.7	130.7	139.0	132.2	125.2	118.4	111.6	104.8	98.0	91.1	84.4
97.5°	137.8	147.3	156.9	150.1	143.3	136.4	129.5	122.8	116.0	108.9	102.2
100°	237.9	259.9	282.3	262.9	243.5	224.2	204.8	185.2	165.8	146.5	127.0
102.5°	536.9	591.3	645.7	596.5	547.4	498.3	449.3	400.3	351.3	302.1	253.1
105°	967.2	1049.3	1131.8	1056.6	981.8	906.9	832.1	757.1	682.3	607.4	532.6
107.5°	1302.8	1379.6	1457.0	1389.2	1321.4	1253.8	1185.9	1118.2	1050.4	982.7	915.1
110°	1469.5	1530.0	1591.4	1545.7	1500.2	1454.5	1409.1	1363.6	1318.1	1272.8	1227.4



TEST NUMBER: P1444479
 CATALOG NUMBER: EHBR1-48-UNV-TA-L830-UPL36

CANDELA DISTRIBUTION (continued):

	220°	222.5°	225°	227.5°	230°	232.5°	235°	237.5°	240°	242.5°	245°
112.5°	1468.9	1512.5	1557.2	1530.2	1503.7	1476.9	1450.3	1423.5	1397.1	1370.3	1344.1
115°	1343.3	1368.6	1395.2	1384.4	1373.8	1363.2	1352.4	1341.9	1331.3	1320.8	1310.5
117.5°	1186.2	1197.7	1210.9	1208.5	1206.7	1204.3	1202.4	1200.2	1198.4	1196.5	1194.7
120°	1022.0	1023.6	1027.1	1028.1	1029.4	1030.4	1031.7	1032.8	1034.1	1035.3	1036.7
122.5°	883.5	879.0	876.5	877.5	878.4	879.3	880.4	881.4	882.6	883.7	885.0
125°	784.7	777.4	772.3	770.3	768.3	766.1	764.0	761.9	760.0	758.1	756.2
127.5°	713.1	705.2	699.7	695.2	690.7	686.1	681.6	677.0	672.7	668.1	663.8
130°	663.1	655.4	650.4	644.6	639.3	633.4	628.1	622.3	616.7	611.1	605.7
132.5°	627.0	619.5	615.0	609.7	604.6	598.9	593.7	588.2	582.8	577.1	572.0
135°	603.9	597.1	593.4	588.3	583.8	578.7	573.7	568.8	564.0	558.7	554.3
137.5°	583.6	576.9	573.7	569.7	566.0	561.8	558.2	554.0	550.0	545.7	542.0
140°	566.5	559.4	556.1	553.8	551.7	549.1	546.9	544.5	542.3	539.8	537.5
142.5°	553.5	546.7	543.8	542.3	540.9	539.4	538.1	536.5	535.0	533.2	531.7
145°	540.2	532.6	529.4	529.1	529.0	528.7	528.4	528.1	527.8	527.5	527.1
147.5°	531.0	523.4	520.2	520.5	520.7	520.7	521.1	520.9	521.3	521.3	521.5
150°	521.0	512.2	508.6	509.2	509.6	510.1	510.7	511.2	511.9	512.3	512.8
152.5°	512.5	502.1	498.0	498.6	499.5	499.8	500.6	501.2	502.1	502.8	503.5
155°	505.4	494.2	489.8	489.8	490.1	490.4	490.6	491.1	491.5	492.0	492.4
157.5°	501.5	489.8	485.6	485.2	485.4	485.4	485.5	485.8	486.0	486.2	486.7
160°	499.3	487.7	483.5	483.2	483.2	483.2	483.1	483.2	483.3	483.5	484.0
162.5°	497.2	485.9	481.8	481.5	481.3	481.3	481.3	481.1	481.3	481.4	481.7
165°	495.8	485.9	482.3	482.2	482.3	482.3	482.4	482.6	482.9	483.2	483.5
167.5°	498.7	489.8	487.0	486.5	486.2	485.7	485.7	485.1	485.1	484.8	484.8
170°	498.3	491.3	488.8	488.7	488.9	488.9	488.8	488.9	488.9	488.9	489.1
172.5°	498.5	493.5	491.6	491.9	492.2	492.6	493.0	493.3	493.6	494.1	494.5
175°	499.4	496.3	495.5	495.4	495.7	495.9	496.1	496.4	496.5	496.7	497.3
177.5°	501.7	500.8	500.3	500.3	500.3	500.3	500.3	500.3	500.3	500.5	500.5
180°	500.0	500.0	500.0	500.0	500.0	500.0	500.0	500.0	500.0	500.0	500.0



TEST NUMBER: P1444479
 CATALOG NUMBER: EHBR1-48-UNV-TA-L830-UPL36

CANDELA DISTRIBUTION (continued):

	247.5°	250°	252.5°	255°	257.5°	260°	262.5°	265°	267.5°	270°	272.5°
0°	38337.2	38337.2	38337.2	38337.2	38337.2	38337.2	38337.2	38337.2	38337.2	38337.2	38337.2
2.5°	38636.8	38681.9	38678.4	38720.5	38718.4	38758.0	38750.1	38784.2	38776.5	38805.7	38788.6
5°	39904.2	39989.9	40018.1	40095.4	40111.5	40180.7	40182.1	40237.1	40230.4	40273.4	40250.6
7.5°	41103.1	41183.1	41221.0	41281.0	41311.1	41360.8	41380.2	41421.2	41431.0	41455.2	41454.4
10°	41204.2	41203.9	41222.7	41214.3	41231.1	41221.4	41241.9	41234.5	41264.7	41257.0	41279.8
12.5°	39842.8	39707.7	39658.4	39537.0	39510.5	39406.3	39413.7	39346.9	39379.1	39338.1	39408.0
15°	36916.9	36603.5	36448.6	36176.1	36090.5	35875.1	35857.7	35714.6	35753.2	35678.4	35787.8
17.5°	32593.2	32099.7	31828.9	31431.0	31273.0	30968.3	30907.3	30723.1	30751.7	30658.9	30791.0
20°	27438.2	26841.9	26500.2	26040.1	25834.8	25471.6	25375.3	25169.3	25195.1	25102.8	25252.3
22.5°	22224.4	21600.1	21214.6	20732.2	20470.1	20128.5	20026.0	19819.0	19830.8	19744.1	19887.9
25°	17433.0	16834.6	16460.3	16022.1	15794.7	15481.5	15373.8	15188.0	15198.5	15127.0	15256.1
27.5°	13485.7	12994.7	12681.5	12314.3	12110.3	11852.9	11747.9	11591.6	11591.2	11538.8	11646.6
30°	10538.3	10128.6	9847.4	9527.6	9336.1	9103.8	9002.3	8862.5	8856.4	8819.2	8904.8
32.5°	8251.3	7886.8	7630.3	7348.9	7177.0	6977.6	6881.6	6769.2	6759.0	6725.3	6795.6
35°	6414.3	6107.4	5886.8	5649.9	5667.4	5373.2	5422.1	5193.7	5131.8	5118.2	5170.5
37.5°	4957.5	4719.8	4540.7	4363.2	4243.0	4118.7	4051.7	3991.7	3984.9	3979.0	4015.7
40°	3880.4	3714.1	3583.8	3462.0	3379.3	3303.4	3261.5	3228.6	3220.7	3216.3	3238.5
42.5°	3140.6	3028.4	2944.4	2870.1	2819.8	2778.6	2755.5	2737.3	2731.1	2731.3	2744.3
45°	2653.4	2585.3	2531.2	2485.0	2452.9	2467.0	2425.5	2447.2	2418.5	2448.2	2428.6
47.5°	2336.7	2278.7	2245.2	2212.5	2193.0	2177.4	2177.9	2178.2	2184.4	2185.3	2191.7
50°	2092.3	2058.8	2035.5	2014.6	2004.5	1996.2	1999.1	2001.2	2007.2	2007.6	2012.3
52.5°	1911.4	1889.4	1875.4	1862.4	1857.9	1853.2	1855.2	1854.3	1857.0	1855.6	1859.5
55°	1764.2	1753.9	1749.5	1744.6	1745.4	1744.1	1744.9	1740.2	1737.4	1733.8	1737.1
57.5°	1643.5	1642.1	1645.0	1647.0	1652.5	1654.5	1655.8	1650.4	1645.3	1640.6	1643.4
60°	1550.4	1552.7	1560.1	1566.0	1574.0	1577.7	1579.9	1576.9	1573.1	1569.3	1571.6
62.5°	1458.6	1462.2	1471.0	1477.7	1487.3	1492.3	1497.8	1498.1	1499.6	1498.1	1499.7
65°	1352.0	1356.4	1364.4	1369.9	1378.9	1383.3	1389.0	1390.0	1393.1	1392.4	1395.1
67.5°	1271.0	1275.0	1281.7	1286.9	1294.9	1299.5	1304.5	1304.7	1305.9	1305.6	1308.1
70°	1184.7	1186.6	1192.6	1197.0	1205.0	1209.7	1215.4	1217.1	1220.6	1221.2	1224.0
72.5°	1092.6	1091.7	1095.3	1097.3	1103.3	1107.0	1114.2	1118.1	1124.1	1125.7	1127.9
75°	992.3	991.4	995.7	997.4	1002.6	1006.2	1014.4	1019.6	1028.8	1032.6	1031.7
77.5°	876.2	878.2	886.1	890.5	897.4	902.1	912.6	921.0	937.9	945.2	937.7
80°	746.4	748.5	756.8	760.9	769.8	775.5	787.3	797.0	812.3	815.6	811.3
82.5°	586.8	587.4	594.7	597.9	609.5	617.9	632.8	640.6	650.0	648.6	647.5
85°	400.1	405.5	414.8	424.0	438.2	451.8	465.9	477.5	469.3	482.2	467.7
87.5°	213.9	213.3	225.7	223.8	243.6	255.2	267.4	273.2	279.8	278.5	278.6
90°	63.1	59.9	59.7	56.0	56.8	52.9	54.6	51.1	53.5	49.1	55.9
92.5°	63.6	61.0	58.1	55.5	52.5	49.9	47.0	44.2	41.5	38.7	41.5
95°	77.6	75.0	72.4	69.8	67.3	64.6	62.1	59.6	57.0	54.4	57.6
97.5°	95.4	93.9	92.4	90.9	89.4	88.0	86.5	85.0	83.4	81.9	84.0
100°	107.6	107.6	107.6	107.6	107.3	107.3	107.3	107.3	107.3	107.3	109.0
102.5°	203.9	199.1	194.2	189.0	184.2	179.3	174.4	169.5	164.6	159.7	166.9
105°	457.7	438.5	419.3	400.1	380.8	361.6	342.5	323.3	304.1	284.9	304.7
107.5°	847.6	812.5	777.6	742.6	707.5	672.7	637.7	602.8	567.9	533.0	564.3
110°	1181.9	1144.8	1107.6	1070.6	1033.4	996.2	959.1	922.1	885.0	848.0	877.8



TEST NUMBER: P1444479
 CATALOG NUMBER: EHBR1-48-UNV-TA-L830-UPL36

CANDELA DISTRIBUTION (continued):

	247.5°	250°	252.5°	255°	257.5°	260°	262.5°	265°	267.5°	270°	272.5°
112.5°	1317.6	1293.2	1269.2	1245.3	1221.3	1197.4	1173.5	1149.6	1125.8	1101.9	1116.5
115°	1299.9	1288.4	1276.8	1265.5	1254.0	1242.5	1231.0	1219.8	1208.4	1197.2	1198.1
117.5°	1192.7	1188.7	1184.8	1180.9	1177.0	1173.2	1169.5	1165.8	1162.1	1158.6	1150.6
120°	1038.3	1039.3	1040.2	1041.4	1042.7	1044.0	1045.0	1046.5	1048.0	1049.5	1038.6
122.5°	886.3	888.7	891.4	894.1	896.9	899.9	902.8	906.0	909.2	912.4	901.5
125°	754.2	756.8	759.2	761.8	764.3	767.4	770.3	773.4	776.4	779.8	770.6
127.5°	659.5	660.2	660.7	661.6	662.4	663.6	664.8	666.1	667.6	669.3	663.6
130°	600.1	598.8	597.3	596.3	594.9	594.2	593.5	592.8	592.3	592.0	589.5
132.5°	566.5	563.9	561.2	558.6	556.1	554.1	551.8	550.0	548.2	546.7	545.9
135°	549.0	545.4	542.0	538.5	535.1	532.3	529.1	526.5	523.9	521.5	522.1
137.5°	537.9	534.5	530.8	527.6	524.2	521.4	518.2	515.5	512.9	510.5	511.6
140°	535.0	531.5	527.8	524.7	521.6	518.5	515.6	513.0	510.0	508.0	508.6
142.5°	530.0	527.1	523.7	520.8	517.8	515.2	512.6	510.2	507.6	505.6	506.4
145°	526.7	524.5	522.0	519.7	517.6	515.8	513.5	511.9	510.2	508.9	509.3
147.5°	521.4	519.8	517.9	516.3	514.4	513.2	511.6	510.4	509.2	508.2	508.4
150°	513.3	512.3	511.1	510.0	508.9	508.0	507.0	506.3	505.4	504.9	504.9
152.5°	504.2	503.4	502.2	501.3	500.4	499.6	498.8	498.3	497.6	497.0	497.0
155°	492.9	492.4	492.1	491.8	491.4	491.3	490.9	490.9	490.6	490.6	490.7
157.5°	486.9	487.0	486.7	486.9	486.9	486.9	486.9	487.3	487.1	487.5	487.7
160°	484.5	484.3	484.1	484.0	483.9	483.7	483.8	483.7	483.8	483.7	484.2
162.5°	481.9	482.3	482.5	482.8	483.2	483.4	483.9	484.5	484.7	485.3	485.8
165°	484.0	484.0	483.9	483.8	484.0	484.1	484.2	484.6	484.7	485.0	485.6
167.5°	484.7	485.0	485.1	485.5	485.9	486.3	486.6	487.4	487.8	488.6	489.1
170°	489.0	489.0	489.0	489.0	489.0	489.2	489.4	489.5	489.7	490.1	490.5
172.5°	494.8	494.8	494.5	494.8	494.5	494.8	494.8	495.0	495.0	495.1	495.3
175°	497.2	497.7	497.9	498.3	498.3	498.5	498.7	499.0	499.2	499.5	499.5
177.5°	500.5	500.6	500.6	500.6	500.6	500.8	500.8	500.8	500.8	500.6	500.8
180°	500.0	500.0	500.0	500.0	500.0	500.0	500.0	500.0	500.0	500.0	500.0



TEST NUMBER: P1444479
 CATALOG NUMBER: EHBR1-48-UNV-TA-L830-UPL36

CANDELA DISTRIBUTION (continued):

	275°	277.5°	280°	282.5°	285°	287.5°	290°	292.5°	295°	297.5°	300°
0°	38337.2	38337.2	38337.2	38337.2	38337.2	38337.2	38337.2	38337.2	38337.2	38337.2	38337.2
2.5°	38817.1	38797.6	38817.5	38797.4	38817.5	38793.3	38809.7	38783.6	38790.2	38763.1	38770.1
5°	40284.9	40253.8	40270.3	40230.1	40234.4	40180.7	40179.7	40117.2	40100.7	40029.5	39998.2
7.5°	41471.7	41461.5	41467.3	41441.3	41438.4	41401.7	41384.3	41332.6	41300.0	41234.5	41189.7
10°	41283.8	41314.0	41321.9	41352.7	41359.1	41389.6	41396.1	41426.6	41433.0	41455.5	41455.8
12.5°	39404.7	39507.5	39532.0	39658.9	39712.3	39857.5	39935.5	40095.4	40190.4	40350.0	40448.0
15°	35784.8	35962.5	36033.4	36281.3	36418.3	36707.6	36889.4	37221.5	37456.0	37808.8	38060.4
17.5°	30802.6	31051.1	31163.2	31499.2	31718.4	32145.3	32453.1	32959.6	33347.4	33910.3	34356.4
20°	25277.8	25553.9	25706.0	26089.4	26348.1	26847.0	27231.2	27853.6	28372.6	29085.9	29695.8
22.5°	19933.0	20195.7	20364.6	20754.7	21045.9	21566.2	21995.6	22652.5	23234.1	24037.8	24769.2
25°	15304.8	15545.5	15698.2	16051.0	16324.5	16802.6	17212.7	17844.5	18413.5	19219.8	19969.6
27.5°	11700.3	11901.9	12049.2	12349.9	12591.1	12996.6	13348.9	13871.1	14361.3	15058.8	15726.6
30°	8957.6	9136.3	9279.5	9541.5	9765.2	10116.6	10426.4	10865.0	11270.8	11825.8	12357.1
32.5°	6845.1	6999.0	7126.6	7355.9	7558.8	7875.3	8154.3	8538.9	8887.1	9357.8	9794.9
35°	5219.1	5521.9	5500.4	5816.7	5867.5	6094.8	6343.7	6679.9	6988.3	7388.6	7760.5
37.5°	4050.9	4136.0	4227.2	4367.0	4513.9	4720.6	4930.9	5341.7	5492.3	5794.9	6102.8
40°	3266.6	3324.2	3384.4	3478.8	3581.8	3727.4	3880.5	4076.5	4277.2	4522.4	4773.0
42.5°	2761.6	2794.2	2832.5	2888.1	2951.5	3043.8	3146.3	3279.1	3418.8	3591.4	3767.6
45°	2467.4	2451.9	2463.3	2493.1	2531.4	2587.5	2652.1	2734.3	2825.3	2937.1	3056.2
47.5°	2193.0	2199.3	2202.7	2218.9	2239.4	2277.0	2316.2	2372.0	2479.9	2512.7	2577.6
50°	2011.9	2014.9	2013.8	2022.1	2032.5	2056.9	2082.4	2120.1	2157.9	2207.9	2255.7
52.5°	1860.0	1864.2	1863.7	1869.1	1874.6	1890.1	1906.2	1932.9	1957.6	1989.5	2016.8
55°	1740.1	1745.9	1748.2	1752.8	1755.4	1763.5	1769.9	1782.7	1793.2	1811.2	1827.9
57.5°	1647.9	1655.8	1659.5	1661.1	1657.8	1657.4	1655.3	1658.0	1660.1	1669.8	1679.1
60°	1575.3	1581.6	1582.7	1581.6	1575.7	1571.4	1564.6	1562.4	1561.3	1566.0	1571.1
62.5°	1499.3	1501.5	1500.0	1498.1	1491.3	1487.2	1480.1	1477.5	1475.1	1478.4	1481.0
65°	1394.1	1396.1	1394.1	1393.0	1386.9	1383.6	1377.6	1375.7	1372.2	1373.1	1372.5
67.5°	1308.7	1310.7	1309.1	1307.6	1303.3	1301.4	1297.0	1294.1	1289.9	1288.4	1285.5
70°	1223.6	1225.2	1222.8	1221.2	1216.4	1214.5	1210.4	1209.6	1206.3	1205.5	1202.3
72.5°	1125.7	1125.8	1122.5	1121.4	1117.9	1117.8	1116.1	1117.6	1117.5	1119.2	1118.4
75°	1025.5	1024.1	1019.9	1019.1	1016.4	1017.7	1015.9	1018.3	1018.6	1022.3	1022.7
77.5°	925.3	919.9	911.9	908.0	902.6	902.0	898.8	900.9	900.3	904.5	906.2
80°	798.5	792.1	781.8	776.7	770.3	769.4	766.5	769.4	767.9	773.0	776.4
82.5°	637.5	632.0	621.2	617.2	609.8	610.5	607.4	610.5	610.1	617.5	621.8
85°	471.5	467.9	456.8	447.0	436.0	429.7	423.4	422.3	420.4	423.4	425.9
87.5°	272.4	268.9	260.3	254.6	235.4	236.2	228.7	228.4	226.5	224.8	228.7
90°	55.3	61.2	60.9	66.2	66.5	72.6	73.3	79.2	79.3	85.2	86.4
92.5°	44.2	47.0	49.7	52.5	55.3	58.1	60.8	63.6	69.6	75.2	81.5
95°	60.8	64.0	67.2	70.4	73.6	76.8	80.0	83.2	91.9	100.6	109.4
97.5°	86.2	88.2	90.4	92.5	94.6	96.8	98.8	101.0	110.4	119.8	129.2
100°	110.7	112.4	114.1	115.9	117.6	119.2	120.9	122.6	141.0	159.1	177.2
102.5°	174.1	181.4	188.7	195.9	203.3	210.6	217.8	225.0	266.7	308.2	349.8
105°	324.6	344.3	364.4	384.1	404.0	423.8	443.7	463.5	530.1	596.5	663.2
107.5°	595.6	626.8	658.1	689.7	721.0	752.4	783.7	815.1	879.9	945.0	1009.9
110°	907.6	937.6	967.4	997.3	1027.1	1057.2	1087.1	1117.1	1156.2	1195.1	1234.1



TEST NUMBER: P1444479
 CATALOG NUMBER: EHBR1-48-UNV-TA-L830-UPL36

CANDELA DISTRIBUTION (continued):

	275°	277.5°	280°	282.5°	285°	287.5°	290°	292.5°	295°	297.5°	300°
112.5°	1131.0	1145.5	1160.1	1174.7	1189.3	1204.1	1218.8	1233.6	1253.1	1272.5	1292.2
115°	1199.0	1199.8	1201.0	1202.0	1203.1	1204.0	1205.5	1206.6	1212.9	1219.1	1225.4
117.5°	1142.5	1134.6	1126.9	1118.8	1111.0	1103.5	1095.9	1088.4	1087.2	1086.1	1085.2
120°	1028.2	1017.5	1006.9	996.3	986.0	975.5	965.4	955.2	950.0	945.0	940.0
122.5°	890.9	880.3	869.8	859.4	849.1	839.0	829.0	819.0	815.4	812.0	808.7
125°	761.8	753.0	744.3	735.8	727.4	719.1	711.1	702.8	702.9	702.8	703.2
127.5°	658.1	652.9	647.7	642.6	637.9	633.0	628.3	623.7	626.4	628.9	631.6
130°	587.2	585.0	583.1	580.9	579.4	577.6	576.1	574.4	578.9	583.1	587.5
132.5°	545.8	545.5	545.5	545.4	545.7	546.0	546.6	546.9	552.0	556.8	561.9
135°	522.8	523.6	524.7	525.8	527.3	528.6	530.2	531.5	536.5	541.0	545.9
137.5°	512.8	514.0	515.5	517.0	518.9	520.5	522.6	524.4	528.2	532.1	535.9
140°	509.7	510.6	511.9	513.2	514.6	516.1	517.9	519.3	522.7	525.6	528.6
142.5°	507.5	508.3	509.5	510.8	512.2	513.5	515.0	516.3	518.7	520.8	523.5
145°	510.1	510.7	511.7	512.6	513.7	514.7	515.9	517.0	518.7	520.1	521.6
147.5°	508.9	509.3	510.0	510.8	511.6	512.3	513.0	513.7	514.9	515.8	517.0
150°	505.3	505.4	505.7	506.0	506.7	507.1	507.8	508.2	509.0	509.8	511.0
152.5°	497.4	497.5	497.9	498.0	498.5	498.9	499.3	499.7	500.7	501.3	502.3
155°	491.2	491.8	492.3	492.8	493.5	493.7	494.5	494.9	495.6	496.2	496.9
157.5°	488.3	488.6	489.3	489.6	490.4	490.7	491.3	491.8	492.4	492.9	493.5
160°	484.9	485.9	486.4	487.2	487.9	488.7	489.4	490.2	490.7	491.2	491.8
162.5°	486.3	486.9	487.5	487.8	488.4	489.0	489.4	490.0	490.9	491.4	492.3
165°	486.3	487.1	487.9	488.4	489.3	490.2	490.8	491.6	492.0	492.5	493.0
167.5°	489.9	490.4	491.3	492.0	492.7	493.4	494.2	494.8	495.3	495.6	496.2
170°	491.1	491.8	492.4	493.1	493.7	494.2	495.1	495.5	496.3	496.7	497.6
172.5°	495.9	496.4	496.8	497.2	497.7	498.3	498.9	499.2	499.8	500.3	500.9
175°	499.5	499.5	499.6	499.8	499.9	499.9	500.1	500.4	500.5	500.7	500.8
177.5°	501.0	501.2	501.4	501.6	501.8	502.1	502.3	502.5	502.5	502.5	502.5
180°	500.0	500.0	500.0	500.0	500.0	500.0	500.0	500.0	500.0	500.0	500.0



TEST NUMBER: P1444479
 CATALOG NUMBER: EHBR1-48-UNV-TA-L830-UPL36

CANDELA DISTRIBUTION (continued):

	302.5°	305°	307.5°	310°	312.5°	315°	317.5°	320°	322.5°	325°	327.5°
0°	38337.2	38337.2	38337.2	38337.2	38337.2	38337.2	38337.2	38337.2	38337.2	38337.2	38337.2
2.5°	38742.9	38744.6	38713.3	38711.6	38682.4	38678.7	38650.1	38641.5	38618.4	38609.9	38586.3
5°	39918.4	39880.3	39792.3	39740.6	39653.7	39596.1	39502.0	39440.7	39349.9	39281.4	39190.0
7.5°	41107.2	41048.1	40949.4	40869.4	40748.7	40652.4	40511.3	40395.7	40242.8	40110.4	39949.9
10°	41455.8	41446.7	41421.6	41384.9	41328.8	41265.8	41169.7	41069.5	40935.6	40790.0	40611.6
12.5°	40598.0	40690.6	40816.9	40891.7	40982.9	41022.8	41060.2	41050.8	41026.2	40952.6	40849.4
15°	38424.8	38685.1	39029.8	39296.9	39604.2	39827.5	40074.3	40228.0	40381.2	40452.1	40495.3
17.5°	34967.8	35460.7	36078.7	36590.9	37181.9	37656.5	38176.9	38568.6	38971.4	39260.0	39521.0
20°	30527.3	31241.4	32115.5	32887.8	33785.7	34566.0	35421.1	36123.1	36846.9	37413.1	37948.8
22.5°	25710.9	26559.0	27615.8	28594.7	29752.3	30792.6	31966.3	32987.9	34054.5	34945.6	35807.2
25°	20974.7	21904.7	23060.4	24152.6	25463.5	26673.6	28065.6	29338.8	30717.4	31914.3	33096.7
27.5°	16649.9	17563.0	18742.8	19905.4	21291.7	22581.1	24072.6	25475.3	27045.0	28492.5	29973.4
30°	13095.3	13869.8	14927.6	16053.7	17421.0	18733.1	20240.7	21683.4	23316.4	24896.9	26564.8
32.5°	10375.0	10965.0	11796.6	12748.9	14010.4	15259.5	16695.1	18087.8	19695.8	21292.4	23027.1
35°	8239.7	8699.9	9333.9	10077.0	11145.3	12222.1	13491.8	14758.3	16258.5	17773.6	19459.7
37.5°	6497.4	6870.8	7367.4	7925.6	8782.5	9666.1	10707.3	11757.3	13060.9	14403.9	15931.9
40°	5073.8	5376.1	5762.7	6179.0	6826.1	7506.9	8312.1	9126.4	10173.7	11271.2	12535.9
42.5°	3985.8	4208.9	4482.0	4786.2	5389.9	5751.3	6297.4	6886.3	7656.2	8453.0	9403.8
45°	3200.9	3353.1	3542.5	3746.6	4026.7	4333.4	4707.3	5099.4	5830.9	6189.7	6767.9
47.5°	2673.1	2775.3	2895.7	3024.4	3189.6	3367.9	3589.7	3816.4	4109.7	4413.7	4770.0
50°	2317.6	2421.5	2462.9	2529.5	2625.1	2726.9	2852.0	2977.0	3134.3	3293.7	3477.2
52.5°	2053.8	2087.6	2132.6	2175.0	2234.2	2350.2	2387.7	2453.1	2541.3	2627.6	2723.9
55°	1852.3	1874.4	1903.6	1929.2	1965.0	1999.2	2048.7	2092.1	2151.0	2203.0	2266.9
57.5°	1695.4	1709.5	1729.8	1746.6	1769.8	1789.1	1818.1	1841.7	1875.5	1904.9	1943.7
60°	1581.5	1590.9	1604.5	1615.4	1630.2	1640.4	1654.7	1665.7	1683.6	1698.6	1720.2
62.5°	1488.4	1493.3	1502.2	1508.7	1518.0	1523.1	1530.8	1535.6	1545.4	1553.0	1565.1
65°	1376.8	1377.9	1383.9	1386.6	1394.0	1396.6	1402.9	1405.2	1413.3	1418.8	1429.5
67.5°	1285.3	1282.7	1282.8	1280.8	1281.7	1279.5	1280.2	1277.9	1281.1	1282.8	1291.0
70°	1201.7	1198.1	1197.0	1193.2	1192.1	1188.1	1187.0	1183.4	1183.0	1181.8	1184.7
72.5°	1120.3	1119.4	1119.6	1116.9	1116.7	1113.9	1114.0	1112.3	1114.2	1115.1	1118.7
75°	1026.7	1027.0	1028.8	1026.4	1027.1	1024.9	1025.7	1023.5	1024.7	1024.3	1027.9
77.5°	912.7	915.4	920.4	919.4	921.0	918.4	919.6	916.6	917.4	915.4	916.9
80°	784.6	790.3	797.0	796.7	799.5	797.6	800.2	797.3	798.5	795.1	794.2
82.5°	632.4	637.2	644.4	644.6	650.9	652.0	659.0	658.7	663.1	660.3	658.2
85°	432.4	435.7	441.8	445.3	451.7	455.6	462.4	465.1	460.2	469.0	462.1
87.5°	225.7	234.2	229.5	240.4	237.8	248.9	246.5	256.8	254.8	263.6	262.5
90°	93.8	95.4	103.1	105.2	114.3	117.3	120.7	117.1	120.4	117.0	120.2
92.5°	87.1	93.4	99.3	105.3	111.2	117.4	111.7	106.1	100.6	95.3	89.5
95°	118.1	126.8	135.5	144.3	153.1	161.8	152.4	143.1	133.8	124.4	115.0
97.5°	138.5	147.9	157.3	166.6	176.2	185.6	174.5	163.5	152.4	141.4	130.3
100°	195.3	213.5	231.6	249.7	268.0	286.1	265.6	244.9	224.4	203.7	183.1
102.5°	391.5	433.0	474.6	516.4	557.9	599.5	555.8	512.3	468.4	424.6	380.8
105°	729.7	796.3	862.8	929.4	995.9	1062.8	991.8	920.9	849.9	779.1	708.0
107.5°	1074.9	1139.6	1204.8	1269.6	1334.6	1399.8	1328.0	1255.9	1184.2	1112.2	1040.1
110°	1273.4	1312.3	1351.5	1390.7	1429.7	1469.0	1416.5	1364.1	1311.6	1259.0	1206.6



TEST NUMBER: P1444479
 CATALOG NUMBER: EHBR1-48-UNV-TA-L830-UPL36

CANDELA DISTRIBUTION (continued):

	302.5°	305°	307.5°	310°	312.5°	315°	317.5°	320°	322.5°	325°	327.5°
112.5°	1311.7	1331.6	1351.0	1370.9	1390.5	1410.2	1372.7	1335.5	1297.8	1260.5	1222.9
115°	1232.0	1238.2	1244.7	1251.2	1257.5	1263.9	1238.7	1213.6	1188.4	1163.2	1137.7
117.5°	1084.2	1083.5	1082.5	1081.8	1080.7	1079.8	1065.8	1051.8	1037.8	1023.6	1009.5
120°	934.8	930.0	925.0	919.9	914.9	909.7	904.0	898.3	892.3	886.3	880.3
122.5°	805.2	802.0	798.5	795.2	791.6	788.1	786.0	784.0	781.8	779.6	777.2
125°	703.3	703.4	703.5	703.7	703.6	703.7	702.5	701.7	700.6	699.7	698.4
127.5°	634.1	636.7	639.1	641.7	644.0	646.5	646.3	646.4	646.2	646.0	645.9
130°	591.6	596.2	600.3	604.4	608.4	612.8	612.1	611.8	611.3	610.8	610.4
132.5°	566.8	571.7	576.5	581.5	586.1	590.9	590.2	589.8	588.8	588.3	587.6
135°	550.5	555.2	559.6	564.4	568.7	573.2	572.3	571.5	570.5	569.8	568.9
137.5°	539.4	543.5	546.9	550.6	554.2	557.8	556.8	555.9	554.9	554.3	553.2
140°	531.6	534.6	537.4	540.4	543.2	546.1	544.8	543.8	542.4	541.2	539.9
142.5°	525.6	527.9	529.9	532.3	534.2	536.5	534.6	532.9	531.1	529.4	527.6
145°	523.1	524.7	526.1	527.6	528.6	530.3	528.0	526.1	523.8	521.9	519.7
147.5°	517.8	518.8	519.5	520.6	521.1	522.1	520.1	518.1	516.0	513.9	511.8
150°	511.5	512.6	513.2	514.1	514.6	515.6	513.3	511.3	508.9	506.8	504.7
152.5°	503.0	503.9	504.5	505.1	505.8	506.4	504.2	502.5	500.2	498.0	496.0
155°	497.2	497.9	498.1	498.7	498.9	499.3	497.4	495.9	494.2	492.3	490.5
157.5°	493.8	494.4	494.9	495.1	495.4	495.9	494.5	493.3	491.8	490.6	489.1
160°	492.1	492.6	493.0	493.3	493.7	493.8	492.7	491.9	490.7	489.5	488.2
162.5°	492.8	493.6	494.0	494.6	495.2	495.7	494.4	493.2	491.8	490.5	489.1
165°	493.4	493.8	494.3	494.7	494.9	495.2	494.4	493.6	492.5	491.8	490.6
167.5°	496.5	497.1	497.4	497.8	498.0	498.2	497.3	496.6	495.6	494.6	493.6
170°	498.0	498.4	499.0	499.5	499.9	500.2	499.6	499.0	498.1	497.4	496.5
172.5°	501.3	501.8	502.0	502.5	502.7	503.2	502.5	501.7	501.0	500.1	499.2
175°	500.8	501.0	501.2	501.2	501.2	501.3	500.7	500.0	499.5	498.8	498.1
177.5°	502.5	502.5	502.5	502.4	502.4	502.4	501.9	501.5	501.0	500.7	500.0
180°	500.0	500.0	500.0	500.0	500.0	500.0	500.0	500.0	500.0	500.0	500.0



TEST NUMBER: P1444479
 CATALOG NUMBER: EHBR1-48-UNV-TA-L830-UPL36

CANDELA DISTRIBUTION (continued):

	330°	332.5°	335°	337.5°	340°	342.5°	345°	347.5°	350°	352.5°	355°
0°	38337.2	38337.2	38337.2	38337.2	38337.2	38337.2	38337.2	38337.2	38337.2	38337.2	38337.2
2.5°	38578.0	38561.2	38550.4	38536.7	38528.2	38517.6	38509.8	38503.1	38497.7	38492.7	38489.0
5°	39120.4	39034.2	38967.3	38894.8	38835.3	38775.9	38730.1	38692.2	38666.0	38646.5	38634.8
7.5°	39811.1	39653.2	39512.9	39365.1	39232.6	39102.4	38990.1	38893.4	38820.8	38773.8	38745.2
10°	40427.9	40216.6	40007.6	39787.6	39579.0	39376.8	39190.0	39025.8	38895.8	38809.4	38759.0
12.5°	40704.4	40524.4	40311.0	40072.1	39816.5	39557.9	39305.9	39078.6	38887.7	38759.7	38685.8
15°	40460.9	40387.0	40242.1	40056.8	39814.2	39546.8	39250.9	38972.7	38716.8	38550.8	38454.6
17.5°	39668.8	39771.9	39760.8	39689.9	39515.5	39290.5	38988.9	38676.4	38356.4	38134.5	38013.3
20°	38332.0	38656.3	38820.8	38905.2	38836.7	38690.8	38417.7	38100.5	37727.4	37437.9	37261.2
22.5°	36453.5	37026.0	37382.7	37643.8	37699.2	37649.5	37408.3	37106.7	36690.9	36342.7	36081.7
25°	34035.3	34874.0	35437.9	35879.8	36051.5	36095.8	35890.7	35590.7	35127.1	34721.5	34363.1
27.5°	31187.0	32276.7	33029.6	33623.4	33891.5	34007.8	33818.9	33512.9	32964.5	32480.4	32012.1
30°	27980.3	29273.3	30179.6	30891.7	31218.5	31372.2	31171.5	30830.0	30191.7	29609.2	29019.2
32.5°	24548.2	25963.0	26950.7	27724.1	28047.9	28192.3	27929.9	27546.3	26808.6	26122.4	25434.4
35°	20954.8	22382.9	23378.8	24131.7	24403.0	24490.2	24154.5	23711.1	22893.8	22140.6	21390.5
37.5°	17288.3	18616.9	19522.0	20197.7	20365.6	20380.6	19976.3	19486.5	18627.5	17884.9	17138.1
40°	13653.4	14773.9	15504.7	16045.4	16103.7	16051.7	15612.1	15119.2	14315.6	13650.3	12994.7
42.5°	10229.5	11075.3	11596.7	11967.3	11945.3	11842.5	11439.5	11015.8	10352.8	9846.0	9330.1
45°	7296.2	7853.8	8158.7	8375.6	8306.0	8208.1	7894.4	7597.4	7146.9	6819.5	6472.8
47.5°	5068.8	5734.7	5618.8	6042.7	5677.5	5918.7	5416.3	5139.3	4900.3	4726.4	4530.4
50°	3628.8	3781.4	3855.1	3905.4	3878.7	3841.6	3751.4	3670.7	3561.5	3481.8	3389.1
52.5°	2802.4	2878.7	2920.5	2950.7	2944.8	2931.3	2891.9	2856.0	2804.9	2771.2	2730.5
55°	2373.8	2374.9	2451.7	2418.8	2467.6	2410.4	2432.9	2369.7	2379.9	2325.6	2289.1
57.5°	1972.5	2003.8	2017.9	2031.5	2027.7	2025.3	2010.0	2002.4	1985.2	1979.9	1967.7
60°	1735.1	1751.5	1754.8	1761.1	1755.9	1753.9	1741.9	1737.7	1726.2	1724.0	1716.0
62.5°	1572.3	1580.7	1580.7	1580.7	1573.9	1567.3	1554.1	1547.2	1537.3	1535.2	1530.5
65°	1436.4	1445.2	1446.6	1448.3	1443.4	1438.3	1426.6	1419.1	1409.0	1405.2	1399.8
67.5°	1296.2	1305.5	1308.6	1313.3	1310.5	1309.4	1301.5	1298.5	1291.8	1290.2	1285.3
70°	1186.1	1189.9	1189.6	1189.5	1183.3	1177.7	1168.5	1164.0	1157.1	1155.7	1151.1
72.5°	1120.6	1123.3	1121.6	1119.2	1111.1	1102.9	1092.0	1084.1	1075.0	1069.3	1062.9
75°	1028.4	1032.0	1029.6	1028.1	1020.8	1015.5	1006.8	1002.4	996.0	994.1	989.7
77.5°	915.2	916.9	913.2	912.7	907.2	903.8	897.3	896.1	891.5	891.6	887.3
80°	789.1	788.1	782.2	781.0	775.5	774.1	768.9	769.2	765.6	767.1	764.1
82.5°	649.3	645.8	638.0	635.7	629.3	628.7	625.3	628.2	625.9	629.3	627.3
85°	465.4	466.3	462.9	462.9	461.0	461.6	461.3	463.5	463.8	466.9	466.8
87.5°	259.5	263.1	262.5	265.8	265.7	269.5	270.8	276.5	277.2	282.4	282.4
90°	116.9	120.6	117.2	121.1	119.7	124.9	124.4	129.5	128.3	132.6	130.3
92.5°	84.0	78.5	73.2	67.4	64.6	61.6	59.4	56.1	53.6	50.6	47.8
95°	105.7	96.3	86.9	77.6	74.4	71.1	67.9	64.7	61.4	58.3	55.1
97.5°	119.2	108.2	97.1	86.1	83.3	80.6	77.7	74.9	72.1	69.4	66.6
100°	162.4	141.8	121.3	100.5	98.2	95.8	93.5	91.1	88.8	86.3	83.9
102.5°	337.1	293.2	249.4	205.5	197.2	188.9	180.6	172.2	163.8	155.6	147.3
105°	637.1	566.0	495.0	423.9	401.3	378.7	356.1	333.5	310.9	288.3	265.7
107.5°	968.1	896.0	823.8	751.7	710.2	668.4	626.8	584.8	543.3	501.3	459.6
110°	1154.0	1101.4	1048.8	996.0	962.7	929.0	895.4	861.8	828.1	794.4	760.8



TEST NUMBER: P1444479
 CATALOG NUMBER: EHBR1-48-UNV-TA-L830-UPL36

CANDELA DISTRIBUTION (continued):

	330°	332.5°	335°	337.5°	340°	342.5°	345°	347.5°	350°	352.5°	355°
112.5°	1185.3	1147.7	1110.1	1072.2	1057.1	1041.8	1026.7	1011.5	996.2	980.8	965.6
115°	1112.3	1087.1	1061.6	1035.9	1030.8	1025.4	1020.2	1014.6	1009.4	1003.9	998.3
117.5°	995.3	981.2	966.9	952.6	953.6	954.5	955.5	956.3	957.1	957.8	958.4
120°	874.2	868.2	862.3	856.2	861.0	865.6	870.4	874.8	879.3	883.6	888.0
122.5°	775.1	772.8	770.6	768.0	773.8	779.5	785.0	790.6	795.9	801.1	806.3
125°	697.6	696.3	695.2	693.8	699.9	705.5	711.2	716.6	722.1	727.2	732.5
127.5°	645.8	645.6	645.5	645.1	649.5	653.4	657.5	661.2	665.2	668.6	672.2
130°	609.9	609.2	608.9	608.2	612.0	615.8	619.5	622.8	626.4	629.4	632.5
132.5°	587.0	586.2	585.6	584.8	587.7	590.4	593.1	595.4	597.8	599.8	601.7
135°	568.1	567.1	566.2	565.2	567.8	570.5	572.9	575.0	577.3	579.0	580.9
137.5°	552.4	551.3	550.4	549.4	551.8	554.1	556.2	558.2	560.1	561.8	563.3
140°	538.9	537.5	536.5	535.0	537.3	539.2	541.2	542.9	544.7	546.0	547.5
142.5°	526.0	523.9	522.5	520.5	522.1	523.5	524.9	526.2	527.6	528.6	529.4
145°	517.6	515.3	513.4	511.2	512.4	513.5	514.7	515.8	516.5	517.2	517.9
147.5°	510.0	507.7	505.5	503.5	504.6	505.3	506.0	506.6	507.4	507.8	508.3
150°	502.5	499.9	497.7	495.4	496.2	496.7	497.3	498.0	498.6	498.8	499.3
152.5°	493.7	491.6	489.3	487.0	487.7	488.0	488.5	488.7	489.1	489.4	489.7
155°	488.7	486.8	484.8	482.8	483.4	483.6	484.0	484.2	484.4	484.5	484.7
157.5°	487.7	485.9	484.7	482.9	483.0	483.0	483.2	482.8	482.8	482.6	482.4
160°	487.1	485.7	484.5	483.0	482.9	482.8	483.0	482.6	482.5	482.1	481.9
162.5°	487.6	486.1	484.4	482.8	482.7	482.8	482.7	482.3	482.3	481.9	481.7
165°	489.7	488.6	487.5	486.2	486.0	485.7	485.6	485.0	484.7	484.1	483.7
167.5°	492.4	491.4	490.2	488.9	488.9	489.1	489.0	488.7	488.7	488.3	488.2
170°	495.6	494.7	493.8	492.8	492.5	492.4	492.1	491.9	491.4	491.1	490.6
172.5°	498.2	497.4	496.4	495.2	495.2	495.1	494.8	494.7	494.2	493.9	493.8
175°	497.4	496.8	495.9	495.2	495.1	495.0	494.8	494.7	494.4	494.2	493.9
177.5°	499.6	499.2	498.5	498.0	498.0	498.0	497.8	497.7	497.7	497.5	497.4
180°	500.0	500.0	500.0	500.0	500.0	500.0	500.0	500.0	500.0	500.0	500.0



TEST NUMBER: P1444479
 CATALOG NUMBER: EHBR1-48-UNV-TA-L830-UPL36

CANDELA DISTRIBUTION (continued):

	357.5°	360°
0°	38337.2	38337.2
2.5°	38485.6	38483.7
5°	38628.7	38626.4
7.5°	38737.5	38736.8
10°	38750.3	38757.0
12.5°	38673.1	38678.4
15°	38447.2	38457.8
17.5°	38015.6	38029.3
20°	37271.9	37286.4
22.5°	36067.7	36073.6
25°	34316.8	34291.9
27.5°	31929.8	31887.1
30°	28895.4	28854.0
32.5°	25277.6	25251.7
35°	21205.0	21188.7
37.5°	16917.4	16884.2
40°	12755.0	12658.1
42.5°	9104.2	8934.1
45°	6291.8	6090.2
47.5°	4392.3	4267.7
50°	3329.3	3289.1
52.5°	2712.8	2703.4
55°	2288.9	2284.8
57.5°	1970.4	1969.0
60°	1720.2	1719.8
62.5°	1533.7	1534.3
65°	1402.3	1402.5
67.5°	1286.6	1285.7
70°	1152.8	1151.9
72.5°	1060.8	1059.2
75°	989.7	988.8
77.5°	888.6	887.1
80°	766.1	764.1
82.5°	630.1	627.9
85°	470.0	470.1
87.5°	287.6	287.5
90°	134.3	131.3
92.5°	45.3	42.8
95°	51.9	48.7
97.5°	63.9	61.1
100°	81.6	79.2
102.5°	139.0	130.7
105°	243.2	220.6
107.5°	417.9	376.2
110°	727.2	693.5



TEST NUMBER: P1444479
CATALOG NUMBER: EHBR1-48-UNV-TA-L830-UPL36

CANDELA DISTRIBUTION (continued):

	357.5°	360°
112.5°	950.2	934.8
115°	992.4	986.9
117.5°	959.0	959.5
120°	892.0	896.2
122.5°	811.1	816.1
125°	737.3	742.2
127.5°	675.4	678.5
130°	634.8	637.7
132.5°	603.4	604.9
135°	582.2	583.6
137.5°	564.4	565.6
140°	548.3	549.3
142.5°	530.1	530.6
145°	518.5	518.8
147.5°	508.1	508.4
150°	499.3	499.5
152.5°	489.5	489.7
155°	484.5	484.5
157.5°	481.8	481.7
160°	481.5	481.2
162.5°	481.3	481.0
165°	483.0	482.4
167.5°	487.7	487.7
170°	490.3	490.0
172.5°	493.4	493.1
175°	493.8	493.6
177.5°	497.4	497.1
180°	500.0	500.0

LM-79-2019: Approved Method: Electrical and Photometric Measurements of Solid-
State Lighting Products

Report Prepared for

Cooper Lighting Solutions

Metalux

Report Number: SP1-2506-472-2

Test Date: 07/31/2025

Luminaire Tested: EHBR-60-L830-N

Data in this report applies to families of products including EHBR-60-L830-N

Test Information

Test Method: LM-79-2019
 Report Number: SP1-2506-472-2
 Test Lab: COOPER LIGHTING SOLUTIONS
 Photometer: SP1 - 76IN SPHERE
 Measurement Geometry: 4π
 Issue Date: 08/05/2025
 Manufacturer: COOPER LIGHTING SOLUTIONS
 Product Line: Metalux
 Catalog Number: **EHBR-60-L830-N**
 Description: Elevate Round Highbay at, 60000 lumens, 3000K 80CRI LEDs with N lens

Spectral Parameters

CCT (K): 2983
 CIE u': 0.2516
 CIE v': 0.5201
 Duv: -0.0012
 CIE x: 0.4364
 CIE y: 0.4010
 CIE z: 0.1626
 Peak Wavelength (nm): 630
 Dominant Wavelength (nm): 583
 Purity: 51.34918
 Rf: 81.2
 Rg: 101.5

CRI (Ra):	83.4		
R1:	84.0	R9:	29.4
R2:	87.5	R10:	68.6
R3:	88.9	R11:	82.2
R4:	83.8	R12:	61.6
R5:	81.9	R13:	83.9
R6:	83.1	R14:	92.5
R7:	87.1	R15:	79.8
R8:	70.9		



Test Conditions

Stabilization Time: 38M
 Operation Time: 1H 38M
 Sphere Temperature (°C): 25.0

REPORT NUMBER: SP1-2506-472-2

Measurement and Test Equipment			
Instrument	Identification Number	Calibration Date	Calibration Due Date
Photometer	76INCH SPHERE IN0058	6/16/2025	12/16/2025
Power Meter	XITRON INXT2011004	1/21/2025	1/21/2026
AC Power Source	CHROMA 61603 IN0063	10/22/2024	10/22/2025
DC Power Source	AGILENT E3634A IN0208	10/22/2024	10/22/2025
Sphere Thermometer	ONSET IN0085	10/22/2024	10/22/2025
Room Thermometer	ONSET IN0046	10/22/2024	10/22/2025

REPORT NUMBER: SP1-2506-472-2

CIE 1931 Chromaticity Diagram



CIE 1931 Chromaticity Diagram with 2017 ANSI 7-Step and 4-Step Quadrangles

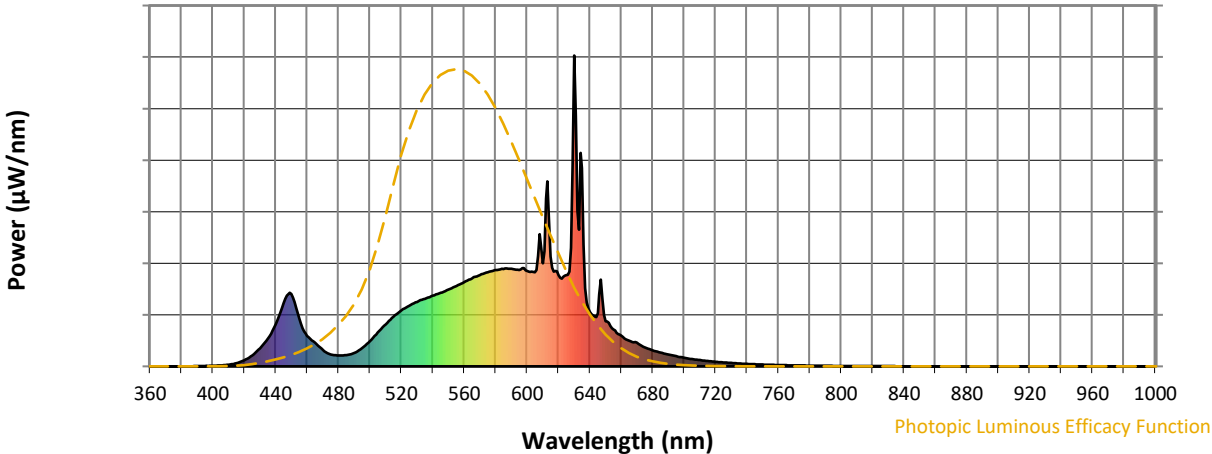


CCT = 2983K
 CIE x = 0.4364
 CIE y = 0.4010
 Duv = -0.0012

Point lies inside the ANSI 3000K 4-step quadrangle

REPORT NUMBER: SP1-2506-472-2

Photopic Flux vs. Wavelength



Photopic Lumens: NR

λ (nm)	Power W [^] /nm	Lumens (φ/nm)	λ (nm)	Power W [^] /nm	Lumens (φ/nm)	λ (nm)	Power W [^] /nm	Lumens (φ/nm)	λ (nm)	Power W [^] /nm	Lumens (φ/nm)	λ (nm)	Power W [^] /nm	Lumens (φ/nm)
360	0	NR	490	43	NR	620	294	NR	750	6	NR	880	0	NR
365	0	NR	495	59	NR	625	294	NR	755	5	NR	885	0	NR
370	0	NR	500	81	NR	630	1000	NR	760	4	NR	890	0	NR
375	0	NR	505	109	NR	635	637	NR	765	4	NR	895	0	NR
380	0	NR	510	135	NR	640	175	NR	770	3	NR	900	0	NR
385	0	NR	515	160	NR	645	171	NR	775	3	NR	905	0	NR
390	1	NR	520	180	NR	650	146	NR	780	2	NR	910	0	NR
395	1	NR	525	195	NR	655	119	NR	785	2	NR	915	0	NR
400	2	NR	530	207	NR	660	99	NR	790	2	NR	920	0	NR
405	3	NR	535	218	NR	665	82	NR	795	2	NR	925	0	NR
410	5	NR	540	227	NR	670	76	NR	800	1	NR	930	0	NR
415	10	NR	545	237	NR	675	61	NR	805	1	NR	935	0	NR
420	20	NR	550	247	NR	680	52	NR	810	1	NR	940	0	NR
425	35	NR	555	259	NR	685	44	NR	815	1	NR	945	0	NR
430	58	NR	560	271	NR	690	38	NR	820	1	NR	950	0	NR
435	90	NR	565	283	NR	695	33	NR	825	1	NR	955	0	NR
440	135	NR	570	293	NR	700	27	NR	830	1	NR	960	0	NR
445	204	NR	575	303	NR	705	24	NR	835	1	NR	965	0	NR
450	233	NR	580	310	NR	710	20	NR	840	0	NR	970	0	NR
455	153	NR	585	313	NR	715	17	NR	845	0	NR	975	0	NR
460	98	NR	590	314	NR	720	15	NR	850	0	NR	980	0	NR
465	76	NR	595	310	NR	725	13	NR	855	0	NR	985	0	NR
470	53	NR	600	307	NR	730	11	NR	860	0	NR	990	0	NR
475	39	NR	605	303	NR	735	9	NR	865	0	NR	995	0	NR
480	35	NR	610	331	NR	740	8	NR	870	0	NR	1000	0	NR
485	36	NR	615	353	NR	745	7	NR	875	0	NR			

REPORT NUMBER: SP1-2506-472-2

Scotopic Flux vs. Wavelength



Scotopic Lumens: NR

S/P: 1.27

λ (nm)	Power W [^] /nm	Lumens (φ/nm)	λ (nm)	Power W [^] /nm	Lumens (φ/nm)	λ (nm)	Power W [^] /nm	Lumens (φ/nm)	λ (nm)	Power W [^] /nm	Lumens (φ/nm)	λ (nm)	Power W [^] /nm	Lumens (φ/nm)
360	0	NR	490	43	NR	620	294	NR	750	6	NR	880	0	NR
365	0	NR	495	59	NR	625	294	NR	755	5	NR	885	0	NR
370	0	NR	500	81	NR	630	1000	NR	760	4	NR	890	0	NR
375	0	NR	505	109	NR	635	637	NR	765	4	NR	895	0	NR
380	0	NR	510	135	NR	640	175	NR	770	3	NR	900	0	NR
385	0	NR	515	160	NR	645	171	NR	775	3	NR	905	0	NR
390	1	NR	520	180	NR	650	146	NR	780	2	NR	910	0	NR
395	1	NR	525	195	NR	655	119	NR	785	2	NR	915	0	NR
400	2	NR	530	207	NR	660	99	NR	790	2	NR	920	0	NR
405	3	NR	535	218	NR	665	82	NR	795	2	NR	925	0	NR
410	5	NR	540	227	NR	670	76	NR	800	1	NR	930	0	NR
415	10	NR	545	237	NR	675	61	NR	805	1	NR	935	0	NR
420	20	NR	550	247	NR	680	52	NR	810	1	NR	940	0	NR
425	35	NR	555	259	NR	685	44	NR	815	1	NR	945	0	NR
430	58	NR	560	271	NR	690	38	NR	820	1	NR	950	0	NR
435	90	NR	565	283	NR	695	33	NR	825	1	NR	955	0	NR
440	135	NR	570	293	NR	700	27	NR	830	1	NR	960	0	NR
445	204	NR	575	303	NR	705	24	NR	835	1	NR	965	0	NR
450	233	NR	580	310	NR	710	20	NR	840	0	NR	970	0	NR
455	153	NR	585	313	NR	715	17	NR	845	0	NR	975	0	NR
460	98	NR	590	314	NR	720	15	NR	850	0	NR	980	0	NR
465	76	NR	595	310	NR	725	13	NR	855	0	NR	985	0	NR
470	53	NR	600	307	NR	730	11	NR	860	0	NR	990	0	NR
475	39	NR	605	303	NR	735	9	NR	865	0	NR	995	0	NR
480	35	NR	610	331	NR	740	8	NR	870	0	NR	1000	0	NR
485	36	NR	615	353	NR	745	7	NR	875	0	NR			

REPORT NUMBER: SP1-2506-472-2

Melanopic Flux vs. Wavelength



Melanopic Lumens: NR

M/P: 2.34

λ (nm)	Power W^{\wedge}/nm	Lumens (ϕ/nm)	λ (nm)	Power W^{\wedge}/nm	Lumens (ϕ/nm)	λ (nm)	Power W^{\wedge}/nm	Lumens (ϕ/nm)	λ (nm)	Power W^{\wedge}/nm	Lumens (ϕ/nm)	λ (nm)	Power W^{\wedge}/nm	Lumens (ϕ/nm)
360	0	NR	490	43	NR	620	294	NR	750	6	NR	880	0	NR
365	0	NR	495	59	NR	625	294	NR	755	5	NR	885	0	NR
370	0	NR	500	81	NR	630	1000	NR	760	4	NR	890	0	NR
375	0	NR	505	109	NR	635	637	NR	765	4	NR	895	0	NR
380	0	NR	510	135	NR	640	175	NR	770	3	NR	900	0	NR
385	0	NR	515	160	NR	645	171	NR	775	3	NR	905	0	NR
390	1	NR	520	180	NR	650	146	NR	780	2	NR	910	0	NR
395	1	NR	525	195	NR	655	119	NR	785	2	NR	915	0	NR
400	2	NR	530	207	NR	660	99	NR	790	2	NR	920	0	NR
405	3	NR	535	218	NR	665	82	NR	795	2	NR	925	0	NR
410	5	NR	540	227	NR	670	76	NR	800	1	NR	930	0	NR
415	10	NR	545	237	NR	675	61	NR	805	1	NR	935	0	NR
420	20	NR	550	247	NR	680	52	NR	810	1	NR	940	0	NR
425	35	NR	555	259	NR	685	44	NR	815	1	NR	945	0	NR
430	58	NR	560	271	NR	690	38	NR	820	1	NR	950	0	NR
435	90	NR	565	283	NR	695	33	NR	825	1	NR	955	0	NR
440	135	NR	570	293	NR	700	27	NR	830	1	NR	960	0	NR
445	204	NR	575	303	NR	705	24	NR	835	1	NR	965	0	NR
450	233	NR	580	310	NR	710	20	NR	840	0	NR	970	0	NR
455	153	NR	585	313	NR	715	17	NR	845	0	NR	975	0	NR
460	98	NR	590	314	NR	720	15	NR	850	0	NR	980	0	NR
465	76	NR	595	310	NR	725	13	NR	855	0	NR	985	0	NR
470	53	NR	600	307	NR	730	11	NR	860	0	NR	990	0	NR
475	39	NR	605	303	NR	735	9	NR	865	0	NR	995	0	NR
480	35	NR	610	331	NR	740	8	NR	870	0	NR	1000	0	NR
485	36	NR	615	353	NR	745	7	NR	875	0	NR			

Summary

$R_f = 81.2$
 $R_g = 101.5$
 CIE $R_a = 83.4$
 $R_9 = 29.4$



Color Vector Graphics

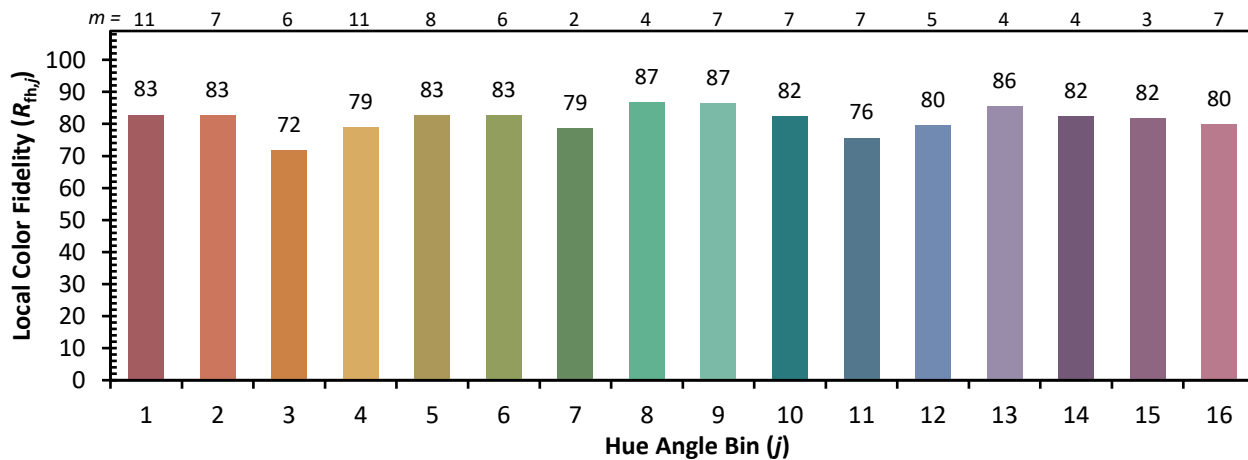
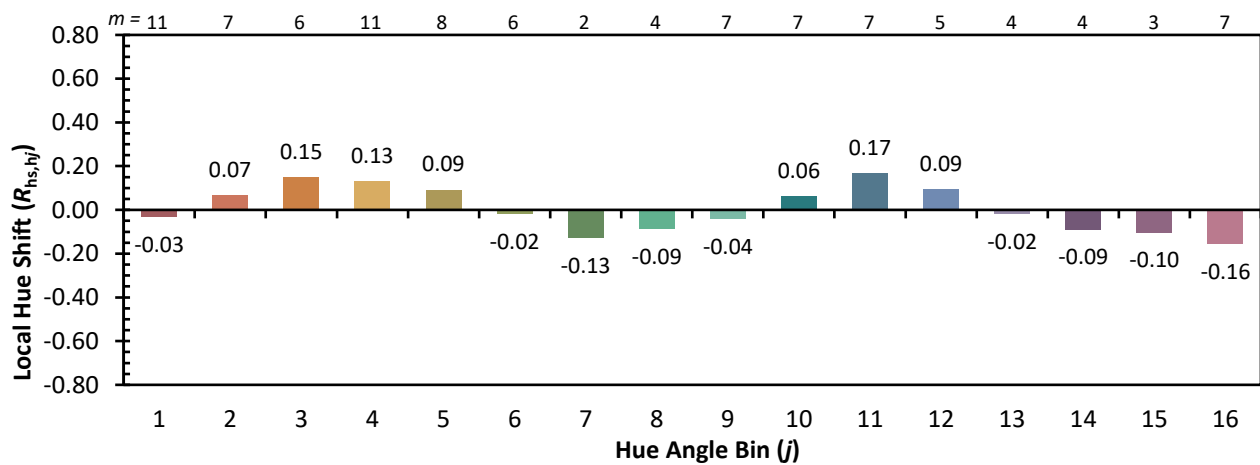
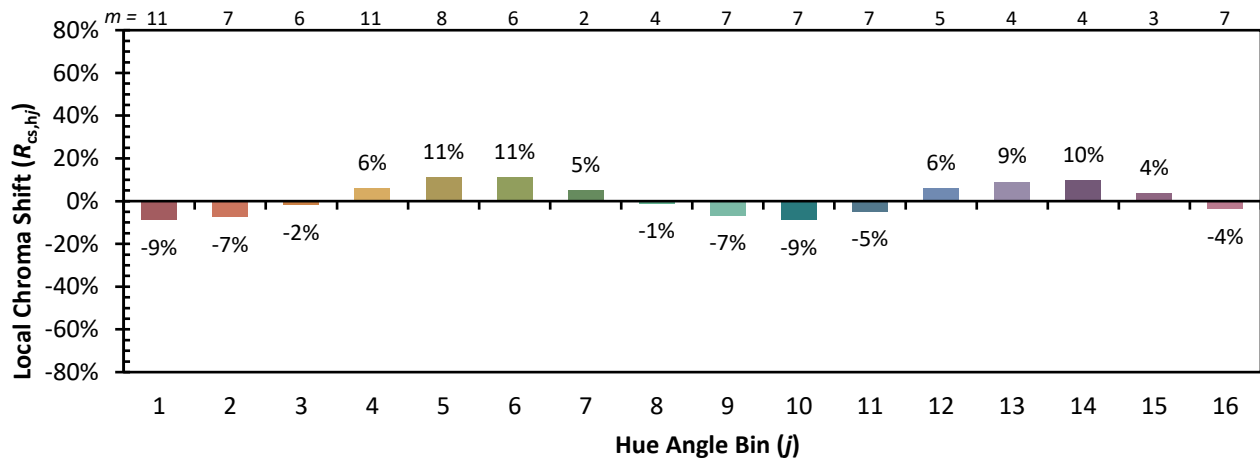


Individual Sample Fidelity Index ($R_{f,i}$)

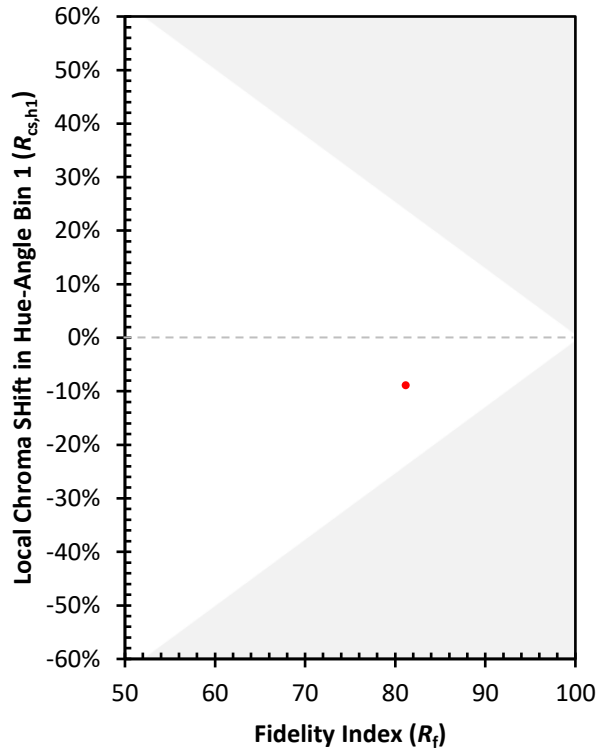
CES01 = 86	CES26 = 71	CES51 = 89	CES76 = 65
CES02 = 63	CES27 = 89	CES52 = 89	CES77 = 82
CES03 = 31	CES28 = 86	CES53 = 80	CES78 = 67
CES04 = 70	CES29 = 68	CES54 = 92	CES79 = 89
CES05 = 50	CES30 = 77	CES55 = 90	CES80 = 85
CES06 = 51	CES31 = 70	CES56 = 81	CES81 = 75
CES07 = 43	CES32 = 64	CES57 = 79	CES82 = 93
CES08 = 41	CES33 = 74	CES58 = 81	CES83 = 89
CES09 = 29	CES34 = 76	CES59 = 92	CES84 = 91
CES10 = 76	CES35 = 87	CES60 = 96	CES85 = 81
CES11 = 59	CES36 = 99	CES61 = 91	CES86 = 74
CES12 = 65	CES37 = 81	CES62 = 93	CES87 = 83
CES13 = 44	CES38 = 83	CES63 = 79	CES88 = 86
CES14 = 74	CES39 = 94	CES64 = 81	CES89 = 74
CES15 = 72	CES40 = 89	CES65 = 78	CES90 = 85
CES16 = 48	CES41 = 88	CES66 = 76	CES91 = 87
CES17 = 50	CES42 = 80	CES67 = 74	CES92 = 73
CES18 = 57	CES43 = 75	CES68 = 79	CES93 = 84
CES19 = 72	CES44 = 99	CES69 = 83	CES94 = 64
CES20 = 67	CES45 = 83	CES70 = 72	CES95 = 80
CES21 = 87	CES46 = 82	CES71 = 70	CES96 = 86
CES22 = 79	CES47 = 79	CES72 = 90	CES97 = 85
CES23 = 92	CES48 = 78	CES73 = 65	CES98 = 83
CES24 = 91	CES49 = 79	CES74 = 94	CES99 = 82
CES25 = 72	CES50 = 88	CES75 = 70	



Color Rendition by Hue-Angle Bin



Measure Comparisons



(END OF REPORT)