

Cooper Lighting Solutions Photometric Lab
1121 Highway 74 South
Peachtree City, GA 30269



Scaled data based on original data using
LM-79-2019 Approved Method: Electrical and Photometric Measurements of Solid-
State Lighting Products

Test Report Prepared for
Cooper Lighting Solutions

Brand: METALUX

Report Number: P1444480

Luminaire Tested: EHBR1-48-UNV-TA-L830-UPL40

Issue Date: 5/1/2026

Test Information

Test Method: LM-79-2019
Report Number: P1444480
REPORT IS A COMBINATION OF REPORTS P1444360 AND P1431635
Test Lab: INNOVATION CENTER
Issue Date: 5/1/2026
Manufacturer: COOPER LIGHTING SOLUTIONS
Product Line: METALUX
Catalog Number: EHBR1-48-UNV-TA-L830-UPL40
Description: Elevate Round Highbay at, 48000 lumens, 3000K 80CRI LEDs with TA lens
Light Source: -
Ballast/Driver: -

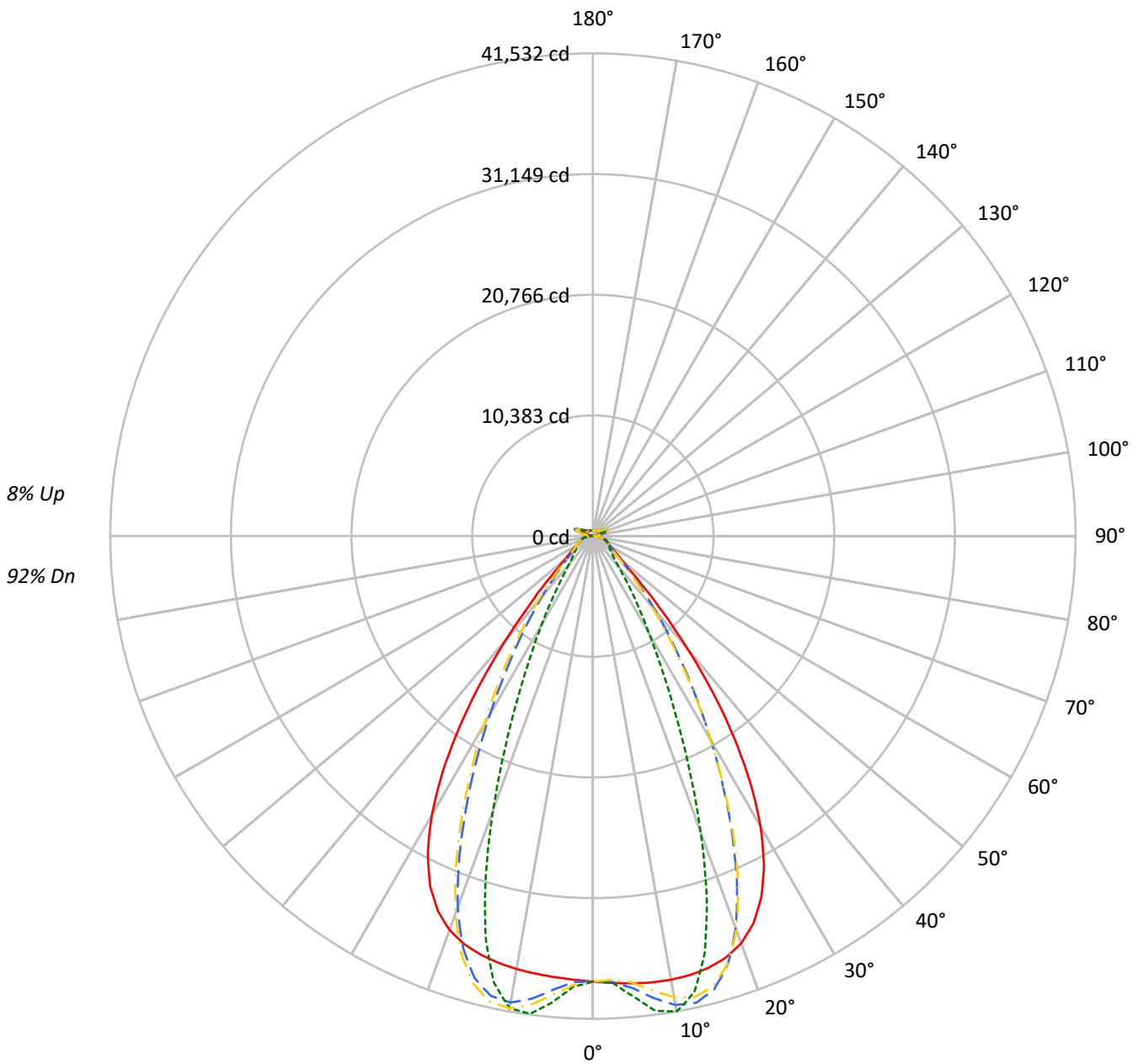
Summary

Lumens per Lamp: N/A
Luminaire Lumens: 48018.5 lumens
Efficiency: N/A
Efficacy: 166.0 lumens/watt
Spacing Criteria (0/90/45): 1.13 / 0.77 / 0.88
Luminous Opening: Vertical Cylinder (Dia: 1.71' x H: 0.1')
CIE Type: Direct

Input Watts (W): 289.2
Input Voltage (V): NR
Input Current (Ain): NR
Voltage Rise (V): NR
Power Factor: NR
Total Harmonic Distortion (THDi): NR
Frequency (hertz): 60
Stabilization Time: NR
Operation Time: NR
Ambient Temperature (°C): NR
Test Distance: 24 FT

TEST NUMBER: P1444480
CATALOG NUMBER: EHBR1-48-UNV-TA-L830-UPL40

Luminous Intensity Polar Plot



— 0°-180° - - 45°-225° - · - 90°-270° - · - 135°-315°



TEST NUMBER: P1444480
 CATALOG NUMBER: EHBR1-48-UNV-TA-L830-UPL40

COEFFICIENT OF UTILIZATION - ZONAL CAVITY METHOD:

RF	20				20				20				20				20				
RC	80				70				50				30				10			0	
RW	70	50	30	10	70	50	30	10	50	30	10	50	30	10	50	30	10	50	30	10	0
RCR																					
0	117	117	117	117	113	113	113	113	107	107	107	100	100	100	95	95	95	95	95	95	92
1	110	106	103	101	107	103	101	98	98	96	94	93	91	89	88	87	85	85	85	85	83
2	103	97	92	88	100	95	90	87	90	86	83	86	83	80	82	80	78	78	78	78	75
3	97	89	83	79	94	87	82	77	83	79	75	80	76	73	76	73	71	71	71	71	69
4	91	82	76	71	88	80	74	70	77	72	68	74	70	66	71	68	65	65	65	65	63
5	86	76	69	64	83	75	68	64	72	66	62	69	65	61	67	63	60	60	60	60	58
6	81	71	64	59	79	69	63	58	67	61	57	65	60	56	63	58	55	55	55	55	54
7	76	66	59	54	74	65	58	54	63	57	53	61	56	52	59	55	51	51	51	51	50
8	72	62	55	50	70	61	54	50	59	53	49	57	52	49	55	51	48	48	48	48	46
9	68	58	51	47	67	57	51	47	55	50	46	54	49	45	52	48	45	45	45	45	43
10	65	54	48	44	63	54	48	43	52	47	43	51	46	42	50	45	42	42	42	42	40

AVERAGE LUMINANCE (cd/sqm):

	0°	90°	180°	270°
0°	180035	180035	180035	180035
5°	180906	186182	178375	188620
10°	182417	195477	178042	194184
15°	183312	177198	177731	170063
20°	181417	132006	175479	122137
25°	171718	83487	166043	75749
30°	150008	50170	144198	45850
35°	115447	31481	108807	27887
40°	73031	19747	66817	18556
45°	37641	15384	37018	15131
50°	22069	13684	21392	13471
55°	16907	12947	16282	12830
60°	14306	13225	13696	13054
65°	13437	13811	12922	13340
70°	13128	14462	12474	13918
75°	14037	15337	13277	14658
80°	14525	16983	13169	15504
85°	13678	16387	11053	14030

MAXIMUM LUMINANCE 45°-90°:

Horizontal Angle: 25°
 Vertical Angle: 45°
 Luminance: 57605 cd/sqm



TEST NUMBER: P1444480
 CATALOG NUMBER: EHBR1-48-UNV-TA-L830-UPL40

ZONAL LUMENS:

Zone	Lumens	% Fixture
0°-10°	3778.2	7.9
10°-20°	10628.5	22.1
20°-30°	12105.0	25.2
30°-40°	8700.5	18.1
40°-50°	4012.7	8.4
50°-60°	1920.2	4.0
60°-70°	1401.1	2.9
70°-80°	1064.4	2.2
80°-90°	490.6	1.0
90°-100°	111.3	0.2
100°-110°	644.7	1.3
110°-120°	1191.1	2.5
120°-130°	727.5	1.5
130°-140°	466.0	1.0
140°-150°	344.4	0.7
150°-160°	239.2	0.5
160°-170°	143.8	0.3
170°-180°	49.1	0.1
0°-30°	26511.7	55.2
0°-40°	35212.3	73.3
0°-60°	41145.2	85.7
0°-90°	44101.3	91.8
90°-120°	1947.1	4.1
90°-150°	3485.0	7.3
90°-180°	3917.0	8.2
0°-180°	48018.5	100.0

CANDELA DISTRIBUTION:

	0°	90°	180°	270°	360°	Flux
0°	38337	38337	38337	38337	38337	
5°	38626	39753	38086	40273	38626	3691
15°	38458	37175	37287	35678	38458	10836
25°	34292	16672	33159	15127	34292	15545
35°	21189	5778	19970	5118	21189	13004
45°	6090	2489	5989	2448	6090	5180
55°	2285	1750	2200	1734	2285	2109
65°	1402	1442	1349	1392	1402	1401
75°	989	1080	935	1033	989	1028
85°	470	563	380	482	470	442
90°	133	167	42	50	133	82
95°	51	57	51	57	51	49
105°	232	299	155	300	232	307
115°	1038	1260	1088	1260	1038	959
125°	779	819	882	820	779	710
135°	611	543	658	547	611	477
145°	541	526	576	532	541	342
155°	504	506	537	511	504	235
165°	501	500	519	504	501	142
175°	512	517	521	518	512	49
180°	518	518	518	518	518	



TEST NUMBER: P1444480
 CATALOG NUMBER: EHBR1-48-UNV-TA-L830-UPL40

CANDELA DISTRIBUTION (FULL):

	0°	2.5°	5°	7.5°	10°	12.5°	15°	17.5°	20°	22.5°	25°
0°	38337.2	38337.2	38337.2	38337.2	38337.2	38337.2	38337.2	38337.2	38337.2	38337.2	38337.2
2.5°	38483.7	38480.5	38479.9	38477.3	38476.5	38476.5	38475.2	38472.1	38470.2	38465.8	38460.8
5°	38626.4	38624.7	38625.8	38626.0	38623.3	38617.3	38608.0	38596.4	38581.9	38568.3	38556.1
7.5°	38736.8	38739.6	38742.9	38742.2	38733.8	38719.8	38700.6	38689.8	38696.2	38717.1	38764.9
10°	38757.0	38773.5	38779.8	38777.9	38761.1	38749.0	38753.7	38794.4	38875.2	38983.0	39130.5
12.5°	38678.4	38698.6	38697.9	38691.2	38675.0	38691.5	38750.3	38871.3	39044.6	39257.3	39506.7
15°	38457.8	38483.9	38476.5	38467.8	38457.1	38511.2	38628.7	38838.7	39106.4	39406.3	39713.4
17.5°	38029.3	38060.9	38045.6	38035.8	38026.7	38128.2	38330.0	38637.5	38974.7	39314.0	39605.0
20°	37286.4	37307.5	37271.0	37253.8	37268.3	37467.0	37764.4	38157.1	38512.5	38833.3	39032.2
22.5°	36073.6	36099.9	36031.3	36023.3	36108.1	36413.3	36789.6	37228.7	37562.5	37816.8	37893.4
25°	34291.9	34317.8	34236.2	34284.9	34429.0	34844.9	35293.0	35762.6	36047.5	36235.9	36183.8
27.5°	31887.1	31910.7	31833.3	31932.8	32160.6	32707.0	33234.4	33743.8	33997.7	34129.6	33962.4
30°	28854.0	28903.0	28811.7	28950.5	29298.2	30007.6	30611.8	31183.0	31436.2	31536.6	31276.3
32.5°	25251.7	25321.4	25220.7	25427.2	25912.4	26764.6	27451.0	28089.2	28369.3	28483.9	28190.0
35°	21188.7	21288.7	21173.2	21483.2	22081.5	23030.5	23790.6	24503.2	24834.8	24997.4	24701.1
37.5°	16884.2	16979.5	16917.0	17330.6	17987.6	18971.3	19747.1	20515.8	20890.3	21134.3	20900.7
40°	12658.1	12745.3	12792.6	13265.7	13883.5	14810.7	15555.8	16316.4	16735.4	17041.6	16897.6
42.5°	8934.1	9022.1	9182.9	9639.3	10154.6	10922.0	11560.4	12243.3	12643.4	12970.1	12914.6
45°	6090.2	6192.4	6393.8	6767.5	7140.2	7690.8	8159.5	8690.6	9017.5	9316.8	9320.3
47.5°	4267.7	4339.5	4519.5	4774.7	5017.7	5706.9	5735.2	5996.2	6215.9	6439.6	6468.5
50°	3289.1	3332.2	3427.7	3570.0	3707.6	3886.5	4050.3	4239.5	4374.7	4497.3	4526.6
52.5°	2703.4	2730.8	2779.4	2856.4	2936.3	3033.6	3121.3	3225.1	3298.7	3364.4	3378.1
55°	2284.8	2307.6	2379.9	2394.5	2485.8	2503.4	2542.4	2605.6	2648.5	2687.8	2697.5
57.5°	1969.0	1985.4	2000.8	2033.6	2061.8	2102.6	2135.6	2180.9	2207.9	2236.4	2238.8
60°	1719.8	1731.7	1742.7	1765.4	1784.5	1813.0	1835.7	1866.5	1885.9	1907.1	1909.6
62.5°	1534.3	1542.9	1550.2	1565.1	1578.8	1600.7	1618.7	1644.5	1662.5	1679.0	1682.7
65°	1402.5	1408.7	1413.4	1424.8	1436.7	1455.4	1471.7	1492.7	1505.9	1518.6	1521.3
67.5°	1285.7	1291.6	1296.5	1306.9	1315.1	1329.0	1340.0	1355.8	1365.7	1375.7	1376.0
70°	1151.9	1157.4	1161.1	1170.8	1177.4	1189.3	1198.1	1212.4	1222.6	1233.8	1236.6
72.5°	1059.2	1062.5	1067.5	1076.3	1085.6	1098.3	1110.1	1124.9	1137.3	1148.9	1153.8
75°	988.8	992.6	995.8	1003.4	1009.8	1020.5	1029.3	1042.8	1053.7	1066.2	1072.3
77.5°	887.1	891.5	894.3	901.8	907.3	917.7	924.3	936.3	945.1	956.5	962.0
80°	764.1	768.2	770.3	777.4	781.8	791.2	797.6	809.3	816.7	828.1	834.7
82.5°	627.9	631.8	632.9	639.7	642.1	649.9	654.6	666.5	675.6	690.4	700.6
85°	470.1	471.5	473.9	472.1	481.7	482.2	493.0	495.1	509.2	512.9	529.1
87.5°	287.5	291.7	293.8	300.4	303.2	309.8	311.7	318.7	322.5	330.5	334.2
90°	132.6	139.9	142.8	151.5	154.2	161.8	164.2	172.7	175.6	184.3	188.8
92.5°	44.7	47.6	50.4	53.8	56.7	60.4	63.8	67.1	70.1	73.7	79.7
95°	51.0	54.3	57.7	61.1	64.4	67.7	71.1	74.5	77.8	81.2	90.9
97.5°	63.9	66.8	69.7	72.6	75.5	78.5	81.4	84.3	87.2	89.9	101.6
100°	83.0	85.4	88.0	90.4	92.8	95.4	97.8	100.2	102.8	105.2	126.8
102.5°	137.1	145.8	154.7	163.4	172.1	180.8	189.6	198.2	207.0	215.7	261.6
105°	231.8	255.4	279.4	302.9	326.7	350.5	374.3	397.7	421.5	445.2	520.2
107.5°	395.6	439.4	483.3	527.4	571.3	615.0	659.0	702.9	746.7	790.3	866.4
110°	729.8	764.9	800.3	835.6	870.9	906.3	941.6	976.6	1012.0	1047.1	1102.7



TEST NUMBER: P1444480
 CATALOG NUMBER: EHBR1-48-UNV-TA-L830-UPL40

CANDELA DISTRIBUTION (continued):

	0°	2.5°	5°	7.5°	10°	12.5°	15°	17.5°	20°	22.5°	25°
112.5°	983.7	999.6	1015.6	1031.6	1047.5	1063.4	1079.3	1095.1	1111.2	1126.9	1166.5
115°	1038.3	1043.9	1049.7	1055.0	1060.7	1066.2	1071.7	1077.1	1082.7	1088.0	1114.9
117.5°	1009.2	1008.2	1007.1	1006.1	1004.9	1003.9	1002.7	1001.4	1000.2	999.0	1014.1
120°	942.2	937.2	932.4	927.2	922.3	917.1	912.2	907.0	901.8	896.4	903.0
122.5°	857.6	851.6	845.9	839.7	833.8	827.5	821.6	814.9	809.0	802.8	805.1
125°	779.3	773.3	767.6	761.5	755.1	748.9	742.6	736.3	730.1	723.5	724.7
127.5°	711.7	707.6	703.3	698.8	694.4	689.7	685.2	680.4	675.9	671.0	671.2
130°	668.5	664.8	660.9	656.8	652.9	648.5	644.3	639.9	635.7	631.2	631.6
132.5°	633.5	630.9	628.2	625.2	622.2	618.7	615.7	612.0	609.0	605.7	606.1
135°	610.6	608.0	605.7	602.8	600.0	596.8	593.7	590.4	587.4	584.0	585.0
137.5°	591.3	589.0	586.8	584.1	581.5	578.3	575.6	572.6	569.7	566.5	567.4
140°	573.7	571.8	569.5	567.0	564.7	562.0	559.3	556.6	553.8	550.9	552.0
142.5°	553.8	552.0	550.4	548.3	546.6	544.1	542.1	539.5	537.4	535.0	536.5
145°	541.0	539.6	538.3	536.5	534.8	532.7	530.8	528.6	526.8	524.7	526.3
147.5°	529.9	528.7	527.6	526.3	524.9	523.1	521.5	519.7	518.1	516.3	518.1
150°	520.2	519.1	518.1	516.9	515.4	513.8	512.2	510.7	509.0	507.3	509.0
152.5°	509.7	508.5	507.6	506.4	505.1	503.3	502.2	500.5	499.0	497.4	498.9
155°	503.9	502.8	501.6	500.6	499.2	497.8	496.3	495.0	493.6	492.0	493.2
157.5°	500.8	499.7	498.9	497.7	496.8	495.6	494.5	493.4	492.2	491.1	491.9
160°	499.9	499.0	498.0	497.0	496.0	494.7	493.7	492.6	491.8	490.6	491.2
162.5°	499.5	498.4	497.4	496.4	495.4	494.2	493.3	492.3	491.3	490.2	491.0
165°	500.7	500.1	499.5	498.7	498.0	497.3	496.5	495.7	495.1	494.1	494.7
167.5°	505.9	505.1	504.3	503.5	502.5	501.7	500.7	499.8	499.1	498.0	498.6
170°	508.2	507.4	507.0	506.6	506.0	505.4	505.0	504.4	503.9	503.3	503.9
172.5°	511.3	510.7	510.4	510.1	509.6	509.3	508.8	508.4	508.2	507.6	508.4
175°	511.7	511.3	511.2	510.9	510.6	510.3	510.1	509.9	509.9	509.5	509.9
177.5°	515.3	515.1	515.1	515.0	515.0	514.8	514.7	514.4	514.3	514.3	514.6
180°	518.3	518.3	518.3	518.3	518.3	518.3	518.3	518.3	518.3	518.3	518.3



TEST NUMBER: P1444480
 CATALOG NUMBER: EHBR1-48-UNV-TA-L830-UPL40

CANDELA DISTRIBUTION (continued):

	27.5°	30°	32.5°	35°	37.5°	40°	42.5°	45°	47.5°	50°	52.5°
0°	38337.2	38337.2	38337.2	38337.2	38337.2	38337.2	38337.2	38337.2	38337.2	38337.2	38337.2
2.5°	38457.1	38452.4	38446.0	38437.8	38430.9	38422.9	38403.7	38397.9	38404.3	38408.6	38417.4
5°	38548.4	38551.1	38552.1	38569.5	38584.6	38622.3	38917.3	39034.4	39125.1	39182.7	39270.0
7.5°	38824.0	38912.6	39000.2	39118.2	39219.9	39357.3	39873.4	40093.0	40249.2	40361.4	40499.5
10°	39290.8	39484.3	39665.8	39878.3	40061.1	40270.3	40750.7	40964.7	41099.8	41198.1	41289.9
12.5°	39761.1	40029.5	40272.0	40508.6	40706.4	40887.8	41056.7	41131.6	41138.0	41141.1	41092.4
15°	40006.1	40262.7	40476.3	40632.7	40749.0	40800.4	40509.6	40357.0	40164.2	40005.3	39744.0
17.5°	39851.4	40005.3	40097.7	40088.6	40040.6	39879.7	39056.0	38602.8	38153.0	37747.7	37216.1
20°	39164.2	39152.4	39072.1	38844.7	38570.6	38144.4	36732.0	35917.2	35129.4	34437.4	33598.0
22.5°	37885.6	37684.5	37403.9	36913.4	36368.6	35624.0	33600.0	32401.4	31304.6	30335.8	29250.4
25°	36033.0	35619.1	35101.8	34323.2	33476.4	32390.3	29895.8	28404.9	27088.1	25946.0	24693.7
27.5°	33662.0	33038.7	32280.5	31202.8	30055.6	28664.2	25898.6	24253.3	22839.7	21615.2	20282.4
30°	30855.1	30044.3	29065.3	27727.7	26344.0	24765.9	21961.0	20294.5	18863.6	17603.9	16270.1
32.5°	27683.0	26733.3	25586.1	24084.9	22588.5	20965.9	18257.0	16643.9	15277.1	14065.2	12858.0
35°	24184.3	23165.9	21952.2	20421.0	18933.6	17356.0	14870.4	13415.9	12209.0	11137.8	10163.0
37.5°	20431.4	19431.5	18277.9	16834.7	15455.4	14025.9	11881.2	10662.4	9649.5	8760.5	8007.7
40°	16529.4	15654.3	14656.2	13408.6	12231.5	11040.9	9280.3	8312.9	7513.6	6835.5	6271.5
42.5°	12675.2	11997.0	11231.6	10245.7	9344.9	8438.4	7083.4	6366.5	5774.5	5286.4	4887.7
45°	9196.2	8742.6	8229.3	7543.9	6920.5	6288.2	5323.8	4820.1	4434.6	4119.8	3853.7
47.5°	6428.6	6165.5	6149.5	5516.1	5059.0	4672.4	4051.1	3732.9	3496.6	3305.9	3137.4
50°	4514.7	4387.4	4229.2	4003.1	3791.0	3572.5	3194.0	3001.6	2863.2	2747.7	2641.1
52.5°	3375.1	3308.9	3224.7	3104.8	2989.8	2866.9	2627.4	2504.9	2461.4	2353.9	2269.5
55°	2695.8	2657.8	2609.9	2539.4	2469.5	2441.5	2236.2	2145.3	2087.7	2045.3	2000.0
57.5°	2239.2	2210.9	2182.5	2134.8	2094.3	2045.3	1936.3	1889.7	1855.4	1830.4	1799.0
60°	1910.0	1893.1	1877.2	1849.2	1827.3	1800.9	1731.7	1705.4	1687.5	1672.5	1652.4
62.5°	1685.8	1677.2	1668.9	1653.9	1642.9	1628.6	1581.3	1568.6	1559.6	1552.1	1539.9
65°	1523.9	1517.7	1513.2	1503.2	1497.7	1489.3	1448.7	1440.2	1434.6	1431.9	1424.8
67.5°	1377.0	1370.4	1367.4	1360.3	1358.0	1352.8	1319.5	1314.9	1313.0	1313.8	1311.3
70°	1239.4	1236.6	1238.1	1236.9	1240.1	1241.0	1220.9	1220.8	1222.9	1227.2	1227.6
72.5°	1156.9	1156.9	1158.5	1159.3	1162.3	1163.7	1146.9	1146.1	1147.0	1150.2	1150.3
75°	1078.5	1079.8	1084.1	1085.6	1089.0	1089.8	1067.6	1065.0	1065.2	1068.1	1067.2
77.5°	970.0	974.6	982.8	987.0	993.8	995.2	970.2	967.3	967.4	970.4	967.9
80°	846.8	855.8	868.7	877.6	888.2	892.4	866.8	860.7	855.0	854.2	849.1
82.5°	715.9	726.9	742.3	750.5	761.7	764.3	721.5	713.4	708.5	709.0	704.3
85°	546.6	554.8	568.9	573.5	580.4	579.8	530.9	510.0	515.7	506.9	513.8
87.5°	342.8	347.7	356.5	357.6	360.9	360.2	311.0	301.3	298.5	298.6	295.1
90°	198.8	204.0	213.7	215.6	222.7	224.0	186.1	183.5	178.3	178.5	172.0
92.5°	86.1	92.0	98.2	104.2	110.3	116.5	118.1	122.8	116.9	110.3	104.6
95°	100.8	110.6	120.5	130.4	140.2	150.1	160.0	169.8	160.6	151.4	142.2
97.5°	113.2	125.0	136.5	148.2	159.8	171.5	183.1	194.8	185.0	174.8	165.0
100°	148.7	170.4	191.9	213.8	235.4	257.1	279.0	300.7	281.6	262.3	243.2
102.5°	307.6	353.9	400.0	446.0	492.1	538.3	584.6	630.8	586.9	542.9	499.0
105°	594.8	669.7	744.4	818.9	893.6	968.5	1043.6	1118.3	1048.3	978.1	908.0
107.5°	942.0	1018.0	1093.6	1169.3	1245.2	1320.9	1397.4	1473.3	1404.8	1336.2	1267.8
110°	1158.1	1213.1	1268.5	1323.8	1378.9	1434.2	1490.4	1545.8	1504.6	1463.4	1422.4



TEST NUMBER: P1444480
 CATALOG NUMBER: EHBR1-48-UNV-TA-L830-UPL40

CANDELA DISTRIBUTION (continued):

	27.5°	30°	32.5°	35°	37.5°	40°	42.5°	45°	47.5°	50°	52.5°
112.5°	1205.8	1245.5	1285.1	1324.3	1363.7	1403.3	1444.0	1483.7	1463.0	1442.2	1421.6
115°	1141.2	1168.1	1194.5	1221.0	1247.6	1274.1	1302.1	1329.2	1322.4	1315.7	1309.1
117.5°	1028.8	1043.6	1058.5	1073.3	1087.9	1102.7	1119.6	1134.6	1135.6	1136.6	1137.7
120°	909.0	915.4	921.4	927.6	933.6	939.7	948.2	954.9	960.3	965.6	971.0
122.5°	807.3	809.7	811.8	814.1	816.2	818.4	823.4	826.3	829.8	833.6	837.2
125°	725.8	726.8	727.7	728.9	729.5	730.6	734.8	736.3	736.4	736.4	736.5
127.5°	671.2	671.3	671.3	671.4	671.2	671.3	674.7	675.4	672.9	670.4	667.9
130°	632.1	632.4	632.7	633.2	633.7	634.0	638.0	639.3	635.0	630.5	626.2
132.5°	606.6	607.3	607.6	608.5	609.0	609.5	614.0	615.5	610.6	605.5	600.5
135°	585.5	586.5	587.1	587.9	588.6	589.7	594.6	596.4	591.8	586.8	582.1
137.5°	567.8	568.8	569.5	570.5	571.2	572.1	577.7	579.6	575.9	571.8	568.1
140°	552.9	554.0	555.0	556.2	557.2	558.6	564.6	566.8	563.8	560.7	557.5
142.5°	537.7	539.5	541.0	542.8	544.3	546.2	553.1	555.9	553.8	551.3	549.1
145°	527.9	530.0	531.8	533.9	535.8	538.0	545.7	549.1	547.7	546.1	544.5
147.5°	519.2	521.1	522.9	524.7	526.4	528.8	536.8	540.1	539.4	538.1	537.3
150°	510.5	512.4	514.1	516.0	518.2	520.3	529.3	533.0	532.2	531.4	530.6
152.5°	500.4	502.0	503.6	505.4	507.1	509.1	519.9	523.7	523.2	522.1	521.6
155°	494.3	495.5	496.6	498.1	499.4	501.1	512.5	516.3	515.8	515.4	514.8
157.5°	492.6	493.3	494.0	495.1	496.1	497.0	508.8	512.7	512.1	511.7	511.3
160°	491.7	492.3	492.8	493.6	494.2	495.0	507.1	510.6	510.3	509.8	509.3
162.5°	491.8	492.9	493.6	494.5	495.3	496.5	508.6	512.7	511.9	511.3	510.6
165°	495.1	495.5	496.0	496.5	497.0	497.7	509.0	512.3	512.0	511.4	511.0
167.5°	499.1	499.7	500.1	500.9	501.4	502.3	512.8	516.0	515.8	515.1	514.8
170°	504.1	504.8	505.1	505.7	506.3	507.0	515.8	518.5	518.2	517.3	516.9
172.5°	508.8	509.6	510.1	510.8	511.3	512.2	519.7	522.2	521.8	521.3	520.6
175°	510.3	510.7	511.3	512.0	512.5	513.0	518.9	520.7	520.5	520.2	520.0
177.5°	515.1	515.3	515.8	516.2	516.7	517.1	520.6	521.8	521.7	521.7	521.6
180°	518.3	518.3	518.3	518.3	518.3	518.3	518.3	518.3	518.3	518.3	518.3



TEST NUMBER: P1444480
 CATALOG NUMBER: EHBR1-48-UNV-TA-L830-UPL40

CANDELA DISTRIBUTION (continued):

	55°	57.5°	60°	62.5°	65°	67.5°	70°	72.5°	75°	77.5°	80°
0°	38337.2	38337.2	38337.2	38337.2	38337.2	38337.2	38337.2	38337.2	38337.2	38337.2	38337.2
2.5°	38419.4	38432.9	38434.9	38450.7	38449.4	38468.1	38465.2	38480.5	38471.6	38484.2	38473.5
5°	39321.7	39403.6	39446.4	39526.2	39551.5	39623.0	39643.2	39708.4	39711.1	39762.8	39751.0
7.5°	40597.5	40718.2	40789.7	40888.5	40938.5	41020.8	41057.0	41117.9	41137.4	41185.8	41189.4
10°	41359.3	41417.9	41458.8	41486.4	41511.6	41523.4	41537.1	41533.4	41537.1	41531.7	41543.5
12.5°	41059.7	40974.2	40917.6	40810.5	40748.4	40630.0	40572.0	40458.1	40416.8	40319.0	40305.0
15°	39542.1	39244.1	39033.5	38727.2	38534.6	38233.3	38057.0	37785.1	37660.9	37444.8	37388.2
17.5°	36776.1	36222.8	35794.5	35245.3	34864.1	34350.7	34027.9	33602.9	33370.3	33027.5	32908.9
20°	32898.2	32079.6	31437.3	30672.1	30124.6	29442.3	29005.5	28454.6	28134.8	27713.9	27543.3
22.5°	28345.5	27326.2	26524.0	25620.1	24959.5	24199.1	23675.9	23079.9	22731.9	22274.7	22072.1
25°	23652.9	22529.0	21637.1	20684.7	19986.7	19224.5	18701.1	18115.6	17755.6	17321.5	17120.3
27.5°	19165.1	18027.2	17165.4	16279.9	15639.6	14951.8	14479.6	13968.4	13648.8	13278.3	13089.0
30°	15204.5	14201.0	13467.5	12732.7	12200.0	11641.5	11249.0	10825.4	10545.0	10227.7	10047.5
32.5°	11977.8	11203.0	10628.7	10045.6	9609.7	9142.9	8803.8	8430.0	8177.0	7893.6	7730.4
35°	9486.2	8884.2	8426.2	7946.2	7571.7	7174.2	6875.3	6552.7	6325.6	6081.7	5940.7
37.5°	7495.1	7016.4	6639.5	6240.8	5933.2	5603.9	5492.9	5122.6	4887.4	4692.7	4557.8
40°	5882.2	5501.6	5189.6	4884.7	4633.9	4384.1	4183.6	3985.8	3833.9	3694.7	3598.4
42.5°	4593.5	4317.8	4090.0	3866.6	3683.6	3501.6	3356.4	3220.1	3117.8	3026.8	2964.7
45°	3651.7	3462.0	3303.7	3146.4	3017.2	2895.7	2798.0	2711.0	2645.0	2590.3	2551.5
47.5°	2999.9	2870.1	2758.4	2652.3	2564.6	2485.0	2419.5	2398.2	2327.2	2279.3	2261.1
50°	2549.5	2471.1	2386.3	2308.0	2249.4	2191.1	2148.7	2107.0	2080.5	2058.5	2051.8
52.5°	2213.3	2153.4	2106.2	2056.6	2018.0	1976.5	1947.2	1919.5	1904.9	1893.4	1892.0
55°	1963.4	1921.5	1890.3	1857.0	1833.9	1809.5	1794.4	1779.7	1773.3	1767.5	1767.9
57.5°	1774.3	1746.3	1726.0	1704.4	1691.9	1680.3	1676.4	1672.8	1674.7	1675.6	1678.9
60°	1636.5	1618.4	1605.5	1593.2	1587.9	1584.3	1587.1	1590.3	1597.0	1602.4	1607.2
62.5°	1531.0	1520.6	1514.3	1507.6	1507.1	1507.4	1513.1	1518.6	1526.9	1533.2	1537.9
65°	1422.2	1416.3	1414.2	1410.0	1412.2	1413.4	1420.2	1424.5	1432.9	1437.8	1443.8
67.5°	1312.4	1311.0	1312.2	1312.2	1316.1	1319.4	1325.9	1330.8	1337.8	1342.4	1347.3
70°	1231.3	1231.9	1234.9	1235.4	1239.5	1241.8	1247.5	1250.6	1257.0	1260.8	1266.6
72.5°	1152.4	1151.1	1151.9	1150.0	1151.4	1150.8	1154.0	1155.5	1161.0	1164.0	1171.1
75°	1068.4	1064.9	1064.0	1060.3	1060.4	1057.6	1058.9	1058.8	1062.3	1063.7	1068.9
77.5°	967.0	961.1	958.2	951.8	951.7	949.3	951.8	953.4	959.7	962.6	968.5
80°	845.7	836.3	832.1	824.7	825.9	825.5	831.7	836.5	844.1	845.6	852.9
82.5°	702.9	693.4	688.9	681.5	683.2	683.4	689.1	690.1	696.7	699.6	708.2
85°	503.3	506.9	496.8	497.6	495.4	499.5	503.3	508.1	513.6	522.9	530.0
87.5°	296.4	295.1	298.6	299.1	304.2	306.9	315.1	319.8	329.1	336.3	349.4
90°	170.5	163.9	165.0	161.7	164.9	161.7	164.9	161.2	165.3	164.5	170.2
92.5°	97.8	91.9	85.1	79.2	72.6	66.9	63.4	61.0	57.6	55.3	51.7
95°	133.0	123.7	114.6	105.4	96.2	87.0	83.6	80.3	76.9	73.5	70.3
97.5°	155.1	145.2	135.4	125.3	115.4	105.6	103.3	101.1	98.8	96.6	94.3
100°	224.0	204.9	185.8	166.6	147.6	128.5	126.7	125.0	123.2	121.4	119.5
102.5°	455.2	411.4	367.7	323.8	280.1	236.1	228.6	220.9	213.3	205.6	198.0
105°	837.8	767.6	697.6	627.4	557.4	487.4	466.5	445.4	424.5	403.6	382.8
107.5°	1199.4	1131.0	1062.7	994.3	926.0	857.7	824.6	791.6	758.4	725.4	692.5
110°	1380.9	1339.8	1298.8	1257.6	1216.7	1175.7	1144.0	1112.6	1081.0	1049.5	1018.0



TEST NUMBER: P1444480
 CATALOG NUMBER: EHBR1-48-UNV-TA-L830-UPL40

CANDELA DISTRIBUTION (continued):

	55°	57.5°	60°	62.5°	65°	67.5°	70°	72.5°	75°	77.5°	80°
112.5°	1400.9	1380.2	1359.5	1339.0	1318.6	1297.9	1282.5	1267.1	1251.8	1236.4	1220.8
115°	1302.2	1295.7	1289.0	1282.4	1276.1	1269.4	1268.2	1267.2	1265.9	1264.8	1263.8
117.5°	1138.7	1139.8	1140.7	1142.0	1143.2	1144.4	1152.5	1160.5	1168.7	1177.1	1185.4
120°	976.3	981.9	987.1	992.6	998.1	1003.7	1014.4	1025.4	1036.3	1047.5	1058.8
122.5°	840.8	844.6	848.1	851.9	855.8	859.6	870.1	881.0	891.7	902.7	913.9
125°	736.3	736.3	736.3	736.1	736.1	736.3	745.0	753.8	762.8	771.9	780.9
127.5°	665.3	662.4	659.8	657.4	654.6	652.2	657.2	662.3	667.4	672.8	678.1
130°	621.7	617.2	612.5	608.2	603.5	599.2	601.0	603.0	604.8	606.9	609.0
132.5°	595.3	590.2	585.0	579.7	574.6	569.4	569.1	568.8	568.5	568.5	568.5
135°	577.1	572.4	567.3	562.3	557.2	552.5	551.1	549.5	548.2	546.9	545.7
137.5°	564.2	560.2	556.1	552.4	548.1	544.2	542.1	540.4	538.3	536.9	535.0
140°	554.3	551.3	547.9	544.7	541.4	538.3	536.5	535.0	533.4	532.1	530.6
142.5°	546.5	544.1	541.7	539.4	536.8	534.5	532.8	531.3	529.8	528.5	527.0
145°	542.9	541.3	539.6	538.0	536.4	534.9	533.4	532.2	531.0	529.9	529.1
147.5°	536.3	535.1	534.1	533.0	531.8	530.7	529.7	529.1	528.0	527.5	526.6
150°	529.5	528.5	527.5	526.7	525.4	524.6	523.9	523.4	522.8	522.5	521.9
152.5°	520.3	519.6	518.7	517.9	516.8	515.8	515.3	515.0	514.5	514.3	513.6
155°	514.2	513.6	512.8	512.3	511.4	511.0	510.3	509.6	509.0	508.4	507.8
157.5°	510.7	510.1	509.4	509.0	508.2	507.6	507.0	506.5	505.7	505.3	504.6
160°	508.7	508.4	507.6	507.0	506.5	505.9	505.0	504.3	503.4	502.8	501.8
162.5°	509.8	509.0	508.3	507.5	506.6	505.9	505.3	504.7	504.0	503.5	502.8
165°	510.4	509.9	509.3	508.7	508.3	507.7	506.9	506.1	505.3	504.6	503.7
167.5°	514.3	513.9	513.3	512.8	512.2	511.6	511.0	510.1	509.4	508.5	507.6
170°	516.3	515.5	515.0	514.3	513.6	512.8	512.2	511.3	510.6	510.0	509.1
172.5°	520.2	519.8	519.1	518.7	517.8	517.3	516.9	516.2	515.6	514.9	514.4
175°	519.9	519.7	519.6	519.1	519.0	518.7	518.5	518.3	518.0	517.9	517.4
177.5°	521.6	521.4	521.4	521.1	521.0	521.0	520.6	520.3	520.1	519.7	519.4
180°	518.3	518.3	518.3	518.3	518.3	518.3	518.3	518.3	518.3	518.3	518.3



TEST NUMBER: P1444480
 CATALOG NUMBER: EHBR1-48-UNV-TA-L830-UPL40

CANDELA DISTRIBUTION (continued):

	82.5°	85°	87.5°	90°	92.5°	95°	97.5°	100°	102.5°	105°	107.5°
0°	38337.2	38337.2	38337.2	38337.2	38337.2	38337.2	38337.2	38337.2	38337.2	38337.2	38337.2
2.5°	38484.6	38474.8	38479.5	38461.5	38465.8	38444.0	38442.0	38417.4	38415.0	38391.9	38383.1
5°	39787.6	39766.2	39790.4	39752.7	39760.1	39711.1	39707.0	39643.6	39621.8	39542.4	39508.2
7.5°	41219.7	41211.6	41226.3	41194.9	41193.8	41150.1	41132.0	41075.2	41039.9	40956.8	40903.5
10°	41533.4	41540.8	41528.7	41531.7	41514.7	41510.0	41492.5	41481.4	41452.8	41431.3	41399.4
12.5°	40230.7	40238.5	40188.7	40220.3	40195.4	40253.6	40248.9	40317.4	40327.8	40414.5	40447.4
15°	37219.8	37210.5	37115.1	37175.2	37142.9	37270.5	37299.1	37470.7	37562.5	37782.9	37918.3
17.5°	32671.5	32646.9	32512.6	32585.8	32548.6	32736.7	32799.8	33074.3	33245.5	33600.6	33853.6
20°	27249.6	27202.6	27045.5	27131.1	27092.8	27306.5	27396.6	27728.3	27949.1	28419.4	28754.0
22.5°	21760.4	21686.1	21532.2	21612.2	21576.0	21797.4	21914.6	22247.5	22500.4	22983.2	23373.8
25°	16831.2	16764.9	16616.2	16672.2	16658.7	16846.0	16950.2	17265.1	17513.6	17973.5	18346.4
27.5°	12837.5	12768.7	12634.2	12673.9	12660.2	12819.8	12918.1	13181.1	13394.9	13782.1	14109.5
30°	9825.2	9742.1	9628.1	9650.1	9640.7	9770.0	9861.8	10083.3	10266.6	10593.8	10875.8
32.5°	7531.0	7447.5	7342.8	7353.1	7339.2	7440.7	7516.2	7708.9	7868.6	8146.8	8392.3
35°	5762.3	5859.9	5636.3	5777.9	5630.5	5846.9	5769.1	5889.5	6026.9	6261.2	6466.0
37.5°	4429.8	4361.8	4304.3	4298.1	4297.8	4348.0	4407.2	4523.2	4644.2	4818.9	4999.3
40°	3510.4	3462.6	3425.5	3422.7	3425.5	3461.1	3504.9	3585.0	3673.7	3799.1	3931.6
42.5°	2911.6	2879.8	2857.4	2855.8	2863.0	2888.2	2918.7	2966.3	3024.0	3105.2	3196.1
45°	2519.9	2502.3	2489.9	2489.1	2492.4	2505.6	2523.1	2552.8	2589.3	2640.0	2697.5
47.5°	2245.2	2240.9	2233.1	2233.4	2229.8	2235.3	2237.2	2253.8	2273.3	2311.5	2386.7
50°	2045.1	2045.1	2039.7	2039.4	2034.3	2034.1	2029.8	2036.3	2045.4	2069.1	2093.2
52.5°	1887.0	1886.4	1880.6	1879.5	1874.1	1873.8	1870.0	1872.7	1873.9	1885.9	1900.2
55°	1763.4	1759.7	1752.0	1749.6	1747.4	1750.6	1749.2	1749.3	1747.7	1752.8	1757.0
57.5°	1674.7	1669.9	1662.7	1660.5	1659.9	1663.6	1663.8	1662.5	1655.8	1651.3	1644.9
60°	1604.5	1599.7	1591.8	1589.9	1591.0	1596.2	1595.9	1591.6	1581.6	1573.0	1562.9
62.5°	1535.6	1533.7	1529.6	1529.1	1528.1	1529.0	1525.4	1520.8	1511.0	1501.8	1490.9
65°	1443.1	1444.1	1441.1	1441.6	1438.0	1437.5	1432.0	1427.6	1417.7	1409.3	1398.1
67.5°	1347.1	1347.8	1345.4	1345.4	1343.5	1343.8	1340.5	1336.4	1328.1	1321.2	1312.5
70°	1267.9	1269.9	1268.5	1269.0	1266.6	1265.8	1260.7	1256.7	1248.1	1242.4	1234.6
72.5°	1173.1	1177.4	1177.3	1178.3	1174.9	1173.1	1167.0	1162.1	1154.3	1149.7	1143.4
75°	1070.8	1076.4	1078.0	1080.4	1075.5	1073.0	1066.3	1062.3	1056.0	1053.2	1049.1
77.5°	971.0	977.1	982.9	988.3	980.5	973.5	965.2	958.8	949.6	946.2	939.7
80°	858.9	869.6	882.6	893.4	879.4	865.1	851.4	841.2	829.1	824.1	816.2
82.5°	712.6	723.6	731.0	737.9	728.2	717.8	704.4	695.5	682.4	677.6	668.3
85°	541.3	555.1	559.5	563.2	557.0	551.4	538.9	522.0	513.8	500.9	494.2
87.5°	356.0	364.3	365.9	367.1	363.3	360.6	352.5	344.5	330.5	320.3	307.7
90°	168.0	171.5	166.5	166.6	163.5	165.8	159.5	158.6	148.8	146.3	137.9
92.5°	49.1	45.8	43.0	40.0	43.6	45.9	49.4	51.7	55.2	57.6	61.0
95°	66.9	63.5	60.1	56.8	59.5	62.1	64.8	67.5	70.2	72.9	75.6
97.5°	92.1	89.8	87.6	85.3	86.9	88.5	90.0	91.6	93.2	94.8	96.5
100°	117.7	116.0	114.2	112.4	112.4	112.4	112.4	112.4	112.4	112.4	112.4
102.5°	190.3	182.8	175.1	167.5	172.6	177.8	182.9	188.1	193.3	198.5	203.8
105°	361.9	341.1	320.3	299.4	319.5	339.7	359.9	380.1	400.3	420.8	440.9
107.5°	659.3	626.4	593.4	560.4	597.4	634.2	671.0	707.8	744.5	781.3	818.4
110°	986.6	955.3	923.9	892.5	931.6	970.5	1009.6	1048.6	1087.7	1126.7	1166.0



TEST NUMBER: P1444480
 CATALOG NUMBER: EHBR1-48-UNV-TA-L830-UPL40

CANDELA DISTRIBUTION (continued):

	82.5°	85°	87.5°	90°	92.5°	95°	97.5°	100°	102.5°	105°	107.5°
112.5°	1205.5	1190.4	1175.1	1159.8	1184.9	1210.0	1235.1	1260.5	1285.7	1311.0	1336.1
115°	1262.8	1261.8	1261.0	1260.1	1272.0	1283.9	1295.7	1307.8	1319.7	1331.6	1343.8
117.5°	1193.6	1202.0	1210.5	1219.0	1222.9	1226.7	1230.6	1234.5	1238.6	1242.5	1246.6
120°	1070.0	1081.1	1092.5	1103.9	1102.3	1100.7	1099.3	1097.7	1096.6	1095.1	1094.3
122.5°	925.1	936.2	947.7	959.0	955.6	952.3	949.0	945.8	942.8	939.7	936.8
125°	790.4	799.7	809.1	818.7	815.3	811.9	808.7	805.8	802.7	799.6	796.9
127.5°	683.9	689.7	695.2	701.2	699.6	698.0	697.0	695.5	694.4	693.4	692.5
130°	611.4	613.8	616.6	619.1	619.5	620.0	620.9	621.6	622.6	623.5	624.7
132.5°	569.0	569.1	569.7	570.3	572.0	573.8	576.1	578.1	580.7	582.8	585.9
135°	544.9	544.1	543.4	542.9	545.6	548.2	551.2	554.2	557.5	561.0	564.5
137.5°	533.8	532.5	531.5	530.3	533.0	535.6	538.6	541.6	544.9	548.3	552.0
140°	529.4	528.3	527.6	526.5	529.2	531.8	534.7	537.7	541.0	544.4	547.9
142.5°	526.0	524.7	524.0	523.2	525.4	527.9	530.7	533.4	536.5	539.4	542.6
145°	528.0	527.2	526.6	526.0	527.6	529.3	531.4	533.5	535.7	537.8	540.5
147.5°	526.1	525.5	525.2	524.7	526.1	527.4	528.8	530.1	532.0	533.5	535.4
150°	521.8	521.4	521.2	521.1	521.9	522.6	523.7	524.4	525.6	526.6	528.1
152.5°	513.6	513.0	513.2	512.9	513.6	514.3	515.2	515.9	517.0	517.8	519.2
155°	507.5	507.0	506.6	506.2	506.4	506.6	506.9	507.1	507.7	508.1	508.5
157.5°	504.3	503.8	503.5	502.9	502.8	502.6	502.7	502.7	502.9	502.7	502.9
160°	501.3	500.5	499.7	499.1	499.3	499.2	499.5	499.4	499.6	499.8	500.1
162.5°	502.4	501.8	501.4	500.9	500.6	499.9	499.6	499.1	498.8	498.5	498.4
165°	502.8	502.1	501.4	500.5	500.4	500.3	500.0	499.8	499.8	499.5	499.5
167.5°	507.0	506.2	505.4	504.7	504.2	503.4	503.0	502.5	501.9	501.4	501.2
170°	508.5	507.8	507.2	506.7	506.4	505.9	505.8	505.4	505.3	505.1	505.1
172.5°	513.8	513.2	512.7	512.2	511.9	511.6	511.4	511.3	511.1	511.1	510.9
175°	517.3	517.0	516.9	516.6	516.2	515.9	515.7	515.5	515.2	514.8	514.6
177.5°	518.9	518.7	518.4	518.2	518.0	518.0	518.0	518.0	518.0	517.9	517.7
180°	518.3	518.3	518.3	518.3	518.3	518.3	518.3	518.3	518.3	518.3	518.3



TEST NUMBER: P1444480
 CATALOG NUMBER: EHBR1-48-UNV-TA-L830-UPL40

CANDELA DISTRIBUTION (continued):

	110°	112.5°	115°	117.5°	120°	122.5°	125°	127.5°	130°	132.5°	135°
0°	38337.2	38337.2	38337.2	38337.2	38337.2	38337.2	38337.2	38337.2	38337.2	38337.2	38337.2
2.5°	38358.3	38348.2	38321.7	38308.6	38284.0	38271.7	38252.5	38240.1	38224.7	38213.1	38207.1
5°	39421.1	39372.0	39273.8	39213.3	39107.1	39037.2	38931.8	38854.5	38745.7	38665.4	38562.5
7.5°	40803.8	40728.6	40602.7	40507.1	40358.7	40245.1	40078.5	39945.2	39761.1	39608.2	39420.1
10°	41366.7	41322.8	41266.3	41204.9	41122.6	41042.0	40928.2	40812.2	40657.7	40503.9	40303.0
12.5°	40534.8	40576.1	40657.7	40695.7	40758.1	40779.2	40807.8	40794.4	40769.1	40706.4	40615.3
15°	38178.3	38350.9	38623.7	38812.4	39076.8	39262.5	39508.2	39666.3	39848.4	39957.3	40060.7
17.5°	34302.0	34635.9	35117.3	35501.4	36016.9	36436.1	36949.7	37353.2	37819.2	38176.6	38557.1
20°	29337.1	29804.7	30469.2	31033.5	31780.7	32414.2	33225.7	33905.6	34698.7	35359.8	36073.3
22.5°	23993.5	24543.6	25304.9	25985.7	26877.8	27674.6	28691.5	29590.4	30662.6	31623.1	32685.5
25°	18952.4	19491.5	20267.2	20972.0	21935.0	22812.8	23923.7	24955.0	26199.2	27359.5	28691.5
27.5°	14629.5	15108.3	15790.1	16424.5	17306.6	18168.3	19295.7	20395.4	21723.0	22970.0	24405.4
30°	11298.1	11686.6	12232.9	12743.2	13451.3	14156.1	15160.3	16177.3	17498.4	18790.5	20262.1
32.5°	8755.7	9086.8	9542.9	9957.2	10502.8	11034.2	11773.8	12586.5	13745.3	14982.9	16405.9
35°	6777.8	7061.2	7449.4	7806.3	8254.9	8676.8	9228.6	9808.7	10693.1	11734.2	13007.6
37.5°	5403.7	5519.2	5796.3	6088.6	6461.3	6808.0	7239.6	7668.6	8301.3	9122.7	10163.0
40°	4109.4	4292.8	4518.3	4748.6	5030.9	5308.9	5782.5	6010.5	6427.0	7016.7	7824.1
42.5°	3315.8	3444.7	3603.5	3763.6	3960.2	4153.9	4393.4	4637.5	4948.8	5348.2	5922.5
45°	2774.7	2858.8	2961.1	3067.8	3197.0	3329.2	3489.5	3657.0	3868.0	4113.6	4462.4
47.5°	2413.2	2459.7	2526.5	2599.4	2687.9	2779.4	2883.7	2990.4	3121.6	3267.1	3465.8
50°	2131.1	2169.9	2221.8	2270.5	2331.6	2425.3	2466.7	2525.6	2604.5	2690.2	2801.3
52.5°	1926.9	1952.8	1985.4	2013.3	2052.0	2087.1	2133.1	2173.7	2228.2	2279.7	2351.4
55°	1767.9	1777.3	1795.8	1813.8	1840.5	1864.5	1896.1	1922.7	1957.4	1988.3	2033.5
57.5°	1645.1	1646.0	1654.5	1663.9	1681.1	1696.2	1717.9	1735.3	1759.5	1779.2	1806.3
60°	1556.9	1552.2	1553.9	1557.2	1566.9	1576.7	1590.6	1602.0	1617.1	1628.3	1643.5
62.5°	1483.5	1476.1	1474.4	1473.5	1478.4	1481.9	1489.5	1495.0	1503.7	1508.5	1516.6
65°	1390.7	1382.0	1378.6	1374.6	1376.0	1374.9	1377.8	1377.9	1382.3	1383.3	1388.0
67.5°	1306.6	1299.3	1294.9	1289.6	1287.1	1283.3	1281.6	1277.9	1277.3	1274.2	1273.5
70°	1229.9	1222.8	1219.0	1214.1	1211.5	1206.4	1203.3	1197.0	1193.4	1187.6	1184.3
72.5°	1141.1	1137.1	1135.9	1132.6	1131.6	1128.8	1127.5	1123.1	1120.6	1115.6	1112.8
75°	1048.3	1045.0	1044.7	1041.3	1041.1	1037.6	1036.7	1032.1	1029.6	1024.7	1022.6
77.5°	937.7	932.9	931.5	927.5	928.5	926.8	928.2	924.6	923.1	918.2	916.6
80°	813.3	807.1	804.4	799.2	800.6	798.3	800.6	800.3	802.2	798.3	797.5
82.5°	665.8	659.0	657.7	654.0	656.4	656.7	662.0	659.2	660.3	656.5	658.1
85°	484.5	479.4	472.3	471.3	466.8	471.4	465.4	469.5	462.7	467.4	461.2
87.5°	300.4	289.8	284.3	276.8	273.9	266.7	263.7	258.4	260.0	257.6	259.0
90°	137.2	129.9	130.7	126.1	128.0	124.4	127.9	126.1	130.2	128.3	132.8
92.5°	63.4	66.3	71.7	77.4	82.5	87.9	93.2	98.9	104.1	109.7	114.8
95°	78.2	80.9	88.1	95.3	102.5	109.7	116.9	124.1	131.3	138.4	145.7
97.5°	98.1	99.7	106.9	114.0	121.2	128.4	135.5	143.0	150.2	157.4	164.6
100°	112.4	112.5	132.9	153.3	173.7	194.3	214.7	235.1	255.7	276.1	296.6
102.5°	209.0	214.1	265.7	317.4	369.0	420.6	472.3	524.1	575.7	627.5	679.2
105°	461.1	481.4	560.1	639.0	717.7	796.6	875.4	954.5	1033.3	1112.2	1191.0
107.5°	855.1	892.0	963.3	1034.5	1105.6	1177.0	1248.3	1319.5	1390.7	1462.1	1533.7
110°	1205.0	1244.2	1291.9	1339.7	1387.5	1435.2	1483.1	1530.9	1578.9	1626.7	1674.8



TEST NUMBER: P1444480
 CATALOG NUMBER: EHBR1-48-UNV-TA-L830-UPL40

CANDELA DISTRIBUTION (continued):

	110°	112.5°	115°	117.5°	120°	122.5°	125°	127.5°	130°	132.5°	135°
112.5°	1361.3	1386.7	1414.5	1442.5	1470.4	1498.4	1526.3	1554.3	1582.5	1610.6	1638.6
115°	1356.0	1368.2	1378.9	1390.0	1400.8	1411.9	1422.9	1434.1	1445.4	1456.5	1467.7
117.5°	1250.6	1255.0	1256.6	1258.6	1260.3	1262.5	1264.5	1266.6	1268.8	1271.0	1272.9
120°	1093.0	1091.7	1090.0	1088.5	1086.9	1085.5	1084.1	1082.6	1081.4	1080.1	1078.7
122.5°	933.8	931.2	929.5	928.1	926.7	925.5	924.3	923.3	922.1	921.0	919.7
125°	794.0	791.5	793.4	795.2	797.1	799.2	801.0	803.4	805.5	807.5	809.8
127.5°	691.5	690.9	695.3	699.8	704.3	708.9	713.5	718.3	722.8	727.7	732.2
130°	626.0	627.5	633.0	638.9	644.5	650.5	656.3	662.3	668.0	673.9	679.7
132.5°	588.3	591.4	596.6	602.4	607.8	613.5	619.3	625.0	630.6	636.5	641.8
135°	568.1	572.0	577.0	582.2	587.3	592.7	597.7	603.1	608.1	613.4	618.4
137.5°	555.5	559.3	563.5	567.6	571.7	576.2	580.5	584.8	588.8	593.1	597.2
140°	551.4	555.3	557.6	560.4	562.9	565.5	567.9	570.6	572.9	575.8	578.0
142.5°	545.8	549.4	550.8	552.6	554.3	556.4	558.1	559.9	561.5	563.1	564.6
145°	542.8	545.5	545.8	546.4	546.9	547.3	547.6	548.2	548.3	548.7	548.9
147.5°	537.4	539.4	539.2	539.4	539.4	539.3	539.3	539.4	539.0	539.1	539.0
150°	529.2	530.7	530.1	529.9	529.2	529.0	528.3	528.1	527.5	527.2	526.5
152.5°	520.2	521.5	520.5	520.2	519.4	518.8	518.1	517.6	516.9	516.3	515.8
155°	508.9	509.5	509.0	508.7	508.4	508.0	507.5	507.5	507.2	506.9	506.8
157.5°	503.0	503.1	502.9	502.6	502.3	502.2	502.0	501.8	501.8	502.0	502.1
160°	500.1	500.5	500.1	499.8	499.6	499.4	499.2	499.2	499.2	499.5	499.5
162.5°	498.0	497.9	497.5	497.2	497.0	497.0	496.8	497.1	497.0	497.2	497.4
165°	499.7	499.9	499.2	499.0	498.6	498.2	498.0	497.8	497.9	497.8	497.8
167.5°	500.8	500.6	500.6	500.8	500.8	500.9	501.0	501.6	501.7	502.3	502.5
170°	505.0	505.1	504.8	504.6	504.4	504.4	504.2	504.2	504.3	504.3	504.2
172.5°	510.9	510.9	510.4	509.9	509.6	509.3	508.8	508.6	508.3	507.9	507.4
175°	514.3	514.1	513.9	513.6	513.4	512.9	512.8	512.2	512.0	511.7	511.5
177.5°	517.6	517.3	517.2	517.2	517.1	516.9	516.9	516.8	516.8	516.8	516.5
180°	518.3	518.3	518.3	518.3	518.3	518.3	518.3	518.3	518.3	518.3	518.3



TEST NUMBER: P1444480
 CATALOG NUMBER: EHBR1-48-UNV-TA-L830-UPL40

CANDELA DISTRIBUTION (continued):

	137.5°	140°	142.5°	145°	147.5°	150°	152.5°	155°	157.5°	160°	162.5°
0°	38337.2	38337.2	38337.2	38337.2	38337.2	38337.2	38337.2	38337.2	38337.2	38337.2	38337.2
2.5°	38199.5	38199.1	38195.3	38197.0	38197.8	38200.5	38203.8	38207.1	38207.9	38210.5	38211.1
5°	38485.3	38390.8	38320.9	38244.0	38186.2	38134.3	38099.6	38072.1	38061.4	38064.1	38070.5
7.5°	39260.6	39065.4	38904.5	38721.5	38568.9	38407.3	38273.4	38146.1	38053.2	37984.1	37945.4
10°	40111.2	39873.6	39646.3	39381.5	39130.3	38862.2	38619.3	38374.8	38170.9	37993.8	37863.8
12.5°	40488.7	40320.7	40124.3	39874.3	39605.5	39296.2	38983.8	38648.9	38337.4	38048.3	37815.1
15°	40089.0	40089.3	40017.7	39897.8	39711.1	39463.8	39166.2	38817.1	38449.7	38074.7	37732.1
17.5°	38820.2	39059.6	39192.7	39277.0	39251.2	39160.1	38970.6	38702.6	38360.0	37960.6	37542.6
20°	36641.4	37206.0	37608.6	37970.6	38173.5	38308.3	38294.8	38185.7	37941.8	37602.1	37166.8
22.5°	33589.2	34536.8	35284.7	35982.0	36471.0	36868.9	37058.0	37138.3	37027.7	36791.1	36382.3
25°	29881.9	31170.5	32270.1	33337.3	34137.8	34825.7	35239.2	35530.5	35553.6	35430.0	35065.3
27.5°	25762.6	27283.6	28675.3	30093.6	31219.3	32208.3	32857.2	33332.1	33483.0	33463.2	33132.0
30°	21648.5	23245.2	24779.2	26433.1	27826.1	29089.6	29946.8	30589.2	30836.6	30884.1	30565.6
32.5°	17763.1	19337.6	20867.4	22596.4	24129.3	25577.5	26590.3	27353.2	27641.1	27708.9	27359.5
35°	14236.9	15689.6	17143.4	18819.0	20343.2	21842.7	22909.8	23708.7	23977.5	24022.8	23618.3
37.5°	11179.1	12416.7	13683.5	15187.0	16586.7	17995.0	19008.9	19759.6	19955.5	19943.4	19485.5
40°	8604.3	9566.5	10584.4	11822.2	12985.9	14176.3	15032.6	15653.2	15756.0	15679.9	15198.9
42.5°	6470.0	7164.9	7902.9	8826.9	9690.3	10581.3	11204.2	11664.9	11679.5	11559.1	11127.4
45°	4820.1	5498.1	5807.6	6366.2	6922.4	7514.8	7895.2	8179.8	8135.8	8029.7	7701.7
47.5°	3674.5	3935.1	4211.4	4557.8	4881.8	5554.1	5504.3	5961.3	5632.1	5856.6	5362.5
50°	2917.9	3063.6	3212.4	3396.3	3565.6	3741.3	3851.1	3933.1	3922.5	3887.2	3792.6
52.5°	2482.5	2527.5	2600.8	2705.4	2799.8	2894.9	2957.5	3008.3	3009.3	2995.1	2947.2
55°	2074.8	2131.9	2184.7	2253.0	2369.4	2387.3	2476.9	2458.8	2465.8	2441.0	2466.4
57.5°	1829.3	1862.6	1892.2	1932.9	1966.5	2005.8	2028.9	2051.2	2049.1	2044.3	2019.8
60°	1655.4	1673.7	1690.2	1713.9	1732.4	1754.5	1765.2	1776.6	1772.9	1764.7	1742.9
62.5°	1521.3	1532.7	1542.2	1557.5	1568.7	1582.5	1588.1	1592.9	1588.1	1580.2	1561.0
65°	1389.0	1396.4	1402.3	1413.9	1421.8	1433.6	1438.3	1442.8	1438.4	1432.3	1417.7
67.5°	1269.6	1270.4	1269.8	1274.5	1276.9	1284.0	1286.1	1289.4	1284.3	1279.0	1266.6
70°	1179.1	1177.3	1175.0	1176.9	1177.3	1180.7	1181.3	1180.7	1174.6	1165.5	1152.0
72.5°	1108.4	1107.4	1105.7	1107.3	1107.3	1110.4	1109.3	1107.8	1100.3	1091.5	1078.2
75°	1017.5	1016.7	1013.3	1013.4	1010.6	1011.6	1007.9	1005.8	997.4	990.0	978.1
77.5°	911.0	909.4	904.4	902.5	897.1	894.8	887.9	884.4	875.9	869.9	859.7
80°	792.3	790.4	784.0	780.5	771.9	766.5	756.3	750.5	740.7	734.8	724.9
82.5°	654.9	655.6	649.1	644.7	632.6	623.2	609.5	602.1	591.3	585.6	575.4
85°	465.7	459.1	462.6	462.4	454.7	446.5	435.5	427.7	418.6	413.2	406.0
87.5°	255.4	257.0	255.2	253.7	248.2	244.1	235.4	230.9	224.2	221.0	215.5
90°	123.3	120.3	111.1	108.2	99.1	94.0	83.8	79.6	70.3	68.0	62.2
92.5°	108.8	102.8	96.9	90.6	84.9	78.8	72.7	66.7	60.6	58.3	56.6
95°	136.9	128.3	119.6	110.8	102.1	93.3	84.7	75.9	67.2	65.4	63.6
97.5°	154.4	144.1	133.8	123.6	113.2	102.9	92.7	82.4	72.1	71.0	69.9
100°	272.9	249.3	225.6	201.8	178.1	154.3	130.8	107.0	83.4	82.1	80.7
102.5°	621.6	564.1	506.6	449.2	391.7	334.1	276.6	218.9	161.5	153.2	144.9
105°	1104.0	1016.8	930.1	842.9	755.8	668.6	581.7	494.4	407.4	379.5	351.5
107.5°	1451.9	1369.9	1288.3	1206.5	1124.6	1042.9	961.0	879.0	797.1	747.9	698.7
110°	1609.8	1544.9	1480.2	1415.2	1350.4	1285.4	1220.3	1155.4	1090.4	1048.0	1005.8



TEST NUMBER: P1444480
 CATALOG NUMBER: EHBR1-48-UNV-TA-L830-UPL40

CANDELA DISTRIBUTION (continued):

	137.5°	140°	142.5°	145°	147.5°	150°	152.5°	155°	157.5°	160°	162.5°
112.5°	1591.2	1543.6	1496.4	1448.7	1401.2	1353.5	1306.1	1258.4	1210.7	1185.0	1159.3
115°	1439.3	1410.7	1382.2	1353.6	1325.1	1296.5	1267.9	1239.0	1210.2	1196.8	1183.3
117.5°	1258.7	1244.0	1229.7	1215.2	1200.7	1186.0	1171.4	1156.7	1142.0	1137.4	1132.8
120°	1074.9	1070.6	1066.2	1061.9	1057.5	1053.2	1048.8	1044.3	1039.7	1040.5	1041.2
122.5°	921.8	923.6	925.7	927.2	929.3	930.9	933.0	934.4	936.1	939.9	943.6
125°	814.3	818.7	823.2	827.6	831.8	836.2	840.7	844.8	849.3	852.9	856.9
127.5°	737.5	742.2	747.4	752.2	757.2	762.1	767.1	771.7	776.6	780.1	783.8
130°	684.3	688.4	693.0	697.1	701.5	705.7	710.0	714.3	718.6	721.5	724.4
132.5°	645.8	649.8	653.7	657.4	661.5	665.3	669.2	673.0	677.1	679.2	681.5
135°	621.6	624.3	627.4	630.2	633.5	636.2	639.3	642.4	645.6	647.0	648.8
137.5°	599.6	602.0	604.6	607.0	609.6	612.0	614.8	617.3	620.2	620.9	622.1
140°	580.7	583.2	585.7	588.3	591.1	593.6	596.6	599.3	602.3	603.1	604.2
142.5°	566.7	568.6	570.6	572.6	574.9	576.8	579.2	581.6	584.0	585.0	585.9
145°	551.3	553.6	556.0	558.4	560.7	563.2	566.1	568.8	571.7	572.2	573.1
147.5°	540.9	542.8	545.0	547.0	549.3	551.3	553.9	556.3	558.8	559.5	560.2
150°	528.8	530.8	532.9	535.0	537.5	539.9	542.4	545.0	548.1	549.0	549.8
152.5°	518.0	520.2	522.5	525.0	527.6	530.3	533.0	535.8	538.7	539.5	540.5
155°	509.1	511.2	513.7	516.1	518.8	521.2	524.0	526.6	529.4	530.6	531.5
157.5°	504.2	506.1	508.3	510.6	512.8	515.2	517.7	520.0	522.6	523.4	524.3
160°	501.4	503.2	505.3	507.3	509.4	511.4	513.6	515.7	517.8	518.7	519.6
162.5°	499.3	501.3	503.3	505.1	507.3	509.3	511.4	513.5	515.7	516.3	517.2
165°	499.3	500.7	502.3	503.6	505.3	506.5	508.3	509.7	511.4	512.1	513.2
167.5°	503.9	504.8	505.8	506.9	508.4	509.5	510.8	511.9	513.3	514.1	514.9
170°	505.4	506.3	507.2	508.3	509.5	510.5	511.6	512.6	514.0	514.5	515.4
172.5°	508.2	508.6	509.5	510.0	510.8	511.4	512.2	513.0	513.8	514.6	515.4
175°	512.0	512.3	512.7	512.9	513.2	513.7	514.2	514.7	515.0	515.7	516.2
177.5°	516.7	517.0	517.2	517.3	517.9	518.1	518.4	518.7	519.0	519.7	520.4
180°	518.3	518.3	518.3	518.3	518.3	518.3	518.3	518.3	518.3	518.3	518.3



TEST NUMBER: P1444480
 CATALOG NUMBER: EHBR1-48-UNV-TA-L830-UPL40

CANDELA DISTRIBUTION (continued):

	165°	167.5°	170°	172.5°	175°	177.5°	180°	182.5°	185°	187.5°	190°
0°	38337.2	38337.2	38337.2	38337.2	38337.2	38337.2	38337.2	38337.2	38337.2	38337.2	38337.2
2.5°	38209.9	38209.4	38208.2	38206.4	38204.7	38205.7	38207.4	38211.8	38219.5	38230.6	38245.1
5°	38075.7	38083.5	38087.9	38088.5	38084.5	38082.1	38085.8	38096.3	38117.5	38153.0	38201.0
7.5°	37935.0	37944.7	37959.5	37970.6	37972.7	37970.0	37970.6	37987.0	38026.2	38095.3	38192.3
10°	37784.9	37756.3	37771.4	37798.9	37820.8	37824.8	37827.5	37847.0	37904.1	38008.6	38164.5
12.5°	37646.2	37555.8	37538.3	37563.2	37596.5	37607.1	37604.2	37612.5	37679.5	37817.8	38035.1
15°	37463.8	37293.7	37235.6	37242.0	37283.1	37297.8	37287.0	37270.5	37335.7	37504.7	37785.9
17.5°	37168.5	36894.3	36787.5	36782.8	36830.8	36843.6	36817.2	36766.0	36830.3	37041.0	37390.1
20°	36719.6	36314.9	36113.7	36081.7	36133.9	36118.7	36066.0	35988.6	36073.0	36329.4	36744.6
22.5°	35912.8	35399.9	35056.1	34945.3	35007.7	34966.1	34889.2	34790.5	34902.6	35193.8	35656.2
25°	34594.3	34001.7	33531.1	33267.1	33316.9	33242.2	33158.6	33038.9	33172.6	33506.9	34015.8
27.5°	32656.3	31971.7	31388.6	30951.6	30967.6	30869.9	30773.5	30618.7	30785.6	31181.4	31755.4
30°	30079.2	29287.0	28576.9	27983.1	27929.9	27835.1	27736.4	27533.2	27742.1	28215.8	28886.6
32.5°	26842.9	25963.3	25142.9	24391.9	24250.3	24157.8	24069.9	23836.0	24109.5	24661.8	25432.4
35°	23058.0	22121.2	21231.6	20374.0	20139.2	20046.8	19969.9	19745.8	20087.2	20688.2	21520.4
37.5°	18903.7	17946.7	17063.5	16184.0	15852.4	15726.9	15671.0	15524.3	15918.1	16512.5	17348.2
40°	14638.9	13749.0	12957.2	12180.4	11802.3	11610.4	11581.1	11554.4	11935.1	12450.8	13209.4
42.5°	10649.2	9931.3	9320.7	8726.9	8384.4	8122.3	8122.1	8201.7	8544.4	8930.7	9515.7
45°	7366.4	6884.6	6495.6	6098.9	6204.9	5682.3	5989.3	5831.8	6001.1	6250.2	6630.6
47.5°	5063.7	4800.6	4587.0	4365.3	4203.8	4049.5	4063.0	4162.5	4322.0	4469.8	4667.7
50°	3690.5	3556.6	3447.7	3332.7	3252.3	3184.2	3188.2	3231.3	3315.0	3392.9	3496.5
52.5°	2891.8	2817.9	2758.8	2695.2	2652.9	2619.1	2621.0	2641.9	2687.2	2731.6	2791.0
55°	2383.5	2374.7	2297.7	2240.6	2218.9	2196.2	2200.3	2208.5	2239.4	2265.3	2304.7
57.5°	1997.3	1962.9	1939.8	1909.8	1895.9	1880.1	1883.6	1886.7	1907.3	1924.7	1953.0
60°	1724.8	1700.3	1683.9	1663.5	1654.4	1644.3	1646.5	1648.4	1661.6	1673.1	1693.3
62.5°	1543.6	1521.7	1507.4	1491.7	1485.3	1478.5	1480.1	1480.7	1488.9	1497.2	1512.6
65°	1404.6	1387.3	1375.5	1361.9	1355.1	1348.1	1348.8	1348.8	1355.8	1361.9	1373.4
67.5°	1257.7	1244.6	1236.9	1226.2	1221.7	1214.3	1214.3	1211.9	1216.5	1218.9	1226.7
70°	1139.8	1126.6	1116.7	1106.3	1100.7	1094.4	1094.5	1094.6	1099.9	1105.4	1115.5
72.5°	1066.9	1054.3	1045.6	1036.5	1031.1	1025.7	1024.7	1024.1	1027.9	1030.9	1037.6
75°	970.4	960.3	955.3	946.7	942.4	936.3	935.3	932.5	934.4	934.9	939.9
77.5°	853.3	843.8	839.7	831.0	827.5	820.6	820.0	816.8	818.2	817.3	821.1
80°	720.0	711.2	709.0	701.9	700.2	693.8	692.8	688.9	690.1	687.1	688.6
82.5°	571.0	563.1	561.4	554.8	554.8	549.0	548.7	542.9	542.9	538.0	530.0
85°	402.2	396.4	394.0	388.6	387.0	382.4	379.9	374.4	372.4	368.9	367.8
87.5°	212.3	208.6	205.3	202.8	198.0	189.7	188.9	183.1	183.6	179.5	179.8
90°	60.7	55.3	53.9	48.8	47.2	43.5	42.0	42.6	43.9	44.6	46.0
92.5°	54.5	52.5	50.5	48.5	46.5	44.5	42.4	44.5	46.5	48.5	50.5
95°	61.8	60.0	58.2	56.4	54.6	52.8	51.1	52.8	54.6	56.6	58.4
97.5°	68.8	67.6	66.5	65.4	64.3	63.1	62.0	63.3	64.4	65.6	66.7
100°	79.3	78.0	76.6	75.3	74.0	72.6	71.3	72.9	74.3	75.6	76.9
102.5°	136.7	128.4	120.1	111.8	103.5	95.3	86.9	95.3	103.5	112.0	120.3
105°	323.4	295.5	267.5	239.5	211.4	183.4	155.4	183.5	211.5	239.6	267.8
107.5°	649.4	600.3	551.0	501.7	452.3	403.1	353.7	403.3	452.6	501.9	551.3
110°	963.2	920.7	878.4	835.8	793.2	750.8	708.2	750.9	793.5	836.1	878.7



TEST NUMBER: P1444480
 CATALOG NUMBER: EHBR1-48-UNV-TA-L830-UPL40

CANDELA DISTRIBUTION (continued):

	165°	167.5°	170°	172.5°	175°	177.5°	180°	182.5°	185°	187.5°	190°
112.5°	1133.5	1107.8	1081.8	1056.1	1030.2	1004.4	978.4	1004.7	1030.8	1056.8	1082.7
115°	1169.9	1156.2	1142.8	1129.1	1115.3	1101.7	1087.8	1102.1	1116.1	1130.0	1143.9
117.5°	1128.0	1123.5	1118.6	1113.9	1109.1	1104.3	1099.3	1104.6	1109.7	1115.2	1120.0
120°	1041.6	1042.5	1043.0	1043.5	1044.1	1044.4	1044.7	1045.0	1045.0	1045.0	1044.9
122.5°	947.3	951.0	954.6	958.3	961.7	965.2	968.4	965.7	962.8	960.0	956.8
125°	860.6	864.6	868.3	872.1	875.5	879.3	882.4	880.0	877.1	874.2	871.0
127.5°	787.3	790.7	794.1	797.7	800.7	803.9	806.8	804.7	802.2	799.8	797.0
130°	726.9	729.9	732.3	735.0	737.3	739.5	741.6	740.4	738.8	737.6	735.6
132.5°	683.5	685.9	687.9	689.9	691.5	693.4	694.6	694.2	693.4	692.6	691.3
135°	650.4	651.9	653.3	654.9	656.0	657.1	657.8	658.1	657.9	657.7	656.9
137.5°	622.9	623.9	624.7	625.4	625.9	626.3	626.4	627.3	627.8	628.5	628.5
140°	605.1	606.2	607.0	607.6	608.4	609.0	609.0	610.0	610.5	610.8	610.8
142.5°	586.9	587.9	588.7	589.6	590.0	590.5	590.6	591.5	592.0	592.4	592.6
145°	573.8	574.4	575.0	575.6	575.8	576.0	575.7	577.0	577.7	578.3	578.8
147.5°	560.7	561.6	561.7	562.2	562.4	562.7	562.6	563.5	564.3	564.9	565.5
150°	550.9	551.9	552.6	553.4	554.1	554.5	554.6	555.4	555.7	556.1	556.1
152.5°	541.3	542.2	542.8	543.5	544.1	544.5	544.7	545.4	546.0	546.5	546.7
155°	532.4	533.4	534.2	535.0	535.6	536.4	536.9	537.5	538.0	538.2	538.5
157.5°	525.1	526.1	526.8	527.6	528.2	529.1	529.7	530.4	530.8	531.4	531.7
160°	520.2	521.3	521.8	522.7	523.4	524.1	524.7	525.4	526.0	526.3	527.0
162.5°	517.9	518.7	519.2	520.1	520.7	521.5	522.0	522.7	523.3	523.9	524.3
165°	514.2	515.1	515.8	516.9	517.7	518.7	519.4	519.9	520.1	520.4	520.5
167.5°	515.7	516.6	517.3	518.2	518.8	519.9	520.6	521.0	521.1	521.4	521.5
170°	516.0	516.9	517.6	518.3	519.1	520.0	520.4	520.6	520.8	521.0	521.2
172.5°	516.0	517.1	517.8	518.8	519.5	520.4	521.2	521.3	521.1	521.0	520.7
175°	516.8	517.7	518.3	519.0	519.6	520.3	521.1	520.7	520.7	520.4	520.2
177.5°	521.4	522.3	523.1	523.7	524.7	525.3	526.1	525.4	524.9	524.3	523.6
180°	518.3	518.3	518.3	518.3	518.3	518.3	518.3	518.3	518.3	518.3	518.3



TEST NUMBER: P1444480
 CATALOG NUMBER: EHBR1-48-UNV-TA-L830-UPL40

CANDELA DISTRIBUTION (continued):

	192.5°	195°	197.5°	200°	202.5°	205°	207.5°	210°	212.5°	215°	217.5°
0°	38337.2	38337.2	38337.2	38337.2	38337.2	38337.2	38337.2	38337.2	38337.2	38337.2	38337.2
2.5°	38265.5	38284.7	38314.0	38340.5	38380.5	38412.0	38459.3	38495.3	38548.7	38583.4	38641.5
5°	38269.0	38343.8	38442.3	38538.4	38653.9	38758.7	38889.0	39000.0	39130.9	39237.8	39371.7
7.5°	38323.1	38467.4	38640.5	38814.8	39012.1	39196.5	39404.3	39592.4	39798.0	39972.1	40162.1
10°	38363.0	38585.7	38840.7	39097.3	39367.3	39618.3	39871.7	40090.6	40295.2	40463.6	40612.3
12.5°	38308.9	38615.6	38942.8	39258.9	39559.2	39818.9	40036.9	40205.2	40321.5	40400.3	40418.8
15°	38124.9	38494.0	38849.8	39164.5	39413.7	39605.9	39705.4	39752.0	39702.0	39619.0	39436.6
17.5°	37781.2	38170.5	38488.6	38736.8	38868.5	38920.7	38838.3	38694.9	38414.7	38103.7	37654.6
20°	37151.0	37513.8	37744.5	37879.9	37844.7	37714.4	37403.3	37025.0	36465.6	35869.5	35082.7
22.5°	36045.8	36362.9	36485.8	36495.9	36280.9	35954.7	35393.5	34744.8	33862.3	32944.8	31816.5
25°	34386.7	34664.5	34683.9	34574.8	34181.3	33652.7	32828.6	31911.0	30711.8	29489.3	28075.4
27.5°	32136.7	32403.1	32337.9	32134.3	31588.1	30880.7	29825.6	28640.1	27161.7	25717.8	24153.8
30°	29308.2	29593.2	29516.5	29255.4	28605.8	27769.7	26528.2	25150.8	23509.4	21967.3	20382.4
32.5°	25923.4	26283.6	26230.8	25982.5	25304.6	24409.8	23062.8	21601.9	19922.6	18402.9	16861.1
35°	22076.2	22513.4	22536.1	22373.8	21744.5	20860.0	19529.9	18115.9	16507.3	15073.5	13649.3
37.5°	17931.1	18438.1	18542.2	18498.5	17976.9	17196.2	15984.2	14715.7	13290.8	12034.1	10816.0
40°	13763.2	14276.4	14454.4	14507.3	14122.4	13517.6	12523.0	11499.1	10337.4	9319.1	8352.0
42.5°	9962.2	10417.1	10589.2	10697.5	10457.2	10054.0	9328.4	8584.8	7733.8	6999.4	6295.2
45°	6919.0	7240.8	7371.6	7480.7	7349.8	7122.3	6664.0	6199.0	5637.2	5157.3	4702.9
47.5°	4837.4	5015.0	5101.3	5154.1	5103.5	4984.8	4735.4	4466.0	4149.0	3868.5	3598.8
50°	3585.6	3680.0	3725.3	3755.8	3718.8	3652.9	3518.0	3371.3	3197.2	3038.3	2883.0
52.5°	2841.5	2895.6	2922.5	2938.9	2917.8	2877.5	2798.9	2712.0	2607.5	2509.3	2457.7
55°	2393.8	2390.9	2453.1	2423.1	2453.1	2386.2	2372.0	2276.5	2189.7	2128.7	2062.6
57.5°	1974.1	2002.2	2014.1	2027.5	2018.9	2006.6	1973.3	1939.0	1893.3	1855.1	1814.2
60°	1708.8	1732.0	1745.1	1758.3	1757.5	1752.9	1733.6	1713.1	1684.5	1661.6	1636.9
62.5°	1526.1	1546.1	1559.1	1571.7	1572.8	1571.0	1556.3	1542.2	1522.7	1508.4	1491.3
65°	1382.3	1396.4	1405.2	1415.3	1414.7	1412.0	1398.8	1387.0	1371.0	1361.0	1348.5
67.5°	1231.9	1242.5	1249.3	1258.8	1260.7	1261.3	1254.0	1248.4	1240.7	1237.9	1233.6
70°	1124.9	1137.8	1148.8	1160.8	1167.3	1170.5	1167.3	1164.5	1159.9	1158.0	1154.7
72.5°	1043.9	1054.8	1063.4	1074.3	1080.4	1084.8	1082.4	1080.8	1076.8	1076.3	1074.0
75°	943.3	950.9	955.6	963.9	967.2	971.3	969.4	970.4	969.1	972.3	972.1
77.5°	822.3	828.0	830.2	836.1	836.8	841.7	842.9	848.7	852.8	861.9	866.7
80°	686.2	689.8	689.8	695.9	698.6	707.0	711.0	720.5	724.9	733.0	733.7
82.5°	533.1	529.0	533.1	530.6	538.3	547.7	549.0	557.1	558.9	564.1	560.1
85°	364.5	364.2	360.9	361.5	359.0	360.2	358.8	360.4	358.9	359.0	355.4
87.5°	174.6	176.2	172.4	173.7	169.9	171.6	168.3	170.9	167.1	167.7	162.0
90°	47.0	48.3	49.3	50.7	52.5	56.2	60.0	63.8	68.1	71.8	75.9
92.5°	52.5	54.7	56.8	58.7	60.8	66.9	72.9	79.0	85.1	91.0	97.1
95°	60.2	62.0	63.8	65.9	67.6	76.3	85.1	93.9	102.7	111.4	120.2
97.5°	68.1	69.2	70.3	71.5	72.7	83.0	93.3	103.6	113.9	124.3	134.5
100°	78.4	79.7	81.0	82.6	83.9	107.7	131.5	155.2	179.0	202.6	226.4
102.5°	128.7	136.9	145.3	153.8	162.1	219.8	277.5	335.1	392.4	450.1	507.6
105°	295.8	323.8	352.2	380.2	408.2	495.4	582.7	669.9	757.0	844.0	931.3
107.5°	600.7	650.1	699.5	748.9	798.3	880.3	962.2	1044.2	1126.3	1208.2	1289.8
110°	921.5	963.9	1006.8	1049.4	1092.0	1157.0	1222.2	1287.2	1352.4	1417.3	1482.3



TEST NUMBER: P1444480
 CATALOG NUMBER: EHBR1-48-UNV-TA-L830-UPL40

CANDELA DISTRIBUTION (continued):

	192.5°	195°	197.5°	200°	202.5°	205°	207.5°	210°	212.5°	215°	217.5°
112.5°	1108.9	1134.8	1160.8	1186.5	1212.6	1260.2	1308.3	1355.9	1403.8	1451.2	1498.9
115°	1157.8	1171.3	1185.1	1198.8	1212.7	1241.5	1270.3	1299.1	1328.0	1356.6	1385.5
117.5°	1125.2	1130.1	1135.2	1139.8	1144.8	1159.6	1174.4	1189.2	1204.0	1218.8	1233.6
120°	1044.7	1044.3	1044.1	1043.5	1043.2	1047.6	1052.5	1057.0	1061.7	1066.1	1070.6
122.5°	953.8	950.3	947.1	943.6	940.3	938.5	937.1	935.3	934.0	932.2	930.6
125°	867.8	864.2	860.9	857.3	853.7	849.6	845.6	841.3	837.0	832.9	828.7
127.5°	794.4	791.2	788.4	785.1	781.9	777.0	772.4	767.6	763.0	758.2	753.5
130°	733.7	731.4	729.5	726.7	724.5	720.1	716.3	712.0	707.9	703.7	699.6
132.5°	690.1	688.6	687.0	685.0	683.4	679.6	676.1	672.2	668.5	664.7	661.1
135°	656.4	655.4	654.7	653.4	652.4	649.3	646.7	643.8	641.0	638.2	635.4
137.5°	628.6	628.3	628.1	627.7	627.2	624.8	622.5	620.1	617.9	615.4	613.2
140°	611.0	610.8	610.5	610.2	609.8	607.3	604.8	602.3	599.9	597.2	594.8
142.5°	592.6	592.5	592.3	591.9	591.7	589.6	587.9	585.9	583.9	582.1	580.2
145°	579.1	579.2	579.4	579.3	579.4	577.0	575.0	572.5	570.5	568.1	566.0
147.5°	566.1	566.1	566.5	566.6	567.0	564.9	563.2	561.3	559.7	557.5	555.9
150°	556.4	556.5	556.5	556.4	556.3	554.3	552.5	550.6	548.8	546.7	545.0
152.5°	546.9	547.1	547.3	547.5	547.7	545.7	543.9	541.8	539.8	537.7	535.8
155°	538.8	538.9	539.1	539.1	539.1	537.3	535.5	533.5	531.8	529.8	528.0
157.5°	532.0	532.2	532.5	532.7	532.8	531.2	529.6	528.1	526.5	524.8	523.2
160°	527.3	527.6	527.9	528.1	528.4	527.1	526.0	524.4	523.3	521.7	520.2
162.5°	524.7	525.1	525.4	525.6	525.9	524.6	523.4	522.1	520.8	519.1	517.8
165°	520.9	520.8	521.0	520.9	521.0	520.1	519.3	518.4	517.5	516.5	515.7
167.5°	521.7	521.6	521.8	521.7	521.8	521.2	520.9	520.2	519.5	518.7	518.1
170°	521.3	521.3	521.4	521.2	521.3	520.6	520.2	519.5	519.1	518.1	517.4
172.5°	520.6	520.3	520.2	520.1	519.7	519.2	518.9	518.6	518.2	517.7	517.3
175°	520.0	519.6	519.5	519.2	518.8	518.8	518.6	518.5	518.2	518.0	517.7
177.5°	523.2	522.8	522.0	521.5	521.0	520.8	520.6	520.4	520.5	520.2	520.1
180°	518.3	518.3	518.3	518.3	518.3	518.3	518.3	518.3	518.3	518.3	518.3



TEST NUMBER: P1444480
 CATALOG NUMBER: EHBR1-48-UNV-TA-L830-UPL40

CANDELA DISTRIBUTION (continued):

	220°	222.5°	225°	227.5°	230°	232.5°	235°	237.5°	240°	242.5°	245°
0°	38337.2	38337.2	38337.2	38337.2	38337.2	38337.2	38337.2	38337.2	38337.2	38337.2	38337.2
2.5°	38677.5	38438.6	38407.0	38423.8	38463.7	38478.5	38521.6	38533.4	38576.7	38587.3	38628.9
5°	39475.5	39159.8	39175.6	39251.5	39366.4	39434.9	39547.8	39607.0	39714.8	39763.8	39861.3
7.5°	40317.1	40069.1	40146.4	40274.5	40431.5	40540.4	40676.1	40764.4	40881.4	40954.0	41047.6
10°	40730.3	40662.3	40747.4	40848.2	40937.8	41008.0	41065.5	41111.6	41141.7	41169.9	41182.3
12.5°	40415.8	40520.9	40535.4	40525.7	40466.2	40421.0	40319.0	40249.8	40126.9	40052.1	39905.9
15°	39250.2	39481.3	39353.3	39159.5	38875.9	38639.5	38305.6	38057.0	37709.3	37473.4	37124.5
17.5°	37204.5	37496.3	37162.7	36714.3	36143.8	35655.7	35048.1	34565.7	33961.4	33522.0	32958.1
20°	34324.6	34597.2	34002.3	33259.0	32376.5	31633.9	30758.1	30059.3	29245.5	28640.1	27909.4
22.5°	30738.9	30933.1	30095.0	29092.9	27968.5	27040.7	25993.7	25155.9	24227.1	23535.0	22756.0
25°	26772.0	26824.3	25819.0	24664.5	23411.4	22368.7	21250.7	20370.0	19422.8	18721.3	17956.7
27.5°	22768.1	22691.2	21604.5	20380.3	19062.3	17978.5	16888.1	16062.8	15233.2	14601.3	13942.6
30°	18989.0	18802.8	17674.6	16416.3	15136.8	14165.5	13260.2	12597.4	11937.4	11436.2	10907.5
32.5°	15523.4	15260.9	14162.6	12983.7	11905.7	11156.0	10484.8	9983.3	9450.3	9026.9	8583.2
35°	12453.9	12174.1	11201.2	10201.8	9385.8	8833.3	8305.7	7894.2	7441.7	7084.5	6699.2
37.5°	9819.6	9590.2	8775.3	7988.8	7371.6	6943.4	6511.2	6174.9	5800.9	5643.8	5232.0
40°	7580.7	7420.4	6783.2	6203.4	5740.0	5538.8	5100.0	4785.9	4506.4	4276.0	4052.8
42.5°	5913.1	5856.3	5236.1	4784.1	4457.7	4204.2	3959.7	3761.2	3567.9	3409.2	3259.1
45°	4339.3	4294.4	4019.0	3758.1	3535.7	3358.6	3193.3	3056.8	2930.4	2825.8	2730.5
47.5°	3379.0	3364.7	3206.1	3044.2	2904.2	2790.4	2683.1	2592.4	2508.6	2438.7	2416.0
50°	2748.3	2746.4	2653.4	2553.5	2453.8	2388.0	2319.5	2265.9	2212.0	2170.2	2125.9
52.5°	2335.1	2325.0	2262.2	2200.6	2141.3	2098.1	2054.4	2020.1	1984.4	1958.6	1931.0
55°	2010.4	2020.9	1984.6	1947.8	1910.7	1883.9	1853.2	1830.6	1806.2	1789.8	1773.2
57.5°	1784.7	1798.8	1779.7	1758.9	1736.3	1718.6	1697.4	1681.9	1665.5	1655.1	1645.4
60°	1620.6	1636.0	1628.3	1617.8	1603.8	1593.3	1579.9	1571.1	1560.7	1554.8	1549.4
62.5°	1481.3	1500.5	1497.8	1492.8	1483.9	1478.0	1470.7	1466.9	1459.9	1457.3	1454.8
65°	1342.4	1363.9	1363.6	1361.1	1356.2	1354.5	1349.9	1349.0	1345.5	1346.9	1346.6
67.5°	1233.1	1251.9	1256.0	1259.0	1258.8	1260.0	1259.6	1261.4	1261.4	1264.1	1265.8
70°	1154.3	1167.3	1170.5	1173.6	1174.4	1177.0	1177.0	1178.6	1178.1	1180.4	1180.7
72.5°	1074.6	1091.7	1094.9	1097.4	1097.4	1099.9	1098.6	1098.2	1094.7	1094.1	1091.6
75°	975.4	997.4	1002.3	1005.4	1005.8	1007.9	1004.9	1003.1	997.4	995.2	991.1
77.5°	871.8	894.7	898.1	899.2	897.4	897.8	891.6	887.3	880.0	877.0	873.2
80°	737.0	770.6	773.3	771.2	765.9	765.1	759.0	755.0	746.4	743.4	740.1
82.5°	560.8	600.3	605.9	608.3	604.0	605.0	599.1	596.9	588.9	587.5	582.3
85°	354.1	393.6	400.1	399.1	394.8	393.9	390.4	391.5	390.9	393.0	394.2
87.5°	162.7	200.9	210.1	207.2	206.7	204.0	197.9	200.2	203.9	206.3	206.5
90°	79.7	95.2	98.7	96.5	90.4	87.6	81.9	79.6	74.5	72.2	67.2
92.5°	103.2	109.2	115.3	109.9	104.5	99.1	93.8	88.1	83.0	77.4	72.2
95°	128.9	137.4	146.1	138.9	131.6	124.4	117.2	110.1	102.9	95.6	88.5
97.5°	144.8	154.8	165.0	157.7	150.6	143.3	136.1	129.0	121.8	114.4	107.3
100°	250.1	273.3	296.9	276.5	256.0	235.7	215.3	194.6	174.2	153.9	133.4
102.5°	565.0	622.3	679.7	627.9	576.3	524.5	472.9	421.2	369.6	317.7	266.2
105°	1018.2	1104.8	1191.8	1112.6	1033.8	954.9	876.0	797.1	718.3	639.3	560.5
107.5°	1371.8	1452.7	1534.2	1462.9	1391.5	1320.2	1248.7	1177.5	1106.2	1034.8	963.6
110°	1547.3	1611.0	1675.7	1627.5	1579.8	1531.6	1483.8	1435.8	1388.0	1340.2	1292.5



TEST NUMBER: P1444480
 CATALOG NUMBER: EHBR1-48-UNV-TA-L830-UPL40

CANDELA DISTRIBUTION (continued):

	220°	222.5°	225°	227.5°	230°	232.5°	235°	237.5°	240°	242.5°	245°
112.5°	1546.4	1592.5	1639.6	1611.2	1583.3	1555.1	1527.1	1498.9	1471.1	1442.9	1415.3
115°	1414.0	1440.8	1468.9	1457.4	1446.4	1435.1	1423.9	1412.8	1401.7	1390.5	1379.8
117.5°	1248.2	1260.4	1274.5	1272.1	1270.1	1267.7	1265.7	1263.4	1261.6	1259.6	1257.6
120°	1075.0	1076.8	1080.6	1081.7	1083.1	1084.2	1085.6	1086.9	1088.3	1089.7	1091.2
122.5°	928.8	924.3	921.7	922.8	923.9	924.9	926.1	927.2	928.4	929.7	931.1
125°	824.5	817.0	811.8	809.6	807.6	805.4	803.1	801.1	799.1	797.0	795.2
127.5°	748.6	740.5	734.8	730.2	725.5	720.7	716.0	711.3	706.8	702.1	697.7
130°	695.5	687.7	682.5	676.6	671.0	664.9	659.3	653.4	647.5	641.7	636.0
132.5°	657.3	649.6	644.9	639.4	634.0	628.3	622.7	617.0	611.4	605.6	600.1
135°	632.5	625.5	621.8	616.5	611.8	606.5	601.4	596.2	591.3	585.8	581.1
137.5°	610.7	603.9	600.7	596.6	592.7	588.4	584.6	580.2	576.1	571.7	567.7
140°	592.4	585.2	581.8	579.4	577.2	574.6	572.3	569.8	567.5	565.0	562.5
142.5°	578.2	571.4	568.4	566.9	565.6	563.8	562.6	560.9	559.4	557.4	555.9
145°	563.8	556.2	552.9	552.6	552.6	552.2	552.0	551.7	551.5	551.1	550.8
147.5°	553.9	546.1	542.9	543.2	543.4	543.5	543.9	543.8	544.1	544.2	544.4
150°	542.9	534.0	530.4	531.0	531.4	532.1	532.6	533.1	533.8	534.3	534.9
152.5°	533.5	523.1	518.9	519.6	520.4	520.9	521.7	522.4	523.2	524.1	524.7
155°	525.8	514.5	510.0	510.0	510.4	510.6	511.0	511.4	511.9	512.3	512.8
157.5°	521.4	509.6	505.3	504.9	505.1	505.1	505.3	505.4	505.7	505.9	506.5
160°	518.7	506.9	502.8	502.5	502.5	502.5	502.5	502.5	502.7	502.9	503.4
162.5°	516.2	504.7	500.7	500.3	500.2	500.1	500.1	500.0	500.2	500.2	500.7
165°	514.4	504.5	500.9	500.8	501.0	500.9	501.0	501.2	501.6	501.8	502.3
167.5°	517.2	508.3	505.4	505.0	504.6	504.1	504.1	503.6	503.6	503.3	503.3
170°	516.6	509.6	507.0	506.9	507.2	507.1	507.0	507.2	507.2	507.1	507.4
172.5°	516.8	511.6	509.8	510.0	510.5	510.8	511.3	511.5	512.0	512.4	512.8
175°	517.5	514.4	513.7	513.6	513.9	514.1	514.3	514.5	514.8	515.0	515.6
177.5°	520.1	519.0	518.6	518.6	518.6	518.6	518.6	518.6	518.6	518.7	518.7
180°	518.3	518.3	518.3	518.3	518.3	518.3	518.3	518.3	518.3	518.3	518.3



TEST NUMBER: P1444480
 CATALOG NUMBER: EHBR1-48-UNV-TA-L830-UPL40

CANDELA DISTRIBUTION (continued):

	247.5°	250°	252.5°	255°	257.5°	260°	262.5°	265°	267.5°	270°	272.5°
0°	38337.2	38337.2	38337.2	38337.2	38337.2	38337.2	38337.2	38337.2	38337.2	38337.2	38337.2
2.5°	38636.8	38681.9	38678.4	38720.5	38718.4	38758.0	38750.1	38784.2	38776.5	38805.7	38788.6
5°	39904.2	39989.9	40018.1	40095.4	40111.5	40180.7	40182.1	40237.1	40230.4	40273.4	40250.6
7.5°	41103.1	41183.1	41221.0	41281.0	41311.1	41360.8	41380.2	41421.2	41431.0	41455.2	41454.4
10°	41204.2	41203.9	41222.7	41214.3	41231.1	41221.4	41241.9	41234.5	41264.7	41257.0	41279.8
12.5°	39842.8	39707.7	39658.4	39537.0	39510.5	39406.3	39413.7	39346.9	39379.1	39338.1	39408.0
15°	36916.9	36603.5	36448.6	36176.1	36090.5	35875.1	35857.7	35714.6	35753.2	35678.4	35787.8
17.5°	32593.2	32099.7	31828.9	31431.0	31273.0	30968.3	30907.3	30723.1	30751.7	30658.9	30791.0
20°	27438.2	26841.9	26500.2	26040.1	25834.8	25471.6	25375.3	25169.3	25195.1	25102.8	25252.3
22.5°	22224.4	21600.1	21214.6	20732.2	20470.1	20128.5	20026.0	19819.0	19830.8	19744.1	19887.9
25°	17433.0	16834.6	16460.3	16022.1	15794.7	15481.5	15373.8	15188.0	15198.5	15127.0	15256.1
27.5°	13485.7	12994.7	12681.5	12314.3	12110.3	11852.9	11747.9	11591.6	11591.2	11538.8	11646.6
30°	10538.3	10128.6	9847.4	9527.6	9336.1	9103.8	9002.3	8862.5	8856.4	8819.2	8904.8
32.5°	8251.3	7886.8	7630.3	7348.9	7177.0	6977.6	6881.6	6769.2	6759.0	6725.3	6795.6
35°	6414.3	6107.4	5886.8	5649.9	5667.4	5373.2	5422.1	5193.7	5131.8	5118.2	5170.5
37.5°	4957.5	4719.8	4540.7	4363.2	4243.0	4118.7	4051.7	3991.7	3984.9	3979.0	4015.7
40°	3880.4	3714.1	3583.8	3462.0	3379.3	3303.4	3261.5	3228.6	3220.7	3216.3	3238.5
42.5°	3140.6	3028.4	2944.4	2870.1	2819.8	2778.6	2755.5	2737.3	2731.1	2731.3	2744.3
45°	2653.4	2585.3	2531.2	2485.0	2452.9	2467.0	2425.5	2447.2	2418.5	2448.2	2428.6
47.5°	2336.7	2278.7	2245.2	2212.5	2193.0	2177.4	2177.9	2178.2	2184.4	2185.3	2191.7
50°	2092.3	2058.8	2035.5	2014.6	2004.5	1996.2	1999.1	2001.2	2007.2	2007.6	2012.3
52.5°	1911.4	1889.4	1875.4	1862.4	1857.9	1853.2	1855.2	1854.3	1857.0	1855.6	1859.5
55°	1764.2	1753.9	1749.5	1744.6	1745.4	1744.1	1744.9	1740.2	1737.4	1733.8	1737.1
57.5°	1643.5	1642.1	1645.0	1647.0	1652.5	1654.5	1655.8	1650.4	1645.3	1640.6	1643.4
60°	1550.4	1552.7	1560.1	1566.0	1574.0	1577.7	1579.9	1576.9	1573.1	1569.3	1571.6
62.5°	1458.6	1462.2	1471.0	1477.7	1487.3	1492.3	1497.8	1498.1	1499.6	1498.1	1499.7
65°	1352.0	1356.4	1364.4	1369.9	1378.9	1383.3	1389.0	1390.0	1393.1	1392.4	1395.1
67.5°	1271.0	1275.0	1281.7	1286.9	1294.9	1299.5	1304.5	1304.7	1305.9	1305.6	1308.1
70°	1184.7	1186.6	1192.6	1197.0	1205.0	1209.7	1215.4	1217.1	1220.6	1221.2	1224.0
72.5°	1092.6	1091.7	1095.3	1097.3	1103.3	1107.0	1114.2	1118.1	1124.1	1125.7	1127.9
75°	992.3	991.4	995.7	997.4	1002.6	1006.2	1014.4	1019.6	1028.8	1032.6	1031.7
77.5°	876.2	878.2	886.1	890.5	897.4	902.1	912.6	921.0	937.9	945.2	937.7
80°	746.4	748.5	756.8	760.9	769.8	775.5	787.3	797.0	812.3	815.6	811.3
82.5°	586.8	587.4	594.7	597.9	609.5	617.9	632.8	640.6	650.0	648.6	647.5
85°	400.1	405.5	414.8	424.0	438.2	451.8	465.9	477.5	469.3	482.2	467.7
87.5°	213.9	213.3	225.7	223.8	243.6	255.2	267.4	273.2	279.8	278.5	278.6
90°	65.4	61.9	61.7	57.9	58.6	54.6	56.3	52.5	55.0	50.4	57.3
92.5°	66.6	63.9	60.8	58.1	55.0	52.2	49.1	46.2	43.3	40.4	43.3
95°	81.3	78.6	76.0	73.2	70.4	67.8	65.1	62.4	59.8	57.0	60.4
97.5°	100.0	98.4	96.9	95.4	93.8	92.2	90.6	89.1	87.4	85.8	88.1
100°	113.0	113.0	113.0	113.0	112.7	112.7	112.7	112.7	112.7	112.7	114.5
102.5°	214.4	209.3	204.1	198.8	193.6	188.4	183.2	178.1	172.9	167.8	175.4
105°	481.7	461.5	441.2	421.1	400.6	380.5	360.3	340.1	319.9	299.7	320.6
107.5°	892.5	855.5	818.7	781.9	744.9	708.2	671.3	634.5	597.8	561.0	594.0
110°	1244.6	1205.5	1166.3	1127.2	1088.2	1048.9	1010.0	970.9	931.9	892.9	924.3



TEST NUMBER: P1444480
 CATALOG NUMBER: EHBR1-48-UNV-TA-L830-UPL40

CANDELA DISTRIBUTION (continued):

	247.5°	250°	252.5°	255°	257.5°	260°	262.5°	265°	267.5°	270°	272.5°
112.5°	1387.4	1361.8	1336.5	1311.3	1286.0	1260.8	1235.6	1210.5	1185.4	1160.3	1175.6
115°	1368.6	1356.5	1344.4	1332.4	1320.3	1308.2	1296.2	1284.3	1272.4	1260.5	1261.5
117.5°	1255.7	1251.4	1247.3	1243.3	1239.2	1235.1	1231.2	1227.5	1223.4	1219.8	1211.3
120°	1092.9	1093.9	1094.9	1096.1	1097.4	1098.9	1100.1	1101.6	1103.2	1104.8	1093.3
122.5°	932.5	935.1	937.9	940.8	943.8	946.9	950.0	953.4	956.8	960.1	948.7
125°	793.1	795.8	798.5	801.3	803.9	807.2	810.3	813.6	816.8	820.4	810.7
127.5°	693.2	693.9	694.5	695.4	696.3	697.7	699.0	700.3	701.9	703.7	697.6
130°	630.2	628.9	627.4	626.4	625.0	624.2	623.5	622.8	622.3	621.9	619.3
132.5°	594.5	591.8	589.0	586.3	583.8	581.6	579.3	577.4	575.4	573.8	573.0
135°	575.7	572.0	568.3	564.8	561.3	558.3	554.9	552.3	549.5	546.9	547.5
137.5°	563.5	560.0	556.2	552.8	549.3	546.4	543.0	540.2	537.6	535.0	536.1
140°	560.0	556.3	552.6	549.3	546.0	542.8	539.7	537.1	534.0	531.8	532.4
142.5°	554.3	551.3	547.7	544.7	541.6	538.8	536.1	533.6	530.8	528.8	529.5
145°	550.4	548.1	545.5	543.1	540.9	539.0	536.6	535.0	533.2	531.8	532.1
147.5°	544.3	542.7	540.7	539.1	537.2	535.8	534.2	533.0	531.6	530.6	530.7
150°	535.4	534.3	533.1	532.0	530.8	529.9	529.0	528.1	527.3	526.6	526.6
152.5°	525.6	524.7	523.4	522.5	521.6	520.7	519.9	519.3	518.6	517.9	517.9
155°	513.3	512.8	512.4	512.2	511.7	511.6	511.2	511.3	510.9	510.9	511.0
157.5°	506.7	506.8	506.5	506.7	506.6	506.7	506.6	506.9	506.8	507.1	507.4
160°	503.9	503.7	503.4	503.4	503.2	503.0	503.0	503.0	503.0	502.9	503.4
162.5°	500.9	501.2	501.4	501.7	502.1	502.4	502.8	503.4	503.7	504.2	504.7
165°	502.7	502.7	502.5	502.5	502.7	502.7	502.8	503.3	503.3	503.7	504.2
167.5°	503.2	503.5	503.7	503.9	504.3	504.9	505.2	505.8	506.4	507.1	507.6
170°	507.3	507.3	507.3	507.3	507.3	507.6	507.8	507.9	508.1	508.4	508.8
172.5°	513.1	513.1	512.8	513.1	512.8	513.1	513.1	513.3	513.3	513.5	513.7
175°	515.5	515.9	516.2	516.6	516.6	516.9	517.1	517.3	517.5	517.9	517.9
177.5°	518.7	518.8	518.8	518.8	518.8	519.0	519.0	519.0	519.0	518.8	519.0
180°	518.3	518.3	518.3	518.3	518.3	518.3	518.3	518.3	518.3	518.3	518.3



TEST NUMBER: P1444480
 CATALOG NUMBER: EHBR1-48-UNV-TA-L830-UPL40

CANDELA DISTRIBUTION (continued):

	275°	277.5°	280°	282.5°	285°	287.5°	290°	292.5°	295°	297.5°	300°
0°	38337.2	38337.2	38337.2	38337.2	38337.2	38337.2	38337.2	38337.2	38337.2	38337.2	38337.2
2.5°	38817.1	38797.6	38817.5	38797.4	38817.5	38793.3	38809.7	38783.6	38790.2	38763.1	38770.1
5°	40284.9	40253.8	40270.3	40230.1	40234.4	40180.7	40179.7	40117.2	40100.7	40029.5	39998.2
7.5°	41471.7	41461.5	41467.3	41441.3	41438.4	41401.7	41384.3	41332.6	41300.0	41234.5	41189.7
10°	41283.8	41314.0	41321.9	41352.7	41359.1	41389.6	41396.1	41426.6	41433.0	41455.5	41455.8
12.5°	39404.7	39507.5	39532.0	39658.9	39712.3	39857.5	39935.5	40095.4	40190.4	40350.0	40448.0
15°	35784.8	35962.5	36033.4	36281.3	36418.3	36707.6	36889.4	37221.5	37456.0	37808.8	38060.4
17.5°	30802.6	31051.1	31163.2	31499.2	31718.4	32145.3	32453.1	32959.6	33347.4	33910.3	34356.4
20°	25277.8	25553.9	25706.0	26089.4	26348.1	26847.0	27231.2	27853.6	28372.6	29085.9	29695.8
22.5°	19933.0	20195.7	20364.6	20754.7	21045.9	21566.2	21995.6	22652.5	23234.1	24037.8	24769.2
25°	15304.8	15545.5	15698.2	16051.0	16324.5	16802.6	17212.7	17844.5	18413.5	19219.8	19969.6
27.5°	11700.3	11901.9	12049.2	12349.9	12591.1	12996.6	13348.9	13871.1	14361.3	15058.8	15726.6
30°	8957.6	9136.3	9279.5	9541.5	9765.2	10116.6	10426.4	10865.0	11270.8	11825.8	12357.1
32.5°	6845.1	6999.0	7126.6	7355.9	7558.8	7875.3	8154.3	8538.9	8887.1	9357.8	9794.9
35°	5219.1	5521.9	5500.4	5816.7	5867.5	6094.8	6343.7	6679.9	6988.3	7388.6	7760.5
37.5°	4050.9	4136.0	4227.2	4367.0	4513.9	4720.6	4930.9	5341.7	5492.3	5794.9	6102.8
40°	3266.6	3324.2	3384.4	3478.8	3581.8	3727.4	3880.5	4076.5	4277.2	4522.4	4773.0
42.5°	2761.6	2794.2	2832.5	2888.1	2951.5	3043.8	3146.3	3279.1	3418.8	3591.4	3767.6
45°	2467.4	2451.9	2463.3	2493.1	2531.4	2587.5	2652.1	2734.3	2825.3	2937.1	3056.2
47.5°	2193.0	2199.3	2202.7	2218.9	2239.4	2277.0	2316.2	2372.0	2479.9	2512.7	2577.6
50°	2011.9	2014.9	2013.8	2022.1	2032.5	2056.9	2082.4	2120.1	2157.9	2207.9	2255.7
52.5°	1860.0	1864.2	1863.7	1869.1	1874.6	1890.1	1906.2	1932.9	1957.6	1989.5	2016.8
55°	1740.1	1745.9	1748.2	1752.8	1755.4	1763.5	1769.9	1782.7	1793.2	1811.2	1827.9
57.5°	1647.9	1655.8	1659.5	1661.1	1657.8	1657.4	1655.3	1658.0	1660.1	1669.8	1679.1
60°	1575.3	1581.6	1582.7	1581.6	1575.7	1571.4	1564.6	1562.4	1561.3	1566.0	1571.1
62.5°	1499.3	1501.5	1500.0	1498.1	1491.3	1487.2	1480.1	1477.5	1475.1	1478.4	1481.0
65°	1394.1	1396.1	1394.1	1393.0	1386.9	1383.6	1377.6	1375.7	1372.2	1373.1	1372.5
67.5°	1308.7	1310.7	1309.1	1307.6	1303.3	1301.4	1297.0	1294.1	1289.9	1288.4	1285.5
70°	1223.6	1225.2	1222.8	1221.2	1216.4	1214.5	1210.4	1209.6	1206.3	1205.5	1202.3
72.5°	1125.7	1125.8	1122.5	1121.4	1117.9	1117.8	1116.1	1117.6	1117.5	1119.2	1118.4
75°	1025.5	1024.1	1019.9	1019.1	1016.4	1017.7	1015.9	1018.3	1018.6	1022.3	1022.7
77.5°	925.3	919.9	911.9	908.0	902.6	902.0	898.8	900.9	900.3	904.5	906.2
80°	798.5	792.1	781.8	776.7	770.3	769.4	766.5	769.4	767.9	773.0	776.4
82.5°	637.5	632.0	621.2	617.2	609.8	610.5	607.4	610.5	610.1	617.5	621.8
85°	471.5	467.9	456.8	447.0	436.0	429.7	423.4	422.3	420.4	423.4	425.9
87.5°	272.4	268.9	260.3	254.6	235.4	236.2	228.7	228.4	226.5	224.8	228.7
90°	56.9	62.9	62.7	68.2	68.6	74.7	75.6	81.6	81.9	88.0	89.2
92.5°	46.2	49.1	52.0	55.0	57.9	60.8	63.7	66.6	72.9	78.9	85.4
95°	63.8	67.2	70.5	73.8	77.2	80.6	83.9	87.3	96.5	105.7	114.8
97.5°	90.4	92.5	94.8	97.0	99.3	101.5	103.8	106.0	116.0	125.9	135.7
100°	116.2	118.0	119.8	121.7	123.5	125.2	127.0	128.8	148.2	167.2	186.3
102.5°	183.0	190.6	198.3	205.9	213.8	221.3	229.0	236.6	280.5	324.3	368.0
105°	341.4	362.3	383.4	404.2	425.1	446.0	466.9	487.7	557.9	627.9	698.1
107.5°	626.9	659.9	692.9	725.9	758.9	792.0	825.0	858.1	926.4	994.9	1063.3
110°	955.6	987.2	1018.6	1050.1	1081.5	1113.1	1144.6	1176.2	1217.3	1258.4	1299.4



TEST NUMBER: P1444480
 CATALOG NUMBER: EHBR1-48-UNV-TA-L830-UPL40

CANDELA DISTRIBUTION (continued):

	275°	277.5°	280°	282.5°	285°	287.5°	290°	292.5°	295°	297.5°	300°
112.5°	1190.9	1206.1	1221.6	1236.9	1252.4	1267.8	1283.3	1298.8	1319.4	1339.9	1360.6
115°	1262.4	1263.3	1264.5	1265.6	1266.7	1267.7	1269.1	1270.4	1277.0	1283.5	1290.1
117.5°	1202.8	1194.5	1186.2	1177.9	1169.7	1161.7	1153.7	1145.7	1144.5	1143.3	1142.2
120°	1082.4	1071.0	1059.9	1048.6	1037.7	1026.6	1016.0	1005.2	999.7	994.4	989.1
122.5°	937.6	926.4	915.4	904.3	893.4	882.8	872.2	861.6	857.8	854.1	850.5
125°	801.4	792.1	782.9	773.8	765.0	756.2	747.6	738.9	738.9	738.8	739.1
127.5°	691.9	686.3	680.8	675.5	670.4	665.2	660.3	655.2	657.9	660.7	663.4
130°	616.8	614.5	612.4	610.0	608.4	606.4	604.7	603.0	607.6	612.0	616.6
132.5°	572.9	572.5	572.5	572.4	572.7	572.9	573.5	573.7	579.0	583.9	589.3
135°	548.3	549.0	550.2	551.3	552.8	554.1	555.7	557.1	562.2	566.9	572.0
137.5°	537.3	538.5	540.0	541.6	543.6	545.3	547.3	549.1	553.1	557.1	561.0
140°	533.5	534.4	535.8	537.1	538.6	540.0	541.9	543.3	546.9	549.8	552.9
142.5°	530.7	531.4	532.7	534.0	535.5	536.7	538.3	539.6	542.1	544.3	547.0
145°	533.0	533.5	534.7	535.4	536.6	537.7	538.9	539.9	541.6	543.0	544.6
147.5°	531.3	531.7	532.4	533.2	534.0	534.7	535.4	536.1	537.3	538.3	539.4
150°	526.9	527.1	527.5	527.6	528.3	528.9	529.4	529.8	530.6	531.5	532.6
152.5°	518.3	518.4	518.7	518.9	519.3	519.7	520.1	520.5	521.5	522.1	523.1
155°	511.4	512.0	512.6	513.0	513.7	514.0	514.7	515.1	515.8	516.4	517.2
157.5°	508.0	508.3	509.0	509.3	510.0	510.4	511.0	511.4	512.1	512.6	513.1
160°	504.2	505.1	505.6	506.5	507.2	507.9	508.7	509.5	510.0	510.5	511.1
162.5°	505.3	505.8	506.4	506.8	507.3	507.9	508.4	508.9	509.9	510.4	511.3
165°	505.1	505.7	506.6	507.1	508.1	508.8	509.6	510.3	510.7	511.3	511.7
167.5°	508.4	508.9	509.9	510.5	511.3	512.0	512.8	513.4	514.0	514.3	514.8
170°	509.5	510.1	510.9	511.4	512.2	512.7	513.5	514.0	514.7	515.3	516.0
172.5°	514.3	514.7	515.3	515.6	516.1	516.8	517.3	517.6	518.3	518.8	519.3
175°	517.9	517.9	518.0	518.2	518.3	518.3	518.5	518.7	518.8	519.0	519.1
177.5°	519.3	519.5	519.7	520.0	520.2	520.3	520.6	520.8	520.8	520.8	520.8
180°	518.3	518.3	518.3	518.3	518.3	518.3	518.3	518.3	518.3	518.3	518.3



TEST NUMBER: P1444480
 CATALOG NUMBER: EHBR1-48-UNV-TA-L830-UPL40

CANDELA DISTRIBUTION (continued):

	302.5°	305°	307.5°	310°	312.5°	315°	317.5°	320°	322.5°	325°	327.5°
0°	38337.2	38337.2	38337.2	38337.2	38337.2	38337.2	38337.2	38337.2	38337.2	38337.2	38337.2
2.5°	38742.9	38744.6	38713.3	38711.6	38682.4	38678.7	38650.1	38641.5	38618.4	38609.9	38586.3
5°	39918.4	39880.3	39792.3	39740.6	39653.7	39596.1	39502.0	39440.7	39349.9	39281.4	39190.0
7.5°	41107.2	41048.1	40949.4	40869.4	40748.7	40652.4	40511.3	40395.7	40242.8	40110.4	39949.9
10°	41455.8	41446.7	41421.6	41384.9	41328.8	41265.8	41169.7	41069.5	40935.6	40790.0	40611.6
12.5°	40598.0	40690.6	40816.9	40891.7	40982.9	41022.8	41060.2	41050.8	41026.2	40952.6	40849.4
15°	38424.8	38685.1	39029.8	39296.9	39604.2	39827.5	40074.3	40228.0	40381.2	40452.1	40495.3
17.5°	34967.8	35460.7	36078.7	36590.9	37181.9	37656.5	38176.9	38568.6	38971.4	39260.0	39521.0
20°	30527.3	31241.4	32115.5	32887.8	33785.7	34566.0	35421.1	36123.1	36846.9	37413.1	37948.8
22.5°	25710.9	26559.0	27615.8	28594.7	29752.3	30792.6	31966.3	32987.9	34054.5	34945.6	35807.2
25°	20974.7	21904.7	23060.4	24152.6	25463.5	26673.6	28065.6	29338.8	30717.4	31914.3	33096.7
27.5°	16649.9	17563.0	18742.8	19905.4	21291.7	22581.1	24072.6	25475.3	27045.0	28492.5	29973.4
30°	13095.3	13869.8	14927.6	16053.7	17421.0	18733.1	20240.7	21683.4	23316.4	24896.9	26564.8
32.5°	10375.0	10965.0	11796.6	12748.9	14010.4	15259.5	16695.1	18087.8	19695.8	21292.4	23027.1
35°	8239.7	8699.9	9333.9	10077.0	11145.3	12222.1	13491.8	14758.3	16258.5	17773.6	19459.7
37.5°	6497.4	6870.8	7367.4	7925.6	8782.5	9666.1	10707.3	11757.3	13060.9	14403.9	15931.9
40°	5073.8	5376.1	5762.7	6179.0	6826.1	7506.9	8312.1	9126.4	10173.7	11271.2	12535.9
42.5°	3985.8	4208.9	4482.0	4786.2	5389.9	5751.3	6297.4	6886.3	7656.2	8453.0	9403.8
45°	3200.9	3353.1	3542.5	3746.6	4026.7	4333.4	4707.3	5099.4	5830.9	6189.7	6767.9
47.5°	2673.1	2775.3	2895.7	3024.4	3189.6	3367.9	3589.7	3816.4	4109.7	4413.7	4770.0
50°	2317.6	2421.5	2462.9	2529.5	2625.1	2726.9	2852.0	2977.0	3134.3	3293.7	3477.2
52.5°	2053.8	2087.6	2132.6	2175.0	2234.2	2350.2	2387.7	2453.1	2541.3	2627.6	2723.9
55°	1852.3	1874.4	1903.6	1929.2	1965.0	1999.2	2048.7	2092.1	2151.0	2203.0	2266.9
57.5°	1695.4	1709.5	1729.8	1746.6	1769.8	1789.1	1818.1	1841.7	1875.5	1904.9	1943.7
60°	1581.5	1590.9	1604.5	1615.4	1630.2	1640.4	1654.7	1665.7	1683.6	1698.6	1720.2
62.5°	1488.4	1493.3	1502.2	1508.7	1518.0	1523.1	1530.8	1535.6	1545.4	1553.0	1565.1
65°	1376.8	1377.9	1383.9	1386.6	1394.0	1396.6	1402.9	1405.2	1413.3	1418.8	1429.5
67.5°	1285.3	1282.7	1282.8	1280.8	1281.7	1279.5	1280.2	1277.9	1281.1	1282.8	1291.0
70°	1201.7	1198.1	1197.0	1193.2	1192.1	1188.1	1187.0	1183.4	1183.0	1181.8	1184.7
72.5°	1120.3	1119.4	1119.6	1116.9	1116.7	1113.9	1114.0	1112.3	1114.2	1115.1	1118.7
75°	1026.7	1027.0	1028.8	1026.4	1027.1	1024.9	1025.7	1023.5	1024.7	1024.3	1027.9
77.5°	912.7	915.4	920.4	919.4	921.0	918.4	919.6	916.6	917.4	915.4	916.9
80°	784.6	790.3	797.0	796.7	799.5	797.6	800.2	797.3	798.5	795.1	794.2
82.5°	632.4	637.2	644.4	644.6	650.9	652.0	659.0	658.7	663.1	660.3	658.2
85°	432.4	435.7	441.8	445.3	451.7	455.6	462.4	465.1	460.2	469.0	462.1
87.5°	225.7	234.2	229.5	240.4	237.8	248.9	246.5	256.8	254.8	263.6	262.5
90°	96.8	98.5	106.5	108.7	117.9	121.0	124.3	120.5	123.6	120.0	123.1
92.5°	91.4	98.1	104.3	110.6	116.9	123.4	117.4	111.6	105.7	100.0	94.0
95°	124.0	133.3	142.5	151.7	160.8	170.0	160.2	150.3	140.5	130.7	120.7
97.5°	145.6	155.5	165.3	175.2	185.3	195.1	183.4	171.8	160.1	148.6	136.9
100°	205.3	224.5	243.5	262.7	281.9	301.0	279.3	257.5	236.0	214.2	192.4
102.5°	412.1	455.7	499.5	543.5	587.2	631.1	585.1	539.2	492.9	446.8	400.6
105°	768.2	838.4	908.4	978.6	1048.6	1119.1	1044.2	969.6	894.7	820.1	745.2
107.5°	1131.7	1199.9	1268.6	1336.9	1405.3	1474.0	1398.2	1322.4	1246.8	1170.9	1095.0
110°	1340.7	1381.8	1423.0	1464.3	1505.4	1546.8	1491.4	1436.2	1380.9	1325.5	1270.2



TEST NUMBER: P1444480
 CATALOG NUMBER: EHBR1-48-UNV-TA-L830-UPL40

CANDELA DISTRIBUTION (continued):

	302.5°	305°	307.5°	310°	312.5°	315°	317.5°	320°	322.5°	325°	327.5°
112.5°	1381.1	1402.1	1422.5	1443.4	1464.0	1484.8	1445.3	1406.0	1366.3	1326.9	1287.3
115°	1297.0	1303.5	1310.3	1317.1	1323.7	1330.4	1303.8	1277.4	1250.8	1224.2	1197.4
117.5°	1141.2	1140.3	1139.2	1138.5	1137.3	1136.3	1121.5	1106.8	1091.8	1076.9	1062.0
120°	983.6	978.3	973.1	967.7	962.3	956.8	950.8	944.8	938.3	932.0	925.7
122.5°	846.9	843.3	839.7	836.1	832.2	828.5	826.2	824.1	821.6	819.3	816.7
125°	739.1	739.2	739.2	739.3	739.2	739.2	737.9	737.0	735.8	734.8	733.4
127.5°	665.8	668.6	671.1	673.7	676.1	678.6	678.4	678.5	678.2	678.0	677.7
130°	620.9	625.6	629.8	634.2	638.3	642.9	642.1	641.6	641.2	640.6	640.0
132.5°	594.3	599.4	604.4	609.6	614.4	619.4	618.6	618.0	617.0	616.4	615.6
135°	576.8	581.6	586.2	591.3	595.7	600.3	599.3	598.5	597.2	596.6	595.5
137.5°	564.6	568.9	572.5	576.3	579.9	583.8	582.5	581.7	580.5	579.8	578.6
140°	555.9	559.1	561.9	565.1	567.9	571.0	569.6	568.4	567.0	565.7	564.3
142.5°	549.2	551.6	553.7	556.1	558.2	560.5	558.4	556.6	554.7	552.8	551.0
145°	546.1	547.9	549.3	550.8	551.8	553.5	551.2	549.1	546.7	544.6	542.2
147.5°	540.2	541.3	542.0	543.0	543.6	544.6	542.4	540.3	538.1	535.8	533.6
150°	533.2	534.3	535.0	535.7	536.4	537.3	534.9	532.7	530.3	527.9	525.8
152.5°	523.9	524.7	525.4	526.0	526.7	527.3	525.0	523.1	520.7	518.5	516.2
155°	517.4	518.1	518.4	518.9	519.1	519.5	517.4	515.9	514.1	512.2	510.1
157.5°	513.5	514.1	514.5	514.8	515.1	515.6	514.1	512.8	511.3	509.9	508.4
160°	511.4	511.9	512.3	512.6	513.0	513.1	512.0	511.0	509.9	508.5	507.1
162.5°	511.8	512.6	513.1	513.6	514.3	514.8	513.4	512.1	510.7	509.3	507.7
165°	512.1	512.6	513.0	513.4	513.6	514.0	513.0	512.2	511.1	510.2	509.2
167.5°	515.1	515.8	516.0	516.4	516.6	516.9	515.8	515.2	514.1	513.0	511.9
170°	516.4	517.0	517.5	518.0	518.5	518.7	518.1	517.4	516.5	515.8	514.8
172.5°	519.8	520.3	520.5	521.0	521.3	521.7	521.0	520.2	519.3	518.5	517.5
175°	519.1	519.3	519.6	519.6	519.6	519.7	519.0	518.4	517.7	517.1	516.3
177.5°	520.8	520.8	520.8	520.7	520.7	520.7	520.2	519.8	519.4	518.9	518.3
180°	518.3	518.3	518.3	518.3	518.3	518.3	518.3	518.3	518.3	518.3	518.3



TEST NUMBER: P1444480
 CATALOG NUMBER: EHBR1-48-UNV-TA-L830-UPL40

CANDELA DISTRIBUTION (continued):

	330°	332.5°	335°	337.5°	340°	342.5°	345°	347.5°	350°	352.5°	355°
0°	38337.2	38337.2	38337.2	38337.2	38337.2	38337.2	38337.2	38337.2	38337.2	38337.2	38337.2
2.5°	38578.0	38561.2	38550.4	38536.7	38528.2	38517.6	38509.8	38503.1	38497.7	38492.7	38489.0
5°	39120.4	39034.2	38967.3	38894.8	38835.3	38775.9	38730.1	38692.2	38666.0	38646.5	38634.8
7.5°	39811.1	39653.2	39512.9	39365.1	39232.6	39102.4	38990.1	38893.4	38820.8	38773.8	38745.2
10°	40427.9	40216.6	40007.6	39787.6	39579.0	39376.8	39190.0	39025.8	38895.8	38809.4	38759.0
12.5°	40704.4	40524.4	40311.0	40072.1	39816.5	39557.9	39305.9	39078.6	38887.7	38759.7	38685.8
15°	40460.9	40387.0	40242.1	40056.8	39814.2	39546.8	39250.9	38972.7	38716.8	38550.8	38454.6
17.5°	39668.8	39771.9	39760.8	39689.9	39515.5	39290.5	38988.9	38676.4	38356.4	38134.5	38013.3
20°	38332.0	38656.3	38820.8	38905.2	38836.7	38690.8	38417.7	38100.5	37727.4	37437.9	37261.2
22.5°	36453.5	37026.0	37382.7	37643.8	37699.2	37649.5	37408.3	37106.7	36690.9	36342.7	36081.7
25°	34035.3	34874.0	35437.9	35879.8	36051.5	36095.8	35890.7	35590.7	35127.1	34721.5	34363.1
27.5°	31187.0	32276.7	33029.6	33623.4	33891.5	34007.8	33818.9	33512.9	32964.5	32480.4	32012.1
30°	27980.3	29273.3	30179.6	30891.7	31218.5	31372.2	31171.5	30830.0	30191.7	29609.2	29019.2
32.5°	24548.2	25963.0	26950.7	27724.1	28047.9	28192.3	27929.9	27546.3	26808.6	26122.4	25434.4
35°	20954.8	22382.9	23378.8	24131.7	24403.0	24490.2	24154.5	23711.1	22893.8	22140.6	21390.5
37.5°	17288.3	18616.9	19522.0	20197.7	20365.6	20380.6	19976.3	19486.5	18627.5	17884.9	17138.1
40°	13653.4	14773.9	15504.7	16045.4	16103.7	16051.7	15612.1	15119.2	14315.6	13650.3	12994.7
42.5°	10229.5	11075.3	11596.7	11967.3	11945.3	11842.5	11439.5	11015.8	10352.8	9846.0	9330.1
45°	7296.2	7853.8	8158.7	8375.6	8306.0	8208.1	7894.4	7597.4	7146.9	6819.5	6472.8
47.5°	5068.8	5734.7	5618.8	6042.7	5677.5	5918.7	5416.3	5139.3	4900.3	4726.4	4530.4
50°	3628.8	3781.4	3855.1	3905.4	3878.7	3841.6	3751.4	3670.7	3561.5	3481.8	3389.1
52.5°	2802.4	2878.7	2920.5	2950.7	2944.8	2931.3	2891.9	2856.0	2804.9	2771.2	2730.5
55°	2373.8	2374.9	2451.7	2418.8	2467.6	2410.4	2432.9	2369.7	2379.9	2325.6	2289.1
57.5°	1972.5	2003.8	2017.9	2031.5	2027.7	2025.3	2010.0	2002.4	1985.2	1979.9	1967.7
60°	1735.1	1751.5	1754.8	1761.1	1755.9	1753.9	1741.9	1737.7	1726.2	1724.0	1716.0
62.5°	1572.3	1580.7	1580.7	1580.7	1573.9	1567.3	1554.1	1547.2	1537.3	1535.2	1530.5
65°	1436.4	1445.2	1446.6	1448.3	1443.4	1438.3	1426.6	1419.1	1409.0	1405.2	1399.8
67.5°	1296.2	1305.5	1308.6	1313.3	1310.5	1309.4	1301.5	1298.5	1291.8	1290.2	1285.3
70°	1186.1	1189.9	1189.6	1189.5	1183.3	1177.7	1168.5	1164.0	1157.1	1155.7	1151.1
72.5°	1120.6	1123.3	1121.6	1119.2	1111.1	1102.9	1092.0	1084.1	1075.0	1069.3	1062.9
75°	1028.4	1032.0	1029.6	1028.1	1020.8	1015.5	1006.8	1002.4	996.0	994.1	989.7
77.5°	915.2	916.9	913.2	912.7	907.2	903.8	897.3	896.1	891.5	891.6	887.3
80°	789.1	788.1	782.2	781.0	775.5	774.1	768.9	769.2	765.6	767.1	764.1
82.5°	649.3	645.8	638.0	635.7	629.3	628.7	625.3	628.2	625.9	629.3	627.3
85°	465.4	466.3	462.9	462.9	461.0	461.6	461.3	463.5	463.8	466.9	466.8
87.5°	259.5	263.1	262.5	265.8	265.7	269.5	270.8	276.5	277.2	282.4	282.4
90°	119.6	123.2	119.5	123.3	121.8	126.8	126.3	131.2	130.0	134.2	131.8
92.5°	88.2	82.3	76.7	70.7	67.8	64.6	62.2	58.7	56.1	52.9	49.9
95°	110.9	101.1	91.1	81.3	77.9	74.5	71.1	67.7	64.4	61.1	57.7
97.5°	125.2	113.5	101.9	90.2	87.3	84.4	81.4	78.5	75.5	72.6	69.7
100°	170.7	148.9	127.3	105.4	102.9	100.4	98.0	95.5	93.0	90.4	88.0
102.5°	354.6	308.4	262.2	216.0	207.3	198.5	189.8	180.9	172.1	163.4	154.7
105°	670.5	595.6	520.8	445.9	422.1	398.3	374.6	350.7	326.9	303.1	279.4
107.5°	1019.1	943.1	867.2	791.1	747.4	703.5	659.4	615.3	571.6	527.5	483.4
110°	1214.8	1159.5	1104.0	1048.4	1013.2	977.8	942.3	906.9	871.6	836.1	800.6



TEST NUMBER: P1444480
 CATALOG NUMBER: EHBR1-48-UNV-TA-L830-UPL40

CANDELA DISTRIBUTION (continued):

	330°	332.5°	335°	337.5°	340°	342.5°	345°	347.5°	350°	352.5°	355°
112.5°	1247.7	1208.0	1168.4	1128.5	1112.6	1096.4	1080.6	1064.5	1048.4	1032.2	1016.1
115°	1170.6	1143.9	1117.1	1090.0	1084.7	1078.9	1073.4	1067.6	1062.0	1056.2	1050.4
117.5°	1047.1	1032.1	1017.0	1002.0	1002.9	1003.9	1005.1	1005.8	1006.7	1007.3	1008.2
120°	919.3	912.8	906.6	900.2	905.2	910.0	915.1	919.7	924.3	928.8	933.5
122.5°	814.6	811.9	809.7	806.9	813.1	819.0	824.8	830.6	836.3	841.6	847.3
125°	732.5	731.1	730.0	728.5	734.8	740.7	746.7	752.4	758.1	763.5	769.0
127.5°	677.6	677.3	677.2	676.8	681.4	685.4	689.7	693.5	697.8	701.3	705.1
130°	639.4	638.7	638.3	637.5	641.6	645.4	649.4	652.8	656.5	659.6	663.0
132.5°	614.9	614.0	613.4	612.4	615.5	618.2	621.1	623.4	626.0	628.0	630.1
135°	594.7	593.5	592.7	591.4	594.2	596.9	599.4	601.6	604.0	605.8	607.7
137.5°	577.8	576.5	575.6	574.4	576.9	579.3	581.4	583.5	585.5	587.4	588.9
140°	563.1	561.7	560.5	558.9	561.2	563.2	565.3	567.0	569.0	570.3	571.8
142.5°	549.1	546.9	545.4	543.3	545.0	546.4	547.9	549.2	550.5	551.5	552.5
145°	539.9	537.5	535.4	533.1	534.3	535.4	536.7	537.8	538.6	539.3	540.1
147.5°	531.7	529.2	527.0	524.7	525.9	526.6	527.3	527.9	528.8	529.2	529.6
150°	523.3	520.7	518.4	515.9	516.7	517.3	517.8	518.6	519.2	519.5	519.9
152.5°	513.9	511.6	509.2	506.8	507.4	507.9	508.3	508.5	509.0	509.4	509.6
155°	508.4	506.3	504.3	502.1	502.7	503.0	503.3	503.6	503.8	503.9	504.0
157.5°	506.8	505.0	503.7	501.8	501.9	502.0	502.1	501.8	501.8	501.7	501.4
160°	505.9	504.5	503.1	501.6	501.5	501.5	501.6	501.2	501.2	500.9	500.6
162.5°	506.1	504.6	502.8	501.1	501.0	501.1	501.0	500.8	500.7	500.4	500.1
165°	508.2	506.9	505.8	504.4	504.2	503.9	503.9	503.3	503.0	502.4	502.0
167.5°	510.8	509.7	508.4	507.0	507.0	507.2	507.1	506.9	506.9	506.6	506.5
170°	514.0	512.9	512.1	511.0	510.7	510.6	510.3	510.0	509.6	509.3	508.8
172.5°	516.6	515.7	514.6	513.4	513.4	513.2	512.9	512.8	512.4	512.1	512.0
175°	515.6	514.9	514.0	513.3	513.1	513.0	512.8	512.8	512.5	512.3	512.0
177.5°	517.8	517.4	516.7	516.2	516.1	516.1	515.9	515.8	515.8	515.7	515.6
180°	518.3	518.3	518.3	518.3	518.3	518.3	518.3	518.3	518.3	518.3	518.3



TEST NUMBER: P1444480
 CATALOG NUMBER: EHBR1-48-UNV-TA-L830-UPL40

CANDELA DISTRIBUTION (continued):

	357.5°	360°
0°	38337.2	38337.2
2.5°	38485.6	38483.7
5°	38628.7	38626.4
7.5°	38737.5	38736.8
10°	38750.3	38757.0
12.5°	38673.1	38678.4
15°	38447.2	38457.8
17.5°	38015.6	38029.3
20°	37271.9	37286.4
22.5°	36067.7	36073.6
25°	34316.8	34291.9
27.5°	31929.8	31887.1
30°	28895.4	28854.0
32.5°	25277.6	25251.7
35°	21205.0	21188.7
37.5°	16917.4	16884.2
40°	12755.0	12658.1
42.5°	9104.2	8934.1
45°	6291.8	6090.2
47.5°	4392.3	4267.7
50°	3329.3	3289.1
52.5°	2712.8	2703.4
55°	2288.9	2284.8
57.5°	1970.4	1969.0
60°	1720.2	1719.8
62.5°	1533.7	1534.3
65°	1402.3	1402.5
67.5°	1286.6	1285.7
70°	1152.8	1151.9
72.5°	1060.8	1059.2
75°	989.7	988.8
77.5°	888.6	887.1
80°	766.1	764.1
82.5°	630.1	627.9
85°	470.0	470.1
87.5°	287.6	287.5
90°	135.7	132.6
92.5°	47.3	44.7
95°	54.3	51.0
97.5°	66.8	63.9
100°	85.4	83.0
102.5°	145.8	137.1
105°	255.6	231.8
107.5°	439.5	395.6
110°	765.2	729.8



TEST NUMBER: P1444480
CATALOG NUMBER: EHBR1-48-UNV-TA-L830-UPL40

CANDELA DISTRIBUTION (continued):

	357.5°	360°
112.5°	999.8	983.7
115°	1044.1	1038.3
117.5°	1008.7	1009.2
120°	937.7	942.2
122.5°	852.2	857.6
125°	774.2	779.3
127.5°	708.4	711.7
130°	665.4	668.5
132.5°	631.8	633.5
135°	609.1	610.6
137.5°	590.0	591.3
140°	572.7	573.7
142.5°	553.1	553.8
145°	540.7	541.0
147.5°	529.5	529.9
150°	520.0	520.2
152.5°	509.5	509.7
155°	503.9	503.9
157.5°	501.0	500.8
160°	500.2	499.9
162.5°	499.7	499.5
165°	501.2	500.7
167.5°	506.0	505.9
170°	508.4	508.2
172.5°	511.5	511.3
175°	511.9	511.7
177.5°	515.6	515.3
180°	518.3	518.3

LM-79-2019: Approved Method: Electrical and Photometric Measurements of Solid-
State Lighting Products

Report Prepared for

Cooper Lighting Solutions

Metalux

Report Number: SP1-2506-472-2

Test Date: 07/31/2025

Luminaire Tested: EHBR-60-L830-N

Data in this report applies to families of products including EHBR-60-L830-N

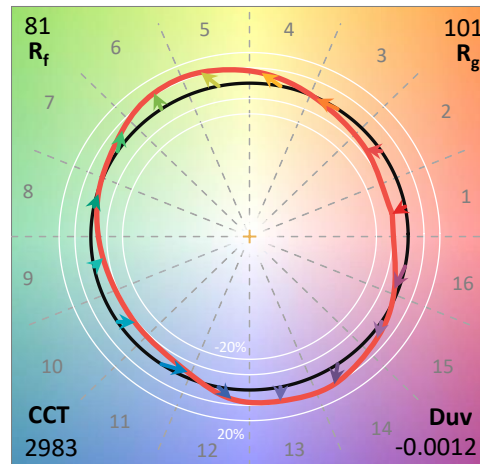
Test Information

Test Method: LM-79-2019
 Report Number: SP1-2506-472-2
 Test Lab: COOPER LIGHTING SOLUTIONS
 Photometer: SP1 - 76IN SPHERE
 Measurement Geometry: 4π
 Issue Date: 08/05/2025
 Manufacturer: COOPER LIGHTING SOLUTIONS
 Product Line: Metalux
 Catalog Number: **EHBR-60-L830-N**
 Description: Elevate Round Highbay at, 60000 lumens, 3000K 80CRI LEDs with N lens

Spectral Parameters

CCT (K): 2983
 CIE u': 0.2516
 CIE v': 0.5201
 Duv: -0.0012
 CIE x: 0.4364
 CIE y: 0.4010
 CIE z: 0.1626
 Peak Wavelength (nm): 630
 Dominant Wavelength (nm): 583
 Purity: 51.34918
 Rf: 81.2
 Rg: 101.5

CRI (Ra):	83.4		
R1:	84.0	R9:	29.4
R2:	87.5	R10:	68.6
R3:	88.9	R11:	82.2
R4:	83.8	R12:	61.6
R5:	81.9	R13:	83.9
R6:	83.1	R14:	92.5
R7:	87.1	R15:	79.8
R8:	70.9		



Test Conditions

Stabilization Time: 38M
 Operation Time: 1H 38M
 Sphere Temperature (°C): 25.0

REPORT NUMBER: SP1-2506-472-2

Measurement and Test Equipment			
Instrument	Identification Number	Calibration Date	Calibration Due Date
Photometer	76INCH SPHERE IN0058	6/16/2025	12/16/2025
Power Meter	XITRON INXT2011004	1/21/2025	1/21/2026
AC Power Source	CHROMA 61603 IN0063	10/22/2024	10/22/2025
DC Power Source	AGILENT E3634A IN0208	10/22/2024	10/22/2025
Sphere Thermometer	ONSET IN0085	10/22/2024	10/22/2025
Room Thermometer	ONSET IN0046	10/22/2024	10/22/2025

REPORT NUMBER: SP1-2506-472-2

CIE 1931 Chromaticity Diagram



CIE 1931 Chromaticity Diagram with 2017 ANSI 7-Step and 4-Step Quadrangles

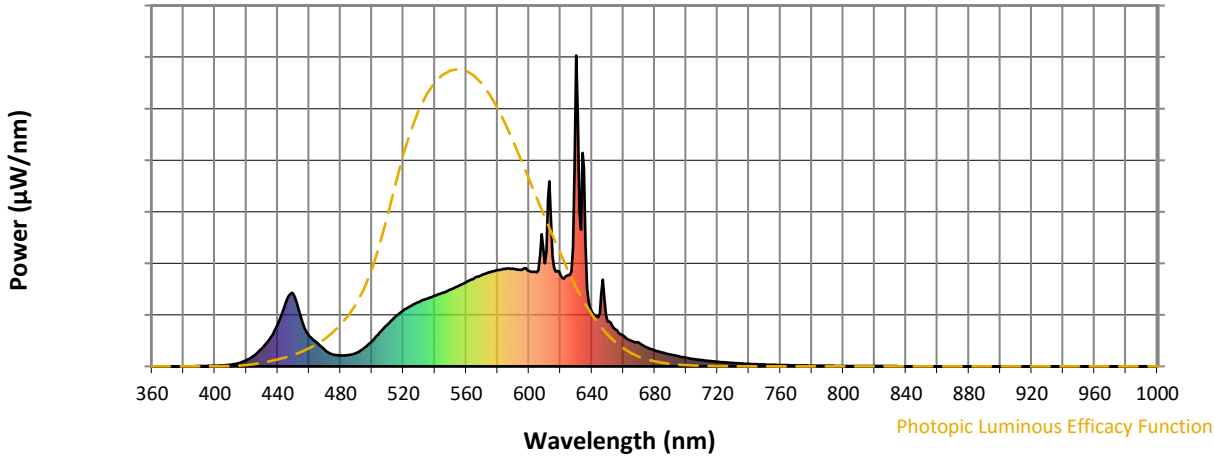


CCT = 2983K
 CIE x = 0.4364
 CIE y = 0.4010
 Duv = -0.0012

Point lies inside the ANSI 3000K 4-step quadrangle

REPORT NUMBER: SP1-2506-472-2

Photopic Flux vs. Wavelength



Photopic Lumens: NR

λ (nm)	Power W [^] /nm	Lumens (φ/nm)	λ (nm)	Power W [^] /nm	Lumens (φ/nm)	λ (nm)	Power W [^] /nm	Lumens (φ/nm)	λ (nm)	Power W [^] /nm	Lumens (φ/nm)	λ (nm)	Power W [^] /nm	Lumens (φ/nm)
360	0	NR	490	43	NR	620	294	NR	750	6	NR	880	0	NR
365	0	NR	495	59	NR	625	294	NR	755	5	NR	885	0	NR
370	0	NR	500	81	NR	630	1000	NR	760	4	NR	890	0	NR
375	0	NR	505	109	NR	635	637	NR	765	4	NR	895	0	NR
380	0	NR	510	135	NR	640	175	NR	770	3	NR	900	0	NR
385	0	NR	515	160	NR	645	171	NR	775	3	NR	905	0	NR
390	1	NR	520	180	NR	650	146	NR	780	2	NR	910	0	NR
395	1	NR	525	195	NR	655	119	NR	785	2	NR	915	0	NR
400	2	NR	530	207	NR	660	99	NR	790	2	NR	920	0	NR
405	3	NR	535	218	NR	665	82	NR	795	2	NR	925	0	NR
410	5	NR	540	227	NR	670	76	NR	800	1	NR	930	0	NR
415	10	NR	545	237	NR	675	61	NR	805	1	NR	935	0	NR
420	20	NR	550	247	NR	680	52	NR	810	1	NR	940	0	NR
425	35	NR	555	259	NR	685	44	NR	815	1	NR	945	0	NR
430	58	NR	560	271	NR	690	38	NR	820	1	NR	950	0	NR
435	90	NR	565	283	NR	695	33	NR	825	1	NR	955	0	NR
440	135	NR	570	293	NR	700	27	NR	830	1	NR	960	0	NR
445	204	NR	575	303	NR	705	24	NR	835	1	NR	965	0	NR
450	233	NR	580	310	NR	710	20	NR	840	0	NR	970	0	NR
455	153	NR	585	313	NR	715	17	NR	845	0	NR	975	0	NR
460	98	NR	590	314	NR	720	15	NR	850	0	NR	980	0	NR
465	76	NR	595	310	NR	725	13	NR	855	0	NR	985	0	NR
470	53	NR	600	307	NR	730	11	NR	860	0	NR	990	0	NR
475	39	NR	605	303	NR	735	9	NR	865	0	NR	995	0	NR
480	35	NR	610	331	NR	740	8	NR	870	0	NR	1000	0	NR
485	36	NR	615	353	NR	745	7	NR	875	0	NR			

REPORT NUMBER: SP1-2506-472-2

Scotopic Flux vs. Wavelength



Scotopic Lumens: NR

S/P: 1.27

λ (nm)	Power W [^] /nm	Lumens (ϕ /nm)	λ (nm)	Power W [^] /nm	Lumens (ϕ /nm)	λ (nm)	Power W [^] /nm	Lumens (ϕ /nm)	λ (nm)	Power W [^] /nm	Lumens (ϕ /nm)	λ (nm)	Power W [^] /nm	Lumens (ϕ /nm)
360	0	NR	490	43	NR	620	294	NR	750	6	NR	880	0	NR
365	0	NR	495	59	NR	625	294	NR	755	5	NR	885	0	NR
370	0	NR	500	81	NR	630	1000	NR	760	4	NR	890	0	NR
375	0	NR	505	109	NR	635	637	NR	765	4	NR	895	0	NR
380	0	NR	510	135	NR	640	175	NR	770	3	NR	900	0	NR
385	0	NR	515	160	NR	645	171	NR	775	3	NR	905	0	NR
390	1	NR	520	180	NR	650	146	NR	780	2	NR	910	0	NR
395	1	NR	525	195	NR	655	119	NR	785	2	NR	915	0	NR
400	2	NR	530	207	NR	660	99	NR	790	2	NR	920	0	NR
405	3	NR	535	218	NR	665	82	NR	795	2	NR	925	0	NR
410	5	NR	540	227	NR	670	76	NR	800	1	NR	930	0	NR
415	10	NR	545	237	NR	675	61	NR	805	1	NR	935	0	NR
420	20	NR	550	247	NR	680	52	NR	810	1	NR	940	0	NR
425	35	NR	555	259	NR	685	44	NR	815	1	NR	945	0	NR
430	58	NR	560	271	NR	690	38	NR	820	1	NR	950	0	NR
435	90	NR	565	283	NR	695	33	NR	825	1	NR	955	0	NR
440	135	NR	570	293	NR	700	27	NR	830	1	NR	960	0	NR
445	204	NR	575	303	NR	705	24	NR	835	1	NR	965	0	NR
450	233	NR	580	310	NR	710	20	NR	840	0	NR	970	0	NR
455	153	NR	585	313	NR	715	17	NR	845	0	NR	975	0	NR
460	98	NR	590	314	NR	720	15	NR	850	0	NR	980	0	NR
465	76	NR	595	310	NR	725	13	NR	855	0	NR	985	0	NR
470	53	NR	600	307	NR	730	11	NR	860	0	NR	990	0	NR
475	39	NR	605	303	NR	735	9	NR	865	0	NR	995	0	NR
480	35	NR	610	331	NR	740	8	NR	870	0	NR	1000	0	NR
485	36	NR	615	353	NR	745	7	NR	875	0	NR			

REPORT NUMBER: SP1-2506-472-2

Melanopic Flux vs. Wavelength



Melanopic Lumens: NR

M/P: 2.34

λ (nm)	Power W [^] /nm	Lumens (φ/nm)	λ (nm)	Power W [^] /nm	Lumens (φ/nm)	λ (nm)	Power W [^] /nm	Lumens (φ/nm)	λ (nm)	Power W [^] /nm	Lumens (φ/nm)	λ (nm)	Power W [^] /nm	Lumens (φ/nm)
360	0	NR	490	43	NR	620	294	NR	750	6	NR	880	0	NR
365	0	NR	495	59	NR	625	294	NR	755	5	NR	885	0	NR
370	0	NR	500	81	NR	630	1000	NR	760	4	NR	890	0	NR
375	0	NR	505	109	NR	635	637	NR	765	4	NR	895	0	NR
380	0	NR	510	135	NR	640	175	NR	770	3	NR	900	0	NR
385	0	NR	515	160	NR	645	171	NR	775	3	NR	905	0	NR
390	1	NR	520	180	NR	650	146	NR	780	2	NR	910	0	NR
395	1	NR	525	195	NR	655	119	NR	785	2	NR	915	0	NR
400	2	NR	530	207	NR	660	99	NR	790	2	NR	920	0	NR
405	3	NR	535	218	NR	665	82	NR	795	2	NR	925	0	NR
410	5	NR	540	227	NR	670	76	NR	800	1	NR	930	0	NR
415	10	NR	545	237	NR	675	61	NR	805	1	NR	935	0	NR
420	20	NR	550	247	NR	680	52	NR	810	1	NR	940	0	NR
425	35	NR	555	259	NR	685	44	NR	815	1	NR	945	0	NR
430	58	NR	560	271	NR	690	38	NR	820	1	NR	950	0	NR
435	90	NR	565	283	NR	695	33	NR	825	1	NR	955	0	NR
440	135	NR	570	293	NR	700	27	NR	830	1	NR	960	0	NR
445	204	NR	575	303	NR	705	24	NR	835	1	NR	965	0	NR
450	233	NR	580	310	NR	710	20	NR	840	0	NR	970	0	NR
455	153	NR	585	313	NR	715	17	NR	845	0	NR	975	0	NR
460	98	NR	590	314	NR	720	15	NR	850	0	NR	980	0	NR
465	76	NR	595	310	NR	725	13	NR	855	0	NR	985	0	NR
470	53	NR	600	307	NR	730	11	NR	860	0	NR	990	0	NR
475	39	NR	605	303	NR	735	9	NR	865	0	NR	995	0	NR
480	35	NR	610	331	NR	740	8	NR	870	0	NR	1000	0	NR
485	36	NR	615	353	NR	745	7	NR	875	0	NR			

Summary

$R_f = 81.2$
 $R_g = 101.5$
 CIE $R_a = 83.4$
 $R_9 = 29.4$

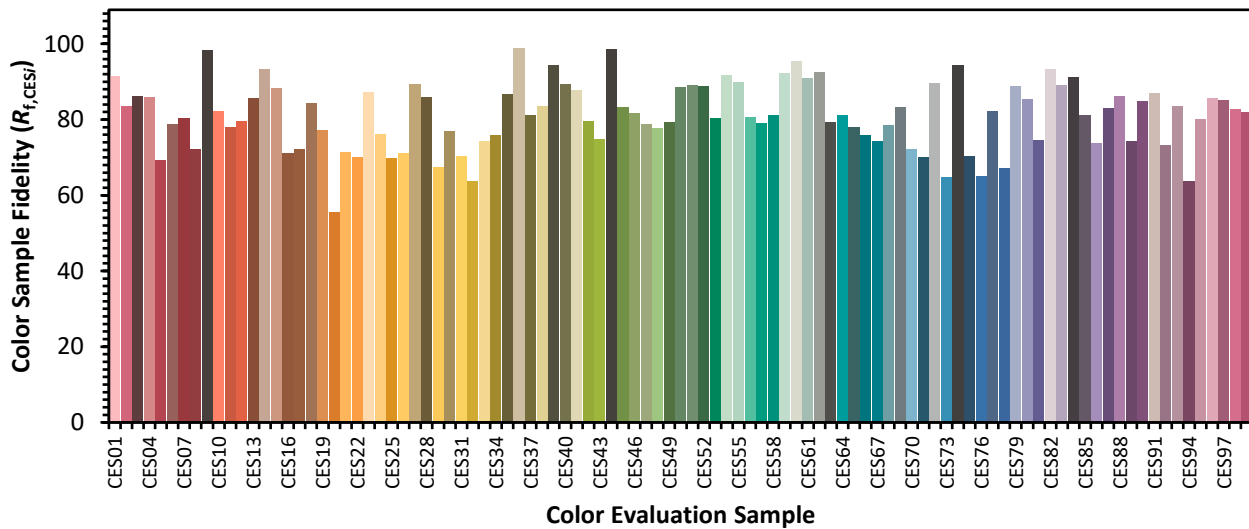


Color Vector Graphics

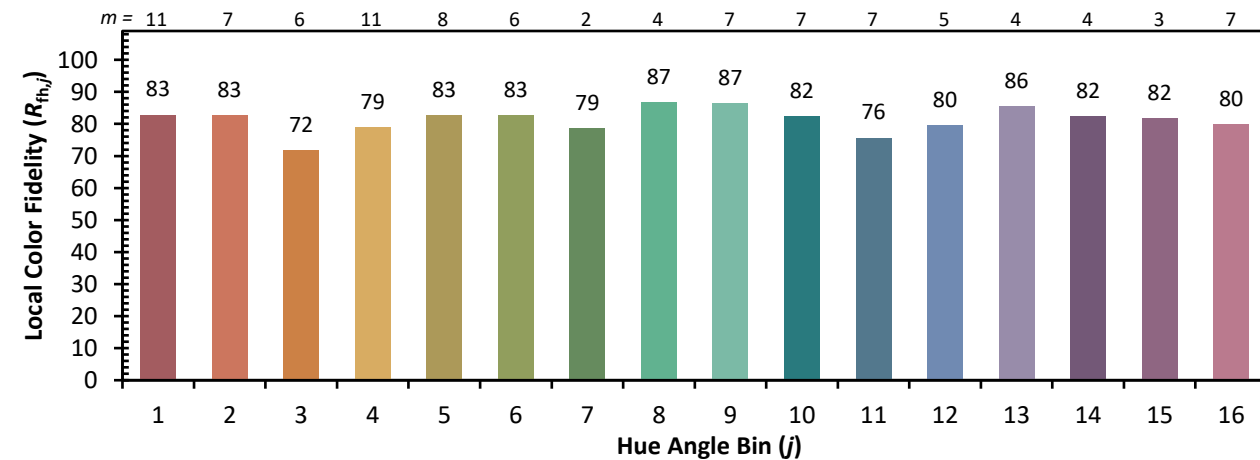
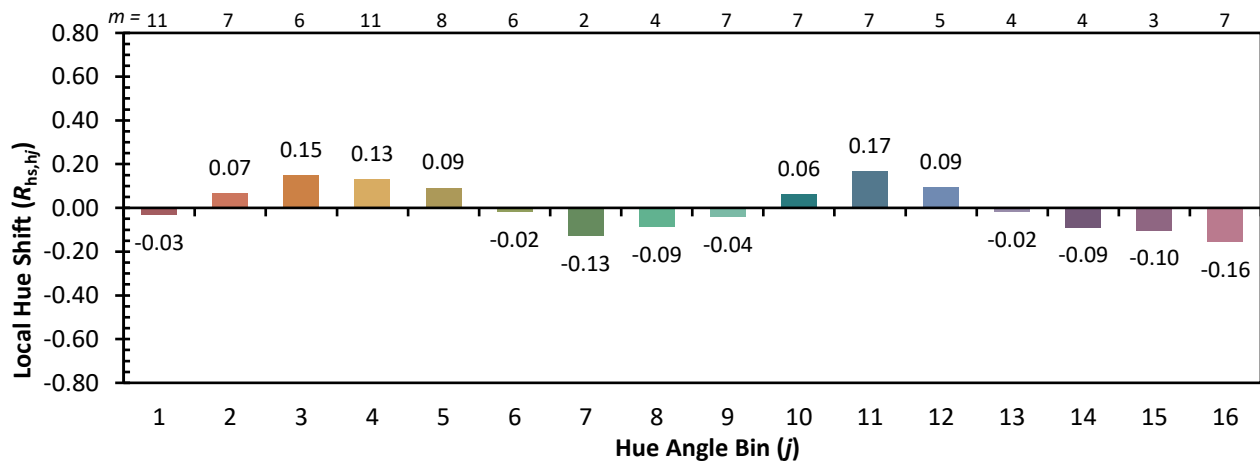
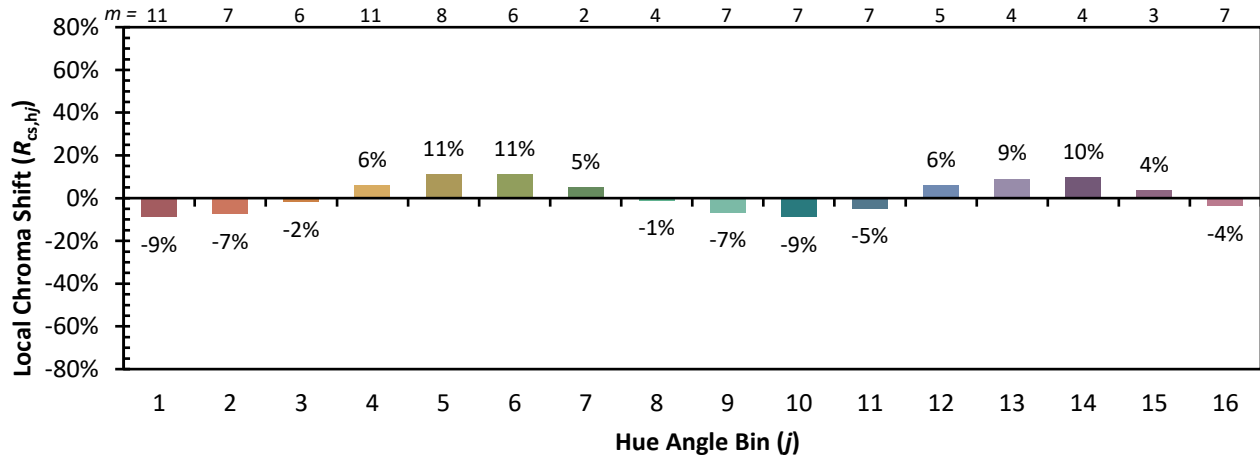


Individual Sample Fidelity Index ($R_{f,i}$)

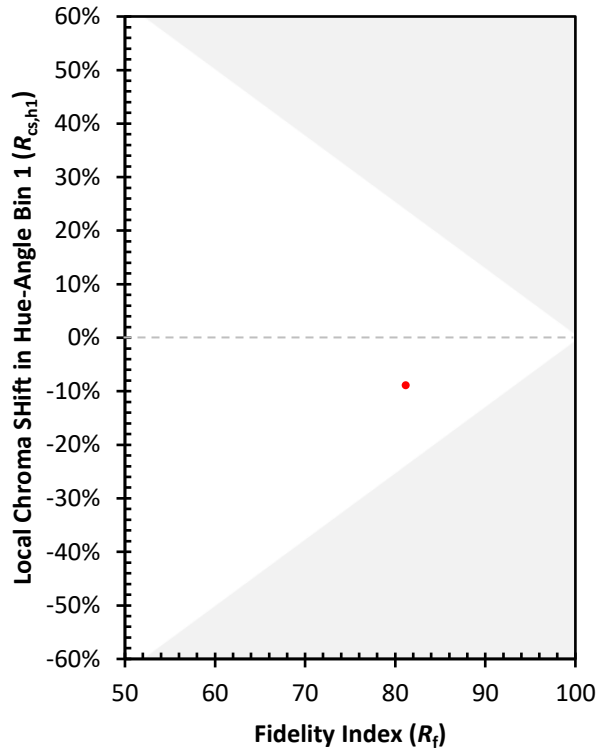
CES01 = 86	CES26 = 71	CES51 = 89	CES76 = 65
CES02 = 63	CES27 = 89	CES52 = 89	CES77 = 82
CES03 = 31	CES28 = 86	CES53 = 80	CES78 = 67
CES04 = 70	CES29 = 68	CES54 = 92	CES79 = 89
CES05 = 50	CES30 = 77	CES55 = 90	CES80 = 85
CES06 = 51	CES31 = 70	CES56 = 81	CES81 = 75
CES07 = 43	CES32 = 64	CES57 = 79	CES82 = 93
CES08 = 41	CES33 = 74	CES58 = 81	CES83 = 89
CES09 = 29	CES34 = 76	CES59 = 92	CES84 = 91
CES10 = 76	CES35 = 87	CES60 = 96	CES85 = 81
CES11 = 59	CES36 = 99	CES61 = 91	CES86 = 74
CES12 = 65	CES37 = 81	CES62 = 93	CES87 = 83
CES13 = 44	CES38 = 83	CES63 = 79	CES88 = 86
CES14 = 74	CES39 = 94	CES64 = 81	CES89 = 74
CES15 = 72	CES40 = 89	CES65 = 78	CES90 = 85
CES16 = 48	CES41 = 88	CES66 = 76	CES91 = 87
CES17 = 50	CES42 = 80	CES67 = 74	CES92 = 73
CES18 = 57	CES43 = 75	CES68 = 79	CES93 = 84
CES19 = 72	CES44 = 99	CES69 = 83	CES94 = 64
CES20 = 67	CES45 = 83	CES70 = 72	CES95 = 80
CES21 = 87	CES46 = 82	CES71 = 70	CES96 = 86
CES22 = 79	CES47 = 79	CES72 = 90	CES97 = 85
CES23 = 92	CES48 = 78	CES73 = 65	CES98 = 83
CES24 = 91	CES49 = 79	CES74 = 94	CES99 = 82
CES25 = 72	CES50 = 88	CES75 = 70	



Color Rendition by Hue-Angle Bin



Measure Comparisons



(END OF REPORT)