

Cooper Lighting Solutions Photometric Lab
1121 Highway 74 South
Peachtree City, GA 30269



Scaled data based on original data using
LM-79-2019 Approved Method: Electrical and Photometric Measurements of Solid-
State Lighting Products

Test Report Prepared for
Cooper Lighting Solutions

Brand: METALUX

Report Number: P1444537

Luminaire Tested: EHBR1-36-UNV-TA-L835

Issue Date: 5/1/2026

Test Information

Test Method: LM-79-2019
Report Number: P1444537
TEST IS SCALED FROM IESNA LM-79-08 TEST DATA (C80-8019A)
Test Lab: INNOVATION CENTER
Issue Date: 5/1/2026
Manufacturer: COOPER LIGHTING SOLUTIONS
Product Line: METALUX
Catalog Number: EHBR1-36-UNV-TA-L835
Description: Elevate Round Highbay at, 36000 lumens, 3500K 80CRI LEDs with TA lens
Light Source: -
Ballast/Driver: -

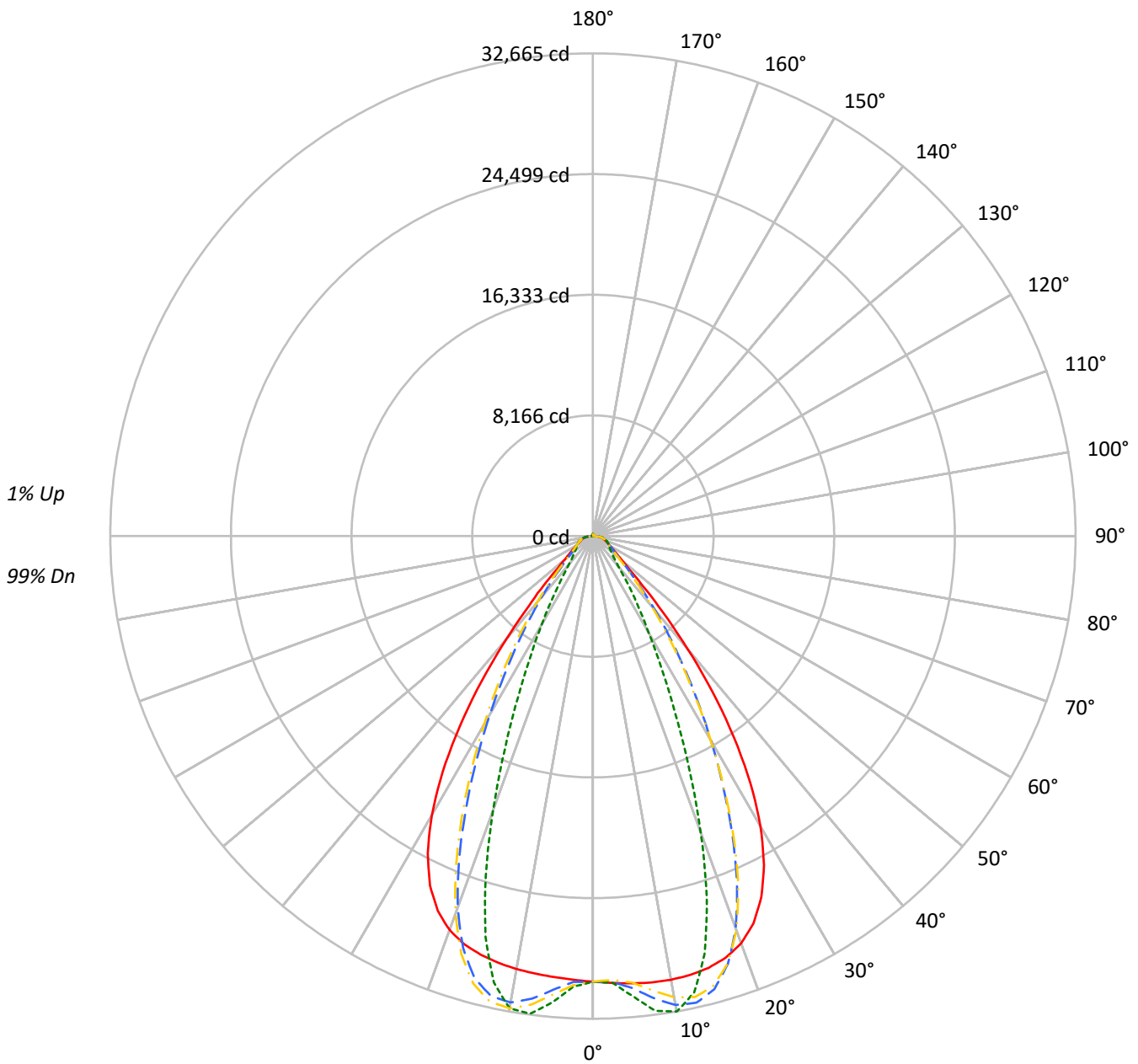
Summary

Lumens per Lamp: N/A
Luminaire Lumens: 34909.3 lumens
Efficiency: N/A
Efficacy: 182.4 lumens/watt
Spacing Criteria (0/90/45): 1.13 / 0.77 / 0.88
Luminous Opening: Circular (Dia: 1.71' x H: 0')
CIE Type: Direct

Input Watts (W): 191.4
Input Voltage (V): NR
Input Current (Ain): NR
Voltage Rise (V): NR
Power Factor: NR
Total Harmonic Distortion (THDi): NR
Frequency (hertz): 60
Stabilization Time: NR
Operation Time: NR
Ambient Temperature (°C): NR
Test Distance: 24 FT

TEST NUMBER: P1444537
CATALOG NUMBER: EHBR1-36-UNV-TA-L835

Luminous Intensity Polar Plot



— 0°-180° - - 45°-225° ··· 90°-270° - · 135°-315°



TEST NUMBER: P1444537

CATALOG NUMBER: EHBR1-36-UNV-TA-L835

COEFFICIENT OF UTILIZATION - ZONAL CAVITY METHOD:

RF	20				20				20				20				20				20
RC	80				70				50				30				10				0
RW	70	50	30	10	70	50	30	10	50	30	10	50	30	10	50	30	10	50	30	10	0
RCR																					
0	119	119	119	119	116	116	116	116	111	111	111	106	106	106	101	101	101	99			
1	112	108	105	103	109	106	103	101	102	100	98	98	96	95	94	93	92	90			
2	105	99	94	90	103	97	93	89	94	90	87	91	88	85	88	85	83	81			
3	99	91	85	81	97	90	84	80	87	82	79	84	81	77	82	79	76	74			
4	93	84	78	73	91	83	77	73	81	76	72	79	74	71	77	73	70	68			
5	88	78	72	67	86	77	71	66	75	70	66	73	69	65	72	68	64	63			
6	83	73	66	61	81	72	66	61	70	65	60	69	64	60	67	63	60	58			
7	78	68	61	57	77	67	61	56	66	60	56	65	59	56	63	59	55	54			
8	74	64	57	53	73	63	57	52	62	56	52	61	56	52	60	55	52	50			
9	70	60	53	49	69	59	53	49	58	53	49	57	52	48	56	52	48	47			
10	67	56	50	46	66	56	50	46	55	49	46	54	49	45	53	49	45	44			

AVERAGE LUMINANCE (cd/sqm):

	0°	90°	180°	270°
0°	141599	141599	141599	141599
5°	143212	147388	141208	149319
10°	145358	155765	141872	154734
15°	147055	142151	142579	136428
20°	146557	106641	141760	98668
25°	139752	67945	135133	61648
30°	123060	41157	118293	37613
35°	95539	26052	90043	23078
40°	61032	16503	55839	15507
45°	31812	13002	31285	12788
50°	18899	11719	18319	11536
55°	14713	11267	14169	11165
60°	12704	11744	12163	11592
65°	12256	12599	11789	12170
70°	12438	13703	11819	13188
75°	14109	15419	13349	14737
80°	16253	19004	14736	17346
85°	19925	23870	16100	20437

MAXIMUM LUMINANCE 45°-90°:

Horizontal Angle: 25°
 Vertical Angle: 45°
 Luminance: 48684 cd/sqm



TEST NUMBER: P1444537
 CATALOG NUMBER: EHBR1-36-UNV-TA-L835

ZONAL LUMENS:

Zone	Lumens	% Fixture
0°-10°	2971.6	8.5
10°-20°	8359.4	23.9
20°-30°	9520.7	27.3
30°-40°	6843.1	19.6
40°-50°	3156.0	9.0
50°-60°	1510.3	4.3
60°-70°	1102.0	3.2
70°-80°	837.2	2.4
80°-90°	380.8	1.1
90°-100°	12.3	0.0
100°-110°	8.9	0.0
110°-120°	15.2	0.0
120°-130°	25.5	0.1
130°-140°	37.5	0.1
140°-150°	44.6	0.1
150°-160°	41.9	0.1
160°-170°	30.6	0.1
170°-180°	11.6	0.0
0°-30°	20851.7	59.7
0°-40°	27694.8	79.3
0°-60°	32361.1	92.7
0°-90°	34681.1	99.3
90°-120°	36.5	0.1
90°-150°	144.0	0.4
90°-180°	228.0	0.7
0°-180°	34909.3	100.0

CANDELA DISTRIBUTION:

	0°	90°	180°	270°	360°	Flux
0°	30153	30153	30153	30153	30153	
5°	30380	31266	29955	31676	30380	2903
15°	30247	29239	29327	28061	30247	8522
25°	26971	13113	26080	11898	26971	12227
35°	16665	4544	15706	4026	16665	10228
45°	4790	1958	4711	1926	4790	4074
55°	1797	1376	1731	1364	1797	1659
65°	1103	1134	1061	1095	1103	1102
75°	778	850	736	812	778	809
85°	370	443	299	379	370	347
90°	84	110	12	19	84	55
95°	5	5	5	5	5	5
105°	9	7	10	7	9	10
115°	20	10	21	10	20	20
125°	38	17	40	18	38	34
135°	61	33	63	36	61	47
145°	81	60	83	64	81	51
155°	95	85	97	89	95	44
165°	111	105	113	107	111	31
175°	123	122	124	123	123	12
180°	125	125	125	125	125	



TEST NUMBER: P1444537
 CATALOG NUMBER: EHBR1-36-UNV-TA-L835

CANDELA DISTRIBUTION (FULL):

	0°	2.5°	5°	7.5°	10°	12.5°	15°	17.5°	20°	22.5°	25°
0°	30152.6	30152.6	30152.6	30152.6	30152.6	30152.6	30152.6	30152.6	30152.6	30152.6	30152.6
2.5°	30267.8	30265.2	30264.9	30262.7	30262.1	30262.1	30261.2	30258.6	30257.1	30253.7	30249.7
5°	30380.0	30378.7	30379.5	30379.8	30377.6	30372.9	30365.5	30356.5	30345.0	30334.4	30324.8
7.5°	30466.9	30469.0	30471.7	30471.1	30464.5	30453.4	30438.4	30429.9	30434.9	30451.3	30488.9
10°	30482.7	30495.7	30500.8	30499.2	30486.0	30476.5	30480.2	30512.1	30575.7	30660.6	30776.5
12.5°	30421.0	30436.9	30436.3	30431.0	30418.2	30431.2	30477.5	30572.6	30708.9	30876.2	31072.5
15°	30247.4	30268.0	30262.1	30255.4	30246.8	30289.4	30381.9	30547.0	30757.5	30993.4	31235.0
17.5°	29910.5	29935.3	29923.3	29915.5	29908.3	29988.1	30146.9	30388.8	30654.0	30920.8	31149.6
20°	29326.1	29342.6	29313.9	29300.5	29311.8	29468.2	29702.1	30010.9	30290.5	30542.7	30699.2
22.5°	28372.3	28392.9	28339.0	28332.7	28399.3	28639.5	28935.4	29280.7	29543.3	29743.3	29803.5
25°	26971.0	26991.2	26927.1	26965.4	27078.8	27405.8	27758.3	28127.6	28351.7	28499.9	28458.9
27.5°	25079.4	25098.0	25037.2	25115.5	25294.6	25724.4	26139.2	26539.8	26739.5	26843.4	26711.8
30°	22694.0	22732.6	22660.7	22769.9	23043.3	23601.2	24076.5	24525.8	24724.9	24803.9	24599.2
32.5°	19860.6	19915.5	19836.3	19998.8	20380.4	21050.6	21590.4	22092.4	22312.7	22402.9	22171.6
35°	16665.2	16743.8	16652.9	16896.8	17367.4	18113.7	18711.5	19272.0	19532.8	19660.7	19427.7
37.5°	13279.5	13354.6	13305.4	13630.7	14147.4	14921.0	15531.3	16135.8	16430.4	16622.3	16438.6
40°	9955.7	10024.3	10061.6	10433.5	10919.6	11648.7	12234.9	12833.0	13162.6	13403.4	13290.1
42.5°	7026.7	7096.0	7222.4	7581.4	7986.7	8590.3	9092.3	9629.4	9944.2	10201.1	10157.5
45°	4790.0	4870.3	5028.8	5322.7	5615.8	6048.9	6417.5	6835.2	7092.4	7327.7	7330.5
47.5°	3356.6	3413.1	3554.6	3755.3	3946.5	4488.5	4510.8	4716.0	4888.9	5064.8	5087.6
50°	2586.8	2620.9	2695.9	2807.8	2916.1	3056.8	3185.6	3334.3	3440.8	3537.2	3560.3
52.5°	2126.3	2147.8	2186.0	2246.6	2309.4	2385.9	2454.9	2536.6	2594.5	2646.1	2657.0
55°	1797.0	1814.9	1871.8	1883.3	1955.1	1969.0	1999.6	2049.4	2083.0	2114.0	2121.6
57.5°	1548.6	1561.6	1573.7	1599.5	1621.6	1653.8	1679.7	1715.4	1736.6	1758.9	1760.8
60°	1352.6	1362.0	1370.6	1388.5	1403.5	1425.9	1443.8	1468.0	1483.2	1500.0	1501.9
62.5°	1206.8	1213.5	1219.2	1231.0	1241.8	1259.0	1273.1	1293.4	1307.5	1320.5	1323.4
65°	1103.0	1108.0	1111.7	1120.6	1130.0	1144.6	1157.5	1174.0	1184.4	1194.4	1196.5
67.5°	1011.2	1015.9	1019.7	1027.9	1034.4	1045.3	1053.9	1066.3	1074.1	1082.1	1082.3
70°	905.9	910.3	913.2	920.8	926.1	935.5	942.4	953.5	961.6	970.4	972.6
72.5°	833.1	835.6	839.6	846.5	853.8	863.8	873.0	884.7	894.5	903.6	907.5
75°	777.6	780.6	783.3	789.2	794.2	802.7	809.6	820.2	828.7	838.5	843.4
77.5°	697.6	701.1	703.4	709.3	713.6	721.8	726.9	736.4	743.3	752.3	756.7
80°	601.0	604.3	605.8	611.3	614.8	622.3	627.3	636.6	642.4	651.3	656.5
82.5°	493.8	496.9	497.8	503.1	505.0	511.2	514.9	524.2	531.4	543.0	551.0
85°	369.8	370.9	372.7	371.4	378.8	379.3	387.8	389.3	400.6	403.5	416.2
87.5°	226.1	229.4	231.1	236.2	238.4	243.6	245.2	250.6	253.7	260.0	262.9
90°	83.7	88.0	88.9	94.2	95.0	99.6	100.0	105.3	106.2	111.6	112.6
92.5°	5.0	5.0	4.9	5.2	5.2	5.9	6.3	6.5	6.6	7.2	7.3
95°	5.1	5.1	5.1	5.1	5.1	5.1	5.1	5.1	5.1	5.1	5.0
97.5°	5.8	5.8	5.8	5.8	5.8	5.8	5.8	5.8	5.8	5.7	5.7
100°	6.6	6.6	6.6	6.6	6.6	6.6	6.6	6.6	6.6	6.6	6.5
102.5°	7.9	7.9	7.9	7.9	7.9	7.8	7.9	7.8	7.8	7.8	7.5
105°	9.3	9.2	9.3	9.2	9.2	9.2	9.2	8.9	8.9	8.8	8.8
107.5°	11.1	11.0	11.0	11.0	11.0	10.9	10.9	10.8	10.6	10.4	10.4
110°	13.5	13.3	13.3	13.2	13.1	13.1	13.0	12.6	12.6	12.4	12.3



TEST NUMBER: P1444537
 CATALOG NUMBER: EHBR1-36-UNV-TA-L835

CANDELA DISTRIBUTION (continued):

	0°	2.5°	5°	7.5°	10°	12.5°	15°	17.5°	20°	22.5°	25°
112.5°	16.4	16.2	16.1	16.0	15.9	15.5	15.4	15.2	15.1	14.7	14.5
115°	19.8	19.6	19.5	19.1	19.0	18.6	18.4	18.1	17.8	17.5	17.2
117.5°	23.8	23.5	23.3	23.0	22.6	22.2	21.9	21.4	21.0	20.6	20.3
120°	28.3	27.8	27.6	27.1	26.7	26.2	25.8	25.2	24.7	24.0	23.7
122.5°	33.1	32.7	32.4	31.7	31.3	30.6	30.2	29.3	28.8	28.1	27.5
125°	38.3	37.8	37.5	36.8	36.2	35.5	34.9	34.1	33.5	32.5	31.8
127.5°	43.8	43.3	43.0	42.1	41.5	40.7	39.9	39.0	38.3	37.2	36.6
130°	49.5	49.1	48.5	47.7	47.0	46.2	45.3	44.2	43.4	42.4	41.5
132.5°	55.3	54.9	54.3	53.5	52.7	51.6	50.8	49.6	48.7	47.7	46.7
135°	61.1	60.5	60.0	59.2	58.5	57.3	56.3	55.2	54.2	52.9	52.1
137.5°	66.6	66.0	65.4	64.6	63.8	62.5	61.7	60.5	59.4	58.2	57.2
140°	71.8	71.3	70.6	69.7	68.9	68.0	66.8	65.7	64.6	63.3	62.4
142.5°	76.8	76.1	75.5	74.7	73.9	72.7	71.8	70.5	69.5	68.3	67.4
145°	81.1	80.5	79.9	79.1	78.2	77.1	76.2	75.0	74.1	73.0	71.9
147.5°	84.9	84.4	84.0	83.1	82.5	81.4	80.5	79.3	78.4	77.5	76.7
150°	88.4	87.9	87.5	86.8	86.0	85.1	84.3	83.4	82.5	81.4	80.7
152.5°	91.3	90.8	90.4	89.7	89.1	88.0	87.5	86.5	85.7	84.8	84.1
155°	94.7	94.2	93.7	93.1	92.4	91.6	90.9	90.1	89.4	88.5	87.8
157.5°	98.6	97.9	97.4	96.7	96.2	95.4	94.7	94.0	93.3	92.6	92.0
160°	102.7	102.1	101.6	100.9	100.3	99.5	98.9	98.1	97.6	96.9	96.3
162.5°	107.0	106.4	105.8	105.2	104.6	103.8	103.3	102.7	102.1	101.3	100.8
165°	111.2	110.7	110.1	109.7	109.1	108.5	107.9	107.2	106.8	106.1	105.6
167.5°	115.3	114.8	114.4	113.8	113.3	112.9	112.3	111.8	111.4	110.7	110.3
170°	118.7	118.1	117.8	117.4	117.0	116.5	116.3	115.8	115.3	114.9	114.5
172.5°	121.1	120.7	120.4	120.2	119.7	119.6	119.3	118.9	118.7	118.2	118.1
175°	123.0	122.7	122.6	122.4	122.2	121.9	121.8	121.6	121.6	121.2	121.0
177.5°	124.3	124.1	124.1	124.0	124.0	123.9	123.8	123.6	123.5	123.5	123.3
180°	125.1	125.1	125.1	125.1	125.1	125.1	125.1	125.1	125.1	125.1	125.1



TEST NUMBER: P1444537
 CATALOG NUMBER: EHBR1-36-UNV-TA-L835

CANDELA DISTRIBUTION (continued):

	27.5°	30°	32.5°	35°	37.5°	40°	42.5°	45°	47.5°	50°	52.5°
0°	30152.6	30152.6	30152.6	30152.6	30152.6	30152.6	30152.6	30152.6	30152.6	30152.6	30152.6
2.5°	30246.8	30243.1	30238.1	30231.8	30226.3	30220.0	30204.8	30200.4	30205.4	30208.7	30215.7
5°	30318.7	30320.8	30321.6	30335.3	30347.2	30376.8	30608.8	30701.0	30772.3	30817.5	30886.3
7.5°	30535.4	30605.1	30674.0	30766.8	30846.8	30954.9	31360.7	31533.5	31656.4	31744.6	31853.3
10°	30902.6	31054.8	31197.5	31364.7	31508.4	31673.0	32050.8	32219.1	32325.4	32402.7	32474.9
12.5°	31272.5	31483.6	31674.3	31860.4	32016.0	32158.6	32291.6	32350.4	32355.5	32357.9	32319.6
15°	31465.1	31666.9	31835.1	31958.1	32049.4	32090.0	31861.1	31741.2	31589.5	31464.6	31259.1
17.5°	31343.6	31464.6	31537.2	31530.0	31492.3	31365.8	30717.9	30361.5	30007.7	29688.9	29270.8
20°	30803.0	30793.8	30730.6	30551.7	30336.1	30000.9	28890.1	28249.2	27629.6	27085.4	26425.2
22.5°	29797.4	29639.2	29418.6	29032.9	28604.3	28018.5	26426.7	25484.0	24621.4	23859.3	23005.7
25°	28340.3	28014.8	27607.9	26995.5	26329.5	25475.3	23513.3	22340.7	21305.1	20406.8	19421.9
27.5°	26475.6	25985.1	25388.9	24541.3	23639.1	22544.6	20369.5	19075.4	17963.7	17000.5	15952.3
30°	24267.8	23630.1	22860.2	21808.1	20719.8	19478.6	17272.4	15961.8	14836.5	13845.7	12796.6
32.5°	21772.9	21026.0	20123.7	18943.0	17766.1	16489.8	14359.3	13090.6	12015.5	11062.5	10112.9
35°	19021.2	18220.2	17265.6	16061.4	14891.4	13650.7	11695.8	10551.8	9602.4	8760.0	7993.3
37.5°	16069.5	15283.0	14375.7	13240.6	12155.8	11031.5	9344.6	8386.1	7589.4	6890.2	6298.2
40°	13000.6	12312.2	11527.2	10546.0	9620.1	8683.8	7299.1	6538.2	5909.5	5376.3	4932.6
42.5°	9969.2	9435.8	8833.7	8058.3	7349.8	6636.9	5571.1	5007.3	4541.7	4157.8	3844.2
45°	7233.0	6876.2	6472.4	5933.3	5443.1	4945.7	4187.2	3791.1	3487.8	3240.3	3030.9
47.5°	5056.2	4849.3	4836.6	4338.5	3978.9	3674.9	3186.2	2936.0	2750.1	2600.1	2467.7
50°	3550.8	3450.7	3326.3	3148.6	2981.7	2809.8	2512.1	2360.8	2251.9	2161.1	2077.3
52.5°	2654.5	2602.6	2536.2	2441.9	2351.5	2254.9	2066.5	1970.2	1935.9	1851.3	1785.0
55°	2120.2	2090.4	2052.7	1997.3	1942.3	1920.3	1758.8	1687.3	1642.1	1608.6	1573.0
57.5°	1761.1	1738.9	1716.6	1679.0	1647.2	1608.6	1522.9	1486.2	1459.4	1439.7	1415.0
60°	1502.2	1488.9	1476.4	1454.4	1437.2	1416.4	1362.0	1341.3	1327.2	1315.4	1299.7
62.5°	1325.9	1319.1	1312.6	1300.8	1292.1	1280.9	1243.6	1233.7	1226.7	1220.8	1211.2
65°	1198.6	1193.7	1190.1	1182.3	1178.0	1171.4	1139.4	1132.7	1128.3	1126.2	1120.6
67.5°	1083.0	1077.8	1075.5	1069.9	1068.1	1064.0	1037.8	1034.1	1032.6	1033.3	1031.3
70°	974.8	972.6	973.8	972.9	975.3	976.1	960.2	960.1	961.9	965.2	965.5
72.5°	910.0	910.0	911.2	911.7	914.1	915.2	902.0	901.4	902.1	904.7	904.8
75°	848.3	849.3	852.7	853.8	856.6	857.1	839.7	837.7	837.8	840.2	839.3
77.5°	762.9	766.6	773.0	776.3	781.7	782.7	763.1	760.8	760.9	763.3	761.2
80°	666.0	673.1	683.2	690.3	698.5	701.9	681.7	677.0	672.5	671.8	667.8
82.5°	563.1	571.7	583.9	590.3	599.1	601.1	567.4	561.1	557.3	557.6	553.9
85°	429.9	436.4	447.5	451.0	456.5	456.0	417.6	401.1	405.5	398.7	404.0
87.5°	269.7	273.4	280.4	281.3	283.8	283.3	244.6	237.0	234.7	234.9	232.1
90°	117.7	119.2	124.0	123.0	126.0	124.3	91.8	87.2	85.4	87.8	84.9
92.5°	7.8	7.8	8.0	8.1	8.5	8.7	5.3	4.5	4.8	4.6	5.0
95°	5.0	5.0	5.0	5.0	5.0	5.0	5.0	5.0	5.0	4.9	4.9
97.5°	5.7	5.7	5.6	5.6	5.6	5.6	5.6	5.6	5.6	5.3	5.3
100°	6.5	6.5	6.4	6.4	6.3	6.3	6.3	6.3	6.3	6.0	6.0
102.5°	7.4	7.4	7.3	7.2	7.1	7.1	7.2	7.2	7.1	6.8	6.7
105°	8.7	8.6	8.5	8.1	8.0	8.0	8.1	8.0	8.0	7.9	7.8
107.5°	10.2	10.1	9.7	9.5	9.4	9.2	9.5	9.4	9.2	8.8	8.7
110°	12.0	11.7	11.5	11.2	10.9	10.6	11.1	10.9	10.6	10.3	10.1



TEST NUMBER: P1444537
 CATALOG NUMBER: EHBR1-36-UNV-TA-L835

CANDELA DISTRIBUTION (continued):

	27.5°	30°	32.5°	35°	37.5°	40°	42.5°	45°	47.5°	50°	52.5°
112.5°	14.1	13.9	13.5	13.1	12.6	12.3	13.0	12.9	12.4	11.8	11.6
115°	16.7	16.4	15.9	15.4	14.9	14.4	15.2	15.1	14.5	14.0	13.5
117.5°	19.7	19.1	18.6	18.1	17.5	16.9	18.0	17.6	17.0	16.4	15.9
120°	23.0	22.5	21.8	21.2	20.5	19.8	21.0	20.7	20.1	19.3	18.6
122.5°	26.9	26.2	25.4	24.7	23.9	23.2	24.6	24.3	23.5	22.7	21.9
125°	31.0	30.3	29.5	28.7	27.7	27.0	28.7	28.3	27.5	26.6	25.8
127.5°	35.7	34.9	33.9	33.2	32.1	31.3	33.1	32.8	31.8	30.9	30.0
130°	40.5	39.7	38.7	37.8	36.8	36.0	37.9	37.6	36.7	35.7	34.7
132.5°	45.7	44.8	43.7	43.0	41.9	40.9	43.1	42.8	42.0	40.9	40.0
135°	51.0	50.0	49.1	48.1	47.0	46.3	48.6	48.4	47.6	46.4	45.6
137.5°	56.1	55.2	54.2	53.4	52.5	51.5	54.3	54.2	53.4	52.3	51.5
140°	61.5	60.5	59.5	58.8	57.8	57.1	60.0	60.0	59.3	58.5	57.6
142.5°	66.2	65.4	64.6	63.9	63.0	62.3	65.7	65.8	65.2	64.3	63.6
145°	71.0	70.3	69.4	68.7	68.0	67.4	71.2	71.6	71.0	70.2	69.5
147.5°	75.5	74.9	74.1	73.4	72.7	72.4	76.7	77.1	76.7	76.0	75.4
150°	79.8	79.1	78.3	77.8	77.4	76.9	81.9	82.7	82.2	81.8	81.3
152.5°	83.3	82.6	81.9	81.4	80.8	80.5	87.0	88.0	87.8	87.2	86.8
155°	87.2	86.5	85.8	85.4	84.8	84.6	92.0	93.3	93.0	92.6	92.2
157.5°	91.3	90.7	90.0	89.5	89.1	88.6	96.7	98.4	98.0	97.6	97.3
160°	95.7	95.1	94.4	94.0	93.4	93.0	101.4	103.2	102.9	102.5	102.1
162.5°	100.2	99.8	99.1	98.6	98.0	97.6	106.1	107.9	107.5	107.1	106.9
165°	105.0	104.5	103.9	103.6	103.1	102.7	110.7	112.4	112.2	111.8	111.4
167.5°	109.8	109.4	108.9	108.5	108.0	107.8	115.3	116.9	116.6	116.3	116.0
170°	114.1	113.8	113.4	113.2	113.0	112.9	119.2	120.4	120.3	119.9	119.7
172.5°	117.8	117.7	117.4	117.2	117.0	116.9	122.2	123.3	123.2	123.0	122.7
175°	120.9	120.7	120.6	120.6	120.4	120.3	124.5	125.4	125.3	125.1	124.8
177.5°	123.3	123.2	123.2	123.2	123.2	123.2	125.8	126.2	126.1	126.1	126.1
180°	125.1	125.1	125.1	125.1	125.1	125.1	125.1	125.1	125.1	125.1	125.1



TEST NUMBER: P1444537
 CATALOG NUMBER: EHBR1-36-UNV-TA-L835

CANDELA DISTRIBUTION (continued):

	55°	57.5°	60°	62.5°	65°	67.5°	70°	72.5°	75°	77.5°	80°
0°	30152.6	30152.6	30152.6	30152.6	30152.6	30152.6	30152.6	30152.6	30152.6	30152.6	30152.6
2.5°	30217.2	30227.8	30229.5	30241.8	30240.8	30255.5	30253.2	30265.2	30258.3	30268.2	30259.8
5°	30926.9	30991.3	31024.9	31087.8	31107.6	31163.9	31179.7	31231.0	31233.1	31273.8	31264.5
7.5°	31930.4	32025.2	32081.5	32159.2	32198.6	32263.2	32291.7	32339.6	32355.0	32393.0	32395.9
10°	32529.5	32575.6	32607.7	32629.5	32649.2	32658.5	32669.3	32666.4	32669.3	32665.1	32674.4
12.5°	32293.9	32226.6	32182.1	32097.8	32049.1	31956.0	31910.2	31820.7	31788.2	31711.3	31700.3
15°	31100.3	30865.8	30700.2	30459.3	30307.9	30070.8	29932.2	29718.4	29620.7	29450.8	29406.2
17.5°	28924.7	28489.6	28152.8	27720.8	27421.0	27017.2	26763.3	26429.0	26246.0	25976.5	25883.1
20°	25874.8	25230.9	24725.7	24123.9	23693.3	23156.6	22813.1	22379.8	22128.3	21797.3	21663.1
22.5°	22294.0	21492.3	20861.4	20150.5	19630.8	19032.9	18621.3	18152.5	17878.8	17519.2	17360.0
25°	18603.3	17719.2	17017.8	16268.8	15719.7	15120.3	14708.7	14248.1	13965.0	13623.6	13465.3
27.5°	15073.4	14178.6	13500.7	12804.3	12300.6	11759.7	11388.3	10986.3	10735.0	10443.5	10294.7
30°	11958.4	11169.2	10592.3	10014.3	9595.5	9156.1	8847.5	8514.2	8293.7	8044.3	7902.4
32.5°	9420.6	8811.3	8359.6	7901.0	7558.1	7191.0	6924.3	6630.3	6431.3	6208.5	6080.0
35°	7461.0	6987.6	6627.3	6249.8	5955.2	5642.5	5407.6	5153.7	4975.2	4783.3	4672.4
37.5°	5895.0	5518.5	5222.0	4908.4	4666.5	4407.5	4320.2	4029.0	3844.0	3690.9	3584.8
40°	4626.4	4327.0	4081.7	3841.9	3644.6	3448.2	3290.4	3134.9	3015.4	2906.0	2830.1
42.5°	3612.8	3395.9	3216.8	3041.1	2897.2	2754.0	2639.9	2532.6	2452.2	2380.6	2331.7
45°	2872.0	2722.9	2598.4	2474.7	2373.1	2277.5	2200.7	2132.3	2080.3	2037.3	2006.8
47.5°	2359.5	2257.4	2169.5	2086.0	2017.1	1954.5	1903.0	1886.2	1830.4	1792.6	1778.4
50°	2005.2	1943.5	1876.8	1815.2	1769.2	1723.4	1690.0	1657.3	1636.3	1619.0	1613.7
52.5°	1740.9	1693.6	1656.6	1617.5	1587.2	1554.5	1531.5	1509.7	1498.3	1489.1	1488.1
55°	1544.2	1511.3	1486.7	1460.5	1442.3	1423.2	1411.3	1399.7	1394.7	1390.1	1390.5
57.5°	1395.5	1373.5	1357.6	1340.5	1330.7	1321.5	1318.5	1315.6	1317.2	1317.8	1320.4
60°	1287.2	1272.8	1262.7	1253.0	1248.9	1246.0	1248.2	1250.8	1256.0	1260.3	1264.1
62.5°	1204.1	1195.9	1191.0	1185.7	1185.4	1185.6	1190.0	1194.4	1201.0	1205.9	1209.6
65°	1118.7	1113.9	1112.3	1109.0	1110.7	1111.7	1117.0	1120.4	1127.0	1130.9	1135.6
67.5°	1032.3	1031.1	1032.2	1032.2	1035.2	1037.7	1042.8	1046.6	1052.2	1055.8	1059.6
70°	968.5	968.8	971.2	971.7	974.9	976.7	981.2	983.6	988.6	991.6	996.3
72.5°	906.4	905.4	905.9	904.5	905.6	905.1	907.7	908.8	913.1	915.4	921.0
75°	840.4	837.6	836.9	833.9	834.0	831.8	832.9	832.7	835.5	836.7	840.7
77.5°	760.6	755.9	753.6	748.6	748.4	746.6	748.6	749.8	754.8	757.1	761.6
80°	665.2	657.8	654.4	648.6	649.5	649.3	654.2	657.9	663.9	665.1	670.8
82.5°	552.8	545.3	541.7	536.1	537.4	537.6	542.0	542.8	548.0	550.3	556.9
85°	395.8	398.7	390.8	391.3	389.7	392.8	395.8	399.6	403.9	411.2	416.8
87.5°	233.1	232.1	234.9	235.2	239.3	241.3	247.8	251.5	258.8	264.5	274.8
90°	86.0	83.3	86.4	86.0	90.9	90.7	94.8	93.8	98.8	99.9	106.2
92.5°	4.6	4.9	4.6	4.8	4.6	5.0	4.6	4.9	4.6	5.0	4.6
95°	4.9	4.9	4.9	4.9	4.9	4.9	4.9	4.9	4.9	4.9	4.9
97.5°	5.3	5.3	5.3	5.2	5.2	5.2	5.2	5.2	5.2	5.2	5.2
100°	5.9	5.9	5.9	5.8	5.8	5.8	5.8	5.8	5.8	5.8	5.8
102.5°	6.7	6.6	6.6	6.5	6.5	6.4	6.4	6.4	6.4	6.4	6.4
105°	7.5	7.4	7.3	7.2	7.2	7.1	7.1	6.8	6.8	6.8	6.8
107.5°	8.5	8.2	8.1	8.0	8.0	7.9	7.8	7.8	7.5	7.5	7.5
110°	9.6	9.4	9.3	8.9	8.8	8.7	8.5	8.5	8.2	8.1	8.1



TEST NUMBER: P1444537
 CATALOG NUMBER: EHBR1-36-UNV-TA-L835

CANDELA DISTRIBUTION (continued):

	55°	57.5°	60°	62.5°	65°	67.5°	70°	72.5°	75°	77.5°	80°
112.5°	11.2	10.9	10.4	10.2	10.0	9.6	9.5	9.4	9.3	9.2	8.9
115°	13.0	12.5	12.0	11.7	11.4	11.0	10.8	10.6	10.3	10.2	10.1
117.5°	15.2	14.6	14.0	13.5	13.1	12.6	12.3	11.8	11.6	11.5	11.4
120°	17.8	17.2	16.4	15.9	15.2	14.6	14.1	13.8	13.3	13.2	13.0
122.5°	21.0	20.3	19.3	18.6	17.8	17.2	16.6	16.1	15.5	15.2	14.9
125°	24.7	23.8	22.9	21.9	21.0	20.4	19.6	18.9	18.3	18.0	17.5
127.5°	28.9	27.8	26.9	25.9	24.8	24.0	23.2	22.5	21.7	21.1	20.6
130°	33.6	32.7	31.4	30.5	29.3	28.4	27.5	26.7	25.9	25.2	24.6
132.5°	38.9	37.9	36.7	35.7	34.5	33.5	32.5	31.6	30.6	30.0	29.3
135°	44.5	43.5	42.4	41.3	40.1	39.3	38.2	37.2	36.4	35.5	34.7
137.5°	50.5	49.5	48.5	47.6	46.3	45.5	44.2	43.4	42.4	41.8	40.9
140°	56.5	55.8	54.7	53.7	52.7	52.0	50.8	50.0	49.1	48.4	47.6
142.5°	62.5	61.8	60.9	60.1	59.2	58.5	57.4	56.6	55.8	55.1	54.3
145°	68.7	68.1	67.3	66.5	65.7	65.1	64.0	63.3	62.5	61.9	61.4
147.5°	74.8	74.1	73.4	72.7	71.9	71.3	70.5	70.1	69.1	68.7	68.1
150°	80.6	80.0	79.3	78.9	78.2	77.6	76.9	76.3	75.6	75.3	74.7
152.5°	86.2	85.7	85.1	84.7	84.1	83.5	82.9	82.5	81.9	81.4	80.8
155°	91.6	91.1	90.7	90.2	89.5	89.2	88.6	88.0	87.7	87.2	86.6
157.5°	96.9	96.5	95.9	95.5	94.8	94.4	94.0	93.6	93.0	92.6	92.1
160°	101.7	101.3	100.8	100.4	99.9	99.5	98.9	98.6	98.0	97.6	97.2
162.5°	106.4	106.0	105.6	105.2	104.6	104.2	103.7	103.3	102.8	102.4	101.8
165°	110.9	110.5	110.1	109.7	109.3	108.9	108.3	107.9	107.4	107.0	106.5
167.5°	115.6	115.2	114.8	114.4	113.8	113.4	113.1	112.7	112.2	111.8	111.2
170°	119.5	119.0	118.8	118.3	118.0	117.5	117.2	116.7	116.4	116.1	115.6
172.5°	122.5	122.4	122.1	121.8	121.4	121.1	120.9	120.6	120.2	119.9	119.7
175°	124.7	124.6	124.5	124.1	124.0	123.8	123.6	123.5	123.2	123.1	122.9
177.5°	126.1	126.0	126.0	125.8	125.6	125.6	125.5	125.5	125.4	125.3	125.3
180°	125.1	125.1	125.1	125.1	125.1	125.1	125.1	125.1	125.1	125.1	125.1



TEST NUMBER: P1444537
 CATALOG NUMBER: EHBR1-36-UNV-TA-L835

CANDELA DISTRIBUTION (continued):

	82.5°	85°	87.5°	90°	92.5°	95°	97.5°	100°	102.5°	105°	107.5°
0°	30152.6	30152.6	30152.6	30152.6	30152.6	30152.6	30152.6	30152.6	30152.6	30152.6	30152.6
2.5°	30268.5	30260.8	30264.5	30250.3	30253.7	30236.5	30235.0	30215.7	30213.8	30195.5	30188.7
5°	31293.3	31276.5	31295.5	31265.9	31271.7	31233.1	31229.9	31180.1	31162.8	31100.5	31073.6
7.5°	32419.7	32413.3	32425.0	32400.2	32399.4	32365.0	32350.7	32306.0	32278.4	32212.8	32171.0
10°	32666.4	32672.2	32662.7	32665.1	32651.7	32648.0	32634.2	32625.5	32603.1	32586.1	32561.0
12.5°	31641.8	31647.9	31608.8	31633.7	31614.1	31659.8	31656.1	31710.0	31718.2	31786.4	31812.3
15°	29273.7	29266.3	29191.4	29238.6	29213.3	29313.7	29336.1	29471.1	29543.3	29716.6	29823.1
17.5°	25696.4	25677.1	25571.5	25629.0	25599.8	25747.7	25797.3	26013.3	26147.9	26427.2	26626.2
20°	21432.1	21395.1	21271.5	21338.9	21308.8	21476.8	21547.7	21808.6	21982.3	22352.2	22615.3
22.5°	17114.8	17056.3	16935.3	16998.2	16969.7	17143.9	17236.1	17497.9	17696.7	18076.5	18383.7
25°	13237.8	13185.8	13068.8	13112.9	13102.2	13249.5	13331.5	13579.1	13774.6	14136.4	14429.6
27.5°	10096.8	10042.6	9937.0	9968.1	9957.4	10082.9	10160.2	10367.1	10535.2	10839.8	11097.2
30°	7727.7	7662.3	7572.6	7589.9	7582.5	7684.1	7756.4	7930.6	8074.7	8332.1	8553.9
32.5°	5923.2	5857.6	5775.2	5783.2	5772.3	5852.1	5911.6	6063.1	6188.8	6407.5	6600.7
35°	4532.1	4608.9	4433.0	4544.4	4428.4	4598.7	4537.4	4632.1	4740.2	4924.5	5085.6
37.5°	3484.1	3430.6	3385.3	3380.5	3380.3	3419.8	3466.3	3557.5	3652.8	3790.1	3932.0
40°	2761.0	2723.5	2694.2	2692.1	2694.2	2722.2	2756.6	2819.7	2889.4	2988.1	3092.3
42.5°	2290.0	2265.0	2247.4	2246.1	2251.7	2271.6	2295.6	2333.0	2378.4	2442.3	2513.8
45°	1982.0	1968.1	1958.2	1957.8	1960.3	1970.7	1984.4	2007.8	2036.5	2076.4	2121.6
47.5°	1765.9	1762.5	1756.4	1756.6	1753.8	1758.0	1759.6	1772.7	1788.0	1818.0	1877.2
50°	1608.5	1608.5	1604.2	1604.0	1600.1	1599.8	1596.5	1601.6	1608.7	1627.4	1646.3
52.5°	1484.1	1483.7	1479.2	1478.2	1473.9	1473.7	1470.8	1472.9	1473.8	1483.2	1494.6
55°	1386.9	1384.0	1377.9	1376.1	1374.4	1376.9	1375.7	1375.9	1374.6	1378.5	1381.9
57.5°	1317.2	1313.4	1307.7	1306.0	1305.6	1308.5	1308.6	1307.5	1302.3	1298.7	1293.8
60°	1262.0	1258.2	1252.1	1250.4	1251.4	1255.4	1255.2	1251.8	1244.0	1237.1	1229.3
62.5°	1207.8	1206.2	1203.1	1202.6	1201.8	1202.5	1199.7	1196.1	1188.5	1181.2	1172.6
65°	1135.0	1135.8	1133.5	1133.8	1131.0	1130.6	1126.3	1122.8	1115.1	1108.5	1099.6
67.5°	1059.5	1060.1	1058.1	1058.1	1056.7	1056.9	1054.4	1051.1	1044.5	1039.1	1032.4
70°	997.3	998.8	997.7	998.0	996.3	995.6	991.5	988.4	981.6	977.1	971.0
72.5°	922.7	926.1	926.0	926.8	924.0	922.7	917.9	914.0	907.9	904.3	899.3
75°	842.2	846.6	847.8	849.8	845.9	844.0	838.7	835.5	830.5	828.3	825.1
77.5°	763.7	768.5	773.1	777.3	771.1	765.7	759.1	754.1	746.9	744.2	739.1
80°	675.5	684.0	694.2	702.7	691.6	680.5	669.6	661.6	652.1	648.2	641.9
82.5°	560.4	569.2	575.0	580.4	572.8	564.5	554.0	547.0	536.7	532.9	525.6
85°	425.8	436.6	440.1	443.0	438.1	433.7	423.8	410.5	404.0	394.0	388.6
87.5°	280.0	286.5	287.8	288.8	285.7	283.6	277.2	271.0	260.0	251.9	242.0
90°	106.2	110.7	108.5	110.4	106.4	106.6	100.0	97.7	88.5	84.9	76.7
92.5°	4.8	4.5	4.6	4.5	5.0	4.6	5.0	4.6	4.9	4.6	4.9
95°	4.9	4.9	4.9	4.9	4.9	4.9	4.9	4.9	4.9	4.9	4.9
97.5°	5.2	5.2	5.2	5.2	5.2	5.2	5.2	5.2	5.2	5.2	5.3
100°	5.8	5.8	5.8	5.8	5.8	5.8	5.8	5.8	5.8	5.8	5.8
102.5°	6.4	6.4	6.4	6.4	6.4	6.4	6.4	6.4	6.4	6.4	6.5
105°	6.8	6.8	6.8	6.8	6.8	6.8	6.8	6.8	6.8	7.1	7.1
107.5°	7.4	7.4	7.4	7.4	7.5	7.5	7.5	7.5	7.5	7.5	7.8
110°	8.1	8.1	8.1	8.1	8.1	8.1	8.1	8.1	8.2	8.2	8.5



TEST NUMBER: P1444537
 CATALOG NUMBER: EHBR1-36-UNV-TA-L835

CANDELA DISTRIBUTION (continued):

	82.5°	85°	87.5°	90°	92.5°	95°	97.5°	100°	102.5°	105°	107.5°
112.5°	8.9	8.9	8.9	8.9	8.9	8.9	8.9	9.2	9.2	9.3	9.3
115°	10.0	10.0	10.0	10.0	10.0	10.0	10.0	10.1	10.2	10.2	10.4
117.5°	11.2	11.1	11.1	11.1	11.1	11.1	11.2	11.2	11.4	11.5	11.7
120°	12.9	12.5	12.5	12.5	12.5	12.5	12.6	12.6	13.0	13.1	13.5
122.5°	14.7	14.5	14.5	14.4	14.4	14.4	14.5	14.6	14.9	15.2	15.5
125°	17.4	17.0	16.9	16.8	16.8	16.8	16.9	17.2	17.5	17.6	18.2
127.5°	20.4	20.1	19.8	19.7	19.7	19.7	20.0	20.1	20.5	20.9	21.4
130°	24.1	23.8	23.7	23.4	23.4	23.4	23.7	23.9	24.3	24.7	25.4
132.5°	28.9	28.4	28.1	27.8	27.8	27.8	28.1	28.4	28.9	29.3	30.2
135°	34.3	33.8	33.5	33.3	33.3	33.2	33.5	33.6	34.2	34.7	35.4
137.5°	40.4	39.9	39.7	39.3	39.3	39.3	39.5	39.7	40.1	40.7	41.5
140°	47.0	46.4	46.3	45.9	45.9	45.7	46.0	46.2	46.6	47.1	47.8
142.5°	53.9	53.2	52.9	52.7	52.6	52.6	52.8	52.9	53.4	53.7	54.4
145°	60.8	60.2	60.0	59.6	59.5	59.5	59.6	59.9	60.2	60.5	61.1
147.5°	67.6	67.2	66.9	66.6	66.6	66.5	66.6	66.6	66.9	67.2	67.6
150°	74.5	73.9	73.5	73.3	73.2	73.1	73.2	73.1	73.3	73.4	73.9
152.5°	80.6	80.0	79.9	79.6	79.3	79.2	79.2	79.1	79.2	79.2	79.6
155°	86.4	86.0	85.7	85.4	85.1	84.9	84.9	84.7	84.8	84.7	84.8
157.5°	91.8	91.4	91.1	90.8	90.6	90.2	90.1	89.9	89.9	89.5	89.5
160°	96.9	96.3	96.0	95.7	95.4	95.0	94.8	94.4	94.3	94.1	94.0
162.5°	101.4	101.0	100.6	100.3	100.0	99.6	99.4	98.9	98.7	98.4	98.3
165°	106.1	105.6	105.3	104.7	104.5	104.1	103.8	103.5	103.3	102.9	102.8
167.5°	110.9	110.4	110.1	109.7	109.4	109.0	108.9	108.5	108.3	108.0	108.0
170°	115.3	114.9	114.6	114.3	114.1	113.7	113.6	113.3	113.2	113.1	113.1
172.5°	119.5	119.2	118.9	118.7	118.5	118.2	118.1	118.0	117.8	117.8	117.7
175°	122.7	122.5	122.4	122.2	122.1	122.1	121.9	121.9	121.9	121.8	121.8
177.5°	125.1	124.9	124.9	124.9	124.8	124.8	124.8	124.8	124.8	124.7	124.6
180°	125.1	125.1	125.1	125.1	125.1	125.1	125.1	125.1	125.1	125.1	125.1



TEST NUMBER: P1444537
 CATALOG NUMBER: EHBR1-36-UNV-TA-L835

CANDELA DISTRIBUTION (continued):

	110°	112.5°	115°	117.5°	120°	122.5°	125°	127.5°	130°	132.5°	135°
0°	30152.6	30152.6	30152.6	30152.6	30152.6	30152.6	30152.6	30152.6	30152.6	30152.6	30152.6
2.5°	30169.2	30161.2	30140.4	30130.1	30110.8	30101.0	30086.0	30076.2	30064.0	30054.9	30050.3
5°	31005.1	30966.5	30889.2	30841.6	30758.1	30703.1	30620.2	30559.4	30473.8	30410.7	30329.7
7.5°	32092.6	32033.3	31934.3	31859.3	31742.5	31653.3	31522.2	31417.3	31272.5	31152.3	31004.3
10°	32535.3	32500.8	32456.4	32408.1	32343.3	32279.9	32190.4	32099.2	31977.6	31856.7	31698.7
12.5°	31880.9	31913.5	31977.6	32007.6	32056.6	32073.3	32095.7	32085.2	32065.3	32016.0	31944.3
15°	30027.6	30163.3	30377.9	30526.4	30734.3	30880.4	31073.6	31197.9	31341.2	31426.8	31508.2
17.5°	26978.9	27241.5	27620.1	27922.2	28327.6	28657.3	29061.3	29378.7	29745.1	30026.2	30325.6
20°	23074.0	23441.6	23964.4	24408.2	24995.7	25494.0	26132.3	26667.1	27290.8	27810.8	28372.1
22.5°	18871.1	19303.7	19902.6	20437.9	21139.7	21766.3	22566.2	23273.1	24116.4	24871.8	25707.5
25°	14906.3	15330.3	15940.3	16494.7	17252.2	17942.5	18816.3	19627.3	20606.0	21518.5	22566.2
27.5°	11506.2	11882.8	12419.1	12918.1	13611.8	14289.6	15176.3	16041.2	17085.4	18066.1	19195.1
30°	8886.1	9191.6	9621.3	10022.7	10579.6	11133.9	11923.7	12723.6	13762.7	14778.9	15936.4
32.5°	6886.4	7146.9	7505.6	7831.4	8260.6	8678.5	9260.2	9899.4	10810.8	11784.3	12903.4
35°	5330.9	5553.7	5859.0	6139.7	6492.6	6824.4	7258.4	7714.7	8410.2	9229.0	10230.7
37.5°	4250.0	4340.9	4558.8	4788.8	5081.9	5354.5	5694.1	6031.4	6529.0	7175.1	7993.3
40°	3232.1	3376.4	3553.8	3734.9	3956.8	4175.5	4548.0	4727.3	5054.9	5518.7	6153.8
42.5°	2607.9	2709.3	2834.2	2960.2	3114.8	3267.1	3455.5	3647.3	3892.3	4206.4	4658.2
45°	2182.3	2248.5	2328.9	2412.9	2514.4	2618.4	2744.5	2876.3	3042.3	3235.3	3509.7
47.5°	1898.0	1934.6	1987.1	2044.4	2114.1	2186.0	2268.0	2352.0	2455.1	2569.7	2725.9
50°	1676.1	1706.6	1747.4	1785.7	1833.8	1907.5	1940.1	1986.5	2048.5	2115.8	2203.3
52.5°	1515.5	1535.9	1561.5	1583.5	1613.8	1641.5	1677.7	1709.6	1752.6	1793.0	1849.5
55°	1390.5	1397.9	1412.3	1426.6	1447.6	1466.5	1491.3	1512.2	1539.6	1563.8	1599.4
57.5°	1294.0	1294.6	1301.3	1308.7	1322.2	1334.1	1351.2	1364.9	1383.9	1399.4	1420.7
60°	1224.5	1220.8	1222.2	1224.7	1232.4	1240.0	1251.0	1259.9	1271.9	1280.7	1292.6
62.5°	1166.7	1160.9	1159.7	1159.0	1162.8	1165.6	1171.5	1175.9	1182.6	1186.4	1192.8
65°	1093.8	1086.9	1084.3	1081.1	1082.3	1081.4	1083.6	1083.7	1087.2	1088.0	1091.7
67.5°	1027.6	1022.0	1018.5	1014.2	1012.4	1009.3	1008.0	1005.1	1004.6	1002.2	1001.6
70°	967.3	961.7	958.8	954.9	952.8	948.9	946.4	941.5	938.6	934.0	931.4
72.5°	897.5	894.3	893.4	890.8	890.1	887.9	886.8	883.4	881.4	877.4	875.2
75°	824.5	821.9	821.7	819.0	818.7	816.1	815.5	811.8	809.8	805.9	804.3
77.5°	737.6	733.7	732.6	729.5	730.3	729.0	730.0	727.2	726.1	722.1	720.9
80°	639.7	634.7	632.7	628.6	629.7	627.8	629.7	629.5	630.9	627.8	627.2
82.5°	523.7	518.3	517.3	514.4	516.3	516.5	520.7	518.4	519.3	516.4	517.6
85°	381.1	377.1	371.5	370.7	367.1	370.8	365.9	369.2	364.0	367.7	362.7
87.5°	236.2	228.0	223.6	217.7	215.4	209.7	207.4	203.2	204.5	202.6	203.7
90°	74.7	67.3	65.1	58.6	57.3	51.6	51.5	47.3	47.7	43.3	44.1
92.5°	4.6	4.6	4.5	4.8	4.6	4.6	4.5	4.8	4.6	4.8	4.6
95°	4.9	4.9	4.9	4.9	4.9	4.9	5.0	5.0	5.0	5.0	5.0
97.5°	5.3	5.3	5.3	5.3	5.3	5.3	5.3	5.6	5.6	5.6	5.6
100°	5.8	5.9	5.9	5.9	5.9	6.0	6.0	6.0	6.3	6.3	6.3
102.5°	6.5	6.5	6.5	6.6	6.6	6.6	6.7	6.8	6.8	7.1	7.2
105°	7.1	7.2	7.2	7.3	7.3	7.4	7.5	7.8	7.9	8.0	8.0
107.5°	7.8	7.9	8.0	8.0	8.0	8.2	8.5	8.6	8.7	8.9	9.3
110°	8.5	8.6	8.7	8.9	9.2	9.3	9.5	9.7	10.1	10.3	10.8



TEST NUMBER: P1444537
 CATALOG NUMBER: EHBR1-36-UNV-TA-L835

CANDELA DISTRIBUTION (continued):

	110°	112.5°	115°	117.5°	120°	122.5°	125°	127.5°	130°	132.5°	135°
112.5°	9.4	9.6	9.7	10.1	10.3	10.6	10.9	11.2	11.6	12.0	12.4
115°	10.6	10.9	11.0	11.4	11.6	12.0	12.4	13.0	13.5	14.0	14.5
117.5°	11.8	12.3	12.5	13.0	13.3	14.0	14.4	15.1	15.8	16.4	16.9
120°	13.8	14.1	14.5	15.1	15.5	16.2	16.9	17.6	18.3	19.1	19.8
122.5°	15.9	16.4	16.9	17.6	18.2	19.0	19.8	20.7	21.5	22.5	23.3
125°	18.6	19.3	20.0	20.7	21.5	22.5	23.3	24.3	25.2	26.3	27.2
127.5°	21.9	22.7	23.5	24.3	25.2	26.3	27.2	28.4	29.3	30.5	31.4
130°	26.1	26.9	27.6	28.7	29.6	30.7	31.8	33.1	33.9	35.1	36.1
132.5°	30.7	31.7	32.5	33.6	34.6	35.8	36.8	38.0	39.1	40.3	41.2
135°	36.2	37.1	38.0	39.1	40.1	41.3	42.4	43.5	44.5	45.7	46.6
137.5°	42.1	43.1	44.0	45.0	46.0	47.1	48.2	49.3	50.1	51.3	52.2
140°	48.5	49.4	50.1	51.3	52.2	53.2	54.0	55.1	55.9	57.0	57.8
142.5°	55.0	55.9	56.4	57.3	58.1	59.2	60.0	60.9	61.6	62.3	63.0
145°	61.6	62.3	62.9	63.7	64.4	65.2	65.7	66.5	66.9	67.6	68.2
147.5°	68.1	68.6	68.9	69.6	70.2	70.6	71.2	71.8	72.0	72.6	73.1
150°	74.1	74.6	74.8	75.3	75.5	76.0	76.2	76.7	76.9	77.4	77.6
152.5°	79.7	79.9	79.9	80.4	80.5	80.7	80.8	81.2	81.3	81.4	81.8
155°	84.7	84.8	84.8	84.9	84.9	85.0	85.0	85.4	85.5	85.6	85.8
157.5°	89.4	89.3	89.3	89.3	89.2	89.3	89.3	89.4	89.5	89.9	90.1
160°	93.7	93.6	93.4	93.4	93.4	93.4	93.4	93.7	93.8	94.2	94.4
162.5°	98.0	97.9	97.7	97.7	97.7	97.9	98.0	98.3	98.4	98.8	99.1
165°	102.7	102.7	102.5	102.7	102.7	102.8	102.9	103.2	103.5	103.8	104.1
167.5°	107.9	107.9	107.9	108.0	108.0	108.2	108.3	108.7	108.9	109.3	109.4
170°	113.0	113.1	113.0	113.1	113.1	113.2	113.3	113.4	113.6	113.8	114.0
172.5°	117.7	117.7	117.7	117.7	117.7	117.8	117.8	118.0	118.0	118.1	118.1
175°	121.7	121.7	121.7	121.7	121.7	121.6	121.6	121.4	121.4	121.4	121.4
177.5°	124.5	124.3	124.1	124.1	124.0	123.9	123.9	123.8	123.8	123.8	123.6
180°	125.1	125.1	125.1	125.1	125.1	125.1	125.1	125.1	125.1	125.1	125.1



TEST NUMBER: P1444537
 CATALOG NUMBER: EHBR1-36-UNV-TA-L835

CANDELA DISTRIBUTION (continued):

	137.5°	140°	142.5°	145°	147.5°	150°	152.5°	155°	157.5°	160°	162.5°
0°	30152.6	30152.6	30152.6	30152.6	30152.6	30152.6	30152.6	30152.6	30152.6	30152.6	30152.6
2.5°	30044.3	30043.9	30041.0	30042.3	30042.9	30045.0	30047.6	30050.3	30050.9	30053.0	30053.4
5°	30269.1	30194.8	30139.8	30079.4	30033.9	29993.0	29965.7	29944.0	29935.7	29937.7	29942.7
7.5°	30878.8	30725.3	30598.8	30454.8	30334.8	30207.7	30102.3	30002.2	29929.3	29874.9	29844.4
10°	31547.9	31361.0	31182.2	30973.8	30776.3	30565.4	30374.4	30182.1	30021.8	29882.5	29780.3
12.5°	31844.8	31712.7	31558.1	31361.5	31150.1	30906.8	30661.1	30397.7	30152.8	29925.4	29741.9
15°	31530.4	31530.6	31474.3	31380.0	31233.1	31038.7	30804.5	30530.0	30241.0	29946.1	29676.7
17.5°	30532.5	30720.8	30825.5	30891.7	30871.4	30799.8	30650.9	30440.0	30170.5	29856.4	29527.7
20°	28818.8	29262.9	29579.5	29864.2	30023.8	30129.9	30119.2	30033.4	29841.5	29574.5	29232.0
22.5°	26418.2	27163.6	27751.7	28300.2	28684.9	28997.8	29146.5	29209.6	29122.6	28936.6	28615.0
25°	23502.4	24515.9	25380.8	26220.1	26849.7	27390.8	27715.9	27945.0	27963.3	27866.0	27579.2
27.5°	20262.5	21458.8	22553.4	23668.8	24554.3	25332.1	25842.5	26216.1	26334.8	26319.1	26058.6
30°	17026.7	18282.6	19489.1	20789.9	21885.5	22879.3	23553.4	24058.6	24253.3	24290.6	24040.1
32.5°	13970.9	15209.3	16412.5	17772.4	18978.0	20116.9	20913.4	21513.5	21740.0	21793.3	21518.5
35°	11197.5	12340.0	13483.4	14801.4	16000.1	17179.5	18018.8	18647.1	18858.5	18894.2	18576.0
37.5°	8792.4	9765.8	10762.2	11944.8	13045.6	14153.3	14950.7	15541.2	15695.1	15685.6	15325.6
40°	6767.4	7524.2	8324.8	9298.3	10213.5	11149.9	11823.3	12311.4	12392.3	12332.4	11954.2
42.5°	5088.7	5635.2	6215.7	6942.4	7621.5	8322.3	8812.2	9174.5	9186.1	9091.4	8751.8
45°	3791.1	4324.3	4567.8	5007.1	5444.5	5910.5	6209.6	6433.5	6398.8	6315.5	6057.4
47.5°	2890.1	3095.0	3312.3	3584.8	3839.6	4368.3	4329.2	4688.7	4429.7	4606.3	4217.7
50°	2295.0	2409.5	2526.6	2671.2	2804.3	2942.6	3029.0	3093.5	3085.0	3057.3	2982.9
52.5°	1952.5	1987.9	2045.6	2127.8	2202.1	2276.9	2326.0	2366.1	2366.8	2355.7	2318.0
55°	1631.9	1676.8	1718.3	1772.0	1863.5	1877.6	1948.2	1933.8	1939.4	1919.8	1939.8
57.5°	1438.7	1464.9	1488.3	1520.3	1546.7	1577.6	1595.8	1613.4	1611.6	1607.8	1588.6
60°	1302.0	1316.4	1329.3	1348.1	1362.5	1380.0	1388.4	1397.3	1394.4	1387.9	1370.8
62.5°	1196.5	1205.5	1212.9	1225.0	1233.8	1244.7	1249.1	1252.8	1249.1	1242.9	1227.8
65°	1092.5	1098.3	1102.9	1112.1	1118.3	1127.6	1131.3	1134.8	1131.4	1126.5	1115.1
67.5°	998.6	999.2	998.7	1002.4	1004.3	1009.9	1011.5	1014.1	1010.1	1006.0	996.3
70°	927.4	926.0	924.1	925.6	926.0	928.6	929.1	928.6	923.9	916.7	906.0
72.5°	871.8	871.0	869.7	870.8	870.8	873.3	872.6	871.3	865.4	858.5	847.9
75°	800.2	799.6	797.0	797.1	794.9	795.7	792.8	791.1	784.5	778.7	769.3
77.5°	716.5	715.2	711.3	709.9	705.6	703.8	698.3	695.6	688.9	684.3	676.2
80°	623.1	621.6	616.7	613.9	607.2	602.9	594.9	590.3	582.5	578.0	570.1
82.5°	515.1	515.6	510.6	507.1	497.5	490.1	479.4	473.6	465.1	460.7	452.6
85°	366.3	361.1	363.9	363.6	357.6	351.2	342.5	336.4	329.2	324.9	319.3
87.5°	200.9	202.2	200.7	199.5	195.2	192.0	185.2	181.6	176.4	173.8	169.5
90°	39.8	40.5	36.6	37.4	33.5	32.7	27.8	27.7	23.5	23.0	19.7
92.5°	4.6	4.6	4.8	4.6	4.8	4.8	4.8	4.8	4.8	4.6	4.8
95°	5.0	5.1	5.1	5.1	5.1	5.1	5.2	5.2	5.2	5.2	5.2
97.5°	5.7	5.7	5.7	5.8	5.8	5.8	5.9	5.9	5.9	5.9	5.9
100°	6.4	6.5	6.5	6.5	6.6	6.6	6.7	6.7	6.8	6.8	6.8
102.5°	7.2	7.3	7.4	7.5	7.8	7.8	7.9	7.9	8.0	8.0	8.0
105°	8.1	8.2	8.6	8.7	8.8	8.9	9.2	9.2	9.3	9.4	9.4
107.5°	9.5	9.6	10.0	10.2	10.3	10.6	10.8	10.9	11.0	11.1	11.2
110°	11.0	11.2	11.6	11.8	12.2	12.4	12.6	12.9	13.1	13.2	13.5



TEST NUMBER: P1444537
 CATALOG NUMBER: EHBR1-36-UNV-TA-L835

CANDELA DISTRIBUTION (continued):

	137.5°	140°	142.5°	145°	147.5°	150°	152.5°	155°	157.5°	160°	162.5°
112.5°	12.9	13.2	13.8	14.0	14.4	14.6	15.1	15.3	15.5	15.9	16.1
115°	15.1	15.5	16.1	16.6	17.0	17.5	17.8	18.1	18.4	18.8	19.1
117.5°	17.6	18.2	18.9	19.5	20.0	20.5	21.0	21.4	21.9	22.4	22.7
120°	20.7	21.4	22.0	22.7	23.4	24.0	24.6	25.1	25.6	26.2	26.7
122.5°	24.1	24.9	25.8	26.4	27.2	27.8	28.7	29.2	29.9	30.5	31.2
125°	28.1	28.9	29.9	30.6	31.4	32.2	33.1	33.6	34.5	35.1	36.0
127.5°	32.5	33.3	34.3	35.1	36.1	36.8	37.8	38.4	39.4	40.1	41.1
130°	37.2	38.0	39.1	39.9	40.9	41.8	42.7	43.5	44.5	45.5	46.4
132.5°	42.3	43.2	44.2	45.0	46.2	46.9	47.9	48.9	49.9	50.8	52.0
135°	47.7	48.5	49.5	50.3	51.4	52.2	53.2	54.2	55.3	56.3	57.4
137.5°	53.0	53.9	54.9	55.7	56.6	57.4	58.6	59.4	60.7	61.6	62.9
140°	58.6	59.3	60.1	60.9	61.8	62.5	63.7	64.6	65.7	66.7	68.0
142.5°	63.8	64.4	65.2	65.8	66.7	67.4	68.4	69.4	70.4	71.6	72.6
145°	68.8	69.4	70.1	70.6	71.3	72.0	73.1	74.0	75.0	76.0	77.1
147.5°	73.5	74.0	74.7	75.2	75.9	76.4	77.5	78.2	79.2	80.2	81.3
150°	78.2	78.4	78.9	79.3	80.0	80.7	81.4	82.2	83.4	84.3	85.1
152.5°	82.1	82.5	82.9	83.5	84.1	84.7	85.5	86.3	87.2	87.9	88.9
155°	86.3	86.5	87.1	87.7	88.2	88.7	89.5	90.2	91.0	91.8	92.6
157.5°	90.6	90.8	91.3	91.8	92.4	93.0	93.8	94.3	95.1	95.8	96.5
160°	94.8	95.2	95.8	96.3	96.9	97.4	98.1	98.7	99.4	100.0	100.6
162.5°	99.6	100.0	100.5	100.9	101.6	102.1	102.8	103.3	103.9	104.5	105.2
165°	104.6	105.0	105.6	106.0	106.5	106.9	107.5	107.9	108.6	109.0	109.7
167.5°	110.0	110.1	110.5	110.8	111.4	111.8	112.3	112.7	113.2	113.6	114.1
170°	114.3	114.5	114.8	115.1	115.5	115.8	116.1	116.4	116.9	117.2	117.7
172.5°	118.3	118.3	118.7	118.8	119.0	119.2	119.5	119.7	119.9	120.2	120.4
175°	121.6	121.6	121.7	121.7	121.8	121.9	122.2	122.4	122.5	122.6	122.7
177.5°	123.6	123.6	123.6	123.6	123.8	123.8	123.9	123.9	124.0	124.0	124.1
180°	125.1	125.1	125.1	125.1	125.1	125.1	125.1	125.1	125.1	125.1	125.1



TEST NUMBER: P1444537
 CATALOG NUMBER: EHBR1-36-UNV-TA-L835

CANDELA DISTRIBUTION (continued):

	165°	167.5°	170°	172.5°	175°	177.5°	180°	182.5°	185°	187.5°	190°
0°	30152.6	30152.6	30152.6	30152.6	30152.6	30152.6	30152.6	30152.6	30152.6	30152.6	30152.6
2.5°	30052.4	30052.0	30051.1	30049.7	30048.3	30049.2	30050.5	30054.0	30060.0	30068.7	30080.1
5°	29946.9	29953.0	29956.5	29957.0	29953.8	29952.0	29954.9	29963.1	29979.8	30007.7	30045.4
7.5°	29836.3	29843.8	29855.5	29864.2	29865.9	29863.8	29864.2	29877.2	29907.9	29962.3	30038.6
10°	29718.2	29695.7	29707.5	29729.2	29746.4	29749.6	29751.7	29767.0	29811.9	29894.2	30016.7
12.5°	29609.1	29538.0	29524.3	29543.8	29570.0	29578.4	29576.0	29582.6	29635.3	29744.1	29914.9
15°	29465.6	29331.9	29286.1	29291.2	29323.4	29335.1	29326.6	29313.7	29364.9	29497.8	29719.0
17.5°	29233.4	29017.7	28933.7	28930.0	28967.8	28977.8	28957.0	28916.8	28967.3	29133.1	29407.7
20°	28880.4	28562.0	28403.8	28378.7	28419.7	28407.6	28366.2	28305.4	28371.8	28573.4	28899.9
22.5°	28245.7	27842.4	27572.0	27484.9	27533.9	27501.1	27440.7	27363.1	27451.2	27680.3	28043.9
25°	27208.7	26742.6	26372.5	26164.9	26204.0	26145.3	26079.5	25985.4	26090.5	26353.5	26753.8
27.5°	25684.5	25146.0	24687.4	24343.7	24356.4	24279.5	24203.7	24081.9	24213.2	24524.4	24975.9
30°	23657.6	23034.6	22476.1	22008.9	21967.1	21892.6	21814.9	21655.1	21819.5	22192.0	22719.6
32.5°	21112.1	20420.4	19775.1	19184.5	19073.1	19000.3	18931.2	18747.2	18962.4	19396.7	20002.8
35°	18135.4	17398.5	16698.9	16024.3	15839.7	15767.0	15706.5	15530.3	15798.7	16271.4	16926.1
37.5°	14868.0	14115.2	13420.6	12728.9	12468.1	12369.3	12325.4	12210.0	12519.6	12987.2	13644.5
40°	11513.6	10813.7	10190.9	9580.0	9282.7	9131.7	9108.6	9087.7	9387.0	9792.7	10389.3
42.5°	8375.7	7811.1	7330.8	6863.8	6594.4	6388.2	6388.1	6450.7	6720.2	7024.1	7484.1
45°	5793.8	5414.7	5108.8	4796.8	4880.2	4469.2	4710.7	4586.7	4719.9	4915.9	5215.0
47.5°	3982.6	3775.8	3607.7	3433.3	3306.3	3184.9	3195.6	3273.8	3399.3	3515.6	3671.2
50°	2902.7	2797.3	2711.7	2621.2	2558.0	2504.4	2507.5	2541.4	2607.3	2668.6	2750.0
52.5°	2274.4	2216.4	2169.8	2119.8	2086.6	2060.0	2061.4	2077.9	2113.5	2148.5	2195.2
55°	1874.7	1867.7	1807.2	1762.3	1745.2	1727.3	1730.6	1737.0	1761.3	1781.7	1812.7
57.5°	1571.0	1543.8	1525.7	1502.0	1491.2	1478.7	1481.5	1483.9	1500.1	1513.9	1536.1
60°	1356.5	1337.3	1324.4	1308.3	1301.2	1293.3	1295.0	1296.5	1307.0	1315.9	1331.9
62.5°	1214.1	1196.8	1185.7	1173.2	1168.2	1162.9	1164.1	1164.5	1171.0	1177.6	1189.7
65°	1104.8	1091.1	1081.8	1071.1	1065.9	1060.3	1060.9	1060.9	1066.3	1071.1	1080.2
67.5°	989.2	978.9	972.9	964.4	960.8	955.1	955.0	953.2	956.8	958.7	964.9
70°	896.4	886.0	878.4	870.2	865.7	860.7	860.8	860.9	865.1	869.4	877.3
72.5°	839.1	829.2	822.3	815.2	811.0	806.7	805.9	805.5	808.5	810.9	816.1
75°	763.3	755.3	751.3	744.6	741.3	736.4	735.7	733.4	734.9	735.3	739.2
77.5°	671.2	663.7	660.4	653.6	650.8	645.4	644.9	642.5	643.5	642.8	645.8
80°	566.3	559.4	557.6	552.0	550.7	545.7	544.9	541.8	542.8	540.4	541.5
82.5°	449.1	442.8	441.6	436.4	436.4	431.8	431.6	427.0	427.0	423.0	416.8
85°	316.4	311.7	309.9	305.6	304.4	300.7	298.8	294.5	292.9	290.1	289.2
87.5°	167.0	164.1	161.4	159.5	155.8	149.2	148.6	144.1	144.4	141.2	141.4
90°	19.7	16.7	16.8	14.1	14.0	12.3	12.4	11.6	11.4	10.8	10.6
92.5°	4.8	4.8	4.8	4.8	4.8	4.8	4.8	4.8	4.8	4.8	4.8
95°	5.2	5.2	5.2	5.2	5.2	5.2	5.2	5.2	5.2	5.3	5.3
97.5°	5.9	5.9	5.9	5.9	5.9	5.9	5.9	6.0	6.0	6.0	6.0
100°	6.8	6.8	6.8	6.8	6.8	6.8	6.8	7.1	7.1	7.1	7.1
102.5°	8.0	8.0	8.0	8.0	8.0	8.0	8.0	8.0	8.0	8.1	8.1
105°	9.4	9.5	9.5	9.5	9.5	9.5	9.5	9.6	9.6	9.6	9.7
107.5°	11.2	11.4	11.4	11.5	11.4	11.5	11.5	11.6	11.6	11.6	11.6
110°	13.5	13.7	13.8	13.9	13.9	14.0	14.0	14.1	14.1	14.1	14.1



TEST NUMBER: P1444537
 CATALOG NUMBER: EHBR1-36-UNV-TA-L835

CANDELA DISTRIBUTION (continued):

	165°	167.5°	170°	172.5°	175°	177.5°	180°	182.5°	185°	187.5°	190°
112.5°	16.2	16.4	16.6	16.8	16.8	17.0	17.0	17.2	17.2	17.4	17.2
115°	19.5	19.7	20.0	20.3	20.4	20.6	20.6	20.9	20.9	20.9	20.9
117.5°	23.0	23.5	23.8	24.1	24.3	24.7	24.8	24.9	24.9	25.1	24.9
120°	27.1	27.7	28.1	28.5	28.9	29.3	29.5	29.8	29.8	29.8	29.6
122.5°	31.7	32.4	32.9	33.5	33.8	34.3	34.5	34.7	34.7	34.9	34.6
125°	36.6	37.4	38.0	38.7	39.1	39.8	39.9	40.3	40.3	40.3	40.1
127.5°	41.9	42.7	43.3	44.2	44.7	45.3	45.6	46.0	46.0	46.0	45.7
130°	47.3	48.4	49.1	49.9	50.5	51.1	51.4	51.8	51.8	52.0	51.6
132.5°	52.8	54.0	54.9	55.8	56.3	57.1	57.3	57.8	57.8	57.9	57.6
135°	58.6	59.5	60.5	61.6	62.2	62.9	63.2	63.7	63.7	63.7	63.3
137.5°	63.9	65.2	66.0	66.9	67.7	68.4	68.8	69.1	69.1	69.4	69.0
140°	68.9	70.2	71.2	72.0	73.0	73.8	74.1	74.6	74.6	74.6	74.2
142.5°	73.8	74.9	75.9	76.9	77.6	78.3	78.8	79.1	79.1	79.1	78.9
145°	78.2	79.2	80.2	81.3	81.9	82.6	82.9	83.4	83.4	83.4	83.3
147.5°	82.2	83.4	84.2	85.0	85.7	86.4	86.8	87.1	87.2	87.2	87.1
150°	86.2	87.1	87.8	88.6	89.3	89.9	90.1	90.6	90.7	90.8	90.7
152.5°	89.7	90.6	91.3	92.0	92.6	93.1	93.4	93.8	94.1	94.3	94.3
155°	93.3	94.1	94.7	95.4	95.9	96.5	96.9	97.3	97.6	97.9	98.1
157.5°	97.2	97.9	98.4	99.1	99.6	100.3	100.6	101.2	101.6	102.0	102.3
160°	101.2	102.0	102.5	103.2	103.7	104.2	104.7	105.3	105.7	106.1	106.5
162.5°	105.7	106.4	106.8	107.4	107.9	108.5	109.0	109.5	110.0	110.4	110.7
165°	110.1	110.7	111.2	111.8	112.3	112.9	113.2	113.7	114.1	114.5	114.9
167.5°	114.5	115.1	115.5	116.0	116.4	116.9	117.3	117.8	118.1	118.5	118.8
170°	118.0	118.5	118.9	119.3	119.7	120.1	120.3	120.7	121.0	121.4	121.7
172.5°	120.7	121.1	121.4	121.8	122.1	122.4	122.6	123.0	123.2	123.5	123.6
175°	122.9	123.1	123.2	123.5	123.6	123.8	124.0	124.1	124.5	124.6	124.8
177.5°	124.3	124.5	124.6	124.6	124.7	124.7	124.8	124.8	124.9	125.1	125.1
180°	125.1	125.1	125.1	125.1	125.1	125.1	125.1	125.1	125.1	125.1	125.1



TEST NUMBER: P1444537
 CATALOG NUMBER: EHBR1-36-UNV-TA-L835

CANDELA DISTRIBUTION (continued):

	192.5°	195°	197.5°	200°	202.5°	205°	207.5°	210°	212.5°	215°	217.5°
0°	30152.6	30152.6	30152.6	30152.6	30152.6	30152.6	30152.6	30152.6	30152.6	30152.6	30152.6
2.5°	30096.2	30111.3	30134.3	30155.2	30186.6	30211.4	30248.7	30276.9	30319.0	30346.2	30391.9
5°	30098.9	30157.8	30235.2	30310.8	30401.7	30484.1	30586.6	30673.8	30776.9	30860.9	30966.3
7.5°	30141.4	30255.0	30391.1	30528.2	30683.3	30828.4	30991.9	31139.8	31301.6	31438.4	31587.9
10°	30172.8	30348.0	30548.6	30750.3	30962.8	31160.2	31359.5	31531.7	31692.5	31825.0	31942.0
12.5°	30130.3	30371.5	30628.9	30877.5	31113.7	31318.0	31489.4	31621.8	31713.2	31775.2	31789.8
15°	29985.6	30275.9	30555.7	30803.3	30999.2	31150.4	31228.7	31265.3	31226.0	31160.7	31017.3
17.5°	29715.3	30021.5	30271.6	30466.9	30570.5	30611.5	30546.6	30434.0	30213.6	29968.9	29615.7
20°	29219.6	29505.0	29686.4	29792.9	29765.2	29662.7	29418.0	29120.5	28680.6	28211.7	27593.0
22.5°	28350.3	28599.8	28696.4	28704.3	28535.3	28278.7	27837.3	27327.1	26633.0	25911.5	25024.1
25°	27045.4	27264.0	27279.2	27193.4	26884.0	26468.2	25820.0	25098.2	24155.1	23193.6	22081.5
27.5°	25275.8	25485.3	25434.0	25273.9	24844.4	24287.9	23458.1	22525.6	21363.0	20227.3	18997.2
30°	23051.3	23275.2	23215.0	23009.7	22498.8	21841.1	20864.7	19781.3	18490.5	17277.5	16030.9
32.5°	20389.1	20672.3	20630.7	20435.5	19902.3	19198.6	18139.1	16990.1	15669.4	14474.0	13261.5
35°	17363.1	17707.0	17724.9	17597.3	17102.3	16406.7	15360.4	14248.3	12983.2	11855.4	10735.2
37.5°	14103.0	14501.7	14583.7	14549.2	14139.0	13524.9	12571.7	11574.1	10453.3	9464.9	8506.9
40°	10824.9	11228.5	11368.5	11410.1	11107.4	10631.8	9849.4	9044.1	8130.6	7329.7	6568.9
42.5°	7835.4	8193.2	8328.6	8413.7	8224.7	7907.5	7336.8	6752.0	6082.7	5505.1	4951.3
45°	5441.8	5695.0	5797.8	5883.6	5780.7	5601.8	5241.4	4875.6	4433.8	4056.3	3698.9
47.5°	3804.7	3944.3	4012.2	4053.8	4013.9	3920.6	3724.5	3512.6	3263.2	3042.6	2830.5
50°	2820.1	2894.4	2929.9	2953.9	2925.0	2873.1	2766.9	2651.6	2514.6	2389.6	2267.5
52.5°	2234.9	2277.4	2298.6	2311.5	2294.9	2263.1	2201.3	2133.0	2050.8	1973.6	1933.0
55°	1882.7	1880.5	1929.4	1905.8	1929.4	1876.7	1865.6	1790.4	1722.2	1674.2	1622.3
57.5°	1552.7	1574.8	1584.2	1594.6	1587.9	1578.3	1552.0	1525.0	1489.0	1459.0	1426.9
60°	1344.0	1362.2	1372.5	1382.9	1382.2	1378.6	1363.5	1347.4	1324.9	1307.0	1287.5
62.5°	1200.3	1216.1	1226.2	1236.2	1237.0	1235.6	1224.1	1212.9	1197.6	1186.3	1172.9
65°	1087.2	1098.3	1105.2	1113.1	1112.6	1110.6	1100.1	1090.9	1078.2	1070.5	1060.6
67.5°	968.8	977.3	982.6	990.1	991.5	992.0	986.3	981.9	975.8	973.6	970.2
70°	884.7	894.9	903.5	913.0	918.1	920.6	918.1	915.9	912.3	910.8	908.1
72.5°	821.0	829.6	836.3	844.9	849.8	853.2	851.3	850.1	847.0	846.5	844.7
75°	741.9	747.9	751.6	758.1	760.7	764.0	762.5	763.3	762.2	764.7	764.5
77.5°	646.8	651.2	652.9	657.6	658.1	662.0	662.9	667.5	670.7	677.9	681.6
80°	539.8	542.5	542.5	547.4	549.5	556.1	559.2	566.6	570.1	576.5	577.1
82.5°	419.3	416.1	419.3	417.2	423.4	430.8	431.8	438.2	439.6	443.6	440.5
85°	286.6	286.4	283.8	284.3	282.4	283.3	282.2	283.4	282.3	282.4	279.4
87.5°	137.3	138.6	135.6	136.5	133.6	135.0	132.5	134.4	131.4	131.9	127.4
90°	10.2	10.0	9.5	9.4	9.6	9.3	9.2	8.9	9.2	8.8	8.8
92.5°	4.8	4.9	4.9	4.9	4.9	4.9	4.9	4.9	5.0	4.9	4.9
95°	5.3	5.3	5.3	5.6	5.6	5.6	5.6	5.6	5.6	5.6	5.6
97.5°	6.3	6.3	6.3	6.3	6.4	6.4	6.4	6.4	6.4	6.4	6.3
100°	7.2	7.2	7.2	7.3	7.3	7.3	7.3	7.3	7.3	7.2	7.2
102.5°	8.2	8.2	8.2	8.5	8.5	8.5	8.5	8.5	8.2	8.2	8.1
105°	9.7	9.7	10.0	10.0	10.0	10.0	10.0	10.0	9.7	9.6	9.6
107.5°	11.7	11.7	11.8	11.8	11.8	11.8	11.7	11.6	11.6	11.5	11.2
110°	14.4	14.1	14.4	14.4	14.4	14.1	14.1	13.9	13.8	13.5	13.3



TEST NUMBER: P1444537
 CATALOG NUMBER: EHBR1-36-UNV-TA-L835

CANDELA DISTRIBUTION (continued):

	192.5°	195°	197.5°	200°	202.5°	205°	207.5°	210°	212.5°	215°	217.5°
112.5°	17.4	17.2	17.2	17.0	17.0	16.8	16.8	16.6	16.4	16.0	15.8
115°	20.9	20.6	20.6	20.4	20.4	20.1	19.8	19.6	19.3	18.9	18.6
117.5°	24.8	24.7	24.6	24.1	24.0	23.7	23.4	23.0	22.7	22.4	21.9
120°	29.5	29.2	28.9	28.5	28.3	27.7	27.5	27.0	26.6	26.1	25.5
122.5°	34.5	34.1	33.8	33.5	33.1	32.4	32.0	31.3	30.9	30.3	29.8
125°	39.9	39.5	39.1	38.6	38.0	37.4	36.8	36.2	35.5	34.9	34.2
127.5°	45.6	45.0	44.7	44.0	43.4	42.7	42.0	41.2	40.7	39.8	39.1
130°	51.4	50.8	50.5	49.6	49.2	48.2	47.6	46.7	46.0	45.2	44.4
132.5°	57.3	56.7	56.3	55.5	54.9	54.0	53.4	52.5	51.6	50.7	50.0
135°	63.1	62.5	62.2	61.4	60.7	59.6	59.0	58.1	57.3	56.5	55.8
137.5°	68.8	68.2	67.6	66.9	66.2	65.4	64.7	63.8	63.1	62.2	61.6
140°	74.0	73.4	73.0	72.3	71.7	70.9	70.2	69.4	68.7	68.0	67.3
142.5°	78.5	78.2	77.7	77.0	76.4	75.6	75.2	74.6	73.9	73.2	72.6
145°	82.9	82.5	82.1	81.4	81.2	80.5	80.0	79.3	79.0	78.3	77.9
147.5°	87.0	86.5	86.3	85.8	85.6	85.0	84.8	84.3	84.1	83.5	83.3
150°	90.7	90.6	90.4	90.1	89.9	89.5	89.4	89.1	88.9	88.5	88.4
152.5°	94.3	94.3	94.3	94.2	94.2	94.1	94.0	93.8	93.7	93.4	93.3
155°	98.3	98.4	98.6	98.6	98.6	98.6	98.6	98.4	98.4	98.3	98.3
157.5°	102.5	102.7	102.9	103.1	103.2	103.2	103.2	103.2	103.2	103.1	103.1
160°	106.8	107.0	107.2	107.4	107.6	107.6	107.8	107.6	107.8	107.6	107.5
162.5°	111.1	111.4	111.6	111.8	112.0	112.0	112.2	112.2	112.2	112.0	112.0
165°	115.3	115.5	115.8	115.9	116.1	116.1	116.3	116.3	116.3	116.1	116.1
167.5°	119.2	119.3	119.6	119.7	119.9	119.9	120.2	120.1	120.1	120.1	120.1
170°	121.9	122.2	122.4	122.5	122.7	122.7	122.9	122.9	123.0	122.9	122.9
172.5°	123.9	124.0	124.3	124.5	124.6	124.6	124.7	124.7	124.8	124.8	124.8
175°	124.9	125.1	125.3	125.4	125.5	125.6	125.6	125.8	125.8	125.8	125.8
177.5°	125.3	125.4	125.4	125.5	125.6	125.6	125.8	125.8	126.0	126.0	126.0
180°	125.1	125.1	125.1	125.1	125.1	125.1	125.1	125.1	125.1	125.1	125.1



TEST NUMBER: P1444537
 CATALOG NUMBER: EHBR1-36-UNV-TA-L835

CANDELA DISTRIBUTION (continued):

	220°	222.5°	225°	227.5°	230°	232.5°	235°	237.5°	240°	242.5°	245°
0°	30152.6	30152.6	30152.6	30152.6	30152.6	30152.6	30152.6	30152.6	30152.6	30152.6	30152.6
2.5°	30420.2	30232.3	30207.5	30220.7	30252.1	30263.7	30297.6	30306.8	30341.0	30349.3	30382.1
5°	31047.8	30799.6	30811.9	30871.6	30962.0	31015.9	31104.7	31151.2	31236.0	31274.6	31351.2
7.5°	31709.8	31514.8	31575.6	31676.2	31799.9	31885.4	31992.1	32061.7	32153.6	32210.7	32284.4
10°	32034.7	31981.3	32048.3	32127.5	32198.0	32253.2	32298.4	32334.6	32358.4	32380.6	32390.3
12.5°	31787.4	31870.2	31881.5	31873.8	31827.1	31791.4	31711.3	31656.9	31560.3	31501.3	31386.3
15°	30870.7	31052.5	30951.7	30799.3	30576.3	30390.3	30127.7	29932.2	29658.7	29473.3	29198.8
17.5°	29261.7	29491.2	29228.8	28876.2	28427.4	28043.6	27565.6	27186.3	26711.0	26365.3	25921.8
20°	26996.7	27211.0	26743.2	26158.5	25464.5	24880.4	24191.5	23642.0	23001.8	22525.6	21951.0
22.5°	24176.4	24329.2	23670.0	22881.8	21997.6	21267.8	20444.2	19785.4	19054.9	18510.5	17897.8
25°	21056.4	21097.7	20306.9	19398.8	18413.3	17593.2	16713.9	16021.2	15276.2	14724.5	14123.2
27.5°	17907.3	17846.8	16992.2	16029.4	14992.7	14140.3	13282.7	12633.6	11981.0	11484.1	10966.0
30°	14935.1	14788.6	13901.3	12911.6	11905.3	11141.2	10429.3	9908.0	9388.9	8994.7	8578.8
32.5°	12209.4	12002.8	11139.0	10211.8	9363.9	8774.3	8246.4	7851.9	7432.7	7099.8	6750.8
35°	9795.1	9575.1	8809.9	8023.8	7382.0	6947.4	6532.5	6208.9	5852.9	5572.0	5268.9
37.5°	7723.2	7542.9	6901.9	6283.3	5797.8	5461.1	5121.1	4856.6	4562.5	4438.9	4115.1
40°	5962.3	5836.2	5335.0	4879.0	4514.6	4356.3	4011.2	3764.2	3544.3	3363.1	3187.5
42.5°	4650.7	4606.1	4118.3	3762.7	3506.0	3306.7	3114.3	2958.2	2806.3	2681.3	2563.3
45°	3413.0	3377.6	3161.1	2955.8	2780.9	2641.5	2511.5	2404.2	2304.8	2222.5	2147.6
47.5°	2657.6	2646.3	2521.6	2394.3	2284.1	2194.6	2110.3	2039.0	1973.1	1918.1	1900.2
50°	2161.6	2160.1	2086.9	2008.4	1929.9	1878.2	1824.3	1782.2	1739.8	1706.8	1672.0
52.5°	1836.6	1828.7	1779.3	1730.8	1684.1	1650.2	1615.8	1588.8	1560.8	1540.4	1518.8
55°	1581.2	1589.5	1560.9	1532.0	1502.8	1481.7	1457.5	1439.8	1420.6	1407.7	1394.6
57.5°	1403.7	1414.8	1399.7	1383.4	1365.6	1351.7	1335.1	1322.8	1310.0	1301.7	1294.2
60°	1274.6	1286.7	1280.7	1272.3	1261.4	1253.1	1242.6	1235.7	1227.4	1222.9	1218.6
62.5°	1165.1	1180.2	1178.1	1174.1	1167.1	1162.5	1156.8	1153.7	1148.2	1146.2	1144.2
65°	1055.8	1072.8	1072.5	1070.6	1066.7	1065.3	1061.7	1061.1	1058.2	1059.4	1059.1
67.5°	969.9	984.6	987.8	990.2	990.1	991.0	990.7	992.1	992.1	994.2	995.6
70°	907.9	918.1	920.6	923.1	923.8	925.7	925.7	927.0	926.7	928.4	928.6
72.5°	845.1	858.7	861.1	863.2	863.2	865.1	864.0	863.7	861.0	860.4	858.6
75°	767.2	784.5	788.3	790.7	791.1	792.8	790.4	789.0	784.5	782.7	779.6
77.5°	685.7	703.7	706.4	707.2	705.8	706.2	701.2	697.8	692.2	689.8	686.8
80°	579.6	606.1	608.2	606.6	602.4	601.7	597.0	593.8	587.0	584.7	582.1
82.5°	441.1	472.1	476.5	478.4	475.0	475.8	471.2	469.5	463.2	462.1	458.0
85°	278.5	309.5	314.6	313.9	310.6	309.8	307.1	308.0	307.5	309.1	310.0
87.5°	128.0	158.0	165.3	162.9	162.6	160.5	155.6	157.5	160.4	162.2	162.4
90°	8.7	17.6	17.4	18.3	16.4	17.0	15.3	16.4	15.2	16.2	15.1
92.5°	4.9	4.9	4.9	4.9	4.9	4.9	4.9	4.8	4.9	4.8	4.9
95°	5.6	5.3	5.3	5.3	5.2	5.2	5.2	5.2	5.2	5.2	5.2
97.5°	6.3	6.0	5.9	5.9	5.9	5.8	5.8	5.8	5.8	5.7	5.7
100°	7.2	6.7	6.6	6.6	6.5	6.5	6.5	6.4	6.4	6.4	6.3
102.5°	8.0	7.8	7.5	7.4	7.3	7.2	7.2	7.1	7.1	6.8	6.8
105°	9.4	8.8	8.6	8.2	8.1	8.0	8.0	7.9	7.8	7.5	7.5
107.5°	11.1	10.2	9.7	9.5	9.3	9.2	8.8	8.7	8.5	8.2	8.1
110°	13.1	11.8	11.4	11.0	10.8	10.3	10.1	9.7	9.5	9.4	9.2



TEST NUMBER: P1444537
 CATALOG NUMBER: EHBR1-36-UNV-TA-L835

CANDELA DISTRIBUTION (continued):

	220°	222.5°	225°	227.5°	230°	232.5°	235°	237.5°	240°	242.5°	245°
112.5°	15.4	13.9	13.2	12.6	12.3	11.8	11.5	11.1	10.9	10.4	10.3
115°	18.1	16.2	15.4	14.7	14.4	13.8	13.2	12.9	12.3	11.8	11.6
117.5°	21.4	19.1	18.1	17.4	16.8	16.0	15.4	14.7	14.4	13.8	13.3
120°	24.9	22.4	21.2	20.4	19.7	18.8	18.1	17.4	16.7	16.0	15.4
122.5°	29.1	26.2	24.8	23.9	23.0	22.0	21.2	20.4	19.6	18.8	18.1
125°	33.5	30.3	28.8	27.8	27.0	25.9	24.9	23.9	23.2	22.2	21.4
127.5°	38.3	34.9	33.5	32.4	31.4	30.3	29.3	28.1	27.2	26.2	25.4
130°	43.5	39.9	38.3	37.2	36.4	35.1	34.2	33.1	32.0	30.9	30.0
132.5°	49.2	45.3	43.7	42.7	41.8	40.5	39.7	38.4	37.4	36.2	35.3
135°	54.9	50.8	49.3	48.2	47.4	46.3	45.3	44.1	43.2	42.0	41.2
137.5°	60.7	56.4	55.0	54.0	53.2	52.2	51.4	50.3	49.4	48.2	47.4
140°	66.5	62.2	60.7	59.9	59.2	58.2	57.4	56.5	55.8	54.9	54.0
142.5°	71.9	67.5	66.0	65.4	64.8	64.0	63.6	62.8	62.2	61.1	60.5
145°	77.5	72.6	71.3	70.6	70.3	69.7	69.1	68.6	68.1	67.4	66.8
147.5°	82.7	77.7	76.2	75.9	75.5	75.0	74.8	74.2	74.0	73.4	73.1
150°	87.9	82.2	80.6	80.4	80.0	79.8	79.6	79.2	79.1	78.8	78.5
152.5°	93.0	86.2	84.3	84.1	84.1	83.7	83.6	83.5	83.5	83.4	83.3
155°	98.0	90.6	88.4	88.0	87.9	87.8	87.8	87.8	87.8	87.8	87.8
157.5°	102.8	94.7	92.6	92.2	92.1	92.0	91.8	91.8	91.8	91.8	92.1
160°	107.4	99.2	97.0	96.6	96.5	96.2	96.0	95.9	95.9	95.9	96.0
162.5°	111.8	103.8	101.7	101.2	100.9	100.6	100.5	100.3	100.3	100.2	100.3
165°	115.9	108.7	106.6	106.2	106.0	105.6	105.4	105.2	105.0	104.9	104.9
167.5°	119.9	113.4	111.8	111.4	111.1	110.7	110.7	110.3	110.3	110.1	110.1
170°	122.7	117.7	116.3	116.0	116.0	115.8	115.6	115.5	115.3	115.1	115.1
172.5°	124.7	121.0	119.9	119.7	119.7	119.7	119.7	119.6	119.6	119.6	119.6
175°	125.8	123.5	123.0	122.9	122.9	122.9	122.9	122.9	122.9	122.9	123.0
177.5°	126.1	125.5	125.3	125.3	125.3	125.3	125.3	125.3	125.3	125.4	125.4
180°	125.1	125.1	125.1	125.1	125.1	125.1	125.1	125.1	125.1	125.1	125.1



TEST NUMBER: P1444537
 CATALOG NUMBER: EHBR1-36-UNV-TA-L835

CANDELA DISTRIBUTION (continued):

	247.5°	250°	252.5°	255°	257.5°	260°	262.5°	265°	267.5°	270°	272.5°
0°	30152.6	30152.6	30152.6	30152.6	30152.6	30152.6	30152.6	30152.6	30152.6	30152.6	30152.6
2.5°	30388.2	30423.7	30421.0	30454.0	30452.4	30483.5	30477.3	30504.3	30498.0	30521.1	30507.5
5°	31385.1	31452.3	31474.6	31535.4	31548.0	31602.4	31603.6	31646.9	31641.6	31675.5	31657.4
7.5°	32327.9	32390.8	32420.7	32467.9	32491.6	32530.7	32546.0	32578.2	32585.8	32604.8	32604.3
10°	32407.5	32407.3	32422.1	32415.5	32428.7	32421.0	32437.1	32431.3	32455.1	32448.9	32467.0
12.5°	31336.8	31230.5	31191.7	31096.2	31075.4	30993.4	30999.2	30946.7	30972.1	30939.8	30994.8
15°	29035.5	28789.0	28667.2	28452.8	28385.5	28216.1	28202.4	28089.9	28120.2	28061.4	28147.4
17.5°	25634.8	25246.8	25033.8	24720.8	24596.5	24356.9	24308.9	24164.0	24186.5	24113.5	24217.4
20°	21580.4	21111.3	20842.8	20480.8	20319.3	20033.7	19957.9	19795.9	19816.2	19743.6	19861.1
22.5°	17479.6	16988.7	16685.4	16306.1	16099.9	15831.3	15750.7	15587.8	15597.1	15529.0	15642.0
25°	13711.2	13240.6	12946.2	12601.6	12422.7	12176.4	12091.6	11945.5	11953.8	11897.5	11999.1
27.5°	10606.7	10220.5	9974.2	9685.2	9524.9	9322.4	9239.8	9117.0	9116.6	9075.4	9160.2
30°	8288.5	7966.2	7745.1	7493.5	7342.9	7160.2	7080.4	6970.4	6965.7	6936.4	7003.8
32.5°	6489.7	6203.0	6001.4	5780.0	5644.7	5488.0	5412.4	5324.1	5316.0	5289.6	5344.8
35°	5044.9	4803.5	4630.1	4443.7	4457.4	4226.1	4264.6	4084.9	4036.1	4025.6	4066.7
37.5°	3899.1	3712.2	3571.3	3431.7	3337.1	3239.4	3186.8	3139.4	3134.1	3129.5	3158.3
40°	3052.0	2921.1	2818.7	2722.9	2657.8	2598.2	2565.2	2539.2	2533.1	2529.6	2547.1
42.5°	2470.1	2381.8	2315.7	2257.4	2217.8	2185.3	2167.3	2152.8	2148.0	2148.2	2158.5
45°	2086.9	2033.4	1990.8	1954.5	1929.3	1940.3	1907.6	1924.8	1902.2	1925.6	1910.2
47.5°	1837.8	1792.2	1765.9	1740.2	1724.9	1712.5	1713.0	1713.2	1718.1	1718.8	1723.8
50°	1645.6	1619.3	1600.9	1584.5	1576.5	1570.1	1572.3	1574.0	1578.6	1579.0	1582.7
52.5°	1503.4	1486.0	1475.0	1464.8	1461.2	1457.5	1459.1	1458.4	1460.5	1459.5	1462.5
55°	1387.6	1379.4	1376.0	1372.2	1372.7	1371.7	1372.4	1368.7	1366.5	1363.7	1366.2
57.5°	1292.6	1291.4	1293.9	1295.4	1299.8	1301.3	1302.3	1298.0	1294.1	1290.4	1292.5
60°	1219.4	1221.2	1227.0	1231.7	1237.9	1240.8	1242.7	1240.1	1237.2	1234.2	1236.1
62.5°	1147.3	1150.0	1157.0	1162.2	1169.7	1173.7	1178.1	1178.3	1179.4	1178.3	1179.5
65°	1063.4	1066.9	1073.1	1077.4	1084.5	1088.0	1092.5	1093.2	1095.7	1095.2	1097.2
67.5°	999.7	1002.9	1008.1	1012.2	1018.5	1022.1	1026.0	1026.1	1027.1	1026.8	1028.9
70°	931.8	933.4	938.0	941.5	947.7	951.4	955.9	957.2	960.0	960.5	962.7
72.5°	859.4	858.7	861.5	863.1	867.7	870.6	876.3	879.4	884.2	885.4	887.1
75°	780.4	779.8	783.2	784.5	788.5	791.4	797.8	801.9	809.1	812.2	811.4
77.5°	689.1	690.8	697.0	700.5	705.8	709.5	717.8	724.4	737.7	743.5	737.6
80°	587.0	588.7	595.2	598.4	605.4	609.9	619.2	627.0	638.9	641.4	638.1
82.5°	461.5	461.9	467.7	470.3	479.4	486.0	497.7	503.9	511.3	510.1	509.2
85°	314.6	318.9	326.2	333.5	344.6	355.4	366.4	375.6	369.1	379.3	367.9
87.5°	168.2	167.7	177.5	176.0	191.7	200.7	210.3	214.9	220.0	219.0	219.1
90°	16.6	15.4	16.8	15.4	17.6	16.0	18.9	17.6	21.0	19.0	22.7
92.5°	4.8	4.9	4.8	4.9	4.8	4.9	4.8	4.8	4.8	4.8	4.8
95°	5.2	5.2	5.2	5.1	5.1	5.1	5.1	5.1	5.1	5.1	5.1
97.5°	5.7	5.7	5.7	5.7	5.7	5.7	5.7	5.7	5.6	5.6	5.6
100°	6.3	6.3	6.3	6.3	6.0	6.0	6.0	6.0	6.0	6.0	6.0
102.5°	6.7	6.7	6.7	6.6	6.6	6.6	6.6	6.6	6.6	6.6	6.6
105°	7.4	7.4	7.3	7.3	7.2	7.2	7.2	7.2	7.2	7.2	7.2
107.5°	8.1	8.0	8.0	8.0	7.9	7.9	7.9	7.9	7.9	7.9	7.9
110°	8.9	8.8	8.7	8.7	8.6	8.5	8.5	8.5	8.5	8.5	8.5



TEST NUMBER: P1444537
 CATALOG NUMBER: EHBR1-36-UNV-TA-L835

CANDELA DISTRIBUTION (continued):

	247.5°	250°	252.5°	255°	257.5°	260°	262.5°	265°	267.5°	270°	272.5°
112.5°	10.1	9.7	9.6	9.5	9.4	9.4	9.3	9.3	9.3	9.3	9.3
115°	11.2	11.1	10.9	10.8	10.6	10.4	10.3	10.3	10.3	10.3	10.3
117.5°	12.9	12.5	12.3	12.0	11.8	11.7	11.6	11.6	11.5	11.6	11.6
120°	14.9	14.5	14.1	13.9	13.7	13.5	13.2	13.2	13.2	13.2	13.2
122.5°	17.5	16.9	16.4	16.1	15.8	15.5	15.3	15.3	15.3	15.3	15.3
125°	20.6	20.0	19.5	19.0	18.4	18.3	18.1	18.1	18.0	18.1	18.1
127.5°	24.4	23.8	23.0	22.6	22.0	21.8	21.5	21.4	21.4	21.5	21.5
130°	28.9	28.3	27.5	27.0	26.3	26.1	25.8	25.6	25.5	25.6	25.8
132.5°	34.2	33.5	32.7	32.0	31.4	31.0	30.6	30.6	30.5	30.6	30.7
135°	40.0	39.3	38.4	37.8	37.1	36.8	36.5	36.5	36.4	36.5	36.7
137.5°	46.3	45.7	44.8	44.2	43.5	43.3	43.0	42.8	42.8	43.0	43.2
140°	53.0	52.3	51.5	51.0	50.5	50.1	49.8	49.8	49.6	49.9	50.0
142.5°	59.6	59.2	58.5	58.0	57.4	57.2	57.0	57.0	56.7	57.1	57.3
145°	66.1	65.7	65.2	64.7	64.4	64.3	63.8	63.9	63.9	64.3	64.4
147.5°	72.5	72.3	71.8	71.6	71.1	71.1	70.9	71.0	71.0	71.2	71.3
150°	78.2	78.2	77.8	77.7	77.5	77.5	77.4	77.5	77.5	77.7	77.8
152.5°	83.1	83.1	82.9	82.9	82.8	82.9	82.9	83.1	83.3	83.5	83.6
155°	87.8	87.8	87.8	87.9	87.9	88.2	88.2	88.6	88.7	89.1	89.2
157.5°	92.1	92.3	92.3	92.6	92.8	93.0	93.1	93.6	93.7	94.1	94.3
160°	96.2	96.5	96.6	96.9	97.2	97.3	97.6	98.0	98.3	98.7	98.9
162.5°	100.3	100.5	100.6	100.9	101.2	101.4	101.8	102.3	102.5	102.9	103.3
165°	104.9	105.0	105.2	105.3	105.6	105.8	106.1	106.5	106.8	107.1	107.5
167.5°	110.0	110.1	110.0	110.1	110.1	110.4	110.5	110.8	111.1	111.5	111.8
170°	114.9	114.9	114.9	114.9	114.9	115.1	115.2	115.3	115.5	115.8	115.9
172.5°	119.5	119.5	119.3	119.5	119.3	119.5	119.5	119.6	119.6	119.7	119.7
175°	122.9	123.0	123.0	123.1	123.0	123.0	123.0	123.0	123.0	123.1	123.1
177.5°	125.4	125.5	125.5	125.5	125.5	125.6	125.6	125.6	125.6	125.5	125.5
180°	125.1	125.1	125.1	125.1	125.1	125.1	125.1	125.1	125.1	125.1	125.1



TEST NUMBER: P1444537
 CATALOG NUMBER: EHBR1-36-UNV-TA-L835

CANDELA DISTRIBUTION (continued):

	275°	277.5°	280°	282.5°	285°	287.5°	290°	292.5°	295°	297.5°	300°
0°	30152.6	30152.6	30152.6	30152.6	30152.6	30152.6	30152.6	30152.6	30152.6	30152.6	30152.6
2.5°	30530.0	30514.7	30530.3	30514.5	30530.3	30511.3	30524.2	30503.7	30508.9	30487.6	30493.0
5°	31684.4	31660.0	31673.0	31641.3	31644.7	31602.4	31601.7	31552.5	31539.5	31483.6	31458.9
7.5°	32617.8	32609.9	32614.3	32594.0	32591.7	32562.9	32549.1	32508.5	32482.9	32431.3	32396.1
10°	32470.1	32493.9	32500.0	32524.3	32529.3	32553.4	32558.4	32582.4	32587.4	32605.2	32605.4
12.5°	30992.2	31073.0	31092.3	31192.1	31234.2	31348.4	31409.6	31535.4	31610.2	31735.7	31812.8
15°	28145.1	28284.9	28340.6	28535.5	28643.4	28870.9	29013.8	29275.1	29459.5	29736.9	29934.9
17.5°	24226.6	24421.9	24510.1	24774.4	24946.8	25282.7	25524.7	25923.1	26228.0	26670.8	27021.7
20°	19881.3	20098.4	20218.0	20519.6	20723.0	21115.4	21417.6	21907.1	22315.3	22876.3	23356.1
22.5°	15677.5	15884.1	16017.0	16323.8	16552.8	16962.1	17299.8	17816.5	18273.9	18906.0	19481.2
25°	12037.4	12226.7	12346.8	12624.3	12839.4	13215.4	13537.9	14034.9	14482.4	15116.5	15706.3
27.5°	9202.4	9361.0	9476.8	9713.4	9903.1	10222.0	10499.0	10909.7	11295.4	11843.9	12369.2
30°	7045.2	7185.8	7298.4	7504.5	7680.4	7956.9	8200.5	8545.5	8864.6	9301.1	9718.9
32.5°	5383.7	5504.7	5605.1	5785.4	5945.0	6194.0	6413.5	6715.9	6989.8	7360.0	7703.7
35°	4104.9	4343.0	4326.2	4574.9	4614.9	4793.6	4989.4	5253.8	5496.4	5811.1	6103.8
37.5°	3186.1	3253.0	3324.7	3434.7	3550.3	3712.9	3878.3	4201.3	4319.8	4557.7	4799.8
40°	2569.2	2614.5	2661.9	2736.2	2817.0	2931.6	3052.1	3206.1	3364.1	3557.0	3754.0
42.5°	2172.0	2197.6	2227.8	2271.5	2321.4	2394.0	2474.6	2579.1	2688.9	2824.7	2963.3
45°	1940.6	1928.5	1937.4	1960.9	1990.9	2035.0	2085.9	2150.6	2222.1	2310.1	2403.7
47.5°	1724.9	1729.8	1732.4	1745.2	1761.3	1790.9	1821.7	1865.6	1950.5	1976.3	2027.4
50°	1582.3	1584.7	1584.0	1590.4	1598.6	1617.8	1637.8	1667.6	1697.2	1736.6	1774.1
52.5°	1462.9	1466.3	1465.8	1470.0	1474.4	1486.6	1499.2	1520.3	1539.7	1564.7	1586.3
55°	1368.6	1373.2	1374.9	1378.5	1380.6	1387.0	1392.1	1402.1	1410.4	1424.6	1437.7
57.5°	1296.1	1302.3	1305.2	1306.5	1303.8	1303.6	1301.9	1304.0	1305.7	1313.3	1320.6
60°	1239.0	1244.0	1244.8	1244.0	1239.3	1236.0	1230.5	1228.9	1228.0	1231.7	1235.7
62.5°	1179.2	1181.0	1179.7	1178.3	1172.9	1169.7	1164.1	1162.1	1160.2	1162.8	1164.9
65°	1096.4	1098.0	1096.4	1095.6	1090.8	1088.2	1083.6	1082.0	1079.3	1080.0	1079.5
67.5°	1029.3	1030.9	1029.6	1028.4	1025.1	1023.5	1020.0	1017.8	1014.6	1013.4	1011.1
70°	962.3	963.6	961.7	960.5	956.7	955.3	952.0	951.3	948.8	948.2	945.6
72.5°	885.4	885.5	882.8	882.1	879.3	879.2	877.8	879.1	878.9	880.2	879.6
75°	806.6	805.5	802.2	801.6	799.5	800.4	799.0	800.9	801.1	804.0	804.4
77.5°	727.7	723.5	717.2	714.2	710.0	709.4	707.0	708.6	708.0	711.4	712.8
80°	628.0	623.0	614.8	611.0	605.9	605.1	602.9	605.1	604.0	608.0	610.7
82.5°	501.4	497.0	488.6	485.4	479.7	480.2	477.7	480.2	479.9	485.7	489.0
85°	370.9	368.0	359.2	351.6	343.0	337.9	333.0	332.1	330.6	333.0	335.0
87.5°	214.2	211.6	204.7	200.2	185.2	185.9	180.0	179.6	178.1	176.8	180.0
90°	20.6	23.5	21.5	24.1	22.7	25.8	24.7	27.6	25.6	28.0	26.7
92.5°	4.8	4.8	4.8	4.8	4.8	4.8	4.8	4.8	4.8	4.6	4.8
95°	5.1	5.1	5.1	5.1	5.1	5.1	5.1	5.1	5.1	5.1	5.1
97.5°	5.7	5.6	5.6	5.6	5.6	5.6	5.6	5.6	5.7	5.7	5.7
100°	6.0	6.0	6.0	6.0	6.0	6.0	6.0	6.0	6.3	6.3	6.3
102.5°	6.6	6.6	6.6	6.6	6.7	6.7	6.7	6.7	6.8	6.8	6.8
105°	7.2	7.2	7.3	7.3	7.3	7.3	7.4	7.4	7.5	7.5	7.8
107.5°	7.9	7.9	7.9	8.0	8.0	8.0	8.0	8.1	8.2	8.5	8.6
110°	8.5	8.6	8.6	8.7	8.7	8.8	8.9	9.2	9.4	9.5	9.7



TEST NUMBER: P1444537
 CATALOG NUMBER: EHBR1-36-UNV-TA-L835

CANDELA DISTRIBUTION (continued):

	275°	277.5°	280°	282.5°	285°	287.5°	290°	292.5°	295°	297.5°	300°
112.5°	9.4	9.4	9.5	9.6	9.7	10.0	10.1	10.3	10.6	10.9	11.2
115°	10.4	10.4	10.6	10.8	11.0	11.1	11.5	11.7	12.2	12.5	13.0
117.5°	11.7	11.8	12.0	12.2	12.4	12.9	13.2	13.7	14.1	14.5	15.2
120°	13.5	13.7	13.9	14.0	14.4	14.7	15.3	15.9	16.6	17.2	18.0
122.5°	15.5	15.8	16.1	16.4	16.9	17.5	18.1	18.8	19.6	20.4	21.2
125°	18.3	18.6	19.0	19.5	20.1	20.7	21.5	22.4	23.3	24.0	25.1
127.5°	21.9	22.2	22.7	23.3	24.0	24.7	25.6	26.4	27.5	28.5	29.6
130°	26.2	26.6	27.2	27.7	28.7	29.5	30.3	31.3	32.5	33.5	34.6
132.5°	31.3	31.7	32.4	33.1	33.9	34.9	36.0	36.8	38.0	39.0	40.1
135°	37.1	37.5	38.3	39.0	40.0	40.8	41.9	42.8	44.0	44.9	46.2
137.5°	43.7	44.1	44.8	45.5	46.4	47.3	48.4	49.3	50.3	51.3	52.3
140°	50.6	51.0	51.8	52.5	53.2	54.0	55.1	55.9	57.0	57.8	58.7
142.5°	57.9	58.1	58.8	59.4	60.2	60.9	61.8	62.4	63.3	64.0	65.2
145°	64.8	65.2	65.8	66.2	66.9	67.6	68.4	69.0	69.8	70.4	71.2
147.5°	71.8	72.0	72.6	73.2	73.9	74.5	75.0	75.5	76.3	76.9	77.6
150°	78.2	78.5	79.0	79.3	80.0	80.6	81.3	81.6	82.2	82.7	83.4
152.5°	84.2	84.4	84.8	85.1	85.7	86.2	86.6	87.2	87.8	88.0	88.6
155°	89.5	90.0	90.4	90.8	91.3	91.5	92.1	92.4	93.0	93.4	94.0
157.5°	94.7	95.0	95.5	95.8	96.3	96.7	97.2	97.4	98.0	98.3	98.8
160°	99.4	99.8	100.2	100.5	101.0	101.3	101.8	102.3	102.7	103.1	103.5
162.5°	103.7	104.1	104.6	104.9	105.4	105.8	106.2	106.6	107.1	107.4	107.9
165°	107.9	108.3	108.9	109.1	109.7	110.1	110.4	110.8	111.2	111.6	112.0
167.5°	112.2	112.4	113.0	113.3	113.7	114.1	114.5	114.9	115.3	115.6	116.0
170°	116.3	116.5	116.9	117.2	117.5	117.8	118.2	118.5	118.9	119.2	119.6
172.5°	119.9	120.1	120.3	120.4	120.7	121.0	121.2	121.4	121.7	121.9	122.2
175°	123.1	123.1	123.2	123.3	123.5	123.5	123.6	123.8	123.9	124.0	124.1
177.5°	125.5	125.5	125.5	125.5	125.5	125.5	125.5	125.5	125.5	125.5	125.5
180°	125.1	125.1	125.1	125.1	125.1	125.1	125.1	125.1	125.1	125.1	125.1



TEST NUMBER: P1444537
 CATALOG NUMBER: EHBR1-36-UNV-TA-L835

CANDELA DISTRIBUTION (continued):

	302.5°	305°	307.5°	310°	312.5°	315°	317.5°	320°	322.5°	325°	327.5°
0°	30152.6	30152.6	30152.6	30152.6	30152.6	30152.6	30152.6	30152.6	30152.6	30152.6	30152.6
2.5°	30471.7	30473.0	30448.4	30447.1	30424.1	30421.2	30398.8	30391.9	30373.6	30367.1	30348.5
5°	31396.2	31366.2	31297.1	31256.4	31188.0	31142.7	31068.8	31020.5	30949.1	30895.2	30823.4
7.5°	32331.2	32284.7	32207.0	32144.1	32049.2	31973.5	31862.5	31771.5	31651.3	31547.3	31421.0
10°	32605.4	32598.2	32578.5	32549.7	32505.5	32455.9	32380.4	32301.5	32196.2	32081.7	31941.4
12.5°	31930.7	32003.6	32102.9	32161.8	32233.4	32264.8	32294.2	32286.8	32267.5	32209.6	32128.5
15°	30221.5	30426.2	30697.3	30907.4	31149.1	31324.7	31518.8	31639.7	31760.3	31816.0	31850.0
17.5°	27502.5	27890.2	28376.3	28779.1	29243.9	29617.2	30026.5	30334.6	30651.3	30878.3	31083.6
20°	24010.0	24571.7	25259.2	25866.6	26572.7	27186.5	27859.0	28411.1	28980.5	29425.7	29847.1
22.5°	20221.8	20888.9	21720.1	22490.1	23400.4	24218.7	25141.9	25945.3	26784.2	27485.0	28162.7
25°	16496.8	17228.3	18137.1	18996.2	20027.3	20979.1	22073.9	23075.2	24159.5	25100.9	26030.9
27.5°	13095.3	13813.5	14741.3	15655.8	16746.1	17760.2	18933.3	20036.6	21271.1	22409.7	23574.3
30°	10299.6	10908.7	11740.6	12626.4	13701.8	14733.8	15919.5	17054.3	18338.5	19581.7	20893.5
32.5°	8160.0	8624.1	9278.2	10027.1	11019.3	12001.8	13130.8	14226.2	15490.9	16746.7	18111.1
35°	6480.6	6842.5	7341.2	7925.7	8765.9	9612.7	10611.4	11607.6	12787.5	13979.1	15305.3
37.5°	5110.3	5404.0	5794.5	6233.6	6907.6	7602.5	8421.4	9247.3	10272.5	11328.8	12530.6
40°	3990.6	4228.3	4532.4	4859.8	5368.8	5904.2	6537.6	7178.0	8001.7	8864.9	9859.6
42.5°	3134.9	3310.4	3525.2	3764.4	4239.2	4523.5	4952.9	5416.1	6021.7	6648.4	7396.2
45°	2517.6	2637.3	2786.2	2946.7	3167.1	3408.2	3702.4	4010.7	4586.1	4868.3	5323.0
47.5°	2102.4	2182.8	2277.5	2378.7	2508.7	2648.9	2823.3	3001.7	3232.3	3471.3	3751.7
50°	1822.9	1904.5	1937.0	1989.5	2064.7	2144.8	2243.1	2341.4	2465.2	2590.5	2734.8
52.5°	1615.3	1642.0	1677.3	1710.6	1757.2	1848.5	1878.0	1929.4	1998.8	2066.6	2142.4
55°	1456.9	1474.2	1497.2	1517.4	1545.5	1572.4	1611.3	1645.5	1691.8	1732.7	1782.9
57.5°	1333.5	1344.6	1360.6	1373.8	1392.0	1407.1	1429.9	1448.5	1475.1	1498.3	1528.7
60°	1243.8	1251.3	1262.0	1270.6	1282.2	1290.2	1301.4	1310.2	1324.2	1335.9	1352.9
62.5°	1170.7	1174.5	1181.5	1186.5	1193.9	1198.0	1204.0	1207.8	1215.5	1221.4	1230.9
65°	1082.9	1083.7	1088.4	1090.5	1096.3	1098.5	1103.4	1105.2	1111.6	1115.9	1124.3
67.5°	1010.9	1008.9	1009.0	1007.3	1008.1	1006.4	1006.9	1005.1	1007.6	1009.0	1015.4
70°	945.2	942.4	941.5	938.5	937.5	934.4	933.6	930.7	930.4	929.6	931.8
72.5°	881.1	880.3	880.6	878.5	878.3	876.1	876.2	874.9	876.3	877.0	879.9
75°	807.5	807.7	809.1	807.3	807.8	806.0	806.7	805.1	805.9	805.6	808.5
77.5°	717.9	720.0	723.9	723.1	724.4	722.4	723.2	720.9	721.6	720.0	721.1
80°	617.1	621.5	626.8	626.6	628.8	627.3	629.4	627.2	628.0	625.3	624.6
82.5°	497.4	501.2	506.8	507.0	512.0	512.8	518.3	518.1	521.6	519.3	517.8
85°	340.0	342.7	347.5	350.2	355.3	358.4	363.6	365.7	362.0	368.8	363.4
87.5°	177.5	184.1	180.4	189.1	187.0	195.8	193.9	202.0	200.3	207.3	206.4
90°	30.3	29.5	33.5	32.9	37.9	38.0	43.2	43.0	47.9	47.8	52.8
92.5°	4.6	4.8	4.8	4.8	4.8	4.9	4.8	4.8	4.8	4.9	4.8
95°	5.1	5.1	5.1	5.1	5.1	5.1	5.1	5.2	5.2	5.2	5.2
97.5°	5.7	5.7	5.7	5.7	5.8	5.8	5.8	5.8	5.8	5.9	5.9
100°	6.3	6.4	6.4	6.4	6.5	6.5	6.6	6.6	6.7	6.7	6.7
102.5°	7.1	7.1	7.2	7.3	7.3	7.4	7.5	7.8	7.8	7.9	7.9
105°	7.9	8.0	8.0	8.1	8.2	8.6	8.7	8.8	8.9	9.2	9.2
107.5°	8.8	8.9	9.3	9.4	9.6	10.0	10.2	10.3	10.6	10.8	10.9
110°	10.1	10.3	10.6	11.0	11.2	11.6	11.8	12.2	12.4	12.6	12.9



TEST NUMBER: P1444537
 CATALOG NUMBER: EHBR1-36-UNV-TA-L835

CANDELA DISTRIBUTION (continued):

	302.5°	305°	307.5°	310°	312.5°	315°	317.5°	320°	322.5°	325°	327.5°
112.5°	11.5	12.0	12.3	12.9	13.2	13.7	14.0	14.4	14.6	15.1	15.3
115°	13.5	14.0	14.5	15.1	15.5	16.1	16.6	17.0	17.5	17.8	18.1
117.5°	15.8	16.6	17.0	17.8	18.3	19.0	19.6	20.1	20.6	21.0	21.4
120°	18.6	19.5	20.3	21.0	21.7	22.4	23.0	23.7	24.1	24.7	25.1
122.5°	22.0	23.0	23.8	24.7	25.4	26.2	26.9	27.6	28.1	28.8	29.3
125°	26.1	27.0	27.8	28.8	29.6	30.5	31.2	32.0	32.7	33.5	33.9
127.5°	30.5	31.6	32.5	33.5	34.3	35.3	36.0	36.8	37.5	38.3	39.0
130°	35.5	36.7	37.6	38.6	39.4	40.4	41.1	42.0	42.8	43.5	44.4
132.5°	41.1	42.1	43.1	44.1	44.9	45.9	46.6	47.6	48.2	49.2	49.9
135°	47.0	48.1	48.9	49.9	50.6	51.5	52.3	53.2	53.9	54.9	55.7
137.5°	53.0	54.2	55.0	55.9	56.5	57.4	58.1	59.0	59.6	60.7	61.4
140°	59.4	60.3	61.0	61.9	62.5	63.3	64.0	64.8	65.4	66.2	66.8
142.5°	65.8	66.6	67.2	68.1	68.6	69.4	69.8	70.5	71.2	71.8	72.4
145°	71.8	72.6	73.2	73.9	74.2	75.0	75.4	76.1	76.4	77.1	77.6
147.5°	78.2	78.8	79.1	79.8	80.0	80.7	81.1	81.4	81.9	82.2	82.6
150°	83.7	84.4	84.7	85.1	85.5	86.0	86.3	86.6	86.8	87.2	87.5
152.5°	89.1	89.5	89.9	90.2	90.6	90.9	91.0	91.4	91.5	91.6	91.8
155°	94.2	94.7	95.0	95.4	95.5	95.9	95.9	96.2	96.3	96.5	96.5
157.5°	99.1	99.6	99.9	100.2	100.4	100.6	100.8	101.0	101.0	101.2	101.2
160°	103.8	104.1	104.5	104.7	105.0	105.2	105.3	105.6	105.7	105.7	105.7
162.5°	108.2	108.6	108.9	109.1	109.4	109.7	109.8	110.0	110.1	110.1	110.1
165°	112.3	112.7	113.0	113.3	113.4	113.7	113.8	114.1	114.1	114.3	114.3
167.5°	116.3	116.6	116.9	117.2	117.3	117.5	117.7	118.0	118.0	118.1	118.1
170°	119.7	119.9	120.2	120.4	120.6	120.7	120.9	121.0	121.0	121.1	121.1
172.5°	122.4	122.6	122.6	122.9	122.9	123.0	123.1	123.1	123.2	123.2	123.2
175°	124.1	124.3	124.5	124.5	124.5	124.6	124.6	124.6	124.6	124.6	124.6
177.5°	125.5	125.5	125.5	125.4	125.4	125.4	125.4	125.4	125.4	125.4	125.3
180°	125.1	125.1	125.1	125.1	125.1	125.1	125.1	125.1	125.1	125.1	125.1



TEST NUMBER: P1444537
 CATALOG NUMBER: EHBR1-36-UNV-TA-L835

CANDELA DISTRIBUTION (continued):

	330°	332.5°	335°	337.5°	340°	342.5°	345°	347.5°	350°	352.5°	355°
0°	30152.6	30152.6	30152.6	30152.6	30152.6	30152.6	30152.6	30152.6	30152.6	30152.6	30152.6
2.5°	30341.9	30328.8	30320.2	30309.5	30302.9	30294.4	30288.3	30283.1	30278.8	30274.9	30272.0
5°	30768.6	30700.8	30648.1	30591.1	30544.3	30497.7	30461.6	30431.8	30411.3	30395.8	30386.6
7.5°	31311.8	31187.6	31077.3	30961.0	30856.9	30754.4	30666.1	30590.1	30533.0	30495.9	30473.5
10°	31797.0	31630.8	31466.4	31293.3	31129.4	30970.2	30823.4	30694.2	30591.9	30523.9	30484.3
12.5°	32014.3	31872.8	31704.9	31517.1	31316.0	31112.7	30914.4	30735.6	30585.6	30484.9	30426.8
15°	31822.8	31764.8	31650.8	31505.0	31314.3	31104.0	30871.2	30652.4	30451.1	30320.6	30245.0
17.5°	31199.9	31281.0	31272.3	31216.5	31079.3	30902.4	30665.1	30419.4	30167.6	29993.2	29897.9
20°	30148.5	30403.5	30533.0	30599.3	30545.5	30430.7	30215.9	29966.5	29673.0	29445.2	29306.3
22.5°	28671.1	29121.3	29401.9	29607.2	29650.8	29611.6	29422.1	29184.8	28857.7	28583.9	28378.7
25°	26769.1	27428.8	27872.2	28219.8	28354.8	28389.7	28228.4	27992.5	27627.8	27308.9	27026.9
27.5°	24528.9	25386.0	25978.1	26445.1	26656.0	26747.5	26598.9	26358.3	25926.9	25546.1	25177.8
30°	22006.8	23023.7	23736.6	24296.6	24553.7	24674.5	24516.7	24248.1	23746.1	23288.0	22823.9
32.5°	19307.4	20420.2	21197.0	21805.2	22059.9	22173.6	21967.1	21665.4	21085.3	20545.5	20004.4
35°	16481.2	17604.3	18387.7	18979.7	19193.2	19261.7	18997.8	18649.0	18006.2	17413.8	16823.8
37.5°	13597.4	14642.3	15354.3	15885.7	16017.7	16029.6	15711.5	15326.4	14650.8	14066.6	13479.3
40°	10738.5	11619.7	12194.6	12619.9	12665.8	12624.8	12279.1	11891.4	11259.3	10736.0	10220.5
42.5°	8045.6	8710.8	9120.9	9412.4	9395.0	9314.3	8997.2	8664.0	8142.6	7744.0	7338.2
45°	5738.5	6177.2	6416.9	6587.5	6532.7	6455.7	6209.0	5975.5	5621.1	5363.6	5091.0
47.5°	3986.6	4510.4	4419.2	4752.7	4465.4	4655.1	4260.0	4042.2	3854.1	3717.3	3563.3
50°	2854.1	2974.1	3032.1	3071.7	3050.6	3021.4	2950.5	2887.0	2801.1	2738.5	2665.6
52.5°	2204.1	2264.2	2297.0	2320.8	2316.1	2305.5	2274.5	2246.2	2206.1	2179.5	2147.6
55°	1867.0	1867.9	1928.4	1902.4	1940.7	1895.8	1913.4	1863.7	1871.8	1829.1	1800.4
57.5°	1551.4	1576.0	1587.1	1597.7	1594.7	1592.9	1580.9	1574.9	1561.4	1557.2	1547.6
60°	1364.6	1377.5	1380.3	1385.1	1381.0	1379.4	1370.1	1366.7	1357.7	1355.9	1349.6
62.5°	1236.7	1243.2	1243.2	1243.2	1237.8	1232.7	1222.3	1216.9	1209.1	1207.5	1203.8
65°	1129.8	1136.6	1137.8	1139.2	1135.2	1131.3	1122.0	1116.1	1108.2	1105.2	1100.9
67.5°	1019.5	1026.7	1029.3	1032.9	1030.7	1029.8	1023.6	1021.3	1016.1	1014.8	1010.9
70°	932.9	935.9	935.7	935.6	930.6	926.3	919.0	915.5	910.1	908.9	905.4
72.5°	881.4	883.5	882.2	880.2	873.9	867.4	858.9	852.7	845.5	841.0	836.0
75°	808.9	811.7	809.8	808.7	802.9	798.7	791.9	788.4	783.4	781.9	778.4
77.5°	719.7	721.1	718.2	717.9	713.5	710.8	705.7	704.8	701.1	701.2	697.8
80°	620.7	619.9	615.2	614.3	609.9	608.8	604.8	605.0	602.1	603.3	601.0
82.5°	510.7	507.9	501.8	499.9	494.9	494.5	491.8	494.0	492.3	494.9	493.3
85°	365.9	366.8	364.1	364.1	362.6	363.0	362.8	364.5	364.8	367.2	367.1
87.5°	204.0	206.9	206.4	209.1	209.0	212.0	213.0	217.5	218.1	222.1	222.1
90°	52.7	58.2	58.0	63.6	63.8	69.1	70.2	75.5	76.0	80.7	80.2
92.5°	4.8	4.8	4.9	4.8	4.8	4.6	5.0	4.6	4.8	4.6	4.6
95°	5.2	5.2	5.2	5.2	5.2	5.1	5.1	5.1	5.1	5.1	5.1
97.5°	5.9	5.9	5.9	5.9	5.9	5.9	5.8	5.8	5.8	5.8	5.8
100°	6.7	6.7	6.8	6.7	6.7	6.7	6.7	6.7	6.7	6.6	6.6
102.5°	8.0	8.0	8.0	8.0	8.0	8.0	8.0	7.9	7.9	7.9	7.9
105°	9.3	9.3	9.4	9.4	9.4	9.4	9.4	9.3	9.3	9.3	9.3
107.5°	11.0	11.0	11.1	11.1	11.2	11.2	11.2	11.1	11.2	11.1	11.1
110°	13.1	13.2	13.3	13.3	13.5	13.5	13.5	13.5	13.7	13.5	13.5



TEST NUMBER: P1444537
 CATALOG NUMBER: EHBR1-36-UNV-TA-L835

CANDELA DISTRIBUTION (continued):

	330°	332.5°	335°	337.5°	340°	342.5°	345°	347.5°	350°	352.5°	355°
112.5°	15.5	15.8	16.0	16.0	16.2	16.2	16.4	16.4	16.6	16.4	16.6
115°	18.4	18.8	19.0	19.1	19.5	19.6	19.8	19.8	20.0	20.0	20.0
117.5°	21.9	22.2	22.6	22.9	23.2	23.4	23.7	23.8	23.9	23.9	24.0
120°	25.6	26.1	26.6	27.0	27.3	27.6	28.0	28.1	28.4	28.4	28.5
122.5°	30.0	30.3	31.0	31.4	32.0	32.4	32.8	33.1	33.3	33.3	33.5
125°	34.7	35.3	36.0	36.5	37.1	37.5	38.0	38.2	38.6	38.6	38.7
127.5°	39.8	40.4	41.2	41.8	42.6	43.0	43.4	43.7	44.1	44.1	44.2
130°	45.2	45.9	46.7	47.4	48.1	48.6	49.3	49.5	49.9	49.9	50.0
132.5°	50.8	51.5	52.5	53.0	53.9	54.4	55.1	55.3	55.8	55.8	55.9
135°	56.5	57.2	58.1	58.8	59.5	60.2	60.8	61.1	61.6	61.6	61.7
137.5°	62.2	62.9	63.7	64.4	65.2	65.7	66.2	66.6	66.9	67.2	67.2
140°	67.7	68.3	69.1	69.7	70.4	71.0	71.6	71.8	72.3	72.3	72.4
142.5°	73.1	73.5	74.5	74.9	75.4	75.9	76.3	76.7	77.0	77.1	77.1
145°	78.2	78.4	79.1	79.6	80.0	80.4	80.8	81.2	81.3	81.3	81.4
147.5°	83.1	83.4	83.7	84.1	84.6	84.8	85.0	85.1	85.5	85.5	85.5
150°	87.8	87.8	88.0	88.2	88.5	88.6	88.7	88.9	89.1	88.9	88.9
152.5°	92.0	92.1	92.2	92.2	92.3	92.3	92.3	92.2	92.2	92.1	92.0
155°	96.6	96.6	96.6	96.5	96.6	96.5	96.3	96.2	96.0	95.8	95.5
157.5°	101.2	101.0	101.2	101.0	100.9	100.8	100.6	100.3	100.2	99.8	99.5
160°	105.8	105.7	105.7	105.6	105.4	105.2	105.0	104.6	104.3	103.9	103.6
162.5°	110.1	110.1	110.1	110.0	109.8	109.7	109.4	109.0	108.7	108.3	107.9
165°	114.4	114.3	114.3	114.1	114.0	113.7	113.6	113.2	113.0	112.6	112.2
167.5°	118.1	118.1	118.0	117.8	117.7	117.5	117.3	117.0	116.7	116.4	116.1
170°	121.1	121.0	121.0	120.9	120.7	120.6	120.3	120.1	119.7	119.6	119.3
172.5°	123.1	123.1	123.0	122.9	122.9	122.7	122.5	122.4	122.1	121.8	121.7
175°	124.5	124.5	124.3	124.3	124.1	124.0	123.9	123.8	123.6	123.5	123.2
177.5°	125.3	125.3	125.1	125.1	124.9	124.9	124.8	124.7	124.7	124.6	124.5
180°	125.1	125.1	125.1	125.1	125.1	125.1	125.1	125.1	125.1	125.1	125.1



TEST NUMBER: P1444537
 CATALOG NUMBER: EHBR1-36-UNV-TA-L835

CANDELA DISTRIBUTION (continued):

	357.5°	360°
0°	30152.6	30152.6
2.5°	30269.3	30267.8
5°	30381.9	30380.0
7.5°	30467.4	30466.9
10°	30477.5	30482.7
12.5°	30416.7	30421.0
15°	30239.2	30247.4
17.5°	29899.6	29910.5
20°	29314.7	29326.1
22.5°	28367.6	28372.3
25°	26990.4	26971.0
27.5°	25113.1	25079.4
30°	22726.4	22694.0
32.5°	19881.0	19860.6
35°	16678.0	16665.2
37.5°	13305.7	13279.5
40°	10031.9	9955.7
42.5°	7160.5	7026.7
45°	4948.6	4790.0
47.5°	3454.6	3356.6
50°	2618.5	2586.8
52.5°	2133.6	2126.3
55°	1800.3	1797.0
57.5°	1549.7	1548.6
60°	1352.9	1352.6
62.5°	1206.2	1206.8
65°	1102.8	1103.0
67.5°	1011.9	1011.2
70°	906.7	905.9
72.5°	834.4	833.1
75°	778.4	777.6
77.5°	698.9	697.6
80°	602.5	601.0
82.5°	495.6	493.8
85°	369.6	369.8
87.5°	226.2	226.1
90°	84.7	83.7
92.5°	4.8	5.0
95°	5.1	5.1
97.5°	5.8	5.8
100°	6.6	6.6
102.5°	7.9	7.9
105°	9.3	9.3
107.5°	11.1	11.1
110°	13.5	13.5



TEST NUMBER: P1444537
CATALOG NUMBER: EHBR1-36-UNV-TA-L835

CANDELA DISTRIBUTION (continued):

	357.5°	360°
112.5°	16.4	16.4
115°	19.8	19.8
117.5°	23.9	23.8
120°	28.3	28.3
122.5°	33.2	33.1
125°	38.4	38.3
127.5°	44.0	43.8
130°	49.6	49.5
132.5°	55.7	55.3
135°	61.4	61.1
137.5°	66.8	66.6
140°	72.0	71.8
142.5°	77.0	76.8
145°	81.3	81.1
147.5°	85.0	84.9
150°	88.6	88.4
152.5°	91.5	91.3
155°	95.1	94.7
157.5°	98.9	98.6
160°	103.1	102.7
162.5°	107.4	107.0
165°	111.6	111.2
167.5°	115.6	115.3
170°	118.9	118.7
172.5°	121.4	121.1
175°	123.1	123.0
177.5°	124.5	124.3
180°	125.1	125.1

LM-79-2019: Approved Method: Electrical and Photometric Measurements of Solid-State Lighting Products

Report Prepared for

Cooper Lighting Solutions

Metalux

Report Number: SP1-2506-472-3

Test Date: 07/31/2025

Luminaire Tested: EHBR-60-L835-N

Data in this report applies to families of products including EHBR-60-L835-N

Test Information

Test Method: LM-79-2019
 Report Number: SP1-2506-472-3
 Test Lab: COOPER LIGHTING SOLUTIONS
 Photometer: SP1 - 76IN SPHERE
 Measurement Geometry: 4π
 Issue Date: 08/05/2025
 Manufacturer: COOPER LIGHTING SOLUTIONS
 Product Line: Metalux
 Catalog Number: **EHBR-60-L835-N**
 Description: Elevate Round Highbay at, 60000 lumens, 3500K 80CRI LEDs with N lens

Spectral Parameters

CCT (K): 3468
 CIE u': 0.2375
 CIE v': 0.5091
 Duv: -0.0021
 CIE x: 0.4049
 CIE y: 0.3856
 CIE z: 0.2095
 Peak Wavelength (nm): 630
 Dominant Wavelength (nm): 581
 Purity: 37.24544
 Rf: 80.1
 Rg: 101

CRI (Ra):	82.1		
R1:	82.9	R9:	27.6
R2:	85.6	R10:	63.8
R3:	85.9	R11:	81.2
R4:	82.8	R12:	57.2
R5:	81.0	R13:	82.6
R6:	79.7	R14:	91.0
R7:	86.5	R15:	79.4
R8:	72.1		



Test Conditions

Stabilization Time: 39M
 Operation Time: 1H 39M
 Sphere Temperature (°C): 25.0

REPORT NUMBER: SP1-2506-472-3

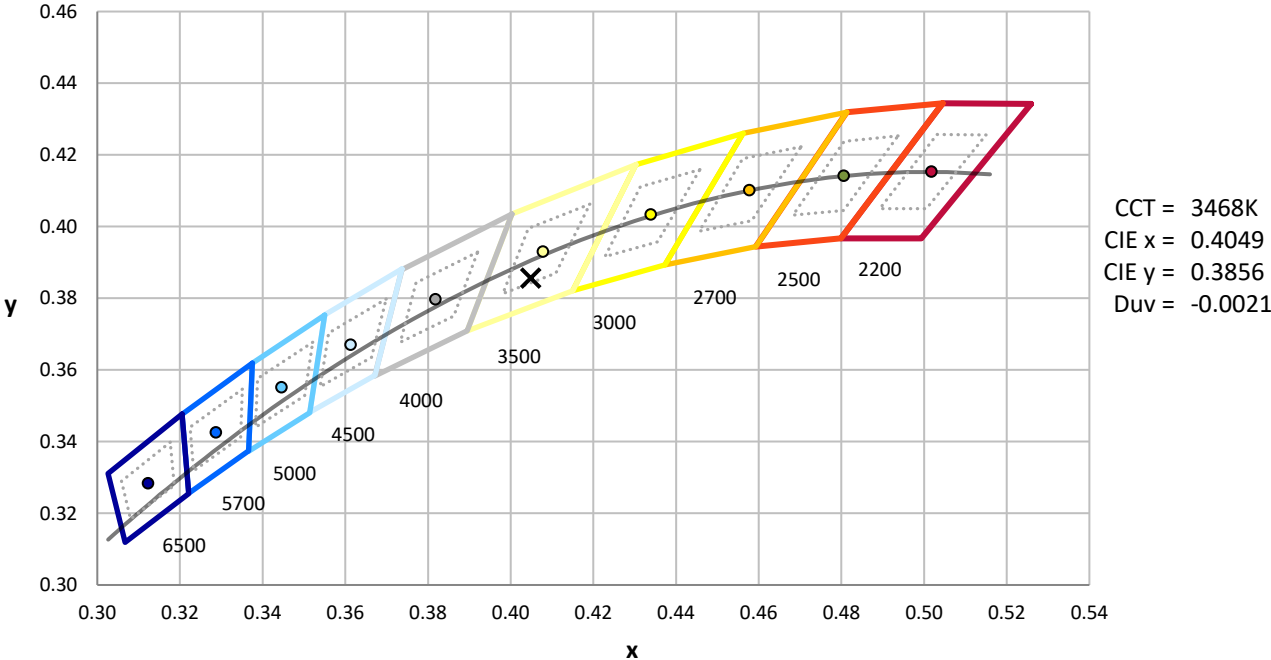
Measurement and Test Equipment			
Instrument	Identification Number	Calibration Date	Calibration Due Date
Photometer	76INCH SPHERE IN0058	6/16/2025	12/16/2025
Power Meter	XITRON INXT2011004	1/21/2025	1/21/2026
AC Power Source	CHROMA 61603 IN0063	10/22/2024	10/22/2025
DC Power Source	AGILENT E3634A IN0208	10/22/2024	10/22/2025
Sphere Thermometer	ONSET IN0085	10/22/2024	10/22/2025
Room Thermometer	ONSET IN0046	10/22/2024	10/22/2025

REPORT NUMBER: SP1-2506-472-3

CIE 1931 Chromaticity Diagram



CIE 1931 Chromaticity Diagram with 2017 ANSI 7-Step and 4-Step Quadrangles



CCT = 3468K
 CIE x = 0.4049
 CIE y = 0.3856
 Duv = -0.0021

Point lies inside the ANSI 3500K 4-step quadrangle

REPORT NUMBER: SP1-2506-472-3

Photopic Flux vs. Wavelength



Photopic Lumens: NR

λ (nm)	Power W [^] /nm	Lumens (φ/nm)	λ (nm)	Power W [^] /nm	Lumens (φ/nm)	λ (nm)	Power W [^] /nm	Lumens (φ/nm)	λ (nm)	Power W [^] /nm	Lumens (φ/nm)	λ (nm)	Power W [^] /nm	Lumens (φ/nm)
360	0	NR	490	60	NR	620	327	NR	750	7	NR	880	0	NR
365	0	NR	495	82	NR	625	322	NR	755	6	NR	885	0	NR
370	0	NR	500	114	NR	630	1000	NR	760	5	NR	890	0	NR
375	0	NR	505	152	NR	635	645	NR	765	4	NR	895	0	NR
380	0	NR	510	189	NR	640	197	NR	770	4	NR	900	0	NR
385	1	NR	515	222	NR	645	189	NR	775	3	NR	905	0	NR
390	2	NR	520	248	NR	650	163	NR	780	3	NR	910	0	NR
395	3	NR	525	268	NR	655	134	NR	785	2	NR	915	0	NR
400	4	NR	530	283	NR	660	113	NR	790	2	NR	920	0	NR
405	6	NR	535	294	NR	665	94	NR	795	2	NR	925	0	NR
410	9	NR	540	305	NR	670	87	NR	800	2	NR	930	0	NR
415	18	NR	545	314	NR	675	70	NR	805	1	NR	935	0	NR
420	34	NR	550	323	NR	680	60	NR	810	1	NR	940	0	NR
425	62	NR	555	335	NR	685	51	NR	815	1	NR	945	0	NR
430	102	NR	560	346	NR	690	44	NR	820	1	NR	950	0	NR
435	159	NR	565	356	NR	695	38	NR	825	1	NR	955	0	NR
440	241	NR	570	364	NR	700	32	NR	830	1	NR	960	0	NR
445	363	NR	575	371	NR	705	28	NR	835	1	NR	965	0	NR
450	389	NR	580	375	NR	710	24	NR	840	1	NR	970	0	NR
455	245	NR	585	375	NR	715	20	NR	845	0	NR	975	0	NR
460	158	NR	590	373	NR	720	17	NR	850	0	NR	980	0	NR
465	120	NR	595	364	NR	725	15	NR	855	0	NR	985	0	NR
470	79	NR	600	357	NR	730	13	NR	860	0	NR	990	0	NR
475	57	NR	605	349	NR	735	11	NR	865	0	NR	995	0	NR
480	51	NR	610	371	NR	740	9	NR	870	0	NR	1000	0	NR
485	51	NR	615	387	NR	745	8	NR	875	0	NR			

REPORT NUMBER: SP1-2506-472-3

Scotopic Flux vs. Wavelength



Scotopic Lumens: NR

S/P: 1.43

λ (nm)	Power W [^] /nm	Lumens (φ/nm)	λ (nm)	Power W [^] /nm	Lumens (φ/nm)	λ (nm)	Power W [^] /nm	Lumens (φ/nm)	λ (nm)	Power W [^] /nm	Lumens (φ/nm)	λ (nm)	Power W [^] /nm	Lumens (φ/nm)
360	0	NR	490	60	NR	620	327	NR	750	7	NR	880	0	NR
365	0	NR	495	82	NR	625	322	NR	755	6	NR	885	0	NR
370	0	NR	500	114	NR	630	1000	NR	760	5	NR	890	0	NR
375	0	NR	505	152	NR	635	645	NR	765	4	NR	895	0	NR
380	0	NR	510	189	NR	640	197	NR	770	4	NR	900	0	NR
385	1	NR	515	222	NR	645	189	NR	775	3	NR	905	0	NR
390	2	NR	520	248	NR	650	163	NR	780	3	NR	910	0	NR
395	3	NR	525	268	NR	655	134	NR	785	2	NR	915	0	NR
400	4	NR	530	283	NR	660	113	NR	790	2	NR	920	0	NR
405	6	NR	535	294	NR	665	94	NR	795	2	NR	925	0	NR
410	9	NR	540	305	NR	670	87	NR	800	2	NR	930	0	NR
415	18	NR	545	314	NR	675	70	NR	805	1	NR	935	0	NR
420	34	NR	550	323	NR	680	60	NR	810	1	NR	940	0	NR
425	62	NR	555	335	NR	685	51	NR	815	1	NR	945	0	NR
430	102	NR	560	346	NR	690	44	NR	820	1	NR	950	0	NR
435	159	NR	565	356	NR	695	38	NR	825	1	NR	955	0	NR
440	241	NR	570	364	NR	700	32	NR	830	1	NR	960	0	NR
445	363	NR	575	371	NR	705	28	NR	835	1	NR	965	0	NR
450	389	NR	580	375	NR	710	24	NR	840	1	NR	970	0	NR
455	245	NR	585	375	NR	715	20	NR	845	0	NR	975	0	NR
460	158	NR	590	373	NR	720	17	NR	850	0	NR	980	0	NR
465	120	NR	595	364	NR	725	15	NR	855	0	NR	985	0	NR
470	79	NR	600	357	NR	730	13	NR	860	0	NR	990	0	NR
475	57	NR	605	349	NR	735	11	NR	865	0	NR	995	0	NR
480	51	NR	610	371	NR	740	9	NR	870	0	NR	1000	0	NR
485	51	NR	615	387	NR	745	8	NR	875	0	NR			

REPORT NUMBER: SP1-2506-472-3

Melanopic Flux vs. Wavelength



Melanopic Lumens: NR

M/P: 2.75

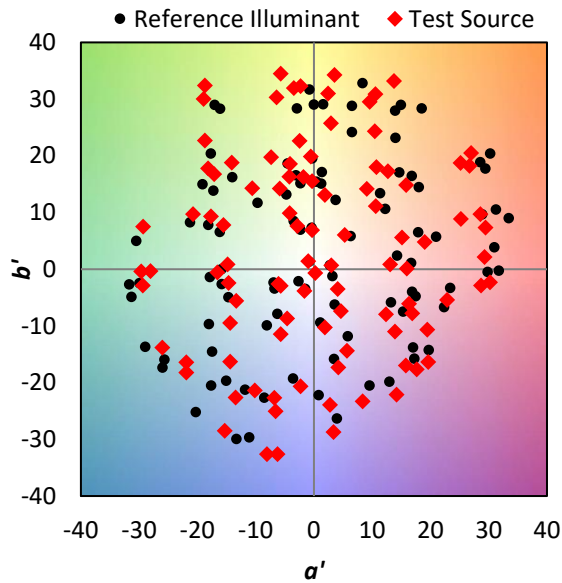
λ (nm)	Power W [^] /nm	Lumens (φ/nm)	λ (nm)	Power W [^] /nm	Lumens (φ/nm)	λ (nm)	Power W [^] /nm	Lumens (φ/nm)	λ (nm)	Power W [^] /nm	Lumens (φ/nm)	λ (nm)	Power W [^] /nm	Lumens (φ/nm)
360	0	NR	490	60	NR	620	327	NR	750	7	NR	880	0	NR
365	0	NR	495	82	NR	625	322	NR	755	6	NR	885	0	NR
370	0	NR	500	114	NR	630	1000	NR	760	5	NR	890	0	NR
375	0	NR	505	152	NR	635	645	NR	765	4	NR	895	0	NR
380	0	NR	510	189	NR	640	197	NR	770	4	NR	900	0	NR
385	1	NR	515	222	NR	645	189	NR	775	3	NR	905	0	NR
390	2	NR	520	248	NR	650	163	NR	780	3	NR	910	0	NR
395	3	NR	525	268	NR	655	134	NR	785	2	NR	915	0	NR
400	4	NR	530	283	NR	660	113	NR	790	2	NR	920	0	NR
405	6	NR	535	294	NR	665	94	NR	795	2	NR	925	0	NR
410	9	NR	540	305	NR	670	87	NR	800	2	NR	930	0	NR
415	18	NR	545	314	NR	675	70	NR	805	1	NR	935	0	NR
420	34	NR	550	323	NR	680	60	NR	810	1	NR	940	0	NR
425	62	NR	555	335	NR	685	51	NR	815	1	NR	945	0	NR
430	102	NR	560	346	NR	690	44	NR	820	1	NR	950	0	NR
435	159	NR	565	356	NR	695	38	NR	825	1	NR	955	0	NR
440	241	NR	570	364	NR	700	32	NR	830	1	NR	960	0	NR
445	363	NR	575	371	NR	705	28	NR	835	1	NR	965	0	NR
450	389	NR	580	375	NR	710	24	NR	840	1	NR	970	0	NR
455	245	NR	585	375	NR	715	20	NR	845	0	NR	975	0	NR
460	158	NR	590	373	NR	720	17	NR	850	0	NR	980	0	NR
465	120	NR	595	364	NR	725	15	NR	855	0	NR	985	0	NR
470	79	NR	600	357	NR	730	13	NR	860	0	NR	990	0	NR
475	57	NR	605	349	NR	735	11	NR	865	0	NR	995	0	NR
480	51	NR	610	371	NR	740	9	NR	870	0	NR	1000	0	NR
485	51	NR	615	387	NR	745	8	NR	875	0	NR			

Summary

$R_f = 80.1$
 $R_g = 101$
 $CIE R_a = 82.1$
 $R_9 = 27.6$

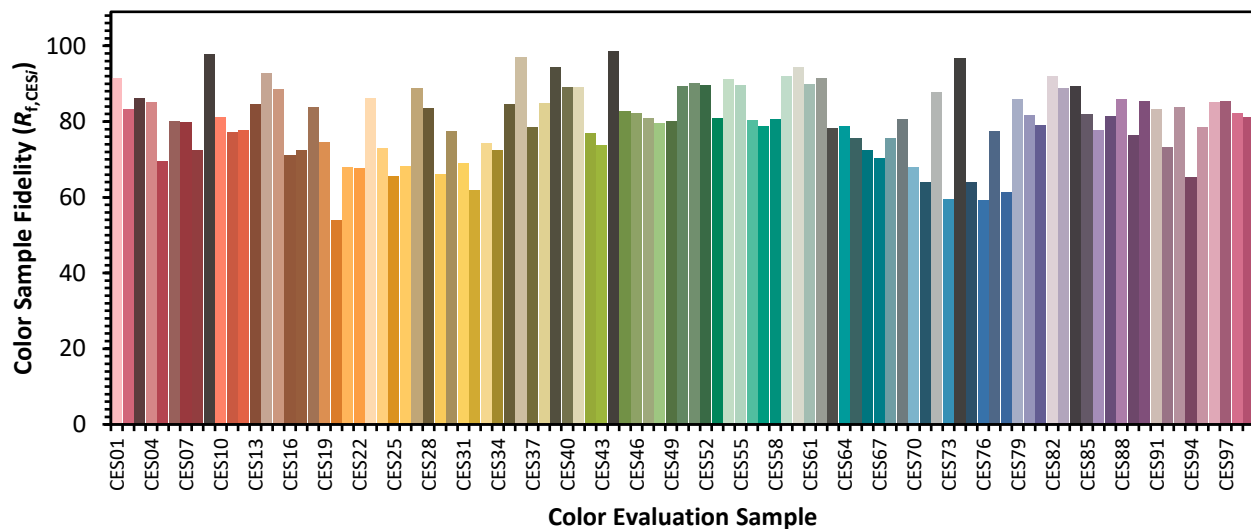


Color Vector Graphics

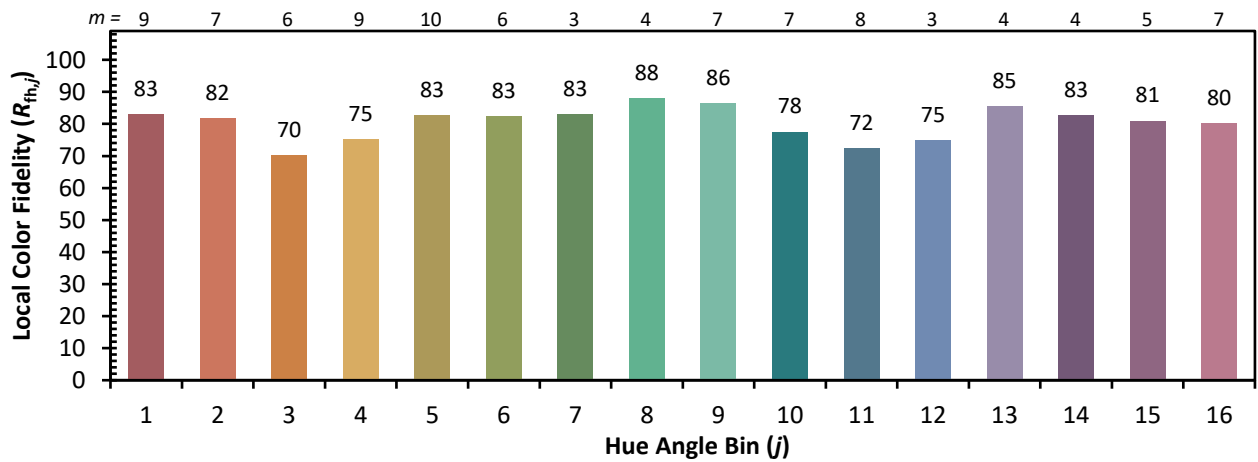
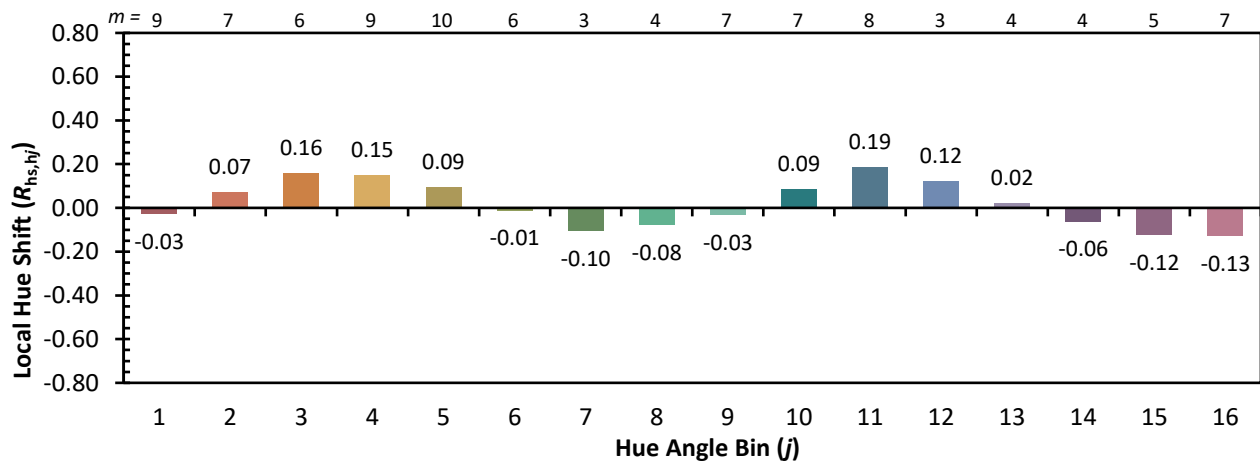
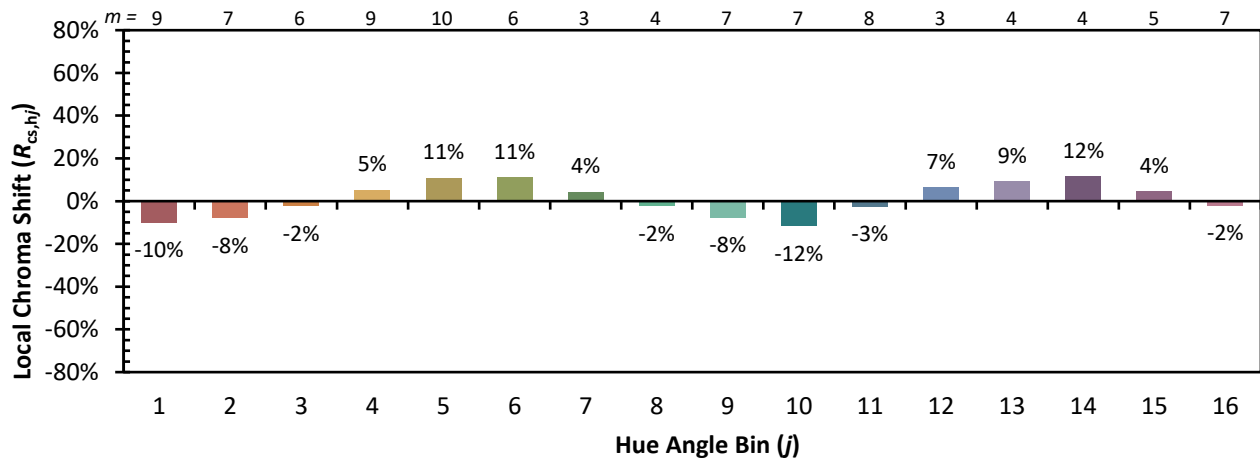


Individual Sample Fidelity Index ($R_{f,i}$)

CES01 = 86	CES26 = 68	CES51 = 90	CES76 = 59
CES02 = 62	CES27 = 89	CES52 = 90	CES77 = 78
CES03 = 31	CES28 = 84	CES53 = 81	CES78 = 61
CES04 = 70	CES29 = 66	CES54 = 91	CES79 = 86
CES05 = 49	CES30 = 77	CES55 = 90	CES80 = 82
CES06 = 51	CES31 = 69	CES56 = 80	CES81 = 79
CES07 = 42	CES32 = 62	CES57 = 79	CES82 = 92
CES08 = 41	CES33 = 74	CES58 = 81	CES83 = 89
CES09 = 29	CES34 = 72	CES59 = 92	CES84 = 89
CES10 = 75	CES35 = 85	CES60 = 94	CES85 = 82
CES11 = 58	CES36 = 97	CES61 = 90	CES86 = 78
CES12 = 64	CES37 = 79	CES62 = 92	CES87 = 82
CES13 = 43	CES38 = 85	CES63 = 78	CES88 = 86
CES14 = 74	CES39 = 94	CES64 = 79	CES89 = 76
CES15 = 71	CES40 = 89	CES65 = 76	CES90 = 85
CES16 = 47	CES41 = 89	CES66 = 73	CES91 = 83
CES17 = 49	CES42 = 77	CES67 = 70	CES92 = 73
CES18 = 56	CES43 = 74	CES68 = 76	CES93 = 84
CES19 = 72	CES44 = 99	CES69 = 81	CES94 = 65
CES20 = 66	CES45 = 83	CES70 = 68	CES95 = 79
CES21 = 86	CES46 = 82	CES71 = 64	CES96 = 85
CES22 = 78	CES47 = 81	CES72 = 88	CES97 = 85
CES23 = 92	CES48 = 80	CES73 = 60	CES98 = 82
CES24 = 91	CES49 = 80	CES74 = 97	CES99 = 81
CES25 = 72	CES50 = 89	CES75 = 64	



Color Rendition by Hue-Angle Bin



Measure Comparisons



(END OF REPORT)