

Cooper Lighting Solutions Photometric Lab
1121 Highway 74 South
Peachtree City, GA 30269



Scaled data based on original data using
LM-79-2019 Approved Method: Electrical and Photometric Measurements of Solid-
State Lighting Products

Test Report Prepared for
Cooper Lighting Solutions

Brand: METALUX

Report Number: P1444502

Luminaire Tested: EHBR1-12-UNV-TA-L835-UPL30

Issue Date: 5/1/2026

Test Information

Test Method: LM-79-2019
Report Number: P1444502
REPORT IS A COMBINATION OF REPORTS P1444336 AND P1431635
Test Lab: INNOVATION CENTER
Issue Date: 5/1/2026
Manufacturer: COOPER LIGHTING SOLUTIONS
Product Line: METALUX
Catalog Number: EHBR1-12-UNV-TA-L835-UPL30
Description: Elevate Round Highbay at, 12000 lumens, 3500K 80CRI LEDs with TA lens
Light Source: -
Ballast/Driver: -

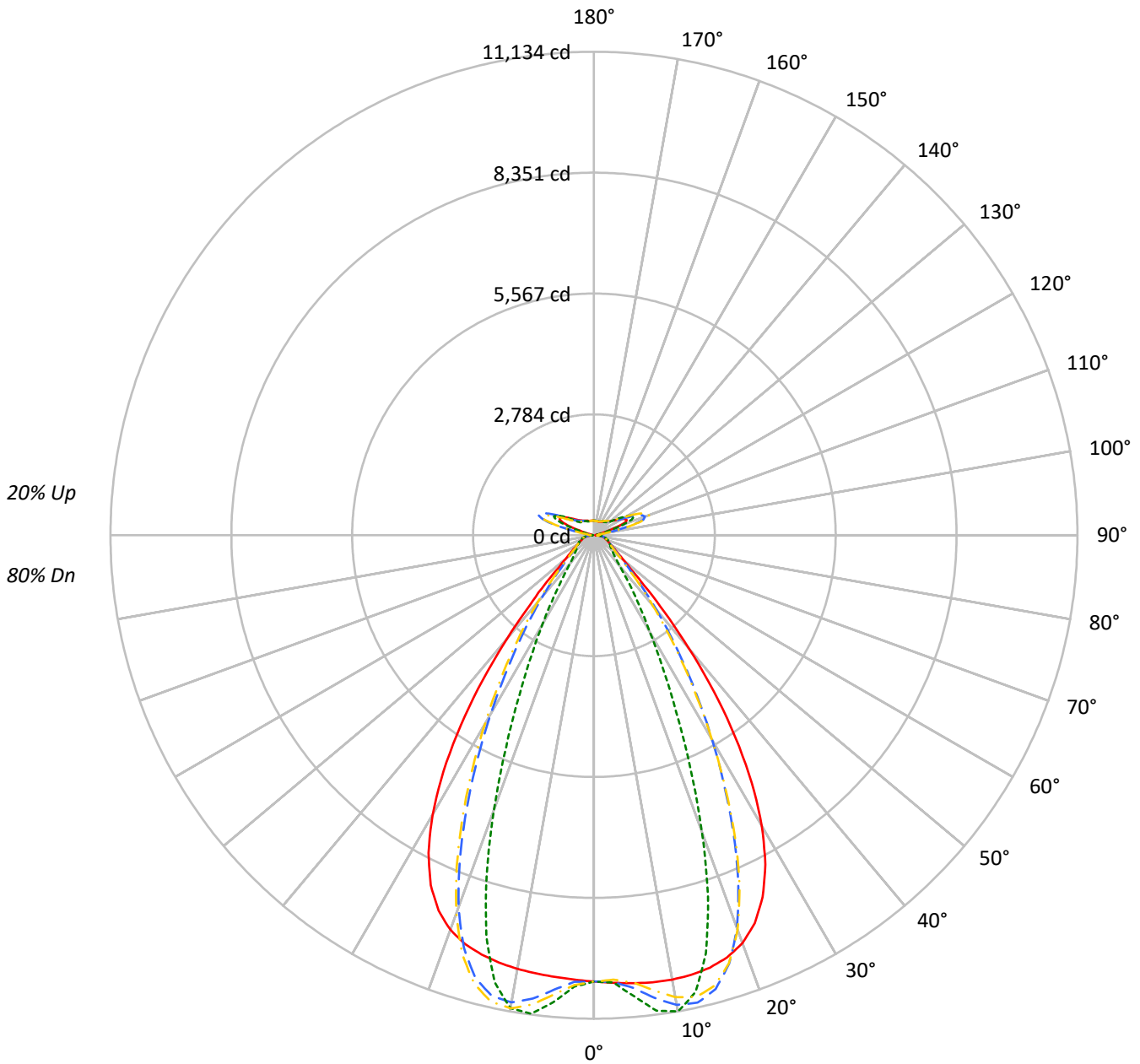
Summary

Lumens per Lamp: N/A
Luminaire Lumens: 14856.5 lumens
Efficiency: N/A
Efficacy: 171.4 lumens/watt
Spacing Criteria (0/90/45): 1.13 / 0.77 / 0.88
Luminous Opening: Vertical Cylinder (Dia: 1.71' x H: 0.1')
CIE Type: Semi-Direct

Input Watts (W): 86.7
Input Voltage (V): NR
Input Current (Ain): NR
Voltage Rise (V): NR
Power Factor: NR
Total Harmonic Distortion (THDi): NR
Frequency (hertz): 60
Stabilization Time: NR
Operation Time: NR
Ambient Temperature (°C): NR
Test Distance: 24 FT

TEST NUMBER: P1444502
CATALOG NUMBER: EHBR1-12-UNV-TA-L835-UPL30

Luminous Intensity Polar Plot



— 0°-180° - - 45°-225° - · - · 90°-270° - · - · 135°-315°



TEST NUMBER: P1444502
 CATALOG NUMBER: EHBR1-12-UNV-TA-L835-UPL30

COEFFICIENT OF UTILIZATION - ZONAL CAVITY METHOD:

RF	20				20				20				20				20				
RC	80				70				50				30				10			0	
RW	70	50	30	10	70	50	30	10	50	30	10	50	30	10	50	30	10	50	30	10	0
RCR																					
0	114	114	114	114	109	109	109	109	100	100	100	91	91	91	83	83	83	83	83	83	80
1	107	103	100	97	102	99	96	94	91	89	87	84	82	81	77	76	75	75	75	75	72
2	100	94	89	85	96	90	86	82	84	80	77	78	75	73	72	70	68	68	68	68	65
3	93	86	80	75	90	83	77	73	77	73	69	72	68	66	67	64	62	62	62	62	59
4	88	79	72	67	84	76	70	66	71	66	63	67	63	60	63	59	57	57	57	57	54
5	82	72	66	61	79	70	64	59	66	61	57	62	58	55	59	55	52	52	52	52	50
6	77	67	60	55	74	65	59	54	61	56	52	58	54	50	55	51	48	48	48	48	46
7	73	62	55	51	70	61	54	50	57	52	48	54	50	47	52	48	45	45	45	45	43
8	69	58	51	47	66	57	50	46	54	48	45	51	47	43	49	45	42	42	42	42	40
9	65	54	48	43	63	53	47	43	50	45	41	48	44	40	46	42	39	39	39	39	37
10	62	51	45	40	60	50	44	40	47	42	39	45	41	38	43	39	37	37	37	37	35

AVERAGE LUMINANCE (cd/sqm):

	0°	90°	180°	270°
0°	48266	48266	48266	48266
5°	48499	49913	47820	50567
10°	48904	52405	47731	52059
15°	49144	47505	47648	45592
20°	48636	35390	47044	32744
25°	46036	22382	44514	20308
30°	40215	13449	38658	12292
35°	30950	8440	29170	7476
40°	19579	5294	17913	4975
45°	10091	4124	9924	4056
50°	5917	3669	5735	3611
55°	4532	3470	4365	3439
60°	3836	3545	3673	3500
65°	3602	3703	3464	3576
70°	3519	3876	3344	3730
75°	3763	4111	3559	3929
80°	3895	4553	3530	4155
85°	3669	4393	2962	3762

MAXIMUM LUMINANCE 45°-90°:

Horizontal Angle: 25°
 Vertical Angle: 45°
 Luminance: 15444 cd/sqm



TEST NUMBER: P1444502
 CATALOG NUMBER: EHBR1-12-UNV-TA-L835-UPL30

ZONAL LUMENS:

Zone	Lumens	% Fixture
0°-10°	1012.9	6.8
10°-20°	2849.4	19.2
20°-30°	3245.2	21.8
30°-40°	2332.5	15.7
40°-50°	1075.8	7.2
50°-60°	514.8	3.5
60°-70°	375.6	2.5
70°-80°	285.4	1.9
80°-90°	135.0	0.9
90°-100°	82.0	0.6
100°-110°	518.5	3.5
110°-120°	958.9	6.5
120°-130°	574.4	3.9
130°-140°	353.3	2.4
140°-150°	249.4	1.7
150°-160°	165.6	1.1
160°-170°	95.8	0.6
170°-180°	32.0	0.2
0°-30°	7107.5	47.8
0°-40°	9440.1	63.5
0°-60°	11030.6	74.2
0°-90°	11826.6	79.6
90°-120°	1559.5	10.5
90°-150°	2736.5	18.4
90°-180°	3030.0	20.4
0°-180°	14856.5	100.0

CANDELA DISTRIBUTION:

	0°	90°	180°	270°	360°	Flux
0°	10278	10278	10278	10278	10278	
5°	10355	10657	10210	10797	10355	990
15°	10310	9966	9996	9565	10310	2905
25°	9193	4470	8890	4055	9193	4168
35°	5680	1549	5354	1372	5680	3486
45°	1633	667	1606	656	1633	1389
55°	612	469	590	465	612	565
65°	376	386	362	373	376	376
75°	265	290	251	277	265	276
85°	126	151	102	129	126	118
90°	50	59	26	28	50	29
95°	38	43	38	43	38	36
105°	182	239	120	239	182	243
115°	831	1019	871	1019	831	767
125°	608	655	690	655	608	554
135°	455	419	491	420	455	355
145°	384	387	411	388	384	243
155°	344	353	370	354	344	160
165°	330	335	344	336	330	94
175°	331	336	338	336	331	32
180°	335	335	335	335	335	



TEST NUMBER: P1444502
 CATALOG NUMBER: EHBR1-12-UNV-TA-L835-UPL30

CANDELA DISTRIBUTION (FULL):

	0°	2.5°	5°	7.5°	10°	12.5°	15°	17.5°	20°	22.5°	25°
0°	10277.8	10277.8	10277.8	10277.8	10277.8	10277.8	10277.8	10277.8	10277.8	10277.8	10277.8
2.5°	10317.1	10316.3	10316.1	10315.4	10315.2	10315.2	10314.8	10313.9	10313.5	10312.3	10310.9
5°	10355.4	10354.9	10355.2	10355.3	10354.5	10352.9	10350.4	10347.3	10343.4	10339.7	10336.5
7.5°	10384.9	10385.7	10386.6	10386.4	10384.1	10380.4	10375.2	10372.3	10374.1	10379.7	10392.5
10°	10390.4	10394.8	10396.5	10396.0	10391.5	10388.2	10389.5	10400.3	10422.1	10451.0	10490.5
12.5°	10369.3	10374.7	10374.5	10372.7	10368.3	10372.8	10388.6	10421.0	10467.4	10524.5	10591.4
15°	10310.2	10317.1	10315.2	10312.9	10310.0	10324.4	10355.9	10412.3	10484.0	10564.4	10646.7
17.5°	10195.3	10203.8	10199.6	10197.0	10194.6	10221.7	10275.9	10358.4	10448.7	10539.7	10617.7
20°	9996.1	10001.7	9991.9	9987.4	9991.3	10044.5	10124.3	10229.6	10324.8	10410.8	10464.1
22.5°	9671.0	9678.1	9659.6	9657.5	9680.2	9762.0	9862.9	9980.6	10070.1	10138.3	10158.8
25°	9193.4	9200.2	9178.4	9191.4	9230.1	9341.6	9461.7	9587.6	9664.0	9714.5	9700.6
27.5°	8548.6	8555.0	8534.2	8560.9	8622.0	8768.4	8909.8	9046.4	9114.4	9149.8	9105.0
30°	7735.4	7748.6	7724.1	7761.3	7854.5	8044.7	8206.8	8359.9	8427.7	8454.7	8384.9
32.5°	6769.7	6788.4	6761.5	6816.8	6946.8	7175.3	7359.3	7530.5	7605.5	7636.2	7557.4
35°	5680.5	5707.3	5676.4	5759.4	5919.8	6174.3	6378.1	6569.1	6658.0	6701.5	6622.1
37.5°	4526.5	4552.1	4535.3	4646.1	4822.3	5085.9	5294.0	5500.1	5600.5	5665.9	5603.2
40°	3393.5	3416.9	3429.5	3556.4	3722.1	3970.6	4170.3	4374.2	4486.6	4568.7	4530.1
42.5°	2395.2	2418.7	2461.9	2584.2	2722.3	2928.1	3099.2	3282.3	3389.6	3477.2	3462.2
45°	1632.7	1660.1	1714.1	1814.3	1914.2	2061.8	2187.5	2329.9	2417.6	2497.7	2498.7
47.5°	1144.2	1163.4	1211.6	1280.0	1345.2	1530.0	1537.5	1607.5	1666.4	1726.4	1734.2
50°	881.8	893.3	918.9	957.1	994.0	1042.0	1085.9	1136.6	1172.9	1205.7	1213.6
52.5°	724.8	732.1	745.2	765.8	787.1	813.3	836.8	864.6	884.4	901.9	905.6
55°	612.5	618.6	638.0	642.0	666.4	671.2	681.6	698.5	710.1	720.5	723.2
57.5°	527.9	532.3	536.4	545.2	552.8	563.7	572.6	584.7	592.0	599.5	600.2
60°	461.1	464.3	467.2	473.3	478.4	486.1	492.2	500.4	505.6	511.3	512.0
62.5°	411.3	413.6	415.6	419.7	423.2	429.2	434.0	440.9	445.7	450.1	451.1
65°	376.0	377.7	378.9	381.9	385.1	390.2	394.5	400.2	403.7	407.1	407.8
67.5°	344.7	346.3	347.6	350.3	352.6	356.3	359.2	363.5	366.1	368.8	368.9
70°	308.8	310.3	311.2	313.9	315.6	318.8	321.2	325.0	327.7	330.7	331.5
72.5°	284.0	284.9	286.1	288.6	291.0	294.5	297.6	301.6	304.8	308.0	309.3
75°	265.1	266.1	266.9	269.0	270.7	273.6	276.0	279.5	282.5	285.8	287.5
77.5°	237.8	239.0	239.8	241.7	243.3	246.0	247.7	251.0	253.4	256.5	257.9
80°	204.9	205.9	206.5	208.4	209.5	212.2	213.8	217.0	218.9	221.9	223.8
82.5°	168.3	169.4	169.7	171.5	172.1	174.2	175.5	178.7	181.1	185.1	187.8
85°	126.1	126.4	127.0	126.5	129.2	129.3	132.2	132.7	136.5	137.5	141.9
87.5°	77.1	78.2	78.7	80.5	81.3	83.0	83.6	85.4	86.5	88.6	89.6
90°	49.8	52.8	54.6	57.8	59.5	62.6	64.3	67.5	69.2	72.5	75.6
92.5°	33.0	35.3	37.6	40.0	42.5	45.1	47.6	50.0	52.5	55.0	59.8
95°	37.9	40.6	43.3	46.2	48.9	51.6	54.3	57.1	59.8	62.5	70.6
97.5°	47.9	50.3	52.7	55.1	57.4	59.8	62.2	64.6	66.9	69.3	78.8
100°	63.0	65.1	67.0	69.0	71.1	73.0	75.0	77.1	79.0	81.1	98.8
102.5°	106.1	113.2	120.3	127.4	134.6	141.7	148.8	155.9	163.1	170.2	207.7
105°	182.3	201.6	221.0	240.3	259.6	279.0	298.3	317.6	336.8	356.2	417.2
107.5°	314.3	349.9	385.7	421.5	457.3	493.1	528.8	564.6	600.3	636.1	697.9
110°	584.6	613.3	642.2	670.9	699.8	728.6	757.5	786.1	815.0	843.8	888.9



TEST NUMBER: P1444502
 CATALOG NUMBER: EHBR1-12-UNV-TA-L835-UPL30

CANDELA DISTRIBUTION (continued):

	0°	2.5°	5°	7.5°	10°	12.5°	15°	17.5°	20°	22.5°	25°
112.5°	789.3	802.4	815.5	828.5	841.6	854.7	867.7	880.8	893.9	907.0	939.4
115°	831.4	836.1	840.8	845.4	850.2	854.8	859.5	864.1	868.8	873.3	895.3
117.5°	804.9	804.1	803.6	802.9	802.3	801.6	801.0	800.2	799.6	798.9	811.4
120°	747.2	743.4	739.7	735.8	732.2	728.3	724.6	720.7	716.9	713.0	718.5
122.5°	675.0	670.5	666.0	661.4	656.8	652.3	647.7	643.0	638.4	633.8	636.2
125°	607.8	603.2	598.7	594.2	589.5	584.9	580.3	575.7	571.0	566.4	567.8
127.5°	548.9	545.8	542.8	539.5	536.4	533.2	530.0	526.7	523.6	520.3	520.9
130°	509.7	507.0	504.2	501.5	498.7	495.8	493.0	490.1	487.2	484.3	485.3
132.5°	477.2	475.4	473.6	471.6	469.7	467.7	465.9	463.8	461.8	459.9	461.0
135°	454.6	452.9	451.3	449.5	447.8	445.9	444.1	442.2	440.5	438.6	439.9
137.5°	435.1	433.6	432.2	430.5	429.0	427.3	425.8	424.0	422.4	420.7	422.0
140°	417.1	415.9	414.5	413.1	411.7	410.3	408.9	407.3	405.9	404.4	406.0
142.5°	397.4	396.5	395.6	394.4	393.6	392.4	391.3	390.2	389.1	387.9	389.9
145°	384.2	383.4	382.7	381.8	381.0	380.1	379.2	378.2	377.4	376.5	378.4
147.5°	372.3	371.8	371.2	370.6	370.0	369.2	368.6	367.9	367.2	366.4	368.4
150°	362.1	361.5	361.0	360.4	359.7	359.1	358.4	357.8	357.1	356.3	358.4
152.5°	351.5	350.9	350.4	349.8	349.3	348.6	348.0	347.3	346.6	346.0	347.7
155°	344.4	343.8	343.2	342.8	342.2	341.5	340.8	340.3	339.7	339.0	340.4
157.5°	339.1	338.7	338.4	337.9	337.5	337.1	336.7	336.3	335.9	335.5	336.5
160°	335.7	335.3	334.9	334.5	334.0	333.7	333.4	332.9	332.5	332.1	333.0
162.5°	332.2	331.8	331.4	331.0	330.6	330.3	329.9	329.5	329.1	328.6	329.7
165°	330.3	330.2	330.0	329.8	329.6	329.4	329.2	329.0	328.8	328.6	329.3
167.5°	331.7	331.3	331.0	330.6	330.3	330.1	329.7	329.3	329.0	328.5	329.3
170°	331.2	331.0	330.9	330.8	330.6	330.5	330.4	330.3	330.1	330.0	330.6
172.5°	332.1	331.9	331.8	331.8	331.6	331.5	331.4	331.3	331.2	331.1	331.8
175°	331.1	330.9	330.9	330.8	330.7	330.7	330.6	330.5	330.5	330.4	330.9
177.5°	333.2	333.1	333.1	333.1	333.1	333.1	333.0	332.9	332.9	332.9	333.3
180°	335.1	335.1	335.1	335.1	335.1	335.1	335.1	335.1	335.1	335.1	335.1



TEST NUMBER: P1444502
 CATALOG NUMBER: EHBR1-12-UNV-TA-L835-UPL30

CANDELA DISTRIBUTION (continued):

	27.5°	30°	32.5°	35°	37.5°	40°	42.5°	45°	47.5°	50°	52.5°
0°	10277.8	10277.8	10277.8	10277.8	10277.8	10277.8	10277.8	10277.8	10277.8	10277.8	10277.8
2.5°	10310.0	10308.7	10307.0	10304.8	10303.0	10300.8	10295.6	10294.1	10295.8	10297.0	10299.3
5°	10334.4	10335.2	10335.5	10340.1	10344.2	10354.3	10433.3	10464.7	10489.1	10504.5	10527.9
7.5°	10408.3	10432.0	10455.6	10487.2	10514.5	10551.3	10689.7	10748.5	10790.4	10820.5	10857.5
10°	10533.5	10585.3	10634.0	10690.9	10740.0	10796.0	10924.8	10982.2	11018.5	11044.8	11069.4
12.5°	10659.5	10731.5	10796.5	10859.9	10913.0	10961.7	11006.9	11027.0	11028.7	11029.5	11016.4
15°	10725.3	10794.0	10851.3	10893.2	10924.4	10938.2	10860.2	10819.3	10767.6	10725.1	10655.0
17.5°	10683.8	10725.1	10749.8	10747.4	10734.5	10691.3	10470.5	10349.0	10228.4	10119.7	9977.3
20°	10499.5	10496.3	10474.8	10413.8	10340.4	10226.1	9847.5	9629.0	9417.8	9232.3	9007.3
22.5°	10156.8	10102.9	10027.6	9896.1	9750.0	9550.5	9007.9	8686.4	8392.5	8132.7	7841.7
25°	9660.1	9549.1	9410.5	9201.7	8974.7	8683.5	8014.8	7615.1	7262.1	6955.9	6620.2
27.5°	9024.4	8857.3	8654.1	8365.1	8057.6	7684.6	6943.2	6502.1	6123.1	5794.8	5437.5
30°	8271.9	8054.5	7792.2	7433.5	7062.5	6639.5	5887.5	5440.7	5057.2	4719.4	4361.8
32.5°	7421.6	7166.9	6859.4	6456.9	6055.8	5620.8	4894.5	4462.1	4095.7	3770.8	3447.1
35°	6483.6	6210.5	5885.2	5474.7	5075.9	4653.0	3986.6	3596.7	3273.1	2985.9	2724.6
37.5°	5477.5	5209.4	4900.1	4513.2	4143.5	3760.2	3185.2	2858.4	2586.9	2348.6	2146.8
40°	4431.4	4196.8	3929.2	3594.7	3279.2	2960.0	2487.9	2228.6	2014.3	1832.6	1681.3
42.5°	3398.0	3216.2	3011.1	2746.7	2505.3	2262.2	1899.0	1706.8	1548.1	1417.2	1310.3
45°	2465.5	2343.8	2206.2	2022.4	1855.4	1685.8	1427.3	1292.2	1188.9	1104.5	1033.1
47.5°	1723.5	1652.9	1648.6	1478.8	1356.3	1252.7	1086.1	1000.7	937.4	886.3	841.1
50°	1210.4	1176.2	1133.8	1073.2	1016.4	957.8	856.3	804.7	767.6	736.6	708.1
52.5°	904.8	887.1	864.5	832.3	801.6	768.6	704.3	671.6	659.9	631.0	608.4
55°	722.7	712.6	699.7	680.8	662.1	654.6	599.5	575.2	559.7	548.3	536.2
57.5°	600.3	592.7	585.1	572.3	561.4	548.3	519.1	506.6	497.4	490.7	482.3
60°	512.1	507.5	503.2	495.8	489.9	482.8	464.3	457.2	452.4	448.4	443.0
62.5°	451.9	449.6	447.4	443.4	440.4	436.6	423.9	420.5	418.1	416.1	412.9
65°	408.6	406.9	405.7	403.0	401.5	399.3	388.3	386.1	384.6	383.9	381.9
67.5°	369.1	367.4	366.6	364.7	364.1	362.6	353.7	352.5	352.0	352.3	351.6
70°	332.3	331.5	331.9	331.6	332.5	332.7	327.3	327.2	327.8	329.0	329.1
72.5°	310.2	310.2	310.6	310.8	311.5	311.9	307.5	307.3	307.5	308.3	308.3
75°	289.1	289.5	290.6	291.0	292.0	292.1	286.2	285.6	285.6	286.3	286.1
77.5°	260.1	261.3	263.4	264.6	266.5	266.7	260.1	259.3	259.4	260.1	259.5
80°	227.0	229.4	232.9	235.3	238.1	239.2	232.4	230.8	229.2	229.0	227.7
82.5°	192.0	194.9	199.1	201.2	204.2	204.9	193.4	191.2	189.9	190.0	188.8
85°	146.5	148.7	152.5	153.8	155.6	155.4	142.3	136.7	138.3	135.9	137.8
87.5°	91.9	93.2	95.6	95.9	96.8	96.6	83.4	80.8	80.0	80.1	79.1
90°	80.1	83.4	87.8	90.2	93.9	96.1	87.8	88.8	85.9	84.4	81.1
92.5°	64.7	69.4	74.3	79.1	84.0	88.8	92.4	96.9	91.8	86.6	81.7
95°	78.6	86.6	94.6	102.7	110.7	118.7	126.7	134.8	127.3	119.7	112.3
97.5°	88.3	97.8	107.3	116.7	126.2	135.7	145.2	154.8	146.7	138.6	130.5
100°	116.5	134.2	151.8	169.5	187.2	205.0	222.6	240.4	224.9	209.2	193.7
102.5°	245.3	282.8	320.5	358.0	395.6	433.1	470.8	508.4	472.8	437.1	401.5
105°	478.2	539.0	600.0	660.9	721.8	782.7	843.8	904.7	847.7	790.6	733.7
107.5°	759.7	821.6	883.3	945.1	1007.0	1068.8	1130.8	1192.6	1137.1	1081.4	1026.0
110°	934.1	979.3	1024.5	1069.6	1114.8	1160.0	1205.4	1250.6	1217.3	1184.0	1150.6



TEST NUMBER: P1444502
 CATALOG NUMBER: EHBR1-12-UNV-TA-L835-UPL30

CANDELA DISTRIBUTION (continued):

	27.5°	30°	32.5°	35°	37.5°	40°	42.5°	45°	47.5°	50°	52.5°
112.5°	971.7	1004.1	1036.5	1068.9	1101.2	1133.6	1166.4	1198.7	1182.3	1165.6	1149.1
115°	917.4	939.3	961.2	983.1	1005.1	1026.9	1049.2	1071.3	1066.2	1061.1	1056.1
117.5°	823.8	836.2	848.7	861.0	873.3	885.7	898.7	911.2	912.5	913.8	915.0
120°	724.0	729.4	734.9	740.4	745.7	751.2	757.3	762.8	767.7	772.5	777.4
122.5°	638.5	640.8	643.1	645.5	647.8	650.0	653.1	655.7	659.1	662.7	666.2
125°	569.2	570.5	572.0	573.2	574.5	576.0	578.2	579.6	580.3	580.9	581.6
127.5°	521.6	522.2	522.8	523.5	524.1	524.7	526.2	527.0	525.6	524.2	522.7
130°	486.3	487.1	488.1	489.2	490.1	491.0	493.0	494.1	491.3	488.3	485.5
132.5°	462.1	463.3	464.4	465.5	466.6	467.7	469.9	471.2	467.9	464.4	461.1
135°	441.2	442.5	443.8	445.2	446.4	447.9	450.3	451.8	448.6	445.3	442.1
137.5°	423.2	424.6	426.0	427.3	428.6	429.9	432.5	434.2	431.7	429.2	426.6
140°	407.4	408.9	410.3	412.0	413.4	415.0	417.8	419.7	417.8	415.8	413.8
142.5°	391.6	393.6	395.5	397.4	399.4	401.3	404.6	406.9	405.6	404.1	402.9
145°	380.5	382.6	384.7	386.9	389.0	391.1	394.8	397.3	396.5	395.8	394.9
147.5°	370.2	372.1	374.1	376.0	378.1	380.2	383.7	386.1	385.7	385.3	384.9
150°	360.1	362.2	364.0	366.0	368.1	370.1	374.0	376.5	376.1	375.8	375.4
152.5°	349.5	351.2	353.0	354.8	356.6	358.6	362.7	365.2	364.8	364.4	364.1
155°	341.8	343.2	344.7	346.2	347.6	349.2	353.3	355.5	355.4	355.3	355.1
157.5°	337.5	338.7	339.7	340.8	341.9	343.1	347.1	349.0	348.9	348.7	348.6
160°	333.7	334.7	335.6	336.5	337.3	338.4	342.4	344.0	343.9	343.7	343.6
162.5°	330.7	331.9	332.9	334.0	335.2	336.3	340.4	342.3	342.0	341.7	341.4
165°	330.1	330.7	331.5	332.3	333.1	333.8	337.5	339.0	338.9	338.8	338.7
167.5°	330.1	330.8	331.6	332.3	333.2	333.9	337.4	338.9	338.8	338.7	338.6
170°	331.1	331.8	332.4	333.1	333.6	334.4	337.2	338.4	338.2	337.9	337.6
172.5°	332.4	333.2	333.7	334.4	335.0	335.8	338.2	339.5	339.2	339.0	338.6
175°	331.4	331.9	332.5	333.0	333.5	334.0	336.0	336.8	336.7	336.7	336.7
177.5°	333.6	333.8	334.2	334.6	335.0	335.3	336.6	337.1	337.1	337.1	337.0
180°	335.1	335.1	335.1	335.1	335.1	335.1	335.1	335.1	335.1	335.1	335.1



TEST NUMBER: P1444502
 CATALOG NUMBER: EHBR1-12-UNV-TA-L835-UPL30

CANDELA DISTRIBUTION (continued):

	55°	57.5°	60°	62.5°	65°	67.5°	70°	72.5°	75°	77.5°	80°
0°	10277.8	10277.8	10277.8	10277.8	10277.8	10277.8	10277.8	10277.8	10277.8	10277.8	10277.8
2.5°	10299.9	10303.5	10304.1	10308.2	10307.9	10312.9	10312.1	10316.3	10313.9	10317.2	10314.3
5°	10541.8	10563.7	10575.2	10596.6	10603.4	10622.5	10627.9	10645.5	10646.1	10660.0	10656.8
7.5°	10883.8	10916.2	10935.4	10961.8	10975.2	10997.2	11006.9	11023.3	11028.6	11041.5	11042.5
10°	11088.0	11103.7	11114.7	11122.1	11128.8	11132.0	11135.7	11134.7	11135.7	11134.2	11137.4
12.5°	11007.7	10984.7	10969.6	10940.9	10924.2	10892.5	10876.9	10846.5	10835.3	10809.1	10805.4
15°	10600.9	10521.0	10464.5	10382.4	10330.7	10250.0	10202.7	10129.8	10096.6	10038.6	10023.4
17.5°	9859.3	9710.9	9596.1	9448.9	9346.8	9209.1	9122.6	9008.6	8946.2	8854.4	8822.6
20°	8819.7	8600.2	8428.0	8222.9	8076.1	7893.2	7776.1	7628.4	7542.7	7429.8	7384.0
22.5°	7599.1	7325.9	7110.8	6868.5	6691.3	6487.5	6347.2	6187.4	6094.2	5971.6	5917.3
25°	6341.1	6039.8	5800.7	5545.4	5358.2	5153.9	5013.6	4856.6	4760.1	4643.7	4589.8
27.5°	5137.9	4832.9	4601.8	4364.5	4192.8	4008.4	3881.9	3744.8	3659.2	3559.8	3509.1
30°	4076.2	3807.1	3610.5	3413.5	3270.7	3121.0	3015.7	2902.2	2827.0	2742.0	2693.6
32.5°	3211.1	3003.4	2849.4	2693.1	2576.3	2451.1	2360.2	2260.0	2192.1	2116.2	2072.5
35°	2543.2	2381.8	2259.0	2130.3	2029.9	1923.3	1843.2	1756.7	1695.9	1630.4	1592.7
37.5°	2009.3	1881.1	1780.0	1673.1	1590.7	1502.3	1472.6	1373.4	1310.2	1258.1	1221.9
40°	1577.0	1474.9	1391.3	1309.6	1242.3	1175.4	1121.6	1068.5	1027.8	990.5	964.7
42.5°	1231.5	1157.5	1096.4	1036.6	987.6	938.8	899.8	863.3	835.9	811.5	794.8
45°	978.9	928.1	885.7	843.5	808.9	776.4	750.1	726.8	709.1	694.4	684.1
47.5°	804.2	769.4	739.5	711.0	687.6	666.2	648.7	643.0	623.9	611.1	606.2
50°	683.5	662.4	639.8	618.7	603.0	587.4	576.1	564.9	557.7	551.8	550.1
52.5°	593.4	577.3	564.6	551.3	541.0	529.9	522.0	514.6	510.7	507.6	507.2
55°	526.4	515.2	506.7	497.8	491.6	485.1	481.0	477.2	475.4	473.9	474.0
57.5°	475.7	468.1	462.7	457.0	453.6	450.5	449.4	448.4	448.9	449.2	450.1
60°	438.8	433.8	430.4	427.1	425.7	424.7	425.5	426.3	428.2	429.5	430.9
62.5°	410.4	407.6	406.0	404.1	404.0	404.1	405.6	407.1	409.4	411.0	412.3
65°	381.3	379.7	379.1	378.1	378.5	378.9	380.8	381.9	384.2	385.5	387.1
67.5°	351.9	351.5	351.8	351.8	352.8	353.7	355.5	356.7	358.7	359.9	361.2
70°	330.1	330.3	331.0	331.2	332.3	332.9	334.4	335.3	336.9	338.0	339.6
72.5°	308.9	308.6	308.8	308.3	308.7	308.5	309.4	309.8	311.2	312.0	314.0
75°	286.4	285.5	285.3	284.2	284.3	283.5	283.9	283.8	284.8	285.2	286.5
77.5°	259.3	257.6	256.9	255.2	255.1	254.5	255.2	255.6	257.2	258.1	259.7
80°	226.7	224.2	223.0	221.1	221.5	221.3	223.0	224.3	226.3	226.7	228.6
82.5°	188.4	185.9	184.6	182.7	183.2	183.3	184.7	185.0	186.7	187.5	189.9
85°	134.9	135.9	133.2	133.4	132.8	133.9	134.9	136.2	137.7	140.2	142.0
87.5°	79.4	79.1	80.1	80.2	81.5	82.3	84.5	85.7	88.2	90.2	93.7
90°	78.9	75.7	74.4	71.8	71.1	68.7	68.4	66.1	65.9	64.5	64.9
92.5°	76.4	71.4	66.1	61.2	55.9	51.0	48.5	46.2	43.7	41.5	39.0
95°	104.8	97.3	89.8	82.3	74.9	67.4	64.7	62.0	59.1	56.4	53.7
97.5°	122.5	114.5	106.5	98.3	90.3	82.2	80.4	78.5	76.8	75.0	73.1
100°	178.2	162.7	147.2	131.6	116.1	100.5	99.1	97.6	96.2	94.7	93.2
102.5°	365.9	330.3	294.7	259.1	223.5	187.8	181.6	175.4	169.2	163.0	156.8
105°	676.7	619.7	562.8	505.8	448.7	391.8	374.9	357.8	340.8	323.9	306.8
107.5°	970.4	914.7	859.3	803.7	748.2	692.6	665.7	638.9	612.0	585.2	558.3
110°	1117.3	1084.0	1050.8	1017.3	984.2	950.9	925.2	899.7	874.0	848.5	822.9



TEST NUMBER: P1444502
 CATALOG NUMBER: EHBR1-12-UNV-TA-L835-UPL30

CANDELA DISTRIBUTION (continued):

	55°	57.5°	60°	62.5°	65°	67.5°	70°	72.5°	75°	77.5°	80°
112.5°	1132.4	1115.9	1099.4	1082.9	1066.3	1049.8	1037.3	1024.9	1012.5	1000.0	987.5
115°	1051.0	1045.8	1040.7	1035.7	1030.7	1025.6	1024.8	1024.0	1023.1	1022.5	1021.6
117.5°	916.2	917.5	918.7	920.1	921.3	922.6	929.5	936.3	943.1	949.9	956.9
120°	782.3	787.0	792.0	796.9	801.7	806.6	815.7	825.0	834.2	843.4	852.7
122.5°	669.8	673.3	676.9	680.5	684.1	687.6	696.7	705.9	715.0	724.1	733.5
125°	582.2	582.7	583.4	583.9	584.6	585.2	592.8	600.4	608.0	615.8	623.5
127.5°	521.4	519.8	518.4	517.0	515.5	514.1	518.7	523.5	528.2	532.9	537.6
130°	482.6	479.7	476.7	473.9	470.8	468.0	470.1	472.2	474.2	476.5	478.5
132.5°	457.6	454.1	450.6	447.1	443.6	440.2	440.6	441.0	441.5	441.9	442.4
135°	438.9	435.6	432.3	429.0	425.7	422.5	421.9	421.4	420.9	420.4	420.0
137.5°	424.1	421.6	419.0	416.5	413.9	411.4	410.4	409.7	408.7	407.9	407.1
140°	411.9	410.1	408.0	406.1	404.0	402.2	401.4	400.7	400.1	399.5	398.8
142.5°	401.4	400.0	398.6	397.3	395.8	394.4	393.8	393.1	392.5	391.9	391.2
145°	394.2	393.4	392.5	391.7	391.0	390.2	389.6	389.2	388.7	388.3	388.0
147.5°	384.6	384.2	383.8	383.4	382.9	382.5	382.2	382.0	381.7	381.6	381.4
150°	375.0	374.7	374.3	373.9	373.5	373.1	373.0	373.0	373.0	373.1	372.9
152.5°	363.7	363.4	363.0	362.7	362.3	361.9	361.9	362.0	362.0	362.0	361.9
155°	354.9	354.8	354.6	354.4	354.2	354.0	353.9	353.7	353.5	353.3	353.1
157.5°	348.5	348.3	348.1	348.0	347.8	347.6	347.4	347.3	347.1	347.0	346.8
160°	343.4	343.3	343.1	343.1	342.9	342.8	342.4	342.0	341.7	341.3	341.0
162.5°	341.0	340.7	340.4	340.1	339.8	339.5	339.3	339.1	338.9	338.8	338.6
165°	338.5	338.4	338.2	338.0	337.9	337.8	337.4	337.0	336.7	336.4	336.1
167.5°	338.4	338.3	338.1	338.0	337.8	337.7	337.4	337.0	336.7	336.4	336.1
170°	337.3	337.0	336.8	336.5	336.2	335.8	335.5	335.2	334.8	334.5	334.2
172.5°	338.4	338.2	337.9	337.6	337.3	337.0	336.7	336.5	336.2	335.9	335.7
175°	336.6	336.6	336.6	336.4	336.4	336.3	336.2	336.2	336.1	336.1	336.0
177.5°	337.0	337.0	337.0	336.9	336.9	336.9	336.7	336.5	336.3	336.0	335.9
180°	335.1	335.1	335.1	335.1	335.1	335.1	335.1	335.1	335.1	335.1	335.1



TEST NUMBER: P1444502
 CATALOG NUMBER: EHBR1-12-UNV-TA-L835-UPL30

CANDELA DISTRIBUTION (continued):

	82.5°	85°	87.5°	90°	92.5°	95°	97.5°	100°	102.5°	105°	107.5°
0°	10277.8	10277.8	10277.8	10277.8	10277.8	10277.8	10277.8	10277.8	10277.8	10277.8	10277.8
2.5°	10317.3	10314.7	10316.0	10311.1	10312.3	10306.5	10305.9	10299.3	10298.7	10292.5	10290.2
5°	10666.7	10660.9	10667.4	10657.3	10659.3	10646.1	10645.1	10628.0	10622.2	10601.0	10591.7
7.5°	11050.6	11048.4	11052.4	11044.0	11043.7	11032.0	11027.1	11011.9	11002.4	10980.1	10965.8
10°	11134.7	11136.7	11133.5	11134.2	11129.7	11128.4	11123.8	11120.8	11113.1	11107.3	11098.8
12.5°	10785.5	10787.5	10774.2	10782.7	10776.0	10791.6	10790.3	10808.6	10811.5	10834.7	10843.6
15°	9978.3	9975.7	9950.1	9966.3	9957.6	9991.8	9999.5	10045.6	10070.1	10129.2	10165.5
17.5°	8758.9	8752.3	8716.3	8735.9	8725.9	8776.4	8793.3	8866.9	8912.7	9008.0	9075.8
20°	7305.3	7292.7	7250.6	7273.6	7263.3	7320.6	7344.8	7433.7	7492.8	7619.0	7708.7
22.5°	5833.7	5813.8	5772.5	5794.1	5784.3	5843.6	5875.1	5964.3	6032.1	6161.5	6266.3
25°	4512.2	4494.5	4454.6	4469.7	4466.1	4516.2	4544.2	4628.6	4695.2	4818.5	4918.5
27.5°	3441.6	3423.1	3387.1	3397.7	3394.1	3436.8	3463.2	3533.7	3591.1	3694.8	3782.6
30°	2634.1	2611.8	2581.2	2587.0	2584.6	2619.2	2643.9	2703.2	2752.4	2840.1	2915.7
32.5°	2019.0	1996.6	1968.5	1971.2	1967.6	1994.8	2015.1	2066.6	2109.5	2184.1	2249.9
35°	1544.8	1571.0	1511.1	1549.0	1509.5	1567.5	1546.6	1578.9	1615.8	1678.6	1733.5
37.5°	1187.6	1169.4	1153.9	1152.3	1152.2	1165.7	1181.6	1212.6	1245.1	1291.9	1340.3
40°	941.1	928.3	918.3	917.6	918.3	927.9	939.7	961.1	984.8	1018.5	1054.1
42.5°	780.5	772.1	766.0	765.6	767.6	774.3	782.5	795.2	810.7	832.5	856.9
45°	675.5	670.9	667.5	667.3	668.2	671.8	676.4	684.4	694.2	707.7	723.2
47.5°	601.9	600.8	598.6	598.7	597.8	599.2	599.8	604.3	609.4	619.7	639.9
50°	548.3	548.3	546.9	546.8	545.4	545.3	544.2	545.9	548.3	554.7	561.1
52.5°	505.9	505.8	504.2	503.9	502.5	502.4	501.4	502.1	502.4	505.6	509.4
55°	472.8	471.7	469.7	469.0	468.5	469.3	468.9	469.0	468.5	469.9	471.0
57.5°	448.9	447.7	445.7	445.2	445.1	446.0	446.0	445.7	443.9	442.7	441.0
60°	430.1	428.9	426.7	426.2	426.5	427.9	427.8	426.7	424.0	421.7	419.0
62.5°	411.7	411.1	410.1	410.0	409.7	409.9	409.0	407.7	405.1	402.6	399.7
65°	386.9	387.2	386.4	386.5	385.5	385.3	383.9	382.7	380.1	377.9	374.9
67.5°	361.2	361.4	360.7	360.7	360.2	360.3	359.3	358.3	356.0	354.2	351.9
70°	339.9	340.4	340.0	340.1	339.6	339.4	338.0	336.9	334.6	333.1	330.9
72.5°	314.5	315.6	315.6	315.9	314.9	314.5	312.9	311.5	309.4	308.2	306.6
75°	287.1	288.6	288.9	289.6	288.4	287.7	285.8	284.8	283.1	282.4	281.3
77.5°	260.3	262.0	263.5	265.0	262.9	261.0	258.8	257.0	254.6	253.7	251.9
80°	230.3	233.2	236.6	239.5	235.7	231.9	228.2	225.5	222.2	220.9	218.7
82.5°	191.0	194.0	196.0	197.8	195.2	192.5	188.9	186.5	183.0	181.6	179.2
85°	145.2	148.8	150.0	151.0	149.3	147.9	144.5	139.9	137.8	134.3	132.5
87.5°	95.4	97.6	98.1	98.4	97.3	96.7	94.5	92.4	88.6	85.8	82.5
90°	63.0	62.7	60.1	59.0	59.2	61.0	60.4	61.3	59.7	60.2	59.0
92.5°	36.7	34.2	31.8	29.5	32.0	34.2	36.7	39.0	41.4	43.7	46.2
95°	51.0	48.2	45.5	42.8	45.0	47.1	49.4	51.5	53.7	55.9	58.1
97.5°	71.3	69.5	67.7	65.8	67.1	68.4	69.6	70.9	72.2	73.5	74.9
100°	91.7	90.3	88.8	87.4	87.4	87.4	87.4	87.4	87.4	87.4	87.4
102.5°	150.6	144.4	138.2	132.0	136.1	140.3	144.6	148.7	152.9	157.1	161.4
105°	289.8	272.9	255.9	238.9	255.3	271.8	288.2	304.7	321.0	337.6	354.0
107.5°	531.4	504.7	477.8	451.0	480.9	510.9	540.8	570.7	600.7	630.6	660.6
110°	797.4	771.8	746.3	720.7	752.5	784.2	816.0	847.7	879.5	911.2	943.1



TEST NUMBER: P1444502
 CATALOG NUMBER: EHBR1-12-UNV-TA-L835-UPL30

CANDELA DISTRIBUTION (continued):

	82.5°	85°	87.5°	90°	92.5°	95°	97.5°	100°	102.5°	105°	107.5°
112.5°	975.1	962.6	950.2	937.8	958.3	978.7	999.1	1019.7	1040.1	1060.7	1081.0
115°	1020.9	1020.1	1019.5	1018.7	1028.4	1038.1	1047.7	1057.4	1067.2	1076.9	1086.6
117.5°	963.7	970.7	977.6	984.6	987.7	990.8	993.9	997.0	1000.2	1003.3	1006.5
120°	861.9	871.1	880.4	889.7	888.5	887.2	885.9	884.7	883.5	882.3	881.2
122.5°	742.7	751.9	761.2	770.6	767.8	765.0	762.3	759.6	757.0	754.3	751.7
125°	631.3	639.1	646.8	654.7	652.0	649.2	646.4	643.8	641.1	638.5	636.0
127.5°	542.4	547.4	552.2	557.0	555.8	554.5	553.3	552.1	550.9	549.8	548.6
130°	480.8	483.1	485.4	487.6	488.0	488.4	488.8	489.3	489.9	490.3	490.8
132.5°	443.0	443.6	444.2	444.9	446.3	447.8	449.3	450.9	452.5	454.1	455.8
135°	419.7	419.4	419.1	418.8	421.0	423.1	425.4	427.6	430.0	432.4	434.9
137.5°	406.4	405.6	405.0	404.3	406.6	408.7	411.0	413.3	415.6	418.0	420.5
140°	398.2	397.7	397.4	396.8	399.0	401.1	403.4	405.6	408.0	410.3	412.8
142.5°	390.7	390.2	389.7	389.2	391.2	393.3	395.3	397.4	399.6	401.7	403.8
145°	387.7	387.3	387.0	386.7	388.0	389.5	391.0	392.6	394.2	395.8	397.4
147.5°	381.3	381.1	381.0	380.9	381.9	383.0	384.2	385.2	386.4	387.6	388.9
150°	373.1	373.1	373.1	373.3	374.0	374.7	375.4	376.1	377.0	377.7	378.6
152.5°	362.0	362.0	362.2	362.3	362.9	363.6	364.4	365.0	365.8	366.5	367.4
155°	353.1	352.9	352.8	352.7	353.0	353.4	353.7	354.0	354.4	354.8	355.1
157.5°	346.7	346.5	346.5	346.3	346.4	346.5	346.7	346.8	346.9	347.0	347.2
160°	340.8	340.4	340.0	339.8	340.0	340.3	340.6	340.8	341.2	341.5	341.7
162.5°	338.5	338.3	338.2	338.0	338.0	337.8	337.7	337.6	337.5	337.4	337.4
165°	335.8	335.4	335.1	334.7	334.8	334.9	335.0	335.1	335.1	335.2	335.3
167.5°	335.8	335.4	335.1	334.7	334.5	334.1	333.9	333.5	333.5	333.2	333.0
170°	333.9	333.6	333.4	333.1	333.0	332.9	332.9	332.7	332.7	332.7	332.7
172.5°	335.4	335.1	334.8	334.5	334.4	334.4	334.3	334.3	334.2	334.2	334.2
175°	335.9	335.9	335.8	335.7	335.5	335.3	335.1	334.9	334.8	334.5	334.3
177.5°	335.7	335.4	335.2	335.0	335.0	335.0	335.0	335.0	335.0	334.9	334.9
180°	335.1	335.1	335.1	335.1	335.1	335.1	335.1	335.1	335.1	335.1	335.1



TEST NUMBER: P1444502
 CATALOG NUMBER: EHBR1-12-UNV-TA-L835-UPL30

CANDELA DISTRIBUTION (continued):

	110°	112.5°	115°	117.5°	120°	122.5°	125°	127.5°	130°	132.5°	135°
0°	10277.8	10277.8	10277.8	10277.8	10277.8	10277.8	10277.8	10277.8	10277.8	10277.8	10277.8
2.5°	10283.5	10280.8	10273.6	10270.1	10263.5	10260.2	10255.1	10251.8	10247.6	10244.5	10243.0
5°	10568.4	10555.3	10528.9	10512.7	10484.2	10465.5	10437.2	10416.5	10387.3	10365.8	10338.2
7.5°	10939.1	10918.9	10885.2	10859.6	10819.8	10789.4	10744.7	10708.9	10659.5	10618.6	10568.2
10°	11090.0	11078.2	11063.1	11046.6	11024.6	11003.0	10972.4	10941.4	10899.9	10858.7	10804.9
12.5°	10866.9	10878.1	10899.9	10910.1	10926.8	10932.5	10940.1	10936.5	10929.9	10913.0	10888.5
15°	10235.2	10281.5	10354.7	10405.2	10476.1	10525.9	10591.7	10634.1	10683.0	10712.2	10739.9
17.5°	9196.1	9285.6	9414.6	9517.6	9655.8	9768.1	9905.8	10014.0	10138.9	10234.7	10336.7
20°	7865.0	7990.3	8168.5	8319.8	8520.1	8689.9	8907.5	9089.8	9302.3	9479.6	9670.9
22.5°	6432.5	6579.8	6784.0	6966.5	7205.6	7419.2	7691.9	7932.9	8220.3	8477.9	8762.7
25°	5081.0	5225.5	5433.5	5622.3	5880.6	6115.9	6413.7	6690.2	7023.7	7334.8	7691.9
27.5°	3922.0	4050.4	4233.2	4403.2	4639.7	4870.8	5173.0	5467.8	5823.7	6158.1	6542.9
30°	3028.9	3133.0	3279.5	3416.4	3606.2	3795.1	4064.4	4337.0	4691.1	5037.6	5432.1
32.5°	2347.4	2436.1	2558.3	2669.5	2815.7	2958.2	3156.4	3374.3	3684.9	4016.7	4398.3
35°	1817.1	1893.0	1997.1	2092.8	2213.1	2326.1	2474.1	2629.6	2866.7	3145.8	3487.2
37.5°	1448.7	1479.6	1553.9	1632.3	1732.2	1825.1	1940.9	2055.9	2225.5	2445.7	2724.6
40°	1101.7	1150.8	1211.3	1273.1	1348.7	1423.3	1550.2	1611.3	1723.0	1881.2	2097.6
42.5°	888.9	923.5	966.0	1009.0	1061.7	1113.6	1177.8	1243.2	1326.7	1433.8	1587.8
45°	743.9	766.4	793.8	822.4	857.0	892.5	935.5	980.4	1037.0	1102.8	1196.3
47.5°	646.9	659.4	677.4	696.9	720.6	745.2	773.1	801.7	836.9	875.9	929.2
50°	571.3	581.7	595.6	608.7	625.1	650.2	661.3	677.1	698.2	721.2	751.0
52.5°	516.6	523.5	532.2	539.8	550.1	559.5	571.9	582.7	597.4	611.2	630.4
55°	474.0	476.5	481.4	486.3	493.4	499.8	508.3	515.5	524.8	533.0	545.1
57.5°	441.1	441.3	443.6	446.1	450.7	454.8	460.6	465.2	471.7	477.0	484.2
60°	417.4	416.2	416.6	417.5	420.0	422.7	426.4	429.4	433.5	436.5	440.6
62.5°	397.7	395.7	395.3	395.0	396.4	397.3	399.3	400.7	403.1	404.4	406.6
65°	372.8	370.5	369.6	368.6	368.9	368.6	369.3	369.4	370.6	370.9	372.1
67.5°	350.3	348.4	347.1	345.7	345.1	344.0	343.5	342.6	342.5	341.6	341.4
70°	329.7	327.8	326.9	325.5	324.8	323.5	322.6	320.9	319.9	318.3	317.5
72.5°	305.9	304.8	304.6	303.6	303.4	302.6	302.3	301.1	300.4	299.1	298.4
75°	281.0	280.1	280.1	279.2	279.1	278.2	278.0	276.7	276.1	274.7	274.1
77.5°	251.4	250.1	249.7	248.6	248.9	248.5	248.8	247.9	247.4	246.2	245.7
80°	218.1	216.3	215.6	214.3	214.7	214.0	214.7	214.6	215.1	214.0	213.8
82.5°	178.5	176.7	176.3	175.3	176.0	176.1	177.4	176.7	177.1	176.0	176.5
85°	129.9	128.5	126.6	126.3	125.1	126.3	124.8	125.9	124.0	125.3	123.6
87.5°	80.5	77.7	76.2	74.2	73.4	71.5	70.7	69.3	69.7	69.0	69.4
90°	59.9	59.0	61.3	62.0	64.5	65.4	68.4	69.8	72.9	74.3	77.5
92.5°	48.5	50.8	55.2	59.6	64.0	68.4	72.7	77.2	81.5	86.0	90.3
95°	60.2	62.4	68.3	74.1	80.0	85.8	91.7	97.5	103.5	109.3	115.1
97.5°	76.1	77.4	83.2	89.1	94.9	100.7	106.7	112.6	118.4	124.3	130.1
100°	87.4	87.5	104.0	120.7	137.3	153.9	170.6	187.1	203.8	220.5	237.1
102.5°	165.6	169.8	211.8	253.7	295.7	337.7	379.8	421.8	463.8	505.9	547.8
105°	370.5	386.9	451.0	515.2	579.2	643.2	707.3	771.5	835.5	899.7	963.8
107.5°	690.6	720.5	778.5	836.4	894.2	952.2	1010.2	1068.0	1125.9	1183.8	1241.9
110°	974.9	1006.7	1045.4	1084.1	1122.9	1161.7	1200.5	1239.3	1278.1	1316.8	1355.7



TEST NUMBER: P1444502
 CATALOG NUMBER: EHBR1-12-UNV-TA-L835-UPL30

CANDELA DISTRIBUTION (continued):

	110°	112.5°	115°	117.5°	120°	122.5°	125°	127.5°	130°	132.5°	135°
112.5°	1101.5	1122.0	1144.5	1167.0	1189.6	1212.1	1234.7	1257.2	1279.9	1302.4	1325.1
115°	1096.3	1106.0	1114.6	1123.4	1132.0	1140.8	1149.5	1158.3	1167.0	1175.8	1184.5
117.5°	1009.7	1012.9	1014.0	1015.4	1016.5	1017.8	1019.2	1020.4	1021.7	1023.1	1024.3
120°	879.9	878.8	877.1	875.5	873.8	872.2	870.6	869.1	867.4	865.9	864.3
122.5°	749.0	746.5	744.8	743.2	741.7	740.1	738.6	737.0	735.6	734.0	732.5
125°	633.4	630.8	631.8	632.8	633.8	634.8	635.9	636.9	638.0	639.0	640.1
127.5°	547.5	546.6	549.5	552.6	555.7	558.7	561.8	564.9	568.0	571.1	574.1
130°	491.5	492.1	496.1	500.0	504.0	508.1	512.1	516.1	520.1	524.1	528.2
132.5°	457.5	459.3	463.0	466.9	470.7	474.5	478.4	482.3	486.0	489.9	493.7
135°	437.2	439.7	443.2	446.6	450.1	453.6	457.1	460.6	464.0	467.6	470.9
137.5°	422.9	425.4	428.1	430.8	433.4	436.3	438.9	441.8	444.4	447.2	449.8
140°	415.1	417.7	419.0	420.5	421.9	423.3	424.8	426.2	427.5	429.1	430.4
142.5°	406.1	408.4	409.2	410.1	410.8	411.7	412.6	413.3	414.1	414.9	415.8
145°	399.0	400.7	400.6	400.5	400.4	400.3	400.1	400.0	399.8	399.7	399.5
147.5°	390.1	391.3	390.9	390.7	390.3	389.8	389.5	389.1	388.6	388.3	387.9
150°	379.3	380.3	379.6	379.1	378.4	377.9	377.2	376.6	375.9	375.4	374.8
152.5°	368.1	368.9	368.2	367.6	366.9	366.3	365.5	365.0	364.3	363.6	363.0
155°	355.5	355.9	355.5	355.2	354.9	354.5	354.1	353.8	353.6	353.2	352.9
157.5°	347.3	347.5	347.3	347.1	346.8	346.7	346.6	346.4	346.3	346.3	346.2
160°	342.0	342.4	342.1	341.9	341.7	341.5	341.4	341.3	341.2	341.1	341.0
162.5°	337.3	337.2	337.0	336.8	336.7	336.6	336.5	336.4	336.3	336.2	336.1
165°	335.5	335.7	335.2	334.9	334.6	334.2	333.9	333.6	333.5	333.2	332.9
167.5°	332.7	332.5	332.5	332.6	332.6	332.6	332.7	332.8	332.9	333.0	333.1
170°	332.6	332.7	332.4	332.3	332.1	331.9	331.8	331.7	331.6	331.4	331.3
172.5°	334.2	334.2	333.8	333.5	333.2	332.8	332.4	332.1	331.8	331.4	331.0
175°	334.1	333.9	333.7	333.5	333.4	333.1	333.0	332.8	332.6	332.4	332.2
177.5°	334.9	334.8	334.7	334.7	334.7	334.7	334.7	334.6	334.6	334.6	334.5
180°	335.1	335.1	335.1	335.1	335.1	335.1	335.1	335.1	335.1	335.1	335.1



TEST NUMBER: P1444502
 CATALOG NUMBER: EHBR1-12-UNV-TA-L835-UPL30

CANDELA DISTRIBUTION (continued):

	137.5°	140°	142.5°	145°	147.5°	150°	152.5°	155°	157.5°	160°	162.5°
0°	10277.8	10277.8	10277.8	10277.8	10277.8	10277.8	10277.8	10277.8	10277.8	10277.8	10277.8
2.5°	10240.9	10240.7	10239.8	10240.3	10240.5	10241.1	10242.0	10243.0	10243.2	10243.8	10244.0
5°	10317.5	10292.2	10273.4	10252.9	10237.3	10223.4	10214.1	10206.7	10203.9	10204.6	10206.3
7.5°	10525.3	10473.1	10429.9	10380.9	10339.9	10296.6	10260.7	10226.6	10201.7	10183.1	10172.8
10°	10753.4	10689.7	10628.8	10557.8	10490.4	10418.6	10353.4	10287.9	10233.3	10185.8	10151.0
12.5°	10854.6	10809.6	10756.9	10689.9	10617.8	10534.9	10451.1	10361.4	10277.9	10200.4	10137.9
15°	10747.5	10747.6	10728.4	10696.2	10646.1	10579.9	10500.0	10406.4	10307.9	10207.5	10115.7
17.5°	10407.3	10471.5	10507.2	10529.8	10522.8	10498.5	10447.7	10375.8	10284.0	10176.8	10064.8
20°	9823.2	9974.6	10082.5	10179.6	10234.0	10270.1	10266.4	10237.2	10171.8	10080.8	9964.0
22.5°	9005.0	9259.0	9459.4	9646.5	9777.6	9884.2	9934.9	9956.4	9926.8	9863.4	9753.8
25°	8011.1	8356.5	8651.3	8937.4	9152.0	9336.5	9447.3	9525.4	9531.6	9498.4	9400.7
27.5°	6906.7	7314.4	7687.5	8067.8	8369.6	8634.8	8808.7	8936.0	8976.5	8971.1	8882.3
30°	5803.8	6231.8	6643.1	7086.5	7459.9	7798.7	8028.5	8200.7	8267.0	8279.7	8194.4
32.5°	4762.1	5184.3	5594.3	6057.9	6468.8	6857.1	7128.6	7333.1	7410.3	7428.5	7334.8
35°	3816.8	4206.2	4596.0	5045.2	5453.8	5855.8	6141.9	6356.1	6428.1	6440.3	6331.8
37.5°	2997.0	3328.8	3668.4	4071.5	4446.7	4824.2	5096.1	5297.3	5349.9	5346.6	5223.9
40°	2306.7	2564.6	2837.6	3169.4	3481.4	3800.5	4030.0	4196.4	4224.1	4203.6	4074.7
42.5°	1734.6	1920.8	2118.7	2366.4	2597.9	2836.7	3003.7	3127.2	3131.2	3098.9	2983.1
45°	1292.2	1474.0	1556.9	1706.7	1855.9	2014.7	2116.6	2192.9	2181.2	2152.7	2064.7
47.5°	985.1	1054.9	1129.0	1221.9	1308.8	1489.0	1475.7	1598.1	1509.9	1570.1	1437.7
50°	782.3	821.3	861.2	910.6	955.9	1003.0	1032.5	1054.5	1051.6	1042.1	1016.7
52.5°	665.5	677.6	697.3	725.3	750.6	776.1	792.9	806.5	806.7	802.9	790.1
55°	556.3	571.6	585.7	604.0	635.2	640.0	664.0	659.1	661.1	654.4	661.2
57.5°	490.4	499.4	507.3	518.2	527.2	537.8	544.0	549.9	549.4	548.0	541.5
60°	443.8	448.7	453.1	459.5	464.4	470.4	473.3	476.3	475.3	473.1	467.3
62.5°	407.8	410.9	413.4	417.5	420.5	424.2	425.8	427.0	425.8	423.6	418.5
65°	372.3	374.4	375.9	379.0	381.2	384.4	385.6	386.8	385.6	384.0	380.1
67.5°	340.3	340.5	340.4	341.7	342.3	344.2	344.8	345.7	344.3	342.9	339.6
70°	316.1	315.6	315.0	315.5	315.6	316.6	316.7	316.6	314.9	312.4	308.8
72.5°	297.2	296.9	296.4	296.8	296.8	297.7	297.4	297.0	295.0	292.6	289.0
75°	272.8	272.6	271.7	271.7	270.9	271.2	270.2	269.7	267.4	265.4	262.2
77.5°	244.2	243.8	242.4	241.9	240.5	239.9	238.0	237.1	234.8	233.2	230.5
80°	212.3	211.9	210.2	209.2	206.9	205.5	202.7	201.2	198.6	197.0	194.3
82.5°	175.6	175.8	174.0	172.9	169.6	167.1	163.4	161.4	158.5	157.0	154.3
85°	124.9	123.0	124.0	123.9	121.9	119.7	116.7	114.6	112.2	110.7	108.8
87.5°	68.5	68.9	68.5	68.0	66.5	65.4	63.1	61.9	60.1	59.2	57.8
90°	72.7	69.7	65.0	62.1	57.5	53.9	49.0	45.6	40.8	39.5	37.0
92.5°	85.3	80.4	75.5	70.5	65.7	60.8	55.9	50.9	46.0	44.2	42.7
95°	108.0	100.8	93.8	86.6	79.5	72.3	65.3	58.1	51.0	49.5	48.1
97.5°	121.7	113.3	104.9	96.5	88.1	79.7	71.4	63.0	54.6	53.7	52.7
100°	217.7	198.5	179.1	159.8	140.4	121.1	101.8	82.5	63.1	62.1	60.9
102.5°	500.9	454.1	407.2	360.3	313.5	266.5	219.7	172.8	126.0	119.2	112.5
105°	892.9	821.9	751.0	680.1	609.0	538.0	467.2	396.1	325.2	302.4	279.5
107.5°	1175.1	1108.4	1041.7	975.0	908.1	841.4	774.7	707.9	641.1	601.1	560.9
110°	1302.6	1249.5	1196.7	1143.7	1090.6	1037.6	984.6	931.5	878.5	843.8	809.3



TEST NUMBER: P1444502
 CATALOG NUMBER: EHBR1-12-UNV-TA-L835-UPL30

CANDELA DISTRIBUTION (continued):

	137.5°	140°	142.5°	145°	147.5°	150°	152.5°	155°	157.5°	160°	162.5°
112.5°	1286.1	1247.1	1208.2	1169.3	1130.5	1091.4	1052.5	1013.5	974.6	953.5	932.4
115°	1160.9	1137.5	1113.9	1090.2	1066.8	1043.1	1019.6	996.0	972.3	961.1	949.8
117.5°	1012.2	1000.0	987.8	975.5	963.3	951.1	938.9	926.6	914.4	910.4	906.2
120°	860.4	856.5	852.4	848.5	844.5	840.6	836.5	832.5	828.5	828.7	828.9
122.5°	733.5	734.5	735.6	736.4	737.5	738.4	739.4	740.3	741.3	743.8	746.5
125°	643.1	646.2	649.3	652.3	655.2	658.2	661.3	664.2	667.2	669.8	672.4
127.5°	577.6	581.0	584.5	587.8	591.4	594.8	598.2	601.5	604.8	607.2	609.5
130°	531.1	534.0	536.8	539.6	542.6	545.4	548.2	551.1	553.9	555.6	557.1
132.5°	496.3	498.8	501.4	503.8	506.3	508.9	511.5	513.9	516.5	517.5	518.6
135°	472.8	474.4	476.3	478.0	480.0	481.6	483.5	485.3	487.0	487.6	488.2
137.5°	451.3	452.6	454.1	455.4	456.9	458.2	459.7	461.2	462.6	462.5	462.6
140°	432.0	433.5	435.0	436.5	438.2	439.7	441.4	442.9	444.6	444.6	444.7
142.5°	416.8	418.0	419.2	420.3	421.6	422.8	423.9	425.3	426.4	426.4	426.4
145°	400.9	402.4	403.9	405.4	406.9	408.4	410.1	411.7	413.3	413.1	413.0
147.5°	389.1	390.5	391.7	393.0	394.4	395.7	397.1	398.5	400.0	399.7	399.6
150°	376.2	377.6	379.0	380.5	381.9	383.5	385.0	386.6	388.2	388.3	388.4
152.5°	364.6	366.1	367.7	369.3	371.1	372.8	374.6	376.2	378.0	378.1	378.2
155°	354.5	356.0	357.7	359.3	361.0	362.6	364.4	366.0	367.8	368.1	368.4
157.5°	347.5	348.9	350.4	351.9	353.3	354.8	356.4	357.9	359.3	359.6	359.8
160°	342.3	343.5	344.8	346.1	347.4	348.7	349.9	351.3	352.6	352.8	353.0
162.5°	337.3	338.6	339.9	341.1	342.4	343.6	345.0	346.3	347.5	347.7	348.0
165°	333.7	334.6	335.5	336.4	337.2	338.2	339.1	339.9	340.9	341.2	341.6
167.5°	333.8	334.3	335.1	335.8	336.5	337.1	337.9	338.5	339.3	339.7	339.9
170°	332.0	332.6	333.2	333.9	334.5	335.2	335.9	336.5	337.2	337.5	337.9
172.5°	331.5	331.9	332.3	332.8	333.2	333.6	334.0	334.5	335.0	335.5	335.9
175°	332.4	332.6	332.9	333.1	333.2	333.5	333.6	333.9	334.2	334.6	335.0
177.5°	334.7	334.9	335.1	335.3	335.5	335.7	336.0	336.2	336.4	336.9	337.4
180°	335.1	335.1	335.1	335.1	335.1	335.1	335.1	335.1	335.1	335.1	335.1



TEST NUMBER: P1444502
 CATALOG NUMBER: EHBR1-12-UNV-TA-L835-UPL30

CANDELA DISTRIBUTION (continued):

	165°	167.5°	170°	172.5°	175°	177.5°	180°	182.5°	185°	187.5°	190°
0°	10277.8	10277.8	10277.8	10277.8	10277.8	10277.8	10277.8	10277.8	10277.8	10277.8	10277.8
2.5°	10243.7	10243.6	10243.3	10242.8	10242.3	10242.6	10243.1	10244.2	10246.3	10249.3	10253.2
5°	10207.7	10209.8	10211.0	10211.2	10210.1	10209.4	10210.4	10213.2	10218.9	10228.4	10241.3
7.5°	10170.1	10172.6	10176.6	10179.6	10180.1	10179.4	10179.6	10183.9	10194.4	10213.0	10239.0
10°	10129.7	10122.1	10126.1	10133.5	10139.4	10140.5	10141.2	10146.4	10161.7	10189.7	10231.5
12.5°	10092.6	10068.3	10063.7	10070.3	10079.2	10082.1	10081.3	10083.6	10101.5	10138.5	10196.8
15°	10043.6	9998.0	9982.5	9984.2	9995.2	9999.2	9996.3	9991.8	10009.4	10054.7	10130.0
17.5°	9964.5	9891.0	9862.4	9861.1	9873.9	9877.4	9870.3	9856.6	9873.8	9930.4	10023.9
20°	9844.2	9735.7	9681.8	9673.1	9687.1	9683.0	9669.0	9648.2	9670.8	9739.5	9850.9
22.5°	9627.8	9490.4	9398.2	9368.5	9385.2	9374.1	9353.4	9327.0	9357.0	9435.1	9559.1
25°	9274.4	9115.5	8989.3	8918.6	8931.9	8911.9	8889.5	8857.4	8893.3	8982.9	9119.3
27.5°	8754.8	8571.3	8414.9	8297.8	8302.1	8275.9	8250.1	8208.6	8253.3	8359.4	8513.3
30°	8063.9	7851.6	7661.2	7502.0	7487.7	7462.3	7435.8	7381.4	7437.4	7564.4	7744.2
32.5°	7196.3	6960.5	6740.5	6539.2	6501.3	6476.5	6452.9	6390.2	6463.5	6611.5	6818.2
35°	6181.6	5930.5	5692.0	5462.1	5399.1	5374.3	5353.8	5293.6	5385.2	5546.3	5769.4
37.5°	5067.9	4811.4	4574.6	4338.8	4249.8	4216.2	4201.3	4161.9	4267.5	4426.8	4650.9
40°	3924.5	3686.0	3473.7	3265.5	3164.1	3112.6	3104.8	3097.6	3199.6	3337.9	3541.3
42.5°	2854.9	2662.5	2498.8	2339.6	2247.8	2177.5	2177.5	2198.8	2290.6	2394.2	2551.1
45°	1974.8	1845.7	1741.4	1635.1	1663.5	1523.4	1605.7	1563.4	1608.8	1675.6	1777.6
47.5°	1357.6	1287.0	1229.8	1170.3	1127.0	1085.6	1089.3	1115.9	1158.7	1198.3	1251.4
50°	989.4	953.5	924.3	893.5	871.9	853.7	854.7	866.3	888.8	909.6	937.3
52.5°	775.3	755.4	739.6	722.6	711.2	702.2	702.7	708.3	720.4	732.4	748.3
55°	639.0	636.7	616.0	600.7	594.9	588.8	589.9	592.1	600.4	607.3	617.8
57.5°	535.5	526.2	520.0	512.0	508.3	504.0	505.0	505.9	511.4	516.0	523.6
60°	462.4	455.8	451.5	445.9	443.5	440.8	441.5	442.0	445.4	448.5	454.0
62.5°	413.8	407.9	404.1	399.9	398.2	396.4	396.8	397.0	399.2	401.4	405.5
65°	376.6	371.9	368.7	365.1	363.3	361.4	361.6	361.6	363.5	365.1	368.2
67.5°	337.1	333.6	331.6	328.7	327.5	325.6	325.5	324.9	326.2	326.8	328.9
70°	305.5	302.0	299.4	296.6	295.1	293.4	293.4	293.4	294.9	296.3	299.0
72.5°	286.0	282.6	280.3	277.9	276.4	275.0	274.7	274.6	275.6	276.3	278.2
75°	260.1	257.4	256.1	253.8	252.7	251.0	250.7	250.0	250.5	250.6	252.0
77.5°	228.7	226.2	225.1	222.8	221.8	220.0	219.8	218.9	219.3	219.1	220.1
80°	193.1	190.7	190.0	188.2	187.7	186.0	185.7	184.7	185.0	184.2	184.6
82.5°	153.1	151.0	150.5	148.7	148.7	147.2	147.1	145.5	145.5	144.2	142.0
85°	107.8	106.3	105.6	104.1	103.7	102.5	101.8	100.4	99.9	98.9	98.6
87.5°	56.9	55.9	55.1	54.4	53.1	50.8	50.6	49.1	49.3	48.1	48.2
90°	35.7	33.5	32.2	30.0	28.6	26.8	25.6	26.6	27.7	28.9	30.1
92.5°	41.0	39.4	37.8	36.2	34.5	32.9	31.2	32.9	34.5	36.2	37.8
95°	46.6	45.2	43.7	42.3	40.8	39.4	37.9	39.4	40.8	42.4	43.8
97.5°	51.9	50.9	50.0	49.1	48.2	47.2	46.3	47.2	48.2	49.1	50.0
100°	59.8	58.8	57.6	56.5	55.5	54.3	53.2	54.4	55.6	56.6	57.7
102.5°	105.7	98.9	92.2	85.4	78.6	71.9	65.2	71.9	78.6	85.5	92.3
105°	256.8	234.0	211.1	188.3	165.5	142.6	119.8	142.7	165.6	188.4	211.2
107.5°	520.7	480.6	440.5	400.4	360.1	320.0	279.8	320.1	360.2	400.5	440.6
110°	774.6	739.9	705.3	670.7	636.0	601.4	566.6	601.4	636.0	670.7	705.4



TEST NUMBER: P1444502
 CATALOG NUMBER: EHBR1-12-UNV-TA-L835-UPL30

CANDELA DISTRIBUTION (continued):

	165°	167.5°	170°	172.5°	175°	177.5°	180°	182.5°	185°	187.5°	190°
112.5°	911.2	890.2	869.0	847.9	826.8	805.7	784.5	805.7	826.9	848.1	869.2
115°	938.7	927.4	916.2	904.9	893.7	882.5	871.1	882.5	893.9	905.1	916.5
117.5°	902.1	898.1	894.0	889.9	885.8	881.7	877.5	881.8	886.0	890.2	894.4
120°	829.0	829.2	829.4	829.5	829.7	829.8	829.9	829.9	829.9	829.9	829.9
122.5°	749.0	751.6	754.1	756.7	759.2	761.8	764.2	761.9	759.5	757.3	754.8
125°	675.0	677.8	680.4	682.9	685.4	688.0	690.5	688.2	685.9	683.5	681.1
127.5°	611.7	614.1	616.2	618.6	620.8	622.9	625.0	623.1	621.1	619.1	617.1
130°	558.8	560.4	561.9	563.5	565.1	566.5	567.9	566.7	565.5	564.2	562.8
132.5°	519.6	520.8	521.8	522.8	523.7	524.8	525.5	525.0	524.2	523.5	522.6
135°	488.8	489.3	489.8	490.2	490.7	491.1	491.4	491.4	491.2	491.0	490.7
137.5°	462.7	462.7	462.6	462.5	462.5	462.3	462.1	462.6	463.0	463.4	463.7
140°	444.6	444.7	444.7	444.6	444.6	444.5	444.2	444.8	445.1	445.4	445.7
142.5°	426.5	426.5	426.5	426.4	426.4	426.2	426.1	426.5	426.9	427.2	427.5
145°	412.8	412.6	412.4	412.2	411.8	411.5	411.0	411.8	412.3	412.9	413.4
147.5°	399.3	399.1	398.9	398.6	398.2	398.0	397.5	398.2	398.7	399.3	399.9
150°	388.6	388.7	388.9	389.0	389.0	389.0	388.9	389.2	389.5	389.7	389.9
152.5°	378.2	378.3	378.5	378.5	378.6	378.5	378.4	378.8	379.1	379.4	379.6
155°	368.6	368.8	369.0	369.2	369.4	369.6	369.8	369.9	370.0	370.1	370.2
157.5°	360.0	360.3	360.5	360.7	360.9	361.1	361.3	361.5	361.6	361.8	361.8
160°	353.2	353.5	353.6	353.9	354.1	354.3	354.4	354.6	354.8	354.9	355.0
162.5°	348.2	348.4	348.5	348.8	348.9	349.1	349.3	349.5	349.6	349.7	349.8
165°	342.0	342.4	342.7	343.1	343.4	343.8	344.1	344.1	344.0	344.0	343.9
167.5°	340.3	340.7	340.9	341.3	341.6	342.0	342.3	342.3	342.2	342.1	342.1
170°	338.2	338.5	338.8	339.1	339.5	339.8	340.0	339.9	339.9	339.9	339.8
172.5°	336.3	336.8	337.3	337.8	338.2	338.7	339.2	339.0	338.6	338.4	338.0
175°	335.4	335.9	336.3	336.7	337.0	337.5	338.0	337.6	337.4	337.1	336.8
177.5°	338.1	338.8	339.3	339.9	340.4	340.9	341.6	341.0	340.5	340.0	339.5
180°	335.1	335.1	335.1	335.1	335.1	335.1	335.1	335.1	335.1	335.1	335.1



TEST NUMBER: P1444502
 CATALOG NUMBER: EHBR1-12-UNV-TA-L835-UPL30

CANDELA DISTRIBUTION (continued):

	192.5°	195°	197.5°	200°	202.5°	205°	207.5°	210°	212.5°	215°	217.5°
0°	10277.8	10277.8	10277.8	10277.8	10277.8	10277.8	10277.8	10277.8	10277.8	10277.8	10277.8
2.5°	10258.6	10263.7	10271.6	10278.8	10289.4	10297.9	10310.6	10320.2	10334.5	10343.8	10359.4
5°	10259.6	10279.6	10306.0	10331.8	10362.7	10390.8	10425.7	10455.5	10490.6	10519.2	10555.2
7.5°	10274.0	10312.8	10359.1	10405.9	10458.7	10508.2	10563.9	10614.3	10669.4	10716.1	10767.1
10°	10284.8	10344.4	10412.8	10481.6	10554.0	10621.3	10689.2	10747.9	10802.7	10847.9	10887.8
12.5°	10270.2	10352.4	10440.2	10524.9	10605.4	10675.0	10733.5	10778.6	10809.8	10830.9	10835.9
15°	10220.9	10319.9	10415.3	10499.6	10566.4	10617.9	10644.6	10657.1	10643.7	10621.4	10572.5
17.5°	10128.8	10233.1	10318.4	10384.9	10420.2	10434.3	10412.2	10373.7	10298.6	10215.2	10094.8
20°	9959.8	10057.1	10119.0	10155.2	10145.8	10110.8	10027.4	9926.0	9776.1	9616.2	9405.3
22.5°	9663.5	9748.6	9781.5	9784.1	9726.6	9639.1	9488.6	9314.8	9078.2	8832.2	8529.7
25°	9218.8	9293.2	9298.5	9269.2	9163.7	9021.9	8801.0	8555.0	8233.5	7905.8	7526.8
27.5°	8615.6	8686.9	8669.5	8614.9	8468.5	8278.8	7996.0	7678.1	7281.8	6894.7	6475.4
30°	7857.2	7933.6	7913.1	7843.1	7668.9	7444.7	7112.0	6742.6	6302.6	5889.2	5464.3
32.5°	6949.9	7046.3	7032.2	6965.7	6783.9	6544.1	6182.9	5791.3	5341.1	4933.6	4520.3
35°	5918.4	6035.6	6041.7	5998.2	5829.5	5592.4	5235.8	4856.7	4425.4	4041.1	3659.2
37.5°	4807.2	4943.1	4971.0	4959.2	4819.4	4610.2	4285.2	3945.1	3563.2	3226.2	2899.6
40°	3689.8	3827.4	3875.1	3889.2	3786.1	3624.0	3357.3	3082.8	2771.4	2498.4	2239.0
42.5°	2670.8	2792.7	2838.9	2867.8	2803.5	2695.4	2500.8	2301.5	2073.3	1876.5	1687.7
45°	1854.9	1941.2	1976.3	2005.5	1970.4	1909.4	1786.5	1661.9	1511.3	1382.6	1260.8
47.5°	1296.9	1344.5	1367.6	1381.8	1368.2	1336.3	1269.5	1197.3	1112.3	1037.1	964.8
50°	961.3	986.6	998.7	1006.9	997.0	979.3	943.1	903.8	857.1	814.6	772.9
52.5°	761.7	776.3	783.5	787.9	782.2	771.4	750.4	727.0	699.0	672.7	658.9
55°	641.8	641.0	657.6	649.6	657.6	639.7	636.0	610.3	587.0	570.7	553.0
57.5°	529.2	536.8	540.0	543.6	541.2	537.9	529.0	519.8	507.6	497.3	486.4
60°	458.1	464.4	467.8	471.3	471.1	469.9	464.7	459.2	451.6	445.4	438.9
62.5°	409.2	414.5	418.0	421.4	421.7	421.2	417.2	413.4	408.2	404.3	399.8
65°	370.6	374.4	376.7	379.4	379.3	378.5	375.0	371.8	367.6	364.9	361.5
67.5°	330.3	333.1	334.9	337.5	338.0	338.1	336.2	334.7	332.6	331.8	330.7
70°	301.6	305.0	308.0	311.2	313.0	313.8	313.0	312.2	311.0	310.5	309.6
72.5°	279.8	282.7	285.1	288.0	289.6	290.8	290.2	289.7	288.7	288.6	287.9
75°	252.9	254.9	256.2	258.4	259.3	260.3	259.9	260.1	259.9	260.6	260.6
77.5°	220.5	221.9	222.5	224.2	224.3	225.6	225.9	227.5	228.6	231.1	232.3
80°	183.9	184.9	184.9	186.6	187.3	189.6	190.6	193.1	194.3	196.5	196.7
82.5°	142.9	141.9	142.9	142.2	144.3	146.8	147.2	149.3	149.8	151.3	150.2
85°	97.7	97.6	96.8	96.9	96.3	96.6	96.2	96.6	96.2	96.3	95.2
87.5°	46.8	47.2	46.3	46.5	45.6	46.1	45.2	45.9	44.8	45.0	43.4
90°	31.2	32.4	33.5	34.8	36.2	39.4	42.6	45.8	49.2	52.3	55.6
92.5°	39.4	41.0	42.7	44.3	46.0	50.9	55.9	60.8	65.8	70.6	75.5
95°	45.3	46.7	48.2	49.7	51.2	58.3	65.4	72.5	79.7	86.8	94.0
97.5°	51.0	52.0	52.8	53.8	54.7	63.1	71.5	79.9	88.3	96.7	105.1
100°	58.9	59.9	61.0	62.2	63.3	82.7	102.0	121.4	140.7	160.0	179.3
102.5°	99.0	105.8	112.6	119.4	126.1	173.1	220.0	266.8	313.7	360.6	407.5
105°	234.1	256.9	279.7	302.6	325.4	396.4	467.5	538.4	609.3	680.4	751.4
107.5°	480.7	520.9	561.2	601.4	641.5	708.3	775.0	841.8	908.6	975.3	1042.1
110°	740.1	774.7	809.5	844.2	878.9	931.9	985.0	1038.1	1091.1	1144.2	1197.3



TEST NUMBER: P1444502
 CATALOG NUMBER: EHBR1-12-UNV-TA-L835-UPL30

CANDELA DISTRIBUTION (continued):

	192.5°	195°	197.5°	200°	202.5°	205°	207.5°	210°	212.5°	215°	217.5°
112.5°	890.5	911.5	932.7	953.9	975.1	1014.0	1053.1	1092.1	1131.2	1169.9	1208.9
115°	927.8	939.1	950.3	961.6	972.9	996.7	1020.2	1043.9	1067.6	1091.0	1114.8
117.5°	898.5	902.7	906.8	911.0	915.0	927.3	939.7	952.0	964.3	976.6	988.8
120°	829.9	829.8	829.7	829.5	829.4	833.4	837.6	841.6	845.6	849.7	853.7
122.5°	752.3	749.8	747.4	744.8	742.3	741.4	740.5	739.5	738.8	737.7	736.8
125°	678.5	676.1	673.5	671.1	668.5	665.5	662.6	659.5	656.6	653.7	650.7
127.5°	615.0	612.8	610.7	608.5	606.3	602.9	599.6	596.2	592.9	589.4	586.0
130°	561.5	560.1	558.6	556.9	555.6	552.7	549.9	547.1	544.2	541.4	538.6
132.5°	521.9	521.0	520.1	519.0	518.2	515.6	513.3	510.7	508.2	505.8	503.3
135°	490.5	490.1	489.8	489.4	488.9	487.1	485.4	483.6	482.0	480.2	478.4
137.5°	464.0	464.2	464.3	464.4	464.5	463.2	461.7	460.4	459.1	457.7	456.3
140°	445.9	446.1	446.4	446.4	446.6	445.1	443.6	442.0	440.6	438.9	437.4
142.5°	427.8	428.1	428.2	428.4	428.6	427.4	426.2	425.2	424.0	422.9	421.7
145°	413.7	414.2	414.7	414.9	415.4	413.9	412.5	410.9	409.6	408.0	406.7
147.5°	400.4	400.7	401.2	401.6	402.1	400.8	399.6	398.3	397.2	395.8	394.7
150°	390.0	390.1	390.3	390.4	390.5	389.1	387.8	386.3	385.0	383.6	382.3
152.5°	379.7	379.9	380.1	380.2	380.4	378.9	377.4	375.9	374.4	372.7	371.3
155°	370.3	370.3	370.3	370.3	370.3	368.8	367.4	365.9	364.5	363.0	361.6
157.5°	361.9	362.0	362.1	362.1	362.2	360.9	359.6	358.3	357.0	355.7	354.4
160°	355.1	355.2	355.3	355.4	355.4	354.3	353.2	352.1	351.1	349.8	348.8
162.5°	349.9	350.1	350.1	350.2	350.3	349.3	348.2	347.0	346.0	344.9	343.8
165°	343.9	343.8	343.7	343.5	343.4	342.8	342.1	341.4	340.6	339.9	339.1
167.5°	342.1	341.9	341.8	341.7	341.6	341.0	340.6	339.9	339.4	338.9	338.3
170°	339.8	339.6	339.5	339.4	339.2	338.6	338.2	337.6	337.1	336.6	336.0
172.5°	337.8	337.4	337.2	336.9	336.6	336.2	335.8	335.5	335.2	334.8	334.4
175°	336.5	336.2	335.9	335.6	335.2	335.1	334.9	334.7	334.5	334.4	334.2
177.5°	339.0	338.5	337.9	337.4	336.9	336.7	336.6	336.4	336.3	336.2	336.0
180°	335.1	335.1	335.1	335.1	335.1	335.1	335.1	335.1	335.1	335.1	335.1



TEST NUMBER: P1444502
 CATALOG NUMBER: EHBR1-12-UNV-TA-L835-UPL30

CANDELA DISTRIBUTION (continued):

	220°	222.5°	225°	227.5°	230°	232.5°	235°	237.5°	240°	242.5°	245°
0°	10277.8	10277.8	10277.8	10277.8	10277.8	10277.8	10277.8	10277.8	10277.8	10277.8	10277.8
2.5°	10369.0	10305.0	10296.6	10301.1	10311.7	10315.7	10327.2	10330.4	10342.1	10344.9	10356.0
5°	10583.0	10498.4	10502.5	10522.9	10553.7	10572.1	10602.4	10618.2	10647.1	10660.3	10686.4
7.5°	10808.6	10742.1	10762.9	10797.2	10839.3	10868.5	10904.8	10928.6	10959.9	10979.4	11004.5
10°	10919.4	10901.1	10923.9	10951.0	10975.0	10993.8	11009.3	11021.6	11029.7	11037.3	11040.6
12.5°	10835.1	10863.2	10867.1	10864.5	10848.6	10836.5	10809.1	10790.6	10757.6	10737.6	10698.4
15°	10522.6	10584.6	10550.2	10498.3	10422.3	10358.8	10269.3	10202.7	10109.5	10046.2	9952.7
17.5°	9974.2	10052.3	9962.9	9842.7	9689.8	9559.0	9396.0	9266.8	9104.7	8986.9	8835.8
20°	9202.1	9275.2	9115.7	8916.4	8679.8	8480.7	8245.9	8058.6	7840.4	7678.1	7482.3
22.5°	8240.8	8292.9	8068.1	7799.5	7498.1	7249.4	6968.7	6744.1	6495.0	6309.5	6100.7
25°	7177.3	7191.4	6921.8	6612.3	6276.4	5996.8	5697.1	5461.0	5207.1	5018.9	4814.1
27.5°	6103.9	6083.3	5791.9	5463.8	5110.4	4819.9	4527.5	4306.3	4083.8	3914.5	3737.9
30°	5090.8	5040.9	4738.3	4401.0	4058.1	3797.6	3554.9	3377.3	3200.3	3065.9	2924.2
32.5°	4161.7	4091.3	3796.8	3480.8	3191.8	2990.8	2810.8	2676.4	2533.5	2420.0	2301.1
35°	3338.8	3263.7	3002.9	2735.0	2516.3	2368.1	2226.6	2116.4	1995.1	1899.3	1796.0
37.5°	2632.5	2571.0	2352.6	2141.7	1976.3	1861.5	1745.6	1655.4	1555.2	1513.0	1402.7
40°	2032.3	1989.4	1818.5	1663.1	1538.8	1484.9	1367.3	1283.0	1208.1	1146.4	1086.5
42.5°	1585.2	1570.0	1403.7	1282.5	1195.1	1127.1	1061.5	1008.3	956.5	914.0	873.7
45°	1163.4	1151.3	1077.4	1007.5	947.9	900.4	856.1	819.5	785.6	757.6	732.1
47.5°	905.9	902.0	859.5	816.1	778.6	748.1	719.3	695.0	672.5	653.8	647.7
50°	736.8	736.3	711.3	684.6	657.8	640.1	621.8	607.5	593.0	581.8	569.9
52.5°	626.0	623.3	606.5	589.9	574.1	562.5	550.7	541.5	532.0	525.0	517.7
55°	538.9	541.8	532.0	522.1	512.3	505.1	496.8	490.7	484.2	479.9	475.4
57.5°	478.4	482.2	477.2	471.5	465.5	460.8	455.0	450.9	446.5	443.7	441.2
60°	434.5	438.6	436.5	433.7	429.9	427.1	423.5	421.2	418.4	416.8	415.4
62.5°	397.2	402.3	401.5	400.3	397.8	396.3	394.2	393.3	391.3	390.7	390.0
65°	359.9	365.6	365.5	364.9	363.6	363.1	361.9	361.7	360.7	361.1	361.0
67.5°	330.5	335.6	336.7	337.5	337.5	337.8	337.7	338.2	338.2	338.9	339.4
70°	309.4	313.0	313.8	314.6	314.8	315.5	315.5	316.0	315.8	316.5	316.6
72.5°	288.1	292.7	293.5	294.2	294.2	294.9	294.5	294.4	293.5	293.3	292.6
75°	261.5	267.4	268.7	269.6	269.7	270.2	269.5	268.9	267.4	266.7	265.7
77.5°	233.7	239.9	240.8	241.0	240.6	240.7	239.0	237.8	235.9	235.1	234.1
80°	197.6	206.6	207.3	206.7	205.4	205.1	203.5	202.5	200.1	199.3	198.4
82.5°	150.4	161.0	162.4	163.1	161.9	162.2	160.7	160.0	157.9	157.5	156.1
85°	94.9	105.5	107.2	106.9	105.9	105.6	104.7	105.0	104.8	105.4	105.7
87.5°	43.6	53.8	56.3	55.6	55.5	54.7	53.0	53.7	54.7	55.3	55.4
90°	58.9	65.2	68.4	65.7	62.2	59.5	56.0	53.4	50.0	47.5	44.2
92.5°	80.5	85.4	90.4	86.0	81.6	77.2	72.8	68.5	64.1	59.6	55.3
95°	101.0	108.1	115.2	109.4	103.5	97.5	91.7	85.9	80.1	74.2	68.4
97.5°	113.5	121.8	130.2	124.4	118.5	112.6	106.8	100.8	95.0	89.2	83.3
100°	198.7	217.9	237.2	220.6	203.9	187.3	170.8	154.0	137.4	120.8	104.1
102.5°	454.3	501.1	547.9	505.9	464.0	421.9	379.9	337.9	295.9	253.8	211.9
105°	822.2	893.1	964.0	899.8	835.7	771.6	707.5	643.3	579.3	515.2	451.1
107.5°	1108.9	1175.4	1242.0	1184.0	1126.1	1068.2	1010.2	952.4	894.4	836.5	778.6
110°	1250.2	1303.0	1355.9	1317.0	1278.3	1239.5	1200.7	1161.8	1123.0	1084.3	1045.5



TEST NUMBER: P1444502
 CATALOG NUMBER: EHBR1-12-UNV-TA-L835-UPL30

CANDELA DISTRIBUTION (continued):

	220°	222.5°	225°	227.5°	230°	232.5°	235°	237.5°	240°	242.5°	245°
112.5°	1247.9	1286.5	1325.3	1302.6	1280.1	1257.5	1234.9	1212.3	1189.8	1167.2	1144.7
115°	1138.3	1161.3	1184.8	1176.1	1167.2	1158.5	1149.7	1141.0	1132.2	1123.6	1114.9
117.5°	1001.0	1012.7	1024.8	1023.4	1022.1	1020.7	1019.5	1018.1	1016.8	1015.6	1014.3
120°	857.7	861.0	864.8	866.3	867.9	869.5	871.1	872.6	874.2	875.8	877.4
122.5°	735.8	734.2	732.9	734.5	736.0	737.4	739.0	740.5	742.1	743.6	745.3
125°	647.7	643.8	640.6	639.6	638.6	637.4	636.5	635.3	634.3	633.3	632.3
127.5°	582.7	578.5	574.8	571.8	568.7	565.5	562.5	559.4	556.4	553.2	550.2
130°	535.8	531.9	528.9	524.9	521.0	516.8	512.8	508.9	504.8	500.8	496.8
132.5°	500.8	497.3	494.6	490.7	486.9	483.2	479.3	475.4	471.6	467.7	464.0
135°	476.7	473.9	471.8	468.3	465.0	461.5	458.0	454.6	451.2	447.7	444.3
137.5°	454.9	452.3	450.8	448.2	445.4	442.7	440.1	437.4	434.7	431.9	429.3
140°	435.9	433.1	431.4	430.1	428.7	427.3	426.0	424.5	423.1	421.8	420.3
142.5°	420.6	418.1	416.7	416.0	415.3	414.4	413.8	413.0	412.2	411.3	410.6
145°	405.1	402.2	400.6	400.6	400.9	401.0	401.2	401.4	401.6	401.7	401.9
147.5°	393.5	390.6	389.0	389.5	389.9	390.3	390.8	391.0	391.5	391.9	392.3
150°	380.8	377.6	375.7	376.4	377.0	377.7	378.3	379.0	379.6	380.3	380.9
152.5°	369.7	365.9	363.8	364.5	365.2	365.8	366.5	367.2	367.9	368.6	369.3
155°	360.0	355.9	353.8	354.1	354.4	354.7	355.0	355.4	355.8	356.0	356.5
157.5°	352.9	349.0	347.0	347.0	347.2	347.3	347.5	347.6	347.8	348.0	348.3
160°	347.7	343.7	341.9	341.9	342.1	342.2	342.3	342.4	342.6	342.8	343.0
162.5°	342.6	338.8	336.9	337.0	337.1	337.1	337.3	337.3	337.5	337.6	337.8
165°	338.3	335.1	333.7	333.9	334.2	334.4	334.7	335.1	335.4	335.7	336.1
167.5°	337.7	335.0	333.8	333.7	333.5	333.5	333.5	333.4	333.4	333.3	333.3
170°	335.3	333.2	332.1	332.2	332.4	332.5	332.6	332.7	332.8	333.0	333.2
172.5°	334.0	332.4	331.7	332.0	332.4	332.7	333.1	333.4	333.7	334.0	334.4
175°	334.0	333.1	332.8	332.9	333.1	333.3	333.5	333.5	333.7	333.9	334.2
177.5°	335.8	335.4	335.1	335.1	335.1	335.1	335.1	335.1	335.1	335.2	335.2
180°	335.1	335.1	335.1	335.1	335.1	335.1	335.1	335.1	335.1	335.1	335.1



TEST NUMBER: P1444502
 CATALOG NUMBER: EHBR1-12-UNV-TA-L835-UPL30

CANDELA DISTRIBUTION (continued):

	247.5°	250°	252.5°	255°	257.5°	260°	262.5°	265°	267.5°	270°	272.5°
0°	10277.8	10277.8	10277.8	10277.8	10277.8	10277.8	10277.8	10277.8	10277.8	10277.8	10277.8
2.5°	10358.2	10370.2	10369.3	10380.6	10380.0	10390.6	10388.5	10397.7	10395.6	10403.4	10398.8
5°	10697.9	10720.9	10728.5	10749.2	10753.5	10772.0	10772.4	10787.1	10785.4	10796.9	10790.8
7.5°	11019.3	11040.8	11051.0	11067.1	11075.1	11088.4	11093.6	11104.6	11107.2	11113.7	11113.5
10°	11046.4	11046.4	11051.3	11049.1	11053.7	11051.1	11056.6	11054.5	11062.7	11060.6	11066.7
12.5°	10681.4	10645.3	10632.0	10599.5	10592.3	10564.4	10566.4	10548.5	10557.1	10546.2	10564.9
15°	9897.0	9813.0	9771.5	9698.4	9675.5	9617.8	9613.1	9574.7	9585.1	9565.0	9594.3
17.5°	8737.9	8605.6	8533.0	8426.3	8384.0	8302.3	8285.9	8236.5	8244.2	8219.4	8254.8
20°	7355.9	7196.0	7104.5	6981.1	6926.1	6828.6	6802.9	6747.6	6754.6	6729.8	6769.9
22.5°	5958.1	5790.8	5687.4	5558.1	5487.9	5396.2	5368.8	5313.3	5316.4	5293.3	5331.7
25°	4673.7	4513.2	4412.8	4295.4	4234.4	4150.5	4121.6	4071.7	4074.5	4055.4	4090.0
27.5°	3615.4	3483.7	3399.8	3301.4	3246.7	3177.6	3149.5	3107.6	3107.4	3093.5	3122.4
30°	2825.3	2715.4	2640.0	2554.3	2502.9	2440.6	2413.4	2376.0	2374.3	2364.3	2387.3
32.5°	2212.1	2114.4	2045.6	1970.2	1924.1	1870.6	1844.9	1814.7	1812.0	1803.0	1821.8
35°	1719.6	1637.3	1578.3	1514.6	1519.4	1440.6	1453.7	1392.4	1375.8	1372.1	1386.2
37.5°	1329.1	1265.4	1217.3	1169.7	1137.5	1104.2	1086.3	1070.2	1068.3	1066.8	1076.6
40°	1040.3	995.7	960.8	928.1	905.9	885.7	874.4	865.6	863.4	862.3	868.2
42.5°	841.9	811.9	789.4	769.4	755.9	744.9	738.8	733.8	732.2	732.3	735.7
45°	711.3	693.1	678.5	666.2	657.6	661.4	650.2	656.0	648.4	656.3	651.1
47.5°	626.5	610.9	601.9	593.1	588.0	583.7	583.9	584.0	585.7	585.8	587.6
50°	560.9	551.9	545.7	540.1	537.4	535.1	535.9	536.5	538.1	538.2	539.5
52.5°	512.4	506.5	502.7	499.3	498.1	496.8	497.3	497.1	497.8	497.5	498.5
55°	473.0	470.2	469.0	467.7	467.9	467.6	467.7	466.6	465.8	464.8	465.7
57.5°	440.6	440.2	441.0	441.6	443.0	443.6	443.9	442.4	441.1	439.8	440.6
60°	415.7	416.3	418.2	419.8	422.0	422.9	423.5	422.8	421.8	420.7	421.3
62.5°	391.0	392.0	394.3	396.2	398.7	400.1	401.5	401.6	402.0	401.6	402.0
65°	362.4	363.6	365.7	367.3	369.7	370.9	372.3	372.6	373.5	373.3	374.0
67.5°	340.7	341.8	343.6	345.0	347.1	348.4	349.7	349.7	350.1	350.0	350.7
70°	317.6	318.1	319.8	320.9	323.1	324.3	325.8	326.3	327.2	327.3	328.1
72.5°	292.9	292.7	293.6	294.2	295.7	296.8	298.7	299.8	301.4	301.7	302.3
75°	266.1	265.8	266.9	267.4	268.8	269.7	272.0	273.3	275.9	276.8	276.5
77.5°	234.9	235.4	237.6	238.7	240.6	241.8	244.6	246.9	251.4	253.5	251.4
80°	200.1	200.6	202.8	204.0	206.3	207.9	211.1	213.7	217.8	218.6	217.5
82.5°	157.3	157.5	159.4	160.3	163.4	165.6	169.7	171.7	174.2	173.9	173.6
85°	107.2	108.7	111.2	113.6	117.5	121.1	124.9	128.0	125.9	129.3	125.4
87.5°	57.3	57.2	60.5	60.0	65.4	68.5	71.7	73.2	75.0	74.7	74.7
90°	41.8	39.8	38.6	36.5	35.6	33.4	32.7	30.6	30.2	27.8	30.9
92.5°	50.9	48.6	46.2	43.8	41.4	39.1	36.7	34.3	31.9	29.6	31.9
95°	62.5	60.3	58.2	55.9	53.8	51.6	49.5	47.2	45.1	42.9	45.6
97.5°	77.5	76.2	75.0	73.7	72.4	71.1	69.8	68.6	67.3	66.0	67.9
100°	87.6	87.6	87.6	87.6	87.5	87.5	87.5	87.5	87.5	87.5	88.9
102.5°	169.9	165.7	161.5	157.2	153.0	148.8	144.7	140.4	136.2	132.1	138.3
105°	387.0	370.6	354.1	337.7	321.1	304.8	288.3	271.9	255.4	239.0	256.0
107.5°	720.7	690.7	660.7	630.8	600.8	570.8	540.9	511.0	481.0	451.1	477.9
110°	1006.8	975.0	943.2	911.4	879.6	847.8	816.1	784.3	752.6	720.8	746.4



TEST NUMBER: P1444502
 CATALOG NUMBER: EHBR1-12-UNV-TA-L835-UPL30

CANDELA DISTRIBUTION (continued):

	247.5°	250°	252.5°	255°	257.5°	260°	262.5°	265°	267.5°	270°	272.5°
112.5°	1122.1	1101.6	1081.1	1060.7	1040.2	1019.7	999.3	978.9	958.5	938.0	950.4
115°	1106.1	1096.4	1086.7	1077.1	1067.3	1057.6	1047.8	1038.2	1028.5	1018.8	1019.6
117.5°	1013.1	1009.9	1006.7	1003.5	1000.4	997.2	994.1	991.0	987.8	984.7	977.8
120°	879.2	880.2	881.3	882.5	883.7	885.1	886.1	887.4	888.7	889.9	880.6
122.5°	746.8	749.3	752.0	754.7	757.2	760.0	762.6	765.3	768.1	770.8	761.5
125°	631.2	633.7	636.4	639.0	641.5	644.2	646.9	649.6	652.4	655.2	647.3
127.5°	547.2	548.2	549.2	550.4	551.4	552.7	553.8	555.1	556.4	557.7	552.8
130°	492.9	492.2	491.6	491.1	490.4	490.0	489.6	489.2	488.8	488.4	486.2
132.5°	460.1	458.3	456.7	454.9	453.3	451.7	450.2	448.7	447.2	445.8	445.1
135°	440.8	438.3	435.8	433.4	431.0	428.8	426.4	424.2	422.1	419.8	420.1
137.5°	426.5	424.1	421.7	419.3	416.7	414.5	412.2	409.9	407.7	405.6	406.3
140°	419.0	416.5	414.0	411.6	409.4	406.9	404.7	402.5	400.3	398.2	398.6
142.5°	409.8	407.5	405.2	403.2	400.9	398.8	396.7	394.7	392.7	390.8	391.2
145°	402.1	400.5	398.8	397.2	395.6	394.1	392.4	391.0	389.6	388.2	388.4
147.5°	392.7	391.5	390.3	389.0	387.8	386.8	385.6	384.5	383.4	382.4	382.5
150°	381.5	380.8	379.9	379.1	378.3	377.6	376.9	376.1	375.4	374.8	374.6
152.5°	370.0	369.2	368.5	367.7	367.0	366.2	365.5	364.9	364.3	363.5	363.4
155°	356.9	356.5	356.1	355.9	355.5	355.2	354.8	354.7	354.3	354.0	354.0
157.5°	348.5	348.3	348.1	348.1	347.9	347.9	347.7	347.7	347.5	347.5	347.6
160°	343.2	343.0	342.6	342.5	342.1	341.8	341.5	341.4	341.1	340.8	341.1
162.5°	338.0	338.2	338.2	338.3	338.4	338.5	338.6	338.7	338.8	339.0	339.1
165°	336.5	336.3	336.2	336.0	335.9	335.9	335.8	335.7	335.6	335.6	335.9
167.5°	333.3	333.5	333.6	333.8	334.0	334.2	334.5	334.8	335.0	335.4	335.7
170°	333.3	333.3	333.3	333.3	333.3	333.4	333.4	333.4	333.5	333.5	333.7
172.5°	334.8	334.8	334.7	334.8	334.7	334.8	334.8	334.8	334.8	334.9	335.1
175°	334.3	334.6	334.8	335.0	335.2	335.3	335.5	335.7	335.9	336.1	336.1
177.5°	335.2	335.2	335.2	335.2	335.2	335.3	335.3	335.3	335.3	335.2	335.4
180°	335.1	335.1	335.1	335.1	335.1	335.1	335.1	335.1	335.1	335.1	335.1



TEST NUMBER: P1444502
 CATALOG NUMBER: EHBR1-12-UNV-TA-L835-UPL30

CANDELA DISTRIBUTION (continued):

	275°	277.5°	280°	282.5°	285°	287.5°	290°	292.5°	295°	297.5°	300°
0°	10277.8	10277.8	10277.8	10277.8	10277.8	10277.8	10277.8	10277.8	10277.8	10277.8	10277.8
2.5°	10406.4	10401.2	10406.5	10401.2	10406.5	10400.1	10404.5	10397.5	10399.3	10392.0	10393.8
5°	10799.9	10791.7	10796.0	10785.3	10786.4	10772.0	10771.8	10755.0	10750.6	10731.5	10723.1
7.5°	11118.2	11115.4	11117.0	11110.0	11109.2	11099.3	11094.7	11080.8	11072.1	11054.5	11042.5
10°	11067.7	11075.9	11078.0	11086.3	11088.0	11096.1	11097.9	11106.0	11107.8	11113.8	11113.9
12.5°	10564.0	10591.5	10598.1	10632.2	10646.5	10685.4	10706.3	10749.2	10774.6	10817.5	10843.7
15°	9593.5	9641.2	9660.2	9726.6	9763.4	9841.0	9889.6	9978.7	10041.6	10136.1	10203.6
17.5°	8257.9	8324.5	8354.5	8444.6	8503.4	8617.9	8700.3	8836.1	8940.1	9091.0	9210.6
20°	6776.8	6850.8	6891.6	6994.3	7063.7	7197.4	7300.4	7467.2	7606.4	7797.7	7961.2
22.5°	5343.9	5414.3	5459.5	5564.1	5642.2	5781.7	5896.8	6072.9	6228.8	6444.3	6640.3
25°	4103.0	4167.6	4208.5	4303.1	4376.5	4504.7	4614.5	4783.9	4936.5	5152.7	5353.7
27.5°	3136.7	3190.8	3230.3	3310.9	3375.5	3484.2	3578.7	3718.7	3850.2	4037.1	4216.2
30°	2401.5	2449.4	2487.8	2558.0	2618.0	2712.2	2795.2	2912.8	3021.6	3170.4	3312.8
32.5°	1835.1	1876.3	1910.5	1972.0	2026.4	2111.3	2186.1	2289.2	2382.6	2508.7	2625.9
35°	1399.2	1480.3	1474.6	1559.4	1573.0	1633.9	1700.7	1790.8	1873.5	1980.8	2080.5
37.5°	1086.0	1108.9	1133.3	1170.7	1210.2	1265.5	1322.0	1432.0	1472.5	1553.5	1636.0
40°	875.8	891.2	907.4	932.7	960.2	999.3	1040.3	1092.9	1146.7	1212.4	1279.6
42.5°	740.4	749.1	759.4	774.2	791.3	816.0	843.5	879.1	916.6	962.8	1010.1
45°	661.5	657.3	660.4	668.4	678.6	693.7	711.0	733.0	757.5	787.4	819.3
47.5°	588.0	589.6	590.5	594.9	600.4	610.5	620.9	636.0	664.9	673.6	691.0
50°	539.4	540.2	539.9	542.1	544.9	551.4	558.2	568.4	578.5	592.0	604.8
52.5°	498.7	499.7	499.6	501.1	502.6	506.7	511.0	518.2	524.9	533.4	540.7
55°	466.5	468.0	468.7	469.9	470.7	472.8	474.5	477.9	480.7	485.6	490.0
57.5°	441.8	443.9	444.9	445.3	444.5	444.4	443.8	444.5	445.1	447.7	450.2
60°	422.3	424.0	424.3	424.0	422.5	421.3	419.5	418.9	418.6	419.8	421.2
62.5°	401.9	402.6	402.1	401.6	399.8	398.7	396.8	396.1	395.4	396.4	397.1
65°	373.8	374.3	373.8	373.4	371.8	370.9	369.3	368.7	367.9	368.1	368.0
67.5°	350.8	351.4	351.0	350.5	349.5	348.9	347.7	346.9	345.9	345.4	344.6
70°	328.0	328.4	327.8	327.3	326.1	325.6	324.5	324.2	323.4	323.2	322.3
72.5°	301.7	301.8	300.9	300.7	299.7	299.6	299.2	299.6	299.6	300.0	299.8
75°	275.0	274.6	273.4	273.2	272.5	272.9	272.4	273.0	273.0	274.0	274.2
77.5°	248.0	246.7	244.4	243.5	242.0	241.8	241.0	241.5	241.3	242.5	243.0
80°	214.1	212.3	209.5	208.3	206.5	206.2	205.5	206.2	205.9	207.2	208.2
82.5°	170.9	169.4	166.6	165.5	163.5	163.7	162.8	163.7	163.6	165.5	166.7
85°	126.4	125.5	122.5	119.8	116.9	115.2	113.5	113.3	112.7	113.5	114.2
87.5°	73.0	72.1	69.8	68.3	63.1	63.3	61.3	61.2	60.7	60.2	61.3
90°	32.0	34.8	36.1	38.7	40.0	43.0	44.4	47.2	48.9	52.2	54.0
92.5°	34.3	36.7	39.1	41.4	43.8	46.2	48.6	50.9	56.0	61.1	66.2
95°	48.3	51.1	53.8	56.5	59.2	62.1	64.8	67.5	75.0	82.4	89.9
97.5°	69.7	71.5	73.3	75.1	77.0	78.7	80.6	82.4	90.5	98.5	106.6
100°	90.4	91.8	93.3	94.8	96.3	97.7	99.2	100.6	116.3	131.8	147.3
102.5°	144.5	150.7	156.9	163.1	169.4	175.6	181.8	188.0	223.6	259.2	294.8
105°	272.9	289.9	307.0	324.0	341.0	358.0	375.0	391.9	448.8	505.9	562.9
107.5°	504.8	531.5	558.4	585.4	612.2	639.0	665.8	692.8	748.3	803.9	859.4
110°	771.9	797.5	823.0	848.7	874.2	899.8	925.3	951.0	984.4	1017.5	1050.9



TEST NUMBER: P1444502
 CATALOG NUMBER: EHBR1-12-UNV-TA-L835-UPL30

CANDELA DISTRIBUTION (continued):

	275°	277.5°	280°	282.5°	285°	287.5°	290°	292.5°	295°	297.5°	300°
112.5°	962.8	975.2	987.7	1000.2	1012.6	1025.1	1037.5	1050.0	1066.5	1083.1	1099.5
115°	1020.3	1021.1	1021.8	1022.7	1023.3	1024.2	1025.0	1025.9	1031.0	1036.0	1041.1
117.5°	970.9	964.0	957.1	950.2	943.4	936.6	929.8	923.0	921.6	920.4	919.1
120°	871.5	862.2	853.0	843.7	834.6	825.3	816.2	807.1	802.2	797.3	792.5
122.5°	752.3	743.0	733.9	724.6	715.4	706.3	697.3	688.1	684.6	681.0	677.6
125°	639.5	631.8	624.0	616.3	608.7	601.1	593.5	585.9	585.4	584.6	584.1
127.5°	547.9	543.1	538.3	533.7	528.9	524.3	519.6	515.0	516.4	517.9	519.3
130°	483.8	481.6	479.5	477.2	475.2	473.2	471.0	469.0	471.9	474.8	477.8
132.5°	444.6	444.0	443.5	442.9	442.5	442.1	441.8	441.4	444.9	448.3	451.7
135°	420.4	420.8	421.3	421.6	422.2	422.6	423.1	423.6	427.0	430.2	433.5
137.5°	406.9	407.6	408.5	409.2	410.1	410.9	411.8	412.7	415.3	417.7	420.3
140°	399.2	399.6	400.3	400.8	401.5	402.1	402.9	403.5	405.5	407.4	409.4
142.5°	391.7	392.1	392.8	393.4	394.1	394.5	395.2	395.9	397.3	398.6	400.1
145°	388.8	389.1	389.5	389.8	390.2	390.7	391.0	391.5	392.4	393.0	393.9
147.5°	382.6	382.7	382.9	383.1	383.4	383.6	383.8	384.0	384.4	384.7	385.2
150°	374.6	374.5	374.5	374.5	374.5	374.5	374.6	374.5	374.9	375.2	375.6
152.5°	363.4	363.3	363.2	363.2	363.2	363.2	363.1	363.1	363.5	363.9	364.3
155°	354.2	354.3	354.5	354.6	354.8	354.9	355.1	355.2	355.4	355.5	355.7
157.5°	347.7	347.8	348.0	348.1	348.3	348.4	348.5	348.7	348.9	349.0	349.1
160°	341.4	341.8	342.1	342.4	342.7	343.0	343.3	343.6	343.8	343.9	344.1
162.5°	339.3	339.4	339.6	339.7	339.8	339.9	340.0	340.2	340.6	340.9	341.2
165°	336.2	336.6	336.9	337.0	337.4	337.8	338.1	338.5	338.6	338.7	338.9
167.5°	336.0	336.3	336.7	336.8	337.2	337.5	337.9	338.2	338.3	338.4	338.6
170°	334.1	334.4	334.7	334.9	335.2	335.5	335.9	336.1	336.5	336.7	337.0
172.5°	335.4	335.6	335.9	336.0	336.3	336.6	336.8	337.1	337.4	337.7	337.9
175°	336.1	336.1	336.1	336.2	336.2	336.2	336.2	336.3	336.4	336.4	336.4
177.5°	335.6	335.8	336.0	336.1	336.3	336.5	336.7	336.8	336.8	336.8	336.8
180°	335.1	335.1	335.1	335.1	335.1	335.1	335.1	335.1	335.1	335.1	335.1



TEST NUMBER: P1444502
 CATALOG NUMBER: EHBR1-12-UNV-TA-L835-UPL30

CANDELA DISTRIBUTION (continued):

	302.5°	305°	307.5°	310°	312.5°	315°	317.5°	320°	322.5°	325°	327.5°
0°	10277.8	10277.8	10277.8	10277.8	10277.8	10277.8	10277.8	10277.8	10277.8	10277.8	10277.8
2.5°	10386.6	10387.1	10378.7	10378.2	10370.4	10369.4	10361.7	10359.4	10353.2	10351.0	10344.6
5°	10701.7	10691.5	10668.0	10654.1	10630.7	10615.3	10590.1	10573.6	10549.3	10530.9	10506.4
7.5°	11020.4	11004.6	10978.1	10956.6	10924.3	10898.5	10860.7	10829.7	10788.7	10753.2	10710.1
10°	11113.9	11111.5	11104.7	11094.9	11079.9	11063.0	11037.2	11010.3	10974.5	10935.4	10887.6
12.5°	10883.9	10908.7	10942.6	10962.7	10987.1	10997.8	11007.8	11005.3	10998.7	10979.0	10951.4
15°	10301.3	10371.1	10463.5	10535.1	10617.5	10677.4	10743.5	10784.7	10825.8	10844.8	10856.5
17.5°	9374.5	9506.6	9672.3	9809.6	9968.1	10095.4	10234.8	10339.8	10447.9	10525.2	10595.1
20°	8184.1	8375.5	8609.8	8816.9	9057.6	9266.8	9496.1	9684.3	9878.3	10030.0	10173.7
22.5°	6892.8	7120.2	7403.5	7665.9	7976.3	8255.2	8569.9	8843.7	9129.7	9368.6	9599.5
25°	5623.1	5872.4	6182.2	6475.0	6826.5	7150.9	7524.2	7865.5	8235.1	8555.9	8872.9
27.5°	4463.6	4708.5	5024.8	5336.4	5708.1	6053.7	6453.6	6829.7	7250.5	7638.6	8035.5
30°	3510.7	3718.3	4001.9	4303.9	4670.4	5022.1	5426.4	5813.1	6250.9	6674.6	7121.8
32.5°	2781.5	2939.6	3162.6	3417.8	3756.0	4090.9	4475.8	4849.2	5280.3	5708.3	6173.4
35°	2209.0	2332.3	2502.3	2701.6	2988.0	3276.6	3617.1	3956.5	4358.7	4764.9	5216.9
37.5°	1741.9	1842.0	1975.1	2124.8	2354.5	2591.4	2870.6	3152.0	3501.5	3861.5	4271.2
40°	1360.2	1441.2	1544.9	1656.5	1830.0	2012.5	2228.4	2446.6	2727.4	3021.7	3360.7
42.5°	1068.5	1128.3	1201.6	1283.1	1444.9	1541.9	1688.3	1846.2	2052.6	2266.2	2521.1
45°	858.1	898.9	949.7	1004.4	1079.6	1161.7	1262.0	1367.2	1563.2	1659.4	1814.5
47.5°	716.6	744.0	776.4	810.8	855.1	902.9	962.3	1023.1	1101.8	1183.2	1278.7
50°	621.3	649.2	660.3	678.2	703.8	731.1	764.6	798.1	840.3	883.0	932.2
52.5°	550.6	559.7	571.8	583.1	598.9	630.1	640.1	657.6	681.3	704.4	730.2
55°	496.5	502.5	510.3	517.2	526.8	536.0	549.2	560.9	576.6	590.6	607.8
57.5°	454.6	458.3	463.8	468.2	474.4	479.7	487.4	493.7	502.8	510.7	521.1
60°	424.0	426.5	430.1	433.1	437.0	439.7	443.6	446.6	451.4	455.3	461.2
62.5°	399.0	400.4	402.8	404.4	406.9	408.3	410.3	411.7	414.3	416.4	419.6
65°	369.1	369.4	371.0	371.8	373.7	374.5	376.1	376.7	378.9	380.4	383.2
67.5°	344.6	343.9	343.9	343.3	343.6	343.1	343.2	342.6	343.4	343.9	346.1
70°	322.2	321.2	320.9	319.9	319.6	318.5	318.2	317.3	317.2	316.9	317.6
72.5°	300.4	300.1	300.2	299.4	299.3	298.6	298.6	298.3	298.7	298.9	299.9
75°	275.3	275.3	275.9	275.2	275.4	274.8	275.0	274.4	274.7	274.6	275.6
77.5°	244.7	245.4	246.8	246.5	246.9	246.2	246.5	245.7	246.0	245.4	245.8
80°	210.3	211.9	213.6	213.6	214.4	213.8	214.5	213.8	214.1	213.1	212.9
82.5°	169.6	170.8	172.8	172.8	174.5	174.8	176.7	176.6	177.7	177.1	176.5
85°	115.9	116.7	118.5	119.4	121.1	122.2	123.9	124.7	123.3	125.8	123.9
87.5°	60.5	62.7	61.5	64.5	63.8	66.7	66.1	68.8	68.3	70.7	70.4
90°	57.7	59.7	63.4	65.5	69.7	72.1	71.2	68.4	67.3	64.5	63.5
92.5°	71.3	76.5	81.6	86.7	91.8	97.0	92.2	87.5	82.7	78.0	73.2
95°	97.3	104.9	112.4	119.8	127.3	134.8	126.7	118.7	110.7	102.7	94.6
97.5°	114.6	122.6	130.6	138.7	146.7	154.8	145.2	135.7	126.2	116.8	107.4
100°	162.8	178.3	193.8	209.3	225.0	240.5	222.7	205.1	187.4	169.7	152.0
102.5°	330.4	366.0	401.6	437.3	472.9	508.5	470.8	433.3	395.8	358.2	320.6
105°	619.8	676.9	733.8	790.8	847.8	904.8	844.0	783.0	722.1	661.2	600.2
107.5°	914.9	970.5	1026.1	1081.6	1137.3	1192.8	1131.1	1069.2	1007.3	945.6	883.7
110°	1084.2	1117.5	1150.8	1184.2	1217.5	1250.9	1205.7	1160.5	1115.4	1070.1	1025.0



TEST NUMBER: P1444502
 CATALOG NUMBER: EHBR1-12-UNV-TA-L835-UPL30

CANDELA DISTRIBUTION (continued):

	302.5°	305°	307.5°	310°	312.5°	315°	317.5°	320°	322.5°	325°	327.5°
112.5°	1116.1	1132.7	1149.3	1165.9	1182.5	1199.0	1166.6	1134.4	1101.9	1069.6	1037.1
115°	1046.2	1051.3	1056.4	1061.4	1066.6	1071.7	1049.7	1027.8	1005.9	984.0	962.0
117.5°	917.8	916.7	915.4	914.3	912.9	911.7	899.3	886.9	874.4	862.0	849.6
120°	787.6	782.8	777.9	773.1	768.2	763.4	758.0	752.4	747.0	741.6	735.9
122.5°	673.9	670.5	666.9	663.4	659.7	656.2	653.9	651.6	649.3	646.8	644.5
125°	583.5	582.9	582.3	581.7	581.0	580.4	579.1	577.6	576.2	574.8	573.4
127.5°	520.7	522.2	523.6	525.0	526.5	527.9	527.2	526.6	525.9	525.2	524.6
130°	480.6	483.6	486.5	489.4	492.2	495.1	494.1	493.1	492.1	491.1	490.0
132.5°	455.2	458.6	462.0	465.5	468.9	472.3	471.1	470.0	468.7	467.6	466.5
135°	436.7	440.1	443.3	446.6	449.7	452.9	451.6	450.2	448.7	447.5	446.1
137.5°	422.9	425.4	427.8	430.3	432.7	435.3	433.8	432.5	431.1	429.7	428.4
140°	411.3	413.2	415.0	417.0	418.9	420.8	419.2	417.6	416.1	414.5	412.9
142.5°	401.3	402.8	404.0	405.4	406.8	408.1	406.1	404.1	402.1	400.2	398.2
145°	394.7	395.4	396.2	397.1	397.6	398.5	396.3	394.2	391.9	389.7	387.6
147.5°	385.6	385.9	386.2	386.6	386.9	387.4	385.2	383.2	381.2	379.0	377.0
150°	375.9	376.3	376.6	376.9	377.3	377.6	375.4	373.4	371.3	369.2	367.2
152.5°	364.6	364.9	365.2	365.4	365.7	366.0	364.1	362.3	360.3	358.3	356.4
155°	355.8	355.9	356.0	356.1	356.2	356.3	354.7	353.1	351.6	349.9	348.3
157.5°	349.2	349.4	349.5	349.5	349.6	349.7	348.5	347.3	346.0	344.8	343.5
160°	344.2	344.3	344.4	344.5	344.6	344.7	343.6	342.7	341.6	340.5	339.5
162.5°	341.5	341.8	342.1	342.3	342.7	342.9	341.7	340.5	339.3	338.0	336.7
165°	339.0	339.1	339.2	339.3	339.4	339.5	338.6	337.7	336.8	336.0	335.1
167.5°	338.7	338.8	338.9	339.0	339.0	339.1	338.3	337.4	336.6	335.6	334.7
170°	337.3	337.5	337.8	338.0	338.3	338.5	337.8	337.1	336.4	335.8	335.0
172.5°	338.2	338.4	338.6	338.9	339.1	339.4	338.6	337.9	337.1	336.5	335.7
175°	336.4	336.5	336.6	336.6	336.6	336.6	336.0	335.5	334.9	334.3	333.8
177.5°	336.8	336.8	336.8	336.8	336.8	336.8	336.5	336.1	335.8	335.4	334.9
180°	335.1	335.1	335.1	335.1	335.1	335.1	335.1	335.1	335.1	335.1	335.1



TEST NUMBER: P1444502
 CATALOG NUMBER: EHBR1-12-UNV-TA-L835-UPL30

CANDELA DISTRIBUTION (continued):

	330°	332.5°	335°	337.5°	340°	342.5°	345°	347.5°	350°	352.5°	355°
0°	10277.8	10277.8	10277.8	10277.8	10277.8	10277.8	10277.8	10277.8	10277.8	10277.8	10277.8
2.5°	10342.4	10337.9	10335.0	10331.3	10329.1	10326.2	10324.1	10322.3	10320.8	10319.5	10318.5
5°	10487.8	10464.7	10446.8	10427.3	10411.4	10395.4	10383.2	10373.0	10366.0	10360.7	10357.6
7.5°	10673.0	10630.6	10593.0	10553.3	10517.9	10483.0	10452.9	10426.9	10407.4	10394.8	10387.3
10°	10838.3	10781.7	10725.6	10666.7	10610.7	10556.5	10506.4	10462.4	10427.6	10404.4	10390.9
12.5°	10912.4	10864.2	10807.0	10742.9	10674.5	10605.1	10537.5	10476.6	10425.5	10391.1	10371.3
15°	10847.1	10827.4	10788.5	10738.8	10673.8	10602.1	10522.8	10448.1	10379.6	10335.1	10309.3
17.5°	10634.8	10662.4	10659.5	10640.5	10593.7	10533.4	10452.5	10368.7	10282.9	10223.5	10191.0
20°	10276.4	10363.4	10407.4	10430.1	10411.7	10372.6	10299.4	10214.4	10114.4	10036.7	9989.3
22.5°	9772.8	9926.3	10022.0	10091.9	10106.7	10093.5	10028.8	9947.9	9836.4	9743.1	9673.1
25°	9124.5	9349.4	9500.5	9619.0	9665.1	9676.9	9621.9	9541.5	9417.2	9308.5	9212.4
27.5°	8360.9	8653.1	8854.9	9014.1	9086.0	9117.1	9066.5	8984.5	8837.4	8707.7	8582.1
30°	7501.3	7847.9	8090.9	8281.8	8369.4	8410.6	8356.8	8265.2	8094.1	7937.9	7779.7
32.5°	6581.1	6960.4	7225.2	7432.5	7519.3	7558.1	7487.7	7384.9	7187.1	7003.2	6818.7
35°	5617.8	6000.6	6267.6	6469.5	6542.2	6565.6	6475.6	6356.7	6137.6	5935.7	5734.5
37.5°	4634.8	4991.0	5233.7	5414.7	5459.8	5463.8	5355.4	5224.1	4993.8	4794.8	4594.5
40°	3660.3	3960.7	4156.7	4301.6	4317.2	4303.3	4185.5	4053.3	3837.9	3659.5	3483.7
42.5°	2742.4	2969.2	3109.0	3208.3	3202.4	3174.8	3066.8	2953.2	2775.4	2639.6	2501.3
45°	1956.0	2105.5	2187.3	2245.4	2226.7	2200.5	2116.4	2036.8	1916.0	1828.2	1735.3
47.5°	1358.9	1537.4	1506.3	1620.0	1522.1	1586.8	1452.1	1377.8	1313.7	1267.1	1214.5
50°	972.8	1013.7	1033.5	1047.0	1039.8	1029.9	1005.7	984.1	954.8	933.5	908.5
52.5°	751.3	771.7	783.0	791.1	789.5	785.9	775.3	765.7	751.9	742.9	732.1
55°	636.4	636.7	657.3	648.5	661.5	646.3	652.3	635.3	638.0	623.5	613.7
57.5°	528.8	537.2	541.0	544.6	543.6	543.0	538.9	536.8	532.2	530.8	527.5
60°	465.1	469.6	470.5	472.1	470.8	470.2	467.0	465.8	462.8	462.2	460.0
62.5°	421.5	423.7	423.7	423.7	422.0	420.1	416.6	414.8	412.2	411.6	410.3
65°	385.1	387.5	387.8	388.3	387.0	385.6	382.5	380.5	377.8	376.7	375.2
67.5°	347.5	349.9	350.8	352.1	351.3	351.0	348.9	348.1	346.3	345.9	344.6
70°	317.9	319.0	318.9	318.9	317.3	315.7	313.3	312.1	310.2	309.8	308.6
72.5°	300.4	301.2	300.7	300.0	297.9	295.6	292.7	290.6	288.2	286.7	285.0
75°	275.7	276.6	276.1	275.7	273.7	272.3	269.9	268.8	267.0	266.5	265.4
77.5°	245.3	245.8	244.8	244.7	243.2	242.3	240.6	240.3	239.0	239.0	237.8
80°	211.6	211.3	209.7	209.3	207.9	207.5	206.1	206.2	205.3	205.7	204.9
82.5°	174.0	173.1	171.0	170.5	168.7	168.5	167.6	168.4	167.7	168.7	168.1
85°	124.8	125.0	124.1	124.1	123.6	123.7	123.7	124.2	124.3	125.2	125.1
87.5°	69.5	70.6	70.4	71.3	71.3	72.2	72.6	74.1	74.3	75.7	75.7
90°	60.7	59.8	57.0	56.2	54.8	55.2	54.1	54.5	53.0	53.2	51.6
92.5°	68.5	63.7	59.0	54.2	51.9	49.4	47.2	44.6	42.4	39.9	37.5
95°	86.6	78.6	70.6	62.5	59.8	57.1	54.3	51.6	48.9	46.2	43.3
97.5°	97.9	88.4	78.9	69.4	67.0	64.7	62.2	59.8	57.4	55.1	52.7
100°	134.3	116.5	98.9	81.2	79.1	77.2	75.1	73.1	71.2	69.0	67.0
102.5°	283.0	245.5	207.9	170.3	163.2	156.0	148.9	141.7	134.6	127.4	120.3
105°	539.3	478.4	417.4	356.4	337.0	317.7	298.4	279.1	259.7	240.4	221.0
107.5°	821.9	759.9	698.1	636.3	600.5	564.7	528.9	493.1	457.4	421.6	385.8
110°	979.8	934.5	889.3	844.1	815.4	786.5	757.7	728.8	700.0	671.1	642.3



TEST NUMBER: P1444502
 CATALOG NUMBER: EHBR1-12-UNV-TA-L835-UPL30

CANDELA DISTRIBUTION (continued):

	330°	332.5°	335°	337.5°	340°	342.5°	345°	347.5°	350°	352.5°	355°
112.5°	1004.7	972.2	939.9	907.4	894.3	881.2	868.1	855.0	841.8	828.7	815.5
115°	939.9	918.0	896.0	873.9	869.3	864.6	860.0	855.2	850.5	845.7	841.0
117.5°	837.2	824.7	812.2	799.7	800.3	800.9	801.6	802.2	802.7	803.2	803.8
120°	730.5	725.1	719.5	714.0	717.8	721.5	725.4	729.0	732.7	736.3	740.0
122.5°	642.1	639.8	637.3	634.9	639.5	644.0	648.6	653.0	657.5	661.9	666.3
125°	572.1	570.6	569.2	567.7	572.3	576.8	581.4	585.7	590.4	594.8	599.1
127.5°	523.9	523.2	522.5	521.8	525.0	528.1	531.3	534.3	537.3	540.2	543.3
130°	489.1	488.0	487.0	486.1	488.8	491.6	494.3	496.9	499.7	502.3	504.8
132.5°	465.3	464.1	462.9	461.7	463.6	465.4	467.4	469.0	470.8	472.4	474.0
135°	444.8	443.3	442.0	440.6	442.2	444.0	445.6	447.2	448.8	450.3	451.8
137.5°	427.0	425.6	424.2	422.8	424.3	425.8	427.3	428.7	430.0	431.4	432.7
140°	411.3	409.8	408.2	406.6	407.8	409.1	410.4	411.7	412.9	413.9	415.2
142.5°	396.2	394.1	392.3	390.2	391.1	392.0	392.9	393.7	394.6	395.3	396.1
145°	385.3	383.1	380.9	378.7	379.4	380.0	380.8	381.4	382.0	382.6	383.2
147.5°	375.0	372.8	370.8	368.6	369.2	369.7	370.1	370.5	371.1	371.5	371.8
150°	365.1	362.9	360.9	358.7	359.1	359.6	359.9	360.4	360.8	361.2	361.5
152.5°	354.4	352.5	350.5	348.5	348.9	349.3	349.5	349.9	350.3	350.7	350.9
155°	346.6	345.0	343.3	341.7	342.1	342.5	342.8	343.1	343.3	343.7	343.9
157.5°	342.3	340.8	339.7	338.3	338.5	338.6	338.8	338.8	338.9	339.0	339.1
160°	338.4	337.2	336.2	335.0	335.1	335.3	335.4	335.5	335.5	335.5	335.6
162.5°	335.4	334.1	332.9	331.6	331.7	331.8	332.0	332.0	332.0	332.1	332.1
165°	334.1	333.3	332.3	331.3	331.3	331.2	331.2	331.0	330.9	330.8	330.6
167.5°	333.7	332.9	331.9	330.9	331.1	331.2	331.3	331.4	331.5	331.5	331.6
170°	334.3	333.5	332.8	332.0	331.9	331.9	331.8	331.7	331.6	331.5	331.4
172.5°	335.0	334.2	333.5	332.7	332.7	332.6	332.6	332.5	332.4	332.3	332.3
175°	333.3	332.7	332.1	331.5	331.4	331.4	331.4	331.3	331.2	331.2	331.1
177.5°	334.5	334.2	333.8	333.5	333.4	333.4	333.4	333.3	333.3	333.3	333.3
180°	335.1	335.1	335.1	335.1	335.1	335.1	335.1	335.1	335.1	335.1	335.1



TEST NUMBER: P1444502
 CATALOG NUMBER: EHBR1-12-UNV-TA-L835-UPL30

CANDELA DISTRIBUTION (continued):

	357.5°	360°
0°	10277.8	10277.8
2.5°	10317.6	10317.1
5°	10355.9	10355.4
7.5°	10385.1	10384.9
10°	10388.6	10390.4
12.5°	10367.9	10369.3
15°	10307.4	10310.2
17.5°	10191.6	10195.3
20°	9992.2	9996.1
22.5°	9669.3	9671.0
25°	9200.0	9193.4
27.5°	8560.1	8548.6
30°	7746.6	7735.4
32.5°	6776.7	6769.7
35°	5684.9	5680.5
37.5°	4535.4	4526.5
40°	3419.5	3393.5
42.5°	2440.7	2395.2
45°	1686.8	1632.7
47.5°	1177.5	1144.2
50°	892.5	881.8
52.5°	727.3	724.8
55°	613.7	612.5
57.5°	528.2	527.9
60°	461.2	461.1
62.5°	411.1	411.3
65°	375.9	376.0
67.5°	344.9	344.7
70°	309.1	308.8
72.5°	284.4	284.0
75°	265.4	265.1
77.5°	238.2	237.8
80°	205.4	204.9
82.5°	168.9	168.3
85°	126.1	126.1
87.5°	77.1	77.1
90°	51.7	49.8
92.5°	35.2	33.0
95°	40.6	37.9
97.5°	50.3	47.9
100°	65.1	63.0
102.5°	113.2	106.1
105°	201.7	182.3
107.5°	350.0	314.3
110°	613.4	584.6



TEST NUMBER: P1444502
CATALOG NUMBER: EHBR1-12-UNV-TA-L835-UPL30

CANDELA DISTRIBUTION (continued):

	357.5°	360°
112.5°	802.5	789.3
115°	836.2	831.4
117.5°	804.3	804.9
120°	743.5	747.2
122.5°	670.7	675.0
125°	603.4	607.8
127.5°	546.1	548.9
130°	507.2	509.7
132.5°	475.7	477.2
135°	453.2	454.6
137.5°	433.9	435.1
140°	416.1	417.1
142.5°	396.8	397.4
145°	383.7	384.2
147.5°	371.9	372.3
150°	361.8	362.1
152.5°	351.2	351.5
155°	344.1	344.4
157.5°	339.1	339.1
160°	335.6	335.7
162.5°	332.2	332.2
165°	330.4	330.3
167.5°	331.6	331.7
170°	331.3	331.2
172.5°	332.2	332.1
175°	331.1	331.1
177.5°	333.3	333.2
180°	335.1	335.1

LM-79-2019: Approved Method: Electrical and Photometric Measurements of Solid-
State Lighting Products

Report Prepared for

Cooper Lighting Solutions

Metalux

Report Number: SP1-2506-472-3

Test Date: 07/31/2025

Luminaire Tested: EHBR-60-L835-N

Data in this report applies to families of products including EHBR-60-L835-N

Test Information

Test Method: LM-79-2019
 Report Number: SP1-2506-472-3
 Test Lab: COOPER LIGHTING SOLUTIONS
 Photometer: SP1 - 76IN SPHERE
 Measurement Geometry: 4π
 Issue Date: 08/05/2025
 Manufacturer: COOPER LIGHTING SOLUTIONS
 Product Line: Metalux
 Catalog Number: **EHBR-60-L835-N**
 Description: Elevate Round Highbay at, 60000 lumens, 3500K 80CRI LEDs with N lens

Spectral Parameters

CCT (K): 3468
 CIE u': 0.2375
 CIE v': 0.5091
 Duv: -0.0021
 CIE x: 0.4049
 CIE y: 0.3856
 CIE z: 0.2095
 Peak Wavelength (nm): 630
 Dominant Wavelength (nm): 581
 Purity: 37.24544
 Rf: 80.1
 Rg: 101

CRI (Ra):	82.1		
R1:	82.9	R9:	27.6
R2:	85.6	R10:	63.8
R3:	85.9	R11:	81.2
R4:	82.8	R12:	57.2
R5:	81.0	R13:	82.6
R6:	79.7	R14:	91.0
R7:	86.5	R15:	79.4
R8:	72.1		



Test Conditions

Stabilization Time: 39M
 Operation Time: 1H 39M
 Sphere Temperature (°C): 25.0

REPORT NUMBER: SP1-2506-472-3

Measurement and Test Equipment			
Instrument	Identification Number	Calibration Date	Calibration Due Date
Photometer	76INCH SPHERE IN0058	6/16/2025	12/16/2025
Power Meter	XITRON INXT2011004	1/21/2025	1/21/2026
AC Power Source	CHROMA 61603 IN0063	10/22/2024	10/22/2025
DC Power Source	AGILENT E3634A IN0208	10/22/2024	10/22/2025
Sphere Thermometer	ONSET IN0085	10/22/2024	10/22/2025
Room Thermometer	ONSET IN0046	10/22/2024	10/22/2025

REPORT NUMBER: SP1-2506-472-3

CIE 1931 Chromaticity Diagram



CIE 1931 Chromaticity Diagram with 2017 ANSI 7-Step and 4-Step Quadrangles



Point lies inside the ANSI 3500K 4-step quadrangle

REPORT NUMBER: SP1-2506-472-3

Photopic Flux vs. Wavelength



Photopic Lumens: NR

λ (nm)	Power W [^] /nm	Lumens (ϕ /nm)	λ (nm)	Power W [^] /nm	Lumens (ϕ /nm)	λ (nm)	Power W [^] /nm	Lumens (ϕ /nm)	λ (nm)	Power W [^] /nm	Lumens (ϕ /nm)	λ (nm)	Power W [^] /nm	Lumens (ϕ /nm)
360	0	NR	490	60	NR	620	327	NR	750	7	NR	880	0	NR
365	0	NR	495	82	NR	625	322	NR	755	6	NR	885	0	NR
370	0	NR	500	114	NR	630	1000	NR	760	5	NR	890	0	NR
375	0	NR	505	152	NR	635	645	NR	765	4	NR	895	0	NR
380	0	NR	510	189	NR	640	197	NR	770	4	NR	900	0	NR
385	1	NR	515	222	NR	645	189	NR	775	3	NR	905	0	NR
390	2	NR	520	248	NR	650	163	NR	780	3	NR	910	0	NR
395	3	NR	525	268	NR	655	134	NR	785	2	NR	915	0	NR
400	4	NR	530	283	NR	660	113	NR	790	2	NR	920	0	NR
405	6	NR	535	294	NR	665	94	NR	795	2	NR	925	0	NR
410	9	NR	540	305	NR	670	87	NR	800	2	NR	930	0	NR
415	18	NR	545	314	NR	675	70	NR	805	1	NR	935	0	NR
420	34	NR	550	323	NR	680	60	NR	810	1	NR	940	0	NR
425	62	NR	555	335	NR	685	51	NR	815	1	NR	945	0	NR
430	102	NR	560	346	NR	690	44	NR	820	1	NR	950	0	NR
435	159	NR	565	356	NR	695	38	NR	825	1	NR	955	0	NR
440	241	NR	570	364	NR	700	32	NR	830	1	NR	960	0	NR
445	363	NR	575	371	NR	705	28	NR	835	1	NR	965	0	NR
450	389	NR	580	375	NR	710	24	NR	840	1	NR	970	0	NR
455	245	NR	585	375	NR	715	20	NR	845	0	NR	975	0	NR
460	158	NR	590	373	NR	720	17	NR	850	0	NR	980	0	NR
465	120	NR	595	364	NR	725	15	NR	855	0	NR	985	0	NR
470	79	NR	600	357	NR	730	13	NR	860	0	NR	990	0	NR
475	57	NR	605	349	NR	735	11	NR	865	0	NR	995	0	NR
480	51	NR	610	371	NR	740	9	NR	870	0	NR	1000	0	NR
485	51	NR	615	387	NR	745	8	NR	875	0	NR			

REPORT NUMBER: SP1-2506-472-3

Scotopic Flux vs. Wavelength



Scotopic Lumens: NR

S/P: 1.43

λ (nm)	Power W [^] /nm	Lumens (φ/nm)	λ (nm)	Power W [^] /nm	Lumens (φ/nm)	λ (nm)	Power W [^] /nm	Lumens (φ/nm)	λ (nm)	Power W [^] /nm	Lumens (φ/nm)	λ (nm)	Power W [^] /nm	Lumens (φ/nm)
360	0	NR	490	60	NR	620	327	NR	750	7	NR	880	0	NR
365	0	NR	495	82	NR	625	322	NR	755	6	NR	885	0	NR
370	0	NR	500	114	NR	630	1000	NR	760	5	NR	890	0	NR
375	0	NR	505	152	NR	635	645	NR	765	4	NR	895	0	NR
380	0	NR	510	189	NR	640	197	NR	770	4	NR	900	0	NR
385	1	NR	515	222	NR	645	189	NR	775	3	NR	905	0	NR
390	2	NR	520	248	NR	650	163	NR	780	3	NR	910	0	NR
395	3	NR	525	268	NR	655	134	NR	785	2	NR	915	0	NR
400	4	NR	530	283	NR	660	113	NR	790	2	NR	920	0	NR
405	6	NR	535	294	NR	665	94	NR	795	2	NR	925	0	NR
410	9	NR	540	305	NR	670	87	NR	800	2	NR	930	0	NR
415	18	NR	545	314	NR	675	70	NR	805	1	NR	935	0	NR
420	34	NR	550	323	NR	680	60	NR	810	1	NR	940	0	NR
425	62	NR	555	335	NR	685	51	NR	815	1	NR	945	0	NR
430	102	NR	560	346	NR	690	44	NR	820	1	NR	950	0	NR
435	159	NR	565	356	NR	695	38	NR	825	1	NR	955	0	NR
440	241	NR	570	364	NR	700	32	NR	830	1	NR	960	0	NR
445	363	NR	575	371	NR	705	28	NR	835	1	NR	965	0	NR
450	389	NR	580	375	NR	710	24	NR	840	1	NR	970	0	NR
455	245	NR	585	375	NR	715	20	NR	845	0	NR	975	0	NR
460	158	NR	590	373	NR	720	17	NR	850	0	NR	980	0	NR
465	120	NR	595	364	NR	725	15	NR	855	0	NR	985	0	NR
470	79	NR	600	357	NR	730	13	NR	860	0	NR	990	0	NR
475	57	NR	605	349	NR	735	11	NR	865	0	NR	995	0	NR
480	51	NR	610	371	NR	740	9	NR	870	0	NR	1000	0	NR
485	51	NR	615	387	NR	745	8	NR	875	0	NR			

REPORT NUMBER: SP1-2506-472-3

Melanopic Flux vs. Wavelength



Melanopic Lumens: NR

M/P: 2.75

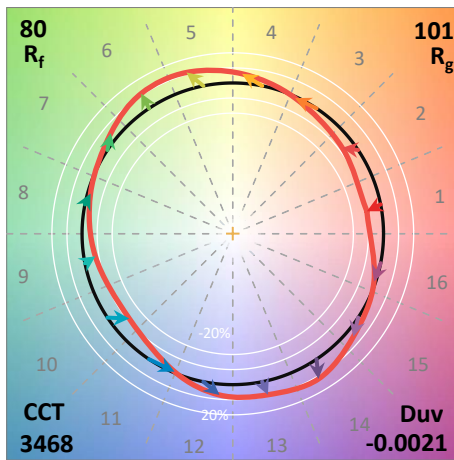
λ (nm)	Power W [^] /nm	Lumens (φ/nm)	λ (nm)	Power W [^] /nm	Lumens (φ/nm)	λ (nm)	Power W [^] /nm	Lumens (φ/nm)	λ (nm)	Power W [^] /nm	Lumens (φ/nm)	λ (nm)	Power W [^] /nm	Lumens (φ/nm)
360	0	NR	490	60	NR	620	327	NR	750	7	NR	880	0	NR
365	0	NR	495	82	NR	625	322	NR	755	6	NR	885	0	NR
370	0	NR	500	114	NR	630	1000	NR	760	5	NR	890	0	NR
375	0	NR	505	152	NR	635	645	NR	765	4	NR	895	0	NR
380	0	NR	510	189	NR	640	197	NR	770	4	NR	900	0	NR
385	1	NR	515	222	NR	645	189	NR	775	3	NR	905	0	NR
390	2	NR	520	248	NR	650	163	NR	780	3	NR	910	0	NR
395	3	NR	525	268	NR	655	134	NR	785	2	NR	915	0	NR
400	4	NR	530	283	NR	660	113	NR	790	2	NR	920	0	NR
405	6	NR	535	294	NR	665	94	NR	795	2	NR	925	0	NR
410	9	NR	540	305	NR	670	87	NR	800	2	NR	930	0	NR
415	18	NR	545	314	NR	675	70	NR	805	1	NR	935	0	NR
420	34	NR	550	323	NR	680	60	NR	810	1	NR	940	0	NR
425	62	NR	555	335	NR	685	51	NR	815	1	NR	945	0	NR
430	102	NR	560	346	NR	690	44	NR	820	1	NR	950	0	NR
435	159	NR	565	356	NR	695	38	NR	825	1	NR	955	0	NR
440	241	NR	570	364	NR	700	32	NR	830	1	NR	960	0	NR
445	363	NR	575	371	NR	705	28	NR	835	1	NR	965	0	NR
450	389	NR	580	375	NR	710	24	NR	840	1	NR	970	0	NR
455	245	NR	585	375	NR	715	20	NR	845	0	NR	975	0	NR
460	158	NR	590	373	NR	720	17	NR	850	0	NR	980	0	NR
465	120	NR	595	364	NR	725	15	NR	855	0	NR	985	0	NR
470	79	NR	600	357	NR	730	13	NR	860	0	NR	990	0	NR
475	57	NR	605	349	NR	735	11	NR	865	0	NR	995	0	NR
480	51	NR	610	371	NR	740	9	NR	870	0	NR	1000	0	NR
485	51	NR	615	387	NR	745	8	NR	875	0	NR			

Summary

$R_f = 80.1$
 $R_g = 101$
 $CIE R_a = 82.1$
 $R_9 = 27.6$



Color Vector Graphics

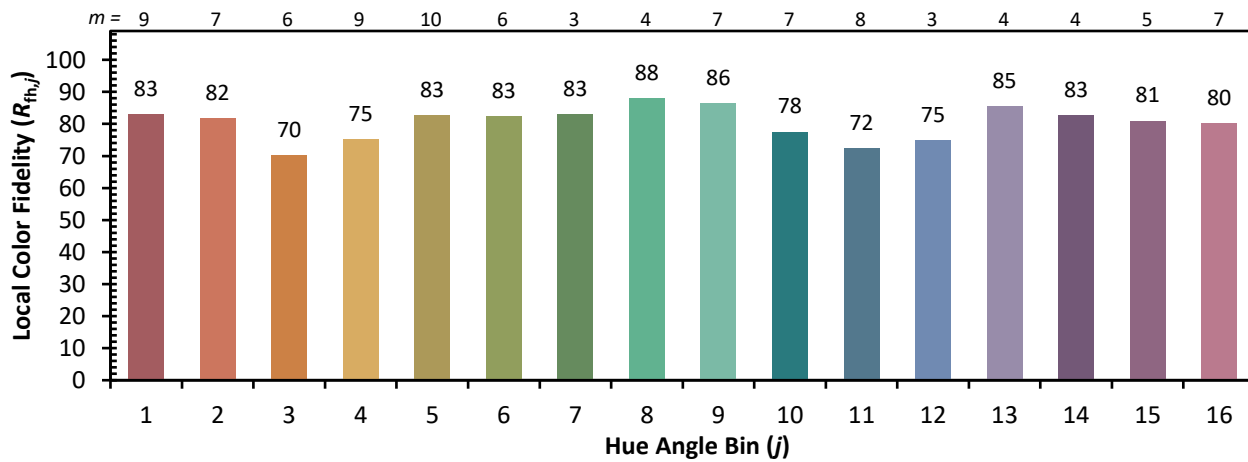
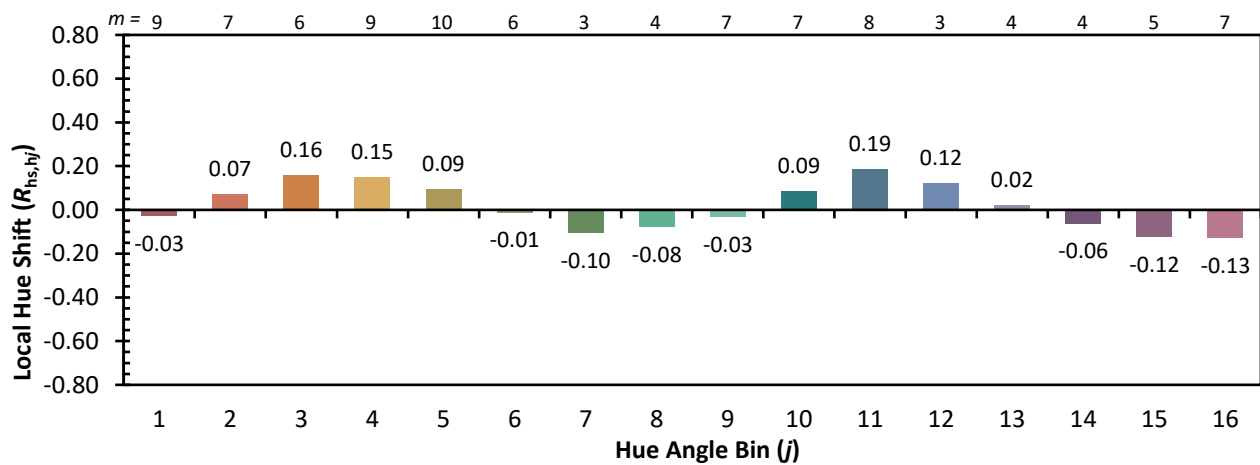
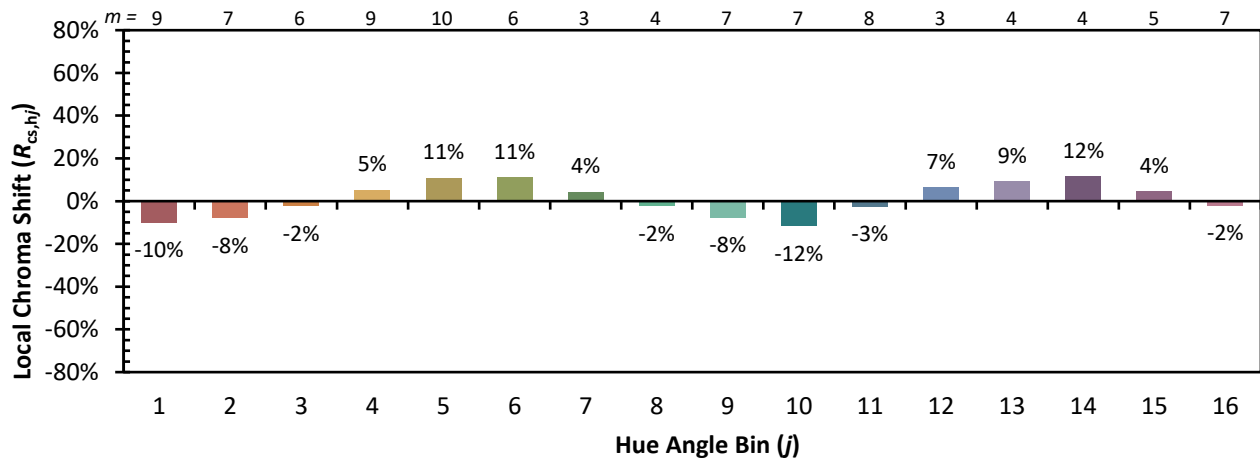


Individual Sample Fidelity Index ($R_{f,i}$)

CES01 = 86	CES26 = 68	CES51 = 90	CES76 = 59
CES02 = 62	CES27 = 89	CES52 = 90	CES77 = 78
CES03 = 31	CES28 = 84	CES53 = 81	CES78 = 61
CES04 = 70	CES29 = 66	CES54 = 91	CES79 = 86
CES05 = 49	CES30 = 77	CES55 = 90	CES80 = 82
CES06 = 51	CES31 = 69	CES56 = 80	CES81 = 79
CES07 = 42	CES32 = 62	CES57 = 79	CES82 = 92
CES08 = 41	CES33 = 74	CES58 = 81	CES83 = 89
CES09 = 29	CES34 = 72	CES59 = 92	CES84 = 89
CES10 = 75	CES35 = 85	CES60 = 94	CES85 = 82
CES11 = 58	CES36 = 97	CES61 = 90	CES86 = 78
CES12 = 64	CES37 = 79	CES62 = 92	CES87 = 82
CES13 = 43	CES38 = 85	CES63 = 78	CES88 = 86
CES14 = 74	CES39 = 94	CES64 = 79	CES89 = 76
CES15 = 71	CES40 = 89	CES65 = 76	CES90 = 85
CES16 = 47	CES41 = 89	CES66 = 73	CES91 = 83
CES17 = 49	CES42 = 77	CES67 = 70	CES92 = 73
CES18 = 56	CES43 = 74	CES68 = 76	CES93 = 84
CES19 = 72	CES44 = 99	CES69 = 81	CES94 = 65
CES20 = 66	CES45 = 83	CES70 = 68	CES95 = 79
CES21 = 86	CES46 = 82	CES71 = 64	CES96 = 85
CES22 = 78	CES47 = 81	CES72 = 88	CES97 = 85
CES23 = 92	CES48 = 80	CES73 = 60	CES98 = 82
CES24 = 91	CES49 = 80	CES74 = 97	CES99 = 81
CES25 = 72	CES50 = 89	CES75 = 64	



Color Rendition by Hue-Angle Bin



Measure Comparisons



(END OF REPORT)