

Cooper Lighting Solutions Photometric Lab
1121 Highway 74 South
Peachtree City, GA 30269



Scaled data based on original data using
LM-79-2019 Approved Method: Electrical and Photometric Measurements of Solid-
State Lighting Products

Test Report Prepared for
Cooper Lighting Solutions

Brand: METALUX

Report Number: P1444297

Luminaire Tested: EHBR1-48-UNV-TA-L840

Issue Date: 5/1/2026

Test Information

Test Method: LM-79-2019
Report Number: P1444297
TEST IS SCALED FROM IESNA LM-79-08 TEST DATA (C80-8019A)
Test Lab: INNOVATION CENTER
Issue Date: 5/1/2026
Manufacturer: COOPER LIGHTING SOLUTIONS
Product Line: METALUX
Catalog Number: EHBR1-48-UNV-TA-L840
Description: Elevate Round Highbay at, 48000 lumens, 4000K 80CRI LEDs with TA lens
Light Source: -
Ballast/Driver: -

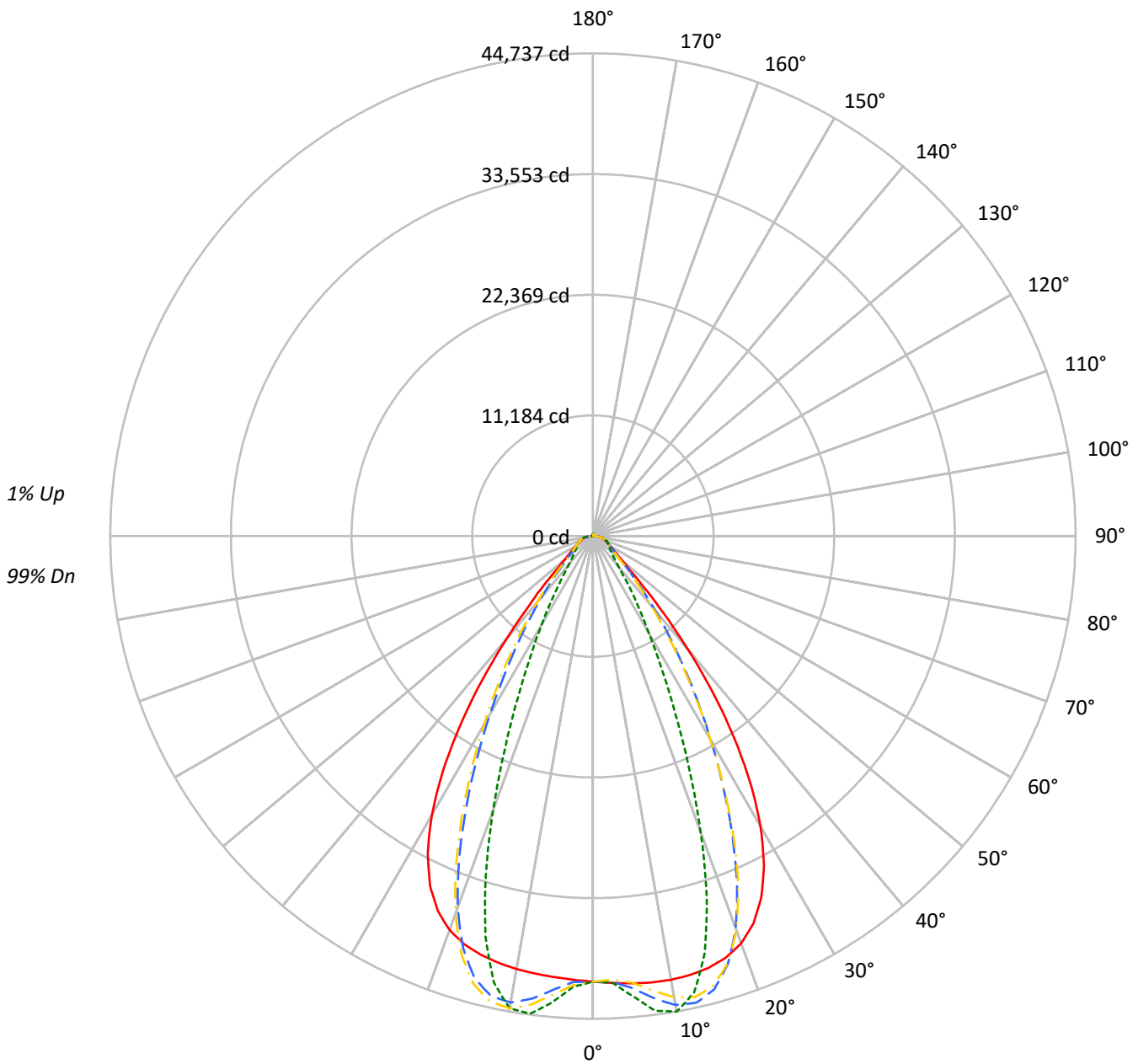
Summary

Lumens per Lamp: N/A
Luminaire Lumens: 47810.5 lumens
Efficiency: N/A
Efficacy: 184.9 lumens/watt
Spacing Criteria (0/90/45): 1.13 / 0.77 / 0.88
Luminous Opening: Circular (Dia: 1.71' x H: 0')
CIE Type: Direct

Input Watts (W): 258.6
Input Voltage (V): NR
Input Current (Ain): NR
Voltage Rise (V): NR
Power Factor: NR
Total Harmonic Distortion (THDi): NR
Frequency (hertz): 60
Stabilization Time: NR
Operation Time: NR
Ambient Temperature (°C): NR
Test Distance: 24 FT

TEST NUMBER: P1444297
CATALOG NUMBER: EHBR1-48-UNV-TA-L840

Luminous Intensity Polar Plot



— 0°-180° - - 45°-225° ··· 90°-270° - · - 135°-315°



TEST NUMBER: P1444297
 CATALOG NUMBER: EHBR1-48-UNV-TA-L840

COEFFICIENT OF UTILIZATION - ZONAL CAVITY METHOD:

RF	20				20				20				20				20				20
RC	80				70				50				30				10				0
RW	70	50	30	10	70	50	30	10	50	30	10	50	30	10	50	30	10	50	30	10	0
RCR																					
0	119	119	119	119	116	116	116	116	111	111	111	106	106	106	101	101	101	99			
1	112	108	105	103	109	106	103	101	102	100	98	98	96	95	94	93	92	90			
2	105	99	94	90	103	97	93	89	94	90	87	91	88	85	88	85	83	81			
3	99	91	85	81	97	90	84	80	87	82	79	84	81	77	82	79	76	74			
4	93	84	78	73	91	83	77	73	81	76	72	79	74	71	77	73	70	68			
5	88	78	72	67	86	77	71	66	75	70	66	73	69	65	72	68	64	63			
6	83	73	66	61	81	72	66	61	70	65	60	69	64	60	67	63	60	58			
7	78	68	61	57	77	67	61	56	66	60	56	65	59	56	63	59	55	54			
8	74	64	57	53	73	63	57	52	62	56	52	61	56	52	60	55	52	50			
9	70	60	53	49	69	59	53	49	58	53	49	57	52	48	56	52	48	47			
10	67	56	50	46	66	56	50	46	55	49	46	54	49	45	53	49	45	44			

AVERAGE LUMINANCE (cd/sqm):

	0°	90°	180°	270°
0°	193929	193929	193929	193929
5°	196139	201858	193394	204502
10°	199077	213330	194303	211919
15°	201402	194685	195271	186846
20°	200719	146051	194149	135132
25°	191399	93055	185073	84431
30°	168538	56367	162011	51513
35°	130847	35680	123320	31606
40°	83587	22602	76475	21238
45°	43568	17807	42846	17514
50°	25884	16049	25090	15800
55°	20151	15430	19405	15292
60°	17399	16085	16658	15877
65°	16788	17256	16144	16667
70°	17037	18768	16187	18061
75°	19326	21116	18280	20182
80°	22257	26027	20183	23758
85°	27286	32690	22054	27986

MAXIMUM LUMINANCE 45°-90°:

Horizontal Angle: 25°
 Vertical Angle: 45°
 Luminance: 66676 cd/sqm



TEST NUMBER: P1444297
 CATALOG NUMBER: EHBR1-48-UNV-TA-L840

ZONAL LUMENS:

Zone	Lumens	% Fixture
0°-10°	4069.8	8.5
10°-20°	11448.8	23.9
20°-30°	13039.2	27.3
30°-40°	9372.0	19.6
40°-50°	4322.4	9.0
50°-60°	2068.4	4.3
60°-70°	1509.2	3.2
70°-80°	1146.6	2.4
80°-90°	521.5	1.1
90°-100°	16.9	0.0
100°-110°	12.2	0.0
110°-120°	20.9	0.0
120°-130°	34.9	0.1
130°-140°	51.3	0.1
140°-150°	61.1	0.1
150°-160°	57.4	0.1
160°-170°	42.0	0.1
170°-180°	15.9	0.0
0°-30°	28557.8	59.7
0°-40°	37929.8	79.3
0°-60°	44320.6	92.7
0°-90°	47497.9	99.3
90°-120°	50.0	0.1
90°-150°	197.3	0.4
90°-180°	313.0	0.7
0°-180°	47810.5	100.0

CANDELA DISTRIBUTION:

	0°	90°	180°	270°	360°	Flux
0°	41296	41296	41296	41296	41296	
5°	41607	42821	41025	43382	41607	3976
15°	41426	40044	40165	38432	41426	11672
25°	36938	17959	35718	16294	36938	16745
35°	22824	6224	21511	5513	22824	14008
45°	6560	2681	6452	2637	6560	5579
55°	2461	1885	2370	1868	2461	2272
65°	1511	1553	1453	1500	1511	1509
75°	1065	1164	1008	1112	1065	1108
85°	506	607	409	519	506	476
90°	115	151	17	26	115	75
95°	7	7	7	7	7	6
105°	13	9	13	10	13	14
115°	27	14	28	14	27	27
125°	52	23	55	25	52	47
135°	84	46	87	50	84	64
145°	111	82	114	88	111	69
155°	130	117	133	122	130	60
165°	152	143	155	147	152	43
175°	168	167	170	169	168	16
180°	171	171	171	171	171	



TEST NUMBER: P1444297
 CATALOG NUMBER: EHBR1-48-UNV-TA-L840

CANDELA DISTRIBUTION (FULL):

	0°	2.5°	5°	7.5°	10°	12.5°	15°	17.5°	20°	22.5°	25°
0°	41295.8	41295.8	41295.8	41295.8	41295.8	41295.8	41295.8	41295.8	41295.8	41295.8	41295.8
2.5°	41453.7	41450.2	41449.6	41446.8	41446.0	41446.0	41444.6	41441.2	41439.1	41434.4	41429.0
5°	41607.4	41605.6	41606.7	41607.0	41604.1	41597.6	41587.5	41575.1	41559.5	41544.9	41531.7
7.5°	41726.4	41729.3	41732.9	41732.1	41723.2	41708.0	41687.3	41675.7	41682.6	41705.1	41756.6
10°	41748.1	41765.8	41772.7	41770.6	41752.5	41739.5	41744.5	41788.3	41875.4	41991.6	42150.5
12.5°	41663.4	41685.2	41684.4	41677.2	41659.8	41677.6	41740.9	41871.2	42057.8	42287.0	42555.7
15°	41425.8	41454.0	41446.0	41436.6	41425.0	41483.3	41609.8	41836.1	42124.4	42447.5	42778.3
17.5°	40964.3	40998.3	40981.7	40971.3	40961.5	41070.7	41288.2	41619.3	41982.6	42348.0	42661.5
20°	40164.0	40186.8	40147.4	40128.8	40144.5	40358.6	40678.9	41101.9	41484.7	41830.3	42044.5
22.5°	38857.6	38886.0	38812.0	38803.4	38894.7	39223.6	39628.9	40101.8	40461.4	40735.3	40817.9
25°	36938.4	36966.3	36878.4	36930.9	37086.1	37534.1	38016.8	38522.6	38829.4	39032.5	38976.4
27.5°	34348.0	34373.4	34290.1	34397.2	34642.6	35231.2	35799.3	36348.0	36621.5	36763.6	36583.5
30°	31080.8	31133.6	31035.2	31184.8	31559.3	32323.4	32974.3	33589.6	33862.3	33970.5	33690.1
32.5°	27200.5	27275.6	27167.1	27389.6	27912.2	28830.2	29569.6	30257.0	30558.7	30682.2	30365.6
35°	22824.0	22931.6	22807.2	23141.2	23785.7	24807.9	25626.7	26394.2	26751.4	26926.6	26607.4
37.5°	18187.2	18289.9	18222.5	18668.1	19375.8	20435.4	21271.1	22099.1	22502.5	22765.4	22513.7
40°	13635.0	13729.0	13779.9	14289.5	14955.0	15953.7	16756.4	17575.7	18027.0	18356.8	18201.7
42.5°	9623.6	9718.4	9891.6	10383.2	10938.3	11764.9	12452.6	13188.1	13619.2	13971.1	13911.3
45°	6560.2	6670.3	6887.2	7289.8	7691.2	8284.3	8789.2	9361.3	9713.4	10035.8	10039.6
47.5°	4597.1	4674.4	4868.3	5143.2	5404.9	6147.3	6177.8	6458.9	6695.6	6936.6	6967.8
50°	3542.9	3589.4	3692.2	3845.5	3993.7	4186.4	4362.9	4566.6	4712.3	4844.4	4875.9
52.5°	2912.1	2941.5	2993.9	3076.8	3162.9	3267.7	3362.2	3474.0	3553.3	3624.0	3638.9
55°	2461.2	2485.7	2563.6	2579.3	2677.7	2696.7	2738.6	2806.7	2852.8	2895.2	2905.7
57.5°	2120.9	2138.7	2155.2	2190.5	2220.9	2264.9	2300.4	2349.3	2378.3	2409.0	2411.6
60°	1852.5	1865.3	1877.1	1901.7	1922.2	1952.9	1977.3	2010.5	2031.4	2054.3	2056.9
62.5°	1652.7	1661.9	1669.8	1685.9	1700.7	1724.3	1743.7	1771.4	1790.8	1808.5	1812.6
65°	1510.8	1517.4	1522.5	1534.8	1547.6	1567.7	1585.2	1607.9	1622.2	1635.8	1638.7
67.5°	1385.0	1391.3	1396.6	1407.8	1416.6	1431.6	1443.4	1460.4	1471.1	1481.9	1482.2
70°	1240.8	1246.7	1250.7	1261.1	1268.3	1281.1	1290.6	1305.9	1316.9	1329.1	1332.1
72.5°	1141.0	1144.5	1149.9	1159.3	1169.3	1183.1	1195.8	1211.7	1225.0	1237.5	1242.9
75°	1065.1	1069.2	1072.7	1080.8	1087.7	1099.3	1108.8	1123.3	1135.0	1148.4	1155.0
77.5°	955.5	960.3	963.3	971.4	977.3	988.5	995.6	1008.6	1018.1	1030.3	1036.2
80°	823.0	827.5	829.7	837.4	842.1	852.3	859.2	871.8	879.7	892.0	899.1
82.5°	676.3	680.6	681.8	689.0	691.7	700.0	705.1	717.9	727.7	743.6	754.6
85°	506.4	507.9	510.5	508.5	518.8	519.4	531.0	533.3	548.5	552.5	570.0
87.5°	309.7	314.2	316.5	323.6	326.6	333.7	335.8	343.3	347.4	356.0	360.0
90°	114.6	120.6	121.8	129.1	130.1	136.3	137.0	144.2	145.4	152.9	154.1
92.5°	6.9	6.9	6.8	7.2	7.2	8.1	8.6	8.9	9.0	9.8	10.0
95°	7.1	7.1	7.1	7.1	7.1	7.1	7.1	7.1	7.1	7.1	6.9
97.5°	8.0	8.0	8.0	8.0	8.0	8.0	8.0	8.0	8.0	7.8	7.8
100°	9.0	9.0	9.0	9.0	9.0	9.0	9.0	9.0	9.0	9.0	8.9
102.5°	10.7	10.7	10.7	10.7	10.7	10.6	10.7	10.6	10.6	10.6	10.3
105°	12.7	12.5	12.7	12.5	12.5	12.5	12.5	12.2	12.2	12.1	12.1
107.5°	15.1	15.0	15.0	15.0	15.0	14.8	14.8	14.7	14.5	14.2	14.2
110°	18.6	18.3	18.3	18.1	17.9	17.9	17.8	17.3	17.3	17.0	16.9



TEST NUMBER: P1444297
 CATALOG NUMBER: EHBR1-48-UNV-TA-L840

CANDELA DISTRIBUTION (continued):

	0°	2.5°	5°	7.5°	10°	12.5°	15°	17.5°	20°	22.5°	25°
112.5°	22.5	22.2	22.0	21.9	21.7	21.3	21.1	20.8	20.7	20.2	19.9
115°	27.0	26.7	26.6	26.1	26.0	25.5	25.2	24.8	24.5	23.9	23.6
117.5°	32.6	32.2	31.8	31.5	30.9	30.5	30.0	29.4	28.8	28.2	27.7
120°	38.7	38.1	37.8	37.0	36.6	35.8	35.3	34.6	33.8	32.9	32.5
122.5°	45.3	44.7	44.4	43.5	42.9	42.0	41.4	40.1	39.5	38.5	37.6
125°	52.5	51.8	51.5	50.6	49.5	48.6	47.7	46.7	45.8	44.5	43.6
127.5°	60.0	59.4	58.7	57.7	56.8	55.7	54.7	53.4	52.5	51.0	50.0
130°	67.8	67.2	66.4	65.4	64.5	63.2	62.0	60.6	59.5	58.0	56.8
132.5°	75.8	75.2	74.4	73.4	72.2	70.7	69.6	67.9	66.7	65.4	64.0
135°	83.7	82.8	82.2	81.1	80.0	78.5	77.1	75.6	74.3	72.5	71.3
137.5°	91.2	90.4	89.7	88.5	87.4	85.7	84.5	82.8	81.4	79.7	78.4
140°	98.4	97.7	96.8	95.5	94.4	93.0	91.5	90.0	88.5	86.8	85.6
142.5°	105.1	104.2	103.4	102.2	101.2	99.6	98.3	96.6	95.1	93.5	92.3
145°	111.0	110.2	109.5	108.4	107.2	105.6	104.3	102.7	101.5	99.9	98.6
147.5°	116.3	115.5	114.9	113.9	112.9	111.4	110.2	108.7	107.5	106.0	105.0
150°	121.1	120.5	119.9	119.0	117.9	116.6	115.4	114.2	112.9	111.6	110.5
152.5°	125.0	124.3	123.8	122.9	122.0	120.6	119.9	118.5	117.3	116.1	115.1
155°	129.8	129.1	128.2	127.5	126.5	125.5	124.4	123.4	122.4	121.2	120.3
157.5°	135.0	134.1	133.5	132.4	131.8	130.7	129.8	128.7	127.8	126.8	125.9
160°	140.7	139.8	139.1	138.2	137.3	136.2	135.4	134.4	133.8	132.7	132.0
162.5°	146.6	145.7	144.9	144.0	143.3	142.2	141.5	140.7	139.8	138.8	138.0
165°	152.3	151.7	150.9	150.1	149.3	148.6	147.8	146.9	146.2	145.2	144.6
167.5°	157.9	157.2	156.7	156.0	155.2	154.6	153.8	153.1	152.6	151.7	151.0
170°	162.5	161.7	161.3	160.8	160.2	159.6	159.1	158.5	157.9	157.3	156.9
172.5°	165.9	165.3	165.0	164.7	164.1	163.8	163.3	162.9	162.5	161.9	161.7
175°	168.5	168.0	167.9	167.6	167.3	167.0	166.8	166.5	166.5	166.1	165.8
177.5°	170.2	170.0	170.0	169.9	169.9	169.7	169.6	169.3	169.1	169.1	169.0
180°	171.2	171.2	171.2	171.2	171.2	171.2	171.2	171.2	171.2	171.2	171.2



TEST NUMBER: P1444297
 CATALOG NUMBER: EHBR1-48-UNV-TA-L840

CANDELA DISTRIBUTION (continued):

	27.5°	30°	32.5°	35°	37.5°	40°	42.5°	45°	47.5°	50°	52.5°
0°	41295.8	41295.8	41295.8	41295.8	41295.8	41295.8	41295.8	41295.8	41295.8	41295.8	41295.8
2.5°	41425.0	41420.0	41413.1	41404.3	41396.8	41388.2	41367.5	41361.3	41368.2	41372.8	41382.3
5°	41523.4	41526.3	41527.4	41546.2	41562.4	41603.0	41920.7	42046.9	42144.6	42206.7	42300.7
7.5°	41820.2	41915.7	42010.1	42137.2	42246.7	42394.7	42950.6	43187.2	43355.4	43476.3	43625.0
10°	42323.1	42531.6	42727.0	42956.0	43152.8	43378.2	43895.6	44126.2	44271.7	44377.6	44476.5
12.5°	42829.7	43118.8	43380.0	43634.9	43847.9	44043.4	44225.3	44306.0	44312.9	44316.2	44263.7
15°	43093.6	43369.9	43600.1	43768.6	43893.8	43949.2	43635.9	43471.6	43263.9	43092.8	42811.3
17.5°	42927.0	43092.8	43192.3	43182.5	43130.7	42957.5	42070.2	41582.0	41097.5	40660.9	40088.3
20°	42186.7	42174.0	42087.5	41842.5	41547.3	41088.2	39566.8	38689.1	37840.5	37095.2	36190.9
22.5°	40809.4	40592.8	40290.6	39762.3	39175.3	38373.3	36193.1	34902.0	33720.6	32677.0	31507.8
25°	38813.9	38368.0	37810.8	36972.1	36059.9	34890.0	32203.0	30597.0	29178.7	27948.4	26599.5
27.5°	36259.9	35588.4	34771.8	33610.9	32375.2	30876.4	27897.3	26125.0	24602.3	23283.4	21847.7
30°	33236.4	32363.0	31308.5	29867.6	28377.1	26677.3	23655.8	21860.7	20319.4	18962.5	17525.7
32.5°	29819.5	28796.5	27560.7	25943.7	24331.7	22583.9	19666.0	17928.4	16456.1	15150.7	13850.3
35°	26050.8	24953.8	23646.4	21997.0	20394.8	18695.5	16018.1	14451.3	13151.2	11997.4	10947.3
37.5°	22008.2	20931.1	19688.5	18133.9	16648.2	15108.4	12798.2	11485.2	10394.2	9436.6	8625.7
40°	17805.0	16862.4	15787.3	14443.4	13175.4	11893.0	9996.6	8954.5	8093.5	7363.1	6755.6
42.5°	13653.4	12922.9	12098.4	11036.4	10066.1	9089.7	7630.1	6857.9	6220.2	5694.4	5264.9
45°	9906.0	9417.3	8864.4	8126.1	7454.6	6773.5	5734.7	5192.1	4776.8	4437.8	4151.1
47.5°	6924.8	6641.3	6624.1	5941.8	5449.4	5033.0	4363.7	4021.0	3766.5	3561.1	3379.5
50°	4863.1	4726.0	4555.6	4312.1	4083.6	3848.2	3440.5	3233.2	3084.2	2959.8	2845.0
52.5°	3635.5	3564.3	3473.6	3344.4	3220.5	3088.1	2830.1	2698.3	2651.3	2535.5	2444.6
55°	2903.8	2862.9	2811.3	2735.4	2660.1	2630.0	2408.8	2310.8	2248.9	2203.2	2154.3
57.5°	2412.0	2381.5	2351.0	2299.5	2255.9	2203.2	2085.7	2035.6	1998.6	1971.7	1937.9
60°	2057.5	2039.2	2022.0	1991.9	1968.4	1939.9	1865.3	1837.0	1817.7	1801.6	1780.0
62.5°	1815.9	1806.6	1797.7	1781.6	1769.7	1754.2	1703.3	1689.7	1680.0	1671.9	1658.7
65°	1641.5	1634.9	1629.9	1619.2	1613.3	1604.2	1560.5	1551.3	1545.3	1542.5	1534.8
67.5°	1483.2	1476.2	1472.9	1465.3	1462.8	1457.2	1421.4	1416.3	1414.3	1415.2	1412.5
70°	1335.0	1332.1	1333.7	1332.4	1335.8	1336.8	1315.1	1315.0	1317.2	1321.9	1322.3
72.5°	1246.2	1246.2	1247.9	1248.7	1252.0	1253.5	1235.4	1234.5	1235.5	1239.0	1239.1
75°	1161.8	1163.2	1167.7	1169.3	1173.1	1173.9	1150.0	1147.2	1147.4	1150.6	1149.6
77.5°	1044.8	1049.9	1058.6	1063.2	1070.5	1072.0	1045.1	1042.0	1042.1	1045.3	1042.6
80°	912.1	921.8	935.7	945.3	956.7	961.3	933.7	927.2	921.0	920.1	914.7
82.5°	771.2	783.0	799.6	808.4	820.5	823.2	777.1	768.5	763.2	763.7	758.7
85°	588.8	597.6	612.8	617.7	625.2	624.6	571.9	549.4	555.5	546.1	553.4
87.5°	369.3	374.5	384.0	385.2	388.8	388.0	335.0	324.6	321.6	321.7	317.8
90°	161.1	163.2	169.9	168.5	172.4	170.2	125.8	119.4	116.9	120.3	116.3
92.5°	10.6	10.6	11.0	11.2	11.6	11.9	7.4	6.2	6.6	6.3	6.9
95°	6.9	6.9	6.9	6.9	6.9	6.9	6.9	6.9	6.9	6.8	6.8
97.5°	7.8	7.8	7.7	7.7	7.7	7.7	7.7	7.7	7.7	7.4	7.4
100°	8.9	8.9	8.7	8.7	8.6	8.6	8.6	8.6	8.6	8.3	8.3
102.5°	10.1	10.1	10.0	9.8	9.7	9.7	9.8	9.8	9.7	9.4	9.2
105°	11.9	11.8	11.6	11.2	11.0	10.9	11.2	11.0	10.9	10.7	10.6
107.5°	13.9	13.8	13.3	13.0	12.8	12.5	13.0	12.8	12.5	12.1	11.9
110°	16.5	16.0	15.7	15.3	14.8	14.5	15.1	14.8	14.5	14.1	13.8



TEST NUMBER: P1444297
 CATALOG NUMBER: EHBR1-48-UNV-TA-L840

CANDELA DISTRIBUTION (continued):

	27.5°	30°	32.5°	35°	37.5°	40°	42.5°	45°	47.5°	50°	52.5°
112.5°	19.3	19.0	18.6	17.9	17.3	16.9	17.8	17.6	17.0	16.2	15.9
115°	22.8	22.5	21.7	21.1	20.5	19.8	20.8	20.7	19.9	19.2	18.6
117.5°	26.9	26.1	25.5	24.8	23.9	23.1	24.6	24.2	23.3	22.5	21.7
120°	31.5	30.8	29.9	29.1	28.1	27.0	28.8	28.5	27.5	26.4	25.5
122.5°	36.7	35.8	34.7	33.8	32.8	31.7	33.7	33.4	32.2	31.1	30.0
125°	42.6	41.5	40.4	39.4	37.9	36.9	39.4	38.7	37.6	36.4	35.3
127.5°	48.8	47.7	46.5	45.4	43.9	42.9	45.3	44.8	43.6	42.4	41.1
130°	55.6	54.3	53.0	51.8	50.6	49.2	51.9	51.6	50.3	48.8	47.6
132.5°	62.6	61.3	59.8	58.7	57.4	56.0	58.9	58.6	57.5	56.0	54.8
135°	69.8	68.6	67.2	65.8	64.5	63.4	66.6	66.3	65.2	63.7	62.5
137.5°	76.8	75.6	74.3	73.2	71.7	70.5	74.4	74.3	73.2	71.6	70.5
140°	84.2	82.8	81.5	80.5	79.1	78.2	82.2	82.2	81.2	80.0	78.8
142.5°	90.7	89.7	88.5	87.6	86.3	85.4	90.0	90.1	89.2	88.0	87.1
145°	97.2	96.3	95.0	94.1	93.0	92.3	97.5	98.0	97.2	96.2	95.1
147.5°	103.4	102.5	101.5	100.6	99.6	99.2	105.0	105.6	105.0	104.0	103.3
150°	109.3	108.4	107.3	106.6	105.9	105.3	112.2	113.2	112.6	112.0	111.3
152.5°	114.0	113.1	112.2	111.4	110.7	110.2	119.1	120.6	120.2	119.4	119.0
155°	119.4	118.5	117.5	116.9	116.1	115.8	125.9	127.8	127.3	126.8	126.2
157.5°	125.0	124.1	123.2	122.6	122.0	121.4	132.4	134.8	134.2	133.8	133.3
160°	131.0	130.3	129.4	128.7	127.9	127.3	138.9	141.3	141.0	140.4	139.8
162.5°	137.1	136.7	135.7	135.0	134.2	133.8	145.2	147.8	147.2	146.8	146.3
165°	143.9	143.1	142.4	141.9	141.2	140.7	151.7	154.0	153.7	153.1	152.6
167.5°	150.3	149.8	149.0	148.6	148.0	147.7	157.9	160.1	159.8	159.1	158.8
170°	156.3	156.0	155.4	155.1	154.8	154.6	163.2	165.0	164.9	164.3	164.0
172.5°	161.3	161.1	160.8	160.5	160.2	160.1	167.3	169.0	168.8	168.5	168.0
175°	165.6	165.3	165.2	165.2	165.0	164.9	170.5	171.7	171.5	171.2	170.9
177.5°	169.0	168.8	168.8	168.8	168.8	168.8	172.1	172.9	172.7	172.7	172.6
180°	171.2	171.2	171.2	171.2	171.2	171.2	171.2	171.2	171.2	171.2	171.2



TEST NUMBER: P1444297
 CATALOG NUMBER: EHBR1-48-UNV-TA-L840

CANDELA DISTRIBUTION (continued):

	55°	57.5°	60°	62.5°	65°	67.5°	70°	72.5°	75°	77.5°	80°
0°	41295.8	41295.8	41295.8	41295.8	41295.8	41295.8	41295.8	41295.8	41295.8	41295.8	41295.8
2.5°	41384.4	41399.0	41401.1	41418.1	41416.7	41436.9	41433.8	41450.2	41440.6	41454.3	41442.8
5°	42356.4	42444.6	42490.7	42576.7	42603.9	42680.9	42702.7	42772.9	42775.8	42831.5	42818.8
7.5°	43730.7	43860.6	43937.7	44044.1	44097.9	44186.6	44225.6	44291.2	44312.3	44364.3	44368.3
10°	44551.3	44614.3	44658.4	44688.1	44715.2	44728.0	44742.8	44738.8	44742.8	44736.9	44749.7
12.5°	44228.5	44136.4	44075.4	43960.1	43893.2	43765.7	43703.1	43580.5	43536.0	43430.7	43415.6
15°	42593.8	42272.8	42045.9	41716.0	41508.5	41183.9	40994.1	40701.2	40567.5	40334.7	40273.6
17.5°	39614.3	39018.3	38557.0	37965.3	37554.8	37001.7	36654.0	36196.3	35945.6	35576.4	35448.7
20°	35437.2	34555.3	33863.5	33039.2	32449.4	31714.5	31244.0	30650.6	30306.1	29852.8	29668.9
22.5°	30533.0	29435.2	28571.0	27597.4	26885.7	26066.7	25503.1	24861.1	24486.2	23993.7	23775.6
25°	25478.4	24267.7	23307.0	22281.0	21529.1	20708.2	20144.4	19513.7	19125.9	18658.3	18441.6
27.5°	20644.1	19418.5	18490.1	17536.3	16846.6	16105.8	15597.0	15046.4	14702.1	14303.1	14099.2
30°	16377.9	15296.9	14506.9	13715.3	13141.5	12540.0	12117.2	11660.8	11358.8	11017.1	10822.9
32.5°	12902.2	12067.6	11449.0	10820.9	10351.3	9848.5	9483.3	9080.6	8808.1	8502.8	8327.0
35°	10218.3	9569.9	9076.5	8559.4	8156.0	7727.8	7406.0	7058.4	6813.8	6551.0	6399.2
37.5°	8073.5	7557.9	7151.9	6722.5	6391.1	6036.3	5916.8	5517.9	5264.6	5054.9	4909.6
40°	6336.1	5926.2	5590.2	5261.7	4991.5	4722.4	4506.5	4293.4	4129.8	3979.8	3876.1
42.5°	4948.0	4651.0	4405.6	4165.1	3967.9	3771.8	3615.4	3468.6	3358.5	3260.4	3193.5
45°	3933.5	3729.2	3558.6	3389.2	3250.1	3119.2	3014.0	2920.2	2849.1	2790.2	2748.4
47.5°	3231.4	3091.6	2971.3	2857.0	2762.5	2676.8	2606.2	2583.2	2506.8	2455.2	2435.6
50°	2746.3	2661.8	2570.4	2486.1	2423.0	2360.3	2314.5	2269.6	2241.1	2217.4	2210.1
52.5°	2384.2	2319.6	2268.7	2215.4	2173.7	2129.1	2097.5	2067.6	2051.9	2039.5	2038.0
55°	2115.0	2069.8	2036.2	2000.3	1975.4	1949.2	1932.8	1917.1	1910.1	1903.9	1904.4
57.5°	1911.2	1881.1	1859.2	1836.0	1822.5	1809.9	1805.8	1801.9	1804.0	1804.9	1808.4
60°	1762.8	1743.2	1729.4	1716.1	1710.5	1706.5	1709.5	1713.1	1720.2	1726.1	1731.2
62.5°	1649.1	1637.9	1631.1	1624.0	1623.4	1623.7	1629.8	1635.8	1644.8	1651.5	1656.6
65°	1532.0	1525.6	1523.4	1518.8	1521.2	1522.5	1529.8	1534.5	1543.5	1548.8	1555.3
67.5°	1413.7	1412.2	1413.5	1413.5	1417.6	1421.2	1428.2	1433.5	1441.1	1446.0	1451.2
70°	1326.3	1326.9	1330.2	1330.8	1335.2	1337.6	1343.8	1347.1	1354.0	1358.1	1364.4
72.5°	1241.4	1240.0	1240.8	1238.7	1240.3	1239.7	1243.1	1244.7	1250.6	1253.8	1261.5
75°	1150.9	1147.1	1146.1	1142.1	1142.2	1139.3	1140.7	1140.5	1144.3	1145.8	1151.4
77.5°	1041.6	1035.2	1032.1	1025.2	1025.1	1022.5	1025.2	1027.0	1033.7	1036.8	1043.2
80°	910.9	900.8	896.3	888.3	889.6	889.2	895.9	901.0	909.2	910.8	918.7
82.5°	757.2	746.9	742.0	734.1	736.0	736.2	742.3	743.3	750.5	753.6	762.8
85°	542.1	546.1	535.2	536.0	533.7	538.0	542.1	547.3	553.2	563.2	570.9
87.5°	319.2	317.8	321.7	322.2	327.7	330.5	339.4	344.5	354.5	362.2	376.4
90°	117.9	114.0	118.4	117.9	124.4	124.1	130.0	128.4	135.3	136.8	145.4
92.5°	6.3	6.8	6.3	6.6	6.3	6.9	6.3	6.8	6.3	6.9	6.3
95°	6.8	6.8	6.8	6.8	6.8	6.8	6.8	6.8	6.8	6.8	6.8
97.5°	7.4	7.4	7.4	7.2	7.2	7.2	7.2	7.2	7.2	7.2	7.2
100°	8.1	8.1	8.1	8.0	8.0	8.0	8.0	8.0	8.0	8.0	8.0
102.5°	9.2	9.0	9.0	8.9	8.9	8.7	8.7	8.7	8.7	8.7	8.7
105°	10.3	10.1	10.0	9.8	9.8	9.7	9.7	9.4	9.4	9.4	9.4
107.5°	11.6	11.3	11.2	11.0	10.9	10.7	10.6	10.6	10.3	10.3	10.3
110°	13.1	12.8	12.7	12.2	12.1	11.9	11.6	11.6	11.3	11.2	11.2



TEST NUMBER: P1444297
 CATALOG NUMBER: EHBR1-48-UNV-TA-L840

CANDELA DISTRIBUTION (continued):

	55°	57.5°	60°	62.5°	65°	67.5°	70°	72.5°	75°	77.5°	80°
112.5°	15.3	14.8	14.2	13.9	13.6	13.1	13.0	12.8	12.7	12.5	12.2
115°	17.8	17.2	16.5	16.0	15.6	15.0	14.7	14.5	14.1	13.9	13.8
117.5°	20.8	20.1	19.2	18.6	17.9	17.3	16.9	16.2	15.9	15.7	15.6
120°	24.5	23.6	22.5	21.7	20.8	20.1	19.3	18.9	18.3	18.1	17.8
122.5°	28.8	27.7	26.4	25.5	24.5	23.6	22.6	22.0	21.3	20.8	20.5
125°	33.8	32.6	31.4	30.0	28.8	27.8	26.7	25.8	25.1	24.6	23.9
127.5°	39.7	38.1	36.7	35.5	34.0	32.9	31.7	30.8	29.7	29.0	28.2
130°	46.1	44.7	43.0	41.8	40.1	38.8	37.6	36.6	35.5	34.6	33.7
132.5°	53.3	51.9	50.3	48.8	47.3	45.9	44.5	43.3	42.0	41.1	40.1
135°	60.9	59.7	58.0	56.6	55.0	53.7	52.4	51.0	49.7	48.6	47.6
137.5°	69.2	67.8	66.4	65.2	63.5	62.3	60.6	59.5	58.0	57.2	56.0
140°	77.5	76.4	74.9	73.7	72.2	71.1	69.6	68.6	67.2	66.3	65.2
142.5°	85.7	84.7	83.4	82.3	81.1	80.0	78.7	77.6	76.4	75.5	74.4
145°	94.1	93.2	92.1	91.1	90.0	89.1	87.7	86.8	85.7	84.8	84.0
147.5°	102.4	101.5	100.6	99.6	98.6	97.7	96.6	96.0	94.7	94.1	93.2
150°	110.4	109.6	108.7	108.1	107.0	106.2	105.3	104.5	103.6	103.1	102.2
152.5°	118.0	117.3	116.6	116.0	115.1	114.3	113.5	112.9	112.2	111.6	110.7
155°	125.5	124.9	124.1	123.5	122.6	122.1	121.4	120.6	120.0	119.4	118.7
157.5°	132.7	132.1	131.3	130.9	130.0	129.4	128.7	128.1	127.3	126.8	126.1
160°	139.2	138.8	138.0	137.4	136.8	136.2	135.4	135.0	134.2	133.8	133.0
162.5°	145.7	145.1	144.6	144.0	143.3	142.8	142.1	141.5	140.8	140.2	139.4
165°	152.0	151.4	150.7	150.1	149.6	149.0	148.3	147.8	147.1	146.6	145.9
167.5°	158.2	157.8	157.2	156.7	156.0	155.4	154.9	154.3	153.7	153.1	152.3
170°	163.6	163.0	162.7	162.0	161.6	161.0	160.5	159.9	159.3	159.0	158.2
172.5°	167.7	167.6	167.1	166.8	166.2	165.9	165.6	165.2	164.7	164.3	164.0
175°	170.8	170.6	170.5	170.0	169.9	169.6	169.3	169.1	168.8	168.7	168.2
177.5°	172.6	172.4	172.4	172.1	172.0	172.0	171.8	171.8	171.7	171.5	171.5
180°	171.2	171.2	171.2	171.2	171.2	171.2	171.2	171.2	171.2	171.2	171.2



TEST NUMBER: P1444297
 CATALOG NUMBER: EHBR1-48-UNV-TA-L840

CANDELA DISTRIBUTION (continued):

	82.5°	85°	87.5°	90°	92.5°	95°	97.5°	100°	102.5°	105°	107.5°
0°	41295.8	41295.8	41295.8	41295.8	41295.8	41295.8	41295.8	41295.8	41295.8	41295.8	41295.8
2.5°	41454.7	41444.2	41449.2	41429.7	41434.4	41411.0	41408.8	41382.3	41379.7	41354.8	41345.4
5°	42858.3	42835.2	42861.2	42820.6	42828.6	42775.8	42771.4	42703.1	42679.6	42594.1	42557.3
7.5°	44400.8	44392.2	44408.0	44374.1	44373.0	44325.9	44306.4	44245.3	44207.2	44117.6	44060.3
10°	44738.8	44746.7	44733.7	44736.9	44718.6	44713.5	44694.7	44682.8	44652.0	44628.8	44594.5
12.5°	43335.5	43343.9	43290.3	43324.3	43297.5	43360.2	43355.1	43428.9	43440.2	43533.5	43568.9
15°	40092.3	40082.2	39979.5	40044.2	40009.5	40146.9	40177.7	40362.5	40461.4	40698.8	40844.6
17.5°	35192.9	35166.5	35021.8	35100.6	35060.5	35263.1	35331.1	35626.8	35811.2	36193.7	36466.3
20°	29352.6	29302.0	29132.8	29225.0	29183.7	29413.9	29510.9	29868.2	30106.1	30612.7	30973.1
22.5°	23439.8	23359.8	23194.0	23280.2	23241.1	23479.6	23605.9	23964.5	24236.9	24756.9	25177.7
25°	18130.1	18058.8	17898.6	17958.9	17944.4	18146.1	18258.4	18597.6	18865.3	19360.6	19762.3
27.5°	13828.2	13754.1	13609.3	13652.0	13637.2	13809.2	13915.0	14198.3	14428.7	14845.7	15198.4
30°	10583.5	10494.0	10371.2	10394.8	10384.7	10524.0	10622.9	10861.5	11058.9	11411.4	11715.2
32.5°	8112.3	8022.3	7909.5	7920.5	7905.6	8014.9	8096.3	8303.9	8475.9	8775.6	9040.0
35°	6207.0	6312.1	6071.3	6223.8	6065.0	6298.2	6214.3	6344.0	6492.0	6744.5	6965.0
37.5°	4771.7	4698.4	4636.5	4629.8	4629.5	4683.6	4747.3	4872.3	5002.6	5190.8	5385.1
40°	3781.3	3729.9	3689.8	3686.9	3689.8	3728.3	3775.4	3861.6	3957.2	4092.3	4235.1
42.5°	3136.3	3102.1	3078.0	3076.2	3083.9	3111.2	3143.9	3195.2	3257.4	3344.8	3442.8
45°	2714.4	2695.4	2682.0	2681.2	2684.7	2699.0	2717.8	2749.8	2789.2	2843.8	2905.7
47.5°	2418.5	2413.8	2405.5	2405.8	2401.9	2407.8	2409.9	2427.8	2448.7	2489.9	2570.9
50°	2202.9	2202.9	2197.1	2196.8	2191.3	2191.0	2186.4	2193.5	2203.3	2228.8	2254.7
52.5°	2032.6	2032.0	2025.8	2024.6	2018.7	2018.4	2014.4	2017.2	2018.5	2031.4	2046.9
55°	1899.4	1895.5	1887.2	1884.6	1882.3	1885.7	1884.2	1884.3	1882.6	1888.0	1892.6
57.5°	1804.0	1798.7	1791.0	1788.7	1788.0	1792.0	1792.2	1790.8	1783.6	1778.8	1771.8
60°	1728.3	1723.2	1714.7	1712.6	1713.8	1719.3	1719.0	1714.4	1703.7	1694.4	1683.5
62.5°	1654.2	1652.0	1647.7	1647.1	1646.0	1647.0	1643.2	1638.2	1627.6	1617.7	1605.9
65°	1554.5	1555.6	1552.3	1552.9	1549.0	1548.4	1542.6	1537.8	1527.1	1518.0	1506.0
67.5°	1451.0	1451.9	1449.2	1449.2	1447.2	1447.5	1444.0	1439.5	1430.6	1423.2	1413.8
70°	1365.8	1367.9	1366.4	1366.9	1364.4	1363.5	1358.0	1353.7	1344.4	1338.2	1329.9
72.5°	1263.7	1268.3	1268.1	1269.2	1265.6	1263.7	1257.1	1251.8	1243.4	1238.4	1231.7
75°	1153.5	1159.4	1161.2	1163.8	1158.5	1155.8	1148.6	1144.3	1137.4	1134.5	1130.1
77.5°	1045.9	1052.5	1058.7	1064.6	1056.2	1048.7	1039.7	1032.8	1022.9	1019.2	1012.2
80°	925.2	936.8	950.7	962.4	947.2	931.9	917.1	906.1	893.1	887.7	879.1
82.5°	767.5	779.5	787.4	794.9	784.4	773.2	758.8	749.2	735.1	729.9	719.9
85°	583.1	597.9	602.7	606.7	600.0	594.0	580.5	562.3	553.4	539.5	532.3
87.5°	383.5	392.4	394.1	395.4	391.4	388.5	379.7	371.1	356.0	345.0	331.5
90°	145.4	151.7	148.6	151.2	145.7	146.0	137.0	133.9	121.2	116.3	105.0
92.5°	6.6	6.2	6.3	6.2	6.9	6.3	6.9	6.3	6.8	6.3	6.8
95°	6.8	6.8	6.8	6.8	6.8	6.8	6.8	6.8	6.8	6.8	6.8
97.5°	7.2	7.2	7.2	7.2	7.2	7.2	7.2	7.2	7.2	7.2	7.4
100°	8.0	8.0	8.0	8.0	8.0	8.0	8.0	8.0	8.0	8.0	8.0
102.5°	8.7	8.7	8.7	8.7	8.7	8.7	8.7	8.7	8.7	8.7	8.9
105°	9.4	9.4	9.4	9.4	9.4	9.4	9.4	9.4	9.4	9.7	9.7
107.5°	10.1	10.1	10.1	10.1	10.3	10.3	10.3	10.3	10.3	10.3	10.6
110°	11.2	11.2	11.2	11.2	11.2	11.2	11.2	11.2	11.3	11.3	11.6



TEST NUMBER: P1444297
 CATALOG NUMBER: EHBR1-48-UNV-TA-L840

CANDELA DISTRIBUTION (continued):

	82.5°	85°	87.5°	90°	92.5°	95°	97.5°	100°	102.5°	105°	107.5°
112.5°	12.2	12.2	12.2	12.2	12.2	12.2	12.2	12.5	12.5	12.7	12.7
115°	13.6	13.6	13.6	13.6	13.6	13.6	13.6	13.8	13.9	13.9	14.2
117.5°	15.3	15.1	15.1	15.1	15.1	15.1	15.3	15.3	15.6	15.7	16.0
120°	17.6	17.2	17.2	17.2	17.2	17.2	17.3	17.3	17.8	17.9	18.6
122.5°	20.2	19.9	19.9	19.8	19.8	19.8	19.9	20.1	20.5	20.8	21.3
125°	23.7	23.3	23.1	23.0	23.0	23.0	23.1	23.6	23.9	24.2	24.9
127.5°	27.8	27.5	27.0	26.9	26.9	26.9	27.4	27.5	28.1	28.7	29.4
130°	33.1	32.6	32.5	32.0	32.0	32.0	32.5	32.8	33.4	33.8	34.7
132.5°	39.7	38.8	38.5	38.1	38.1	38.1	38.5	38.8	39.7	40.1	41.4
135°	47.0	46.4	45.9	45.6	45.6	45.4	45.8	46.1	46.8	47.6	48.5
137.5°	55.4	54.7	54.3	53.7	53.7	53.7	54.0	54.3	55.0	55.7	56.8
140°	64.5	63.7	63.4	62.8	62.8	62.6	62.9	63.2	63.9	64.6	65.5
142.5°	73.8	72.8	72.5	72.2	71.9	71.9	72.3	72.5	73.2	73.7	74.6
145°	83.2	82.5	82.2	81.7	81.5	81.5	81.7	82.0	82.5	82.8	83.7
147.5°	92.6	92.0	91.7	91.2	91.2	91.1	91.2	91.2	91.7	92.0	92.6
150°	101.9	101.2	100.7	100.4	100.3	100.1	100.3	100.1	100.4	100.6	101.2
152.5°	110.4	109.6	109.5	109.0	108.7	108.5	108.5	108.4	108.5	108.5	109.0
155°	118.4	117.9	117.3	116.9	116.6	116.3	116.3	116.0	116.1	116.0	116.1
157.5°	125.8	125.2	124.9	124.3	124.0	123.5	123.4	123.1	123.1	122.6	122.6
160°	132.7	132.0	131.5	131.0	130.7	130.1	130.0	129.4	129.2	128.8	128.7
162.5°	138.9	138.3	137.9	137.3	137.0	136.3	136.0	135.4	135.1	134.8	134.7
165°	145.2	144.6	144.2	143.4	143.1	142.7	142.2	141.8	141.5	141.0	140.8
167.5°	152.0	151.2	150.7	150.1	149.8	149.2	149.0	148.6	148.3	148.0	148.0
170°	157.9	157.3	157.0	156.6	156.3	155.8	155.7	155.2	155.1	154.9	154.9
172.5°	163.6	163.2	162.9	162.5	162.2	161.9	161.7	161.6	161.3	161.3	161.1
175°	168.0	167.7	167.6	167.3	167.1	167.1	167.0	167.0	167.0	166.8	166.8
177.5°	171.2	171.1	171.1	171.1	170.9	170.9	170.9	170.9	170.9	170.8	170.6
180°	171.2	171.2	171.2	171.2	171.2	171.2	171.2	171.2	171.2	171.2	171.2



TEST NUMBER: P1444297
 CATALOG NUMBER: EHBR1-48-UNV-TA-L840

CANDELA DISTRIBUTION (continued):

	110°	112.5°	115°	117.5°	120°	122.5°	125°	127.5°	130°	132.5°	135°
0°	41295.8	41295.8	41295.8	41295.8	41295.8	41295.8	41295.8	41295.8	41295.8	41295.8	41295.8
2.5°	41318.7	41307.8	41279.2	41265.1	41238.6	41225.3	41204.6	41191.3	41174.7	41162.3	41155.8
5°	42463.5	42410.6	42304.7	42239.6	42125.2	42049.9	41936.4	41853.1	41735.9	41649.4	41538.6
7.5°	43952.8	43871.8	43736.2	43633.3	43473.4	43351.1	43171.6	43028.0	42829.7	42665.0	42462.4
10°	44559.3	44511.9	44451.1	44384.9	44296.3	44209.4	44086.8	43961.9	43795.4	43629.8	43413.4
12.5°	43663.1	43707.6	43795.4	43836.4	43903.6	43926.4	43957.2	43942.8	43915.5	43847.9	43749.8
15°	41124.7	41310.7	41604.5	41807.8	42092.6	42292.6	42557.3	42727.6	42923.8	43041.0	43152.4
17.5°	36949.3	37309.0	37827.5	38241.2	38796.6	39248.1	39801.3	40236.0	40737.9	41122.9	41532.8
20°	31601.2	32104.9	32820.7	33428.6	34233.4	34915.7	35789.9	36522.3	37376.6	38088.7	38857.3
22.5°	25845.2	26437.7	27257.8	27991.2	28952.1	29810.4	30905.8	31874.1	33029.0	34063.6	35208.0
25°	20415.1	20995.8	21831.3	22590.5	23627.9	24573.4	25770.1	26881.0	28221.1	29471.0	30905.8
27.5°	15758.6	16274.3	17008.7	17692.1	18642.3	19570.5	20784.9	21969.5	23399.5	24742.7	26288.9
30°	12170.1	12588.5	13176.9	13726.6	14489.4	15248.6	16330.3	17425.8	18848.8	20240.6	21825.9
32.5°	9431.4	9788.1	10279.4	10725.7	11313.4	11885.8	12682.4	13557.8	14806.1	16139.3	17672.0
35°	7300.9	7606.1	8024.3	8408.7	8892.0	9346.5	9940.9	10565.7	11518.3	12639.7	14011.5
37.5°	5820.7	5945.1	6243.6	6558.5	6960.0	7333.4	7798.4	8260.4	8942.0	9826.8	10947.3
40°	4426.6	4624.1	4867.0	5115.1	5419.1	5718.6	6228.8	6474.3	6923.1	7558.2	8428.0
42.5°	3571.7	3710.6	3881.6	4054.1	4265.9	4474.5	4732.5	4995.4	5330.7	5761.0	6379.6
45°	2988.9	3079.5	3189.7	3304.6	3443.7	3586.1	3758.8	3939.2	4166.6	4431.0	4806.8
47.5°	2599.5	2649.5	2721.5	2800.0	2895.3	2993.9	3106.2	3221.2	3362.5	3519.3	3733.3
50°	2295.6	2337.3	2393.2	2445.7	2511.5	2612.5	2657.1	2720.6	2805.5	2897.8	3017.5
52.5°	2075.6	2103.5	2138.6	2168.6	2210.3	2248.2	2297.7	2341.5	2400.2	2455.6	2532.9
55°	1904.4	1914.5	1934.4	1953.8	1982.6	2008.4	2042.4	2071.1	2108.5	2141.7	2190.4
57.5°	1772.1	1773.0	1782.2	1792.3	1810.9	1827.1	1850.5	1869.3	1895.3	1916.5	1945.7
60°	1677.1	1672.0	1673.8	1677.4	1687.9	1698.3	1713.4	1725.6	1741.9	1753.9	1770.3
62.5°	1598.0	1590.0	1588.2	1587.3	1592.5	1596.2	1604.4	1610.4	1619.7	1624.9	1633.7
65°	1498.1	1488.7	1485.0	1480.7	1482.2	1481.0	1484.1	1484.2	1489.0	1490.1	1495.1
67.5°	1407.5	1399.6	1394.8	1389.1	1386.5	1382.3	1380.5	1376.5	1375.9	1372.5	1371.7
70°	1324.8	1317.1	1313.1	1307.8	1305.0	1299.5	1296.2	1289.4	1285.5	1279.2	1275.7
72.5°	1229.2	1224.8	1223.6	1220.0	1219.0	1215.9	1214.5	1209.8	1207.1	1201.7	1198.7
75°	1129.2	1125.6	1125.3	1121.7	1121.4	1117.7	1116.8	1111.7	1109.1	1103.7	1101.5
77.5°	1010.1	1004.9	1003.3	999.1	1000.1	998.3	999.8	996.0	994.4	989.0	987.3
80°	876.0	869.4	866.5	860.9	862.4	859.9	862.4	862.1	864.1	859.9	859.1
82.5°	717.2	709.8	708.4	704.5	707.1	707.4	713.1	710.0	711.2	707.2	708.9
85°	521.9	516.4	508.7	507.6	502.8	507.8	501.3	505.7	498.4	503.5	496.8
87.5°	323.6	312.2	306.2	298.2	295.0	287.3	284.0	278.4	280.1	277.5	279.0
90°	102.2	92.1	89.1	80.2	78.5	70.7	70.5	64.8	65.4	59.4	60.4
92.5°	6.3	6.3	6.2	6.6	6.3	6.3	6.2	6.6	6.3	6.6	6.3
95°	6.8	6.8	6.8	6.8	6.8	6.8	6.9	6.9	6.9	6.9	6.9
97.5°	7.4	7.4	7.4	7.4	7.4	7.4	7.4	7.7	7.7	7.7	7.7
100°	8.0	8.1	8.1	8.1	8.1	8.3	8.3	8.3	8.6	8.6	8.6
102.5°	8.9	8.9	8.9	9.0	9.0	9.0	9.2	9.4	9.4	9.7	9.8
105°	9.7	9.8	9.8	10.0	10.0	10.1	10.3	10.6	10.7	10.9	11.0
107.5°	10.6	10.7	10.9	11.0	11.0	11.3	11.6	11.8	11.9	12.2	12.7
110°	11.6	11.8	11.9	12.2	12.5	12.7	13.0	13.3	13.8	14.1	14.7



TEST NUMBER: P1444297
 CATALOG NUMBER: EHBR1-48-UNV-TA-L840

CANDELA DISTRIBUTION (continued):

	110°	112.5°	115°	117.5°	120°	122.5°	125°	127.5°	130°	132.5°	135°
112.5°	12.8	13.1	13.3	13.8	14.1	14.5	14.8	15.3	15.9	16.5	17.0
115°	14.5	14.8	15.0	15.6	15.9	16.5	17.0	17.8	18.6	19.2	19.9
117.5°	16.2	16.9	17.2	17.8	18.3	19.2	19.8	20.7	21.6	22.5	23.1
120°	18.9	19.3	19.9	20.7	21.3	22.2	23.1	24.0	25.1	26.1	27.0
122.5°	21.7	22.5	23.1	24.0	24.9	26.0	27.0	28.5	29.6	30.8	31.8
125°	25.5	26.4	27.4	28.5	29.6	30.8	31.8	33.4	34.6	35.9	37.3
127.5°	30.0	31.1	32.2	33.4	34.6	35.9	37.3	38.8	40.1	41.8	43.0
130°	35.6	36.7	37.8	39.4	40.6	42.1	43.6	45.3	46.5	48.0	49.4
132.5°	42.1	43.5	44.5	46.1	47.4	48.9	50.6	52.1	53.6	55.3	56.5
135°	49.5	50.9	52.1	53.6	55.0	56.6	58.0	59.7	60.9	62.6	63.9
137.5°	57.7	58.9	60.3	61.6	62.9	64.6	66.0	67.5	68.7	70.2	71.4
140°	66.4	67.6	68.7	70.2	71.4	72.8	74.0	75.5	76.5	78.1	79.1
142.5°	75.3	76.5	77.3	78.5	79.6	81.1	82.2	83.4	84.4	85.4	86.3
145°	84.4	85.4	86.2	87.3	88.2	89.2	90.0	91.1	91.7	92.6	93.3
147.5°	93.2	93.9	94.4	95.4	96.2	96.8	97.5	98.3	98.7	99.5	100.1
150°	101.5	102.1	102.4	103.1	103.4	104.0	104.3	105.0	105.3	105.9	106.2
152.5°	109.1	109.5	109.5	110.1	110.2	110.5	110.7	111.1	111.3	111.6	112.0
155°	116.0	116.1	116.1	116.3	116.3	116.4	116.4	116.9	117.0	117.2	117.5
157.5°	122.4	122.3	122.3	122.3	122.1	122.3	122.3	122.4	122.6	123.1	123.4
160°	128.2	128.1	127.9	127.9	127.9	127.9	127.9	128.2	128.4	129.1	129.4
162.5°	134.2	134.1	133.9	133.9	133.9	134.1	134.2	134.7	134.8	135.3	135.7
165°	140.7	140.7	140.4	140.7	140.7	140.8	141.0	141.3	141.8	142.2	142.7
167.5°	147.8	147.8	147.8	148.0	148.0	148.1	148.3	148.9	149.0	149.6	149.8
170°	154.8	154.9	154.8	154.9	154.9	155.1	155.2	155.4	155.7	156.0	156.1
172.5°	161.1	161.1	161.1	161.1	161.1	161.3	161.3	161.6	161.6	161.7	161.7
175°	166.7	166.7	166.7	166.7	166.7	166.5	166.5	166.2	166.2	166.2	166.2
177.5°	170.5	170.2	170.0	170.0	169.9	169.7	169.7	169.6	169.6	169.6	169.3
180°	171.2	171.2	171.2	171.2	171.2	171.2	171.2	171.2	171.2	171.2	171.2



TEST NUMBER: P1444297
 CATALOG NUMBER: EHBR1-48-UNV-TA-L840

CANDELA DISTRIBUTION (continued):

	137.5°	140°	142.5°	145°	147.5°	150°	152.5°	155°	157.5°	160°	162.5°
0°	41295.8	41295.8	41295.8	41295.8	41295.8	41295.8	41295.8	41295.8	41295.8	41295.8	41295.8
2.5°	41147.5	41147.1	41143.1	41144.9	41145.7	41148.6	41152.2	41155.8	41156.6	41159.4	41160.0
5°	41455.5	41353.7	41278.4	41195.6	41133.3	41077.3	41040.0	41010.3	40998.8	41001.7	41008.6
7.5°	42290.5	42080.3	41907.0	41709.8	41545.5	41371.4	41227.1	41090.0	40990.0	40915.6	40873.9
10°	43206.8	42950.9	42706.0	42420.8	42150.2	41861.4	41599.8	41336.4	41116.7	40926.0	40786.0
12.5°	43613.4	43432.5	43220.9	42951.6	42662.1	42328.9	41992.4	41631.6	41296.2	40984.7	40733.5
15°	43182.9	43183.2	43106.1	42976.9	42775.8	42509.5	42188.9	41812.9	41417.0	41013.1	40644.1
17.5°	41816.2	42074.1	42217.5	42308.3	42280.4	42182.3	41978.2	41689.5	41320.5	40890.2	40440.0
20°	39469.3	40077.4	40511.0	40901.0	41119.6	41264.8	41250.2	41132.7	40869.9	40504.1	40035.2
22.5°	36181.4	37202.2	38007.8	38758.9	39285.7	39714.2	39918.0	40004.4	39885.4	39630.5	39190.2
25°	32188.1	33576.1	34760.6	35910.1	36772.4	37513.4	37958.8	38272.6	38297.5	38164.3	37771.5
27.5°	27750.8	29389.2	30888.3	32416.0	33628.7	34694.0	35393.0	35904.6	36067.1	36045.7	35688.9
30°	23319.2	25039.1	26691.6	28473.1	29973.6	31334.6	32257.9	32949.9	33216.5	33267.6	32924.5
32.5°	19134.0	20830.0	22477.9	24340.3	25991.5	27551.5	28642.4	29464.2	29774.3	29847.3	29471.0
35°	15335.7	16900.4	18466.4	20271.4	21913.2	23528.5	24677.9	25538.4	25828.0	25876.8	25441.0
37.5°	12041.8	13375.0	14739.6	16359.1	17866.8	19383.8	20475.9	21284.6	21495.5	21482.5	20989.3
40°	9268.4	10304.8	11401.3	12734.6	13988.1	15270.4	16192.7	16861.2	16972.0	16890.0	16371.9
42.5°	6969.4	7717.8	8512.8	9508.1	10438.1	11397.9	12068.9	12565.2	12580.9	12451.2	11986.2
45°	5192.1	5922.4	6255.8	6857.6	7456.6	8094.8	8504.6	8811.1	8763.7	8649.5	8296.1
47.5°	3958.1	4238.8	4536.5	4909.6	5258.5	5982.8	5929.1	6421.4	6066.8	6308.6	5776.3
50°	3143.1	3300.0	3460.4	3658.4	3840.8	4030.0	4148.3	4236.7	4225.2	4187.2	4085.3
52.5°	2674.1	2722.6	2801.5	2914.2	3015.9	3118.3	3185.7	3240.5	3241.5	3226.3	3174.6
55°	2234.9	2296.5	2353.3	2426.8	2552.3	2571.5	2668.1	2648.5	2656.1	2629.4	2656.8
57.5°	1970.5	2006.3	2038.3	2082.1	2118.3	2160.6	2185.5	2209.5	2207.3	2202.0	2175.7
60°	1783.1	1802.9	1820.6	1846.2	1866.1	1890.0	1901.5	1913.7	1909.7	1900.9	1877.4
62.5°	1638.7	1651.0	1661.2	1677.7	1689.8	1704.6	1710.7	1715.8	1710.7	1702.2	1681.5
65°	1496.1	1504.1	1510.6	1523.0	1531.6	1544.3	1549.3	1554.2	1549.4	1542.9	1527.1
67.5°	1367.6	1368.4	1367.8	1372.8	1375.5	1383.1	1385.4	1388.9	1383.4	1377.7	1364.4
70°	1270.1	1268.1	1265.7	1267.7	1268.1	1271.8	1272.4	1271.8	1265.3	1255.4	1240.9
72.5°	1193.9	1192.8	1191.0	1192.7	1192.7	1196.1	1195.0	1193.3	1185.2	1175.7	1161.4
75°	1096.0	1095.2	1091.5	1091.6	1088.6	1089.7	1085.7	1083.5	1074.4	1066.4	1053.6
77.5°	981.4	979.5	974.2	972.2	966.3	963.9	956.4	952.7	943.5	937.1	926.1
80°	853.4	851.4	844.5	840.7	831.5	825.7	814.7	808.4	797.8	791.6	780.9
82.5°	705.4	706.2	699.2	694.5	681.4	671.3	656.6	648.6	637.0	630.8	619.8
85°	501.7	494.5	498.3	498.0	489.8	481.0	469.1	460.7	450.9	445.1	437.3
87.5°	275.2	276.9	274.9	273.2	267.4	262.9	253.6	248.7	241.6	238.0	232.2
90°	54.5	55.6	50.0	51.3	45.9	44.7	38.1	37.9	32.2	31.5	26.9
92.5°	6.3	6.3	6.6	6.3	6.6	6.6	6.6	6.6	6.6	6.3	6.6
95°	6.9	7.1	7.1	7.1	7.1	7.1	7.2	7.2	7.2	7.2	7.2
97.5°	7.8	7.8	7.8	8.0	8.0	8.0	8.1	8.1	8.1	8.1	8.1
100°	8.7	8.9	8.9	8.9	9.0	9.0	9.2	9.2	9.4	9.4	9.4
102.5°	9.8	10.0	10.1	10.3	10.6	10.6	10.7	10.7	10.9	10.9	10.9
105°	11.2	11.3	11.8	11.9	12.1	12.2	12.5	12.5	12.7	12.8	12.8
107.5°	13.0	13.1	13.6	13.9	14.1	14.5	14.7	14.8	15.0	15.1	15.3
110°	15.0	15.3	15.9	16.2	16.6	17.0	17.3	17.6	17.9	18.1	18.6



TEST NUMBER: P1444297
 CATALOG NUMBER: EHBR1-48-UNV-TA-L840

CANDELA DISTRIBUTION (continued):

	137.5°	140°	142.5°	145°	147.5°	150°	152.5°	155°	157.5°	160°	162.5°
112.5°	17.6	18.1	18.9	19.2	19.8	20.1	20.7	21.0	21.3	21.7	22.0
115°	20.7	21.3	22.0	22.6	23.3	23.9	24.5	24.8	25.2	25.7	26.1
117.5°	24.2	24.9	25.8	26.6	27.4	28.1	28.8	29.4	30.0	30.6	31.1
120°	28.5	29.4	30.2	31.1	32.0	32.9	33.7	34.4	35.0	35.8	36.6
122.5°	33.1	34.1	35.3	36.1	37.3	38.1	39.4	40.0	40.9	41.8	42.7
125°	38.5	39.7	40.9	42.0	43.0	44.1	45.3	46.1	47.3	48.0	49.2
127.5°	44.5	45.6	47.0	48.0	49.4	50.6	51.8	52.7	53.9	55.0	56.3
130°	51.0	52.1	53.6	54.7	56.0	57.2	58.4	59.7	60.9	62.3	63.7
132.5°	57.8	59.2	60.6	61.6	63.2	64.3	65.7	66.9	68.4	69.6	71.1
135°	65.4	66.4	67.8	68.9	70.4	71.4	72.8	74.3	75.8	77.1	78.7
137.5°	72.6	73.8	75.2	76.2	77.6	78.7	80.2	81.4	83.1	84.4	86.2
140°	80.2	81.2	82.3	83.4	84.7	85.7	87.3	88.5	90.0	91.4	93.0
142.5°	87.4	88.2	89.2	90.1	91.4	92.3	93.6	95.0	96.5	98.0	99.5
145°	94.2	95.0	96.0	96.8	97.7	98.7	100.1	101.3	102.7	104.0	105.6
147.5°	100.7	101.3	102.2	103.0	103.9	104.7	106.0	107.2	108.5	109.9	111.3
150°	107.0	107.5	108.1	108.7	109.6	110.5	111.6	112.6	114.2	115.4	116.6
152.5°	112.5	112.9	113.5	114.3	115.1	116.0	117.0	118.2	119.4	120.5	121.8
155°	118.2	118.5	119.3	120.0	120.9	121.5	122.6	123.5	124.6	125.8	126.8
157.5°	124.0	124.3	125.0	125.8	126.5	127.3	128.4	129.2	130.3	131.2	132.1
160°	130.0	130.4	131.2	132.0	132.7	133.5	134.4	135.1	136.0	137.0	137.9
162.5°	136.3	137.0	137.7	138.2	139.1	139.8	140.8	141.5	142.4	143.1	144.0
165°	143.3	143.9	144.6	145.1	145.9	146.3	147.2	147.8	148.7	149.2	150.1
167.5°	150.6	150.9	151.4	151.9	152.6	153.1	153.8	154.3	155.1	155.7	156.3
170°	156.6	156.9	157.2	157.6	158.1	158.5	159.0	159.3	160.1	160.5	161.1
172.5°	162.0	162.0	162.5	162.7	163.0	163.2	163.6	164.0	164.3	164.7	165.0
175°	166.5	166.5	166.7	166.7	166.8	167.0	167.3	167.6	167.7	167.9	168.0
177.5°	169.3	169.3	169.3	169.3	169.6	169.6	169.7	169.7	169.9	169.9	170.0
180°	171.2	171.2	171.2	171.2	171.2	171.2	171.2	171.2	171.2	171.2	171.2



TEST NUMBER: P1444297
 CATALOG NUMBER: EHBR1-48-UNV-TA-L840

CANDELA DISTRIBUTION (continued):

	165°	167.5°	170°	172.5°	175°	177.5°	180°	182.5°	185°	187.5°	190°
0°	41295.8	41295.8	41295.8	41295.8	41295.8	41295.8	41295.8	41295.8	41295.8	41295.8	41295.8
2.5°	41158.7	41158.2	41156.9	41155.0	41153.2	41154.3	41156.1	41160.8	41169.1	41181.0	41196.7
5°	41014.2	41022.6	41027.4	41028.0	41023.7	41021.1	41025.1	41036.4	41059.2	41097.5	41149.2
7.5°	40862.7	40873.1	40889.0	40901.0	40903.2	40900.3	40901.0	40918.7	40960.9	41035.3	41139.9
10°	40700.9	40670.2	40686.4	40716.1	40739.7	40743.9	40746.9	40767.8	40829.4	40942.0	41109.9
12.5°	40551.6	40454.2	40435.4	40462.2	40498.0	40509.4	40506.3	40515.3	40587.4	40736.5	40970.4
15°	40355.1	40171.8	40109.3	40116.1	40160.4	40176.3	40164.7	40146.9	40217.1	40399.1	40702.1
17.5°	40037.0	39741.7	39626.6	39621.5	39673.3	39687.0	39658.5	39603.5	39672.7	39899.7	40275.7
20°	39553.5	39117.5	38900.8	38866.4	38922.6	38906.1	38849.4	38766.1	38857.0	39133.2	39580.3
22.5°	38684.4	38131.9	37761.6	37642.3	37709.5	37664.7	37581.8	37475.5	37596.2	37909.9	38408.0
25°	37264.1	36625.8	36118.9	35834.5	35888.1	35807.7	35717.6	35588.7	35732.7	36092.8	36641.0
27.5°	35176.6	34439.2	33811.1	33340.3	33357.5	33252.3	33148.5	32981.7	33161.5	33587.8	34206.1
30°	32400.6	31547.3	30782.4	30142.7	30085.5	29983.3	29877.0	29658.1	29883.1	30393.4	31115.9
32.5°	28914.5	27967.1	27083.3	26274.4	26121.8	26022.2	25927.5	25675.5	25970.1	26565.1	27395.2
35°	24837.5	23828.4	22870.2	21946.4	21693.5	21593.9	21511.1	21269.7	21637.4	22284.8	23181.3
37.5°	20362.6	19331.7	18380.3	17433.0	17075.8	16940.6	16880.5	16722.4	17146.5	17786.9	18687.1
40°	15768.7	14810.1	13957.2	13120.4	12713.2	12506.5	12474.9	12446.1	12856.2	13411.7	14228.8
42.5°	11471.0	10697.7	10040.1	9400.4	9031.5	8749.1	8748.9	8834.7	9203.8	9619.9	10250.0
45°	7934.9	7415.9	6996.9	6569.6	6683.7	6120.8	6451.5	6281.8	6464.3	6732.6	7142.3
47.5°	5454.5	5171.1	4941.0	4702.2	4528.2	4362.0	4376.5	4483.7	4655.5	4814.7	5027.9
50°	3975.4	3831.1	3713.8	3589.9	3503.2	3429.9	3434.2	3480.6	3570.9	3654.8	3766.3
52.5°	3115.0	3035.4	2971.7	2903.2	2857.7	2821.3	2823.3	2845.8	2894.6	2942.4	3006.4
55°	2567.5	2557.9	2475.1	2413.5	2390.1	2365.7	2370.1	2378.9	2412.2	2440.2	2482.5
57.5°	2151.5	2114.4	2089.5	2057.1	2042.2	2025.2	2029.0	2032.3	2054.5	2073.3	2103.8
60°	1857.9	1831.5	1813.9	1791.9	1782.1	1771.2	1773.6	1775.6	1789.9	1802.2	1824.0
62.5°	1662.7	1639.1	1623.8	1606.8	1600.0	1592.6	1594.3	1594.9	1603.8	1612.8	1629.3
65°	1513.0	1494.3	1481.6	1467.0	1459.7	1452.2	1452.9	1452.9	1460.4	1467.0	1479.4
67.5°	1354.8	1340.7	1332.4	1320.8	1315.9	1308.1	1308.0	1305.4	1310.4	1313.0	1321.4
70°	1227.8	1213.5	1202.9	1191.7	1185.7	1178.8	1178.9	1179.1	1184.8	1190.7	1201.6
72.5°	1149.3	1135.6	1126.2	1116.5	1110.7	1104.9	1103.7	1103.1	1107.3	1110.5	1117.7
75°	1045.3	1034.4	1029.0	1019.8	1015.2	1008.6	1007.5	1004.5	1006.5	1007.1	1012.4
77.5°	919.2	908.9	904.5	895.2	891.4	883.9	883.3	879.8	881.4	880.4	884.5
80°	775.5	766.1	763.7	756.0	754.2	747.4	746.3	742.1	743.3	740.1	741.7
82.5°	615.1	606.5	604.7	597.6	597.6	591.4	591.1	584.8	584.8	579.5	570.9
85°	433.3	427.0	424.4	418.6	416.9	411.9	409.3	403.3	401.2	397.3	396.1
87.5°	228.6	224.7	221.2	218.4	213.3	204.3	203.5	197.3	197.8	193.3	193.6
90°	26.9	22.8	23.0	19.3	19.2	16.9	17.0	15.9	15.6	14.7	14.5
92.5°	6.6	6.6	6.6	6.6	6.6	6.6	6.6	6.6	6.6	6.6	6.6
95°	7.2	7.2	7.2	7.2	7.2	7.2	7.2	7.2	7.2	7.4	7.4
97.5°	8.1	8.1	8.1	8.1	8.1	8.1	8.1	8.3	8.3	8.3	8.3
100°	9.4	9.4	9.4	9.4	9.4	9.4	9.4	9.7	9.7	9.7	9.7
102.5°	11.0	11.0	11.0	11.0	11.0	11.0	11.0	11.0	11.0	11.2	11.2
105°	12.8	13.0	13.0	13.0	13.0	13.0	13.0	13.1	13.1	13.1	13.3
107.5°	15.3	15.6	15.6	15.7	15.6	15.7	15.7	15.9	15.9	15.9	15.9
110°	18.6	18.7	18.9	19.0	19.0	19.2	19.2	19.3	19.3	19.3	19.3



TEST NUMBER: P1444297
 CATALOG NUMBER: EHBR1-48-UNV-TA-L840

CANDELA DISTRIBUTION (continued):

	165°	167.5°	170°	172.5°	175°	177.5°	180°	182.5°	185°	187.5°	190°
112.5°	22.2	22.5	22.6	23.0	23.0	23.3	23.3	23.6	23.6	23.7	23.6
115°	26.6	26.9	27.4	27.7	27.8	28.2	28.2	28.7	28.7	28.7	28.7
117.5°	31.5	32.2	32.6	33.1	33.4	33.8	34.0	34.1	34.1	34.4	34.1
120°	37.0	37.9	38.5	39.0	39.7	40.1	40.4	40.7	40.7	40.7	40.6
122.5°	43.5	44.4	45.0	45.8	46.4	47.0	47.3	47.6	47.6	47.7	47.4
125°	50.0	51.3	52.1	53.0	53.6	54.5	54.7	55.3	55.3	55.3	55.0
127.5°	57.4	58.4	59.4	60.6	61.2	62.0	62.5	62.9	62.9	62.9	62.6
130°	64.8	66.3	67.2	68.4	69.2	69.9	70.4	70.8	70.8	71.1	70.7
132.5°	72.3	74.0	75.2	76.4	77.1	78.2	78.5	79.1	79.1	79.3	78.8
135°	80.2	81.5	82.8	84.4	85.3	86.2	86.7	87.3	87.3	87.3	86.8
137.5°	87.6	89.2	90.4	91.7	92.7	93.6	94.2	94.7	94.7	95.0	94.5
140°	94.4	96.2	97.5	98.7	99.9	101.0	101.5	102.1	102.1	102.1	101.6
142.5°	101.0	102.5	103.9	105.3	106.2	107.3	107.9	108.4	108.4	108.4	108.1
145°	107.2	108.5	109.9	111.3	112.2	113.1	113.5	114.2	114.2	114.2	114.0
147.5°	112.6	114.2	115.2	116.4	117.3	118.4	119.0	119.3	119.4	119.4	119.3
150°	118.0	119.3	120.3	121.4	122.3	123.1	123.4	124.0	124.1	124.3	124.1
152.5°	122.9	124.0	125.0	125.9	126.8	127.5	127.9	128.4	128.8	129.2	129.2
155°	127.8	128.8	129.8	130.7	131.3	132.1	132.7	133.3	133.8	134.1	134.4
157.5°	133.0	134.1	134.8	135.7	136.3	137.3	137.9	138.6	139.1	139.7	140.0
160°	138.6	139.7	140.4	141.3	142.1	142.8	143.4	144.2	144.8	145.2	145.9
162.5°	144.8	145.7	146.2	147.1	147.8	148.6	149.2	149.9	150.6	151.2	151.7
165°	150.9	151.7	152.3	153.1	153.8	154.6	155.1	155.8	156.3	156.9	157.3
167.5°	156.9	157.6	158.1	158.8	159.3	160.1	160.7	161.3	161.7	162.2	162.7
170°	161.6	162.2	162.9	163.3	164.0	164.6	164.9	165.3	165.8	166.2	166.7
172.5°	165.3	165.9	166.2	166.8	167.1	167.6	167.9	168.5	168.8	169.1	169.3
175°	168.2	168.7	168.8	169.1	169.3	169.6	169.9	170.0	170.5	170.6	170.9
177.5°	170.2	170.5	170.6	170.6	170.8	170.8	170.9	170.9	171.1	171.2	171.2
180°	171.2	171.2	171.2	171.2	171.2	171.2	171.2	171.2	171.2	171.2	171.2



TEST NUMBER: P1444297
 CATALOG NUMBER: EHBR1-48-UNV-TA-L840

CANDELA DISTRIBUTION (continued):

	192.5°	195°	197.5°	200°	202.5°	205°	207.5°	210°	212.5°	215°	217.5°
0°	41295.8	41295.8	41295.8	41295.8	41295.8	41295.8	41295.8	41295.8	41295.8	41295.8	41295.8
2.5°	41218.7	41239.3	41270.9	41299.5	41342.6	41376.5	41427.4	41466.2	41523.7	41561.1	41623.7
5°	41222.4	41303.0	41409.1	41512.6	41637.0	41749.9	41890.2	42009.8	42150.9	42266.0	42410.3
7.5°	41280.7	41436.2	41622.6	41810.3	42022.8	42221.5	42445.4	42648.0	42869.5	43057.0	43261.7
10°	41323.7	41563.5	41838.3	42114.7	42405.5	42675.9	42948.8	43184.6	43405.0	43586.4	43746.6
12.5°	41265.4	41595.8	41948.3	42288.7	42612.2	42892.0	43126.8	43308.1	43433.3	43518.3	43538.1
15°	41067.2	41464.8	41848.1	42187.0	42455.5	42662.5	42769.7	42819.8	42766.1	42676.7	42480.1
17.5°	40697.0	41116.3	41459.0	41726.4	41868.3	41924.5	41835.7	41681.2	41379.4	41044.4	40560.6
20°	40018.2	40408.9	40657.5	40803.4	40765.4	40625.1	40289.9	39882.4	39279.9	38637.7	37790.3
22.5°	38827.6	39169.3	39301.7	39312.5	39080.9	38729.6	38125.0	37426.2	36475.7	35487.3	34272.0
25°	37040.5	37339.8	37360.6	37243.1	36819.3	36249.8	35362.2	34373.7	33082.0	31765.1	30242.2
27.5°	34616.9	34903.8	34833.6	34614.2	34025.9	33263.9	32127.4	30850.4	29257.9	27702.6	26017.9
30°	31570.1	31877.0	31794.5	31513.2	30813.4	29912.8	28575.5	27091.9	25323.8	23662.7	21955.4
32.5°	27924.1	28312.0	28255.1	27987.7	27257.5	26293.6	24842.7	23269.1	21460.1	19823.1	18162.4
35°	23779.9	24250.9	24275.3	24100.5	23422.6	22469.9	21037.1	19514.0	17781.3	16236.8	14702.6
37.5°	19315.0	19861.1	19973.3	19926.1	19364.3	18523.3	17217.8	15851.4	14316.5	12962.8	11650.7
40°	14825.3	15378.2	15570.0	15626.9	15212.3	14560.9	13489.4	12386.6	11135.2	10038.3	8996.5
42.5°	10731.0	11221.1	11406.4	11523.1	11264.3	10829.9	10048.3	9247.4	8330.7	7539.6	6781.1
45°	7453.0	7799.6	7940.5	8058.0	7917.0	7671.9	7178.3	6677.5	6072.3	5555.4	5065.9
47.5°	5210.8	5402.0	5495.0	5551.9	5497.3	5369.5	5100.9	4810.7	4469.2	4167.1	3876.6
50°	3862.4	3964.1	4012.8	4045.7	4005.8	3934.8	3789.5	3631.5	3443.9	3272.8	3105.5
52.5°	3060.8	3119.1	3148.1	3165.7	3142.9	3099.5	3014.9	2921.3	2808.8	2703.0	2647.4
55°	2578.5	2575.5	2642.4	2610.1	2642.4	2570.3	2555.1	2452.2	2358.7	2293.0	2221.8
57.5°	2126.5	2156.7	2169.6	2184.0	2174.7	2161.5	2125.6	2088.6	2039.4	1998.2	1954.2
60°	1840.7	1865.6	1879.8	1894.0	1893.1	1888.1	1867.4	1845.3	1814.5	1789.9	1763.2
62.5°	1643.9	1665.5	1679.4	1693.0	1694.2	1692.2	1676.5	1661.2	1640.2	1624.8	1606.4
65°	1489.0	1504.1	1513.6	1524.5	1523.9	1521.0	1506.7	1494.0	1476.8	1466.1	1452.6
67.5°	1326.9	1338.4	1345.7	1356.0	1358.0	1358.6	1350.7	1344.8	1336.4	1333.4	1328.8
70°	1211.7	1225.6	1237.4	1250.4	1257.4	1260.8	1257.4	1254.4	1249.4	1247.3	1243.8
72.5°	1124.4	1136.2	1145.4	1157.2	1163.8	1168.5	1165.9	1164.2	1159.9	1159.3	1156.9
75°	1016.1	1024.2	1029.4	1038.3	1041.8	1046.2	1044.2	1045.3	1043.9	1047.3	1047.1
77.5°	885.8	891.9	894.3	900.6	901.3	906.7	907.9	914.2	918.6	928.4	933.6
80°	739.2	743.0	743.0	749.6	752.5	761.6	765.8	776.1	780.9	789.5	790.3
82.5°	574.2	569.8	574.2	571.5	579.9	590.0	591.4	600.1	602.1	607.6	603.3
85°	392.6	392.3	388.8	389.4	386.7	388.0	386.4	388.2	386.5	386.7	382.8
87.5°	188.1	189.8	185.7	187.1	183.0	184.8	181.3	184.1	180.0	180.6	174.5
90°	13.9	13.6	13.0	12.8	13.1	12.7	12.5	12.2	12.5	12.1	12.1
92.5°	6.6	6.8	6.8	6.8	6.8	6.8	6.8	6.8	6.9	6.8	6.8
95°	7.4	7.4	7.4	7.7	7.7	7.7	7.7	7.7	7.7	7.7	7.7
97.5°	8.6	8.6	8.6	8.6	8.7	8.7	8.7	8.7	8.7	8.7	8.6
100°	9.8	9.8	9.8	10.0	10.0	10.0	10.0	10.0	10.0	9.8	9.8
102.5°	11.3	11.3	11.3	11.6	11.6	11.6	11.6	11.6	11.3	11.3	11.2
105°	13.3	13.3	13.6	13.6	13.6	13.6	13.6	13.6	13.3	13.1	13.1
107.5°	16.0	16.0	16.2	16.2	16.2	16.2	16.0	15.9	15.9	15.7	15.3
110°	19.6	19.3	19.6	19.6	19.6	19.3	19.3	19.0	18.9	18.6	18.3



TEST NUMBER: P1444297
 CATALOG NUMBER: EHBR1-48-UNV-TA-L840

CANDELA DISTRIBUTION (continued):

	192.5°	195°	197.5°	200°	202.5°	205°	207.5°	210°	212.5°	215°	217.5°
112.5°	23.7	23.6	23.6	23.3	23.3	23.0	23.0	22.6	22.5	21.9	21.6
115°	28.7	28.2	28.2	27.8	27.8	27.5	27.0	26.7	26.4	25.8	25.5
117.5°	34.0	33.8	33.7	33.1	32.9	32.5	32.0	31.5	31.1	30.6	30.0
120°	40.4	40.0	39.7	39.0	38.7	37.9	37.6	36.9	36.4	35.6	34.9
122.5°	47.3	46.7	46.4	45.8	45.3	44.4	43.8	42.9	42.4	41.5	40.7
125°	54.7	54.0	53.6	52.8	52.1	51.3	50.6	49.5	48.6	47.7	46.8
127.5°	62.5	61.6	61.2	60.3	59.5	58.4	57.5	56.5	55.7	54.5	53.6
130°	70.4	69.6	69.2	67.9	67.3	66.0	65.2	64.0	62.9	61.9	60.7
132.5°	78.5	77.8	77.1	75.9	75.2	74.0	73.2	71.7	70.7	69.5	68.6
135°	86.5	85.7	85.1	84.0	83.1	81.7	80.8	79.6	78.5	77.5	76.4
137.5°	94.2	93.3	92.6	91.7	90.7	89.5	88.6	87.4	86.5	85.3	84.4
140°	101.3	100.6	99.9	99.0	98.1	97.1	96.2	95.0	94.1	93.0	92.1
142.5°	107.6	107.0	106.3	105.4	104.7	103.6	103.0	102.1	101.2	100.3	99.5
145°	113.5	112.9	112.5	111.6	111.1	110.2	109.6	108.7	108.2	107.3	106.7
147.5°	119.1	118.5	118.2	117.5	117.2	116.4	116.1	115.4	115.1	114.3	114.0
150°	124.1	124.0	123.8	123.4	123.1	122.6	122.4	122.0	121.8	121.2	121.1
152.5°	129.2	129.2	129.2	129.1	129.1	128.8	128.7	128.4	128.2	127.9	127.8
155°	134.7	134.8	135.0	135.0	135.0	135.0	135.0	134.8	134.8	134.7	134.7
157.5°	140.4	140.7	141.0	141.2	141.3	141.3	141.3	141.3	141.3	141.2	141.2
160°	146.2	146.6	146.9	147.1	147.4	147.4	147.7	147.4	147.7	147.4	147.2
162.5°	152.2	152.6	152.9	153.1	153.4	153.4	153.7	153.7	153.7	153.4	153.4
165°	157.9	158.1	158.5	158.7	159.0	159.0	159.1	159.1	159.1	159.0	159.0
167.5°	163.2	163.3	163.8	164.0	164.3	164.3	164.7	164.6	164.6	164.6	164.6
170°	167.0	167.3	167.6	167.7	168.0	168.0	168.2	168.2	168.5	168.2	168.2
172.5°	169.7	169.9	170.2	170.5	170.6	170.6	170.8	170.8	170.9	170.9	170.9
175°	171.1	171.2	171.5	171.7	171.8	172.0	172.0	172.1	172.1	172.1	172.1
177.5°	171.5	171.7	171.7	171.8	172.0	172.0	172.1	172.1	172.4	172.4	172.4
180°	171.2	171.2	171.2	171.2	171.2	171.2	171.2	171.2	171.2	171.2	171.2



TEST NUMBER: P1444297
 CATALOG NUMBER: EHBR1-48-UNV-TA-L840

CANDELA DISTRIBUTION (continued):

	220°	222.5°	225°	227.5°	230°	232.5°	235°	237.5°	240°	242.5°	245°
0°	41295.8	41295.8	41295.8	41295.8	41295.8	41295.8	41295.8	41295.8	41295.8	41295.8	41295.8
2.5°	41662.4	41405.1	41371.1	41389.2	41432.2	41448.1	41494.5	41507.2	41553.8	41565.4	41610.2
5°	42522.1	42182.0	42199.0	42280.7	42404.5	42478.3	42600.0	42663.6	42779.8	42832.6	42937.6
7.5°	43428.6	43161.5	43244.7	43382.7	43551.9	43669.1	43815.3	43910.5	44036.5	44114.7	44215.5
10°	43873.6	43800.5	43892.1	44000.7	44097.2	44172.8	44234.8	44284.4	44316.8	44347.3	44360.6
12.5°	43534.9	43648.1	43663.8	43653.3	43589.2	43540.5	43430.7	43356.1	43223.7	43143.1	42985.6
15°	42279.3	42528.3	42390.4	42181.6	41876.2	41621.6	41261.8	40994.1	40619.5	40365.4	39989.6
17.5°	40075.8	40390.1	40030.8	39547.8	38933.3	38407.5	37752.9	37233.3	36582.4	36109.1	35501.7
20°	36973.6	37267.3	36626.5	35825.8	34875.2	34075.2	33131.8	32379.1	31502.5	30850.4	30063.4
22.5°	33111.1	33320.4	32417.6	31338.1	30127.0	29127.6	27999.7	27097.3	26096.9	25351.3	24512.2
25°	28838.1	28894.5	27811.6	26568.0	25218.2	24095.0	22890.8	21942.1	20921.7	20166.2	19342.5
27.5°	24525.3	24442.4	23271.9	21953.2	20533.5	19366.0	18191.5	17302.4	16408.9	15728.2	15018.7
30°	20454.4	20254.0	19038.6	17683.2	16305.0	15258.7	14283.6	13569.6	12858.7	12318.8	11749.3
32.5°	16721.5	16438.6	15255.6	13985.7	12824.5	12017.0	11293.9	10753.7	10179.6	9723.5	9245.6
35°	13415.1	13113.7	12065.6	10989.1	10110.2	9515.0	8946.7	8503.4	8016.0	7631.3	7216.2
37.5°	10577.4	10330.3	9452.5	8605.4	7940.5	7479.3	7013.7	6651.4	6248.6	6079.3	5635.8
40°	8165.7	7993.1	7306.7	6682.2	6183.0	5966.2	5493.6	5155.3	4854.2	4606.0	4365.5
42.5°	6369.4	6308.3	5640.2	5153.3	4801.7	4528.7	4265.2	4051.4	3843.3	3672.3	3510.6
45°	4674.2	4625.9	4329.2	4048.1	3808.6	3617.8	3439.8	3292.7	3156.6	3043.9	2941.2
47.5°	3639.8	3624.3	3453.5	3279.1	3128.3	3005.7	2890.2	2792.5	2702.2	2626.9	2602.4
50°	2960.4	2958.4	2858.2	2750.5	2643.2	2572.2	2498.5	2440.8	2382.8	2337.7	2289.9
52.5°	2515.3	2504.4	2436.8	2370.4	2306.6	2260.1	2212.9	2176.0	2137.6	2109.7	2080.1
55°	2165.5	2176.9	2137.8	2098.1	2058.2	2029.3	1996.2	1971.9	1945.6	1927.9	1910.0
57.5°	1922.4	1937.6	1917.1	1894.6	1870.3	1851.2	1828.4	1811.7	1794.0	1782.8	1772.4
60°	1745.7	1762.2	1753.9	1742.6	1727.6	1716.3	1701.8	1692.4	1681.1	1674.8	1669.0
62.5°	1595.6	1616.3	1613.4	1608.0	1598.5	1592.1	1584.2	1580.1	1572.5	1569.8	1567.1
65°	1446.0	1469.2	1468.8	1466.2	1460.8	1459.0	1454.1	1453.2	1449.3	1450.8	1450.5
67.5°	1328.2	1348.5	1353.0	1356.2	1356.0	1357.2	1356.8	1358.7	1358.7	1361.6	1363.5
70°	1243.4	1257.4	1260.8	1264.2	1265.1	1267.8	1267.8	1269.5	1269.0	1271.5	1271.8
72.5°	1157.5	1176.0	1179.4	1182.1	1182.1	1184.8	1183.4	1183.0	1179.2	1178.5	1175.9
75°	1050.7	1074.4	1079.6	1083.0	1083.5	1085.7	1082.5	1080.5	1074.4	1072.0	1067.6
77.5°	939.1	963.7	967.4	968.6	966.6	967.1	960.4	955.8	948.0	944.7	940.6
80°	793.9	830.1	833.0	830.7	825.1	824.2	817.6	813.3	804.0	800.7	797.2
82.5°	604.1	646.7	652.6	655.2	650.6	651.7	645.4	642.9	634.4	632.8	627.2
85°	381.4	424.0	430.9	429.9	425.3	424.3	420.6	421.8	421.1	423.4	424.6
87.5°	175.3	216.4	226.3	223.2	222.7	219.8	213.2	215.6	219.7	222.2	222.4
90°	11.9	24.2	23.7	25.1	22.5	23.3	21.0	22.5	20.8	22.2	20.7
92.5°	6.8	6.8	6.8	6.8	6.8	6.8	6.8	6.6	6.8	6.6	6.8
95°	7.7	7.4	7.4	7.4	7.2	7.2	7.2	7.2	7.2	7.2	7.2
97.5°	8.6	8.3	8.1	8.1	8.1	8.0	8.0	8.0	8.0	7.8	7.8
100°	9.8	9.2	9.0	9.0	8.9	8.9	8.9	8.7	8.7	8.7	8.6
102.5°	11.0	10.6	10.3	10.1	10.0	9.8	9.8	9.7	9.7	9.4	9.4
105°	12.8	12.1	11.8	11.3	11.2	11.0	10.9	10.7	10.6	10.3	10.3
107.5°	15.1	13.9	13.3	13.0	12.7	12.5	12.1	11.9	11.6	11.3	11.2
110°	17.9	16.2	15.6	15.0	14.7	14.1	13.8	13.3	13.0	12.8	12.5



TEST NUMBER: P1444297
 CATALOG NUMBER: EHBR1-48-UNV-TA-L840

CANDELA DISTRIBUTION (continued):

	220°	222.5°	225°	227.5°	230°	232.5°	235°	237.5°	240°	242.5°	245°
112.5°	21.1	19.0	18.1	17.3	16.9	16.2	15.7	15.1	14.8	14.2	14.1
115°	24.8	22.2	21.1	20.2	19.6	18.9	18.1	17.6	16.9	16.2	15.9
117.5°	29.4	26.1	24.8	23.7	23.0	21.9	21.1	20.2	19.6	18.9	18.3
120°	34.1	30.6	29.1	27.8	26.9	25.7	24.8	23.7	22.8	21.9	21.1
122.5°	39.8	35.8	34.0	32.8	31.5	30.2	29.1	27.8	26.7	25.7	24.8
125°	45.9	41.5	39.5	38.1	36.9	35.5	34.1	32.8	31.7	30.5	29.4
127.5°	52.5	47.7	45.8	44.4	43.0	41.5	40.1	38.5	37.3	35.8	34.7
130°	59.7	54.7	52.5	51.0	49.7	48.0	46.8	45.3	43.8	42.4	41.1
132.5°	67.3	62.0	59.8	58.4	57.2	55.6	54.3	52.7	51.3	49.5	48.3
135°	75.2	69.6	67.5	66.0	64.9	63.4	62.0	60.4	59.2	57.5	56.5
137.5°	83.1	77.3	75.3	74.0	72.8	71.4	70.4	68.9	67.6	66.0	64.9
140°	91.1	85.1	83.1	82.0	81.1	79.7	78.7	77.5	76.4	75.2	74.0
142.5°	98.6	92.4	90.4	89.5	88.8	87.7	87.1	86.0	85.1	83.7	82.8
145°	106.0	99.5	97.7	96.8	96.3	95.5	94.7	93.9	93.2	92.3	91.5
147.5°	113.2	106.3	104.3	103.9	103.4	102.7	102.4	101.6	101.3	100.6	100.1
150°	120.5	112.6	110.4	110.1	109.6	109.3	109.0	108.5	108.4	107.9	107.6
152.5°	127.3	118.0	115.4	115.1	115.1	114.6	114.5	114.3	114.3	114.2	114.0
155°	134.2	124.0	121.1	120.6	120.5	120.3	120.2	120.2	120.2	120.2	120.3
157.5°	140.8	129.8	126.8	126.2	126.1	125.9	125.8	125.8	125.8	125.8	126.1
160°	147.1	135.9	132.9	132.3	132.1	131.8	131.5	131.3	131.3	131.3	131.5
162.5°	153.1	142.2	139.2	138.6	138.2	137.9	137.7	137.3	137.3	137.1	137.3
165°	158.7	148.9	146.0	145.4	145.1	144.6	144.3	144.0	143.9	143.7	143.7
167.5°	164.3	155.4	153.1	152.6	152.2	151.7	151.7	151.0	151.0	150.7	150.7
170°	168.0	161.1	159.1	158.8	158.8	158.5	158.2	158.1	157.9	157.6	157.6
172.5°	170.8	165.8	164.3	164.1	164.1	164.0	164.0	163.8	163.8	163.8	163.8
175°	172.1	169.1	168.5	168.2	168.2	168.2	168.2	168.2	168.2	168.2	168.5
177.5°	172.6	171.8	171.5	171.5	171.5	171.5	171.5	171.5	171.5	171.7	171.7
180°	171.2	171.2	171.2	171.2	171.2	171.2	171.2	171.2	171.2	171.2	171.2



TEST NUMBER: P1444297
 CATALOG NUMBER: EHBR1-48-UNV-TA-L840

CANDELA DISTRIBUTION (continued):

	247.5°	250°	252.5°	255°	257.5°	260°	262.5°	265°	267.5°	270°	272.5°
0°	41295.8	41295.8	41295.8	41295.8	41295.8	41295.8	41295.8	41295.8	41295.8	41295.8	41295.8
2.5°	41618.6	41667.2	41663.4	41708.7	41706.5	41749.2	41740.6	41777.4	41769.1	41800.5	41782.1
5°	42983.8	43076.1	43106.5	43189.8	43207.1	43281.7	43283.2	43342.4	43335.2	43381.6	43356.9
7.5°	44275.2	44361.4	44402.3	44466.9	44499.3	44552.8	44573.8	44617.9	44628.5	44654.5	44653.7
10°	44384.2	44383.9	44404.1	44395.1	44413.2	44402.7	44424.8	44416.8	44449.4	44441.0	44465.6
12.5°	42917.7	42772.1	42719.0	42588.3	42559.7	42447.5	42455.5	42383.5	42418.3	42374.1	42449.3
15°	39766.0	39428.4	39261.5	38968.0	38875.9	38643.8	38625.0	38470.8	38512.5	38431.9	38549.8
17.5°	35108.6	34577.0	34285.3	33856.7	33686.5	33358.3	33292.6	33094.2	33125.0	33025.0	33167.3
20°	29555.7	28913.4	28545.4	28049.8	27828.6	27437.4	27333.6	27111.7	27139.6	27040.1	27201.1
22.5°	23939.5	23267.1	22851.8	22332.2	22049.9	21681.9	21571.5	21348.5	21361.2	21267.9	21422.8
25°	18778.4	18133.8	17730.7	17258.6	17013.7	16676.3	16560.3	16360.1	16371.4	16294.4	16433.5
27.5°	14526.5	13997.6	13660.2	13264.6	13045.0	12767.7	12654.6	12486.2	12485.8	12429.3	12545.4
30°	11351.7	10910.3	10607.4	10262.9	10056.6	9806.4	9697.1	9546.5	9539.9	9499.8	9592.1
32.5°	8888.1	8495.5	8219.2	7916.1	7730.9	7516.1	7412.7	7291.6	7280.6	7244.3	7320.1
35°	6909.3	6578.8	6341.2	6085.9	6104.8	5787.9	5840.6	5594.5	5527.8	5513.2	5569.6
37.5°	5340.1	5084.0	4891.1	4699.9	4570.5	4436.6	4364.4	4299.8	4292.4	4286.1	4325.6
40°	4179.9	4000.7	3860.3	3729.2	3640.1	3558.3	3513.2	3477.7	3469.2	3464.5	3488.4
42.5°	3383.0	3262.1	3171.6	3091.6	3037.4	2993.0	2968.2	2948.5	2941.8	2942.0	2956.1
45°	2858.2	2784.8	2726.5	2676.8	2642.2	2657.4	2612.7	2636.1	2605.1	2637.1	2616.0
47.5°	2517.1	2454.6	2418.5	2383.3	2362.3	2345.4	2346.0	2346.3	2353.0	2354.0	2360.9
50°	2253.8	2217.7	2192.6	2170.1	2159.2	2150.3	2153.4	2155.6	2162.1	2162.6	2167.6
52.5°	2059.0	2035.3	2020.1	2006.1	2001.3	1996.2	1998.3	1997.4	2000.3	1998.8	2003.0
55°	1900.4	1889.3	1884.5	1879.3	1880.1	1878.7	1879.6	1874.5	1871.5	1867.7	1871.2
57.5°	1770.3	1768.8	1772.0	1774.1	1780.1	1782.2	1783.6	1777.8	1772.3	1767.3	1770.2
60°	1670.1	1672.5	1680.5	1686.8	1695.4	1699.5	1701.9	1698.6	1694.5	1690.4	1692.9
62.5°	1571.2	1575.0	1584.5	1591.7	1602.1	1607.4	1613.4	1613.7	1615.3	1613.7	1615.4
65°	1456.4	1461.1	1469.7	1475.7	1485.3	1490.1	1496.1	1497.3	1500.6	1499.9	1502.8
67.5°	1369.1	1373.5	1380.6	1386.3	1394.8	1399.8	1405.1	1405.4	1406.6	1406.3	1409.1
70°	1276.1	1278.2	1284.7	1289.4	1298.0	1303.0	1309.2	1311.0	1314.8	1315.4	1318.5
72.5°	1176.9	1176.0	1179.8	1181.9	1188.4	1192.4	1200.2	1204.4	1210.9	1212.6	1214.9
75°	1068.8	1067.9	1072.6	1074.4	1079.9	1083.9	1092.6	1098.3	1108.2	1112.3	1111.3
77.5°	943.8	945.9	954.5	959.3	966.6	971.7	983.1	992.0	1010.3	1018.2	1010.1
80°	804.0	806.3	815.2	819.6	829.2	835.4	848.1	858.6	875.0	878.5	873.9
82.5°	632.0	632.7	640.6	644.0	656.6	665.6	681.7	690.1	700.1	698.6	697.4
85°	430.9	436.8	446.8	456.7	472.0	486.6	501.9	514.4	505.5	519.4	503.8
87.5°	230.4	229.7	243.2	241.1	262.4	274.9	288.1	294.3	301.4	300.0	300.1
90°	22.6	21.1	23.0	21.1	24.0	21.9	25.8	24.0	28.8	26.0	31.1
92.5°	6.6	6.8	6.6	6.8	6.6	6.8	6.6	6.6	6.6	6.6	6.6
95°	7.2	7.2	7.2	7.1	7.1	7.1	7.1	7.1	7.1	7.1	7.1
97.5°	7.8	7.8	7.8	7.8	7.8	7.8	7.8	7.8	7.7	7.7	7.7
100°	8.6	8.6	8.6	8.6	8.3	8.3	8.3	8.3	8.3	8.3	8.3
102.5°	9.2	9.2	9.2	9.0	9.0	9.0	9.0	9.0	9.0	9.0	9.0
105°	10.1	10.1	10.0	10.0	9.8	9.8	9.8	9.8	9.8	9.8	9.8
107.5°	11.2	11.0	10.9	10.9	10.7	10.7	10.7	10.7	10.7	10.7	10.7
110°	12.2	12.1	11.9	11.9	11.8	11.6	11.6	11.6	11.6	11.6	11.6



TEST NUMBER: P1444297
 CATALOG NUMBER: EHBR1-48-UNV-TA-L840

CANDELA DISTRIBUTION (continued):

	247.5°	250°	252.5°	255°	257.5°	260°	262.5°	265°	267.5°	270°	272.5°
112.5°	13.8	13.3	13.1	13.0	12.8	12.8	12.7	12.7	12.7	12.7	12.7
115°	15.3	15.1	14.8	14.7	14.5	14.2	14.1	14.1	14.1	14.1	14.1
117.5°	17.6	17.2	16.9	16.5	16.2	16.0	15.9	15.9	15.7	15.9	15.9
120°	20.5	19.9	19.3	19.0	18.7	18.6	18.1	18.1	18.1	18.1	18.1
122.5°	23.9	23.1	22.5	22.0	21.6	21.3	21.0	21.0	21.0	21.0	21.0
125°	28.2	27.4	26.6	26.0	25.2	25.1	24.8	24.8	24.6	24.8	24.8
127.5°	33.5	32.6	31.5	30.9	30.2	29.9	29.6	29.4	29.4	29.6	29.6
130°	39.7	38.7	37.6	36.9	35.9	35.6	35.3	35.0	34.9	35.0	35.3
132.5°	46.8	45.8	44.7	43.8	43.0	42.6	42.0	42.0	41.8	42.0	42.1
135°	54.8	53.7	52.7	51.8	50.9	50.6	49.8	49.8	49.7	49.8	50.3
137.5°	63.5	62.6	61.3	60.6	59.7	59.4	58.7	58.6	58.6	58.7	59.2
140°	72.6	71.6	70.5	69.8	69.2	68.7	68.3	68.3	67.9	68.4	68.6
142.5°	81.7	81.1	80.0	79.4	78.7	78.4	78.1	78.1	77.8	78.2	78.5
145°	90.6	90.0	89.2	88.6	88.2	88.0	87.4	87.6	87.6	88.0	88.2
147.5°	99.3	99.0	98.3	98.0	97.4	97.4	97.1	97.2	97.2	97.5	97.7
150°	107.2	107.0	106.6	106.3	106.0	106.0	105.9	106.0	106.0	106.3	106.6
152.5°	113.9	113.9	113.5	113.5	113.4	113.5	113.5	113.9	114.0	114.3	114.5
155°	120.3	120.3	120.3	120.5	120.5	120.9	120.9	121.4	121.5	122.0	122.1
157.5°	126.1	126.4	126.4	126.8	127.0	127.3	127.5	128.1	128.2	128.8	129.2
160°	131.8	132.1	132.3	132.7	133.0	133.3	133.8	134.2	134.7	135.1	135.4
162.5°	137.3	137.7	137.9	138.2	138.6	138.9	139.4	140.0	140.4	141.0	141.5
165°	143.7	143.9	144.0	144.2	144.6	144.9	145.2	145.9	146.2	146.8	147.2
167.5°	150.6	150.7	150.6	150.7	150.9	151.2	151.4	151.9	152.2	152.8	153.1
170°	157.3	157.3	157.3	157.3	157.3	157.6	157.8	157.9	158.1	158.5	158.7
172.5°	163.6	163.6	163.3	163.6	163.3	163.6	163.6	163.8	163.8	164.0	164.0
175°	168.2	168.5	168.5	168.7	168.5	168.5	168.5	168.5	168.5	168.7	168.7
177.5°	171.7	171.8	171.8	171.8	171.8	172.0	172.0	172.0	172.0	171.8	171.8
180°	171.2	171.2	171.2	171.2	171.2	171.2	171.2	171.2	171.2	171.2	171.2



TEST NUMBER: P1444297
 CATALOG NUMBER: EHBR1-48-UNV-TA-L840

CANDELA DISTRIBUTION (continued):

	275°	277.5°	280°	282.5°	285°	287.5°	290°	292.5°	295°	297.5°	300°
0°	41295.8	41295.8	41295.8	41295.8	41295.8	41295.8	41295.8	41295.8	41295.8	41295.8	41295.8
2.5°	41812.9	41791.9	41813.3	41791.6	41813.3	41787.2	41804.9	41776.7	41783.9	41754.6	41762.2
5°	43393.9	43360.5	43378.2	43334.9	43339.5	43281.7	43280.6	43213.3	43195.5	43118.8	43085.1
7.5°	44672.3	44661.4	44667.5	44639.6	44636.4	44596.9	44578.1	44522.4	44487.3	44416.8	44368.6
10°	44469.9	44502.4	44510.9	44544.1	44551.0	44583.9	44590.8	44623.7	44630.6	44654.9	44655.2
12.5°	42445.8	42556.5	42582.9	42719.6	42777.2	42933.6	43017.5	43189.8	43292.2	43464.1	43569.6
15°	38546.5	38737.9	38814.3	39081.3	39228.9	39540.5	39736.3	40094.1	40346.7	40726.7	40997.7
17.5°	33179.9	33447.4	33568.2	33930.1	34166.3	34626.2	34957.7	35503.3	35921.0	36527.3	37007.9
20°	27228.7	27526.0	27689.9	28102.9	28381.6	28918.9	29332.7	30003.2	30562.3	31330.7	31987.6
22.5°	21471.3	21754.3	21936.3	22356.4	22670.1	23230.6	23693.1	24400.7	25027.2	25893.0	26680.8
25°	16486.0	16745.3	16909.7	17289.7	17584.3	18099.3	18541.1	19221.7	19834.6	20703.1	21510.8
27.5°	12603.3	12820.5	12979.1	13303.1	13562.9	13999.7	14379.1	14941.6	15469.7	16221.0	16940.3
30°	9648.9	9841.4	9995.7	10277.9	10518.8	10897.4	11231.1	11703.5	12140.6	12738.4	13310.7
32.5°	7373.4	7539.1	7676.6	7923.6	8142.1	8483.1	8783.6	9197.8	9573.0	10080.0	10550.8
35°	5621.8	5948.1	5924.9	6265.6	6320.4	6565.2	6833.3	7195.4	7527.6	7958.8	8359.5
37.5°	4363.5	4455.2	4553.4	4704.1	4862.3	5085.0	5311.5	5753.9	5916.2	6242.1	6573.7
40°	3518.7	3580.7	3645.6	3747.3	3858.2	4015.0	4180.0	4391.1	4607.3	4871.5	5141.4
42.5°	2974.7	3009.8	3051.1	3110.9	3179.3	3278.7	3389.1	3532.2	3682.6	3868.6	4058.4
45°	2657.8	2641.2	2653.4	2685.6	2726.7	2787.2	2856.8	2945.4	3043.3	3163.8	3292.1
47.5°	2362.3	2369.0	2372.7	2390.1	2412.2	2452.8	2495.0	2555.1	2671.3	2706.6	2776.6
50°	2167.1	2170.4	2169.2	2178.1	2189.3	2215.7	2243.1	2283.8	2324.4	2378.3	2429.8
52.5°	2003.6	2008.1	2007.5	2013.4	2019.3	2036.0	2053.3	2082.1	2108.7	2143.0	2172.5
55°	1874.4	1880.7	1883.1	1888.0	1890.9	1899.6	1906.5	1920.3	1931.6	1951.0	1969.0
57.5°	1775.0	1783.6	1787.5	1789.3	1785.7	1785.3	1783.0	1785.9	1788.3	1798.6	1808.7
60°	1696.8	1703.7	1704.8	1703.7	1697.3	1692.7	1685.3	1683.0	1681.8	1686.8	1692.4
62.5°	1615.0	1617.4	1615.7	1613.7	1606.4	1602.0	1594.3	1591.5	1589.0	1592.5	1595.3
65°	1501.7	1503.8	1501.7	1500.5	1493.9	1490.4	1483.9	1481.8	1478.1	1479.1	1478.4
67.5°	1409.7	1411.9	1410.2	1408.5	1403.9	1401.8	1397.1	1393.9	1389.5	1387.9	1384.8
70°	1318.1	1319.8	1317.1	1315.4	1310.3	1308.3	1303.8	1302.9	1299.4	1298.6	1295.1
72.5°	1212.6	1212.7	1209.1	1208.0	1204.1	1204.0	1202.2	1203.8	1203.7	1205.6	1204.7
75°	1104.7	1103.1	1098.6	1097.8	1094.9	1096.3	1094.3	1096.9	1097.2	1101.2	1101.6
77.5°	996.7	990.9	982.3	978.1	972.3	971.6	968.1	970.5	969.7	974.3	976.1
80°	860.2	853.2	842.1	836.7	829.8	828.8	825.7	828.8	827.2	832.6	836.4
82.5°	686.7	680.8	669.2	664.8	656.9	657.7	654.2	657.7	657.2	665.1	669.8
85°	507.9	504.0	492.1	481.5	469.7	462.8	456.1	454.9	452.8	456.1	458.8
87.5°	293.4	289.7	280.4	274.2	253.6	254.5	246.4	246.0	244.0	242.2	246.4
90°	28.2	32.2	29.6	33.1	31.1	35.3	33.8	37.8	35.0	38.4	36.6
92.5°	6.6	6.6	6.6	6.6	6.6	6.6	6.6	6.6	6.6	6.3	6.6
95°	7.1	7.1	7.1	7.1	7.1	7.1	7.1	7.1	7.1	7.1	7.1
97.5°	7.8	7.7	7.7	7.7	7.7	7.7	7.7	7.7	7.8	7.8	7.8
100°	8.3	8.3	8.3	8.3	8.3	8.3	8.3	8.3	8.6	8.6	8.6
102.5°	9.0	9.0	9.0	9.0	9.2	9.2	9.2	9.2	9.4	9.4	9.4
105°	9.8	9.8	10.0	10.0	10.0	10.0	10.1	10.1	10.3	10.3	10.6
107.5°	10.7	10.7	10.7	10.9	10.9	11.0	11.0	11.2	11.3	11.6	11.8
110°	11.6	11.8	11.8	11.9	11.9	12.1	12.2	12.5	12.8	13.0	13.3



TEST NUMBER: P1444297
 CATALOG NUMBER: EHBR1-48-UNV-TA-L840

CANDELA DISTRIBUTION (continued):

	275°	277.5°	280°	282.5°	285°	287.5°	290°	292.5°	295°	297.5°	300°
112.5°	12.8	12.8	13.0	13.1	13.3	13.6	13.8	14.1	14.5	14.8	15.3
115°	14.2	14.2	14.5	14.7	15.0	15.1	15.7	16.0	16.6	17.2	17.8
117.5°	16.0	16.2	16.5	16.6	17.0	17.6	18.1	18.7	19.3	19.9	20.8
120°	18.6	18.7	19.0	19.2	19.8	20.2	21.0	21.7	22.6	23.6	24.6
122.5°	21.3	21.6	22.0	22.5	23.1	23.9	24.8	25.7	26.7	27.8	29.1
125°	25.1	25.5	26.0	26.6	27.5	28.5	29.6	30.6	31.8	32.9	34.4
127.5°	30.0	30.5	31.1	31.8	32.9	33.8	35.0	36.1	37.6	39.0	40.6
130°	35.8	36.4	37.3	37.9	39.4	40.4	41.7	42.9	44.5	45.8	47.4
132.5°	42.9	43.5	44.4	45.3	46.5	47.7	49.2	50.6	52.1	53.4	55.0
135°	50.9	51.5	52.5	53.4	54.8	55.9	57.4	58.6	60.3	61.5	63.2
137.5°	59.8	60.4	61.3	62.3	63.7	64.8	66.3	67.5	68.9	70.2	71.6
140°	69.3	69.8	70.8	71.7	72.8	74.0	75.5	76.5	78.1	79.1	80.3
142.5°	79.3	79.6	80.5	81.4	82.5	83.4	84.7	85.6	86.8	87.7	89.2
145°	88.8	89.2	90.1	90.7	91.7	92.6	93.6	94.5	95.7	96.5	97.5
147.5°	98.3	98.7	99.5	100.3	101.2	101.9	102.7	103.4	104.5	105.3	106.2
150°	107.2	107.6	108.2	108.7	109.6	110.4	111.3	111.9	112.6	113.2	114.2
152.5°	115.2	115.5	116.1	116.6	117.3	118.0	118.7	119.4	120.2	120.6	121.4
155°	122.6	123.2	123.8	124.3	125.0	125.3	126.1	126.5	127.3	127.9	128.7
157.5°	129.8	130.1	130.9	131.2	132.0	132.4	133.0	133.5	134.2	134.7	135.3
160°	136.0	136.7	137.1	137.7	138.3	138.8	139.4	140.0	140.7	141.2	141.8
162.5°	142.1	142.7	143.3	143.7	144.3	144.9	145.4	146.0	146.8	147.1	147.8
165°	147.8	148.3	149.0	149.3	150.1	150.7	151.2	151.9	152.3	152.9	153.4
167.5°	153.7	154.0	154.8	155.2	155.8	156.3	156.9	157.3	157.9	158.2	158.8
170°	159.1	159.6	160.1	160.5	161.0	161.3	161.9	162.2	162.9	163.2	163.8
172.5°	164.3	164.6	164.9	165.0	165.3	165.8	166.1	166.2	166.7	167.0	167.3
175°	168.7	168.7	168.8	169.0	169.1	169.1	169.3	169.6	169.7	169.9	170.0
177.5°	171.8	171.8	171.8	171.8	171.8	171.8	171.8	171.8	171.8	171.8	171.8
180°	171.2	171.2	171.2	171.2	171.2	171.2	171.2	171.2	171.2	171.2	171.2



TEST NUMBER: P1444297
 CATALOG NUMBER: EHBR1-48-UNV-TA-L840

CANDELA DISTRIBUTION (continued):

	302.5°	305°	307.5°	310°	312.5°	315°	317.5°	320°	322.5°	325°	327.5°
0°	41295.8	41295.8	41295.8	41295.8	41295.8	41295.8	41295.8	41295.8	41295.8	41295.8	41295.8
2.5°	41732.9	41734.8	41701.1	41699.2	41667.8	41663.7	41633.0	41623.7	41598.7	41589.7	41564.2
5°	42999.1	42958.1	42863.3	42807.6	42714.0	42651.9	42550.6	42484.6	42386.8	42313.0	42214.5
7.5°	44279.7	44216.0	44109.6	44023.5	43893.5	43789.8	43637.7	43513.2	43348.6	43206.0	43033.0
10°	44655.2	44645.4	44618.4	44578.8	44518.4	44450.5	44347.0	44239.1	44094.8	43938.0	43745.8
12.5°	43731.2	43831.0	43967.0	44047.6	44145.8	44188.8	44229.0	44218.9	44192.4	44113.2	44002.0
15°	41390.3	41670.7	42041.9	42329.7	42660.7	42901.3	43167.0	43332.6	43497.7	43574.0	43620.6
17.5°	37666.5	38197.4	38863.1	39414.9	40051.4	40562.7	41123.2	41545.2	41979.0	42289.9	42571.0
20°	32883.3	33652.5	34594.1	35425.9	36393.1	37233.6	38154.7	38910.9	39690.6	40300.5	40877.5
22.5°	27695.1	28608.7	29747.0	30801.5	32048.5	33169.1	34433.3	35533.8	36682.7	37642.6	38570.6
25°	22593.4	23595.3	24840.1	26016.6	27428.7	28732.2	30231.6	31603.1	33088.0	34377.3	35651.0
27.5°	17934.9	18918.4	20189.3	21441.7	22934.9	24323.8	25930.4	27441.4	29132.3	30691.5	32286.6
30°	14105.9	14940.2	16079.6	17292.6	18765.5	20178.8	21802.8	23356.8	25115.8	26818.3	28614.9
32.5°	11175.7	11811.3	12707.0	13732.8	15091.7	16437.1	17983.5	19483.7	21215.8	22935.7	24804.2
35°	8875.6	9371.3	10054.3	10854.7	12005.5	13165.3	14533.0	15897.3	17513.3	19145.3	20961.5
37.5°	6998.8	7401.0	7936.0	8537.2	9460.3	10412.1	11533.7	12664.7	14068.9	15515.5	17161.5
40°	5465.3	5791.1	6207.5	6655.9	7352.9	8086.2	8953.6	9830.7	10958.8	12141.1	13503.3
42.5°	4293.4	4533.7	4827.9	5155.6	5805.9	6195.2	6783.4	7417.8	8247.1	9105.4	10129.6
45°	3448.0	3611.9	3815.9	4035.7	4337.5	4667.8	5070.6	5493.0	6280.9	6667.4	7290.2
47.5°	2879.4	2989.5	3119.2	3257.8	3435.7	3627.9	3866.8	4111.0	4426.9	4754.3	5138.1
50°	2496.5	2608.4	2653.0	2724.7	2827.7	2937.4	3072.1	3206.8	3376.2	3547.9	3745.5
52.5°	2212.3	2248.8	2297.2	2342.9	2406.7	2531.6	2571.9	2642.4	2737.4	2830.3	2934.1
55°	1995.3	2019.0	2050.5	2078.0	2116.7	2153.5	2206.8	2253.6	2317.0	2373.0	2441.9
57.5°	1826.3	1841.4	1863.3	1881.4	1906.4	1927.2	1958.4	1983.8	2020.2	2051.9	2093.7
60°	1703.6	1713.7	1728.3	1740.1	1756.1	1767.0	1782.4	1794.3	1813.6	1829.7	1852.9
62.5°	1603.3	1608.5	1618.1	1625.1	1635.2	1640.6	1648.9	1654.2	1664.6	1672.8	1685.8
65°	1483.0	1484.2	1490.7	1493.6	1501.6	1504.4	1511.2	1513.6	1522.4	1528.3	1539.8
67.5°	1384.4	1381.7	1381.8	1379.6	1380.6	1378.3	1379.0	1376.5	1380.0	1381.8	1390.6
70°	1294.4	1290.6	1289.4	1285.3	1284.1	1279.8	1278.6	1274.8	1274.3	1273.1	1276.1
72.5°	1206.8	1205.8	1206.1	1203.1	1202.8	1199.9	1200.0	1198.2	1200.2	1201.1	1205.0
75°	1106.0	1106.3	1108.2	1105.7	1106.4	1103.9	1104.9	1102.5	1103.7	1103.3	1107.3
77.5°	983.2	986.1	991.4	990.3	992.0	989.3	990.5	987.3	988.2	986.1	987.6
80°	845.1	851.3	858.5	858.2	861.2	859.2	862.0	858.9	860.2	856.4	855.5
82.5°	681.2	686.4	694.1	694.4	701.2	702.4	709.8	709.5	714.3	711.2	709.0
85°	465.8	469.3	475.9	479.7	486.5	490.8	498.0	501.0	495.7	505.2	497.7
87.5°	243.2	252.2	247.2	258.9	256.2	268.1	265.6	276.6	274.4	283.9	282.7
90°	41.7	40.4	45.8	45.0	51.9	52.1	59.2	58.7	65.7	65.5	72.3
92.5°	6.3	6.6	6.6	6.6	6.6	6.8	6.6	6.6	6.6	6.8	6.6
95°	7.1	7.1	7.1	7.1	7.1	7.1	7.1	7.2	7.2	7.2	7.2
97.5°	7.8	7.8	7.8	7.8	8.0	8.0	8.0	8.0	8.0	8.1	8.1
100°	8.6	8.7	8.7	8.7	8.9	8.9	9.0	9.0	9.2	9.2	9.2
102.5°	9.7	9.7	9.8	10.0	10.0	10.1	10.3	10.6	10.6	10.7	10.7
105°	10.7	10.9	11.0	11.2	11.3	11.8	11.9	12.1	12.2	12.5	12.5
107.5°	12.1	12.2	12.7	12.8	13.1	13.6	13.9	14.1	14.5	14.7	14.8
110°	13.8	14.1	14.5	15.0	15.3	15.9	16.2	16.6	17.0	17.3	17.6



TEST NUMBER: P1444297
 CATALOG NUMBER: EHBR1-48-UNV-TA-L840

CANDELA DISTRIBUTION (continued):

	302.5°	305°	307.5°	310°	312.5°	315°	317.5°	320°	322.5°	325°	327.5°
112.5°	15.7	16.5	16.9	17.6	18.1	18.7	19.2	19.8	20.1	20.7	21.0
115°	18.6	19.2	19.9	20.7	21.3	22.0	22.6	23.3	23.9	24.5	24.8
117.5°	21.6	22.6	23.3	24.5	25.1	26.0	26.7	27.5	28.2	28.8	29.4
120°	25.5	26.6	27.7	28.8	29.7	30.6	31.5	32.5	33.1	33.8	34.4
122.5°	30.2	31.5	32.6	33.8	34.7	35.8	36.7	37.8	38.5	39.5	40.1
125°	35.6	36.9	38.1	39.5	40.6	41.8	42.7	43.8	44.7	45.8	46.5
127.5°	41.8	43.3	44.5	45.9	47.0	48.3	49.2	50.6	51.5	52.5	53.4
130°	48.6	50.3	51.6	52.8	53.9	55.4	56.3	57.5	58.6	59.7	60.7
132.5°	56.3	57.7	58.9	60.4	61.5	62.8	63.9	65.2	66.0	67.3	68.4
135°	64.5	65.8	66.9	68.4	69.3	70.5	71.6	72.8	73.8	75.2	76.2
137.5°	72.6	74.3	75.3	76.5	77.5	78.7	79.6	80.8	81.7	83.1	84.0
140°	81.4	82.6	83.5	84.8	85.7	86.8	87.7	88.8	89.7	90.7	91.5
142.5°	90.1	91.2	92.0	93.2	93.9	95.0	95.7	96.6	97.5	98.4	99.2
145°	98.4	99.5	100.3	101.2	101.6	102.7	103.3	104.2	104.7	105.6	106.2
147.5°	107.0	107.9	108.4	109.3	109.6	110.5	111.0	111.6	112.2	112.6	113.1
150°	114.6	115.5	116.0	116.6	117.0	117.9	118.2	118.7	119.0	119.4	119.9
152.5°	122.0	122.6	123.1	123.5	124.0	124.4	124.6	125.2	125.3	125.5	125.8
155°	129.1	129.8	130.1	130.7	130.9	131.3	131.3	131.8	132.0	132.1	132.1
157.5°	135.7	136.3	136.8	137.1	137.4	137.9	138.0	138.3	138.3	138.6	138.6
160°	142.2	142.7	143.1	143.4	143.9	144.0	144.2	144.6	144.8	144.8	144.8
162.5°	148.1	148.7	149.0	149.3	149.8	150.1	150.3	150.6	150.7	150.9	150.9
165°	153.8	154.3	154.8	155.2	155.4	155.8	156.0	156.3	156.3	156.6	156.6
167.5°	159.1	159.8	160.1	160.5	160.7	161.0	161.1	161.6	161.6	161.7	161.7
170°	164.0	164.3	164.7	165.0	165.2	165.3	165.6	165.8	165.8	165.9	165.9
172.5°	167.6	167.9	167.9	168.2	168.2	168.5	168.7	168.7	168.8	168.8	168.8
175°	170.0	170.2	170.5	170.5	170.5	170.6	170.6	170.6	170.6	170.6	170.6
177.5°	171.8	171.8	171.8	171.7	171.7	171.7	171.7	171.7	171.7	171.7	171.5
180°	171.2	171.2	171.2	171.2	171.2	171.2	171.2	171.2	171.2	171.2	171.2



TEST NUMBER: P1444297
 CATALOG NUMBER: EHBR1-48-UNV-TA-L840

CANDELA DISTRIBUTION (continued):

	330°	332.5°	335°	337.5°	340°	342.5°	345°	347.5°	350°	352.5°	355°
0°	41295.8	41295.8	41295.8	41295.8	41295.8	41295.8	41295.8	41295.8	41295.8	41295.8	41295.8
2.5°	41555.3	41537.2	41525.6	41510.8	41501.7	41490.2	41481.8	41474.6	41468.8	41463.4	41459.4
5°	42139.6	42046.6	41974.6	41896.5	41832.4	41768.5	41719.1	41678.3	41650.1	41629.0	41616.5
7.5°	42883.5	42713.5	42562.3	42403.1	42260.5	42120.2	41999.2	41895.0	41816.8	41766.1	41735.4
10°	43547.9	43320.3	43095.2	42858.3	42633.6	42415.7	42214.5	42037.7	41897.6	41804.6	41750.2
12.5°	43845.8	43651.9	43422.0	43164.7	42889.4	42610.8	42339.4	42094.5	41888.9	41751.0	41671.4
15°	43583.5	43503.8	43347.9	43148.2	42886.9	42598.9	42280.1	41980.5	41704.8	41526.0	41422.4
17.5°	42730.2	42841.3	42829.3	42753.0	42565.2	42322.8	41997.9	41661.3	41316.5	41077.6	40947.0
20°	41290.3	41639.6	41816.8	41907.7	41833.9	41676.7	41382.6	41041.0	40639.1	40327.2	40136.8
22.5°	39266.8	39883.6	40267.8	40549.0	40608.6	40555.1	40295.3	39970.4	39522.5	39147.5	38866.4
25°	36662.0	37565.5	38172.8	38648.8	38833.8	38881.5	38660.5	38337.5	37838.0	37401.2	37015.1
27.5°	33593.8	34767.7	35578.7	36218.4	36507.1	36632.4	36428.9	36099.3	35508.5	34987.1	34482.7
30°	30139.7	31532.5	32508.8	33275.8	33627.9	33793.3	33577.2	33209.3	32521.8	31894.3	31258.8
32.5°	26442.8	27966.8	29030.6	29863.7	30212.5	30368.1	30085.5	29672.2	28877.6	28138.4	27397.3
35°	22572.0	24110.4	25183.1	25994.1	26286.4	26380.2	26018.7	25541.0	24660.7	23849.3	23041.3
37.5°	18622.5	20053.7	21028.7	21756.5	21937.4	21953.5	21518.0	20990.4	20065.1	19265.1	18460.8
40°	14707.1	15914.0	16701.3	17283.8	17346.5	17290.5	16817.0	16286.1	15420.4	14703.8	13997.6
42.5°	11019.0	11930.0	12491.7	12890.9	12867.2	12756.5	12322.3	11865.9	11151.8	10605.9	10050.1
45°	7859.3	8460.0	8788.4	9022.0	8947.0	8841.6	8503.7	8183.7	7698.5	7345.8	6972.4
47.5°	5460.0	6177.3	6052.4	6509.1	6115.6	6375.5	5834.3	5536.0	5278.5	5091.1	4880.0
50°	3908.9	4073.2	4152.6	4206.8	4178.1	4138.1	4040.9	3954.0	3836.3	3750.6	3650.7
52.5°	3018.7	3100.9	3145.9	3178.5	3172.1	3157.6	3115.1	3076.4	3021.3	2985.0	2941.2
55°	2557.0	2558.2	2641.0	2605.4	2658.0	2596.5	2620.7	2552.6	2563.6	2505.0	2465.8
57.5°	2124.8	2158.5	2173.6	2188.3	2184.2	2181.6	2165.1	2156.9	2138.4	2132.7	2119.5
60°	1869.0	1886.6	1890.3	1897.0	1891.4	1889.3	1876.3	1871.8	1859.4	1857.1	1848.4
62.5°	1693.6	1702.7	1702.7	1702.7	1695.3	1688.3	1674.0	1666.6	1656.0	1653.7	1648.6
65°	1547.3	1556.7	1558.2	1560.1	1554.8	1549.3	1536.7	1528.6	1517.7	1513.6	1507.8
67.5°	1396.3	1406.2	1409.6	1414.6	1411.6	1410.5	1401.9	1398.7	1391.5	1389.8	1384.4
70°	1277.6	1281.7	1281.4	1281.3	1274.6	1268.6	1258.6	1253.9	1246.4	1244.9	1240.0
72.5°	1207.1	1210.0	1208.2	1205.6	1196.9	1188.0	1176.3	1167.7	1157.9	1151.9	1144.9
75°	1107.8	1111.6	1109.1	1107.5	1099.6	1093.9	1084.5	1079.7	1072.9	1070.9	1066.1
77.5°	985.8	987.6	983.7	983.2	977.2	973.6	966.5	965.3	960.3	960.4	955.8
80°	850.0	849.0	842.5	841.3	835.4	833.8	828.3	828.6	824.7	826.3	823.0
82.5°	699.4	695.6	687.2	684.7	677.8	677.2	673.6	676.6	674.2	677.8	675.7
85°	501.3	502.3	498.6	498.6	496.6	497.2	496.9	499.3	499.6	502.9	502.8
87.5°	279.5	283.4	282.7	286.4	286.2	290.3	291.7	297.9	298.6	304.2	304.2
90°	72.2	79.7	79.4	87.1	87.4	94.7	96.2	103.4	104.0	110.5	109.9
92.5°	6.6	6.6	6.8	6.6	6.6	6.3	6.9	6.3	6.6	6.3	6.3
95°	7.2	7.2	7.2	7.2	7.2	7.1	7.1	7.1	7.1	7.1	7.1
97.5°	8.1	8.1	8.1	8.1	8.1	8.1	8.0	8.0	8.0	8.0	8.0
100°	9.2	9.2	9.4	9.2	9.2	9.2	9.2	9.2	9.2	9.0	9.0
102.5°	10.9	10.9	10.9	10.9	10.9	10.9	10.9	10.7	10.7	10.7	10.7
105°	12.7	12.7	12.8	12.8	12.8	12.8	12.8	12.7	12.7	12.7	12.7
107.5°	15.0	15.0	15.1	15.1	15.3	15.3	15.3	15.1	15.3	15.1	15.1
110°	17.9	18.1	18.3	18.3	18.6	18.6	18.6	18.6	18.7	18.6	18.6



TEST NUMBER: P1444297
 CATALOG NUMBER: EHBR1-48-UNV-TA-L840

CANDELA DISTRIBUTION (continued):

	330°	332.5°	335°	337.5°	340°	342.5°	345°	347.5°	350°	352.5°	355°
112.5°	21.3	21.6	21.9	21.9	22.2	22.2	22.5	22.5	22.6	22.5	22.6
115°	25.2	25.7	26.0	26.1	26.6	26.7	27.0	27.0	27.4	27.4	27.4
117.5°	30.0	30.5	30.9	31.4	31.7	32.0	32.5	32.6	32.8	32.8	32.9
120°	35.0	35.6	36.4	36.9	37.5	37.8	38.4	38.5	38.8	38.8	39.0
122.5°	41.1	41.7	42.6	43.0	43.8	44.4	44.8	45.3	45.6	45.6	45.8
125°	47.6	48.3	49.2	49.8	50.9	51.5	52.1	52.4	52.8	52.8	53.0
127.5°	54.5	55.4	56.5	57.2	58.3	58.7	59.5	59.8	60.4	60.4	60.6
130°	61.9	62.8	64.0	64.9	65.8	66.6	67.5	67.8	68.4	68.4	68.6
132.5°	69.6	70.5	71.7	72.6	73.8	74.6	75.5	75.8	76.4	76.4	76.5
135°	77.5	78.4	79.6	80.5	81.5	82.5	83.2	83.7	84.4	84.4	84.5
137.5°	85.3	86.2	87.3	88.2	89.2	90.0	90.7	91.2	91.7	92.0	92.0
140°	92.7	93.5	94.7	95.5	96.5	97.2	98.0	98.4	99.0	99.0	99.2
142.5°	100.1	100.7	101.9	102.5	103.3	103.9	104.5	105.0	105.4	105.6	105.6
145°	107.0	107.5	108.4	109.0	109.6	110.1	110.7	111.1	111.3	111.3	111.4
147.5°	113.9	114.2	114.6	115.1	115.8	116.1	116.4	116.6	117.0	117.0	117.0
150°	120.2	120.3	120.6	120.9	121.2	121.4	121.5	121.8	122.0	121.8	121.8
152.5°	125.9	126.1	126.2	126.2	126.4	126.4	126.4	126.2	126.2	126.1	125.9
155°	132.3	132.3	132.3	132.1	132.3	132.1	132.0	131.8	131.5	131.2	130.9
157.5°	138.6	138.3	138.6	138.3	138.2	138.0	137.9	137.3	137.1	136.7	136.2
160°	144.9	144.8	144.8	144.6	144.3	144.0	143.9	143.3	143.0	142.4	141.9
162.5°	150.9	150.9	150.7	150.6	150.3	150.1	149.8	149.2	148.9	148.3	147.8
165°	156.7	156.6	156.6	156.3	156.1	155.8	155.7	155.1	154.8	154.1	153.7
167.5°	161.7	161.7	161.6	161.3	161.1	161.0	160.7	160.2	159.9	159.3	159.0
170°	165.9	165.8	165.8	165.6	165.3	165.2	164.9	164.6	164.1	163.8	163.3
172.5°	168.7	168.7	168.5	168.2	168.2	168.0	167.7	167.6	167.1	166.8	166.7
175°	170.5	170.5	170.2	170.2	170.0	169.9	169.7	169.6	169.3	169.1	168.8
177.5°	171.5	171.5	171.2	171.2	171.1	171.1	170.9	170.8	170.8	170.6	170.5
180°	171.2	171.2	171.2	171.2	171.2	171.2	171.2	171.2	171.2	171.2	171.2



TEST NUMBER: P1444297
 CATALOG NUMBER: EHBR1-48-UNV-TA-L840

CANDELA DISTRIBUTION (continued):

	357.5°	360°
0°	41295.8	41295.8
2.5°	41455.8	41453.7
5°	41609.8	41607.4
7.5°	41727.1	41726.4
10°	41740.9	41748.1
12.5°	41657.7	41663.4
15°	41414.4	41425.8
17.5°	40949.5	40964.3
20°	40148.4	40164.0
22.5°	38851.2	38857.6
25°	36965.2	36938.4
27.5°	34394.0	34348.0
30°	31125.4	31080.8
32.5°	27228.4	27200.5
35°	22841.5	22824.0
37.5°	18223.0	18187.2
40°	13739.4	13635.0
42.5°	9806.8	9623.6
45°	6777.4	6560.2
47.5°	4731.3	4597.1
50°	3586.2	3542.9
52.5°	2922.2	2912.1
55°	2465.6	2461.2
57.5°	2122.4	2120.9
60°	1852.9	1852.5
62.5°	1652.0	1652.7
65°	1510.5	1510.8
67.5°	1385.9	1385.0
70°	1241.8	1240.8
72.5°	1142.7	1141.0
75°	1066.1	1065.1
77.5°	957.1	955.5
80°	825.3	823.0
82.5°	678.8	676.3
85°	506.3	506.4
87.5°	309.8	309.7
90°	116.0	114.6
92.5°	6.6	6.9
95°	7.1	7.1
97.5°	8.0	8.0
100°	9.0	9.0
102.5°	10.7	10.7
105°	12.7	12.7
107.5°	15.1	15.1
110°	18.6	18.6



TEST NUMBER: P1444297
CATALOG NUMBER: EHBR1-48-UNV-TA-L840

CANDELA DISTRIBUTION (continued):

	357.5°	360°
112.5°	22.5	22.5
115°	27.0	27.0
117.5°	32.8	32.6
120°	38.7	38.7
122.5°	45.4	45.3
125°	52.7	52.5
127.5°	60.3	60.0
130°	67.9	67.8
132.5°	76.2	75.8
135°	84.0	83.7
137.5°	91.5	91.2
140°	98.7	98.4
142.5°	105.4	105.1
145°	111.3	111.0
147.5°	116.4	116.3
150°	121.4	121.1
152.5°	125.3	125.0
155°	130.3	129.8
157.5°	135.4	135.0
160°	141.2	140.7
162.5°	147.1	146.6
165°	152.9	152.3
167.5°	158.2	157.9
170°	162.9	162.5
172.5°	166.2	165.9
175°	168.7	168.5
177.5°	170.5	170.2
180°	171.2	171.2



TEST NUMBER: P1444297
 CATALOG NUMBER: EHBR1-48-UNV-TA-L840

CIE UGR TABLE:

Reflectances:											
Ceiling		0.7	0.7	0.5	0.5	0.3	0.7	0.7	0.5	0.5	0.3
Wall		0.5	0.3	0.5	0.3	0.3	0.5	0.3	0.5	0.3	0.3
Reference plane		0.2	0.2	0.2	0.2	0.2	0.2	0.2	0.2	0.2	0.2
Room dimensions		Viewed crosswise					Viewed endwise				
X=2H	Y=2H	18.75	19.92	19.13	20.25	20.58	17.13	18.30	17.51	18.63	18.96
	3H	20.39	21.43	20.79	21.78	22.16	19.68	20.72	20.08	21.07	21.45
	4H	21.27	22.24	21.69	22.60	23.00	20.89	21.86	21.31	22.23	22.63
	6H	22.16	23.05	22.59	23.44	23.85	22.08	22.97	22.51	23.36	23.77
	8H	22.56	23.40	23.01	23.81	24.23	22.62	23.46	23.07	23.87	24.29
	12H	22.92	23.72	23.36	24.12	24.57	23.11	23.91	23.55	24.31	24.76
4H	2H	19.18	20.14	19.59	20.51	20.91	17.90	18.87	18.32	19.24	19.64
	3H	21.17	21.97	21.59	22.39	22.81	20.66	21.46	21.09	21.88	22.30
	4H	22.27	22.99	22.72	23.42	23.88	22.02	22.74	22.47	23.18	23.64
	6H	23.37	23.99	23.85	24.45	24.94	23.37	23.99	23.84	24.45	24.93
	8H	23.86	24.43	24.34	24.90	25.38	23.97	24.55	24.46	25.01	25.50
	12H	24.29	24.80	24.79	25.30	25.79	24.53	25.04	25.03	25.54	26.03
8H	4H	22.72	23.30	23.21	23.76	24.25	22.51	23.09	23.00	23.55	24.04
	6H	24.06	24.53	24.58	25.04	25.54	24.05	24.52	24.56	25.03	25.53
	8H	24.69	25.11	25.23	25.64	26.15	24.78	25.20	25.31	25.73	26.24
	12H	25.28	25.65	25.81	26.15	26.74	25.48	25.85	26.01	26.35	26.94
12H	4H	22.80	23.31	23.30	23.80	24.29	22.60	23.11	23.10	23.60	24.09
	6H	24.21	24.64	24.75	25.17	25.67	24.20	24.62	24.74	25.15	25.66
	8H	24.95	25.32	25.48	25.83	26.42	25.02	25.39	25.55	25.90	26.49

LM-79-2019: Approved Method: Electrical and Photometric Measurements of Solid-
State Lighting Products

Report Prepared for

Cooper Lighting Solutions

Metalux

Report Number: SP1-2506-472-1

Test Date: 07/30/2025

Luminaire Tested: EHBR-60-L840-N

Data in this report applies to families of products including EHBR-60-L840-N

Test Information

Test Method: LM-79-2019
 Report Number: SP1-2506-472-1
 Test Lab: COOPER LIGHTING SOLUTIONS
 Photometer: SP1 - 76IN SPHERE
 Measurement Geometry: 4π
 Issue Date: 08/05/2025
 Manufacturer: COOPER LIGHTING SOLUTIONS
 Product Line: Metalux
 Catalog Number: **EHBR-60-L840-N**
 Description: Elevate Round Highbay at, 60000 lumens, 4000K 80CRI LEDs with N lens

Spectral Parameters

CCT (K): 3898
 CIE u': 0.2263
 CIE v': 0.5052
 Duv: 0.0013
 CIE x: 0.3861
 CIE y: 0.3831
 CIE z: 0.2308
 Peak Wavelength (nm): 630
 Dominant Wavelength (nm): 578
 Purity: 30.85729
 Rf: 80.7
 Rg: 102.1

CRI (Ra):	82.1		
R1:	84.4	R9:	38.5
R2:	83.5	R10:	58.9
R3:	80.8	R11:	83.6
R4:	83.9	R12:	54.2
R5:	82.1	R13:	82.8
R6:	77.3	R14:	88.2
R7:	86.4	R15:	81.2
R8:	78.3		



Test Conditions
 Stabilization Time: 42M
 Operation Time: 1H 42M
 Sphere Temperature (°C): 25.0

REPORT NUMBER: SP1-2506-472-1

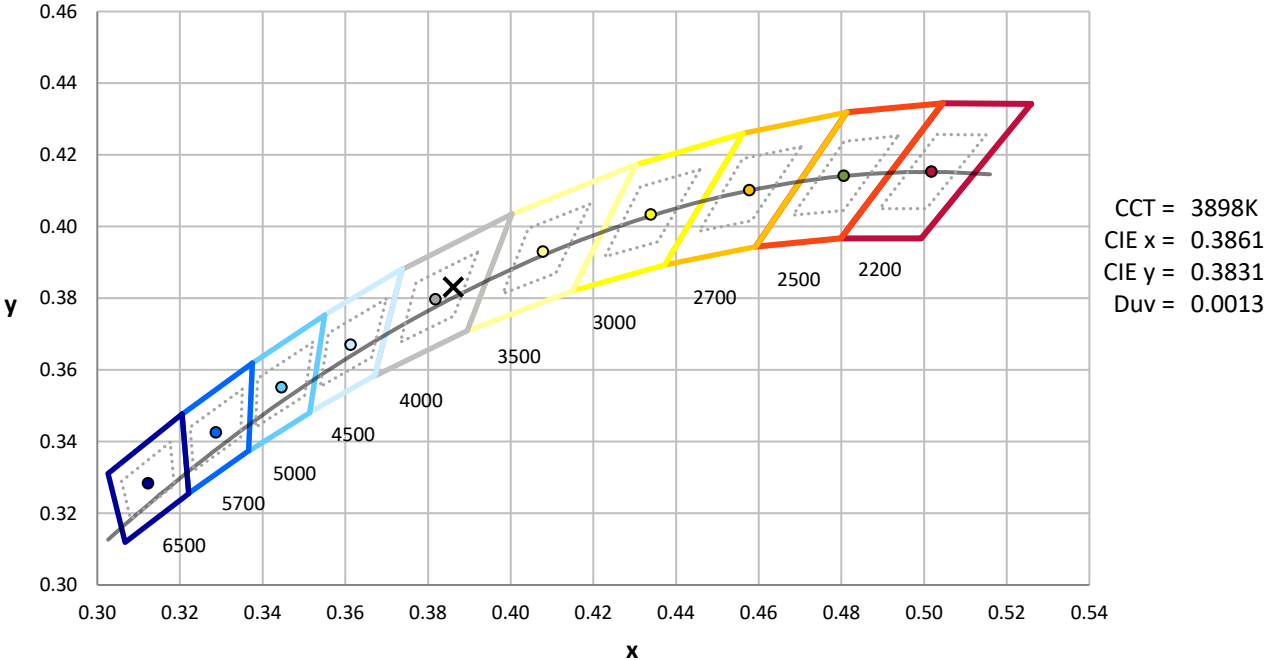
Measurement and Test Equipment			
Instrument	Identification Number	Calibration Date	Calibration Due Date
Photometer	76INCH SPHERE IN0058	6/16/2025	12/16/2025
Power Meter	XITRON INXT2011004	1/21/2025	1/21/2026
AC Power Source	CHROMA 61603 IN0063	10/22/2024	10/22/2025
DC Power Source	AGILENT E3634A IN0208	10/22/2024	10/22/2025
Sphere Thermometer	ONSET IN0085	10/22/2024	10/22/2025
Room Thermometer	ONSET IN0046	10/22/2024	10/22/2025

REPORT NUMBER: SP1-2506-472-1

CIE 1931 Chromaticity Diagram



CIE 1931 Chromaticity Diagram with 2017 ANSI 7-Step and 4-Step Quadrangles



CCT = 3898K
 CIE x = 0.3861
 CIE y = 0.3831
 Duv = 0.0013

Point lies inside the ANSI 4000K 4-step quadrangle

REPORT NUMBER: SP1-2506-472-1

Photopic Flux vs. Wavelength



Photopic Lumens: NR

λ (nm)	Power W [^] /nm	Lumens (φ/nm)	λ (nm)	Power W [^] /nm	Lumens (φ/nm)	λ (nm)	Power W [^] /nm	Lumens (φ/nm)	λ (nm)	Power W [^] /nm	Lumens (φ/nm)	λ (nm)	Power W [^] /nm	Lumens (φ/nm)
360	0	NR	490	60	NR	620	277	NR	750	6	NR	880	0	NR
365	0	NR	495	87	NR	625	278	NR	755	5	NR	885	0	NR
370	0	NR	500	124	NR	630	1000	NR	760	4	NR	890	0	NR
375	0	NR	505	168	NR	635	623	NR	765	4	NR	895	0	NR
380	1	NR	510	209	NR	640	162	NR	770	3	NR	900	0	NR
385	1	NR	515	246	NR	645	158	NR	775	3	NR	905	0	NR
390	2	NR	520	273	NR	650	134	NR	780	2	NR	910	0	NR
395	4	NR	525	292	NR	655	109	NR	785	2	NR	915	0	NR
400	5	NR	530	305	NR	660	91	NR	790	2	NR	920	0	NR
405	7	NR	535	313	NR	665	75	NR	795	2	NR	925	0	NR
410	11	NR	540	319	NR	670	70	NR	800	1	NR	930	0	NR
415	21	NR	545	323	NR	675	56	NR	805	1	NR	935	0	NR
420	42	NR	550	326	NR	680	47	NR	810	1	NR	940	0	NR
425	76	NR	555	330	NR	685	41	NR	815	1	NR	945	0	NR
430	125	NR	560	333	NR	690	35	NR	820	1	NR	950	0	NR
435	193	NR	565	336	NR	695	30	NR	825	1	NR	955	0	NR
440	302	NR	570	336	NR	700	26	NR	830	1	NR	960	0	NR
445	432	NR	575	335	NR	705	22	NR	835	1	NR	965	0	NR
450	380	NR	580	332	NR	710	19	NR	840	0	NR	970	0	NR
455	213	NR	585	326	NR	715	16	NR	845	0	NR	975	0	NR
460	147	NR	590	319	NR	720	14	NR	850	0	NR	980	0	NR
465	104	NR	595	307	NR	725	12	NR	855	0	NR	985	0	NR
470	65	NR	600	299	NR	730	10	NR	860	0	NR	990	0	NR
475	50	NR	605	291	NR	735	9	NR	865	0	NR	995	0	NR
480	46	NR	610	317	NR	740	8	NR	870	0	NR	1000	0	NR
485	47	NR	615	336	NR	745	7	NR	875	0	NR			

REPORT NUMBER: SP1-2506-472-1

Scotopic Flux vs. Wavelength



Scotopic Lumens: NR

S/P: 1.55

λ (nm)	Power W [^] /nm	Lumens (φ/nm)	λ (nm)	Power W [^] /nm	Lumens (φ/nm)	λ (nm)	Power W [^] /nm	Lumens (φ/nm)	λ (nm)	Power W [^] /nm	Lumens (φ/nm)	λ (nm)	Power W [^] /nm	Lumens (φ/nm)
360	0	NR	490	60	NR	620	277	NR	750	6	NR	880	0	NR
365	0	NR	495	87	NR	625	278	NR	755	5	NR	885	0	NR
370	0	NR	500	124	NR	630	1000	NR	760	4	NR	890	0	NR
375	0	NR	505	168	NR	635	623	NR	765	4	NR	895	0	NR
380	1	NR	510	209	NR	640	162	NR	770	3	NR	900	0	NR
385	1	NR	515	246	NR	645	158	NR	775	3	NR	905	0	NR
390	2	NR	520	273	NR	650	134	NR	780	2	NR	910	0	NR
395	4	NR	525	292	NR	655	109	NR	785	2	NR	915	0	NR
400	5	NR	530	305	NR	660	91	NR	790	2	NR	920	0	NR
405	7	NR	535	313	NR	665	75	NR	795	2	NR	925	0	NR
410	11	NR	540	319	NR	670	70	NR	800	1	NR	930	0	NR
415	21	NR	545	323	NR	675	56	NR	805	1	NR	935	0	NR
420	42	NR	550	326	NR	680	47	NR	810	1	NR	940	0	NR
425	76	NR	555	330	NR	685	41	NR	815	1	NR	945	0	NR
430	125	NR	560	333	NR	690	35	NR	820	1	NR	950	0	NR
435	193	NR	565	336	NR	695	30	NR	825	1	NR	955	0	NR
440	302	NR	570	336	NR	700	26	NR	830	1	NR	960	0	NR
445	432	NR	575	335	NR	705	22	NR	835	1	NR	965	0	NR
450	380	NR	580	332	NR	710	19	NR	840	0	NR	970	0	NR
455	213	NR	585	326	NR	715	16	NR	845	0	NR	975	0	NR
460	147	NR	590	319	NR	720	14	NR	850	0	NR	980	0	NR
465	104	NR	595	307	NR	725	12	NR	855	0	NR	985	0	NR
470	65	NR	600	299	NR	730	10	NR	860	0	NR	990	0	NR
475	50	NR	605	291	NR	735	9	NR	865	0	NR	995	0	NR
480	46	NR	610	317	NR	740	8	NR	870	0	NR	1000	0	NR
485	47	NR	615	336	NR	745	7	NR	875	0	NR			

REPORT NUMBER: SP1-2506-472-1

Melanopic Flux vs. Wavelength



Melanopic Lumens: NR

M/P: 2.99

λ (nm)	Power W [^] /nm	Lumens (φ/nm)	λ (nm)	Power W [^] /nm	Lumens (φ/nm)	λ (nm)	Power W [^] /nm	Lumens (φ/nm)	λ (nm)	Power W [^] /nm	Lumens (φ/nm)	λ (nm)	Power W [^] /nm	Lumens (φ/nm)
360	0	NR	490	60	NR	620	277	NR	750	6	NR	880	0	NR
365	0	NR	495	87	NR	625	278	NR	755	5	NR	885	0	NR
370	0	NR	500	124	NR	630	1000	NR	760	4	NR	890	0	NR
375	0	NR	505	168	NR	635	623	NR	765	4	NR	895	0	NR
380	1	NR	510	209	NR	640	162	NR	770	3	NR	900	0	NR
385	1	NR	515	246	NR	645	158	NR	775	3	NR	905	0	NR
390	2	NR	520	273	NR	650	134	NR	780	2	NR	910	0	NR
395	4	NR	525	292	NR	655	109	NR	785	2	NR	915	0	NR
400	5	NR	530	305	NR	660	91	NR	790	2	NR	920	0	NR
405	7	NR	535	313	NR	665	75	NR	795	2	NR	925	0	NR
410	11	NR	540	319	NR	670	70	NR	800	1	NR	930	0	NR
415	21	NR	545	323	NR	675	56	NR	805	1	NR	935	0	NR
420	42	NR	550	326	NR	680	47	NR	810	1	NR	940	0	NR
425	76	NR	555	330	NR	685	41	NR	815	1	NR	945	0	NR
430	125	NR	560	333	NR	690	35	NR	820	1	NR	950	0	NR
435	193	NR	565	336	NR	695	30	NR	825	1	NR	955	0	NR
440	302	NR	570	336	NR	700	26	NR	830	1	NR	960	0	NR
445	432	NR	575	335	NR	705	22	NR	835	1	NR	965	0	NR
450	380	NR	580	332	NR	710	19	NR	840	0	NR	970	0	NR
455	213	NR	585	326	NR	715	16	NR	845	0	NR	975	0	NR
460	147	NR	590	319	NR	720	14	NR	850	0	NR	980	0	NR
465	104	NR	595	307	NR	725	12	NR	855	0	NR	985	0	NR
470	65	NR	600	299	NR	730	10	NR	860	0	NR	990	0	NR
475	50	NR	605	291	NR	735	9	NR	865	0	NR	995	0	NR
480	46	NR	610	317	NR	740	8	NR	870	0	NR	1000	0	NR
485	47	NR	615	336	NR	745	7	NR	875	0	NR			

Summary

$R_f = 80.7$
 $R_g = 102.1$
 CIE $R_a = 82.1$
 $R_9 = 38.5$

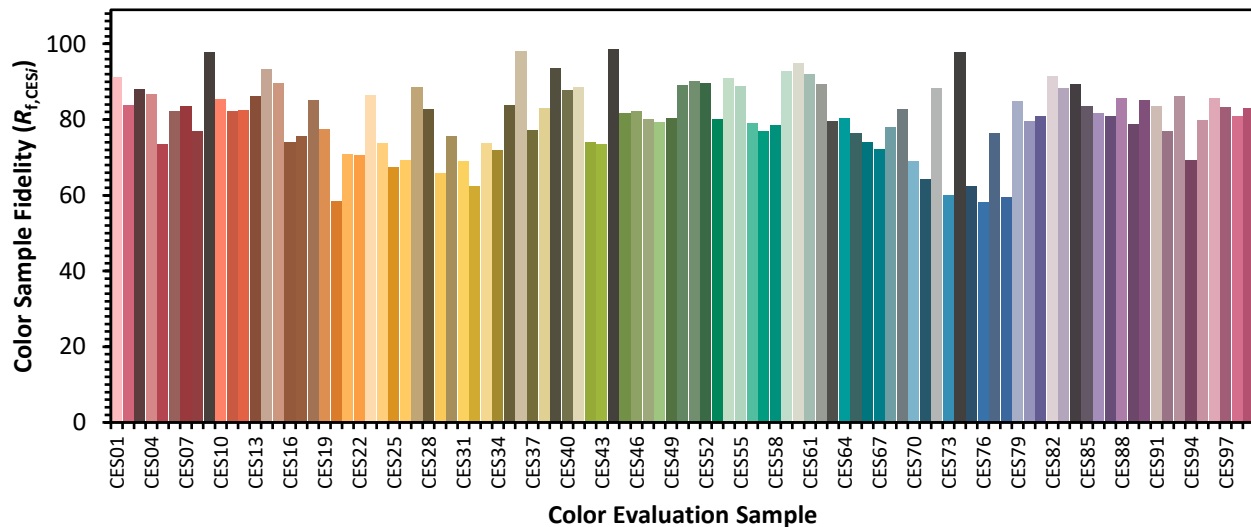


Color Vector Graphics

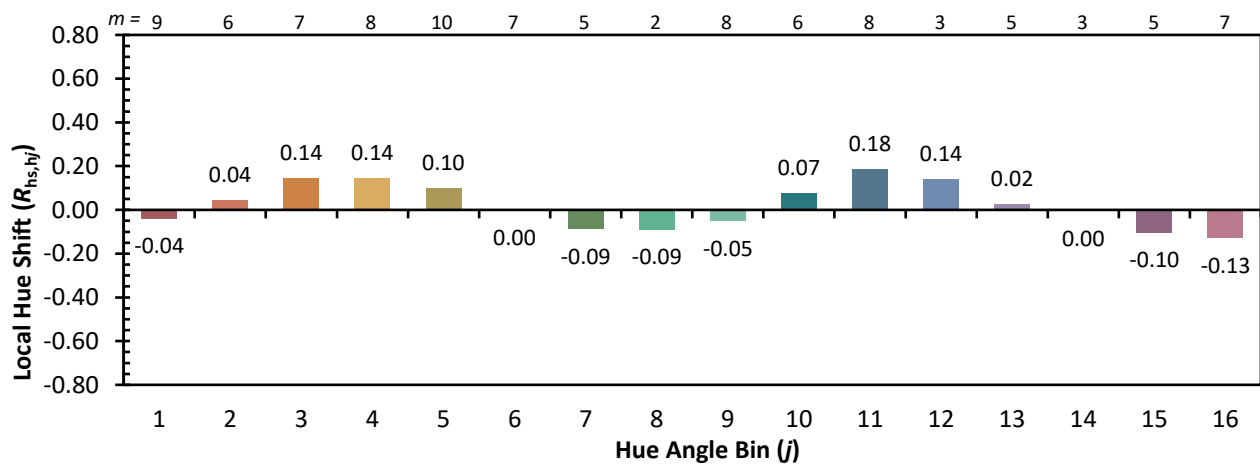
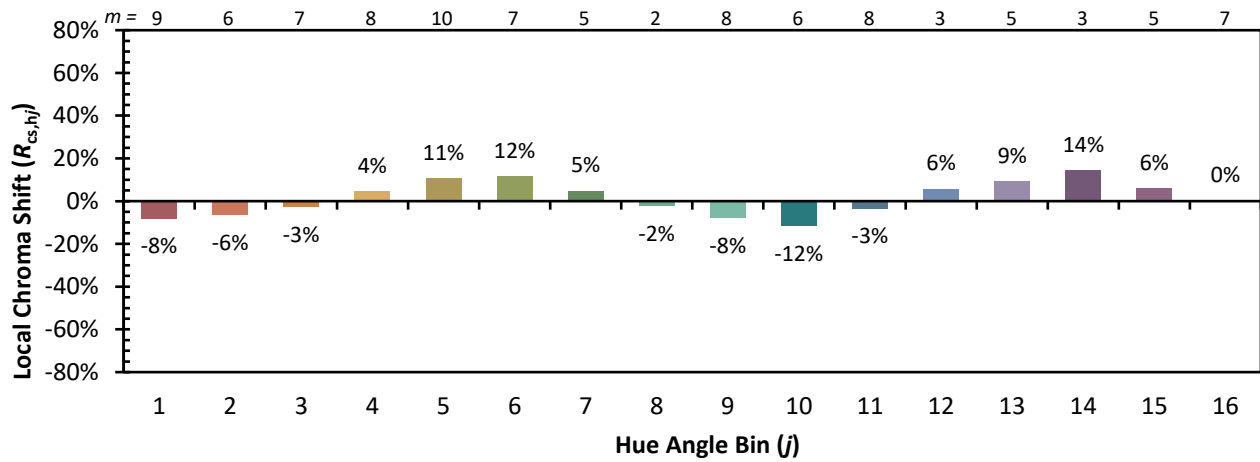


Individual Sample Fidelity Index ($R_{f,i}$)

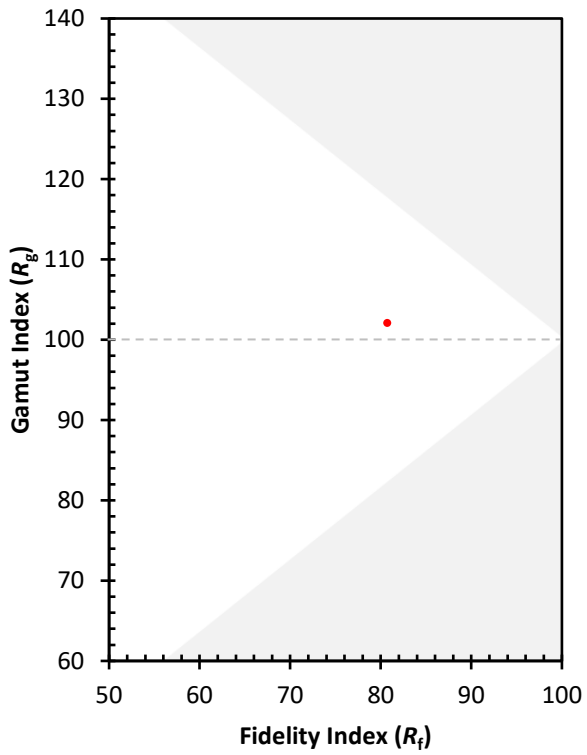
CES01 = 85	CES26 = 69	CES51 = 90	CES76 = 58
CES02 = 61	CES27 = 89	CES52 = 90	CES77 = 76
CES03 = 31	CES28 = 83	CES53 = 80	CES78 = 60
CES04 = 69	CES29 = 66	CES54 = 91	CES79 = 85
CES05 = 48	CES30 = 76	CES55 = 89	CES80 = 79
CES06 = 50	CES31 = 69	CES56 = 79	CES81 = 81
CES07 = 41	CES32 = 62	CES57 = 77	CES82 = 91
CES08 = 40	CES33 = 74	CES58 = 79	CES83 = 88
CES09 = 29	CES34 = 72	CES59 = 93	CES84 = 89
CES10 = 74	CES35 = 84	CES60 = 95	CES85 = 84
CES11 = 57	CES36 = 98	CES61 = 92	CES86 = 82
CES12 = 63	CES37 = 77	CES62 = 89	CES87 = 81
CES13 = 43	CES38 = 83	CES63 = 80	CES88 = 86
CES14 = 74	CES39 = 94	CES64 = 80	CES89 = 79
CES15 = 71	CES40 = 88	CES65 = 77	CES90 = 85
CES16 = 47	CES41 = 89	CES66 = 74	CES91 = 83
CES17 = 49	CES42 = 74	CES67 = 72	CES92 = 77
CES18 = 56	CES43 = 73	CES68 = 78	CES93 = 86
CES19 = 71	CES44 = 98	CES69 = 83	CES94 = 69
CES20 = 65	CES45 = 82	CES70 = 69	CES95 = 80
CES21 = 86	CES46 = 82	CES71 = 64	CES96 = 86
CES22 = 78	CES47 = 80	CES72 = 88	CES97 = 83
CES23 = 91	CES48 = 79	CES73 = 60	CES98 = 81
CES24 = 90	CES49 = 80	CES74 = 98	CES99 = 83
CES25 = 71	CES50 = 89	CES75 = 62	



Color Rendition by Hue-Angle Bin



Measure Comparisons



(END OF REPORT)