

Cooper Lighting Solutions Photometric Lab  
1121 Highway 74 South  
Peachtree City, GA 30269



Scaled data based on original data using  
LM-79-2019 Approved Method: Electrical and Photometric Measurements of Solid-  
State Lighting Products

Test Report Prepared for  
Cooper Lighting Solutions

Brand: METALUX

Report Number: P1444392

Luminaire Tested: EHBR1-36-UNV-TA-L840-UPL15

Issue Date: 5/1/2026

**Test Information**

Test Method: LM-79-2019  
Report Number: P1444392  
REPORT IS A COMBINATION OF REPORTS P1444313 AND P1431635  
Test Lab: INNOVATION CENTER  
Issue Date: 5/1/2026  
Manufacturer: COOPER LIGHTING SOLUTIONS  
Product Line: METALUX  
Catalog Number: EHBR1-36-UNV-TA-L840-UPL15  
Description: Elevate Round Highbay at, 36000 lumens, 4000K 80CRI LEDs with TA lens  
Light Source: -  
Ballast/Driver: -

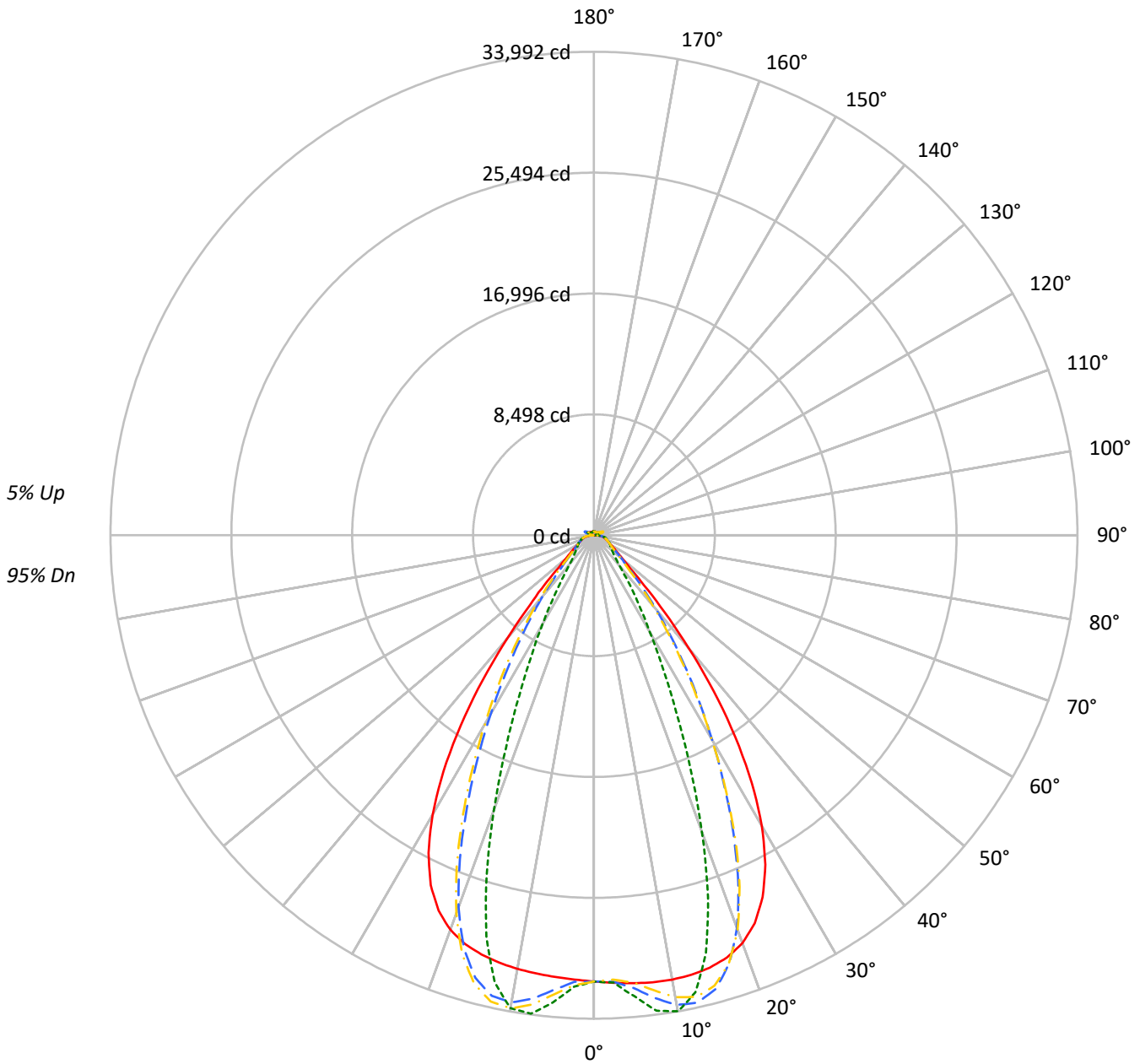
**Summary**

Lumens per Lamp: N/A  
Luminaire Lumens: 37828.4 lumens  
Efficiency: N/A  
Efficacy: 188.5 lumens/watt  
Spacing Criteria (0/90/45): 1.13 / 0.77 / 0.88  
Luminous Opening: Vertical Cylinder (Dia: 1.71' x H: 0.1')  
CIE Type: Direct

Input Watts (W): 200.7  
Input Voltage (V): NR  
Input Current (Ain): NR  
Voltage Rise (V): NR  
Power Factor: NR  
Total Harmonic Distortion (THDi): NR  
Frequency (hertz): 60  
Stabilization Time: NR  
Operation Time: NR  
Ambient Temperature (°C): NR  
Test Distance: 24 FT

TEST NUMBER: P1444392  
CATALOG NUMBER: EHBR1-36-UNV-TA-L840-UPL15

### Luminous Intensity Polar Plot



— 0°-180°    - - 45°-225°    - · - · 90°-270°    - · - · 135°-315°



TEST NUMBER: P1444392  
 CATALOG NUMBER: EHBR1-36-UNV-TA-L840-UPL15

**COEFFICIENT OF UTILIZATION - ZONAL CAVITY METHOD:**

RF	20				20				20				20				20			
RC	80				70				50				30				10		0	
RW	70	50	30	10	70	50	30	10	50	30	10	50	30	10	50	30	10	50	30	10
RCR																				
0	118	118	118	118	115	115	115	115	109	109	109	103	103	103	98	98	98	98	95	
1	111	107	104	102	108	105	102	100	100	98	96	95	94	92	91	90	88	88	86	
2	104	98	93	89	101	96	92	88	92	88	85	88	85	83	85	82	80	80	78	
3	98	90	84	80	95	88	83	79	85	80	77	82	78	75	79	76	73	73	71	
4	92	83	77	72	90	82	76	71	79	74	70	76	72	68	74	70	67	67	65	
5	87	77	70	65	85	76	70	65	73	68	64	71	67	63	69	65	62	62	60	
6	82	72	65	60	80	71	64	60	69	63	59	67	62	58	65	61	57	57	56	
7	77	67	60	55	76	66	60	55	64	59	54	63	58	54	61	57	53	53	52	
8	73	63	56	51	72	62	55	51	60	55	51	59	54	50	57	53	50	50	48	
9	69	59	52	48	68	58	52	48	57	51	47	55	50	47	54	50	46	46	45	
10	66	55	49	45	65	55	49	45	53	48	44	52	47	44	51	47	44	44	42	

**AVERAGE LUMINANCE (cd/sqm):**

	0°	90°	180°	270°
0°	147350	147350	147350	147350
5°	148063	152381	145991	154377
10°	149299	159988	145719	158930
15°	150032	145028	145464	139189
20°	148481	108041	143621	99964
25°	140543	68330	135898	61997
30°	122774	41061	118019	37526
35°	94488	25766	89053	22824
40°	59772	16163	54686	15188
45°	30808	12592	30297	12385
50°	18062	11200	17509	11026
55°	13838	10596	13326	10501
60°	11709	10824	11210	10684
65°	10997	11303	10576	10919
70°	10744	11837	10209	11391
75°	11487	12553	10867	11997
80°	11888	13899	10780	12688
85°	11196	13413	9049	11484

**MAXIMUM LUMINANCE 45°-90°:**

Horizontal Angle: 25°  
 Vertical Angle: 45°  
 Luminance: 47147 cd/sqm



TEST NUMBER: P1444392  
 CATALOG NUMBER: EHBR1-36-UNV-TA-L840-UPL15

**ZONAL LUMENS:**

Zone	Lumens	% Fixture
0°-10°	3092.3	8.2
10°-20°	8698.9	23.0
20°-30°	9907.4	26.2
30°-40°	7121.0	18.8
40°-50°	3284.2	8.7
50°-60°	1571.6	4.2
60°-70°	1146.7	3.0
70°-80°	871.2	2.3
80°-90°	398.9	1.1
90°-100°	52.4	0.1
100°-110°	271.0	0.7
110°-120°	500.0	1.3
120°-130°	313.7	0.8
130°-140°	211.9	0.6
140°-150°	165.3	0.4
150°-160°	120.4	0.3
160°-170°	75.2	0.2
170°-180°	26.3	0.1
0°-30°	21698.6	57.4
0°-40°	28819.6	76.2
0°-60°	33675.4	89.0
0°-90°	36092.2	95.4
90°-120°	823.4	2.2
90°-150°	1514.3	4.0
90°-180°	1736.0	4.6
0°-180°	37828.4	100.0

**CANDELA DISTRIBUTION:**

	0°	90°	180°	270°	360°	Flux
0°	31377	31377	31377	31377	31377	
5°	31614	32536	31171	32962	31614	3021
15°	31476	30426	30518	29201	31476	8868
25°	28066	13645	27139	12381	28066	12723
35°	17342	4729	16344	4189	17342	10643
45°	4985	2037	4902	2004	4985	4239
55°	1870	1432	1801	1419	1870	1726
65°	1148	1180	1104	1140	1148	1146
75°	809	884	766	845	809	842
85°	385	461	311	395	385	362
90°	98	126	24	31	98	62
95°	24	26	24	26	24	22
105°	101	127	69	128	101	132
115°	439	526	460	526	439	406
125°	342	347	385	348	342	311
135°	284	242	304	245	284	221
145°	265	248	281	253	265	167
155°	257	253	272	257	257	119
165°	264	261	273	263	264	75
175°	275	276	279	278	275	26
180°	279	279	279	279	279	



TEST NUMBER: P1444392  
 CATALOG NUMBER: EHBR1-36-UNV-TA-L840-UPL15

**CANDELA DISTRIBUTION (FULL):**

	0°	2.5°	5°	7.5°	10°	12.5°	15°	17.5°	20°	22.5°	25°
0°	31377.2	31377.2	31377.2	31377.2	31377.2	31377.2	31377.2	31377.2	31377.2	31377.2	31377.2
2.5°	31497.0	31494.4	31494.0	31491.8	31491.2	31491.2	31490.2	31487.6	31485.9	31482.4	31478.3
5°	31613.9	31612.5	31613.3	31613.6	31611.4	31606.4	31598.8	31589.4	31577.5	31566.4	31556.4
7.5°	31704.3	31706.4	31709.2	31708.6	31701.8	31690.3	31674.6	31665.7	31671.0	31688.0	31727.2
10°	31720.7	31734.3	31739.5	31737.9	31724.2	31714.3	31718.1	31751.3	31817.5	31905.8	32026.5
12.5°	31656.5	31673.0	31672.4	31667.0	31653.6	31667.2	31715.3	31814.3	31956.1	32130.2	32334.4
15°	31475.9	31497.2	31491.2	31484.1	31475.3	31519.5	31615.8	31787.6	32006.7	32252.2	32503.5
17.5°	31125.2	31151.1	31138.5	31130.5	31123.0	31206.0	31371.3	31623.0	31898.9	32176.6	32414.7
20°	30517.1	30534.4	30504.5	30490.5	30502.3	30665.0	30908.4	31229.8	31520.7	31783.2	31946.0
22.5°	29524.6	29546.0	29489.9	29483.4	29552.7	29802.6	30110.6	30469.9	30743.1	30951.3	31013.9
25°	28066.3	28087.4	28020.7	28060.6	28178.5	28518.9	28885.7	29270.0	29503.2	29657.3	29614.8
27.5°	26098.0	26117.4	26054.1	26135.5	26321.9	26769.2	27200.8	27617.6	27825.5	27933.6	27796.6
30°	23615.6	23655.8	23581.0	23694.6	23979.2	24559.8	25054.4	25521.8	25729.1	25811.2	25598.2
32.5°	20667.2	20724.4	20641.9	20811.0	21208.1	21905.5	22467.3	22989.7	23218.9	23312.7	23072.1
35°	17342.0	17423.8	17329.3	17583.0	18072.7	18849.3	19471.5	20054.7	20326.1	20459.2	20216.7
37.5°	13818.9	13897.0	13845.8	14184.3	14722.0	15527.0	16162.1	16791.2	17097.7	17297.4	17106.2
40°	10360.0	10431.4	10470.2	10857.2	11363.1	12121.8	12731.8	13354.2	13697.2	13947.7	13829.9
42.5°	7312.1	7384.2	7515.7	7889.3	8311.0	8939.1	9461.6	10020.5	10348.1	10615.4	10570.0
45°	4984.6	5068.1	5233.1	5538.9	5843.9	6294.5	6678.2	7112.8	7380.4	7625.3	7628.2
47.5°	3493.0	3551.7	3699.0	3907.9	4106.7	4670.8	4694.0	4907.6	5087.5	5270.5	5294.2
50°	2691.9	2727.3	2805.4	2921.9	3034.6	3181.0	3315.0	3469.7	3580.5	3680.8	3704.8
52.5°	2212.6	2235.0	2274.8	2337.9	2403.2	2482.8	2554.6	2639.6	2699.9	2753.6	2764.9
55°	1870.0	1888.6	1947.8	1959.8	2034.5	2049.0	2080.9	2132.6	2167.6	2199.8	2207.8
57.5°	1611.5	1625.0	1637.6	1664.4	1687.5	1721.0	1747.9	1785.0	1807.1	1830.3	1832.3
60°	1407.6	1417.3	1426.2	1444.9	1460.5	1483.8	1502.4	1527.6	1543.5	1560.9	1562.9
62.5°	1255.8	1262.8	1268.7	1281.0	1292.2	1310.1	1324.8	1345.9	1360.6	1374.2	1377.2
65°	1147.8	1153.0	1156.8	1166.1	1175.9	1191.1	1204.5	1221.7	1232.5	1242.9	1245.1
67.5°	1052.3	1057.1	1061.2	1069.6	1076.4	1087.7	1096.7	1109.6	1117.8	1126.0	1126.2
70°	942.7	947.2	950.3	958.2	963.7	973.5	980.6	992.3	1000.6	1009.8	1012.1
72.5°	866.9	869.6	873.7	880.9	888.4	898.9	908.5	920.6	930.8	940.3	944.3
75°	809.2	812.3	815.1	821.2	826.5	835.3	842.5	853.5	862.4	872.6	877.6
77.5°	726.0	729.6	731.9	738.1	742.6	751.1	756.4	766.3	773.5	782.9	787.4
80°	625.4	628.8	630.4	636.2	639.8	647.6	652.8	662.4	668.5	677.7	683.2
82.5°	513.9	517.1	518.0	523.6	525.5	531.9	535.8	545.5	552.9	565.0	573.4
85°	384.8	385.9	387.9	386.4	394.2	394.7	403.5	405.1	416.8	419.8	433.1
87.5°	235.3	238.7	240.4	245.8	248.1	253.5	255.2	260.8	264.0	270.5	273.5
90°	97.9	103.1	104.8	111.1	112.7	118.2	119.4	125.6	127.3	133.7	136.1
92.5°	21.1	22.3	23.4	24.9	26.1	28.1	29.7	31.1	32.4	34.2	36.7
95°	23.7	25.1	26.5	27.8	29.3	30.7	32.1	33.4	34.8	36.2	40.2
97.5°	29.4	30.6	31.8	33.0	34.2	35.4	36.6	37.8	39.0	40.2	45.0
100°	37.7	38.7	39.8	40.8	41.8	42.9	43.9	44.9	45.9	46.9	55.8
102.5°	60.7	64.4	68.0	71.5	75.2	78.7	82.4	85.9	89.5	93.1	111.9
105°	100.6	110.3	120.3	130.0	139.7	149.6	159.4	168.9	178.8	188.5	219.5
107.5°	169.1	187.2	205.3	223.5	241.7	259.7	277.9	295.9	313.9	331.9	363.2
110°	308.5	322.9	337.5	352.0	366.6	381.3	395.8	410.1	424.7	439.1	462.0



TEST NUMBER: P1444392  
 CATALOG NUMBER: EHBR1-36-UNV-TA-L840-UPL15

**CANDELA DISTRIBUTION (continued):**

	0°	2.5°	5°	7.5°	10°	12.5°	15°	17.5°	20°	22.5°	25°
112.5°	414.9	421.4	427.9	434.5	441.0	447.4	453.9	460.4	467.0	473.2	489.5
115°	439.3	441.5	443.9	445.8	448.1	450.1	452.3	454.4	456.5	458.5	469.4
117.5°	429.2	428.6	428.1	427.6	426.9	426.2	425.6	424.9	424.2	423.4	429.4
120°	403.9	401.6	399.5	397.0	394.8	392.4	390.2	387.8	385.3	382.8	385.2
122.5°	371.3	368.7	366.2	363.2	360.6	357.7	355.0	351.8	349.1	346.2	346.9
125°	341.7	339.0	336.5	333.6	330.6	327.7	324.9	321.9	318.9	315.7	315.8
127.5°	316.6	314.6	312.8	310.4	308.2	306.0	303.6	301.2	299.1	296.4	296.2
130°	301.8	300.0	298.1	295.9	293.9	291.8	289.6	287.2	285.0	282.6	282.3
132.5°	290.2	289.0	287.6	285.8	284.2	282.2	280.6	278.5	276.7	274.9	274.5
135°	283.7	282.4	281.1	279.6	278.1	276.1	274.3	272.4	270.6	268.6	268.5
137.5°	278.7	277.5	276.2	274.6	273.1	271.2	269.6	267.8	266.0	264.1	263.9
140°	274.1	272.9	271.7	270.2	268.9	267.3	265.6	263.9	262.1	260.2	260.2
142.5°	268.4	267.3	266.4	265.1	263.9	262.3	260.9	259.2	257.9	256.2	256.4
145°	265.4	264.5	263.6	262.5	261.3	259.8	258.6	257.1	255.9	254.5	254.6
147.5°	262.7	261.9	261.3	260.2	259.4	258.1	257.0	255.6	254.5	253.3	253.6
150°	260.5	259.8	259.1	258.2	257.2	256.2	255.1	254.0	252.9	251.5	251.8
152.5°	257.7	256.9	256.3	255.4	254.6	253.4	252.6	251.3	250.3	249.2	249.4
155°	257.1	256.4	255.6	254.8	253.9	253.0	251.9	250.9	250.0	248.9	249.0
157.5°	257.7	256.9	256.3	255.4	254.8	254.0	253.2	252.2	251.4	250.6	250.6
160°	259.5	258.8	258.2	257.4	256.6	255.7	255.0	254.1	253.5	252.6	252.6
162.5°	261.5	260.7	260.0	259.3	258.6	257.8	257.1	256.4	255.7	254.8	254.9
165°	264.2	263.7	263.0	262.5	261.9	261.3	260.7	260.0	259.5	258.8	258.8
167.5°	268.4	267.8	267.3	266.6	266.0	265.5	264.8	264.2	263.7	262.8	262.9
170°	271.1	270.5	270.2	269.8	269.4	268.9	268.6	268.1	267.6	267.2	267.2
172.5°	273.6	273.2	272.9	272.7	272.2	272.0	271.7	271.3	271.1	270.6	270.9
175°	274.9	274.4	274.3	274.1	273.9	273.6	273.5	273.3	273.3	272.9	273.0
177.5°	277.0	276.8	276.8	276.7	276.7	276.6	276.5	276.3	276.2	276.2	276.2
180°	278.6	278.6	278.6	278.6	278.6	278.6	278.6	278.6	278.6	278.6	278.6



TEST NUMBER: P1444392  
 CATALOG NUMBER: EHBR1-36-UNV-TA-L840-UPL15

**CANDELA DISTRIBUTION (continued):**

	27.5°	30°	32.5°	35°	37.5°	40°	42.5°	45°	47.5°	50°	52.5°
0°	31377.2	31377.2	31377.2	31377.2	31377.2	31377.2	31377.2	31377.2	31377.2	31377.2	31377.2
2.5°	31475.3	31471.4	31466.2	31459.6	31453.9	31447.3	31431.6	31426.9	31432.2	31435.6	31442.9
5°	31550.0	31552.2	31553.0	31567.4	31579.7	31610.6	31851.9	31947.9	32022.0	32069.1	32140.7
7.5°	31775.5	31848.1	31919.8	32016.4	32099.6	32212.1	32634.4	32814.2	32942.0	33033.9	33147.0
10°	32157.6	32316.1	32464.6	32638.5	32788.1	32959.4	33352.5	33527.7	33638.2	33718.7	33793.8
12.5°	32542.6	32762.2	32960.7	33154.3	33316.3	33464.7	33603.0	33664.3	33669.5	33672.0	33632.2
15°	32743.1	32953.0	33128.0	33256.0	33351.1	33393.3	33155.1	33030.3	32872.5	32742.5	32528.6
17.5°	32616.5	32742.5	32818.0	32810.6	32771.3	32639.6	31965.4	31594.6	31226.4	30894.7	30459.6
20°	32054.0	32044.4	31978.6	31792.5	31568.2	31219.4	30063.5	29396.5	28751.8	28185.4	27498.4
22.5°	31007.6	30842.9	30613.4	30212.0	29766.0	29156.5	27500.0	26519.0	25621.3	24828.4	23940.0
25°	29491.3	29152.5	28729.2	28091.9	27398.8	26510.0	24468.2	23248.1	22170.4	21235.6	20210.7
27.5°	27550.8	27040.5	26420.1	25538.0	24599.1	23460.3	21196.8	19850.2	18693.2	17691.0	16600.2
30°	25253.5	24589.8	23788.6	22693.8	21561.3	20269.7	17973.9	16610.1	15439.0	14408.0	13316.3
32.5°	22657.2	21880.0	20941.0	19712.3	18487.6	17159.6	14942.5	13622.2	12503.5	11511.8	10523.7
35°	19793.8	18960.2	17966.9	16713.7	15496.2	14205.1	12170.8	10980.3	9992.4	9115.8	8317.9
37.5°	16722.2	15903.7	14959.5	13778.4	12649.5	11479.5	9724.1	8726.6	7897.6	7170.1	6554.0
40°	13528.6	12812.3	11995.4	10974.3	10010.8	9036.5	7595.6	6803.8	6149.6	5594.6	5132.9
42.5°	10374.0	9819.0	9192.5	8385.6	7648.3	6906.4	5797.4	5210.7	4726.2	4326.7	4000.3
45°	7526.7	7155.4	6735.3	6174.3	5664.1	5146.6	4357.3	3945.1	3629.5	3371.9	3154.0
47.5°	5261.5	5046.2	5033.0	4514.7	4140.5	3824.1	3315.6	3055.3	2861.8	2705.7	2567.9
50°	3695.1	3590.8	3461.4	3276.4	3102.8	2923.9	2614.1	2456.7	2343.4	2248.9	2161.7
52.5°	2762.3	2708.3	2639.2	2541.1	2447.0	2346.4	2150.4	2050.2	2014.6	1926.5	1857.5
55°	2206.3	2175.3	2136.1	2078.4	2021.2	1998.3	1830.2	1755.9	1708.7	1673.9	1636.9
57.5°	1832.6	1809.5	1786.3	1747.2	1714.1	1673.9	1584.7	1546.6	1518.6	1498.2	1472.4
60°	1563.2	1549.4	1536.4	1513.5	1495.5	1473.9	1417.3	1395.7	1381.1	1368.8	1352.5
62.5°	1379.7	1372.6	1365.9	1353.7	1344.6	1332.9	1294.1	1283.9	1276.5	1270.3	1260.3
65°	1247.3	1242.2	1238.4	1230.3	1225.8	1219.0	1185.7	1178.7	1174.2	1172.0	1166.1
67.5°	1127.0	1121.6	1119.2	1113.3	1111.5	1107.2	1079.9	1076.1	1074.6	1075.3	1073.2
70°	1014.3	1012.1	1013.3	1012.4	1015.0	1015.8	999.2	999.1	1000.9	1004.4	1004.8
72.5°	946.9	946.9	948.2	948.8	951.2	952.4	938.7	938.0	938.8	941.4	941.5
75°	882.8	883.8	887.3	888.4	891.4	892.0	873.8	871.7	871.8	874.3	873.4
77.5°	793.9	797.7	804.4	807.8	813.5	814.5	794.1	791.7	791.8	794.3	792.2
80°	693.1	700.4	710.9	718.3	726.9	730.4	709.4	704.5	699.8	699.1	694.9
82.5°	585.9	594.9	607.6	614.3	623.5	625.5	590.5	583.9	580.0	580.3	576.4
85°	447.4	454.2	465.7	469.3	475.0	474.5	434.6	417.4	422.0	414.9	420.5
87.5°	280.6	284.5	291.8	292.7	295.3	294.8	254.6	246.6	244.3	244.5	241.6
90°	142.9	145.7	152.2	152.6	157.0	156.6	124.2	120.8	117.8	119.1	114.8
92.5°	39.7	42.0	44.7	47.2	50.0	52.6	51.5	53.0	50.8	47.9	45.8
95°	44.3	48.3	52.5	56.5	60.6	64.7	68.8	72.8	69.0	65.2	61.3
97.5°	49.8	54.6	59.3	64.2	69.0	73.8	78.6	83.4	79.4	75.0	70.9
100°	64.8	73.8	82.6	91.7	100.6	109.6	118.6	127.5	119.7	111.5	103.6
102.5°	130.9	150.0	169.0	188.0	206.9	226.1	245.3	264.4	246.2	227.8	209.7
105°	250.3	281.1	312.0	342.6	373.4	404.2	435.4	466.3	437.2	408.2	379.2
107.5°	394.5	425.8	456.9	488.1	519.4	550.6	582.4	613.7	585.3	556.8	528.4
110°	484.7	507.3	530.1	552.7	575.4	598.0	621.5	644.3	627.2	610.0	592.9



TEST NUMBER: P1444392  
 CATALOG NUMBER: EHBR1-36-UNV-TA-L840-UPL15

**CANDELA DISTRIBUTION (continued):**

	27.5°	30°	32.5°	35°	37.5°	40°	42.5°	45°	47.5°	50°	52.5°
112.5°	505.5	521.8	537.9	553.9	570.0	586.1	603.4	619.7	610.8	602.0	593.4
115°	480.1	491.1	501.8	512.5	523.2	534.0	546.0	557.1	553.9	550.8	547.8
117.5°	435.3	441.0	447.0	452.8	458.6	464.3	472.0	478.0	478.0	478.2	478.4
120°	387.5	389.8	392.0	394.2	396.3	398.5	402.7	405.2	407.1	408.9	410.8
122.5°	347.5	348.1	348.6	349.1	349.6	350.1	352.9	354.0	355.0	356.1	357.3
125°	315.8	315.9	315.9	315.9	315.7	315.8	318.4	318.8	318.5	317.9	317.6
127.5°	295.7	295.4	294.9	294.5	293.9	293.6	295.8	296.0	294.4	293.0	291.4
130°	282.0	281.7	281.4	281.1	280.8	280.5	283.2	283.5	281.3	278.9	276.6
132.5°	274.2	274.0	273.6	273.6	273.2	272.9	276.0	276.4	273.9	271.3	268.8
135°	268.2	268.1	267.9	267.7	267.4	267.5	270.7	271.3	269.0	266.4	264.0
137.5°	263.6	263.4	263.2	263.2	263.0	262.9	266.7	267.4	265.5	263.1	261.2
140°	260.1	260.1	260.0	260.1	260.0	260.3	264.3	265.2	263.7	261.8	260.1
142.5°	256.3	256.6	256.8	257.2	257.4	257.8	262.4	263.7	262.4	260.9	259.7
145°	254.8	255.3	255.6	256.0	256.4	257.0	262.1	263.8	262.8	261.8	260.8
147.5°	253.5	253.9	254.2	254.6	255.0	255.8	261.3	262.8	262.3	261.5	260.8
150°	252.0	252.5	252.8	253.3	254.0	254.6	260.9	262.8	262.2	261.7	261.0
152.5°	249.6	249.9	250.2	250.7	251.1	251.8	259.6	261.7	261.3	260.6	260.1
155°	249.1	249.3	249.4	249.8	250.0	250.6	259.2	261.3	261.0	260.6	260.2
157.5°	250.6	250.5	250.5	250.6	250.9	251.0	260.1	262.5	262.1	261.7	261.4
160°	252.5	252.5	252.2	252.4	252.2	252.5	261.7	264.2	263.9	263.4	263.0
162.5°	254.9	255.1	255.0	255.2	255.2	255.4	264.9	267.4	266.9	266.4	266.0
165°	258.6	258.6	258.5	258.5	258.5	258.6	267.4	269.6	269.4	269.0	268.6
167.5°	262.7	262.8	262.7	262.8	262.7	263.0	271.2	273.4	273.1	272.7	272.4
170°	267.1	267.2	267.2	267.2	267.4	267.7	274.5	276.3	276.1	275.6	275.2
172.5°	270.9	271.2	271.3	271.4	271.6	271.9	277.7	279.3	279.1	278.8	278.3
175°	273.2	273.2	273.4	273.7	273.8	273.9	278.6	279.8	279.7	279.5	279.2
177.5°	276.4	276.5	276.7	276.8	277.0	277.2	280.0	280.7	280.6	280.6	280.5
180°	278.6	278.6	278.6	278.6	278.6	278.6	278.6	278.6	278.6	278.6	278.6



TEST NUMBER: P1444392  
 CATALOG NUMBER: EHBR1-36-UNV-TA-L840-UPL15

**CANDELA DISTRIBUTION (continued):**

	55°	57.5°	60°	62.5°	65°	67.5°	70°	72.5°	75°	77.5°	80°
0°	31377.2	31377.2	31377.2	31377.2	31377.2	31377.2	31377.2	31377.2	31377.2	31377.2	31377.2
2.5°	31444.5	31455.5	31457.2	31470.0	31469.0	31484.3	31481.9	31494.4	31487.2	31497.4	31488.8
5°	32183.0	32250.0	32285.0	32350.4	32371.0	32429.6	32446.0	32499.4	32501.6	32544.0	32534.3
7.5°	33227.2	33325.9	33384.5	33465.3	33506.3	33573.6	33603.2	33653.0	33669.0	33708.6	33711.6
10°	33850.6	33898.6	33932.1	33954.7	33975.2	33984.8	33996.1	33993.1	33996.1	33991.7	34001.4
12.5°	33605.5	33535.4	33489.1	33401.4	33350.7	33253.8	33206.2	33113.1	33079.3	32999.2	32987.7
15°	32363.4	32119.4	31947.1	31696.3	31538.8	31292.1	31147.8	30925.3	30823.7	30646.9	30600.4
17.5°	30099.5	29646.6	29296.2	28846.6	28534.6	28114.5	27850.2	27502.4	27311.9	27031.5	26934.3
20°	26925.7	26255.6	25729.9	25103.6	24655.5	24097.0	23739.7	23288.7	23027.0	22682.5	22542.9
22.5°	23199.4	22365.2	21708.6	20968.8	20428.1	19805.9	19377.5	18889.7	18605.0	18230.7	18065.0
25°	19358.9	18438.9	17709.0	16929.5	16358.1	15734.3	15306.0	14826.8	14532.1	14176.9	14012.2
27.5°	15685.6	14754.4	14049.0	13324.3	12800.2	12237.4	11850.8	11432.5	11170.9	10867.6	10712.8
30°	12444.1	11622.8	11022.5	10421.1	9985.2	9528.0	9206.8	8860.0	8630.6	8371.0	8223.3
32.5°	9803.2	9169.2	8699.1	8221.8	7865.1	7483.0	7205.5	6899.5	6692.5	6460.6	6326.9
35°	7764.1	7271.4	6896.4	6503.6	6197.1	5871.7	5627.2	5363.0	5177.3	4977.6	4862.2
37.5°	6134.4	5742.6	5434.1	5107.8	4856.0	4586.5	4495.7	4192.6	4000.1	3840.8	3730.4
40°	4814.3	4502.8	4247.5	3998.0	3792.6	3588.2	3424.0	3262.2	3137.9	3024.0	2945.1
42.5°	3759.5	3533.8	3347.5	3164.6	3014.9	2865.9	2747.1	2635.5	2551.8	2477.3	2426.4
45°	2988.7	2833.5	2703.9	2575.2	2469.5	2370.0	2290.0	2218.9	2164.8	2120.0	2088.3
47.5°	2455.3	2349.1	2257.6	2170.8	2099.0	2033.8	1980.3	1962.8	1904.7	1865.4	1850.6
50°	2086.6	2022.4	1953.0	1888.9	1841.0	1793.4	1758.6	1724.6	1702.8	1684.7	1679.3
52.5°	1811.6	1762.4	1723.9	1683.2	1651.6	1617.6	1593.7	1571.0	1559.1	1549.6	1548.5
55°	1606.9	1572.6	1547.1	1519.9	1500.9	1481.0	1468.6	1456.6	1451.3	1446.6	1447.0
57.5°	1452.2	1429.2	1412.7	1394.9	1384.8	1375.2	1372.0	1369.0	1370.7	1371.3	1374.1
60°	1339.4	1324.5	1314.0	1303.9	1299.6	1296.6	1298.9	1301.6	1307.1	1311.5	1315.4
62.5°	1253.0	1244.5	1239.4	1233.9	1233.5	1233.7	1238.3	1242.9	1249.7	1254.9	1258.7
65°	1164.1	1159.1	1157.5	1154.0	1155.8	1156.8	1162.4	1165.9	1172.8	1176.8	1181.7
67.5°	1074.2	1073.0	1074.1	1074.1	1077.2	1079.8	1085.2	1089.1	1095.0	1098.7	1102.6
70°	1007.8	1008.2	1010.6	1011.1	1014.4	1016.4	1021.0	1023.5	1028.8	1031.9	1036.7
72.5°	943.2	942.2	942.7	941.2	942.4	941.9	944.5	945.7	950.2	952.6	958.4
75°	874.5	871.6	870.9	867.7	867.8	865.6	866.7	866.5	869.5	870.7	874.8
77.5°	791.5	786.6	784.2	779.0	778.8	776.9	779.0	780.3	785.4	787.8	792.6
80°	692.2	684.5	681.0	674.9	675.9	675.6	680.8	684.6	690.9	692.1	698.0
82.5°	575.2	567.5	563.7	557.9	559.2	559.4	564.0	564.8	570.3	572.6	579.6
85°	411.9	414.9	406.6	407.2	405.5	408.7	411.9	415.8	420.3	427.9	433.8
87.5°	242.6	241.6	244.5	244.8	249.0	251.1	257.9	261.7	269.3	275.3	286.0
90°	114.7	110.7	112.7	111.1	114.9	113.5	116.9	114.9	119.2	119.4	125.0
92.5°	42.7	40.6	37.5	35.2	32.4	30.3	28.6	27.7	26.1	25.4	23.8
95°	57.5	53.8	49.9	46.1	42.4	38.5	37.1	35.7	34.4	33.0	31.6
97.5°	66.8	62.8	58.6	54.5	50.3	46.3	45.4	44.5	43.5	42.6	41.7
100°	95.7	87.7	79.8	71.8	64.0	56.1	55.4	54.6	53.9	53.2	52.4
102.5°	191.6	173.3	155.3	137.1	119.1	100.9	97.8	94.6	91.4	88.3	85.2
105°	350.0	321.0	292.0	262.9	234.1	205.0	196.5	187.5	178.9	170.2	161.6
107.5°	500.1	471.6	443.4	415.0	386.7	358.5	344.8	331.2	317.2	303.6	290.0
110°	575.5	558.5	541.5	524.2	507.2	490.3	477.1	464.1	450.8	437.8	424.8



TEST NUMBER: P1444392  
 CATALOG NUMBER: EHBR1-36-UNV-TA-L840-UPL15

**CANDELA DISTRIBUTION (continued):**

	55°	57.5°	60°	62.5°	65°	67.5°	70°	72.5°	75°	77.5°	80°
112.5°	584.5	575.9	567.1	558.5	550.0	541.2	534.9	528.4	522.1	515.6	509.0
115°	544.8	541.8	538.8	536.0	533.2	530.1	529.5	529.0	528.3	527.8	527.4
117.5°	478.4	478.6	478.6	478.8	479.2	479.4	482.6	485.6	489.0	492.4	495.7
120°	412.6	414.5	416.3	418.3	420.2	422.3	426.4	430.8	435.0	439.6	444.2
122.5°	358.3	359.4	360.3	361.6	362.7	363.9	368.1	372.3	376.5	380.9	385.2
125°	317.0	316.4	316.0	315.5	315.0	314.8	317.9	321.3	324.6	328.3	331.7
127.5°	289.8	288.1	286.6	284.9	283.3	281.9	283.5	285.3	287.0	288.9	290.8
130°	274.1	271.9	269.3	267.1	264.5	262.2	262.5	262.8	263.2	263.8	264.4
132.5°	266.0	263.4	260.6	257.9	255.2	252.6	251.8	251.2	250.6	250.3	249.9
135°	261.3	258.9	256.2	253.6	250.9	248.5	247.3	246.2	245.2	244.2	243.4
137.5°	259.1	257.0	254.8	252.8	250.3	248.3	246.7	245.6	244.3	243.4	242.2
140°	258.2	256.5	254.6	252.8	250.8	249.2	247.8	246.8	245.7	244.8	243.8
142.5°	258.0	256.7	255.2	253.9	252.4	251.0	249.7	248.7	247.6	246.7	245.8
145°	259.7	258.8	257.7	256.6	255.6	254.6	253.4	252.6	251.6	250.8	250.2
147.5°	260.0	259.3	258.5	257.7	256.8	256.0	255.2	254.8	253.8	253.4	252.7
150°	260.2	259.6	258.8	258.3	257.4	256.7	256.1	255.6	255.0	254.8	254.1
152.5°	259.4	258.9	258.2	257.7	256.9	256.2	255.7	255.4	254.9	254.5	253.8
155°	259.6	259.1	258.6	258.1	257.4	257.1	256.5	255.9	255.5	255.0	254.4
157.5°	260.9	260.5	259.9	259.5	258.8	258.4	257.9	257.5	256.9	256.5	256.0
160°	262.6	262.2	261.7	261.2	260.7	260.3	259.6	259.2	258.5	258.0	257.5
162.5°	265.4	265.0	264.5	264.0	263.2	262.7	262.2	261.7	261.2	260.8	260.2
165°	268.1	267.7	267.2	266.8	266.4	266.0	265.3	264.8	264.2	263.7	262.9
167.5°	272.0	271.6	271.2	270.8	270.2	269.8	269.3	268.8	268.2	267.7	267.1
170°	274.9	274.3	274.0	273.4	273.0	272.4	272.0	271.4	270.9	270.5	270.0
172.5°	278.0	277.9	277.5	277.1	276.6	276.2	275.9	275.5	275.0	274.5	274.2
175°	279.1	279.0	278.9	278.5	278.4	278.2	278.0	277.9	277.6	277.5	277.2
177.5°	280.5	280.4	280.4	280.2	280.0	280.0	279.8	279.7	279.5	279.3	279.2
180°	278.6	278.6	278.6	278.6	278.6	278.6	278.6	278.6	278.6	278.6	278.6



TEST NUMBER: P1444392  
 CATALOG NUMBER: EHBR1-36-UNV-TA-L840-UPL15

**CANDELA DISTRIBUTION (continued):**

	82.5°	85°	87.5°	90°	92.5°	95°	97.5°	100°	102.5°	105°	107.5°
0°	31377.2	31377.2	31377.2	31377.2	31377.2	31377.2	31377.2	31377.2	31377.2	31377.2	31377.2
2.5°	31497.9	31489.8	31493.6	31478.9	31482.4	31464.6	31462.9	31442.9	31440.8	31421.9	31414.8
5°	32564.3	32546.7	32566.5	32535.7	32541.8	32501.6	32498.3	32446.4	32428.5	32363.6	32335.6
7.5°	33736.4	33729.8	33741.9	33716.0	33715.2	33679.4	33664.6	33618.1	33589.3	33521.1	33477.6
10°	33993.1	33999.2	33989.3	33991.7	33977.8	33973.9	33959.6	33950.5	33927.2	33909.6	33883.4
12.5°	32926.9	32933.3	32892.6	32918.4	32898.0	32945.7	32941.7	32997.8	33006.4	33077.3	33104.3
15°	30462.6	30454.9	30377.0	30426.1	30399.8	30504.2	30527.5	30668.1	30743.1	30923.5	31034.3
17.5°	26740.0	26719.9	26610.1	26669.9	26639.5	26793.4	26845.1	27069.8	27209.9	27500.5	27707.5
20°	22302.5	22264.0	22135.4	22205.6	22174.2	22349.0	22422.8	22694.3	22875.0	23260.0	23533.8
22.5°	17809.9	17749.0	17623.1	17688.6	17658.9	17840.1	17936.1	18208.5	18415.5	18810.7	19130.3
25°	13775.5	13721.3	13599.6	13645.4	13634.3	13787.6	13872.9	14130.6	14334.1	14710.5	15015.6
27.5°	10506.9	10450.5	10340.5	10372.9	10361.8	10492.4	10572.8	10788.1	10963.1	11280.0	11547.9
30°	8041.5	7973.5	7880.2	7898.1	7890.5	7996.2	8071.4	8252.7	8402.6	8670.5	8901.3
32.5°	6163.8	6095.5	6009.7	6018.1	6006.8	6089.8	6151.7	6309.4	6440.1	6667.8	6868.8
35°	4716.2	4796.1	4613.0	4729.0	4608.2	4785.5	4721.7	4820.2	4932.7	5124.5	5292.1
37.5°	3625.6	3569.9	3522.8	3517.8	3517.6	3558.6	3607.1	3702.0	3801.1	3944.0	4091.7
40°	2873.1	2834.1	2803.6	2801.4	2803.6	2832.8	2868.6	2934.2	3006.7	3109.4	3217.9
42.5°	2383.0	2357.0	2338.7	2337.3	2343.2	2363.9	2388.8	2427.8	2475.0	2541.5	2615.9
45°	2062.5	2048.1	2037.8	2037.3	2039.9	2050.7	2065.0	2089.3	2119.2	2160.8	2207.8
47.5°	1837.6	1834.1	1827.7	1827.9	1825.0	1829.4	1831.0	1844.7	1860.6	1891.9	1953.4
50°	1673.8	1673.8	1669.4	1669.2	1665.1	1664.7	1661.3	1666.7	1674.0	1693.5	1713.2
52.5°	1544.4	1544.0	1539.2	1538.2	1533.8	1533.6	1530.6	1532.7	1533.7	1543.5	1555.3
55°	1443.3	1440.2	1433.9	1432.0	1430.3	1432.8	1431.6	1431.8	1430.5	1434.5	1438.0
57.5°	1370.7	1366.7	1360.8	1359.0	1358.6	1361.6	1361.7	1360.6	1355.2	1351.5	1346.3
60°	1313.2	1309.3	1302.9	1301.2	1302.2	1306.4	1306.2	1302.6	1294.5	1287.4	1279.2
62.5°	1256.8	1255.2	1252.0	1251.5	1250.7	1251.4	1248.4	1244.7	1236.7	1229.2	1220.2
65°	1181.1	1181.9	1179.5	1179.8	1176.9	1176.5	1172.1	1168.4	1160.4	1153.5	1144.3
67.5°	1102.5	1103.1	1101.1	1101.1	1099.6	1099.8	1097.2	1093.8	1086.9	1081.3	1074.3
70°	1037.8	1039.4	1038.3	1038.6	1036.7	1036.0	1031.8	1028.6	1021.5	1016.8	1010.4
72.5°	960.2	963.7	963.6	964.4	961.6	960.2	955.2	951.1	944.7	941.0	935.8
75°	876.4	881.0	882.3	884.3	880.3	878.2	872.8	869.5	864.2	862.0	858.7
77.5°	794.7	799.7	804.5	808.9	802.5	796.8	789.9	784.7	777.2	774.4	769.2
80°	703.0	711.7	722.3	731.2	719.7	708.1	696.8	688.4	678.6	674.5	668.0
82.5°	583.2	592.3	598.3	604.0	596.0	587.4	576.5	569.2	558.5	554.5	547.0
85°	443.1	454.4	458.0	461.0	455.9	451.3	441.0	427.2	420.5	410.0	404.4
87.5°	291.4	298.2	299.5	300.5	297.4	295.1	288.5	282.0	270.5	262.1	251.8
90°	124.1	127.8	124.6	125.7	122.3	123.4	117.3	115.8	107.2	104.2	96.5
92.5°	22.9	21.3	20.2	18.9	20.7	21.4	23.1	23.8	25.3	26.1	27.7
95°	30.2	28.9	27.4	26.0	27.1	28.3	29.4	30.5	31.6	32.7	33.8
97.5°	40.8	39.8	38.8	37.9	38.5	39.3	39.9	40.6	41.2	41.9	42.6
100°	51.7	51.0	50.1	49.4	49.4	49.4	49.4	49.4	49.4	49.4	49.4
102.5°	82.0	78.8	75.7	72.5	74.7	76.8	78.9	81.0	83.2	85.4	87.6
105°	153.0	144.4	135.7	127.1	135.5	143.8	152.2	160.5	168.8	177.5	185.9
107.5°	276.3	262.6	249.0	235.4	250.7	265.9	281.1	296.2	311.5	326.6	342.2
110°	411.9	398.9	385.9	372.9	389.1	405.2	421.4	437.5	453.6	469.8	486.2



TEST NUMBER: P1444392  
 CATALOG NUMBER: EHBR1-36-UNV-TA-L840-UPL15

**CANDELA DISTRIBUTION (continued):**

	82.5°	85°	87.5°	90°	92.5°	95°	97.5°	100°	102.5°	105°	107.5°
112.5°	502.7	496.4	490.1	483.8	494.2	504.6	515.0	525.7	536.0	546.5	556.9
115°	526.9	526.5	526.2	525.8	530.7	535.7	540.5	545.6	550.6	555.6	560.6
117.5°	499.0	502.4	505.9	509.4	511.1	512.6	514.3	515.8	517.7	519.3	521.1
120°	448.8	453.0	457.8	462.5	461.9	461.2	460.7	460.1	459.8	459.3	459.1
122.5°	389.8	394.3	399.1	403.7	402.3	400.9	399.7	398.4	397.2	396.1	395.1
125°	335.6	339.1	343.1	346.9	345.5	344.1	342.9	341.7	340.6	339.4	338.7
127.5°	293.1	295.2	297.5	299.9	299.3	298.6	298.3	297.7	297.5	297.3	297.2
130°	265.1	265.9	267.0	267.9	268.1	268.3	268.7	269.2	269.8	270.4	271.2
132.5°	249.9	249.8	249.8	249.9	250.6	251.4	252.5	253.6	254.8	256.0	257.6
135°	242.9	242.3	241.9	241.5	242.6	243.6	245.0	246.3	248.0	249.6	251.4
137.5°	241.4	240.5	240.0	239.3	240.4	241.6	242.9	244.2	245.9	247.6	249.5
140°	243.0	242.3	241.9	241.3	242.4	243.3	244.7	246.0	247.6	249.2	251.0
142.5°	245.2	244.3	243.8	243.4	244.2	245.2	246.5	247.6	249.2	250.5	252.2
145°	249.5	248.8	248.5	248.0	248.6	249.4	250.2	251.2	252.4	253.4	254.7
147.5°	252.1	251.7	251.4	251.1	251.7	252.1	252.9	253.4	254.3	255.1	256.1
150°	254.0	253.5	253.2	253.1	253.4	253.6	254.1	254.4	254.9	255.4	256.3
152.5°	253.7	253.2	253.2	253.0	253.1	253.3	253.7	254.0	254.4	254.8	255.6
155°	254.2	253.8	253.5	253.2	253.1	253.1	253.3	253.3	253.5	253.6	253.9
157.5°	255.7	255.3	255.0	254.6	254.5	254.2	254.2	254.1	254.1	253.8	253.9
160°	257.1	256.4	256.0	255.6	255.5	255.3	255.2	255.0	255.1	255.0	255.0
162.5°	259.8	259.4	259.0	258.6	258.3	257.9	257.7	257.2	257.0	256.7	256.6
165°	262.4	261.8	261.4	260.7	260.6	260.3	260.1	259.8	259.7	259.4	259.4
167.5°	266.7	266.1	265.6	265.1	264.7	264.2	264.0	263.4	263.2	262.8	262.7
170°	269.6	269.1	268.7	268.3	268.1	267.7	267.6	267.3	267.1	267.0	267.0
172.5°	273.9	273.5	273.1	272.8	272.6	272.3	272.2	272.1	271.9	271.9	271.8
175°	277.0	276.8	276.7	276.5	276.3	276.2	275.9	275.8	275.7	275.5	275.4
177.5°	278.9	278.6	278.5	278.4	278.3	278.3	278.3	278.3	278.3	278.2	278.1
180°	278.6	278.6	278.6	278.6	278.6	278.6	278.6	278.6	278.6	278.6	278.6



TEST NUMBER: P1444392  
 CATALOG NUMBER: EHBR1-36-UNV-TA-L840-UPL15

**CANDELA DISTRIBUTION (continued):**

	110°	112.5°	115°	117.5°	120°	122.5°	125°	127.5°	130°	132.5°	135°
0°	31377.2	31377.2	31377.2	31377.2	31377.2	31377.2	31377.2	31377.2	31377.2	31377.2	31377.2
2.5°	31394.4	31386.2	31364.5	31353.8	31333.7	31323.5	31307.9	31297.7	31285.1	31275.6	31270.7
5°	32264.3	32224.1	32143.7	32094.2	32007.3	31950.1	31863.8	31800.6	31711.5	31645.8	31561.5
7.5°	33396.0	33334.3	33231.3	33153.2	33031.6	32938.8	32802.4	32693.3	32542.6	32417.5	32263.5
10°	33856.7	33820.8	33774.6	33724.3	33656.9	33590.9	33497.8	33402.8	33276.3	33150.5	32986.1
12.5°	33175.7	33209.6	33276.3	33307.5	33358.5	33375.9	33399.2	33388.3	33367.6	33316.3	33241.7
15°	31247.1	31388.4	31611.7	31766.1	31982.6	32134.5	32335.6	32465.0	32614.1	32703.2	32787.9
17.5°	28074.6	28347.9	28741.9	29056.2	29478.1	29821.2	30241.5	30571.9	30953.2	31245.7	31557.2
20°	24011.1	24393.7	24937.6	25399.5	26010.9	26529.4	27193.7	27750.1	28399.2	28940.3	29524.3
22.5°	19637.6	20087.7	20710.9	21268.0	21998.2	22650.3	23482.7	24218.3	25095.8	25882.0	26751.6
25°	15511.7	15952.9	16587.7	17164.6	17952.8	18671.2	19580.5	20424.5	21442.9	22392.4	23482.7
27.5°	11973.5	12365.4	12923.5	13442.7	14164.6	14869.9	15792.7	16692.7	17779.3	18799.8	19974.7
30°	9247.0	9564.9	10012.0	10429.7	11009.3	11586.0	12408.0	13240.4	14321.6	15379.1	16583.6
32.5°	7166.1	7437.1	7810.5	8149.5	8596.1	9031.0	9636.3	10301.5	11249.8	12262.9	13427.5
35°	5547.4	5779.2	6097.0	6389.1	6756.3	7101.5	7553.2	8028.0	8751.8	9603.9	10646.2
37.5°	4422.6	4517.2	4743.9	4983.2	5288.3	5572.0	5925.4	6276.4	6794.2	7466.5	8317.9
40°	3363.4	3513.5	3698.1	3886.6	4117.5	4345.1	4732.7	4919.3	5260.2	5742.8	6403.7
42.5°	2713.8	2819.3	2949.3	3080.4	3241.3	3399.8	3595.9	3795.5	4050.4	4377.2	4847.3
45°	2271.0	2339.8	2423.5	2510.9	2616.5	2724.7	2856.0	2993.1	3165.8	3366.7	3652.3
47.5°	1975.1	2013.2	2067.8	2127.5	2199.9	2274.8	2360.2	2447.5	2554.8	2674.1	2836.6
50°	1744.2	1775.9	1818.4	1858.3	1908.3	1985.0	2018.9	2067.1	2131.7	2201.7	2292.8
52.5°	1577.1	1598.3	1624.9	1647.8	1679.4	1708.1	1745.9	1779.1	1823.8	1865.8	1924.6
55°	1447.0	1454.7	1469.7	1484.5	1506.4	1526.0	1551.8	1573.6	1602.1	1627.3	1664.3
57.5°	1346.5	1347.2	1354.2	1361.8	1375.9	1388.3	1406.0	1420.4	1440.1	1456.2	1478.4
60°	1274.3	1270.4	1271.8	1274.5	1282.4	1290.4	1301.8	1311.1	1323.6	1332.7	1345.1
62.5°	1214.1	1208.1	1206.8	1206.1	1210.0	1212.9	1219.1	1223.6	1230.7	1234.6	1241.3
65°	1138.3	1131.1	1128.4	1125.0	1126.2	1125.3	1127.7	1127.8	1131.4	1132.2	1136.0
67.5°	1069.3	1063.5	1059.9	1055.4	1053.5	1050.3	1049.0	1045.9	1045.4	1042.9	1042.3
70°	1006.6	1000.7	997.7	993.7	991.5	987.4	984.9	979.7	976.7	972.0	969.2
72.5°	933.9	930.6	929.7	927.0	926.3	923.9	922.8	919.3	917.2	913.0	910.7
75°	858.0	855.3	855.0	852.3	852.0	849.3	848.6	844.7	842.7	838.7	837.0
77.5°	767.5	763.5	762.4	759.2	760.0	758.6	759.7	756.7	755.5	751.4	750.2
80°	665.6	660.5	658.4	654.1	655.2	653.3	655.2	655.0	656.6	653.3	652.7
82.5°	545.0	539.3	538.3	535.3	537.3	537.5	541.8	539.4	540.4	537.4	538.6
85°	396.5	392.4	386.5	385.7	382.0	385.8	380.8	384.2	378.8	382.6	377.5
87.5°	245.8	237.2	232.7	226.5	224.2	218.2	215.8	211.5	212.8	210.8	212.0
90°	95.2	88.4	87.6	82.2	82.4	78.0	79.3	76.5	78.4	75.3	77.6
92.5°	28.6	29.8	31.9	34.5	36.4	38.6	40.8	43.4	45.3	47.8	49.7
95°	34.9	36.0	38.9	42.0	44.9	47.8	51.0	53.9	56.8	59.8	62.8
97.5°	43.3	43.9	46.8	49.8	52.8	55.8	58.7	62.1	65.0	68.0	70.9
100°	49.4	49.5	58.0	66.4	74.9	83.3	91.8	100.2	109.0	117.3	125.8
102.5°	89.7	91.8	113.1	134.5	155.9	177.2	198.6	220.0	241.4	262.9	284.3
105°	194.1	202.6	235.1	267.8	300.3	333.0	365.6	398.5	431.0	463.7	496.3
107.5°	357.3	372.6	402.1	431.5	461.0	490.6	520.2	549.7	579.3	608.8	638.6
110°	502.4	518.6	538.4	558.2	578.2	597.9	617.7	637.6	657.7	677.4	697.6



TEST NUMBER: P1444392  
 CATALOG NUMBER: EHBR1-36-UNV-TA-L840-UPL15

**CANDELA DISTRIBUTION (continued):**

	110°	112.5°	115°	117.5°	120°	122.5°	125°	127.5°	130°	132.5°	135°
112.5°	567.4	578.0	589.5	601.3	612.9	624.6	636.3	648.0	659.9	671.7	683.5
115°	565.7	571.0	575.4	580.3	584.8	589.6	594.4	599.3	604.2	609.0	614.0
117.5°	522.8	524.9	525.7	526.7	527.6	528.8	529.9	531.1	532.4	533.6	534.7
120°	458.7	458.4	458.0	457.7	457.1	456.9	456.7	456.5	456.3	456.2	456.0
122.5°	394.1	393.2	392.8	392.6	392.3	392.2	392.1	392.2	392.0	392.1	392.0
125°	337.7	337.0	338.1	339.2	340.4	341.8	343.0	344.5	345.8	347.2	348.6
127.5°	296.9	297.2	299.4	301.7	303.9	306.4	308.9	311.5	313.7	316.4	318.7
130°	272.1	273.1	275.8	278.8	281.5	284.6	287.6	290.8	293.5	296.6	299.5
132.5°	259.0	260.7	263.2	266.3	269.0	272.0	274.9	277.9	280.7	283.8	286.5
135°	253.4	255.5	258.0	260.6	263.3	266.2	268.8	271.6	274.2	277.0	279.6
137.5°	251.2	253.4	255.6	257.8	260.0	262.4	264.7	267.0	269.1	271.5	273.6
140°	252.9	254.9	256.3	258.0	259.5	261.1	262.5	264.2	265.6	267.3	268.7
142.5°	253.9	255.8	256.7	257.9	258.9	260.4	261.5	262.7	263.7	264.8	265.8
145°	256.0	257.5	257.9	258.5	259.1	259.7	260.1	260.7	261.0	261.5	261.9
147.5°	257.1	258.3	258.3	258.7	259.1	259.2	259.5	259.8	259.9	260.2	260.4
150°	256.8	257.7	257.5	257.8	257.6	257.7	257.6	257.7	257.5	257.7	257.5
152.5°	256.0	256.6	256.2	256.4	256.1	255.9	255.7	255.7	255.4	255.3	255.3
155°	254.0	254.3	254.1	254.0	253.8	253.7	253.6	253.8	253.7	253.6	253.6
157.5°	253.9	253.9	253.8	253.7	253.5	253.5	253.5	253.5	253.5	253.8	253.9
160°	254.9	255.0	254.7	254.6	254.5	254.4	254.4	254.6	254.6	255.0	255.1
162.5°	256.3	256.2	255.9	255.8	255.7	255.8	255.9	256.1	256.1	256.4	256.6
165°	259.4	259.5	259.1	259.1	258.9	258.8	258.8	258.9	259.0	259.2	259.3
167.5°	262.5	262.4	262.4	262.5	262.5	262.7	262.8	263.2	263.4	263.9	264.0
170°	266.9	267.0	266.8	266.8	266.7	266.7	266.8	266.8	266.9	267.0	267.1
172.5°	271.8	271.8	271.6	271.4	271.2	271.1	271.0	271.0	270.8	270.7	270.5
175°	275.2	275.1	275.0	274.9	274.8	274.5	274.5	274.2	274.1	274.0	273.9
177.5°	278.0	277.8	277.6	277.6	277.5	277.4	277.4	277.3	277.3	277.3	277.1
180°	278.6	278.6	278.6	278.6	278.6	278.6	278.6	278.6	278.6	278.6	278.6



TEST NUMBER: P1444392  
 CATALOG NUMBER: EHBR1-36-UNV-TA-L840-UPL15

**CANDELA DISTRIBUTION (continued):**

	137.5°	140°	142.5°	145°	147.5°	150°	152.5°	155°	157.5°	160°	162.5°
0°	31377.2	31377.2	31377.2	31377.2	31377.2	31377.2	31377.2	31377.2	31377.2	31377.2	31377.2
2.5°	31264.5	31264.1	31261.0	31262.5	31263.1	31265.3	31267.9	31270.7	31271.3	31273.6	31274.0
5°	31498.5	31421.1	31363.9	31301.0	31253.7	31211.1	31182.7	31160.1	31151.5	31153.6	31158.8
7.5°	32132.9	31973.2	31841.5	31691.7	31566.8	31434.6	31324.9	31220.7	31144.8	31088.2	31056.5
10°	32829.1	32634.7	32448.6	32231.8	32026.3	31806.8	31608.0	31408.0	31241.1	31096.2	30989.8
12.5°	33138.1	33000.7	32839.8	32635.2	32415.2	32162.1	31906.4	31632.3	31377.4	31140.8	30949.9
15°	32811.0	32811.2	32752.5	32654.5	32501.6	32299.3	32055.6	31770.0	31469.2	31162.4	30882.0
17.5°	31772.5	31968.4	32077.4	32146.3	32125.2	32050.7	31895.7	31676.2	31395.8	31068.9	30726.9
20°	29989.2	30451.4	30780.9	31077.1	31243.2	31353.6	31342.5	31253.2	31053.5	30775.6	30419.2
22.5°	27491.1	28266.8	28878.8	29449.6	29849.9	30175.5	30330.2	30395.9	30305.4	30111.8	29777.2
25°	24456.9	25511.6	26411.6	27285.0	27940.1	28503.2	28841.6	29080.0	29099.0	28997.8	28699.3
27.5°	21085.5	22330.3	23469.3	24630.1	25551.5	26360.9	26892.1	27280.8	27404.3	27388.0	27117.0
30°	17718.2	19025.1	20280.6	21634.3	22774.3	23808.5	24510.0	25035.7	25238.3	25277.2	25016.4
32.5°	14538.3	15827.0	17079.0	18494.2	19748.8	20933.9	21762.8	22387.3	22622.9	22678.4	22392.4
35°	11652.2	12841.1	14031.1	15402.5	16649.9	17877.3	18750.7	19404.4	19624.4	19661.6	19330.4
37.5°	9149.5	10162.4	11199.3	12429.9	13575.4	14728.1	15557.9	16172.4	16332.6	16322.7	15948.1
40°	7042.2	7829.7	8662.9	9675.9	10628.3	11602.7	12303.4	12811.4	12895.6	12833.3	12439.7
42.5°	5295.3	5864.1	6468.1	7224.3	7931.0	8660.2	9170.1	9547.2	9559.2	9460.6	9107.2
45°	3945.1	4499.9	4753.3	5210.5	5665.6	6150.6	6461.8	6694.8	6658.7	6572.0	6303.4
47.5°	3007.4	3220.7	3446.8	3730.4	3995.5	4545.7	4505.0	4879.1	4609.6	4793.4	4388.9
50°	2388.2	2507.4	2629.3	2779.7	2918.2	3062.1	3152.0	3219.1	3210.3	3181.5	3104.1
52.5°	2031.8	2068.7	2128.7	2214.3	2291.5	2369.3	2420.5	2462.2	2463.0	2451.4	2412.1
55°	1698.1	1744.9	1788.0	1843.9	1939.2	1953.8	2027.3	2012.3	2018.2	1997.8	2018.6
57.5°	1497.2	1524.4	1548.7	1582.0	1609.6	1641.6	1660.6	1678.9	1677.1	1673.1	1653.1
60°	1354.9	1369.8	1383.3	1402.8	1417.8	1436.0	1444.8	1454.1	1451.0	1444.3	1426.5
62.5°	1245.1	1254.5	1262.2	1274.8	1284.0	1295.3	1299.8	1303.7	1299.8	1293.3	1277.7
65°	1136.8	1142.9	1147.7	1157.2	1163.7	1173.4	1177.2	1180.9	1177.3	1172.3	1160.4
67.5°	1039.2	1039.8	1039.3	1043.1	1045.1	1050.9	1052.6	1055.3	1051.1	1046.8	1036.7
70°	965.1	963.6	961.7	963.2	963.6	966.3	966.8	966.3	961.4	953.9	942.8
72.5°	907.2	906.4	905.0	906.2	906.2	908.8	908.0	906.7	900.5	893.4	882.4
75°	832.7	832.1	829.4	829.5	827.2	828.0	825.0	823.2	816.4	810.3	800.5
77.5°	745.7	744.2	740.2	738.7	734.2	732.3	726.7	723.9	716.9	712.1	703.7
80°	648.4	646.9	641.7	638.8	631.8	627.4	619.0	614.3	606.2	601.5	593.3
82.5°	536.0	536.6	531.3	527.7	517.7	510.0	498.8	492.8	484.0	479.4	471.0
85°	381.2	375.8	378.7	378.4	372.1	365.5	356.4	350.0	342.6	338.1	332.3
87.5°	209.1	210.4	208.9	207.6	203.1	199.8	192.7	189.0	183.5	180.8	176.4
90°	71.3	70.5	64.7	64.0	58.2	55.7	48.9	47.2	41.1	40.0	35.8
92.5°	47.2	44.7	42.6	39.8	37.5	35.0	32.6	30.1	27.5	26.4	25.9
95°	59.1	55.6	52.1	48.4	44.8	41.2	37.7	34.1	30.5	29.8	29.0
97.5°	66.8	62.6	58.2	54.1	49.8	45.6	41.4	37.1	32.9	32.4	32.0
100°	116.1	106.3	96.6	86.8	77.0	67.2	57.5	47.6	37.9	37.3	36.8
102.5°	260.5	236.8	213.1	189.4	165.9	142.1	118.4	94.5	70.8	67.4	64.0
105°	460.4	424.4	388.8	352.8	316.8	280.9	245.2	209.1	173.1	161.6	150.0
107.5°	604.9	571.1	537.5	503.8	470.0	436.4	402.6	368.8	335.0	314.7	294.4
110°	670.9	644.1	617.6	590.9	564.3	537.6	510.8	484.1	457.4	439.8	422.6



TEST NUMBER: P1444392  
 CATALOG NUMBER: EHBR1-36-UNV-TA-L840-UPL15

**CANDELA DISTRIBUTION (continued):**

	137.5°	140°	142.5°	145°	147.5°	150°	152.5°	155°	157.5°	160°	162.5°
112.5°	664.1	644.7	625.4	605.8	586.4	566.9	547.5	527.9	508.2	497.8	487.3
115°	602.6	590.9	579.5	567.9	556.3	544.7	533.1	521.2	509.5	504.2	498.7
117.5°	529.2	523.5	517.9	512.2	506.4	500.6	494.9	489.0	483.2	481.6	479.8
120°	454.9	453.4	451.9	450.5	449.0	447.6	446.1	444.5	442.9	443.5	444.0
122.5°	393.3	394.4	395.7	396.7	397.9	399.0	400.3	401.1	402.2	404.1	406.0
125°	350.9	353.2	355.5	357.7	359.9	362.1	364.3	366.4	368.7	370.5	372.6
127.5°	321.5	323.8	326.5	328.9	331.5	333.9	336.5	338.6	341.2	343.1	345.1
130°	302.0	304.1	306.4	308.6	311.0	313.2	315.3	317.5	319.9	321.5	323.2
132.5°	288.7	290.8	292.9	294.8	297.2	299.1	301.2	303.3	305.5	306.8	308.4
135°	281.4	283.0	284.8	286.4	288.3	289.8	291.6	293.4	295.2	296.4	297.7
137.5°	275.2	276.6	278.2	279.5	281.1	282.4	284.2	285.6	287.6	288.3	289.5
140°	270.1	271.6	273.0	274.4	276.1	277.5	279.3	280.9	282.7	283.5	284.6
142.5°	267.1	268.1	269.4	270.5	271.9	273.0	274.5	276.1	277.6	278.6	279.5
145°	263.2	264.6	265.9	267.1	268.4	269.9	271.6	273.2	274.9	275.7	276.5
147.5°	261.3	262.4	263.7	264.9	266.1	267.2	268.8	270.2	271.7	272.4	273.3
150°	258.7	259.7	260.8	261.9	263.2	264.7	266.1	267.6	269.4	270.2	271.0
152.5°	256.3	257.5	258.6	259.9	261.3	262.7	264.3	265.9	267.5	268.2	269.1
155°	254.8	255.8	257.1	258.5	259.8	261.1	262.6	264.2	265.7	266.6	267.4
157.5°	255.0	255.9	257.1	258.3	259.5	260.8	262.2	263.6	265.0	265.7	266.4
160°	256.1	257.0	258.2	259.2	260.4	261.5	262.8	264.0	265.3	265.9	266.6
162.5°	257.7	258.6	259.8	260.7	262.0	263.0	264.4	265.4	266.7	267.3	268.0
165°	260.2	260.9	261.9	262.7	263.6	264.4	265.5	266.2	267.3	267.8	268.6
167.5°	264.9	265.4	266.0	266.6	267.5	268.2	268.9	269.6	270.4	271.0	271.6
170°	267.7	268.2	268.7	269.3	270.0	270.6	271.1	271.7	272.6	273.0	273.6
172.5°	270.9	271.1	271.7	272.0	272.3	272.7	273.2	273.6	274.1	274.6	275.1
175°	274.2	274.3	274.5	274.6	274.8	275.0	275.4	275.7	275.9	276.2	276.5
177.5°	277.2	277.3	277.4	277.5	277.8	277.9	278.1	278.2	278.4	278.7	279.0
180°	278.6	278.6	278.6	278.6	278.6	278.6	278.6	278.6	278.6	278.6	278.6



TEST NUMBER: P1444392  
 CATALOG NUMBER: EHBR1-36-UNV-TA-L840-UPL15

**CANDELA DISTRIBUTION (continued):**

	165°	167.5°	170°	172.5°	175°	177.5°	180°	182.5°	185°	187.5°	190°
0°	31377.2	31377.2	31377.2	31377.2	31377.2	31377.2	31377.2	31377.2	31377.2	31377.2	31377.2
2.5°	31272.9	31272.5	31271.5	31270.1	31268.7	31269.6	31270.9	31274.6	31280.8	31289.9	31301.8
5°	31163.2	31169.5	31173.2	31173.7	31170.3	31168.4	31171.4	31180.0	31197.4	31226.4	31265.7
7.5°	31048.0	31055.9	31068.0	31077.1	31078.8	31076.7	31077.1	31090.6	31122.6	31179.2	31258.6
10°	30925.1	30901.7	30914.0	30936.6	30954.5	30957.8	30960.1	30975.9	31022.7	31108.3	31235.8
12.5°	30811.6	30737.7	30723.3	30743.7	30771.0	30779.6	30777.2	30784.1	30838.9	30952.1	31129.9
15°	30662.3	30523.2	30475.5	30480.8	30514.4	30526.5	30517.6	30504.2	30557.6	30695.8	30926.0
17.5°	30420.6	30196.2	30108.8	30104.9	30144.3	30154.7	30133.1	30091.2	30143.8	30316.3	30602.1
20°	30053.4	29722.0	29557.3	29531.2	29573.9	29561.4	29518.3	29455.0	29524.0	29733.9	30073.6
22.5°	29392.9	28973.1	28691.8	28601.1	28652.2	28618.1	28555.2	28474.4	28566.1	28804.5	29182.9
25°	28313.8	27828.7	27443.6	27227.6	27268.2	27207.2	27138.7	27040.8	27150.2	27423.8	27840.3
27.5°	26727.6	26167.3	25690.0	25332.4	25345.6	25265.6	25186.7	25059.9	25196.5	25520.4	25990.2
30°	24618.4	23970.1	23388.9	22902.8	22859.3	22781.7	22700.9	22534.6	22705.6	23093.3	23642.3
32.5°	21969.6	21249.7	20578.3	19963.7	19847.7	19772.0	19700.0	19508.6	19732.5	20184.4	20815.2
35°	18871.9	18105.1	17377.1	16675.1	16483.0	16407.3	16344.4	16161.1	16440.3	16932.2	17613.5
37.5°	15471.8	14688.5	13965.7	13245.8	12974.4	12871.7	12826.0	12705.9	13028.1	13514.6	14198.6
40°	11981.2	11252.9	10604.8	9969.1	9659.7	9502.6	9478.5	9456.8	9768.2	10190.4	10811.2
42.5°	8715.8	8128.3	7628.5	7142.6	6862.2	6647.7	6647.6	6712.7	6993.2	7309.4	7788.1
45°	6029.1	5634.7	5316.3	4991.6	5078.4	4650.7	4902.0	4773.0	4911.6	5115.5	5426.8
47.5°	4144.4	3929.1	3754.2	3572.8	3440.6	3314.3	3325.4	3406.8	3537.4	3658.3	3820.3
50°	3020.5	2910.9	2821.9	2727.6	2661.8	2606.1	2609.4	2644.6	2713.2	2777.0	2861.7
52.5°	2366.8	2306.4	2257.9	2205.9	2171.4	2143.6	2145.1	2162.3	2199.3	2235.7	2284.4
55°	1950.8	1943.5	1880.6	1833.9	1816.1	1797.4	1800.9	1807.5	1832.8	1854.0	1886.3
57.5°	1634.8	1606.5	1587.7	1563.0	1551.7	1538.7	1541.7	1544.2	1561.0	1575.4	1598.5
60°	1411.6	1391.6	1378.2	1361.4	1354.1	1345.8	1347.6	1349.1	1360.0	1369.3	1386.0
62.5°	1263.4	1245.4	1233.8	1220.9	1215.6	1210.1	1211.4	1211.8	1218.6	1225.4	1238.0
65°	1149.7	1135.4	1125.7	1114.6	1109.2	1103.3	1103.9	1103.9	1109.6	1114.6	1124.0
67.5°	1029.4	1018.7	1012.4	1003.6	999.8	993.9	993.8	991.9	995.7	997.6	1004.1
70°	932.8	922.0	914.1	905.6	900.8	895.7	895.8	895.9	900.2	904.7	912.9
72.5°	873.2	862.9	855.7	848.3	843.9	839.5	838.7	838.2	841.3	843.8	849.3
75°	794.3	786.0	781.8	774.8	771.4	766.3	765.5	763.2	764.7	765.1	769.3
77.5°	698.4	690.7	687.2	680.2	677.2	671.6	671.1	668.6	669.7	668.9	672.0
80°	589.3	582.1	580.3	574.4	573.1	567.9	567.1	563.8	564.8	562.3	563.5
82.5°	467.4	460.8	459.5	454.2	454.2	449.3	449.1	444.4	444.4	440.2	433.8
85°	329.2	324.4	322.5	318.0	316.7	312.9	311.0	306.4	304.8	301.9	301.0
87.5°	173.7	170.7	168.0	166.0	162.1	155.3	154.7	149.9	150.2	146.9	147.1
90°	35.2	31.4	30.9	27.3	26.6	24.2	23.7	23.5	24.0	23.9	24.4
92.5°	25.0	24.2	23.4	22.6	21.7	20.9	20.1	20.9	21.7	22.6	23.4
95°	28.3	27.5	26.7	26.0	25.3	24.5	23.8	24.5	25.3	26.1	26.8
97.5°	31.5	31.0	30.6	30.1	29.6	29.2	28.7	29.3	29.7	30.2	30.7
100°	36.2	35.7	35.1	34.6	34.0	33.5	32.9	33.8	34.3	34.9	35.4
102.5°	60.6	57.2	53.8	50.3	46.9	43.5	40.1	43.5	46.9	50.4	53.9
105°	138.5	127.0	115.4	103.8	92.3	80.7	69.1	80.8	92.4	103.9	115.6
107.5°	274.0	254.0	233.6	213.3	192.8	172.5	152.2	172.6	193.0	213.4	233.8
110°	404.9	387.6	370.0	352.5	334.9	317.4	299.8	317.5	335.1	352.7	370.3



TEST NUMBER: P1444392  
 CATALOG NUMBER: EHBR1-36-UNV-TA-L840-UPL15

**CANDELA DISTRIBUTION (continued):**

	165°	167.5°	170°	172.5°	175°	177.5°	180°	182.5°	185°	187.5°	190°
112.5°	476.7	466.2	455.6	445.1	434.3	423.8	413.0	424.0	434.7	445.7	456.2
115°	493.4	487.9	482.5	477.1	471.4	465.9	460.1	466.3	472.0	477.8	483.5
117.5°	478.0	476.3	474.4	472.7	470.8	469.1	467.1	469.3	471.4	473.7	475.6
120°	444.4	445.1	445.5	445.9	446.3	446.7	446.9	447.2	447.2	447.2	447.0
122.5°	407.7	409.7	411.4	413.2	414.8	416.5	417.9	416.9	415.7	414.7	413.2
125°	374.4	376.6	378.4	380.3	381.9	383.8	385.1	384.4	383.2	382.0	380.6
127.5°	346.9	348.7	350.5	352.4	354.0	355.6	356.9	356.3	355.3	354.3	352.9
130°	324.7	326.5	327.8	329.4	330.6	332.0	332.9	332.7	332.0	331.6	330.4
132.5°	309.7	311.3	312.5	313.8	314.8	315.9	316.5	316.6	316.3	316.0	315.3
135°	299.0	300.1	301.1	302.3	303.1	303.9	304.3	304.7	304.6	304.5	304.0
137.5°	290.3	291.4	292.2	292.9	293.5	294.0	294.3	294.8	295.0	295.5	295.3
140°	285.5	286.7	287.5	288.2	289.1	289.7	289.8	290.5	290.7	290.8	290.6
142.5°	280.6	281.5	282.4	283.2	283.8	284.4	284.7	285.2	285.4	285.5	285.5
145°	277.5	278.2	278.9	279.7	280.2	280.6	280.6	281.4	281.7	281.9	282.1
147.5°	274.0	275.0	275.6	276.2	276.6	277.1	277.2	277.8	278.1	278.4	278.6
150°	272.0	272.8	273.6	274.3	275.0	275.5	275.6	276.2	276.4	276.6	276.6
152.5°	269.8	270.6	271.4	272.0	272.5	272.9	273.1	273.6	274.0	274.4	274.5
155°	268.1	268.9	269.6	270.3	270.8	271.4	271.8	272.3	272.6	272.9	273.1
157.5°	267.1	267.9	268.4	269.1	269.6	270.3	270.7	271.3	271.7	272.1	272.4
160°	267.2	268.0	268.5	269.2	269.8	270.3	270.8	271.4	271.8	272.2	272.6
162.5°	268.5	269.2	269.6	270.3	270.8	271.4	271.9	272.4	272.9	273.4	273.7
165°	269.2	269.9	270.4	271.1	271.7	272.4	272.8	273.3	273.6	273.9	274.2
167.5°	272.1	272.8	273.2	273.8	274.3	275.1	275.6	276.0	276.2	276.5	276.7
170°	274.0	274.6	275.1	275.6	276.1	276.7	277.0	277.3	277.5	277.8	278.0
172.5°	275.5	276.1	276.6	277.2	277.6	278.1	278.5	278.8	278.8	279.0	278.9
175°	276.9	277.4	277.6	278.1	278.4	278.8	279.2	279.1	279.3	279.2	279.2
177.5°	279.5	280.0	280.3	280.6	281.0	281.2	281.6	281.3	281.2	281.1	280.8
180°	278.6	278.6	278.6	278.6	278.6	278.6	278.6	278.6	278.6	278.6	278.6



TEST NUMBER: P1444392  
 CATALOG NUMBER: EHBR1-36-UNV-TA-L840-UPL15

**CANDELA DISTRIBUTION (continued):**

	192.5°	195°	197.5°	200°	202.5°	205°	207.5°	210°	212.5°	215°	217.5°
0°	31377.2	31377.2	31377.2	31377.2	31377.2	31377.2	31377.2	31377.2	31377.2	31377.2	31377.2
2.5°	31318.6	31334.2	31358.2	31379.9	31412.6	31438.4	31477.2	31506.5	31550.3	31578.7	31626.2
5°	31321.3	31382.6	31463.1	31541.8	31636.4	31722.2	31828.8	31919.6	32026.9	32114.3	32223.9
7.5°	31365.6	31483.7	31625.4	31768.1	31929.5	32080.4	32250.6	32404.5	32572.8	32715.2	32870.8
10°	31398.3	31580.5	31789.3	31999.2	32220.3	32425.7	32633.1	32812.3	32979.7	33117.5	33239.3
12.5°	31354.0	31605.0	31872.9	32131.5	32377.3	32589.9	32768.3	32906.1	33001.2	33065.7	33080.9
15°	31203.4	31505.5	31796.7	32054.3	32258.2	32415.5	32497.0	32535.1	32494.2	32426.2	32277.0
17.5°	30922.1	31240.8	31501.1	31704.3	31812.1	31854.7	31787.2	31670.0	31440.6	31186.1	30818.5
20°	30406.3	30703.3	30892.0	31002.9	30974.1	30867.4	30612.8	30303.2	29845.4	29357.5	28713.6
22.5°	29501.7	29761.4	29861.9	29870.1	29694.3	29427.2	28967.9	28436.9	27714.7	26963.8	26040.4
25°	28143.8	28371.3	28387.1	28297.8	27975.8	27543.2	26868.7	26117.6	25136.1	24135.6	22978.4
27.5°	26302.3	26520.4	26467.0	26300.4	25853.4	25274.3	24410.8	23440.5	22230.6	21048.8	19768.7
30°	23987.5	24220.5	24157.9	23944.2	23412.5	22728.1	21712.1	20584.7	19241.4	17979.2	16682.0
32.5°	21217.2	21511.9	21468.6	21265.5	20710.6	19978.3	18875.8	17680.1	16305.7	15061.8	13800.1
35°	18068.3	18426.2	18444.7	18311.9	17796.8	17073.0	15984.3	14827.0	13510.5	12336.9	11171.2
37.5°	14675.8	15090.7	15176.0	15140.1	14713.2	14074.2	13082.3	12044.1	10877.8	9849.4	8852.4
40°	11264.6	11684.5	11830.2	11873.5	11558.5	11063.6	10249.4	9411.4	8460.8	7627.3	6835.7
42.5°	8153.6	8525.9	8666.8	8755.4	8558.7	8228.7	7634.8	7026.3	6329.8	5728.7	5152.4
45°	5662.8	5926.3	6033.3	6122.5	6015.5	5829.3	5454.3	5073.7	4613.9	4221.1	3849.1
47.5°	3959.2	4104.5	4175.1	4218.4	4177.0	4079.8	3875.8	3655.3	3395.7	3166.1	2945.5
50°	2934.7	3012.0	3048.9	3073.9	3043.7	2989.8	2879.3	2759.3	2616.7	2486.7	2359.5
52.5°	2325.6	2369.9	2391.9	2405.4	2388.1	2355.0	2290.7	2219.6	2134.1	2053.7	2011.5
55°	1959.2	1956.9	2007.7	1983.2	2007.7	1952.9	1941.4	1863.1	1792.2	1742.2	1688.2
57.5°	1615.7	1638.7	1648.5	1659.4	1652.3	1642.3	1615.0	1587.0	1549.5	1518.2	1484.8
60°	1398.6	1417.5	1428.2	1439.0	1438.3	1434.6	1418.9	1402.1	1378.7	1360.0	1339.8
62.5°	1249.0	1265.5	1276.0	1286.4	1287.3	1285.8	1273.9	1262.2	1246.2	1234.5	1220.6
65°	1131.4	1142.9	1150.1	1158.3	1157.8	1155.7	1144.8	1135.2	1122.0	1113.9	1103.6
67.5°	1008.2	1017.0	1022.5	1030.3	1031.8	1032.3	1026.4	1021.8	1015.5	1013.1	1009.6
70°	920.6	931.2	940.2	950.1	955.4	957.9	955.4	953.1	949.4	947.8	945.0
72.5°	854.3	863.3	870.3	879.2	884.3	887.8	885.9	884.6	881.4	880.9	879.0
75°	772.0	778.2	782.2	788.9	791.6	795.0	793.5	794.3	793.2	795.8	795.6
77.5°	673.1	677.6	679.5	684.3	684.8	688.8	689.9	694.6	697.9	705.4	709.3
80°	561.7	564.5	564.5	569.6	571.8	578.7	581.9	589.7	593.3	600.0	600.6
82.5°	436.3	433.0	436.3	434.2	440.6	448.3	449.3	456.0	457.5	461.6	458.4
85°	298.3	298.1	295.3	295.8	293.8	294.8	293.6	294.9	293.7	293.8	290.8
87.5°	142.9	144.2	141.1	142.1	139.0	140.5	137.8	139.8	136.7	137.2	132.6
90°	24.6	25.1	25.2	25.8	26.6	28.1	29.6	31.0	32.9	34.2	35.8
92.5°	24.2	25.1	26.0	26.8	27.6	30.2	32.7	35.1	37.7	40.2	42.7
95°	27.6	28.4	29.1	30.2	30.9	34.5	38.1	41.7	45.3	48.9	52.6
97.5°	31.4	31.9	32.4	32.8	33.4	37.6	41.9	46.2	50.4	54.7	58.8
100°	36.1	36.6	37.2	37.8	38.4	48.2	58.1	67.9	77.7	87.5	97.3
102.5°	57.4	60.8	64.3	68.0	71.4	95.2	119.1	142.9	166.4	190.2	213.9
105°	127.2	138.8	150.6	162.2	173.9	209.9	246.0	282.0	317.7	353.8	389.8
107.5°	254.3	274.6	295.1	315.5	335.9	369.8	403.6	437.5	471.4	505.2	538.7
110°	388.3	405.5	423.5	441.0	458.7	485.3	512.3	539.1	565.9	592.6	619.3



TEST NUMBER: P1444392  
 CATALOG NUMBER: EHBR1-36-UNV-TA-L840-UPL15

**CANDELA DISTRIBUTION (continued):**

	192.5°	195°	197.5°	200°	202.5°	205°	207.5°	210°	212.5°	215°	217.5°
112.5°	467.2	477.7	488.5	499.0	509.7	529.4	549.2	568.9	588.4	607.9	627.5
115°	489.2	494.5	500.3	505.8	511.6	523.3	535.1	546.9	558.7	570.3	582.1
117.5°	477.8	479.8	481.8	483.4	485.4	491.3	497.3	503.2	509.2	515.2	521.0
120°	446.9	446.6	446.3	445.9	445.7	447.2	449.1	450.6	452.3	454.0	455.6
122.5°	411.9	410.3	408.7	407.1	405.5	404.4	403.7	402.6	401.8	400.8	399.9
125°	379.1	377.5	375.9	374.1	372.3	370.3	368.3	366.3	364.1	362.1	360.0
127.5°	351.7	350.1	348.8	347.1	345.5	343.1	340.8	338.4	336.3	333.8	331.5
130°	329.6	328.3	327.4	325.8	324.7	322.4	320.5	318.3	316.2	314.1	312.0
132.5°	314.7	313.7	312.9	311.7	310.7	308.7	306.9	304.8	302.8	300.8	299.0
135°	303.8	303.1	302.6	301.7	300.9	299.1	297.7	295.9	294.4	292.8	291.3
137.5°	295.2	294.7	294.3	293.8	293.3	291.8	290.6	289.1	287.9	286.4	285.1
140°	290.6	290.2	289.9	289.4	288.9	287.5	286.1	284.6	283.3	281.8	280.5
142.5°	285.3	285.1	284.7	284.2	283.8	282.5	281.7	280.5	279.4	278.2	277.2
145°	282.0	281.9	281.7	281.3	281.3	280.0	278.8	277.5	276.5	275.2	273.9
147.5°	278.7	278.5	278.6	278.3	278.4	277.3	276.5	275.4	274.5	273.4	272.6
150°	276.6	276.6	276.5	276.3	276.2	275.2	274.3	273.4	272.5	271.5	270.7
152.5°	274.5	274.6	274.8	274.8	274.9	273.9	273.0	272.1	271.3	270.2	269.4
155°	273.3	273.4	273.6	273.6	273.6	272.9	272.1	271.2	270.4	269.6	268.8
157.5°	272.6	272.8	273.0	273.2	273.3	272.7	272.0	271.4	270.7	270.0	269.3
160°	272.9	273.2	273.4	273.6	273.8	273.2	272.9	272.1	271.8	271.0	270.4
162.5°	274.1	274.4	274.6	274.9	275.1	274.4	274.1	273.5	273.0	272.2	271.7
165°	274.6	274.8	275.0	275.0	275.1	274.6	274.5	274.1	273.7	273.2	272.8
167.5°	277.1	277.1	277.3	277.3	277.5	277.2	277.2	276.9	276.6	276.3	276.0
170°	278.2	278.4	278.5	278.5	278.6	278.3	278.2	278.0	277.9	277.4	277.1
172.5°	279.0	278.9	279.1	279.1	279.0	278.8	278.7	278.5	278.4	278.3	278.1
175°	279.2	279.2	279.2	279.1	279.0	279.0	278.9	279.0	278.9	278.9	278.8
177.5°	280.8	280.6	280.3	280.2	280.0	279.9	280.0	279.9	280.0	279.9	279.8
180°	278.6	278.6	278.6	278.6	278.6	278.6	278.6	278.6	278.6	278.6	278.6



TEST NUMBER: P1444392  
 CATALOG NUMBER: EHBR1-36-UNV-TA-L840-UPL15

**CANDELA DISTRIBUTION (continued):**

	220°	222.5°	225°	227.5°	230°	232.5°	235°	237.5°	240°	242.5°	245°
0°	31377.2	31377.2	31377.2	31377.2	31377.2	31377.2	31377.2	31377.2	31377.2	31377.2	31377.2
2.5°	31655.7	31460.1	31434.4	31448.1	31480.7	31492.8	31528.1	31537.7	31573.2	31581.9	31616.0
5°	32308.8	32050.5	32063.3	32125.5	32219.5	32275.6	32368.0	32416.3	32504.6	32544.8	32624.5
7.5°	32997.6	32794.7	32858.0	32962.7	33091.4	33180.4	33291.5	33363.8	33459.4	33518.9	33595.6
10°	33335.7	33280.1	33349.9	33432.3	33505.7	33563.1	33610.2	33647.8	33672.5	33695.7	33705.7
12.5°	33078.5	33164.5	33176.3	33168.4	33119.7	33082.6	32999.2	32942.6	32842.0	32780.7	32661.0
15°	32124.4	32313.6	32208.8	32050.2	31818.1	31624.6	31351.3	31147.8	30863.3	30670.3	30384.6
17.5°	30450.1	30688.9	30415.9	30048.9	29582.0	29182.6	28685.2	28290.4	27795.8	27436.1	26974.6
20°	28093.1	28316.2	27829.3	27220.9	26498.7	25890.8	25174.0	24602.1	23936.0	23440.5	22842.5
22.5°	25158.3	25317.3	24631.3	23811.1	22891.0	22131.6	21274.6	20588.9	19828.8	19262.3	18624.7
25°	21911.5	21954.5	21131.6	20186.7	19161.1	18307.7	17392.7	16671.9	15896.6	15322.5	14696.8
27.5°	18634.6	18571.7	17682.3	16680.4	15601.6	14714.5	13822.2	13146.7	12467.6	11950.5	11411.4
30°	15541.6	15389.3	14465.8	13435.9	12388.8	11593.7	10852.9	10310.4	9770.2	9360.0	8927.2
32.5°	12705.2	12490.3	11591.4	10626.6	9744.2	9130.6	8581.3	8170.8	7734.6	7388.1	7025.0
35°	10192.9	9964.0	9167.7	8349.7	7681.8	7229.6	6797.8	6461.0	6090.6	5798.3	5482.9
37.5°	8036.9	7849.2	7182.2	6538.5	6033.3	5682.9	5329.1	5053.9	4747.7	4619.2	4282.2
40°	6204.4	6073.3	5551.7	5077.2	4697.9	4533.2	4174.1	3917.0	3688.3	3499.7	3317.0
42.5°	4839.6	4793.2	4285.5	3915.5	3648.4	3441.0	3240.8	3078.4	2920.2	2790.2	2667.4
45°	3551.6	3514.8	3289.4	3075.8	2893.8	2748.8	2613.5	2501.8	2398.4	2312.7	2234.8
47.5°	2765.6	2753.8	2624.0	2491.5	2376.9	2283.8	2196.0	2121.8	2053.2	1996.0	1977.3
50°	2249.4	2247.9	2171.7	2089.9	2008.3	1954.4	1898.4	1854.5	1810.4	1776.1	1739.9
52.5°	1911.1	1903.0	1851.5	1801.1	1752.5	1717.2	1681.4	1653.3	1624.2	1603.0	1580.5
55°	1645.4	1654.1	1624.3	1594.2	1563.8	1541.9	1516.7	1498.3	1478.3	1464.9	1451.2
57.5°	1460.7	1472.2	1456.6	1439.5	1421.1	1406.6	1389.3	1376.5	1363.2	1354.6	1346.7
60°	1326.3	1338.9	1332.7	1324.0	1312.6	1304.0	1293.0	1285.9	1277.3	1272.6	1268.1
62.5°	1212.4	1228.2	1225.9	1221.8	1214.5	1209.7	1203.7	1200.5	1194.9	1192.7	1190.6
65°	1098.7	1116.4	1116.1	1114.0	1110.0	1108.6	1104.9	1104.1	1101.2	1102.4	1102.1
67.5°	1009.3	1024.6	1028.0	1030.4	1030.3	1031.2	1030.9	1032.4	1032.4	1034.6	1036.0
70°	944.7	955.4	957.9	960.6	961.3	963.3	963.3	964.6	964.3	966.1	966.3
72.5°	879.4	893.6	896.1	898.2	898.2	900.2	899.1	898.8	896.0	895.4	893.5
75°	798.3	816.4	820.3	822.8	823.2	825.0	822.5	821.0	816.4	814.5	811.2
77.5°	713.6	732.2	735.1	736.0	734.5	734.9	729.7	726.2	720.3	717.8	714.7
80°	603.2	630.7	632.9	631.2	626.9	626.2	621.2	617.9	610.8	608.4	605.7
82.5°	459.0	491.3	495.8	497.8	494.3	495.1	490.4	488.6	482.0	480.9	476.6
85°	289.8	322.1	327.4	326.6	323.2	322.4	319.6	320.5	320.0	321.7	322.6
87.5°	133.2	164.5	172.0	169.5	169.2	167.0	161.9	163.9	166.9	168.8	169.0
90°	37.4	48.3	49.7	49.2	45.8	44.9	41.7	41.4	38.6	38.1	35.6
92.5°	45.1	47.6	50.1	47.9	45.7	43.5	41.3	38.9	36.8	34.5	32.4
95°	56.1	59.4	63.1	60.1	57.0	54.1	51.2	48.1	45.2	42.3	39.3
97.5°	63.2	67.1	71.2	68.3	65.3	62.3	59.2	56.3	53.3	50.2	47.2
100°	107.1	116.4	126.1	117.6	109.2	100.7	92.3	83.7	75.4	66.9	58.4
102.5°	237.6	261.1	284.6	263.2	241.9	220.4	199.1	177.7	156.4	134.7	113.4
105°	425.6	461.1	496.9	464.0	431.3	398.8	366.1	333.5	300.8	268.0	235.4
107.5°	572.6	605.6	639.0	609.4	579.9	550.3	520.5	491.1	461.5	431.8	402.3
110°	646.2	671.8	698.3	678.1	658.4	638.2	618.3	598.3	578.5	558.7	538.9



TEST NUMBER: P1444392  
 CATALOG NUMBER: EHBR1-36-UNV-TA-L840-UPL15

**CANDELA DISTRIBUTION (continued):**

	220°	222.5°	225°	227.5°	230°	232.5°	235°	237.5°	240°	242.5°	245°
112.5°	647.0	665.1	684.3	672.3	660.6	648.7	637.0	625.1	613.5	601.6	590.1
115°	593.6	603.7	614.9	609.8	605.1	600.2	595.2	590.5	585.5	580.7	576.1
117.5°	526.8	530.7	536.0	534.6	533.5	532.0	530.9	529.6	528.7	527.5	526.5
120°	457.1	456.6	457.5	457.5	457.7	457.8	458.0	458.1	458.3	458.6	458.9
122.5°	398.8	395.4	393.6	393.6	393.5	393.5	393.6	393.6	393.7	393.9	394.1
125°	358.0	353.2	350.2	348.8	347.6	346.1	344.7	343.4	342.2	340.7	339.6
127.5°	329.0	324.0	320.9	318.3	315.9	313.4	311.0	308.4	306.0	303.6	301.4
130°	309.9	304.7	301.8	298.9	296.0	292.9	290.1	287.1	284.0	281.1	278.2
132.5°	296.9	291.8	289.1	286.3	283.5	280.5	277.8	274.8	271.9	268.9	266.2
135°	289.7	284.6	282.3	279.6	277.3	274.4	271.8	269.1	266.6	263.7	261.3
137.5°	283.6	278.7	276.6	274.3	272.3	270.0	268.0	265.8	263.6	261.1	259.1
140°	279.1	273.8	271.7	270.3	269.1	267.4	266.1	264.6	263.2	261.7	260.3
142.5°	276.0	270.9	268.9	267.9	267.0	266.0	265.3	264.2	263.1	261.8	260.9
145°	272.9	267.2	265.2	264.7	264.6	264.1	263.7	263.3	262.9	262.3	261.9
147.5°	271.5	265.7	263.7	263.7	263.6	263.1	263.2	262.9	263.0	262.6	262.6
150°	269.6	262.9	260.6	260.8	260.7	260.9	261.1	261.0	261.3	261.4	261.4
152.5°	268.4	260.5	257.8	258.0	258.3	258.3	258.6	258.8	259.2	259.5	259.7
155°	267.8	259.2	256.3	256.1	256.2	256.3	256.4	256.5	256.7	256.9	257.2
157.5°	268.4	259.3	256.5	256.2	256.2	256.2	256.1	256.1	256.2	256.3	256.7
160°	269.7	260.6	257.7	257.4	257.4	257.2	257.1	257.0	257.1	257.2	257.4
162.5°	270.9	262.1	259.3	258.9	258.7	258.5	258.5	258.2	258.3	258.3	258.5
165°	272.2	264.5	261.8	261.6	261.6	261.4	261.4	261.3	261.3	261.4	261.6
167.5°	275.6	268.5	266.5	266.1	265.8	265.4	265.4	265.0	265.0	264.7	264.7
170°	276.7	271.2	269.4	269.2	269.3	269.2	269.1	269.1	269.0	268.9	269.0
172.5°	277.8	273.7	272.4	272.4	272.6	272.7	272.9	272.9	273.1	273.3	273.5
175°	278.7	276.3	275.7	275.6	275.7	275.8	275.9	275.9	276.0	276.1	276.4
177.5°	279.8	279.1	278.8	278.8	278.8	278.8	278.8	278.8	278.8	278.9	278.9
180°	278.6	278.6	278.6	278.6	278.6	278.6	278.6	278.6	278.6	278.6	278.6



TEST NUMBER: P1444392  
 CATALOG NUMBER: EHBR1-36-UNV-TA-L840-UPL15

**CANDELA DISTRIBUTION (continued):**

	247.5°	250°	252.5°	255°	257.5°	260°	262.5°	265°	267.5°	270°	272.5°
0°	31377.2	31377.2	31377.2	31377.2	31377.2	31377.2	31377.2	31377.2	31377.2	31377.2	31377.2
2.5°	31622.4	31659.3	31656.5	31690.9	31689.2	31721.5	31715.1	31743.1	31736.7	31760.7	31746.6
5°	32659.7	32729.7	32752.9	32816.2	32829.3	32885.9	32887.1	32932.1	32926.7	32961.9	32943.1
7.5°	33640.9	33706.4	33737.4	33786.6	33811.2	33851.8	33867.8	33901.3	33909.3	33929.0	33928.4
10°	33723.7	33723.5	33738.8	33732.0	33745.7	33737.7	33754.5	33748.4	33773.2	33766.8	33785.6
12.5°	32609.5	32498.9	32458.5	32359.1	32337.4	32252.2	32258.2	32203.5	32230.0	32196.4	32253.6
15°	30214.7	29958.2	29831.5	29608.4	29538.4	29362.1	29347.8	29230.7	29262.3	29201.1	29290.6
17.5°	26675.9	26272.1	26050.5	25724.8	25595.4	25346.1	25296.1	25145.4	25168.8	25092.8	25201.0
20°	22456.8	21968.8	21689.3	21312.6	21144.5	20847.4	20768.4	20599.8	20621.0	20545.5	20667.8
22.5°	18189.5	17678.7	17363.1	16968.4	16753.7	16474.2	16390.4	16220.9	16230.6	16159.6	16277.3
25°	14268.1	13778.3	13472.0	13113.4	12927.2	12670.9	12582.7	12430.7	12439.3	12380.7	12486.4
27.5°	11037.5	10635.6	10379.3	10078.6	9911.7	9701.0	9615.1	9487.2	9486.8	9443.9	9532.2
30°	8625.1	8289.7	8059.7	7797.9	7641.2	7451.0	7367.9	7253.5	7248.6	7218.1	7288.2
32.5°	6753.2	6455.0	6245.1	6014.7	5874.0	5710.8	5632.2	5540.3	5531.9	5504.4	5561.9
35°	5249.8	4998.6	4818.2	4624.1	4638.5	4397.7	4437.8	4250.8	4200.1	4189.1	4231.8
37.5°	4057.5	3863.0	3716.3	3571.1	3472.7	3371.0	3316.2	3266.9	3261.4	3256.6	3286.6
40°	3175.9	3039.7	2933.2	2833.5	2765.8	2703.7	2669.4	2642.4	2636.0	2632.4	2650.5
42.5°	2570.4	2478.5	2409.8	2349.1	2307.9	2274.1	2255.3	2240.3	2235.2	2235.4	2246.1
45°	2171.7	2116.0	2071.7	2033.8	2007.6	2019.1	1985.1	2003.0	1979.5	2003.8	1987.7
47.5°	1912.5	1865.0	1837.6	1810.9	1794.9	1782.1	1782.6	1782.8	1787.8	1788.7	1793.8
50°	1712.5	1685.0	1666.0	1648.8	1640.5	1633.9	1636.2	1637.9	1642.8	1643.2	1647.0
52.5°	1564.5	1546.4	1534.9	1524.3	1520.6	1516.7	1518.3	1517.6	1519.9	1518.7	1521.9
55°	1444.0	1435.4	1431.9	1427.9	1428.4	1427.4	1428.1	1424.3	1422.0	1419.1	1421.7
57.5°	1345.1	1343.9	1346.4	1348.0	1352.6	1354.2	1355.2	1350.7	1346.6	1342.8	1345.0
60°	1268.9	1270.8	1276.8	1281.7	1288.2	1291.2	1293.1	1290.5	1287.5	1284.4	1286.3
62.5°	1193.8	1196.7	1203.9	1209.4	1217.3	1221.4	1225.9	1226.1	1227.3	1226.1	1227.4
65°	1106.6	1110.2	1116.7	1121.2	1128.6	1132.2	1136.8	1137.6	1140.2	1139.7	1141.8
67.5°	1040.3	1043.6	1049.1	1053.3	1059.9	1063.6	1067.6	1067.8	1068.8	1068.5	1070.6
70°	969.6	971.3	976.1	979.7	986.2	990.0	994.7	996.1	999.0	999.5	1001.8
72.5°	894.3	893.6	896.5	898.1	903.0	906.0	911.9	915.2	920.1	921.3	923.1
75°	812.1	811.4	815.0	816.4	820.5	823.5	830.2	834.4	842.0	845.1	844.3
77.5°	717.1	718.8	725.3	728.9	734.5	738.3	747.0	753.8	767.6	773.7	767.5
80°	610.8	612.6	619.3	622.8	630.0	634.7	644.3	652.4	664.8	667.5	664.0
82.5°	480.3	480.7	486.7	489.4	498.8	505.7	517.9	524.4	532.0	530.8	529.9
85°	327.4	331.9	339.4	347.0	358.6	369.8	381.3	390.9	384.1	394.7	382.8
87.5°	175.1	174.6	184.7	183.1	199.5	208.9	218.9	223.6	228.9	227.9	228.0
90°	35.6	33.6	34.1	31.9	33.3	30.8	33.0	30.8	33.5	30.6	35.3
92.5°	30.1	29.0	27.6	26.5	25.2	24.2	22.9	21.7	20.5	19.3	20.5
95°	36.3	35.2	34.1	32.9	31.8	30.7	29.6	28.5	27.3	26.2	27.6
97.5°	44.3	43.7	43.0	42.4	41.7	41.1	40.4	39.8	38.9	38.3	39.3
100°	49.9	49.9	49.9	49.9	49.6	49.6	49.6	49.6	49.6	49.6	50.3
102.5°	92.0	89.9	87.8	85.6	83.4	81.2	79.1	77.0	74.9	72.7	75.9
105°	202.8	194.4	186.1	177.7	169.2	160.9	152.6	144.2	135.9	127.5	136.1
107.5°	372.9	357.6	342.4	327.1	311.9	296.6	281.5	266.3	251.1	235.9	249.5
110°	518.9	502.7	486.4	470.3	454.0	437.9	421.8	405.6	389.5	373.3	386.3



TEST NUMBER: P1444392  
 CATALOG NUMBER: EHBR1-36-UNV-TA-L840-UPL15

**CANDELA DISTRIBUTION (continued):**

	247.5°	250°	252.5°	255°	257.5°	260°	262.5°	265°	267.5°	270°	272.5°
112.5°	578.5	567.7	557.2	546.7	536.2	525.9	515.4	505.0	494.6	484.2	490.5
115°	571.3	566.3	561.1	556.2	551.0	545.9	540.8	536.0	531.0	526.1	526.5
117.5°	525.5	523.5	521.8	519.8	518.1	516.4	514.8	513.2	511.6	510.0	506.5
120°	459.3	459.5	459.7	460.1	460.5	461.0	461.3	461.9	462.6	463.2	458.5
122.5°	394.3	395.1	396.0	397.0	398.2	399.3	400.5	401.8	403.2	404.6	399.9
125°	338.3	339.1	340.0	340.8	341.6	343.0	344.2	345.5	346.8	348.3	344.4
127.5°	299.0	298.9	298.8	299.0	299.1	299.5	299.9	300.4	301.1	301.8	299.3
130°	275.3	274.4	273.4	272.7	271.8	271.4	270.9	270.6	270.3	270.2	269.2
132.5°	263.3	261.8	260.2	258.8	257.4	256.3	255.1	254.4	253.5	252.9	252.6
135°	258.5	256.6	254.6	252.9	251.0	249.6	248.1	247.0	245.8	244.8	245.2
137.5°	256.8	255.0	253.0	251.2	249.4	248.0	246.5	245.2	244.1	243.2	243.8
140°	258.7	256.8	254.9	253.3	251.6	250.1	248.7	247.6	246.3	245.5	245.8
142.5°	259.7	258.3	256.5	255.0	253.4	252.0	250.8	249.8	248.5	247.9	248.3
145°	261.4	260.3	258.9	257.7	256.7	255.8	254.6	254.0	253.2	252.9	253.1
147.5°	262.3	261.5	260.4	259.6	258.6	258.0	257.3	256.8	256.3	255.9	256.0
150°	261.5	261.0	260.3	259.8	259.2	258.9	258.4	258.1	257.8	257.6	257.6
152.5°	259.9	259.5	259.0	258.6	258.1	257.9	257.5	257.3	257.2	257.0	257.0
155°	257.4	257.2	257.0	256.9	256.7	256.9	256.7	256.9	256.8	257.0	257.1
157.5°	256.8	256.9	256.8	257.0	257.1	257.3	257.3	257.7	257.7	258.0	258.3
160°	257.7	257.8	257.7	257.9	258.0	258.0	258.1	258.4	258.5	258.7	259.0
162.5°	258.6	258.9	259.0	259.3	259.6	259.8	260.2	260.7	260.9	261.3	261.7
165°	261.8	261.8	261.9	261.9	262.1	262.2	262.4	262.7	262.9	263.2	263.8
167.5°	264.6	264.8	264.8	265.0	265.2	265.5	265.7	266.1	266.5	267.0	267.4
170°	268.9	268.9	268.9	268.9	268.9	269.1	269.2	269.3	269.5	269.8	270.0
172.5°	273.6	273.6	273.4	273.6	273.4	273.6	273.6	273.7	273.7	273.8	273.9
175°	276.3	276.6	276.7	276.9	276.9	277.0	277.1	277.2	277.3	277.5	277.5
177.5°	278.9	279.0	279.0	279.0	279.0	279.1	279.1	279.1	279.1	279.0	279.1
180°	278.6	278.6	278.6	278.6	278.6	278.6	278.6	278.6	278.6	278.6	278.6



TEST NUMBER: P1444392  
 CATALOG NUMBER: EHBR1-36-UNV-TA-L840-UPL15

**CANDELA DISTRIBUTION (continued):**

	275°	277.5°	280°	282.5°	285°	287.5°	290°	292.5°	295°	297.5°	300°
0°	31377.2	31377.2	31377.2	31377.2	31377.2	31377.2	31377.2	31377.2	31377.2	31377.2	31377.2
2.5°	31770.0	31754.0	31770.3	31753.8	31770.3	31750.5	31763.9	31742.5	31748.0	31725.8	31731.4
5°	32971.2	32945.9	32959.4	32926.4	32929.9	32885.9	32885.1	32834.0	32820.4	32762.2	32736.6
7.5°	33942.6	33934.3	33938.9	33917.7	33915.3	33885.3	33871.0	33828.7	33802.1	33748.4	33711.8
10°	33788.8	33813.6	33820.0	33845.2	33850.4	33875.5	33880.7	33905.7	33910.9	33929.4	33929.6
12.5°	32250.9	32335.0	32355.1	32458.9	32502.7	32621.6	32685.2	32816.2	32894.0	33024.6	33104.8
15°	29288.1	29433.6	29491.7	29694.5	29806.7	30043.5	30192.2	30464.0	30655.9	30944.6	31150.7
17.5°	25210.6	25413.8	25505.5	25780.6	25960.0	26309.5	26561.3	26975.9	27293.2	27754.0	28119.1
20°	20688.7	20914.7	21039.2	21353.0	21564.7	21973.0	22287.4	22796.8	23221.6	23805.4	24304.7
22.5°	16314.2	16529.2	16667.5	16986.7	17225.0	17650.9	18002.4	18540.1	19016.0	19673.9	20272.4
25°	12526.2	12723.3	12848.2	13137.0	13360.9	13752.2	14087.8	14604.9	15070.6	15730.4	16344.2
27.5°	9576.1	9741.2	9861.7	10107.9	10305.3	10637.2	10925.5	11352.8	11754.1	12324.9	12871.5
30°	7331.3	7477.6	7594.8	7809.3	7992.3	8280.1	8533.5	8892.5	9224.6	9678.8	10113.6
32.5°	5602.4	5728.3	5832.7	6020.4	6186.5	6445.6	6673.9	6988.6	7273.7	7658.9	8016.6
35°	4271.6	4519.4	4501.9	4760.7	4802.3	4988.3	5192.0	5467.2	5719.6	6047.1	6351.7
37.5°	3315.5	3385.1	3459.8	3574.2	3694.5	3863.7	4035.8	4371.9	4495.2	4742.8	4994.8
40°	2673.5	2720.7	2770.0	2847.3	2931.4	3050.7	3176.0	3336.4	3500.7	3701.4	3906.4
42.5°	2260.3	2286.9	2318.3	2363.8	2415.6	2491.2	2575.1	2683.8	2798.1	2939.4	3083.6
45°	2019.4	2006.8	2016.1	2040.5	2071.8	2117.7	2170.7	2238.0	2312.3	2403.9	2501.3
47.5°	1794.9	1800.1	1802.8	1816.1	1832.8	1863.6	1895.7	1941.4	2029.7	2056.5	2109.7
50°	1646.6	1649.1	1648.3	1655.0	1663.5	1683.5	1704.3	1735.3	1766.2	1807.1	1846.2
52.5°	1522.3	1525.8	1525.3	1529.7	1534.3	1547.0	1560.1	1582.0	1602.2	1628.2	1650.7
55°	1424.2	1428.9	1430.8	1434.5	1436.7	1443.4	1448.6	1459.0	1467.7	1482.4	1496.0
57.5°	1348.7	1355.2	1358.2	1359.5	1356.8	1356.5	1354.8	1357.0	1358.7	1366.6	1374.3
60°	1289.3	1294.5	1295.4	1294.5	1289.6	1286.2	1280.5	1278.8	1277.9	1281.7	1285.9
62.5°	1227.0	1229.0	1227.7	1226.1	1220.6	1217.2	1211.4	1209.3	1207.3	1210.0	1212.2
65°	1141.0	1142.6	1141.0	1140.1	1135.1	1132.4	1127.6	1125.9	1123.1	1123.8	1123.3
67.5°	1071.2	1072.8	1071.5	1070.1	1066.7	1065.1	1061.5	1059.1	1055.8	1054.5	1052.2
70°	1001.4	1002.7	1000.7	999.5	995.6	994.1	990.6	989.9	987.3	986.7	984.0
72.5°	921.3	921.4	918.7	917.9	915.0	914.9	913.4	914.8	914.6	916.0	915.4
75°	839.4	838.2	834.7	834.1	831.9	832.9	831.4	833.4	833.6	836.7	837.1
77.5°	757.3	752.9	746.4	743.2	738.8	738.2	735.7	737.4	736.8	740.3	741.7
80°	653.5	648.3	639.8	635.8	630.5	629.7	627.4	629.7	628.5	632.6	635.5
82.5°	521.8	517.2	508.4	505.1	499.2	499.7	497.1	499.7	499.4	505.4	508.8
85°	385.9	382.9	373.8	365.9	356.9	351.6	346.5	345.6	344.1	346.5	348.6
87.5°	222.9	220.2	213.0	208.4	192.7	193.4	187.3	186.9	185.4	183.9	187.3
90°	34.0	38.0	36.9	40.6	40.0	44.2	44.0	47.9	47.0	50.8	50.6
92.5°	21.7	22.9	24.1	25.2	26.4	27.6	28.9	30.1	32.7	34.9	37.8
95°	29.1	30.4	31.8	33.2	34.6	35.9	37.3	38.7	42.6	46.3	50.1
97.5°	40.3	41.2	42.1	43.0	43.9	44.9	45.8	46.7	50.9	55.0	59.0
100°	51.2	51.9	52.6	53.4	54.1	54.8	55.6	56.3	64.5	72.3	80.2
102.5°	79.0	82.2	85.4	88.5	91.7	94.9	98.1	101.2	119.4	137.4	155.5
105°	144.8	153.4	162.1	170.7	179.4	188.0	196.8	205.3	234.4	263.2	292.5
107.5°	263.1	276.8	290.4	304.1	317.7	331.5	345.1	358.8	387.1	415.5	443.9
110°	399.3	412.4	425.3	438.4	451.3	464.4	477.5	490.8	507.8	524.8	541.9



TEST NUMBER: P1444392  
 CATALOG NUMBER: EHBR1-36-UNV-TA-L840-UPL15

**CANDELA DISTRIBUTION (continued):**

	275°	277.5°	280°	282.5°	285°	287.5°	290°	292.5°	295°	297.5°	300°
112.5°	496.9	503.2	509.6	516.0	522.5	529.0	535.5	541.9	550.6	559.2	567.9
115°	526.9	527.3	527.9	528.4	529.0	529.5	530.3	530.9	534.0	536.8	539.8
117.5°	503.1	499.7	496.3	493.1	489.8	486.7	483.5	480.5	480.2	479.9	479.9
120°	454.0	449.6	445.1	440.4	436.2	431.9	427.7	423.6	421.7	419.6	418.0
122.5°	395.3	390.9	386.4	382.1	377.9	373.7	369.7	365.7	364.6	363.4	362.3
125°	340.5	336.9	333.3	329.8	326.4	323.2	320.0	316.9	317.3	317.7	318.3
127.5°	297.2	295.0	293.0	291.1	289.4	287.7	286.1	284.3	286.2	287.7	289.4
130°	268.4	267.6	267.1	266.4	266.2	265.8	265.5	265.3	267.8	270.1	272.6
132.5°	252.9	252.9	253.2	253.6	254.1	254.7	255.5	256.0	258.8	261.3	264.2
135°	245.7	246.2	247.1	247.8	249.0	249.9	251.1	252.1	255.0	257.3	260.1
137.5°	244.6	245.2	246.2	247.2	248.5	249.6	251.0	252.2	254.5	256.6	258.7
140°	246.6	247.1	248.1	249.0	250.0	250.9	252.2	253.3	255.3	257.0	258.7
142.5°	249.1	249.5	250.4	251.2	252.2	253.2	254.3	255.2	256.6	257.9	259.6
145°	253.6	254.1	254.9	255.4	256.2	257.0	257.9	258.7	259.8	260.6	261.7
147.5°	256.5	256.8	257.4	258.0	258.7	259.3	259.8	260.4	261.3	262.0	262.8
150°	258.0	258.2	258.6	258.9	259.5	260.0	260.6	260.9	261.6	262.2	263.0
152.5°	257.5	257.6	258.0	258.3	258.8	259.2	259.5	260.0	260.7	261.1	261.8
155°	257.4	257.9	258.3	258.7	259.3	259.5	260.1	260.4	261.0	261.4	262.0
157.5°	258.7	259.0	259.5	259.8	260.3	260.7	261.2	261.5	262.1	262.4	262.9
160°	259.6	260.1	260.6	261.0	261.6	262.0	262.6	263.2	263.7	264.1	264.5
162.5°	262.2	262.6	263.1	263.4	264.0	264.4	264.8	265.2	265.9	266.3	266.9
165°	264.3	264.8	265.5	265.8	266.5	267.0	267.5	268.0	268.4	268.8	269.2
167.5°	267.9	268.2	268.9	269.3	269.8	270.3	270.8	271.3	271.7	272.0	272.4
170°	270.5	270.9	271.4	271.7	272.1	272.5	273.0	273.4	273.9	274.3	274.9
172.5°	274.3	274.6	275.0	275.1	275.5	275.9	276.2	276.5	276.9	277.2	277.6
175°	277.5	277.5	277.6	277.7	277.9	277.9	278.0	278.2	278.3	278.4	278.5
177.5°	279.2	279.3	279.4	279.5	279.6	279.7	279.8	279.9	279.9	279.9	279.9
180°	278.6	278.6	278.6	278.6	278.6	278.6	278.6	278.6	278.6	278.6	278.6



TEST NUMBER: P1444392  
 CATALOG NUMBER: EHBR1-36-UNV-TA-L840-UPL15

**CANDELA DISTRIBUTION (continued):**

	302.5°	305°	307.5°	310°	312.5°	315°	317.5°	320°	322.5°	325°	327.5°
0°	31377.2	31377.2	31377.2	31377.2	31377.2	31377.2	31377.2	31377.2	31377.2	31377.2	31377.2
2.5°	31709.2	31710.7	31685.0	31683.7	31659.7	31656.7	31633.4	31626.2	31607.2	31600.4	31581.1
5°	32671.3	32640.1	32568.2	32525.8	32454.7	32407.6	32330.6	32280.3	32206.1	32150.0	32075.2
7.5°	33644.3	33595.9	33515.0	33449.6	33350.9	33272.1	33156.5	33061.9	32936.8	32828.5	32697.1
10°	33929.6	33922.2	33901.6	33871.6	33825.7	33774.1	33695.5	33613.4	33503.8	33384.7	33238.7
12.5°	33227.5	33303.4	33406.7	33468.0	33542.5	33575.2	33605.8	33598.1	33578.0	33517.8	33433.3
15°	31448.9	31661.9	31944.0	32162.7	32414.2	32597.0	32798.9	32924.7	33050.2	33108.1	33143.5
17.5°	28619.5	29022.9	29528.8	29947.9	30431.6	30820.1	31246.0	31566.6	31896.2	32132.4	32346.0
20°	24985.2	25569.7	26285.1	26917.1	27651.9	28290.6	28990.5	29565.0	30157.5	30620.8	31059.3
22.5°	21043.1	21737.3	22602.2	23403.5	24350.8	25202.3	26163.0	26999.0	27872.0	28601.3	29306.5
25°	17166.8	17928.0	18873.7	19767.7	20840.7	21831.1	22970.4	24012.4	25140.7	26120.4	27088.1
27.5°	13627.2	14374.5	15340.0	16291.6	17426.2	18481.6	19702.2	20850.4	22135.0	23319.8	24531.7
30°	10717.9	11351.8	12217.5	13139.2	14258.3	15332.2	16566.1	17746.9	19083.3	20377.0	21742.0
32.5°	8491.4	8974.3	9655.0	10434.4	11466.9	12489.2	13664.1	14803.9	16120.1	17426.8	18846.6
35°	6743.8	7120.4	7639.3	8247.6	9122.0	10003.1	11042.4	12079.0	13306.9	14546.9	15926.9
37.5°	5317.8	5623.5	6029.9	6486.8	7188.1	7911.3	8763.5	9622.8	10689.7	11788.9	13039.5
40°	4152.6	4400.0	4716.5	5057.2	5586.8	6144.0	6803.1	7469.5	8326.7	9225.0	10260.0
42.5°	3262.2	3444.8	3668.3	3917.2	4411.3	4707.2	5154.1	5636.1	6266.3	6918.4	7696.6
45°	2619.9	2744.4	2899.4	3066.4	3295.7	3546.6	3852.8	4173.6	4772.4	5066.0	5539.2
47.5°	2187.8	2271.5	2370.0	2475.3	2610.6	2756.5	2938.0	3123.6	3363.6	3612.3	3904.0
50°	1896.9	1981.9	2015.7	2070.3	2148.6	2231.9	2334.2	2436.5	2565.3	2695.7	2845.9
52.5°	1680.9	1708.6	1745.5	1780.1	1828.6	1923.6	1954.2	2007.7	2080.0	2150.5	2229.4
55°	1516.0	1534.1	1558.0	1579.0	1608.2	1636.3	1676.8	1712.4	1760.5	1803.1	1855.3
57.5°	1387.7	1399.2	1415.8	1429.6	1448.5	1464.3	1488.0	1507.3	1535.0	1559.1	1590.8
60°	1294.3	1302.1	1313.2	1322.2	1334.3	1342.6	1354.3	1363.4	1378.0	1390.2	1407.9
62.5°	1218.3	1222.2	1229.5	1234.7	1242.4	1246.6	1252.9	1256.8	1264.9	1271.0	1280.9
65°	1126.9	1127.8	1132.6	1134.8	1140.9	1143.1	1148.2	1150.1	1156.7	1161.3	1169.9
67.5°	1052.0	1049.9	1050.0	1048.3	1049.1	1047.2	1047.7	1045.9	1048.6	1050.0	1056.6
70°	983.6	980.6	979.7	976.6	975.6	972.4	971.5	968.5	968.2	967.3	969.6
72.5°	916.9	916.1	916.4	914.2	914.0	911.7	911.8	910.4	911.9	912.6	915.7
75°	840.3	840.5	842.0	840.1	840.6	838.8	839.5	837.8	838.7	838.3	841.3
77.5°	747.1	749.3	753.3	752.5	753.8	751.7	752.6	750.2	750.9	749.3	750.4
80°	642.1	646.8	652.2	652.0	654.3	652.8	654.9	652.6	653.5	650.7	650.0
82.5°	517.6	521.6	527.4	527.6	532.8	533.7	539.3	539.1	542.7	540.4	538.8
85°	353.9	356.6	361.6	364.5	369.7	372.9	378.4	380.6	376.7	383.8	378.2
87.5°	184.7	191.6	187.8	196.8	194.6	203.7	201.8	210.2	208.5	215.7	214.8
90°	55.6	55.9	61.2	61.9	68.3	69.6	73.7	71.9	75.8	74.3	78.1
92.5°	40.2	43.0	45.6	48.2	50.8	53.5	51.0	48.5	46.2	43.9	41.4
95°	54.0	57.7	61.5	65.4	69.1	73.0	68.9	64.9	60.8	56.7	52.7
97.5°	63.2	67.2	71.3	75.4	79.6	83.6	78.8	74.0	69.2	64.5	59.6
100°	88.1	96.2	104.0	111.9	119.9	127.7	118.9	109.9	101.0	92.0	82.9
102.5°	173.9	192.0	210.2	228.3	246.4	264.6	245.6	226.8	207.7	188.7	169.6
105°	321.5	350.5	379.5	408.5	437.5	466.9	436.0	405.1	374.3	343.7	312.7
107.5°	472.2	500.5	529.0	557.4	585.7	614.3	583.1	551.7	520.6	489.4	458.1
110°	559.2	576.2	593.4	610.7	627.8	645.2	622.4	599.7	577.0	554.2	531.5



TEST NUMBER: P1444392  
 CATALOG NUMBER: EHBR1-36-UNV-TA-L840-UPL15

**CANDELA DISTRIBUTION (continued):**

	302.5°	305°	307.5°	310°	312.5°	315°	317.5°	320°	322.5°	325°	327.5°
112.5°	576.6	585.4	594.1	603.1	611.7	620.5	604.4	588.3	572.1	556.1	539.8
115°	542.8	545.8	548.9	552.0	554.9	558.1	547.4	536.6	525.8	515.0	504.1
117.5°	479.8	479.8	479.5	479.7	479.4	479.4	473.6	467.7	461.8	455.9	449.9
120°	416.0	414.3	412.5	410.8	408.8	406.9	404.7	402.5	400.2	397.8	395.4
122.5°	361.2	360.3	359.2	358.2	357.0	355.9	355.3	354.8	354.0	353.4	352.6
125°	318.8	319.3	319.8	320.3	320.7	321.2	321.1	321.1	320.9	320.9	320.6
127.5°	290.9	292.6	294.0	295.7	297.0	298.7	298.9	299.4	299.6	299.9	300.2
130°	274.9	277.4	279.6	281.9	284.0	286.5	286.6	286.8	287.0	287.1	287.4
132.5°	266.8	269.3	271.9	274.6	277.0	279.6	279.7	279.9	279.8	280.1	280.1
135°	262.5	265.1	267.4	270.0	272.1	274.5	274.5	274.8	274.5	274.8	274.8
137.5°	260.6	262.9	264.9	266.9	268.7	270.7	270.6	270.8	270.5	270.8	270.7
140°	260.3	262.1	263.7	265.4	267.0	268.6	268.4	268.3	268.0	267.9	267.6
142.5°	260.9	262.2	263.4	264.9	266.1	267.4	266.7	266.3	265.9	265.5	265.0
145°	262.7	263.8	264.7	265.7	266.2	267.3	266.6	266.1	265.2	264.7	264.1
147.5°	263.6	264.3	264.7	265.5	265.8	266.6	265.9	265.2	264.6	263.8	263.0
150°	263.4	264.2	264.7	265.2	265.7	266.3	265.5	264.7	263.8	263.0	262.2
152.5°	262.4	262.8	263.3	263.8	264.3	264.7	263.8	263.2	262.3	261.4	260.5
155°	262.3	262.8	263.1	263.6	263.7	264.1	263.2	262.7	261.9	261.3	260.5
157.5°	263.2	263.8	264.1	264.4	264.6	264.9	264.5	264.0	263.3	262.8	262.2
160°	264.9	265.2	265.6	265.8	266.1	266.3	265.8	265.6	265.1	264.6	264.0
162.5°	267.3	267.7	268.1	268.4	268.8	269.2	268.7	268.2	267.7	267.2	266.5
165°	269.5	269.9	270.2	270.6	270.7	271.0	270.6	270.5	270.0	269.7	269.3
167.5°	272.7	273.1	273.4	273.7	273.8	274.0	273.7	273.6	273.1	272.8	272.3
170°	275.1	275.4	275.8	276.1	276.4	276.6	276.4	276.2	275.8	275.5	275.2
172.5°	277.9	278.1	278.2	278.6	278.7	279.0	278.7	278.4	278.1	277.7	277.4
175°	278.5	278.7	278.9	278.9	278.9	279.0	278.7	278.4	278.2	277.9	277.6
177.5°	279.9	279.9	279.9	279.8	279.8	279.8	279.6	279.4	279.2	279.0	278.8
180°	278.6	278.6	278.6	278.6	278.6	278.6	278.6	278.6	278.6	278.6	278.6



TEST NUMBER: P1444392  
 CATALOG NUMBER: EHBR1-36-UNV-TA-L840-UPL15

**CANDELA DISTRIBUTION (continued):**

	330°	332.5°	335°	337.5°	340°	342.5°	345°	347.5°	350°	352.5°	355°
0°	31377.2	31377.2	31377.2	31377.2	31377.2	31377.2	31377.2	31377.2	31377.2	31377.2	31377.2
2.5°	31574.2	31560.5	31551.6	31540.4	31533.6	31524.8	31518.4	31513.0	31508.5	31504.5	31501.5
5°	32018.2	31947.7	31892.9	31833.5	31784.8	31736.3	31698.7	31667.8	31646.4	31630.3	31620.7
7.5°	32583.5	32454.3	32339.5	32218.5	32110.1	32003.5	31911.5	31832.4	31773.0	31734.5	31711.2
10°	33088.3	32915.4	32744.4	32564.3	32393.6	32228.0	32075.2	31940.8	31834.4	31763.6	31722.4
12.5°	33314.6	33167.2	32992.6	32797.1	32587.9	32376.3	32169.9	31983.9	31827.8	31723.0	31662.5
15°	33115.3	33054.8	32936.3	32784.5	32586.1	32367.2	32124.9	31897.3	31687.8	31552.0	31473.3
17.5°	32467.0	32551.4	32542.4	32484.4	32341.6	32157.4	31910.5	31654.9	31392.8	31211.3	31112.1
20°	31372.9	31638.3	31773.0	31842.0	31786.0	31666.6	31443.1	31183.5	30878.1	30641.1	30496.5
22.5°	29835.5	30304.0	30596.0	30809.6	30855.0	30814.3	30617.0	30370.1	30029.8	29744.8	29531.2
25°	27856.3	28542.8	29004.2	29365.9	29506.4	29542.7	29374.8	29129.3	28749.8	28418.0	28124.6
27.5°	25525.1	26417.0	27033.1	27519.2	27738.6	27833.8	27679.2	27428.8	26979.9	26583.6	26200.4
30°	22900.6	23958.8	24700.6	25283.4	25550.9	25676.6	25512.4	25232.9	24710.5	24233.8	23750.9
32.5°	20091.5	21249.5	22057.8	22690.8	22955.9	23074.1	22859.3	22545.3	21941.6	21379.9	20816.9
35°	17150.6	18319.3	19134.5	19750.6	19972.8	20044.0	19769.3	19406.4	18737.5	18121.0	17507.1
37.5°	14149.6	15237.0	15977.9	16530.9	16668.3	16680.6	16349.6	15948.9	15245.8	14637.9	14026.7
40°	11174.7	12091.7	12689.9	13132.4	13180.2	13137.6	12777.8	12374.4	11716.6	11172.1	10635.6
42.5°	8372.4	9064.6	9491.4	9794.7	9776.6	9692.6	9362.6	9015.9	8473.3	8058.5	7636.2
45°	5971.6	6428.0	6677.6	6855.0	6798.0	6717.9	6461.1	6218.2	5849.4	5581.5	5297.8
47.5°	4148.5	4693.6	4598.7	4945.7	4646.7	4844.2	4433.0	4206.3	4010.7	3868.3	3708.0
50°	2970.0	3094.9	3155.2	3196.4	3174.5	3144.1	3070.3	3004.3	2914.9	2849.7	2773.8
52.5°	2293.7	2356.1	2390.3	2415.0	2410.2	2399.1	2366.9	2337.4	2295.7	2268.0	2234.8
55°	1942.8	1943.7	2006.7	1979.7	2019.5	1972.8	1991.2	1939.4	1947.8	1903.4	1873.5
57.5°	1614.4	1640.0	1651.5	1662.6	1659.5	1657.6	1645.1	1638.8	1624.8	1620.5	1610.5
60°	1420.1	1433.5	1436.3	1441.4	1437.1	1435.4	1425.7	1422.2	1412.8	1411.0	1404.4
62.5°	1286.9	1293.7	1293.7	1293.7	1288.1	1282.7	1271.9	1266.3	1258.2	1256.5	1252.7
65°	1175.7	1182.7	1184.0	1185.5	1181.3	1177.2	1167.6	1161.5	1153.2	1150.1	1145.6
67.5°	1060.9	1068.4	1071.1	1074.9	1072.6	1071.7	1065.2	1062.8	1057.3	1056.0	1052.0
70°	970.8	973.9	973.7	973.6	968.4	963.9	956.3	952.7	947.0	945.8	942.2
72.5°	917.2	919.4	918.0	916.0	909.4	902.7	893.8	887.3	879.8	875.2	870.0
75°	841.7	844.6	842.7	841.5	835.6	831.1	824.1	820.4	815.2	813.7	810.0
77.5°	749.0	750.4	747.4	747.1	742.5	739.7	734.4	733.4	729.6	729.7	726.2
80°	645.9	645.1	640.2	639.2	634.7	633.6	629.3	629.6	626.6	627.8	625.4
82.5°	531.4	528.5	522.2	520.2	515.0	514.6	511.8	514.1	512.3	515.0	513.4
85°	380.8	381.7	378.9	378.9	377.4	377.8	377.6	379.3	379.6	382.1	382.0
87.5°	212.3	215.3	214.8	217.5	217.4	220.6	221.7	226.3	226.9	231.2	231.2
90°	76.6	80.9	79.3	83.7	83.2	88.0	88.4	93.1	92.9	97.0	95.8
92.5°	38.9	36.6	34.3	31.8	30.6	29.1	28.4	26.6	25.7	24.2	23.0
95°	48.5	44.5	40.4	36.3	34.9	33.4	32.1	30.7	29.3	27.8	26.5
97.5°	54.8	50.0	45.2	40.4	39.1	37.9	36.6	35.4	34.2	33.0	31.8
100°	74.0	65.0	56.1	47.0	46.0	45.0	44.0	43.0	41.9	40.8	39.8
102.5°	150.6	131.5	112.4	93.3	89.7	86.1	82.5	78.8	75.2	71.5	68.0
105°	281.8	250.9	220.1	189.1	179.3	169.4	159.6	149.7	139.8	130.1	120.3
107.5°	426.7	395.3	363.9	332.6	314.5	296.3	278.2	259.9	241.9	223.6	205.4
110°	508.7	485.9	463.0	440.0	425.6	411.0	396.3	381.7	367.2	352.3	337.7



TEST NUMBER: P1444392  
 CATALOG NUMBER: EHBR1-36-UNV-TA-L840-UPL15

**CANDELA DISTRIBUTION (continued):**

	330°	332.5°	335°	337.5°	340°	342.5°	345°	347.5°	350°	352.5°	355°
112.5°	523.5	507.3	491.0	474.5	468.1	461.4	455.0	448.3	441.7	434.9	428.4
115°	493.2	482.3	471.3	460.2	458.2	455.9	453.7	451.3	449.1	446.7	444.4
117.5°	444.0	437.9	431.9	425.8	426.4	426.9	427.4	427.8	428.3	428.6	428.9
120°	393.0	390.7	388.3	385.8	388.1	390.3	392.5	394.4	396.6	398.5	400.4
122.5°	352.0	351.1	350.5	349.6	352.4	355.1	357.7	360.2	362.6	364.9	367.3
125°	320.6	320.3	320.2	319.9	322.8	325.4	328.1	330.5	333.2	335.4	337.7
127.5°	300.5	300.7	301.1	301.2	303.5	305.3	307.3	309.2	311.0	312.5	314.1
130°	287.5	287.6	287.8	287.9	289.9	291.7	293.7	295.3	296.9	298.3	299.7
132.5°	280.3	280.3	280.5	280.4	282.1	283.4	285.0	286.1	287.4	288.2	289.2
135°	274.9	274.6	274.8	274.6	276.2	277.7	279.0	280.0	281.3	282.0	282.8
137.5°	270.8	270.6	270.6	270.5	271.9	273.2	274.3	275.5	276.4	277.4	278.0
140°	267.6	267.2	267.2	266.9	268.2	269.3	270.5	271.3	272.4	272.9	273.6
142.5°	264.6	263.9	263.8	263.0	264.1	264.9	265.7	266.5	267.1	267.6	268.0
145°	263.4	262.5	262.0	261.3	262.0	262.7	263.3	264.1	264.5	264.8	265.1
147.5°	262.4	261.6	260.8	260.1	260.8	261.3	261.7	262.0	262.5	262.7	262.9
150°	261.4	260.4	259.5	258.6	259.1	259.4	259.7	260.1	260.4	260.4	260.6
152.5°	259.7	258.8	257.9	256.9	257.2	257.4	257.6	257.7	257.8	257.9	258.0
155°	259.8	258.9	258.1	257.2	257.5	257.6	257.6	257.7	257.6	257.6	257.5
157.5°	261.5	260.7	260.2	259.4	259.4	259.4	259.3	259.0	258.9	258.6	258.4
160°	263.6	262.8	262.3	261.6	261.5	261.4	261.3	261.0	260.8	260.5	260.2
162.5°	265.9	265.3	264.5	263.8	263.7	263.7	263.4	263.1	262.8	262.5	262.2
165°	268.9	268.3	267.9	267.2	267.1	266.8	266.7	266.2	266.0	265.6	265.2
167.5°	271.9	271.4	270.9	270.2	270.2	270.1	270.0	269.8	269.5	269.2	269.0
170°	274.8	274.2	273.9	273.4	273.2	273.1	272.8	272.6	272.2	272.0	271.7
172.5°	276.9	276.5	276.1	275.5	275.5	275.3	275.1	275.0	274.6	274.3	274.2
175°	277.2	277.0	276.5	276.2	276.0	275.9	275.8	275.7	275.5	275.4	275.1
177.5°	278.6	278.4	278.0	277.8	277.6	277.6	277.5	277.4	277.4	277.3	277.2
180°	278.6	278.6	278.6	278.6	278.6	278.6	278.6	278.6	278.6	278.6	278.6



TEST NUMBER: P1444392  
CATALOG NUMBER: EHBR1-36-UNV-TA-L840-UPL15

**CANDELA DISTRIBUTION (continued):**

	357.5°	360°
0°	31377.2	31377.2
2.5°	31498.7	31497.0
5°	31615.8	31613.9
7.5°	31704.8	31704.3
10°	31715.3	31720.7
12.5°	31652.0	31656.5
15°	31467.3	31475.9
17.5°	31113.9	31125.2
20°	30505.3	30517.1
22.5°	29519.7	29524.6
25°	28086.6	28066.3
27.5°	26133.0	26098.0
30°	23649.4	23615.6
32.5°	20688.4	20667.2
35°	17355.3	17342.0
37.5°	13846.1	13818.9
40°	10439.3	10360.0
42.5°	7451.4	7312.1
45°	5149.5	4984.6
47.5°	3594.9	3493.0
50°	2724.8	2691.9
52.5°	2220.3	2212.6
55°	1873.4	1870.0
57.5°	1612.7	1611.5
60°	1407.9	1407.6
62.5°	1255.2	1255.8
65°	1147.6	1147.8
67.5°	1053.0	1052.3
70°	943.5	942.7
72.5°	868.2	866.9
75°	810.0	809.2
77.5°	727.3	726.0
80°	627.0	625.4
82.5°	515.7	513.9
85°	384.6	384.8
87.5°	235.4	235.3
90°	99.7	97.9
92.5°	22.1	21.1
95°	25.1	23.7
97.5°	30.6	29.4
100°	38.7	37.7
102.5°	64.4	60.7
105°	110.4	100.6
107.5°	187.3	169.1
110°	323.1	308.5



TEST NUMBER: P1444392  
CATALOG NUMBER: EHBR1-36-UNV-TA-L840-UPL15

**CANDELA DISTRIBUTION (continued):**

	357.5°	360°
112.5°	421.6	414.9
115°	441.7	439.3
117.5°	429.1	429.2
120°	402.1	403.9
122.5°	369.2	371.3
125°	339.6	341.7
127.5°	315.3	316.6
130°	300.6	301.8
132.5°	289.8	290.2
135°	283.3	283.7
137.5°	278.3	278.7
140°	273.7	274.1
142.5°	268.2	268.4
145°	265.3	265.4
147.5°	262.6	262.7
150°	260.5	260.5
152.5°	257.7	257.7
155°	257.3	257.1
157.5°	257.9	257.7
160°	259.8	259.5
162.5°	261.8	261.5
165°	264.6	264.2
167.5°	268.6	268.4
170°	271.3	271.1
172.5°	273.9	273.6
175°	275.0	274.9
177.5°	277.2	277.0
180°	278.6	278.6



TEST NUMBER: P1444392  
 CATALOG NUMBER: EHBR1-36-UNV-TA-L840-UPL15

**CIE UGR TABLE:**

Reflectances:											
Ceiling		0.7	0.7	0.5	0.5	0.3	0.7	0.7	0.5	0.5	0.3
Wall		0.5	0.3	0.5	0.3	0.3	0.5	0.3	0.5	0.3	0.3
Reference plane		0.2	0.2	0.2	0.2	0.2	0.2	0.2	0.2	0.2	0.2
Room dimensions		Viewed crosswise					Viewed endwise				
X=2H	Y=2H	17.00	18.10	17.45	18.52	18.95	15.38	16.48	15.82	16.89	17.33
	3H	18.55	19.53	19.01	19.96	20.44	17.81	18.79	18.27	19.22	19.70
	4H	19.34	20.26	19.83	20.71	21.21	18.92	19.84	19.41	20.29	20.79
	6H	20.11	20.96	20.61	21.42	21.93	19.97	20.81	20.46	21.28	21.78
	8H	20.43	21.23	20.94	21.71	22.23	20.41	21.21	20.92	21.69	22.21
	12H	20.67	21.44	21.19	21.91	22.45	20.76	21.52	21.28	22.00	22.54
4H	2H	17.38	18.30	17.86	18.74	19.24	16.09	17.01	16.58	17.45	17.95
	3H	19.25	20.01	19.75	20.51	21.02	18.71	19.47	19.21	19.97	20.49
	4H	20.26	20.94	20.77	21.45	22.00	19.97	20.65	20.49	21.16	21.72
	6H	21.21	21.80	21.76	22.33	22.91	21.15	21.74	21.70	22.28	22.85
	8H	21.60	22.15	22.15	22.68	23.26	21.65	22.20	22.20	22.73	23.31
	12H	21.91	22.39	22.48	22.96	23.54	22.07	22.55	22.63	23.12	23.70
8H	4H	20.63	21.18	21.18	21.71	22.29	20.39	20.94	20.94	21.47	22.05
	6H	21.79	22.24	22.37	22.82	23.41	21.74	22.18	22.32	22.77	23.35
	8H	22.30	22.70	22.90	23.29	23.89	22.34	22.74	22.94	23.33	23.93
	12H	22.73	23.08	23.32	23.65	24.33	22.87	23.22	23.46	23.79	24.47
12H	4H	20.68	21.16	21.25	21.73	22.31	20.44	20.93	21.01	21.49	22.08
	6H	21.90	22.30	22.50	22.90	23.50	21.85	22.25	22.45	22.85	23.45
	8H	22.49	22.84	23.08	23.42	24.09	22.52	22.87	23.11	23.45	24.12

Cooper Lighting Solutions Photometric Lab  
1121 Highway 74 South  
Peachtree City, GA 30269



LM-79-2019: Approved Method: Electrical and Photometric Measurements of Solid-State Lighting Products

Report Prepared for

Cooper Lighting Solutions

Metalux

Report Number: SP1-2506-472-1

Test Date: 07/30/2025

Luminaire Tested: EHBR-60-L840-N

Data in this report applies to families of products including EHBR-60-L840-N

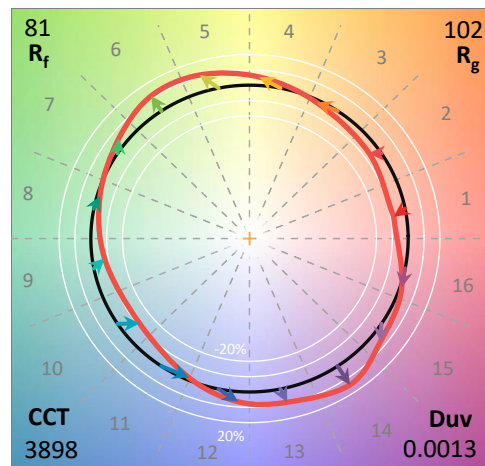
**Test Information**

Test Method: LM-79-2019  
 Report Number: SP1-2506-472-1  
 Test Lab: COOPER LIGHTING SOLUTIONS  
 Photometer: SP1 - 76IN SPHERE  
 Measurement Geometry: 4π  
 Issue Date: 08/05/2025  
 Manufacturer: COOPER LIGHTING SOLUTIONS  
 Product Line: Metalux  
 Catalog Number: **EHBR-60-L840-N**  
 Description: Elevate Round Highbay at, 60000 lumens, 4000K 80CRI LEDs with N lens

**Spectral Parameters**

CCT (K): 3898  
 CIE u': 0.2263  
 CIE v': 0.5052  
 Duv: 0.0013  
 CIE x: 0.3861  
 CIE y: 0.3831  
 CIE z: 0.2308  
 Peak Wavelength (nm): 630  
 Dominant Wavelength (nm): 578  
 Purity: 30.85729  
 Rf: 80.7  
 Rg: 102.1

CRI (Ra):	82.1		
R1:	84.4	R9:	38.5
R2:	83.5	R10:	58.9
R3:	80.8	R11:	83.6
R4:	83.9	R12:	54.2
R5:	82.1	R13:	82.8
R6:	77.3	R14:	88.2
R7:	86.4	R15:	81.2
R8:	78.3		



**Test Conditions**

Stabilization Time: 42M  
 Operation Time: 1H 42M  
 Sphere Temperature (°C): 25.0

REPORT NUMBER: SP1-2506-472-1

Measurement and Test Equipment			
Instrument	Identification Number	Calibration Date	Calibration Due Date
Photometer	76INCH SPHERE IN0058	6/16/2025	12/16/2025
Power Meter	XITRON INXT2011004	1/21/2025	1/21/2026
AC Power Source	CHROMA 61603 IN0063	10/22/2024	10/22/2025
DC Power Source	AGILENT E3634A IN0208	10/22/2024	10/22/2025
Sphere Thermometer	ONSET IN0085	10/22/2024	10/22/2025
Room Thermometer	ONSET IN0046	10/22/2024	10/22/2025

REPORT NUMBER: SP1-2506-472-1

CIE 1931 Chromaticity Diagram



CIE 1931 Chromaticity Diagram with 2017 ANSI 7-Step and 4-Step Quadrangles

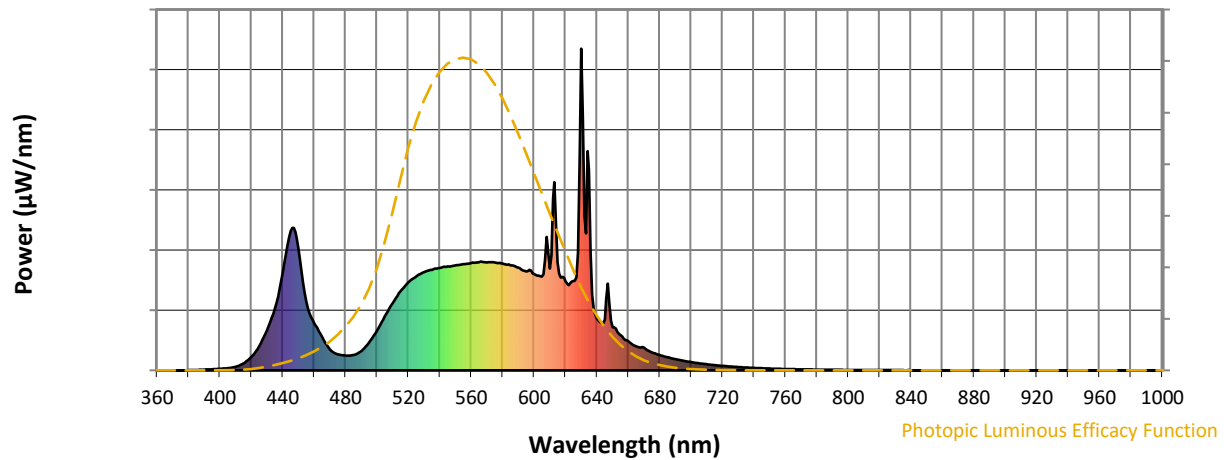


CCT = 3898K  
 CIE x = 0.3861  
 CIE y = 0.3831  
 Duv = 0.0013

Point lies inside the ANSI 4000K 4-step quadrangle

REPORT NUMBER: SP1-2506-472-1

**Photopic Flux vs. Wavelength**



**Photopic Lumens: NR**

$\lambda$ (nm)	Power W <sup>^</sup> /nm	Lumens ( $\phi$ /nm)	$\lambda$ (nm)	Power W <sup>^</sup> /nm	Lumens ( $\phi$ /nm)	$\lambda$ (nm)	Power W <sup>^</sup> /nm	Lumens ( $\phi$ /nm)	$\lambda$ (nm)	Power W <sup>^</sup> /nm	Lumens ( $\phi$ /nm)	$\lambda$ (nm)	Power W <sup>^</sup> /nm	Lumens ( $\phi$ /nm)
360	0	NR	490	60	NR	620	277	NR	750	6	NR	880	0	NR
365	0	NR	495	87	NR	625	278	NR	755	5	NR	885	0	NR
370	0	NR	500	124	NR	630	1000	NR	760	4	NR	890	0	NR
375	0	NR	505	168	NR	635	623	NR	765	4	NR	895	0	NR
380	1	NR	510	209	NR	640	162	NR	770	3	NR	900	0	NR
385	1	NR	515	246	NR	645	158	NR	775	3	NR	905	0	NR
390	2	NR	520	273	NR	650	134	NR	780	2	NR	910	0	NR
395	4	NR	525	292	NR	655	109	NR	785	2	NR	915	0	NR
400	5	NR	530	305	NR	660	91	NR	790	2	NR	920	0	NR
405	7	NR	535	313	NR	665	75	NR	795	2	NR	925	0	NR
410	11	NR	540	319	NR	670	70	NR	800	1	NR	930	0	NR
415	21	NR	545	323	NR	675	56	NR	805	1	NR	935	0	NR
420	42	NR	550	326	NR	680	47	NR	810	1	NR	940	0	NR
425	76	NR	555	330	NR	685	41	NR	815	1	NR	945	0	NR
430	125	NR	560	333	NR	690	35	NR	820	1	NR	950	0	NR
435	193	NR	565	336	NR	695	30	NR	825	1	NR	955	0	NR
440	302	NR	570	336	NR	700	26	NR	830	1	NR	960	0	NR
445	432	NR	575	335	NR	705	22	NR	835	1	NR	965	0	NR
450	380	NR	580	332	NR	710	19	NR	840	0	NR	970	0	NR
455	213	NR	585	326	NR	715	16	NR	845	0	NR	975	0	NR
460	147	NR	590	319	NR	720	14	NR	850	0	NR	980	0	NR
465	104	NR	595	307	NR	725	12	NR	855	0	NR	985	0	NR
470	65	NR	600	299	NR	730	10	NR	860	0	NR	990	0	NR
475	50	NR	605	291	NR	735	9	NR	865	0	NR	995	0	NR
480	46	NR	610	317	NR	740	8	NR	870	0	NR	1000	0	NR
485	47	NR	615	336	NR	745	7	NR	875	0	NR			

REPORT NUMBER: SP1-2506-472-1

Scotopic Flux vs. Wavelength



Scotopic Lumens: NR

S/P: 1.55

λ (nm)	Power W <sup>^</sup> /nm	Lumens (φ/nm)	λ (nm)	Power W <sup>^</sup> /nm	Lumens (φ/nm)	λ (nm)	Power W <sup>^</sup> /nm	Lumens (φ/nm)	λ (nm)	Power W <sup>^</sup> /nm	Lumens (φ/nm)	λ (nm)	Power W <sup>^</sup> /nm	Lumens (φ/nm)
360	0	NR	490	60	NR	620	277	NR	750	6	NR	880	0	NR
365	0	NR	495	87	NR	625	278	NR	755	5	NR	885	0	NR
370	0	NR	500	124	NR	630	1000	NR	760	4	NR	890	0	NR
375	0	NR	505	168	NR	635	623	NR	765	4	NR	895	0	NR
380	1	NR	510	209	NR	640	162	NR	770	3	NR	900	0	NR
385	1	NR	515	246	NR	645	158	NR	775	3	NR	905	0	NR
390	2	NR	520	273	NR	650	134	NR	780	2	NR	910	0	NR
395	4	NR	525	292	NR	655	109	NR	785	2	NR	915	0	NR
400	5	NR	530	305	NR	660	91	NR	790	2	NR	920	0	NR
405	7	NR	535	313	NR	665	75	NR	795	2	NR	925	0	NR
410	11	NR	540	319	NR	670	70	NR	800	1	NR	930	0	NR
415	21	NR	545	323	NR	675	56	NR	805	1	NR	935	0	NR
420	42	NR	550	326	NR	680	47	NR	810	1	NR	940	0	NR
425	76	NR	555	330	NR	685	41	NR	815	1	NR	945	0	NR
430	125	NR	560	333	NR	690	35	NR	820	1	NR	950	0	NR
435	193	NR	565	336	NR	695	30	NR	825	1	NR	955	0	NR
440	302	NR	570	336	NR	700	26	NR	830	1	NR	960	0	NR
445	432	NR	575	335	NR	705	22	NR	835	1	NR	965	0	NR
450	380	NR	580	332	NR	710	19	NR	840	0	NR	970	0	NR
455	213	NR	585	326	NR	715	16	NR	845	0	NR	975	0	NR
460	147	NR	590	319	NR	720	14	NR	850	0	NR	980	0	NR
465	104	NR	595	307	NR	725	12	NR	855	0	NR	985	0	NR
470	65	NR	600	299	NR	730	10	NR	860	0	NR	990	0	NR
475	50	NR	605	291	NR	735	9	NR	865	0	NR	995	0	NR
480	46	NR	610	317	NR	740	8	NR	870	0	NR	1000	0	NR
485	47	NR	615	336	NR	745	7	NR	875	0	NR			

REPORT NUMBER: SP1-2506-472-1

Melanopic Flux vs. Wavelength



Melanopic Lumens: NR

M/P: 2.99

λ (nm)	Power W <sup>^</sup> /nm	Lumens (φ/nm)	λ (nm)	Power W <sup>^</sup> /nm	Lumens (φ/nm)	λ (nm)	Power W <sup>^</sup> /nm	Lumens (φ/nm)	λ (nm)	Power W <sup>^</sup> /nm	Lumens (φ/nm)	λ (nm)	Power W <sup>^</sup> /nm	Lumens (φ/nm)
360	0	NR	490	60	NR	620	277	NR	750	6	NR	880	0	NR
365	0	NR	495	87	NR	625	278	NR	755	5	NR	885	0	NR
370	0	NR	500	124	NR	630	1000	NR	760	4	NR	890	0	NR
375	0	NR	505	168	NR	635	623	NR	765	4	NR	895	0	NR
380	1	NR	510	209	NR	640	162	NR	770	3	NR	900	0	NR
385	1	NR	515	246	NR	645	158	NR	775	3	NR	905	0	NR
390	2	NR	520	273	NR	650	134	NR	780	2	NR	910	0	NR
395	4	NR	525	292	NR	655	109	NR	785	2	NR	915	0	NR
400	5	NR	530	305	NR	660	91	NR	790	2	NR	920	0	NR
405	7	NR	535	313	NR	665	75	NR	795	2	NR	925	0	NR
410	11	NR	540	319	NR	670	70	NR	800	1	NR	930	0	NR
415	21	NR	545	323	NR	675	56	NR	805	1	NR	935	0	NR
420	42	NR	550	326	NR	680	47	NR	810	1	NR	940	0	NR
425	76	NR	555	330	NR	685	41	NR	815	1	NR	945	0	NR
430	125	NR	560	333	NR	690	35	NR	820	1	NR	950	0	NR
435	193	NR	565	336	NR	695	30	NR	825	1	NR	955	0	NR
440	302	NR	570	336	NR	700	26	NR	830	1	NR	960	0	NR
445	432	NR	575	335	NR	705	22	NR	835	1	NR	965	0	NR
450	380	NR	580	332	NR	710	19	NR	840	0	NR	970	0	NR
455	213	NR	585	326	NR	715	16	NR	845	0	NR	975	0	NR
460	147	NR	590	319	NR	720	14	NR	850	0	NR	980	0	NR
465	104	NR	595	307	NR	725	12	NR	855	0	NR	985	0	NR
470	65	NR	600	299	NR	730	10	NR	860	0	NR	990	0	NR
475	50	NR	605	291	NR	735	9	NR	865	0	NR	995	0	NR
480	46	NR	610	317	NR	740	8	NR	870	0	NR	1000	0	NR
485	47	NR	615	336	NR	745	7	NR	875	0	NR			

**Summary**

$R_f = 80.7$   
 $R_g = 102.1$   
 CIE  $R_a = 82.1$   
 $R_9 = 38.5$



**Color Vector Graphics**

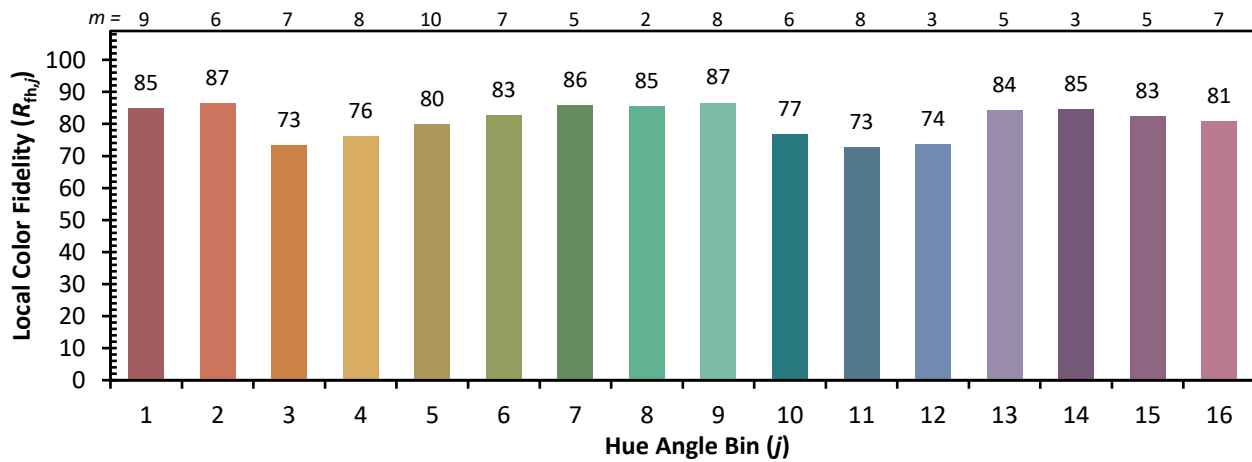
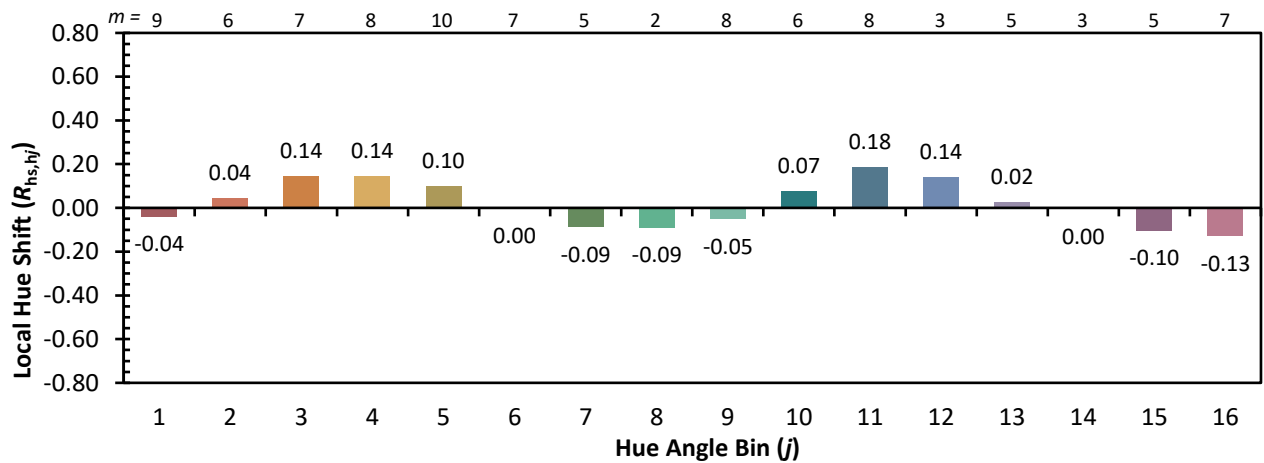
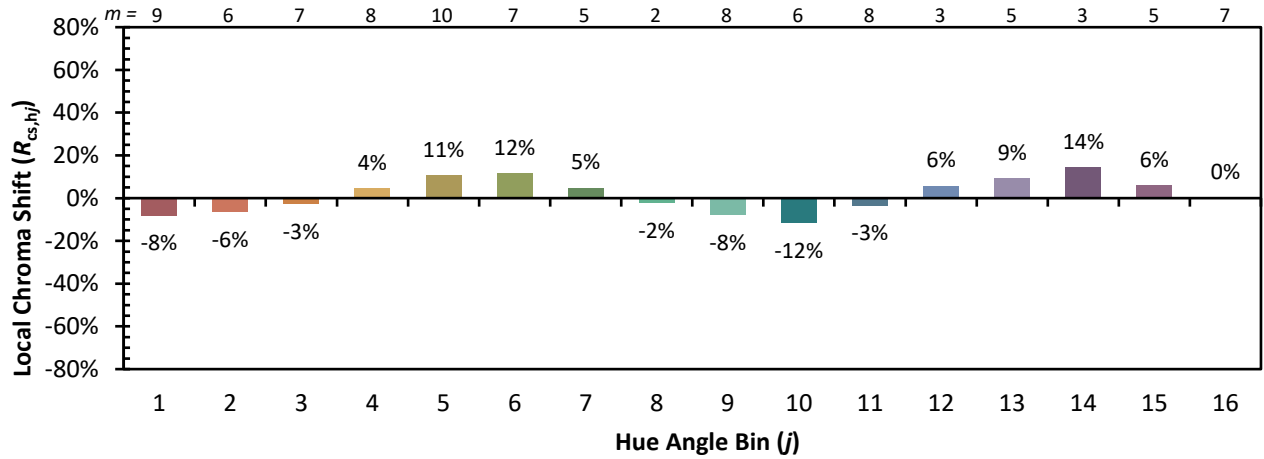


**Individual Sample Fidelity Index ( $R_{f,i}$ )**

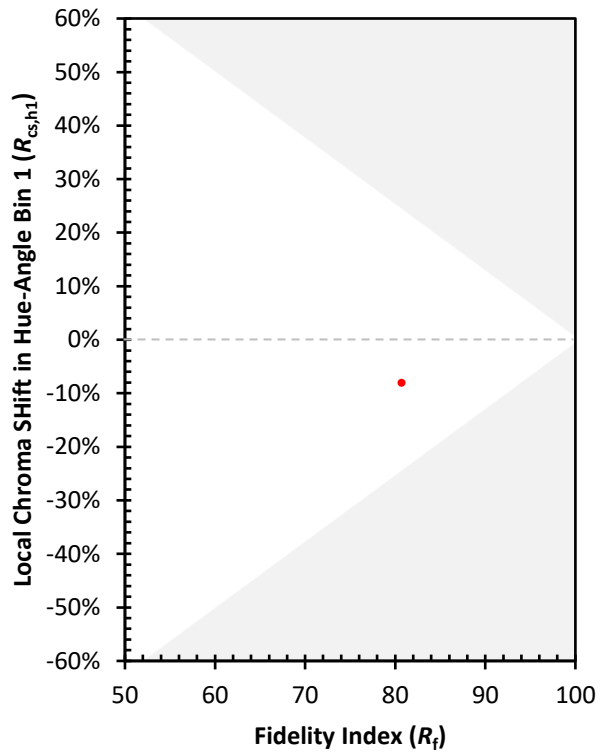
CES01 = 85	CES26 = 69	CES51 = 90	CES76 = 58
CES02 = 61	CES27 = 89	CES52 = 90	CES77 = 76
CES03 = 31	CES28 = 83	CES53 = 80	CES78 = 60
CES04 = 69	CES29 = 66	CES54 = 91	CES79 = 85
CES05 = 48	CES30 = 76	CES55 = 89	CES80 = 79
CES06 = 50	CES31 = 69	CES56 = 79	CES81 = 81
CES07 = 41	CES32 = 62	CES57 = 77	CES82 = 91
CES08 = 40	CES33 = 74	CES58 = 79	CES83 = 88
CES09 = 29	CES34 = 72	CES59 = 93	CES84 = 89
CES10 = 74	CES35 = 84	CES60 = 95	CES85 = 84
CES11 = 57	CES36 = 98	CES61 = 92	CES86 = 82
CES12 = 63	CES37 = 77	CES62 = 89	CES87 = 81
CES13 = 43	CES38 = 83	CES63 = 80	CES88 = 86
CES14 = 74	CES39 = 94	CES64 = 80	CES89 = 79
CES15 = 71	CES40 = 88	CES65 = 77	CES90 = 85
CES16 = 47	CES41 = 89	CES66 = 74	CES91 = 83
CES17 = 49	CES42 = 74	CES67 = 72	CES92 = 77
CES18 = 56	CES43 = 73	CES68 = 78	CES93 = 86
CES19 = 71	CES44 = 98	CES69 = 83	CES94 = 69
CES20 = 65	CES45 = 82	CES70 = 69	CES95 = 80
CES21 = 86	CES46 = 82	CES71 = 64	CES96 = 86
CES22 = 78	CES47 = 80	CES72 = 88	CES97 = 83
CES23 = 91	CES48 = 79	CES73 = 60	CES98 = 81
CES24 = 90	CES49 = 80	CES74 = 98	CES99 = 83
CES25 = 71	CES50 = 89	CES75 = 62	



Color Rendition by Hue-Angle Bin



Measure Comparisons



(END OF REPORT)