

Cooper Lighting Solutions Photometric Lab
1121 Highway 74 South
Peachtree City, GA 30269



Scaled data based on original data using
LM-79-2019 Approved Method: Electrical and Photometric Measurements of Solid-
State Lighting Products

Test Report Prepared for
Cooper Lighting Solutions

Brand: METALUX

Report Number: P1444423

Luminaire Tested: EHBR1-60-UNV-TA-L840-UPL30

Issue Date: 5/1/2026

Test Information

Test Method: LM-79-2019
Report Number: P1444423
REPORT IS A COMBINATION OF REPORTS P1444344 AND P1431635
Test Lab: INNOVATION CENTER
Issue Date: 5/1/2026
Manufacturer: COOPER LIGHTING SOLUTIONS
Product Line: METALUX
Catalog Number: EHBR1-60-UNV-TA-L840-UPL30
Description: Elevate Round Highbay at, 60000 lumens, 4000K 80CRI LEDs with TA lens
Light Source: -
Ballast/Driver: -

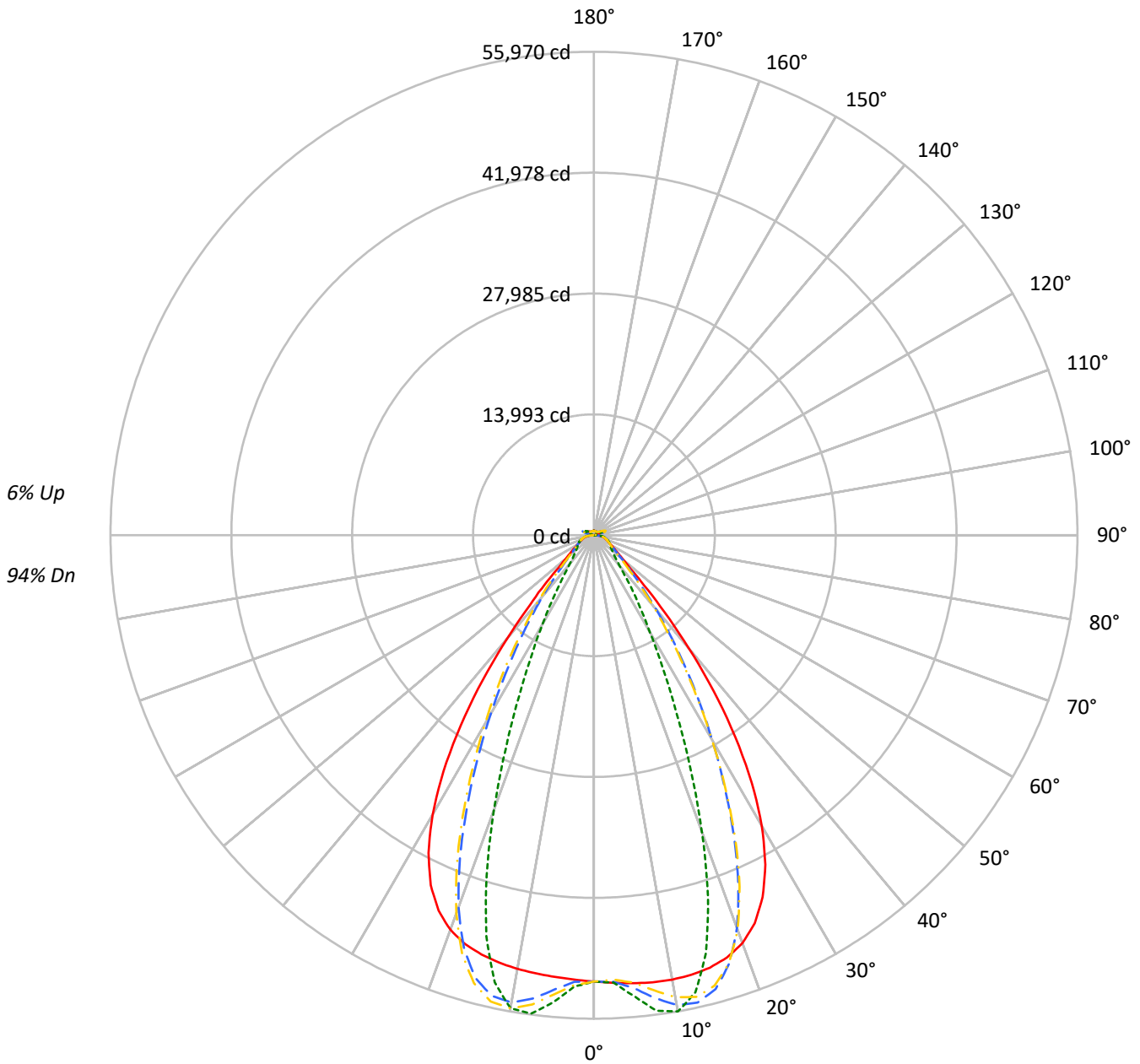
Summary

Lumens per Lamp: N/A
Luminaire Lumens: 62893.0 lumens
Efficiency: N/A
Efficacy: 178.5 lumens/watt
Spacing Criteria (0/90/45): 1.13 / 0.77 / 0.88
Luminous Opening: Vertical Cylinder (Dia: 1.71' x H: 0.1')
CIE Type: Direct

Input Watts (W): 352.4
Input Voltage (V): NR
Input Current (Ain): NR
Voltage Rise (V): NR
Power Factor: NR
Total Harmonic Distortion (THDi): NR
Frequency (hertz): 60
Stabilization Time: NR
Operation Time: NR
Ambient Temperature (°C): NR
Test Distance: 24 FT

TEST NUMBER: P1444423
CATALOG NUMBER: EHBR1-60-UNV-TA-L840-UPL30

Luminous Intensity Polar Plot



— 0°-180° - - 45°-225° - · - · 90°-270° - · - · 135°-315°



TEST NUMBER: P1444423
 CATALOG NUMBER: EHBR1-60-UNV-TA-L840-UPL30

COEFFICIENT OF UTILIZATION - ZONAL CAVITY METHOD:

RF	20				20				20				20				20				
RC	80				70				50				30				10			0	
RW	70	50	30	10	70	50	30	10	50	30	10	50	30	10	50	30	10	50	30	10	0
RCR																					
0	118	118	118	118	114	114	114	114	108	108	108	102	102	102	97	97	97	97	97	97	94
1	111	107	104	101	107	104	102	99	99	97	95	95	93	91	90	89	88	88	88	88	85
2	104	98	93	89	101	96	91	87	91	88	85	88	85	82	84	82	80	84	82	80	77
3	98	90	84	79	95	88	83	78	85	80	76	81	78	74	78	75	73	78	75	73	71
4	92	83	76	72	89	81	75	71	78	73	69	76	71	68	73	70	67	73	70	67	65
5	86	77	70	65	84	75	69	65	73	68	63	71	66	62	68	65	61	68	65	61	60
6	82	71	65	60	80	70	64	59	68	63	58	66	61	58	64	60	57	64	60	57	55
7	77	67	60	55	75	66	59	55	64	58	54	62	57	53	60	56	53	60	56	53	51
8	73	62	56	51	71	61	55	51	60	54	50	58	53	50	57	52	49	57	52	49	48
9	69	58	52	48	68	58	52	47	56	51	47	55	50	46	54	49	46	54	49	46	44
10	66	55	49	44	64	54	48	44	53	48	44	52	47	43	51	46	43	51	46	43	42

AVERAGE LUMINANCE (cd/sqm):

	0°	90°	180°	270°
0°	242624	242624	242624	242624
5°	243799	250908	240387	254195
10°	245834	263434	239939	261691
15°	247040	238801	239519	229186
20°	244486	177898	236484	164599
25°	231416	112511	223768	102084
30°	202159	67611	194329	61790
35°	155583	42426	146634	37582
40°	98420	26612	90046	25008
45°	50728	20733	49887	20392
50°	29741	18441	28829	18153
55°	22785	17447	21942	17290
60°	19279	17823	18458	17592
65°	18108	18612	17415	17977
70°	17691	19490	16810	18757
75°	18916	20669	17894	19755
80°	19575	22887	17747	20893
85°	18435	22083	14897	18909

MAXIMUM LUMINANCE 45°-90°:

Horizontal Angle: 25°
 Vertical Angle: 45°
 Luminance: 77632 cd/sqm



TEST NUMBER: P1444423
 CATALOG NUMBER: EHBR1-60-UNV-TA-L840-UPL30

ZONAL LUMENS:

Zone	Lumens	% Fixture
0°-10°	5091.7	8.1
10°-20°	14323.5	22.8
20°-30°	16313.4	25.9
30°-40°	11725.3	18.6
40°-50°	5407.7	8.6
50°-60°	2587.8	4.1
60°-70°	1888.2	3.0
70°-80°	1434.5	2.3
80°-90°	657.9	1.0
90°-100°	102.1	0.2
100°-110°	551.7	0.9
110°-120°	1018.5	1.6
120°-130°	632.4	1.0
130°-140°	418.6	0.7
140°-150°	320.1	0.5
150°-160°	229.2	0.4
160°-170°	141.3	0.2
170°-180°	49.0	0.1
0°-30°	35728.6	56.8
0°-40°	47453.9	75.5
0°-60°	55449.4	88.2
0°-90°	59430.0	94.5
90°-120°	1672.4	2.7
90°-150°	3043.4	4.8
90°-180°	3463.0	5.5
0°-180°	62893.0	100.0

CANDELA DISTRIBUTION:

	0°	90°	180°	270°	360°	Flux
0°	51665	51665	51665	51665	51665	
5°	52055	53573	51326	54275	52055	4974
15°	51828	50099	50250	48082	51828	14603
25°	46214	22468	44686	20386	46214	20950
35°	28555	7787	26912	6898	28555	17525
45°	8208	3354	8072	3299	8208	6981
55°	3079	2358	2965	2337	3079	2842
65°	1890	1943	1818	1876	1890	1888
75°	1332	1456	1260	1392	1332	1386
85°	634	759	512	650	634	595
90°	166	211	44	55	166	104
95°	46	51	47	52	46	44
105°	202	258	138	258	202	267
115°	892	1074	934	1074	892	825
125°	684	704	773	706	684	623
135°	556	481	597	486	556	434
145°	510	483	540	491	510	322
155°	487	483	516	489	487	227
165°	495	491	512	495	495	140
175°	512	515	520	517	512	49
180°	519	519	519	519	519	



TEST NUMBER: P1444423
 CATALOG NUMBER: EHBR1-60-UNV-TA-L840-UPL30

CANDELA DISTRIBUTION (FULL):

	0°	2.5°	5°	7.5°	10°	12.5°	15°	17.5°	20°	22.5°	25°
0°	51665.1	51665.1	51665.1	51665.1	51665.1	51665.1	51665.1	51665.1	51665.1	51665.1	51665.1
2.5°	51862.5	51858.4	51857.6	51853.9	51852.9	51852.9	51851.2	51847.1	51844.3	51838.4	51831.7
5°	52054.9	52052.7	52054.0	52054.4	52050.8	52042.7	52030.1	52014.6	51995.1	51976.6	51960.2
7.5°	52203.7	52207.4	52212.0	52211.0	52199.7	52180.7	52154.9	52140.4	52149.0	52177.1	52241.5
10°	52230.9	52253.2	52261.8	52259.0	52236.5	52220.2	52226.5	52281.3	52390.2	52535.6	52734.4
12.5°	52125.0	52152.3	52151.3	52142.3	52120.5	52142.7	52221.9	52384.9	52618.4	52905.1	53241.4
15°	51827.7	51862.9	51852.9	51841.3	51826.7	51899.6	52058.0	52341.1	52701.8	53106.0	53519.8
17.5°	51250.3	51292.9	51272.2	51259.0	51246.7	51383.4	51655.6	52069.9	52524.3	52981.5	53373.7
20°	50248.9	50277.5	50228.3	50205.1	50224.6	50492.5	50893.3	51422.5	51901.4	52333.8	52601.8
22.5°	48614.7	48650.1	48557.6	48546.9	48661.0	49072.5	49579.5	50171.2	50621.2	50963.9	51067.1
25°	46213.6	46248.4	46138.5	46204.2	46398.4	46958.8	47562.7	48195.6	48579.4	48833.4	48763.3
27.5°	42972.6	43004.4	42900.3	43034.3	43341.2	44077.7	44788.4	45474.8	45817.0	45994.9	45769.6
30°	38885.1	38951.2	38828.1	39015.2	39483.7	40439.8	41254.1	42023.8	42365.1	42500.5	42149.7
32.5°	34030.4	34124.5	33988.7	34267.2	34920.8	36069.3	36994.4	37854.5	38231.8	38386.4	37990.2
35°	28555.0	28689.8	28534.1	28951.9	29758.2	31037.1	32061.5	33021.7	33468.6	33687.7	33288.5
37.5°	22754.0	22882.5	22798.3	23355.6	24241.0	25566.6	26612.3	27648.1	28152.9	28481.6	28166.8
40°	17058.7	17176.3	17240.0	17877.5	18710.2	19959.5	20963.9	21988.8	22553.5	22966.2	22772.0
42.5°	12040.1	12158.7	12375.4	12990.4	13684.9	14719.0	15579.4	16499.6	17039.0	17479.2	17404.3
45°	8207.5	8345.1	8616.7	9120.3	9622.5	10364.4	10996.2	11711.9	12152.5	12555.7	12560.5
47.5°	5751.4	5848.1	6090.7	6434.6	6762.0	7690.9	7728.9	8080.7	8376.9	8678.3	8717.4
50°	4432.5	4490.8	4619.4	4811.0	4996.6	5237.6	5458.5	5713.3	5895.6	6060.9	6100.3
52.5°	3643.2	3680.2	3745.7	3849.4	3957.1	4088.3	4206.3	4346.4	4445.6	4533.9	4552.6
55°	3079.2	3109.7	3207.2	3227.0	3350.1	3373.8	3426.3	3511.5	3569.1	3622.2	3635.4
57.5°	2653.5	2675.7	2696.4	2740.6	2778.5	2833.7	2878.1	2939.2	2975.5	3013.9	3017.1
60°	2317.7	2333.7	2348.4	2379.1	2405.0	2443.3	2473.9	2515.4	2541.5	2570.2	2573.5
62.5°	2067.7	2079.2	2089.0	2109.3	2127.7	2157.1	2181.5	2216.2	2240.5	2262.7	2267.6
65°	1890.1	1898.5	1904.8	1920.1	1936.2	1961.3	1983.3	2011.6	2029.5	2046.6	2050.2
67.5°	1732.7	1740.7	1747.2	1761.2	1772.3	1791.1	1805.8	1827.1	1840.5	1854.0	1854.4
70°	1552.3	1559.8	1564.8	1577.8	1586.8	1602.9	1614.7	1633.9	1647.7	1662.8	1666.7
72.5°	1427.4	1431.9	1438.5	1450.4	1462.8	1480.1	1496.0	1515.9	1532.6	1548.3	1555.0
75°	1332.5	1337.6	1342.1	1352.2	1360.8	1375.4	1387.3	1405.4	1420.0	1436.8	1445.1
77.5°	1195.4	1201.3	1205.1	1215.3	1222.8	1236.7	1245.5	1261.9	1273.7	1289.0	1296.5
80°	1029.8	1035.3	1038.0	1047.5	1053.5	1066.3	1075.0	1090.6	1100.6	1116.0	1124.9
82.5°	846.1	851.5	853.0	862.0	865.3	875.8	882.2	898.2	910.5	930.4	944.2
85°	633.6	635.5	638.6	636.3	649.1	649.9	664.4	667.2	686.2	691.3	713.1
87.5°	387.4	393.1	395.9	404.8	408.6	417.4	420.1	429.5	434.7	445.4	450.3
90°	165.6	174.6	177.7	188.2	191.0	200.5	202.7	213.3	216.3	227.2	231.6
92.5°	41.1	43.5	45.8	48.8	51.4	55.0	58.0	60.8	63.6	66.9	72.0
95°	46.4	49.2	52.1	55.0	57.8	60.6	63.5	66.4	69.2	72.0	80.2
97.5°	57.8	60.3	62.8	65.3	67.7	70.2	72.6	75.2	77.6	79.9	89.8
100°	74.6	76.7	78.7	80.8	82.9	85.0	87.1	89.2	91.2	93.3	111.6
102.5°	121.1	128.4	135.9	143.3	150.7	157.9	165.6	172.7	180.2	187.6	226.3
105°	202.3	222.3	242.6	262.5	282.6	302.8	322.9	342.7	362.7	382.7	446.2
107.5°	342.1	379.1	416.3	453.5	490.8	527.8	565.0	602.1	639.1	675.9	740.3
110°	626.7	656.3	686.3	716.1	746.0	775.9	805.8	835.1	865.2	894.9	941.8



TEST NUMBER: P1444423
 CATALOG NUMBER: EHBR1-60-UNV-TA-L840-UPL30

CANDELA DISTRIBUTION (continued):

	0°	2.5°	5°	7.5°	10°	12.5°	15°	17.5°	20°	22.5°	25°
112.5°	843.6	856.9	870.4	883.9	897.3	910.5	923.9	937.3	950.7	963.8	997.3
115°	892.1	896.6	901.3	905.8	910.5	914.9	919.4	923.7	928.4	932.5	955.1
117.5°	869.9	868.7	867.8	866.8	865.5	864.4	863.3	861.9	860.7	859.3	871.8
120°	816.0	811.4	807.3	802.5	798.2	793.4	789.0	784.3	779.6	774.6	779.9
122.5°	747.4	742.0	737.1	731.3	726.0	720.3	715.0	708.8	703.6	697.8	699.3
125°	684.5	679.0	674.1	668.4	662.7	656.9	651.2	645.4	639.6	633.6	634.2
127.5°	630.7	626.9	623.2	618.6	614.5	610.1	605.7	601.1	596.9	592.0	591.8
130°	597.7	594.3	590.7	586.6	582.9	578.7	574.5	570.1	566.0	561.5	561.3
132.5°	571.7	569.3	566.6	563.5	560.5	557.0	553.8	550.1	546.8	543.3	543.1
135°	556.1	553.4	551.1	548.3	545.4	541.9	538.6	535.2	531.9	528.4	528.5
137.5°	543.2	541.0	538.7	535.8	533.2	529.7	526.9	523.4	520.3	516.9	516.9
140°	531.6	529.6	527.3	524.6	522.2	519.3	516.3	513.2	510.2	506.9	507.3
142.5°	517.9	515.9	514.3	512.0	509.8	507.1	504.7	501.8	499.4	496.4	497.2
145°	509.8	508.2	506.8	504.9	502.7	500.3	498.1	495.4	493.4	490.9	491.6
147.5°	502.8	501.5	500.3	498.6	497.0	494.8	492.8	490.6	488.7	486.5	487.5
150°	496.8	495.6	494.5	493.1	491.3	489.4	487.4	485.6	483.6	481.5	482.5
152.5°	489.8	488.5	487.4	486.0	484.4	482.3	481.0	479.0	477.3	475.2	476.0
155°	487.1	485.8	484.4	483.2	481.6	479.9	478.2	476.6	474.9	473.0	473.6
157.5°	486.8	485.4	484.5	483.0	482.0	480.6	479.2	477.7	476.3	474.9	475.1
160°	488.9	487.6	486.5	485.2	483.8	482.4	481.2	479.7	478.8	477.2	477.4
162.5°	491.2	489.9	488.7	487.3	486.1	484.7	483.5	482.4	481.2	479.7	480.1
165°	494.8	494.1	493.1	492.2	491.2	490.3	489.3	488.2	487.1	486.0	486.1
167.5°	501.9	500.8	500.0	498.8	497.6	496.8	495.6	494.5	493.7	492.4	492.5
170°	505.9	505.0	504.4	503.8	503.1	502.3	501.8	501.0	500.2	499.5	499.7
172.5°	510.2	509.4	509.0	508.6	507.8	507.5	506.9	506.3	505.9	505.2	505.8
175°	511.7	511.2	511.0	510.6	510.2	509.7	509.5	509.2	509.2	508.6	508.8
177.5°	515.5	515.3	515.3	515.1	515.1	515.0	514.8	514.4	514.2	514.2	514.4
180°	518.6	518.6	518.6	518.6	518.6	518.6	518.6	518.6	518.6	518.6	518.6



TEST NUMBER: P1444423
 CATALOG NUMBER: EHBR1-60-UNV-TA-L840-UPL30

CANDELA DISTRIBUTION (continued):

	27.5°	30°	32.5°	35°	37.5°	40°	42.5°	45°	47.5°	50°	52.5°
0°	51665.1	51665.1	51665.1	51665.1	51665.1	51665.1	51665.1	51665.1	51665.1	51665.1	51665.1
2.5°	51826.7	51820.4	51811.7	51800.8	51791.5	51780.6	51754.7	51747.1	51755.6	51761.4	51773.3
5°	51949.9	51953.5	51954.8	51978.3	51998.7	52049.4	52446.9	52604.9	52727.0	52804.6	52922.4
7.5°	52321.1	52440.6	52558.7	52717.6	52854.7	53039.9	53735.4	54031.3	54241.8	54393.1	54579.2
10°	52950.3	53211.1	53455.6	53742.1	53988.3	54270.4	54917.8	55206.1	55388.2	55520.7	55644.4
12.5°	53584.1	53945.8	54272.7	54591.4	54858.0	55102.5	55330.2	55431.1	55439.7	55443.9	55378.3
15°	53914.2	54260.0	54548.0	54758.8	54915.4	54984.7	54592.8	54387.1	54127.3	53913.3	53561.2
17.5°	53705.8	53913.3	54037.7	54025.5	53960.7	53744.0	52633.8	52023.1	51416.9	50870.7	50154.4
20°	52779.7	52763.8	52655.7	52349.0	51979.7	51405.3	49502.0	48403.8	47342.2	46409.7	45278.4
22.5°	51056.6	50785.5	50407.5	49746.5	49012.2	48008.6	45281.1	43665.8	42187.8	40882.1	39419.4
25°	48559.9	48002.2	47304.9	46255.7	45114.5	43650.9	40289.1	38279.9	36505.3	34966.2	33278.5
27.5°	45364.7	44524.5	43502.8	42050.5	40504.5	38629.4	34902.2	32684.9	30779.9	29129.8	27333.5
30°	41581.9	40489.2	39169.9	37367.3	35502.6	33375.8	29595.7	27349.9	25421.7	23724.0	21926.4
32.5°	37307.0	36027.2	34481.2	32458.0	30441.4	28254.7	24604.1	22430.2	20588.2	18955.1	17328.1
35°	32592.1	31219.6	29584.0	27520.5	25515.9	23389.9	20040.2	18080.1	16453.5	15009.9	13696.2
37.5°	27534.4	26186.8	24632.2	22687.4	20828.5	18902.0	16011.7	14369.2	13004.2	11806.1	10791.7
40°	22275.9	21096.6	19751.5	18070.1	16483.7	14879.3	12506.8	11202.9	10125.7	9212.0	8451.8
42.5°	17081.7	16167.7	15136.3	13807.6	12593.6	11372.0	9545.9	8579.9	7782.0	7124.2	6586.9
45°	12393.3	11782.0	11090.1	10166.5	9326.5	8474.4	7174.7	6495.8	5976.2	5552.0	5193.4
47.5°	8663.6	8308.9	8287.3	7433.7	6817.7	6296.8	5459.4	5030.7	4712.2	4455.2	4228.2
50°	6084.2	5912.6	5699.5	5394.8	5109.0	4814.5	4304.4	4045.2	3858.6	3702.9	3559.3
52.5°	4548.4	4459.3	4345.8	4184.1	4029.2	3863.7	3540.8	3375.7	3317.2	3172.2	3058.5
55°	3632.9	3581.7	3517.3	3422.2	3328.1	3290.3	3013.7	2891.1	2813.6	2756.3	2695.2
57.5°	3017.7	2979.6	2941.2	2877.0	2822.4	2756.3	2609.5	2546.6	2500.5	2466.8	2424.5
60°	2574.1	2551.3	2529.8	2492.0	2462.6	2426.9	2333.7	2298.3	2274.2	2253.9	2226.9
62.5°	2271.9	2260.2	2249.1	2229.0	2214.0	2194.7	2130.9	2114.0	2101.8	2091.7	2075.2
65°	2053.8	2045.3	2039.2	2025.9	2018.4	2007.1	1952.3	1940.8	1933.3	1929.7	1920.1
67.5°	1855.7	1846.8	1842.7	1833.3	1830.1	1823.1	1778.3	1771.9	1769.5	1770.6	1767.2
70°	1670.3	1666.7	1668.5	1667.0	1671.2	1672.5	1645.4	1645.2	1648.0	1653.8	1654.4
72.5°	1559.2	1559.2	1561.3	1562.2	1566.3	1568.2	1545.6	1544.5	1545.8	1550.0	1550.2
75°	1453.5	1455.2	1460.9	1462.8	1467.7	1468.6	1438.7	1435.3	1435.5	1439.5	1438.2
77.5°	1307.3	1313.5	1324.4	1330.2	1339.3	1341.1	1307.6	1303.5	1303.7	1307.8	1304.3
80°	1141.2	1153.3	1170.6	1182.7	1196.9	1202.6	1168.2	1159.9	1152.3	1151.2	1144.3
82.5°	964.8	979.6	1000.4	1011.4	1026.6	1030.0	972.3	961.4	954.9	955.4	949.2
85°	736.6	747.7	766.6	772.8	782.2	781.4	715.6	687.4	694.9	683.2	692.4
87.5°	462.0	468.6	480.4	481.9	486.3	485.4	419.1	406.1	402.3	402.5	397.7
90°	243.2	248.6	259.8	260.9	268.8	268.8	216.1	210.9	205.4	207.1	199.7
92.5°	77.8	82.7	88.3	93.4	98.9	104.2	103.4	106.9	102.1	96.4	91.8
95°	88.6	96.9	105.2	113.6	122.0	130.3	138.6	147.0	139.2	131.3	123.5
97.5°	99.7	109.6	119.3	129.1	138.9	148.8	158.7	168.6	160.2	151.5	143.1
100°	130.0	148.4	166.7	185.1	203.3	221.8	240.1	258.6	242.5	225.9	209.8
102.5°	265.3	304.3	343.3	382.2	421.3	460.3	499.6	538.7	501.6	464.1	426.9
105°	509.4	572.6	635.9	698.8	762.1	825.3	889.1	952.4	893.0	833.4	774.0
107.5°	804.4	868.6	932.4	996.4	1060.6	1124.7	1189.6	1253.8	1195.8	1137.3	1079.4
110°	988.5	1035.0	1081.7	1128.3	1174.8	1221.5	1269.4	1316.1	1281.1	1246.1	1211.1



TEST NUMBER: P1444423
 CATALOG NUMBER: EHBR1-60-UNV-TA-L840-UPL30

CANDELA DISTRIBUTION (continued):

	27.5°	30°	32.5°	35°	37.5°	40°	42.5°	45°	47.5°	50°	52.5°
112.5°	1030.3	1063.7	1097.0	1130.1	1163.1	1196.4	1231.3	1264.9	1247.1	1229.0	1211.5
115°	977.2	999.7	1021.7	1044.0	1066.2	1088.2	1112.5	1135.3	1129.3	1123.1	1117.4
117.5°	884.0	896.2	908.5	920.5	932.5	944.7	959.8	972.3	972.6	973.2	973.7
120°	784.7	789.5	794.3	799.3	803.8	808.5	816.6	822.0	826.3	830.1	834.3
122.5°	700.9	702.4	703.8	705.2	706.6	707.9	713.1	715.4	717.8	720.4	723.0
125°	634.6	634.9	635.3	635.6	635.6	635.9	640.7	641.6	641.2	640.7	640.2
127.5°	591.2	590.8	590.3	589.9	589.0	588.4	592.6	592.9	590.3	587.5	584.7
130°	561.1	560.9	560.5	560.3	560.1	559.9	564.4	565.4	561.2	556.6	552.4
132.5°	542.9	542.9	542.5	542.7	542.5	542.3	547.5	548.6	544.1	538.9	534.1
135°	528.3	528.5	528.5	528.5	528.5	528.9	534.6	536.0	531.5	526.6	522.1
137.5°	516.7	516.8	516.8	517.2	517.2	517.4	523.9	525.4	521.8	517.6	514.0
140°	507.5	507.6	507.9	508.5	508.7	509.4	516.3	518.2	515.4	512.1	508.8
142.5°	497.5	498.5	499.4	500.4	501.2	502.4	510.4	512.9	510.6	507.8	505.6
145°	492.4	493.7	494.6	495.9	497.1	498.5	507.6	510.7	509.0	507.2	505.4
147.5°	487.9	489.0	490.0	491.1	492.2	494.0	503.5	506.5	505.6	504.2	503.1
150°	483.2	484.4	485.2	486.6	488.1	489.7	500.5	504.1	503.2	502.2	501.1
152.5°	476.8	477.7	478.7	479.8	480.9	482.4	495.5	499.6	498.8	497.6	496.9
155°	474.1	474.7	475.2	476.2	477.0	478.4	492.7	496.7	496.1	495.5	494.8
157.5°	475.2	475.5	475.7	476.2	476.8	477.5	492.6	496.9	496.1	495.6	495.0
160°	477.3	477.6	477.6	477.9	478.0	478.5	494.1	498.1	497.7	496.9	496.3
162.5°	480.2	481.0	481.1	481.6	481.9	482.7	498.3	502.9	502.0	501.2	500.4
165°	486.2	486.1	486.2	486.5	486.6	486.9	501.8	505.5	505.1	504.4	503.8
167.5°	492.6	492.9	492.9	493.3	493.5	494.0	507.8	511.5	511.1	510.4	509.9
170°	499.7	500.1	500.0	500.4	500.8	501.4	512.8	515.9	515.5	514.5	513.9
172.5°	505.9	506.5	506.8	507.3	507.6	508.2	517.9	520.8	520.4	519.8	519.1
175°	509.1	509.4	509.8	510.4	510.8	511.2	518.7	520.8	520.6	520.3	519.9
177.5°	514.8	514.9	515.3	515.7	516.1	516.4	521.0	522.4	522.2	522.2	522.1
180°	518.6	518.6	518.6	518.6	518.6	518.6	518.6	518.6	518.6	518.6	518.6



TEST NUMBER: P1444423
 CATALOG NUMBER: EHBR1-60-UNV-TA-L840-UPL30

CANDELA DISTRIBUTION (continued):

	55°	57.5°	60°	62.5°	65°	67.5°	70°	72.5°	75°	77.5°	80°
0°	51665.1	51665.1	51665.1	51665.1	51665.1	51665.1	51665.1	51665.1	51665.1	51665.1	51665.1
2.5°	51776.0	51794.2	51796.8	51818.1	51816.4	51841.6	51837.7	51858.4	51846.3	51863.3	51849.0
5°	52992.1	53102.4	53160.0	53267.6	53301.6	53398.0	53425.1	53513.0	53516.7	53586.4	53570.5
7.5°	54711.3	54873.9	54970.4	55103.5	55170.9	55281.7	55330.5	55412.6	55438.9	55504.1	55509.0
10°	55738.1	55816.9	55872.1	55909.2	55943.1	55959.0	55977.6	55972.6	55977.6	55970.2	55986.2
12.5°	55334.2	55218.9	55142.8	54998.4	54914.7	54755.2	54676.9	54523.5	54467.7	54336.1	54317.1
15°	53289.0	52887.3	52603.5	52190.7	51931.3	51525.2	51287.6	50921.2	50753.9	50462.6	50386.2
17.5°	49561.4	48815.7	48238.7	47498.4	46984.7	46292.8	45857.8	45285.1	44971.4	44509.6	44349.7
20°	44335.4	43232.1	42366.4	41335.3	40597.3	39677.9	39089.3	38346.9	37915.9	37348.7	37118.8
22.5°	38199.8	36826.2	35745.1	34527.0	33636.6	32612.0	31906.8	31103.5	30634.7	30018.5	29745.6
25°	31875.9	30361.2	29159.3	27875.8	26935.1	25908.0	25202.6	24413.6	23928.3	23343.3	23072.2
27.5°	25827.8	24294.4	23132.9	21939.6	21076.7	20149.9	19513.5	18824.5	18393.9	17894.5	17639.4
30°	20490.4	19137.9	18149.6	17159.3	16441.4	15688.6	15159.8	14588.8	14211.1	13783.4	13540.5
32.5°	16141.9	15097.8	14323.9	13538.1	12950.5	12321.5	11864.5	11360.7	11019.7	10637.9	10417.9
35°	12784.1	11972.9	11355.6	10708.7	10204.0	9668.2	9265.5	8830.8	8524.7	8196.0	8006.0
37.5°	10100.8	9455.7	8947.7	8410.4	7995.9	7552.1	7402.5	6903.5	6586.4	6324.1	6142.4
40°	7927.1	7414.2	6993.9	6583.0	6244.8	5908.2	5638.1	5371.5	5166.8	4979.2	4849.4
42.5°	6190.4	5818.8	5511.9	5210.9	4964.3	4719.0	4523.2	4339.6	4201.8	4079.1	3995.3
45°	4921.2	4665.5	4452.2	4240.2	4066.2	3902.5	3770.7	3653.6	3564.5	3490.8	3438.6
47.5°	4042.9	3867.8	3717.4	3574.3	3456.1	3349.0	3260.7	3231.9	3136.2	3071.7	3047.2
50°	3435.8	3330.2	3215.9	3110.3	3031.4	2952.9	2895.7	2839.6	2803.8	2774.1	2765.2
52.5°	2982.8	2902.0	2838.4	2771.6	2719.6	2663.7	2624.2	2586.9	2567.1	2551.7	2549.7
55°	2646.0	2589.5	2547.4	2502.6	2471.4	2438.7	2418.2	2398.4	2389.8	2381.9	2382.6
57.5°	2391.1	2353.5	2326.0	2297.0	2280.1	2264.4	2259.3	2254.3	2256.9	2258.0	2262.5
60°	2205.5	2181.0	2163.7	2147.1	2140.0	2134.9	2138.8	2143.2	2152.2	2159.5	2166.0
62.5°	2063.2	2049.2	2040.8	2031.7	2031.0	2031.4	2039.1	2046.6	2057.8	2066.2	2072.6
65°	1916.7	1908.6	1906.0	1900.2	1903.1	1904.8	1914.0	1919.7	1931.0	1937.8	1945.8
67.5°	1768.7	1766.8	1768.5	1768.5	1773.6	1778.1	1786.8	1793.4	1803.0	1809.0	1815.6
70°	1659.3	1660.1	1664.1	1664.8	1670.4	1673.5	1681.2	1685.3	1694.0	1699.2	1707.0
72.5°	1553.1	1551.3	1552.3	1549.8	1551.7	1550.9	1555.2	1557.3	1564.6	1568.6	1578.2
75°	1439.9	1435.1	1434.0	1428.8	1428.9	1425.3	1427.0	1426.9	1431.7	1433.6	1440.4
77.5°	1303.2	1295.2	1291.3	1282.7	1282.5	1279.2	1282.7	1284.9	1293.2	1297.3	1305.1
80°	1139.7	1127.1	1121.3	1111.3	1113.0	1112.5	1120.9	1127.3	1137.5	1139.5	1149.5
82.5°	947.2	934.4	928.3	918.5	920.8	921.0	928.7	930.0	939.0	942.8	954.3
85°	678.2	683.2	669.6	670.6	667.7	673.0	678.2	684.7	692.2	704.7	714.2
87.5°	399.5	397.7	402.5	403.1	410.0	413.6	424.7	431.0	443.5	453.2	470.8
90°	199.1	191.9	194.7	191.7	197.5	194.6	200.0	196.1	202.9	202.9	211.8
92.5°	85.8	80.9	75.1	70.2	64.5	59.8	56.7	54.7	51.8	49.9	46.8
95°	115.7	107.9	100.1	92.3	84.6	76.8	74.0	71.1	68.2	65.4	62.6
97.5°	134.7	126.4	118.1	109.5	101.1	92.7	90.8	88.9	87.1	85.2	83.2
100°	193.5	177.4	161.2	144.9	128.7	112.6	111.1	109.6	108.1	106.6	104.9
102.5°	389.9	352.6	315.6	278.4	241.4	204.1	197.7	191.2	184.7	178.3	171.8
105°	714.4	654.8	595.4	536.0	476.7	417.3	399.7	381.6	363.9	346.3	328.5
107.5°	1021.3	963.1	905.3	847.4	789.3	731.4	703.3	675.3	647.1	619.1	591.2
110°	1175.7	1140.8	1106.1	1070.9	1036.1	1001.3	974.3	947.8	920.7	894.1	867.4



TEST NUMBER: P1444423
 CATALOG NUMBER: EHBR1-60-UNV-TA-L840-UPL30

CANDELA DISTRIBUTION (continued):

	55°	57.5°	60°	62.5°	65°	67.5°	70°	72.5°	75°	77.5°	80°
112.5°	1193.6	1176.0	1158.0	1140.7	1123.1	1105.5	1092.3	1079.2	1066.2	1053.1	1039.8
115°	1111.2	1105.4	1099.4	1093.8	1088.1	1082.2	1080.9	1080.0	1078.7	1077.8	1076.8
117.5°	974.1	974.7	975.0	975.8	976.5	977.2	984.0	990.3	997.2	1004.2	1011.3
120°	838.4	842.4	846.5	850.8	854.9	859.4	868.0	877.1	886.1	895.6	904.9
122.5°	725.6	728.1	730.6	733.4	736.2	738.9	747.5	756.3	765.1	774.2	783.6
125°	639.3	638.7	638.2	637.4	636.9	636.6	643.4	650.5	657.7	665.3	672.5
127.5°	581.9	578.8	575.8	573.2	570.1	567.7	571.3	575.2	579.1	583.3	587.3
130°	547.9	543.4	538.7	534.6	529.7	525.6	526.5	527.7	528.7	530.1	531.3
132.5°	528.9	524.0	518.8	513.7	508.5	503.6	502.7	501.9	501.0	500.6	500.2
135°	517.1	512.5	507.3	502.6	497.4	492.9	491.0	489.1	487.3	485.7	484.3
137.5°	509.9	506.0	502.0	498.0	493.8	489.9	487.1	485.3	482.8	481.3	479.3
140°	505.4	502.5	498.8	495.6	492.2	489.1	486.7	485.0	483.0	481.5	479.7
142.5°	502.8	500.2	497.5	495.1	492.4	489.9	487.8	486.0	484.2	482.7	480.9
145°	503.5	501.9	499.9	497.9	496.1	494.3	492.4	491.1	489.6	488.2	487.1
147.5°	501.8	500.5	499.2	497.7	496.2	494.9	493.5	492.8	491.3	490.5	489.4
150°	499.7	498.6	497.2	496.3	494.7	493.6	492.7	491.9	491.0	490.6	489.6
152.5°	495.5	494.7	493.5	492.5	491.2	490.1	489.3	488.7	488.0	487.3	486.3
155°	493.8	493.1	492.1	491.3	490.2	489.6	488.7	487.6	486.9	486.1	485.2
157.5°	494.2	493.5	492.5	492.0	490.8	490.1	489.3	488.5	487.5	486.9	486.0
160°	495.6	495.0	494.1	493.3	492.6	491.8	490.6	489.9	488.7	488.0	486.8
162.5°	499.5	498.5	497.7	496.8	495.6	494.9	493.9	493.1	492.4	491.6	490.7
165°	503.0	502.3	501.5	500.8	500.2	499.4	498.2	497.4	496.3	495.5	494.5
167.5°	509.1	508.6	507.8	507.2	506.3	505.5	504.7	503.8	502.8	501.9	500.8
170°	513.4	512.5	511.9	511.0	510.2	509.1	508.4	507.4	506.4	505.9	504.8
172.5°	518.5	518.2	517.4	516.8	515.9	515.3	514.7	514.0	513.2	512.4	511.9
175°	519.7	519.5	519.3	518.7	518.5	518.2	517.8	517.6	517.2	517.0	516.5
177.5°	522.1	521.9	521.9	521.5	521.2	521.2	520.8	520.6	520.2	519.8	519.7
180°	518.6	518.6	518.6	518.6	518.6	518.6	518.6	518.6	518.6	518.6	518.6



TEST NUMBER: P1444423
 CATALOG NUMBER: EHBR1-60-UNV-TA-L840-UPL30

CANDELA DISTRIBUTION (continued):

	82.5°	85°	87.5°	90°	92.5°	95°	97.5°	100°	102.5°	105°	107.5°
0°	51665.1	51665.1	51665.1	51665.1	51665.1	51665.1	51665.1	51665.1	51665.1	51665.1	51665.1
2.5°	51863.9	51850.7	51856.9	51832.6	51838.4	51809.1	51806.4	51773.3	51770.1	51738.8	51727.2
5°	53619.9	53591.0	53623.5	53572.8	53582.7	53516.7	53511.1	53425.7	53396.3	53289.4	53243.3
7.5°	55549.8	55538.9	55558.8	55516.3	55515.0	55456.0	55431.6	55355.1	55307.6	55195.4	55123.8
10°	55972.6	55982.5	55966.3	55970.2	55947.3	55941.0	55917.5	55902.5	55864.0	55834.9	55792.0
12.5°	54216.9	54227.5	54160.5	54203.0	54169.5	54247.8	54241.4	54333.7	54347.9	54464.7	54508.9
15°	50159.3	50146.7	50018.2	50099.2	50055.8	50227.7	50266.2	50497.5	50621.2	50918.2	51100.6
17.5°	44029.7	43996.6	43815.7	43914.3	43864.2	44117.6	44202.7	44572.6	44803.3	45281.8	45622.8
20°	36723.1	36659.6	36447.9	36563.3	36511.6	36799.6	36921.0	37368.1	37665.7	38299.4	38750.3
22.5°	29325.5	29225.4	29017.9	29125.8	29077.0	29375.2	29533.2	29981.8	30322.7	30973.4	31499.7
25°	22682.5	22593.3	22392.8	22468.3	22450.1	22702.5	22843.1	23267.3	23602.2	24222.1	24724.4
27.5°	17300.5	17207.7	17026.6	17079.9	17061.6	17276.6	17409.1	17763.5	18051.7	18573.5	19014.6
30°	13241.0	13129.0	12975.4	13004.9	12992.3	13166.5	13290.2	13588.7	13835.7	14276.7	14656.8
32.5°	10149.2	10036.6	9895.6	9909.3	9890.7	10027.4	10129.4	10389.0	10604.2	10979.1	11310.0
35°	7765.6	7897.1	7595.8	7786.7	7587.9	7879.7	7774.7	7936.9	8122.0	8438.0	8713.9
37.5°	5969.8	5878.1	5800.6	5792.4	5792.0	5859.6	5939.5	6095.7	6258.8	6494.1	6737.3
40°	4730.8	4666.5	4616.3	4612.6	4616.3	4664.4	4723.3	4831.4	4950.9	5119.9	5298.6
42.5°	3923.8	3881.0	3850.7	3848.7	3858.2	3892.3	3933.3	3997.5	4075.3	4184.7	4307.3
45°	3396.0	3372.3	3355.4	3354.5	3358.9	3376.7	3400.2	3440.3	3489.5	3557.8	3635.4
47.5°	3025.7	3019.9	3009.4	3009.8	3005.0	3012.3	3015.0	3037.4	3063.6	3115.2	3216.4
50°	2756.1	2756.1	2748.8	2748.4	2741.6	2741.2	2735.4	2744.3	2756.5	2788.5	2820.9
52.5°	2543.0	2542.3	2534.4	2532.9	2525.6	2525.2	2520.2	2523.7	2525.4	2541.5	2560.8
55°	2376.4	2371.5	2361.1	2357.8	2355.0	2359.1	2357.2	2357.4	2355.4	2362.1	2367.8
57.5°	2256.9	2250.5	2240.7	2237.8	2237.1	2242.0	2242.2	2240.5	2231.5	2225.3	2216.8
60°	2162.4	2155.8	2145.3	2142.6	2144.1	2151.1	2150.7	2144.9	2131.5	2119.8	2106.3
62.5°	2069.5	2066.8	2061.5	2060.7	2059.4	2060.5	2055.7	2049.6	2036.4	2024.0	2009.1
65°	1944.8	1946.2	1942.1	1942.7	1938.0	1937.2	1929.9	1924.0	1910.5	1899.2	1884.1
67.5°	1815.4	1816.4	1813.1	1813.1	1810.7	1811.0	1806.6	1801.1	1789.8	1780.6	1768.9
70°	1708.7	1711.5	1709.5	1710.1	1707.0	1705.9	1699.0	1693.6	1681.9	1674.2	1663.7
72.5°	1581.0	1586.8	1586.6	1588.0	1583.3	1581.0	1572.8	1566.1	1555.6	1549.4	1541.0
75°	1443.2	1450.6	1452.8	1456.0	1449.5	1446.0	1437.0	1431.7	1423.1	1419.5	1413.9
77.5°	1308.6	1316.7	1324.6	1331.9	1321.4	1312.0	1300.7	1292.1	1279.8	1275.1	1266.4
80°	1157.5	1172.1	1189.4	1204.0	1185.1	1165.9	1147.3	1133.5	1117.3	1110.6	1099.8
82.5°	960.3	975.2	985.2	994.6	981.4	967.3	949.4	937.3	919.7	913.1	900.7
85°	729.5	748.1	754.0	759.0	750.6	743.1	726.3	703.5	692.4	674.9	665.9
87.5°	479.9	491.0	493.1	494.8	489.6	485.9	475.0	464.3	445.4	431.5	414.7
90°	209.9	215.8	210.1	211.4	206.2	208.3	198.7	196.6	182.4	178.0	165.6
92.5°	44.7	41.7	39.4	36.7	40.1	41.9	45.0	46.8	49.7	51.8	54.7
95°	59.7	56.8	54.0	51.2	53.5	55.7	58.0	60.2	62.6	64.8	67.1
97.5°	81.3	79.5	77.6	75.7	77.0	78.3	79.6	80.9	82.3	83.6	85.2
100°	103.4	101.9	100.4	98.9	98.9	98.9	98.9	98.9	98.9	98.9	98.9
102.5°	165.4	158.9	152.5	146.0	150.3	154.7	159.1	163.5	167.8	172.1	176.8
105°	310.9	293.2	275.6	257.9	275.0	292.1	309.2	326.3	343.4	360.9	378.0
107.5°	563.0	535.2	507.2	479.3	510.7	541.8	572.9	604.1	635.3	666.4	697.9
110°	840.9	814.3	787.7	761.1	794.2	827.2	860.3	893.3	926.5	959.5	993.0



TEST NUMBER: P1444423
 CATALOG NUMBER: EHBR1-60-UNV-TA-L840-UPL30

CANDELA DISTRIBUTION (continued):

	82.5°	85°	87.5°	90°	92.5°	95°	97.5°	100°	102.5°	105°	107.5°
112.5°	1026.9	1013.9	1001.0	988.1	1009.4	1030.7	1051.9	1073.6	1094.9	1116.4	1137.5
115°	1075.9	1075.1	1074.4	1073.6	1083.7	1093.8	1103.7	1114.0	1124.3	1134.4	1144.7
117.5°	1018.1	1025.1	1032.3	1039.6	1042.8	1046.0	1049.5	1052.7	1056.3	1059.7	1063.3
120°	914.4	923.5	933.2	942.9	941.6	940.3	939.1	937.8	937.0	935.8	935.3
122.5°	792.9	802.3	811.9	821.4	818.6	815.7	813.1	810.4	808.0	805.6	803.4
125°	680.5	688.0	696.1	704.1	701.3	698.3	695.7	693.4	690.9	688.4	686.5
127.5°	592.1	596.9	601.5	606.4	605.1	603.8	603.0	601.9	601.1	600.6	600.1
130°	533.2	535.0	537.3	539.2	539.6	540.0	540.8	541.6	542.8	543.8	545.3
132.5°	500.4	500.2	500.5	500.8	502.3	503.8	505.8	507.7	510.3	512.3	515.3
135°	483.4	482.4	481.6	481.1	483.4	485.4	488.1	490.7	494.0	497.1	500.7
137.5°	477.9	476.2	475.4	474.0	476.3	478.6	481.3	484.0	486.9	490.3	493.9
140°	478.4	477.1	476.3	475.1	477.5	479.5	482.2	484.8	487.9	491.1	494.5
142.5°	479.8	478.3	477.6	476.8	478.5	480.6	483.2	485.5	488.4	491.1	494.2
145°	485.9	484.8	484.2	483.4	484.7	486.2	488.0	489.9	492.1	494.0	496.6
147.5°	488.6	487.9	487.4	486.8	488.0	488.9	490.3	491.4	493.1	494.6	496.5
150°	489.4	488.6	488.3	488.1	488.7	489.2	490.2	490.7	491.9	492.8	494.3
152.5°	486.1	485.4	485.4	485.0	485.4	485.9	486.7	487.3	488.3	489.0	490.4
155°	484.8	484.2	483.7	483.1	483.1	483.1	483.4	483.4	484.0	484.2	484.7
157.5°	485.6	484.8	484.5	483.7	483.5	483.1	483.2	483.0	483.1	482.7	482.9
160°	486.2	485.1	484.3	483.5	483.6	483.2	483.3	483.0	483.2	483.2	483.3
162.5°	490.1	489.4	488.8	488.0	487.5	486.8	486.4	485.6	485.3	484.9	484.7
165°	493.5	492.5	491.8	490.6	490.4	490.1	489.7	489.3	489.0	488.7	488.7
167.5°	500.2	499.1	498.2	497.3	496.7	495.7	495.3	494.6	494.1	493.5	493.3
170°	504.2	503.3	502.7	501.9	501.6	501.0	500.8	500.2	500.0	499.8	499.8
172.5°	511.4	510.6	509.9	509.3	509.0	508.6	508.4	508.2	507.8	507.8	507.6
175°	516.3	515.9	515.7	515.3	514.9	514.7	514.3	514.1	514.0	513.6	513.4
177.5°	519.2	518.8	518.6	518.4	518.2	518.2	518.2	518.2	518.2	518.0	517.8
180°	518.6	518.6	518.6	518.6	518.6	518.6	518.6	518.6	518.6	518.6	518.6



TEST NUMBER: P1444423
 CATALOG NUMBER: EHBR1-60-UNV-TA-L840-UPL30

CANDELA DISTRIBUTION (continued):

	110°	112.5°	115°	117.5°	120°	122.5°	125°	127.5°	130°	132.5°	135°
0°	51665.1	51665.1	51665.1	51665.1	51665.1	51665.1	51665.1	51665.1	51665.1	51665.1	51665.1
2.5°	51693.7	51680.1	51644.3	51626.6	51593.5	51576.9	51551.0	51534.4	51513.5	51497.9	51489.9
5°	53125.9	53059.9	52927.3	52845.8	52702.7	52608.6	52466.5	52362.3	52215.6	52107.4	51968.8
7.5°	54989.4	54887.9	54718.2	54589.5	54389.4	54236.5	54011.9	53832.3	53584.1	53378.1	53124.6
10°	55748.0	55688.8	55612.6	55529.9	55419.0	55310.3	55156.9	55000.7	54792.3	54585.2	54314.4
12.5°	54626.7	54682.5	54792.3	54843.6	54927.7	54956.2	54994.7	54976.7	54942.7	54858.0	54735.2
15°	51451.0	51683.7	52051.3	52305.7	52661.9	52912.2	53243.3	53456.4	53701.9	53848.5	53988.0
17.5°	46227.1	46677.1	47325.8	47843.5	48538.2	49103.2	49795.4	50339.1	50967.0	51448.7	51961.5
20°	39536.2	40166.4	41061.9	41822.4	42829.2	43683.0	44776.7	45693.0	46761.8	47652.7	48614.3
22.5°	32334.9	33076.1	34102.3	35019.7	36221.9	37295.8	38666.1	39877.6	41322.5	42616.8	44048.7
25°	25541.3	26267.8	27313.0	28263.0	29560.8	30743.7	32240.9	33630.7	35307.4	36871.0	38666.1
27.5°	19715.5	20360.7	21279.6	22134.5	23323.2	24484.6	26003.9	27486.0	29275.1	30955.5	32890.1
30°	15225.9	15749.4	16485.6	17173.4	18127.7	19077.5	20430.8	21801.4	23581.7	25323.1	27306.4
32.5°	11799.5	12245.9	12860.5	13418.9	14154.2	14870.3	15866.9	16962.2	18523.9	20191.8	22109.5
35°	9134.2	9516.0	10039.1	10520.1	11124.8	11693.3	12437.0	13218.8	14410.5	15813.6	17529.8
37.5°	7282.3	7437.9	7811.3	8205.4	8707.6	9174.8	9756.5	10334.6	11187.3	12294.2	13696.2
40°	5538.1	5785.3	6089.1	6399.6	6779.8	7154.5	7792.7	8100.1	8661.5	9456.1	10544.3
42.5°	4468.5	4642.4	4856.2	5072.0	5337.0	5598.0	5920.8	6249.6	6669.4	7207.6	7981.5
45°	3739.4	3852.7	3990.6	4134.4	4308.4	4486.5	4702.6	4928.5	5212.8	5543.6	6013.7
47.5°	3252.2	3314.9	3404.9	3503.0	3622.4	3745.7	3886.3	4030.0	4206.7	4403.0	4670.7
50°	2871.9	2924.3	2994.1	3059.8	3142.1	3268.6	3324.3	3403.7	3510.0	3625.4	3775.2
52.5°	2596.8	2631.7	2675.5	2713.2	2765.3	2812.6	2874.6	2929.4	3003.0	3072.2	3169.0
55°	2382.6	2395.2	2420.1	2444.4	2480.4	2512.7	2555.3	2591.1	2637.9	2679.5	2740.4
57.5°	2217.1	2218.3	2229.8	2242.4	2265.5	2285.9	2315.2	2338.7	2371.3	2397.7	2434.2
60°	2098.2	2091.9	2094.2	2098.6	2111.6	2124.9	2143.6	2158.9	2179.4	2194.4	2214.9
62.5°	1999.2	1989.2	1986.9	1985.8	1992.3	1997.1	2007.3	2014.8	2026.4	2032.9	2043.8
65°	1874.2	1862.5	1857.9	1852.5	1854.4	1852.9	1856.8	1857.0	1862.9	1864.2	1870.6
67.5°	1760.8	1751.0	1745.2	1737.8	1734.6	1729.4	1727.1	1722.2	1721.4	1717.2	1716.2
70°	1657.4	1647.9	1642.9	1636.2	1632.8	1625.8	1621.7	1613.2	1608.2	1600.4	1595.9
72.5°	1537.7	1532.4	1530.9	1526.3	1525.1	1521.3	1519.6	1513.6	1510.2	1503.5	1499.7
75°	1412.7	1408.4	1408.0	1403.3	1402.9	1398.4	1397.2	1390.9	1387.7	1380.9	1378.1
77.5°	1263.8	1257.2	1255.3	1249.9	1251.3	1249.0	1251.0	1246.1	1244.0	1237.3	1235.2
80°	1096.0	1087.6	1084.2	1077.1	1078.9	1075.7	1078.9	1078.6	1081.0	1075.7	1074.8
82.5°	897.3	888.0	886.3	881.4	884.6	885.0	892.1	888.2	889.8	884.8	886.9
85°	652.9	646.1	636.5	635.2	629.0	635.4	627.1	632.6	623.7	629.9	621.5
87.5°	404.8	390.6	383.1	373.0	369.2	359.4	355.4	348.3	350.4	347.2	349.0
90°	163.9	152.9	152.1	144.0	145.0	138.2	141.2	136.9	140.7	136.2	140.7
92.5°	56.7	59.1	63.5	68.6	72.8	77.4	81.7	86.9	91.1	96.1	100.2
95°	69.3	71.6	77.7	83.7	89.9	96.0	102.2	108.3	114.4	120.5	126.5
97.5°	86.5	87.8	93.8	100.0	106.0	112.1	118.3	124.7	130.8	136.9	143.0
100°	98.9	99.1	116.3	133.7	150.9	168.3	185.7	202.9	220.6	237.9	255.2
102.5°	181.1	185.5	229.1	273.0	316.7	360.4	404.3	448.2	491.9	536.0	579.8
105°	395.1	412.3	479.0	545.9	612.5	679.4	746.3	813.4	880.2	947.0	1013.9
107.5°	729.1	760.5	820.9	881.4	941.5	1002.0	1062.7	1123.1	1183.5	1244.1	1304.9
110°	1026.0	1059.2	1099.7	1140.4	1181.0	1221.5	1262.2	1302.8	1343.7	1384.3	1425.3



TEST NUMBER: P1444423
 CATALOG NUMBER: EHBR1-60-UNV-TA-L840-UPL30

CANDELA DISTRIBUTION (continued):

	110°	112.5°	115°	117.5°	120°	122.5°	125°	127.5°	130°	132.5°	135°
112.5°	1158.9	1180.6	1204.2	1228.2	1252.0	1275.8	1299.6	1323.5	1347.6	1371.7	1395.7
115°	1155.2	1165.7	1174.8	1184.6	1193.7	1203.5	1213.0	1222.9	1232.8	1242.5	1252.4
117.5°	1066.7	1070.8	1072.3	1074.2	1075.9	1078.1	1080.1	1082.4	1084.7	1087.0	1088.9
120°	934.3	933.6	932.5	931.5	930.4	929.6	929.0	928.2	927.6	927.1	926.3
122.5°	800.9	799.1	798.0	797.2	796.5	796.0	795.4	795.2	794.7	794.3	793.8
125°	684.4	682.7	684.7	686.7	688.8	691.1	693.3	695.9	698.2	700.6	703.2
127.5°	599.5	599.5	603.8	608.1	612.6	617.1	621.6	626.4	630.8	635.8	640.1
130°	546.8	548.5	553.7	559.4	564.7	570.5	576.1	582.1	587.4	593.1	598.6
132.5°	517.8	521.0	526.0	531.5	536.8	542.3	547.9	553.4	558.9	564.6	569.8
135°	504.2	508.0	512.8	517.9	522.9	528.2	533.2	538.5	543.2	548.6	553.3
137.5°	497.2	501.2	505.3	509.5	513.5	518.1	522.3	526.7	530.6	535.1	539.0
140°	497.9	501.8	504.2	507.3	509.9	512.8	515.4	518.4	520.8	524.0	526.4
142.5°	497.3	501.0	502.5	504.6	506.5	508.9	510.9	512.9	514.7	516.5	518.2
145°	499.0	501.8	502.3	503.3	504.1	505.0	505.6	506.5	507.0	507.7	508.3
147.5°	498.4	500.5	500.5	501.1	501.5	501.6	502.1	502.4	502.4	502.8	503.0
150°	495.4	497.0	496.6	496.8	496.4	496.4	496.0	496.1	495.7	495.7	495.3
152.5°	491.3	492.5	491.7	491.7	491.1	490.8	490.2	490.1	489.5	489.1	488.9
155°	484.9	485.5	485.1	484.9	484.6	484.4	484.0	484.2	484.1	483.9	483.8
157.5°	482.9	482.9	482.7	482.5	482.1	482.1	482.0	482.0	482.0	482.4	482.6
160°	483.1	483.3	482.9	482.7	482.5	482.3	482.2	482.4	482.4	483.0	483.2
162.5°	484.1	483.9	483.5	483.3	483.2	483.2	483.2	483.6	483.7	484.1	484.4
165°	488.7	488.9	488.1	488.1	487.8	487.5	487.3	487.3	487.5	487.8	488.0
167.5°	492.9	492.7	492.7	492.9	492.9	493.1	493.3	494.0	494.2	495.0	495.2
170°	499.7	499.8	499.5	499.4	499.2	499.2	499.3	499.3	499.5	499.7	499.7
172.5°	507.6	507.6	507.2	506.8	506.5	506.3	505.9	505.9	505.6	505.4	505.0
175°	513.1	512.9	512.7	512.5	512.3	511.9	511.8	511.2	511.0	510.8	510.6
177.5°	517.6	517.2	517.0	517.0	516.8	516.7	516.7	516.5	516.5	516.5	516.1
180°	518.6	518.6	518.6	518.6	518.6	518.6	518.6	518.6	518.6	518.6	518.6



TEST NUMBER: P1444423
 CATALOG NUMBER: EHBR1-60-UNV-TA-L840-UPL30

CANDELA DISTRIBUTION (continued):

	137.5°	140°	142.5°	145°	147.5°	150°	152.5°	155°	157.5°	160°	162.5°
0°	51665.1	51665.1	51665.1	51665.1	51665.1	51665.1	51665.1	51665.1	51665.1	51665.1	51665.1
2.5°	51479.6	51479.0	51474.0	51476.4	51477.3	51480.9	51485.3	51489.9	51490.9	51494.5	51495.3
5°	51864.8	51737.5	51643.2	51539.7	51461.7	51391.7	51345.0	51307.9	51293.4	51297.1	51305.7
7.5°	52909.5	52646.6	52429.7	52183.1	51977.4	51759.7	51579.2	51407.5	51282.5	51189.3	51137.2
10°	54055.9	53735.7	53429.4	53072.5	52734.0	52372.6	52045.4	51715.9	51441.0	51202.5	51027.3
12.5°	54564.7	54338.3	54073.5	53736.7	53374.4	52957.6	52536.5	52085.2	51665.5	51275.9	50961.7
15°	54026.0	54026.4	53929.9	53768.3	53516.7	53183.5	52782.4	52311.9	51816.8	51311.5	50849.8
17.5°	52316.1	52638.8	52818.2	52931.7	52896.9	52774.1	52519.0	52157.6	51695.9	51157.7	50594.4
20°	49379.9	50140.7	50683.2	51171.1	51444.6	51626.3	51608.0	51461.0	51132.3	50674.6	50088.0
22.5°	45266.6	46543.7	47551.4	48491.2	49150.3	49686.4	49941.3	50049.4	49900.5	49581.7	49030.7
25°	40270.5	42007.0	43488.8	44927.0	46005.9	46932.9	47490.2	47882.7	47913.9	47747.3	47255.8
27.5°	34719.0	36768.8	38644.3	40555.6	42072.7	43405.6	44280.1	44920.2	45123.5	45096.6	44650.4
30°	29174.6	31326.4	33393.8	35622.5	37499.8	39202.7	40357.8	41223.5	41557.1	41620.9	41191.7
32.5°	23938.4	26060.5	28122.0	30452.1	32518.0	34469.6	35834.3	36862.6	37250.6	37341.9	36871.0
35°	19186.4	21144.1	23103.3	25361.5	27415.5	29436.4	30874.5	31951.0	32313.3	32374.4	31829.2
37.5°	15065.4	16733.4	18440.6	20466.8	22353.1	24250.9	25617.3	26629.1	26893.0	26876.7	26259.7
40°	11595.6	12892.3	14264.1	15932.2	17500.4	19104.8	20258.7	21095.1	21233.7	21131.0	20482.9
42.5°	8719.3	9655.8	10650.3	11895.5	13059.1	14259.9	15099.3	15720.2	15740.0	15577.6	14996.0
45°	6495.8	7409.6	7826.6	8579.5	9328.9	10127.4	10640.0	11023.5	10964.2	10821.3	10379.2
47.5°	4952.0	5303.1	5675.5	6142.4	6579.0	7485.1	7417.9	8033.8	7590.2	7892.7	7226.8
50°	3932.4	4128.6	4329.3	4577.0	4805.2	5042.0	5190.0	5300.5	5286.2	5238.6	5111.1
52.5°	3345.4	3406.2	3505.0	3645.9	3773.3	3901.3	3985.6	4054.2	4055.5	4036.3	3971.8
55°	2796.1	2873.1	2944.2	3036.3	3193.1	3217.2	3338.0	3313.6	3323.0	3289.5	3323.8
57.5°	2465.3	2510.1	2550.0	2604.8	2650.2	2703.1	2734.3	2764.4	2761.5	2755.0	2722.1
60°	2230.9	2255.6	2277.8	2309.8	2334.7	2364.6	2378.9	2394.3	2389.2	2378.1	2348.9
62.5°	2050.2	2065.6	2078.3	2098.9	2114.1	2132.6	2140.2	2146.6	2140.2	2129.6	2103.8
65°	1871.9	1881.9	1889.9	1905.4	1916.1	1932.0	1938.3	1944.4	1938.5	1930.3	1910.5
67.5°	1711.1	1712.0	1711.3	1717.5	1720.8	1730.3	1733.3	1737.7	1730.7	1723.7	1707.0
70°	1589.1	1586.6	1583.5	1586.0	1586.6	1591.2	1591.9	1591.2	1582.9	1570.7	1552.4
72.5°	1493.7	1492.4	1490.1	1492.2	1492.2	1496.3	1495.0	1492.9	1482.8	1470.9	1453.0
75°	1371.1	1370.2	1365.6	1365.8	1361.9	1363.4	1358.3	1355.5	1344.2	1334.2	1318.2
77.5°	1227.8	1225.4	1218.8	1216.2	1209.0	1206.0	1196.6	1191.9	1180.4	1172.5	1158.6
80°	1067.7	1065.2	1056.5	1051.8	1040.3	1033.0	1019.2	1011.4	998.2	990.3	976.9
82.5°	882.5	883.5	874.9	869.0	852.5	839.8	821.4	811.4	796.9	789.2	775.5
85°	627.7	618.6	623.5	623.1	612.8	601.8	586.8	576.3	564.1	556.8	547.1
87.5°	344.3	346.4	343.9	341.7	334.5	328.9	317.2	311.2	302.2	297.8	290.5
90°	129.8	127.6	117.3	115.4	105.3	100.4	88.8	85.2	74.5	72.3	65.3
92.5°	95.0	89.9	85.2	79.6	75.0	69.8	64.7	59.5	54.4	52.3	51.0
95°	119.2	111.9	104.5	97.1	89.7	82.2	75.1	67.6	60.2	58.7	57.2
97.5°	134.4	125.7	116.9	108.4	99.7	90.9	82.3	73.7	64.9	64.0	63.0
100°	235.2	215.3	195.1	175.1	155.1	135.0	115.0	94.9	75.0	73.9	72.6
102.5°	530.9	482.3	433.8	385.1	336.7	287.9	239.3	190.5	141.9	134.8	127.8
105°	940.3	866.4	793.2	719.5	645.8	572.1	498.6	424.7	351.0	327.4	303.6
107.5°	1235.7	1166.4	1097.5	1028.4	959.1	890.0	820.7	751.4	682.1	640.5	598.9
110°	1370.4	1315.5	1261.0	1206.2	1151.5	1096.6	1041.7	986.8	931.9	896.0	860.6



TEST NUMBER: P1444423
 CATALOG NUMBER: EHBR1-60-UNV-TA-L840-UPL30

CANDELA DISTRIBUTION (continued):

	137.5°	140°	142.5°	145°	147.5°	150°	152.5°	155°	157.5°	160°	162.5°
112.5°	1355.8	1315.7	1276.0	1235.7	1196.0	1155.7	1115.8	1075.5	1035.2	1013.7	992.0
115°	1228.6	1204.7	1180.9	1157.0	1133.1	1109.2	1085.3	1061.0	1036.8	1025.6	1014.4
117.5°	1077.3	1065.3	1053.6	1041.6	1029.7	1017.5	1005.6	993.4	981.3	977.7	973.8
120°	923.6	920.4	917.0	913.8	910.6	907.4	903.9	900.5	897.0	897.9	898.9
122.5°	796.1	798.1	800.4	802.2	804.5	806.2	808.5	809.9	811.9	815.5	819.1
125°	707.5	711.7	716.2	720.3	724.5	728.7	733.1	736.9	741.2	744.7	748.7
127.5°	645.3	649.9	654.8	659.4	664.4	669.0	673.7	678.1	682.9	686.3	690.1
130°	603.2	607.2	611.8	615.7	620.2	624.4	628.5	632.7	636.9	639.9	642.9
132.5°	573.8	577.8	581.8	585.5	589.7	593.3	597.3	601.1	605.3	607.5	610.2
135°	556.8	559.7	562.9	565.7	569.3	572.1	575.3	578.6	582.0	583.9	586.0
137.5°	541.6	544.3	547.1	549.5	552.4	554.8	557.9	560.7	563.8	565.0	566.9
140°	529.0	531.7	534.4	537.0	539.9	542.6	545.9	548.7	551.9	553.2	555.1
142.5°	520.5	522.5	524.7	526.9	529.3	531.4	534.1	536.8	539.5	541.0	542.4
145°	510.8	513.0	515.6	517.8	520.3	523.0	526.1	528.9	531.9	533.1	534.5
147.5°	504.9	506.8	509.1	511.2	513.6	515.6	518.4	520.9	523.8	525.0	526.2
150°	497.5	499.5	501.7	503.7	506.2	508.6	511.4	514.1	517.3	518.6	519.9
152.5°	491.0	493.0	495.3	497.8	500.4	503.0	505.9	508.7	511.8	512.9	514.5
155°	486.1	488.1	490.5	493.0	495.6	497.9	500.8	503.4	506.3	507.8	509.1
157.5°	484.6	486.3	488.7	491.0	493.2	495.5	498.2	500.6	503.2	504.3	505.5
160°	485.0	486.8	488.9	491.0	493.1	495.2	497.4	499.7	501.9	503.0	504.2
162.5°	486.3	488.2	490.4	492.1	494.3	496.3	498.7	500.6	502.9	503.8	505.0
165°	489.4	491.0	492.6	494.0	495.7	497.0	499.0	500.5	502.4	503.1	504.5
167.5°	496.7	497.6	498.8	500.1	501.5	502.7	504.2	505.3	506.8	507.8	508.8
170°	500.8	501.7	502.7	503.9	504.9	506.1	507.3	508.1	509.7	510.6	511.5
172.5°	505.8	506.2	507.0	507.6	508.4	509.0	509.9	510.7	511.5	512.5	513.3
175°	511.2	511.4	511.8	512.0	512.2	512.6	513.2	513.8	514.2	514.8	515.4
177.5°	516.3	516.5	516.7	516.9	517.4	517.6	518.0	518.2	518.5	519.1	519.8
180°	518.6	518.6	518.6	518.6	518.6	518.6	518.6	518.6	518.6	518.6	518.6



TEST NUMBER: P1444423
 CATALOG NUMBER: EHBR1-60-UNV-TA-L840-UPL30

CANDELA DISTRIBUTION (continued):

	165°	167.5°	170°	172.5°	175°	177.5°	180°	182.5°	185°	187.5°	190°
0°	51665.1	51665.1	51665.1	51665.1	51665.1	51665.1	51665.1	51665.1	51665.1	51665.1	51665.1
2.5°	51493.5	51493.0	51491.3	51489.0	51486.6	51488.0	51490.3	51496.2	51506.6	51521.6	51541.0
5°	51312.8	51323.3	51329.2	51330.0	51324.7	51321.4	51326.4	51340.5	51369.1	51416.9	51481.7
7.5°	51123.2	51136.2	51156.2	51171.1	51174.0	51170.3	51171.1	51193.3	51246.0	51339.2	51470.0
10°	50920.8	50882.4	50902.6	50939.8	50969.3	50974.7	50978.3	51004.5	51081.5	51222.4	51432.5
12.5°	50733.9	50612.1	50588.6	50622.1	50666.9	50681.3	50677.3	50688.6	50778.7	50965.3	51258.0
15°	50488.1	50258.9	50180.6	50189.2	50244.6	50264.4	50249.9	50227.7	50315.6	50543.2	50922.2
17.5°	50090.2	49720.7	49576.7	49570.4	49635.0	49652.3	49616.7	49547.8	49634.3	49918.5	50389.0
20°	49485.3	48939.8	48668.7	48625.6	48695.9	48675.4	48604.3	48500.2	48613.9	48959.4	49518.9
22.5°	48397.9	47706.7	47243.5	47094.2	47178.2	47122.1	47018.6	46885.5	47036.6	47429.1	48052.1
25°	46621.0	45822.4	45188.2	44832.5	44899.5	44798.9	44686.2	44525.0	44705.2	45155.7	45841.5
27.5°	44009.3	43086.7	42300.9	41712.0	41733.6	41601.9	41472.0	41263.4	41488.3	42021.5	42795.1
30°	40536.3	39468.8	38511.8	37711.4	37639.8	37512.1	37379.0	37105.2	37386.7	38025.1	38929.0
32.5°	36174.8	34989.6	33883.8	32871.8	32680.9	32556.3	32437.7	32122.6	32491.2	33235.5	34274.0
35°	31074.3	29811.6	28612.8	27457.0	27140.7	27016.1	26912.5	26610.6	27070.5	27880.4	29002.1
37.5°	25475.6	24185.8	22995.6	21810.3	21363.5	21194.4	21119.2	20921.3	21451.9	22253.1	23379.3
40°	19728.1	18528.9	17461.8	16414.9	15905.5	15646.8	15607.3	15571.3	16084.3	16779.4	17801.6
42.5°	14351.4	13383.9	12561.0	11760.9	11299.3	10945.9	10945.8	11053.0	11514.8	12035.5	12823.8
45°	9927.3	9278.1	8753.8	8219.1	8362.0	7657.7	8071.5	7859.2	8087.4	8423.0	8935.7
47.5°	6824.1	6469.6	6181.6	5883.0	5665.2	5457.3	5475.4	5609.5	5824.6	6023.6	6290.4
50°	4973.7	4793.1	4646.3	4491.3	4382.9	4291.2	4296.5	4354.5	4467.5	4572.5	4712.0
52.5°	3897.2	3797.6	3717.9	3632.1	3575.3	3529.7	3532.2	3560.4	3621.4	3681.3	3761.4
55°	3212.3	3200.1	3096.5	3019.6	2990.3	2959.7	2965.2	2976.3	3017.9	3052.9	3105.9
57.5°	2691.8	2645.3	2614.2	2573.7	2555.1	2533.6	2538.4	2542.6	2570.4	2593.9	2632.1
60°	2324.3	2291.4	2269.3	2241.8	2229.6	2216.0	2219.0	2221.5	2239.4	2254.6	2282.1
62.5°	2080.3	2050.7	2031.6	2010.3	2001.7	1992.5	1994.6	1995.4	2006.5	2017.8	2038.5
65°	1893.0	1869.6	1853.7	1835.3	1826.3	1816.7	1817.7	1817.7	1827.1	1835.3	1850.8
67.5°	1694.9	1677.4	1667.0	1652.4	1646.3	1636.6	1636.4	1633.3	1639.4	1642.7	1653.2
70°	1536.0	1518.2	1505.0	1491.0	1483.3	1474.8	1475.0	1475.2	1482.2	1489.7	1503.3
72.5°	1437.8	1420.8	1409.1	1396.9	1389.6	1382.2	1380.9	1380.2	1385.4	1389.4	1398.4
75°	1307.8	1294.1	1287.3	1275.8	1270.0	1261.9	1260.5	1256.7	1259.1	1259.9	1266.6
77.5°	1150.1	1137.1	1131.6	1120.0	1115.1	1105.8	1105.1	1100.8	1102.7	1101.4	1106.6
80°	970.3	958.6	955.4	945.9	943.6	934.9	933.6	928.5	930.0	926.0	927.9
82.5°	769.6	758.9	756.5	747.7	747.7	739.9	739.5	731.6	731.6	725.0	714.2
85°	542.0	534.3	530.9	523.7	521.6	515.3	512.0	504.5	501.9	497.0	495.5
87.5°	286.1	281.1	276.7	273.2	266.9	255.6	254.7	246.8	247.4	241.9	242.3
90°	63.9	57.4	56.3	50.3	48.7	44.6	43.5	43.4	44.4	44.6	45.7
92.5°	49.2	47.5	45.9	44.2	42.5	40.8	39.0	40.8	42.5	44.2	45.9
95°	55.7	54.2	52.7	51.2	49.6	48.1	46.6	48.1	49.6	51.4	52.9
97.5°	62.1	61.0	60.1	59.1	58.2	57.2	56.3	57.3	58.3	59.2	60.2
100°	71.5	70.4	69.2	68.1	67.0	65.8	64.7	66.2	67.4	68.5	69.6
102.5°	121.0	113.9	107.0	99.9	92.8	85.9	78.8	85.9	92.8	100.1	107.2
105°	279.9	256.4	232.6	208.9	185.2	161.3	137.6	161.5	185.4	209.1	233.0
107.5°	557.1	515.7	473.9	432.3	390.3	348.6	306.8	348.8	390.6	432.5	474.2
110°	824.5	788.5	752.6	716.7	680.6	644.8	608.6	645.0	681.0	717.1	753.2



TEST NUMBER: P1444423
 CATALOG NUMBER: EHBR1-60-UNV-TA-L840-UPL30

CANDELA DISTRIBUTION (continued):

	165°	167.5°	170°	172.5°	175°	177.5°	180°	182.5°	185°	187.5°	190°
112.5°	970.3	948.7	926.8	905.2	883.2	861.4	839.4	861.8	883.9	906.1	927.9
115°	1003.2	991.8	980.6	969.1	957.6	946.2	934.4	946.8	958.7	970.4	982.2
117.5°	970.1	966.5	962.6	958.9	954.9	951.0	946.8	951.4	955.8	960.6	964.5
120°	899.4	900.6	901.3	901.9	902.8	903.3	903.7	904.1	904.1	904.1	903.9
122.5°	822.5	826.2	829.4	832.8	836.1	839.4	842.1	840.1	837.6	835.4	832.4
125°	752.2	756.1	759.6	763.2	766.4	770.1	772.7	771.0	768.6	766.0	763.2
127.5°	693.6	697.0	700.1	703.8	706.7	709.7	712.4	710.8	708.8	706.7	704.2
130°	645.8	649.0	651.4	654.2	656.7	658.9	660.8	660.1	658.8	657.7	655.8
132.5°	612.6	615.3	617.5	619.8	621.4	623.7	624.8	624.8	624.0	623.5	622.0
135°	588.1	590.1	591.8	593.9	595.2	596.5	597.3	597.9	597.7	597.5	596.7
137.5°	568.3	570.0	571.2	572.3	573.3	574.0	574.4	575.4	575.8	576.4	576.3
140°	556.4	558.1	559.5	560.6	561.7	562.7	562.9	564.1	564.4	564.8	564.6
142.5°	544.1	545.6	547.0	548.3	549.1	550.0	550.4	551.4	551.8	552.1	552.1
145°	535.8	536.9	538.2	539.3	539.8	540.4	540.4	541.8	542.3	542.9	543.3
147.5°	527.3	528.6	529.4	530.3	530.9	531.5	531.7	532.7	533.4	534.0	534.4
150°	521.5	522.8	524.1	525.2	526.1	526.9	527.1	528.0	528.4	528.8	528.8
152.5°	515.6	516.7	517.9	518.9	519.8	520.4	520.7	521.6	522.4	523.0	523.2
155°	510.4	511.7	512.8	514.0	514.7	515.7	516.4	517.2	517.8	518.1	518.5
157.5°	506.6	507.9	508.9	510.0	510.9	512.0	512.8	513.7	514.3	515.1	515.4
160°	505.1	506.5	507.2	508.4	509.3	510.4	511.1	512.1	512.8	513.4	514.2
162.5°	505.9	507.1	507.6	508.8	509.7	510.8	511.5	512.5	513.2	514.0	514.6
165°	505.6	506.8	507.6	508.8	509.9	511.2	511.9	512.7	513.1	513.6	514.0
167.5°	509.7	511.0	511.6	512.8	513.5	514.7	515.7	516.2	516.6	517.0	517.3
170°	512.3	513.3	514.1	514.9	515.8	516.8	517.4	517.8	518.1	518.5	518.9
172.5°	514.0	515.1	515.9	517.0	517.7	518.7	519.5	519.8	519.8	519.9	519.7
175°	515.9	516.8	517.4	518.2	518.7	519.5	520.2	520.0	520.2	520.1	520.1
177.5°	520.6	521.7	522.4	523.0	523.8	524.3	525.1	524.5	524.2	523.8	523.2
180°	518.6	518.6	518.6	518.6	518.6	518.6	518.6	518.6	518.6	518.6	518.6



TEST NUMBER: P1444423
 CATALOG NUMBER: EHBR1-60-UNV-TA-L840-UPL30

CANDELA DISTRIBUTION (continued):

	192.5°	195°	197.5°	200°	202.5°	205°	207.5°	210°	212.5°	215°	217.5°
0°	51665.1	51665.1	51665.1	51665.1	51665.1	51665.1	51665.1	51665.1	51665.1	51665.1	51665.1
2.5°	51568.6	51594.5	51633.9	51669.7	51723.6	51766.0	51829.8	51878.2	51950.2	51996.9	52075.3
5°	51573.2	51674.1	51806.8	51936.3	52091.9	52233.2	52408.8	52558.4	52734.9	52878.9	53059.5
7.5°	51646.2	51840.7	52073.9	52308.9	52574.7	52823.2	53103.3	53356.8	53633.9	53868.5	54124.7
10°	51699.9	52000.0	52343.7	52689.5	53053.5	53391.6	53733.1	54028.1	54303.9	54530.8	54731.3
12.5°	51627.0	52040.4	52481.4	52907.2	53312.0	53662.1	53955.8	54182.7	54339.3	54445.5	54470.5
15°	51379.1	51876.5	52356.0	52780.1	53116.0	53375.0	53509.1	53571.8	53504.4	53392.6	53146.8
17.5°	50915.9	51440.5	51869.3	52203.7	52381.2	52451.6	52340.5	52147.2	51769.7	51350.5	50745.2
20°	50066.7	50555.5	50866.5	51048.9	51001.4	50825.9	50406.5	49896.9	49142.9	48339.6	47279.3
22.5°	48577.2	49004.5	49170.2	49183.8	48894.0	48454.4	47698.1	46823.9	45634.5	44398.2	42877.7
25°	46341.3	46715.6	46741.8	46594.8	46064.6	45352.1	44241.5	43004.8	41388.8	39741.3	37835.9
27.5°	43309.1	43668.1	43580.2	43305.8	42569.8	41616.4	40194.5	38596.8	36604.5	34658.6	32550.9
30°	39497.3	39881.2	39778.0	39426.1	38550.7	37423.8	35750.7	33894.5	31682.6	29604.3	27468.3
32.5°	34935.7	35421.1	35349.9	35015.4	34101.9	32895.9	31080.5	29111.8	26848.7	24800.7	22723.0
35°	29751.0	30340.3	30370.8	30152.0	29304.1	28112.1	26319.5	24413.9	22246.2	20313.8	18394.5
37.5°	24164.9	24848.1	24988.5	24929.6	24226.6	23174.5	21541.1	19831.7	17911.4	16217.8	14576.2
40°	18548.0	19239.6	19479.6	19550.8	19032.1	18217.1	16876.6	15496.8	13931.3	12559.0	11255.6
42.5°	13425.7	14038.7	14270.6	14416.5	14092.7	13549.3	12571.4	11569.4	10422.5	9432.7	8483.8
45°	9324.4	9758.0	9934.4	10081.2	9904.9	9598.3	8980.8	8354.1	7597.1	6950.2	6337.9
47.5°	6519.2	6758.4	6874.8	6946.1	6877.6	6717.8	6381.7	6018.7	5591.3	5213.3	4850.0
50°	4832.1	4959.4	5020.4	5061.5	5011.7	4922.9	4741.0	4543.3	4308.6	4094.5	3885.3
52.5°	3829.4	3902.3	3938.5	3960.7	3932.2	3877.8	3771.9	3654.7	3513.9	3381.7	3312.1
55°	3226.0	3222.1	3305.9	3265.4	3305.9	3215.7	3196.7	3067.9	2951.0	2868.7	2779.7
57.5°	2660.4	2698.3	2714.4	2732.4	2720.7	2704.2	2659.2	2613.1	2551.5	2499.9	2445.0
60°	2302.9	2334.1	2351.7	2369.5	2368.4	2362.3	2336.2	2308.6	2270.1	2239.4	2206.0
62.5°	2056.6	2083.7	2101.0	2118.1	2119.6	2117.2	2097.4	2078.3	2052.1	2032.7	2009.7
65°	1862.9	1881.9	1893.7	1907.3	1906.5	1902.9	1885.1	1869.2	1847.6	1834.2	1817.3
67.5°	1660.1	1674.4	1683.6	1696.5	1699.0	1699.8	1690.0	1682.5	1672.0	1668.2	1662.4
70°	1515.9	1533.4	1548.1	1564.4	1573.1	1577.4	1573.1	1569.3	1563.2	1560.5	1556.2
72.5°	1406.7	1421.5	1433.0	1447.7	1456.0	1461.9	1458.7	1456.6	1451.2	1450.4	1447.4
75°	1271.2	1281.3	1287.9	1299.0	1303.4	1309.0	1306.5	1307.8	1306.0	1310.3	1310.1
77.5°	1108.3	1115.8	1118.8	1126.9	1127.7	1134.3	1135.8	1143.7	1149.3	1161.5	1168.0
80°	924.8	929.6	929.6	937.9	941.5	952.8	958.1	971.0	976.9	987.8	988.8
82.5°	718.4	712.9	718.4	715.0	725.5	738.2	739.9	750.8	753.3	760.2	754.8
85°	491.2	490.8	486.3	487.1	483.8	485.4	483.5	485.6	483.7	483.8	478.9
87.5°	235.3	237.4	232.3	234.0	229.0	231.3	226.9	230.4	225.2	225.9	218.2
90°	46.3	47.2	47.8	48.9	50.7	53.6	56.8	59.8	63.7	66.4	69.8
92.5°	47.5	49.3	51.1	52.8	54.5	59.6	64.8	69.9	75.3	80.1	85.3
95°	54.4	55.9	57.4	59.3	60.8	68.2	75.7	83.0	90.5	97.9	105.3
97.5°	61.5	62.6	63.5	64.5	65.6	74.4	83.0	91.8	100.6	109.3	117.9
100°	70.9	72.0	73.2	74.6	75.7	95.9	115.9	136.1	156.2	176.2	196.3
102.5°	114.2	121.3	128.3	135.7	142.8	191.6	240.4	289.2	337.6	386.4	435.2
105°	256.8	280.5	304.6	328.4	352.1	426.0	500.0	573.8	647.3	721.0	794.9
107.5°	516.2	558.0	600.1	641.8	683.6	753.1	822.4	891.8	961.3	1030.6	1099.6
110°	789.6	825.4	861.9	897.9	934.0	988.9	1044.2	1099.0	1154.1	1209.1	1264.0



TEST NUMBER: P1444423
 CATALOG NUMBER: EHBR1-60-UNV-TA-L840-UPL30

CANDELA DISTRIBUTION (continued):

	192.5°	195°	197.5°	200°	202.5°	205°	207.5°	210°	212.5°	215°	217.5°
112.5°	950.2	972.0	994.0	1015.7	1037.7	1078.0	1118.7	1158.9	1199.4	1239.2	1279.5
115°	994.0	1005.2	1016.9	1028.3	1040.1	1064.5	1088.5	1112.8	1137.1	1161.1	1185.4
117.5°	968.7	972.9	977.0	980.7	984.9	997.2	1009.6	1021.9	1034.2	1046.6	1058.7
120°	903.7	903.1	902.8	901.9	901.5	905.0	908.9	912.3	916.2	919.5	922.9
122.5°	829.8	826.6	823.7	820.4	817.5	815.5	814.1	812.0	810.8	808.8	807.2
125°	760.3	757.2	754.0	750.7	747.2	743.4	739.6	735.6	731.5	727.6	723.7
127.5°	702.0	698.9	696.2	693.1	690.0	685.4	681.1	676.4	672.3	667.5	663.0
130°	654.1	651.8	649.9	647.1	645.0	640.6	636.9	632.7	628.8	624.8	620.7
132.5°	621.0	619.2	617.7	615.4	613.8	609.9	606.7	602.7	599.0	595.3	591.8
135°	596.2	595.1	594.1	592.6	591.2	587.9	585.3	582.3	579.5	576.4	573.6
137.5°	576.3	575.6	574.9	574.2	573.4	570.8	568.5	565.8	563.5	560.8	558.6
140°	564.5	564.0	563.6	562.8	562.0	559.4	557.0	554.2	551.8	549.1	546.6
142.5°	551.9	551.5	551.1	550.4	549.8	547.6	545.8	543.8	541.5	539.5	537.5
145°	543.2	543.0	543.1	542.4	542.5	540.0	538.0	535.4	533.6	531.0	529.0
147.5°	534.7	534.6	534.8	534.5	534.8	532.7	531.0	529.0	527.5	525.4	523.9
150°	528.9	528.9	528.9	528.6	528.4	526.5	525.0	523.0	521.6	519.4	517.9
152.5°	523.3	523.5	523.7	523.7	523.9	522.2	520.4	518.5	516.8	514.8	513.2
155°	518.9	519.1	519.3	519.3	519.3	517.8	516.3	514.6	513.1	511.4	509.8
157.5°	515.8	516.2	516.6	516.8	517.0	515.7	514.4	513.0	511.7	510.2	508.8
160°	514.5	515.1	515.5	515.7	516.0	514.9	514.1	512.6	511.9	510.3	509.0
162.5°	515.1	515.7	516.1	516.3	516.6	515.5	514.8	513.6	512.5	511.0	509.8
165°	514.6	514.6	515.0	515.0	515.2	514.5	513.9	513.2	512.4	511.5	510.7
167.5°	517.8	517.8	518.2	518.1	518.3	517.7	517.8	517.0	516.4	515.9	515.3
170°	519.1	519.3	519.5	519.5	519.7	519.1	518.8	518.2	517.9	517.1	516.5
172.5°	519.9	519.6	519.7	519.7	519.5	519.1	518.9	518.6	518.4	518.0	517.6
175°	519.9	519.7	519.7	519.5	519.3	519.3	519.1	519.1	518.9	518.8	518.6
177.5°	523.0	522.6	522.0	521.7	521.2	521.0	521.0	520.8	521.0	520.9	520.7
180°	518.6	518.6	518.6	518.6	518.6	518.6	518.6	518.6	518.6	518.6	518.6



TEST NUMBER: P1444423
 CATALOG NUMBER: EHBR1-60-UNV-TA-L840-UPL30

CANDELA DISTRIBUTION (continued):

	220°	222.5°	225°	227.5°	230°	232.5°	235°	237.5°	240°	242.5°	245°
0°	51665.1	51665.1	51665.1	51665.1	51665.1	51665.1	51665.1	51665.1	51665.1	51665.1	51665.1
2.5°	52123.7	51801.9	51759.3	51781.9	51835.8	51855.6	51913.7	51929.6	51987.9	52002.3	52058.4
5°	53199.2	52773.7	52795.0	52897.2	53052.2	53144.4	53296.7	53376.3	53521.7	53587.8	53719.1
7.5°	54333.3	53999.3	54103.4	54275.9	54487.7	54634.3	54817.3	54936.3	55093.9	55191.7	55317.9
10°	54890.2	54798.7	54913.3	55049.1	55169.9	55264.5	55342.0	55404.1	55444.7	55482.8	55499.4
12.5°	54466.4	54608.1	54627.7	54614.4	54534.4	54473.3	54336.1	54242.8	54077.2	53976.3	53779.2
15°	52895.5	53207.1	53034.6	52773.4	52391.2	52072.6	51622.7	51287.6	50819.0	50501.2	50030.9
17.5°	50138.6	50531.9	50082.3	49478.0	48709.3	48051.6	47232.6	46582.5	45768.2	45176.0	44416.0
20°	46257.6	46625.1	45823.3	44821.5	43632.3	42631.5	41451.1	40509.4	39412.6	38596.8	37612.2
22.5°	41425.3	41687.0	40557.6	39207.0	37691.9	36441.5	35030.4	33901.4	32649.7	31717.0	30667.1
25°	36079.2	36149.9	34795.1	33239.1	31550.4	30145.2	28638.6	27451.7	26175.1	25229.7	24199.5
27.5°	30683.5	30579.9	29115.4	27465.7	25689.3	24228.7	22759.3	21647.1	20529.0	19677.5	18789.8
30°	25590.6	25339.7	23819.2	22123.4	20399.2	19090.1	17870.2	16976.9	16087.5	15412.0	14699.5
32.5°	20920.2	20566.3	19086.2	17497.6	16044.6	15034.4	14129.8	13453.9	12735.7	12165.1	11567.2
35°	16783.5	16406.5	15095.2	13748.4	12648.8	11904.1	11193.1	10638.7	10028.9	9547.5	9028.1
37.5°	13233.3	12924.3	11826.0	10766.2	9934.4	9357.3	8774.9	8321.6	7817.6	7605.8	7051.0
40°	10216.0	10000.1	9141.3	8360.1	7735.5	7464.4	6873.1	6449.7	6073.1	5762.5	5461.7
42.5°	7968.7	7892.3	7056.5	6447.2	6007.4	5665.8	5336.3	5068.8	4808.4	4594.3	4392.1
45°	5847.9	5787.4	5416.3	5064.6	4764.9	4526.2	4303.5	4119.4	3949.2	3808.1	3679.8
47.5°	4553.7	4534.3	4320.6	4102.6	3913.8	3760.4	3615.9	3493.7	3380.8	3286.5	3255.8
50°	3703.7	3701.2	3575.8	3441.2	3306.8	3218.2	3125.9	3053.6	2981.1	2924.6	2864.9
52.5°	3147.0	3133.3	3048.7	2965.6	2885.7	2827.5	2768.6	2722.4	2674.4	2639.5	2602.4
55°	2709.2	2723.6	2674.6	2624.9	2575.0	2538.7	2497.5	2467.0	2434.0	2412.0	2389.6
57.5°	2405.2	2424.1	2398.4	2370.3	2339.9	2316.1	2287.6	2266.5	2244.5	2230.5	2217.5
60°	2184.0	2204.7	2194.4	2180.1	2161.4	2147.3	2129.0	2117.4	2103.2	2095.3	2088.0
62.5°	1996.3	2022.2	2018.5	2011.8	1999.7	1992.0	1982.0	1976.8	1967.4	1964.0	1960.5
65°	1809.0	1838.2	1837.6	1834.4	1827.6	1825.4	1819.2	1818.1	1813.3	1815.2	1814.8
67.5°	1661.8	1687.1	1692.7	1696.6	1696.5	1698.0	1697.4	1700.0	1700.0	1703.6	1705.9
70°	1555.6	1573.1	1577.4	1581.6	1582.7	1586.1	1586.1	1588.3	1587.8	1590.8	1591.2
72.5°	1448.1	1471.3	1475.6	1479.0	1479.0	1482.2	1480.5	1479.9	1475.4	1474.4	1471.1
75°	1314.5	1344.2	1350.6	1354.9	1355.5	1358.3	1354.3	1351.9	1344.2	1341.1	1335.7
77.5°	1174.9	1205.8	1210.3	1211.8	1209.4	1210.0	1201.5	1195.8	1186.0	1181.9	1176.8
80°	993.2	1038.6	1042.2	1039.4	1032.2	1031.1	1022.8	1017.5	1005.9	1001.8	997.4
82.5°	755.7	809.0	816.5	819.7	814.0	815.3	807.5	804.4	793.7	791.8	784.7
85°	477.2	530.4	539.2	537.9	532.1	530.7	526.2	527.7	526.8	529.6	531.1
87.5°	219.3	270.7	283.2	279.2	278.6	275.0	266.7	269.8	274.8	278.0	278.2
90°	73.1	91.8	94.6	93.3	87.1	85.0	79.1	77.9	72.7	71.4	66.5
92.5°	90.4	95.6	100.7	96.2	91.6	87.0	82.4	77.8	73.4	68.6	64.2
95°	112.7	119.8	127.1	121.1	114.8	108.7	102.6	96.6	90.5	84.4	78.3
97.5°	126.6	134.9	143.6	137.5	131.4	125.1	119.1	112.9	106.9	100.6	94.4
100°	216.4	235.8	255.8	238.5	221.0	203.7	186.5	168.9	151.7	134.4	116.8
102.5°	483.7	531.9	580.4	536.5	492.6	448.7	405.0	361.2	317.5	273.4	229.7
105°	868.3	941.4	1014.9	947.6	880.8	814.0	747.1	680.2	613.3	546.3	479.6
107.5°	1168.9	1236.9	1305.6	1245.0	1184.5	1124.1	1063.3	1002.8	942.2	881.7	821.3
110°	1318.8	1371.9	1426.5	1385.5	1344.8	1303.8	1263.2	1222.2	1181.5	1141.1	1100.5



TEST NUMBER: P1444423
 CATALOG NUMBER: EHBR1-60-UNV-TA-L840-UPL30

CANDELA DISTRIBUTION (continued):

	220°	222.5°	225°	227.5°	230°	232.5°	235°	237.5°	240°	242.5°	245°
112.5°	1319.6	1357.5	1397.1	1372.6	1348.8	1324.6	1300.7	1276.6	1252.9	1228.7	1205.3
115°	1209.1	1230.5	1253.9	1243.8	1234.1	1224.2	1214.3	1204.8	1195.0	1185.3	1175.9
117.5°	1070.9	1079.8	1090.9	1088.5	1086.4	1083.9	1081.8	1079.4	1077.6	1075.5	1073.6
120°	926.4	926.4	928.8	929.1	929.9	930.3	931.0	931.5	932.3	933.0	934.0
122.5°	805.2	799.5	796.4	796.8	797.2	797.3	797.9	798.2	798.8	799.3	800.0
125°	719.5	711.1	705.9	703.4	701.1	698.5	696.1	693.6	691.6	689.2	687.1
127.5°	658.5	649.3	643.5	639.0	634.5	629.6	625.1	620.3	616.0	611.2	607.0
130°	616.8	607.7	602.5	596.7	591.5	585.5	580.2	574.5	568.8	563.2	557.8
132.5°	587.9	579.1	574.0	568.7	563.5	557.9	552.7	547.0	541.6	536.0	530.8
135°	570.6	562.1	558.0	552.8	548.3	543.1	538.2	533.1	528.2	523.0	518.3
137.5°	555.9	547.4	543.9	539.7	535.8	531.6	527.8	523.5	519.4	514.9	511.1
140°	544.0	535.2	531.3	528.9	526.6	523.8	521.2	518.5	516.1	513.5	510.8
142.5°	535.5	526.8	523.5	521.7	520.2	518.2	517.0	515.1	513.4	511.1	509.4
145°	526.8	517.2	513.7	512.9	512.8	512.1	511.6	511.0	510.5	509.5	509.0
147.5°	521.8	512.0	508.3	508.4	508.3	507.9	508.2	507.7	507.9	507.6	507.5
150°	515.7	504.7	500.5	500.9	501.1	501.5	501.8	502.0	502.6	502.8	503.1
152.5°	511.1	497.8	493.1	493.5	494.2	494.4	494.9	495.6	496.3	496.9	497.4
155°	507.7	493.4	488.3	488.1	488.3	488.5	488.7	489.1	489.5	489.8	490.4
157.5°	507.0	491.9	486.9	486.4	486.4	486.4	486.4	486.5	486.7	486.9	487.5
160°	507.7	492.5	487.5	487.0	487.0	486.8	486.6	486.5	486.7	486.9	487.3
162.5°	508.3	493.6	488.9	488.3	488.0	487.6	487.6	487.2	487.4	487.3	487.8
165°	509.5	496.4	492.1	491.8	491.8	491.5	491.6	491.6	491.8	491.9	492.3
167.5°	514.3	502.7	499.3	498.6	498.0	497.5	497.5	496.7	496.7	496.3	496.3
170°	515.7	506.5	503.5	503.3	503.5	503.3	503.1	503.0	503.0	502.9	503.1
172.5°	517.1	510.4	508.0	508.2	508.6	508.7	509.1	509.4	509.8	510.2	510.6
175°	518.4	514.4	513.4	513.3	513.5	513.7	513.9	514.0	514.2	514.4	514.9
177.5°	520.7	519.5	518.9	518.9	518.9	518.9	518.9	518.9	518.9	519.1	519.1
180°	518.6	518.6	518.6	518.6	518.6	518.6	518.6	518.6	518.6	518.6	518.6



TEST NUMBER: P1444423
 CATALOG NUMBER: EHBR1-60-UNV-TA-L840-UPL30

CANDELA DISTRIBUTION (continued):

	247.5°	250°	252.5°	255°	257.5°	260°	262.5°	265°	267.5°	270°	272.5°
0°	51665.1	51665.1	51665.1	51665.1	51665.1	51665.1	51665.1	51665.1	51665.1	51665.1	51665.1
2.5°	52068.9	52129.7	52125.0	52181.7	52178.8	52232.3	52221.5	52267.7	52257.1	52296.6	52273.5
5°	53776.9	53892.4	53930.4	54034.7	54056.3	54149.5	54151.4	54225.6	54216.6	54274.6	54243.7
7.5°	55392.6	55500.4	55551.5	55632.5	55672.9	55740.0	55766.2	55821.3	55834.5	55867.1	55866.1
10°	55528.9	55528.6	55553.8	55542.5	55565.1	55552.1	55579.7	55569.8	55610.5	55599.9	55630.8
12.5°	53694.2	53512.1	53445.6	53282.2	53246.3	53106.0	53116.0	53026.0	53069.4	53014.1	53108.3
15°	49751.1	49328.7	49120.0	48752.8	48637.4	48347.2	48323.6	48130.8	48182.9	48082.0	48229.5
17.5°	43924.3	43259.3	42894.3	42358.0	42145.0	41734.6	41652.2	41404.0	41442.6	41317.5	41495.5
20°	36977.1	36173.5	35713.2	35092.9	34816.3	34326.9	34197.0	33919.5	33954.3	33829.8	34031.2
22.5°	29950.7	29109.4	28589.8	27939.7	27586.5	27126.2	26988.1	26709.1	26725.1	26608.2	26802.0
25°	23493.7	22687.2	22182.8	21592.3	21285.8	20863.7	20718.6	20468.2	20482.3	20386.0	20559.9
27.5°	18174.0	17512.3	17090.2	16595.3	16320.6	15973.6	15832.1	15621.4	15620.9	15550.2	15695.6
30°	14202.1	13649.9	13270.9	12839.9	12581.7	12268.7	12132.0	11943.5	11935.4	11885.2	12000.6
32.5°	11119.9	10628.7	10283.1	9903.7	9672.1	9403.5	9274.0	9122.6	9108.7	9063.3	9158.2
35°	8644.2	8230.6	7933.5	7614.1	7637.6	7241.3	7307.2	6999.2	6915.8	6897.6	6968.1
37.5°	6681.0	6360.6	6119.2	5880.0	5718.1	5550.5	5460.3	5379.4	5370.2	5362.3	5411.7
40°	5229.4	5005.2	4829.6	4665.5	4554.1	4451.8	4395.4	4350.9	4340.4	4334.5	4364.3
42.5°	4232.5	4081.1	3968.0	3867.8	3800.1	3744.5	3713.5	3688.8	3680.5	3680.7	3698.4
45°	3575.8	3484.1	3411.1	3349.0	3305.7	3324.7	3268.7	3298.0	3259.4	3299.3	3272.9
47.5°	3149.0	3070.9	3025.7	2981.7	2955.5	2934.4	2935.2	2935.6	2943.8	2945.1	2953.7
50°	2819.7	2774.5	2743.1	2714.9	2701.4	2690.3	2694.1	2697.0	2705.0	2705.5	2711.9
52.5°	2576.0	2546.3	2527.3	2509.9	2503.7	2497.5	2500.1	2499.0	2502.6	2500.7	2505.9
55°	2377.6	2363.6	2357.6	2351.2	2352.1	2350.4	2351.6	2345.2	2341.4	2336.6	2341.0
57.5°	2214.9	2212.9	2216.9	2219.6	2227.1	2229.8	2231.5	2224.2	2217.3	2211.0	2214.7
60°	2089.4	2092.5	2102.5	2110.4	2121.2	2126.2	2129.2	2125.1	2120.0	2114.9	2117.9
62.5°	1965.7	1970.5	1982.4	1991.4	2004.4	2011.0	2018.5	2018.9	2020.8	2018.9	2021.0
65°	1822.1	1828.0	1838.8	1846.3	1858.3	1864.2	1871.9	1873.2	1877.4	1876.4	1880.1
67.5°	1713.0	1718.3	1727.3	1734.4	1745.2	1751.2	1758.0	1758.4	1759.9	1759.5	1762.9
70°	1596.5	1599.3	1607.2	1613.2	1623.9	1630.2	1637.9	1640.2	1645.0	1645.8	1649.6
72.5°	1472.4	1471.3	1476.1	1478.8	1486.9	1491.8	1501.6	1506.9	1515.0	1517.0	1520.0
75°	1337.2	1336.1	1341.9	1344.2	1351.1	1356.0	1367.0	1374.1	1386.5	1391.6	1390.3
77.5°	1180.8	1183.6	1194.3	1200.2	1209.4	1215.6	1229.9	1241.2	1264.0	1273.9	1263.8
80°	1005.9	1008.7	1019.8	1025.3	1037.5	1045.1	1061.0	1074.2	1094.7	1099.1	1093.4
82.5°	790.8	791.6	801.5	805.7	821.4	832.7	852.8	863.4	876.0	874.1	872.6
85°	539.2	546.5	558.9	571.4	590.5	608.9	627.9	643.5	632.4	649.9	630.3
87.5°	288.2	287.4	304.2	301.6	328.4	343.9	360.3	368.2	377.1	375.2	375.4
90°	66.0	62.4	63.0	58.9	60.8	56.4	59.7	55.7	59.9	54.8	63.0
92.5°	59.5	57.2	54.6	52.3	49.6	47.3	44.7	42.3	39.8	37.3	39.8
95°	72.2	69.9	67.7	65.2	63.0	60.6	58.4	56.1	53.9	51.6	54.4
97.5°	88.4	87.1	85.8	84.5	83.1	81.7	80.4	79.1	77.6	76.3	78.2
100°	99.6	99.6	99.6	99.6	99.2	99.2	99.2	99.2	99.2	99.2	100.7
102.5°	185.9	181.5	177.2	172.5	168.2	163.9	159.5	155.1	150.7	146.4	152.9
105°	412.7	395.6	378.3	361.2	343.9	326.8	309.7	292.6	275.5	258.4	276.1
107.5°	761.1	729.7	698.3	667.3	635.9	604.7	573.5	542.4	511.3	480.1	508.0
110°	1059.9	1026.6	993.4	960.3	927.1	893.8	860.8	827.7	794.7	761.6	788.2



TEST NUMBER: P1444423
 CATALOG NUMBER: EHBR1-60-UNV-TA-L840-UPL30

CANDELA DISTRIBUTION (continued):

	247.5°	250°	252.5°	255°	257.5°	260°	262.5°	265°	267.5°	270°	272.5°
112.5°	1181.4	1159.5	1138.1	1116.7	1095.2	1073.9	1052.5	1031.3	1010.0	988.7	1001.6
115°	1166.3	1156.0	1145.5	1135.3	1125.0	1114.5	1104.4	1094.4	1084.3	1074.2	1075.0
117.5°	1071.7	1067.9	1064.3	1060.7	1057.0	1053.6	1050.2	1046.9	1043.5	1040.5	1033.2
120°	935.1	935.7	936.3	937.2	938.2	939.4	940.1	941.4	942.7	944.0	934.3
122.5°	800.8	802.8	804.9	807.1	809.4	811.9	814.4	817.2	820.1	822.9	813.3
125°	684.8	686.7	688.6	690.8	692.6	695.3	697.7	700.5	703.4	706.3	698.1
127.5°	602.7	602.8	602.8	603.4	603.8	604.7	605.6	606.8	608.1	609.6	604.5
130°	552.2	550.6	548.9	547.6	546.1	545.3	544.5	543.9	543.2	543.0	540.9
132.5°	525.3	522.4	519.5	516.9	514.4	512.4	510.0	508.5	506.8	505.5	504.9
135°	513.0	509.3	505.8	502.3	499.0	496.2	493.3	491.0	488.6	486.4	487.1
137.5°	506.9	503.4	499.7	496.3	492.9	490.3	487.2	484.7	482.5	480.4	481.5
140°	508.0	504.4	500.9	497.5	494.6	491.7	488.9	486.5	484.0	482.2	482.8
142.5°	507.4	504.6	501.1	498.3	495.2	492.8	490.3	488.3	485.7	484.2	485.0
145°	508.2	506.0	503.5	501.3	499.2	497.3	495.1	493.7	492.2	491.3	491.7
147.5°	507.2	505.7	503.6	502.1	500.2	499.1	497.5	496.5	495.4	494.7	494.9
150°	503.3	502.3	501.1	500.1	499.0	498.1	497.2	496.6	495.9	495.5	495.5
152.5°	498.0	497.2	496.1	495.3	494.4	493.8	493.1	492.7	492.2	491.8	491.7
155°	490.8	490.4	490.0	489.8	489.4	489.6	489.2	489.5	489.3	489.4	489.6
157.5°	487.8	487.9	487.6	488.1	488.1	488.4	488.4	488.9	488.9	489.5	489.9
160°	488.0	488.0	487.8	488.0	488.0	488.0	488.2	488.4	488.6	488.8	489.3
162.5°	488.0	488.6	488.8	489.2	489.7	490.1	490.7	491.4	491.8	492.6	493.1
165°	492.7	492.7	492.7	492.7	493.0	493.3	493.5	494.1	494.2	494.8	495.6
167.5°	496.1	496.5	496.5	496.9	497.3	497.8	498.2	499.1	499.6	500.6	501.2
170°	502.9	502.9	502.9	502.9	502.9	503.3	503.5	503.6	503.8	504.4	504.8
172.5°	510.8	510.8	510.4	510.8	510.4	510.8	510.8	511.0	511.0	511.1	511.3
175°	514.8	515.3	515.5	515.9	515.9	516.0	516.2	516.4	516.6	517.0	517.0
177.5°	519.1	519.3	519.3	519.3	519.3	519.5	519.5	519.5	519.5	519.3	519.5
180°	518.6	518.6	518.6	518.6	518.6	518.6	518.6	518.6	518.6	518.6	518.6



TEST NUMBER: P1444423
 CATALOG NUMBER: EHBR1-60-UNV-TA-L840-UPL30

CANDELA DISTRIBUTION (continued):

	275°	277.5°	280°	282.5°	285°	287.5°	290°	292.5°	295°	297.5°	300°
0°	51665.1	51665.1	51665.1	51665.1	51665.1	51665.1	51665.1	51665.1	51665.1	51665.1	51665.1
2.5°	52311.9	52285.7	52312.5	52285.3	52312.5	52279.9	52302.0	52266.7	52275.8	52239.2	52248.5
5°	54289.9	54248.2	54270.4	54216.2	54221.9	54149.5	54148.2	54063.9	54041.7	53945.8	53903.7
7.5°	55889.3	55875.7	55883.4	55848.6	55844.5	55795.1	55771.6	55701.8	55658.0	55569.8	55509.4
10°	55636.2	55676.9	55687.5	55729.0	55737.7	55778.8	55787.4	55828.6	55837.3	55867.6	55868.0
12.5°	53103.9	53242.3	53275.4	53446.4	53518.5	53714.1	53819.1	54034.7	54162.7	54377.7	54509.9
15°	48225.5	48465.0	48560.5	48894.4	49079.2	49469.1	49713.9	50161.6	50477.5	50953.0	51292.1
17.5°	41511.3	41846.0	41997.1	42449.9	42745.4	43320.7	43735.5	44418.1	44940.7	45699.2	46300.5
20°	34065.7	34437.8	34642.8	35159.4	35508.1	36180.3	36698.1	37537.0	38236.5	39197.6	40019.7
22.5°	26862.7	27216.8	27444.4	27970.0	28362.6	29063.7	29642.4	30527.8	31311.5	32394.7	33380.2
25°	20625.6	20949.9	21155.7	21631.1	21999.7	22644.1	23196.7	24048.2	24815.0	25901.5	26912.1
27.5°	15767.9	16039.7	16238.0	16643.4	16968.6	17515.0	17989.7	18693.3	19354.1	20294.1	21194.0
30°	12071.7	12312.5	12505.5	12858.6	13160.0	13633.7	14051.1	14642.2	15189.1	15937.1	16652.9
32.5°	9224.8	9432.1	9604.1	9913.1	10186.6	10613.2	10989.2	11507.3	11976.7	12611.1	13200.0
35°	7033.5	7441.6	7412.6	7838.9	7907.4	8213.6	8549.1	9002.1	9417.8	9957.2	10458.5
37.5°	5459.2	5573.9	5696.8	5885.2	6083.3	6361.8	6645.2	7198.8	7401.7	7809.4	8224.4
40°	4402.3	4479.8	4561.0	4688.3	4827.0	5023.2	5229.6	5493.7	5764.2	6094.8	6432.3
42.5°	3721.7	3765.6	3817.2	3892.1	3977.6	4102.0	4240.0	4419.1	4607.3	4840.0	5077.4
45°	3325.2	3304.3	3319.6	3359.9	3411.3	3487.0	3574.1	3685.0	3807.6	3958.2	4118.6
47.5°	2955.5	2963.8	2968.5	2990.3	3017.9	3068.6	3121.4	3196.7	3342.0	3386.3	3473.8
50°	2711.3	2715.3	2714.0	2725.1	2739.0	2772.0	2806.3	2857.2	2908.1	2975.5	3039.9
52.5°	2506.7	2512.4	2511.6	2518.9	2526.3	2547.2	2568.8	2604.8	2638.1	2681.0	2718.0
55°	2345.0	2352.9	2355.9	2362.1	2365.7	2376.6	2385.3	2402.4	2416.7	2441.0	2463.4
57.5°	2220.7	2231.5	2236.4	2238.6	2234.1	2233.6	2230.7	2234.3	2237.3	2250.3	2262.9
60°	2122.9	2131.5	2132.8	2131.5	2123.4	2117.7	2108.5	2105.7	2104.2	2110.4	2117.4
62.5°	2020.4	2023.5	2021.4	2018.9	2009.7	2004.2	1994.6	1991.2	1987.9	1992.3	1996.0
65°	1878.8	1881.5	1878.8	1877.2	1869.0	1864.6	1856.6	1853.8	1849.3	1850.4	1849.7
67.5°	1763.7	1766.4	1764.2	1762.1	1756.5	1753.7	1747.8	1744.0	1738.4	1736.3	1732.5
70°	1649.0	1651.1	1647.9	1645.8	1639.2	1636.7	1631.1	1630.0	1625.6	1624.7	1620.3
72.5°	1517.0	1517.2	1512.7	1511.3	1506.5	1506.3	1504.0	1506.1	1505.9	1508.3	1507.3
75°	1382.1	1380.2	1374.5	1373.5	1369.8	1371.5	1369.0	1372.3	1372.7	1377.7	1378.3
77.5°	1246.9	1239.9	1228.9	1223.7	1216.5	1215.5	1211.3	1214.1	1213.2	1219.0	1221.2
80°	1076.1	1067.5	1053.5	1046.8	1038.2	1036.8	1033.0	1036.8	1034.9	1041.6	1046.4
82.5°	859.2	851.7	837.2	831.8	821.8	822.7	818.6	822.7	822.2	832.1	837.9
85°	635.5	630.5	615.6	602.4	587.6	579.1	570.6	569.1	566.6	570.6	574.0
87.5°	367.1	362.4	350.8	343.2	317.2	318.4	308.2	307.7	305.2	302.9	308.2
90°	61.2	68.2	66.8	73.1	72.4	79.7	79.7	86.7	85.7	92.3	92.5
92.5°	42.3	44.7	47.2	49.6	52.2	54.6	57.1	59.5	64.9	69.8	75.5
95°	57.2	60.1	63.0	65.8	68.6	71.5	74.4	77.2	85.0	92.7	100.5
97.5°	80.3	81.9	83.8	85.8	87.7	89.5	91.4	93.3	101.9	110.3	118.7
100°	102.2	103.7	105.2	106.9	108.4	109.9	111.4	112.9	129.5	145.6	161.7
102.5°	159.3	165.8	172.2	178.7	185.4	191.8	198.3	204.7	242.0	279.0	316.0
105°	293.7	311.4	329.2	347.0	364.7	382.3	400.2	417.8	477.3	536.6	596.2
107.5°	536.0	563.8	591.8	619.9	647.9	675.9	703.9	732.0	789.8	848.1	906.0
110°	814.8	841.6	868.1	895.0	921.5	948.4	975.1	1002.1	1037.1	1071.8	1106.8



TEST NUMBER: P1444423
 CATALOG NUMBER: EHBR1-60-UNV-TA-L840-UPL30

CANDELA DISTRIBUTION (continued):

	275°	277.5°	280°	282.5°	285°	287.5°	290°	292.5°	295°	297.5°	300°
112.5°	1014.7	1027.6	1040.7	1053.8	1066.9	1080.2	1093.4	1106.7	1124.2	1141.8	1159.4
115°	1075.8	1076.6	1077.7	1078.7	1079.8	1080.8	1082.3	1083.5	1089.4	1095.2	1100.9
117.5°	1026.3	1019.2	1012.4	1005.4	998.6	992.0	985.5	979.0	978.2	977.5	977.1
120°	925.3	915.8	906.4	896.9	888.0	878.8	870.2	861.4	857.2	853.1	849.2
122.5°	804.0	794.7	785.5	776.3	767.4	758.7	750.1	741.6	739.0	736.3	733.9
125°	690.4	682.8	675.2	667.8	660.8	653.7	646.9	640.1	640.7	641.0	642.0
127.5°	600.0	595.4	591.0	586.9	583.1	579.1	575.5	571.7	574.7	577.7	580.7
130°	539.0	537.4	536.0	534.4	533.6	532.4	531.4	530.5	535.3	539.5	544.3
132.5°	505.1	505.1	505.5	505.9	506.7	507.4	508.6	509.3	514.5	519.4	524.6
135°	488.0	489.0	490.5	491.7	493.6	495.2	497.3	499.1	504.2	508.7	513.9
137.5°	482.8	484.2	485.9	487.5	489.9	491.9	494.3	496.4	500.5	504.4	508.4
140°	484.2	485.0	486.8	488.4	490.1	491.8	494.1	495.8	499.5	502.5	505.7
142.5°	486.3	487.0	488.6	490.2	491.9	493.3	495.2	496.8	499.5	501.8	504.8
145°	492.7	493.4	494.8	495.6	497.0	498.3	499.9	501.3	503.2	504.7	506.6
147.5°	495.6	496.2	497.1	498.1	499.3	500.3	501.2	502.2	503.7	504.9	506.2
150°	496.0	496.4	497.0	497.4	498.4	499.2	500.2	500.7	501.9	502.8	504.2
152.5°	492.5	492.7	493.2	493.7	494.5	495.0	495.6	496.3	497.5	498.2	499.5
155°	490.2	491.0	491.7	492.3	493.2	493.6	494.6	495.1	496.1	496.8	497.8
157.5°	490.6	491.0	492.0	492.3	493.3	493.9	494.6	495.2	496.1	496.7	497.5
160°	490.3	491.3	492.0	492.9	493.9	494.6	495.6	496.5	497.3	497.9	498.6
162.5°	493.9	494.7	495.4	496.0	496.8	497.5	498.1	498.8	500.1	500.7	501.8
165°	496.5	497.3	498.4	499.0	500.2	501.1	501.9	502.9	503.4	504.2	504.7
167.5°	502.1	502.7	503.9	504.5	505.5	506.3	507.2	508.0	508.7	509.1	509.9
170°	505.6	506.3	507.1	507.8	508.5	509.1	510.2	510.8	511.7	512.3	513.3
172.5°	511.9	512.5	513.1	513.4	514.0	514.7	515.3	515.7	516.5	517.0	517.6
175°	517.0	517.0	517.2	517.4	517.6	517.6	517.8	518.2	518.4	518.5	518.7
177.5°	519.7	519.9	520.1	520.2	520.4	520.6	520.8	521.0	521.0	521.0	521.0
180°	518.6	518.6	518.6	518.6	518.6	518.6	518.6	518.6	518.6	518.6	518.6



TEST NUMBER: P1444423
 CATALOG NUMBER: EHBR1-60-UNV-TA-L840-UPL30

CANDELA DISTRIBUTION (continued):

	302.5°	305°	307.5°	310°	312.5°	315°	317.5°	320°	322.5°	325°	327.5°
0°	51665.1	51665.1	51665.1	51665.1	51665.1	51665.1	51665.1	51665.1	51665.1	51665.1	51665.1
2.5°	52212.0	52214.2	52172.2	52169.8	52130.4	52125.4	52086.9	52075.3	52044.0	52032.7	52000.9
5°	53796.0	53744.8	53626.2	53556.5	53439.4	53361.8	53235.0	53152.3	53030.0	52937.7	52814.6
7.5°	55398.1	55318.5	55185.4	55077.6	54915.0	54785.3	54595.1	54439.3	54233.2	54055.0	53838.5
10°	55868.0	55855.8	55821.9	55772.5	55696.9	55611.8	55482.4	55347.4	55166.9	54970.8	54730.3
12.5°	54711.9	54836.7	55006.9	55107.8	55230.6	55284.4	55334.8	55322.2	55289.1	55189.9	55050.8
15°	51783.3	52134.0	52598.6	52958.6	53372.7	53673.8	54006.1	54213.3	54419.9	54515.3	54573.7
17.5°	47124.4	47788.7	48621.6	49311.8	50108.3	50748.0	51449.1	51977.0	52519.9	52908.7	53260.5
20°	41140.2	42102.5	43280.6	44321.2	45531.3	46582.9	47735.3	48681.3	49656.9	50419.7	51141.8
22.5°	34649.4	35792.3	37216.5	38535.7	40095.6	41497.6	43079.5	44456.2	45893.7	47094.6	48255.6
25°	28266.6	29520.0	31077.3	32549.2	34316.0	35946.7	37822.7	39538.5	41396.3	43009.4	44602.8
27.5°	22438.2	23668.8	25258.7	26825.6	28693.8	30431.4	32441.4	34331.8	36447.3	38398.1	40393.6
30°	17647.9	18691.6	20117.1	21634.8	23477.4	25245.7	27277.4	29221.7	31422.4	33552.4	35800.1
32.5°	13981.8	14777.0	15897.8	17181.1	18881.2	20564.4	22499.1	24376.0	26543.2	28694.7	31032.5
35°	11104.1	11724.4	12578.9	13580.3	15020.1	16471.0	18182.3	19889.1	21910.9	23952.7	26224.9
37.5°	8756.2	9259.5	9928.7	10681.0	11835.8	13026.6	14429.7	15844.7	17601.5	19411.3	21470.7
40°	6837.7	7245.1	7766.1	8327.2	9199.2	10116.7	11201.8	12299.1	13710.5	15189.7	16894.0
42.5°	5371.5	5672.1	6040.2	6450.1	7263.7	7750.8	8486.6	9280.3	10317.9	11391.7	12673.1
45°	4313.8	4518.9	4774.1	5049.0	5426.6	5839.9	6343.8	6872.3	7858.0	8341.5	9120.9
47.5°	3602.4	3740.2	3902.5	4075.8	4298.4	4538.8	4837.7	5143.3	5538.5	5948.1	6428.2
50°	3123.4	3263.3	3319.1	3408.9	3537.8	3675.0	3843.5	4012.0	4224.0	4438.8	4686.0
52.5°	2767.8	2813.4	2874.0	2931.1	3011.0	3167.3	3217.8	3305.9	3424.7	3541.0	3670.8
55°	2496.3	2525.9	2565.4	2599.9	2648.1	2694.2	2760.9	2819.5	2898.8	2968.9	3055.1
57.5°	2284.9	2303.8	2331.2	2353.8	2385.1	2411.1	2450.2	2481.9	2527.5	2567.1	2619.4
60°	2131.3	2143.9	2162.4	2177.1	2197.0	2210.6	2230.0	2244.9	2269.0	2289.1	2318.2
62.5°	2005.9	2012.5	2024.5	2033.1	2045.7	2052.6	2063.0	2069.5	2082.7	2092.9	2109.1
65°	1855.5	1857.0	1865.0	1868.7	1878.6	1882.2	1890.7	1893.7	1904.6	1912.1	1926.5
67.5°	1732.2	1728.6	1728.8	1726.0	1727.3	1724.5	1725.2	1722.2	1726.5	1728.8	1739.7
70°	1619.5	1614.7	1613.2	1608.0	1606.5	1601.1	1599.6	1594.8	1594.2	1592.7	1596.5
72.5°	1509.8	1508.5	1508.9	1505.2	1504.8	1501.2	1501.4	1499.1	1501.6	1502.7	1507.6
75°	1383.6	1384.0	1386.5	1383.2	1384.1	1381.1	1382.2	1379.4	1380.9	1380.3	1385.4
77.5°	1230.1	1233.7	1240.4	1239.1	1241.2	1237.7	1239.3	1235.2	1236.3	1233.7	1235.6
80°	1057.3	1065.0	1074.0	1073.6	1077.4	1075.0	1078.4	1074.6	1076.1	1071.5	1070.3
82.5°	852.3	858.8	868.3	868.7	877.1	878.7	888.0	887.7	893.7	889.8	887.1
85°	582.7	587.0	595.5	600.1	608.7	614.1	623.1	626.7	620.2	632.0	622.7
87.5°	304.2	315.5	309.3	324.0	320.6	335.5	332.2	346.0	343.4	355.2	353.7
90°	101.3	102.2	111.4	112.9	124.0	126.6	132.8	129.5	135.1	132.1	137.9
92.5°	80.4	86.2	91.5	96.8	102.1	107.6	102.5	97.6	92.6	87.8	82.7
95°	108.3	116.1	123.9	131.7	139.4	147.2	138.8	130.7	122.4	114.0	105.6
97.5°	127.0	135.3	143.7	152.1	160.6	169.0	159.1	149.2	139.3	129.7	119.9
100°	177.9	194.2	210.4	226.5	242.9	259.0	240.7	222.4	204.1	185.7	167.3
102.5°	353.5	390.5	427.6	464.8	501.9	539.1	500.2	461.4	422.4	383.4	344.3
105°	655.6	715.2	774.6	834.0	893.5	953.3	890.0	826.8	763.6	700.5	637.1
107.5°	964.1	1022.1	1080.4	1138.3	1196.5	1254.8	1190.8	1126.6	1062.7	998.5	934.3
110°	1142.0	1176.9	1212.0	1247.2	1282.1	1317.5	1270.7	1224.2	1177.5	1130.7	1084.1



TEST NUMBER: P1444423
 CATALOG NUMBER: EHBR1-60-UNV-TA-L840-UPL30

CANDELA DISTRIBUTION (continued):

	302.5°	305°	307.5°	310°	312.5°	315°	317.5°	320°	322.5°	325°	327.5°
112.5°	1177.1	1195.2	1212.7	1230.7	1248.4	1266.3	1233.0	1200.0	1166.6	1133.5	1100.0
115°	1107.1	1112.9	1119.1	1125.0	1131.0	1137.0	1114.8	1092.5	1070.4	1048.3	1025.5
117.5°	976.6	976.4	975.6	975.7	974.9	974.6	962.4	950.3	937.9	925.6	913.2
120°	844.9	841.0	837.0	833.0	828.9	824.8	820.0	815.2	810.1	805.2	800.0
122.5°	731.2	729.0	726.3	723.9	721.0	718.4	716.9	715.6	713.9	712.4	710.4
125°	642.5	643.1	643.7	644.5	644.9	645.5	644.9	644.5	643.9	643.5	642.9
127.5°	583.3	586.4	589.1	591.9	594.5	597.3	597.5	598.0	598.3	598.6	598.8
130°	548.4	553.2	557.5	561.6	565.6	570.2	570.0	570.3	570.3	570.3	570.2
132.5°	529.5	534.5	539.3	544.5	549.0	553.7	553.5	553.7	553.2	553.4	553.2
135°	518.4	523.3	527.6	532.6	536.8	541.3	540.9	540.7	540.2	540.2	539.8
137.5°	512.1	516.2	519.9	523.8	527.1	530.9	530.4	530.2	529.6	529.6	529.1
140°	508.8	512.0	514.8	518.0	520.9	524.0	523.2	522.7	522.0	521.4	520.4
142.5°	507.1	509.6	511.8	514.4	516.5	518.9	517.4	516.3	515.2	514.0	512.8
145°	508.3	510.2	511.8	513.5	514.6	516.5	514.9	513.5	511.7	510.3	508.6
147.5°	507.3	508.6	509.4	510.8	511.4	512.7	511.0	509.4	507.9	506.2	504.5
150°	504.9	506.2	506.9	507.9	508.7	509.8	507.9	506.3	504.4	502.7	501.0
152.5°	500.4	501.3	502.1	502.8	503.6	504.4	502.5	501.2	499.3	497.3	495.7
155°	498.2	499.2	499.6	500.4	500.6	501.1	499.4	498.2	496.7	495.2	493.5
157.5°	498.0	498.8	499.5	499.8	500.2	500.8	499.7	498.7	497.3	496.3	495.0
160°	499.3	499.9	500.4	500.8	501.4	501.6	500.7	500.1	499.1	497.9	496.8
162.5°	502.4	503.3	503.8	504.4	505.2	505.8	504.7	503.7	502.6	501.5	500.1
165°	505.3	505.9	506.5	507.0	507.2	507.8	507.1	506.5	505.6	504.9	504.0
167.5°	510.4	511.1	511.5	512.1	512.3	512.6	511.9	511.5	510.6	509.7	508.8
170°	513.6	514.1	514.9	515.5	515.9	516.3	515.8	515.3	514.5	514.0	513.2
172.5°	518.2	518.7	518.9	519.5	519.7	520.2	519.6	518.9	518.3	517.6	516.8
175°	518.7	518.9	519.3	519.3	519.3	519.5	518.9	518.4	517.8	517.2	516.7
177.5°	521.0	521.0	521.0	520.8	520.8	520.8	520.4	520.0	519.7	519.3	518.7
180°	518.6	518.6	518.6	518.6	518.6	518.6	518.6	518.6	518.6	518.6	518.6



TEST NUMBER: P1444423
 CATALOG NUMBER: EHBR1-60-UNV-TA-L840-UPL30

CANDELA DISTRIBUTION (continued):

	330°	332.5°	335°	337.5°	340°	342.5°	345°	347.5°	350°	352.5°	355°
0°	51665.1	51665.1	51665.1	51665.1	51665.1	51665.1	51665.1	51665.1	51665.1	51665.1	51665.1
2.5°	51989.6	51967.0	51952.5	51933.9	51922.6	51908.3	51897.7	51888.7	51881.5	51874.8	51869.8
5°	52720.8	52604.5	52514.3	52416.6	52336.4	52256.4	52194.8	52143.6	52108.4	52082.0	52066.2
7.5°	53651.5	53438.8	53249.6	53050.5	52872.0	52696.4	52545.2	52414.7	52317.0	52253.5	52215.0
10°	54482.7	54197.9	53916.3	53619.9	53338.9	53066.1	52814.6	52593.2	52418.1	52301.6	52233.6
12.5°	54855.3	54612.7	54325.2	54003.3	53658.8	53310.3	52970.6	52664.3	52407.1	52234.6	52135.0
15°	54527.2	54427.6	54232.4	53982.6	53655.7	53295.4	52896.5	52521.6	52176.7	51953.1	51823.5
17.5°	53459.6	53598.7	53583.8	53488.2	53253.2	52949.9	52543.5	52122.3	51691.0	51392.1	51228.7
20°	51658.2	52095.2	52317.0	52430.7	52338.3	52141.7	51773.7	51346.3	50843.5	50453.2	50215.1
22.5°	49126.7	49898.2	50379.0	50730.7	50805.4	50738.4	50413.5	50006.9	49446.4	48977.4	48625.6
25°	45867.7	46998.0	47757.8	48353.5	48584.9	48644.6	48368.0	47963.8	47339.1	46792.6	46309.5
27.5°	42029.2	43497.9	44512.3	45312.7	45674.0	45830.6	45576.1	45163.7	44424.6	43772.2	43141.1
30°	37707.7	39450.2	40671.7	41631.3	42071.8	42278.7	42008.4	41548.0	40687.9	39902.8	39107.8
32.5°	33082.5	34989.2	36320.2	37362.4	37798.8	37993.5	37639.8	37122.8	36128.7	35203.8	34276.7
35°	28239.8	30164.4	31506.6	32521.1	32886.7	33004.2	32551.9	31954.3	30852.9	29837.8	28826.9
37.5°	23298.5	25089.1	26309.0	27219.4	27445.7	27466.1	26921.1	26261.0	25103.4	24102.6	23096.1
40°	18400.0	19910.0	20895.0	21623.7	21702.2	21632.2	21039.7	20375.4	19292.5	18395.8	17512.3
42.5°	13785.8	14925.6	15628.4	16127.8	16098.1	15959.7	15416.4	14845.4	13951.9	13269.0	12573.8
45°	9832.7	10584.3	10995.2	11287.4	11193.5	11061.7	10638.9	10238.6	9631.5	9190.4	8723.1
47.5°	6830.9	7728.4	7572.1	8143.5	7651.2	7976.3	7299.3	6926.1	6603.8	6369.5	6105.5
50°	4890.3	5096.0	5195.3	5263.1	5227.1	5177.2	5055.6	4946.8	4799.6	4692.4	4567.3
52.5°	3776.7	3879.5	3935.8	3976.6	3968.6	3950.3	3897.4	3848.9	3779.9	3734.6	3679.8
55°	3199.0	3200.5	3304.2	3259.7	3325.4	3248.4	3278.6	3193.5	3207.2	3134.1	3084.9
57.5°	2658.3	2700.4	2719.4	2737.7	2732.6	2729.3	2708.9	2698.5	2675.4	2668.2	2651.8
60°	2338.4	2360.4	2364.9	2373.4	2366.3	2363.6	2347.5	2341.8	2326.2	2323.4	2312.4
62.5°	2118.9	2130.2	2130.2	2130.2	2121.0	2112.1	2094.4	2085.0	2071.8	2069.0	2062.6
65°	1935.9	1947.5	1949.4	1951.9	1945.3	1938.3	1922.6	1912.5	1898.8	1893.7	1886.4
67.5°	1746.9	1759.3	1763.5	1769.8	1766.0	1764.6	1753.9	1749.9	1740.9	1738.8	1732.2
70°	1598.5	1603.6	1603.2	1603.0	1594.6	1587.2	1574.7	1568.8	1559.4	1557.5	1551.3
72.5°	1510.2	1513.8	1511.5	1508.3	1497.4	1486.3	1471.7	1460.9	1448.7	1441.1	1432.5
75°	1385.9	1390.7	1387.7	1385.6	1375.8	1368.5	1356.8	1350.8	1342.3	1339.8	1333.8
77.5°	1233.3	1235.6	1230.6	1230.1	1222.6	1218.0	1209.2	1207.7	1201.3	1201.5	1195.8
80°	1063.5	1062.1	1054.1	1052.6	1045.1	1043.2	1036.2	1036.6	1031.7	1033.8	1029.8
82.5°	875.0	870.3	859.8	856.6	848.1	847.3	842.7	846.6	843.4	848.1	845.3
85°	627.1	628.4	623.9	623.9	621.3	622.1	621.7	624.6	625.0	629.2	629.0
87.5°	349.6	354.7	353.7	358.3	358.1	363.2	365.0	372.6	373.5	380.7	380.7
90°	134.9	141.4	138.1	144.9	143.8	151.5	151.7	159.3	158.4	165.0	162.8
92.5°	77.8	72.8	68.0	63.0	60.5	57.6	55.9	52.7	50.7	47.7	45.3
95°	97.3	89.0	80.6	72.2	69.4	66.4	63.5	60.6	57.8	55.0	52.1
97.5°	110.0	100.1	90.2	80.3	77.8	75.4	72.6	70.2	67.7	65.3	62.8
100°	148.8	130.4	112.2	93.5	91.4	89.4	87.3	85.2	83.1	80.8	78.7
102.5°	305.3	266.3	227.1	188.0	180.6	173.1	165.8	158.1	150.7	143.3	135.9
105°	573.8	510.5	447.1	383.6	363.4	343.4	323.2	303.0	282.8	262.7	242.6
107.5°	870.2	805.7	741.5	677.1	640.1	602.9	565.6	528.2	491.2	453.7	416.5
110°	1037.4	990.4	943.5	896.4	866.8	836.8	806.8	776.7	747.0	716.7	686.7



TEST NUMBER: P1444423
 CATALOG NUMBER: EHBR1-60-UNV-TA-L840-UPL30

CANDELA DISTRIBUTION (continued):

	330°	332.5°	335°	337.5°	340°	342.5°	345°	347.5°	350°	352.5°	355°
112.5°	1066.6	1033.2	999.7	965.9	952.6	939.0	925.7	912.0	898.5	884.7	871.2
115°	1003.1	980.8	958.2	935.4	931.0	926.3	921.7	916.8	912.2	907.3	902.3
117.5°	900.9	888.4	875.8	863.3	864.3	865.2	866.3	867.0	867.8	868.3	869.2
120°	795.0	789.8	784.9	779.6	784.2	788.3	792.9	796.8	801.0	804.8	808.8
122.5°	708.9	707.0	705.5	703.4	708.9	714.2	719.4	724.6	729.5	734.0	738.8
125°	642.5	641.8	641.2	640.3	646.0	651.3	656.6	661.5	666.7	671.3	676.0
127.5°	599.2	599.4	599.7	599.9	604.2	607.8	611.9	615.3	619.1	622.1	625.4
130°	570.3	570.1	570.3	570.2	573.9	577.6	581.4	584.4	587.8	590.5	593.3
132.5°	553.2	552.9	552.9	552.5	555.7	558.3	561.2	563.2	565.6	567.4	569.3
135°	539.6	539.1	538.9	538.3	541.1	543.9	546.3	548.4	550.8	552.3	554.0
137.5°	528.9	528.3	528.0	527.4	530.0	532.3	534.7	536.6	538.5	540.2	541.6
140°	520.0	519.1	518.8	517.8	520.1	522.2	524.4	526.0	527.9	529.0	530.4
142.5°	511.6	510.0	509.3	507.7	509.5	511.1	512.6	513.9	515.3	516.1	516.9
145°	507.0	505.2	503.9	502.2	503.6	504.6	506.0	507.2	507.9	508.5	509.3
147.5°	503.2	501.3	499.6	497.8	499.3	500.0	500.7	501.3	502.3	502.7	503.0
150°	499.2	497.0	495.1	493.2	494.0	494.6	495.1	495.9	496.4	496.7	497.0
152.5°	493.8	491.9	490.1	488.0	488.5	488.9	489.2	489.5	489.9	490.1	490.2
155°	492.0	490.3	488.6	486.6	487.2	487.4	487.5	487.8	487.8	487.8	487.8
157.5°	493.7	492.0	491.0	489.4	489.4	489.4	489.4	488.8	488.7	488.4	488.0
160°	495.9	494.5	493.4	492.1	492.0	491.8	491.8	491.2	490.9	490.4	490.0
162.5°	498.7	497.4	495.9	494.4	494.3	494.3	494.1	493.5	493.2	492.7	492.3
165°	503.2	502.1	501.1	499.9	499.7	499.3	499.1	498.2	497.9	497.1	496.5
167.5°	507.8	506.9	505.7	504.4	504.4	504.4	504.3	503.9	503.6	503.0	502.9
170°	512.5	511.5	510.8	509.7	509.4	509.2	508.8	508.4	507.8	507.5	506.9
172.5°	515.9	515.1	514.2	513.1	513.1	512.9	512.5	512.3	511.7	511.3	511.2
175°	515.9	515.3	514.4	513.8	513.6	513.4	513.3	513.1	512.7	512.5	512.1
177.5°	518.3	518.0	517.3	516.9	516.7	516.7	516.5	516.3	516.3	516.1	515.9
180°	518.6	518.6	518.6	518.6	518.6	518.6	518.6	518.6	518.6	518.6	518.6



TEST NUMBER: P1444423
CATALOG NUMBER: EHBR1-60-UNV-TA-L840-UPL30

CANDELA DISTRIBUTION (continued):

	357.5°	360°
0°	51665.1	51665.1
2.5°	51865.2	51862.5
5°	52058.0	52054.9
7.5°	52204.7	52203.7
10°	52221.9	52230.9
12.5°	52117.8	52125.0
15°	51813.6	51827.7
17.5°	51231.8	51250.3
20°	50229.6	50248.9
22.5°	48606.7	48614.7
25°	46247.1	46213.6
27.5°	43030.2	42972.6
30°	38940.8	38885.1
32.5°	34065.4	34030.4
35°	28577.0	28555.0
37.5°	22798.8	22754.0
40°	17189.3	17058.7
42.5°	12269.2	12040.1
45°	8479.1	8207.5
47.5°	5919.3	5751.4
50°	4486.7	4432.5
52.5°	3655.9	3643.2
55°	3084.7	3079.2
57.5°	2655.4	2653.5
60°	2318.2	2317.7
62.5°	2066.8	2067.7
65°	1889.7	1890.1
67.5°	1733.9	1732.7
70°	1553.7	1552.3
72.5°	1429.6	1427.4
75°	1333.8	1332.5
77.5°	1197.5	1195.4
80°	1032.4	1029.8
82.5°	849.2	846.1
85°	633.5	633.6
87.5°	387.6	387.4
90°	168.8	165.6
92.5°	43.2	41.1
95°	49.2	46.4
97.5°	60.3	57.8
100°	76.7	74.6
102.5°	128.4	121.1
105°	222.5	202.3
107.5°	379.3	342.1
110°	656.7	626.7



TEST NUMBER: P1444423
CATALOG NUMBER: EHBR1-60-UNV-TA-L840-UPL30

CANDELA DISTRIBUTION (continued):

	357.5°	360°
112.5°	857.3	843.6
115°	897.0	892.1
117.5°	869.5	869.9
120°	812.1	816.0
122.5°	743.0	747.4
125°	680.2	684.5
127.5°	628.1	630.7
130°	595.3	597.7
132.5°	570.6	571.7
135°	554.9	556.1
137.5°	542.3	543.2
140°	530.9	531.6
142.5°	517.5	517.9
145°	509.6	509.8
147.5°	502.6	502.8
150°	496.8	496.8
152.5°	489.8	489.8
155°	487.3	487.1
157.5°	487.1	486.8
160°	489.3	488.9
162.5°	491.6	491.2
165°	495.6	494.8
167.5°	502.1	501.9
170°	506.3	505.9
172.5°	510.6	510.2
175°	511.9	511.7
177.5°	515.9	515.5
180°	518.6	518.6



TEST NUMBER: P1444423
 CATALOG NUMBER: EHBR1-60-UNV-TA-L840-UPL30

CIE UGR TABLE:

Reflectances:											
Ceiling		0.7	0.7	0.5	0.5	0.3	0.7	0.7	0.5	0.5	0.3
Wall		0.5	0.3	0.5	0.3	0.3	0.5	0.3	0.5	0.3	0.3
Reference plane		0.2	0.2	0.2	0.2	0.2	0.2	0.2	0.2	0.2	0.2
Room dimensions		Viewed crosswise					Viewed endwise				
X=2H	Y=2H	18.66	19.75	19.12	20.18	20.64	17.03	18.13	17.50	18.56	19.02
	3H	20.21	21.18	20.69	21.63	22.13	19.47	20.44	19.95	20.89	21.39
	4H	21.00	21.91	21.50	22.37	22.89	20.58	21.49	21.08	21.95	22.47
	6H	21.77	22.60	22.28	23.09	23.62	21.62	22.46	22.14	22.94	23.47
	8H	22.08	22.87	22.61	23.37	23.91	22.06	22.85	22.59	23.35	23.89
	12H	22.33	23.09	22.86	23.58	24.14	22.42	23.17	22.95	23.66	24.23
4H	2H	19.03	19.94	19.54	20.41	20.93	17.75	18.66	18.25	19.12	19.64
	3H	20.91	21.66	21.42	22.17	22.71	20.37	21.12	20.88	21.64	22.17
	4H	21.91	22.59	22.44	23.11	23.69	21.63	22.30	22.16	22.83	23.40
	6H	22.87	23.45	23.43	24.00	24.60	22.81	23.39	23.37	23.94	24.54
	8H	23.25	23.80	23.82	24.35	24.95	23.31	23.85	23.87	24.40	25.00
	12H	23.57	24.05	24.15	24.63	25.23	23.72	24.20	24.30	24.79	25.39
8H	4H	22.29	22.83	22.85	23.38	23.98	22.04	22.59	22.61	23.14	23.74
	6H	23.45	23.89	24.04	24.49	25.09	23.39	23.84	23.99	24.43	25.04
	8H	23.95	24.35	24.57	24.96	25.58	24.00	24.39	24.61	25.00	25.62
	12H	24.38	24.73	24.99	25.32	26.02	24.52	24.87	25.13	25.46	26.15
12H	4H	22.34	22.82	22.92	23.40	24.00	22.10	22.58	22.68	23.16	23.76
	6H	23.56	23.95	24.17	24.56	25.18	23.51	23.90	24.12	24.51	25.13
	8H	24.15	24.49	24.75	25.08	25.78	24.18	24.52	24.79	25.11	25.81

Cooper Lighting Solutions Photometric Lab
1121 Highway 74 South
Peachtree City, GA 30269



LM-79-2019: Approved Method: Electrical and Photometric Measurements of Solid-State Lighting Products

Report Prepared for

Cooper Lighting Solutions

Metalux

Report Number: SP1-2506-472-1

Test Date: 07/30/2025

Luminaire Tested: EHBR-60-L840-N

Data in this report applies to families of products including EHBR-60-L840-N

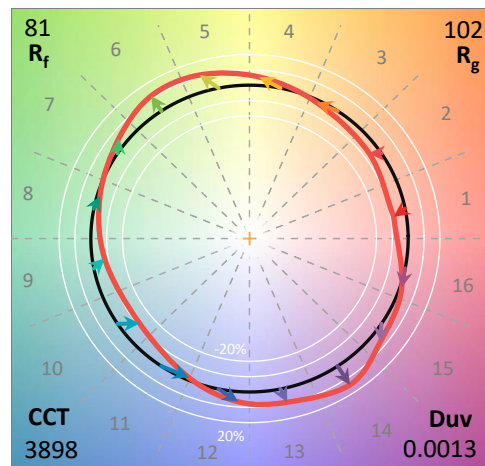
Test Information

Test Method: LM-79-2019
 Report Number: SP1-2506-472-1
 Test Lab: COOPER LIGHTING SOLUTIONS
 Photometer: SP1 - 76IN SPHERE
 Measurement Geometry: 4π
 Issue Date: 08/05/2025
 Manufacturer: COOPER LIGHTING SOLUTIONS
 Product Line: Metalux
 Catalog Number: **EHBR-60-L840-N**
 Description: Elevate Round Highbay at, 60000 lumens, 4000K 80CRI LEDs with N lens

Spectral Parameters

CCT (K): 3898
 CIE u': 0.2263
 CIE v': 0.5052
 Duv: 0.0013
 CIE x: 0.3861
 CIE y: 0.3831
 CIE z: 0.2308
 Peak Wavelength (nm): 630
 Dominant Wavelength (nm): 578
 Purity: 30.85729
 Rf: 80.7
 Rg: 102.1

CRI (Ra):	82.1		
R1:	84.4	R9:	38.5
R2:	83.5	R10:	58.9
R3:	80.8	R11:	83.6
R4:	83.9	R12:	54.2
R5:	82.1	R13:	82.8
R6:	77.3	R14:	88.2
R7:	86.4	R15:	81.2
R8:	78.3		



Test Conditions
 Stabilization Time: 42M
 Operation Time: 1H 42M
 Sphere Temperature (°C): 25.0

REPORT NUMBER: SP1-2506-472-1

Measurement and Test Equipment			
Instrument	Identification Number	Calibration Date	Calibration Due Date
Photometer	76INCH SPHERE IN0058	6/16/2025	12/16/2025
Power Meter	XITRON INXT2011004	1/21/2025	1/21/2026
AC Power Source	CHROMA 61603 IN0063	10/22/2024	10/22/2025
DC Power Source	AGILENT E3634A IN0208	10/22/2024	10/22/2025
Sphere Thermometer	ONSET IN0085	10/22/2024	10/22/2025
Room Thermometer	ONSET IN0046	10/22/2024	10/22/2025

REPORT NUMBER: SP1-2506-472-1

CIE 1931 Chromaticity Diagram



CIE 1931 Chromaticity Diagram with 2017 ANSI 7-Step and 4-Step Quadrangles



Point lies inside the ANSI 4000K 4-step quadrangle

REPORT NUMBER: SP1-2506-472-1

Photopic Flux vs. Wavelength



Photopic Lumens: NR

λ (nm)	Power W [^] /nm	Lumens (φ/nm)	λ (nm)	Power W [^] /nm	Lumens (φ/nm)	λ (nm)	Power W [^] /nm	Lumens (φ/nm)	λ (nm)	Power W [^] /nm	Lumens (φ/nm)	λ (nm)	Power W [^] /nm	Lumens (φ/nm)
360	0	NR	490	60	NR	620	277	NR	750	6	NR	880	0	NR
365	0	NR	495	87	NR	625	278	NR	755	5	NR	885	0	NR
370	0	NR	500	124	NR	630	1000	NR	760	4	NR	890	0	NR
375	0	NR	505	168	NR	635	623	NR	765	4	NR	895	0	NR
380	1	NR	510	209	NR	640	162	NR	770	3	NR	900	0	NR
385	1	NR	515	246	NR	645	158	NR	775	3	NR	905	0	NR
390	2	NR	520	273	NR	650	134	NR	780	2	NR	910	0	NR
395	4	NR	525	292	NR	655	109	NR	785	2	NR	915	0	NR
400	5	NR	530	305	NR	660	91	NR	790	2	NR	920	0	NR
405	7	NR	535	313	NR	665	75	NR	795	2	NR	925	0	NR
410	11	NR	540	319	NR	670	70	NR	800	1	NR	930	0	NR
415	21	NR	545	323	NR	675	56	NR	805	1	NR	935	0	NR
420	42	NR	550	326	NR	680	47	NR	810	1	NR	940	0	NR
425	76	NR	555	330	NR	685	41	NR	815	1	NR	945	0	NR
430	125	NR	560	333	NR	690	35	NR	820	1	NR	950	0	NR
435	193	NR	565	336	NR	695	30	NR	825	1	NR	955	0	NR
440	302	NR	570	336	NR	700	26	NR	830	1	NR	960	0	NR
445	432	NR	575	335	NR	705	22	NR	835	1	NR	965	0	NR
450	380	NR	580	332	NR	710	19	NR	840	0	NR	970	0	NR
455	213	NR	585	326	NR	715	16	NR	845	0	NR	975	0	NR
460	147	NR	590	319	NR	720	14	NR	850	0	NR	980	0	NR
465	104	NR	595	307	NR	725	12	NR	855	0	NR	985	0	NR
470	65	NR	600	299	NR	730	10	NR	860	0	NR	990	0	NR
475	50	NR	605	291	NR	735	9	NR	865	0	NR	995	0	NR
480	46	NR	610	317	NR	740	8	NR	870	0	NR	1000	0	NR
485	47	NR	615	336	NR	745	7	NR	875	0	NR			

REPORT NUMBER: SP1-2506-472-1

Scotopic Flux vs. Wavelength



Scotopic Lumens: NR

S/P: 1.55

λ (nm)	Power W^{\wedge}/nm	Lumens (ϕ/nm)	λ (nm)	Power W^{\wedge}/nm	Lumens (ϕ/nm)	λ (nm)	Power W^{\wedge}/nm	Lumens (ϕ/nm)	λ (nm)	Power W^{\wedge}/nm	Lumens (ϕ/nm)	λ (nm)	Power W^{\wedge}/nm	Lumens (ϕ/nm)
360	0	NR	490	60	NR	620	277	NR	750	6	NR	880	0	NR
365	0	NR	495	87	NR	625	278	NR	755	5	NR	885	0	NR
370	0	NR	500	124	NR	630	1000	NR	760	4	NR	890	0	NR
375	0	NR	505	168	NR	635	623	NR	765	4	NR	895	0	NR
380	1	NR	510	209	NR	640	162	NR	770	3	NR	900	0	NR
385	1	NR	515	246	NR	645	158	NR	775	3	NR	905	0	NR
390	2	NR	520	273	NR	650	134	NR	780	2	NR	910	0	NR
395	4	NR	525	292	NR	655	109	NR	785	2	NR	915	0	NR
400	5	NR	530	305	NR	660	91	NR	790	2	NR	920	0	NR
405	7	NR	535	313	NR	665	75	NR	795	2	NR	925	0	NR
410	11	NR	540	319	NR	670	70	NR	800	1	NR	930	0	NR
415	21	NR	545	323	NR	675	56	NR	805	1	NR	935	0	NR
420	42	NR	550	326	NR	680	47	NR	810	1	NR	940	0	NR
425	76	NR	555	330	NR	685	41	NR	815	1	NR	945	0	NR
430	125	NR	560	333	NR	690	35	NR	820	1	NR	950	0	NR
435	193	NR	565	336	NR	695	30	NR	825	1	NR	955	0	NR
440	302	NR	570	336	NR	700	26	NR	830	1	NR	960	0	NR
445	432	NR	575	335	NR	705	22	NR	835	1	NR	965	0	NR
450	380	NR	580	332	NR	710	19	NR	840	0	NR	970	0	NR
455	213	NR	585	326	NR	715	16	NR	845	0	NR	975	0	NR
460	147	NR	590	319	NR	720	14	NR	850	0	NR	980	0	NR
465	104	NR	595	307	NR	725	12	NR	855	0	NR	985	0	NR
470	65	NR	600	299	NR	730	10	NR	860	0	NR	990	0	NR
475	50	NR	605	291	NR	735	9	NR	865	0	NR	995	0	NR
480	46	NR	610	317	NR	740	8	NR	870	0	NR	1000	0	NR
485	47	NR	615	336	NR	745	7	NR	875	0	NR			

REPORT NUMBER: SP1-2506-472-1

Melanopic Flux vs. Wavelength



Melanopic Lumens: NR

M/P: 2.99

λ (nm)	Power $\text{W}^{\wedge}/\text{nm}$	Lumens (ϕ/nm)	λ (nm)	Power $\text{W}^{\wedge}/\text{nm}$	Lumens (ϕ/nm)	λ (nm)	Power $\text{W}^{\wedge}/\text{nm}$	Lumens (ϕ/nm)	λ (nm)	Power $\text{W}^{\wedge}/\text{nm}$	Lumens (ϕ/nm)	λ (nm)	Power $\text{W}^{\wedge}/\text{nm}$	Lumens (ϕ/nm)
360	0	NR	490	60	NR	620	277	NR	750	6	NR	880	0	NR
365	0	NR	495	87	NR	625	278	NR	755	5	NR	885	0	NR
370	0	NR	500	124	NR	630	1000	NR	760	4	NR	890	0	NR
375	0	NR	505	168	NR	635	623	NR	765	4	NR	895	0	NR
380	1	NR	510	209	NR	640	162	NR	770	3	NR	900	0	NR
385	1	NR	515	246	NR	645	158	NR	775	3	NR	905	0	NR
390	2	NR	520	273	NR	650	134	NR	780	2	NR	910	0	NR
395	4	NR	525	292	NR	655	109	NR	785	2	NR	915	0	NR
400	5	NR	530	305	NR	660	91	NR	790	2	NR	920	0	NR
405	7	NR	535	313	NR	665	75	NR	795	2	NR	925	0	NR
410	11	NR	540	319	NR	670	70	NR	800	1	NR	930	0	NR
415	21	NR	545	323	NR	675	56	NR	805	1	NR	935	0	NR
420	42	NR	550	326	NR	680	47	NR	810	1	NR	940	0	NR
425	76	NR	555	330	NR	685	41	NR	815	1	NR	945	0	NR
430	125	NR	560	333	NR	690	35	NR	820	1	NR	950	0	NR
435	193	NR	565	336	NR	695	30	NR	825	1	NR	955	0	NR
440	302	NR	570	336	NR	700	26	NR	830	1	NR	960	0	NR
445	432	NR	575	335	NR	705	22	NR	835	1	NR	965	0	NR
450	380	NR	580	332	NR	710	19	NR	840	0	NR	970	0	NR
455	213	NR	585	326	NR	715	16	NR	845	0	NR	975	0	NR
460	147	NR	590	319	NR	720	14	NR	850	0	NR	980	0	NR
465	104	NR	595	307	NR	725	12	NR	855	0	NR	985	0	NR
470	65	NR	600	299	NR	730	10	NR	860	0	NR	990	0	NR
475	50	NR	605	291	NR	735	9	NR	865	0	NR	995	0	NR
480	46	NR	610	317	NR	740	8	NR	870	0	NR	1000	0	NR
485	47	NR	615	336	NR	745	7	NR	875	0	NR			

Summary

$R_f = 80.7$
 $R_g = 102.1$
 CIE $R_a = 82.1$
 $R_9 = 38.5$



Color Vector Graphics

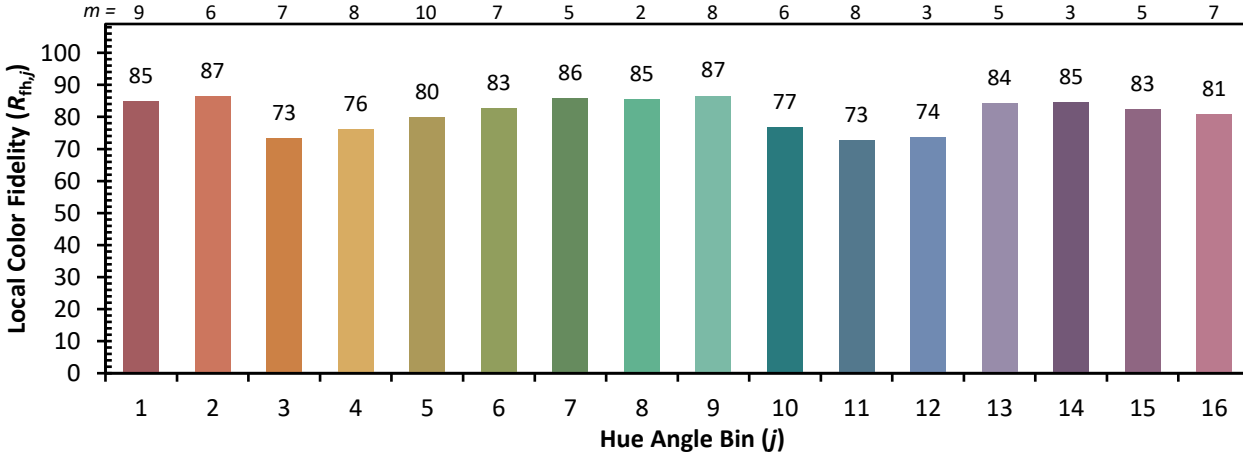
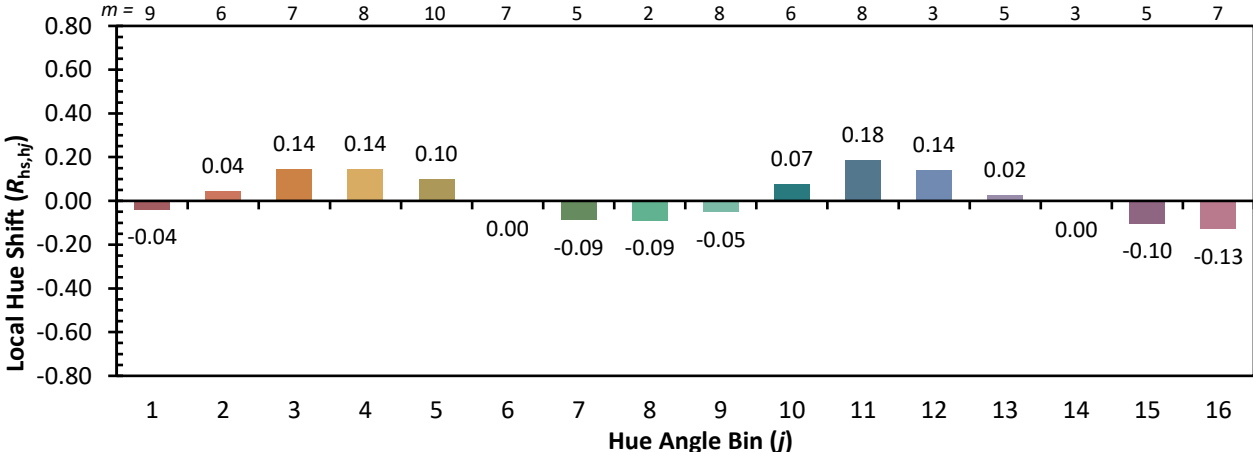
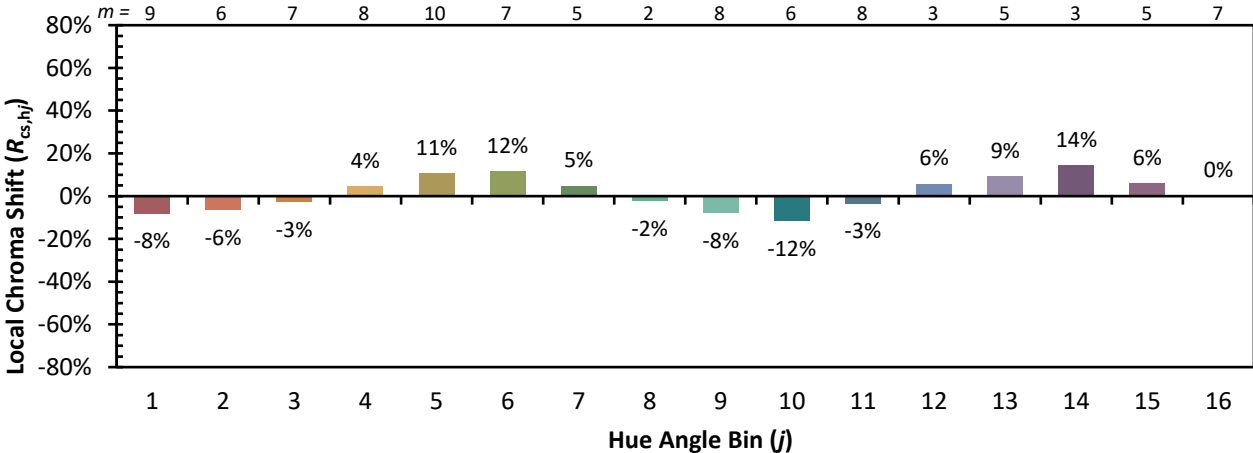


Individual Sample Fidelity Index ($R_{f,i}$)

CES01 = 85	CES26 = 69	CES51 = 90	CES76 = 58
CES02 = 61	CES27 = 89	CES52 = 90	CES77 = 76
CES03 = 31	CES28 = 83	CES53 = 80	CES78 = 60
CES04 = 69	CES29 = 66	CES54 = 91	CES79 = 85
CES05 = 48	CES30 = 76	CES55 = 89	CES80 = 79
CES06 = 50	CES31 = 69	CES56 = 79	CES81 = 81
CES07 = 41	CES32 = 62	CES57 = 77	CES82 = 91
CES08 = 40	CES33 = 74	CES58 = 79	CES83 = 88
CES09 = 29	CES34 = 72	CES59 = 93	CES84 = 89
CES10 = 74	CES35 = 84	CES60 = 95	CES85 = 84
CES11 = 57	CES36 = 98	CES61 = 92	CES86 = 82
CES12 = 63	CES37 = 77	CES62 = 89	CES87 = 81
CES13 = 43	CES38 = 83	CES63 = 80	CES88 = 86
CES14 = 74	CES39 = 94	CES64 = 80	CES89 = 79
CES15 = 71	CES40 = 88	CES65 = 77	CES90 = 85
CES16 = 47	CES41 = 89	CES66 = 74	CES91 = 83
CES17 = 49	CES42 = 74	CES67 = 72	CES92 = 77
CES18 = 56	CES43 = 73	CES68 = 78	CES93 = 86
CES19 = 71	CES44 = 98	CES69 = 83	CES94 = 69
CES20 = 65	CES45 = 82	CES70 = 69	CES95 = 80
CES21 = 86	CES46 = 82	CES71 = 64	CES96 = 86
CES22 = 78	CES47 = 80	CES72 = 88	CES97 = 83
CES23 = 91	CES48 = 79	CES73 = 60	CES98 = 81
CES24 = 90	CES49 = 80	CES74 = 98	CES99 = 83
CES25 = 71	CES50 = 89	CES75 = 62	



Color Rendition by Hue-Angle Bin



Measure Comparisons



(END OF REPORT)