

Cooper Lighting Solutions Photometric Lab  
1121 Highway 74 South  
Peachtree City, GA 30269



Scaled data based on original data using  
LM-79-2019 Approved Method: Electrical and Photometric Measurements of Solid-  
State Lighting Products

Test Report Prepared for  
Cooper Lighting Solutions

Brand: METALUX

Report Number: P1444577

Luminaire Tested: EHBR1-12-UNV-TA-L850

Issue Date: 5/1/2026

**Test Information**

Test Method: LM-79-2019  
Report Number: P1444577  
TEST IS SCALED FROM IESNA LM-79-08 TEST DATA ( C80-8019A)  
Test Lab: INNOVATION CENTER  
Issue Date: 5/1/2026  
Manufacturer: COOPER LIGHTING SOLUTIONS  
Product Line: METALUX  
Catalog Number: EHBR1-12-UNV-TA-L850  
Description: Elevate Round Highbay at, 12000 lumens, 5000K 80CRI LEDs with TA lens  
Light Source: -  
Ballast/Driver: -

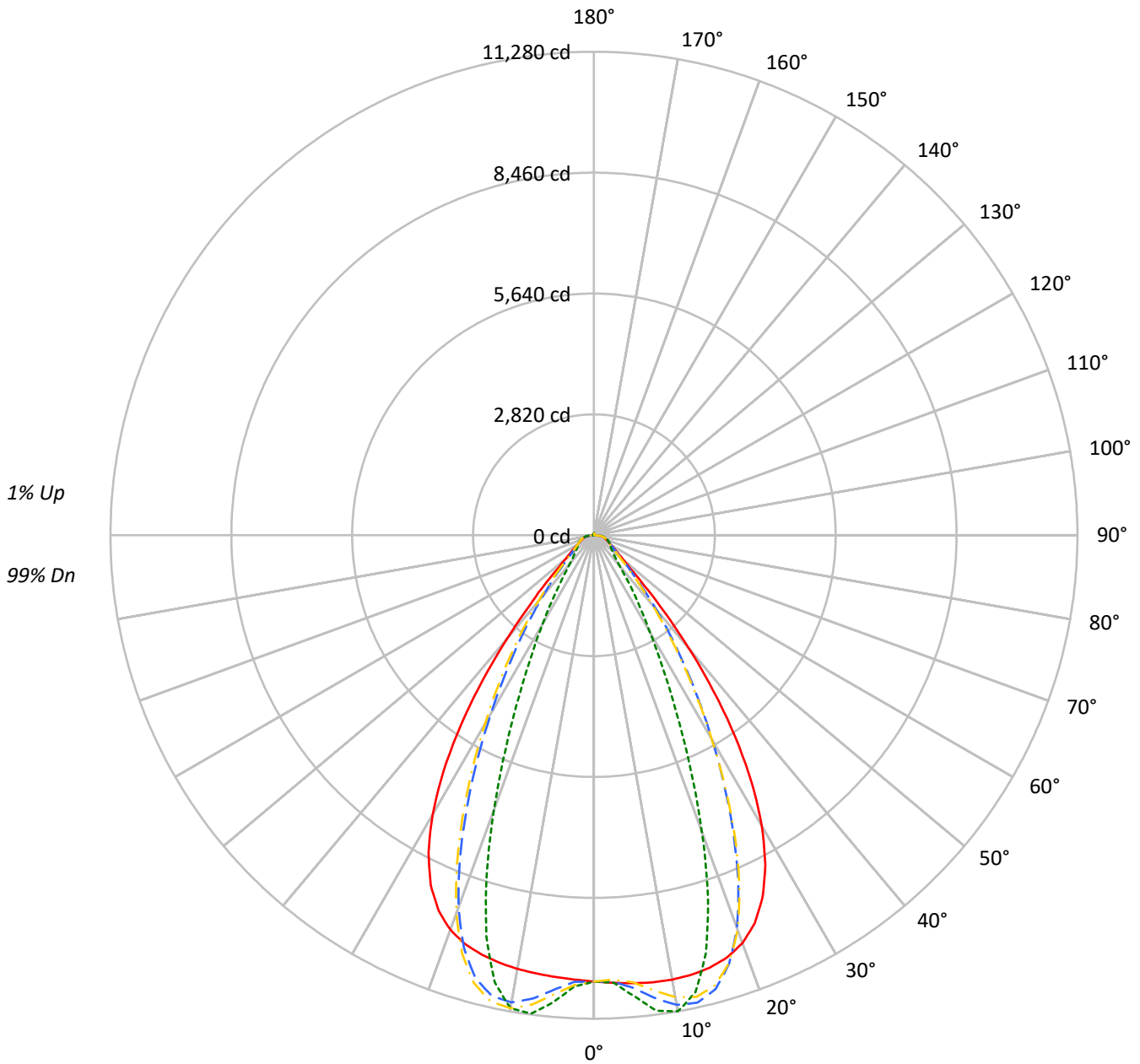
**Summary**

Lumens per Lamp: N/A  
Luminaire Lumens: 12054.5 lumens  
Efficiency: N/A  
Efficacy: 186.3 lumens/watt  
Spacing Criteria (0/90/45): 1.13 / 0.77 / 0.88  
Luminous Opening: Circular (Dia: 1.71' x H: 0')  
CIE Type: Direct

Input Watts (W): 64.7  
Input Voltage (V): NR  
Input Current (Ain): NR  
Voltage Rise (V): NR  
Power Factor: NR  
Total Harmonic Distortion (THDi): NR  
Frequency (hertz): 60  
Stabilization Time: NR  
Operation Time: NR  
Ambient Temperature (°C): NR  
Test Distance: 24 FT

TEST NUMBER: P1444577  
CATALOG NUMBER: EHBR1-12-UNV-TA-L850

### Luminous Intensity Polar Plot



— 0°-180°    - - 45°-225°    - - - 90°-270°    - · - 135°-315°



TEST NUMBER: P1444577  
 CATALOG NUMBER: EHBR1-12-UNV-TA-L850

**COEFFICIENT OF UTILIZATION - ZONAL CAVITY METHOD:**

RF	20				20				20				20				20				20	
RC	80				70				50				30				10				0	
RW	70	50	30	10	70	50	30	10	50	30	10	50	30	10	50	30	10	50	30	10	0	
RCR																						
0	119	119	119	119	116	116	116	116	111	111	111	106	106	106	101	101	101	99				99
1	112	108	105	103	109	106	103	101	102	100	98	98	96	95	94	93	92	90				90
2	105	99	94	90	103	97	93	89	94	90	87	91	88	85	88	85	83	81				81
3	99	91	85	81	97	90	84	80	87	82	79	84	81	77	82	79	76	74				74
4	93	84	78	73	91	83	77	73	81	76	72	79	74	71	77	73	70	68				68
5	88	78	72	67	86	77	71	66	75	70	66	73	69	65	72	68	64	63				63
6	83	73	66	61	81	72	66	61	70	65	60	69	64	60	67	63	60	58				58
7	78	68	61	57	77	67	61	56	66	60	56	65	59	56	63	59	55	54				54
8	74	64	57	53	73	63	57	52	62	56	52	61	56	52	60	55	52	50				50
9	70	60	53	49	69	59	53	49	58	53	49	57	52	48	56	52	48	47				47
10	67	56	50	46	66	56	50	46	55	49	46	54	49	45	53	49	45	44				44

**AVERAGE LUMINANCE (cd/sqm):**

	0°	90°	180°	270°
0°	48896	48896	48896	48896
5°	49453	50895	48761	51562
10°	50194	53787	48990	53431
15°	50780	49086	49234	47110
20°	50607	36824	48951	34071
25°	48258	23462	46663	21288
30°	42494	14212	40848	12988
35°	32991	8996	31093	7969
40°	21075	5699	19282	5355
45°	10985	4490	10803	4416
50°	6526	4047	6326	3984
55°	5080	3890	4893	3855
60°	4387	4056	4200	4003
65°	4233	4350	4070	4203
70°	4296	4732	4081	4553
75°	4874	5324	4609	5088
80°	5614	6561	5087	5990
85°	6881	8239	5555	7053

**MAXIMUM LUMINANCE 45°-90°:**

Horizontal Angle: 25°  
 Vertical Angle: 45°  
 Luminance: 16811 cd/sqm



TEST NUMBER: P1444577  
 CATALOG NUMBER: EHBR1-12-UNV-TA-L850

**ZONAL LUMENS:**

Zone	Lumens	% Fixture
0°-10°	1026.1	8.5
10°-20°	2886.6	23.9
20°-30°	3287.6	27.3
30°-40°	2363.0	19.6
40°-50°	1089.8	9.0
50°-60°	521.5	4.3
60°-70°	380.5	3.2
70°-80°	289.1	2.4
80°-90°	131.5	1.1
90°-100°	4.3	0.0
100°-110°	3.1	0.0
110°-120°	5.3	0.0
120°-130°	8.8	0.1
130°-140°	12.9	0.1
140°-150°	15.4	0.1
150°-160°	14.5	0.1
160°-170°	10.6	0.1
170°-180°	4.0	0.0
0°-30°	7200.3	59.7
0°-40°	9563.3	79.3
0°-60°	11174.6	92.7
0°-90°	11975.7	99.3
90°-120°	12.6	0.1
90°-150°	49.8	0.4
90°-180°	79.0	0.7
0°-180°	12054.5	100.0

**CANDELA DISTRIBUTION:**

	0°	90°	180°	270°	360°	Flux
0°	10412	10412	10412	10412	10412	
5°	10490	10796	10344	10938	10490	1002
15°	10445	10096	10127	9690	10445	2943
25°	9313	4528	9006	4108	9313	4222
35°	5755	1569	5424	1390	5755	3532
45°	1654	676	1627	665	1654	1407
55°	620	475	598	471	620	573
65°	381	392	366	378	381	380
75°	269	293	254	280	269	279
85°	128	153	103	131	128	120
90°	29	38	4	7	29	19
95°	2	2	2	2	2	2
105°	3	2	3	2	3	3
115°	7	3	7	4	7	7
125°	13	6	14	6	13	12
135°	21	12	22	13	21	16
145°	28	21	29	22	28	17
155°	33	30	34	31	33	15
165°	38	36	39	37	38	11
175°	42	42	43	42	42	4
180°	43	43	43	43	43	



TEST NUMBER: P1444577  
 CATALOG NUMBER: EHBR1-12-UNV-TA-L850

**CANDELA DISTRIBUTION (FULL):**

	0°	2.5°	5°	7.5°	10°	12.5°	15°	17.5°	20°	22.5°	25°
0°	10412.0	10412.0	10412.0	10412.0	10412.0	10412.0	10412.0	10412.0	10412.0	10412.0	10412.0
2.5°	10451.7	10451.0	10450.8	10450.1	10449.9	10449.9	10449.5	10448.6	10448.1	10446.9	10445.5
5°	10490.5	10490.0	10490.3	10490.4	10489.7	10488.1	10485.5	10482.4	10478.5	10474.7	10471.5
7.5°	10520.5	10521.3	10522.2	10522.0	10519.7	10515.9	10510.7	10507.7	10509.5	10515.2	10528.2
10°	10526.0	10530.5	10532.2	10531.7	10527.2	10523.8	10525.1	10536.1	10558.1	10587.4	10627.5
12.5°	10504.7	10510.2	10510.0	10508.1	10503.7	10508.2	10524.2	10557.0	10604.1	10661.8	10729.6
15°	10444.8	10451.8	10449.9	10447.5	10444.6	10459.2	10491.1	10548.2	10620.9	10702.3	10785.7
17.5°	10328.4	10337.0	10332.8	10330.1	10327.7	10355.2	10410.1	10493.6	10585.1	10677.3	10756.3
20°	10126.6	10132.3	10122.4	10117.8	10121.7	10175.6	10256.5	10363.1	10459.6	10546.7	10600.7
22.5°	9797.2	9804.4	9785.8	9783.6	9806.6	9889.5	9991.6	10110.9	10201.6	10270.7	10291.4
25°	9313.4	9320.3	9298.2	9311.4	9350.6	9463.6	9585.3	9712.8	9790.2	9841.3	9827.2
27.5°	8660.2	8666.6	8645.6	8672.6	8734.5	8882.8	9026.2	9164.5	9233.4	9269.3	9223.9
30°	7836.4	7849.8	7824.9	7862.6	7957.0	8149.8	8313.9	8469.0	8537.8	8565.1	8494.4
32.5°	6858.1	6877.0	6849.7	6905.8	7037.5	7269.0	7455.4	7628.8	7704.8	7735.9	7656.1
35°	5754.7	5781.8	5750.5	5834.6	5997.1	6254.9	6461.3	6654.8	6744.9	6789.0	6708.6
37.5°	4585.6	4611.5	4594.5	4706.8	4885.3	5152.3	5363.1	5571.9	5673.6	5739.8	5676.4
40°	3437.8	3461.5	3474.3	3602.8	3770.7	4022.4	4224.8	4431.4	4545.2	4628.3	4589.2
42.5°	2426.4	2450.3	2494.0	2618.0	2757.8	2966.3	3139.7	3325.1	3433.8	3522.5	3507.4
45°	1654.1	1681.8	1736.5	1837.9	1939.2	2088.7	2216.0	2360.3	2449.1	2530.3	2531.3
47.5°	1159.1	1178.5	1227.5	1296.7	1362.7	1549.9	1557.6	1628.5	1688.1	1748.9	1756.8
50°	893.3	905.0	930.9	969.6	1006.9	1055.6	1100.1	1151.4	1188.2	1221.5	1229.4
52.5°	734.3	741.6	754.9	775.8	797.4	823.9	847.7	875.9	895.9	913.7	917.4
55°	620.5	626.7	646.3	650.4	675.1	679.9	690.5	707.6	719.3	729.9	732.7
57.5°	534.8	539.3	543.4	552.3	560.0	571.1	580.0	592.3	599.7	607.3	608.0
60°	467.1	470.3	473.3	479.5	484.7	492.4	498.6	507.0	512.2	518.0	518.6
62.5°	416.7	419.0	421.0	425.1	428.8	434.8	439.7	446.6	451.6	456.0	457.0
65°	380.9	382.6	383.9	386.9	390.2	395.3	399.7	405.4	409.0	412.5	413.1
67.5°	349.2	350.8	352.1	354.9	357.2	361.0	363.9	368.3	370.9	373.7	373.8
70°	312.9	314.3	315.3	318.0	319.7	323.0	325.4	329.3	332.0	335.1	335.8
72.5°	287.7	288.6	289.9	292.3	294.8	298.3	301.5	305.5	308.8	312.1	313.3
75°	268.6	269.5	270.4	272.5	274.3	277.2	279.6	283.2	286.1	289.6	291.2
77.5°	241.0	242.1	242.9	244.9	246.5	249.2	251.0	254.3	256.7	259.8	261.3
80°	207.6	208.6	209.2	211.1	212.3	214.9	216.6	219.8	221.8	224.8	226.7
82.5°	170.5	171.6	171.9	173.8	174.4	176.5	177.8	181.0	183.5	187.5	190.3
85°	127.7	128.1	128.7	128.2	130.8	130.9	133.9	134.5	138.3	139.3	143.7
87.5°	78.1	79.3	79.8	81.5	82.3	84.1	84.7	86.5	87.6	89.8	90.8
90°	28.9	30.5	30.7	32.5	32.8	34.4	34.6	36.3	36.6	38.5	38.9
92.5°	1.8	1.8	1.7	1.8	1.8	2.1	2.2	2.3	2.3	2.5	2.6
95°	1.8	1.8	1.8	1.8	1.8	1.8	1.8	1.8	1.8	1.8	1.8
97.5°	2.0	2.0	2.0	2.0	2.0	2.0	2.0	2.0	2.0	2.0	2.0
100°	2.3	2.3	2.3	2.3	2.3	2.3	2.3	2.3	2.3	2.3	2.3
102.5°	2.7	2.7	2.7	2.7	2.7	2.7	2.7	2.7	2.7	2.7	2.6
105°	3.2	3.1	3.2	3.1	3.1	3.1	3.1	3.0	3.0	3.0	3.0
107.5°	3.8	3.7	3.7	3.7	3.7	3.7	3.7	3.7	3.6	3.6	3.6
110°	4.7	4.6	4.6	4.5	4.5	4.5	4.5	4.3	4.3	4.3	4.2



TEST NUMBER: P1444577  
 CATALOG NUMBER: EHBR1-12-UNV-TA-L850

**CANDELA DISTRIBUTION (continued):**

	0°	2.5°	5°	7.5°	10°	12.5°	15°	17.5°	20°	22.5°	25°
112.5°	5.7	5.6	5.6	5.5	5.5	5.4	5.3	5.2	5.2	5.1	5.0
115°	6.9	6.8	6.7	6.6	6.6	6.5	6.4	6.3	6.2	6.0	5.9
117.5°	8.3	8.1	8.1	8.0	7.8	7.7	7.6	7.4	7.3	7.1	7.0
120°	9.7	9.6	9.5	9.3	9.2	9.0	8.9	8.7	8.5	8.3	8.2
122.5°	11.4	11.3	11.2	11.0	10.8	10.6	10.4	10.1	9.9	9.7	9.5
125°	13.3	13.1	13.0	12.8	12.5	12.3	12.1	11.8	11.5	11.2	11.0
127.5°	15.1	14.9	14.8	14.5	14.3	14.0	13.8	13.5	13.3	12.9	12.6
130°	17.1	16.9	16.7	16.5	16.2	15.9	15.6	15.3	15.0	14.6	14.3
132.5°	19.1	19.0	18.8	18.5	18.2	17.8	17.6	17.1	16.8	16.5	16.1
135°	21.1	20.9	20.7	20.4	20.1	19.8	19.4	19.1	18.8	18.3	18.0
137.5°	23.0	22.8	22.6	22.3	22.0	21.6	21.3	20.9	20.5	20.1	19.7
140°	24.9	24.7	24.4	24.1	23.8	23.5	23.1	22.7	22.3	21.9	21.6
142.5°	26.5	26.3	26.1	25.7	25.5	25.1	24.8	24.4	24.0	23.6	23.3
145°	28.0	27.8	27.6	27.3	27.0	26.6	26.3	25.9	25.5	25.2	24.9
147.5°	29.4	29.2	29.0	28.7	28.5	28.1	27.8	27.4	27.1	26.7	26.4
150°	30.5	30.4	30.3	30.0	29.7	29.4	29.1	28.8	28.5	28.1	27.9
152.5°	31.5	31.3	31.2	30.9	30.7	30.5	30.3	29.9	29.6	29.3	29.0
155°	32.7	32.5	32.3	32.1	31.9	31.6	31.3	31.1	30.8	30.5	30.4
157.5°	34.0	33.8	33.7	33.4	33.2	32.9	32.7	32.4	32.2	32.0	31.7
160°	35.5	35.3	35.1	34.9	34.6	34.4	34.2	33.9	33.7	33.5	33.3
162.5°	36.9	36.7	36.5	36.3	36.1	35.9	35.7	35.5	35.3	35.0	34.8
165°	38.4	38.2	38.0	37.8	37.6	37.4	37.2	37.0	36.8	36.6	36.4
167.5°	39.8	39.6	39.5	39.3	39.1	39.0	38.8	38.6	38.5	38.2	38.1
170°	41.0	40.8	40.7	40.6	40.4	40.3	40.2	40.0	39.8	39.7	39.6
172.5°	41.8	41.6	41.6	41.6	41.4	41.3	41.2	41.1	41.0	40.9	40.8
175°	42.5	42.3	42.3	42.2	42.1	42.1	42.0	41.9	41.9	41.8	41.7
177.5°	42.9	42.8	42.8	42.8	42.8	42.8	42.7	42.6	42.6	42.6	42.6
180°	43.2	43.2	43.2	43.2	43.2	43.2	43.2	43.2	43.2	43.2	43.2



TEST NUMBER: P1444577  
 CATALOG NUMBER: EHBR1-12-UNV-TA-L850

**CANDELA DISTRIBUTION (continued):**

	27.5°	30°	32.5°	35°	37.5°	40°	42.5°	45°	47.5°	50°	52.5°
0°	10412.0	10412.0	10412.0	10412.0	10412.0	10412.0	10412.0	10412.0	10412.0	10412.0	10412.0
2.5°	10444.6	10443.3	10441.5	10439.4	10437.5	10435.2	10430.0	10428.5	10430.2	10431.4	10433.8
5°	10469.3	10470.1	10470.4	10475.1	10479.2	10489.5	10569.5	10601.3	10626.0	10641.6	10665.4
7.5°	10544.2	10568.2	10592.1	10624.1	10651.7	10689.1	10829.2	10888.9	10931.3	10961.7	10999.3
10°	10671.0	10723.5	10772.8	10830.5	10880.2	10937.0	11067.4	11125.6	11162.3	11189.0	11213.9
12.5°	10798.7	10871.6	10937.5	11001.7	11055.4	11104.8	11150.6	11171.0	11172.6	11173.5	11160.3
15°	10865.3	10934.9	10993.0	11035.4	11067.0	11081.0	11002.0	10960.6	10908.2	10865.1	10794.1
17.5°	10823.2	10865.1	10890.1	10887.7	10874.6	10830.9	10607.2	10484.2	10362.0	10251.8	10107.5
20°	10636.6	10633.4	10611.6	10549.8	10475.4	10359.6	9976.0	9754.7	9540.8	9352.9	9124.9
22.5°	10289.4	10234.8	10158.5	10025.3	9877.3	9675.1	9125.5	8799.8	8502.0	8238.9	7944.1
25°	9786.2	9673.8	9533.3	9321.8	9091.9	8796.9	8119.4	7714.5	7356.9	7046.7	6706.6
27.5°	9142.3	8972.9	8767.0	8474.3	8162.8	7784.9	7033.8	6587.0	6203.0	5870.5	5508.5
30°	8379.9	8159.7	7893.9	7530.5	7154.7	6726.2	5964.4	5511.8	5123.2	4781.0	4418.8
32.5°	7518.5	7260.5	6948.9	6541.2	6134.8	5694.2	4958.4	4520.3	4149.1	3820.0	3492.1
35°	6568.2	6291.6	5962.0	5546.1	5142.1	4713.8	4038.6	3643.7	3315.9	3024.9	2760.2
37.5°	5549.0	5277.4	4964.0	4572.1	4197.6	3809.3	3226.8	2895.8	2620.7	2379.3	2174.9
40°	4489.2	4251.6	3980.5	3641.6	3322.0	2998.6	2520.4	2257.7	2040.6	1856.5	1703.3
42.5°	3442.4	3258.2	3050.4	2782.6	2538.0	2291.8	1923.8	1729.1	1568.3	1435.7	1327.5
45°	2497.6	2374.4	2235.0	2048.8	1879.6	1707.8	1445.9	1309.1	1204.4	1118.9	1046.6
47.5°	1746.0	1674.5	1670.2	1498.1	1374.0	1269.0	1100.3	1013.8	949.7	897.9	852.1
50°	1226.2	1191.6	1148.6	1087.2	1029.6	970.3	867.5	815.2	777.7	746.2	717.4
52.5°	916.7	898.7	875.8	843.2	812.0	778.7	713.5	680.3	668.5	639.3	616.4
55°	732.1	721.9	708.8	689.7	670.7	663.1	607.3	582.7	567.0	555.5	543.2
57.5°	608.1	600.5	592.7	579.7	568.7	555.5	525.9	513.2	503.9	497.1	488.6
60°	518.7	514.1	509.8	502.2	496.2	489.1	470.3	463.1	458.3	454.2	448.8
62.5°	457.8	455.5	453.2	449.2	446.2	442.3	429.5	426.0	423.6	421.5	418.3
65°	413.9	412.2	411.0	408.2	406.8	404.5	393.4	391.1	389.7	388.9	386.9
67.5°	374.0	372.2	371.4	369.4	368.8	367.4	358.3	357.1	356.6	356.9	356.2
70°	336.6	335.8	336.2	335.9	336.8	337.0	331.6	331.5	332.1	333.3	333.4
72.5°	314.2	314.2	314.6	314.8	315.6	316.0	311.5	311.3	311.5	312.4	312.4
75°	292.9	293.3	294.4	294.8	295.8	296.0	290.0	289.3	289.3	290.1	289.9
77.5°	263.4	264.7	266.9	268.1	269.9	270.2	263.5	262.7	262.8	263.5	262.9
80°	230.0	232.4	235.9	238.4	241.2	242.3	235.5	233.8	232.2	232.0	230.6
82.5°	194.5	197.4	201.7	203.8	206.9	207.6	196.0	193.7	192.4	192.5	191.2
85°	148.4	150.7	154.5	155.8	157.7	157.5	144.2	138.5	140.1	137.7	139.6
87.5°	93.1	94.4	96.9	97.1	98.0	97.8	84.5	81.8	81.0	81.1	80.2
90°	40.7	41.2	42.8	42.5	43.5	42.9	31.7	30.1	29.5	30.4	29.4
92.5°	2.7	2.7	2.8	2.8	2.9	3.0	1.9	1.6	1.7	1.6	1.8
95°	1.8	1.8	1.8	1.8	1.8	1.8	1.8	1.8	1.8	1.7	1.7
97.5°	2.0	2.0	2.0	2.0	2.0	2.0	2.0	2.0	2.0	1.9	1.9
100°	2.3	2.3	2.2	2.2	2.2	2.2	2.2	2.2	2.2	2.1	2.1
102.5°	2.6	2.6	2.6	2.5	2.5	2.5	2.5	2.5	2.5	2.4	2.4
105°	3.0	2.9	2.9	2.8	2.8	2.8	2.8	2.8	2.8	2.7	2.7
107.5°	3.5	3.4	3.3	3.2	3.2	3.1	3.2	3.2	3.1	3.0	3.0
110°	4.1	4.0	3.9	3.8	3.7	3.6	3.8	3.7	3.6	3.5	3.4



TEST NUMBER: P1444577  
 CATALOG NUMBER: EHBR1-12-UNV-TA-L850

**CANDELA DISTRIBUTION (continued):**

	27.5°	30°	32.5°	35°	37.5°	40°	42.5°	45°	47.5°	50°	52.5°
112.5°	4.8	4.8	4.7	4.5	4.3	4.2	4.5	4.4	4.3	4.1	4.0
115°	5.8	5.7	5.5	5.3	5.2	5.0	5.2	5.2	5.0	4.8	4.7
117.5°	6.8	6.6	6.5	6.3	6.0	5.8	6.2	6.1	5.9	5.7	5.5
120°	8.0	7.8	7.6	7.4	7.1	6.9	7.3	7.2	7.0	6.7	6.5
122.5°	9.2	9.0	8.7	8.5	8.3	8.0	8.4	8.4	8.1	7.9	7.6
125°	10.7	10.4	10.2	9.9	9.5	9.3	9.9	9.7	9.5	9.1	8.9
127.5°	12.3	12.1	11.7	11.5	11.1	10.8	11.4	11.3	11.0	10.7	10.3
130°	14.0	13.7	13.4	13.1	12.8	12.4	13.1	13.0	12.7	12.3	12.0
132.5°	15.8	15.5	15.1	14.8	14.4	14.1	14.8	14.7	14.5	14.1	13.9
135°	17.6	17.3	16.9	16.6	16.2	16.0	16.8	16.7	16.4	16.0	15.7
137.5°	19.4	19.1	18.8	18.5	18.1	17.8	18.8	18.8	18.5	18.1	17.8
140°	21.2	20.9	20.5	20.3	19.9	19.7	20.7	20.7	20.5	20.1	19.8
142.5°	22.9	22.6	22.3	22.1	21.8	21.5	22.7	22.7	22.5	22.2	22.0
145°	24.5	24.3	24.0	23.8	23.5	23.3	24.6	24.7	24.5	24.3	24.0
147.5°	26.1	25.8	25.5	25.3	25.1	25.0	26.4	26.6	26.4	26.2	26.0
150°	27.5	27.3	27.0	26.8	26.7	26.5	28.3	28.6	28.4	28.3	28.1
152.5°	28.8	28.5	28.3	28.1	27.9	27.8	30.1	30.5	30.3	30.1	30.0
155°	30.1	29.9	29.7	29.5	29.3	29.2	31.7	32.2	32.1	32.0	31.8
157.5°	31.5	31.3	31.0	30.9	30.7	30.6	33.4	34.0	33.9	33.7	33.6
160°	33.0	32.8	32.6	32.4	32.2	32.1	35.1	35.7	35.6	35.4	35.3
162.5°	34.6	34.5	34.2	34.0	33.9	33.7	36.6	37.2	37.1	37.0	36.9
165°	36.2	36.0	35.9	35.8	35.6	35.5	38.2	38.8	38.7	38.6	38.5
167.5°	37.9	37.8	37.6	37.4	37.3	37.2	39.8	40.4	40.3	40.2	40.1
170°	39.4	39.3	39.2	39.1	39.0	39.0	41.2	41.6	41.6	41.5	41.4
172.5°	40.7	40.7	40.6	40.5	40.4	40.4	42.1	42.6	42.5	42.5	42.3
175°	41.7	41.6	41.6	41.6	41.6	41.6	43.0	43.3	43.2	43.2	43.1
177.5°	42.6	42.5	42.5	42.5	42.5	42.5	43.4	43.6	43.6	43.6	43.5
180°	43.2	43.2	43.2	43.2	43.2	43.2	43.2	43.2	43.2	43.2	43.2



TEST NUMBER: P1444577  
 CATALOG NUMBER: EHBR1-12-UNV-TA-L850

**CANDELA DISTRIBUTION (continued):**

	55°	57.5°	60°	62.5°	65°	67.5°	70°	72.5°	75°	77.5°	80°
0°	10412.0	10412.0	10412.0	10412.0	10412.0	10412.0	10412.0	10412.0	10412.0	10412.0	10412.0
2.5°	10434.4	10438.0	10438.6	10442.8	10442.5	10447.5	10446.7	10451.0	10448.5	10451.9	10449.0
5°	10679.4	10701.6	10713.2	10734.9	10741.8	10761.2	10766.7	10784.4	10785.1	10799.2	10795.9
7.5°	11025.9	11058.7	11078.1	11105.0	11118.5	11140.8	11150.6	11167.2	11172.5	11185.6	11186.7
10°	11232.7	11248.7	11259.8	11267.3	11274.1	11277.3	11281.1	11280.1	11281.1	11279.6	11282.8
12.5°	11151.4	11128.1	11112.8	11083.7	11066.8	11034.7	11018.9	10988.1	10976.8	10950.2	10946.4
15°	10739.3	10658.3	10601.1	10517.9	10465.6	10383.8	10335.9	10262.1	10228.4	10169.6	10154.2
17.5°	9988.0	9837.7	9721.4	9572.3	9468.8	9329.3	9241.7	9126.3	9063.0	8970.0	8937.8
20°	8934.8	8712.5	8538.1	8330.2	8181.5	7996.2	7877.6	7728.0	7641.1	7526.8	7480.4
22.5°	7698.3	7421.5	7203.6	6958.2	6778.7	6572.2	6430.1	6268.2	6173.7	6049.6	5994.6
25°	6423.9	6118.6	5876.4	5617.7	5428.2	5221.2	5079.1	4920.0	4822.2	4704.3	4649.7
27.5°	5205.0	4896.0	4661.9	4421.4	4247.6	4060.7	3932.6	3793.7	3706.9	3606.2	3554.9
30°	4129.4	3856.8	3657.6	3458.1	3313.4	3161.8	3055.1	2940.1	2863.9	2777.8	2728.8
32.5°	3253.0	3042.6	2886.6	2728.3	2609.9	2483.1	2391.1	2289.5	2220.7	2143.8	2099.5
35°	2576.4	2412.9	2288.5	2158.1	2056.4	1948.4	1867.3	1779.6	1718.0	1651.7	1613.5
37.5°	2035.6	1905.6	1803.3	1694.9	1611.4	1521.9	1491.8	1391.3	1327.4	1274.5	1237.9
40°	1597.6	1494.1	1409.5	1326.7	1258.5	1190.7	1136.2	1082.5	1041.2	1003.4	977.3
42.5°	1247.6	1172.6	1110.8	1050.2	1000.5	951.0	911.6	874.5	846.8	822.1	805.2
45°	991.7	940.2	897.2	854.5	819.4	786.5	759.9	736.3	718.3	703.5	693.0
47.5°	814.7	779.4	749.2	720.3	696.5	674.9	657.1	651.3	632.0	619.0	614.1
50°	692.4	671.1	648.1	626.8	610.9	595.1	583.6	572.3	565.0	559.0	557.2
52.5°	601.2	584.8	572.0	558.5	548.1	536.8	528.9	521.3	517.4	514.2	513.8
55°	533.3	521.9	513.3	504.3	498.0	491.4	487.3	483.4	481.6	480.0	480.1
57.5°	481.9	474.2	468.7	462.9	459.5	456.4	455.3	454.3	454.8	455.1	456.0
60°	444.5	439.5	436.0	432.7	431.2	430.2	431.0	431.9	433.8	435.1	436.5
62.5°	415.8	412.9	411.3	409.4	409.3	409.4	410.9	412.5	414.7	416.4	417.7
65°	386.2	384.7	384.1	383.0	383.5	383.9	385.7	386.9	389.2	390.6	392.1
67.5°	356.5	356.1	356.4	356.4	357.5	358.3	360.1	361.4	363.3	364.6	365.9
70°	334.4	334.6	335.3	335.5	336.6	337.2	338.8	339.7	341.3	342.4	344.0
72.5°	313.0	312.7	312.9	312.4	312.8	312.6	313.4	313.8	315.3	316.1	318.1
75°	290.2	289.2	289.0	287.9	288.0	287.2	287.6	287.5	288.5	288.9	290.3
77.5°	262.7	261.0	260.2	258.5	258.4	257.8	258.5	258.9	260.6	261.5	263.1
80°	229.7	227.1	225.9	224.0	224.4	224.2	225.9	227.2	229.3	229.7	231.6
82.5°	190.9	188.3	187.0	185.1	185.6	185.7	187.1	187.4	189.2	190.0	192.3
85°	136.6	137.7	135.0	135.2	134.6	135.7	136.6	138.0	139.5	142.0	143.9
87.5°	80.4	80.2	81.1	81.2	82.6	83.4	85.6	86.8	89.4	91.4	94.9
90°	29.7	28.8	29.9	29.7	31.3	31.3	32.8	32.4	34.1	34.5	36.6
92.5°	1.6	1.7	1.6	1.7	1.6	1.8	1.6	1.7	1.6	1.8	1.6
95°	1.7	1.7	1.7	1.7	1.7	1.7	1.7	1.7	1.7	1.7	1.7
97.5°	1.9	1.9	1.9	1.8	1.8	1.8	1.8	1.8	1.8	1.8	1.8
100°	2.1	2.1	2.1	2.0	2.0	2.0	2.0	2.0	2.0	2.0	2.0
102.5°	2.4	2.3	2.3	2.3	2.3	2.2	2.2	2.2	2.2	2.2	2.2
105°	2.6	2.6	2.6	2.5	2.5	2.5	2.5	2.4	2.4	2.4	2.4
107.5°	2.9	2.8	2.8	2.8	2.8	2.7	2.7	2.7	2.6	2.6	2.6
110°	3.3	3.2	3.2	3.0	3.0	3.0	2.9	2.9	2.8	2.8	2.8



TEST NUMBER: P1444577  
 CATALOG NUMBER: EHBR1-12-UNV-TA-L850

**CANDELA DISTRIBUTION (continued):**

	55°	57.5°	60°	62.5°	65°	67.5°	70°	72.5°	75°	77.5°	80°
112.5°	3.8	3.7	3.6	3.5	3.4	3.3	3.2	3.2	3.2	3.1	3.0
115°	4.5	4.3	4.1	4.0	3.9	3.7	3.7	3.6	3.5	3.5	3.4
117.5°	5.2	5.0	4.8	4.7	4.5	4.3	4.2	4.1	4.0	3.9	3.9
120°	6.2	5.9	5.7	5.5	5.2	5.0	4.8	4.7	4.6	4.5	4.5
122.5°	7.3	7.0	6.7	6.5	6.2	5.9	5.7	5.6	5.4	5.2	5.2
125°	8.5	8.3	8.0	7.6	7.3	7.0	6.8	6.5	6.3	6.2	6.0
127.5°	10.0	9.6	9.2	8.9	8.5	8.3	8.0	7.8	7.5	7.3	7.1
130°	11.6	11.3	10.8	10.5	10.1	9.8	9.5	9.2	8.9	8.7	8.4
132.5°	13.5	13.1	12.7	12.3	11.9	11.6	11.2	10.9	10.6	10.3	10.1
135°	15.3	15.0	14.6	14.2	13.9	13.6	13.2	12.9	12.6	12.3	12.0
137.5°	17.5	17.1	16.7	16.4	16.0	15.7	15.3	15.0	14.6	14.4	14.1
140°	19.5	19.3	18.9	18.6	18.2	18.0	17.6	17.3	16.9	16.7	16.4
142.5°	21.6	21.3	21.0	20.7	20.4	20.1	19.8	19.5	19.3	19.1	18.8
145°	23.8	23.5	23.2	23.0	22.7	22.5	22.1	21.9	21.6	21.4	21.2
147.5°	25.8	25.5	25.3	25.1	24.9	24.7	24.4	24.2	23.9	23.8	23.5
150°	27.8	27.6	27.4	27.2	27.0	26.8	26.5	26.3	26.1	26.0	25.7
152.5°	29.8	29.6	29.4	29.3	29.0	28.8	28.6	28.5	28.3	28.1	27.9
155°	31.6	31.5	31.3	31.1	30.9	30.7	30.6	30.5	30.3	30.1	29.9
157.5°	33.5	33.3	33.1	33.0	32.8	32.6	32.4	32.3	32.1	32.0	31.8
160°	35.1	35.0	34.8	34.7	34.5	34.4	34.2	34.0	33.9	33.7	33.5
162.5°	36.7	36.5	36.4	36.3	36.1	36.0	35.9	35.7	35.5	35.4	35.2
165°	38.3	38.2	38.0	37.8	37.7	37.6	37.4	37.2	37.1	36.9	36.7
167.5°	39.9	39.8	39.6	39.5	39.3	39.2	39.1	38.9	38.7	38.6	38.4
170°	41.3	41.1	41.1	40.9	40.8	40.6	40.5	40.4	40.2	40.1	39.9
172.5°	42.3	42.2	42.1	42.0	41.9	41.8	41.7	41.6	41.6	41.5	41.4
175°	43.0	43.0	43.0	42.8	42.8	42.7	42.6	42.6	42.5	42.5	42.4
177.5°	43.5	43.5	43.5	43.4	43.4	43.4	43.3	43.3	43.3	43.2	43.2
180°	43.2	43.2	43.2	43.2	43.2	43.2	43.2	43.2	43.2	43.2	43.2



TEST NUMBER: P1444577  
 CATALOG NUMBER: EHBR1-12-UNV-TA-L850

**CANDELA DISTRIBUTION (continued):**

	82.5°	85°	87.5°	90°	92.5°	95°	97.5°	100°	102.5°	105°	107.5°
0°	10412.0	10412.0	10412.0	10412.0	10412.0	10412.0	10412.0	10412.0	10412.0	10412.0	10412.0
2.5°	10452.0	10449.4	10450.7	10445.7	10446.9	10441.0	10440.4	10433.8	10433.2	10426.9	10424.5
5°	10805.9	10800.1	10806.6	10796.4	10798.5	10785.1	10784.0	10766.8	10760.9	10739.3	10730.0
7.5°	11194.8	11192.7	11196.7	11188.2	11187.9	11176.0	11171.1	11155.6	11146.0	11123.4	11109.0
10°	11280.1	11282.1	11278.8	11279.6	11275.0	11273.7	11269.0	11265.9	11258.2	11252.3	11243.7
12.5°	10926.3	10928.3	10914.9	10923.4	10916.7	10932.5	10931.2	10949.8	10952.6	10976.2	10985.1
15°	10108.5	10106.0	10080.0	10096.4	10087.6	10122.3	10130.0	10176.7	10201.6	10261.5	10298.2
17.5°	8873.2	8866.5	8830.1	8849.9	8839.8	8891.0	8908.1	8982.6	9029.1	9125.6	9194.3
20°	7400.7	7387.9	7345.3	7368.6	7358.1	7416.2	7440.7	7530.7	7590.7	7718.4	7809.3
22.5°	5909.9	5889.7	5847.9	5869.7	5859.8	5919.9	5951.8	6042.2	6110.9	6242.0	6348.1
25°	4571.1	4553.2	4512.8	4528.0	4524.4	4575.2	4603.5	4689.0	4756.5	4881.4	4982.7
27.5°	3486.5	3467.8	3431.3	3442.1	3438.4	3481.7	3508.4	3579.8	3638.0	3743.1	3832.0
30°	2668.5	2645.9	2614.9	2620.8	2618.4	2653.4	2678.4	2738.5	2788.3	2877.2	2953.8
32.5°	2045.4	2022.7	1994.2	1997.0	1993.2	2020.8	2041.4	2093.6	2137.0	2212.6	2279.3
35°	1565.0	1591.5	1530.8	1569.2	1529.2	1588.0	1566.8	1599.5	1636.9	1700.5	1756.1
37.5°	1203.1	1184.6	1169.0	1167.3	1167.2	1180.9	1197.0	1228.4	1261.3	1308.8	1357.8
40°	953.4	940.4	930.3	929.6	930.3	940.0	951.9	973.6	997.7	1031.8	1067.8
42.5°	790.7	782.2	776.0	775.6	777.6	784.4	792.7	805.6	821.3	843.4	868.0
45°	684.4	679.6	676.2	676.0	676.9	680.5	685.2	693.3	703.2	717.0	732.7
47.5°	609.8	608.6	606.5	606.6	605.6	607.0	607.6	612.2	617.4	627.8	648.2
50°	555.5	555.5	554.0	553.9	552.5	552.4	551.3	553.0	555.5	562.0	568.4
52.5°	512.5	512.4	510.8	510.5	509.0	508.9	507.9	508.6	508.9	512.2	516.1
55°	479.0	477.9	475.8	475.1	474.6	475.4	475.0	475.1	474.6	476.0	477.2
57.5°	454.8	453.5	451.6	451.0	450.9	451.8	451.8	451.6	449.7	448.5	446.7
60°	435.7	434.5	432.3	431.8	432.1	433.5	433.4	432.3	429.6	427.2	424.4
62.5°	417.1	416.5	415.4	415.3	415.0	415.2	414.3	413.0	410.4	407.8	404.9
65°	391.9	392.2	391.4	391.5	390.6	390.4	388.9	387.7	385.1	382.8	379.7
67.5°	365.9	366.1	365.4	365.4	364.9	365.0	364.0	363.0	360.7	358.8	356.5
70°	344.4	344.9	344.5	344.6	344.0	343.8	342.4	341.3	339.0	337.4	335.3
72.5°	318.7	319.7	319.7	320.0	319.0	318.7	317.0	315.6	313.4	312.3	310.6
75°	290.9	292.3	292.7	293.4	292.1	291.4	289.6	288.5	286.8	286.0	285.0
77.5°	263.7	265.4	267.0	268.5	266.3	264.4	262.2	260.4	257.9	257.0	255.2
80°	233.3	236.2	239.7	242.6	238.8	235.0	231.2	228.5	225.1	223.8	221.6
82.5°	193.5	196.6	198.5	200.4	197.7	195.0	191.3	188.9	185.4	184.0	181.5
85°	147.0	150.8	152.0	152.9	151.3	149.8	146.4	141.7	139.6	136.0	134.2
87.5°	96.7	98.9	99.4	99.7	98.6	97.9	95.8	93.6	89.8	86.9	83.6
90°	36.6	38.2	37.4	38.1	36.7	36.8	34.6	33.8	30.5	29.4	26.4
92.5°	1.7	1.6	1.6	1.6	1.8	1.6	1.8	1.6	1.7	1.6	1.7
95°	1.7	1.7	1.7	1.7	1.7	1.7	1.7	1.7	1.7	1.7	1.7
97.5°	1.8	1.8	1.8	1.8	1.8	1.8	1.8	1.8	1.8	1.8	1.9
100°	2.0	2.0	2.0	2.0	2.0	2.0	2.0	2.0	2.0	2.0	2.0
102.5°	2.2	2.2	2.2	2.2	2.2	2.2	2.2	2.2	2.2	2.2	2.3
105°	2.4	2.4	2.4	2.4	2.4	2.4	2.4	2.4	2.4	2.5	2.5
107.5°	2.6	2.6	2.6	2.6	2.6	2.6	2.6	2.6	2.6	2.6	2.7
110°	2.8	2.8	2.8	2.8	2.8	2.8	2.8	2.8	2.8	2.8	2.9



TEST NUMBER: P1444577  
 CATALOG NUMBER: EHBR1-12-UNV-TA-L850

**CANDELA DISTRIBUTION (continued):**

	82.5°	85°	87.5°	90°	92.5°	95°	97.5°	100°	102.5°	105°	107.5°
112.5°	3.0	3.0	3.0	3.0	3.0	3.0	3.0	3.1	3.1	3.2	3.2
115°	3.4	3.4	3.4	3.4	3.4	3.4	3.4	3.4	3.5	3.5	3.6
117.5°	3.8	3.8	3.8	3.8	3.8	3.8	3.8	3.8	3.9	3.9	4.0
120°	4.4	4.3	4.3	4.3	4.3	4.3	4.3	4.3	4.5	4.5	4.7
122.5°	5.1	5.0	5.0	5.0	5.0	5.0	5.0	5.0	5.2	5.2	5.4
125°	6.0	5.9	5.8	5.8	5.8	5.8	5.8	5.9	6.0	6.1	6.3
127.5°	7.0	7.0	6.9	6.8	6.8	6.8	6.9	7.0	7.1	7.2	7.4
130°	8.3	8.3	8.2	8.1	8.1	8.1	8.2	8.3	8.4	8.5	8.7
132.5°	10.0	9.8	9.7	9.6	9.6	9.6	9.7	9.8	10.0	10.1	10.4
135°	11.9	11.7	11.6	11.5	11.5	11.5	11.5	11.6	11.8	12.0	12.3
137.5°	13.9	13.8	13.7	13.6	13.6	13.6	13.7	13.7	13.9	14.0	14.3
140°	16.2	16.0	16.0	15.8	15.8	15.8	15.8	15.9	16.1	16.3	16.5
142.5°	18.6	18.4	18.3	18.2	18.2	18.2	18.3	18.3	18.5	18.6	18.8
145°	21.0	20.8	20.7	20.6	20.5	20.5	20.6	20.7	20.8	20.9	21.1
147.5°	23.4	23.2	23.1	23.0	23.0	23.0	23.0	23.0	23.1	23.2	23.4
150°	25.7	25.5	25.3	25.3	25.2	25.2	25.2	25.2	25.3	25.3	25.5
152.5°	27.8	27.6	27.6	27.5	27.4	27.4	27.4	27.3	27.4	27.4	27.5
155°	29.9	29.7	29.6	29.5	29.4	29.4	29.4	29.3	29.3	29.3	29.3
157.5°	31.7	31.5	31.5	31.3	31.2	31.1	31.1	31.0	31.0	30.9	30.9
160°	33.5	33.3	33.1	33.0	32.9	32.8	32.8	32.6	32.6	32.5	32.4
162.5°	35.1	34.9	34.8	34.6	34.6	34.4	34.3	34.2	34.1	34.0	34.0
165°	36.6	36.4	36.3	36.1	36.0	36.0	35.9	35.8	35.7	35.6	35.5
167.5°	38.3	38.1	38.0	37.8	37.8	37.6	37.6	37.4	37.4	37.3	37.3
170°	39.8	39.7	39.6	39.5	39.4	39.3	39.3	39.1	39.1	39.1	39.1
172.5°	41.3	41.2	41.1	41.0	40.9	40.9	40.8	40.8	40.7	40.7	40.7
175°	42.3	42.3	42.2	42.1	42.1	42.1	42.1	42.1	42.1	42.0	42.0
177.5°	43.2	43.1	43.1	43.1	43.1	43.1	43.1	43.1	43.1	43.0	43.0
180°	43.2	43.2	43.2	43.2	43.2	43.2	43.2	43.2	43.2	43.2	43.2



TEST NUMBER: P1444577  
 CATALOG NUMBER: EHBR1-12-UNV-TA-L850

**CANDELA DISTRIBUTION (continued):**

	110°	112.5°	115°	117.5°	120°	122.5°	125°	127.5°	130°	132.5°	135°
0°	10412.0	10412.0	10412.0	10412.0	10412.0	10412.0	10412.0	10412.0	10412.0	10412.0	10412.0
2.5°	10417.8	10415.0	10407.7	10404.2	10397.5	10394.2	10389.0	10385.6	10381.4	10378.3	10376.7
5°	10706.3	10693.1	10666.4	10650.0	10621.1	10602.1	10573.4	10552.5	10523.0	10501.1	10473.2
7.5°	11081.9	11061.4	11027.3	11001.3	10961.0	10930.2	10884.9	10848.7	10798.7	10757.2	10706.1
10°	11234.8	11222.8	11207.5	11190.8	11168.5	11146.6	11115.7	11084.2	11042.2	11000.4	10945.9
12.5°	11008.8	11020.1	11042.2	11052.5	11069.5	11075.2	11082.9	11079.3	11072.5	11055.4	11030.7
15°	10368.8	10415.7	10489.9	10541.0	10612.8	10663.3	10730.0	10772.9	10822.4	10852.0	10880.1
17.5°	9316.1	9406.8	9537.5	9641.8	9781.8	9895.7	10035.2	10144.8	10271.3	10368.3	10471.7
20°	7967.7	8094.7	8275.1	8428.4	8631.3	8803.4	9023.8	9208.5	9423.8	9603.3	9797.1
22.5°	6516.4	6665.7	6872.6	7057.5	7299.7	7516.1	7792.3	8036.5	8327.7	8588.6	8877.0
25°	5147.3	5293.7	5504.4	5695.7	5957.3	6195.7	6497.5	6777.5	7115.4	7430.5	7792.3
27.5°	3973.2	4103.3	4288.4	4460.7	4700.3	4934.4	5240.6	5539.2	5899.8	6238.5	6628.3
30°	3068.4	3173.9	3322.4	3461.0	3653.3	3844.6	4117.4	4393.6	4752.4	5103.3	5503.0
32.5°	2378.0	2467.9	2591.7	2704.3	2852.4	2996.8	3197.6	3418.3	3733.1	4069.2	4455.7
35°	1840.8	1917.7	2023.2	2120.1	2242.0	2356.5	2506.4	2663.9	2904.1	3186.9	3532.8
37.5°	1467.6	1499.0	1574.2	1653.6	1754.8	1848.9	1966.2	2082.7	2254.5	2477.6	2760.2
40°	1116.1	1165.9	1227.2	1289.7	1366.3	1441.9	1570.5	1632.4	1745.5	1905.7	2125.0
42.5°	900.6	935.5	978.6	1022.2	1075.6	1128.1	1193.2	1259.5	1344.1	1452.5	1608.5
45°	753.6	776.4	804.2	833.2	868.2	904.2	947.7	993.2	1050.5	1117.2	1211.9
47.5°	655.4	668.0	686.2	706.0	730.0	754.9	783.2	812.1	847.8	887.3	941.3
50°	578.8	589.3	603.4	616.7	633.3	658.7	669.9	685.9	707.3	730.6	760.8
52.5°	523.4	530.3	539.2	546.8	557.2	566.8	579.3	590.3	605.2	619.1	638.7
55°	480.1	482.7	487.7	492.6	499.9	506.4	514.9	522.2	531.6	540.0	552.2
57.5°	446.8	447.0	449.4	451.9	456.6	460.7	466.6	471.3	477.9	483.2	490.5
60°	422.9	421.6	422.1	423.0	425.5	428.2	432.0	435.1	439.2	442.2	446.3
62.5°	402.9	400.9	400.5	400.2	401.6	402.4	404.5	406.0	408.3	409.7	411.9
65°	377.7	375.3	374.4	373.4	373.8	373.5	374.1	374.2	375.4	375.7	377.0
67.5°	354.9	352.9	351.7	350.2	349.6	348.5	348.0	347.0	346.9	346.1	345.9
70°	334.0	332.1	331.1	329.8	329.1	327.7	326.8	325.1	324.1	322.5	321.6
72.5°	309.9	308.8	308.5	307.6	307.4	306.6	306.3	305.0	304.3	303.0	302.2
75°	284.7	283.8	283.8	282.8	282.7	281.8	281.6	280.3	279.7	278.3	277.7
77.5°	254.7	253.3	252.9	251.9	252.2	251.8	252.1	251.2	250.7	249.4	248.9
80°	220.9	219.1	218.5	217.1	217.5	216.8	217.5	217.4	217.9	216.8	216.6
82.5°	180.8	179.0	178.6	177.6	178.3	178.4	179.8	179.0	179.4	178.3	178.8
85°	131.6	130.2	128.3	128.0	126.7	128.0	126.4	127.5	125.6	126.9	125.2
87.5°	81.5	78.7	77.2	75.1	74.4	72.4	71.6	70.2	70.6	69.9	70.3
90°	25.7	23.2	22.5	20.2	19.8	17.8	17.8	16.3	16.5	14.9	15.2
92.5°	1.6	1.6	1.6	1.7	1.6	1.6	1.6	1.7	1.6	1.7	1.6
95°	1.7	1.7	1.7	1.7	1.7	1.7	1.8	1.8	1.8	1.8	1.8
97.5°	1.9	1.9	1.9	1.9	1.9	1.9	1.9	2.0	2.0	2.0	2.0
100°	2.0	2.1	2.1	2.1	2.1	2.1	2.1	2.1	2.2	2.2	2.2
102.5°	2.3	2.3	2.3	2.3	2.3	2.3	2.4	2.4	2.4	2.5	2.5
105°	2.5	2.5	2.5	2.6	2.6	2.6	2.6	2.7	2.7	2.8	2.8
107.5°	2.7	2.7	2.8	2.8	2.8	2.8	2.9	2.9	3.0	3.0	3.2
110°	2.9	2.9	3.0	3.0	3.1	3.2	3.2	3.3	3.4	3.5	3.7



TEST NUMBER: P1444577  
 CATALOG NUMBER: EHBR1-12-UNV-TA-L850

**CANDELA DISTRIBUTION (continued):**

	110°	112.5°	115°	117.5°	120°	122.5°	125°	127.5°	130°	132.5°	135°
112.5°	3.2	3.3	3.3	3.4	3.5	3.6	3.7	3.8	4.0	4.1	4.3
115°	3.6	3.7	3.7	3.9	4.0	4.1	4.3	4.5	4.7	4.8	5.0
117.5°	4.1	4.2	4.3	4.5	4.6	4.8	5.0	5.2	5.4	5.7	5.8
120°	4.7	4.8	5.0	5.2	5.4	5.6	5.8	6.1	6.3	6.6	6.9
122.5°	5.5	5.7	5.8	6.1	6.3	6.6	6.9	7.2	7.5	7.8	8.1
125°	6.5	6.7	6.9	7.2	7.5	7.8	8.1	8.4	8.7	9.0	9.4
127.5°	7.6	7.9	8.1	8.4	8.7	9.0	9.4	9.8	10.1	10.5	10.8
130°	9.0	9.2	9.5	9.9	10.2	10.6	11.0	11.4	11.7	12.1	12.5
132.5°	10.6	11.0	11.2	11.6	12.0	12.4	12.8	13.2	13.5	13.9	14.2
135°	12.5	12.8	13.2	13.5	13.9	14.2	14.6	15.0	15.3	15.8	16.1
137.5°	14.5	14.8	15.2	15.5	15.8	16.3	16.6	17.0	17.3	17.7	18.0
140°	16.7	17.1	17.3	17.7	18.0	18.4	18.7	19.1	19.3	19.6	19.9
142.5°	19.0	19.3	19.4	19.8	20.0	20.4	20.7	21.0	21.2	21.5	21.8
145°	21.2	21.5	21.7	22.0	22.2	22.5	22.7	23.0	23.1	23.4	23.6
147.5°	23.5	23.7	23.8	24.1	24.3	24.4	24.6	24.8	24.9	25.0	25.2
150°	25.5	25.7	25.8	26.0	26.1	26.2	26.3	26.4	26.5	26.7	26.8
152.5°	27.5	27.6	27.6	27.7	27.8	27.9	27.9	28.0	28.1	28.1	28.3
155°	29.3	29.3	29.3	29.4	29.4	29.4	29.4	29.5	29.6	29.6	29.7
157.5°	30.8	30.8	30.8	30.8	30.7	30.8	30.8	30.8	30.9	31.0	31.1
160°	32.3	32.3	32.2	32.2	32.2	32.2	32.2	32.3	32.4	32.5	32.6
162.5°	33.9	33.8	33.8	33.8	33.8	33.8	33.9	34.0	34.0	34.1	34.2
165°	35.5	35.5	35.4	35.5	35.5	35.5	35.6	35.7	35.8	35.9	36.0
167.5°	37.2	37.2	37.2	37.3	37.3	37.3	37.4	37.5	37.6	37.7	37.8
170°	39.0	39.1	39.0	39.1	39.1	39.1	39.1	39.2	39.3	39.3	39.4
172.5°	40.7	40.7	40.7	40.7	40.7	40.7	40.7	40.8	40.8	40.8	40.8
175°	42.0	42.0	42.0	42.0	42.0	41.9	41.9	41.9	41.9	41.9	41.9
177.5°	43.0	42.9	42.8	42.8	42.8	42.8	42.8	42.7	42.7	42.7	42.6
180°	43.2	43.2	43.2	43.2	43.2	43.2	43.2	43.2	43.2	43.2	43.2



TEST NUMBER: P1444577  
 CATALOG NUMBER: EHBR1-12-UNV-TA-L850

**CANDELA DISTRIBUTION (continued):**

	137.5°	140°	142.5°	145°	147.5°	150°	152.5°	155°	157.5°	160°	162.5°
0°	10412.0	10412.0	10412.0	10412.0	10412.0	10412.0	10412.0	10412.0	10412.0	10412.0	10412.0
2.5°	10374.6	10374.4	10373.5	10373.9	10374.1	10374.8	10375.7	10376.7	10376.9	10377.6	10377.8
5°	10452.2	10426.6	10407.5	10386.7	10371.0	10356.8	10347.4	10340.0	10337.1	10337.8	10339.6
7.5°	10662.7	10609.8	10566.1	10516.4	10474.9	10431.0	10394.7	10360.1	10334.8	10316.1	10305.6
10°	10893.8	10829.2	10767.5	10695.6	10627.4	10554.6	10488.6	10422.2	10366.9	10318.7	10283.5
12.5°	10996.3	10950.7	10897.3	10829.4	10756.4	10672.5	10587.6	10496.6	10412.1	10333.6	10270.2
15°	10887.8	10887.9	10868.4	10835.8	10785.1	10718.0	10637.1	10542.3	10442.5	10340.7	10247.7
17.5°	10543.2	10608.2	10644.4	10667.2	10660.2	10635.5	10584.1	10511.3	10418.2	10309.7	10196.1
20°	9951.5	10104.8	10214.1	10312.5	10367.6	10404.2	10400.5	10370.8	10304.6	10212.4	10094.1
22.5°	9122.5	9379.9	9582.9	9772.4	9905.2	10013.2	10064.6	10086.3	10056.4	9992.1	9881.1
25°	8115.7	8465.6	8764.3	9054.1	9271.4	9458.4	9570.6	9649.7	9656.0	9622.4	9523.4
27.5°	6996.9	7409.9	7787.9	8173.1	8478.8	8747.5	8923.7	9052.7	9093.6	9088.2	8998.3
30°	5879.5	6313.2	6729.8	7179.0	7557.3	7900.5	8133.3	8307.7	8374.9	8387.8	8301.3
32.5°	4824.3	5251.9	5667.4	6137.0	6553.3	6946.6	7221.6	7428.9	7507.1	7525.4	7430.5
35°	3866.6	4261.1	4656.0	5111.1	5525.0	5932.3	6222.0	6439.0	6512.0	6524.4	6414.5
37.5°	3036.1	3372.3	3716.3	4124.7	4504.7	4887.2	5162.7	5366.5	5419.7	5416.4	5292.1
40°	2336.8	2598.1	2874.6	3210.8	3526.9	3850.1	4082.6	4251.2	4279.2	4258.5	4127.9
42.5°	1757.2	1945.9	2146.4	2397.3	2631.8	2873.8	3042.9	3168.0	3172.1	3139.4	3022.1
45°	1309.1	1493.3	1577.2	1729.0	1880.1	2041.0	2144.2	2221.5	2209.6	2180.8	2091.7
47.5°	998.0	1068.7	1143.8	1237.9	1325.9	1508.5	1494.9	1619.0	1529.6	1590.6	1456.4
50°	792.5	832.0	872.5	922.5	968.3	1016.1	1045.9	1068.2	1065.3	1055.8	1030.0
52.5°	674.2	686.4	706.4	734.7	760.4	786.2	803.2	817.1	817.3	813.4	800.5
55°	563.5	579.1	593.3	611.9	643.5	648.4	672.7	667.8	669.7	662.9	669.8
57.5°	496.8	505.9	513.9	524.9	534.1	544.8	551.1	557.1	556.6	555.2	548.6
60°	449.6	454.6	459.0	465.5	470.5	476.5	479.5	482.5	481.5	479.3	473.4
62.5°	413.1	416.3	418.8	423.0	426.0	429.7	431.3	432.6	431.3	429.2	424.0
65°	377.2	379.3	380.8	384.0	386.1	389.4	390.7	391.8	390.7	389.0	385.1
67.5°	344.8	345.0	344.9	346.2	346.7	348.7	349.3	350.2	348.8	347.3	344.0
70°	320.2	319.7	319.1	319.6	319.7	320.7	320.8	320.7	319.0	316.5	312.9
72.5°	301.1	300.8	300.3	300.7	300.7	301.6	301.3	300.9	298.8	296.5	292.8
75°	276.3	276.1	275.2	275.2	274.4	274.7	273.8	273.2	270.9	268.8	265.6
77.5°	247.4	246.9	245.6	245.1	243.6	243.0	241.1	240.2	237.9	236.2	233.5
80°	215.1	214.6	213.0	212.0	209.6	208.1	205.4	203.8	201.2	199.6	196.8
82.5°	177.9	178.1	176.3	175.1	171.8	169.2	165.5	163.5	160.6	159.0	156.3
85°	126.5	124.7	125.6	125.5	123.5	121.3	118.3	116.1	113.6	112.2	110.2
87.5°	69.3	69.8	69.3	68.9	67.4	66.3	63.9	62.7	60.9	60.0	58.5
90°	13.8	14.0	12.6	13.0	11.6	11.3	9.6	9.5	8.1	8.0	6.8
92.5°	1.6	1.6	1.7	1.6	1.7	1.7	1.7	1.7	1.7	1.6	1.7
95°	1.8	1.8	1.8	1.8	1.8	1.8	1.8	1.8	1.8	1.8	1.8
97.5°	2.0	2.0	2.0	2.0	2.0	2.0	2.1	2.1	2.1	2.1	2.1
100°	2.2	2.3	2.3	2.3	2.3	2.3	2.4	2.4	2.4	2.4	2.4
102.5°	2.5	2.6	2.6	2.6	2.7	2.7	2.7	2.7	2.8	2.8	2.8
105°	2.8	2.8	2.9	3.0	3.0	3.0	3.1	3.1	3.2	3.2	3.2
107.5°	3.2	3.3	3.4	3.5	3.5	3.6	3.7	3.7	3.7	3.8	3.8
110°	3.7	3.8	4.0	4.1	4.2	4.3	4.3	4.4	4.5	4.5	4.7



TEST NUMBER: P1444577  
 CATALOG NUMBER: EHBR1-12-UNV-TA-L850

**CANDELA DISTRIBUTION (continued):**

	137.5°	140°	142.5°	145°	147.5°	150°	152.5°	155°	157.5°	160°	162.5°
112.5°	4.4	4.5	4.7	4.8	5.0	5.0	5.2	5.3	5.4	5.5	5.6
115°	5.2	5.4	5.6	5.7	5.9	6.0	6.2	6.3	6.4	6.5	6.6
117.5°	6.1	6.3	6.5	6.7	6.9	7.1	7.3	7.4	7.6	7.8	7.9
120°	7.2	7.4	7.6	7.9	8.1	8.3	8.4	8.6	8.8	9.0	9.2
122.5°	8.3	8.6	8.9	9.1	9.4	9.6	9.9	10.1	10.3	10.5	10.8
125°	9.7	10.0	10.3	10.6	10.8	11.1	11.4	11.6	11.9	12.1	12.4
127.5°	11.2	11.5	11.9	12.1	12.5	12.8	13.1	13.3	13.6	13.9	14.2
130°	12.9	13.2	13.5	13.8	14.1	14.4	14.7	15.0	15.3	15.7	16.0
132.5°	14.5	14.9	15.3	15.5	15.9	16.2	16.6	16.9	17.3	17.6	18.0
135°	16.5	16.7	17.1	17.4	17.8	18.0	18.4	18.8	19.1	19.4	19.8
137.5°	18.4	18.6	19.0	19.3	19.5	19.8	20.2	20.5	20.9	21.2	21.7
140°	20.2	20.5	20.7	21.0	21.3	21.6	22.0	22.3	22.7	23.1	23.5
142.5°	22.0	22.2	22.5	22.7	23.1	23.3	23.6	24.0	24.3	24.7	25.0
145°	23.8	24.0	24.2	24.4	24.7	24.9	25.2	25.5	25.9	26.2	26.6
147.5°	25.3	25.5	25.7	25.9	26.2	26.4	26.7	27.0	27.4	27.7	28.1
150°	27.0	27.1	27.2	27.4	27.6	27.9	28.1	28.4	28.8	29.1	29.4
152.5°	28.4	28.5	28.6	28.8	29.0	29.3	29.6	29.8	30.1	30.4	30.7
155°	29.8	29.9	30.1	30.3	30.5	30.6	30.9	31.1	31.4	31.7	32.0
157.5°	31.2	31.3	31.5	31.7	31.9	32.1	32.4	32.6	32.8	33.1	33.3
160°	32.8	32.9	33.1	33.3	33.5	33.7	33.9	34.1	34.3	34.6	34.8
162.5°	34.4	34.6	34.8	34.9	35.1	35.3	35.5	35.7	35.9	36.0	36.3
165°	36.1	36.2	36.4	36.5	36.7	36.9	37.1	37.2	37.5	37.6	37.8
167.5°	38.0	38.0	38.2	38.3	38.5	38.6	38.8	38.9	39.1	39.3	39.4
170°	39.5	39.6	39.6	39.8	39.9	40.0	40.1	40.2	40.4	40.5	40.7
172.5°	40.9	40.9	41.0	41.1	41.1	41.2	41.3	41.4	41.5	41.6	41.6
175°	41.9	41.9	42.0	42.0	42.0	42.1	42.1	42.2	42.3	42.3	42.3
177.5°	42.6	42.6	42.6	42.6	42.7	42.7	42.8	42.8	42.8	42.8	42.8
180°	43.2	43.2	43.2	43.2	43.2	43.2	43.2	43.2	43.2	43.2	43.2



TEST NUMBER: P1444577  
 CATALOG NUMBER: EHBR1-12-UNV-TA-L850

**CANDELA DISTRIBUTION (continued):**

	165°	167.5°	170°	172.5°	175°	177.5°	180°	182.5°	185°	187.5°	190°
0°	10412.0	10412.0	10412.0	10412.0	10412.0	10412.0	10412.0	10412.0	10412.0	10412.0	10412.0
2.5°	10377.4	10377.3	10377.0	10376.5	10376.0	10376.3	10376.8	10378.0	10380.0	10383.1	10387.0
5°	10340.9	10343.1	10344.3	10344.5	10343.4	10342.7	10343.7	10346.5	10352.3	10362.0	10375.0
7.5°	10302.8	10305.4	10309.4	10312.5	10313.0	10312.3	10312.5	10316.9	10327.5	10346.3	10372.7
10°	10262.0	10254.2	10258.3	10265.8	10271.8	10272.9	10273.6	10278.9	10294.4	10322.8	10365.1
12.5°	10224.3	10199.8	10195.1	10201.7	10210.8	10213.7	10212.9	10215.2	10233.4	10270.9	10329.9
15°	10174.7	10128.6	10112.9	10114.5	10125.7	10129.7	10126.8	10122.3	10140.1	10185.9	10262.3
17.5°	10094.6	10020.1	9991.1	9989.9	10002.8	10006.4	9999.2	9985.3	10002.7	10060.0	10154.8
20°	9972.7	9862.8	9808.1	9799.4	9813.6	9809.4	9795.2	9774.2	9797.0	9866.7	9979.5
22.5°	9753.5	9614.2	9520.9	9490.8	9507.8	9496.5	9475.5	9448.7	9479.2	9558.3	9683.9
25°	9395.5	9234.5	9106.7	9035.0	9048.6	9028.2	9005.5	8973.0	9009.4	9100.1	9238.3
27.5°	8869.1	8683.2	8524.8	8406.1	8410.5	8383.9	8357.8	8315.8	8361.1	8468.5	8624.4
30°	8169.2	7954.1	7761.2	7599.9	7585.4	7559.7	7532.9	7477.8	7534.5	7663.1	7845.3
32.5°	7290.3	7051.4	6828.5	6624.6	6586.2	6561.0	6537.2	6473.6	6547.9	6697.9	6907.2
35°	6262.3	6007.9	5766.3	5533.4	5469.6	5444.5	5423.7	5362.7	5455.5	5618.7	5844.8
37.5°	5134.1	4874.2	4634.3	4395.4	4305.3	4271.2	4256.1	4216.2	4323.2	4484.6	4711.6
40°	3975.8	3734.1	3519.0	3308.1	3205.4	3153.2	3145.4	3138.1	3241.4	3381.5	3587.6
42.5°	2892.2	2697.2	2531.4	2370.1	2277.1	2205.9	2205.9	2227.5	2320.5	2425.4	2584.4
45°	2000.6	1869.8	1764.2	1656.4	1685.2	1543.3	1626.7	1583.8	1629.8	1697.5	1800.8
47.5°	1375.3	1303.8	1245.8	1185.6	1141.7	1099.8	1103.5	1130.5	1173.8	1213.9	1267.7
50°	1002.3	966.0	936.4	905.2	883.3	864.8	865.9	877.6	900.4	921.5	949.6
52.5°	785.4	765.3	749.3	732.0	720.5	711.4	711.9	717.6	729.8	741.9	758.0
55°	647.3	645.0	624.0	608.5	602.6	596.4	597.6	599.8	608.2	615.2	625.9
57.5°	542.5	533.1	526.8	518.6	514.9	510.6	511.6	512.5	518.1	522.8	530.4
60°	468.4	461.8	457.3	451.7	449.3	446.5	447.2	447.7	451.3	454.4	459.9
62.5°	419.2	413.2	409.4	405.1	403.4	401.6	401.9	402.1	404.4	406.7	410.8
65°	381.5	376.8	373.6	369.8	368.1	366.1	366.3	366.3	368.3	369.8	373.0
67.5°	341.5	338.0	335.9	333.0	331.8	329.8	329.8	329.2	330.4	331.0	333.2
70°	309.5	306.0	303.3	300.5	298.9	297.2	297.2	297.2	298.7	300.2	302.9
72.5°	289.8	286.3	284.0	281.5	280.0	278.6	278.3	278.2	279.2	279.9	281.8
75°	263.5	260.8	259.4	257.2	256.0	254.3	254.0	253.2	253.7	253.9	255.3
77.5°	231.7	229.2	228.1	225.7	224.7	222.9	222.7	221.8	222.2	222.0	223.0
80°	195.6	193.2	192.5	190.7	190.2	188.4	188.1	187.1	187.4	186.6	187.0
82.5°	155.1	152.9	152.4	150.7	150.7	149.1	149.0	147.4	147.4	146.1	143.9
85°	109.2	107.7	107.0	105.5	105.1	103.8	103.1	101.7	101.2	100.2	99.9
87.5°	57.7	56.7	55.8	55.1	53.8	51.5	51.3	49.7	49.9	48.7	48.8
90°	6.8	5.8	5.8	4.8	4.8	4.2	4.3	4.0	3.9	3.7	3.6
92.5°	1.7	1.7	1.7	1.7	1.7	1.7	1.7	1.7	1.7	1.7	1.7
95°	1.8	1.8	1.8	1.8	1.8	1.8	1.8	1.8	1.8	1.9	1.9
97.5°	2.1	2.1	2.1	2.1	2.1	2.1	2.1	2.1	2.1	2.1	2.1
100°	2.4	2.4	2.4	2.4	2.4	2.4	2.4	2.5	2.5	2.5	2.5
102.5°	2.8	2.8	2.8	2.8	2.8	2.8	2.8	2.8	2.8	2.8	2.8
105°	3.2	3.2	3.2	3.2	3.2	3.2	3.2	3.3	3.3	3.3	3.3
107.5°	3.8	3.9	3.9	3.9	3.9	3.9	3.9	4.0	4.0	4.0	4.0
110°	4.7	4.7	4.7	4.8	4.8	4.8	4.8	4.8	4.8	4.8	4.8



TEST NUMBER: P1444577  
 CATALOG NUMBER: EHBR1-12-UNV-TA-L850

**CANDELA DISTRIBUTION (continued):**

	165°	167.5°	170°	172.5°	175°	177.5°	180°	182.5°	185°	187.5°	190°
112.5°	5.6	5.7	5.7	5.8	5.8	5.9	5.9	5.9	5.9	6.0	5.9
115°	6.7	6.8	6.9	7.0	7.0	7.1	7.1	7.2	7.2	7.2	7.2
117.5°	8.0	8.1	8.3	8.3	8.4	8.5	8.5	8.6	8.6	8.6	8.6
120°	9.3	9.5	9.7	9.8	10.0	10.1	10.2	10.2	10.2	10.2	10.2
122.5°	11.0	11.2	11.3	11.5	11.7	11.9	11.9	12.0	12.0	12.1	12.0
125°	12.6	13.0	13.2	13.4	13.5	13.8	13.8	13.9	13.9	13.9	13.9
127.5°	14.4	14.7	14.9	15.3	15.4	15.6	15.7	15.8	15.8	15.8	15.8
130°	16.3	16.7	16.9	17.3	17.5	17.7	17.8	17.9	17.9	18.0	17.8
132.5°	18.3	18.7	19.0	19.3	19.4	19.7	19.8	19.9	19.9	19.9	19.8
135°	20.2	20.5	20.9	21.2	21.5	21.7	21.8	22.0	22.0	22.0	21.9
137.5°	22.1	22.5	22.8	23.1	23.4	23.6	23.8	23.9	23.9	24.0	23.9
140°	23.8	24.3	24.6	24.9	25.2	25.4	25.5	25.7	25.7	25.7	25.6
142.5°	25.4	25.8	26.2	26.5	26.8	27.0	27.2	27.3	27.3	27.3	27.2
145°	27.0	27.4	27.7	28.1	28.3	28.5	28.6	28.8	28.8	28.8	28.8
147.5°	28.4	28.8	29.1	29.4	29.6	29.9	30.0	30.1	30.1	30.1	30.1
150°	29.8	30.1	30.4	30.6	30.8	31.0	31.1	31.2	31.3	31.3	31.3
152.5°	30.9	31.2	31.5	31.7	32.0	32.1	32.2	32.4	32.5	32.6	32.6
155°	32.2	32.5	32.7	32.9	33.1	33.3	33.5	33.6	33.7	33.8	33.9
157.5°	33.5	33.8	34.0	34.2	34.4	34.6	34.8	35.0	35.1	35.3	35.3
160°	35.0	35.3	35.4	35.7	35.9	36.0	36.1	36.3	36.5	36.6	36.7
162.5°	36.5	36.7	36.8	37.1	37.2	37.4	37.6	37.8	38.0	38.1	38.2
165°	38.0	38.2	38.4	38.6	38.8	39.0	39.1	39.3	39.4	39.6	39.7
167.5°	39.6	39.8	39.9	40.1	40.2	40.4	40.5	40.7	40.8	40.9	41.1
170°	40.8	40.9	41.1	41.2	41.4	41.5	41.6	41.6	41.7	41.9	42.0
172.5°	41.6	41.8	41.9	42.0	42.1	42.2	42.3	42.5	42.5	42.6	42.6
175°	42.4	42.5	42.5	42.6	42.6	42.7	42.8	42.8	43.0	43.0	43.1
177.5°	42.9	43.0	43.0	43.0	43.0	43.0	43.1	43.1	43.1	43.2	43.2
180°	43.2	43.2	43.2	43.2	43.2	43.2	43.2	43.2	43.2	43.2	43.2



TEST NUMBER: P1444577  
 CATALOG NUMBER: EHBR1-12-UNV-TA-L850

**CANDELA DISTRIBUTION (continued):**

	192.5°	195°	197.5°	200°	202.5°	205°	207.5°	210°	212.5°	215°	217.5°
0°	10412.0	10412.0	10412.0	10412.0	10412.0	10412.0	10412.0	10412.0	10412.0	10412.0	10412.0
2.5°	10392.5	10397.7	10405.7	10412.9	10423.7	10432.3	10445.2	10454.9	10469.4	10478.8	10494.7
5°	10393.5	10413.8	10440.5	10466.7	10498.0	10526.5	10561.9	10592.0	10627.6	10656.5	10693.0
7.5°	10408.1	10447.4	10494.4	10541.7	10595.2	10645.3	10701.8	10752.9	10808.7	10856.0	10907.6
10°	10419.0	10479.4	10548.7	10618.4	10691.8	10760.0	10828.7	10888.2	10943.8	10989.5	11029.9
12.5°	10404.3	10487.6	10576.5	10662.3	10743.9	10814.4	10873.6	10919.3	10950.9	10972.3	10977.4
15°	10354.3	10454.6	10551.2	10636.7	10704.4	10756.5	10783.6	10796.2	10782.7	10760.1	10710.6
17.5°	10261.0	10366.7	10453.1	10520.5	10556.3	10570.5	10548.1	10509.1	10433.1	10348.6	10226.6
20°	10089.9	10188.4	10251.1	10287.8	10278.3	10242.8	10158.3	10055.6	9903.7	9741.7	9528.1
22.5°	9789.7	9875.8	9909.2	9911.9	9853.5	9764.9	9612.5	9436.4	9196.7	8947.5	8641.1
25°	9339.1	9414.5	9419.9	9390.2	9283.3	9139.7	8915.9	8666.6	8341.0	8009.0	7625.0
27.5°	8728.0	8800.3	8782.7	8727.3	8579.0	8386.9	8100.4	7778.4	7376.8	6984.7	6560.0
30°	7959.8	8037.2	8016.4	7945.5	7769.0	7541.9	7204.8	6830.7	6384.9	5966.1	5535.6
32.5°	7040.6	7138.3	7124.0	7056.6	6872.5	6629.5	6263.6	5866.9	5410.8	4998.0	4579.3
35°	5995.6	6114.4	6120.6	6076.5	5905.6	5665.4	5304.1	4920.1	4483.2	4093.8	3707.0
37.5°	4869.9	5007.7	5035.8	5024.0	4882.3	4670.3	4341.2	3996.6	3609.7	3268.3	2937.5
40°	3738.0	3877.3	3925.7	3940.0	3835.5	3671.3	3401.1	3123.1	2807.5	2531.0	2268.3
42.5°	2705.7	2829.2	2875.9	2905.3	2840.1	2730.5	2533.5	2331.5	2100.4	1901.0	1709.8
45°	1879.1	1966.5	2002.1	2031.6	1996.1	1934.3	1809.8	1683.6	1531.0	1400.6	1277.3
47.5°	1313.8	1362.0	1385.5	1399.8	1386.1	1353.8	1286.1	1212.9	1126.8	1050.6	977.4
50°	973.8	999.5	1011.7	1020.0	1010.0	992.1	955.5	915.6	868.3	825.2	783.0
52.5°	771.7	786.4	793.7	798.2	792.4	781.5	760.2	736.5	708.1	681.5	667.5
55°	650.2	649.4	666.2	658.1	666.2	648.0	644.3	618.2	594.7	578.2	560.2
57.5°	536.1	543.8	547.0	550.7	548.3	545.0	535.9	526.6	514.2	503.8	492.7
60°	464.1	470.4	473.9	477.5	477.3	476.0	470.8	465.2	457.5	451.3	444.6
62.5°	414.5	419.9	423.5	426.9	427.2	426.7	422.7	418.8	413.5	409.6	405.0
65°	375.4	379.3	381.6	384.4	384.3	383.5	379.9	376.7	372.4	369.6	366.2
67.5°	334.6	337.4	339.3	341.9	342.4	342.5	340.6	339.1	336.9	336.1	335.1
70°	305.5	309.0	312.0	315.3	317.1	317.9	317.1	316.3	315.0	314.5	313.6
72.5°	283.5	286.4	288.8	291.7	293.4	294.6	294.0	293.5	292.4	292.3	291.6
75°	256.2	258.2	259.5	261.8	262.7	263.7	263.3	263.5	263.3	264.0	264.0
77.5°	223.4	224.8	225.4	227.1	227.2	228.6	228.9	230.4	231.6	234.1	235.4
80°	186.3	187.3	187.3	189.0	189.8	192.0	193.1	195.7	196.8	199.1	199.3
82.5°	144.8	143.7	144.8	144.1	146.2	148.7	149.1	151.3	151.8	153.2	152.2
85°	99.0	98.9	98.0	98.1	97.5	97.8	97.4	97.8	97.4	97.5	96.5
87.5°	47.4	47.8	46.9	47.1	46.2	46.7	45.8	46.5	45.4	45.6	44.0
90°	3.5	3.4	3.2	3.2	3.3	3.2	3.1	3.0	3.1	3.0	3.0
92.5°	1.7	1.7	1.7	1.7	1.7	1.7	1.7	1.7	1.8	1.7	1.7
95°	1.9	1.9	1.9	2.0	2.0	2.0	2.0	2.0	2.0	2.0	2.0
97.5°	2.2	2.2	2.2	2.2	2.2	2.2	2.2	2.2	2.2	2.2	2.2
100°	2.5	2.5	2.5	2.6	2.6	2.6	2.6	2.6	2.6	2.5	2.5
102.5°	2.8	2.8	2.8	2.9	2.9	2.9	2.9	2.9	2.8	2.8	2.8
105°	3.3	3.3	3.4	3.4	3.4	3.4	3.4	3.4	3.3	3.3	3.3
107.5°	4.0	4.0	4.1	4.1	4.1	4.1	4.0	4.0	4.0	3.9	3.8
110°	4.9	4.8	4.9	4.9	4.9	4.8	4.8	4.8	4.7	4.7	4.6



TEST NUMBER: P1444577  
 CATALOG NUMBER: EHBR1-12-UNV-TA-L850

**CANDELA DISTRIBUTION (continued):**

	192.5°	195°	197.5°	200°	202.5°	205°	207.5°	210°	212.5°	215°	217.5°
112.5°	6.0	5.9	5.9	5.9	5.9	5.8	5.8	5.7	5.7	5.5	5.4
115°	7.2	7.1	7.1	7.0	7.0	7.0	6.9	6.8	6.7	6.5	6.5
117.5°	8.5	8.5	8.4	8.3	8.3	8.2	8.1	8.0	7.9	7.8	7.6
120°	10.2	10.1	10.0	9.8	9.7	9.5	9.5	9.3	9.1	9.0	8.8
122.5°	11.9	11.8	11.7	11.5	11.4	11.2	11.0	10.8	10.7	10.4	10.2
125°	13.8	13.7	13.5	13.4	13.2	13.0	12.8	12.5	12.3	12.1	11.8
127.5°	15.7	15.5	15.4	15.2	15.0	14.7	14.5	14.2	14.0	13.8	13.5
130°	17.8	17.6	17.5	17.1	17.0	16.6	16.4	16.1	15.8	15.6	15.3
132.5°	19.8	19.6	19.4	19.2	19.0	18.7	18.5	18.1	17.8	17.5	17.3
135°	21.8	21.6	21.4	21.2	20.9	20.6	20.3	20.0	19.8	19.5	19.3
137.5°	23.8	23.6	23.4	23.1	22.9	22.6	22.3	22.0	21.8	21.5	21.2
140°	25.5	25.3	25.2	24.9	24.8	24.5	24.3	24.0	23.8	23.5	23.2
142.5°	27.1	27.0	26.8	26.6	26.4	26.1	25.9	25.7	25.5	25.2	25.0
145°	28.6	28.5	28.4	28.1	28.0	27.8	27.6	27.4	27.3	27.0	26.9
147.5°	30.1	29.9	29.8	29.7	29.6	29.4	29.3	29.1	29.0	28.8	28.8
150°	31.3	31.2	31.2	31.1	31.0	30.9	30.8	30.7	30.7	30.5	30.5
152.5°	32.6	32.6	32.6	32.5	32.5	32.5	32.4	32.4	32.3	32.2	32.2
155°	34.0	34.0	34.0	34.0	34.0	34.0	34.0	34.0	34.0	34.0	34.0
157.5°	35.4	35.5	35.6	35.6	35.7	35.7	35.7	35.7	35.7	35.6	35.6
160°	36.8	36.9	37.0	37.1	37.1	37.1	37.2	37.1	37.2	37.1	37.1
162.5°	38.3	38.5	38.5	38.6	38.7	38.7	38.7	38.7	38.7	38.7	38.7
165°	39.8	39.9	40.0	40.0	40.1	40.1	40.2	40.2	40.2	40.1	40.1
167.5°	41.2	41.2	41.3	41.4	41.5	41.5	41.6	41.5	41.5	41.5	41.5
170°	42.1	42.1	42.2	42.3	42.3	42.3	42.4	42.4	42.5	42.4	42.4
172.5°	42.8	42.8	42.9	43.0	43.0	43.0	43.0	43.0	43.1	43.1	43.1
175°	43.1	43.2	43.2	43.3	43.3	43.4	43.4	43.4	43.4	43.4	43.4
177.5°	43.2	43.3	43.3	43.3	43.4	43.4	43.4	43.4	43.5	43.5	43.5
180°	43.2	43.2	43.2	43.2	43.2	43.2	43.2	43.2	43.2	43.2	43.2



TEST NUMBER: P1444577  
 CATALOG NUMBER: EHBR1-12-UNV-TA-L850

**CANDELA DISTRIBUTION (continued):**

	220°	222.5°	225°	227.5°	230°	232.5°	235°	237.5°	240°	242.5°	245°
0°	10412.0	10412.0	10412.0	10412.0	10412.0	10412.0	10412.0	10412.0	10412.0	10412.0	10412.0
2.5°	10504.4	10439.6	10431.0	10435.5	10446.3	10450.4	10462.1	10465.3	10477.1	10479.9	10491.2
5°	10721.2	10635.4	10639.6	10660.3	10691.5	10710.1	10740.8	10756.8	10786.1	10799.5	10825.9
7.5°	10949.8	10882.4	10903.4	10938.2	10980.8	11010.4	11047.2	11071.3	11103.0	11122.7	11148.2
10°	11061.9	11043.5	11066.5	11094.0	11118.3	11137.4	11153.0	11165.5	11173.7	11181.4	11184.7
12.5°	10976.6	11005.1	11009.0	11006.3	10990.2	10977.9	10950.2	10931.5	10898.1	10877.8	10838.1
15°	10660.0	10722.7	10688.0	10635.3	10558.3	10494.1	10403.4	10335.9	10241.4	10177.4	10082.6
17.5°	10104.4	10183.6	10093.0	9971.2	9816.3	9683.8	9518.7	9387.7	9223.6	9104.2	8951.1
20°	9322.2	9396.3	9234.7	9032.8	8793.2	8591.4	8353.6	8163.8	7942.8	7778.4	7579.9
22.5°	8348.4	8401.1	8173.4	7901.3	7596.0	7344.0	7059.6	6832.1	6579.8	6391.9	6180.3
25°	7271.0	7285.3	7012.2	6698.6	6358.3	6075.1	5771.5	5532.3	5275.0	5084.5	4876.9
27.5°	6183.5	6162.7	5867.5	5535.1	5177.1	4882.8	4586.7	4362.5	4137.2	3965.6	3786.7
30°	5157.3	5106.7	4800.2	4458.5	4111.0	3847.2	3601.3	3421.4	3242.1	3106.0	2962.4
32.5°	4216.0	4144.7	3846.4	3526.3	3233.5	3029.8	2847.5	2711.4	2566.6	2451.6	2331.1
35°	3382.4	3306.3	3042.1	2770.7	2549.1	2399.0	2255.7	2144.0	2021.1	1924.1	1819.5
37.5°	2666.9	2604.6	2383.3	2169.7	2002.1	1885.8	1768.4	1677.0	1575.5	1532.7	1421.0
40°	2058.9	2015.3	1842.3	1684.8	1558.9	1504.3	1385.1	1299.8	1223.9	1161.3	1100.6
42.5°	1605.9	1590.5	1422.0	1299.3	1210.7	1141.8	1075.4	1021.5	969.0	925.9	885.1
45°	1178.5	1166.4	1091.5	1020.7	960.3	912.1	867.3	830.2	795.8	767.5	741.6
47.5°	917.7	913.8	870.7	826.8	788.8	757.8	728.7	704.1	681.3	662.4	656.2
50°	746.4	745.9	720.6	693.5	666.4	648.5	629.9	615.4	600.8	589.4	577.4
52.5°	634.2	631.4	614.4	597.6	581.6	569.8	557.9	548.6	539.0	531.9	524.4
55°	546.0	548.9	539.0	529.0	518.9	511.7	503.3	497.1	490.5	486.1	481.6
57.5°	484.7	488.5	483.4	477.7	471.6	466.8	461.0	456.8	452.3	449.5	446.9
60°	440.2	444.3	442.2	439.4	435.5	432.7	429.1	426.7	423.9	422.3	420.8
62.5°	402.3	407.5	406.8	405.5	403.0	401.5	399.4	398.4	396.4	395.8	395.1
65°	364.6	370.4	370.3	369.6	368.4	367.9	366.6	366.4	365.4	365.8	365.7
67.5°	334.9	340.0	341.1	341.9	341.9	342.2	342.1	342.6	342.6	343.3	343.8
70°	313.4	317.1	317.9	318.7	318.9	319.6	319.6	320.1	319.9	320.6	320.7
72.5°	291.8	296.5	297.3	298.0	298.0	298.7	298.3	298.2	297.3	297.1	296.5
75°	264.9	270.9	272.2	273.1	273.2	273.8	273.0	272.4	270.9	270.2	269.1
77.5°	236.7	243.0	243.9	244.2	243.7	243.8	242.1	241.0	239.0	238.2	237.1
80°	200.2	209.3	210.0	209.4	208.0	207.8	206.2	205.1	202.7	201.9	201.0
82.5°	152.4	163.1	164.5	165.2	164.0	164.3	162.8	162.1	159.9	159.5	158.1
85°	96.2	106.9	108.6	108.3	107.3	107.0	106.1	106.4	106.2	106.8	107.1
87.5°	44.2	54.5	57.1	56.3	56.2	55.4	53.7	54.4	55.4	56.0	56.1
90°	3.0	6.1	6.0	6.3	5.7	5.9	5.3	5.7	5.2	5.6	5.2
92.5°	1.7	1.7	1.7	1.7	1.7	1.7	1.7	1.7	1.7	1.7	1.7
95°	2.0	1.9	1.9	1.9	1.8	1.8	1.8	1.8	1.8	1.8	1.8
97.5°	2.2	2.1	2.1	2.1	2.1	2.0	2.0	2.0	2.0	2.0	2.0
100°	2.5	2.4	2.3	2.3	2.3	2.3	2.3	2.2	2.2	2.2	2.2
102.5°	2.8	2.7	2.6	2.6	2.6	2.5	2.5	2.5	2.5	2.4	2.4
105°	3.2	3.0	2.9	2.8	2.8	2.8	2.8	2.7	2.7	2.6	2.6
107.5°	3.8	3.5	3.3	3.2	3.2	3.1	3.0	3.0	2.9	2.8	2.8
110°	4.5	4.1	3.9	3.7	3.7	3.5	3.4	3.3	3.2	3.2	3.1



TEST NUMBER: P1444577  
 CATALOG NUMBER: EHBR1-12-UNV-TA-L850

**CANDELA DISTRIBUTION (continued):**

	220°	222.5°	225°	227.5°	230°	232.5°	235°	237.5°	240°	242.5°	245°
112.5°	5.3	4.8	4.5	4.3	4.2	4.1	3.9	3.8	3.7	3.6	3.5
115°	6.3	5.6	5.3	5.1	4.9	4.7	4.5	4.4	4.2	4.1	4.0
117.5°	7.4	6.6	6.3	6.0	5.8	5.5	5.3	5.1	4.9	4.7	4.6
120°	8.6	7.8	7.4	7.0	6.8	6.5	6.3	6.0	5.8	5.5	5.3
122.5°	10.0	9.0	8.5	8.3	8.0	7.6	7.4	7.0	6.8	6.5	6.3
125°	11.6	10.4	9.9	9.6	9.3	8.9	8.6	8.3	8.0	7.7	7.4
127.5°	13.3	12.1	11.5	11.2	10.8	10.4	10.1	9.7	9.4	9.0	8.7
130°	15.0	13.8	13.3	12.9	12.6	12.1	11.8	11.4	11.0	10.7	10.3
132.5°	17.0	15.6	15.1	14.7	14.4	14.0	13.7	13.3	13.0	12.5	12.2
135°	19.0	17.6	17.0	16.6	16.4	16.0	15.6	15.2	14.9	14.5	14.2
137.5°	20.9	19.4	19.0	18.7	18.4	18.0	17.8	17.4	17.1	16.6	16.4
140°	23.0	21.4	20.9	20.7	20.4	20.1	19.8	19.5	19.3	19.0	18.7
142.5°	24.9	23.3	22.8	22.6	22.4	22.1	22.0	21.7	21.4	21.1	20.9
145°	26.7	25.0	24.7	24.4	24.3	24.1	23.9	23.7	23.5	23.3	23.1
147.5°	28.6	26.8	26.3	26.2	26.1	25.9	25.8	25.6	25.5	25.3	25.2
150°	30.4	28.4	27.8	27.7	27.6	27.5	27.5	27.4	27.3	27.2	27.1
152.5°	32.1	29.8	29.1	29.0	29.0	28.9	28.9	28.8	28.8	28.8	28.8
155°	33.9	31.2	30.5	30.5	30.4	30.4	30.3	30.3	30.3	30.3	30.4
157.5°	35.5	32.7	32.0	31.8	31.8	31.7	31.7	31.7	31.7	31.7	31.8
160°	37.1	34.3	33.5	33.3	33.3	33.2	33.1	33.1	33.1	33.1	33.1
162.5°	38.6	35.9	35.1	35.0	34.9	34.8	34.8	34.6	34.6	34.6	34.6
165°	40.0	37.5	36.8	36.6	36.5	36.4	36.3	36.3	36.2	36.2	36.2
167.5°	41.5	39.2	38.6	38.5	38.3	38.2	38.2	38.1	38.1	38.0	38.0
170°	42.3	40.7	40.2	40.1	40.1	40.0	39.9	39.9	39.8	39.8	39.8
172.5°	43.0	41.7	41.5	41.4	41.4	41.4	41.4	41.3	41.3	41.3	41.3
175°	43.4	42.6	42.5	42.4	42.4	42.4	42.4	42.4	42.4	42.4	42.5
177.5°	43.5	43.3	43.2	43.2	43.2	43.2	43.2	43.2	43.2	43.3	43.3
180°	43.2	43.2	43.2	43.2	43.2	43.2	43.2	43.2	43.2	43.2	43.2



TEST NUMBER: P1444577  
 CATALOG NUMBER: EHBR1-12-UNV-TA-L850

**CANDELA DISTRIBUTION (continued):**

	247.5°	250°	252.5°	255°	257.5°	260°	262.5°	265°	267.5°	270°	272.5°
0°	10412.0	10412.0	10412.0	10412.0	10412.0	10412.0	10412.0	10412.0	10412.0	10412.0	10412.0
2.5°	10493.4	10505.6	10504.7	10516.1	10515.5	10526.3	10524.1	10533.5	10531.3	10539.3	10534.5
5°	10837.6	10860.9	10868.5	10889.5	10893.9	10912.6	10913.0	10927.9	10926.2	10937.9	10931.7
7.5°	11163.2	11184.9	11195.2	11211.5	11219.7	11233.1	11238.4	11249.5	11252.2	11258.8	11258.6
10°	11190.6	11190.6	11195.6	11193.4	11198.0	11195.3	11200.9	11198.9	11207.1	11204.9	11211.1
12.5°	10820.9	10784.2	10770.8	10737.9	10730.6	10702.3	10704.4	10686.2	10694.9	10683.9	10702.8
15°	10026.2	9941.1	9899.1	9825.0	9801.9	9743.3	9738.6	9699.7	9710.2	9689.9	9719.5
17.5°	8852.0	8717.9	8644.4	8536.3	8493.5	8410.7	8394.1	8344.1	8351.8	8326.7	8362.5
20°	7452.0	7290.0	7197.3	7072.2	7016.5	6917.8	6891.7	6835.7	6842.7	6817.7	6858.3
22.5°	6035.9	5866.4	5761.7	5630.6	5559.5	5466.7	5438.9	5382.7	5385.8	5362.4	5401.4
25°	4734.7	4572.1	4470.4	4351.5	4289.7	4204.6	4175.4	4124.9	4127.7	4108.4	4143.3
27.5°	3662.6	3529.2	3444.2	3344.5	3289.1	3219.1	3190.6	3148.2	3148.0	3133.9	3163.1
30°	2862.2	2750.9	2674.4	2587.6	2535.6	2472.5	2444.9	2407.0	2405.3	2395.2	2418.5
32.5°	2241.0	2142.0	2072.3	1995.9	1949.2	1895.0	1869.0	1838.4	1835.7	1826.5	1845.6
35°	1742.1	1658.7	1598.9	1534.4	1539.2	1459.4	1472.6	1410.6	1393.8	1390.0	1404.3
37.5°	1346.4	1281.9	1233.2	1185.0	1152.3	1118.6	1100.4	1084.1	1082.3	1080.7	1090.6
40°	1053.9	1008.7	973.3	940.2	917.7	897.2	885.8	876.9	874.7	873.5	879.5
42.5°	852.9	822.5	799.7	779.4	765.8	754.6	748.4	743.4	741.7	741.8	745.4
45°	720.6	702.1	687.4	674.9	666.2	670.0	658.7	664.6	656.8	664.9	659.6
47.5°	634.7	618.8	609.8	600.9	595.7	591.3	591.5	591.6	593.3	593.5	595.3
50°	568.2	559.1	552.8	547.1	544.4	542.1	542.9	543.5	545.2	545.3	546.5
52.5°	519.1	513.1	509.3	505.8	504.6	503.3	503.8	503.6	504.3	504.0	505.0
55°	479.2	476.3	475.1	473.9	474.0	473.7	473.9	472.7	471.9	470.9	471.8
57.5°	446.3	446.0	446.7	447.3	448.8	449.4	449.7	448.2	446.8	445.6	446.3
60°	421.1	421.7	423.7	425.3	427.5	428.5	429.1	428.3	427.3	426.2	426.8
62.5°	396.2	397.1	399.5	401.4	403.9	405.3	406.8	406.9	407.3	406.9	407.3
65°	367.2	368.4	370.5	372.1	374.5	375.7	377.2	377.5	378.4	378.2	378.9
67.5°	345.2	346.3	348.1	349.5	351.7	352.9	354.3	354.3	354.7	354.6	355.3
70°	321.8	322.3	324.0	325.1	327.3	328.6	330.0	330.5	331.5	331.6	332.4
72.5°	296.7	296.5	297.4	298.0	299.6	300.7	302.6	303.7	305.3	305.7	306.3
75°	269.5	269.2	270.4	270.9	272.3	273.3	275.5	276.9	279.5	280.4	280.1
77.5°	238.0	238.5	240.7	241.8	243.7	245.0	247.8	250.1	254.7	256.8	254.7
80°	202.7	203.2	205.5	206.7	209.0	210.6	213.8	216.5	220.6	221.5	220.3
82.5°	159.3	159.5	161.5	162.4	165.5	167.8	171.9	174.0	176.5	176.1	175.8
85°	108.6	110.1	112.7	115.1	119.1	122.7	126.5	129.7	127.5	130.9	127.0
87.5°	58.1	58.0	61.3	60.8	66.2	69.3	72.6	74.2	76.0	75.6	75.6
90°	5.7	5.3	5.8	5.3	6.1	5.5	6.5	6.1	7.3	6.6	7.9
92.5°	1.7	1.7	1.7	1.7	1.7	1.7	1.7	1.7	1.7	1.7	1.7
95°	1.8	1.8	1.8	1.8	1.8	1.8	1.8	1.8	1.8	1.8	1.8
97.5°	2.0	2.0	2.0	2.0	2.0	2.0	2.0	2.0	2.0	2.0	2.0
100°	2.2	2.2	2.2	2.2	2.1	2.1	2.1	2.1	2.1	2.1	2.1
102.5°	2.4	2.4	2.4	2.3	2.3	2.3	2.3	2.3	2.3	2.3	2.3
105°	2.6	2.6	2.6	2.6	2.5	2.5	2.5	2.5	2.5	2.5	2.5
107.5°	2.8	2.8	2.8	2.8	2.7	2.7	2.7	2.7	2.7	2.7	2.7
110°	3.0	3.0	3.0	3.0	2.9	2.9	2.9	2.9	2.9	2.9	2.9



TEST NUMBER: P1444577  
 CATALOG NUMBER: EHBR1-12-UNV-TA-L850

**CANDELA DISTRIBUTION (continued):**

	247.5°	250°	252.5°	255°	257.5°	260°	262.5°	265°	267.5°	270°	272.5°
112.5°	3.4	3.3	3.3	3.2	3.2	3.2	3.2	3.2	3.2	3.2	3.2
115°	3.8	3.8	3.7	3.7	3.6	3.6	3.5	3.5	3.5	3.5	3.5
117.5°	4.4	4.3	4.2	4.1	4.1	4.0	4.0	4.0	3.9	4.0	4.0
120°	5.2	5.0	4.8	4.8	4.7	4.7	4.5	4.5	4.5	4.5	4.5
122.5°	6.0	5.8	5.7	5.6	5.4	5.4	5.3	5.3	5.3	5.3	5.3
125°	7.1	6.9	6.7	6.6	6.4	6.3	6.3	6.3	6.2	6.3	6.3
127.5°	8.4	8.3	8.0	7.8	7.6	7.6	7.5	7.4	7.4	7.5	7.5
130°	10.0	9.7	9.5	9.3	9.0	9.0	8.9	8.8	8.8	8.8	8.9
132.5°	11.8	11.5	11.3	11.0	10.8	10.7	10.6	10.6	10.5	10.6	10.6
135°	13.9	13.6	13.3	13.1	12.8	12.8	12.6	12.6	12.6	12.6	12.7
137.5°	16.0	15.8	15.5	15.3	15.0	14.9	14.8	14.7	14.7	14.8	14.9
140°	18.4	18.1	17.8	17.6	17.5	17.3	17.2	17.2	17.1	17.3	17.3
142.5°	20.6	20.4	20.1	20.0	19.8	19.7	19.6	19.6	19.6	19.7	19.8
145°	22.9	22.7	22.5	22.3	22.2	22.2	22.0	22.1	22.1	22.2	22.2
147.5°	25.0	24.9	24.8	24.7	24.6	24.6	24.5	24.5	24.5	24.6	24.7
150°	27.0	27.0	26.8	26.8	26.7	26.7	26.7	26.7	26.7	26.8	26.8
152.5°	28.7	28.7	28.6	28.6	28.6	28.6	28.6	28.7	28.8	28.8	28.9
155°	30.4	30.4	30.4	30.4	30.4	30.5	30.5	30.6	30.6	30.7	30.7
157.5°	31.8	31.8	31.8	32.0	32.0	32.1	32.1	32.3	32.3	32.5	32.6
160°	33.2	33.3	33.3	33.5	33.5	33.6	33.7	33.9	34.0	34.1	34.2
162.5°	34.6	34.8	34.8	34.9	35.0	35.1	35.2	35.3	35.4	35.6	35.7
165°	36.2	36.2	36.3	36.3	36.4	36.5	36.6	36.7	36.8	37.0	37.1
167.5°	38.0	38.0	38.0	38.0	38.0	38.1	38.2	38.3	38.3	38.5	38.6
170°	39.7	39.7	39.7	39.7	39.7	39.8	39.8	39.8	39.9	40.0	40.0
172.5°	41.3	41.3	41.2	41.3	41.2	41.3	41.3	41.3	41.3	41.4	41.4
175°	42.4	42.5	42.5	42.5	42.5	42.5	42.5	42.5	42.5	42.5	42.5
177.5°	43.3	43.3	43.3	43.3	43.3	43.4	43.4	43.4	43.4	43.3	43.3
180°	43.2	43.2	43.2	43.2	43.2	43.2	43.2	43.2	43.2	43.2	43.2



TEST NUMBER: P1444577  
 CATALOG NUMBER: EHBR1-12-UNV-TA-L850

**CANDELA DISTRIBUTION (continued):**

	275°	277.5°	280°	282.5°	285°	287.5°	290°	292.5°	295°	297.5°	300°
0°	10412.0	10412.0	10412.0	10412.0	10412.0	10412.0	10412.0	10412.0	10412.0	10412.0	10412.0
2.5°	10542.3	10537.0	10542.4	10537.0	10542.4	10535.9	10540.3	10533.3	10535.0	10527.7	10529.5
5°	10940.9	10932.6	10937.0	10926.1	10927.3	10912.6	10912.4	10895.4	10890.9	10871.6	10863.1
7.5°	11263.3	11260.5	11262.1	11255.0	11254.3	11244.2	11239.5	11225.5	11216.6	11198.9	11186.7
10°	11212.2	11220.5	11222.6	11231.0	11232.7	11241.0	11242.8	11251.0	11252.8	11258.9	11259.0
12.5°	10701.9	10729.8	10736.5	10771.0	10785.5	10824.9	10846.0	10889.5	10915.3	10958.7	10985.3
15°	9718.8	9767.1	9786.3	9853.6	9890.9	9969.4	10018.7	10109.0	10172.7	10268.4	10336.8
17.5°	8365.7	8433.2	8463.6	8554.9	8614.4	8730.4	8813.9	8951.5	9056.8	9209.6	9330.9
20°	6865.2	6940.2	6981.5	7085.6	7155.9	7291.4	7395.7	7564.7	7705.7	7899.5	8065.1
22.5°	5413.6	5484.9	5530.8	5636.7	5715.9	5857.1	5973.8	6152.2	6310.2	6528.4	6727.0
25°	4156.6	4222.0	4263.5	4359.3	4433.6	4563.5	4674.8	4846.4	5001.0	5219.9	5423.6
27.5°	3177.7	3232.5	3272.5	3354.1	3419.6	3529.7	3625.4	3767.2	3900.4	4089.8	4271.2
30°	2432.8	2481.3	2520.2	2591.3	2652.2	2747.6	2831.7	2950.9	3061.1	3211.8	3356.1
32.5°	1859.1	1900.8	1935.5	1997.8	2052.9	2138.8	2214.6	2319.1	2413.7	2541.4	2660.2
35°	1417.4	1499.6	1493.8	1579.8	1593.6	1655.2	1722.9	1814.2	1898.0	2006.7	2107.7
37.5°	1100.2	1123.3	1148.1	1186.0	1226.0	1282.1	1339.2	1450.7	1491.7	1573.8	1657.4
40°	887.2	902.8	919.2	944.9	972.8	1012.3	1053.9	1107.1	1161.6	1228.2	1296.3
42.5°	750.1	758.9	769.3	784.3	801.6	826.7	854.5	890.5	928.5	975.4	1023.2
45°	670.1	665.9	669.0	677.1	687.5	702.7	720.3	742.6	767.4	797.7	830.0
47.5°	595.7	597.3	598.2	602.6	608.2	618.4	629.1	644.3	673.5	682.4	700.1
50°	546.4	547.2	546.9	549.2	552.0	558.6	565.5	575.8	586.0	599.7	612.6
52.5°	505.2	506.3	506.2	507.6	509.1	513.3	517.7	524.9	531.7	540.4	547.7
55°	472.6	474.1	474.8	476.0	476.8	479.0	480.7	484.2	487.0	491.9	496.4
57.5°	447.5	449.7	450.7	451.2	450.3	450.2	449.6	450.3	450.9	453.5	456.1
60°	427.8	429.6	429.8	429.6	428.0	426.8	424.9	424.3	424.0	425.3	426.7
62.5°	407.2	407.8	407.4	406.9	405.0	403.9	401.9	401.3	400.6	401.6	402.2
65°	378.7	379.2	378.7	378.3	376.7	375.7	374.1	373.6	372.7	372.9	372.8
67.5°	355.4	356.0	355.6	355.1	354.0	353.4	352.2	351.5	350.4	349.9	349.1
70°	332.3	332.7	332.1	331.6	330.3	329.8	328.8	328.5	327.6	327.4	326.5
72.5°	305.7	305.8	304.8	304.6	303.6	303.5	303.1	303.5	303.5	303.9	303.7
75°	278.6	278.2	277.0	276.8	276.0	276.4	275.9	276.6	276.6	277.6	277.8
77.5°	251.3	249.9	247.6	246.7	245.2	245.0	244.1	244.7	244.5	245.7	246.2
80°	216.9	215.1	212.3	211.0	209.2	208.9	208.1	208.9	208.5	209.9	210.9
82.5°	173.2	171.6	168.8	167.7	165.6	165.8	164.9	165.8	165.7	167.7	168.9
85°	128.1	127.1	124.1	121.4	118.5	116.7	115.0	114.7	114.1	115.0	115.7
87.5°	74.0	73.1	70.7	69.2	63.9	64.1	62.1	62.0	61.5	61.0	62.1
90°	7.1	8.1	7.5	8.3	7.9	8.9	8.5	9.5	8.8	9.7	9.2
92.5°	1.7	1.7	1.7	1.7	1.7	1.7	1.7	1.7	1.7	1.6	1.7
95°	1.8	1.8	1.8	1.8	1.8	1.8	1.8	1.8	1.8	1.8	1.8
97.5°	2.0	2.0	2.0	2.0	2.0	2.0	2.0	2.0	2.0	2.0	2.0
100°	2.1	2.1	2.1	2.1	2.1	2.1	2.1	2.1	2.2	2.2	2.2
102.5°	2.3	2.3	2.3	2.3	2.4	2.4	2.4	2.4	2.4	2.4	2.4
105°	2.5	2.5	2.6	2.6	2.6	2.6	2.6	2.6	2.6	2.6	2.7
107.5°	2.7	2.7	2.7	2.8	2.8	2.8	2.8	2.8	2.8	2.9	2.9
110°	2.9	2.9	2.9	3.0	3.0	3.0	3.0	3.1	3.2	3.2	3.3



TEST NUMBER: P1444577  
 CATALOG NUMBER: EHBR1-12-UNV-TA-L850

**CANDELA DISTRIBUTION (continued):**

	275°	277.5°	280°	282.5°	285°	287.5°	290°	292.5°	295°	297.5°	300°
112.5°	3.2	3.2	3.2	3.3	3.3	3.4	3.4	3.5	3.6	3.7	3.8
115°	3.6	3.6	3.6	3.7	3.7	3.8	3.9	4.0	4.2	4.3	4.5
117.5°	4.0	4.1	4.1	4.2	4.3	4.4	4.5	4.7	4.8	5.0	5.2
120°	4.7	4.7	4.8	4.8	5.0	5.1	5.3	5.5	5.7	5.9	6.2
122.5°	5.4	5.4	5.6	5.7	5.8	6.0	6.3	6.5	6.8	7.0	7.4
125°	6.3	6.5	6.6	6.7	7.0	7.2	7.5	7.8	8.1	8.3	8.6
127.5°	7.6	7.7	7.9	8.1	8.3	8.5	8.8	9.1	9.5	9.8	10.2
130°	9.0	9.1	9.4	9.5	9.9	10.2	10.5	10.8	11.2	11.5	12.0
132.5°	10.8	11.0	11.2	11.4	11.7	12.1	12.4	12.8	13.2	13.5	13.9
135°	12.8	13.0	13.3	13.5	13.9	14.0	14.4	14.7	15.2	15.5	15.9
137.5°	15.1	15.2	15.5	15.7	16.0	16.3	16.7	17.0	17.4	17.7	18.1
140°	17.5	17.6	17.9	18.1	18.4	18.7	19.1	19.3	19.6	19.9	20.2
142.5°	19.9	20.0	20.3	20.5	20.8	21.0	21.3	21.6	21.9	22.1	22.5
145°	22.4	22.5	22.7	22.9	23.1	23.4	23.6	23.9	24.2	24.3	24.6
147.5°	24.8	24.9	25.0	25.2	25.5	25.7	25.9	26.1	26.3	26.5	26.8
150°	27.0	27.1	27.3	27.4	27.6	27.8	28.1	28.2	28.4	28.6	28.8
152.5°	29.1	29.2	29.3	29.4	29.6	29.8	29.9	30.1	30.3	30.5	30.6
155°	30.9	31.0	31.2	31.3	31.5	31.6	31.8	31.9	32.1	32.2	32.4
157.5°	32.7	32.8	33.0	33.1	33.3	33.4	33.5	33.7	33.9	34.0	34.1
160°	34.3	34.5	34.6	34.8	34.9	35.0	35.2	35.3	35.5	35.6	35.8
162.5°	35.9	36.0	36.1	36.2	36.3	36.5	36.6	36.8	37.0	37.1	37.2
165°	37.2	37.4	37.6	37.6	37.8	38.0	38.1	38.3	38.4	38.5	38.7
167.5°	38.7	38.8	39.0	39.1	39.3	39.4	39.6	39.7	39.8	39.9	40.1
170°	40.2	40.3	40.4	40.5	40.6	40.7	40.9	40.9	41.1	41.2	41.3
172.5°	41.5	41.5	41.6	41.6	41.6	41.7	41.8	41.9	42.0	42.1	42.1
175°	42.5	42.5	42.5	42.6	42.6	42.6	42.6	42.7	42.8	42.8	42.8
177.5°	43.3	43.3	43.3	43.3	43.3	43.3	43.3	43.3	43.3	43.3	43.3
180°	43.2	43.2	43.2	43.2	43.2	43.2	43.2	43.2	43.2	43.2	43.2



TEST NUMBER: P1444577  
 CATALOG NUMBER: EHBR1-12-UNV-TA-L850

**CANDELA DISTRIBUTION (continued):**

	302.5°	305°	307.5°	310°	312.5°	315°	317.5°	320°	322.5°	325°	327.5°
0°	10412.0	10412.0	10412.0	10412.0	10412.0	10412.0	10412.0	10412.0	10412.0	10412.0	10412.0
2.5°	10522.2	10522.7	10514.2	10513.7	10505.8	10504.8	10497.0	10494.7	10488.4	10486.1	10479.6
5°	10841.4	10831.1	10807.2	10793.2	10769.5	10753.9	10728.3	10711.6	10687.0	10668.4	10643.6
7.5°	11164.3	11148.3	11121.5	11099.6	11066.9	11040.8	11002.5	10971.1	10929.5	10893.6	10850.0
10°	11259.0	11256.5	11249.6	11239.7	11224.5	11207.4	11181.3	11154.1	11117.7	11078.1	11029.7
12.5°	11026.0	11051.1	11085.5	11105.8	11130.5	11141.4	11151.5	11149.0	11142.3	11122.3	11094.3
15°	10435.8	10506.5	10600.1	10672.7	10756.1	10816.8	10883.7	10925.5	10967.1	10986.4	10998.2
17.5°	9496.9	9630.7	9798.6	9937.7	10098.2	10227.2	10368.4	10474.8	10584.2	10662.6	10733.5
20°	8290.9	8484.8	8722.2	8932.0	9175.9	9387.7	9620.0	9810.7	10007.3	10161.0	10306.6
22.5°	6982.8	7213.2	7500.2	7766.0	8080.4	8362.9	8681.8	8959.2	9248.8	9490.9	9724.9
25°	5696.5	5949.1	6262.9	6559.6	6915.6	7244.3	7622.4	7968.1	8342.6	8667.6	8988.7
27.5°	4521.9	4769.9	5090.4	5406.1	5782.6	6132.8	6537.8	6918.9	7345.2	7738.3	8140.4
30°	3556.5	3766.8	4054.2	4360.0	4731.3	5087.7	5497.2	5889.0	6332.5	6761.7	7214.7
32.5°	2817.8	2978.0	3203.9	3462.4	3805.1	4144.3	4534.2	4912.5	5349.2	5782.8	6254.0
35°	2237.8	2362.8	2535.0	2736.8	3027.0	3319.4	3664.3	4008.2	4415.6	4827.1	5285.1
37.5°	1764.7	1866.0	2000.9	2152.6	2385.3	2625.2	2908.0	3193.2	3547.2	3911.9	4326.9
40°	1377.9	1460.1	1565.1	1678.1	1853.9	2038.8	2257.5	2478.6	2763.1	3061.2	3404.6
42.5°	1082.5	1143.1	1217.2	1299.8	1463.8	1562.0	1710.3	1870.3	2079.4	2295.8	2554.0
45°	869.3	910.7	962.1	1017.5	1093.7	1176.9	1278.4	1385.0	1583.6	1681.1	1838.1
47.5°	726.0	753.7	786.5	821.4	866.3	914.7	974.9	1036.5	1116.2	1198.7	1295.4
50°	629.4	657.6	668.9	687.0	712.9	740.6	774.6	808.5	851.2	894.6	944.4
52.5°	557.8	567.0	579.2	590.7	606.8	638.3	648.5	666.2	690.1	713.6	739.8
55°	503.0	509.0	517.0	523.9	533.7	543.0	556.4	568.2	584.2	598.3	615.7
57.5°	460.5	464.3	469.8	474.3	480.6	485.9	493.8	500.2	509.4	517.4	527.9
60°	429.6	432.1	435.7	438.8	442.7	445.5	449.4	452.4	457.3	461.3	467.2
62.5°	404.2	405.6	408.0	409.7	412.3	413.6	415.7	417.1	419.7	421.8	425.0
65°	374.0	374.2	375.8	376.6	378.6	379.4	381.0	381.6	383.9	385.3	388.2
67.5°	349.1	348.4	348.4	347.8	348.1	347.5	347.7	347.0	347.9	348.4	350.6
70°	326.4	325.4	325.1	324.1	323.8	322.7	322.4	321.4	321.3	321.0	321.8
72.5°	304.3	304.0	304.1	303.3	303.2	302.5	302.5	302.1	302.6	302.8	303.8
75°	278.9	278.9	279.5	278.8	279.0	278.4	278.6	278.0	278.3	278.2	279.2
77.5°	247.9	248.6	250.0	249.7	250.1	249.4	249.7	248.9	249.2	248.6	249.0
80°	213.1	214.6	216.4	216.4	217.2	216.6	217.3	216.6	216.9	215.9	215.7
82.5°	171.8	173.1	175.0	175.0	176.8	177.1	179.0	178.9	180.1	179.4	178.8
85°	117.4	118.3	120.0	120.9	122.7	123.8	125.5	126.3	124.9	127.4	125.5
87.5°	61.3	63.6	62.3	65.3	64.6	67.6	67.0	69.7	69.2	71.6	71.3
90°	10.5	10.2	11.5	11.3	13.1	13.2	14.9	14.8	16.6	16.5	18.3
92.5°	1.6	1.7	1.7	1.7	1.7	1.7	1.7	1.7	1.7	1.7	1.7
95°	1.8	1.8	1.8	1.8	1.8	1.8	1.8	1.8	1.8	1.8	1.8
97.5°	2.0	2.0	2.0	2.0	2.0	2.0	2.0	2.0	2.0	2.1	2.1
100°	2.2	2.2	2.2	2.2	2.3	2.3	2.3	2.3	2.4	2.4	2.4
102.5°	2.5	2.5	2.5	2.6	2.6	2.6	2.6	2.7	2.7	2.7	2.7
105°	2.7	2.8	2.8	2.8	2.8	2.9	3.0	3.0	3.0	3.1	3.1
107.5°	3.0	3.0	3.2	3.2	3.3	3.4	3.5	3.5	3.6	3.7	3.7
110°	3.4	3.5	3.6	3.7	3.8	4.0	4.1	4.2	4.3	4.3	4.4



TEST NUMBER: P1444577  
 CATALOG NUMBER: EHBR1-12-UNV-TA-L850

**CANDELA DISTRIBUTION (continued):**

	302.5°	305°	307.5°	310°	312.5°	315°	317.5°	320°	322.5°	325°	327.5°
112.5°	3.9	4.1	4.2	4.4	4.5	4.7	4.8	5.0	5.0	5.2	5.3
115°	4.7	4.8	5.0	5.2	5.4	5.6	5.7	5.9	6.0	6.2	6.3
117.5°	5.4	5.7	5.9	6.2	6.3	6.6	6.8	7.0	7.1	7.3	7.4
120°	6.5	6.7	7.0	7.3	7.5	7.8	8.0	8.2	8.3	8.5	8.6
122.5°	7.6	8.0	8.3	8.5	8.7	9.0	9.2	9.5	9.7	9.9	10.1
125°	9.0	9.3	9.6	9.9	10.2	10.5	10.8	11.0	11.3	11.5	11.7
127.5°	10.5	10.9	11.2	11.6	11.9	12.2	12.4	12.8	13.0	13.3	13.5
130°	12.3	12.7	13.0	13.4	13.6	13.9	14.2	14.5	14.7	15.0	15.3
132.5°	14.2	14.5	14.8	15.2	15.5	15.8	16.1	16.4	16.6	17.0	17.3
135°	16.2	16.6	16.9	17.3	17.5	17.8	18.1	18.4	18.6	19.0	19.3
137.5°	18.4	18.8	19.0	19.3	19.5	19.8	20.0	20.3	20.6	20.9	21.2
140°	20.5	20.8	21.0	21.4	21.6	21.9	22.1	22.4	22.6	22.9	23.1
142.5°	22.7	23.0	23.2	23.5	23.7	24.0	24.2	24.4	24.6	24.9	25.0
145°	24.9	25.0	25.2	25.5	25.6	25.9	26.0	26.3	26.4	26.6	26.8
147.5°	27.0	27.2	27.3	27.5	27.6	27.9	28.0	28.1	28.3	28.4	28.5
150°	28.9	29.2	29.3	29.4	29.6	29.7	29.8	29.9	30.0	30.1	30.3
152.5°	30.7	30.9	31.0	31.1	31.2	31.3	31.4	31.5	31.6	31.6	31.7
155°	32.5	32.7	32.8	32.9	33.0	33.1	33.1	33.2	33.3	33.3	33.3
157.5°	34.2	34.4	34.5	34.6	34.7	34.8	34.8	34.9	34.9	35.0	35.0
160°	35.9	36.0	36.0	36.1	36.2	36.3	36.3	36.4	36.5	36.5	36.5
162.5°	37.3	37.5	37.6	37.6	37.8	37.8	37.9	38.0	38.0	38.0	38.0
165°	38.8	38.9	39.0	39.1	39.2	39.3	39.3	39.4	39.4	39.5	39.5
167.5°	40.2	40.3	40.4	40.5	40.5	40.6	40.7	40.8	40.8	40.8	40.8
170°	41.4	41.5	41.6	41.6	41.6	41.6	41.7	41.7	41.7	41.8	41.8
172.5°	42.2	42.3	42.3	42.4	42.4	42.5	42.5	42.5	42.5	42.5	42.5
175°	42.8	42.9	43.0	43.0	43.0	43.0	43.0	43.0	43.0	43.0	43.0
177.5°	43.3	43.3	43.3	43.3	43.3	43.3	43.3	43.3	43.3	43.3	43.2
180°	43.2	43.2	43.2	43.2	43.2	43.2	43.2	43.2	43.2	43.2	43.2



TEST NUMBER: P1444577  
 CATALOG NUMBER: EHBR1-12-UNV-TA-L850

**CANDELA DISTRIBUTION (continued):**

	330°	332.5°	335°	337.5°	340°	342.5°	345°	347.5°	350°	352.5°	355°
0°	10412.0	10412.0	10412.0	10412.0	10412.0	10412.0	10412.0	10412.0	10412.0	10412.0	10412.0
2.5°	10477.4	10472.9	10469.9	10466.2	10463.9	10461.0	10458.9	10457.0	10455.6	10454.2	10453.2
5°	10624.7	10601.3	10583.2	10563.4	10547.3	10531.1	10518.7	10508.4	10501.3	10495.9	10492.8
7.5°	10812.3	10769.4	10731.3	10691.1	10655.2	10619.8	10589.4	10563.0	10543.3	10530.5	10522.9
10°	10979.8	10922.4	10865.7	10805.9	10749.3	10694.4	10643.6	10599.0	10563.7	10540.2	10526.6
12.5°	11054.9	11006.0	10948.1	10883.2	10813.8	10743.6	10675.1	10613.3	10561.6	10526.8	10506.6
15°	10988.7	10968.7	10929.3	10879.0	10813.1	10740.5	10660.2	10584.5	10515.1	10470.0	10443.9
17.5°	10773.6	10801.6	10798.7	10779.4	10732.0	10670.9	10589.0	10504.1	10417.2	10356.9	10324.0
20°	10410.6	10498.7	10543.3	10566.3	10547.6	10508.0	10433.9	10347.7	10246.4	10167.8	10119.7
22.5°	9900.4	10055.9	10152.8	10223.7	10238.7	10225.2	10159.7	10077.8	9964.8	9870.3	9799.4
25°	9243.6	9471.4	9624.6	9744.6	9791.3	9803.2	9747.5	9666.1	9540.2	9430.1	9332.6
27.5°	8470.1	8766.0	8970.5	9131.8	9204.6	9236.2	9184.9	9101.8	8952.8	8821.4	8694.1
30°	7599.2	7950.4	8196.5	8389.9	8478.6	8520.4	8465.9	8373.1	8199.8	8041.5	7881.3
32.5°	6667.0	7051.3	7319.5	7529.6	7617.5	7656.8	7585.4	7481.3	7280.9	7094.6	6907.7
35°	5691.1	6078.9	6349.4	6554.0	6627.6	6651.3	6560.1	6439.7	6217.7	6013.2	5809.4
37.5°	4695.3	5056.2	5302.0	5485.4	5531.1	5535.1	5425.3	5292.3	5059.0	4857.4	4654.5
40°	3708.1	4012.4	4210.9	4357.8	4373.6	4359.5	4240.1	4106.2	3888.0	3707.3	3529.2
42.5°	2778.2	3007.9	3149.6	3250.2	3244.2	3216.3	3106.8	2991.7	2811.7	2674.1	2534.0
45°	1981.6	2133.0	2215.8	2274.8	2255.8	2229.2	2144.0	2063.4	1941.0	1852.1	1758.0
47.5°	1376.7	1557.5	1526.0	1641.2	1542.0	1607.5	1471.1	1395.8	1330.9	1283.6	1230.4
50°	985.5	1027.0	1047.0	1060.7	1053.4	1043.4	1018.8	996.9	967.2	945.6	920.4
52.5°	761.1	781.8	793.2	801.4	799.8	796.1	785.4	775.7	761.8	752.6	741.6
55°	644.7	645.0	665.9	656.9	670.1	654.7	660.8	643.6	646.3	631.6	621.7
57.5°	535.7	544.2	548.0	551.7	550.7	550.1	546.0	543.8	539.2	537.7	534.4
60°	471.2	475.7	476.6	478.3	476.9	476.3	473.1	471.9	468.8	468.3	466.0
62.5°	427.0	429.3	429.3	429.3	427.5	425.6	422.1	420.2	417.6	417.0	415.7
65°	390.2	392.5	392.9	393.4	392.0	390.7	387.5	385.4	382.7	381.6	380.1
67.5°	352.0	354.5	355.4	356.7	355.9	355.6	353.4	352.6	350.9	350.4	349.1
70°	322.1	323.2	323.1	323.1	321.4	319.8	317.4	316.2	314.2	313.8	312.7
72.5°	304.3	305.1	304.6	303.9	301.8	299.5	296.5	294.4	291.9	290.5	288.7
75°	279.3	280.2	279.7	279.3	277.3	275.8	273.5	272.3	270.5	270.0	268.8
77.5°	248.5	249.0	248.0	247.9	246.4	245.5	243.7	243.4	242.1	242.1	241.0
80°	214.3	214.0	212.5	212.1	210.6	210.2	208.8	208.9	207.9	208.3	207.6
82.5°	176.3	175.3	173.3	172.7	170.9	170.7	169.8	170.6	169.9	170.9	170.3
85°	126.4	126.6	125.7	125.7	125.2	125.3	125.3	125.8	125.9	126.8	126.7
87.5°	70.4	71.5	71.3	72.2	72.2	73.2	73.6	75.0	75.2	76.7	76.7
90°	18.2	20.1	20.0	22.0	22.0	23.9	24.3	26.1	26.2	27.9	27.7
92.5°	1.7	1.7	1.7	1.7	1.7	1.6	1.8	1.6	1.7	1.6	1.6
95°	1.8	1.8	1.8	1.8	1.8	1.8	1.8	1.8	1.8	1.8	1.8
97.5°	2.1	2.1	2.1	2.1	2.1	2.1	2.0	2.0	2.0	2.0	2.0
100°	2.4	2.4	2.4	2.4	2.4	2.4	2.4	2.4	2.4	2.3	2.3
102.5°	2.8	2.8	2.8	2.8	2.8	2.8	2.8	2.7	2.7	2.7	2.7
105°	3.2	3.2	3.2	3.2	3.2	3.2	3.2	3.2	3.2	3.2	3.2
107.5°	3.7	3.7	3.8	3.8	3.8	3.8	3.8	3.8	3.8	3.8	3.8
110°	4.5	4.5	4.6	4.6	4.7	4.7	4.7	4.7	4.7	4.7	4.7



TEST NUMBER: P1444577  
 CATALOG NUMBER: EHBR1-12-UNV-TA-L850

**CANDELA DISTRIBUTION (continued):**

	330°	332.5°	335°	337.5°	340°	342.5°	345°	347.5°	350°	352.5°	355°
112.5°	5.4	5.4	5.5	5.5	5.6	5.6	5.7	5.7	5.7	5.7	5.7
115°	6.4	6.5	6.6	6.6	6.7	6.8	6.9	6.9	6.9	6.9	6.9
117.5°	7.6	7.7	7.8	8.0	8.0	8.1	8.2	8.3	8.3	8.3	8.3
120°	8.8	9.0	9.1	9.3	9.4	9.5	9.7	9.7	9.8	9.8	9.8
122.5°	10.3	10.5	10.7	10.8	11.0	11.2	11.3	11.4	11.5	11.5	11.5
125°	12.0	12.2	12.4	12.6	12.8	13.0	13.2	13.2	13.4	13.4	13.4
127.5°	13.8	13.9	14.2	14.4	14.7	14.8	15.0	15.1	15.2	15.2	15.3
130°	15.6	15.8	16.1	16.4	16.6	16.8	17.0	17.1	17.3	17.3	17.3
132.5°	17.6	17.8	18.1	18.4	18.6	18.8	19.1	19.1	19.3	19.3	19.3
135°	19.5	19.7	20.0	20.3	20.5	20.8	21.0	21.1	21.2	21.2	21.3
137.5°	21.5	21.7	22.0	22.2	22.5	22.7	22.9	23.0	23.1	23.2	23.2
140°	23.4	23.6	23.9	24.1	24.3	24.5	24.7	24.9	24.9	24.9	25.0
142.5°	25.2	25.3	25.7	25.8	26.0	26.2	26.3	26.4	26.6	26.6	26.6
145°	27.0	27.1	27.3	27.5	27.6	27.7	27.9	28.0	28.1	28.1	28.1
147.5°	28.7	28.8	28.9	29.0	29.2	29.3	29.4	29.4	29.6	29.6	29.6
150°	30.3	30.4	30.5	30.5	30.5	30.6	30.6	30.7	30.7	30.7	30.7
152.5°	31.7	31.8	31.8	31.8	31.8	31.8	31.8	31.8	31.8	31.8	31.7
155°	33.3	33.3	33.3	33.3	33.3	33.3	33.3	33.2	33.1	33.1	33.0
157.5°	35.0	34.9	35.0	34.9	34.9	34.8	34.8	34.6	34.6	34.5	34.4
160°	36.5	36.5	36.5	36.4	36.3	36.3	36.2	36.1	36.0	35.9	35.8
162.5°	38.0	38.0	38.0	38.0	37.9	37.8	37.8	37.6	37.5	37.4	37.2
165°	39.5	39.5	39.5	39.4	39.4	39.3	39.3	39.1	39.0	38.9	38.7
167.5°	40.8	40.8	40.8	40.7	40.7	40.6	40.5	40.4	40.4	40.2	40.1
170°	41.8	41.7	41.7	41.7	41.6	41.6	41.6	41.5	41.4	41.3	41.2
172.5°	42.5	42.5	42.5	42.4	42.4	42.3	42.3	42.2	42.1	42.0	42.0
175°	43.0	43.0	42.9	42.9	42.8	42.8	42.8	42.7	42.6	42.6	42.5
177.5°	43.2	43.2	43.2	43.2	43.1	43.1	43.1	43.0	43.0	43.0	43.0
180°	43.2	43.2	43.2	43.2	43.2	43.2	43.2	43.2	43.2	43.2	43.2



TEST NUMBER: P1444577  
CATALOG NUMBER: EHBR1-12-UNV-TA-L850

**CANDELA DISTRIBUTION (continued):**

	357.5°	360°
0°	10412.0	10412.0
2.5°	10452.3	10451.7
5°	10491.1	10490.5
7.5°	10520.7	10520.5
10°	10524.2	10526.0
12.5°	10503.2	10504.7
15°	10441.9	10444.8
17.5°	10324.6	10328.4
20°	10122.7	10126.6
22.5°	9795.6	9797.2
25°	9320.1	9313.4
27.5°	8671.8	8660.2
30°	7847.7	7836.4
32.5°	6865.1	6858.1
35°	5759.1	5754.7
37.5°	4594.6	4585.6
40°	3464.1	3437.8
42.5°	2472.6	2426.4
45°	1708.8	1654.1
47.5°	1192.9	1159.1
50°	904.2	893.3
52.5°	736.8	734.3
55°	621.7	620.5
57.5°	535.1	534.8
60°	467.2	467.1
62.5°	416.5	416.7
65°	380.8	380.9
67.5°	349.4	349.2
70°	313.2	312.9
72.5°	288.1	287.7
75°	268.8	268.6
77.5°	241.3	241.0
80°	208.0	207.6
82.5°	171.1	170.5
85°	127.7	127.7
87.5°	78.1	78.1
90°	29.3	28.9
92.5°	1.7	1.8
95°	1.8	1.8
97.5°	2.0	2.0
100°	2.3	2.3
102.5°	2.7	2.7
105°	3.2	3.2
107.5°	3.8	3.8
110°	4.7	4.7



TEST NUMBER: P1444577  
CATALOG NUMBER: EHBR1-12-UNV-TA-L850

**CANDELA DISTRIBUTION (continued):**

	357.5°	360°
112.5°	5.7	5.7
115°	6.9	6.9
117.5°	8.3	8.3
120°	9.7	9.7
122.5°	11.5	11.4
125°	13.3	13.3
127.5°	15.2	15.1
130°	17.1	17.1
132.5°	19.3	19.1
135°	21.2	21.1
137.5°	23.1	23.0
140°	24.9	24.9
142.5°	26.6	26.5
145°	28.1	28.0
147.5°	29.4	29.4
150°	30.6	30.5
152.5°	31.6	31.5
155°	32.8	32.7
157.5°	34.2	34.0
160°	35.6	35.5
162.5°	37.1	36.9
165°	38.5	38.4
167.5°	39.9	39.8
170°	41.1	41.0
172.5°	41.9	41.8
175°	42.5	42.5
177.5°	43.0	42.9
180°	43.2	43.2

LM-79-2019: Approved Method: Electrical and Photometric Measurements of Solid-State Lighting Products

Report Prepared for

Cooper Lighting Solutions

Metalux

Report Number: SP1-2506-472-4

Test Date: 07/31/2025

Luminaire Tested: EHBR-60-L850-N

Data in this report applies to families of products including EHBR-60-L850-N

**Test Information**

Test Method: LM-79-2019  
 Report Number: SP1-2506-472-4  
 Test Lab: COOPER LIGHTING SOLUTIONS  
 Photometer: SP1 - 76IN SPHERE  
 Measurement Geometry: 4π  
 Issue Date: 08/05/2025  
 Manufacturer: COOPER LIGHTING SOLUTIONS  
 Product Line: Metalux  
 Catalog Number: **EHBR-60-L850-N**  
 Description: Elevate Round Highbay at, 60000 lumens, 5000K 80CRI LEDs with N lens

**Spectral Parameters**

CCT (K): 4875  
 CIE u': 0.2124  
 CIE v': 0.4871  
 Duv: 0.0005  
 CIE x: 0.3488  
 CIE y: 0.3555  
 CIE z: 0.2957  
 Peak Wavelength (nm): 630  
 Dominant Wavelength (nm): 573  
 Purity: 11.33556  
 Rf: 80  
 Rg: 102.3

CRI (Ra):	82.3		
R1:	85.0	R9:	43.9
R2:	83.1	R10:	57.4
R3:	78.8	R11:	83.1
R4:	84.0	R12:	51.0
R5:	83.0	R13:	83.4
R6:	76.3	R14:	87.4
R7:	86.8	R15:	83.4
R8:	81.7		



**Test Conditions**

Stabilization Time: 39M  
 Operation Time: 1H 39M  
 Sphere Temperature (°C): 25.0

REPORT NUMBER: SP1-2506-472-4

Measurement and Test Equipment			
Instrument	Identification Number	Calibration Date	Calibration Due Date
Photometer	76INCH SPHERE IN0058	6/16/2025	12/16/2025
Power Meter	XITRON INXT2011004	1/21/2025	1/21/2026
AC Power Source	CHROMA 61603 IN0063	10/22/2024	10/22/2025
DC Power Source	AGILENT E3634A IN0208	10/22/2024	10/22/2025
Sphere Thermometer	ONSET IN0085	10/22/2024	10/22/2025
Room Thermometer	ONSET IN0046	10/22/2024	10/22/2025

REPORT NUMBER: SP1-2506-472-4

CIE 1931 Chromaticity Diagram



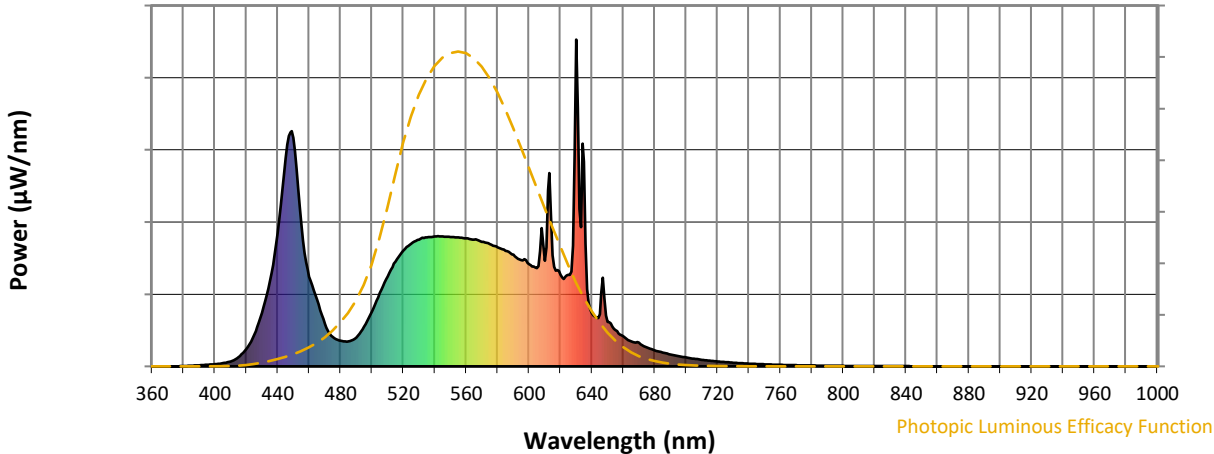
CIE 1931 Chromaticity Diagram with 2017 ANSI 7-Step and 4-Step Quadrangles



Point lies inside the ANSI 5000K 4-step quadrangle

REPORT NUMBER: SP1-2506-472-4

**Photopic Flux vs. Wavelength**

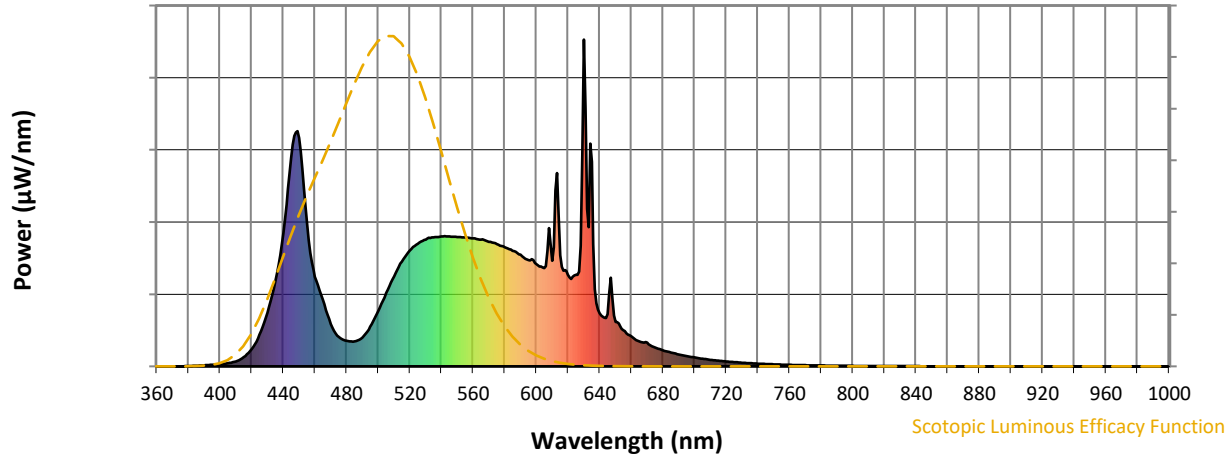


**Photopic Lumens: NR**

λ (nm)	Power W <sup>^</sup> /nm	Lumens (φ/nm)	λ (nm)	Power W <sup>^</sup> /nm	Lumens (φ/nm)	λ (nm)	Power W <sup>^</sup> /nm	Lumens (φ/nm)	λ (nm)	Power W <sup>^</sup> /nm	Lumens (φ/nm)	λ (nm)	Power W <sup>^</sup> /nm	Lumens (φ/nm)
360	0	NR	490	89	NR	620	280	NR	750	6	NR	880	0	NR
365	0	NR	495	121	NR	625	280	NR	755	5	NR	885	0	NR
370	0	NR	500	168	NR	630	1000	NR	760	5	NR	890	0	NR
375	0	NR	505	224	NR	635	626	NR	765	4	NR	895	0	NR
380	1	NR	510	275	NR	640	163	NR	770	4	NR	900	0	NR
385	2	NR	515	321	NR	645	160	NR	775	3	NR	905	0	NR
390	3	NR	520	354	NR	650	136	NR	780	3	NR	910	0	NR
395	5	NR	525	375	NR	655	111	NR	785	2	NR	915	0	NR
400	7	NR	530	388	NR	660	93	NR	790	2	NR	920	0	NR
405	10	NR	535	395	NR	665	76	NR	795	2	NR	925	0	NR
410	15	NR	540	397	NR	670	72	NR	800	2	NR	930	0	NR
415	28	NR	545	398	NR	675	57	NR	805	1	NR	935	0	NR
420	53	NR	550	396	NR	680	49	NR	810	1	NR	940	0	NR
425	97	NR	555	395	NR	685	42	NR	815	1	NR	945	0	NR
430	163	NR	560	392	NR	690	37	NR	820	1	NR	950	0	NR
435	261	NR	565	388	NR	695	32	NR	825	1	NR	955	0	NR
440	409	NR	570	381	NR	700	27	NR	830	1	NR	960	0	NR
445	637	NR	575	374	NR	705	23	NR	835	1	NR	965	0	NR
450	699	NR	580	365	NR	710	20	NR	840	1	NR	970	0	NR
455	436	NR	585	354	NR	715	17	NR	845	0	NR	975	0	NR
460	274	NR	590	342	NR	720	15	NR	850	0	NR	980	0	NR
465	205	NR	595	325	NR	725	13	NR	855	0	NR	985	0	NR
470	130	NR	600	313	NR	730	11	NR	860	0	NR	990	0	NR
475	90	NR	605	301	NR	735	10	NR	865	0	NR	995	0	NR
480	78	NR	610	323	NR	740	8	NR	870	0	NR	1000	0	NR
485	77	NR	615	340	NR	745	7	NR	875	0	NR			

REPORT NUMBER: SP1-2506-472-4

**Scotopic Flux vs. Wavelength**



**Scotopic Lumens: NR**

**S/P: 1.82**

$\lambda$ (nm)	Power W <sup>^</sup> /nm	Lumens ( $\phi$ /nm)	$\lambda$ (nm)	Power W <sup>^</sup> /nm	Lumens ( $\phi$ /nm)	$\lambda$ (nm)	Power W <sup>^</sup> /nm	Lumens ( $\phi$ /nm)	$\lambda$ (nm)	Power W <sup>^</sup> /nm	Lumens ( $\phi$ /nm)	$\lambda$ (nm)	Power W <sup>^</sup> /nm	Lumens ( $\phi$ /nm)
360	0	NR	490	89	NR	620	280	NR	750	6	NR	880	0	NR
365	0	NR	495	121	NR	625	280	NR	755	5	NR	885	0	NR
370	0	NR	500	168	NR	630	1000	NR	760	5	NR	890	0	NR
375	0	NR	505	224	NR	635	626	NR	765	4	NR	895	0	NR
380	1	NR	510	275	NR	640	163	NR	770	4	NR	900	0	NR
385	2	NR	515	321	NR	645	160	NR	775	3	NR	905	0	NR
390	3	NR	520	354	NR	650	136	NR	780	3	NR	910	0	NR
395	5	NR	525	375	NR	655	111	NR	785	2	NR	915	0	NR
400	7	NR	530	388	NR	660	93	NR	790	2	NR	920	0	NR
405	10	NR	535	395	NR	665	76	NR	795	2	NR	925	0	NR
410	15	NR	540	397	NR	670	72	NR	800	2	NR	930	0	NR
415	28	NR	545	398	NR	675	57	NR	805	1	NR	935	0	NR
420	53	NR	550	396	NR	680	49	NR	810	1	NR	940	0	NR
425	97	NR	555	395	NR	685	42	NR	815	1	NR	945	0	NR
430	163	NR	560	392	NR	690	37	NR	820	1	NR	950	0	NR
435	261	NR	565	388	NR	695	32	NR	825	1	NR	955	0	NR
440	409	NR	570	381	NR	700	27	NR	830	1	NR	960	0	NR
445	637	NR	575	374	NR	705	23	NR	835	1	NR	965	0	NR
450	699	NR	580	365	NR	710	20	NR	840	1	NR	970	0	NR
455	436	NR	585	354	NR	715	17	NR	845	0	NR	975	0	NR
460	274	NR	590	342	NR	720	15	NR	850	0	NR	980	0	NR
465	205	NR	595	325	NR	725	13	NR	855	0	NR	985	0	NR
470	130	NR	600	313	NR	730	11	NR	860	0	NR	990	0	NR
475	90	NR	605	301	NR	735	10	NR	865	0	NR	995	0	NR
480	78	NR	610	323	NR	740	8	NR	870	0	NR	1000	0	NR
485	77	NR	615	340	NR	745	7	NR	875	0	NR			

REPORT NUMBER: SP1-2506-472-4

**Melanopic Flux vs. Wavelength**



**Melanopic Lumens: NR**

**M/P: 3.71**

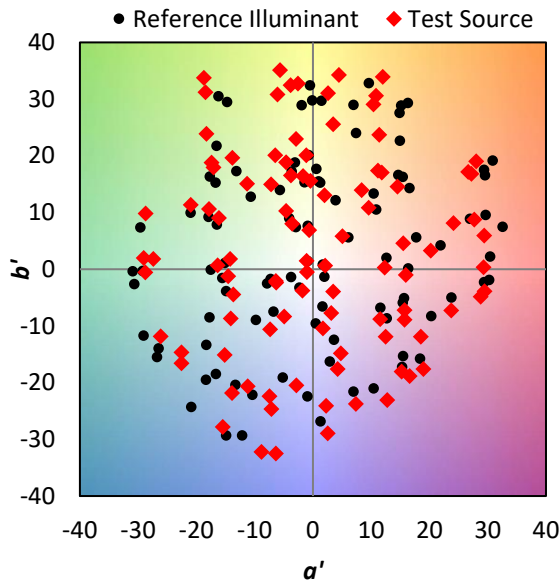
$\lambda$ (nm)	Power W <sup>^</sup> /nm	Lumens ( $\phi$ /nm)	$\lambda$ (nm)	Power W <sup>^</sup> /nm	Lumens ( $\phi$ /nm)	$\lambda$ (nm)	Power W <sup>^</sup> /nm	Lumens ( $\phi$ /nm)	$\lambda$ (nm)	Power W <sup>^</sup> /nm	Lumens ( $\phi$ /nm)	$\lambda$ (nm)	Power W <sup>^</sup> /nm	Lumens ( $\phi$ /nm)
360	0	NR	490	89	NR	620	280	NR	750	6	NR	880	0	NR
365	0	NR	495	121	NR	625	280	NR	755	5	NR	885	0	NR
370	0	NR	500	168	NR	630	1000	NR	760	5	NR	890	0	NR
375	0	NR	505	224	NR	635	626	NR	765	4	NR	895	0	NR
380	1	NR	510	275	NR	640	163	NR	770	4	NR	900	0	NR
385	2	NR	515	321	NR	645	160	NR	775	3	NR	905	0	NR
390	3	NR	520	354	NR	650	136	NR	780	3	NR	910	0	NR
395	5	NR	525	375	NR	655	111	NR	785	2	NR	915	0	NR
400	7	NR	530	388	NR	660	93	NR	790	2	NR	920	0	NR
405	10	NR	535	395	NR	665	76	NR	795	2	NR	925	0	NR
410	15	NR	540	397	NR	670	72	NR	800	2	NR	930	0	NR
415	28	NR	545	398	NR	675	57	NR	805	1	NR	935	0	NR
420	53	NR	550	396	NR	680	49	NR	810	1	NR	940	0	NR
425	97	NR	555	395	NR	685	42	NR	815	1	NR	945	0	NR
430	163	NR	560	392	NR	690	37	NR	820	1	NR	950	0	NR
435	261	NR	565	388	NR	695	32	NR	825	1	NR	955	0	NR
440	409	NR	570	381	NR	700	27	NR	830	1	NR	960	0	NR
445	637	NR	575	374	NR	705	23	NR	835	1	NR	965	0	NR
450	699	NR	580	365	NR	710	20	NR	840	1	NR	970	0	NR
455	436	NR	585	354	NR	715	17	NR	845	0	NR	975	0	NR
460	274	NR	590	342	NR	720	15	NR	850	0	NR	980	0	NR
465	205	NR	595	325	NR	725	13	NR	855	0	NR	985	0	NR
470	130	NR	600	313	NR	730	11	NR	860	0	NR	990	0	NR
475	90	NR	605	301	NR	735	10	NR	865	0	NR	995	0	NR
480	78	NR	610	323	NR	740	8	NR	870	0	NR	1000	0	NR
485	77	NR	615	340	NR	745	7	NR	875	0	NR			

**Summary**

$R_f = 80$   
 $R_g = 102.3$   
 $CIE R_a = 82.3$   
 $R_9 = 43.9$

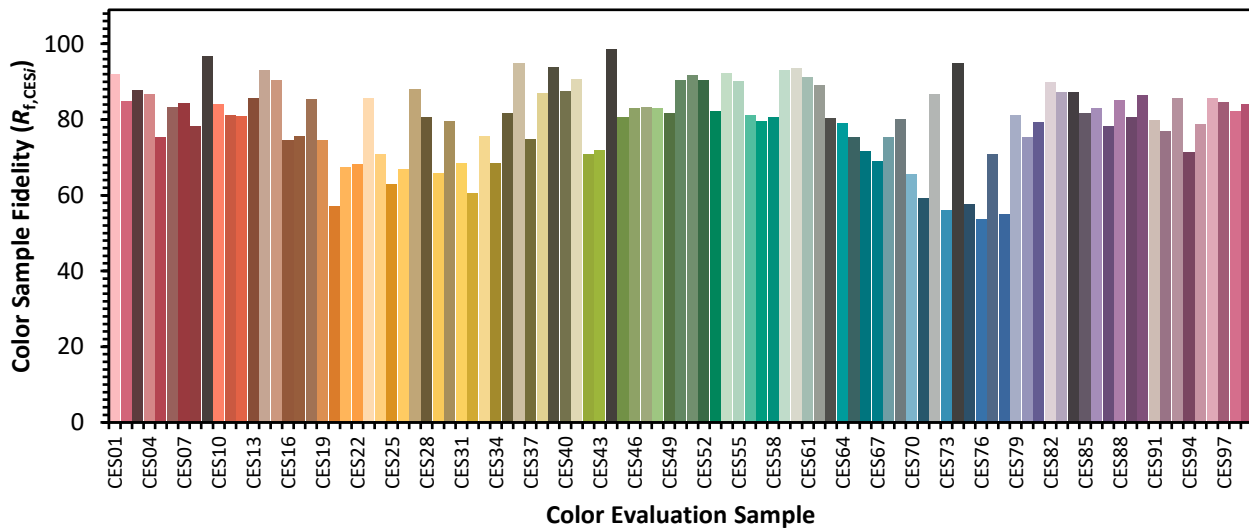


**Color Vector Graphics**

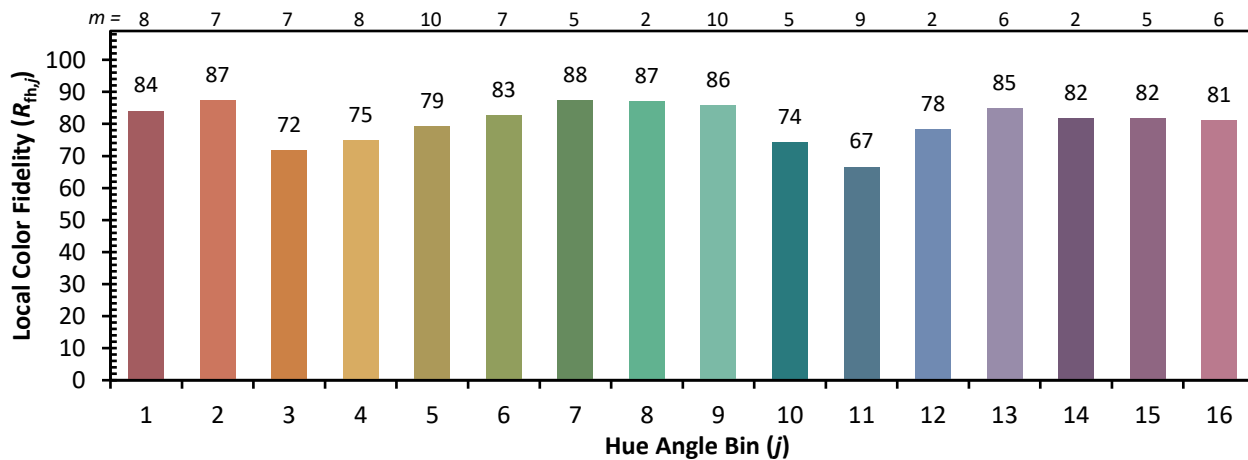
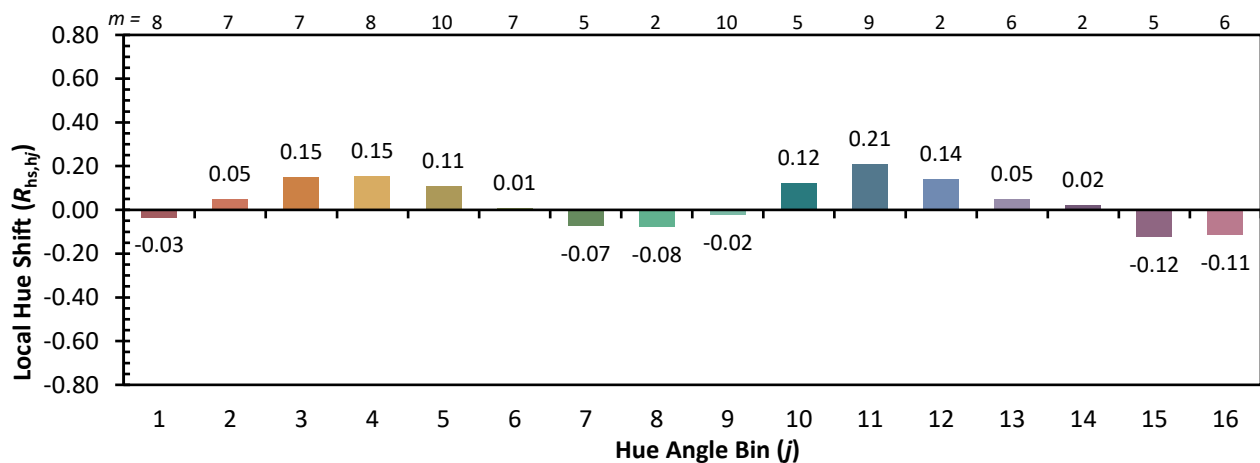
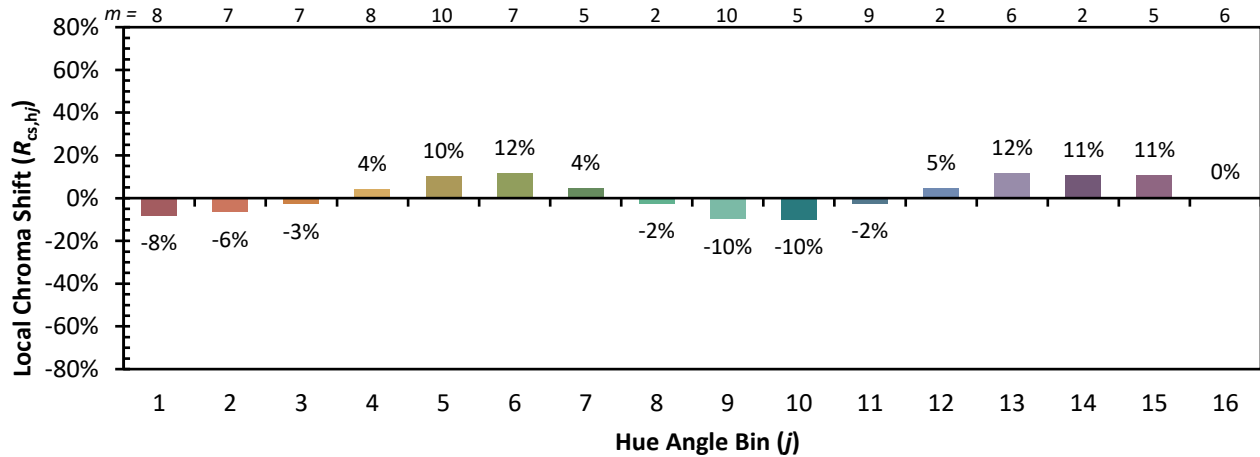


**Individual Sample Fidelity Index ( $R_{f,i}$ )**

CES01 = 85	CES26 = 67	CES51 = 92	CES76 = 54
CES02 = 60	CES27 = 88	CES52 = 91	CES77 = 71
CES03 = 31	CES28 = 81	CES53 = 82	CES78 = 55
CES04 = 69	CES29 = 66	CES54 = 92	CES79 = 81
CES05 = 47	CES30 = 80	CES55 = 90	CES80 = 75
CES06 = 50	CES31 = 69	CES56 = 81	CES81 = 79
CES07 = 40	CES32 = 61	CES57 = 80	CES82 = 90
CES08 = 39	CES33 = 76	CES58 = 81	CES83 = 87
CES09 = 29	CES34 = 68	CES59 = 93	CES84 = 87
CES10 = 73	CES35 = 82	CES60 = 94	CES85 = 82
CES11 = 56	CES36 = 95	CES61 = 91	CES86 = 83
CES12 = 62	CES37 = 75	CES62 = 89	CES87 = 78
CES13 = 42	CES38 = 87	CES63 = 80	CES88 = 85
CES14 = 74	CES39 = 94	CES64 = 79	CES89 = 81
CES15 = 71	CES40 = 87	CES65 = 75	CES90 = 86
CES16 = 46	CES41 = 91	CES66 = 72	CES91 = 80
CES17 = 48	CES42 = 71	CES67 = 69	CES92 = 77
CES18 = 56	CES43 = 72	CES68 = 75	CES93 = 86
CES19 = 70	CES44 = 99	CES69 = 80	CES94 = 71
CES20 = 65	CES45 = 81	CES70 = 66	CES95 = 79
CES21 = 85	CES46 = 83	CES71 = 59	CES96 = 86
CES22 = 77	CES47 = 83	CES72 = 87	CES97 = 85
CES23 = 91	CES48 = 83	CES73 = 56	CES98 = 82
CES24 = 90	CES49 = 82	CES74 = 95	CES99 = 84
CES25 = 71	CES50 = 91	CES75 = 58	



Color Rendition by Hue-Angle Bin



Measure Comparisons



(END OF REPORT)