

Cooper Lighting Solutions Photometric Lab
1121 Highway 74 South
Peachtree City, GA 30269



Scaled data based on original data using
LM-79-2019 Approved Method: Electrical and Photometric Measurements of Solid-
State Lighting Products

Test Report Prepared for
Cooper Lighting Solutions

Brand: METALUX

Report Number: P1444635

Luminaire Tested: EHBR1-60-UNV-TA-L850-UPL15

Issue Date: 5/1/2026

Test Information

Test Method: LM-79-2019
Report Number: P1444635
REPORT IS A COMBINATION OF REPORTS P1444317 AND P1431635
Test Lab: INNOVATION CENTER
Issue Date: 5/1/2026
Manufacturer: COOPER LIGHTING SOLUTIONS
Product Line: METALUX
Catalog Number: EHBR1-60-UNV-TA-L850-UPL15
Description: Elevate Round Highbay at, 60000 lumens, 5000K 80CRI LEDs with TA lens
Light Source: -
Ballast/Driver: -

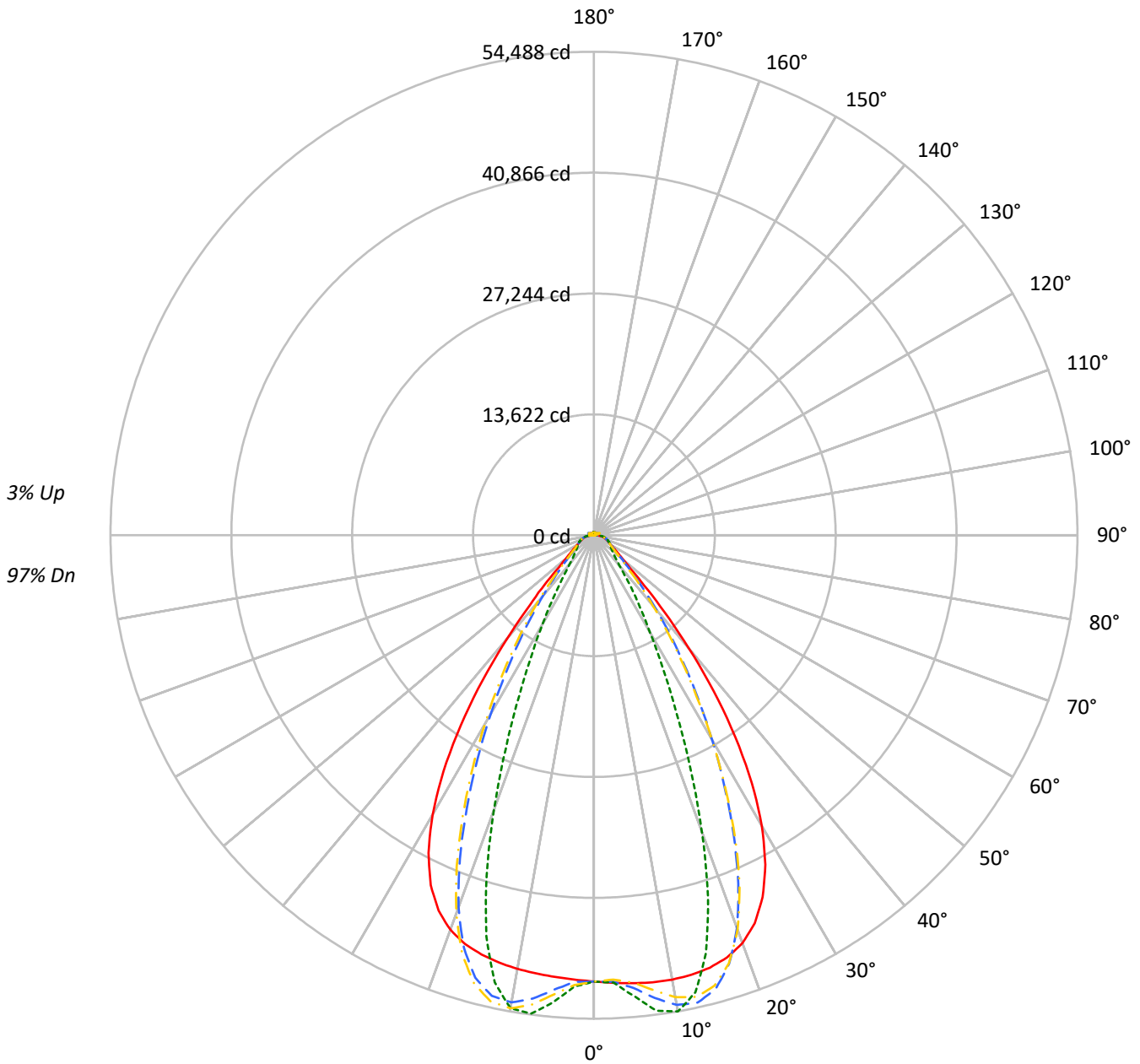
Summary

Lumens per Lamp: N/A
Luminaire Lumens: 59693.1 lumens
Efficiency: N/A
Efficacy: 175.7 lumens/watt
Spacing Criteria (0/90/45): 1.13 / 0.77 / 0.88
Luminous Opening: Vertical Cylinder (Dia: 1.71' x H: 0.1')
CIE Type: Direct

Input Watts (W): 339.7
Input Voltage (V): NR
Input Current (Ain): NR
Voltage Rise (V): NR
Power Factor: NR
Total Harmonic Distortion (THDi): NR
Frequency (hertz): 60
Stabilization Time: NR
Operation Time: NR
Ambient Temperature (°C): NR
Test Distance: 24 FT

TEST NUMBER: P1444635
CATALOG NUMBER: EHBR1-60-UNV-TA-L850-UPL15

Luminous Intensity Polar Plot



— 0°-180° - - 45°-225° - · - · 90°-270° - · - · 135°-315°



TEST NUMBER: P1444635
 CATALOG NUMBER: EHBR1-60-UNV-TA-L850-UPL15

COEFFICIENT OF UTILIZATION - ZONAL CAVITY METHOD:

RF	20				20				20				20				20				
RC	80				70				50				30				10			0	
RW	70	50	30	10	70	50	30	10	50	30	10	50	30	10	50	30	10	50	30	10	0
RCR																					
0	118	118	118	118	115	115	115	115	109	109	109	104	104	104	99	99	99	99	99	99	97
1	111	108	105	102	108	105	103	100	101	98	96	96	95	93	92	91	90	92	91	90	88
2	104	99	94	90	102	97	92	88	93	89	86	89	86	84	86	84	81	86	84	81	79
3	98	91	85	80	96	89	84	79	86	81	77	83	79	76	80	77	74	80	77	74	72
4	92	84	77	72	90	82	76	72	80	74	70	77	73	69	75	71	68	75	71	68	66
5	87	78	71	66	85	76	70	65	74	69	65	72	67	64	70	66	63	70	66	63	61
6	82	72	65	60	80	71	65	60	69	64	59	67	63	59	66	62	58	66	62	58	56
7	78	67	61	56	76	66	60	56	65	59	55	63	58	55	62	57	54	62	57	54	52
8	74	63	56	52	72	62	56	52	61	55	51	60	54	51	58	54	50	58	54	50	49
9	70	59	53	48	68	59	52	48	57	52	48	56	51	47	55	50	47	55	50	47	46
10	66	56	49	45	65	55	49	45	54	49	45	53	48	44	52	47	44	52	47	44	43

AVERAGE LUMINANCE (cd/sqm):

	0°	90°	180°	270°
0°	236199	236199	236199	236199
5°	237342	244263	234021	247463
10°	239324	256458	233584	254761
15°	240497	232477	233176	223116
20°	238011	173187	230221	160239
25°	225287	109531	217842	99381
30°	196805	65820	189182	60154
35°	151463	41302	142750	36587
40°	95813	25908	87662	24346
45°	49384	20184	48566	19852
50°	28954	17953	28065	17673
55°	22181	16985	21361	16833
60°	18769	17351	17969	17127
65°	17628	18120	16954	17501
70°	17223	18973	16365	18260
75°	18415	20121	17421	19232
80°	19056	22282	17277	20340
85°	17946	21499	14501	18409

MAXIMUM LUMINANCE 45°-90°:

Horizontal Angle: 25°
 Vertical Angle: 45°
 Luminance: 75576 cd/sqm



TEST NUMBER: P1444635
 CATALOG NUMBER: EHBR1-60-UNV-TA-L850-UPL15

ZONAL LUMENS:

Zone	Lumens	% Fixture
0°-10°	4956.9	8.3
10°-20°	13944.2	23.4
20°-30°	15881.3	26.6
30°-40°	11414.8	19.1
40°-50°	5264.5	8.8
50°-60°	2519.3	4.2
60°-70°	1838.2	3.1
70°-80°	1396.5	2.3
80°-90°	637.8	1.1
90°-100°	59.0	0.1
100°-110°	269.7	0.5
110°-120°	496.8	0.8
120°-130°	322.1	0.5
130°-140°	230.8	0.4
140°-150°	190.1	0.3
150°-160°	144.7	0.2
160°-170°	93.3	0.2
170°-180°	33.2	0.1
0°-30°	34782.4	58.3
0°-40°	46197.2	77.4
0°-60°	53980.9	90.4
0°-90°	57853.4	96.9
90°-120°	825.5	1.4
90°-150°	1568.5	2.6
90°-180°	1840.0	3.1
0°-180°	59693.1	100.0

CANDELA DISTRIBUTION:

	0°	90°	180°	270°	360°	Flux
0°	50297	50297	50297	50297	50297	
5°	50676	52154	49967	52837	50676	4843
15°	50455	48772	48919	46809	50455	14216
25°	44990	21873	43503	19846	44990	20395
35°	27799	7580	26200	6715	27799	17061
45°	7990	3266	7858	3212	7990	6796
55°	2998	2295	2887	2275	2998	2767
65°	1840	1891	1770	1827	1840	1838
75°	1297	1417	1227	1355	1297	1349
85°	617	739	498	633	617	580
90°	150	195	31	42	150	96
95°	26	28	27	29	26	25
105°	104	128	74	129	104	135
115°	441	518	461	519	441	409
125°	358	349	401	351	358	325
135°	316	257	338	262	316	246
145°	311	280	328	288	311	196
155°	312	302	328	308	312	145
165°	330	322	340	326	330	93
175°	348	349	353	351	348	33
180°	353	353	353	353	353	



TEST NUMBER: P1444635
 CATALOG NUMBER: EHBR1-60-UNV-TA-L850-UPL15

CANDELA DISTRIBUTION (FULL):

	0°	2.5°	5°	7.5°	10°	12.5°	15°	17.5°	20°	22.5°	25°
0°	50296.9	50296.9	50296.9	50296.9	50296.9	50296.9	50296.9	50296.9	50296.9	50296.9	50296.9
2.5°	50489.0	50485.0	50484.2	50480.7	50479.7	50479.7	50478.0	50474.0	50471.3	50465.5	50459.1
5°	50676.3	50674.2	50675.5	50675.8	50672.3	50664.5	50652.2	50637.0	50618.1	50600.1	50584.1
7.5°	50821.2	50824.8	50829.3	50828.3	50817.3	50798.8	50773.7	50759.5	50767.9	50795.3	50858.0
10°	50847.6	50869.4	50877.7	50875.1	50853.1	50837.2	50843.4	50896.8	51002.7	51144.3	51337.8
12.5°	50744.6	50771.1	50770.1	50761.4	50740.2	50761.8	50838.9	50997.5	51224.9	51504.0	51831.4
15°	50455.1	50489.4	50479.7	50468.4	50454.1	50525.2	50679.4	50954.9	51306.1	51699.6	52102.4
17.5°	49893.1	49934.5	49914.4	49901.5	49889.5	50022.6	50287.6	50691.0	51133.3	51578.4	51960.2
20°	48918.2	48946.0	48898.1	48875.5	48894.5	49155.3	49545.4	50060.6	50526.9	50947.8	51208.7
22.5°	47327.3	47361.7	47271.7	47261.2	47372.3	47772.9	48266.5	48842.5	49280.6	49614.2	49714.7
25°	44989.7	45023.6	44916.6	44980.6	45169.6	45715.1	46303.1	46919.2	47292.9	47540.1	47471.8
27.5°	41834.6	41865.5	41764.1	41894.6	42193.4	42910.3	43602.3	44270.5	44603.6	44776.8	44557.4
30°	37855.3	37919.7	37799.8	37982.0	38438.0	39368.8	40161.5	40910.9	41243.1	41374.9	41033.4
32.5°	33129.2	33220.8	33088.5	33359.7	33996.0	35114.1	36014.7	36851.9	37219.3	37369.8	36984.1
35°	27798.8	27930.0	27778.4	28185.2	28970.1	30215.2	31212.4	32147.2	32582.3	32795.5	32406.9
37.5°	22151.4	22276.5	22194.5	22737.1	23599.0	24889.6	25907.5	26915.9	27407.3	27727.4	27420.9
40°	16606.9	16721.4	16783.4	17404.0	18214.7	19430.9	20408.7	21406.5	21956.2	22357.9	22168.9
42.5°	11721.2	11836.7	12047.6	12646.3	13322.4	14329.2	15166.8	16062.6	16587.7	17016.3	16943.4
45°	7990.1	8124.1	8388.5	8878.7	9367.7	10090.0	10705.0	11401.7	11830.7	12223.2	12227.9
47.5°	5599.1	5693.2	5929.4	6264.2	6582.9	7487.2	7524.3	7866.7	8155.1	8448.5	8486.5
50°	4315.1	4371.8	4497.1	4683.6	4864.2	5098.9	5313.9	5562.0	5739.5	5900.4	5938.8
52.5°	3546.7	3582.8	3646.5	3747.5	3852.3	3980.0	4094.9	4231.3	4327.8	4413.9	4432.0
55°	2997.6	3027.4	3122.3	3141.5	3261.4	3284.4	3335.5	3418.5	3474.6	3526.3	3539.1
57.5°	2583.2	2604.8	2624.9	2668.1	2704.9	2758.6	2801.9	2861.4	2896.7	2934.1	2937.2
60°	2256.3	2271.9	2286.3	2316.1	2341.3	2378.6	2408.4	2448.8	2474.2	2502.2	2505.3
62.5°	2013.0	2024.2	2033.7	2053.5	2071.3	2100.0	2123.7	2157.5	2181.1	2202.8	2207.6
65°	1840.0	1848.3	1854.3	1869.3	1884.9	1909.4	1930.8	1958.4	1975.8	1992.4	1995.9
67.5°	1686.8	1694.6	1700.9	1714.6	1725.4	1743.6	1758.0	1778.7	1791.8	1804.9	1805.3
70°	1511.2	1518.5	1523.3	1536.0	1544.7	1560.4	1571.9	1590.6	1604.1	1618.8	1622.5
72.5°	1389.6	1394.0	1400.4	1412.0	1424.1	1440.9	1456.4	1475.8	1492.0	1507.3	1513.8
75°	1297.2	1302.2	1306.5	1316.4	1324.8	1338.9	1350.5	1368.2	1382.4	1398.8	1406.8
77.5°	1163.7	1169.5	1173.2	1183.2	1190.4	1204.0	1212.5	1228.4	1239.9	1254.9	1262.1
80°	1002.5	1007.9	1010.5	1019.8	1025.6	1038.1	1046.5	1061.7	1071.5	1086.4	1095.1
82.5°	823.7	828.9	830.4	839.2	842.4	852.6	858.8	874.4	886.4	905.8	919.2
85°	616.8	618.6	621.7	619.4	631.9	632.7	646.8	649.5	668.0	673.0	694.2
87.5°	377.1	382.7	385.4	394.1	397.8	406.4	409.0	418.2	423.2	433.6	438.4
90°	150.1	158.0	160.4	169.8	171.9	180.2	181.7	191.2	193.5	203.3	206.2
92.5°	23.8	24.9	25.9	27.7	28.9	31.2	32.9	34.5	35.9	37.9	40.5
95°	26.4	27.8	29.2	30.5	31.8	33.2	34.6	35.9	37.2	38.6	42.3
97.5°	32.4	33.6	34.8	36.0	37.1	38.3	39.5	40.7	41.8	42.8	47.5
100°	41.1	42.0	43.0	44.0	45.0	46.1	47.1	48.0	49.0	50.0	58.5
102.5°	64.2	67.8	71.3	74.8	78.3	81.6	85.4	88.6	92.1	95.7	113.8
105°	104.0	113.4	123.2	132.5	142.0	151.7	161.2	170.3	180.0	189.3	219.4
107.5°	171.9	189.4	207.1	224.7	242.4	259.9	277.6	295.1	312.6	329.8	360.4
110°	309.2	323.1	337.3	351.4	365.4	379.7	393.8	407.4	421.7	435.6	457.8



TEST NUMBER: P1444635
 CATALOG NUMBER: EHBR1-60-UNV-TA-L850-UPL15

CANDELA DISTRIBUTION (continued):

	0°	2.5°	5°	7.5°	10°	12.5°	15°	17.5°	20°	22.5°	25°
112.5°	414.7	420.8	427.1	433.4	439.7	445.8	452.0	458.1	464.4	470.3	486.0
115°	440.7	442.6	444.8	446.5	448.7	450.5	452.4	454.1	456.2	457.7	468.3
117.5°	433.5	432.7	432.0	431.4	430.3	429.6	428.7	427.7	426.7	425.6	431.2
120°	411.7	409.2	407.0	404.2	401.9	399.1	396.7	394.1	391.2	388.4	390.6
122.5°	383.2	380.2	377.7	374.4	371.5	368.3	365.3	361.7	358.8	355.5	355.7
125°	357.8	354.7	352.2	348.9	345.7	342.3	339.1	335.6	332.3	328.7	328.4
127.5°	336.9	334.7	332.6	329.8	327.2	324.5	321.7	318.7	316.3	313.0	312.4
130°	326.2	324.2	322.0	319.3	317.0	314.3	311.6	308.5	306.0	302.8	302.0
132.5°	318.7	317.3	315.5	313.3	311.3	308.6	306.5	303.6	301.3	298.8	297.8
135°	316.3	314.5	313.0	311.0	308.9	306.4	303.9	301.4	298.9	296.3	295.5
137.5°	314.9	313.4	311.8	309.7	307.7	305.1	302.9	300.3	297.9	295.3	294.4
140°	313.9	312.5	310.8	308.7	307.0	304.7	302.3	299.9	297.5	294.9	294.3
142.5°	311.6	310.0	308.8	307.0	305.2	303.0	301.0	298.5	296.5	294.1	293.7
145°	311.4	310.1	308.9	307.5	305.6	303.4	301.7	299.4	297.6	295.5	295.0
147.5°	311.4	310.3	309.3	307.8	306.5	304.6	302.8	300.8	299.1	297.2	297.0
150°	311.5	310.5	309.6	308.3	306.8	305.2	303.5	301.9	300.1	298.2	298.0
152.5°	310.6	309.5	308.7	307.5	306.1	304.3	303.2	301.4	299.9	298.1	297.8
155°	312.4	311.3	310.1	309.0	307.6	306.3	304.8	303.3	302.0	300.3	300.0
157.5°	315.4	314.1	313.3	312.0	311.1	309.8	308.5	307.2	306.0	304.7	304.2
160°	319.9	318.8	317.9	316.7	315.4	314.0	313.0	311.6	310.8	309.3	309.0
162.5°	324.7	323.6	322.5	321.3	320.2	318.9	317.9	316.9	315.8	314.4	314.1
165°	329.9	329.3	328.3	327.4	326.4	325.5	324.5	323.5	322.5	321.4	321.1
167.5°	336.8	335.8	335.2	334.2	333.1	332.4	331.3	330.3	329.7	328.5	328.2
170°	341.6	340.8	340.2	339.6	338.9	338.1	337.6	336.8	336.0	335.3	335.2
172.5°	345.8	345.1	344.7	344.3	343.5	343.2	342.6	342.0	341.6	340.9	341.1
175°	348.1	347.6	347.4	347.0	346.6	346.3	346.1	345.8	345.8	345.2	345.1
177.5°	351.0	350.8	350.8	350.6	350.6	350.5	350.3	349.9	349.7	349.7	349.7
180°	353.1	353.1	353.1	353.1	353.1	353.1	353.1	353.1	353.1	353.1	353.1



TEST NUMBER: P1444635
 CATALOG NUMBER: EHBR1-60-UNV-TA-L850-UPL15

CANDELA DISTRIBUTION (continued):

	27.5°	30°	32.5°	35°	37.5°	40°	42.5°	45°	47.5°	50°	52.5°
0°	50296.9	50296.9	50296.9	50296.9	50296.9	50296.9	50296.9	50296.9	50296.9	50296.9	50296.9
2.5°	50454.1	50448.1	50439.6	50429.0	50419.9	50409.3	50384.1	50376.6	50385.0	50390.6	50402.2
5°	50574.1	50577.6	50578.9	50601.8	50621.6	50670.9	51058.0	51211.8	51330.6	51406.2	51520.8
7.5°	50935.5	51051.8	51166.8	51321.5	51455.0	51635.2	52312.3	52600.4	52805.3	52952.6	53133.8
10°	51548.0	51801.9	52039.9	52318.8	52558.5	52833.1	53463.4	53744.1	53921.4	54050.4	54170.8
12.5°	52165.0	52517.1	52835.4	53145.7	53405.2	53643.2	53864.9	53963.1	53971.5	53975.6	53911.7
15°	52486.4	52823.0	53103.3	53308.6	53461.1	53528.6	53147.0	52946.8	52693.8	52485.5	52142.7
17.5°	52283.5	52485.5	52606.6	52594.7	52531.7	52320.7	51239.9	50645.4	50055.2	49523.4	48826.1
20°	51381.9	51366.5	51261.2	50962.7	50603.2	50043.9	48191.1	47122.0	46088.4	45180.6	44079.3
22.5°	49704.5	49440.5	49072.6	48429.1	47714.2	46737.2	44081.9	42509.4	41070.5	39799.4	38375.5
25°	47273.9	46730.9	46052.2	45030.7	43919.7	42494.8	39222.1	37266.2	35538.5	34040.2	32397.2
27.5°	44163.3	43345.4	42350.7	40936.8	39431.8	37606.3	33977.9	31819.3	29964.8	28358.4	26609.6
30°	40480.7	39416.9	38132.5	36377.7	34562.4	32491.9	28811.9	26625.5	24748.4	23095.7	21345.7
32.5°	36319.0	35073.0	33568.0	31598.4	29635.2	27506.4	23952.5	21836.1	20043.0	18453.1	16869.2
35°	31729.0	30392.8	28800.5	26791.6	24840.2	22770.5	19509.4	17601.3	16017.7	14612.4	13333.4
37.5°	26805.2	25493.3	23979.9	22086.5	20276.9	18401.4	15587.7	13988.6	12659.8	11493.4	10505.9
40°	21686.0	20537.9	19228.4	17591.5	16047.2	14485.3	12175.5	10906.2	9857.6	8968.0	8228.0
42.5°	16629.3	15739.5	14735.5	13441.9	12260.1	11070.9	9293.1	8352.7	7575.9	6935.6	6412.4
45°	12065.1	11470.0	10796.4	9897.2	9079.5	8250.0	6984.7	6323.8	5817.9	5405.0	5055.9
47.5°	8434.1	8088.9	8067.8	7236.8	6637.2	6130.0	5314.8	4897.4	4587.4	4337.3	4116.2
50°	5923.0	5756.1	5548.6	5251.9	4973.7	4687.0	4190.4	3938.1	3756.4	3604.9	3465.1
52.5°	4427.9	4341.2	4230.7	4073.3	3922.5	3761.3	3447.0	3286.3	3229.3	3088.2	2977.5
55°	3536.7	3486.9	3424.1	3331.6	3239.9	3203.2	2933.9	2814.5	2739.1	2683.3	2623.9
57.5°	2937.8	2900.7	2863.3	2800.8	2747.6	2683.3	2540.4	2479.2	2434.3	2401.5	2360.3
60°	2505.9	2483.7	2462.8	2426.0	2397.3	2362.7	2271.9	2237.4	2214.0	2194.2	2167.9
62.5°	2211.7	2200.3	2189.5	2170.0	2155.4	2136.6	2074.5	2058.0	2046.2	2036.3	2020.3
65°	1999.4	1991.2	1985.2	1972.2	1964.9	1953.9	1900.6	1889.4	1882.1	1878.6	1869.3
67.5°	1806.5	1797.9	1793.9	1784.7	1781.7	1774.8	1731.2	1725.0	1722.6	1723.7	1720.4
70°	1626.1	1622.5	1624.3	1622.8	1626.9	1628.2	1601.8	1601.6	1604.4	1610.0	1610.5
72.5°	1517.9	1517.9	1520.0	1520.9	1524.8	1526.7	1504.7	1503.6	1504.9	1509.0	1509.2
75°	1415.0	1416.6	1422.2	1424.1	1428.8	1429.7	1400.6	1397.3	1397.5	1401.4	1400.1
77.5°	1272.6	1278.7	1289.3	1294.9	1303.9	1305.5	1272.9	1269.0	1269.2	1273.1	1269.8
80°	1111.0	1122.7	1139.6	1151.4	1165.2	1170.8	1137.3	1129.2	1121.8	1120.7	1114.0
82.5°	939.3	953.7	973.9	984.6	999.4	1002.7	946.5	935.9	929.6	930.1	924.0
85°	717.1	727.9	746.3	752.3	761.5	760.7	696.6	669.2	676.5	665.1	674.0
87.5°	449.8	456.2	467.7	469.1	473.5	472.6	408.0	395.4	391.6	391.8	387.2
90°	216.1	219.8	229.4	229.1	235.4	233.8	181.1	174.6	170.5	173.5	167.4
92.5°	43.6	45.9	48.8	51.4	54.2	56.9	53.6	54.5	52.6	49.7	47.8
95°	46.4	50.3	54.3	58.2	62.3	66.2	70.2	74.2	70.4	66.6	62.9
97.5°	52.3	56.9	61.4	66.1	70.8	75.4	80.2	84.9	80.9	76.5	72.6
100°	67.3	76.0	84.6	93.4	102.0	110.7	119.4	128.2	120.5	112.5	104.8
102.5°	132.2	150.9	169.2	187.6	206.1	224.7	243.4	262.0	244.3	226.3	208.5
105°	249.4	279.3	309.2	338.9	368.8	398.7	429.3	459.2	430.8	402.5	374.1
107.5°	390.8	421.1	451.2	481.3	511.8	542.0	573.2	603.5	575.8	547.8	520.1
110°	479.8	501.6	523.6	545.5	567.3	589.2	612.4	634.4	617.6	600.7	583.8



TEST NUMBER: P1444635
 CATALOG NUMBER: EHBR1-60-UNV-TA-L850-UPL15

CANDELA DISTRIBUTION (continued):

	27.5°	30°	32.5°	35°	37.5°	40°	42.5°	45°	47.5°	50°	52.5°
112.5°	501.4	517.0	532.6	547.8	563.1	578.7	595.9	611.7	602.8	593.8	585.2
115°	478.3	488.9	498.8	509.0	519.1	529.3	541.4	552.1	548.8	545.4	542.2
117.5°	436.6	441.9	447.4	452.6	457.8	463.1	471.3	476.9	476.4	476.3	476.0
120°	392.3	394.1	395.9	397.7	399.2	400.9	405.8	408.1	409.6	410.8	412.2
122.5°	355.8	356.0	356.0	356.0	356.0	356.0	359.6	360.6	361.0	361.5	362.2
125°	327.9	327.4	326.9	326.4	325.5	325.0	328.9	328.9	328.1	327.0	326.1
127.5°	311.2	310.4	309.4	308.5	307.2	306.3	309.7	309.6	307.6	305.6	303.3
130°	301.2	300.3	299.3	298.3	297.5	296.6	300.5	300.8	297.9	294.8	292.0
132.5°	296.9	296.2	295.0	294.5	293.5	292.5	296.8	297.1	294.3	291.0	287.8
135°	294.4	293.8	292.9	292.0	291.1	290.8	295.4	295.9	293.0	289.8	286.8
137.5°	293.3	292.6	291.7	291.2	290.4	289.8	295.2	295.8	293.4	290.5	288.1
140°	293.5	292.8	292.1	291.7	291.0	290.9	296.5	297.4	295.6	293.1	290.9
142.5°	292.9	292.7	292.3	292.2	291.8	291.8	298.5	299.8	298.1	296.1	294.5
145°	294.5	294.6	294.2	294.2	294.1	294.3	301.9	303.6	302.3	300.9	299.4
147.5°	296.3	296.2	296.0	296.0	295.9	296.5	304.6	306.4	305.6	304.3	303.3
150°	297.6	297.6	297.3	297.5	297.8	298.2	307.6	310.0	309.2	308.3	307.4
152.5°	297.5	297.3	297.2	297.4	297.4	297.8	309.6	312.5	311.9	310.8	310.2
155°	299.6	299.4	299.0	299.1	298.9	299.5	312.6	315.6	315.0	314.4	313.7
157.5°	303.7	303.2	302.8	302.6	302.5	302.4	316.6	320.1	319.3	318.8	318.3
160°	308.3	308.0	307.5	307.3	306.8	306.7	321.3	324.7	324.3	323.6	323.0
162.5°	313.6	313.7	313.2	313.0	312.6	312.7	327.3	331.0	330.2	329.6	328.9
165°	320.6	320.1	319.7	319.5	319.1	319.0	332.9	336.1	335.7	335.1	334.5
167.5°	327.7	327.6	327.0	327.0	326.6	326.7	339.6	342.7	342.3	341.6	341.2
170°	334.8	334.8	334.4	334.3	334.4	334.6	345.3	347.9	347.6	346.7	346.3
172.5°	340.9	341.0	341.0	341.0	341.0	341.2	350.3	352.7	352.4	352.0	351.4
175°	345.2	345.1	345.2	345.5	345.6	345.6	352.7	354.5	354.3	354.0	353.6
177.5°	349.9	349.9	350.1	350.2	350.4	350.6	354.9	356.0	355.8	355.8	355.7
180°	353.1	353.1	353.1	353.1	353.1	353.1	353.1	353.1	353.1	353.1	353.1



TEST NUMBER: P1444635
 CATALOG NUMBER: EHBR1-60-UNV-TA-L850-UPL15

CANDELA DISTRIBUTION (continued):

	55°	57.5°	60°	62.5°	65°	67.5°	70°	72.5°	75°	77.5°	80°
0°	50296.9	50296.9	50296.9	50296.9	50296.9	50296.9	50296.9	50296.9	50296.9	50296.9	50296.9
2.5°	50404.8	50422.5	50425.1	50445.8	50444.1	50468.7	50464.9	50485.0	50473.2	50489.8	50475.9
5°	51588.7	51696.0	51752.1	51856.9	51890.0	51983.8	52010.3	52095.8	52099.4	52167.2	52151.8
7.5°	53262.4	53420.6	53514.6	53644.2	53709.8	53817.7	53865.2	53945.1	53970.7	54034.2	54039.0
10°	54261.9	54338.7	54392.4	54428.5	54461.5	54477.1	54495.1	54490.2	54495.1	54488.0	54503.5
12.5°	53868.7	53756.6	53682.4	53541.8	53460.4	53305.1	53228.9	53079.6	53025.3	52897.1	52878.6
15°	51877.8	51486.7	51210.4	50808.6	50556.0	50160.6	49929.3	49572.6	49409.8	49126.2	49051.8
17.5°	48248.8	47522.9	46961.2	46240.5	45740.4	45066.8	44643.4	44085.8	43780.4	43330.9	43175.2
20°	43161.2	42087.2	41244.4	40240.6	39522.2	38627.1	38054.1	37331.4	36911.8	36359.6	36135.8
22.5°	37188.2	35850.9	34798.5	33612.6	32745.8	31748.3	31061.8	30279.8	29823.3	29223.5	28957.9
25°	31031.7	29557.2	28387.1	27137.6	26221.7	25221.9	24535.2	23767.0	23294.6	22725.1	22461.2
27.5°	25143.8	23651.0	22520.3	21358.6	20518.5	19616.3	18996.7	18326.0	17906.7	17420.6	17172.3
30°	19947.7	18631.1	17668.9	16704.8	16005.9	15273.2	14758.3	14202.5	13834.7	13418.4	13181.9
32.5°	15714.4	14697.9	13944.5	13179.5	12607.5	11995.2	11550.3	11059.9	10727.9	10356.2	10142.0
35°	12445.6	11655.8	11054.9	10425.1	9933.8	9412.2	9020.2	8596.9	8299.0	7978.9	7794.0
37.5°	9833.3	9205.3	8710.7	8187.7	7784.2	7352.1	7206.5	6720.7	6412.0	6156.6	5979.7
40°	7717.2	7217.9	6808.7	6408.7	6079.4	5751.7	5488.8	5229.3	5030.0	4847.3	4720.9
42.5°	6026.5	5664.7	5365.9	5072.9	4832.8	4594.0	4403.5	4224.7	4090.5	3971.1	3889.5
45°	4790.9	4542.0	4334.3	4127.9	3958.5	3799.2	3670.9	3556.8	3470.1	3398.4	3347.5
47.5°	3935.8	3765.4	3618.9	3479.6	3364.6	3260.3	3174.3	3146.3	3053.1	2990.4	2966.5
50°	3344.9	3242.0	3130.7	3028.0	2951.2	2874.7	2819.0	2764.4	2729.6	2700.7	2691.9
52.5°	2903.8	2825.1	2763.2	2698.2	2647.5	2593.1	2554.7	2518.4	2499.1	2484.1	2482.2
55°	2575.9	2520.9	2480.0	2436.3	2406.0	2374.1	2354.1	2334.9	2326.5	2318.9	2319.5
57.5°	2327.8	2291.2	2264.4	2236.2	2219.8	2204.4	2199.4	2194.6	2197.2	2198.2	2202.6
60°	2147.1	2123.2	2106.4	2090.2	2083.3	2078.4	2082.1	2086.5	2095.2	2102.3	2108.7
62.5°	2008.6	1994.9	1986.8	1977.9	1977.2	1977.6	1985.1	1992.4	2003.3	2011.5	2017.7
65°	1865.9	1858.1	1855.5	1849.9	1852.7	1854.3	1863.3	1868.9	1879.9	1886.5	1894.2
67.5°	1721.8	1720.0	1721.6	1721.6	1726.6	1731.0	1739.5	1745.9	1755.2	1761.1	1767.5
70°	1615.4	1616.1	1620.1	1620.8	1626.2	1629.2	1636.7	1640.7	1649.1	1654.2	1661.8
72.5°	1511.9	1510.3	1511.2	1508.8	1510.6	1509.9	1514.0	1516.0	1523.1	1527.1	1536.4
75°	1401.8	1397.1	1396.0	1391.0	1391.1	1387.6	1389.2	1389.1	1393.8	1395.6	1402.3
77.5°	1268.7	1260.9	1257.1	1248.8	1248.6	1245.3	1248.8	1250.8	1259.0	1262.9	1270.6
80°	1109.5	1097.2	1091.6	1081.9	1083.6	1083.1	1091.2	1097.4	1107.4	1109.3	1119.0
82.5°	922.2	909.7	903.7	894.2	896.4	896.6	904.1	905.4	914.1	917.8	929.0
85°	660.3	665.1	651.8	652.8	650.0	655.2	660.3	666.6	673.8	686.0	695.3
87.5°	388.9	387.2	391.8	392.4	399.1	402.6	413.4	419.6	431.7	441.2	458.3
90°	168.1	162.3	166.3	164.5	171.4	169.8	176.0	173.3	180.7	181.7	191.2
92.5°	44.6	42.6	39.6	37.4	34.6	32.7	30.8	30.2	28.5	28.0	26.2
95°	59.1	55.5	51.8	48.0	44.4	40.7	39.3	37.9	36.6	35.3	33.9
97.5°	68.6	64.6	60.6	56.5	52.5	48.5	47.6	46.8	45.8	44.9	44.0
100°	97.0	89.3	81.6	73.8	66.1	58.4	57.8	57.0	56.3	55.6	54.8
102.5°	191.0	173.1	155.5	137.7	120.1	102.4	99.3	96.3	93.1	90.1	87.0
105°	345.7	317.3	289.0	260.6	232.5	204.2	195.9	187.0	178.7	170.2	161.9
107.5°	492.3	464.5	437.0	409.3	381.7	354.1	340.7	327.4	313.7	300.5	287.2
110°	566.6	549.8	533.3	516.2	499.6	483.0	469.9	457.3	444.3	431.6	418.9



TEST NUMBER: P1444635
 CATALOG NUMBER: EHBR1-60-UNV-TA-L850-UPL15

CANDELA DISTRIBUTION (continued):

	55°	57.5°	60°	62.5°	65°	67.5°	70°	72.5°	75°	77.5°	80°
112.5°	576.4	567.8	558.8	550.4	541.9	533.2	526.9	520.5	514.3	507.9	501.5
115°	538.8	535.7	532.5	529.4	526.5	523.3	522.5	522.0	521.1	520.5	520.0
117.5°	475.6	475.5	475.0	475.0	475.0	474.9	477.9	480.5	483.6	486.8	490.1
120°	413.4	414.8	416.1	417.6	419.0	420.7	424.3	428.4	432.2	436.6	440.8
122.5°	362.6	363.1	363.4	364.3	364.9	365.6	369.1	373.0	376.7	380.7	384.9
125°	324.7	323.7	322.7	321.5	320.4	319.7	322.3	325.1	328.0	331.4	334.3
127.5°	301.2	298.7	296.5	294.4	292.0	290.2	291.1	292.4	293.5	295.1	296.5
130°	288.9	286.0	282.7	279.9	276.6	273.9	273.6	273.5	273.3	273.4	273.4
132.5°	284.4	281.2	277.8	274.4	271.0	267.8	266.5	265.3	264.0	263.3	262.5
135°	283.5	280.6	277.1	274.0	270.5	267.6	265.8	264.0	262.5	261.0	259.7
137.5°	285.4	282.6	279.9	277.2	274.2	271.5	269.1	267.6	265.5	264.3	262.6
140°	288.4	286.2	283.6	281.3	278.8	276.6	274.5	273.1	271.3	270.0	268.5
142.5°	292.2	290.4	288.3	286.5	284.5	282.6	280.7	279.3	277.6	276.3	274.8
145°	297.8	296.5	294.9	293.3	291.8	290.4	288.6	287.4	286.0	284.8	283.8
147.5°	302.1	301.0	299.8	298.5	297.1	296.0	294.6	293.9	292.4	291.6	290.6
150°	306.1	305.2	303.9	303.1	301.7	300.7	299.7	298.8	297.8	297.3	296.3
152.5°	308.9	308.2	307.2	306.3	305.1	304.1	303.2	302.5	301.8	301.1	300.0
155°	312.8	312.1	311.1	310.3	309.2	308.6	307.7	306.8	306.1	305.3	304.4
157.5°	317.5	316.8	315.8	315.3	314.1	313.4	312.7	311.9	311.0	310.4	309.5
160°	322.3	321.7	320.8	320.0	319.3	318.6	317.5	316.9	315.8	315.2	314.2
162.5°	328.1	327.3	326.6	325.8	324.7	324.2	323.2	322.4	321.7	320.9	320.0
165°	333.7	333.0	332.2	331.5	330.9	330.1	329.2	328.5	327.5	326.8	325.8
167.5°	340.5	340.0	339.2	338.6	337.7	336.9	336.2	335.4	334.6	333.8	332.8
170°	345.9	345.1	344.6	343.8	343.1	342.2	341.6	340.8	339.9	339.5	338.5
172.5°	350.9	350.7	350.0	349.5	348.7	348.2	347.7	347.1	346.4	345.8	345.4
175°	353.4	353.2	353.0	352.4	352.2	352.0	351.6	351.4	351.0	350.8	350.3
177.5°	355.7	355.5	355.5	355.1	354.9	354.9	354.6	354.5	354.2	353.9	353.8
180°	353.1	353.1	353.1	353.1	353.1	353.1	353.1	353.1	353.1	353.1	353.1



TEST NUMBER: P1444635
 CATALOG NUMBER: EHBR1-60-UNV-TA-L850-UPL15

CANDELA DISTRIBUTION (continued):

	82.5°	85°	87.5°	90°	92.5°	95°	97.5°	100°	102.5°	105°	107.5°
0°	50296.9	50296.9	50296.9	50296.9	50296.9	50296.9	50296.9	50296.9	50296.9	50296.9	50296.9
2.5°	50490.4	50477.5	50483.6	50459.9	50465.5	50437.1	50434.4	50402.2	50399.0	50368.6	50357.3
5°	52199.9	52171.8	52203.4	52154.0	52163.7	52099.4	52094.0	52010.9	51982.2	51878.2	51833.3
7.5°	54078.7	54068.0	54087.4	54046.0	54044.8	53987.3	53963.6	53889.1	53842.9	53733.7	53663.9
10°	54490.2	54500.0	54484.1	54488.0	54465.7	54459.5	54436.6	54422.1	54384.5	54356.2	54314.5
12.5°	52781.1	52791.4	52726.2	52767.5	52734.9	52811.1	52804.9	52894.8	52908.6	53022.3	53065.3
15°	48830.9	48818.7	48693.6	48772.4	48730.1	48897.5	48935.0	49160.2	49280.6	49569.7	49747.3
17.5°	42863.7	42831.5	42655.3	42751.3	42702.5	42949.2	43032.0	43392.2	43616.8	44082.6	44414.6
20°	35750.5	35688.7	35482.6	35595.0	35544.6	35825.1	35943.2	36378.5	36668.2	37285.1	37724.1
22.5°	28548.8	28451.4	28249.4	28354.5	28306.9	28597.3	28751.1	29187.8	29519.6	30153.1	30665.5
25°	22081.8	21995.0	21799.8	21873.3	21855.6	22101.3	22238.1	22651.1	22977.2	23580.6	24069.7
27.5°	16842.3	16752.0	16575.7	16627.6	16609.7	16819.1	16948.0	17293.1	17573.6	18081.6	18511.0
30°	12890.3	12781.3	12631.8	12660.5	12648.2	12817.9	12938.3	13228.8	13469.3	13898.7	14268.7
32.5°	9880.4	9770.8	9633.5	9646.9	9628.8	9761.9	9861.1	10113.8	10323.4	10688.4	11010.5
35°	7559.9	7688.0	7394.6	7580.4	7386.9	7671.0	7568.8	7726.7	7906.9	8214.5	8483.2
37.5°	5811.7	5722.5	5647.0	5639.0	5638.6	5704.4	5782.2	5934.2	6093.1	6322.1	6558.9
40°	4605.5	4542.9	4494.0	4490.5	4494.0	4540.9	4598.2	4703.4	4819.7	4984.3	5158.2
42.5°	3819.9	3778.2	3748.8	3746.8	3756.0	3789.2	3829.1	3891.6	3967.3	4073.9	4193.2
45°	3306.1	3283.0	3266.6	3265.7	3269.9	3287.3	3310.2	3349.2	3397.1	3463.6	3539.1
47.5°	2945.6	2940.0	2929.7	2930.1	2925.4	2932.5	2935.1	2957.0	2982.5	3032.7	3131.2
50°	2683.1	2683.1	2676.0	2675.6	2668.9	2668.6	2663.0	2671.6	2683.5	2714.6	2746.2
52.5°	2475.6	2474.9	2467.3	2465.8	2458.7	2458.3	2453.4	2456.9	2458.5	2474.2	2493.0
55°	2313.5	2308.6	2298.5	2295.4	2292.6	2296.7	2294.8	2295.0	2293.0	2299.5	2305.1
57.5°	2197.2	2190.9	2181.3	2178.5	2177.8	2182.6	2182.8	2181.1	2172.4	2166.4	2158.1
60°	2105.1	2098.7	2088.5	2085.9	2087.3	2094.1	2093.7	2088.1	2075.1	2063.7	2050.5
62.5°	2014.7	2012.1	2006.9	2006.1	2004.8	2005.9	2001.3	1995.3	1982.4	1970.4	1955.9
65°	1893.3	1894.6	1890.7	1891.3	1886.7	1885.9	1878.8	1873.0	1859.9	1848.9	1834.2
67.5°	1767.3	1768.3	1765.1	1765.1	1762.7	1763.0	1758.8	1753.4	1742.4	1733.4	1722.0
70°	1663.5	1666.1	1664.3	1664.8	1661.8	1660.7	1654.0	1648.8	1637.4	1629.9	1619.7
72.5°	1539.1	1544.7	1544.5	1545.9	1541.4	1539.1	1531.2	1524.6	1514.4	1508.4	1500.2
75°	1405.0	1412.2	1414.3	1417.4	1411.1	1407.7	1399.0	1393.8	1385.4	1381.9	1376.5
77.5°	1273.9	1281.9	1289.5	1296.6	1286.4	1277.3	1266.3	1257.9	1245.9	1241.3	1232.9
80°	1126.9	1141.0	1157.9	1172.2	1153.7	1135.0	1116.9	1103.5	1087.7	1081.2	1070.7
82.5°	934.8	949.4	959.1	968.2	955.4	941.7	924.2	912.4	895.3	889.0	876.9
85°	710.2	728.3	734.1	738.9	730.7	723.4	707.0	684.8	674.0	657.0	648.3
87.5°	467.2	478.0	480.0	481.7	476.6	473.1	462.5	452.0	433.6	420.1	403.7
90°	190.4	197.0	192.4	194.7	188.8	190.0	179.8	176.8	162.3	157.1	144.1
92.5°	25.4	23.7	22.7	21.3	23.4	23.9	25.7	26.2	27.8	28.5	30.2
95°	32.5	31.2	29.9	28.5	29.6	30.6	31.7	32.8	33.9	35.0	36.0
97.5°	43.1	42.1	41.3	40.4	41.0	41.6	42.2	42.9	43.5	44.2	45.0
100°	54.1	53.4	52.7	52.0	52.0	52.0	52.0	52.0	52.0	52.0	52.0
102.5°	84.0	80.8	77.8	74.8	76.8	78.9	80.9	83.0	85.2	87.2	89.5
105°	153.4	145.1	136.6	128.3	136.4	144.5	152.6	160.8	168.9	177.4	185.6
107.5°	273.8	260.5	247.2	234.0	249.0	263.7	278.6	293.3	308.1	322.9	338.1
110°	406.4	393.7	381.1	368.5	384.2	399.9	415.6	431.3	447.0	462.8	478.9



TEST NUMBER: P1444635
 CATALOG NUMBER: EHBR1-60-UNV-TA-L850-UPL15

CANDELA DISTRIBUTION (continued):

	82.5°	85°	87.5°	90°	92.5°	95°	97.5°	100°	102.5°	105°	107.5°
112.5°	495.3	489.2	483.0	476.9	487.0	497.1	507.2	517.8	527.8	538.1	548.2
115°	519.4	519.0	518.7	518.3	523.2	528.0	532.7	537.7	542.7	547.5	552.5
117.5°	493.1	496.3	499.8	503.2	504.8	506.3	508.0	509.5	511.5	513.0	515.0
120°	445.3	449.3	453.9	458.5	457.9	457.3	456.8	456.2	456.1	455.7	455.9
122.5°	389.1	393.4	398.0	402.4	401.1	399.7	398.6	397.4	396.5	395.6	394.9
125°	338.0	341.2	345.1	348.7	347.3	346.0	344.9	344.0	343.0	342.0	341.6
127.5°	298.6	300.7	302.5	304.8	304.2	303.5	303.5	303.0	302.9	303.0	303.3
130°	273.9	274.4	275.4	276.1	276.3	276.5	277.1	277.7	278.7	279.4	280.6
132.5°	262.4	261.8	261.7	261.6	262.3	263.1	264.2	265.4	267.1	268.4	270.5
135°	258.9	258.0	257.4	257.0	258.0	258.9	260.3	261.8	263.8	265.8	268.1
137.5°	261.5	260.3	259.7	258.6	259.7	260.8	262.3	263.7	265.6	267.7	270.0
140°	267.4	266.3	265.8	264.8	265.9	266.8	268.3	269.7	271.5	273.6	275.7
142.5°	274.0	272.6	272.1	271.5	272.1	273.1	274.6	275.8	277.6	279.2	281.2
145°	282.7	281.7	281.2	280.5	281.0	281.8	282.7	283.8	285.2	286.2	288.0
147.5°	289.8	289.1	288.7	288.1	288.7	289.0	289.8	290.3	291.4	292.3	293.6
150°	296.0	295.1	294.7	294.4	294.6	294.7	295.3	295.5	296.2	296.7	297.8
152.5°	299.7	298.9	298.8	298.3	298.3	298.4	298.8	299.1	299.5	299.9	300.9
155°	304.0	303.4	302.9	302.3	302.1	302.0	302.1	302.0	302.2	302.2	302.6
157.5°	309.1	308.3	308.0	307.3	307.0	306.5	306.5	306.2	306.2	305.7	305.8
160°	313.7	312.8	312.1	311.4	311.3	310.7	310.6	310.1	310.1	309.9	309.8
162.5°	319.4	318.7	318.2	317.4	317.0	316.3	315.9	315.1	314.8	314.4	314.2
165°	324.9	324.1	323.5	322.4	322.1	321.7	321.2	320.7	320.4	320.0	319.9
167.5°	332.3	331.3	330.6	329.8	329.4	328.5	328.2	327.6	327.2	326.7	326.6
170°	338.0	337.2	336.7	336.0	335.7	335.2	335.0	334.4	334.2	334.0	334.0
172.5°	345.0	344.3	343.8	343.3	343.0	342.6	342.4	342.2	341.8	341.8	341.6
175°	350.1	349.7	349.5	349.1	348.8	348.7	348.4	348.3	348.2	347.9	347.8
177.5°	353.4	353.1	353.0	352.9	352.7	352.7	352.7	352.7	352.7	352.5	352.3
180°	353.1	353.1	353.1	353.1	353.1	353.1	353.1	353.1	353.1	353.1	353.1



TEST NUMBER: P1444635
 CATALOG NUMBER: EHBR1-60-UNV-TA-L850-UPL15

CANDELA DISTRIBUTION (continued):

	110°	112.5°	115°	117.5°	120°	122.5°	125°	127.5°	130°	132.5°	135°
0°	50296.9	50296.9	50296.9	50296.9	50296.9	50296.9	50296.9	50296.9	50296.9	50296.9	50296.9
2.5°	50324.7	50311.4	50276.5	50259.4	50227.1	50210.9	50185.8	50169.6	50149.2	50134.1	50126.3
5°	51718.9	51654.7	51525.6	51446.2	51307.0	51215.3	51077.0	50975.5	50832.8	50727.4	50592.5
7.5°	53533.1	53434.3	53269.1	53143.8	52949.0	52800.1	52581.5	52406.6	52165.0	51964.5	51717.6
10°	54271.6	54214.0	54139.9	54059.3	53951.4	53845.5	53696.2	53544.1	53341.3	53139.6	52876.0
12.5°	53180.0	53234.3	53341.3	53391.2	53473.1	53500.8	53538.3	53520.7	53487.6	53405.2	53285.7
15°	50088.4	50315.0	50672.8	50920.4	51267.3	51510.9	51833.3	52040.7	52279.7	52422.4	52558.2
17.5°	45002.9	45441.0	46072.5	46576.4	47252.8	47802.8	48476.6	49006.0	49617.2	50086.2	50585.4
20°	38489.1	39102.6	39974.4	40714.9	41695.0	42526.2	43590.9	44482.9	45523.4	46390.8	47326.9
22.5°	31478.6	32200.2	33199.1	34092.2	35262.6	36308.1	37642.1	38821.5	40228.1	41488.2	42882.2
25°	24864.9	25572.1	26589.7	27514.5	28777.9	29929.5	31387.0	32740.0	34372.4	35894.5	37642.1
27.5°	19193.3	19821.5	20716.1	21548.3	22705.6	23836.2	25315.3	26758.1	28499.8	30135.7	32019.0
30°	14822.7	15332.3	16049.1	16718.6	17647.6	18572.2	19889.8	21224.0	22957.2	24652.4	26583.2
32.5°	11487.1	11921.6	12519.9	13063.5	13779.3	14476.5	15446.7	16513.0	18033.4	19657.1	21524.0
35°	8892.3	9264.0	9773.3	10241.5	10830.2	11383.6	12107.7	12868.7	14028.9	15394.8	17065.5
37.5°	7089.4	7241.0	7604.4	7988.1	8477.0	8931.9	9498.1	10060.9	10891.0	11968.6	13333.4
40°	5391.4	5632.1	5927.9	6230.1	6600.2	6965.0	7586.3	7885.5	8432.1	9205.7	10265.0
42.5°	4350.1	4519.5	4727.6	4937.7	5195.7	5449.8	5764.0	6084.1	6492.8	7016.7	7770.1
45°	3640.3	3750.6	3884.9	4024.9	4194.3	4367.7	4578.1	4797.9	5074.7	5396.8	5854.5
47.5°	3166.1	3227.1	3314.7	3410.3	3526.5	3646.5	3783.3	3923.3	4095.3	4286.4	4547.0
50°	2795.9	2846.8	2914.8	2978.8	3058.9	3182.0	3236.2	3313.5	3417.1	3529.4	3675.2
52.5°	2528.0	2562.0	2604.6	2641.3	2692.0	2738.1	2798.5	2851.8	2923.5	2990.8	3085.0
55°	2319.5	2331.7	2356.0	2379.7	2414.7	2446.2	2487.6	2522.5	2568.1	2608.5	2667.9
57.5°	2158.4	2159.5	2170.7	2183.0	2205.5	2225.4	2253.8	2276.7	2308.5	2334.2	2369.7
60°	2042.6	2036.5	2038.7	2043.0	2055.7	2068.6	2086.9	2101.7	2121.7	2136.3	2156.2
62.5°	1946.3	1936.6	1934.3	1933.2	1939.5	1944.2	1954.1	1961.4	1972.7	1979.1	1989.7
65°	1824.6	1813.2	1808.7	1803.5	1805.3	1803.9	1807.6	1807.8	1813.6	1814.9	1821.0
67.5°	1714.2	1704.6	1698.9	1691.8	1688.6	1683.6	1681.4	1676.6	1675.8	1671.7	1670.8
70°	1613.5	1604.3	1599.3	1592.9	1589.5	1582.7	1578.7	1570.5	1565.7	1558.0	1553.7
72.5°	1497.0	1491.8	1490.3	1485.9	1484.7	1481.0	1479.3	1473.5	1470.2	1463.7	1460.0
75°	1375.3	1371.1	1370.7	1366.2	1365.8	1361.3	1360.2	1354.1	1350.9	1344.3	1341.6
77.5°	1230.3	1223.9	1222.1	1216.8	1218.1	1216.0	1217.8	1213.1	1211.1	1204.6	1202.5
80°	1067.0	1058.8	1055.5	1048.6	1050.4	1047.2	1050.4	1050.1	1052.4	1047.2	1046.3
82.5°	873.5	864.5	862.8	858.0	861.2	861.6	868.4	864.7	866.3	861.4	863.4
85°	635.6	629.0	619.6	618.3	612.4	618.5	610.5	615.9	607.1	613.2	605.1
87.5°	394.1	380.2	373.0	363.1	359.4	349.9	346.0	339.1	341.1	338.0	339.8
90°	141.6	130.1	127.8	118.4	117.9	109.8	111.0	105.4	107.6	101.7	104.5
92.5°	30.8	32.0	34.0	36.7	38.5	40.7	42.6	45.4	47.1	49.7	51.5
95°	37.1	38.2	41.1	44.0	46.9	49.7	52.8	55.7	58.5	61.5	64.3
97.5°	45.7	46.3	49.1	52.1	54.9	57.9	60.7	64.0	66.9	69.8	72.7
100°	52.0	52.2	60.4	68.6	76.8	85.1	93.3	101.5	110.1	118.3	126.5
102.5°	91.5	93.6	114.3	135.3	156.1	176.8	197.7	218.7	239.5	260.6	281.4
105°	193.6	201.9	233.5	265.4	297.0	329.0	360.8	392.9	424.7	456.7	488.5
107.5°	352.8	367.9	396.6	425.4	454.1	483.0	512.0	540.7	569.6	598.6	627.8
110°	494.6	510.5	529.8	549.3	568.8	588.2	607.5	627.1	646.8	666.3	686.1



TEST NUMBER: P1444635
 CATALOG NUMBER: EHBR1-60-UNV-TA-L850-UPL15

CANDELA DISTRIBUTION (continued):

	110°	112.5°	115°	117.5°	120°	122.5°	125°	127.5°	130°	132.5°	135°
112.5°	558.4	568.9	580.2	591.9	603.4	615.0	626.5	638.2	650.0	661.9	673.5
115°	557.7	562.9	567.4	572.4	576.9	581.9	586.8	591.9	597.1	602.0	607.2
117.5°	516.7	519.0	520.0	521.2	522.4	523.9	525.3	526.9	528.7	530.2	531.6
120°	455.5	455.5	455.4	455.4	455.2	455.4	455.7	455.9	456.2	456.7	456.9
122.5°	394.0	393.6	393.5	393.7	393.8	394.3	394.7	395.5	395.8	396.3	396.8
125°	341.0	340.8	342.3	343.9	345.6	347.4	349.1	351.4	353.2	355.2	357.3
127.5°	303.4	304.1	306.9	309.7	312.5	315.5	318.6	321.8	324.5	328.0	330.8
130°	281.9	283.4	286.5	290.3	293.5	297.2	300.9	304.8	308.0	311.8	315.2
132.5°	272.3	274.6	277.6	281.2	284.6	288.2	291.7	295.4	298.9	302.7	305.9
135°	270.4	273.0	276.0	279.4	282.6	286.2	289.4	293.0	296.1	299.6	302.6
137.5°	272.2	274.8	277.7	280.5	283.2	286.4	289.2	292.2	294.9	297.9	300.6
140°	278.0	280.5	282.4	284.8	286.8	289.0	291.0	293.3	295.2	297.5	299.4
142.5°	283.2	285.6	286.8	288.7	290.2	292.3	293.9	295.7	297.0	298.6	300.0
145°	289.6	291.5	292.2	293.4	294.4	295.5	296.3	297.3	298.0	298.9	299.7
147.5°	294.9	296.4	296.6	297.4	298.2	298.6	299.3	299.9	300.3	300.9	301.4
150°	298.5	299.7	299.7	300.3	300.3	300.6	300.7	301.1	301.1	301.5	301.5
152.5°	301.4	302.1	301.8	302.1	302.0	302.0	301.9	302.1	301.9	301.9	302.1
155°	302.6	303.0	302.8	302.8	302.6	302.6	302.5	302.9	302.9	302.9	303.0
157.5°	305.7	305.6	305.5	305.4	305.1	305.2	305.2	305.3	305.4	305.9	306.2
160°	309.4	309.4	309.1	309.0	308.9	308.8	308.8	309.1	309.2	309.9	310.2
162.5°	313.6	313.4	313.2	313.1	313.0	313.1	313.2	313.7	313.8	314.3	314.7
165°	319.8	319.9	319.3	319.5	319.3	319.3	319.4	319.6	319.9	320.3	320.7
167.5°	326.3	326.2	326.2	326.4	326.4	326.6	326.8	327.5	327.7	328.5	328.7
170°	333.9	334.0	333.8	333.8	333.7	333.8	333.9	334.0	334.3	334.6	334.7
172.5°	341.6	341.6	341.4	341.2	341.0	341.0	340.9	341.1	340.9	340.9	340.8
175°	347.6	347.5	347.4	347.3	347.2	346.9	346.9	346.4	346.4	346.3	346.2
177.5°	352.1	351.8	351.6	351.6	351.4	351.3	351.3	351.1	351.1	351.1	350.7
180°	353.1	353.1	353.1	353.1	353.1	353.1	353.1	353.1	353.1	353.1	353.1



TEST NUMBER: P1444635
 CATALOG NUMBER: EHBR1-60-UNV-TA-L850-UPL15

CANDELA DISTRIBUTION (continued):

	137.5°	140°	142.5°	145°	147.5°	150°	152.5°	155°	157.5°	160°	162.5°
0°	50296.9	50296.9	50296.9	50296.9	50296.9	50296.9	50296.9	50296.9	50296.9	50296.9	50296.9
2.5°	50116.2	50115.7	50110.8	50113.1	50114.0	50117.5	50121.8	50126.3	50127.2	50130.8	50131.6
5°	50491.3	50367.3	50275.6	50174.8	50098.9	50030.7	49985.2	49949.1	49935.0	49938.5	49947.0
7.5°	51508.3	51252.3	51041.2	50801.1	50600.9	50388.9	50213.2	50046.1	49924.4	49833.6	49783.0
10°	52624.3	52312.6	52014.4	51667.0	51337.4	50985.7	50667.1	50346.3	50078.7	49846.5	49676.0
12.5°	53119.7	52899.2	52641.5	52313.6	51960.9	51555.1	51145.2	50705.8	50297.3	49917.9	49612.0
15°	52595.2	52595.6	52501.7	52344.3	52099.4	51775.0	51384.6	50926.5	50444.5	49952.6	49503.1
17.5°	50930.6	51244.8	51419.4	51529.9	51496.0	51376.5	51128.1	50776.3	50326.8	49802.9	49254.5
20°	48072.1	48812.9	49340.9	49816.0	50082.2	50259.1	50241.3	50098.2	49778.1	49332.6	48761.5
22.5°	44067.8	45311.0	46292.1	47207.0	47848.7	48370.5	48618.7	48724.0	48579.0	48268.6	47732.3
25°	39204.0	40894.5	42337.1	43737.2	44787.5	45690.0	46232.5	46614.6	46645.0	46482.8	46004.3
27.5°	33799.5	35795.0	37620.9	39481.6	40958.5	42256.0	43107.4	43730.5	43928.5	43902.3	43467.9
30°	28402.0	30496.8	32509.4	34679.1	36506.7	38164.5	39289.0	40131.8	40456.5	40518.7	40100.8
32.5°	23304.5	25370.3	27377.3	29645.7	31656.8	33556.7	34885.3	35886.4	36264.1	36352.9	35894.5
35°	18678.3	20584.1	22491.4	24689.9	26689.5	28656.8	30056.8	31104.8	31457.6	31517.0	30986.3
37.5°	14666.4	16290.2	17952.2	19924.7	21761.1	23608.7	24938.9	25923.9	26180.8	26165.0	25564.3
40°	11288.5	12550.9	13886.4	15510.3	17036.9	18598.9	19722.2	20536.4	20671.4	20571.4	19940.4
42.5°	8488.4	9400.1	10368.2	11580.5	12713.2	13882.2	14699.4	15303.9	15323.2	15165.1	14598.8
45°	6323.8	7213.4	7619.3	8352.3	9081.9	9859.2	10358.2	10731.6	10673.8	10534.7	10104.3
47.5°	4820.8	5162.7	5525.2	5979.7	6404.8	7286.8	7221.4	7821.0	7389.2	7683.7	7035.4
50°	3828.2	4019.3	4214.7	4455.8	4677.9	4908.4	5052.5	5160.1	5146.2	5099.9	4975.7
52.5°	3256.8	3316.0	3412.1	3549.4	3673.3	3798.0	3880.0	3946.8	3948.1	3929.4	3866.6
55°	2722.1	2797.0	2866.2	2955.9	3108.5	3132.0	3249.6	3225.8	3235.0	3202.4	3235.8
57.5°	2400.0	2443.6	2482.5	2535.9	2580.1	2631.5	2661.9	2691.1	2688.4	2682.0	2650.0
60°	2171.8	2195.9	2217.5	2248.6	2272.9	2302.0	2315.9	2330.8	2325.9	2315.1	2286.6
62.5°	1995.9	2010.9	2023.3	2043.3	2058.1	2076.1	2083.5	2089.8	2083.5	2073.2	2048.1
65°	1822.3	1832.0	1839.8	1854.9	1865.3	1880.9	1887.0	1892.9	1887.2	1879.2	1859.9
67.5°	1665.7	1666.6	1665.9	1672.0	1675.3	1684.5	1687.4	1691.7	1684.9	1678.0	1661.8
70°	1547.0	1544.5	1541.6	1544.0	1544.5	1549.1	1549.7	1549.1	1541.0	1529.1	1511.3
72.5°	1454.2	1452.9	1450.6	1452.7	1452.7	1456.7	1455.4	1453.4	1443.6	1432.0	1414.5
75°	1334.8	1333.9	1329.4	1329.6	1325.9	1327.3	1322.3	1319.6	1308.6	1298.9	1283.2
77.5°	1195.2	1193.0	1186.5	1184.0	1177.0	1174.0	1164.9	1160.4	1149.2	1141.4	1128.0
80°	1039.4	1037.0	1028.5	1023.9	1012.7	1005.7	992.2	984.6	971.8	964.1	951.0
82.5°	859.1	860.1	851.7	845.9	829.9	817.6	799.7	789.9	775.8	768.3	755.0
85°	611.1	602.2	606.9	606.6	596.5	585.8	571.3	561.1	549.2	542.0	532.6
87.5°	335.2	337.2	334.8	332.7	325.6	320.2	308.8	302.9	294.2	289.9	282.8
90°	95.6	95.3	86.9	86.8	78.6	75.5	65.9	64.1	55.4	54.0	47.7
92.5°	49.0	46.6	44.6	41.7	39.7	37.2	34.9	32.4	30.0	28.8	28.4
95°	60.8	57.5	54.0	50.5	47.0	43.4	40.2	36.6	33.1	32.4	31.6
97.5°	68.8	64.6	60.4	56.5	52.4	48.2	44.2	40.1	36.0	35.5	35.1
100°	117.2	107.8	98.2	88.7	79.3	69.7	60.4	50.8	41.5	40.9	40.4
102.5°	258.2	235.3	212.3	189.3	166.5	143.3	120.3	97.1	74.2	70.8	67.5
105°	453.6	418.5	384.1	349.2	314.2	279.4	244.7	209.5	174.6	163.5	152.2
107.5°	595.1	562.3	529.7	497.1	464.3	431.8	398.9	366.1	333.3	313.6	294.0
110°	660.3	634.5	608.8	583.0	557.3	531.5	505.5	479.6	453.8	436.8	420.3



TEST NUMBER: P1444635
 CATALOG NUMBER: EHBR1-60-UNV-TA-L850-UPL15

CANDELA DISTRIBUTION (continued):

	137.5°	140°	142.5°	145°	147.5°	150°	152.5°	155°	157.5°	160°	162.5°
112.5°	654.9	636.2	617.8	598.9	580.3	561.5	542.8	523.9	505.0	495.0	485.0
115°	596.4	585.4	574.6	563.6	552.6	541.6	530.7	519.2	508.1	503.1	498.1
117.5°	526.8	521.5	516.6	511.3	506.2	500.7	495.6	490.1	484.8	483.5	481.9
120°	456.5	455.5	454.4	453.4	452.4	451.5	450.3	449.2	447.9	448.8	449.8
122.5°	398.7	400.3	402.1	403.5	405.3	406.7	408.5	409.5	411.1	413.3	415.6
125°	360.1	362.9	365.6	368.3	370.9	373.7	376.4	378.7	381.5	383.7	386.3
127.5°	334.3	337.1	340.4	343.2	346.4	349.2	352.2	354.9	357.9	360.2	362.9
130°	318.4	320.9	324.0	326.5	329.6	332.3	335.0	337.7	340.5	342.7	345.1
132.5°	308.6	311.4	314.1	316.6	319.5	321.9	324.6	327.2	330.1	332.0	334.2
135°	305.2	307.4	309.7	311.7	314.3	316.3	318.7	321.1	323.7	325.4	327.4
137.5°	302.6	304.5	306.8	308.5	310.8	312.6	315.0	317.1	319.6	321.0	323.0
140°	301.3	303.3	305.2	307.1	309.2	311.2	313.6	315.8	318.3	319.7	321.6
142.5°	301.9	303.1	304.9	306.5	308.4	309.9	312.1	314.1	316.4	318.1	319.6
145°	301.4	302.9	304.7	306.3	308.0	310.0	312.3	314.4	316.7	318.1	319.6
147.5°	302.6	303.9	305.6	307.1	308.7	310.2	312.4	314.2	316.4	317.9	319.3
150°	302.9	304.2	305.6	307.0	308.7	310.5	312.4	314.4	316.9	318.3	319.6
152.5°	303.3	304.6	306.1	307.7	309.4	311.2	313.2	315.3	317.5	318.7	320.3
155°	304.5	305.7	307.3	309.0	310.8	312.4	314.3	316.2	318.3	319.7	321.0
157.5°	307.5	308.5	310.0	311.7	313.2	314.8	316.7	318.4	320.2	321.3	322.5
160°	311.5	312.6	314.0	315.5	317.0	318.5	320.1	321.6	323.3	324.3	325.5
162.5°	316.1	317.3	318.8	319.9	321.6	323.0	324.7	325.9	327.7	328.6	329.8
165°	321.8	322.9	324.2	325.1	326.4	327.3	328.9	329.8	331.4	332.0	333.3
167.5°	329.8	330.5	331.3	332.2	333.4	334.3	335.3	336.2	337.4	338.3	339.2
170°	335.4	336.1	336.7	337.6	338.4	339.3	340.1	340.7	341.9	342.6	343.4
172.5°	341.3	341.5	342.2	342.6	343.1	343.5	344.3	344.8	345.4	346.2	346.7
175°	346.6	346.7	347.0	347.1	347.2	347.5	348.0	348.5	348.8	349.2	349.6
177.5°	350.8	350.9	351.0	351.1	351.6	351.7	352.0	352.0	352.2	352.5	352.9
180°	353.1	353.1	353.1	353.1	353.1	353.1	353.1	353.1	353.1	353.1	353.1



TEST NUMBER: P1444635
 CATALOG NUMBER: EHBR1-60-UNV-TA-L850-UPL15

CANDELA DISTRIBUTION (continued):

	165°	167.5°	170°	172.5°	175°	177.5°	180°	182.5°	185°	187.5°	190°
0°	50296.9	50296.9	50296.9	50296.9	50296.9	50296.9	50296.9	50296.9	50296.9	50296.9	50296.9
2.5°	50129.8	50129.3	50127.6	50125.4	50123.1	50124.4	50126.7	50132.4	50142.6	50157.1	50176.1
5°	49953.9	49964.1	49969.9	49970.7	49965.5	49962.2	49967.1	49980.9	50008.7	50055.2	50118.3
7.5°	49769.3	49782.0	49801.4	49816.0	49818.7	49815.2	49816.0	49837.6	49888.8	49979.6	50106.9
10°	49572.3	49534.8	49554.6	49590.7	49619.5	49624.7	49628.2	49653.8	49728.7	49865.9	50070.4
12.5°	49390.3	49271.8	49248.9	49281.5	49325.1	49339.1	49335.2	49346.2	49434.0	49615.6	49900.5
15°	49151.1	48927.9	48851.7	48860.0	48913.9	48933.3	48919.1	48897.5	48983.1	49204.7	49573.6
17.5°	48763.6	48403.9	48263.8	48257.6	48320.5	48337.3	48302.7	48235.6	48319.9	48596.5	49054.5
20°	48174.8	47643.7	47379.8	47337.9	47406.2	47386.3	47317.1	47215.8	47326.5	47662.8	48207.5
22.5°	47116.2	46443.3	45992.3	45847.0	45928.8	45874.2	45773.4	45643.8	45790.9	46173.0	46779.5
25°	45386.4	44608.9	43991.4	43645.2	43710.4	43612.5	43502.8	43345.8	43521.2	43959.8	44627.5
27.5°	42843.7	41945.6	41180.7	40607.3	40628.3	40500.1	40373.7	40170.6	40389.5	40908.7	41661.8
30°	39462.7	38423.5	37491.9	36712.7	36643.0	36518.7	36389.1	36122.5	36396.6	37018.0	37898.1
32.5°	35216.7	34063.0	32986.5	32001.3	31815.4	31694.1	31578.7	31271.9	31630.7	32355.3	33366.3
35°	30251.3	29022.1	27855.1	26729.9	26421.9	26300.6	26199.7	25905.8	26353.5	27142.0	28234.0
37.5°	24801.0	23545.3	22386.6	21232.7	20797.7	20633.2	20559.9	20367.2	20883.8	21663.8	22760.2
40°	19205.6	18038.2	16999.3	15980.2	15484.2	15232.4	15194.0	15158.9	15658.3	16335.0	17330.1
42.5°	13971.3	13029.4	12228.4	11449.4	11000.0	10656.1	10656.0	10760.3	11209.9	11716.7	12484.2
45°	9664.4	9032.3	8522.0	8001.4	8140.5	7454.9	7857.7	7651.1	7873.3	8200.0	8699.1
47.5°	6643.3	6298.3	6017.9	5727.2	5515.2	5312.8	5330.4	5461.0	5670.3	5864.1	6123.8
50°	4841.9	4666.1	4523.3	4372.3	4266.8	4177.5	4182.7	4239.2	4349.2	4451.4	4587.2
52.5°	3794.0	3697.0	3619.4	3535.9	3480.6	3436.2	3438.7	3466.1	3525.5	3583.8	3661.7
55°	3127.2	3115.4	3014.5	2939.7	2911.1	2881.3	2886.7	2897.5	2938.0	2972.1	3023.6
57.5°	2620.5	2575.2	2545.0	2505.5	2487.4	2466.5	2471.2	2475.2	2502.4	2525.2	2562.4
60°	2262.8	2230.8	2209.2	2182.4	2170.5	2157.3	2160.2	2162.7	2180.1	2194.9	2221.6
62.5°	2025.2	1996.4	1977.8	1957.1	1948.6	1939.7	1941.8	1942.6	1953.4	1964.4	1984.5
65°	1842.9	1820.1	1804.6	1786.7	1777.9	1768.6	1769.6	1769.6	1778.7	1786.7	1801.8
67.5°	1650.0	1632.9	1622.8	1608.7	1602.7	1593.3	1593.1	1590.0	1596.0	1599.1	1609.5
70°	1495.3	1478.0	1465.2	1451.5	1444.0	1435.7	1435.9	1436.1	1443.0	1450.2	1463.5
72.5°	1399.7	1383.1	1371.8	1359.9	1352.8	1345.6	1344.3	1343.7	1348.7	1352.6	1361.3
75°	1273.1	1259.9	1253.2	1242.0	1236.4	1228.4	1227.2	1223.4	1225.8	1226.6	1233.1
77.5°	1119.6	1107.0	1101.6	1090.3	1085.6	1076.5	1075.8	1071.7	1073.5	1072.3	1077.3
80°	944.6	933.2	930.1	920.9	918.6	910.2	908.9	903.9	905.4	901.4	903.3
82.5°	749.2	738.8	736.5	727.9	727.9	720.3	719.9	712.3	712.3	705.8	695.3
85°	527.7	520.1	516.9	509.8	507.7	501.6	498.4	491.1	488.6	483.9	482.4
87.5°	278.5	273.7	269.3	266.0	259.8	248.8	247.9	240.3	240.9	235.5	235.8
90°	47.1	41.5	41.1	35.9	35.1	31.6	31.2	30.5	30.8	30.3	30.7
92.5°	27.5	26.7	25.9	25.1	24.3	23.5	22.7	23.5	24.3	25.1	25.9
95°	30.9	30.3	29.5	28.8	28.1	27.3	26.6	27.3	28.1	29.0	29.7
97.5°	34.6	34.1	33.7	33.2	32.7	32.3	31.8	32.4	32.8	33.3	33.8
100°	39.8	39.3	38.7	38.2	37.6	37.1	36.5	37.5	38.0	38.6	39.1
102.5°	64.3	61.0	57.7	54.3	51.0	47.6	44.3	47.6	51.0	54.5	57.9
105°	141.0	129.9	118.6	107.3	96.1	84.8	73.5	85.0	96.3	107.5	119.0
107.5°	274.2	254.7	234.9	215.1	195.2	175.4	155.6	175.6	195.5	215.3	235.2
110°	403.1	386.2	369.1	352.2	335.1	318.2	301.0	318.4	335.4	352.6	369.7



TEST NUMBER: P1444635
 CATALOG NUMBER: EHBR1-60-UNV-TA-L850-UPL15

CANDELA DISTRIBUTION (continued):

	165°	167.5°	170°	172.5°	175°	177.5°	180°	182.5°	185°	187.5°	190°
112.5°	474.6	464.6	454.3	444.3	433.8	423.7	413.1	424.0	434.5	445.2	455.4
115°	493.0	487.8	482.9	477.6	472.2	467.0	461.4	467.6	473.2	478.8	484.4
117.5°	480.4	479.2	477.5	476.0	474.3	472.8	470.9	473.2	475.2	477.7	479.4
120°	450.3	451.5	452.1	452.7	453.5	454.0	454.4	454.8	454.8	454.8	454.6
122.5°	417.8	420.0	422.0	424.0	426.0	428.0	429.5	428.7	427.5	426.5	424.9
125°	388.5	391.1	393.2	395.6	397.4	399.8	401.1	400.7	399.5	398.3	396.7
127.5°	365.2	367.5	369.6	372.1	373.9	375.8	377.3	376.9	375.9	374.9	373.6
130°	347.0	349.6	351.3	353.4	355.0	356.6	357.7	357.7	357.1	356.8	355.6
132.5°	336.1	338.4	340.2	342.0	343.3	345.0	345.8	346.1	345.8	345.6	344.6
135°	329.4	331.1	332.7	334.7	335.8	337.0	337.7	338.4	338.3	338.2	337.5
137.5°	324.4	326.3	327.8	329.1	330.1	331.0	331.6	332.4	332.6	333.1	332.8
140°	323.2	325.0	326.5	327.8	329.2	330.2	330.6	331.6	331.8	331.9	331.5
142.5°	321.4	323.1	324.6	326.1	327.1	328.2	328.8	329.6	329.8	329.8	329.7
145°	321.3	322.7	324.2	325.5	326.4	327.2	327.5	328.6	328.9	329.1	329.2
147.5°	320.7	322.3	323.4	324.5	325.4	326.3	326.8	327.4	327.8	328.1	328.2
150°	321.2	322.6	324.0	325.1	326.1	327.0	327.3	328.1	328.4	328.7	328.6
152.5°	321.5	322.7	324.0	325.0	326.0	326.7	327.1	327.8	328.5	329.0	329.1
155°	322.2	323.5	324.5	325.7	326.4	327.4	328.1	328.9	329.5	329.8	330.1
157.5°	323.6	324.8	325.8	326.9	327.7	328.8	329.6	330.4	331.0	331.8	332.1
160°	326.4	327.8	328.5	329.7	330.5	331.5	332.2	333.2	333.9	334.5	335.3
162.5°	330.6	331.8	332.3	333.5	334.4	335.3	336.0	337.0	337.7	338.5	339.1
165°	334.3	335.3	336.0	337.1	338.1	339.2	339.8	340.7	341.1	341.7	342.2
167.5°	340.0	341.0	341.5	342.6	343.2	344.3	345.2	345.8	346.3	346.7	347.1
170°	344.1	345.0	345.7	346.4	347.1	348.0	348.5	349.0	349.4	349.9	350.4
172.5°	347.2	348.1	348.7	349.6	350.1	350.9	351.5	352.0	352.1	352.4	352.4
175°	350.0	350.7	351.0	351.6	352.0	352.5	353.0	353.0	353.4	353.4	353.6
177.5°	353.4	354.1	354.5	354.8	355.3	355.5	356.0	355.7	355.7	355.6	355.3
180°	353.1	353.1	353.1	353.1	353.1	353.1	353.1	353.1	353.1	353.1	353.1



TEST NUMBER: P1444635
 CATALOG NUMBER: EHBR1-60-UNV-TA-L850-UPL15

CANDELA DISTRIBUTION (continued):

	192.5°	195°	197.5°	200°	202.5°	205°	207.5°	210°	212.5°	215°	217.5°
0°	50296.9	50296.9	50296.9	50296.9	50296.9	50296.9	50296.9	50296.9	50296.9	50296.9	50296.9
2.5°	50202.9	50228.1	50266.4	50301.3	50353.8	50395.1	50457.2	50504.3	50574.4	50619.9	50696.2
5°	50207.4	50305.6	50434.8	50560.8	50712.4	50849.9	51020.8	51166.5	51338.3	51478.5	51654.3
7.5°	50278.4	50467.8	50694.8	50923.6	51182.3	51424.2	51696.9	51943.8	52213.5	52441.9	52691.3
10°	50330.8	50622.9	50957.5	51294.1	51648.5	51977.7	52310.1	52597.3	52865.7	53086.7	53281.8
12.5°	50259.8	50662.2	51091.5	51506.1	51900.2	52240.9	52526.9	52747.8	52900.2	53003.6	53027.9
15°	50018.4	50502.7	50969.4	51382.3	51709.3	51961.5	52092.0	52153.1	52087.5	51978.6	51739.3
17.5°	49567.4	50078.2	50495.6	50821.2	50994.0	51062.5	50954.3	50766.2	50398.6	49990.6	49401.3
20°	48740.8	49216.7	49519.4	49697.0	49650.7	49479.8	49071.6	48575.4	47841.5	47059.4	46027.2
22.5°	47290.7	47706.7	47868.0	47881.3	47599.2	47171.2	46434.9	45583.8	44426.0	43222.4	41742.1
25°	45114.0	45478.4	45504.0	45360.8	44844.6	44151.1	43069.9	41865.9	40292.7	38688.8	36833.9
27.5°	42162.1	42511.6	42426.1	42158.9	41442.4	40514.3	39130.0	37574.6	35635.1	33740.8	31688.9
30°	38451.3	38825.0	38724.6	38381.9	37529.7	36432.7	34803.9	32996.9	30843.5	28820.2	26740.9
32.5°	34010.5	34483.1	34413.7	34088.1	33198.8	32024.7	30257.4	28340.8	26137.6	24143.9	22121.2
35°	28963.1	29536.8	29566.5	29353.5	28528.0	27367.6	25622.4	23767.3	21657.1	19775.8	17907.3
37.5°	23525.0	24190.1	24326.7	24269.4	23585.0	22560.8	20970.7	19306.5	17437.0	15788.3	14190.2
40°	18056.8	18730.1	18963.7	19033.0	18528.0	17734.6	16429.7	15086.4	13562.3	12226.4	10957.5
42.5°	13070.1	13666.9	13892.7	14034.7	13719.5	13190.4	12238.5	11263.0	10146.4	9182.9	8259.1
45°	9077.4	9499.6	9671.3	9814.2	9642.6	9344.1	8743.0	8132.9	7395.9	6766.1	6170.1
47.5°	6346.6	6579.4	6692.8	6762.1	6695.5	6539.9	6212.7	5859.3	5443.2	5075.2	4721.5
50°	4704.1	4828.1	4887.4	4927.5	4879.0	4792.5	4615.4	4423.0	4194.5	3986.1	3782.4
52.5°	3727.9	3799.0	3834.2	3855.8	3828.0	3775.1	3672.1	3557.9	3420.9	3292.1	3224.4
55°	3140.5	3136.8	3218.3	3178.9	3218.3	3130.5	3112.1	2986.6	2872.9	2792.7	2706.1
57.5°	2590.0	2626.8	2642.5	2660.0	2648.6	2632.6	2588.8	2543.9	2483.9	2433.7	2380.3
60°	2242.0	2272.3	2289.4	2306.8	2305.7	2299.7	2274.4	2247.5	2210.0	2180.1	2147.6
62.5°	2002.2	2028.5	2045.4	2062.0	2063.5	2061.1	2041.9	2023.3	1997.8	1978.9	1956.5
65°	1813.6	1832.0	1843.5	1856.8	1856.0	1852.5	1835.2	1819.7	1798.7	1785.6	1769.2
67.5°	1616.1	1630.1	1639.0	1651.6	1654.0	1654.7	1645.2	1637.9	1627.7	1624.0	1618.4
70°	1475.8	1492.8	1507.1	1522.9	1531.5	1535.6	1531.5	1527.7	1521.8	1519.2	1515.0
72.5°	1369.5	1383.8	1395.0	1409.4	1417.4	1423.2	1420.1	1418.0	1412.8	1412.0	1409.1
75°	1237.6	1247.4	1253.8	1264.6	1268.9	1274.3	1271.9	1273.1	1271.5	1275.6	1275.4
77.5°	1078.9	1086.2	1089.2	1097.0	1097.8	1104.3	1105.8	1113.4	1118.8	1130.7	1137.1
80°	900.4	905.0	905.0	913.0	916.6	927.6	932.8	945.2	951.0	961.7	962.6
82.5°	699.4	694.0	699.4	696.0	706.3	718.6	720.3	730.9	733.4	740.0	734.8
85°	478.2	477.8	473.5	474.2	471.0	472.6	470.7	472.8	470.9	471.0	466.2
87.5°	229.1	231.1	226.1	227.8	223.0	225.1	220.9	224.3	219.2	219.9	212.5
90°	30.6	30.9	30.7	31.2	32.2	33.4	34.8	36.0	38.0	39.1	40.7
92.5°	26.7	27.6	28.5	29.3	30.1	32.5	35.0	37.3	40.0	42.2	44.7
95°	30.5	31.1	31.8	33.0	33.7	37.2	40.8	44.2	47.7	51.3	54.8
97.5°	34.6	35.1	35.6	36.0	36.6	40.8	44.9	49.1	53.2	57.4	61.3
100°	39.8	40.3	40.9	41.6	42.1	51.7	61.3	70.8	80.4	89.8	99.3
102.5°	61.3	64.6	68.0	71.7	75.0	98.2	121.4	144.6	167.4	190.6	213.6
105°	130.3	141.5	153.1	164.4	175.7	210.8	246.0	281.0	315.7	350.7	385.7
107.5°	255.2	275.0	295.1	314.9	334.8	367.8	400.6	433.5	466.5	499.3	531.8
110°	387.3	404.0	421.6	438.7	455.9	481.7	507.9	533.9	559.9	585.8	611.7



TEST NUMBER: P1444635
 CATALOG NUMBER: EHBR1-60-UNV-TA-L850-UPL15

CANDELA DISTRIBUTION (continued):

	192.5°	195°	197.5°	200°	202.5°	205°	207.5°	210°	212.5°	215°	217.5°
112.5°	466.1	476.3	486.8	496.8	507.3	526.4	545.7	564.6	583.7	602.2	621.2
115°	489.9	494.9	500.5	505.7	511.3	522.7	533.9	545.2	556.6	567.6	579.0
117.5°	481.3	483.2	485.0	486.4	488.3	493.8	499.5	505.0	510.6	516.2	521.6
120°	454.4	453.8	453.5	452.7	452.3	453.5	455.2	456.3	457.8	459.0	460.2
122.5°	423.6	421.7	420.1	418.2	416.5	414.9	413.9	412.4	411.5	410.0	408.7
125°	395.2	393.3	391.5	389.5	387.3	385.1	382.7	380.3	377.8	375.3	372.9
127.5°	372.3	370.4	368.8	366.8	364.8	362.0	359.4	356.5	354.0	351.1	348.3
130°	354.6	352.9	351.9	349.7	348.3	345.4	343.1	340.5	337.9	335.3	332.7
132.5°	344.0	342.6	341.4	339.7	338.4	335.8	333.8	331.0	328.7	326.1	323.9
135°	337.1	336.1	335.3	333.9	332.6	330.2	328.4	326.2	324.3	322.1	320.1
137.5°	332.5	331.6	330.8	329.9	329.0	326.9	325.3	323.3	321.6	319.5	318.0
140°	331.3	330.6	329.9	329.1	328.1	326.2	324.4	322.5	320.8	318.8	317.1
142.5°	329.3	328.7	328.1	327.2	326.4	324.6	323.5	321.9	320.3	318.7	317.4
145°	328.9	328.4	328.1	327.2	327.0	325.2	323.9	322.1	320.9	319.1	317.8
147.5°	328.2	327.8	327.7	327.1	327.1	325.6	324.6	323.3	322.3	320.9	319.9
150°	328.6	328.5	328.4	328.0	327.7	326.5	325.6	324.4	323.7	322.3	321.4
152.5°	329.1	329.2	329.3	329.2	329.3	328.4	327.4	326.3	325.4	324.3	323.5
155°	330.5	330.7	330.9	330.9	330.9	330.2	329.5	328.6	327.8	326.9	326.1
157.5°	332.5	332.9	333.3	333.5	333.7	333.1	332.4	331.8	331.1	330.3	329.7
160°	335.5	336.1	336.5	336.7	337.0	336.4	336.3	335.3	335.3	334.3	333.7
162.5°	339.6	340.2	340.6	340.8	341.0	340.5	340.4	339.8	339.3	338.3	337.8
165°	342.9	343.0	343.5	343.6	343.9	343.5	343.4	343.0	342.6	342.1	341.7
167.5°	347.7	347.8	348.3	348.3	348.6	348.3	348.6	348.2	347.9	347.6	347.3
170°	350.7	351.0	351.3	351.4	351.7	351.4	351.3	351.1	351.1	350.5	350.2
172.5°	352.8	352.7	353.0	353.2	353.2	353.0	353.0	352.8	352.8	352.7	352.5
175°	353.7	353.7	353.8	353.8	353.8	353.9	353.8	353.9	353.8	353.8	353.7
177.5°	355.4	355.3	355.0	355.0	354.9	354.8	354.9	354.8	355.1	355.0	354.9
180°	353.1	353.1	353.1	353.1	353.1	353.1	353.1	353.1	353.1	353.1	353.1



TEST NUMBER: P1444635
 CATALOG NUMBER: EHBR1-60-UNV-TA-L850-UPL15

CANDELA DISTRIBUTION (continued):

	220°	222.5°	225°	227.5°	230°	232.5°	235°	237.5°	240°	242.5°	245°
0°	50296.9	50296.9	50296.9	50296.9	50296.9	50296.9	50296.9	50296.9	50296.9	50296.9	50296.9
2.5°	50743.3	50430.0	50388.5	50410.5	50463.0	50482.3	50538.8	50554.3	50611.1	50625.2	50679.8
5°	51790.3	51376.1	51396.8	51496.3	51647.2	51737.0	51885.2	51962.7	52104.3	52168.6	52296.4
7.5°	52894.4	52569.2	52670.6	52838.5	53044.7	53187.4	53365.5	53481.4	53634.9	53730.0	53852.9
10°	53436.5	53347.4	53459.0	53591.2	53708.8	53801.0	53876.4	53936.8	53976.3	54013.4	54029.6
12.5°	53024.0	53161.9	53180.9	53168.1	53090.2	53030.7	52897.1	52806.3	52645.0	52546.8	52355.0
15°	51494.7	51798.0	51630.0	51375.8	51003.7	50693.5	50255.5	49929.3	49473.1	49163.7	48705.9
17.5°	48810.8	49193.7	48756.0	48167.7	47419.3	46779.0	45981.7	45348.9	44556.2	43979.6	43239.7
20°	45032.6	45390.3	44609.8	43634.5	42476.8	41502.4	40353.4	39436.6	38368.9	37574.6	36616.1
22.5°	40328.2	40583.0	39483.5	38168.7	36693.7	35476.5	34102.6	33003.6	31785.1	30877.0	29855.0
25°	35123.7	35192.6	33873.6	32358.8	30714.9	29346.8	27880.2	26724.7	25481.9	24561.6	23558.6
27.5°	29870.9	29770.0	28344.3	26738.3	25009.0	23587.1	22156.6	21073.8	19985.3	19156.4	18292.2
30°	24912.8	24668.6	23188.4	21537.5	19858.9	18584.5	17396.9	16527.3	15661.4	15003.8	14310.2
32.5°	20366.2	20021.7	18580.8	17034.2	15619.7	14636.2	13755.6	13097.6	12398.4	11842.9	11260.8
35°	16339.0	15972.0	14695.5	13384.3	12313.8	11588.8	10896.7	10356.9	9763.3	9294.6	8789.0
37.5°	12882.9	12582.0	11512.8	10481.1	9671.3	9109.5	8542.5	8101.2	7610.6	7404.4	6864.3
40°	9945.5	9735.3	8899.2	8138.7	7530.6	7266.7	6691.1	6278.9	5912.2	5609.9	5317.1
42.5°	7757.6	7683.3	6869.7	6276.5	5848.3	5515.8	5195.0	4934.6	4681.0	4472.6	4275.8
45°	5693.0	5634.2	5272.9	4930.4	4638.7	4406.3	4189.5	4010.3	3844.6	3707.2	3582.4
47.5°	4433.1	4414.3	4206.2	3993.9	3810.2	3660.9	3520.1	3401.1	3291.2	3199.5	3169.6
50°	3605.6	3603.2	3481.1	3350.1	3219.2	3133.0	3043.1	2972.8	2902.1	2847.1	2789.0
52.5°	3063.6	3050.4	2968.0	2887.0	2809.3	2752.6	2695.3	2650.3	2603.5	2569.6	2533.5
55°	2637.4	2651.5	2603.7	2555.4	2506.8	2471.5	2431.3	2401.7	2369.6	2348.1	2326.3
57.5°	2341.5	2359.9	2334.9	2307.6	2277.9	2254.7	2227.0	2206.5	2185.1	2171.4	2158.8
60°	2126.1	2146.3	2136.3	2122.4	2104.1	2090.4	2072.6	2061.3	2047.5	2039.8	2032.7
62.5°	1943.4	1968.7	1965.0	1958.6	1946.8	1939.2	1929.5	1924.5	1915.3	1912.0	1908.6
65°	1761.1	1789.5	1788.9	1785.8	1779.2	1777.0	1771.0	1770.0	1765.3	1767.1	1766.7
67.5°	1617.8	1642.5	1647.9	1651.7	1651.6	1653.1	1652.5	1654.9	1654.9	1658.5	1660.7
70°	1514.4	1531.5	1535.6	1539.7	1540.8	1544.1	1544.1	1546.2	1545.7	1548.7	1549.1
72.5°	1409.8	1432.4	1436.5	1439.8	1439.8	1443.0	1441.3	1440.7	1436.3	1435.3	1432.2
75°	1279.7	1308.6	1314.9	1319.0	1319.6	1322.3	1318.4	1316.1	1308.6	1305.5	1300.3
77.5°	1143.8	1173.8	1178.2	1179.7	1177.4	1177.9	1169.7	1164.1	1154.6	1150.6	1145.6
80°	966.9	1011.1	1014.6	1011.8	1004.9	1003.8	995.7	990.5	979.2	975.3	971.0
82.5°	735.7	787.6	794.9	798.0	792.4	793.7	786.1	783.1	772.7	770.8	763.9
85°	464.5	516.4	524.9	523.7	518.1	516.7	512.3	513.7	512.8	515.6	517.1
87.5°	213.4	263.5	275.7	271.8	271.2	267.7	259.6	262.7	267.5	270.6	270.8
90°	42.1	58.6	59.7	59.9	55.4	54.8	50.6	51.1	47.5	47.7	44.5
92.5°	47.1	49.5	52.0	49.8	47.6	45.5	43.3	41.1	39.0	36.7	34.7
95°	58.2	61.4	64.9	62.1	58.9	56.1	53.2	50.3	47.4	44.6	41.6
97.5°	65.5	69.3	73.3	70.4	67.5	64.4	61.5	58.6	55.7	52.7	49.7
100°	108.8	117.8	127.1	118.9	110.5	102.3	94.1	85.7	77.5	69.3	60.9
102.5°	236.6	259.2	282.0	261.1	240.2	219.1	198.4	177.6	156.9	135.7	114.9
105°	420.4	454.7	489.4	457.2	425.3	393.5	361.6	329.8	297.8	265.8	234.1
107.5°	564.7	596.2	628.5	599.5	570.6	541.7	512.6	483.8	454.8	425.7	397.0
110°	637.6	661.8	687.3	667.4	647.9	628.1	608.5	588.9	569.3	550.0	530.6



TEST NUMBER: P1444635
 CATALOG NUMBER: EHBR1-60-UNV-TA-L850-UPL15

CANDELA DISTRIBUTION (continued):

	220°	222.5°	225°	227.5°	230°	232.5°	235°	237.5°	240°	242.5°	245°
112.5°	640.0	656.6	674.8	662.7	651.2	639.3	627.6	615.8	604.3	592.4	581.2
115°	589.7	598.3	608.7	603.3	598.4	593.2	588.1	583.2	578.1	573.1	568.4
117.5°	526.9	529.3	533.6	531.7	530.3	528.4	527.0	525.2	524.0	522.5	521.3
120°	461.3	459.1	459.3	458.6	458.4	457.9	457.6	457.3	457.1	456.9	456.9
122.5°	407.2	402.0	399.4	398.8	398.2	397.5	397.1	396.4	396.1	395.8	395.5
125°	370.4	363.6	359.9	357.8	356.0	353.9	351.9	349.9	348.2	346.4	344.7
127.5°	345.5	338.2	334.2	331.1	328.1	324.9	321.9	318.7	315.8	312.7	310.0
130°	330.2	322.8	318.9	315.3	312.0	308.1	304.8	301.2	297.4	294.0	290.5
132.5°	321.3	313.7	310.0	306.7	303.4	299.7	296.5	292.7	289.3	285.5	282.3
135°	318.0	310.4	307.2	303.7	301.0	297.5	294.3	291.0	287.8	284.3	281.4
137.5°	315.8	308.2	305.3	302.4	299.9	297.0	294.6	291.6	289.0	285.7	283.3
140°	315.2	307.3	304.2	302.3	300.8	298.5	296.6	294.6	292.8	290.8	288.8
142.5°	315.8	307.9	305.1	303.6	302.4	300.9	299.9	298.3	296.8	295.0	293.6
145°	316.4	307.6	304.9	303.9	303.6	302.7	302.1	301.3	300.6	299.5	298.8
147.5°	318.5	309.5	306.6	306.4	306.1	305.3	305.3	304.6	304.5	303.8	303.5
150°	320.0	309.9	306.5	306.5	306.3	306.3	306.3	306.0	306.3	306.1	306.0
152.5°	322.2	310.0	306.2	306.2	306.5	306.3	306.5	306.7	307.1	307.3	307.4
155°	324.8	311.6	307.4	307.0	307.0	307.1	307.1	307.2	307.4	307.6	307.9
157.5°	328.7	314.5	310.4	309.8	309.7	309.6	309.5	309.5	309.6	309.7	310.2
160°	332.9	318.7	314.4	313.8	313.7	313.4	313.2	313.0	313.1	313.2	313.4
162.5°	336.9	323.2	319.0	318.4	318.0	317.7	317.6	317.0	317.1	317.0	317.3
165°	340.9	328.7	324.7	324.3	324.1	323.7	323.6	323.3	323.3	323.3	323.5
167.5°	346.7	335.6	332.6	332.0	331.4	330.9	330.9	330.1	330.1	329.8	329.8
170°	349.8	341.0	338.4	338.1	338.2	337.9	337.6	337.5	337.4	337.2	337.3
172.5°	352.1	345.8	343.7	343.7	343.9	343.9	344.1	344.1	344.3	344.5	344.7
175°	353.6	349.8	348.9	348.7	348.8	348.9	349.0	349.0	349.1	349.2	349.6
177.5°	355.0	353.9	353.4	353.4	353.4	353.4	353.4	353.4	353.4	353.6	353.6
180°	353.1	353.1	353.1	353.1	353.1	353.1	353.1	353.1	353.1	353.1	353.1



TEST NUMBER: P1444635
 CATALOG NUMBER: EHBR1-60-UNV-TA-L850-UPL15

CANDELA DISTRIBUTION (continued):

	247.5°	250°	252.5°	255°	257.5°	260°	262.5°	265°	267.5°	270°	272.5°
0°	50296.9	50296.9	50296.9	50296.9	50296.9	50296.9	50296.9	50296.9	50296.9	50296.9	50296.9
2.5°	50690.0	50749.1	50744.6	50799.8	50797.0	50849.0	50838.5	50883.5	50873.2	50911.6	50889.1
5°	52352.7	52465.2	52502.2	52603.7	52624.7	52715.4	52717.3	52789.5	52780.8	52837.3	52807.2
7.5°	53925.6	54030.6	54080.3	54159.2	54198.5	54263.8	54289.4	54343.0	54355.9	54387.6	54386.6
10°	54058.3	54058.0	54082.6	54071.6	54093.6	54080.9	54107.7	54098.1	54137.8	54127.5	54157.5
12.5°	52272.2	52094.9	52030.2	51871.1	51836.2	51699.6	51709.3	51621.7	51663.9	51610.1	51701.8
15°	48433.5	48022.3	47819.2	47461.6	47349.4	47066.9	47043.9	46856.2	46906.8	46808.6	46952.2
17.5°	42761.0	42113.6	41758.3	41236.2	41028.9	40629.3	40549.1	40307.5	40345.0	40223.3	40396.6
20°	35997.9	35215.5	34767.4	34163.5	33894.2	33417.8	33291.4	33021.2	33055.0	32933.8	33130.0
22.5°	29157.5	28338.5	27832.7	27199.8	26855.9	26407.8	26273.4	26001.8	26017.3	25903.6	26092.2
25°	22871.5	22086.3	21595.3	21020.5	20722.0	20311.2	20169.9	19926.1	19939.9	19846.2	20015.4
27.5°	17692.7	17048.5	16637.6	16155.8	15888.4	15550.5	15412.8	15207.7	15207.2	15138.4	15279.9
30°	13826.0	13288.4	12919.4	12499.9	12248.5	11943.8	11810.7	11627.2	11619.3	11570.5	11682.8
32.5°	10825.4	10347.2	10010.8	9641.5	9415.9	9154.4	9028.4	8881.0	8867.5	8823.3	8915.7
35°	8415.3	8012.6	7723.4	7412.5	7435.4	7049.5	7113.7	6813.9	6732.6	6715.0	6783.5
37.5°	6504.1	6192.2	5957.1	5724.3	5566.7	5403.5	5315.7	5236.9	5228.0	5220.3	5268.4
40°	5091.0	4872.7	4701.7	4542.0	4433.5	4333.9	4279.0	4235.7	4225.5	4219.7	4248.7
42.5°	4120.4	3973.0	3862.9	3765.4	3699.5	3645.3	3615.2	3591.1	3583.1	3583.3	3600.4
45°	3481.1	3391.8	3320.8	3260.3	3218.1	3236.6	3182.1	3210.7	3173.1	3212.0	3186.2
47.5°	3065.6	2989.6	2945.6	2902.7	2877.2	2856.7	2857.4	2857.8	2865.8	2867.1	2875.5
50°	2745.0	2701.1	2670.4	2643.0	2629.9	2619.0	2622.8	2625.5	2633.4	2633.9	2640.1
52.5°	2507.8	2478.9	2460.4	2443.4	2437.4	2431.3	2433.9	2432.8	2436.3	2434.5	2439.5
55°	2314.6	2301.0	2295.2	2288.9	2289.8	2288.1	2289.3	2283.1	2279.4	2274.8	2279.0
57.5°	2156.2	2154.3	2158.2	2160.8	2168.1	2170.7	2172.4	2165.3	2158.6	2152.5	2156.0
60°	2034.1	2037.0	2046.8	2054.5	2065.0	2069.9	2072.8	2068.8	2063.9	2058.9	2061.8
62.5°	1913.7	1918.3	1929.9	1938.6	1951.3	1957.8	1965.0	1965.4	1967.3	1965.4	1967.5
65°	1773.8	1779.6	1790.1	1797.4	1809.1	1814.9	1822.3	1823.6	1827.7	1826.7	1830.3
67.5°	1667.6	1672.8	1681.6	1688.4	1698.9	1704.8	1711.4	1711.8	1713.3	1712.9	1716.2
70°	1554.3	1556.9	1564.7	1570.5	1580.9	1587.1	1594.5	1596.8	1601.4	1602.2	1605.9
72.5°	1433.4	1432.4	1437.0	1439.6	1447.5	1452.3	1461.8	1467.0	1474.9	1476.9	1479.7
75°	1301.8	1300.7	1306.3	1308.6	1315.3	1320.1	1330.8	1337.7	1349.7	1354.8	1353.5
77.5°	1149.6	1152.2	1162.6	1168.4	1177.4	1183.4	1197.3	1208.3	1230.5	1240.1	1230.3
80°	979.2	982.0	992.8	998.2	1010.0	1017.4	1032.9	1045.7	1065.7	1070.0	1064.4
82.5°	769.8	770.6	780.3	784.3	799.7	810.7	830.2	840.5	852.8	850.9	849.5
85°	524.9	532.0	544.1	556.3	574.8	592.8	611.3	626.5	615.7	632.7	613.6
87.5°	280.5	279.8	296.2	293.6	319.7	334.8	350.8	358.4	367.1	365.3	365.5
90°	45.5	42.8	44.2	41.2	43.9	40.4	44.5	41.5	46.4	42.2	49.2
92.5°	32.4	31.3	30.1	29.0	27.7	26.7	25.4	24.3	23.1	21.9	23.1
95°	38.8	37.7	36.6	35.4	34.3	33.2	32.1	31.0	30.0	28.9	30.3
97.5°	46.9	46.3	45.6	45.0	44.3	43.7	43.0	42.4	41.6	41.0	41.8
100°	52.7	52.7	52.7	52.7	52.3	52.3	52.3	52.3	52.3	52.3	52.9
102.5°	94.0	91.9	89.9	87.6	85.6	83.4	81.3	79.3	77.2	75.1	78.2
105°	202.3	194.1	185.8	177.7	169.3	161.3	153.1	145.0	136.9	128.8	137.1
107.5°	368.5	353.4	338.5	323.7	308.7	293.9	279.2	264.3	249.6	234.8	248.0
110°	511.1	495.2	479.3	463.5	447.6	431.8	416.1	400.4	384.7	368.9	381.6



TEST NUMBER: P1444635
 CATALOG NUMBER: EHBR1-60-UNV-TA-L850-UPL15

CANDELA DISTRIBUTION (continued):

	247.5°	250°	252.5°	255°	257.5°	260°	262.5°	265°	267.5°	270°	272.5°
112.5°	569.7	559.0	548.7	538.4	528.1	518.1	507.8	497.7	487.6	477.5	483.6
115°	563.5	558.5	553.3	548.4	543.4	538.2	533.3	528.6	523.8	518.9	519.3
117.5°	519.9	517.9	516.0	514.0	512.2	510.4	508.7	507.2	505.5	504.1	500.7
120°	457.0	456.9	456.8	457.0	457.3	457.7	457.7	458.3	459.0	459.6	455.0
122.5°	395.3	395.8	396.3	397.0	397.9	398.9	399.9	401.2	402.5	403.9	399.3
125°	342.8	343.3	343.7	344.3	344.7	345.9	346.8	348.1	349.4	350.9	347.0
127.5°	307.2	306.6	306.0	305.8	305.6	305.8	306.1	306.5	307.2	307.9	305.5
130°	287.0	285.6	284.2	283.1	281.8	281.2	280.6	280.2	279.9	279.9	279.0
132.5°	278.8	276.7	274.6	272.9	271.1	269.9	268.4	267.7	266.7	266.2	266.0
135°	277.8	275.4	273.1	270.8	268.7	267.2	265.4	264.3	263.1	262.2	262.8
137.5°	280.4	278.2	275.6	273.6	271.4	269.8	268.1	266.8	265.7	264.8	265.6
140°	286.6	284.3	281.9	279.9	278.1	276.4	274.7	273.7	272.3	271.7	272.1
142.5°	291.9	290.3	287.9	286.2	284.3	282.9	281.5	280.5	279.2	278.8	279.4
145°	297.8	296.5	294.7	293.3	292.0	291.0	289.7	289.1	288.3	288.2	288.5
147.5°	302.9	302.0	300.5	299.6	298.3	297.7	296.8	296.5	296.0	295.8	296.0
150°	305.8	305.2	304.4	303.8	303.0	302.7	302.1	302.0	301.7	301.7	301.8
152.5°	307.6	307.2	306.5	306.1	305.5	305.4	305.0	305.0	304.9	304.9	304.9
155°	308.1	307.9	307.7	307.6	307.5	307.9	307.7	308.1	308.1	308.4	308.6
157.5°	310.3	310.5	310.4	310.9	311.0	311.4	311.5	312.1	312.2	312.9	313.2
160°	313.9	314.1	314.1	314.5	314.7	314.9	315.3	315.7	316.1	316.5	316.9
162.5°	317.4	318.0	318.2	318.6	319.0	319.4	320.0	320.7	321.1	321.9	322.4
165°	323.7	323.8	323.9	324.0	324.3	324.6	324.9	325.6	325.8	326.5	327.2
167.5°	329.6	329.8	329.8	330.0	330.3	330.7	331.0	331.7	332.1	333.0	333.5
170°	337.0	337.0	337.0	337.0	337.0	337.4	337.6	337.7	337.9	338.5	338.8
172.5°	344.7	344.7	344.3	344.7	344.3	344.7	344.7	344.9	344.9	345.0	345.1
175°	349.4	349.8	349.9	350.2	350.1	350.2	350.3	350.4	350.5	350.8	350.8
177.5°	353.6	353.8	353.8	353.8	353.8	354.0	354.0	354.0	354.0	353.8	353.9
180°	353.1	353.1	353.1	353.1	353.1	353.1	353.1	353.1	353.1	353.1	353.1



TEST NUMBER: P1444635
 CATALOG NUMBER: EHBR1-60-UNV-TA-L850-UPL15

CANDELA DISTRIBUTION (continued):

	275°	277.5°	280°	282.5°	285°	287.5°	290°	292.5°	295°	297.5°	300°
0°	50296.9	50296.9	50296.9	50296.9	50296.9	50296.9	50296.9	50296.9	50296.9	50296.9	50296.9
2.5°	50926.5	50901.0	50927.1	50900.6	50927.1	50895.4	50916.9	50882.5	50891.4	50855.7	50864.8
5°	52852.1	52811.5	52833.1	52780.4	52786.0	52715.4	52714.2	52632.2	52610.5	52517.1	52476.2
7.5°	54409.2	54395.9	54403.4	54369.5	54365.6	54317.4	54294.6	54226.7	54184.0	54098.1	54039.4
10°	54162.7	54202.4	54212.7	54253.1	54261.6	54301.6	54310.0	54350.1	54358.5	54388.1	54388.5
12.5°	51697.5	51832.3	51864.5	52031.0	52101.1	52291.6	52393.8	52603.7	52728.3	52937.6	53066.3
15°	46948.3	47181.5	47274.5	47599.5	47779.4	48159.0	48397.4	48833.2	49140.7	49603.6	49933.7
17.5°	40411.9	40737.7	40884.9	41325.7	41613.3	42173.4	42577.3	43241.8	43750.5	44489.0	45074.3
20°	33163.5	33525.8	33725.4	34228.3	34567.8	35222.1	35726.3	36542.9	37223.8	38159.6	38959.8
22.5°	26151.3	26496.0	26717.6	27229.3	27611.5	28294.0	28857.4	29719.3	30482.3	31536.7	32496.2
25°	20079.3	20395.0	20595.4	21058.3	21417.1	22044.4	22582.4	23411.3	24157.9	25215.6	26199.4
27.5°	15350.4	15614.9	15808.0	16202.6	16519.2	17051.2	17513.2	18198.3	18841.6	19756.7	20632.8
30°	11752.0	11986.4	12174.4	12518.1	12811.5	13272.6	13679.0	14254.4	14786.8	15515.0	16211.9
32.5°	8980.5	9182.3	9349.7	9650.6	9916.8	10332.1	10698.2	11202.6	11659.5	12277.1	12850.5
35°	6847.3	7244.5	7216.3	7631.3	7698.0	7996.0	8322.6	8763.7	9168.4	9693.5	10181.5
37.5°	5314.6	5426.3	5545.9	5729.3	5922.2	6193.4	6469.2	7008.2	7205.7	7602.5	8006.6
40°	4285.7	4361.1	4440.2	4564.2	4699.1	4890.2	5091.1	5348.2	5611.6	5933.4	6261.9
42.5°	3623.1	3665.9	3716.2	3789.0	3872.2	3993.4	4127.7	4302.1	4485.3	4711.8	4942.9
45°	3237.1	3216.8	3231.7	3270.9	3321.0	3394.7	3479.4	3587.4	3706.7	3853.4	4009.6
47.5°	2877.2	2885.3	2889.9	2911.1	2938.0	2987.3	3038.8	3112.1	3253.5	3296.6	3381.8
50°	2639.5	2643.4	2642.1	2652.9	2666.5	2698.6	2732.0	2781.5	2831.1	2896.7	2959.4
52.5°	2440.3	2445.9	2445.1	2452.2	2459.4	2479.8	2500.8	2535.9	2568.3	2610.0	2646.1
55°	2282.9	2290.6	2293.5	2299.5	2303.1	2313.7	2322.1	2338.8	2352.7	2376.3	2398.1
57.5°	2161.9	2172.4	2177.2	2179.3	2175.0	2174.5	2171.6	2175.2	2178.0	2190.7	2203.0
60°	2066.7	2075.1	2076.3	2075.1	2067.2	2061.6	2052.7	2049.9	2048.4	2054.5	2061.3
62.5°	1966.9	1970.0	1967.9	1965.4	1956.5	1951.1	1941.8	1938.4	1935.3	1939.5	1943.1
65°	1829.0	1831.7	1829.0	1827.5	1819.5	1815.3	1807.4	1804.7	1800.3	1801.4	1800.7
67.5°	1717.0	1719.6	1717.5	1715.5	1710.0	1707.3	1701.5	1697.8	1692.4	1690.3	1686.6
70°	1605.3	1607.4	1604.3	1602.2	1595.8	1593.4	1588.0	1586.9	1582.5	1581.7	1577.3
72.5°	1476.9	1477.1	1472.6	1471.3	1466.6	1466.4	1464.2	1466.2	1466.1	1468.3	1467.4
75°	1345.5	1343.7	1338.1	1337.1	1333.5	1335.2	1332.8	1336.0	1336.4	1341.2	1341.8
77.5°	1213.9	1207.0	1196.3	1191.3	1184.2	1183.4	1179.2	1182.0	1181.1	1186.7	1188.9
80°	1047.6	1039.3	1025.6	1019.1	1010.7	1009.4	1005.7	1009.4	1007.5	1014.0	1018.7
82.5°	836.4	829.1	815.0	809.8	800.1	800.9	796.9	800.9	800.5	810.1	815.7
85°	618.6	613.8	599.3	586.4	572.1	563.7	555.5	554.0	551.5	555.5	558.8
87.5°	357.4	352.8	341.5	334.1	308.8	310.0	300.1	299.6	297.1	294.9	300.1
90°	46.6	52.5	50.1	55.3	53.7	59.9	58.9	64.7	62.6	67.8	66.8
92.5°	24.3	25.4	26.6	27.7	28.9	30.1	31.2	32.4	35.0	37.0	40.0
95°	31.6	32.9	34.3	35.7	37.0	38.3	39.7	41.1	44.8	48.4	52.2
97.5°	42.9	43.7	44.6	45.5	46.4	47.3	48.2	49.1	53.2	57.3	61.2
100°	53.7	54.4	55.1	55.9	56.6	57.3	58.1	58.7	66.8	74.5	82.1
102.5°	81.2	84.4	87.4	90.5	93.7	96.9	99.9	102.9	120.7	138.3	155.9
105°	145.6	153.9	162.6	170.9	179.4	187.7	196.4	204.7	233.1	261.2	289.8
107.5°	261.3	274.5	287.8	301.3	314.5	328.0	341.2	354.7	382.2	410.0	437.7
110°	394.2	407.1	419.6	432.5	445.1	457.9	470.7	483.8	500.5	517.1	534.0



TEST NUMBER: P1444635
 CATALOG NUMBER: EHBR1-60-UNV-TA-L850-UPL15

CANDELA DISTRIBUTION (continued):

	275°	277.5°	280°	282.5°	285°	287.5°	290°	292.5°	295°	297.5°	300°
112.5°	489.9	496.0	502.3	508.6	515.0	521.5	527.9	534.4	543.0	551.5	560.2
115°	519.7	520.1	520.9	521.4	522.2	522.8	523.8	524.5	527.8	530.8	534.0
117.5°	497.4	494.2	491.1	488.0	485.0	482.2	479.4	476.7	476.7	476.7	477.1
120°	451.0	446.6	442.3	437.9	434.1	430.0	426.4	422.7	421.3	419.8	418.7
122.5°	395.1	390.8	386.7	382.8	379.0	375.2	371.7	368.3	367.7	367.1	366.7
125°	343.5	340.3	336.9	333.8	331.0	328.3	325.6	323.2	324.2	325.0	326.4
127.5°	303.6	301.9	300.1	298.6	297.4	296.2	295.3	294.1	296.5	298.7	301.2
130°	278.4	278.0	277.9	277.5	278.0	278.1	278.4	278.7	282.0	284.8	288.1
132.5°	266.6	267.0	267.7	268.6	269.6	270.7	272.3	273.4	276.8	279.9	283.4
135°	263.4	264.3	265.7	266.8	268.6	270.0	272.0	273.6	277.1	279.9	283.5
137.5°	266.7	267.7	269.0	270.4	272.4	274.0	276.1	277.9	280.6	283.4	286.1
140°	273.3	273.9	275.4	276.7	278.2	279.7	281.7	283.2	285.8	288.0	290.3
142.5°	280.4	281.0	282.3	283.6	285.1	286.3	288.0	289.4	291.3	293.0	295.4
145°	289.4	290.0	291.2	292.0	293.3	294.5	295.9	297.1	298.7	299.9	301.5
147.5°	296.6	297.2	298.1	299.1	300.2	301.2	302.1	303.0	304.4	305.5	306.7
150°	302.3	302.8	303.5	304.0	305.1	305.9	307.0	307.6	308.6	309.4	310.7
152.5°	305.8	306.1	306.7	307.3	308.1	308.7	309.4	310.2	311.3	311.9	313.0
155°	309.2	310.0	310.7	311.3	312.2	312.6	313.5	314.0	315.0	315.7	316.7
157.5°	313.9	314.3	315.3	315.6	316.6	317.2	317.9	318.5	319.3	319.9	320.7
160°	317.8	318.7	319.2	320.0	320.9	321.5	322.4	323.2	324.0	324.5	325.2
162.5°	323.2	324.0	324.6	325.2	326.0	326.7	327.3	328.0	329.1	329.6	330.5
165°	328.0	328.7	329.7	330.1	331.2	332.0	332.7	333.6	334.1	334.9	335.3
167.5°	334.3	334.8	335.8	336.3	337.2	337.9	338.7	339.4	340.1	340.5	341.2
170°	339.5	340.1	340.8	341.3	341.9	342.4	343.3	343.8	344.6	345.1	346.0
172.5°	345.6	346.1	346.5	346.7	347.2	347.8	348.3	348.6	349.3	349.7	350.2
175°	350.8	350.8	351.0	351.2	351.4	351.4	351.6	352.0	352.1	352.2	352.4
177.5°	354.0	354.1	354.2	354.3	354.4	354.5	354.6	354.7	354.7	354.7	354.7
180°	353.1	353.1	353.1	353.1	353.1	353.1	353.1	353.1	353.1	353.1	353.1



TEST NUMBER: P1444635
 CATALOG NUMBER: EHBR1-60-UNV-TA-L850-UPL15

CANDELA DISTRIBUTION (continued):

	302.5°	305°	307.5°	310°	312.5°	315°	317.5°	320°	322.5°	325°	327.5°
0°	50296.9	50296.9	50296.9	50296.9	50296.9	50296.9	50296.9	50296.9	50296.9	50296.9	50296.9
2.5°	50829.3	50831.4	50790.5	50788.2	50749.8	50745.0	50707.5	50696.2	50665.7	50654.7	50623.8
5°	52371.4	52321.5	52206.0	52138.2	52024.1	51948.6	51825.2	51744.7	51625.6	51535.7	51415.9
7.5°	53931.0	53853.5	53724.0	53618.9	53460.7	53334.4	53149.2	52997.6	52797.0	52623.4	52412.7
10°	54388.5	54376.6	54343.6	54295.4	54221.9	54139.1	54013.0	53881.6	53705.9	53515.0	53280.8
12.5°	53263.0	53384.5	53550.2	53648.4	53768.0	53820.3	53869.3	53857.1	53824.8	53728.3	53592.9
15°	50411.9	50753.3	51205.6	51556.1	51959.2	52252.3	52575.9	52777.5	52978.7	53071.5	53128.4
17.5°	45876.4	46523.1	47333.9	48005.9	48781.2	49404.0	50086.6	50600.5	51129.0	51507.5	51850.0
20°	40050.6	40987.5	42134.3	43147.5	44325.5	45349.2	46471.1	47392.1	48341.9	49084.5	49787.4
22.5°	33731.7	34844.4	36230.9	37515.2	39033.8	40398.7	41938.6	43278.9	44678.2	45847.4	46977.7
25°	27518.0	28738.2	30254.3	31687.2	33407.2	34994.8	36821.0	38491.4	40300.0	41870.4	43421.6
27.5°	21844.0	23042.0	24589.8	26115.2	27933.9	29625.5	31582.2	33422.6	35482.1	37381.2	39323.8
30°	17180.5	18196.6	19584.4	21061.8	22855.7	24577.1	26555.0	28447.9	30590.2	32663.8	34852.0
32.5°	13611.5	14385.7	15476.8	16726.0	18381.2	20019.8	21903.2	23730.5	25840.2	27934.8	30210.7
35°	10810.1	11413.9	12245.8	13220.7	14622.3	16034.8	17700.8	19362.4	21330.7	23318.3	25530.4
37.5°	8524.3	9014.3	9665.7	10398.1	11522.3	12681.6	14047.6	15425.1	17135.4	18897.3	20902.1
40°	6656.6	7053.3	7560.4	8106.6	8955.5	9848.8	10905.2	11973.4	13347.4	14787.4	16446.6
42.5°	5229.3	5521.9	5880.2	6279.3	7071.3	7545.6	8261.8	9034.5	10044.7	11090.0	12337.5
45°	4199.5	4399.2	4647.7	4915.3	5282.9	5685.2	6175.8	6690.3	7649.9	8120.6	8879.3
47.5°	3507.0	3641.1	3799.2	3967.8	4184.6	4418.6	4709.5	5007.1	5391.8	5790.5	6258.0
50°	3040.6	3176.9	3231.2	3318.6	3444.1	3577.7	3741.7	3905.7	4112.1	4321.2	4561.9
52.5°	2694.5	2738.9	2797.9	2853.5	2931.2	3083.4	3132.6	3218.3	3334.0	3447.2	3573.6
55°	2430.2	2459.0	2497.4	2531.0	2578.0	2622.9	2687.8	2744.9	2822.0	2890.3	2974.1
57.5°	2224.4	2242.8	2269.5	2291.5	2321.9	2347.3	2385.3	2416.2	2460.6	2499.1	2550.0
60°	2074.9	2087.1	2105.1	2119.5	2138.8	2152.1	2170.9	2185.5	2208.9	2228.5	2256.8
62.5°	1952.8	1959.2	1970.8	1979.3	1991.6	1998.2	2008.4	2014.7	2027.5	2037.4	2053.3
65°	1806.3	1807.8	1815.6	1819.2	1828.8	1832.3	1840.6	1843.5	1854.1	1861.4	1875.5
67.5°	1686.3	1682.8	1683.0	1680.3	1681.6	1678.8	1679.5	1676.6	1680.8	1683.0	1693.6
70°	1576.7	1571.9	1570.5	1565.5	1564.0	1558.7	1557.2	1552.6	1552.0	1550.5	1554.3
72.5°	1469.8	1468.5	1468.9	1465.4	1465.0	1461.4	1461.6	1459.4	1461.8	1462.9	1467.7
75°	1347.0	1347.4	1349.7	1346.6	1347.5	1344.5	1345.6	1342.9	1344.3	1343.8	1348.7
77.5°	1197.5	1201.0	1207.5	1206.2	1208.3	1205.0	1206.4	1202.5	1203.6	1201.0	1202.9
80°	1029.3	1036.8	1045.5	1045.1	1048.9	1046.5	1049.9	1046.1	1047.6	1043.1	1042.0
82.5°	829.7	836.0	845.3	845.7	853.9	855.5	864.5	864.2	870.0	866.3	863.6
85°	567.3	571.5	579.7	584.2	592.6	597.8	606.6	610.1	603.8	615.3	606.2
87.5°	296.2	307.2	301.1	315.4	312.1	326.6	323.4	336.8	334.3	345.8	344.3
90°	74.1	73.8	81.4	81.7	91.3	92.6	100.0	98.1	105.2	103.6	110.7
92.5°	42.1	45.0	47.5	50.1	52.6	55.2	52.7	50.4	48.1	45.9	43.4
95°	55.9	59.5	63.3	67.0	70.6	74.4	70.4	66.6	62.7	58.6	54.7
97.5°	65.2	69.2	73.2	77.1	81.3	85.3	80.5	75.8	71.2	66.7	62.0
100°	89.8	97.7	105.4	113.1	120.9	128.6	120.0	111.3	102.7	94.0	85.2
102.5°	173.9	191.5	209.2	227.0	244.6	262.4	244.0	225.8	207.2	188.8	170.2
105°	318.1	346.4	374.7	403.1	431.3	460.1	430.1	400.2	370.3	340.6	310.4
107.5°	465.5	493.1	521.1	548.7	576.5	604.5	574.3	543.9	513.8	483.4	453.0
110°	551.0	567.8	584.7	601.7	618.5	635.6	613.6	591.8	569.9	547.8	525.8



TEST NUMBER: P1444635
 CATALOG NUMBER: EHBR1-60-UNV-TA-L850-UPL15

CANDELA DISTRIBUTION (continued):

	302.5°	305°	307.5°	310°	312.5°	315°	317.5°	320°	322.5°	325°	327.5°
112.5°	568.8	577.9	586.4	595.5	604.1	613.0	597.5	582.2	566.6	551.2	535.5
115°	537.4	540.4	543.9	547.2	550.5	553.8	543.7	533.5	523.3	513.1	502.5
117.5°	477.4	477.9	477.9	478.8	478.7	479.2	473.9	468.5	463.0	457.5	452.0
120°	417.3	416.0	414.7	413.6	412.2	410.8	409.1	407.4	405.4	403.4	401.5
122.5°	366.1	365.9	365.3	364.8	364.1	363.5	363.3	363.4	363.1	363.0	362.5
125°	327.4	328.5	329.6	330.7	331.6	332.6	332.9	333.5	333.7	334.2	334.4
127.5°	303.1	305.6	307.6	309.8	311.7	313.9	314.5	315.6	316.3	317.1	317.8
130°	290.9	294.1	296.9	299.7	302.2	305.4	305.9	306.8	307.5	308.0	308.7
132.5°	286.6	289.8	292.9	296.4	299.1	302.1	302.7	303.6	303.9	304.9	305.4
135°	286.4	289.5	292.2	295.6	298.1	301.1	301.6	302.2	302.5	303.4	303.9
137.5°	288.5	291.4	293.9	296.5	298.6	301.2	301.6	302.2	302.4	303.3	303.7
140°	292.4	294.8	296.6	298.9	301.0	303.0	303.2	303.7	303.8	304.2	304.3
142.5°	297.1	298.9	300.5	302.4	303.9	305.7	305.4	305.4	305.5	305.5	305.4
145°	302.8	304.3	305.6	307.0	307.7	309.3	308.9	308.8	308.2	308.1	307.8
147.5°	307.6	308.8	309.5	310.7	311.2	312.4	311.9	311.5	311.2	310.7	310.1
150°	311.3	312.5	313.1	313.9	314.6	315.6	314.9	314.4	313.7	313.2	312.7
152.5°	313.7	314.5	315.2	315.8	316.5	317.2	316.4	316.1	315.3	314.5	313.8
155°	317.1	318.0	318.4	319.1	319.3	319.8	319.0	318.8	318.2	317.6	316.8
157.5°	321.2	322.0	322.6	322.9	323.3	323.9	323.5	323.2	322.6	322.2	321.6
160°	325.8	326.4	326.9	327.3	327.9	328.1	327.7	327.7	327.3	326.8	326.2
162.5°	331.0	331.8	332.2	332.7	333.4	333.9	333.5	333.1	332.7	332.3	331.6
165°	335.9	336.5	337.1	337.6	337.8	338.4	338.1	338.1	337.6	337.4	337.0
167.5°	341.6	342.3	342.7	343.3	343.5	343.8	343.5	343.7	343.2	343.0	342.5
170°	346.2	346.5	347.2	347.7	348.0	348.3	348.2	348.1	347.7	347.5	347.2
172.5°	350.7	351.1	351.2	351.7	351.8	352.1	352.0	351.7	351.5	351.1	350.8
175°	352.4	352.6	353.0	353.0	353.0	353.2	352.9	352.6	352.4	352.1	351.9
177.5°	354.7	354.7	354.7	354.5	354.5	354.5	354.3	354.1	353.9	353.7	353.4
180°	353.1	353.1	353.1	353.1	353.1	353.1	353.1	353.1	353.1	353.1	353.1



TEST NUMBER: P1444635
 CATALOG NUMBER: EHBR1-60-UNV-TA-L850-UPL15

CANDELA DISTRIBUTION (continued):

	330°	332.5°	335°	337.5°	340°	342.5°	345°	347.5°	350°	352.5°	355°
0°	50296.9	50296.9	50296.9	50296.9	50296.9	50296.9	50296.9	50296.9	50296.9	50296.9	50296.9
2.5°	50612.8	50590.8	50576.6	50558.6	50547.6	50533.6	50523.3	50514.6	50507.5	50501.0	50496.1
5°	51324.5	51211.4	51123.6	51028.5	50950.4	50872.5	50812.5	50762.7	50728.4	50702.7	50687.3
7.5°	52230.6	52023.5	51839.4	51645.6	51471.8	51300.9	51153.6	51026.6	50931.4	50869.6	50832.2
10°	53039.8	52762.6	52488.4	52199.9	51926.3	51660.8	51415.9	51200.4	51029.9	50916.5	50850.3
12.5°	53402.6	53166.4	52886.5	52573.1	52237.8	51898.5	51567.8	51269.5	51019.2	50851.3	50754.3
15°	53083.1	52986.2	52796.2	52553.0	52234.7	51883.9	51495.7	51130.6	50794.9	50577.2	50451.0
17.5°	52043.9	52179.2	52164.7	52071.7	51842.9	51547.6	51152.0	50742.0	50322.0	50031.1	49872.0
20°	50290.1	50715.5	50931.4	51042.1	50952.3	50760.8	50402.6	49986.5	49497.0	49117.1	48885.2
22.5°	47825.7	48576.7	49044.8	49387.2	49459.9	49394.7	49078.4	48682.6	48136.9	47680.3	47337.9
25°	44653.0	45753.4	46493.0	47072.9	47298.2	47356.3	47087.1	46693.6	46085.4	45553.4	45083.0
27.5°	40916.1	42345.9	43333.5	44112.7	44464.4	44616.9	44369.1	43967.7	43248.1	42613.0	41998.6
30°	36709.1	38405.4	39594.6	40528.8	40957.6	41159.0	40895.9	40447.7	39610.4	38846.1	38072.1
32.5°	32206.4	34062.6	35358.3	36372.9	36797.7	36987.3	36643.0	36139.7	35171.9	34271.5	33369.0
35°	27491.9	29365.5	30672.2	31659.8	32015.8	32130.1	31689.8	31108.1	30035.8	29047.6	28063.5
37.5°	22681.5	24424.6	25612.2	26498.5	26718.9	26738.7	26208.2	25565.6	24438.6	23464.3	22484.5
40°	17912.7	19382.7	20341.6	21051.0	21127.4	21059.3	20482.5	19835.8	18781.6	17908.6	17048.5
42.5°	13420.7	14530.4	15214.5	15700.6	15671.8	15537.0	15008.1	14452.3	13582.5	12917.6	12240.8
45°	9572.3	10304.0	10704.0	10988.5	10897.1	10768.7	10357.1	9967.5	9376.4	8947.0	8492.1
47.5°	6650.0	7523.8	7371.6	7927.9	7448.6	7765.1	7106.0	6742.7	6428.9	6200.8	5943.8
50°	4760.8	4961.0	5057.8	5123.8	5088.7	5040.1	4921.7	4815.8	4672.5	4568.1	4446.4
52.5°	3676.7	3776.8	3831.6	3871.3	3863.5	3845.7	3794.1	3747.0	3679.8	3635.7	3582.4
55°	3114.3	3115.8	3216.7	3173.3	3237.3	3162.3	3191.8	3108.9	3122.3	3051.1	3003.2
57.5°	2587.9	2628.9	2647.3	2665.2	2660.2	2657.1	2637.1	2627.0	2604.5	2597.5	2581.5
60°	2276.4	2297.8	2302.3	2310.5	2303.6	2301.0	2285.4	2279.8	2264.6	2261.9	2251.2
62.5°	2062.8	2073.8	2073.8	2073.8	2064.8	2056.2	2038.9	2029.8	2016.9	2014.2	2008.0
65°	1884.6	1895.9	1897.8	1900.2	1893.7	1887.0	1871.7	1861.8	1848.5	1843.5	1836.5
67.5°	1700.6	1712.7	1716.8	1722.9	1719.2	1717.9	1707.5	1703.6	1694.8	1692.8	1686.3
70°	1556.1	1561.1	1560.7	1560.5	1552.4	1545.1	1533.0	1527.2	1518.1	1516.2	1510.3
72.5°	1470.2	1473.7	1471.5	1468.3	1457.7	1446.9	1432.8	1422.2	1410.4	1402.9	1394.5
75°	1349.2	1353.9	1350.9	1348.9	1339.3	1332.3	1320.9	1315.1	1306.7	1304.3	1298.5
77.5°	1200.6	1202.9	1198.0	1197.5	1190.2	1185.7	1177.2	1175.7	1169.5	1169.7	1164.1
80°	1035.3	1033.9	1026.2	1024.7	1017.4	1015.6	1008.8	1009.2	1004.4	1006.4	1002.5
82.5°	851.8	847.2	837.0	834.0	825.6	824.8	820.4	824.1	821.1	825.6	823.0
85°	610.5	611.8	607.3	607.3	604.9	605.7	605.3	608.0	608.4	612.5	612.4
87.5°	340.4	345.3	344.3	348.8	348.6	353.6	355.3	362.8	363.6	370.6	370.6
90°	109.1	117.0	115.2	123.2	122.9	131.0	132.0	140.2	140.2	147.2	145.9
92.5°	41.1	38.8	36.5	34.1	32.9	31.3	30.8	29.0	28.2	26.6	25.4
95°	50.7	46.8	42.7	38.8	37.4	35.9	34.6	33.2	31.8	30.5	29.2
97.5°	57.3	52.7	47.9	43.2	42.0	40.9	39.5	38.3	37.1	36.0	34.8
100°	76.4	67.7	59.1	50.2	49.2	48.2	47.2	46.3	45.2	44.0	43.0
102.5°	151.9	133.2	114.6	96.1	92.5	89.0	85.6	81.8	78.3	74.8	71.3
105°	280.4	250.4	220.3	190.2	180.6	171.0	161.5	151.9	142.2	132.7	123.2
107.5°	422.6	392.0	361.6	331.0	313.5	295.9	278.2	260.3	242.8	224.9	207.3
110°	503.8	481.7	459.5	437.1	423.3	409.0	394.8	380.5	366.4	352.0	337.7



TEST NUMBER: P1444635
 CATALOG NUMBER: EHBR1-60-UNV-TA-L850-UPL15

CANDELA DISTRIBUTION (continued):

	330°	332.5°	335°	337.5°	340°	342.5°	345°	347.5°	350°	352.5°	355°
112.5°	519.8	504.2	488.4	472.4	466.3	459.8	453.7	447.2	440.8	434.2	427.9
115°	492.2	481.8	471.3	460.6	458.7	456.6	454.7	452.3	450.4	448.0	445.8
117.5°	446.5	440.9	435.1	429.6	430.2	430.9	431.6	432.1	432.6	432.9	433.3
120°	399.4	397.3	395.5	393.2	395.8	398.0	400.5	402.4	404.7	406.5	408.4
122.5°	362.4	361.8	361.7	360.9	364.0	366.9	369.6	372.4	374.9	377.1	379.4
125°	334.9	335.0	335.3	335.3	338.5	341.4	344.3	346.8	349.6	351.8	354.1
127.5°	318.7	319.2	320.1	320.6	323.4	325.3	327.7	329.6	331.7	333.2	334.8
130°	309.4	309.9	310.7	311.3	313.6	315.8	318.3	319.9	321.8	323.1	324.5
132.5°	306.2	306.7	307.4	307.7	309.9	311.6	313.6	314.7	316.3	317.1	318.2
135°	304.6	304.9	305.6	305.9	307.8	309.8	311.4	312.7	314.2	314.9	315.8
137.5°	304.4	304.6	305.2	305.5	307.4	309.0	310.5	311.8	313.0	314.0	314.6
140°	304.9	304.8	305.5	305.5	307.3	308.6	310.2	311.2	312.6	313.1	313.8
142.5°	305.4	305.1	305.5	305.1	306.5	307.6	308.6	309.6	310.5	311.0	311.4
145°	307.6	307.0	307.0	306.5	307.6	308.3	309.3	310.2	310.7	311.0	311.4
147.5°	310.0	309.3	308.7	308.2	309.4	309.9	310.5	310.9	311.6	311.8	312.0
150°	312.0	311.1	310.3	309.6	310.2	310.6	311.0	311.6	311.8	311.9	312.1
152.5°	313.1	312.3	311.5	310.5	310.8	311.0	311.2	311.3	311.4	311.4	311.4
155°	316.2	315.3	314.5	313.5	313.9	313.9	313.9	313.9	313.6	313.4	313.3
157.5°	320.9	320.0	319.6	318.7	318.7	318.6	318.5	317.8	317.6	317.2	316.7
160°	325.9	325.1	324.6	323.9	323.7	323.4	323.3	322.6	322.3	321.7	321.2
162.5°	331.0	330.4	329.6	328.8	328.6	328.5	328.2	327.5	327.1	326.5	326.0
165°	336.7	336.0	335.6	334.9	334.7	334.3	334.1	333.3	333.0	332.2	331.6
167.5°	342.1	341.6	341.0	340.2	340.1	340.0	339.8	339.3	338.9	338.2	338.0
170°	346.8	346.3	346.0	345.4	345.1	344.9	344.5	344.1	343.5	343.2	342.6
172.5°	350.2	349.8	349.3	348.6	348.6	348.4	348.0	347.8	347.2	346.8	346.7
175°	351.4	351.2	350.5	350.2	350.0	349.8	349.7	349.5	349.1	348.9	348.5
177.5°	353.2	353.0	352.5	352.3	352.1	352.1	352.0	351.8	351.8	351.6	351.4
180°	353.1	353.1	353.1	353.1	353.1	353.1	353.1	353.1	353.1	353.1	353.1



TEST NUMBER: P1444635
 CATALOG NUMBER: EHBR1-60-UNV-TA-L850-UPL15

CANDELA DISTRIBUTION (continued):

	357.5°	360°
0°	50296.9	50296.9
2.5°	50491.7	50489.0
5°	50679.4	50676.3
7.5°	50822.1	50821.2
10°	50838.9	50847.6
12.5°	50737.5	50744.6
15°	50441.4	50455.1
17.5°	49875.0	49893.1
20°	48899.4	48918.2
22.5°	47319.4	47327.3
25°	45022.3	44989.7
27.5°	41890.6	41834.6
30°	37909.6	37855.3
32.5°	33163.2	33129.2
35°	27820.2	27798.8
37.5°	22195.0	22151.4
40°	16734.1	16606.9
42.5°	11944.3	11721.2
45°	8254.6	7990.1
47.5°	5762.5	5599.1
50°	4367.9	4315.1
52.5°	3559.1	3546.7
55°	3003.0	2997.6
57.5°	2585.1	2583.2
60°	2256.8	2256.3
62.5°	2012.1	2013.0
65°	1839.6	1840.0
67.5°	1687.9	1686.8
70°	1512.5	1511.2
72.5°	1391.7	1389.6
75°	1298.5	1297.2
77.5°	1165.8	1163.7
80°	1005.1	1002.5
82.5°	826.7	823.7
85°	616.7	616.8
87.5°	377.3	377.1
90°	152.4	150.1
92.5°	24.7	23.8
95°	27.8	26.4
97.5°	33.6	32.4
100°	42.0	41.1
102.5°	67.8	64.2
105°	113.6	104.0
107.5°	189.6	171.9
110°	323.5	309.2



TEST NUMBER: P1444635
CATALOG NUMBER: EHBR1-60-UNV-TA-L850-UPL15

CANDELA DISTRIBUTION (continued):

	357.5°	360°
112.5°	421.2	414.7
115°	443.0	440.7
117.5°	433.4	433.5
120°	409.9	411.7
122.5°	381.2	383.2
125°	355.9	357.8
127.5°	335.8	336.9
130°	325.1	326.2
132.5°	318.6	318.7
135°	316.0	316.3
137.5°	314.7	314.9
140°	313.7	313.9
142.5°	311.6	311.6
145°	311.5	311.4
147.5°	311.4	311.4
150°	311.7	311.5
152.5°	310.8	310.6
155°	312.8	312.4
157.5°	315.8	315.4
160°	320.4	319.9
162.5°	325.2	324.7
165°	330.7	329.9
167.5°	337.1	336.8
170°	342.0	341.6
172.5°	346.2	345.8
175°	348.3	348.1
177.5°	351.4	351.0
180°	353.1	353.1

LM-79-2019: Approved Method: Electrical and Photometric Measurements of Solid-State Lighting Products

Report Prepared for

Cooper Lighting Solutions

Metalux

Report Number: SP1-2506-472-4

Test Date: 07/31/2025

Luminaire Tested: EHBR-60-L850-N

Data in this report applies to families of products including EHBR-60-L850-N

Test Information

Test Method: LM-79-2019
 Report Number: SP1-2506-472-4
 Test Lab: COOPER LIGHTING SOLUTIONS
 Photometer: SP1 - 76IN SPHERE
 Measurement Geometry: 4π
 Issue Date: 08/05/2025
 Manufacturer: COOPER LIGHTING SOLUTIONS
 Product Line: Metalux
 Catalog Number: **EHBR-60-L850-N**
 Description: Elevate Round Highbay at, 60000 lumens, 5000K 80CRI LEDs with N lens

Spectral Parameters

CCT (K): 4875
 CIE u': 0.2124
 CIE v': 0.4871
 Duv: 0.0005
 CIE x: 0.3488
 CIE y: 0.3555
 CIE z: 0.2957
 Peak Wavelength (nm): 630
 Dominant Wavelength (nm): 573
 Purity: 11.33556
 Rf: 80
 Rg: 102.3

CRI (Ra):	82.3		
R1:	85.0	R9:	43.9
R2:	83.1	R10:	57.4
R3:	78.8	R11:	83.1
R4:	84.0	R12:	51.0
R5:	83.0	R13:	83.4
R6:	76.3	R14:	87.4
R7:	86.8	R15:	83.4
R8:	81.7		



Test Conditions

Stabilization Time: 39M
 Operation Time: 1H 39M
 Sphere Temperature (°C): 25.0

REPORT NUMBER: SP1-2506-472-4

Measurement and Test Equipment			
Instrument	Identification Number	Calibration Date	Calibration Due Date
Photometer	76INCH SPHERE IN0058	6/16/2025	12/16/2025
Power Meter	XITRON INXT2011004	1/21/2025	1/21/2026
AC Power Source	CHROMA 61603 IN0063	10/22/2024	10/22/2025
DC Power Source	AGILENT E3634A IN0208	10/22/2024	10/22/2025
Sphere Thermometer	ONSET IN0085	10/22/2024	10/22/2025
Room Thermometer	ONSET IN0046	10/22/2024	10/22/2025

REPORT NUMBER: SP1-2506-472-4

CIE 1931 Chromaticity Diagram



CIE 1931 Chromaticity Diagram with 2017 ANSI 7-Step and 4-Step Quadrangles



Point lies inside the ANSI 5000K 4-step quadrangle

REPORT NUMBER: SP1-2506-472-4

Photopic Flux vs. Wavelength



Photopic Lumens: NR

λ (nm)	Power W [^] /nm	Lumens (φ/nm)	λ (nm)	Power W [^] /nm	Lumens (φ/nm)	λ (nm)	Power W [^] /nm	Lumens (φ/nm)	λ (nm)	Power W [^] /nm	Lumens (φ/nm)	λ (nm)	Power W [^] /nm	Lumens (φ/nm)
360	0	NR	490	89	NR	620	280	NR	750	6	NR	880	0	NR
365	0	NR	495	121	NR	625	280	NR	755	5	NR	885	0	NR
370	0	NR	500	168	NR	630	1000	NR	760	5	NR	890	0	NR
375	0	NR	505	224	NR	635	626	NR	765	4	NR	895	0	NR
380	1	NR	510	275	NR	640	163	NR	770	4	NR	900	0	NR
385	2	NR	515	321	NR	645	160	NR	775	3	NR	905	0	NR
390	3	NR	520	354	NR	650	136	NR	780	3	NR	910	0	NR
395	5	NR	525	375	NR	655	111	NR	785	2	NR	915	0	NR
400	7	NR	530	388	NR	660	93	NR	790	2	NR	920	0	NR
405	10	NR	535	395	NR	665	76	NR	795	2	NR	925	0	NR
410	15	NR	540	397	NR	670	72	NR	800	2	NR	930	0	NR
415	28	NR	545	398	NR	675	57	NR	805	1	NR	935	0	NR
420	53	NR	550	396	NR	680	49	NR	810	1	NR	940	0	NR
425	97	NR	555	395	NR	685	42	NR	815	1	NR	945	0	NR
430	163	NR	560	392	NR	690	37	NR	820	1	NR	950	0	NR
435	261	NR	565	388	NR	695	32	NR	825	1	NR	955	0	NR
440	409	NR	570	381	NR	700	27	NR	830	1	NR	960	0	NR
445	637	NR	575	374	NR	705	23	NR	835	1	NR	965	0	NR
450	699	NR	580	365	NR	710	20	NR	840	1	NR	970	0	NR
455	436	NR	585	354	NR	715	17	NR	845	0	NR	975	0	NR
460	274	NR	590	342	NR	720	15	NR	850	0	NR	980	0	NR
465	205	NR	595	325	NR	725	13	NR	855	0	NR	985	0	NR
470	130	NR	600	313	NR	730	11	NR	860	0	NR	990	0	NR
475	90	NR	605	301	NR	735	10	NR	865	0	NR	995	0	NR
480	78	NR	610	323	NR	740	8	NR	870	0	NR	1000	0	NR
485	77	NR	615	340	NR	745	7	NR	875	0	NR			

REPORT NUMBER: SP1-2506-472-4

Scotopic Flux vs. Wavelength



Scotopic Lumens: NR

S/P: 1.82

λ (nm)	Power W [^] /nm	Lumens (φ/nm)	λ (nm)	Power W [^] /nm	Lumens (φ/nm)	λ (nm)	Power W [^] /nm	Lumens (φ/nm)	λ (nm)	Power W [^] /nm	Lumens (φ/nm)	λ (nm)	Power W [^] /nm	Lumens (φ/nm)
360	0	NR	490	89	NR	620	280	NR	750	6	NR	880	0	NR
365	0	NR	495	121	NR	625	280	NR	755	5	NR	885	0	NR
370	0	NR	500	168	NR	630	1000	NR	760	5	NR	890	0	NR
375	0	NR	505	224	NR	635	626	NR	765	4	NR	895	0	NR
380	1	NR	510	275	NR	640	163	NR	770	4	NR	900	0	NR
385	2	NR	515	321	NR	645	160	NR	775	3	NR	905	0	NR
390	3	NR	520	354	NR	650	136	NR	780	3	NR	910	0	NR
395	5	NR	525	375	NR	655	111	NR	785	2	NR	915	0	NR
400	7	NR	530	388	NR	660	93	NR	790	2	NR	920	0	NR
405	10	NR	535	395	NR	665	76	NR	795	2	NR	925	0	NR
410	15	NR	540	397	NR	670	72	NR	800	2	NR	930	0	NR
415	28	NR	545	398	NR	675	57	NR	805	1	NR	935	0	NR
420	53	NR	550	396	NR	680	49	NR	810	1	NR	940	0	NR
425	97	NR	555	395	NR	685	42	NR	815	1	NR	945	0	NR
430	163	NR	560	392	NR	690	37	NR	820	1	NR	950	0	NR
435	261	NR	565	388	NR	695	32	NR	825	1	NR	955	0	NR
440	409	NR	570	381	NR	700	27	NR	830	1	NR	960	0	NR
445	637	NR	575	374	NR	705	23	NR	835	1	NR	965	0	NR
450	699	NR	580	365	NR	710	20	NR	840	1	NR	970	0	NR
455	436	NR	585	354	NR	715	17	NR	845	0	NR	975	0	NR
460	274	NR	590	342	NR	720	15	NR	850	0	NR	980	0	NR
465	205	NR	595	325	NR	725	13	NR	855	0	NR	985	0	NR
470	130	NR	600	313	NR	730	11	NR	860	0	NR	990	0	NR
475	90	NR	605	301	NR	735	10	NR	865	0	NR	995	0	NR
480	78	NR	610	323	NR	740	8	NR	870	0	NR	1000	0	NR
485	77	NR	615	340	NR	745	7	NR	875	0	NR			

REPORT NUMBER: SP1-2506-472-4

Melanopic Flux vs. Wavelength



Melanopic Lumens: NR

M/P: 3.71

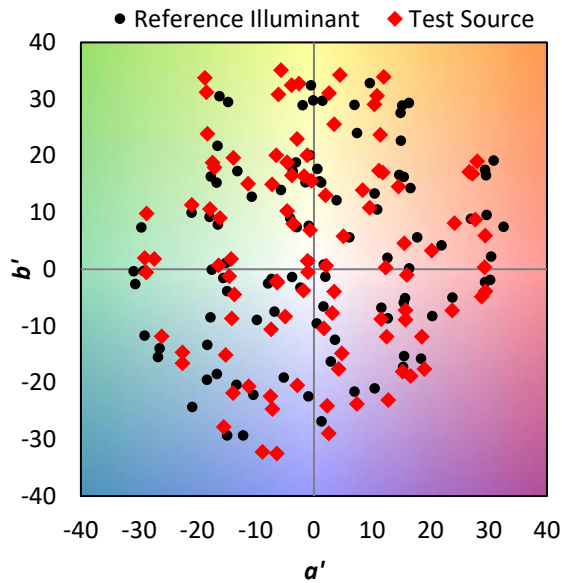
λ (nm)	Power W [^] /nm	Lumens (ϕ /nm)	λ (nm)	Power W [^] /nm	Lumens (ϕ /nm)	λ (nm)	Power W [^] /nm	Lumens (ϕ /nm)	λ (nm)	Power W [^] /nm	Lumens (ϕ /nm)	λ (nm)	Power W [^] /nm	Lumens (ϕ /nm)
360	0	NR	490	89	NR	620	280	NR	750	6	NR	880	0	NR
365	0	NR	495	121	NR	625	280	NR	755	5	NR	885	0	NR
370	0	NR	500	168	NR	630	1000	NR	760	5	NR	890	0	NR
375	0	NR	505	224	NR	635	626	NR	765	4	NR	895	0	NR
380	1	NR	510	275	NR	640	163	NR	770	4	NR	900	0	NR
385	2	NR	515	321	NR	645	160	NR	775	3	NR	905	0	NR
390	3	NR	520	354	NR	650	136	NR	780	3	NR	910	0	NR
395	5	NR	525	375	NR	655	111	NR	785	2	NR	915	0	NR
400	7	NR	530	388	NR	660	93	NR	790	2	NR	920	0	NR
405	10	NR	535	395	NR	665	76	NR	795	2	NR	925	0	NR
410	15	NR	540	397	NR	670	72	NR	800	2	NR	930	0	NR
415	28	NR	545	398	NR	675	57	NR	805	1	NR	935	0	NR
420	53	NR	550	396	NR	680	49	NR	810	1	NR	940	0	NR
425	97	NR	555	395	NR	685	42	NR	815	1	NR	945	0	NR
430	163	NR	560	392	NR	690	37	NR	820	1	NR	950	0	NR
435	261	NR	565	388	NR	695	32	NR	825	1	NR	955	0	NR
440	409	NR	570	381	NR	700	27	NR	830	1	NR	960	0	NR
445	637	NR	575	374	NR	705	23	NR	835	1	NR	965	0	NR
450	699	NR	580	365	NR	710	20	NR	840	1	NR	970	0	NR
455	436	NR	585	354	NR	715	17	NR	845	0	NR	975	0	NR
460	274	NR	590	342	NR	720	15	NR	850	0	NR	980	0	NR
465	205	NR	595	325	NR	725	13	NR	855	0	NR	985	0	NR
470	130	NR	600	313	NR	730	11	NR	860	0	NR	990	0	NR
475	90	NR	605	301	NR	735	10	NR	865	0	NR	995	0	NR
480	78	NR	610	323	NR	740	8	NR	870	0	NR	1000	0	NR
485	77	NR	615	340	NR	745	7	NR	875	0	NR			

Summary

$R_f = 80$
 $R_g = 102.3$
 $CIE R_a = 82.3$
 $R_9 = 43.9$

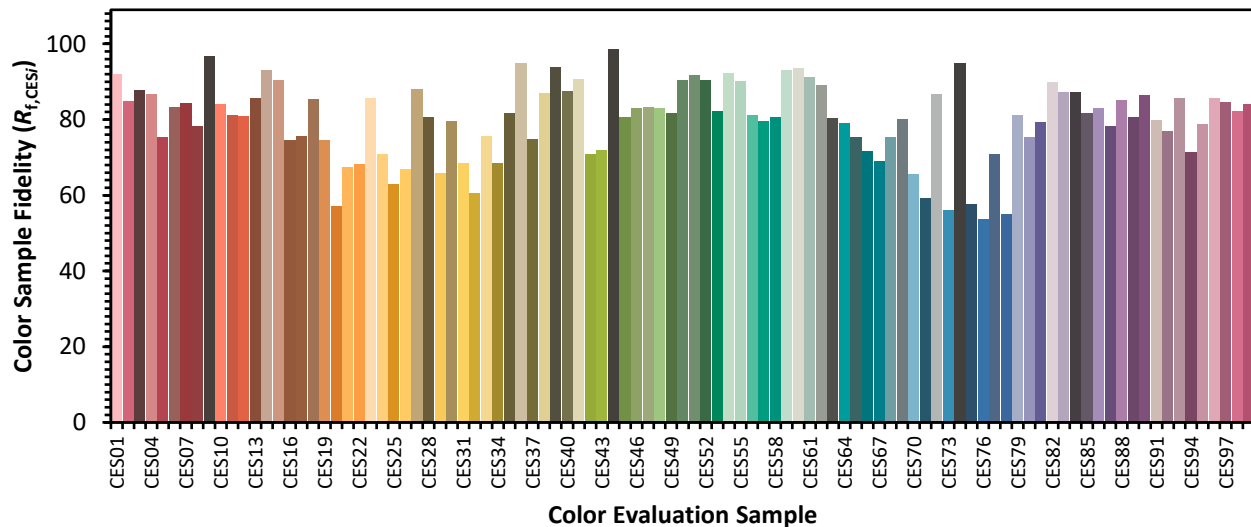


Color Vector Graphics

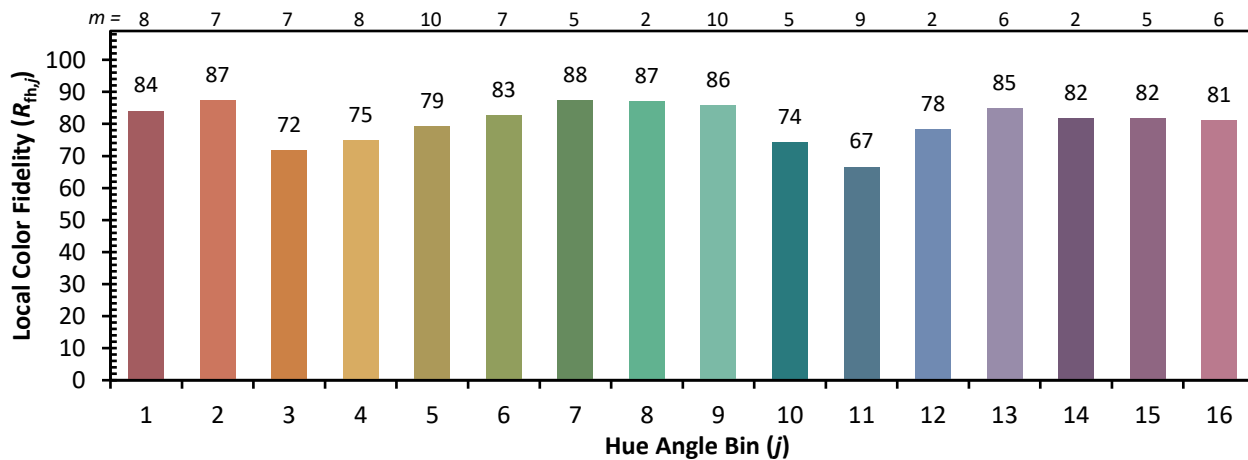
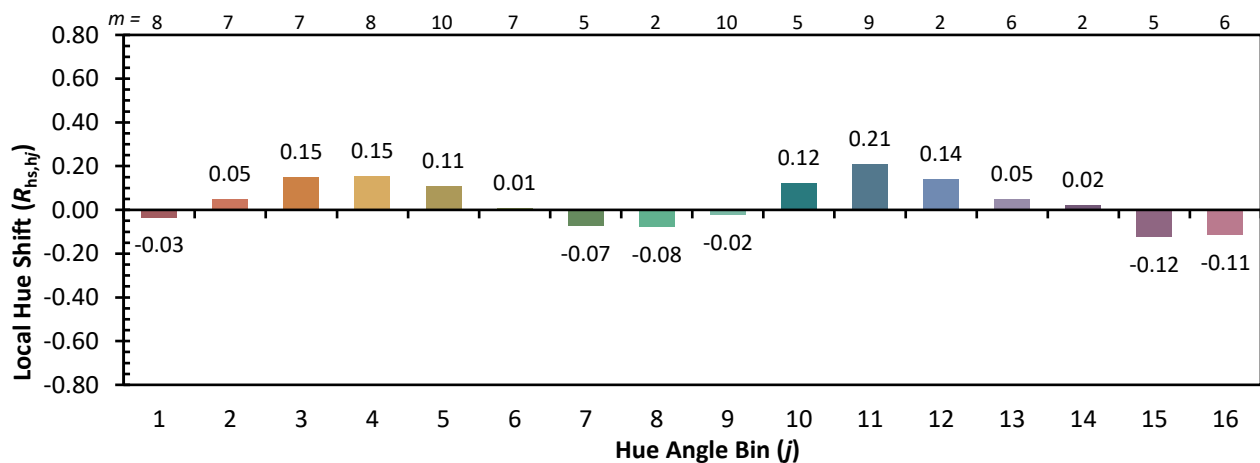
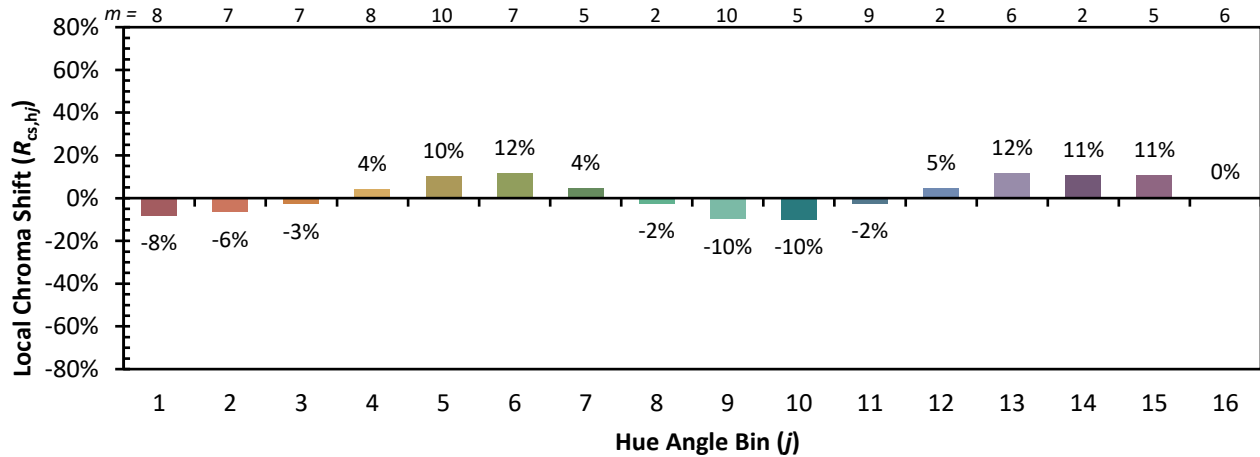


Individual Sample Fidelity Index ($R_{f,i}$)

CES01 = 85	CES26 = 67	CES51 = 92	CES76 = 54
CES02 = 60	CES27 = 88	CES52 = 91	CES77 = 71
CES03 = 31	CES28 = 81	CES53 = 82	CES78 = 55
CES04 = 69	CES29 = 66	CES54 = 92	CES79 = 81
CES05 = 47	CES30 = 80	CES55 = 90	CES80 = 75
CES06 = 50	CES31 = 69	CES56 = 81	CES81 = 79
CES07 = 40	CES32 = 61	CES57 = 80	CES82 = 90
CES08 = 39	CES33 = 76	CES58 = 81	CES83 = 87
CES09 = 29	CES34 = 68	CES59 = 93	CES84 = 87
CES10 = 73	CES35 = 82	CES60 = 94	CES85 = 82
CES11 = 56	CES36 = 95	CES61 = 91	CES86 = 83
CES12 = 62	CES37 = 75	CES62 = 89	CES87 = 78
CES13 = 42	CES38 = 87	CES63 = 80	CES88 = 85
CES14 = 74	CES39 = 94	CES64 = 79	CES89 = 81
CES15 = 71	CES40 = 87	CES65 = 75	CES90 = 86
CES16 = 46	CES41 = 91	CES66 = 72	CES91 = 80
CES17 = 48	CES42 = 71	CES67 = 69	CES92 = 77
CES18 = 56	CES43 = 72	CES68 = 75	CES93 = 86
CES19 = 70	CES44 = 99	CES69 = 80	CES94 = 71
CES20 = 65	CES45 = 81	CES70 = 66	CES95 = 79
CES21 = 85	CES46 = 83	CES71 = 59	CES96 = 86
CES22 = 77	CES47 = 83	CES72 = 87	CES97 = 85
CES23 = 91	CES48 = 83	CES73 = 56	CES98 = 82
CES24 = 90	CES49 = 82	CES74 = 95	CES99 = 84
CES25 = 71	CES50 = 91	CES75 = 58	



Color Rendition by Hue-Angle Bin



Measure Comparisons



(END OF REPORT)