

Cooper Lighting Solutions Photometric Lab
1121 Highway 74 South
Peachtree City, GA 30269



Scaled data based on original data using
LM-79-2019 Approved Method: Electrical and Photometric Measurements of Solid-
State Lighting Products

Test Report Prepared for
Cooper Lighting Solutions

Brand: METALUX

Report Number: P1444697

Luminaire Tested: EHBR1-48-UNV-TA-L930

Issue Date: 5/1/2026

Test Information

Test Method: LM-79-2019
Report Number: P1444697
TEST IS SCALED FROM IESNA LM-79-08 TEST DATA (C80-8019A)
Test Lab: INNOVATION CENTER
Issue Date: 5/1/2026
Manufacturer: COOPER LIGHTING SOLUTIONS
Product Line: METALUX
Catalog Number: EHBR1-48-UNV-TA-L930
Description: Elevate Round Highbay at, 48000 lumens, 3000K 90CRI LEDs with TA lens
Light Source: -
Ballast/Driver: -

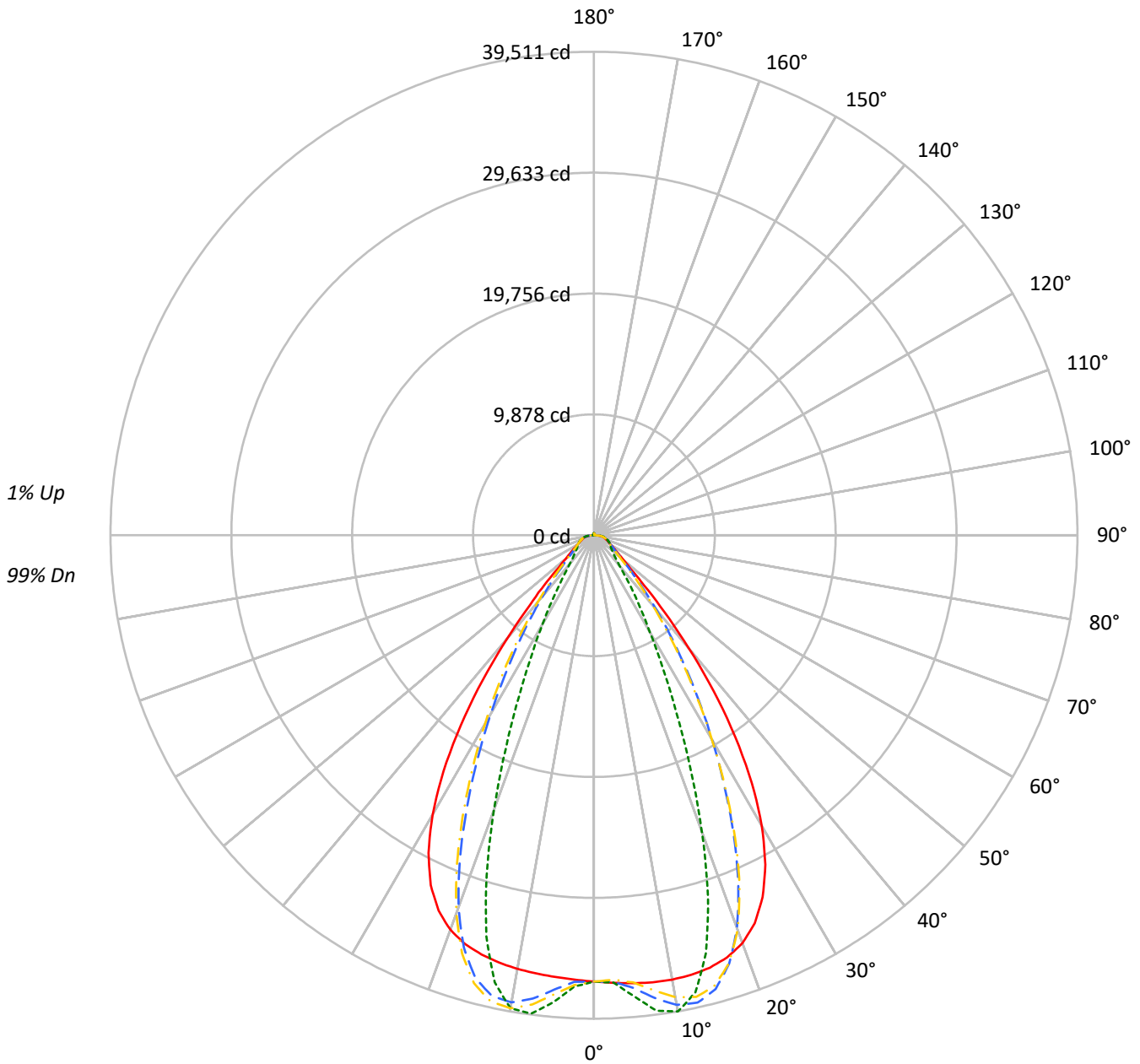
Summary

Lumens per Lamp: N/A
Luminaire Lumens: 42225.7 lumens
Efficiency: N/A
Efficacy: 163.3 lumens/watt
Spacing Criteria (0/90/45): 1.13 / 0.77 / 0.88
Luminous Opening: Circular (Dia: 1.71' x H: 0')
CIE Type: Direct

Input Watts (W): 258.6
Input Voltage (V): NR
Input Current (Ain): NR
Voltage Rise (V): NR
Power Factor: NR
Total Harmonic Distortion (THDi): NR
Frequency (hertz): 60
Stabilization Time: NR
Operation Time: NR
Ambient Temperature (°C): NR
Test Distance: 24 FT

TEST NUMBER: P1444697
CATALOG NUMBER: EHBR1-48-UNV-TA-L930

Luminous Intensity Polar Plot



— 0°-180° - - 45°-225° - - - 90°-270° - · - 135°-315°



TEST NUMBER: P1444697
 CATALOG NUMBER: EHBR1-48-UNV-TA-L930

COEFFICIENT OF UTILIZATION - ZONAL CAVITY METHOD:

RF	20				20				20				20				20				20
RC	80				70				50				30				10				0
RW	70	50	30	10	70	50	30	10	50	30	10	50	30	10	50	30	10	50	30	10	0
RCR																					
0	119	119	119	119	116	116	116	116	111	111	111	106	106	106	101	101	101	99			
1	112	108	105	103	109	106	103	101	102	100	98	98	96	95	94	93	92	90			
2	105	99	94	90	103	97	93	89	94	90	87	91	88	85	88	85	83	81			
3	99	91	85	81	97	90	84	80	87	82	79	84	81	77	82	79	76	74			
4	93	84	78	73	91	83	77	73	81	76	72	79	74	71	77	73	70	68			
5	88	78	72	67	86	77	71	66	75	70	66	73	69	65	72	68	64	63			
6	83	73	66	61	81	72	66	61	70	65	60	69	64	60	67	63	60	58			
7	78	68	61	57	77	67	61	56	66	60	56	65	59	56	63	59	55	54			
8	74	64	57	53	73	63	57	52	62	56	52	61	56	52	60	55	52	50			
9	70	60	53	49	69	59	53	49	58	53	49	57	52	48	56	52	48	47			
10	67	56	50	46	66	56	50	46	55	49	46	54	49	45	53	49	45	44			

AVERAGE LUMINANCE (cd/sqm):

	0°	90°	180°	270°
0°	171276	171276	171276	171276
5°	173228	178279	170804	180614
10°	175823	188411	171606	187165
15°	177877	171944	172461	165021
20°	177273	128991	171471	119348
25°	169041	82185	163455	74568
30°	148852	49783	143086	45497
35°	115563	31512	108915	27915
40°	73823	19962	67542	18758
45°	38479	15727	37841	15468
50°	22861	14175	22159	13954
55°	17797	13628	17139	13505
60°	15367	14206	14712	14022
65°	14827	15240	14259	14720
70°	15046	16575	14296	15952
75°	17068	18649	16145	17825
80°	19658	22987	17825	20983
85°	24101	28870	19473	24721

MAXIMUM LUMINANCE 45°-90°:

Horizontal Angle: 25°
 Vertical Angle: 45°
 Luminance: 58887 cd/sqm



TEST NUMBER: P1444697
 CATALOG NUMBER: EHBR1-48-UNV-TA-L930

ZONAL LUMENS:

Zone	Lumens	% Fixture
0°-10°	3594.4	8.5
10°-20°	10111.4	23.9
20°-30°	11516.1	27.3
30°-40°	8277.3	19.6
40°-50°	3817.5	9.0
50°-60°	1826.8	4.3
60°-70°	1332.9	3.2
70°-80°	1012.7	2.4
80°-90°	460.6	1.1
90°-100°	14.9	0.0
100°-110°	10.8	0.0
110°-120°	18.4	0.0
120°-130°	30.8	0.1
130°-140°	45.3	0.1
140°-150°	53.9	0.1
150°-160°	50.7	0.1
160°-170°	37.1	0.1
170°-180°	14.0	0.0
0°-30°	25222.0	59.7
0°-40°	33499.3	79.3
0°-60°	39143.5	92.7
0°-90°	41949.7	99.3
90°-120°	44.1	0.1
90°-150°	174.2	0.4
90°-180°	276.0	0.7
0°-180°	42225.7	100.0

CANDELA DISTRIBUTION:

	0°	90°	180°	270°	360°	Flux
0°	36472	36472	36472	36472	36472	
5°	36747	37819	36233	38314	36747	3512
15°	36587	35367	35473	33943	36587	10309
25°	32624	15861	31545	14391	32624	14789
35°	20158	5497	18998	4869	20158	12371
45°	5794	2368	5698	2329	5794	4928
55°	2174	1664	2093	1650	2174	2006
65°	1334	1372	1283	1325	1334	1333
75°	941	1028	890	982	941	978
85°	447	536	361	459	447	420
90°	101	134	15	23	101	66
95°	6	6	6	6	6	5
105°	11	8	12	9	11	12
115°	24	12	25	12	24	24
125°	46	20	48	22	46	42
135°	74	40	76	44	74	57
145°	98	72	100	78	98	61
155°	115	103	117	108	115	53
165°	134	127	137	130	134	38
175°	149	148	150	149	149	14
180°	151	151	151	151	151	



TEST NUMBER: P1444697
 CATALOG NUMBER: EHBR1-48-UNV-TA-L930

CANDELA DISTRIBUTION (FULL):

	0°	2.5°	5°	7.5°	10°	12.5°	15°	17.5°	20°	22.5°	25°
0°	36472.1	36472.1	36472.1	36472.1	36472.1	36472.1	36472.1	36472.1	36472.1	36472.1	36472.1
2.5°	36611.5	36608.4	36607.9	36605.4	36604.7	36604.7	36603.5	36600.5	36598.6	36594.5	36589.7
5°	36747.3	36745.7	36746.7	36746.9	36744.3	36738.6	36729.7	36718.8	36705.0	36692.0	36680.4
7.5°	36852.4	36854.9	36858.1	36857.4	36849.5	36836.1	36817.9	36807.6	36813.7	36833.5	36879.0
10°	36871.5	36887.2	36893.3	36891.4	36875.4	36863.9	36868.4	36907.1	36984.0	37086.5	37226.9
12.5°	36796.7	36816.0	36815.3	36809.0	36793.5	36809.2	36865.2	36980.2	37145.1	37347.5	37584.8
15°	36586.9	36611.7	36604.7	36596.4	36586.2	36637.7	36749.4	36949.2	37203.9	37489.2	37781.4
17.5°	36179.3	36209.3	36194.7	36185.4	36176.8	36273.3	36465.3	36757.8	37078.6	37401.4	37678.3
20°	35472.4	35492.6	35457.8	35441.4	35455.2	35644.3	35927.3	36300.8	36638.9	36944.1	37133.3
22.5°	34318.7	34343.7	34278.4	34270.8	34351.5	34641.9	34999.9	35417.5	35735.1	35977.1	36050.0
25°	32623.6	32648.3	32570.7	32617.0	32754.1	33149.8	33576.1	34022.8	34293.8	34473.1	34423.6
27.5°	30335.8	30358.3	30284.7	30379.3	30596.0	31115.8	31617.6	32102.2	32343.7	32469.3	32310.2
30°	27450.3	27496.9	27410.0	27542.1	27872.9	28547.7	29122.6	29666.0	29906.9	30002.4	29754.8
32.5°	24023.2	24089.5	23993.7	24190.2	24651.8	25462.5	26115.5	26722.7	26989.1	27098.2	26818.6
35°	20157.9	20253.0	20143.1	20438.1	21007.3	21910.1	22633.2	23311.1	23626.6	23781.3	23499.4
37.5°	16062.8	16153.5	16094.0	16487.5	17112.5	18048.3	18786.5	19517.7	19874.0	20106.2	19883.9
40°	12042.3	12125.3	12170.3	12620.3	13208.1	14090.2	14799.1	15522.7	15921.3	16212.6	16075.5
42.5°	8499.5	8583.2	8736.2	9170.4	9660.6	10390.7	10998.0	11647.6	12028.3	12339.2	12286.3
45°	5793.9	5891.1	6082.7	6438.3	6792.8	7316.6	7762.5	8267.8	8578.8	8863.5	8866.8
47.5°	4060.1	4128.4	4299.7	4542.4	4773.6	5429.3	5456.2	5704.4	5913.5	6126.3	6153.9
50°	3129.1	3170.1	3260.9	3396.3	3527.2	3697.4	3853.3	4033.2	4161.9	4278.5	4306.3
52.5°	2571.9	2597.9	2644.2	2717.4	2793.5	2886.0	2969.5	3068.2	3138.2	3200.7	3213.8
55°	2173.7	2195.3	2264.1	2278.0	2364.9	2381.7	2418.7	2478.9	2519.6	2557.0	2566.3
57.5°	1873.2	1888.9	1903.5	1934.7	1961.5	2000.3	2031.7	2074.8	2100.5	2127.6	2129.9
60°	1636.1	1647.4	1657.9	1679.5	1697.7	1724.8	1746.4	1775.7	1794.1	1814.4	1816.7
62.5°	1459.7	1467.8	1474.7	1489.0	1502.0	1522.9	1540.0	1564.5	1581.6	1597.3	1600.8
65°	1334.3	1340.2	1344.6	1355.5	1366.8	1384.6	1400.1	1420.1	1432.7	1444.7	1447.3
67.5°	1223.2	1228.8	1233.4	1243.3	1251.2	1264.3	1274.8	1289.8	1299.3	1308.8	1309.1
70°	1095.8	1101.1	1104.6	1113.8	1120.2	1131.5	1139.9	1153.4	1163.1	1173.8	1176.5
72.5°	1007.7	1010.8	1015.5	1023.9	1032.7	1044.9	1056.1	1070.2	1081.9	1093.0	1097.7
75°	940.7	944.3	947.4	954.6	960.6	970.9	979.3	992.1	1002.4	1014.3	1020.1
77.5°	843.9	848.1	850.8	857.9	863.2	873.0	879.3	890.8	899.2	909.9	915.2
80°	726.9	730.8	732.8	739.6	743.7	752.7	758.8	769.9	777.0	787.8	794.1
82.5°	597.3	601.1	602.1	608.6	610.9	618.3	622.7	634.0	642.7	656.8	666.5
85°	447.3	448.6	450.8	449.1	458.2	458.8	469.0	471.0	484.4	488.0	503.4
87.5°	273.5	277.5	279.6	285.8	288.5	294.7	296.6	303.2	306.8	314.4	318.0
90°	101.2	106.5	107.6	114.0	114.9	120.4	121.0	127.3	128.4	135.0	136.1
92.5°	6.1	6.1	6.0	6.3	6.3	7.1	7.6	7.8	7.9	8.6	8.8
95°	6.2	6.2	6.2	6.2	6.2	6.2	6.2	6.2	6.2	6.2	6.1
97.5°	7.0	7.0	7.0	7.0	7.0	7.0	7.0	7.0	7.0	6.9	6.9
100°	7.9	7.9	7.9	7.9	7.9	7.9	7.9	7.9	7.9	7.9	7.8
102.5°	9.4	9.4	9.4	9.4	9.4	9.4	9.4	9.4	9.4	9.4	9.1
105°	11.2	11.1	11.2	11.1	11.1	11.1	11.1	10.8	10.8	10.7	10.7
107.5°	13.4	13.3	13.3	13.3	13.3	13.1	13.1	13.0	12.8	12.6	12.6
110°	16.4	16.1	16.1	16.0	15.8	15.8	15.7	15.2	15.2	15.0	14.9



TEST NUMBER: P1444697
 CATALOG NUMBER: EHBR1-48-UNV-TA-L930

CANDELA DISTRIBUTION (continued):

	0°	2.5°	5°	7.5°	10°	12.5°	15°	17.5°	20°	22.5°	25°
112.5°	19.9	19.6	19.4	19.3	19.2	18.8	18.6	18.4	18.3	17.8	17.6
115°	23.9	23.6	23.5	23.1	23.0	22.5	22.3	21.9	21.7	21.1	20.9
117.5°	28.8	28.4	28.1	27.8	27.3	26.9	26.5	25.9	25.4	24.9	24.5
120°	34.2	33.7	33.4	32.7	32.3	31.6	31.2	30.6	29.9	29.1	28.7
122.5°	40.0	39.5	39.2	38.4	37.9	37.1	36.5	35.4	34.8	34.0	33.2
125°	46.3	45.7	45.4	44.6	43.8	43.0	42.2	41.3	40.5	39.3	38.5
127.5°	53.0	52.5	51.9	51.0	50.2	49.2	48.3	47.1	46.3	45.0	44.2
130°	59.9	59.3	58.6	57.7	56.9	55.8	54.7	53.6	52.6	51.2	50.2
132.5°	66.9	66.4	65.7	64.8	63.8	62.5	61.5	60.0	58.9	57.7	56.5
135°	74.0	73.2	72.6	71.6	70.7	69.3	68.1	66.7	65.6	64.1	63.0
137.5°	80.6	79.8	79.2	78.2	77.2	75.7	74.6	73.2	71.9	70.4	69.2
140°	86.9	86.3	85.5	84.3	83.4	82.2	80.8	79.5	78.2	76.6	75.6
142.5°	92.9	92.1	91.3	90.3	89.4	88.0	86.8	85.3	84.0	82.6	81.5
145°	98.0	97.3	96.7	95.7	94.6	93.3	92.1	90.7	89.6	88.2	87.1
147.5°	102.7	102.0	101.5	100.6	99.7	98.4	97.3	96.0	94.9	93.7	92.8
150°	106.9	106.4	105.9	105.1	104.1	103.0	101.9	100.9	99.7	98.6	97.6
152.5°	110.4	109.8	109.3	108.5	107.7	106.5	105.9	104.6	103.6	102.6	101.7
155°	114.6	114.0	113.3	112.6	111.7	110.9	109.9	109.0	108.1	107.0	106.2
157.5°	119.2	118.4	117.9	116.9	116.4	115.4	114.6	113.7	112.9	112.0	111.2
160°	124.2	123.5	122.9	122.1	121.3	120.3	119.6	118.7	118.2	117.2	116.6
162.5°	129.5	128.7	128.0	127.2	126.5	125.6	124.9	124.2	123.5	122.6	121.9
165°	134.5	133.9	133.3	132.6	131.9	131.3	130.6	129.7	129.1	128.2	127.7
167.5°	139.5	138.8	138.4	137.8	137.1	136.5	135.8	135.2	134.7	133.9	133.4
170°	143.6	142.8	142.5	142.0	141.5	141.0	140.5	140.0	139.5	138.9	138.6
172.5°	146.5	146.0	145.7	145.4	144.9	144.6	144.2	143.8	143.6	143.0	142.8
175°	148.8	148.4	148.3	148.0	147.8	147.5	147.3	147.0	147.0	146.7	146.4
177.5°	150.3	150.2	150.2	150.1	150.1	149.9	149.8	149.5	149.4	149.4	149.3
180°	151.2	151.2	151.2	151.2	151.2	151.2	151.2	151.2	151.2	151.2	151.2



TEST NUMBER: P1444697
 CATALOG NUMBER: EHBR1-48-UNV-TA-L930

CANDELA DISTRIBUTION (continued):

	27.5°	30°	32.5°	35°	37.5°	40°	42.5°	45°	47.5°	50°	52.5°
0°	36472.1	36472.1	36472.1	36472.1	36472.1	36472.1	36472.1	36472.1	36472.1	36472.1	36472.1
2.5°	36586.2	36581.7	36575.7	36567.9	36561.3	36553.6	36535.4	36529.9	36536.0	36540.1	36548.5
5°	36673.1	36675.6	36676.6	36693.2	36707.5	36743.4	37024.0	37135.5	37221.7	37276.5	37359.6
7.5°	36935.2	37019.5	37102.9	37215.1	37311.9	37442.6	37933.6	38142.5	38291.1	38397.9	38529.2
10°	37379.4	37563.5	37736.1	37938.3	38112.2	38311.2	38768.2	38971.8	39100.3	39193.9	39281.2
12.5°	37826.8	38082.1	38312.8	38537.9	38726.1	38898.7	39059.3	39130.6	39136.7	39139.6	39093.3
15°	38059.8	38303.9	38507.2	38656.0	38766.6	38815.5	38538.8	38393.7	38210.3	38059.1	37810.5
17.5°	37912.7	38059.1	38147.0	38138.4	38092.6	37939.6	37156.0	36724.8	36296.9	35911.3	35405.6
20°	37258.9	37247.7	37171.3	36954.9	36694.2	36288.7	34945.0	34169.8	33420.4	32762.1	31963.5
22.5°	36042.5	35851.2	35584.3	35117.7	34599.3	33890.9	31965.4	30825.1	29781.7	28860.0	27827.4
25°	34280.1	33886.3	33394.1	32653.4	31847.8	30814.5	28441.4	27023.0	25770.3	24683.8	23492.4
27.5°	32024.4	31431.4	30710.1	29684.8	28593.5	27269.8	24638.7	23073.4	21728.6	20563.7	19295.7
30°	29354.0	28582.7	27651.3	26378.8	25062.4	23561.1	20892.6	19307.2	17945.9	16747.5	15478.6
32.5°	26336.3	25432.8	24341.4	22913.2	21489.6	19945.9	17368.8	15834.2	14533.9	13381.0	12232.5
35°	23007.8	22038.9	20884.3	19427.5	18012.5	16511.7	14147.0	12763.3	11615.0	10596.0	9668.6
37.5°	19437.4	18486.1	17388.7	16015.7	14703.5	13343.6	11303.2	10143.7	9180.1	8334.3	7618.2
40°	15725.2	14892.7	13943.2	12756.3	11636.4	10503.8	8828.9	7908.5	7148.1	6503.0	5966.4
42.5°	12058.5	11413.4	10685.2	9747.3	8890.3	8027.9	6738.8	6056.8	5493.6	5029.2	4649.9
45°	8748.8	8317.3	7828.9	7176.9	6583.8	5982.3	5064.8	4585.6	4218.8	3919.4	3666.2
47.5°	6115.9	5865.6	5850.3	5247.7	4812.9	4445.1	3854.0	3551.3	3326.5	3145.1	2984.8
50°	4295.0	4173.9	4023.5	3808.4	3606.6	3398.7	3038.6	2855.6	2723.9	2614.1	2512.7
52.5°	3210.9	3147.9	3067.8	2953.8	2844.3	2727.4	2499.6	2383.1	2341.6	2239.3	2159.1
55°	2564.6	2528.5	2482.9	2415.9	2349.4	2322.8	2127.4	2040.9	1986.2	1945.8	1902.7
57.5°	2130.3	2103.4	2076.4	2030.9	1992.4	1945.8	1842.1	1797.8	1765.2	1741.4	1711.5
60°	1817.1	1801.0	1785.8	1759.2	1738.4	1713.3	1647.4	1622.4	1605.4	1591.1	1572.1
62.5°	1603.8	1595.6	1587.7	1573.5	1563.0	1549.3	1504.3	1492.3	1483.7	1476.6	1464.9
65°	1449.8	1443.9	1439.5	1430.1	1424.8	1416.8	1378.2	1370.1	1364.8	1362.3	1355.5
67.5°	1310.0	1303.7	1300.9	1294.1	1292.0	1287.0	1255.3	1250.9	1249.1	1249.9	1247.5
70°	1179.1	1176.5	1177.9	1176.7	1179.8	1180.7	1161.5	1161.4	1163.4	1167.5	1167.8
72.5°	1100.6	1100.6	1102.2	1102.9	1105.7	1107.1	1091.1	1090.3	1091.2	1094.2	1094.3
75°	1026.1	1027.3	1031.3	1032.7	1036.0	1036.8	1015.6	1013.2	1013.4	1016.2	1015.3
77.5°	922.8	927.2	935.0	939.0	945.5	946.7	923.0	920.3	920.4	923.2	920.8
80°	805.6	814.1	826.4	834.9	845.0	849.0	824.7	818.9	813.4	812.6	807.8
82.5°	681.1	691.5	706.2	714.0	724.7	727.1	686.4	678.7	674.1	674.5	670.0
85°	520.0	527.8	541.2	545.6	552.1	551.6	505.1	485.2	490.6	482.3	488.8
87.5°	326.2	330.8	339.2	340.2	343.4	342.6	295.9	286.7	284.0	284.1	280.7
90°	142.3	144.1	150.1	148.8	152.3	150.3	111.1	105.4	103.3	106.2	102.7
92.5°	9.4	9.4	9.7	9.9	10.2	10.5	6.5	5.4	5.8	5.5	6.1
95°	6.1	6.1	6.1	6.1	6.1	6.1	6.1	6.1	6.1	6.0	6.0
97.5°	6.9	6.9	6.8	6.8	6.8	6.8	6.8	6.8	6.8	6.5	6.5
100°	7.8	7.8	7.7	7.7	7.6	7.6	7.6	7.6	7.6	7.3	7.3
102.5°	8.9	8.9	8.8	8.6	8.6	8.6	8.6	8.6	8.6	8.3	8.1
105°	10.5	10.4	10.2	9.9	9.7	9.6	9.9	9.7	9.6	9.4	9.4
107.5°	12.3	12.2	11.8	11.5	11.3	11.1	11.5	11.3	11.1	10.7	10.5
110°	14.6	14.2	13.9	13.5	13.1	12.8	13.4	13.1	12.8	12.5	12.2



TEST NUMBER: P1444697
 CATALOG NUMBER: EHBR1-48-UNV-TA-L930

CANDELA DISTRIBUTION (continued):

	27.5°	30°	32.5°	35°	37.5°	40°	42.5°	45°	47.5°	50°	52.5°
112.5°	17.0	16.8	16.4	15.8	15.2	14.9	15.7	15.5	15.0	14.3	14.1
115°	20.1	19.9	19.2	18.6	18.1	17.5	18.4	18.3	17.6	16.9	16.4
117.5°	23.8	23.1	22.5	21.9	21.1	20.4	21.7	21.4	20.6	19.9	19.2
120°	27.8	27.2	26.4	25.7	24.8	23.9	25.4	25.1	24.3	23.3	22.5
122.5°	32.4	31.6	30.7	29.9	29.0	28.0	29.8	29.5	28.4	27.4	26.5
125°	37.6	36.6	35.6	34.8	33.5	32.6	34.8	34.2	33.2	32.2	31.2
127.5°	43.1	42.2	41.1	40.1	38.8	37.9	40.0	39.6	38.5	37.4	36.3
130°	49.1	47.9	46.8	45.7	44.6	43.5	45.8	45.5	44.5	43.1	42.1
132.5°	55.3	54.2	52.8	51.9	50.7	49.5	52.0	51.8	50.8	49.5	48.4
135°	61.7	60.6	59.3	58.1	56.9	56.0	58.8	58.5	57.6	56.2	55.2
137.5°	67.8	66.7	65.6	64.6	63.4	62.3	65.7	65.6	64.6	63.3	62.3
140°	74.3	73.2	72.0	71.1	69.9	69.1	72.6	72.6	71.7	70.7	69.6
142.5°	80.1	79.2	78.2	77.4	76.2	75.4	79.5	79.6	78.8	77.7	76.9
145°	85.8	85.0	83.9	83.1	82.2	81.5	86.1	86.5	85.8	84.9	84.0
147.5°	91.3	90.5	89.6	88.8	88.0	87.6	92.8	93.3	92.8	91.9	91.3
150°	96.5	95.7	94.7	94.1	93.6	93.0	99.1	100.0	99.5	98.9	98.3
152.5°	100.7	99.9	99.1	98.4	97.8	97.3	105.2	106.5	106.1	105.4	105.1
155°	105.4	104.6	103.8	103.3	102.6	102.3	111.2	112.9	112.5	112.0	111.5
157.5°	110.4	109.6	108.8	108.3	107.7	107.2	116.9	119.1	118.5	118.2	117.7
160°	115.7	115.0	114.2	113.7	113.0	112.5	122.7	124.8	124.5	124.0	123.5
162.5°	121.1	120.7	119.9	119.2	118.5	118.2	128.2	130.6	130.0	129.7	129.2
165°	127.1	126.4	125.7	125.3	124.7	124.2	133.9	136.0	135.7	135.2	134.7
167.5°	132.8	132.3	131.6	131.3	130.7	130.5	139.5	141.4	141.2	140.5	140.3
170°	138.0	137.8	137.2	137.0	136.7	136.5	144.1	145.7	145.6	145.1	144.8
172.5°	142.5	142.3	142.0	141.8	141.5	141.4	147.8	149.3	149.1	148.8	148.4
175°	146.2	146.0	145.9	145.9	145.7	145.6	150.6	151.7	151.5	151.2	151.0
177.5°	149.3	149.1	149.1	149.1	149.1	149.1	152.0	152.7	152.6	152.6	152.5
180°	151.2	151.2	151.2	151.2	151.2	151.2	151.2	151.2	151.2	151.2	151.2



TEST NUMBER: P1444697
 CATALOG NUMBER: EHBR1-48-UNV-TA-L930

CANDELA DISTRIBUTION (continued):

	55°	57.5°	60°	62.5°	65°	67.5°	70°	72.5°	75°	77.5°	80°
0°	36472.1	36472.1	36472.1	36472.1	36472.1	36472.1	36472.1	36472.1	36472.1	36472.1	36472.1
2.5°	36550.3	36563.2	36565.0	36580.1	36578.9	36596.7	36593.9	36608.4	36600.0	36612.0	36601.9
5°	37408.8	37486.7	37527.4	37603.3	37627.4	37695.4	37714.6	37776.6	37779.2	37828.4	37817.2
7.5°	38622.5	38737.3	38805.4	38899.3	38946.9	39025.2	39059.6	39117.5	39136.2	39182.1	39185.6
10°	39347.3	39403.0	39441.9	39468.1	39492.1	39503.3	39516.4	39512.8	39516.4	39511.2	39522.5
12.5°	39062.2	38980.8	38927.0	38825.2	38766.1	38653.4	38598.2	38489.9	38450.6	38357.6	38344.2
15°	37618.5	37334.9	37134.6	36843.2	36660.0	36373.3	36205.6	35947.0	35828.8	35623.2	35569.3
17.5°	34987.0	34460.6	34053.2	33530.6	33168.0	32679.6	32372.5	31968.2	31746.8	31420.8	31307.9
20°	31297.8	30518.9	29907.9	29179.9	28659.0	28009.9	27594.4	27070.3	26766.1	26365.7	26203.3
22.5°	26966.5	25996.8	25233.7	24373.7	23745.2	23021.9	22524.1	21957.0	21626.0	21191.0	20998.4
25°	22502.2	21433.0	20584.5	19678.4	19014.3	18289.3	17791.3	17234.3	16891.8	16478.9	16287.4
27.5°	18232.7	17150.2	16330.3	15487.9	14878.7	14224.5	13775.1	13288.8	12984.8	12632.3	12452.2
30°	14464.8	13510.1	12812.4	12113.3	11606.5	11075.2	10701.8	10298.7	10032.0	9730.2	9558.7
32.5°	11395.1	10658.0	10111.7	9556.9	9142.2	8698.1	8375.6	8019.9	7779.2	7509.6	7354.3
35°	9024.7	8452.0	8016.2	7559.6	7203.3	6825.1	6540.9	6233.9	6017.9	5785.8	5651.7
37.5°	7130.5	6675.1	6316.5	5937.2	5644.6	5331.2	5225.6	4873.4	4649.6	4464.4	4336.1
40°	5596.0	5233.9	4937.2	4647.1	4408.5	4170.8	3980.1	3791.9	3647.4	3514.9	3423.3
42.5°	4370.1	4107.7	3891.0	3678.5	3504.4	3331.3	3193.1	3063.5	2966.2	2879.5	2820.5
45°	3474.0	3293.6	3143.0	2993.3	2870.4	2754.9	2661.9	2579.1	2516.3	2464.3	2427.4
47.5°	2854.0	2730.5	2624.2	2523.3	2439.9	2364.1	2301.8	2281.5	2213.9	2168.4	2151.1
50°	2425.5	2350.9	2270.2	2195.7	2140.0	2084.6	2044.2	2004.5	1979.3	1958.4	1952.0
52.5°	2105.7	2048.6	2003.7	1956.6	1919.8	1880.4	1852.5	1826.1	1812.2	1801.3	1799.9
55°	1867.9	1828.0	1798.3	1766.7	1744.7	1721.5	1707.1	1693.2	1687.0	1681.5	1681.9
57.5°	1688.0	1661.4	1642.0	1621.5	1609.6	1598.5	1594.9	1591.4	1593.3	1594.1	1597.2
60°	1556.9	1539.6	1527.4	1515.6	1510.7	1507.2	1509.9	1513.0	1519.3	1524.5	1529.0
62.5°	1456.5	1446.6	1440.6	1434.3	1433.8	1434.0	1439.5	1444.7	1452.6	1458.6	1463.1
65°	1353.0	1347.4	1345.4	1341.4	1343.5	1344.6	1351.1	1355.2	1363.2	1367.9	1373.6
67.5°	1248.6	1247.2	1248.4	1248.4	1252.1	1255.2	1261.4	1266.0	1272.7	1277.1	1281.7
70°	1171.4	1171.9	1174.8	1175.3	1179.2	1181.4	1186.8	1189.8	1195.8	1199.5	1205.0
72.5°	1096.4	1095.1	1095.8	1094.1	1095.4	1094.9	1097.9	1099.3	1104.5	1107.3	1114.1
75°	1016.4	1013.1	1012.2	1008.7	1008.8	1006.2	1007.4	1007.3	1010.6	1012.0	1016.9
77.5°	919.9	914.3	911.5	905.5	905.4	903.1	905.5	907.0	913.0	915.7	921.3
80°	804.5	795.6	791.6	784.6	785.7	785.4	791.2	795.8	803.0	804.4	811.4
82.5°	668.7	659.6	655.3	648.4	650.0	650.2	655.6	656.5	662.8	665.6	673.7
85°	478.8	482.3	472.7	473.4	471.3	475.2	478.8	483.4	488.6	497.4	504.2
87.5°	282.0	280.7	284.1	284.5	289.4	291.9	299.8	304.2	313.1	319.9	332.4
90°	104.1	100.7	104.5	104.1	109.9	109.6	114.8	113.4	119.5	120.8	128.4
92.5°	5.5	6.0	5.5	5.8	5.5	6.1	5.5	6.0	5.5	6.1	5.5
95°	6.0	6.0	6.0	6.0	6.0	6.0	6.0	6.0	6.0	6.0	6.0
97.5°	6.5	6.5	6.5	6.3	6.3	6.3	6.3	6.3	6.3	6.3	6.3
100°	7.1	7.1	7.1	7.0	7.0	7.0	7.0	7.0	7.0	7.0	7.0
102.5°	8.1	7.9	7.9	7.8	7.8	7.7	7.7	7.7	7.7	7.7	7.7
105°	9.1	8.9	8.8	8.6	8.6	8.6	8.6	8.3	8.3	8.3	8.3
107.5°	10.2	10.0	9.9	9.7	9.6	9.4	9.4	9.4	9.1	9.1	9.1
110°	11.6	11.3	11.2	10.8	10.7	10.5	10.2	10.2	10.0	9.9	9.9



TEST NUMBER: P1444697
 CATALOG NUMBER: EHBR1-48-UNV-TA-L930

CANDELA DISTRIBUTION (continued):

	55°	57.5°	60°	62.5°	65°	67.5°	70°	72.5°	75°	77.5°	80°
112.5°	13.5	13.1	12.6	12.3	12.0	11.6	11.5	11.3	11.2	11.1	10.8
115°	15.7	15.1	14.6	14.2	13.8	13.3	13.0	12.8	12.5	12.3	12.2
117.5°	18.4	17.7	16.9	16.4	15.8	15.2	14.9	14.3	14.1	13.9	13.8
120°	21.7	20.9	19.9	19.2	18.4	17.7	17.0	16.7	16.1	16.0	15.7
122.5°	25.4	24.5	23.3	22.5	21.7	20.9	20.0	19.4	18.8	18.4	18.1
125°	29.9	28.8	27.7	26.5	25.4	24.6	23.6	22.8	22.2	21.7	21.1
127.5°	35.0	33.7	32.4	31.4	30.0	29.1	28.0	27.2	26.2	25.6	24.9
130°	40.7	39.5	38.0	36.9	35.4	34.3	33.2	32.3	31.4	30.6	29.8
132.5°	47.1	45.8	44.5	43.1	41.8	40.5	39.3	38.2	37.1	36.3	35.4
135°	53.8	52.8	51.2	50.0	48.6	47.4	46.3	45.0	43.9	43.0	42.1
137.5°	61.1	59.9	58.6	57.6	56.1	55.0	53.6	52.6	51.2	50.5	49.5
140°	68.4	67.5	66.1	65.1	63.8	62.8	61.5	60.6	59.3	58.5	57.6
142.5°	75.7	74.8	73.7	72.7	71.6	70.7	69.5	68.5	67.5	66.7	65.7
145°	83.1	82.3	81.4	80.5	79.5	78.7	77.4	76.6	75.7	74.9	74.2
147.5°	90.5	89.6	88.8	88.0	87.1	86.3	85.3	84.7	83.7	83.1	82.3
150°	97.5	96.8	96.0	95.4	94.5	93.8	93.0	92.3	91.5	91.1	90.3
152.5°	104.2	103.6	103.0	102.5	101.7	101.0	100.3	99.7	99.1	98.6	97.8
155°	110.9	110.3	109.6	109.1	108.3	107.8	107.2	106.5	106.0	105.4	104.8
157.5°	117.2	116.7	115.9	115.6	114.8	114.2	113.7	113.2	112.5	112.0	111.4
160°	123.0	122.6	121.9	121.4	120.8	120.3	119.6	119.2	118.5	118.2	117.5
162.5°	128.7	128.1	127.7	127.2	126.5	126.1	125.5	124.9	124.3	123.8	123.2
165°	134.2	133.7	133.1	132.6	132.2	131.6	131.0	130.6	129.9	129.5	128.9
167.5°	139.7	139.4	138.8	138.4	137.8	137.2	136.8	136.3	135.7	135.2	134.5
170°	144.5	143.9	143.7	143.1	142.8	142.2	141.8	141.2	140.7	140.4	139.7
172.5°	148.1	148.0	147.6	147.3	146.8	146.5	146.2	145.9	145.4	145.1	144.8
175°	150.9	150.7	150.6	150.2	150.1	149.8	149.5	149.4	149.1	149.0	148.6
177.5°	152.5	152.3	152.3	152.0	151.9	151.9	151.8	151.8	151.7	151.5	151.5
180°	151.2	151.2	151.2	151.2	151.2	151.2	151.2	151.2	151.2	151.2	151.2



TEST NUMBER: P1444697
 CATALOG NUMBER: EHBR1-48-UNV-TA-L930

CANDELA DISTRIBUTION (continued):

	82.5°	85°	87.5°	90°	92.5°	95°	97.5°	100°	102.5°	105°	107.5°
0°	36472.1	36472.1	36472.1	36472.1	36472.1	36472.1	36472.1	36472.1	36472.1	36472.1	36472.1
2.5°	36612.4	36603.1	36607.6	36590.4	36594.5	36573.8	36571.8	36548.5	36546.2	36524.1	36515.9
5°	37852.0	37831.6	37854.6	37818.8	37825.8	37779.2	37775.3	37715.0	37694.2	37618.7	37586.2
7.5°	39214.4	39206.7	39220.7	39190.8	39189.8	39148.2	39131.0	39077.0	39043.4	38964.3	38913.6
10°	39512.8	39519.9	39508.4	39511.2	39495.0	39490.6	39473.9	39463.4	39436.2	39415.7	39385.4
12.5°	38273.5	38280.9	38233.6	38263.6	38239.9	38295.3	38290.8	38356.0	38366.0	38448.4	38479.7
15°	35409.2	35400.2	35309.5	35366.6	35336.0	35457.4	35484.5	35647.8	35735.1	35944.8	36073.6
17.5°	31082.0	31058.7	30930.9	31000.5	30965.1	31144.1	31204.1	31465.2	31628.1	31966.0	32206.7
20°	25924.0	25879.2	25729.8	25811.2	25774.8	25978.0	26063.8	26379.3	26589.5	27036.8	27355.1
22.5°	20701.8	20631.1	20484.7	20560.8	20526.3	20737.0	20848.5	21165.2	21405.8	21865.1	22236.7
25°	16012.3	15949.3	15807.8	15861.1	15848.3	16026.4	16125.6	16425.2	16661.6	17099.1	17453.9
27.5°	12213.0	12147.5	12019.6	12057.3	12044.3	12196.1	12289.6	12539.8	12743.3	13111.6	13423.1
30°	9347.2	9268.2	9159.8	9180.6	9171.7	9294.7	9382.0	9592.8	9767.2	10078.4	10346.8
32.5°	7164.7	7085.2	6985.6	6995.4	6982.2	7078.7	7150.6	7333.9	7485.8	7750.5	7984.1
35°	5481.9	5574.8	5362.1	5496.8	5356.5	5562.5	5488.4	5602.9	5733.7	5956.6	6151.4
37.5°	4214.3	4149.6	4094.9	4089.0	4088.7	4136.5	4192.8	4303.1	4418.3	4584.5	4756.1
40°	3339.6	3294.2	3258.8	3256.2	3258.8	3292.8	3334.4	3410.6	3495.0	3614.3	3740.4
42.5°	2769.9	2739.7	2718.4	2716.9	2723.7	2747.7	2776.7	2822.0	2876.9	2954.1	3040.7
45°	2397.3	2380.6	2368.7	2368.0	2371.1	2383.7	2400.4	2428.6	2463.4	2511.6	2566.3
47.5°	2136.0	2131.9	2124.5	2124.7	2121.4	2126.5	2128.4	2144.2	2162.7	2199.1	2270.6
50°	1945.6	1945.6	1940.5	1940.2	1935.4	1935.1	1931.0	1937.2	1945.9	1968.4	1991.3
52.5°	1795.2	1794.7	1789.1	1788.1	1782.9	1782.6	1779.1	1781.6	1782.7	1794.1	1807.8
55°	1677.6	1674.1	1666.8	1664.5	1662.4	1665.5	1664.1	1664.2	1662.7	1667.5	1671.5
57.5°	1593.3	1588.6	1581.8	1579.7	1579.2	1582.7	1582.8	1581.6	1575.3	1571.0	1564.8
60°	1526.4	1521.9	1514.4	1512.5	1513.6	1518.5	1518.2	1514.1	1504.7	1496.5	1486.9
62.5°	1460.9	1459.1	1455.2	1454.7	1453.7	1454.6	1451.2	1446.9	1437.5	1428.8	1418.3
65°	1372.9	1373.9	1371.0	1371.5	1368.1	1367.5	1362.4	1358.2	1348.7	1340.7	1330.1
67.5°	1281.5	1282.3	1279.9	1279.9	1278.2	1278.4	1275.3	1271.4	1263.5	1257.0	1248.7
70°	1206.2	1208.1	1206.8	1207.2	1205.0	1204.2	1199.4	1195.6	1187.4	1181.9	1174.5
72.5°	1116.1	1120.2	1120.0	1121.0	1117.8	1116.1	1110.3	1105.5	1098.2	1093.8	1087.8
75°	1018.8	1024.0	1025.5	1027.8	1023.2	1020.8	1014.5	1010.6	1004.6	1002.0	998.1
77.5°	923.8	929.5	935.1	940.2	932.8	926.2	918.2	912.2	903.4	900.1	894.0
80°	817.1	827.3	839.6	850.0	836.6	823.1	810.0	800.2	788.7	784.0	776.4
82.5°	677.9	688.4	695.4	702.0	692.8	682.9	670.1	661.7	649.2	644.7	635.8
85°	515.0	528.1	532.3	535.8	529.9	524.6	512.7	496.6	488.8	476.5	470.2
87.5°	338.7	346.6	348.1	349.2	345.7	343.1	335.3	327.8	314.4	304.7	292.7
90°	128.4	133.9	131.3	133.6	128.7	128.9	121.0	118.3	107.0	102.7	92.8
92.5°	5.8	5.4	5.5	5.4	6.1	5.5	6.1	5.5	6.0	5.5	6.0
95°	6.0	6.0	6.0	6.0	6.0	6.0	6.0	6.0	6.0	6.0	6.0
97.5°	6.3	6.3	6.3	6.3	6.3	6.3	6.3	6.3	6.3	6.3	6.5
100°	7.0	7.0	7.0	7.0	7.0	7.0	7.0	7.0	7.0	7.0	7.0
102.5°	7.7	7.7	7.7	7.7	7.7	7.7	7.7	7.7	7.7	7.7	7.8
105°	8.3	8.3	8.3	8.3	8.3	8.3	8.3	8.3	8.3	8.6	8.6
107.5°	8.9	8.9	8.9	8.9	9.1	9.1	9.1	9.1	9.1	9.1	9.4
110°	9.9	9.9	9.9	9.9	9.9	9.9	9.9	9.9	10.0	10.0	10.2



TEST NUMBER: P1444697
 CATALOG NUMBER: EHBR1-48-UNV-TA-L930

CANDELA DISTRIBUTION (continued):

	82.5°	85°	87.5°	90°	92.5°	95°	97.5°	100°	102.5°	105°	107.5°
112.5°	10.8	10.8	10.8	10.8	10.8	10.8	10.8	11.1	11.1	11.2	11.2
115°	12.0	12.0	12.0	12.0	12.0	12.0	12.0	12.2	12.3	12.3	12.6
117.5°	13.5	13.4	13.4	13.4	13.4	13.4	13.5	13.5	13.8	13.9	14.2
120°	15.5	15.1	15.1	15.1	15.1	15.1	15.2	15.2	15.7	15.8	16.4
122.5°	17.8	17.6	17.6	17.5	17.5	17.5	17.6	17.7	18.1	18.4	18.8
125°	20.9	20.6	20.4	20.3	20.3	20.3	20.4	20.9	21.1	21.4	22.0
127.5°	24.6	24.3	23.9	23.8	23.8	23.8	24.2	24.3	24.8	25.3	25.9
130°	29.2	28.8	28.7	28.2	28.2	28.2	28.7	29.0	29.5	29.9	30.7
132.5°	35.0	34.3	34.0	33.7	33.7	33.7	34.0	34.3	35.0	35.4	36.5
135°	41.5	41.0	40.5	40.3	40.3	40.1	40.5	40.7	41.3	42.1	42.9
137.5°	48.9	48.3	47.9	47.4	47.4	47.4	47.7	47.9	48.6	49.2	50.2
140°	56.9	56.2	56.0	55.4	55.4	55.3	55.5	55.8	56.4	57.0	57.8
142.5°	65.1	64.3	64.1	63.8	63.5	63.5	63.9	64.1	64.6	65.1	65.9
145°	73.5	72.9	72.6	72.2	72.0	72.0	72.2	72.4	72.9	73.2	74.0
147.5°	81.8	81.3	81.0	80.6	80.6	80.5	80.6	80.6	81.0	81.3	81.8
150°	90.0	89.4	88.9	88.7	88.6	88.4	88.6	88.4	88.7	88.8	89.4
152.5°	97.5	96.8	96.7	96.2	96.0	95.8	95.8	95.7	95.8	95.8	96.2
155°	104.5	104.1	103.6	103.3	103.0	102.7	102.7	102.5	102.6	102.5	102.6
157.5°	111.1	110.6	110.3	109.8	109.5	109.1	109.0	108.7	108.7	108.3	108.3
160°	117.2	116.6	116.1	115.7	115.4	114.9	114.8	114.2	114.1	113.8	113.7
162.5°	122.7	122.2	121.8	121.3	121.0	120.4	120.1	119.6	119.3	119.1	119.0
165°	128.2	127.7	127.3	126.6	126.4	126.0	125.6	125.2	124.9	124.5	124.3
167.5°	134.2	133.6	133.1	132.6	132.3	131.8	131.6	131.3	131.0	130.7	130.7
170°	139.5	138.9	138.7	138.3	138.0	137.6	137.5	137.1	137.0	136.8	136.8
172.5°	144.5	144.1	143.8	143.6	143.3	143.0	142.8	142.8	142.5	142.5	142.3
175°	148.4	148.1	148.0	147.8	147.6	147.6	147.5	147.5	147.5	147.3	147.3
177.5°	151.2	151.1	151.1	151.1	151.0	151.0	151.0	151.0	151.0	150.9	150.7
180°	151.2	151.2	151.2	151.2	151.2	151.2	151.2	151.2	151.2	151.2	151.2



TEST NUMBER: P1444697
 CATALOG NUMBER: EHBR1-48-UNV-TA-L930

CANDELA DISTRIBUTION (continued):

	110°	112.5°	115°	117.5°	120°	122.5°	125°	127.5°	130°	132.5°	135°
0°	36472.1	36472.1	36472.1	36472.1	36472.1	36472.1	36472.1	36472.1	36472.1	36472.1	36472.1
2.5°	36492.2	36482.6	36457.4	36444.9	36421.6	36409.8	36391.5	36379.8	36365.1	36354.1	36348.4
5°	37503.3	37456.6	37363.2	37305.6	37204.6	37138.0	37037.8	36964.3	36860.7	36784.4	36686.5
7.5°	38818.7	38747.2	38627.4	38536.5	38395.3	38287.3	38128.7	38001.9	37826.8	37681.3	37502.3
10°	39354.3	39312.5	39258.8	39200.3	39122.1	39045.4	38937.1	38826.8	38679.7	38533.4	38342.3
12.5°	38562.8	38602.1	38679.7	38715.9	38775.3	38795.4	38822.6	38809.8	38785.8	38726.1	38639.4
15°	36321.0	36485.2	36744.7	36924.3	37175.7	37352.5	37586.2	37736.6	37909.9	38013.4	38111.8
17.5°	32633.3	32950.9	33408.9	33774.3	34264.7	34663.5	35152.1	35536.0	35979.3	36319.4	36681.3
20°	27909.9	28354.7	28986.9	29523.8	30234.6	30837.2	31609.3	32256.1	33010.6	33639.6	34318.4
22.5°	22826.3	23349.5	24073.9	24721.5	25570.3	26328.3	27295.7	28150.9	29170.9	30084.7	31095.4
25°	18030.4	18543.3	19281.2	19951.7	20867.9	21703.0	22759.9	23741.0	24924.6	26028.5	27295.7
27.5°	13917.8	14373.3	15021.9	15625.5	16464.7	17284.4	18357.0	19403.2	20666.2	21852.5	23218.1
30°	10748.5	11118.0	11637.7	12123.2	12796.9	13467.4	14422.7	15390.3	16647.1	17876.3	19276.4
32.5°	8329.7	8644.8	9078.7	9472.8	9991.9	10497.4	11201.0	11974.1	13076.6	14254.0	15607.8
35°	6448.1	6717.7	7087.0	7426.5	7853.3	8254.7	8779.7	9331.6	10172.9	11163.3	12374.8
37.5°	5140.8	5250.7	5514.3	5792.4	6147.0	6476.8	6887.4	7295.5	7897.5	8678.9	9668.6
40°	3909.5	4084.0	4298.5	4517.6	4786.1	5050.6	5501.2	5718.1	6114.4	6675.3	7443.5
42.5°	3154.5	3277.2	3428.2	3580.5	3767.6	3951.8	4179.7	4411.9	4708.1	5088.0	5634.4
45°	2639.7	2719.8	2817.1	2918.6	3041.5	3167.2	3319.8	3479.1	3679.9	3913.4	4245.3
47.5°	2295.8	2340.0	2403.6	2472.9	2557.1	2644.2	2743.4	2845.0	2969.7	3108.2	3297.2
50°	2027.4	2064.3	2113.7	2160.0	2218.1	2307.3	2346.7	2402.8	2477.8	2559.4	2665.0
52.5°	1833.2	1857.8	1888.8	1915.3	1952.1	1985.5	2029.3	2068.0	2119.8	2168.8	2237.0
55°	1681.9	1690.8	1708.4	1725.6	1751.0	1773.8	1803.8	1829.2	1862.2	1891.5	1934.6
57.5°	1565.1	1565.9	1574.0	1582.9	1599.3	1613.7	1634.3	1650.9	1673.9	1692.6	1718.4
60°	1481.2	1476.7	1478.3	1481.4	1490.7	1500.0	1513.2	1524.0	1538.5	1549.1	1563.5
62.5°	1411.3	1404.3	1402.7	1401.9	1406.5	1409.8	1417.0	1422.3	1430.5	1435.1	1442.8
65°	1323.1	1314.8	1311.6	1307.7	1309.1	1308.0	1310.8	1310.9	1315.1	1316.0	1320.5
67.5°	1243.1	1236.1	1231.9	1226.8	1224.5	1220.9	1219.3	1215.7	1215.2	1212.2	1211.5
70°	1170.1	1163.3	1159.7	1155.0	1152.6	1147.7	1144.8	1138.8	1135.3	1129.8	1126.7
72.5°	1085.6	1081.8	1080.7	1077.5	1076.6	1073.9	1072.7	1068.5	1066.1	1061.3	1058.7
75°	997.3	994.2	993.9	990.7	990.4	987.1	986.3	981.9	979.5	974.8	972.9
77.5°	892.1	887.5	886.1	882.4	883.3	881.7	883.0	879.6	878.2	873.5	872.0
80°	773.7	767.8	765.3	760.3	761.7	759.4	761.7	761.4	763.2	759.4	758.7
82.5°	633.4	626.9	625.7	622.2	624.5	624.8	629.8	627.1	628.2	624.6	626.1
85°	460.9	456.1	449.3	448.3	444.1	448.5	442.7	446.6	440.2	444.7	438.8
87.5°	285.8	275.7	270.5	263.3	260.6	253.7	250.9	245.9	247.4	245.1	246.4
90°	90.3	81.4	78.7	70.8	69.3	62.5	62.3	57.2	57.7	52.5	53.4
92.5°	5.5	5.5	5.4	5.8	5.5	5.5	5.4	5.8	5.5	5.8	5.5
95°	6.0	6.0	6.0	6.0	6.0	6.0	6.1	6.1	6.1	6.1	6.1
97.5°	6.5	6.5	6.5	6.5	6.5	6.5	6.5	6.8	6.8	6.8	6.8
100°	7.0	7.1	7.1	7.1	7.1	7.3	7.3	7.3	7.6	7.6	7.6
102.5°	7.8	7.8	7.8	7.9	7.9	7.9	8.1	8.3	8.3	8.6	8.6
105°	8.6	8.6	8.6	8.8	8.8	8.9	9.1	9.4	9.4	9.6	9.7
107.5°	9.4	9.4	9.6	9.7	9.7	10.0	10.2	10.4	10.5	10.8	11.2
110°	10.2	10.4	10.5	10.8	11.1	11.2	11.5	11.8	12.2	12.5	13.0



TEST NUMBER: P1444697
 CATALOG NUMBER: EHBR1-48-UNV-TA-L930

CANDELA DISTRIBUTION (continued):

	110°	112.5°	115°	117.5°	120°	122.5°	125°	127.5°	130°	132.5°	135°
112.5°	11.3	11.6	11.8	12.2	12.5	12.8	13.1	13.5	14.1	14.6	15.0
115°	12.8	13.1	13.3	13.8	14.1	14.6	15.0	15.7	16.4	16.9	17.6
117.5°	14.3	14.9	15.1	15.7	16.1	16.9	17.5	18.3	19.1	19.9	20.4
120°	16.7	17.0	17.6	18.3	18.8	19.6	20.4	21.2	22.2	23.1	23.9
122.5°	19.2	19.9	20.4	21.2	22.0	23.0	23.9	25.1	26.1	27.2	28.1
125°	22.5	23.3	24.2	25.1	26.1	27.2	28.1	29.5	30.6	31.7	33.0
127.5°	26.5	27.4	28.4	29.5	30.6	31.7	33.0	34.3	35.4	36.9	38.0
130°	31.5	32.4	33.4	34.8	35.8	37.2	38.5	40.0	41.1	42.4	43.7
132.5°	37.2	38.4	39.3	40.7	41.9	43.2	44.6	46.0	47.3	48.8	49.9
135°	43.8	44.9	46.0	47.3	48.6	50.0	51.2	52.8	53.8	55.3	56.4
137.5°	51.0	52.0	53.3	54.4	55.5	57.0	58.3	59.6	60.7	62.0	63.1
140°	58.6	59.7	60.7	62.0	63.1	64.3	65.3	66.7	67.5	69.0	69.9
142.5°	66.5	67.5	68.3	69.3	70.3	71.6	72.6	73.7	74.5	75.4	76.2
145°	74.5	75.4	76.1	77.1	77.9	78.8	79.5	80.5	81.0	81.8	82.4
147.5°	82.3	83.0	83.4	84.2	84.9	85.5	86.1	86.8	87.2	87.9	88.4
150°	89.6	90.2	90.5	91.1	91.3	91.9	92.1	92.8	93.0	93.6	93.8
152.5°	96.3	96.7	96.7	97.2	97.3	97.6	97.8	98.1	98.3	98.6	98.9
155°	102.5	102.6	102.6	102.7	102.7	102.8	102.8	103.3	103.4	103.6	103.8
157.5°	108.1	108.0	108.0	108.0	107.8	108.0	108.0	108.1	108.3	108.7	109.0
160°	113.3	113.2	113.0	113.0	113.0	113.0	113.0	113.3	113.4	114.0	114.2
162.5°	118.5	118.4	118.3	118.3	118.3	118.4	118.5	119.0	119.1	119.5	119.9
165°	124.2	124.2	124.0	124.2	124.2	124.3	124.5	124.8	125.2	125.6	126.0
167.5°	130.6	130.6	130.6	130.7	130.7	130.8	131.0	131.5	131.6	132.2	132.3
170°	136.7	136.8	136.7	136.8	136.8	137.0	137.1	137.2	137.5	137.8	137.9
172.5°	142.3	142.3	142.3	142.3	142.3	142.5	142.5	142.8	142.8	142.8	142.8
175°	147.2	147.2	147.2	147.2	147.2	147.0	147.0	146.8	146.8	146.8	146.8
177.5°	150.6	150.3	150.2	150.2	150.1	149.9	149.9	149.8	149.8	149.8	149.5
180°	151.2	151.2	151.2	151.2	151.2	151.2	151.2	151.2	151.2	151.2	151.2



TEST NUMBER: P1444697
 CATALOG NUMBER: EHBR1-48-UNV-TA-L930

CANDELA DISTRIBUTION (continued):

	137.5°	140°	142.5°	145°	147.5°	150°	152.5°	155°	157.5°	160°	162.5°
0°	36472.1	36472.1	36472.1	36472.1	36472.1	36472.1	36472.1	36472.1	36472.1	36472.1	36472.1
2.5°	36341.1	36340.7	36337.2	36338.8	36339.5	36342.1	36345.2	36348.4	36349.1	36351.6	36352.2
5°	36613.1	36523.2	36456.7	36383.5	36328.5	36279.1	36246.1	36219.9	36209.7	36212.3	36218.4
7.5°	37350.6	37165.0	37011.9	36837.7	36692.6	36538.8	36411.4	36290.3	36202.0	36136.2	36099.4
10°	38159.8	37933.8	37717.6	37465.6	37226.6	36971.6	36740.5	36507.9	36313.9	36145.5	36021.8
12.5°	38519.0	38359.2	38172.3	37934.5	37678.8	37384.4	37087.3	36768.7	36472.4	36197.3	35975.5
15°	38138.7	38139.0	38070.9	37956.8	37779.2	37544.0	37260.8	36928.7	36579.1	36222.4	35896.5
17.5°	36931.7	37159.4	37286.1	37366.3	37341.7	37255.0	37074.8	36819.7	36493.8	36113.9	35716.2
20°	34858.9	35396.0	35779.0	36123.4	36316.4	36444.7	36431.8	36328.0	36096.0	35772.8	35358.7
22.5°	31955.1	32856.7	33568.1	34231.5	34696.8	35075.2	35255.2	35331.5	35226.4	35001.3	34612.4
25°	28428.2	29654.1	30700.2	31715.5	32477.0	33131.5	33524.8	33802.0	33824.0	33706.4	33359.4
27.5°	24509.3	25956.3	27280.3	28629.5	29700.5	30641.4	31258.8	31710.6	31854.1	31835.2	31520.1
30°	20595.3	22114.3	23573.8	25147.1	26472.4	27674.4	28489.9	29101.0	29336.5	29381.7	29078.6
32.5°	16898.9	18396.9	19852.3	21497.1	22955.5	24333.2	25296.7	26022.5	26296.4	26360.9	26028.5
35°	13544.3	14926.3	16309.4	17903.5	19353.5	20780.1	21795.3	22555.3	22811.0	22854.2	22469.3
37.5°	10635.2	11812.7	13017.9	14448.2	15779.8	17119.6	18084.2	18798.3	18984.7	18973.2	18537.6
40°	8185.7	9101.1	10069.5	11247.1	12354.1	13486.7	14301.3	14891.6	14989.5	14917.0	14459.5
42.5°	6155.3	6816.3	7518.5	8397.5	9218.8	10066.5	10659.1	11097.4	11111.3	10996.7	10586.1
45°	4585.6	5230.6	5525.1	6056.5	6585.6	7149.3	7511.1	7781.9	7740.0	7639.1	7327.0
47.5°	3495.8	3743.7	4006.6	4336.1	4644.3	5283.9	5236.5	5671.3	5358.2	5571.7	5101.6
50°	2776.0	2914.6	3056.2	3231.1	3392.1	3559.3	3663.7	3741.8	3731.6	3698.1	3608.1
52.5°	2361.7	2404.6	2474.2	2573.8	2663.6	2754.1	2813.6	2862.0	2862.9	2849.4	2803.8
55°	1973.9	2028.2	2078.4	2143.4	2254.1	2271.2	2356.4	2339.2	2345.8	2322.2	2346.5
57.5°	1740.3	1771.9	1800.2	1838.9	1870.9	1908.2	1930.2	1951.4	1949.5	1944.8	1921.6
60°	1574.8	1592.3	1608.0	1630.5	1648.2	1669.2	1679.4	1690.1	1686.7	1678.8	1658.1
62.5°	1447.3	1458.2	1467.2	1481.7	1492.4	1505.5	1510.8	1515.4	1510.8	1503.4	1485.1
65°	1321.4	1328.4	1334.1	1345.1	1352.7	1363.9	1368.3	1372.6	1368.4	1362.6	1348.7
67.5°	1207.9	1208.6	1208.0	1212.5	1214.8	1221.6	1223.5	1226.7	1221.8	1216.8	1205.0
70°	1121.8	1120.0	1117.8	1119.6	1120.0	1123.3	1123.8	1123.3	1117.5	1108.8	1095.9
72.5°	1054.5	1053.5	1051.9	1053.4	1053.4	1056.4	1055.4	1054.0	1046.7	1038.4	1025.7
75°	968.0	967.2	964.0	964.1	961.5	962.4	958.9	956.9	948.9	941.8	930.5
77.5°	866.7	865.1	860.4	858.6	853.4	851.3	844.7	841.4	833.3	827.6	817.9
80°	753.7	751.9	745.9	742.5	734.4	729.2	719.5	714.0	704.6	699.1	689.7
82.5°	623.0	623.7	617.6	613.4	601.8	592.9	579.9	572.8	562.6	557.1	547.4
85°	443.1	436.7	440.1	439.9	432.6	424.8	414.3	406.9	398.3	393.1	386.2
87.5°	243.0	244.5	242.7	241.3	236.2	232.2	223.9	219.7	213.3	210.2	205.1
90°	48.1	49.1	44.2	45.3	40.5	39.5	33.7	33.5	28.4	27.8	23.8
92.5°	5.5	5.5	5.8	5.5	5.8	5.8	5.8	5.8	5.8	5.5	5.8
95°	6.1	6.2	6.2	6.2	6.2	6.2	6.3	6.3	6.3	6.3	6.3
97.5°	6.9	6.9	6.9	7.0	7.0	7.0	7.1	7.1	7.1	7.1	7.1
100°	7.7	7.8	7.8	7.8	7.9	7.9	8.1	8.1	8.3	8.3	8.3
102.5°	8.6	8.8	8.9	9.1	9.4	9.4	9.4	9.4	9.6	9.6	9.6
105°	9.9	10.0	10.4	10.5	10.7	10.8	11.1	11.1	11.2	11.3	11.3
107.5°	11.5	11.6	12.0	12.3	12.5	12.8	13.0	13.1	13.3	13.4	13.5
110°	13.3	13.5	14.1	14.3	14.7	15.0	15.2	15.5	15.8	16.0	16.4



TEST NUMBER: P1444697
 CATALOG NUMBER: EHBR1-48-UNV-TA-L930

CANDELA DISTRIBUTION (continued):

	137.5°	140°	142.5°	145°	147.5°	150°	152.5°	155°	157.5°	160°	162.5°
112.5°	15.5	16.0	16.7	16.9	17.5	17.7	18.3	18.5	18.8	19.2	19.4
115°	18.3	18.8	19.4	20.0	20.6	21.1	21.7	21.9	22.3	22.7	23.1
117.5°	21.4	22.0	22.8	23.5	24.2	24.8	25.4	25.9	26.5	27.0	27.4
120°	25.1	25.9	26.6	27.4	28.2	29.1	29.8	30.4	30.9	31.6	32.3
122.5°	29.2	30.1	31.2	31.9	33.0	33.7	34.8	35.3	36.1	36.9	37.7
125°	34.0	35.0	36.1	37.1	38.0	38.9	40.0	40.7	41.8	42.4	43.5
127.5°	39.3	40.3	41.5	42.4	43.7	44.6	45.7	46.5	47.6	48.6	49.7
130°	45.0	46.0	47.3	48.3	49.5	50.5	51.6	52.8	53.8	55.0	56.2
132.5°	51.1	52.3	53.6	54.4	55.8	56.8	58.0	59.1	60.4	61.5	62.8
135°	57.7	58.6	59.9	60.9	62.2	63.1	64.3	65.6	66.9	68.1	69.5
137.5°	64.2	65.1	66.4	67.3	68.5	69.5	70.8	71.9	73.4	74.5	76.1
140°	70.8	71.7	72.7	73.7	74.8	75.7	77.1	78.2	79.5	80.7	82.2
142.5°	77.2	77.9	78.8	79.6	80.7	81.5	82.7	83.9	85.2	86.5	87.9
145°	83.2	83.9	84.7	85.5	86.3	87.2	88.4	89.5	90.7	91.9	93.3
147.5°	88.9	89.5	90.3	91.0	91.8	92.5	93.7	94.6	95.8	97.0	98.3
150°	94.5	94.9	95.4	96.0	96.8	97.6	98.6	99.5	100.9	101.9	103.0
152.5°	99.4	99.7	100.3	101.0	101.7	102.5	103.4	104.4	105.4	106.4	107.6
155°	104.4	104.6	105.3	106.0	106.8	107.3	108.3	109.1	110.1	111.1	112.0
157.5°	109.5	109.8	110.4	111.1	111.7	112.5	113.4	114.1	115.0	115.8	116.7
160°	114.8	115.1	115.8	116.6	117.2	117.9	118.7	119.3	120.1	121.0	121.8
162.5°	120.4	121.0	121.6	122.1	122.9	123.5	124.3	124.9	125.7	126.4	127.2
165°	126.5	127.1	127.7	128.1	128.9	129.2	130.0	130.6	131.4	131.8	132.6
167.5°	133.0	133.3	133.7	134.1	134.7	135.2	135.8	136.3	137.0	137.5	138.0
170°	138.3	138.6	138.8	139.2	139.6	140.0	140.4	140.7	141.4	141.8	142.3
172.5°	143.1	143.1	143.6	143.7	143.9	144.1	144.5	144.8	145.1	145.4	145.7
175°	147.0	147.0	147.2	147.2	147.3	147.5	147.8	148.0	148.1	148.3	148.4
177.5°	149.5	149.5	149.5	149.5	149.8	149.8	149.9	149.9	150.1	150.1	150.2
180°	151.2	151.2	151.2	151.2	151.2	151.2	151.2	151.2	151.2	151.2	151.2



TEST NUMBER: P1444697
 CATALOG NUMBER: EHBR1-48-UNV-TA-L930

CANDELA DISTRIBUTION (continued):

	165°	167.5°	170°	172.5°	175°	177.5°	180°	182.5°	185°	187.5°	190°
0°	36472.1	36472.1	36472.1	36472.1	36472.1	36472.1	36472.1	36472.1	36472.1	36472.1	36472.1
2.5°	36351.0	36350.5	36349.4	36347.7	36346.1	36347.1	36348.7	36352.9	36360.2	36370.7	36384.5
5°	36223.4	36230.8	36235.0	36235.5	36231.8	36229.4	36233.0	36243.0	36263.1	36296.9	36342.6
7.5°	36089.5	36098.7	36112.8	36123.4	36125.4	36122.8	36123.4	36139.0	36176.2	36242.0	36334.3
10°	35946.7	35919.5	35933.9	35960.1	35980.9	35984.6	35987.2	36005.8	36060.1	36159.6	36307.9
12.5°	35814.8	35728.8	35712.1	35735.8	35767.5	35777.5	35774.8	35782.7	35846.4	35978.1	36184.7
15°	35641.2	35479.4	35424.1	35430.2	35469.3	35483.3	35473.0	35457.4	35519.4	35680.1	35947.7
17.5°	35360.3	35099.5	34997.8	34993.3	35039.1	35051.2	35026.0	34977.4	35038.5	35239.0	35571.2
20°	34933.3	34548.2	34356.8	34326.4	34376.1	34361.5	34311.4	34237.8	34318.1	34562.0	34957.0
22.5°	34165.7	33677.8	33350.7	33245.3	33304.6	33265.1	33191.9	33098.0	33204.7	33481.7	33921.6
25°	32911.3	32347.6	31899.8	31648.7	31696.0	31625.0	31545.4	31431.6	31558.8	31876.9	32361.0
27.5°	31067.6	30416.4	29861.6	29445.8	29461.1	29368.1	29276.4	29129.1	29287.9	29664.4	30210.5
30°	28615.9	27862.3	27186.7	26621.7	26571.2	26481.0	26387.1	26193.8	26392.5	26843.2	27481.3
32.5°	25537.0	24700.2	23919.7	23205.3	23070.5	22982.6	22898.9	22676.4	22936.6	23462.0	24195.1
35°	21936.3	21045.1	20198.7	19382.8	19159.5	19071.5	18998.4	18785.2	19109.9	19681.7	20473.5
37.5°	17984.1	17073.6	16233.3	15396.7	15081.2	14961.8	14908.7	14769.0	15143.7	15709.2	16504.3
40°	13926.7	13080.1	12326.9	11587.8	11228.2	11045.6	11017.7	10992.3	11354.5	11845.1	12566.8
42.5°	10131.1	9448.1	8867.3	8302.4	7976.5	7727.2	7727.0	7802.7	8128.7	8496.2	9052.7
45°	7008.0	6549.7	6179.6	5802.2	5903.0	5405.8	5697.9	5548.1	5709.2	5946.1	6308.0
47.5°	4817.3	4567.1	4363.8	4153.0	3999.3	3852.5	3865.3	3960.0	4111.7	4252.3	4440.6
50°	3511.0	3383.6	3280.0	3170.6	3094.0	3029.2	3033.1	3074.1	3153.7	3227.9	3326.4
52.5°	2751.1	2680.8	2624.6	2564.1	2523.9	2491.7	2493.5	2513.4	2556.5	2598.7	2655.2
55°	2267.6	2259.1	2186.0	2131.6	2110.9	2089.4	2093.3	2101.0	2130.4	2155.1	2192.6
57.5°	1900.2	1867.4	1845.5	1816.9	1803.7	1788.6	1792.0	1794.9	1814.5	1831.1	1858.0
60°	1640.9	1617.6	1602.0	1582.6	1573.9	1564.3	1566.4	1568.2	1580.8	1591.7	1610.9
62.5°	1468.5	1447.7	1434.1	1419.1	1413.1	1406.6	1408.1	1408.6	1416.5	1424.4	1439.0
65°	1336.3	1319.8	1308.5	1295.6	1289.2	1282.5	1283.2	1283.2	1289.8	1295.6	1306.6
67.5°	1196.5	1184.1	1176.7	1166.5	1162.2	1155.3	1155.2	1153.0	1157.3	1159.6	1167.0
70°	1084.3	1071.8	1062.4	1052.5	1047.2	1041.1	1041.2	1041.4	1046.4	1051.6	1061.3
72.5°	1015.0	1003.0	994.7	986.0	981.0	975.8	974.8	974.3	977.9	980.8	987.1
75°	923.2	913.6	908.8	900.7	896.6	890.8	889.8	887.1	888.9	889.4	894.2
77.5°	811.8	802.7	798.8	790.6	787.2	780.6	780.1	777.1	778.4	777.5	781.2
80°	684.9	676.6	674.5	667.7	666.1	660.1	659.1	655.4	656.5	653.7	655.1
82.5°	543.2	535.7	534.1	527.8	527.8	522.3	522.0	516.5	516.5	511.8	504.2
85°	382.7	377.1	374.8	369.7	368.2	363.8	361.4	356.2	354.3	350.9	349.9
87.5°	201.9	198.5	195.3	192.9	188.4	180.5	179.7	174.2	174.7	170.7	171.0
90°	23.8	20.1	20.3	17.0	16.9	14.9	15.0	14.1	13.8	13.0	12.8
92.5°	5.8	5.8	5.8	5.8	5.8	5.8	5.8	5.8	5.8	5.8	5.8
95°	6.3	6.3	6.3	6.3	6.3	6.3	6.3	6.3	6.3	6.5	6.5
97.5°	7.1	7.1	7.1	7.1	7.1	7.1	7.1	7.3	7.3	7.3	7.3
100°	8.3	8.3	8.3	8.3	8.3	8.3	8.3	8.6	8.6	8.6	8.6
102.5°	9.7	9.7	9.7	9.7	9.7	9.7	9.7	9.7	9.7	9.9	9.9
105°	11.3	11.5	11.5	11.5	11.5	11.5	11.5	11.6	11.6	11.6	11.8
107.5°	13.5	13.8	13.8	13.9	13.8	13.9	13.9	14.1	14.1	14.1	14.1
110°	16.4	16.5	16.7	16.8	16.8	16.9	16.9	17.0	17.0	17.0	17.0



TEST NUMBER: P1444697
 CATALOG NUMBER: EHBR1-48-UNV-TA-L930

CANDELA DISTRIBUTION (continued):

	165°	167.5°	170°	172.5°	175°	177.5°	180°	182.5°	185°	187.5°	190°
112.5°	19.6	19.9	20.0	20.3	20.3	20.6	20.6	20.9	20.9	20.9	20.9
115°	23.5	23.8	24.2	24.5	24.6	24.9	24.9	25.3	25.3	25.3	25.3
117.5°	27.8	28.4	28.8	29.2	29.5	29.9	30.0	30.1	30.1	30.4	30.1
120°	32.7	33.5	34.0	34.5	35.0	35.4	35.6	35.9	35.9	35.9	35.8
122.5°	38.4	39.2	39.7	40.5	41.0	41.5	41.8	42.1	42.1	42.2	41.9
125°	44.2	45.3	46.0	46.8	47.3	48.1	48.3	48.8	48.8	48.8	48.6
127.5°	50.7	51.6	52.5	53.6	54.1	54.7	55.2	55.5	55.5	55.5	55.3
130°	57.2	58.5	59.3	60.4	61.1	61.8	62.2	62.6	62.6	62.8	62.5
132.5°	63.9	65.3	66.4	67.5	68.1	69.1	69.3	69.9	69.9	70.0	69.6
135°	70.8	72.0	73.2	74.5	75.3	76.1	76.5	77.1	77.1	77.1	76.6
137.5°	77.4	78.8	79.8	81.0	81.9	82.7	83.2	83.7	83.7	83.9	83.5
140°	83.4	84.9	86.1	87.2	88.2	89.2	89.6	90.2	90.2	90.2	89.7
142.5°	89.2	90.5	91.8	93.0	93.8	94.7	95.3	95.7	95.7	95.7	95.4
145°	94.6	95.8	97.0	98.3	99.1	99.9	100.3	100.9	100.9	100.9	100.7
147.5°	99.5	100.9	101.8	102.8	103.6	104.5	105.1	105.3	105.4	105.4	105.3
150°	104.2	105.3	106.2	107.2	108.0	108.7	109.0	109.5	109.6	109.8	109.6
152.5°	108.5	109.5	110.4	111.2	112.0	112.6	113.0	113.4	113.8	114.1	114.1
155°	112.9	113.8	114.6	115.4	115.9	116.7	117.2	117.7	118.2	118.4	118.7
157.5°	117.5	118.4	119.1	119.9	120.4	121.3	121.8	122.4	122.9	123.4	123.7
160°	122.4	123.4	124.0	124.8	125.5	126.1	126.6	127.3	127.9	128.2	128.9
162.5°	127.9	128.7	129.1	129.9	130.6	131.3	131.8	132.4	133.0	133.6	133.9
165°	133.3	133.9	134.5	135.2	135.8	136.5	137.0	137.6	138.0	138.6	138.9
167.5°	138.6	139.2	139.6	140.3	140.7	141.4	142.0	142.5	142.8	143.3	143.7
170°	142.8	143.3	143.8	144.2	144.8	145.3	145.6	146.0	146.4	146.8	147.2
172.5°	146.0	146.5	146.8	147.3	147.6	148.0	148.3	148.8	149.1	149.4	149.5
175°	148.6	149.0	149.1	149.4	149.5	149.8	150.1	150.2	150.6	150.7	151.0
177.5°	150.3	150.6	150.7	150.7	150.9	150.9	151.0	151.0	151.1	151.2	151.2
180°	151.2	151.2	151.2	151.2	151.2	151.2	151.2	151.2	151.2	151.2	151.2



TEST NUMBER: P1444697
 CATALOG NUMBER: EHBR1-48-UNV-TA-L930

CANDELA DISTRIBUTION (continued):

	192.5°	195°	197.5°	200°	202.5°	205°	207.5°	210°	212.5°	215°	217.5°
0°	36472.1	36472.1	36472.1	36472.1	36472.1	36472.1	36472.1	36472.1	36472.1	36472.1	36472.1
2.5°	36403.9	36422.2	36450.1	36475.3	36513.4	36543.3	36588.3	36622.5	36673.3	36706.4	36761.6
5°	36407.2	36478.4	36572.1	36663.5	36773.4	36873.1	36997.1	37102.7	37227.3	37328.9	37456.4
7.5°	36458.7	36596.1	36760.7	36926.5	37114.2	37289.6	37487.4	37666.3	37861.9	38027.5	38208.3
10°	36496.7	36708.5	36951.2	37195.3	37452.2	37690.9	37932.0	38140.2	38334.8	38495.1	38636.6
12.5°	36445.2	36737.0	37048.3	37349.0	37634.7	37881.8	38089.2	38249.3	38359.9	38434.9	38452.5
15°	36270.2	36621.3	36959.8	37259.2	37496.3	37679.1	37773.8	37818.1	37770.6	37691.6	37518.0
17.5°	35943.2	36313.6	36616.2	36852.4	36977.6	37027.3	36948.9	36812.4	36545.9	36250.0	35822.7
20°	35343.7	35688.8	35908.3	36037.1	36003.6	35879.7	35583.6	35223.8	34691.6	34124.5	33376.0
22.5°	34292.2	34593.9	34710.9	34720.4	34515.9	34205.6	33671.6	33054.5	32215.0	31342.1	30268.7
25°	32713.8	32978.1	32996.6	32892.8	32518.5	32015.5	31231.6	30358.5	29217.7	28054.7	26709.6
27.5°	30573.3	30826.7	30764.7	30571.0	30051.4	29378.4	28374.6	27246.8	25840.3	24466.7	22978.7
30°	27882.4	28153.5	28080.6	27832.1	27214.1	26418.7	25237.6	23927.3	22365.7	20898.6	19390.8
32.5°	24662.3	25004.9	24954.7	24718.5	24073.6	23222.3	21940.8	20551.0	18953.4	17507.6	16040.9
35°	21002.2	21418.2	21439.7	21285.3	20686.6	19845.2	18579.8	17234.5	15704.3	14340.2	12985.2
37.5°	17058.8	17541.1	17640.2	17598.6	17102.4	16359.6	15206.6	13999.8	12644.2	11448.6	10289.8
40°	13093.6	13581.9	13751.3	13801.5	13435.3	12860.0	11913.7	10939.7	9834.5	8865.8	7945.7
42.5°	9477.5	9910.4	10074.1	10177.1	9948.5	9564.9	8874.6	8167.2	7357.6	6658.9	5989.0
45°	6582.4	6888.5	7013.0	7116.7	6992.2	6775.8	6339.8	5897.5	5363.0	4906.4	4474.1
47.5°	4602.1	4771.0	4853.1	4903.4	4855.2	4742.3	4505.1	4248.8	3947.1	3680.3	3423.8
50°	3411.2	3501.0	3544.1	3573.1	3537.9	3475.2	3346.9	3207.3	3041.6	2890.5	2742.7
52.5°	2703.3	2754.8	2780.4	2795.9	2775.8	2737.5	2662.7	2580.0	2480.7	2387.3	2338.2
55°	2277.3	2274.6	2333.7	2305.2	2333.7	2270.1	2256.6	2165.7	2083.2	2025.1	1962.3
57.5°	1878.1	1904.8	1916.1	1928.9	1920.7	1909.0	1877.3	1844.7	1801.2	1764.8	1726.0
60°	1625.7	1647.7	1660.2	1672.8	1672.0	1667.6	1649.2	1629.7	1602.5	1580.8	1557.3
62.5°	1451.8	1470.9	1483.2	1495.2	1496.3	1494.5	1480.6	1467.2	1448.6	1435.0	1418.8
65°	1315.1	1328.4	1336.8	1346.4	1345.9	1343.3	1330.7	1319.5	1304.3	1294.8	1282.9
67.5°	1171.9	1182.1	1188.5	1197.6	1199.4	1199.9	1193.0	1187.7	1180.3	1177.6	1173.5
70°	1070.2	1082.5	1092.9	1104.3	1110.5	1113.6	1110.5	1107.9	1103.5	1101.6	1098.5
72.5°	993.1	1003.5	1011.6	1022.0	1027.8	1032.0	1029.7	1028.2	1024.5	1023.9	1021.8
75°	897.4	904.6	909.1	917.0	920.1	924.0	922.2	923.2	922.0	925.0	924.8
77.5°	782.3	787.7	789.8	795.4	796.1	800.8	801.8	807.4	811.3	819.9	824.6
80°	652.8	656.2	656.2	662.0	664.6	672.6	676.4	685.5	689.7	697.3	698.0
82.5°	507.1	503.2	507.1	504.7	512.1	521.0	522.3	530.0	531.7	536.6	532.8
85°	346.7	346.5	343.4	343.9	341.6	342.6	341.3	342.8	341.4	341.6	338.1
87.5°	166.1	167.6	164.0	165.2	161.7	163.3	160.1	162.6	159.0	159.5	154.1
90°	12.3	12.0	11.5	11.3	11.6	11.2	11.1	10.8	11.1	10.7	10.7
92.5°	5.8	6.0	6.0	6.0	6.0	6.0	6.0	6.0	6.1	6.0	6.0
95°	6.5	6.5	6.5	6.8	6.8	6.8	6.8	6.8	6.8	6.8	6.8
97.5°	7.6	7.6	7.6	7.6	7.7	7.7	7.7	7.7	7.7	7.7	7.6
100°	8.6	8.6	8.6	8.8	8.8	8.8	8.8	8.8	8.8	8.6	8.6
102.5°	10.0	10.0	10.0	10.2	10.2	10.2	10.2	10.2	10.0	10.0	9.9
105°	11.8	11.8	12.0	12.0	12.0	12.0	12.0	12.0	11.8	11.6	11.6
107.5°	14.2	14.2	14.3	14.3	14.3	14.3	14.2	14.1	14.1	13.9	13.5
110°	17.3	17.0	17.3	17.3	17.3	17.0	17.0	16.8	16.7	16.4	16.1



TEST NUMBER: P1444697
 CATALOG NUMBER: EHBR1-48-UNV-TA-L930

CANDELA DISTRIBUTION (continued):

	192.5°	195°	197.5°	200°	202.5°	205°	207.5°	210°	212.5°	215°	217.5°
112.5°	20.9	20.9	20.9	20.6	20.6	20.3	20.3	20.0	19.9	19.3	19.1
115°	25.3	24.9	24.9	24.6	24.6	24.3	23.9	23.6	23.3	22.8	22.5
117.5°	30.0	29.9	29.8	29.2	29.1	28.7	28.2	27.8	27.4	27.0	26.5
120°	35.6	35.3	35.0	34.5	34.2	33.5	33.2	32.6	32.2	31.5	30.8
122.5°	41.8	41.3	41.0	40.5	40.0	39.2	38.7	37.9	37.4	36.6	35.9
125°	48.3	47.7	47.3	46.6	46.0	45.3	44.6	43.8	43.0	42.2	41.3
127.5°	55.2	54.4	54.1	53.3	52.6	51.6	50.8	49.9	49.2	48.1	47.3
130°	62.2	61.5	61.1	60.0	59.4	58.3	57.6	56.5	55.5	54.6	53.6
132.5°	69.3	68.7	68.1	67.0	66.4	65.3	64.6	63.4	62.5	61.4	60.6
135°	76.4	75.7	75.1	74.2	73.4	72.2	71.4	70.3	69.3	68.4	67.5
137.5°	83.2	82.4	81.8	81.0	80.1	79.0	78.2	77.2	76.4	75.3	74.5
140°	89.5	88.8	88.2	87.4	86.6	85.7	84.9	83.9	83.1	82.2	81.4
142.5°	95.0	94.5	93.9	93.1	92.5	91.5	91.0	90.2	89.4	88.6	87.9
145°	100.3	99.7	99.4	98.6	98.1	97.3	96.8	96.0	95.5	94.7	94.2
147.5°	105.2	104.6	104.4	103.8	103.6	102.8	102.6	101.9	101.7	101.0	100.7
150°	109.6	109.5	109.3	109.0	108.7	108.3	108.1	107.7	107.6	107.0	106.9
152.5°	114.1	114.1	114.1	114.0	114.0	113.8	113.7	113.4	113.3	113.0	112.9
155°	119.0	119.1	119.2	119.2	119.2	119.2	119.2	119.1	119.1	119.0	119.0
157.5°	124.0	124.2	124.5	124.7	124.8	124.8	124.8	124.8	124.8	124.7	124.7
160°	129.1	129.5	129.7	129.9	130.2	130.2	130.5	130.2	130.5	130.2	130.0
162.5°	134.4	134.7	135.0	135.2	135.5	135.5	135.7	135.7	135.7	135.5	135.5
165°	139.5	139.6	140.0	140.2	140.4	140.4	140.5	140.5	140.5	140.4	140.4
167.5°	144.1	144.2	144.6	144.8	145.1	145.1	145.4	145.3	145.3	145.3	145.3
170°	147.5	147.8	148.0	148.1	148.4	148.4	148.6	148.6	148.8	148.6	148.6
172.5°	149.9	150.1	150.3	150.6	150.7	150.7	150.9	150.9	151.0	151.0	151.0
175°	151.1	151.2	151.5	151.7	151.8	151.9	151.9	152.0	152.0	152.0	152.0
177.5°	151.5	151.7	151.7	151.8	151.9	151.9	152.0	152.0	152.3	152.3	152.3
180°	151.2	151.2	151.2	151.2	151.2	151.2	151.2	151.2	151.2	151.2	151.2



TEST NUMBER: P1444697
 CATALOG NUMBER: EHBR1-48-UNV-TA-L930

CANDELA DISTRIBUTION (continued):

	220°	222.5°	225°	227.5°	230°	232.5°	235°	237.5°	240°	242.5°	245°
0°	36472.1	36472.1	36472.1	36472.1	36472.1	36472.1	36472.1	36472.1	36472.1	36472.1	36472.1
2.5°	36795.9	36568.6	36538.6	36554.5	36592.5	36606.6	36647.6	36658.8	36700.0	36710.1	36749.7
5°	37555.1	37254.7	37269.8	37341.9	37451.3	37516.4	37623.9	37680.1	37782.7	37829.3	37922.1
7.5°	38355.7	38119.8	38193.3	38315.2	38464.6	38568.1	38697.3	38781.3	38892.6	38961.7	39050.7
10°	38748.8	38684.2	38765.1	38861.0	38946.3	39013.0	39067.7	39111.6	39140.2	39167.1	39178.8
12.5°	38449.6	38549.6	38563.4	38554.2	38497.6	38454.5	38357.6	38291.7	38174.8	38103.6	37964.5
15°	37340.7	37560.6	37438.8	37254.4	36984.7	36759.8	36442.1	36205.6	35874.8	35650.4	35318.4
17.5°	35394.5	35672.1	35354.8	34928.2	34385.5	33921.1	33343.0	32884.1	32309.2	31891.2	31354.7
20°	32654.7	32914.1	32348.2	31641.0	30801.4	30094.9	29261.7	28596.9	27822.7	27246.8	26551.7
22.5°	29243.4	29428.3	28630.9	27677.5	26607.9	25725.2	24729.1	23932.1	23048.5	22390.1	21649.0
25°	25469.6	25519.4	24562.9	23464.6	22272.5	21280.5	20216.9	19379.1	18477.9	17810.6	17083.1
27.5°	21660.5	21587.3	20553.5	19388.9	18135.0	17103.9	16066.5	15281.3	14492.2	13891.0	13264.3
30°	18065.2	17888.1	16814.7	15617.7	14400.5	13476.3	12615.1	11984.6	11356.7	10879.8	10376.9
32.5°	14768.2	14518.4	13473.6	12352.1	11326.5	10613.3	9974.7	9497.6	8990.5	8587.7	8165.6
35°	11848.1	11581.9	10656.2	9705.5	8929.2	8403.5	7901.6	7510.2	7079.7	6739.9	6373.2
37.5°	9341.9	9123.7	8348.4	7600.2	7013.0	6605.7	6194.4	5874.5	5518.7	5369.2	4977.5
40°	7211.9	7059.4	6453.2	5901.7	5460.7	5269.3	4851.9	4553.1	4287.2	4068.0	3855.6
42.5°	5625.4	5571.4	4981.4	4551.3	4240.8	3999.7	3767.0	3578.2	3394.3	3243.3	3100.5
45°	4128.2	4085.5	3823.5	3575.3	3363.7	3195.2	3038.0	2908.1	2787.8	2688.3	2597.7
47.5°	3214.6	3201.0	3050.1	2896.1	2762.9	2654.6	2552.6	2466.3	2386.6	2320.1	2298.4
50°	2614.6	2612.8	2524.3	2429.2	2334.4	2271.8	2206.6	2155.7	2104.4	2064.6	2022.4
52.5°	2221.5	2211.9	2152.2	2093.6	2037.1	1996.1	1954.4	1921.8	1887.9	1863.3	1837.1
55°	1912.6	1922.6	1888.1	1853.0	1817.7	1792.3	1763.0	1741.6	1718.3	1702.7	1686.9
57.5°	1697.9	1711.3	1693.2	1673.3	1651.8	1635.0	1614.8	1600.0	1584.4	1574.6	1565.4
60°	1541.8	1556.4	1549.1	1539.1	1525.8	1515.8	1503.0	1494.7	1484.7	1479.2	1474.0
62.5°	1409.2	1427.5	1424.9	1420.2	1411.7	1406.1	1399.2	1395.5	1388.8	1386.4	1384.0
65°	1277.1	1297.6	1297.2	1294.9	1290.2	1288.6	1284.2	1283.4	1280.0	1281.4	1281.1
67.5°	1173.1	1191.0	1194.9	1197.8	1197.6	1198.7	1198.3	1200.0	1200.0	1202.6	1204.2
70°	1098.2	1110.5	1113.6	1116.5	1117.3	1119.7	1119.7	1121.2	1120.8	1123.0	1123.3
72.5°	1022.3	1038.6	1041.7	1044.1	1044.1	1046.4	1045.1	1044.8	1041.5	1040.9	1038.5
75°	927.9	948.9	953.5	956.5	956.9	958.9	956.0	954.3	948.9	946.7	942.9
77.5°	829.4	851.1	854.4	855.5	853.7	854.2	848.2	844.2	837.2	834.4	830.7
80°	701.1	733.1	735.7	733.7	728.7	727.9	722.1	718.3	710.1	707.2	704.1
82.5°	533.5	571.1	576.4	578.7	574.6	575.6	570.0	567.8	560.3	558.9	553.9
85°	336.9	374.5	380.6	379.7	375.6	374.7	371.4	372.5	371.9	373.9	375.0
87.5°	154.8	191.1	199.9	197.1	196.7	194.1	188.3	190.4	194.0	196.2	196.4
90°	10.5	21.4	20.9	22.2	19.9	20.6	18.5	19.9	18.4	19.6	18.3
92.5°	6.0	6.0	6.0	6.0	6.0	6.0	6.0	5.8	6.0	5.8	6.0
95°	6.8	6.5	6.5	6.5	6.3	6.3	6.3	6.3	6.3	6.3	6.3
97.5°	7.6	7.3	7.1	7.1	7.1	7.0	7.0	7.0	7.0	6.9	6.9
100°	8.6	8.1	7.9	7.9	7.8	7.8	7.8	7.7	7.7	7.7	7.6
102.5°	9.7	9.4	9.1	8.9	8.8	8.6	8.6	8.6	8.6	8.3	8.3
105°	11.3	10.7	10.4	10.0	9.9	9.7	9.6	9.4	9.4	9.1	9.1
107.5°	13.4	12.3	11.8	11.5	11.2	11.1	10.7	10.5	10.2	10.0	9.9
110°	15.8	14.3	13.8	13.3	13.0	12.5	12.2	11.8	11.5	11.3	11.1



TEST NUMBER: P1444697
 CATALOG NUMBER: EHBR1-48-UNV-TA-L930

CANDELA DISTRIBUTION (continued):

	220°	222.5°	225°	227.5°	230°	232.5°	235°	237.5°	240°	242.5°	245°
112.5°	18.6	16.8	16.0	15.2	14.9	14.3	13.9	13.4	13.1	12.6	12.5
115°	21.9	19.6	18.6	17.8	17.3	16.7	16.0	15.5	14.9	14.3	14.1
117.5°	25.9	23.1	21.9	20.9	20.3	19.3	18.6	17.8	17.3	16.7	16.1
120°	30.1	27.0	25.7	24.6	23.8	22.7	21.9	20.9	20.1	19.3	18.6
122.5°	35.1	31.6	30.0	29.0	27.8	26.6	25.7	24.6	23.6	22.7	21.9
125°	40.5	36.6	34.8	33.7	32.6	31.4	30.1	29.0	28.0	26.9	25.9
127.5°	46.3	42.2	40.5	39.2	38.0	36.6	35.4	34.0	33.0	31.6	30.7
130°	52.8	48.3	46.3	45.0	43.9	42.4	41.3	40.0	38.7	37.4	36.3
132.5°	59.4	54.7	52.8	51.6	50.5	49.1	47.9	46.5	45.3	43.8	42.7
135°	66.4	61.5	59.6	58.3	57.3	56.0	54.7	53.4	52.3	50.8	49.9
137.5°	73.4	68.3	66.5	65.3	64.3	63.1	62.2	60.9	59.7	58.3	57.3
140°	80.5	75.1	73.4	72.4	71.6	70.4	69.5	68.4	67.5	66.4	65.3
142.5°	87.1	81.6	79.8	79.0	78.4	77.4	76.9	75.9	75.1	74.0	73.2
145°	93.7	87.9	86.3	85.5	85.0	84.3	83.7	83.0	82.3	81.5	80.8
147.5°	100.0	93.9	92.1	91.8	91.3	90.7	90.5	89.7	89.5	88.8	88.4
150°	106.4	99.5	97.5	97.2	96.8	96.5	96.2	95.8	95.7	95.3	95.0
152.5°	112.5	104.2	101.9	101.7	101.7	101.2	101.1	101.0	101.0	100.9	100.7
155°	118.5	109.5	106.9	106.5	106.4	106.2	106.1	106.1	106.1	106.1	106.2
157.5°	124.3	114.6	112.0	111.5	111.4	111.2	111.1	111.1	111.1	111.1	111.4
160°	129.9	120.0	117.4	116.8	116.7	116.4	116.1	115.9	115.9	115.9	116.1
162.5°	135.2	125.6	123.0	122.4	122.1	121.8	121.6	121.3	121.3	121.1	121.3
165°	140.2	131.5	128.9	128.4	128.1	127.7	127.4	127.2	127.1	126.9	126.9
167.5°	145.1	137.2	135.2	134.7	134.4	133.9	133.9	133.4	133.4	133.1	133.1
170°	148.4	142.3	140.5	140.3	140.3	140.0	139.7	139.6	139.5	139.2	139.2
172.5°	150.9	146.4	145.1	144.9	144.9	144.8	144.8	144.6	144.6	144.6	144.6
175°	152.0	149.4	148.8	148.6	148.6	148.6	148.6	148.6	148.6	148.6	148.8
177.5°	152.5	151.8	151.5	151.5	151.5	151.5	151.5	151.5	151.5	151.7	151.7
180°	151.2	151.2	151.2	151.2	151.2	151.2	151.2	151.2	151.2	151.2	151.2



TEST NUMBER: P1444697
 CATALOG NUMBER: EHBR1-48-UNV-TA-L930

CANDELA DISTRIBUTION (continued):

	247.5°	250°	252.5°	255°	257.5°	260°	262.5°	265°	267.5°	270°	272.5°
0°	36472.1	36472.1	36472.1	36472.1	36472.1	36472.1	36472.1	36472.1	36472.1	36472.1	36472.1
2.5°	36757.2	36800.0	36796.7	36836.8	36834.8	36872.5	36864.9	36897.4	36890.0	36917.8	36901.5
5°	37962.9	38044.4	38071.3	38144.9	38160.1	38226.0	38227.3	38279.6	38273.3	38314.2	38292.4
7.5°	39103.5	39179.6	39215.7	39272.8	39301.4	39348.6	39367.1	39406.1	39415.4	39438.4	39437.7
10°	39199.7	39199.4	39217.3	39209.3	39225.3	39216.0	39235.5	39228.5	39257.3	39249.9	39271.6
12.5°	37904.5	37775.9	37729.1	37613.6	37588.3	37489.2	37496.3	37432.7	37463.4	37424.4	37490.9
15°	35121.0	34822.8	34675.4	34416.2	34334.8	34129.8	34113.3	33977.1	34013.9	33942.7	34046.8
17.5°	31007.5	30538.1	30280.5	29901.9	29751.6	29461.8	29403.7	29228.5	29255.7	29167.3	29293.1
20°	26103.3	25536.0	25211.0	24773.3	24578.0	24232.5	24140.8	23944.8	23969.4	23881.6	24023.8
22.5°	21143.2	20549.3	20182.5	19723.6	19474.2	19149.2	19051.8	18854.8	18866.0	18783.6	18920.4
25°	16584.9	16015.6	15659.5	15242.7	15026.3	14728.4	14625.9	14449.1	14459.1	14391.1	14513.9
27.5°	12829.6	12362.5	12064.6	11715.2	11521.2	11276.3	11176.4	11027.7	11027.3	10977.4	11080.0
30°	10025.7	9635.9	9368.4	9064.1	8881.9	8660.9	8564.4	8431.3	8425.5	8390.2	8471.6
32.5°	7849.9	7503.1	7259.1	6991.4	6827.8	6638.2	6546.8	6439.9	6430.2	6398.1	6465.0
35°	6102.3	5810.3	5600.5	5375.0	5391.7	5111.8	5158.4	4941.0	4882.1	4869.2	4919.0
37.5°	4716.4	4490.2	4319.8	4150.9	4036.6	3918.3	3854.6	3797.5	3791.0	3785.5	3820.3
40°	3691.6	3533.4	3409.4	3293.6	3214.9	3142.7	3102.9	3071.5	3064.0	3059.8	3080.9
42.5°	2987.8	2881.1	2801.1	2730.5	2682.6	2643.4	2621.5	2604.1	2598.2	2598.4	2610.8
45°	2524.3	2459.5	2408.0	2364.1	2333.5	2347.0	2307.5	2328.2	2300.8	2329.1	2310.5
47.5°	2223.0	2167.9	2136.0	2104.9	2086.3	2071.5	2072.0	2072.3	2078.1	2079.0	2085.1
50°	1990.5	1958.6	1936.4	1916.6	1906.9	1899.1	1901.9	1903.8	1909.5	1910.0	1914.4
52.5°	1818.5	1797.5	1784.1	1771.8	1767.5	1763.0	1764.9	1764.1	1766.7	1765.3	1769.0
55°	1678.4	1668.6	1664.4	1659.7	1660.5	1659.2	1660.0	1655.6	1652.9	1649.5	1652.6
57.5°	1563.5	1562.2	1565.0	1566.9	1572.1	1574.0	1575.3	1570.1	1565.3	1560.8	1563.4
60°	1475.0	1477.2	1484.2	1489.8	1497.4	1500.9	1503.1	1500.1	1496.6	1492.9	1495.2
62.5°	1387.7	1391.1	1399.4	1405.8	1415.0	1419.7	1424.9	1425.2	1426.6	1425.2	1426.7
65°	1286.3	1290.5	1298.0	1303.3	1311.8	1316.0	1321.4	1322.4	1325.3	1324.7	1327.3
67.5°	1209.2	1213.0	1219.3	1224.3	1231.9	1236.3	1241.0	1241.3	1242.3	1242.1	1244.5
70°	1127.0	1128.9	1134.6	1138.8	1146.4	1150.8	1156.3	1157.9	1161.2	1161.8	1164.5
72.5°	1039.4	1038.6	1042.0	1043.9	1049.6	1053.1	1060.0	1063.8	1069.5	1071.0	1073.0
75°	944.0	943.2	947.3	948.9	953.8	957.3	965.0	970.0	978.7	982.4	981.5
77.5°	833.6	835.4	843.0	847.2	853.7	858.2	868.2	876.2	892.3	899.2	892.1
80°	710.1	712.1	720.0	723.9	732.3	737.8	749.0	758.3	772.8	775.9	771.8
82.5°	558.2	558.8	565.8	568.8	579.9	587.9	602.1	609.5	618.4	617.0	616.0
85°	380.6	385.8	394.6	403.3	416.9	429.8	443.3	454.3	446.5	458.8	444.9
87.5°	203.4	202.9	214.8	212.9	231.8	242.7	254.4	259.9	266.2	264.9	265.0
90°	20.0	18.6	20.3	18.6	21.2	19.3	22.8	21.2	25.4	23.0	27.4
92.5°	5.8	6.0	5.8	6.0	5.8	6.0	5.8	5.8	5.8	5.8	5.8
95°	6.3	6.3	6.3	6.2	6.2	6.2	6.2	6.2	6.2	6.2	6.2
97.5°	6.9	6.9	6.9	6.9	6.9	6.9	6.9	6.9	6.8	6.8	6.8
100°	7.6	7.6	7.6	7.6	7.3	7.3	7.3	7.3	7.3	7.3	7.3
102.5°	8.1	8.1	8.1	7.9	7.9	7.9	7.9	7.9	7.9	7.9	7.9
105°	8.9	8.9	8.8	8.8	8.6	8.6	8.6	8.6	8.6	8.6	8.6
107.5°	9.9	9.7	9.6	9.6	9.4	9.4	9.4	9.4	9.4	9.4	9.4
110°	10.8	10.7	10.5	10.5	10.4	10.2	10.2	10.2	10.2	10.2	10.2



TEST NUMBER: P1444697
 CATALOG NUMBER: EHBR1-48-UNV-TA-L930

CANDELA DISTRIBUTION (continued):

	247.5°	250°	252.5°	255°	257.5°	260°	262.5°	265°	267.5°	270°	272.5°
112.5°	12.2	11.8	11.6	11.5	11.3	11.3	11.2	11.2	11.2	11.2	11.2
115°	13.5	13.4	13.1	13.0	12.8	12.6	12.5	12.5	12.5	12.5	12.5
117.5°	15.5	15.1	14.9	14.6	14.3	14.2	14.1	14.1	13.9	14.1	14.1
120°	18.1	17.6	17.0	16.8	16.5	16.4	16.0	16.0	16.0	16.0	16.0
122.5°	21.1	20.4	19.9	19.4	19.1	18.8	18.5	18.5	18.5	18.5	18.5
125°	24.9	24.2	23.5	23.0	22.3	22.2	21.9	21.9	21.7	21.9	21.9
127.5°	29.6	28.8	27.8	27.3	26.6	26.4	26.1	25.9	25.9	26.1	26.1
130°	35.0	34.2	33.2	32.6	31.7	31.5	31.2	30.9	30.8	30.9	31.2
132.5°	41.3	40.5	39.5	38.7	38.0	37.6	37.1	37.1	36.9	37.1	37.2
135°	48.4	47.4	46.5	45.7	44.9	44.6	44.0	44.0	43.9	44.0	44.5
137.5°	56.1	55.3	54.2	53.6	52.8	52.5	51.9	51.8	51.8	51.9	52.3
140°	64.2	63.3	62.3	61.7	61.1	60.7	60.3	60.3	60.0	60.4	60.6
142.5°	72.2	71.6	70.7	70.1	69.5	69.2	69.0	69.0	68.7	69.1	69.3
145°	80.0	79.5	78.8	78.2	77.9	77.7	77.2	77.4	77.4	77.7	77.9
147.5°	87.7	87.4	86.8	86.5	86.0	86.0	85.7	85.8	85.8	86.1	86.3
150°	94.6	94.5	94.1	93.9	93.7	93.7	93.6	93.7	93.7	93.9	94.1
152.5°	100.6	100.6	100.3	100.3	100.2	100.3	100.3	100.6	100.7	101.0	101.1
155°	106.2	106.2	106.2	106.4	106.4	106.8	106.8	107.2	107.3	107.7	107.8
157.5°	111.4	111.7	111.7	112.0	112.2	112.5	112.6	113.2	113.3	113.8	114.1
160°	116.4	116.7	116.8	117.2	117.5	117.7	118.2	118.5	119.0	119.3	119.6
162.5°	121.3	121.6	121.8	122.1	122.4	122.7	123.2	123.7	124.0	124.5	124.9
165°	126.9	127.1	127.2	127.3	127.7	128.0	128.2	128.9	129.1	129.7	130.0
167.5°	133.0	133.1	133.0	133.1	133.3	133.6	133.7	134.1	134.4	134.9	135.2
170°	138.9	138.9	138.9	138.9	138.9	139.2	139.4	139.5	139.6	140.0	140.2
172.5°	144.5	144.5	144.2	144.5	144.2	144.5	144.5	144.6	144.6	144.8	144.8
175°	148.6	148.8	148.8	149.0	148.8	148.8	148.8	148.8	148.8	149.0	149.0
177.5°	151.7	151.8	151.8	151.8	151.8	151.9	151.9	151.9	151.9	151.8	151.8
180°	151.2	151.2	151.2	151.2	151.2	151.2	151.2	151.2	151.2	151.2	151.2



TEST NUMBER: P1444697
 CATALOG NUMBER: EHBR1-48-UNV-TA-L930

CANDELA DISTRIBUTION (continued):

	275°	277.5°	280°	282.5°	285°	287.5°	290°	292.5°	295°	297.5°	300°
0°	36472.1	36472.1	36472.1	36472.1	36472.1	36472.1	36472.1	36472.1	36472.1	36472.1	36472.1
2.5°	36928.7	36910.2	36929.1	36909.9	36929.1	36906.1	36921.7	36896.8	36903.1	36877.3	36884.0
5°	38325.0	38295.6	38311.2	38273.0	38277.0	38226.0	38225.0	38165.5	38149.8	38082.1	38052.4
7.5°	39454.1	39444.5	39449.9	39425.2	39422.5	39387.6	39371.0	39321.8	39290.8	39228.5	39185.9
10°	39275.4	39304.1	39311.6	39340.9	39347.0	39376.1	39382.2	39411.3	39417.3	39438.8	39439.1
12.5°	37487.7	37585.5	37608.8	37729.6	37780.4	37918.5	37992.7	38144.9	38235.2	38387.1	38480.3
15°	34043.9	34213.0	34280.4	34516.2	34646.6	34921.8	35094.8	35410.8	35633.8	35969.4	36208.8
17.5°	29304.1	29540.5	29647.1	29966.8	30175.3	30581.5	30874.3	31356.2	31725.1	32260.6	32685.0
20°	24048.1	24310.7	24455.4	24820.2	25066.3	25540.9	25906.4	26498.6	26992.3	27670.9	28251.2
22.5°	18963.3	19213.2	19373.9	19745.0	20022.0	20517.1	20925.6	21550.5	22103.8	22868.4	23564.2
25°	14560.2	14789.3	14934.5	15270.1	15530.3	15985.2	16375.3	16976.4	17517.7	18284.8	18998.1
27.5°	11131.1	11322.9	11463.0	11749.1	11978.6	12364.4	12699.4	13196.3	13662.7	14326.2	14961.5
30°	8521.8	8691.8	8828.1	9077.3	9290.1	9624.5	9919.2	10336.4	10722.5	11250.5	11755.9
32.5°	6512.1	6658.5	6779.9	6998.0	7191.0	7492.2	7757.6	8123.4	8454.8	8902.6	9318.4
35°	4965.2	5253.3	5232.9	5533.7	5582.1	5798.3	6035.1	6354.9	6648.3	7029.1	7383.0
37.5°	3853.8	3934.8	4021.5	4154.6	4294.3	4491.0	4691.0	5081.8	5225.1	5512.9	5805.9
40°	3107.7	3162.5	3219.8	3309.6	3407.5	3546.0	3691.7	3878.1	4069.1	4302.4	4540.8
42.5°	2627.3	2658.3	2694.7	2747.6	2807.9	2895.8	2993.2	3119.6	3252.5	3416.7	3584.3
45°	2347.3	2332.6	2343.4	2371.9	2408.2	2461.6	2523.1	2601.3	2687.9	2794.3	2907.5
47.5°	2086.3	2092.3	2095.5	2110.9	2130.4	2166.3	2203.5	2256.6	2359.3	2390.5	2452.2
50°	1914.0	1916.8	1915.9	1923.7	1933.6	1956.9	1981.1	2017.0	2052.9	2100.5	2146.0
52.5°	1769.5	1773.5	1773.0	1778.2	1783.4	1798.1	1813.5	1838.9	1862.4	1892.7	1918.7
55°	1655.5	1661.0	1663.1	1667.5	1670.0	1677.7	1683.8	1696.0	1706.0	1723.1	1739.0
57.5°	1567.7	1575.3	1578.7	1580.3	1577.1	1576.8	1574.7	1577.3	1579.4	1588.5	1597.5
60°	1498.6	1504.7	1505.7	1504.7	1499.1	1495.0	1488.5	1486.4	1485.4	1489.8	1494.7
62.5°	1426.4	1428.5	1427.0	1425.2	1418.8	1414.9	1408.1	1405.6	1403.4	1406.5	1409.0
65°	1326.3	1328.2	1326.3	1325.2	1319.4	1316.3	1310.6	1308.7	1305.4	1306.3	1305.7
67.5°	1245.0	1247.0	1245.5	1243.9	1239.9	1238.1	1233.9	1231.1	1227.2	1225.8	1223.0
70°	1164.1	1165.6	1163.3	1161.8	1157.2	1155.5	1151.5	1150.7	1147.6	1146.9	1143.8
72.5°	1071.0	1071.1	1067.9	1066.9	1063.5	1063.4	1061.8	1063.2	1063.1	1064.7	1064.0
75°	975.6	974.3	970.3	969.6	967.0	968.2	966.4	968.8	969.0	972.6	972.9
77.5°	880.3	875.2	867.5	863.9	858.7	858.1	855.0	857.1	856.5	860.5	862.1
80°	759.7	753.5	743.7	738.9	732.9	732.0	729.2	732.0	730.6	735.4	738.7
82.5°	606.5	601.3	591.0	587.2	580.1	580.8	577.8	580.8	580.4	587.4	591.5
85°	448.6	445.1	434.6	425.3	414.8	408.8	402.8	401.7	399.9	402.8	405.2
87.5°	259.1	255.8	247.6	242.2	223.9	224.7	217.6	217.3	215.5	213.9	217.6
90°	24.9	28.4	26.1	29.2	27.4	31.2	29.9	33.4	30.9	34.0	32.3
92.5°	5.8	5.8	5.8	5.8	5.8	5.8	5.8	5.8	5.8	5.5	5.8
95°	6.2	6.2	6.2	6.2	6.2	6.2	6.2	6.2	6.2	6.2	6.2
97.5°	6.9	6.8	6.8	6.8	6.8	6.8	6.8	6.8	6.9	6.9	6.9
100°	7.3	7.3	7.3	7.3	7.3	7.3	7.3	7.3	7.6	7.6	7.6
102.5°	7.9	7.9	7.9	7.9	8.1	8.1	8.1	8.1	8.3	8.3	8.3
105°	8.6	8.6	8.8	8.8	8.8	8.8	8.9	8.9	9.1	9.1	9.4
107.5°	9.4	9.4	9.4	9.6	9.6	9.7	9.7	9.9	10.0	10.2	10.4
110°	10.2	10.4	10.4	10.5	10.5	10.7	10.8	11.1	11.3	11.5	11.8



TEST NUMBER: P1444697
 CATALOG NUMBER: EHBR1-48-UNV-TA-L930

CANDELA DISTRIBUTION (continued):

	275°	277.5°	280°	282.5°	285°	287.5°	290°	292.5°	295°	297.5°	300°
112.5°	11.3	11.3	11.5	11.6	11.8	12.0	12.2	12.5	12.8	13.1	13.5
115°	12.6	12.6	12.8	13.0	13.3	13.4	13.9	14.2	14.7	15.1	15.7
117.5°	14.2	14.3	14.6	14.7	15.0	15.5	16.0	16.5	17.0	17.6	18.4
120°	16.4	16.5	16.8	16.9	17.5	17.8	18.5	19.2	20.0	20.9	21.7
122.5°	18.8	19.1	19.4	19.9	20.4	21.1	21.9	22.7	23.6	24.6	25.7
125°	22.2	22.5	23.0	23.5	24.3	25.1	26.1	27.0	28.1	29.1	30.4
127.5°	26.5	26.9	27.4	28.1	29.1	29.9	30.9	31.9	33.2	34.5	35.8
130°	31.6	32.2	33.0	33.5	34.8	35.6	36.8	37.9	39.3	40.5	41.9
132.5°	37.9	38.4	39.2	40.0	41.1	42.2	43.5	44.6	46.0	47.1	48.6
135°	44.9	45.4	46.3	47.1	48.4	49.4	50.7	51.8	53.3	54.4	55.8
137.5°	52.8	53.4	54.2	55.0	56.2	57.2	58.5	59.6	60.9	62.0	63.3
140°	61.2	61.7	62.6	63.4	64.3	65.3	66.7	67.5	69.0	69.9	70.9
142.5°	70.0	70.3	71.1	71.9	72.9	73.7	74.8	75.6	76.6	77.4	78.8
145°	78.4	78.8	79.6	80.1	81.0	81.8	82.7	83.5	84.5	85.2	86.1
147.5°	86.8	87.2	87.9	88.6	89.4	90.0	90.7	91.3	92.3	93.0	93.8
150°	94.6	95.0	95.5	96.0	96.8	97.5	98.3	98.8	99.5	100.0	100.9
152.5°	101.8	102.0	102.6	103.0	103.6	104.2	104.8	105.4	106.1	106.5	107.2
155°	108.3	108.8	109.3	109.8	110.4	110.7	111.4	111.7	112.5	113.0	113.7
157.5°	114.6	114.9	115.6	115.8	116.6	116.9	117.5	117.9	118.5	119.0	119.5
160°	120.1	120.7	121.1	121.6	122.2	122.6	123.2	123.7	124.2	124.7	125.2
162.5°	125.5	126.0	126.5	126.9	127.4	128.0	128.4	128.9	129.7	129.9	130.6
165°	130.6	131.0	131.6	131.9	132.6	133.1	133.6	134.1	134.5	135.0	135.5
167.5°	135.7	136.0	136.7	137.1	137.6	138.0	138.6	138.9	139.5	139.7	140.3
170°	140.5	141.0	141.4	141.8	142.2	142.5	143.0	143.3	143.8	144.1	144.6
172.5°	145.1	145.3	145.6	145.7	146.0	146.4	146.7	146.8	147.2	147.5	147.8
175°	149.0	149.0	149.1	149.3	149.4	149.4	149.5	149.8	149.9	150.1	150.2
177.5°	151.8	151.8	151.8	151.8	151.8	151.8	151.8	151.8	151.8	151.8	151.8
180°	151.2	151.2	151.2	151.2	151.2	151.2	151.2	151.2	151.2	151.2	151.2



TEST NUMBER: P1444697
 CATALOG NUMBER: EHBR1-48-UNV-TA-L930

CANDELA DISTRIBUTION (continued):

	302.5°	305°	307.5°	310°	312.5°	315°	317.5°	320°	322.5°	325°	327.5°
0°	36472.1	36472.1	36472.1	36472.1	36472.1	36472.1	36472.1	36472.1	36472.1	36472.1	36472.1
2.5°	36858.1	36859.7	36830.0	36828.4	36800.6	36797.0	36769.8	36761.6	36739.6	36731.6	36709.1
5°	37976.4	37940.2	37856.5	37807.3	37724.6	37669.8	37580.3	37522.0	37435.6	37370.5	37283.5
7.5°	39107.4	39051.1	38957.2	38881.1	38766.3	38674.7	38540.4	38430.5	38285.0	38159.1	38006.4
10°	39439.1	39430.4	39406.5	39371.6	39318.2	39258.2	39166.8	39071.6	38944.1	38805.6	38635.9
12.5°	38623.0	38711.1	38831.2	38902.4	38989.1	39027.1	39062.6	39053.7	39030.3	38960.3	38862.1
15°	36555.5	36803.2	37131.0	37385.2	37677.5	37890.0	38124.7	38271.0	38416.7	38484.1	38525.3
17.5°	33266.7	33735.6	34323.6	34810.8	35373.1	35824.6	36319.6	36692.3	37075.5	37350.1	37598.3
20°	29042.2	29721.5	30553.2	31287.8	32142.1	32884.4	33697.9	34365.7	35054.4	35593.0	36102.6
22.5°	24460.1	25266.9	26272.3	27203.6	28304.9	29294.6	30411.2	31383.1	32397.8	33245.6	34065.2
25°	19954.3	20839.1	21938.5	22977.6	24224.7	25376.0	26700.2	27911.6	29223.0	30361.7	31486.6
27.5°	15839.9	16708.6	17831.0	18937.1	20255.9	21482.5	22901.5	24236.0	25729.3	27106.4	28515.2
30°	12458.2	13195.0	14201.4	15272.7	16573.5	17821.7	19256.0	20628.5	22182.1	23685.7	25272.4
32.5°	9870.3	10431.6	11222.7	12128.7	13328.9	14517.1	15882.9	17207.8	18737.6	20256.6	21906.9
35°	7838.8	8276.6	8879.8	9586.8	10603.1	11627.5	12835.4	14040.3	15467.6	16908.9	18513.0
37.5°	6181.3	6536.5	7009.0	7540.0	8355.2	9195.8	10186.4	11185.3	12425.5	13703.1	15156.9
40°	4826.9	5114.6	5482.4	5878.4	6494.0	7141.7	7907.7	8682.4	9678.8	10722.9	11926.0
42.5°	3791.9	4004.2	4263.9	4553.4	5127.7	5471.5	5991.0	6551.3	7283.7	8041.8	8946.3
45°	3045.2	3190.0	3370.2	3564.3	3830.8	4122.6	4478.3	4851.4	5547.3	5888.6	6438.7
47.5°	2543.0	2640.3	2754.9	2877.2	3034.4	3204.1	3415.1	3630.8	3909.8	4199.0	4537.9
50°	2204.9	2303.7	2343.1	2406.4	2497.4	2594.3	2713.3	2832.2	2981.8	3133.5	3308.0
52.5°	1953.9	1986.1	2028.9	2069.2	2125.5	2235.9	2271.5	2333.7	2417.7	2499.7	2591.3
55°	1762.2	1783.2	1811.0	1835.3	1869.4	1902.0	1949.0	1990.4	2046.3	2095.8	2156.6
57.5°	1613.0	1626.3	1645.7	1661.6	1683.7	1702.1	1729.6	1752.1	1784.2	1812.2	1849.1
60°	1504.6	1513.5	1526.4	1536.9	1550.9	1560.6	1574.2	1584.7	1601.7	1616.0	1636.5
62.5°	1416.0	1420.7	1429.1	1435.3	1444.2	1449.0	1456.3	1460.9	1470.2	1477.4	1488.9
65°	1309.8	1310.9	1316.6	1319.2	1326.2	1328.7	1334.7	1336.8	1344.6	1349.8	1360.0
67.5°	1222.7	1220.3	1220.4	1218.5	1219.3	1217.3	1217.9	1215.7	1218.8	1220.4	1228.2
70°	1143.2	1139.9	1138.8	1135.1	1134.1	1130.3	1129.3	1125.9	1125.4	1124.4	1127.0
72.5°	1065.8	1064.9	1065.2	1062.6	1062.3	1059.7	1059.8	1058.2	1060.0	1060.8	1064.3
75°	976.8	977.0	978.7	976.5	977.1	975.0	975.8	973.7	974.8	974.5	977.9
77.5°	868.3	870.9	875.6	874.7	876.2	873.8	874.8	872.0	872.8	870.9	872.2
80°	746.4	751.9	758.2	757.9	760.6	758.8	761.3	758.5	759.7	756.4	755.6
82.5°	601.6	606.2	613.0	613.3	619.3	620.3	626.9	626.6	630.8	628.2	626.2
85°	411.3	414.5	420.4	423.6	429.7	433.5	439.9	442.5	437.8	446.2	439.6
87.5°	214.8	222.8	218.3	228.7	226.3	236.8	234.5	244.3	242.4	250.8	249.7
90°	36.8	35.6	40.5	39.7	45.8	46.0	52.3	51.9	58.0	57.8	63.9
92.5°	5.5	5.8	5.8	5.8	5.8	6.0	5.8	5.8	5.8	6.0	5.8
95°	6.2	6.2	6.2	6.2	6.2	6.2	6.2	6.3	6.3	6.3	6.3
97.5°	6.9	6.9	6.9	6.9	7.0	7.0	7.0	7.0	7.0	7.1	7.1
100°	7.6	7.7	7.7	7.7	7.8	7.8	7.9	7.9	8.1	8.1	8.1
102.5°	8.6	8.6	8.6	8.8	8.8	8.9	9.1	9.4	9.4	9.4	9.4
105°	9.4	9.6	9.7	9.9	10.0	10.4	10.5	10.7	10.8	11.1	11.1
107.5°	10.7	10.8	11.2	11.3	11.6	12.0	12.3	12.5	12.8	13.0	13.1
110°	12.2	12.5	12.8	13.3	13.5	14.1	14.3	14.7	15.0	15.2	15.5



TEST NUMBER: P1444697
 CATALOG NUMBER: EHBR1-48-UNV-TA-L930

CANDELA DISTRIBUTION (continued):

	302.5°	305°	307.5°	310°	312.5°	315°	317.5°	320°	322.5°	325°	327.5°
112.5°	13.9	14.6	14.9	15.5	16.0	16.5	16.9	17.5	17.7	18.3	18.5
115°	16.4	16.9	17.6	18.3	18.8	19.4	20.0	20.6	21.1	21.7	21.9
117.5°	19.1	20.0	20.6	21.7	22.2	23.0	23.6	24.3	24.9	25.4	25.9
120°	22.5	23.5	24.5	25.4	26.2	27.0	27.8	28.7	29.2	29.9	30.4
122.5°	26.6	27.8	28.8	29.9	30.7	31.6	32.4	33.4	34.0	34.8	35.4
125°	31.5	32.6	33.7	34.8	35.8	36.9	37.7	38.7	39.5	40.5	41.1
127.5°	36.9	38.2	39.3	40.5	41.5	42.7	43.5	44.6	45.4	46.3	47.1
130°	43.0	44.5	45.5	46.6	47.6	48.9	49.7	50.8	51.8	52.8	53.6
132.5°	49.7	51.0	52.0	53.4	54.4	55.4	56.4	57.6	58.3	59.4	60.4
135°	56.9	58.1	59.1	60.4	61.2	62.3	63.3	64.3	65.1	66.4	67.3
137.5°	64.2	65.6	66.5	67.5	68.4	69.5	70.3	71.4	72.2	73.4	74.2
140°	71.9	73.0	73.8	74.9	75.7	76.6	77.4	78.4	79.2	80.1	80.8
142.5°	79.6	80.6	81.3	82.3	83.0	83.9	84.5	85.3	86.1	86.9	87.6
145°	86.9	87.9	88.6	89.4	89.7	90.7	91.3	92.1	92.5	93.3	93.8
147.5°	94.5	95.3	95.7	96.5	96.8	97.6	98.0	98.6	99.1	99.5	99.9
150°	101.2	102.0	102.5	103.0	103.4	104.1	104.4	104.8	105.1	105.4	105.9
152.5°	107.7	108.3	108.7	109.1	109.5	109.9	110.1	110.6	110.7	110.9	111.1
155°	114.0	114.6	114.9	115.4	115.6	115.9	115.9	116.4	116.6	116.7	116.7
157.5°	119.9	120.4	120.8	121.1	121.4	121.8	121.9	122.2	122.2	122.4	122.4
160°	125.6	126.0	126.4	126.6	127.1	127.2	127.3	127.7	127.9	127.9	127.9
162.5°	130.8	131.4	131.6	131.9	132.3	132.6	132.8	133.0	133.1	133.3	133.3
165°	135.8	136.3	136.7	137.1	137.2	137.6	137.8	138.0	138.0	138.3	138.3
167.5°	140.5	141.2	141.4	141.8	142.0	142.2	142.3	142.8	142.8	142.8	142.8
170°	144.8	145.1	145.4	145.7	145.9	146.0	146.2	146.4	146.4	146.5	146.5
172.5°	148.0	148.3	148.3	148.6	148.6	148.8	149.0	149.0	149.1	149.1	149.1
175°	150.2	150.3	150.6	150.6	150.6	150.7	150.7	150.7	150.7	150.7	150.7
177.5°	151.8	151.8	151.8	151.7	151.7	151.7	151.7	151.7	151.7	151.7	151.5
180°	151.2	151.2	151.2	151.2	151.2	151.2	151.2	151.2	151.2	151.2	151.2



TEST NUMBER: P1444697
 CATALOG NUMBER: EHBR1-48-UNV-TA-L930

CANDELA DISTRIBUTION (continued):

	330°	332.5°	335°	337.5°	340°	342.5°	345°	347.5°	350°	352.5°	355°
0°	36472.1	36472.1	36472.1	36472.1	36472.1	36472.1	36472.1	36472.1	36472.1	36472.1	36472.1
2.5°	36701.2	36685.3	36675.0	36661.9	36653.9	36643.7	36636.3	36630.0	36624.8	36620.1	36616.6
5°	37217.3	37135.2	37071.6	37002.6	36946.0	36889.5	36845.9	36809.8	36785.0	36766.4	36755.3
7.5°	37874.3	37724.2	37590.7	37450.0	37324.0	37200.2	37093.3	37001.3	36932.2	36887.5	36860.3
10°	38461.1	38260.1	38061.3	37852.0	37653.6	37461.2	37283.5	37127.3	37003.6	36921.4	36873.4
12.5°	38724.2	38552.9	38349.9	38122.7	37879.5	37633.4	37393.7	37177.4	36995.9	36874.1	36803.8
15°	38492.5	38422.2	38284.4	38108.1	37877.3	37622.9	37341.4	37076.7	36833.3	36675.4	36583.9
17.5°	37738.9	37837.1	37826.5	37759.1	37593.2	37379.1	37092.2	36794.9	36490.4	36279.3	36164.0
20°	36467.2	36775.7	36932.2	37012.5	36947.3	36808.5	36548.7	36247.0	35892.1	35616.6	35448.4
22.5°	34680.1	35224.8	35564.1	35812.5	35865.1	35817.9	35588.4	35301.5	34905.9	34574.7	34326.4
25°	32379.5	33177.5	33713.8	34134.3	34297.6	34339.8	34144.6	33859.3	33418.2	33032.4	32691.4
27.5°	29669.8	30706.5	31422.7	31987.7	32242.8	32353.3	32173.7	31882.6	31360.8	30900.3	30454.8
30°	26619.1	27849.2	28711.4	29388.9	29699.8	29845.9	29655.1	29330.2	28722.9	28168.7	27607.5
32.5°	23354.0	24700.0	25639.6	26375.3	26683.4	26820.8	26571.2	26206.2	25504.4	24851.6	24197.0
35°	19935.4	21294.0	22241.5	22957.7	23215.9	23298.7	22979.5	22557.6	21780.1	21063.5	20349.9
37.5°	16447.2	17711.2	18572.3	19215.1	19374.9	19389.1	19004.5	18538.5	17721.3	17014.8	16304.4
40°	12989.2	14055.1	14750.4	15264.9	15320.3	15270.8	14852.6	14383.7	13619.2	12986.2	12362.5
42.5°	9731.9	10536.5	11032.6	11385.1	11364.2	11266.4	10882.9	10479.9	9849.1	9367.0	8876.2
45°	6941.3	7471.8	7761.8	7968.1	7901.9	7808.8	7510.3	7227.8	6799.2	6487.8	6158.0
47.5°	4822.2	5455.7	5345.4	5748.7	5401.3	5630.8	5152.8	4889.3	4661.9	4496.4	4310.0
50°	3452.3	3597.4	3667.6	3715.4	3690.0	3654.7	3568.9	3492.1	3388.2	3312.5	3224.2
52.5°	2666.1	2738.6	2778.4	2807.2	2801.6	2788.7	2751.2	2717.1	2668.4	2636.3	2597.7
55°	2258.3	2259.4	2332.5	2301.1	2347.5	2293.2	2314.6	2254.4	2264.1	2212.4	2177.8
57.5°	1876.6	1906.3	1919.7	1932.7	1929.0	1926.7	1912.2	1905.0	1888.6	1883.6	1871.9
60°	1650.7	1666.3	1669.5	1675.4	1670.4	1668.6	1657.2	1653.2	1642.2	1640.1	1632.5
62.5°	1495.8	1503.8	1503.8	1503.8	1497.3	1491.1	1478.5	1471.9	1462.5	1460.5	1456.0
65°	1366.6	1374.8	1376.2	1377.9	1373.2	1368.3	1357.2	1350.1	1340.5	1336.8	1331.7
67.5°	1233.2	1242.0	1244.9	1249.4	1246.7	1245.7	1238.1	1235.3	1229.0	1227.5	1222.7
70°	1128.4	1132.0	1131.7	1131.7	1125.7	1120.4	1111.6	1107.4	1100.8	1099.5	1095.1
72.5°	1066.1	1068.7	1067.1	1064.7	1057.1	1049.2	1038.9	1031.3	1022.7	1017.3	1011.2
75°	978.4	981.8	979.5	978.1	971.2	966.1	957.8	953.6	947.5	945.8	941.6
77.5°	870.6	872.2	868.8	868.3	863.1	859.9	853.6	852.6	848.1	848.2	844.2
80°	750.7	749.8	744.1	743.0	737.8	736.4	731.5	731.8	728.3	729.8	726.9
82.5°	617.7	614.4	607.0	604.7	598.7	598.1	594.9	597.6	595.5	598.7	596.8
85°	442.7	443.6	440.4	440.4	438.6	439.2	438.9	440.9	441.2	444.1	444.1
87.5°	246.8	250.3	249.7	252.9	252.7	256.4	257.6	263.1	263.7	268.7	268.7
90°	63.8	70.4	70.1	76.9	77.2	83.7	84.9	91.3	91.9	97.6	97.0
92.5°	5.8	5.8	6.0	5.8	5.8	5.5	6.1	5.5	5.8	5.5	5.5
95°	6.3	6.3	6.3	6.3	6.3	6.2	6.2	6.2	6.2	6.2	6.2
97.5°	7.1	7.1	7.1	7.1	7.1	7.1	7.0	7.0	7.0	7.0	7.0
100°	8.1	8.1	8.3	8.1	8.1	8.1	8.1	8.1	8.1	7.9	7.9
102.5°	9.6	9.6	9.6	9.6	9.6	9.6	9.6	9.4	9.4	9.4	9.4
105°	11.2	11.2	11.3	11.3	11.3	11.3	11.3	11.2	11.2	11.2	11.2
107.5°	13.3	13.3	13.4	13.4	13.5	13.5	13.5	13.4	13.5	13.4	13.4
110°	15.8	16.0	16.1	16.1	16.4	16.4	16.4	16.4	16.5	16.4	16.4



TEST NUMBER: P1444697
 CATALOG NUMBER: EHBR1-48-UNV-TA-L930

CANDELA DISTRIBUTION (continued):

	330°	332.5°	335°	337.5°	340°	342.5°	345°	347.5°	350°	352.5°	355°
112.5°	18.8	19.1	19.3	19.3	19.6	19.6	19.9	19.9	20.0	19.9	20.0
115°	22.3	22.7	23.0	23.1	23.5	23.6	23.9	23.9	24.2	24.2	24.2
117.5°	26.5	26.9	27.3	27.7	28.0	28.2	28.7	28.8	29.0	29.0	29.1
120°	30.9	31.5	32.2	32.6	33.2	33.4	34.0	34.0	34.3	34.3	34.5
122.5°	36.3	36.8	37.6	38.0	38.7	39.2	39.6	40.0	40.3	40.3	40.5
125°	42.1	42.7	43.5	44.0	44.9	45.4	46.0	46.3	46.6	46.6	46.8
127.5°	48.1	48.9	49.9	50.5	51.5	51.9	52.6	52.8	53.4	53.4	53.6
130°	54.6	55.4	56.5	57.3	58.1	58.8	59.6	59.9	60.4	60.4	60.6
132.5°	61.5	62.3	63.4	64.2	65.1	65.9	66.7	66.9	67.5	67.5	67.5
135°	68.4	69.2	70.3	71.1	72.0	72.9	73.5	74.0	74.5	74.5	74.6
137.5°	75.3	76.1	77.1	77.9	78.8	79.5	80.1	80.6	81.0	81.3	81.3
140°	81.9	82.6	83.7	84.3	85.2	85.8	86.5	86.9	87.4	87.4	87.6
142.5°	88.4	88.9	90.0	90.5	91.3	91.8	92.3	92.8	93.1	93.3	93.3
145°	94.5	94.9	95.7	96.2	96.8	97.2	97.8	98.1	98.3	98.3	98.4
147.5°	100.6	100.9	101.2	101.7	102.3	102.6	102.8	103.0	103.4	103.4	103.4
150°	106.1	106.2	106.5	106.8	107.0	107.2	107.3	107.6	107.7	107.6	107.6
152.5°	111.2	111.4	111.5	111.5	111.7	111.7	111.7	111.5	111.5	111.4	111.2
155°	116.8	116.8	116.8	116.7	116.8	116.7	116.6	116.4	116.1	115.8	115.6
157.5°	122.4	122.2	122.4	122.2	122.1	121.9	121.8	121.3	121.1	120.7	120.3
160°	128.0	127.9	127.9	127.7	127.4	127.2	127.1	126.5	126.3	125.7	125.3
162.5°	133.3	133.3	133.1	133.0	132.8	132.6	132.3	131.8	131.5	131.0	130.6
165°	138.4	138.3	138.3	138.0	137.9	137.6	137.5	137.0	136.7	136.1	135.7
167.5°	142.8	142.8	142.8	142.5	142.3	142.2	142.0	141.5	141.2	140.7	140.4
170°	146.5	146.4	146.4	146.2	146.0	145.9	145.6	145.3	144.9	144.6	144.2
172.5°	149.0	149.0	148.8	148.6	148.6	148.4	148.1	148.0	147.6	147.3	147.2
175°	150.6	150.6	150.3	150.3	150.2	150.1	149.9	149.8	149.5	149.4	149.1
177.5°	151.5	151.5	151.2	151.2	151.1	151.1	151.0	150.9	150.9	150.7	150.6
180°	151.2	151.2	151.2	151.2	151.2	151.2	151.2	151.2	151.2	151.2	151.2



TEST NUMBER: P1444697
 CATALOG NUMBER: EHBR1-48-UNV-TA-L930

CANDELA DISTRIBUTION (continued):

	357.5°	360°
0°	36472.1	36472.1
2.5°	36613.3	36611.5
5°	36749.4	36747.3
7.5°	36853.0	36852.4
10°	36865.2	36871.5
12.5°	36791.7	36796.7
15°	36576.8	36586.9
17.5°	36166.2	36179.3
20°	35458.7	35472.4
22.5°	34313.0	34318.7
25°	32647.3	32623.6
27.5°	30376.4	30335.8
30°	27489.7	27450.3
32.5°	24047.8	24023.2
35°	20173.4	20157.9
37.5°	16094.4	16062.8
40°	12134.5	12042.3
42.5°	8661.2	8499.5
45°	5985.7	5793.9
47.5°	4178.6	4060.1
50°	3167.3	3129.1
52.5°	2580.8	2571.9
55°	2177.6	2173.7
57.5°	1874.5	1873.2
60°	1636.5	1636.1
62.5°	1459.1	1459.7
65°	1334.0	1334.3
67.5°	1224.0	1223.2
70°	1096.7	1095.8
72.5°	1009.2	1007.7
75°	941.6	940.7
77.5°	845.3	843.9
80°	728.9	726.9
82.5°	599.5	597.3
85°	447.2	447.3
87.5°	273.6	273.5
90°	102.5	101.2
92.5°	5.8	6.1
95°	6.2	6.2
97.5°	7.0	7.0
100°	7.9	7.9
102.5°	9.4	9.4
105°	11.2	11.2
107.5°	13.4	13.4
110°	16.4	16.4



TEST NUMBER: P1444697
CATALOG NUMBER: EHBR1-48-UNV-TA-L930

CANDELA DISTRIBUTION (continued):

	357.5°	360°
112.5°	19.9	19.9
115°	23.9	23.9
117.5°	29.0	28.8
120°	34.2	34.2
122.5°	40.1	40.0
125°	46.5	46.3
127.5°	53.3	53.0
130°	60.0	59.9
132.5°	67.3	66.9
135°	74.2	74.0
137.5°	80.8	80.6
140°	87.2	86.9
142.5°	93.1	92.9
145°	98.3	98.0
147.5°	102.8	102.7
150°	107.2	106.9
152.5°	110.7	110.4
155°	115.0	114.6
157.5°	119.6	119.2
160°	124.7	124.2
162.5°	129.9	129.5
165°	135.0	134.5
167.5°	139.7	139.5
170°	143.8	143.6
172.5°	146.8	146.5
175°	149.0	148.8
177.5°	150.6	150.3
180°	151.2	151.2

LM-79-2019: Approved Method: Electrical and Photometric Measurements of Solid-
State Lighting Products

Report Prepared for

Cooper Lighting Solutions

Metalux

Report Number: SP1-2506-472-5

Test Date: 08/01/2025

Luminaire Tested: EHBR-60-L930-N

Data in this report applies to families of products including EHBR-60-L930-N

Test Information

Test Method: LM-79-2019
 Report Number: SP1-2506-472-5
 Test Lab: COOPER LIGHTING SOLUTIONS
 Photometer: SP1 - 76IN SPHERE
 Measurement Geometry: 4π
 Issue Date: 08/05/2025
 Manufacturer: COOPER LIGHTING SOLUTIONS
 Product Line: Metalux
 Catalog Number: **EHBR-60-L930-N**
 Description: Elevate Round Highbay at, 60000 lumens, 3000K 90CRI LEDs with N lens

Spectral Parameters

CCT (K): 2996
 CIE u': 0.2519
 CIE v': 0.5169
 Duv: -0.0033
 CIE x: 0.4325
 CIE y: 0.3945
 CIE z: 0.1730
 Peak Wavelength (nm): 630
 Dominant Wavelength (nm): 584
 Purity: 48.21818
 Rf: 91.3
 Rg: 102

CRI (Ra):	94.4		
R1:	96.8	R9:	61.4
R2:	98.1	R10:	94.4
R3:	97.8	R11:	95.7
R4:	95.6	R12:	88.5
R5:	96.9	R13:	97.3
R6:	95.7	R14:	97.8
R7:	90.9	R15:	92.3
R8:	83.0		



Test Conditions

Stabilization Time: 40M
 Operation Time: 1H 40M
 Sphere Temperature (°C): 25.0

REPORT NUMBER: SP1-2506-472-5

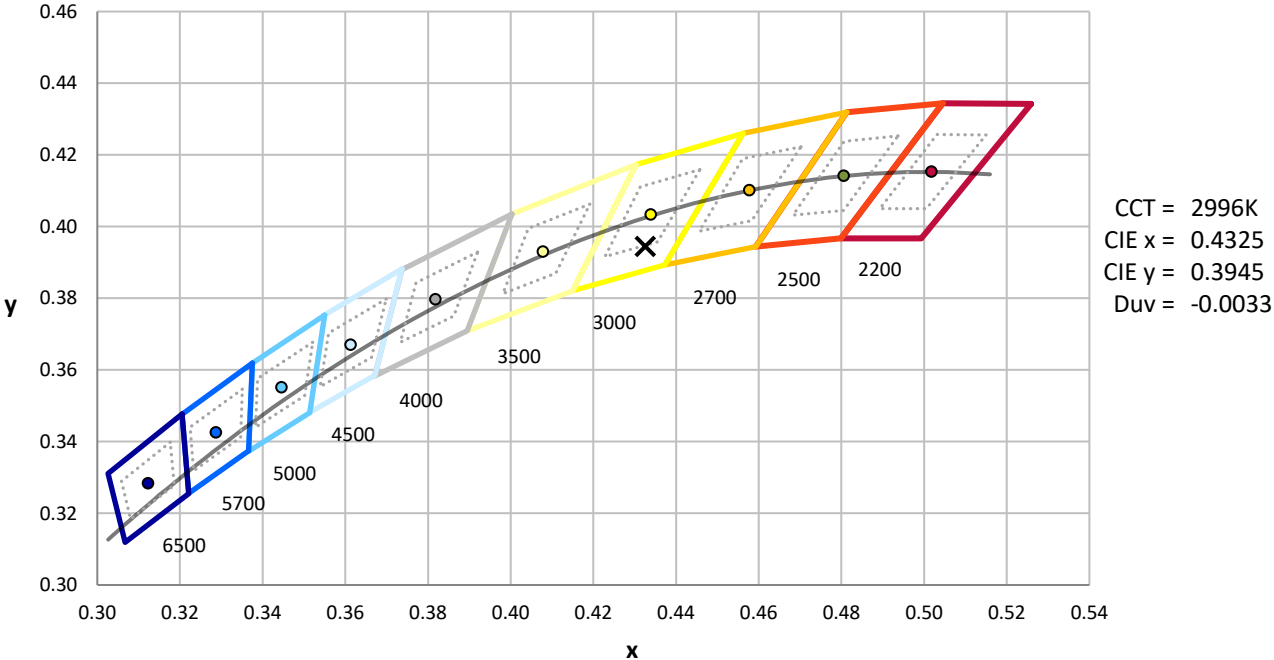
Measurement and Test Equipment			
Instrument	Identification Number	Calibration Date	Calibration Due Date
Photometer	76INCH SPHERE IN0058	6/16/2025	12/16/2025
Power Meter	XITRON INXT2011004	1/21/2025	1/21/2026
AC Power Source	CHROMA 61603 IN0063	10/22/2024	10/22/2025
DC Power Source	AGILENT E3634A IN0208	10/22/2024	10/22/2025
Sphere Thermometer	ONSET IN0085	10/22/2024	10/22/2025
Room Thermometer	ONSET IN0046	10/22/2024	10/22/2025

REPORT NUMBER: SP1-2506-472-5

CIE 1931 Chromaticity Diagram



CIE 1931 Chromaticity Diagram with 2017 ANSI 7-Step and 4-Step Quadrangles



Point lies inside the ANSI 3000K 7-step quadrangle

REPORT NUMBER: SP1-2506-472-5

Photopic Flux vs. Wavelength

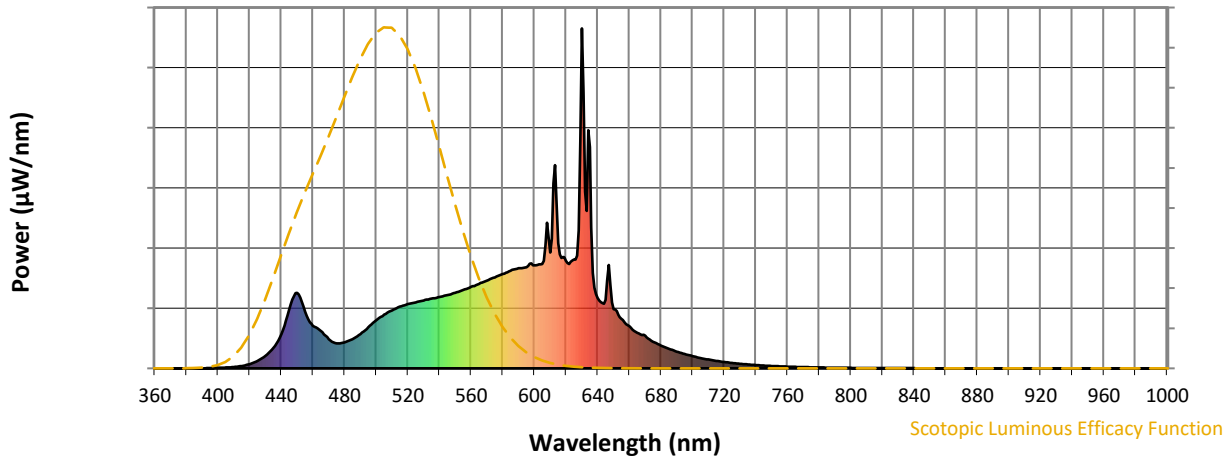


Photopic Lumens: NR

λ (nm)	Power W [^] /nm	Lumens (φ/nm)	λ (nm)	Power W [^] /nm	Lumens (φ/nm)	λ (nm)	Power W [^] /nm	Lumens (φ/nm)	λ (nm)	Power W [^] /nm	Lumens (φ/nm)	λ (nm)	Power W [^] /nm	Lumens (φ/nm)
360	0	NR	490	101	NR	620	317	NR	750	7	NR	880	0	NR
365	0	NR	495	121	NR	625	320	NR	755	6	NR	885	0	NR
370	0	NR	500	141	NR	630	1000	NR	760	5	NR	890	0	NR
375	0	NR	505	158	NR	635	651	NR	765	4	NR	895	0	NR
380	0	NR	510	171	NR	640	207	NR	770	4	NR	900	0	NR
385	0	NR	515	182	NR	645	201	NR	775	3	NR	905	0	NR
390	0	NR	520	189	NR	650	174	NR	780	3	NR	910	0	NR
395	1	NR	525	194	NR	655	146	NR	785	2	NR	915	0	NR
400	1	NR	530	199	NR	660	124	NR	790	2	NR	920	0	NR
405	3	NR	535	205	NR	665	105	NR	795	2	NR	925	0	NR
410	4	NR	540	210	NR	670	96	NR	800	1	NR	930	0	NR
415	7	NR	545	216	NR	675	79	NR	805	1	NR	935	0	NR
420	13	NR	550	222	NR	680	67	NR	810	1	NR	940	0	NR
425	22	NR	555	230	NR	685	58	NR	815	1	NR	945	0	NR
430	37	NR	560	240	NR	690	49	NR	820	1	NR	950	0	NR
435	60	NR	565	248	NR	695	42	NR	825	1	NR	955	0	NR
440	101	NR	570	258	NR	700	36	NR	830	1	NR	960	0	NR
445	172	NR	575	268	NR	705	30	NR	835	1	NR	965	0	NR
450	223	NR	580	278	NR	710	26	NR	840	1	NR	970	0	NR
455	167	NR	585	287	NR	715	22	NR	845	0	NR	975	0	NR
460	126	NR	590	295	NR	720	19	NR	850	0	NR	980	0	NR
465	111	NR	595	298	NR	725	16	NR	855	0	NR	985	0	NR
470	86	NR	600	303	NR	730	14	NR	860	0	NR	990	0	NR
475	74	NR	605	307	NR	735	12	NR	865	0	NR	995	0	NR
480	77	NR	610	341	NR	740	10	NR	870	0	NR	1000	0	NR
485	86	NR	615	368	NR	745	8	NR	875	0	NR			

REPORT NUMBER: SP1-2506-472-5

Scotopic Flux vs. Wavelength



Scotopic Lumens: NR

S/P: 1.44

λ (nm)	Power W [^] /nm	Lumens (φ/nm)	λ (nm)	Power W [^] /nm	Lumens (φ/nm)	λ (nm)	Power W [^] /nm	Lumens (φ/nm)	λ (nm)	Power W [^] /nm	Lumens (φ/nm)	λ (nm)	Power W [^] /nm	Lumens (φ/nm)
360	0	NR	490	101	NR	620	317	NR	750	7	NR	880	0	NR
365	0	NR	495	121	NR	625	320	NR	755	6	NR	885	0	NR
370	0	NR	500	141	NR	630	1000	NR	760	5	NR	890	0	NR
375	0	NR	505	158	NR	635	651	NR	765	4	NR	895	0	NR
380	0	NR	510	171	NR	640	207	NR	770	4	NR	900	0	NR
385	0	NR	515	182	NR	645	201	NR	775	3	NR	905	0	NR
390	0	NR	520	189	NR	650	174	NR	780	3	NR	910	0	NR
395	1	NR	525	194	NR	655	146	NR	785	2	NR	915	0	NR
400	1	NR	530	199	NR	660	124	NR	790	2	NR	920	0	NR
405	3	NR	535	205	NR	665	105	NR	795	2	NR	925	0	NR
410	4	NR	540	210	NR	670	96	NR	800	1	NR	930	0	NR
415	7	NR	545	216	NR	675	79	NR	805	1	NR	935	0	NR
420	13	NR	550	222	NR	680	67	NR	810	1	NR	940	0	NR
425	22	NR	555	230	NR	685	58	NR	815	1	NR	945	0	NR
430	37	NR	560	240	NR	690	49	NR	820	1	NR	950	0	NR
435	60	NR	565	248	NR	695	42	NR	825	1	NR	955	0	NR
440	101	NR	570	258	NR	700	36	NR	830	1	NR	960	0	NR
445	172	NR	575	268	NR	705	30	NR	835	1	NR	965	0	NR
450	223	NR	580	278	NR	710	26	NR	840	1	NR	970	0	NR
455	167	NR	585	287	NR	715	22	NR	845	0	NR	975	0	NR
460	126	NR	590	295	NR	720	19	NR	850	0	NR	980	0	NR
465	111	NR	595	298	NR	725	16	NR	855	0	NR	985	0	NR
470	86	NR	600	303	NR	730	14	NR	860	0	NR	990	0	NR
475	74	NR	605	307	NR	735	12	NR	865	0	NR	995	0	NR
480	77	NR	610	341	NR	740	10	NR	870	0	NR	1000	0	NR
485	86	NR	615	368	NR	745	8	NR	875	0	NR			

REPORT NUMBER: SP1-2506-472-5

Melanopic Flux vs. Wavelength



Melanopic Lumens: NR

M/P: 2.85

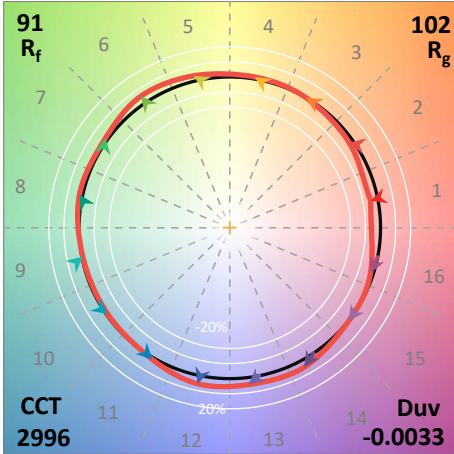
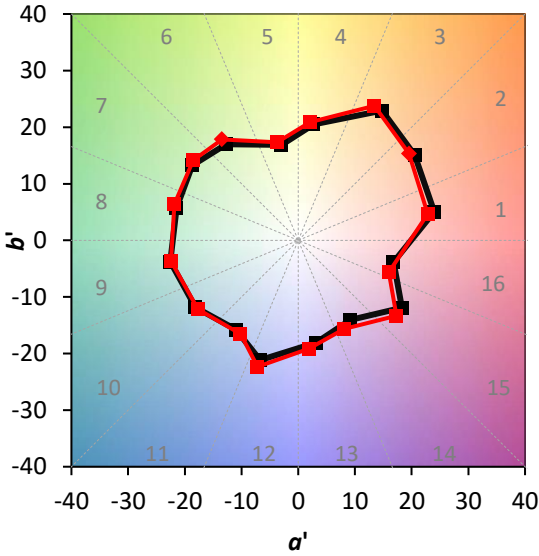
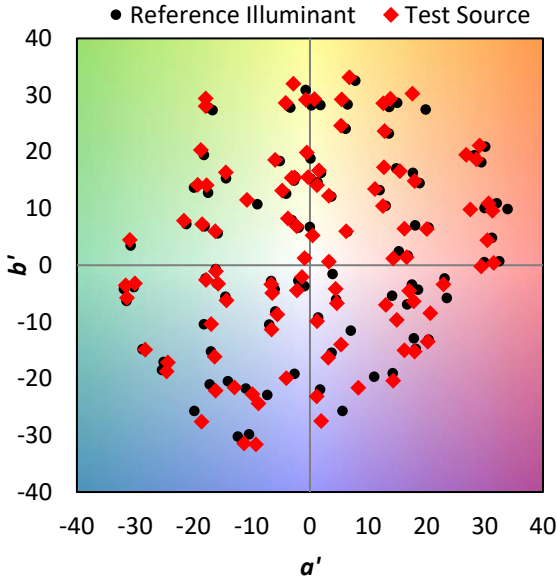
λ (nm)	Power W [^] /nm	Lumens (φ/nm)	λ (nm)	Power W [^] /nm	Lumens (φ/nm)	λ (nm)	Power W [^] /nm	Lumens (φ/nm)	λ (nm)	Power W [^] /nm	Lumens (φ/nm)	λ (nm)	Power W [^] /nm	Lumens (φ/nm)
360	0	NR	490	101	NR	620	317	NR	750	7	NR	880	0	NR
365	0	NR	495	121	NR	625	320	NR	755	6	NR	885	0	NR
370	0	NR	500	141	NR	630	1000	NR	760	5	NR	890	0	NR
375	0	NR	505	158	NR	635	651	NR	765	4	NR	895	0	NR
380	0	NR	510	171	NR	640	207	NR	770	4	NR	900	0	NR
385	0	NR	515	182	NR	645	201	NR	775	3	NR	905	0	NR
390	0	NR	520	189	NR	650	174	NR	780	3	NR	910	0	NR
395	1	NR	525	194	NR	655	146	NR	785	2	NR	915	0	NR
400	1	NR	530	199	NR	660	124	NR	790	2	NR	920	0	NR
405	3	NR	535	205	NR	665	105	NR	795	2	NR	925	0	NR
410	4	NR	540	210	NR	670	96	NR	800	1	NR	930	0	NR
415	7	NR	545	216	NR	675	79	NR	805	1	NR	935	0	NR
420	13	NR	550	222	NR	680	67	NR	810	1	NR	940	0	NR
425	22	NR	555	230	NR	685	58	NR	815	1	NR	945	0	NR
430	37	NR	560	240	NR	690	49	NR	820	1	NR	950	0	NR
435	60	NR	565	248	NR	695	42	NR	825	1	NR	955	0	NR
440	101	NR	570	258	NR	700	36	NR	830	1	NR	960	0	NR
445	172	NR	575	268	NR	705	30	NR	835	1	NR	965	0	NR
450	223	NR	580	278	NR	710	26	NR	840	1	NR	970	0	NR
455	167	NR	585	287	NR	715	22	NR	845	0	NR	975	0	NR
460	126	NR	590	295	NR	720	19	NR	850	0	NR	980	0	NR
465	111	NR	595	298	NR	725	16	NR	855	0	NR	985	0	NR
470	86	NR	600	303	NR	730	14	NR	860	0	NR	990	0	NR
475	74	NR	605	307	NR	735	12	NR	865	0	NR	995	0	NR
480	77	NR	610	341	NR	740	10	NR	870	0	NR	1000	0	NR
485	86	NR	615	368	NR	745	8	NR	875	0	NR			

Summary

$R_f = 91.3$
 $R_g = 102$
 $CIE R_a = 94.4$
 $R_9 = 61.4$



Color Vector Graphics

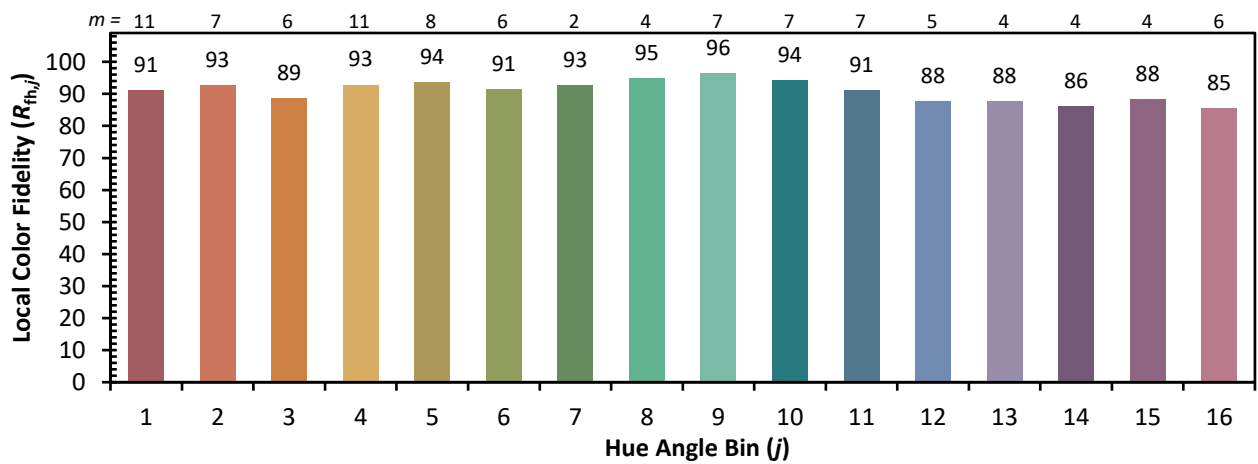
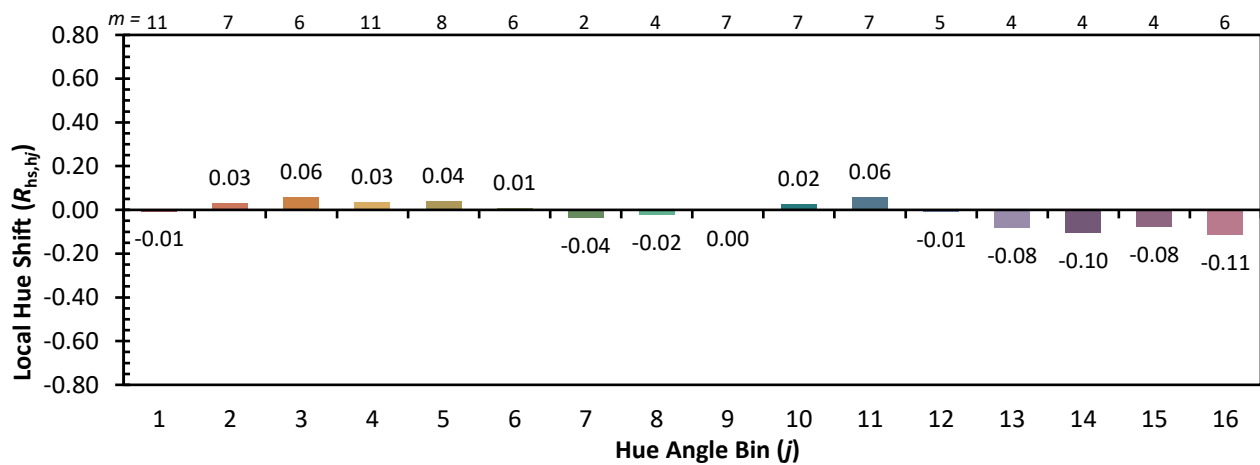
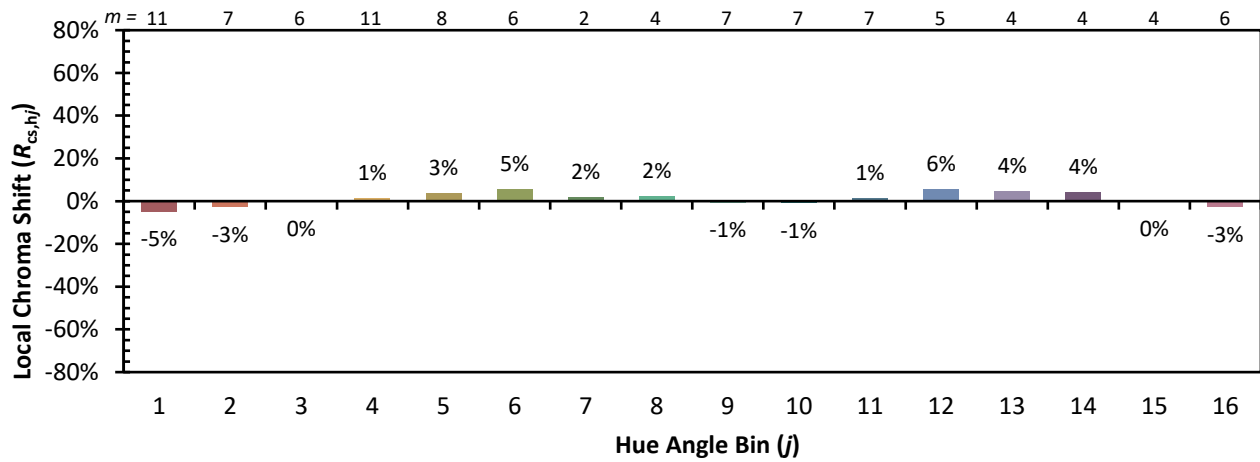


Individual Sample Fidelity Index ($R_{f,i}$)

CES01 = 86	CES26 = 91	CES51 = 96	CES76 = 89
CES02 = 63	CES27 = 96	CES52 = 95	CES77 = 85
CES03 = 32	CES28 = 96	CES53 = 93	CES78 = 86
CES04 = 70	CES29 = 90	CES54 = 98	CES79 = 89
CES05 = 51	CES30 = 96	CES55 = 98	CES80 = 91
CES06 = 51	CES31 = 90	CES56 = 95	CES81 = 72
CES07 = 44	CES32 = 84	CES57 = 95	CES82 = 95
CES08 = 42	CES33 = 91	CES58 = 95	CES83 = 93
CES09 = 29	CES34 = 92	CES59 = 99	CES84 = 96
CES10 = 76	CES35 = 96	CES60 = 96	CES85 = 80
CES11 = 59	CES36 = 90	CES61 = 96	CES86 = 77
CES12 = 65	CES37 = 94	CES62 = 95	CES87 = 91
CES13 = 44	CES38 = 99	CES63 = 94	CES88 = 96
CES14 = 74	CES39 = 97	CES64 = 96	CES89 = 82
CES15 = 72	CES40 = 94	CES65 = 92	CES90 = 97
CES16 = 48	CES41 = 94	CES66 = 95	CES91 = 82
CES17 = 50	CES42 = 91	CES67 = 94	CES92 = 78
CES18 = 57	CES43 = 88	CES68 = 93	CES93 = 87
CES19 = 72	CES44 = 99	CES69 = 94	CES94 = 73
CES20 = 67	CES45 = 93	CES70 = 90	CES95 = 85
CES21 = 86	CES46 = 93	CES71 = 90	CES96 = 92
CES22 = 79	CES47 = 86	CES72 = 96	CES97 = 93
CES23 = 92	CES48 = 95	CES73 = 85	CES98 = 94
CES24 = 91	CES49 = 91	CES74 = 90	CES99 = 93
CES25 = 72	CES50 = 96	CES75 = 90	



Color Rendition by Hue-Angle Bin



Measure Comparisons



(END OF REPORT)