

Cooper Lighting Solutions Photometric Lab
1121 Highway 74 South
Peachtree City, GA 30269



Scaled data based on original data using
LM-79-2019 Approved Method: Electrical and Photometric Measurements of Solid-
State Lighting Products

Test Report Prepared for
Cooper Lighting Solutions

Brand: METALUX

Report Number: P1444705

Luminaire Tested: EHBR1-54-UNV-TA-L930

Issue Date: 5/1/2026

Test Information

Test Method: LM-79-2019
Report Number: P1444705
TEST IS SCALED FROM IESNA LM-79-08 TEST DATA (C80-8019A)
Test Lab: INNOVATION CENTER
Issue Date: 5/1/2026
Manufacturer: COOPER LIGHTING SOLUTIONS
Product Line: METALUX
Catalog Number: EHBR1-54-UNV-TA-L930
Description: Elevate Round Highbay at, 54000 lumens, 3000K 90CRI LEDs with TA lens
Light Source: -
Ballast/Driver: -

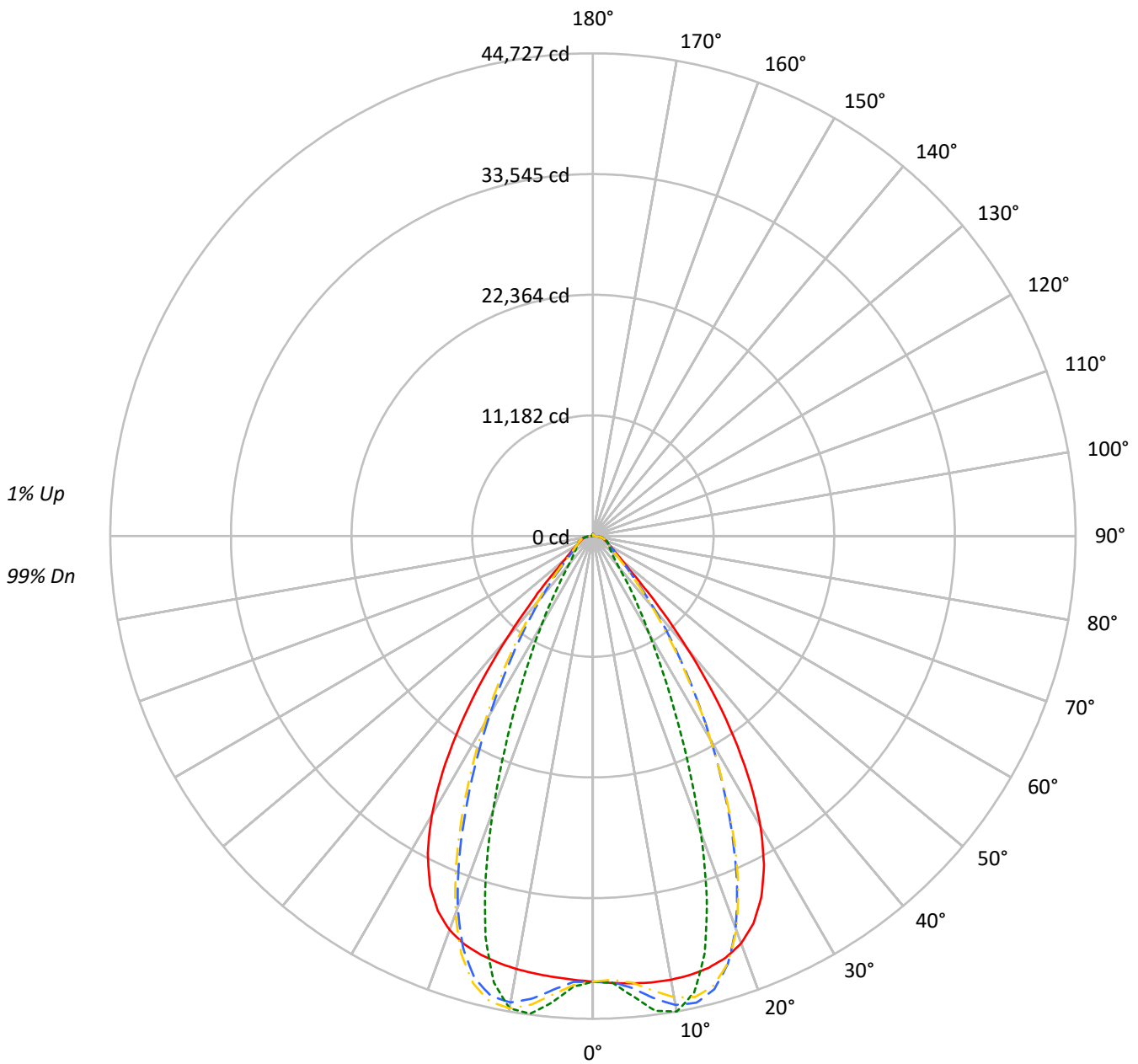
Summary

Lumens per Lamp: N/A
Luminaire Lumens: 47799.8 lumens
Efficiency: N/A
Efficacy: 161.5 lumens/watt
Spacing Criteria (0/90/45): 1.13 / 0.77 / 0.88
Luminous Opening: Circular (Dia: 1.71' x H: 0')
CIE Type: Direct

Input Watts (W): 296
Input Voltage (V): NR
Input Current (Ain): NR
Voltage Rise (V): NR
Power Factor: NR
Total Harmonic Distortion (THDi): NR
Frequency (hertz): 60
Stabilization Time: NR
Operation Time: NR
Ambient Temperature (°C): NR
Test Distance: 24 FT

TEST NUMBER: P1444705
CATALOG NUMBER: EHBR1-54-UNV-TA-L930

Luminous Intensity Polar Plot



— 0°-180° - - 45°-225° - - - 90°-270° - · - 135°-315°



TEST NUMBER: P1444705
 CATALOG NUMBER: EHBR1-54-UNV-TA-L930

COEFFICIENT OF UTILIZATION - ZONAL CAVITY METHOD:

| | | | | | | | | | | | | | | | | | | | | | | |
|-----|-----|-----|-----|-----|-----|-----|-----|-----|-----|-----|-----|-----|-----|-----|-----|-----|-----|----|----|----|----|----|
| RF | 20 | | | | 20 | | | | 20 | | | | 20 | | | | 20 | | | | 20 | |
| RC | 80 | | | | 70 | | | | 50 | | | | 30 | | | | 10 | | | | 0 | |
| RW | 70 | 50 | 30 | 10 | 70 | 50 | 30 | 10 | 50 | 30 | 10 | 50 | 30 | 10 | 50 | 30 | 10 | 50 | 30 | 10 | 0 | |
| RCR | | | | | | | | | | | | | | | | | | | | | | |
| 0 | 119 | 119 | 119 | 119 | 116 | 116 | 116 | 116 | 111 | 111 | 111 | 106 | 106 | 106 | 101 | 101 | 101 | 99 | | | | 99 |
| 1 | 112 | 108 | 105 | 103 | 109 | 106 | 103 | 101 | 102 | 100 | 98 | 98 | 96 | 95 | 94 | 93 | 92 | 90 | | | | 90 |
| 2 | 105 | 99 | 94 | 90 | 103 | 97 | 93 | 89 | 94 | 90 | 87 | 91 | 88 | 85 | 88 | 85 | 83 | 81 | | | | 81 |
| 3 | 99 | 91 | 85 | 81 | 97 | 90 | 84 | 80 | 87 | 82 | 79 | 84 | 81 | 77 | 82 | 79 | 76 | 74 | | | | 74 |
| 4 | 93 | 84 | 78 | 73 | 91 | 83 | 77 | 73 | 81 | 76 | 72 | 79 | 74 | 71 | 77 | 73 | 70 | 68 | | | | 68 |
| 5 | 88 | 78 | 72 | 67 | 86 | 77 | 71 | 66 | 75 | 70 | 66 | 73 | 69 | 65 | 72 | 68 | 64 | 63 | | | | 63 |
| 6 | 83 | 73 | 66 | 61 | 81 | 72 | 66 | 61 | 70 | 65 | 60 | 69 | 64 | 60 | 67 | 63 | 60 | 58 | | | | 58 |
| 7 | 78 | 68 | 61 | 57 | 77 | 67 | 61 | 56 | 66 | 60 | 56 | 65 | 59 | 56 | 63 | 59 | 55 | 54 | | | | 54 |
| 8 | 74 | 64 | 57 | 53 | 73 | 63 | 57 | 52 | 62 | 56 | 52 | 61 | 56 | 52 | 60 | 55 | 52 | 50 | | | | 50 |
| 9 | 70 | 60 | 53 | 49 | 69 | 59 | 53 | 49 | 58 | 53 | 49 | 57 | 52 | 48 | 56 | 52 | 48 | 47 | | | | 47 |
| 10 | 67 | 56 | 50 | 46 | 66 | 56 | 50 | 46 | 55 | 49 | 46 | 54 | 49 | 45 | 53 | 49 | 45 | 44 | | | | 44 |

AVERAGE LUMINANCE (cd/sqm):

| | 0° | 90° | 180° | 270° |
|-----|--------|--------|--------|--------|
| 0° | 193886 | 193886 | 193886 | 193886 |
| 5° | 196095 | 201813 | 193350 | 204457 |
| 10° | 199033 | 213282 | 194260 | 211871 |
| 15° | 201357 | 194642 | 195227 | 186805 |
| 20° | 200674 | 146019 | 194106 | 135102 |
| 25° | 191356 | 93035 | 185032 | 84412 |
| 30° | 168501 | 56354 | 161975 | 51502 |
| 35° | 130818 | 35673 | 123293 | 31600 |
| 40° | 83568 | 22597 | 76458 | 21234 |
| 45° | 43559 | 17803 | 42838 | 17510 |
| 50° | 25878 | 16047 | 25085 | 15796 |
| 55° | 20146 | 15427 | 19400 | 15287 |
| 60° | 17395 | 16081 | 16655 | 15873 |
| 65° | 16783 | 17251 | 16141 | 16662 |
| 70° | 17033 | 18764 | 16183 | 18057 |
| 75° | 19320 | 21111 | 18277 | 20178 |
| 80° | 22254 | 26021 | 20177 | 23753 |
| 85° | 27280 | 32679 | 22043 | 27986 |

MAXIMUM LUMINANCE 45°-90°:

Horizontal Angle: 25°
 Vertical Angle: 45°
 Luminance: 66661 cd/sqm



TEST NUMBER: P1444705
 CATALOG NUMBER: EHBR1-54-UNV-TA-L930

ZONAL LUMENS:

| Zone | Lumens | % Fixture |
|-----------|---------|-----------|
| 0°-10° | 4068.9 | 8.5 |
| 10°-20° | 11446.2 | 23.9 |
| 20°-30° | 13036.3 | 27.3 |
| 30°-40° | 9369.9 | 19.6 |
| 40°-50° | 4321.4 | 9.0 |
| 50°-60° | 2068.0 | 4.3 |
| 60°-70° | 1508.9 | 3.2 |
| 70°-80° | 1146.3 | 2.4 |
| 80°-90° | 521.4 | 1.1 |
| 90°-100° | 16.9 | 0.0 |
| 100°-110° | 12.2 | 0.0 |
| 110°-120° | 20.9 | 0.0 |
| 120°-130° | 34.9 | 0.1 |
| 130°-140° | 51.3 | 0.1 |
| 140°-150° | 61.0 | 0.1 |
| 150°-160° | 57.4 | 0.1 |
| 160°-170° | 42.0 | 0.1 |
| 170°-180° | 15.9 | 0.0 |
| 0°-30° | 28551.5 | 59.7 |
| 0°-40° | 37921.4 | 79.3 |
| 0°-60° | 44310.8 | 92.7 |
| 0°-90° | 47487.4 | 99.3 |
| 90°-120° | 50.0 | 0.1 |
| 90°-150° | 197.2 | 0.4 |
| 90°-180° | 312.0 | 0.7 |
| 0°-180° | 47799.8 | 100.0 |

CANDELA DISTRIBUTION:

| | 0° | 90° | 180° | 270° | 360° | Flux |
|------|-------|-------|-------|-------|-------|-------|
| 0° | 41287 | 41287 | 41287 | 41287 | 41287 | |
| 5° | 41598 | 42811 | 41016 | 43372 | 41598 | 3975 |
| 15° | 41417 | 40035 | 40156 | 38423 | 41417 | 11669 |
| 25° | 36930 | 17955 | 35710 | 16291 | 36930 | 16741 |
| 35° | 22819 | 6222 | 21506 | 5512 | 22819 | 14005 |
| 45° | 6559 | 2681 | 6450 | 2637 | 6559 | 5578 |
| 55° | 2461 | 1884 | 2370 | 1867 | 2461 | 2271 |
| 65° | 1510 | 1552 | 1453 | 1500 | 1510 | 1509 |
| 75° | 1065 | 1164 | 1007 | 1112 | 1065 | 1107 |
| 85° | 506 | 606 | 409 | 519 | 506 | 476 |
| 90° | 115 | 151 | 17 | 26 | 115 | 75 |
| 95° | 7 | 7 | 7 | 7 | 7 | 6 |
| 105° | 13 | 9 | 13 | 10 | 13 | 14 |
| 115° | 27 | 14 | 28 | 14 | 27 | 27 |
| 125° | 52 | 23 | 55 | 25 | 52 | 47 |
| 135° | 84 | 46 | 87 | 50 | 84 | 64 |
| 145° | 111 | 82 | 114 | 88 | 111 | 69 |
| 155° | 130 | 117 | 133 | 122 | 130 | 60 |
| 165° | 152 | 143 | 155 | 147 | 152 | 43 |
| 175° | 168 | 167 | 170 | 169 | 168 | 16 |
| 180° | 171 | 171 | 171 | 171 | 171 | |



TEST NUMBER: P1444705
 CATALOG NUMBER: EHBR1-54-UNV-TA-L930

CANDELA DISTRIBUTION (FULL):

| | 0° | 2.5° | 5° | 7.5° | 10° | 12.5° | 15° | 17.5° | 20° | 22.5° | 25° |
|--------|---------|---------|---------|---------|---------|---------|---------|---------|---------|---------|---------|
| 0° | 41286.7 | 41286.7 | 41286.7 | 41286.7 | 41286.7 | 41286.7 | 41286.7 | 41286.7 | 41286.7 | 41286.7 | 41286.7 |
| 2.5° | 41444.4 | 41441.0 | 41440.5 | 41437.5 | 41436.7 | 41436.7 | 41435.4 | 41432.0 | 41429.9 | 41425.1 | 41419.8 |
| 5° | 41598.2 | 41596.3 | 41597.4 | 41597.8 | 41594.8 | 41588.4 | 41578.3 | 41565.9 | 41550.3 | 41535.6 | 41522.5 |
| 7.5° | 41717.1 | 41720.0 | 41723.7 | 41722.9 | 41713.9 | 41698.7 | 41678.0 | 41666.5 | 41673.3 | 41695.8 | 41747.2 |
| 10° | 41738.8 | 41756.6 | 41763.4 | 41761.3 | 41743.3 | 41730.3 | 41735.3 | 41779.0 | 41866.1 | 41982.3 | 42141.1 |
| 12.5° | 41654.2 | 41675.9 | 41675.1 | 41668.0 | 41650.5 | 41668.2 | 41731.6 | 41861.8 | 42048.5 | 42277.6 | 42546.3 |
| 15° | 41416.6 | 41444.7 | 41436.7 | 41427.5 | 41415.8 | 41474.1 | 41600.6 | 41826.8 | 42115.1 | 42438.1 | 42768.7 |
| 17.5° | 40955.2 | 40989.2 | 40972.7 | 40962.1 | 40952.3 | 41061.6 | 41279.0 | 41610.1 | 41973.2 | 42338.6 | 42652.0 |
| 20° | 40155.0 | 40177.7 | 40138.4 | 40119.9 | 40135.6 | 40349.6 | 40669.8 | 41092.7 | 41475.5 | 41821.0 | 42035.2 |
| 22.5° | 38849.0 | 38877.3 | 38803.4 | 38794.9 | 38886.0 | 39214.8 | 39620.1 | 40092.8 | 40452.5 | 40726.3 | 40808.8 |
| 25° | 36930.2 | 36958.0 | 36870.3 | 36922.8 | 37077.9 | 37525.7 | 38008.3 | 38514.1 | 38820.9 | 39023.7 | 38967.7 |
| 27.5° | 34340.3 | 34365.7 | 34282.5 | 34389.6 | 34634.8 | 35223.3 | 35791.4 | 36339.9 | 36613.3 | 36755.5 | 36575.4 |
| 30° | 31073.9 | 31126.7 | 31028.3 | 31177.8 | 31552.2 | 32316.3 | 32967.0 | 33582.1 | 33854.8 | 33963.0 | 33682.7 |
| 32.5° | 27194.5 | 27269.6 | 27161.1 | 27383.6 | 27905.9 | 28823.7 | 29562.9 | 30250.3 | 30551.8 | 30675.3 | 30358.7 |
| 35° | 22818.9 | 22926.6 | 22802.2 | 23136.0 | 23780.4 | 24802.4 | 25621.0 | 26388.3 | 26745.5 | 26920.5 | 26601.5 |
| 37.5° | 18183.2 | 18285.8 | 18218.5 | 18663.9 | 19371.5 | 20430.8 | 21266.4 | 22094.2 | 22497.5 | 22760.2 | 22508.8 |
| 40° | 13631.9 | 13725.9 | 13776.8 | 14286.2 | 14951.7 | 15950.1 | 16752.6 | 17571.8 | 18022.9 | 18352.7 | 18197.6 |
| 42.5° | 9621.5 | 9716.2 | 9889.4 | 10380.9 | 10935.9 | 11762.3 | 12449.7 | 13185.1 | 13616.2 | 13968.0 | 13908.1 |
| 45° | 6558.8 | 6668.8 | 6885.7 | 7288.2 | 7689.6 | 8282.4 | 8787.3 | 9359.2 | 9711.3 | 10033.5 | 10037.3 |
| 47.5° | 4596.1 | 4673.3 | 4867.2 | 5142.1 | 5403.7 | 6145.9 | 6176.4 | 6457.5 | 6694.1 | 6935.0 | 6966.2 |
| 50° | 3542.1 | 3588.6 | 3691.5 | 3844.6 | 3992.8 | 4185.5 | 4361.9 | 4565.6 | 4711.3 | 4843.3 | 4874.9 |
| 52.5° | 2911.4 | 2940.9 | 2993.2 | 3076.2 | 3162.2 | 3267.0 | 3361.4 | 3473.2 | 3552.5 | 3623.2 | 3638.1 |
| 55° | 2460.6 | 2485.1 | 2563.0 | 2578.7 | 2677.2 | 2696.1 | 2738.0 | 2806.1 | 2852.2 | 2894.5 | 2905.1 |
| 57.5° | 2120.5 | 2138.2 | 2154.8 | 2190.1 | 2220.4 | 2264.5 | 2299.9 | 2348.8 | 2377.8 | 2408.4 | 2411.1 |
| 60° | 1852.1 | 1864.9 | 1876.7 | 1901.2 | 1921.8 | 1952.5 | 1976.9 | 2010.1 | 2030.9 | 2053.9 | 2056.5 |
| 62.5° | 1652.4 | 1661.5 | 1669.4 | 1685.6 | 1700.3 | 1723.8 | 1743.2 | 1771.0 | 1790.4 | 1808.1 | 1812.1 |
| 65° | 1510.4 | 1517.2 | 1522.2 | 1534.5 | 1547.3 | 1567.3 | 1584.9 | 1607.5 | 1621.8 | 1635.4 | 1638.3 |
| 67.5° | 1384.7 | 1391.1 | 1396.2 | 1407.4 | 1416.3 | 1431.3 | 1443.1 | 1460.0 | 1470.7 | 1481.6 | 1482.0 |
| 70° | 1240.5 | 1246.4 | 1250.4 | 1260.9 | 1268.0 | 1280.8 | 1290.4 | 1305.7 | 1316.7 | 1328.8 | 1331.8 |
| 72.5° | 1140.7 | 1144.2 | 1149.6 | 1159.1 | 1169.0 | 1182.8 | 1195.5 | 1211.4 | 1224.7 | 1237.3 | 1242.6 |
| 75° | 1064.8 | 1068.9 | 1072.5 | 1080.6 | 1087.5 | 1099.1 | 1108.6 | 1123.1 | 1134.8 | 1148.2 | 1154.8 |
| 77.5° | 955.3 | 960.0 | 963.1 | 971.2 | 977.1 | 988.3 | 995.3 | 1008.3 | 1017.9 | 1030.1 | 1036.0 |
| 80° | 822.9 | 827.3 | 829.5 | 837.1 | 841.9 | 852.1 | 859.1 | 871.5 | 879.6 | 891.8 | 899.0 |
| 82.5° | 676.2 | 680.5 | 681.6 | 688.9 | 691.4 | 699.9 | 704.9 | 717.8 | 727.6 | 743.5 | 754.5 |
| 85° | 506.3 | 507.9 | 510.3 | 508.5 | 518.7 | 519.4 | 530.9 | 533.1 | 548.4 | 552.4 | 569.8 |
| 87.5° | 309.6 | 314.1 | 316.4 | 323.5 | 326.5 | 333.6 | 335.7 | 343.2 | 347.4 | 355.9 | 359.9 |
| 90° | 114.6 | 120.6 | 121.8 | 128.9 | 130.0 | 136.3 | 137.0 | 144.1 | 145.3 | 152.8 | 154.1 |
| 92.5° | 6.9 | 6.9 | 6.8 | 7.2 | 7.2 | 8.1 | 8.6 | 8.9 | 9.0 | 9.8 | 10.0 |
| 95° | 7.0 | 7.0 | 7.0 | 7.0 | 7.0 | 7.0 | 7.0 | 7.0 | 7.0 | 7.0 | 6.9 |
| 97.5° | 7.9 | 7.9 | 7.9 | 7.9 | 7.9 | 7.9 | 7.9 | 7.9 | 7.9 | 7.8 | 7.8 |
| 100° | 9.0 | 9.0 | 9.0 | 9.0 | 9.0 | 9.0 | 9.0 | 9.0 | 9.0 | 9.0 | 8.9 |
| 102.5° | 10.7 | 10.7 | 10.7 | 10.7 | 10.7 | 10.5 | 10.7 | 10.5 | 10.5 | 10.5 | 10.2 |
| 105° | 12.7 | 12.6 | 12.7 | 12.6 | 12.6 | 12.6 | 12.6 | 12.2 | 12.2 | 12.1 | 12.1 |
| 107.5° | 15.1 | 15.0 | 15.0 | 15.0 | 15.0 | 14.9 | 14.9 | 14.7 | 14.5 | 14.3 | 14.3 |
| 110° | 18.5 | 18.2 | 18.2 | 18.1 | 17.9 | 17.9 | 17.7 | 17.3 | 17.3 | 17.0 | 16.8 |



TEST NUMBER: P1444705
 CATALOG NUMBER: EHBR1-54-UNV-TA-L930

CANDELA DISTRIBUTION (continued):

| | 0° | 2.5° | 5° | 7.5° | 10° | 12.5° | 15° | 17.5° | 20° | 22.5° | 25° |
|--------|-------|-------|-------|-------|-------|-------|-------|-------|-------|-------|-------|
| 112.5° | 22.5 | 22.2 | 22.0 | 21.9 | 21.7 | 21.3 | 21.1 | 20.9 | 20.7 | 20.2 | 19.9 |
| 115° | 27.1 | 26.7 | 26.6 | 26.2 | 26.0 | 25.6 | 25.2 | 24.8 | 24.5 | 23.9 | 23.5 |
| 117.5° | 32.6 | 32.2 | 31.8 | 31.5 | 30.9 | 30.5 | 30.0 | 29.4 | 28.8 | 28.2 | 27.7 |
| 120° | 38.7 | 38.1 | 37.8 | 37.1 | 36.5 | 35.8 | 35.4 | 34.6 | 33.8 | 32.9 | 32.4 |
| 122.5° | 45.3 | 44.6 | 44.4 | 43.5 | 42.9 | 41.9 | 41.3 | 40.1 | 39.5 | 38.6 | 37.6 |
| 125° | 52.5 | 51.7 | 51.4 | 50.5 | 49.5 | 48.7 | 47.8 | 46.7 | 45.7 | 44.6 | 43.6 |
| 127.5° | 60.0 | 59.3 | 58.7 | 57.7 | 56.8 | 55.7 | 54.6 | 53.4 | 52.5 | 51.0 | 50.0 |
| 130° | 67.8 | 67.2 | 66.4 | 65.3 | 64.4 | 63.2 | 61.9 | 60.6 | 59.5 | 58.0 | 56.8 |
| 132.5° | 75.7 | 75.1 | 74.3 | 73.3 | 72.2 | 70.7 | 69.6 | 67.9 | 66.7 | 65.3 | 64.0 |
| 135° | 83.7 | 82.8 | 82.2 | 81.1 | 80.0 | 78.5 | 77.1 | 75.6 | 74.2 | 72.5 | 71.3 |
| 137.5° | 91.2 | 90.5 | 89.6 | 88.4 | 87.3 | 85.7 | 84.5 | 82.8 | 81.4 | 79.8 | 78.3 |
| 140° | 98.4 | 97.6 | 96.7 | 95.4 | 94.4 | 93.0 | 91.5 | 90.0 | 88.4 | 86.8 | 85.5 |
| 142.5° | 105.2 | 104.2 | 103.5 | 102.2 | 101.1 | 99.6 | 98.2 | 96.5 | 95.2 | 93.5 | 92.2 |
| 145° | 110.9 | 110.1 | 109.4 | 108.4 | 107.1 | 105.6 | 104.4 | 102.7 | 101.4 | 99.9 | 98.6 |
| 147.5° | 116.3 | 115.5 | 115.0 | 113.8 | 112.9 | 111.4 | 110.1 | 108.6 | 107.4 | 106.0 | 105.0 |
| 150° | 121.0 | 120.4 | 119.8 | 118.9 | 117.8 | 116.6 | 115.4 | 114.2 | 112.9 | 111.6 | 110.5 |
| 152.5° | 125.0 | 124.2 | 123.8 | 122.9 | 121.9 | 120.6 | 119.8 | 118.4 | 117.4 | 116.1 | 115.0 |
| 155° | 129.7 | 128.9 | 128.2 | 127.4 | 126.5 | 125.5 | 124.4 | 123.3 | 122.4 | 121.2 | 120.3 |
| 157.5° | 134.9 | 134.0 | 133.4 | 132.3 | 131.7 | 130.6 | 129.7 | 128.7 | 127.8 | 126.8 | 125.9 |
| 160° | 140.6 | 139.8 | 139.1 | 138.1 | 137.2 | 136.2 | 135.5 | 134.4 | 133.8 | 132.7 | 131.9 |
| 162.5° | 146.6 | 145.7 | 144.9 | 144.0 | 143.2 | 142.1 | 141.4 | 140.6 | 139.8 | 138.8 | 138.0 |
| 165° | 152.2 | 151.7 | 150.9 | 150.1 | 149.4 | 148.6 | 147.8 | 146.9 | 146.1 | 145.2 | 144.6 |
| 167.5° | 157.9 | 157.1 | 156.7 | 155.9 | 155.1 | 154.5 | 153.8 | 153.0 | 152.6 | 151.7 | 151.0 |
| 170° | 162.5 | 161.7 | 161.3 | 160.9 | 160.2 | 159.6 | 159.2 | 158.5 | 157.9 | 157.3 | 156.8 |
| 172.5° | 165.8 | 165.2 | 164.9 | 164.7 | 164.1 | 163.7 | 163.3 | 162.8 | 162.5 | 161.9 | 161.7 |
| 175° | 168.4 | 168.0 | 167.9 | 167.5 | 167.3 | 166.9 | 166.8 | 166.5 | 166.5 | 166.0 | 165.8 |
| 177.5° | 170.1 | 170.0 | 170.0 | 169.9 | 169.9 | 169.7 | 169.5 | 169.2 | 169.0 | 169.0 | 169.0 |
| 180° | 171.2 | 171.2 | 171.2 | 171.2 | 171.2 | 171.2 | 171.2 | 171.2 | 171.2 | 171.2 | 171.2 |



TEST NUMBER: P1444705
 CATALOG NUMBER: EHBR1-54-UNV-TA-L930

CANDELA DISTRIBUTION (continued):

| | 27.5° | 30° | 32.5° | 35° | 37.5° | 40° | 42.5° | 45° | 47.5° | 50° | 52.5° |
|--------|---------|---------|---------|---------|---------|---------|---------|---------|---------|---------|---------|
| 0° | 41286.7 | 41286.7 | 41286.7 | 41286.7 | 41286.7 | 41286.7 | 41286.7 | 41286.7 | 41286.7 | 41286.7 | 41286.7 |
| 2.5° | 41415.8 | 41410.7 | 41403.8 | 41395.1 | 41387.6 | 41378.9 | 41358.2 | 41352.2 | 41359.0 | 41363.7 | 41373.1 |
| 5° | 41514.2 | 41517.1 | 41518.2 | 41537.0 | 41553.2 | 41593.7 | 41911.4 | 42037.6 | 42135.3 | 42197.2 | 42291.3 |
| 7.5° | 41810.9 | 41906.4 | 42000.7 | 42127.8 | 42237.3 | 42385.3 | 42941.1 | 43177.6 | 43345.7 | 43466.7 | 43615.4 |
| 10° | 42313.7 | 42522.0 | 42717.5 | 42946.4 | 43143.2 | 43368.5 | 43885.8 | 44116.3 | 44261.8 | 44367.7 | 44466.6 |
| 12.5° | 42820.1 | 43109.2 | 43370.4 | 43625.2 | 43838.2 | 44033.5 | 44215.5 | 44296.1 | 44303.0 | 44306.4 | 44253.9 |
| 15° | 43083.9 | 43360.3 | 43590.4 | 43758.9 | 43884.1 | 43939.4 | 43626.3 | 43461.9 | 43254.2 | 43083.2 | 42801.8 |
| 17.5° | 42917.4 | 43083.2 | 43182.6 | 43172.8 | 43121.2 | 42947.9 | 42060.7 | 41572.8 | 41088.4 | 40651.8 | 40079.3 |
| 20° | 42177.4 | 42164.6 | 42078.2 | 41833.2 | 41538.0 | 41079.0 | 39558.0 | 38680.5 | 37832.1 | 37086.9 | 36182.9 |
| 22.5° | 40800.4 | 40583.7 | 40281.6 | 39753.5 | 39166.6 | 38364.7 | 36185.1 | 34894.3 | 33713.1 | 32669.7 | 31500.9 |
| 25° | 38805.2 | 38359.5 | 37802.4 | 36963.8 | 36051.9 | 34882.3 | 32195.8 | 30590.2 | 29172.2 | 27942.2 | 26593.6 |
| 27.5° | 36251.9 | 35580.5 | 34764.0 | 33603.4 | 32368.0 | 30869.5 | 27891.1 | 26119.2 | 24596.9 | 23278.3 | 21842.8 |
| 30° | 33229.0 | 32355.8 | 31301.4 | 29861.0 | 28370.8 | 26671.3 | 23650.5 | 21855.8 | 20314.9 | 18958.4 | 17521.8 |
| 32.5° | 29812.8 | 28790.0 | 27554.6 | 25937.9 | 24326.3 | 22579.0 | 19661.6 | 17924.5 | 16452.5 | 15147.4 | 13847.2 |
| 35° | 26045.0 | 24948.2 | 23641.1 | 21992.2 | 20390.2 | 18691.4 | 16014.5 | 14448.1 | 13148.3 | 11994.7 | 10944.9 |
| 37.5° | 22003.3 | 20926.4 | 19684.1 | 18130.0 | 16644.5 | 15105.0 | 12795.2 | 11482.7 | 10391.9 | 9434.5 | 8623.8 |
| 40° | 17801.1 | 16858.7 | 15783.8 | 14440.2 | 13172.5 | 11890.4 | 9994.4 | 8952.5 | 8091.6 | 7361.4 | 6754.0 |
| 42.5° | 13650.3 | 12920.0 | 12095.7 | 11033.9 | 10063.8 | 9087.6 | 7628.3 | 6856.3 | 6218.7 | 5693.1 | 5263.7 |
| 45° | 9903.8 | 9415.2 | 8862.4 | 8124.2 | 7453.0 | 6772.0 | 5733.4 | 5191.0 | 4775.7 | 4436.8 | 4150.2 |
| 47.5° | 6923.3 | 6639.9 | 6622.6 | 5940.4 | 5448.2 | 5031.8 | 4362.8 | 4020.1 | 3765.7 | 3560.3 | 3378.8 |
| 50° | 4862.0 | 4724.9 | 4554.6 | 4311.2 | 4082.7 | 3847.4 | 3439.7 | 3232.5 | 3083.5 | 2959.1 | 2844.3 |
| 52.5° | 3634.7 | 3563.5 | 3472.8 | 3343.6 | 3219.9 | 3087.5 | 2829.5 | 2697.7 | 2650.8 | 2534.9 | 2444.0 |
| 55° | 2903.2 | 2862.3 | 2810.7 | 2734.8 | 2659.5 | 2629.4 | 2408.3 | 2310.4 | 2248.3 | 2202.6 | 2153.8 |
| 57.5° | 2411.5 | 2381.0 | 2350.5 | 2299.1 | 2255.4 | 2202.6 | 2085.3 | 2035.1 | 1998.2 | 1971.3 | 1937.4 |
| 60° | 2056.9 | 2038.7 | 2021.6 | 1991.4 | 1967.9 | 1939.5 | 1864.9 | 1836.6 | 1817.3 | 1801.1 | 1779.5 |
| 62.5° | 1815.5 | 1806.2 | 1797.2 | 1781.2 | 1769.3 | 1753.9 | 1702.9 | 1689.2 | 1679.6 | 1671.5 | 1658.3 |
| 65° | 1641.2 | 1634.5 | 1629.6 | 1618.8 | 1612.9 | 1603.9 | 1560.1 | 1550.9 | 1545.0 | 1542.0 | 1534.5 |
| 67.5° | 1482.9 | 1475.8 | 1472.6 | 1464.9 | 1462.5 | 1456.8 | 1421.0 | 1416.0 | 1414.0 | 1415.0 | 1412.2 |
| 70° | 1334.7 | 1331.8 | 1333.3 | 1332.2 | 1335.5 | 1336.5 | 1314.9 | 1314.7 | 1317.0 | 1321.6 | 1322.0 |
| 72.5° | 1246.0 | 1246.0 | 1247.7 | 1248.4 | 1251.6 | 1253.2 | 1235.1 | 1234.2 | 1235.3 | 1238.7 | 1238.8 |
| 75° | 1161.5 | 1162.9 | 1167.5 | 1169.0 | 1172.8 | 1173.6 | 1149.7 | 1147.0 | 1147.2 | 1150.4 | 1149.3 |
| 77.5° | 1044.6 | 1049.7 | 1058.4 | 1063.0 | 1070.3 | 1071.7 | 1044.9 | 1041.7 | 1041.8 | 1045.0 | 1042.4 |
| 80° | 912.0 | 921.6 | 935.5 | 945.1 | 956.5 | 961.1 | 933.6 | 927.0 | 920.8 | 919.9 | 914.4 |
| 82.5° | 771.0 | 782.8 | 799.5 | 808.2 | 820.3 | 823.1 | 777.0 | 768.3 | 763.1 | 763.5 | 758.4 |
| 85° | 588.6 | 597.5 | 612.7 | 617.6 | 625.0 | 624.4 | 571.8 | 549.3 | 555.3 | 545.9 | 553.3 |
| 87.5° | 369.2 | 374.5 | 383.9 | 385.2 | 388.6 | 387.9 | 335.0 | 324.6 | 321.5 | 321.6 | 317.8 |
| 90° | 161.1 | 163.1 | 169.9 | 168.4 | 172.4 | 170.1 | 125.7 | 119.3 | 116.9 | 120.3 | 116.3 |
| 92.5° | 10.5 | 10.5 | 11.1 | 11.1 | 11.6 | 11.9 | 7.3 | 6.1 | 6.6 | 6.2 | 6.9 |
| 95° | 6.9 | 6.9 | 6.9 | 6.9 | 6.9 | 6.9 | 6.9 | 6.9 | 6.9 | 6.8 | 6.8 |
| 97.5° | 7.8 | 7.8 | 7.7 | 7.7 | 7.7 | 7.7 | 7.7 | 7.7 | 7.7 | 7.3 | 7.3 |
| 100° | 8.9 | 8.9 | 8.7 | 8.7 | 8.6 | 8.6 | 8.6 | 8.6 | 8.6 | 8.3 | 8.3 |
| 102.5° | 10.1 | 10.1 | 10.0 | 9.8 | 9.6 | 9.6 | 9.8 | 9.8 | 9.6 | 9.4 | 9.2 |
| 105° | 11.9 | 11.8 | 11.6 | 11.1 | 11.1 | 10.9 | 11.1 | 11.1 | 10.9 | 10.7 | 10.5 |
| 107.5° | 13.9 | 13.8 | 13.3 | 13.0 | 12.8 | 12.6 | 13.0 | 12.8 | 12.6 | 12.1 | 11.9 |
| 110° | 16.5 | 16.0 | 15.8 | 15.3 | 14.9 | 14.5 | 15.1 | 14.9 | 14.5 | 14.1 | 13.8 |



TEST NUMBER: P1444705
 CATALOG NUMBER: EHBR1-54-UNV-TA-L930

CANDELA DISTRIBUTION (continued):

| | 27.5° | 30° | 32.5° | 35° | 37.5° | 40° | 42.5° | 45° | 47.5° | 50° | 52.5° |
|--------|-------|-------|-------|-------|-------|-------|-------|-------|-------|-------|-------|
| 112.5° | 19.2 | 19.0 | 18.5 | 17.9 | 17.3 | 16.8 | 17.7 | 17.6 | 17.0 | 16.2 | 16.0 |
| 115° | 22.8 | 22.5 | 21.7 | 21.1 | 20.5 | 19.7 | 20.9 | 20.7 | 19.9 | 19.2 | 18.5 |
| 117.5° | 26.9 | 26.2 | 25.6 | 24.8 | 23.9 | 23.1 | 24.6 | 24.1 | 23.3 | 22.5 | 21.7 |
| 120° | 31.5 | 30.7 | 29.9 | 29.1 | 28.0 | 27.1 | 28.8 | 28.4 | 27.5 | 26.5 | 25.6 |
| 122.5° | 36.7 | 35.8 | 34.8 | 33.8 | 32.7 | 31.6 | 33.7 | 33.3 | 32.2 | 31.1 | 30.0 |
| 125° | 42.5 | 41.4 | 40.4 | 39.3 | 38.0 | 36.9 | 39.3 | 38.7 | 37.6 | 36.4 | 35.4 |
| 127.5° | 48.8 | 47.8 | 46.5 | 45.4 | 43.9 | 42.9 | 45.3 | 44.8 | 43.6 | 42.4 | 41.0 |
| 130° | 55.5 | 54.4 | 52.9 | 51.7 | 50.5 | 49.3 | 51.9 | 51.6 | 50.3 | 48.8 | 47.6 |
| 132.5° | 62.6 | 61.4 | 59.8 | 58.7 | 57.4 | 56.0 | 58.9 | 58.6 | 57.6 | 56.0 | 54.8 |
| 135° | 69.8 | 68.5 | 67.2 | 65.8 | 64.4 | 63.4 | 66.6 | 66.2 | 65.1 | 63.6 | 62.5 |
| 137.5° | 76.8 | 75.6 | 74.2 | 73.2 | 71.7 | 70.6 | 74.3 | 74.2 | 73.2 | 71.6 | 70.6 |
| 140° | 84.1 | 82.8 | 81.5 | 80.5 | 79.1 | 78.2 | 82.2 | 82.2 | 81.3 | 80.0 | 78.8 |
| 142.5° | 90.7 | 89.6 | 88.4 | 87.5 | 86.3 | 85.4 | 90.0 | 90.1 | 89.2 | 88.0 | 87.1 |
| 145° | 97.1 | 96.2 | 95.0 | 94.1 | 93.0 | 92.2 | 97.5 | 97.9 | 97.1 | 96.1 | 95.2 |
| 147.5° | 103.5 | 102.5 | 101.4 | 100.5 | 99.6 | 99.2 | 105.0 | 105.6 | 105.0 | 104.1 | 103.3 |
| 150° | 109.3 | 108.4 | 107.3 | 106.5 | 105.9 | 105.2 | 112.2 | 113.3 | 112.6 | 112.0 | 111.2 |
| 152.5° | 114.0 | 113.1 | 112.2 | 111.4 | 110.6 | 110.1 | 119.1 | 120.6 | 120.1 | 119.3 | 118.9 |
| 155° | 119.3 | 118.4 | 117.5 | 116.9 | 116.1 | 115.8 | 125.9 | 127.8 | 127.3 | 126.8 | 126.3 |
| 157.5° | 125.0 | 124.1 | 123.2 | 122.5 | 121.9 | 121.4 | 132.3 | 134.8 | 134.2 | 133.8 | 133.3 |
| 160° | 131.0 | 130.2 | 129.3 | 128.7 | 127.9 | 127.3 | 138.9 | 141.2 | 140.9 | 140.4 | 139.8 |
| 162.5° | 137.1 | 136.6 | 135.7 | 134.9 | 134.2 | 133.8 | 145.2 | 147.8 | 147.2 | 146.8 | 146.3 |
| 165° | 143.8 | 143.0 | 142.3 | 141.9 | 141.1 | 140.6 | 151.7 | 153.9 | 153.6 | 153.0 | 152.6 |
| 167.5° | 150.2 | 149.8 | 149.0 | 148.6 | 147.9 | 147.7 | 157.9 | 160.0 | 159.8 | 159.2 | 158.8 |
| 170° | 156.2 | 155.9 | 155.3 | 155.0 | 154.7 | 154.5 | 163.1 | 164.9 | 164.8 | 164.1 | 163.9 |
| 172.5° | 161.3 | 161.1 | 160.9 | 160.5 | 160.2 | 160.0 | 167.3 | 169.0 | 168.8 | 168.4 | 168.0 |
| 175° | 165.6 | 165.2 | 165.1 | 165.1 | 164.9 | 164.8 | 170.5 | 171.7 | 171.5 | 171.2 | 170.9 |
| 177.5° | 169.0 | 168.8 | 168.8 | 168.8 | 168.8 | 168.8 | 172.2 | 172.9 | 172.8 | 172.8 | 172.6 |
| 180° | 171.2 | 171.2 | 171.2 | 171.2 | 171.2 | 171.2 | 171.2 | 171.2 | 171.2 | 171.2 | 171.2 |



TEST NUMBER: P1444705
 CATALOG NUMBER: EHBR1-54-UNV-TA-L930

CANDELA DISTRIBUTION (continued):

| | 55° | 57.5° | 60° | 62.5° | 65° | 67.5° | 70° | 72.5° | 75° | 77.5° | 80° |
|--------|---------|---------|---------|---------|---------|---------|---------|---------|---------|---------|---------|
| 0° | 41286.7 | 41286.7 | 41286.7 | 41286.7 | 41286.7 | 41286.7 | 41286.7 | 41286.7 | 41286.7 | 41286.7 | 41286.7 |
| 2.5° | 41375.2 | 41389.8 | 41391.9 | 41408.9 | 41407.5 | 41427.7 | 41424.5 | 41441.0 | 41431.4 | 41445.0 | 41433.5 |
| 5° | 42347.0 | 42435.2 | 42481.2 | 42567.2 | 42594.5 | 42671.4 | 42693.1 | 42763.4 | 42766.3 | 42822.0 | 42809.3 |
| 7.5° | 43720.9 | 43850.8 | 43928.0 | 44034.3 | 44088.1 | 44176.8 | 44215.7 | 44281.2 | 44302.4 | 44354.4 | 44358.4 |
| 10° | 44541.4 | 44604.5 | 44648.5 | 44678.2 | 44705.2 | 44718.0 | 44732.8 | 44728.9 | 44732.8 | 44727.0 | 44739.7 |
| 12.5° | 44218.7 | 44126.5 | 44065.7 | 43950.3 | 43883.4 | 43756.0 | 43693.4 | 43570.8 | 43526.3 | 43421.0 | 43405.9 |
| 15° | 42584.3 | 42263.3 | 42036.6 | 41706.7 | 41499.4 | 41174.8 | 40984.9 | 40692.2 | 40558.4 | 40325.7 | 40264.7 |
| 17.5° | 39605.5 | 39009.6 | 38548.5 | 37956.9 | 37546.4 | 36993.6 | 36645.9 | 36188.3 | 35937.6 | 35568.6 | 35440.8 |
| 20° | 35429.3 | 34547.6 | 33855.9 | 33031.9 | 32442.2 | 31707.4 | 31237.0 | 30643.8 | 30299.4 | 29846.1 | 29662.4 |
| 22.5° | 30526.3 | 29428.6 | 28564.7 | 27591.2 | 26879.7 | 26060.9 | 25497.4 | 24855.5 | 24480.8 | 23988.3 | 23770.3 |
| 25° | 25472.8 | 24262.2 | 23301.8 | 22276.2 | 21524.4 | 20703.6 | 20139.9 | 19509.4 | 19121.6 | 18654.1 | 18437.5 |
| 27.5° | 20639.5 | 19414.2 | 18486.0 | 17532.5 | 16842.8 | 16102.2 | 15593.6 | 15043.1 | 14698.9 | 14299.8 | 14096.0 |
| 30° | 16374.2 | 15293.6 | 14503.6 | 13712.3 | 13138.6 | 12537.2 | 12114.5 | 11658.2 | 11356.3 | 11014.7 | 10820.5 |
| 32.5° | 12899.3 | 12065.0 | 11446.5 | 10818.5 | 10349.1 | 9846.4 | 9481.2 | 9078.6 | 8806.1 | 8500.9 | 8325.1 |
| 35° | 10216.1 | 9567.8 | 9074.5 | 8557.6 | 8154.2 | 7726.1 | 7404.3 | 7056.8 | 6812.3 | 6549.6 | 6397.8 |
| 37.5° | 8071.8 | 7556.2 | 7150.3 | 6721.0 | 6389.6 | 6035.0 | 5915.5 | 5516.8 | 5263.3 | 5053.7 | 4908.5 |
| 40° | 6334.8 | 5924.8 | 5589.0 | 5260.6 | 4990.4 | 4721.3 | 4505.5 | 4292.4 | 4128.9 | 3978.9 | 3875.2 |
| 42.5° | 4946.9 | 4650.0 | 4404.6 | 4164.1 | 3967.0 | 3771.0 | 3614.6 | 3467.9 | 3357.7 | 3259.6 | 3192.8 |
| 45° | 3932.6 | 3728.3 | 3557.9 | 3388.5 | 3249.4 | 3118.5 | 3013.3 | 2919.6 | 2848.5 | 2789.6 | 2747.8 |
| 47.5° | 3230.7 | 3090.8 | 2970.6 | 2856.3 | 2761.9 | 2676.2 | 2605.7 | 2582.7 | 2506.2 | 2454.6 | 2435.0 |
| 50° | 2745.7 | 2661.2 | 2569.9 | 2485.6 | 2422.5 | 2359.7 | 2314.0 | 2269.2 | 2240.6 | 2216.9 | 2209.7 |
| 52.5° | 2383.6 | 2319.1 | 2268.3 | 2214.8 | 2173.2 | 2128.6 | 2097.0 | 2067.2 | 2051.5 | 2039.0 | 2037.5 |
| 55° | 2114.5 | 2069.3 | 2035.7 | 1999.9 | 1974.9 | 1948.7 | 1932.4 | 1916.7 | 1909.8 | 1903.5 | 1903.9 |
| 57.5° | 1910.9 | 1880.7 | 1858.8 | 1835.6 | 1822.1 | 1809.5 | 1805.4 | 1801.4 | 1803.6 | 1804.5 | 1808.0 |
| 60° | 1762.4 | 1742.8 | 1729.1 | 1715.7 | 1710.1 | 1706.1 | 1709.1 | 1712.7 | 1719.9 | 1725.7 | 1730.9 |
| 62.5° | 1648.7 | 1637.6 | 1630.8 | 1623.7 | 1623.0 | 1623.3 | 1629.4 | 1635.4 | 1644.4 | 1651.2 | 1656.2 |
| 65° | 1531.7 | 1525.3 | 1523.1 | 1518.5 | 1520.8 | 1522.2 | 1529.6 | 1534.1 | 1543.1 | 1548.5 | 1554.9 |
| 67.5° | 1413.3 | 1411.8 | 1413.3 | 1413.3 | 1417.4 | 1420.9 | 1428.0 | 1433.1 | 1440.8 | 1445.7 | 1450.9 |
| 70° | 1326.0 | 1326.6 | 1329.8 | 1330.5 | 1334.9 | 1337.3 | 1343.5 | 1346.8 | 1353.7 | 1357.8 | 1364.2 |
| 72.5° | 1241.1 | 1239.8 | 1240.5 | 1238.5 | 1240.0 | 1239.4 | 1242.8 | 1244.5 | 1250.3 | 1253.5 | 1261.1 |
| 75° | 1150.6 | 1146.8 | 1145.9 | 1141.8 | 1141.9 | 1139.1 | 1140.4 | 1140.2 | 1144.0 | 1145.6 | 1151.1 |
| 77.5° | 1041.4 | 1035.0 | 1031.9 | 1025.1 | 1024.9 | 1022.3 | 1025.1 | 1026.7 | 1033.5 | 1036.7 | 1042.9 |
| 80° | 910.7 | 900.7 | 896.0 | 888.1 | 889.4 | 889.0 | 895.8 | 900.8 | 909.1 | 910.6 | 918.5 |
| 82.5° | 756.9 | 746.7 | 741.8 | 734.0 | 735.8 | 736.0 | 742.1 | 743.2 | 750.3 | 753.5 | 762.6 |
| 85° | 542.0 | 545.9 | 535.1 | 535.8 | 533.5 | 537.8 | 542.0 | 547.2 | 553.1 | 563.1 | 570.8 |
| 87.5° | 319.2 | 317.8 | 321.6 | 322.1 | 327.6 | 330.5 | 339.3 | 344.4 | 354.4 | 362.2 | 376.2 |
| 90° | 117.8 | 114.0 | 118.3 | 117.8 | 124.4 | 124.1 | 129.9 | 128.4 | 135.3 | 136.8 | 145.3 |
| 92.5° | 6.2 | 6.8 | 6.2 | 6.6 | 6.2 | 6.9 | 6.2 | 6.8 | 6.2 | 6.9 | 6.2 |
| 95° | 6.8 | 6.8 | 6.8 | 6.8 | 6.8 | 6.8 | 6.8 | 6.8 | 6.8 | 6.8 | 6.8 |
| 97.5° | 7.3 | 7.3 | 7.3 | 7.2 | 7.2 | 7.2 | 7.2 | 7.2 | 7.2 | 7.2 | 7.2 |
| 100° | 8.1 | 8.1 | 8.1 | 7.9 | 7.9 | 7.9 | 7.9 | 7.9 | 7.9 | 7.9 | 7.9 |
| 102.5° | 9.2 | 9.0 | 9.0 | 8.9 | 8.9 | 8.7 | 8.7 | 8.7 | 8.7 | 8.7 | 8.7 |
| 105° | 10.2 | 10.1 | 10.0 | 9.8 | 9.8 | 9.6 | 9.6 | 9.4 | 9.4 | 9.4 | 9.4 |
| 107.5° | 11.6 | 11.3 | 11.1 | 11.1 | 10.9 | 10.7 | 10.5 | 10.5 | 10.2 | 10.2 | 10.2 |
| 110° | 13.2 | 12.8 | 12.7 | 12.2 | 12.1 | 11.9 | 11.6 | 11.6 | 11.3 | 11.1 | 11.1 |



TEST NUMBER: P1444705
 CATALOG NUMBER: EHBR1-54-UNV-TA-L930

CANDELA DISTRIBUTION (continued):

| | 55° | 57.5° | 60° | 62.5° | 65° | 67.5° | 70° | 72.5° | 75° | 77.5° | 80° |
|--------|-------|-------|-------|-------|-------|-------|-------|-------|-------|-------|-------|
| 112.5° | 15.3 | 14.9 | 14.3 | 13.9 | 13.6 | 13.2 | 13.0 | 12.8 | 12.7 | 12.6 | 12.2 |
| 115° | 17.7 | 17.1 | 16.5 | 16.0 | 15.6 | 15.0 | 14.7 | 14.5 | 14.1 | 13.9 | 13.8 |
| 117.5° | 20.9 | 20.1 | 19.2 | 18.5 | 17.9 | 17.3 | 16.8 | 16.2 | 16.0 | 15.8 | 15.6 |
| 120° | 24.5 | 23.5 | 22.5 | 21.7 | 20.9 | 20.1 | 19.2 | 18.8 | 18.2 | 18.1 | 17.7 |
| 122.5° | 28.8 | 27.7 | 26.5 | 25.6 | 24.5 | 23.5 | 22.6 | 22.0 | 21.3 | 20.9 | 20.5 |
| 125° | 33.8 | 32.6 | 31.4 | 30.0 | 28.8 | 27.9 | 26.7 | 25.8 | 25.1 | 24.6 | 23.9 |
| 127.5° | 39.7 | 38.1 | 36.7 | 35.5 | 34.0 | 32.9 | 31.6 | 30.7 | 29.7 | 29.0 | 28.2 |
| 130° | 46.1 | 44.6 | 43.0 | 41.8 | 40.1 | 38.9 | 37.6 | 36.5 | 35.5 | 34.6 | 33.7 |
| 132.5° | 53.3 | 51.9 | 50.3 | 48.8 | 47.3 | 45.9 | 44.6 | 43.3 | 41.9 | 41.0 | 40.1 |
| 135° | 60.9 | 59.7 | 58.0 | 56.6 | 54.9 | 53.7 | 52.3 | 51.0 | 49.7 | 48.7 | 47.6 |
| 137.5° | 69.2 | 67.8 | 66.4 | 65.1 | 63.5 | 62.3 | 60.6 | 59.5 | 58.0 | 57.2 | 56.0 |
| 140° | 77.4 | 76.4 | 74.9 | 73.6 | 72.2 | 71.1 | 69.6 | 68.5 | 67.2 | 66.2 | 65.1 |
| 142.5° | 85.7 | 84.7 | 83.4 | 82.3 | 81.1 | 80.0 | 78.7 | 77.6 | 76.4 | 75.5 | 74.3 |
| 145° | 94.1 | 93.2 | 92.1 | 91.1 | 90.0 | 89.0 | 87.7 | 86.8 | 85.7 | 84.7 | 84.0 |
| 147.5° | 102.4 | 101.4 | 100.5 | 99.6 | 98.6 | 97.6 | 96.5 | 96.0 | 94.7 | 94.1 | 93.2 |
| 150° | 110.3 | 109.5 | 108.6 | 108.0 | 106.9 | 106.2 | 105.2 | 104.5 | 103.6 | 103.1 | 102.2 |
| 152.5° | 118.0 | 117.4 | 116.6 | 116.0 | 115.0 | 114.3 | 113.5 | 112.9 | 112.2 | 111.6 | 110.6 |
| 155° | 125.5 | 124.8 | 124.1 | 123.5 | 122.5 | 122.1 | 121.4 | 120.6 | 119.9 | 119.3 | 118.6 |
| 157.5° | 132.7 | 132.1 | 131.3 | 130.8 | 129.9 | 129.3 | 128.7 | 128.1 | 127.3 | 126.8 | 126.1 |
| 160° | 139.3 | 138.8 | 138.0 | 137.4 | 136.8 | 136.2 | 135.5 | 134.9 | 134.2 | 133.8 | 133.0 |
| 162.5° | 145.7 | 145.1 | 144.6 | 144.0 | 143.2 | 142.8 | 142.0 | 141.4 | 140.8 | 140.2 | 139.4 |
| 165° | 151.9 | 151.3 | 150.7 | 150.1 | 149.6 | 149.0 | 148.3 | 147.8 | 147.0 | 146.6 | 145.8 |
| 167.5° | 158.2 | 157.7 | 157.1 | 156.7 | 155.9 | 155.3 | 154.9 | 154.3 | 153.6 | 153.0 | 152.2 |
| 170° | 163.6 | 163.0 | 162.6 | 162.0 | 161.6 | 160.9 | 160.5 | 159.9 | 159.2 | 159.0 | 158.2 |
| 172.5° | 167.7 | 167.5 | 167.1 | 166.8 | 166.2 | 165.8 | 165.6 | 165.1 | 164.7 | 164.1 | 163.9 |
| 175° | 170.7 | 170.7 | 170.5 | 170.0 | 169.9 | 169.5 | 169.2 | 169.0 | 168.8 | 168.6 | 168.2 |
| 177.5° | 172.6 | 172.4 | 172.4 | 172.2 | 172.0 | 172.0 | 171.8 | 171.8 | 171.7 | 171.5 | 171.5 |
| 180° | 171.2 | 171.2 | 171.2 | 171.2 | 171.2 | 171.2 | 171.2 | 171.2 | 171.2 | 171.2 | 171.2 |



TEST NUMBER: P1444705
 CATALOG NUMBER: EHBR1-54-UNV-TA-L930

CANDELA DISTRIBUTION (continued):

| | 82.5° | 85° | 87.5° | 90° | 92.5° | 95° | 97.5° | 100° | 102.5° | 105° | 107.5° |
|--------|---------|---------|---------|---------|---------|---------|---------|---------|---------|---------|---------|
| 0° | 41286.7 | 41286.7 | 41286.7 | 41286.7 | 41286.7 | 41286.7 | 41286.7 | 41286.7 | 41286.7 | 41286.7 | 41286.7 |
| 2.5° | 41445.5 | 41434.9 | 41439.9 | 41420.5 | 41425.1 | 41401.7 | 41399.6 | 41373.1 | 41370.5 | 41345.6 | 41336.2 |
| 5° | 42848.7 | 42825.7 | 42851.7 | 42811.1 | 42819.1 | 42766.3 | 42761.9 | 42693.6 | 42670.1 | 42584.7 | 42547.8 |
| 7.5° | 44390.9 | 44382.3 | 44398.2 | 44364.2 | 44363.1 | 44316.0 | 44296.6 | 44235.3 | 44197.4 | 44107.7 | 44050.5 |
| 10° | 44728.9 | 44736.8 | 44723.8 | 44727.0 | 44708.6 | 44703.6 | 44684.8 | 44672.8 | 44642.1 | 44618.8 | 44584.6 |
| 12.5° | 43325.9 | 43334.2 | 43280.8 | 43314.7 | 43287.9 | 43350.5 | 43345.5 | 43419.2 | 43430.6 | 43523.9 | 43559.2 |
| 15° | 40083.4 | 40073.3 | 39970.6 | 40035.3 | 40000.6 | 40138.0 | 40168.7 | 40353.5 | 40452.5 | 40689.8 | 40835.6 |
| 17.5° | 35185.1 | 35158.7 | 35014.0 | 35092.8 | 35052.7 | 35255.3 | 35323.2 | 35618.9 | 35803.3 | 36185.7 | 36458.2 |
| 20° | 29346.1 | 29295.5 | 29126.3 | 29218.5 | 29177.1 | 29407.3 | 29504.3 | 29861.6 | 30099.4 | 30605.9 | 30966.2 |
| 22.5° | 23434.6 | 23354.5 | 23188.9 | 23275.0 | 23236.0 | 23474.4 | 23600.6 | 23959.1 | 24231.5 | 24751.4 | 25172.1 |
| 25° | 18126.1 | 18054.8 | 17894.6 | 17954.9 | 17940.3 | 18142.0 | 18254.4 | 18593.4 | 18861.1 | 19356.3 | 19757.8 |
| 27.5° | 13825.2 | 13751.0 | 13606.3 | 13649.0 | 13634.3 | 13806.1 | 13911.9 | 14195.2 | 14425.5 | 14842.5 | 15195.0 |
| 30° | 10581.2 | 10491.6 | 10368.9 | 10392.5 | 10382.4 | 10521.7 | 10620.5 | 10859.1 | 11056.5 | 11408.8 | 11712.5 |
| 32.5° | 8110.4 | 8020.5 | 7907.7 | 7918.8 | 7903.9 | 8013.1 | 8094.6 | 8302.0 | 8474.0 | 8773.6 | 9038.0 |
| 35° | 6205.6 | 6310.7 | 6069.9 | 6222.5 | 6063.6 | 6296.8 | 6212.9 | 6342.6 | 6490.5 | 6743.0 | 6963.5 |
| 37.5° | 4770.6 | 4697.4 | 4635.3 | 4628.8 | 4628.5 | 4682.5 | 4746.3 | 4871.1 | 5001.5 | 5189.6 | 5383.9 |
| 40° | 3780.5 | 3729.1 | 3689.0 | 3686.1 | 3689.0 | 3727.4 | 3774.5 | 3860.9 | 3956.3 | 4091.4 | 4234.2 |
| 42.5° | 3135.6 | 3101.4 | 3077.3 | 3075.6 | 3083.3 | 3110.4 | 3143.2 | 3194.5 | 3256.6 | 3344.1 | 3442.0 |
| 45° | 2713.9 | 2694.9 | 2681.4 | 2680.6 | 2684.2 | 2698.4 | 2717.2 | 2749.2 | 2788.6 | 2843.2 | 2905.1 |
| 47.5° | 2417.9 | 2413.3 | 2404.9 | 2405.2 | 2401.4 | 2407.2 | 2409.4 | 2427.3 | 2448.2 | 2489.4 | 2570.3 |
| 50° | 2202.5 | 2202.5 | 2196.7 | 2196.4 | 2190.9 | 2190.5 | 2186.0 | 2193.0 | 2202.8 | 2228.3 | 2254.2 |
| 52.5° | 2032.2 | 2031.5 | 2025.3 | 2024.0 | 2018.3 | 2017.9 | 2014.0 | 2016.7 | 2018.1 | 2030.9 | 2046.4 |
| 55° | 1899.0 | 1895.1 | 1886.8 | 1884.2 | 1881.9 | 1885.3 | 1883.8 | 1883.9 | 1882.2 | 1887.6 | 1892.2 |
| 57.5° | 1803.6 | 1798.4 | 1790.6 | 1788.2 | 1787.6 | 1791.6 | 1791.8 | 1790.4 | 1783.3 | 1778.4 | 1771.4 |
| 60° | 1728.0 | 1722.8 | 1714.4 | 1712.2 | 1713.5 | 1718.9 | 1718.7 | 1714.0 | 1703.3 | 1694.0 | 1683.2 |
| 62.5° | 1653.8 | 1651.6 | 1647.4 | 1646.7 | 1645.7 | 1646.6 | 1642.7 | 1637.8 | 1627.3 | 1617.3 | 1605.6 |
| 65° | 1554.1 | 1555.2 | 1552.0 | 1552.5 | 1548.6 | 1548.0 | 1542.2 | 1537.5 | 1526.8 | 1517.7 | 1505.7 |
| 67.5° | 1450.7 | 1451.5 | 1448.9 | 1448.9 | 1446.9 | 1447.2 | 1443.6 | 1439.3 | 1430.2 | 1422.9 | 1413.5 |
| 70° | 1365.5 | 1367.6 | 1366.1 | 1366.6 | 1364.2 | 1363.2 | 1357.7 | 1353.4 | 1344.1 | 1338.0 | 1329.5 |
| 72.5° | 1263.5 | 1268.0 | 1267.8 | 1269.0 | 1265.2 | 1263.5 | 1256.9 | 1251.5 | 1243.1 | 1238.1 | 1231.5 |
| 75° | 1153.2 | 1159.2 | 1160.9 | 1163.5 | 1158.3 | 1155.5 | 1148.3 | 1144.0 | 1137.2 | 1134.3 | 1129.9 |
| 77.5° | 1045.7 | 1052.3 | 1058.6 | 1064.4 | 1055.9 | 1048.4 | 1039.4 | 1032.6 | 1022.8 | 1018.9 | 1012.1 |
| 80° | 925.0 | 936.6 | 950.5 | 962.2 | 947.0 | 931.7 | 916.9 | 905.8 | 892.8 | 887.5 | 878.9 |
| 82.5° | 767.4 | 779.3 | 787.2 | 794.7 | 784.2 | 773.1 | 758.6 | 749.0 | 734.9 | 729.8 | 719.8 |
| 85° | 583.0 | 597.9 | 602.6 | 606.5 | 599.8 | 593.9 | 580.4 | 562.1 | 553.3 | 539.4 | 532.2 |
| 87.5° | 383.5 | 392.4 | 394.0 | 395.4 | 391.3 | 388.4 | 379.6 | 371.1 | 355.9 | 344.9 | 331.4 |
| 90° | 145.3 | 151.7 | 148.6 | 151.1 | 145.7 | 146.0 | 137.0 | 133.8 | 121.2 | 116.3 | 105.0 |
| 92.5° | 6.6 | 6.1 | 6.2 | 6.1 | 6.9 | 6.2 | 6.9 | 6.2 | 6.8 | 6.2 | 6.8 |
| 95° | 6.8 | 6.8 | 6.8 | 6.8 | 6.8 | 6.8 | 6.8 | 6.8 | 6.8 | 6.8 | 6.8 |
| 97.5° | 7.2 | 7.2 | 7.2 | 7.2 | 7.2 | 7.2 | 7.2 | 7.2 | 7.2 | 7.2 | 7.3 |
| 100° | 7.9 | 7.9 | 7.9 | 7.9 | 7.9 | 7.9 | 7.9 | 7.9 | 7.9 | 7.9 | 7.9 |
| 102.5° | 8.7 | 8.7 | 8.7 | 8.7 | 8.7 | 8.7 | 8.7 | 8.7 | 8.7 | 8.7 | 8.9 |
| 105° | 9.4 | 9.4 | 9.4 | 9.4 | 9.4 | 9.4 | 9.4 | 9.4 | 9.4 | 9.6 | 9.6 |
| 107.5° | 10.1 | 10.1 | 10.1 | 10.1 | 10.2 | 10.2 | 10.2 | 10.2 | 10.2 | 10.2 | 10.5 |
| 110° | 11.1 | 11.1 | 11.1 | 11.1 | 11.1 | 11.1 | 11.1 | 11.1 | 11.3 | 11.3 | 11.6 |



TEST NUMBER: P1444705
 CATALOG NUMBER: EHBR1-54-UNV-TA-L930

CANDELA DISTRIBUTION (continued):

| | 82.5° | 85° | 87.5° | 90° | 92.5° | 95° | 97.5° | 100° | 102.5° | 105° | 107.5° |
|--------|-------|-------|-------|-------|-------|-------|-------|-------|--------|-------|--------|
| 112.5° | 12.2 | 12.2 | 12.2 | 12.2 | 12.2 | 12.2 | 12.2 | 12.6 | 12.6 | 12.7 | 12.7 |
| 115° | 13.6 | 13.6 | 13.6 | 13.6 | 13.6 | 13.6 | 13.6 | 13.8 | 13.9 | 13.9 | 14.3 |
| 117.5° | 15.3 | 15.1 | 15.1 | 15.1 | 15.1 | 15.1 | 15.3 | 15.3 | 15.6 | 15.8 | 16.0 |
| 120° | 17.6 | 17.1 | 17.1 | 17.1 | 17.1 | 17.1 | 17.3 | 17.3 | 17.7 | 17.9 | 18.5 |
| 122.5° | 20.2 | 19.9 | 19.9 | 19.7 | 19.7 | 19.7 | 19.9 | 20.1 | 20.5 | 20.9 | 21.3 |
| 125° | 23.7 | 23.3 | 23.1 | 23.0 | 23.0 | 23.0 | 23.1 | 23.5 | 23.9 | 24.1 | 25.0 |
| 127.5° | 27.9 | 27.5 | 27.1 | 26.9 | 26.9 | 26.9 | 27.4 | 27.5 | 28.0 | 28.6 | 29.4 |
| 130° | 33.1 | 32.6 | 32.4 | 32.0 | 32.0 | 32.0 | 32.4 | 32.7 | 33.3 | 33.8 | 34.8 |
| 132.5° | 39.7 | 38.9 | 38.6 | 38.1 | 38.1 | 38.1 | 38.6 | 38.9 | 39.7 | 40.1 | 41.3 |
| 135° | 47.0 | 46.3 | 45.9 | 45.6 | 45.6 | 45.4 | 45.7 | 46.1 | 46.8 | 47.6 | 48.5 |
| 137.5° | 55.4 | 54.6 | 54.4 | 53.7 | 53.7 | 53.7 | 54.0 | 54.4 | 54.9 | 55.7 | 56.8 |
| 140° | 64.4 | 63.6 | 63.4 | 62.7 | 62.7 | 62.6 | 62.9 | 63.2 | 63.8 | 64.6 | 65.5 |
| 142.5° | 73.8 | 72.8 | 72.5 | 72.2 | 71.9 | 71.9 | 72.4 | 72.5 | 73.2 | 73.6 | 74.5 |
| 145° | 83.2 | 82.4 | 82.2 | 81.7 | 81.5 | 81.5 | 81.7 | 82.0 | 82.4 | 82.8 | 83.7 |
| 147.5° | 92.6 | 92.0 | 91.7 | 91.2 | 91.2 | 91.1 | 91.2 | 91.2 | 91.7 | 92.0 | 92.6 |
| 150° | 101.9 | 101.1 | 100.7 | 100.3 | 100.3 | 100.1 | 100.3 | 100.1 | 100.3 | 100.5 | 101.1 |
| 152.5° | 110.3 | 109.5 | 109.4 | 109.0 | 108.6 | 108.5 | 108.5 | 108.4 | 108.5 | 108.5 | 109.0 |
| 155° | 118.3 | 117.8 | 117.4 | 116.9 | 116.6 | 116.3 | 116.3 | 116.0 | 116.1 | 116.0 | 116.1 |
| 157.5° | 125.7 | 125.2 | 124.8 | 124.2 | 124.0 | 123.5 | 123.3 | 123.1 | 123.1 | 122.5 | 122.5 |
| 160° | 132.7 | 131.9 | 131.4 | 131.0 | 130.6 | 130.0 | 129.9 | 129.3 | 129.1 | 128.9 | 128.7 |
| 162.5° | 138.9 | 138.3 | 137.9 | 137.2 | 137.0 | 136.3 | 136.0 | 135.5 | 135.1 | 134.8 | 134.7 |
| 165° | 145.2 | 144.6 | 144.1 | 143.4 | 143.0 | 142.6 | 142.1 | 141.7 | 141.4 | 140.9 | 140.8 |
| 167.5° | 151.9 | 151.1 | 150.7 | 150.1 | 149.8 | 149.2 | 149.0 | 148.6 | 148.3 | 147.9 | 147.9 |
| 170° | 157.9 | 157.3 | 157.0 | 156.6 | 156.2 | 155.8 | 155.6 | 155.1 | 155.0 | 154.9 | 154.9 |
| 172.5° | 163.6 | 163.1 | 162.8 | 162.5 | 162.2 | 161.9 | 161.7 | 161.6 | 161.3 | 161.3 | 161.1 |
| 175° | 168.0 | 167.7 | 167.5 | 167.3 | 167.1 | 167.1 | 166.9 | 166.9 | 166.9 | 166.8 | 166.8 |
| 177.5° | 171.2 | 171.1 | 171.1 | 171.1 | 170.9 | 170.9 | 170.9 | 170.9 | 170.9 | 170.7 | 170.7 |
| 180° | 171.2 | 171.2 | 171.2 | 171.2 | 171.2 | 171.2 | 171.2 | 171.2 | 171.2 | 171.2 | 171.2 |



TEST NUMBER: P1444705
 CATALOG NUMBER: EHBR1-54-UNV-TA-L930

CANDELA DISTRIBUTION (continued):

| | 110° | 112.5° | 115° | 117.5° | 120° | 122.5° | 125° | 127.5° | 130° | 132.5° | 135° |
|--------|---------|---------|---------|---------|---------|---------|---------|---------|---------|---------|---------|
| 0° | 41286.7 | 41286.7 | 41286.7 | 41286.7 | 41286.7 | 41286.7 | 41286.7 | 41286.7 | 41286.7 | 41286.7 | 41286.7 |
| 2.5° | 41309.5 | 41298.6 | 41270.0 | 41255.9 | 41229.4 | 41216.1 | 41195.5 | 41182.1 | 41165.5 | 41153.1 | 41146.7 |
| 5° | 42454.0 | 42401.2 | 42295.3 | 42230.1 | 42115.9 | 42040.6 | 41927.0 | 41843.8 | 41726.5 | 41640.1 | 41529.3 |
| 7.5° | 43943.1 | 43862.1 | 43726.4 | 43623.6 | 43463.7 | 43341.4 | 43162.0 | 43018.4 | 42820.1 | 42655.5 | 42452.9 |
| 10° | 44549.4 | 44502.1 | 44441.2 | 44375.1 | 44286.5 | 44199.5 | 44077.0 | 43952.1 | 43785.7 | 43620.1 | 43403.7 |
| 12.5° | 43653.3 | 43697.8 | 43785.7 | 43826.7 | 43893.9 | 43916.7 | 43947.4 | 43933.0 | 43905.8 | 43838.2 | 43740.1 |
| 15° | 41115.6 | 41301.5 | 41595.3 | 41798.4 | 42083.2 | 42283.2 | 42547.8 | 42718.1 | 42914.2 | 43031.4 | 43142.8 |
| 17.5° | 36941.1 | 37300.7 | 37819.1 | 38232.6 | 38787.9 | 39239.4 | 39792.5 | 40227.0 | 40728.8 | 41113.8 | 41523.5 |
| 20° | 31594.2 | 32097.8 | 32813.4 | 33421.2 | 34225.7 | 34908.0 | 35782.0 | 36514.2 | 37368.3 | 38080.3 | 38848.7 |
| 22.5° | 25839.5 | 26431.8 | 27251.8 | 27984.9 | 28945.6 | 29803.8 | 30898.9 | 31867.0 | 33021.6 | 34056.0 | 35200.3 |
| 25° | 20410.6 | 20991.1 | 21826.4 | 22585.5 | 23622.7 | 24568.0 | 25764.4 | 26875.0 | 28214.9 | 29464.4 | 30898.9 |
| 27.5° | 15755.0 | 16270.7 | 17005.0 | 17688.2 | 18638.1 | 19566.1 | 20780.3 | 21964.6 | 23394.4 | 24737.2 | 26283.1 |
| 30° | 12167.3 | 12585.6 | 13174.0 | 13723.6 | 14486.2 | 15245.2 | 16326.7 | 17422.0 | 18844.7 | 20236.2 | 21821.1 |
| 32.5° | 9429.3 | 9786.0 | 10277.2 | 10723.3 | 11310.9 | 11883.2 | 12679.6 | 13554.9 | 14802.8 | 16135.7 | 17668.2 |
| 35° | 7299.3 | 7604.4 | 8022.5 | 8406.8 | 8890.1 | 9344.4 | 9938.7 | 10563.4 | 11515.7 | 12636.9 | 14008.4 |
| 37.5° | 5819.4 | 5943.8 | 6242.2 | 6557.1 | 6958.5 | 7331.8 | 7796.7 | 8258.5 | 8939.9 | 9824.5 | 10944.9 |
| 40° | 4425.6 | 4623.1 | 4866.0 | 5114.0 | 5417.9 | 5717.4 | 6227.4 | 6472.9 | 6921.6 | 7556.6 | 8426.2 |
| 42.5° | 3570.9 | 3709.8 | 3880.7 | 4053.2 | 4264.9 | 4473.5 | 4731.5 | 4994.2 | 5329.6 | 5759.7 | 6378.2 |
| 45° | 2988.2 | 3078.8 | 3188.9 | 3303.9 | 3442.9 | 3585.2 | 3758.0 | 3938.4 | 4165.6 | 4430.0 | 4805.6 |
| 47.5° | 2598.9 | 2649.0 | 2720.9 | 2799.3 | 2894.7 | 2993.2 | 3105.5 | 3220.5 | 3361.7 | 3518.6 | 3732.4 |
| 50° | 2295.0 | 2336.8 | 2392.7 | 2445.1 | 2511.0 | 2611.9 | 2656.5 | 2719.9 | 2804.9 | 2897.2 | 3016.8 |
| 52.5° | 2075.2 | 2103.0 | 2138.0 | 2168.2 | 2209.8 | 2247.6 | 2297.2 | 2340.9 | 2399.7 | 2455.1 | 2532.4 |
| 55° | 1903.9 | 1914.1 | 1934.0 | 1953.4 | 1982.2 | 2008.0 | 2042.0 | 2070.6 | 2108.1 | 2141.2 | 2189.9 |
| 57.5° | 1771.8 | 1772.7 | 1781.8 | 1791.9 | 1810.4 | 1826.7 | 1850.1 | 1868.9 | 1894.9 | 1916.0 | 1945.3 |
| 60° | 1676.7 | 1671.7 | 1673.5 | 1677.0 | 1687.5 | 1698.0 | 1712.9 | 1725.2 | 1741.6 | 1753.5 | 1769.9 |
| 62.5° | 1597.6 | 1589.6 | 1587.8 | 1586.9 | 1592.1 | 1595.9 | 1604.1 | 1610.0 | 1619.4 | 1624.5 | 1633.3 |
| 65° | 1497.7 | 1488.4 | 1484.7 | 1480.4 | 1482.0 | 1480.7 | 1483.7 | 1483.9 | 1488.6 | 1489.7 | 1494.8 |
| 67.5° | 1407.1 | 1399.3 | 1394.5 | 1388.8 | 1386.2 | 1382.0 | 1380.2 | 1376.2 | 1375.6 | 1372.3 | 1371.5 |
| 70° | 1324.5 | 1316.8 | 1312.8 | 1307.5 | 1304.7 | 1299.2 | 1295.9 | 1289.1 | 1285.2 | 1278.9 | 1275.4 |
| 72.5° | 1228.9 | 1224.6 | 1223.4 | 1219.7 | 1218.7 | 1215.7 | 1214.4 | 1209.5 | 1206.8 | 1201.4 | 1198.4 |
| 75° | 1128.9 | 1125.4 | 1125.1 | 1121.4 | 1121.1 | 1117.5 | 1116.5 | 1111.5 | 1108.8 | 1103.5 | 1101.3 |
| 77.5° | 1009.9 | 1004.7 | 1003.2 | 998.9 | 999.9 | 998.1 | 999.7 | 995.8 | 994.2 | 988.8 | 987.1 |
| 80° | 875.8 | 869.1 | 866.4 | 860.7 | 862.3 | 859.6 | 862.3 | 861.9 | 863.9 | 859.6 | 858.9 |
| 82.5° | 717.0 | 709.7 | 708.3 | 704.4 | 706.9 | 707.2 | 712.9 | 709.8 | 711.0 | 707.0 | 708.7 |
| 85° | 521.8 | 516.2 | 508.6 | 507.5 | 502.7 | 507.7 | 501.1 | 505.5 | 498.3 | 503.4 | 496.7 |
| 87.5° | 323.5 | 312.2 | 306.2 | 298.1 | 295.0 | 287.2 | 284.0 | 278.3 | 280.0 | 277.4 | 278.9 |
| 90° | 102.2 | 92.1 | 89.0 | 80.2 | 78.5 | 70.7 | 70.6 | 64.7 | 65.3 | 59.3 | 60.4 |
| 92.5° | 6.2 | 6.2 | 6.1 | 6.6 | 6.2 | 6.2 | 6.1 | 6.6 | 6.2 | 6.6 | 6.2 |
| 95° | 6.8 | 6.8 | 6.8 | 6.8 | 6.8 | 6.8 | 6.9 | 6.9 | 6.9 | 6.9 | 6.9 |
| 97.5° | 7.3 | 7.3 | 7.3 | 7.3 | 7.3 | 7.3 | 7.3 | 7.7 | 7.7 | 7.7 | 7.7 |
| 100° | 7.9 | 8.1 | 8.1 | 8.1 | 8.1 | 8.3 | 8.3 | 8.3 | 8.6 | 8.6 | 8.6 |
| 102.5° | 8.9 | 8.9 | 8.9 | 9.0 | 9.0 | 9.0 | 9.2 | 9.4 | 9.4 | 9.6 | 9.8 |
| 105° | 9.6 | 9.8 | 9.8 | 10.0 | 10.0 | 10.1 | 10.2 | 10.5 | 10.7 | 10.9 | 11.1 |
| 107.5° | 10.5 | 10.7 | 10.9 | 11.1 | 11.1 | 11.3 | 11.6 | 11.8 | 11.9 | 12.2 | 12.7 |
| 110° | 11.6 | 11.8 | 11.9 | 12.2 | 12.6 | 12.7 | 13.0 | 13.3 | 13.8 | 14.1 | 14.7 |



TEST NUMBER: P1444705
 CATALOG NUMBER: EHBR1-54-UNV-TA-L930

CANDELA DISTRIBUTION (continued):

| | 110° | 112.5° | 115° | 117.5° | 120° | 122.5° | 125° | 127.5° | 130° | 132.5° | 135° |
|--------|-------|--------|-------|--------|-------|--------|-------|--------|-------|--------|-------|
| 112.5° | 12.8 | 13.2 | 13.3 | 13.8 | 14.1 | 14.5 | 14.9 | 15.3 | 16.0 | 16.5 | 17.0 |
| 115° | 14.5 | 14.9 | 15.0 | 15.6 | 16.0 | 16.5 | 17.0 | 17.7 | 18.5 | 19.2 | 19.9 |
| 117.5° | 16.2 | 16.8 | 17.1 | 17.7 | 18.2 | 19.2 | 19.7 | 20.7 | 21.6 | 22.5 | 23.1 |
| 120° | 18.8 | 19.2 | 19.9 | 20.7 | 21.3 | 22.2 | 23.1 | 24.1 | 25.1 | 26.2 | 27.1 |
| 122.5° | 21.7 | 22.5 | 23.1 | 24.1 | 25.0 | 26.0 | 27.1 | 28.4 | 29.5 | 30.7 | 31.8 |
| 125° | 25.6 | 26.5 | 27.4 | 28.4 | 29.5 | 30.7 | 31.8 | 33.3 | 34.6 | 36.0 | 37.3 |
| 127.5° | 30.0 | 31.1 | 32.2 | 33.3 | 34.6 | 36.0 | 37.3 | 38.9 | 40.1 | 41.8 | 43.0 |
| 130° | 35.6 | 36.7 | 37.8 | 39.3 | 40.5 | 42.1 | 43.6 | 45.3 | 46.5 | 48.0 | 49.5 |
| 132.5° | 42.1 | 43.5 | 44.6 | 46.1 | 47.4 | 48.9 | 50.5 | 52.0 | 53.6 | 55.3 | 56.5 |
| 135° | 49.5 | 50.8 | 52.0 | 53.6 | 54.9 | 56.6 | 58.0 | 59.7 | 60.9 | 62.6 | 63.8 |
| 137.5° | 57.7 | 58.9 | 60.3 | 61.7 | 62.9 | 64.6 | 65.9 | 67.5 | 68.7 | 70.2 | 71.5 |
| 140° | 66.4 | 67.6 | 68.7 | 70.2 | 71.5 | 72.8 | 73.9 | 75.5 | 76.5 | 78.1 | 79.1 |
| 142.5° | 75.3 | 76.5 | 77.3 | 78.5 | 79.6 | 81.1 | 82.2 | 83.4 | 84.3 | 85.4 | 86.3 |
| 145° | 84.3 | 85.4 | 86.2 | 87.2 | 88.1 | 89.2 | 90.0 | 91.1 | 91.7 | 92.6 | 93.3 |
| 147.5° | 93.2 | 93.9 | 94.4 | 95.4 | 96.1 | 96.7 | 97.5 | 98.2 | 98.6 | 99.5 | 100.1 |
| 150° | 101.4 | 102.0 | 102.4 | 103.1 | 103.5 | 104.1 | 104.4 | 105.0 | 105.2 | 105.9 | 106.2 |
| 152.5° | 109.1 | 109.4 | 109.4 | 110.1 | 110.1 | 110.5 | 110.6 | 111.1 | 111.2 | 111.6 | 112.0 |
| 155° | 116.0 | 116.1 | 116.1 | 116.3 | 116.3 | 116.5 | 116.5 | 116.9 | 117.1 | 117.2 | 117.5 |
| 157.5° | 122.4 | 122.3 | 122.3 | 122.3 | 122.1 | 122.3 | 122.3 | 122.4 | 122.5 | 123.1 | 123.3 |
| 160° | 128.2 | 128.1 | 127.9 | 127.9 | 127.9 | 127.9 | 127.9 | 128.2 | 128.4 | 128.9 | 129.3 |
| 162.5° | 134.2 | 134.0 | 133.8 | 133.8 | 133.8 | 134.0 | 134.2 | 134.7 | 134.8 | 135.3 | 135.7 |
| 165° | 140.6 | 140.6 | 140.4 | 140.6 | 140.6 | 140.8 | 140.9 | 141.2 | 141.7 | 142.1 | 142.6 |
| 167.5° | 147.8 | 147.8 | 147.8 | 147.9 | 147.9 | 148.1 | 148.3 | 148.9 | 149.0 | 149.6 | 149.8 |
| 170° | 154.7 | 154.9 | 154.7 | 154.9 | 154.9 | 155.0 | 155.1 | 155.3 | 155.6 | 155.9 | 156.0 |
| 172.5° | 161.1 | 161.1 | 161.1 | 161.1 | 161.1 | 161.3 | 161.3 | 161.6 | 161.6 | 161.7 | 161.7 |
| 175° | 166.6 | 166.6 | 166.6 | 166.6 | 166.6 | 166.5 | 166.5 | 166.2 | 166.2 | 166.2 | 166.2 |
| 177.5° | 170.5 | 170.1 | 170.0 | 170.0 | 169.9 | 169.7 | 169.7 | 169.5 | 169.5 | 169.5 | 169.2 |
| 180° | 171.2 | 171.2 | 171.2 | 171.2 | 171.2 | 171.2 | 171.2 | 171.2 | 171.2 | 171.2 | 171.2 |



TEST NUMBER: P1444705
 CATALOG NUMBER: EHBR1-54-UNV-TA-L930

CANDELA DISTRIBUTION (continued):

| | 137.5° | 140° | 142.5° | 145° | 147.5° | 150° | 152.5° | 155° | 157.5° | 160° | 162.5° |
|--------|---------|---------|---------|---------|---------|---------|---------|---------|---------|---------|---------|
| 0° | 41286.7 | 41286.7 | 41286.7 | 41286.7 | 41286.7 | 41286.7 | 41286.7 | 41286.7 | 41286.7 | 41286.7 | 41286.7 |
| 2.5° | 41138.4 | 41137.9 | 41133.9 | 41135.8 | 41136.5 | 41139.4 | 41143.0 | 41146.7 | 41147.4 | 41150.3 | 41150.9 |
| 5° | 41446.3 | 41344.5 | 41269.2 | 41186.4 | 41124.1 | 41068.2 | 41030.8 | 41001.1 | 40989.6 | 40992.6 | 40999.4 |
| 7.5° | 42281.1 | 42071.0 | 41897.6 | 41700.6 | 41536.2 | 41362.2 | 41218.0 | 41080.8 | 40980.9 | 40906.4 | 40864.8 |
| 10° | 43197.2 | 42941.3 | 42696.5 | 42411.3 | 42140.7 | 41852.0 | 41590.5 | 41327.2 | 41107.6 | 40917.0 | 40776.9 |
| 12.5° | 43603.7 | 43422.9 | 43211.3 | 42942.1 | 42652.6 | 42319.5 | 41983.0 | 41622.4 | 41286.9 | 40975.6 | 40724.4 |
| 15° | 43173.3 | 43173.6 | 43096.5 | 42967.3 | 42766.3 | 42500.0 | 42179.5 | 41803.5 | 41407.9 | 41004.1 | 40635.1 |
| 17.5° | 41806.9 | 42064.7 | 42208.1 | 42298.8 | 42271.0 | 42172.9 | 41968.9 | 41680.2 | 41311.3 | 40881.2 | 40431.0 |
| 20° | 39460.4 | 40068.5 | 40502.0 | 40891.9 | 41110.4 | 41255.6 | 41241.0 | 41123.6 | 40860.8 | 40495.1 | 40026.3 |
| 22.5° | 36173.4 | 37194.0 | 37999.3 | 38750.3 | 39277.0 | 39705.4 | 39909.0 | 39995.5 | 39876.5 | 39621.7 | 39181.5 |
| 25° | 32181.0 | 33568.7 | 34752.8 | 35902.1 | 36764.2 | 37505.1 | 37950.3 | 38264.0 | 38289.0 | 38155.8 | 37763.1 |
| 27.5° | 27744.6 | 29382.6 | 30881.5 | 32408.9 | 33621.2 | 34686.3 | 35385.1 | 35896.6 | 36059.1 | 36037.7 | 35681.0 |
| 30° | 23314.0 | 25033.6 | 26685.7 | 28466.7 | 29966.9 | 31327.6 | 32250.8 | 32942.6 | 33209.1 | 33260.2 | 32917.2 |
| 32.5° | 19129.7 | 20825.4 | 22472.9 | 24335.0 | 25985.8 | 27545.3 | 28636.0 | 29457.7 | 29767.6 | 29840.7 | 29464.4 |
| 35° | 15332.2 | 16896.6 | 18462.3 | 20266.9 | 21908.3 | 23523.2 | 24672.4 | 25532.7 | 25822.2 | 25871.0 | 25435.4 |
| 37.5° | 12039.1 | 13372.0 | 14736.2 | 16355.4 | 17862.8 | 19379.4 | 20471.3 | 21279.9 | 21490.7 | 21477.7 | 20984.7 |
| 40° | 9266.3 | 10302.5 | 11398.7 | 12731.8 | 13984.9 | 15267.1 | 16189.1 | 16857.5 | 16968.3 | 16886.2 | 16368.3 |
| 42.5° | 6967.7 | 7716.2 | 8510.9 | 9506.0 | 10435.8 | 11395.4 | 12066.2 | 12562.4 | 12578.2 | 12448.4 | 11983.5 |
| 45° | 5191.0 | 5921.2 | 6254.5 | 6856.1 | 7455.0 | 8093.1 | 8502.6 | 8809.1 | 8761.7 | 8647.5 | 8294.3 |
| 47.5° | 3957.2 | 4237.8 | 4535.5 | 4908.5 | 5257.4 | 5981.4 | 5927.8 | 6419.9 | 6065.5 | 6307.2 | 5775.0 |
| 50° | 3142.4 | 3299.3 | 3459.7 | 3657.6 | 3839.8 | 4029.1 | 4147.5 | 4235.7 | 4224.3 | 4186.3 | 4084.4 |
| 52.5° | 2673.4 | 2722.0 | 2800.9 | 2913.5 | 3015.3 | 3117.7 | 3184.9 | 3239.7 | 3240.8 | 3225.5 | 3174.0 |
| 55° | 2234.4 | 2295.9 | 2352.7 | 2426.3 | 2551.7 | 2570.9 | 2667.4 | 2647.9 | 2655.5 | 2628.8 | 2656.1 |
| 57.5° | 1970.0 | 2005.9 | 2037.9 | 2081.6 | 2117.9 | 2160.1 | 2185.1 | 2209.0 | 2206.7 | 2201.6 | 2175.3 |
| 60° | 1782.7 | 1802.5 | 1820.2 | 1845.8 | 1865.7 | 1889.6 | 1901.1 | 1913.3 | 1909.3 | 1900.4 | 1877.0 |
| 62.5° | 1638.3 | 1650.7 | 1660.8 | 1677.3 | 1689.4 | 1704.3 | 1710.2 | 1715.4 | 1710.2 | 1701.8 | 1681.1 |
| 65° | 1495.9 | 1503.8 | 1510.2 | 1522.6 | 1531.2 | 1543.9 | 1549.0 | 1553.9 | 1549.1 | 1542.6 | 1526.8 |
| 67.5° | 1367.4 | 1368.1 | 1367.5 | 1372.5 | 1375.1 | 1382.8 | 1385.1 | 1388.6 | 1383.0 | 1377.4 | 1364.2 |
| 70° | 1269.9 | 1267.8 | 1265.4 | 1267.4 | 1267.8 | 1271.6 | 1272.2 | 1271.6 | 1265.0 | 1255.2 | 1240.6 |
| 72.5° | 1193.7 | 1192.6 | 1190.7 | 1192.4 | 1192.4 | 1195.8 | 1194.8 | 1193.1 | 1184.9 | 1175.4 | 1161.1 |
| 75° | 1095.7 | 1094.9 | 1091.3 | 1091.5 | 1088.3 | 1089.4 | 1085.5 | 1083.2 | 1074.2 | 1066.2 | 1053.3 |
| 77.5° | 981.1 | 979.3 | 973.9 | 972.0 | 966.1 | 963.7 | 956.2 | 952.5 | 943.4 | 936.9 | 925.9 |
| 80° | 853.2 | 851.2 | 844.4 | 840.5 | 831.3 | 825.5 | 814.5 | 808.2 | 797.7 | 791.4 | 780.6 |
| 82.5° | 705.2 | 706.0 | 699.1 | 694.4 | 681.2 | 671.1 | 656.4 | 648.5 | 636.8 | 630.7 | 619.7 |
| 85° | 501.5 | 494.4 | 498.2 | 497.9 | 489.7 | 480.9 | 469.0 | 460.5 | 450.7 | 444.9 | 437.2 |
| 87.5° | 275.1 | 276.8 | 274.8 | 273.1 | 267.3 | 262.9 | 253.5 | 248.6 | 241.5 | 237.9 | 232.1 |
| 90° | 54.4 | 55.5 | 50.0 | 51.2 | 45.9 | 44.6 | 38.1 | 38.0 | 32.2 | 31.5 | 26.9 |
| 92.5° | 6.2 | 6.2 | 6.6 | 6.2 | 6.6 | 6.6 | 6.6 | 6.6 | 6.6 | 6.2 | 6.6 |
| 95° | 6.9 | 7.0 | 7.0 | 7.0 | 7.0 | 7.0 | 7.2 | 7.2 | 7.2 | 7.2 | 7.2 |
| 97.5° | 7.8 | 7.8 | 7.8 | 7.9 | 7.9 | 7.9 | 8.1 | 8.1 | 8.1 | 8.1 | 8.1 |
| 100° | 8.7 | 8.9 | 8.9 | 8.9 | 9.0 | 9.0 | 9.2 | 9.2 | 9.4 | 9.4 | 9.4 |
| 102.5° | 9.8 | 10.0 | 10.1 | 10.2 | 10.5 | 10.5 | 10.7 | 10.7 | 10.9 | 10.9 | 10.9 |
| 105° | 11.1 | 11.3 | 11.8 | 11.9 | 12.1 | 12.2 | 12.6 | 12.6 | 12.7 | 12.8 | 12.8 |
| 107.5° | 13.0 | 13.2 | 13.6 | 13.9 | 14.1 | 14.5 | 14.7 | 14.9 | 15.0 | 15.1 | 15.3 |
| 110° | 15.0 | 15.3 | 16.0 | 16.2 | 16.7 | 17.0 | 17.3 | 17.6 | 17.9 | 18.1 | 18.5 |



TEST NUMBER: P1444705
 CATALOG NUMBER: EHBR1-54-UNV-TA-L930

CANDELA DISTRIBUTION (continued):

| | 137.5° | 140° | 142.5° | 145° | 147.5° | 150° | 152.5° | 155° | 157.5° | 160° | 162.5° |
|--------|--------|-------|--------|-------|--------|-------|--------|-------|--------|-------|--------|
| 112.5° | 17.6 | 18.1 | 18.8 | 19.2 | 19.7 | 20.1 | 20.7 | 20.9 | 21.3 | 21.7 | 22.0 |
| 115° | 20.7 | 21.3 | 22.0 | 22.6 | 23.3 | 23.9 | 24.5 | 24.8 | 25.2 | 25.7 | 26.2 |
| 117.5° | 24.1 | 25.0 | 25.8 | 26.6 | 27.4 | 28.0 | 28.8 | 29.4 | 30.0 | 30.6 | 31.1 |
| 120° | 28.4 | 29.4 | 30.1 | 31.1 | 32.0 | 32.9 | 33.7 | 34.4 | 35.0 | 35.8 | 36.5 |
| 122.5° | 33.1 | 34.1 | 35.4 | 36.1 | 37.3 | 38.1 | 39.3 | 39.9 | 40.8 | 41.8 | 42.7 |
| 125° | 38.6 | 39.7 | 40.8 | 41.9 | 43.0 | 44.1 | 45.3 | 46.1 | 47.3 | 48.0 | 49.3 |
| 127.5° | 44.6 | 45.6 | 47.0 | 48.0 | 49.5 | 50.5 | 51.7 | 52.7 | 53.8 | 54.9 | 56.3 |
| 130° | 51.0 | 52.0 | 53.6 | 54.6 | 56.0 | 57.2 | 58.5 | 59.7 | 60.9 | 62.3 | 63.6 |
| 132.5° | 57.8 | 59.2 | 60.6 | 61.7 | 63.2 | 64.3 | 65.7 | 66.8 | 68.4 | 69.6 | 71.1 |
| 135° | 65.3 | 66.4 | 67.8 | 68.9 | 70.4 | 71.5 | 72.8 | 74.2 | 75.7 | 77.1 | 78.7 |
| 137.5° | 72.7 | 73.8 | 75.1 | 76.2 | 77.6 | 78.7 | 80.2 | 81.4 | 83.1 | 84.3 | 86.2 |
| 140° | 80.2 | 81.3 | 82.3 | 83.4 | 84.7 | 85.7 | 87.2 | 88.4 | 90.0 | 91.3 | 93.0 |
| 142.5° | 87.3 | 88.1 | 89.2 | 90.1 | 91.3 | 92.2 | 93.7 | 95.0 | 96.4 | 97.9 | 99.5 |
| 145° | 94.3 | 95.0 | 96.0 | 96.7 | 97.6 | 98.6 | 100.1 | 101.3 | 102.7 | 104.1 | 105.6 |
| 147.5° | 100.7 | 101.3 | 102.2 | 103.0 | 103.9 | 104.6 | 106.0 | 107.1 | 108.5 | 109.9 | 111.2 |
| 150° | 106.9 | 107.4 | 108.0 | 108.6 | 109.5 | 110.5 | 111.6 | 112.6 | 114.2 | 115.4 | 116.6 |
| 152.5° | 112.5 | 112.9 | 113.5 | 114.3 | 115.0 | 116.0 | 117.1 | 118.2 | 119.3 | 120.4 | 121.8 |
| 155° | 118.2 | 118.4 | 119.2 | 119.9 | 120.8 | 121.5 | 122.5 | 123.5 | 124.6 | 125.7 | 126.8 |
| 157.5° | 124.0 | 124.2 | 125.0 | 125.7 | 126.5 | 127.3 | 128.4 | 129.1 | 130.2 | 131.2 | 132.1 |
| 160° | 129.9 | 130.4 | 131.2 | 131.9 | 132.7 | 133.4 | 134.4 | 135.1 | 136.0 | 137.0 | 137.9 |
| 162.5° | 136.3 | 137.0 | 137.7 | 138.1 | 139.1 | 139.8 | 140.8 | 141.4 | 142.3 | 143.0 | 144.0 |
| 165° | 143.2 | 143.8 | 144.6 | 145.1 | 145.8 | 146.3 | 147.2 | 147.8 | 148.7 | 149.2 | 150.1 |
| 167.5° | 150.6 | 150.9 | 151.3 | 151.8 | 152.6 | 153.0 | 153.8 | 154.3 | 155.0 | 155.6 | 156.2 |
| 170° | 156.6 | 156.8 | 157.1 | 157.6 | 158.1 | 158.5 | 159.0 | 159.2 | 160.0 | 160.5 | 161.1 |
| 172.5° | 162.0 | 162.0 | 162.5 | 162.6 | 163.0 | 163.1 | 163.6 | 163.9 | 164.1 | 164.7 | 164.9 |
| 175° | 166.5 | 166.5 | 166.6 | 166.6 | 166.8 | 166.9 | 167.3 | 167.5 | 167.7 | 167.9 | 168.0 |
| 177.5° | 169.2 | 169.2 | 169.2 | 169.2 | 169.5 | 169.5 | 169.7 | 169.7 | 169.9 | 169.9 | 170.0 |
| 180° | 171.2 | 171.2 | 171.2 | 171.2 | 171.2 | 171.2 | 171.2 | 171.2 | 171.2 | 171.2 | 171.2 |



TEST NUMBER: P1444705
 CATALOG NUMBER: EHBR1-54-UNV-TA-L930

CANDELA DISTRIBUTION (continued):

| | 165° | 167.5° | 170° | 172.5° | 175° | 177.5° | 180° | 182.5° | 185° | 187.5° | 190° |
|--------|---------|---------|---------|---------|---------|---------|---------|---------|---------|---------|---------|
| 0° | 41286.7 | 41286.7 | 41286.7 | 41286.7 | 41286.7 | 41286.7 | 41286.7 | 41286.7 | 41286.7 | 41286.7 | 41286.7 |
| 2.5° | 41149.5 | 41149.1 | 41147.7 | 41145.9 | 41144.1 | 41145.1 | 41146.9 | 41151.7 | 41159.9 | 41171.9 | 41187.5 |
| 5° | 41005.1 | 41013.5 | 41018.2 | 41018.9 | 41014.6 | 41012.0 | 41015.9 | 41027.2 | 41050.1 | 41088.4 | 41140.1 |
| 7.5° | 40853.7 | 40864.0 | 40879.9 | 40891.9 | 40894.2 | 40891.3 | 40891.9 | 40909.6 | 40951.7 | 41026.2 | 41130.7 |
| 10° | 40691.9 | 40661.2 | 40677.4 | 40707.1 | 40730.6 | 40734.9 | 40737.8 | 40758.7 | 40820.2 | 40932.9 | 41100.8 |
| 12.5° | 40542.6 | 40445.2 | 40426.4 | 40453.2 | 40489.0 | 40500.5 | 40497.3 | 40506.3 | 40578.4 | 40727.4 | 40961.3 |
| 15° | 40346.1 | 40162.9 | 40100.4 | 40107.2 | 40151.4 | 40167.4 | 40155.7 | 40138.0 | 40208.2 | 40390.2 | 40693.0 |
| 17.5° | 40028.1 | 39732.8 | 39617.7 | 39612.7 | 39664.4 | 39678.2 | 39649.7 | 39594.7 | 39663.8 | 39890.9 | 40266.8 |
| 20° | 39544.7 | 39108.8 | 38892.2 | 38857.7 | 38913.9 | 38897.5 | 38840.7 | 38757.5 | 38848.4 | 39124.4 | 39571.5 |
| 22.5° | 38675.8 | 38123.4 | 37753.3 | 37633.9 | 37701.1 | 37656.2 | 37573.5 | 37467.1 | 37587.9 | 37901.6 | 38399.5 |
| 25° | 37255.9 | 36617.6 | 36110.8 | 35826.6 | 35880.1 | 35799.7 | 35709.6 | 35580.8 | 35724.8 | 36084.8 | 36632.9 |
| 27.5° | 35168.7 | 34431.5 | 33803.5 | 33332.9 | 33350.2 | 33244.9 | 33141.1 | 32974.4 | 33154.1 | 33580.3 | 34198.4 |
| 30° | 32393.4 | 31540.4 | 30775.6 | 30135.9 | 30078.7 | 29976.7 | 29870.4 | 29651.5 | 29876.4 | 30386.6 | 31109.0 |
| 32.5° | 28908.0 | 27960.9 | 27077.3 | 26268.6 | 26116.0 | 26016.4 | 25921.6 | 25669.8 | 25964.3 | 26559.2 | 27389.1 |
| 35° | 24832.0 | 23823.1 | 22865.1 | 21941.5 | 21688.7 | 21589.1 | 21506.3 | 21265.0 | 21632.6 | 22279.8 | 23176.1 |
| 37.5° | 20358.1 | 19327.4 | 18376.3 | 17429.2 | 17072.0 | 16936.9 | 16876.8 | 16718.7 | 17142.7 | 17782.9 | 18682.9 |
| 40° | 15765.1 | 14806.8 | 13954.1 | 13117.5 | 12710.3 | 12503.7 | 12472.1 | 12443.3 | 12853.3 | 13408.7 | 14225.6 |
| 42.5° | 11468.5 | 10695.4 | 10037.8 | 9398.4 | 9029.5 | 8747.2 | 8747.0 | 8832.7 | 9201.7 | 9617.8 | 10247.7 |
| 45° | 7933.1 | 7414.3 | 6995.3 | 6568.1 | 6682.2 | 6119.5 | 6450.2 | 6280.4 | 6462.8 | 6731.0 | 7140.7 |
| 47.5° | 5453.2 | 5170.0 | 4939.9 | 4701.2 | 4527.2 | 4361.1 | 4375.6 | 4482.7 | 4654.5 | 4813.7 | 5026.8 |
| 50° | 3974.5 | 3830.2 | 3713.0 | 3589.1 | 3502.4 | 3429.2 | 3433.5 | 3479.8 | 3570.1 | 3653.9 | 3765.5 |
| 52.5° | 3114.3 | 3034.7 | 2971.1 | 2902.5 | 2857.1 | 2820.6 | 2822.6 | 2845.1 | 2894.0 | 2941.8 | 3005.8 |
| 55° | 2566.9 | 2557.3 | 2474.5 | 2413.0 | 2389.6 | 2365.1 | 2369.5 | 2378.5 | 2411.6 | 2439.7 | 2482.0 |
| 57.5° | 2151.0 | 2113.9 | 2089.1 | 2056.7 | 2041.8 | 2024.7 | 2028.5 | 2031.9 | 2054.1 | 2072.9 | 2103.4 |
| 60° | 1857.4 | 1831.1 | 1813.6 | 1791.5 | 1781.7 | 1770.8 | 1773.3 | 1775.2 | 1789.5 | 1801.7 | 1823.6 |
| 62.5° | 1662.3 | 1638.8 | 1623.5 | 1606.5 | 1599.6 | 1592.3 | 1594.0 | 1594.5 | 1603.4 | 1612.4 | 1629.0 |
| 65° | 1512.7 | 1494.0 | 1481.3 | 1466.6 | 1459.4 | 1451.8 | 1452.6 | 1452.6 | 1460.0 | 1466.6 | 1479.0 |
| 67.5° | 1354.4 | 1340.4 | 1332.2 | 1320.5 | 1315.6 | 1307.8 | 1307.7 | 1305.2 | 1310.1 | 1312.7 | 1321.1 |
| 70° | 1227.5 | 1213.3 | 1202.7 | 1191.5 | 1185.4 | 1178.5 | 1178.6 | 1178.8 | 1184.5 | 1190.5 | 1201.3 |
| 72.5° | 1148.9 | 1135.4 | 1126.0 | 1116.2 | 1110.4 | 1104.6 | 1103.5 | 1103.0 | 1107.1 | 1110.3 | 1117.5 |
| 75° | 1045.0 | 1034.3 | 1028.7 | 1019.6 | 1014.9 | 1008.3 | 1007.3 | 1004.2 | 1006.2 | 1006.8 | 1012.2 |
| 77.5° | 919.0 | 908.8 | 904.3 | 895.0 | 891.1 | 883.7 | 883.0 | 879.6 | 881.2 | 880.1 | 884.3 |
| 80° | 775.3 | 766.0 | 763.5 | 755.9 | 754.1 | 747.1 | 746.1 | 742.0 | 743.2 | 740.0 | 741.5 |
| 82.5° | 615.0 | 606.4 | 604.5 | 597.5 | 597.5 | 591.3 | 590.9 | 584.7 | 584.7 | 579.3 | 570.8 |
| 85° | 433.2 | 426.9 | 424.3 | 418.5 | 416.8 | 411.8 | 409.1 | 403.2 | 401.0 | 397.2 | 396.0 |
| 87.5° | 228.6 | 224.7 | 221.1 | 218.3 | 213.3 | 204.2 | 203.5 | 197.2 | 197.7 | 193.3 | 193.6 |
| 90° | 26.9 | 22.8 | 23.0 | 19.2 | 19.2 | 16.8 | 17.0 | 16.0 | 15.6 | 14.7 | 14.5 |
| 92.5° | 6.6 | 6.6 | 6.6 | 6.6 | 6.6 | 6.6 | 6.6 | 6.6 | 6.6 | 6.6 | 6.6 |
| 95° | 7.2 | 7.2 | 7.2 | 7.2 | 7.2 | 7.2 | 7.2 | 7.2 | 7.2 | 7.3 | 7.3 |
| 97.5° | 8.1 | 8.1 | 8.1 | 8.1 | 8.1 | 8.1 | 8.1 | 8.3 | 8.3 | 8.3 | 8.3 |
| 100° | 9.4 | 9.4 | 9.4 | 9.4 | 9.4 | 9.4 | 9.4 | 9.6 | 9.6 | 9.6 | 9.6 |
| 102.5° | 11.1 | 11.1 | 11.1 | 11.1 | 11.1 | 11.1 | 11.1 | 11.1 | 11.1 | 11.1 | 11.1 |
| 105° | 12.8 | 13.0 | 13.0 | 13.0 | 13.0 | 13.0 | 13.0 | 13.2 | 13.2 | 13.2 | 13.3 |
| 107.5° | 15.3 | 15.6 | 15.6 | 15.8 | 15.6 | 15.8 | 15.8 | 16.0 | 16.0 | 16.0 | 16.0 |
| 110° | 18.5 | 18.6 | 18.8 | 19.0 | 19.0 | 19.2 | 19.2 | 19.2 | 19.2 | 19.2 | 19.2 |



TEST NUMBER: P1444705
 CATALOG NUMBER: EHBR1-54-UNV-TA-L930

CANDELA DISTRIBUTION (continued):

| | 165° | 167.5° | 170° | 172.5° | 175° | 177.5° | 180° | 182.5° | 185° | 187.5° | 190° |
|--------|-------|--------|-------|--------|-------|--------|-------|--------|-------|--------|-------|
| 112.5° | 22.2 | 22.5 | 22.6 | 23.0 | 23.0 | 23.3 | 23.3 | 23.5 | 23.5 | 23.7 | 23.5 |
| 115° | 26.6 | 26.9 | 27.4 | 27.7 | 27.9 | 28.2 | 28.2 | 28.6 | 28.6 | 28.6 | 28.6 |
| 117.5° | 31.5 | 32.2 | 32.6 | 33.1 | 33.3 | 33.8 | 34.0 | 34.1 | 34.1 | 34.4 | 34.1 |
| 120° | 37.1 | 38.0 | 38.6 | 39.0 | 39.7 | 40.1 | 40.4 | 40.7 | 40.7 | 40.7 | 40.5 |
| 122.5° | 43.5 | 44.4 | 45.0 | 45.7 | 46.3 | 47.0 | 47.3 | 47.6 | 47.6 | 47.8 | 47.4 |
| 125° | 50.0 | 51.2 | 52.0 | 52.9 | 53.6 | 54.4 | 54.6 | 55.3 | 55.3 | 55.3 | 54.9 |
| 127.5° | 57.4 | 58.5 | 59.3 | 60.6 | 61.2 | 61.9 | 62.5 | 62.9 | 62.9 | 62.9 | 62.6 |
| 130° | 64.7 | 66.2 | 67.2 | 68.4 | 69.2 | 70.0 | 70.4 | 70.8 | 70.8 | 71.1 | 70.7 |
| 132.5° | 72.4 | 73.9 | 75.1 | 76.4 | 77.1 | 78.2 | 78.5 | 79.1 | 79.1 | 79.2 | 78.8 |
| 135° | 80.2 | 81.5 | 82.8 | 84.3 | 85.2 | 86.2 | 86.6 | 87.2 | 87.2 | 87.2 | 86.8 |
| 137.5° | 87.5 | 89.2 | 90.5 | 91.7 | 92.8 | 93.7 | 94.3 | 94.7 | 94.7 | 95.0 | 94.5 |
| 140° | 94.4 | 96.1 | 97.5 | 98.6 | 99.9 | 101.0 | 101.4 | 102.0 | 102.0 | 102.0 | 101.6 |
| 142.5° | 101.0 | 102.5 | 103.9 | 105.2 | 106.2 | 107.3 | 107.9 | 108.4 | 108.4 | 108.4 | 108.0 |
| 145° | 107.1 | 108.5 | 109.9 | 111.2 | 112.2 | 113.1 | 113.5 | 114.2 | 114.2 | 114.2 | 114.0 |
| 147.5° | 112.6 | 114.2 | 115.2 | 116.5 | 117.4 | 118.3 | 118.9 | 119.2 | 119.3 | 119.3 | 119.2 |
| 150° | 118.0 | 119.2 | 120.3 | 121.4 | 122.3 | 123.1 | 123.3 | 124.0 | 124.1 | 124.2 | 124.1 |
| 152.5° | 122.9 | 124.0 | 125.0 | 125.9 | 126.8 | 127.4 | 127.9 | 128.4 | 128.9 | 129.1 | 129.1 |
| 155° | 127.8 | 128.9 | 129.7 | 130.6 | 131.3 | 132.1 | 132.7 | 133.3 | 133.8 | 134.0 | 134.4 |
| 157.5° | 133.0 | 134.0 | 134.8 | 135.7 | 136.3 | 137.2 | 137.9 | 138.7 | 139.1 | 139.7 | 140.0 |
| 160° | 138.7 | 139.7 | 140.4 | 141.2 | 142.0 | 142.8 | 143.4 | 144.1 | 144.7 | 145.2 | 145.8 |
| 162.5° | 144.7 | 145.7 | 146.1 | 147.0 | 147.8 | 148.6 | 149.2 | 150.0 | 150.6 | 151.1 | 151.7 |
| 165° | 150.9 | 151.7 | 152.2 | 153.0 | 153.8 | 154.5 | 155.0 | 155.8 | 156.2 | 156.8 | 157.3 |
| 167.5° | 156.8 | 157.6 | 158.1 | 158.8 | 159.2 | 160.0 | 160.7 | 161.3 | 161.7 | 162.2 | 162.6 |
| 170° | 161.6 | 162.2 | 162.8 | 163.3 | 163.9 | 164.5 | 164.8 | 165.2 | 165.8 | 166.2 | 166.6 |
| 172.5° | 165.2 | 165.8 | 166.2 | 166.8 | 167.1 | 167.5 | 167.9 | 168.4 | 168.8 | 169.0 | 169.2 |
| 175° | 168.2 | 168.6 | 168.8 | 169.0 | 169.2 | 169.5 | 169.9 | 170.0 | 170.5 | 170.7 | 170.9 |
| 177.5° | 170.1 | 170.5 | 170.7 | 170.7 | 170.7 | 170.7 | 170.9 | 170.9 | 171.1 | 171.2 | 171.2 |
| 180° | 171.2 | 171.2 | 171.2 | 171.2 | 171.2 | 171.2 | 171.2 | 171.2 | 171.2 | 171.2 | 171.2 |



TEST NUMBER: P1444705
 CATALOG NUMBER: EHBR1-54-UNV-TA-L930

CANDELA DISTRIBUTION (continued):

| | 192.5° | 195° | 197.5° | 200° | 202.5° | 205° | 207.5° | 210° | 212.5° | 215° | 217.5° |
|--------|---------|---------|---------|---------|---------|---------|---------|---------|---------|---------|---------|
| 0° | 41286.7 | 41286.7 | 41286.7 | 41286.7 | 41286.7 | 41286.7 | 41286.7 | 41286.7 | 41286.7 | 41286.7 | 41286.7 |
| 2.5° | 41209.6 | 41230.2 | 41261.7 | 41290.3 | 41333.4 | 41367.3 | 41418.3 | 41457.0 | 41514.5 | 41551.9 | 41614.4 |
| 5° | 41213.2 | 41293.9 | 41399.9 | 41503.3 | 41627.7 | 41740.6 | 41881.0 | 42000.5 | 42141.5 | 42256.6 | 42400.9 |
| 7.5° | 41271.5 | 41426.9 | 41613.4 | 41801.1 | 42013.5 | 42212.1 | 42436.0 | 42638.5 | 42860.0 | 43047.4 | 43252.1 |
| 10° | 41314.5 | 41554.3 | 41828.9 | 42105.3 | 42396.1 | 42666.4 | 42939.2 | 43175.0 | 43395.4 | 43576.6 | 43736.8 |
| 12.5° | 41256.2 | 41586.5 | 41939.0 | 42279.2 | 42602.7 | 42882.4 | 43117.1 | 43298.5 | 43423.6 | 43508.5 | 43528.4 |
| 15° | 41058.1 | 41455.6 | 41838.7 | 42177.6 | 42446.0 | 42653.0 | 42760.2 | 42810.3 | 42756.5 | 42667.1 | 42470.6 |
| 17.5° | 40687.9 | 41107.2 | 41449.7 | 41717.1 | 41858.9 | 41915.1 | 41826.3 | 41671.9 | 41370.2 | 41035.3 | 40551.6 |
| 20° | 40009.3 | 40400.0 | 40648.4 | 40794.2 | 40756.3 | 40616.0 | 40280.9 | 39873.6 | 39271.2 | 38629.1 | 37781.9 |
| 22.5° | 38819.0 | 39160.5 | 39292.9 | 39303.8 | 39072.3 | 38720.9 | 38116.5 | 37417.9 | 36467.5 | 35479.5 | 34264.4 |
| 25° | 37032.3 | 37331.4 | 37352.4 | 37234.8 | 36811.2 | 36241.8 | 35354.3 | 34366.0 | 33074.5 | 31758.1 | 30235.5 |
| 27.5° | 34609.2 | 34896.0 | 34825.8 | 34606.6 | 34018.3 | 33256.5 | 32120.2 | 30843.5 | 29251.4 | 27696.4 | 26012.1 |
| 30° | 31563.1 | 31869.9 | 31787.5 | 31506.2 | 30806.6 | 29906.1 | 28569.1 | 27085.8 | 25318.2 | 23657.3 | 21950.5 |
| 32.5° | 27917.9 | 28305.8 | 28248.8 | 27981.5 | 27251.5 | 26287.8 | 24837.1 | 23263.8 | 21455.3 | 19818.8 | 18158.4 |
| 35° | 23774.6 | 24245.6 | 24269.9 | 24095.2 | 23417.4 | 22464.9 | 21032.4 | 19509.6 | 17777.4 | 16233.2 | 14699.3 |
| 37.5° | 19310.7 | 19856.7 | 19968.8 | 19921.7 | 19360.0 | 18519.2 | 17214.0 | 15847.9 | 14313.3 | 12959.9 | 11648.2 |
| 40° | 14822.1 | 15374.7 | 15566.5 | 15623.5 | 15208.9 | 14557.7 | 13486.4 | 12383.8 | 11132.8 | 10036.1 | 8994.5 |
| 42.5° | 10728.7 | 11218.6 | 11403.9 | 11520.6 | 11261.8 | 10827.5 | 10046.1 | 9245.4 | 8328.9 | 7537.9 | 6779.5 |
| 45° | 7451.3 | 7797.8 | 7938.8 | 8056.2 | 7915.2 | 7670.2 | 7176.8 | 6676.0 | 6071.0 | 5554.1 | 5064.7 |
| 47.5° | 5209.6 | 5400.7 | 5493.8 | 5550.7 | 5496.1 | 5368.3 | 5099.8 | 4809.7 | 4468.2 | 4166.1 | 3875.7 |
| 50° | 3861.5 | 3963.2 | 4011.8 | 4044.8 | 4005.0 | 3933.9 | 3788.6 | 3630.7 | 3443.1 | 3272.0 | 3104.8 |
| 52.5° | 3060.1 | 3118.5 | 3147.3 | 3165.1 | 3142.2 | 3098.8 | 3014.2 | 2920.5 | 2808.1 | 2702.4 | 2646.9 |
| 55° | 2578.0 | 2574.9 | 2641.8 | 2609.5 | 2641.8 | 2569.7 | 2554.5 | 2451.6 | 2358.2 | 2292.5 | 2221.3 |
| 57.5° | 2126.0 | 2156.3 | 2169.1 | 2183.5 | 2174.2 | 2161.0 | 2125.0 | 2088.2 | 2038.9 | 1997.8 | 1953.8 |
| 60° | 1840.3 | 1865.2 | 1879.3 | 1893.6 | 1892.6 | 1887.7 | 1866.9 | 1844.8 | 1814.1 | 1789.5 | 1762.9 |
| 62.5° | 1643.5 | 1665.1 | 1679.0 | 1692.6 | 1693.9 | 1691.8 | 1676.1 | 1660.8 | 1639.9 | 1624.4 | 1606.0 |
| 65° | 1488.6 | 1503.8 | 1513.3 | 1524.2 | 1523.6 | 1520.6 | 1506.4 | 1493.7 | 1476.4 | 1465.7 | 1452.3 |
| 67.5° | 1326.6 | 1338.1 | 1345.4 | 1355.7 | 1357.7 | 1358.3 | 1350.5 | 1344.6 | 1336.1 | 1333.1 | 1328.4 |
| 70° | 1211.4 | 1225.3 | 1237.1 | 1250.1 | 1257.1 | 1260.5 | 1257.1 | 1254.1 | 1249.2 | 1247.1 | 1243.5 |
| 72.5° | 1124.2 | 1135.9 | 1145.1 | 1157.0 | 1163.5 | 1168.3 | 1165.7 | 1164.0 | 1159.7 | 1159.1 | 1156.6 |
| 75° | 1015.9 | 1024.0 | 1029.2 | 1038.0 | 1041.6 | 1046.0 | 1044.0 | 1045.0 | 1043.7 | 1047.1 | 1046.9 |
| 77.5° | 885.6 | 891.6 | 894.1 | 900.5 | 901.1 | 906.5 | 907.7 | 914.0 | 918.4 | 928.2 | 933.4 |
| 80° | 739.0 | 742.9 | 742.9 | 749.4 | 752.4 | 761.4 | 765.7 | 775.9 | 780.6 | 789.4 | 790.2 |
| 82.5° | 574.1 | 569.7 | 574.1 | 571.3 | 579.8 | 589.8 | 591.3 | 600.0 | 602.0 | 607.5 | 603.2 |
| 85° | 392.5 | 392.2 | 388.6 | 389.2 | 386.7 | 387.9 | 386.4 | 388.0 | 386.5 | 386.7 | 382.7 |
| 87.5° | 188.0 | 189.7 | 185.6 | 187.0 | 183.0 | 184.8 | 181.3 | 184.1 | 179.9 | 180.5 | 174.4 |
| 90° | 13.9 | 13.6 | 13.0 | 12.8 | 13.2 | 12.7 | 12.6 | 12.2 | 12.6 | 12.1 | 12.1 |
| 92.5° | 6.6 | 6.8 | 6.8 | 6.8 | 6.8 | 6.8 | 6.8 | 6.8 | 6.9 | 6.8 | 6.8 |
| 95° | 7.3 | 7.3 | 7.3 | 7.7 | 7.7 | 7.7 | 7.7 | 7.7 | 7.7 | 7.7 | 7.7 |
| 97.5° | 8.6 | 8.6 | 8.6 | 8.6 | 8.7 | 8.7 | 8.7 | 8.7 | 8.7 | 8.7 | 8.6 |
| 100° | 9.8 | 9.8 | 9.8 | 10.0 | 10.0 | 10.0 | 10.0 | 10.0 | 10.0 | 9.8 | 9.8 |
| 102.5° | 11.3 | 11.3 | 11.3 | 11.6 | 11.6 | 11.6 | 11.6 | 11.6 | 11.3 | 11.3 | 11.1 |
| 105° | 13.3 | 13.3 | 13.6 | 13.6 | 13.6 | 13.6 | 13.6 | 13.6 | 13.3 | 13.2 | 13.2 |
| 107.5° | 16.0 | 16.0 | 16.2 | 16.2 | 16.2 | 16.2 | 16.0 | 16.0 | 16.0 | 15.8 | 15.3 |
| 110° | 19.6 | 19.2 | 19.6 | 19.6 | 19.6 | 19.2 | 19.2 | 19.0 | 18.8 | 18.5 | 18.2 |



TEST NUMBER: P1444705
 CATALOG NUMBER: EHBR1-54-UNV-TA-L930

CANDELA DISTRIBUTION (continued):

| | 192.5° | 195° | 197.5° | 200° | 202.5° | 205° | 207.5° | 210° | 212.5° | 215° | 217.5° |
|--------|--------|-------|--------|-------|--------|-------|--------|-------|--------|-------|--------|
| 112.5° | 23.7 | 23.5 | 23.5 | 23.3 | 23.3 | 23.0 | 23.0 | 22.6 | 22.5 | 21.9 | 21.6 |
| 115° | 28.6 | 28.2 | 28.2 | 27.9 | 27.9 | 27.5 | 27.1 | 26.7 | 26.5 | 25.8 | 25.6 |
| 117.5° | 34.0 | 33.8 | 33.7 | 33.1 | 32.9 | 32.4 | 32.0 | 31.5 | 31.1 | 30.6 | 30.0 |
| 120° | 40.4 | 39.9 | 39.7 | 39.0 | 38.7 | 38.0 | 37.6 | 36.9 | 36.4 | 35.6 | 34.8 |
| 122.5° | 47.3 | 46.7 | 46.3 | 45.7 | 45.3 | 44.4 | 43.8 | 42.9 | 42.4 | 41.4 | 40.7 |
| 125° | 54.6 | 54.0 | 53.6 | 52.8 | 52.0 | 51.2 | 50.5 | 49.5 | 48.7 | 47.8 | 46.8 |
| 127.5° | 62.5 | 61.7 | 61.2 | 60.3 | 59.5 | 58.5 | 57.6 | 56.5 | 55.7 | 54.4 | 53.6 |
| 130° | 70.4 | 69.6 | 69.2 | 67.9 | 67.4 | 65.9 | 65.1 | 64.0 | 62.9 | 61.8 | 60.8 |
| 132.5° | 78.5 | 77.7 | 77.1 | 75.9 | 75.1 | 73.9 | 73.2 | 71.7 | 70.7 | 69.5 | 68.5 |
| 135° | 86.4 | 85.7 | 85.1 | 84.0 | 83.1 | 81.7 | 80.8 | 79.6 | 78.5 | 77.4 | 76.4 |
| 137.5° | 94.3 | 93.3 | 92.6 | 91.7 | 90.7 | 89.5 | 88.6 | 87.3 | 86.4 | 85.2 | 84.3 |
| 140° | 101.3 | 100.5 | 99.9 | 99.0 | 98.1 | 97.0 | 96.1 | 95.0 | 94.1 | 93.0 | 92.1 |
| 142.5° | 107.6 | 106.9 | 106.3 | 105.4 | 104.6 | 103.6 | 103.0 | 102.0 | 101.1 | 100.3 | 99.5 |
| 145° | 113.5 | 112.9 | 112.5 | 111.6 | 111.1 | 110.1 | 109.5 | 108.6 | 108.2 | 107.3 | 106.7 |
| 147.5° | 119.1 | 118.4 | 118.2 | 117.5 | 117.2 | 116.5 | 116.1 | 115.4 | 115.0 | 114.3 | 114.0 |
| 150° | 124.1 | 124.0 | 123.8 | 123.3 | 123.1 | 122.5 | 122.4 | 121.9 | 121.8 | 121.2 | 121.0 |
| 152.5° | 129.1 | 129.1 | 129.1 | 128.9 | 128.9 | 128.9 | 128.7 | 128.4 | 128.2 | 127.9 | 127.8 |
| 155° | 134.7 | 134.8 | 134.9 | 134.9 | 134.9 | 134.9 | 134.9 | 134.8 | 134.8 | 134.7 | 134.7 |
| 157.5° | 140.4 | 140.6 | 140.9 | 141.1 | 141.2 | 141.2 | 141.2 | 141.2 | 141.2 | 141.1 | 141.1 |
| 160° | 146.1 | 146.6 | 146.9 | 147.0 | 147.4 | 147.4 | 147.7 | 147.4 | 147.7 | 147.4 | 147.2 |
| 162.5° | 152.1 | 152.6 | 152.8 | 153.0 | 153.3 | 153.3 | 153.6 | 153.6 | 153.6 | 153.3 | 153.3 |
| 165° | 157.9 | 158.1 | 158.5 | 158.7 | 159.0 | 159.0 | 159.2 | 159.2 | 159.2 | 159.0 | 159.0 |
| 167.5° | 163.1 | 163.3 | 163.7 | 163.9 | 164.1 | 164.1 | 164.7 | 164.5 | 164.5 | 164.5 | 164.5 |
| 170° | 166.9 | 167.3 | 167.5 | 167.7 | 168.0 | 168.0 | 168.2 | 168.2 | 168.4 | 168.2 | 168.2 |
| 172.5° | 169.7 | 169.9 | 170.1 | 170.5 | 170.7 | 170.7 | 170.7 | 170.7 | 170.9 | 170.9 | 170.9 |
| 175° | 171.1 | 171.2 | 171.5 | 171.7 | 171.8 | 172.0 | 172.0 | 172.2 | 172.2 | 172.2 | 172.2 |
| 177.5° | 171.5 | 171.7 | 171.7 | 171.8 | 172.0 | 172.0 | 172.2 | 172.2 | 172.4 | 172.4 | 172.4 |
| 180° | 171.2 | 171.2 | 171.2 | 171.2 | 171.2 | 171.2 | 171.2 | 171.2 | 171.2 | 171.2 | 171.2 |



TEST NUMBER: P1444705
 CATALOG NUMBER: EHBR1-54-UNV-TA-L930

CANDELA DISTRIBUTION (continued):

| | 220° | 222.5° | 225° | 227.5° | 230° | 232.5° | 235° | 237.5° | 240° | 242.5° | 245° |
|--------|---------|---------|---------|---------|---------|---------|---------|---------|---------|---------|---------|
| 0° | 41286.7 | 41286.7 | 41286.7 | 41286.7 | 41286.7 | 41286.7 | 41286.7 | 41286.7 | 41286.7 | 41286.7 | 41286.7 |
| 2.5° | 41653.1 | 41395.9 | 41362.0 | 41380.0 | 41423.0 | 41438.9 | 41485.3 | 41497.9 | 41544.6 | 41556.1 | 41601.0 |
| 5° | 42512.6 | 42172.6 | 42189.6 | 42271.3 | 42395.1 | 42468.8 | 42590.5 | 42654.1 | 42770.2 | 42823.1 | 42928.0 |
| 7.5° | 43418.9 | 43151.9 | 43235.1 | 43373.0 | 43542.2 | 43659.4 | 43805.6 | 43900.7 | 44026.6 | 44104.9 | 44205.7 |
| 10° | 43863.8 | 43790.7 | 43882.4 | 43990.8 | 44087.4 | 44163.0 | 44224.9 | 44274.6 | 44307.0 | 44337.4 | 44350.8 |
| 12.5° | 43525.2 | 43638.5 | 43654.1 | 43643.5 | 43579.6 | 43530.7 | 43421.0 | 43346.5 | 43214.2 | 43133.5 | 42976.1 |
| 15° | 42269.9 | 42518.8 | 42381.0 | 42172.3 | 41866.9 | 41612.3 | 41252.7 | 40984.9 | 40610.5 | 40356.5 | 39980.7 |
| 17.5° | 40066.9 | 40381.1 | 40021.9 | 39539.0 | 38924.6 | 38399.0 | 37744.6 | 37225.0 | 36574.3 | 36101.0 | 35493.7 |
| 20° | 36965.4 | 37259.1 | 36618.3 | 35817.8 | 34867.4 | 34067.6 | 33124.4 | 32372.0 | 31495.4 | 30843.5 | 30056.7 |
| 22.5° | 33103.8 | 33313.0 | 32410.4 | 31331.1 | 30120.3 | 29121.2 | 27993.4 | 27091.3 | 26091.0 | 25345.7 | 24506.8 |
| 25° | 28831.7 | 28888.1 | 27805.4 | 26562.0 | 25212.6 | 24089.6 | 22885.7 | 21937.2 | 20917.1 | 20161.7 | 19338.3 |
| 27.5° | 24519.8 | 24437.0 | 23266.8 | 21948.4 | 20528.9 | 19361.7 | 18187.4 | 17298.6 | 16405.2 | 15724.7 | 15015.3 |
| 30° | 20450.0 | 20249.4 | 19034.4 | 17679.3 | 16301.4 | 15255.2 | 14280.4 | 13566.6 | 12855.8 | 12316.1 | 11746.6 |
| 32.5° | 16717.8 | 16435.0 | 15252.2 | 13982.7 | 12821.6 | 12014.3 | 11291.4 | 10751.3 | 10177.3 | 9721.3 | 9243.5 |
| 35° | 13412.1 | 13110.8 | 12063.0 | 10986.7 | 10107.9 | 9512.8 | 8944.7 | 8501.6 | 8014.2 | 7629.6 | 7214.6 |
| 37.5° | 10575.1 | 10328.1 | 9450.4 | 8603.5 | 7938.8 | 7477.6 | 7012.1 | 6649.9 | 6247.2 | 6078.0 | 5634.6 |
| 40° | 8163.9 | 7991.3 | 7305.0 | 6680.7 | 6181.6 | 5964.9 | 5492.4 | 5154.1 | 4853.1 | 4605.0 | 4364.5 |
| 42.5° | 6368.0 | 6306.9 | 5639.0 | 5152.1 | 4800.7 | 4527.7 | 4264.4 | 4050.6 | 3842.5 | 3671.4 | 3509.8 |
| 45° | 4673.1 | 4624.8 | 4328.3 | 4047.2 | 3807.7 | 3617.0 | 3439.0 | 3292.0 | 3155.9 | 3043.2 | 2940.6 |
| 47.5° | 3639.0 | 3623.6 | 3452.7 | 3278.5 | 3127.6 | 3005.0 | 2889.5 | 2791.9 | 2701.6 | 2626.3 | 2601.9 |
| 50° | 2959.7 | 2957.8 | 2857.5 | 2750.0 | 2642.5 | 2571.6 | 2498.0 | 2440.3 | 2382.3 | 2337.1 | 2289.4 |
| 52.5° | 2514.8 | 2503.9 | 2436.3 | 2369.9 | 2306.1 | 2259.6 | 2212.4 | 2175.5 | 2137.1 | 2109.3 | 2079.6 |
| 55° | 2165.0 | 2176.4 | 2137.3 | 2097.7 | 2057.7 | 2028.8 | 1995.8 | 1971.5 | 1945.1 | 1927.5 | 1909.6 |
| 57.5° | 1922.0 | 1937.2 | 1916.7 | 1894.1 | 1869.8 | 1850.8 | 1828.1 | 1811.2 | 1793.6 | 1782.5 | 1772.0 |
| 60° | 1745.3 | 1761.8 | 1753.5 | 1742.2 | 1727.2 | 1715.9 | 1701.4 | 1692.0 | 1680.7 | 1674.5 | 1668.6 |
| 62.5° | 1595.3 | 1616.0 | 1613.1 | 1607.7 | 1598.1 | 1591.8 | 1583.8 | 1579.7 | 1572.2 | 1569.5 | 1566.7 |
| 65° | 1445.7 | 1469.0 | 1468.5 | 1465.8 | 1460.5 | 1458.7 | 1453.8 | 1452.8 | 1449.0 | 1450.6 | 1450.2 |
| 67.5° | 1328.0 | 1348.2 | 1352.7 | 1355.9 | 1355.7 | 1356.9 | 1356.5 | 1358.5 | 1358.5 | 1361.4 | 1363.2 |
| 70° | 1243.1 | 1257.1 | 1260.5 | 1263.9 | 1264.8 | 1267.6 | 1267.6 | 1269.2 | 1268.8 | 1271.2 | 1271.6 |
| 72.5° | 1157.2 | 1175.8 | 1179.2 | 1181.9 | 1181.9 | 1184.5 | 1183.1 | 1182.6 | 1179.0 | 1178.2 | 1175.6 |
| 75° | 1050.5 | 1074.2 | 1079.3 | 1082.7 | 1083.2 | 1085.5 | 1082.3 | 1080.2 | 1074.2 | 1071.7 | 1067.4 |
| 77.5° | 938.9 | 963.5 | 967.2 | 968.4 | 966.4 | 966.9 | 960.2 | 955.6 | 947.7 | 944.5 | 940.4 |
| 80° | 793.6 | 829.9 | 832.9 | 830.5 | 824.9 | 823.9 | 817.4 | 813.1 | 803.8 | 800.6 | 797.0 |
| 82.5° | 603.9 | 646.5 | 652.5 | 655.1 | 650.4 | 651.5 | 645.3 | 642.8 | 634.2 | 632.7 | 627.0 |
| 85° | 381.3 | 423.8 | 430.9 | 429.8 | 425.3 | 424.2 | 420.4 | 421.7 | 421.0 | 423.2 | 424.4 |
| 87.5° | 175.2 | 216.4 | 226.3 | 223.1 | 222.6 | 219.8 | 213.2 | 215.6 | 219.6 | 222.2 | 222.3 |
| 90° | 11.9 | 24.1 | 23.7 | 25.1 | 22.5 | 23.3 | 20.9 | 22.5 | 20.9 | 22.2 | 20.7 |
| 92.5° | 6.8 | 6.8 | 6.8 | 6.8 | 6.8 | 6.8 | 6.8 | 6.6 | 6.8 | 6.6 | 6.8 |
| 95° | 7.7 | 7.3 | 7.3 | 7.3 | 7.2 | 7.2 | 7.2 | 7.2 | 7.2 | 7.2 | 7.2 |
| 97.5° | 8.6 | 8.3 | 8.1 | 8.1 | 8.1 | 7.9 | 7.9 | 7.9 | 7.9 | 7.8 | 7.8 |
| 100° | 9.8 | 9.2 | 9.0 | 9.0 | 8.9 | 8.9 | 8.9 | 8.7 | 8.7 | 8.7 | 8.6 |
| 102.5° | 11.1 | 10.5 | 10.2 | 10.1 | 10.0 | 9.8 | 9.8 | 9.6 | 9.6 | 9.4 | 9.4 |
| 105° | 12.8 | 12.1 | 11.8 | 11.3 | 11.1 | 11.1 | 10.9 | 10.7 | 10.5 | 10.2 | 10.2 |
| 107.5° | 15.1 | 13.9 | 13.3 | 13.0 | 12.7 | 12.6 | 12.1 | 11.9 | 11.6 | 11.3 | 11.1 |
| 110° | 17.9 | 16.2 | 15.6 | 15.0 | 14.7 | 14.1 | 13.8 | 13.3 | 13.0 | 12.8 | 12.6 |



TEST NUMBER: P1444705
 CATALOG NUMBER: EHBR1-54-UNV-TA-L930

CANDELA DISTRIBUTION (continued):

| | 220° | 222.5° | 225° | 227.5° | 230° | 232.5° | 235° | 237.5° | 240° | 242.5° | 245° |
|--------|-------|--------|-------|--------|-------|--------|-------|--------|-------|--------|-------|
| 112.5° | 21.1 | 19.0 | 18.1 | 17.3 | 16.8 | 16.2 | 15.8 | 15.1 | 14.9 | 14.3 | 14.1 |
| 115° | 24.8 | 22.2 | 21.1 | 20.2 | 19.6 | 18.8 | 18.1 | 17.6 | 16.8 | 16.2 | 16.0 |
| 117.5° | 29.4 | 26.2 | 24.8 | 23.7 | 23.0 | 21.9 | 21.1 | 20.2 | 19.6 | 18.8 | 18.2 |
| 120° | 34.1 | 30.6 | 29.1 | 27.9 | 26.9 | 25.7 | 24.8 | 23.7 | 22.8 | 21.9 | 21.1 |
| 122.5° | 39.7 | 35.8 | 34.0 | 32.7 | 31.5 | 30.1 | 29.1 | 27.9 | 26.7 | 25.7 | 24.8 |
| 125° | 45.9 | 41.4 | 39.5 | 38.1 | 36.9 | 35.5 | 34.1 | 32.7 | 31.6 | 30.5 | 29.4 |
| 127.5° | 52.5 | 47.8 | 45.7 | 44.4 | 43.0 | 41.4 | 40.1 | 38.6 | 37.3 | 35.8 | 34.8 |
| 130° | 59.7 | 54.6 | 52.5 | 51.0 | 49.7 | 48.0 | 46.8 | 45.3 | 43.8 | 42.4 | 41.0 |
| 132.5° | 67.4 | 61.9 | 59.8 | 58.5 | 57.2 | 55.5 | 54.4 | 52.7 | 51.2 | 49.5 | 48.4 |
| 135° | 75.1 | 69.6 | 67.5 | 65.9 | 64.9 | 63.4 | 61.9 | 60.4 | 59.2 | 57.6 | 56.5 |
| 137.5° | 83.1 | 77.3 | 75.3 | 73.9 | 72.8 | 71.5 | 70.4 | 68.9 | 67.6 | 65.9 | 64.9 |
| 140° | 91.1 | 85.1 | 83.1 | 82.0 | 81.1 | 79.8 | 78.7 | 77.4 | 76.4 | 75.1 | 73.9 |
| 142.5° | 98.6 | 92.4 | 90.5 | 89.5 | 88.8 | 87.7 | 87.1 | 86.0 | 85.1 | 83.7 | 82.8 |
| 145° | 106.0 | 99.5 | 97.6 | 96.7 | 96.2 | 95.4 | 94.7 | 93.9 | 93.2 | 92.2 | 91.5 |
| 147.5° | 113.3 | 106.3 | 104.4 | 103.9 | 103.5 | 102.7 | 102.4 | 101.6 | 101.3 | 100.5 | 100.1 |
| 150° | 120.4 | 112.6 | 110.3 | 110.1 | 109.5 | 109.3 | 109.0 | 108.5 | 108.4 | 107.9 | 107.6 |
| 152.5° | 127.3 | 118.0 | 115.4 | 115.0 | 115.0 | 114.6 | 114.4 | 114.3 | 114.3 | 114.2 | 114.0 |
| 155° | 134.2 | 124.0 | 121.0 | 120.6 | 120.4 | 120.3 | 120.1 | 120.1 | 120.1 | 120.1 | 120.3 |
| 157.5° | 140.8 | 129.7 | 126.8 | 126.3 | 126.1 | 125.9 | 125.7 | 125.7 | 125.7 | 125.7 | 126.1 |
| 160° | 147.0 | 135.9 | 132.8 | 132.2 | 132.1 | 131.7 | 131.4 | 131.3 | 131.3 | 131.3 | 131.4 |
| 162.5° | 153.0 | 142.1 | 139.3 | 138.7 | 138.1 | 137.9 | 137.7 | 137.2 | 137.2 | 137.1 | 137.2 |
| 165° | 158.7 | 148.9 | 146.0 | 145.3 | 145.1 | 144.6 | 144.3 | 144.0 | 143.8 | 143.7 | 143.7 |
| 167.5° | 164.1 | 155.3 | 153.0 | 152.6 | 152.1 | 151.7 | 151.7 | 151.0 | 151.0 | 150.7 | 150.7 |
| 170° | 168.0 | 161.1 | 159.2 | 158.8 | 158.8 | 158.5 | 158.2 | 158.1 | 157.9 | 157.6 | 157.6 |
| 172.5° | 170.7 | 165.8 | 164.1 | 164.1 | 164.1 | 163.9 | 163.9 | 163.7 | 163.7 | 163.7 | 163.7 |
| 175° | 172.2 | 169.0 | 168.4 | 168.2 | 168.2 | 168.2 | 168.2 | 168.2 | 168.2 | 168.2 | 168.4 |
| 177.5° | 172.6 | 171.8 | 171.5 | 171.5 | 171.5 | 171.5 | 171.5 | 171.5 | 171.5 | 171.7 | 171.7 |
| 180° | 171.2 | 171.2 | 171.2 | 171.2 | 171.2 | 171.2 | 171.2 | 171.2 | 171.2 | 171.2 | 171.2 |



TEST NUMBER: P1444705
 CATALOG NUMBER: EHBR1-54-UNV-TA-L930

CANDELA DISTRIBUTION (continued):

| | 247.5° | 250° | 252.5° | 255° | 257.5° | 260° | 262.5° | 265° | 267.5° | 270° | 272.5° |
|--------|---------|---------|---------|---------|---------|---------|---------|---------|---------|---------|---------|
| 0° | 41286.7 | 41286.7 | 41286.7 | 41286.7 | 41286.7 | 41286.7 | 41286.7 | 41286.7 | 41286.7 | 41286.7 | 41286.7 |
| 2.5° | 41609.3 | 41657.8 | 41654.2 | 41699.5 | 41697.2 | 41739.9 | 41731.3 | 41768.1 | 41759.8 | 41791.3 | 41772.8 |
| 5° | 42974.2 | 43066.5 | 43096.9 | 43180.2 | 43197.4 | 43272.0 | 43273.5 | 43332.7 | 43325.6 | 43371.9 | 43347.2 |
| 7.5° | 44265.4 | 44351.5 | 44392.4 | 44457.1 | 44489.4 | 44542.9 | 44563.9 | 44607.9 | 44618.5 | 44644.6 | 44643.8 |
| 10° | 44374.3 | 44374.0 | 44394.2 | 44385.2 | 44403.2 | 44392.8 | 44414.8 | 44406.9 | 44439.5 | 44431.0 | 44455.7 |
| 12.5° | 42908.2 | 42762.7 | 42709.5 | 42578.8 | 42550.2 | 42438.1 | 42446.0 | 42374.1 | 42408.9 | 42364.7 | 42439.9 |
| 15° | 39757.1 | 39419.5 | 39252.8 | 38959.4 | 38867.2 | 38635.3 | 38616.4 | 38462.4 | 38504.0 | 38423.3 | 38541.1 |
| 17.5° | 35100.8 | 34569.3 | 34277.8 | 33849.1 | 33679.0 | 33350.9 | 33285.1 | 33086.8 | 33117.6 | 33017.7 | 33160.0 |
| 20° | 29549.2 | 28907.0 | 28539.1 | 28043.5 | 27822.4 | 27431.3 | 27327.6 | 27105.7 | 27133.5 | 27034.0 | 27195.1 |
| 22.5° | 23934.2 | 23262.0 | 22846.8 | 22327.2 | 22044.9 | 21677.1 | 21566.7 | 21343.9 | 21356.5 | 21263.2 | 21418.0 |
| 25° | 18774.3 | 18129.8 | 17726.7 | 17254.9 | 17009.9 | 16672.6 | 16556.7 | 16356.5 | 16367.8 | 16290.8 | 16429.8 |
| 27.5° | 14523.3 | 13994.5 | 13657.2 | 13261.7 | 13042.1 | 12764.9 | 12651.8 | 12483.4 | 12483.0 | 12426.5 | 12542.6 |
| 30° | 11349.1 | 10907.9 | 10605.0 | 10260.6 | 10054.4 | 9804.1 | 9694.9 | 9544.4 | 9537.8 | 9497.7 | 9590.0 |
| 32.5° | 8886.1 | 8493.6 | 8217.5 | 7914.3 | 7729.1 | 7514.4 | 7411.1 | 7290.1 | 7279.0 | 7242.7 | 7318.5 |
| 35° | 6907.8 | 6577.2 | 6339.8 | 6084.6 | 6103.4 | 5786.6 | 5839.3 | 5593.2 | 5526.5 | 5512.0 | 5568.3 |
| 37.5° | 5338.9 | 5083.0 | 4890.0 | 4698.9 | 4569.4 | 4435.6 | 4363.5 | 4298.8 | 4291.4 | 4285.1 | 4324.6 |
| 40° | 4178.9 | 3999.8 | 3859.4 | 3728.3 | 3639.2 | 3557.5 | 3512.4 | 3477.0 | 3468.5 | 3463.8 | 3487.7 |
| 42.5° | 3382.2 | 3261.3 | 3170.9 | 3090.8 | 3036.7 | 2992.4 | 2967.6 | 2947.8 | 2941.2 | 2941.4 | 2955.5 |
| 45° | 2857.5 | 2784.2 | 2725.9 | 2676.2 | 2641.6 | 2656.8 | 2612.1 | 2635.5 | 2604.6 | 2636.6 | 2615.5 |
| 47.5° | 2516.5 | 2454.0 | 2417.9 | 2382.7 | 2361.8 | 2344.9 | 2345.6 | 2345.8 | 2352.4 | 2353.5 | 2360.4 |
| 50° | 2253.2 | 2217.2 | 2192.0 | 2169.6 | 2158.7 | 2149.9 | 2152.9 | 2155.2 | 2161.6 | 2162.1 | 2167.2 |
| 52.5° | 2058.5 | 2034.7 | 2019.6 | 2005.7 | 2000.8 | 1995.8 | 1997.9 | 1997.0 | 1999.9 | 1998.4 | 2002.5 |
| 55° | 1900.0 | 1888.8 | 1884.0 | 1878.9 | 1879.6 | 1878.3 | 1879.1 | 1874.1 | 1871.0 | 1867.2 | 1870.8 |
| 57.5° | 1769.9 | 1768.4 | 1771.6 | 1773.7 | 1779.7 | 1781.8 | 1783.3 | 1777.4 | 1771.9 | 1766.9 | 1769.7 |
| 60° | 1669.6 | 1672.1 | 1680.1 | 1686.5 | 1695.1 | 1699.0 | 1701.5 | 1698.2 | 1694.1 | 1690.0 | 1692.5 |
| 62.5° | 1570.8 | 1574.6 | 1584.2 | 1591.3 | 1601.7 | 1607.1 | 1613.1 | 1613.4 | 1614.9 | 1613.4 | 1615.0 |
| 65° | 1456.0 | 1460.8 | 1469.4 | 1475.4 | 1485.0 | 1489.7 | 1495.9 | 1496.9 | 1500.3 | 1499.5 | 1502.5 |
| 67.5° | 1368.9 | 1373.2 | 1380.4 | 1386.0 | 1394.5 | 1399.4 | 1404.8 | 1405.1 | 1406.3 | 1406.0 | 1408.8 |
| 70° | 1275.8 | 1278.0 | 1284.4 | 1289.1 | 1297.7 | 1302.8 | 1308.9 | 1310.7 | 1314.5 | 1315.1 | 1318.2 |
| 72.5° | 1176.7 | 1175.8 | 1179.6 | 1181.7 | 1188.2 | 1192.2 | 1199.9 | 1204.2 | 1210.6 | 1212.3 | 1214.6 |
| 75° | 1068.7 | 1067.8 | 1072.3 | 1074.2 | 1079.7 | 1083.6 | 1092.4 | 1098.1 | 1108.0 | 1112.1 | 1111.1 |
| 77.5° | 943.6 | 945.8 | 954.3 | 959.0 | 966.4 | 971.5 | 982.8 | 991.8 | 1010.0 | 1018.0 | 1009.9 |
| 80° | 803.8 | 806.0 | 814.9 | 819.4 | 829.0 | 835.2 | 847.8 | 858.4 | 874.7 | 878.3 | 873.7 |
| 82.5° | 631.9 | 632.5 | 640.6 | 643.8 | 656.4 | 665.4 | 681.5 | 689.9 | 700.1 | 698.5 | 697.3 |
| 85° | 430.9 | 436.7 | 446.6 | 456.6 | 471.9 | 486.6 | 501.7 | 514.3 | 505.4 | 519.4 | 503.8 |
| 87.5° | 230.3 | 229.6 | 243.1 | 241.0 | 262.4 | 274.8 | 287.9 | 294.3 | 301.3 | 299.9 | 300.0 |
| 90° | 22.6 | 21.1 | 23.0 | 21.1 | 24.1 | 21.9 | 25.8 | 24.1 | 28.8 | 26.0 | 31.1 |
| 92.5° | 6.6 | 6.8 | 6.6 | 6.8 | 6.6 | 6.8 | 6.6 | 6.6 | 6.6 | 6.6 | 6.6 |
| 95° | 7.2 | 7.2 | 7.2 | 7.0 | 7.0 | 7.0 | 7.0 | 7.0 | 7.0 | 7.0 | 7.0 |
| 97.5° | 7.8 | 7.8 | 7.8 | 7.8 | 7.8 | 7.8 | 7.8 | 7.8 | 7.7 | 7.7 | 7.7 |
| 100° | 8.6 | 8.6 | 8.6 | 8.6 | 8.3 | 8.3 | 8.3 | 8.3 | 8.3 | 8.3 | 8.3 |
| 102.5° | 9.2 | 9.2 | 9.2 | 9.0 | 9.0 | 9.0 | 9.0 | 9.0 | 9.0 | 9.0 | 9.0 |
| 105° | 10.1 | 10.1 | 10.0 | 10.0 | 9.8 | 9.8 | 9.8 | 9.8 | 9.8 | 9.8 | 9.8 |
| 107.5° | 11.1 | 11.1 | 10.9 | 10.9 | 10.7 | 10.7 | 10.7 | 10.7 | 10.7 | 10.7 | 10.7 |
| 110° | 12.2 | 12.1 | 11.9 | 11.9 | 11.8 | 11.6 | 11.6 | 11.6 | 11.6 | 11.6 | 11.6 |



TEST NUMBER: P1444705
 CATALOG NUMBER: EHBR1-54-UNV-TA-L930

CANDELA DISTRIBUTION (continued):

| | 247.5° | 250° | 252.5° | 255° | 257.5° | 260° | 262.5° | 265° | 267.5° | 270° | 272.5° |
|--------|--------|-------|--------|-------|--------|-------|--------|-------|--------|-------|--------|
| 112.5° | 13.8 | 13.3 | 13.2 | 13.0 | 12.8 | 12.8 | 12.7 | 12.7 | 12.7 | 12.7 | 12.7 |
| 115° | 15.3 | 15.1 | 14.9 | 14.7 | 14.5 | 14.3 | 14.1 | 14.1 | 14.1 | 14.1 | 14.1 |
| 117.5° | 17.6 | 17.1 | 16.8 | 16.5 | 16.2 | 16.0 | 16.0 | 16.0 | 15.8 | 16.0 | 16.0 |
| 120° | 20.5 | 19.9 | 19.2 | 19.0 | 18.6 | 18.5 | 18.1 | 18.1 | 18.1 | 18.1 | 18.1 |
| 122.5° | 23.9 | 23.1 | 22.5 | 22.0 | 21.6 | 21.3 | 20.9 | 20.9 | 20.9 | 20.9 | 20.9 |
| 125° | 28.2 | 27.4 | 26.6 | 26.0 | 25.2 | 25.1 | 24.8 | 24.8 | 24.6 | 24.8 | 24.8 |
| 127.5° | 33.5 | 32.6 | 31.5 | 30.9 | 30.1 | 29.9 | 29.5 | 29.4 | 29.4 | 29.5 | 29.5 |
| 130° | 39.7 | 38.7 | 37.6 | 36.9 | 36.0 | 35.6 | 35.4 | 35.0 | 34.8 | 35.0 | 35.4 |
| 132.5° | 46.8 | 45.7 | 44.6 | 43.8 | 43.0 | 42.5 | 41.9 | 41.9 | 41.8 | 41.9 | 42.1 |
| 135° | 54.8 | 53.7 | 52.7 | 51.7 | 50.8 | 50.5 | 49.9 | 49.9 | 49.7 | 49.9 | 50.3 |
| 137.5° | 63.5 | 62.6 | 61.4 | 60.6 | 59.7 | 59.3 | 58.7 | 58.6 | 58.6 | 58.7 | 59.2 |
| 140° | 72.7 | 71.6 | 70.6 | 69.8 | 69.2 | 68.7 | 68.3 | 68.3 | 67.9 | 68.4 | 68.5 |
| 142.5° | 81.7 | 81.1 | 80.0 | 79.4 | 78.7 | 78.3 | 78.1 | 78.1 | 77.7 | 78.2 | 78.5 |
| 145° | 90.5 | 90.0 | 89.2 | 88.6 | 88.1 | 88.0 | 87.3 | 87.5 | 87.5 | 88.0 | 88.1 |
| 147.5° | 99.3 | 99.0 | 98.2 | 97.9 | 97.3 | 97.3 | 97.0 | 97.1 | 97.1 | 97.5 | 97.6 |
| 150° | 107.1 | 106.9 | 106.5 | 106.3 | 106.0 | 106.0 | 105.9 | 106.0 | 106.0 | 106.3 | 106.5 |
| 152.5° | 113.8 | 113.8 | 113.5 | 113.5 | 113.4 | 113.5 | 113.5 | 113.8 | 114.0 | 114.3 | 114.4 |
| 155° | 120.3 | 120.3 | 120.3 | 120.4 | 120.4 | 120.8 | 120.8 | 121.4 | 121.5 | 121.9 | 122.1 |
| 157.5° | 126.1 | 126.4 | 126.4 | 126.8 | 127.0 | 127.3 | 127.4 | 128.1 | 128.2 | 128.9 | 129.1 |
| 160° | 131.7 | 132.1 | 132.2 | 132.7 | 133.0 | 133.3 | 133.8 | 134.2 | 134.7 | 135.1 | 135.5 |
| 162.5° | 137.2 | 137.7 | 137.9 | 138.1 | 138.7 | 138.9 | 139.4 | 140.0 | 140.4 | 140.9 | 141.4 |
| 165° | 143.7 | 143.8 | 144.0 | 144.1 | 144.6 | 144.9 | 145.2 | 145.8 | 146.1 | 146.8 | 147.2 |
| 167.5° | 150.6 | 150.7 | 150.6 | 150.7 | 150.9 | 151.1 | 151.3 | 151.8 | 152.1 | 152.7 | 153.0 |
| 170° | 157.3 | 157.3 | 157.3 | 157.3 | 157.3 | 157.6 | 157.7 | 157.9 | 158.1 | 158.5 | 158.7 |
| 172.5° | 163.6 | 163.6 | 163.3 | 163.6 | 163.3 | 163.6 | 163.6 | 163.7 | 163.7 | 163.9 | 163.9 |
| 175° | 168.2 | 168.4 | 168.4 | 168.6 | 168.4 | 168.4 | 168.4 | 168.4 | 168.4 | 168.6 | 168.6 |
| 177.5° | 171.7 | 171.8 | 171.8 | 171.8 | 171.8 | 172.0 | 172.0 | 172.0 | 172.0 | 171.8 | 171.8 |
| 180° | 171.2 | 171.2 | 171.2 | 171.2 | 171.2 | 171.2 | 171.2 | 171.2 | 171.2 | 171.2 | 171.2 |



TEST NUMBER: P1444705
 CATALOG NUMBER: EHBR1-54-UNV-TA-L930

CANDELA DISTRIBUTION (continued):

| | 275° | 277.5° | 280° | 282.5° | 285° | 287.5° | 290° | 292.5° | 295° | 297.5° | 300° |
|--------|---------|---------|---------|---------|---------|---------|---------|---------|---------|---------|---------|
| 0° | 41286.7 | 41286.7 | 41286.7 | 41286.7 | 41286.7 | 41286.7 | 41286.7 | 41286.7 | 41286.7 | 41286.7 | 41286.7 |
| 2.5° | 41803.5 | 41782.6 | 41804.0 | 41782.2 | 41804.0 | 41777.9 | 41795.6 | 41767.4 | 41774.6 | 41745.4 | 41752.9 |
| 5° | 43384.1 | 43350.8 | 43368.5 | 43325.2 | 43329.9 | 43272.0 | 43271.0 | 43203.6 | 43185.9 | 43109.2 | 43075.5 |
| 7.5° | 44662.3 | 44651.4 | 44657.6 | 44629.7 | 44626.5 | 44587.0 | 44568.2 | 44512.5 | 44477.5 | 44406.9 | 44358.7 |
| 10° | 44460.0 | 44492.6 | 44501.0 | 44534.2 | 44541.1 | 44574.0 | 44580.8 | 44613.7 | 44620.7 | 44645.0 | 44645.3 |
| 12.5° | 42436.4 | 42547.0 | 42573.5 | 42710.2 | 42767.6 | 42924.0 | 43007.9 | 43180.2 | 43282.5 | 43454.4 | 43560.0 |
| 15° | 38537.9 | 38729.4 | 38805.7 | 39072.5 | 39220.2 | 39531.7 | 39727.4 | 40085.2 | 40337.7 | 40717.6 | 40988.6 |
| 17.5° | 33172.5 | 33440.0 | 33560.7 | 33922.6 | 34158.7 | 34618.4 | 34949.9 | 35495.4 | 35913.0 | 36519.2 | 36999.7 |
| 20° | 27222.6 | 27519.9 | 27683.8 | 28096.6 | 28375.2 | 28912.5 | 29326.2 | 29996.5 | 30555.6 | 31323.6 | 31980.6 |
| 22.5° | 21466.6 | 21749.5 | 21931.4 | 22351.4 | 22665.1 | 23225.4 | 23687.8 | 24395.4 | 25021.7 | 25887.2 | 26674.8 |
| 25° | 16482.2 | 16741.5 | 16906.0 | 17285.9 | 17580.5 | 18095.4 | 18536.9 | 19217.4 | 19830.3 | 20698.4 | 21506.0 |
| 27.5° | 12600.5 | 12817.6 | 12976.1 | 13300.1 | 13559.8 | 13996.6 | 14375.9 | 14938.3 | 15466.3 | 16217.4 | 16936.5 |
| 30° | 9646.8 | 9839.2 | 9993.4 | 10275.6 | 10516.4 | 10895.0 | 11228.5 | 11700.9 | 12137.9 | 12735.6 | 13307.7 |
| 32.5° | 7371.7 | 7537.4 | 7674.8 | 7921.8 | 8140.3 | 8481.2 | 8781.7 | 9195.8 | 9570.8 | 10077.7 | 10548.4 |
| 35° | 5620.6 | 5946.8 | 5923.6 | 6264.2 | 6319.0 | 6563.7 | 6831.7 | 7193.7 | 7525.9 | 7957.0 | 8357.5 |
| 37.5° | 4362.6 | 4454.2 | 4552.5 | 4703.0 | 4861.3 | 5083.9 | 5310.3 | 5752.7 | 5914.8 | 6240.6 | 6572.2 |
| 40° | 3518.0 | 3579.9 | 3644.8 | 3746.5 | 3857.3 | 4014.1 | 4179.1 | 4390.1 | 4606.3 | 4870.4 | 5140.2 |
| 42.5° | 2974.1 | 3009.2 | 3050.5 | 3110.3 | 3178.5 | 3278.0 | 3388.3 | 3531.4 | 3681.8 | 3867.7 | 4057.4 |
| 45° | 2657.2 | 2640.5 | 2652.8 | 2684.9 | 2726.1 | 2786.5 | 2856.1 | 2944.8 | 3042.7 | 3163.1 | 3291.3 |
| 47.5° | 2361.8 | 2368.5 | 2372.1 | 2389.6 | 2411.6 | 2452.1 | 2494.4 | 2554.5 | 2670.7 | 2706.0 | 2776.0 |
| 50° | 2166.6 | 2169.9 | 2168.8 | 2177.7 | 2188.8 | 2215.2 | 2242.6 | 2283.3 | 2324.0 | 2377.8 | 2429.2 |
| 52.5° | 2003.1 | 2007.6 | 2007.1 | 2012.9 | 2018.9 | 2035.5 | 2052.8 | 2081.6 | 2108.3 | 2142.5 | 2172.1 |
| 55° | 1874.0 | 1880.2 | 1882.7 | 1887.6 | 1890.5 | 1899.2 | 1906.1 | 1919.9 | 1931.2 | 1950.6 | 1968.5 |
| 57.5° | 1774.6 | 1783.3 | 1787.2 | 1788.9 | 1785.4 | 1784.9 | 1782.6 | 1785.5 | 1787.8 | 1798.2 | 1808.3 |
| 60° | 1696.5 | 1703.3 | 1704.4 | 1703.3 | 1696.9 | 1692.4 | 1685.0 | 1682.6 | 1681.5 | 1686.5 | 1692.0 |
| 62.5° | 1614.6 | 1617.1 | 1615.4 | 1613.4 | 1606.0 | 1601.6 | 1594.0 | 1591.2 | 1588.5 | 1592.1 | 1595.1 |
| 65° | 1501.4 | 1503.5 | 1501.4 | 1500.1 | 1493.5 | 1490.1 | 1483.7 | 1481.4 | 1477.8 | 1478.8 | 1478.1 |
| 67.5° | 1409.4 | 1411.6 | 1409.9 | 1408.2 | 1403.6 | 1401.4 | 1396.7 | 1393.7 | 1389.2 | 1387.5 | 1384.5 |
| 70° | 1317.7 | 1319.4 | 1316.8 | 1315.1 | 1310.0 | 1307.9 | 1303.6 | 1302.6 | 1299.1 | 1298.3 | 1294.8 |
| 72.5° | 1212.3 | 1212.5 | 1208.8 | 1207.8 | 1203.9 | 1203.8 | 1201.9 | 1203.6 | 1203.5 | 1205.3 | 1204.6 |
| 75° | 1104.5 | 1103.0 | 1098.3 | 1097.5 | 1094.7 | 1096.0 | 1094.1 | 1096.6 | 1097.0 | 1100.9 | 1101.4 |
| 77.5° | 996.4 | 990.8 | 982.0 | 977.9 | 972.1 | 971.3 | 968.0 | 970.3 | 969.5 | 974.1 | 975.9 |
| 80° | 859.9 | 853.1 | 841.9 | 836.5 | 829.7 | 828.6 | 825.5 | 828.6 | 827.1 | 832.4 | 836.2 |
| 82.5° | 686.5 | 680.6 | 669.0 | 664.7 | 656.8 | 657.5 | 654.1 | 657.5 | 657.0 | 665.0 | 669.6 |
| 85° | 507.9 | 503.9 | 491.9 | 481.4 | 469.6 | 462.7 | 456.0 | 454.7 | 452.8 | 456.0 | 458.8 |
| 87.5° | 293.4 | 289.6 | 280.4 | 274.2 | 253.5 | 254.4 | 246.3 | 245.9 | 243.9 | 242.0 | 246.3 |
| 90° | 28.2 | 32.2 | 29.5 | 33.1 | 31.1 | 35.4 | 33.8 | 37.8 | 35.0 | 38.4 | 36.5 |
| 92.5° | 6.6 | 6.6 | 6.6 | 6.6 | 6.6 | 6.6 | 6.6 | 6.6 | 6.6 | 6.2 | 6.6 |
| 95° | 7.0 | 7.0 | 7.0 | 7.0 | 7.0 | 7.0 | 7.0 | 7.0 | 7.0 | 7.0 | 7.0 |
| 97.5° | 7.8 | 7.7 | 7.7 | 7.7 | 7.7 | 7.7 | 7.7 | 7.7 | 7.8 | 7.8 | 7.8 |
| 100° | 8.3 | 8.3 | 8.3 | 8.3 | 8.3 | 8.3 | 8.3 | 8.3 | 8.6 | 8.6 | 8.6 |
| 102.5° | 9.0 | 9.0 | 9.0 | 9.0 | 9.2 | 9.2 | 9.2 | 9.2 | 9.4 | 9.4 | 9.4 |
| 105° | 9.8 | 9.8 | 10.0 | 10.0 | 10.0 | 10.0 | 10.1 | 10.1 | 10.2 | 10.2 | 10.5 |
| 107.5° | 10.7 | 10.7 | 10.7 | 10.9 | 10.9 | 11.1 | 11.1 | 11.1 | 11.3 | 11.6 | 11.8 |
| 110° | 11.6 | 11.8 | 11.8 | 11.9 | 11.9 | 12.1 | 12.2 | 12.6 | 12.8 | 13.0 | 13.3 |



TEST NUMBER: P1444705
 CATALOG NUMBER: EHBR1-54-UNV-TA-L930

CANDELA DISTRIBUTION (continued):

| | 275° | 277.5° | 280° | 282.5° | 285° | 287.5° | 290° | 292.5° | 295° | 297.5° | 300° |
|--------|-------|--------|-------|--------|-------|--------|-------|--------|-------|--------|-------|
| 112.5° | 12.8 | 12.8 | 13.0 | 13.2 | 13.3 | 13.6 | 13.8 | 14.1 | 14.5 | 14.9 | 15.3 |
| 115° | 14.3 | 14.3 | 14.5 | 14.7 | 15.0 | 15.1 | 15.8 | 16.0 | 16.7 | 17.1 | 17.7 |
| 117.5° | 16.0 | 16.2 | 16.5 | 16.7 | 17.0 | 17.6 | 18.1 | 18.6 | 19.2 | 19.9 | 20.9 |
| 120° | 18.5 | 18.6 | 19.0 | 19.2 | 19.7 | 20.2 | 20.9 | 21.7 | 22.6 | 23.5 | 24.6 |
| 122.5° | 21.3 | 21.6 | 22.0 | 22.5 | 23.1 | 23.9 | 24.8 | 25.7 | 26.7 | 27.9 | 29.1 |
| 125° | 25.1 | 25.6 | 26.0 | 26.6 | 27.5 | 28.4 | 29.5 | 30.6 | 31.8 | 32.9 | 34.4 |
| 127.5° | 30.0 | 30.5 | 31.1 | 31.8 | 32.9 | 33.8 | 35.0 | 36.1 | 37.6 | 39.0 | 40.5 |
| 130° | 35.8 | 36.4 | 37.3 | 38.0 | 39.3 | 40.4 | 41.6 | 42.9 | 44.6 | 45.7 | 47.4 |
| 132.5° | 42.9 | 43.5 | 44.4 | 45.3 | 46.5 | 47.8 | 49.3 | 50.5 | 52.0 | 53.4 | 54.9 |
| 135° | 50.8 | 51.4 | 52.5 | 53.4 | 54.8 | 55.9 | 57.4 | 58.6 | 60.3 | 61.5 | 63.2 |
| 137.5° | 59.8 | 60.4 | 61.4 | 62.3 | 63.6 | 64.7 | 66.2 | 67.5 | 68.9 | 70.2 | 71.6 |
| 140° | 69.3 | 69.8 | 70.8 | 71.7 | 72.8 | 73.9 | 75.5 | 76.5 | 78.1 | 79.1 | 80.3 |
| 142.5° | 79.2 | 79.6 | 80.5 | 81.4 | 82.4 | 83.4 | 84.7 | 85.5 | 86.8 | 87.7 | 89.2 |
| 145° | 88.8 | 89.2 | 90.1 | 90.7 | 91.7 | 92.6 | 93.7 | 94.5 | 95.6 | 96.4 | 97.5 |
| 147.5° | 98.2 | 98.6 | 99.5 | 100.3 | 101.1 | 101.9 | 102.7 | 103.5 | 104.5 | 105.2 | 106.2 |
| 150° | 107.1 | 107.6 | 108.2 | 108.6 | 109.5 | 110.3 | 111.2 | 111.8 | 112.6 | 113.3 | 114.2 |
| 152.5° | 115.2 | 115.5 | 116.1 | 116.6 | 117.4 | 118.0 | 118.6 | 119.3 | 120.1 | 120.6 | 121.4 |
| 155° | 122.5 | 123.2 | 123.8 | 124.2 | 125.0 | 125.3 | 126.1 | 126.5 | 127.3 | 127.9 | 128.7 |
| 157.5° | 129.7 | 130.0 | 130.8 | 131.2 | 131.9 | 132.3 | 133.0 | 133.4 | 134.2 | 134.7 | 135.3 |
| 160° | 136.0 | 136.6 | 137.1 | 137.7 | 138.3 | 138.8 | 139.4 | 140.0 | 140.6 | 141.1 | 141.7 |
| 162.5° | 142.0 | 142.6 | 143.2 | 143.7 | 144.3 | 144.9 | 145.3 | 146.0 | 146.8 | 147.0 | 147.8 |
| 165° | 147.8 | 148.3 | 149.0 | 149.4 | 150.1 | 150.7 | 151.1 | 151.8 | 152.2 | 152.8 | 153.3 |
| 167.5° | 153.6 | 153.9 | 154.7 | 155.1 | 155.8 | 156.2 | 156.8 | 157.3 | 157.9 | 158.2 | 158.8 |
| 170° | 159.2 | 159.6 | 160.0 | 160.5 | 160.9 | 161.3 | 161.9 | 162.2 | 162.8 | 163.1 | 163.7 |
| 172.5° | 164.1 | 164.5 | 164.8 | 164.9 | 165.2 | 165.8 | 166.0 | 166.2 | 166.6 | 166.9 | 167.3 |
| 175° | 168.6 | 168.6 | 168.8 | 169.0 | 169.0 | 169.0 | 169.2 | 169.5 | 169.7 | 169.9 | 170.0 |
| 177.5° | 171.8 | 171.8 | 171.8 | 171.8 | 171.8 | 171.8 | 171.8 | 171.8 | 171.8 | 171.8 | 171.8 |
| 180° | 171.2 | 171.2 | 171.2 | 171.2 | 171.2 | 171.2 | 171.2 | 171.2 | 171.2 | 171.2 | 171.2 |



TEST NUMBER: P1444705
 CATALOG NUMBER: EHBR1-54-UNV-TA-L930

CANDELA DISTRIBUTION (continued):

| | 302.5° | 305° | 307.5° | 310° | 312.5° | 315° | 317.5° | 320° | 322.5° | 325° | 327.5° |
|--------|---------|---------|---------|---------|---------|---------|---------|---------|---------|---------|---------|
| 0° | 41286.7 | 41286.7 | 41286.7 | 41286.7 | 41286.7 | 41286.7 | 41286.7 | 41286.7 | 41286.7 | 41286.7 | 41286.7 |
| 2.5° | 41723.7 | 41725.5 | 41691.9 | 41690.0 | 41658.4 | 41654.5 | 41623.8 | 41614.4 | 41589.5 | 41580.5 | 41555.1 |
| 5° | 42989.5 | 42948.5 | 42853.8 | 42798.1 | 42704.5 | 42642.5 | 42541.2 | 42475.1 | 42377.3 | 42303.5 | 42205.2 |
| 7.5° | 44269.8 | 44206.1 | 44099.8 | 44013.6 | 43883.7 | 43780.0 | 43628.0 | 43503.5 | 43338.9 | 43196.4 | 43023.5 |
| 10° | 44645.3 | 44635.5 | 44608.4 | 44568.9 | 44508.5 | 44440.6 | 44337.1 | 44229.3 | 44084.9 | 43928.3 | 43736.0 |
| 12.5° | 43721.4 | 43821.1 | 43957.2 | 44037.9 | 44135.9 | 44178.9 | 44219.1 | 44209.1 | 44182.6 | 44103.3 | 43992.2 |
| 15° | 41381.0 | 41661.4 | 42032.6 | 42320.3 | 42651.3 | 42891.8 | 43157.4 | 43322.9 | 43488.0 | 43564.2 | 43610.9 |
| 17.5° | 37658.1 | 38188.9 | 38854.5 | 39406.1 | 40042.5 | 40553.7 | 41114.0 | 41535.9 | 41969.7 | 42280.5 | 42561.5 |
| 20° | 32876.0 | 33645.1 | 34586.4 | 35418.0 | 36385.0 | 37225.4 | 38146.2 | 38902.2 | 39681.8 | 40291.4 | 40868.4 |
| 22.5° | 27688.9 | 28602.3 | 29740.4 | 30794.7 | 32041.3 | 33161.6 | 34425.7 | 35525.9 | 36674.6 | 37634.2 | 38562.1 |
| 25° | 22588.4 | 23590.1 | 24834.5 | 26010.8 | 27422.6 | 28725.8 | 30224.9 | 31596.1 | 33080.7 | 34369.7 | 35643.1 |
| 27.5° | 17930.9 | 18914.3 | 20184.7 | 21436.9 | 22929.8 | 24318.4 | 25924.6 | 27435.2 | 29125.7 | 30684.7 | 32279.4 |
| 30° | 14102.8 | 14936.8 | 16076.1 | 17288.8 | 18761.2 | 20174.3 | 21798.0 | 23351.7 | 25110.3 | 26812.3 | 28608.6 |
| 32.5° | 11173.2 | 11808.7 | 12704.3 | 13729.7 | 15088.3 | 16433.5 | 17979.5 | 19479.3 | 21211.2 | 22930.5 | 24798.7 |
| 35° | 8873.5 | 9369.2 | 10052.1 | 10852.3 | 12002.8 | 13162.4 | 14529.8 | 15893.8 | 17509.5 | 19141.0 | 20956.8 |
| 37.5° | 6997.3 | 7399.4 | 7934.2 | 8535.4 | 9458.2 | 10409.8 | 11531.1 | 12661.8 | 14065.7 | 15512.1 | 17157.7 |
| 40° | 5464.1 | 5789.7 | 6206.1 | 6654.4 | 7351.2 | 8084.4 | 8951.6 | 9828.5 | 10956.4 | 12138.4 | 13500.4 |
| 42.5° | 4292.4 | 4532.7 | 4826.8 | 5154.4 | 5804.5 | 6193.9 | 6781.8 | 7416.1 | 8245.3 | 9103.3 | 10127.4 |
| 45° | 3447.2 | 3611.1 | 3815.1 | 4034.8 | 4336.6 | 4666.7 | 5069.5 | 5491.8 | 6279.5 | 6665.9 | 7288.6 |
| 47.5° | 2878.8 | 2988.8 | 3118.5 | 3257.0 | 3435.0 | 3627.0 | 3865.9 | 4110.1 | 4425.9 | 4753.2 | 5137.0 |
| 50° | 2496.0 | 2607.8 | 2652.3 | 2724.1 | 2827.1 | 2936.7 | 3071.4 | 3206.1 | 3375.5 | 3547.2 | 3744.7 |
| 52.5° | 2211.8 | 2248.3 | 2296.7 | 2342.4 | 2406.2 | 2531.0 | 2571.4 | 2641.8 | 2736.8 | 2829.6 | 2933.5 |
| 55° | 1994.8 | 2018.5 | 2050.1 | 2077.6 | 2116.2 | 2153.1 | 2206.3 | 2253.2 | 2316.4 | 2372.5 | 2441.4 |
| 57.5° | 1825.9 | 1841.1 | 1862.9 | 1881.0 | 1906.0 | 1926.7 | 1957.9 | 1983.3 | 2019.8 | 2051.5 | 2093.2 |
| 60° | 1703.2 | 1713.3 | 1728.0 | 1739.8 | 1755.6 | 1766.5 | 1782.0 | 1794.0 | 1813.2 | 1829.2 | 1852.5 |
| 62.5° | 1603.0 | 1608.1 | 1617.8 | 1624.7 | 1634.8 | 1640.3 | 1648.6 | 1653.8 | 1664.3 | 1672.4 | 1685.4 |
| 65° | 1482.7 | 1483.9 | 1490.3 | 1493.3 | 1501.2 | 1504.2 | 1510.8 | 1513.3 | 1522.1 | 1527.9 | 1539.4 |
| 67.5° | 1384.1 | 1381.4 | 1381.5 | 1379.3 | 1380.4 | 1378.1 | 1378.7 | 1376.2 | 1379.8 | 1381.5 | 1390.3 |
| 70° | 1294.2 | 1290.4 | 1289.1 | 1285.0 | 1283.8 | 1279.5 | 1278.3 | 1274.4 | 1274.0 | 1272.7 | 1275.8 |
| 72.5° | 1206.5 | 1205.4 | 1205.7 | 1202.9 | 1202.5 | 1199.7 | 1199.7 | 1198.0 | 1199.9 | 1200.8 | 1204.8 |
| 75° | 1105.6 | 1106.0 | 1108.0 | 1105.4 | 1106.2 | 1103.7 | 1104.6 | 1102.3 | 1103.5 | 1103.1 | 1107.1 |
| 77.5° | 982.9 | 985.9 | 991.2 | 990.1 | 991.8 | 989.1 | 990.3 | 987.1 | 988.0 | 985.9 | 987.4 |
| 80° | 845.0 | 851.0 | 858.3 | 858.0 | 861.0 | 859.1 | 861.7 | 858.7 | 859.9 | 856.3 | 855.3 |
| 82.5° | 681.1 | 686.3 | 693.9 | 694.2 | 701.0 | 702.2 | 709.7 | 709.3 | 714.1 | 711.0 | 708.9 |
| 85° | 465.6 | 469.1 | 475.9 | 479.5 | 486.5 | 490.8 | 497.9 | 500.8 | 495.7 | 505.1 | 497.6 |
| 87.5° | 243.1 | 252.2 | 247.1 | 258.9 | 256.1 | 268.1 | 265.5 | 276.5 | 274.4 | 283.8 | 282.6 |
| 90° | 41.6 | 40.4 | 45.7 | 45.0 | 51.9 | 52.0 | 59.2 | 58.7 | 65.7 | 65.5 | 72.4 |
| 92.5° | 6.2 | 6.6 | 6.6 | 6.6 | 6.6 | 6.8 | 6.6 | 6.6 | 6.6 | 6.8 | 6.6 |
| 95° | 7.0 | 7.0 | 7.0 | 7.0 | 7.0 | 7.0 | 7.0 | 7.2 | 7.2 | 7.2 | 7.2 |
| 97.5° | 7.8 | 7.8 | 7.8 | 7.8 | 7.9 | 7.9 | 7.9 | 7.9 | 7.9 | 8.1 | 8.1 |
| 100° | 8.6 | 8.7 | 8.7 | 8.7 | 8.9 | 8.9 | 9.0 | 9.0 | 9.2 | 9.2 | 9.2 |
| 102.5° | 9.6 | 9.6 | 9.8 | 10.0 | 10.0 | 10.1 | 10.2 | 10.5 | 10.5 | 10.7 | 10.7 |
| 105° | 10.7 | 10.9 | 11.1 | 11.1 | 11.3 | 11.8 | 11.9 | 12.1 | 12.2 | 12.6 | 12.6 |
| 107.5° | 12.1 | 12.2 | 12.7 | 12.8 | 13.2 | 13.6 | 13.9 | 14.1 | 14.5 | 14.7 | 14.9 |
| 110° | 13.8 | 14.1 | 14.5 | 15.0 | 15.3 | 16.0 | 16.2 | 16.7 | 17.0 | 17.3 | 17.6 |



TEST NUMBER: P1444705
 CATALOG NUMBER: EHBR1-54-UNV-TA-L930

CANDELA DISTRIBUTION (continued):

| | 302.5° | 305° | 307.5° | 310° | 312.5° | 315° | 317.5° | 320° | 322.5° | 325° | 327.5° |
|--------|--------|-------|--------|-------|--------|-------|--------|-------|--------|-------|--------|
| 112.5° | 15.8 | 16.5 | 16.8 | 17.6 | 18.1 | 18.6 | 19.2 | 19.7 | 20.1 | 20.7 | 20.9 |
| 115° | 18.5 | 19.2 | 19.9 | 20.7 | 21.3 | 22.0 | 22.6 | 23.3 | 23.9 | 24.5 | 24.8 |
| 117.5° | 21.6 | 22.6 | 23.3 | 24.5 | 25.1 | 26.0 | 26.7 | 27.5 | 28.2 | 28.8 | 29.4 |
| 120° | 25.6 | 26.6 | 27.7 | 28.8 | 29.7 | 30.6 | 31.5 | 32.4 | 33.1 | 33.8 | 34.4 |
| 122.5° | 30.1 | 31.5 | 32.6 | 33.8 | 34.8 | 35.8 | 36.7 | 37.8 | 38.6 | 39.5 | 40.1 |
| 125° | 35.6 | 36.9 | 38.1 | 39.5 | 40.5 | 41.8 | 42.7 | 43.8 | 44.6 | 45.7 | 46.5 |
| 127.5° | 41.8 | 43.3 | 44.6 | 45.9 | 47.0 | 48.4 | 49.3 | 50.5 | 51.4 | 52.5 | 53.4 |
| 130° | 48.7 | 50.3 | 51.6 | 52.8 | 53.8 | 55.4 | 56.3 | 57.6 | 58.6 | 59.7 | 60.8 |
| 132.5° | 56.3 | 57.7 | 58.9 | 60.4 | 61.5 | 62.7 | 63.8 | 65.1 | 65.9 | 67.4 | 68.4 |
| 135° | 64.4 | 65.8 | 66.8 | 68.4 | 69.3 | 70.6 | 71.6 | 72.8 | 73.8 | 75.1 | 76.2 |
| 137.5° | 72.7 | 74.2 | 75.3 | 76.5 | 77.4 | 78.7 | 79.6 | 80.8 | 81.7 | 83.1 | 84.0 |
| 140° | 81.4 | 82.6 | 83.6 | 84.7 | 85.7 | 86.8 | 87.7 | 88.8 | 89.6 | 90.7 | 91.5 |
| 142.5° | 90.1 | 91.2 | 92.0 | 93.2 | 93.9 | 95.0 | 95.6 | 96.5 | 97.5 | 98.4 | 99.2 |
| 145° | 98.4 | 99.5 | 100.3 | 101.1 | 101.6 | 102.7 | 103.3 | 104.2 | 104.6 | 105.6 | 106.2 |
| 147.5° | 106.9 | 107.9 | 108.4 | 109.3 | 109.5 | 110.5 | 110.9 | 111.6 | 112.2 | 112.6 | 113.1 |
| 150° | 114.6 | 115.5 | 116.0 | 116.6 | 117.1 | 117.8 | 118.2 | 118.6 | 118.9 | 119.3 | 119.8 |
| 152.5° | 121.9 | 122.5 | 123.1 | 123.5 | 124.0 | 124.4 | 124.6 | 125.2 | 125.3 | 125.5 | 125.7 |
| 155° | 128.9 | 129.7 | 130.0 | 130.6 | 130.8 | 131.3 | 131.3 | 131.7 | 131.9 | 132.1 | 132.1 |
| 157.5° | 135.7 | 136.3 | 136.8 | 137.1 | 137.4 | 137.9 | 138.0 | 138.3 | 138.3 | 138.7 | 138.7 |
| 160° | 142.1 | 142.6 | 143.0 | 143.4 | 143.8 | 144.0 | 144.1 | 144.6 | 144.7 | 144.7 | 144.7 |
| 162.5° | 148.1 | 148.7 | 149.0 | 149.4 | 149.8 | 150.1 | 150.2 | 150.6 | 150.7 | 150.9 | 150.9 |
| 165° | 153.8 | 154.3 | 154.7 | 155.1 | 155.3 | 155.8 | 155.9 | 156.2 | 156.2 | 156.6 | 156.6 |
| 167.5° | 159.2 | 159.8 | 160.0 | 160.5 | 160.7 | 160.9 | 161.1 | 161.6 | 161.6 | 161.7 | 161.7 |
| 170° | 163.9 | 164.1 | 164.7 | 164.9 | 165.1 | 165.2 | 165.6 | 165.8 | 165.8 | 165.8 | 165.8 |
| 172.5° | 167.5 | 167.9 | 167.9 | 168.2 | 168.2 | 168.4 | 168.6 | 168.6 | 168.8 | 168.8 | 168.8 |
| 175° | 170.0 | 170.1 | 170.5 | 170.5 | 170.5 | 170.7 | 170.7 | 170.7 | 170.7 | 170.7 | 170.7 |
| 177.5° | 171.8 | 171.8 | 171.8 | 171.7 | 171.7 | 171.7 | 171.7 | 171.7 | 171.7 | 171.7 | 171.5 |
| 180° | 171.2 | 171.2 | 171.2 | 171.2 | 171.2 | 171.2 | 171.2 | 171.2 | 171.2 | 171.2 | 171.2 |



TEST NUMBER: P1444705
 CATALOG NUMBER: EHBR1-54-UNV-TA-L930

CANDELA DISTRIBUTION (continued):

| | 330° | 332.5° | 335° | 337.5° | 340° | 342.5° | 345° | 347.5° | 350° | 352.5° | 355° |
|--------|---------|---------|---------|---------|---------|---------|---------|---------|---------|---------|---------|
| 0° | 41286.7 | 41286.7 | 41286.7 | 41286.7 | 41286.7 | 41286.7 | 41286.7 | 41286.7 | 41286.7 | 41286.7 | 41286.7 |
| 2.5° | 41546.0 | 41528.0 | 41516.3 | 41501.5 | 41492.4 | 41481.0 | 41472.6 | 41465.3 | 41459.5 | 41454.2 | 41450.2 |
| 5° | 42130.2 | 42037.4 | 41965.3 | 41887.2 | 41823.1 | 41759.1 | 41709.9 | 41669.0 | 41640.9 | 41619.8 | 41607.2 |
| 7.5° | 42874.0 | 42704.0 | 42552.9 | 42393.7 | 42251.1 | 42110.8 | 41989.9 | 41885.7 | 41807.5 | 41756.8 | 41726.1 |
| 10° | 43538.2 | 43310.7 | 43085.6 | 42848.7 | 42624.2 | 42406.3 | 42205.2 | 42028.3 | 41888.3 | 41795.2 | 41741.0 |
| 12.5° | 43836.0 | 43642.1 | 43412.3 | 43155.1 | 42879.8 | 42601.4 | 42329.9 | 42085.0 | 41879.5 | 41741.7 | 41662.2 |
| 15° | 43573.8 | 43494.2 | 43338.2 | 43138.5 | 42877.3 | 42589.4 | 42270.7 | 41971.1 | 41695.5 | 41516.8 | 41413.2 |
| 17.5° | 42720.7 | 42831.8 | 42819.9 | 42743.5 | 42555.7 | 42313.3 | 41988.5 | 41652.0 | 41307.3 | 41068.4 | 40938.0 |
| 20° | 41281.1 | 41630.3 | 41807.5 | 41898.4 | 41824.6 | 41667.5 | 41373.4 | 41031.9 | 40630.1 | 40318.3 | 40127.9 |
| 22.5° | 39258.2 | 39874.6 | 40258.8 | 40540.0 | 40599.6 | 40546.0 | 40286.4 | 39961.5 | 39513.6 | 39138.8 | 38857.7 |
| 25° | 36653.9 | 37557.1 | 38164.3 | 38640.2 | 38825.2 | 38872.8 | 38651.9 | 38328.9 | 37829.7 | 37392.9 | 37006.9 |
| 27.5° | 33586.4 | 34760.0 | 35570.7 | 36210.3 | 36499.0 | 36624.2 | 36420.9 | 36091.2 | 35500.6 | 34979.3 | 34475.0 |
| 30° | 30133.1 | 31525.5 | 32501.5 | 33268.5 | 33620.4 | 33785.8 | 33569.7 | 33201.9 | 32514.6 | 31887.2 | 31251.9 |
| 32.5° | 26436.9 | 27960.6 | 29024.1 | 29857.0 | 30205.7 | 30361.4 | 30078.7 | 29665.6 | 28871.1 | 28132.1 | 27391.2 |
| 35° | 22567.0 | 24105.0 | 25177.5 | 25988.2 | 26280.5 | 26374.2 | 26012.9 | 25535.3 | 24655.1 | 23844.0 | 23036.1 |
| 37.5° | 18618.3 | 20049.2 | 21024.0 | 21751.6 | 21932.5 | 21948.7 | 21513.2 | 20985.8 | 20060.6 | 19260.8 | 18456.7 |
| 40° | 14703.8 | 15910.5 | 16697.5 | 17279.9 | 17342.6 | 17286.7 | 16813.2 | 16282.5 | 15417.0 | 14700.4 | 13994.5 |
| 42.5° | 11016.5 | 11927.4 | 12489.0 | 12888.0 | 12864.3 | 12753.6 | 12319.6 | 11863.3 | 11149.3 | 10603.5 | 10048.0 |
| 45° | 7857.5 | 8458.1 | 8786.5 | 9020.0 | 8945.0 | 8839.6 | 8501.7 | 8181.9 | 7696.7 | 7344.1 | 6970.8 |
| 47.5° | 5458.8 | 6176.0 | 6051.1 | 6507.6 | 6114.3 | 6374.1 | 5833.0 | 5534.8 | 5277.2 | 5090.0 | 4879.0 |
| 50° | 3908.0 | 4072.3 | 4151.7 | 4205.9 | 4177.1 | 4137.2 | 4040.0 | 3953.1 | 3835.5 | 3749.7 | 3649.8 |
| 52.5° | 3018.0 | 3100.2 | 3145.2 | 3177.8 | 3171.4 | 3156.9 | 3114.4 | 3075.7 | 3020.6 | 2984.3 | 2940.6 |
| 55° | 2556.4 | 2557.7 | 2640.4 | 2604.9 | 2657.4 | 2595.9 | 2620.0 | 2552.0 | 2563.0 | 2504.5 | 2465.2 |
| 57.5° | 2124.3 | 2158.0 | 2173.1 | 2187.7 | 2183.6 | 2181.1 | 2164.7 | 2156.4 | 2137.9 | 2132.2 | 2119.0 |
| 60° | 1868.6 | 1886.2 | 1889.8 | 1896.6 | 1890.9 | 1888.8 | 1875.9 | 1871.4 | 1858.9 | 1856.7 | 1848.0 |
| 62.5° | 1693.3 | 1702.3 | 1702.3 | 1702.3 | 1694.9 | 1687.9 | 1673.6 | 1666.2 | 1655.6 | 1653.3 | 1648.3 |
| 65° | 1546.9 | 1556.3 | 1557.8 | 1559.9 | 1554.5 | 1549.0 | 1536.4 | 1528.3 | 1517.4 | 1513.3 | 1507.5 |
| 67.5° | 1396.0 | 1405.9 | 1409.2 | 1414.3 | 1411.2 | 1410.1 | 1401.6 | 1398.4 | 1391.2 | 1389.6 | 1384.1 |
| 70° | 1277.4 | 1281.5 | 1281.2 | 1281.0 | 1274.3 | 1268.4 | 1258.4 | 1253.7 | 1246.2 | 1244.7 | 1239.8 |
| 72.5° | 1206.8 | 1209.7 | 1207.9 | 1205.3 | 1196.5 | 1187.7 | 1176.0 | 1167.5 | 1157.7 | 1151.6 | 1144.7 |
| 75° | 1107.5 | 1111.3 | 1108.8 | 1107.2 | 1099.4 | 1093.6 | 1084.2 | 1079.5 | 1072.7 | 1070.6 | 1065.9 |
| 77.5° | 985.6 | 987.4 | 983.4 | 982.9 | 977.0 | 973.3 | 966.3 | 965.0 | 960.0 | 960.2 | 955.6 |
| 80° | 849.9 | 848.7 | 842.3 | 841.1 | 835.2 | 833.7 | 828.1 | 828.4 | 824.4 | 826.1 | 822.9 |
| 82.5° | 699.3 | 695.4 | 687.1 | 684.6 | 677.7 | 677.1 | 673.4 | 676.5 | 674.1 | 677.7 | 675.6 |
| 85° | 501.1 | 502.2 | 498.5 | 498.5 | 496.5 | 497.2 | 496.8 | 499.1 | 499.4 | 502.8 | 502.7 |
| 87.5° | 279.4 | 283.4 | 282.6 | 286.3 | 286.1 | 290.2 | 291.7 | 297.7 | 298.5 | 304.1 | 304.1 |
| 90° | 72.2 | 79.8 | 79.4 | 87.1 | 87.3 | 94.7 | 96.1 | 103.5 | 104.1 | 110.5 | 109.9 |
| 92.5° | 6.6 | 6.6 | 6.8 | 6.6 | 6.6 | 6.2 | 6.9 | 6.2 | 6.6 | 6.2 | 6.2 |
| 95° | 7.2 | 7.2 | 7.2 | 7.2 | 7.2 | 7.0 | 7.0 | 7.0 | 7.0 | 7.0 | 7.0 |
| 97.5° | 8.1 | 8.1 | 8.1 | 8.1 | 8.1 | 8.1 | 7.9 | 7.9 | 7.9 | 7.9 | 7.9 |
| 100° | 9.2 | 9.2 | 9.4 | 9.2 | 9.2 | 9.2 | 9.2 | 9.2 | 9.2 | 9.0 | 9.0 |
| 102.5° | 10.9 | 10.9 | 10.9 | 10.9 | 10.9 | 10.9 | 10.9 | 10.7 | 10.7 | 10.7 | 10.7 |
| 105° | 12.7 | 12.7 | 12.8 | 12.8 | 12.8 | 12.8 | 12.8 | 12.7 | 12.7 | 12.7 | 12.7 |
| 107.5° | 15.0 | 15.0 | 15.1 | 15.1 | 15.3 | 15.3 | 15.3 | 15.1 | 15.3 | 15.1 | 15.1 |
| 110° | 17.9 | 18.1 | 18.2 | 18.2 | 18.5 | 18.5 | 18.5 | 18.5 | 18.6 | 18.5 | 18.5 |



TEST NUMBER: P1444705
 CATALOG NUMBER: EHBR1-54-UNV-TA-L930

CANDELA DISTRIBUTION (continued):

| | 330° | 332.5° | 335° | 337.5° | 340° | 342.5° | 345° | 347.5° | 350° | 352.5° | 355° |
|--------|-------|--------|-------|--------|-------|--------|-------|--------|-------|--------|-------|
| 112.5° | 21.3 | 21.6 | 21.9 | 21.9 | 22.2 | 22.2 | 22.5 | 22.5 | 22.6 | 22.5 | 22.6 |
| 115° | 25.2 | 25.7 | 26.0 | 26.2 | 26.6 | 26.7 | 27.1 | 27.1 | 27.4 | 27.4 | 27.4 |
| 117.5° | 30.0 | 30.5 | 30.9 | 31.4 | 31.6 | 32.0 | 32.4 | 32.6 | 32.7 | 32.7 | 32.9 |
| 120° | 35.0 | 35.6 | 36.4 | 36.9 | 37.5 | 37.8 | 38.4 | 38.6 | 38.9 | 38.9 | 39.0 |
| 122.5° | 41.0 | 41.6 | 42.5 | 43.0 | 43.8 | 44.4 | 44.8 | 45.3 | 45.6 | 45.6 | 45.7 |
| 125° | 47.6 | 48.4 | 49.3 | 49.9 | 50.8 | 51.4 | 52.0 | 52.3 | 52.8 | 52.8 | 52.9 |
| 127.5° | 54.4 | 55.4 | 56.5 | 57.2 | 58.3 | 58.7 | 59.5 | 59.8 | 60.4 | 60.4 | 60.6 |
| 130° | 61.8 | 62.7 | 64.0 | 64.9 | 65.8 | 66.6 | 67.5 | 67.8 | 68.4 | 68.4 | 68.5 |
| 132.5° | 69.6 | 70.6 | 71.7 | 72.7 | 73.8 | 74.5 | 75.5 | 75.7 | 76.4 | 76.4 | 76.5 |
| 135° | 77.4 | 78.3 | 79.6 | 80.5 | 81.5 | 82.4 | 83.2 | 83.7 | 84.3 | 84.3 | 84.5 |
| 137.5° | 85.2 | 86.2 | 87.2 | 88.1 | 89.2 | 90.0 | 90.7 | 91.2 | 91.7 | 92.0 | 92.0 |
| 140° | 92.8 | 93.5 | 94.7 | 95.4 | 96.4 | 97.1 | 97.9 | 98.4 | 99.0 | 99.0 | 99.2 |
| 142.5° | 100.1 | 100.7 | 101.9 | 102.5 | 103.3 | 103.9 | 104.5 | 105.0 | 105.4 | 105.6 | 105.6 |
| 145° | 106.9 | 107.4 | 108.4 | 109.0 | 109.5 | 110.1 | 110.6 | 111.1 | 111.2 | 111.2 | 111.4 |
| 147.5° | 113.8 | 114.2 | 114.6 | 115.0 | 115.8 | 116.1 | 116.5 | 116.6 | 117.1 | 117.1 | 117.1 |
| 150° | 120.1 | 120.3 | 120.6 | 120.8 | 121.2 | 121.4 | 121.5 | 121.8 | 121.9 | 121.8 | 121.8 |
| 152.5° | 125.9 | 126.1 | 126.3 | 126.3 | 126.4 | 126.4 | 126.4 | 126.3 | 126.3 | 126.1 | 125.9 |
| 155° | 132.2 | 132.2 | 132.2 | 132.1 | 132.2 | 132.1 | 131.9 | 131.7 | 131.4 | 131.2 | 130.8 |
| 157.5° | 138.7 | 138.3 | 138.7 | 138.3 | 138.1 | 138.0 | 137.9 | 137.2 | 137.1 | 136.6 | 136.2 |
| 160° | 144.9 | 144.7 | 144.7 | 144.6 | 144.3 | 144.0 | 143.8 | 143.2 | 142.9 | 142.3 | 141.9 |
| 162.5° | 150.9 | 150.9 | 150.7 | 150.6 | 150.2 | 150.1 | 149.8 | 149.2 | 148.9 | 148.3 | 147.8 |
| 165° | 156.7 | 156.6 | 156.6 | 156.2 | 156.0 | 155.8 | 155.6 | 155.0 | 154.7 | 154.1 | 153.6 |
| 167.5° | 161.7 | 161.7 | 161.6 | 161.3 | 161.1 | 160.9 | 160.7 | 160.2 | 159.9 | 159.2 | 159.0 |
| 170° | 165.8 | 165.8 | 165.8 | 165.6 | 165.2 | 165.1 | 164.8 | 164.5 | 164.1 | 163.7 | 163.3 |
| 172.5° | 168.6 | 168.6 | 168.4 | 168.2 | 168.2 | 168.0 | 167.7 | 167.5 | 167.1 | 166.8 | 166.6 |
| 175° | 170.5 | 170.5 | 170.1 | 170.1 | 170.0 | 169.9 | 169.7 | 169.5 | 169.2 | 169.0 | 168.8 |
| 177.5° | 171.5 | 171.5 | 171.2 | 171.2 | 171.1 | 171.1 | 170.9 | 170.7 | 170.7 | 170.7 | 170.5 |
| 180° | 171.2 | 171.2 | 171.2 | 171.2 | 171.2 | 171.2 | 171.2 | 171.2 | 171.2 | 171.2 | 171.2 |



TEST NUMBER: P1444705
CATALOG NUMBER: EHBR1-54-UNV-TA-L930

CANDELA DISTRIBUTION (continued):

| | 357.5° | 360° |
|--------|---------|---------|
| 0° | 41286.7 | 41286.7 |
| 2.5° | 41446.5 | 41444.4 |
| 5° | 41600.6 | 41598.2 |
| 7.5° | 41717.9 | 41717.1 |
| 10° | 41731.6 | 41738.8 |
| 12.5° | 41648.4 | 41654.2 |
| 15° | 41405.3 | 41416.6 |
| 17.5° | 40940.4 | 40955.2 |
| 20° | 40139.5 | 40155.0 |
| 22.5° | 38842.5 | 38849.0 |
| 25° | 36957.0 | 36930.2 |
| 27.5° | 34386.4 | 34340.3 |
| 30° | 31118.5 | 31073.9 |
| 32.5° | 27222.3 | 27194.5 |
| 35° | 22836.4 | 22818.9 |
| 37.5° | 18219.0 | 18183.2 |
| 40° | 13736.3 | 13631.9 |
| 42.5° | 9804.7 | 9621.5 |
| 45° | 6775.9 | 6558.8 |
| 47.5° | 4730.3 | 4596.1 |
| 50° | 3585.4 | 3542.1 |
| 52.5° | 2921.5 | 2911.4 |
| 55° | 2465.1 | 2460.6 |
| 57.5° | 2122.0 | 2120.5 |
| 60° | 1852.5 | 1852.1 |
| 62.5° | 1651.6 | 1652.4 |
| 65° | 1510.1 | 1510.4 |
| 67.5° | 1385.5 | 1384.7 |
| 70° | 1241.5 | 1240.5 |
| 72.5° | 1142.4 | 1140.7 |
| 75° | 1065.9 | 1064.8 |
| 77.5° | 956.9 | 955.3 |
| 80° | 825.0 | 822.9 |
| 82.5° | 678.6 | 676.2 |
| 85° | 506.2 | 506.3 |
| 87.5° | 309.7 | 309.6 |
| 90° | 116.0 | 114.6 |
| 92.5° | 6.6 | 6.9 |
| 95° | 7.0 | 7.0 |
| 97.5° | 7.9 | 7.9 |
| 100° | 9.0 | 9.0 |
| 102.5° | 10.7 | 10.7 |
| 105° | 12.7 | 12.7 |
| 107.5° | 15.1 | 15.1 |
| 110° | 18.5 | 18.5 |



TEST NUMBER: P1444705
CATALOG NUMBER: EHBR1-54-UNV-TA-L930

CANDELA DISTRIBUTION (continued):

| | 357.5° | 360° |
|--------|--------|-------|
| 112.5° | 22.5 | 22.5 |
| 115° | 27.1 | 27.1 |
| 117.5° | 32.7 | 32.6 |
| 120° | 38.7 | 38.7 |
| 122.5° | 45.4 | 45.3 |
| 125° | 52.7 | 52.5 |
| 127.5° | 60.3 | 60.0 |
| 130° | 67.9 | 67.8 |
| 132.5° | 76.2 | 75.7 |
| 135° | 84.0 | 83.7 |
| 137.5° | 91.5 | 91.2 |
| 140° | 98.6 | 98.4 |
| 142.5° | 105.4 | 105.2 |
| 145° | 111.2 | 110.9 |
| 147.5° | 116.5 | 116.3 |
| 150° | 121.4 | 121.0 |
| 152.5° | 125.3 | 125.0 |
| 155° | 130.2 | 129.7 |
| 157.5° | 135.5 | 134.9 |
| 160° | 141.1 | 140.6 |
| 162.5° | 147.0 | 146.6 |
| 165° | 152.8 | 152.2 |
| 167.5° | 158.2 | 157.9 |
| 170° | 162.8 | 162.5 |
| 172.5° | 166.2 | 165.8 |
| 175° | 168.6 | 168.4 |
| 177.5° | 170.5 | 170.1 |
| 180° | 171.2 | 171.2 |

LM-79-2019: Approved Method: Electrical and Photometric Measurements of Solid-
State Lighting Products

Report Prepared for

Cooper Lighting Solutions

Metalux

Report Number: SP1-2506-472-5

Test Date: 08/01/2025

Luminaire Tested: EHBR-60-L930-N

Data in this report applies to families of products including EHBR-60-L930-N

Test Information

Test Method: LM-79-2019
 Report Number: SP1-2506-472-5
 Test Lab: COOPER LIGHTING SOLUTIONS
 Photometer: SP1 - 76IN SPHERE
 Measurement Geometry: 4π
 Issue Date: 08/05/2025
 Manufacturer: COOPER LIGHTING SOLUTIONS
 Product Line: Metalux
 Catalog Number: **EHBR-60-L930-N**
 Description: Elevate Round Highbay at, 60000 lumens, 3000K 90CRI LEDs with N lens

Spectral Parameters

CCT (K): 2996
 CIE u': 0.2519
 CIE v': 0.5169
 Duv: -0.0033
 CIE x: 0.4325
 CIE y: 0.3945
 CIE z: 0.1730
 Peak Wavelength (nm): 630
 Dominant Wavelength (nm): 584
 Purity: 48.21818
 Rf: 91.3
 Rg: 102

| | | | |
|-----------|------|------|------|
| CRI (Ra): | 94.4 | | |
| R1: | 96.8 | R9: | 61.4 |
| R2: | 98.1 | R10: | 94.4 |
| R3: | 97.8 | R11: | 95.7 |
| R4: | 95.6 | R12: | 88.5 |
| R5: | 96.9 | R13: | 97.3 |
| R6: | 95.7 | R14: | 97.8 |
| R7: | 90.9 | R15: | 92.3 |
| R8: | 83.0 | | |



Test Conditions

Stabilization Time: 40M
 Operation Time: 1H 40M
 Sphere Temperature (°C): 25.0

REPORT NUMBER: SP1-2506-472-5

| Measurement and Test Equipment | | | |
|--------------------------------|-----------------------|------------------|----------------------|
| Instrument | Identification Number | Calibration Date | Calibration Due Date |
| Photometer | 76INCH SPHERE IN0058 | 6/16/2025 | 12/16/2025 |
| Power Meter | XITRON INXT2011004 | 1/21/2025 | 1/21/2026 |
| AC Power Source | CHROMA 61603 IN0063 | 10/22/2024 | 10/22/2025 |
| DC Power Source | AGILENT E3634A IN0208 | 10/22/2024 | 10/22/2025 |
| Sphere Thermometer | ONSET IN0085 | 10/22/2024 | 10/22/2025 |
| Room Thermometer | ONSET IN0046 | 10/22/2024 | 10/22/2025 |

REPORT NUMBER: SP1-2506-472-5

CIE 1931 Chromaticity Diagram



CIE 1931 Chromaticity Diagram with 2017 ANSI 7-Step and 4-Step Quadrangles



Point lies inside the ANSI 3000K 7-step quadrangle

REPORT NUMBER: SP1-2506-472-5

Photopic Flux vs. Wavelength

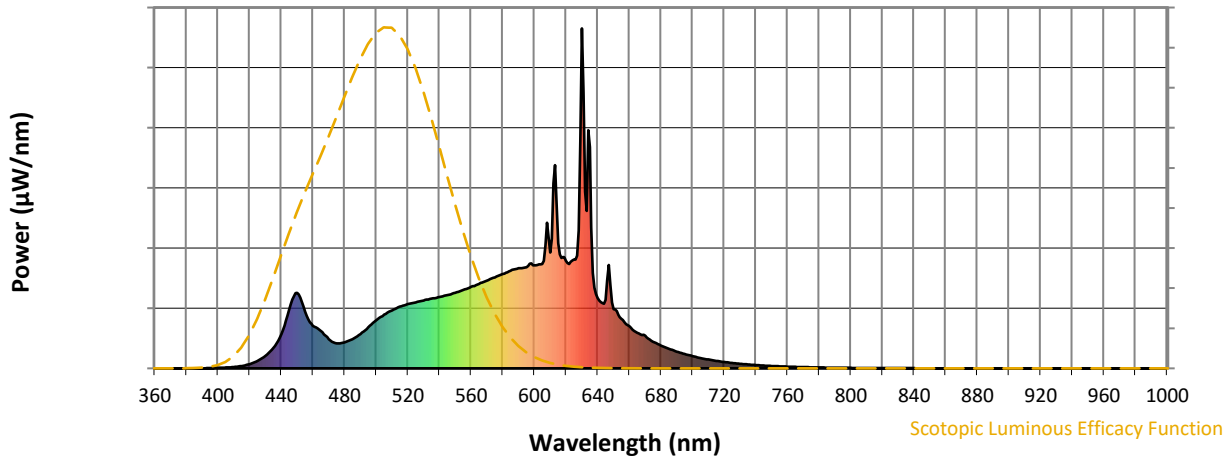


Photopic Lumens: NR

| λ (nm) | Power W^{\wedge}/nm | Lumens (ϕ/nm) | λ (nm) | Power W^{\wedge}/nm | Lumens (ϕ/nm) | λ (nm) | Power W^{\wedge}/nm | Lumens (ϕ/nm) | λ (nm) | Power W^{\wedge}/nm | Lumens (ϕ/nm) | λ (nm) | Power W^{\wedge}/nm | Lumens (ϕ/nm) |
|----------------|-----------------------|----------------------|----------------|-----------------------|----------------------|----------------|-----------------------|----------------------|----------------|-----------------------|----------------------|----------------|-----------------------|----------------------|
| 360 | 0 | NR | 490 | 101 | NR | 620 | 317 | NR | 750 | 7 | NR | 880 | 0 | NR |
| 365 | 0 | NR | 495 | 121 | NR | 625 | 320 | NR | 755 | 6 | NR | 885 | 0 | NR |
| 370 | 0 | NR | 500 | 141 | NR | 630 | 1000 | NR | 760 | 5 | NR | 890 | 0 | NR |
| 375 | 0 | NR | 505 | 158 | NR | 635 | 651 | NR | 765 | 4 | NR | 895 | 0 | NR |
| 380 | 0 | NR | 510 | 171 | NR | 640 | 207 | NR | 770 | 4 | NR | 900 | 0 | NR |
| 385 | 0 | NR | 515 | 182 | NR | 645 | 201 | NR | 775 | 3 | NR | 905 | 0 | NR |
| 390 | 0 | NR | 520 | 189 | NR | 650 | 174 | NR | 780 | 3 | NR | 910 | 0 | NR |
| 395 | 1 | NR | 525 | 194 | NR | 655 | 146 | NR | 785 | 2 | NR | 915 | 0 | NR |
| 400 | 1 | NR | 530 | 199 | NR | 660 | 124 | NR | 790 | 2 | NR | 920 | 0 | NR |
| 405 | 3 | NR | 535 | 205 | NR | 665 | 105 | NR | 795 | 2 | NR | 925 | 0 | NR |
| 410 | 4 | NR | 540 | 210 | NR | 670 | 96 | NR | 800 | 1 | NR | 930 | 0 | NR |
| 415 | 7 | NR | 545 | 216 | NR | 675 | 79 | NR | 805 | 1 | NR | 935 | 0 | NR |
| 420 | 13 | NR | 550 | 222 | NR | 680 | 67 | NR | 810 | 1 | NR | 940 | 0 | NR |
| 425 | 22 | NR | 555 | 230 | NR | 685 | 58 | NR | 815 | 1 | NR | 945 | 0 | NR |
| 430 | 37 | NR | 560 | 240 | NR | 690 | 49 | NR | 820 | 1 | NR | 950 | 0 | NR |
| 435 | 60 | NR | 565 | 248 | NR | 695 | 42 | NR | 825 | 1 | NR | 955 | 0 | NR |
| 440 | 101 | NR | 570 | 258 | NR | 700 | 36 | NR | 830 | 1 | NR | 960 | 0 | NR |
| 445 | 172 | NR | 575 | 268 | NR | 705 | 30 | NR | 835 | 1 | NR | 965 | 0 | NR |
| 450 | 223 | NR | 580 | 278 | NR | 710 | 26 | NR | 840 | 1 | NR | 970 | 0 | NR |
| 455 | 167 | NR | 585 | 287 | NR | 715 | 22 | NR | 845 | 0 | NR | 975 | 0 | NR |
| 460 | 126 | NR | 590 | 295 | NR | 720 | 19 | NR | 850 | 0 | NR | 980 | 0 | NR |
| 465 | 111 | NR | 595 | 298 | NR | 725 | 16 | NR | 855 | 0 | NR | 985 | 0 | NR |
| 470 | 86 | NR | 600 | 303 | NR | 730 | 14 | NR | 860 | 0 | NR | 990 | 0 | NR |
| 475 | 74 | NR | 605 | 307 | NR | 735 | 12 | NR | 865 | 0 | NR | 995 | 0 | NR |
| 480 | 77 | NR | 610 | 341 | NR | 740 | 10 | NR | 870 | 0 | NR | 1000 | 0 | NR |
| 485 | 86 | NR | 615 | 368 | NR | 745 | 8 | NR | 875 | 0 | NR | | | |

REPORT NUMBER: SP1-2506-472-5

Scotopic Flux vs. Wavelength



Scotopic Lumens: NR

S/P: 1.44

| λ (nm) | Power W [^] /nm | Lumens (ϕ /nm) | λ (nm) | Power W [^] /nm | Lumens (ϕ /nm) | λ (nm) | Power W [^] /nm | Lumens (ϕ /nm) | λ (nm) | Power W [^] /nm | Lumens (ϕ /nm) | λ (nm) | Power W [^] /nm | Lumens (ϕ /nm) |
|-------------------|-----------------------------|-------------------------|-------------------|-----------------------------|-------------------------|-------------------|-----------------------------|-------------------------|-------------------|-----------------------------|-------------------------|-------------------|-----------------------------|-------------------------|
| 360 | 0 | NR | 490 | 101 | NR | 620 | 317 | NR | 750 | 7 | NR | 880 | 0 | NR |
| 365 | 0 | NR | 495 | 121 | NR | 625 | 320 | NR | 755 | 6 | NR | 885 | 0 | NR |
| 370 | 0 | NR | 500 | 141 | NR | 630 | 1000 | NR | 760 | 5 | NR | 890 | 0 | NR |
| 375 | 0 | NR | 505 | 158 | NR | 635 | 651 | NR | 765 | 4 | NR | 895 | 0 | NR |
| 380 | 0 | NR | 510 | 171 | NR | 640 | 207 | NR | 770 | 4 | NR | 900 | 0 | NR |
| 385 | 0 | NR | 515 | 182 | NR | 645 | 201 | NR | 775 | 3 | NR | 905 | 0 | NR |
| 390 | 0 | NR | 520 | 189 | NR | 650 | 174 | NR | 780 | 3 | NR | 910 | 0 | NR |
| 395 | 1 | NR | 525 | 194 | NR | 655 | 146 | NR | 785 | 2 | NR | 915 | 0 | NR |
| 400 | 1 | NR | 530 | 199 | NR | 660 | 124 | NR | 790 | 2 | NR | 920 | 0 | NR |
| 405 | 3 | NR | 535 | 205 | NR | 665 | 105 | NR | 795 | 2 | NR | 925 | 0 | NR |
| 410 | 4 | NR | 540 | 210 | NR | 670 | 96 | NR | 800 | 1 | NR | 930 | 0 | NR |
| 415 | 7 | NR | 545 | 216 | NR | 675 | 79 | NR | 805 | 1 | NR | 935 | 0 | NR |
| 420 | 13 | NR | 550 | 222 | NR | 680 | 67 | NR | 810 | 1 | NR | 940 | 0 | NR |
| 425 | 22 | NR | 555 | 230 | NR | 685 | 58 | NR | 815 | 1 | NR | 945 | 0 | NR |
| 430 | 37 | NR | 560 | 240 | NR | 690 | 49 | NR | 820 | 1 | NR | 950 | 0 | NR |
| 435 | 60 | NR | 565 | 248 | NR | 695 | 42 | NR | 825 | 1 | NR | 955 | 0 | NR |
| 440 | 101 | NR | 570 | 258 | NR | 700 | 36 | NR | 830 | 1 | NR | 960 | 0 | NR |
| 445 | 172 | NR | 575 | 268 | NR | 705 | 30 | NR | 835 | 1 | NR | 965 | 0 | NR |
| 450 | 223 | NR | 580 | 278 | NR | 710 | 26 | NR | 840 | 1 | NR | 970 | 0 | NR |
| 455 | 167 | NR | 585 | 287 | NR | 715 | 22 | NR | 845 | 0 | NR | 975 | 0 | NR |
| 460 | 126 | NR | 590 | 295 | NR | 720 | 19 | NR | 850 | 0 | NR | 980 | 0 | NR |
| 465 | 111 | NR | 595 | 298 | NR | 725 | 16 | NR | 855 | 0 | NR | 985 | 0 | NR |
| 470 | 86 | NR | 600 | 303 | NR | 730 | 14 | NR | 860 | 0 | NR | 990 | 0 | NR |
| 475 | 74 | NR | 605 | 307 | NR | 735 | 12 | NR | 865 | 0 | NR | 995 | 0 | NR |
| 480 | 77 | NR | 610 | 341 | NR | 740 | 10 | NR | 870 | 0 | NR | 1000 | 0 | NR |
| 485 | 86 | NR | 615 | 368 | NR | 745 | 8 | NR | 875 | 0 | NR | | | |

REPORT NUMBER: SP1-2506-472-5

Melanopic Flux vs. Wavelength



Melanopic Lumens: NR

M/P: 2.85

| λ (nm) | Power W [^] /nm | Lumens (ϕ /nm) | λ (nm) | Power W [^] /nm | Lumens (ϕ /nm) | λ (nm) | Power W [^] /nm | Lumens (ϕ /nm) | λ (nm) | Power W [^] /nm | Lumens (ϕ /nm) | λ (nm) | Power W [^] /nm | Lumens (ϕ /nm) |
|----------------|--------------------------|----------------------|----------------|--------------------------|----------------------|----------------|--------------------------|----------------------|----------------|--------------------------|----------------------|----------------|--------------------------|----------------------|
| 360 | 0 | NR | 490 | 101 | NR | 620 | 317 | NR | 750 | 7 | NR | 880 | 0 | NR |
| 365 | 0 | NR | 495 | 121 | NR | 625 | 320 | NR | 755 | 6 | NR | 885 | 0 | NR |
| 370 | 0 | NR | 500 | 141 | NR | 630 | 1000 | NR | 760 | 5 | NR | 890 | 0 | NR |
| 375 | 0 | NR | 505 | 158 | NR | 635 | 651 | NR | 765 | 4 | NR | 895 | 0 | NR |
| 380 | 0 | NR | 510 | 171 | NR | 640 | 207 | NR | 770 | 4 | NR | 900 | 0 | NR |
| 385 | 0 | NR | 515 | 182 | NR | 645 | 201 | NR | 775 | 3 | NR | 905 | 0 | NR |
| 390 | 0 | NR | 520 | 189 | NR | 650 | 174 | NR | 780 | 3 | NR | 910 | 0 | NR |
| 395 | 1 | NR | 525 | 194 | NR | 655 | 146 | NR | 785 | 2 | NR | 915 | 0 | NR |
| 400 | 1 | NR | 530 | 199 | NR | 660 | 124 | NR | 790 | 2 | NR | 920 | 0 | NR |
| 405 | 3 | NR | 535 | 205 | NR | 665 | 105 | NR | 795 | 2 | NR | 925 | 0 | NR |
| 410 | 4 | NR | 540 | 210 | NR | 670 | 96 | NR | 800 | 1 | NR | 930 | 0 | NR |
| 415 | 7 | NR | 545 | 216 | NR | 675 | 79 | NR | 805 | 1 | NR | 935 | 0 | NR |
| 420 | 13 | NR | 550 | 222 | NR | 680 | 67 | NR | 810 | 1 | NR | 940 | 0 | NR |
| 425 | 22 | NR | 555 | 230 | NR | 685 | 58 | NR | 815 | 1 | NR | 945 | 0 | NR |
| 430 | 37 | NR | 560 | 240 | NR | 690 | 49 | NR | 820 | 1 | NR | 950 | 0 | NR |
| 435 | 60 | NR | 565 | 248 | NR | 695 | 42 | NR | 825 | 1 | NR | 955 | 0 | NR |
| 440 | 101 | NR | 570 | 258 | NR | 700 | 36 | NR | 830 | 1 | NR | 960 | 0 | NR |
| 445 | 172 | NR | 575 | 268 | NR | 705 | 30 | NR | 835 | 1 | NR | 965 | 0 | NR |
| 450 | 223 | NR | 580 | 278 | NR | 710 | 26 | NR | 840 | 1 | NR | 970 | 0 | NR |
| 455 | 167 | NR | 585 | 287 | NR | 715 | 22 | NR | 845 | 0 | NR | 975 | 0 | NR |
| 460 | 126 | NR | 590 | 295 | NR | 720 | 19 | NR | 850 | 0 | NR | 980 | 0 | NR |
| 465 | 111 | NR | 595 | 298 | NR | 725 | 16 | NR | 855 | 0 | NR | 985 | 0 | NR |
| 470 | 86 | NR | 600 | 303 | NR | 730 | 14 | NR | 860 | 0 | NR | 990 | 0 | NR |
| 475 | 74 | NR | 605 | 307 | NR | 735 | 12 | NR | 865 | 0 | NR | 995 | 0 | NR |
| 480 | 77 | NR | 610 | 341 | NR | 740 | 10 | NR | 870 | 0 | NR | 1000 | 0 | NR |
| 485 | 86 | NR | 615 | 368 | NR | 745 | 8 | NR | 875 | 0 | NR | | | |

Summary

$R_f = 91.3$
 $R_g = 102$
 $CIE R_a = 94.4$
 $R_9 = 61.4$



Color Vector Graphics

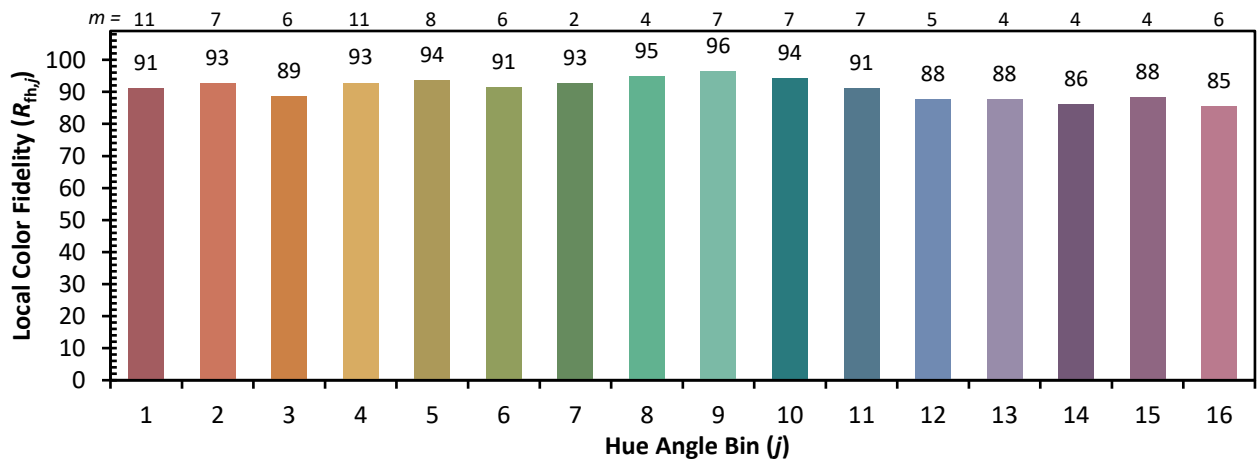
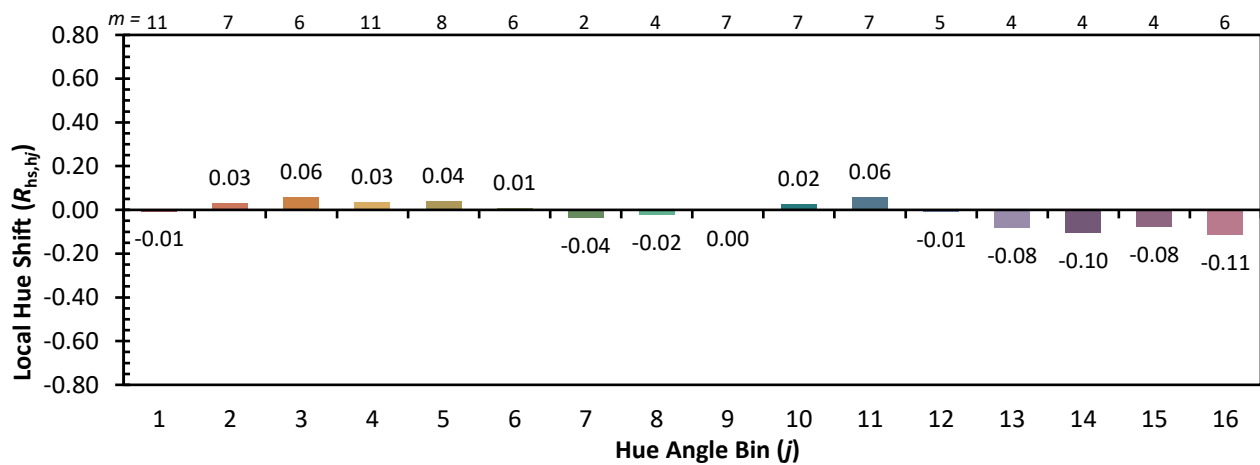
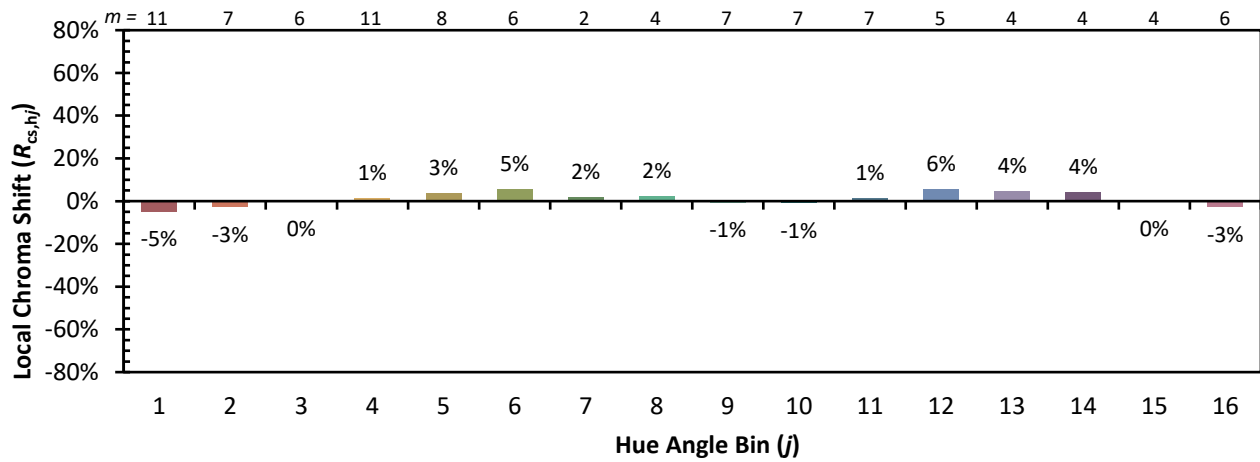


Individual Sample Fidelity Index ($R_{f,i}$)

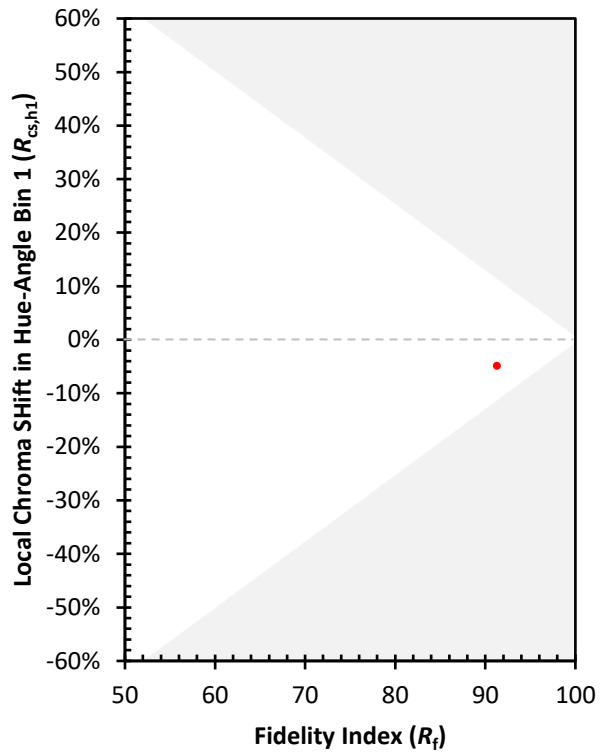
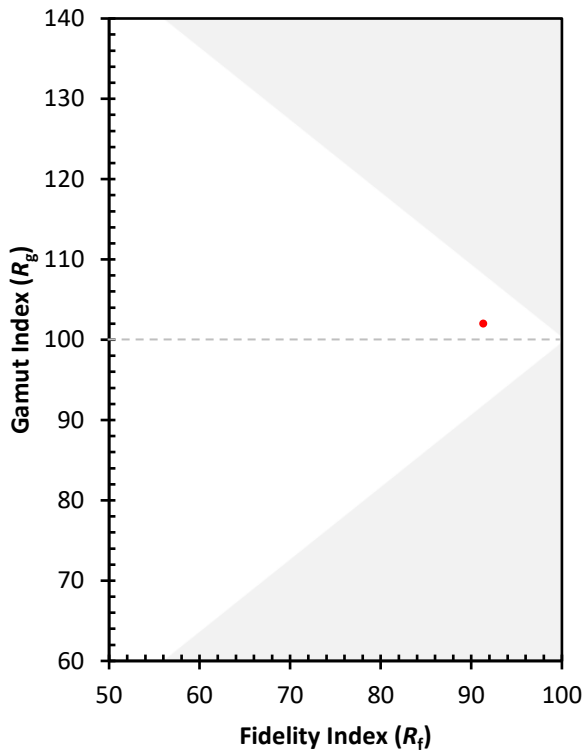
| | | | |
|------------|------------|------------|------------|
| CES01 = 86 | CES26 = 91 | CES51 = 96 | CES76 = 89 |
| CES02 = 63 | CES27 = 96 | CES52 = 95 | CES77 = 85 |
| CES03 = 32 | CES28 = 96 | CES53 = 93 | CES78 = 86 |
| CES04 = 70 | CES29 = 90 | CES54 = 98 | CES79 = 89 |
| CES05 = 51 | CES30 = 96 | CES55 = 98 | CES80 = 91 |
| CES06 = 51 | CES31 = 90 | CES56 = 95 | CES81 = 72 |
| CES07 = 44 | CES32 = 84 | CES57 = 95 | CES82 = 95 |
| CES08 = 42 | CES33 = 91 | CES58 = 95 | CES83 = 93 |
| CES09 = 29 | CES34 = 92 | CES59 = 99 | CES84 = 96 |
| CES10 = 76 | CES35 = 96 | CES60 = 96 | CES85 = 80 |
| CES11 = 59 | CES36 = 90 | CES61 = 96 | CES86 = 77 |
| CES12 = 65 | CES37 = 94 | CES62 = 95 | CES87 = 91 |
| CES13 = 44 | CES38 = 99 | CES63 = 94 | CES88 = 96 |
| CES14 = 74 | CES39 = 97 | CES64 = 96 | CES89 = 82 |
| CES15 = 72 | CES40 = 94 | CES65 = 92 | CES90 = 97 |
| CES16 = 48 | CES41 = 94 | CES66 = 95 | CES91 = 82 |
| CES17 = 50 | CES42 = 91 | CES67 = 94 | CES92 = 78 |
| CES18 = 57 | CES43 = 88 | CES68 = 93 | CES93 = 87 |
| CES19 = 72 | CES44 = 99 | CES69 = 94 | CES94 = 73 |
| CES20 = 67 | CES45 = 93 | CES70 = 90 | CES95 = 85 |
| CES21 = 86 | CES46 = 93 | CES71 = 90 | CES96 = 92 |
| CES22 = 79 | CES47 = 86 | CES72 = 96 | CES97 = 93 |
| CES23 = 92 | CES48 = 95 | CES73 = 85 | CES98 = 94 |
| CES24 = 91 | CES49 = 91 | CES74 = 90 | CES99 = 93 |
| CES25 = 72 | CES50 = 96 | CES75 = 90 | |



Color Rendition by Hue-Angle Bin



Measure Comparisons



(END OF REPORT)