

Cooper Lighting Solutions Photometric Lab
1121 Highway 74 South
Peachtree City, GA 30269



Scaled data based on original data using
LM-79-2019 Approved Method: Electrical and Photometric Measurements of Solid-
State Lighting Products

Test Report Prepared for
Cooper Lighting Solutions

Brand: METALUX

Report Number: P1444674

Luminaire Tested: EHBR1-36-UNV-TA-L930-UPL12

Issue Date: 5/1/2026

Test Information

Test Method: LM-79-2019
Report Number: P1444674
REPORT IS A COMBINATION OF REPORTS P1444304 AND P1431635
Test Lab: INNOVATION CENTER
Issue Date: 5/1/2026
Manufacturer: COOPER LIGHTING SOLUTIONS
Product Line: METALUX
Catalog Number: EHBR1-36-UNV-TA-L930-UPL12
Description: Elevate Round Highbay at, 36000 lumens, 3000K 90CRI LEDs with TA lens
Light Source: -
Ballast/Driver: -

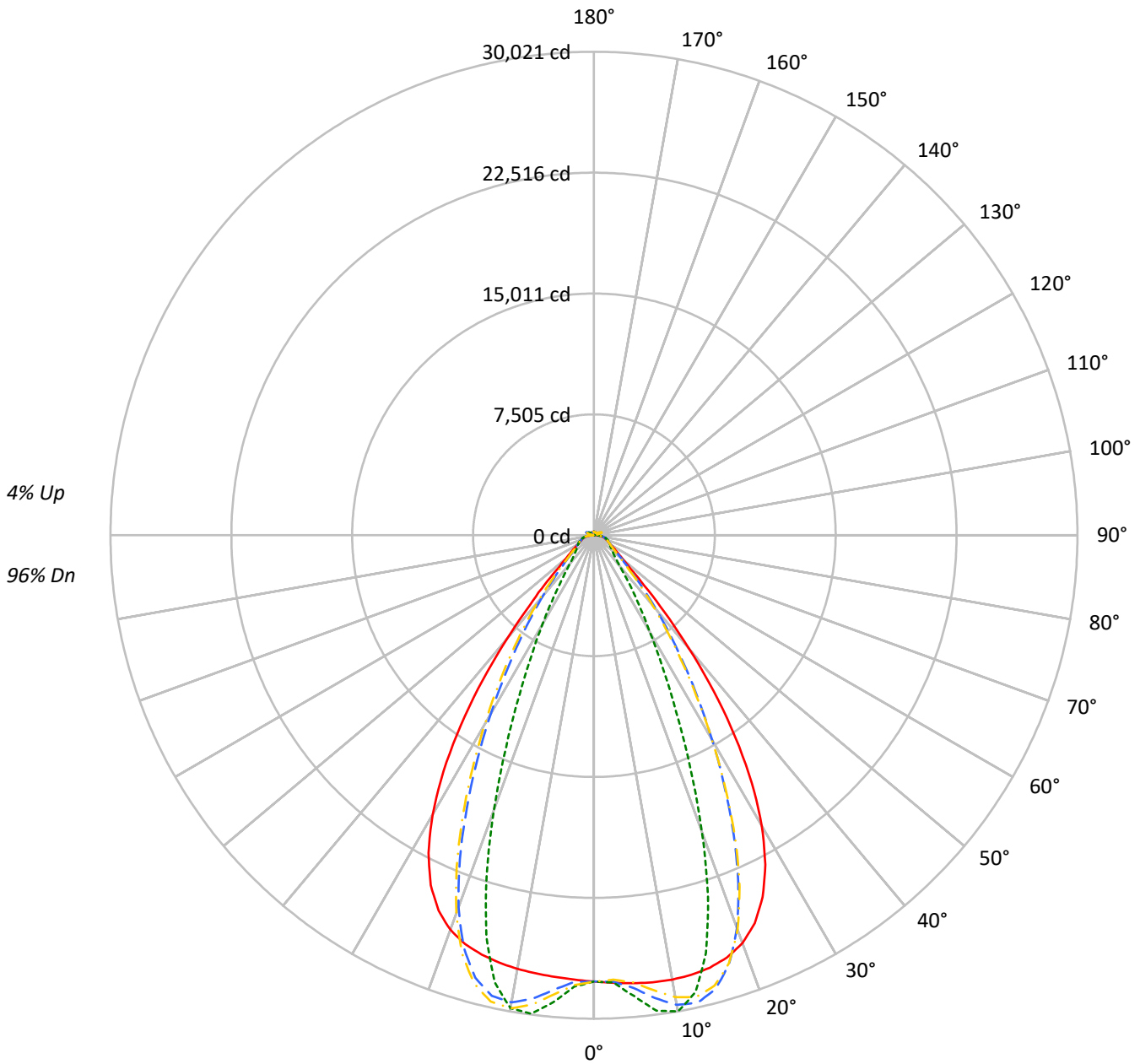
Summary

Lumens per Lamp: N/A
Luminaire Lumens: 33161.1 lumens
Efficiency: N/A
Efficacy: 166.8 lumens/watt
Spacing Criteria (0/90/45): 1.13 / 0.77 / 0.88
Luminous Opening: Vertical Cylinder (Dia: 1.71' x H: 0.1')
CIE Type: Direct

Input Watts (W): 198.8
Input Voltage (V): NR
Input Current (Ain): NR
Voltage Rise (V): NR
Power Factor: NR
Total Harmonic Distortion (THDi): NR
Frequency (hertz): 60
Stabilization Time: NR
Operation Time: NR
Ambient Temperature (°C): NR
Test Distance: 24 FT

TEST NUMBER: P1444674
CATALOG NUMBER: EHBR1-36-UNV-TA-L930-UPL12

Luminous Intensity Polar Plot



— 0°-180° - - 45°-225° - · - · 90°-270° - · - · 135°-315°



TEST NUMBER: P1444674
 CATALOG NUMBER: EHBR1-36-UNV-TA-L930-UPL12

COEFFICIENT OF UTILIZATION - ZONAL CAVITY METHOD:

RF	20				20				20				20				20				
RC	80				70				50				30				10			0	
RW	70	50	30	10	70	50	30	10	50	30	10	50	30	10	50	30	10	50	30	10	0
RCR																					
0	118	118	118	118	115	115	115	115	109	109	109	103	103	103	98	98	98	98	98	98	96
1	111	108	105	102	108	105	102	100	100	98	96	96	94	92	92	90	89	89	89	89	87
2	104	98	93	89	102	96	92	88	92	89	86	89	86	83	85	83	81	81	81	81	79
3	98	90	84	80	96	89	83	79	85	81	77	82	79	75	80	76	74	74	74	74	72
4	92	83	77	72	90	82	76	71	79	74	70	77	72	69	74	71	68	68	68	68	66
5	87	77	71	66	85	76	70	65	74	68	64	72	67	63	70	66	62	62	62	62	61
6	82	72	65	60	80	71	64	60	69	63	59	67	62	58	65	61	58	58	58	58	56
7	77	67	60	56	76	66	60	55	64	59	55	63	58	54	61	57	54	54	54	54	52
8	73	63	56	52	72	62	56	51	61	55	51	59	54	50	58	53	50	50	50	50	48
9	70	59	52	48	68	58	52	48	57	51	47	56	51	47	55	50	47	47	47	47	45
10	66	55	49	45	65	55	49	45	54	48	44	53	48	44	52	47	44	44	44	44	42

AVERAGE LUMINANCE (cd/sqm):

	0°	90°	180°	270°
0°	130138	130138	130138	130138
5°	130768	134581	128938	136344
10°	131860	141300	128698	140365
15°	132507	128087	128473	122930
20°	131137	95421	126845	88287
25°	124126	60348	120024	54755
30°	108433	36265	104233	33142
35°	83451	22756	78651	20158
40°	52790	14275	48299	13414
45°	27209	11121	26758	10938
50°	15953	9892	15463	9737
55°	12221	9358	11769	9274
60°	10341	9559	9901	9436
65°	9713	9983	9341	9643
70°	9489	10453	9017	10061
75°	10146	11087	9598	10596
80°	10499	12276	9520	11206
85°	9890	11848	7990	10143

MAXIMUM LUMINANCE 45°-90°:

Horizontal Angle: 25°
 Vertical Angle: 45°
 Luminance: 41640 cd/sqm



TEST NUMBER: P1444674
 CATALOG NUMBER: EHBR1-36-UNV-TA-L930-UPL12

ZONAL LUMENS:

Zone	Lumens	% Fixture
0°-10°	2731.1	8.2
10°-20°	7682.8	23.2
20°-30°	8750.1	26.4
30°-40°	6289.2	19.0
40°-50°	2900.6	8.7
50°-60°	1388.0	4.2
60°-70°	1012.8	3.1
70°-80°	769.4	2.3
80°-90°	351.9	1.1
90°-100°	39.7	0.1
100°-110°	196.0	0.6
110°-120°	361.5	1.1
120°-130°	229.5	0.7
130°-140°	158.5	0.5
140°-150°	126.3	0.4
150°-160°	93.6	0.3
160°-170°	59.3	0.2
170°-180°	20.8	0.1
0°-30°	19164.0	57.8
0°-40°	25453.2	76.8
0°-60°	29741.8	89.7
0°-90°	31875.9	96.1
90°-120°	597.1	1.8
90°-150°	1111.5	3.4
90°-180°	1285.0	3.9
0°-180°	33161.1	100.0

CANDELA DISTRIBUTION:

	0°	90°	180°	270°	360°	Flux
0°	27712	27712	27712	27712	27712	
5°	27921	28735	27530	29112	27921	2668
15°	27799	26872	26953	25790	27799	7833
25°	24788	12052	23969	10934	24788	11237
35°	15316	4177	14435	3700	15316	9400
45°	4402	1799	4329	1770	4402	3744
55°	1652	1265	1590	1253	1652	1524
65°	1014	1042	975	1006	1014	1013
75°	715	781	676	746	715	743
85°	340	407	275	349	340	319
90°	85	109	19	25	85	54
95°	18	20	18	20	18	17
105°	74	92	51	93	74	97
115°	319	379	334	379	319	295
125°	252	252	283	253	252	229
135°	214	179	229	182	214	167
145°	204	188	216	193	204	129
155°	201	196	212	200	201	93
165°	209	205	215	207	209	59
175°	218	219	222	220	218	21
180°	221	221	221	221	221	



TEST NUMBER: P1444674
 CATALOG NUMBER: EHBR1-36-UNV-TA-L930-UPL12

CANDELA DISTRIBUTION (FULL):

	0°	2.5°	5°	7.5°	10°	12.5°	15°	17.5°	20°	22.5°	25°
0°	27712.0	27712.0	27712.0	27712.0	27712.0	27712.0	27712.0	27712.0	27712.0	27712.0	27712.0
2.5°	27817.9	27815.6	27815.2	27813.3	27812.7	27812.7	27811.8	27809.5	27808.1	27805.0	27801.3
5°	27921.1	27919.8	27920.6	27920.8	27918.9	27914.5	27907.7	27899.4	27888.9	27879.1	27870.3
7.5°	28000.9	28002.8	28005.3	28004.8	27998.7	27988.5	27974.7	27966.9	27971.5	27986.6	28021.2
10°	28015.5	28027.4	28032.0	28030.6	28018.5	28009.8	28013.1	28042.5	28100.9	28178.9	28285.5
12.5°	27958.7	27973.3	27972.8	27968.0	27956.2	27968.1	28010.6	28098.1	28223.4	28377.1	28557.4
15°	27799.2	27818.1	27812.7	27806.5	27798.6	27837.8	27922.8	28074.5	28268.0	28484.8	28706.8
17.5°	27489.5	27512.3	27501.3	27494.1	27487.5	27560.9	27706.9	27929.1	28172.8	28418.1	28628.4
20°	26952.4	26967.7	26941.3	26928.9	26939.3	27083.1	27298.0	27581.8	27838.7	28070.6	28214.4
22.5°	26075.8	26094.8	26045.2	26039.4	26100.7	26321.4	26593.4	26910.7	27152.0	27335.9	27391.2
25°	24787.9	24806.6	24747.6	24782.8	24887.0	25187.6	25511.5	25851.0	26056.9	26193.1	26155.5
27.5°	23049.5	23066.6	23010.7	23082.6	23247.2	23642.3	24023.5	24391.6	24575.2	24670.7	24549.7
30°	20857.1	20892.6	20826.5	20926.9	21178.2	21691.0	22127.8	22540.7	22723.7	22796.2	22608.1
32.5°	18253.1	18303.6	18230.7	18380.1	18730.8	19346.7	19842.9	20304.3	20506.7	20589.6	20377.1
35°	15316.3	15388.5	15305.0	15529.2	15961.6	16647.6	17197.0	17712.1	17951.8	18069.4	17855.2
37.5°	12204.7	12273.7	12228.5	12527.5	13002.3	13713.3	14274.2	14829.8	15100.5	15276.9	15108.0
40°	9149.9	9213.0	9247.2	9589.0	10035.7	10705.9	11244.6	11794.3	12097.2	12318.5	12214.4
42.5°	6458.0	6521.6	6637.8	6967.7	7340.2	7895.0	8356.4	8850.0	9139.3	9375.4	9335.3
45°	4402.3	4476.1	4621.8	4891.9	5161.3	5559.3	5898.1	6282.0	6518.3	6734.6	6737.2
47.5°	3084.9	3136.8	3266.9	3451.4	3627.0	4125.2	4145.7	4334.3	4493.2	4654.9	4675.8
50°	2377.5	2408.7	2477.7	2580.6	2680.1	2809.4	2927.7	3064.4	3162.3	3250.9	3272.1
52.5°	1954.2	1974.0	2009.1	2064.8	2122.5	2192.8	2256.2	2331.3	2384.5	2431.9	2441.9
55°	1651.5	1668.0	1720.3	1730.9	1796.9	1809.6	1837.8	1883.5	1914.4	1942.9	1949.9
57.5°	1423.2	1435.2	1446.3	1470.0	1490.3	1519.9	1543.7	1576.5	1596.0	1616.5	1618.3
60°	1243.1	1251.8	1259.6	1276.1	1289.9	1310.5	1326.9	1349.2	1363.2	1378.6	1380.4
62.5°	1109.1	1115.3	1120.5	1131.4	1141.3	1157.1	1170.1	1188.7	1201.7	1213.6	1216.3
65°	1013.8	1018.3	1021.7	1029.9	1038.5	1052.0	1063.8	1079.0	1088.5	1097.7	1099.7
67.5°	929.4	933.6	937.2	944.7	950.7	960.6	968.6	980.0	987.2	994.5	994.7
70°	832.6	836.6	839.3	846.3	851.1	859.8	866.1	876.3	883.7	891.9	893.9
72.5°	765.7	768.0	771.6	778.0	784.6	793.9	802.4	813.1	822.1	830.5	834.0
75°	714.7	717.5	719.9	725.3	729.9	737.7	744.1	753.8	761.7	770.7	775.1
77.5°	641.2	644.4	646.4	651.9	655.9	663.4	668.1	676.8	683.1	691.4	695.4
80°	552.3	555.4	556.8	561.9	565.1	571.9	576.6	585.0	590.4	598.6	603.4
82.5°	453.9	456.7	457.5	462.4	464.1	469.8	473.2	481.7	488.3	499.0	506.4
85°	339.9	340.9	342.6	341.3	348.2	348.6	356.4	357.8	368.1	370.8	382.5
87.5°	207.8	210.8	212.4	217.1	219.1	223.9	225.4	230.4	233.1	238.9	241.6
90°	84.7	89.2	90.5	96.0	97.2	101.9	102.8	108.3	109.6	115.1	117.0
92.5°	16.0	16.9	17.6	18.8	19.7	21.1	22.4	23.4	24.3	25.8	27.5
95°	17.9	18.9	19.9	20.9	21.8	22.9	23.9	24.9	25.8	26.8	29.7
97.5°	22.1	23.0	23.8	24.7	25.6	26.4	27.3	28.2	29.0	29.8	33.2
100°	28.2	28.9	29.6	30.4	31.1	31.8	32.5	33.3	34.0	34.8	41.1
102.5°	44.9	47.5	50.1	52.7	55.3	57.8	60.5	63.0	65.6	68.2	81.6
105°	73.8	80.7	87.9	94.8	101.9	109.0	116.0	122.8	129.8	136.8	159.0
107.5°	123.2	136.2	149.3	162.3	175.3	188.3	201.3	214.2	227.2	240.0	262.5
110°	223.7	234.0	244.5	255.0	265.4	275.8	286.2	296.4	306.9	317.2	333.6



TEST NUMBER: P1444674
 CATALOG NUMBER: EHBR1-36-UNV-TA-L930-UPL12

CANDELA DISTRIBUTION (continued):

	0°	2.5°	5°	7.5°	10°	12.5°	15°	17.5°	20°	22.5°	25°
112.5°	300.6	305.2	309.8	314.6	319.3	323.7	328.4	333.0	337.7	342.1	353.8
115°	318.7	320.2	321.9	323.2	324.8	326.2	327.8	329.2	330.7	332.0	339.8
117.5°	312.1	311.6	311.3	310.7	310.2	309.7	309.2	308.5	308.0	307.4	311.7
120°	294.8	293.0	291.5	289.6	287.9	286.1	284.5	282.6	280.8	278.8	280.5
122.5°	272.2	270.2	268.3	266.1	264.1	262.0	259.9	257.5	255.5	253.3	253.6
125°	251.8	249.8	247.9	245.7	243.5	241.3	239.2	236.9	234.6	232.1	232.1
127.5°	234.8	233.3	231.9	230.0	228.4	226.6	224.7	222.9	221.2	219.1	218.9
130°	225.1	223.8	222.3	220.6	219.0	217.3	215.6	213.7	212.0	210.1	209.8
132.5°	217.8	216.8	215.7	214.4	213.1	211.4	210.0	208.4	206.9	205.4	205.1
135°	214.1	213.1	212.1	210.8	209.6	208.0	206.6	205.0	203.5	201.8	201.7
137.5°	211.5	210.5	209.5	208.2	207.0	205.4	204.2	202.6	201.1	199.5	199.3
140°	209.1	208.2	207.1	205.9	204.8	203.5	202.0	200.7	199.2	197.7	197.5
142.5°	205.9	205.0	204.2	203.1	202.1	200.8	199.6	198.2	197.0	195.6	195.6
145°	204.3	203.6	202.9	201.9	201.0	199.7	198.7	197.3	196.3	195.2	195.1
147.5°	203.2	202.5	202.0	201.0	200.4	199.2	198.3	197.0	196.1	195.1	195.2
150°	202.2	201.6	201.0	200.2	199.4	198.5	197.6	196.6	195.7	194.5	194.6
152.5°	200.7	200.0	199.5	198.7	198.1	196.9	196.3	195.2	194.4	193.5	193.5
155°	200.8	200.2	199.5	198.9	198.1	197.3	196.4	195.6	194.8	193.9	193.9
157.5°	201.9	201.2	200.7	200.0	199.4	198.6	197.9	197.2	196.5	195.8	195.7
160°	203.9	203.3	202.7	202.1	201.4	200.6	200.0	199.3	198.7	197.9	197.8
162.5°	206.1	205.4	204.8	204.2	203.6	202.8	202.2	201.7	201.0	200.2	200.2
165°	208.7	208.3	207.7	207.3	206.7	206.2	205.7	205.1	204.6	204.0	203.9
167.5°	212.4	211.9	211.6	210.9	210.4	210.0	209.3	208.8	208.4	207.7	207.7
170°	215.0	214.5	214.2	213.9	213.5	213.1	212.8	212.4	211.9	211.6	211.5
172.5°	217.3	216.9	216.6	216.5	216.0	215.8	215.6	215.2	215.0	214.6	214.8
175°	218.4	218.1	218.0	217.8	217.6	217.3	217.3	217.1	217.1	216.7	216.7
177.5°	220.2	220.0	220.0	219.9	219.9	219.8	219.8	219.6	219.5	219.5	219.4
180°	221.4	221.4	221.4	221.4	221.4	221.4	221.4	221.4	221.4	221.4	221.4



TEST NUMBER: P1444674
 CATALOG NUMBER: EHBR1-36-UNV-TA-L930-UPL12

CANDELA DISTRIBUTION (continued):

	27.5°	30°	32.5°	35°	37.5°	40°	42.5°	45°	47.5°	50°	52.5°
0°	27712.0	27712.0	27712.0	27712.0	27712.0	27712.0	27712.0	27712.0	27712.0	27712.0	27712.0
2.5°	27798.6	27795.3	27790.6	27784.8	27779.8	27774.0	27760.1	27756.0	27760.6	27763.6	27770.0
5°	27864.7	27866.6	27867.3	27880.0	27890.9	27918.1	28131.3	28216.1	28281.6	28323.2	28386.3
7.5°	28063.8	28127.9	28191.3	28276.6	28350.1	28449.4	28822.4	28981.2	29094.1	29175.2	29275.1
10°	28401.3	28541.2	28672.4	28826.0	28958.1	29109.4	29456.6	29611.3	29709.0	29780.0	29846.4
12.5°	28741.3	28935.3	29110.6	29281.6	29424.6	29555.7	29677.9	29732.0	29736.6	29738.8	29703.6
15°	28918.4	29103.8	29258.3	29371.4	29455.4	29492.6	29282.3	29172.1	29032.7	28917.8	28729.0
17.5°	28806.6	28917.8	28984.6	28978.0	28943.3	28827.0	28231.6	27904.1	27578.9	27285.9	26901.6
20°	28309.8	28301.3	28243.2	28078.8	27880.7	27572.7	26551.8	25962.7	25393.3	24893.1	24286.3
22.5°	27385.6	27240.2	27037.4	26682.9	26289.1	25750.7	24287.7	23421.4	22628.5	21928.2	21143.6
25°	26046.4	25747.2	25373.3	24810.5	24198.4	23413.3	21610.1	20532.5	19580.6	18755.1	17849.9
27.5°	24332.6	23881.9	23333.9	22554.9	21725.7	20719.9	18720.8	17531.5	16509.7	15624.5	14661.1
30°	22303.6	21717.5	21009.9	20043.0	19042.8	17902.0	15874.4	14669.8	13635.6	12725.0	11760.8
32.5°	20010.6	19324.2	18494.9	17409.7	16328.1	15155.2	13197.1	12031.0	11043.0	10167.1	9294.4
35°	17481.7	16745.5	15868.2	14761.4	13686.1	12545.8	10749.1	9697.7	8825.2	8051.0	7346.3
37.5°	14768.9	14046.0	13212.1	12169.0	11171.9	10138.6	8588.3	7707.3	6975.1	6332.5	5788.4
40°	11948.3	11315.7	10594.2	9692.4	8841.4	7981.0	6708.3	6009.0	5431.2	4941.1	4533.3
42.5°	9162.2	8672.0	8118.7	7406.1	6754.9	6099.7	5120.2	4602.0	4174.1	3821.3	3533.0
45°	6647.5	6319.6	5948.5	5453.1	5002.5	4545.4	3848.3	3484.3	3205.5	2978.0	2785.6
47.5°	4646.9	4456.8	4445.1	3987.3	3656.9	3377.4	2928.3	2698.4	2527.5	2389.7	2267.9
50°	3263.4	3171.4	3057.1	2893.7	2740.3	2582.3	2308.8	2169.7	2069.7	1986.2	1909.2
52.5°	2439.7	2391.9	2331.0	2244.2	2161.2	2072.3	1899.2	1810.7	1779.2	1701.5	1640.5
55°	1948.6	1921.2	1886.5	1835.7	1785.1	1764.9	1616.4	1550.8	1509.1	1478.4	1445.7
57.5°	1618.6	1598.2	1577.7	1543.1	1513.9	1478.4	1399.6	1365.9	1341.3	1323.2	1300.4
60°	1380.6	1368.4	1356.9	1336.7	1320.8	1301.8	1251.8	1232.7	1219.8	1208.9	1194.5
62.5°	1218.5	1212.3	1206.3	1195.6	1187.5	1177.2	1143.0	1133.9	1127.4	1121.9	1113.1
65°	1101.6	1097.1	1093.8	1086.6	1082.6	1076.6	1047.2	1041.0	1037.0	1035.1	1029.9
67.5°	995.3	990.6	988.5	983.3	981.7	977.8	953.8	950.4	949.1	949.7	947.8
70°	895.9	893.9	895.0	894.2	896.4	897.1	882.5	882.4	884.0	887.0	887.4
72.5°	836.3	836.3	837.4	837.9	840.1	841.1	829.0	828.4	829.1	831.4	831.5
75°	779.7	780.5	783.7	784.6	787.2	787.8	771.7	769.9	769.9	772.2	771.4
77.5°	701.1	704.5	710.4	713.4	718.4	719.3	701.3	699.2	699.3	701.5	699.6
80°	612.1	618.6	627.9	634.4	642.0	645.1	626.6	622.2	618.1	617.5	613.7
82.5°	517.5	525.4	536.6	542.5	550.6	552.4	521.5	515.7	512.2	512.5	509.1
85°	395.1	401.1	411.3	414.5	419.5	419.1	383.8	368.7	372.7	366.4	371.3
87.5°	247.8	251.3	257.7	258.5	260.8	260.4	224.8	217.8	215.7	215.9	213.3
90°	122.7	125.1	130.6	130.6	134.3	133.8	105.0	101.7	99.2	100.5	97.0
92.5°	29.8	31.5	33.5	35.3	37.4	39.3	38.0	38.9	37.3	35.2	33.8
95°	32.6	35.6	38.5	41.3	44.3	47.2	50.2	53.1	50.3	47.6	44.8
97.5°	36.7	40.2	43.6	47.0	50.4	53.9	57.4	60.9	57.9	54.7	51.8
100°	47.6	54.0	60.4	66.8	73.3	79.7	86.2	92.6	87.0	81.0	75.4
102.5°	95.3	108.9	122.5	136.2	149.8	163.4	177.2	191.0	177.9	164.7	151.6
105°	181.1	203.3	225.4	247.2	269.3	291.5	313.9	336.0	315.1	294.3	273.5
107.5°	284.9	307.4	329.5	351.8	374.3	396.6	419.5	441.9	421.5	400.9	380.7
110°	349.9	366.1	382.4	398.6	414.8	431.0	448.0	464.3	451.9	439.5	427.2



TEST NUMBER: P1444674
 CATALOG NUMBER: EHBR1-36-UNV-TA-L930-UPL12

CANDELA DISTRIBUTION (continued):

	27.5°	30°	32.5°	35°	37.5°	40°	42.5°	45°	47.5°	50°	52.5°
112.5°	365.2	376.9	388.4	399.8	411.2	422.8	435.2	447.0	440.6	434.1	427.8
115°	347.5	355.2	362.8	370.4	378.0	385.6	394.4	402.3	400.0	397.7	395.4
117.5°	315.7	319.8	323.9	328.1	332.0	336.1	341.8	346.0	345.9	345.9	346.0
120°	282.0	283.6	285.0	286.6	287.9	289.4	292.6	294.3	295.6	296.7	298.0
122.5°	254.0	254.2	254.5	254.8	255.0	255.2	257.5	258.2	258.8	259.4	260.1
125°	232.1	231.9	231.8	231.7	231.4	231.3	233.5	233.7	233.4	232.8	232.4
127.5°	218.4	218.0	217.4	217.1	216.5	216.0	218.0	218.1	216.8	215.6	214.3
130°	209.3	209.1	208.6	208.3	207.8	207.5	209.8	210.0	208.3	206.3	204.5
132.5°	204.6	204.3	203.9	203.7	203.3	202.9	205.4	205.7	203.8	201.8	199.8
135°	201.3	201.0	200.7	200.4	200.1	199.9	202.6	203.1	201.3	199.2	197.3
137.5°	198.8	198.5	198.3	198.1	197.8	197.6	200.7	201.2	199.7	197.8	196.3
140°	197.3	197.0	196.9	196.8	196.6	196.6	200.0	200.6	199.3	198.0	196.6
142.5°	195.3	195.4	195.4	195.6	195.6	195.8	199.7	200.6	199.5	198.4	197.3
145°	195.1	195.2	195.3	195.6	195.8	196.1	200.4	201.7	201.0	200.0	199.2
147.5°	194.9	195.1	195.2	195.3	195.5	196.1	200.8	201.9	201.5	200.8	200.2
150°	194.6	194.8	194.9	195.2	195.6	196.0	201.4	202.9	202.4	201.9	201.4
152.5°	193.5	193.6	193.7	193.9	194.1	194.6	201.3	203.0	202.6	202.0	201.7
155°	193.8	193.8	193.8	194.0	194.1	194.4	201.8	203.6	203.4	203.0	202.6
157.5°	195.6	195.4	195.2	195.3	195.4	195.4	203.4	205.4	205.1	204.7	204.4
160°	197.7	197.6	197.3	197.3	197.1	197.2	205.3	207.4	207.1	206.7	206.4
162.5°	200.1	200.2	200.1	200.1	200.0	200.1	208.3	210.5	210.0	209.6	209.3
165°	203.7	203.5	203.4	203.4	203.3	203.2	210.9	212.8	212.6	212.3	211.9
167.5°	207.5	207.5	207.4	207.3	207.2	207.4	214.5	216.4	216.1	215.7	215.5
170°	211.4	211.4	211.3	211.3	211.4	211.6	217.6	219.0	218.9	218.4	218.2
172.5°	214.8	214.9	214.9	215.0	215.1	215.3	220.4	221.7	221.5	221.3	220.9
175°	216.8	216.9	217.0	217.2	217.2	217.3	221.4	222.3	222.3	222.1	221.8
177.5°	219.6	219.6	219.8	219.8	220.0	220.1	222.6	223.1	223.1	223.1	223.0
180°	221.4	221.4	221.4	221.4	221.4	221.4	221.4	221.4	221.4	221.4	221.4



TEST NUMBER: P1444674
 CATALOG NUMBER: EHBR1-36-UNV-TA-L930-UPL12

CANDELA DISTRIBUTION (continued):

	55°	57.5°	60°	62.5°	65°	67.5°	70°	72.5°	75°	77.5°	80°
0°	27712.0	27712.0	27712.0	27712.0	27712.0	27712.0	27712.0	27712.0	27712.0	27712.0	27712.0
2.5°	27771.5	27781.2	27782.7	27794.0	27793.1	27806.7	27804.5	27815.6	27809.2	27818.2	27810.6
5°	28423.7	28482.9	28513.8	28571.5	28589.8	28641.5	28656.0	28703.1	28705.1	28742.5	28734.0
7.5°	29345.9	29433.1	29484.9	29556.2	29592.4	29651.9	29678.1	29722.0	29736.2	29771.1	29773.8
10°	29896.6	29938.9	29968.5	29988.4	30006.6	30015.1	30025.1	30022.4	30025.1	30021.1	30029.7
12.5°	29680.0	29618.2	29577.3	29499.8	29455.0	29369.5	29327.4	29245.1	29215.3	29144.6	29134.5
15°	28583.0	28367.5	28215.3	27993.9	27854.8	27636.9	27509.5	27313.0	27223.2	27067.0	27026.0
17.5°	26583.6	26183.6	25874.1	25477.0	25201.5	24830.4	24597.0	24289.9	24121.6	23874.0	23788.2
20°	23780.5	23188.7	22724.4	22171.3	21775.5	21282.3	20966.6	20568.4	20337.2	20033.0	19909.7
22.5°	20489.5	19752.7	19172.9	18519.5	18041.9	17492.4	17114.1	16683.2	16431.7	16101.2	15954.9
25°	17097.6	16285.0	15640.4	14952.0	14447.3	13896.4	13518.1	13094.8	12834.6	12520.9	12375.4
27.5°	13853.4	13031.0	12408.0	11767.9	11305.0	10807.9	10466.5	10097.1	9866.1	9598.2	9461.4
30°	10990.5	10265.1	9735.0	9203.8	8818.8	8415.0	8131.4	7825.1	7622.4	7393.2	7262.8
32.5°	8658.1	8098.1	7683.0	7261.4	6946.3	6609.0	6363.8	6093.6	5910.7	5706.0	5587.9
35°	6857.1	6422.0	6090.8	5743.9	5473.2	5185.8	4969.9	4736.6	4572.5	4396.2	4294.2
37.5°	5417.9	5071.8	4799.3	4511.1	4288.8	4050.8	3970.6	3702.9	3532.8	3392.1	3294.6
40°	4252.0	3976.8	3751.3	3531.0	3349.6	3169.1	3024.1	2881.1	2771.4	2670.7	2601.1
42.5°	3320.4	3121.0	2956.4	2795.0	2662.7	2531.1	2426.2	2327.7	2253.7	2187.9	2143.0
45°	2639.6	2502.5	2388.1	2274.4	2181.1	2093.2	2022.5	1959.7	1911.9	1872.4	1844.4
47.5°	2168.5	2074.7	1993.9	1917.2	1853.8	1796.3	1748.9	1733.5	1682.2	1647.5	1634.4
50°	1842.9	1786.2	1724.9	1668.3	1626.0	1583.9	1553.2	1523.1	1503.9	1487.9	1483.1
52.5°	1600.0	1556.6	1522.5	1486.6	1458.7	1428.7	1407.6	1387.5	1377.0	1368.6	1367.6
55°	1419.2	1388.9	1366.4	1342.3	1325.6	1308.0	1297.1	1286.4	1281.8	1277.6	1278.0
57.5°	1282.5	1262.3	1247.7	1232.0	1223.0	1214.5	1211.8	1209.1	1210.6	1211.1	1213.6
60°	1183.0	1169.8	1160.5	1151.6	1147.8	1145.1	1147.2	1149.6	1154.4	1158.3	1161.8
62.5°	1106.6	1099.1	1094.6	1089.8	1089.4	1089.6	1093.7	1097.7	1103.8	1108.3	1111.7
65°	1028.1	1023.7	1022.3	1019.2	1020.8	1021.7	1026.6	1029.7	1035.8	1039.3	1043.7
67.5°	948.7	947.6	948.6	948.6	951.4	953.7	958.4	961.9	967.1	970.4	973.8
70°	890.1	890.4	892.6	893.0	896.0	897.6	901.7	904.0	908.6	911.4	915.6
72.5°	833.0	832.1	832.6	831.3	832.3	831.9	834.2	835.3	839.2	841.3	846.5
75°	772.4	769.8	769.1	766.4	766.5	764.5	765.5	765.3	767.9	769.0	772.6
77.5°	699.0	694.7	692.6	688.0	687.9	686.2	688.0	689.1	693.7	695.8	700.0
80°	611.3	604.5	601.4	596.1	597.0	596.7	601.3	604.6	610.2	611.2	616.5
82.5°	508.0	501.2	497.9	492.7	493.9	494.0	498.1	498.9	503.7	505.7	511.9
85°	363.8	366.4	359.1	359.7	358.1	361.0	363.8	367.2	371.2	377.9	383.1
87.5°	214.2	213.3	215.9	216.2	219.9	221.8	227.8	231.2	237.8	243.1	252.5
90°	97.1	93.7	95.7	94.5	98.1	97.0	100.3	98.6	102.6	102.8	108.0
92.5°	31.5	29.9	27.7	26.1	24.0	22.5	21.2	20.8	19.5	19.1	17.8
95°	42.2	39.4	36.7	34.0	31.3	28.5	27.5	26.6	25.5	24.5	23.5
97.5°	48.8	46.0	43.0	40.0	37.1	34.1	33.5	32.8	32.2	31.5	30.8
100°	69.6	64.0	58.3	52.6	46.9	41.3	40.7	40.2	39.7	39.1	38.6
102.5°	138.7	125.6	112.6	99.5	86.6	73.5	71.3	69.0	66.7	64.5	62.2
105°	252.5	231.6	210.8	190.0	169.2	148.4	142.2	135.7	129.6	123.3	117.2
107.5°	360.3	339.8	319.5	299.2	278.9	258.6	248.7	239.0	228.9	219.1	209.4
110°	414.6	402.4	390.2	377.8	365.5	353.3	343.9	334.5	325.0	315.6	306.3



TEST NUMBER: P1444674
 CATALOG NUMBER: EHBR1-36-UNV-TA-L930-UPL12

CANDELA DISTRIBUTION (continued):

	55°	57.5°	60°	62.5°	65°	67.5°	70°	72.5°	75°	77.5°	80°
112.5°	421.4	415.2	408.8	402.5	396.4	390.1	385.4	380.8	376.2	371.6	366.8
115°	393.2	390.9	388.7	386.6	384.5	382.3	381.9	381.4	380.9	380.5	380.2
117.5°	345.9	345.9	345.8	345.9	346.0	346.1	348.3	350.5	352.8	355.3	357.7
120°	299.2	300.3	301.5	302.9	304.1	305.5	308.3	311.5	314.4	317.7	321.0
122.5°	260.7	261.4	261.9	262.7	263.3	264.1	267.0	269.9	272.8	275.9	279.1
125°	231.8	231.2	230.7	230.2	229.6	229.4	231.5	233.7	236.1	238.6	241.1
127.5°	212.9	211.6	210.2	209.0	207.5	206.5	207.5	208.6	209.7	210.9	212.3
130°	202.6	200.8	198.6	196.9	194.8	193.1	193.2	193.2	193.4	193.6	193.9
132.5°	197.6	195.6	193.4	191.2	189.1	187.1	186.3	185.8	185.2	184.8	184.5
135°	195.2	193.3	191.1	189.1	187.0	185.1	184.0	183.1	182.2	181.3	180.6
137.5°	194.6	193.0	191.2	189.6	187.7	186.1	184.7	183.8	182.6	181.9	180.8
140°	195.0	193.7	192.1	190.6	189.2	187.9	186.6	185.8	184.7	184.0	183.1
142.5°	196.0	194.8	193.6	192.5	191.3	190.2	189.1	188.2	187.3	186.5	185.7
145°	198.3	197.4	196.5	195.6	194.6	193.8	192.8	192.1	191.3	190.6	190.2
147.5°	199.5	198.8	198.1	197.5	196.7	196.0	195.2	194.9	194.0	193.6	193.0
150°	200.7	200.1	199.3	199.0	198.2	197.6	197.0	196.6	196.0	195.8	195.2
152.5°	201.0	200.5	199.9	199.5	198.8	198.2	197.7	197.5	196.9	196.6	196.1
155°	202.1	201.7	201.2	200.8	200.1	199.9	199.3	198.8	198.5	198.0	197.5
157.5°	204.0	203.6	203.1	202.7	202.1	201.8	201.3	201.0	200.4	200.1	199.6
160°	206.0	205.7	205.2	204.8	204.3	204.0	203.4	203.0	202.5	202.0	201.5
162.5°	208.8	208.3	207.9	207.5	206.9	206.5	206.0	205.6	205.1	204.8	204.2
165°	211.5	211.1	210.7	210.3	210.0	209.6	209.0	208.5	208.1	207.6	207.0
167.5°	215.1	214.8	214.4	214.1	213.5	213.2	212.7	212.4	211.8	211.4	210.8
170°	217.9	217.3	217.1	216.6	216.3	215.7	215.4	214.9	214.5	214.1	213.6
172.5°	220.6	220.5	220.1	219.8	219.4	219.0	218.8	218.4	218.1	217.7	217.3
175°	221.7	221.6	221.5	221.2	221.1	220.9	220.7	220.6	220.4	220.3	220.0
177.5°	223.0	222.9	222.9	222.7	222.5	222.5	222.3	222.3	222.2	222.0	221.9
180°	221.4	221.4	221.4	221.4	221.4	221.4	221.4	221.4	221.4	221.4	221.4



TEST NUMBER: P1444674
 CATALOG NUMBER: EHBR1-36-UNV-TA-L930-UPL12

CANDELA DISTRIBUTION (continued):

	82.5°	85°	87.5°	90°	92.5°	95°	97.5°	100°	102.5°	105°	107.5°
0°	27712.0	27712.0	27712.0	27712.0	27712.0	27712.0	27712.0	27712.0	27712.0	27712.0	27712.0
2.5°	27818.6	27811.5	27814.9	27801.9	27805.0	27789.2	27787.8	27770.0	27768.3	27751.5	27745.3
5°	28760.4	28744.9	28762.4	28735.2	28740.6	28705.1	28702.2	28656.4	28640.5	28583.2	28558.5
7.5°	29795.7	29789.8	29800.5	29777.7	29777.0	29745.3	29732.2	29691.2	29665.8	29605.5	29567.1
10°	30022.4	30027.7	30019.0	30021.1	30008.8	30005.5	29992.8	29984.8	29964.2	29948.6	29925.5
12.5°	29080.7	29086.3	29050.4	29073.2	29055.2	29097.3	29093.8	29143.4	29150.9	29213.6	29237.4
15°	26904.3	26897.5	26828.6	26872.0	26848.8	26941.0	26961.6	27085.7	27152.0	27311.4	27409.2
17.5°	23616.5	23598.8	23501.7	23554.6	23527.8	23663.7	23709.3	23907.8	24031.5	24288.2	24471.0
20°	19697.4	19663.3	19549.8	19611.7	19584.0	19738.5	19803.6	20043.4	20203.0	20543.0	20784.8
22.5°	15729.5	15675.8	15564.5	15622.4	15596.2	15756.2	15841.0	16081.6	16264.4	16613.4	16895.7
25°	12166.4	12118.5	12011.0	12051.5	12041.7	12177.1	12252.5	12480.0	12659.7	12992.2	13261.7
27.5°	9279.6	9229.8	9132.7	9161.3	9151.5	9266.8	9337.8	9528.0	9682.5	9962.4	10199.0
30°	7102.2	7042.1	6959.7	6975.6	6968.8	7062.2	7128.6	7288.7	7421.1	7657.7	7861.5
32.5°	5443.8	5383.5	5307.7	5315.1	5305.1	5378.5	5433.1	5572.4	5687.9	5888.9	6066.4
35°	4165.3	4235.9	4074.2	4176.6	4069.9	4226.5	4170.2	4257.2	4356.5	4525.9	4673.9
37.5°	3202.1	3152.9	3111.3	3106.9	3106.7	3143.0	3185.7	3269.6	3357.1	3483.3	3613.7
40°	2537.5	2503.0	2476.1	2474.2	2476.1	2501.9	2533.5	2591.4	2655.5	2746.2	2842.0
42.5°	2104.6	2081.7	2065.5	2064.3	2069.5	2087.8	2109.8	2144.2	2185.9	2244.6	2310.4
45°	1821.6	1808.8	1799.7	1799.3	1801.6	1811.2	1823.8	1845.3	1871.7	1908.4	1949.9
47.5°	1622.9	1619.8	1614.2	1614.4	1611.8	1615.7	1617.2	1629.2	1643.3	1670.9	1725.2
50°	1478.3	1478.3	1474.4	1474.2	1470.6	1470.3	1467.3	1472.0	1478.5	1495.7	1513.1
52.5°	1364.0	1363.6	1359.4	1358.5	1354.6	1354.4	1351.8	1353.6	1354.5	1363.2	1373.6
55°	1274.7	1272.0	1266.4	1264.7	1263.2	1265.4	1264.3	1264.5	1263.4	1266.9	1270.1
57.5°	1210.6	1207.0	1201.9	1200.3	1199.9	1202.6	1202.7	1201.7	1196.9	1193.6	1189.0
60°	1159.8	1156.3	1150.7	1149.2	1150.1	1153.8	1153.6	1150.5	1143.3	1137.0	1129.8
62.5°	1110.0	1108.6	1105.7	1105.3	1104.6	1105.2	1102.6	1099.3	1092.3	1085.6	1077.7
65°	1043.2	1043.9	1041.7	1042.0	1039.4	1039.1	1035.1	1031.9	1024.8	1018.8	1010.6
67.5°	973.7	974.3	972.5	972.5	971.2	971.3	969.0	966.0	959.9	955.0	948.8
70°	916.5	918.0	917.0	917.2	915.6	915.0	911.3	908.4	902.2	898.0	892.4
72.5°	848.0	851.1	851.0	851.8	849.3	848.0	843.6	840.0	834.4	831.1	826.5
75°	774.0	778.1	779.2	781.0	777.4	775.6	770.8	767.9	763.3	761.3	758.4
77.5°	701.9	706.3	710.5	714.4	708.7	703.7	697.7	693.0	686.4	683.9	679.3
80°	620.9	628.6	638.0	645.8	635.6	625.4	615.4	608.0	599.3	595.7	589.9
82.5°	515.1	523.1	528.4	533.4	526.4	518.8	509.2	502.7	493.2	489.8	483.1
85°	391.3	401.3	404.5	407.2	402.6	398.6	389.5	377.3	371.3	362.1	357.2
87.5°	257.4	263.3	264.5	265.4	262.6	260.7	254.8	249.1	238.9	231.5	222.4
90°	107.3	110.9	108.1	109.3	106.1	106.9	101.4	100.0	92.1	89.5	82.4
92.5°	17.2	16.0	15.2	14.3	15.7	16.0	17.4	17.8	19.0	19.5	20.8
95°	22.5	21.5	20.5	19.5	20.3	21.1	21.9	22.7	23.4	24.2	25.0
97.5°	30.1	29.5	28.8	28.2	28.6	29.1	29.6	30.0	30.5	30.9	31.5
100°	38.1	37.5	37.0	36.4	36.4	36.4	36.4	36.4	36.4	36.4	36.4
102.5°	60.0	57.7	55.4	53.2	54.7	56.2	57.7	59.3	60.9	62.4	64.0
105°	110.9	104.8	98.6	92.4	98.4	104.4	110.4	116.4	122.4	128.6	134.7
107.5°	199.5	189.7	180.0	170.2	181.2	192.1	203.0	213.9	224.8	235.7	246.8
110°	296.9	287.7	278.3	269.0	280.6	292.2	303.8	315.4	327.0	338.5	350.4



TEST NUMBER: P1444674
 CATALOG NUMBER: EHBR1-36-UNV-TA-L930-UPL12

CANDELA DISTRIBUTION (continued):

	82.5°	85°	87.5°	90°	92.5°	95°	97.5°	100°	102.5°	105°	107.5°
112.5°	362.2	357.8	353.2	348.7	356.2	363.6	371.1	378.8	386.2	393.8	401.3
115°	379.9	379.6	379.4	379.1	382.7	386.1	389.7	393.3	396.9	400.4	404.1
117.5°	360.0	362.4	365.0	367.5	368.7	369.7	371.0	372.1	373.5	374.7	376.1
120°	324.3	327.3	330.7	334.1	333.6	333.2	332.8	332.3	332.2	331.9	331.7
122.5°	282.3	285.5	288.9	292.2	291.2	290.2	289.3	288.4	287.7	286.9	286.1
125°	243.8	246.3	249.1	251.8	250.9	249.9	248.9	248.2	247.5	246.7	246.1
127.5°	213.9	215.4	216.9	218.6	218.2	217.7	217.4	217.1	217.0	217.0	216.9
130°	194.4	194.9	195.6	196.2	196.4	196.5	196.9	197.3	197.8	198.3	199.1
132.5°	184.4	184.2	184.2	184.2	184.7	185.3	186.1	186.9	187.9	188.7	190.1
135°	180.2	179.7	179.4	179.0	179.8	180.5	181.6	182.6	183.8	185.1	186.5
137.5°	180.2	179.5	179.0	178.5	179.3	180.1	181.1	182.1	183.3	184.6	186.2
140°	182.5	181.8	181.5	181.0	181.8	182.4	183.5	184.5	185.7	187.0	188.4
142.5°	185.2	184.5	184.0	183.8	184.3	185.0	186.1	186.9	188.0	189.0	190.4
145°	189.5	188.9	188.7	188.3	188.7	189.3	189.9	190.7	191.4	192.2	193.3
147.5°	192.6	192.2	192.0	191.7	192.0	192.4	192.8	193.3	193.9	194.6	195.3
150°	195.2	194.6	194.4	194.3	194.4	194.6	195.0	195.2	195.6	196.0	196.7
152.5°	196.0	195.4	195.4	195.2	195.2	195.4	195.7	195.9	196.2	196.5	197.1
155°	197.3	196.9	196.7	196.4	196.3	196.2	196.4	196.3	196.6	196.6	196.9
157.5°	199.3	199.0	198.7	198.4	198.3	197.9	197.9	197.8	197.8	197.6	197.7
160°	201.1	200.6	200.2	199.9	199.7	199.5	199.4	199.3	199.3	199.2	199.2
162.5°	203.9	203.5	203.2	202.8	202.6	202.2	202.0	201.6	201.4	201.1	201.0
165°	206.6	206.1	205.8	205.1	205.1	204.8	204.5	204.2	204.2	203.9	203.8
167.5°	210.5	210.0	209.6	209.2	208.8	208.3	208.3	207.8	207.5	207.2	207.2
170°	213.2	212.9	212.5	212.2	212.0	211.6	211.6	211.3	211.1	211.0	211.0
172.5°	217.1	216.8	216.5	216.2	216.0	215.7	215.7	215.6	215.4	215.4	215.3
175°	219.8	219.7	219.6	219.4	219.2	219.1	219.0	218.9	218.8	218.6	218.6
177.5°	221.6	221.4	221.4	221.3	221.2	221.2	221.2	221.2	221.2	221.1	221.0
180°	221.4	221.4	221.4	221.4	221.4	221.4	221.4	221.4	221.4	221.4	221.4



TEST NUMBER: P1444674
 CATALOG NUMBER: EHBR1-36-UNV-TA-L930-UPL12

CANDELA DISTRIBUTION (continued):

	110°	112.5°	115°	117.5°	120°	122.5°	125°	127.5°	130°	132.5°	135°
0°	27712.0	27712.0	27712.0	27712.0	27712.0	27712.0	27712.0	27712.0	27712.0	27712.0	27712.0
2.5°	27727.3	27720.0	27700.8	27691.3	27673.6	27664.6	27650.8	27641.8	27630.7	27622.3	27618.0
5°	28495.5	28460.0	28389.0	28345.3	28268.5	28218.0	28141.8	28085.9	28007.3	27949.2	27874.8
7.5°	29495.0	29440.6	29349.6	29280.6	29173.2	29091.2	28970.8	28874.4	28741.3	28630.8	28494.8
10°	29901.9	29870.2	29829.4	29785.0	29725.5	29667.2	29584.9	29501.1	29389.3	29278.2	29133.0
12.5°	29300.5	29330.4	29389.3	29416.9	29462.0	29477.3	29497.9	29488.2	29470.0	29424.6	29358.8
15°	27597.2	27721.9	27919.1	28055.6	28246.7	28380.9	28558.5	28672.8	28804.5	28883.2	28957.9
17.5°	24795.2	25036.6	25384.5	25662.1	26034.8	26337.8	26709.0	27000.8	27337.6	27595.9	27871.0
20°	21206.4	21544.3	22024.7	22432.6	22972.6	23430.5	24017.2	24508.6	25081.9	25559.8	26075.6
22.5°	17343.7	17741.2	18291.7	18783.7	19428.6	20004.6	20739.7	21389.4	22164.4	22858.7	23626.8
25°	13699.8	14089.4	14650.1	15159.6	15855.8	16490.3	17293.3	18038.7	18938.1	19776.8	20739.7
27.5°	10574.9	10921.0	11413.9	11872.5	12510.1	13133.0	13947.9	14742.8	15702.5	16603.8	17641.4
30°	8166.8	8447.6	8842.5	9211.4	9723.3	10232.7	10958.6	11693.8	12648.7	13582.7	14646.5
32.5°	6329.0	6568.4	6898.1	7197.6	7592.0	7976.1	8510.6	9098.2	9935.8	10830.5	11859.0
35°	4899.4	5104.2	5384.8	5642.8	5967.1	6272.0	6670.9	7090.3	7729.5	8482.0	9402.6
37.5°	3906.0	3989.5	4189.8	4401.2	4670.5	4921.1	5233.2	5543.2	6000.6	6594.3	7346.3
40°	2970.5	3103.1	3266.1	3432.6	3636.6	3837.5	4179.9	4344.7	4645.8	5072.0	5655.7
42.5°	2396.8	2490.0	2604.8	2720.6	2862.7	3002.7	3175.8	3352.1	3577.3	3865.9	4281.1
45°	2005.7	2066.5	2140.4	2217.6	2310.9	2406.4	2522.4	2643.5	2796.0	2973.5	3225.7
47.5°	1744.4	1778.0	1826.3	1879.0	1943.0	2009.1	2084.5	2161.6	2256.4	2361.7	2505.3
50°	1540.4	1568.5	1606.0	1641.2	1685.4	1753.1	1783.1	1825.7	1882.7	1944.6	2024.9
52.5°	1392.9	1411.6	1435.1	1455.3	1483.2	1508.6	1541.9	1571.3	1610.7	1647.9	1699.8
55°	1278.0	1284.8	1298.0	1311.1	1330.5	1347.8	1370.6	1389.8	1415.0	1437.2	1469.9
57.5°	1189.2	1189.8	1196.0	1202.8	1215.2	1226.1	1241.8	1254.5	1271.9	1286.1	1305.7
60°	1125.4	1122.0	1123.3	1125.6	1132.6	1139.7	1149.7	1157.9	1169.0	1177.0	1188.0
62.5°	1072.3	1067.0	1065.8	1065.2	1068.7	1071.2	1076.7	1080.7	1086.9	1090.4	1096.3
65°	1005.3	999.0	996.6	993.6	994.7	993.9	995.9	996.0	999.2	999.9	1003.3
67.5°	944.4	939.3	936.1	932.1	930.4	927.6	926.4	923.8	923.3	921.1	920.5
70°	889.0	883.8	881.2	877.6	875.7	872.1	869.8	865.3	862.6	858.4	856.0
72.5°	824.8	821.9	821.1	818.7	818.1	816.0	815.0	811.9	810.0	806.4	804.3
75°	757.7	755.4	755.2	752.7	752.5	750.1	749.4	746.1	744.3	740.7	739.2
77.5°	677.9	674.3	673.3	670.5	671.2	670.0	670.9	668.4	667.3	663.6	662.6
80°	587.9	583.3	581.5	577.7	578.7	577.0	578.7	578.5	579.9	577.0	576.5
82.5°	481.3	476.3	475.4	472.7	474.5	474.7	478.5	476.4	477.3	474.6	475.7
85°	350.2	346.6	341.4	340.7	337.4	340.8	336.3	339.3	334.5	337.9	333.4
87.5°	217.1	209.5	205.5	200.1	198.0	192.8	190.6	186.8	187.9	186.2	187.2
90°	81.2	75.0	74.1	69.2	69.1	64.9	65.8	63.0	64.4	61.5	63.3
92.5°	21.2	22.1	23.6	25.6	26.9	28.5	30.0	32.0	33.3	35.2	36.5
95°	25.8	26.6	28.8	30.9	33.1	35.2	37.3	39.5	41.6	43.8	45.9
97.5°	32.0	32.4	34.6	36.7	38.9	41.0	43.0	45.4	47.6	49.7	51.9
100°	36.4	36.5	42.6	48.7	54.7	60.9	66.8	72.9	79.2	85.3	91.3
102.5°	65.5	67.0	82.3	97.7	113.0	128.3	143.7	159.1	174.4	189.9	205.3
105°	140.6	146.7	170.0	193.5	216.8	240.3	263.6	287.2	310.7	334.1	357.5
107.5°	257.8	268.8	290.0	311.1	332.2	353.4	374.8	395.9	417.1	438.4	459.8
110°	362.0	373.7	387.8	402.1	416.4	430.6	444.9	459.2	473.6	487.9	502.4



TEST NUMBER: P1444674
 CATALOG NUMBER: EHBR1-36-UNV-TA-L930-UPL12

CANDELA DISTRIBUTION (continued):

	110°	112.5°	115°	117.5°	120°	122.5°	125°	127.5°	130°	132.5°	135°
112.5°	408.8	416.4	424.7	433.3	441.6	450.0	458.5	467.0	475.5	484.1	492.6
115°	407.8	411.6	414.8	418.4	421.7	425.2	428.6	432.3	435.9	439.4	443.1
117.5°	377.2	378.8	379.4	380.2	380.9	381.9	382.7	383.8	384.8	385.8	386.6
120°	331.5	331.3	331.1	331.0	330.7	330.6	330.6	330.5	330.6	330.6	330.6
122.5°	285.5	285.0	284.8	284.7	284.7	284.7	284.8	285.0	285.1	285.3	285.3
125°	245.5	245.2	246.0	247.0	248.0	249.2	250.1	251.4	252.5	253.7	254.9
127.5°	216.9	217.2	218.9	220.6	222.5	224.5	226.3	228.4	230.3	232.4	234.2
130°	199.8	200.7	202.7	205.1	207.2	209.6	211.8	214.3	216.5	218.9	221.1
132.5°	191.1	192.6	194.5	196.9	199.0	201.3	203.6	205.9	208.2	210.6	212.6
135°	188.0	189.7	191.7	193.7	195.9	198.1	200.1	202.4	204.4	206.6	208.6
137.5°	187.5	189.2	191.0	192.7	194.4	196.4	198.2	200.1	201.8	203.6	205.3
140°	189.8	191.4	192.5	194.0	195.2	196.6	197.7	199.1	200.1	201.7	202.7
142.5°	191.7	193.2	193.9	194.9	195.9	197.1	198.0	199.0	199.9	200.8	201.6
145°	194.3	195.5	196.0	196.5	197.0	197.6	198.0	198.5	198.8	199.3	199.7
147.5°	196.2	197.1	197.2	197.7	197.9	198.1	198.5	198.8	198.8	199.2	199.4
150°	197.1	197.8	197.7	198.0	197.9	198.1	198.0	198.2	198.1	198.3	198.2
152.5°	197.5	197.9	197.7	197.8	197.7	197.6	197.4	197.5	197.3	197.2	197.3
155°	196.9	197.1	196.9	196.9	196.8	196.8	196.6	196.9	196.8	196.8	196.8
157.5°	197.6	197.6	197.5	197.5	197.3	197.3	197.3	197.3	197.3	197.7	197.7
160°	199.1	199.1	198.8	198.8	198.7	198.6	198.6	198.8	198.8	199.3	199.3
162.5°	200.8	200.7	200.4	200.4	200.3	200.4	200.5	200.7	200.7	201.0	201.2
165°	203.8	203.9	203.6	203.6	203.5	203.4	203.4	203.5	203.7	203.9	204.1
167.5°	207.0	206.9	206.9	207.0	207.0	207.2	207.3	207.6	207.8	208.2	208.3
170°	210.9	211.0	210.8	210.8	210.8	210.8	210.9	210.9	211.1	211.2	211.3
172.5°	215.3	215.3	215.2	215.0	214.9	214.9	214.8	214.8	214.7	214.6	214.5
175°	218.4	218.3	218.2	218.2	218.2	218.0	218.0	217.7	217.6	217.6	217.5
177.5°	220.9	220.7	220.6	220.6	220.5	220.4	220.4	220.3	220.3	220.3	220.1
180°	221.4	221.4	221.4	221.4	221.4	221.4	221.4	221.4	221.4	221.4	221.4



TEST NUMBER: P1444674
 CATALOG NUMBER: EHBR1-36-UNV-TA-L930-UPL12

CANDELA DISTRIBUTION (continued):

	137.5°	140°	142.5°	145°	147.5°	150°	152.5°	155°	157.5°	160°	162.5°
0°	27712.0	27712.0	27712.0	27712.0	27712.0	27712.0	27712.0	27712.0	27712.0	27712.0	27712.0
2.5°	27612.5	27612.1	27609.5	27610.7	27611.2	27613.2	27615.5	27618.0	27618.5	27620.5	27620.9
5°	27819.1	27750.8	27700.3	27644.7	27602.9	27565.3	27540.3	27520.3	27512.7	27514.5	27519.2
7.5°	28379.5	28238.4	28122.1	27989.8	27879.5	27762.7	27665.9	27573.8	27506.8	27456.8	27428.8
10°	28994.4	28822.7	28658.3	28466.8	28285.3	28091.5	27915.9	27739.2	27591.8	27463.8	27369.9
12.5°	29267.2	29145.9	29003.8	28823.1	28628.8	28405.2	28179.4	27937.3	27712.2	27503.2	27334.6
15°	28978.3	28978.5	28926.7	28840.1	28705.1	28526.4	28311.2	28058.9	27793.3	27522.3	27274.7
17.5°	28061.2	28234.2	28330.5	28391.3	28372.7	28306.9	28170.0	27976.2	27728.5	27439.8	27137.7
20°	26486.2	26894.4	27185.4	27447.0	27593.7	27691.2	27681.4	27602.5	27426.1	27180.7	26866.0
22.5°	24279.9	24965.0	25505.5	26009.6	26363.1	26650.7	26787.4	26845.4	26765.5	26594.4	26298.9
25°	21600.1	22531.6	23326.5	24097.8	24676.4	25173.8	25472.6	25683.2	25699.9	25610.5	25346.9
27.5°	18622.5	19721.9	20727.9	21753.1	22566.9	23281.7	23750.8	24094.2	24203.3	24188.8	23949.5
30°	15648.6	16802.8	17911.6	19107.2	20114.1	21027.4	21647.0	22111.3	22290.2	22324.6	22094.3
32.5°	12840.1	13978.2	15084.0	16333.9	17441.9	18488.6	19220.7	19772.2	19980.3	20029.3	19776.8
35°	10291.1	11341.2	12392.1	13603.3	14705.0	15789.0	16560.4	17137.8	17332.1	17364.9	17072.4
37.5°	8080.8	8975.4	9891.1	10977.9	11989.7	13007.7	13740.6	14283.3	14424.8	14416.0	14085.2
40°	6219.6	6915.2	7651.0	8545.7	9386.8	10247.4	10866.3	11314.9	11389.3	11334.2	10986.6
42.5°	4676.8	5179.1	5712.6	6380.5	7004.6	7648.6	8098.9	8432.0	8442.6	8355.5	8043.4
45°	3484.3	3974.3	4198.1	4601.8	5003.8	5432.1	5707.0	5912.8	5880.9	5804.3	5567.1
47.5°	2656.1	2844.5	3044.2	3294.6	3528.8	4014.8	3978.8	4309.2	4071.2	4233.4	3876.3
50°	2109.2	2214.5	2322.1	2455.0	2577.4	2704.4	2783.8	2843.1	2835.3	2809.9	2741.5
52.5°	1794.5	1827.0	1880.0	1955.6	2023.9	2092.6	2137.8	2174.6	2175.3	2165.0	2130.4
55°	1499.8	1541.0	1579.2	1628.6	1712.7	1725.6	1790.5	1777.3	1782.5	1764.5	1782.8
57.5°	1322.3	1346.3	1367.8	1397.2	1421.5	1449.9	1466.6	1482.8	1481.2	1477.7	1460.0
60°	1196.6	1209.8	1221.8	1239.0	1252.2	1268.3	1276.0	1284.2	1281.5	1275.6	1259.9
62.5°	1099.7	1108.0	1114.7	1125.9	1134.0	1144.0	1148.0	1151.4	1148.0	1142.3	1128.4
65°	1004.0	1009.4	1013.7	1022.0	1027.8	1036.3	1039.7	1043.0	1039.8	1035.3	1024.8
67.5°	917.8	918.3	917.9	921.3	923.0	928.1	929.6	932.0	928.3	924.6	915.6
70°	852.4	851.0	849.3	850.7	851.0	853.4	853.9	853.4	849.1	842.5	832.7
72.5°	801.2	800.5	799.3	800.3	800.3	802.6	801.9	800.8	795.3	789.0	779.3
75°	735.5	734.9	732.5	732.6	730.6	731.3	728.6	727.1	721.0	715.7	707.0
77.5°	658.6	657.3	653.7	652.4	648.5	646.8	641.8	639.3	633.2	628.9	621.5
80°	572.6	571.3	566.8	564.2	558.0	554.1	546.7	542.5	535.4	531.2	524.0
82.5°	473.4	473.9	469.3	466.1	457.2	450.5	440.6	435.2	427.5	423.4	416.0
85°	336.7	331.9	334.4	334.2	328.7	322.8	314.8	309.1	302.5	298.6	293.5
87.5°	184.6	185.8	184.5	183.3	179.4	176.4	170.2	166.9	162.1	159.7	155.8
90°	58.1	57.6	52.8	52.3	47.6	45.5	39.9	38.6	33.5	32.6	29.1
92.5°	34.8	33.0	31.4	29.3	27.8	26.0	24.1	22.4	20.6	19.7	19.4
95°	43.3	40.8	38.2	35.6	33.0	30.4	27.9	25.3	22.7	22.2	21.7
97.5°	48.9	45.8	42.8	39.8	36.7	33.7	30.7	27.6	24.6	24.2	23.9
100°	84.4	77.4	70.4	63.4	56.3	49.3	42.3	35.3	28.3	28.0	27.5
102.5°	188.2	171.2	154.3	137.2	120.4	103.3	86.4	69.2	52.2	49.7	47.3
105°	331.8	305.9	280.4	254.7	228.8	203.1	177.5	151.6	125.8	117.6	109.3
107.5°	435.7	411.4	387.5	363.3	339.0	314.9	290.8	266.5	242.3	227.8	213.2
110°	483.3	464.1	445.2	426.1	407.0	387.8	368.7	349.6	330.4	317.9	305.5



TEST NUMBER: P1444674
 CATALOG NUMBER: EHBR1-36-UNV-TA-L930-UPL12

CANDELA DISTRIBUTION (continued):

	137.5°	140°	142.5°	145°	147.5°	150°	152.5°	155°	157.5°	160°	162.5°
112.5°	478.8	464.9	451.2	437.1	423.4	409.3	395.5	381.5	367.4	360.0	352.5
115°	435.0	426.7	418.6	410.4	402.1	393.9	385.6	377.2	368.8	365.1	361.3
117.5°	382.7	378.7	374.9	370.9	366.8	362.7	358.8	354.6	350.5	349.4	348.2
120°	330.0	329.1	328.0	327.1	326.2	325.4	324.3	323.2	322.1	322.7	323.1
122.5°	286.4	287.4	288.5	289.3	290.3	291.1	292.2	292.9	293.8	295.3	296.7
125°	256.6	258.3	260.3	262.0	263.7	265.4	267.3	268.8	270.5	272.0	273.6
127.5°	236.3	238.1	240.3	242.1	244.1	246.0	248.0	249.6	251.7	253.1	254.7
130°	223.1	224.7	226.6	228.3	230.2	232.0	233.7	235.4	237.2	238.6	239.9
132.5°	214.4	216.1	217.8	219.3	221.2	222.7	224.4	226.1	227.9	228.9	230.3
135°	210.1	211.4	212.9	214.1	215.7	216.9	218.4	219.8	221.4	222.4	223.5
137.5°	206.6	207.7	209.1	210.1	211.5	212.5	214.1	215.2	216.8	217.4	218.6
140°	203.9	205.1	206.3	207.5	208.7	209.9	211.5	212.7	214.2	215.0	216.0
142.5°	202.6	203.4	204.5	205.5	206.6	207.5	208.8	210.0	211.3	212.3	213.1
145°	200.8	201.8	202.9	203.8	204.9	206.0	207.5	208.8	210.1	210.9	211.7
147.5°	200.2	201.0	202.1	203.0	204.1	204.9	206.3	207.4	208.7	209.4	210.1
150°	199.2	199.9	200.9	201.7	202.7	203.8	205.1	206.2	207.7	208.4	209.2
152.5°	198.1	199.0	199.9	201.0	202.0	203.2	204.4	205.7	207.0	207.6	208.4
155°	197.7	198.5	199.5	200.6	201.7	202.6	203.9	205.1	206.3	207.1	207.8
157.5°	198.6	199.3	200.3	201.2	202.2	203.2	204.4	205.4	206.6	207.2	207.8
160°	200.1	200.9	201.8	202.6	203.5	204.5	205.5	206.5	207.5	208.0	208.6
162.5°	202.0	202.8	203.7	204.5	205.5	206.4	207.4	208.3	209.2	209.8	210.4
165°	204.8	205.4	206.2	206.8	207.5	208.1	209.0	209.6	210.5	210.9	211.6
167.5°	209.0	209.3	210.0	210.4	211.1	211.6	212.4	212.9	213.5	214.1	214.6
170°	211.7	212.2	212.6	213.1	213.7	214.1	214.6	215.1	215.8	216.2	216.6
172.5°	214.8	214.9	215.4	215.7	215.9	216.3	216.6	217.0	217.3	217.8	218.1
175°	217.8	217.8	218.0	218.1	218.2	218.3	218.7	218.9	219.0	219.3	219.5
177.5°	220.2	220.3	220.3	220.4	220.6	220.7	220.8	220.9	221.1	221.3	221.5
180°	221.4	221.4	221.4	221.4	221.4	221.4	221.4	221.4	221.4	221.4	221.4



TEST NUMBER: P1444674
 CATALOG NUMBER: EHBR1-36-UNV-TA-L930-UPL12

CANDELA DISTRIBUTION (continued):

	165°	167.5°	170°	172.5°	175°	177.5°	180°	182.5°	185°	187.5°	190°
0°	27712.0	27712.0	27712.0	27712.0	27712.0	27712.0	27712.0	27712.0	27712.0	27712.0	27712.0
2.5°	27620.0	27619.6	27618.7	27617.5	27616.2	27617.0	27618.2	27621.4	27626.9	27634.9	27645.5
5°	27523.0	27528.6	27531.8	27532.3	27529.3	27527.6	27530.3	27537.9	27553.2	27578.9	27613.6
7.5°	27421.3	27428.3	27439.0	27447.0	27448.5	27446.6	27447.0	27458.9	27487.2	27537.2	27607.3
10°	27312.8	27292.1	27303.0	27323.0	27338.7	27341.7	27343.6	27357.6	27399.0	27474.5	27587.2
12.5°	27212.5	27147.2	27134.6	27152.6	27176.6	27184.3	27182.2	27188.2	27236.6	27336.6	27493.6
15°	27080.7	26957.8	26915.7	26920.3	26950.0	26960.7	26952.9	26941.0	26988.2	27110.2	27313.5
17.5°	26867.2	26669.0	26591.8	26588.4	26623.1	26632.3	26613.2	26576.3	26622.7	26775.1	27027.5
20°	26542.8	26250.2	26104.8	26081.7	26119.4	26108.3	26070.3	26014.4	26075.4	26260.7	26560.8
22.5°	25959.5	25588.8	25340.3	25260.2	25305.3	25275.2	25219.7	25148.3	25229.3	25439.9	25774.1
25°	25006.4	24578.1	24237.9	24047.1	24083.0	24029.1	23968.6	23882.2	23978.8	24220.5	24588.3
27.5°	23605.6	23110.7	22689.2	22373.3	22385.0	22314.3	22244.6	22132.7	22253.4	22539.4	22954.3
30°	21742.7	21170.2	20656.9	20227.5	20189.1	20120.6	20049.2	19902.3	20053.4	20395.8	20880.6
32.5°	19403.3	18767.6	18174.5	17631.7	17529.3	17462.4	17398.9	17229.8	17427.6	17826.7	18383.8
35°	16667.5	15990.2	15347.3	14727.3	14557.7	14490.8	14435.2	14273.3	14520.0	14954.4	15556.1
37.5°	13664.6	12972.8	12334.3	11698.6	11458.9	11368.2	11327.8	11221.8	11506.3	11936.0	12540.1
40°	10581.7	9938.4	9366.1	8804.6	8531.3	8392.6	8371.4	8352.1	8627.2	9000.1	9548.4
42.5°	7697.7	7178.8	6737.5	6308.3	6060.6	5871.2	5871.1	5928.6	6176.3	6455.6	6878.3
45°	5324.8	4976.5	4695.3	4408.6	4485.2	4107.4	4329.4	4215.4	4337.9	4518.0	4792.9
47.5°	3660.3	3470.2	3315.7	3155.4	3038.7	2927.1	2936.9	3008.8	3124.2	3231.0	3374.0
50°	2667.7	2570.8	2492.2	2409.0	2350.9	2301.7	2304.6	2335.7	2396.3	2452.6	2527.4
52.5°	2090.3	2037.0	1994.2	1948.2	1917.7	1893.2	1894.6	1909.7	1942.4	1974.6	2017.5
55°	1722.9	1716.5	1660.9	1619.6	1604.0	1587.5	1590.5	1596.4	1618.8	1637.5	1666.0
57.5°	1443.8	1418.9	1402.2	1380.5	1370.5	1359.0	1361.6	1363.8	1378.7	1391.3	1411.7
60°	1246.7	1229.1	1217.2	1202.4	1195.9	1188.6	1190.2	1191.5	1201.2	1209.4	1224.1
62.5°	1115.8	1099.9	1089.7	1078.3	1073.6	1068.7	1069.9	1070.3	1076.2	1082.3	1093.4
65°	1015.4	1002.8	994.2	984.4	979.6	974.5	975.0	975.0	980.0	984.4	992.7
67.5°	909.1	899.7	894.2	886.3	883.0	877.8	877.7	876.1	879.4	881.1	886.8
70°	823.9	814.3	807.3	799.8	795.6	791.1	791.2	791.2	795.1	799.0	806.3
72.5°	771.2	762.1	755.8	749.2	745.3	741.4	740.7	740.3	743.0	745.3	750.1
75°	701.5	694.2	690.5	684.3	681.3	676.8	676.1	674.1	675.4	675.8	679.4
77.5°	616.8	610.0	607.0	600.7	598.1	593.1	592.7	590.5	591.4	590.7	593.5
80°	520.4	514.1	512.5	507.3	506.2	501.5	500.8	498.0	498.9	496.6	497.7
82.5°	412.8	407.0	405.8	401.1	401.1	396.8	396.6	392.5	392.5	388.8	383.1
85°	290.8	286.5	284.8	280.9	279.7	276.3	274.6	270.6	269.2	266.6	265.8
87.5°	153.5	150.8	148.4	146.6	143.2	137.1	136.6	132.4	132.7	129.7	129.9
90°	28.6	25.4	25.0	22.1	21.5	19.5	19.2	18.9	19.2	19.1	19.3
92.5°	18.8	18.2	17.6	17.0	16.4	15.9	15.2	15.9	16.4	17.0	17.6
95°	21.1	20.6	20.1	19.6	19.1	18.5	18.0	18.5	19.1	19.7	20.2
97.5°	23.6	23.3	22.9	22.5	22.3	21.9	21.6	22.0	22.4	22.6	23.0
100°	27.2	26.7	26.4	25.9	25.6	25.1	24.8	25.4	25.8	26.2	26.6
102.5°	44.9	42.4	40.0	37.5	35.0	32.6	30.1	32.6	35.0	37.6	40.1
105°	101.0	92.8	84.5	76.2	67.8	59.5	51.2	59.6	67.9	76.3	84.7
107.5°	198.5	184.2	169.6	155.1	140.3	125.7	111.1	125.8	140.4	155.1	169.8
110°	292.9	280.4	267.9	255.3	242.7	230.2	217.5	230.3	242.9	255.5	268.1



TEST NUMBER: P1444674
 CATALOG NUMBER: EHBR1-36-UNV-TA-L930-UPL12

CANDELA DISTRIBUTION (continued):

	165°	167.5°	170°	172.5°	175°	177.5°	180°	182.5°	185°	187.5°	190°
112.5°	344.9	337.3	329.8	322.2	314.5	307.0	299.2	307.2	314.8	322.8	330.3
115°	357.4	353.5	349.7	345.9	341.8	337.8	333.7	338.2	342.3	346.5	350.6
117.5°	346.9	345.9	344.5	343.4	342.0	340.9	339.4	341.0	342.6	344.2	345.6
120°	323.5	324.1	324.5	324.8	325.2	325.5	325.7	326.0	326.0	326.0	325.8
122.5°	298.1	299.6	300.8	302.3	303.5	304.8	305.8	305.1	304.3	303.6	302.5
125°	275.0	276.7	278.0	279.6	280.8	282.2	283.2	282.8	282.0	281.1	280.0
127.5°	256.2	257.6	259.0	260.5	261.7	263.0	264.0	263.6	262.9	262.1	261.1
130°	241.2	242.7	243.7	245.0	246.0	247.0	247.7	247.6	247.2	246.8	246.0
132.5°	231.3	232.7	233.7	234.8	235.6	236.6	237.0	237.2	237.0	236.8	236.2
135°	224.6	225.5	226.5	227.6	228.2	228.9	229.3	229.6	229.6	229.6	229.1
137.5°	219.3	220.4	221.0	221.7	222.3	222.8	223.1	223.5	223.6	224.0	223.8
140°	216.8	217.8	218.6	219.2	220.0	220.6	220.7	221.3	221.4	221.5	221.4
142.5°	214.1	214.9	215.7	216.5	217.0	217.5	217.9	218.2	218.4	218.5	218.5
145°	212.5	213.2	214.0	214.8	215.1	215.6	215.7	216.3	216.5	216.7	216.8
147.5°	210.8	211.7	212.2	212.8	213.2	213.6	213.8	214.2	214.6	214.8	214.9
150°	210.1	210.8	211.5	212.1	212.7	213.2	213.2	213.8	214.0	214.1	214.1
152.5°	209.2	209.9	210.5	211.0	211.6	211.9	212.1	212.5	212.9	213.2	213.2
155°	208.4	209.2	209.8	210.4	210.8	211.4	211.7	212.2	212.4	212.7	212.9
157.5°	208.4	209.2	209.6	210.2	210.7	211.3	211.6	212.2	212.5	212.9	213.2
160°	209.2	209.9	210.3	210.9	211.5	211.9	212.4	212.9	213.2	213.6	214.0
162.5°	210.8	211.5	211.8	212.4	212.9	213.4	213.9	214.3	214.8	215.2	215.5
165°	212.1	212.7	213.2	213.9	214.3	214.9	215.3	215.7	216.0	216.4	216.6
167.5°	214.9	215.6	216.0	216.5	216.9	217.5	218.0	218.3	218.5	218.9	219.0
170°	217.0	217.5	217.9	218.3	218.8	219.2	219.5	219.8	220.0	220.3	220.5
172.5°	218.5	219.0	219.4	219.8	220.3	220.6	221.0	221.3	221.4	221.4	221.4
175°	219.8	220.2	220.5	220.8	221.1	221.4	221.7	221.6	221.9	221.8	221.9
177.5°	222.0	222.3	222.6	222.8	223.1	223.3	223.6	223.4	223.3	223.2	223.1
180°	221.4	221.4	221.4	221.4	221.4	221.4	221.4	221.4	221.4	221.4	221.4



TEST NUMBER: P1444674
 CATALOG NUMBER: EHBR1-36-UNV-TA-L930-UPL12

CANDELA DISTRIBUTION (continued):

	192.5°	195°	197.5°	200°	202.5°	205°	207.5°	210°	212.5°	215°	217.5°
0°	27712.0	27712.0	27712.0	27712.0	27712.0	27712.0	27712.0	27712.0	27712.0	27712.0	27712.0
2.5°	27660.2	27674.1	27695.3	27714.4	27743.3	27766.1	27800.3	27826.3	27864.9	27890.0	27932.0
5°	27662.7	27716.8	27787.9	27857.5	27941.0	28016.7	28110.9	28191.1	28285.8	28363.0	28459.9
7.5°	27701.8	27806.1	27931.2	28057.3	28199.8	28333.1	28483.4	28619.4	28768.0	28893.8	29031.2
10°	27730.6	27891.6	28076.0	28261.4	28456.7	28638.1	28821.2	28979.5	29127.3	29249.1	29356.6
12.5°	27691.5	27913.2	28149.8	28378.2	28595.3	28783.1	28940.6	29062.4	29146.3	29203.3	29216.7
15°	27558.6	27825.4	28082.6	28310.1	28490.2	28629.1	28701.0	28734.7	28698.6	28638.5	28506.7
17.5°	27310.1	27591.5	27821.5	28000.9	28096.1	28133.8	28074.2	27970.6	27768.1	27543.2	27218.6
20°	26854.6	27116.8	27283.6	27381.5	27356.0	27261.8	27036.9	26763.5	26359.2	25928.2	25359.6
22.5°	26055.7	26285.0	26373.7	26381.0	26225.7	25989.8	25584.2	25115.2	24477.4	23814.2	22998.6
25°	24856.4	25057.2	25071.2	24992.4	24708.0	24325.9	23730.1	23066.8	22200.0	21316.3	20294.3
27.5°	23230.0	23422.5	23375.4	23228.3	22833.5	22322.1	21559.4	20702.4	19633.8	18590.1	17459.6
30°	21185.5	21391.4	21336.0	21147.3	20677.7	20073.3	19175.9	18180.2	16993.8	15879.0	14733.4
32.5°	18738.8	18999.1	18960.9	18781.5	18291.4	17644.6	16670.9	15614.9	14401.1	13302.5	12188.1
35°	15957.7	16273.8	16290.2	16172.9	15718.0	15078.7	14117.2	13095.0	11932.4	10895.9	9866.3
37.5°	12961.5	13328.0	13403.3	13371.6	12994.6	12430.2	11554.2	10637.3	9607.2	8698.9	7818.3
40°	9948.8	10319.7	10448.3	10486.6	10208.4	9771.3	9052.2	8312.1	7472.5	6736.4	6037.2
42.5°	7201.2	7530.0	7654.4	7732.7	7559.0	7267.5	6743.0	6205.5	5590.4	5059.5	4550.5
45°	5001.3	5234.0	5328.6	5407.3	5312.8	5148.4	4817.1	4481.0	4074.9	3728.0	3399.5
47.5°	3496.7	3625.1	3687.4	3725.7	3689.0	3603.2	3423.0	3228.3	2999.0	2796.3	2601.4
50°	2591.9	2660.1	2692.8	2714.9	2688.2	2640.5	2543.0	2437.0	2311.1	2196.2	2083.9
52.5°	2054.0	2093.1	2112.5	2124.4	2109.1	2079.9	2023.2	1960.3	1884.8	1813.8	1776.6
55°	1730.3	1728.3	1773.2	1751.5	1773.2	1724.8	1714.6	1645.5	1582.8	1538.7	1491.0
57.5°	1427.0	1447.3	1455.9	1465.6	1459.3	1450.5	1426.4	1401.6	1368.5	1340.9	1311.4
60°	1235.2	1252.0	1261.4	1270.9	1270.3	1267.0	1253.1	1238.3	1217.7	1201.2	1183.3
62.5°	1103.1	1117.7	1126.9	1136.1	1136.9	1135.6	1125.1	1114.7	1100.6	1090.3	1078.0
65°	999.2	1009.4	1015.7	1023.0	1022.6	1020.7	1011.1	1002.6	990.9	983.8	974.7
67.5°	890.4	898.2	903.1	909.9	911.3	911.7	906.5	902.5	896.8	894.8	891.7
70°	813.1	822.4	830.4	839.1	843.8	846.0	843.8	841.8	838.5	837.0	834.6
72.5°	754.5	762.5	768.6	776.5	781.0	784.1	782.4	781.3	778.4	778.0	776.4
75°	681.8	687.3	690.8	696.8	699.1	702.1	700.8	701.5	700.5	702.8	702.7
77.5°	594.5	598.5	600.1	604.4	604.8	608.4	609.3	613.5	616.4	623.0	626.5
80°	496.1	498.6	498.6	503.0	505.0	511.1	513.9	520.8	524.0	529.9	530.4
82.5°	385.3	382.4	385.3	383.5	389.2	395.9	396.8	402.7	404.0	407.7	404.8
85°	263.4	263.2	260.8	261.3	259.5	260.4	259.3	260.5	259.4	259.5	256.8
87.5°	126.2	127.3	124.6	125.5	122.8	124.0	121.7	123.5	120.7	121.2	117.1
90°	19.4	19.7	19.8	20.1	20.8	21.7	22.8	23.7	25.2	26.0	27.3
92.5°	18.2	18.9	19.5	20.1	20.7	22.5	24.2	26.1	28.0	29.7	31.5
95°	20.7	21.2	21.7	22.5	23.1	25.7	28.2	30.8	33.4	36.1	38.7
97.5°	23.6	24.0	24.2	24.6	25.0	28.1	31.2	34.2	37.2	40.4	43.3
100°	27.1	27.5	27.9	28.4	28.8	35.8	42.9	49.9	56.9	64.0	71.0
102.5°	42.6	45.1	47.6	50.3	52.8	69.9	87.0	104.0	120.8	137.9	155.0
105°	92.9	101.2	109.9	118.2	126.5	152.3	178.2	204.1	229.6	255.5	281.3
107.5°	184.5	199.1	213.9	228.5	243.1	267.4	291.7	315.9	340.2	364.6	388.5
110°	281.1	293.5	306.3	318.9	331.6	350.7	370.0	389.2	408.4	427.6	446.7



TEST NUMBER: P1444674
 CATALOG NUMBER: EHBR1-36-UNV-TA-L930-UPL12

CANDELA DISTRIBUTION (continued):

	192.5°	195°	197.5°	200°	202.5°	205°	207.5°	210°	212.5°	215°	217.5°
112.5°	338.2	345.8	353.5	361.0	368.8	382.8	397.0	411.1	425.2	439.0	453.1
115°	354.7	358.4	362.6	366.5	370.6	379.0	387.4	395.8	404.2	412.5	420.9
117.5°	347.1	348.5	350.0	351.0	352.4	356.6	360.9	365.0	369.3	373.6	377.7
120°	325.7	325.4	325.2	324.8	324.6	325.6	327.0	328.0	329.2	330.3	331.2
122.5°	301.6	300.3	299.2	298.0	296.7	295.9	295.2	294.3	293.7	292.8	292.1
125°	278.9	277.7	276.4	275.2	273.8	272.2	270.7	269.0	267.4	265.9	264.3
127.5°	260.3	259.1	258.0	256.6	255.4	253.5	251.8	250.0	248.4	246.4	244.6
130°	245.4	244.4	243.6	242.4	241.5	239.7	238.2	236.5	234.8	233.2	231.5
132.5°	235.7	234.9	234.3	233.2	232.4	230.8	229.5	227.8	226.2	224.6	223.1
135°	228.8	228.2	227.9	227.1	226.3	224.8	223.8	222.3	221.1	219.8	218.6
137.5°	223.8	223.2	222.9	222.3	221.9	220.6	219.7	218.4	217.4	216.2	215.2
140°	221.3	220.9	220.6	220.2	219.7	218.5	217.4	216.2	215.1	214.0	212.9
142.5°	218.2	218.1	217.7	217.3	216.8	215.7	215.1	214.1	213.2	212.3	211.4
145°	216.6	216.5	216.4	215.9	215.8	214.8	213.9	212.7	212.0	210.9	210.0
147.5°	215.0	214.8	214.8	214.6	214.6	213.6	213.1	212.1	211.6	210.6	210.0
150°	214.1	214.1	214.0	213.8	213.7	212.9	212.4	211.6	210.9	210.1	209.6
152.5°	213.3	213.4	213.4	213.4	213.5	212.8	212.2	211.5	210.8	210.0	209.4
155°	213.1	213.2	213.3	213.3	213.3	212.8	212.3	211.6	211.0	210.4	209.9
157.5°	213.3	213.5	213.7	213.9	214.0	213.5	213.1	212.5	212.1	211.6	211.1
160°	214.2	214.5	214.7	214.9	215.0	214.7	214.4	213.9	213.6	213.1	212.5
162.5°	215.8	216.1	216.3	216.5	216.6	216.3	216.0	215.7	215.2	214.7	214.2
165°	216.9	217.0	217.3	217.3	217.3	217.1	217.0	216.7	216.5	216.1	215.8
167.5°	219.3	219.3	219.6	219.6	219.8	219.6	219.7	219.3	219.1	219.0	218.8
170°	220.6	220.8	220.9	221.0	221.1	220.9	220.8	220.6	220.6	220.2	220.0
172.5°	221.5	221.5	221.6	221.7	221.6	221.5	221.4	221.4	221.3	221.2	221.0
175°	221.8	221.9	221.9	221.9	221.8	221.8	221.8	221.9	221.8	221.8	221.7
177.5°	223.1	223.0	222.7	222.6	222.5	222.4	222.5	222.5	222.6	222.5	222.4
180°	221.4	221.4	221.4	221.4	221.4	221.4	221.4	221.4	221.4	221.4	221.4



TEST NUMBER: P1444674
 CATALOG NUMBER: EHBR1-36-UNV-TA-L930-UPL12

CANDELA DISTRIBUTION (continued):

	220°	222.5°	225°	227.5°	230°	232.5°	235°	237.5°	240°	242.5°	245°
0°	27712.0	27712.0	27712.0	27712.0	27712.0	27712.0	27712.0	27712.0	27712.0	27712.0	27712.0
2.5°	27958.0	27785.3	27762.6	27774.7	27803.5	27814.1	27845.3	27853.8	27885.2	27892.8	27923.0
5°	28534.8	28306.7	28318.0	28372.9	28455.9	28505.5	28587.1	28629.8	28707.8	28743.3	28813.7
7.5°	29143.2	28964.0	29019.9	29112.4	29226.0	29304.6	29402.7	29466.6	29551.1	29603.6	29671.3
10°	29441.8	29392.7	29454.3	29527.1	29591.9	29642.6	29684.2	29717.4	29739.3	29759.7	29768.6
12.5°	29214.6	29290.6	29301.0	29294.0	29251.0	29218.2	29144.6	29094.6	29005.8	28951.6	28845.9
15°	28372.0	28539.1	28446.5	28306.4	28101.5	27930.5	27689.2	27509.5	27258.2	27087.7	26835.4
17.5°	26893.2	27104.2	26863.0	26538.9	26126.5	25773.8	25334.5	24985.9	24549.0	24231.3	23823.7
20°	24811.5	25008.6	24578.6	24041.2	23403.4	22866.5	22233.5	21728.4	21140.1	20702.4	20174.3
22.5°	22219.6	22360.0	21754.1	21029.7	20217.1	19546.4	18789.5	18184.0	17512.6	17012.3	16449.2
25°	19352.1	19390.0	18663.2	17828.7	16922.9	16169.2	15361.1	14724.5	14039.7	13532.7	12980.1
27.5°	16457.9	16402.3	15616.9	14732.0	13779.2	12995.8	12207.6	11611.0	11011.3	10554.6	10078.4
30°	13726.2	13591.7	12776.1	11866.5	10941.7	10239.5	9585.2	9106.0	8629.0	8266.7	7884.4
32.5°	11221.1	11031.3	10237.4	9385.3	8606.0	8064.1	7579.0	7216.4	6831.1	6525.1	6204.4
35°	9002.3	8800.1	8096.8	7374.4	6784.5	6385.1	6003.8	5706.3	5379.2	5121.0	4842.5
37.5°	7098.1	6932.4	6343.2	5774.8	5328.6	5019.1	4706.6	4463.5	4193.2	4079.6	3782.0
40°	5479.7	5363.9	4903.2	4484.1	4149.1	4003.7	3686.6	3459.5	3257.5	3090.9	2929.5
42.5°	4274.3	4233.3	3784.9	3458.2	3222.3	3039.1	2862.3	2718.8	2579.1	2464.3	2355.8
45°	3136.7	3104.2	2905.2	2716.5	2555.8	2427.7	2308.2	2209.6	2118.2	2042.6	1973.8
47.5°	2442.5	2432.1	2317.5	2200.5	2099.3	2017.0	1939.5	1874.0	1813.4	1762.9	1746.4
50°	1986.6	1985.3	1918.0	1845.8	1773.7	1726.1	1676.7	1637.9	1599.0	1568.7	1536.7
52.5°	1687.9	1680.7	1635.2	1590.7	1547.8	1516.6	1485.0	1460.2	1434.5	1415.8	1395.9
55°	1453.2	1460.8	1434.6	1408.0	1381.2	1361.7	1339.6	1323.3	1305.6	1293.8	1281.7
57.5°	1290.1	1300.3	1286.4	1271.4	1255.1	1242.3	1227.0	1215.7	1203.9	1196.4	1189.4
60°	1171.4	1182.5	1177.0	1169.4	1159.3	1151.7	1142.0	1135.7	1128.1	1123.9	1120.0
62.5°	1070.8	1084.7	1082.7	1079.1	1072.7	1068.4	1063.1	1060.3	1055.3	1053.4	1051.5
65°	970.4	986.0	985.7	983.9	980.3	979.1	975.8	975.2	972.6	973.7	973.4
67.5°	891.4	905.0	907.9	910.0	909.9	910.7	910.5	911.8	911.8	913.8	915.0
70°	834.4	843.8	846.0	848.4	849.0	850.8	850.8	851.9	851.7	853.3	853.4
72.5°	776.7	789.2	791.4	793.3	793.3	795.1	794.1	793.8	791.3	790.8	789.1
75°	705.1	721.0	724.5	726.7	727.1	728.6	726.5	725.1	721.0	719.3	716.5
77.5°	630.2	646.7	649.2	650.0	648.7	649.0	644.5	641.4	636.2	634.0	631.2
80°	532.7	557.1	559.0	557.5	553.7	553.0	548.7	545.7	539.5	537.4	535.0
82.5°	405.4	433.9	437.9	439.7	436.6	437.3	433.1	431.5	425.7	424.7	420.9
85°	255.9	284.5	289.2	288.5	285.4	284.7	282.2	283.0	282.6	284.1	284.9
87.5°	117.6	145.3	151.9	149.7	149.4	147.5	143.0	144.7	147.4	149.1	149.3
90°	28.3	37.8	38.7	38.5	35.6	35.1	32.5	32.5	30.4	30.2	28.2
92.5°	33.3	35.1	36.9	35.3	33.7	32.1	30.5	28.8	27.3	25.6	24.1
95°	41.3	43.6	46.2	44.0	41.8	39.7	37.5	35.5	33.3	31.2	29.1
97.5°	46.3	49.2	52.1	50.0	47.9	45.6	43.5	41.4	39.3	37.1	34.9
100°	78.1	84.7	91.6	85.5	79.4	73.3	67.3	61.2	55.2	49.1	43.0
102.5°	171.9	188.7	205.6	190.2	174.8	159.4	144.1	128.8	113.4	97.8	82.6
105°	307.0	332.4	358.1	334.4	310.9	287.5	264.0	240.7	217.3	193.6	170.3
107.5°	412.8	436.3	460.2	438.9	417.7	396.5	375.1	353.9	332.7	311.3	290.2
110°	465.9	484.1	503.0	488.5	474.3	459.7	445.5	431.0	416.7	402.5	388.3



TEST NUMBER: P1444674
 CATALOG NUMBER: EHBR1-36-UNV-TA-L930-UPL12

CANDELA DISTRIBUTION (continued):

	220°	222.5°	225°	227.5°	230°	232.5°	235°	237.5°	240°	242.5°	245°
112.5°	467.0	479.7	493.3	484.6	476.1	467.6	459.1	450.5	442.1	433.5	425.3
115°	429.1	435.9	443.9	440.1	436.7	433.0	429.4	426.0	422.3	418.7	415.4
117.5°	381.7	384.1	387.7	386.7	385.7	384.6	383.6	382.7	381.9	381.0	380.1
120°	332.3	331.5	331.9	331.8	331.9	331.7	331.8	331.7	331.8	331.8	331.9
122.5°	291.2	288.3	286.8	286.6	286.4	286.1	286.1	286.0	286.0	285.9	286.0
125°	262.6	258.6	256.3	255.1	254.1	252.8	251.7	250.5	249.5	248.4	247.4
127.5°	242.7	238.6	236.1	234.1	232.2	230.1	228.2	226.2	224.4	222.3	220.6
130°	229.8	225.5	223.1	220.8	218.7	216.2	214.1	211.7	209.4	207.1	204.9
132.5°	221.5	217.2	214.9	212.7	210.7	208.3	206.2	203.7	201.6	199.2	197.1
135°	217.3	213.0	211.0	208.9	207.1	204.9	202.8	200.7	198.7	196.4	194.6
137.5°	214.0	209.7	207.9	206.1	204.6	202.7	201.1	199.3	197.6	195.6	194.1
140°	211.6	207.2	205.4	204.3	203.3	201.9	200.8	199.6	198.5	197.3	196.1
142.5°	210.4	206.0	204.3	203.5	202.8	201.8	201.3	200.4	199.6	198.4	197.7
145°	209.2	204.2	202.6	202.0	201.9	201.5	201.1	200.8	200.4	199.9	199.5
147.5°	209.1	204.1	202.3	202.2	202.0	201.8	201.8	201.4	201.4	201.1	201.0
150°	208.6	202.9	201.0	201.0	201.0	201.0	201.1	201.0	201.2	201.2	201.2
152.5°	208.6	201.8	199.5	199.6	199.9	199.8	200.0	200.1	200.4	200.6	200.8
155°	209.1	201.7	199.2	199.0	199.0	199.1	199.1	199.3	199.3	199.5	199.7
157.5°	210.3	202.5	200.1	199.8	199.7	199.7	199.6	199.6	199.7	199.8	200.1
160°	212.1	204.1	201.7	201.4	201.3	201.1	201.0	201.0	201.0	201.1	201.2
162.5°	213.7	205.9	203.6	203.3	203.0	202.8	202.8	202.6	202.6	202.6	202.7
165°	215.4	208.5	206.3	206.0	206.0	205.8	205.8	205.7	205.7	205.7	205.9
167.5°	218.3	212.2	210.5	210.1	209.9	209.5	209.5	209.2	209.2	208.9	208.9
170°	219.7	214.9	213.3	213.2	213.2	213.1	213.0	213.0	212.9	212.7	212.8
172.5°	220.8	217.3	216.2	216.1	216.3	216.3	216.5	216.5	216.6	216.7	216.9
175°	221.6	219.6	219.0	219.0	219.0	219.0	219.1	219.1	219.2	219.3	219.5
177.5°	222.5	221.9	221.6	221.6	221.6	221.6	221.6	221.6	221.6	221.7	221.7
180°	221.4	221.4	221.4	221.4	221.4	221.4	221.4	221.4	221.4	221.4	221.4



TEST NUMBER: P1444674
 CATALOG NUMBER: EHBR1-36-UNV-TA-L930-UPL12

CANDELA DISTRIBUTION (continued):

	247.5°	250°	252.5°	255°	257.5°	260°	262.5°	265°	267.5°	270°	272.5°
0°	27712.0	27712.0	27712.0	27712.0	27712.0	27712.0	27712.0	27712.0	27712.0	27712.0	27712.0
2.5°	27928.6	27961.2	27958.7	27989.1	27987.6	28016.2	28010.5	28035.2	28029.5	28050.7	28038.3
5°	28844.8	28906.6	28927.1	28983.0	28994.6	29044.5	29045.6	29085.4	29080.5	29111.6	29095.1
7.5°	29711.3	29769.1	29796.6	29840.0	29861.7	29897.6	29911.7	29941.3	29948.3	29965.8	29965.3
10°	29784.5	29784.3	29797.8	29791.8	29803.9	29796.8	29811.6	29806.3	29828.2	29822.5	29839.1
12.5°	28800.4	28702.7	28667.1	28579.3	28560.1	28484.8	28490.2	28441.9	28465.2	28435.5	28486.1
15°	26685.3	26458.8	26346.9	26149.9	26088.0	25932.3	25919.7	25816.3	25844.2	25790.1	25869.1
17.5°	23559.9	23203.3	23007.5	22719.9	22605.6	22385.4	22341.3	22208.2	22228.8	22161.7	22257.3
20°	19833.6	19402.6	19155.8	18823.1	18674.6	18412.2	18342.5	18193.6	18212.3	18145.6	18253.6
22.5°	16064.8	15613.7	15334.9	14986.3	14796.7	14549.9	14475.8	14326.1	14334.7	14272.0	14375.9
25°	12601.4	12168.9	11898.3	11581.6	11417.2	11190.8	11113.0	10978.7	10986.2	10934.5	11027.8
27.5°	9748.2	9393.2	9166.9	8901.3	8753.9	8567.9	8491.9	8379.0	8378.7	8340.8	8418.8
30°	7617.6	7321.4	7118.2	6887.0	6748.6	6580.6	6507.3	6406.2	6401.9	6374.9	6436.9
32.5°	5964.4	5701.0	5515.6	5312.2	5187.9	5043.8	4974.3	4893.2	4885.8	4861.4	4912.2
35°	4636.6	4414.7	4255.4	4084.0	4096.7	3884.0	3919.4	3754.3	3709.5	3699.7	3737.5
37.5°	3583.5	3411.7	3282.2	3153.9	3067.0	2977.2	2928.8	2885.3	2880.4	2876.2	2902.7
40°	2804.9	2684.6	2590.5	2502.5	2442.7	2387.9	2357.6	2333.7	2328.1	2324.9	2340.9
42.5°	2270.2	2189.0	2128.3	2074.7	2038.3	2008.4	1991.9	1978.6	1974.1	1974.3	1983.8
45°	1918.0	1868.8	1829.7	1796.3	1773.1	1783.3	1753.2	1769.0	1748.2	1769.7	1755.5
47.5°	1689.1	1647.2	1622.9	1599.3	1585.2	1573.9	1574.4	1574.6	1579.0	1579.7	1584.3
50°	1512.4	1488.2	1471.4	1456.2	1448.9	1443.0	1445.1	1446.6	1450.9	1451.2	1454.6
52.5°	1381.7	1365.8	1355.6	1346.2	1342.9	1339.6	1341.0	1340.4	1342.3	1341.3	1344.1
55°	1275.3	1267.7	1264.6	1261.1	1261.6	1260.7	1261.3	1257.9	1255.9	1253.3	1255.6
57.5°	1188.0	1186.9	1189.1	1190.6	1194.6	1196.0	1196.9	1193.0	1189.3	1185.9	1187.9
60°	1120.7	1122.4	1127.6	1132.0	1137.7	1140.4	1142.1	1139.8	1137.1	1134.3	1136.0
62.5°	1054.4	1056.9	1063.3	1068.1	1075.1	1078.7	1082.7	1082.9	1084.0	1082.9	1084.1
65°	977.3	980.5	986.2	990.2	996.7	999.9	1004.0	1004.8	1007.0	1006.5	1008.4
67.5°	918.8	921.7	926.5	930.3	936.1	939.3	942.9	943.1	944.0	943.7	945.6
70°	856.4	857.8	862.1	865.3	871.0	874.4	878.5	879.7	882.3	882.8	884.8
72.5°	789.8	789.2	791.8	793.2	797.5	800.2	805.4	808.3	812.6	813.7	815.3
75°	717.3	716.7	719.8	721.0	724.7	727.3	733.2	737.0	743.7	746.4	745.7
77.5°	633.3	634.8	640.6	643.8	648.7	652.0	659.7	665.8	678.0	683.3	677.9
80°	539.5	541.0	547.0	550.0	556.4	560.5	569.1	576.2	587.2	589.5	586.5
82.5°	424.2	424.5	429.9	432.2	440.6	446.6	457.4	463.1	469.9	468.8	468.0
85°	289.2	293.1	299.8	306.5	316.7	326.6	336.8	345.2	339.3	348.6	338.1
87.5°	154.6	154.2	163.2	161.7	176.2	184.5	193.3	197.5	202.2	201.3	201.4
90°	28.4	26.7	27.4	25.6	26.9	24.9	26.9	25.1	27.7	25.2	29.2
92.5°	22.4	21.6	20.7	19.9	18.9	18.2	17.2	16.3	15.5	14.6	15.5
95°	26.9	26.1	25.3	24.4	23.6	22.9	22.1	21.3	20.5	19.7	20.7
97.5°	32.8	32.3	31.9	31.4	30.9	30.5	30.0	29.5	29.0	28.5	29.1
100°	36.9	36.9	36.9	36.9	36.6	36.6	36.6	36.6	36.6	36.6	37.2
102.5°	67.2	65.7	64.2	62.6	61.0	59.4	57.9	56.4	54.9	53.4	55.6
105°	146.9	140.9	134.8	128.8	122.7	116.7	110.8	104.7	98.7	92.8	98.9
107.5°	269.0	258.1	247.0	236.2	225.2	214.2	203.4	192.5	181.5	170.7	180.5
110°	373.9	362.2	350.6	339.0	327.3	315.7	304.1	292.6	281.0	269.4	278.7



TEST NUMBER: P1444674
 CATALOG NUMBER: EHBR1-36-UNV-TA-L930-UPL12

CANDELA DISTRIBUTION (continued):

	247.5°	250°	252.5°	255°	257.5°	260°	262.5°	265°	267.5°	270°	272.5°
112.5°	416.9	409.0	401.5	394.0	386.4	379.0	371.4	363.9	356.5	349.1	353.6
115°	411.9	408.2	404.6	400.9	397.3	393.5	390.0	386.4	382.9	379.4	379.6
117.5°	379.4	377.8	376.6	375.2	373.8	372.7	371.4	370.3	369.1	368.0	365.5
120°	332.1	332.2	332.2	332.6	332.8	333.1	333.3	333.8	334.3	334.7	331.3
122.5°	286.0	286.4	286.9	287.7	288.5	289.2	290.0	291.0	292.0	293.0	289.6
125°	246.3	246.8	247.3	247.9	248.4	249.3	250.1	251.1	252.0	253.1	250.2
127.5°	218.8	218.6	218.3	218.5	218.4	218.7	218.9	219.3	219.8	220.3	218.5
130°	202.6	201.8	201.0	200.3	199.6	199.3	198.9	198.5	198.4	198.3	197.6
132.5°	194.9	193.6	192.4	191.2	190.2	189.3	188.4	187.9	187.2	186.8	186.6
135°	192.4	190.9	189.3	187.9	186.5	185.5	184.4	183.6	182.7	182.0	182.3
137.5°	192.2	190.8	189.2	187.9	186.4	185.4	184.3	183.3	182.5	181.9	182.3
140°	194.8	193.3	191.8	190.5	189.3	188.1	187.1	186.2	185.3	184.7	185.0
142.5°	196.7	195.6	194.2	192.9	191.7	190.8	189.9	189.1	188.1	187.8	188.0
145°	199.0	198.1	197.0	196.1	195.2	194.7	193.7	193.3	192.8	192.6	192.8
147.5°	200.7	200.1	199.2	198.6	197.7	197.4	196.8	196.5	196.1	195.9	196.0
150°	201.2	200.9	200.2	199.9	199.4	199.2	198.8	198.6	198.4	198.3	198.3
152.5°	200.9	200.6	200.1	199.9	199.5	199.3	199.1	199.0	198.9	198.8	198.8
155°	199.9	199.7	199.6	199.5	199.4	199.5	199.4	199.6	199.6	199.8	199.9
157.5°	200.1	200.2	200.2	200.4	200.5	200.7	200.7	201.0	201.1	201.4	201.7
160°	201.5	201.7	201.6	201.8	201.8	201.9	202.0	202.3	202.4	202.6	202.9
162.5°	202.8	203.1	203.2	203.4	203.7	203.9	204.2	204.7	204.9	205.2	205.6
165°	205.9	205.9	206.0	206.1	206.3	206.4	206.6	206.9	207.1	207.4	207.8
167.5°	208.8	209.0	209.0	209.1	209.2	209.6	209.8	210.0	210.4	210.8	211.2
170°	212.7	212.7	212.7	212.7	212.7	212.9	213.0	213.1	213.2	213.5	213.7
172.5°	216.9	216.9	216.7	216.9	216.7	216.9	216.9	217.0	217.0	217.1	217.2
175°	219.4	219.7	219.8	219.8	219.8	219.9	220.0	220.0	220.1	220.3	220.3
177.5°	221.7	221.8	221.8	221.8	221.8	221.9	221.9	221.9	221.9	221.8	221.9
180°	221.4	221.4	221.4	221.4	221.4	221.4	221.4	221.4	221.4	221.4	221.4



TEST NUMBER: P1444674
 CATALOG NUMBER: EHBR1-36-UNV-TA-L930-UPL12

CANDELA DISTRIBUTION (continued):

	275°	277.5°	280°	282.5°	285°	287.5°	290°	292.5°	295°	297.5°	300°
0°	27712.0	27712.0	27712.0	27712.0	27712.0	27712.0	27712.0	27712.0	27712.0	27712.0	27712.0
2.5°	28058.9	28044.9	28059.2	28044.7	28059.2	28041.7	28053.6	28034.7	28039.5	28019.9	28024.9
5°	29119.8	29097.5	29109.4	29080.3	29083.4	29044.5	29043.8	28998.7	28986.7	28935.3	28912.7
7.5°	29977.7	29970.4	29974.5	29955.8	29953.7	29927.2	29914.6	29877.2	29853.7	29806.3	29773.9
10°	29841.9	29863.9	29869.5	29891.8	29896.4	29918.5	29923.1	29945.2	29949.8	29966.2	29966.3
12.5°	28483.7	28558.0	28575.7	28667.4	28706.1	28811.1	28867.3	28983.0	29051.7	29167.0	29237.8
15°	25867.0	25995.5	26046.8	26225.9	26325.0	26534.1	26665.5	26905.5	27075.0	27330.0	27512.0
17.5°	22265.7	22445.2	22526.2	22769.1	22927.6	23236.3	23458.7	23824.9	24105.1	24512.0	24834.5
20°	18272.1	18471.6	18581.6	18858.7	19045.7	19406.3	19684.0	20134.0	20509.1	21024.7	21465.7
22.5°	14408.6	14598.5	14720.6	15002.5	15213.0	15589.1	15899.5	16374.4	16794.8	17375.8	17904.4
25°	11063.0	11237.1	11347.4	11602.5	11800.2	12145.8	12442.2	12898.9	13310.2	13892.9	14435.0
27.5°	8457.5	8603.3	8709.7	8927.2	9101.6	9394.7	9649.3	10026.7	10381.1	10885.3	11368.0
30°	6474.9	6604.1	6707.7	6897.1	7058.7	7312.9	7536.7	7853.8	8147.1	8548.3	8932.2
32.5°	4948.0	5059.2	5151.4	5317.2	5463.8	5692.7	5894.4	6172.3	6424.0	6764.3	7080.2
35°	3772.6	3991.5	3976.0	4204.6	4241.4	4405.6	4585.5	4828.5	5051.5	5340.8	5609.7
37.5°	2928.2	2989.7	3055.6	3156.7	3262.9	3412.4	3564.4	3861.2	3970.1	4188.8	4411.3
40°	2361.3	2402.9	2446.4	2514.7	2589.0	2694.4	2805.0	2946.6	3091.8	3269.1	3450.1
42.5°	1996.2	2019.8	2047.5	2087.7	2133.5	2200.2	2274.3	2370.3	2471.2	2596.1	2723.4
45°	1783.5	1772.4	1780.6	1802.2	1829.8	1870.3	1917.1	1976.5	2042.2	2123.1	2209.1
47.5°	1585.2	1589.8	1592.2	1604.0	1618.8	1645.9	1674.3	1714.6	1792.6	1816.3	1863.3
50°	1454.3	1456.5	1455.8	1461.6	1469.2	1486.9	1505.2	1532.6	1559.9	1596.0	1630.5
52.5°	1344.5	1347.6	1347.1	1351.1	1355.1	1366.3	1377.9	1397.2	1415.0	1438.0	1457.9
55°	1257.8	1262.0	1263.6	1266.9	1268.9	1274.8	1279.4	1288.6	1296.3	1309.3	1321.3
57.5°	1191.2	1196.9	1199.6	1200.7	1198.3	1198.0	1196.5	1198.5	1200.0	1207.0	1213.7
60°	1138.7	1143.3	1144.0	1143.3	1139.0	1135.9	1130.9	1129.4	1128.6	1132.0	1135.7
62.5°	1083.7	1085.4	1084.2	1082.9	1078.0	1075.0	1069.9	1068.0	1066.2	1068.7	1070.6
65°	1007.7	1009.1	1007.7	1006.9	1002.5	1000.1	995.8	994.4	991.9	992.6	992.1
67.5°	946.0	947.5	946.3	945.1	942.1	940.7	937.5	935.4	932.5	931.3	929.3
70°	884.5	885.6	883.8	882.8	879.3	878.0	874.9	874.3	872.0	871.4	869.0
72.5°	813.7	813.8	811.4	810.7	808.1	808.0	806.7	807.9	807.7	809.0	808.4
75°	741.3	740.3	737.2	736.7	734.7	735.6	734.3	736.1	736.3	738.9	739.3
77.5°	668.8	665.0	659.2	656.4	652.5	652.0	649.7	651.2	650.7	653.8	655.1
80°	577.2	572.6	565.1	561.5	556.9	556.2	554.1	556.2	555.1	558.7	561.2
82.5°	460.8	456.8	449.0	446.1	440.8	441.3	439.1	441.3	441.0	446.4	449.4
85°	340.9	338.2	330.2	323.1	315.2	310.6	306.0	305.2	303.9	306.0	307.9
87.5°	196.9	194.4	188.1	184.0	170.2	170.8	165.4	165.0	163.7	162.5	165.4
90°	28.0	31.3	30.2	33.2	32.6	36.1	35.8	39.1	38.1	41.3	40.8
92.5°	16.3	17.2	18.1	18.9	19.8	20.7	21.5	22.4	24.2	25.8	28.0
95°	21.7	22.7	23.7	24.7	25.7	26.7	27.7	28.7	31.5	34.1	36.9
97.5°	29.9	30.5	31.2	31.8	32.5	33.2	33.9	34.5	37.5	40.5	43.4
100°	37.7	38.2	38.8	39.3	39.8	40.4	40.9	41.4	47.3	53.0	58.6
102.5°	57.9	60.2	62.4	64.7	67.0	69.2	71.6	73.8	86.9	99.8	112.8
105°	105.2	111.3	117.6	123.8	130.0	136.2	142.5	148.6	169.5	190.3	211.2
107.5°	190.2	200.0	209.8	219.6	229.4	239.3	249.0	258.9	279.2	299.7	319.9
110°	288.0	297.4	306.7	316.1	325.4	334.8	344.2	353.8	366.1	378.3	390.6



TEST NUMBER: P1444674
 CATALOG NUMBER: EHBR1-36-UNV-TA-L930-UPL12

CANDELA DISTRIBUTION (continued):

	275°	277.5°	280°	282.5°	285°	287.5°	290°	292.5°	295°	297.5°	300°
112.5°	358.2	362.7	367.3	372.0	376.6	381.3	386.0	390.7	396.9	403.2	409.5
115°	380.0	380.2	380.7	381.1	381.5	381.9	382.6	383.0	385.2	387.3	389.6
117.5°	363.1	360.6	358.2	355.9	353.5	351.5	349.1	347.1	346.9	346.8	346.9
120°	328.2	325.0	321.8	318.4	315.5	312.3	309.5	306.6	305.4	304.1	303.0
122.5°	286.4	283.3	280.2	277.0	274.0	271.2	268.4	265.6	264.9	264.3	263.7
125°	247.6	245.0	242.5	240.0	237.7	235.4	233.3	231.3	231.7	232.1	232.8
127.5°	217.1	215.6	214.2	212.9	211.8	210.7	209.7	208.6	210.0	211.4	212.7
130°	197.1	196.6	196.3	196.0	196.0	195.8	195.8	195.8	197.7	199.6	201.6
132.5°	186.9	187.0	187.3	187.7	188.2	188.8	189.5	190.1	192.3	194.3	196.5
135°	182.7	183.1	183.9	184.6	185.6	186.4	187.4	188.3	190.5	192.4	194.6
137.5°	183.0	183.6	184.4	185.3	186.3	187.3	188.6	189.5	191.3	193.0	194.7
140°	185.6	186.2	187.0	187.8	188.6	189.5	190.5	191.4	193.1	194.4	195.8
142.5°	188.7	189.0	189.8	190.5	191.4	192.1	193.1	193.8	195.1	196.1	197.6
145°	193.1	193.6	194.3	194.6	195.3	196.1	196.8	197.5	198.4	199.2	200.1
147.5°	196.4	196.7	197.2	197.7	198.4	198.9	199.3	199.9	200.7	201.3	201.9
150°	198.6	198.9	199.3	199.4	200.0	200.5	201.0	201.3	201.9	202.5	203.1
152.5°	199.3	199.4	199.8	200.0	200.4	200.9	201.1	201.6	202.2	202.6	203.1
155°	200.1	200.6	201.0	201.3	201.8	202.0	202.6	202.8	203.4	203.7	204.2
157.5°	202.0	202.3	202.7	203.0	203.4	203.8	204.2	204.5	205.1	205.3	205.8
160°	203.4	203.8	204.2	204.7	205.2	205.5	206.0	206.6	206.9	207.3	207.6
162.5°	206.0	206.4	206.8	207.1	207.5	207.9	208.3	208.6	209.2	209.6	210.0
165°	208.3	208.6	209.2	209.5	210.1	210.5	210.9	211.4	211.7	212.1	212.4
167.5°	211.6	211.8	212.4	212.8	213.2	213.7	214.1	214.5	214.9	215.1	215.5
170°	214.1	214.4	214.9	215.2	215.6	215.8	216.3	216.6	217.1	217.4	217.8
172.5°	217.5	217.7	218.0	218.2	218.5	218.8	219.0	219.3	219.7	219.9	220.2
175°	220.3	220.3	220.4	220.5	220.6	220.6	220.7	220.9	221.0	221.1	221.2
177.5°	222.0	222.0	222.1	222.2	222.3	222.3	222.3	222.4	222.4	222.4	222.4
180°	221.4	221.4	221.4	221.4	221.4	221.4	221.4	221.4	221.4	221.4	221.4



TEST NUMBER: P1444674
 CATALOG NUMBER: EHBR1-36-UNV-TA-L930-UPL12

CANDELA DISTRIBUTION (continued):

	302.5°	305°	307.5°	310°	312.5°	315°	317.5°	320°	322.5°	325°	327.5°
0°	27712.0	27712.0	27712.0	27712.0	27712.0	27712.0	27712.0	27712.0	27712.0	27712.0	27712.0
2.5°	28005.3	28006.5	27983.9	27982.8	27961.5	27958.9	27938.3	27932.0	27915.2	27909.1	27892.1
5°	28855.0	28827.5	28763.9	28726.5	28663.7	28622.1	28554.1	28509.7	28444.1	28394.5	28328.5
7.5°	29714.3	29671.6	29600.2	29542.3	29455.2	29385.6	29283.5	29200.0	29089.5	28993.8	28877.8
10°	29966.3	29959.7	29941.6	29915.1	29874.6	29828.9	29759.5	29687.1	29590.3	29485.0	29356.1
12.5°	29346.2	29413.2	29504.5	29558.6	29624.4	29653.3	29680.3	29673.5	29655.8	29602.6	29528.0
15°	27775.4	27963.5	28212.7	28405.8	28627.9	28789.3	28967.6	29078.8	29189.6	29240.8	29272.1
17.5°	25276.5	25632.7	26079.5	26449.7	26876.9	27220.0	27596.2	27879.3	28170.4	28379.0	28567.7
20°	22066.7	22582.9	23214.7	23772.9	24421.9	24986.0	25604.1	26111.5	26634.8	27044.0	27431.3
22.5°	18585.1	19198.2	19962.1	20669.7	21506.4	22258.4	23106.9	23845.3	24616.3	25260.4	25883.2
25°	15161.6	15833.9	16669.1	17458.7	18406.3	19281.0	20287.2	21207.5	22204.1	23069.3	23924.0
27.5°	12035.4	12695.4	13548.2	14388.6	15390.7	16322.7	17400.8	18414.9	19549.5	20595.8	21666.2
30°	9465.9	10025.8	10790.4	11604.4	12592.8	13541.2	14631.0	15673.9	16854.2	17996.7	19202.4
32.5°	7499.6	7926.1	8527.2	9215.5	10127.4	11030.3	12068.0	13074.7	14237.1	15391.2	16645.1
35°	5956.0	6288.7	6747.0	7284.2	8056.4	8834.7	9752.5	10668.1	11752.5	12847.6	14066.5
37.5°	4696.7	4966.6	5325.5	5729.0	6348.5	6987.2	7739.8	8498.8	9441.1	10411.8	11516.4
40°	3667.6	3886.1	4165.5	4466.5	4934.2	5426.3	6008.4	6597.0	7354.0	8147.4	9061.5
42.5°	2881.1	3042.4	3239.8	3459.7	3896.1	4157.3	4552.0	4977.7	5534.3	6110.3	6797.5
45°	2313.8	2423.8	2560.7	2708.2	2910.7	3132.4	3402.7	3686.1	4214.9	4474.2	4892.2
47.5°	1932.3	2006.1	2093.2	2186.1	2305.6	2434.5	2594.8	2758.7	2970.7	3190.4	3448.0
50°	1675.3	1750.4	1780.2	1828.4	1897.6	1971.2	2061.6	2151.9	2265.6	2380.9	2513.5
52.5°	1484.5	1509.1	1541.6	1572.1	1615.0	1698.9	1726.0	1773.2	1837.0	1899.3	1969.0
55°	1338.9	1354.9	1376.0	1394.5	1420.4	1445.2	1480.9	1512.4	1554.9	1592.5	1638.6
57.5°	1225.6	1235.7	1250.4	1262.6	1279.3	1293.2	1314.2	1331.3	1355.7	1377.0	1405.0
60°	1143.2	1150.0	1159.8	1167.7	1178.4	1185.7	1196.1	1204.1	1217.0	1227.8	1243.4
62.5°	1076.0	1079.4	1085.9	1090.5	1097.3	1101.0	1106.5	1110.0	1117.1	1122.6	1131.3
65°	995.2	996.0	1000.3	1002.3	1007.6	1009.6	1014.1	1015.7	1021.6	1025.6	1033.3
67.5°	929.1	927.2	927.3	925.8	926.5	924.9	925.4	923.8	926.1	927.3	933.2
70°	868.7	866.1	865.3	862.5	861.6	858.8	858.0	855.4	855.1	854.3	856.4
72.5°	809.8	809.1	809.3	807.4	807.2	805.2	805.3	804.1	805.4	806.0	808.7
75°	742.1	742.3	743.7	742.0	742.4	740.8	741.4	739.9	740.7	740.4	743.0
77.5°	659.8	661.8	665.3	664.6	665.8	663.9	664.7	662.6	663.2	661.8	662.7
80°	567.1	571.2	576.0	575.9	577.9	576.6	578.4	576.4	577.2	574.7	574.1
82.5°	457.2	460.6	465.8	466.0	470.5	471.3	476.3	476.1	479.3	477.3	475.9
85°	312.5	314.9	319.4	321.9	326.5	329.4	334.2	336.1	332.7	339.0	334.0
87.5°	163.2	169.2	165.8	173.8	171.9	179.9	178.2	185.6	184.1	190.5	189.7
90°	45.1	45.2	49.7	50.0	55.5	56.5	60.3	59.1	62.6	61.5	65.1
92.5°	29.6	31.7	33.6	35.5	37.3	39.3	37.5	35.7	34.0	32.3	30.6
95°	39.6	42.3	45.0	47.8	50.4	53.2	50.3	47.4	44.5	41.5	38.7
97.5°	46.3	49.2	52.1	55.1	58.1	61.0	57.6	54.1	50.6	47.2	43.8
100°	64.3	70.0	75.7	81.4	87.2	92.8	86.4	79.9	73.6	67.1	60.7
102.5°	126.0	139.0	152.0	165.1	178.0	191.1	177.5	164.1	150.4	136.8	123.1
105°	232.1	252.9	273.8	294.5	315.4	336.5	314.4	292.3	270.1	248.2	226.0
107.5°	340.3	360.6	381.2	401.5	421.9	442.5	420.1	397.6	375.3	353.0	330.6
110°	403.1	415.3	427.7	440.1	452.4	465.0	448.7	432.6	416.3	399.9	383.6



TEST NUMBER: P1444674
 CATALOG NUMBER: EHBR1-36-UNV-TA-L930-UPL12

CANDELA DISTRIBUTION (continued):

	302.5°	305°	307.5°	310°	312.5°	315°	317.5°	320°	322.5°	325°	327.5°
112.5°	415.8	422.2	428.5	435.1	441.3	447.7	436.1	424.7	413.0	401.6	390.1
115°	391.8	394.1	396.4	398.8	400.9	403.2	395.7	387.9	380.3	372.7	364.8
117.5°	346.9	347.2	347.0	347.3	347.2	347.3	343.2	339.1	334.9	330.8	326.5
120°	301.7	300.7	299.5	298.4	297.1	295.9	294.3	292.9	291.3	289.8	288.0
122.5°	263.0	262.5	261.8	261.3	260.6	259.9	259.6	259.3	258.9	258.5	258.1
125°	233.3	233.8	234.3	234.8	235.3	235.8	235.8	235.9	236.0	236.1	235.9
127.5°	214.1	215.4	216.6	218.0	219.1	220.4	220.6	221.1	221.4	221.8	222.1
130°	203.4	205.4	207.2	209.0	210.7	212.5	212.7	213.1	213.2	213.5	213.9
132.5°	198.5	200.5	202.6	204.7	206.5	208.5	208.7	209.1	209.1	209.4	209.6
135°	196.5	198.5	200.3	202.4	204.1	205.9	206.0	206.3	206.4	206.7	206.7
137.5°	196.2	198.0	199.5	201.1	202.6	204.2	204.2	204.5	204.4	204.8	204.9
140°	197.1	198.5	199.7	201.1	202.3	203.6	203.6	203.6	203.6	203.6	203.5
142.5°	198.5	199.7	200.6	201.8	202.7	203.9	203.4	203.3	203.1	202.9	202.6
145°	200.9	201.8	202.6	203.4	203.9	204.8	204.3	204.1	203.5	203.3	202.8
147.5°	202.6	203.3	203.6	204.2	204.5	205.2	204.8	204.3	204.0	203.4	203.0
150°	203.4	204.2	204.6	205.0	205.4	205.9	205.4	204.9	204.2	203.8	203.3
152.5°	203.6	204.1	204.5	204.8	205.2	205.6	205.0	204.7	204.0	203.4	202.8
155°	204.5	205.0	205.2	205.6	205.7	206.0	205.4	205.1	204.6	204.2	203.6
157.5°	206.0	206.5	206.7	207.0	207.2	207.5	207.2	206.8	206.4	206.1	205.6
160°	208.0	208.3	208.6	208.8	209.1	209.2	208.9	208.8	208.4	208.1	207.6
162.5°	210.4	210.8	211.2	211.4	211.7	212.1	211.7	211.5	211.0	210.7	210.2
165°	212.7	213.1	213.3	213.7	213.8	214.1	213.8	213.7	213.4	213.2	212.9
167.5°	215.7	216.1	216.4	216.6	216.7	216.9	216.7	216.7	216.4	216.1	215.8
170°	218.0	218.3	218.7	218.9	219.1	219.3	219.2	219.0	218.8	218.6	218.3
172.5°	220.5	220.7	220.8	221.1	221.2	221.4	221.3	221.0	220.8	220.6	220.3
175°	221.2	221.4	221.5	221.5	221.5	221.6	221.4	221.3	221.0	220.8	220.6
177.5°	222.4	222.4	222.4	222.3	222.3	222.3	222.3	222.1	222.0	221.8	221.6
180°	221.4	221.4	221.4	221.4	221.4	221.4	221.4	221.4	221.4	221.4	221.4



TEST NUMBER: P1444674
 CATALOG NUMBER: EHBR1-36-UNV-TA-L930-UPL12

CANDELA DISTRIBUTION (continued):

	330°	332.5°	335°	337.5°	340°	342.5°	345°	347.5°	350°	352.5°	355°
0°	27712.0	27712.0	27712.0	27712.0	27712.0	27712.0	27712.0	27712.0	27712.0	27712.0	27712.0
2.5°	27886.1	27873.9	27866.1	27856.2	27850.2	27842.4	27836.8	27832.0	27828.1	27824.5	27821.8
5°	28278.2	28215.9	28167.5	28115.1	28072.0	28029.2	27996.0	27968.7	27949.8	27935.6	27927.1
7.5°	28777.5	28663.3	28561.9	28455.1	28359.3	28265.2	28184.0	28114.1	28061.6	28027.6	28007.0
10°	29223.3	29070.6	28919.5	28760.4	28609.8	28463.4	28328.5	28209.8	28115.8	28053.3	28016.9
12.5°	29423.1	29293.0	29138.7	28966.1	28781.3	28594.4	28412.2	28247.9	28110.0	28017.4	27964.0
15°	29247.1	29193.7	29089.0	28955.0	28779.7	28586.4	28372.4	28171.4	27986.4	27866.5	27796.9
17.5°	28674.5	28749.1	28741.1	28689.9	28563.8	28401.1	28183.1	27957.3	27725.8	27565.5	27477.9
20°	27708.3	27942.7	28061.6	28122.6	28073.1	27967.6	27770.2	27541.0	27271.3	27061.9	26934.2
22.5°	26350.5	26764.2	27022.1	27210.8	27250.9	27214.9	27040.6	26822.6	26522.0	26270.3	26081.7
25°	24602.4	25208.7	25616.2	25935.7	26059.8	26091.8	25943.6	25726.7	25391.6	25098.5	24839.3
27.5°	22543.5	23331.3	23875.4	24304.7	24498.5	24582.5	24446.0	24224.8	23828.4	23478.4	23139.9
30°	20225.6	21160.2	21815.4	22330.1	22566.3	22677.4	22532.3	22285.4	21824.1	21403.0	20976.5
32.5°	17744.6	18767.4	19481.3	20040.3	20274.4	20378.8	20189.1	19911.8	19378.6	18882.5	18385.3
35°	15147.2	16179.4	16899.4	17443.5	17639.7	17702.7	17460.1	17139.5	16548.8	16004.3	15462.1
37.5°	12496.8	13457.2	14111.5	14599.9	14721.3	14732.1	14439.8	14085.9	13464.9	12928.0	12388.3
40°	9869.4	10679.2	11207.6	11598.4	11640.6	11603.0	11285.2	10928.9	10348.0	9867.1	9393.2
42.5°	7394.4	8005.7	8382.7	8650.6	8634.6	8560.4	8269.0	7962.8	7483.5	7117.2	6744.2
45°	5274.0	5677.2	5897.6	6054.3	6004.0	5933.2	5706.4	5491.8	5166.1	4929.5	4678.9
47.5°	3663.9	4145.3	4061.5	4368.0	4104.0	4278.4	3915.2	3715.0	3542.2	3416.4	3274.8
50°	2623.1	2733.4	2786.7	2823.0	2803.7	2776.9	2711.6	2653.4	2574.4	2516.8	2449.8
52.5°	2025.7	2080.9	2111.1	2132.9	2128.7	2118.9	2090.4	2064.4	2027.5	2003.1	1973.8
55°	1715.9	1716.7	1772.3	1748.4	1783.6	1742.4	1758.6	1712.9	1720.3	1681.0	1654.7
57.5°	1425.8	1448.5	1458.6	1468.4	1465.7	1464.0	1452.9	1447.4	1435.0	1431.2	1422.3
60°	1254.2	1266.0	1268.5	1273.0	1269.2	1267.7	1259.2	1256.1	1247.8	1246.2	1240.4
62.5°	1136.6	1142.6	1142.6	1142.6	1137.6	1132.9	1123.4	1118.4	1111.3	1109.7	1106.3
65°	1038.4	1044.6	1045.7	1047.0	1043.3	1039.7	1031.2	1025.8	1018.5	1015.7	1011.8
67.5°	936.9	943.6	945.9	949.3	947.3	946.5	940.8	938.6	933.8	932.7	929.1
70°	857.4	860.1	859.9	859.9	855.3	851.3	844.6	841.4	836.4	835.4	832.1
72.5°	810.0	812.0	810.8	809.0	803.2	797.2	789.4	783.7	777.1	773.0	768.3
75°	743.4	746.0	744.3	743.2	738.0	734.0	727.8	724.6	720.0	718.6	715.4
77.5°	661.5	662.7	660.1	659.8	655.8	653.3	648.6	647.8	644.4	644.5	641.4
80°	570.4	569.7	565.4	564.5	560.5	559.5	555.8	556.1	553.4	554.5	552.3
82.5°	469.4	466.8	461.2	459.5	454.8	454.5	452.0	454.0	452.4	454.8	453.4
85°	336.3	337.1	334.6	334.6	333.3	333.6	333.5	335.0	335.2	337.5	337.4
87.5°	187.5	190.2	189.7	192.1	192.0	194.8	195.8	199.9	200.4	204.2	204.2
90°	64.1	68.0	66.8	71.0	70.7	75.0	75.5	79.8	79.8	83.5	82.5
92.5°	28.8	27.1	25.4	23.6	22.7	21.7	21.2	19.9	19.3	18.2	17.3
95°	35.7	32.8	29.9	26.9	25.9	24.9	23.9	22.9	21.8	20.9	19.9
97.5°	40.4	36.9	33.4	29.9	29.1	28.2	27.3	26.4	25.6	24.7	23.8
100°	54.2	47.8	41.3	34.8	34.1	33.4	32.6	31.9	31.2	30.4	29.6
102.5°	109.4	95.8	82.1	68.4	65.8	63.2	60.6	57.9	55.3	52.7	50.1
105°	203.9	181.6	159.5	137.3	130.3	123.2	116.2	109.1	101.9	94.9	87.9
107.5°	308.2	285.6	263.2	240.6	227.7	214.6	201.6	188.5	175.5	162.4	149.4
110°	367.3	350.9	334.5	318.0	307.7	297.2	286.7	276.2	265.9	255.2	244.7



TEST NUMBER: P1444674
 CATALOG NUMBER: EHBR1-36-UNV-TA-L930-UPL12

CANDELA DISTRIBUTION (continued):

	330°	332.5°	335°	337.5°	340°	342.5°	345°	347.5°	350°	352.5°	355°
112.5°	378.4	366.8	355.1	343.3	338.6	333.9	329.3	324.5	319.9	314.9	310.3
115°	357.1	349.4	341.5	333.6	332.2	330.5	329.0	327.3	325.7	324.0	322.3
117.5°	322.4	318.0	313.9	309.5	309.9	310.3	310.8	311.1	311.5	311.6	312.0
120°	286.4	284.8	283.2	281.5	283.2	284.8	286.5	287.9	289.5	290.9	292.3
122.5°	257.7	257.2	256.8	256.3	258.4	260.4	262.4	264.2	265.9	267.5	269.3
125°	236.0	236.0	236.0	235.8	238.0	240.0	242.0	243.8	245.7	247.3	249.0
127.5°	222.4	222.8	223.1	223.3	225.1	226.5	228.0	229.4	230.8	231.9	233.0
130°	214.1	214.2	214.6	214.8	216.3	217.7	219.2	220.5	221.7	222.7	223.7
132.5°	209.9	210.0	210.3	210.3	211.7	212.8	214.0	214.8	215.8	216.5	217.1
135°	206.9	207.0	207.2	207.2	208.4	209.6	210.7	211.5	212.4	213.0	213.6
137.5°	205.1	205.1	205.2	205.2	206.4	207.4	208.3	209.2	209.9	210.6	211.1
140°	203.6	203.5	203.6	203.5	204.5	205.5	206.4	207.1	207.9	208.3	208.8
142.5°	202.5	202.0	202.1	201.7	202.5	203.2	203.8	204.4	205.0	205.3	205.6
145°	202.5	201.9	201.7	201.2	201.8	202.3	202.9	203.4	203.7	203.9	204.2
147.5°	202.6	202.1	201.6	201.1	201.8	202.1	202.5	202.6	203.2	203.3	203.4
150°	202.7	202.0	201.4	200.8	201.2	201.4	201.7	201.9	202.3	202.2	202.4
152.5°	202.3	201.6	201.0	200.2	200.5	200.6	200.8	200.8	201.0	201.0	201.0
155°	203.1	202.5	201.9	201.2	201.4	201.5	201.4	201.5	201.4	201.4	201.2
157.5°	205.1	204.5	204.2	203.5	203.5	203.5	203.4	203.1	203.1	202.8	202.6
160°	207.4	206.8	206.5	205.9	205.9	205.8	205.6	205.3	205.1	204.9	204.5
162.5°	209.8	209.2	208.7	208.2	208.1	208.1	207.8	207.5	207.4	207.1	206.7
165°	212.6	212.3	211.9	211.4	211.3	211.0	210.9	210.5	210.3	210.0	209.6
167.5°	215.5	215.1	214.8	214.2	214.2	214.1	214.0	213.8	213.5	213.2	213.1
170°	218.1	217.7	217.4	217.1	216.9	216.8	216.5	216.4	216.0	215.8	215.6
172.5°	219.9	219.7	219.3	218.9	218.9	218.7	218.5	218.4	218.2	217.9	217.8
175°	220.4	220.1	219.8	219.6	219.4	219.3	219.2	219.1	219.0	218.9	218.6
177.5°	221.4	221.4	221.0	220.9	220.7	220.7	220.6	220.6	220.6	220.5	220.4
180°	221.4	221.4	221.4	221.4	221.4	221.4	221.4	221.4	221.4	221.4	221.4



TEST NUMBER: P1444674
 CATALOG NUMBER: EHBR1-36-UNV-TA-L930-UPL12

CANDELA DISTRIBUTION (continued):

	357.5°	360°
0°	27712.0	27712.0
2.5°	27819.3	27817.9
5°	27922.8	27921.1
7.5°	28001.4	28000.9
10°	28010.6	28015.5
12.5°	27954.8	27958.7
15°	27791.6	27799.2
17.5°	27479.5	27489.5
20°	26942.0	26952.4
22.5°	26071.5	26075.8
25°	24805.8	24787.9
27.5°	23080.4	23049.5
30°	20887.0	20857.1
32.5°	18271.8	18253.1
35°	15328.0	15316.3
37.5°	12228.7	12204.7
40°	9219.9	9149.9
42.5°	6581.0	6458.0
45°	4548.0	4402.3
47.5°	3175.0	3084.9
50°	2406.5	2377.5
52.5°	1961.0	1954.2
55°	1654.6	1651.5
57.5°	1424.3	1423.2
60°	1243.4	1243.1
62.5°	1108.6	1109.1
65°	1013.6	1013.8
67.5°	930.0	929.4
70°	833.3	832.6
72.5°	766.8	765.7
75°	715.4	714.7
77.5°	642.3	641.2
80°	553.8	552.3
82.5°	455.5	453.9
85°	339.7	339.9
87.5°	207.9	207.8
90°	86.2	84.7
92.5°	16.8	16.0
95°	18.9	17.9
97.5°	23.0	22.1
100°	28.9	28.2
102.5°	47.5	44.9
105°	80.8	73.8
107.5°	136.3	123.2
110°	234.2	223.7



TEST NUMBER: P1444674
CATALOG NUMBER: EHBR1-36-UNV-TA-L930-UPL12

CANDELA DISTRIBUTION (continued):

	357.5°	360°
112.5°	305.4	300.6
115°	320.4	318.7
117.5°	312.1	312.1
120°	293.5	294.8
122.5°	270.6	272.2
125°	250.3	251.8
127.5°	233.9	234.8
130°	224.3	225.1
132.5°	217.5	217.8
135°	213.9	214.1
137.5°	211.2	211.5
140°	208.9	209.1
142.5°	205.8	205.9
145°	204.3	204.3
147.5°	203.1	203.2
150°	202.2	202.2
152.5°	200.7	200.7
155°	201.0	200.8
157.5°	202.1	201.9
160°	204.2	203.9
162.5°	206.4	206.1
165°	209.1	208.7
167.5°	212.6	212.4
170°	215.2	215.0
172.5°	217.5	217.3
175°	218.5	218.4
177.5°	220.4	220.2
180°	221.4	221.4

LM-79-2019: Approved Method: Electrical and Photometric Measurements of Solid-
State Lighting Products

Report Prepared for

Cooper Lighting Solutions

Metalux

Report Number: SP1-2506-472-5

Test Date: 08/01/2025

Luminaire Tested: EHBR-60-L930-N

Data in this report applies to families of products including EHBR-60-L930-N

Test Information

Test Method: LM-79-2019
 Report Number: SP1-2506-472-5
 Test Lab: COOPER LIGHTING SOLUTIONS
 Photometer: SP1 - 76IN SPHERE
 Measurement Geometry: 4π
 Issue Date: 08/05/2025
 Manufacturer: COOPER LIGHTING SOLUTIONS
 Product Line: Metalux
 Catalog Number: **EHBR-60-L930-N**
 Description: Elevate Round Highbay at, 60000 lumens, 3000K 90CRI LEDs with N lens

Spectral Parameters

CCT (K): 2996
 CIE u': 0.2519
 CIE v': 0.5169
 Duv: -0.0033
 CIE x: 0.4325
 CIE y: 0.3945
 CIE z: 0.1730
 Peak Wavelength (nm): 630
 Dominant Wavelength (nm): 584
 Purity: 48.21818
 Rf: 91.3
 Rg: 102

CRI (Ra):	94.4		
R1:	96.8	R9:	61.4
R2:	98.1	R10:	94.4
R3:	97.8	R11:	95.7
R4:	95.6	R12:	88.5
R5:	96.9	R13:	97.3
R6:	95.7	R14:	97.8
R7:	90.9	R15:	92.3
R8:	83.0		



Test Conditions

Stabilization Time: 40M
 Operation Time: 1H 40M
 Sphere Temperature (°C): 25.0

REPORT NUMBER: SP1-2506-472-5

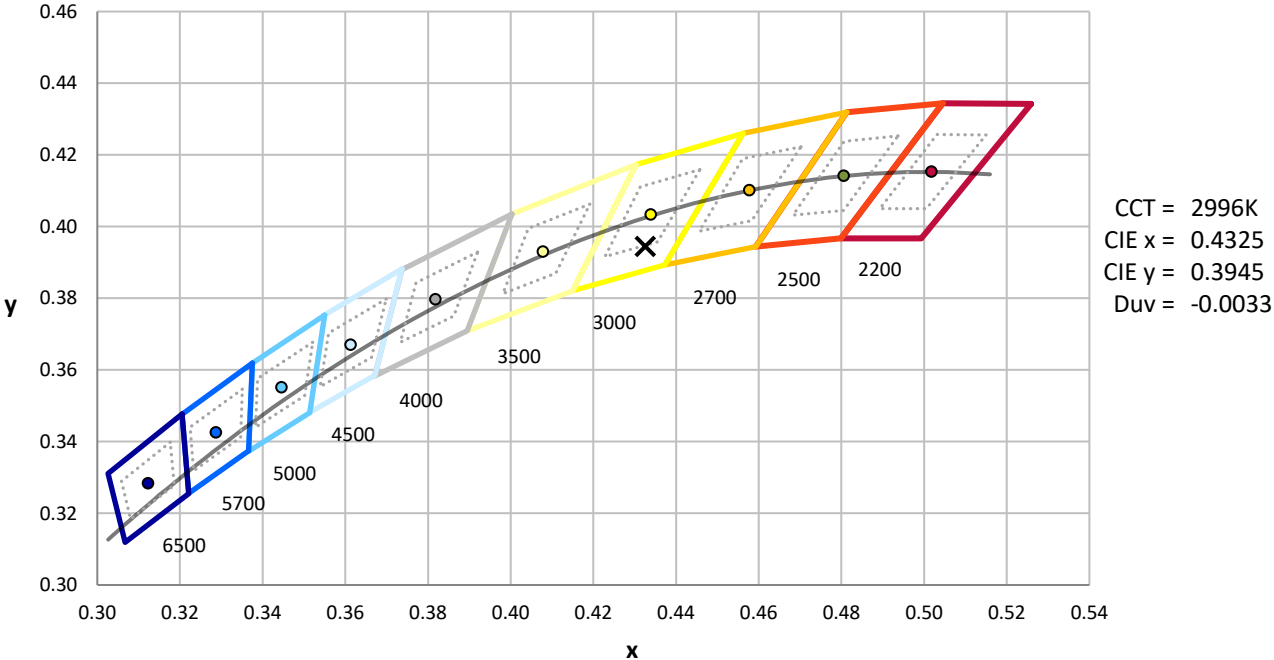
Measurement and Test Equipment			
Instrument	Identification Number	Calibration Date	Calibration Due Date
Photometer	76INCH SPHERE IN0058	6/16/2025	12/16/2025
Power Meter	XITRON INXT2011004	1/21/2025	1/21/2026
AC Power Source	CHROMA 61603 IN0063	10/22/2024	10/22/2025
DC Power Source	AGILENT E3634A IN0208	10/22/2024	10/22/2025
Sphere Thermometer	ONSET IN0085	10/22/2024	10/22/2025
Room Thermometer	ONSET IN0046	10/22/2024	10/22/2025

REPORT NUMBER: SP1-2506-472-5

CIE 1931 Chromaticity Diagram



CIE 1931 Chromaticity Diagram with 2017 ANSI 7-Step and 4-Step Quadrangles



Point lies inside the ANSI 3000K 7-step quadrangle

REPORT NUMBER: SP1-2506-472-5

Photopic Flux vs. Wavelength

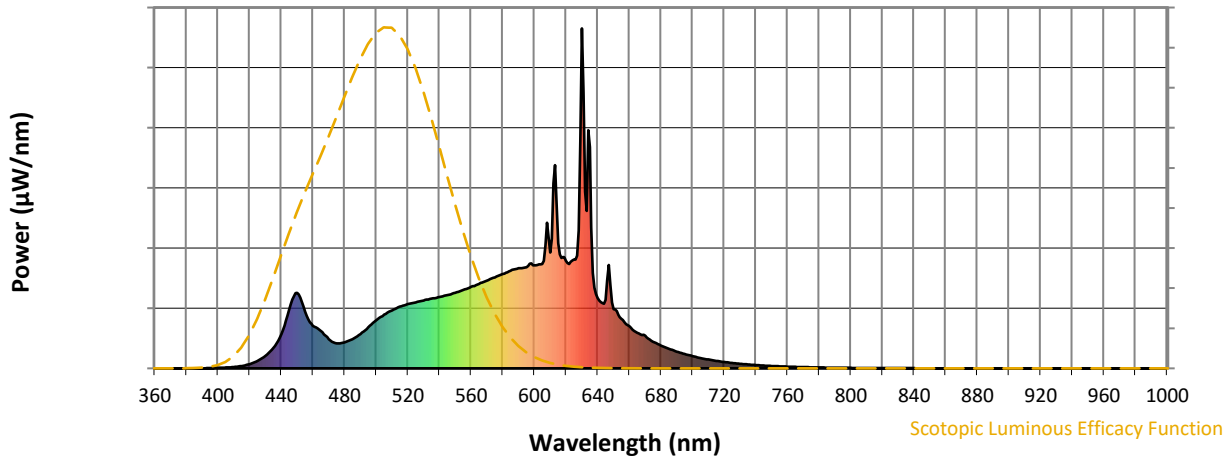


Photopic Lumens: NR

λ (nm)	Power W [^] /nm	Lumens (φ/nm)	λ (nm)	Power W [^] /nm	Lumens (φ/nm)	λ (nm)	Power W [^] /nm	Lumens (φ/nm)	λ (nm)	Power W [^] /nm	Lumens (φ/nm)	λ (nm)	Power W [^] /nm	Lumens (φ/nm)
360	0	NR	490	101	NR	620	317	NR	750	7	NR	880	0	NR
365	0	NR	495	121	NR	625	320	NR	755	6	NR	885	0	NR
370	0	NR	500	141	NR	630	1000	NR	760	5	NR	890	0	NR
375	0	NR	505	158	NR	635	651	NR	765	4	NR	895	0	NR
380	0	NR	510	171	NR	640	207	NR	770	4	NR	900	0	NR
385	0	NR	515	182	NR	645	201	NR	775	3	NR	905	0	NR
390	0	NR	520	189	NR	650	174	NR	780	3	NR	910	0	NR
395	1	NR	525	194	NR	655	146	NR	785	2	NR	915	0	NR
400	1	NR	530	199	NR	660	124	NR	790	2	NR	920	0	NR
405	3	NR	535	205	NR	665	105	NR	795	2	NR	925	0	NR
410	4	NR	540	210	NR	670	96	NR	800	1	NR	930	0	NR
415	7	NR	545	216	NR	675	79	NR	805	1	NR	935	0	NR
420	13	NR	550	222	NR	680	67	NR	810	1	NR	940	0	NR
425	22	NR	555	230	NR	685	58	NR	815	1	NR	945	0	NR
430	37	NR	560	240	NR	690	49	NR	820	1	NR	950	0	NR
435	60	NR	565	248	NR	695	42	NR	825	1	NR	955	0	NR
440	101	NR	570	258	NR	700	36	NR	830	1	NR	960	0	NR
445	172	NR	575	268	NR	705	30	NR	835	1	NR	965	0	NR
450	223	NR	580	278	NR	710	26	NR	840	1	NR	970	0	NR
455	167	NR	585	287	NR	715	22	NR	845	0	NR	975	0	NR
460	126	NR	590	295	NR	720	19	NR	850	0	NR	980	0	NR
465	111	NR	595	298	NR	725	16	NR	855	0	NR	985	0	NR
470	86	NR	600	303	NR	730	14	NR	860	0	NR	990	0	NR
475	74	NR	605	307	NR	735	12	NR	865	0	NR	995	0	NR
480	77	NR	610	341	NR	740	10	NR	870	0	NR	1000	0	NR
485	86	NR	615	368	NR	745	8	NR	875	0	NR			

REPORT NUMBER: SP1-2506-472-5

Scotopic Flux vs. Wavelength



Scotopic Lumens: NR

S/P: 1.44

λ (nm)	Power W [^] /nm	Lumens (φ/nm)	λ (nm)	Power W [^] /nm	Lumens (φ/nm)	λ (nm)	Power W [^] /nm	Lumens (φ/nm)	λ (nm)	Power W [^] /nm	Lumens (φ/nm)	λ (nm)	Power W [^] /nm	Lumens (φ/nm)
360	0	NR	490	101	NR	620	317	NR	750	7	NR	880	0	NR
365	0	NR	495	121	NR	625	320	NR	755	6	NR	885	0	NR
370	0	NR	500	141	NR	630	1000	NR	760	5	NR	890	0	NR
375	0	NR	505	158	NR	635	651	NR	765	4	NR	895	0	NR
380	0	NR	510	171	NR	640	207	NR	770	4	NR	900	0	NR
385	0	NR	515	182	NR	645	201	NR	775	3	NR	905	0	NR
390	0	NR	520	189	NR	650	174	NR	780	3	NR	910	0	NR
395	1	NR	525	194	NR	655	146	NR	785	2	NR	915	0	NR
400	1	NR	530	199	NR	660	124	NR	790	2	NR	920	0	NR
405	3	NR	535	205	NR	665	105	NR	795	2	NR	925	0	NR
410	4	NR	540	210	NR	670	96	NR	800	1	NR	930	0	NR
415	7	NR	545	216	NR	675	79	NR	805	1	NR	935	0	NR
420	13	NR	550	222	NR	680	67	NR	810	1	NR	940	0	NR
425	22	NR	555	230	NR	685	58	NR	815	1	NR	945	0	NR
430	37	NR	560	240	NR	690	49	NR	820	1	NR	950	0	NR
435	60	NR	565	248	NR	695	42	NR	825	1	NR	955	0	NR
440	101	NR	570	258	NR	700	36	NR	830	1	NR	960	0	NR
445	172	NR	575	268	NR	705	30	NR	835	1	NR	965	0	NR
450	223	NR	580	278	NR	710	26	NR	840	1	NR	970	0	NR
455	167	NR	585	287	NR	715	22	NR	845	0	NR	975	0	NR
460	126	NR	590	295	NR	720	19	NR	850	0	NR	980	0	NR
465	111	NR	595	298	NR	725	16	NR	855	0	NR	985	0	NR
470	86	NR	600	303	NR	730	14	NR	860	0	NR	990	0	NR
475	74	NR	605	307	NR	735	12	NR	865	0	NR	995	0	NR
480	77	NR	610	341	NR	740	10	NR	870	0	NR	1000	0	NR
485	86	NR	615	368	NR	745	8	NR	875	0	NR			

REPORT NUMBER: SP1-2506-472-5

Melanopic Flux vs. Wavelength



Melanopic Lumens: NR

M/P: 2.85

λ (nm)	Power W [^] /nm	Lumens (ϕ /nm)	λ (nm)	Power W [^] /nm	Lumens (ϕ /nm)	λ (nm)	Power W [^] /nm	Lumens (ϕ /nm)	λ (nm)	Power W [^] /nm	Lumens (ϕ /nm)	λ (nm)	Power W [^] /nm	Lumens (ϕ /nm)
360	0	NR	490	101	NR	620	317	NR	750	7	NR	880	0	NR
365	0	NR	495	121	NR	625	320	NR	755	6	NR	885	0	NR
370	0	NR	500	141	NR	630	1000	NR	760	5	NR	890	0	NR
375	0	NR	505	158	NR	635	651	NR	765	4	NR	895	0	NR
380	0	NR	510	171	NR	640	207	NR	770	4	NR	900	0	NR
385	0	NR	515	182	NR	645	201	NR	775	3	NR	905	0	NR
390	0	NR	520	189	NR	650	174	NR	780	3	NR	910	0	NR
395	1	NR	525	194	NR	655	146	NR	785	2	NR	915	0	NR
400	1	NR	530	199	NR	660	124	NR	790	2	NR	920	0	NR
405	3	NR	535	205	NR	665	105	NR	795	2	NR	925	0	NR
410	4	NR	540	210	NR	670	96	NR	800	1	NR	930	0	NR
415	7	NR	545	216	NR	675	79	NR	805	1	NR	935	0	NR
420	13	NR	550	222	NR	680	67	NR	810	1	NR	940	0	NR
425	22	NR	555	230	NR	685	58	NR	815	1	NR	945	0	NR
430	37	NR	560	240	NR	690	49	NR	820	1	NR	950	0	NR
435	60	NR	565	248	NR	695	42	NR	825	1	NR	955	0	NR
440	101	NR	570	258	NR	700	36	NR	830	1	NR	960	0	NR
445	172	NR	575	268	NR	705	30	NR	835	1	NR	965	0	NR
450	223	NR	580	278	NR	710	26	NR	840	1	NR	970	0	NR
455	167	NR	585	287	NR	715	22	NR	845	0	NR	975	0	NR
460	126	NR	590	295	NR	720	19	NR	850	0	NR	980	0	NR
465	111	NR	595	298	NR	725	16	NR	855	0	NR	985	0	NR
470	86	NR	600	303	NR	730	14	NR	860	0	NR	990	0	NR
475	74	NR	605	307	NR	735	12	NR	865	0	NR	995	0	NR
480	77	NR	610	341	NR	740	10	NR	870	0	NR	1000	0	NR
485	86	NR	615	368	NR	745	8	NR	875	0	NR			

Summary

$R_f = 91.3$
 $R_g = 102$
 $CIE R_a = 94.4$
 $R_9 = 61.4$

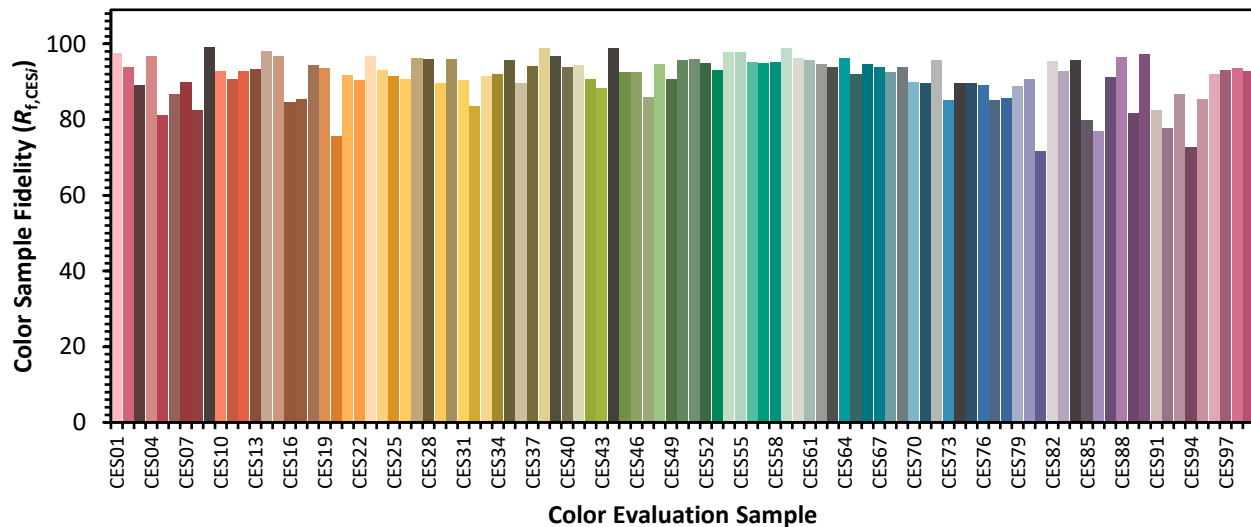


Color Vector Graphics

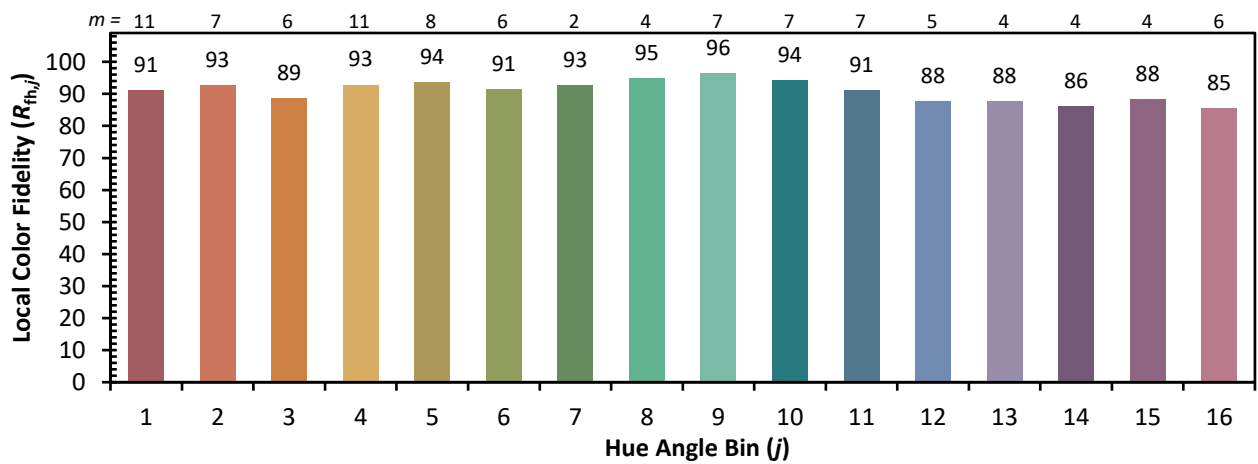
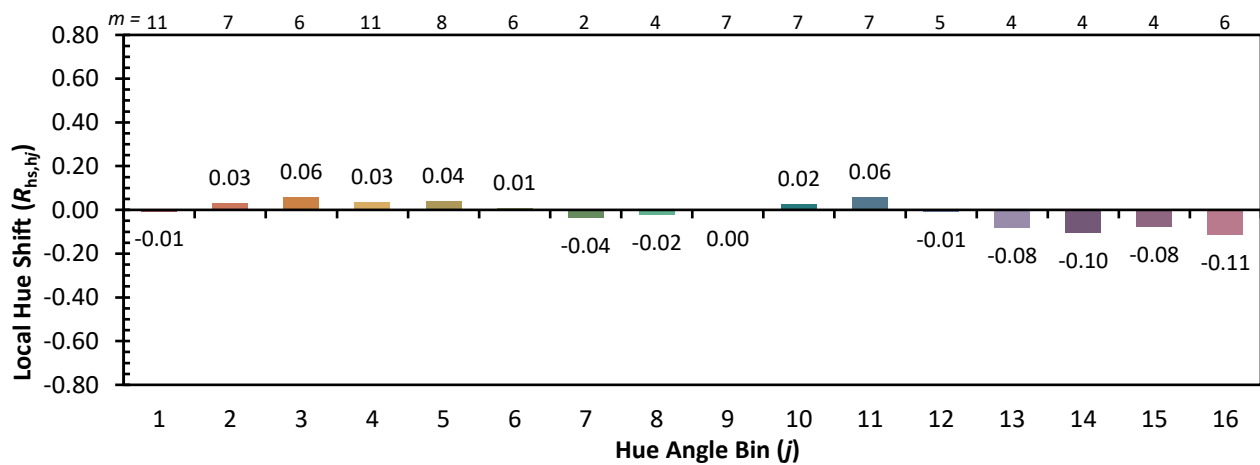
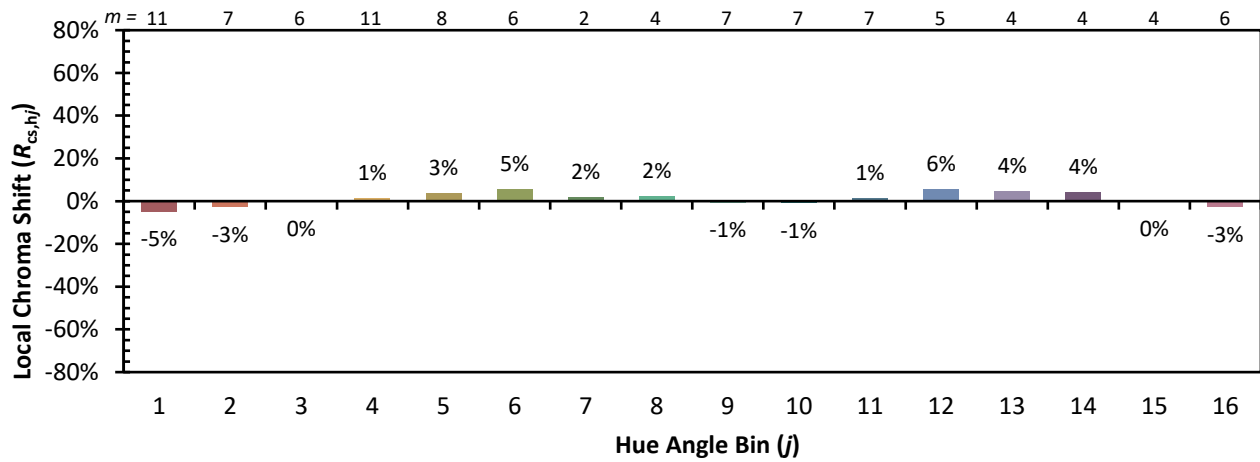


Individual Sample Fidelity Index ($R_{f,i}$)

CES01 = 86	CES26 = 91	CES51 = 96	CES76 = 89
CES02 = 63	CES27 = 96	CES52 = 95	CES77 = 85
CES03 = 32	CES28 = 96	CES53 = 93	CES78 = 86
CES04 = 70	CES29 = 90	CES54 = 98	CES79 = 89
CES05 = 51	CES30 = 96	CES55 = 98	CES80 = 91
CES06 = 51	CES31 = 90	CES56 = 95	CES81 = 72
CES07 = 44	CES32 = 84	CES57 = 95	CES82 = 95
CES08 = 42	CES33 = 91	CES58 = 95	CES83 = 93
CES09 = 29	CES34 = 92	CES59 = 99	CES84 = 96
CES10 = 76	CES35 = 96	CES60 = 96	CES85 = 80
CES11 = 59	CES36 = 90	CES61 = 96	CES86 = 77
CES12 = 65	CES37 = 94	CES62 = 95	CES87 = 91
CES13 = 44	CES38 = 99	CES63 = 94	CES88 = 96
CES14 = 74	CES39 = 97	CES64 = 96	CES89 = 82
CES15 = 72	CES40 = 94	CES65 = 92	CES90 = 97
CES16 = 48	CES41 = 94	CES66 = 95	CES91 = 82
CES17 = 50	CES42 = 91	CES67 = 94	CES92 = 78
CES18 = 57	CES43 = 88	CES68 = 93	CES93 = 87
CES19 = 72	CES44 = 99	CES69 = 94	CES94 = 73
CES20 = 67	CES45 = 93	CES70 = 90	CES95 = 85
CES21 = 86	CES46 = 93	CES71 = 90	CES96 = 92
CES22 = 79	CES47 = 86	CES72 = 96	CES97 = 93
CES23 = 92	CES48 = 95	CES73 = 85	CES98 = 94
CES24 = 91	CES49 = 91	CES74 = 90	CES99 = 93
CES25 = 72	CES50 = 96	CES75 = 90	



Color Rendition by Hue-Angle Bin



Measure Comparisons



(END OF REPORT)