

Cooper Lighting Solutions Photometric Lab
1121 Highway 74 South
Peachtree City, GA 30269



Scaled data based on original data using
LM-79-2019 Approved Method: Electrical and Photometric Measurements of Solid-
State Lighting Products

Test Report Prepared for
Cooper Lighting Solutions

Brand: METALUX

Report Number: P1444690

Luminaire Tested: EHBR1-48-UNV-TA-L930-UPL12

Issue Date: 5/1/2026

Test Information

Test Method: LM-79-2019
Report Number: P1444690
REPORT IS A COMBINATION OF REPORTS P1444306 AND P1431635
Test Lab: INNOVATION CENTER
Issue Date: 5/1/2026
Manufacturer: COOPER LIGHTING SOLUTIONS
Product Line: METALUX
Catalog Number: EHBR1-48-UNV-TA-L930-UPL12
Description: Elevate Round Highbay at, 48000 lumens, 3000K 90CRI LEDs with TA lens
Light Source: -
Ballast/Driver: -

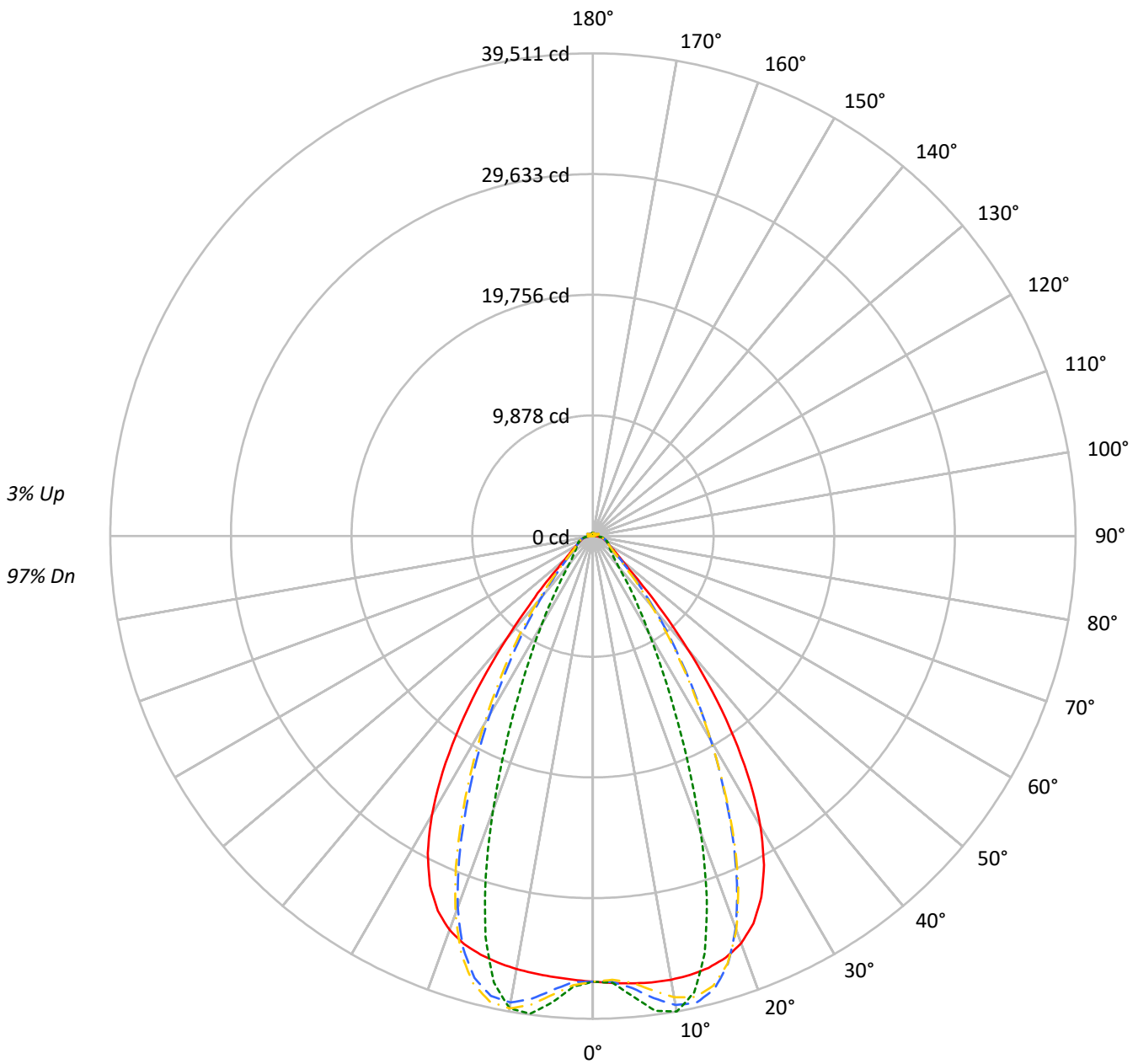
Summary

Lumens per Lamp: N/A
Luminaire Lumens: 43303.1 lumens
Efficiency: N/A
Efficacy: 162.8 lumens/watt
Spacing Criteria (0/90/45): 1.13 / 0.77 / 0.88
Luminous Opening: Vertical Cylinder (Dia: 1.71' x H: 0.1')
CIE Type: Direct

Input Watts (W): 266
Input Voltage (V): NR
Input Current (Ain): NR
Voltage Rise (V): NR
Power Factor: NR
Total Harmonic Distortion (THDi): NR
Frequency (hertz): 60
Stabilization Time: NR
Operation Time: NR
Ambient Temperature (°C): NR
Test Distance: 24 FT

TEST NUMBER: P1444690
CATALOG NUMBER: EHBR1-48-UNV-TA-L930-UPL12

Luminous Intensity Polar Plot



— 0°-180° - - 45°-225° - · - · 90°-270° - · - · 135°-315°



TEST NUMBER: P1444690
 CATALOG NUMBER: EHBR1-48-UNV-TA-L930-UPL12

COEFFICIENT OF UTILIZATION - ZONAL CAVITY METHOD:

RF	20				20				20				20				20				
RC	80				70				50				30				10			0	
RW	70	50	30	10	70	50	30	10	50	30	10	50	30	10	50	30	10	50	30	10	0
RCR																					
0	118	118	118	118	115	115	115	115	109	109	109	104	104	104	99	99	99	99	99	99	97
1	111	108	105	102	108	105	103	100	101	98	96	96	95	93	92	91	90	92	91	90	88
2	104	99	94	90	102	97	92	88	93	89	86	89	86	84	86	84	81	86	84	81	79
3	98	91	85	80	96	89	83	79	86	81	77	83	79	76	80	77	74	80	77	74	72
4	92	84	77	72	90	82	76	72	80	74	70	77	73	69	75	71	68	75	71	68	66
5	87	78	71	66	85	76	70	65	74	69	65	72	67	64	70	66	63	70	66	63	61
6	82	72	65	60	80	71	65	60	69	64	59	67	63	59	66	61	58	66	61	58	56
7	78	67	61	56	76	66	60	56	65	59	55	63	58	55	62	57	54	62	57	54	52
8	74	63	56	52	72	62	56	52	61	55	51	60	54	51	58	54	50	58	54	50	49
9	70	59	53	48	68	59	52	48	57	52	48	56	51	47	55	50	47	55	50	47	46
10	66	56	49	45	65	55	49	45	54	49	45	53	48	44	52	47	44	52	47	44	43

AVERAGE LUMINANCE (cd/sqm):

	0°	90°	180°	270°
0°	171276	171276	171276	171276
5°	172106	177124	169697	179444
10°	173543	185967	169380	184737
15°	174394	168577	169084	161790
20°	172591	125584	166942	116196
25°	163364	79425	157965	72064
30°	142711	47729	137183	43620
35°	109831	29949	103513	26530
40°	69478	18787	63567	17654
45°	35810	14636	35217	14395
50°	20996	13018	20352	12816
55°	16085	12317	15490	12206
60°	13610	12582	13030	12418
65°	12783	13140	12294	12691
70°	12489	13758	11866	13241
75°	13354	14590	12631	13946
80°	13818	16158	12529	14749
85°	13014	15589	10515	13349

MAXIMUM LUMINANCE 45°-90°:

Horizontal Angle: 25°
 Vertical Angle: 45°
 Luminance: 54802 cd/sqm



TEST NUMBER: P1444690
 CATALOG NUMBER: EHBR1-48-UNV-TA-L930-UPL12

ZONAL LUMENS:

Zone	Lumens	% Fixture
0°-10°	3594.4	8.3
10°-20°	10111.4	23.4
20°-30°	11516.1	26.6
30°-40°	8277.3	19.1
40°-50°	3817.5	8.8
50°-60°	1826.8	4.2
60°-70°	1332.9	3.1
70°-80°	1012.7	2.3
80°-90°	462.5	1.1
90°-100°	43.3	0.1
100°-110°	198.6	0.5
110°-120°	365.9	0.8
120°-130°	236.9	0.5
130°-140°	169.4	0.4
140°-150°	139.2	0.3
150°-160°	105.8	0.2
160°-170°	68.2	0.2
170°-180°	24.2	0.1
0°-30°	25222.0	58.2
0°-40°	33499.3	77.4
0°-60°	39143.5	90.4
0°-90°	41951.6	96.9
90°-120°	607.7	1.4
90°-150°	1153.3	2.7
90°-180°	1351.0	3.1
0°-180°	43303.1	100.0

CANDELA DISTRIBUTION:

	0°	90°	180°	270°	360°	Flux
0°	36472	36472	36472	36472	36472	
5°	36747	37819	36233	38314	36747	3512
15°	36587	35367	35473	33943	36587	10309
25°	32624	15861	31545	14391	32624	14789
35°	20158	5497	18998	4869	20158	12371
45°	5794	2368	5698	2329	5794	4928
55°	2174	1664	2093	1650	2174	2006
65°	1334	1372	1283	1325	1334	1333
75°	941	1028	890	982	941	978
85°	447	536	361	459	447	420
90°	109	141	23	31	109	70
95°	19	21	20	21	19	18
105°	76	94	54	95	76	100
115°	324	382	340	382	324	301
125°	263	257	295	258	263	239
135°	232	189	248	192	232	180
145°	228	206	240	211	228	143
155°	228	221	240	226	228	106
165°	241	236	248	239	241	68
175°	254	255	258	256	254	24
180°	258	258	258	258	258	



TEST NUMBER: P1444690
 CATALOG NUMBER: EHBR1-48-UNV-TA-L930-UPL12

CANDELA DISTRIBUTION (FULL):

	0°	2.5°	5°	7.5°	10°	12.5°	15°	17.5°	20°	22.5°	25°
0°	36472.1	36472.1	36472.1	36472.1	36472.1	36472.1	36472.1	36472.1	36472.1	36472.1	36472.1
2.5°	36611.5	36608.4	36607.9	36605.4	36604.7	36604.7	36603.5	36600.5	36598.6	36594.5	36589.7
5°	36747.3	36745.7	36746.7	36746.9	36744.3	36738.6	36729.7	36718.8	36705.0	36692.0	36680.4
7.5°	36852.4	36854.9	36858.1	36857.4	36849.5	36836.1	36817.9	36807.6	36813.7	36833.5	36879.0
10°	36871.5	36887.2	36893.3	36891.4	36875.4	36863.9	36868.4	36907.1	36984.0	37086.5	37226.9
12.5°	36796.7	36816.0	36815.3	36809.0	36793.5	36809.2	36865.2	36980.2	37145.1	37347.5	37584.8
15°	36586.9	36611.7	36604.7	36596.4	36586.2	36637.7	36749.4	36949.2	37203.9	37489.2	37781.4
17.5°	36179.3	36209.3	36194.7	36185.4	36176.8	36273.3	36465.3	36757.8	37078.6	37401.4	37678.3
20°	35472.4	35492.6	35457.8	35441.4	35455.2	35644.3	35927.3	36300.8	36638.9	36944.1	37133.3
22.5°	34318.7	34343.7	34278.4	34270.8	34351.5	34641.9	34999.9	35417.5	35735.1	35977.1	36050.0
25°	32623.6	32648.3	32570.7	32617.0	32754.1	33149.8	33576.1	34022.8	34293.8	34473.1	34423.6
27.5°	30335.8	30358.3	30284.7	30379.3	30596.0	31115.8	31617.6	32102.2	32343.7	32469.3	32310.2
30°	27450.3	27496.9	27410.0	27542.1	27872.9	28547.7	29122.6	29666.0	29906.9	30002.4	29754.8
32.5°	24023.2	24089.5	23993.7	24190.2	24651.8	25462.5	26115.5	26722.7	26989.1	27098.2	26818.6
35°	20157.9	20253.0	20143.1	20438.1	21007.3	21910.1	22633.2	23311.1	23626.6	23781.3	23499.4
37.5°	16062.8	16153.5	16094.0	16487.5	17112.5	18048.3	18786.5	19517.7	19874.0	20106.2	19883.9
40°	12042.3	12125.3	12170.3	12620.3	13208.1	14090.2	14799.1	15522.7	15921.3	16212.6	16075.5
42.5°	8499.5	8583.2	8736.2	9170.4	9660.6	10390.7	10998.0	11647.6	12028.3	12339.2	12286.3
45°	5793.9	5891.1	6082.7	6438.3	6792.8	7316.6	7762.5	8267.8	8578.8	8863.5	8866.8
47.5°	4060.1	4128.4	4299.7	4542.4	4773.6	5429.3	5456.2	5704.4	5913.5	6126.3	6153.9
50°	3129.1	3170.1	3260.9	3396.3	3527.2	3697.4	3853.3	4033.2	4161.9	4278.5	4306.3
52.5°	2571.9	2597.9	2644.2	2717.4	2793.5	2886.0	2969.5	3068.2	3138.2	3200.7	3213.8
55°	2173.7	2195.3	2264.1	2278.0	2364.9	2381.7	2418.7	2478.9	2519.6	2557.0	2566.3
57.5°	1873.2	1888.9	1903.5	1934.7	1961.5	2000.3	2031.7	2074.8	2100.5	2127.6	2129.9
60°	1636.1	1647.4	1657.9	1679.5	1697.7	1724.8	1746.4	1775.7	1794.1	1814.4	1816.7
62.5°	1459.7	1467.8	1474.7	1489.0	1502.0	1522.9	1540.0	1564.5	1581.6	1597.3	1600.8
65°	1334.3	1340.2	1344.6	1355.5	1366.8	1384.6	1400.1	1420.1	1432.7	1444.7	1447.3
67.5°	1223.2	1228.8	1233.4	1243.3	1251.2	1264.3	1274.8	1289.8	1299.3	1308.8	1309.1
70°	1095.8	1101.1	1104.6	1113.8	1120.2	1131.5	1139.9	1153.4	1163.1	1173.8	1176.5
72.5°	1007.7	1010.8	1015.5	1023.9	1032.7	1044.9	1056.1	1070.2	1081.9	1093.0	1097.7
75°	940.7	944.3	947.4	954.6	960.6	970.9	979.3	992.1	1002.4	1014.3	1020.1
77.5°	843.9	848.1	850.8	857.9	863.2	873.0	879.3	890.8	899.2	909.9	915.2
80°	726.9	730.8	732.8	739.6	743.7	752.7	758.8	769.9	777.0	787.8	794.1
82.5°	597.3	601.1	602.1	608.6	610.9	618.3	622.7	634.0	642.7	656.8	666.5
85°	447.3	448.6	450.8	449.1	458.2	458.8	469.0	471.0	484.4	488.0	503.4
87.5°	273.5	277.5	279.6	285.8	288.5	294.7	296.6	303.2	306.8	314.4	318.0
90°	109.0	114.8	116.4	123.3	124.8	130.8	132.0	138.8	140.4	147.6	149.6
92.5°	17.5	18.4	19.1	20.3	21.2	22.8	24.1	25.3	26.2	27.8	29.7
95°	19.4	20.4	21.4	22.4	23.3	24.4	25.4	26.4	27.4	28.3	31.1
97.5°	23.8	24.7	25.5	26.4	27.3	28.1	29.0	29.9	30.7	31.4	34.8
100°	30.0	30.7	31.5	32.3	33.0	33.7	34.4	35.2	35.9	36.6	43.0
102.5°	47.1	49.7	52.3	54.9	57.5	60.1	62.7	65.2	67.8	70.4	83.9
105°	76.5	83.3	90.5	97.4	104.4	111.6	118.6	125.4	132.4	139.4	161.6
107.5°	126.5	139.4	152.5	165.5	178.5	191.4	204.4	217.3	230.3	243.0	265.6
110°	227.7	237.9	248.4	258.8	269.1	279.6	290.0	300.0	310.6	320.8	337.2



TEST NUMBER: P1444690
 CATALOG NUMBER: EHBR1-48-UNV-TA-L930-UPL12

CANDELA DISTRIBUTION (continued):

	0°	2.5°	5°	7.5°	10°	12.5°	15°	17.5°	20°	22.5°	25°
112.5°	305.4	309.9	314.5	319.2	323.8	328.2	332.8	337.4	342.0	346.4	358.0
115°	324.4	325.8	327.5	328.7	330.3	331.7	333.1	334.4	336.0	337.1	344.9
117.5°	319.0	318.5	318.0	317.4	316.7	316.2	315.6	314.8	314.0	313.3	317.6
120°	303.0	301.1	299.5	297.5	295.8	293.7	291.9	290.0	287.9	285.8	287.5
122.5°	281.8	279.6	277.8	275.4	273.2	270.9	268.8	266.0	263.9	261.5	261.5
125°	263.0	260.7	258.9	256.5	254.0	251.7	249.3	246.8	244.4	241.6	241.4
127.5°	247.6	246.0	244.3	242.3	240.4	238.4	236.4	234.2	232.3	229.9	229.5
130°	239.4	238.0	236.3	234.5	232.8	230.7	228.7	226.6	224.7	222.4	221.8
132.5°	233.9	232.8	231.4	230.0	228.4	226.4	224.8	222.8	221.1	219.3	218.6
135°	232.0	230.6	229.6	228.0	226.5	224.7	222.9	221.0	219.3	217.3	216.8
137.5°	230.8	229.6	228.6	227.0	225.5	223.6	222.1	220.1	218.4	216.5	215.9
140°	229.9	228.9	227.7	226.2	224.8	223.2	221.4	219.8	218.0	216.1	215.7
142.5°	228.1	227.1	226.1	224.7	223.6	221.9	220.5	218.7	217.2	215.5	215.2
145°	227.9	227.0	226.2	224.9	223.7	222.2	220.8	219.1	217.9	216.3	216.0
147.5°	227.9	227.0	226.3	225.3	224.3	222.8	221.6	220.1	219.0	217.5	217.4
150°	227.9	227.2	226.5	225.5	224.5	223.2	222.1	220.8	219.6	218.2	218.1
152.5°	227.2	226.3	225.8	224.8	223.9	222.5	221.8	220.4	219.3	218.1	217.9
155°	228.3	227.6	226.7	226.0	224.9	223.9	222.8	221.8	220.7	219.6	219.4
157.5°	230.5	229.6	229.0	228.0	227.4	226.3	225.5	224.6	223.7	222.7	222.3
160°	233.7	232.9	232.2	231.4	230.5	229.5	228.7	227.8	227.2	226.1	225.9
162.5°	237.2	236.3	235.5	234.7	234.0	232.9	232.2	231.5	230.7	229.7	229.5
165°	241.0	240.4	239.8	239.1	238.4	237.8	237.0	236.2	235.6	234.7	234.5
167.5°	246.0	245.2	244.8	244.1	243.3	242.7	241.9	241.2	240.8	239.9	239.7
170°	249.5	248.8	248.4	248.0	247.5	246.9	246.5	246.0	245.4	244.9	244.8
172.5°	252.5	251.9	251.7	251.4	250.9	250.6	250.1	249.8	249.5	249.0	249.1
175°	254.2	253.7	253.6	253.4	253.1	252.8	252.6	252.4	252.4	252.0	251.9
177.5°	256.3	256.1	256.1	256.0	256.0	255.8	255.8	255.5	255.3	255.3	255.3
180°	257.7	257.7	257.7	257.7	257.7	257.7	257.7	257.7	257.7	257.7	257.7



TEST NUMBER: P1444690
 CATALOG NUMBER: EHBR1-48-UNV-TA-L930-UPL12

CANDELA DISTRIBUTION (continued):

	27.5°	30°	32.5°	35°	37.5°	40°	42.5°	45°	47.5°	50°	52.5°
0°	36472.1	36472.1	36472.1	36472.1	36472.1	36472.1	36472.1	36472.1	36472.1	36472.1	36472.1
2.5°	36586.2	36581.7	36575.7	36567.9	36561.3	36553.6	36535.4	36529.9	36536.0	36540.1	36548.5
5°	36673.1	36675.6	36676.6	36693.2	36707.5	36743.4	37024.0	37135.5	37221.7	37276.5	37359.6
7.5°	36935.2	37019.5	37102.9	37215.1	37311.9	37442.6	37933.6	38142.5	38291.1	38397.9	38529.2
10°	37379.4	37563.5	37736.1	37938.3	38112.2	38311.2	38768.2	38971.8	39100.3	39193.9	39281.2
12.5°	37826.8	38082.1	38312.8	38537.9	38726.1	38898.7	39059.3	39130.6	39136.7	39139.6	39093.3
15°	38059.8	38303.9	38507.2	38656.0	38766.6	38815.5	38538.8	38393.7	38210.3	38059.1	37810.5
17.5°	37912.7	38059.1	38147.0	38138.4	38092.6	37939.6	37156.0	36724.8	36296.9	35911.3	35405.6
20°	37258.9	37247.7	37171.3	36954.9	36694.2	36288.7	34945.0	34169.8	33420.4	32762.1	31963.5
22.5°	36042.5	35851.2	35584.3	35117.7	34599.3	33890.9	31965.4	30825.1	29781.7	28860.0	27827.4
25°	34280.1	33886.3	33394.1	32653.4	31847.8	30814.5	28441.4	27023.0	25770.3	24683.8	23492.4
27.5°	32024.4	31431.4	30710.1	29684.8	28593.5	27269.8	24638.7	23073.4	21728.6	20563.7	19295.7
30°	29354.0	28582.7	27651.3	26378.8	25062.4	23561.1	20892.6	19307.2	17945.9	16747.5	15478.6
32.5°	26336.3	25432.8	24341.4	22913.2	21489.6	19945.9	17368.8	15834.2	14533.9	13381.0	12232.5
35°	23007.8	22038.9	20884.3	19427.5	18012.5	16511.7	14147.0	12763.3	11615.0	10596.0	9668.6
37.5°	19437.4	18486.1	17388.7	16015.7	14703.5	13343.6	11303.2	10143.7	9180.1	8334.3	7618.2
40°	15725.2	14892.7	13943.2	12756.3	11636.4	10503.8	8828.9	7908.5	7148.1	6503.0	5966.4
42.5°	12058.5	11413.4	10685.2	9747.3	8890.3	8027.9	6738.8	6056.8	5493.6	5029.2	4649.9
45°	8748.8	8317.3	7828.9	7176.9	6583.8	5982.3	5064.8	4585.6	4218.8	3919.4	3666.2
47.5°	6115.9	5865.6	5850.3	5247.7	4812.9	4445.1	3854.0	3551.3	3326.5	3145.1	2984.8
50°	4295.0	4173.9	4023.5	3808.4	3606.6	3398.7	3038.6	2855.6	2723.9	2614.1	2512.7
52.5°	3210.9	3147.9	3067.8	2953.8	2844.3	2727.4	2499.6	2383.1	2341.6	2239.3	2159.1
55°	2564.6	2528.5	2482.9	2415.9	2349.4	2322.8	2127.4	2040.9	1986.2	1945.8	1902.7
57.5°	2130.3	2103.4	2076.4	2030.9	1992.4	1945.8	1842.1	1797.8	1765.2	1741.4	1711.5
60°	1817.1	1801.0	1785.8	1759.2	1738.4	1713.3	1647.4	1622.4	1605.4	1591.1	1572.1
62.5°	1603.8	1595.6	1587.7	1573.5	1563.0	1549.3	1504.3	1492.3	1483.7	1476.6	1464.9
65°	1449.8	1443.9	1439.5	1430.1	1424.8	1416.8	1378.2	1370.1	1364.8	1362.3	1355.5
67.5°	1310.0	1303.7	1300.9	1294.1	1292.0	1287.0	1255.3	1250.9	1249.1	1249.9	1247.5
70°	1179.1	1176.5	1177.9	1176.7	1179.8	1180.7	1161.5	1161.4	1163.4	1167.5	1167.8
72.5°	1100.6	1100.6	1102.2	1102.9	1105.7	1107.1	1091.1	1090.3	1091.2	1094.2	1094.3
75°	1026.1	1027.3	1031.3	1032.7	1036.0	1036.8	1015.6	1013.2	1013.4	1016.2	1015.3
77.5°	922.8	927.2	935.0	939.0	945.5	946.7	923.0	920.3	920.4	923.2	920.8
80°	805.6	814.1	826.4	834.9	845.0	849.0	824.7	818.9	813.4	812.6	807.8
82.5°	681.1	691.5	706.2	714.0	724.7	727.1	686.4	678.7	674.1	674.5	670.0
85°	520.0	527.8	541.2	545.6	552.1	551.6	505.1	485.2	490.6	482.3	488.8
87.5°	326.2	330.8	339.2	340.2	343.4	342.6	295.9	286.7	284.0	284.1	280.7
90°	156.8	159.7	166.6	166.4	170.8	169.9	131.7	127.0	124.0	126.0	121.7
92.5°	32.0	33.7	35.8	37.7	39.8	41.8	39.6	40.2	38.7	36.5	35.2
95°	34.0	37.0	39.9	42.8	45.7	48.7	51.6	54.5	51.8	49.0	46.3
97.5°	38.3	41.8	45.2	48.6	52.0	55.5	59.0	62.5	59.5	56.3	53.4
100°	49.5	55.9	62.2	68.6	75.0	81.5	88.0	94.4	88.8	82.8	77.2
102.5°	97.4	111.0	124.7	138.2	151.9	165.5	179.3	193.0	179.9	166.7	153.5
105°	183.6	205.8	227.8	249.6	271.6	293.8	316.3	338.3	317.4	296.5	275.7
107.5°	287.8	310.3	332.4	354.6	377.0	399.2	422.2	444.6	424.1	403.5	383.2
110°	353.4	369.5	385.7	401.9	417.9	434.2	451.2	467.4	455.0	442.5	430.2



TEST NUMBER: P1444690
 CATALOG NUMBER: EHBR1-48-UNV-TA-L930-UPL12

CANDELA DISTRIBUTION (continued):

	27.5°	30°	32.5°	35°	37.5°	40°	42.5°	45°	47.5°	50°	52.5°
112.5°	369.3	380.9	392.4	403.5	414.8	426.3	439.0	450.6	444.1	437.5	431.2
115°	352.3	360.0	367.3	374.9	382.4	389.8	398.8	406.7	404.2	401.8	399.4
117.5°	321.4	325.4	329.4	333.4	337.1	341.0	346.9	351.2	350.9	350.8	350.6
120°	288.6	290.1	291.3	292.7	293.9	295.1	298.6	300.4	301.5	302.4	303.4
122.5°	261.7	261.8	261.8	261.9	262.0	261.9	264.7	265.3	265.6	266.0	266.5
125°	241.1	240.7	240.3	240.1	239.4	239.1	241.9	241.9	241.3	240.5	239.9
127.5°	228.8	228.0	227.3	226.7	225.7	225.1	227.6	227.5	226.1	224.6	223.1
130°	221.2	220.6	219.8	219.2	218.6	218.0	220.7	220.9	219.0	216.6	214.7
132.5°	217.9	217.3	216.5	216.1	215.5	214.8	217.9	218.2	216.0	213.6	211.4
135°	216.1	215.6	214.9	214.3	213.8	213.3	216.8	217.2	215.1	212.7	210.6
137.5°	215.0	214.6	214.1	213.6	213.0	212.5	216.5	217.0	215.2	213.1	211.3
140°	215.1	214.6	214.1	213.9	213.3	213.2	217.4	218.1	216.5	214.9	213.2
142.5°	214.6	214.5	214.2	214.2	213.9	213.9	218.8	219.7	218.4	217.0	215.7
145°	215.7	215.7	215.5	215.6	215.5	215.7	221.1	222.4	221.5	220.4	219.3
147.5°	216.8	216.8	216.7	216.7	216.6	217.1	223.1	224.4	223.8	222.8	222.2
150°	217.8	217.8	217.6	217.8	218.1	218.3	225.2	226.9	226.3	225.6	225.0
152.5°	217.6	217.6	217.5	217.5	217.6	218.0	226.5	228.6	228.1	227.3	227.0
155°	219.1	219.0	218.8	218.8	218.7	219.0	228.5	230.8	230.4	229.9	229.4
157.5°	222.1	221.7	221.4	221.4	221.3	221.2	231.4	234.0	233.5	233.1	232.7
160°	225.4	225.2	224.7	224.7	224.3	224.2	234.8	237.3	237.0	236.5	236.1
162.5°	229.1	229.3	228.8	228.7	228.4	228.6	239.1	241.9	241.2	240.8	240.3
165°	234.3	233.8	233.6	233.5	233.2	233.0	243.1	245.5	245.2	244.7	244.3
167.5°	239.4	239.3	238.9	238.8	238.6	238.7	248.0	250.3	250.1	249.4	249.2
170°	244.5	244.5	244.3	244.3	244.3	244.4	252.2	254.1	253.9	253.3	253.0
172.5°	249.0	249.1	249.1	249.1	249.1	249.3	255.8	257.6	257.4	257.0	256.6
175°	251.9	251.9	252.0	252.2	252.2	252.4	257.5	258.8	258.6	258.3	258.1
177.5°	255.5	255.4	255.6	255.7	255.8	255.9	259.1	259.9	259.7	259.7	259.6
180°	257.7	257.7	257.7	257.7	257.7	257.7	257.7	257.7	257.7	257.7	257.7



TEST NUMBER: P1444690
 CATALOG NUMBER: EHBR1-48-UNV-TA-L930-UPL12

CANDELA DISTRIBUTION (continued):

	55°	57.5°	60°	62.5°	65°	67.5°	70°	72.5°	75°	77.5°	80°
0°	36472.1	36472.1	36472.1	36472.1	36472.1	36472.1	36472.1	36472.1	36472.1	36472.1	36472.1
2.5°	36550.3	36563.2	36565.0	36580.1	36578.9	36596.7	36593.9	36608.4	36600.0	36612.0	36601.9
5°	37408.8	37486.7	37527.4	37603.3	37627.4	37695.4	37714.6	37776.6	37779.2	37828.4	37817.2
7.5°	38622.5	38737.3	38805.4	38899.3	38946.9	39025.2	39059.6	39117.5	39136.2	39182.1	39185.6
10°	39347.3	39403.0	39441.9	39468.1	39492.1	39503.3	39516.4	39512.8	39516.4	39511.2	39522.5
12.5°	39062.2	38980.8	38927.0	38825.2	38766.1	38653.4	38598.2	38489.9	38450.6	38357.6	38344.2
15°	37618.5	37334.9	37134.6	36843.2	36660.0	36373.3	36205.6	35947.0	35828.8	35623.2	35569.3
17.5°	34987.0	34460.6	34053.2	33530.6	33168.0	32679.6	32372.5	31968.2	31746.8	31420.8	31307.9
20°	31297.8	30518.9	29907.9	29179.9	28659.0	28009.9	27594.4	27070.3	26766.1	26365.7	26203.3
22.5°	26966.5	25996.8	25233.7	24373.7	23745.2	23021.9	22524.1	21957.0	21626.0	21191.0	20998.4
25°	22502.2	21433.0	20584.5	19678.4	19014.3	18289.3	17791.3	17234.3	16891.8	16478.9	16287.4
27.5°	18232.7	17150.2	16330.3	15487.9	14878.7	14224.5	13775.1	13288.8	12984.8	12632.3	12452.2
30°	14464.8	13510.1	12812.4	12113.3	11606.5	11075.2	10701.8	10298.7	10032.0	9730.2	9558.7
32.5°	11395.1	10658.0	10111.7	9556.9	9142.2	8698.1	8375.6	8019.9	7779.2	7509.6	7354.3
35°	9024.7	8452.0	8016.2	7559.6	7203.3	6825.1	6540.9	6233.9	6017.9	5785.8	5651.7
37.5°	7130.5	6675.1	6316.5	5937.2	5644.6	5331.2	5225.6	4873.4	4649.6	4464.4	4336.1
40°	5596.0	5233.9	4937.2	4647.1	4408.5	4170.8	3980.1	3791.9	3647.4	3514.9	3423.3
42.5°	4370.1	4107.7	3891.0	3678.5	3504.4	3331.3	3193.1	3063.5	2966.2	2879.5	2820.5
45°	3474.0	3293.6	3143.0	2993.3	2870.4	2754.9	2661.9	2579.1	2516.3	2464.3	2427.4
47.5°	2854.0	2730.5	2624.2	2523.3	2439.9	2364.1	2301.8	2281.5	2213.9	2168.4	2151.1
50°	2425.5	2350.9	2270.2	2195.7	2140.0	2084.6	2044.2	2004.5	1979.3	1958.4	1952.0
52.5°	2105.7	2048.6	2003.7	1956.6	1919.8	1880.4	1852.5	1826.1	1812.2	1801.3	1799.9
55°	1867.9	1828.0	1798.3	1766.7	1744.7	1721.5	1707.1	1693.2	1687.0	1681.5	1681.9
57.5°	1688.0	1661.4	1642.0	1621.5	1609.6	1598.5	1594.9	1591.4	1593.3	1594.1	1597.2
60°	1556.9	1539.6	1527.4	1515.6	1510.7	1507.2	1509.9	1513.0	1519.3	1524.5	1529.0
62.5°	1456.5	1446.6	1440.6	1434.3	1433.8	1434.0	1439.5	1444.7	1452.6	1458.6	1463.1
65°	1353.0	1347.4	1345.4	1341.4	1343.5	1344.6	1351.1	1355.2	1363.2	1367.9	1373.6
67.5°	1248.6	1247.2	1248.4	1248.4	1252.1	1255.2	1261.4	1266.0	1272.7	1277.1	1281.7
70°	1171.4	1171.9	1174.8	1175.3	1179.2	1181.4	1186.8	1189.8	1195.8	1199.5	1205.0
72.5°	1096.4	1095.1	1095.8	1094.1	1095.4	1094.9	1097.9	1099.3	1104.5	1107.3	1114.1
75°	1016.4	1013.1	1012.2	1008.7	1008.8	1006.2	1007.4	1007.3	1010.6	1012.0	1016.9
77.5°	919.9	914.3	911.5	905.5	905.4	903.1	905.5	907.0	913.0	915.7	921.3
80°	804.5	795.6	791.6	784.6	785.7	785.4	791.2	795.8	803.0	804.4	811.4
82.5°	668.7	659.6	655.3	648.4	650.0	650.2	655.6	656.5	662.8	665.6	673.7
85°	478.8	482.3	472.7	473.4	471.3	475.2	478.8	483.4	488.6	497.4	504.2
87.5°	282.0	280.7	284.1	284.5	289.4	291.9	299.8	304.2	313.1	319.9	332.4
90°	122.2	117.9	120.8	119.6	124.5	123.3	127.9	125.8	131.3	131.9	138.8
92.5°	32.8	31.4	29.1	27.4	25.3	24.0	22.5	22.2	20.9	20.5	19.2
95°	43.6	40.8	38.1	35.4	32.7	29.9	29.0	28.0	26.9	25.9	25.0
97.5°	50.4	47.6	44.6	41.5	38.6	35.6	35.0	34.3	33.7	33.0	32.3
100°	71.3	65.7	60.0	54.3	48.6	43.0	42.4	41.9	41.3	40.8	40.3
102.5°	140.6	127.4	114.5	101.4	88.5	75.3	73.1	70.8	68.5	66.3	64.0
105°	254.7	233.7	212.9	192.0	171.3	150.4	144.3	137.8	131.6	125.4	119.2
107.5°	362.7	342.2	321.9	301.6	281.2	260.8	250.9	241.2	231.2	221.4	211.6
110°	417.4	405.1	392.9	380.3	368.1	355.8	346.3	336.9	327.4	318.0	308.7



TEST NUMBER: P1444690
 CATALOG NUMBER: EHBR1-48-UNV-TA-L930-UPL12

CANDELA DISTRIBUTION (continued):

	55°	57.5°	60°	62.5°	65°	67.5°	70°	72.5°	75°	77.5°	80°
112.5°	424.7	418.3	411.8	405.5	399.2	392.8	388.2	383.5	378.9	374.2	369.4
115°	396.9	394.6	392.3	390.0	387.8	385.5	385.0	384.5	383.9	383.5	383.2
117.5°	350.3	350.1	349.9	349.9	349.8	349.8	351.9	354.0	356.2	358.6	361.0
120°	304.4	305.4	306.3	307.4	308.5	309.8	312.4	315.5	318.3	321.5	324.7
122.5°	266.8	267.3	267.5	268.1	268.6	269.2	271.7	274.6	277.3	280.3	283.5
125°	238.9	238.1	237.4	236.5	235.7	235.3	237.1	239.2	241.4	243.8	246.1
127.5°	221.4	219.7	218.0	216.5	214.8	213.4	214.1	215.1	215.9	217.1	218.2
130°	212.4	210.2	207.7	205.8	203.3	201.3	201.1	201.0	201.0	201.0	201.0
132.5°	208.9	206.6	204.1	201.6	199.2	196.8	195.8	195.0	194.1	193.6	192.9
135°	208.2	206.0	203.4	201.1	198.6	196.4	195.2	193.9	192.8	191.7	190.8
137.5°	209.3	207.4	205.3	203.4	201.1	199.3	197.7	196.4	194.9	194.0	192.7
140°	211.5	210.0	208.0	206.3	204.5	202.9	201.4	200.4	199.0	198.1	196.9
142.5°	214.1	212.8	211.4	210.0	208.5	207.1	205.9	204.7	203.5	202.6	201.5
145°	218.2	217.2	216.0	214.9	213.7	212.7	211.4	210.6	209.5	208.6	208.0
147.5°	221.3	220.4	219.5	218.6	217.6	216.7	215.7	215.2	214.1	213.6	212.8
150°	224.1	223.3	222.4	221.9	220.8	220.1	219.4	218.8	218.0	217.6	216.9
152.5°	226.0	225.4	224.7	224.1	223.2	222.4	221.8	221.4	220.7	220.3	219.6
155°	228.8	228.2	227.5	227.0	226.2	225.7	225.1	224.4	223.9	223.3	222.7
157.5°	232.1	231.6	230.9	230.5	229.7	229.2	228.7	228.1	227.4	227.0	226.3
160°	235.5	235.2	234.5	233.9	233.4	232.9	232.1	231.6	230.9	230.4	229.6
162.5°	239.7	239.1	238.6	238.0	237.3	236.8	236.2	235.6	235.0	234.5	233.8
165°	243.7	243.2	242.7	242.1	241.7	241.1	240.4	239.9	239.3	238.7	238.0
167.5°	248.6	248.3	247.7	247.3	246.7	246.1	245.6	245.1	244.4	243.8	243.1
170°	252.5	251.9	251.6	251.0	250.6	250.0	249.4	248.8	248.3	247.9	247.1
172.5°	256.2	256.0	255.5	255.2	254.6	254.2	253.9	253.4	253.0	252.5	252.2
175°	258.0	257.8	257.7	257.3	257.2	256.9	256.6	256.5	256.2	256.1	255.7
177.5°	259.6	259.4	259.4	259.1	259.1	259.1	258.8	258.7	258.6	258.3	258.3
180°	257.7	257.7	257.7	257.7	257.7	257.7	257.7	257.7	257.7	257.7	257.7



TEST NUMBER: P1444690
 CATALOG NUMBER: EHBR1-48-UNV-TA-L930-UPL12

CANDELA DISTRIBUTION (continued):

	82.5°	85°	87.5°	90°	92.5°	95°	97.5°	100°	102.5°	105°	107.5°
0°	36472.1	36472.1	36472.1	36472.1	36472.1	36472.1	36472.1	36472.1	36472.1	36472.1	36472.1
2.5°	36612.4	36603.1	36607.6	36590.4	36594.5	36573.8	36571.8	36548.5	36546.2	36524.1	36515.9
5°	37852.0	37831.6	37854.6	37818.8	37825.8	37779.2	37775.3	37715.0	37694.2	37618.7	37586.2
7.5°	39214.4	39206.7	39220.7	39190.8	39189.8	39148.2	39131.0	39077.0	39043.4	38964.3	38913.6
10°	39512.8	39519.9	39508.4	39511.2	39495.0	39490.6	39473.9	39463.4	39436.2	39415.7	39385.4
12.5°	38273.5	38280.9	38233.6	38263.6	38239.9	38295.3	38290.8	38356.0	38366.0	38448.4	38479.7
15°	35409.2	35400.2	35309.5	35366.6	35336.0	35457.4	35484.5	35647.8	35735.1	35944.8	36073.6
17.5°	31082.0	31058.7	30930.9	31000.5	30965.1	31144.1	31204.1	31465.2	31628.1	31966.0	32206.7
20°	25924.0	25879.2	25729.8	25811.2	25774.8	25978.0	26063.8	26379.3	26589.5	27036.8	27355.1
22.5°	20701.8	20631.1	20484.7	20560.8	20526.3	20737.0	20848.5	21165.2	21405.8	21865.1	22236.7
25°	16012.3	15949.3	15807.8	15861.1	15848.3	16026.4	16125.6	16425.2	16661.6	17099.1	17453.9
27.5°	12213.0	12147.5	12019.6	12057.3	12044.3	12196.1	12289.6	12539.8	12743.3	13111.6	13423.1
30°	9347.2	9268.2	9159.8	9180.6	9171.7	9294.7	9382.0	9592.8	9767.2	10078.4	10346.8
32.5°	7164.7	7085.2	6985.6	6995.4	6982.2	7078.7	7150.6	7333.9	7485.8	7750.5	7984.1
35°	5481.9	5574.8	5362.1	5496.8	5356.5	5562.5	5488.4	5602.9	5733.7	5956.6	6151.4
37.5°	4214.3	4149.6	4094.9	4089.0	4088.7	4136.5	4192.8	4303.1	4418.3	4584.5	4756.1
40°	3339.6	3294.2	3258.8	3256.2	3258.8	3292.8	3334.4	3410.6	3495.0	3614.3	3740.4
42.5°	2769.9	2739.7	2718.4	2716.9	2723.7	2747.7	2776.7	2822.0	2876.9	2954.1	3040.7
45°	2397.3	2380.6	2368.7	2368.0	2371.1	2383.7	2400.4	2428.6	2463.4	2511.6	2566.3
47.5°	2136.0	2131.9	2124.5	2124.7	2121.4	2126.5	2128.4	2144.2	2162.7	2199.1	2270.6
50°	1945.6	1945.6	1940.5	1940.2	1935.4	1935.1	1931.0	1937.2	1945.9	1968.4	1991.3
52.5°	1795.2	1794.7	1789.1	1788.1	1782.9	1782.6	1779.1	1781.6	1782.7	1794.1	1807.8
55°	1677.6	1674.1	1666.8	1664.5	1662.4	1665.5	1664.1	1664.2	1662.7	1667.5	1671.5
57.5°	1593.3	1588.6	1581.8	1579.7	1579.2	1582.7	1582.8	1581.6	1575.3	1571.0	1564.8
60°	1526.4	1521.9	1514.4	1512.5	1513.6	1518.5	1518.2	1514.1	1504.7	1496.5	1486.9
62.5°	1460.9	1459.1	1455.2	1454.7	1453.7	1454.6	1451.2	1446.9	1437.5	1428.8	1418.3
65°	1372.9	1373.9	1371.0	1371.5	1368.1	1367.5	1362.4	1358.2	1348.7	1340.7	1330.1
67.5°	1281.5	1282.3	1279.9	1279.9	1278.2	1278.4	1275.3	1271.4	1263.5	1257.0	1248.7
70°	1206.2	1208.1	1206.8	1207.2	1205.0	1204.2	1199.4	1195.6	1187.4	1181.9	1174.5
72.5°	1116.1	1120.2	1120.0	1121.0	1117.8	1116.1	1110.3	1105.5	1098.2	1093.8	1087.8
75°	1018.8	1024.0	1025.5	1027.8	1023.2	1020.8	1014.5	1010.6	1004.6	1002.0	998.1
77.5°	923.8	929.5	935.1	940.2	932.8	926.2	918.2	912.2	903.4	900.1	894.0
80°	817.1	827.3	839.6	850.0	836.6	823.1	810.0	800.2	788.7	784.0	776.4
82.5°	677.9	688.4	695.4	702.0	692.8	682.9	670.1	661.7	649.2	644.7	635.8
85°	515.0	528.1	532.3	535.8	529.9	524.6	512.7	496.6	488.8	476.5	470.2
87.5°	338.7	346.6	348.1	349.2	345.7	343.1	335.3	327.8	314.4	304.7	292.7
90°	138.1	143.0	139.6	141.3	137.1	137.9	130.6	128.4	117.8	114.2	104.7
92.5°	18.5	17.3	16.6	15.6	17.1	17.4	18.8	19.2	20.4	20.9	22.2
95°	24.0	22.9	21.9	20.9	21.7	22.5	23.3	24.1	24.9	25.7	26.5
97.5°	31.6	31.0	30.3	29.7	30.1	30.6	31.1	31.5	32.0	32.4	33.2
100°	39.7	39.2	38.7	38.1	38.1	38.1	38.1	38.1	38.1	38.1	38.1
102.5°	61.8	59.5	57.2	55.0	56.5	58.0	59.5	61.0	62.6	64.2	65.9
105°	113.0	106.8	100.6	94.5	100.4	106.4	112.5	118.4	124.4	130.6	136.7
107.5°	201.7	191.9	182.1	172.3	183.4	194.4	205.2	216.1	227.1	237.9	249.1
110°	299.3	290.1	280.7	271.4	283.0	294.6	306.2	317.8	329.4	340.9	352.8



TEST NUMBER: P1444690
 CATALOG NUMBER: EHBR1-48-UNV-TA-L930-UPL12

CANDELA DISTRIBUTION (continued):

	82.5°	85°	87.5°	90°	92.5°	95°	97.5°	100°	102.5°	105°	107.5°
112.5°	364.8	360.4	355.8	351.3	358.8	366.2	373.7	381.4	388.8	396.5	404.0
115°	382.7	382.5	382.2	381.9	385.5	389.0	392.5	396.2	399.9	403.3	407.2
117.5°	363.3	365.6	368.2	370.7	371.9	372.9	374.3	375.4	376.8	378.0	379.4
120°	327.9	331.0	334.4	337.7	337.3	336.9	336.4	336.0	336.0	335.6	335.7
122.5°	286.6	289.7	293.1	296.4	295.4	294.4	293.5	292.7	292.0	291.3	290.7
125°	248.8	251.3	254.0	256.7	255.8	254.8	253.8	253.3	252.5	251.8	251.4
127.5°	219.8	221.3	222.6	224.3	223.9	223.4	223.3	223.0	223.0	223.1	223.1
130°	201.4	201.8	202.6	203.0	203.2	203.3	203.9	204.2	205.0	205.4	206.4
132.5°	192.8	192.4	192.4	192.3	192.8	193.4	194.3	195.1	196.3	197.2	198.9
135°	190.2	189.5	189.1	188.7	189.5	190.2	191.3	192.4	193.7	195.2	196.9
137.5°	192.0	191.1	190.5	189.8	190.6	191.4	192.5	193.6	195.0	196.4	198.2
140°	196.2	195.3	195.0	194.3	195.1	195.7	196.8	197.8	199.3	200.7	202.3
142.5°	200.8	199.9	199.4	199.1	199.5	200.2	201.4	202.3	203.5	204.7	206.3
145°	207.2	206.5	206.2	205.7	206.0	206.6	207.3	208.1	209.0	209.8	211.1
147.5°	212.3	211.7	211.5	211.0	211.4	211.7	212.2	212.6	213.4	214.1	215.0
150°	216.7	216.1	215.7	215.6	215.7	215.8	216.3	216.4	216.9	217.3	218.2
152.5°	219.4	218.7	218.7	218.3	218.3	218.4	218.7	218.9	219.2	219.5	220.2
155°	222.4	222.0	221.5	221.2	221.1	220.9	221.1	220.9	221.2	221.2	221.4
157.5°	226.1	225.5	225.3	224.7	224.6	224.1	224.1	223.9	223.9	223.6	223.7
160°	229.3	228.7	228.1	227.6	227.4	227.1	227.1	226.7	226.6	226.5	226.5
162.5°	233.4	232.9	232.5	232.0	231.7	231.1	230.8	230.3	230.0	229.7	229.6
165°	237.3	236.8	236.3	235.5	235.3	235.1	234.6	234.4	234.2	233.8	233.7
167.5°	242.7	242.0	241.6	241.0	240.6	240.0	239.8	239.4	239.0	238.6	238.6
170°	246.8	246.2	245.9	245.4	245.2	244.7	244.6	244.2	244.1	243.9	243.9
172.5°	251.7	251.4	251.0	250.7	250.4	250.1	250.0	249.9	249.6	249.6	249.4
175°	255.5	255.2	255.1	254.9	254.6	254.5	254.4	254.3	254.2	254.0	254.0
177.5°	257.9	257.8	257.7	257.6	257.5	257.5	257.5	257.5	257.5	257.4	257.2
180°	257.7	257.7	257.7	257.7	257.7	257.7	257.7	257.7	257.7	257.7	257.7



TEST NUMBER: P1444690
 CATALOG NUMBER: EHBR1-48-UNV-TA-L930-UPL12

CANDELA DISTRIBUTION (continued):

	110°	112.5°	115°	117.5°	120°	122.5°	125°	127.5°	130°	132.5°	135°
0°	36472.1	36472.1	36472.1	36472.1	36472.1	36472.1	36472.1	36472.1	36472.1	36472.1	36472.1
2.5°	36492.2	36482.6	36457.4	36444.9	36421.6	36409.8	36391.5	36379.8	36365.1	36354.1	36348.4
5°	37503.3	37456.6	37363.2	37305.6	37204.6	37138.0	37037.8	36964.3	36860.7	36784.4	36686.5
7.5°	38818.7	38747.2	38627.4	38536.5	38395.3	38287.3	38128.7	38001.9	37826.8	37681.3	37502.3
10°	39354.3	39312.5	39258.8	39200.3	39122.1	39045.4	38937.1	38826.8	38679.7	38533.4	38342.3
12.5°	38562.8	38602.1	38679.7	38715.9	38775.3	38795.4	38822.6	38809.8	38785.8	38726.1	38639.4
15°	36321.0	36485.2	36744.7	36924.3	37175.7	37352.5	37586.2	37736.6	37909.9	38013.4	38111.8
17.5°	32633.3	32950.9	33408.9	33774.3	34264.7	34663.5	35152.1	35536.0	35979.3	36319.4	36681.3
20°	27909.9	28354.7	28986.9	29523.8	30234.6	30837.2	31609.3	32256.1	33010.6	33639.6	34318.4
22.5°	22826.3	23349.5	24073.9	24721.5	25570.3	26328.3	27295.7	28150.9	29170.9	30084.7	31095.4
25°	18030.4	18543.3	19281.2	19951.7	20867.9	21703.0	22759.9	23741.0	24924.6	26028.5	27295.7
27.5°	13917.8	14373.3	15021.9	15625.5	16464.7	17284.4	18357.0	19403.2	20666.2	21852.5	23218.1
30°	10748.5	11118.0	11637.7	12123.2	12796.9	13467.4	14422.7	15390.3	16647.1	17876.3	19276.4
32.5°	8329.7	8644.8	9078.7	9472.8	9991.9	10497.4	11201.0	11974.1	13076.6	14254.0	15607.8
35°	6448.1	6717.7	7087.0	7426.5	7853.3	8254.7	8779.7	9331.6	10172.9	11163.3	12374.8
37.5°	5140.8	5250.7	5514.3	5792.4	6147.0	6476.8	6887.4	7295.5	7897.5	8678.9	9668.6
40°	3909.5	4084.0	4298.5	4517.6	4786.1	5050.6	5501.2	5718.1	6114.4	6675.3	7443.5
42.5°	3154.5	3277.2	3428.2	3580.5	3767.6	3951.8	4179.7	4411.9	4708.1	5088.0	5634.4
45°	2639.7	2719.8	2817.1	2918.6	3041.5	3167.2	3319.8	3479.1	3679.9	3913.4	4245.3
47.5°	2295.8	2340.0	2403.6	2472.9	2557.1	2644.2	2743.4	2845.0	2969.7	3108.2	3297.2
50°	2027.4	2064.3	2113.7	2160.0	2218.1	2307.3	2346.7	2402.8	2477.8	2559.4	2665.0
52.5°	1833.2	1857.8	1888.8	1915.3	1952.1	1985.5	2029.3	2068.0	2119.8	2168.8	2237.0
55°	1681.9	1690.8	1708.4	1725.6	1751.0	1773.8	1803.8	1829.2	1862.2	1891.5	1934.6
57.5°	1565.1	1565.9	1574.0	1582.9	1599.3	1613.7	1634.3	1650.9	1673.9	1692.6	1718.4
60°	1481.2	1476.7	1478.3	1481.4	1490.7	1500.0	1513.2	1524.0	1538.5	1549.1	1563.5
62.5°	1411.3	1404.3	1402.7	1401.9	1406.5	1409.8	1417.0	1422.3	1430.5	1435.1	1442.8
65°	1323.1	1314.8	1311.6	1307.7	1309.1	1308.0	1310.8	1310.9	1315.1	1316.0	1320.5
67.5°	1243.1	1236.1	1231.9	1226.8	1224.5	1220.9	1219.3	1215.7	1215.2	1212.2	1211.5
70°	1170.1	1163.3	1159.7	1155.0	1152.6	1147.7	1144.8	1138.8	1135.3	1129.8	1126.7
72.5°	1085.6	1081.8	1080.7	1077.5	1076.6	1073.9	1072.7	1068.5	1066.1	1061.3	1058.7
75°	997.3	994.2	993.9	990.7	990.4	987.1	986.3	981.9	979.5	974.8	972.9
77.5°	892.1	887.5	886.1	882.4	883.3	881.7	883.0	879.6	878.2	873.5	872.0
80°	773.7	767.8	765.3	760.3	761.7	759.4	761.7	761.4	763.2	759.4	758.7
82.5°	633.4	626.9	625.7	622.2	624.5	624.8	629.8	627.1	628.2	624.6	626.1
85°	460.9	456.1	449.3	448.3	444.1	448.5	442.7	446.6	440.2	444.7	438.8
87.5°	285.8	275.7	270.5	263.3	260.6	253.7	250.9	245.9	247.4	245.1	246.4
90°	102.8	94.5	92.9	86.2	85.7	79.9	80.7	76.7	78.3	74.1	76.1
92.5°	22.5	23.4	25.0	26.9	28.2	29.9	31.4	33.3	34.7	36.5	37.9
95°	27.3	28.1	30.2	32.3	34.5	36.6	38.8	40.9	43.0	45.2	47.3
97.5°	33.6	34.0	36.2	38.3	40.5	42.6	44.6	47.1	49.2	51.3	53.5
100°	38.1	38.2	44.3	50.3	56.4	62.6	68.6	74.7	81.0	87.1	93.1
102.5°	67.4	68.9	84.2	99.5	114.9	130.2	145.6	161.1	176.4	192.0	207.4
105°	142.7	148.7	172.1	195.6	219.0	242.4	265.8	289.4	312.9	336.4	359.8
107.5°	260.0	271.0	292.3	313.4	334.5	355.8	377.2	398.4	419.6	440.9	462.5
110°	364.4	376.1	390.3	404.7	419.0	433.3	447.7	462.1	476.6	490.9	505.5



TEST NUMBER: P1444690
 CATALOG NUMBER: EHBR1-48-UNV-TA-L930-UPL12

CANDELA DISTRIBUTION (continued):

	110°	112.5°	115°	117.5°	120°	122.5°	125°	127.5°	130°	132.5°	135°
112.5°	411.4	419.2	427.6	436.2	444.6	453.1	461.6	470.3	478.9	487.6	496.2
115°	410.9	414.7	418.0	421.7	425.1	428.7	432.2	436.0	439.9	443.5	447.3
117.5°	380.7	382.4	383.0	384.0	384.8	386.0	386.9	388.2	389.3	390.6	391.5
120°	335.5	335.4	335.3	335.3	335.2	335.3	335.5	335.6	336.0	336.1	336.3
122.5°	290.1	289.8	289.7	289.8	290.0	290.2	290.5	291.0	291.4	291.8	292.0
125°	250.9	250.8	251.9	253.1	254.3	255.7	256.8	258.5	259.9	261.3	262.8
127.5°	223.2	223.8	225.7	227.8	229.9	232.1	234.3	236.6	238.7	241.2	243.3
130°	207.3	208.4	210.8	213.4	215.8	218.5	221.1	223.9	226.3	229.0	231.6
132.5°	200.1	201.8	204.0	206.7	209.1	211.6	214.4	217.0	219.6	222.3	224.7
135°	198.5	200.5	202.7	205.1	207.5	210.1	212.4	215.1	217.3	219.8	222.2
137.5°	199.8	201.7	203.8	205.8	207.7	210.1	212.2	214.4	216.4	218.5	220.5
140°	203.9	205.8	207.1	208.9	210.3	212.0	213.3	215.1	216.4	218.2	219.5
142.5°	207.6	209.4	210.3	211.6	212.8	214.3	215.5	216.7	217.8	218.9	219.8
145°	212.2	213.6	214.2	215.0	215.7	216.5	217.1	217.9	218.3	219.0	219.5
147.5°	216.0	217.0	217.3	217.9	218.3	218.7	219.1	219.7	219.8	220.3	220.6
150°	218.7	219.5	219.5	219.8	219.8	220.1	220.1	220.5	220.5	220.7	220.7
152.5°	220.6	221.2	220.9	221.2	221.0	221.0	220.9	221.0	220.9	220.9	221.0
155°	221.4	221.7	221.5	221.6	221.4	221.4	221.3	221.6	221.5	221.6	221.7
157.5°	223.5	223.5	223.4	223.4	223.1	223.2	223.2	223.2	223.3	223.8	223.9
160°	226.3	226.3	226.0	226.0	225.9	225.8	225.8	226.0	226.1	226.6	226.8
162.5°	229.2	229.1	228.8	228.8	228.8	228.8	228.9	229.3	229.3	229.7	230.0
165°	233.7	233.7	233.4	233.5	233.4	233.3	233.4	233.5	233.8	234.0	234.4
167.5°	238.4	238.3	238.3	238.5	238.5	238.6	238.7	239.3	239.4	239.9	240.1
170°	243.8	243.9	243.7	243.7	243.7	243.8	243.8	243.9	244.2	244.4	244.4
172.5°	249.4	249.4	249.3	249.2	249.1	249.1	249.0	249.1	249.0	248.9	248.8
175°	253.8	253.7	253.6	253.6	253.5	253.3	253.3	252.9	252.8	252.8	252.7
177.5°	257.1	256.8	256.6	256.6	256.6	256.4	256.4	256.3	256.3	256.3	256.0
180°	257.7	257.7	257.7	257.7	257.7	257.7	257.7	257.7	257.7	257.7	257.7



TEST NUMBER: P1444690
 CATALOG NUMBER: EHBR1-48-UNV-TA-L930-UPL12

CANDELA DISTRIBUTION (continued):

	137.5°	140°	142.5°	145°	147.5°	150°	152.5°	155°	157.5°	160°	162.5°
0°	36472.1	36472.1	36472.1	36472.1	36472.1	36472.1	36472.1	36472.1	36472.1	36472.1	36472.1
2.5°	36341.1	36340.7	36337.2	36338.8	36339.5	36342.1	36345.2	36348.4	36349.1	36351.6	36352.2
5°	36613.1	36523.2	36456.7	36383.5	36328.5	36279.1	36246.1	36219.9	36209.7	36212.3	36218.4
7.5°	37350.6	37165.0	37011.9	36837.7	36692.6	36538.8	36411.4	36290.3	36202.0	36136.2	36099.4
10°	38159.8	37933.8	37717.6	37465.6	37226.6	36971.6	36740.5	36507.9	36313.9	36145.5	36021.8
12.5°	38519.0	38359.2	38172.3	37934.5	37678.8	37384.4	37087.3	36768.7	36472.4	36197.3	35975.5
15°	38138.7	38139.0	38070.9	37956.8	37779.2	37544.0	37260.8	36928.7	36579.1	36222.4	35896.5
17.5°	36931.7	37159.4	37286.1	37366.3	37341.7	37255.0	37074.8	36819.7	36493.8	36113.9	35716.2
20°	34858.9	35396.0	35779.0	36123.4	36316.4	36444.7	36431.8	36328.0	36096.0	35772.8	35358.7
22.5°	31955.1	32856.7	33568.1	34231.5	34696.8	35075.2	35255.2	35331.5	35226.4	35001.3	34612.4
25°	28428.2	29654.1	30700.2	31715.5	32477.0	33131.5	33524.8	33802.0	33824.0	33706.4	33359.4
27.5°	24509.3	25956.3	27280.3	28629.5	29700.5	30641.4	31258.8	31710.6	31854.1	31835.2	31520.1
30°	20595.3	22114.3	23573.8	25147.1	26472.4	27674.4	28489.9	29101.0	29336.5	29381.7	29078.6
32.5°	16898.9	18396.9	19852.3	21497.1	22955.5	24333.2	25296.7	26022.5	26296.4	26360.9	26028.5
35°	13544.3	14926.3	16309.4	17903.5	19353.5	20780.1	21795.3	22555.3	22811.0	22854.2	22469.3
37.5°	10635.2	11812.7	13017.9	14448.2	15779.8	17119.6	18084.2	18798.3	18984.7	18973.2	18537.6
40°	8185.7	9101.1	10069.5	11247.1	12354.1	13486.7	14301.3	14891.6	14989.5	14917.0	14459.5
42.5°	6155.3	6816.3	7518.5	8397.5	9218.8	10066.5	10659.1	11097.4	11111.3	10996.7	10586.1
45°	4585.6	5230.6	5525.1	6056.5	6585.6	7149.3	7511.1	7781.9	7740.0	7639.1	7327.0
47.5°	3495.8	3743.7	4006.6	4336.1	4644.3	5283.9	5236.5	5671.3	5358.2	5571.7	5101.6
50°	2776.0	2914.6	3056.2	3231.1	3392.1	3559.3	3663.7	3741.8	3731.6	3698.1	3608.1
52.5°	2361.7	2404.6	2474.2	2573.8	2663.6	2754.1	2813.6	2862.0	2862.9	2849.4	2803.8
55°	1973.9	2028.2	2078.4	2143.4	2254.1	2271.2	2356.4	2339.2	2345.8	2322.2	2346.5
57.5°	1740.3	1771.9	1800.2	1838.9	1870.9	1908.2	1930.2	1951.4	1949.5	1944.8	1921.6
60°	1574.8	1592.3	1608.0	1630.5	1648.2	1669.2	1679.4	1690.1	1686.7	1678.8	1658.1
62.5°	1447.3	1458.2	1467.2	1481.7	1492.4	1505.5	1510.8	1515.4	1510.8	1503.4	1485.1
65°	1321.4	1328.4	1334.1	1345.1	1352.7	1363.9	1368.3	1372.6	1368.4	1362.6	1348.7
67.5°	1207.9	1208.6	1208.0	1212.5	1214.8	1221.6	1223.5	1226.7	1221.8	1216.8	1205.0
70°	1121.8	1120.0	1117.8	1119.6	1120.0	1123.3	1123.8	1123.3	1117.5	1108.8	1095.9
72.5°	1054.5	1053.5	1051.9	1053.4	1053.4	1056.4	1055.4	1054.0	1046.7	1038.4	1025.7
75°	968.0	967.2	964.0	964.1	961.5	962.4	958.9	956.9	948.9	941.8	930.5
77.5°	866.7	865.1	860.4	858.6	853.4	851.3	844.7	841.4	833.3	827.6	817.9
80°	753.7	751.9	745.9	742.5	734.4	729.2	719.5	714.0	704.6	699.1	689.7
82.5°	623.0	623.7	617.6	613.4	601.8	592.9	579.9	572.8	562.6	557.1	547.4
85°	443.1	436.7	440.1	439.9	432.6	424.8	414.3	406.9	398.3	393.1	386.2
87.5°	243.0	244.5	242.7	241.3	236.2	232.2	223.9	219.7	213.3	210.2	205.1
90°	69.7	69.4	63.4	63.2	57.3	55.0	48.0	46.6	40.4	39.3	34.8
92.5°	36.1	34.3	32.7	30.7	29.1	27.4	25.5	23.7	21.9	21.0	20.8
95°	44.7	42.3	39.7	37.2	34.5	31.9	29.4	26.8	24.2	23.7	23.2
97.5°	50.5	47.4	44.4	41.5	38.4	35.4	32.4	29.3	26.3	25.9	25.6
100°	86.2	79.3	72.3	65.2	58.2	51.2	44.3	37.2	30.4	30.0	29.6
102.5°	190.3	173.3	156.4	139.5	122.6	105.5	88.6	71.5	54.5	52.0	49.6
105°	334.2	308.3	282.9	257.2	231.4	205.7	180.1	154.2	128.5	120.3	112.0
107.5°	438.4	414.2	390.3	366.3	342.0	318.0	293.9	269.7	245.5	231.0	216.5
110°	486.5	467.4	448.6	429.5	410.5	391.4	372.3	353.2	334.2	321.7	309.5



TEST NUMBER: P1444690
 CATALOG NUMBER: EHBR1-48-UNV-TA-L930-UPL12

CANDELA DISTRIBUTION (continued):

	137.5°	140°	142.5°	145°	147.5°	150°	152.5°	155°	157.5°	160°	162.5°
112.5°	482.5	468.7	455.2	441.2	427.6	413.6	399.9	386.0	372.0	364.6	357.2
115°	439.3	431.2	423.2	415.1	407.1	399.0	390.9	382.5	374.2	370.5	366.8
117.5°	387.9	384.0	380.3	376.5	372.7	368.7	364.8	360.8	356.8	355.8	354.8
120°	336.0	335.3	334.4	333.7	333.0	332.3	331.4	330.5	329.5	330.3	331.0
122.5°	293.5	294.6	295.9	296.9	298.3	299.2	300.6	301.4	302.5	304.1	305.7
125°	264.8	266.8	268.9	270.9	272.8	274.7	276.9	278.6	280.6	282.1	284.0
127.5°	245.8	247.8	250.2	252.3	254.6	256.7	259.0	260.8	263.1	264.8	266.6
130°	233.8	235.8	238.0	240.0	242.0	244.1	246.0	248.2	250.1	251.7	253.4
132.5°	226.6	228.7	230.7	232.4	234.5	236.3	238.4	240.3	242.4	243.7	245.3
135°	224.0	225.5	227.2	228.8	230.6	232.1	233.8	235.6	237.5	238.7	240.3
137.5°	222.0	223.3	225.0	226.3	228.0	229.3	231.1	232.5	234.5	235.3	236.9
140°	220.9	222.3	223.8	225.2	226.7	228.0	230.0	231.5	233.3	234.5	235.7
142.5°	221.2	222.2	223.4	224.6	226.0	227.2	228.7	230.2	231.8	233.0	234.2
145°	220.7	221.9	223.2	224.4	225.6	227.0	228.8	230.3	232.0	232.9	234.2
147.5°	221.6	222.5	223.8	224.8	226.1	227.2	228.8	230.1	231.7	232.8	233.7
150°	221.8	222.7	223.8	224.7	226.0	227.2	228.8	230.1	232.0	232.9	233.9
152.5°	222.0	222.9	223.9	225.2	226.4	227.8	229.2	230.7	232.3	233.2	234.3
155°	222.8	223.6	224.8	226.0	227.3	228.4	229.9	231.3	232.8	233.8	234.7
157.5°	224.9	225.6	226.8	228.0	229.0	230.2	231.7	232.8	234.2	235.0	235.8
160°	227.7	228.5	229.6	230.7	231.7	232.9	234.0	235.1	236.2	237.1	237.9
162.5°	230.9	232.0	232.9	233.8	235.0	236.1	237.2	238.3	239.4	240.1	240.9
165°	235.2	236.0	236.9	237.6	238.5	239.1	240.2	241.0	242.0	242.6	243.5
167.5°	241.0	241.4	242.0	242.7	243.5	244.1	245.0	245.6	246.5	247.1	247.7
170°	245.0	245.5	246.0	246.5	247.2	247.7	248.4	248.9	249.8	250.2	250.8
172.5°	249.2	249.3	249.9	250.1	250.5	250.9	251.3	251.8	252.2	252.7	253.1
175°	253.1	253.1	253.4	253.4	253.5	253.8	254.2	254.4	254.6	255.0	255.1
177.5°	256.1	256.2	256.2	256.3	256.6	256.7	256.8	256.9	257.2	257.4	257.6
180°	257.7	257.7	257.7	257.7	257.7	257.7	257.7	257.7	257.7	257.7	257.7



TEST NUMBER: P1444690
 CATALOG NUMBER: EHBR1-48-UNV-TA-L930-UPL12

CANDELA DISTRIBUTION (continued):

	165°	167.5°	170°	172.5°	175°	177.5°	180°	182.5°	185°	187.5°	190°
0°	36472.1	36472.1	36472.1	36472.1	36472.1	36472.1	36472.1	36472.1	36472.1	36472.1	36472.1
2.5°	36351.0	36350.5	36349.4	36347.7	36346.1	36347.1	36348.7	36352.9	36360.2	36370.7	36384.5
5°	36223.4	36230.8	36235.0	36235.5	36231.8	36229.4	36233.0	36243.0	36263.1	36296.9	36342.6
7.5°	36089.5	36098.7	36112.8	36123.4	36125.4	36122.8	36123.4	36139.0	36176.2	36242.0	36334.3
10°	35946.7	35919.5	35933.9	35960.1	35980.9	35984.6	35987.2	36005.8	36060.1	36159.6	36307.9
12.5°	35814.8	35728.8	35712.1	35735.8	35767.5	35777.5	35774.8	35782.7	35846.4	35978.1	36184.7
15°	35641.2	35479.4	35424.1	35430.2	35469.3	35483.3	35473.0	35457.4	35519.4	35680.1	35947.7
17.5°	35360.3	35099.5	34997.8	34993.3	35039.1	35051.2	35026.0	34977.4	35038.5	35239.0	35571.2
20°	34933.3	34548.2	34356.8	34326.4	34376.1	34361.5	34311.4	34237.8	34318.1	34562.0	34957.0
22.5°	34165.7	33677.8	33350.7	33245.3	33304.6	33265.1	33191.9	33098.0	33204.7	33481.7	33921.6
25°	32911.3	32347.6	31899.8	31648.7	31696.0	31625.0	31545.4	31431.6	31558.8	31876.9	32361.0
27.5°	31067.6	30416.4	29861.6	29445.8	29461.1	29368.1	29276.4	29129.1	29287.9	29664.4	30210.5
30°	28615.9	27862.3	27186.7	26621.7	26571.2	26481.0	26387.1	26193.8	26392.5	26843.2	27481.3
32.5°	25537.0	24700.2	23919.7	23205.3	23070.5	22982.6	22898.9	22676.4	22936.6	23462.0	24195.1
35°	21936.3	21045.1	20198.7	19382.8	19159.5	19071.5	18998.4	18785.2	19109.9	19681.7	20473.5
37.5°	17984.1	17073.6	16233.3	15396.7	15081.2	14961.8	14908.7	14769.0	15143.7	15709.2	16504.3
40°	13926.7	13080.1	12326.9	11587.8	11228.2	11045.6	11017.7	10992.3	11354.5	11845.1	12566.8
42.5°	10131.1	9448.1	8867.3	8302.4	7976.5	7727.2	7727.0	7802.7	8128.7	8496.2	9052.7
45°	7008.0	6549.7	6179.6	5802.2	5903.0	5405.8	5697.9	5548.1	5709.2	5946.1	6308.0
47.5°	4817.3	4567.1	4363.8	4153.0	3999.3	3852.5	3865.3	3960.0	4111.7	4252.3	4440.6
50°	3511.0	3383.6	3280.0	3170.6	3094.0	3029.2	3033.1	3074.1	3153.7	3227.9	3326.4
52.5°	2751.1	2680.8	2624.6	2564.1	2523.9	2491.7	2493.5	2513.4	2556.5	2598.7	2655.2
55°	2267.6	2259.1	2186.0	2131.6	2110.9	2089.4	2093.3	2101.0	2130.4	2155.1	2192.6
57.5°	1900.2	1867.4	1845.5	1816.9	1803.7	1788.6	1792.0	1794.9	1814.5	1831.1	1858.0
60°	1640.9	1617.6	1602.0	1582.6	1573.9	1564.3	1566.4	1568.2	1580.8	1591.7	1610.9
62.5°	1468.5	1447.7	1434.1	1419.1	1413.1	1406.6	1408.1	1408.6	1416.5	1424.4	1439.0
65°	1336.3	1319.8	1308.5	1295.6	1289.2	1282.5	1283.2	1283.2	1289.8	1295.6	1306.6
67.5°	1196.5	1184.1	1176.7	1166.5	1162.2	1155.3	1155.2	1153.0	1157.3	1159.6	1167.0
70°	1084.3	1071.8	1062.4	1052.5	1047.2	1041.1	1041.2	1041.4	1046.4	1051.6	1061.3
72.5°	1015.0	1003.0	994.7	986.0	981.0	975.8	974.8	974.3	977.9	980.8	987.1
75°	923.2	913.6	908.8	900.7	896.6	890.8	889.8	887.1	888.9	889.4	894.2
77.5°	811.8	802.7	798.8	790.6	787.2	780.6	780.1	777.1	778.4	777.5	781.2
80°	684.9	676.6	674.5	667.7	666.1	660.1	659.1	655.4	656.5	653.7	655.1
82.5°	543.2	535.7	534.1	527.8	527.8	522.3	522.0	516.5	516.5	511.8	504.2
85°	382.7	377.1	374.8	369.7	368.2	363.8	361.4	356.2	354.3	350.9	349.9
87.5°	201.9	198.5	195.3	192.9	188.4	180.5	179.7	174.2	174.7	170.7	171.0
90°	34.3	30.2	29.9	26.2	25.6	23.1	22.7	22.3	22.5	22.2	22.5
92.5°	20.1	19.5	19.0	18.4	17.7	17.2	16.6	17.2	17.7	18.4	19.0
95°	22.6	22.1	21.7	21.1	20.6	20.1	19.5	20.1	20.6	21.3	21.8
97.5°	25.3	25.0	24.6	24.2	24.0	23.6	23.3	23.8	24.1	24.4	24.8
100°	29.2	28.8	28.4	28.0	27.6	27.2	26.8	27.4	27.9	28.2	28.7
102.5°	47.2	44.7	42.3	39.8	37.3	34.9	32.4	34.9	37.3	40.0	42.5
105°	103.6	95.5	87.2	79.0	70.6	62.3	54.0	62.4	70.7	79.0	87.5
107.5°	201.8	187.5	172.9	158.4	143.6	129.0	114.4	129.2	143.8	158.5	173.1
110°	296.9	284.4	271.9	259.3	246.8	234.3	221.6	234.4	247.0	259.6	272.2



TEST NUMBER: P1444690
 CATALOG NUMBER: EHBR1-48-UNV-TA-L930-UPL12

CANDELA DISTRIBUTION (continued):

	165°	167.5°	170°	172.5°	175°	177.5°	180°	182.5°	185°	187.5°	190°
112.5°	349.6	342.1	334.5	327.1	319.4	312.0	304.2	312.3	319.9	327.8	335.4
115°	363.1	359.2	355.6	351.7	347.6	343.8	339.7	344.2	348.3	352.5	356.6
117.5°	353.6	352.7	351.5	350.4	349.1	348.0	346.7	348.3	349.8	351.6	352.8
120°	331.3	332.1	332.7	333.1	333.6	334.0	334.3	334.5	334.5	334.5	334.4
122.5°	307.4	309.0	310.4	312.0	313.4	314.8	315.9	315.3	314.5	313.7	312.5
125°	285.6	287.6	289.1	290.8	292.2	293.8	294.9	294.5	293.7	292.8	291.7
127.5°	268.4	270.0	271.6	273.4	274.7	276.1	277.2	276.9	276.2	275.4	274.4
130°	255.0	256.7	258.0	259.5	260.7	261.8	262.7	262.6	262.2	261.9	261.1
132.5°	246.7	248.4	249.7	251.0	251.9	253.2	253.7	254.0	253.7	253.6	252.9
135°	241.6	242.8	244.1	245.5	246.3	247.2	247.7	248.2	248.1	248.1	247.6
137.5°	237.9	239.3	240.2	241.2	241.9	242.7	243.0	243.6	243.7	244.2	243.8
140°	236.9	238.2	239.3	240.2	241.1	241.9	242.3	242.9	243.1	243.2	242.9
142.5°	235.4	236.6	237.8	238.8	239.5	240.3	240.7	241.2	241.4	241.5	241.4
145°	235.3	236.2	237.3	238.4	238.9	239.5	239.7	240.5	240.7	241.0	241.0
147.5°	234.7	236.0	236.6	237.5	238.1	238.7	239.1	239.5	239.9	240.1	240.2
150°	235.1	236.2	237.0	237.8	238.6	239.3	239.4	240.1	240.3	240.4	240.3
152.5°	235.3	236.2	237.0	237.7	238.5	239.0	239.3	239.8	240.3	240.5	240.6
155°	235.6	236.5	237.3	238.1	238.6	239.4	239.9	240.4	240.9	241.1	241.4
157.5°	236.6	237.6	238.2	239.0	239.5	240.4	241.0	241.6	242.0	242.6	242.8
160°	238.6	239.5	240.1	240.9	241.6	242.2	242.7	243.5	244.0	244.4	245.0
162.5°	241.6	242.4	242.8	243.6	244.3	245.0	245.5	246.1	246.8	247.3	247.6
165°	244.2	244.9	245.5	246.3	246.9	247.7	248.3	248.8	249.2	249.7	250.0
167.5°	248.3	249.0	249.5	250.2	250.7	251.5	252.1	252.5	252.8	253.3	253.5
170°	251.3	251.9	252.5	252.9	253.6	254.2	254.5	254.8	255.2	255.5	255.8
172.5°	253.5	254.2	254.6	255.2	255.7	256.2	256.6	257.0	257.2	257.3	257.4
175°	255.5	256.0	256.3	256.6	257.0	257.4	257.8	257.7	258.1	258.0	258.2
177.5°	258.1	258.5	258.8	259.0	259.4	259.6	259.9	259.7	259.7	259.5	259.3
180°	257.7	257.7	257.7	257.7	257.7	257.7	257.7	257.7	257.7	257.7	257.7



TEST NUMBER: P1444690
 CATALOG NUMBER: EHBR1-48-UNV-TA-L930-UPL12

CANDELA DISTRIBUTION (continued):

	192.5°	195°	197.5°	200°	202.5°	205°	207.5°	210°	212.5°	215°	217.5°
0°	36472.1	36472.1	36472.1	36472.1	36472.1	36472.1	36472.1	36472.1	36472.1	36472.1	36472.1
2.5°	36403.9	36422.2	36450.1	36475.3	36513.4	36543.3	36588.3	36622.5	36673.3	36706.4	36761.6
5°	36407.2	36478.4	36572.1	36663.5	36773.4	36873.1	36997.1	37102.7	37227.3	37328.9	37456.4
7.5°	36458.7	36596.1	36760.7	36926.5	37114.2	37289.6	37487.4	37666.3	37861.9	38027.5	38208.3
10°	36496.7	36708.5	36951.2	37195.3	37452.2	37690.9	37932.0	38140.2	38334.8	38495.1	38636.6
12.5°	36445.2	36737.0	37048.3	37349.0	37634.7	37881.8	38089.2	38249.3	38359.9	38434.9	38452.5
15°	36270.2	36621.3	36959.8	37259.2	37496.3	37679.1	37773.8	37818.1	37770.6	37691.6	37518.0
17.5°	35943.2	36313.6	36616.2	36852.4	36977.6	37027.3	36948.9	36812.4	36545.9	36250.0	35822.7
20°	35343.7	35688.8	35908.3	36037.1	36003.6	35879.7	35583.6	35223.8	34691.6	34124.5	33376.0
22.5°	34292.2	34593.9	34710.9	34720.4	34515.9	34205.6	33671.6	33054.5	32215.0	31342.1	30268.7
25°	32713.8	32978.1	32996.6	32892.8	32518.5	32015.5	31231.6	30358.5	29217.7	28054.7	26709.6
27.5°	30573.3	30826.7	30764.7	30571.0	30051.4	29378.4	28374.6	27246.8	25840.3	24466.7	22978.7
30°	27882.4	28153.5	28080.6	27832.1	27214.1	26418.7	25237.6	23927.3	22365.7	20898.6	19390.8
32.5°	24662.3	25004.9	24954.7	24718.5	24073.6	23222.3	21940.8	20551.0	18953.4	17507.6	16040.9
35°	21002.2	21418.2	21439.7	21285.3	20686.6	19845.2	18579.8	17234.5	15704.3	14340.2	12985.2
37.5°	17058.8	17541.1	17640.2	17598.6	17102.4	16359.6	15206.6	13999.8	12644.2	11448.6	10289.8
40°	13093.6	13581.9	13751.3	13801.5	13435.3	12860.0	11913.7	10939.7	9834.5	8865.8	7945.7
42.5°	9477.5	9910.4	10074.1	10177.1	9948.5	9564.9	8874.6	8167.2	7357.6	6658.9	5989.0
45°	6582.4	6888.5	7013.0	7116.7	6992.2	6775.8	6339.8	5897.5	5363.0	4906.4	4474.1
47.5°	4602.1	4771.0	4853.1	4903.4	4855.2	4742.3	4505.1	4248.8	3947.1	3680.3	3423.8
50°	3411.2	3501.0	3544.1	3573.1	3537.9	3475.2	3346.9	3207.3	3041.6	2890.5	2742.7
52.5°	2703.3	2754.8	2780.4	2795.9	2775.8	2737.5	2662.7	2580.0	2480.7	2387.3	2338.2
55°	2277.3	2274.6	2333.7	2305.2	2333.7	2270.1	2256.6	2165.7	2083.2	2025.1	1962.3
57.5°	1878.1	1904.8	1916.1	1928.9	1920.7	1909.0	1877.3	1844.7	1801.2	1764.8	1726.0
60°	1625.7	1647.7	1660.2	1672.8	1672.0	1667.6	1649.2	1629.7	1602.5	1580.8	1557.3
62.5°	1451.8	1470.9	1483.2	1495.2	1496.3	1494.5	1480.6	1467.2	1448.6	1435.0	1418.8
65°	1315.1	1328.4	1336.8	1346.4	1345.9	1343.3	1330.7	1319.5	1304.3	1294.8	1282.9
67.5°	1171.9	1182.1	1188.5	1197.6	1199.4	1199.9	1193.0	1187.7	1180.3	1177.6	1173.5
70°	1070.2	1082.5	1092.9	1104.3	1110.5	1113.6	1110.5	1107.9	1103.5	1101.6	1098.5
72.5°	993.1	1003.5	1011.6	1022.0	1027.8	1032.0	1029.7	1028.2	1024.5	1023.9	1021.8
75°	897.4	904.6	909.1	917.0	920.1	924.0	922.2	923.2	922.0	925.0	924.8
77.5°	782.3	787.7	789.8	795.4	796.1	800.8	801.8	807.4	811.3	819.9	824.6
80°	652.8	656.2	656.2	662.0	664.6	672.6	676.4	685.5	689.7	697.3	698.0
82.5°	507.1	503.2	507.1	504.7	512.1	521.0	522.3	530.0	531.7	536.6	532.8
85°	346.7	346.5	343.4	343.9	341.6	342.6	341.3	342.8	341.4	341.6	338.1
87.5°	166.1	167.6	164.0	165.2	161.7	163.3	160.1	162.6	159.0	159.5	154.1
90°	22.4	22.5	22.5	22.8	23.5	24.3	25.4	26.3	27.8	28.6	29.9
92.5°	19.5	20.3	20.9	21.5	22.1	23.9	25.7	27.5	29.4	31.1	32.9
95°	22.3	22.8	23.3	24.1	24.7	27.3	29.9	32.4	35.0	37.7	40.3
97.5°	25.4	25.8	26.0	26.4	26.8	29.9	33.0	36.0	39.0	42.2	45.1
100°	29.1	29.6	29.9	30.6	30.9	38.0	45.0	52.0	59.1	66.0	73.1
102.5°	45.0	47.5	50.0	52.7	55.2	72.3	89.4	106.4	123.2	140.4	157.4
105°	95.8	104.1	112.7	121.0	129.3	155.1	181.1	206.9	232.5	258.3	284.1
107.5°	187.9	202.5	217.3	232.0	246.6	270.9	295.1	319.3	343.6	367.9	391.8
110°	285.2	297.6	310.4	323.0	335.7	354.8	374.1	393.2	412.4	431.6	450.6



TEST NUMBER: P1444690
 CATALOG NUMBER: EHBR1-48-UNV-TA-L930-UPL12

CANDELA DISTRIBUTION (continued):

	192.5°	195°	197.5°	200°	202.5°	205°	207.5°	210°	212.5°	215°	217.5°
112.5°	343.2	350.8	358.6	366.0	373.7	387.7	401.9	415.8	430.0	443.6	457.6
115°	360.7	364.4	368.6	372.4	376.5	384.9	393.1	401.5	409.8	417.9	426.3
117.5°	354.3	355.7	357.1	358.1	359.4	363.6	367.7	371.7	375.9	380.0	384.0
120°	334.3	333.9	333.6	333.1	332.8	333.6	334.9	335.9	336.9	337.7	338.6
122.5°	311.6	310.2	309.0	307.7	306.4	305.3	304.5	303.4	302.7	301.7	300.7
125°	290.6	289.1	287.8	286.3	284.8	283.1	281.5	279.6	277.8	276.0	274.2
127.5°	273.6	272.2	271.0	269.5	268.1	265.9	264.0	262.0	260.1	258.0	256.0
130°	260.4	259.2	258.3	256.7	255.8	253.7	252.0	250.1	248.1	246.3	244.4
132.5°	252.4	251.5	250.6	249.3	248.4	246.5	245.0	242.9	241.2	239.4	237.8
135°	247.2	246.4	245.9	244.9	244.0	242.2	240.9	239.3	237.8	236.3	234.8
137.5°	243.7	243.0	242.6	241.9	241.1	239.6	238.5	237.0	235.8	234.3	233.1
140°	242.7	242.3	241.8	241.1	240.4	239.1	237.8	236.3	235.1	233.7	232.4
142.5°	241.1	240.7	240.3	239.6	239.1	237.8	237.0	235.8	234.6	233.6	232.5
145°	240.7	240.3	240.3	239.6	239.4	238.1	237.1	235.8	234.9	233.7	232.7
147.5°	240.3	239.9	239.8	239.5	239.4	238.3	237.7	236.6	236.0	234.8	234.2
150°	240.4	240.4	240.3	240.0	239.8	238.9	238.3	237.4	236.8	235.8	235.3
152.5°	240.7	240.8	240.8	240.8	240.9	240.2	239.5	238.7	238.0	237.2	236.6
155°	241.7	241.8	241.9	241.9	241.9	241.4	240.9	240.2	239.6	239.0	238.5
157.5°	243.1	243.4	243.6	243.8	243.9	243.5	243.0	242.5	242.0	241.5	241.1
160°	245.2	245.6	245.9	246.0	246.3	246.0	245.8	245.2	245.0	244.4	243.7
162.5°	248.1	248.4	248.7	248.9	249.2	248.8	248.6	248.3	247.8	247.2	246.8
165°	250.4	250.5	250.9	250.9	251.1	250.9	250.7	250.4	250.1	249.9	249.6
167.5°	253.9	253.9	254.3	254.4	254.6	254.4	254.6	254.2	254.1	253.9	253.7
170°	256.1	256.3	256.5	256.6	256.7	256.6	256.5	256.3	256.4	255.8	255.7
172.5°	257.5	257.6	257.7	257.9	257.8	257.7	257.7	257.6	257.5	257.5	257.3
175°	258.2	258.2	258.3	258.3	258.3	258.3	258.3	258.3	258.3	258.3	258.2
177.5°	259.4	259.4	259.1	259.1	259.1	259.0	259.0	259.0	259.1	259.1	259.0
180°	257.7	257.7	257.7	257.7	257.7	257.7	257.7	257.7	257.7	257.7	257.7



TEST NUMBER: P1444690
 CATALOG NUMBER: EHBR1-48-UNV-TA-L930-UPL12

CANDELA DISTRIBUTION (continued):

	220°	222.5°	225°	227.5°	230°	232.5°	235°	237.5°	240°	242.5°	245°
0°	36472.1	36472.1	36472.1	36472.1	36472.1	36472.1	36472.1	36472.1	36472.1	36472.1	36472.1
2.5°	36795.9	36568.6	36538.6	36554.5	36592.5	36606.6	36647.6	36658.8	36700.0	36710.1	36749.7
5°	37555.1	37254.7	37269.8	37341.9	37451.3	37516.4	37623.9	37680.1	37782.7	37829.3	37922.1
7.5°	38355.7	38119.8	38193.3	38315.2	38464.6	38568.1	38697.3	38781.3	38892.6	38961.7	39050.7
10°	38748.8	38684.2	38765.1	38861.0	38946.3	39013.0	39067.7	39111.6	39140.2	39167.1	39178.8
12.5°	38449.6	38549.6	38563.4	38554.2	38497.6	38454.5	38357.6	38291.7	38174.8	38103.6	37964.5
15°	37340.7	37560.6	37438.8	37254.4	36984.7	36759.8	36442.1	36205.6	35874.8	35650.4	35318.4
17.5°	35394.5	35672.1	35354.8	34928.2	34385.5	33921.1	33343.0	32884.1	32309.2	31891.2	31354.7
20°	32654.7	32914.1	32348.2	31641.0	30801.4	30094.9	29261.7	28596.9	27822.7	27246.8	26551.7
22.5°	29243.4	29428.3	28630.9	27677.5	26607.9	25725.2	24729.1	23932.1	23048.5	22390.1	21649.0
25°	25469.6	25519.4	24562.9	23464.6	22272.5	21280.5	20216.9	19379.1	18477.9	17810.6	17083.1
27.5°	21660.5	21587.3	20553.5	19388.9	18135.0	17103.9	16066.5	15281.3	14492.2	13891.0	13264.3
30°	18065.2	17888.1	16814.7	15617.7	14400.5	13476.3	12615.1	11984.6	11356.7	10879.8	10376.9
32.5°	14768.2	14518.4	13473.6	12352.1	11326.5	10613.3	9974.7	9497.6	8990.5	8587.7	8165.6
35°	11848.1	11581.9	10656.2	9705.5	8929.2	8403.5	7901.6	7510.2	7079.7	6739.9	6373.2
37.5°	9341.9	9123.7	8348.4	7600.2	7013.0	6605.7	6194.4	5874.5	5518.7	5369.2	4977.5
40°	7211.9	7059.4	6453.2	5901.7	5460.7	5269.3	4851.9	4553.1	4287.2	4068.0	3855.6
42.5°	5625.4	5571.4	4981.4	4551.3	4240.8	3999.7	3767.0	3578.2	3394.3	3243.3	3100.5
45°	4128.2	4085.5	3823.5	3575.3	3363.7	3195.2	3038.0	2908.1	2787.8	2688.3	2597.7
47.5°	3214.6	3201.0	3050.1	2896.1	2762.9	2654.6	2552.6	2466.3	2386.6	2320.1	2298.4
50°	2614.6	2612.8	2524.3	2429.2	2334.4	2271.8	2206.6	2155.7	2104.4	2064.6	2022.4
52.5°	2221.5	2211.9	2152.2	2093.6	2037.1	1996.1	1954.4	1921.8	1887.9	1863.3	1837.1
55°	1912.6	1922.6	1888.1	1853.0	1817.7	1792.3	1763.0	1741.6	1718.3	1702.7	1686.9
57.5°	1697.9	1711.3	1693.2	1673.3	1651.8	1635.0	1614.8	1600.0	1584.4	1574.6	1565.4
60°	1541.8	1556.4	1549.1	1539.1	1525.8	1515.8	1503.0	1494.7	1484.7	1479.2	1474.0
62.5°	1409.2	1427.5	1424.9	1420.2	1411.7	1406.1	1399.2	1395.5	1388.8	1386.4	1384.0
65°	1277.1	1297.6	1297.2	1294.9	1290.2	1288.6	1284.2	1283.4	1280.0	1281.4	1281.1
67.5°	1173.1	1191.0	1194.9	1197.8	1197.6	1198.7	1198.3	1200.0	1200.0	1202.6	1204.2
70°	1098.2	1110.5	1113.6	1116.5	1117.3	1119.7	1119.7	1121.2	1120.8	1123.0	1123.3
72.5°	1022.3	1038.6	1041.7	1044.1	1044.1	1046.4	1045.1	1044.8	1041.5	1040.9	1038.5
75°	927.9	948.9	953.5	956.5	956.9	958.9	956.0	954.3	948.9	946.7	942.9
77.5°	829.4	851.1	854.4	855.5	853.7	854.2	848.2	844.2	837.2	834.4	830.7
80°	701.1	733.1	735.7	733.7	728.7	727.9	722.1	718.3	710.1	707.2	704.1
82.5°	533.5	571.1	576.4	578.7	574.6	575.6	570.0	567.8	560.3	558.9	553.9
85°	336.9	374.5	380.6	379.7	375.6	374.7	371.4	372.5	371.9	373.9	375.0
87.5°	154.8	191.1	199.9	197.1	196.7	194.1	188.3	190.4	194.0	196.2	196.4
90°	30.8	43.0	43.7	43.8	40.5	40.1	37.0	37.3	34.8	34.9	32.5
92.5°	34.8	36.5	38.3	36.7	35.1	33.5	31.9	30.1	28.7	26.9	25.5
95°	42.9	45.2	47.8	45.6	43.3	41.2	39.0	37.0	34.8	32.7	30.6
97.5°	48.1	51.0	53.8	51.7	49.5	47.3	45.2	43.1	41.0	38.7	36.5
100°	80.1	86.6	93.5	87.4	81.3	75.2	69.2	63.0	56.9	50.9	44.7
102.5°	174.2	191.0	207.8	192.3	177.0	161.5	146.1	130.8	115.5	99.9	84.7
105°	309.7	335.0	360.6	336.8	313.3	289.8	266.4	242.9	219.5	195.9	172.5
107.5°	416.0	439.2	463.0	441.6	420.4	399.1	377.7	356.4	335.1	313.7	292.6
110°	469.6	487.5	506.3	491.7	477.4	462.8	448.4	433.8	419.5	405.2	390.9



TEST NUMBER: P1444690
 CATALOG NUMBER: EHBR1-48-UNV-TA-L930-UPL12

CANDELA DISTRIBUTION (continued):

	220°	222.5°	225°	227.5°	230°	232.5°	235°	237.5°	240°	242.5°	245°
112.5°	471.4	483.7	497.2	488.3	479.7	471.1	462.4	453.7	445.2	436.6	428.3
115°	434.3	440.7	448.3	444.4	440.8	437.0	433.2	429.6	425.9	422.2	418.8
117.5°	387.9	389.6	393.0	391.7	390.6	389.2	388.1	386.9	386.0	385.0	384.0
120°	339.5	337.9	338.1	337.7	337.6	337.1	337.0	336.7	336.6	336.4	336.4
122.5°	299.6	295.9	294.0	293.5	293.1	292.6	292.3	291.8	291.6	291.3	291.2
125°	272.3	267.4	264.7	263.2	261.9	260.4	258.9	257.5	256.2	254.9	253.6
127.5°	253.9	248.6	245.8	243.5	241.3	238.9	236.7	234.4	232.3	229.9	228.0
130°	242.6	237.1	234.3	231.6	229.2	226.3	223.9	221.4	218.7	216.1	213.6
132.5°	235.8	230.3	227.6	225.1	222.8	220.1	217.7	214.9	212.4	209.7	207.4
135°	233.2	227.8	225.4	222.9	220.8	218.3	215.9	213.5	211.3	208.6	206.7
137.5°	231.6	226.1	223.9	221.8	220.0	217.9	216.1	214.0	211.9	209.6	207.8
140°	231.0	225.2	223.1	221.7	220.5	218.9	217.5	216.1	214.7	213.2	211.7
142.5°	231.3	225.6	223.5	222.5	221.7	220.5	219.8	218.6	217.6	216.2	215.2
145°	231.6	225.4	223.3	222.6	222.3	221.7	221.3	220.6	220.2	219.5	219.0
147.5°	233.0	226.6	224.4	224.2	223.9	223.6	223.5	223.0	222.9	222.5	222.3
150°	234.2	226.8	224.4	224.4	224.2	224.2	224.2	224.0	224.2	224.0	224.0
152.5°	235.6	226.8	224.0	224.0	224.3	224.1	224.3	224.4	224.7	224.8	224.9
155°	237.5	228.0	224.8	224.6	224.6	224.6	224.6	224.7	224.8	225.0	225.2
157.5°	240.2	230.0	227.0	226.5	226.4	226.3	226.3	226.3	226.4	226.5	226.8
160°	243.3	232.9	229.9	229.5	229.3	229.1	228.9	228.8	228.8	228.9	229.1
162.5°	246.1	236.1	233.1	232.7	232.3	232.1	232.1	231.7	231.8	231.7	231.9
165°	249.1	240.2	237.3	236.9	236.8	236.4	236.3	236.2	236.2	236.2	236.3
167.5°	253.2	245.2	242.9	242.5	242.1	241.7	241.7	241.1	241.1	240.9	240.9
170°	255.3	249.0	247.0	246.8	246.9	246.7	246.5	246.5	246.4	246.1	246.2
172.5°	257.1	252.5	251.0	250.9	251.1	251.1	251.3	251.2	251.4	251.5	251.7
175°	258.1	255.4	254.8	254.6	254.6	254.7	254.8	254.8	254.9	255.0	255.2
177.5°	259.1	258.3	258.0	258.0	258.0	258.0	258.0	258.0	258.0	258.2	258.2
180°	257.7	257.7	257.7	257.7	257.7	257.7	257.7	257.7	257.7	257.7	257.7



TEST NUMBER: P1444690
 CATALOG NUMBER: EHBR1-48-UNV-TA-L930-UPL12

CANDELA DISTRIBUTION (continued):

	247.5°	250°	252.5°	255°	257.5°	260°	262.5°	265°	267.5°	270°	272.5°
0°	36472.1	36472.1	36472.1	36472.1	36472.1	36472.1	36472.1	36472.1	36472.1	36472.1	36472.1
2.5°	36757.2	36800.0	36796.7	36836.8	36834.8	36872.5	36864.9	36897.4	36890.0	36917.8	36901.5
5°	37962.9	38044.4	38071.3	38144.9	38160.1	38226.0	38227.3	38279.6	38273.3	38314.2	38292.4
7.5°	39103.5	39179.6	39215.7	39272.8	39301.4	39348.6	39367.1	39406.1	39415.4	39438.4	39437.7
10°	39199.7	39199.4	39217.3	39209.3	39225.3	39216.0	39235.5	39228.5	39257.3	39249.9	39271.6
12.5°	37904.5	37775.9	37729.1	37613.6	37588.3	37489.2	37496.3	37432.7	37463.4	37424.4	37490.9
15°	35121.0	34822.8	34675.4	34416.2	34334.8	34129.8	34113.3	33977.1	34013.9	33942.7	34046.8
17.5°	31007.5	30538.1	30280.5	29901.9	29751.6	29461.8	29403.7	29228.5	29255.7	29167.3	29293.1
20°	26103.3	25536.0	25211.0	24773.3	24578.0	24232.5	24140.8	23944.8	23969.4	23881.6	24023.8
22.5°	21143.2	20549.3	20182.5	19723.6	19474.2	19149.2	19051.8	18854.8	18866.0	18783.6	18920.4
25°	16584.9	16015.6	15659.5	15242.7	15026.3	14728.4	14625.9	14449.1	14459.1	14391.1	14513.9
27.5°	12829.6	12362.5	12064.6	11715.2	11521.2	11276.3	11176.4	11027.7	11027.3	10977.4	11080.0
30°	10025.7	9635.9	9368.4	9064.1	8881.9	8660.9	8564.4	8431.3	8425.5	8390.2	8471.6
32.5°	7849.9	7503.1	7259.1	6991.4	6827.8	6638.2	6546.8	6439.9	6430.2	6398.1	6465.0
35°	6102.3	5810.3	5600.5	5375.0	5391.7	5111.8	5158.4	4941.0	4882.1	4869.2	4919.0
37.5°	4716.4	4490.2	4319.8	4150.9	4036.6	3918.3	3854.6	3797.5	3791.0	3785.5	3820.3
40°	3691.6	3533.4	3409.4	3293.6	3214.9	3142.7	3102.9	3071.5	3064.0	3059.8	3080.9
42.5°	2987.8	2881.1	2801.1	2730.5	2682.6	2643.4	2621.5	2604.1	2598.2	2598.4	2610.8
45°	2524.3	2459.5	2408.0	2364.1	2333.5	2347.0	2307.5	2328.2	2300.8	2329.1	2310.5
47.5°	2223.0	2167.9	2136.0	2104.9	2086.3	2071.5	2072.0	2072.3	2078.1	2079.0	2085.1
50°	1990.5	1958.6	1936.4	1916.6	1906.9	1899.1	1901.9	1903.8	1909.5	1910.0	1914.4
52.5°	1818.5	1797.5	1784.1	1771.8	1767.5	1763.0	1764.9	1764.1	1766.7	1765.3	1769.0
55°	1678.4	1668.6	1664.4	1659.7	1660.5	1659.2	1660.0	1655.6	1652.9	1649.5	1652.6
57.5°	1563.5	1562.2	1565.0	1566.9	1572.1	1574.0	1575.3	1570.1	1565.3	1560.8	1563.4
60°	1475.0	1477.2	1484.2	1489.8	1497.4	1500.9	1503.1	1500.1	1496.6	1492.9	1495.2
62.5°	1387.7	1391.1	1399.4	1405.8	1415.0	1419.7	1424.9	1425.2	1426.6	1425.2	1426.7
65°	1286.3	1290.5	1298.0	1303.3	1311.8	1316.0	1321.4	1322.4	1325.3	1324.7	1327.3
67.5°	1209.2	1213.0	1219.3	1224.3	1231.9	1236.3	1241.0	1241.3	1242.3	1242.1	1244.5
70°	1127.0	1128.9	1134.6	1138.8	1146.4	1150.8	1156.3	1157.9	1161.2	1161.8	1164.5
72.5°	1039.4	1038.6	1042.0	1043.9	1049.6	1053.1	1060.0	1063.8	1069.5	1071.0	1073.0
75°	944.0	943.2	947.3	948.9	953.8	957.3	965.0	970.0	978.7	982.4	981.5
77.5°	833.6	835.4	843.0	847.2	853.7	858.2	868.2	876.2	892.3	899.2	892.1
80°	710.1	712.1	720.0	723.9	732.3	737.8	749.0	758.3	772.8	775.9	771.8
82.5°	558.2	558.8	565.8	568.8	579.9	587.9	602.1	609.5	618.4	617.0	616.0
85°	380.6	385.8	394.6	403.3	416.9	429.8	443.3	454.3	446.5	458.8	444.9
87.5°	203.4	202.9	214.8	212.9	231.8	242.7	254.4	259.9	266.2	264.9	265.0
90°	33.2	31.2	32.3	30.0	32.0	29.5	32.3	30.2	33.8	30.7	35.8
92.5°	23.7	23.0	22.0	21.3	20.2	19.6	18.5	17.6	16.8	16.0	16.8
95°	28.4	27.6	26.8	25.9	25.1	24.4	23.6	22.8	22.0	21.2	22.2
97.5°	34.4	34.0	33.5	33.0	32.5	32.1	31.6	31.1	30.6	30.1	30.7
100°	38.7	38.7	38.7	38.7	38.4	38.4	38.4	38.4	38.4	38.4	38.9
102.5°	69.2	67.6	66.1	64.4	62.9	61.3	59.8	58.3	56.8	55.3	57.5
105°	149.0	143.0	137.0	130.9	124.8	118.8	112.8	106.8	100.8	94.8	101.0
107.5°	271.4	260.4	249.3	238.5	227.4	216.5	205.6	194.7	183.8	172.9	182.7
110°	376.5	364.8	353.1	341.5	329.8	318.1	306.6	295.0	283.4	271.8	281.1



TEST NUMBER: P1444690
 CATALOG NUMBER: EHBR1-48-UNV-TA-L930-UPL12

CANDELA DISTRIBUTION (continued):

	247.5°	250°	252.5°	255°	257.5°	260°	262.5°	265°	267.5°	270°	272.5°
112.5°	419.8	411.9	404.3	396.7	389.1	381.7	374.1	366.6	359.2	351.7	356.3
115°	415.2	411.4	407.7	404.0	400.4	396.6	393.0	389.4	386.0	382.4	382.7
117.5°	383.0	381.5	380.2	378.7	377.3	376.1	374.8	373.7	372.4	371.4	368.9
120°	336.5	336.4	336.3	336.6	336.8	337.1	337.1	337.7	338.1	338.5	335.2
122.5°	291.0	291.3	291.8	292.4	293.0	293.7	294.4	295.5	296.5	297.5	294.1
125°	252.3	252.6	252.9	253.4	253.7	254.6	255.3	256.4	257.2	258.3	255.5
127.5°	225.9	225.5	225.0	225.0	224.8	225.0	225.2	225.5	226.0	226.6	224.8
130°	211.0	210.0	209.0	208.2	207.2	206.7	206.4	205.9	205.8	205.7	205.1
132.5°	204.8	203.4	201.8	200.5	199.3	198.4	197.3	196.8	196.1	195.7	195.5
135°	204.0	202.2	200.5	198.9	197.3	196.3	194.9	194.1	193.2	192.5	193.0
137.5°	205.7	204.1	202.2	200.8	199.2	198.1	196.7	195.8	195.0	194.3	194.9
140°	210.2	208.5	206.7	205.3	204.0	202.7	201.6	200.8	199.6	199.3	199.6
142.5°	214.1	212.8	211.1	209.8	208.4	207.5	206.5	205.7	204.7	204.3	204.7
145°	218.2	217.2	215.9	214.9	214.0	213.3	212.3	211.9	211.4	211.2	211.5
147.5°	221.7	221.1	220.0	219.4	218.4	218.1	217.3	217.1	216.6	216.5	216.7
150°	223.9	223.5	222.9	222.4	221.9	221.6	221.3	221.1	220.8	220.8	220.9
152.5°	225.1	224.8	224.2	223.9	223.6	223.4	223.1	223.2	223.1	223.1	223.1
155°	225.4	225.2	225.1	225.1	225.0	225.2	225.1	225.4	225.4	225.6	225.7
157.5°	226.9	227.1	227.1	227.3	227.4	227.7	227.8	228.2	228.3	228.8	229.0
160°	229.5	229.6	229.6	229.9	230.0	230.2	230.4	230.7	231.0	231.3	231.6
162.5°	232.0	232.3	232.5	232.8	233.1	233.4	233.8	234.4	234.6	235.2	235.6
165°	236.4	236.5	236.5	236.7	237.0	237.1	237.3	237.9	238.1	238.6	239.0
167.5°	240.8	241.0	241.0	241.1	241.3	241.7	241.9	242.3	242.7	243.3	243.6
170°	246.0	246.0	246.0	246.0	246.0	246.3	246.5	246.6	246.8	247.1	247.4
172.5°	251.6	251.6	251.3	251.6	251.3	251.6	251.6	251.7	251.7	251.9	252.0
175°	255.0	255.4	255.5	255.7	255.6	255.7	255.8	255.8	255.8	256.1	256.1
177.5°	258.2	258.3	258.3	258.3	258.3	258.4	258.4	258.4	258.4	258.3	258.3
180°	257.7	257.7	257.7	257.7	257.7	257.7	257.7	257.7	257.7	257.7	257.7



TEST NUMBER: P1444690
 CATALOG NUMBER: EHBR1-48-UNV-TA-L930-UPL12

CANDELA DISTRIBUTION (continued):

	275°	277.5°	280°	282.5°	285°	287.5°	290°	292.5°	295°	297.5°	300°
0°	36472.1	36472.1	36472.1	36472.1	36472.1	36472.1	36472.1	36472.1	36472.1	36472.1	36472.1
2.5°	36928.7	36910.2	36929.1	36909.9	36929.1	36906.1	36921.7	36896.8	36903.1	36877.3	36884.0
5°	38325.0	38295.6	38311.2	38273.0	38277.0	38226.0	38225.0	38165.5	38149.8	38082.1	38052.4
7.5°	39454.1	39444.5	39449.9	39425.2	39422.5	39387.6	39371.0	39321.8	39290.8	39228.5	39185.9
10°	39275.4	39304.1	39311.6	39340.9	39347.0	39376.1	39382.2	39411.3	39417.3	39438.8	39439.1
12.5°	37487.7	37585.5	37608.8	37729.6	37780.4	37918.5	37992.7	38144.9	38235.2	38387.1	38480.3
15°	34043.9	34213.0	34280.4	34516.2	34646.6	34921.8	35094.8	35410.8	35633.8	35969.4	36208.8
17.5°	29304.1	29540.5	29647.1	29966.8	30175.3	30581.5	30874.3	31356.2	31725.1	32260.6	32685.0
20°	24048.1	24310.7	24455.4	24820.2	25066.3	25540.9	25906.4	26498.6	26992.3	27670.9	28251.2
22.5°	18963.3	19213.2	19373.9	19745.0	20022.0	20517.1	20925.6	21550.5	22103.8	22868.4	23564.2
25°	14560.2	14789.3	14934.5	15270.1	15530.3	15985.2	16375.3	16976.4	17517.7	18284.8	18998.1
27.5°	11131.1	11322.9	11463.0	11749.1	11978.6	12364.4	12699.4	13196.3	13662.7	14326.2	14961.5
30°	8521.8	8691.8	8828.1	9077.3	9290.1	9624.5	9919.2	10336.4	10722.5	11250.5	11755.9
32.5°	6512.1	6658.5	6779.9	6998.0	7191.0	7492.2	7757.6	8123.4	8454.8	8902.6	9318.4
35°	4965.2	5253.3	5232.9	5533.7	5582.1	5798.3	6035.1	6354.9	6648.3	7029.1	7383.0
37.5°	3853.8	3934.8	4021.5	4154.6	4294.3	4491.0	4691.0	5081.8	5225.1	5512.9	5805.9
40°	3107.7	3162.5	3219.8	3309.6	3407.5	3546.0	3691.7	3878.1	4069.1	4302.4	4540.8
42.5°	2627.3	2658.3	2694.7	2747.6	2807.9	2895.8	2993.2	3119.6	3252.5	3416.7	3584.3
45°	2347.3	2332.6	2343.4	2371.9	2408.2	2461.6	2523.1	2601.3	2687.9	2794.3	2907.5
47.5°	2086.3	2092.3	2095.5	2110.9	2130.4	2166.3	2203.5	2256.6	2359.3	2390.5	2452.2
50°	1914.0	1916.8	1915.9	1923.7	1933.6	1956.9	1981.1	2017.0	2052.9	2100.5	2146.0
52.5°	1769.5	1773.5	1773.0	1778.2	1783.4	1798.1	1813.5	1838.9	1862.4	1892.7	1918.7
55°	1655.5	1661.0	1663.1	1667.5	1670.0	1677.7	1683.8	1696.0	1706.0	1723.1	1739.0
57.5°	1567.7	1575.3	1578.7	1580.3	1577.1	1576.8	1574.7	1577.3	1579.4	1588.5	1597.5
60°	1498.6	1504.7	1505.7	1504.7	1499.1	1495.0	1488.5	1486.4	1485.4	1489.8	1494.7
62.5°	1426.4	1428.5	1427.0	1425.2	1418.8	1414.9	1408.1	1405.6	1403.4	1406.5	1409.0
65°	1326.3	1328.2	1326.3	1325.2	1319.4	1316.3	1310.6	1308.7	1305.4	1306.3	1305.7
67.5°	1245.0	1247.0	1245.5	1243.9	1239.9	1238.1	1233.9	1231.1	1227.2	1225.8	1223.0
70°	1164.1	1165.6	1163.3	1161.8	1157.2	1155.5	1151.5	1150.7	1147.6	1146.9	1143.8
72.5°	1071.0	1071.1	1067.9	1066.9	1063.5	1063.4	1061.8	1063.2	1063.1	1064.7	1064.0
75°	975.6	974.3	970.3	969.6	967.0	968.2	966.4	968.8	969.0	972.6	972.9
77.5°	880.3	875.2	867.5	863.9	858.7	858.1	855.0	857.1	856.5	860.5	862.1
80°	759.7	753.5	743.7	738.9	732.9	732.0	729.2	732.0	730.6	735.4	738.7
82.5°	606.5	601.3	591.0	587.2	580.1	580.8	577.8	580.8	580.4	587.4	591.5
85°	448.6	445.1	434.6	425.3	414.8	408.8	402.8	401.7	399.9	402.8	405.2
87.5°	259.1	255.8	247.6	242.2	223.9	224.7	217.6	217.3	215.5	213.9	217.6
90°	34.0	38.1	36.5	40.3	39.2	43.6	43.0	47.1	45.5	49.5	48.7
92.5°	17.6	18.5	19.4	20.2	21.1	22.0	22.8	23.7	25.6	27.2	29.3
95°	23.2	24.2	25.2	26.2	27.2	28.2	29.2	30.2	33.0	35.6	38.4
97.5°	31.5	32.1	32.8	33.4	34.1	34.8	35.5	36.1	39.1	42.1	45.0
100°	39.5	40.0	40.5	41.1	41.6	42.2	42.7	43.2	49.1	54.8	60.4
102.5°	59.8	62.0	64.3	66.6	69.0	71.2	73.5	75.7	88.9	101.9	114.9
105°	107.2	113.4	119.8	125.9	132.2	138.3	144.6	150.8	171.7	192.5	213.4
107.5°	192.4	202.2	212.0	221.9	231.7	241.6	251.3	261.3	281.6	302.1	322.4
110°	290.4	299.9	309.2	318.6	327.9	337.4	346.8	356.4	368.8	381.1	393.4



TEST NUMBER: P1444690
 CATALOG NUMBER: EHBR1-48-UNV-TA-L930-UPL12

CANDELA DISTRIBUTION (continued):

	275°	277.5°	280°	282.5°	285°	287.5°	290°	292.5°	295°	297.5°	300°
112.5°	360.9	365.4	370.1	374.7	379.4	384.2	388.9	393.7	400.0	406.3	412.8
115°	383.0	383.3	383.8	384.2	384.7	385.1	385.9	386.4	388.7	390.9	393.3
117.5°	366.4	364.1	361.8	359.4	357.1	355.1	353.0	351.0	351.0	351.0	351.3
120°	332.2	328.9	325.8	322.5	319.7	316.6	313.9	311.2	310.1	309.1	308.2
122.5°	291.0	287.8	284.8	281.8	278.9	276.3	273.7	271.1	270.5	270.2	269.8
125°	252.9	250.4	248.0	245.6	243.5	241.5	239.6	237.7	238.4	239.1	240.1
127.5°	223.4	222.1	220.8	219.6	218.8	217.8	217.1	216.3	218.0	219.7	221.4
130°	204.7	204.3	204.2	204.0	204.3	204.3	204.7	204.9	207.2	209.3	211.6
132.5°	196.0	196.2	196.8	197.3	198.1	198.9	200.0	200.9	203.4	205.6	208.2
135°	193.5	194.1	195.1	195.9	197.2	198.3	199.6	200.8	203.4	205.5	208.0
137.5°	195.7	196.4	197.4	198.5	199.9	201.0	202.6	203.9	205.9	207.9	210.0
140°	200.3	201.0	201.9	202.9	204.0	205.1	206.6	207.6	209.7	211.1	212.8
142.5°	205.6	205.9	206.9	207.8	209.0	209.9	211.1	212.0	213.5	214.7	216.5
145°	212.0	212.4	213.3	213.9	214.9	215.7	216.6	217.5	218.7	219.7	220.7
147.5°	217.3	217.6	218.3	219.0	219.8	220.5	221.2	221.8	222.9	223.7	224.5
150°	221.4	221.7	222.2	222.5	223.2	223.9	224.7	225.1	225.8	226.4	227.3
152.5°	223.7	223.9	224.4	224.7	225.3	225.8	226.3	226.9	227.7	228.1	228.8
155°	226.2	226.7	227.2	227.7	228.3	228.6	229.3	229.6	230.4	230.9	231.6
157.5°	229.6	229.8	230.5	230.8	231.5	231.9	232.4	232.9	233.5	233.9	234.5
160°	232.2	232.9	233.3	233.9	234.5	235.0	235.6	236.2	236.8	237.2	237.8
162.5°	236.2	236.7	237.2	237.6	238.1	238.6	239.1	239.6	240.4	240.8	241.4
165°	239.6	240.1	240.8	241.1	241.9	242.5	243.0	243.6	244.0	244.5	245.0
167.5°	244.2	244.5	245.3	245.7	246.3	246.8	247.4	247.8	248.4	248.6	249.2
170°	247.8	248.3	248.8	249.3	249.8	250.1	250.7	251.0	251.7	252.0	252.5
172.5°	252.4	252.6	253.0	253.2	253.5	254.0	254.3	254.5	255.0	255.4	255.7
175°	256.1	256.1	256.2	256.4	256.5	256.5	256.6	256.9	257.0	257.2	257.3
177.5°	258.4	258.4	258.5	258.6	258.7	258.7	258.8	258.9	258.9	258.9	258.9
180°	257.7	257.7	257.7	257.7	257.7	257.7	257.7	257.7	257.7	257.7	257.7



TEST NUMBER: P1444690
 CATALOG NUMBER: EHBR1-48-UNV-TA-L930-UPL12

CANDELA DISTRIBUTION (continued):

	302.5°	305°	307.5°	310°	312.5°	315°	317.5°	320°	322.5°	325°	327.5°
0°	36472.1	36472.1	36472.1	36472.1	36472.1	36472.1	36472.1	36472.1	36472.1	36472.1	36472.1
2.5°	36858.1	36859.7	36830.0	36828.4	36800.6	36797.0	36769.8	36761.6	36739.6	36731.6	36709.1
5°	37976.4	37940.2	37856.5	37807.3	37724.6	37669.8	37580.3	37522.0	37435.6	37370.5	37283.5
7.5°	39107.4	39051.1	38957.2	38881.1	38766.3	38674.7	38540.4	38430.5	38285.0	38159.1	38006.4
10°	39439.1	39430.4	39406.5	39371.6	39318.2	39258.2	39166.8	39071.6	38944.1	38805.6	38635.9
12.5°	38623.0	38711.1	38831.2	38902.4	38989.1	39027.1	39062.6	39053.7	39030.3	38960.3	38862.1
15°	36555.5	36803.2	37131.0	37385.2	37677.5	37890.0	38124.7	38271.0	38416.7	38484.1	38525.3
17.5°	33266.7	33735.6	34323.6	34810.8	35373.1	35824.6	36319.6	36692.3	37075.5	37350.1	37598.3
20°	29042.2	29721.5	30553.2	31287.8	32142.1	32884.4	33697.9	34365.7	35054.4	35593.0	36102.6
22.5°	24460.1	25266.9	26272.3	27203.6	28304.9	29294.6	30411.2	31383.1	32397.8	33245.6	34065.2
25°	19954.3	20839.1	21938.5	22977.6	24224.7	25376.0	26700.2	27911.6	29223.0	30361.7	31486.6
27.5°	15839.9	16708.6	17831.0	18937.1	20255.9	21482.5	22901.5	24236.0	25729.3	27106.4	28515.2
30°	12458.2	13195.0	14201.4	15272.7	16573.5	17821.7	19256.0	20628.5	22182.1	23685.7	25272.4
32.5°	9870.3	10431.6	11222.7	12128.7	13328.9	14517.1	15882.9	17207.8	18737.6	20256.6	21906.9
35°	7838.8	8276.6	8879.8	9586.8	10603.1	11627.5	12835.4	14040.3	15467.6	16908.9	18513.0
37.5°	6181.3	6536.5	7009.0	7540.0	8355.2	9195.8	10186.4	11185.3	12425.5	13703.1	15156.9
40°	4826.9	5114.6	5482.4	5878.4	6494.0	7141.7	7907.7	8682.4	9678.8	10722.9	11926.0
42.5°	3791.9	4004.2	4263.9	4553.4	5127.7	5471.5	5991.0	6551.3	7283.7	8041.8	8946.3
45°	3045.2	3190.0	3370.2	3564.3	3830.8	4122.6	4478.3	4851.4	5547.3	5888.6	6438.7
47.5°	2543.0	2640.3	2754.9	2877.2	3034.4	3204.1	3415.1	3630.8	3909.8	4199.0	4537.9
50°	2204.9	2303.7	2343.1	2406.4	2497.4	2594.3	2713.3	2832.2	2981.8	3133.5	3308.0
52.5°	1953.9	1986.1	2028.9	2069.2	2125.5	2235.9	2271.5	2333.7	2417.7	2499.7	2591.3
55°	1762.2	1783.2	1811.0	1835.3	1869.4	1902.0	1949.0	1990.4	2046.3	2095.8	2156.6
57.5°	1613.0	1626.3	1645.7	1661.6	1683.7	1702.1	1729.6	1752.1	1784.2	1812.2	1849.1
60°	1504.6	1513.5	1526.4	1536.9	1550.9	1560.6	1574.2	1584.7	1601.7	1616.0	1636.5
62.5°	1416.0	1420.7	1429.1	1435.3	1444.2	1449.0	1456.3	1460.9	1470.2	1477.4	1488.9
65°	1309.8	1310.9	1316.6	1319.2	1326.2	1328.7	1334.7	1336.8	1344.6	1349.8	1360.0
67.5°	1222.7	1220.3	1220.4	1218.5	1219.3	1217.3	1217.9	1215.7	1218.8	1220.4	1228.2
70°	1143.2	1139.9	1138.8	1135.1	1134.1	1130.3	1129.3	1125.9	1125.4	1124.4	1127.0
72.5°	1065.8	1064.9	1065.2	1062.6	1062.3	1059.7	1059.8	1058.2	1060.0	1060.8	1064.3
75°	976.8	977.0	978.7	976.5	977.1	975.0	975.8	973.7	974.8	974.5	977.9
77.5°	868.3	870.9	875.6	874.7	876.2	873.8	874.8	872.0	872.8	870.9	872.2
80°	746.4	751.9	758.2	757.9	760.6	758.8	761.3	758.5	759.7	756.4	755.6
82.5°	601.6	606.2	613.0	613.3	619.3	620.3	626.9	626.6	630.8	628.2	626.2
85°	411.3	414.5	420.4	423.6	429.7	433.5	439.9	442.5	437.8	446.2	439.6
87.5°	214.8	222.8	218.3	228.7	226.3	236.8	234.5	244.3	242.4	250.8	249.7
90°	54.0	53.7	59.4	59.5	66.5	67.5	72.9	71.5	76.5	75.4	80.5
92.5°	30.9	33.1	34.9	36.8	38.7	40.7	38.9	37.1	35.4	33.8	31.9
95°	41.1	43.8	46.5	49.3	52.0	54.7	51.8	48.9	46.0	43.0	40.2
97.5°	47.9	50.8	53.7	56.7	59.8	62.7	59.3	55.8	52.3	48.9	45.5
100°	66.1	71.8	77.5	83.1	89.0	94.6	88.3	81.8	75.6	69.1	62.6
102.5°	128.1	141.1	154.1	167.3	180.2	193.3	179.7	166.3	152.7	139.0	125.3
105°	234.3	255.2	276.1	296.9	317.8	339.0	316.9	294.9	272.7	250.8	228.6
107.5°	342.9	363.2	383.9	404.1	424.6	445.3	423.0	400.7	378.5	356.1	333.7
110°	406.0	418.3	430.8	443.3	455.7	468.4	452.2	436.0	419.8	403.6	387.3



TEST NUMBER: P1444690
 CATALOG NUMBER: EHBR1-48-UNV-TA-L930-UPL12

CANDELA DISTRIBUTION (continued):

	302.5°	305°	307.5°	310°	312.5°	315°	317.5°	320°	322.5°	325°	327.5°
112.5°	419.1	425.8	432.0	438.7	445.1	451.6	440.2	428.9	417.3	406.0	394.5
115°	395.8	398.2	400.6	403.2	405.5	407.9	400.4	392.9	385.4	377.9	370.1
117.5°	351.5	351.9	352.0	352.5	352.5	352.8	348.8	345.0	340.9	336.9	332.8
120°	307.1	306.3	305.4	304.4	303.3	302.3	301.0	299.9	298.4	296.9	295.3
122.5°	269.4	269.2	268.8	268.4	267.9	267.4	267.3	267.3	267.1	266.9	266.5
125°	240.8	241.7	242.4	243.2	243.9	244.6	244.8	245.2	245.4	245.8	245.8
127.5°	222.9	224.6	226.1	227.7	229.1	230.6	231.1	231.9	232.4	232.9	233.4
130°	213.7	216.1	218.2	220.1	222.1	224.3	224.7	225.3	225.7	226.3	226.7
132.5°	210.5	212.8	215.0	217.5	219.6	221.8	222.3	222.9	223.1	223.7	224.1
135°	210.2	212.4	214.5	216.9	218.8	220.9	221.3	221.7	222.0	222.6	222.9
137.5°	211.6	213.8	215.5	217.3	219.0	220.9	221.1	221.6	221.8	222.4	222.7
140°	214.4	216.0	217.4	219.1	220.5	222.1	222.3	222.5	222.7	222.9	223.0
142.5°	217.6	219.0	220.1	221.6	222.6	224.0	223.8	223.8	223.8	223.8	223.7
145°	221.7	223.0	223.9	224.8	225.5	226.6	226.3	226.2	225.8	225.7	225.4
147.5°	225.2	226.1	226.6	227.4	227.8	228.7	228.3	228.0	227.8	227.3	227.0
150°	227.8	228.7	229.2	229.7	230.2	231.0	230.4	230.1	229.6	229.1	228.8
152.5°	229.5	230.1	230.6	231.0	231.5	232.0	231.4	231.3	230.5	230.0	229.6
155°	231.9	232.5	232.8	233.3	233.5	233.8	233.2	233.1	232.7	232.1	231.6
157.5°	234.8	235.3	235.8	236.1	236.3	236.8	236.4	236.2	235.7	235.5	235.0
160°	238.1	238.6	238.9	239.2	239.6	239.7	239.4	239.4	239.2	238.8	238.4
162.5°	241.8	242.4	242.7	243.0	243.5	243.9	243.6	243.5	243.0	242.7	242.3
165°	245.3	245.8	246.2	246.6	246.8	247.1	246.9	246.8	246.6	246.5	246.1
167.5°	249.4	250.1	250.3	250.7	250.9	251.1	250.9	251.0	250.7	250.4	250.1
170°	252.8	253.2	253.6	253.9	254.2	254.3	254.3	254.2	254.0	253.8	253.5
172.5°	256.0	256.4	256.5	256.7	256.8	257.2	257.1	256.8	256.6	256.4	256.1
175°	257.3	257.5	257.7	257.7	257.7	257.8	257.6	257.5	257.2	257.0	256.8
177.5°	258.9	258.9	258.9	258.8	258.8	258.8	258.7	258.5	258.4	258.3	258.0
180°	257.7	257.7	257.7	257.7	257.7	257.7	257.7	257.7	257.7	257.7	257.7



TEST NUMBER: P1444690
 CATALOG NUMBER: EHBR1-48-UNV-TA-L930-UPL12

CANDELA DISTRIBUTION (continued):

	330°	332.5°	335°	337.5°	340°	342.5°	345°	347.5°	350°	352.5°	355°
0°	36472.1	36472.1	36472.1	36472.1	36472.1	36472.1	36472.1	36472.1	36472.1	36472.1	36472.1
2.5°	36701.2	36685.3	36675.0	36661.9	36653.9	36643.7	36636.3	36630.0	36624.8	36620.1	36616.6
5°	37217.3	37135.2	37071.6	37002.6	36946.0	36889.5	36845.9	36809.8	36785.0	36766.4	36755.3
7.5°	37874.3	37724.2	37590.7	37450.0	37324.0	37200.2	37093.3	37001.3	36932.2	36887.5	36860.3
10°	38461.1	38260.1	38061.3	37852.0	37653.6	37461.2	37283.5	37127.3	37003.6	36921.4	36873.4
12.5°	38724.2	38552.9	38349.9	38122.7	37879.5	37633.4	37393.7	37177.4	36995.9	36874.1	36803.8
15°	38492.5	38422.2	38284.4	38108.1	37877.3	37622.9	37341.4	37076.7	36833.3	36675.4	36583.9
17.5°	37738.9	37837.1	37826.5	37759.1	37593.2	37379.1	37092.2	36794.9	36490.4	36279.3	36164.0
20°	36467.2	36775.7	36932.2	37012.5	36947.3	36808.5	36548.7	36247.0	35892.1	35616.6	35448.4
22.5°	34680.1	35224.8	35564.1	35812.5	35865.1	35817.9	35588.4	35301.5	34905.9	34574.7	34326.4
25°	32379.5	33177.5	33713.8	34134.3	34297.6	34339.8	34144.6	33859.3	33418.2	33032.4	32691.4
27.5°	29669.8	30706.5	31422.7	31987.7	32242.8	32353.3	32173.7	31882.6	31360.8	30900.3	30454.8
30°	26619.1	27849.2	28711.4	29388.9	29699.8	29845.9	29655.1	29330.2	28722.9	28168.7	27607.5
32.5°	23354.0	24700.0	25639.6	26375.3	26683.4	26820.8	26571.2	26206.2	25504.4	24851.6	24197.0
35°	19935.4	21294.0	22241.5	22957.7	23215.9	23298.7	22979.5	22557.6	21780.1	21063.5	20349.9
37.5°	16447.2	17711.2	18572.3	19215.1	19374.9	19389.1	19004.5	18538.5	17721.3	17014.8	16304.4
40°	12989.2	14055.1	14750.4	15264.9	15320.3	15270.8	14852.6	14383.7	13619.2	12986.2	12362.5
42.5°	9731.9	10536.5	11032.6	11385.1	11364.2	11266.4	10882.9	10479.9	9849.1	9367.0	8876.2
45°	6941.3	7471.8	7761.8	7968.1	7901.9	7808.8	7510.3	7227.8	6799.2	6487.8	6158.0
47.5°	4822.2	5455.7	5345.4	5748.7	5401.3	5630.8	5152.8	4889.3	4661.9	4496.4	4310.0
50°	3452.3	3597.4	3667.6	3715.4	3690.0	3654.7	3568.9	3492.1	3388.2	3312.5	3224.2
52.5°	2666.1	2738.6	2778.4	2807.2	2801.6	2788.7	2751.2	2717.1	2668.4	2636.3	2597.7
55°	2258.3	2259.4	2332.5	2301.1	2347.5	2293.2	2314.6	2254.4	2264.1	2212.4	2177.8
57.5°	1876.6	1906.3	1919.7	1932.7	1929.0	1926.7	1912.2	1905.0	1888.6	1883.6	1871.9
60°	1650.7	1666.3	1669.5	1675.4	1670.4	1668.6	1657.2	1653.2	1642.2	1640.1	1632.5
62.5°	1495.8	1503.8	1503.8	1503.8	1497.3	1491.1	1478.5	1471.9	1462.5	1460.5	1456.0
65°	1366.6	1374.8	1376.2	1377.9	1373.2	1368.3	1357.2	1350.1	1340.5	1336.8	1331.7
67.5°	1233.2	1242.0	1244.9	1249.4	1246.7	1245.7	1238.1	1235.3	1229.0	1227.5	1222.7
70°	1128.4	1132.0	1131.7	1131.7	1125.7	1120.4	1111.6	1107.4	1100.8	1099.5	1095.1
72.5°	1066.1	1068.7	1067.1	1064.7	1057.1	1049.2	1038.9	1031.3	1022.7	1017.3	1011.2
75°	978.4	981.8	979.5	978.1	971.2	966.1	957.8	953.6	947.5	945.8	941.6
77.5°	870.6	872.2	868.8	868.3	863.1	859.9	853.6	852.6	848.1	848.2	844.2
80°	750.7	749.8	744.1	743.0	737.8	736.4	731.5	731.8	728.3	729.8	726.9
82.5°	617.7	614.4	607.0	604.7	598.7	598.1	594.9	597.6	595.5	598.7	596.8
85°	442.7	443.6	440.4	440.4	438.6	439.2	438.9	440.9	441.2	444.1	444.1
87.5°	246.8	250.3	249.7	252.9	252.7	256.4	257.6	263.1	263.7	268.7	268.7
90°	79.4	84.9	83.7	89.5	89.2	95.2	95.9	101.8	101.8	106.9	105.9
92.5°	30.1	28.4	26.8	25.0	24.1	23.0	22.6	21.2	20.7	19.5	18.6
95°	37.2	34.3	31.4	28.4	27.4	26.4	25.4	24.4	23.3	22.4	21.4
97.5°	42.1	38.6	35.1	31.6	30.7	29.9	29.0	28.1	27.3	26.4	25.5
100°	56.1	49.7	43.4	36.8	36.1	35.4	34.6	33.9	33.2	32.3	31.5
102.5°	111.7	98.1	84.4	70.7	68.1	65.5	62.9	60.2	57.5	54.9	52.3
105°	206.6	184.3	162.2	140.0	133.0	125.9	118.9	111.7	104.6	97.6	90.5
107.5°	311.4	288.8	266.4	243.8	231.0	217.9	204.9	191.7	178.8	165.6	152.6
110°	371.1	354.8	338.5	322.0	311.7	301.2	290.7	280.2	269.8	259.2	248.7



TEST NUMBER: P1444690
 CATALOG NUMBER: EHBR1-48-UNV-TA-L930-UPL12

CANDELA DISTRIBUTION (continued):

	330°	332.5°	335°	337.5°	340°	342.5°	345°	347.5°	350°	352.5°	355°
112.5°	382.9	371.3	359.8	347.9	343.4	338.6	334.1	329.3	324.6	319.7	315.0
115°	362.4	354.9	347.0	339.1	337.8	336.1	334.7	333.0	331.6	329.9	328.2
117.5°	328.7	324.6	320.4	316.2	316.6	317.1	317.8	318.0	318.4	318.6	318.9
120°	293.8	292.3	291.0	289.4	291.2	292.8	294.7	296.1	297.7	299.1	300.6
122.5°	266.5	266.1	265.9	265.4	267.7	269.8	271.8	273.8	275.6	277.2	279.0
125°	246.1	246.2	246.4	246.3	248.8	250.9	253.1	255.0	256.8	258.4	260.2
127.5°	234.0	234.5	235.2	235.4	237.5	238.9	240.7	242.0	243.6	244.7	246.0
130°	227.2	227.5	228.1	228.5	230.2	231.9	233.6	234.8	236.2	237.2	238.3
132.5°	224.7	224.9	225.5	225.7	227.3	228.7	230.0	230.9	232.1	232.7	233.3
135°	223.4	223.7	224.1	224.3	225.7	227.2	228.3	229.3	230.4	230.9	231.5
137.5°	223.1	223.3	223.8	223.9	225.3	226.4	227.6	228.5	229.4	230.1	230.6
140°	223.3	223.4	223.8	223.8	225.0	226.1	227.2	228.0	228.8	229.3	229.8
142.5°	223.7	223.4	223.7	223.4	224.4	225.2	226.0	226.7	227.3	227.8	228.0
145°	225.1	224.7	224.7	224.3	225.0	225.6	226.4	227.0	227.3	227.5	227.9
147.5°	226.9	226.3	225.9	225.5	226.3	226.7	227.2	227.4	228.0	228.0	228.2
150°	228.2	227.5	227.0	226.4	226.9	227.2	227.4	227.8	228.1	228.0	228.2
152.5°	228.9	228.3	227.7	227.0	227.3	227.4	227.6	227.5	227.7	227.7	227.7
155°	231.2	230.5	230.0	229.2	229.5	229.5	229.5	229.5	229.3	229.2	229.0
157.5°	234.5	233.8	233.6	232.9	232.9	232.8	232.7	232.2	232.1	231.9	231.4
160°	238.1	237.6	237.2	236.6	236.4	236.2	236.2	235.7	235.5	235.1	234.6
162.5°	241.9	241.3	240.7	240.2	240.0	239.9	239.6	239.2	239.0	238.6	238.1
165°	245.9	245.5	245.2	244.5	244.4	244.1	244.0	243.5	243.2	242.6	242.2
167.5°	249.8	249.4	249.1	248.4	248.4	248.3	248.1	247.7	247.5	247.0	246.8
170°	253.3	252.9	252.6	252.2	251.9	251.8	251.6	251.3	250.9	250.6	250.1
172.5°	255.8	255.5	255.0	254.5	254.5	254.3	254.1	254.0	253.5	253.3	253.2
175°	256.6	256.3	255.8	255.7	255.5	255.4	255.2	255.1	254.9	254.7	254.4
177.5°	257.8	257.7	257.3	257.2	257.1	257.1	256.9	256.8	256.8	256.6	256.6
180°	257.7	257.7	257.7	257.7	257.7	257.7	257.7	257.7	257.7	257.7	257.7



TEST NUMBER: P1444690
 CATALOG NUMBER: EHBR1-48-UNV-TA-L930-UPL12

CANDELA DISTRIBUTION (continued):

	357.5°	360°
0°	36472.1	36472.1
2.5°	36613.3	36611.5
5°	36749.4	36747.3
7.5°	36853.0	36852.4
10°	36865.2	36871.5
12.5°	36791.7	36796.7
15°	36576.8	36586.9
17.5°	36166.2	36179.3
20°	35458.7	35472.4
22.5°	34313.0	34318.7
25°	32647.3	32623.6
27.5°	30376.4	30335.8
30°	27489.7	27450.3
32.5°	24047.8	24023.2
35°	20173.4	20157.9
37.5°	16094.4	16062.8
40°	12134.5	12042.3
42.5°	8661.2	8499.5
45°	5985.7	5793.9
47.5°	4178.6	4060.1
50°	3167.3	3129.1
52.5°	2580.8	2571.9
55°	2177.6	2173.7
57.5°	1874.5	1873.2
60°	1636.5	1636.1
62.5°	1459.1	1459.7
65°	1334.0	1334.3
67.5°	1224.0	1223.2
70°	1096.7	1095.8
72.5°	1009.2	1007.7
75°	941.6	940.7
77.5°	845.3	843.9
80°	728.9	726.9
82.5°	599.5	597.3
85°	447.2	447.3
87.5°	273.6	273.5
90°	110.8	109.0
92.5°	18.1	17.5
95°	20.4	19.4
97.5°	24.7	23.8
100°	30.7	30.0
102.5°	49.7	47.1
105°	83.5	76.5
107.5°	139.5	126.5
110°	238.2	227.7



TEST NUMBER: P1444690
CATALOG NUMBER: EHBR1-48-UNV-TA-L930-UPL12

CANDELA DISTRIBUTION (continued):

	357.5°	360°
112.5°	310.2	305.4
115°	326.1	324.4
117.5°	319.0	319.0
120°	301.7	303.0
122.5°	280.3	281.8
125°	261.5	263.0
127.5°	246.8	247.6
130°	238.6	239.4
132.5°	233.7	233.9
135°	231.7	232.0
137.5°	230.6	230.8
140°	229.8	229.9
142.5°	228.1	228.1
145°	228.0	227.9
147.5°	227.8	227.9
150°	228.0	227.9
152.5°	227.2	227.2
155°	228.7	228.3
157.5°	230.8	230.5
160°	234.1	233.7
162.5°	237.6	237.2
165°	241.5	241.0
167.5°	246.1	246.0
170°	249.8	249.5
172.5°	252.7	252.5
175°	254.3	254.2
177.5°	256.6	256.3
180°	257.7	257.7

LM-79-2019: Approved Method: Electrical and Photometric Measurements of Solid-State Lighting Products

Report Prepared for

Cooper Lighting Solutions

Metalux

Report Number: SP1-2506-472-5

Test Date: 08/01/2025

Luminaire Tested: EHBR-60-L930-N

Data in this report applies to families of products including EHBR-60-L930-N

Test Information

Test Method: LM-79-2019
 Report Number: SP1-2506-472-5
 Test Lab: COOPER LIGHTING SOLUTIONS
 Photometer: SP1 - 76IN SPHERE
 Measurement Geometry: 4π
 Issue Date: 08/05/2025
 Manufacturer: COOPER LIGHTING SOLUTIONS
 Product Line: Metalux
 Catalog Number: **EHBR-60-L930-N**
 Description: Elevate Round Highbay at, 60000 lumens, 3000K 90CRI LEDs with N lens

Spectral Parameters

CCT (K): 2996
 CIE u': 0.2519
 CIE v': 0.5169
 Duv: -0.0033
 CIE x: 0.4325
 CIE y: 0.3945
 CIE z: 0.1730
 Peak Wavelength (nm): 630
 Dominant Wavelength (nm): 584
 Purity: 48.21818
 Rf: 91.3
 Rg: 102

CRI (Ra):	94.4		
R1:	96.8	R9:	61.4
R2:	98.1	R10:	94.4
R3:	97.8	R11:	95.7
R4:	95.6	R12:	88.5
R5:	96.9	R13:	97.3
R6:	95.7	R14:	97.8
R7:	90.9	R15:	92.3
R8:	83.0		



Test Conditions

Stabilization Time: 40M
 Operation Time: 1H 40M
 Sphere Temperature (°C): 25.0

REPORT NUMBER: SP1-2506-472-5

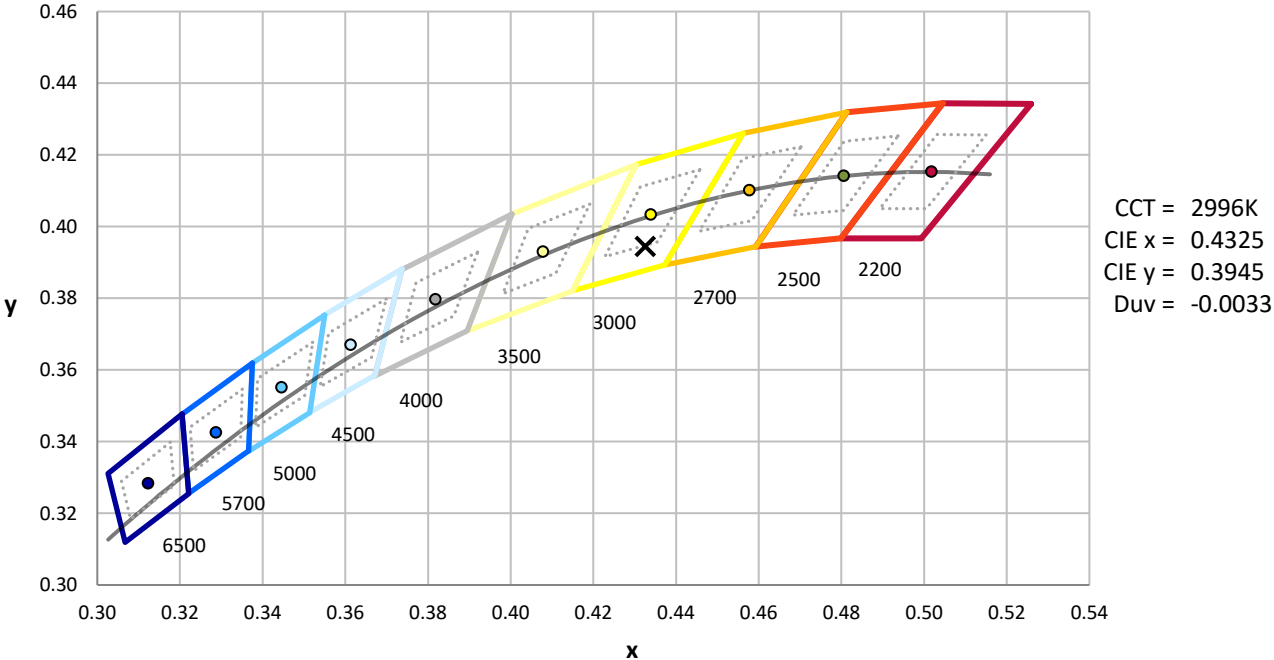
Measurement and Test Equipment			
Instrument	Identification Number	Calibration Date	Calibration Due Date
Photometer	76INCH SPHERE IN0058	6/16/2025	12/16/2025
Power Meter	XITRON INXT2011004	1/21/2025	1/21/2026
AC Power Source	CHROMA 61603 IN0063	10/22/2024	10/22/2025
DC Power Source	AGILENT E3634A IN0208	10/22/2024	10/22/2025
Sphere Thermometer	ONSET IN0085	10/22/2024	10/22/2025
Room Thermometer	ONSET IN0046	10/22/2024	10/22/2025

REPORT NUMBER: SP1-2506-472-5

CIE 1931 Chromaticity Diagram



CIE 1931 Chromaticity Diagram with 2017 ANSI 7-Step and 4-Step Quadrangles



Point lies inside the ANSI 3000K 7-step quadrangle

REPORT NUMBER: SP1-2506-472-5

Photopic Flux vs. Wavelength



Photopic Lumens: NR

λ (nm)	Power W [^] /nm	Lumens (φ/nm)	λ (nm)	Power W [^] /nm	Lumens (φ/nm)	λ (nm)	Power W [^] /nm	Lumens (φ/nm)	λ (nm)	Power W [^] /nm	Lumens (φ/nm)	λ (nm)	Power W [^] /nm	Lumens (φ/nm)
360	0	NR	490	101	NR	620	317	NR	750	7	NR	880	0	NR
365	0	NR	495	121	NR	625	320	NR	755	6	NR	885	0	NR
370	0	NR	500	141	NR	630	1000	NR	760	5	NR	890	0	NR
375	0	NR	505	158	NR	635	651	NR	765	4	NR	895	0	NR
380	0	NR	510	171	NR	640	207	NR	770	4	NR	900	0	NR
385	0	NR	515	182	NR	645	201	NR	775	3	NR	905	0	NR
390	0	NR	520	189	NR	650	174	NR	780	3	NR	910	0	NR
395	1	NR	525	194	NR	655	146	NR	785	2	NR	915	0	NR
400	1	NR	530	199	NR	660	124	NR	790	2	NR	920	0	NR
405	3	NR	535	205	NR	665	105	NR	795	2	NR	925	0	NR
410	4	NR	540	210	NR	670	96	NR	800	1	NR	930	0	NR
415	7	NR	545	216	NR	675	79	NR	805	1	NR	935	0	NR
420	13	NR	550	222	NR	680	67	NR	810	1	NR	940	0	NR
425	22	NR	555	230	NR	685	58	NR	815	1	NR	945	0	NR
430	37	NR	560	240	NR	690	49	NR	820	1	NR	950	0	NR
435	60	NR	565	248	NR	695	42	NR	825	1	NR	955	0	NR
440	101	NR	570	258	NR	700	36	NR	830	1	NR	960	0	NR
445	172	NR	575	268	NR	705	30	NR	835	1	NR	965	0	NR
450	223	NR	580	278	NR	710	26	NR	840	1	NR	970	0	NR
455	167	NR	585	287	NR	715	22	NR	845	0	NR	975	0	NR
460	126	NR	590	295	NR	720	19	NR	850	0	NR	980	0	NR
465	111	NR	595	298	NR	725	16	NR	855	0	NR	985	0	NR
470	86	NR	600	303	NR	730	14	NR	860	0	NR	990	0	NR
475	74	NR	605	307	NR	735	12	NR	865	0	NR	995	0	NR
480	77	NR	610	341	NR	740	10	NR	870	0	NR	1000	0	NR
485	86	NR	615	368	NR	745	8	NR	875	0	NR			

REPORT NUMBER: SP1-2506-472-5

Scotopic Flux vs. Wavelength



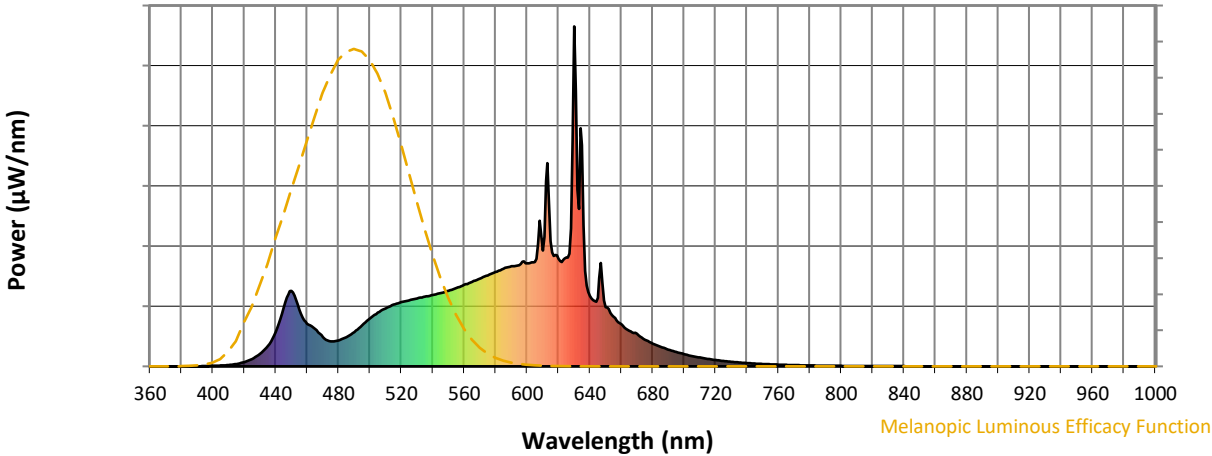
Scotopic Lumens: NR

S/P: 1.44

λ (nm)	Power W [^] /nm	Lumens (φ/nm)	λ (nm)	Power W [^] /nm	Lumens (φ/nm)	λ (nm)	Power W [^] /nm	Lumens (φ/nm)	λ (nm)	Power W [^] /nm	Lumens (φ/nm)	λ (nm)	Power W [^] /nm	Lumens (φ/nm)
360	0	NR	490	101	NR	620	317	NR	750	7	NR	880	0	NR
365	0	NR	495	121	NR	625	320	NR	755	6	NR	885	0	NR
370	0	NR	500	141	NR	630	1000	NR	760	5	NR	890	0	NR
375	0	NR	505	158	NR	635	651	NR	765	4	NR	895	0	NR
380	0	NR	510	171	NR	640	207	NR	770	4	NR	900	0	NR
385	0	NR	515	182	NR	645	201	NR	775	3	NR	905	0	NR
390	0	NR	520	189	NR	650	174	NR	780	3	NR	910	0	NR
395	1	NR	525	194	NR	655	146	NR	785	2	NR	915	0	NR
400	1	NR	530	199	NR	660	124	NR	790	2	NR	920	0	NR
405	3	NR	535	205	NR	665	105	NR	795	2	NR	925	0	NR
410	4	NR	540	210	NR	670	96	NR	800	1	NR	930	0	NR
415	7	NR	545	216	NR	675	79	NR	805	1	NR	935	0	NR
420	13	NR	550	222	NR	680	67	NR	810	1	NR	940	0	NR
425	22	NR	555	230	NR	685	58	NR	815	1	NR	945	0	NR
430	37	NR	560	240	NR	690	49	NR	820	1	NR	950	0	NR
435	60	NR	565	248	NR	695	42	NR	825	1	NR	955	0	NR
440	101	NR	570	258	NR	700	36	NR	830	1	NR	960	0	NR
445	172	NR	575	268	NR	705	30	NR	835	1	NR	965	0	NR
450	223	NR	580	278	NR	710	26	NR	840	1	NR	970	0	NR
455	167	NR	585	287	NR	715	22	NR	845	0	NR	975	0	NR
460	126	NR	590	295	NR	720	19	NR	850	0	NR	980	0	NR
465	111	NR	595	298	NR	725	16	NR	855	0	NR	985	0	NR
470	86	NR	600	303	NR	730	14	NR	860	0	NR	990	0	NR
475	74	NR	605	307	NR	735	12	NR	865	0	NR	995	0	NR
480	77	NR	610	341	NR	740	10	NR	870	0	NR	1000	0	NR
485	86	NR	615	368	NR	745	8	NR	875	0	NR			

REPORT NUMBER: SP1-2506-472-5

Melanopic Flux vs. Wavelength



Melanopic Lumens: NR

M/P: 2.85

λ (nm)	Power W [^] /nm	Lumens (φ/nm)	λ (nm)	Power W [^] /nm	Lumens (φ/nm)	λ (nm)	Power W [^] /nm	Lumens (φ/nm)	λ (nm)	Power W [^] /nm	Lumens (φ/nm)	λ (nm)	Power W [^] /nm	Lumens (φ/nm)
360	0	NR	490	101	NR	620	317	NR	750	7	NR	880	0	NR
365	0	NR	495	121	NR	625	320	NR	755	6	NR	885	0	NR
370	0	NR	500	141	NR	630	1000	NR	760	5	NR	890	0	NR
375	0	NR	505	158	NR	635	651	NR	765	4	NR	895	0	NR
380	0	NR	510	171	NR	640	207	NR	770	4	NR	900	0	NR
385	0	NR	515	182	NR	645	201	NR	775	3	NR	905	0	NR
390	0	NR	520	189	NR	650	174	NR	780	3	NR	910	0	NR
395	1	NR	525	194	NR	655	146	NR	785	2	NR	915	0	NR
400	1	NR	530	199	NR	660	124	NR	790	2	NR	920	0	NR
405	3	NR	535	205	NR	665	105	NR	795	2	NR	925	0	NR
410	4	NR	540	210	NR	670	96	NR	800	1	NR	930	0	NR
415	7	NR	545	216	NR	675	79	NR	805	1	NR	935	0	NR
420	13	NR	550	222	NR	680	67	NR	810	1	NR	940	0	NR
425	22	NR	555	230	NR	685	58	NR	815	1	NR	945	0	NR
430	37	NR	560	240	NR	690	49	NR	820	1	NR	950	0	NR
435	60	NR	565	248	NR	695	42	NR	825	1	NR	955	0	NR
440	101	NR	570	258	NR	700	36	NR	830	1	NR	960	0	NR
445	172	NR	575	268	NR	705	30	NR	835	1	NR	965	0	NR
450	223	NR	580	278	NR	710	26	NR	840	1	NR	970	0	NR
455	167	NR	585	287	NR	715	22	NR	845	0	NR	975	0	NR
460	126	NR	590	295	NR	720	19	NR	850	0	NR	980	0	NR
465	111	NR	595	298	NR	725	16	NR	855	0	NR	985	0	NR
470	86	NR	600	303	NR	730	14	NR	860	0	NR	990	0	NR
475	74	NR	605	307	NR	735	12	NR	865	0	NR	995	0	NR
480	77	NR	610	341	NR	740	10	NR	870	0	NR	1000	0	NR
485	86	NR	615	368	NR	745	8	NR	875	0	NR			

Summary

$R_f = 91.3$
 $R_g = 102$
 $CIE R_a = 94.4$
 $R_9 = 61.4$



Color Vector Graphics

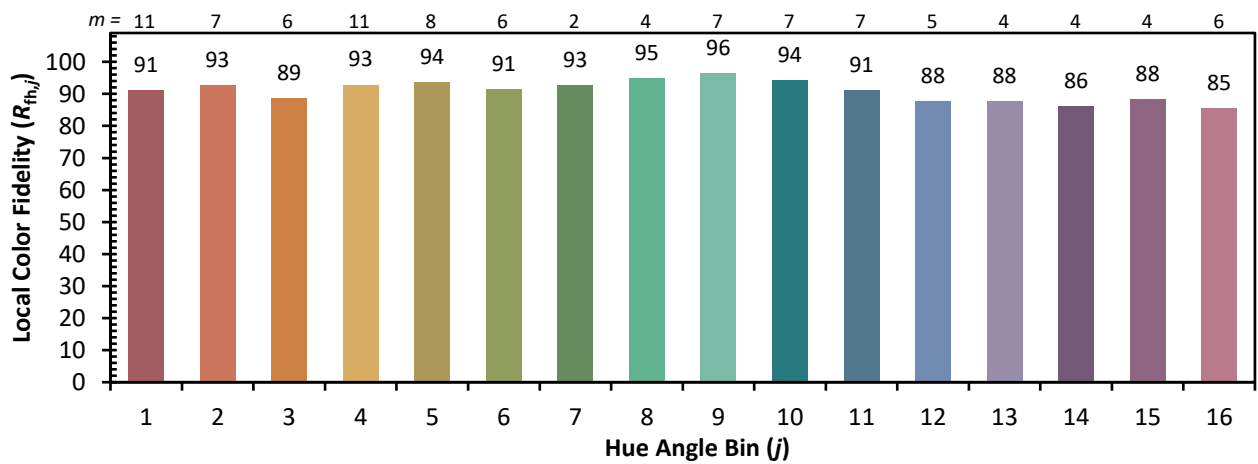
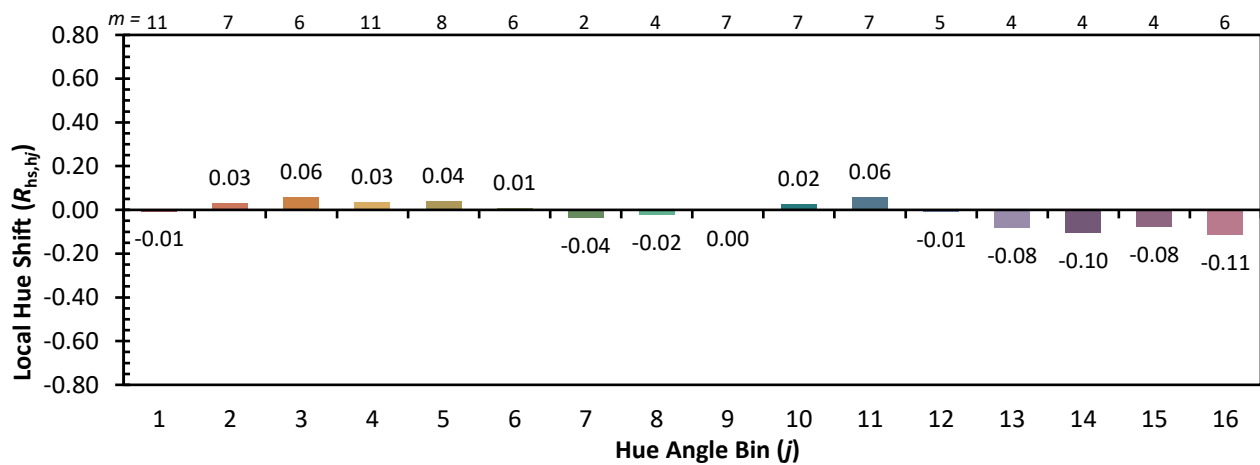
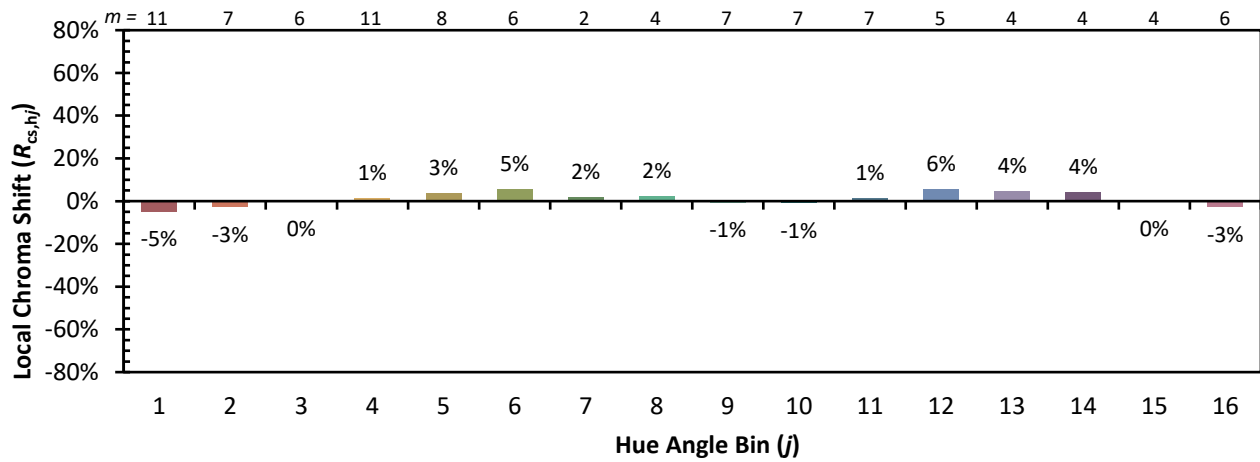


Individual Sample Fidelity Index ($R_{f,i}$)

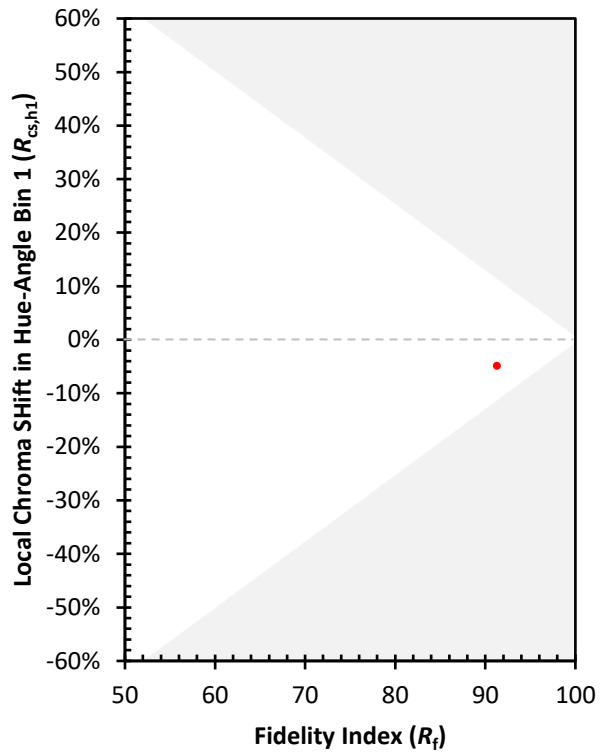
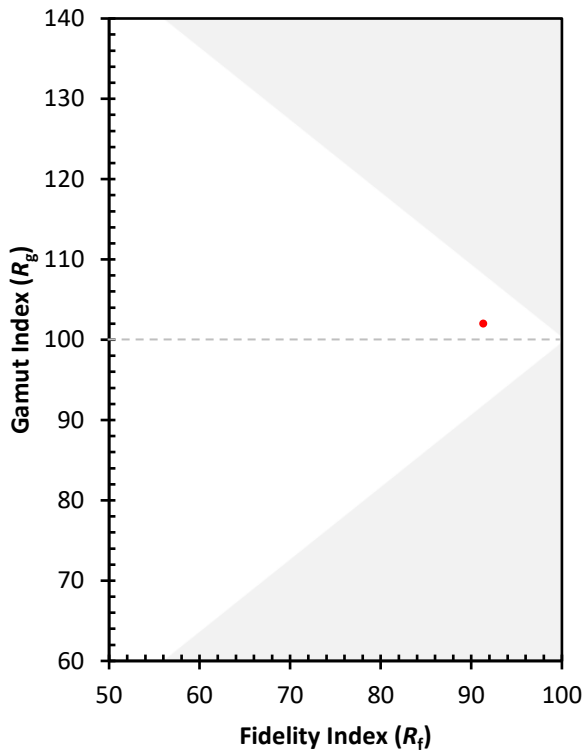
CES01 = 86	CES26 = 91	CES51 = 96	CES76 = 89
CES02 = 63	CES27 = 96	CES52 = 95	CES77 = 85
CES03 = 32	CES28 = 96	CES53 = 93	CES78 = 86
CES04 = 70	CES29 = 90	CES54 = 98	CES79 = 89
CES05 = 51	CES30 = 96	CES55 = 98	CES80 = 91
CES06 = 51	CES31 = 90	CES56 = 95	CES81 = 72
CES07 = 44	CES32 = 84	CES57 = 95	CES82 = 95
CES08 = 42	CES33 = 91	CES58 = 95	CES83 = 93
CES09 = 29	CES34 = 92	CES59 = 99	CES84 = 96
CES10 = 76	CES35 = 96	CES60 = 96	CES85 = 80
CES11 = 59	CES36 = 90	CES61 = 96	CES86 = 77
CES12 = 65	CES37 = 94	CES62 = 95	CES87 = 91
CES13 = 44	CES38 = 99	CES63 = 94	CES88 = 96
CES14 = 74	CES39 = 97	CES64 = 96	CES89 = 82
CES15 = 72	CES40 = 94	CES65 = 92	CES90 = 97
CES16 = 48	CES41 = 94	CES66 = 95	CES91 = 82
CES17 = 50	CES42 = 91	CES67 = 94	CES92 = 78
CES18 = 57	CES43 = 88	CES68 = 93	CES93 = 87
CES19 = 72	CES44 = 99	CES69 = 94	CES94 = 73
CES20 = 67	CES45 = 93	CES70 = 90	CES95 = 85
CES21 = 86	CES46 = 93	CES71 = 90	CES96 = 92
CES22 = 79	CES47 = 86	CES72 = 96	CES97 = 93
CES23 = 92	CES48 = 95	CES73 = 85	CES98 = 94
CES24 = 91	CES49 = 91	CES74 = 90	CES99 = 93
CES25 = 72	CES50 = 96	CES75 = 90	



Color Rendition by Hue-Angle Bin



Measure Comparisons



(END OF REPORT)