

Cooper Lighting Solutions Photometric Lab
1121 Highway 74 South
Peachtree City, GA 30269



Scaled data based on original data using
LM-79-2019 Approved Method: Electrical and Photometric Measurements of Solid-
State Lighting Products

Test Report Prepared for
Cooper Lighting Solutions

Brand: METALUX

Report Number: P1444643

Luminaire Tested: EHBR1-12-UNV-TA-L930-UPL15

Issue Date: 5/1/2026

Test Information

Test Method: LM-79-2019
Report Number: P1444643
REPORT IS A COMBINATION OF REPORTS P1444309 AND P1431635
Test Lab: INNOVATION CENTER
Issue Date: 5/1/2026
Manufacturer: COOPER LIGHTING SOLUTIONS
Product Line: METALUX
Catalog Number: EHBR1-12-UNV-TA-L930-UPL15
Description: Elevate Round Highbay at, 12000 lumens, 3000K 90CRI LEDs with TA lens
Light Source: -
Ballast/Driver: -

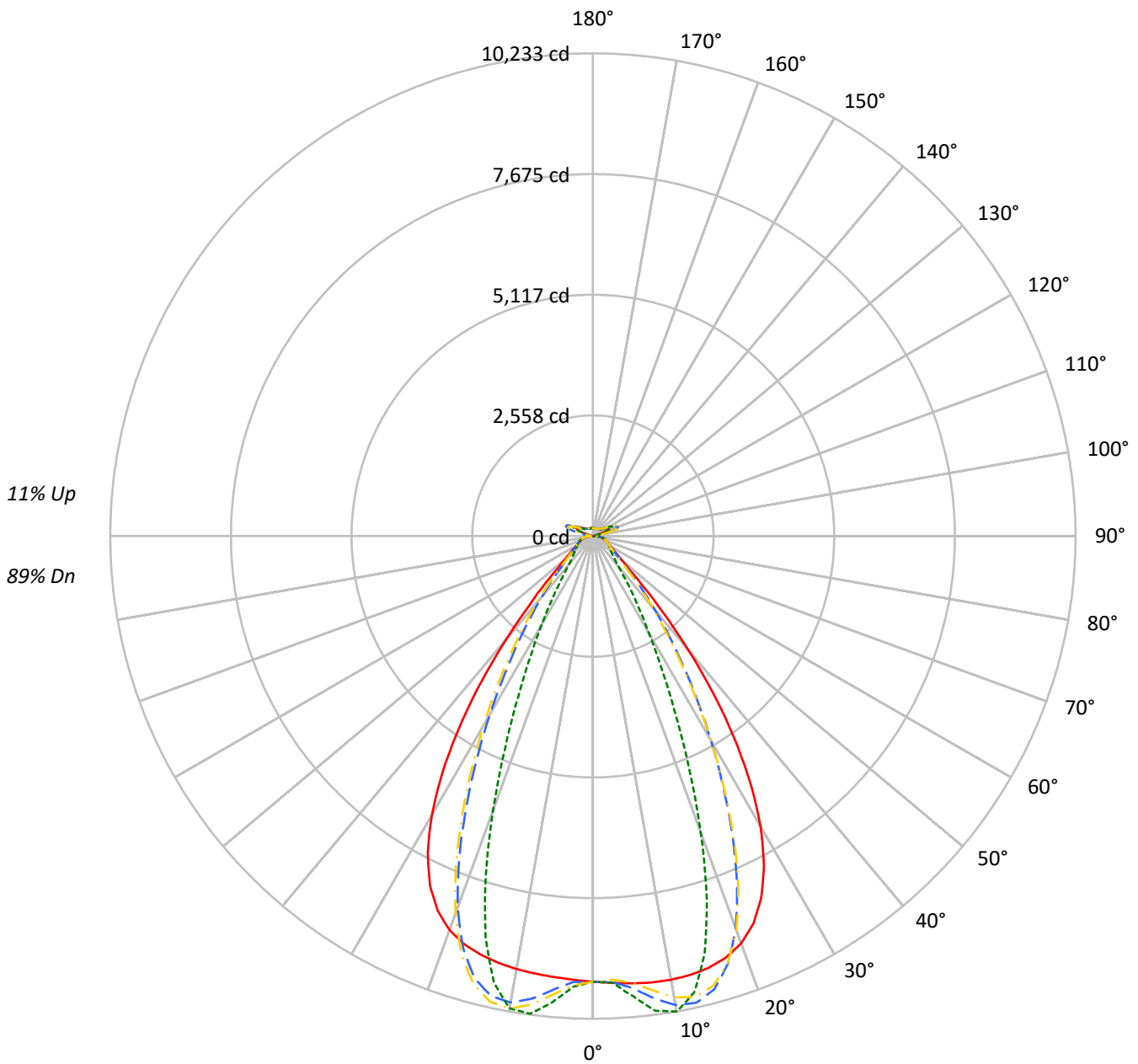
Summary

Lumens per Lamp: N/A
Luminaire Lumens: 12262.1 lumens
Efficiency: N/A
Efficacy: 165.7 lumens/watt
Spacing Criteria (0/90/45): 1.13 / 0.77 / 0.88
Luminous Opening: Vertical Cylinder (Dia: 1.71' x H: 0.1')
CIE Type: Semi-Direct

Input Watts (W): 74
Input Voltage (V): NR
Input Current (Ain): NR
Voltage Rise (V): NR
Power Factor: NR
Total Harmonic Distortion (THDi): NR
Frequency (hertz): 60
Stabilization Time: NR
Operation Time: NR
Ambient Temperature (°C): NR
Test Distance: 24 FT

TEST NUMBER: P1444643
CATALOG NUMBER: EHBR1-12-UNV-TA-L930-UPL15

Luminous Intensity Polar Plot



— 0°-180° - - 45°-225° - · - 90°-270° - · - 135°-315°



TEST NUMBER: P1444643
 CATALOG NUMBER: EHBR1-12-UNV-TA-L930-UPL15

COEFFICIENT OF UTILIZATION - ZONAL CAVITY METHOD:

RF	20				20				20				20				20				
RC	80				70				50				30				10			0	
RW	70	50	30	10	70	50	30	10	50	30	10	50	30	10	50	30	10	50	30	10	0
RCR																					
0	116	116	116	116	112	112	112	112	105	105	105	98	98	98	92	92	92	89			89
1	109	106	103	100	105	102	100	97	96	94	92	90	89	87	85	84	83	80			80
2	102	96	91	87	99	94	89	85	88	85	82	84	81	78	79	77	75	73			73
3	96	88	82	78	93	86	81	76	82	77	73	78	74	71	74	71	68	66			66
4	90	81	75	70	87	79	73	69	76	71	67	72	68	65	69	66	63	61			61
5	85	75	68	63	82	73	67	63	70	65	61	67	63	59	65	61	58	56			56
6	80	70	63	58	78	68	62	57	66	60	56	63	58	55	61	57	53	52			52
7	75	65	58	53	73	64	57	53	61	56	52	59	54	51	57	53	50	48			48
8	71	61	54	49	69	60	53	49	57	52	48	55	51	47	54	49	46	45			45
9	68	57	50	46	66	56	50	45	54	49	45	52	47	44	51	46	43	42			42
10	64	53	47	43	62	53	47	42	51	46	42	49	45	41	48	44	41	39			39

AVERAGE LUMINANCE (cd/sqm):

	0°	90°	180°	270°
0°	44359	44359	44359	44359
5°	44574	45873	43950	46474
10°	44946	48164	43868	47845
15°	45167	43660	43791	41902
20°	44699	32525	43237	30094
25°	42310	20570	40912	18664
30°	36960	12361	35529	11297
35°	28445	7757	26809	6871
40°	17994	4866	16463	4572
45°	9275	3791	9121	3728
50°	5438	3372	5271	3319
55°	4165	3189	4012	3161
60°	3524	3258	3375	3217
65°	3311	3403	3184	3287
70°	3234	3563	3074	3428
75°	3458	3779	3271	3611
80°	3579	4184	3245	3821
85°	3369	4038	2723	3457

MAXIMUM LUMINANCE 45°-90°:

Horizontal Angle: 25°
 Vertical Angle: 45°
 Luminance: 14194 cd/sqm



TEST NUMBER: P1444643
 CATALOG NUMBER: EHBR1-12-UNV-TA-L930-UPL15

ZONAL LUMENS:

Zone	Lumens	% Fixture
0°-10°	930.9	7.6
10°-20°	2618.8	21.4
20°-30°	2982.6	24.3
30°-40°	2143.7	17.5
40°-50°	988.7	8.1
50°-60°	473.1	3.9
60°-70°	345.2	2.8
70°-80°	262.3	2.1
80°-90°	121.6	1.0
90°-100°	38.8	0.3
100°-110°	233.9	1.9
110°-120°	432.4	3.5
120°-130°	261.6	2.1
130°-140°	164.4	1.3
140°-150°	119.0	1.0
150°-160°	81.0	0.7
160°-170°	47.9	0.4
170°-180°	16.2	0.1
0°-30°	6532.3	53.3
0°-40°	8676.0	70.8
0°-60°	10137.8	82.7
0°-90°	10866.9	88.6
90°-120°	705.1	5.8
90°-150°	1250.1	10.2
90°-180°	1395.0	11.4
0°-180°	12262.1	100.0

CANDELA DISTRIBUTION:

	0°	90°	180°	270°	360°	Flux
0°	9446	9446	9446	9446	9446	
5°	9517	9795	9384	9923	9517	909
15°	9476	9160	9187	8791	9476	2670
25°	8449	4108	8170	3727	8449	3830
35°	5221	1424	4920	1261	5221	3204
45°	1501	613	1476	603	1501	1276
55°	563	431	542	427	563	520
65°	346	355	332	343	346	345
75°	244	266	230	254	244	253
85°	116	139	94	119	116	109
90°	36	44	14	16	36	22
95°	18	20	18	20	18	17
105°	83	108	55	108	83	111
115°	376	458	394	458	376	347
125°	279	296	316	297	279	254
135°	214	193	230	194	214	167
145°	185	183	198	184	185	117
155°	170	172	181	173	170	79
165°	166	167	172	168	166	47
175°	168	170	172	170	168	16
180°	170	170	170	170	170	



TEST NUMBER: P1444643
 CATALOG NUMBER: EHBR1-12-UNV-TA-L930-UPL15

CANDELA DISTRIBUTION (FULL):

	0°	2.5°	5°	7.5°	10°	12.5°	15°	17.5°	20°	22.5°	25°
0°	9445.9	9445.9	9445.9	9445.9	9445.9	9445.9	9445.9	9445.9	9445.9	9445.9	9445.9
2.5°	9482.0	9481.3	9481.1	9480.5	9480.3	9480.3	9479.9	9479.1	9478.7	9477.6	9476.4
5°	9517.2	9516.7	9517.0	9517.1	9516.4	9515.0	9512.6	9509.8	9506.2	9502.8	9499.9
7.5°	9544.4	9545.1	9545.9	9545.7	9543.7	9540.2	9535.5	9532.8	9534.4	9539.6	9551.3
10°	9549.4	9553.5	9555.0	9554.5	9550.4	9547.4	9548.6	9558.5	9578.5	9605.1	9641.4
12.5°	9530.0	9535.0	9534.8	9533.1	9529.1	9533.2	9547.8	9577.5	9620.2	9672.6	9734.1
15°	9475.7	9482.1	9480.3	9478.2	9475.5	9488.8	9517.7	9569.5	9635.4	9709.3	9785.0
17.5°	9370.1	9377.9	9374.1	9371.7	9369.4	9394.4	9444.2	9520.0	9603.0	9686.6	9758.3
20°	9187.0	9192.2	9183.2	9179.0	9182.6	9231.5	9304.8	9401.6	9489.1	9568.2	9617.2
22.5°	8888.2	8894.7	8877.8	8875.8	8896.7	8971.9	9064.6	9172.8	9255.0	9317.8	9336.6
25°	8449.2	8455.6	8435.5	8447.5	8483.0	8585.5	8695.9	8811.6	8881.8	8928.2	8915.4
27.5°	7856.6	7862.5	7843.5	7868.0	7924.1	8058.7	8188.7	8314.2	8376.7	8409.2	8368.1
30°	7109.3	7121.5	7098.9	7133.1	7218.8	7393.6	7542.5	7683.2	7745.6	7770.4	7706.2
32.5°	6221.8	6239.0	6214.2	6265.1	6384.6	6594.5	6763.7	6920.9	6989.9	7018.2	6945.7
35°	5220.7	5245.3	5216.9	5293.3	5440.7	5674.5	5861.8	6037.4	6119.1	6159.1	6086.1
37.5°	4160.1	4183.6	4168.2	4270.1	4432.0	4674.3	4865.5	5054.9	5147.2	5207.3	5149.7
40°	3118.8	3140.4	3152.0	3268.5	3420.8	3649.2	3832.8	4020.2	4123.5	4198.9	4163.4
42.5°	2201.3	2222.9	2262.6	2375.1	2502.0	2691.1	2848.3	3016.6	3115.2	3195.7	3182.0
45°	1500.6	1525.7	1575.4	1667.4	1759.3	1894.9	2010.4	2141.3	2221.9	2295.6	2296.5
47.5°	1051.5	1069.2	1113.6	1176.4	1236.3	1406.1	1413.1	1477.4	1531.5	1586.7	1593.8
50°	810.4	821.0	844.5	879.6	913.5	957.6	998.0	1044.6	1077.9	1108.1	1115.3
52.5°	666.1	672.8	684.8	703.8	723.4	747.5	769.1	794.6	812.8	828.9	832.3
55°	562.9	568.5	586.4	590.0	612.5	616.8	626.5	642.0	652.6	662.2	664.7
57.5°	485.1	489.2	493.0	501.1	508.0	518.1	526.2	537.4	544.0	551.0	551.6
60°	423.7	426.7	429.4	435.0	439.7	446.7	452.3	459.9	464.6	469.9	470.5
62.5°	378.0	380.2	381.9	385.7	389.0	394.4	398.9	405.2	409.7	413.7	414.6
65°	345.6	347.1	348.3	351.0	354.0	358.6	362.6	367.8	371.1	374.2	374.8
67.5°	316.8	318.2	319.5	322.0	324.0	327.5	330.2	334.1	336.5	339.0	339.1
70°	283.8	285.2	286.1	288.5	290.1	293.0	295.2	298.7	301.2	304.0	304.7
72.5°	261.0	261.8	263.0	265.2	267.4	270.6	273.5	277.1	280.2	283.1	284.3
75°	243.6	244.5	245.3	247.2	248.8	251.5	253.6	256.9	259.6	262.7	264.2
77.5°	218.6	219.7	220.4	222.2	223.6	226.1	227.7	230.7	232.9	235.7	237.0
80°	188.3	189.3	189.8	191.5	192.6	195.0	196.5	199.4	201.2	204.0	205.7
82.5°	154.7	155.7	155.9	157.6	158.2	160.1	161.3	164.2	166.5	170.1	172.6
85°	115.8	116.2	116.7	116.3	118.7	118.8	121.5	122.0	125.5	126.4	130.4
87.5°	70.8	71.9	72.4	74.0	74.7	76.3	76.8	78.5	79.5	81.5	82.3
90°	35.7	37.8	38.8	41.0	42.0	44.0	44.9	47.1	48.1	50.4	52.0
92.5°	15.6	16.7	17.6	18.8	19.9	21.2	22.4	23.5	24.6	25.8	28.1
95°	17.8	19.1	20.3	21.5	22.7	24.0	25.2	26.4	27.6	28.9	32.4
97.5°	22.4	23.4	24.5	25.6	26.6	27.7	28.8	29.9	30.9	32.0	36.3
100°	29.3	30.2	31.1	32.0	32.9	33.9	34.8	35.6	36.5	37.4	45.4
102.5°	48.8	52.0	55.3	58.4	61.6	64.8	68.0	71.1	74.3	77.5	94.3
105°	83.2	91.8	100.6	109.2	117.8	126.5	135.2	143.7	152.5	161.1	188.5
107.5°	142.7	158.6	174.7	190.7	206.7	222.8	238.8	254.9	270.8	286.9	314.6
110°	264.3	277.1	290.1	302.9	315.8	328.8	341.8	354.5	367.4	380.3	400.6



TEST NUMBER: P1444643
 CATALOG NUMBER: EHBR1-12-UNV-TA-L930-UPL15

CANDELA DISTRIBUTION (continued):

	0°	2.5°	5°	7.5°	10°	12.5°	15°	17.5°	20°	22.5°	25°
112.5°	356.5	362.3	368.2	374.0	379.9	385.8	391.6	397.4	403.2	409.0	423.5
115°	376.1	378.1	380.2	382.1	384.3	386.3	388.4	390.3	392.4	394.3	404.1
117.5°	364.7	364.3	364.0	363.8	363.3	363.0	362.6	362.2	361.9	361.4	367.0
120°	339.5	337.8	336.0	334.3	332.6	330.7	329.0	327.2	325.4	323.5	325.9
122.5°	307.9	305.8	303.8	301.7	299.5	297.4	295.2	293.0	290.9	288.7	289.7
125°	278.7	276.5	274.5	272.3	270.1	268.0	265.8	263.6	261.4	259.1	259.7
127.5°	253.1	251.6	250.2	248.6	247.1	245.6	244.0	242.4	241.0	239.3	239.4
130°	236.5	235.2	233.8	232.5	231.1	229.7	228.3	226.9	225.5	223.9	224.2
132.5°	222.8	222.0	221.1	220.0	219.0	218.0	217.1	215.8	214.9	213.9	214.1
135°	213.6	212.8	211.9	211.0	210.1	209.2	208.2	207.2	206.2	205.1	205.6
137.5°	205.8	205.1	204.2	203.4	202.6	201.7	200.8	199.9	198.9	198.0	198.4
140°	198.6	197.9	197.2	196.4	195.7	194.9	194.1	193.2	192.4	191.5	192.0
142.5°	190.5	190.0	189.5	188.8	188.3	187.7	187.0	186.2	185.6	184.9	185.6
145°	185.3	184.8	184.4	183.9	183.4	182.8	182.2	181.7	181.1	180.5	181.3
147.5°	180.6	180.3	179.9	179.5	179.1	178.7	178.2	177.7	177.2	176.7	177.4
150°	176.5	176.2	175.9	175.5	175.0	174.7	174.2	173.8	173.3	172.8	173.6
152.5°	172.3	171.9	171.6	171.2	170.8	170.5	170.1	169.6	169.1	168.7	169.3
155°	169.7	169.3	169.0	168.6	168.2	167.9	167.4	167.1	166.6	166.2	166.7
157.5°	167.8	167.5	167.4	167.0	166.7	166.5	166.2	165.8	165.6	165.3	165.6
160°	167.0	166.7	166.5	166.2	165.8	165.6	165.3	164.9	164.7	164.4	164.8
162.5°	166.1	165.8	165.6	165.3	165.0	164.8	164.5	164.2	164.0	163.6	164.0
165°	165.9	165.8	165.6	165.4	165.2	165.0	164.9	164.7	164.5	164.3	164.6
167.5°	167.2	166.9	166.7	166.5	166.2	166.1	165.8	165.6	165.4	165.0	165.4
170°	167.5	167.4	167.3	167.2	167.0	166.9	166.8	166.6	166.5	166.4	166.6
172.5°	168.3	168.2	168.1	168.1	167.9	167.8	167.7	167.6	167.5	167.4	167.7
175°	168.2	168.1	168.1	168.0	167.9	167.9	167.8	167.7	167.7	167.6	167.8
177.5°	169.3	169.2	169.2	169.2	169.2	169.2	169.1	169.0	169.0	169.0	169.2
180°	170.3	170.3	170.3	170.3	170.3	170.3	170.3	170.3	170.3	170.3	170.3



TEST NUMBER: P1444643
 CATALOG NUMBER: EHBR1-12-UNV-TA-L930-UPL15

CANDELA DISTRIBUTION (continued):

	27.5°	30°	32.5°	35°	37.5°	40°	42.5°	45°	47.5°	50°	52.5°
0°	9445.9	9445.9	9445.9	9445.9	9445.9	9445.9	9445.9	9445.9	9445.9	9445.9	9445.9
2.5°	9475.5	9474.3	9472.7	9470.8	9469.1	9467.0	9462.3	9460.9	9462.5	9463.5	9465.7
5°	9497.9	9498.7	9498.9	9503.2	9506.9	9516.2	9588.8	9617.7	9640.1	9654.2	9675.8
7.5°	9565.8	9587.7	9609.3	9638.4	9663.4	9697.3	9824.5	9878.5	9917.0	9944.7	9978.7
10°	9680.9	9728.6	9773.3	9825.6	9870.7	9922.2	10040.6	10093.3	10126.6	10150.9	10173.4
12.5°	9796.7	9862.9	9922.7	9980.9	10029.7	10074.4	10116.0	10134.5	10136.0	10136.8	10124.8
15°	9857.2	9920.3	9973.0	10011.5	10040.2	10052.9	9981.2	9943.6	9896.1	9857.0	9792.6
17.5°	9819.0	9857.0	9879.7	9877.5	9865.6	9826.0	9623.1	9511.4	9400.5	9300.6	9169.7
20°	9649.7	9646.8	9627.0	9570.9	9503.5	9398.4	9050.4	8849.6	8655.5	8485.1	8278.2
22.5°	9334.7	9285.1	9216.0	9095.1	8960.9	8777.5	8278.8	7983.4	7713.2	7474.4	7207.0
25°	8878.2	8776.2	8648.8	8456.9	8248.3	7980.7	7366.1	6998.7	6674.3	6392.9	6084.3
27.5°	8294.0	8140.4	7953.6	7688.0	7405.5	7062.6	6381.2	5975.8	5627.5	5325.8	4997.4
30°	7602.4	7402.6	7161.5	6831.8	6490.9	6102.1	5411.0	5000.4	4647.8	4337.4	4008.8
32.5°	6820.9	6586.9	6304.2	5934.3	5565.6	5165.8	4498.4	4100.9	3764.2	3465.6	3168.1
35°	5958.8	5707.8	5408.9	5031.6	4665.0	4276.4	3663.9	3305.6	3008.2	2744.3	2504.1
37.5°	5034.1	4787.7	4503.5	4147.9	3808.1	3455.8	2927.4	2627.1	2377.6	2158.5	1973.1
40°	4072.7	3857.1	3611.2	3303.7	3013.7	2720.4	2286.6	2048.2	1851.3	1684.3	1545.2
42.5°	3123.0	2955.9	2767.3	2524.4	2302.5	2079.1	1745.3	1568.7	1422.8	1302.5	1204.3
45°	2265.9	2154.1	2027.6	1858.7	1705.2	1549.3	1311.8	1187.6	1092.6	1015.1	949.5
47.5°	1584.0	1519.1	1515.2	1359.1	1246.5	1151.3	998.2	919.7	861.6	814.6	773.1
50°	1112.4	1081.0	1042.0	986.3	934.1	880.3	787.0	739.6	705.5	677.0	650.8
52.5°	831.6	815.3	794.5	765.0	736.7	706.4	647.3	617.2	606.5	580.0	559.2
55°	664.2	654.9	643.0	625.7	608.5	601.6	551.0	528.6	514.4	503.9	492.8
57.5°	551.7	544.8	537.7	526.0	516.0	503.9	477.1	465.6	457.2	451.0	443.3
60°	470.6	466.4	462.5	455.6	450.2	443.7	426.7	420.2	415.8	412.1	407.2
62.5°	415.4	413.2	411.2	407.5	404.8	401.3	389.6	386.5	384.3	382.4	379.4
65°	375.5	373.9	372.9	370.4	369.0	367.0	356.9	354.9	353.5	352.8	351.0
67.5°	339.3	337.7	336.9	335.2	334.6	333.3	325.1	323.9	323.5	323.8	323.1
70°	305.4	304.7	305.0	304.8	305.6	305.7	300.8	300.8	301.3	302.4	302.5
72.5°	285.1	285.1	285.4	285.6	286.3	286.7	282.6	282.4	282.6	283.4	283.4
75°	265.7	266.1	267.1	267.4	268.3	268.5	263.1	262.4	262.4	263.2	263.0
77.5°	239.0	240.2	242.1	243.2	244.9	245.2	239.1	238.3	238.4	239.1	238.5
80°	208.6	210.8	214.1	216.3	218.9	219.8	213.6	212.1	210.7	210.5	209.2
82.5°	176.4	179.1	183.0	184.9	187.7	188.3	177.8	175.7	174.6	174.7	173.5
85°	134.7	136.7	140.2	141.3	143.0	142.8	130.8	125.7	127.1	124.9	126.6
87.5°	84.5	85.6	87.9	88.1	88.9	88.8	76.6	74.2	73.5	73.6	72.7
90°	54.9	56.5	59.3	60.2	62.4	63.0	54.1	53.8	52.2	52.0	50.0
92.5°	30.3	32.3	34.6	36.8	39.0	41.2	42.2	44.1	41.9	39.6	37.4
95°	36.1	39.7	43.3	46.9	50.5	54.1	57.7	61.3	57.9	54.5	51.2
97.5°	40.5	44.7	49.0	53.3	57.6	61.8	66.0	70.3	66.7	63.0	59.4
100°	53.3	61.2	69.1	77.1	85.0	92.9	100.9	108.8	101.9	94.8	87.9
102.5°	111.1	128.1	144.9	161.7	178.5	195.4	212.3	229.1	213.2	197.1	181.2
105°	215.8	243.0	270.4	297.6	324.9	352.2	379.6	406.9	381.3	355.7	330.2
107.5°	342.3	369.9	397.6	425.3	453.1	480.7	508.6	536.3	511.3	486.4	461.4
110°	420.8	440.9	461.2	481.4	501.6	521.8	542.3	562.5	547.5	532.5	517.5



TEST NUMBER: P1444643
 CATALOG NUMBER: EHBR1-12-UNV-TA-L930-UPL15

CANDELA DISTRIBUTION (continued):

	27.5°	30°	32.5°	35°	37.5°	40°	42.5°	45°	47.5°	50°	52.5°
112.5°	437.9	452.4	467.0	481.3	495.7	510.2	525.1	539.5	532.0	524.5	517.0
115°	413.9	423.8	433.5	443.3	453.1	462.9	472.9	482.8	480.4	478.0	475.7
117.5°	372.5	377.9	383.5	389.0	394.4	399.9	405.9	411.4	411.9	412.4	412.9
120°	328.3	330.6	333.0	335.3	337.7	340.0	342.9	345.3	347.5	349.5	351.6
122.5°	290.6	291.6	292.5	293.4	294.3	295.1	296.7	297.9	299.2	300.8	302.3
125°	260.1	260.7	261.2	261.6	262.0	262.6	263.9	264.4	264.7	264.7	264.9
127.5°	239.5	239.8	239.9	240.1	240.2	240.3	241.2	241.6	240.8	240.1	239.2
130°	224.6	224.7	225.1	225.4	225.7	225.9	227.2	227.6	226.2	224.7	223.2
132.5°	214.6	214.9	215.2	215.7	215.9	216.3	217.6	218.2	216.5	214.9	213.2
135°	205.9	206.5	206.8	207.3	207.6	208.3	209.7	210.3	208.7	207.1	205.5
137.5°	198.7	199.3	199.7	200.1	200.5	201.0	202.6	203.4	202.1	200.8	199.5
140°	192.5	193.1	193.6	194.2	194.6	195.3	197.0	197.8	196.9	195.8	194.8
142.5°	186.2	187.0	187.7	188.5	189.2	189.9	192.0	192.9	192.3	191.5	190.9
145°	182.0	182.9	183.7	184.5	185.3	186.2	188.4	189.5	189.1	188.7	188.2
147.5°	178.1	178.9	179.6	180.4	181.2	182.1	184.3	185.4	185.2	184.9	184.6
150°	174.2	175.0	175.7	176.5	177.4	178.2	180.8	182.1	181.8	181.6	181.3
152.5°	170.0	170.7	171.4	172.2	172.9	173.7	176.6	177.9	177.6	177.3	177.2
155°	167.2	167.8	168.3	168.9	169.4	170.1	173.1	174.3	174.2	174.1	174.0
157.5°	166.0	166.4	166.7	167.2	167.6	168.1	171.2	172.3	172.2	172.0	171.9
160°	164.9	165.3	165.6	165.9	166.2	166.6	169.8	170.8	170.7	170.6	170.5
162.5°	164.4	164.9	165.1	165.6	166.0	166.4	169.7	170.7	170.6	170.4	170.2
165°	164.8	165.0	165.3	165.6	165.8	166.2	169.0	170.0	169.9	169.9	169.8
167.5°	165.6	165.9	166.1	166.4	166.6	167.0	169.7	170.7	170.6	170.5	170.4
170°	166.7	167.0	167.3	167.4	167.7	168.1	170.3	171.0	170.9	170.7	170.6
172.5°	167.9	168.2	168.5	168.7	169.0	169.3	171.2	172.0	171.8	171.7	171.5
175°	168.1	168.2	168.4	168.7	168.9	169.0	170.7	171.2	171.1	171.1	171.0
177.5°	169.4	169.5	169.7	169.8	169.9	170.1	171.1	171.5	171.5	171.5	171.4
180°	170.3	170.3	170.3	170.3	170.3	170.3	170.3	170.3	170.3	170.3	170.3



TEST NUMBER: P1444643
 CATALOG NUMBER: EHBR1-12-UNV-TA-L930-UPL15

CANDELA DISTRIBUTION (continued):

	55°	57.5°	60°	62.5°	65°	67.5°	70°	72.5°	75°	77.5°	80°
0°	9445.9	9445.9	9445.9	9445.9	9445.9	9445.9	9445.9	9445.9	9445.9	9445.9	9445.9
2.5°	9466.2	9469.5	9470.0	9473.9	9473.6	9478.2	9477.4	9481.3	9479.0	9482.2	9479.5
5°	9688.6	9708.7	9719.2	9738.9	9745.1	9762.7	9767.7	9783.8	9784.4	9797.2	9794.2
7.5°	10002.9	10032.6	10050.3	10074.6	10086.9	10107.1	10116.0	10131.1	10135.9	10147.8	10148.7
10°	10190.5	10205.0	10215.0	10221.9	10228.1	10231.0	10234.4	10233.5	10234.4	10233.0	10236.0
12.5°	10116.7	10095.6	10081.7	10055.3	10040.0	10010.9	9996.5	9968.6	9958.3	9934.2	9930.8
15°	9742.8	9669.4	9617.5	9542.1	9494.6	9420.3	9376.9	9309.9	9279.3	9226.1	9212.1
17.5°	9061.3	8924.9	8819.4	8684.2	8590.2	8463.7	8384.2	8279.5	8222.1	8137.7	8108.5
20°	8105.8	7904.1	7745.9	7557.3	7422.4	7254.3	7146.7	7010.9	6932.2	6828.4	6786.4
22.5°	6984.0	6732.9	6535.3	6312.6	6149.8	5962.4	5833.5	5686.6	5600.9	5488.3	5438.4
25°	5827.9	5550.9	5331.2	5096.5	4924.5	4736.8	4607.8	4463.5	4374.8	4267.8	4218.3
27.5°	4722.1	4441.7	4229.3	4011.2	3853.5	3684.0	3567.7	3441.7	3363.0	3271.6	3225.0
30°	3746.3	3499.0	3318.2	3137.3	3006.0	2868.4	2771.6	2667.3	2598.2	2520.1	2475.6
32.5°	2951.2	2760.3	2618.8	2475.1	2367.8	2252.7	2169.2	2077.1	2014.7	1944.9	1904.7
35°	2337.4	2189.0	2076.2	1957.8	1865.6	1767.7	1694.1	1614.5	1558.6	1498.5	1463.8
37.5°	1846.7	1728.8	1636.0	1537.7	1461.9	1380.7	1353.4	1262.2	1204.2	1156.3	1123.0
40°	1449.3	1355.5	1278.7	1203.6	1141.7	1080.2	1030.8	982.0	944.6	910.3	886.6
42.5°	1131.8	1063.8	1007.7	952.7	907.6	862.8	827.0	793.4	768.3	745.8	730.5
45°	899.7	853.0	814.0	775.2	743.4	713.5	689.4	668.0	651.7	638.2	628.7
47.5°	739.1	707.1	679.7	653.5	631.9	612.3	596.2	590.9	573.4	561.6	557.1
50°	628.2	608.8	588.0	568.6	554.2	539.9	529.4	519.2	512.6	507.1	505.5
52.5°	545.4	530.6	518.9	506.7	497.3	487.0	479.8	472.9	469.4	466.5	466.2
55°	483.8	473.5	465.7	457.5	451.8	445.8	442.1	438.5	436.9	435.5	435.6
57.5°	437.2	430.2	425.3	420.0	416.9	414.0	413.0	412.2	412.6	412.9	413.7
60°	403.2	398.7	395.6	392.5	391.2	390.3	391.0	391.8	393.5	394.8	396.0
62.5°	377.2	374.6	373.1	371.4	371.3	371.4	372.8	374.2	376.2	377.8	378.9
65°	350.4	349.0	348.4	347.5	347.9	348.3	350.0	351.0	353.1	354.3	355.7
67.5°	323.4	323.0	323.3	323.3	324.3	325.1	326.7	327.9	329.6	330.8	331.9
70°	303.3	303.5	304.2	304.4	305.4	305.9	307.4	308.2	309.7	310.7	312.1
72.5°	283.9	283.6	283.8	283.4	283.7	283.6	284.4	284.7	286.1	286.8	288.6
75°	263.2	262.4	262.2	261.2	261.3	260.6	260.9	260.8	261.7	262.1	263.3
77.5°	238.3	236.8	236.1	234.5	234.5	233.9	234.5	234.9	236.4	237.2	238.6
80°	208.3	206.0	205.0	203.2	203.5	203.4	205.0	206.1	208.0	208.3	210.1
82.5°	173.1	170.8	169.7	167.9	168.3	168.4	169.8	170.0	171.6	172.3	174.5
85°	124.0	124.9	122.4	122.6	122.1	123.1	124.0	125.2	126.5	128.9	130.6
87.5°	73.0	72.7	73.6	73.7	74.9	75.7	77.6	78.8	81.1	82.9	86.1
90°	49.2	47.3	47.2	46.0	46.4	45.4	45.9	44.7	45.4	44.9	46.1
92.5°	34.9	32.8	30.4	28.2	25.8	23.7	22.5	21.5	20.3	19.4	18.3
95°	47.8	44.5	41.1	37.7	34.4	31.0	29.8	28.5	27.4	26.1	24.9
97.5°	55.8	52.2	48.6	44.9	41.3	37.7	36.9	36.1	35.2	34.4	33.6
100°	80.9	73.9	66.9	59.9	52.9	46.0	45.4	44.6	44.0	43.4	42.7
102.5°	165.2	149.1	133.1	117.2	101.2	85.2	82.4	79.7	76.8	74.1	71.3
105°	304.6	279.0	253.5	227.9	202.4	176.8	169.2	161.5	153.9	146.2	138.7
107.5°	436.5	411.5	386.7	361.6	336.8	311.8	299.8	287.7	275.6	263.6	251.6
110°	502.5	487.5	472.7	457.5	442.6	427.7	416.2	404.8	393.2	381.8	370.3



TEST NUMBER: P1444643
 CATALOG NUMBER: EHBR1-12-UNV-TA-L930-UPL15

CANDELA DISTRIBUTION (continued):

	55°	57.5°	60°	62.5°	65°	67.5°	70°	72.5°	75°	77.5°	80°
112.5°	509.5	502.1	494.6	487.1	479.7	472.2	466.6	461.0	455.5	449.8	444.1
115°	473.3	471.0	468.6	466.2	463.9	461.5	461.2	460.8	460.4	460.0	459.6
117.5°	413.2	413.8	414.2	414.7	415.3	415.7	418.7	421.8	424.8	427.8	430.9
120°	353.6	355.7	357.8	359.8	361.9	364.0	368.0	372.1	376.1	380.2	384.4
122.5°	303.7	305.1	306.6	308.2	309.6	311.0	315.0	319.1	323.1	327.1	331.2
125°	265.0	265.1	265.3	265.4	265.5	265.6	268.9	272.2	275.5	279.0	282.3
127.5°	238.5	237.6	236.8	236.0	235.2	234.4	236.3	238.4	240.3	242.3	244.4
130°	221.7	220.4	218.8	217.3	215.8	214.4	215.2	216.0	216.8	217.7	218.5
132.5°	211.4	209.7	207.9	206.1	204.4	202.7	202.7	202.7	202.8	202.9	203.0
135°	203.8	202.3	200.6	198.9	197.3	195.7	195.2	194.9	194.5	194.2	193.9
137.5°	198.3	196.9	195.6	194.4	193.0	191.8	191.1	190.6	190.1	189.6	189.1
140°	193.8	192.8	191.7	190.7	189.5	188.7	188.1	187.7	187.2	186.9	186.4
142.5°	190.0	189.3	188.5	187.8	187.0	186.2	185.8	185.4	184.9	184.6	184.2
145°	187.8	187.3	186.8	186.3	185.9	185.4	185.0	184.7	184.4	184.1	183.8
147.5°	184.4	184.1	183.8	183.6	183.2	183.0	182.7	182.5	182.2	182.1	181.9
150°	181.0	180.8	180.5	180.3	180.0	179.7	179.6	179.5	179.4	179.4	179.1
152.5°	176.9	176.7	176.4	176.3	175.9	175.6	175.6	175.6	175.5	175.4	175.2
155°	173.8	173.7	173.5	173.3	173.1	173.0	172.9	172.7	172.5	172.3	172.2
157.5°	171.8	171.6	171.5	171.4	171.2	171.0	170.8	170.7	170.6	170.5	170.3
160°	170.3	170.2	170.0	169.9	169.8	169.7	169.4	169.1	169.0	168.7	168.5
162.5°	169.9	169.8	169.6	169.4	169.1	169.0	168.8	168.6	168.4	168.3	168.2
165°	169.6	169.5	169.3	169.1	169.0	169.0	168.7	168.4	168.2	168.0	167.7
167.5°	170.2	170.1	169.9	169.9	169.7	169.6	169.4	169.1	168.9	168.7	168.5
170°	170.4	170.2	170.1	169.9	169.7	169.4	169.2	169.0	168.8	168.6	168.4
172.5°	171.4	171.3	171.1	170.9	170.7	170.6	170.4	170.2	170.0	169.9	169.8
175°	170.9	170.9	170.9	170.7	170.7	170.7	170.6	170.6	170.5	170.5	170.4
177.5°	171.4	171.4	171.4	171.3	171.3	171.3	171.1	171.0	170.9	170.7	170.7
180°	170.3	170.3	170.3	170.3	170.3	170.3	170.3	170.3	170.3	170.3	170.3



TEST NUMBER: P1444643
 CATALOG NUMBER: EHBR1-12-UNV-TA-L930-UPL15

CANDELA DISTRIBUTION (continued):

	82.5°	85°	87.5°	90°	92.5°	95°	97.5°	100°	102.5°	105°	107.5°
0°	9445.9	9445.9	9445.9	9445.9	9445.9	9445.9	9445.9	9445.9	9445.9	9445.9	9445.9
2.5°	9482.3	9479.9	9481.0	9476.6	9477.6	9472.3	9471.7	9465.7	9465.1	9459.4	9457.3
5°	9803.3	9798.0	9804.0	9794.7	9796.6	9784.4	9783.5	9767.8	9762.4	9742.9	9734.4
7.5°	10156.1	10154.2	10157.8	10150.1	10149.8	10139.0	10134.6	10120.6	10111.8	10091.3	10078.3
10°	10233.5	10235.3	10232.3	10233.0	10228.9	10227.7	10223.4	10220.7	10213.6	10208.3	10200.4
12.5°	9912.5	9914.4	9902.2	9909.9	9903.8	9918.1	9917.0	9933.8	9936.4	9957.8	9965.9
15°	9170.6	9168.3	9144.8	9159.7	9151.6	9183.1	9190.1	9232.5	9255.0	9309.4	9342.7
17.5°	8049.9	8043.9	8010.8	8028.8	8019.6	8066.1	8081.6	8149.2	8191.4	8278.9	8341.2
20°	6714.0	6702.4	6663.8	6684.9	6675.4	6728.1	6750.3	6832.0	6886.4	7002.3	7084.7
22.5°	5361.5	5343.3	5305.3	5325.1	5316.1	5370.6	5399.6	5481.6	5543.9	5662.8	5759.1
25°	4147.0	4130.7	4094.1	4107.9	4104.6	4150.7	4176.4	4253.9	4315.2	4428.5	4520.4
27.5°	3163.0	3146.1	3112.9	3122.7	3119.3	3158.6	3182.9	3247.7	3300.4	3395.8	3476.4
30°	2420.9	2400.4	2372.3	2377.6	2375.4	2407.2	2429.9	2484.4	2529.6	2610.2	2679.7
32.5°	1855.6	1835.0	1809.2	1811.7	1808.3	1833.3	1852.0	1899.4	1938.8	2007.3	2067.8
35°	1419.8	1443.8	1388.8	1423.6	1387.3	1440.6	1421.5	1451.1	1485.0	1542.7	1593.2
37.5°	1091.5	1074.7	1060.5	1059.0	1058.9	1071.3	1085.9	1114.5	1144.3	1187.4	1231.8
40°	864.9	853.2	844.0	843.4	844.0	852.8	863.6	883.3	905.1	936.1	968.8
42.5°	717.4	709.6	704.0	703.6	705.4	711.7	719.1	730.8	745.1	765.1	787.5
45°	620.9	616.6	613.5	613.3	614.1	617.4	621.7	629.0	638.0	650.4	664.7
47.5°	553.2	552.1	550.2	550.3	549.4	550.7	551.3	555.4	560.1	569.5	588.1
50°	503.9	503.9	502.6	502.5	501.3	501.2	500.1	501.7	503.9	509.8	515.7
52.5°	464.9	464.8	463.4	463.1	461.8	461.7	460.8	461.4	461.7	464.6	468.2
55°	434.5	433.5	431.7	431.0	430.6	431.3	431.0	431.0	430.6	431.8	432.9
57.5°	412.6	411.4	409.7	409.1	409.0	409.9	409.9	409.7	408.0	406.9	405.3
60°	395.3	394.2	392.2	391.7	392.0	393.3	393.2	392.2	389.7	387.6	385.1
62.5°	378.4	377.8	376.9	376.8	376.5	376.7	375.9	374.7	372.3	370.0	367.3
65°	355.6	355.8	355.1	355.2	354.3	354.1	352.8	351.7	349.3	347.3	344.5
67.5°	331.9	332.1	331.5	331.5	331.1	331.1	330.3	329.3	327.2	325.5	323.4
70°	312.4	312.9	312.5	312.6	312.1	311.9	310.7	309.7	307.5	306.1	304.1
72.5°	289.1	290.1	290.1	290.3	289.4	289.1	287.6	286.3	284.4	283.3	281.8
75°	263.9	265.2	265.6	266.2	265.0	264.4	262.7	261.7	260.2	259.5	258.5
77.5°	239.3	240.8	242.2	243.5	241.6	239.9	237.8	236.2	234.0	233.1	231.5
80°	211.6	214.3	217.4	220.1	216.6	213.2	209.8	207.3	204.2	203.0	201.0
82.5°	175.6	178.3	180.1	181.8	179.4	176.9	173.6	171.4	168.2	166.9	164.7
85°	133.4	136.8	137.9	138.8	137.2	135.9	132.8	128.6	126.6	123.4	121.7
87.5°	87.7	89.7	90.2	90.5	89.5	88.8	86.9	84.9	81.5	78.9	75.8
90°	45.3	45.8	44.3	44.1	43.6	44.5	43.1	43.1	41.0	40.6	38.7
92.5°	17.3	16.1	15.1	14.0	15.2	16.1	17.4	18.3	19.3	20.3	21.5
95°	23.6	22.5	21.2	20.0	20.9	21.9	22.9	23.9	24.9	25.8	26.8
97.5°	32.8	31.9	31.1	30.3	30.8	31.5	32.0	32.6	33.2	33.8	34.4
100°	42.1	41.4	40.7	40.1	40.1	40.1	40.1	40.1	40.1	40.1	40.1
102.5°	68.5	65.7	62.9	60.2	62.0	63.9	65.8	67.6	69.6	71.5	73.4
105°	131.0	123.4	115.8	108.2	115.6	122.9	130.3	137.7	145.0	152.5	159.9
107.5°	239.5	227.5	215.5	203.4	216.9	230.3	243.7	257.1	270.5	283.9	297.5
110°	358.9	347.4	336.0	324.5	338.7	353.0	367.2	381.5	395.7	409.9	424.3



TEST NUMBER: P1444643
 CATALOG NUMBER: EHBR1-12-UNV-TA-L930-UPL15

CANDELA DISTRIBUTION (continued):

	82.5°	85°	87.5°	90°	92.5°	95°	97.5°	100°	102.5°	105°	107.5°
112.5°	438.5	433.0	427.4	421.9	431.0	440.2	449.4	458.7	467.8	477.0	486.2
115°	459.3	458.9	458.7	458.3	462.7	467.0	471.3	475.7	480.1	484.5	488.9
117.5°	433.9	437.0	440.1	443.3	444.7	446.0	447.4	448.8	450.3	451.6	453.1
120°	388.5	392.5	396.7	400.9	400.4	399.8	399.2	398.7	398.3	397.7	397.4
122.5°	335.3	339.4	343.6	347.8	346.6	345.3	344.2	342.9	341.8	340.6	339.6
125°	285.9	289.3	292.7	296.2	295.0	293.7	292.6	291.4	290.2	289.1	288.1
127.5°	246.5	248.6	250.8	252.9	252.4	251.7	251.3	250.8	250.3	249.8	249.4
130°	219.5	220.5	221.4	222.4	222.6	222.8	223.0	223.2	223.6	223.9	224.1
132.5°	203.3	203.4	203.6	203.9	204.5	205.2	205.9	206.7	207.5	208.3	209.2
135°	193.7	193.5	193.3	193.1	194.1	195.1	196.1	197.1	198.3	199.4	200.7
137.5°	188.7	188.3	187.9	187.6	188.6	189.5	190.6	191.6	192.8	194.0	195.2
140°	186.1	185.8	185.6	185.3	186.2	187.2	188.2	189.3	190.4	191.6	192.8
142.5°	183.8	183.5	183.2	183.0	183.8	184.7	185.7	186.6	187.8	188.7	189.8
145°	183.6	183.3	183.1	183.0	183.5	184.2	184.9	185.6	186.4	187.1	187.9
147.5°	181.8	181.6	181.5	181.4	182.0	182.4	183.0	183.4	184.0	184.6	185.3
150°	179.2	179.1	179.0	179.1	179.4	179.7	180.0	180.4	180.7	181.1	181.6
152.5°	175.2	175.1	175.2	175.2	175.5	175.7	176.1	176.4	176.7	177.1	177.5
155°	172.2	172.0	171.9	171.8	171.9	172.1	172.3	172.3	172.4	172.6	172.8
157.5°	170.2	170.0	170.0	169.9	169.9	169.9	169.9	169.9	169.9	169.9	170.0
160°	168.4	168.2	167.9	167.7	167.8	167.9	168.0	168.0	168.2	168.2	168.2
162.5°	168.1	167.9	167.8	167.6	167.6	167.4	167.4	167.3	167.2	167.1	167.1
165°	167.5	167.3	167.1	166.8	166.8	166.8	166.8	166.8	166.8	166.8	166.8
167.5°	168.3	168.1	167.9	167.6	167.5	167.3	167.2	166.9	166.9	166.7	166.6
170°	168.2	168.1	167.9	167.7	167.6	167.5	167.5	167.4	167.4	167.4	167.4
172.5°	169.6	169.4	169.2	169.0	169.0	169.0	168.9	168.9	168.8	168.8	168.8
175°	170.3	170.3	170.2	170.1	170.0	169.9	169.9	169.8	169.7	169.5	169.4
177.5°	170.6	170.4	170.3	170.2	170.2	170.2	170.2	170.2	170.2	170.1	170.1
180°	170.3	170.3	170.3	170.3	170.3	170.3	170.3	170.3	170.3	170.3	170.3



TEST NUMBER: P1444643
 CATALOG NUMBER: EHBR1-12-UNV-TA-L930-UPL15

CANDELA DISTRIBUTION (continued):

	110°	112.5°	115°	117.5°	120°	122.5°	125°	127.5°	130°	132.5°	135°
0°	9445.9	9445.9	9445.9	9445.9	9445.9	9445.9	9445.9	9445.9	9445.9	9445.9	9445.9
2.5°	9451.2	9448.7	9442.1	9438.9	9432.8	9429.8	9425.0	9422.0	9418.2	9415.3	9413.9
5°	9713.0	9700.9	9676.7	9661.8	9635.6	9618.4	9592.4	9573.4	9546.6	9526.8	9501.4
7.5°	10053.7	10035.1	10004.1	9980.6	9944.0	9916.1	9875.0	9842.1	9796.7	9759.1	9712.8
10°	10192.4	10181.5	10167.6	10152.5	10132.3	10112.4	10084.3	10055.8	10017.7	9979.8	9930.3
12.5°	9987.4	9997.6	10017.7	10027.0	10042.4	10047.6	10054.6	10051.3	10045.2	10029.7	10007.2
15°	9406.8	9449.3	9516.6	9563.0	9628.1	9673.9	9734.4	9773.4	9818.3	9845.1	9870.6
17.5°	8451.7	8534.0	8652.6	8747.2	8874.2	8977.5	9104.1	9203.5	9318.3	9406.3	9500.1
20°	7228.4	7343.6	7507.3	7646.4	7830.4	7986.6	8186.5	8354.1	8549.4	8712.3	8888.1
22.5°	5911.8	6047.3	6234.9	6402.7	6622.4	6818.7	7069.3	7290.9	7555.0	7791.7	8053.4
25°	4669.7	4802.5	4993.7	5167.3	5404.6	5620.9	5894.6	6148.7	6455.2	6741.1	7069.3
27.5°	3604.6	3722.6	3890.5	4046.8	4264.2	4476.5	4754.3	5025.2	5352.4	5659.6	6013.3
30°	2783.7	2879.4	3014.1	3139.8	3314.3	3487.9	3735.4	3986.0	4311.4	4629.8	4992.4
32.5°	2157.4	2238.9	2351.3	2453.4	2587.8	2718.8	2900.9	3101.2	3386.7	3691.6	4042.3
35°	1670.0	1739.8	1835.5	1923.4	2033.9	2137.8	2273.8	2416.8	2634.7	2891.2	3205.0
37.5°	1331.5	1359.9	1428.1	1500.1	1592.0	1677.4	1783.8	1889.5	2045.3	2247.7	2504.1
40°	1012.5	1057.7	1113.3	1170.1	1239.6	1308.1	1424.8	1480.9	1583.6	1728.9	1927.8
42.5°	817.0	848.7	887.8	927.3	975.8	1023.5	1082.5	1142.6	1219.3	1317.7	1459.2
45°	683.7	704.4	729.6	755.9	787.7	820.3	859.8	901.0	953.1	1013.6	1099.5
47.5°	594.6	606.1	622.5	640.5	662.3	684.8	710.5	736.8	769.1	805.0	854.0
50°	525.1	534.6	547.4	559.5	574.5	597.6	607.8	622.3	641.7	662.8	690.2
52.5°	474.8	481.1	489.1	496.1	505.5	514.2	525.6	535.6	549.0	561.7	579.4
55°	435.6	437.9	442.5	446.9	453.5	459.4	467.1	473.7	482.3	489.9	501.0
57.5°	405.4	405.6	407.7	410.0	414.2	417.9	423.3	427.6	433.5	438.4	445.0
60°	383.6	382.5	382.9	383.7	386.0	388.4	391.9	394.7	398.4	401.2	404.9
62.5°	365.5	363.7	363.3	363.1	364.3	365.1	367.0	368.3	370.4	371.7	373.7
65°	342.6	340.5	339.7	338.7	339.1	338.8	339.4	339.5	340.6	340.9	342.0
67.5°	322.0	320.2	319.0	317.7	317.2	316.2	315.7	314.8	314.8	313.9	313.8
70°	303.0	301.3	300.4	299.2	298.5	297.3	296.5	295.0	294.0	292.6	291.8
72.5°	281.2	280.2	279.9	279.0	278.8	278.1	277.9	276.7	276.1	274.9	274.2
75°	258.3	257.5	257.5	256.6	256.5	255.7	255.5	254.3	253.7	252.5	251.9
77.5°	231.1	229.8	229.5	228.5	228.8	228.4	228.7	227.9	227.4	226.3	225.8
80°	200.4	198.8	198.2	196.9	197.3	196.7	197.3	197.2	197.7	196.7	196.5
82.5°	164.1	162.4	162.0	161.1	161.7	161.8	163.1	162.4	162.7	161.7	162.2
85°	119.4	118.1	116.4	116.1	115.0	116.1	114.7	115.7	114.0	115.1	113.6
87.5°	74.0	71.4	70.0	68.2	67.5	65.7	65.0	63.7	64.1	63.4	63.8
90°	38.9	37.2	38.0	37.2	38.1	37.6	38.9	38.9	40.4	40.2	41.8
92.5°	22.5	23.5	25.5	27.5	29.4	31.4	33.3	35.4	37.2	39.3	41.2
95°	27.8	28.8	31.4	34.0	36.6	39.2	42.0	44.6	47.1	49.8	52.4
97.5°	35.0	35.6	38.1	40.8	43.4	46.1	48.7	51.4	54.0	56.7	59.3
100°	40.1	40.2	47.7	55.1	62.6	70.0	77.4	84.8	92.4	99.8	107.3
102.5°	75.3	77.2	96.0	114.8	133.7	152.5	171.4	190.2	209.1	228.0	246.8
105°	167.2	174.6	203.3	232.1	260.8	289.6	318.3	347.2	375.9	404.8	433.5
107.5°	310.8	324.3	350.3	376.2	402.3	428.3	454.3	480.2	506.3	532.3	558.4
110°	438.5	452.8	470.3	487.5	505.0	522.5	539.8	557.2	574.7	592.1	609.6



TEST NUMBER: P1444643
 CATALOG NUMBER: EHBR1-12-UNV-TA-L930-UPL15

CANDELA DISTRIBUTION (continued):

	110°	112.5°	115°	117.5°	120°	122.5°	125°	127.5°	130°	132.5°	135°
112.5°	495.4	504.7	514.7	524.9	535.0	545.2	555.4	565.5	575.8	585.9	596.2
115°	493.2	497.7	501.5	505.5	509.5	513.4	517.5	521.5	525.5	529.4	533.4
117.5°	454.6	456.1	456.7	457.3	458.0	458.6	459.3	459.9	460.6	461.3	462.0
120°	396.7	396.3	395.7	395.0	394.3	393.7	393.1	392.5	391.8	391.3	390.8
122.5°	338.5	337.4	336.7	336.1	335.4	334.9	334.4	333.8	333.2	332.7	332.1
125°	287.0	286.0	286.5	287.0	287.7	288.3	288.8	289.5	290.2	290.7	291.4
127.5°	249.0	248.7	250.1	251.7	253.2	254.7	256.3	257.9	259.3	260.9	262.4
130°	224.6	224.9	226.8	228.8	230.7	232.8	234.7	236.8	238.6	240.7	242.7
132.5°	210.1	211.1	212.8	214.8	216.6	218.6	220.5	222.4	224.2	226.3	228.0
135°	201.8	203.1	204.9	206.5	208.3	210.0	211.7	213.5	215.2	217.0	218.7
137.5°	196.4	197.7	199.1	200.4	201.8	203.3	204.5	205.9	207.3	208.7	210.0
140°	193.9	195.2	196.0	196.8	197.6	198.4	199.2	200.0	200.7	201.5	202.3
142.5°	190.9	192.0	192.5	193.1	193.5	194.1	194.6	195.2	195.5	196.1	196.6
145°	188.7	189.6	189.6	189.7	189.8	189.9	189.9	190.0	190.0	190.1	190.1
147.5°	185.8	186.5	186.3	186.3	186.3	186.2	186.1	186.0	185.9	185.8	185.7
150°	181.9	182.4	182.1	182.1	181.8	181.5	181.3	181.1	180.8	180.7	180.5
152.5°	177.8	178.2	177.9	177.7	177.4	177.2	176.9	176.6	176.4	176.1	175.9
155°	173.0	173.1	173.0	172.9	172.7	172.5	172.4	172.3	172.3	172.1	172.0
157.5°	170.0	170.1	170.0	169.9	169.8	169.8	169.8	169.7	169.7	169.7	169.7
160°	168.3	168.5	168.3	168.2	168.2	168.1	168.1	168.1	168.1	168.1	168.1
162.5°	167.0	166.9	166.8	166.7	166.6	166.6	166.6	166.6	166.6	166.6	166.6
165°	166.9	167.0	166.7	166.6	166.5	166.3	166.3	166.2	166.1	166.0	165.9
167.5°	166.5	166.4	166.4	166.5	166.5	166.5	166.6	166.6	166.7	166.8	166.9
170°	167.3	167.4	167.2	167.2	167.1	167.0	166.9	166.9	166.9	166.8	166.8
172.5°	168.8	168.8	168.6	168.4	168.2	168.1	168.0	167.9	167.7	167.5	167.4
175°	169.3	169.2	169.1	169.0	169.0	168.8	168.8	168.7	168.6	168.5	168.4
177.5°	170.1	170.0	169.9	169.9	169.9	169.9	169.9	169.9	169.9	169.9	169.8
180°	170.3	170.3	170.3	170.3	170.3	170.3	170.3	170.3	170.3	170.3	170.3



TEST NUMBER: P1444643
 CATALOG NUMBER: EHBR1-12-UNV-TA-L930-UPL15

CANDELA DISTRIBUTION (continued):

	137.5°	140°	142.5°	145°	147.5°	150°	152.5°	155°	157.5°	160°	162.5°
0°	9445.9	9445.9	9445.9	9445.9	9445.9	9445.9	9445.9	9445.9	9445.9	9445.9	9445.9
2.5°	9412.0	9411.9	9411.0	9411.4	9411.6	9412.2	9413.0	9413.9	9414.1	9414.7	9414.9
5°	9482.4	9459.2	9441.9	9423.0	9408.7	9395.9	9387.3	9380.6	9378.0	9378.6	9380.2
7.5°	9673.4	9625.4	9585.7	9540.6	9503.0	9463.2	9430.2	9398.8	9375.9	9358.9	9349.4
10°	9883.0	9824.5	9768.5	9703.3	9641.3	9575.3	9515.4	9455.2	9405.0	9361.3	9329.3
12.5°	9976.0	9934.7	9886.2	9824.6	9758.4	9682.2	9605.2	9522.7	9446.0	9374.8	9317.3
15°	9877.6	9877.7	9860.0	9830.4	9784.4	9723.6	9650.1	9564.2	9473.6	9381.3	9296.9
17.5°	9565.0	9623.9	9656.7	9677.5	9671.1	9648.7	9602.0	9536.0	9451.6	9353.1	9250.1
20°	9028.1	9167.2	9266.4	9355.6	9405.6	9438.9	9435.5	9408.6	9348.5	9264.8	9157.5
22.5°	8276.1	8509.6	8693.8	8865.7	8986.2	9084.2	9130.8	9150.5	9123.3	9065.0	8964.3
25°	7362.7	7680.1	7951.1	8214.0	8411.2	8580.8	8682.6	8754.4	8760.1	8729.6	8639.8
27.5°	6347.7	6722.4	7065.3	7414.8	7692.1	7935.9	8095.7	8212.7	8249.9	8245.0	8163.4
30°	5334.0	5727.4	6105.4	6512.9	6856.1	7167.4	7378.6	7536.9	7597.9	7609.5	7531.1
32.5°	4376.7	4764.7	5141.5	5567.6	5945.2	6302.0	6551.6	6739.6	6810.5	6827.2	6741.1
35°	3507.9	3865.8	4224.0	4636.9	5012.4	5381.9	5644.7	5841.6	5907.8	5919.0	5819.3
37.5°	2754.4	3059.4	3371.4	3742.0	4086.8	4433.8	4683.6	4868.6	4916.9	4913.8	4801.1
40°	2120.0	2357.1	2607.9	2912.9	3199.6	3492.9	3703.8	3856.8	3882.2	3863.4	3744.9
42.5°	1594.2	1765.3	1947.2	2174.8	2387.6	2607.1	2760.6	2874.1	2877.8	2848.1	2741.7
45°	1187.6	1354.7	1430.9	1568.6	1705.6	1851.6	1945.3	2015.4	2004.6	1978.4	1897.6
47.5°	905.4	969.6	1037.6	1123.0	1202.9	1368.5	1356.2	1468.8	1387.7	1443.0	1321.3
50°	719.0	754.8	791.5	836.9	878.5	921.8	948.9	969.1	966.4	957.8	934.4
52.5°	611.7	622.7	640.8	666.6	689.8	713.3	728.7	741.2	741.4	738.0	726.2
55°	511.2	525.3	538.2	555.1	583.8	588.2	610.3	605.8	607.6	601.4	607.7
57.5°	450.7	458.9	466.2	476.2	484.5	494.2	499.9	505.4	504.9	503.7	497.7
60°	407.9	412.4	416.4	422.3	426.9	432.3	435.0	437.7	436.8	434.8	429.4
62.5°	374.8	377.7	380.0	383.7	386.5	389.9	391.3	392.5	391.3	389.3	384.6
65°	342.2	344.1	345.5	348.3	350.3	353.2	354.4	355.5	354.4	352.9	349.3
67.5°	312.8	313.0	312.9	314.0	314.6	316.4	316.9	317.7	316.4	315.1	312.1
70°	290.5	290.1	289.5	290.0	290.1	291.0	291.0	291.0	289.4	287.1	283.8
72.5°	273.1	272.9	272.4	272.8	272.8	273.6	273.3	273.0	271.1	268.9	265.6
75°	250.7	250.5	249.7	249.7	249.0	249.3	248.4	247.8	245.8	243.9	241.0
77.5°	224.5	224.0	222.8	222.3	221.0	220.5	218.8	217.9	215.8	214.3	211.8
80°	195.2	194.7	193.2	192.3	190.2	188.8	186.3	184.9	182.5	181.1	178.6
82.5°	161.4	161.6	160.0	158.9	155.9	153.5	150.2	148.4	145.7	144.3	141.8
85°	114.8	113.1	114.0	113.9	112.0	110.1	107.3	105.3	103.1	101.8	100.0
87.5°	62.9	63.4	62.9	62.5	61.1	60.2	58.0	56.9	55.3	54.4	53.1
90°	38.9	37.8	34.9	33.9	31.1	29.4	26.4	24.9	22.0	21.4	19.7
92.5°	38.9	36.7	34.7	32.3	30.2	28.0	25.8	23.6	21.4	20.6	20.0
95°	49.2	46.0	42.9	39.7	36.4	33.2	30.1	26.9	23.7	23.1	22.4
97.5°	55.5	51.8	47.9	44.2	40.5	36.7	33.0	29.2	25.5	25.0	24.7
100°	98.6	90.0	81.4	72.7	64.0	55.3	46.8	38.1	29.4	28.9	28.4
102.5°	225.7	204.8	183.8	162.7	141.8	120.7	99.7	78.7	57.7	54.7	51.7
105°	401.7	369.8	338.1	306.4	274.5	242.7	210.9	179.0	147.3	137.1	126.8
107.5°	528.4	498.6	468.7	438.8	408.9	379.0	349.1	319.1	289.2	271.3	253.3
110°	585.8	562.1	538.4	514.7	491.0	467.3	443.4	419.7	396.0	380.4	365.1



TEST NUMBER: P1444643
 CATALOG NUMBER: EHBR1-12-UNV-TA-L930-UPL15

CANDELA DISTRIBUTION (continued):

	137.5°	140°	142.5°	145°	147.5°	150°	152.5°	155°	157.5°	160°	162.5°
112.5°	578.7	561.3	544.0	526.6	509.2	491.7	474.4	457.0	439.5	430.1	420.7
115°	523.0	512.5	502.1	491.5	481.0	470.4	460.0	449.4	438.9	433.9	428.9
117.5°	456.7	451.3	445.9	440.5	435.1	429.7	424.4	418.8	413.5	411.8	410.0
120°	389.2	387.5	385.8	384.2	382.4	380.7	379.0	377.3	375.6	375.8	376.0
122.5°	332.8	333.3	333.9	334.4	335.0	335.5	336.1	336.6	337.1	338.4	339.7
125°	292.9	294.4	295.9	297.4	298.8	300.3	301.7	303.2	304.7	305.9	307.3
127.5°	264.2	265.8	267.6	269.2	270.9	272.6	274.3	275.8	277.5	278.7	279.9
130°	244.2	245.6	246.9	248.4	249.9	251.3	252.6	254.1	255.5	256.4	257.3
132.5°	229.3	230.6	232.0	233.1	234.5	235.7	237.0	238.3	239.6	240.3	240.9
135°	219.7	220.6	221.5	222.4	223.5	224.3	225.3	226.3	227.2	227.7	228.1
137.5°	210.9	211.6	212.4	213.2	214.0	214.7	215.6	216.3	217.2	217.3	217.5
140°	203.1	204.0	204.7	205.5	206.4	207.2	208.1	209.0	209.9	210.0	210.2
142.5°	197.2	197.7	198.5	199.0	199.8	200.3	201.0	201.8	202.5	202.6	202.8
145°	190.8	191.6	192.3	193.1	193.9	194.7	195.6	196.5	197.4	197.4	197.5
147.5°	186.2	187.0	187.6	188.3	189.0	189.7	190.4	191.2	192.0	192.0	192.2
150°	181.2	181.9	182.5	183.3	184.0	184.9	185.6	186.5	187.4	187.6	187.8
152.5°	176.6	177.4	178.1	178.9	179.8	180.7	181.6	182.5	183.4	183.6	183.8
155°	172.7	173.5	174.3	175.2	176.0	176.9	177.8	178.7	179.6	179.8	180.1
157.5°	170.3	171.0	171.7	172.5	173.2	174.0	174.8	175.6	176.4	176.6	176.8
160°	168.8	169.3	170.0	170.7	171.4	172.0	172.7	173.3	174.0	174.3	174.5
162.5°	167.3	167.9	168.6	169.1	169.9	170.5	171.2	171.8	172.5	172.7	173.0
165°	166.5	166.8	167.4	167.8	168.2	168.8	169.3	169.7	170.3	170.5	170.7
167.5°	167.4	167.6	168.0	168.3	168.8	169.1	169.5	169.9	170.3	170.6	170.7
170°	167.2	167.5	167.7	168.2	168.5	168.9	169.1	169.5	169.9	170.1	170.4
172.5°	167.6	167.8	168.1	168.3	168.4	168.7	169.0	169.2	169.5	169.8	169.9
175°	168.5	168.6	168.8	168.9	168.9	169.0	169.1	169.3	169.5	169.7	169.9
177.5°	169.9	169.9	170.0	170.1	170.3	170.4	170.6	170.7	170.7	171.0	171.2
180°	170.3	170.3	170.3	170.3	170.3	170.3	170.3	170.3	170.3	170.3	170.3



TEST NUMBER: P1444643
 CATALOG NUMBER: EHBR1-12-UNV-TA-L930-UPL15

CANDELA DISTRIBUTION (continued):

	165°	167.5°	170°	172.5°	175°	177.5°	180°	182.5°	185°	187.5°	190°
0°	9445.9	9445.9	9445.9	9445.9	9445.9	9445.9	9445.9	9445.9	9445.9	9445.9	9445.9
2.5°	9414.5	9414.4	9414.2	9413.7	9413.3	9413.5	9414.0	9415.1	9416.9	9419.7	9423.3
5°	9381.5	9383.4	9384.5	9384.7	9383.7	9383.1	9384.0	9386.5	9391.8	9400.5	9412.4
7.5°	9346.9	9349.2	9352.9	9355.6	9356.2	9355.4	9355.6	9359.6	9369.3	9386.4	9410.3
10°	9309.8	9302.8	9306.5	9313.3	9318.7	9319.7	9320.3	9325.1	9339.2	9365.0	9403.4
12.5°	9275.7	9253.4	9249.1	9255.2	9263.4	9266.1	9265.4	9267.4	9283.9	9317.9	9371.5
15°	9230.7	9188.8	9174.5	9176.1	9186.2	9189.9	9187.2	9183.1	9199.2	9240.8	9310.1
17.5°	9158.0	9090.4	9064.1	9063.0	9074.7	9077.9	9071.4	9058.8	9074.6	9126.6	9212.6
20°	9047.4	8947.7	8898.1	8890.2	8903.0	8899.3	8886.4	8867.3	8888.0	8951.2	9053.5
22.5°	8848.6	8722.2	8637.5	8610.2	8625.6	8615.4	8596.4	8572.0	8599.7	8671.4	8785.4
25°	8523.7	8377.7	8261.8	8196.7	8209.0	8190.5	8170.0	8140.5	8173.4	8255.8	8381.2
27.5°	8046.2	7877.6	7733.8	7626.2	7630.1	7606.1	7582.3	7544.2	7585.3	7682.8	7824.2
30°	7411.2	7216.1	7041.1	6894.7	6881.6	6858.3	6834.0	6784.0	6835.4	6952.1	7117.4
32.5°	6613.9	6397.1	6194.9	6009.9	5975.1	5952.3	5930.6	5873.0	5940.3	6076.4	6266.3
35°	5681.3	5450.5	5231.3	5020.0	4962.1	4939.3	4920.4	4865.2	4949.3	5097.4	5302.5
37.5°	4657.7	4421.9	4204.3	3987.6	3905.9	3874.9	3861.2	3825.0	3922.1	4068.5	4274.4
40°	3606.9	3387.7	3192.5	3001.2	2908.0	2860.6	2853.5	2846.9	2940.7	3067.7	3254.7
42.5°	2623.9	2447.0	2296.6	2150.2	2065.8	2001.2	2001.2	2020.8	2105.2	2200.4	2344.6
45°	1815.0	1696.3	1600.5	1502.7	1528.8	1400.1	1475.7	1436.9	1478.6	1540.0	1633.7
47.5°	1247.7	1182.8	1130.2	1075.6	1035.8	997.7	1001.1	1025.6	1064.9	1101.3	1150.1
50°	909.3	876.3	849.5	821.2	801.3	784.6	785.5	796.1	816.8	836.0	861.5
52.5°	712.6	694.3	679.8	664.1	653.7	645.4	645.8	651.0	662.1	673.1	687.7
55°	587.3	585.1	566.1	552.1	546.7	541.1	542.2	544.1	551.8	558.1	567.8
57.5°	492.2	483.6	477.9	470.5	467.1	463.2	464.1	464.9	470.0	474.3	481.2
60°	425.0	418.9	414.9	409.8	407.6	405.1	405.7	406.2	409.4	412.2	417.2
62.5°	380.3	374.9	371.4	367.5	366.0	364.3	364.7	364.8	366.9	368.9	372.7
65°	346.1	341.8	338.9	335.5	333.9	332.1	332.3	332.3	334.1	335.5	338.4
67.5°	309.8	306.6	304.8	302.1	301.0	299.2	299.2	298.6	299.8	300.3	302.3
70°	280.8	277.6	275.2	272.6	271.2	269.7	269.7	269.7	271.0	272.3	274.8
72.5°	262.9	259.8	257.6	255.4	254.1	252.7	252.5	252.4	253.3	254.0	255.7
75°	239.1	236.6	235.3	233.3	232.2	230.7	230.4	229.7	230.2	230.4	231.6
77.5°	210.2	207.9	206.9	204.8	203.9	202.2	202.0	201.2	201.6	201.4	202.3
80°	177.4	175.3	174.7	173.0	172.5	170.9	170.7	169.8	170.0	169.3	169.7
82.5°	140.7	138.8	138.3	136.7	136.7	135.3	135.2	133.8	133.8	132.5	130.6
85°	99.1	97.7	97.0	95.7	95.4	94.2	93.6	92.2	91.8	90.9	90.6
87.5°	52.3	51.4	50.6	50.0	48.8	46.7	46.5	45.1	45.3	44.2	44.3
90°	19.2	17.6	17.1	15.6	15.1	13.9	13.5	13.7	14.3	14.6	15.1
92.5°	19.2	18.4	17.7	17.0	16.2	15.5	14.8	15.5	16.2	17.0	17.7
95°	21.7	21.1	20.4	19.8	19.2	18.4	17.8	18.4	19.2	19.9	20.5
97.5°	24.2	23.8	23.4	23.0	22.5	22.2	21.7	22.2	22.5	23.0	23.4
100°	27.9	27.4	26.9	26.5	25.9	25.5	25.0	25.6	26.0	26.6	27.0
102.5°	48.7	45.6	42.6	39.6	36.5	33.5	30.5	33.5	36.5	39.7	42.7
105°	116.7	106.4	96.2	85.9	75.7	65.5	55.3	65.6	75.8	86.0	96.2
107.5°	235.3	217.3	199.3	181.3	163.3	145.3	127.3	145.4	163.4	181.4	199.4
110°	349.5	334.0	318.4	303.0	287.4	271.9	256.3	271.9	287.4	303.0	318.5



TEST NUMBER: P1444643
 CATALOG NUMBER: EHBR1-12-UNV-TA-L930-UPL15

CANDELA DISTRIBUTION (continued):

	165°	167.5°	170°	172.5°	175°	177.5°	180°	182.5°	185°	187.5°	190°
112.5°	411.2	401.8	392.3	382.9	373.4	364.0	354.5	364.0	373.5	383.1	392.5
115°	423.9	418.9	414.0	409.0	404.0	399.0	393.9	399.1	404.1	409.2	414.3
117.5°	408.2	406.4	404.7	402.9	401.1	399.3	397.4	399.4	401.3	403.2	405.0
120°	376.1	376.2	376.4	376.5	376.7	376.8	376.9	376.9	376.9	376.9	376.9
122.5°	340.9	342.2	343.4	344.6	345.9	347.1	348.2	347.2	346.1	345.1	344.0
125°	308.5	309.9	311.2	312.4	313.6	314.9	316.0	315.1	314.0	313.0	311.8
127.5°	281.0	282.1	283.3	284.5	285.5	286.6	287.6	286.8	285.9	285.0	284.1
130°	258.1	259.1	259.8	260.7	261.5	262.3	262.9	262.4	261.8	261.4	260.6
132.5°	241.5	242.2	242.7	243.4	243.9	244.4	244.9	244.6	244.4	244.0	243.5
135°	228.6	228.9	229.3	229.6	230.0	230.3	230.4	230.5	230.4	230.4	230.2
137.5°	217.7	217.9	218.1	218.2	218.2	218.2	218.2	218.5	218.7	219.0	219.0
140°	210.4	210.7	210.8	210.8	211.1	211.1	211.0	211.4	211.6	211.6	211.7
142.5°	203.1	203.3	203.4	203.5	203.7	203.7	203.7	204.0	204.2	204.2	204.3
145°	197.7	197.7	197.7	197.8	197.8	197.7	197.6	198.0	198.3	198.5	198.7
147.5°	192.2	192.3	192.4	192.4	192.3	192.4	192.2	192.6	192.8	193.0	193.3
150°	188.0	188.2	188.5	188.7	188.7	188.8	188.8	189.0	189.2	189.3	189.4
152.5°	183.9	184.1	184.4	184.5	184.6	184.6	184.6	184.9	185.1	185.3	185.4
155°	180.3	180.5	180.7	180.9	181.1	181.3	181.4	181.5	181.6	181.7	181.8
157.5°	177.0	177.2	177.4	177.6	177.8	178.0	178.1	178.3	178.4	178.6	178.6
160°	174.7	174.9	175.0	175.3	175.5	175.6	175.7	175.9	176.1	176.2	176.3
162.5°	173.1	173.3	173.4	173.7	173.8	174.0	174.1	174.3	174.5	174.6	174.7
165°	171.0	171.3	171.5	171.7	172.0	172.3	172.4	172.5	172.5	172.6	172.6
167.5°	171.0	171.3	171.4	171.6	171.8	172.1	172.3	172.3	172.3	172.3	172.4
170°	170.6	170.7	170.9	171.1	171.4	171.5	171.7	171.7	171.7	171.8	171.8
172.5°	170.1	170.5	170.7	171.0	171.2	171.5	171.7	171.7	171.5	171.5	171.4
175°	170.1	170.4	170.5	170.7	170.9	171.2	171.5	171.3	171.3	171.1	171.0
177.5°	171.5	171.9	172.1	172.3	172.6	172.8	173.1	172.9	172.7	172.5	172.3
180°	170.3	170.3	170.3	170.3	170.3	170.3	170.3	170.3	170.3	170.3	170.3



TEST NUMBER: P1444643
 CATALOG NUMBER: EHBR1-12-UNV-TA-L930-UPL15

CANDELA DISTRIBUTION (continued):

	192.5°	195°	197.5°	200°	202.5°	205°	207.5°	210°	212.5°	215°	217.5°
0°	9445.9	9445.9	9445.9	9445.9	9445.9	9445.9	9445.9	9445.9	9445.9	9445.9	9445.9
2.5°	9428.3	9433.0	9440.2	9446.8	9456.6	9464.3	9476.0	9484.8	9498.0	9506.6	9520.9
5°	9429.1	9447.6	9471.8	9495.5	9524.0	9549.8	9581.9	9609.2	9641.5	9667.8	9700.9
7.5°	9442.4	9478.1	9520.7	9563.6	9612.2	9657.6	9708.9	9755.2	9805.8	9848.8	9895.6
10°	9452.3	9507.1	9569.9	9633.2	9699.8	9761.6	9824.0	9877.9	9928.4	9969.9	10006.5
12.5°	9438.9	9514.5	9595.2	9673.0	9747.0	9811.0	9864.7	9906.2	9934.9	9954.3	9958.8
15°	9393.6	9484.6	9572.3	9649.8	9711.2	9758.5	9783.0	9794.5	9782.2	9761.7	9716.8
17.5°	9308.9	9404.8	9483.2	9544.4	9576.8	9589.7	9569.4	9534.0	9465.1	9388.4	9277.7
20°	9153.7	9243.1	9299.9	9333.3	9324.6	9292.4	9215.8	9122.6	8984.8	8837.9	8644.1
22.5°	8881.4	8959.5	8989.8	8992.2	8939.3	8858.9	8720.6	8560.8	8343.4	8117.3	7839.4
25°	8472.6	8541.0	8545.8	8518.9	8422.0	8291.7	8088.7	7862.5	7567.1	7265.9	6917.6
27.5°	7918.2	7983.8	7967.8	7917.6	7783.0	7608.7	7348.8	7056.7	6692.4	6336.6	5951.3
30°	7221.3	7291.5	7272.6	7208.2	7048.2	6842.2	6536.3	6196.9	5792.5	5412.5	5022.0
32.5°	6387.3	6476.0	6463.0	6401.9	6234.9	6014.4	5682.4	5322.5	4908.8	4534.3	4154.4
35°	5439.3	5547.1	5552.7	5512.7	5357.6	5139.7	4812.0	4463.6	4067.2	3714.0	3363.1
37.5°	4418.1	4543.0	4568.6	4557.8	4429.3	4237.0	3938.4	3625.8	3274.8	2965.1	2665.0
40°	3391.1	3517.6	3561.4	3574.4	3479.6	3330.6	3085.6	2833.3	2547.1	2296.2	2057.8
42.5°	2454.6	2566.7	2609.1	2635.7	2576.6	2477.2	2298.4	2115.2	1905.5	1724.6	1551.1
45°	1704.7	1784.1	1816.3	1843.1	1810.9	1754.8	1641.9	1527.4	1388.9	1270.7	1158.7
47.5°	1191.9	1235.7	1257.0	1270.0	1257.5	1228.2	1166.8	1100.4	1022.2	953.2	886.7
50°	883.5	906.7	917.9	925.4	916.3	900.1	866.8	830.6	787.8	748.6	710.3
52.5°	700.1	713.4	720.0	724.1	718.9	709.0	689.7	668.2	642.4	618.3	605.5
55°	589.8	589.1	604.4	597.1	604.4	587.9	584.5	560.9	539.5	524.5	508.2
57.5°	486.4	493.3	496.3	499.6	497.4	494.4	486.2	477.7	466.5	457.1	447.0
60°	421.1	426.8	430.0	433.2	433.0	431.8	427.1	422.0	415.1	409.4	403.3
62.5°	376.1	381.0	384.2	387.3	387.6	387.1	383.5	380.0	375.2	371.6	367.4
65°	340.6	344.1	346.2	348.7	348.6	347.9	344.7	341.8	337.8	335.3	332.2
67.5°	303.5	306.1	307.8	310.2	310.7	310.7	309.0	307.6	305.7	304.9	304.0
70°	277.1	280.4	283.0	286.1	287.7	288.4	287.7	286.9	285.8	285.3	284.5
72.5°	257.2	259.9	262.0	264.7	266.2	267.3	266.7	266.3	265.3	265.2	264.6
75°	232.4	234.3	235.4	237.5	238.3	239.3	238.8	239.1	238.8	239.5	239.5
77.5°	202.6	204.0	204.5	206.0	206.1	207.4	207.6	209.1	210.1	212.4	213.5
80°	169.0	169.9	169.9	171.5	172.2	174.2	175.2	177.5	178.6	180.6	180.8
82.5°	131.4	130.4	131.4	130.7	132.6	134.9	135.3	137.2	137.7	139.0	138.0
85°	89.8	89.7	88.9	89.0	88.5	88.8	88.4	88.8	88.4	88.5	87.5
87.5°	43.0	43.4	42.5	42.8	41.9	42.3	41.5	42.2	41.2	41.3	39.9
90°	15.6	16.1	16.5	17.1	17.7	19.2	20.5	21.9	23.4	24.9	26.3
92.5°	18.4	19.2	20.0	20.7	21.4	23.6	25.8	28.0	30.3	32.4	34.7
95°	21.2	21.8	22.5	23.3	23.9	27.1	30.3	33.4	36.6	39.8	43.0
97.5°	23.9	24.3	24.8	25.1	25.6	29.3	33.1	36.9	40.6	44.4	48.1
100°	27.5	28.0	28.5	29.1	29.6	38.2	47.0	55.6	64.3	72.9	81.5
102.5°	45.7	48.7	51.8	54.9	57.9	79.0	100.0	121.0	142.0	163.0	184.0
105°	106.5	116.7	127.0	137.2	147.5	179.3	211.2	243.0	274.7	306.6	338.5
107.5°	217.4	235.4	253.5	271.5	289.5	319.5	349.3	379.4	409.3	439.2	469.0
110°	334.2	349.6	365.3	380.8	396.4	420.1	443.9	467.8	491.5	515.3	539.0



TEST NUMBER: P1444643
 CATALOG NUMBER: EHBR1-12-UNV-TA-L930-UPL15

CANDELA DISTRIBUTION (continued):

	192.5°	195°	197.5°	200°	202.5°	205°	207.5°	210°	212.5°	215°	217.5°
112.5°	402.1	411.4	421.0	430.4	440.0	457.4	474.9	492.4	509.8	527.2	544.6
115°	419.3	424.3	429.4	434.3	439.4	450.0	460.6	471.1	481.7	492.2	502.9
117.5°	406.9	408.8	410.5	412.3	414.1	419.5	425.1	430.5	436.0	441.5	446.9
120°	376.9	376.8	376.7	376.5	376.4	378.1	380.0	381.7	383.4	385.2	386.9
122.5°	342.8	341.7	340.5	339.3	338.1	337.6	337.1	336.6	336.1	335.6	335.1
125°	310.7	309.5	308.2	307.1	305.8	304.4	303.0	301.6	300.1	298.7	297.2
127.5°	283.0	282.0	281.0	279.9	278.8	277.1	275.6	273.9	272.3	270.7	269.0
130°	260.0	259.2	258.6	257.6	257.0	255.5	254.2	252.8	251.4	250.1	248.6
132.5°	243.3	242.7	242.2	241.7	241.1	239.9	238.7	237.4	236.2	234.9	233.7
135°	230.1	229.8	229.6	229.3	228.9	228.0	227.1	226.2	225.4	224.4	223.5
137.5°	219.0	219.0	219.0	219.0	219.0	218.2	217.4	216.6	216.0	215.2	214.5
140°	211.8	211.8	211.8	211.7	211.7	210.9	210.1	209.3	208.6	207.7	206.9
142.5°	204.4	204.5	204.4	204.4	204.4	203.7	203.2	202.6	202.0	201.3	200.8
145°	198.8	199.0	199.1	199.1	199.3	198.5	197.7	197.0	196.3	195.5	194.8
147.5°	193.5	193.6	193.7	193.8	194.0	193.4	192.8	192.1	191.5	190.9	190.3
150°	189.4	189.4	189.5	189.5	189.5	188.8	188.1	187.5	186.9	186.2	185.5
152.5°	185.4	185.4	185.5	185.5	185.6	185.0	184.2	183.6	182.9	182.1	181.4
155°	181.9	181.9	181.9	181.9	181.9	181.3	180.5	179.9	179.2	178.6	177.9
157.5°	178.7	178.8	178.9	178.9	178.9	178.4	177.8	177.2	176.6	176.0	175.4
160°	176.4	176.4	176.5	176.6	176.6	176.1	175.7	175.1	174.8	174.1	173.7
162.5°	174.8	174.9	174.9	175.0	175.1	174.6	174.1	173.6	173.1	172.6	172.2
165°	172.7	172.7	172.7	172.6	172.6	172.3	172.1	171.7	171.4	171.0	170.7
167.5°	172.5	172.4	172.4	172.4	172.4	172.2	172.0	171.7	171.5	171.2	170.9
170°	171.9	171.8	171.8	171.8	171.7	171.5	171.3	171.1	170.9	170.6	170.3
172.5°	171.4	171.2	171.2	171.1	170.9	170.7	170.6	170.4	170.3	170.2	170.0
175°	170.9	170.8	170.7	170.6	170.4	170.4	170.3	170.2	170.1	170.1	170.0
177.5°	172.1	171.9	171.6	171.5	171.3	171.2	171.1	171.0	171.0	170.9	170.8
180°	170.3	170.3	170.3	170.3	170.3	170.3	170.3	170.3	170.3	170.3	170.3



TEST NUMBER: P1444643
 CATALOG NUMBER: EHBR1-12-UNV-TA-L930-UPL15

CANDELA DISTRIBUTION (continued):

	220°	222.5°	225°	227.5°	230°	232.5°	235°	237.5°	240°	242.5°	245°
0°	9445.9	9445.9	9445.9	9445.9	9445.9	9445.9	9445.9	9445.9	9445.9	9445.9	9445.9
2.5°	9529.8	9470.9	9463.2	9467.3	9477.1	9480.7	9491.3	9494.3	9505.0	9507.6	9517.8
5°	9726.4	9648.6	9652.5	9671.2	9699.5	9716.4	9744.3	9758.8	9785.3	9797.5	9821.4
7.5°	9933.8	9872.7	9891.7	9923.3	9962.0	9988.8	10022.2	10044.0	10072.8	10090.7	10113.8
10°	10035.6	10018.8	10039.8	10064.6	10086.7	10104.0	10118.2	10129.5	10137.0	10143.9	10147.0
12.5°	9958.1	9984.0	9987.5	9985.1	9970.5	9959.4	9934.2	9917.2	9886.9	9868.5	9832.5
15°	9670.9	9727.9	9696.3	9648.5	9578.7	9520.4	9438.1	9376.9	9291.2	9233.1	9147.1
17.5°	9166.9	9238.7	9156.5	9046.0	8905.5	8785.3	8635.5	8516.7	8367.8	8259.5	8120.6
20°	8457.3	8524.5	8377.9	8194.7	7977.3	7794.3	7578.5	7406.3	7205.8	7056.7	6876.7
22.5°	7573.8	7621.6	7415.1	7168.2	6891.2	6662.6	6404.6	6198.2	5969.3	5798.8	5606.9
25°	6596.4	6609.3	6361.6	6077.1	5768.3	5511.4	5236.0	5019.0	4785.6	4612.7	4424.4
27.5°	5609.8	5590.9	5323.1	5021.6	4696.7	4429.8	4161.1	3957.7	3753.3	3597.6	3435.3
30°	4678.7	4632.9	4354.8	4044.8	3729.6	3490.2	3267.2	3103.9	2941.3	2817.8	2687.5
32.5°	3824.9	3760.2	3489.5	3199.1	2933.5	2748.7	2583.3	2459.8	2328.5	2224.1	2114.9
35°	3068.5	2999.6	2759.9	2513.6	2312.6	2176.4	2046.4	1945.1	1833.6	1745.6	1650.7
37.5°	2419.4	2362.9	2162.2	1968.3	1816.3	1710.8	1604.3	1521.4	1429.3	1390.5	1289.1
40°	1867.8	1828.4	1671.3	1528.5	1414.2	1364.7	1256.6	1179.2	1110.4	1053.6	998.5
42.5°	1456.9	1442.9	1290.1	1178.7	1098.3	1035.9	975.6	926.7	879.1	840.0	803.0
45°	1069.2	1058.1	990.2	926.0	871.2	827.5	786.8	753.2	722.0	696.2	672.8
47.5°	832.6	829.0	789.9	750.1	715.6	687.5	661.0	638.8	618.1	600.9	595.3
50°	677.2	676.7	653.7	629.1	604.5	588.3	571.5	558.3	545.0	534.7	523.8
52.5°	575.3	572.8	557.4	542.2	527.6	516.9	506.2	497.7	489.0	482.6	475.8
55°	495.3	498.0	489.0	479.9	470.8	464.2	456.6	451.0	445.0	441.0	436.9
57.5°	439.7	443.2	438.5	433.4	427.8	423.5	418.2	414.4	410.4	407.8	405.5
60°	399.3	403.1	401.2	398.6	395.1	392.5	389.2	387.1	384.5	383.1	381.8
62.5°	365.0	369.7	369.0	367.9	365.6	364.2	362.3	361.4	359.7	359.0	358.4
65°	330.8	336.0	336.0	335.3	334.2	333.7	332.6	332.4	331.5	331.9	331.8
67.5°	303.8	308.4	309.5	310.2	310.2	310.5	310.4	310.8	310.8	311.5	311.9
70°	284.4	287.7	288.4	289.2	289.4	290.0	290.0	290.4	290.2	290.9	291.0
72.5°	264.8	269.0	269.7	270.4	270.4	271.0	270.6	270.5	269.7	269.6	268.9
75°	240.3	245.8	246.9	247.7	247.8	248.4	247.6	247.1	245.8	245.2	244.2
77.5°	214.8	220.5	221.3	221.5	221.1	221.2	219.7	218.6	216.8	216.1	215.1
80°	181.6	189.9	190.5	190.0	188.7	188.5	187.1	186.1	183.9	183.1	182.3
82.5°	138.2	147.9	149.3	149.9	148.8	149.1	147.7	147.0	145.1	144.7	143.5
85°	87.2	97.0	98.6	98.3	97.3	97.0	96.2	96.5	96.3	96.9	97.1
87.5°	40.1	49.5	51.8	51.1	51.0	50.3	48.7	49.4	50.3	50.8	50.9
90°	27.8	32.0	33.4	32.3	30.6	29.4	27.5	26.6	24.9	23.9	22.3
92.5°	36.8	39.0	41.3	39.3	37.3	35.4	33.4	31.5	29.5	27.5	25.6
95°	46.2	49.3	52.5	49.9	47.1	44.6	42.0	39.3	36.7	34.1	31.5
97.5°	52.0	55.6	59.3	56.8	54.1	51.4	48.7	46.2	43.5	40.9	38.2
100°	90.2	98.8	107.4	99.9	92.5	85.0	77.6	70.0	62.6	55.2	47.8
102.5°	205.0	225.9	246.8	228.0	209.2	190.3	171.5	152.7	133.8	114.9	96.1
105°	370.2	401.9	433.6	404.8	376.1	347.3	318.5	289.7	260.9	232.1	203.4
107.5°	499.0	528.7	558.5	532.5	506.5	480.4	454.4	428.5	402.4	376.3	350.4
110°	562.8	586.2	609.8	592.3	575.0	557.4	539.9	522.6	505.1	487.7	470.3



TEST NUMBER: P1444643
 CATALOG NUMBER: EHBR1-12-UNV-TA-L930-UPL15

CANDELA DISTRIBUTION (continued):

	220°	222.5°	225°	227.5°	230°	232.5°	235°	237.5°	240°	242.5°	245°
112.5°	562.0	579.1	596.4	586.1	575.9	565.8	555.5	545.4	535.2	525.1	514.9
115°	513.3	523.4	533.7	529.7	525.7	521.7	517.7	513.7	509.6	505.7	501.8
117.5°	452.3	457.2	462.4	461.6	461.0	460.2	459.6	458.8	458.2	457.5	457.0
120°	388.6	389.7	391.2	391.7	392.3	392.9	393.5	394.1	394.7	395.3	395.9
122.5°	334.5	333.4	332.6	333.1	333.6	334.2	334.8	335.2	335.9	336.5	337.1
125°	295.9	293.5	291.8	291.2	290.7	290.0	289.4	288.7	288.1	287.5	286.9
127.5°	267.4	265.0	263.1	261.5	259.9	258.4	256.9	255.3	253.8	252.3	250.8
130°	247.3	245.0	243.4	241.4	239.4	237.4	235.4	233.5	231.4	229.6	227.5
132.5°	232.5	230.3	228.8	227.0	225.1	223.2	221.3	219.4	217.5	215.6	213.7
135°	222.6	220.6	219.5	217.7	216.2	214.4	212.6	210.9	209.2	207.5	205.9
137.5°	213.7	211.9	210.9	209.6	208.3	206.8	205.6	204.2	202.9	201.4	200.1
140°	206.2	204.2	203.2	202.5	201.8	201.0	200.2	199.4	198.7	197.9	197.2
142.5°	200.1	198.4	197.5	197.0	196.6	196.1	195.8	195.2	194.7	194.3	193.8
145°	194.1	192.0	191.1	191.0	191.1	191.0	191.0	191.0	191.0	190.9	190.9
147.5°	189.7	187.6	186.7	186.9	187.1	187.1	187.2	187.3	187.5	187.5	187.7
150°	184.8	182.4	181.3	181.6	181.8	182.1	182.4	182.6	182.9	183.1	183.3
152.5°	180.7	177.9	176.6	176.9	177.2	177.4	177.8	178.0	178.3	178.7	178.9
155°	177.2	174.0	172.8	172.9	173.0	173.1	173.2	173.3	173.5	173.7	174.0
157.5°	174.8	171.6	170.5	170.4	170.5	170.5	170.6	170.6	170.7	170.7	170.9
160°	173.1	170.1	168.9	168.8	168.9	168.9	168.9	168.9	169.0	169.0	169.1
162.5°	171.5	168.6	167.4	167.4	167.4	167.4	167.4	167.3	167.4	167.4	167.5
165°	170.2	167.7	166.7	166.7	166.8	166.9	167.0	167.1	167.2	167.4	167.5
167.5°	170.7	168.4	167.6	167.5	167.4	167.3	167.3	167.2	167.2	167.1	167.1
170°	170.0	168.2	167.5	167.5	167.6	167.6	167.6	167.7	167.7	167.8	167.9
172.5°	169.8	168.4	168.0	168.1	168.2	168.4	168.6	168.6	168.8	169.0	169.1
175°	169.9	169.1	169.0	169.0	169.0	169.1	169.2	169.2	169.3	169.4	169.6
177.5°	170.7	170.5	170.3	170.3	170.3	170.3	170.3	170.3	170.3	170.4	170.4
180°	170.3	170.3	170.3	170.3	170.3	170.3	170.3	170.3	170.3	170.3	170.3



TEST NUMBER: P1444643
 CATALOG NUMBER: EHBR1-12-UNV-TA-L930-UPL15

CANDELA DISTRIBUTION (continued):

	247.5°	250°	252.5°	255°	257.5°	260°	262.5°	265°	267.5°	270°	272.5°
0°	9445.9	9445.9	9445.9	9445.9	9445.9	9445.9	9445.9	9445.9	9445.9	9445.9	9445.9
2.5°	9519.8	9530.8	9530.0	9540.4	9539.8	9549.6	9547.7	9556.1	9554.2	9561.4	9557.1
5°	9832.0	9853.1	9860.1	9879.2	9883.1	9900.1	9900.5	9914.0	9912.4	9923.0	9917.4
7.5°	10127.4	10147.1	10156.5	10171.3	10178.7	10190.9	10195.7	10205.8	10208.2	10214.1	10214.0
10°	10152.3	10152.3	10156.8	10154.8	10159.0	10156.6	10161.7	10159.8	10167.3	10165.3	10170.9
12.5°	9816.9	9783.6	9771.4	9741.6	9735.0	9709.3	9711.2	9694.7	9702.6	9692.6	9709.8
15°	9095.9	9018.8	8980.6	8913.4	8892.4	8839.3	8835.0	8799.7	8809.3	8790.8	8817.7
17.5°	8030.7	7909.0	7842.4	7744.3	7705.4	7630.3	7615.2	7569.9	7576.9	7554.1	7586.6
20°	6760.5	6613.6	6529.5	6416.0	6365.5	6275.9	6252.2	6201.4	6207.9	6185.1	6221.9
22.5°	5475.9	5322.1	5227.1	5108.2	5043.7	4959.5	4934.2	4883.3	4886.1	4864.8	4900.2
25°	4295.4	4147.9	4055.7	3947.7	3891.7	3814.5	3788.0	3742.2	3744.7	3727.2	3758.9
27.5°	3322.8	3201.8	3124.6	3034.2	2983.9	2920.4	2894.6	2856.1	2855.9	2843.1	2869.6
30°	2596.6	2495.6	2426.3	2347.5	2300.3	2243.1	2218.0	2183.6	2182.1	2173.0	2194.1
32.5°	2033.0	1943.2	1880.0	1810.7	1768.4	1719.2	1695.6	1667.9	1665.4	1657.1	1674.4
35°	1580.4	1504.8	1450.5	1392.0	1396.4	1324.0	1336.0	1279.7	1264.4	1261.1	1274.0
37.5°	1221.5	1162.9	1118.7	1075.1	1045.4	1014.8	998.3	983.6	981.9	980.4	989.4
40°	956.1	915.1	883.0	853.0	832.6	814.0	803.6	795.5	793.6	792.5	797.9
42.5°	773.8	746.2	725.5	707.1	694.7	684.6	679.0	674.4	672.9	673.0	676.2
45°	653.7	637.0	623.6	612.3	604.4	607.8	597.6	602.9	595.9	603.2	598.4
47.5°	575.8	561.4	553.2	545.1	540.4	536.5	536.6	536.7	538.2	538.4	540.0
50°	515.5	507.2	501.5	496.4	493.9	491.8	492.5	493.1	494.6	494.7	495.8
52.5°	471.0	465.5	462.1	458.8	457.8	456.6	457.1	456.9	457.5	457.2	458.1
55°	434.7	432.1	431.0	429.9	430.1	429.7	429.9	428.8	428.1	427.2	428.0
57.5°	404.9	404.6	405.3	405.8	407.2	407.7	408.0	406.6	405.4	404.2	404.9
60°	382.0	382.6	384.3	385.9	387.8	388.7	389.2	388.5	387.6	386.7	387.2
62.5°	359.4	360.3	362.4	364.1	366.4	367.7	369.0	369.1	369.5	369.1	369.5
65°	333.1	334.2	336.1	337.6	339.8	340.9	342.2	342.5	343.3	343.1	343.7
67.5°	313.1	314.1	315.8	317.1	319.0	320.2	321.4	321.4	321.8	321.7	322.3
70°	291.9	292.4	293.9	295.0	296.9	298.1	299.4	299.9	300.8	300.8	301.6
72.5°	269.2	269.0	269.8	270.4	271.8	272.8	274.6	275.5	277.0	277.3	277.9
75°	244.5	244.3	245.3	245.8	247.0	247.9	250.0	251.2	253.5	254.4	254.2
77.5°	215.9	216.4	218.3	219.4	221.1	222.3	224.8	226.9	231.1	232.9	231.1
80°	183.9	184.4	186.4	187.5	189.6	191.1	194.0	196.4	200.1	201.0	199.9
82.5°	144.5	144.7	146.5	147.3	150.2	152.2	155.9	157.8	160.1	159.8	159.5
85°	98.6	99.9	102.2	104.4	108.0	111.3	114.8	117.6	115.7	118.8	115.2
87.5°	52.7	52.6	55.6	55.2	60.1	62.9	65.9	67.3	69.0	68.6	68.6
90°	21.4	20.3	20.0	18.8	18.8	17.5	17.6	16.6	16.8	15.5	17.5
92.5°	23.6	22.5	21.5	20.4	19.3	18.4	17.3	16.2	15.1	14.1	15.1
95°	28.9	27.9	26.9	25.9	25.0	24.0	23.0	22.0	21.0	20.1	21.3
97.5°	35.6	35.1	34.5	34.0	33.3	32.8	32.2	31.6	31.0	30.5	31.3
100°	40.3	40.3	40.3	40.3	40.2	40.2	40.2	40.2	40.2	40.2	40.8
102.5°	77.3	75.4	73.5	71.6	69.7	67.7	65.9	64.0	62.1	60.2	63.0
105°	174.7	167.3	160.0	152.6	145.1	137.8	130.4	123.0	115.7	108.3	115.8
107.5°	324.5	310.9	297.6	284.1	270.6	257.2	243.8	230.4	217.0	203.5	215.6
110°	452.9	438.6	424.4	410.1	395.8	381.6	367.3	353.1	338.8	324.6	336.0



TEST NUMBER: P1444643
 CATALOG NUMBER: EHBR1-12-UNV-TA-L930-UPL15

CANDELA DISTRIBUTION (continued):

	247.5°	250°	252.5°	255°	257.5°	260°	262.5°	265°	267.5°	270°	272.5°
112.5°	504.7	495.5	486.3	477.0	467.8	458.8	449.6	440.4	431.2	422.0	427.6
115°	497.8	493.4	489.0	484.7	480.2	475.9	471.4	467.1	462.8	458.4	458.8
117.5°	456.3	454.7	453.3	451.8	450.5	449.0	447.6	446.2	444.8	443.4	440.3
120°	396.6	397.0	397.4	398.0	398.4	399.1	399.4	399.9	400.6	401.1	396.9
122.5°	337.7	338.7	339.9	340.9	342.0	343.3	344.4	345.6	346.8	348.1	343.9
125°	286.3	287.4	288.5	289.5	290.6	291.8	293.0	294.2	295.3	296.7	293.2
127.5°	249.3	249.6	250.0	250.3	250.8	251.3	251.8	252.3	252.9	253.5	251.3
130°	225.6	225.2	224.8	224.6	224.1	223.9	223.7	223.5	223.3	223.1	222.2
132.5°	211.8	210.9	210.0	209.2	208.3	207.5	206.7	206.1	205.3	204.8	204.4
135°	204.1	202.8	201.6	200.4	199.2	198.2	197.0	196.1	195.1	194.1	194.3
137.5°	198.7	197.6	196.3	195.2	193.9	192.8	191.7	190.6	189.6	188.7	189.1
140°	196.4	195.2	193.9	192.8	191.7	190.5	189.5	188.5	187.4	186.6	186.8
142.5°	193.3	192.2	191.1	190.1	189.0	187.9	187.0	186.1	185.2	184.4	184.6
145°	190.9	190.1	189.2	188.4	187.7	187.0	186.2	185.6	184.9	184.4	184.5
147.5°	187.8	187.1	186.5	185.9	185.4	184.8	184.3	183.8	183.3	182.9	183.0
150°	183.6	183.2	182.8	182.4	182.0	181.7	181.3	181.0	180.7	180.5	180.4
152.5°	179.2	178.9	178.5	178.1	177.8	177.5	177.2	176.9	176.7	176.4	176.4
155°	174.1	174.0	173.8	173.6	173.4	173.4	173.2	173.2	173.1	173.0	173.0
157.5°	171.0	170.9	170.8	170.9	170.8	170.9	170.8	170.9	170.8	170.9	171.0
160°	169.3	169.2	169.0	169.1	169.0	168.9	168.8	168.9	168.8	168.7	168.9
162.5°	167.6	167.8	167.8	167.9	168.0	168.1	168.2	168.2	168.3	168.5	168.6
165°	167.7	167.6	167.6	167.5	167.5	167.5	167.5	167.5	167.5	167.6	167.8
167.5°	167.1	167.2	167.3	167.4	167.4	167.5	167.7	167.9	168.0	168.2	168.4
170°	167.9	167.9	167.9	167.9	167.9	168.0	168.0	168.0	168.1	168.2	168.2
172.5°	169.3	169.3	169.2	169.3	169.2	169.3	169.3	169.3	169.3	169.4	169.5
175°	169.6	169.8	169.9	169.9	170.0	170.1	170.2	170.3	170.4	170.5	170.5
177.5°	170.4	170.4	170.4	170.4	170.4	170.5	170.5	170.5	170.5	170.4	170.5
180°	170.3	170.3	170.3	170.3	170.3	170.3	170.3	170.3	170.3	170.3	170.3



TEST NUMBER: P1444643
 CATALOG NUMBER: EHBR1-12-UNV-TA-L930-UPL15

CANDELA DISTRIBUTION (continued):

	275°	277.5°	280°	282.5°	285°	287.5°	290°	292.5°	295°	297.5°	300°
0°	9445.9	9445.9	9445.9	9445.9	9445.9	9445.9	9445.9	9445.9	9445.9	9445.9	9445.9
2.5°	9564.2	9559.3	9564.2	9559.3	9564.2	9558.4	9562.4	9556.0	9557.6	9550.9	9552.6
5°	9925.8	9918.2	9922.2	9912.3	9913.4	9900.1	9899.9	9884.5	9880.4	9862.9	9855.2
7.5°	10218.2	10215.8	10217.2	10210.8	10210.0	10201.0	10196.7	10183.9	10175.9	10159.8	10148.7
10°	10171.9	10179.4	10181.4	10188.9	10190.5	10198.0	10199.6	10207.1	10208.7	10214.2	10214.3
12.5°	9709.0	9734.3	9740.3	9771.6	9784.8	9820.5	9839.7	9879.2	9902.5	9941.9	9966.1
15°	8817.0	8860.9	8878.3	8939.4	8973.1	9044.4	9089.2	9171.1	9228.8	9315.7	9377.7
17.5°	7589.5	7650.7	7678.3	7761.1	7815.1	7920.4	7996.1	8121.0	8216.5	8355.1	8465.1
20°	6228.3	6296.3	6333.8	6428.1	6491.9	6614.8	6709.5	6862.8	6990.7	7166.5	7316.8
22.5°	4911.3	4976.0	5017.6	5113.7	5185.5	5313.7	5419.6	5581.4	5724.7	5922.7	6102.9
25°	3770.9	3830.3	3867.9	3954.8	4022.2	4140.1	4241.0	4396.7	4537.0	4735.6	4920.3
27.5°	2882.8	2932.6	2968.8	3042.9	3102.3	3202.2	3289.0	3417.7	3538.5	3710.3	3874.9
30°	2207.1	2251.1	2286.4	2350.9	2406.1	2492.7	2569.0	2677.1	2777.1	2913.8	3044.7
32.5°	1686.6	1724.4	1755.9	1812.4	1862.4	1940.4	2009.2	2103.9	2189.7	2305.6	2413.4
35°	1285.9	1360.5	1355.2	1433.2	1445.7	1501.7	1563.1	1645.8	1721.9	1820.5	1912.1
37.5°	998.1	1019.1	1041.6	1076.0	1112.2	1163.1	1215.0	1316.1	1353.3	1427.8	1503.6
40°	804.9	819.0	833.9	857.2	882.5	918.4	956.1	1004.4	1053.9	1114.3	1176.0
42.5°	680.5	688.5	697.9	711.6	727.3	750.0	775.2	807.9	842.4	884.9	928.3
45°	607.9	604.1	607.0	614.3	623.7	637.5	653.5	673.7	696.2	723.7	753.0
47.5°	540.4	541.9	542.7	546.7	551.8	561.1	570.7	584.5	611.1	619.1	635.1
50°	495.7	496.5	496.2	498.2	500.8	506.8	513.0	522.4	531.7	544.0	555.8
52.5°	458.3	459.3	459.2	460.5	461.9	465.7	469.6	476.2	482.4	490.2	496.9
55°	428.7	430.2	430.8	431.8	432.6	434.5	436.1	439.2	441.8	446.3	450.4
57.5°	406.0	408.0	408.9	409.3	408.5	408.4	407.9	408.5	409.0	411.4	413.8
60°	388.1	389.7	390.0	389.7	388.3	387.2	385.5	385.0	384.7	385.9	387.1
62.5°	369.4	370.0	369.6	369.1	367.4	366.4	364.7	364.0	363.4	364.3	364.9
65°	343.5	344.0	343.5	343.2	341.8	340.9	339.4	338.9	338.1	338.3	338.2
67.5°	322.4	322.9	322.6	322.1	321.2	320.6	319.6	318.8	317.9	317.4	316.7
70°	301.5	301.8	301.3	300.8	299.7	299.2	298.3	298.0	297.2	297.0	296.2
72.5°	277.3	277.4	276.5	276.3	275.5	275.4	275.0	275.4	275.4	275.7	275.5
75°	252.7	252.4	251.3	251.1	250.4	250.8	250.3	250.9	250.9	251.8	252.0
77.5°	228.0	226.7	224.7	223.8	222.4	222.3	221.4	222.0	221.8	222.9	223.3
80°	196.8	195.2	192.6	191.4	189.8	189.5	188.8	189.5	189.2	190.4	191.3
82.5°	157.1	155.7	153.1	152.1	150.2	150.4	149.6	150.4	150.3	152.1	153.2
85°	116.2	115.3	112.6	110.1	107.5	105.9	104.4	104.1	103.6	104.4	105.0
87.5°	67.1	66.3	64.2	62.7	58.0	58.2	56.3	56.2	55.8	55.3	56.3
90°	17.6	19.3	19.6	21.2	21.6	23.4	23.9	25.6	26.0	27.9	28.5
92.5°	16.2	17.3	18.4	19.3	20.4	21.5	22.5	23.6	25.9	28.1	30.5
95°	22.5	23.7	25.0	26.2	27.4	28.6	29.9	31.1	34.5	37.8	41.2
97.5°	32.1	33.0	33.8	34.6	35.4	36.3	37.1	37.9	41.4	45.1	48.7
100°	41.5	42.2	42.8	43.5	44.1	44.7	45.4	46.1	53.1	60.1	67.0
102.5°	65.8	68.6	71.4	74.1	77.0	79.8	82.6	85.4	101.3	117.3	133.2
105°	123.5	131.1	138.8	146.4	154.1	161.7	169.3	176.9	202.5	228.0	253.6
107.5°	227.6	239.6	251.7	263.8	275.8	287.8	299.9	312.0	336.9	361.8	386.8
110°	347.5	359.0	370.4	381.9	393.3	404.8	416.3	427.8	442.8	457.7	472.7



TEST NUMBER: P1444643

CATALOG NUMBER: EHBR1-12-UNV-TA-L930-UPL15

CANDELA DISTRIBUTION (continued):

	275°	277.5°	280°	282.5°	285°	287.5°	290°	292.5°	295°	297.5°	300°
112.5°	433.2	438.7	444.3	449.9	455.6	461.2	466.8	472.4	479.9	487.3	494.8
115°	459.1	459.5	459.8	460.2	460.5	461.0	461.3	461.8	464.2	466.5	468.9
117.5°	437.2	434.2	431.0	428.1	425.1	422.0	419.0	416.1	415.5	415.0	414.6
120°	392.9	388.8	384.7	380.5	376.5	372.5	368.5	364.5	362.3	360.2	358.2
122.5°	339.8	335.6	331.6	327.6	323.5	319.5	315.6	311.5	310.1	308.6	307.2
125°	289.6	286.3	282.8	279.5	276.2	272.9	269.6	266.4	266.2	266.0	265.9
127.5°	249.2	247.1	245.1	243.0	241.0	239.1	237.1	235.2	236.1	236.8	237.7
130°	221.2	220.2	219.4	218.4	217.7	216.9	216.1	215.3	216.8	218.2	219.8
132.5°	204.3	204.2	204.0	203.9	203.8	203.8	203.8	203.8	205.6	207.2	209.0
135°	194.4	194.7	195.1	195.2	195.7	196.0	196.4	196.8	198.5	200.1	201.8
137.5°	189.5	189.8	190.3	190.8	191.3	191.8	192.4	192.9	194.3	195.5	196.9
140°	187.1	187.3	187.8	188.1	188.6	188.9	189.5	189.8	190.9	192.0	192.9
142.5°	184.9	185.2	185.6	185.9	186.3	186.7	187.1	187.6	188.3	189.0	189.8
145°	184.7	184.9	185.2	185.4	185.7	186.1	186.3	186.7	187.2	187.5	188.0
147.5°	183.0	183.1	183.3	183.5	183.8	183.9	184.1	184.3	184.6	184.8	185.2
150°	180.5	180.5	180.5	180.6	180.7	180.8	181.0	181.0	181.3	181.5	181.8
152.5°	176.4	176.4	176.4	176.5	176.6	176.7	176.7	176.8	177.1	177.3	177.6
155°	173.1	173.2	173.4	173.5	173.7	173.8	174.0	174.0	174.2	174.3	174.5
157.5°	171.1	171.2	171.4	171.5	171.6	171.7	171.8	172.0	172.2	172.3	172.3
160°	169.0	169.3	169.5	169.7	169.9	170.0	170.3	170.5	170.7	170.7	170.9
162.5°	168.8	168.9	169.0	169.1	169.2	169.4	169.5	169.7	169.9	170.1	170.3
165°	168.0	168.2	168.5	168.6	168.9	169.1	169.3	169.6	169.7	169.8	169.9
167.5°	168.6	168.8	169.0	169.1	169.4	169.6	169.9	170.0	170.1	170.2	170.4
170°	168.5	168.7	168.9	169.0	169.1	169.3	169.6	169.7	169.9	170.1	170.3
172.5°	169.7	169.8	169.9	169.9	170.1	170.3	170.5	170.7	170.8	171.0	171.1
175°	170.5	170.5	170.5	170.6	170.6	170.6	170.6	170.7	170.7	170.7	170.7
177.5°	170.6	170.7	170.7	170.8	170.9	171.0	171.1	171.2	171.2	171.2	171.2
180°	170.3	170.3	170.3	170.3	170.3	170.3	170.3	170.3	170.3	170.3	170.3



TEST NUMBER: P1444643
 CATALOG NUMBER: EHBR1-12-UNV-TA-L930-UPL15

CANDELA DISTRIBUTION (continued):

	302.5°	305°	307.5°	310°	312.5°	315°	317.5°	320°	322.5°	325°	327.5°
0°	9445.9	9445.9	9445.9	9445.9	9445.9	9445.9	9445.9	9445.9	9445.9	9445.9	9445.9
2.5°	9545.9	9546.3	9538.7	9538.2	9531.0	9530.1	9523.1	9520.9	9515.2	9513.2	9507.3
5°	9835.5	9826.1	9804.5	9791.7	9770.3	9756.1	9732.9	9717.8	9695.4	9678.6	9656.0
7.5°	10128.4	10113.9	10089.6	10069.8	10040.1	10016.4	9981.7	9953.1	9915.4	9882.8	9843.3
10°	10214.3	10212.1	10205.9	10196.9	10183.0	10167.5	10143.8	10119.2	10086.2	10050.3	10006.3
12.5°	10002.9	10025.8	10057.0	10075.4	10097.8	10107.7	10116.8	10114.5	10108.5	10090.4	10065.0
15°	9467.6	9531.6	9616.6	9682.4	9758.2	9813.1	9873.9	9911.8	9949.6	9967.0	9977.7
17.5°	8615.7	8737.2	8889.5	9015.7	9161.3	9278.3	9406.4	9502.9	9602.2	9673.3	9737.6
20°	7521.7	7697.6	7913.0	8103.2	8324.5	8516.7	8727.5	8900.4	9078.7	9218.2	9350.3
22.5°	6334.9	6543.9	6804.3	7045.4	7330.7	7587.0	7876.2	8127.9	8390.7	8610.3	8822.5
25°	5168.0	5397.1	5681.8	5950.9	6274.0	6572.2	6915.2	7228.8	7568.5	7863.4	8154.7
27.5°	4102.4	4327.4	4618.1	4904.5	5246.0	5563.7	5931.2	6276.9	6663.7	7020.3	7385.1
30°	3226.5	3417.3	3678.0	3955.5	4292.4	4615.7	4987.2	5342.6	5744.9	6134.3	6545.3
32.5°	2556.3	2701.7	2906.6	3141.2	3452.0	3759.8	4113.5	4456.7	4852.9	5246.2	5673.7
35°	2030.2	2143.5	2299.8	2482.9	2746.1	3011.4	3324.3	3636.3	4005.9	4379.2	4794.7
37.5°	1600.9	1692.9	1815.3	1952.8	2164.0	2381.7	2638.2	2896.9	3218.1	3549.0	3925.5
40°	1250.1	1324.6	1419.9	1522.4	1681.8	1849.6	2048.0	2248.6	2506.7	2777.1	3088.7
42.5°	982.0	1037.0	1104.3	1179.2	1328.0	1417.1	1551.7	1696.7	1886.5	2082.8	2317.1
45°	788.7	826.2	872.9	923.1	992.2	1067.7	1159.8	1256.5	1436.7	1525.1	1667.6
47.5°	658.6	683.8	713.5	745.2	785.9	829.8	884.5	940.3	1012.6	1087.5	1175.2
50°	571.0	596.6	606.9	623.3	646.8	671.9	702.8	733.5	772.3	811.6	856.7
52.5°	506.1	514.4	525.5	535.9	550.5	579.1	588.3	604.4	626.1	647.4	671.1
55°	456.4	461.8	469.0	475.3	484.2	492.6	504.7	515.5	530.0	542.8	558.6
57.5°	417.8	421.2	426.2	430.3	436.0	440.8	448.0	453.8	462.1	469.4	478.9
60°	389.7	392.0	395.3	398.1	401.6	404.1	407.7	410.5	414.8	418.5	423.8
62.5°	366.7	368.0	370.2	371.7	374.0	375.3	377.1	378.4	380.8	382.7	385.6
65°	339.3	339.5	340.9	341.7	343.4	344.2	345.7	346.2	348.3	349.6	352.2
67.5°	316.7	316.1	316.1	315.6	315.8	315.3	315.5	314.8	315.6	316.1	318.0
70°	296.1	295.2	295.0	294.0	293.7	292.7	292.5	291.6	291.5	291.2	291.9
72.5°	276.1	275.8	275.9	275.2	275.1	274.5	274.5	274.1	274.6	274.7	275.6
75°	253.0	253.0	253.5	252.9	253.1	252.5	252.7	252.2	252.5	252.4	253.3
77.5°	224.9	225.5	226.8	226.5	226.9	226.3	226.5	225.8	226.1	225.5	225.9
80°	193.3	194.7	196.3	196.3	197.0	196.5	197.1	196.5	196.8	195.9	195.7
82.5°	155.9	157.0	158.8	158.8	160.4	160.7	162.4	162.3	163.3	162.7	162.2
85°	106.5	107.3	108.9	109.7	111.3	112.3	113.9	114.6	113.4	115.6	113.9
87.5°	55.6	57.7	56.5	59.3	58.6	61.3	60.8	63.3	62.7	65.0	64.7
90°	30.7	31.5	33.8	34.7	37.3	38.5	38.9	37.5	38.0	36.6	37.0
92.5°	32.7	35.0	37.3	39.7	41.9	44.2	42.1	39.9	37.9	35.7	33.6
95°	44.6	47.9	51.2	54.6	57.9	61.3	57.7	54.1	50.5	46.9	43.3
97.5°	52.3	55.9	59.5	63.1	66.7	70.3	66.0	61.8	57.6	53.4	49.1
100°	74.0	81.0	88.0	94.9	101.9	108.9	101.0	93.0	85.2	77.3	69.2
102.5°	149.3	165.3	181.3	197.3	213.2	229.2	212.4	195.6	178.7	161.8	145.0
105°	279.1	304.8	330.3	355.9	381.4	407.1	379.8	352.4	325.2	297.9	270.5
107.5°	411.7	436.6	461.6	486.6	511.5	536.5	508.8	481.0	453.4	425.7	398.0
110°	487.7	502.7	517.7	532.7	547.7	562.8	542.5	522.3	502.2	481.8	461.6



TEST NUMBER: P1444643
 CATALOG NUMBER: EHBR1-12-UNV-TA-L930-UPL15

CANDELA DISTRIBUTION (continued):

	302.5°	305°	307.5°	310°	312.5°	315°	317.5°	320°	322.5°	325°	327.5°
112.5°	502.2	509.7	517.2	524.8	532.2	539.8	525.3	510.9	496.4	481.9	467.5
115°	471.3	473.6	476.0	478.4	480.8	483.2	473.4	463.7	453.8	444.1	434.3
117.5°	414.1	413.7	413.2	412.9	412.2	411.9	406.4	400.9	395.4	389.9	384.3
120°	356.2	354.0	352.0	350.0	347.9	345.9	343.5	341.1	338.8	336.4	334.0
122.5°	305.7	304.3	302.9	301.4	299.9	298.4	297.5	296.6	295.6	294.6	293.7
125°	265.8	265.7	265.6	265.4	265.3	265.1	264.7	264.1	263.6	263.1	262.5
127.5°	238.4	239.3	240.0	240.9	241.6	242.4	242.1	242.1	241.9	241.7	241.5
130°	221.3	222.7	224.1	225.6	227.0	228.5	228.2	227.9	227.5	227.2	226.9
132.5°	210.8	212.4	214.1	215.8	217.4	219.1	218.8	218.3	217.9	217.6	217.2
135°	203.4	205.0	206.6	208.3	209.7	211.3	210.8	210.4	209.8	209.4	209.0
137.5°	198.1	199.4	200.6	201.8	203.1	204.3	203.8	203.4	202.8	202.4	201.9
140°	193.9	195.0	195.9	196.9	197.9	198.9	198.3	197.7	197.0	196.5	195.9
142.5°	190.5	191.2	192.0	192.7	193.4	194.1	193.3	192.5	191.7	191.0	190.2
145°	188.6	188.9	189.4	189.9	190.2	190.7	189.7	188.9	187.9	187.1	186.2
147.5°	185.4	185.6	185.8	186.1	186.2	186.6	185.7	184.8	184.0	183.1	182.2
150°	182.0	182.2	182.4	182.6	182.9	183.0	182.1	181.3	180.4	179.5	178.7
152.5°	177.8	178.0	178.1	178.3	178.5	178.7	177.9	177.1	176.3	175.4	174.5
155°	174.6	174.8	174.8	174.9	175.0	175.1	174.4	173.8	173.1	172.3	171.6
157.5°	172.4	172.6	172.7	172.8	172.9	173.0	172.4	171.9	171.4	170.8	170.3
160°	171.0	171.1	171.2	171.3	171.4	171.5	170.9	170.6	170.1	169.7	169.1
162.5°	170.5	170.7	170.8	170.9	171.2	171.3	170.8	170.3	169.8	169.2	168.6
165°	170.0	170.1	170.2	170.3	170.4	170.5	170.0	169.8	169.3	169.0	168.6
167.5°	170.5	170.6	170.7	170.7	170.7	170.8	170.5	170.2	169.8	169.4	169.0
170°	170.5	170.6	170.7	170.8	171.0	171.1	170.8	170.6	170.2	169.9	169.7
172.5°	171.3	171.4	171.5	171.6	171.7	171.9	171.5	171.3	170.9	170.6	170.3
175°	170.7	170.8	170.9	170.9	170.9	170.9	170.7	170.4	170.2	169.9	169.7
177.5°	171.2	171.2	171.2	171.2	171.2	171.2	171.0	170.8	170.7	170.5	170.3
180°	170.3	170.3	170.3	170.3	170.3	170.3	170.3	170.3	170.3	170.3	170.3



TEST NUMBER: P1444643
 CATALOG NUMBER: EHBR1-12-UNV-TA-L930-UPL15

CANDELA DISTRIBUTION (continued):

	330°	332.5°	335°	337.5°	340°	342.5°	345°	347.5°	350°	352.5°	355°
0°	9445.9	9445.9	9445.9	9445.9	9445.9	9445.9	9445.9	9445.9	9445.9	9445.9	9445.9
2.5°	9505.2	9501.1	9498.5	9495.1	9493.0	9490.4	9488.5	9486.8	9485.5	9484.2	9483.3
5°	9638.9	9617.7	9601.2	9583.3	9568.7	9554.0	9542.8	9533.4	9527.0	9522.1	9519.2
7.5°	9809.1	9770.2	9735.6	9699.2	9666.5	9634.5	9606.8	9583.0	9565.0	9553.5	9546.5
10°	9961.1	9909.0	9857.5	9803.3	9751.9	9702.1	9656.0	9615.6	9583.6	9562.3	9549.9
12.5°	10029.1	9984.9	9932.3	9873.4	9810.5	9746.7	9684.6	9628.6	9581.6	9550.1	9531.8
15°	9969.2	9951.0	9915.3	9869.6	9809.8	9744.0	9671.1	9602.5	9539.5	9498.6	9474.9
17.5°	9774.0	9799.4	9796.7	9779.3	9736.2	9680.8	9606.5	9529.5	9450.6	9396.0	9366.1
20°	9444.7	9524.6	9565.0	9585.9	9569.0	9533.1	9465.8	9387.6	9295.7	9224.4	9180.8
22.5°	8981.8	9122.9	9210.8	9275.1	9288.7	9276.5	9217.1	9142.7	9040.3	8954.5	8890.2
25°	8386.0	8592.6	8731.6	8840.5	8882.8	8893.7	8843.1	8769.3	8655.0	8555.1	8466.7
27.5°	7684.2	7952.7	8138.2	8284.5	8350.6	8379.2	8332.7	8257.3	8122.1	8002.9	7887.5
30°	6894.1	7212.7	7436.0	7611.5	7692.0	7729.8	7680.4	7596.2	7439.0	7295.4	7150.1
32.5°	6048.4	6397.0	6640.4	6830.9	6910.7	6946.3	6881.6	6787.2	6605.4	6436.3	6266.8
35°	5163.1	5514.9	5760.3	5945.9	6012.7	6034.2	5951.5	5842.2	5640.8	5455.3	5270.4
37.5°	4259.6	4587.1	4810.1	4976.5	5017.9	5021.6	4921.9	4801.3	4589.6	4406.7	4222.7
40°	3364.1	3640.1	3820.2	3953.5	3967.8	3955.0	3846.7	3725.2	3527.2	3363.3	3201.8
42.5°	2520.4	2728.8	2857.3	2948.6	2943.2	2917.9	2818.6	2714.1	2550.8	2425.9	2298.9
45°	1797.7	1935.1	2010.2	2063.7	2046.5	2022.4	1945.1	1871.9	1760.9	1680.2	1594.9
47.5°	1248.9	1413.0	1384.4	1488.9	1398.9	1458.3	1334.6	1266.3	1207.4	1164.5	1116.2
50°	894.1	931.7	949.9	962.3	955.7	946.6	924.3	904.4	877.5	857.9	835.0
52.5°	690.5	709.3	719.6	727.1	725.6	722.3	712.6	703.7	691.1	682.8	672.8
55°	584.9	585.1	604.1	596.0	607.9	593.9	599.5	583.9	586.4	573.0	564.0
57.5°	486.0	493.7	497.2	500.6	499.6	499.0	495.3	493.3	489.1	487.8	484.8
60°	427.5	431.6	432.4	433.9	432.6	432.1	429.2	428.1	425.3	424.8	422.8
62.5°	387.4	389.4	389.4	389.4	387.8	386.1	382.9	381.2	378.8	378.3	377.1
65°	354.0	356.1	356.5	356.9	355.7	354.4	351.6	349.7	347.2	346.2	344.9
67.5°	319.4	321.6	322.4	323.6	322.9	322.6	320.6	319.9	318.3	317.9	316.7
70°	292.2	293.2	293.1	293.1	291.6	290.2	287.9	286.9	285.1	284.7	283.6
72.5°	276.1	276.8	276.3	275.7	273.8	271.7	269.0	267.1	264.8	263.5	261.9
75°	253.4	254.2	253.7	253.4	251.6	250.2	248.1	247.0	245.4	245.0	243.9
77.5°	225.5	225.9	225.0	224.9	223.5	222.7	221.1	220.8	219.7	219.7	218.6
80°	194.4	194.2	192.8	192.4	191.1	190.7	189.5	189.5	188.7	189.0	188.3
82.5°	160.0	159.1	157.2	156.7	155.1	154.9	154.1	154.8	154.2	155.1	154.5
85°	114.7	114.9	114.1	114.1	113.6	113.7	113.7	114.2	114.2	115.0	115.0
87.5°	63.9	64.9	64.7	65.5	65.5	66.4	66.7	68.1	68.3	69.6	69.6
90°	35.6	36.3	34.9	35.5	34.8	35.8	35.6	36.5	36.0	36.8	36.0
92.5°	31.5	29.4	27.3	25.1	24.1	22.9	22.0	20.8	19.8	18.6	17.6
95°	39.7	36.1	32.4	28.9	27.6	26.4	25.2	24.0	22.7	21.5	20.3
97.5°	44.8	40.6	36.4	32.1	31.0	29.9	28.8	27.7	26.6	25.6	24.5
100°	61.3	53.4	45.4	37.5	36.6	35.7	34.8	34.0	33.0	32.0	31.1
102.5°	128.2	111.3	94.5	77.6	74.4	71.2	68.1	64.8	61.6	58.4	55.3
105°	243.3	216.0	188.7	161.3	152.7	143.9	135.3	126.6	117.9	109.3	100.6
107.5°	370.2	342.5	314.8	287.0	271.0	255.0	238.9	222.9	206.8	190.8	174.8
110°	441.4	421.2	400.9	380.6	367.8	354.9	341.9	329.0	316.0	303.1	290.2



TEST NUMBER: P1444643
 CATALOG NUMBER: EHBR1-12-UNV-TA-L930-UPL15

CANDELA DISTRIBUTION (continued):

	330°	332.5°	335°	337.5°	340°	342.5°	345°	347.5°	350°	352.5°	355°
112.5°	453.0	438.4	423.9	409.4	403.6	397.7	391.9	386.0	380.1	374.2	368.3
115°	424.4	414.6	404.8	394.9	392.8	390.8	388.8	386.7	384.5	382.4	380.3
117.5°	378.8	373.3	367.7	362.2	362.5	362.9	363.1	363.5	363.8	364.0	364.2
120°	331.6	329.3	326.8	324.5	326.2	327.9	329.7	331.3	333.1	334.7	336.3
122.5°	292.7	291.8	290.8	289.7	291.8	294.0	296.0	298.1	300.1	302.1	304.1
125°	262.1	261.5	260.9	260.4	262.5	264.7	266.8	268.8	270.9	272.9	274.8
127.5°	241.3	241.1	241.0	240.7	242.3	243.6	245.2	246.6	247.9	249.3	250.7
130°	226.5	226.2	225.8	225.5	226.9	228.2	229.6	230.8	232.1	233.2	234.4
132.5°	216.8	216.4	215.9	215.6	216.5	217.3	218.4	219.1	220.0	220.7	221.5
135°	208.5	207.9	207.5	207.0	207.8	208.8	209.6	210.3	211.1	211.7	212.4
137.5°	201.5	200.9	200.4	199.9	200.7	201.5	202.2	202.9	203.5	204.2	204.8
140°	195.3	194.6	194.1	193.5	194.2	194.8	195.5	196.1	196.8	197.2	197.8
142.5°	189.4	188.5	187.9	187.0	187.5	187.9	188.4	188.8	189.3	189.6	190.0
145°	185.4	184.4	183.5	182.6	183.0	183.3	183.7	184.0	184.4	184.6	184.8
147.5°	181.4	180.5	179.7	178.8	179.1	179.4	179.7	179.8	180.1	180.3	180.5
150°	177.7	176.8	175.9	174.9	175.2	175.5	175.6	175.9	176.0	176.2	176.4
152.5°	173.6	172.8	171.9	171.0	171.2	171.4	171.5	171.7	171.8	172.0	172.1
155°	170.9	170.1	169.4	168.7	168.9	169.0	169.2	169.3	169.3	169.5	169.6
157.5°	169.7	169.0	168.5	167.9	168.0	168.0	168.1	168.0	168.0	168.0	168.0
160°	168.7	168.2	167.7	167.1	167.1	167.2	167.2	167.2	167.2	167.1	167.1
162.5°	168.1	167.5	166.9	166.4	166.4	166.4	166.5	166.4	166.3	166.3	166.2
165°	168.2	167.7	167.4	166.8	166.8	166.7	166.7	166.6	166.5	166.4	166.2
167.5°	168.6	168.2	167.8	167.3	167.4	167.4	167.4	167.4	167.4	167.3	167.3
170°	169.3	168.9	168.6	168.2	168.2	168.2	168.1	168.0	167.9	167.8	167.7
172.5°	169.9	169.6	169.3	168.9	168.9	168.8	168.8	168.7	168.6	168.5	168.5
175°	169.4	169.2	168.9	168.6	168.5	168.5	168.5	168.4	168.3	168.3	168.2
177.5°	170.1	169.9	169.8	169.6	169.5	169.5	169.5	169.4	169.4	169.4	169.4
180°	170.3	170.3	170.3	170.3	170.3	170.3	170.3	170.3	170.3	170.3	170.3



TEST NUMBER: P1444643
 CATALOG NUMBER: EHBR1-12-UNV-TA-L930-UPL15

CANDELA DISTRIBUTION (continued):

	357.5°	360°
0°	9445.9	9445.9
2.5°	9482.5	9482.0
5°	9517.7	9517.2
7.5°	9544.5	9544.4
10°	9547.8	9549.4
12.5°	9528.7	9530.0
15°	9473.1	9475.7
17.5°	9366.7	9370.1
20°	9183.5	9187.0
22.5°	8886.7	8888.2
25°	8455.3	8449.2
27.5°	7867.2	7856.6
30°	7119.6	7109.3
32.5°	6228.2	6221.8
35°	5224.7	5220.7
37.5°	4168.3	4160.1
40°	3142.7	3118.8
42.5°	2243.2	2201.3
45°	1550.2	1500.6
47.5°	1082.2	1051.5
50°	820.3	810.4
52.5°	668.4	666.1
55°	564.0	562.9
57.5°	485.5	485.1
60°	423.8	423.7
62.5°	377.8	378.0
65°	345.5	345.6
67.5°	317.0	316.8
70°	284.1	283.8
72.5°	261.4	261.0
75°	243.9	243.6
77.5°	219.0	218.6
80°	188.7	188.3
82.5°	155.2	154.7
85°	115.8	115.8
87.5°	70.8	70.8
90°	36.7	35.7
92.5°	16.6	15.6
95°	19.1	17.8
97.5°	23.4	22.4
100°	30.2	29.3
102.5°	52.0	48.8
105°	91.9	83.2
107.5°	158.7	142.7
110°	277.2	264.3



TEST NUMBER: P1444643
CATALOG NUMBER: EHBR1-12-UNV-TA-L930-UPL15

CANDELA DISTRIBUTION (continued):

	357.5°	360°
112.5°	362.4	356.5
115°	378.2	376.1
117.5°	364.5	364.7
120°	337.9	339.5
122.5°	306.0	307.9
125°	276.7	278.7
127.5°	251.8	253.1
130°	235.3	236.5
132.5°	222.3	222.8
135°	213.1	213.6
137.5°	205.3	205.8
140°	198.1	198.6
142.5°	190.3	190.5
145°	185.1	185.3
147.5°	180.5	180.6
150°	176.4	176.5
152.5°	172.2	172.3
155°	169.6	169.7
157.5°	167.9	167.8
160°	167.0	167.0
162.5°	166.2	166.1
165°	166.0	165.9
167.5°	167.2	167.2
170°	167.6	167.5
172.5°	168.4	168.3
175°	168.2	168.2
177.5°	169.4	169.3
180°	170.3	170.3

LM-79-2019: Approved Method: Electrical and Photometric Measurements of Solid-
State Lighting Products

Report Prepared for

Cooper Lighting Solutions

Metalux

Report Number: SP1-2506-472-5

Test Date: 08/01/2025

Luminaire Tested: EHBR-60-L930-N

Data in this report applies to families of products including EHBR-60-L930-N

Test Information

Test Method: LM-79-2019
 Report Number: SP1-2506-472-5
 Test Lab: COOPER LIGHTING SOLUTIONS
 Photometer: SP1 - 76IN SPHERE
 Measurement Geometry: 4π
 Issue Date: 08/05/2025
 Manufacturer: COOPER LIGHTING SOLUTIONS
 Product Line: Metalux
 Catalog Number: **EHBR-60-L930-N**
 Description: Elevate Round Highbay at, 60000 lumens, 3000K 90CRI LEDs with N lens

Spectral Parameters

CCT (K): 2996
 CIE u': 0.2519
 CIE v': 0.5169
 Duv: -0.0033
 CIE x: 0.4325
 CIE y: 0.3945
 CIE z: 0.1730
 Peak Wavelength (nm): 630
 Dominant Wavelength (nm): 584
 Purity: 48.21818
 Rf: 91.3
 Rg: 102

CRI (Ra):	94.4		
R1:	96.8	R9:	61.4
R2:	98.1	R10:	94.4
R3:	97.8	R11:	95.7
R4:	95.6	R12:	88.5
R5:	96.9	R13:	97.3
R6:	95.7	R14:	97.8
R7:	90.9	R15:	92.3
R8:	83.0		



Test Conditions

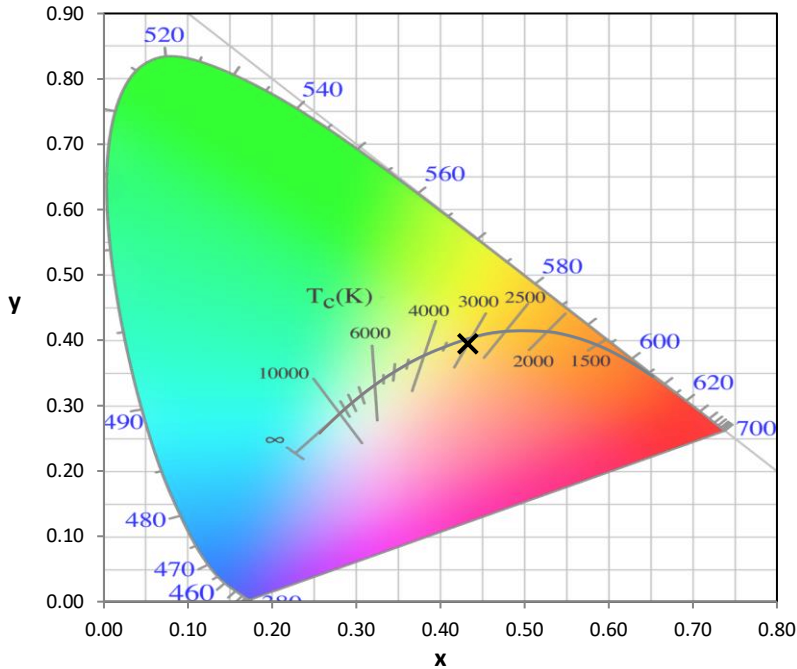
Stabilization Time: 40M
 Operation Time: 1H 40M
 Sphere Temperature (°C): 25.0

REPORT NUMBER: SP1-2506-472-5

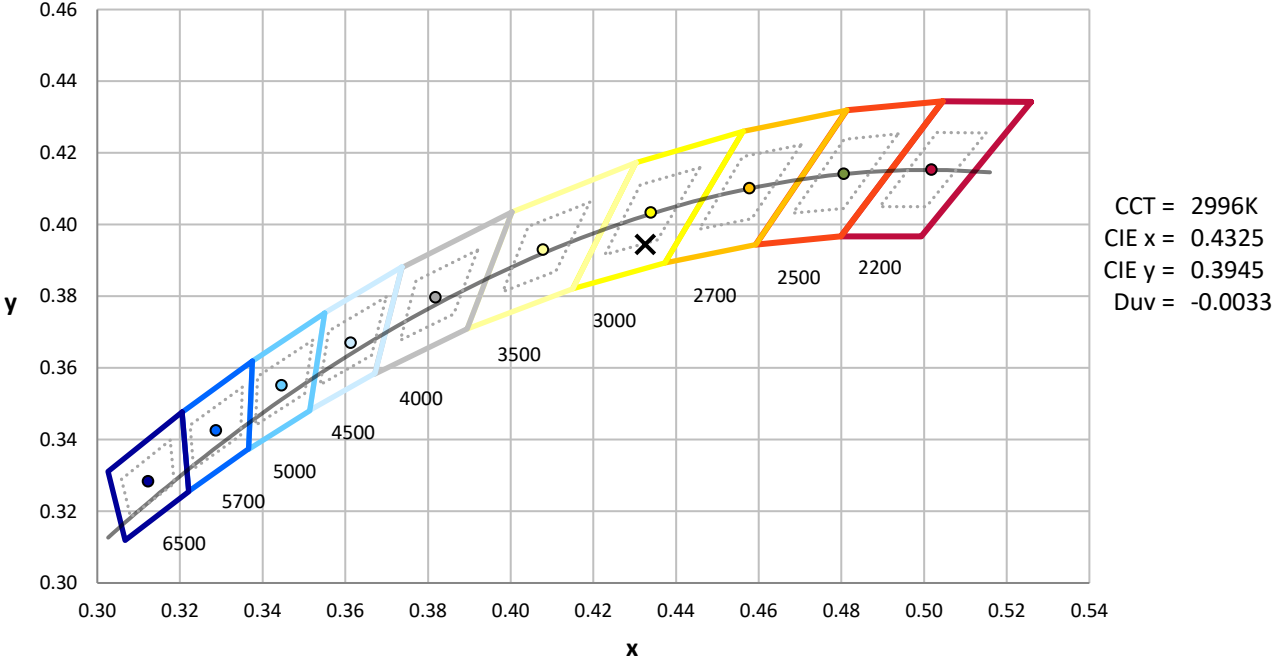
Measurement and Test Equipment			
Instrument	Identification Number	Calibration Date	Calibration Due Date
Photometer	76INCH SPHERE IN0058	6/16/2025	12/16/2025
Power Meter	XITRON INXT2011004	1/21/2025	1/21/2026
AC Power Source	CHROMA 61603 IN0063	10/22/2024	10/22/2025
DC Power Source	AGILENT E3634A IN0208	10/22/2024	10/22/2025
Sphere Thermometer	ONSET IN0085	10/22/2024	10/22/2025
Room Thermometer	ONSET IN0046	10/22/2024	10/22/2025

REPORT NUMBER: SP1-2506-472-5

CIE 1931 Chromaticity Diagram



CIE 1931 Chromaticity Diagram with 2017 ANSI 7-Step and 4-Step Quadrangles



Point lies inside the ANSI 3000K 7-step quadrangle

REPORT NUMBER: SP1-2506-472-5

Photopic Flux vs. Wavelength

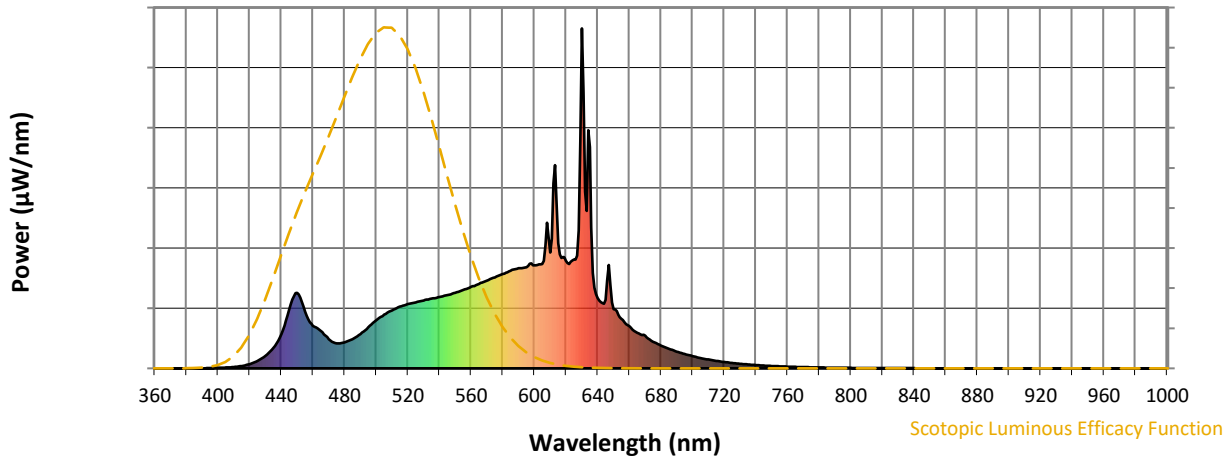


Photopic Lumens: NR

λ (nm)	Power $\text{W}^{\wedge}/\text{nm}$	Lumens (ϕ/nm)	λ (nm)	Power $\text{W}^{\wedge}/\text{nm}$	Lumens (ϕ/nm)	λ (nm)	Power $\text{W}^{\wedge}/\text{nm}$	Lumens (ϕ/nm)	λ (nm)	Power $\text{W}^{\wedge}/\text{nm}$	Lumens (ϕ/nm)	λ (nm)	Power $\text{W}^{\wedge}/\text{nm}$	Lumens (ϕ/nm)
360	0	NR	490	101	NR	620	317	NR	750	7	NR	880	0	NR
365	0	NR	495	121	NR	625	320	NR	755	6	NR	885	0	NR
370	0	NR	500	141	NR	630	1000	NR	760	5	NR	890	0	NR
375	0	NR	505	158	NR	635	651	NR	765	4	NR	895	0	NR
380	0	NR	510	171	NR	640	207	NR	770	4	NR	900	0	NR
385	0	NR	515	182	NR	645	201	NR	775	3	NR	905	0	NR
390	0	NR	520	189	NR	650	174	NR	780	3	NR	910	0	NR
395	1	NR	525	194	NR	655	146	NR	785	2	NR	915	0	NR
400	1	NR	530	199	NR	660	124	NR	790	2	NR	920	0	NR
405	3	NR	535	205	NR	665	105	NR	795	2	NR	925	0	NR
410	4	NR	540	210	NR	670	96	NR	800	1	NR	930	0	NR
415	7	NR	545	216	NR	675	79	NR	805	1	NR	935	0	NR
420	13	NR	550	222	NR	680	67	NR	810	1	NR	940	0	NR
425	22	NR	555	230	NR	685	58	NR	815	1	NR	945	0	NR
430	37	NR	560	240	NR	690	49	NR	820	1	NR	950	0	NR
435	60	NR	565	248	NR	695	42	NR	825	1	NR	955	0	NR
440	101	NR	570	258	NR	700	36	NR	830	1	NR	960	0	NR
445	172	NR	575	268	NR	705	30	NR	835	1	NR	965	0	NR
450	223	NR	580	278	NR	710	26	NR	840	1	NR	970	0	NR
455	167	NR	585	287	NR	715	22	NR	845	0	NR	975	0	NR
460	126	NR	590	295	NR	720	19	NR	850	0	NR	980	0	NR
465	111	NR	595	298	NR	725	16	NR	855	0	NR	985	0	NR
470	86	NR	600	303	NR	730	14	NR	860	0	NR	990	0	NR
475	74	NR	605	307	NR	735	12	NR	865	0	NR	995	0	NR
480	77	NR	610	341	NR	740	10	NR	870	0	NR	1000	0	NR
485	86	NR	615	368	NR	745	8	NR	875	0	NR			

REPORT NUMBER: SP1-2506-472-5

Scotopic Flux vs. Wavelength



Scotopic Lumens: NR

S/P: 1.44

λ (nm)	Power W [^] /nm	Lumens (φ/nm)	λ (nm)	Power W [^] /nm	Lumens (φ/nm)	λ (nm)	Power W [^] /nm	Lumens (φ/nm)	λ (nm)	Power W [^] /nm	Lumens (φ/nm)	λ (nm)	Power W [^] /nm	Lumens (φ/nm)
360	0	NR	490	101	NR	620	317	NR	750	7	NR	880	0	NR
365	0	NR	495	121	NR	625	320	NR	755	6	NR	885	0	NR
370	0	NR	500	141	NR	630	1000	NR	760	5	NR	890	0	NR
375	0	NR	505	158	NR	635	651	NR	765	4	NR	895	0	NR
380	0	NR	510	171	NR	640	207	NR	770	4	NR	900	0	NR
385	0	NR	515	182	NR	645	201	NR	775	3	NR	905	0	NR
390	0	NR	520	189	NR	650	174	NR	780	3	NR	910	0	NR
395	1	NR	525	194	NR	655	146	NR	785	2	NR	915	0	NR
400	1	NR	530	199	NR	660	124	NR	790	2	NR	920	0	NR
405	3	NR	535	205	NR	665	105	NR	795	2	NR	925	0	NR
410	4	NR	540	210	NR	670	96	NR	800	1	NR	930	0	NR
415	7	NR	545	216	NR	675	79	NR	805	1	NR	935	0	NR
420	13	NR	550	222	NR	680	67	NR	810	1	NR	940	0	NR
425	22	NR	555	230	NR	685	58	NR	815	1	NR	945	0	NR
430	37	NR	560	240	NR	690	49	NR	820	1	NR	950	0	NR
435	60	NR	565	248	NR	695	42	NR	825	1	NR	955	0	NR
440	101	NR	570	258	NR	700	36	NR	830	1	NR	960	0	NR
445	172	NR	575	268	NR	705	30	NR	835	1	NR	965	0	NR
450	223	NR	580	278	NR	710	26	NR	840	1	NR	970	0	NR
455	167	NR	585	287	NR	715	22	NR	845	0	NR	975	0	NR
460	126	NR	590	295	NR	720	19	NR	850	0	NR	980	0	NR
465	111	NR	595	298	NR	725	16	NR	855	0	NR	985	0	NR
470	86	NR	600	303	NR	730	14	NR	860	0	NR	990	0	NR
475	74	NR	605	307	NR	735	12	NR	865	0	NR	995	0	NR
480	77	NR	610	341	NR	740	10	NR	870	0	NR	1000	0	NR
485	86	NR	615	368	NR	745	8	NR	875	0	NR			

REPORT NUMBER: SP1-2506-472-5

Melanopic Flux vs. Wavelength



Melanopic Lumens: NR

M/P: 2.85

λ (nm)	Power W [^] /nm	Lumens (φ/nm)	λ (nm)	Power W [^] /nm	Lumens (φ/nm)	λ (nm)	Power W [^] /nm	Lumens (φ/nm)	λ (nm)	Power W [^] /nm	Lumens (φ/nm)	λ (nm)	Power W [^] /nm	Lumens (φ/nm)
360	0	NR	490	101	NR	620	317	NR	750	7	NR	880	0	NR
365	0	NR	495	121	NR	625	320	NR	755	6	NR	885	0	NR
370	0	NR	500	141	NR	630	1000	NR	760	5	NR	890	0	NR
375	0	NR	505	158	NR	635	651	NR	765	4	NR	895	0	NR
380	0	NR	510	171	NR	640	207	NR	770	4	NR	900	0	NR
385	0	NR	515	182	NR	645	201	NR	775	3	NR	905	0	NR
390	0	NR	520	189	NR	650	174	NR	780	3	NR	910	0	NR
395	1	NR	525	194	NR	655	146	NR	785	2	NR	915	0	NR
400	1	NR	530	199	NR	660	124	NR	790	2	NR	920	0	NR
405	3	NR	535	205	NR	665	105	NR	795	2	NR	925	0	NR
410	4	NR	540	210	NR	670	96	NR	800	1	NR	930	0	NR
415	7	NR	545	216	NR	675	79	NR	805	1	NR	935	0	NR
420	13	NR	550	222	NR	680	67	NR	810	1	NR	940	0	NR
425	22	NR	555	230	NR	685	58	NR	815	1	NR	945	0	NR
430	37	NR	560	240	NR	690	49	NR	820	1	NR	950	0	NR
435	60	NR	565	248	NR	695	42	NR	825	1	NR	955	0	NR
440	101	NR	570	258	NR	700	36	NR	830	1	NR	960	0	NR
445	172	NR	575	268	NR	705	30	NR	835	1	NR	965	0	NR
450	223	NR	580	278	NR	710	26	NR	840	1	NR	970	0	NR
455	167	NR	585	287	NR	715	22	NR	845	0	NR	975	0	NR
460	126	NR	590	295	NR	720	19	NR	850	0	NR	980	0	NR
465	111	NR	595	298	NR	725	16	NR	855	0	NR	985	0	NR
470	86	NR	600	303	NR	730	14	NR	860	0	NR	990	0	NR
475	74	NR	605	307	NR	735	12	NR	865	0	NR	995	0	NR
480	77	NR	610	341	NR	740	10	NR	870	0	NR	1000	0	NR
485	86	NR	615	368	NR	745	8	NR	875	0	NR			

Summary

$R_f = 91.3$
 $R_g = 102$
 $CIE R_a = 94.4$
 $R_9 = 61.4$



Color Vector Graphics

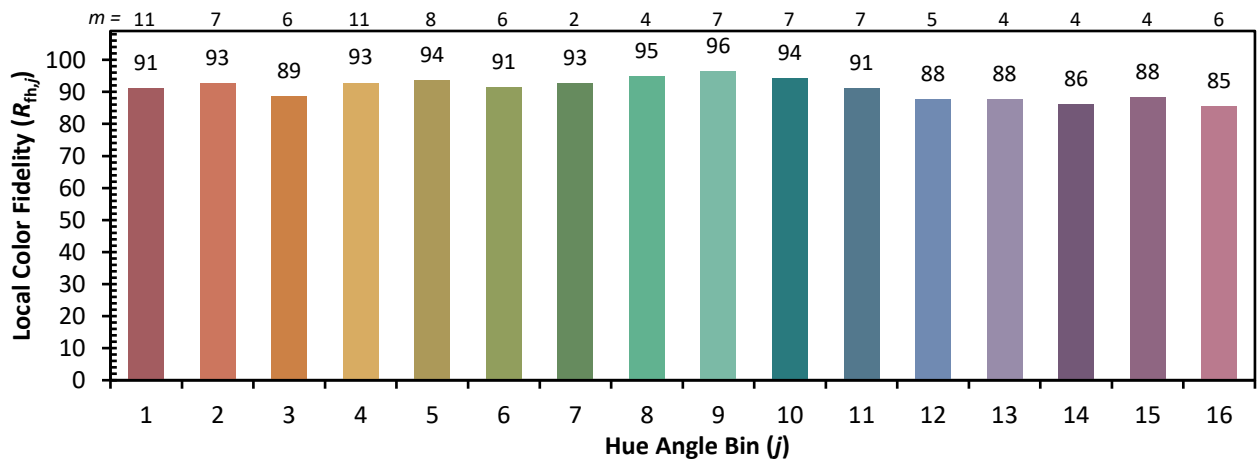
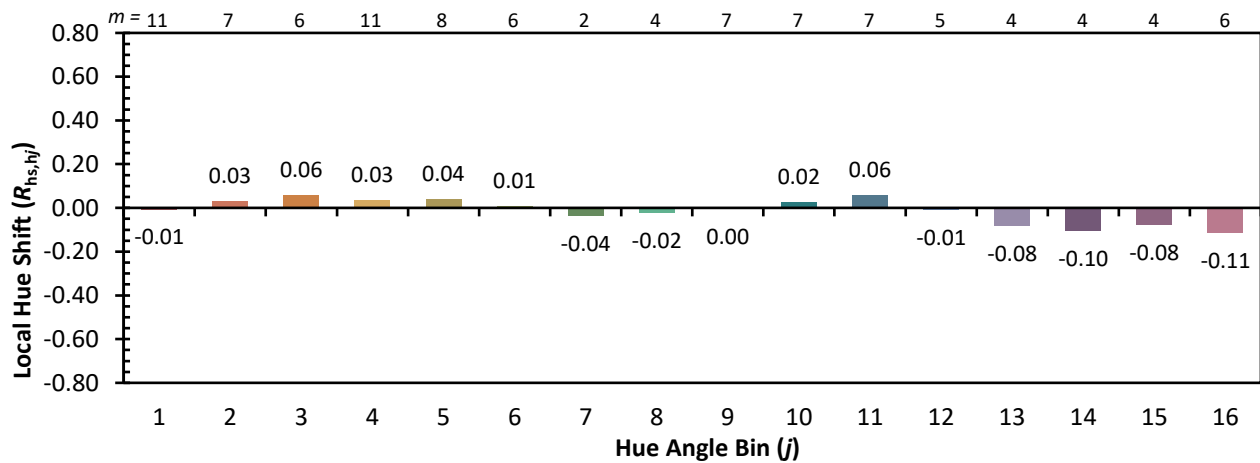
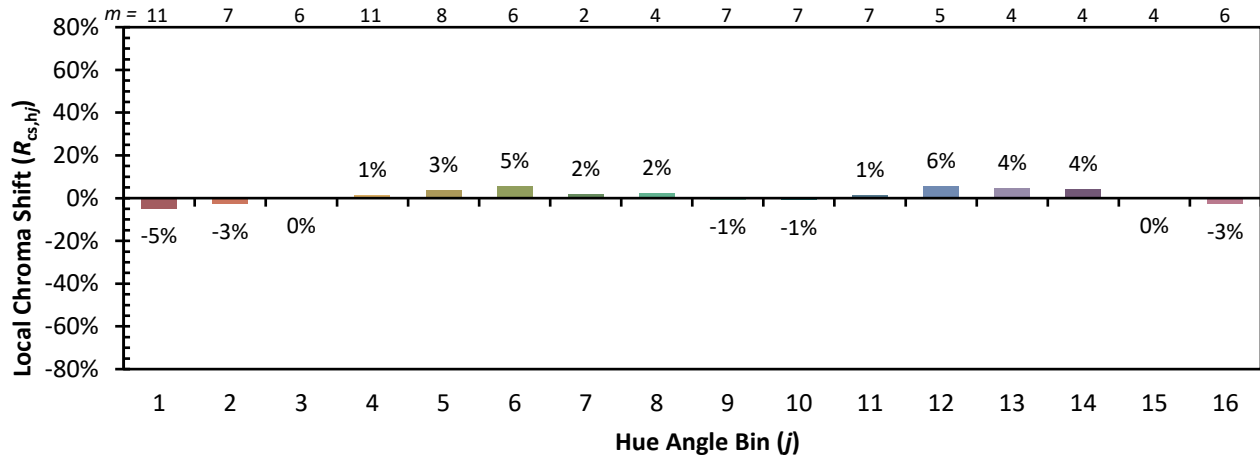


Individual Sample Fidelity Index ($R_{f,i}$)

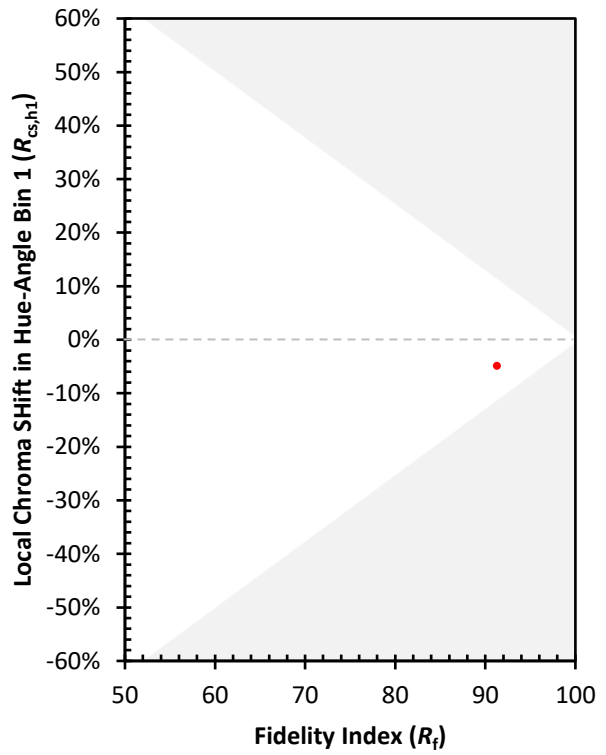
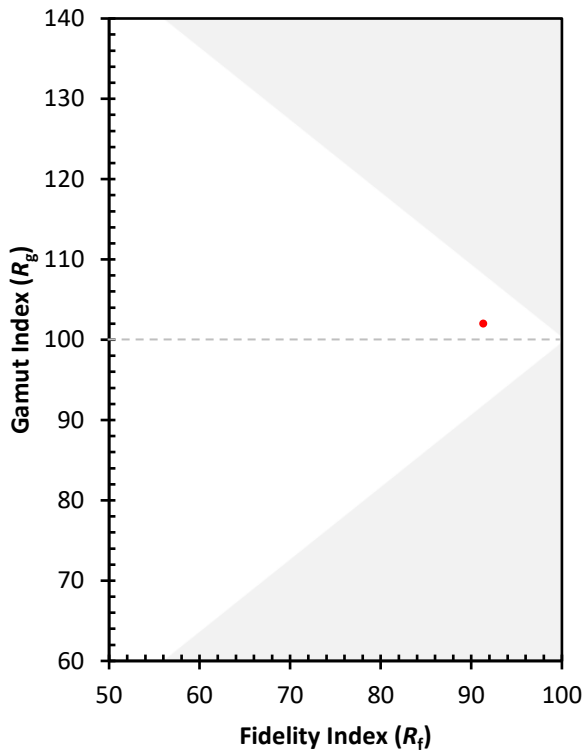
CES01 = 86	CES26 = 91	CES51 = 96	CES76 = 89
CES02 = 63	CES27 = 96	CES52 = 95	CES77 = 85
CES03 = 32	CES28 = 96	CES53 = 93	CES78 = 86
CES04 = 70	CES29 = 90	CES54 = 98	CES79 = 89
CES05 = 51	CES30 = 96	CES55 = 98	CES80 = 91
CES06 = 51	CES31 = 90	CES56 = 95	CES81 = 72
CES07 = 44	CES32 = 84	CES57 = 95	CES82 = 95
CES08 = 42	CES33 = 91	CES58 = 95	CES83 = 93
CES09 = 29	CES34 = 92	CES59 = 99	CES84 = 96
CES10 = 76	CES35 = 96	CES60 = 96	CES85 = 80
CES11 = 59	CES36 = 90	CES61 = 96	CES86 = 77
CES12 = 65	CES37 = 94	CES62 = 95	CES87 = 91
CES13 = 44	CES38 = 99	CES63 = 94	CES88 = 96
CES14 = 74	CES39 = 97	CES64 = 96	CES89 = 82
CES15 = 72	CES40 = 94	CES65 = 92	CES90 = 97
CES16 = 48	CES41 = 94	CES66 = 95	CES91 = 82
CES17 = 50	CES42 = 91	CES67 = 94	CES92 = 78
CES18 = 57	CES43 = 88	CES68 = 93	CES93 = 87
CES19 = 72	CES44 = 99	CES69 = 94	CES94 = 73
CES20 = 67	CES45 = 93	CES70 = 90	CES95 = 85
CES21 = 86	CES46 = 93	CES71 = 90	CES96 = 92
CES22 = 79	CES47 = 86	CES72 = 96	CES97 = 93
CES23 = 92	CES48 = 95	CES73 = 85	CES98 = 94
CES24 = 91	CES49 = 91	CES74 = 90	CES99 = 93
CES25 = 72	CES50 = 96	CES75 = 90	



Color Rendition by Hue-Angle Bin



Measure Comparisons



(END OF REPORT)