

Cooper Lighting Solutions Photometric Lab
1121 Highway 74 South
Peachtree City, GA 30269



Scaled data based on original data using
LM-79-2019 Approved Method: Electrical and Photometric Measurements of Solid-
State Lighting Products

Test Report Prepared for
Cooper Lighting Solutions

Brand: METALUX

Report Number: P1444683

Luminaire Tested: EHBR1-42-UNV-TA-L930-UPL15

Issue Date: 5/1/2026

Test Information

Test Method: LM-79-2019
Report Number: P1444683
REPORT IS A COMBINATION OF REPORTS P1444314 AND P1431635
Test Lab: INNOVATION CENTER
Issue Date: 5/1/2026
Manufacturer: COOPER LIGHTING SOLUTIONS
Product Line: METALUX
Catalog Number: EHBR1-42-UNV-TA-L930-UPL15
Description: Elevate Round Highbay at, 42000 lumens, 3000K 90CRI LEDs with TA lens
Light Source: -
Ballast/Driver: -

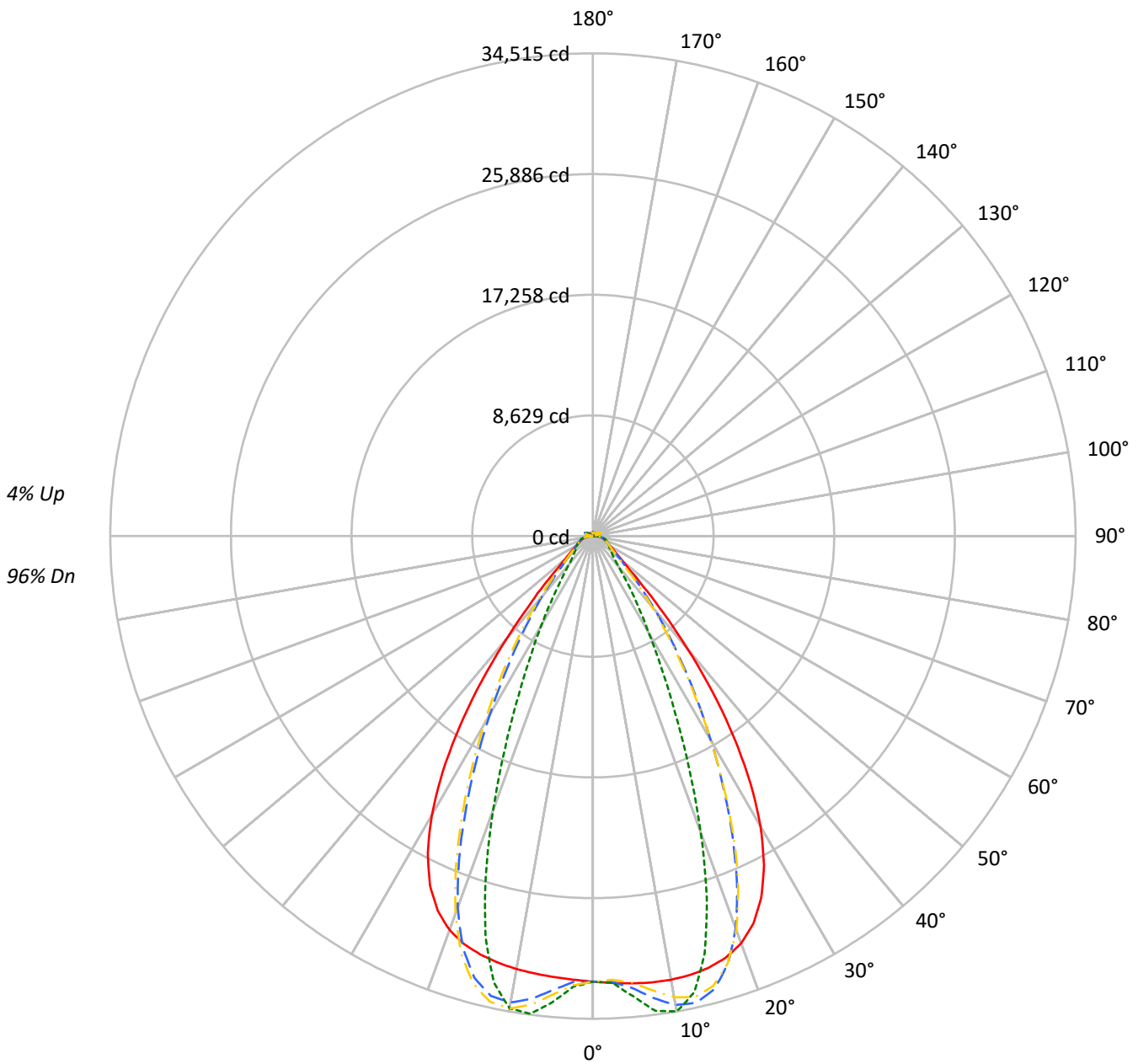
Summary

Lumens per Lamp: N/A
Luminaire Lumens: 38212.0 lumens
Efficiency: N/A
Efficacy: 163.5 lumens/watt
Spacing Criteria (0/90/45): 1.13 / 0.77 / 0.88
Luminous Opening: Vertical Cylinder (Dia: 1.71' x H: 0.1')
CIE Type: Direct

Input Watts (W): 233.7
Input Voltage (V): NR
Input Current (Ain): NR
Voltage Rise (V): NR
Power Factor: NR
Total Harmonic Distortion (THDi): NR
Frequency (hertz): 60
Stabilization Time: NR
Operation Time: NR
Ambient Temperature (°C): NR
Test Distance: 24 FT

TEST NUMBER: P1444683
CATALOG NUMBER: EHBR1-42-UNV-TA-L930-UPL15

Luminous Intensity Polar Plot



— 0°-180° - - 45°-225° - - - 90°-270° - · - 135°-315°



TEST NUMBER: P1444683
 CATALOG NUMBER: EHBR1-42-UNV-TA-L930-UPL15

COEFFICIENT OF UTILIZATION - ZONAL CAVITY METHOD:

| | | | | | | | | | | | | | | | | | | | | | |
|-----|-----|-----|-----|-----|-----|-----|-----|-----|-----|-----|-----|-----|-----|-----|----|----|----|----|----|----|----|
| RF | 20 | | | | 20 | | | | 20 | | | | 20 | | | | 20 | | | | |
| RC | 80 | | | | 70 | | | | 50 | | | | 30 | | | | 10 | | | 0 | |
| RW | 70 | 50 | 30 | 10 | 70 | 50 | 30 | 10 | 50 | 30 | 10 | 50 | 30 | 10 | 50 | 30 | 10 | 50 | 30 | 10 | 0 |
| RCR | | | | | | | | | | | | | | | | | | | | | |
| 0 | 118 | 118 | 118 | 118 | 115 | 115 | 115 | 115 | 109 | 109 | 109 | 103 | 103 | 103 | 98 | 98 | 98 | 98 | 98 | 98 | 96 |
| 1 | 111 | 108 | 104 | 102 | 108 | 105 | 102 | 100 | 100 | 98 | 96 | 96 | 94 | 92 | 92 | 90 | 89 | 89 | 89 | 89 | 87 |
| 2 | 104 | 98 | 93 | 89 | 101 | 96 | 92 | 88 | 92 | 89 | 85 | 89 | 86 | 83 | 85 | 83 | 81 | 81 | 81 | 81 | 79 |
| 3 | 98 | 90 | 84 | 80 | 95 | 89 | 83 | 79 | 85 | 81 | 77 | 82 | 78 | 75 | 79 | 76 | 74 | 74 | 74 | 74 | 72 |
| 4 | 92 | 83 | 77 | 72 | 90 | 82 | 76 | 71 | 79 | 74 | 70 | 77 | 72 | 69 | 74 | 70 | 67 | 67 | 67 | 67 | 66 |
| 5 | 87 | 77 | 71 | 66 | 85 | 76 | 70 | 65 | 74 | 68 | 64 | 71 | 67 | 63 | 69 | 65 | 62 | 62 | 62 | 62 | 60 |
| 6 | 82 | 72 | 65 | 60 | 80 | 71 | 64 | 60 | 69 | 63 | 59 | 67 | 62 | 58 | 65 | 61 | 58 | 58 | 58 | 58 | 56 |
| 7 | 77 | 67 | 60 | 56 | 76 | 66 | 60 | 55 | 64 | 59 | 55 | 63 | 58 | 54 | 61 | 57 | 53 | 53 | 53 | 53 | 52 |
| 8 | 73 | 63 | 56 | 52 | 72 | 62 | 56 | 51 | 60 | 55 | 51 | 59 | 54 | 50 | 58 | 53 | 50 | 50 | 50 | 50 | 48 |
| 9 | 70 | 59 | 52 | 48 | 68 | 58 | 52 | 48 | 57 | 51 | 47 | 56 | 51 | 47 | 55 | 50 | 47 | 47 | 47 | 47 | 45 |
| 10 | 66 | 55 | 49 | 45 | 65 | 55 | 49 | 45 | 54 | 48 | 44 | 53 | 48 | 44 | 52 | 47 | 44 | 44 | 44 | 44 | 42 |

AVERAGE LUMINANCE (cd/sqm):

| | 0° | 90° | 180° | 270° |
|-----|--------|--------|--------|--------|
| 0° | 149618 | 149618 | 149618 | 149618 |
| 5° | 150342 | 154726 | 148238 | 156752 |
| 10° | 151597 | 162450 | 147962 | 161376 |
| 15° | 152341 | 147260 | 147702 | 141331 |
| 20° | 150766 | 109703 | 145831 | 101502 |
| 25° | 142706 | 69381 | 137989 | 62951 |
| 30° | 124664 | 41693 | 119836 | 38104 |
| 35° | 95942 | 26162 | 90424 | 23175 |
| 40° | 60692 | 16411 | 55529 | 15421 |
| 45° | 31281 | 12785 | 30763 | 12575 |
| 50° | 18341 | 11373 | 17778 | 11195 |
| 55° | 14051 | 10759 | 13530 | 10662 |
| 60° | 11889 | 10991 | 11383 | 10849 |
| 65° | 11166 | 11478 | 10739 | 11086 |
| 70° | 10910 | 12019 | 10366 | 11565 |
| 75° | 11665 | 12745 | 11034 | 12183 |
| 80° | 12071 | 14114 | 10945 | 12884 |
| 85° | 11368 | 13617 | 9185 | 11659 |

MAXIMUM LUMINANCE 45°-90°:

Horizontal Angle: 25°
 Vertical Angle: 45°
 Luminance: 47873 cd/sqm



TEST NUMBER: P1444683
 CATALOG NUMBER: EHBR1-42-UNV-TA-L930-UPL15

ZONAL LUMENS:

| Zone | Lumens | % Fixture |
|-----------|---------|-----------|
| 0°-10° | 3139.9 | 8.2 |
| 10°-20° | 8832.8 | 23.1 |
| 20°-30° | 10059.9 | 26.3 |
| 30°-40° | 7230.6 | 18.9 |
| 40°-50° | 3334.7 | 8.7 |
| 50°-60° | 1595.8 | 4.2 |
| 60°-70° | 1164.4 | 3.0 |
| 70°-80° | 884.6 | 2.3 |
| 80°-90° | 404.7 | 1.1 |
| 90°-100° | 47.9 | 0.1 |
| 100°-110° | 240.6 | 0.6 |
| 110°-120° | 443.7 | 1.2 |
| 120°-130° | 280.6 | 0.7 |
| 130°-140° | 192.3 | 0.5 |
| 140°-150° | 152.1 | 0.4 |
| 150°-160° | 112.1 | 0.3 |
| 160°-170° | 70.6 | 0.2 |
| 170°-180° | 24.8 | 0.1 |
| 0°-30° | 22032.5 | 57.7 |
| 0°-40° | 29263.1 | 76.6 |
| 0°-60° | 34193.6 | 89.5 |
| 0°-90° | 36647.3 | 95.9 |
| 90°-120° | 732.2 | 1.9 |
| 90°-150° | 1357.2 | 3.6 |
| 90°-180° | 1565.0 | 4.1 |
| 0°-180° | 38212.0 | 100.0 |

CANDELA DISTRIBUTION:

| | 0° | 90° | 180° | 270° | 360° | Flux |
|------|-------|-------|-------|-------|-------|-------|
| 0° | 31860 | 31860 | 31860 | 31860 | 31860 | |
| 5° | 32100 | 33036 | 31651 | 33469 | 32100 | 3068 |
| 15° | 31960 | 30894 | 30987 | 29650 | 31960 | 9005 |
| 25° | 28498 | 13855 | 27556 | 12571 | 28498 | 12919 |
| 35° | 17609 | 4802 | 16596 | 4254 | 17609 | 10807 |
| 45° | 5061 | 2069 | 4977 | 2035 | 5061 | 4305 |
| 55° | 1899 | 1454 | 1828 | 1441 | 1899 | 1753 |
| 65° | 1166 | 1198 | 1121 | 1157 | 1166 | 1164 |
| 75° | 822 | 898 | 777 | 858 | 822 | 854 |
| 85° | 391 | 468 | 316 | 401 | 391 | 367 |
| 90° | 98 | 126 | 23 | 30 | 98 | 62 |
| 95° | 22 | 24 | 22 | 24 | 22 | 20 |
| 105° | 90 | 113 | 62 | 114 | 90 | 118 |
| 115° | 391 | 466 | 409 | 466 | 391 | 362 |
| 125° | 307 | 309 | 346 | 310 | 307 | 279 |
| 135° | 259 | 218 | 278 | 221 | 259 | 202 |
| 145° | 246 | 227 | 259 | 232 | 246 | 155 |
| 155° | 240 | 235 | 253 | 239 | 240 | 112 |
| 165° | 248 | 245 | 257 | 247 | 248 | 70 |
| 175° | 260 | 261 | 264 | 262 | 260 | 25 |
| 180° | 263 | 263 | 263 | 263 | 263 | |



TEST NUMBER: P1444683
 CATALOG NUMBER: EHBR1-42-UNV-TA-L930-UPL15

CANDELA DISTRIBUTION (FULL):

| | 0° | 2.5° | 5° | 7.5° | 10° | 12.5° | 15° | 17.5° | 20° | 22.5° | 25° |
|--------|---------|---------|---------|---------|---------|---------|---------|---------|---------|---------|---------|
| 0° | 31860.0 | 31860.0 | 31860.0 | 31860.0 | 31860.0 | 31860.0 | 31860.0 | 31860.0 | 31860.0 | 31860.0 | 31860.0 |
| 2.5° | 31981.7 | 31979.2 | 31978.6 | 31976.4 | 31975.8 | 31975.8 | 31974.7 | 31972.1 | 31970.5 | 31966.9 | 31962.7 |
| 5° | 32100.4 | 32098.9 | 32099.8 | 32100.0 | 32097.8 | 32092.8 | 32085.0 | 32075.5 | 32063.5 | 32052.1 | 32041.9 |
| 7.5° | 32192.1 | 32194.4 | 32197.2 | 32196.6 | 32189.6 | 32178.0 | 32162.0 | 32153.0 | 32158.4 | 32175.7 | 32215.4 |
| 10° | 32208.9 | 32222.6 | 32227.9 | 32226.3 | 32212.3 | 32202.3 | 32206.2 | 32239.9 | 32307.1 | 32396.7 | 32519.3 |
| 12.5° | 32143.6 | 32160.3 | 32159.8 | 32154.2 | 32140.7 | 32154.4 | 32203.4 | 32303.8 | 32447.9 | 32624.6 | 32832.0 |
| 15° | 31960.3 | 31981.9 | 31975.8 | 31968.6 | 31959.6 | 32004.6 | 32102.2 | 32276.8 | 32499.2 | 32748.5 | 33003.7 |
| 17.5° | 31604.3 | 31630.5 | 31617.7 | 31609.5 | 31601.9 | 31686.2 | 31854.0 | 32109.6 | 32389.8 | 32671.7 | 32913.6 |
| 20° | 30986.7 | 31004.2 | 30974.0 | 30959.6 | 30971.7 | 31136.9 | 31384.0 | 31710.4 | 32005.7 | 32272.3 | 32437.6 |
| 22.5° | 29978.9 | 30000.7 | 29943.7 | 29937.1 | 30007.4 | 30261.2 | 30573.9 | 30938.8 | 31216.3 | 31427.5 | 31491.3 |
| 25° | 28498.2 | 28519.7 | 28451.9 | 28492.4 | 28612.2 | 28957.7 | 29330.2 | 29720.4 | 29957.2 | 30113.7 | 30070.5 |
| 27.5° | 26499.6 | 26519.2 | 26455.0 | 26537.7 | 26727.0 | 27181.1 | 27619.3 | 28042.6 | 28253.7 | 28363.4 | 28224.4 |
| 30° | 23979.0 | 24019.8 | 23943.8 | 24059.2 | 24348.2 | 24937.7 | 25439.9 | 25914.6 | 26125.0 | 26208.5 | 25992.1 |
| 32.5° | 20985.3 | 21043.3 | 20959.6 | 21131.2 | 21534.4 | 22242.6 | 22813.1 | 23343.5 | 23576.2 | 23671.4 | 23427.2 |
| 35° | 17608.8 | 17692.0 | 17595.9 | 17853.6 | 18350.8 | 19139.4 | 19771.2 | 20363.3 | 20638.9 | 20774.0 | 20527.7 |
| 37.5° | 14031.5 | 14110.7 | 14058.8 | 14402.5 | 14948.5 | 15765.9 | 16410.8 | 17049.6 | 17360.8 | 17563.6 | 17369.5 |
| 40° | 10519.5 | 10592.0 | 10631.3 | 11024.4 | 11537.8 | 12308.3 | 12927.7 | 13559.8 | 13907.9 | 14162.3 | 14042.7 |
| 42.5° | 7424.7 | 7497.8 | 7631.4 | 8010.7 | 8438.9 | 9076.7 | 9607.2 | 10174.7 | 10507.3 | 10778.8 | 10732.6 |
| 45° | 5061.2 | 5146.2 | 5313.6 | 5624.2 | 5933.8 | 6391.3 | 6780.9 | 7222.3 | 7493.9 | 7742.7 | 7745.6 |
| 47.5° | 3546.6 | 3606.3 | 3755.9 | 3968.0 | 4169.9 | 4742.6 | 4766.2 | 4983.1 | 5165.8 | 5351.6 | 5375.7 |
| 50° | 2733.4 | 2769.2 | 2848.6 | 2966.8 | 3081.2 | 3229.8 | 3366.0 | 3523.2 | 3635.6 | 3737.5 | 3761.9 |
| 52.5° | 2246.7 | 2269.5 | 2309.8 | 2373.8 | 2440.2 | 2521.0 | 2593.9 | 2680.2 | 2741.4 | 2795.9 | 2807.4 |
| 55° | 1898.8 | 1917.6 | 1977.8 | 1989.9 | 2065.8 | 2080.5 | 2112.9 | 2165.4 | 2200.9 | 2233.6 | 2241.8 |
| 57.5° | 1636.3 | 1650.0 | 1662.8 | 1690.0 | 1713.4 | 1747.4 | 1774.8 | 1812.5 | 1834.9 | 1858.6 | 1860.5 |
| 60° | 1429.2 | 1439.1 | 1448.2 | 1467.1 | 1483.0 | 1506.6 | 1525.5 | 1551.2 | 1567.2 | 1585.0 | 1586.9 |
| 62.5° | 1275.1 | 1282.2 | 1288.2 | 1300.7 | 1312.1 | 1330.3 | 1345.3 | 1366.7 | 1381.6 | 1395.3 | 1398.4 |
| 65° | 1165.5 | 1170.7 | 1174.6 | 1184.1 | 1194.0 | 1209.5 | 1223.0 | 1240.6 | 1251.5 | 1262.0 | 1264.3 |
| 67.5° | 1068.5 | 1073.5 | 1077.5 | 1086.0 | 1092.9 | 1104.5 | 1113.6 | 1126.7 | 1135.0 | 1143.3 | 1143.6 |
| 70° | 957.3 | 961.9 | 964.9 | 972.9 | 978.5 | 988.5 | 995.8 | 1007.5 | 1016.1 | 1025.3 | 1027.8 |
| 72.5° | 880.3 | 882.9 | 887.1 | 894.4 | 902.1 | 912.7 | 922.5 | 934.8 | 945.1 | 954.8 | 958.9 |
| 75° | 821.7 | 824.9 | 827.6 | 833.8 | 839.2 | 848.2 | 855.5 | 866.7 | 875.6 | 886.1 | 891.1 |
| 77.5° | 737.2 | 740.8 | 743.2 | 749.4 | 754.1 | 762.6 | 768.1 | 778.1 | 785.5 | 794.9 | 799.5 |
| 80° | 635.0 | 638.4 | 640.1 | 646.0 | 649.6 | 657.6 | 662.9 | 672.5 | 678.7 | 688.1 | 693.7 |
| 82.5° | 521.8 | 525.1 | 526.0 | 531.6 | 533.6 | 540.1 | 544.0 | 553.9 | 561.4 | 573.7 | 582.3 |
| 85° | 390.7 | 391.9 | 393.8 | 392.4 | 400.3 | 400.7 | 409.7 | 411.3 | 423.2 | 426.2 | 439.7 |
| 87.5° | 238.8 | 242.4 | 244.2 | 249.6 | 252.0 | 257.5 | 259.1 | 264.8 | 268.1 | 274.6 | 277.7 |
| 90° | 97.9 | 103.2 | 104.9 | 111.0 | 112.6 | 118.1 | 119.2 | 125.4 | 127.1 | 133.5 | 135.6 |
| 92.5° | 19.3 | 20.4 | 21.3 | 22.7 | 23.8 | 25.6 | 27.0 | 28.3 | 29.5 | 31.2 | 33.4 |
| 95° | 21.7 | 22.9 | 24.1 | 25.3 | 26.6 | 27.8 | 29.1 | 30.2 | 31.5 | 32.7 | 36.2 |
| 97.5° | 26.7 | 27.8 | 28.9 | 29.9 | 31.0 | 32.1 | 33.2 | 34.2 | 35.3 | 36.3 | 40.5 |
| 100° | 34.2 | 35.1 | 36.0 | 36.9 | 37.8 | 38.8 | 39.7 | 40.5 | 41.4 | 42.3 | 50.2 |
| 102.5° | 54.7 | 57.9 | 61.1 | 64.3 | 67.5 | 70.5 | 73.9 | 76.8 | 80.0 | 83.2 | 99.9 |
| 105° | 90.1 | 98.6 | 107.5 | 116.0 | 124.7 | 133.4 | 142.0 | 150.4 | 159.2 | 167.7 | 195.1 |
| 107.5° | 150.9 | 166.8 | 182.9 | 198.9 | 214.9 | 230.9 | 246.9 | 262.8 | 278.7 | 294.5 | 322.2 |
| 110° | 274.3 | 287.0 | 300.0 | 312.7 | 325.5 | 338.5 | 351.4 | 363.9 | 376.9 | 389.5 | 409.7 |



TEST NUMBER: P1444683
 CATALOG NUMBER: EHBR1-42-UNV-TA-L930-UPL15

CANDELA DISTRIBUTION (continued):

| | 0° | 2.5° | 5° | 7.5° | 10° | 12.5° | 15° | 17.5° | 20° | 22.5° | 25° |
|--------|-------|-------|-------|-------|-------|-------|-------|-------|-------|-------|-------|
| 112.5° | 368.8 | 374.4 | 380.2 | 385.9 | 391.7 | 397.3 | 403.1 | 408.7 | 414.5 | 420.0 | 434.3 |
| 115° | 390.8 | 392.6 | 394.7 | 396.4 | 398.3 | 400.1 | 402.1 | 403.8 | 405.6 | 407.3 | 417.0 |
| 117.5° | 382.4 | 381.8 | 381.3 | 380.9 | 380.2 | 379.5 | 378.9 | 378.2 | 377.5 | 376.8 | 382.0 |
| 120° | 360.6 | 358.5 | 356.5 | 354.4 | 352.4 | 350.1 | 348.2 | 345.9 | 343.7 | 341.4 | 343.5 |
| 122.5° | 332.5 | 330.1 | 327.9 | 325.2 | 322.8 | 320.1 | 317.7 | 314.8 | 312.3 | 309.7 | 310.1 |
| 125° | 307.1 | 304.6 | 302.4 | 299.7 | 297.0 | 294.3 | 291.7 | 288.9 | 286.2 | 283.4 | 283.4 |
| 127.5° | 285.6 | 283.8 | 282.1 | 280.0 | 277.9 | 275.8 | 273.7 | 271.4 | 269.4 | 266.9 | 266.6 |
| 130° | 273.3 | 271.7 | 269.9 | 268.0 | 266.1 | 264.0 | 262.0 | 259.8 | 257.7 | 255.4 | 255.0 |
| 132.5° | 264.0 | 262.8 | 261.5 | 259.9 | 258.3 | 256.4 | 254.9 | 252.7 | 251.1 | 249.3 | 248.9 |
| 135° | 259.1 | 257.7 | 256.6 | 255.0 | 253.6 | 251.7 | 250.1 | 248.3 | 246.5 | 244.5 | 244.3 |
| 137.5° | 255.3 | 254.2 | 252.9 | 251.5 | 250.1 | 248.2 | 246.6 | 244.8 | 243.1 | 241.2 | 240.9 |
| 140° | 252.0 | 250.9 | 249.7 | 248.3 | 247.0 | 245.4 | 243.7 | 242.0 | 240.4 | 238.6 | 238.5 |
| 142.5° | 247.6 | 246.5 | 245.7 | 244.4 | 243.2 | 241.8 | 240.3 | 238.6 | 237.3 | 235.7 | 235.7 |
| 145° | 245.5 | 244.6 | 243.7 | 242.7 | 241.6 | 240.1 | 238.9 | 237.4 | 236.2 | 234.7 | 234.7 |
| 147.5° | 243.7 | 242.9 | 242.3 | 241.3 | 240.4 | 239.2 | 238.0 | 236.7 | 235.5 | 234.3 | 234.5 |
| 150° | 242.2 | 241.6 | 240.9 | 240.1 | 239.0 | 238.0 | 236.9 | 235.7 | 234.6 | 233.4 | 233.6 |
| 152.5° | 240.2 | 239.4 | 238.8 | 237.9 | 237.0 | 235.9 | 235.1 | 233.9 | 232.9 | 231.8 | 231.8 |
| 155° | 240.2 | 239.4 | 238.6 | 237.8 | 237.0 | 236.1 | 235.0 | 234.0 | 233.1 | 232.0 | 232.0 |
| 157.5° | 241.1 | 240.3 | 239.7 | 238.8 | 238.3 | 237.5 | 236.7 | 235.7 | 234.9 | 234.1 | 233.9 |
| 160° | 243.4 | 242.7 | 241.9 | 241.1 | 240.4 | 239.4 | 238.8 | 237.8 | 237.3 | 236.4 | 236.3 |
| 162.5° | 245.7 | 244.9 | 244.3 | 243.5 | 242.7 | 241.9 | 241.2 | 240.6 | 239.9 | 239.0 | 238.9 |
| 165° | 248.5 | 248.1 | 247.5 | 246.9 | 246.3 | 245.8 | 245.2 | 244.4 | 243.8 | 243.1 | 243.1 |
| 167.5° | 252.9 | 252.3 | 251.8 | 251.1 | 250.5 | 250.0 | 249.3 | 248.6 | 248.2 | 247.4 | 247.4 |
| 170° | 255.8 | 255.2 | 254.9 | 254.5 | 254.0 | 253.5 | 253.2 | 252.7 | 252.2 | 251.7 | 251.7 |
| 172.5° | 258.3 | 257.9 | 257.6 | 257.5 | 256.9 | 256.7 | 256.4 | 256.0 | 255.8 | 255.3 | 255.6 |
| 175° | 259.7 | 259.3 | 259.2 | 259.0 | 258.7 | 258.5 | 258.3 | 258.2 | 258.2 | 257.8 | 257.8 |
| 177.5° | 261.6 | 261.5 | 261.5 | 261.5 | 261.5 | 261.3 | 261.2 | 260.9 | 260.8 | 260.8 | 260.9 |
| 180° | 263.2 | 263.2 | 263.2 | 263.2 | 263.2 | 263.2 | 263.2 | 263.2 | 263.2 | 263.2 | 263.2 |



TEST NUMBER: P1444683
 CATALOG NUMBER: EHBR1-42-UNV-TA-L930-UPL15

CANDELA DISTRIBUTION (continued):

| | 27.5° | 30° | 32.5° | 35° | 37.5° | 40° | 42.5° | 45° | 47.5° | 50° | 52.5° |
|--------|---------|---------|---------|---------|---------|---------|---------|---------|---------|---------|---------|
| 0° | 31860.0 | 31860.0 | 31860.0 | 31860.0 | 31860.0 | 31860.0 | 31860.0 | 31860.0 | 31860.0 | 31860.0 | 31860.0 |
| 2.5° | 31959.6 | 31955.7 | 31950.5 | 31943.7 | 31937.9 | 31931.2 | 31915.3 | 31910.5 | 31915.8 | 31919.4 | 31926.7 |
| 5° | 32035.6 | 32037.8 | 32038.6 | 32053.1 | 32065.7 | 32097.0 | 32342.1 | 32439.5 | 32514.8 | 32562.7 | 32635.3 |
| 7.5° | 32264.5 | 32338.2 | 32411.0 | 32509.0 | 32593.6 | 32707.8 | 33136.7 | 33319.2 | 33448.9 | 33542.2 | 33657.0 |
| 10° | 32652.5 | 32813.4 | 32964.1 | 33140.8 | 33292.6 | 33466.6 | 33865.8 | 34043.6 | 34155.9 | 34237.6 | 34313.9 |
| 12.5° | 33043.4 | 33266.4 | 33468.0 | 33664.6 | 33828.9 | 33979.7 | 34120.1 | 34182.3 | 34187.6 | 34190.3 | 34149.7 |
| 15° | 33246.9 | 33460.1 | 33637.7 | 33767.8 | 33864.4 | 33907.0 | 33665.4 | 33538.6 | 33378.3 | 33246.4 | 33029.2 |
| 17.5° | 33118.5 | 33246.4 | 33323.1 | 33315.5 | 33275.6 | 33141.9 | 32457.3 | 32080.7 | 31706.9 | 31370.1 | 30928.3 |
| 20° | 32547.3 | 32537.5 | 32470.8 | 32281.8 | 32054.0 | 31699.8 | 30526.1 | 29848.9 | 29194.2 | 28619.1 | 27921.5 |
| 22.5° | 31484.8 | 31317.5 | 31084.5 | 30676.8 | 30224.1 | 29605.2 | 27923.1 | 26927.1 | 26015.7 | 25210.5 | 24308.5 |
| 25° | 29945.1 | 29601.2 | 29171.3 | 28524.2 | 27820.5 | 26917.8 | 24844.8 | 23605.8 | 22511.5 | 21562.4 | 20521.6 |
| 27.5° | 27974.7 | 27456.6 | 26826.6 | 25931.0 | 24977.7 | 23821.3 | 21523.0 | 20155.6 | 18980.8 | 17963.2 | 16855.6 |
| 30° | 25642.1 | 24968.2 | 24154.6 | 23043.1 | 21893.1 | 20581.7 | 18250.5 | 16865.6 | 15676.6 | 14629.7 | 13521.3 |
| 32.5° | 23005.8 | 22216.6 | 21263.3 | 20015.7 | 18772.1 | 17423.6 | 15172.4 | 13831.9 | 12696.0 | 11688.9 | 10685.6 |
| 35° | 20098.3 | 19252.0 | 18243.3 | 16970.9 | 15734.7 | 14423.7 | 12358.1 | 11149.3 | 10146.2 | 9256.1 | 8446.0 |
| 37.5° | 16979.4 | 16148.4 | 15189.7 | 13990.4 | 12844.2 | 11656.2 | 9873.8 | 8861.0 | 8019.2 | 7280.3 | 6654.8 |
| 40° | 13736.7 | 13009.5 | 12180.0 | 11143.2 | 10164.9 | 9175.5 | 7712.5 | 6908.5 | 6244.1 | 5680.7 | 5211.9 |
| 42.5° | 10533.6 | 9970.1 | 9334.0 | 8514.7 | 7766.0 | 7012.7 | 5886.6 | 5290.9 | 4798.9 | 4393.3 | 4061.8 |
| 45° | 7642.5 | 7265.5 | 6838.9 | 6269.3 | 5751.3 | 5225.8 | 4424.3 | 4005.8 | 3685.3 | 3423.8 | 3202.6 |
| 47.5° | 5342.5 | 5123.8 | 5110.5 | 4584.1 | 4204.2 | 3883.0 | 3366.6 | 3102.2 | 2905.9 | 2747.4 | 2607.4 |
| 50° | 3751.9 | 3646.1 | 3514.7 | 3326.8 | 3150.5 | 2968.9 | 2654.3 | 2494.5 | 2379.5 | 2283.5 | 2195.0 |
| 52.5° | 2804.8 | 2749.9 | 2679.8 | 2580.2 | 2484.7 | 2382.5 | 2183.5 | 2081.7 | 2045.5 | 1956.1 | 1886.0 |
| 55° | 2240.2 | 2208.8 | 2168.9 | 2110.4 | 2052.3 | 2029.0 | 1858.4 | 1782.8 | 1735.0 | 1699.8 | 1662.1 |
| 57.5° | 1860.9 | 1837.4 | 1813.7 | 1774.1 | 1740.5 | 1699.8 | 1609.1 | 1570.5 | 1541.9 | 1521.2 | 1495.1 |
| 60° | 1587.3 | 1573.2 | 1560.0 | 1536.8 | 1518.6 | 1496.7 | 1439.1 | 1417.3 | 1402.4 | 1389.9 | 1373.2 |
| 62.5° | 1401.0 | 1393.7 | 1387.0 | 1374.5 | 1365.3 | 1353.4 | 1314.1 | 1303.6 | 1296.2 | 1289.8 | 1279.7 |
| 65° | 1266.5 | 1261.3 | 1257.5 | 1249.3 | 1244.7 | 1237.7 | 1203.9 | 1196.8 | 1192.3 | 1189.9 | 1184.1 |
| 67.5° | 1144.3 | 1138.9 | 1136.4 | 1130.5 | 1128.5 | 1124.2 | 1096.5 | 1092.7 | 1091.1 | 1091.8 | 1089.8 |
| 70° | 1030.0 | 1027.8 | 1028.9 | 1028.0 | 1030.6 | 1031.4 | 1014.7 | 1014.5 | 1016.3 | 1019.8 | 1020.2 |
| 72.5° | 961.5 | 961.5 | 962.8 | 963.4 | 965.9 | 967.1 | 953.1 | 952.4 | 953.3 | 955.8 | 955.9 |
| 75° | 896.3 | 897.4 | 900.9 | 902.1 | 905.0 | 905.7 | 887.2 | 885.1 | 885.3 | 887.7 | 886.9 |
| 77.5° | 806.1 | 810.0 | 816.7 | 820.3 | 825.9 | 827.0 | 806.3 | 803.9 | 804.0 | 806.5 | 804.3 |
| 80° | 703.7 | 711.2 | 721.9 | 729.4 | 738.1 | 741.6 | 720.4 | 715.3 | 710.6 | 709.9 | 705.6 |
| 82.5° | 595.0 | 604.1 | 616.9 | 623.7 | 633.0 | 635.1 | 599.6 | 592.9 | 588.9 | 589.2 | 585.3 |
| 85° | 454.2 | 461.1 | 472.7 | 476.6 | 482.4 | 481.8 | 441.3 | 423.9 | 428.5 | 421.3 | 426.9 |
| 87.5° | 284.9 | 288.9 | 296.2 | 297.2 | 300.0 | 299.3 | 258.4 | 250.4 | 248.1 | 248.2 | 245.2 |
| 90° | 142.3 | 145.0 | 151.5 | 151.7 | 155.9 | 155.3 | 122.4 | 118.7 | 115.7 | 117.2 | 113.1 |
| 92.5° | 36.0 | 38.1 | 40.5 | 42.9 | 45.4 | 47.6 | 46.3 | 47.4 | 45.4 | 43.0 | 41.2 |
| 95° | 39.8 | 43.4 | 47.1 | 50.6 | 54.3 | 57.8 | 61.5 | 65.1 | 61.7 | 58.2 | 54.8 |
| 97.5° | 44.8 | 49.0 | 53.1 | 57.4 | 61.7 | 65.9 | 70.1 | 74.4 | 70.8 | 67.0 | 63.4 |
| 100° | 58.1 | 66.0 | 73.9 | 81.9 | 89.6 | 97.6 | 105.5 | 113.4 | 106.5 | 99.4 | 92.4 |
| 102.5° | 116.6 | 133.5 | 150.2 | 167.0 | 183.7 | 200.6 | 217.6 | 234.5 | 218.3 | 202.2 | 186.2 |
| 105° | 222.3 | 249.4 | 276.7 | 303.7 | 330.9 | 358.1 | 385.7 | 412.9 | 387.2 | 361.6 | 335.9 |
| 107.5° | 349.9 | 377.4 | 404.8 | 432.4 | 460.0 | 487.5 | 515.7 | 543.2 | 518.2 | 493.0 | 467.8 |
| 110° | 429.8 | 449.7 | 469.7 | 489.8 | 509.7 | 529.7 | 550.5 | 570.6 | 555.4 | 540.2 | 525.0 |



TEST NUMBER: P1444683
 CATALOG NUMBER: EHBR1-42-UNV-TA-L930-UPL15

CANDELA DISTRIBUTION (continued):

| | 27.5° | 30° | 32.5° | 35° | 37.5° | 40° | 42.5° | 45° | 47.5° | 50° | 52.5° |
|--------|-------|-------|-------|-------|-------|-------|-------|-------|-------|-------|-------|
| 112.5° | 448.4 | 462.7 | 476.9 | 491.0 | 505.2 | 519.4 | 534.7 | 549.0 | 541.2 | 533.3 | 525.7 |
| 115° | 426.2 | 436.0 | 445.3 | 454.7 | 464.2 | 473.6 | 484.2 | 494.0 | 491.2 | 488.4 | 485.7 |
| 117.5° | 387.1 | 392.2 | 397.4 | 402.4 | 407.4 | 412.4 | 419.3 | 424.5 | 424.4 | 424.6 | 424.6 |
| 120° | 345.4 | 347.3 | 349.1 | 351.1 | 352.8 | 354.7 | 358.5 | 360.7 | 362.4 | 363.9 | 365.4 |
| 122.5° | 310.6 | 311.0 | 311.4 | 311.7 | 312.1 | 312.3 | 315.1 | 316.0 | 316.7 | 317.6 | 318.6 |
| 125° | 283.2 | 283.2 | 283.1 | 283.0 | 282.7 | 282.6 | 285.3 | 285.4 | 285.1 | 284.5 | 284.1 |
| 127.5° | 266.1 | 265.6 | 265.2 | 264.8 | 264.0 | 263.6 | 265.8 | 265.9 | 264.5 | 263.1 | 261.5 |
| 130° | 254.7 | 254.2 | 253.8 | 253.4 | 253.1 | 252.7 | 255.3 | 255.7 | 253.5 | 251.2 | 249.1 |
| 132.5° | 248.5 | 248.2 | 247.6 | 247.6 | 247.1 | 246.7 | 249.6 | 250.0 | 247.7 | 245.2 | 242.8 |
| 135° | 243.8 | 243.7 | 243.4 | 243.0 | 242.7 | 242.7 | 245.8 | 246.3 | 244.1 | 241.7 | 239.4 |
| 137.5° | 240.4 | 240.3 | 240.0 | 239.8 | 239.4 | 239.4 | 243.0 | 243.6 | 241.8 | 239.6 | 237.8 |
| 140° | 238.2 | 238.0 | 237.8 | 237.8 | 237.6 | 237.8 | 241.7 | 242.5 | 241.1 | 239.3 | 237.6 |
| 142.5° | 235.5 | 235.6 | 235.7 | 236.0 | 236.0 | 236.2 | 240.8 | 241.9 | 240.7 | 239.3 | 238.1 |
| 145° | 234.7 | 235.1 | 235.3 | 235.5 | 235.8 | 236.2 | 241.3 | 242.7 | 241.9 | 240.9 | 239.9 |
| 147.5° | 234.3 | 234.5 | 234.6 | 235.0 | 235.3 | 235.9 | 241.3 | 242.7 | 242.2 | 241.4 | 240.7 |
| 150° | 233.6 | 233.8 | 234.0 | 234.4 | 234.9 | 235.4 | 241.7 | 243.5 | 242.9 | 242.4 | 241.7 |
| 152.5° | 231.9 | 232.1 | 232.2 | 232.7 | 232.9 | 233.5 | 241.2 | 243.3 | 242.8 | 242.2 | 241.8 |
| 155° | 232.1 | 232.1 | 232.1 | 232.3 | 232.5 | 233.0 | 241.5 | 243.6 | 243.3 | 242.9 | 242.5 |
| 157.5° | 233.9 | 233.7 | 233.7 | 233.7 | 233.8 | 233.9 | 243.0 | 245.4 | 245.0 | 244.6 | 244.3 |
| 160° | 236.1 | 236.1 | 235.8 | 235.8 | 235.7 | 235.7 | 245.2 | 247.5 | 247.2 | 246.8 | 246.4 |
| 162.5° | 238.8 | 239.0 | 238.8 | 238.9 | 238.8 | 239.0 | 248.4 | 251.0 | 250.5 | 250.1 | 249.6 |
| 165° | 242.9 | 242.7 | 242.6 | 242.6 | 242.5 | 242.6 | 251.4 | 253.6 | 253.4 | 252.9 | 252.5 |
| 167.5° | 247.1 | 247.2 | 247.0 | 247.1 | 246.9 | 247.2 | 255.4 | 257.5 | 257.3 | 256.8 | 256.6 |
| 170° | 251.6 | 251.7 | 251.6 | 251.6 | 251.7 | 251.9 | 258.8 | 260.6 | 260.4 | 259.9 | 259.5 |
| 172.5° | 255.5 | 255.7 | 255.8 | 255.8 | 255.9 | 256.2 | 262.0 | 263.7 | 263.4 | 263.2 | 262.7 |
| 175° | 258.0 | 257.9 | 258.1 | 258.3 | 258.4 | 258.5 | 263.2 | 264.4 | 264.2 | 264.0 | 263.8 |
| 177.5° | 261.1 | 261.1 | 261.3 | 261.4 | 261.5 | 261.7 | 264.6 | 265.3 | 265.2 | 265.2 | 265.1 |
| 180° | 263.2 | 263.2 | 263.2 | 263.2 | 263.2 | 263.2 | 263.2 | 263.2 | 263.2 | 263.2 | 263.2 |



TEST NUMBER: P1444683
 CATALOG NUMBER: EHBR1-42-UNV-TA-L930-UPL15

CANDELA DISTRIBUTION (continued):

| | 55° | 57.5° | 60° | 62.5° | 65° | 67.5° | 70° | 72.5° | 75° | 77.5° | 80° |
|--------|---------|---------|---------|---------|---------|---------|---------|---------|---------|---------|---------|
| 0° | 31860.0 | 31860.0 | 31860.0 | 31860.0 | 31860.0 | 31860.0 | 31860.0 | 31860.0 | 31860.0 | 31860.0 | 31860.0 |
| 2.5° | 31928.4 | 31939.6 | 31941.2 | 31954.3 | 31953.2 | 31968.8 | 31966.3 | 31979.2 | 31971.7 | 31982.2 | 31973.4 |
| 5° | 32678.3 | 32746.2 | 32781.8 | 32848.2 | 32869.1 | 32928.6 | 32945.3 | 32999.5 | 33001.7 | 33044.8 | 33035.0 |
| 7.5° | 33738.4 | 33838.7 | 33898.2 | 33980.3 | 34021.8 | 34090.2 | 34120.3 | 34170.8 | 34187.1 | 34227.3 | 34230.4 |
| 10° | 34371.6 | 34420.3 | 34454.2 | 34477.1 | 34498.0 | 34507.9 | 34519.3 | 34516.2 | 34519.3 | 34514.8 | 34524.6 |
| 12.5° | 34122.5 | 34051.5 | 34004.4 | 33915.4 | 33863.8 | 33765.5 | 33717.2 | 33622.6 | 33588.3 | 33507.0 | 33495.3 |
| 15° | 32861.4 | 32613.6 | 32438.6 | 32184.1 | 32024.1 | 31773.7 | 31627.2 | 31401.3 | 31298.1 | 31118.5 | 31071.4 |
| 17.5° | 30562.7 | 30102.9 | 29747.0 | 29290.5 | 28973.7 | 28547.1 | 28278.8 | 27925.6 | 27732.3 | 27447.4 | 27348.9 |
| 20° | 27340.0 | 26659.6 | 26125.8 | 25490.0 | 25034.9 | 24467.9 | 24105.0 | 23647.1 | 23381.4 | 23031.6 | 22889.8 |
| 22.5° | 23556.5 | 22709.3 | 22042.7 | 21291.5 | 20742.4 | 20110.6 | 19675.7 | 19180.4 | 18891.3 | 18511.3 | 18343.0 |
| 25° | 19656.7 | 18722.7 | 17981.5 | 17190.0 | 16609.9 | 15976.5 | 15541.6 | 15054.9 | 14755.8 | 14395.0 | 14227.8 |
| 27.5° | 15927.1 | 14981.5 | 14265.2 | 13529.4 | 12997.2 | 12425.7 | 12033.2 | 11608.3 | 11342.8 | 11034.9 | 10877.6 |
| 30° | 12635.6 | 11801.6 | 11192.2 | 10581.5 | 10138.8 | 9674.7 | 9348.5 | 8996.4 | 8763.5 | 8499.8 | 8349.9 |
| 32.5° | 9954.1 | 9310.3 | 8833.0 | 8348.4 | 7986.1 | 7598.2 | 7316.4 | 7005.8 | 6795.5 | 6560.0 | 6424.3 |
| 35° | 7883.6 | 7383.3 | 7002.6 | 6603.7 | 6292.4 | 5962.1 | 5713.7 | 5445.6 | 5256.9 | 5054.2 | 4937.0 |
| 37.5° | 6228.8 | 5831.0 | 5517.8 | 5186.4 | 4930.8 | 4657.1 | 4564.9 | 4257.2 | 4061.6 | 3899.8 | 3787.8 |
| 40° | 4888.3 | 4572.1 | 4312.8 | 4059.5 | 3851.0 | 3643.4 | 3476.8 | 3312.5 | 3186.2 | 3070.5 | 2990.4 |
| 42.5° | 3817.5 | 3588.3 | 3399.0 | 3213.4 | 3061.2 | 2910.0 | 2789.4 | 2676.1 | 2591.1 | 2515.4 | 2463.8 |
| 45° | 3034.7 | 2877.0 | 2745.5 | 2614.8 | 2507.5 | 2406.5 | 2325.2 | 2253.1 | 2198.1 | 2152.6 | 2120.5 |
| 47.5° | 2493.1 | 2385.1 | 2292.4 | 2204.1 | 2131.2 | 2065.1 | 2010.8 | 1993.0 | 1934.0 | 1894.2 | 1879.1 |
| 50° | 2118.8 | 2053.6 | 1983.1 | 1918.0 | 1869.4 | 1821.0 | 1785.7 | 1751.1 | 1729.0 | 1710.7 | 1705.1 |
| 52.5° | 1839.4 | 1789.6 | 1750.4 | 1709.2 | 1677.0 | 1642.5 | 1618.2 | 1595.2 | 1583.0 | 1573.5 | 1572.3 |
| 55° | 1631.7 | 1596.8 | 1570.9 | 1543.3 | 1524.0 | 1503.8 | 1491.2 | 1479.0 | 1473.7 | 1468.9 | 1469.2 |
| 57.5° | 1474.6 | 1451.3 | 1434.4 | 1416.5 | 1406.0 | 1396.4 | 1393.2 | 1390.1 | 1391.8 | 1392.5 | 1395.2 |
| 60° | 1360.0 | 1344.9 | 1334.3 | 1324.0 | 1319.6 | 1316.6 | 1318.9 | 1321.6 | 1327.2 | 1331.6 | 1335.7 |
| 62.5° | 1272.3 | 1263.6 | 1258.5 | 1252.9 | 1252.4 | 1252.7 | 1257.4 | 1262.0 | 1269.0 | 1274.2 | 1278.1 |
| 65° | 1181.9 | 1177.0 | 1175.3 | 1171.8 | 1173.5 | 1174.6 | 1180.3 | 1183.9 | 1190.8 | 1194.9 | 1199.9 |
| 67.5° | 1090.7 | 1089.5 | 1090.6 | 1090.6 | 1093.8 | 1096.5 | 1101.9 | 1105.9 | 1111.8 | 1115.6 | 1119.6 |
| 70° | 1023.3 | 1023.7 | 1026.2 | 1026.7 | 1030.1 | 1032.0 | 1036.8 | 1039.3 | 1044.6 | 1047.8 | 1052.6 |
| 72.5° | 957.7 | 956.6 | 957.3 | 955.7 | 956.9 | 956.5 | 959.0 | 960.3 | 964.8 | 967.2 | 973.2 |
| 75° | 887.9 | 885.0 | 884.3 | 881.1 | 881.2 | 878.9 | 880.0 | 879.9 | 882.9 | 884.0 | 888.3 |
| 77.5° | 803.6 | 798.6 | 796.3 | 791.0 | 790.9 | 788.8 | 791.0 | 792.3 | 797.5 | 800.0 | 804.8 |
| 80° | 702.8 | 695.0 | 691.4 | 685.3 | 686.4 | 686.0 | 691.3 | 695.1 | 701.5 | 702.7 | 708.8 |
| 82.5° | 584.1 | 576.2 | 572.5 | 566.4 | 567.8 | 567.9 | 572.6 | 573.5 | 579.1 | 581.4 | 588.5 |
| 85° | 418.2 | 421.3 | 413.0 | 413.5 | 411.7 | 415.0 | 418.2 | 422.2 | 426.9 | 434.5 | 440.4 |
| 87.5° | 246.3 | 245.2 | 248.2 | 248.5 | 252.8 | 255.0 | 261.9 | 265.8 | 273.5 | 279.5 | 290.3 |
| 90° | 113.2 | 109.2 | 111.4 | 110.0 | 114.0 | 112.7 | 116.4 | 114.4 | 118.8 | 119.2 | 125.0 |
| 92.5° | 38.3 | 36.4 | 33.8 | 31.7 | 29.2 | 27.4 | 25.8 | 25.1 | 23.7 | 23.2 | 21.7 |
| 95° | 51.4 | 48.1 | 44.7 | 41.3 | 38.1 | 34.7 | 33.4 | 32.2 | 31.0 | 29.8 | 28.5 |
| 97.5° | 59.8 | 56.2 | 52.6 | 48.8 | 45.2 | 41.6 | 40.8 | 40.0 | 39.1 | 38.3 | 37.5 |
| 100° | 85.3 | 78.2 | 71.3 | 64.3 | 57.3 | 50.3 | 49.7 | 49.0 | 48.4 | 47.8 | 47.1 |
| 102.5° | 170.2 | 154.0 | 138.0 | 122.0 | 106.0 | 90.0 | 87.2 | 84.5 | 81.6 | 78.9 | 76.1 |
| 105° | 310.2 | 284.5 | 258.9 | 233.2 | 207.7 | 182.0 | 174.4 | 166.6 | 159.0 | 151.3 | 143.7 |
| 107.5° | 442.8 | 417.7 | 392.7 | 367.6 | 342.6 | 317.7 | 305.5 | 293.5 | 281.2 | 269.2 | 257.2 |
| 110° | 509.6 | 494.5 | 479.5 | 464.2 | 449.2 | 434.2 | 422.5 | 411.1 | 399.3 | 387.8 | 376.3 |



TEST NUMBER: P1444683
 CATALOG NUMBER: EHBR1-42-UNV-TA-L930-UPL15

CANDELA DISTRIBUTION (continued):

| | 55° | 57.5° | 60° | 62.5° | 65° | 67.5° | 70° | 72.5° | 75° | 77.5° | 80° |
|--------|-------|-------|-------|-------|-------|-------|-------|-------|-------|-------|-------|
| 112.5° | 517.8 | 510.2 | 502.2 | 494.7 | 487.1 | 479.3 | 473.7 | 467.9 | 462.3 | 456.6 | 450.8 |
| 115° | 482.9 | 480.2 | 477.6 | 475.0 | 472.4 | 469.7 | 469.1 | 468.7 | 468.0 | 467.6 | 467.1 |
| 117.5° | 424.5 | 424.7 | 424.6 | 424.7 | 425.0 | 425.2 | 427.9 | 430.5 | 433.5 | 436.4 | 439.3 |
| 120° | 366.9 | 368.5 | 370.0 | 371.6 | 373.2 | 375.0 | 378.6 | 382.4 | 386.0 | 390.1 | 394.1 |
| 122.5° | 319.3 | 320.2 | 320.9 | 322.0 | 322.9 | 323.8 | 327.3 | 331.1 | 334.6 | 338.5 | 342.4 |
| 125° | 283.4 | 282.8 | 282.3 | 281.7 | 281.1 | 280.8 | 283.5 | 286.3 | 289.2 | 292.4 | 295.3 |
| 127.5° | 259.9 | 258.3 | 256.7 | 255.2 | 253.6 | 252.3 | 253.5 | 255.0 | 256.4 | 258.0 | 259.7 |
| 130° | 246.8 | 244.6 | 242.1 | 240.1 | 237.6 | 235.5 | 235.6 | 235.9 | 236.1 | 236.4 | 236.9 |
| 132.5° | 240.3 | 237.8 | 235.3 | 232.7 | 230.1 | 227.7 | 227.0 | 226.3 | 225.5 | 225.2 | 224.7 |
| 135° | 236.9 | 234.7 | 232.1 | 229.6 | 227.2 | 224.8 | 223.7 | 222.5 | 221.5 | 220.6 | 219.8 |
| 137.5° | 235.8 | 233.7 | 231.7 | 229.7 | 227.5 | 225.5 | 224.0 | 222.9 | 221.5 | 220.7 | 219.5 |
| 140° | 235.8 | 234.2 | 232.3 | 230.6 | 228.8 | 227.2 | 225.9 | 224.9 | 223.8 | 222.9 | 221.8 |
| 142.5° | 236.5 | 235.3 | 233.7 | 232.5 | 231.0 | 229.7 | 228.5 | 227.5 | 226.3 | 225.5 | 224.6 |
| 145° | 238.8 | 237.9 | 236.9 | 235.7 | 234.7 | 233.7 | 232.6 | 231.8 | 230.9 | 230.1 | 229.4 |
| 147.5° | 239.9 | 239.2 | 238.5 | 237.7 | 236.7 | 235.9 | 235.1 | 234.6 | 233.7 | 233.2 | 232.5 |
| 150° | 240.9 | 240.3 | 239.5 | 238.9 | 238.0 | 237.4 | 236.8 | 236.2 | 235.6 | 235.3 | 234.6 |
| 152.5° | 241.0 | 240.4 | 239.8 | 239.2 | 238.4 | 237.8 | 237.2 | 236.9 | 236.3 | 236.0 | 235.3 |
| 155° | 241.9 | 241.4 | 240.9 | 240.3 | 239.6 | 239.3 | 238.7 | 238.1 | 237.7 | 237.2 | 236.6 |
| 157.5° | 243.8 | 243.3 | 242.7 | 242.4 | 241.7 | 241.2 | 240.7 | 240.3 | 239.6 | 239.3 | 238.7 |
| 160° | 246.0 | 245.6 | 245.0 | 244.5 | 244.1 | 243.5 | 242.9 | 242.5 | 241.8 | 241.3 | 240.7 |
| 162.5° | 249.0 | 248.5 | 248.1 | 247.6 | 246.8 | 246.4 | 245.9 | 245.3 | 244.9 | 244.4 | 243.8 |
| 165° | 252.1 | 251.6 | 251.1 | 250.7 | 250.3 | 249.9 | 249.2 | 248.7 | 248.0 | 247.6 | 246.9 |
| 167.5° | 256.1 | 255.8 | 255.3 | 255.0 | 254.3 | 253.9 | 253.4 | 252.9 | 252.3 | 251.7 | 251.1 |
| 170° | 259.1 | 258.7 | 258.3 | 257.8 | 257.4 | 256.8 | 256.4 | 255.8 | 255.2 | 255.0 | 254.3 |
| 172.5° | 262.4 | 262.3 | 261.8 | 261.5 | 260.9 | 260.6 | 260.3 | 259.9 | 259.4 | 259.0 | 258.7 |
| 175° | 263.7 | 263.5 | 263.4 | 263.1 | 263.0 | 262.7 | 262.4 | 262.4 | 262.1 | 262.0 | 261.6 |
| 177.5° | 265.1 | 264.9 | 264.9 | 264.8 | 264.6 | 264.6 | 264.4 | 264.3 | 264.1 | 263.9 | 263.8 |
| 180° | 263.2 | 263.2 | 263.2 | 263.2 | 263.2 | 263.2 | 263.2 | 263.2 | 263.2 | 263.2 | 263.2 |



TEST NUMBER: P1444683
 CATALOG NUMBER: EHBR1-42-UNV-TA-L930-UPL15

CANDELA DISTRIBUTION (continued):

| | 82.5° | 85° | 87.5° | 90° | 92.5° | 95° | 97.5° | 100° | 102.5° | 105° | 107.5° |
|--------|---------|---------|---------|---------|---------|---------|---------|---------|---------|---------|---------|
| 0° | 31860.0 | 31860.0 | 31860.0 | 31860.0 | 31860.0 | 31860.0 | 31860.0 | 31860.0 | 31860.0 | 31860.0 | 31860.0 |
| 2.5° | 31982.5 | 31974.4 | 31978.3 | 31963.3 | 31966.9 | 31948.8 | 31947.1 | 31926.7 | 31924.7 | 31905.5 | 31898.2 |
| 5° | 33065.5 | 33047.6 | 33067.7 | 33036.4 | 33042.6 | 33001.7 | 32998.4 | 32945.7 | 32927.5 | 32861.7 | 32833.1 |
| 7.5° | 34255.5 | 34248.8 | 34261.1 | 34234.9 | 34234.0 | 34197.6 | 34182.7 | 34135.4 | 34106.1 | 34037.0 | 33992.8 |
| 10° | 34516.2 | 34522.4 | 34512.3 | 34514.8 | 34500.6 | 34496.7 | 34482.2 | 34473.0 | 34449.3 | 34431.3 | 34404.9 |
| 12.5° | 33433.6 | 33440.1 | 33398.7 | 33424.9 | 33404.3 | 33452.6 | 33448.7 | 33505.6 | 33514.3 | 33586.4 | 33613.7 |
| 15° | 30931.4 | 30923.6 | 30844.4 | 30894.4 | 30867.5 | 30973.6 | 30997.3 | 31140.0 | 31216.3 | 31399.4 | 31511.8 |
| 17.5° | 27151.5 | 27131.1 | 27019.5 | 27080.3 | 27049.4 | 27205.8 | 27258.2 | 27486.3 | 27628.6 | 27923.7 | 28134.0 |
| 20° | 22645.7 | 22606.6 | 22476.0 | 22547.2 | 22515.3 | 22692.9 | 22767.8 | 23043.5 | 23227.0 | 23617.9 | 23895.9 |
| 22.5° | 18084.0 | 18022.2 | 17894.3 | 17960.8 | 17930.7 | 18114.6 | 18212.0 | 18488.7 | 18698.9 | 19100.1 | 19424.7 |
| 25° | 13987.5 | 13932.5 | 13808.8 | 13855.3 | 13844.1 | 13999.8 | 14086.4 | 14348.1 | 14554.6 | 14936.8 | 15246.7 |
| 27.5° | 10668.6 | 10611.3 | 10499.7 | 10532.6 | 10521.2 | 10653.8 | 10735.6 | 10954.2 | 11131.8 | 11453.5 | 11725.6 |
| 30° | 8165.2 | 8096.2 | 8001.5 | 8019.6 | 8011.9 | 8119.3 | 8195.6 | 8379.6 | 8532.0 | 8803.9 | 9038.3 |
| 32.5° | 6258.6 | 6189.2 | 6102.3 | 6110.7 | 6099.2 | 6183.5 | 6246.4 | 6406.5 | 6539.2 | 6770.4 | 6974.4 |
| 35° | 4788.7 | 4869.8 | 4684.0 | 4801.7 | 4679.2 | 4859.1 | 4794.4 | 4894.4 | 5008.6 | 5203.5 | 5373.6 |
| 37.5° | 3681.4 | 3624.8 | 3577.0 | 3572.0 | 3571.7 | 3613.4 | 3662.6 | 3759.0 | 3859.6 | 4004.7 | 4154.7 |
| 40° | 2917.3 | 2877.7 | 2846.7 | 2844.4 | 2846.7 | 2876.3 | 2912.7 | 2979.3 | 3053.0 | 3157.2 | 3267.5 |
| 42.5° | 2419.6 | 2393.3 | 2374.6 | 2373.4 | 2379.3 | 2400.3 | 2425.5 | 2465.1 | 2513.0 | 2580.6 | 2656.1 |
| 45° | 2094.2 | 2079.6 | 2069.1 | 2068.6 | 2071.3 | 2082.3 | 2096.9 | 2121.4 | 2151.8 | 2194.0 | 2241.8 |
| 47.5° | 1865.9 | 1862.3 | 1855.8 | 1856.1 | 1853.1 | 1857.6 | 1859.3 | 1873.1 | 1889.2 | 1921.0 | 1983.5 |
| 50° | 1699.6 | 1699.6 | 1695.1 | 1694.9 | 1690.6 | 1690.4 | 1686.8 | 1692.3 | 1699.8 | 1719.5 | 1739.5 |
| 52.5° | 1568.1 | 1567.7 | 1562.9 | 1561.9 | 1557.4 | 1557.2 | 1554.1 | 1556.3 | 1557.4 | 1567.2 | 1579.2 |
| 55° | 1465.5 | 1462.4 | 1456.0 | 1454.0 | 1452.2 | 1454.8 | 1453.6 | 1453.8 | 1452.5 | 1456.6 | 1460.1 |
| 57.5° | 1391.8 | 1387.8 | 1381.7 | 1379.9 | 1379.5 | 1382.6 | 1382.7 | 1381.6 | 1376.1 | 1372.3 | 1367.0 |
| 60° | 1333.4 | 1329.4 | 1322.9 | 1321.3 | 1322.2 | 1326.5 | 1326.3 | 1322.7 | 1314.4 | 1307.2 | 1298.8 |
| 62.5° | 1276.2 | 1274.5 | 1271.2 | 1270.8 | 1269.9 | 1270.6 | 1267.6 | 1263.9 | 1255.7 | 1248.0 | 1239.0 |
| 65° | 1199.3 | 1200.1 | 1197.7 | 1198.0 | 1195.0 | 1194.6 | 1190.1 | 1186.5 | 1178.2 | 1171.2 | 1161.9 |
| 67.5° | 1119.4 | 1120.1 | 1118.1 | 1118.1 | 1116.5 | 1116.8 | 1114.0 | 1110.6 | 1103.7 | 1098.0 | 1090.8 |
| 70° | 1053.7 | 1055.4 | 1054.2 | 1054.6 | 1052.6 | 1052.0 | 1047.7 | 1044.4 | 1037.2 | 1032.5 | 1026.0 |
| 72.5° | 975.0 | 978.5 | 978.4 | 979.2 | 976.4 | 975.0 | 969.9 | 965.7 | 959.2 | 955.5 | 950.3 |
| 75° | 890.0 | 894.5 | 895.9 | 897.8 | 893.8 | 891.7 | 886.1 | 882.9 | 877.5 | 875.3 | 871.9 |
| 77.5° | 806.9 | 812.0 | 816.8 | 821.4 | 814.9 | 809.1 | 802.1 | 796.8 | 789.2 | 786.3 | 781.0 |
| 80° | 713.8 | 722.7 | 733.5 | 742.5 | 730.7 | 719.0 | 707.5 | 699.0 | 688.9 | 684.8 | 678.2 |
| 82.5° | 592.2 | 601.3 | 607.5 | 613.3 | 605.2 | 596.5 | 585.4 | 578.0 | 567.1 | 563.1 | 555.4 |
| 85° | 449.8 | 461.3 | 465.0 | 468.0 | 462.9 | 458.2 | 447.9 | 433.8 | 426.9 | 416.3 | 410.6 |
| 87.5° | 295.9 | 302.7 | 304.1 | 305.1 | 301.9 | 299.7 | 292.9 | 286.3 | 274.6 | 266.2 | 255.8 |
| 90° | 124.2 | 128.1 | 125.0 | 126.2 | 122.6 | 123.7 | 117.5 | 115.8 | 106.8 | 103.7 | 95.7 |
| 92.5° | 20.9 | 19.4 | 18.4 | 17.3 | 19.0 | 19.5 | 21.1 | 21.7 | 23.0 | 23.7 | 25.1 |
| 95° | 27.3 | 26.1 | 24.9 | 23.6 | 24.6 | 25.6 | 26.6 | 27.5 | 28.5 | 29.5 | 30.5 |
| 97.5° | 36.7 | 35.8 | 35.0 | 34.2 | 34.8 | 35.4 | 35.9 | 36.5 | 37.1 | 37.7 | 38.4 |
| 100° | 46.4 | 45.8 | 45.1 | 44.5 | 44.5 | 44.5 | 44.5 | 44.5 | 44.5 | 44.5 | 44.5 |
| 102.5° | 73.3 | 70.5 | 67.7 | 65.0 | 66.8 | 68.7 | 70.6 | 72.4 | 74.4 | 76.3 | 78.2 |
| 105° | 136.1 | 128.5 | 120.8 | 113.3 | 120.7 | 128.0 | 135.4 | 142.8 | 150.1 | 157.6 | 165.0 |
| 107.5° | 245.0 | 232.9 | 220.9 | 208.9 | 222.5 | 235.9 | 249.3 | 262.7 | 276.2 | 289.5 | 303.2 |
| 110° | 364.9 | 353.4 | 342.0 | 330.5 | 344.8 | 359.0 | 373.3 | 387.6 | 401.8 | 416.1 | 430.6 |



TEST NUMBER: P1444683
 CATALOG NUMBER: EHBR1-42-UNV-TA-L930-UPL15

CANDELA DISTRIBUTION (continued):

| | 82.5° | 85° | 87.5° | 90° | 92.5° | 95° | 97.5° | 100° | 102.5° | 105° | 107.5° |
|--------|-------|-------|-------|-------|-------|-------|-------|-------|--------|-------|--------|
| 112.5° | 445.2 | 439.7 | 434.1 | 428.5 | 437.7 | 446.9 | 456.1 | 465.5 | 474.6 | 483.9 | 493.1 |
| 115° | 466.7 | 466.3 | 466.1 | 465.7 | 470.1 | 474.4 | 478.7 | 483.2 | 487.7 | 492.1 | 496.5 |
| 117.5° | 442.3 | 445.2 | 448.3 | 451.5 | 452.9 | 454.2 | 455.8 | 457.2 | 458.8 | 460.2 | 461.9 |
| 120° | 398.1 | 401.8 | 406.0 | 410.2 | 409.7 | 409.0 | 408.7 | 408.1 | 407.9 | 407.4 | 407.3 |
| 122.5° | 346.3 | 350.2 | 354.4 | 358.5 | 357.3 | 356.0 | 354.9 | 353.9 | 353.0 | 351.9 | 351.1 |
| 125° | 298.7 | 301.8 | 305.3 | 308.7 | 307.4 | 306.2 | 305.1 | 304.2 | 303.3 | 302.2 | 301.7 |
| 127.5° | 261.6 | 263.6 | 265.5 | 267.5 | 267.0 | 266.4 | 266.2 | 265.7 | 265.5 | 265.4 | 265.4 |
| 130° | 237.4 | 238.1 | 239.1 | 239.8 | 240.0 | 240.2 | 240.6 | 241.1 | 241.7 | 242.2 | 243.0 |
| 132.5° | 224.7 | 224.6 | 224.6 | 224.6 | 225.2 | 225.9 | 226.9 | 227.9 | 229.0 | 230.1 | 231.7 |
| 135° | 219.2 | 218.6 | 218.2 | 217.9 | 218.9 | 219.8 | 220.9 | 222.2 | 223.7 | 225.3 | 227.0 |
| 137.5° | 218.8 | 218.0 | 217.4 | 216.7 | 217.7 | 218.7 | 219.9 | 221.1 | 222.7 | 224.2 | 226.1 |
| 140° | 221.1 | 220.4 | 220.0 | 219.3 | 220.3 | 221.2 | 222.4 | 223.6 | 225.1 | 226.6 | 228.3 |
| 142.5° | 223.9 | 223.1 | 222.6 | 222.2 | 222.9 | 223.8 | 225.0 | 226.0 | 227.4 | 228.7 | 230.3 |
| 145° | 228.8 | 228.0 | 227.8 | 227.3 | 227.8 | 228.5 | 229.3 | 230.1 | 231.2 | 232.1 | 233.4 |
| 147.5° | 232.1 | 231.5 | 231.3 | 231.0 | 231.5 | 231.8 | 232.5 | 232.9 | 233.8 | 234.5 | 235.5 |
| 150° | 234.5 | 234.0 | 233.7 | 233.6 | 233.8 | 234.0 | 234.5 | 234.7 | 235.2 | 235.7 | 236.5 |
| 152.5° | 235.1 | 234.6 | 234.5 | 234.3 | 234.5 | 234.5 | 234.9 | 235.2 | 235.5 | 235.9 | 236.6 |
| 155° | 236.3 | 236.0 | 235.6 | 235.3 | 235.3 | 235.2 | 235.3 | 235.3 | 235.5 | 235.5 | 235.9 |
| 157.5° | 238.5 | 238.0 | 237.8 | 237.3 | 237.1 | 236.9 | 236.9 | 236.7 | 236.7 | 236.4 | 236.5 |
| 160° | 240.4 | 239.7 | 239.3 | 238.8 | 238.8 | 238.5 | 238.5 | 238.2 | 238.2 | 238.2 | 238.1 |
| 162.5° | 243.5 | 243.0 | 242.7 | 242.2 | 241.9 | 241.5 | 241.2 | 240.8 | 240.5 | 240.3 | 240.2 |
| 165° | 246.3 | 245.8 | 245.3 | 244.7 | 244.5 | 244.3 | 244.0 | 243.7 | 243.5 | 243.3 | 243.3 |
| 167.5° | 250.9 | 250.1 | 249.7 | 249.2 | 248.8 | 248.3 | 248.1 | 247.6 | 247.4 | 247.0 | 246.9 |
| 170° | 254.0 | 253.4 | 253.1 | 252.6 | 252.5 | 252.1 | 252.0 | 251.7 | 251.5 | 251.4 | 251.4 |
| 172.5° | 258.3 | 257.9 | 257.6 | 257.3 | 257.1 | 256.8 | 256.7 | 256.6 | 256.4 | 256.4 | 256.2 |
| 175° | 261.5 | 261.3 | 261.2 | 260.9 | 260.7 | 260.7 | 260.5 | 260.4 | 260.3 | 260.0 | 259.9 |
| 177.5° | 263.5 | 263.2 | 263.2 | 263.1 | 263.0 | 263.0 | 263.0 | 263.0 | 263.0 | 262.9 | 262.7 |
| 180° | 263.2 | 263.2 | 263.2 | 263.2 | 263.2 | 263.2 | 263.2 | 263.2 | 263.2 | 263.2 | 263.2 |



TEST NUMBER: P1444683
 CATALOG NUMBER: EHBR1-42-UNV-TA-L930-UPL15

CANDELA DISTRIBUTION (continued):

| | 110° | 112.5° | 115° | 117.5° | 120° | 122.5° | 125° | 127.5° | 130° | 132.5° | 135° |
|--------|---------|---------|---------|---------|---------|---------|---------|---------|---------|---------|---------|
| 0° | 31860.0 | 31860.0 | 31860.0 | 31860.0 | 31860.0 | 31860.0 | 31860.0 | 31860.0 | 31860.0 | 31860.0 | 31860.0 |
| 2.5° | 31877.6 | 31869.2 | 31847.1 | 31836.2 | 31815.8 | 31805.6 | 31789.6 | 31779.4 | 31766.4 | 31756.9 | 31751.9 |
| 5° | 32760.8 | 32720.0 | 32638.3 | 32588.1 | 32499.8 | 32441.7 | 32354.1 | 32289.9 | 32199.4 | 32132.7 | 32047.2 |
| 7.5° | 33909.9 | 33847.3 | 33742.7 | 33663.3 | 33540.0 | 33445.6 | 33307.1 | 33196.4 | 33043.4 | 32916.3 | 32760.0 |
| 10° | 34377.7 | 34341.2 | 34294.2 | 34243.3 | 34174.8 | 34107.8 | 34013.2 | 33916.8 | 33788.4 | 33660.6 | 33493.6 |
| 12.5° | 33686.3 | 33720.6 | 33788.4 | 33820.1 | 33871.8 | 33889.5 | 33913.2 | 33902.1 | 33881.1 | 33828.9 | 33753.2 |
| 15° | 31727.9 | 31871.4 | 32098.1 | 32255.0 | 32474.7 | 32629.0 | 32833.1 | 32964.6 | 33116.0 | 33206.4 | 33292.3 |
| 17.5° | 28506.6 | 28784.1 | 29184.1 | 29503.3 | 29931.8 | 30280.1 | 30707.0 | 31042.3 | 31429.5 | 31726.5 | 32042.8 |
| 20° | 24380.5 | 24769.1 | 25321.4 | 25790.4 | 26411.2 | 26937.7 | 27612.1 | 28177.2 | 28836.3 | 29385.7 | 29978.6 |
| 22.5° | 19939.8 | 20396.8 | 21029.6 | 21595.3 | 22336.8 | 22998.9 | 23843.9 | 24591.1 | 25482.0 | 26280.2 | 27163.3 |
| 25° | 15750.4 | 16198.4 | 16843.0 | 17428.7 | 18229.1 | 18958.5 | 19881.8 | 20738.8 | 21772.8 | 22737.0 | 23843.9 |
| 27.5° | 12157.8 | 12555.7 | 13122.4 | 13649.6 | 14382.6 | 15098.8 | 16035.7 | 16949.6 | 18052.9 | 19089.1 | 20282.1 |
| 30° | 9389.2 | 9712.1 | 10166.0 | 10590.2 | 11178.7 | 11764.4 | 12598.9 | 13444.1 | 14542.0 | 15615.8 | 16838.8 |
| 32.5° | 7276.3 | 7551.6 | 7930.6 | 8274.9 | 8728.4 | 9170.0 | 9784.5 | 10459.9 | 11423.0 | 12451.5 | 13634.1 |
| 35° | 5632.7 | 5868.2 | 6190.7 | 6487.4 | 6860.3 | 7210.8 | 7669.4 | 8151.5 | 8886.4 | 9751.6 | 10810.0 |
| 37.5° | 4490.7 | 4586.7 | 4817.0 | 5060.0 | 5369.6 | 5657.8 | 6016.5 | 6373.0 | 6898.8 | 7581.4 | 8446.0 |
| 40° | 3415.1 | 3567.6 | 3755.0 | 3946.3 | 4180.9 | 4411.9 | 4805.5 | 4995.0 | 5341.2 | 5831.3 | 6502.3 |
| 42.5° | 2755.6 | 2862.8 | 2994.7 | 3127.7 | 3291.2 | 3452.1 | 3651.2 | 3853.9 | 4112.7 | 4444.6 | 4921.9 |
| 45° | 2305.9 | 2375.9 | 2460.9 | 2549.5 | 2656.8 | 2766.6 | 2899.9 | 3039.1 | 3214.5 | 3418.6 | 3708.5 |
| 47.5° | 2005.5 | 2044.2 | 2099.6 | 2160.2 | 2233.8 | 2309.8 | 2396.5 | 2485.1 | 2594.1 | 2715.2 | 2880.3 |
| 50° | 1771.1 | 1803.3 | 1846.4 | 1886.9 | 1937.6 | 2015.6 | 2050.0 | 2098.9 | 2164.5 | 2235.7 | 2328.0 |
| 52.5° | 1601.4 | 1622.9 | 1649.9 | 1673.1 | 1705.3 | 1734.4 | 1772.7 | 1806.4 | 1851.8 | 1894.6 | 1954.2 |
| 55° | 1469.2 | 1477.1 | 1492.4 | 1507.4 | 1529.6 | 1549.5 | 1575.7 | 1597.8 | 1626.8 | 1652.4 | 1690.0 |
| 57.5° | 1367.2 | 1367.9 | 1375.0 | 1382.8 | 1397.1 | 1409.6 | 1427.7 | 1442.2 | 1462.3 | 1478.6 | 1501.1 |
| 60° | 1293.8 | 1290.0 | 1291.4 | 1294.1 | 1302.1 | 1310.3 | 1321.8 | 1331.3 | 1343.9 | 1353.2 | 1365.8 |
| 62.5° | 1232.8 | 1226.7 | 1225.3 | 1224.6 | 1228.6 | 1231.6 | 1237.8 | 1242.4 | 1249.6 | 1253.7 | 1260.3 |
| 65° | 1155.7 | 1148.5 | 1145.7 | 1142.4 | 1143.6 | 1142.6 | 1145.0 | 1145.1 | 1148.8 | 1149.6 | 1153.5 |
| 67.5° | 1085.9 | 1079.8 | 1076.1 | 1071.7 | 1069.6 | 1066.4 | 1065.1 | 1062.0 | 1061.5 | 1058.9 | 1058.3 |
| 70° | 1022.0 | 1016.2 | 1013.1 | 1008.9 | 1006.8 | 1002.6 | 1000.0 | 994.8 | 991.7 | 986.8 | 984.2 |
| 72.5° | 948.3 | 945.0 | 944.0 | 941.2 | 940.5 | 938.1 | 937.0 | 933.4 | 931.2 | 927.1 | 924.7 |
| 75° | 871.2 | 868.4 | 868.2 | 865.4 | 865.1 | 862.4 | 861.6 | 857.7 | 855.7 | 851.6 | 849.8 |
| 77.5° | 779.3 | 775.3 | 774.1 | 770.8 | 771.6 | 770.2 | 771.4 | 768.4 | 767.2 | 763.0 | 761.7 |
| 80° | 675.8 | 670.7 | 668.5 | 664.2 | 665.3 | 663.4 | 665.3 | 665.1 | 666.7 | 663.4 | 662.7 |
| 82.5° | 553.3 | 547.6 | 546.5 | 543.5 | 545.6 | 545.7 | 550.1 | 547.8 | 548.7 | 545.6 | 546.9 |
| 85° | 402.6 | 398.4 | 392.5 | 391.7 | 387.9 | 391.7 | 386.7 | 390.1 | 384.6 | 388.4 | 383.3 |
| 87.5° | 249.6 | 240.9 | 236.2 | 230.0 | 227.7 | 221.6 | 219.1 | 214.8 | 216.1 | 214.1 | 215.2 |
| 90° | 94.4 | 87.3 | 86.3 | 80.6 | 80.7 | 76.0 | 77.2 | 74.0 | 75.8 | 72.4 | 74.6 |
| 92.5° | 25.8 | 26.9 | 28.8 | 31.1 | 32.8 | 34.8 | 36.6 | 38.9 | 40.6 | 42.9 | 44.6 |
| 95° | 31.5 | 32.4 | 35.0 | 37.7 | 40.3 | 42.9 | 45.7 | 48.3 | 50.9 | 53.6 | 56.1 |
| 97.5° | 39.0 | 39.6 | 42.2 | 44.8 | 47.4 | 50.1 | 52.7 | 55.5 | 58.1 | 60.8 | 63.4 |
| 100° | 44.5 | 44.6 | 52.0 | 59.4 | 66.9 | 74.5 | 82.0 | 89.4 | 97.0 | 104.4 | 111.9 |
| 102.5° | 80.1 | 82.0 | 100.8 | 119.7 | 138.6 | 157.4 | 176.4 | 195.2 | 214.1 | 233.1 | 252.1 |
| 105° | 172.3 | 179.9 | 208.6 | 237.5 | 266.2 | 295.1 | 323.9 | 352.9 | 381.8 | 410.6 | 439.4 |
| 107.5° | 316.5 | 330.2 | 356.2 | 382.2 | 408.2 | 434.4 | 460.6 | 486.7 | 512.8 | 539.0 | 565.2 |
| 110° | 444.9 | 459.2 | 476.7 | 494.2 | 511.9 | 529.3 | 546.9 | 564.4 | 582.2 | 599.7 | 617.6 |



TEST NUMBER: P1444683
 CATALOG NUMBER: EHBR1-42-UNV-TA-L930-UPL15

CANDELA DISTRIBUTION (continued):

| | 110° | 112.5° | 115° | 117.5° | 120° | 122.5° | 125° | 127.5° | 130° | 132.5° | 135° |
|--------|-------|--------|-------|--------|-------|--------|-------|--------|-------|--------|-------|
| 112.5° | 502.3 | 511.8 | 521.9 | 532.4 | 542.7 | 553.1 | 563.5 | 573.9 | 584.4 | 594.9 | 605.4 |
| 115° | 501.2 | 505.8 | 509.7 | 514.0 | 518.1 | 522.4 | 526.7 | 531.1 | 535.5 | 539.9 | 544.2 |
| 117.5° | 463.3 | 465.3 | 466.0 | 467.0 | 467.8 | 469.0 | 470.0 | 471.1 | 472.4 | 473.6 | 474.5 |
| 120° | 407.0 | 406.8 | 406.4 | 406.3 | 405.8 | 405.7 | 405.6 | 405.6 | 405.5 | 405.6 | 405.5 |
| 122.5° | 350.2 | 349.6 | 349.2 | 349.1 | 349.0 | 349.0 | 349.1 | 349.2 | 349.2 | 349.3 | 349.4 |
| 125° | 300.8 | 300.3 | 301.4 | 302.5 | 303.7 | 304.9 | 306.1 | 307.6 | 308.9 | 310.2 | 311.6 |
| 127.5° | 265.3 | 265.6 | 267.6 | 269.8 | 271.9 | 274.2 | 276.5 | 279.0 | 281.1 | 283.6 | 285.8 |
| 130° | 243.9 | 244.9 | 247.3 | 250.2 | 252.7 | 255.6 | 258.4 | 261.4 | 264.0 | 266.8 | 269.5 |
| 132.5° | 232.9 | 234.6 | 237.0 | 239.8 | 242.4 | 245.2 | 247.8 | 250.7 | 253.4 | 256.2 | 258.7 |
| 135° | 228.8 | 230.7 | 233.1 | 235.6 | 238.1 | 240.8 | 243.2 | 246.0 | 248.3 | 250.9 | 253.4 |
| 137.5° | 227.8 | 229.6 | 231.8 | 233.9 | 236.0 | 238.3 | 240.3 | 242.6 | 244.6 | 246.8 | 248.9 |
| 140° | 230.0 | 232.0 | 233.3 | 234.9 | 236.4 | 237.9 | 239.3 | 240.9 | 242.3 | 243.9 | 245.2 |
| 142.5° | 231.8 | 233.7 | 234.5 | 235.7 | 236.7 | 238.1 | 239.3 | 240.4 | 241.3 | 242.4 | 243.4 |
| 145° | 234.5 | 236.0 | 236.4 | 237.0 | 237.7 | 238.3 | 238.7 | 239.4 | 239.8 | 240.3 | 240.7 |
| 147.5° | 236.4 | 237.6 | 237.7 | 238.0 | 238.5 | 238.6 | 239.0 | 239.4 | 239.5 | 239.8 | 240.1 |
| 150° | 237.0 | 237.8 | 237.7 | 238.0 | 237.9 | 238.0 | 238.0 | 238.1 | 238.0 | 238.2 | 238.1 |
| 152.5° | 237.0 | 237.6 | 237.2 | 237.5 | 237.2 | 237.1 | 237.0 | 237.0 | 236.7 | 236.7 | 236.7 |
| 155° | 235.9 | 236.2 | 236.1 | 236.0 | 235.8 | 235.7 | 235.6 | 235.8 | 235.8 | 235.7 | 235.8 |
| 157.5° | 236.5 | 236.5 | 236.4 | 236.3 | 236.1 | 236.2 | 236.2 | 236.2 | 236.2 | 236.4 | 236.6 |
| 160° | 237.9 | 238.0 | 237.8 | 237.8 | 237.7 | 237.6 | 237.6 | 237.7 | 237.8 | 238.1 | 238.3 |
| 162.5° | 239.8 | 239.7 | 239.4 | 239.4 | 239.3 | 239.4 | 239.4 | 239.7 | 239.7 | 240.0 | 240.3 |
| 165° | 243.3 | 243.4 | 242.9 | 243.0 | 242.8 | 242.7 | 242.7 | 242.8 | 243.0 | 243.2 | 243.4 |
| 167.5° | 246.8 | 246.7 | 246.7 | 246.8 | 246.8 | 246.9 | 247.0 | 247.5 | 247.6 | 248.1 | 248.2 |
| 170° | 251.3 | 251.4 | 251.2 | 251.2 | 251.1 | 251.1 | 251.2 | 251.2 | 251.4 | 251.5 | 251.6 |
| 172.5° | 256.2 | 256.2 | 256.0 | 255.8 | 255.7 | 255.7 | 255.6 | 255.6 | 255.4 | 255.4 | 255.2 |
| 175° | 259.8 | 259.7 | 259.6 | 259.5 | 259.4 | 259.2 | 259.2 | 258.9 | 258.8 | 258.7 | 258.6 |
| 177.5° | 262.6 | 262.4 | 262.3 | 262.3 | 262.2 | 262.0 | 262.0 | 261.9 | 261.9 | 261.9 | 261.6 |
| 180° | 263.2 | 263.2 | 263.2 | 263.2 | 263.2 | 263.2 | 263.2 | 263.2 | 263.2 | 263.2 | 263.2 |



TEST NUMBER: P1444683
 CATALOG NUMBER: EHBR1-42-UNV-TA-L930-UPL15

CANDELA DISTRIBUTION (continued):

| | 137.5° | 140° | 142.5° | 145° | 147.5° | 150° | 152.5° | 155° | 157.5° | 160° | 162.5° |
|--------|---------|---------|---------|---------|---------|---------|---------|---------|---------|---------|---------|
| 0° | 31860.0 | 31860.0 | 31860.0 | 31860.0 | 31860.0 | 31860.0 | 31860.0 | 31860.0 | 31860.0 | 31860.0 | 31860.0 |
| 2.5° | 31745.6 | 31745.2 | 31742.1 | 31743.5 | 31744.2 | 31746.4 | 31749.1 | 31751.9 | 31752.5 | 31754.8 | 31755.2 |
| 5° | 31983.2 | 31904.6 | 31846.6 | 31782.7 | 31734.5 | 31691.3 | 31662.5 | 31639.6 | 31630.8 | 31633.0 | 31638.4 |
| 7.5° | 32627.4 | 32465.3 | 32331.4 | 32179.4 | 32052.6 | 31918.3 | 31807.0 | 31701.1 | 31624.0 | 31566.6 | 31534.5 |
| 10° | 33334.3 | 33136.8 | 32947.9 | 32727.8 | 32519.1 | 32296.2 | 32094.5 | 31891.3 | 31721.8 | 31574.7 | 31466.7 |
| 12.5° | 33648.0 | 33508.4 | 33345.2 | 33137.5 | 32914.0 | 32657.0 | 32397.4 | 32119.1 | 31860.2 | 31619.9 | 31426.1 |
| 15° | 33315.9 | 33316.1 | 33256.6 | 33156.9 | 33001.7 | 32796.3 | 32548.9 | 32258.8 | 31953.5 | 31641.9 | 31357.2 |
| 17.5° | 32261.5 | 32460.4 | 32571.1 | 32641.1 | 32619.5 | 32543.9 | 32386.5 | 32163.6 | 31879.0 | 31547.0 | 31199.7 |
| 20° | 30450.8 | 30919.9 | 31254.5 | 31555.3 | 31723.9 | 31836.0 | 31824.8 | 31734.1 | 31531.4 | 31249.1 | 30887.3 |
| 22.5° | 27914.2 | 28701.8 | 29323.2 | 29902.7 | 30309.2 | 30639.8 | 30797.0 | 30863.6 | 30771.8 | 30575.2 | 30235.5 |
| 25° | 24833.4 | 25904.2 | 26817.9 | 27704.8 | 28370.1 | 28941.8 | 29285.4 | 29527.5 | 29546.7 | 29444.0 | 29140.9 |
| 27.5° | 21410.0 | 22674.0 | 23830.5 | 25009.1 | 25944.7 | 26766.6 | 27305.8 | 27700.6 | 27826.0 | 27809.4 | 27534.2 |
| 30° | 17990.9 | 19317.8 | 20592.7 | 21967.1 | 23124.8 | 24174.8 | 24887.2 | 25421.0 | 25626.7 | 25666.1 | 25401.4 |
| 32.5° | 14762.0 | 16070.5 | 17341.8 | 18778.7 | 20052.7 | 21256.1 | 22097.8 | 22731.8 | 22971.0 | 23027.4 | 22737.0 |
| 35° | 11831.6 | 13038.8 | 14246.9 | 15639.5 | 16906.2 | 18152.3 | 19039.2 | 19703.0 | 19926.4 | 19964.1 | 19627.9 |
| 37.5° | 9290.3 | 10318.9 | 11371.6 | 12621.1 | 13784.3 | 14954.7 | 15797.2 | 16421.2 | 16583.9 | 16573.9 | 16193.4 |
| 40° | 7150.6 | 7950.2 | 8796.2 | 9824.8 | 10791.9 | 11781.2 | 12492.8 | 13008.5 | 13094.0 | 13030.7 | 12631.0 |
| 42.5° | 5376.9 | 5954.4 | 6567.7 | 7335.5 | 8053.0 | 8793.5 | 9311.2 | 9694.1 | 9706.3 | 9606.1 | 9247.4 |
| 45° | 4005.8 | 4569.2 | 4826.4 | 5290.7 | 5752.8 | 6245.2 | 6561.3 | 6797.8 | 6761.2 | 6673.1 | 6400.5 |
| 47.5° | 3053.7 | 3270.2 | 3499.9 | 3787.8 | 4057.0 | 4615.7 | 4574.3 | 4954.1 | 4680.5 | 4867.1 | 4456.5 |
| 50° | 2425.0 | 2546.0 | 2669.7 | 2822.5 | 2963.1 | 3109.2 | 3200.4 | 3268.6 | 3259.8 | 3230.5 | 3151.8 |
| 52.5° | 2063.1 | 2100.5 | 2161.4 | 2248.3 | 2326.9 | 2405.8 | 2457.8 | 2500.0 | 2500.9 | 2489.0 | 2449.3 |
| 55° | 1724.3 | 1771.8 | 1815.5 | 1872.4 | 1969.1 | 1983.9 | 2058.4 | 2043.3 | 2049.3 | 2028.6 | 2049.7 |
| 57.5° | 1520.3 | 1547.9 | 1572.5 | 1606.3 | 1634.3 | 1666.9 | 1686.1 | 1704.7 | 1702.9 | 1698.9 | 1678.5 |
| 60° | 1375.7 | 1391.0 | 1404.6 | 1424.4 | 1439.7 | 1458.2 | 1467.0 | 1476.4 | 1473.3 | 1466.5 | 1448.5 |
| 62.5° | 1264.3 | 1273.8 | 1281.6 | 1294.4 | 1303.6 | 1315.1 | 1319.8 | 1323.8 | 1319.8 | 1313.3 | 1297.3 |
| 65° | 1154.3 | 1160.4 | 1165.4 | 1175.0 | 1181.6 | 1191.4 | 1195.3 | 1199.0 | 1195.4 | 1190.3 | 1178.2 |
| 67.5° | 1055.1 | 1055.7 | 1055.3 | 1059.1 | 1061.2 | 1067.1 | 1068.8 | 1071.5 | 1067.3 | 1063.0 | 1052.6 |
| 70° | 979.9 | 978.4 | 976.5 | 978.0 | 978.4 | 981.2 | 981.7 | 981.2 | 976.2 | 968.6 | 957.4 |
| 72.5° | 921.1 | 920.3 | 918.9 | 920.2 | 920.2 | 922.8 | 922.0 | 920.6 | 914.4 | 907.1 | 896.0 |
| 75° | 845.5 | 845.0 | 842.1 | 842.2 | 839.9 | 840.7 | 837.7 | 835.9 | 828.9 | 822.8 | 812.8 |
| 77.5° | 757.1 | 755.7 | 751.6 | 750.0 | 745.5 | 743.7 | 737.9 | 735.0 | 728.0 | 723.0 | 714.5 |
| 80° | 658.4 | 656.9 | 651.5 | 648.6 | 641.5 | 637.0 | 628.5 | 623.7 | 615.5 | 610.7 | 602.4 |
| 82.5° | 544.2 | 544.8 | 539.5 | 535.8 | 525.7 | 517.8 | 506.5 | 500.4 | 491.5 | 486.7 | 478.2 |
| 85° | 387.0 | 381.5 | 384.4 | 384.3 | 377.8 | 371.2 | 361.9 | 355.4 | 347.8 | 343.4 | 337.4 |
| 87.5° | 212.3 | 213.6 | 212.1 | 210.8 | 206.3 | 202.8 | 195.7 | 191.9 | 186.3 | 183.6 | 179.1 |
| 90° | 68.5 | 67.9 | 62.1 | 61.7 | 56.1 | 53.6 | 47.1 | 45.5 | 39.5 | 38.5 | 34.3 |
| 92.5° | 42.3 | 40.1 | 38.2 | 35.7 | 33.8 | 31.5 | 29.4 | 27.2 | 25.0 | 24.0 | 23.5 |
| 95° | 52.9 | 49.8 | 46.7 | 43.5 | 40.3 | 37.1 | 34.0 | 30.8 | 27.6 | 27.0 | 26.3 |
| 97.5° | 59.8 | 56.1 | 52.2 | 48.6 | 44.8 | 41.1 | 37.3 | 33.6 | 29.9 | 29.4 | 29.1 |
| 100° | 103.5 | 94.8 | 86.2 | 77.5 | 68.9 | 60.2 | 51.8 | 43.0 | 34.5 | 34.0 | 33.5 |
| 102.5° | 231.1 | 210.1 | 189.2 | 168.3 | 147.5 | 126.5 | 105.6 | 84.6 | 63.6 | 60.6 | 57.6 |
| 105° | 407.8 | 376.0 | 344.5 | 312.8 | 281.1 | 249.3 | 217.8 | 185.9 | 154.2 | 144.0 | 133.8 |
| 107.5° | 535.6 | 505.7 | 476.0 | 446.4 | 416.5 | 386.9 | 357.0 | 327.2 | 297.4 | 279.5 | 261.6 |
| 110° | 594.0 | 570.5 | 547.1 | 523.5 | 500.0 | 476.5 | 452.9 | 429.3 | 405.7 | 390.2 | 375.1 |



TEST NUMBER: P1444683
 CATALOG NUMBER: EHBR1-42-UNV-TA-L930-UPL15

CANDELA DISTRIBUTION (continued):

| | 137.5° | 140° | 142.5° | 145° | 147.5° | 150° | 152.5° | 155° | 157.5° | 160° | 162.5° |
|--------|--------|-------|--------|-------|--------|-------|--------|-------|--------|-------|--------|
| 112.5° | 588.2 | 571.1 | 554.2 | 537.0 | 519.9 | 502.7 | 485.6 | 468.4 | 451.0 | 441.8 | 432.6 |
| 115° | 534.2 | 524.0 | 514.0 | 503.8 | 493.6 | 483.4 | 473.3 | 462.9 | 452.6 | 447.9 | 443.2 |
| 117.5° | 469.8 | 464.8 | 460.0 | 455.0 | 450.0 | 444.9 | 440.0 | 434.8 | 429.8 | 428.4 | 426.9 |
| 120° | 404.6 | 403.4 | 402.2 | 401.0 | 399.8 | 398.6 | 397.4 | 396.0 | 394.6 | 395.2 | 395.8 |
| 122.5° | 350.7 | 351.7 | 353.1 | 354.0 | 355.2 | 356.2 | 357.5 | 358.2 | 359.3 | 361.1 | 362.9 |
| 125° | 313.9 | 315.9 | 318.0 | 320.1 | 322.1 | 324.3 | 326.3 | 328.2 | 330.3 | 332.0 | 334.1 |
| 127.5° | 288.5 | 290.6 | 293.1 | 295.3 | 297.7 | 300.0 | 302.4 | 304.4 | 306.7 | 308.5 | 310.5 |
| 130° | 271.8 | 273.8 | 276.1 | 278.0 | 280.3 | 282.4 | 284.4 | 286.5 | 288.6 | 290.2 | 291.8 |
| 132.5° | 260.7 | 262.8 | 264.8 | 266.6 | 268.8 | 270.6 | 272.6 | 274.6 | 276.7 | 278.0 | 279.5 |
| 135° | 255.1 | 256.6 | 258.3 | 259.8 | 261.7 | 263.2 | 264.8 | 266.6 | 268.4 | 269.6 | 270.8 |
| 137.5° | 250.3 | 251.7 | 253.3 | 254.5 | 256.1 | 257.4 | 259.1 | 260.5 | 262.3 | 263.1 | 264.3 |
| 140° | 246.6 | 248.1 | 249.4 | 250.8 | 252.4 | 253.7 | 255.4 | 257.0 | 258.7 | 259.6 | 260.7 |
| 142.5° | 244.7 | 245.6 | 246.8 | 247.9 | 249.3 | 250.4 | 251.9 | 253.4 | 254.9 | 255.8 | 256.8 |
| 145° | 241.9 | 243.2 | 244.4 | 245.6 | 246.8 | 248.4 | 250.0 | 251.5 | 253.1 | 253.9 | 254.8 |
| 147.5° | 241.0 | 241.9 | 243.1 | 244.3 | 245.4 | 246.5 | 248.0 | 249.4 | 250.9 | 251.7 | 252.5 |
| 150° | 239.2 | 240.2 | 241.1 | 242.3 | 243.5 | 244.9 | 246.2 | 247.6 | 249.3 | 250.2 | 251.1 |
| 152.5° | 237.7 | 238.7 | 239.8 | 241.1 | 242.3 | 243.6 | 245.2 | 246.7 | 248.3 | 249.0 | 250.0 |
| 155° | 236.9 | 237.8 | 239.0 | 240.3 | 241.7 | 242.8 | 244.3 | 245.7 | 247.2 | 248.1 | 248.9 |
| 157.5° | 237.6 | 238.5 | 239.6 | 240.8 | 241.9 | 243.1 | 244.5 | 245.7 | 247.1 | 247.8 | 248.4 |
| 160° | 239.3 | 240.1 | 241.2 | 242.2 | 243.4 | 244.4 | 245.6 | 246.7 | 247.9 | 248.6 | 249.3 |
| 162.5° | 241.3 | 242.2 | 243.4 | 244.1 | 245.3 | 246.4 | 247.6 | 248.5 | 249.8 | 250.4 | 251.1 |
| 165° | 244.2 | 245.0 | 245.9 | 246.6 | 247.5 | 248.2 | 249.3 | 250.0 | 251.0 | 251.5 | 252.3 |
| 167.5° | 249.1 | 249.5 | 250.1 | 250.7 | 251.6 | 252.2 | 253.0 | 253.6 | 254.4 | 255.0 | 255.6 |
| 170° | 252.1 | 252.6 | 253.1 | 253.7 | 254.3 | 255.0 | 255.5 | 255.9 | 256.8 | 257.3 | 257.8 |
| 172.5° | 255.6 | 255.8 | 256.3 | 256.6 | 256.9 | 257.2 | 257.7 | 258.2 | 258.6 | 259.1 | 259.5 |
| 175° | 259.0 | 259.1 | 259.2 | 259.3 | 259.4 | 259.7 | 259.9 | 260.3 | 260.5 | 260.8 | 261.1 |
| 177.5° | 261.7 | 261.8 | 261.9 | 262.0 | 262.4 | 262.4 | 262.6 | 262.7 | 263.0 | 263.2 | 263.5 |
| 180° | 263.2 | 263.2 | 263.2 | 263.2 | 263.2 | 263.2 | 263.2 | 263.2 | 263.2 | 263.2 | 263.2 |



TEST NUMBER: P1444683
 CATALOG NUMBER: EHBR1-42-UNV-TA-L930-UPL15

CANDELA DISTRIBUTION (continued):

| | 165° | 167.5° | 170° | 172.5° | 175° | 177.5° | 180° | 182.5° | 185° | 187.5° | 190° |
|--------|---------|---------|---------|---------|---------|---------|---------|---------|---------|---------|---------|
| 0° | 31860.0 | 31860.0 | 31860.0 | 31860.0 | 31860.0 | 31860.0 | 31860.0 | 31860.0 | 31860.0 | 31860.0 | 31860.0 |
| 2.5° | 31754.1 | 31753.8 | 31752.7 | 31751.4 | 31750.0 | 31750.8 | 31752.2 | 31755.8 | 31762.2 | 31771.4 | 31783.5 |
| 5° | 31642.8 | 31649.2 | 31652.9 | 31653.4 | 31650.1 | 31648.0 | 31651.1 | 31659.9 | 31677.4 | 31706.9 | 31746.8 |
| 7.5° | 31525.8 | 31533.9 | 31546.2 | 31555.3 | 31557.1 | 31554.9 | 31555.3 | 31569.1 | 31601.5 | 31659.0 | 31739.6 |
| 10° | 31401.0 | 31377.3 | 31389.8 | 31412.7 | 31430.8 | 31434.2 | 31436.5 | 31452.6 | 31500.1 | 31587.0 | 31716.5 |
| 12.5° | 31285.8 | 31210.6 | 31196.1 | 31216.8 | 31244.4 | 31253.3 | 31250.8 | 31257.8 | 31313.4 | 31428.4 | 31609.0 |
| 15° | 31134.2 | 30992.8 | 30944.5 | 30949.8 | 30983.9 | 30996.2 | 30987.2 | 30973.6 | 31027.8 | 31168.1 | 31401.9 |
| 17.5° | 30888.8 | 30660.9 | 30572.1 | 30568.2 | 30608.1 | 30618.7 | 30596.8 | 30554.3 | 30607.7 | 30782.9 | 31073.0 |
| 20° | 30515.8 | 30179.4 | 30012.1 | 29985.6 | 30029.0 | 30016.3 | 29972.5 | 29908.2 | 29978.5 | 30191.4 | 30536.5 |
| 22.5° | 29845.2 | 29419.0 | 29133.3 | 29041.2 | 29093.1 | 29058.4 | 28994.6 | 28912.6 | 29005.7 | 29247.7 | 29632.0 |
| 25° | 28749.5 | 28257.0 | 27865.9 | 27646.5 | 27687.9 | 27625.9 | 27556.3 | 27456.9 | 27568.0 | 27845.9 | 28268.8 |
| 27.5° | 27138.9 | 26570.0 | 26085.4 | 25722.2 | 25735.6 | 25654.3 | 25574.3 | 25445.6 | 25584.3 | 25913.2 | 26390.2 |
| 30° | 24997.3 | 24339.0 | 23748.8 | 23255.3 | 23211.1 | 23132.3 | 23050.3 | 22881.4 | 23055.0 | 23448.6 | 24006.1 |
| 32.5° | 22307.7 | 21576.8 | 20894.9 | 20270.8 | 20153.1 | 20076.3 | 20003.1 | 19808.8 | 20036.1 | 20495.0 | 21135.5 |
| 35° | 19162.3 | 18383.8 | 17644.5 | 16931.7 | 16736.7 | 16659.8 | 16596.0 | 16409.7 | 16693.4 | 17192.8 | 17884.5 |
| 37.5° | 15709.9 | 14914.6 | 14180.5 | 13449.7 | 13174.1 | 13069.8 | 13023.4 | 12901.5 | 13228.6 | 13722.7 | 14417.2 |
| 40° | 12165.6 | 11426.1 | 10768.0 | 10122.5 | 9808.3 | 9648.8 | 9624.5 | 9602.2 | 9918.6 | 10347.2 | 10977.6 |
| 42.5° | 8850.0 | 8253.4 | 7746.0 | 7252.5 | 6967.8 | 6750.0 | 6749.8 | 6816.0 | 7100.8 | 7421.9 | 7908.0 |
| 45° | 6121.8 | 5721.4 | 5398.1 | 5068.4 | 5156.6 | 4722.2 | 4977.4 | 4846.5 | 4987.2 | 5194.2 | 5510.3 |
| 47.5° | 4208.1 | 3989.5 | 3812.0 | 3627.8 | 3493.5 | 3365.3 | 3376.5 | 3459.2 | 3591.7 | 3714.5 | 3879.0 |
| 50° | 3067.0 | 2955.7 | 2865.3 | 2769.6 | 2702.7 | 2646.2 | 2649.5 | 2685.3 | 2755.0 | 2819.7 | 2905.7 |
| 52.5° | 2403.2 | 2341.8 | 2292.7 | 2239.8 | 2204.8 | 2176.6 | 2178.1 | 2195.5 | 2233.2 | 2270.2 | 2319.5 |
| 55° | 1980.8 | 1973.4 | 1909.5 | 1862.0 | 1844.0 | 1825.1 | 1828.5 | 1835.4 | 1861.0 | 1882.6 | 1915.3 |
| 57.5° | 1659.9 | 1631.2 | 1612.1 | 1587.0 | 1575.6 | 1562.4 | 1565.4 | 1568.0 | 1585.1 | 1599.6 | 1623.1 |
| 60° | 1433.3 | 1413.0 | 1399.4 | 1382.4 | 1374.8 | 1366.5 | 1368.4 | 1369.9 | 1380.9 | 1390.4 | 1407.2 |
| 62.5° | 1282.8 | 1264.6 | 1252.8 | 1239.7 | 1234.4 | 1228.7 | 1230.0 | 1230.5 | 1237.3 | 1244.3 | 1257.0 |
| 65° | 1167.3 | 1152.9 | 1143.1 | 1131.7 | 1126.2 | 1120.3 | 1120.9 | 1120.9 | 1126.7 | 1131.7 | 1141.4 |
| 67.5° | 1045.2 | 1034.3 | 1028.0 | 1019.0 | 1015.2 | 1009.2 | 1009.1 | 1007.2 | 1011.0 | 1013.0 | 1019.5 |
| 70° | 947.2 | 936.2 | 928.1 | 919.5 | 914.8 | 909.4 | 909.6 | 909.7 | 914.0 | 918.7 | 927.1 |
| 72.5° | 886.7 | 876.2 | 868.9 | 861.4 | 856.9 | 852.4 | 851.6 | 851.1 | 854.2 | 856.7 | 862.4 |
| 75° | 806.5 | 798.1 | 793.8 | 786.8 | 783.2 | 778.1 | 777.3 | 774.9 | 776.4 | 777.0 | 781.1 |
| 77.5° | 709.2 | 701.2 | 697.9 | 690.6 | 687.7 | 681.9 | 681.5 | 678.8 | 680.0 | 679.1 | 682.3 |
| 80° | 598.3 | 591.1 | 589.2 | 583.3 | 581.9 | 576.6 | 575.8 | 572.6 | 573.5 | 571.0 | 572.2 |
| 82.5° | 474.5 | 467.9 | 466.5 | 461.1 | 461.1 | 456.3 | 456.0 | 451.2 | 451.2 | 447.0 | 440.4 |
| 85° | 334.3 | 329.5 | 327.4 | 322.9 | 321.6 | 317.8 | 315.7 | 311.1 | 309.5 | 306.6 | 305.6 |
| 87.5° | 176.4 | 173.3 | 170.7 | 168.5 | 164.6 | 157.6 | 157.0 | 152.2 | 152.6 | 149.1 | 149.4 |
| 90° | 33.8 | 29.9 | 29.6 | 26.1 | 25.5 | 23.1 | 22.6 | 22.4 | 22.7 | 22.5 | 23.1 |
| 92.5° | 22.7 | 22.0 | 21.3 | 20.6 | 19.8 | 19.1 | 18.4 | 19.1 | 19.8 | 20.6 | 21.3 |
| 95° | 25.7 | 25.0 | 24.3 | 23.7 | 23.1 | 22.4 | 21.7 | 22.4 | 23.1 | 23.9 | 24.5 |
| 97.5° | 28.6 | 28.2 | 27.8 | 27.4 | 26.9 | 26.6 | 26.1 | 26.7 | 27.1 | 27.5 | 28.0 |
| 100° | 33.0 | 32.5 | 32.0 | 31.5 | 31.0 | 30.6 | 30.0 | 30.7 | 31.2 | 31.7 | 32.2 |
| 102.5° | 54.6 | 51.6 | 48.6 | 45.5 | 42.5 | 39.5 | 36.4 | 39.5 | 42.5 | 45.7 | 48.7 |
| 105° | 123.6 | 113.5 | 103.3 | 93.0 | 82.9 | 72.6 | 62.4 | 72.7 | 83.0 | 93.1 | 103.5 |
| 107.5° | 243.6 | 225.8 | 207.8 | 189.9 | 171.8 | 153.9 | 135.9 | 154.1 | 172.1 | 190.1 | 208.1 |
| 110° | 359.5 | 344.2 | 328.7 | 313.2 | 297.6 | 282.3 | 266.7 | 282.4 | 297.9 | 313.5 | 329.0 |



TEST NUMBER: P1444683
 CATALOG NUMBER: EHBR1-42-UNV-TA-L930-UPL15

CANDELA DISTRIBUTION (continued):

| | 165° | 167.5° | 170° | 172.5° | 175° | 177.5° | 180° | 182.5° | 185° | 187.5° | 190° |
|--------|-------|--------|-------|--------|-------|--------|-------|--------|-------|--------|-------|
| 112.5° | 423.2 | 414.0 | 404.6 | 395.4 | 385.9 | 376.6 | 367.1 | 376.9 | 386.3 | 395.9 | 405.3 |
| 115° | 438.4 | 433.5 | 428.9 | 424.1 | 419.1 | 414.3 | 409.2 | 414.6 | 419.7 | 424.8 | 429.9 |
| 117.5° | 425.3 | 423.9 | 422.3 | 420.8 | 419.2 | 417.7 | 415.9 | 417.9 | 419.7 | 421.9 | 423.5 |
| 120° | 396.2 | 396.9 | 397.4 | 397.7 | 398.2 | 398.5 | 398.8 | 399.0 | 399.0 | 399.0 | 398.9 |
| 122.5° | 364.5 | 366.3 | 367.9 | 369.5 | 371.0 | 372.6 | 373.8 | 373.0 | 372.0 | 371.0 | 369.7 |
| 125° | 335.7 | 337.7 | 339.4 | 341.1 | 342.7 | 344.5 | 345.7 | 345.0 | 344.0 | 342.9 | 341.7 |
| 127.5° | 312.2 | 313.9 | 315.6 | 317.4 | 318.8 | 320.3 | 321.5 | 321.0 | 320.1 | 319.2 | 318.0 |
| 130° | 293.2 | 295.1 | 296.3 | 297.8 | 299.0 | 300.2 | 301.1 | 300.8 | 300.2 | 300.0 | 299.0 |
| 132.5° | 280.8 | 282.3 | 283.6 | 284.8 | 285.8 | 286.9 | 287.5 | 287.6 | 287.3 | 287.0 | 286.3 |
| 135° | 272.1 | 273.2 | 274.2 | 275.5 | 276.3 | 277.1 | 277.5 | 277.9 | 277.8 | 277.7 | 277.2 |
| 137.5° | 265.2 | 266.3 | 267.2 | 268.0 | 268.6 | 269.1 | 269.4 | 269.9 | 270.1 | 270.5 | 270.4 |
| 140° | 261.7 | 262.8 | 263.7 | 264.5 | 265.3 | 266.0 | 266.1 | 266.8 | 267.0 | 267.1 | 266.9 |
| 142.5° | 258.0 | 259.0 | 259.9 | 260.7 | 261.4 | 262.0 | 262.3 | 262.8 | 263.0 | 263.1 | 263.0 |
| 145° | 255.8 | 256.6 | 257.4 | 258.2 | 258.7 | 259.1 | 259.2 | 259.9 | 260.2 | 260.4 | 260.6 |
| 147.5° | 253.4 | 254.2 | 255.0 | 255.6 | 256.0 | 256.6 | 256.8 | 257.3 | 257.6 | 257.9 | 258.0 |
| 150° | 252.1 | 252.9 | 253.7 | 254.5 | 255.1 | 255.6 | 255.8 | 256.3 | 256.6 | 256.7 | 256.7 |
| 152.5° | 250.7 | 251.4 | 252.3 | 252.8 | 253.4 | 253.9 | 254.2 | 254.6 | 255.0 | 255.3 | 255.4 |
| 155° | 249.6 | 250.5 | 251.2 | 251.9 | 252.4 | 252.9 | 253.4 | 253.9 | 254.2 | 254.5 | 254.7 |
| 157.5° | 249.2 | 250.1 | 250.6 | 251.3 | 251.8 | 252.5 | 253.0 | 253.5 | 253.9 | 254.4 | 254.6 |
| 160° | 249.9 | 250.8 | 251.2 | 251.9 | 252.5 | 253.1 | 253.6 | 254.2 | 254.6 | 255.0 | 255.5 |
| 162.5° | 251.7 | 252.4 | 252.7 | 253.4 | 254.1 | 254.7 | 255.1 | 255.8 | 256.2 | 256.6 | 257.0 |
| 165° | 252.9 | 253.6 | 254.1 | 254.8 | 255.5 | 256.1 | 256.6 | 257.1 | 257.4 | 257.7 | 258.0 |
| 167.5° | 256.1 | 256.8 | 257.2 | 257.8 | 258.3 | 259.0 | 259.5 | 259.9 | 260.2 | 260.5 | 260.7 |
| 170° | 258.3 | 258.9 | 259.3 | 259.8 | 260.3 | 260.8 | 261.2 | 261.5 | 261.7 | 262.0 | 262.3 |
| 172.5° | 259.9 | 260.5 | 260.9 | 261.5 | 261.9 | 262.4 | 262.9 | 263.2 | 263.2 | 263.3 | 263.2 |
| 175° | 261.4 | 261.9 | 262.1 | 262.5 | 262.8 | 263.2 | 263.7 | 263.6 | 263.8 | 263.7 | 263.8 |
| 177.5° | 263.9 | 264.4 | 264.7 | 264.9 | 265.4 | 265.6 | 265.9 | 265.6 | 265.6 | 265.5 | 265.2 |
| 180° | 263.2 | 263.2 | 263.2 | 263.2 | 263.2 | 263.2 | 263.2 | 263.2 | 263.2 | 263.2 | 263.2 |



TEST NUMBER: P1444683
 CATALOG NUMBER: EHBR1-42-UNV-TA-L930-UPL15

CANDELA DISTRIBUTION (continued):

| | 192.5° | 195° | 197.5° | 200° | 202.5° | 205° | 207.5° | 210° | 212.5° | 215° | 217.5° |
|--------|---------|---------|---------|---------|---------|---------|---------|---------|---------|---------|---------|
| 0° | 31860.0 | 31860.0 | 31860.0 | 31860.0 | 31860.0 | 31860.0 | 31860.0 | 31860.0 | 31860.0 | 31860.0 | 31860.0 |
| 2.5° | 31800.5 | 31816.4 | 31840.8 | 31862.8 | 31896.0 | 31922.2 | 31961.5 | 31991.4 | 32035.8 | 32064.6 | 32112.9 |
| 5° | 31803.3 | 31865.5 | 31947.3 | 32027.2 | 32123.2 | 32210.3 | 32318.6 | 32410.8 | 32519.6 | 32608.5 | 32719.8 |
| 7.5° | 31848.2 | 31968.3 | 32112.0 | 32256.9 | 32420.8 | 32574.1 | 32746.9 | 32903.2 | 33074.0 | 33218.6 | 33376.6 |
| 10° | 31881.5 | 32066.5 | 32278.4 | 32491.6 | 32716.1 | 32924.7 | 33135.2 | 33317.2 | 33487.2 | 33627.1 | 33750.7 |
| 12.5° | 31836.5 | 32091.4 | 32363.3 | 32625.9 | 32875.6 | 33091.4 | 33272.6 | 33412.5 | 33509.1 | 33574.6 | 33589.9 |
| 15° | 31683.6 | 31990.3 | 32286.0 | 32547.5 | 32754.6 | 32914.4 | 32997.0 | 33035.8 | 32994.3 | 32925.3 | 32773.7 |
| 17.5° | 31398.0 | 31721.4 | 31985.8 | 32192.1 | 32301.6 | 32344.9 | 32276.4 | 32157.3 | 31924.4 | 31666.0 | 31292.7 |
| 20° | 30874.2 | 31175.7 | 31367.5 | 31480.0 | 31450.7 | 31342.4 | 31083.8 | 30769.5 | 30304.7 | 29809.2 | 29155.4 |
| 22.5° | 29955.7 | 30219.3 | 30321.5 | 30329.8 | 30151.2 | 29880.1 | 29413.7 | 28874.5 | 28141.1 | 27378.7 | 26441.1 |
| 25° | 28577.0 | 28807.8 | 28824.0 | 28733.3 | 28406.3 | 27967.0 | 27282.1 | 26519.5 | 25522.9 | 24507.0 | 23332.0 |
| 27.5° | 26707.1 | 26928.5 | 26874.3 | 26705.1 | 26251.2 | 25663.3 | 24786.5 | 23801.3 | 22572.6 | 21372.7 | 20072.9 |
| 30° | 24356.5 | 24593.3 | 24529.7 | 24312.6 | 23772.7 | 23077.9 | 22046.2 | 20901.5 | 19537.4 | 18255.9 | 16938.7 |
| 32.5° | 21543.6 | 21842.9 | 21799.0 | 21592.7 | 21029.4 | 20285.7 | 19166.3 | 17952.2 | 16556.7 | 15293.6 | 14012.5 |
| 35° | 18346.3 | 18709.7 | 18728.5 | 18593.7 | 18070.7 | 17335.7 | 16230.2 | 15055.2 | 13718.4 | 12526.7 | 11343.1 |
| 37.5° | 14901.6 | 15323.0 | 15409.5 | 15373.1 | 14939.7 | 14290.8 | 13283.7 | 12229.5 | 11045.2 | 10000.9 | 8988.6 |
| 40° | 11437.9 | 11864.4 | 12012.3 | 12056.2 | 11736.4 | 11233.8 | 10407.2 | 9556.3 | 8590.9 | 7744.6 | 6940.9 |
| 42.5° | 8279.0 | 8657.2 | 8800.2 | 8890.1 | 8690.5 | 8355.3 | 7752.4 | 7134.5 | 6427.2 | 5816.8 | 5231.6 |
| 45° | 5750.0 | 6017.4 | 6126.2 | 6216.8 | 6108.0 | 5918.9 | 5538.2 | 5151.7 | 4684.8 | 4285.9 | 3908.4 |
| 47.5° | 4020.2 | 4167.7 | 4239.4 | 4283.3 | 4241.2 | 4142.6 | 3935.4 | 3711.5 | 3448.0 | 3214.9 | 2990.8 |
| 50° | 2979.8 | 3058.3 | 3095.8 | 3121.2 | 3090.6 | 3035.8 | 2923.6 | 2801.7 | 2656.9 | 2525.0 | 2395.9 |
| 52.5° | 2361.4 | 2406.4 | 2428.7 | 2442.4 | 2424.8 | 2391.3 | 2326.0 | 2253.7 | 2167.0 | 2085.4 | 2042.5 |
| 55° | 1989.4 | 1987.0 | 2038.6 | 2013.7 | 2038.6 | 1983.0 | 1971.3 | 1891.8 | 1819.8 | 1769.0 | 1714.1 |
| 57.5° | 1640.6 | 1663.9 | 1673.8 | 1685.0 | 1677.7 | 1667.6 | 1639.9 | 1611.4 | 1573.4 | 1541.6 | 1507.7 |
| 60° | 1420.1 | 1439.4 | 1450.2 | 1461.2 | 1460.5 | 1456.7 | 1440.6 | 1423.7 | 1399.9 | 1380.9 | 1360.3 |
| 62.5° | 1268.3 | 1284.9 | 1295.6 | 1306.1 | 1307.1 | 1305.6 | 1293.4 | 1281.6 | 1265.4 | 1253.5 | 1239.3 |
| 65° | 1148.8 | 1160.4 | 1167.7 | 1176.1 | 1175.7 | 1173.5 | 1162.5 | 1152.7 | 1139.3 | 1131.0 | 1120.7 |
| 67.5° | 1023.7 | 1032.6 | 1038.3 | 1046.2 | 1047.7 | 1048.2 | 1042.2 | 1037.6 | 1031.0 | 1028.6 | 1025.2 |
| 70° | 934.8 | 945.6 | 954.7 | 964.7 | 970.1 | 972.7 | 970.1 | 967.8 | 963.9 | 962.3 | 959.6 |
| 72.5° | 867.5 | 876.6 | 883.7 | 892.7 | 897.8 | 901.5 | 899.5 | 898.2 | 894.9 | 894.4 | 892.6 |
| 75° | 783.9 | 790.2 | 794.2 | 801.0 | 803.7 | 807.2 | 805.7 | 806.5 | 805.4 | 808.0 | 807.9 |
| 77.5° | 683.4 | 688.0 | 689.9 | 694.9 | 695.4 | 699.5 | 700.4 | 705.2 | 708.7 | 716.3 | 720.3 |
| 80° | 570.3 | 573.3 | 573.3 | 578.3 | 580.6 | 587.5 | 590.8 | 598.8 | 602.4 | 609.2 | 609.7 |
| 82.5° | 443.0 | 439.6 | 443.0 | 440.9 | 447.4 | 455.2 | 456.3 | 462.9 | 464.6 | 468.7 | 465.4 |
| 85° | 302.9 | 302.6 | 300.0 | 300.4 | 298.4 | 299.3 | 298.2 | 299.4 | 298.3 | 298.4 | 295.3 |
| 87.5° | 145.1 | 146.4 | 143.2 | 144.3 | 141.2 | 142.7 | 139.9 | 142.0 | 138.8 | 139.4 | 134.7 |
| 90° | 23.2 | 23.5 | 23.6 | 24.1 | 24.9 | 26.0 | 27.4 | 28.6 | 30.3 | 31.5 | 32.9 |
| 92.5° | 22.0 | 22.8 | 23.6 | 24.3 | 25.0 | 27.3 | 29.5 | 31.6 | 34.0 | 36.1 | 38.3 |
| 95° | 25.2 | 25.8 | 26.5 | 27.4 | 28.0 | 31.2 | 34.4 | 37.5 | 40.7 | 43.9 | 47.1 |
| 97.5° | 28.5 | 29.0 | 29.4 | 29.8 | 30.4 | 34.1 | 37.9 | 41.7 | 45.4 | 49.2 | 52.8 |
| 100° | 32.9 | 33.3 | 33.9 | 34.4 | 34.9 | 43.6 | 52.3 | 61.0 | 69.6 | 78.2 | 86.9 |
| 102.5° | 51.9 | 54.9 | 57.9 | 61.2 | 64.3 | 85.3 | 106.3 | 127.3 | 148.1 | 169.1 | 190.1 |
| 105° | 113.7 | 124.0 | 134.4 | 144.6 | 154.9 | 186.7 | 218.6 | 250.4 | 282.0 | 313.8 | 345.6 |
| 107.5° | 226.2 | 244.2 | 262.3 | 280.3 | 298.3 | 328.2 | 358.1 | 388.0 | 417.9 | 447.7 | 477.4 |
| 110° | 344.9 | 360.1 | 376.0 | 391.5 | 407.1 | 430.6 | 454.4 | 478.0 | 501.7 | 525.2 | 548.9 |



TEST NUMBER: P1444683
 CATALOG NUMBER: EHBR1-42-UNV-TA-L930-UPL15

CANDELA DISTRIBUTION (continued):

| | 192.5° | 195° | 197.5° | 200° | 202.5° | 205° | 207.5° | 210° | 212.5° | 215° | 217.5° |
|--------|--------|-------|--------|-------|--------|-------|--------|-------|--------|-------|--------|
| 112.5° | 414.9 | 424.3 | 433.8 | 443.0 | 452.5 | 469.9 | 487.4 | 504.7 | 522.0 | 539.1 | 556.3 |
| 115° | 434.9 | 439.6 | 444.7 | 449.5 | 454.6 | 465.0 | 475.3 | 485.7 | 496.1 | 506.3 | 516.7 |
| 117.5° | 425.3 | 427.1 | 428.9 | 430.2 | 432.0 | 437.2 | 442.5 | 447.6 | 452.9 | 458.0 | 463.2 |
| 120° | 398.8 | 398.4 | 398.2 | 397.7 | 397.4 | 398.8 | 400.4 | 401.6 | 403.2 | 404.6 | 405.8 |
| 122.5° | 368.5 | 367.0 | 365.6 | 364.1 | 362.7 | 361.6 | 360.9 | 359.8 | 359.1 | 358.1 | 357.2 |
| 125° | 340.3 | 338.8 | 337.4 | 335.7 | 334.1 | 332.2 | 330.3 | 328.5 | 326.5 | 324.6 | 322.6 |
| 127.5° | 317.0 | 315.5 | 314.2 | 312.6 | 311.1 | 308.9 | 306.8 | 304.6 | 302.5 | 300.3 | 298.2 |
| 130° | 298.3 | 297.0 | 296.1 | 294.5 | 293.5 | 291.3 | 289.5 | 287.6 | 285.6 | 283.6 | 281.6 |
| 132.5° | 285.9 | 284.9 | 284.1 | 282.8 | 282.0 | 280.0 | 278.4 | 276.3 | 274.6 | 272.7 | 271.0 |
| 135° | 277.1 | 276.3 | 275.8 | 274.8 | 274.0 | 272.4 | 271.0 | 269.4 | 268.0 | 266.4 | 264.9 |
| 137.5° | 270.2 | 269.7 | 269.3 | 268.8 | 268.2 | 266.7 | 265.6 | 264.1 | 263.0 | 261.5 | 260.3 |
| 140° | 266.8 | 266.5 | 266.0 | 265.5 | 264.9 | 263.6 | 262.3 | 260.9 | 259.7 | 258.3 | 257.0 |
| 142.5° | 262.8 | 262.5 | 262.2 | 261.6 | 261.2 | 259.9 | 259.1 | 258.0 | 256.9 | 255.8 | 254.8 |
| 145° | 260.5 | 260.3 | 260.1 | 259.7 | 259.6 | 258.3 | 257.3 | 256.0 | 255.0 | 253.8 | 252.7 |
| 147.5° | 258.1 | 257.9 | 257.9 | 257.6 | 257.6 | 256.6 | 255.8 | 254.8 | 254.0 | 253.0 | 252.2 |
| 150° | 256.7 | 256.6 | 256.6 | 256.4 | 256.2 | 255.3 | 254.6 | 253.7 | 253.0 | 251.9 | 251.2 |
| 152.5° | 255.4 | 255.5 | 255.6 | 255.6 | 255.7 | 255.0 | 254.1 | 253.3 | 252.5 | 251.6 | 250.8 |
| 155° | 255.0 | 255.0 | 255.2 | 255.2 | 255.2 | 254.6 | 253.9 | 253.1 | 252.4 | 251.7 | 250.9 |
| 157.5° | 254.9 | 255.1 | 255.3 | 255.5 | 255.6 | 255.0 | 254.4 | 253.9 | 253.3 | 252.6 | 252.0 |
| 160° | 255.7 | 256.0 | 256.3 | 256.4 | 256.6 | 256.1 | 255.9 | 255.1 | 255.0 | 254.2 | 253.6 |
| 162.5° | 257.4 | 257.7 | 258.0 | 258.1 | 258.3 | 257.8 | 257.5 | 257.0 | 256.6 | 255.8 | 255.4 |
| 165° | 258.4 | 258.5 | 258.8 | 258.8 | 259.0 | 258.6 | 258.4 | 258.1 | 257.7 | 257.4 | 257.0 |
| 167.5° | 261.0 | 261.1 | 261.4 | 261.4 | 261.5 | 261.3 | 261.4 | 261.0 | 260.7 | 260.5 | 260.2 |
| 170° | 262.5 | 262.6 | 262.8 | 262.8 | 263.0 | 262.7 | 262.5 | 262.4 | 262.4 | 261.8 | 261.5 |
| 172.5° | 263.4 | 263.4 | 263.5 | 263.6 | 263.5 | 263.3 | 263.3 | 263.2 | 263.1 | 263.0 | 262.8 |
| 175° | 263.8 | 263.8 | 263.8 | 263.8 | 263.7 | 263.7 | 263.6 | 263.7 | 263.6 | 263.6 | 263.5 |
| 177.5° | 265.2 | 265.1 | 264.8 | 264.8 | 264.6 | 264.5 | 264.6 | 264.5 | 264.6 | 264.5 | 264.4 |
| 180° | 263.2 | 263.2 | 263.2 | 263.2 | 263.2 | 263.2 | 263.2 | 263.2 | 263.2 | 263.2 | 263.2 |



TEST NUMBER: P1444683
 CATALOG NUMBER: EHBR1-42-UNV-TA-L930-UPL15

CANDELA DISTRIBUTION (continued):

| | 220° | 222.5° | 225° | 227.5° | 230° | 232.5° | 235° | 237.5° | 240° | 242.5° | 245° |
|--------|---------|---------|---------|---------|---------|---------|---------|---------|---------|---------|---------|
| 0° | 31860.0 | 31860.0 | 31860.0 | 31860.0 | 31860.0 | 31860.0 | 31860.0 | 31860.0 | 31860.0 | 31860.0 | 31860.0 |
| 2.5° | 32142.8 | 31944.3 | 31918.0 | 31932.0 | 31965.2 | 31977.5 | 32013.2 | 32023.0 | 32059.1 | 32067.9 | 32102.5 |
| 5° | 32806.0 | 32543.6 | 32556.7 | 32619.8 | 32715.3 | 32772.3 | 32866.1 | 32915.2 | 33004.9 | 33045.6 | 33126.6 |
| 7.5° | 33505.4 | 33299.3 | 33363.5 | 33469.9 | 33600.6 | 33691.0 | 33803.8 | 33877.2 | 33974.4 | 34034.7 | 34112.5 |
| 10° | 33848.8 | 33792.3 | 33863.0 | 33946.7 | 34021.3 | 34079.6 | 34127.4 | 34165.7 | 34190.7 | 34214.2 | 34224.5 |
| 12.5° | 33587.4 | 33674.8 | 33686.8 | 33678.7 | 33629.4 | 33591.7 | 33507.0 | 33449.5 | 33347.4 | 33285.1 | 33163.7 |
| 15° | 32618.7 | 32810.9 | 32704.5 | 32543.4 | 32307.7 | 32111.2 | 31833.7 | 31627.2 | 31338.2 | 31142.2 | 30852.2 |
| 17.5° | 30918.7 | 31161.2 | 30883.9 | 30511.3 | 30037.2 | 29631.6 | 29126.6 | 28725.7 | 28223.5 | 27858.3 | 27389.7 |
| 20° | 28525.4 | 28752.0 | 28257.6 | 27639.8 | 26906.4 | 26289.2 | 25561.4 | 24980.7 | 24304.3 | 23801.3 | 23194.0 |
| 22.5° | 25545.5 | 25706.9 | 25010.4 | 24177.5 | 23243.2 | 22472.1 | 21601.9 | 20905.8 | 20133.9 | 19558.7 | 18911.3 |
| 25° | 22248.7 | 22292.3 | 21456.9 | 20497.4 | 19456.0 | 18589.4 | 17660.4 | 16928.4 | 16141.2 | 15558.3 | 14922.9 |
| 27.5° | 18921.4 | 18857.5 | 17954.4 | 16937.1 | 15841.7 | 14940.9 | 14034.8 | 13348.9 | 12659.5 | 12134.4 | 11587.0 |
| 30° | 15780.7 | 15626.0 | 14688.4 | 13642.7 | 12579.4 | 11772.1 | 11019.9 | 10469.0 | 9920.6 | 9504.0 | 9064.7 |
| 32.5° | 12900.8 | 12682.5 | 11769.8 | 10790.1 | 9894.1 | 9271.1 | 8713.4 | 8296.6 | 7853.6 | 7501.8 | 7133.0 |
| 35° | 10349.8 | 10117.3 | 9308.8 | 8478.1 | 7800.1 | 7340.8 | 6902.4 | 6560.5 | 6184.4 | 5887.6 | 5567.3 |
| 37.5° | 8160.5 | 7970.0 | 7292.6 | 6639.1 | 6126.2 | 5770.3 | 5411.1 | 5131.6 | 4820.9 | 4690.2 | 4348.0 |
| 40° | 6299.9 | 6166.7 | 5637.1 | 5155.3 | 4770.2 | 4603.0 | 4238.3 | 3977.3 | 3745.0 | 3553.5 | 3368.1 |
| 42.5° | 4914.0 | 4866.9 | 4351.5 | 3975.7 | 3704.6 | 3493.9 | 3290.7 | 3125.8 | 2965.2 | 2833.1 | 2708.4 |
| 45° | 3606.2 | 3568.8 | 3340.1 | 3123.2 | 2938.4 | 2791.1 | 2653.8 | 2540.3 | 2435.3 | 2348.3 | 2269.2 |
| 47.5° | 2808.1 | 2796.2 | 2664.4 | 2529.9 | 2413.5 | 2318.9 | 2229.7 | 2154.4 | 2084.7 | 2026.6 | 2007.7 |
| 50° | 2284.0 | 2282.4 | 2205.1 | 2122.1 | 2039.2 | 1984.5 | 1927.6 | 1883.1 | 1838.3 | 1803.5 | 1766.7 |
| 52.5° | 1940.6 | 1932.2 | 1880.0 | 1828.8 | 1779.5 | 1743.6 | 1707.2 | 1678.8 | 1649.1 | 1627.7 | 1604.8 |
| 55° | 1670.7 | 1679.5 | 1649.3 | 1618.8 | 1587.9 | 1565.6 | 1540.1 | 1521.3 | 1501.0 | 1487.4 | 1473.6 |
| 57.5° | 1483.1 | 1494.9 | 1479.0 | 1461.6 | 1442.9 | 1428.2 | 1410.7 | 1397.7 | 1384.1 | 1375.5 | 1367.5 |
| 60° | 1346.8 | 1359.5 | 1353.2 | 1344.5 | 1332.9 | 1324.1 | 1312.9 | 1305.7 | 1297.0 | 1292.2 | 1287.6 |
| 62.5° | 1231.1 | 1247.0 | 1244.7 | 1240.6 | 1233.2 | 1228.3 | 1222.2 | 1219.0 | 1213.2 | 1211.1 | 1209.0 |
| 65° | 1115.6 | 1133.5 | 1133.2 | 1131.2 | 1127.0 | 1125.6 | 1121.9 | 1121.1 | 1118.2 | 1119.4 | 1119.1 |
| 67.5° | 1024.8 | 1040.4 | 1043.8 | 1046.3 | 1046.2 | 1047.1 | 1046.7 | 1048.2 | 1048.2 | 1050.6 | 1052.0 |
| 70° | 959.2 | 970.1 | 972.7 | 975.4 | 976.1 | 978.1 | 978.1 | 979.5 | 979.1 | 981.0 | 981.2 |
| 72.5° | 893.0 | 907.3 | 909.9 | 912.0 | 912.0 | 914.0 | 913.0 | 912.6 | 909.8 | 909.2 | 907.2 |
| 75° | 810.6 | 828.9 | 832.9 | 835.5 | 835.9 | 837.7 | 835.2 | 833.7 | 828.9 | 827.0 | 823.7 |
| 77.5° | 724.5 | 743.6 | 746.3 | 747.3 | 745.8 | 746.2 | 740.9 | 737.4 | 731.4 | 728.9 | 725.7 |
| 80° | 612.5 | 640.5 | 642.7 | 640.9 | 636.5 | 635.8 | 630.7 | 627.5 | 620.2 | 617.7 | 615.1 |
| 82.5° | 466.1 | 498.9 | 503.5 | 505.5 | 502.0 | 502.8 | 498.0 | 496.0 | 489.4 | 488.3 | 483.9 |
| 85° | 294.3 | 327.0 | 332.5 | 331.7 | 328.1 | 327.3 | 324.5 | 325.4 | 324.8 | 326.6 | 327.6 |
| 87.5° | 135.2 | 167.0 | 174.7 | 172.2 | 171.8 | 169.6 | 164.5 | 166.4 | 169.4 | 171.5 | 171.5 |
| 90° | 34.2 | 45.1 | 46.3 | 46.0 | 42.8 | 42.0 | 38.9 | 38.9 | 36.2 | 35.9 | 33.5 |
| 92.5° | 40.5 | 42.7 | 44.9 | 43.0 | 41.0 | 39.0 | 37.1 | 35.0 | 33.2 | 31.1 | 29.2 |
| 95° | 50.3 | 53.3 | 56.5 | 53.9 | 51.1 | 48.5 | 45.9 | 43.2 | 40.6 | 38.1 | 35.4 |
| 97.5° | 56.6 | 60.2 | 63.7 | 61.1 | 58.5 | 55.8 | 53.1 | 50.5 | 47.9 | 45.2 | 42.5 |
| 100° | 95.5 | 103.8 | 112.3 | 104.8 | 97.3 | 89.8 | 82.4 | 74.9 | 67.5 | 60.0 | 52.4 |
| 102.5° | 210.9 | 231.6 | 252.5 | 233.5 | 214.6 | 195.6 | 176.8 | 157.8 | 139.0 | 119.9 | 101.1 |
| 105° | 377.1 | 408.5 | 440.0 | 411.0 | 382.1 | 353.2 | 324.4 | 295.6 | 266.6 | 237.8 | 209.0 |
| 107.5° | 507.2 | 536.3 | 565.7 | 539.6 | 513.4 | 487.3 | 461.0 | 434.9 | 408.8 | 382.5 | 356.5 |
| 110° | 572.5 | 594.9 | 618.3 | 600.4 | 582.9 | 565.1 | 547.4 | 529.8 | 512.2 | 494.7 | 477.2 |



TEST NUMBER: P1444683
 CATALOG NUMBER: EHBR1-42-UNV-TA-L930-UPL15

CANDELA DISTRIBUTION (continued):

| | 220° | 222.5° | 225° | 227.5° | 230° | 232.5° | 235° | 237.5° | 240° | 242.5° | 245° |
|--------|-------|--------|-------|--------|-------|--------|-------|--------|-------|--------|-------|
| 112.5° | 573.5 | 589.3 | 606.2 | 595.5 | 585.1 | 574.5 | 564.1 | 553.6 | 543.3 | 532.7 | 522.6 |
| 115° | 526.8 | 535.4 | 545.2 | 540.7 | 536.4 | 531.9 | 527.5 | 523.2 | 518.8 | 514.5 | 510.4 |
| 117.5° | 468.2 | 471.4 | 475.9 | 474.4 | 473.5 | 472.0 | 471.1 | 469.8 | 468.9 | 467.8 | 466.9 |
| 120° | 407.1 | 406.3 | 407.0 | 406.8 | 406.9 | 406.9 | 407.0 | 406.9 | 407.0 | 407.2 | 407.4 |
| 122.5° | 356.2 | 352.8 | 351.0 | 350.9 | 350.8 | 350.6 | 350.6 | 350.4 | 350.4 | 350.5 | 350.6 |
| 125° | 320.8 | 316.1 | 313.3 | 311.9 | 310.7 | 309.2 | 307.8 | 306.6 | 305.3 | 304.1 | 302.9 |
| 127.5° | 295.9 | 290.9 | 287.9 | 285.6 | 283.3 | 281.0 | 278.7 | 276.3 | 274.0 | 271.7 | 269.7 |
| 130° | 279.7 | 274.6 | 271.8 | 269.0 | 266.5 | 263.5 | 260.8 | 258.1 | 255.2 | 252.5 | 249.8 |
| 132.5° | 269.0 | 264.0 | 261.3 | 258.7 | 256.2 | 253.4 | 250.8 | 248.0 | 245.3 | 242.5 | 240.0 |
| 135° | 263.4 | 258.4 | 256.1 | 253.5 | 251.4 | 248.8 | 246.3 | 243.7 | 241.4 | 238.6 | 236.5 |
| 137.5° | 258.8 | 253.9 | 251.8 | 249.7 | 247.8 | 245.7 | 243.8 | 241.6 | 239.6 | 237.2 | 235.3 |
| 140° | 255.6 | 250.4 | 248.3 | 246.9 | 245.8 | 244.2 | 242.9 | 241.4 | 240.2 | 238.7 | 237.3 |
| 142.5° | 253.6 | 248.5 | 246.6 | 245.6 | 244.8 | 243.7 | 243.0 | 241.9 | 241.0 | 239.7 | 238.7 |
| 145° | 251.7 | 246.0 | 244.0 | 243.5 | 243.3 | 242.8 | 242.4 | 242.0 | 241.6 | 241.0 | 240.5 |
| 147.5° | 251.2 | 245.3 | 243.4 | 243.3 | 243.2 | 242.7 | 242.7 | 242.5 | 242.5 | 242.1 | 242.0 |
| 150° | 250.2 | 243.5 | 241.2 | 241.4 | 241.3 | 241.4 | 241.5 | 241.4 | 241.7 | 241.7 | 241.7 |
| 152.5° | 249.8 | 241.9 | 239.3 | 239.4 | 239.6 | 239.6 | 239.9 | 240.1 | 240.4 | 240.6 | 240.8 |
| 155° | 250.0 | 241.3 | 238.5 | 238.3 | 238.4 | 238.4 | 238.5 | 238.6 | 238.7 | 238.9 | 239.2 |
| 157.5° | 251.2 | 242.1 | 239.3 | 238.9 | 238.9 | 238.8 | 238.8 | 238.8 | 238.9 | 239.0 | 239.4 |
| 160° | 252.9 | 243.9 | 241.0 | 240.6 | 240.5 | 240.4 | 240.3 | 240.2 | 240.3 | 240.3 | 240.5 |
| 162.5° | 254.6 | 245.8 | 243.0 | 242.6 | 242.3 | 242.2 | 242.2 | 241.9 | 241.9 | 241.9 | 242.1 |
| 165° | 256.4 | 248.5 | 246.0 | 245.7 | 245.6 | 245.4 | 245.3 | 245.2 | 245.3 | 245.3 | 245.5 |
| 167.5° | 259.9 | 252.7 | 250.7 | 250.3 | 250.0 | 249.6 | 249.6 | 249.2 | 249.2 | 248.9 | 248.9 |
| 170° | 261.3 | 255.7 | 253.9 | 253.7 | 253.8 | 253.7 | 253.5 | 253.5 | 253.4 | 253.4 | 253.4 |
| 172.5° | 262.5 | 258.4 | 257.1 | 257.1 | 257.3 | 257.4 | 257.5 | 257.5 | 257.7 | 257.9 | 258.1 |
| 175° | 263.4 | 260.9 | 260.4 | 260.2 | 260.3 | 260.4 | 260.5 | 260.5 | 260.6 | 260.7 | 261.0 |
| 177.5° | 264.5 | 263.8 | 263.4 | 263.4 | 263.4 | 263.4 | 263.4 | 263.4 | 263.4 | 263.6 | 263.6 |
| 180° | 263.2 | 263.2 | 263.2 | 263.2 | 263.2 | 263.2 | 263.2 | 263.2 | 263.2 | 263.2 | 263.2 |



TEST NUMBER: P1444683
 CATALOG NUMBER: EHBR1-42-UNV-TA-L930-UPL15

CANDELA DISTRIBUTION (continued):

| | 247.5° | 250° | 252.5° | 255° | 257.5° | 260° | 262.5° | 265° | 267.5° | 270° | 272.5° |
|--------|---------|---------|---------|---------|---------|---------|---------|---------|---------|---------|---------|
| 0° | 31860.0 | 31860.0 | 31860.0 | 31860.0 | 31860.0 | 31860.0 | 31860.0 | 31860.0 | 31860.0 | 31860.0 | 31860.0 |
| 2.5° | 32109.0 | 32146.4 | 32143.6 | 32178.5 | 32176.8 | 32209.7 | 32203.1 | 32231.5 | 32225.1 | 32249.3 | 32235.1 |
| 5° | 33162.2 | 33233.4 | 33257.0 | 33321.2 | 33334.5 | 33392.1 | 33393.2 | 33438.9 | 33433.3 | 33469.1 | 33450.1 |
| 7.5° | 34158.6 | 34225.1 | 34256.6 | 34306.5 | 34331.4 | 34372.8 | 34389.0 | 34422.9 | 34431.1 | 34451.2 | 34450.6 |
| 10° | 34242.6 | 34242.4 | 34258.0 | 34251.0 | 34264.9 | 34256.9 | 34273.9 | 34267.8 | 34292.9 | 34286.5 | 34305.5 |
| 12.5° | 33111.3 | 32999.0 | 32958.0 | 32857.1 | 32835.1 | 32748.5 | 32754.6 | 32699.1 | 32725.9 | 32691.8 | 32749.9 |
| 15° | 30679.7 | 30419.2 | 30290.5 | 30064.0 | 29993.0 | 29814.0 | 29799.4 | 29680.6 | 29712.6 | 29650.4 | 29741.3 |
| 17.5° | 27086.4 | 26676.4 | 26451.3 | 26120.6 | 25989.3 | 25736.2 | 25685.4 | 25532.4 | 25556.1 | 25479.0 | 25588.8 |
| 20° | 22802.4 | 22306.8 | 22023.0 | 21640.5 | 21470.0 | 21168.1 | 21088.1 | 20916.8 | 20938.3 | 20861.6 | 20985.8 |
| 22.5° | 18469.5 | 17950.8 | 17630.3 | 17229.5 | 17011.6 | 16727.8 | 16642.6 | 16470.6 | 16480.4 | 16408.3 | 16527.8 |
| 25° | 14487.7 | 13990.4 | 13679.3 | 13315.1 | 13126.1 | 12865.9 | 12776.4 | 12621.9 | 12630.7 | 12571.3 | 12678.5 |
| 27.5° | 11207.2 | 10799.2 | 10539.0 | 10233.8 | 10064.3 | 9850.3 | 9763.1 | 9633.2 | 9632.9 | 9589.3 | 9678.8 |
| 30° | 8757.8 | 8417.3 | 8183.7 | 7917.9 | 7758.7 | 7565.7 | 7481.4 | 7365.2 | 7360.1 | 7329.2 | 7400.4 |
| 32.5° | 6857.2 | 6554.3 | 6341.2 | 6107.3 | 5964.4 | 5798.7 | 5719.0 | 5625.5 | 5617.0 | 5589.0 | 5647.5 |
| 35° | 5330.6 | 5075.6 | 4892.3 | 4695.3 | 4709.8 | 4465.4 | 4506.0 | 4316.1 | 4264.7 | 4253.5 | 4296.9 |
| 37.5° | 4119.9 | 3922.4 | 3773.5 | 3626.0 | 3526.1 | 3422.8 | 3367.2 | 3317.3 | 3311.6 | 3306.8 | 3337.2 |
| 40° | 3224.8 | 3086.5 | 2978.3 | 2877.0 | 2808.3 | 2745.2 | 2710.5 | 2683.0 | 2676.5 | 2672.9 | 2691.3 |
| 42.5° | 2610.0 | 2516.7 | 2446.9 | 2385.1 | 2343.3 | 2309.1 | 2290.0 | 2274.7 | 2269.6 | 2269.8 | 2280.7 |
| 45° | 2205.1 | 2148.5 | 2103.5 | 2065.1 | 2038.5 | 2050.2 | 2015.7 | 2033.8 | 2009.9 | 2034.6 | 2018.3 |
| 47.5° | 1941.9 | 1893.8 | 1865.9 | 1838.7 | 1822.6 | 1809.5 | 1810.0 | 1810.3 | 1815.3 | 1816.1 | 1821.5 |
| 50° | 1738.8 | 1710.9 | 1691.6 | 1674.2 | 1665.8 | 1658.9 | 1661.4 | 1663.1 | 1668.0 | 1668.4 | 1672.3 |
| 52.5° | 1588.5 | 1570.2 | 1558.5 | 1547.7 | 1544.0 | 1540.1 | 1541.8 | 1541.0 | 1543.3 | 1542.1 | 1545.2 |
| 55° | 1466.2 | 1457.5 | 1453.9 | 1449.9 | 1450.4 | 1449.4 | 1450.1 | 1446.2 | 1443.8 | 1440.9 | 1443.6 |
| 57.5° | 1365.8 | 1364.6 | 1367.1 | 1368.8 | 1373.3 | 1375.0 | 1376.1 | 1371.6 | 1367.4 | 1363.4 | 1365.7 |
| 60° | 1288.5 | 1290.4 | 1296.5 | 1301.4 | 1308.0 | 1311.1 | 1313.0 | 1310.4 | 1307.4 | 1304.2 | 1306.1 |
| 62.5° | 1212.2 | 1215.2 | 1222.5 | 1228.0 | 1236.0 | 1240.2 | 1244.7 | 1245.0 | 1246.2 | 1245.0 | 1246.3 |
| 65° | 1123.6 | 1127.3 | 1133.9 | 1138.5 | 1145.9 | 1149.6 | 1154.3 | 1155.2 | 1157.8 | 1157.1 | 1159.4 |
| 67.5° | 1056.4 | 1059.7 | 1065.2 | 1069.5 | 1076.1 | 1080.0 | 1084.1 | 1084.3 | 1085.2 | 1085.1 | 1087.1 |
| 70° | 984.5 | 986.1 | 991.1 | 994.8 | 1001.4 | 1005.3 | 1010.0 | 1011.4 | 1014.4 | 1014.8 | 1017.2 |
| 72.5° | 908.0 | 907.3 | 910.3 | 911.9 | 916.9 | 919.9 | 926.0 | 929.3 | 934.2 | 935.5 | 937.3 |
| 75° | 824.7 | 823.9 | 827.5 | 828.9 | 833.1 | 836.2 | 842.9 | 847.3 | 855.0 | 858.2 | 857.4 |
| 77.5° | 728.1 | 729.8 | 736.4 | 740.1 | 745.8 | 749.6 | 758.4 | 765.4 | 779.4 | 785.5 | 779.3 |
| 80° | 620.2 | 622.0 | 628.9 | 632.3 | 639.7 | 644.5 | 654.3 | 662.4 | 675.0 | 677.8 | 674.2 |
| 82.5° | 487.6 | 488.2 | 494.2 | 496.9 | 506.5 | 513.5 | 526.0 | 532.4 | 540.2 | 539.1 | 538.1 |
| 85° | 332.5 | 337.0 | 344.7 | 352.4 | 364.1 | 375.5 | 387.2 | 396.8 | 390.1 | 400.7 | 388.7 |
| 87.5° | 177.7 | 177.2 | 187.6 | 186.0 | 202.5 | 212.1 | 222.3 | 227.1 | 232.5 | 231.4 | 231.5 |
| 90° | 33.7 | 31.8 | 32.4 | 30.3 | 31.8 | 29.3 | 31.7 | 29.6 | 32.4 | 29.6 | 34.3 |
| 92.5° | 27.2 | 26.2 | 25.0 | 24.1 | 22.9 | 22.0 | 20.9 | 19.8 | 18.7 | 17.6 | 18.7 |
| 95° | 32.8 | 31.8 | 30.8 | 29.8 | 28.8 | 27.8 | 26.8 | 25.8 | 24.9 | 23.9 | 25.1 |
| 97.5° | 39.9 | 39.4 | 38.8 | 38.2 | 37.6 | 37.1 | 36.4 | 35.9 | 35.1 | 34.6 | 35.4 |
| 100° | 44.9 | 44.9 | 44.9 | 44.9 | 44.7 | 44.7 | 44.7 | 44.7 | 44.7 | 44.7 | 45.4 |
| 102.5° | 82.3 | 80.4 | 78.5 | 76.5 | 74.6 | 72.6 | 70.8 | 68.9 | 67.0 | 65.1 | 67.9 |
| 105° | 180.1 | 172.7 | 165.3 | 157.9 | 150.4 | 143.1 | 135.7 | 128.3 | 121.0 | 113.6 | 121.2 |
| 107.5° | 330.5 | 316.9 | 303.4 | 290.0 | 276.5 | 263.1 | 249.7 | 236.2 | 222.9 | 209.4 | 221.4 |
| 110° | 459.6 | 445.2 | 430.8 | 416.5 | 402.2 | 387.9 | 373.7 | 359.4 | 345.1 | 330.9 | 342.4 |



TEST NUMBER: P1444683
 CATALOG NUMBER: EHBR1-42-UNV-TA-L930-UPL15

CANDELA DISTRIBUTION (continued):

| | 247.5° | 250° | 252.5° | 255° | 257.5° | 260° | 262.5° | 265° | 267.5° | 270° | 272.5° |
|--------|--------|-------|--------|-------|--------|-------|--------|-------|--------|-------|--------|
| 112.5° | 512.2 | 502.7 | 493.4 | 484.2 | 474.8 | 465.7 | 456.4 | 447.3 | 438.1 | 428.9 | 434.4 |
| 115° | 506.2 | 501.6 | 497.1 | 492.6 | 488.2 | 483.5 | 479.1 | 474.8 | 470.4 | 466.1 | 466.4 |
| 117.5° | 465.8 | 464.0 | 462.5 | 460.8 | 459.2 | 457.7 | 456.3 | 454.8 | 453.3 | 452.1 | 449.0 |
| 120° | 407.8 | 407.8 | 408.0 | 408.2 | 408.6 | 409.0 | 409.2 | 409.7 | 410.4 | 410.9 | 406.7 |
| 122.5° | 350.7 | 351.3 | 352.1 | 352.9 | 353.8 | 354.8 | 355.8 | 357.0 | 358.2 | 359.5 | 355.3 |
| 125° | 301.7 | 302.3 | 303.0 | 303.6 | 304.3 | 305.4 | 306.5 | 307.6 | 308.7 | 310.1 | 306.6 |
| 127.5° | 267.4 | 267.3 | 267.1 | 267.2 | 267.2 | 267.4 | 267.9 | 268.2 | 268.9 | 269.6 | 267.3 |
| 130° | 247.1 | 246.2 | 245.2 | 244.5 | 243.6 | 243.3 | 242.8 | 242.5 | 242.2 | 242.1 | 241.3 |
| 132.5° | 237.2 | 235.8 | 234.3 | 232.9 | 231.6 | 230.6 | 229.5 | 228.8 | 228.0 | 227.5 | 227.2 |
| 135° | 233.7 | 232.0 | 230.2 | 228.5 | 226.8 | 225.5 | 224.1 | 223.1 | 222.1 | 221.2 | 221.6 |
| 137.5° | 233.2 | 231.5 | 229.6 | 228.0 | 226.3 | 225.0 | 223.6 | 222.4 | 221.4 | 220.6 | 221.3 |
| 140° | 235.8 | 234.0 | 232.2 | 230.6 | 229.2 | 227.9 | 226.5 | 225.5 | 224.3 | 223.7 | 224.0 |
| 142.5° | 237.7 | 236.2 | 234.5 | 233.2 | 231.7 | 230.4 | 229.4 | 228.5 | 227.3 | 226.8 | 227.2 |
| 145° | 240.0 | 238.9 | 237.6 | 236.5 | 235.5 | 234.7 | 233.7 | 233.1 | 232.4 | 232.1 | 232.3 |
| 147.5° | 241.7 | 240.9 | 239.9 | 239.1 | 238.2 | 237.7 | 237.0 | 236.5 | 236.1 | 235.8 | 235.9 |
| 150° | 241.8 | 241.2 | 240.6 | 240.2 | 239.5 | 239.3 | 238.8 | 238.6 | 238.3 | 238.2 | 238.2 |
| 152.5° | 241.1 | 240.7 | 240.2 | 239.8 | 239.4 | 239.2 | 238.8 | 238.7 | 238.6 | 238.5 | 238.5 |
| 155° | 239.4 | 239.2 | 239.0 | 239.0 | 238.8 | 239.1 | 238.9 | 239.1 | 239.0 | 239.2 | 239.3 |
| 157.5° | 239.4 | 239.5 | 239.4 | 239.7 | 239.8 | 240.0 | 240.1 | 240.4 | 240.4 | 240.9 | 241.1 |
| 160° | 240.9 | 240.9 | 240.9 | 241.1 | 241.1 | 241.2 | 241.4 | 241.7 | 241.9 | 242.0 | 242.4 |
| 162.5° | 242.2 | 242.6 | 242.7 | 242.8 | 243.2 | 243.5 | 243.8 | 244.3 | 244.5 | 245.0 | 245.3 |
| 165° | 245.7 | 245.8 | 245.8 | 245.8 | 246.0 | 246.2 | 246.3 | 246.8 | 246.8 | 247.3 | 247.7 |
| 167.5° | 248.8 | 249.0 | 249.0 | 249.2 | 249.3 | 249.6 | 249.8 | 250.2 | 250.6 | 251.1 | 251.5 |
| 170° | 253.3 | 253.3 | 253.3 | 253.3 | 253.3 | 253.5 | 253.6 | 253.7 | 253.9 | 254.2 | 254.4 |
| 172.5° | 258.1 | 258.1 | 257.9 | 258.1 | 257.9 | 258.1 | 258.1 | 258.3 | 258.3 | 258.3 | 258.4 |
| 175° | 260.8 | 261.2 | 261.3 | 261.5 | 261.5 | 261.5 | 261.6 | 261.7 | 261.8 | 262.0 | 262.0 |
| 177.5° | 263.6 | 263.7 | 263.7 | 263.7 | 263.7 | 263.8 | 263.8 | 263.8 | 263.8 | 263.7 | 263.8 |
| 180° | 263.2 | 263.2 | 263.2 | 263.2 | 263.2 | 263.2 | 263.2 | 263.2 | 263.2 | 263.2 | 263.2 |



TEST NUMBER: P1444683
 CATALOG NUMBER: EHBR1-42-UNV-TA-L930-UPL15

CANDELA DISTRIBUTION (continued):

| | 275° | 277.5° | 280° | 282.5° | 285° | 287.5° | 290° | 292.5° | 295° | 297.5° | 300° |
|--------|---------|---------|---------|---------|---------|---------|---------|---------|---------|---------|---------|
| 0° | 31860.0 | 31860.0 | 31860.0 | 31860.0 | 31860.0 | 31860.0 | 31860.0 | 31860.0 | 31860.0 | 31860.0 | 31860.0 |
| 2.5° | 32258.8 | 32242.7 | 32259.2 | 32242.4 | 32259.2 | 32239.1 | 32252.7 | 32231.0 | 32236.5 | 32214.0 | 32219.8 |
| 5° | 33478.6 | 33452.8 | 33466.6 | 33433.1 | 33436.6 | 33392.1 | 33391.2 | 33339.2 | 33325.6 | 33266.4 | 33240.4 |
| 7.5° | 34464.9 | 34456.5 | 34461.2 | 34439.7 | 34437.3 | 34406.8 | 34392.3 | 34349.2 | 34322.2 | 34267.8 | 34230.6 |
| 10° | 34308.8 | 34333.9 | 34340.4 | 34366.1 | 34371.3 | 34396.7 | 34402.1 | 34427.5 | 34432.7 | 34451.5 | 34451.8 |
| 12.5° | 32747.2 | 32832.6 | 32853.0 | 32958.4 | 33002.8 | 33123.6 | 33188.3 | 33321.2 | 33400.2 | 33532.8 | 33614.2 |
| 15° | 29738.8 | 29886.6 | 29945.5 | 30151.4 | 30265.3 | 30505.7 | 30656.8 | 30932.9 | 31127.7 | 31420.9 | 31629.9 |
| 17.5° | 25598.5 | 25804.9 | 25898.0 | 26177.3 | 26359.5 | 26714.3 | 26970.1 | 27391.0 | 27713.3 | 28181.0 | 28551.8 |
| 20° | 21007.1 | 21236.5 | 21362.9 | 21681.5 | 21896.5 | 22311.1 | 22630.4 | 23147.7 | 23579.0 | 24171.8 | 24678.7 |
| 22.5° | 16565.2 | 16783.5 | 16924.0 | 17248.1 | 17490.1 | 17922.5 | 18279.4 | 18825.3 | 19308.7 | 19976.6 | 20584.3 |
| 25° | 12719.0 | 12919.0 | 13045.9 | 13339.1 | 13566.4 | 13963.8 | 14304.6 | 14829.6 | 15302.6 | 15972.5 | 16595.7 |
| 27.5° | 9723.5 | 9891.0 | 10013.4 | 10263.3 | 10463.8 | 10800.9 | 11093.5 | 11527.5 | 11934.9 | 12514.6 | 13069.5 |
| 30° | 7444.1 | 7592.7 | 7711.7 | 7929.4 | 8115.3 | 8407.5 | 8664.8 | 9029.4 | 9366.6 | 9827.8 | 10269.2 |
| 32.5° | 5688.6 | 5816.5 | 5922.5 | 6113.0 | 6281.7 | 6544.8 | 6776.7 | 7096.1 | 7385.6 | 7776.8 | 8140.0 |
| 35° | 4337.4 | 4588.9 | 4571.1 | 4834.0 | 4876.2 | 5065.1 | 5271.9 | 5551.3 | 5807.6 | 6140.2 | 6449.4 |
| 37.5° | 3366.5 | 3437.2 | 3513.0 | 3629.3 | 3751.3 | 3923.1 | 4097.8 | 4439.2 | 4564.4 | 4815.8 | 5071.7 |
| 40° | 2714.7 | 2762.5 | 2812.6 | 2891.1 | 2976.6 | 3097.6 | 3224.9 | 3387.8 | 3554.6 | 3758.4 | 3966.5 |
| 42.5° | 2295.0 | 2322.1 | 2353.9 | 2400.1 | 2452.8 | 2529.6 | 2614.7 | 2725.1 | 2841.1 | 2984.6 | 3131.0 |
| 45° | 2050.5 | 2037.7 | 2047.1 | 2071.9 | 2103.6 | 2150.3 | 2204.1 | 2272.4 | 2348.0 | 2440.9 | 2539.8 |
| 47.5° | 1822.6 | 1827.7 | 1830.6 | 1844.0 | 1861.0 | 1892.3 | 1924.9 | 1971.3 | 2060.9 | 2088.2 | 2142.1 |
| 50° | 1672.0 | 1674.5 | 1673.6 | 1680.5 | 1689.1 | 1709.4 | 1730.5 | 1762.0 | 1793.3 | 1834.9 | 1874.6 |
| 52.5° | 1545.8 | 1549.2 | 1548.8 | 1553.3 | 1557.9 | 1570.8 | 1584.1 | 1606.3 | 1626.9 | 1653.3 | 1676.1 |
| 55° | 1446.1 | 1451.0 | 1452.8 | 1456.6 | 1458.9 | 1465.6 | 1470.9 | 1481.5 | 1490.3 | 1505.2 | 1519.0 |
| 57.5° | 1369.4 | 1376.1 | 1379.1 | 1380.5 | 1377.7 | 1377.3 | 1375.6 | 1377.9 | 1379.6 | 1387.7 | 1395.4 |
| 60° | 1309.1 | 1314.4 | 1315.2 | 1314.4 | 1309.4 | 1306.0 | 1300.3 | 1298.5 | 1297.6 | 1301.4 | 1305.7 |
| 62.5° | 1246.0 | 1247.9 | 1246.5 | 1245.0 | 1239.3 | 1235.9 | 1230.0 | 1227.9 | 1225.9 | 1228.6 | 1230.8 |
| 65° | 1158.6 | 1160.3 | 1158.6 | 1157.6 | 1152.5 | 1149.8 | 1144.8 | 1143.2 | 1140.4 | 1141.1 | 1140.7 |
| 67.5° | 1087.6 | 1089.2 | 1088.0 | 1086.7 | 1083.1 | 1081.5 | 1077.8 | 1075.4 | 1072.0 | 1070.7 | 1068.4 |
| 70° | 1016.9 | 1018.2 | 1016.2 | 1014.8 | 1010.8 | 1009.3 | 1005.9 | 1005.2 | 1002.4 | 1001.9 | 999.1 |
| 72.5° | 935.5 | 935.6 | 932.8 | 932.0 | 929.0 | 928.9 | 927.5 | 928.8 | 928.7 | 930.1 | 929.5 |
| 75° | 852.3 | 851.1 | 847.6 | 846.9 | 844.7 | 845.8 | 844.3 | 846.2 | 846.5 | 849.5 | 849.9 |
| 77.5° | 768.9 | 764.5 | 757.8 | 754.6 | 750.2 | 749.5 | 747.0 | 748.7 | 748.1 | 751.7 | 753.1 |
| 80° | 663.6 | 658.3 | 649.6 | 645.5 | 640.2 | 639.4 | 637.0 | 639.4 | 638.2 | 642.3 | 645.3 |
| 82.5° | 529.8 | 525.2 | 516.2 | 512.9 | 506.8 | 507.4 | 504.7 | 507.4 | 507.1 | 513.1 | 516.7 |
| 85° | 391.9 | 388.8 | 379.6 | 371.4 | 362.3 | 357.1 | 351.9 | 350.9 | 349.4 | 351.9 | 354.0 |
| 87.5° | 226.3 | 223.5 | 216.3 | 211.6 | 195.7 | 196.3 | 190.1 | 189.7 | 188.2 | 186.8 | 190.1 |
| 90° | 32.9 | 36.8 | 35.6 | 39.1 | 38.4 | 42.6 | 42.2 | 46.1 | 45.0 | 48.7 | 48.4 |
| 92.5° | 19.8 | 20.9 | 21.9 | 22.9 | 24.0 | 25.0 | 26.1 | 27.2 | 29.5 | 31.5 | 34.0 |
| 95° | 26.4 | 27.5 | 28.8 | 30.0 | 31.3 | 32.4 | 33.7 | 34.9 | 38.3 | 41.6 | 45.0 |
| 97.5° | 36.4 | 37.1 | 37.9 | 38.7 | 39.5 | 40.4 | 41.2 | 42.0 | 45.7 | 49.4 | 52.9 |
| 100° | 46.1 | 46.7 | 47.3 | 48.0 | 48.7 | 49.3 | 50.0 | 50.6 | 57.7 | 64.7 | 71.6 |
| 102.5° | 70.7 | 73.5 | 76.3 | 79.0 | 82.0 | 84.8 | 87.6 | 90.4 | 106.4 | 122.4 | 138.3 |
| 105° | 128.9 | 136.4 | 144.2 | 151.8 | 159.4 | 167.0 | 174.8 | 182.3 | 208.1 | 233.6 | 259.3 |
| 107.5° | 233.5 | 245.5 | 257.5 | 269.7 | 281.7 | 293.8 | 305.8 | 318.0 | 343.0 | 368.1 | 393.2 |
| 110° | 353.8 | 365.4 | 376.8 | 388.4 | 399.8 | 411.4 | 422.9 | 434.7 | 449.8 | 464.8 | 480.0 |



TEST NUMBER: P1444683
 CATALOG NUMBER: EHBR1-42-UNV-TA-L930-UPL15

CANDELA DISTRIBUTION (continued):

| | 275° | 277.5° | 280° | 282.5° | 285° | 287.5° | 290° | 292.5° | 295° | 297.5° | 300° |
|--------|-------|--------|-------|--------|-------|--------|-------|--------|-------|--------|-------|
| 112.5° | 440.1 | 445.7 | 451.5 | 457.1 | 462.8 | 468.6 | 474.3 | 480.1 | 487.8 | 495.4 | 503.1 |
| 115° | 466.8 | 467.1 | 467.8 | 468.1 | 468.7 | 469.2 | 469.9 | 470.5 | 473.2 | 475.8 | 478.5 |
| 117.5° | 445.9 | 442.9 | 440.0 | 437.1 | 434.3 | 431.6 | 428.8 | 426.2 | 426.1 | 425.8 | 425.9 |
| 120° | 402.9 | 399.0 | 395.0 | 390.9 | 387.2 | 383.5 | 379.9 | 376.2 | 374.6 | 373.0 | 371.6 |
| 122.5° | 351.3 | 347.4 | 343.5 | 339.8 | 336.0 | 332.5 | 329.0 | 325.5 | 324.6 | 323.8 | 322.9 |
| 125° | 303.3 | 300.1 | 296.9 | 294.0 | 291.1 | 288.3 | 285.6 | 282.9 | 283.5 | 283.9 | 284.6 |
| 127.5° | 265.5 | 263.7 | 261.9 | 260.3 | 258.9 | 257.5 | 256.1 | 254.8 | 256.5 | 258.0 | 259.7 |
| 130° | 240.6 | 240.0 | 239.6 | 239.1 | 239.1 | 238.8 | 238.6 | 238.6 | 241.1 | 243.1 | 245.6 |
| 132.5° | 227.6 | 227.7 | 228.0 | 228.5 | 229.1 | 229.6 | 230.6 | 231.2 | 233.8 | 236.2 | 238.8 |
| 135° | 222.1 | 222.6 | 223.5 | 224.2 | 225.4 | 226.3 | 227.6 | 228.6 | 231.3 | 233.5 | 236.1 |
| 137.5° | 222.0 | 222.6 | 223.6 | 224.6 | 225.9 | 226.9 | 228.4 | 229.6 | 231.6 | 233.7 | 235.7 |
| 140° | 224.7 | 225.2 | 226.2 | 227.1 | 228.1 | 229.0 | 230.4 | 231.4 | 233.3 | 234.9 | 236.6 |
| 142.5° | 228.0 | 228.4 | 229.3 | 230.1 | 231.1 | 232.0 | 233.1 | 234.0 | 235.3 | 236.6 | 238.2 |
| 145° | 232.9 | 233.3 | 234.1 | 234.7 | 235.5 | 236.3 | 237.2 | 238.0 | 239.1 | 239.9 | 241.0 |
| 147.5° | 236.4 | 236.8 | 237.3 | 237.9 | 238.6 | 239.2 | 239.8 | 240.4 | 241.3 | 242.0 | 242.8 |
| 150° | 238.6 | 238.8 | 239.3 | 239.6 | 240.3 | 240.7 | 241.3 | 241.8 | 242.4 | 243.0 | 243.7 |
| 152.5° | 239.0 | 239.1 | 239.5 | 239.9 | 240.3 | 240.8 | 241.1 | 241.7 | 242.3 | 242.7 | 243.5 |
| 155° | 239.6 | 240.2 | 240.6 | 241.0 | 241.6 | 241.8 | 242.4 | 242.7 | 243.3 | 243.8 | 244.4 |
| 157.5° | 241.6 | 241.8 | 242.4 | 242.7 | 243.2 | 243.5 | 244.0 | 244.4 | 245.0 | 245.3 | 245.8 |
| 160° | 242.9 | 243.5 | 243.9 | 244.4 | 245.0 | 245.4 | 246.0 | 246.5 | 247.0 | 247.4 | 247.8 |
| 162.5° | 245.9 | 246.3 | 246.8 | 247.1 | 247.6 | 248.1 | 248.4 | 248.9 | 249.6 | 249.9 | 250.6 |
| 165° | 248.3 | 248.7 | 249.4 | 249.7 | 250.4 | 250.9 | 251.4 | 251.9 | 252.3 | 252.8 | 253.2 |
| 167.5° | 252.0 | 252.4 | 253.1 | 253.4 | 254.0 | 254.4 | 255.0 | 255.4 | 255.8 | 256.1 | 256.6 |
| 170° | 254.9 | 255.3 | 255.8 | 256.1 | 256.6 | 256.9 | 257.5 | 257.8 | 258.3 | 258.6 | 259.2 |
| 172.5° | 258.8 | 259.1 | 259.4 | 259.5 | 259.9 | 260.3 | 260.7 | 260.8 | 261.3 | 261.6 | 261.9 |
| 175° | 262.0 | 262.0 | 262.1 | 262.3 | 262.4 | 262.4 | 262.4 | 262.7 | 262.8 | 263.0 | 263.1 |
| 177.5° | 263.9 | 264.0 | 264.0 | 264.1 | 264.2 | 264.3 | 264.4 | 264.5 | 264.5 | 264.5 | 264.5 |
| 180° | 263.2 | 263.2 | 263.2 | 263.2 | 263.2 | 263.2 | 263.2 | 263.2 | 263.2 | 263.2 | 263.2 |



TEST NUMBER: P1444683
 CATALOG NUMBER: EHBR1-42-UNV-TA-L930-UPL15

CANDELA DISTRIBUTION (continued):

| | 302.5° | 305° | 307.5° | 310° | 312.5° | 315° | 317.5° | 320° | 322.5° | 325° | 327.5° |
|--------|---------|---------|---------|---------|---------|---------|---------|---------|---------|---------|---------|
| 0° | 31860.0 | 31860.0 | 31860.0 | 31860.0 | 31860.0 | 31860.0 | 31860.0 | 31860.0 | 31860.0 | 31860.0 | 31860.0 |
| 2.5° | 32197.2 | 32198.6 | 32172.6 | 32171.2 | 32146.9 | 32143.8 | 32120.1 | 32112.9 | 32093.7 | 32086.7 | 32067.1 |
| 5° | 33174.1 | 33142.4 | 33069.3 | 33026.3 | 32954.1 | 32906.2 | 32828.1 | 32777.1 | 32701.6 | 32644.7 | 32568.8 |
| 7.5° | 34162.0 | 34112.9 | 34030.8 | 33964.3 | 33864.1 | 33784.1 | 33666.8 | 33570.6 | 33443.7 | 33333.7 | 33200.3 |
| 10° | 34451.8 | 34444.2 | 34423.3 | 34392.8 | 34346.2 | 34293.8 | 34214.0 | 34130.7 | 34019.3 | 33898.5 | 33750.1 |
| 12.5° | 33738.8 | 33815.8 | 33920.8 | 33983.0 | 34058.7 | 34091.9 | 34122.9 | 34115.1 | 34094.7 | 34033.5 | 33947.8 |
| 15° | 31932.8 | 32149.2 | 32435.6 | 32657.6 | 32913.0 | 33098.6 | 33303.6 | 33431.4 | 33558.7 | 33617.5 | 33653.5 |
| 17.5° | 29059.9 | 29469.5 | 29983.2 | 30408.8 | 30899.9 | 31294.4 | 31726.8 | 32052.3 | 32387.0 | 32626.9 | 32843.8 |
| 20° | 25369.7 | 25963.1 | 26689.5 | 27331.2 | 28077.5 | 28726.0 | 29436.6 | 30020.0 | 30621.6 | 31092.0 | 31537.2 |
| 22.5° | 21366.9 | 22071.7 | 22950.0 | 23763.6 | 24725.5 | 25590.1 | 26565.5 | 27414.5 | 28300.9 | 29041.5 | 29757.5 |
| 25° | 17431.0 | 18203.9 | 19164.2 | 20071.8 | 21161.3 | 22167.0 | 23323.9 | 24381.9 | 25527.7 | 26522.3 | 27504.9 |
| 27.5° | 13836.8 | 14595.7 | 15576.1 | 16542.3 | 17694.4 | 18766.0 | 20005.5 | 21171.2 | 22475.7 | 23678.6 | 24909.3 |
| 30° | 10882.8 | 11526.4 | 12405.5 | 13341.4 | 14477.6 | 15568.1 | 16821.0 | 18019.9 | 19377.0 | 20690.5 | 22076.6 |
| 32.5° | 8622.1 | 9112.4 | 9803.6 | 10594.9 | 11643.4 | 12681.4 | 13874.4 | 15031.7 | 16368.2 | 17695.0 | 19136.6 |
| 35° | 6847.5 | 7230.0 | 7756.9 | 8374.5 | 9262.3 | 10157.1 | 11212.3 | 12264.8 | 13511.6 | 14770.7 | 16171.9 |
| 37.5° | 5399.7 | 5710.0 | 6122.7 | 6586.6 | 7298.7 | 8033.0 | 8898.3 | 9770.9 | 10854.3 | 11970.3 | 13240.2 |
| 40° | 4216.5 | 4467.8 | 4789.1 | 5135.0 | 5672.7 | 6238.6 | 6907.8 | 7584.4 | 8454.8 | 9366.9 | 10418.0 |
| 42.5° | 3312.5 | 3497.8 | 3724.7 | 3977.5 | 4479.2 | 4779.6 | 5233.4 | 5722.8 | 6362.7 | 7024.9 | 7815.0 |
| 45° | 2660.1 | 2786.6 | 2944.0 | 3113.6 | 3346.4 | 3601.2 | 3912.0 | 4237.9 | 4845.7 | 5143.9 | 5624.5 |
| 47.5° | 2221.5 | 2306.4 | 2406.5 | 2513.4 | 2650.7 | 2798.9 | 2983.2 | 3171.7 | 3415.4 | 3667.9 | 3964.1 |
| 50° | 1926.1 | 2012.4 | 2046.8 | 2102.1 | 2181.6 | 2266.3 | 2370.2 | 2474.1 | 2604.8 | 2737.2 | 2889.7 |
| 52.5° | 1706.8 | 1734.9 | 1772.3 | 1807.5 | 1856.8 | 1953.1 | 1984.3 | 2038.6 | 2111.9 | 2183.6 | 2263.7 |
| 55° | 1539.4 | 1557.7 | 1582.0 | 1603.2 | 1633.0 | 1661.4 | 1702.5 | 1738.7 | 1787.5 | 1830.8 | 1884.0 |
| 57.5° | 1409.0 | 1420.7 | 1437.6 | 1451.5 | 1470.7 | 1486.9 | 1510.9 | 1530.5 | 1558.6 | 1583.0 | 1615.3 |
| 60° | 1314.3 | 1322.1 | 1333.4 | 1342.5 | 1354.8 | 1363.2 | 1375.1 | 1384.3 | 1399.2 | 1411.6 | 1429.6 |
| 62.5° | 1237.0 | 1241.0 | 1248.4 | 1253.7 | 1261.5 | 1265.8 | 1272.2 | 1276.2 | 1284.3 | 1290.5 | 1300.6 |
| 65° | 1144.1 | 1145.1 | 1150.1 | 1152.3 | 1158.5 | 1160.7 | 1165.9 | 1167.7 | 1174.5 | 1179.2 | 1188.0 |
| 67.5° | 1068.1 | 1066.0 | 1066.2 | 1064.4 | 1065.2 | 1063.4 | 1063.8 | 1062.0 | 1064.7 | 1066.2 | 1072.8 |
| 70° | 998.7 | 995.8 | 994.8 | 991.6 | 990.7 | 987.4 | 986.4 | 983.5 | 983.1 | 982.1 | 984.5 |
| 72.5° | 931.1 | 930.2 | 930.4 | 928.2 | 927.9 | 925.7 | 925.8 | 924.5 | 926.0 | 926.7 | 929.7 |
| 75° | 853.3 | 853.4 | 855.0 | 853.0 | 853.5 | 851.7 | 852.4 | 850.6 | 851.6 | 851.2 | 854.2 |
| 77.5° | 758.5 | 760.8 | 764.9 | 764.1 | 765.4 | 763.3 | 764.2 | 761.7 | 762.5 | 760.8 | 761.9 |
| 80° | 652.0 | 656.8 | 662.3 | 662.0 | 664.4 | 662.9 | 665.0 | 662.7 | 663.6 | 660.8 | 660.1 |
| 82.5° | 525.6 | 529.6 | 535.5 | 535.8 | 540.9 | 541.8 | 547.6 | 547.4 | 551.1 | 548.7 | 547.1 |
| 85° | 359.3 | 362.0 | 367.2 | 370.1 | 375.3 | 378.6 | 384.3 | 386.5 | 382.5 | 389.8 | 384.0 |
| 87.5° | 187.6 | 194.6 | 190.7 | 199.8 | 197.7 | 206.8 | 204.9 | 213.3 | 211.7 | 219.0 | 218.1 |
| 90° | 53.3 | 53.5 | 58.6 | 59.2 | 65.5 | 66.7 | 71.0 | 69.4 | 73.5 | 72.2 | 76.3 |
| 92.5° | 36.1 | 38.6 | 40.9 | 43.2 | 45.4 | 47.9 | 45.6 | 43.5 | 41.4 | 39.4 | 37.2 |
| 95° | 48.4 | 51.7 | 55.1 | 58.5 | 61.8 | 65.1 | 61.6 | 58.0 | 54.4 | 50.8 | 47.2 |
| 97.5° | 56.6 | 60.2 | 63.8 | 67.4 | 71.1 | 74.7 | 70.4 | 66.1 | 61.9 | 57.7 | 53.5 |
| 100° | 78.6 | 85.8 | 92.8 | 99.7 | 106.8 | 113.7 | 105.9 | 97.9 | 90.2 | 82.3 | 74.2 |
| 102.5° | 154.4 | 170.5 | 186.6 | 202.6 | 218.6 | 234.6 | 218.0 | 201.3 | 184.4 | 167.7 | 150.9 |
| 105° | 285.0 | 310.7 | 336.2 | 362.0 | 387.6 | 413.5 | 386.2 | 359.0 | 331.9 | 304.8 | 277.4 |
| 107.5° | 418.3 | 443.3 | 468.5 | 493.5 | 518.6 | 543.9 | 516.4 | 488.7 | 461.3 | 433.6 | 406.1 |
| 110° | 495.2 | 510.4 | 525.6 | 540.9 | 556.1 | 571.4 | 551.3 | 531.3 | 511.3 | 491.3 | 471.1 |



TEST NUMBER: P1444683
 CATALOG NUMBER: EHBR1-42-UNV-TA-L930-UPL15

CANDELA DISTRIBUTION (continued):

| | 302.5° | 305° | 307.5° | 310° | 312.5° | 315° | 317.5° | 320° | 322.5° | 325° | 327.5° |
|--------|--------|-------|--------|-------|--------|-------|--------|-------|--------|-------|--------|
| 112.5° | 510.8 | 518.7 | 526.4 | 534.3 | 542.0 | 549.9 | 535.8 | 521.6 | 507.3 | 493.2 | 478.9 |
| 115° | 481.3 | 484.0 | 486.7 | 489.6 | 492.3 | 495.1 | 485.7 | 476.2 | 466.8 | 457.3 | 447.7 |
| 117.5° | 425.9 | 426.0 | 425.8 | 426.1 | 425.9 | 426.0 | 421.0 | 415.9 | 410.7 | 405.5 | 400.3 |
| 120° | 370.0 | 368.6 | 367.1 | 365.6 | 364.0 | 362.4 | 360.6 | 358.8 | 356.7 | 354.8 | 352.7 |
| 122.5° | 322.1 | 321.4 | 320.5 | 319.7 | 318.8 | 317.9 | 317.4 | 317.1 | 316.5 | 316.1 | 315.5 |
| 125° | 285.2 | 285.7 | 286.2 | 286.9 | 287.3 | 287.8 | 287.8 | 287.9 | 287.8 | 287.9 | 287.8 |
| 127.5° | 261.1 | 262.8 | 264.2 | 265.8 | 267.1 | 268.7 | 268.9 | 269.5 | 269.7 | 270.1 | 270.5 |
| 130° | 247.6 | 250.1 | 252.2 | 254.2 | 256.2 | 258.6 | 258.8 | 259.1 | 259.3 | 259.6 | 259.9 |
| 132.5° | 241.3 | 243.7 | 246.0 | 248.6 | 250.9 | 253.2 | 253.4 | 253.7 | 253.7 | 254.2 | 254.2 |
| 135° | 238.4 | 240.7 | 242.8 | 245.3 | 247.3 | 249.6 | 249.7 | 250.0 | 249.9 | 250.2 | 250.3 |
| 137.5° | 237.5 | 239.7 | 241.5 | 243.5 | 245.1 | 247.0 | 247.0 | 247.3 | 247.2 | 247.5 | 247.5 |
| 140° | 238.1 | 239.9 | 241.2 | 242.9 | 244.4 | 246.0 | 245.9 | 246.0 | 245.7 | 245.8 | 245.5 |
| 142.5° | 239.4 | 240.8 | 241.9 | 243.3 | 244.4 | 245.7 | 245.2 | 244.9 | 244.6 | 244.4 | 244.0 |
| 145° | 241.9 | 242.9 | 243.8 | 244.8 | 245.3 | 246.4 | 245.8 | 245.4 | 244.7 | 244.4 | 243.9 |
| 147.5° | 243.5 | 244.2 | 244.6 | 245.4 | 245.8 | 246.6 | 246.0 | 245.4 | 244.9 | 244.3 | 243.6 |
| 150° | 244.2 | 244.9 | 245.3 | 246.0 | 246.4 | 247.0 | 246.3 | 245.7 | 245.0 | 244.4 | 243.6 |
| 152.5° | 244.0 | 244.4 | 244.9 | 245.3 | 245.8 | 246.2 | 245.5 | 245.1 | 244.3 | 243.5 | 242.7 |
| 155° | 244.6 | 245.2 | 245.4 | 246.0 | 246.0 | 246.4 | 245.7 | 245.3 | 244.6 | 244.0 | 243.3 |
| 157.5° | 246.1 | 246.7 | 247.0 | 247.2 | 247.5 | 247.8 | 247.4 | 247.0 | 246.5 | 246.0 | 245.5 |
| 160° | 248.2 | 248.5 | 248.9 | 249.2 | 249.5 | 249.6 | 249.2 | 249.1 | 248.6 | 248.2 | 247.6 |
| 162.5° | 250.9 | 251.4 | 251.7 | 252.0 | 252.5 | 252.8 | 252.4 | 252.0 | 251.6 | 251.1 | 250.5 |
| 165° | 253.5 | 253.9 | 254.2 | 254.6 | 254.7 | 255.0 | 254.7 | 254.6 | 254.2 | 253.9 | 253.5 |
| 167.5° | 256.8 | 257.3 | 257.5 | 257.9 | 258.0 | 258.3 | 257.9 | 257.9 | 257.5 | 257.3 | 256.8 |
| 170° | 259.4 | 259.7 | 260.1 | 260.4 | 260.7 | 260.8 | 260.7 | 260.6 | 260.2 | 259.9 | 259.7 |
| 172.5° | 262.3 | 262.5 | 262.6 | 262.9 | 263.0 | 263.3 | 263.1 | 262.8 | 262.5 | 262.2 | 261.9 |
| 175° | 263.1 | 263.2 | 263.4 | 263.4 | 263.4 | 263.5 | 263.2 | 263.0 | 262.8 | 262.5 | 262.3 |
| 177.5° | 264.5 | 264.5 | 264.5 | 264.4 | 264.4 | 264.4 | 264.2 | 264.0 | 263.9 | 263.7 | 263.4 |
| 180° | 263.2 | 263.2 | 263.2 | 263.2 | 263.2 | 263.2 | 263.2 | 263.2 | 263.2 | 263.2 | 263.2 |



TEST NUMBER: P1444683
 CATALOG NUMBER: EHBR1-42-UNV-TA-L930-UPL15

CANDELA DISTRIBUTION (continued):

| | 330° | 332.5° | 335° | 337.5° | 340° | 342.5° | 345° | 347.5° | 350° | 352.5° | 355° |
|--------|---------|---------|---------|---------|---------|---------|---------|---------|---------|---------|---------|
| 0° | 31860.0 | 31860.0 | 31860.0 | 31860.0 | 31860.0 | 31860.0 | 31860.0 | 31860.0 | 31860.0 | 31860.0 | 31860.0 |
| 2.5° | 32060.1 | 32046.2 | 32037.2 | 32025.8 | 32018.8 | 32009.9 | 32003.4 | 31997.9 | 31993.4 | 31989.2 | 31986.2 |
| 5° | 32510.9 | 32439.3 | 32383.6 | 32323.4 | 32273.9 | 32224.6 | 32186.6 | 32155.1 | 32133.3 | 32117.0 | 32107.3 |
| 7.5° | 33084.9 | 32953.7 | 32837.1 | 32714.3 | 32604.2 | 32495.9 | 32402.6 | 32322.2 | 32261.9 | 32222.8 | 32199.1 |
| 10° | 33597.5 | 33421.9 | 33248.2 | 33065.5 | 32892.0 | 32724.0 | 32568.8 | 32432.3 | 32324.3 | 32252.5 | 32210.6 |
| 12.5° | 33827.3 | 33677.7 | 33500.3 | 33301.8 | 33089.4 | 32874.5 | 32665.0 | 32476.1 | 32317.5 | 32211.1 | 32149.7 |
| 15° | 33624.9 | 33563.4 | 33443.1 | 33289.0 | 33087.5 | 32865.3 | 32619.3 | 32388.1 | 32175.5 | 32037.5 | 31957.6 |
| 17.5° | 32966.6 | 33052.4 | 33043.1 | 32984.2 | 32839.3 | 32652.2 | 32401.6 | 32142.0 | 31875.9 | 31691.6 | 31590.9 |
| 20° | 31855.7 | 32125.2 | 32261.9 | 32332.0 | 32275.1 | 32153.9 | 31926.9 | 31663.3 | 31353.3 | 31112.7 | 30965.8 |
| 22.5° | 30294.6 | 30770.3 | 31066.8 | 31283.8 | 31329.8 | 31288.5 | 31088.1 | 30837.4 | 30491.8 | 30202.5 | 29985.6 |
| 25° | 28284.9 | 28982.0 | 29450.5 | 29817.9 | 29960.5 | 29997.4 | 29826.8 | 29577.5 | 29192.3 | 28855.3 | 28557.4 |
| 27.5° | 25917.9 | 26823.6 | 27449.0 | 27942.7 | 28165.4 | 28262.0 | 28105.1 | 27850.8 | 27395.0 | 26992.7 | 26603.5 |
| 30° | 23253.0 | 24327.5 | 25080.7 | 25672.5 | 25944.1 | 26071.7 | 25905.0 | 25621.1 | 25090.7 | 24606.7 | 24116.4 |
| 32.5° | 20400.8 | 21576.5 | 22397.3 | 23040.0 | 23309.1 | 23429.2 | 23211.1 | 22892.3 | 22279.2 | 21708.9 | 21137.2 |
| 35° | 17414.5 | 18601.2 | 19429.0 | 20054.6 | 20280.0 | 20352.5 | 20073.5 | 19705.0 | 19025.8 | 18399.9 | 17776.4 |
| 37.5° | 14367.4 | 15471.5 | 16223.7 | 16785.2 | 16924.8 | 16937.3 | 16601.2 | 16194.2 | 15480.3 | 14863.1 | 14242.5 |
| 40° | 11346.6 | 12277.8 | 12885.2 | 13334.6 | 13383.0 | 13339.7 | 12974.4 | 12564.8 | 11897.0 | 11344.0 | 10799.2 |
| 42.5° | 8501.2 | 9204.1 | 9637.4 | 9945.4 | 9927.1 | 9841.7 | 9506.8 | 9154.6 | 8603.7 | 8182.5 | 7753.7 |
| 45° | 6063.5 | 6527.0 | 6780.3 | 6960.5 | 6902.7 | 6821.3 | 6560.6 | 6313.8 | 5939.4 | 5667.4 | 5379.2 |
| 47.5° | 4212.4 | 4765.8 | 4669.5 | 5021.8 | 4718.2 | 4918.7 | 4501.2 | 4271.1 | 4072.3 | 3927.8 | 3765.0 |
| 50° | 3015.7 | 3142.5 | 3203.8 | 3245.6 | 3223.3 | 3192.6 | 3117.6 | 3050.5 | 2959.7 | 2893.6 | 2816.4 |
| 52.5° | 2329.0 | 2392.4 | 2427.1 | 2452.2 | 2447.2 | 2436.0 | 2403.3 | 2373.5 | 2331.0 | 2303.0 | 2269.2 |
| 55° | 1972.7 | 1973.7 | 2037.5 | 2010.1 | 2050.6 | 2003.2 | 2021.8 | 1969.3 | 1977.8 | 1932.7 | 1902.3 |
| 57.5° | 1639.3 | 1665.3 | 1676.9 | 1688.3 | 1685.1 | 1683.1 | 1670.4 | 1664.0 | 1649.8 | 1645.4 | 1635.2 |
| 60° | 1442.0 | 1455.5 | 1458.3 | 1463.6 | 1459.2 | 1457.5 | 1447.7 | 1444.1 | 1434.6 | 1432.8 | 1426.0 |
| 62.5° | 1306.7 | 1313.6 | 1313.6 | 1313.6 | 1307.9 | 1302.5 | 1291.5 | 1285.7 | 1277.6 | 1275.8 | 1271.9 |
| 65° | 1193.8 | 1201.0 | 1202.1 | 1203.7 | 1199.6 | 1195.3 | 1185.6 | 1179.3 | 1171.0 | 1167.7 | 1163.3 |
| 67.5° | 1077.2 | 1084.9 | 1087.5 | 1091.4 | 1089.1 | 1088.2 | 1081.6 | 1079.1 | 1073.6 | 1072.2 | 1068.1 |
| 70° | 985.7 | 988.9 | 988.6 | 988.5 | 983.4 | 978.7 | 971.1 | 967.4 | 961.6 | 960.5 | 956.6 |
| 72.5° | 931.2 | 933.6 | 932.1 | 930.1 | 923.4 | 916.5 | 907.5 | 900.9 | 893.4 | 888.6 | 883.3 |
| 75° | 854.6 | 857.6 | 855.7 | 854.4 | 848.4 | 843.9 | 836.7 | 833.0 | 827.7 | 826.2 | 822.5 |
| 77.5° | 760.5 | 761.9 | 758.9 | 758.5 | 753.9 | 751.1 | 745.6 | 744.7 | 740.8 | 740.9 | 737.4 |
| 80° | 655.8 | 655.0 | 650.0 | 649.1 | 644.5 | 643.3 | 639.0 | 639.3 | 636.2 | 637.5 | 635.0 |
| 82.5° | 539.6 | 536.6 | 530.1 | 528.3 | 522.9 | 522.5 | 519.6 | 522.0 | 520.2 | 522.9 | 521.3 |
| 85° | 386.7 | 387.6 | 384.7 | 384.7 | 383.2 | 383.6 | 383.4 | 385.2 | 385.4 | 388.0 | 387.9 |
| 87.5° | 215.6 | 218.7 | 218.1 | 220.9 | 220.8 | 224.0 | 225.0 | 229.7 | 230.4 | 234.7 | 234.7 |
| 90° | 74.9 | 79.5 | 78.1 | 82.7 | 82.3 | 87.2 | 87.7 | 92.7 | 92.5 | 96.8 | 95.6 |
| 92.5° | 35.0 | 33.0 | 30.9 | 28.7 | 27.6 | 26.3 | 25.8 | 24.1 | 23.3 | 22.0 | 20.9 |
| 95° | 43.6 | 40.0 | 36.4 | 32.8 | 31.5 | 30.2 | 29.1 | 27.8 | 26.6 | 25.3 | 24.1 |
| 97.5° | 49.2 | 45.0 | 40.7 | 36.4 | 35.4 | 34.3 | 33.2 | 32.1 | 31.0 | 29.9 | 28.9 |
| 100° | 66.3 | 58.4 | 50.5 | 42.5 | 41.6 | 40.7 | 39.8 | 38.9 | 38.0 | 36.9 | 36.0 |
| 102.5° | 134.1 | 117.2 | 100.3 | 83.5 | 80.3 | 77.1 | 74.0 | 70.7 | 67.5 | 64.3 | 61.1 |
| 105° | 250.1 | 222.9 | 195.6 | 168.2 | 159.6 | 150.9 | 142.2 | 133.5 | 124.8 | 116.1 | 107.5 |
| 107.5° | 378.4 | 350.7 | 322.9 | 295.2 | 279.4 | 263.3 | 247.3 | 231.1 | 215.2 | 199.0 | 183.0 |
| 110° | 451.1 | 431.0 | 410.8 | 390.5 | 377.8 | 364.8 | 351.9 | 339.0 | 326.2 | 313.1 | 300.1 |



TEST NUMBER: P1444683
 CATALOG NUMBER: EHBR1-42-UNV-TA-L930-UPL15

CANDELA DISTRIBUTION (continued):

| | 330° | 332.5° | 335° | 337.5° | 340° | 342.5° | 345° | 347.5° | 350° | 352.5° | 355° |
|--------|-------|--------|-------|--------|-------|--------|-------|--------|-------|--------|-------|
| 112.5° | 464.5 | 450.2 | 435.8 | 421.2 | 415.6 | 409.7 | 404.1 | 398.3 | 392.4 | 386.4 | 380.6 |
| 115° | 438.2 | 428.5 | 418.8 | 409.1 | 407.3 | 405.3 | 403.5 | 401.4 | 399.4 | 397.3 | 395.2 |
| 117.5° | 395.1 | 389.9 | 384.5 | 379.3 | 379.7 | 380.2 | 380.8 | 381.1 | 381.6 | 381.9 | 382.1 |
| 120° | 350.6 | 348.6 | 346.6 | 344.4 | 346.6 | 348.4 | 350.6 | 352.3 | 354.2 | 355.8 | 357.5 |
| 122.5° | 315.0 | 314.3 | 313.9 | 313.1 | 315.6 | 318.0 | 320.4 | 322.7 | 324.9 | 326.9 | 328.9 |
| 125° | 287.9 | 287.7 | 287.7 | 287.5 | 290.2 | 292.6 | 295.1 | 297.2 | 299.5 | 301.5 | 303.5 |
| 127.5° | 270.9 | 271.2 | 271.6 | 271.8 | 273.9 | 275.5 | 277.4 | 279.0 | 280.7 | 282.0 | 283.6 |
| 130° | 260.0 | 260.2 | 260.6 | 260.7 | 262.6 | 264.3 | 266.2 | 267.6 | 269.1 | 270.3 | 271.6 |
| 132.5° | 254.6 | 254.7 | 254.9 | 255.0 | 256.6 | 257.8 | 259.3 | 260.3 | 261.5 | 262.2 | 263.2 |
| 135° | 250.5 | 250.4 | 250.7 | 250.7 | 252.1 | 253.5 | 254.8 | 255.8 | 256.9 | 257.5 | 258.3 |
| 137.5° | 247.7 | 247.6 | 247.7 | 247.7 | 249.1 | 250.3 | 251.5 | 252.5 | 253.4 | 254.2 | 254.7 |
| 140° | 245.7 | 245.4 | 245.5 | 245.3 | 246.6 | 247.6 | 248.7 | 249.5 | 250.5 | 250.9 | 251.7 |
| 142.5° | 243.7 | 243.2 | 243.1 | 242.7 | 243.5 | 244.4 | 245.2 | 245.9 | 246.5 | 246.9 | 247.3 |
| 145° | 243.4 | 242.7 | 242.3 | 241.7 | 242.5 | 243.1 | 243.7 | 244.4 | 244.7 | 245.0 | 245.3 |
| 147.5° | 243.3 | 242.5 | 241.9 | 241.2 | 242.0 | 242.5 | 242.8 | 243.2 | 243.6 | 243.8 | 244.0 |
| 150° | 242.9 | 242.0 | 241.3 | 240.6 | 241.0 | 241.3 | 241.6 | 242.0 | 242.2 | 242.3 | 242.5 |
| 152.5° | 241.9 | 241.2 | 240.4 | 239.5 | 239.8 | 240.0 | 240.2 | 240.3 | 240.3 | 240.4 | 240.4 |
| 155° | 242.7 | 241.9 | 241.2 | 240.3 | 240.7 | 240.7 | 240.8 | 240.9 | 240.7 | 240.7 | 240.6 |
| 157.5° | 244.9 | 244.2 | 243.7 | 243.0 | 242.9 | 242.9 | 242.9 | 242.6 | 242.4 | 242.1 | 241.9 |
| 160° | 247.4 | 246.7 | 246.2 | 245.6 | 245.4 | 245.3 | 245.3 | 244.9 | 244.8 | 244.4 | 244.1 |
| 162.5° | 250.0 | 249.4 | 248.7 | 248.1 | 247.9 | 247.9 | 247.7 | 247.4 | 247.1 | 246.8 | 246.5 |
| 165° | 253.3 | 252.6 | 252.3 | 251.7 | 251.6 | 251.3 | 251.2 | 250.7 | 250.5 | 250.0 | 249.6 |
| 167.5° | 256.5 | 256.0 | 255.5 | 254.9 | 254.8 | 254.8 | 254.6 | 254.3 | 254.2 | 253.7 | 253.6 |
| 170° | 259.3 | 258.9 | 258.6 | 258.2 | 257.9 | 257.8 | 257.5 | 257.3 | 256.9 | 256.7 | 256.4 |
| 172.5° | 261.5 | 261.1 | 260.7 | 260.1 | 260.1 | 260.0 | 259.8 | 259.7 | 259.3 | 259.1 | 259.0 |
| 175° | 261.9 | 261.7 | 261.2 | 260.9 | 260.8 | 260.7 | 260.6 | 260.5 | 260.2 | 260.1 | 259.9 |
| 177.5° | 263.2 | 263.1 | 262.7 | 262.5 | 262.4 | 262.4 | 262.3 | 262.2 | 262.2 | 262.0 | 261.9 |
| 180° | 263.2 | 263.2 | 263.2 | 263.2 | 263.2 | 263.2 | 263.2 | 263.2 | 263.2 | 263.2 | 263.2 |



TEST NUMBER: P1444683
 CATALOG NUMBER: EHBR1-42-UNV-TA-L930-UPL15

CANDELA DISTRIBUTION (continued):

| | 357.5° | 360° |
|--------|---------|---------|
| 0° | 31860.0 | 31860.0 |
| 2.5° | 31983.3 | 31981.7 |
| 5° | 32102.2 | 32100.4 |
| 7.5° | 32192.7 | 32192.1 |
| 10° | 32203.4 | 32208.9 |
| 12.5° | 32139.1 | 32143.6 |
| 15° | 31951.4 | 31960.3 |
| 17.5° | 31592.8 | 31604.3 |
| 20° | 30974.8 | 30986.7 |
| 22.5° | 29973.9 | 29978.9 |
| 25° | 28518.9 | 28498.2 |
| 27.5° | 26535.2 | 26499.6 |
| 30° | 24013.4 | 23979.0 |
| 32.5° | 21006.8 | 20985.3 |
| 35° | 17622.4 | 17608.8 |
| 37.5° | 14059.1 | 14031.5 |
| 40° | 10600.0 | 10519.5 |
| 42.5° | 7566.0 | 7424.7 |
| 45° | 5228.8 | 5061.2 |
| 47.5° | 3650.2 | 3546.6 |
| 50° | 2766.8 | 2733.4 |
| 52.5° | 2254.4 | 2246.7 |
| 55° | 1902.2 | 1898.8 |
| 57.5° | 1637.5 | 1636.3 |
| 60° | 1429.6 | 1429.2 |
| 62.5° | 1274.5 | 1275.1 |
| 65° | 1165.3 | 1165.5 |
| 67.5° | 1069.2 | 1068.5 |
| 70° | 958.1 | 957.3 |
| 72.5° | 881.6 | 880.3 |
| 75° | 822.5 | 821.7 |
| 77.5° | 738.5 | 737.2 |
| 80° | 636.6 | 635.0 |
| 82.5° | 523.6 | 521.8 |
| 85° | 390.6 | 390.7 |
| 87.5° | 239.0 | 238.8 |
| 90° | 99.6 | 97.9 |
| 92.5° | 20.1 | 19.3 |
| 95° | 22.9 | 21.7 |
| 97.5° | 27.8 | 26.7 |
| 100° | 35.1 | 34.2 |
| 102.5° | 57.9 | 54.7 |
| 105° | 98.7 | 90.1 |
| 107.5° | 166.9 | 150.9 |
| 110° | 287.2 | 274.3 |



TEST NUMBER: P1444683
CATALOG NUMBER: EHBR1-42-UNV-TA-L930-UPL15

CANDELA DISTRIBUTION (continued):

| | 357.5° | 360° |
|--------|--------|-------|
| 112.5° | 374.6 | 368.8 |
| 115° | 392.9 | 390.8 |
| 117.5° | 382.3 | 382.4 |
| 120° | 359.0 | 360.6 |
| 122.5° | 330.7 | 332.5 |
| 125° | 305.3 | 307.1 |
| 127.5° | 284.5 | 285.6 |
| 130° | 272.2 | 273.3 |
| 132.5° | 263.6 | 264.0 |
| 135° | 258.6 | 259.1 |
| 137.5° | 255.0 | 255.3 |
| 140° | 251.7 | 252.0 |
| 142.5° | 247.5 | 247.6 |
| 145° | 245.4 | 245.5 |
| 147.5° | 243.6 | 243.7 |
| 150° | 242.3 | 242.2 |
| 152.5° | 240.2 | 240.2 |
| 155° | 240.3 | 240.2 |
| 157.5° | 241.4 | 241.1 |
| 160° | 243.6 | 243.4 |
| 162.5° | 246.0 | 245.7 |
| 165° | 249.1 | 248.5 |
| 167.5° | 253.1 | 252.9 |
| 170° | 256.0 | 255.8 |
| 172.5° | 258.6 | 258.3 |
| 175° | 259.8 | 259.7 |
| 177.5° | 261.9 | 261.6 |
| 180° | 263.2 | 263.2 |

LM-79-2019: Approved Method: Electrical and Photometric Measurements of Solid-State Lighting Products

Report Prepared for

Cooper Lighting Solutions

Metalux

Report Number: SP1-2506-472-5

Test Date: 08/01/2025

Luminaire Tested: EHBR-60-L930-N

Data in this report applies to families of products including EHBR-60-L930-N

Test Information

Test Method: LM-79-2019
 Report Number: SP1-2506-472-5
 Test Lab: COOPER LIGHTING SOLUTIONS
 Photometer: SP1 - 76IN SPHERE
 Measurement Geometry: 4π
 Issue Date: 08/05/2025
 Manufacturer: COOPER LIGHTING SOLUTIONS
 Product Line: Metalux
 Catalog Number: **EHBR-60-L930-N**
 Description: Elevate Round Highbay at, 60000 lumens, 3000K 90CRI LEDs with N lens

Spectral Parameters

CCT (K): 2996
 CIE u': 0.2519
 CIE v': 0.5169
 Duv: -0.0033
 CIE x: 0.4325
 CIE y: 0.3945
 CIE z: 0.1730
 Peak Wavelength (nm): 630
 Dominant Wavelength (nm): 584
 Purity: 48.21818
 Rf: 91.3
 Rg: 102

| | | | |
|-----------|------|------|------|
| CRI (Ra): | 94.4 | | |
| R1: | 96.8 | R9: | 61.4 |
| R2: | 98.1 | R10: | 94.4 |
| R3: | 97.8 | R11: | 95.7 |
| R4: | 95.6 | R12: | 88.5 |
| R5: | 96.9 | R13: | 97.3 |
| R6: | 95.7 | R14: | 97.8 |
| R7: | 90.9 | R15: | 92.3 |
| R8: | 83.0 | | |



Test Conditions

Stabilization Time: 40M
 Operation Time: 1H 40M
 Sphere Temperature (°C): 25.0

REPORT NUMBER: SP1-2506-472-5

| Measurement and Test Equipment | | | |
|--------------------------------|-----------------------|------------------|----------------------|
| Instrument | Identification Number | Calibration Date | Calibration Due Date |
| Photometer | 76INCH SPHERE IN0058 | 6/16/2025 | 12/16/2025 |
| Power Meter | XITRON INXT2011004 | 1/21/2025 | 1/21/2026 |
| AC Power Source | CHROMA 61603 IN0063 | 10/22/2024 | 10/22/2025 |
| DC Power Source | AGILENT E3634A IN0208 | 10/22/2024 | 10/22/2025 |
| Sphere Thermometer | ONSET IN0085 | 10/22/2024 | 10/22/2025 |
| Room Thermometer | ONSET IN0046 | 10/22/2024 | 10/22/2025 |

REPORT NUMBER: SP1-2506-472-5

CIE 1931 Chromaticity Diagram



CIE 1931 Chromaticity Diagram with 2017 ANSI 7-Step and 4-Step Quadrangles



Point lies inside the ANSI 3000K 7-step quadrangle

REPORT NUMBER: SP1-2506-472-5

Photopic Flux vs. Wavelength

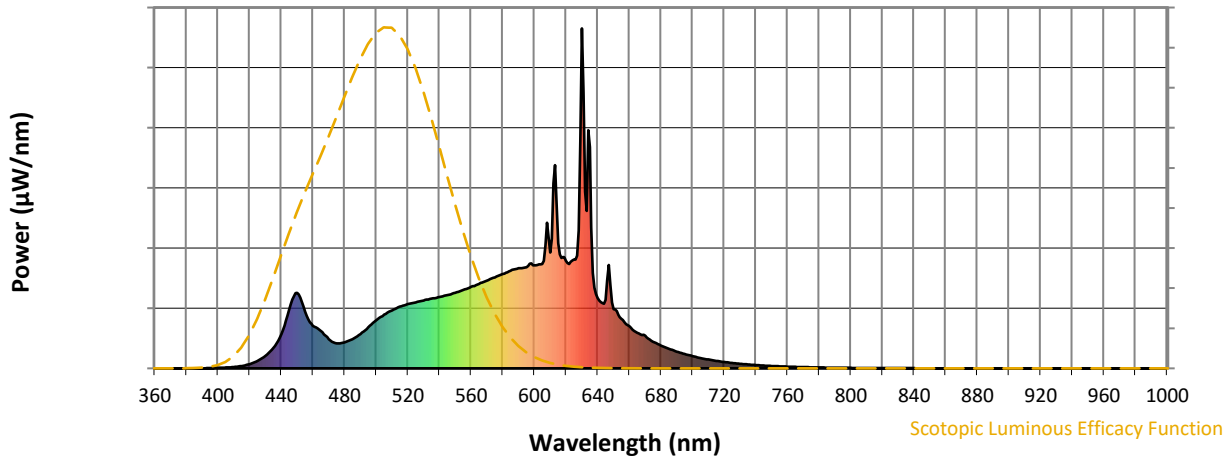


Photopic Lumens: NR

| λ (nm) | Power W [^] /nm | Lumens (φ/nm) | λ (nm) | Power W [^] /nm | Lumens (φ/nm) | λ (nm) | Power W [^] /nm | Lumens (φ/nm) | λ (nm) | Power W [^] /nm | Lumens (φ/nm) | λ (nm) | Power W [^] /nm | Lumens (φ/nm) |
|--------|--------------------------|---------------|--------|--------------------------|---------------|--------|--------------------------|---------------|--------|--------------------------|---------------|--------|--------------------------|---------------|
| 360 | 0 | NR | 490 | 101 | NR | 620 | 317 | NR | 750 | 7 | NR | 880 | 0 | NR |
| 365 | 0 | NR | 495 | 121 | NR | 625 | 320 | NR | 755 | 6 | NR | 885 | 0 | NR |
| 370 | 0 | NR | 500 | 141 | NR | 630 | 1000 | NR | 760 | 5 | NR | 890 | 0 | NR |
| 375 | 0 | NR | 505 | 158 | NR | 635 | 651 | NR | 765 | 4 | NR | 895 | 0 | NR |
| 380 | 0 | NR | 510 | 171 | NR | 640 | 207 | NR | 770 | 4 | NR | 900 | 0 | NR |
| 385 | 0 | NR | 515 | 182 | NR | 645 | 201 | NR | 775 | 3 | NR | 905 | 0 | NR |
| 390 | 0 | NR | 520 | 189 | NR | 650 | 174 | NR | 780 | 3 | NR | 910 | 0 | NR |
| 395 | 1 | NR | 525 | 194 | NR | 655 | 146 | NR | 785 | 2 | NR | 915 | 0 | NR |
| 400 | 1 | NR | 530 | 199 | NR | 660 | 124 | NR | 790 | 2 | NR | 920 | 0 | NR |
| 405 | 3 | NR | 535 | 205 | NR | 665 | 105 | NR | 795 | 2 | NR | 925 | 0 | NR |
| 410 | 4 | NR | 540 | 210 | NR | 670 | 96 | NR | 800 | 1 | NR | 930 | 0 | NR |
| 415 | 7 | NR | 545 | 216 | NR | 675 | 79 | NR | 805 | 1 | NR | 935 | 0 | NR |
| 420 | 13 | NR | 550 | 222 | NR | 680 | 67 | NR | 810 | 1 | NR | 940 | 0 | NR |
| 425 | 22 | NR | 555 | 230 | NR | 685 | 58 | NR | 815 | 1 | NR | 945 | 0 | NR |
| 430 | 37 | NR | 560 | 240 | NR | 690 | 49 | NR | 820 | 1 | NR | 950 | 0 | NR |
| 435 | 60 | NR | 565 | 248 | NR | 695 | 42 | NR | 825 | 1 | NR | 955 | 0 | NR |
| 440 | 101 | NR | 570 | 258 | NR | 700 | 36 | NR | 830 | 1 | NR | 960 | 0 | NR |
| 445 | 172 | NR | 575 | 268 | NR | 705 | 30 | NR | 835 | 1 | NR | 965 | 0 | NR |
| 450 | 223 | NR | 580 | 278 | NR | 710 | 26 | NR | 840 | 1 | NR | 970 | 0 | NR |
| 455 | 167 | NR | 585 | 287 | NR | 715 | 22 | NR | 845 | 0 | NR | 975 | 0 | NR |
| 460 | 126 | NR | 590 | 295 | NR | 720 | 19 | NR | 850 | 0 | NR | 980 | 0 | NR |
| 465 | 111 | NR | 595 | 298 | NR | 725 | 16 | NR | 855 | 0 | NR | 985 | 0 | NR |
| 470 | 86 | NR | 600 | 303 | NR | 730 | 14 | NR | 860 | 0 | NR | 990 | 0 | NR |
| 475 | 74 | NR | 605 | 307 | NR | 735 | 12 | NR | 865 | 0 | NR | 995 | 0 | NR |
| 480 | 77 | NR | 610 | 341 | NR | 740 | 10 | NR | 870 | 0 | NR | 1000 | 0 | NR |
| 485 | 86 | NR | 615 | 368 | NR | 745 | 8 | NR | 875 | 0 | NR | | | |

REPORT NUMBER: SP1-2506-472-5

Scotopic Flux vs. Wavelength



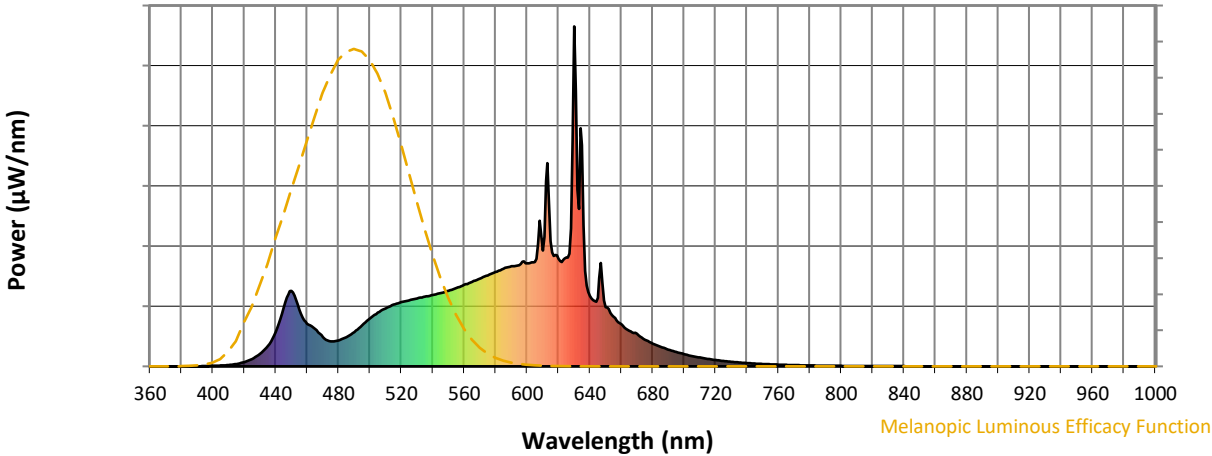
Scotopic Lumens: NR

S/P: 1.44

| λ (nm) | Power W [^] /nm | Lumens (φ/nm) | λ (nm) | Power W [^] /nm | Lumens (φ/nm) | λ (nm) | Power W [^] /nm | Lumens (φ/nm) | λ (nm) | Power W [^] /nm | Lumens (φ/nm) | λ (nm) | Power W [^] /nm | Lumens (φ/nm) |
|--------|--------------------------|---------------|--------|--------------------------|---------------|--------|--------------------------|---------------|--------|--------------------------|---------------|--------|--------------------------|---------------|
| 360 | 0 | NR | 490 | 101 | NR | 620 | 317 | NR | 750 | 7 | NR | 880 | 0 | NR |
| 365 | 0 | NR | 495 | 121 | NR | 625 | 320 | NR | 755 | 6 | NR | 885 | 0 | NR |
| 370 | 0 | NR | 500 | 141 | NR | 630 | 1000 | NR | 760 | 5 | NR | 890 | 0 | NR |
| 375 | 0 | NR | 505 | 158 | NR | 635 | 651 | NR | 765 | 4 | NR | 895 | 0 | NR |
| 380 | 0 | NR | 510 | 171 | NR | 640 | 207 | NR | 770 | 4 | NR | 900 | 0 | NR |
| 385 | 0 | NR | 515 | 182 | NR | 645 | 201 | NR | 775 | 3 | NR | 905 | 0 | NR |
| 390 | 0 | NR | 520 | 189 | NR | 650 | 174 | NR | 780 | 3 | NR | 910 | 0 | NR |
| 395 | 1 | NR | 525 | 194 | NR | 655 | 146 | NR | 785 | 2 | NR | 915 | 0 | NR |
| 400 | 1 | NR | 530 | 199 | NR | 660 | 124 | NR | 790 | 2 | NR | 920 | 0 | NR |
| 405 | 3 | NR | 535 | 205 | NR | 665 | 105 | NR | 795 | 2 | NR | 925 | 0 | NR |
| 410 | 4 | NR | 540 | 210 | NR | 670 | 96 | NR | 800 | 1 | NR | 930 | 0 | NR |
| 415 | 7 | NR | 545 | 216 | NR | 675 | 79 | NR | 805 | 1 | NR | 935 | 0 | NR |
| 420 | 13 | NR | 550 | 222 | NR | 680 | 67 | NR | 810 | 1 | NR | 940 | 0 | NR |
| 425 | 22 | NR | 555 | 230 | NR | 685 | 58 | NR | 815 | 1 | NR | 945 | 0 | NR |
| 430 | 37 | NR | 560 | 240 | NR | 690 | 49 | NR | 820 | 1 | NR | 950 | 0 | NR |
| 435 | 60 | NR | 565 | 248 | NR | 695 | 42 | NR | 825 | 1 | NR | 955 | 0 | NR |
| 440 | 101 | NR | 570 | 258 | NR | 700 | 36 | NR | 830 | 1 | NR | 960 | 0 | NR |
| 445 | 172 | NR | 575 | 268 | NR | 705 | 30 | NR | 835 | 1 | NR | 965 | 0 | NR |
| 450 | 223 | NR | 580 | 278 | NR | 710 | 26 | NR | 840 | 1 | NR | 970 | 0 | NR |
| 455 | 167 | NR | 585 | 287 | NR | 715 | 22 | NR | 845 | 0 | NR | 975 | 0 | NR |
| 460 | 126 | NR | 590 | 295 | NR | 720 | 19 | NR | 850 | 0 | NR | 980 | 0 | NR |
| 465 | 111 | NR | 595 | 298 | NR | 725 | 16 | NR | 855 | 0 | NR | 985 | 0 | NR |
| 470 | 86 | NR | 600 | 303 | NR | 730 | 14 | NR | 860 | 0 | NR | 990 | 0 | NR |
| 475 | 74 | NR | 605 | 307 | NR | 735 | 12 | NR | 865 | 0 | NR | 995 | 0 | NR |
| 480 | 77 | NR | 610 | 341 | NR | 740 | 10 | NR | 870 | 0 | NR | 1000 | 0 | NR |
| 485 | 86 | NR | 615 | 368 | NR | 745 | 8 | NR | 875 | 0 | NR | | | |

REPORT NUMBER: SP1-2506-472-5

Melanopic Flux vs. Wavelength



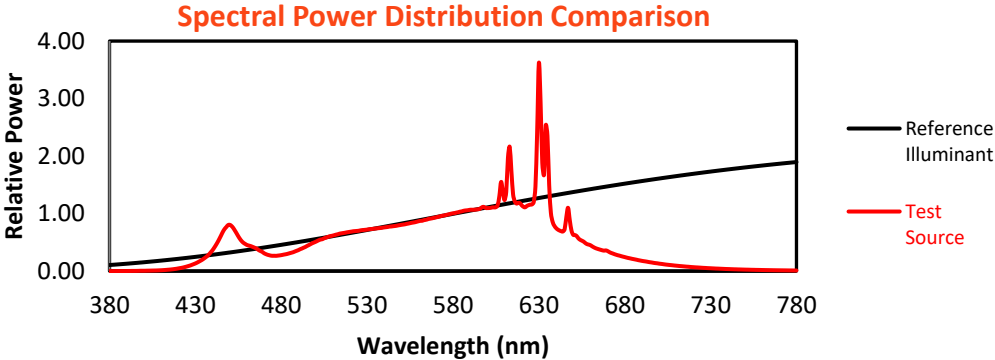
Melanopic Lumens: NR

M/P: 2.85

| λ (nm) | Power W [^] /nm | Lumens (φ/nm) | λ (nm) | Power W [^] /nm | Lumens (φ/nm) | λ (nm) | Power W [^] /nm | Lumens (φ/nm) | λ (nm) | Power W [^] /nm | Lumens (φ/nm) | λ (nm) | Power W [^] /nm | Lumens (φ/nm) |
|--------|--------------------------|---------------|--------|--------------------------|---------------|--------|--------------------------|---------------|--------|--------------------------|---------------|--------|--------------------------|---------------|
| 360 | 0 | NR | 490 | 101 | NR | 620 | 317 | NR | 750 | 7 | NR | 880 | 0 | NR |
| 365 | 0 | NR | 495 | 121 | NR | 625 | 320 | NR | 755 | 6 | NR | 885 | 0 | NR |
| 370 | 0 | NR | 500 | 141 | NR | 630 | 1000 | NR | 760 | 5 | NR | 890 | 0 | NR |
| 375 | 0 | NR | 505 | 158 | NR | 635 | 651 | NR | 765 | 4 | NR | 895 | 0 | NR |
| 380 | 0 | NR | 510 | 171 | NR | 640 | 207 | NR | 770 | 4 | NR | 900 | 0 | NR |
| 385 | 0 | NR | 515 | 182 | NR | 645 | 201 | NR | 775 | 3 | NR | 905 | 0 | NR |
| 390 | 0 | NR | 520 | 189 | NR | 650 | 174 | NR | 780 | 3 | NR | 910 | 0 | NR |
| 395 | 1 | NR | 525 | 194 | NR | 655 | 146 | NR | 785 | 2 | NR | 915 | 0 | NR |
| 400 | 1 | NR | 530 | 199 | NR | 660 | 124 | NR | 790 | 2 | NR | 920 | 0 | NR |
| 405 | 3 | NR | 535 | 205 | NR | 665 | 105 | NR | 795 | 2 | NR | 925 | 0 | NR |
| 410 | 4 | NR | 540 | 210 | NR | 670 | 96 | NR | 800 | 1 | NR | 930 | 0 | NR |
| 415 | 7 | NR | 545 | 216 | NR | 675 | 79 | NR | 805 | 1 | NR | 935 | 0 | NR |
| 420 | 13 | NR | 550 | 222 | NR | 680 | 67 | NR | 810 | 1 | NR | 940 | 0 | NR |
| 425 | 22 | NR | 555 | 230 | NR | 685 | 58 | NR | 815 | 1 | NR | 945 | 0 | NR |
| 430 | 37 | NR | 560 | 240 | NR | 690 | 49 | NR | 820 | 1 | NR | 950 | 0 | NR |
| 435 | 60 | NR | 565 | 248 | NR | 695 | 42 | NR | 825 | 1 | NR | 955 | 0 | NR |
| 440 | 101 | NR | 570 | 258 | NR | 700 | 36 | NR | 830 | 1 | NR | 960 | 0 | NR |
| 445 | 172 | NR | 575 | 268 | NR | 705 | 30 | NR | 835 | 1 | NR | 965 | 0 | NR |
| 450 | 223 | NR | 580 | 278 | NR | 710 | 26 | NR | 840 | 1 | NR | 970 | 0 | NR |
| 455 | 167 | NR | 585 | 287 | NR | 715 | 22 | NR | 845 | 0 | NR | 975 | 0 | NR |
| 460 | 126 | NR | 590 | 295 | NR | 720 | 19 | NR | 850 | 0 | NR | 980 | 0 | NR |
| 465 | 111 | NR | 595 | 298 | NR | 725 | 16 | NR | 855 | 0 | NR | 985 | 0 | NR |
| 470 | 86 | NR | 600 | 303 | NR | 730 | 14 | NR | 860 | 0 | NR | 990 | 0 | NR |
| 475 | 74 | NR | 605 | 307 | NR | 735 | 12 | NR | 865 | 0 | NR | 995 | 0 | NR |
| 480 | 77 | NR | 610 | 341 | NR | 740 | 10 | NR | 870 | 0 | NR | 1000 | 0 | NR |
| 485 | 86 | NR | 615 | 368 | NR | 745 | 8 | NR | 875 | 0 | NR | | | |

Summary

$R_f = 91.3$
 $R_g = 102$
 $CIE R_a = 94.4$
 $R_9 = 61.4$



Color Vector Graphics

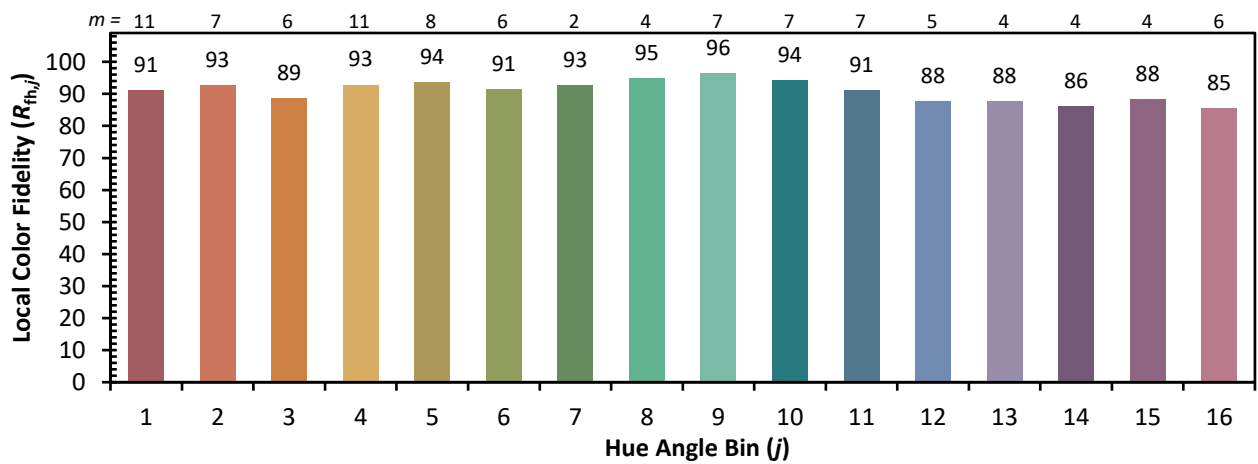
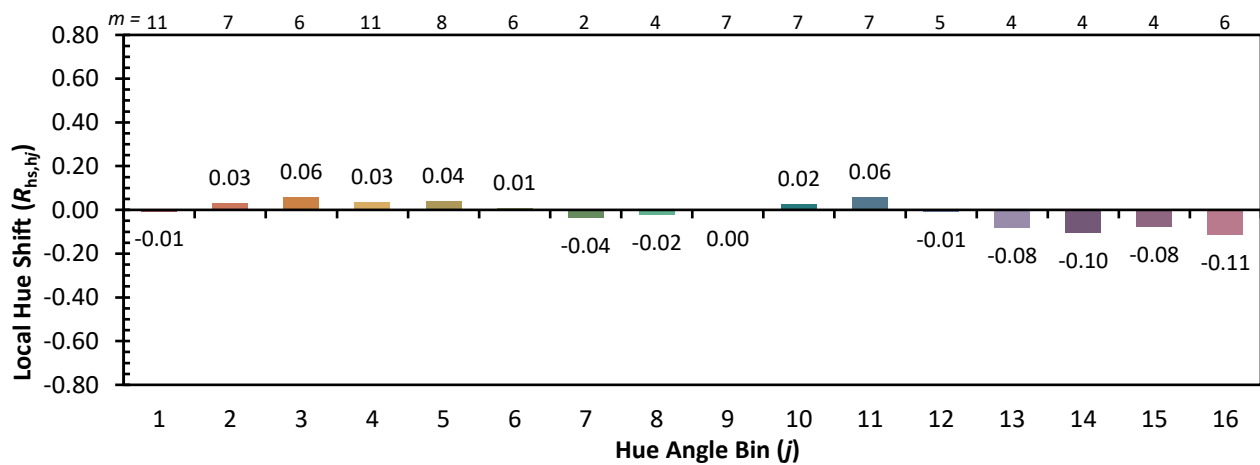
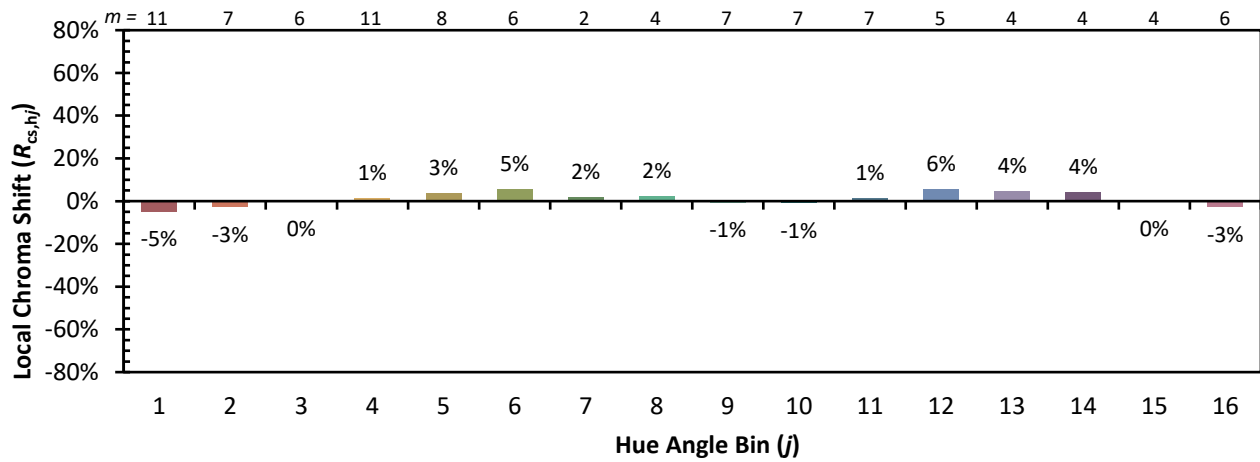


Individual Sample Fidelity Index ($R_{f,i}$)

| | | | |
|------------|------------|------------|------------|
| CES01 = 86 | CES26 = 91 | CES51 = 96 | CES76 = 89 |
| CES02 = 63 | CES27 = 96 | CES52 = 95 | CES77 = 85 |
| CES03 = 32 | CES28 = 96 | CES53 = 93 | CES78 = 86 |
| CES04 = 70 | CES29 = 90 | CES54 = 98 | CES79 = 89 |
| CES05 = 51 | CES30 = 96 | CES55 = 98 | CES80 = 91 |
| CES06 = 51 | CES31 = 90 | CES56 = 95 | CES81 = 72 |
| CES07 = 44 | CES32 = 84 | CES57 = 95 | CES82 = 95 |
| CES08 = 42 | CES33 = 91 | CES58 = 95 | CES83 = 93 |
| CES09 = 29 | CES34 = 92 | CES59 = 99 | CES84 = 96 |
| CES10 = 76 | CES35 = 96 | CES60 = 96 | CES85 = 80 |
| CES11 = 59 | CES36 = 90 | CES61 = 96 | CES86 = 77 |
| CES12 = 65 | CES37 = 94 | CES62 = 95 | CES87 = 91 |
| CES13 = 44 | CES38 = 99 | CES63 = 94 | CES88 = 96 |
| CES14 = 74 | CES39 = 97 | CES64 = 96 | CES89 = 82 |
| CES15 = 72 | CES40 = 94 | CES65 = 92 | CES90 = 97 |
| CES16 = 48 | CES41 = 94 | CES66 = 95 | CES91 = 82 |
| CES17 = 50 | CES42 = 91 | CES67 = 94 | CES92 = 78 |
| CES18 = 57 | CES43 = 88 | CES68 = 93 | CES93 = 87 |
| CES19 = 72 | CES44 = 99 | CES69 = 94 | CES94 = 73 |
| CES20 = 67 | CES45 = 93 | CES70 = 90 | CES95 = 85 |
| CES21 = 86 | CES46 = 93 | CES71 = 90 | CES96 = 92 |
| CES22 = 79 | CES47 = 86 | CES72 = 96 | CES97 = 93 |
| CES23 = 92 | CES48 = 95 | CES73 = 85 | CES98 = 94 |
| CES24 = 91 | CES49 = 91 | CES74 = 90 | CES99 = 93 |
| CES25 = 72 | CES50 = 96 | CES75 = 90 | |



Color Rendition by Hue-Angle Bin



Measure Comparisons



(END OF REPORT)