

Cooper Lighting Solutions Photometric Lab
1121 Highway 74 South
Peachtree City, GA 30269



Scaled data based on original data using
LM-79-2019 Approved Method: Electrical and Photometric Measurements of Solid-
State Lighting Products

Test Report Prepared for
Cooper Lighting Solutions

Brand: METALUX

Report Number: P1444699

Luminaire Tested: EHBR1-54-UNV-TA-L930-UPL15

Issue Date: 5/1/2026

Test Information

Test Method: LM-79-2019
Report Number: P1444699
REPORT IS A COMBINATION OF REPORTS P1444316 AND P1431635
Test Lab: INNOVATION CENTER
Issue Date: 5/1/2026
Manufacturer: COOPER LIGHTING SOLUTIONS
Product Line: METALUX
Catalog Number: EHBR1-54-UNV-TA-L930-UPL15
Description: Elevate Round Highbay at, 54000 lumens, 3000K 90CRI LEDs with TA lens
Light Source: -
Ballast/Driver: -

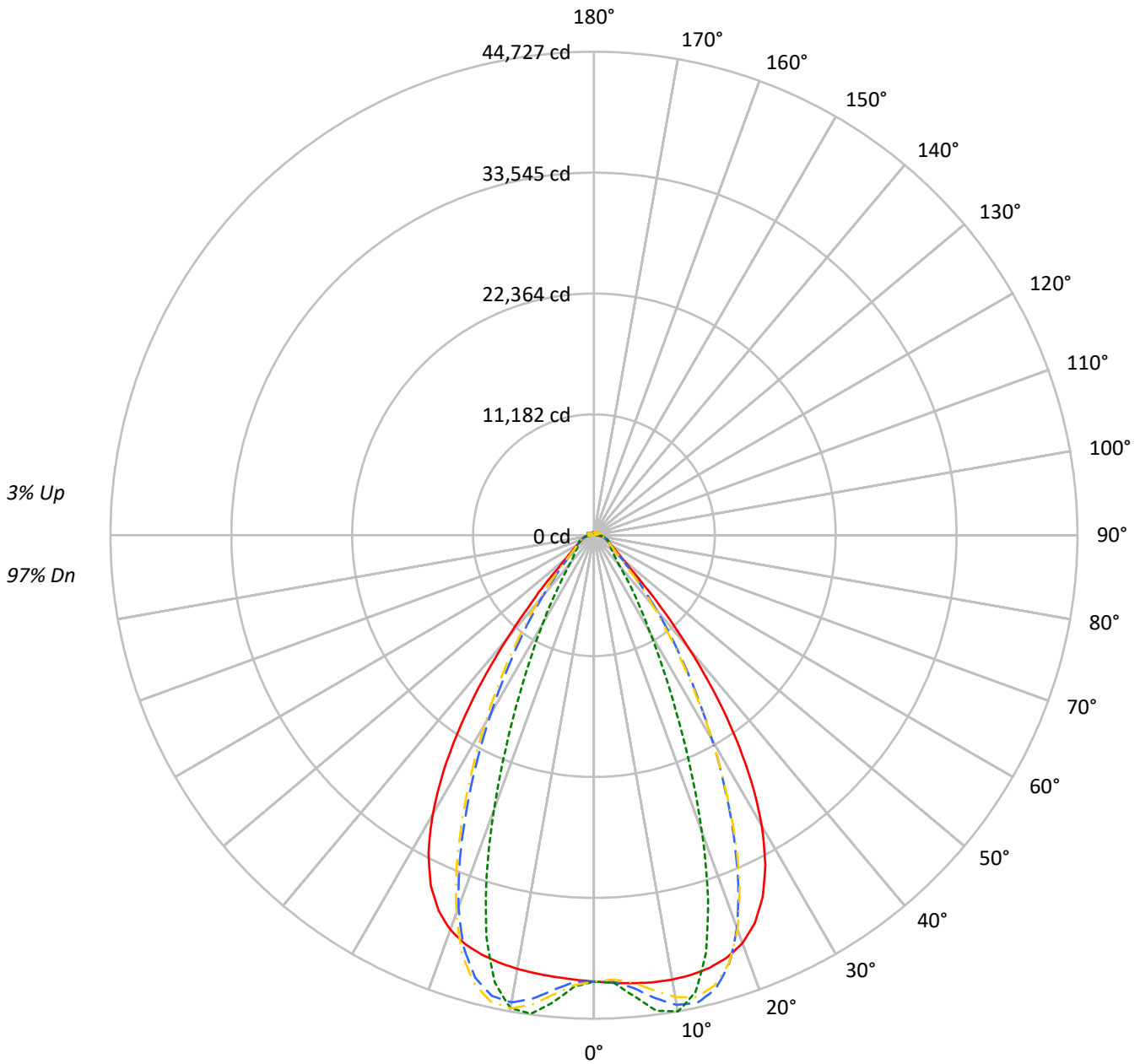
Summary

Lumens per Lamp: N/A
Luminaire Lumens: 49125.8 lumens
Efficiency: N/A
Efficacy: 160.9 lumens/watt
Spacing Criteria (0/90/45): 1.13 / 0.77 / 0.88
Luminous Opening: Vertical Cylinder (Dia: 1.71' x H: 0.1')
CIE Type: Direct

Input Watts (W): 305.3
Input Voltage (V): NR
Input Current (Ain): NR
Voltage Rise (V): NR
Power Factor: NR
Total Harmonic Distortion (THDi): NR
Frequency (hertz): 60
Stabilization Time: NR
Operation Time: NR
Ambient Temperature (°C): NR
Test Distance: 24 FT

TEST NUMBER: P1444699
CATALOG NUMBER: EHBR1-54-UNV-TA-L930-UPL15

Luminous Intensity Polar Plot



— 0°-180° - - 45°-225° - · - · 90°-270° - · - · 135°-315°



TEST NUMBER: P1444699
 CATALOG NUMBER: EHBR1-54-UNV-TA-L930-UPL15

COEFFICIENT OF UTILIZATION - ZONAL CAVITY METHOD:

RF	20				20				20				20				20				
RC	80				70				50				30				10			0	
RW	70	50	30	10	70	50	30	10	50	30	10	50	30	10	50	30	10	50	30	10	0
RCR																					
0	118	118	118	118	115	115	115	115	109	109	109	104	104	104	99	99	99	99	99	99	97
1	111	108	105	102	108	105	102	100	100	98	96	96	94	93	92	91	90	92	91	90	87
2	104	99	94	90	102	96	92	88	93	89	86	89	86	83	86	83	81	86	83	81	79
3	98	91	85	80	96	89	83	79	86	81	77	83	79	76	80	77	74	80	77	74	72
4	92	84	77	72	90	82	76	72	79	74	70	77	73	69	75	71	68	75	71	68	66
5	87	77	71	66	85	76	70	65	74	69	64	72	67	64	70	66	63	70	66	63	61
6	82	72	65	60	80	71	65	60	69	64	59	67	62	59	66	61	58	66	61	58	56
7	78	67	60	56	76	66	60	55	65	59	55	63	58	54	62	57	54	62	57	54	52
8	74	63	56	52	72	62	56	52	61	55	51	59	54	51	58	54	50	58	54	50	49
9	70	59	53	48	68	58	52	48	57	52	48	56	51	47	55	50	47	55	50	47	45
10	66	56	49	45	65	55	49	45	54	48	45	53	48	44	52	47	44	52	47	44	43

AVERAGE LUMINANCE (cd/sqm):

	0°	90°	180°	270°
0°	193886	193886	193886	193886
5°	194825	200506	192098	203132
10°	196451	210516	191740	209123
15°	197415	190831	191405	183147
20°	195374	142162	188979	131534
25°	184929	89910	178817	81577
30°	161549	54029	155292	49377
35°	124329	33903	117178	30032
40°	78649	21267	71958	19984
45°	40538	16568	39866	16296
50°	23767	14737	23038	14507
55°	18208	13943	17534	13817
60°	15406	14243	14751	14058
65°	14471	14874	13917	14366
70°	14138	15575	13432	14988
75°	15116	16517	14299	15787
80°	15642	18290	14183	16696
85°	14731	17646	11903	15112

MAXIMUM LUMINANCE 45°-90°:

Horizontal Angle: 25°
 Vertical Angle: 45°
 Luminance: 62037 cd/sqm



TEST NUMBER: P1444699
 CATALOG NUMBER: EHBR1-54-UNV-TA-L930-UPL15

ZONAL LUMENS:

Zone	Lumens	% Fixture
0°-10°	4068.9	8.3
10°-20°	11446.2	23.3
20°-30°	13036.3	26.5
30°-40°	9369.9	19.1
40°-50°	4321.4	8.8
50°-60°	2068.0	4.2
60°-70°	1508.9	3.1
70°-80°	1146.3	2.3
80°-90°	523.7	1.1
90°-100°	51.8	0.1
100°-110°	243.4	0.5
110°-120°	448.5	0.9
120°-130°	288.6	0.6
130°-140°	204.0	0.4
140°-150°	166.0	0.3
150°-160°	125.2	0.3
160°-170°	80.2	0.2
170°-180°	28.4	0.1
0°-30°	28551.5	58.1
0°-40°	37921.4	77.2
0°-60°	44310.8	90.2
0°-90°	47489.7	96.7
90°-120°	743.6	1.5
90°-150°	1402.2	2.9
90°-180°	1636.0	3.3
0°-180°	49125.8	100.0

CANDELA DISTRIBUTION:

	0°	90°	180°	270°	360°	Flux
0°	41287	41287	41287	41287	41287	
5°	41598	42811	41016	43372	41598	3975
15°	41417	40035	40156	38423	41417	11669
25°	36930	17955	35710	16291	36930	16741
35°	22819	6222	21506	5512	22819	14005
45°	6559	2681	6450	2637	6559	5578
55°	2461	1884	2370	1867	2461	2271
65°	1510	1552	1453	1500	1510	1509
75°	1065	1164	1007	1112	1065	1107
85°	506	606	409	519	506	476
90°	124	161	27	36	124	79
95°	23	25	23	26	23	22
105°	93	115	65	116	93	121
115°	397	469	416	469	397	368
125°	319	314	358	316	319	290
135°	278	228	297	233	278	216
145°	271	246	285	252	271	170
155°	270	262	284	267	270	125
165°	283	277	292	281	283	80
175°	298	299	302	300	298	28
180°	302	302	302	302	302	



TEST NUMBER: P1444699
 CATALOG NUMBER: EHBR1-54-UNV-TA-L930-UPL15

CANDELA DISTRIBUTION (FULL):

	0°	2.5°	5°	7.5°	10°	12.5°	15°	17.5°	20°	22.5°	25°
0°	41286.7	41286.7	41286.7	41286.7	41286.7	41286.7	41286.7	41286.7	41286.7	41286.7	41286.7
2.5°	41444.4	41441.0	41440.5	41437.5	41436.7	41436.7	41435.4	41432.0	41429.9	41425.1	41419.8
5°	41598.2	41596.3	41597.4	41597.8	41594.8	41588.4	41578.3	41565.9	41550.3	41535.6	41522.5
7.5°	41717.1	41720.0	41723.7	41722.9	41713.9	41698.7	41678.0	41666.5	41673.3	41695.8	41747.2
10°	41738.8	41756.6	41763.4	41761.3	41743.3	41730.3	41735.3	41779.0	41866.1	41982.3	42141.1
12.5°	41654.2	41675.9	41675.1	41668.0	41650.5	41668.2	41731.6	41861.8	42048.5	42277.6	42546.3
15°	41416.6	41444.7	41436.7	41427.5	41415.8	41474.1	41600.6	41826.8	42115.1	42438.1	42768.7
17.5°	40955.2	40989.2	40972.7	40962.1	40952.3	41061.6	41279.0	41610.1	41973.2	42338.6	42652.0
20°	40155.0	40177.7	40138.4	40119.9	40135.6	40349.6	40669.8	41092.7	41475.5	41821.0	42035.2
22.5°	38849.0	38877.3	38803.4	38794.9	38886.0	39214.8	39620.1	40092.8	40452.5	40726.3	40808.8
25°	36930.2	36958.0	36870.3	36922.8	37077.9	37525.7	38008.3	38514.1	38820.9	39023.7	38967.7
27.5°	34340.3	34365.7	34282.5	34389.6	34634.8	35223.3	35791.4	36339.9	36613.3	36755.5	36575.4
30°	31073.9	31126.7	31028.3	31177.8	31552.2	32316.3	32967.0	33582.1	33854.8	33963.0	33682.7
32.5°	27194.5	27269.6	27161.1	27383.6	27905.9	28823.7	29562.9	30250.3	30551.8	30675.3	30358.7
35°	22818.9	22926.6	22802.2	23136.0	23780.4	24802.4	25621.0	26388.3	26745.5	26920.5	26601.5
37.5°	18183.2	18285.8	18218.5	18663.9	19371.5	20430.8	21266.4	22094.2	22497.5	22760.2	22508.8
40°	13631.9	13725.9	13776.8	14286.2	14951.7	15950.1	16752.6	17571.8	18022.9	18352.7	18197.6
42.5°	9621.5	9716.2	9889.4	10380.9	10935.9	11762.3	12449.7	13185.1	13616.2	13968.0	13908.1
45°	6558.8	6668.8	6885.7	7288.2	7689.6	8282.4	8787.3	9359.2	9711.3	10033.5	10037.3
47.5°	4596.1	4673.3	4867.2	5142.1	5403.7	6145.9	6176.4	6457.5	6694.1	6935.0	6966.2
50°	3542.1	3588.6	3691.5	3844.6	3992.8	4185.5	4361.9	4565.6	4711.3	4843.3	4874.9
52.5°	2911.4	2940.9	2993.2	3076.2	3162.2	3267.0	3361.4	3473.2	3552.5	3623.2	3638.1
55°	2460.6	2485.1	2563.0	2578.7	2677.2	2696.1	2738.0	2806.1	2852.2	2894.5	2905.1
57.5°	2120.5	2138.2	2154.8	2190.1	2220.4	2264.5	2299.9	2348.8	2377.8	2408.4	2411.1
60°	1852.1	1864.9	1876.7	1901.2	1921.8	1952.5	1976.9	2010.1	2030.9	2053.9	2056.5
62.5°	1652.4	1661.5	1669.4	1685.6	1700.3	1723.8	1743.2	1771.0	1790.4	1808.1	1812.1
65°	1510.4	1517.2	1522.2	1534.5	1547.3	1567.3	1584.9	1607.5	1621.8	1635.4	1638.3
67.5°	1384.7	1391.1	1396.2	1407.4	1416.3	1431.3	1443.1	1460.0	1470.7	1481.6	1482.0
70°	1240.5	1246.4	1250.4	1260.9	1268.0	1280.8	1290.4	1305.7	1316.7	1328.8	1331.8
72.5°	1140.7	1144.2	1149.6	1159.1	1169.0	1182.8	1195.5	1211.4	1224.7	1237.3	1242.6
75°	1064.8	1068.9	1072.5	1080.6	1087.5	1099.1	1108.6	1123.1	1134.8	1148.2	1154.8
77.5°	955.3	960.0	963.1	971.2	977.1	988.3	995.3	1008.3	1017.9	1030.1	1036.0
80°	822.9	827.3	829.5	837.1	841.9	852.1	859.1	871.5	879.6	891.8	899.0
82.5°	676.2	680.5	681.6	688.9	691.4	699.9	704.9	717.8	727.6	743.5	754.5
85°	506.3	507.9	510.3	508.5	518.7	519.4	530.9	533.1	548.4	552.4	569.8
87.5°	309.6	314.1	316.4	323.5	326.5	333.6	335.7	343.2	347.4	355.9	359.9
90°	124.1	130.7	132.7	140.4	142.2	149.2	150.5	158.3	160.2	168.3	170.8
92.5°	20.9	21.9	22.9	24.4	25.5	27.4	29.0	30.4	31.5	33.4	35.7
95°	23.3	24.5	25.8	26.9	28.2	29.4	30.7	31.8	33.1	34.3	37.7
97.5°	28.5	29.6	30.7	31.7	32.8	33.9	34.9	36.0	37.1	38.1	42.3
100°	36.3	37.2	38.1	38.9	39.8	40.8	41.7	42.6	43.5	44.4	52.2
102.5°	57.1	60.3	63.5	66.7	69.9	72.9	76.3	79.2	82.4	85.6	102.2
105°	93.0	101.5	110.4	118.9	127.5	136.3	144.9	153.2	161.9	170.5	197.8
107.5°	154.3	170.2	186.2	202.3	218.3	234.3	250.3	266.2	282.0	297.8	325.5
110°	278.6	291.1	304.1	316.9	329.6	342.6	355.4	367.9	380.8	393.4	413.6



TEST NUMBER: P1444699
 CATALOG NUMBER: EHBR1-54-UNV-TA-L930-UPL15

CANDELA DISTRIBUTION (continued):

	0°	2.5°	5°	7.5°	10°	12.5°	15°	17.5°	20°	22.5°	25°
112.5°	373.8	379.4	385.2	390.9	396.6	402.2	407.9	413.5	419.2	424.6	438.8
115°	396.9	398.7	400.7	402.3	404.3	406.0	407.8	409.4	411.3	412.8	422.3
117.5°	389.9	389.2	388.5	388.1	387.2	386.5	385.8	385.0	384.1	383.2	388.4
120°	369.4	367.2	365.2	362.9	360.7	358.3	356.3	353.9	351.4	348.9	350.9
122.5°	342.8	340.2	338.0	335.2	332.6	329.6	327.1	323.9	321.3	318.5	318.7
125°	319.1	316.4	314.1	311.3	308.3	305.5	302.6	299.6	296.7	293.5	293.3
127.5°	299.3	297.4	295.5	293.1	290.9	288.6	286.1	283.6	281.4	278.6	278.0
130°	288.8	287.0	285.1	282.8	280.8	278.5	276.1	273.6	271.4	268.7	268.0
132.5°	281.2	279.9	278.4	276.5	274.7	272.5	270.7	268.2	266.4	264.2	263.5
135°	278.1	276.6	275.3	273.6	271.9	269.7	267.6	265.5	263.4	261.1	260.6
137.5°	276.1	274.8	273.4	271.6	269.9	267.8	265.9	263.7	261.6	259.5	258.8
140°	274.5	273.1	271.8	270.0	268.5	266.6	264.7	262.6	260.6	258.4	258.0
142.5°	271.6	270.3	269.3	267.7	266.3	264.5	262.7	260.7	259.1	257.0	256.7
145°	270.8	269.7	268.8	267.5	266.0	264.2	262.7	260.8	259.3	257.5	257.3
147.5°	270.3	269.3	268.6	267.3	266.2	264.6	263.2	261.5	260.0	258.5	258.4
150°	269.8	269.0	268.2	267.2	265.9	264.6	263.2	261.8	260.4	258.9	258.8
152.5°	268.7	267.7	267.1	266.0	264.8	263.4	262.4	260.9	259.7	258.3	258.1
155°	269.7	268.8	267.9	266.9	265.8	264.7	263.4	262.2	261.1	259.7	259.5
157.5°	271.9	270.9	270.2	269.0	268.3	267.3	266.3	265.1	264.1	263.1	262.7
160°	275.5	274.6	273.8	272.7	271.7	270.5	269.7	268.6	267.9	266.7	266.5
162.5°	279.2	278.2	277.3	276.3	275.5	274.4	273.6	272.7	271.8	270.6	270.5
165°	283.3	282.8	282.0	281.2	280.4	279.6	278.9	277.9	277.2	276.3	276.2
167.5°	289.0	288.1	287.6	286.8	285.9	285.3	284.5	283.6	283.0	282.0	281.9
170°	292.9	292.1	291.7	291.2	290.6	290.0	289.5	288.9	288.3	287.7	287.6
172.5°	296.2	295.6	295.3	295.1	294.4	294.1	293.6	293.2	292.9	292.3	292.5
175°	298.1	297.6	297.6	297.2	296.9	296.6	296.5	296.1	296.1	295.7	295.7
177.5°	300.5	300.4	300.4	300.2	300.2	300.0	299.9	299.6	299.4	299.4	299.5
180°	302.3	302.3	302.3	302.3	302.3	302.3	302.3	302.3	302.3	302.3	302.3



TEST NUMBER: P1444699
 CATALOG NUMBER: EHBR1-54-UNV-TA-L930-UPL15

CANDELA DISTRIBUTION (continued):

	27.5°	30°	32.5°	35°	37.5°	40°	42.5°	45°	47.5°	50°	52.5°
0°	41286.7	41286.7	41286.7	41286.7	41286.7	41286.7	41286.7	41286.7	41286.7	41286.7	41286.7
2.5°	41415.8	41410.7	41403.8	41395.1	41387.6	41378.9	41358.2	41352.2	41359.0	41363.7	41373.1
5°	41514.2	41517.1	41518.2	41537.0	41553.2	41593.7	41911.4	42037.6	42135.3	42197.2	42291.3
7.5°	41810.9	41906.4	42000.7	42127.8	42237.3	42385.3	42941.1	43177.6	43345.7	43466.7	43615.4
10°	42313.7	42522.0	42717.5	42946.4	43143.2	43368.5	43885.8	44116.3	44261.8	44367.7	44466.6
12.5°	42820.1	43109.2	43370.4	43625.2	43838.2	44033.5	44215.5	44296.1	44303.0	44306.4	44253.9
15°	43083.9	43360.3	43590.4	43758.9	43884.1	43939.4	43626.3	43461.9	43254.2	43083.2	42801.8
17.5°	42917.4	43083.2	43182.6	43172.8	43121.2	42947.9	42060.7	41572.8	41088.4	40651.8	40079.3
20°	42177.4	42164.6	42078.2	41833.2	41538.0	41079.0	39558.0	38680.5	37832.1	37086.9	36182.9
22.5°	40800.4	40583.7	40281.6	39753.5	39166.6	38364.7	36185.1	34894.3	33713.1	32669.7	31500.9
25°	38805.2	38359.5	37802.4	36963.8	36051.9	34882.3	32195.8	30590.2	29172.2	27942.2	26593.6
27.5°	36251.9	35580.5	34764.0	33603.4	32368.0	30869.5	27891.1	26119.2	24596.9	23278.3	21842.8
30°	33229.0	32355.8	31301.4	29861.0	28370.8	26671.3	23650.5	21855.8	20314.9	18958.4	17521.8
32.5°	29812.8	28790.0	27554.6	25937.9	24326.3	22579.0	19661.6	17924.5	16452.5	15147.4	13847.2
35°	26045.0	24948.2	23641.1	21992.2	20390.2	18691.4	16014.5	14448.1	13148.3	11994.7	10944.9
37.5°	22003.3	20926.4	19684.1	18130.0	16644.5	15105.0	12795.2	11482.7	10391.9	9434.5	8623.8
40°	17801.1	16858.7	15783.8	14440.2	13172.5	11890.4	9994.4	8952.5	8091.6	7361.4	6754.0
42.5°	13650.3	12920.0	12095.7	11033.9	10063.8	9087.6	7628.3	6856.3	6218.7	5693.1	5263.7
45°	9903.8	9415.2	8862.4	8124.2	7453.0	6772.0	5733.4	5191.0	4775.7	4436.8	4150.2
47.5°	6923.3	6639.9	6622.6	5940.4	5448.2	5031.8	4362.8	4020.1	3765.7	3560.3	3378.8
50°	4862.0	4724.9	4554.6	4311.2	4082.7	3847.4	3439.7	3232.5	3083.5	2959.1	2844.3
52.5°	3634.7	3563.5	3472.8	3343.6	3219.9	3087.5	2829.5	2697.7	2650.8	2534.9	2444.0
55°	2903.2	2862.3	2810.7	2734.8	2659.5	2629.4	2408.3	2310.4	2248.3	2202.6	2153.8
57.5°	2411.5	2381.0	2350.5	2299.1	2255.4	2202.6	2085.3	2035.1	1998.2	1971.3	1937.4
60°	2056.9	2038.7	2021.6	1991.4	1967.9	1939.5	1864.9	1836.6	1817.3	1801.1	1779.5
62.5°	1815.5	1806.2	1797.2	1781.2	1769.3	1753.9	1702.9	1689.2	1679.6	1671.5	1658.3
65°	1641.2	1634.5	1629.6	1618.8	1612.9	1603.9	1560.1	1550.9	1545.0	1542.0	1534.5
67.5°	1482.9	1475.8	1472.6	1464.9	1462.5	1456.8	1421.0	1416.0	1414.0	1415.0	1412.2
70°	1334.7	1331.8	1333.3	1332.2	1335.5	1336.5	1314.9	1314.7	1317.0	1321.6	1322.0
72.5°	1246.0	1246.0	1247.7	1248.4	1251.6	1253.2	1235.1	1234.2	1235.3	1238.7	1238.8
75°	1161.5	1162.9	1167.5	1169.0	1172.8	1173.6	1149.7	1147.0	1147.2	1150.4	1149.3
77.5°	1044.6	1049.7	1058.4	1063.0	1070.3	1071.7	1044.9	1041.7	1041.8	1045.0	1042.4
80°	912.0	921.6	935.5	945.1	956.5	961.1	933.6	927.0	920.8	919.9	914.4
82.5°	771.0	782.8	799.5	808.2	820.3	823.1	777.0	768.3	763.1	763.5	758.4
85°	588.6	597.5	612.7	617.6	625.0	624.4	571.8	549.3	555.3	545.9	553.3
87.5°	369.2	374.5	383.9	385.2	388.6	387.9	335.0	324.6	321.5	321.6	317.8
90°	179.1	182.2	190.3	190.1	195.3	194.2	151.0	145.9	142.4	144.7	139.6
92.5°	38.4	40.5	43.1	45.4	47.9	50.3	47.9	48.8	47.0	44.4	42.7
95°	41.3	44.9	48.6	52.1	55.8	59.3	63.0	66.6	63.2	59.8	56.4
97.5°	46.6	50.8	54.9	59.2	63.4	67.6	71.9	76.2	72.6	68.6	65.1
100°	60.2	68.1	75.8	83.9	91.6	99.5	107.5	115.4	108.5	101.2	94.3
102.5°	118.9	135.8	152.6	169.2	185.9	202.8	219.8	236.7	220.6	204.3	188.2
105°	225.0	252.1	279.3	306.2	333.5	360.6	388.2	415.4	389.7	364.0	338.3
107.5°	353.0	380.6	407.9	435.3	462.9	490.4	518.6	546.2	521.0	495.7	470.6
110°	433.5	453.3	473.4	493.2	513.1	533.0	553.9	574.0	558.7	543.4	528.2



TEST NUMBER: P1444699
 CATALOG NUMBER: EHBR1-54-UNV-TA-L930-UPL15

CANDELA DISTRIBUTION (continued):

	27.5°	30°	32.5°	35°	37.5°	40°	42.5°	45°	47.5°	50°	52.5°
112.5°	452.8	467.0	481.2	495.1	509.1	523.2	538.7	553.0	545.1	537.0	529.3
115°	431.5	441.1	450.3	459.6	468.8	478.0	489.1	498.8	495.7	492.8	489.9
117.5°	393.3	398.2	403.2	408.1	412.9	417.7	424.9	430.1	429.8	429.7	429.6
120°	352.6	354.3	356.0	357.7	359.2	360.8	365.1	367.2	368.7	369.9	371.2
122.5°	318.9	319.2	319.3	319.4	319.5	319.6	322.8	323.6	324.1	324.7	325.4
125°	292.9	292.7	292.3	291.9	291.3	291.0	294.2	294.3	293.6	292.8	292.2
127.5°	277.2	276.6	275.8	275.1	274.0	273.4	276.2	276.2	274.4	272.8	270.8
130°	267.3	266.7	265.9	265.2	264.7	264.0	267.2	267.4	265.0	262.4	259.9
132.5°	262.8	262.3	261.3	260.9	260.2	259.4	263.1	263.4	260.9	258.0	255.4
135°	259.8	259.3	258.7	258.0	257.4	257.1	261.0	261.4	259.0	256.2	253.7
137.5°	258.0	257.5	256.9	256.6	255.8	255.5	259.9	260.6	258.5	256.0	254.0
140°	257.4	256.9	256.5	256.2	255.7	255.6	260.4	261.2	259.6	257.5	255.6
142.5°	256.2	256.1	255.8	255.9	255.7	255.8	261.4	262.4	261.1	259.3	258.0
145°	256.9	257.1	256.9	257.0	257.0	257.3	263.6	265.1	264.0	262.8	261.6
147.5°	257.9	257.9	257.8	257.9	258.0	258.5	265.3	266.9	266.2	265.2	264.3
150°	258.5	258.6	258.5	258.7	259.1	259.4	267.3	269.4	268.7	268.0	267.1
152.5°	257.9	257.9	257.9	258.1	258.2	258.6	268.4	270.8	270.3	269.4	268.9
155°	259.2	259.1	259.0	259.1	259.0	259.5	270.3	272.9	272.4	271.9	271.4
157.5°	262.4	262.1	261.7	261.6	261.6	261.6	273.2	276.3	275.6	275.2	274.7
160°	266.0	265.7	265.3	265.2	264.8	264.8	276.9	279.7	279.4	278.8	278.3
162.5°	270.1	270.2	269.8	269.7	269.5	269.6	281.6	284.8	284.1	283.6	283.0
165°	275.7	275.4	275.1	275.0	274.6	274.6	286.1	288.7	288.5	287.8	287.4
167.5°	281.4	281.4	281.0	281.0	280.7	280.9	291.5	294.1	293.8	293.2	292.8
170°	287.2	287.3	287.0	286.9	287.0	287.2	296.0	298.3	298.0	297.3	296.9
172.5°	292.3	292.5	292.6	292.5	292.6	292.7	300.2	302.3	302.0	301.6	301.0
175°	295.8	295.6	295.8	296.0	296.1	296.1	302.1	303.6	303.4	303.1	302.8
177.5°	299.7	299.7	299.9	300.0	300.1	300.3	303.9	304.8	304.7	304.7	304.5
180°	302.3	302.3	302.3	302.3	302.3	302.3	302.3	302.3	302.3	302.3	302.3



TEST NUMBER: P1444699
 CATALOG NUMBER: EHBR1-54-UNV-TA-L930-UPL15

CANDELA DISTRIBUTION (continued):

	55°	57.5°	60°	62.5°	65°	67.5°	70°	72.5°	75°	77.5°	80°
0°	41286.7	41286.7	41286.7	41286.7	41286.7	41286.7	41286.7	41286.7	41286.7	41286.7	41286.7
2.5°	41375.2	41389.8	41391.9	41408.9	41407.5	41427.7	41424.5	41441.0	41431.4	41445.0	41433.5
5°	42347.0	42435.2	42481.2	42567.2	42594.5	42671.4	42693.1	42763.4	42766.3	42822.0	42809.3
7.5°	43720.9	43850.8	43928.0	44034.3	44088.1	44176.8	44215.7	44281.2	44302.4	44354.4	44358.4
10°	44541.4	44604.5	44648.5	44678.2	44705.2	44718.0	44732.8	44728.9	44732.8	44727.0	44739.7
12.5°	44218.7	44126.5	44065.7	43950.3	43883.4	43756.0	43693.4	43570.8	43526.3	43421.0	43405.9
15°	42584.3	42263.3	42036.6	41706.7	41499.4	41174.8	40984.9	40692.2	40558.4	40325.7	40264.7
17.5°	39605.5	39009.6	38548.5	37956.9	37546.4	36993.6	36645.9	36188.3	35937.6	35568.6	35440.8
20°	35429.3	34547.6	33855.9	33031.9	32442.2	31707.4	31237.0	30643.8	30299.4	29846.1	29662.4
22.5°	30526.3	29428.6	28564.7	27591.2	26879.7	26060.9	25497.4	24855.5	24480.8	23988.3	23770.3
25°	25472.8	24262.2	23301.8	22276.2	21524.4	20703.6	20139.9	19509.4	19121.6	18654.1	18437.5
27.5°	20639.5	19414.2	18486.0	17532.5	16842.8	16102.2	15593.6	15043.1	14698.9	14299.8	14096.0
30°	16374.2	15293.6	14503.6	13712.3	13138.6	12537.2	12114.5	11658.2	11356.3	11014.7	10820.5
32.5°	12899.3	12065.0	11446.5	10818.5	10349.1	9846.4	9481.2	9078.6	8806.1	8500.9	8325.1
35°	10216.1	9567.8	9074.5	8557.6	8154.2	7726.1	7404.3	7056.8	6812.3	6549.6	6397.8
37.5°	8071.8	7556.2	7150.3	6721.0	6389.6	6035.0	5915.5	5516.8	5263.3	5053.7	4908.5
40°	6334.8	5924.8	5589.0	5260.6	4990.4	4721.3	4505.5	4292.4	4128.9	3978.9	3875.2
42.5°	4946.9	4650.0	4404.6	4164.1	3967.0	3771.0	3614.6	3467.9	3357.7	3259.6	3192.8
45°	3932.6	3728.3	3557.9	3388.5	3249.4	3118.5	3013.3	2919.6	2848.5	2789.6	2747.8
47.5°	3230.7	3090.8	2970.6	2856.3	2761.9	2676.2	2605.7	2582.7	2506.2	2454.6	2435.0
50°	2745.7	2661.2	2569.9	2485.6	2422.5	2359.7	2314.0	2269.2	2240.6	2216.9	2209.7
52.5°	2383.6	2319.1	2268.3	2214.8	2173.2	2128.6	2097.0	2067.2	2051.5	2039.0	2037.5
55°	2114.5	2069.3	2035.7	1999.9	1974.9	1948.7	1932.4	1916.7	1909.8	1903.5	1903.9
57.5°	1910.9	1880.7	1858.8	1835.6	1822.1	1809.5	1805.4	1801.4	1803.6	1804.5	1808.0
60°	1762.4	1742.8	1729.1	1715.7	1710.1	1706.1	1709.1	1712.7	1719.9	1725.7	1730.9
62.5°	1648.7	1637.6	1630.8	1623.7	1623.0	1623.3	1629.4	1635.4	1644.4	1651.2	1656.2
65°	1531.7	1525.3	1523.1	1518.5	1520.8	1522.2	1529.6	1534.1	1543.1	1548.5	1554.9
67.5°	1413.3	1411.8	1413.3	1413.3	1417.4	1420.9	1428.0	1433.1	1440.8	1445.7	1450.9
70°	1326.0	1326.6	1329.8	1330.5	1334.9	1337.3	1343.5	1346.8	1353.7	1357.8	1364.2
72.5°	1241.1	1239.8	1240.5	1238.5	1240.0	1239.4	1242.8	1244.5	1250.3	1253.5	1261.1
75°	1150.6	1146.8	1145.9	1141.8	1141.9	1139.1	1140.4	1140.2	1144.0	1145.6	1151.1
77.5°	1041.4	1035.0	1031.9	1025.1	1024.9	1022.3	1025.1	1026.7	1033.5	1036.7	1042.9
80°	910.7	900.7	896.0	888.1	889.4	889.0	895.8	900.8	909.1	910.6	918.5
82.5°	756.9	746.7	741.8	734.0	735.8	736.0	742.1	743.2	750.3	753.5	762.6
85°	542.0	545.9	535.1	535.8	533.5	537.8	542.0	547.2	553.1	563.1	570.8
87.5°	319.2	317.8	321.6	322.1	327.6	330.5	339.3	344.4	354.4	362.2	376.2
90°	140.1	135.2	138.4	136.9	142.4	141.1	146.1	143.7	149.7	150.4	158.2
92.5°	39.7	38.1	35.2	33.2	30.7	29.0	27.3	26.7	25.1	24.7	23.1
95°	53.0	49.7	46.3	43.0	39.7	36.3	35.0	33.8	32.6	31.4	30.1
97.5°	61.4	57.8	54.2	50.5	46.9	43.3	42.5	41.7	40.8	40.0	39.2
100°	87.2	80.1	73.2	66.0	59.1	52.1	51.5	50.8	50.2	49.5	48.8
102.5°	172.3	156.0	140.1	124.0	108.1	92.0	89.2	86.4	83.6	80.8	78.1
105°	312.5	286.8	261.2	235.4	210.0	184.2	176.6	168.7	161.1	153.5	145.9
107.5°	445.4	420.3	395.2	370.2	345.1	320.1	307.9	295.9	283.6	271.5	259.5
110°	512.7	497.4	482.5	467.0	452.0	436.9	425.1	413.7	401.9	390.3	378.8



TEST NUMBER: P1444699
 CATALOG NUMBER: EHBR1-54-UNV-TA-L930-UPL15

CANDELA DISTRIBUTION (continued):

	55°	57.5°	60°	62.5°	65°	67.5°	70°	72.5°	75°	77.5°	80°
112.5°	521.3	513.6	505.5	497.8	490.2	482.4	476.7	470.9	465.3	459.5	453.6
115°	486.9	484.2	481.3	478.6	476.0	473.1	472.5	472.0	471.2	470.7	470.3
117.5°	429.4	429.3	429.0	429.0	429.1	429.1	431.8	434.3	437.1	440.0	442.9
120°	372.5	373.8	375.1	376.6	378.0	379.5	382.9	386.7	390.1	394.2	398.1
122.5°	325.9	326.5	327.0	327.9	328.5	329.2	332.5	336.0	339.5	343.3	347.0
125°	291.0	290.2	289.4	288.6	287.7	287.2	289.5	292.2	295.0	298.0	300.8
127.5°	269.0	267.0	265.1	263.3	261.4	259.8	260.7	262.1	263.2	264.7	266.1
130°	257.3	254.8	251.9	249.6	246.8	244.4	244.2	244.2	244.2	244.4	244.5
132.5°	252.5	249.7	246.8	243.8	241.0	238.1	237.1	236.2	235.1	234.5	233.9
135°	250.8	248.4	245.3	242.6	239.6	237.1	235.6	234.2	232.9	231.7	230.6
137.5°	251.6	249.3	246.8	244.6	242.0	239.8	237.8	236.5	234.8	233.7	232.2
140°	253.5	251.7	249.4	247.5	245.2	243.5	241.8	240.5	239.1	237.9	236.7
142.5°	256.1	254.6	252.8	251.3	249.5	248.0	246.5	245.2	243.8	242.7	241.5
145°	260.3	259.2	257.9	256.6	255.3	254.1	252.6	251.7	250.5	249.4	248.6
147.5°	263.3	262.4	261.4	260.4	259.2	258.2	257.1	256.6	255.3	254.7	253.8
150°	266.1	265.3	264.3	263.6	262.4	261.6	260.7	260.1	259.2	258.9	258.0
152.5°	267.9	267.3	266.4	265.7	264.7	263.9	263.2	262.6	262.0	261.5	260.5
155°	270.5	269.9	269.2	268.6	267.6	267.2	266.5	265.6	265.0	264.4	263.7
157.5°	274.1	273.5	272.7	272.2	271.4	270.7	270.1	269.5	268.8	268.2	267.5
160°	277.8	277.2	276.5	275.9	275.3	274.6	273.8	273.2	272.4	271.9	271.1
162.5°	282.3	281.7	281.2	280.4	279.6	279.0	278.2	277.7	277.1	276.4	275.6
165°	286.8	286.1	285.5	284.9	284.5	283.8	283.0	282.5	281.6	281.1	280.2
167.5°	292.2	291.8	291.1	290.7	290.0	289.4	288.8	288.1	287.4	286.7	285.9
170°	296.6	295.9	295.5	294.8	294.3	293.5	293.0	292.3	291.6	291.2	290.4
172.5°	300.7	300.5	300.0	299.6	298.9	298.4	298.1	297.6	297.0	296.4	296.1
175°	302.6	302.5	302.4	301.9	301.7	301.4	301.1	300.9	300.7	300.5	300.0
177.5°	304.5	304.3	304.3	304.1	303.9	303.9	303.6	303.5	303.3	303.1	303.0
180°	302.3	302.3	302.3	302.3	302.3	302.3	302.3	302.3	302.3	302.3	302.3



TEST NUMBER: P1444699
 CATALOG NUMBER: EHBR1-54-UNV-TA-L930-UPL15

CANDELA DISTRIBUTION (continued):

	82.5°	85°	87.5°	90°	92.5°	95°	97.5°	100°	102.5°	105°	107.5°
0°	41286.7	41286.7	41286.7	41286.7	41286.7	41286.7	41286.7	41286.7	41286.7	41286.7	41286.7
2.5°	41445.5	41434.9	41439.9	41420.5	41425.1	41401.7	41399.6	41373.1	41370.5	41345.6	41336.2
5°	42848.7	42825.7	42851.7	42811.1	42819.1	42766.3	42761.9	42693.6	42670.1	42584.7	42547.8
7.5°	44390.9	44382.3	44398.2	44364.2	44363.1	44316.0	44296.6	44235.3	44197.4	44107.7	44050.5
10°	44728.9	44736.8	44723.8	44727.0	44708.6	44703.6	44684.8	44672.8	44642.1	44618.8	44584.6
12.5°	43325.9	43334.2	43280.8	43314.7	43287.9	43350.5	43345.5	43419.2	43430.6	43523.9	43559.2
15°	40083.4	40073.3	39970.6	40035.3	40000.6	40138.0	40168.7	40353.5	40452.5	40689.8	40835.6
17.5°	35185.1	35158.7	35014.0	35092.8	35052.7	35255.3	35323.2	35618.9	35803.3	36185.7	36458.2
20°	29346.1	29295.5	29126.3	29218.5	29177.1	29407.3	29504.3	29861.6	30099.4	30605.9	30966.2
22.5°	23434.6	23354.5	23188.9	23275.0	23236.0	23474.4	23600.6	23959.1	24231.5	24751.4	25172.1
25°	18126.1	18054.8	17894.6	17954.9	17940.3	18142.0	18254.4	18593.4	18861.1	19356.3	19757.8
27.5°	13825.2	13751.0	13606.3	13649.0	13634.3	13806.1	13911.9	14195.2	14425.5	14842.5	15195.0
30°	10581.2	10491.6	10368.9	10392.5	10382.4	10521.7	10620.5	10859.1	11056.5	11408.8	11712.5
32.5°	8110.4	8020.5	7907.7	7918.8	7903.9	8013.1	8094.6	8302.0	8474.0	8773.6	9038.0
35°	6205.6	6310.7	6069.9	6222.5	6063.6	6296.8	6212.9	6342.6	6490.5	6743.0	6963.5
37.5°	4770.6	4697.4	4635.3	4628.8	4628.5	4682.5	4746.3	4871.1	5001.5	5189.6	5383.9
40°	3780.5	3729.1	3689.0	3686.1	3689.0	3727.4	3774.5	3860.9	3956.3	4091.4	4234.2
42.5°	3135.6	3101.4	3077.3	3075.6	3083.3	3110.4	3143.2	3194.5	3256.6	3344.1	3442.0
45°	2713.9	2694.9	2681.4	2680.6	2684.2	2698.4	2717.2	2749.2	2788.6	2843.2	2905.1
47.5°	2417.9	2413.3	2404.9	2405.2	2401.4	2407.2	2409.4	2427.3	2448.2	2489.4	2570.3
50°	2202.5	2202.5	2196.7	2196.4	2190.9	2190.5	2186.0	2193.0	2202.8	2228.3	2254.2
52.5°	2032.2	2031.5	2025.3	2024.0	2018.3	2017.9	2014.0	2016.7	2018.1	2030.9	2046.4
55°	1899.0	1895.1	1886.8	1884.2	1881.9	1885.3	1883.8	1883.9	1882.2	1887.6	1892.2
57.5°	1803.6	1798.4	1790.6	1788.2	1787.6	1791.6	1791.8	1790.4	1783.3	1778.4	1771.4
60°	1728.0	1722.8	1714.4	1712.2	1713.5	1718.9	1718.7	1714.0	1703.3	1694.0	1683.2
62.5°	1653.8	1651.6	1647.4	1646.7	1645.7	1646.6	1642.7	1637.8	1627.3	1617.3	1605.6
65°	1554.1	1555.2	1552.0	1552.5	1548.6	1548.0	1542.2	1537.5	1526.8	1517.7	1505.7
67.5°	1450.7	1451.5	1448.9	1448.9	1446.9	1447.2	1443.6	1439.3	1430.2	1422.9	1413.5
70°	1365.5	1367.6	1366.1	1366.6	1364.2	1363.2	1357.7	1353.4	1344.1	1338.0	1329.5
72.5°	1263.5	1268.0	1267.8	1269.0	1265.2	1263.5	1256.9	1251.5	1243.1	1238.1	1231.5
75°	1153.2	1159.2	1160.9	1163.5	1158.3	1155.5	1148.3	1144.0	1137.2	1134.3	1129.9
77.5°	1045.7	1052.3	1058.6	1064.4	1055.9	1048.4	1039.4	1032.6	1022.8	1018.9	1012.1
80°	925.0	936.6	950.5	962.2	947.0	931.7	916.9	905.8	892.8	887.5	878.9
82.5°	767.4	779.3	787.2	794.7	784.2	773.1	758.6	749.0	734.9	729.8	719.8
85°	583.0	597.9	602.6	606.5	599.8	593.9	580.4	562.1	553.3	539.4	532.2
87.5°	383.5	392.4	394.0	395.4	391.3	388.4	379.6	371.1	355.9	344.9	331.4
90°	157.4	162.8	158.9	160.7	155.9	157.0	148.7	146.3	134.5	130.3	119.7
92.5°	22.4	20.9	19.9	18.7	20.5	20.9	22.6	23.1	24.6	25.1	26.7
95°	28.9	27.7	26.5	25.2	26.2	27.2	28.2	29.1	30.1	31.1	32.1
97.5°	38.4	37.5	36.7	35.9	36.4	37.1	37.6	38.2	38.8	39.4	40.0
100°	48.2	47.6	46.9	46.3	46.3	46.3	46.3	46.3	46.3	46.3	46.3
102.5°	75.3	72.4	69.7	66.9	68.8	70.7	72.5	74.4	76.4	78.2	80.3
105°	138.2	130.6	123.0	115.4	122.8	130.1	137.5	144.9	152.2	159.9	167.3
107.5°	247.3	235.3	223.2	211.2	224.8	238.2	251.7	265.0	278.5	291.8	305.6
110°	367.4	355.9	344.5	333.0	347.3	361.5	375.8	390.1	404.4	418.7	433.2



TEST NUMBER: P1444699
 CATALOG NUMBER: EHBR1-54-UNV-TA-L930-UPL15

CANDELA DISTRIBUTION (continued):

	82.5°	85°	87.5°	90°	92.5°	95°	97.5°	100°	102.5°	105°	107.5°
112.5°	448.0	442.5	436.8	431.3	440.5	449.7	458.8	468.4	477.5	486.8	496.0
115°	469.8	469.5	469.2	468.8	473.2	477.6	481.8	486.4	490.8	495.2	499.8
117.5°	445.7	448.7	451.8	454.9	456.4	457.7	459.3	460.6	462.3	463.8	465.5
120°	402.1	405.7	409.9	414.1	413.6	413.0	412.6	412.1	411.9	411.5	411.6
122.5°	350.9	354.8	359.0	363.0	361.7	360.5	359.5	358.4	357.6	356.7	356.0
125°	304.1	307.2	310.6	313.9	312.7	311.5	310.4	309.6	308.7	307.7	307.4
127.5°	268.1	269.8	271.6	273.7	273.1	272.5	272.4	272.0	271.9	271.9	272.2
130°	245.0	245.6	246.5	247.1	247.3	247.5	248.0	248.4	249.3	249.9	250.9
132.5°	233.8	233.4	233.4	233.3	233.9	234.6	235.7	236.7	238.1	239.3	241.1
135°	229.9	229.2	228.7	228.3	229.3	230.1	231.3	232.7	234.4	236.2	238.0
137.5°	231.4	230.4	229.9	229.0	230.0	231.0	232.2	233.6	235.2	237.0	239.0
140°	235.8	234.9	234.5	233.7	234.6	235.4	236.8	238.0	239.6	241.4	243.3
142.5°	240.8	239.6	239.2	238.6	239.3	240.2	241.5	242.6	244.2	245.5	247.3
145°	247.7	246.8	246.5	246.0	246.4	247.1	247.9	248.8	250.0	250.9	252.5
147.5°	253.2	252.5	252.3	251.7	252.3	252.6	253.3	253.7	254.8	255.5	256.6
150°	257.8	257.1	256.7	256.5	256.7	256.8	257.4	257.5	258.1	258.6	259.6
152.5°	260.3	259.6	259.6	259.2	259.2	259.3	259.7	259.9	260.3	260.7	261.5
155°	263.3	262.9	262.4	262.0	261.8	261.7	261.9	261.8	262.0	262.1	262.4
157.5°	267.2	266.6	266.3	265.6	265.5	265.1	265.0	264.8	264.8	264.4	264.5
160°	270.7	269.8	269.3	268.8	268.6	268.1	268.1	267.7	267.7	267.6	267.5
162.5°	275.2	274.6	274.1	273.5	273.2	272.6	272.2	271.7	271.4	271.1	270.9
165°	279.5	278.8	278.2	277.4	277.1	276.8	276.4	276.1	275.9	275.5	275.5
167.5°	285.5	284.6	284.1	283.4	283.0	282.3	282.0	281.5	281.2	280.8	280.7
170°	290.1	289.4	289.0	288.5	288.1	287.7	287.5	287.0	286.9	286.8	286.8
172.5°	295.8	295.1	294.8	294.4	294.1	293.8	293.6	293.5	293.2	293.2	293.0
175°	299.9	299.6	299.4	299.2	298.9	298.8	298.5	298.4	298.4	298.2	298.1
177.5°	302.5	302.4	302.3	302.2	302.0	302.0	302.0	302.0	302.0	301.8	301.7
180°	302.3	302.3	302.3	302.3	302.3	302.3	302.3	302.3	302.3	302.3	302.3



TEST NUMBER: P1444699
 CATALOG NUMBER: EHBR1-54-UNV-TA-L930-UPL15

CANDELA DISTRIBUTION (continued):

	110°	112.5°	115°	117.5°	120°	122.5°	125°	127.5°	130°	132.5°	135°
0°	41286.7	41286.7	41286.7	41286.7	41286.7	41286.7	41286.7	41286.7	41286.7	41286.7	41286.7
2.5°	41309.5	41298.6	41270.0	41255.9	41229.4	41216.1	41195.5	41182.1	41165.5	41153.1	41146.7
5°	42454.0	42401.2	42295.3	42230.1	42115.9	42040.6	41927.0	41843.8	41726.5	41640.1	41529.3
7.5°	43943.1	43862.1	43726.4	43623.6	43463.7	43341.4	43162.0	43018.4	42820.1	42655.5	42452.9
10°	44549.4	44502.1	44441.2	44375.1	44286.5	44199.5	44077.0	43952.1	43785.7	43620.1	43403.7
12.5°	43653.3	43697.8	43785.7	43826.7	43893.9	43916.7	43947.4	43933.0	43905.8	43838.2	43740.1
15°	41115.6	41301.5	41595.3	41798.4	42083.2	42283.2	42547.8	42718.1	42914.2	43031.4	43142.8
17.5°	36941.1	37300.7	37819.1	38232.6	38787.9	39239.4	39792.5	40227.0	40728.8	41113.8	41523.5
20°	31594.2	32097.8	32813.4	33421.2	34225.7	34908.0	35782.0	36514.2	37368.3	38080.3	38848.7
22.5°	25839.5	26431.8	27251.8	27984.9	28945.6	29803.8	30898.9	31867.0	33021.6	34056.0	35200.3
25°	20410.6	20991.1	21826.4	22585.5	23622.7	24568.0	25764.4	26875.0	28214.9	29464.4	30898.9
27.5°	15755.0	16270.7	17005.0	17688.2	18638.1	19566.1	20780.3	21964.6	23394.4	24737.2	26283.1
30°	12167.3	12585.6	13174.0	13723.6	14486.2	15245.2	16326.7	17422.0	18844.7	20236.2	21821.1
32.5°	9429.3	9786.0	10277.2	10723.3	11310.9	11883.2	12679.6	13554.9	14802.8	16135.7	17668.2
35°	7299.3	7604.4	8022.5	8406.8	8890.1	9344.4	9938.7	10563.4	11515.7	12636.9	14008.4
37.5°	5819.4	5943.8	6242.2	6557.1	6958.5	7331.8	7796.7	8258.5	8939.9	9824.5	10944.9
40°	4425.6	4623.1	4866.0	5114.0	5417.9	5717.4	6227.4	6472.9	6921.6	7556.6	8426.2
42.5°	3570.9	3709.8	3880.7	4053.2	4264.9	4473.5	4731.5	4994.2	5329.6	5759.7	6378.2
45°	2988.2	3078.8	3188.9	3303.9	3442.9	3585.2	3758.0	3938.4	4165.6	4430.0	4805.6
47.5°	2598.9	2649.0	2720.9	2799.3	2894.7	2993.2	3105.5	3220.5	3361.7	3518.6	3732.4
50°	2295.0	2336.8	2392.7	2445.1	2511.0	2611.9	2656.5	2719.9	2804.9	2897.2	3016.8
52.5°	2075.2	2103.0	2138.0	2168.2	2209.8	2247.6	2297.2	2340.9	2399.7	2455.1	2532.4
55°	1903.9	1914.1	1934.0	1953.4	1982.2	2008.0	2042.0	2070.6	2108.1	2141.2	2189.9
57.5°	1771.8	1772.7	1781.8	1791.9	1810.4	1826.7	1850.1	1868.9	1894.9	1916.0	1945.3
60°	1676.7	1671.7	1673.5	1677.0	1687.5	1698.0	1712.9	1725.2	1741.6	1753.5	1769.9
62.5°	1597.6	1589.6	1587.8	1586.9	1592.1	1595.9	1604.1	1610.0	1619.4	1624.5	1633.3
65°	1497.7	1488.4	1484.7	1480.4	1482.0	1480.7	1483.7	1483.9	1488.6	1489.7	1494.8
67.5°	1407.1	1399.3	1394.5	1388.8	1386.2	1382.0	1380.2	1376.2	1375.6	1372.3	1371.5
70°	1324.5	1316.8	1312.8	1307.5	1304.7	1299.2	1295.9	1289.1	1285.2	1278.9	1275.4
72.5°	1228.9	1224.6	1223.4	1219.7	1218.7	1215.7	1214.4	1209.5	1206.8	1201.4	1198.4
75°	1128.9	1125.4	1125.1	1121.4	1121.1	1117.5	1116.5	1111.5	1108.8	1103.5	1101.3
77.5°	1009.9	1004.7	1003.2	998.9	999.9	998.1	999.7	995.8	994.2	988.8	987.1
80°	875.8	869.1	866.4	860.7	862.3	859.6	862.3	861.9	863.9	859.6	858.9
82.5°	717.0	709.7	708.3	704.4	706.9	707.2	712.9	709.8	711.0	707.0	708.7
85°	521.8	516.2	508.6	507.5	502.7	507.7	501.1	505.5	498.3	503.4	496.7
87.5°	323.5	312.2	306.2	298.1	295.0	287.2	284.0	278.3	280.0	277.4	278.9
90°	117.7	108.4	106.6	99.0	98.6	92.1	93.3	88.8	90.7	86.0	88.4
92.5°	27.3	28.3	30.2	32.6	34.2	36.2	38.1	40.5	42.1	44.4	46.0
95°	33.1	34.0	36.6	39.3	41.9	44.5	47.2	49.8	52.4	55.1	57.7
97.5°	40.6	41.2	43.8	46.4	49.0	51.7	54.3	57.3	59.9	62.6	65.1
100°	46.3	46.4	53.9	61.3	68.8	76.4	83.9	91.3	99.0	106.4	113.9
102.5°	82.2	84.0	102.8	121.7	140.6	159.4	178.4	197.4	216.3	235.3	254.3
105°	174.6	182.1	210.8	239.8	268.5	297.4	326.2	355.3	384.2	413.1	442.0
107.5°	318.9	332.6	358.7	384.8	410.8	437.0	463.2	489.3	515.5	541.7	568.2
110°	447.4	461.9	479.4	497.0	514.7	532.3	549.8	567.5	585.4	602.9	620.9



TEST NUMBER: P1444699
 CATALOG NUMBER: EHBR1-54-UNV-TA-L930-UPL15

CANDELA DISTRIBUTION (continued):

	110°	112.5°	115°	117.5°	120°	122.5°	125°	127.5°	130°	132.5°	135°
112.5°	505.3	514.8	525.0	535.6	545.9	556.4	566.9	577.4	588.1	598.7	609.3
115°	504.5	509.2	513.1	517.6	521.8	526.1	530.6	535.1	539.8	544.2	548.8
117.5°	467.0	469.1	469.9	471.0	471.9	473.4	474.4	475.9	477.3	478.6	479.8
120°	411.3	411.2	411.0	411.0	410.7	410.8	410.9	411.1	411.3	411.5	411.6
122.5°	355.2	354.7	354.5	354.7	354.7	354.9	355.2	355.7	355.9	356.4	356.6
125°	306.7	306.4	307.6	309.0	310.4	312.0	313.3	315.2	316.8	318.5	320.2
127.5°	272.2	272.7	275.0	277.4	279.8	282.5	285.1	287.8	290.2	293.2	295.6
130°	252.0	253.3	255.9	259.1	262.0	265.2	268.3	271.7	274.6	277.8	280.8
132.5°	242.6	244.6	247.2	250.3	253.2	256.3	259.4	262.5	265.6	268.9	271.6
135°	240.1	242.3	245.0	247.8	250.6	253.7	256.5	259.6	262.2	265.2	267.9
137.5°	240.9	243.1	245.6	248.0	250.3	253.1	255.4	258.0	260.3	262.9	265.2
140°	245.2	247.4	249.0	250.9	252.7	254.5	256.1	258.2	259.8	261.7	263.3
142.5°	249.0	251.1	252.1	253.6	254.9	256.6	258.0	259.5	260.6	261.9	263.1
145°	253.8	255.5	256.1	257.0	257.8	258.7	259.3	260.2	260.7	261.5	262.0
147.5°	257.7	259.0	259.1	259.9	260.4	260.7	261.3	261.7	262.0	262.5	262.9
150°	260.1	261.1	261.1	261.5	261.5	261.8	261.8	262.1	262.0	262.4	262.4
152.5°	261.9	262.6	262.3	262.6	262.4	262.4	262.2	262.4	262.1	262.2	262.3
155°	262.4	262.7	262.5	262.5	262.4	262.4	262.3	262.5	262.5	262.4	262.6
157.5°	264.5	264.4	264.3	264.2	264.0	264.0	264.0	264.1	264.1	264.6	264.8
160°	267.3	267.3	267.0	266.9	266.8	266.7	266.7	267.0	267.1	267.5	267.8
162.5°	270.5	270.3	270.0	269.9	269.8	269.9	270.1	270.5	270.5	270.9	271.3
165°	275.4	275.5	275.0	275.1	274.9	274.9	274.9	275.1	275.4	275.6	275.9
167.5°	280.5	280.4	280.4	280.5	280.5	280.7	280.9	281.5	281.6	282.2	282.4
170°	286.6	286.8	286.5	286.6	286.5	286.5	286.6	286.7	286.9	287.1	287.1
172.5°	293.0	293.0	292.8	292.7	292.5	292.5	292.4	292.5	292.3	292.3	292.1
175°	297.8	297.7	297.6	297.6	297.5	297.2	297.2	296.8	296.7	296.7	296.6
177.5°	301.6	301.2	301.1	301.1	300.9	300.8	300.8	300.6	300.6	300.6	300.3
180°	302.3	302.3	302.3	302.3	302.3	302.3	302.3	302.3	302.3	302.3	302.3



TEST NUMBER: P1444699
 CATALOG NUMBER: EHBR1-54-UNV-TA-L930-UPL15

CANDELA DISTRIBUTION (continued):

	137.5°	140°	142.5°	145°	147.5°	150°	152.5°	155°	157.5°	160°	162.5°
0°	41286.7	41286.7	41286.7	41286.7	41286.7	41286.7	41286.7	41286.7	41286.7	41286.7	41286.7
2.5°	41138.4	41137.9	41133.9	41135.8	41136.5	41139.4	41143.0	41146.7	41147.4	41150.3	41150.9
5°	41446.3	41344.5	41269.2	41186.4	41124.1	41068.2	41030.8	41001.1	40989.6	40992.6	40999.4
7.5°	42281.1	42071.0	41897.6	41700.6	41536.2	41362.2	41218.0	41080.8	40980.9	40906.4	40864.8
10°	43197.2	42941.3	42696.5	42411.3	42140.7	41852.0	41590.5	41327.2	41107.6	40917.0	40776.9
12.5°	43603.7	43422.9	43211.3	42942.1	42652.6	42319.5	41983.0	41622.4	41286.9	40975.6	40724.4
15°	43173.3	43173.6	43096.5	42967.3	42766.3	42500.0	42179.5	41803.5	41407.9	41004.1	40635.1
17.5°	41806.9	42064.7	42208.1	42298.8	42271.0	42172.9	41968.9	41680.2	41311.3	40881.2	40431.0
20°	39460.4	40068.5	40502.0	40891.9	41110.4	41255.6	41241.0	41123.6	40860.8	40495.1	40026.3
22.5°	36173.4	37194.0	37999.3	38750.3	39277.0	39705.4	39909.0	39995.5	39876.5	39621.7	39181.5
25°	32181.0	33568.7	34752.8	35902.1	36764.2	37505.1	37950.3	38264.0	38289.0	38155.8	37763.1
27.5°	27744.6	29382.6	30881.5	32408.9	33621.2	34686.3	35385.1	35896.6	36059.1	36037.7	35681.0
30°	23314.0	25033.6	26685.7	28466.7	29966.9	31327.6	32250.8	32942.6	33209.1	33260.2	32917.2
32.5°	19129.7	20825.4	22472.9	24335.0	25985.8	27545.3	28636.0	29457.7	29767.6	29840.7	29464.4
35°	15332.2	16896.6	18462.3	20266.9	21908.3	23523.2	24672.4	25532.7	25822.2	25871.0	25435.4
37.5°	12039.1	13372.0	14736.2	16355.4	17862.8	19379.4	20471.3	21279.9	21490.7	21477.7	20984.7
40°	9266.3	10302.5	11398.7	12731.8	13984.9	15267.1	16189.1	16857.5	16968.3	16886.2	16368.3
42.5°	6967.7	7716.2	8510.9	9506.0	10435.8	11395.4	12066.2	12562.4	12578.2	12448.4	11983.5
45°	5191.0	5921.2	6254.5	6856.1	7455.0	8093.1	8502.6	8809.1	8761.7	8647.5	8294.3
47.5°	3957.2	4237.8	4535.5	4908.5	5257.4	5981.4	5927.8	6419.9	6065.5	6307.2	5775.0
50°	3142.4	3299.3	3459.7	3657.6	3839.8	4029.1	4147.5	4235.7	4224.3	4186.3	4084.4
52.5°	2673.4	2722.0	2800.9	2913.5	3015.3	3117.7	3184.9	3239.7	3240.8	3225.5	3174.0
55°	2234.4	2295.9	2352.7	2426.3	2551.7	2570.9	2667.4	2647.9	2655.5	2628.8	2656.1
57.5°	1970.0	2005.9	2037.9	2081.6	2117.9	2160.1	2185.1	2209.0	2206.7	2201.6	2175.3
60°	1782.7	1802.5	1820.2	1845.8	1865.7	1889.6	1901.1	1913.3	1909.3	1900.4	1877.0
62.5°	1638.3	1650.7	1660.8	1677.3	1689.4	1704.3	1710.2	1715.4	1710.2	1701.8	1681.1
65°	1495.9	1503.8	1510.2	1522.6	1531.2	1543.9	1549.0	1553.9	1549.1	1542.6	1526.8
67.5°	1367.4	1368.1	1367.5	1372.5	1375.1	1382.8	1385.1	1388.6	1383.0	1377.4	1364.2
70°	1269.9	1267.8	1265.4	1267.4	1267.8	1271.6	1272.2	1271.6	1265.0	1255.2	1240.6
72.5°	1193.7	1192.6	1190.7	1192.4	1192.4	1195.8	1194.8	1193.1	1184.9	1175.4	1161.1
75°	1095.7	1094.9	1091.3	1091.5	1088.3	1089.4	1085.5	1083.2	1074.2	1066.2	1053.3
77.5°	981.1	979.3	973.9	972.0	966.1	963.7	956.2	952.5	943.4	936.9	925.9
80°	853.2	851.2	844.4	840.5	831.3	825.5	814.5	808.2	797.7	791.4	780.6
82.5°	705.2	706.0	699.1	694.4	681.2	671.1	656.4	648.5	636.8	630.7	619.7
85°	501.5	494.4	498.2	497.9	489.7	480.9	469.0	460.5	450.7	444.9	437.2
87.5°	275.1	276.8	274.8	273.1	267.3	262.9	253.5	248.6	241.5	237.9	232.1
90°	80.9	80.6	73.5	73.3	66.5	63.8	55.8	54.2	46.9	45.7	40.5
92.5°	43.8	41.5	39.7	37.2	35.3	33.1	30.9	28.7	26.5	25.4	25.0
95°	54.4	51.4	48.3	45.1	41.9	38.7	35.7	32.5	29.3	28.7	28.0
97.5°	61.6	57.8	54.0	50.3	46.6	42.9	39.2	35.5	31.7	31.3	30.9
100°	105.4	96.9	88.2	79.6	70.9	62.3	53.8	45.1	36.6	36.1	35.6
102.5°	233.3	212.4	191.5	170.7	149.9	128.9	108.0	87.0	66.1	63.1	60.1
105°	410.3	378.6	347.2	315.6	283.8	252.1	220.6	188.7	157.1	146.9	136.7
107.5°	538.5	508.8	479.2	449.5	419.7	390.2	360.4	330.6	300.8	282.9	265.1
110°	597.4	574.0	550.7	527.2	503.9	480.4	456.8	433.3	409.8	394.4	379.4



TEST NUMBER: P1444699
 CATALOG NUMBER: EHBR1-54-UNV-TA-L930-UPL15

CANDELA DISTRIBUTION (continued):

	137.5°	140°	142.5°	145°	147.5°	150°	152.5°	155°	157.5°	160°	162.5°
112.5°	592.3	575.3	558.5	541.4	524.3	507.2	490.3	473.1	455.9	446.8	437.6
115°	539.0	528.9	519.0	508.9	498.9	488.9	478.9	468.5	458.3	453.7	449.1
117.5°	475.3	470.5	465.9	461.1	456.3	451.3	446.5	441.6	436.7	435.3	434.0
120°	411.1	410.2	409.0	408.1	407.1	406.1	405.0	403.9	402.6	403.4	404.1
122.5°	358.2	359.6	361.2	362.2	363.8	364.9	366.4	367.3	368.6	370.6	372.6
125°	322.7	325.0	327.3	329.6	331.9	334.4	336.7	338.7	341.2	343.0	345.3
127.5°	298.6	301.0	303.8	306.3	309.0	311.5	314.1	316.4	319.0	321.0	323.3
130°	283.5	285.7	288.3	290.5	293.0	295.4	297.7	300.1	302.5	304.4	306.4
132.5°	273.9	276.3	278.7	280.7	283.2	285.3	287.7	289.8	292.4	293.9	295.7
135°	270.0	271.8	273.8	275.5	277.8	279.5	281.4	283.6	285.7	287.1	288.8
137.5°	267.0	268.5	270.4	271.9	273.8	275.4	277.4	279.0	281.2	282.3	284.0
140°	264.9	266.6	268.2	269.8	271.7	273.3	275.4	277.1	279.3	280.4	282.0
142.5°	264.6	265.7	267.3	268.5	270.2	271.4	273.3	275.0	276.9	278.2	279.6
145°	263.5	264.8	266.4	267.7	269.1	270.8	272.8	274.6	276.5	277.7	278.9
147.5°	264.0	265.1	266.5	267.8	269.1	270.4	272.2	273.8	275.6	276.8	277.9
150°	263.6	264.7	265.8	267.1	268.5	270.1	271.7	273.4	275.5	276.6	277.7
152.5°	263.3	264.5	265.7	267.2	268.6	270.2	271.9	273.7	275.5	276.4	277.8
155°	263.9	264.8	266.3	267.7	269.2	270.5	272.2	273.9	275.6	276.8	277.9
157.5°	265.9	266.8	268.1	269.5	270.8	272.2	273.8	275.2	276.8	277.8	278.7
160°	268.9	269.8	271.2	272.3	273.7	274.8	276.3	277.5	278.9	279.9	280.8
162.5°	272.4	273.5	274.7	275.6	277.1	278.3	279.8	280.9	282.3	283.0	284.0
165°	276.9	277.8	278.9	279.7	280.7	281.6	282.8	283.7	285.0	285.5	286.5
167.5°	283.5	284.0	284.6	285.3	286.4	287.1	288.1	288.8	289.8	290.5	291.2
170°	287.9	288.5	288.9	289.7	290.4	291.1	291.8	292.3	293.4	293.9	294.6
172.5°	292.6	292.7	293.5	293.7	294.2	294.4	295.1	295.6	296.0	296.7	297.2
175°	296.9	297.0	297.3	297.4	297.6	297.7	298.2	298.5	298.8	299.2	299.4
177.5°	300.4	300.5	300.6	300.7	301.0	301.1	301.4	301.5	301.7	302.0	302.4
180°	302.3	302.3	302.3	302.3	302.3	302.3	302.3	302.3	302.3	302.3	302.3



TEST NUMBER: P1444699
 CATALOG NUMBER: EHBR1-54-UNV-TA-L930-UPL15

CANDELA DISTRIBUTION (continued):

	165°	167.5°	170°	172.5°	175°	177.5°	180°	182.5°	185°	187.5°	190°
0°	41286.7	41286.7	41286.7	41286.7	41286.7	41286.7	41286.7	41286.7	41286.7	41286.7	41286.7
2.5°	41149.5	41149.1	41147.7	41145.9	41144.1	41145.1	41146.9	41151.7	41159.9	41171.9	41187.5
5°	41005.1	41013.5	41018.2	41018.9	41014.6	41012.0	41015.9	41027.2	41050.1	41088.4	41140.1
7.5°	40853.7	40864.0	40879.9	40891.9	40894.2	40891.3	40891.9	40909.6	40951.7	41026.2	41130.7
10°	40691.9	40661.2	40677.4	40707.1	40730.6	40734.9	40737.8	40758.7	40820.2	40932.9	41100.8
12.5°	40542.6	40445.2	40426.4	40453.2	40489.0	40500.5	40497.3	40506.3	40578.4	40727.4	40961.3
15°	40346.1	40162.9	40100.4	40107.2	40151.4	40167.4	40155.7	40138.0	40208.2	40390.2	40693.0
17.5°	40028.1	39732.8	39617.7	39612.7	39664.4	39678.2	39649.7	39594.7	39663.8	39890.9	40266.8
20°	39544.7	39108.8	38892.2	38857.7	38913.9	38897.5	38840.7	38757.5	38848.4	39124.4	39571.5
22.5°	38675.8	38123.4	37753.3	37633.9	37701.1	37656.2	37573.5	37467.1	37587.9	37901.6	38399.5
25°	37255.9	36617.6	36110.8	35826.6	35880.1	35799.7	35709.6	35580.8	35724.8	36084.8	36632.9
27.5°	35168.7	34431.5	33803.5	33332.9	33350.2	33244.9	33141.1	32974.4	33154.1	33580.3	34198.4
30°	32393.4	31540.4	30775.6	30135.9	30078.7	29976.7	29870.4	29651.5	29876.4	30386.6	31109.0
32.5°	28908.0	27960.9	27077.3	26268.6	26116.0	26016.4	25921.6	25669.8	25964.3	26559.2	27389.1
35°	24832.0	23823.1	22865.1	21941.5	21688.7	21589.1	21506.3	21265.0	21632.6	22279.8	23176.1
37.5°	20358.1	19327.4	18376.3	17429.2	17072.0	16936.9	16876.8	16718.7	17142.7	17782.9	18682.9
40°	15765.1	14806.8	13954.1	13117.5	12710.3	12503.7	12472.1	12443.3	12853.3	13408.7	14225.6
42.5°	11468.5	10695.4	10037.8	9398.4	9029.5	8747.2	8747.0	8832.7	9201.7	9617.8	10247.7
45°	7933.1	7414.3	6995.3	6568.1	6682.2	6119.5	6450.2	6280.4	6462.8	6731.0	7140.7
47.5°	5453.2	5170.0	4939.9	4701.2	4527.2	4361.1	4375.6	4482.7	4654.5	4813.7	5026.8
50°	3974.5	3830.2	3713.0	3589.1	3502.4	3429.2	3433.5	3479.8	3570.1	3653.9	3765.5
52.5°	3114.3	3034.7	2971.1	2902.5	2857.1	2820.6	2822.6	2845.1	2894.0	2941.8	3005.8
55°	2566.9	2557.3	2474.5	2413.0	2389.6	2365.1	2369.5	2378.5	2411.6	2439.7	2482.0
57.5°	2151.0	2113.9	2089.1	2056.7	2041.8	2024.7	2028.5	2031.9	2054.1	2072.9	2103.4
60°	1857.4	1831.1	1813.6	1791.5	1781.7	1770.8	1773.3	1775.2	1789.5	1801.7	1823.6
62.5°	1662.3	1638.8	1623.5	1606.5	1599.6	1592.3	1594.0	1594.5	1603.4	1612.4	1629.0
65°	1512.7	1494.0	1481.3	1466.6	1459.4	1451.8	1452.6	1452.6	1460.0	1466.6	1479.0
67.5°	1354.4	1340.4	1332.2	1320.5	1315.6	1307.8	1307.7	1305.2	1310.1	1312.7	1321.1
70°	1227.5	1213.3	1202.7	1191.5	1185.4	1178.5	1178.6	1178.8	1184.5	1190.5	1201.3
72.5°	1148.9	1135.4	1126.0	1116.2	1110.4	1104.6	1103.5	1103.0	1107.1	1110.3	1117.5
75°	1045.0	1034.3	1028.7	1019.6	1014.9	1008.3	1007.3	1004.2	1006.2	1006.8	1012.2
77.5°	919.0	908.8	904.3	895.0	891.1	883.7	883.0	879.6	881.2	880.1	884.3
80°	775.3	766.0	763.5	755.9	754.1	747.1	746.1	742.0	743.2	740.0	741.5
82.5°	615.0	606.4	604.5	597.5	597.5	591.3	590.9	584.7	584.7	579.3	570.8
85°	433.2	426.9	424.3	418.5	416.8	411.8	409.1	403.2	401.0	397.2	396.0
87.5°	228.6	224.7	221.1	218.3	213.3	204.2	203.5	197.2	197.7	193.3	193.6
90°	39.9	35.2	34.8	30.5	29.9	26.9	26.6	26.0	26.3	25.9	26.4
92.5°	24.2	23.5	22.8	22.1	21.3	20.6	19.9	20.6	21.3	22.1	22.8
95°	27.4	26.7	26.0	25.4	24.8	24.1	23.4	24.1	24.8	25.5	26.1
97.5°	30.5	30.0	29.7	29.2	28.8	28.4	28.0	28.6	29.0	29.4	29.9
100°	35.1	34.7	34.1	33.7	33.2	32.7	32.2	33.0	33.4	34.0	34.4
102.5°	57.2	54.2	51.2	48.1	45.1	42.1	39.0	42.1	45.1	48.2	51.2
105°	126.5	116.5	106.2	96.0	85.8	75.6	65.3	75.7	86.0	96.2	106.5
107.5°	247.1	229.4	211.4	193.6	175.4	157.6	139.6	157.7	175.7	193.7	211.7
110°	363.8	348.3	332.9	317.6	302.0	286.7	271.1	286.8	302.3	317.9	333.4



TEST NUMBER: P1444699
 CATALOG NUMBER: EHBR1-54-UNV-TA-L930-UPL15

CANDELA DISTRIBUTION (continued):

	165°	167.5°	170°	172.5°	175°	177.5°	180°	182.5°	185°	187.5°	190°
112.5°	428.3	419.1	409.7	400.7	391.1	381.9	372.4	382.2	391.7	401.4	410.6
115°	444.5	439.7	435.1	430.4	425.5	420.7	415.6	421.2	426.2	431.3	436.4
117.5°	432.6	431.3	429.8	428.4	426.8	425.3	423.6	425.7	427.6	429.7	431.3
120°	404.7	405.6	406.2	406.6	407.3	407.7	408.0	408.3	408.3	408.3	408.1
122.5°	374.5	376.4	378.1	379.9	381.6	383.3	384.7	383.9	382.8	381.9	380.5
125°	347.1	349.4	351.3	353.2	354.9	356.9	358.1	357.7	356.6	355.6	354.1
127.5°	325.3	327.2	329.1	331.2	332.8	334.4	335.8	335.3	334.4	333.6	332.3
130°	308.0	310.1	311.6	313.5	314.8	316.2	317.2	317.1	316.4	316.2	315.1
132.5°	297.3	299.2	300.7	302.3	303.3	304.7	305.4	305.7	305.4	305.1	304.3
135°	290.4	291.8	293.1	294.7	295.7	296.7	297.3	297.8	297.7	297.6	297.1
137.5°	285.2	286.7	287.8	288.9	289.8	290.5	291.0	291.6	291.8	292.2	291.9
140°	283.2	284.7	286.0	286.9	288.1	289.0	289.3	290.1	290.2	290.3	290.1
142.5°	281.0	282.3	283.6	284.7	285.6	286.5	286.9	287.6	287.7	287.8	287.7
145°	280.3	281.3	282.5	283.6	284.4	285.0	285.2	286.1	286.3	286.5	286.6
147.5°	279.1	280.4	281.2	282.2	282.8	283.6	283.9	284.5	284.8	285.1	285.3
150°	279.0	280.2	281.2	282.2	283.0	283.7	283.9	284.6	284.9	285.1	285.1
152.5°	278.7	279.7	280.8	281.6	282.4	282.9	283.3	283.9	284.5	284.8	284.9
155°	278.8	279.9	280.8	281.7	282.3	283.1	283.7	284.4	284.8	285.1	285.4
157.5°	279.6	280.6	281.4	282.3	282.9	283.8	284.5	285.3	285.7	286.3	286.6
160°	281.6	282.7	283.3	284.2	284.9	285.7	286.3	287.0	287.7	288.1	288.7
162.5°	284.7	285.7	286.1	287.0	287.8	288.6	289.2	290.0	290.6	291.1	291.7
165°	287.4	288.3	288.8	289.7	290.6	291.4	291.9	292.7	293.0	293.5	293.9
167.5°	291.9	292.8	293.3	294.1	294.6	295.5	296.2	296.7	297.1	297.5	297.8
170°	295.1	295.9	296.5	297.0	297.7	298.4	298.8	299.2	299.6	300.0	300.3
172.5°	297.6	298.4	298.9	299.7	300.0	300.7	301.2	301.6	301.7	301.9	301.9
175°	299.8	300.4	300.7	301.1	301.5	301.9	302.5	302.5	302.7	302.7	302.8
177.5°	302.7	303.3	303.7	304.0	304.3	304.5	304.9	304.7	304.7	304.5	304.2
180°	302.3	302.3	302.3	302.3	302.3	302.3	302.3	302.3	302.3	302.3	302.3



TEST NUMBER: P1444699
 CATALOG NUMBER: EHBR1-54-UNV-TA-L930-UPL15

CANDELA DISTRIBUTION (continued):

	192.5°	195°	197.5°	200°	202.5°	205°	207.5°	210°	212.5°	215°	217.5°
0°	41286.7	41286.7	41286.7	41286.7	41286.7	41286.7	41286.7	41286.7	41286.7	41286.7	41286.7
2.5°	41209.6	41230.2	41261.7	41290.3	41333.4	41367.3	41418.3	41457.0	41514.5	41551.9	41614.4
5°	41213.2	41293.9	41399.9	41503.3	41627.7	41740.6	41881.0	42000.5	42141.5	42256.6	42400.9
7.5°	41271.5	41426.9	41613.4	41801.1	42013.5	42212.1	42436.0	42638.5	42860.0	43047.4	43252.1
10°	41314.5	41554.3	41828.9	42105.3	42396.1	42666.4	42939.2	43175.0	43395.4	43576.6	43736.8
12.5°	41256.2	41586.5	41939.0	42279.2	42602.7	42882.4	43117.1	43298.5	43423.6	43508.5	43528.4
15°	41058.1	41455.6	41838.7	42177.6	42446.0	42653.0	42760.2	42810.3	42756.5	42667.1	42470.6
17.5°	40687.9	41107.2	41449.7	41717.1	41858.9	41915.1	41826.3	41671.9	41370.2	41035.3	40551.6
20°	40009.3	40400.0	40648.4	40794.2	40756.3	40616.0	40280.9	39873.6	39271.2	38629.1	37781.9
22.5°	38819.0	39160.5	39292.9	39303.8	39072.3	38720.9	38116.5	37417.9	36467.5	35479.5	34264.4
25°	37032.3	37331.4	37352.4	37234.8	36811.2	36241.8	35354.3	34366.0	33074.5	31758.1	30235.5
27.5°	34609.2	34896.0	34825.8	34606.6	34018.3	33256.5	32120.2	30843.5	29251.4	27696.4	26012.1
30°	31563.1	31869.9	31787.5	31506.2	30806.6	29906.1	28569.1	27085.8	25318.2	23657.3	21950.5
32.5°	27917.9	28305.8	28248.8	27981.5	27251.5	26287.8	24837.1	23263.8	21455.3	19818.8	18158.4
35°	23774.6	24245.6	24269.9	24095.2	23417.4	22464.9	21032.4	19509.6	17777.4	16233.2	14699.3
37.5°	19310.7	19856.7	19968.8	19921.7	19360.0	18519.2	17214.0	15847.9	14313.3	12959.9	11648.2
40°	14822.1	15374.7	15566.5	15623.5	15208.9	14557.7	13486.4	12383.8	11132.8	10036.1	8994.5
42.5°	10728.7	11218.6	11403.9	11520.6	11261.8	10827.5	10046.1	9245.4	8328.9	7537.9	6779.5
45°	7451.3	7797.8	7938.8	8056.2	7915.2	7670.2	7176.8	6676.0	6071.0	5554.1	5064.7
47.5°	5209.6	5400.7	5493.8	5550.7	5496.1	5368.3	5099.8	4809.7	4468.2	4166.1	3875.7
50°	3861.5	3963.2	4011.8	4044.8	4005.0	3933.9	3788.6	3630.7	3443.1	3272.0	3104.8
52.5°	3060.1	3118.5	3147.3	3165.1	3142.2	3098.8	3014.2	2920.5	2808.1	2702.4	2646.9
55°	2578.0	2574.9	2641.8	2609.5	2641.8	2569.7	2554.5	2451.6	2358.2	2292.5	2221.3
57.5°	2126.0	2156.3	2169.1	2183.5	2174.2	2161.0	2125.0	2088.2	2038.9	1997.8	1953.8
60°	1840.3	1865.2	1879.3	1893.6	1892.6	1887.7	1866.9	1844.8	1814.1	1789.5	1762.9
62.5°	1643.5	1665.1	1679.0	1692.6	1693.9	1691.8	1676.1	1660.8	1639.9	1624.4	1606.0
65°	1488.6	1503.8	1513.3	1524.2	1523.6	1520.6	1506.4	1493.7	1476.4	1465.7	1452.3
67.5°	1326.6	1338.1	1345.4	1355.7	1357.7	1358.3	1350.5	1344.6	1336.1	1333.1	1328.4
70°	1211.4	1225.3	1237.1	1250.1	1257.1	1260.5	1257.1	1254.1	1249.2	1247.1	1243.5
72.5°	1124.2	1135.9	1145.1	1157.0	1163.5	1168.3	1165.7	1164.0	1159.7	1159.1	1156.6
75°	1015.9	1024.0	1029.2	1038.0	1041.6	1046.0	1044.0	1045.0	1043.7	1047.1	1046.9
77.5°	885.6	891.6	894.1	900.5	901.1	906.5	907.7	914.0	918.4	928.2	933.4
80°	739.0	742.9	742.9	749.4	752.4	761.4	765.7	775.9	780.6	789.4	790.2
82.5°	574.1	569.7	574.1	571.3	579.8	589.8	591.3	600.0	602.0	607.5	603.2
85°	392.5	392.2	388.6	389.2	386.7	387.9	386.4	388.0	386.5	386.7	382.7
87.5°	188.0	189.7	185.6	187.0	183.0	184.8	181.3	184.1	179.9	180.5	174.4
90°	26.3	26.6	26.6	27.0	27.9	29.0	30.2	31.4	33.2	34.2	35.6
92.5°	23.5	24.4	25.2	25.9	26.6	28.9	31.1	33.2	35.6	37.7	39.9
95°	26.8	27.4	28.1	29.1	29.8	33.0	36.2	39.3	42.5	45.7	48.9
97.5°	30.5	30.9	31.4	31.7	32.3	36.1	39.8	43.7	47.4	51.2	54.7
100°	35.1	35.6	36.1	36.7	37.2	45.9	54.6	63.3	71.9	80.5	89.1
102.5°	54.4	57.5	60.5	63.8	66.8	87.9	108.9	129.9	150.7	171.7	192.6
105°	116.7	127.0	137.5	147.8	158.0	189.8	221.7	253.5	285.0	316.8	348.6
107.5°	229.8	247.8	266.0	284.0	302.0	331.9	361.7	391.7	421.6	451.4	480.9
110°	349.3	364.5	380.4	395.9	411.5	435.0	458.8	482.4	506.0	529.5	553.0



TEST NUMBER: P1444699
 CATALOG NUMBER: EHBR1-54-UNV-TA-L930-UPL15

CANDELA DISTRIBUTION (continued):

	192.5°	195°	197.5°	200°	202.5°	205°	207.5°	210°	212.5°	215°	217.5°
112.5°	420.4	429.6	439.2	448.3	457.9	475.2	492.6	509.8	527.1	544.1	561.2
115°	441.4	446.0	451.1	455.9	461.0	471.2	481.5	491.7	502.2	512.1	522.6
117.5°	433.1	434.8	436.6	437.8	439.5	444.6	449.8	454.8	460.0	465.0	470.1
120°	408.0	407.5	407.3	406.6	406.3	407.4	408.9	410.1	411.5	412.7	413.8
122.5°	379.4	377.7	376.2	374.5	373.0	371.8	370.9	369.6	368.8	367.6	366.5
125°	352.8	351.1	349.6	347.7	345.9	343.9	341.9	339.8	337.7	335.5	333.3
127.5°	331.2	329.5	328.2	326.4	324.7	322.2	320.0	317.5	315.3	312.7	310.4
130°	314.3	312.9	311.9	310.0	309.0	306.4	304.4	302.2	300.0	297.7	295.5
132.5°	303.8	302.6	301.7	300.2	299.1	296.8	295.1	292.7	290.7	288.6	286.6
135°	296.7	295.9	295.2	294.1	293.0	291.0	289.4	287.6	285.9	284.1	282.4
137.5°	291.8	291.0	290.4	289.7	288.9	287.1	285.8	284.0	282.7	280.9	279.6
140°	290.0	289.4	288.8	288.1	287.4	285.8	284.2	282.6	281.2	279.5	278.0
142.5°	287.4	286.9	286.4	285.7	285.1	283.6	282.7	281.2	280.0	278.7	277.5
145°	286.4	286.1	285.8	285.2	285.0	283.5	282.2	280.8	279.7	278.3	277.1
147.5°	285.3	284.9	284.9	284.5	284.4	283.2	282.3	281.2	280.3	279.1	278.2
150°	285.1	285.0	284.9	284.5	284.4	283.3	282.6	281.5	280.8	279.6	278.8
152.5°	284.9	285.0	285.1	285.0	285.1	284.4	283.5	282.6	281.8	280.7	280.0
155°	285.7	285.9	286.0	286.0	286.0	285.3	284.6	283.9	283.2	282.4	281.7
157.5°	286.9	287.2	287.5	287.7	287.8	287.3	286.7	286.1	285.5	284.8	284.2
160°	289.1	289.5	289.8	290.0	290.3	289.8	289.6	288.8	288.6	287.8	287.2
162.5°	292.1	292.6	292.8	293.0	293.3	292.7	292.7	292.1	291.7	290.8	290.3
165°	294.5	294.6	295.0	295.1	295.2	294.9	294.8	294.4	294.1	293.6	293.3
167.5°	298.3	298.4	298.7	298.8	299.0	298.7	299.0	298.6	298.4	298.1	297.8
170°	300.6	300.8	301.0	301.1	301.3	301.0	300.9	300.8	300.8	300.2	300.0
172.5°	302.2	302.2	302.4	302.5	302.5	302.4	302.3	302.1	302.1	302.0	301.8
175°	302.9	302.8	303.0	303.0	302.9	303.0	302.9	303.0	302.9	302.9	302.8
177.5°	304.4	304.3	304.1	304.0	303.9	303.8	303.9	303.8	304.0	303.9	303.8
180°	302.3	302.3	302.3	302.3	302.3	302.3	302.3	302.3	302.3	302.3	302.3



TEST NUMBER: P1444699
 CATALOG NUMBER: EHBR1-54-UNV-TA-L930-UPL15

CANDELA DISTRIBUTION (continued):

	220°	222.5°	225°	227.5°	230°	232.5°	235°	237.5°	240°	242.5°	245°
0°	41286.7	41286.7	41286.7	41286.7	41286.7	41286.7	41286.7	41286.7	41286.7	41286.7	41286.7
2.5°	41653.1	41395.9	41362.0	41380.0	41423.0	41438.9	41485.3	41497.9	41544.6	41556.1	41601.0
5°	42512.6	42172.6	42189.6	42271.3	42395.1	42468.8	42590.5	42654.1	42770.2	42823.1	42928.0
7.5°	43418.9	43151.9	43235.1	43373.0	43542.2	43659.4	43805.6	43900.7	44026.6	44104.9	44205.7
10°	43863.8	43790.7	43882.4	43990.8	44087.4	44163.0	44224.9	44274.6	44307.0	44337.4	44350.8
12.5°	43525.2	43638.5	43654.1	43643.5	43579.6	43530.7	43421.0	43346.5	43214.2	43133.5	42976.1
15°	42269.9	42518.8	42381.0	42172.3	41866.9	41612.3	41252.7	40984.9	40610.5	40356.5	39980.7
17.5°	40066.9	40381.1	40021.9	39539.0	38924.6	38399.0	37744.6	37225.0	36574.3	36101.0	35493.7
20°	36965.4	37259.1	36618.3	35817.8	34867.4	34067.6	33124.4	32372.0	31495.4	30843.5	30056.7
22.5°	33103.8	33313.0	32410.4	31331.1	30120.3	29121.2	27993.4	27091.3	26091.0	25345.7	24506.8
25°	28831.7	28888.1	27805.4	26562.0	25212.6	24089.6	22885.7	21937.2	20917.1	20161.7	19338.3
27.5°	24519.8	24437.0	23266.8	21948.4	20528.9	19361.7	18187.4	17298.6	16405.2	15724.7	15015.3
30°	20450.0	20249.4	19034.4	17679.3	16301.4	15255.2	14280.4	13566.6	12855.8	12316.1	11746.6
32.5°	16717.8	16435.0	15252.2	13982.7	12821.6	12014.3	11291.4	10751.3	10177.3	9721.3	9243.5
35°	13412.1	13110.8	12063.0	10986.7	10107.9	9512.8	8944.7	8501.6	8014.2	7629.6	7214.6
37.5°	10575.1	10328.1	9450.4	8603.5	7938.8	7477.6	7012.1	6649.9	6247.2	6078.0	5634.6
40°	8163.9	7991.3	7305.0	6680.7	6181.6	5964.9	5492.4	5154.1	4853.1	4605.0	4364.5
42.5°	6368.0	6306.9	5639.0	5152.1	4800.7	4527.7	4264.4	4050.6	3842.5	3671.4	3509.8
45°	4673.1	4624.8	4328.3	4047.2	3807.7	3617.0	3439.0	3292.0	3155.9	3043.2	2940.6
47.5°	3639.0	3623.6	3452.7	3278.5	3127.6	3005.0	2889.5	2791.9	2701.6	2626.3	2601.9
50°	2959.7	2957.8	2857.5	2750.0	2642.5	2571.6	2498.0	2440.3	2382.3	2337.1	2289.4
52.5°	2514.8	2503.9	2436.3	2369.9	2306.1	2259.6	2212.4	2175.5	2137.1	2109.3	2079.6
55°	2165.0	2176.4	2137.3	2097.7	2057.7	2028.8	1995.8	1971.5	1945.1	1927.5	1909.6
57.5°	1922.0	1937.2	1916.7	1894.1	1869.8	1850.8	1828.1	1811.2	1793.6	1782.5	1772.0
60°	1745.3	1761.8	1753.5	1742.2	1727.2	1715.9	1701.4	1692.0	1680.7	1674.5	1668.6
62.5°	1595.3	1616.0	1613.1	1607.7	1598.1	1591.8	1583.8	1579.7	1572.2	1569.5	1566.7
65°	1445.7	1469.0	1468.5	1465.8	1460.5	1458.7	1453.8	1452.8	1449.0	1450.6	1450.2
67.5°	1328.0	1348.2	1352.7	1355.9	1355.7	1356.9	1356.5	1358.5	1358.5	1361.4	1363.2
70°	1243.1	1257.1	1260.5	1263.9	1264.8	1267.6	1267.6	1269.2	1268.8	1271.2	1271.6
72.5°	1157.2	1175.8	1179.2	1181.9	1181.9	1184.5	1183.1	1182.6	1179.0	1178.2	1175.6
75°	1050.5	1074.2	1079.3	1082.7	1083.2	1085.5	1082.3	1080.2	1074.2	1071.7	1067.4
77.5°	938.9	963.5	967.2	968.4	966.4	966.9	960.2	955.6	947.7	944.5	940.4
80°	793.6	829.9	832.9	830.5	824.9	823.9	817.4	813.1	803.8	800.6	797.0
82.5°	603.9	646.5	652.5	655.1	650.4	651.5	645.3	642.8	634.2	632.7	627.0
85°	381.3	423.8	430.9	429.8	425.3	424.2	420.4	421.7	421.0	423.2	424.4
87.5°	175.2	216.4	226.3	223.1	222.6	219.8	213.2	215.6	219.6	222.2	222.3
90°	37.0	50.6	51.7	51.8	47.9	47.3	43.7	43.9	41.0	41.0	38.2
92.5°	42.1	44.3	46.5	44.6	42.6	40.6	38.7	36.5	34.8	32.6	30.8
95°	52.0	54.9	58.1	55.5	52.8	50.2	47.6	44.9	42.3	39.7	37.1
97.5°	58.5	62.0	65.6	63.0	60.3	57.6	54.9	52.3	49.6	47.0	44.3
100°	97.8	105.9	114.3	106.8	99.4	91.9	84.5	76.8	69.4	61.9	54.4
102.5°	213.5	234.0	254.8	235.8	216.9	197.8	179.0	160.0	141.2	122.1	103.3
105°	380.1	411.3	442.7	413.6	384.6	355.8	326.9	298.0	269.0	240.1	211.3
107.5°	510.7	539.4	568.7	542.5	516.3	490.1	463.7	437.6	411.3	385.1	359.0
110°	576.6	598.7	621.8	603.8	586.3	568.3	550.6	532.8	515.2	497.6	480.1



TEST NUMBER: P1444699
 CATALOG NUMBER: EHBR1-54-UNV-TA-L930-UPL15

CANDELA DISTRIBUTION (continued):

	220°	222.5°	225°	227.5°	230°	232.5°	235°	237.5°	240°	242.5°	245°
112.5°	578.3	593.7	610.3	599.5	589.0	578.3	567.7	557.1	546.7	536.0	525.8
115°	532.4	540.5	550.0	545.3	540.8	536.2	531.7	527.2	522.7	518.2	514.1
117.5°	475.0	477.4	481.5	479.9	478.7	477.1	475.9	474.4	473.4	472.0	471.0
120°	414.9	413.2	413.6	413.2	413.0	412.7	412.6	412.3	412.2	412.2	412.2
122.5°	365.2	361.0	358.8	358.3	358.0	357.4	357.2	356.8	356.5	356.3	356.2
125°	331.2	325.5	322.3	320.6	319.1	317.3	315.6	313.9	312.5	311.0	309.7
127.5°	307.9	301.8	298.4	295.8	293.1	290.4	287.8	285.1	282.6	279.9	277.6
130°	293.4	287.1	283.8	280.7	277.8	274.5	271.5	268.4	265.2	262.3	259.1
132.5°	284.5	278.0	274.9	272.1	269.2	266.0	263.2	260.0	257.0	253.8	251.0
135°	280.5	274.3	271.5	268.6	266.2	263.2	260.4	257.5	254.9	251.8	249.4
137.5°	277.8	271.5	269.0	266.5	264.4	262.0	259.9	257.4	255.0	252.3	250.1
140°	276.4	269.8	267.3	265.6	264.3	262.4	260.9	259.1	257.6	255.8	254.2
142.5°	276.2	269.7	267.3	266.0	265.0	263.8	262.9	261.5	260.4	258.8	257.6
145°	275.9	268.7	266.3	265.6	265.3	264.6	264.0	263.4	262.9	262.0	261.5
147.5°	277.1	269.6	267.2	267.0	266.8	266.2	266.2	265.6	265.6	265.0	264.8
150°	277.7	269.3	266.5	266.5	266.3	266.4	266.5	266.2	266.5	266.4	266.3
152.5°	278.9	268.9	265.6	265.6	265.9	265.8	266.0	266.2	266.5	266.7	266.8
155°	280.6	269.7	266.1	265.8	265.8	265.9	265.9	266.0	266.2	266.4	266.7
157.5°	283.4	271.7	268.2	267.8	267.7	267.6	267.5	267.5	267.6	267.7	268.1
160°	286.5	274.9	271.3	270.8	270.7	270.5	270.3	270.1	270.2	270.3	270.5
162.5°	289.5	278.2	274.8	274.3	273.8	273.7	273.6	273.1	273.2	273.1	273.4
165°	292.7	282.6	279.3	278.8	278.7	278.5	278.3	278.1	278.1	278.1	278.3
167.5°	297.3	288.2	285.6	285.2	284.7	284.3	284.3	283.6	283.6	283.3	283.3
170°	299.6	292.5	290.2	290.0	290.1	289.9	289.6	289.6	289.5	289.4	289.4
172.5°	301.5	296.3	294.5	294.6	294.8	294.8	295.0	294.9	295.1	295.2	295.4
175°	302.7	299.5	298.8	298.6	298.7	298.8	298.9	298.9	299.0	299.1	299.4
177.5°	303.9	303.0	302.6	302.6	302.6	302.6	302.6	302.6	302.6	302.8	302.8
180°	302.3	302.3	302.3	302.3	302.3	302.3	302.3	302.3	302.3	302.3	302.3



TEST NUMBER: P1444699
 CATALOG NUMBER: EHBR1-54-UNV-TA-L930-UPL15

CANDELA DISTRIBUTION (continued):

	247.5°	250°	252.5°	255°	257.5°	260°	262.5°	265°	267.5°	270°	272.5°
0°	41286.7	41286.7	41286.7	41286.7	41286.7	41286.7	41286.7	41286.7	41286.7	41286.7	41286.7
2.5°	41609.3	41657.8	41654.2	41699.5	41697.2	41739.9	41731.3	41768.1	41759.8	41791.3	41772.8
5°	42974.2	43066.5	43096.9	43180.2	43197.4	43272.0	43273.5	43332.7	43325.6	43371.9	43347.2
7.5°	44265.4	44351.5	44392.4	44457.1	44489.4	44542.9	44563.9	44607.9	44618.5	44644.6	44643.8
10°	44374.3	44374.0	44394.2	44385.2	44403.2	44392.8	44414.8	44406.9	44439.5	44431.0	44455.7
12.5°	42908.2	42762.7	42709.5	42578.8	42550.2	42438.1	42446.0	42374.1	42408.9	42364.7	42439.9
15°	39757.1	39419.5	39252.8	38959.4	38867.2	38635.3	38616.4	38462.4	38504.0	38423.3	38541.1
17.5°	35100.8	34569.3	34277.8	33849.1	33679.0	33350.9	33285.1	33086.8	33117.6	33017.7	33160.0
20°	29549.2	28907.0	28539.1	28043.5	27822.4	27431.3	27327.6	27105.7	27133.5	27034.0	27195.1
22.5°	23934.2	23262.0	22846.8	22327.2	22044.9	21677.1	21566.7	21343.9	21356.5	21263.2	21418.0
25°	18774.3	18129.8	17726.7	17254.9	17009.9	16672.6	16556.7	16356.5	16367.8	16290.8	16429.8
27.5°	14523.3	13994.5	13657.2	13261.7	13042.1	12764.9	12651.8	12483.4	12483.0	12426.5	12542.6
30°	11349.1	10907.9	10605.0	10260.6	10054.4	9804.1	9694.9	9544.4	9537.8	9497.7	9590.0
32.5°	8886.1	8493.6	8217.5	7914.3	7729.1	7514.4	7411.1	7290.1	7279.0	7242.7	7318.5
35°	6907.8	6577.2	6339.8	6084.6	6103.4	5786.6	5839.3	5593.2	5526.5	5512.0	5568.3
37.5°	5338.9	5083.0	4890.0	4698.9	4569.4	4435.6	4363.5	4298.8	4291.4	4285.1	4324.6
40°	4178.9	3999.8	3859.4	3728.3	3639.2	3557.5	3512.4	3477.0	3468.5	3463.8	3487.7
42.5°	3382.2	3261.3	3170.9	3090.8	3036.7	2992.4	2967.6	2947.8	2941.2	2941.4	2955.5
45°	2857.5	2784.2	2725.9	2676.2	2641.6	2656.8	2612.1	2635.5	2604.6	2636.6	2615.5
47.5°	2516.5	2454.0	2417.9	2382.7	2361.8	2344.9	2345.6	2345.8	2352.4	2353.5	2360.4
50°	2253.2	2217.2	2192.0	2169.6	2158.7	2149.9	2152.9	2155.2	2161.6	2162.1	2167.2
52.5°	2058.5	2034.7	2019.6	2005.7	2000.8	1995.8	1997.9	1997.0	1999.9	1998.4	2002.5
55°	1900.0	1888.8	1884.0	1878.9	1879.6	1878.3	1879.1	1874.1	1871.0	1867.2	1870.8
57.5°	1769.9	1768.4	1771.6	1773.7	1779.7	1781.8	1783.3	1777.4	1771.9	1766.9	1769.7
60°	1669.6	1672.1	1680.1	1686.5	1695.1	1699.0	1701.5	1698.2	1694.1	1690.0	1692.5
62.5°	1570.8	1574.6	1584.2	1591.3	1601.7	1607.1	1613.1	1613.4	1614.9	1613.4	1615.0
65°	1456.0	1460.8	1469.4	1475.4	1485.0	1489.7	1495.9	1496.9	1500.3	1499.5	1502.5
67.5°	1368.9	1373.2	1380.4	1386.0	1394.5	1399.4	1404.8	1405.1	1406.3	1406.0	1408.8
70°	1275.8	1278.0	1284.4	1289.1	1297.7	1302.8	1308.9	1310.7	1314.5	1315.1	1318.2
72.5°	1176.7	1175.8	1179.6	1181.7	1188.2	1192.2	1199.9	1204.2	1210.6	1212.3	1214.6
75°	1068.7	1067.8	1072.3	1074.2	1079.7	1083.6	1092.4	1098.1	1108.0	1112.1	1111.1
77.5°	943.6	945.8	954.3	959.0	966.4	971.5	982.8	991.8	1010.0	1018.0	1009.9
80°	803.8	806.0	814.9	819.4	829.0	835.2	847.8	858.4	874.7	878.3	873.7
82.5°	631.9	632.5	640.6	643.8	656.4	665.4	681.5	689.9	700.1	698.5	697.3
85°	430.9	436.7	446.6	456.6	471.9	486.6	501.7	514.3	505.4	519.4	503.8
87.5°	230.3	229.6	243.1	241.0	262.4	274.8	287.9	294.3	301.3	299.9	300.0
90°	38.9	36.6	37.7	35.1	37.3	34.4	37.6	35.1	39.0	35.6	41.4
92.5°	28.7	27.8	26.6	25.7	24.4	23.6	22.4	21.3	20.2	19.2	20.2
95°	34.5	33.5	32.5	31.4	30.4	29.4	28.4	27.4	26.5	25.5	26.7
97.5°	41.7	41.2	40.5	40.0	39.4	38.9	38.2	37.7	36.9	36.4	37.2
100°	46.9	46.9	46.9	46.9	46.6	46.6	46.6	46.6	46.6	46.6	47.2
102.5°	84.3	82.4	80.6	78.5	76.6	74.7	72.8	70.9	69.1	67.2	70.0
105°	182.4	175.0	167.6	160.2	152.7	145.3	137.9	130.6	123.2	115.8	123.4
107.5°	333.0	319.5	305.9	292.5	278.9	265.5	252.1	238.6	225.3	211.8	223.9
110°	462.3	448.0	433.5	419.3	404.8	390.5	376.2	362.0	347.7	333.5	345.0



TEST NUMBER: P1444699
 CATALOG NUMBER: EHBR1-54-UNV-TA-L930-UPL15

CANDELA DISTRIBUTION (continued):

	247.5°	250°	252.5°	255°	257.5°	260°	262.5°	265°	267.5°	270°	272.5°
112.5°	515.4	505.7	496.5	487.1	477.7	468.7	459.4	450.2	441.0	431.8	437.4
115°	509.6	505.1	500.5	496.0	491.5	486.8	482.3	478.0	473.6	469.3	469.6
117.5°	469.8	467.9	466.3	464.6	462.9	461.3	459.9	458.5	457.0	455.7	452.6
120°	412.4	412.3	412.3	412.6	412.8	413.3	413.4	413.9	414.6	415.1	410.9
122.5°	356.1	356.5	357.2	357.9	358.7	359.7	360.6	361.7	363.0	364.2	360.0
125°	308.1	308.5	309.0	309.6	310.0	311.2	312.1	313.2	314.3	315.7	312.3
127.5°	275.1	274.7	274.3	274.2	274.0	274.3	274.6	275.0	275.6	276.3	274.0
130°	256.2	255.0	253.8	253.0	251.9	251.4	250.9	250.5	250.1	250.1	249.4
132.5°	247.9	246.2	244.4	242.9	241.4	240.3	239.0	238.4	237.6	237.0	236.9
135°	246.3	244.3	242.2	240.3	238.4	237.1	235.5	234.5	233.4	232.6	233.1
137.5°	247.7	245.8	243.6	241.9	240.0	238.6	237.0	235.9	234.9	234.0	234.7
140°	252.5	250.4	248.4	246.6	245.0	243.5	242.1	241.1	239.8	239.4	239.6
142.5°	256.3	254.8	252.8	251.3	249.7	248.4	247.2	246.3	245.1	244.6	245.2
145°	260.7	259.5	258.0	256.7	255.7	254.8	253.5	253.1	252.4	252.2	252.5
147.5°	264.3	263.5	262.3	261.5	260.4	259.9	259.1	258.7	258.3	258.1	258.2
150°	266.2	265.6	264.9	264.4	263.8	263.5	263.0	262.8	262.5	262.4	262.5
152.5°	267.0	266.6	266.1	265.7	265.2	265.1	264.8	264.7	264.6	264.6	264.6
155°	266.9	266.7	266.5	266.5	266.3	266.6	266.5	266.8	266.7	267.0	267.2
157.5°	268.2	268.4	268.3	268.7	268.8	269.1	269.1	269.7	269.7	270.3	270.5
160°	270.9	271.1	271.1	271.4	271.5	271.7	272.0	272.3	272.6	272.9	273.3
162.5°	273.5	273.9	274.1	274.4	274.9	275.2	275.6	276.3	276.6	277.1	277.7
165°	278.5	278.6	278.7	278.7	279.1	279.3	279.5	280.0	280.3	280.8	281.3
167.5°	283.2	283.4	283.4	283.6	283.8	284.1	284.4	284.9	285.3	286.1	286.4
170°	289.2	289.2	289.2	289.2	289.2	289.5	289.6	289.8	290.0	290.4	290.7
172.5°	295.5	295.5	295.1	295.5	295.1	295.5	295.5	295.6	295.6	295.8	295.9
175°	299.2	299.6	299.7	300.0	299.9	300.0	300.0	300.1	300.2	300.5	300.5
177.5°	302.8	302.9	302.9	302.9	302.9	303.1	303.1	303.1	303.1	302.9	303.0
180°	302.3	302.3	302.3	302.3	302.3	302.3	302.3	302.3	302.3	302.3	302.3



TEST NUMBER: P1444699
 CATALOG NUMBER: EHBR1-54-UNV-TA-L930-UPL15

CANDELA DISTRIBUTION (continued):

	275°	277.5°	280°	282.5°	285°	287.5°	290°	292.5°	295°	297.5°	300°
0°	41286.7	41286.7	41286.7	41286.7	41286.7	41286.7	41286.7	41286.7	41286.7	41286.7	41286.7
2.5°	41803.5	41782.6	41804.0	41782.2	41804.0	41777.9	41795.6	41767.4	41774.6	41745.4	41752.9
5°	43384.1	43350.8	43368.5	43325.2	43329.9	43272.0	43271.0	43203.6	43185.9	43109.2	43075.5
7.5°	44662.3	44651.4	44657.6	44629.7	44626.5	44587.0	44568.2	44512.5	44477.5	44406.9	44358.7
10°	44460.0	44492.6	44501.0	44534.2	44541.1	44574.0	44580.8	44613.7	44620.7	44645.0	44645.3
12.5°	42436.4	42547.0	42573.5	42710.2	42767.6	42924.0	43007.9	43180.2	43282.5	43454.4	43560.0
15°	38537.9	38729.4	38805.7	39072.5	39220.2	39531.7	39727.4	40085.2	40337.7	40717.6	40988.6
17.5°	33172.5	33440.0	33560.7	33922.6	34158.7	34618.4	34949.9	35495.4	35913.0	36519.2	36999.7
20°	27222.6	27519.9	27683.8	28096.6	28375.2	28912.5	29326.2	29996.5	30555.6	31323.6	31980.6
22.5°	21466.6	21749.5	21931.4	22351.4	22665.1	23225.4	23687.8	24395.4	25021.7	25887.2	26674.8
25°	16482.2	16741.5	16906.0	17285.9	17580.5	18095.4	18536.9	19217.4	19830.3	20698.4	21506.0
27.5°	12600.5	12817.6	12976.1	13300.1	13559.8	13996.6	14375.9	14938.3	15466.3	16217.4	16936.5
30°	9646.8	9839.2	9993.4	10275.6	10516.4	10895.0	11228.5	11700.9	12137.9	12735.6	13307.7
32.5°	7371.7	7537.4	7674.8	7921.8	8140.3	8481.2	8781.7	9195.8	9570.8	10077.7	10548.4
35°	5620.6	5946.8	5923.6	6264.2	6319.0	6563.7	6831.7	7193.7	7525.9	7957.0	8357.5
37.5°	4362.6	4454.2	4552.5	4703.0	4861.3	5083.9	5310.3	5752.7	5914.8	6240.6	6572.2
40°	3518.0	3579.9	3644.8	3746.5	3857.3	4014.1	4179.1	4390.1	4606.3	4870.4	5140.2
42.5°	2974.1	3009.2	3050.5	3110.3	3178.5	3278.0	3388.3	3531.4	3681.8	3867.7	4057.4
45°	2657.2	2640.5	2652.8	2684.9	2726.1	2786.5	2856.1	2944.8	3042.7	3163.1	3291.3
47.5°	2361.8	2368.5	2372.1	2389.6	2411.6	2452.1	2494.4	2554.5	2670.7	2706.0	2776.0
50°	2166.6	2169.9	2168.8	2177.7	2188.8	2215.2	2242.6	2283.3	2324.0	2377.8	2429.2
52.5°	2003.1	2007.6	2007.1	2012.9	2018.9	2035.5	2052.8	2081.6	2108.3	2142.5	2172.1
55°	1874.0	1880.2	1882.7	1887.6	1890.5	1899.2	1906.1	1919.9	1931.2	1950.6	1968.5
57.5°	1774.6	1783.3	1787.2	1788.9	1785.4	1784.9	1782.6	1785.5	1787.8	1798.2	1808.3
60°	1696.5	1703.3	1704.4	1703.3	1696.9	1692.4	1685.0	1682.6	1681.5	1686.5	1692.0
62.5°	1614.6	1617.1	1615.4	1613.4	1606.0	1601.6	1594.0	1591.2	1588.5	1592.1	1595.1
65°	1501.4	1503.5	1501.4	1500.1	1493.5	1490.1	1483.7	1481.4	1477.8	1478.8	1478.1
67.5°	1409.4	1411.6	1409.9	1408.2	1403.6	1401.4	1396.7	1393.7	1389.2	1387.5	1384.5
70°	1317.7	1319.4	1316.8	1315.1	1310.0	1307.9	1303.6	1302.6	1299.1	1298.3	1294.8
72.5°	1212.3	1212.5	1208.8	1207.8	1203.9	1203.8	1201.9	1203.6	1203.5	1205.3	1204.6
75°	1104.5	1103.0	1098.3	1097.5	1094.7	1096.0	1094.1	1096.6	1097.0	1100.9	1101.4
77.5°	996.4	990.8	982.0	977.9	972.1	971.3	968.0	970.3	969.5	974.1	975.9
80°	859.9	853.1	841.9	836.5	829.7	828.6	825.5	828.6	827.1	832.4	836.2
82.5°	686.5	680.6	669.0	664.7	656.8	657.5	654.1	657.5	657.0	665.0	669.6
85°	507.9	503.9	491.9	481.4	469.6	462.7	456.0	454.7	452.8	456.0	458.8
87.5°	293.4	289.6	280.4	274.2	253.5	254.4	246.3	245.9	243.9	242.0	246.3
90°	39.3	44.2	42.3	46.7	45.5	50.7	49.9	54.7	53.0	57.5	56.7
92.5°	21.3	22.4	23.4	24.4	25.5	26.6	27.6	28.7	31.0	32.9	35.6
95°	28.0	29.1	30.4	31.6	32.9	34.0	35.3	36.5	39.9	43.2	46.6
97.5°	38.1	38.9	39.7	40.5	41.3	42.2	43.0	43.8	47.5	51.2	54.7
100°	47.9	48.6	49.2	49.9	50.5	51.2	51.9	52.5	59.7	66.7	73.6
102.5°	72.7	75.6	78.3	81.1	84.0	86.9	89.6	92.4	108.5	124.5	140.4
105°	131.1	138.7	146.5	154.1	161.7	169.3	177.1	184.6	210.4	235.9	261.7
107.5°	235.9	247.9	259.9	272.2	284.2	296.4	308.4	320.5	345.6	370.7	395.8
110°	356.4	368.0	379.4	391.1	402.5	414.2	425.7	437.5	452.7	467.8	483.0



TEST NUMBER: P1444699
 CATALOG NUMBER: EHBR1-54-UNV-TA-L930-UPL15

CANDELA DISTRIBUTION (continued):

	275°	277.5°	280°	282.5°	285°	287.5°	290°	292.5°	295°	297.5°	300°
112.5°	443.1	448.6	454.4	460.1	465.8	471.7	477.5	483.3	491.1	498.8	506.6
115°	470.1	470.4	471.1	471.5	472.1	472.7	473.6	474.2	477.0	479.7	482.6
117.5°	449.6	446.6	443.8	440.9	438.2	435.6	433.0	430.4	430.4	430.3	430.7
120°	407.2	403.2	399.3	395.3	391.7	388.1	384.6	381.2	379.8	378.4	377.2
122.5°	356.2	352.3	348.5	344.9	341.3	337.9	334.6	331.3	330.7	330.2	329.5
125°	309.0	306.0	302.9	300.0	297.4	294.8	292.3	289.9	290.7	291.4	292.5
127.5°	272.3	270.6	269.0	267.5	266.4	265.1	264.1	263.0	265.0	266.9	268.9
130°	248.8	248.4	248.2	247.7	248.0	248.0	248.2	248.4	251.2	253.5	256.4
132.5°	237.4	237.7	238.2	238.8	239.7	240.6	241.9	242.7	245.7	248.4	251.3
135°	233.7	234.4	235.5	236.4	237.9	239.1	240.7	242.0	245.1	247.5	250.5
137.5°	235.6	236.4	237.7	238.8	240.4	241.7	243.5	245.0	247.4	249.7	252.1
140°	240.6	241.1	242.4	243.5	244.7	245.9	247.6	248.9	251.1	253.0	254.9
142.5°	246.0	246.6	247.6	248.6	249.9	251.0	252.5	253.5	255.2	256.6	258.6
145°	253.2	253.7	254.7	255.4	256.5	257.5	258.6	259.6	260.9	261.9	263.2
147.5°	258.8	259.2	260.0	260.8	261.7	262.5	263.2	264.0	265.2	266.0	267.1
150°	263.1	263.4	264.0	264.4	265.2	265.9	266.7	267.3	268.1	268.9	269.8
152.5°	265.3	265.5	266.0	266.5	267.2	267.7	268.2	268.9	269.7	270.3	271.2
155°	267.6	268.2	268.9	269.3	270.1	270.4	271.2	271.6	272.4	273.0	273.8
157.5°	271.2	271.4	272.2	272.6	273.3	273.8	274.4	274.8	275.6	276.1	276.7
160°	273.9	274.6	275.2	275.8	276.5	277.1	277.8	278.5	279.1	279.6	280.2
162.5°	278.2	278.8	279.5	279.9	280.5	281.2	281.6	282.2	283.1	283.5	284.4
165°	282.0	282.6	283.4	283.8	284.6	285.3	285.9	286.6	287.0	287.7	288.1
167.5°	287.1	287.5	288.4	288.8	289.5	290.1	290.8	291.3	291.9	292.2	292.8
170°	291.2	291.8	292.3	292.7	293.3	293.7	294.4	294.8	295.5	295.9	296.6
172.5°	296.2	296.7	297.0	297.2	297.6	298.2	298.5	298.8	299.3	299.7	300.1
175°	300.5	300.5	300.7	300.8	300.9	300.9	301.1	301.4	301.6	301.7	301.9
177.5°	303.1	303.2	303.3	303.3	303.4	303.5	303.6	303.7	303.7	303.7	303.7
180°	302.3	302.3	302.3	302.3	302.3	302.3	302.3	302.3	302.3	302.3	302.3



TEST NUMBER: P1444699
 CATALOG NUMBER: EHBR1-54-UNV-TA-L930-UPL15

CANDELA DISTRIBUTION (continued):

	302.5°	305°	307.5°	310°	312.5°	315°	317.5°	320°	322.5°	325°	327.5°
0°	41286.7	41286.7	41286.7	41286.7	41286.7	41286.7	41286.7	41286.7	41286.7	41286.7	41286.7
2.5°	41723.7	41725.5	41691.9	41690.0	41658.4	41654.5	41623.8	41614.4	41589.5	41580.5	41555.1
5°	42989.5	42948.5	42853.8	42798.1	42704.5	42642.5	42541.2	42475.1	42377.3	42303.5	42205.2
7.5°	44269.8	44206.1	44099.8	44013.6	43883.7	43780.0	43628.0	43503.5	43338.9	43196.4	43023.5
10°	44645.3	44635.5	44608.4	44568.9	44508.5	44440.6	44337.1	44229.3	44084.9	43928.3	43736.0
12.5°	43721.4	43821.1	43957.2	44037.9	44135.9	44178.9	44219.1	44209.1	44182.6	44103.3	43992.2
15°	41381.0	41661.4	42032.6	42320.3	42651.3	42891.8	43157.4	43322.9	43488.0	43564.2	43610.9
17.5°	37658.1	38188.9	38854.5	39406.1	40042.5	40553.7	41114.0	41535.9	41969.7	42280.5	42561.5
20°	32876.0	33645.1	34586.4	35418.0	36385.0	37225.4	38146.2	38902.2	39681.8	40291.4	40868.4
22.5°	27688.9	28602.3	29740.4	30794.7	32041.3	33161.6	34425.7	35525.9	36674.6	37634.2	38562.1
25°	22588.4	23590.1	24834.5	26010.8	27422.6	28725.8	30224.9	31596.1	33080.7	34369.7	35643.1
27.5°	17930.9	18914.3	20184.7	21436.9	22929.8	24318.4	25924.6	27435.2	29125.7	30684.7	32279.4
30°	14102.8	14936.8	16076.1	17288.8	18761.2	20174.3	21798.0	23351.7	25110.3	26812.3	28608.6
32.5°	11173.2	11808.7	12704.3	13729.7	15088.3	16433.5	17979.5	19479.3	21211.2	22930.5	24798.7
35°	8873.5	9369.2	10052.1	10852.3	12002.8	13162.4	14529.8	15893.8	17509.5	19141.0	20956.8
37.5°	6997.3	7399.4	7934.2	8535.4	9458.2	10409.8	11531.1	12661.8	14065.7	15512.1	17157.7
40°	5464.1	5789.7	6206.1	6654.4	7351.2	8084.4	8951.6	9828.5	10956.4	12138.4	13500.4
42.5°	4292.4	4532.7	4826.8	5154.4	5804.5	6193.9	6781.8	7416.1	8245.3	9103.3	10127.4
45°	3447.2	3611.1	3815.1	4034.8	4336.6	4666.7	5069.5	5491.8	6279.5	6665.9	7288.6
47.5°	2878.8	2988.8	3118.5	3257.0	3435.0	3627.0	3865.9	4110.1	4425.9	4753.2	5137.0
50°	2496.0	2607.8	2652.3	2724.1	2827.1	2936.7	3071.4	3206.1	3375.5	3547.2	3744.7
52.5°	2211.8	2248.3	2296.7	2342.4	2406.2	2531.0	2571.4	2641.8	2736.8	2829.6	2933.5
55°	1994.8	2018.5	2050.1	2077.6	2116.2	2153.1	2206.3	2253.2	2316.4	2372.5	2441.4
57.5°	1825.9	1841.1	1862.9	1881.0	1906.0	1926.7	1957.9	1983.3	2019.8	2051.5	2093.2
60°	1703.2	1713.3	1728.0	1739.8	1755.6	1766.5	1782.0	1794.0	1813.2	1829.2	1852.5
62.5°	1603.0	1608.1	1617.8	1624.7	1634.8	1640.3	1648.6	1653.8	1664.3	1672.4	1685.4
65°	1482.7	1483.9	1490.3	1493.3	1501.2	1504.2	1510.8	1513.3	1522.1	1527.9	1539.4
67.5°	1384.1	1381.4	1381.5	1379.3	1380.4	1378.1	1378.7	1376.2	1379.8	1381.5	1390.3
70°	1294.2	1290.4	1289.1	1285.0	1283.8	1279.5	1278.3	1274.4	1274.0	1272.7	1275.8
72.5°	1206.5	1205.4	1205.7	1202.9	1202.5	1199.7	1199.7	1198.0	1199.9	1200.8	1204.8
75°	1105.6	1106.0	1108.0	1105.4	1106.2	1103.7	1104.6	1102.3	1103.5	1103.1	1107.1
77.5°	982.9	985.9	991.2	990.1	991.8	989.1	990.3	987.1	988.0	985.9	987.4
80°	845.0	851.0	858.3	858.0	861.0	859.1	861.7	858.7	859.9	856.3	855.3
82.5°	681.1	686.3	693.9	694.2	701.0	702.2	709.7	709.3	714.1	711.0	708.9
85°	465.6	469.1	475.9	479.5	486.5	490.8	497.9	500.8	495.7	505.1	497.6
87.5°	243.1	252.2	247.1	258.9	256.1	268.1	265.5	276.5	274.4	283.8	282.6
90°	62.8	62.6	69.1	69.4	77.4	78.6	84.5	82.8	88.6	87.2	92.8
92.5°	37.5	40.1	42.4	44.7	47.0	49.5	47.1	45.0	43.0	41.0	38.7
95°	50.0	53.3	56.7	60.1	63.4	66.7	63.2	59.7	56.1	52.5	48.9
97.5°	58.4	61.9	65.6	69.2	72.9	76.5	72.2	67.9	63.7	59.6	55.3
100°	80.6	87.8	94.7	101.7	108.8	115.8	107.9	100.0	92.2	84.3	76.3
102.5°	156.7	172.7	188.8	205.0	220.9	237.0	220.3	203.7	186.8	170.1	153.3
105°	287.4	313.1	338.8	364.5	390.1	416.2	389.0	361.8	334.6	307.6	280.3
107.5°	421.1	446.0	471.4	496.5	521.7	547.0	519.5	491.9	464.6	437.0	409.5
110°	498.4	513.6	528.9	544.3	559.5	575.1	555.0	535.1	515.3	495.2	475.2



TEST NUMBER: P1444699
 CATALOG NUMBER: EHBR1-54-UNV-TA-L930-UPL15

CANDELA DISTRIBUTION (continued):

	302.5°	305°	307.5°	310°	312.5°	315°	317.5°	320°	322.5°	325°	327.5°
112.5°	514.5	522.5	530.2	538.3	546.2	554.1	540.1	526.0	511.9	497.9	483.6
115°	485.6	488.3	491.3	494.3	497.2	500.1	490.8	481.6	472.2	462.9	453.3
117.5°	430.8	431.1	431.1	431.8	431.7	431.9	427.0	422.1	417.1	412.1	407.1
120°	375.9	374.6	373.4	372.2	370.8	369.4	367.9	366.2	364.3	362.4	360.6
122.5°	328.9	328.7	328.0	327.4	326.7	326.1	325.8	325.7	325.4	325.1	324.6
125°	293.3	294.2	295.0	295.9	296.6	297.4	297.6	297.9	298.0	298.4	298.4
127.5°	270.6	272.7	274.4	276.3	277.8	279.7	280.2	281.1	281.5	282.1	282.7
130°	258.8	261.5	264.0	266.3	268.5	271.3	271.6	272.2	272.8	273.2	273.8
132.5°	254.2	256.8	259.5	262.4	264.8	267.5	268.0	268.6	268.8	269.6	269.9
135°	253.1	255.7	258.1	261.0	263.2	265.7	266.1	266.5	266.7	267.3	267.7
137.5°	254.2	256.6	258.7	260.9	262.8	265.0	265.2	265.7	265.8	266.5	266.7
140°	256.6	258.7	260.4	262.3	264.0	265.8	265.9	266.2	266.2	266.5	266.5
142.5°	260.0	261.5	262.9	264.6	265.8	267.3	267.0	266.9	266.9	266.8	266.6
145°	264.4	265.6	266.7	267.9	268.5	269.8	269.4	269.2	268.6	268.5	268.1
147.5°	267.9	268.9	269.4	270.4	270.7	271.8	271.3	270.9	270.5	270.0	269.5
150°	270.4	271.3	271.9	272.5	273.1	273.9	273.3	272.8	272.1	271.5	271.0
152.5°	271.8	272.4	273.0	273.6	274.1	274.6	273.9	273.7	272.9	272.2	271.4
155°	274.0	274.8	275.1	275.7	275.9	276.3	275.6	275.4	274.7	274.2	273.5
157.5°	277.1	277.8	278.2	278.5	278.8	279.3	278.9	278.6	278.0	277.8	277.2
160°	280.6	281.1	281.5	281.9	282.3	282.5	282.0	282.1	281.7	281.2	280.7
162.5°	284.7	285.3	285.7	286.1	286.7	287.0	286.7	286.4	286.0	285.6	285.0
165°	288.6	289.1	289.5	290.0	290.2	290.6	290.3	290.2	289.8	289.7	289.4
167.5°	293.2	293.8	294.1	294.5	294.7	295.0	294.7	294.8	294.3	294.2	293.7
170°	296.8	297.1	297.7	298.1	298.4	298.5	298.5	298.4	298.1	297.8	297.6
172.5°	300.5	300.8	300.9	301.3	301.4	301.7	301.6	301.3	301.1	300.8	300.5
175°	301.9	302.0	302.4	302.4	302.4	302.5	302.3	302.0	301.8	301.6	301.3
177.5°	303.7	303.7	303.7	303.6	303.6	303.6	303.4	303.3	303.1	302.9	302.6
180°	302.3	302.3	302.3	302.3	302.3	302.3	302.3	302.3	302.3	302.3	302.3



TEST NUMBER: P1444699
 CATALOG NUMBER: EHBR1-54-UNV-TA-L930-UPL15

CANDELA DISTRIBUTION (continued):

	330°	332.5°	335°	337.5°	340°	342.5°	345°	347.5°	350°	352.5°	355°
0°	41286.7	41286.7	41286.7	41286.7	41286.7	41286.7	41286.7	41286.7	41286.7	41286.7	41286.7
2.5°	41546.0	41528.0	41516.3	41501.5	41492.4	41481.0	41472.6	41465.3	41459.5	41454.2	41450.2
5°	42130.2	42037.4	41965.3	41887.2	41823.1	41759.1	41709.9	41669.0	41640.9	41619.8	41607.2
7.5°	42874.0	42704.0	42552.9	42393.7	42251.1	42110.8	41989.9	41885.7	41807.5	41756.8	41726.1
10°	43538.2	43310.7	43085.6	42848.7	42624.2	42406.3	42205.2	42028.3	41888.3	41795.2	41741.0
12.5°	43836.0	43642.1	43412.3	43155.1	42879.8	42601.4	42329.9	42085.0	41879.5	41741.7	41662.2
15°	43573.8	43494.2	43338.2	43138.5	42877.3	42589.4	42270.7	41971.1	41695.5	41516.8	41413.2
17.5°	42720.7	42831.8	42819.9	42743.5	42555.7	42313.3	41988.5	41652.0	41307.3	41068.4	40938.0
20°	41281.1	41630.3	41807.5	41898.4	41824.6	41667.5	41373.4	41031.9	40630.1	40318.3	40127.9
22.5°	39258.2	39874.6	40258.8	40540.0	40599.6	40546.0	40286.4	39961.5	39513.6	39138.8	38857.7
25°	36653.9	37557.1	38164.3	38640.2	38825.2	38872.8	38651.9	38328.9	37829.7	37392.9	37006.9
27.5°	33586.4	34760.0	35570.7	36210.3	36499.0	36624.2	36420.9	36091.2	35500.6	34979.3	34475.0
30°	30133.1	31525.5	32501.5	33268.5	33620.4	33785.8	33569.7	33201.9	32514.6	31887.2	31251.9
32.5°	26436.9	27960.6	29024.1	29857.0	30205.7	30361.4	30078.7	29665.6	28871.1	28132.1	27391.2
35°	22567.0	24105.0	25177.5	25988.2	26280.5	26374.2	26012.9	25535.3	24655.1	23844.0	23036.1
37.5°	18618.3	20049.2	21024.0	21751.6	21932.5	21948.7	21513.2	20985.8	20060.6	19260.8	18456.7
40°	14703.8	15910.5	16697.5	17279.9	17342.6	17286.7	16813.2	16282.5	15417.0	14700.4	13994.5
42.5°	11016.5	11927.4	12489.0	12888.0	12864.3	12753.6	12319.6	11863.3	11149.3	10603.5	10048.0
45°	7857.5	8458.1	8786.5	9020.0	8945.0	8839.6	8501.7	8181.9	7696.7	7344.1	6970.8
47.5°	5458.8	6176.0	6051.1	6507.6	6114.3	6374.1	5833.0	5534.8	5277.2	5090.0	4879.0
50°	3908.0	4072.3	4151.7	4205.9	4177.1	4137.2	4040.0	3953.1	3835.5	3749.7	3649.8
52.5°	3018.0	3100.2	3145.2	3177.8	3171.4	3156.9	3114.4	3075.7	3020.6	2984.3	2940.6
55°	2556.4	2557.7	2640.4	2604.9	2657.4	2595.9	2620.0	2552.0	2563.0	2504.5	2465.2
57.5°	2124.3	2158.0	2173.1	2187.7	2183.6	2181.1	2164.7	2156.4	2137.9	2132.2	2119.0
60°	1868.6	1886.2	1889.8	1896.6	1890.9	1888.8	1875.9	1871.4	1858.9	1856.7	1848.0
62.5°	1693.3	1702.3	1702.3	1702.3	1694.9	1687.9	1673.6	1666.2	1655.6	1653.3	1648.3
65°	1546.9	1556.3	1557.8	1559.9	1554.5	1549.0	1536.4	1528.3	1517.4	1513.3	1507.5
67.5°	1396.0	1405.9	1409.2	1414.3	1411.2	1410.1	1401.6	1398.4	1391.2	1389.6	1384.1
70°	1277.4	1281.5	1281.2	1281.0	1274.3	1268.4	1258.4	1253.7	1246.2	1244.7	1239.8
72.5°	1206.8	1209.7	1207.9	1205.3	1196.5	1187.7	1176.0	1167.5	1157.7	1151.6	1144.7
75°	1107.5	1111.3	1108.8	1107.2	1099.4	1093.6	1084.2	1079.5	1072.7	1070.6	1065.9
77.5°	985.6	987.4	983.4	982.9	977.0	973.3	966.3	965.0	960.0	960.2	955.6
80°	849.9	848.7	842.3	841.1	835.2	833.7	828.1	828.4	824.4	826.1	822.9
82.5°	699.3	695.4	687.1	684.6	677.7	677.1	673.4	676.5	674.1	677.7	675.6
85°	501.1	502.2	498.5	498.5	496.5	497.2	496.8	499.1	499.4	502.8	502.7
87.5°	279.4	283.4	282.6	286.3	286.1	290.2	291.7	297.7	298.5	304.1	304.1
90°	91.3	97.8	96.2	102.6	102.2	108.9	109.6	116.3	116.3	122.0	120.7
92.5°	36.5	34.5	32.5	30.2	29.1	27.7	27.3	25.6	24.9	23.4	22.4
95°	45.3	41.7	38.1	34.5	33.2	31.8	30.7	29.4	28.2	26.9	25.8
97.5°	51.1	46.9	42.6	38.3	37.2	36.2	34.9	33.9	32.8	31.7	30.7
100°	68.4	60.4	52.7	44.6	43.7	42.8	41.9	41.0	40.0	38.9	38.1
102.5°	136.6	119.7	102.8	86.0	82.8	79.6	76.5	73.1	69.9	66.7	63.5
105°	253.1	225.8	198.5	171.2	162.5	153.8	145.2	136.4	127.7	119.1	110.4
107.5°	381.8	354.0	326.4	298.7	282.8	266.8	250.8	234.5	218.7	202.5	186.4
110°	455.2	435.1	414.9	394.6	382.0	369.1	356.2	343.3	330.3	317.3	304.4



TEST NUMBER: P1444699
 CATALOG NUMBER: EHBR1-54-UNV-TA-L930-UPL15

CANDELA DISTRIBUTION (continued):

	330°	332.5°	335°	337.5°	340°	342.5°	345°	347.5°	350°	352.5°	355°
112.5°	469.4	455.1	440.8	426.3	420.7	414.8	409.2	403.3	397.5	391.5	385.8
115°	443.9	434.3	424.8	415.1	413.4	411.3	409.7	407.5	405.6	403.5	401.5
117.5°	402.0	396.8	391.6	386.4	386.9	387.6	388.2	388.6	389.0	389.2	389.6
120°	358.6	356.7	354.9	352.9	355.1	357.1	359.3	361.1	363.1	364.7	366.4
122.5°	324.4	323.8	323.6	322.9	325.6	328.2	330.6	333.0	335.3	337.3	339.3
125°	298.8	298.8	299.0	298.9	301.7	304.3	306.9	309.1	311.5	313.5	315.6
127.5°	283.3	283.8	284.5	284.8	287.2	288.9	291.0	292.7	294.5	295.9	297.4
130°	274.2	274.6	275.2	275.5	277.6	279.6	281.6	283.1	284.8	286.0	287.2
132.5°	270.5	270.8	271.3	271.6	273.4	274.8	276.6	277.6	278.9	279.6	280.6
135°	268.2	268.3	268.9	269.0	270.7	272.3	273.8	274.8	276.2	276.8	277.6
137.5°	267.2	267.3	267.7	267.9	269.5	270.9	272.2	273.2	274.3	275.2	275.7
140°	266.9	266.7	267.2	267.1	268.6	269.7	271.1	272.0	273.1	273.6	274.3
142.5°	266.5	266.2	266.5	266.0	267.2	268.1	269.0	269.8	270.5	271.1	271.4
145°	267.8	267.2	267.1	266.6	267.4	268.2	268.9	269.7	270.1	270.4	270.7
147.5°	269.2	268.6	268.1	267.5	268.5	268.9	269.5	269.7	270.4	270.5	270.7
150°	270.4	269.6	268.9	268.1	268.7	269.0	269.3	269.8	270.0	270.1	270.3
152.5°	270.7	270.0	269.3	268.4	268.7	268.9	269.0	269.1	269.2	269.2	269.2
155°	273.0	272.2	271.4	270.5	270.9	270.9	270.9	270.9	270.7	270.6	270.5
157.5°	276.6	275.7	275.5	274.6	274.5	274.5	274.4	273.8	273.7	273.3	273.0
160°	280.4	279.7	279.3	278.7	278.4	278.2	278.1	277.6	277.4	276.9	276.5
162.5°	284.5	283.9	283.1	282.5	282.2	282.1	282.0	281.4	281.2	280.6	280.3
165°	289.0	288.5	288.1	287.3	287.1	286.9	286.7	286.1	285.8	285.2	284.7
167.5°	293.4	292.9	292.4	291.7	291.6	291.5	291.3	291.0	290.6	290.1	289.9
170°	297.2	296.7	296.5	295.9	295.6	295.5	295.1	294.9	294.4	294.1	293.6
172.5°	300.0	299.6	299.2	298.5	298.5	298.4	298.1	297.9	297.5	297.2	297.0
175°	300.8	300.7	300.0	299.8	299.7	299.5	299.3	299.2	298.9	298.7	298.4
177.5°	302.5	302.3	301.7	301.6	301.5	301.5	301.3	301.1	301.1	301.0	300.8
180°	302.3	302.3	302.3	302.3	302.3	302.3	302.3	302.3	302.3	302.3	302.3



TEST NUMBER: P1444699
CATALOG NUMBER: EHBR1-54-UNV-TA-L930-UPL15

CANDELA DISTRIBUTION (continued):

	357.5°	360°
0°	41286.7	41286.7
2.5°	41446.5	41444.4
5°	41600.6	41598.2
7.5°	41717.9	41717.1
10°	41731.6	41738.8
12.5°	41648.4	41654.2
15°	41405.3	41416.6
17.5°	40940.4	40955.2
20°	40139.5	40155.0
22.5°	38842.5	38849.0
25°	36957.0	36930.2
27.5°	34386.4	34340.3
30°	31118.5	31073.9
32.5°	27222.3	27194.5
35°	22836.4	22818.9
37.5°	18219.0	18183.2
40°	13736.3	13631.9
42.5°	9804.7	9621.5
45°	6775.9	6558.8
47.5°	4730.3	4596.1
50°	3585.4	3542.1
52.5°	2921.5	2911.4
55°	2465.1	2460.6
57.5°	2122.0	2120.5
60°	1852.5	1852.1
62.5°	1651.6	1652.4
65°	1510.1	1510.4
67.5°	1385.5	1384.7
70°	1241.5	1240.5
72.5°	1142.4	1140.7
75°	1065.9	1064.8
77.5°	956.9	955.3
80°	825.0	822.9
82.5°	678.6	676.2
85°	506.2	506.3
87.5°	309.7	309.6
90°	126.2	124.1
92.5°	21.7	20.9
95°	24.5	23.3
97.5°	29.6	28.5
100°	37.2	36.3
102.5°	60.3	57.1
105°	101.7	93.0
107.5°	170.4	154.3
110°	291.5	278.6



TEST NUMBER: P1444699
CATALOG NUMBER: EHBR1-54-UNV-TA-L930-UPL15

CANDELA DISTRIBUTION (continued):

	357.5°	360°
112.5°	379.7	373.8
115°	399.1	396.9
117.5°	389.7	389.9
120°	367.8	369.4
122.5°	341.0	342.8
125°	317.3	319.1
127.5°	298.4	299.3
130°	287.7	288.8
132.5°	281.0	281.2
135°	277.9	278.1
137.5°	275.9	276.1
140°	274.2	274.5
142.5°	271.5	271.6
145°	270.8	270.8
147.5°	270.3	270.3
150°	270.0	269.8
152.5°	268.8	268.7
155°	270.0	269.7
157.5°	272.3	271.9
160°	275.8	275.5
162.5°	279.6	279.2
165°	283.9	283.3
167.5°	289.2	289.0
170°	293.2	292.9
172.5°	296.6	296.2
175°	298.3	298.1
177.5°	300.8	300.5
180°	302.3	302.3

LM-79-2019: Approved Method: Electrical and Photometric Measurements of Solid-
State Lighting Products

Report Prepared for

Cooper Lighting Solutions

Metalux

Report Number: SP1-2506-472-5

Test Date: 08/01/2025

Luminaire Tested: EHBR-60-L930-N

Data in this report applies to families of products including EHBR-60-L930-N

Test Information

Test Method: LM-79-2019
 Report Number: SP1-2506-472-5
 Test Lab: COOPER LIGHTING SOLUTIONS
 Photometer: SP1 - 76IN SPHERE
 Measurement Geometry: 4π
 Issue Date: 08/05/2025
 Manufacturer: COOPER LIGHTING SOLUTIONS
 Product Line: Metalux
 Catalog Number: **EHBR-60-L930-N**
 Description: Elevate Round Highbay at, 60000 lumens, 3000K 90CRI LEDs with N lens

Spectral Parameters

CCT (K): 2996
 CIE u': 0.2519
 CIE v': 0.5169
 Duv: -0.0033
 CIE x: 0.4325
 CIE y: 0.3945
 CIE z: 0.1730
 Peak Wavelength (nm): 630
 Dominant Wavelength (nm): 584
 Purity: 48.21818
 Rf: 91.3
 Rg: 102

CRI (Ra):	94.4		
R1:	96.8	R9:	61.4
R2:	98.1	R10:	94.4
R3:	97.8	R11:	95.7
R4:	95.6	R12:	88.5
R5:	96.9	R13:	97.3
R6:	95.7	R14:	97.8
R7:	90.9	R15:	92.3
R8:	83.0		



Test Conditions

Stabilization Time: 40M
 Operation Time: 1H 40M
 Sphere Temperature (°C): 25.0

REPORT NUMBER: SP1-2506-472-5

Measurement and Test Equipment			
Instrument	Identification Number	Calibration Date	Calibration Due Date
Photometer	76INCH SPHERE IN0058	6/16/2025	12/16/2025
Power Meter	XITRON INXT2011004	1/21/2025	1/21/2026
AC Power Source	CHROMA 61603 IN0063	10/22/2024	10/22/2025
DC Power Source	AGILENT E3634A IN0208	10/22/2024	10/22/2025
Sphere Thermometer	ONSET IN0085	10/22/2024	10/22/2025
Room Thermometer	ONSET IN0046	10/22/2024	10/22/2025

REPORT NUMBER: SP1-2506-472-5

CIE 1931 Chromaticity Diagram



CIE 1931 Chromaticity Diagram with 2017 ANSI 7-Step and 4-Step Quadrangles



CCT = 2996K
 CIE x = 0.4325
 CIE y = 0.3945
 Duv = -0.0033

Point lies inside the ANSI 3000K 7-step quadrangle

REPORT NUMBER: SP1-2506-472-5

Photopic Flux vs. Wavelength



Photopic Lumens: NR

λ (nm)	Power W [^] /nm	Lumens (φ/nm)	λ (nm)	Power W [^] /nm	Lumens (φ/nm)	λ (nm)	Power W [^] /nm	Lumens (φ/nm)	λ (nm)	Power W [^] /nm	Lumens (φ/nm)	λ (nm)	Power W [^] /nm	Lumens (φ/nm)
360	0	NR	490	101	NR	620	317	NR	750	7	NR	880	0	NR
365	0	NR	495	121	NR	625	320	NR	755	6	NR	885	0	NR
370	0	NR	500	141	NR	630	1000	NR	760	5	NR	890	0	NR
375	0	NR	505	158	NR	635	651	NR	765	4	NR	895	0	NR
380	0	NR	510	171	NR	640	207	NR	770	4	NR	900	0	NR
385	0	NR	515	182	NR	645	201	NR	775	3	NR	905	0	NR
390	0	NR	520	189	NR	650	174	NR	780	3	NR	910	0	NR
395	1	NR	525	194	NR	655	146	NR	785	2	NR	915	0	NR
400	1	NR	530	199	NR	660	124	NR	790	2	NR	920	0	NR
405	3	NR	535	205	NR	665	105	NR	795	2	NR	925	0	NR
410	4	NR	540	210	NR	670	96	NR	800	1	NR	930	0	NR
415	7	NR	545	216	NR	675	79	NR	805	1	NR	935	0	NR
420	13	NR	550	222	NR	680	67	NR	810	1	NR	940	0	NR
425	22	NR	555	230	NR	685	58	NR	815	1	NR	945	0	NR
430	37	NR	560	240	NR	690	49	NR	820	1	NR	950	0	NR
435	60	NR	565	248	NR	695	42	NR	825	1	NR	955	0	NR
440	101	NR	570	258	NR	700	36	NR	830	1	NR	960	0	NR
445	172	NR	575	268	NR	705	30	NR	835	1	NR	965	0	NR
450	223	NR	580	278	NR	710	26	NR	840	1	NR	970	0	NR
455	167	NR	585	287	NR	715	22	NR	845	0	NR	975	0	NR
460	126	NR	590	295	NR	720	19	NR	850	0	NR	980	0	NR
465	111	NR	595	298	NR	725	16	NR	855	0	NR	985	0	NR
470	86	NR	600	303	NR	730	14	NR	860	0	NR	990	0	NR
475	74	NR	605	307	NR	735	12	NR	865	0	NR	995	0	NR
480	77	NR	610	341	NR	740	10	NR	870	0	NR	1000	0	NR
485	86	NR	615	368	NR	745	8	NR	875	0	NR			

REPORT NUMBER: SP1-2506-472-5

Scotopic Flux vs. Wavelength



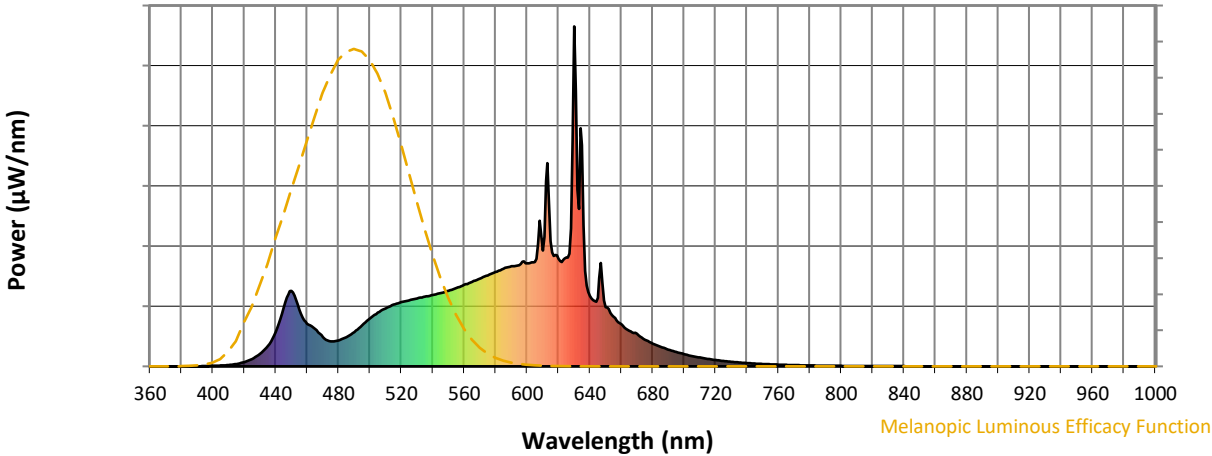
Scotopic Lumens: NR

S/P: 1.44

λ (nm)	Power W [^] /nm	Lumens (φ/nm)	λ (nm)	Power W [^] /nm	Lumens (φ/nm)	λ (nm)	Power W [^] /nm	Lumens (φ/nm)	λ (nm)	Power W [^] /nm	Lumens (φ/nm)	λ (nm)	Power W [^] /nm	Lumens (φ/nm)
360	0	NR	490	101	NR	620	317	NR	750	7	NR	880	0	NR
365	0	NR	495	121	NR	625	320	NR	755	6	NR	885	0	NR
370	0	NR	500	141	NR	630	1000	NR	760	5	NR	890	0	NR
375	0	NR	505	158	NR	635	651	NR	765	4	NR	895	0	NR
380	0	NR	510	171	NR	640	207	NR	770	4	NR	900	0	NR
385	0	NR	515	182	NR	645	201	NR	775	3	NR	905	0	NR
390	0	NR	520	189	NR	650	174	NR	780	3	NR	910	0	NR
395	1	NR	525	194	NR	655	146	NR	785	2	NR	915	0	NR
400	1	NR	530	199	NR	660	124	NR	790	2	NR	920	0	NR
405	3	NR	535	205	NR	665	105	NR	795	2	NR	925	0	NR
410	4	NR	540	210	NR	670	96	NR	800	1	NR	930	0	NR
415	7	NR	545	216	NR	675	79	NR	805	1	NR	935	0	NR
420	13	NR	550	222	NR	680	67	NR	810	1	NR	940	0	NR
425	22	NR	555	230	NR	685	58	NR	815	1	NR	945	0	NR
430	37	NR	560	240	NR	690	49	NR	820	1	NR	950	0	NR
435	60	NR	565	248	NR	695	42	NR	825	1	NR	955	0	NR
440	101	NR	570	258	NR	700	36	NR	830	1	NR	960	0	NR
445	172	NR	575	268	NR	705	30	NR	835	1	NR	965	0	NR
450	223	NR	580	278	NR	710	26	NR	840	1	NR	970	0	NR
455	167	NR	585	287	NR	715	22	NR	845	0	NR	975	0	NR
460	126	NR	590	295	NR	720	19	NR	850	0	NR	980	0	NR
465	111	NR	595	298	NR	725	16	NR	855	0	NR	985	0	NR
470	86	NR	600	303	NR	730	14	NR	860	0	NR	990	0	NR
475	74	NR	605	307	NR	735	12	NR	865	0	NR	995	0	NR
480	77	NR	610	341	NR	740	10	NR	870	0	NR	1000	0	NR
485	86	NR	615	368	NR	745	8	NR	875	0	NR			

REPORT NUMBER: SP1-2506-472-5

Melanopic Flux vs. Wavelength



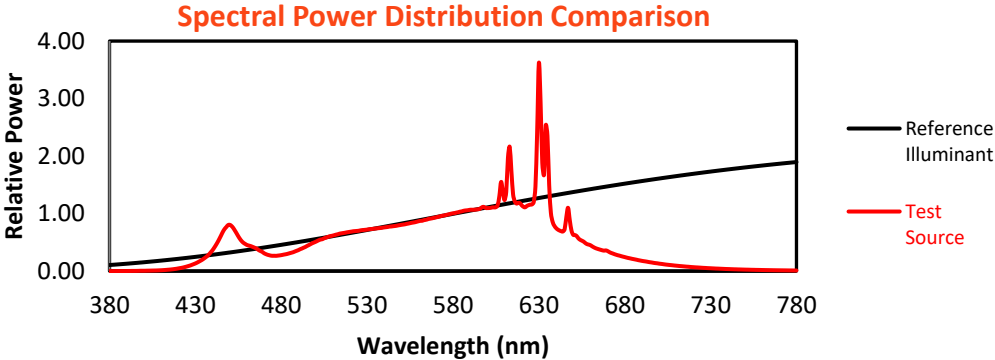
Melanopic Lumens: NR

M/P: 2.85

λ (nm)	Power W [^] /nm	Lumens (φ/nm)	λ (nm)	Power W [^] /nm	Lumens (φ/nm)	λ (nm)	Power W [^] /nm	Lumens (φ/nm)	λ (nm)	Power W [^] /nm	Lumens (φ/nm)	λ (nm)	Power W [^] /nm	Lumens (φ/nm)
360	0	NR	490	101	NR	620	317	NR	750	7	NR	880	0	NR
365	0	NR	495	121	NR	625	320	NR	755	6	NR	885	0	NR
370	0	NR	500	141	NR	630	1000	NR	760	5	NR	890	0	NR
375	0	NR	505	158	NR	635	651	NR	765	4	NR	895	0	NR
380	0	NR	510	171	NR	640	207	NR	770	4	NR	900	0	NR
385	0	NR	515	182	NR	645	201	NR	775	3	NR	905	0	NR
390	0	NR	520	189	NR	650	174	NR	780	3	NR	910	0	NR
395	1	NR	525	194	NR	655	146	NR	785	2	NR	915	0	NR
400	1	NR	530	199	NR	660	124	NR	790	2	NR	920	0	NR
405	3	NR	535	205	NR	665	105	NR	795	2	NR	925	0	NR
410	4	NR	540	210	NR	670	96	NR	800	1	NR	930	0	NR
415	7	NR	545	216	NR	675	79	NR	805	1	NR	935	0	NR
420	13	NR	550	222	NR	680	67	NR	810	1	NR	940	0	NR
425	22	NR	555	230	NR	685	58	NR	815	1	NR	945	0	NR
430	37	NR	560	240	NR	690	49	NR	820	1	NR	950	0	NR
435	60	NR	565	248	NR	695	42	NR	825	1	NR	955	0	NR
440	101	NR	570	258	NR	700	36	NR	830	1	NR	960	0	NR
445	172	NR	575	268	NR	705	30	NR	835	1	NR	965	0	NR
450	223	NR	580	278	NR	710	26	NR	840	1	NR	970	0	NR
455	167	NR	585	287	NR	715	22	NR	845	0	NR	975	0	NR
460	126	NR	590	295	NR	720	19	NR	850	0	NR	980	0	NR
465	111	NR	595	298	NR	725	16	NR	855	0	NR	985	0	NR
470	86	NR	600	303	NR	730	14	NR	860	0	NR	990	0	NR
475	74	NR	605	307	NR	735	12	NR	865	0	NR	995	0	NR
480	77	NR	610	341	NR	740	10	NR	870	0	NR	1000	0	NR
485	86	NR	615	368	NR	745	8	NR	875	0	NR			

Summary

$R_f = 91.3$
 $R_g = 102$
 $CIE R_a = 94.4$
 $R_9 = 61.4$



Color Vector Graphics

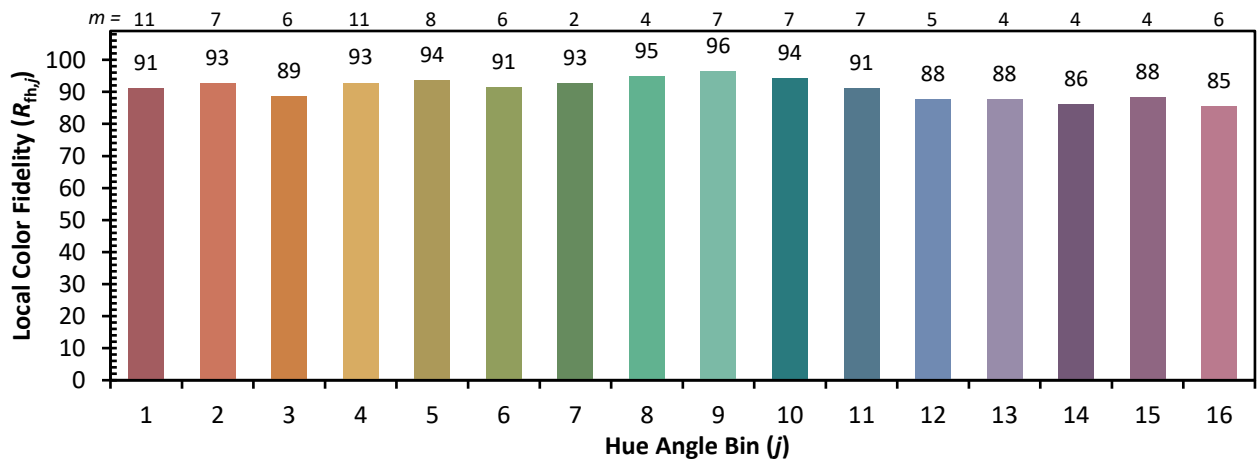
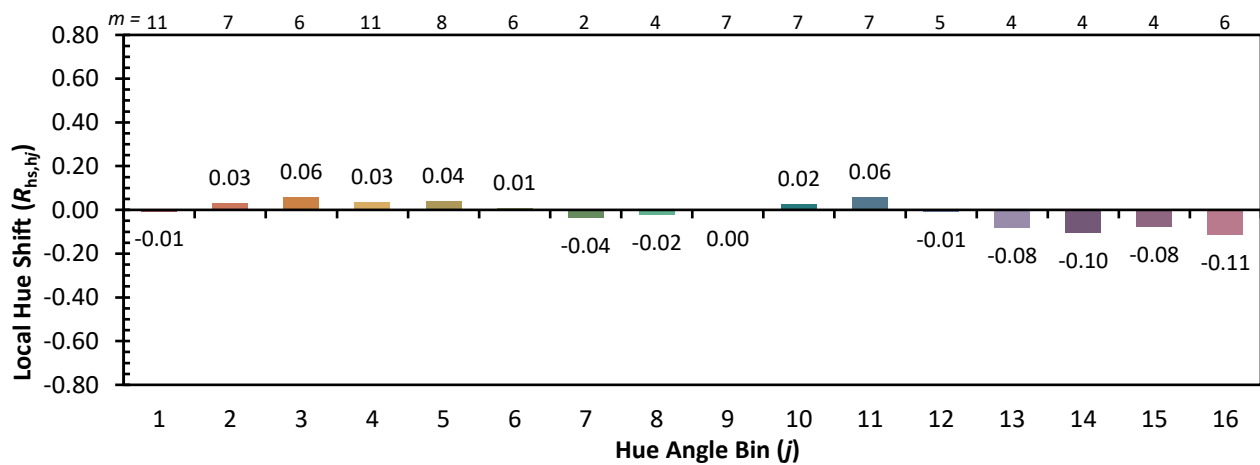
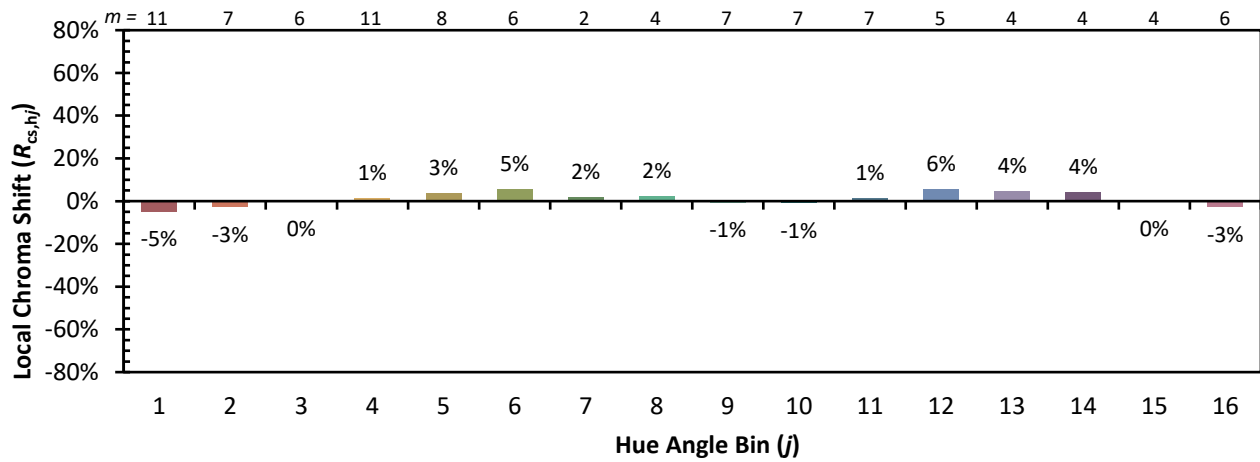


Individual Sample Fidelity Index ($R_{f,i}$)

CES01 = 86	CES26 = 91	CES51 = 96	CES76 = 89
CES02 = 63	CES27 = 96	CES52 = 95	CES77 = 85
CES03 = 32	CES28 = 96	CES53 = 93	CES78 = 86
CES04 = 70	CES29 = 90	CES54 = 98	CES79 = 89
CES05 = 51	CES30 = 96	CES55 = 98	CES80 = 91
CES06 = 51	CES31 = 90	CES56 = 95	CES81 = 72
CES07 = 44	CES32 = 84	CES57 = 95	CES82 = 95
CES08 = 42	CES33 = 91	CES58 = 95	CES83 = 93
CES09 = 29	CES34 = 92	CES59 = 99	CES84 = 96
CES10 = 76	CES35 = 96	CES60 = 96	CES85 = 80
CES11 = 59	CES36 = 90	CES61 = 96	CES86 = 77
CES12 = 65	CES37 = 94	CES62 = 95	CES87 = 91
CES13 = 44	CES38 = 99	CES63 = 94	CES88 = 96
CES14 = 74	CES39 = 97	CES64 = 96	CES89 = 82
CES15 = 72	CES40 = 94	CES65 = 92	CES90 = 97
CES16 = 48	CES41 = 94	CES66 = 95	CES91 = 82
CES17 = 50	CES42 = 91	CES67 = 94	CES92 = 78
CES18 = 57	CES43 = 88	CES68 = 93	CES93 = 87
CES19 = 72	CES44 = 99	CES69 = 94	CES94 = 73
CES20 = 67	CES45 = 93	CES70 = 90	CES95 = 85
CES21 = 86	CES46 = 93	CES71 = 90	CES96 = 92
CES22 = 79	CES47 = 86	CES72 = 96	CES97 = 93
CES23 = 92	CES48 = 95	CES73 = 85	CES98 = 94
CES24 = 91	CES49 = 91	CES74 = 90	CES99 = 93
CES25 = 72	CES50 = 96	CES75 = 90	



Color Rendition by Hue-Angle Bin



Measure Comparisons



(END OF REPORT)