

Cooper Lighting Solutions Photometric Lab  
1121 Highway 74 South  
Peachtree City, GA 30269



Scaled data based on original data using  
LM-79-2019 Approved Method: Electrical and Photometric Measurements of Solid-  
State Lighting Products

Test Report Prepared for  
Cooper Lighting Solutions

Brand: METALUX

Report Number: P1444684

Luminaire Tested: EHBR1-42-UNV-TA-L930-UPL18

Issue Date: 5/1/2026

**Test Information**

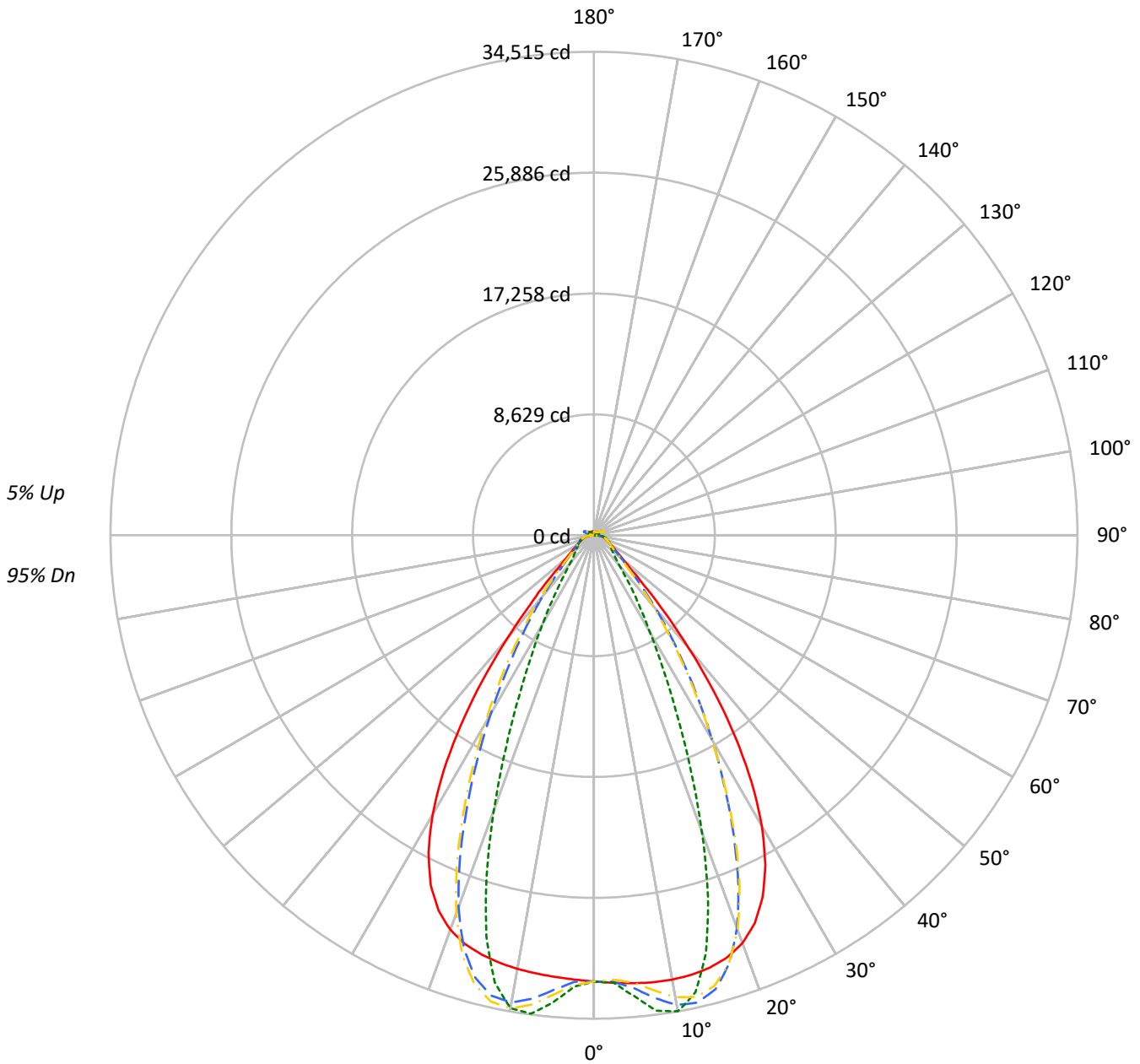
Test Method: LM-79-2019  
Report Number: P1444684  
REPORT IS A COMBINATION OF REPORTS P1444323 AND P1431635  
Test Lab: INNOVATION CENTER  
Issue Date: 5/1/2026  
Manufacturer: COOPER LIGHTING SOLUTIONS  
Product Line: METALUX  
Catalog Number: EHBR1-42-UNV-TA-L930-UPL18  
Description: Elevate Round Highbay at, 42000 lumens, 3000K 90CRI LEDs with TA lens  
Light Source: -  
Ballast/Driver: -

**Summary**

Lumens per Lamp: N/A  
Luminaire Lumens: 38530.2 lumens  
Efficiency: N/A  
Efficacy: 163.1 lumens/watt  
Spacing Criteria (0/90/45): 1.13 / 0.77 / 0.88  
Luminous Opening: Vertical Cylinder (Dia: 1.71' x H: 0.1')  
CIE Type: Direct  
  
Input Watts (W): 236.3  
Input Voltage (V): NR  
Input Current (Ain): NR  
Voltage Rise (V): NR  
Power Factor: NR  
Total Harmonic Distortion (THDi): NR  
Frequency (hertz): 60  
Stabilization Time: NR  
Operation Time: NR  
Ambient Temperature (°C): NR  
Test Distance: 24 FT

TEST NUMBER: P1444684  
CATALOG NUMBER: EHBR1-42-UNV-TA-L930-UPL18

### Luminous Intensity Polar Plot



— 0°-180°    - - 45°-225°    - · - · 90°-270°    - · - · 135°-315°



TEST NUMBER: P1444684  
 CATALOG NUMBER: EHBR1-42-UNV-TA-L930-UPL18

**COEFFICIENT OF UTILIZATION - ZONAL CAVITY METHOD:**

RF	20				20				20				20				20				
RC	80				70				50				30				10			0	
RW	70	50	30	10	70	50	30	10	50	30	10	50	30	10	50	30	10	50	30	10	0
RCR																					
0	118	118	118	118	115	115	115	115	108	108	108	103	103	103	98	98	98	98	98	98	95
1	111	107	104	101	108	105	102	99	100	97	95	95	93	92	91	89	88	88	88	88	86
2	104	98	93	89	101	96	91	88	92	88	85	88	85	82	84	82	80	80	80	80	78
3	98	90	84	79	95	88	83	79	85	80	77	82	78	75	79	76	73	73	73	73	71
4	92	83	77	72	90	82	76	71	79	74	70	76	72	68	74	70	67	67	67	67	65
5	87	77	70	65	84	76	69	65	73	68	64	71	66	63	69	65	62	62	62	62	60
6	82	72	65	60	80	70	64	60	68	63	59	66	62	58	65	60	57	57	57	57	55
7	77	67	60	55	75	66	59	55	64	58	54	62	57	54	61	56	53	53	53	53	51
8	73	63	56	51	72	62	55	51	60	55	50	59	54	50	57	53	49	49	49	49	48
9	69	59	52	48	68	58	52	48	57	51	47	55	50	47	54	50	46	46	46	46	45
10	66	55	49	45	65	55	49	44	53	48	44	52	47	44	51	47	43	43	43	43	42

**AVERAGE LUMINANCE (cd/sqm):**

	0°	90°	180°	270°
0°	149618	149618	149618	149618
5°	150342	154726	148238	156752
10°	151597	162450	147962	161376
15°	152341	147260	147702	141331
20°	150766	109703	145831	101502
25°	142706	69381	137989	62951
30°	124664	41693	119836	38104
35°	95942	26162	90424	23175
40°	60692	16411	55529	15421
45°	31281	12785	30763	12575
50°	18341	11373	17778	11195
55°	14051	10759	13530	10662
60°	11889	10991	11383	10849
65°	11166	11478	10739	11086
70°	10910	12019	10366	11565
75°	11665	12745	11034	12183
80°	12071	14114	10945	12884
85°	11368	13617	9185	11659

**MAXIMUM LUMINANCE 45°-90°:**

Horizontal Angle: 25°  
 Vertical Angle: 45°  
 Luminance: 47873 cd/sqm



TEST NUMBER: P1444684  
 CATALOG NUMBER: EHBR1-42-UNV-TA-L930-UPL18

**ZONAL LUMENS:**

Zone	Lumens	% Fixture
0°-10°	3139.9	8.1
10°-20°	8832.8	22.9
20°-30°	10059.9	26.1
30°-40°	7230.6	18.8
40°-50°	3334.7	8.7
50°-60°	1595.8	4.1
60°-70°	1164.4	3.0
70°-80°	884.6	2.3
80°-90°	405.3	1.1
90°-100°	56.3	0.1
100°-110°	296.0	0.8
110°-120°	546.3	1.4
120°-130°	341.4	0.9
130°-140°	228.9	0.6
140°-150°	177.3	0.5
150°-160°	128.4	0.3
160°-170°	79.8	0.2
170°-180°	27.8	0.1
0°-30°	22032.5	57.2
0°-40°	29263.1	75.9
0°-60°	34193.6	88.7
0°-90°	36647.8	95.1
90°-120°	898.6	2.3
90°-150°	1646.3	4.3
90°-180°	1882.0	4.9
0°-180°	38530.2	100.0

**CANDELA DISTRIBUTION:**

	0°	90°	180°	270°	360°	Flux
0°	31860	31860	31860	31860	31860	
5°	32100	33036	31651	33469	32100	3068
15°	31960	30894	30987	29650	31960	9005
25°	28498	13855	27556	12571	28498	12919
35°	17609	4802	16596	4254	17609	10807
45°	5061	2069	4977	2035	5061	4305
55°	1899	1454	1828	1441	1899	1753
65°	1166	1198	1121	1157	1166	1164
75°	822	898	777	858	822	854
85°	391	468	316	401	391	367
90°	100	128	25	32	100	63
95°	26	28	26	28	26	24
105°	109	139	75	139	109	144
115°	479	575	502	575	479	443
125°	371	378	418	380	371	338
135°	306	262	328	265	306	238
145°	284	267	300	272	284	179
155°	274	270	290	274	274	127
165°	280	277	289	280	280	79
175°	291	293	296	294	291	28
180°	295	295	295	295	295	



TEST NUMBER: P1444684  
 CATALOG NUMBER: EHBR1-42-UNV-TA-L930-UPL18

**CANDELA DISTRIBUTION (FULL):**

	0°	2.5°	5°	7.5°	10°	12.5°	15°	17.5°	20°	22.5°	25°
0°	31860.0	31860.0	31860.0	31860.0	31860.0	31860.0	31860.0	31860.0	31860.0	31860.0	31860.0
2.5°	31981.7	31979.2	31978.6	31976.4	31975.8	31975.8	31974.7	31972.1	31970.5	31966.9	31962.7
5°	32100.4	32098.9	32099.8	32100.0	32097.8	32092.8	32085.0	32075.5	32063.5	32052.1	32041.9
7.5°	32192.1	32194.4	32197.2	32196.6	32189.6	32178.0	32162.0	32153.0	32158.4	32175.7	32215.4
10°	32208.9	32222.6	32227.9	32226.3	32212.3	32202.3	32206.2	32239.9	32307.1	32396.7	32519.3
12.5°	32143.6	32160.3	32159.8	32154.2	32140.7	32154.4	32203.4	32303.8	32447.9	32624.6	32832.0
15°	31960.3	31981.9	31975.8	31968.6	31959.6	32004.6	32102.2	32276.8	32499.2	32748.5	33003.7
17.5°	31604.3	31630.5	31617.7	31609.5	31601.9	31686.2	31854.0	32109.6	32389.8	32671.7	32913.6
20°	30986.7	31004.2	30974.0	30959.6	30971.7	31136.9	31384.0	31710.4	32005.7	32272.3	32437.6
22.5°	29978.9	30000.7	29943.7	29937.1	30007.4	30261.2	30573.9	30938.8	31216.3	31427.5	31491.3
25°	28498.2	28519.7	28451.9	28492.4	28612.2	28957.7	29330.2	29720.4	29957.2	30113.7	30070.5
27.5°	26499.6	26519.2	26455.0	26537.7	26727.0	27181.1	27619.3	28042.6	28253.7	28363.4	28224.4
30°	23979.0	24019.8	23943.8	24059.2	24348.2	24937.7	25439.9	25914.6	26125.0	26208.5	25992.1
32.5°	20985.3	21043.3	20959.6	21131.2	21534.4	22242.6	22813.1	23343.5	23576.2	23671.4	23427.2
35°	17608.8	17692.0	17595.9	17853.6	18350.8	19139.4	19771.2	20363.3	20638.9	20774.0	20527.7
37.5°	14031.5	14110.7	14058.8	14402.5	14948.5	15765.9	16410.8	17049.6	17360.8	17563.6	17369.5
40°	10519.5	10592.0	10631.3	11024.4	11537.8	12308.3	12927.7	13559.8	13907.9	14162.3	14042.7
42.5°	7424.7	7497.8	7631.4	8010.7	8438.9	9076.7	9607.2	10174.7	10507.3	10778.8	10732.6
45°	5061.2	5146.2	5313.6	5624.2	5933.8	6391.3	6780.9	7222.3	7493.9	7742.7	7745.6
47.5°	3546.6	3606.3	3755.9	3968.0	4169.9	4742.6	4766.2	4983.1	5165.8	5351.6	5375.7
50°	2733.4	2769.2	2848.6	2966.8	3081.2	3229.8	3366.0	3523.2	3635.6	3737.5	3761.9
52.5°	2246.7	2269.5	2309.8	2373.8	2440.2	2521.0	2593.9	2680.2	2741.4	2795.9	2807.4
55°	1898.8	1917.6	1977.8	1989.9	2065.8	2080.5	2112.9	2165.4	2200.9	2233.6	2241.8
57.5°	1636.3	1650.0	1662.8	1690.0	1713.4	1747.4	1774.8	1812.5	1834.9	1858.6	1860.5
60°	1429.2	1439.1	1448.2	1467.1	1483.0	1506.6	1525.5	1551.2	1567.2	1585.0	1586.9
62.5°	1275.1	1282.2	1288.2	1300.7	1312.1	1330.3	1345.3	1366.7	1381.6	1395.3	1398.4
65°	1165.5	1170.7	1174.6	1184.1	1194.0	1209.5	1223.0	1240.6	1251.5	1262.0	1264.3
67.5°	1068.5	1073.5	1077.5	1086.0	1092.9	1104.5	1113.6	1126.7	1135.0	1143.3	1143.6
70°	957.3	961.9	964.9	972.9	978.5	988.5	995.8	1007.5	1016.1	1025.3	1027.8
72.5°	880.3	882.9	887.1	894.4	902.1	912.7	922.5	934.8	945.1	954.8	958.9
75°	821.7	824.9	827.6	833.8	839.2	848.2	855.5	866.7	875.6	886.1	891.1
77.5°	737.2	740.8	743.2	749.4	754.1	762.6	768.1	778.1	785.5	794.9	799.5
80°	635.0	638.4	640.1	646.0	649.6	657.6	662.9	672.5	678.7	688.1	693.7
82.5°	521.8	525.1	526.0	531.6	533.6	540.1	544.0	553.9	561.4	573.7	582.3
85°	390.7	391.9	393.8	392.4	400.3	400.7	409.7	411.3	423.2	426.2	439.7
87.5°	238.8	242.4	244.2	249.6	252.0	257.5	259.1	264.8	268.1	274.6	277.7
90°	100.3	105.7	107.5	113.8	115.4	121.2	122.4	128.8	130.6	137.1	139.6
92.5°	22.7	24.1	25.2	26.8	28.2	30.2	31.9	33.4	34.8	36.8	39.6
95°	25.5	27.0	28.5	30.0	31.5	33.2	34.7	36.2	37.7	39.2	43.6
97.5°	31.7	33.1	34.4	35.6	37.0	38.3	39.7	40.9	42.2	43.5	48.7
100°	40.7	41.9	43.0	44.1	45.2	46.3	47.4	48.6	49.6	50.8	60.5
102.5°	65.9	69.8	73.8	77.7	81.6	85.5	89.6	93.3	97.3	101.2	122.0
105°	109.3	120.0	130.9	141.5	152.3	163.1	173.9	184.3	195.1	205.8	239.6
107.5°	184.3	204.1	223.9	243.9	263.8	283.6	303.4	323.2	343.0	362.6	397.0
110°	336.7	352.5	368.6	384.4	400.4	416.3	432.3	448.0	464.0	479.8	504.8



TEST NUMBER: P1444684  
 CATALOG NUMBER: EHBR1-42-UNV-TA-L930-UPL18

**CANDELA DISTRIBUTION (continued):**

	0°	2.5°	5°	7.5°	10°	12.5°	15°	17.5°	20°	22.5°	25°
112.5°	453.1	460.1	467.3	474.4	481.7	488.6	495.8	502.9	510.1	517.0	534.9
115°	479.4	481.8	484.3	486.7	489.1	491.4	493.9	496.2	498.5	500.7	512.8
117.5°	468.1	467.5	467.0	466.4	465.6	465.0	464.3	463.5	462.7	462.0	468.7
120°	440.0	437.5	435.1	432.6	430.2	427.6	425.2	422.6	420.0	417.2	420.0
122.5°	404.0	401.1	398.3	395.2	392.4	389.2	386.3	382.9	380.0	376.9	377.6
125°	371.1	368.1	365.4	362.2	359.1	355.9	352.8	349.6	346.4	343.1	343.3
127.5°	343.1	341.0	339.0	336.5	334.2	331.7	329.3	326.6	324.3	321.5	321.3
130°	326.3	324.5	322.4	320.2	318.0	315.6	313.3	310.8	308.5	305.9	305.7
132.5°	313.3	312.0	310.4	308.7	306.9	304.8	303.1	300.8	299.0	297.0	296.7
135°	305.7	304.2	303.0	301.3	299.7	297.6	295.8	293.8	291.9	289.8	289.7
137.5°	299.7	298.4	297.0	295.4	293.9	291.8	290.2	288.2	286.4	284.4	284.2
140°	294.3	293.0	291.7	290.2	288.7	287.1	285.3	283.5	281.7	279.7	279.8
142.5°	287.5	286.3	285.4	284.0	282.8	281.2	279.8	278.0	276.6	274.9	275.2
145°	283.8	282.9	282.0	280.9	279.6	278.1	276.9	275.3	273.9	272.5	272.8
147.5°	280.6	279.8	279.2	278.1	277.2	275.9	274.7	273.3	272.2	270.9	271.4
150°	277.9	277.2	276.5	275.6	274.6	273.5	272.3	271.1	270.0	268.8	269.2
152.5°	274.6	273.8	273.2	272.3	271.4	270.1	269.3	268.1	267.0	265.9	266.2
155°	273.7	272.9	272.1	271.3	270.4	269.4	268.3	267.3	266.4	265.2	265.4
157.5°	274.0	273.2	272.6	271.7	271.2	270.2	269.4	268.4	267.6	266.8	266.8
160°	275.7	275.0	274.3	273.4	272.7	271.7	271.1	270.0	269.5	268.6	268.6
162.5°	277.5	276.7	276.1	275.3	274.6	273.6	272.9	272.2	271.5	270.6	270.7
165°	280.0	279.6	278.9	278.4	277.8	277.2	276.6	275.9	275.3	274.6	274.6
167.5°	284.4	283.7	283.3	282.6	282.0	281.2	280.6	279.9	279.5	278.7	278.7
170°	287.0	286.5	286.1	285.8	285.3	284.8	284.5	284.0	283.5	283.0	283.1
172.5°	289.6	289.2	288.9	288.7	288.2	288.0	287.7	287.3	287.0	286.6	286.9
175°	290.8	290.4	290.3	290.1	289.8	289.6	289.4	289.3	289.3	288.9	288.9
177.5°	292.9	292.8	292.8	292.7	292.7	292.6	292.5	292.2	292.1	292.1	292.2
180°	294.7	294.7	294.7	294.7	294.7	294.7	294.7	294.7	294.7	294.7	294.7



TEST NUMBER: P1444684  
 CATALOG NUMBER: EHBR1-42-UNV-TA-L930-UPL18

**CANDELA DISTRIBUTION (continued):**

	27.5°	30°	32.5°	35°	37.5°	40°	42.5°	45°	47.5°	50°	52.5°
0°	31860.0	31860.0	31860.0	31860.0	31860.0	31860.0	31860.0	31860.0	31860.0	31860.0	31860.0
2.5°	31959.6	31955.7	31950.5	31943.7	31937.9	31931.2	31915.3	31910.5	31915.8	31919.4	31926.7
5°	32035.6	32037.8	32038.6	32053.1	32065.7	32097.0	32342.1	32439.5	32514.8	32562.7	32635.3
7.5°	32264.5	32338.2	32411.0	32509.0	32593.6	32707.8	33136.7	33319.2	33448.9	33542.2	33657.0
10°	32652.5	32813.4	32964.1	33140.8	33292.6	33466.6	33865.8	34043.6	34155.9	34237.6	34313.9
12.5°	33043.4	33266.4	33468.0	33664.6	33828.9	33979.7	34120.1	34182.3	34187.6	34190.3	34149.7
15°	33246.9	33460.1	33637.7	33767.8	33864.4	33907.0	33665.4	33538.6	33378.3	33246.4	33029.2
17.5°	33118.5	33246.4	33323.1	33315.5	33275.6	33141.9	32457.3	32080.7	31706.9	31370.1	30928.3
20°	32547.3	32537.5	32470.8	32281.8	32054.0	31699.8	30526.1	29848.9	29194.2	28619.1	27921.5
22.5°	31484.8	31317.5	31084.5	30676.8	30224.1	29605.2	27923.1	26927.1	26015.7	25210.5	24308.5
25°	29945.1	29601.2	29171.3	28524.2	27820.5	26917.8	24844.8	23605.8	22511.5	21562.4	20521.6
27.5°	27974.7	27456.6	26826.6	25931.0	24977.7	23821.3	21523.0	20155.6	18980.8	17963.2	16855.6
30°	25642.1	24968.2	24154.6	23043.1	21893.1	20581.7	18250.5	16865.6	15676.6	14629.7	13521.3
32.5°	23005.8	22216.6	21263.3	20015.7	18772.1	17423.6	15172.4	13831.9	12696.0	11688.9	10685.6
35°	20098.3	19252.0	18243.3	16970.9	15734.7	14423.7	12358.1	11149.3	10146.2	9256.1	8446.0
37.5°	16979.4	16148.4	15189.7	13990.4	12844.2	11656.2	9873.8	8861.0	8019.2	7280.3	6654.8
40°	13736.7	13009.5	12180.0	11143.2	10164.9	9175.5	7712.5	6908.5	6244.1	5680.7	5211.9
42.5°	10533.6	9970.1	9334.0	8514.7	7766.0	7012.7	5886.6	5290.9	4798.9	4393.3	4061.8
45°	7642.5	7265.5	6838.9	6269.3	5751.3	5225.8	4424.3	4005.8	3685.3	3423.8	3202.6
47.5°	5342.5	5123.8	5110.5	4584.1	4204.2	3883.0	3366.6	3102.2	2905.9	2747.4	2607.4
50°	3751.9	3646.1	3514.7	3326.8	3150.5	2968.9	2654.3	2494.5	2379.5	2283.5	2195.0
52.5°	2804.8	2749.9	2679.8	2580.2	2484.7	2382.5	2183.5	2081.7	2045.5	1956.1	1886.0
55°	2240.2	2208.8	2168.9	2110.4	2052.3	2029.0	1858.4	1782.8	1735.0	1699.8	1662.1
57.5°	1860.9	1837.4	1813.7	1774.1	1740.5	1699.8	1609.1	1570.5	1541.9	1521.2	1495.1
60°	1587.3	1573.2	1560.0	1536.8	1518.6	1496.7	1439.1	1417.3	1402.4	1389.9	1373.2
62.5°	1401.0	1393.7	1387.0	1374.5	1365.3	1353.4	1314.1	1303.6	1296.2	1289.8	1279.7
65°	1266.5	1261.3	1257.5	1249.3	1244.7	1237.7	1203.9	1196.8	1192.3	1189.9	1184.1
67.5°	1144.3	1138.9	1136.4	1130.5	1128.5	1124.2	1096.5	1092.7	1091.1	1091.8	1089.8
70°	1030.0	1027.8	1028.9	1028.0	1030.6	1031.4	1014.7	1014.5	1016.3	1019.8	1020.2
72.5°	961.5	961.5	962.8	963.4	965.9	967.1	953.1	952.4	953.3	955.8	955.9
75°	896.3	897.4	900.9	902.1	905.0	905.7	887.2	885.1	885.3	887.7	886.9
77.5°	806.1	810.0	816.7	820.3	825.9	827.0	806.3	803.9	804.0	806.5	804.3
80°	703.7	711.2	721.9	729.4	738.1	741.6	720.4	715.3	710.6	709.9	705.6
82.5°	595.0	604.1	616.9	623.7	633.0	635.1	599.6	592.9	588.9	589.2	585.3
85°	454.2	461.1	472.7	476.6	482.4	481.8	441.3	423.9	428.5	421.3	426.9
87.5°	284.9	288.9	296.2	297.2	300.0	299.3	258.4	250.4	248.1	248.2	245.2
90°	146.5	149.5	156.3	156.8	161.4	161.1	128.4	125.0	121.7	123.0	118.7
92.5°	42.6	45.3	48.2	51.1	54.0	56.9	56.0	57.7	55.2	52.0	49.7
95°	48.0	52.5	56.9	61.5	65.9	70.4	74.9	79.3	75.1	70.8	66.7
97.5°	54.0	59.3	64.4	69.7	74.9	80.3	85.5	90.8	86.4	81.7	77.3
100°	70.4	80.2	90.0	99.8	109.5	119.3	129.2	139.0	130.4	121.6	113.0
102.5°	142.7	163.6	184.5	205.2	226.0	246.9	268.0	288.9	268.9	249.0	229.1
105°	273.4	307.2	340.9	374.5	408.2	442.0	476.2	509.9	478.2	446.4	414.6
107.5°	431.2	465.4	499.5	533.7	567.9	602.1	636.9	671.1	640.1	608.9	577.9
110°	529.8	554.6	579.5	604.4	629.2	654.1	679.8	704.7	686.0	667.2	648.4



TEST NUMBER: P1444684  
 CATALOG NUMBER: EHBR1-42-UNV-TA-L930-UPL18

**CANDELA DISTRIBUTION (continued):**

	27.5°	30°	32.5°	35°	37.5°	40°	42.5°	45°	47.5°	50°	52.5°
112.5°	552.4	570.2	588.0	605.5	623.2	640.9	659.6	677.5	668.0	658.2	648.9
115°	524.4	536.5	548.1	560.0	571.8	583.4	596.5	608.7	605.4	602.1	598.8
117.5°	475.0	481.5	487.9	494.4	500.6	507.1	515.2	521.9	521.9	522.2	522.4
120°	422.5	425.0	427.4	430.1	432.3	434.8	439.2	442.1	444.3	446.3	448.4
122.5°	378.3	379.0	379.6	380.2	380.9	381.4	384.4	385.6	386.8	388.1	389.4
125°	343.3	343.4	343.5	343.6	343.4	343.5	346.4	346.7	346.5	346.0	345.7
127.5°	320.9	320.5	320.2	319.8	319.1	318.8	321.2	321.3	319.8	318.2	316.6
130°	305.5	305.2	304.9	304.7	304.4	304.2	306.9	307.4	305.0	302.5	300.0
132.5°	296.5	296.3	295.9	296.0	295.8	295.5	298.5	299.1	296.6	293.6	291.0
135°	289.4	289.5	289.4	289.2	289.0	289.2	292.5	293.2	290.7	287.9	285.3
137.5°	283.9	284.0	283.8	283.8	283.6	283.7	287.6	288.4	286.2	283.9	281.9
140°	279.8	279.7	279.8	280.0	280.0	280.3	284.5	285.4	283.8	281.9	280.0
142.5°	275.2	275.5	275.9	276.3	276.6	277.1	281.9	283.2	281.9	280.4	279.1
145°	273.0	273.7	274.1	274.6	275.2	275.9	281.2	282.9	282.0	280.9	279.9
147.5°	271.4	271.9	272.2	272.8	273.3	274.2	279.8	281.5	281.0	280.2	279.4
150°	269.4	269.9	270.4	270.9	271.7	272.5	278.9	281.1	280.4	279.9	279.2
152.5°	266.5	266.9	267.3	267.9	268.3	269.1	277.1	279.4	278.9	278.3	277.9
155°	265.6	265.9	266.1	266.5	266.8	267.5	276.2	278.5	278.1	277.8	277.3
157.5°	266.9	266.9	266.9	267.1	267.3	267.6	276.8	279.4	278.9	278.6	278.2
160°	268.5	268.6	268.5	268.5	268.6	268.7	278.3	280.7	280.4	280.0	279.6
162.5°	270.7	271.1	271.1	271.2	271.3	271.6	281.2	283.9	283.4	282.9	282.5
165°	274.6	274.5	274.4	274.6	274.6	274.6	283.6	286.0	285.7	285.3	284.9
167.5°	278.6	278.7	278.7	278.8	278.8	279.2	287.5	289.7	289.4	289.0	288.7
170°	283.0	283.2	283.1	283.3	283.5	283.7	290.7	292.6	292.4	291.8	291.5
172.5°	286.9	287.2	287.4	287.6	287.7	288.0	293.9	295.7	295.4	295.1	294.7
175°	289.2	289.2	289.4	289.7	289.9	290.1	294.8	296.0	295.9	295.7	295.4
177.5°	292.5	292.5	292.7	292.9	293.1	293.3	296.2	296.9	296.8	296.8	296.7
180°	294.7	294.7	294.7	294.7	294.7	294.7	294.7	294.7	294.7	294.7	294.7



TEST NUMBER: P1444684  
 CATALOG NUMBER: EHBR1-42-UNV-TA-L930-UPL18

**CANDELA DISTRIBUTION (continued):**

	55°	57.5°	60°	62.5°	65°	67.5°	70°	72.5°	75°	77.5°	80°
0°	31860.0	31860.0	31860.0	31860.0	31860.0	31860.0	31860.0	31860.0	31860.0	31860.0	31860.0
2.5°	31928.4	31939.6	31941.2	31954.3	31953.2	31968.8	31966.3	31979.2	31971.7	31982.2	31973.4
5°	32678.3	32746.2	32781.8	32848.2	32869.1	32928.6	32945.3	32999.5	33001.7	33044.8	33035.0
7.5°	33738.4	33838.7	33898.2	33980.3	34021.8	34090.2	34120.3	34170.8	34187.1	34227.3	34230.4
10°	34371.6	34420.3	34454.2	34477.1	34498.0	34507.9	34519.3	34516.2	34519.3	34514.8	34524.6
12.5°	34122.5	34051.5	34004.4	33915.4	33863.8	33765.5	33717.2	33622.6	33588.3	33507.0	33495.3
15°	32861.4	32613.6	32438.6	32184.1	32024.1	31773.7	31627.2	31401.3	31298.1	31118.5	31071.4
17.5°	30562.7	30102.9	29747.0	29290.5	28973.7	28547.1	28278.8	27925.6	27732.3	27447.4	27348.9
20°	27340.0	26659.6	26125.8	25490.0	25034.9	24467.9	24105.0	23647.1	23381.4	23031.6	22889.8
22.5°	23556.5	22709.3	22042.7	21291.5	20742.4	20110.6	19675.7	19180.4	18891.3	18511.3	18343.0
25°	19656.7	18722.7	17981.5	17190.0	16609.9	15976.5	15541.6	15054.9	14755.8	14395.0	14227.8
27.5°	15927.1	14981.5	14265.2	13529.4	12997.2	12425.7	12033.2	11608.3	11342.8	11034.9	10877.6
30°	12635.6	11801.6	11192.2	10581.5	10138.8	9674.7	9348.5	8996.4	8763.5	8499.8	8349.9
32.5°	9954.1	9310.3	8833.0	8348.4	7986.1	7598.2	7316.4	7005.8	6795.5	6560.0	6424.3
35°	7883.6	7383.3	7002.6	6603.7	6292.4	5962.1	5713.7	5445.6	5256.9	5054.2	4937.0
37.5°	6228.8	5831.0	5517.8	5186.4	4930.8	4657.1	4564.9	4257.2	4061.6	3899.8	3787.8
40°	4888.3	4572.1	4312.8	4059.5	3851.0	3643.4	3476.8	3312.5	3186.2	3070.5	2990.4
42.5°	3817.5	3588.3	3399.0	3213.4	3061.2	2910.0	2789.4	2676.1	2591.1	2515.4	2463.8
45°	3034.7	2877.0	2745.5	2614.8	2507.5	2406.5	2325.2	2253.1	2198.1	2152.6	2120.5
47.5°	2493.1	2385.1	2292.4	2204.1	2131.2	2065.1	2010.8	1993.0	1934.0	1894.2	1879.1
50°	2118.8	2053.6	1983.1	1918.0	1869.4	1821.0	1785.7	1751.1	1729.0	1710.7	1705.1
52.5°	1839.4	1789.6	1750.4	1709.2	1677.0	1642.5	1618.2	1595.2	1583.0	1573.5	1572.3
55°	1631.7	1596.8	1570.9	1543.3	1524.0	1503.8	1491.2	1479.0	1473.7	1468.9	1469.2
57.5°	1474.6	1451.3	1434.4	1416.5	1406.0	1396.4	1393.2	1390.1	1391.8	1392.5	1395.2
60°	1360.0	1344.9	1334.3	1324.0	1319.6	1316.6	1318.9	1321.6	1327.2	1331.6	1335.7
62.5°	1272.3	1263.6	1258.5	1252.9	1252.4	1252.7	1257.4	1262.0	1269.0	1274.2	1278.1
65°	1181.9	1177.0	1175.3	1171.8	1173.5	1174.6	1180.3	1183.9	1190.8	1194.9	1199.9
67.5°	1090.7	1089.5	1090.6	1090.6	1093.8	1096.5	1101.9	1105.9	1111.8	1115.6	1119.6
70°	1023.3	1023.7	1026.2	1026.7	1030.1	1032.0	1036.8	1039.3	1044.6	1047.8	1052.6
72.5°	957.7	956.6	957.3	955.7	956.9	956.5	959.0	960.3	964.8	967.2	973.2
75°	887.9	885.0	884.3	881.1	881.2	878.9	880.0	879.9	882.9	884.0	888.3
77.5°	803.6	798.6	796.3	791.0	790.9	788.8	791.0	792.3	797.5	800.0	804.8
80°	702.8	695.0	691.4	685.3	686.4	686.0	691.3	695.1	701.5	702.7	708.8
82.5°	584.1	576.2	572.5	566.4	567.8	567.9	572.6	573.5	579.1	581.4	588.5
85°	418.2	421.3	413.0	413.5	411.7	415.0	418.2	422.2	426.9	434.5	440.4
87.5°	246.3	245.2	248.2	248.5	252.8	255.0	261.9	265.8	273.5	279.5	290.3
90°	118.5	114.2	116.2	114.6	118.3	116.8	120.3	118.1	122.4	122.5	128.1
92.5°	46.3	43.9	40.7	38.1	35.0	32.7	30.8	29.9	28.2	27.4	25.6
95°	62.5	58.4	54.2	50.0	45.9	41.7	40.2	38.7	37.2	35.6	34.0
97.5°	72.8	68.3	63.8	59.2	54.7	50.3	49.3	48.2	47.2	46.3	45.2
100°	104.2	95.5	86.9	78.2	69.6	61.0	60.2	59.3	58.5	57.7	56.9
102.5°	209.3	189.3	169.5	149.6	129.8	110.0	106.5	103.1	99.6	96.2	92.8
105°	382.7	350.8	319.1	287.4	255.7	223.9	214.4	204.8	195.3	185.9	176.5
107.5°	546.9	515.7	484.8	453.8	422.8	391.9	376.9	361.9	346.8	331.9	317.0
110°	629.5	610.8	592.3	573.4	554.8	536.2	521.9	507.6	493.2	478.8	464.6



TEST NUMBER: P1444684  
 CATALOG NUMBER: EHBR1-42-UNV-TA-L930-UPL18

**CANDELA DISTRIBUTION (continued):**

	55°	57.5°	60°	62.5°	65°	67.5°	70°	72.5°	75°	77.5°	80°
112.5°	639.3	629.9	620.1	610.9	601.4	592.0	585.0	577.9	571.0	563.9	556.8
115°	595.5	592.3	589.0	586.0	582.9	579.7	579.0	578.5	577.7	577.3	576.7
117.5°	522.5	522.8	522.9	523.2	523.5	523.9	527.4	530.8	534.4	538.1	541.9
120°	450.5	452.5	454.6	456.8	458.9	461.3	465.8	470.6	475.3	480.3	485.3
122.5°	390.6	391.8	393.0	394.4	395.8	397.2	401.6	406.4	410.9	415.7	420.8
125°	345.0	344.6	344.2	343.6	343.2	343.0	346.6	350.2	354.0	358.0	361.7
127.5°	314.9	313.1	311.5	309.9	308.2	306.7	308.5	310.5	312.4	314.6	316.7
130°	297.5	295.1	292.3	290.0	287.2	284.9	285.3	285.8	286.1	286.8	287.5
132.5°	288.1	285.3	282.4	279.6	276.5	273.8	273.2	272.6	272.0	271.6	271.4
135°	282.5	280.0	277.1	274.3	271.4	268.9	267.7	266.5	265.6	264.6	263.6
137.5°	279.6	277.3	275.0	272.8	270.4	268.1	266.6	265.4	264.0	263.1	261.8
140°	278.0	276.3	274.2	272.3	270.3	268.6	267.3	266.3	264.9	264.0	263.0
142.5°	277.4	276.0	274.4	273.0	271.4	270.0	268.8	267.7	266.5	265.6	264.6
145°	278.7	277.8	276.6	275.5	274.3	273.3	272.2	271.4	270.5	269.7	268.9
147.5°	278.6	277.8	277.1	276.2	275.2	274.4	273.6	273.1	272.2	271.7	271.0
150°	278.4	277.7	276.9	276.3	275.4	274.7	274.1	273.6	273.0	272.7	272.2
152.5°	277.1	276.3	275.7	275.1	274.3	273.7	273.1	272.8	272.2	271.9	271.4
155°	276.8	276.3	275.7	275.2	274.5	274.1	273.6	273.0	272.5	272.1	271.4
157.5°	277.8	277.2	276.7	276.3	275.6	275.2	274.6	274.2	273.6	273.2	272.7
160°	279.2	278.8	278.2	277.8	277.3	276.8	276.2	275.7	275.0	274.6	273.8
162.5°	281.9	281.2	280.8	280.3	279.6	279.1	278.6	278.0	277.6	277.1	276.5
165°	284.5	283.9	283.5	283.0	282.7	282.2	281.5	281.1	280.3	279.8	279.2
167.5°	288.3	287.9	287.5	287.1	286.5	286.1	285.6	285.1	284.5	283.9	283.1
170°	291.1	290.5	290.2	289.6	289.2	288.6	288.2	287.7	287.0	286.8	286.0
172.5°	294.3	294.1	293.6	293.3	292.7	292.4	292.1	291.7	291.2	290.8	290.3
175°	295.3	295.1	295.1	294.7	294.6	294.3	294.1	294.0	293.7	293.6	293.3
177.5°	296.7	296.6	296.6	296.4	296.2	296.2	296.0	295.9	295.7	295.4	295.3
180°	294.7	294.7	294.7	294.7	294.7	294.7	294.7	294.7	294.7	294.7	294.7



TEST NUMBER: P1444684  
 CATALOG NUMBER: EHBR1-42-UNV-TA-L930-UPL18

**CANDELA DISTRIBUTION (continued):**

	82.5°	85°	87.5°	90°	92.5°	95°	97.5°	100°	102.5°	105°	107.5°
0°	31860.0	31860.0	31860.0	31860.0	31860.0	31860.0	31860.0	31860.0	31860.0	31860.0	31860.0
2.5°	31982.5	31974.4	31978.3	31963.3	31966.9	31948.8	31947.1	31926.7	31924.7	31905.5	31898.2
5°	33065.5	33047.6	33067.7	33036.4	33042.6	33001.7	32998.4	32945.7	32927.5	32861.7	32833.1
7.5°	34255.5	34248.8	34261.1	34234.9	34234.0	34197.6	34182.7	34135.4	34106.1	34037.0	33992.8
10°	34516.2	34522.4	34512.3	34514.8	34500.6	34496.7	34482.2	34473.0	34449.3	34431.3	34404.9
12.5°	33433.6	33440.1	33398.7	33424.9	33404.3	33452.6	33448.7	33505.6	33514.3	33586.4	33613.7
15°	30931.4	30923.6	30844.4	30894.4	30867.5	30973.6	30997.3	31140.0	31216.3	31399.4	31511.8
17.5°	27151.5	27131.1	27019.5	27080.3	27049.4	27205.8	27258.2	27486.3	27628.6	27923.7	28134.0
20°	22645.7	22606.6	22476.0	22547.2	22515.3	22692.9	22767.8	23043.5	23227.0	23617.9	23895.9
22.5°	18084.0	18022.2	17894.3	17960.8	17930.7	18114.6	18212.0	18488.7	18698.9	19100.1	19424.7
25°	13987.5	13932.5	13808.8	13855.3	13844.1	13999.8	14086.4	14348.1	14554.6	14936.8	15246.7
27.5°	10668.6	10611.3	10499.7	10532.6	10521.2	10653.8	10735.6	10954.2	11131.8	11453.5	11725.6
30°	8165.2	8096.2	8001.5	8019.6	8011.9	8119.3	8195.6	8379.6	8532.0	8803.9	9038.3
32.5°	6258.6	6189.2	6102.3	6110.7	6099.2	6183.5	6246.4	6406.5	6539.2	6770.4	6974.4
35°	4788.7	4869.8	4684.0	4801.7	4679.2	4859.1	4794.4	4894.4	5008.6	5203.5	5373.6
37.5°	3681.4	3624.8	3577.0	3572.0	3571.7	3613.4	3662.6	3759.0	3859.6	4004.7	4154.7
40°	2917.3	2877.7	2846.7	2844.4	2846.7	2876.3	2912.7	2979.3	3053.0	3157.2	3267.5
42.5°	2419.6	2393.3	2374.6	2373.4	2379.3	2400.3	2425.5	2465.1	2513.0	2580.6	2656.1
45°	2094.2	2079.6	2069.1	2068.6	2071.3	2082.3	2096.9	2121.4	2151.8	2194.0	2241.8
47.5°	1865.9	1862.3	1855.8	1856.1	1853.1	1857.6	1859.3	1873.1	1889.2	1921.0	1983.5
50°	1699.6	1699.6	1695.1	1694.9	1690.6	1690.4	1686.8	1692.3	1699.8	1719.5	1739.5
52.5°	1568.1	1567.7	1562.9	1561.9	1557.4	1557.2	1554.1	1556.3	1557.4	1567.2	1579.2
55°	1465.5	1462.4	1456.0	1454.0	1452.2	1454.8	1453.6	1453.8	1452.5	1456.6	1460.1
57.5°	1391.8	1387.8	1381.7	1379.9	1379.5	1382.6	1382.7	1381.6	1376.1	1372.3	1367.0
60°	1333.4	1329.4	1322.9	1321.3	1322.2	1326.5	1326.3	1322.7	1314.4	1307.2	1298.8
62.5°	1276.2	1274.5	1271.2	1270.8	1269.9	1270.6	1267.6	1263.9	1255.7	1248.0	1239.0
65°	1199.3	1200.1	1197.7	1198.0	1195.0	1194.6	1190.1	1186.5	1178.2	1171.2	1161.9
67.5°	1119.4	1120.1	1118.1	1118.1	1116.5	1116.8	1114.0	1110.6	1103.7	1098.0	1090.8
70°	1053.7	1055.4	1054.2	1054.6	1052.6	1052.0	1047.7	1044.4	1037.2	1032.5	1026.0
72.5°	975.0	978.5	978.4	979.2	976.4	975.0	969.9	965.7	959.2	955.5	950.3
75°	890.0	894.5	895.9	897.8	893.8	891.7	886.1	882.9	877.5	875.3	871.9
77.5°	806.9	812.0	816.8	821.4	814.9	809.1	802.1	796.8	789.2	786.3	781.0
80°	713.8	722.7	733.5	742.5	730.7	719.0	707.5	699.0	688.9	684.8	678.2
82.5°	592.2	601.3	607.5	613.3	605.2	596.5	585.4	578.0	567.1	563.1	555.4
85°	449.8	461.3	465.0	468.0	462.9	458.2	447.9	433.8	426.9	416.3	410.6
87.5°	295.9	302.7	304.1	305.1	301.9	299.7	292.9	286.3	274.6	266.2	255.8
90°	127.1	130.9	127.5	128.5	125.1	126.3	120.3	118.8	109.9	107.0	99.3
92.5°	24.5	22.9	21.7	20.2	22.2	23.0	24.8	25.6	27.3	28.2	29.9
95°	32.5	31.0	29.5	28.0	29.2	30.4	31.6	32.9	34.0	35.3	36.5
97.5°	44.2	43.2	42.2	41.2	41.9	42.6	43.3	44.0	44.6	45.4	46.3
100°	56.1	55.3	54.4	53.6	53.6	53.6	53.6	53.6	53.6	53.6	53.6
102.5°	89.3	85.8	82.4	79.0	81.3	83.6	85.9	88.2	90.6	92.9	95.4
105°	167.1	157.6	148.2	138.8	147.8	157.0	166.1	175.3	184.4	193.7	202.8
107.5°	301.8	286.9	272.0	257.1	273.9	290.6	307.2	323.8	340.5	357.2	373.9
110°	450.4	436.2	422.0	407.8	425.4	443.1	460.7	478.4	496.2	513.8	531.7



TEST NUMBER: P1444684  
 CATALOG NUMBER: EHBR1-42-UNV-TA-L930-UPL18

**CANDELA DISTRIBUTION (continued):**

	82.5°	85°	87.5°	90°	92.5°	95°	97.5°	100°	102.5°	105°	107.5°
112.5°	549.8	543.0	536.0	529.2	540.6	551.9	563.3	574.9	586.3	597.7	609.1
115°	576.2	575.8	575.4	575.0	580.3	585.7	591.1	596.5	602.1	607.5	613.0
117.5°	545.6	549.2	553.1	557.0	558.7	560.4	562.3	564.0	566.0	567.7	569.7
120°	490.3	495.1	500.3	505.5	504.7	504.0	503.5	502.8	502.5	501.9	501.6
122.5°	425.7	430.6	435.8	440.8	439.3	437.8	436.4	435.1	433.8	432.5	431.3
125°	365.9	369.9	374.2	378.5	377.0	375.4	374.0	372.9	371.6	370.3	369.4
127.5°	319.2	321.8	324.1	326.7	326.0	325.3	324.9	324.4	324.0	323.8	323.7
130°	288.3	289.2	290.4	291.4	291.6	291.8	292.4	292.8	293.5	294.0	295.0
132.5°	271.4	271.3	271.4	271.4	272.2	273.0	274.2	275.3	276.7	277.9	279.6
135°	263.1	262.4	262.1	261.7	263.0	264.0	265.5	267.0	268.7	270.5	272.5
137.5°	261.0	260.1	259.5	258.8	260.0	261.2	262.7	264.1	265.8	267.6	269.7
140°	262.3	261.4	261.0	260.3	261.5	262.6	264.1	265.6	267.3	269.0	271.0
142.5°	264.0	263.1	262.5	262.1	263.1	264.1	265.6	266.8	268.4	269.8	271.7
145°	268.2	267.5	267.3	266.8	267.4	268.2	269.2	270.2	271.4	272.5	274.0
147.5°	270.5	270.0	269.8	269.5	270.1	270.5	271.4	272.0	272.9	273.7	274.8
150°	272.0	271.5	271.3	271.1	271.4	271.7	272.2	272.5	273.1	273.7	274.6
152.5°	271.2	270.7	270.6	270.4	270.6	270.8	271.3	271.5	272.1	272.4	273.2
155°	271.2	270.8	270.5	270.1	270.1	270.1	270.3	270.2	270.6	270.6	271.0
157.5°	272.4	272.0	271.7	271.3	271.1	270.8	270.8	270.6	270.8	270.5	270.6
160°	273.5	272.8	272.3	271.9	271.9	271.5	271.7	271.4	271.4	271.4	271.5
162.5°	276.2	275.7	275.4	274.9	274.6	274.2	273.9	273.5	273.2	273.0	272.9
165°	278.6	277.9	277.5	276.9	276.7	276.4	276.3	276.0	275.8	275.5	275.6
167.5°	282.8	282.1	281.7	281.2	280.8	280.3	280.1	279.6	279.2	278.8	278.7
170°	285.6	285.1	284.7	284.3	284.1	283.7	283.6	283.3	283.1	283.0	283.0
172.5°	290.0	289.5	289.3	288.9	288.7	288.5	288.4	288.2	288.0	288.0	287.8
175°	293.2	292.9	292.8	292.6	292.4	292.3	292.0	291.9	291.8	291.6	291.4
177.5°	295.1	294.7	294.6	294.5	294.4	294.4	294.4	294.4	294.4	294.3	294.2
180°	294.7	294.7	294.7	294.7	294.7	294.7	294.7	294.7	294.7	294.7	294.7



TEST NUMBER: P1444684  
 CATALOG NUMBER: EHBR1-42-UNV-TA-L930-UPL18

**CANDELA DISTRIBUTION (continued):**

	110°	112.5°	115°	117.5°	120°	122.5°	125°	127.5°	130°	132.5°	135°
0°	31860.0	31860.0	31860.0	31860.0	31860.0	31860.0	31860.0	31860.0	31860.0	31860.0	31860.0
2.5°	31877.6	31869.2	31847.1	31836.2	31815.8	31805.6	31789.6	31779.4	31766.4	31756.9	31751.9
5°	32760.8	32720.0	32638.3	32588.1	32499.8	32441.7	32354.1	32289.9	32199.4	32132.7	32047.2
7.5°	33909.9	33847.3	33742.7	33663.3	33540.0	33445.6	33307.1	33196.4	33043.4	32916.3	32760.0
10°	34377.7	34341.2	34294.2	34243.3	34174.8	34107.8	34013.2	33916.8	33788.4	33660.6	33493.6
12.5°	33686.3	33720.6	33788.4	33820.1	33871.8	33889.5	33913.2	33902.1	33881.1	33828.9	33753.2
15°	31727.9	31871.4	32098.1	32255.0	32474.7	32629.0	32833.1	32964.6	33116.0	33206.4	33292.3
17.5°	28506.6	28784.1	29184.1	29503.3	29931.8	30280.1	30707.0	31042.3	31429.5	31726.5	32042.8
20°	24380.5	24769.1	25321.4	25790.4	26411.2	26937.7	27612.1	28177.2	28836.3	29385.7	29978.6
22.5°	19939.8	20396.8	21029.6	21595.3	22336.8	22998.9	23843.9	24591.1	25482.0	26280.2	27163.3
25°	15750.4	16198.4	16843.0	17428.7	18229.1	18958.5	19881.8	20738.8	21772.8	22737.0	23843.9
27.5°	12157.8	12555.7	13122.4	13649.6	14382.6	15098.8	16035.7	16949.6	18052.9	19089.1	20282.1
30°	9389.2	9712.1	10166.0	10590.2	11178.7	11764.4	12598.9	13444.1	14542.0	15615.8	16838.8
32.5°	7276.3	7551.6	7930.6	8274.9	8728.4	9170.0	9784.5	10459.9	11423.0	12451.5	13634.1
35°	5632.7	5868.2	6190.7	6487.4	6860.3	7210.8	7669.4	8151.5	8886.4	9751.6	10810.0
37.5°	4490.7	4586.7	4817.0	5060.0	5369.6	5657.8	6016.5	6373.0	6898.8	7581.4	8446.0
40°	3415.1	3567.6	3755.0	3946.3	4180.9	4411.9	4805.5	4995.0	5341.2	5831.3	6502.3
42.5°	2755.6	2862.8	2994.7	3127.7	3291.2	3452.1	3651.2	3853.9	4112.7	4444.6	4921.9
45°	2305.9	2375.9	2460.9	2549.5	2656.8	2766.6	2899.9	3039.1	3214.5	3418.6	3708.5
47.5°	2005.5	2044.2	2099.6	2160.2	2233.8	2309.8	2396.5	2485.1	2594.1	2715.2	2880.3
50°	1771.1	1803.3	1846.4	1886.9	1937.6	2015.6	2050.0	2098.9	2164.5	2235.7	2328.0
52.5°	1601.4	1622.9	1649.9	1673.1	1705.3	1734.4	1772.7	1806.4	1851.8	1894.6	1954.2
55°	1469.2	1477.1	1492.4	1507.4	1529.6	1549.5	1575.7	1597.8	1626.8	1652.4	1690.0
57.5°	1367.2	1367.9	1375.0	1382.8	1397.1	1409.6	1427.7	1442.2	1462.3	1478.6	1501.1
60°	1293.8	1290.0	1291.4	1294.1	1302.1	1310.3	1321.8	1331.3	1343.9	1353.2	1365.8
62.5°	1232.8	1226.7	1225.3	1224.6	1228.6	1231.6	1237.8	1242.4	1249.6	1253.7	1260.3
65°	1155.7	1148.5	1145.7	1142.4	1143.6	1142.6	1145.0	1145.1	1148.8	1149.6	1153.5
67.5°	1085.9	1079.8	1076.1	1071.7	1069.6	1066.4	1065.1	1062.0	1061.5	1058.9	1058.3
70°	1022.0	1016.2	1013.1	1008.9	1006.8	1002.6	1000.0	994.8	991.7	986.8	984.2
72.5°	948.3	945.0	944.0	941.2	940.5	938.1	937.0	933.4	931.2	927.1	924.7
75°	871.2	868.4	868.2	865.4	865.1	862.4	861.6	857.7	855.7	851.6	849.8
77.5°	779.3	775.3	774.1	770.8	771.6	770.2	771.4	768.4	767.2	763.0	761.7
80°	675.8	670.7	668.5	664.2	665.3	663.4	665.3	665.1	666.7	663.4	662.7
82.5°	553.3	547.6	546.5	543.5	545.6	545.7	550.1	547.8	548.7	545.6	546.9
85°	402.6	398.4	392.5	391.7	387.9	391.7	386.7	390.1	384.6	388.4	383.3
87.5°	249.6	240.9	236.2	230.0	227.7	221.6	219.1	214.8	216.1	214.1	215.2
90°	98.0	91.2	90.4	85.1	85.5	81.1	82.6	79.7	81.9	78.9	81.3
92.5°	30.8	32.2	34.5	37.3	39.5	41.9	44.3	47.1	49.2	52.0	54.1
95°	37.7	38.9	42.2	45.4	48.7	52.0	55.3	58.6	61.8	65.1	68.4
97.5°	47.0	47.7	50.9	54.2	57.4	60.7	63.9	67.4	70.6	73.9	77.1
100°	53.6	53.7	63.0	72.2	81.5	90.9	100.1	109.3	118.8	128.0	137.2
102.5°	97.7	100.0	123.3	146.8	170.1	193.5	217.0	240.4	263.8	287.3	310.8
105°	212.0	221.3	256.9	292.7	328.2	363.9	399.8	435.6	471.3	507.1	542.8
107.5°	390.6	407.4	439.7	471.9	504.1	536.6	569.0	601.3	633.5	665.9	698.5
110°	549.4	567.1	588.7	610.5	632.3	653.9	675.7	697.4	719.2	741.1	763.0



TEST NUMBER: P1444684  
 CATALOG NUMBER: EHBR1-42-UNV-TA-L930-UPL18

**CANDELA DISTRIBUTION (continued):**

	110°	112.5°	115°	117.5°	120°	122.5°	125°	127.5°	130°	132.5°	135°
112.5°	620.5	632.2	644.7	657.6	670.3	683.1	695.9	708.7	721.6	734.6	747.4
115°	618.7	624.3	629.2	634.4	639.5	644.7	649.8	655.2	660.5	665.8	671.1
117.5°	571.6	573.8	574.6	575.8	576.7	578.1	579.1	580.4	581.7	583.1	584.1
120°	501.2	500.8	500.3	499.8	499.3	498.9	498.7	498.3	498.1	498.0	497.7
122.5°	430.2	429.3	428.7	428.4	428.1	427.9	427.7	427.7	427.7	427.5	427.4
125°	368.3	367.5	368.7	369.8	371.2	372.4	373.7	375.3	376.6	378.0	379.5
127.5°	323.5	323.6	325.9	328.4	330.8	333.4	336.0	338.7	341.1	344.0	346.4
130°	295.9	296.8	299.7	303.0	305.8	309.0	312.3	315.6	318.6	321.8	324.9
132.5°	281.0	282.8	285.7	288.7	291.8	294.9	297.9	301.1	304.2	307.4	310.3
135°	274.5	276.7	279.4	282.3	285.1	288.0	290.9	293.9	296.5	299.6	302.3
137.5°	271.6	273.8	276.2	278.6	280.9	283.5	285.8	288.3	290.6	293.1	295.4
140°	272.9	275.1	276.5	278.3	279.8	281.5	282.9	284.7	286.1	287.9	289.4
142.5°	273.4	275.5	276.3	277.7	278.7	280.3	281.4	282.7	283.6	284.8	285.8
145°	275.3	276.9	277.3	277.9	278.4	279.0	279.4	280.0	280.4	280.8	281.2
147.5°	275.9	277.1	277.2	277.5	277.9	277.9	278.3	278.6	278.7	278.8	279.1
150°	275.1	276.1	275.8	276.1	275.9	276.0	275.8	275.9	275.7	275.8	275.6
152.5°	273.8	274.4	273.9	274.1	273.8	273.7	273.3	273.3	273.0	272.9	272.8
155°	271.1	271.4	271.3	271.1	270.9	270.8	270.5	270.7	270.7	270.5	270.6
157.5°	270.6	270.6	270.5	270.5	270.2	270.3	270.1	270.1	270.1	270.4	270.5
160°	271.4	271.4	271.3	271.2	271.1	271.0	270.8	270.9	271.0	271.4	271.5
162.5°	272.5	272.4	272.2	272.1	272.0	272.1	272.0	272.2	272.2	272.5	272.8
165°	275.6	275.7	275.3	275.3	275.1	275.0	274.8	274.9	275.1	275.2	275.4
167.5°	278.6	278.5	278.5	278.6	278.6	278.7	278.8	279.3	279.5	279.9	280.0
170°	282.9	283.0	282.8	282.8	282.7	282.7	282.8	282.8	282.8	282.9	283.0
172.5°	287.8	287.8	287.7	287.4	287.2	287.2	286.9	286.9	286.8	286.7	286.5
175°	291.2	291.1	291.0	291.0	290.9	290.7	290.5	290.2	290.1	290.0	289.9
177.5°	294.1	293.8	293.7	293.7	293.6	293.5	293.5	293.4	293.4	293.4	293.1
180°	294.7	294.7	294.7	294.7	294.7	294.7	294.7	294.7	294.7	294.7	294.7



TEST NUMBER: P1444684  
 CATALOG NUMBER: EHBR1-42-UNV-TA-L930-UPL18

**CANDELA DISTRIBUTION (continued):**

	137.5°	140°	142.5°	145°	147.5°	150°	152.5°	155°	157.5°	160°	162.5°
0°	31860.0	31860.0	31860.0	31860.0	31860.0	31860.0	31860.0	31860.0	31860.0	31860.0	31860.0
2.5°	31745.6	31745.2	31742.1	31743.5	31744.2	31746.4	31749.1	31751.9	31752.5	31754.8	31755.2
5°	31983.2	31904.6	31846.6	31782.7	31734.5	31691.3	31662.5	31639.6	31630.8	31633.0	31638.4
7.5°	32627.4	32465.3	32331.4	32179.4	32052.6	31918.3	31807.0	31701.1	31624.0	31566.6	31534.5
10°	33334.3	33136.8	32947.9	32727.8	32519.1	32296.2	32094.5	31891.3	31721.8	31574.7	31466.7
12.5°	33648.0	33508.4	33345.2	33137.5	32914.0	32657.0	32397.4	32119.1	31860.2	31619.9	31426.1
15°	33315.9	33316.1	33256.6	33156.9	33001.7	32796.3	32548.9	32258.8	31953.5	31641.9	31357.2
17.5°	32261.5	32460.4	32571.1	32641.1	32619.5	32543.9	32386.5	32163.6	31879.0	31547.0	31199.7
20°	30450.8	30919.9	31254.5	31555.3	31723.9	31836.0	31824.8	31734.1	31531.4	31249.1	30887.3
22.5°	27914.2	28701.8	29323.2	29902.7	30309.2	30639.8	30797.0	30863.6	30771.8	30575.2	30235.5
25°	24833.4	25904.2	26817.9	27704.8	28370.1	28941.8	29285.4	29527.5	29546.7	29444.0	29140.9
27.5°	21410.0	22674.0	23830.5	25009.1	25944.7	26766.6	27305.8	27700.6	27826.0	27809.4	27534.2
30°	17990.9	19317.8	20592.7	21967.1	23124.8	24174.8	24887.2	25421.0	25626.7	25666.1	25401.4
32.5°	14762.0	16070.5	17341.8	18778.7	20052.7	21256.1	22097.8	22731.8	22971.0	23027.4	22737.0
35°	11831.6	13038.8	14246.9	15639.5	16906.2	18152.3	19039.2	19703.0	19926.4	19964.1	19627.9
37.5°	9290.3	10318.9	11371.6	12621.1	13784.3	14954.7	15797.2	16421.2	16583.9	16573.9	16193.4
40°	7150.6	7950.2	8796.2	9824.8	10791.9	11781.2	12492.8	13008.5	13094.0	13030.7	12631.0
42.5°	5376.9	5954.4	6567.7	7335.5	8053.0	8793.5	9311.2	9694.1	9706.3	9606.1	9247.4
45°	4005.8	4569.2	4826.4	5290.7	5752.8	6245.2	6561.3	6797.8	6761.2	6673.1	6400.5
47.5°	3053.7	3270.2	3499.9	3787.8	4057.0	4615.7	4574.3	4954.1	4680.5	4867.1	4456.5
50°	2425.0	2546.0	2669.7	2822.5	2963.1	3109.2	3200.4	3268.6	3259.8	3230.5	3151.8
52.5°	2063.1	2100.5	2161.4	2248.3	2326.9	2405.8	2457.8	2500.0	2500.9	2489.0	2449.3
55°	1724.3	1771.8	1815.5	1872.4	1969.1	1983.9	2058.4	2043.3	2049.3	2028.6	2049.7
57.5°	1520.3	1547.9	1572.5	1606.3	1634.3	1666.9	1686.1	1704.7	1702.9	1698.9	1678.5
60°	1375.7	1391.0	1404.6	1424.4	1439.7	1458.2	1467.0	1476.4	1473.3	1466.5	1448.5
62.5°	1264.3	1273.8	1281.6	1294.4	1303.6	1315.1	1319.8	1323.8	1319.8	1313.3	1297.3
65°	1154.3	1160.4	1165.4	1175.0	1181.6	1191.4	1195.3	1199.0	1195.4	1190.3	1178.2
67.5°	1055.1	1055.7	1055.3	1059.1	1061.2	1067.1	1068.8	1071.5	1067.3	1063.0	1052.6
70°	979.9	978.4	976.5	978.0	978.4	981.2	981.7	981.2	976.2	968.6	957.4
72.5°	921.1	920.3	918.9	920.2	920.2	922.8	922.0	920.6	914.4	907.1	896.0
75°	845.5	845.0	842.1	842.2	839.9	840.7	837.7	835.9	828.9	822.8	812.8
77.5°	757.1	755.7	751.6	750.0	745.5	743.7	737.9	735.0	728.0	723.0	714.5
80°	658.4	656.9	651.5	648.6	641.5	637.0	628.5	623.7	615.5	610.7	602.4
82.5°	544.2	544.8	539.5	535.8	525.7	517.8	506.5	500.4	491.5	486.7	478.2
85°	387.0	381.5	384.4	384.3	377.8	371.2	361.9	355.4	347.8	343.4	337.4
87.5°	212.3	213.6	212.1	210.8	206.3	202.8	195.7	191.9	186.3	183.6	179.1
90°	74.9	73.9	67.8	66.9	61.0	58.2	51.3	49.4	43.0	41.9	37.6
92.5°	51.3	48.7	46.2	43.1	40.7	38.0	35.2	32.5	29.8	28.6	27.9
95°	64.4	60.5	56.6	52.6	48.7	44.6	40.8	36.8	32.9	32.1	31.3
97.5°	72.6	67.9	63.3	58.7	54.0	49.4	44.8	40.1	35.5	34.9	34.5
100°	126.6	115.9	105.2	94.5	83.8	73.0	62.5	51.7	41.0	40.4	39.7
102.5°	284.7	258.8	232.8	206.8	181.0	154.9	128.9	102.9	76.9	73.2	69.4
105°	503.5	464.1	425.0	385.6	346.3	306.9	267.7	228.2	188.8	176.3	163.5
107.5°	661.6	624.5	587.8	550.9	513.8	477.0	440.0	403.1	366.0	343.7	321.6
110°	733.8	704.4	675.4	646.1	616.8	587.6	558.4	529.0	499.8	480.6	461.6



TEST NUMBER: P1444684  
 CATALOG NUMBER: EHBR1-42-UNV-TA-L930-UPL18

**CANDELA DISTRIBUTION (continued):**

	137.5°	140°	142.5°	145°	147.5°	150°	152.5°	155°	157.5°	160°	162.5°
112.5°	726.1	704.8	683.7	662.2	641.0	619.5	598.2	576.8	555.3	543.9	532.4
115°	658.6	645.8	633.2	620.5	607.8	595.1	582.4	569.4	556.6	550.6	544.8
117.5°	578.1	571.8	565.6	559.3	553.0	546.4	540.2	533.7	527.4	525.5	523.5
120°	496.4	494.8	493.0	491.4	489.8	488.2	486.4	484.6	482.7	483.4	484.0
122.5°	428.7	429.9	431.3	432.3	433.6	434.6	436.0	436.8	438.0	440.0	442.1
125°	382.0	384.3	386.8	389.2	391.5	393.9	396.3	398.4	400.8	402.8	405.1
127.5°	349.3	351.9	354.7	357.3	360.0	362.6	365.3	367.8	370.4	372.3	374.5
130°	327.5	329.8	332.4	334.6	337.1	339.5	341.8	344.2	346.6	348.3	350.1
132.5°	312.6	314.8	317.2	319.2	321.5	323.7	325.9	328.0	330.4	331.9	333.4
135°	304.2	305.8	307.7	309.3	311.5	313.1	314.9	316.8	318.8	319.9	321.2
137.5°	296.9	298.4	300.0	301.5	303.2	304.6	306.3	307.9	309.8	310.6	311.8
140°	290.9	292.5	294.0	295.5	297.2	298.7	300.6	302.3	304.1	305.0	306.2
142.5°	287.2	288.2	289.5	290.8	292.2	293.5	295.1	296.6	298.2	299.2	300.1
145°	282.6	283.9	285.3	286.6	288.0	289.6	291.4	293.0	294.8	295.6	296.4
147.5°	280.2	281.2	282.6	283.8	285.1	286.2	287.9	289.4	291.0	291.8	292.6
150°	276.9	277.9	279.1	280.4	281.8	283.2	284.7	286.2	288.1	289.0	289.9
152.5°	273.9	275.1	276.3	277.8	279.2	280.7	282.4	284.0	285.8	286.5	287.5
155°	271.9	273.0	274.3	275.7	277.3	278.6	280.2	281.7	283.4	284.3	285.1
157.5°	271.7	272.7	274.0	275.3	276.6	277.9	279.5	280.7	282.3	283.0	283.6
160°	272.6	273.6	274.7	275.9	277.1	278.3	279.6	280.8	282.1	282.8	283.6
162.5°	273.9	275.0	276.2	277.1	278.4	279.6	280.9	282.0	283.3	283.9	284.6
165°	276.3	277.1	278.1	278.8	279.9	280.6	281.8	282.6	283.7	284.2	285.0
167.5°	280.9	281.4	282.0	282.8	283.6	284.4	285.3	286.0	286.8	287.4	287.9
170°	283.6	284.2	284.7	285.4	286.1	286.8	287.4	287.9	288.8	289.3	289.8
172.5°	286.9	287.1	287.7	287.9	288.5	288.7	289.3	289.8	290.2	290.8	291.1
175°	290.2	290.3	290.5	290.6	290.9	291.1	291.4	291.8	291.9	292.3	292.7
177.5°	293.2	293.3	293.5	293.5	293.9	294.0	294.3	294.3	294.6	294.9	295.3
180°	294.7	294.7	294.7	294.7	294.7	294.7	294.7	294.7	294.7	294.7	294.7



TEST NUMBER: P1444684  
 CATALOG NUMBER: EHBR1-42-UNV-TA-L930-UPL18

**CANDELA DISTRIBUTION (continued):**

	165°	167.5°	170°	172.5°	175°	177.5°	180°	182.5°	185°	187.5°	190°
0°	31860.0	31860.0	31860.0	31860.0	31860.0	31860.0	31860.0	31860.0	31860.0	31860.0	31860.0
2.5°	31754.1	31753.8	31752.7	31751.4	31750.0	31750.8	31752.2	31755.8	31762.2	31771.4	31783.5
5°	31642.8	31649.2	31652.9	31653.4	31650.1	31648.0	31651.1	31659.9	31677.4	31706.9	31746.8
7.5°	31525.8	31533.9	31546.2	31555.3	31557.1	31554.9	31555.3	31569.1	31601.5	31659.0	31739.6
10°	31401.0	31377.3	31389.8	31412.7	31430.8	31434.2	31436.5	31452.6	31500.1	31587.0	31716.5
12.5°	31285.8	31210.6	31196.1	31216.8	31244.4	31253.3	31250.8	31257.8	31313.4	31428.4	31609.0
15°	31134.2	30992.8	30944.5	30949.8	30983.9	30996.2	30987.2	30973.6	31027.8	31168.1	31401.9
17.5°	30888.8	30660.9	30572.1	30568.2	30608.1	30618.7	30596.8	30554.3	30607.7	30782.9	31073.0
20°	30515.8	30179.4	30012.1	29985.6	30029.0	30016.3	29972.5	29908.2	29978.5	30191.4	30536.5
22.5°	29845.2	29419.0	29133.3	29041.2	29093.1	29058.4	28994.6	28912.6	29005.7	29247.7	29632.0
25°	28749.5	28257.0	27865.9	27646.5	27687.9	27625.9	27556.3	27456.9	27568.0	27845.9	28268.8
27.5°	27138.9	26570.0	26085.4	25722.2	25735.6	25654.3	25574.3	25445.6	25584.3	25913.2	26390.2
30°	24997.3	24339.0	23748.8	23255.3	23211.1	23132.3	23050.3	22881.4	23055.0	23448.6	24006.1
32.5°	22307.7	21576.8	20894.9	20270.8	20153.1	20076.3	20003.1	19808.8	20036.1	20495.0	21135.5
35°	19162.3	18383.8	17644.5	16931.7	16736.7	16659.8	16596.0	16409.7	16693.4	17192.8	17884.5
37.5°	15709.9	14914.6	14180.5	13449.7	13174.1	13069.8	13023.4	12901.5	13228.6	13722.7	14417.2
40°	12165.6	11426.1	10768.0	10122.5	9808.3	9648.8	9624.5	9602.2	9918.6	10347.2	10977.6
42.5°	8850.0	8253.4	7746.0	7252.5	6967.8	6750.0	6749.8	6816.0	7100.8	7421.9	7908.0
45°	6121.8	5721.4	5398.1	5068.4	5156.6	4722.2	4977.4	4846.5	4987.2	5194.2	5510.3
47.5°	4208.1	3989.5	3812.0	3627.8	3493.5	3365.3	3376.5	3459.2	3591.7	3714.5	3879.0
50°	3067.0	2955.7	2865.3	2769.6	2702.7	2646.2	2649.5	2685.3	2755.0	2819.7	2905.7
52.5°	2403.2	2341.8	2292.7	2239.8	2204.8	2176.6	2178.1	2195.5	2233.2	2270.2	2319.5
55°	1980.8	1973.4	1909.5	1862.0	1844.0	1825.1	1828.5	1835.4	1861.0	1882.6	1915.3
57.5°	1659.9	1631.2	1612.1	1587.0	1575.6	1562.4	1565.4	1568.0	1585.1	1599.6	1623.1
60°	1433.3	1413.0	1399.4	1382.4	1374.8	1366.5	1368.4	1369.9	1380.9	1390.4	1407.2
62.5°	1282.8	1264.6	1252.8	1239.7	1234.4	1228.7	1230.0	1230.5	1237.3	1244.3	1257.0
65°	1167.3	1152.9	1143.1	1131.7	1126.2	1120.3	1120.9	1120.9	1126.7	1131.7	1141.4
67.5°	1045.2	1034.3	1028.0	1019.0	1015.2	1009.2	1009.1	1007.2	1011.0	1013.0	1019.5
70°	947.2	936.2	928.1	919.5	914.8	909.4	909.6	909.7	914.0	918.7	927.1
72.5°	886.7	876.2	868.9	861.4	856.9	852.4	851.6	851.1	854.2	856.7	862.4
75°	806.5	798.1	793.8	786.8	783.2	778.1	777.3	774.9	776.4	777.0	781.1
77.5°	709.2	701.2	697.9	690.6	687.7	681.9	681.5	678.8	680.0	679.1	682.3
80°	598.3	591.1	589.2	583.3	581.9	576.6	575.8	572.6	573.5	571.0	572.2
82.5°	474.5	467.9	466.5	461.1	461.1	456.3	456.0	451.2	451.2	447.0	440.4
85°	334.3	329.5	327.4	322.9	321.6	317.8	315.7	311.1	309.5	306.6	305.6
87.5°	176.4	173.3	170.7	168.5	164.6	157.6	157.0	152.2	152.6	149.1	149.4
90°	36.9	33.0	32.4	28.9	28.1	25.6	25.0	24.9	25.3	25.3	25.9
92.5°	27.0	26.1	25.1	24.2	23.3	22.4	21.5	22.4	23.3	24.2	25.1
95°	30.5	29.7	28.8	28.0	27.2	26.4	25.6	26.4	27.2	28.2	29.0
97.5°	34.0	33.4	33.0	32.4	31.9	31.5	30.9	31.6	32.1	32.6	33.2
100°	39.2	38.6	38.0	37.3	36.8	36.2	35.6	36.4	37.0	37.5	38.1
102.5°	65.7	61.9	58.2	54.4	50.6	46.9	43.1	46.9	50.6	54.6	58.4
105°	150.9	138.4	125.7	113.0	100.3	87.6	74.9	87.7	100.4	113.1	125.8
107.5°	299.2	277.1	254.8	232.6	210.1	187.9	165.6	188.1	210.4	232.8	255.0
110°	442.4	423.2	404.0	384.8	365.5	346.4	327.1	346.5	365.8	385.1	404.4



TEST NUMBER: P1444684  
 CATALOG NUMBER: EHBR1-42-UNV-TA-L930-UPL18

**CANDELA DISTRIBUTION (continued):**

	165°	167.5°	170°	172.5°	175°	177.5°	180°	182.5°	185°	187.5°	190°
112.5°	520.7	509.2	497.4	485.9	474.2	462.6	450.8	462.9	474.6	486.5	498.1
115°	538.8	532.6	526.8	520.7	514.5	508.5	502.2	508.8	515.1	521.4	527.7
117.5°	521.5	519.6	517.7	515.7	513.6	511.6	509.4	511.8	514.1	516.8	518.8
120°	484.3	485.0	485.5	485.8	486.3	486.7	486.9	487.1	487.1	487.1	487.0
122.5°	443.9	445.9	447.8	449.7	451.4	453.2	454.7	453.7	452.3	451.2	449.7
125°	407.0	409.3	411.2	413.1	415.0	417.1	418.5	417.6	416.3	414.9	413.4
127.5°	376.4	378.4	380.2	382.3	383.8	385.6	387.0	386.3	385.2	384.1	382.7
130°	351.6	353.6	354.9	356.5	357.9	359.2	360.3	359.8	359.1	358.7	357.6
132.5°	334.8	336.3	337.7	339.0	340.1	341.2	341.9	341.9	341.6	341.2	340.5
135°	322.4	323.6	324.7	326.0	326.8	327.6	328.0	328.4	328.3	328.2	327.8
137.5°	312.6	313.7	314.5	315.3	315.8	316.4	316.6	317.2	317.3	317.9	317.7
140°	307.0	308.1	309.0	309.8	310.4	311.1	311.2	311.9	312.1	312.3	312.2
142.5°	301.1	302.1	303.0	303.9	304.3	304.9	305.2	305.7	305.9	306.2	306.1
145°	297.4	298.0	298.8	299.5	300.0	300.3	300.4	301.1	301.5	301.7	302.0
147.5°	293.4	294.2	294.8	295.3	295.8	296.1	296.4	296.8	297.4	297.6	297.8
150°	290.8	291.6	292.3	293.1	293.6	294.1	294.3	294.8	295.1	295.3	295.3
152.5°	288.2	288.9	289.6	290.2	290.8	291.2	291.5	291.9	292.4	292.7	292.7
155°	285.8	286.7	287.4	288.1	288.6	289.1	289.6	290.1	290.4	290.7	290.9
157.5°	284.4	285.3	285.8	286.5	287.0	287.7	288.2	288.7	289.1	289.6	289.8
160°	284.1	285.0	285.4	286.1	286.8	287.3	287.8	288.4	288.8	289.2	289.7
162.5°	285.2	285.9	286.2	286.9	287.6	288.2	288.6	289.3	289.7	290.2	290.5
165°	285.6	286.3	286.9	287.7	288.4	289.0	289.4	290.0	290.2	290.6	290.9
167.5°	288.5	289.2	289.7	290.3	290.8	291.5	292.0	292.5	292.7	293.0	293.2
170°	290.2	290.9	291.5	291.9	292.5	293.0	293.4	293.6	293.9	294.2	294.4
172.5°	291.7	292.3	292.7	293.4	293.9	294.4	294.9	295.1	295.1	295.1	295.1
175°	292.9	293.5	293.8	294.3	294.5	295.1	295.5	295.4	295.5	295.4	295.5
177.5°	295.7	296.2	296.7	296.9	297.4	297.7	298.1	297.8	297.6	297.5	297.2
180°	294.7	294.7	294.7	294.7	294.7	294.7	294.7	294.7	294.7	294.7	294.7



TEST NUMBER: P1444684  
 CATALOG NUMBER: EHBR1-42-UNV-TA-L930-UPL18

**CANDELA DISTRIBUTION (continued):**

	192.5°	195°	197.5°	200°	202.5°	205°	207.5°	210°	212.5°	215°	217.5°
0°	31860.0	31860.0	31860.0	31860.0	31860.0	31860.0	31860.0	31860.0	31860.0	31860.0	31860.0
2.5°	31800.5	31816.4	31840.8	31862.8	31896.0	31922.2	31961.5	31991.4	32035.8	32064.6	32112.9
5°	31803.3	31865.5	31947.3	32027.2	32123.2	32210.3	32318.6	32410.8	32519.6	32608.5	32719.8
7.5°	31848.2	31968.3	32112.0	32256.9	32420.8	32574.1	32746.9	32903.2	33074.0	33218.6	33376.6
10°	31881.5	32066.5	32278.4	32491.6	32716.1	32924.7	33135.2	33317.2	33487.2	33627.1	33750.7
12.5°	31836.5	32091.4	32363.3	32625.9	32875.6	33091.4	33272.6	33412.5	33509.1	33574.6	33589.9
15°	31683.6	31990.3	32286.0	32547.5	32754.6	32914.4	32997.0	33035.8	32994.3	32925.3	32773.7
17.5°	31398.0	31721.4	31985.8	32192.1	32301.6	32344.9	32276.4	32157.3	31924.4	31666.0	31292.7
20°	30874.2	31175.7	31367.5	31480.0	31450.7	31342.4	31083.8	30769.5	30304.7	29809.2	29155.4
22.5°	29955.7	30219.3	30321.5	30329.8	30151.2	29880.1	29413.7	28874.5	28141.1	27378.7	26441.1
25°	28577.0	28807.8	28824.0	28733.3	28406.3	27967.0	27282.1	26519.5	25522.9	24507.0	23332.0
27.5°	26707.1	26928.5	26874.3	26705.1	26251.2	25663.3	24786.5	23801.3	22572.6	21372.7	20072.9
30°	24356.5	24593.3	24529.7	24312.6	23772.7	23077.9	22046.2	20901.5	19537.4	18255.9	16938.7
32.5°	21543.6	21842.9	21799.0	21592.7	21029.4	20285.7	19166.3	17952.2	16556.7	15293.6	14012.5
35°	18346.3	18709.7	18728.5	18593.7	18070.7	17335.7	16230.2	15055.2	13718.4	12526.7	11343.1
37.5°	14901.6	15323.0	15409.5	15373.1	14939.7	14290.8	13283.7	12229.5	11045.2	10000.9	8988.6
40°	11437.9	11864.4	12012.3	12056.2	11736.4	11233.8	10407.2	9556.3	8590.9	7744.6	6940.9
42.5°	8279.0	8657.2	8800.2	8890.1	8690.5	8355.3	7752.4	7134.5	6427.2	5816.8	5231.6
45°	5750.0	6017.4	6126.2	6216.8	6108.0	5918.9	5538.2	5151.7	4684.8	4285.9	3908.4
47.5°	4020.2	4167.7	4239.4	4283.3	4241.2	4142.6	3935.4	3711.5	3448.0	3214.9	2990.8
50°	2979.8	3058.3	3095.8	3121.2	3090.6	3035.8	2923.6	2801.7	2656.9	2525.0	2395.9
52.5°	2361.4	2406.4	2428.7	2442.4	2424.8	2391.3	2326.0	2253.7	2167.0	2085.4	2042.5
55°	1989.4	1987.0	2038.6	2013.7	2038.6	1983.0	1971.3	1891.8	1819.8	1769.0	1714.1
57.5°	1640.6	1663.9	1673.8	1685.0	1677.7	1667.6	1639.9	1611.4	1573.4	1541.6	1507.7
60°	1420.1	1439.4	1450.2	1461.2	1460.5	1456.7	1440.6	1423.7	1399.9	1380.9	1360.3
62.5°	1268.3	1284.9	1295.6	1306.1	1307.1	1305.6	1293.4	1281.6	1265.4	1253.5	1239.3
65°	1148.8	1160.4	1167.7	1176.1	1175.7	1173.5	1162.5	1152.7	1139.3	1131.0	1120.7
67.5°	1023.7	1032.6	1038.3	1046.2	1047.7	1048.2	1042.2	1037.6	1031.0	1028.6	1025.2
70°	934.8	945.6	954.7	964.7	970.1	972.7	970.1	967.8	963.9	962.3	959.6
72.5°	867.5	876.6	883.7	892.7	897.8	901.5	899.5	898.2	894.9	894.4	892.6
75°	783.9	790.2	794.2	801.0	803.7	807.2	805.7	806.5	805.4	808.0	807.9
77.5°	683.4	688.0	689.9	694.9	695.4	699.5	700.4	705.2	708.7	716.3	720.3
80°	570.3	573.3	573.3	578.3	580.6	587.5	590.8	598.8	602.4	609.2	609.7
82.5°	443.0	439.6	443.0	440.9	447.4	455.2	456.3	462.9	464.6	468.7	465.4
85°	302.9	302.6	300.0	300.4	298.4	299.3	298.2	299.4	298.3	298.4	295.3
87.5°	145.1	146.4	143.2	144.3	141.2	142.7	139.9	142.0	138.8	139.4	134.7
90°	26.2	26.6	26.9	27.4	28.4	29.9	31.6	33.2	35.3	36.7	38.6
92.5°	26.1	27.1	28.0	29.0	29.9	32.6	35.3	38.1	41.0	43.5	46.3
95°	29.9	30.7	31.5	32.4	33.2	37.2	41.2	45.1	49.1	53.0	57.0
97.5°	33.8	34.3	34.8	35.3	36.0	40.6	45.4	50.0	54.6	59.3	63.8
100°	38.9	39.6	40.1	40.8	41.4	52.2	63.0	73.7	84.5	95.2	106.0
102.5°	62.2	65.9	69.8	73.8	77.5	103.6	129.7	155.8	181.6	207.6	233.7
105°	138.6	151.2	164.1	176.9	189.5	229.0	268.5	308.0	347.2	386.6	426.1
107.5°	277.5	299.8	322.2	344.5	366.9	404.0	441.1	478.1	515.3	552.2	589.1
110°	423.9	443.0	462.5	481.8	501.1	530.3	559.9	589.1	618.5	647.9	677.2



TEST NUMBER: P1444684  
 CATALOG NUMBER: EHBR1-42-UNV-TA-L930-UPL18

**CANDELA DISTRIBUTION (continued):**

	192.5°	195°	197.5°	200°	202.5°	205°	207.5°	210°	212.5°	215°	217.5°
112.5°	510.1	521.8	533.5	545.0	556.8	578.3	600.0	621.5	643.1	664.3	685.8
115°	534.0	539.9	546.3	552.2	558.6	571.6	584.4	597.3	610.3	623.0	635.9
117.5°	521.0	523.3	525.6	527.4	529.6	536.1	542.7	549.2	555.8	562.3	568.8
120°	486.9	486.6	486.3	485.8	485.6	487.4	489.4	491.2	493.2	494.9	496.6
122.5°	448.2	446.4	444.9	443.1	441.4	440.2	439.4	438.3	437.5	436.4	435.4
125°	411.9	410.1	408.4	406.4	404.6	402.4	400.3	398.1	395.8	393.6	391.4
127.5°	381.5	379.7	378.3	376.4	374.7	372.2	369.7	367.2	364.8	362.2	359.8
130°	356.8	355.5	354.4	352.7	351.6	349.1	347.0	344.7	342.5	340.1	337.9
132.5°	339.9	338.9	338.0	336.7	335.7	333.5	331.7	329.4	327.3	325.3	323.3
135°	327.4	326.7	326.2	325.2	324.4	322.6	321.1	319.3	317.7	315.9	314.3
137.5°	317.6	317.1	316.8	316.3	315.7	314.1	312.8	311.4	310.0	308.4	307.1
140°	312.1	311.7	311.5	310.9	310.4	308.9	307.4	305.9	304.5	303.0	301.6
142.5°	305.9	305.7	305.5	304.9	304.5	303.2	302.3	301.0	299.8	298.6	297.5
145°	301.9	301.8	301.7	301.4	301.3	299.9	298.7	297.3	296.2	294.8	293.6
147.5°	298.0	297.9	297.9	297.8	297.8	296.6	295.8	294.5	293.6	292.6	291.7
150°	295.4	295.3	295.4	295.1	295.0	293.9	293.1	292.0	291.2	290.0	289.2
152.5°	292.9	293.0	293.1	293.1	293.2	292.3	291.3	290.3	289.4	288.3	287.3
155°	291.1	291.2	291.4	291.4	291.4	290.6	289.8	288.8	288.0	287.0	286.2
157.5°	290.1	290.3	290.5	290.7	290.8	290.1	289.4	288.6	287.9	287.1	286.4
160°	289.9	290.2	290.5	290.6	290.9	290.2	289.9	289.1	288.7	287.8	287.1
162.5°	290.9	291.2	291.5	291.6	291.8	291.2	290.8	290.2	289.6	288.8	288.2
165°	291.1	291.2	291.5	291.5	291.7	291.2	291.0	290.5	290.2	289.6	289.3
167.5°	293.4	293.5	293.7	293.7	293.9	293.6	293.6	293.2	292.8	292.6	292.2
170°	294.5	294.6	294.8	294.8	295.0	294.7	294.4	294.2	294.1	293.5	293.2
172.5°	295.2	295.2	295.1	295.2	295.1	295.0	294.9	294.7	294.6	294.3	294.2
175°	295.3	295.3	295.3	295.2	295.1	295.1	295.1	295.1	295.1	294.9	294.8
177.5°	297.0	296.9	296.7	296.4	296.2	296.1	296.2	296.0	296.1	296.0	295.9
180°	294.7	294.7	294.7	294.7	294.7	294.7	294.7	294.7	294.7	294.7	294.7



TEST NUMBER: P1444684  
 CATALOG NUMBER: EHBR1-42-UNV-TA-L930-UPL18

**CANDELA DISTRIBUTION (continued):**

	220°	222.5°	225°	227.5°	230°	232.5°	235°	237.5°	240°	242.5°	245°
0°	31860.0	31860.0	31860.0	31860.0	31860.0	31860.0	31860.0	31860.0	31860.0	31860.0	31860.0
2.5°	32142.8	31944.3	31918.0	31932.0	31965.2	31977.5	32013.2	32023.0	32059.1	32067.9	32102.5
5°	32806.0	32543.6	32556.7	32619.8	32715.3	32772.3	32866.1	32915.2	33004.9	33045.6	33126.6
7.5°	33505.4	33299.3	33363.5	33469.9	33600.6	33691.0	33803.8	33877.2	33974.4	34034.7	34112.5
10°	33848.8	33792.3	33863.0	33946.7	34021.3	34079.6	34127.4	34165.7	34190.7	34214.2	34224.5
12.5°	33587.4	33674.8	33686.8	33678.7	33629.4	33591.7	33507.0	33449.5	33347.4	33285.1	33163.7
15°	32618.7	32810.9	32704.5	32543.4	32307.7	32111.2	31833.7	31627.2	31338.2	31142.2	30852.2
17.5°	30918.7	31161.2	30883.9	30511.3	30037.2	29631.6	29126.6	28725.7	28223.5	27858.3	27389.7
20°	28525.4	28752.0	28257.6	27639.8	26906.4	26289.2	25561.4	24980.7	24304.3	23801.3	23194.0
22.5°	25545.5	25706.9	25010.4	24177.5	23243.2	22472.1	21601.9	20905.8	20133.9	19558.7	18911.3
25°	22248.7	22292.3	21456.9	20497.4	19456.0	18589.4	17660.4	16928.4	16141.2	15558.3	14922.9
27.5°	18921.4	18857.5	17954.4	16937.1	15841.7	14940.9	14034.8	13348.9	12659.5	12134.4	11587.0
30°	15780.7	15626.0	14688.4	13642.7	12579.4	11772.1	11019.9	10469.0	9920.6	9504.0	9064.7
32.5°	12900.8	12682.5	11769.8	10790.1	9894.1	9271.1	8713.4	8296.6	7853.6	7501.8	7133.0
35°	10349.8	10117.3	9308.8	8478.1	7800.1	7340.8	6902.4	6560.5	6184.4	5887.6	5567.3
37.5°	8160.5	7970.0	7292.6	6639.1	6126.2	5770.3	5411.1	5131.6	4820.9	4690.2	4348.0
40°	6299.9	6166.7	5637.1	5155.3	4770.2	4603.0	4238.3	3977.3	3745.0	3553.5	3368.1
42.5°	4914.0	4866.9	4351.5	3975.7	3704.6	3493.9	3290.7	3125.8	2965.2	2833.1	2708.4
45°	3606.2	3568.8	3340.1	3123.2	2938.4	2791.1	2653.8	2540.3	2435.3	2348.3	2269.2
47.5°	2808.1	2796.2	2664.4	2529.9	2413.5	2318.9	2229.7	2154.4	2084.7	2026.6	2007.7
50°	2284.0	2282.4	2205.1	2122.1	2039.2	1984.5	1927.6	1883.1	1838.3	1803.5	1766.7
52.5°	1940.6	1932.2	1880.0	1828.8	1779.5	1743.6	1707.2	1678.8	1649.1	1627.7	1604.8
55°	1670.7	1679.5	1649.3	1618.8	1587.9	1565.6	1540.1	1521.3	1501.0	1487.4	1473.6
57.5°	1483.1	1494.9	1479.0	1461.6	1442.9	1428.2	1410.7	1397.7	1384.1	1375.5	1367.5
60°	1346.8	1359.5	1353.2	1344.5	1332.9	1324.1	1312.9	1305.7	1297.0	1292.2	1287.6
62.5°	1231.1	1247.0	1244.7	1240.6	1233.2	1228.3	1222.2	1219.0	1213.2	1211.1	1209.0
65°	1115.6	1133.5	1133.2	1131.2	1127.0	1125.6	1121.9	1121.1	1118.2	1119.4	1119.1
67.5°	1024.8	1040.4	1043.8	1046.3	1046.2	1047.1	1046.7	1048.2	1048.2	1050.6	1052.0
70°	959.2	970.1	972.7	975.4	976.1	978.1	978.1	979.5	979.1	981.0	981.2
72.5°	893.0	907.3	909.9	912.0	912.0	914.0	913.0	912.6	909.8	909.2	907.2
75°	810.6	828.9	832.9	835.5	835.9	837.7	835.2	833.7	828.9	827.0	823.7
77.5°	724.5	743.6	746.3	747.3	745.8	746.2	740.9	737.4	731.4	728.9	725.7
80°	612.5	640.5	642.7	640.9	636.5	635.8	630.7	627.5	620.2	617.7	615.1
82.5°	466.1	498.9	503.5	505.5	502.0	502.8	498.0	496.0	489.4	488.3	483.9
85°	294.3	327.0	332.5	331.7	328.1	327.3	324.5	325.4	324.8	326.6	327.6
87.5°	135.2	167.0	174.7	172.2	171.8	169.6	164.5	166.4	169.4	171.5	171.5
90°	40.2	51.5	52.9	52.4	48.8	47.7	44.4	43.9	41.0	40.4	37.6
92.5°	49.0	51.7	54.4	52.0	49.5	47.1	44.7	42.2	39.8	37.3	34.9
95°	61.0	64.8	68.7	65.5	62.0	58.8	55.5	52.3	49.0	45.8	42.5
97.5°	68.4	73.0	77.4	74.2	70.9	67.6	64.3	61.1	57.8	54.5	51.2
100°	116.7	127.0	137.6	128.3	119.1	109.8	100.5	91.3	82.0	72.7	63.4
102.5°	259.6	285.3	311.2	287.7	264.2	240.8	217.4	193.9	170.6	147.0	123.7
105°	465.3	504.2	543.4	507.4	471.7	435.9	400.2	364.5	328.7	292.9	257.3
107.5°	626.0	662.3	698.9	666.6	634.1	601.9	569.3	537.0	504.7	472.2	440.0
110°	706.4	734.7	763.7	741.8	720.0	698.0	676.2	654.4	632.6	611.0	589.2



TEST NUMBER: P1444684  
 CATALOG NUMBER: EHBR1-42-UNV-TA-L930-UPL18

**CANDELA DISTRIBUTION (continued):**

	220°	222.5°	225°	227.5°	230°	232.5°	235°	237.5°	240°	242.5°	245°
112.5°	707.2	727.2	748.2	735.2	722.4	709.3	696.5	683.6	670.9	657.9	645.4
115°	648.6	659.7	672.1	666.6	661.4	656.0	650.6	645.5	640.2	634.8	629.9
117.5°	575.1	579.7	585.5	584.0	582.8	581.3	580.1	578.9	577.8	576.6	575.5
120°	498.4	498.1	499.2	499.2	499.6	499.7	500.0	500.1	500.5	500.7	501.3
122.5°	434.3	430.9	429.0	429.1	429.2	429.1	429.3	429.4	429.5	429.7	430.1
125°	389.2	384.3	381.2	379.7	378.4	376.9	375.4	374.0	372.8	371.4	370.2
127.5°	357.2	351.7	348.5	345.9	343.4	340.7	338.1	335.4	332.9	330.3	327.9
130°	335.7	330.3	327.2	324.0	321.1	317.8	314.8	311.5	308.3	305.3	302.2
132.5°	321.1	315.8	312.9	309.8	307.1	303.8	300.8	297.7	294.7	291.4	288.6
135°	312.6	307.5	305.0	302.2	299.6	296.7	294.0	291.0	288.4	285.3	282.8
137.5°	305.6	300.5	298.4	295.9	293.8	291.4	289.3	286.8	284.5	281.9	279.7
140°	300.0	294.7	292.4	291.0	289.6	288.0	286.6	285.0	283.6	282.1	280.5
142.5°	296.2	291.0	289.0	288.0	287.1	286.0	285.2	284.1	283.0	281.7	280.6
145°	292.4	286.6	284.5	283.9	283.8	283.5	283.0	282.8	282.3	281.8	281.4
147.5°	290.5	284.5	282.4	282.3	282.3	282.0	282.0	281.8	281.9	281.6	281.6
150°	288.0	281.2	278.7	279.0	279.0	279.2	279.3	279.4	279.6	279.7	279.8
152.5°	286.1	278.2	275.4	275.5	275.9	276.0	276.3	276.6	277.0	277.2	277.5
155°	285.1	276.3	273.3	273.1	273.3	273.3	273.4	273.7	273.8	274.0	274.4
157.5°	285.4	276.3	273.2	272.9	272.9	272.8	272.8	273.0	273.0	273.1	273.5
160°	286.4	277.2	274.2	273.8	273.8	273.7	273.5	273.6	273.7	273.8	273.9
162.5°	287.4	278.4	275.5	275.1	274.8	274.7	274.7	274.6	274.6	274.6	274.8
165°	288.6	280.6	277.9	277.7	277.7	277.5	277.4	277.5	277.6	277.6	277.9
167.5°	291.8	284.5	282.5	282.1	281.8	281.4	281.4	281.0	281.0	280.7	280.7
170°	292.8	287.1	285.3	285.2	285.3	285.3	285.1	285.1	285.0	285.0	285.1
172.5°	293.9	289.7	288.4	288.4	288.6	288.7	288.9	289.1	289.3	289.4	289.7
175°	294.7	292.2	291.7	291.5	291.6	291.7	291.8	291.9	292.0	292.1	292.5
177.5°	295.9	295.2	294.9	294.9	294.9	294.9	294.9	294.9	294.9	295.1	295.1
180°	294.7	294.7	294.7	294.7	294.7	294.7	294.7	294.7	294.7	294.7	294.7



TEST NUMBER: P1444684  
 CATALOG NUMBER: EHBR1-42-UNV-TA-L930-UPL18

**CANDELA DISTRIBUTION (continued):**

	247.5°	250°	252.5°	255°	257.5°	260°	262.5°	265°	267.5°	270°	272.5°
0°	31860.0	31860.0	31860.0	31860.0	31860.0	31860.0	31860.0	31860.0	31860.0	31860.0	31860.0
2.5°	32109.0	32146.4	32143.6	32178.5	32176.8	32209.7	32203.1	32231.5	32225.1	32249.3	32235.1
5°	33162.2	33233.4	33257.0	33321.2	33334.5	33392.1	33393.2	33438.9	33433.3	33469.1	33450.1
7.5°	34158.6	34225.1	34256.6	34306.5	34331.4	34372.8	34389.0	34422.9	34431.1	34451.2	34450.6
10°	34242.6	34242.4	34258.0	34251.0	34264.9	34256.9	34273.9	34267.8	34292.9	34286.5	34305.5
12.5°	33111.3	32999.0	32958.0	32857.1	32835.1	32748.5	32754.6	32699.1	32725.9	32691.8	32749.9
15°	30679.7	30419.2	30290.5	30064.0	29993.0	29814.0	29799.4	29680.6	29712.6	29650.4	29741.3
17.5°	27086.4	26676.4	26451.3	26120.6	25989.3	25736.2	25685.4	25532.4	25556.1	25479.0	25588.8
20°	22802.4	22306.8	22023.0	21640.5	21470.0	21168.1	21088.1	20916.8	20938.3	20861.6	20985.8
22.5°	18469.5	17950.8	17630.3	17229.5	17011.6	16727.8	16642.6	16470.6	16480.4	16408.3	16527.8
25°	14487.7	13990.4	13679.3	13315.1	13126.1	12865.9	12776.4	12621.9	12630.7	12571.3	12678.5
27.5°	11207.2	10799.2	10539.0	10233.8	10064.3	9850.3	9763.1	9633.2	9632.9	9589.3	9678.8
30°	8757.8	8417.3	8183.7	7917.9	7758.7	7565.7	7481.4	7365.2	7360.1	7329.2	7400.4
32.5°	6857.2	6554.3	6341.2	6107.3	5964.4	5798.7	5719.0	5625.5	5617.0	5589.0	5647.5
35°	5330.6	5075.6	4892.3	4695.3	4709.8	4465.4	4506.0	4316.1	4264.7	4253.5	4296.9
37.5°	4119.9	3922.4	3773.5	3626.0	3526.1	3422.8	3367.2	3317.3	3311.6	3306.8	3337.2
40°	3224.8	3086.5	2978.3	2877.0	2808.3	2745.2	2710.5	2683.0	2676.5	2672.9	2691.3
42.5°	2610.0	2516.7	2446.9	2385.1	2343.3	2309.1	2290.0	2274.7	2269.6	2269.8	2280.7
45°	2205.1	2148.5	2103.5	2065.1	2038.5	2050.2	2015.7	2033.8	2009.9	2034.6	2018.3
47.5°	1941.9	1893.8	1865.9	1838.7	1822.6	1809.5	1810.0	1810.3	1815.3	1816.1	1821.5
50°	1738.8	1710.9	1691.6	1674.2	1665.8	1658.9	1661.4	1663.1	1668.0	1668.4	1672.3
52.5°	1588.5	1570.2	1558.5	1547.7	1544.0	1540.1	1541.8	1541.0	1543.3	1542.1	1545.2
55°	1466.2	1457.5	1453.9	1449.9	1450.4	1449.4	1450.1	1446.2	1443.8	1440.9	1443.6
57.5°	1365.8	1364.6	1367.1	1368.8	1373.3	1375.0	1376.1	1371.6	1367.4	1363.4	1365.7
60°	1288.5	1290.4	1296.5	1301.4	1308.0	1311.1	1313.0	1310.4	1307.4	1304.2	1306.1
62.5°	1212.2	1215.2	1222.5	1228.0	1236.0	1240.2	1244.7	1245.0	1246.2	1245.0	1246.3
65°	1123.6	1127.3	1133.9	1138.5	1145.9	1149.6	1154.3	1155.2	1157.8	1157.1	1159.4
67.5°	1056.4	1059.7	1065.2	1069.5	1076.1	1080.0	1084.1	1084.3	1085.2	1085.1	1087.1
70°	984.5	986.1	991.1	994.8	1001.4	1005.3	1010.0	1011.4	1014.4	1014.8	1017.2
72.5°	908.0	907.3	910.3	911.9	916.9	919.9	926.0	929.3	934.2	935.5	937.3
75°	824.7	823.9	827.5	828.9	833.1	836.2	842.9	847.3	855.0	858.2	857.4
77.5°	728.1	729.8	736.4	740.1	745.8	749.6	758.4	765.4	779.4	785.5	779.3
80°	620.2	622.0	628.9	632.3	639.7	644.5	654.3	662.4	675.0	677.8	674.2
82.5°	487.6	488.2	494.2	496.9	506.5	513.5	526.0	532.4	540.2	539.1	538.1
85°	332.5	337.0	344.7	352.4	364.1	375.5	387.2	396.8	390.1	400.7	388.7
87.5°	177.7	177.2	187.6	186.0	202.5	212.1	222.3	227.1	232.5	231.4	231.5
90°	37.5	35.5	36.0	33.6	34.9	32.3	34.6	32.2	34.9	31.9	36.8
92.5°	32.4	31.2	29.8	28.6	27.2	25.9	24.5	23.3	21.9	20.6	21.9
95°	39.3	38.1	36.9	35.6	34.3	33.2	31.9	30.7	29.5	28.2	29.8
97.5°	48.0	47.3	46.6	45.9	45.2	44.6	43.8	43.1	42.2	41.5	42.5
100°	54.1	54.1	54.1	54.1	53.9	53.9	53.9	53.9	53.9	53.9	54.7
102.5°	100.3	97.9	95.6	93.1	90.8	88.4	86.1	83.8	81.5	79.1	82.6
105°	221.4	212.4	203.1	194.0	184.7	175.6	166.5	157.4	148.2	139.1	148.6
107.5°	407.8	390.9	374.2	357.6	340.9	324.2	307.5	291.0	274.3	257.6	272.5
110°	567.5	549.7	531.9	514.3	496.5	478.7	461.1	443.4	425.8	408.1	422.3



TEST NUMBER: P1444684  
 CATALOG NUMBER: EHBR1-42-UNV-TA-L930-UPL18

**CANDELA DISTRIBUTION (continued):**

	247.5°	250°	252.5°	255°	257.5°	260°	262.5°	265°	267.5°	270°	272.5°
112.5°	632.6	620.9	609.5	598.0	586.5	575.1	563.6	552.2	540.9	529.5	536.4
115°	624.7	619.2	613.5	608.0	602.6	596.9	591.4	586.1	580.7	575.3	575.8
117.5°	574.3	572.3	570.3	568.4	566.4	564.5	562.8	561.1	559.1	557.6	553.8
120°	501.8	502.0	502.2	502.7	503.2	503.7	504.0	504.7	505.5	506.2	501.0
122.5°	430.3	431.2	432.3	433.5	434.6	435.9	437.3	438.8	440.3	441.8	436.7
125°	368.8	369.7	370.7	371.7	372.7	374.0	375.3	376.9	378.2	379.9	375.5
127.5°	325.4	325.4	325.4	325.6	325.7	326.1	326.6	327.1	327.9	328.7	326.0
130°	299.1	298.2	297.2	296.3	295.4	295.1	294.6	294.1	293.8	293.7	292.7
132.5°	285.4	283.8	282.2	280.7	279.3	278.0	276.8	276.0	275.1	274.4	274.0
135°	279.7	277.7	275.7	273.8	271.8	270.4	268.7	267.4	266.2	265.0	265.5
137.5°	277.3	275.4	273.2	271.4	269.5	268.1	266.4	264.9	263.8	262.7	263.3
140°	278.9	276.9	274.9	273.0	271.4	269.8	268.2	267.0	265.6	264.7	265.0
142.5°	279.6	277.9	276.0	274.4	272.7	271.3	270.0	268.9	267.5	266.7	267.2
145°	280.9	279.6	278.2	277.0	275.8	274.8	273.6	272.9	272.1	271.6	271.8
147.5°	281.2	280.4	279.2	278.3	277.2	276.7	275.8	275.3	274.6	274.3	274.4
150°	280.0	279.4	278.7	278.1	277.5	277.1	276.6	276.3	275.9	275.7	275.7
152.5°	277.9	277.4	276.8	276.3	275.9	275.5	275.2	275.0	274.7	274.6	274.6
155°	274.6	274.4	274.1	274.1	273.9	274.0	273.8	274.0	273.8	274.0	274.1
157.5°	273.6	273.7	273.6	273.8	273.9	273.9	274.0	274.4	274.4	274.8	275.0
160°	274.3	274.3	274.3	274.4	274.4	274.5	274.6	274.7	274.9	275.1	275.5
162.5°	274.9	275.3	275.4	275.5	275.9	276.2	276.5	277.0	277.2	277.7	278.0
165°	278.0	278.1	278.1	278.0	278.3	278.5	278.6	278.9	279.0	279.5	279.9
167.5°	280.6	280.8	280.8	281.0	281.2	281.6	281.8	282.2	282.6	283.1	283.5
170°	284.9	284.9	284.9	284.9	284.9	285.2	285.3	285.3	285.5	285.9	286.1
172.5°	289.7	289.7	289.5	289.7	289.5	289.7	289.7	289.9	289.9	290.0	290.1
175°	292.3	292.7	292.7	293.0	293.0	293.1	293.2	293.4	293.5	293.6	293.6
177.5°	295.1	295.1	295.1	295.1	295.1	295.2	295.2	295.2	295.2	295.1	295.2
180°	294.7	294.7	294.7	294.7	294.7	294.7	294.7	294.7	294.7	294.7	294.7



TEST NUMBER: P1444684  
 CATALOG NUMBER: EHBR1-42-UNV-TA-L930-UPL18

**CANDELA DISTRIBUTION (continued):**

	275°	277.5°	280°	282.5°	285°	287.5°	290°	292.5°	295°	297.5°	300°
0°	31860.0	31860.0	31860.0	31860.0	31860.0	31860.0	31860.0	31860.0	31860.0	31860.0	31860.0
2.5°	32258.8	32242.7	32259.2	32242.4	32259.2	32239.1	32252.7	32231.0	32236.5	32214.0	32219.8
5°	33478.6	33452.8	33466.6	33433.1	33436.6	33392.1	33391.2	33339.2	33325.6	33266.4	33240.4
7.5°	34464.9	34456.5	34461.2	34439.7	34437.3	34406.8	34392.3	34349.2	34322.2	34267.8	34230.6
10°	34308.8	34333.9	34340.4	34366.1	34371.3	34396.7	34402.1	34427.5	34432.7	34451.5	34451.8
12.5°	32747.2	32832.6	32853.0	32958.4	33002.8	33123.6	33188.3	33321.2	33400.2	33532.8	33614.2
15°	29738.8	29886.6	29945.5	30151.4	30265.3	30505.7	30656.8	30932.9	31127.7	31420.9	31629.9
17.5°	25598.5	25804.9	25898.0	26177.3	26359.5	26714.3	26970.1	27391.0	27713.3	28181.0	28551.8
20°	21007.1	21236.5	21362.9	21681.5	21896.5	22311.1	22630.4	23147.7	23579.0	24171.8	24678.7
22.5°	16565.2	16783.5	16924.0	17248.1	17490.1	17922.5	18279.4	18825.3	19308.7	19976.6	20584.3
25°	12719.0	12919.0	13045.9	13339.1	13566.4	13963.8	14304.6	14829.6	15302.6	15972.5	16595.7
27.5°	9723.5	9891.0	10013.4	10263.3	10463.8	10800.9	11093.5	11527.5	11934.9	12514.6	13069.5
30°	7444.1	7592.7	7711.7	7929.4	8115.3	8407.5	8664.8	9029.4	9366.6	9827.8	10269.2
32.5°	5688.6	5816.5	5922.5	6113.0	6281.7	6544.8	6776.7	7096.1	7385.6	7776.8	8140.0
35°	4337.4	4588.9	4571.1	4834.0	4876.2	5065.1	5271.9	5551.3	5807.6	6140.2	6449.4
37.5°	3366.5	3437.2	3513.0	3629.3	3751.3	3923.1	4097.8	4439.2	4564.4	4815.8	5071.7
40°	2714.7	2762.5	2812.6	2891.1	2976.6	3097.6	3224.9	3387.8	3554.6	3758.4	3966.5
42.5°	2295.0	2322.1	2353.9	2400.1	2452.8	2529.6	2614.7	2725.1	2841.1	2984.6	3131.0
45°	2050.5	2037.7	2047.1	2071.9	2103.6	2150.3	2204.1	2272.4	2348.0	2440.9	2539.8
47.5°	1822.6	1827.7	1830.6	1844.0	1861.0	1892.3	1924.9	1971.3	2060.9	2088.2	2142.1
50°	1672.0	1674.5	1673.6	1680.5	1689.1	1709.4	1730.5	1762.0	1793.3	1834.9	1874.6
52.5°	1545.8	1549.2	1548.8	1553.3	1557.9	1570.8	1584.1	1606.3	1626.9	1653.3	1676.1
55°	1446.1	1451.0	1452.8	1456.6	1458.9	1465.6	1470.9	1481.5	1490.3	1505.2	1519.0
57.5°	1369.4	1376.1	1379.1	1380.5	1377.7	1377.3	1375.6	1377.9	1379.6	1387.7	1395.4
60°	1309.1	1314.4	1315.2	1314.4	1309.4	1306.0	1300.3	1298.5	1297.6	1301.4	1305.7
62.5°	1246.0	1247.9	1246.5	1245.0	1239.3	1235.9	1230.0	1227.9	1225.9	1228.6	1230.8
65°	1158.6	1160.3	1158.6	1157.6	1152.5	1149.8	1144.8	1143.2	1140.4	1141.1	1140.7
67.5°	1087.6	1089.2	1088.0	1086.7	1083.1	1081.5	1077.8	1075.4	1072.0	1070.7	1068.4
70°	1016.9	1018.2	1016.2	1014.8	1010.8	1009.3	1005.9	1005.2	1002.4	1001.9	999.1
72.5°	935.5	935.6	932.8	932.0	929.0	928.9	927.5	928.8	928.7	930.1	929.5
75°	852.3	851.1	847.6	846.9	844.7	845.8	844.3	846.2	846.5	849.5	849.9
77.5°	768.9	764.5	757.8	754.6	750.2	749.5	747.0	748.7	748.1	751.7	753.1
80°	663.6	658.3	649.6	645.5	640.2	639.4	637.0	639.4	638.2	642.3	645.3
82.5°	529.8	525.2	516.2	512.9	506.8	507.4	504.7	507.4	507.1	513.1	516.7
85°	391.9	388.8	379.6	371.4	362.3	357.1	351.9	350.9	349.4	351.9	354.0
87.5°	226.3	223.5	216.3	211.6	195.7	196.3	190.1	189.7	188.2	186.8	190.1
90°	35.6	39.7	38.8	42.4	42.0	46.3	46.2	50.2	49.4	53.4	53.2
92.5°	23.3	24.5	25.8	27.2	28.5	29.8	31.1	32.4	35.3	37.9	41.0
95°	31.3	32.8	34.3	35.9	37.4	38.9	40.5	42.0	46.2	50.3	54.4
97.5°	43.8	44.6	45.5	46.6	47.6	48.6	49.6	50.6	55.3	59.7	64.2
100°	55.5	56.3	57.1	58.0	58.8	59.6	60.4	61.2	70.0	78.7	87.2
102.5°	86.0	89.5	92.9	96.3	100.0	103.5	106.8	110.3	130.2	150.0	169.8
105°	158.0	167.4	177.0	186.3	195.8	205.2	214.8	224.2	256.0	287.7	319.6
107.5°	287.5	302.4	317.3	332.3	347.3	362.2	377.2	392.3	423.2	454.3	485.2
110°	436.6	450.8	465.1	479.3	493.6	507.9	522.3	536.7	555.4	574.0	592.7



TEST NUMBER: P1444684  
 CATALOG NUMBER: EHBR1-42-UNV-TA-L930-UPL18

**CANDELA DISTRIBUTION (continued):**

	275°	277.5°	280°	282.5°	285°	287.5°	290°	292.5°	295°	297.5°	300°
112.5°	543.4	550.3	557.4	564.4	571.4	578.5	585.6	592.7	602.1	611.6	621.0
115°	576.2	576.7	577.3	577.8	578.4	579.0	579.8	580.5	583.7	586.8	590.0
117.5°	549.9	546.2	542.6	538.8	535.2	531.8	528.3	525.0	524.6	524.3	524.2
120°	496.2	491.2	486.2	481.2	476.5	471.7	467.1	462.5	460.4	458.2	456.2
122.5°	431.7	426.8	422.0	417.1	412.3	407.8	403.3	398.9	397.5	396.2	395.0
125°	371.3	367.3	363.3	359.6	355.9	352.2	348.7	345.1	345.6	345.9	346.6
127.5°	323.7	321.3	318.9	316.9	314.9	312.9	311.1	309.2	311.0	312.7	314.4
130°	291.7	290.9	290.2	289.4	289.2	288.7	288.3	287.9	290.7	293.0	295.8
132.5°	274.3	274.3	274.6	274.9	275.5	276.0	276.9	277.3	280.3	283.0	286.0
135°	265.9	266.5	267.3	268.2	269.4	270.4	271.6	272.6	275.5	278.1	281.1
137.5°	264.1	264.8	265.9	266.9	268.3	269.4	271.0	272.2	274.5	276.7	279.0
140°	265.7	266.4	267.3	268.2	269.3	270.4	271.7	272.8	274.8	276.6	278.5
142.5°	268.0	268.4	269.3	270.3	271.3	272.2	273.4	274.3	275.8	277.1	278.8
145°	272.4	272.8	273.6	274.3	275.1	275.9	276.8	277.6	278.7	279.6	280.7
147.5°	274.9	275.3	275.8	276.4	277.1	277.7	278.3	278.9	279.8	280.5	281.4
150°	276.2	276.3	276.8	277.0	277.6	278.0	278.7	279.1	279.7	280.4	281.1
152.5°	275.1	275.2	275.6	275.8	276.3	276.7	277.1	277.6	278.2	278.7	279.4
155°	274.5	275.0	275.5	275.8	276.4	276.6	277.2	277.6	278.1	278.7	279.2
157.5°	275.5	275.7	276.3	276.6	277.1	277.5	277.9	278.3	278.9	279.3	279.7
160°	276.0	276.5	277.0	277.7	278.2	278.7	279.2	279.7	280.3	280.6	281.1
162.5°	278.6	279.0	279.5	279.8	280.3	280.8	281.2	281.6	282.3	282.6	283.3
165°	280.4	281.0	281.7	282.0	282.7	283.3	283.7	284.3	284.6	285.2	285.5
167.5°	284.0	284.4	285.1	285.6	286.1	286.6	287.1	287.6	288.0	288.3	288.7
170°	286.5	286.9	287.4	287.9	288.4	288.7	289.3	289.6	290.2	290.4	291.0
172.5°	290.4	290.7	291.0	291.3	291.7	292.1	292.5	292.7	293.1	293.5	293.7
175°	293.6	293.6	293.7	293.9	294.0	294.0	294.1	294.3	294.4	294.6	294.7
177.5°	295.3	295.5	295.6	295.7	295.8	295.9	296.0	296.1	296.1	296.1	296.1
180°	294.7	294.7	294.7	294.7	294.7	294.7	294.7	294.7	294.7	294.7	294.7



TEST NUMBER: P1444684  
 CATALOG NUMBER: EHBR1-42-UNV-TA-L930-UPL18

**CANDELA DISTRIBUTION (continued):**

	302.5°	305°	307.5°	310°	312.5°	315°	317.5°	320°	322.5°	325°	327.5°
0°	31860.0	31860.0	31860.0	31860.0	31860.0	31860.0	31860.0	31860.0	31860.0	31860.0	31860.0
2.5°	32197.2	32198.6	32172.6	32171.2	32146.9	32143.8	32120.1	32112.9	32093.7	32086.7	32067.1
5°	33174.1	33142.4	33069.3	33026.3	32954.1	32906.2	32828.1	32777.1	32701.6	32644.7	32568.8
7.5°	34162.0	34112.9	34030.8	33964.3	33864.1	33784.1	33666.8	33570.6	33443.7	33333.7	33200.3
10°	34451.8	34444.2	34423.3	34392.8	34346.2	34293.8	34214.0	34130.7	34019.3	33898.5	33750.1
12.5°	33738.8	33815.8	33920.8	33983.0	34058.7	34091.9	34122.9	34115.1	34094.7	34033.5	33947.8
15°	31932.8	32149.2	32435.6	32657.6	32913.0	33098.6	33303.6	33431.4	33558.7	33617.5	33653.5
17.5°	29059.9	29469.5	29983.2	30408.8	30899.9	31294.4	31726.8	32052.3	32387.0	32626.9	32843.8
20°	25369.7	25963.1	26689.5	27331.2	28077.5	28726.0	29436.6	30020.0	30621.6	31092.0	31537.2
22.5°	21366.9	22071.7	22950.0	23763.6	24725.5	25590.1	26565.5	27414.5	28300.9	29041.5	29757.5
25°	17431.0	18203.9	19164.2	20071.8	21161.3	22167.0	23323.9	24381.9	25527.7	26522.3	27504.9
27.5°	13836.8	14595.7	15576.1	16542.3	17694.4	18766.0	20005.5	21171.2	22475.7	23678.6	24909.3
30°	10882.8	11526.4	12405.5	13341.4	14477.6	15568.1	16821.0	18019.9	19377.0	20690.5	22076.6
32.5°	8622.1	9112.4	9803.6	10594.9	11643.4	12681.4	13874.4	15031.7	16368.2	17695.0	19136.6
35°	6847.5	7230.0	7756.9	8374.5	9262.3	10157.1	11212.3	12264.8	13511.6	14770.7	16171.9
37.5°	5399.7	5710.0	6122.7	6586.6	7298.7	8033.0	8898.3	9770.9	10854.3	11970.3	13240.2
40°	4216.5	4467.8	4789.1	5135.0	5672.7	6238.6	6907.8	7584.4	8454.8	9366.9	10418.0
42.5°	3312.5	3497.8	3724.7	3977.5	4479.2	4779.6	5233.4	5722.8	6362.7	7024.9	7815.0
45°	2660.1	2786.6	2944.0	3113.6	3346.4	3601.2	3912.0	4237.9	4845.7	5143.9	5624.5
47.5°	2221.5	2306.4	2406.5	2513.4	2650.7	2798.9	2983.2	3171.7	3415.4	3667.9	3964.1
50°	1926.1	2012.4	2046.8	2102.1	2181.6	2266.3	2370.2	2474.1	2604.8	2737.2	2889.7
52.5°	1706.8	1734.9	1772.3	1807.5	1856.8	1953.1	1984.3	2038.6	2111.9	2183.6	2263.7
55°	1539.4	1557.7	1582.0	1603.2	1633.0	1661.4	1702.5	1738.7	1787.5	1830.8	1884.0
57.5°	1409.0	1420.7	1437.6	1451.5	1470.7	1486.9	1510.9	1530.5	1558.6	1583.0	1615.3
60°	1314.3	1322.1	1333.4	1342.5	1354.8	1363.2	1375.1	1384.3	1399.2	1411.6	1429.6
62.5°	1237.0	1241.0	1248.4	1253.7	1261.5	1265.8	1272.2	1276.2	1284.3	1290.5	1300.6
65°	1144.1	1145.1	1150.1	1152.3	1158.5	1160.7	1165.9	1167.7	1174.5	1179.2	1188.0
67.5°	1068.1	1066.0	1066.2	1064.4	1065.2	1063.4	1063.8	1062.0	1064.7	1066.2	1072.8
70°	998.7	995.8	994.8	991.6	990.7	987.4	986.4	983.5	983.1	982.1	984.5
72.5°	931.1	930.2	930.4	928.2	927.9	925.7	925.8	924.5	926.0	926.7	929.7
75°	853.3	853.4	855.0	853.0	853.5	851.7	852.4	850.6	851.6	851.2	854.2
77.5°	758.5	760.8	764.9	764.1	765.4	763.3	764.2	761.7	762.5	760.8	761.9
80°	652.0	656.8	662.3	662.0	664.4	662.9	665.0	662.7	663.6	660.8	660.1
82.5°	525.6	529.6	535.5	535.8	540.9	541.8	547.6	547.4	551.1	548.7	547.1
85°	359.3	362.0	367.2	370.1	375.3	378.6	384.3	386.5	382.5	389.8	384.0
87.5°	187.6	194.6	190.7	199.8	197.7	206.8	204.9	213.3	211.7	219.0	218.1
90°	58.4	58.8	64.3	65.0	71.6	73.1	77.1	75.2	79.0	77.4	81.1
92.5°	43.6	46.6	49.5	52.3	55.2	58.1	55.3	52.8	50.1	47.6	44.8
95°	58.6	62.7	66.9	71.1	75.2	79.4	74.9	70.6	66.1	61.7	57.1
97.5°	68.6	73.2	77.6	82.1	86.6	91.1	85.8	80.6	75.2	70.0	64.8
100°	95.9	104.7	113.4	121.9	130.6	139.3	129.6	119.7	110.1	100.2	90.4
102.5°	189.7	209.6	229.6	249.4	269.2	289.1	268.3	247.6	226.7	205.9	185.1
105°	351.4	383.2	414.9	446.7	478.5	510.5	476.8	443.0	409.2	375.6	341.7
107.5°	516.3	547.3	578.5	609.5	640.6	671.7	637.6	603.3	569.3	535.0	500.7
110°	611.5	630.2	649.0	667.9	686.6	705.5	680.6	655.7	630.8	605.9	580.9



TEST NUMBER: P1444684  
 CATALOG NUMBER: EHBR1-42-UNV-TA-L930-UPL18

**CANDELA DISTRIBUTION (continued):**

	302.5°	305°	307.5°	310°	312.5°	315°	317.5°	320°	322.5°	325°	327.5°
112.5°	630.5	640.2	649.6	659.3	668.8	678.4	660.7	643.1	625.3	607.7	589.9
115°	593.3	596.6	599.9	603.2	606.4	609.8	598.0	586.1	574.4	562.6	550.5
117.5°	524.0	523.9	523.5	523.7	523.4	523.3	516.9	510.5	503.9	497.4	490.8
120°	454.0	452.2	450.1	448.1	445.9	443.8	441.4	438.9	436.2	433.7	431.0
122.5°	393.7	392.7	391.4	390.2	388.8	387.5	386.8	386.1	385.3	384.6	383.7
125°	347.0	347.4	347.8	348.4	348.7	349.1	349.0	348.9	348.6	348.5	348.3
127.5°	316.0	317.8	319.4	321.0	322.4	324.1	324.3	324.7	324.9	325.2	325.4
130°	298.1	300.8	303.2	305.5	307.7	310.4	310.4	310.6	310.7	310.8	310.9
132.5°	288.7	291.6	294.2	297.0	299.7	302.3	302.4	302.5	302.4	302.6	302.5
135°	283.6	286.3	288.7	291.6	293.9	296.5	296.4	296.5	296.2	296.4	296.3
137.5°	281.1	283.5	285.5	287.7	289.5	291.8	291.6	291.7	291.4	291.5	291.3
140°	280.2	282.1	283.6	285.5	287.2	288.9	288.6	288.5	288.1	287.9	287.5
142.5°	280.2	281.7	282.8	284.4	285.6	287.0	286.2	285.8	285.3	284.7	284.2
145°	281.8	282.8	283.8	284.8	285.5	286.6	285.7	285.1	284.1	283.5	282.8
147.5°	282.0	282.8	283.3	284.2	284.5	285.3	284.5	283.7	282.9	282.0	281.2
150°	281.5	282.4	282.8	283.5	283.9	284.5	283.6	282.8	281.8	280.9	280.0
152.5°	279.9	280.5	281.0	281.4	281.9	282.3	281.3	280.7	279.6	278.7	277.8
155°	279.5	280.1	280.3	280.8	280.9	281.2	280.4	279.8	278.9	278.1	277.2
157.5°	280.1	280.6	281.0	281.2	281.4	281.8	281.2	280.7	280.0	279.5	278.7
160°	281.4	281.8	282.1	282.4	282.8	282.8	282.3	282.0	281.5	280.9	280.4
162.5°	283.6	284.3	284.6	284.9	285.3	285.7	285.1	284.6	284.0	283.4	282.8
165°	285.9	286.2	286.6	286.9	287.0	287.4	286.9	286.7	286.2	285.9	285.3
167.5°	289.0	289.4	289.7	290.1	290.2	290.4	290.0	289.9	289.4	289.0	288.6
170°	291.2	291.7	292.1	292.4	292.7	292.8	292.7	292.4	291.9	291.7	291.2
172.5°	294.1	294.5	294.6	294.9	295.0	295.3	295.0	294.6	294.3	293.9	293.5
175°	294.7	294.8	295.1	295.1	295.1	295.1	294.9	294.5	294.3	293.9	293.6
177.5°	296.1	296.1	296.1	296.0	296.0	296.0	295.9	295.6	295.4	295.2	294.8
180°	294.7	294.7	294.7	294.7	294.7	294.7	294.7	294.7	294.7	294.7	294.7



TEST NUMBER: P1444684  
 CATALOG NUMBER: EHBR1-42-UNV-TA-L930-UPL18

**CANDELA DISTRIBUTION (continued):**

	330°	332.5°	335°	337.5°	340°	342.5°	345°	347.5°	350°	352.5°	355°
0°	31860.0	31860.0	31860.0	31860.0	31860.0	31860.0	31860.0	31860.0	31860.0	31860.0	31860.0
2.5°	32060.1	32046.2	32037.2	32025.8	32018.8	32009.9	32003.4	31997.9	31993.4	31989.2	31986.2
5°	32510.9	32439.3	32383.6	32323.4	32273.9	32224.6	32186.6	32155.1	32133.3	32117.0	32107.3
7.5°	33084.9	32953.7	32837.1	32714.3	32604.2	32495.9	32402.6	32322.2	32261.9	32222.8	32199.1
10°	33597.5	33421.9	33248.2	33065.5	32892.0	32724.0	32568.8	32432.3	32324.3	32252.5	32210.6
12.5°	33827.3	33677.7	33500.3	33301.8	33089.4	32874.5	32665.0	32476.1	32317.5	32211.1	32149.7
15°	33624.9	33563.4	33443.1	33289.0	33087.5	32865.3	32619.3	32388.1	32175.5	32037.5	31957.6
17.5°	32966.6	33052.4	33043.1	32984.2	32839.3	32652.2	32401.6	32142.0	31875.9	31691.6	31590.9
20°	31855.7	32125.2	32261.9	32332.0	32275.1	32153.9	31926.9	31663.3	31353.3	31112.7	30965.8
22.5°	30294.6	30770.3	31066.8	31283.8	31329.8	31288.5	31088.1	30837.4	30491.8	30202.5	29985.6
25°	28284.9	28982.0	29450.5	29817.9	29960.5	29997.4	29826.8	29577.5	29192.3	28855.3	28557.4
27.5°	25917.9	26823.6	27449.0	27942.7	28165.4	28262.0	28105.1	27850.8	27395.0	26992.7	26603.5
30°	23253.0	24327.5	25080.7	25672.5	25944.1	26071.7	25905.0	25621.1	25090.7	24606.7	24116.4
32.5°	20400.8	21576.5	22397.3	23040.0	23309.1	23429.2	23211.1	22892.3	22279.2	21708.9	21137.2
35°	17414.5	18601.2	19429.0	20054.6	20280.0	20352.5	20073.5	19705.0	19025.8	18399.9	17776.4
37.5°	14367.4	15471.5	16223.7	16785.2	16924.8	16937.3	16601.2	16194.2	15480.3	14863.1	14242.5
40°	11346.6	12277.8	12885.2	13334.6	13383.0	13339.7	12974.4	12564.8	11897.0	11344.0	10799.2
42.5°	8501.2	9204.1	9637.4	9945.4	9927.1	9841.7	9506.8	9154.6	8603.7	8182.5	7753.7
45°	6063.5	6527.0	6780.3	6960.5	6902.7	6821.3	6560.6	6313.8	5939.4	5667.4	5379.2
47.5°	4212.4	4765.8	4669.5	5021.8	4718.2	4918.7	4501.2	4271.1	4072.3	3927.8	3765.0
50°	3015.7	3142.5	3203.8	3245.6	3223.3	3192.6	3117.6	3050.5	2959.7	2893.6	2816.4
52.5°	2329.0	2392.4	2427.1	2452.2	2447.2	2436.0	2403.3	2373.5	2331.0	2303.0	2269.2
55°	1972.7	1973.7	2037.5	2010.1	2050.6	2003.2	2021.8	1969.3	1977.8	1932.7	1902.3
57.5°	1639.3	1665.3	1676.9	1688.3	1685.1	1683.1	1670.4	1664.0	1649.8	1645.4	1635.2
60°	1442.0	1455.5	1458.3	1463.6	1459.2	1457.5	1447.7	1444.1	1434.6	1432.8	1426.0
62.5°	1306.7	1313.6	1313.6	1313.6	1307.9	1302.5	1291.5	1285.7	1277.6	1275.8	1271.9
65°	1193.8	1201.0	1202.1	1203.7	1199.6	1195.3	1185.6	1179.3	1171.0	1167.7	1163.3
67.5°	1077.2	1084.9	1087.5	1091.4	1089.1	1088.2	1081.6	1079.1	1073.6	1072.2	1068.1
70°	985.7	988.9	988.6	988.5	983.4	978.7	971.1	967.4	961.6	960.5	956.6
72.5°	931.2	933.6	932.1	930.1	923.4	916.5	907.5	900.9	893.4	888.6	883.3
75°	854.6	857.6	855.7	854.4	848.4	843.9	836.7	833.0	827.7	826.2	822.5
77.5°	760.5	761.9	758.9	758.5	753.9	751.1	745.6	744.7	740.8	740.9	737.4
80°	655.8	655.0	650.0	649.1	644.5	643.3	639.0	639.3	636.2	637.5	635.0
82.5°	539.6	536.6	530.1	528.3	522.9	522.5	519.6	522.0	520.2	522.9	521.3
85°	386.7	387.6	384.7	384.7	383.2	383.6	383.4	385.2	385.4	388.0	387.9
87.5°	215.6	218.7	218.1	220.9	220.8	224.0	225.0	229.7	230.4	234.7	234.7
90°	79.4	83.7	82.0	86.4	85.8	90.6	90.9	95.8	95.4	99.5	98.2
92.5°	42.2	39.6	37.1	34.3	33.0	31.4	30.7	28.8	27.7	26.1	24.9
95°	52.7	48.2	43.8	39.3	37.8	36.2	34.7	33.2	31.5	30.0	28.5
97.5°	59.5	54.2	48.9	43.7	42.3	41.0	39.7	38.3	37.0	35.6	34.4
100°	80.5	70.7	60.9	51.0	49.8	48.7	47.6	46.5	45.4	44.1	43.0
102.5°	164.2	143.3	122.4	101.5	97.6	93.6	89.6	85.6	81.6	77.7	73.8
105°	307.9	274.0	240.2	206.3	195.5	184.7	174.0	163.2	152.4	141.6	130.9
107.5°	466.4	432.0	397.7	363.3	343.6	323.8	303.8	283.7	264.0	244.0	224.0
110°	556.0	530.9	505.9	480.8	464.9	448.9	432.8	416.8	401.0	384.8	368.8



TEST NUMBER: P1444684  
 CATALOG NUMBER: EHBR1-42-UNV-TA-L930-UPL18

**CANDELA DISTRIBUTION (continued):**

	330°	332.5°	335°	337.5°	340°	342.5°	345°	347.5°	350°	352.5°	355°
112.5°	572.0	554.2	536.4	518.3	511.2	503.9	496.9	489.6	482.4	475.0	467.8
115°	538.6	526.8	514.6	502.5	500.2	497.7	495.3	492.6	490.2	487.5	484.9
117.5°	484.4	477.7	471.1	464.5	464.9	465.5	466.2	466.6	467.0	467.4	467.8
120°	428.3	425.7	423.0	420.3	422.8	425.1	427.6	429.7	432.0	434.1	436.1
122.5°	383.0	382.0	381.3	380.2	383.3	386.2	389.0	391.7	394.5	396.9	399.4
125°	348.2	347.8	347.6	347.2	350.3	353.2	356.2	358.8	361.6	364.0	366.5
127.5°	325.8	326.0	326.3	326.4	328.8	330.8	333.0	334.9	336.9	338.5	340.4
130°	311.0	311.0	311.3	311.3	313.4	315.4	317.5	319.2	321.1	322.5	324.1
132.5°	302.7	302.6	302.7	302.6	304.4	305.9	307.5	308.7	310.1	311.0	312.1
135°	296.3	296.0	296.1	295.9	297.6	299.1	300.5	301.7	303.0	303.8	304.7
137.5°	291.4	291.1	291.0	290.9	292.4	293.7	295.1	296.1	297.2	298.1	298.8
140°	287.4	287.0	286.9	286.5	287.8	289.0	290.2	291.2	292.2	292.8	293.6
142.5°	283.6	282.8	282.6	281.9	282.8	283.7	284.6	285.3	286.1	286.6	287.0
145°	282.0	281.0	280.4	279.5	280.3	281.0	281.7	282.4	282.8	283.1	283.6
147.5°	280.6	279.6	278.7	277.9	278.7	279.1	279.6	279.9	280.4	280.6	280.9
150°	279.0	277.9	277.0	276.0	276.3	276.7	277.1	277.5	277.8	277.9	278.1
152.5°	276.8	275.8	274.8	273.7	273.9	274.2	274.4	274.5	274.7	274.8	274.8
155°	276.5	275.5	274.6	273.6	273.9	273.9	274.1	274.2	274.1	274.1	274.1
157.5°	278.0	277.1	276.6	275.7	275.6	275.6	275.6	275.3	275.3	275.0	274.7
160°	279.9	279.1	278.5	277.8	277.6	277.5	277.6	277.1	277.1	276.6	276.4
162.5°	282.0	281.3	280.5	279.7	279.6	279.6	279.4	279.0	278.9	278.6	278.3
165°	285.0	284.4	283.8	283.1	283.0	282.8	282.7	282.1	282.0	281.4	281.1
167.5°	288.0	287.5	286.9	286.1	286.1	286.1	285.9	285.6	285.6	285.2	285.1
170°	290.9	290.3	290.0	289.4	289.2	289.1	288.8	288.6	288.2	288.0	287.7
172.5°	293.0	292.6	292.1	291.4	291.4	291.3	291.0	291.0	290.6	290.3	290.2
175°	293.2	292.9	292.3	292.0	291.9	291.8	291.7	291.6	291.3	291.2	291.0
177.5°	294.6	294.4	294.0	293.8	293.6	293.6	293.5	293.5	293.5	293.3	293.2
180°	294.7	294.7	294.7	294.7	294.7	294.7	294.7	294.7	294.7	294.7	294.7



TEST NUMBER: P1444684  
CATALOG NUMBER: EHBR1-42-UNV-TA-L930-UPL18

**CANDELA DISTRIBUTION (continued):**

	357.5°	360°
0°	31860.0	31860.0
2.5°	31983.3	31981.7
5°	32102.2	32100.4
7.5°	32192.7	32192.1
10°	32203.4	32208.9
12.5°	32139.1	32143.6
15°	31951.4	31960.3
17.5°	31592.8	31604.3
20°	30974.8	30986.7
22.5°	29973.9	29978.9
25°	28518.9	28498.2
27.5°	26535.2	26499.6
30°	24013.4	23979.0
32.5°	21006.8	20985.3
35°	17622.4	17608.8
37.5°	14059.1	14031.5
40°	10600.0	10519.5
42.5°	7566.0	7424.7
45°	5228.8	5061.2
47.5°	3650.2	3546.6
50°	2766.8	2733.4
52.5°	2254.4	2246.7
55°	1902.2	1898.8
57.5°	1637.5	1636.3
60°	1429.6	1429.2
62.5°	1274.5	1275.1
65°	1165.3	1165.5
67.5°	1069.2	1068.5
70°	958.1	957.3
72.5°	881.6	880.3
75°	822.5	821.7
77.5°	738.5	737.2
80°	636.6	635.0
82.5°	523.6	521.8
85°	390.6	390.7
87.5°	239.0	238.8
90°	102.1	100.3
92.5°	23.8	22.7
95°	27.0	25.5
97.5°	33.1	31.7
100°	41.9	40.7
102.5°	69.8	65.9
105°	120.1	109.3
107.5°	204.2	184.3
110°	352.7	336.7



TEST NUMBER: P1444684  
CATALOG NUMBER: EHBR1-42-UNV-TA-L930-UPL18

**CANDELA DISTRIBUTION (continued):**

	357.5°	360°
112.5°	460.4	453.1
115°	482.1	479.4
117.5°	468.0	468.1
120°	437.9	440.0
122.5°	401.7	404.0
125°	368.8	371.1
127.5°	341.8	343.1
130°	325.0	326.3
132.5°	312.8	313.3
135°	305.1	305.7
137.5°	299.2	299.7
140°	293.9	294.3
142.5°	287.3	287.5
145°	283.7	283.8
147.5°	280.5	280.6
150°	277.9	277.9
152.5°	274.6	274.6
155°	273.8	273.7
157.5°	274.3	274.0
160°	276.0	275.7
162.5°	277.8	277.5
165°	280.5	280.0
167.5°	284.5	284.4
170°	287.3	287.0
172.5°	289.9	289.6
175°	290.9	290.8
177.5°	293.2	292.9
180°	294.7	294.7

Cooper Lighting Solutions Photometric Lab  
1121 Highway 74 South  
Peachtree City, GA 30269



LM-79-2019: Approved Method: Electrical and Photometric Measurements of Solid-State Lighting Products

Report Prepared for

Cooper Lighting Solutions

Metalux

Report Number: SP1-2506-472-5

Test Date: 08/01/2025

Luminaire Tested: EHBR-60-L930-N

Data in this report applies to families of products including EHBR-60-L930-N

**Test Information**

Test Method: LM-79-2019  
 Report Number: SP1-2506-472-5  
 Test Lab: COOPER LIGHTING SOLUTIONS  
 Photometer: SP1 - 76IN SPHERE  
 Measurement Geometry: 4π  
 Issue Date: 08/05/2025  
 Manufacturer: COOPER LIGHTING SOLUTIONS  
 Product Line: Metalux  
 Catalog Number: **EHBR-60-L930-N**  
 Description: Elevate Round Highbay at, 60000 lumens, 3000K 90CRI LEDs with N lens

**Spectral Parameters**

CCT (K): 2996  
 CIE u': 0.2519  
 CIE v': 0.5169  
 Duv: -0.0033  
 CIE x: 0.4325  
 CIE y: 0.3945  
 CIE z: 0.1730  
 Peak Wavelength (nm): 630  
 Dominant Wavelength (nm): 584  
 Purity: 48.21818  
 Rf: 91.3  
 Rg: 102

CRI (Ra):	94.4		
R1:	96.8	R9:	61.4
R2:	98.1	R10:	94.4
R3:	97.8	R11:	95.7
R4:	95.6	R12:	88.5
R5:	96.9	R13:	97.3
R6:	95.7	R14:	97.8
R7:	90.9	R15:	92.3
R8:	83.0		



**Test Conditions**

Stabilization Time: 40M  
 Operation Time: 1H 40M  
 Sphere Temperature (°C): 25.0

REPORT NUMBER: SP1-2506-472-5

Measurement and Test Equipment			
Instrument	Identification Number	Calibration Date	Calibration Due Date
Photometer	76INCH SPHERE IN0058	6/16/2025	12/16/2025
Power Meter	XITRON INXT2011004	1/21/2025	1/21/2026
AC Power Source	CHROMA 61603 IN0063	10/22/2024	10/22/2025
DC Power Source	AGILENT E3634A IN0208	10/22/2024	10/22/2025
Sphere Thermometer	ONSET IN0085	10/22/2024	10/22/2025
Room Thermometer	ONSET IN0046	10/22/2024	10/22/2025

REPORT NUMBER: SP1-2506-472-5

CIE 1931 Chromaticity Diagram



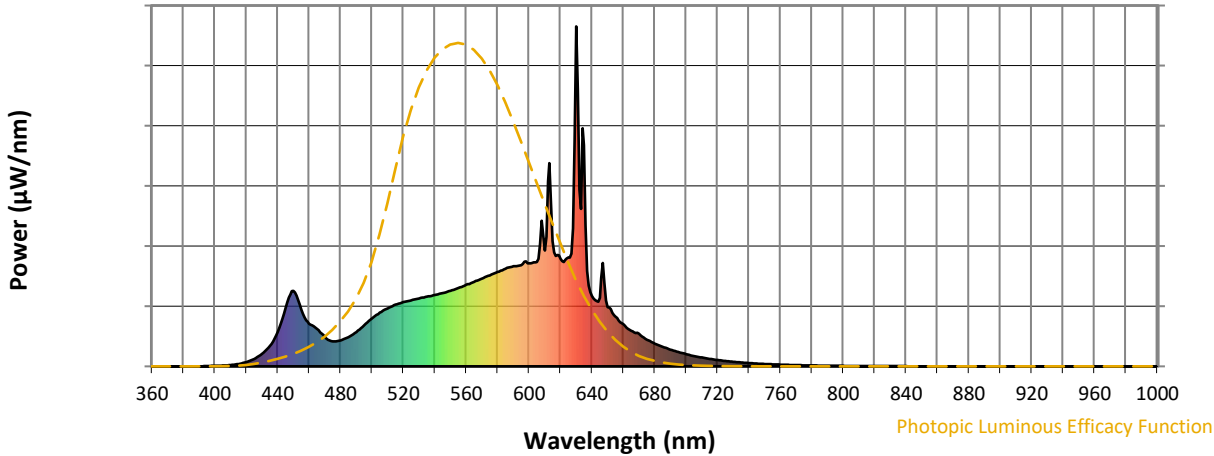
CIE 1931 Chromaticity Diagram with 2017 ANSI 7-Step and 4-Step Quadrangles



Point lies inside the ANSI 3000K 7-step quadrangle

REPORT NUMBER: SP1-2506-472-5

**Photopic Flux vs. Wavelength**

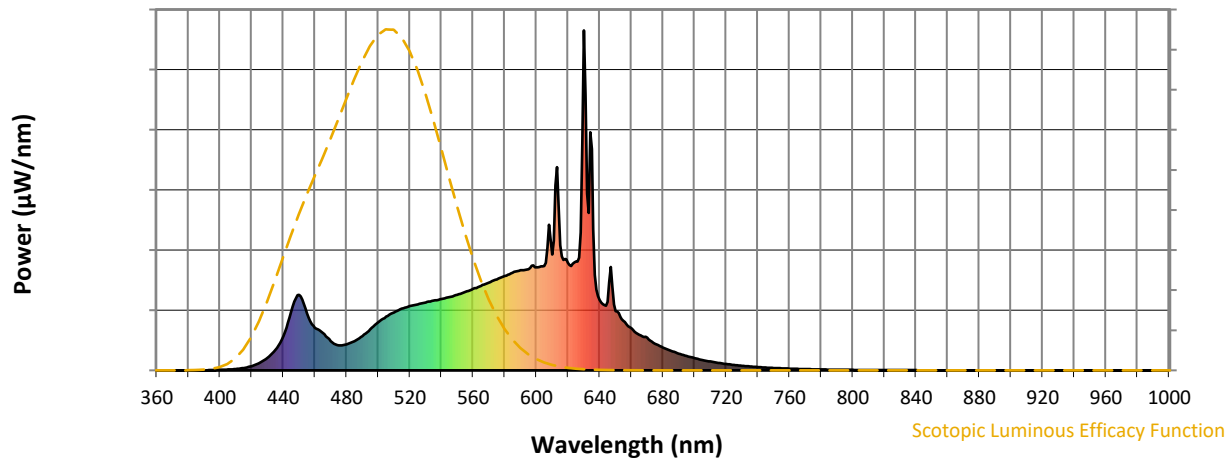


**Photopic Lumens: NR**

$\lambda$ (nm)	Power $\text{W}^{\wedge}/\text{nm}$	Lumens $(\phi/\text{nm})$	$\lambda$ (nm)	Power $\text{W}^{\wedge}/\text{nm}$	Lumens $(\phi/\text{nm})$	$\lambda$ (nm)	Power $\text{W}^{\wedge}/\text{nm}$	Lumens $(\phi/\text{nm})$	$\lambda$ (nm)	Power $\text{W}^{\wedge}/\text{nm}$	Lumens $(\phi/\text{nm})$	$\lambda$ (nm)	Power $\text{W}^{\wedge}/\text{nm}$	Lumens $(\phi/\text{nm})$
360	0	NR	490	101	NR	620	317	NR	750	7	NR	880	0	NR
365	0	NR	495	121	NR	625	320	NR	755	6	NR	885	0	NR
370	0	NR	500	141	NR	630	1000	NR	760	5	NR	890	0	NR
375	0	NR	505	158	NR	635	651	NR	765	4	NR	895	0	NR
380	0	NR	510	171	NR	640	207	NR	770	4	NR	900	0	NR
385	0	NR	515	182	NR	645	201	NR	775	3	NR	905	0	NR
390	0	NR	520	189	NR	650	174	NR	780	3	NR	910	0	NR
395	1	NR	525	194	NR	655	146	NR	785	2	NR	915	0	NR
400	1	NR	530	199	NR	660	124	NR	790	2	NR	920	0	NR
405	3	NR	535	205	NR	665	105	NR	795	2	NR	925	0	NR
410	4	NR	540	210	NR	670	96	NR	800	1	NR	930	0	NR
415	7	NR	545	216	NR	675	79	NR	805	1	NR	935	0	NR
420	13	NR	550	222	NR	680	67	NR	810	1	NR	940	0	NR
425	22	NR	555	230	NR	685	58	NR	815	1	NR	945	0	NR
430	37	NR	560	240	NR	690	49	NR	820	1	NR	950	0	NR
435	60	NR	565	248	NR	695	42	NR	825	1	NR	955	0	NR
440	101	NR	570	258	NR	700	36	NR	830	1	NR	960	0	NR
445	172	NR	575	268	NR	705	30	NR	835	1	NR	965	0	NR
450	223	NR	580	278	NR	710	26	NR	840	1	NR	970	0	NR
455	167	NR	585	287	NR	715	22	NR	845	0	NR	975	0	NR
460	126	NR	590	295	NR	720	19	NR	850	0	NR	980	0	NR
465	111	NR	595	298	NR	725	16	NR	855	0	NR	985	0	NR
470	86	NR	600	303	NR	730	14	NR	860	0	NR	990	0	NR
475	74	NR	605	307	NR	735	12	NR	865	0	NR	995	0	NR
480	77	NR	610	341	NR	740	10	NR	870	0	NR	1000	0	NR
485	86	NR	615	368	NR	745	8	NR	875	0	NR			

REPORT NUMBER: SP1-2506-472-5

Scotopic Flux vs. Wavelength



Scotopic Lumens: NR

S/P: 1.44

λ (nm)	Power W <sup>^</sup> /nm	Lumens (φ/nm)	λ (nm)	Power W <sup>^</sup> /nm	Lumens (φ/nm)	λ (nm)	Power W <sup>^</sup> /nm	Lumens (φ/nm)	λ (nm)	Power W <sup>^</sup> /nm	Lumens (φ/nm)	λ (nm)	Power W <sup>^</sup> /nm	Lumens (φ/nm)
360	0	NR	490	101	NR	620	317	NR	750	7	NR	880	0	NR
365	0	NR	495	121	NR	625	320	NR	755	6	NR	885	0	NR
370	0	NR	500	141	NR	630	1000	NR	760	5	NR	890	0	NR
375	0	NR	505	158	NR	635	651	NR	765	4	NR	895	0	NR
380	0	NR	510	171	NR	640	207	NR	770	4	NR	900	0	NR
385	0	NR	515	182	NR	645	201	NR	775	3	NR	905	0	NR
390	0	NR	520	189	NR	650	174	NR	780	3	NR	910	0	NR
395	1	NR	525	194	NR	655	146	NR	785	2	NR	915	0	NR
400	1	NR	530	199	NR	660	124	NR	790	2	NR	920	0	NR
405	3	NR	535	205	NR	665	105	NR	795	2	NR	925	0	NR
410	4	NR	540	210	NR	670	96	NR	800	1	NR	930	0	NR
415	7	NR	545	216	NR	675	79	NR	805	1	NR	935	0	NR
420	13	NR	550	222	NR	680	67	NR	810	1	NR	940	0	NR
425	22	NR	555	230	NR	685	58	NR	815	1	NR	945	0	NR
430	37	NR	560	240	NR	690	49	NR	820	1	NR	950	0	NR
435	60	NR	565	248	NR	695	42	NR	825	1	NR	955	0	NR
440	101	NR	570	258	NR	700	36	NR	830	1	NR	960	0	NR
445	172	NR	575	268	NR	705	30	NR	835	1	NR	965	0	NR
450	223	NR	580	278	NR	710	26	NR	840	1	NR	970	0	NR
455	167	NR	585	287	NR	715	22	NR	845	0	NR	975	0	NR
460	126	NR	590	295	NR	720	19	NR	850	0	NR	980	0	NR
465	111	NR	595	298	NR	725	16	NR	855	0	NR	985	0	NR
470	86	NR	600	303	NR	730	14	NR	860	0	NR	990	0	NR
475	74	NR	605	307	NR	735	12	NR	865	0	NR	995	0	NR
480	77	NR	610	341	NR	740	10	NR	870	0	NR	1000	0	NR
485	86	NR	615	368	NR	745	8	NR	875	0	NR			

REPORT NUMBER: SP1-2506-472-5

Melanopic Flux vs. Wavelength



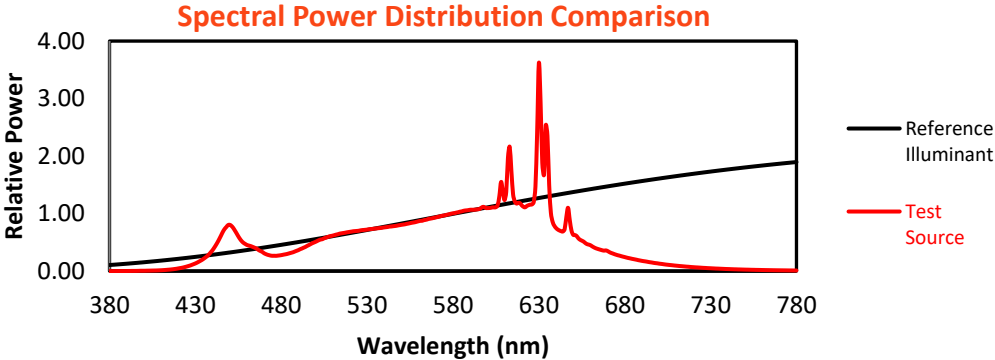
Melanopic Lumens: NR

M/P: 2.85

λ (nm)	Power W <sup>^</sup> /nm	Lumens (φ/nm)	λ (nm)	Power W <sup>^</sup> /nm	Lumens (φ/nm)	λ (nm)	Power W <sup>^</sup> /nm	Lumens (φ/nm)	λ (nm)	Power W <sup>^</sup> /nm	Lumens (φ/nm)	λ (nm)	Power W <sup>^</sup> /nm	Lumens (φ/nm)
360	0	NR	490	101	NR	620	317	NR	750	7	NR	880	0	NR
365	0	NR	495	121	NR	625	320	NR	755	6	NR	885	0	NR
370	0	NR	500	141	NR	630	1000	NR	760	5	NR	890	0	NR
375	0	NR	505	158	NR	635	651	NR	765	4	NR	895	0	NR
380	0	NR	510	171	NR	640	207	NR	770	4	NR	900	0	NR
385	0	NR	515	182	NR	645	201	NR	775	3	NR	905	0	NR
390	0	NR	520	189	NR	650	174	NR	780	3	NR	910	0	NR
395	1	NR	525	194	NR	655	146	NR	785	2	NR	915	0	NR
400	1	NR	530	199	NR	660	124	NR	790	2	NR	920	0	NR
405	3	NR	535	205	NR	665	105	NR	795	2	NR	925	0	NR
410	4	NR	540	210	NR	670	96	NR	800	1	NR	930	0	NR
415	7	NR	545	216	NR	675	79	NR	805	1	NR	935	0	NR
420	13	NR	550	222	NR	680	67	NR	810	1	NR	940	0	NR
425	22	NR	555	230	NR	685	58	NR	815	1	NR	945	0	NR
430	37	NR	560	240	NR	690	49	NR	820	1	NR	950	0	NR
435	60	NR	565	248	NR	695	42	NR	825	1	NR	955	0	NR
440	101	NR	570	258	NR	700	36	NR	830	1	NR	960	0	NR
445	172	NR	575	268	NR	705	30	NR	835	1	NR	965	0	NR
450	223	NR	580	278	NR	710	26	NR	840	1	NR	970	0	NR
455	167	NR	585	287	NR	715	22	NR	845	0	NR	975	0	NR
460	126	NR	590	295	NR	720	19	NR	850	0	NR	980	0	NR
465	111	NR	595	298	NR	725	16	NR	855	0	NR	985	0	NR
470	86	NR	600	303	NR	730	14	NR	860	0	NR	990	0	NR
475	74	NR	605	307	NR	735	12	NR	865	0	NR	995	0	NR
480	77	NR	610	341	NR	740	10	NR	870	0	NR	1000	0	NR
485	86	NR	615	368	NR	745	8	NR	875	0	NR			

**Summary**

$R_f = 91.3$   
 $R_g = 102$   
 $CIE R_a = 94.4$   
 $R_9 = 61.4$

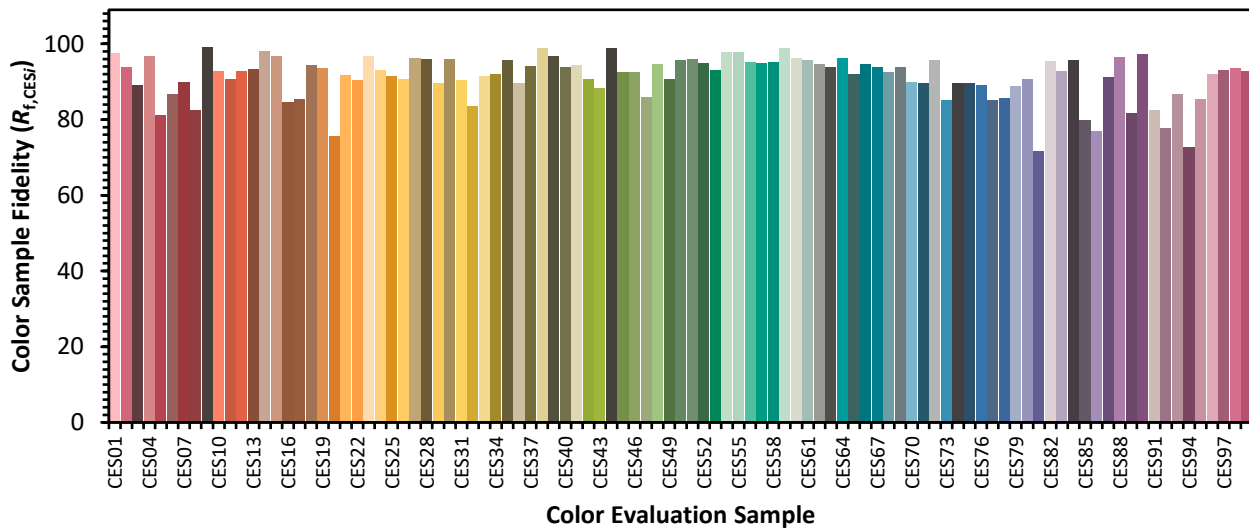


**Color Vector Graphics**

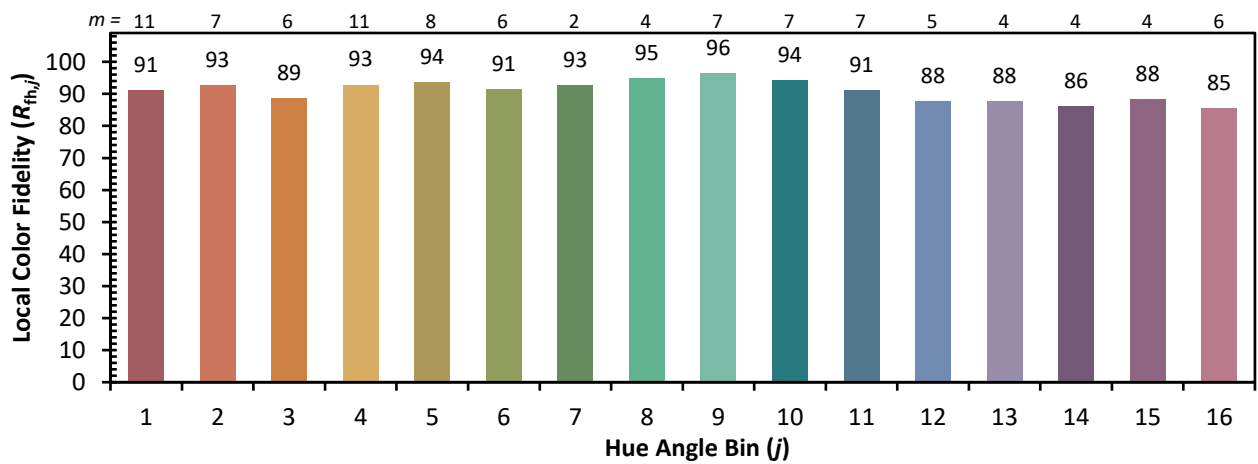
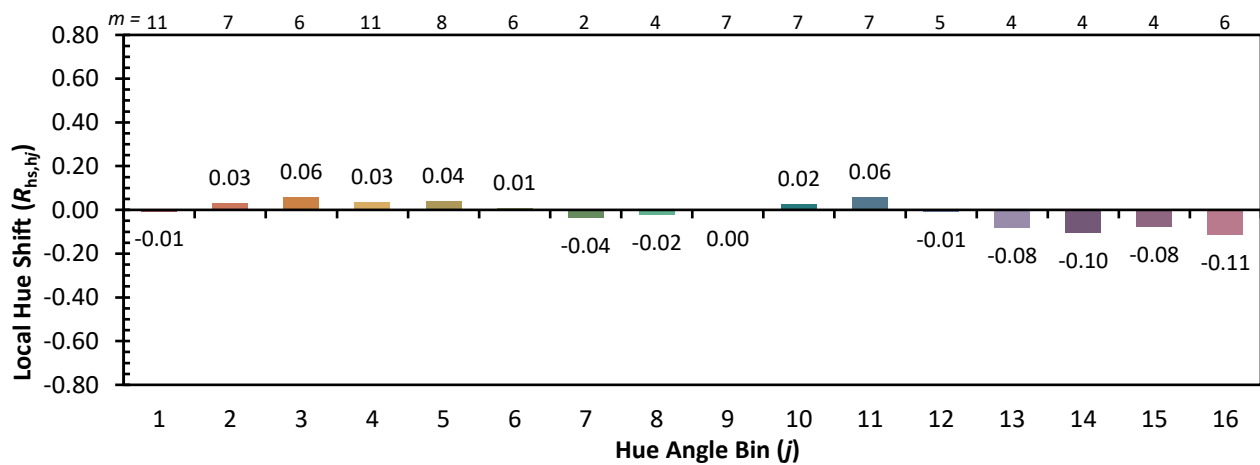
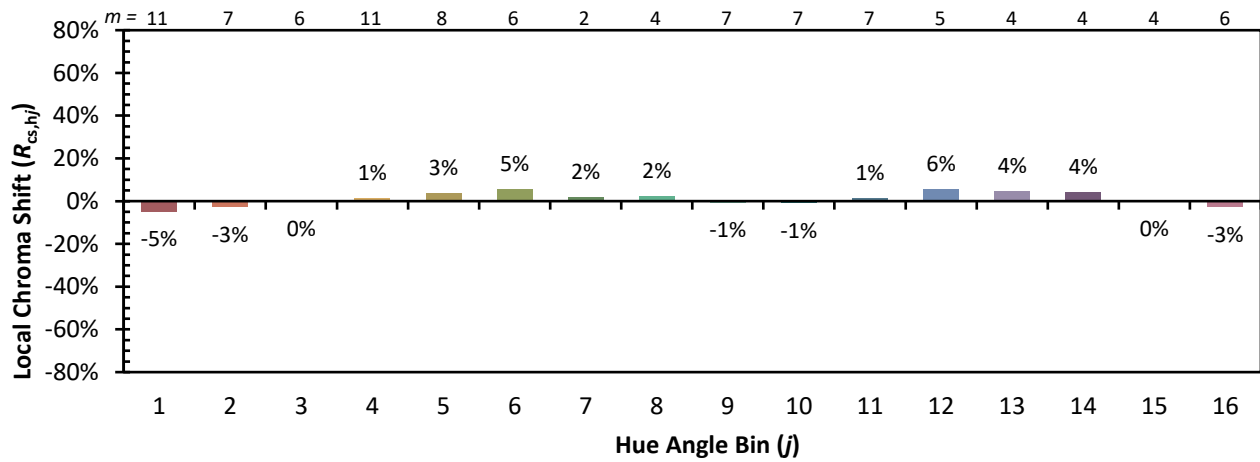


**Individual Sample Fidelity Index ( $R_{f,i}$ )**

CES01 = 86	CES26 = 91	CES51 = 96	CES76 = 89
CES02 = 63	CES27 = 96	CES52 = 95	CES77 = 85
CES03 = 32	CES28 = 96	CES53 = 93	CES78 = 86
CES04 = 70	CES29 = 90	CES54 = 98	CES79 = 89
CES05 = 51	CES30 = 96	CES55 = 98	CES80 = 91
CES06 = 51	CES31 = 90	CES56 = 95	CES81 = 72
CES07 = 44	CES32 = 84	CES57 = 95	CES82 = 95
CES08 = 42	CES33 = 91	CES58 = 95	CES83 = 93
CES09 = 29	CES34 = 92	CES59 = 99	CES84 = 96
CES10 = 76	CES35 = 96	CES60 = 96	CES85 = 80
CES11 = 59	CES36 = 90	CES61 = 96	CES86 = 77
CES12 = 65	CES37 = 94	CES62 = 95	CES87 = 91
CES13 = 44	CES38 = 99	CES63 = 94	CES88 = 96
CES14 = 74	CES39 = 97	CES64 = 96	CES89 = 82
CES15 = 72	CES40 = 94	CES65 = 92	CES90 = 97
CES16 = 48	CES41 = 94	CES66 = 95	CES91 = 82
CES17 = 50	CES42 = 91	CES67 = 94	CES92 = 78
CES18 = 57	CES43 = 88	CES68 = 93	CES93 = 87
CES19 = 72	CES44 = 99	CES69 = 94	CES94 = 73
CES20 = 67	CES45 = 93	CES70 = 90	CES95 = 85
CES21 = 86	CES46 = 93	CES71 = 90	CES96 = 92
CES22 = 79	CES47 = 86	CES72 = 96	CES97 = 93
CES23 = 92	CES48 = 95	CES73 = 85	CES98 = 94
CES24 = 91	CES49 = 91	CES74 = 90	CES99 = 93
CES25 = 72	CES50 = 96	CES75 = 90	



Color Rendition by Hue-Angle Bin



Measure Comparisons



(END OF REPORT)