

Cooper Lighting Solutions Photometric Lab
1121 Highway 74 South
Peachtree City, GA 30269



Scaled data based on original data using
LM-79-2019 Approved Method: Electrical and Photometric Measurements of Solid-
State Lighting Products

Test Report Prepared for
Cooper Lighting Solutions

Brand: METALUX

Report Number: P1444692

Luminaire Tested: EHBR1-48-UNV-TA-L930-UPL18

Issue Date: 5/1/2026

Test Information

Test Method: LM-79-2019
Report Number: P1444692
REPORT IS A COMBINATION OF REPORTS P1444324 AND P1431635
Test Lab: INNOVATION CENTER
Issue Date: 5/1/2026
Manufacturer: COOPER LIGHTING SOLUTIONS
Product Line: METALUX
Catalog Number: EHBR1-48-UNV-TA-L930-UPL18
Description: Elevate Round Highbay at, 48000 lumens, 3000K 90CRI LEDs with TA lens
Light Source: -
Ballast/Driver: -

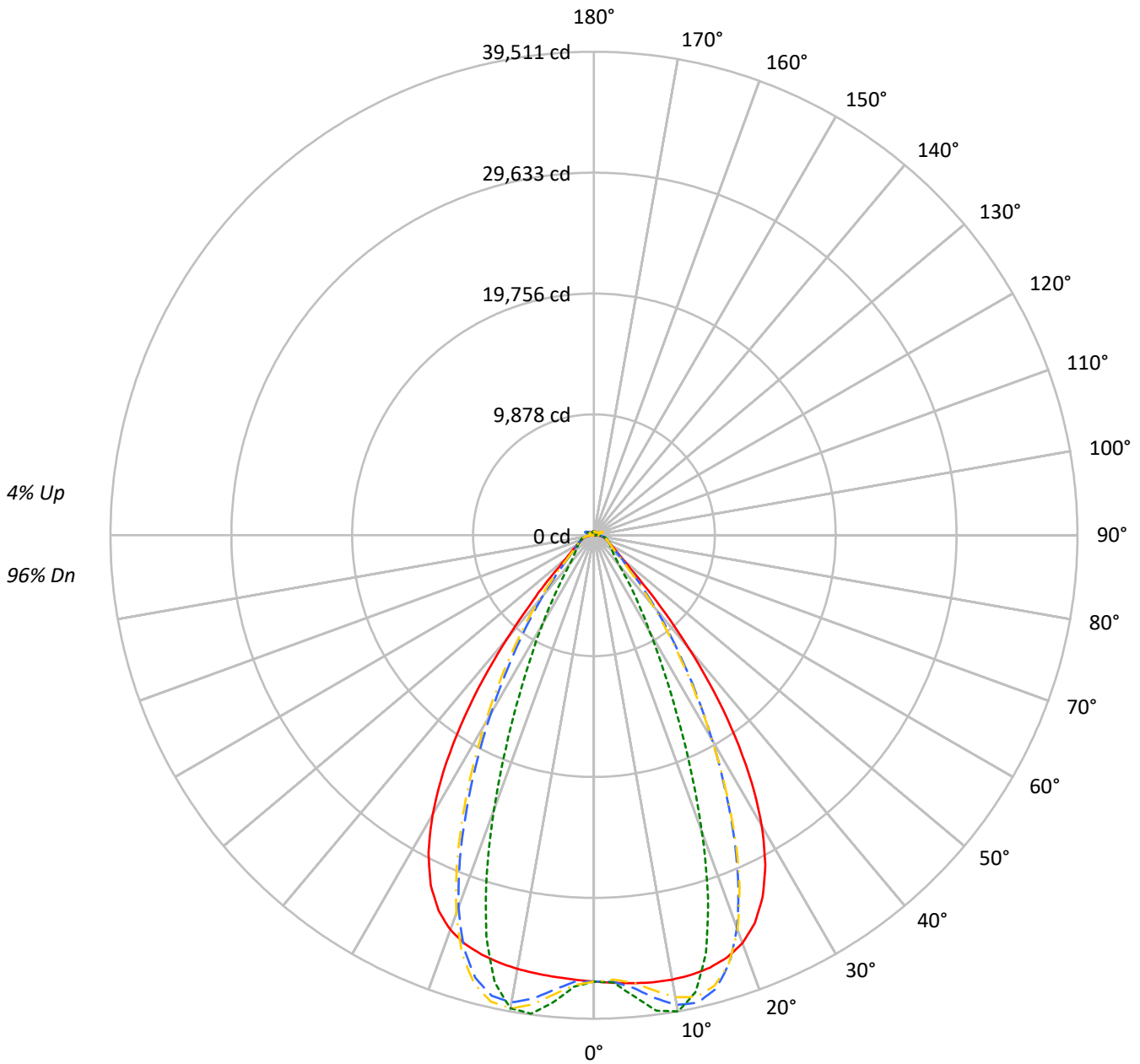
Summary

Lumens per Lamp: N/A
Luminaire Lumens: 43869.9 lumens
Efficiency: N/A
Efficacy: 162.2 lumens/watt
Spacing Criteria (0/90/45): 1.13 / 0.77 / 0.88
Luminous Opening: Vertical Cylinder (Dia: 1.71' x H: 0.1')
CIE Type: Direct

Input Watts (W): 270.5
Input Voltage (V): NR
Input Current (Ain): NR
Voltage Rise (V): NR
Power Factor: NR
Total Harmonic Distortion (THDi): NR
Frequency (hertz): 60
Stabilization Time: NR
Operation Time: NR
Ambient Temperature (°C): NR
Test Distance: 24 FT

TEST NUMBER: P1444692
CATALOG NUMBER: EHBR1-48-UNV-TA-L930-UPL18

Luminous Intensity Polar Plot



— 0°-180° - - 45°-225° - · - 90°-270° - · - 135°-315°



TEST NUMBER: P1444692
 CATALOG NUMBER: EHBR1-48-UNV-TA-L930-UPL18

COEFFICIENT OF UTILIZATION - ZONAL CAVITY METHOD:

RF	20				20				20				20				20				
RC	80				70				50				30				10			0	
RW	70	50	30	10	70	50	30	10	50	30	10	50	30	10	50	30	10	50	30	10	0
RCR																					
0	118	118	118	118	115	115	115	115	109	109	109	103	103	103	98	98	98	98	98	98	96
1	111	107	104	102	108	105	102	100	100	98	96	95	94	92	91	90	89	89	89	89	86
2	104	98	93	89	101	96	92	88	92	88	85	88	85	83	85	83	80	80	80	80	78
3	98	90	84	80	95	88	83	79	85	81	77	82	78	75	79	76	73	73	73	73	71
4	92	83	77	72	90	82	76	71	79	74	70	76	72	69	74	70	67	67	67	67	65
5	87	77	70	65	85	76	70	65	74	68	64	71	67	63	69	65	62	62	62	62	60
6	82	72	65	60	80	71	64	60	69	63	59	67	62	58	65	61	57	57	57	57	56
7	77	67	60	55	76	66	60	55	64	59	55	63	58	54	61	57	53	53	53	53	52
8	73	63	56	51	72	62	56	51	60	55	51	59	54	50	58	53	50	50	50	50	48
9	69	59	52	48	68	58	52	48	57	51	47	56	51	47	54	50	46	46	46	46	45
10	66	55	49	45	65	55	49	45	54	48	44	52	47	44	51	47	44	44	44	44	42

AVERAGE LUMINANCE (cd/sqm):

	0°	90°	180°	270°
0°	171276	171276	171276	171276
5°	172106	177124	169697	179444
10°	173543	185967	169380	184737
15°	174394	168577	169084	161790
20°	172591	125584	166942	116196
25°	163364	79425	157965	72064
30°	142711	47729	137183	43620
35°	109831	29949	103513	26530
40°	69478	18787	63567	17654
45°	35810	14636	35217	14395
50°	20996	13018	20352	12816
55°	16085	12317	15490	12206
60°	13610	12582	13030	12418
65°	12783	13140	12294	12691
70°	12489	13758	11866	13241
75°	13354	14590	12631	13946
80°	13818	16158	12529	14749
85°	13014	15589	10515	13349

MAXIMUM LUMINANCE 45°-90°:

Horizontal Angle: 25°
 Vertical Angle: 45°
 Luminance: 54802 cd/sqm



TEST NUMBER: P1444692
 CATALOG NUMBER: EHBR1-48-UNV-TA-L930-UPL18

ZONAL LUMENS:

Zone	Lumens	% Fixture
0°-10°	3594.4	8.2
10°-20°	10111.4	23.0
20°-30°	11516.1	26.3
30°-40°	8277.3	18.9
40°-50°	3817.5	8.7
50°-60°	1826.8	4.2
60°-70°	1332.9	3.0
70°-80°	1012.7	2.3
80°-90°	463.5	1.1
90°-100°	58.2	0.1
100°-110°	297.4	0.7
110°-120°	548.7	1.3
120°-130°	345.4	0.8
130°-140°	234.7	0.5
140°-150°	184.1	0.4
150°-160°	134.8	0.3
160°-170°	84.5	0.2
170°-180°	29.6	0.1
0°-30°	25222.0	57.5
0°-40°	33499.3	76.4
0°-60°	39143.5	89.2
0°-90°	41952.6	95.6
90°-120°	904.2	2.1
90°-150°	1668.3	3.8
90°-180°	1917.0	4.4
0°-180°	43869.9	100.0

CANDELA DISTRIBUTION:

	0°	90°	180°	270°	360°	Flux
0°	36472	36472	36472	36472	36472	
5°	36747	37819	36233	38314	36747	3512
15°	36587	35367	35473	33943	36587	10309
25°	32624	15861	31545	14391	32624	14789
35°	20158	5497	18998	4869	20158	12371
45°	5794	2368	5698	2329	5794	4928
55°	2174	1664	2093	1650	2174	2006
65°	1334	1372	1283	1325	1334	1333
75°	941	1028	890	982	941	978
85°	447	536	361	459	447	420
90°	113	145	27	35	113	72
95°	26	29	26	29	26	25
105°	111	140	76	140	111	145
115°	482	576	505	577	482	447
125°	377	381	425	383	377	343
135°	315	267	338	270	315	245
145°	296	276	313	281	296	187
155°	288	283	304	288	288	134
165°	297	293	307	296	297	84
175°	310	311	314	312	310	29
180°	314	314	314	314	314	



TEST NUMBER: P1444692
 CATALOG NUMBER: EHBR1-48-UNV-TA-L930-UPL18

CANDELA DISTRIBUTION (FULL):

	0°	2.5°	5°	7.5°	10°	12.5°	15°	17.5°	20°	22.5°	25°
0°	36472.1	36472.1	36472.1	36472.1	36472.1	36472.1	36472.1	36472.1	36472.1	36472.1	36472.1
2.5°	36611.5	36608.4	36607.9	36605.4	36604.7	36604.7	36603.5	36600.5	36598.6	36594.5	36589.7
5°	36747.3	36745.7	36746.7	36746.9	36744.3	36738.6	36729.7	36718.8	36705.0	36692.0	36680.4
7.5°	36852.4	36854.9	36858.1	36857.4	36849.5	36836.1	36817.9	36807.6	36813.7	36833.5	36879.0
10°	36871.5	36887.2	36893.3	36891.4	36875.4	36863.9	36868.4	36907.1	36984.0	37086.5	37226.9
12.5°	36796.7	36816.0	36815.3	36809.0	36793.5	36809.2	36865.2	36980.2	37145.1	37347.5	37584.8
15°	36586.9	36611.7	36604.7	36596.4	36586.2	36637.7	36749.4	36949.2	37203.9	37489.2	37781.4
17.5°	36179.3	36209.3	36194.7	36185.4	36176.8	36273.3	36465.3	36757.8	37078.6	37401.4	37678.3
20°	35472.4	35492.6	35457.8	35441.4	35455.2	35644.3	35927.3	36300.8	36638.9	36944.1	37133.3
22.5°	34318.7	34343.7	34278.4	34270.8	34351.5	34641.9	34999.9	35417.5	35735.1	35977.1	36050.0
25°	32623.6	32648.3	32570.7	32617.0	32754.1	33149.8	33576.1	34022.8	34293.8	34473.1	34423.6
27.5°	30335.8	30358.3	30284.7	30379.3	30596.0	31115.8	31617.6	32102.2	32343.7	32469.3	32310.2
30°	27450.3	27496.9	27410.0	27542.1	27872.9	28547.7	29122.6	29666.0	29906.9	30002.4	29754.8
32.5°	24023.2	24089.5	23993.7	24190.2	24651.8	25462.5	26115.5	26722.7	26989.1	27098.2	26818.6
35°	20157.9	20253.0	20143.1	20438.1	21007.3	21910.1	22633.2	23311.1	23626.6	23781.3	23499.4
37.5°	16062.8	16153.5	16094.0	16487.5	17112.5	18048.3	18786.5	19517.7	19874.0	20106.2	19883.9
40°	12042.3	12125.3	12170.3	12620.3	13208.1	14090.2	14799.1	15522.7	15921.3	16212.6	16075.5
42.5°	8499.5	8583.2	8736.2	9170.4	9660.6	10390.7	10998.0	11647.6	12028.3	12339.2	12286.3
45°	5793.9	5891.1	6082.7	6438.3	6792.8	7316.6	7762.5	8267.8	8578.8	8863.5	8866.8
47.5°	4060.1	4128.4	4299.7	4542.4	4773.6	5429.3	5456.2	5704.4	5913.5	6126.3	6153.9
50°	3129.1	3170.1	3260.9	3396.3	3527.2	3697.4	3853.3	4033.2	4161.9	4278.5	4306.3
52.5°	2571.9	2597.9	2644.2	2717.4	2793.5	2886.0	2969.5	3068.2	3138.2	3200.7	3213.8
55°	2173.7	2195.3	2264.1	2278.0	2364.9	2381.7	2418.7	2478.9	2519.6	2557.0	2566.3
57.5°	1873.2	1888.9	1903.5	1934.7	1961.5	2000.3	2031.7	2074.8	2100.5	2127.6	2129.9
60°	1636.1	1647.4	1657.9	1679.5	1697.7	1724.8	1746.4	1775.7	1794.1	1814.4	1816.7
62.5°	1459.7	1467.8	1474.7	1489.0	1502.0	1522.9	1540.0	1564.5	1581.6	1597.3	1600.8
65°	1334.3	1340.2	1344.6	1355.5	1366.8	1384.6	1400.1	1420.1	1432.7	1444.7	1447.3
67.5°	1223.2	1228.8	1233.4	1243.3	1251.2	1264.3	1274.8	1289.8	1299.3	1308.8	1309.1
70°	1095.8	1101.1	1104.6	1113.8	1120.2	1131.5	1139.9	1153.4	1163.1	1173.8	1176.5
72.5°	1007.7	1010.8	1015.5	1023.9	1032.7	1044.9	1056.1	1070.2	1081.9	1093.0	1097.7
75°	940.7	944.3	947.4	954.6	960.6	970.9	979.3	992.1	1002.4	1014.3	1020.1
77.5°	843.9	848.1	850.8	857.9	863.2	873.0	879.3	890.8	899.2	909.9	915.2
80°	726.9	730.8	732.8	739.6	743.7	752.7	758.8	769.9	777.0	787.8	794.1
82.5°	597.3	601.1	602.1	608.6	610.9	618.3	622.7	634.0	642.7	656.8	666.5
85°	447.3	448.6	450.8	449.1	458.2	458.8	469.0	471.0	484.4	488.0	503.4
87.5°	273.5	277.5	279.6	285.8	288.5	294.7	296.6	303.2	306.8	314.4	318.0
90°	113.1	119.1	121.0	128.2	129.9	136.3	137.8	144.9	146.8	154.2	156.8
92.5°	23.4	24.8	26.0	27.6	29.0	31.1	32.9	34.4	35.8	37.9	40.7
95°	26.3	27.8	29.3	30.8	32.3	34.0	35.5	37.0	38.5	40.0	44.3
97.5°	32.6	34.0	35.3	36.5	37.9	39.2	40.5	41.8	43.1	44.3	49.5
100°	41.7	42.9	43.9	45.1	46.2	47.3	48.4	49.5	50.6	51.8	61.5
102.5°	67.0	70.9	74.9	78.9	82.8	86.7	90.7	94.5	98.6	102.5	123.2
105°	110.8	121.4	132.3	142.8	153.6	164.4	175.2	185.6	196.4	207.1	241.0
107.5°	186.0	205.8	225.6	245.6	265.5	285.2	305.0	324.9	344.6	364.2	398.6
110°	338.8	354.6	370.6	386.5	402.3	418.3	434.3	449.8	465.9	481.7	506.7



TEST NUMBER: P1444692
 CATALOG NUMBER: EHBR1-48-UNV-TA-L930-UPL18

CANDELA DISTRIBUTION (continued):

	0°	2.5°	5°	7.5°	10°	12.5°	15°	17.5°	20°	22.5°	25°
112.5°	455.6	462.6	469.7	476.9	484.1	491.0	498.1	505.2	512.4	519.3	537.1
115°	482.4	484.8	487.3	489.5	492.1	494.2	496.6	498.9	501.3	503.4	515.4
117.5°	471.8	471.1	470.4	469.9	469.0	468.4	467.6	466.8	465.9	465.1	471.8
120°	444.3	441.7	439.4	436.7	434.3	431.6	429.1	426.5	423.7	420.9	423.6
122.5°	409.0	406.1	403.3	400.1	397.2	393.9	390.9	387.4	384.3	381.1	381.8
125°	377.0	373.9	371.2	368.0	364.7	361.4	358.1	354.9	351.6	348.0	348.1
127.5°	349.9	347.7	345.5	342.9	340.5	337.9	335.4	332.6	330.2	327.2	327.0
130°	333.9	331.9	329.8	327.5	325.3	322.7	320.2	317.6	315.2	312.4	312.1
132.5°	321.8	320.4	318.7	316.9	315.0	312.7	310.8	308.4	306.4	304.3	303.9
135°	315.1	313.5	312.2	310.4	308.6	306.4	304.3	302.2	300.2	297.9	297.7
137.5°	309.8	308.4	307.1	305.3	303.6	301.4	299.6	297.5	295.5	293.3	293.0
140°	305.2	304.0	302.5	300.8	299.2	297.5	295.5	293.5	291.6	289.4	289.4
142.5°	299.2	298.0	296.9	295.4	294.2	292.3	290.8	288.8	287.2	285.3	285.5
145°	296.2	295.2	294.3	293.0	291.6	290.0	288.5	286.8	285.3	283.6	283.8
147.5°	293.6	292.7	292.0	290.9	289.8	288.3	287.0	285.4	284.2	282.8	283.1
150°	291.4	290.7	290.0	288.9	287.7	286.5	285.3	283.9	282.6	281.2	281.5
152.5°	288.6	287.7	287.0	286.1	285.1	283.6	282.8	281.3	280.1	278.8	279.1
155°	288.1	287.3	286.4	285.5	284.5	283.4	282.2	281.1	280.0	278.7	278.8
157.5°	289.1	288.2	287.6	286.5	285.9	284.7	283.8	282.8	282.0	281.0	280.9
160°	291.4	290.6	289.9	288.9	288.0	286.9	286.1	285.1	284.5	283.4	283.4
162.5°	293.9	293.0	292.2	291.3	290.6	289.4	288.7	287.9	287.1	286.1	286.1
165°	297.0	296.5	295.9	295.1	294.4	293.8	293.1	292.3	291.7	290.8	290.8
167.5°	302.0	301.3	300.8	300.0	299.2	298.5	297.7	297.0	296.5	295.6	295.6
170°	305.2	304.5	304.1	303.7	303.2	302.6	302.2	301.7	301.1	300.6	300.7
172.5°	308.2	307.6	307.4	307.1	306.6	306.3	305.8	305.5	305.2	304.7	304.9
175°	309.6	309.1	309.0	308.8	308.5	308.2	308.1	307.8	307.8	307.4	307.4
177.5°	312.0	311.8	311.8	311.7	311.7	311.5	311.5	311.2	311.0	311.0	311.1
180°	313.8	313.8	313.8	313.8	313.8	313.8	313.8	313.8	313.8	313.8	313.8



TEST NUMBER: P1444692
 CATALOG NUMBER: EHBR1-48-UNV-TA-L930-UPL18

CANDELA DISTRIBUTION (continued):

	27.5°	30°	32.5°	35°	37.5°	40°	42.5°	45°	47.5°	50°	52.5°
0°	36472.1	36472.1	36472.1	36472.1	36472.1	36472.1	36472.1	36472.1	36472.1	36472.1	36472.1
2.5°	36586.2	36581.7	36575.7	36567.9	36561.3	36553.6	36535.4	36529.9	36536.0	36540.1	36548.5
5°	36673.1	36675.6	36676.6	36693.2	36707.5	36743.4	37024.0	37135.5	37221.7	37276.5	37359.6
7.5°	36935.2	37019.5	37102.9	37215.1	37311.9	37442.6	37933.6	38142.5	38291.1	38397.9	38529.2
10°	37379.4	37563.5	37736.1	37938.3	38112.2	38311.2	38768.2	38971.8	39100.3	39193.9	39281.2
12.5°	37826.8	38082.1	38312.8	38537.9	38726.1	38898.7	39059.3	39130.6	39136.7	39139.6	39093.3
15°	38059.8	38303.9	38507.2	38656.0	38766.6	38815.5	38538.8	38393.7	38210.3	38059.1	37810.5
17.5°	37912.7	38059.1	38147.0	38138.4	38092.6	37939.6	37156.0	36724.8	36296.9	35911.3	35405.6
20°	37258.9	37247.7	37171.3	36954.9	36694.2	36288.7	34945.0	34169.8	33420.4	32762.1	31963.5
22.5°	36042.5	35851.2	35584.3	35117.7	34599.3	33890.9	31965.4	30825.1	29781.7	28860.0	27827.4
25°	34280.1	33886.3	33394.1	32653.4	31847.8	30814.5	28441.4	27023.0	25770.3	24683.8	23492.4
27.5°	32024.4	31431.4	30710.1	29684.8	28593.5	27269.8	24638.7	23073.4	21728.6	20563.7	19295.7
30°	29354.0	28582.7	27651.3	26378.8	25062.4	23561.1	20892.6	19307.2	17945.9	16747.5	15478.6
32.5°	26336.3	25432.8	24341.4	22913.2	21489.6	19945.9	17368.8	15834.2	14533.9	13381.0	12232.5
35°	23007.8	22038.9	20884.3	19427.5	18012.5	16511.7	14147.0	12763.3	11615.0	10596.0	9668.6
37.5°	19437.4	18486.1	17388.7	16015.7	14703.5	13343.6	11303.2	10143.7	9180.1	8334.3	7618.2
40°	15725.2	14892.7	13943.2	12756.3	11636.4	10503.8	8828.9	7908.5	7148.1	6503.0	5966.4
42.5°	12058.5	11413.4	10685.2	9747.3	8890.3	8027.9	6738.8	6056.8	5493.6	5029.2	4649.9
45°	8748.8	8317.3	7828.9	7176.9	6583.8	5982.3	5064.8	4585.6	4218.8	3919.4	3666.2
47.5°	6115.9	5865.6	5850.3	5247.7	4812.9	4445.1	3854.0	3551.3	3326.5	3145.1	2984.8
50°	4295.0	4173.9	4023.5	3808.4	3606.6	3398.7	3038.6	2855.6	2723.9	2614.1	2512.7
52.5°	3210.9	3147.9	3067.8	2953.8	2844.3	2727.4	2499.6	2383.1	2341.6	2239.3	2159.1
55°	2564.6	2528.5	2482.9	2415.9	2349.4	2322.8	2127.4	2040.9	1986.2	1945.8	1902.7
57.5°	2130.3	2103.4	2076.4	2030.9	1992.4	1945.8	1842.1	1797.8	1765.2	1741.4	1711.5
60°	1817.1	1801.0	1785.8	1759.2	1738.4	1713.3	1647.4	1622.4	1605.4	1591.1	1572.1
62.5°	1603.8	1595.6	1587.7	1573.5	1563.0	1549.3	1504.3	1492.3	1483.7	1476.6	1464.9
65°	1449.8	1443.9	1439.5	1430.1	1424.8	1416.8	1378.2	1370.1	1364.8	1362.3	1355.5
67.5°	1310.0	1303.7	1300.9	1294.1	1292.0	1287.0	1255.3	1250.9	1249.1	1249.9	1247.5
70°	1179.1	1176.5	1177.9	1176.7	1179.8	1180.7	1161.5	1161.4	1163.4	1167.5	1167.8
72.5°	1100.6	1100.6	1102.2	1102.9	1105.7	1107.1	1091.1	1090.3	1091.2	1094.2	1094.3
75°	1026.1	1027.3	1031.3	1032.7	1036.0	1036.8	1015.6	1013.2	1013.4	1016.2	1015.3
77.5°	922.8	927.2	935.0	939.0	945.5	946.7	923.0	920.3	920.4	923.2	920.8
80°	805.6	814.1	826.4	834.9	845.0	849.0	824.7	818.9	813.4	812.6	807.8
82.5°	681.1	691.5	706.2	714.0	724.7	727.1	686.4	678.7	674.1	674.5	670.0
85°	520.0	527.8	541.2	545.6	552.1	551.6	505.1	485.2	490.6	482.3	488.8
87.5°	326.2	330.8	339.2	340.2	343.4	342.6	295.9	286.7	284.0	284.1	280.7
90°	164.5	167.8	175.3	175.6	180.6	180.2	142.5	138.3	134.8	136.4	131.7
92.5°	43.8	46.5	49.5	52.3	55.3	58.2	56.8	58.4	55.9	52.8	50.4
95°	48.7	53.2	57.7	62.2	66.7	71.1	75.6	80.0	75.8	71.6	67.5
97.5°	54.8	60.2	65.3	70.6	75.8	81.2	86.4	91.7	87.2	82.5	78.1
100°	71.4	81.2	90.9	100.7	110.5	120.3	130.2	140.0	131.4	122.4	113.9
102.5°	143.8	164.8	185.6	206.3	227.2	248.1	269.0	290.0	270.1	250.1	230.1
105°	274.7	308.5	342.2	375.8	409.5	443.3	477.5	511.2	479.4	447.5	415.8
107.5°	432.7	467.0	501.0	535.1	569.3	603.5	638.3	672.5	641.4	610.3	579.2
110°	531.7	556.3	581.3	606.1	630.8	655.7	681.5	706.3	687.6	668.8	650.0



TEST NUMBER: P1444692
 CATALOG NUMBER: EHBR1-48-UNV-TA-L930-UPL18

CANDELA DISTRIBUTION (continued):

	27.5°	30°	32.5°	35°	37.5°	40°	42.5°	45°	47.5°	50°	52.5°
112.5°	554.6	572.4	590.1	607.5	625.0	642.8	661.6	679.5	669.9	660.1	650.7
115°	527.0	539.0	550.5	562.3	574.1	585.7	598.8	611.1	607.6	604.2	601.0
117.5°	478.0	484.3	490.8	497.2	503.3	509.6	517.9	524.6	524.6	524.7	524.8
120°	426.0	428.5	430.8	433.3	435.5	437.7	442.5	445.3	447.4	449.2	451.3
122.5°	382.4	383.0	383.5	384.0	384.5	385.0	388.2	389.3	390.4	391.6	392.7
125°	348.1	348.1	348.0	348.0	347.6	347.7	350.8	351.1	350.7	350.1	349.6
127.5°	326.3	325.9	325.4	324.8	324.0	323.7	326.2	326.3	324.6	322.9	321.3
130°	311.7	311.3	310.8	310.5	310.1	309.7	312.7	313.1	310.7	307.9	305.4
132.5°	303.4	303.2	302.6	302.5	302.2	301.7	305.1	305.7	303.0	299.9	297.1
135°	297.3	297.2	296.8	296.5	296.2	296.2	300.0	300.6	298.0	295.1	292.3
137.5°	292.5	292.4	292.1	292.0	291.7	291.6	295.9	296.7	294.4	291.9	289.7
140°	289.2	289.0	288.9	289.0	288.8	289.0	293.6	294.6	292.8	290.8	288.8
142.5°	285.3	285.6	285.8	286.1	286.2	286.7	291.9	293.3	291.8	290.2	288.8
145°	283.9	284.5	284.7	285.2	285.5	286.2	292.1	293.9	292.9	291.7	290.5
147.5°	282.8	283.3	283.6	284.0	284.4	285.3	291.6	293.4	292.7	291.8	291.0
150°	281.6	282.0	282.3	282.8	283.6	284.3	291.5	293.6	293.0	292.4	291.7
152.5°	279.2	279.6	279.8	280.3	280.7	281.4	290.3	292.8	292.4	291.6	291.1
155°	278.9	279.1	279.2	279.6	279.7	280.4	290.2	292.8	292.4	291.9	291.4
157.5°	280.8	280.7	280.6	280.8	281.0	281.2	291.6	294.4	293.9	293.5	293.1
160°	283.1	283.1	282.9	282.9	282.8	282.9	293.8	296.5	296.2	295.7	295.2
162.5°	286.1	286.4	286.2	286.2	286.2	286.6	297.4	300.4	299.8	299.3	298.8
165°	290.7	290.4	290.3	290.4	290.3	290.3	300.6	303.2	302.9	302.4	301.9
167.5°	295.4	295.5	295.3	295.4	295.4	295.7	305.1	307.6	307.4	306.7	306.5
170°	300.5	300.7	300.5	300.7	300.8	301.0	309.0	311.0	310.8	310.2	309.8
172.5°	304.9	305.2	305.3	305.5	305.6	305.9	312.6	314.6	314.3	313.9	313.4
175°	307.6	307.6	307.9	308.2	308.3	308.5	313.9	315.2	315.0	314.8	314.5
177.5°	311.4	311.4	311.5	311.8	312.0	312.2	315.4	316.3	316.1	316.1	316.0
180°	313.8	313.8	313.8	313.8	313.8	313.8	313.8	313.8	313.8	313.8	313.8



TEST NUMBER: P1444692
 CATALOG NUMBER: EHBR1-48-UNV-TA-L930-UPL18

CANDELA DISTRIBUTION (continued):

	55°	57.5°	60°	62.5°	65°	67.5°	70°	72.5°	75°	77.5°	80°
0°	36472.1	36472.1	36472.1	36472.1	36472.1	36472.1	36472.1	36472.1	36472.1	36472.1	36472.1
2.5°	36550.3	36563.2	36565.0	36580.1	36578.9	36596.7	36593.9	36608.4	36600.0	36612.0	36601.9
5°	37408.8	37486.7	37527.4	37603.3	37627.4	37695.4	37714.6	37776.6	37779.2	37828.4	37817.2
7.5°	38622.5	38737.3	38805.4	38899.3	38946.9	39025.2	39059.6	39117.5	39136.2	39182.1	39185.6
10°	39347.3	39403.0	39441.9	39468.1	39492.1	39503.3	39516.4	39512.8	39516.4	39511.2	39522.5
12.5°	39062.2	38980.8	38927.0	38825.2	38766.1	38653.4	38598.2	38489.9	38450.6	38357.6	38344.2
15°	37618.5	37334.9	37134.6	36843.2	36660.0	36373.3	36205.6	35947.0	35828.8	35623.2	35569.3
17.5°	34987.0	34460.6	34053.2	33530.6	33168.0	32679.6	32372.5	31968.2	31746.8	31420.8	31307.9
20°	31297.8	30518.9	29907.9	29179.9	28659.0	28009.9	27594.4	27070.3	26766.1	26365.7	26203.3
22.5°	26966.5	25996.8	25233.7	24373.7	23745.2	23021.9	22524.1	21957.0	21626.0	21191.0	20998.4
25°	22502.2	21433.0	20584.5	19678.4	19014.3	18289.3	17791.3	17234.3	16891.8	16478.9	16287.4
27.5°	18232.7	17150.2	16330.3	15487.9	14878.7	14224.5	13775.1	13288.8	12984.8	12632.3	12452.2
30°	14464.8	13510.1	12812.4	12113.3	11606.5	11075.2	10701.8	10298.7	10032.0	9730.2	9558.7
32.5°	11395.1	10658.0	10111.7	9556.9	9142.2	8698.1	8375.6	8019.9	7779.2	7509.6	7354.3
35°	9024.7	8452.0	8016.2	7559.6	7203.3	6825.1	6540.9	6233.9	6017.9	5785.8	5651.7
37.5°	7130.5	6675.1	6316.5	5937.2	5644.6	5331.2	5225.6	4873.4	4649.6	4464.4	4336.1
40°	5596.0	5233.9	4937.2	4647.1	4408.5	4170.8	3980.1	3791.9	3647.4	3514.9	3423.3
42.5°	4370.1	4107.7	3891.0	3678.5	3504.4	3331.3	3193.1	3063.5	2966.2	2879.5	2820.5
45°	3474.0	3293.6	3143.0	2993.3	2870.4	2754.9	2661.9	2579.1	2516.3	2464.3	2427.4
47.5°	2854.0	2730.5	2624.2	2523.3	2439.9	2364.1	2301.8	2281.5	2213.9	2168.4	2151.1
50°	2425.5	2350.9	2270.2	2195.7	2140.0	2084.6	2044.2	2004.5	1979.3	1958.4	1952.0
52.5°	2105.7	2048.6	2003.7	1956.6	1919.8	1880.4	1852.5	1826.1	1812.2	1801.3	1799.9
55°	1867.9	1828.0	1798.3	1766.7	1744.7	1721.5	1707.1	1693.2	1687.0	1681.5	1681.9
57.5°	1688.0	1661.4	1642.0	1621.5	1609.6	1598.5	1594.9	1591.4	1593.3	1594.1	1597.2
60°	1556.9	1539.6	1527.4	1515.6	1510.7	1507.2	1509.9	1513.0	1519.3	1524.5	1529.0
62.5°	1456.5	1446.6	1440.6	1434.3	1433.8	1434.0	1439.5	1444.7	1452.6	1458.6	1463.1
65°	1353.0	1347.4	1345.4	1341.4	1343.5	1344.6	1351.1	1355.2	1363.2	1367.9	1373.6
67.5°	1248.6	1247.2	1248.4	1248.4	1252.1	1255.2	1261.4	1266.0	1272.7	1277.1	1281.7
70°	1171.4	1171.9	1174.8	1175.3	1179.2	1181.4	1186.8	1189.8	1195.8	1199.5	1205.0
72.5°	1096.4	1095.1	1095.8	1094.1	1095.4	1094.9	1097.9	1099.3	1104.5	1107.3	1114.1
75°	1016.4	1013.1	1012.2	1008.7	1008.8	1006.2	1007.4	1007.3	1010.6	1012.0	1016.9
77.5°	919.9	914.3	911.5	905.5	905.4	903.1	905.5	907.0	913.0	915.7	921.3
80°	804.5	795.6	791.6	784.6	785.7	785.4	791.2	795.8	803.0	804.4	811.4
82.5°	668.7	659.6	655.3	648.4	650.0	650.2	655.6	656.5	662.8	665.6	673.7
85°	478.8	482.3	472.7	473.4	471.3	475.2	478.8	483.4	488.6	497.4	504.2
87.5°	282.0	280.7	284.1	284.5	289.4	291.9	299.8	304.2	313.1	319.9	332.4
90°	131.7	127.0	129.5	127.8	132.2	130.6	134.8	132.4	137.5	137.8	144.4
92.5°	47.1	44.7	41.4	38.9	35.7	33.4	31.5	30.7	29.0	28.2	26.3
95°	63.3	59.2	55.0	50.8	46.7	42.5	41.0	39.5	38.0	36.4	34.8
97.5°	73.6	69.1	64.6	60.0	55.5	51.1	50.1	49.0	48.0	47.1	46.0
100°	105.1	96.4	87.8	79.1	70.5	61.8	61.0	60.2	59.4	58.6	57.7
102.5°	210.3	190.3	170.5	150.6	130.8	110.9	107.4	104.0	100.5	97.0	93.7
105°	383.9	352.0	320.3	288.5	256.7	225.0	215.6	205.9	196.4	187.0	177.6
107.5°	548.1	516.9	486.0	455.0	424.1	393.1	378.1	363.1	348.0	333.0	318.1
110°	630.9	612.2	593.7	574.7	556.2	537.5	523.1	508.8	494.4	480.1	465.9



TEST NUMBER: P1444692
 CATALOG NUMBER: EHBR1-48-UNV-TA-L930-UPL18

CANDELA DISTRIBUTION (continued):

	55°	57.5°	60°	62.5°	65°	67.5°	70°	72.5°	75°	77.5°	80°
112.5°	641.0	631.5	621.7	612.4	602.9	593.4	586.5	579.3	572.4	565.2	558.1
115°	597.5	594.2	590.9	587.8	584.7	581.4	580.7	580.1	579.3	578.8	578.3
117.5°	524.8	525.1	525.1	525.3	525.5	525.8	529.2	532.6	536.2	539.9	543.7
120°	453.2	455.2	457.1	459.2	461.3	463.5	467.9	472.7	477.4	482.4	487.3
122.5°	393.8	395.0	395.9	397.3	398.5	399.9	404.1	408.8	413.3	418.0	423.0
125°	348.8	348.3	347.7	346.9	346.4	346.1	349.5	353.1	356.8	360.7	364.4
127.5°	319.4	317.4	315.6	313.9	312.0	310.4	312.1	313.9	315.7	317.9	319.8
130°	302.6	300.0	297.1	294.6	291.7	289.2	289.4	289.9	290.2	290.7	291.2
132.5°	294.1	291.0	288.0	285.0	281.9	278.9	278.1	277.4	276.7	276.3	275.8
135°	289.4	286.7	283.6	280.6	277.6	274.8	273.6	272.2	271.1	270.0	268.9
137.5°	287.3	284.9	282.4	280.1	277.4	275.1	273.4	272.1	270.5	269.4	268.1
140°	286.8	284.8	282.6	280.6	278.4	276.5	275.0	273.9	272.4	271.4	270.3
142.5°	286.9	285.4	283.7	282.2	280.5	278.9	277.6	276.3	275.1	274.1	272.9
145°	289.3	288.2	286.9	285.7	284.4	283.3	282.0	281.1	280.0	279.1	278.3
147.5°	290.1	289.2	288.3	287.2	286.2	285.3	284.4	283.8	282.8	282.2	281.4
150°	290.8	289.9	289.0	288.4	287.3	286.6	285.9	285.3	284.5	284.2	283.6
152.5°	290.2	289.4	288.7	288.1	287.2	286.4	285.8	285.3	284.8	284.4	283.7
155°	290.8	290.2	289.5	289.0	288.2	287.7	287.1	286.4	285.9	285.3	284.7
157.5°	292.6	292.0	291.3	291.0	290.2	289.6	289.1	288.6	287.8	287.4	286.8
160°	294.7	294.3	293.6	293.1	292.6	292.0	291.2	290.8	290.0	289.5	288.6
162.5°	298.2	297.5	296.9	296.3	295.6	295.1	294.4	293.9	293.3	292.7	292.1
165°	301.4	300.8	300.3	299.8	299.3	298.8	298.1	297.6	296.7	296.2	295.5
167.5°	305.9	305.6	305.0	304.6	304.0	303.4	302.9	302.3	301.7	301.0	300.1
170°	309.4	308.7	308.3	307.7	307.3	306.6	306.1	305.5	304.9	304.5	303.6
172.5°	313.1	312.8	312.3	311.9	311.3	310.9	310.6	310.1	309.6	309.1	308.7
175°	314.4	314.2	314.1	313.7	313.6	313.3	313.1	312.9	312.6	312.5	312.1
177.5°	316.0	315.8	315.8	315.6	315.5	315.5	315.2	315.1	314.8	314.6	314.5
180°	313.8	313.8	313.8	313.8	313.8	313.8	313.8	313.8	313.8	313.8	313.8



TEST NUMBER: P1444692
 CATALOG NUMBER: EHBR1-48-UNV-TA-L930-UPL18

CANDELA DISTRIBUTION (continued):

	82.5°	85°	87.5°	90°	92.5°	95°	97.5°	100°	102.5°	105°	107.5°
0°	36472.1	36472.1	36472.1	36472.1	36472.1	36472.1	36472.1	36472.1	36472.1	36472.1	36472.1
2.5°	36612.4	36603.1	36607.6	36590.4	36594.5	36573.8	36571.8	36548.5	36546.2	36524.1	36515.9
5°	37852.0	37831.6	37854.6	37818.8	37825.8	37779.2	37775.3	37715.0	37694.2	37618.7	37586.2
7.5°	39214.4	39206.7	39220.7	39190.8	39189.8	39148.2	39131.0	39077.0	39043.4	38964.3	38913.6
10°	39512.8	39519.9	39508.4	39511.2	39495.0	39490.6	39473.9	39463.4	39436.2	39415.7	39385.4
12.5°	38273.5	38280.9	38233.6	38263.6	38239.9	38295.3	38290.8	38356.0	38366.0	38448.4	38479.7
15°	35409.2	35400.2	35309.5	35366.6	35336.0	35457.4	35484.5	35647.8	35735.1	35944.8	36073.6
17.5°	31082.0	31058.7	30930.9	31000.5	30965.1	31144.1	31204.1	31465.2	31628.1	31966.0	32206.7
20°	25924.0	25879.2	25729.8	25811.2	25774.8	25978.0	26063.8	26379.3	26589.5	27036.8	27355.1
22.5°	20701.8	20631.1	20484.7	20560.8	20526.3	20737.0	20848.5	21165.2	21405.8	21865.1	22236.7
25°	16012.3	15949.3	15807.8	15861.1	15848.3	16026.4	16125.6	16425.2	16661.6	17099.1	17453.9
27.5°	12213.0	12147.5	12019.6	12057.3	12044.3	12196.1	12289.6	12539.8	12743.3	13111.6	13423.1
30°	9347.2	9268.2	9159.8	9180.6	9171.7	9294.7	9382.0	9592.8	9767.2	10078.4	10346.8
32.5°	7164.7	7085.2	6985.6	6995.4	6982.2	7078.7	7150.6	7333.9	7485.8	7750.5	7984.1
35°	5481.9	5574.8	5362.1	5496.8	5356.5	5562.5	5488.4	5602.9	5733.7	5956.6	6151.4
37.5°	4214.3	4149.6	4094.9	4089.0	4088.7	4136.5	4192.8	4303.1	4418.3	4584.5	4756.1
40°	3339.6	3294.2	3258.8	3256.2	3258.8	3292.8	3334.4	3410.6	3495.0	3614.3	3740.4
42.5°	2769.9	2739.7	2718.4	2716.9	2723.7	2747.7	2776.7	2822.0	2876.9	2954.1	3040.7
45°	2397.3	2380.6	2368.7	2368.0	2371.1	2383.7	2400.4	2428.6	2463.4	2511.6	2566.3
47.5°	2136.0	2131.9	2124.5	2124.7	2121.4	2126.5	2128.4	2144.2	2162.7	2199.1	2270.6
50°	1945.6	1945.6	1940.5	1940.2	1935.4	1935.1	1931.0	1937.2	1945.9	1968.4	1991.3
52.5°	1795.2	1794.7	1789.1	1788.1	1782.9	1782.6	1779.1	1781.6	1782.7	1794.1	1807.8
55°	1677.6	1674.1	1666.8	1664.5	1662.4	1665.5	1664.1	1664.2	1662.7	1667.5	1671.5
57.5°	1593.3	1588.6	1581.8	1579.7	1579.2	1582.7	1582.8	1581.6	1575.3	1571.0	1564.8
60°	1526.4	1521.9	1514.4	1512.5	1513.6	1518.5	1518.2	1514.1	1504.7	1496.5	1486.9
62.5°	1460.9	1459.1	1455.2	1454.7	1453.7	1454.6	1451.2	1446.9	1437.5	1428.8	1418.3
65°	1372.9	1373.9	1371.0	1371.5	1368.1	1367.5	1362.4	1358.2	1348.7	1340.7	1330.1
67.5°	1281.5	1282.3	1279.9	1279.9	1278.2	1278.4	1275.3	1271.4	1263.5	1257.0	1248.7
70°	1206.2	1208.1	1206.8	1207.2	1205.0	1204.2	1199.4	1195.6	1187.4	1181.9	1174.5
72.5°	1116.1	1120.2	1120.0	1121.0	1117.8	1116.1	1110.3	1105.5	1098.2	1093.8	1087.8
75°	1018.8	1024.0	1025.5	1027.8	1023.2	1020.8	1014.5	1010.6	1004.6	1002.0	998.1
77.5°	923.8	929.5	935.1	940.2	932.8	926.2	918.2	912.2	903.4	900.1	894.0
80°	817.1	827.3	839.6	850.0	836.6	823.1	810.0	800.2	788.7	784.0	776.4
82.5°	677.9	688.4	695.4	702.0	692.8	682.9	670.1	661.7	649.2	644.7	635.8
85°	515.0	528.1	532.3	535.8	529.9	524.6	512.7	496.6	488.8	476.5	470.2
87.5°	338.7	346.6	348.1	349.2	345.7	343.1	335.3	327.8	314.4	304.7	292.7
90°	143.3	147.8	144.1	145.4	141.4	142.6	135.6	133.8	123.4	120.0	111.0
92.5°	25.2	23.6	22.4	20.9	22.9	23.7	25.5	26.3	28.1	29.0	30.7
95°	33.3	31.8	30.3	28.8	30.0	31.2	32.4	33.7	34.8	36.1	37.3
97.5°	45.0	44.0	43.0	42.0	42.7	43.4	44.1	44.8	45.4	46.2	47.1
100°	56.9	56.1	55.3	54.5	54.5	54.5	54.5	54.5	54.5	54.5	54.5
102.5°	90.2	86.7	83.3	79.8	82.2	84.5	86.8	89.1	91.5	93.8	96.3
105°	168.2	158.7	149.3	139.8	148.9	158.1	167.2	176.4	185.4	194.9	204.0
107.5°	303.0	288.1	273.1	258.3	275.1	291.8	308.3	325.0	341.7	358.3	375.2
110°	451.6	437.5	423.2	409.0	426.7	444.3	462.0	479.6	497.4	515.1	533.0



TEST NUMBER: P1444692
 CATALOG NUMBER: EHBR1-48-UNV-TA-L930-UPL18

CANDELA DISTRIBUTION (continued):

	82.5°	85°	87.5°	90°	92.5°	95°	97.5°	100°	102.5°	105°	107.5°
112.5°	551.2	544.3	537.4	530.5	541.9	553.2	564.6	576.2	587.6	599.1	610.5
115°	577.7	577.3	576.9	576.5	581.8	587.3	592.6	598.1	603.7	609.0	614.6
117.5°	547.2	550.9	554.8	558.7	560.3	562.1	564.0	565.7	567.7	569.5	571.5
120°	492.3	497.1	502.2	507.4	506.7	506.0	505.4	504.7	504.5	503.9	503.8
122.5°	427.9	432.8	438.0	443.1	441.6	440.0	438.6	437.3	436.0	434.8	433.7
125°	368.6	372.6	376.8	381.1	379.5	378.0	376.6	375.5	374.3	373.0	372.1
127.5°	322.3	324.8	327.0	329.7	329.0	328.3	328.0	327.4	327.2	327.0	327.0
130°	292.0	292.8	294.1	295.0	295.1	295.3	296.0	296.5	297.2	297.7	298.8
132.5°	275.8	275.5	275.6	275.7	276.5	277.3	278.5	279.6	281.2	282.3	284.3
135°	268.3	267.7	267.2	266.8	268.1	269.0	270.6	272.2	273.9	275.9	277.9
137.5°	267.2	266.3	265.6	264.8	266.0	267.2	268.7	270.2	272.0	273.8	276.1
140°	269.5	268.5	268.1	267.3	268.6	269.6	271.1	272.6	274.4	276.3	278.3
142.5°	272.2	271.2	270.6	270.2	271.1	272.2	273.7	274.9	276.6	278.1	280.1
145°	277.5	276.8	276.4	275.9	276.5	277.3	278.3	279.4	280.7	281.8	283.4
147.5°	280.9	280.4	280.1	279.6	280.3	280.8	281.5	282.1	283.1	284.0	285.2
150°	283.4	282.8	282.5	282.3	282.7	282.8	283.5	283.6	284.4	284.9	285.9
152.5°	283.6	282.9	282.9	282.6	282.8	282.9	283.4	283.6	284.2	284.5	285.4
155°	284.5	284.0	283.6	283.2	283.1	283.1	283.3	283.2	283.6	283.6	283.9
157.5°	286.5	286.0	285.7	285.2	285.0	284.6	284.6	284.5	284.6	284.3	284.4
160°	288.3	287.6	287.0	286.5	286.4	286.1	286.2	285.9	285.9	285.8	286.0
162.5°	291.7	291.1	290.8	290.2	290.0	289.4	289.1	288.6	288.3	288.0	287.9
165°	294.8	294.1	293.6	292.8	292.7	292.4	292.1	291.8	291.7	291.3	291.3
167.5°	299.8	299.1	298.5	297.9	297.6	296.9	296.7	296.2	295.8	295.4	295.3
170°	303.3	302.6	302.3	301.8	301.6	301.1	301.0	300.6	300.5	300.3	300.3
172.5°	308.2	307.8	307.4	307.1	306.8	306.6	306.4	306.3	306.0	306.0	305.8
175°	311.9	311.6	311.5	311.3	311.0	310.9	310.7	310.6	310.5	310.2	310.0
177.5°	314.1	313.9	313.8	313.7	313.5	313.5	313.5	313.5	313.5	313.4	313.2
180°	313.8	313.8	313.8	313.8	313.8	313.8	313.8	313.8	313.8	313.8	313.8



TEST NUMBER: P1444692
 CATALOG NUMBER: EHBR1-48-UNV-TA-L930-UPL18

CANDELA DISTRIBUTION (continued):

	110°	112.5°	115°	117.5°	120°	122.5°	125°	127.5°	130°	132.5°	135°
0°	36472.1	36472.1	36472.1	36472.1	36472.1	36472.1	36472.1	36472.1	36472.1	36472.1	36472.1
2.5°	36492.2	36482.6	36457.4	36444.9	36421.6	36409.8	36391.5	36379.8	36365.1	36354.1	36348.4
5°	37503.3	37456.6	37363.2	37305.6	37204.6	37138.0	37037.8	36964.3	36860.7	36784.4	36686.5
7.5°	38818.7	38747.2	38627.4	38536.5	38395.3	38287.3	38128.7	38001.9	37826.8	37681.3	37502.3
10°	39354.3	39312.5	39258.8	39200.3	39122.1	39045.4	38937.1	38826.8	38679.7	38533.4	38342.3
12.5°	38562.8	38602.1	38679.7	38715.9	38775.3	38795.4	38822.6	38809.8	38785.8	38726.1	38639.4
15°	36321.0	36485.2	36744.7	36924.3	37175.7	37352.5	37586.2	37736.6	37909.9	38013.4	38111.8
17.5°	32633.3	32950.9	33408.9	33774.3	34264.7	34663.5	35152.1	35536.0	35979.3	36319.4	36681.3
20°	27909.9	28354.7	28986.9	29523.8	30234.6	30837.2	31609.3	32256.1	33010.6	33639.6	34318.4
22.5°	22826.3	23349.5	24073.9	24721.5	25570.3	26328.3	27295.7	28150.9	29170.9	30084.7	31095.4
25°	18030.4	18543.3	19281.2	19951.7	20867.9	21703.0	22759.9	23741.0	24924.6	26028.5	27295.7
27.5°	13917.8	14373.3	15021.9	15625.5	16464.7	17284.4	18357.0	19403.2	20666.2	21852.5	23218.1
30°	10748.5	11118.0	11637.7	12123.2	12796.9	13467.4	14422.7	15390.3	16647.1	17876.3	19276.4
32.5°	8329.7	8644.8	9078.7	9472.8	9991.9	10497.4	11201.0	11974.1	13076.6	14254.0	15607.8
35°	6448.1	6717.7	7087.0	7426.5	7853.3	8254.7	8779.7	9331.6	10172.9	11163.3	12374.8
37.5°	5140.8	5250.7	5514.3	5792.4	6147.0	6476.8	6887.4	7295.5	7897.5	8678.9	9668.6
40°	3909.5	4084.0	4298.5	4517.6	4786.1	5050.6	5501.2	5718.1	6114.4	6675.3	7443.5
42.5°	3154.5	3277.2	3428.2	3580.5	3767.6	3951.8	4179.7	4411.9	4708.1	5088.0	5634.4
45°	2639.7	2719.8	2817.1	2918.6	3041.5	3167.2	3319.8	3479.1	3679.9	3913.4	4245.3
47.5°	2295.8	2340.0	2403.6	2472.9	2557.1	2644.2	2743.4	2845.0	2969.7	3108.2	3297.2
50°	2027.4	2064.3	2113.7	2160.0	2218.1	2307.3	2346.7	2402.8	2477.8	2559.4	2665.0
52.5°	1833.2	1857.8	1888.8	1915.3	1952.1	1985.5	2029.3	2068.0	2119.8	2168.8	2237.0
55°	1681.9	1690.8	1708.4	1725.6	1751.0	1773.8	1803.8	1829.2	1862.2	1891.5	1934.6
57.5°	1565.1	1565.9	1574.0	1582.9	1599.3	1613.7	1634.3	1650.9	1673.9	1692.6	1718.4
60°	1481.2	1476.7	1478.3	1481.4	1490.7	1500.0	1513.2	1524.0	1538.5	1549.1	1563.5
62.5°	1411.3	1404.3	1402.7	1401.9	1406.5	1409.8	1417.0	1422.3	1430.5	1435.1	1442.8
65°	1323.1	1314.8	1311.6	1307.7	1309.1	1308.0	1310.8	1310.9	1315.1	1316.0	1320.5
67.5°	1243.1	1236.1	1231.9	1226.8	1224.5	1220.9	1219.3	1215.7	1215.2	1212.2	1211.5
70°	1170.1	1163.3	1159.7	1155.0	1152.6	1147.7	1144.8	1138.8	1135.3	1129.8	1126.7
72.5°	1085.6	1081.8	1080.7	1077.5	1076.6	1073.9	1072.7	1068.5	1066.1	1061.3	1058.7
75°	997.3	994.2	993.9	990.7	990.4	987.1	986.3	981.9	979.5	974.8	972.9
77.5°	892.1	887.5	886.1	882.4	883.3	881.7	883.0	879.6	878.2	873.5	872.0
80°	773.7	767.8	765.3	760.3	761.7	759.4	761.7	761.4	763.2	759.4	758.7
82.5°	633.4	626.9	625.7	622.2	624.5	624.8	629.8	627.1	628.2	624.6	626.1
85°	460.9	456.1	449.3	448.3	444.1	448.5	442.7	446.6	440.2	444.7	438.8
87.5°	285.8	275.7	270.5	263.3	260.6	253.7	250.9	245.9	247.4	245.1	246.4
90°	109.4	101.4	100.3	94.1	94.3	89.0	90.5	87.0	89.2	85.5	88.0
92.5°	31.5	32.9	35.2	38.1	40.2	42.6	45.0	47.8	49.9	52.7	54.8
95°	38.5	39.7	43.0	46.3	49.5	52.8	56.1	59.3	62.6	65.9	69.1
97.5°	47.8	48.5	51.7	55.0	58.2	61.5	64.7	68.3	71.5	74.8	78.0
100°	54.5	54.6	63.9	73.1	82.3	91.8	101.0	110.2	119.8	128.9	138.2
102.5°	98.6	101.0	124.3	147.8	171.1	194.4	218.0	241.5	264.8	288.5	311.9
105°	213.2	222.3	258.0	293.8	329.4	365.1	400.9	436.8	472.5	508.3	544.0
107.5°	391.8	408.6	440.9	473.2	505.4	537.8	570.2	602.6	634.8	667.3	699.9
110°	550.6	568.5	590.0	611.9	633.6	655.3	677.1	698.9	720.8	742.7	764.7



TEST NUMBER: P1444692
 CATALOG NUMBER: EHBR1-48-UNV-TA-L930-UPL18

CANDELA DISTRIBUTION (continued):

	110°	112.5°	115°	117.5°	120°	122.5°	125°	127.5°	130°	132.5°	135°
112.5°	621.9	633.6	646.3	659.2	671.9	684.8	697.5	710.4	723.4	736.4	749.3
115°	620.3	625.9	630.9	636.2	641.3	646.5	651.7	657.1	662.7	667.9	673.3
117.5°	573.4	575.7	576.6	577.7	578.8	580.2	581.3	582.7	584.1	585.6	586.7
120°	503.3	503.0	502.5	502.2	501.7	501.4	501.3	501.0	501.0	500.8	500.6
122.5°	432.6	431.8	431.3	431.0	430.9	430.9	430.7	431.0	431.0	431.0	430.9
125°	371.2	370.4	371.8	373.0	374.5	375.9	377.2	379.0	380.5	382.0	383.7
127.5°	326.8	327.0	329.5	332.1	334.7	337.4	340.1	343.0	345.6	348.6	351.2
130°	299.8	300.9	304.0	307.4	310.4	313.8	317.2	320.7	323.8	327.1	330.4
132.5°	285.7	287.7	290.6	293.9	297.0	300.3	303.6	306.9	310.2	313.6	316.6
135°	280.0	282.4	285.2	288.3	291.2	294.3	297.4	300.6	303.3	306.6	309.4
137.5°	278.0	280.4	282.9	285.4	287.8	290.7	293.2	295.9	298.3	300.9	303.3
140°	280.3	282.6	284.2	286.1	287.7	289.6	291.2	293.2	294.6	296.7	298.2
142.5°	281.8	284.0	285.0	286.4	287.7	289.4	290.6	292.0	293.1	294.3	295.4
145°	284.7	286.4	286.9	287.7	288.3	289.0	289.4	290.2	290.6	291.1	291.6
147.5°	286.3	287.6	287.7	288.2	288.6	288.8	289.2	289.5	289.6	290.0	290.2
150°	286.5	287.5	287.3	287.6	287.4	287.6	287.4	287.7	287.5	287.7	287.5
152.5°	285.9	286.7	286.2	286.4	286.1	286.0	285.7	285.7	285.4	285.3	285.3
155°	284.1	284.4	284.2	284.1	283.9	283.8	283.6	283.8	283.7	283.6	283.7
157.5°	284.3	284.3	284.2	284.1	283.8	283.9	283.7	283.7	283.8	284.2	284.4
160°	285.7	285.8	285.5	285.4	285.3	285.3	285.1	285.3	285.3	285.8	286.0
162.5°	287.5	287.4	287.1	287.0	286.9	287.0	286.9	287.3	287.3	287.7	287.9
165°	291.3	291.4	291.0	291.0	290.8	290.7	290.6	290.7	291.0	291.0	291.3
167.5°	295.1	295.0	295.0	295.1	295.1	295.2	295.4	295.9	296.0	296.6	296.7
170°	300.2	300.3	300.1	300.1	300.0	300.0	300.0	300.1	300.2	300.4	300.4
172.5°	305.8	305.8	305.7	305.4	305.2	305.2	304.9	305.0	304.9	304.7	304.5
175°	309.8	309.8	309.7	309.6	309.5	309.2	309.0	308.7	308.6	308.5	308.4
177.5°	313.1	312.9	312.7	312.7	312.6	312.4	312.4	312.3	312.3	312.3	312.1
180°	313.8	313.8	313.8	313.8	313.8	313.8	313.8	313.8	313.8	313.8	313.8



TEST NUMBER: P1444692
 CATALOG NUMBER: EHBR1-48-UNV-TA-L930-UPL18

CANDELA DISTRIBUTION (continued):

	137.5°	140°	142.5°	145°	147.5°	150°	152.5°	155°	157.5°	160°	162.5°
0°	36472.1	36472.1	36472.1	36472.1	36472.1	36472.1	36472.1	36472.1	36472.1	36472.1	36472.1
2.5°	36341.1	36340.7	36337.2	36338.8	36339.5	36342.1	36345.2	36348.4	36349.1	36351.6	36352.2
5°	36613.1	36523.2	36456.7	36383.5	36328.5	36279.1	36246.1	36219.9	36209.7	36212.3	36218.4
7.5°	37350.6	37165.0	37011.9	36837.7	36692.6	36538.8	36411.4	36290.3	36202.0	36136.2	36099.4
10°	38159.8	37933.8	37717.6	37465.6	37226.6	36971.6	36740.5	36507.9	36313.9	36145.5	36021.8
12.5°	38519.0	38359.2	38172.3	37934.5	37678.8	37384.4	37087.3	36768.7	36472.4	36197.3	35975.5
15°	38138.7	38139.0	38070.9	37956.8	37779.2	37544.0	37260.8	36928.7	36579.1	36222.4	35896.5
17.5°	36931.7	37159.4	37286.1	37366.3	37341.7	37255.0	37074.8	36819.7	36493.8	36113.9	35716.2
20°	34858.9	35396.0	35779.0	36123.4	36316.4	36444.7	36431.8	36328.0	36096.0	35772.8	35358.7
22.5°	31955.1	32856.7	33568.1	34231.5	34696.8	35075.2	35255.2	35331.5	35226.4	35001.3	34612.4
25°	28428.2	29654.1	30700.2	31715.5	32477.0	33131.5	33524.8	33802.0	33824.0	33706.4	33359.4
27.5°	24509.3	25956.3	27280.3	28629.5	29700.5	30641.4	31258.8	31710.6	31854.1	31835.2	31520.1
30°	20595.3	22114.3	23573.8	25147.1	26472.4	27674.4	28489.9	29101.0	29336.5	29381.7	29078.6
32.5°	16898.9	18396.9	19852.3	21497.1	22955.5	24333.2	25296.7	26022.5	26296.4	26360.9	26028.5
35°	13544.3	14926.3	16309.4	17903.5	19353.5	20780.1	21795.3	22555.3	22811.0	22854.2	22469.3
37.5°	10635.2	11812.7	13017.9	14448.2	15779.8	17119.6	18084.2	18798.3	18984.7	18973.2	18537.6
40°	8185.7	9101.1	10069.5	11247.1	12354.1	13486.7	14301.3	14891.6	14989.5	14917.0	14459.5
42.5°	6155.3	6816.3	7518.5	8397.5	9218.8	10066.5	10659.1	11097.4	11111.3	10996.7	10586.1
45°	4585.6	5230.6	5525.1	6056.5	6585.6	7149.3	7511.1	7781.9	7740.0	7639.1	7327.0
47.5°	3495.8	3743.7	4006.6	4336.1	4644.3	5283.9	5236.5	5671.3	5358.2	5571.7	5101.6
50°	2776.0	2914.6	3056.2	3231.1	3392.1	3559.3	3663.7	3741.8	3731.6	3698.1	3608.1
52.5°	2361.7	2404.6	2474.2	2573.8	2663.6	2754.1	2813.6	2862.0	2862.9	2849.4	2803.8
55°	1973.9	2028.2	2078.4	2143.4	2254.1	2271.2	2356.4	2339.2	2345.8	2322.2	2346.5
57.5°	1740.3	1771.9	1800.2	1838.9	1870.9	1908.2	1930.2	1951.4	1949.5	1944.8	1921.6
60°	1574.8	1592.3	1608.0	1630.5	1648.2	1669.2	1679.4	1690.1	1686.7	1678.8	1658.1
62.5°	1447.3	1458.2	1467.2	1481.7	1492.4	1505.5	1510.8	1515.4	1510.8	1503.4	1485.1
65°	1321.4	1328.4	1334.1	1345.1	1352.7	1363.9	1368.3	1372.6	1368.4	1362.6	1348.7
67.5°	1207.9	1208.6	1208.0	1212.5	1214.8	1221.6	1223.5	1226.7	1221.8	1216.8	1205.0
70°	1121.8	1120.0	1117.8	1119.6	1120.0	1123.3	1123.8	1123.3	1117.5	1108.8	1095.9
72.5°	1054.5	1053.5	1051.9	1053.4	1053.4	1056.4	1055.4	1054.0	1046.7	1038.4	1025.7
75°	968.0	967.2	964.0	964.1	961.5	962.4	958.9	956.9	948.9	941.8	930.5
77.5°	866.7	865.1	860.4	858.6	853.4	851.3	844.7	841.4	833.3	827.6	817.9
80°	753.7	751.9	745.9	742.5	734.4	729.2	719.5	714.0	704.6	699.1	689.7
82.5°	623.0	623.7	617.6	613.4	601.8	592.9	579.9	572.8	562.6	557.1	547.4
85°	443.1	436.7	440.1	439.9	432.6	424.8	414.3	406.9	398.3	393.1	386.2
87.5°	243.0	244.5	242.7	241.3	236.2	232.2	223.9	219.7	213.3	210.2	205.1
90°	81.0	80.1	73.4	72.6	66.1	63.2	55.6	53.6	46.7	45.4	40.6
92.5°	52.0	49.4	46.9	43.8	41.4	38.7	35.9	33.2	30.5	29.3	28.6
95°	65.1	61.3	57.4	53.4	49.5	45.4	41.6	37.6	33.7	32.9	32.1
97.5°	73.4	68.7	64.1	59.6	54.9	50.3	45.7	41.0	36.4	35.8	35.4
100°	127.5	116.9	106.2	95.4	84.7	74.0	63.4	52.7	42.1	41.4	40.8
102.5°	285.8	259.9	233.9	208.0	182.2	156.1	130.1	104.1	78.2	74.4	70.7
105°	504.7	465.4	426.3	386.9	347.6	308.2	269.0	229.6	190.3	177.7	164.9
107.5°	663.0	625.9	589.3	552.4	515.4	478.6	441.7	404.7	367.7	345.4	323.3
110°	735.5	706.1	677.2	647.9	618.7	589.5	560.3	530.9	501.7	482.6	463.7



TEST NUMBER: P1444692
 CATALOG NUMBER: EHBR1-48-UNV-TA-L930-UPL18

CANDELA DISTRIBUTION (continued):

	137.5°	140°	142.5°	145°	147.5°	150°	152.5°	155°	157.5°	160°	162.5°
112.5°	728.1	706.9	685.8	664.3	643.2	621.7	600.5	579.2	557.7	546.3	534.8
115°	660.9	648.2	635.6	623.0	610.4	597.8	585.1	572.2	559.4	553.5	547.6
117.5°	580.8	574.5	568.5	562.2	556.1	549.7	543.4	537.0	530.7	528.9	527.0
120°	499.6	498.1	496.4	494.8	493.3	491.8	490.1	488.4	486.7	487.4	488.1
122.5°	432.5	433.7	435.2	436.3	437.8	438.9	440.4	441.3	442.5	444.7	446.8
125°	386.3	388.8	391.4	393.9	396.3	398.8	401.4	403.6	406.2	408.1	410.5
127.5°	354.2	357.0	359.9	362.6	365.5	368.3	371.1	373.7	376.4	378.5	380.8
130°	333.2	335.6	338.4	340.8	343.4	345.9	348.3	350.9	353.4	355.3	357.3
132.5°	319.0	321.4	323.9	326.1	328.6	330.8	333.3	335.5	338.1	339.6	341.3
135°	311.5	313.2	315.3	317.1	319.3	321.0	323.0	325.1	327.2	328.5	330.0
137.5°	305.0	306.6	308.4	309.9	311.8	313.4	315.3	317.0	319.1	320.0	321.4
140°	299.9	301.5	303.2	304.9	306.6	308.2	310.4	312.2	314.2	315.3	316.5
142.5°	296.9	298.1	299.5	300.8	302.5	303.8	305.5	307.2	309.0	310.1	311.3
145°	293.1	294.5	296.0	297.5	299.0	300.6	302.5	304.3	306.3	307.2	308.2
147.5°	291.4	292.6	294.0	295.3	296.7	298.0	299.8	301.4	303.2	304.1	305.0
150°	288.8	290.0	291.2	292.5	294.0	295.5	297.2	298.8	300.9	301.9	302.9
152.5°	286.5	287.7	289.0	290.5	292.1	293.7	295.4	297.2	299.1	300.0	301.0
155°	285.1	286.1	287.7	289.1	290.8	292.1	293.9	295.5	297.3	298.4	299.2
157.5°	285.6	286.6	287.9	289.4	290.7	292.1	293.8	295.1	296.8	297.6	298.4
160°	287.1	288.1	289.4	290.7	291.9	293.3	294.6	295.9	297.3	298.2	299.0
162.5°	289.1	290.3	291.5	292.6	294.0	295.2	296.6	297.8	299.2	299.9	300.7
165°	292.3	293.2	294.3	295.1	296.2	296.9	298.2	299.1	300.3	300.8	301.7
167.5°	297.7	298.4	299.0	299.8	300.7	301.5	302.4	303.2	304.1	304.8	305.4
170°	301.1	301.7	302.3	303.0	303.7	304.4	305.1	305.7	306.7	307.2	307.8
172.5°	304.9	305.2	305.8	306.1	306.6	307.0	307.5	308.2	308.6	309.1	309.6
175°	308.8	308.9	309.1	309.2	309.5	309.8	310.1	310.5	310.7	311.0	311.4
177.5°	312.2	312.3	312.4	312.5	312.9	313.0	313.2	313.3	313.6	313.9	314.3
180°	313.8	313.8	313.8	313.8	313.8	313.8	313.8	313.8	313.8	313.8	313.8



TEST NUMBER: P1444692
 CATALOG NUMBER: EHBR1-48-UNV-TA-L930-UPL18

CANDELA DISTRIBUTION (continued):

	165°	167.5°	170°	172.5°	175°	177.5°	180°	182.5°	185°	187.5°	190°
0°	36472.1	36472.1	36472.1	36472.1	36472.1	36472.1	36472.1	36472.1	36472.1	36472.1	36472.1
2.5°	36351.0	36350.5	36349.4	36347.7	36346.1	36347.1	36348.7	36352.9	36360.2	36370.7	36384.5
5°	36223.4	36230.8	36235.0	36235.5	36231.8	36229.4	36233.0	36243.0	36263.1	36296.9	36342.6
7.5°	36089.5	36098.7	36112.8	36123.4	36125.4	36122.8	36123.4	36139.0	36176.2	36242.0	36334.3
10°	35946.7	35919.5	35933.9	35960.1	35980.9	35984.6	35987.2	36005.8	36060.1	36159.6	36307.9
12.5°	35814.8	35728.8	35712.1	35735.8	35767.5	35777.5	35774.8	35782.7	35846.4	35978.1	36184.7
15°	35641.2	35479.4	35424.1	35430.2	35469.3	35483.3	35473.0	35457.4	35519.4	35680.1	35947.7
17.5°	35360.3	35099.5	34997.8	34993.3	35039.1	35051.2	35026.0	34977.4	35038.5	35239.0	35571.2
20°	34933.3	34548.2	34356.8	34326.4	34376.1	34361.5	34311.4	34237.8	34318.1	34562.0	34957.0
22.5°	34165.7	33677.8	33350.7	33245.3	33304.6	33265.1	33191.9	33098.0	33204.7	33481.7	33921.6
25°	32911.3	32347.6	31899.8	31648.7	31696.0	31625.0	31545.4	31431.6	31558.8	31876.9	32361.0
27.5°	31067.6	30416.4	29861.6	29445.8	29461.1	29368.1	29276.4	29129.1	29287.9	29664.4	30210.5
30°	28615.9	27862.3	27186.7	26621.7	26571.2	26481.0	26387.1	26193.8	26392.5	26843.2	27481.3
32.5°	25537.0	24700.2	23919.7	23205.3	23070.5	22982.6	22898.9	22676.4	22936.6	23462.0	24195.1
35°	21936.3	21045.1	20198.7	19382.8	19159.5	19071.5	18998.4	18785.2	19109.9	19681.7	20473.5
37.5°	17984.1	17073.6	16233.3	15396.7	15081.2	14961.8	14908.7	14769.0	15143.7	15709.2	16504.3
40°	13926.7	13080.1	12326.9	11587.8	11228.2	11045.6	11017.7	10992.3	11354.5	11845.1	12566.8
42.5°	10131.1	9448.1	8867.3	8302.4	7976.5	7727.2	7727.0	7802.7	8128.7	8496.2	9052.7
45°	7008.0	6549.7	6179.6	5802.2	5903.0	5405.8	5697.9	5548.1	5709.2	5946.1	6308.0
47.5°	4817.3	4567.1	4363.8	4153.0	3999.3	3852.5	3865.3	3960.0	4111.7	4252.3	4440.6
50°	3511.0	3383.6	3280.0	3170.6	3094.0	3029.2	3033.1	3074.1	3153.7	3227.9	3326.4
52.5°	2751.1	2680.8	2624.6	2564.1	2523.9	2491.7	2493.5	2513.4	2556.5	2598.7	2655.2
55°	2267.6	2259.1	2186.0	2131.6	2110.9	2089.4	2093.3	2101.0	2130.4	2155.1	2192.6
57.5°	1900.2	1867.4	1845.5	1816.9	1803.7	1788.6	1792.0	1794.9	1814.5	1831.1	1858.0
60°	1640.9	1617.6	1602.0	1582.6	1573.9	1564.3	1566.4	1568.2	1580.8	1591.7	1610.9
62.5°	1468.5	1447.7	1434.1	1419.1	1413.1	1406.6	1408.1	1408.6	1416.5	1424.4	1439.0
65°	1336.3	1319.8	1308.5	1295.6	1289.2	1282.5	1283.2	1283.2	1289.8	1295.6	1306.6
67.5°	1196.5	1184.1	1176.7	1166.5	1162.2	1155.3	1155.2	1153.0	1157.3	1159.6	1167.0
70°	1084.3	1071.8	1062.4	1052.5	1047.2	1041.1	1041.2	1041.4	1046.4	1051.6	1061.3
72.5°	1015.0	1003.0	994.7	986.0	981.0	975.8	974.8	974.3	977.9	980.8	987.1
75°	923.2	913.6	908.8	900.7	896.6	890.8	889.8	887.1	888.9	889.4	894.2
77.5°	811.8	802.7	798.8	790.6	787.2	780.6	780.1	777.1	778.4	777.5	781.2
80°	684.9	676.6	674.5	667.7	666.1	660.1	659.1	655.4	656.5	653.7	655.1
82.5°	543.2	535.7	534.1	527.8	527.8	522.3	522.0	516.5	516.5	511.8	504.2
85°	382.7	377.1	374.8	369.7	368.2	363.8	361.4	356.2	354.3	350.9	349.9
87.5°	201.9	198.5	195.3	192.9	188.4	180.5	179.7	174.2	174.7	170.7	171.0
90°	39.9	35.6	35.0	31.0	30.2	27.4	26.8	26.6	27.1	27.0	27.5
92.5°	27.7	26.8	25.8	25.0	24.1	23.1	22.2	23.1	24.1	25.0	25.8
95°	31.3	30.5	29.6	28.8	28.0	27.2	26.4	27.2	28.0	29.0	29.8
97.5°	34.8	34.3	33.9	33.3	32.8	32.3	31.8	32.5	33.0	33.5	34.0
100°	40.3	39.7	39.0	38.4	37.9	37.2	36.6	37.5	38.1	38.7	39.3
102.5°	66.9	63.2	59.4	55.7	51.9	48.1	44.4	48.1	51.9	55.9	59.6
105°	152.3	139.8	127.1	114.4	101.8	89.0	76.4	89.1	101.9	114.5	127.3
107.5°	300.9	278.9	256.6	234.4	211.9	189.7	167.4	189.9	212.2	234.5	256.8
110°	444.5	425.3	406.2	386.9	367.7	348.5	329.3	348.6	368.0	387.2	406.5



TEST NUMBER: P1444692
 CATALOG NUMBER: EHBR1-48-UNV-TA-L930-UPL18

CANDELA DISTRIBUTION (continued):

	165°	167.5°	170°	172.5°	175°	177.5°	180°	182.5°	185°	187.5°	190°
112.5°	523.2	511.7	499.9	488.5	476.8	465.3	453.5	465.5	477.3	489.1	500.8
115°	541.7	535.7	529.9	523.8	517.6	511.6	505.3	512.0	518.3	524.6	530.9
117.5°	525.0	523.3	521.3	519.4	517.3	515.3	513.2	515.6	517.9	520.6	522.7
120°	488.4	489.2	489.8	490.2	490.8	491.1	491.4	491.6	491.6	491.6	491.6
122.5°	448.8	450.9	452.8	454.8	456.6	458.5	460.1	459.0	457.7	456.5	454.9
125°	412.6	415.0	417.0	419.1	421.0	423.1	424.6	423.8	422.5	421.2	419.5
127.5°	382.8	384.9	386.8	389.1	390.7	392.5	394.0	393.3	392.1	391.0	389.6
130°	359.0	361.0	362.4	364.2	365.6	367.0	368.1	367.8	367.1	366.6	365.5
132.5°	342.8	344.6	346.1	347.5	348.6	350.0	350.7	350.8	350.4	350.1	349.3
135°	331.4	332.7	334.0	335.4	336.3	337.2	337.7	338.2	338.1	338.0	337.5
137.5°	322.4	323.7	324.6	325.5	326.2	326.8	327.1	327.8	327.9	328.5	328.2
140°	317.5	318.8	319.8	320.7	321.5	322.3	322.6	323.3	323.5	323.8	323.5
142.5°	312.3	313.5	314.6	315.6	316.2	316.9	317.2	317.9	318.0	318.3	318.2
145°	309.3	310.1	311.1	312.0	312.5	313.0	313.1	313.9	314.3	314.6	314.8
147.5°	305.9	307.0	307.6	308.3	308.9	309.4	309.7	310.2	310.7	310.9	311.2
150°	303.9	304.9	305.7	306.6	307.3	307.9	308.1	308.7	308.9	309.2	309.1
152.5°	301.9	302.8	303.5	304.2	304.9	305.5	305.7	306.3	306.7	307.1	307.2
155°	300.1	301.0	301.8	302.6	303.2	303.9	304.4	304.9	305.4	305.7	305.9
157.5°	299.2	300.2	300.8	301.7	302.2	303.1	303.6	304.2	304.7	305.2	305.5
160°	299.6	300.6	301.1	301.9	302.6	303.3	303.8	304.5	305.0	305.4	306.0
162.5°	301.4	302.2	302.6	303.4	304.1	304.8	305.3	305.9	306.6	307.1	307.4
165°	302.5	303.3	304.0	304.8	305.5	306.3	306.8	307.4	307.7	308.2	308.4
167.5°	306.0	306.7	307.4	308.1	308.6	309.4	310.0	310.5	310.7	311.1	311.4
170°	308.3	309.0	309.7	310.1	310.8	311.5	311.8	312.1	312.4	312.7	313.1
172.5°	310.1	310.8	311.3	312.0	312.5	313.1	313.6	313.9	314.0	314.0	314.0
175°	311.7	312.3	312.7	313.1	313.5	314.0	314.5	314.4	314.6	314.5	314.6
177.5°	314.8	315.3	315.7	316.0	316.4	316.8	317.2	316.9	316.7	316.5	316.3
180°	313.8	313.8	313.8	313.8	313.8	313.8	313.8	313.8	313.8	313.8	313.8



TEST NUMBER: P1444692
 CATALOG NUMBER: EHBR1-48-UNV-TA-L930-UPL18

CANDELA DISTRIBUTION (continued):

	192.5°	195°	197.5°	200°	202.5°	205°	207.5°	210°	212.5°	215°	217.5°
0°	36472.1	36472.1	36472.1	36472.1	36472.1	36472.1	36472.1	36472.1	36472.1	36472.1	36472.1
2.5°	36403.9	36422.2	36450.1	36475.3	36513.4	36543.3	36588.3	36622.5	36673.3	36706.4	36761.6
5°	36407.2	36478.4	36572.1	36663.5	36773.4	36873.1	36997.1	37102.7	37227.3	37328.9	37456.4
7.5°	36458.7	36596.1	36760.7	36926.5	37114.2	37289.6	37487.4	37666.3	37861.9	38027.5	38208.3
10°	36496.7	36708.5	36951.2	37195.3	37452.2	37690.9	37932.0	38140.2	38334.8	38495.1	38636.6
12.5°	36445.2	36737.0	37048.3	37349.0	37634.7	37881.8	38089.2	38249.3	38359.9	38434.9	38452.5
15°	36270.2	36621.3	36959.8	37259.2	37496.3	37679.1	37773.8	37818.1	37770.6	37691.6	37518.0
17.5°	35943.2	36313.6	36616.2	36852.4	36977.6	37027.3	36948.9	36812.4	36545.9	36250.0	35822.7
20°	35343.7	35688.8	35908.3	36037.1	36003.6	35879.7	35583.6	35223.8	34691.6	34124.5	33376.0
22.5°	34292.2	34593.9	34710.9	34720.4	34515.9	34205.6	33671.6	33054.5	32215.0	31342.1	30268.7
25°	32713.8	32978.1	32996.6	32892.8	32518.5	32015.5	31231.6	30358.5	29217.7	28054.7	26709.6
27.5°	30573.3	30826.7	30764.7	30571.0	30051.4	29378.4	28374.6	27246.8	25840.3	24466.7	22978.7
30°	27882.4	28153.5	28080.6	27832.1	27214.1	26418.7	25237.6	23927.3	22365.7	20898.6	19390.8
32.5°	24662.3	25004.9	24954.7	24718.5	24073.6	23222.3	21940.8	20551.0	18953.4	17507.6	16040.9
35°	21002.2	21418.2	21439.7	21285.3	20686.6	19845.2	18579.8	17234.5	15704.3	14340.2	12985.2
37.5°	17058.8	17541.1	17640.2	17598.6	17102.4	16359.6	15206.6	13999.8	12644.2	11448.6	10289.8
40°	13093.6	13581.9	13751.3	13801.5	13435.3	12860.0	11913.7	10939.7	9834.5	8865.8	7945.7
42.5°	9477.5	9910.4	10074.1	10177.1	9948.5	9564.9	8874.6	8167.2	7357.6	6658.9	5989.0
45°	6582.4	6888.5	7013.0	7116.7	6992.2	6775.8	6339.8	5897.5	5363.0	4906.4	4474.1
47.5°	4602.1	4771.0	4853.1	4903.4	4855.2	4742.3	4505.1	4248.8	3947.1	3680.3	3423.8
50°	3411.2	3501.0	3544.1	3573.1	3537.9	3475.2	3346.9	3207.3	3041.6	2890.5	2742.7
52.5°	2703.3	2754.8	2780.4	2795.9	2775.8	2737.5	2662.7	2580.0	2480.7	2387.3	2338.2
55°	2277.3	2274.6	2333.7	2305.2	2333.7	2270.1	2256.6	2165.7	2083.2	2025.1	1962.3
57.5°	1878.1	1904.8	1916.1	1928.9	1920.7	1909.0	1877.3	1844.7	1801.2	1764.8	1726.0
60°	1625.7	1647.7	1660.2	1672.8	1672.0	1667.6	1649.2	1629.7	1602.5	1580.8	1557.3
62.5°	1451.8	1470.9	1483.2	1495.2	1496.3	1494.5	1480.6	1467.2	1448.6	1435.0	1418.8
65°	1315.1	1328.4	1336.8	1346.4	1345.9	1343.3	1330.7	1319.5	1304.3	1294.8	1282.9
67.5°	1171.9	1182.1	1188.5	1197.6	1199.4	1199.9	1193.0	1187.7	1180.3	1177.6	1173.5
70°	1070.2	1082.5	1092.9	1104.3	1110.5	1113.6	1110.5	1107.9	1103.5	1101.6	1098.5
72.5°	993.1	1003.5	1011.6	1022.0	1027.8	1032.0	1029.7	1028.2	1024.5	1023.9	1021.8
75°	897.4	904.6	909.1	917.0	920.1	924.0	922.2	923.2	922.0	925.0	924.8
77.5°	782.3	787.7	789.8	795.4	796.1	800.8	801.8	807.4	811.3	819.9	824.6
80°	652.8	656.2	656.2	662.0	664.6	672.6	676.4	685.5	689.7	697.3	698.0
82.5°	507.1	503.2	507.1	504.7	512.1	521.0	522.3	530.0	531.7	536.6	532.8
85°	346.7	346.5	343.4	343.9	341.6	342.6	341.3	342.8	341.4	341.6	338.1
87.5°	166.1	167.6	164.0	165.2	161.7	163.3	160.1	162.6	159.0	159.5	154.1
90°	27.7	28.2	28.3	28.9	29.9	31.3	33.0	34.5	36.6	38.1	39.9
92.5°	26.8	27.9	28.8	29.8	30.7	33.4	36.1	38.9	41.7	44.3	47.1
95°	30.7	31.5	32.3	33.3	34.1	38.1	42.1	46.0	50.0	53.9	57.9
97.5°	34.8	35.3	35.8	36.3	36.9	41.5	46.3	50.9	55.5	60.2	64.8
100°	40.0	40.6	41.2	42.0	42.6	53.4	64.2	74.9	85.6	96.2	107.0
102.5°	63.4	67.2	71.0	75.0	78.8	104.9	130.9	157.0	182.9	208.9	234.9
105°	140.1	152.7	165.7	178.4	191.1	230.5	270.0	309.5	348.7	388.0	427.5
107.5°	279.3	301.6	324.1	346.4	368.8	405.9	442.9	479.9	517.0	554.0	590.8
110°	426.1	445.1	464.6	484.0	503.2	532.5	562.0	591.3	620.7	650.0	679.2



TEST NUMBER: P1444692
 CATALOG NUMBER: EHBR1-48-UNV-TA-L930-UPL18

CANDELA DISTRIBUTION (continued):

	192.5°	195°	197.5°	200°	202.5°	205°	207.5°	210°	212.5°	215°	217.5°
112.5°	512.8	524.4	536.2	547.7	559.5	580.9	602.6	624.0	645.6	666.8	688.2
115°	537.2	543.1	549.4	555.4	561.7	574.6	587.3	600.3	613.2	625.8	638.8
117.5°	524.9	527.0	529.3	531.1	533.3	539.8	546.3	552.7	559.3	565.7	572.1
120°	491.4	491.0	490.8	490.2	489.9	491.6	493.6	495.4	497.3	498.9	500.6
122.5°	453.5	451.6	450.1	448.2	446.5	445.2	444.3	443.1	442.3	441.0	440.0
125°	418.0	416.1	414.4	412.3	410.4	408.1	406.0	403.6	401.3	399.0	396.6
127.5°	388.4	386.6	385.2	383.2	381.4	378.7	376.1	373.6	371.1	368.3	365.7
130°	364.7	363.2	362.2	360.3	359.0	356.5	354.3	351.8	349.4	347.1	344.7
132.5°	348.6	347.6	346.6	345.1	344.1	341.8	339.9	337.4	335.2	333.0	331.0
135°	337.0	336.2	335.6	334.6	333.7	331.7	330.1	328.2	326.4	324.6	322.9
137.5°	328.1	327.5	327.1	326.5	325.8	324.1	322.7	321.1	319.7	318.0	316.5
140°	323.4	322.9	322.6	322.0	321.3	319.7	318.2	316.5	315.0	313.3	311.8
142.5°	318.0	317.6	317.3	316.7	316.3	314.8	313.8	312.4	311.1	309.8	308.6
145°	314.6	314.4	314.3	313.9	313.7	312.2	310.9	309.4	308.2	306.7	305.5
147.5°	311.3	311.1	311.1	310.9	310.9	309.6	308.7	307.4	306.6	305.3	304.4
150°	309.2	309.2	309.2	309.0	308.8	307.6	306.7	305.7	304.8	303.5	302.7
152.5°	307.4	307.4	307.5	307.5	307.6	306.6	305.7	304.7	303.7	302.5	301.7
155°	306.2	306.3	306.5	306.5	306.5	305.7	304.9	303.9	303.1	302.1	301.3
157.5°	305.7	306.0	306.3	306.5	306.6	305.8	305.1	304.4	303.7	302.9	302.2
160°	306.3	306.6	306.9	307.1	307.4	306.7	306.4	305.6	305.2	304.3	303.5
162.5°	307.9	308.2	308.5	308.7	309.0	308.3	308.0	307.4	306.8	305.9	305.3
165°	308.8	308.9	309.1	309.2	309.4	309.0	308.7	308.2	307.9	307.4	307.0
167.5°	311.6	311.6	312.0	312.1	312.3	312.0	312.0	311.6	311.3	311.0	310.7
170°	313.1	313.3	313.5	313.5	313.7	313.4	313.2	313.0	312.9	312.3	312.0
172.5°	314.2	314.2	314.2	314.3	314.2	314.0	313.9	313.8	313.7	313.4	313.2
175°	314.5	314.4	314.5	314.4	314.3	314.4	314.3	314.3	314.2	314.0	313.9
177.5°	316.2	316.1	315.8	315.6	315.5	315.4	315.4	315.2	315.4	315.3	315.2
180°	313.8	313.8	313.8	313.8	313.8	313.8	313.8	313.8	313.8	313.8	313.8



TEST NUMBER: P1444692
 CATALOG NUMBER: EHBR1-48-UNV-TA-L930-UPL18

CANDELA DISTRIBUTION (continued):

	220°	222.5°	225°	227.5°	230°	232.5°	235°	237.5°	240°	242.5°	245°
0°	36472.1	36472.1	36472.1	36472.1	36472.1	36472.1	36472.1	36472.1	36472.1	36472.1	36472.1
2.5°	36795.9	36568.6	36538.6	36554.5	36592.5	36606.6	36647.6	36658.8	36700.0	36710.1	36749.7
5°	37555.1	37254.7	37269.8	37341.9	37451.3	37516.4	37623.9	37680.1	37782.7	37829.3	37922.1
7.5°	38355.7	38119.8	38193.3	38315.2	38464.6	38568.1	38697.3	38781.3	38892.6	38961.7	39050.7
10°	38748.8	38684.2	38765.1	38861.0	38946.3	39013.0	39067.7	39111.6	39140.2	39167.1	39178.8
12.5°	38449.6	38549.6	38563.4	38554.2	38497.6	38454.5	38357.6	38291.7	38174.8	38103.6	37964.5
15°	37340.7	37560.6	37438.8	37254.4	36984.7	36759.8	36442.1	36205.6	35874.8	35650.4	35318.4
17.5°	35394.5	35672.1	35354.8	34928.2	34385.5	33921.1	33343.0	32884.1	32309.2	31891.2	31354.7
20°	32654.7	32914.1	32348.2	31641.0	30801.4	30094.9	29261.7	28596.9	27822.7	27246.8	26551.7
22.5°	29243.4	29428.3	28630.9	27677.5	26607.9	25725.2	24729.1	23932.1	23048.5	22390.1	21649.0
25°	25469.6	25519.4	24562.9	23464.6	22272.5	21280.5	20216.9	19379.1	18477.9	17810.6	17083.1
27.5°	21660.5	21587.3	20553.5	19388.9	18135.0	17103.9	16066.5	15281.3	14492.2	13891.0	13264.3
30°	18065.2	17888.1	16814.7	15617.7	14400.5	13476.3	12615.1	11984.6	11356.7	10879.8	10376.9
32.5°	14768.2	14518.4	13473.6	12352.1	11326.5	10613.3	9974.7	9497.6	8990.5	8587.7	8165.6
35°	11848.1	11581.9	10656.2	9705.5	8929.2	8403.5	7901.6	7510.2	7079.7	6739.9	6373.2
37.5°	9341.9	9123.7	8348.4	7600.2	7013.0	6605.7	6194.4	5874.5	5518.7	5369.2	4977.5
40°	7211.9	7059.4	6453.2	5901.7	5460.7	5269.3	4851.9	4553.1	4287.2	4068.0	3855.6
42.5°	5625.4	5571.4	4981.4	4551.3	4240.8	3999.7	3767.0	3578.2	3394.3	3243.3	3100.5
45°	4128.2	4085.5	3823.5	3575.3	3363.7	3195.2	3038.0	2908.1	2787.8	2688.3	2597.7
47.5°	3214.6	3201.0	3050.1	2896.1	2762.9	2654.6	2552.6	2466.3	2386.6	2320.1	2298.4
50°	2614.6	2612.8	2524.3	2429.2	2334.4	2271.8	2206.6	2155.7	2104.4	2064.6	2022.4
52.5°	2221.5	2211.9	2152.2	2093.6	2037.1	1996.1	1954.4	1921.8	1887.9	1863.3	1837.1
55°	1912.6	1922.6	1888.1	1853.0	1817.7	1792.3	1763.0	1741.6	1718.3	1702.7	1686.9
57.5°	1697.9	1711.3	1693.2	1673.3	1651.8	1635.0	1614.8	1600.0	1584.4	1574.6	1565.4
60°	1541.8	1556.4	1549.1	1539.1	1525.8	1515.8	1503.0	1494.7	1484.7	1479.2	1474.0
62.5°	1409.2	1427.5	1424.9	1420.2	1411.7	1406.1	1399.2	1395.5	1388.8	1386.4	1384.0
65°	1277.1	1297.6	1297.2	1294.9	1290.2	1288.6	1284.2	1283.4	1280.0	1281.4	1281.1
67.5°	1173.1	1191.0	1194.9	1197.8	1197.6	1198.7	1198.3	1200.0	1200.0	1202.6	1204.2
70°	1098.2	1110.5	1113.6	1116.5	1117.3	1119.7	1119.7	1121.2	1120.8	1123.0	1123.3
72.5°	1022.3	1038.6	1041.7	1044.1	1044.1	1046.4	1045.1	1044.8	1041.5	1040.9	1038.5
75°	927.9	948.9	953.5	956.5	956.9	958.9	956.0	954.3	948.9	946.7	942.9
77.5°	829.4	851.1	854.4	855.5	853.7	854.2	848.2	844.2	837.2	834.4	830.7
80°	701.1	733.1	735.7	733.7	728.7	727.9	722.1	718.3	710.1	707.2	704.1
82.5°	533.5	571.1	576.4	578.7	574.6	575.6	570.0	567.8	560.3	558.9	553.9
85°	336.9	374.5	380.6	379.7	375.6	374.7	371.4	372.5	371.9	373.9	375.0
87.5°	154.8	191.1	199.9	197.1	196.7	194.1	188.3	190.4	194.0	196.2	196.4
90°	41.5	54.3	55.6	55.3	51.3	50.3	46.7	46.4	43.3	42.9	39.9
92.5°	49.8	52.5	55.3	52.8	50.3	47.9	45.5	42.9	40.6	38.1	35.7
95°	61.8	65.6	69.5	66.3	62.8	59.6	56.3	53.1	49.8	46.6	43.3
97.5°	69.4	73.9	78.3	75.1	71.8	68.5	65.2	62.0	58.7	55.3	52.0
100°	117.7	128.0	138.6	129.3	120.0	110.8	101.5	92.1	82.9	73.6	64.3
102.5°	260.8	286.5	312.3	288.8	265.4	241.9	218.5	195.1	171.7	148.1	124.8
105°	466.7	505.5	544.8	508.7	472.9	437.2	401.5	365.6	329.9	294.1	258.4
107.5°	627.7	663.8	700.4	668.0	635.6	603.2	570.7	538.3	505.9	473.5	441.2
110°	708.4	736.5	765.5	743.5	721.6	699.6	677.8	655.9	634.0	612.4	590.6



TEST NUMBER: P1444692
 CATALOG NUMBER: EHBR1-48-UNV-TA-L930-UPL18

CANDELA DISTRIBUTION (continued):

	220°	222.5°	225°	227.5°	230°	232.5°	235°	237.5°	240°	242.5°	245°
112.5°	709.5	729.3	750.3	737.1	724.2	711.2	698.3	685.3	672.5	659.5	647.0
115°	651.3	662.2	674.4	668.8	663.5	658.1	652.7	647.4	642.1	636.7	631.7
117.5°	578.4	582.5	588.2	586.6	585.4	583.8	582.4	581.1	580.0	578.7	577.5
120°	502.2	501.4	502.4	502.3	502.6	502.5	502.8	502.8	503.0	503.2	503.6
122.5°	438.7	434.9	432.8	432.7	432.6	432.5	432.5	432.5	432.5	432.6	432.8
125°	394.3	388.9	385.6	384.0	382.6	380.9	379.3	377.7	376.3	374.8	373.5
127.5°	363.1	357.1	353.7	350.9	348.2	345.3	342.6	339.7	337.1	334.3	331.8
130°	342.4	336.5	333.1	329.7	326.6	323.1	320.0	316.6	313.2	310.0	306.8
132.5°	328.6	322.7	319.6	316.4	313.4	310.0	306.9	303.6	300.4	296.9	294.0
135°	321.0	315.3	312.6	309.6	306.8	303.8	300.8	297.7	295.0	291.8	289.1
137.5°	314.9	309.1	306.7	304.2	301.9	299.3	297.1	294.5	292.0	289.3	286.9
140°	310.2	304.1	301.7	300.1	298.7	296.9	295.4	293.7	292.1	290.5	288.8
142.5°	307.3	301.4	299.1	298.0	297.0	295.8	294.9	293.6	292.5	291.0	289.9
145°	304.2	297.7	295.4	294.8	294.6	294.1	293.6	293.2	292.7	292.1	291.7
147.5°	303.1	296.4	294.0	293.9	293.8	293.5	293.5	293.1	293.2	292.8	292.7
150°	301.5	293.8	291.1	291.3	291.2	291.4	291.5	291.5	291.8	291.8	291.8
152.5°	300.4	291.3	288.3	288.5	288.8	288.8	289.1	289.4	289.7	290.1	290.2
155°	300.0	290.2	286.9	286.6	286.8	286.8	286.9	287.1	287.3	287.5	287.8
157.5°	301.1	290.7	287.4	286.9	286.9	286.9	286.9	287.0	287.1	287.2	287.6
160°	302.9	292.4	289.1	288.6	288.6	288.4	288.2	288.2	288.3	288.4	288.6
162.5°	304.5	294.3	291.0	290.6	290.3	290.2	290.1	289.9	290.0	289.9	290.2
165°	306.3	297.3	294.3	293.9	293.9	293.6	293.5	293.5	293.6	293.6	293.9
167.5°	310.1	301.9	299.6	299.2	298.8	298.4	298.4	297.8	297.8	297.6	297.6
170°	311.5	305.1	303.1	302.9	303.0	302.9	302.7	302.7	302.6	302.5	302.6
172.5°	313.0	308.2	306.7	306.7	307.0	307.1	307.3	307.4	307.5	307.7	308.0
175°	313.9	311.1	310.5	310.3	310.4	310.5	310.6	310.7	310.8	310.9	311.3
177.5°	315.2	314.4	314.0	314.0	314.0	314.0	314.0	314.0	314.0	314.2	314.2
180°	313.8	313.8	313.8	313.8	313.8	313.8	313.8	313.8	313.8	313.8	313.8



TEST NUMBER: P1444692
 CATALOG NUMBER: EHBR1-48-UNV-TA-L930-UPL18

CANDELA DISTRIBUTION (continued):

	247.5°	250°	252.5°	255°	257.5°	260°	262.5°	265°	267.5°	270°	272.5°
0°	36472.1	36472.1	36472.1	36472.1	36472.1	36472.1	36472.1	36472.1	36472.1	36472.1	36472.1
2.5°	36757.2	36800.0	36796.7	36836.8	36834.8	36872.5	36864.9	36897.4	36890.0	36917.8	36901.5
5°	37962.9	38044.4	38071.3	38144.9	38160.1	38226.0	38227.3	38279.6	38273.3	38314.2	38292.4
7.5°	39103.5	39179.6	39215.7	39272.8	39301.4	39348.6	39367.1	39406.1	39415.4	39438.4	39437.7
10°	39199.7	39199.4	39217.3	39209.3	39225.3	39216.0	39235.5	39228.5	39257.3	39249.9	39271.6
12.5°	37904.5	37775.9	37729.1	37613.6	37588.3	37489.2	37496.3	37432.7	37463.4	37424.4	37490.9
15°	35121.0	34822.8	34675.4	34416.2	34334.8	34129.8	34113.3	33977.1	34013.9	33942.7	34046.8
17.5°	31007.5	30538.1	30280.5	29901.9	29751.6	29461.8	29403.7	29228.5	29255.7	29167.3	29293.1
20°	26103.3	25536.0	25211.0	24773.3	24578.0	24232.5	24140.8	23944.8	23969.4	23881.6	24023.8
22.5°	21143.2	20549.3	20182.5	19723.6	19474.2	19149.2	19051.8	18854.8	18866.0	18783.6	18920.4
25°	16584.9	16015.6	15659.5	15242.7	15026.3	14728.4	14625.9	14449.1	14459.1	14391.1	14513.9
27.5°	12829.6	12362.5	12064.6	11715.2	11521.2	11276.3	11176.4	11027.7	11027.3	10977.4	11080.0
30°	10025.7	9635.9	9368.4	9064.1	8881.9	8660.9	8564.4	8431.3	8425.5	8390.2	8471.6
32.5°	7849.9	7503.1	7259.1	6991.4	6827.8	6638.2	6546.8	6439.9	6430.2	6398.1	6465.0
35°	6102.3	5810.3	5600.5	5375.0	5391.7	5111.8	5158.4	4941.0	4882.1	4869.2	4919.0
37.5°	4716.4	4490.2	4319.8	4150.9	4036.6	3918.3	3854.6	3797.5	3791.0	3785.5	3820.3
40°	3691.6	3533.4	3409.4	3293.6	3214.9	3142.7	3102.9	3071.5	3064.0	3059.8	3080.9
42.5°	2987.8	2881.1	2801.1	2730.5	2682.6	2643.4	2621.5	2604.1	2598.2	2598.4	2610.8
45°	2524.3	2459.5	2408.0	2364.1	2333.5	2347.0	2307.5	2328.2	2300.8	2329.1	2310.5
47.5°	2223.0	2167.9	2136.0	2104.9	2086.3	2071.5	2072.0	2072.3	2078.1	2079.0	2085.1
50°	1990.5	1958.6	1936.4	1916.6	1906.9	1899.1	1901.9	1903.8	1909.5	1910.0	1914.4
52.5°	1818.5	1797.5	1784.1	1771.8	1767.5	1763.0	1764.9	1764.1	1766.7	1765.3	1769.0
55°	1678.4	1668.6	1664.4	1659.7	1660.5	1659.2	1660.0	1655.6	1652.9	1649.5	1652.6
57.5°	1563.5	1562.2	1565.0	1566.9	1572.1	1574.0	1575.3	1570.1	1565.3	1560.8	1563.4
60°	1475.0	1477.2	1484.2	1489.8	1497.4	1500.9	1503.1	1500.1	1496.6	1492.9	1495.2
62.5°	1387.7	1391.1	1399.4	1405.8	1415.0	1419.7	1424.9	1425.2	1426.6	1425.2	1426.7
65°	1286.3	1290.5	1298.0	1303.3	1311.8	1316.0	1321.4	1322.4	1325.3	1324.7	1327.3
67.5°	1209.2	1213.0	1219.3	1224.3	1231.9	1236.3	1241.0	1241.3	1242.3	1242.1	1244.5
70°	1127.0	1128.9	1134.6	1138.8	1146.4	1150.8	1156.3	1157.9	1161.2	1161.8	1164.5
72.5°	1039.4	1038.6	1042.0	1043.9	1049.6	1053.1	1060.0	1063.8	1069.5	1071.0	1073.0
75°	944.0	943.2	947.3	948.9	953.8	957.3	965.0	970.0	978.7	982.4	981.5
77.5°	833.6	835.4	843.0	847.2	853.7	858.2	868.2	876.2	892.3	899.2	892.1
80°	710.1	712.1	720.0	723.9	732.3	737.8	749.0	758.3	772.8	775.9	771.8
82.5°	558.2	558.8	565.8	568.8	579.9	587.9	602.1	609.5	618.4	617.0	616.0
85°	380.6	385.8	394.6	403.3	416.9	429.8	443.3	454.3	446.5	458.8	444.9
87.5°	203.4	202.9	214.8	212.9	231.8	242.7	254.4	259.9	266.2	264.9	265.0
90°	40.0	37.8	38.6	35.9	37.6	34.8	37.4	34.8	38.1	34.8	40.3
92.5°	33.2	32.0	30.5	29.4	27.9	26.7	25.2	24.0	22.6	21.3	22.6
95°	40.1	38.9	37.7	36.4	35.1	34.0	32.7	31.5	30.3	29.1	30.6
97.5°	48.8	48.1	47.4	46.7	46.0	45.4	44.6	43.9	43.1	42.4	43.4
100°	55.1	55.1	55.1	55.1	54.8	54.8	54.8	54.8	54.8	54.8	55.6
102.5°	101.2	98.9	96.6	94.1	91.8	89.4	87.1	84.7	82.4	80.1	83.6
105°	222.6	213.5	204.2	195.2	185.8	176.7	167.5	158.4	149.3	140.2	149.6
107.5°	409.0	392.2	375.4	358.9	342.0	325.4	308.7	292.1	275.5	258.8	273.7
110°	568.8	551.1	533.3	515.6	497.9	480.0	462.3	444.7	427.0	409.4	423.6



TEST NUMBER: P1444692
 CATALOG NUMBER: EHBR1-48-UNV-TA-L930-UPL18

CANDELA DISTRIBUTION (continued):

	247.5°	250°	252.5°	255°	257.5°	260°	262.5°	265°	267.5°	270°	272.5°
112.5°	634.2	622.4	610.9	599.4	587.9	576.5	565.1	553.7	542.3	530.9	537.8
115°	626.4	620.9	615.2	609.7	604.2	598.5	593.1	587.7	582.3	576.9	577.4
117.5°	576.3	574.3	572.2	570.2	568.3	566.3	564.5	562.8	560.9	559.4	555.5
120°	504.0	504.2	504.4	504.8	505.3	505.8	506.1	506.8	507.5	508.2	503.0
122.5°	433.0	433.8	434.8	435.9	437.0	438.4	439.6	441.1	442.6	444.1	439.0
125°	372.0	372.9	373.7	374.6	375.4	376.9	378.1	379.6	381.0	382.7	378.3
127.5°	329.2	329.1	328.8	329.0	329.1	329.5	329.9	330.4	331.1	332.0	329.3
130°	303.5	302.5	301.4	300.5	299.4	299.0	298.5	298.0	297.7	297.6	296.6
132.5°	290.7	289.0	287.2	285.6	284.1	282.8	281.5	280.7	279.7	279.1	278.7
135°	285.9	283.6	281.6	279.6	277.5	276.1	274.2	273.0	271.7	270.5	271.1
137.5°	284.4	282.3	280.1	278.2	276.2	274.7	272.9	271.5	270.4	269.2	269.9
140°	287.0	284.9	282.8	280.9	279.1	277.5	275.9	274.6	273.1	272.3	272.7
142.5°	288.6	286.9	284.9	283.2	281.5	280.1	278.7	277.6	276.3	275.5	275.9
145°	291.0	289.7	288.2	286.9	285.7	284.6	283.3	282.7	281.9	281.4	281.7
147.5°	292.3	291.4	290.2	289.3	288.1	287.6	286.7	286.1	285.5	285.2	285.3
150°	291.9	291.3	290.6	290.0	289.4	288.9	288.5	288.1	287.7	287.6	287.7
152.5°	290.6	290.2	289.4	289.0	288.6	288.2	287.8	287.7	287.5	287.3	287.4
155°	288.0	287.8	287.6	287.6	287.4	287.5	287.3	287.6	287.4	287.7	287.7
157.5°	287.7	287.8	287.7	288.0	288.1	288.2	288.3	288.7	288.7	289.2	289.4
160°	289.0	289.1	289.1	289.2	289.3	289.4	289.6	289.7	290.0	290.2	290.5
162.5°	290.2	290.6	290.8	291.0	291.4	291.7	292.1	292.7	292.9	293.5	293.9
165°	294.1	294.2	294.2	294.2	294.4	294.6	294.8	295.2	295.4	295.9	296.3
167.5°	297.5	297.6	297.6	297.8	298.1	298.5	298.7	299.2	299.6	300.2	300.6
170°	302.5	302.5	302.5	302.5	302.5	302.7	302.9	303.0	303.2	303.5	303.8
172.5°	308.0	308.0	307.7	308.0	307.7	308.0	308.0	308.2	308.2	308.3	308.4
175°	311.1	311.5	311.5	311.9	311.8	311.9	312.0	312.2	312.3	312.5	312.5
177.5°	314.2	314.3	314.3	314.3	314.3	314.5	314.5	314.5	314.5	314.3	314.4
180°	313.8	313.8	313.8	313.8	313.8	313.8	313.8	313.8	313.8	313.8	313.8



TEST NUMBER: P1444692
 CATALOG NUMBER: EHBR1-48-UNV-TA-L930-UPL18

CANDELA DISTRIBUTION (continued):

	275°	277.5°	280°	282.5°	285°	287.5°	290°	292.5°	295°	297.5°	300°
0°	36472.1	36472.1	36472.1	36472.1	36472.1	36472.1	36472.1	36472.1	36472.1	36472.1	36472.1
2.5°	36928.7	36910.2	36929.1	36909.9	36929.1	36906.1	36921.7	36896.8	36903.1	36877.3	36884.0
5°	38325.0	38295.6	38311.2	38273.0	38277.0	38226.0	38225.0	38165.5	38149.8	38082.1	38052.4
7.5°	39454.1	39444.5	39449.9	39425.2	39422.5	39387.6	39371.0	39321.8	39290.8	39228.5	39185.9
10°	39275.4	39304.1	39311.6	39340.9	39347.0	39376.1	39382.2	39411.3	39417.3	39438.8	39439.1
12.5°	37487.7	37585.5	37608.8	37729.6	37780.4	37918.5	37992.7	38144.9	38235.2	38387.1	38480.3
15°	34043.9	34213.0	34280.4	34516.2	34646.6	34921.8	35094.8	35410.8	35633.8	35969.4	36208.8
17.5°	29304.1	29540.5	29647.1	29966.8	30175.3	30581.5	30874.3	31356.2	31725.1	32260.6	32685.0
20°	24048.1	24310.7	24455.4	24820.2	25066.3	25540.9	25906.4	26498.6	26992.3	27670.9	28251.2
22.5°	18963.3	19213.2	19373.9	19745.0	20022.0	20517.1	20925.6	21550.5	22103.8	22868.4	23564.2
25°	14560.2	14789.3	14934.5	15270.1	15530.3	15985.2	16375.3	16976.4	17517.7	18284.8	18998.1
27.5°	11131.1	11322.9	11463.0	11749.1	11978.6	12364.4	12699.4	13196.3	13662.7	14326.2	14961.5
30°	8521.8	8691.8	8828.1	9077.3	9290.1	9624.5	9919.2	10336.4	10722.5	11250.5	11755.9
32.5°	6512.1	6658.5	6779.9	6998.0	7191.0	7492.2	7757.6	8123.4	8454.8	8902.6	9318.4
35°	4965.2	5253.3	5232.9	5533.7	5582.1	5798.3	6035.1	6354.9	6648.3	7029.1	7383.0
37.5°	3853.8	3934.8	4021.5	4154.6	4294.3	4491.0	4691.0	5081.8	5225.1	5512.9	5805.9
40°	3107.7	3162.5	3219.8	3309.6	3407.5	3546.0	3691.7	3878.1	4069.1	4302.4	4540.8
42.5°	2627.3	2658.3	2694.7	2747.6	2807.9	2895.8	2993.2	3119.6	3252.5	3416.7	3584.3
45°	2347.3	2332.6	2343.4	2371.9	2408.2	2461.6	2523.1	2601.3	2687.9	2794.3	2907.5
47.5°	2086.3	2092.3	2095.5	2110.9	2130.4	2166.3	2203.5	2256.6	2359.3	2390.5	2452.2
50°	1914.0	1916.8	1915.9	1923.7	1933.6	1956.9	1981.1	2017.0	2052.9	2100.5	2146.0
52.5°	1769.5	1773.5	1773.0	1778.2	1783.4	1798.1	1813.5	1838.9	1862.4	1892.7	1918.7
55°	1655.5	1661.0	1663.1	1667.5	1670.0	1677.7	1683.8	1696.0	1706.0	1723.1	1739.0
57.5°	1567.7	1575.3	1578.7	1580.3	1577.1	1576.8	1574.7	1577.3	1579.4	1588.5	1597.5
60°	1498.6	1504.7	1505.7	1504.7	1499.1	1495.0	1488.5	1486.4	1485.4	1489.8	1494.7
62.5°	1426.4	1428.5	1427.0	1425.2	1418.8	1414.9	1408.1	1405.6	1403.4	1406.5	1409.0
65°	1326.3	1328.2	1326.3	1325.2	1319.4	1316.3	1310.6	1308.7	1305.4	1306.3	1305.7
67.5°	1245.0	1247.0	1245.5	1243.9	1239.9	1238.1	1233.9	1231.1	1227.2	1225.8	1223.0
70°	1164.1	1165.6	1163.3	1161.8	1157.2	1155.5	1151.5	1150.7	1147.6	1146.9	1143.8
72.5°	1071.0	1071.1	1067.9	1066.9	1063.5	1063.4	1061.8	1063.2	1063.1	1064.7	1064.0
75°	975.6	974.3	970.3	969.6	967.0	968.2	966.4	968.8	969.0	972.6	972.9
77.5°	880.3	875.2	867.5	863.9	858.7	858.1	855.0	857.1	856.5	860.5	862.1
80°	759.7	753.5	743.7	738.9	732.9	732.0	729.2	732.0	730.6	735.4	738.7
82.5°	606.5	601.3	591.0	587.2	580.1	580.8	577.8	580.8	580.4	587.4	591.5
85°	448.6	445.1	434.6	425.3	414.8	408.8	402.8	401.7	399.9	402.8	405.2
87.5°	259.1	255.8	247.6	242.2	223.9	224.7	217.6	217.3	215.5	213.9	217.6
90°	38.8	43.3	42.1	46.2	45.4	50.2	49.9	54.4	53.3	57.7	57.3
92.5°	24.0	25.2	26.6	27.9	29.2	30.5	31.8	33.2	36.0	38.6	41.7
95°	32.1	33.6	35.1	36.7	38.2	39.7	41.3	42.8	47.0	51.1	55.3
97.5°	44.6	45.4	46.4	47.5	48.5	49.5	50.5	51.5	56.1	60.5	65.0
100°	56.4	57.2	58.0	58.9	59.7	60.5	61.3	62.1	71.0	79.7	88.2
102.5°	87.0	90.5	93.9	97.3	101.0	104.4	107.8	111.3	131.3	151.0	170.8
105°	159.1	168.5	178.1	187.5	196.9	206.4	215.9	225.4	257.2	288.9	320.8
107.5°	288.6	303.5	318.5	333.6	348.5	363.5	378.5	393.5	424.4	455.6	486.6
110°	437.8	452.2	466.4	480.7	494.9	509.3	523.6	538.1	556.8	575.4	594.2



TEST NUMBER: P1444692
 CATALOG NUMBER: EHBR1-48-UNV-TA-L930-UPL18

CANDELA DISTRIBUTION (continued):

	275°	277.5°	280°	282.5°	285°	287.5°	290°	292.5°	295°	297.5°	300°
112.5°	544.8	551.7	558.8	565.8	572.9	580.0	587.2	594.3	603.7	613.2	622.7
115°	577.8	578.3	578.9	579.5	580.1	580.7	581.6	582.3	585.6	588.8	592.0
117.5°	551.7	548.1	544.5	540.7	537.1	533.8	530.3	527.0	526.8	526.5	526.5
120°	498.3	493.2	488.3	483.4	478.7	473.9	469.5	464.9	462.9	460.9	458.9
122.5°	434.1	429.2	424.4	419.5	414.9	410.5	406.1	401.7	400.5	399.3	398.3
125°	374.2	370.2	366.3	362.5	359.0	355.4	352.0	348.5	349.1	349.5	350.4
127.5°	327.0	324.6	322.4	320.4	318.6	316.6	315.0	313.2	315.2	317.1	318.9
130°	295.7	295.0	294.4	293.6	293.5	293.2	293.0	292.7	295.6	298.2	301.0
132.5°	279.1	279.2	279.6	280.0	280.7	281.3	282.3	283.0	286.1	289.0	292.1
135°	271.6	272.2	273.2	274.2	275.5	276.6	278.0	279.2	282.3	285.0	288.1
137.5°	270.8	271.6	272.8	273.8	275.5	276.7	278.4	279.7	282.2	284.5	287.0
140°	273.5	274.2	275.3	276.3	277.4	278.7	280.2	281.2	283.6	285.4	287.4
142.5°	276.9	277.3	278.3	279.4	280.5	281.5	282.8	283.8	285.5	286.9	288.8
145°	282.3	282.8	283.6	284.4	285.3	286.2	287.2	288.1	289.4	290.4	291.6
147.5°	285.9	286.2	286.9	287.7	288.5	289.1	289.8	290.4	291.5	292.3	293.3
150°	288.1	288.4	288.8	289.1	289.8	290.4	291.1	291.6	292.3	292.9	293.9
152.5°	287.9	288.1	288.6	288.8	289.4	289.8	290.3	290.9	291.7	292.1	292.9
155°	288.2	288.7	289.3	289.7	290.3	290.6	291.3	291.7	292.4	292.9	293.6
157.5°	290.0	290.2	291.0	291.2	291.9	292.3	292.8	293.3	293.9	294.3	294.9
160°	291.1	291.8	292.3	293.0	293.6	294.2	294.8	295.4	295.9	296.4	296.9
162.5°	294.4	295.0	295.5	295.9	296.4	296.9	297.4	297.9	298.7	299.1	299.8
165°	296.9	297.6	298.3	298.6	299.4	300.1	300.7	301.3	301.7	302.2	302.6
167.5°	301.2	301.6	302.4	302.9	303.5	304.1	304.7	305.1	305.7	305.9	306.5
170°	304.2	304.8	305.3	305.8	306.4	306.7	307.4	307.7	308.3	308.7	309.3
172.5°	308.8	309.1	309.5	309.8	310.1	310.7	311.0	311.2	311.7	312.1	312.4
175°	312.5	312.5	312.6	312.8	312.9	312.9	313.1	313.3	313.4	313.6	313.7
177.5°	314.5	314.7	314.8	314.8	314.9	315.1	315.2	315.3	315.3	315.3	315.3
180°	313.8	313.8	313.8	313.8	313.8	313.8	313.8	313.8	313.8	313.8	313.8



TEST NUMBER: P1444692
 CATALOG NUMBER: EHBR1-48-UNV-TA-L930-UPL18

CANDELA DISTRIBUTION (continued):

	302.5°	305°	307.5°	310°	312.5°	315°	317.5°	320°	322.5°	325°	327.5°
0°	36472.1	36472.1	36472.1	36472.1	36472.1	36472.1	36472.1	36472.1	36472.1	36472.1	36472.1
2.5°	36858.1	36859.7	36830.0	36828.4	36800.6	36797.0	36769.8	36761.6	36739.6	36731.6	36709.1
5°	37976.4	37940.2	37856.5	37807.3	37724.6	37669.8	37580.3	37522.0	37435.6	37370.5	37283.5
7.5°	39107.4	39051.1	38957.2	38881.1	38766.3	38674.7	38540.4	38430.5	38285.0	38159.1	38006.4
10°	39439.1	39430.4	39406.5	39371.6	39318.2	39258.2	39166.8	39071.6	38944.1	38805.6	38635.9
12.5°	38623.0	38711.1	38831.2	38902.4	38989.1	39027.1	39062.6	39053.7	39030.3	38960.3	38862.1
15°	36555.5	36803.2	37131.0	37385.2	37677.5	37890.0	38124.7	38271.0	38416.7	38484.1	38525.3
17.5°	33266.7	33735.6	34323.6	34810.8	35373.1	35824.6	36319.6	36692.3	37075.5	37350.1	37598.3
20°	29042.2	29721.5	30553.2	31287.8	32142.1	32884.4	33697.9	34365.7	35054.4	35593.0	36102.6
22.5°	24460.1	25266.9	26272.3	27203.6	28304.9	29294.6	30411.2	31383.1	32397.8	33245.6	34065.2
25°	19954.3	20839.1	21938.5	22977.6	24224.7	25376.0	26700.2	27911.6	29223.0	30361.7	31486.6
27.5°	15839.9	16708.6	17831.0	18937.1	20255.9	21482.5	22901.5	24236.0	25729.3	27106.4	28515.2
30°	12458.2	13195.0	14201.4	15272.7	16573.5	17821.7	19256.0	20628.5	22182.1	23685.7	25272.4
32.5°	9870.3	10431.6	11222.7	12128.7	13328.9	14517.1	15882.9	17207.8	18737.6	20256.6	21906.9
35°	7838.8	8276.6	8879.8	9586.8	10603.1	11627.5	12835.4	14040.3	15467.6	16908.9	18513.0
37.5°	6181.3	6536.5	7009.0	7540.0	8355.2	9195.8	10186.4	11185.3	12425.5	13703.1	15156.9
40°	4826.9	5114.6	5482.4	5878.4	6494.0	7141.7	7907.7	8682.4	9678.8	10722.9	11926.0
42.5°	3791.9	4004.2	4263.9	4553.4	5127.7	5471.5	5991.0	6551.3	7283.7	8041.8	8946.3
45°	3045.2	3190.0	3370.2	3564.3	3830.8	4122.6	4478.3	4851.4	5547.3	5888.6	6438.7
47.5°	2543.0	2640.3	2754.9	2877.2	3034.4	3204.1	3415.1	3630.8	3909.8	4199.0	4537.9
50°	2204.9	2303.7	2343.1	2406.4	2497.4	2594.3	2713.3	2832.2	2981.8	3133.5	3308.0
52.5°	1953.9	1986.1	2028.9	2069.2	2125.5	2235.9	2271.5	2333.7	2417.7	2499.7	2591.3
55°	1762.2	1783.2	1811.0	1835.3	1869.4	1902.0	1949.0	1990.4	2046.3	2095.8	2156.6
57.5°	1613.0	1626.3	1645.7	1661.6	1683.7	1702.1	1729.6	1752.1	1784.2	1812.2	1849.1
60°	1504.6	1513.5	1526.4	1536.9	1550.9	1560.6	1574.2	1584.7	1601.7	1616.0	1636.5
62.5°	1416.0	1420.7	1429.1	1435.3	1444.2	1449.0	1456.3	1460.9	1470.2	1477.4	1488.9
65°	1309.8	1310.9	1316.6	1319.2	1326.2	1328.7	1334.7	1336.8	1344.6	1349.8	1360.0
67.5°	1222.7	1220.3	1220.4	1218.5	1219.3	1217.3	1217.9	1215.7	1218.8	1220.4	1228.2
70°	1143.2	1139.9	1138.8	1135.1	1134.1	1130.3	1129.3	1125.9	1125.4	1124.4	1127.0
72.5°	1065.8	1064.9	1065.2	1062.6	1062.3	1059.7	1059.8	1058.2	1060.0	1060.8	1064.3
75°	976.8	977.0	978.7	976.5	977.1	975.0	975.8	973.7	974.8	974.5	977.9
77.5°	868.3	870.9	875.6	874.7	876.2	873.8	874.8	872.0	872.8	870.9	872.2
80°	746.4	751.9	758.2	757.9	760.6	758.8	761.3	758.5	759.7	756.4	755.6
82.5°	601.6	606.2	613.0	613.3	619.3	620.3	626.9	626.6	630.8	628.2	626.2
85°	411.3	414.5	420.4	423.6	429.7	433.5	439.9	442.5	437.8	446.2	439.6
87.5°	214.8	222.8	218.3	228.7	226.3	236.8	234.5	244.3	242.4	250.8	249.7
90°	63.1	63.3	69.4	70.0	77.4	78.9	83.7	81.7	86.4	84.7	89.1
92.5°	44.3	47.3	50.2	53.0	55.9	58.9	56.1	53.5	50.8	48.4	45.5
95°	59.4	63.5	67.7	71.9	76.0	80.2	75.7	71.4	66.9	62.5	57.9
97.5°	69.4	74.0	78.4	82.9	87.5	92.0	86.7	81.5	76.1	70.9	65.7
100°	96.9	105.6	114.2	122.8	131.6	140.3	130.6	120.7	111.0	101.1	91.3
102.5°	190.9	210.8	230.6	250.6	270.4	290.2	269.5	248.9	228.0	207.1	186.2
105°	352.5	384.4	416.2	448.0	479.8	511.9	478.1	444.3	410.5	377.0	343.0
107.5°	517.7	548.7	580.0	610.9	642.0	673.3	639.1	604.9	570.9	536.6	502.3
110°	613.1	631.8	650.6	669.6	688.3	707.3	682.4	657.6	632.7	607.8	582.9



TEST NUMBER: P1444692
 CATALOG NUMBER: EHBR1-48-UNV-TA-L930-UPL18

CANDELA DISTRIBUTION (continued):

	302.5°	305°	307.5°	310°	312.5°	315°	317.5°	320°	322.5°	325°	327.5°
112.5°	632.3	642.1	651.5	661.2	670.8	680.5	662.8	645.4	627.5	610.0	592.3
115°	595.5	598.8	602.1	605.5	608.8	612.2	600.4	588.8	577.1	565.3	553.3
117.5°	526.4	526.4	526.2	526.5	526.2	526.2	519.8	513.6	507.1	500.6	494.1
120°	456.9	455.1	453.2	451.3	449.2	447.2	444.9	442.5	440.0	437.5	434.8
122.5°	397.1	396.2	395.0	394.0	392.6	391.5	390.9	390.4	389.6	389.0	388.2
125°	350.9	351.6	352.1	352.8	353.2	353.8	353.7	353.8	353.6	353.7	353.4
127.5°	320.6	322.6	324.3	326.1	327.7	329.5	329.7	330.4	330.7	331.1	331.4
130°	303.5	306.4	308.9	311.4	313.8	316.5	316.6	317.0	317.2	317.5	317.7
132.5°	295.0	298.0	300.8	303.8	306.6	309.3	309.5	309.8	309.8	310.1	310.2
135°	290.9	293.6	296.2	299.2	301.7	304.3	304.4	304.6	304.4	304.8	304.8
137.5°	289.2	291.8	293.9	296.2	298.3	300.6	300.5	300.7	300.5	300.8	300.8
140°	289.3	291.3	293.0	295.0	296.7	298.6	298.4	298.4	298.2	298.0	297.7
142.5°	290.2	291.8	293.2	294.8	296.0	297.6	296.9	296.6	296.1	295.7	295.2
145°	292.7	294.0	295.1	296.1	296.8	298.1	297.3	296.7	295.9	295.3	294.6
147.5°	294.0	294.9	295.4	296.4	296.7	297.6	296.8	296.2	295.5	294.6	293.9
150°	294.3	295.3	295.9	296.5	296.9	297.7	296.7	296.0	295.1	294.2	293.5
152.5°	293.5	294.3	294.8	295.2	295.8	296.2	295.2	294.7	293.6	292.7	291.8
155°	293.9	294.5	294.8	295.3	295.5	295.9	295.0	294.5	293.7	292.9	292.0
157.5°	295.2	295.8	296.2	296.5	296.7	297.2	296.6	296.1	295.4	295.0	294.3
160°	297.3	297.7	298.1	298.4	298.8	298.9	298.4	298.2	297.7	297.1	296.6
162.5°	300.1	300.8	301.2	301.6	302.1	302.5	301.9	301.5	300.8	300.3	299.7
165°	303.0	303.4	303.9	304.2	304.4	304.8	304.4	304.1	303.7	303.4	302.9
167.5°	306.7	307.4	307.6	308.0	308.2	308.4	308.0	308.0	307.4	307.0	306.6
170°	309.6	310.0	310.5	310.8	311.1	311.3	311.1	310.9	310.5	310.2	309.8
172.5°	312.8	313.2	313.3	313.7	313.8	314.1	313.9	313.5	313.1	312.8	312.3
175°	313.7	313.9	314.1	314.1	314.1	314.2	313.9	313.6	313.3	313.0	312.7
177.5°	315.3	315.3	315.3	315.2	315.2	315.2	315.0	314.8	314.6	314.4	313.9
180°	313.8	313.8	313.8	313.8	313.8	313.8	313.8	313.8	313.8	313.8	313.8



TEST NUMBER: P1444692
 CATALOG NUMBER: EHBR1-48-UNV-TA-L930-UPL18

CANDELA DISTRIBUTION (continued):

	330°	332.5°	335°	337.5°	340°	342.5°	345°	347.5°	350°	352.5°	355°
0°	36472.1	36472.1	36472.1	36472.1	36472.1	36472.1	36472.1	36472.1	36472.1	36472.1	36472.1
2.5°	36701.2	36685.3	36675.0	36661.9	36653.9	36643.7	36636.3	36630.0	36624.8	36620.1	36616.6
5°	37217.3	37135.2	37071.6	37002.6	36946.0	36889.5	36845.9	36809.8	36785.0	36766.4	36755.3
7.5°	37874.3	37724.2	37590.7	37450.0	37324.0	37200.2	37093.3	37001.3	36932.2	36887.5	36860.3
10°	38461.1	38260.1	38061.3	37852.0	37653.6	37461.2	37283.5	37127.3	37003.6	36921.4	36873.4
12.5°	38724.2	38552.9	38349.9	38122.7	37879.5	37633.4	37393.7	37177.4	36995.9	36874.1	36803.8
15°	38492.5	38422.2	38284.4	38108.1	37877.3	37622.9	37341.4	37076.7	36833.3	36675.4	36583.9
17.5°	37738.9	37837.1	37826.5	37759.1	37593.2	37379.1	37092.2	36794.9	36490.4	36279.3	36164.0
20°	36467.2	36775.7	36932.2	37012.5	36947.3	36808.5	36548.7	36247.0	35892.1	35616.6	35448.4
22.5°	34680.1	35224.8	35564.1	35812.5	35865.1	35817.9	35588.4	35301.5	34905.9	34574.7	34326.4
25°	32379.5	33177.5	33713.8	34134.3	34297.6	34339.8	34144.6	33859.3	33418.2	33032.4	32691.4
27.5°	29669.8	30706.5	31422.7	31987.7	32242.8	32353.3	32173.7	31882.6	31360.8	30900.3	30454.8
30°	26619.1	27849.2	28711.4	29388.9	29699.8	29845.9	29655.1	29330.2	28722.9	28168.7	27607.5
32.5°	23354.0	24700.0	25639.6	26375.3	26683.4	26820.8	26571.2	26206.2	25504.4	24851.6	24197.0
35°	19935.4	21294.0	22241.5	22957.7	23215.9	23298.7	22979.5	22557.6	21780.1	21063.5	20349.9
37.5°	16447.2	17711.2	18572.3	19215.1	19374.9	19389.1	19004.5	18538.5	17721.3	17014.8	16304.4
40°	12989.2	14055.1	14750.4	15264.9	15320.3	15270.8	14852.6	14383.7	13619.2	12986.2	12362.5
42.5°	9731.9	10536.5	11032.6	11385.1	11364.2	11266.4	10882.9	10479.9	9849.1	9367.0	8876.2
45°	6941.3	7471.8	7761.8	7968.1	7901.9	7808.8	7510.3	7227.8	6799.2	6487.8	6158.0
47.5°	4822.2	5455.7	5345.4	5748.7	5401.3	5630.8	5152.8	4889.3	4661.9	4496.4	4310.0
50°	3452.3	3597.4	3667.6	3715.4	3690.0	3654.7	3568.9	3492.1	3388.2	3312.5	3224.2
52.5°	2666.1	2738.6	2778.4	2807.2	2801.6	2788.7	2751.2	2717.1	2668.4	2636.3	2597.7
55°	2258.3	2259.4	2332.5	2301.1	2347.5	2293.2	2314.6	2254.4	2264.1	2212.4	2177.8
57.5°	1876.6	1906.3	1919.7	1932.7	1929.0	1926.7	1912.2	1905.0	1888.6	1883.6	1871.9
60°	1650.7	1666.3	1669.5	1675.4	1670.4	1668.6	1657.2	1653.2	1642.2	1640.1	1632.5
62.5°	1495.8	1503.8	1503.8	1503.8	1497.3	1491.1	1478.5	1471.9	1462.5	1460.5	1456.0
65°	1366.6	1374.8	1376.2	1377.9	1373.2	1368.3	1357.2	1350.1	1340.5	1336.8	1331.7
67.5°	1233.2	1242.0	1244.9	1249.4	1246.7	1245.7	1238.1	1235.3	1229.0	1227.5	1222.7
70°	1128.4	1132.0	1131.7	1131.7	1125.7	1120.4	1111.6	1107.4	1100.8	1099.5	1095.1
72.5°	1066.1	1068.7	1067.1	1064.7	1057.1	1049.2	1038.9	1031.3	1022.7	1017.3	1011.2
75°	978.4	981.8	979.5	978.1	971.2	966.1	957.8	953.6	947.5	945.8	941.6
77.5°	870.6	872.2	868.8	868.3	863.1	859.9	853.6	852.6	848.1	848.2	844.2
80°	750.7	749.8	744.1	743.0	737.8	736.4	731.5	731.8	728.3	729.8	726.9
82.5°	617.7	614.4	607.0	604.7	598.7	598.1	594.9	597.6	595.5	598.7	596.8
85°	442.7	443.6	440.4	440.4	438.6	439.2	438.9	440.9	441.2	444.1	444.1
87.5°	246.8	250.3	249.7	252.9	252.7	256.4	257.6	263.1	263.7	268.7	268.7
90°	87.5	92.6	90.8	96.1	95.5	101.2	101.7	107.3	106.9	111.8	110.5
92.5°	43.0	40.3	37.9	35.0	33.7	32.1	31.4	29.5	28.4	26.8	25.6
95°	53.5	49.0	44.6	40.1	38.6	37.0	35.5	34.0	32.3	30.8	29.3
97.5°	60.4	55.1	49.8	44.6	43.2	41.9	40.5	39.2	37.9	36.5	35.3
100°	81.5	71.6	61.9	52.0	50.8	49.7	48.6	47.5	46.3	45.1	43.9
102.5°	165.5	144.5	123.7	102.7	98.8	94.8	90.9	86.8	82.8	78.9	74.9
105°	309.3	275.5	241.6	207.7	196.9	186.2	175.5	164.6	153.8	143.0	132.3
107.5°	468.1	433.7	399.4	365.0	345.3	325.4	305.5	285.4	265.7	245.7	225.7
110°	557.9	533.0	507.9	482.8	467.0	451.0	435.0	418.9	403.1	386.9	370.9



TEST NUMBER: P1444692
 CATALOG NUMBER: EHBR1-48-UNV-TA-L930-UPL18

CANDELA DISTRIBUTION (continued):

	330°	332.5°	335°	337.5°	340°	342.5°	345°	347.5°	350°	352.5°	355°
112.5°	574.4	556.6	538.9	520.8	513.7	506.4	499.4	492.1	484.9	477.5	470.3
115°	541.4	529.6	517.6	505.4	503.1	500.6	498.2	495.6	493.3	490.7	488.0
117.5°	487.7	481.1	474.5	467.9	468.5	469.1	469.8	470.3	470.7	471.1	471.4
120°	432.2	429.6	427.1	424.4	427.0	429.4	431.8	434.0	436.3	438.4	440.5
122.5°	387.6	386.8	386.1	385.1	388.2	391.2	394.0	396.8	399.6	402.0	404.6
125°	353.5	353.2	353.1	352.7	356.0	359.0	362.0	364.7	367.5	369.9	372.5
127.5°	331.9	332.1	332.7	332.8	335.3	337.3	339.7	341.6	343.7	345.3	347.2
130°	318.0	318.0	318.4	318.5	320.7	322.9	325.1	326.8	328.7	330.2	331.8
132.5°	310.5	310.5	310.7	310.7	312.6	314.3	316.0	317.2	318.7	319.6	320.5
135°	305.0	304.9	305.0	304.9	306.6	308.3	309.8	311.0	312.4	313.2	314.1
137.5°	300.9	300.8	300.8	300.8	302.4	303.8	305.1	306.3	307.4	308.4	309.1
140°	297.7	297.5	297.5	297.1	298.6	299.9	301.2	302.2	303.3	303.9	304.7
142.5°	294.8	294.1	294.0	293.3	294.4	295.3	296.3	297.1	297.9	298.4	298.9
145°	293.9	293.0	292.5	291.7	292.5	293.3	294.1	294.8	295.2	295.6	295.9
147.5°	293.4	292.4	291.6	290.8	291.6	292.0	292.6	292.9	293.5	293.6	293.9
150°	292.5	291.3	290.4	289.4	289.9	290.2	290.6	291.0	291.4	291.4	291.7
152.5°	290.9	289.9	288.9	287.7	288.1	288.4	288.6	288.6	288.8	288.9	288.9
155°	291.3	290.3	289.4	288.4	288.7	288.7	288.9	288.9	288.8	288.7	288.7
157.5°	293.5	292.6	292.1	291.1	291.1	291.0	291.0	290.6	290.6	290.3	290.0
160°	296.0	295.3	294.7	293.9	293.7	293.5	293.6	293.2	293.0	292.6	292.3
162.5°	299.0	298.3	297.4	296.6	296.4	296.3	296.1	295.7	295.6	295.1	294.8
165°	302.5	301.9	301.4	300.6	300.4	300.1	300.0	299.5	299.2	298.6	298.3
167.5°	306.0	305.5	304.9	304.1	304.1	304.1	303.9	303.5	303.4	303.0	302.8
170°	309.4	308.9	308.5	307.9	307.6	307.5	307.3	307.0	306.6	306.3	305.8
172.5°	311.9	311.5	310.9	310.2	310.2	310.0	309.8	309.7	309.2	309.0	308.9
175°	312.3	312.0	311.4	311.1	310.9	310.8	310.7	310.6	310.3	310.1	309.8
177.5°	313.8	313.6	313.1	312.9	312.8	312.8	312.6	312.5	312.5	312.3	312.3
180°	313.8	313.8	313.8	313.8	313.8	313.8	313.8	313.8	313.8	313.8	313.8



TEST NUMBER: P1444692
CATALOG NUMBER: EHBR1-48-UNV-TA-L930-UPL18

CANDELA DISTRIBUTION (continued):

	357.5°	360°
0°	36472.1	36472.1
2.5°	36613.3	36611.5
5°	36749.4	36747.3
7.5°	36853.0	36852.4
10°	36865.2	36871.5
12.5°	36791.7	36796.7
15°	36576.8	36586.9
17.5°	36166.2	36179.3
20°	35458.7	35472.4
22.5°	34313.0	34318.7
25°	32647.3	32623.6
27.5°	30376.4	30335.8
30°	27489.7	27450.3
32.5°	24047.8	24023.2
35°	20173.4	20157.9
37.5°	16094.4	16062.8
40°	12134.5	12042.3
42.5°	8661.2	8499.5
45°	5985.7	5793.9
47.5°	4178.6	4060.1
50°	3167.3	3129.1
52.5°	2580.8	2571.9
55°	2177.6	2173.7
57.5°	1874.5	1873.2
60°	1636.5	1636.1
62.5°	1459.1	1459.7
65°	1334.0	1334.3
67.5°	1224.0	1223.2
70°	1096.7	1095.8
72.5°	1009.2	1007.7
75°	941.6	940.7
77.5°	845.3	843.9
80°	728.9	726.9
82.5°	599.5	597.3
85°	447.2	447.3
87.5°	273.6	273.5
90°	115.1	113.1
92.5°	24.5	23.4
95°	27.8	26.3
97.5°	34.0	32.6
100°	42.9	41.7
102.5°	70.9	67.0
105°	121.6	110.8
107.5°	205.9	186.0
110°	354.9	338.8



TEST NUMBER: P1444692
CATALOG NUMBER: EHBR1-48-UNV-TA-L930-UPL18

CANDELA DISTRIBUTION (continued):

	357.5°	360°
112.5°	462.9	455.6
115°	485.0	482.4
117.5°	471.7	471.8
120°	442.3	444.3
122.5°	406.7	409.0
125°	374.7	377.0
127.5°	348.5	349.9
130°	332.6	333.9
132.5°	321.3	321.8
135°	314.6	315.1
137.5°	309.4	309.8
140°	304.9	305.2
142.5°	299.1	299.2
145°	296.2	296.2
147.5°	293.5	293.6
150°	291.5	291.4
152.5°	288.6	288.6
155°	288.4	288.1
157.5°	289.4	289.1
160°	291.8	291.4
162.5°	294.3	293.9
165°	297.6	297.0
167.5°	302.2	302.0
170°	305.5	305.2
172.5°	308.4	308.2
175°	309.8	309.6
177.5°	312.3	312.0
180°	313.8	313.8

LM-79-2019: Approved Method: Electrical and Photometric Measurements of Solid-
State Lighting Products

Report Prepared for

Cooper Lighting Solutions

Metalux

Report Number: SP1-2506-472-5

Test Date: 08/01/2025

Luminaire Tested: EHBR-60-L930-N

Data in this report applies to families of products including EHBR-60-L930-N

Test Information

Test Method: LM-79-2019
 Report Number: SP1-2506-472-5
 Test Lab: COOPER LIGHTING SOLUTIONS
 Photometer: SP1 - 76IN SPHERE
 Measurement Geometry: 4π
 Issue Date: 08/05/2025
 Manufacturer: COOPER LIGHTING SOLUTIONS
 Product Line: Metalux
 Catalog Number: **EHBR-60-L930-N**
 Description: Elevate Round Highbay at, 60000 lumens, 3000K 90CRI LEDs with N lens

Spectral Parameters

CCT (K): 2996
 CIE u': 0.2519
 CIE v': 0.5169
 Duv: -0.0033
 CIE x: 0.4325
 CIE y: 0.3945
 CIE z: 0.1730
 Peak Wavelength (nm): 630
 Dominant Wavelength (nm): 584
 Purity: 48.21818
 Rf: 91.3
 Rg: 102

CRI (Ra):	94.4		
R1:	96.8	R9:	61.4
R2:	98.1	R10:	94.4
R3:	97.8	R11:	95.7
R4:	95.6	R12:	88.5
R5:	96.9	R13:	97.3
R6:	95.7	R14:	97.8
R7:	90.9	R15:	92.3
R8:	83.0		



Test Conditions

Stabilization Time: 40M
 Operation Time: 1H 40M
 Sphere Temperature (°C): 25.0

REPORT NUMBER: SP1-2506-472-5

Measurement and Test Equipment			
Instrument	Identification Number	Calibration Date	Calibration Due Date
Photometer	76INCH SPHERE IN0058	6/16/2025	12/16/2025
Power Meter	XITRON INXT2011004	1/21/2025	1/21/2026
AC Power Source	CHROMA 61603 IN0063	10/22/2024	10/22/2025
DC Power Source	AGILENT E3634A IN0208	10/22/2024	10/22/2025
Sphere Thermometer	ONSET IN0085	10/22/2024	10/22/2025
Room Thermometer	ONSET IN0046	10/22/2024	10/22/2025

REPORT NUMBER: SP1-2506-472-5

CIE 1931 Chromaticity Diagram



CIE 1931 Chromaticity Diagram with 2017 ANSI 7-Step and 4-Step Quadrangles



Point lies inside the ANSI 3000K 7-step quadrangle

REPORT NUMBER: SP1-2506-472-5

Photopic Flux vs. Wavelength



Photopic Lumens: NR

λ (nm)	Power W [^] /nm	Lumens (φ/nm)	λ (nm)	Power W [^] /nm	Lumens (φ/nm)	λ (nm)	Power W [^] /nm	Lumens (φ/nm)	λ (nm)	Power W [^] /nm	Lumens (φ/nm)	λ (nm)	Power W [^] /nm	Lumens (φ/nm)
360	0	NR	490	101	NR	620	317	NR	750	7	NR	880	0	NR
365	0	NR	495	121	NR	625	320	NR	755	6	NR	885	0	NR
370	0	NR	500	141	NR	630	1000	NR	760	5	NR	890	0	NR
375	0	NR	505	158	NR	635	651	NR	765	4	NR	895	0	NR
380	0	NR	510	171	NR	640	207	NR	770	4	NR	900	0	NR
385	0	NR	515	182	NR	645	201	NR	775	3	NR	905	0	NR
390	0	NR	520	189	NR	650	174	NR	780	3	NR	910	0	NR
395	1	NR	525	194	NR	655	146	NR	785	2	NR	915	0	NR
400	1	NR	530	199	NR	660	124	NR	790	2	NR	920	0	NR
405	3	NR	535	205	NR	665	105	NR	795	2	NR	925	0	NR
410	4	NR	540	210	NR	670	96	NR	800	1	NR	930	0	NR
415	7	NR	545	216	NR	675	79	NR	805	1	NR	935	0	NR
420	13	NR	550	222	NR	680	67	NR	810	1	NR	940	0	NR
425	22	NR	555	230	NR	685	58	NR	815	1	NR	945	0	NR
430	37	NR	560	240	NR	690	49	NR	820	1	NR	950	0	NR
435	60	NR	565	248	NR	695	42	NR	825	1	NR	955	0	NR
440	101	NR	570	258	NR	700	36	NR	830	1	NR	960	0	NR
445	172	NR	575	268	NR	705	30	NR	835	1	NR	965	0	NR
450	223	NR	580	278	NR	710	26	NR	840	1	NR	970	0	NR
455	167	NR	585	287	NR	715	22	NR	845	0	NR	975	0	NR
460	126	NR	590	295	NR	720	19	NR	850	0	NR	980	0	NR
465	111	NR	595	298	NR	725	16	NR	855	0	NR	985	0	NR
470	86	NR	600	303	NR	730	14	NR	860	0	NR	990	0	NR
475	74	NR	605	307	NR	735	12	NR	865	0	NR	995	0	NR
480	77	NR	610	341	NR	740	10	NR	870	0	NR	1000	0	NR
485	86	NR	615	368	NR	745	8	NR	875	0	NR			

REPORT NUMBER: SP1-2506-472-5

Scotopic Flux vs. Wavelength



Scotopic Lumens: NR

S/P: 1.44

λ (nm)	Power W [^] /nm	Lumens (φ/nm)	λ (nm)	Power W [^] /nm	Lumens (φ/nm)	λ (nm)	Power W [^] /nm	Lumens (φ/nm)	λ (nm)	Power W [^] /nm	Lumens (φ/nm)	λ (nm)	Power W [^] /nm	Lumens (φ/nm)
360	0	NR	490	101	NR	620	317	NR	750	7	NR	880	0	NR
365	0	NR	495	121	NR	625	320	NR	755	6	NR	885	0	NR
370	0	NR	500	141	NR	630	1000	NR	760	5	NR	890	0	NR
375	0	NR	505	158	NR	635	651	NR	765	4	NR	895	0	NR
380	0	NR	510	171	NR	640	207	NR	770	4	NR	900	0	NR
385	0	NR	515	182	NR	645	201	NR	775	3	NR	905	0	NR
390	0	NR	520	189	NR	650	174	NR	780	3	NR	910	0	NR
395	1	NR	525	194	NR	655	146	NR	785	2	NR	915	0	NR
400	1	NR	530	199	NR	660	124	NR	790	2	NR	920	0	NR
405	3	NR	535	205	NR	665	105	NR	795	2	NR	925	0	NR
410	4	NR	540	210	NR	670	96	NR	800	1	NR	930	0	NR
415	7	NR	545	216	NR	675	79	NR	805	1	NR	935	0	NR
420	13	NR	550	222	NR	680	67	NR	810	1	NR	940	0	NR
425	22	NR	555	230	NR	685	58	NR	815	1	NR	945	0	NR
430	37	NR	560	240	NR	690	49	NR	820	1	NR	950	0	NR
435	60	NR	565	248	NR	695	42	NR	825	1	NR	955	0	NR
440	101	NR	570	258	NR	700	36	NR	830	1	NR	960	0	NR
445	172	NR	575	268	NR	705	30	NR	835	1	NR	965	0	NR
450	223	NR	580	278	NR	710	26	NR	840	1	NR	970	0	NR
455	167	NR	585	287	NR	715	22	NR	845	0	NR	975	0	NR
460	126	NR	590	295	NR	720	19	NR	850	0	NR	980	0	NR
465	111	NR	595	298	NR	725	16	NR	855	0	NR	985	0	NR
470	86	NR	600	303	NR	730	14	NR	860	0	NR	990	0	NR
475	74	NR	605	307	NR	735	12	NR	865	0	NR	995	0	NR
480	77	NR	610	341	NR	740	10	NR	870	0	NR	1000	0	NR
485	86	NR	615	368	NR	745	8	NR	875	0	NR			

REPORT NUMBER: SP1-2506-472-5

Melanopic Flux vs. Wavelength



Melanopic Lumens: NR

M/P: 2.85

λ (nm)	Power W [^] /nm	Lumens (ϕ /nm)	λ (nm)	Power W [^] /nm	Lumens (ϕ /nm)	λ (nm)	Power W [^] /nm	Lumens (ϕ /nm)	λ (nm)	Power W [^] /nm	Lumens (ϕ /nm)	λ (nm)	Power W [^] /nm	Lumens (ϕ /nm)
360	0	NR	490	101	NR	620	317	NR	750	7	NR	880	0	NR
365	0	NR	495	121	NR	625	320	NR	755	6	NR	885	0	NR
370	0	NR	500	141	NR	630	1000	NR	760	5	NR	890	0	NR
375	0	NR	505	158	NR	635	651	NR	765	4	NR	895	0	NR
380	0	NR	510	171	NR	640	207	NR	770	4	NR	900	0	NR
385	0	NR	515	182	NR	645	201	NR	775	3	NR	905	0	NR
390	0	NR	520	189	NR	650	174	NR	780	3	NR	910	0	NR
395	1	NR	525	194	NR	655	146	NR	785	2	NR	915	0	NR
400	1	NR	530	199	NR	660	124	NR	790	2	NR	920	0	NR
405	3	NR	535	205	NR	665	105	NR	795	2	NR	925	0	NR
410	4	NR	540	210	NR	670	96	NR	800	1	NR	930	0	NR
415	7	NR	545	216	NR	675	79	NR	805	1	NR	935	0	NR
420	13	NR	550	222	NR	680	67	NR	810	1	NR	940	0	NR
425	22	NR	555	230	NR	685	58	NR	815	1	NR	945	0	NR
430	37	NR	560	240	NR	690	49	NR	820	1	NR	950	0	NR
435	60	NR	565	248	NR	695	42	NR	825	1	NR	955	0	NR
440	101	NR	570	258	NR	700	36	NR	830	1	NR	960	0	NR
445	172	NR	575	268	NR	705	30	NR	835	1	NR	965	0	NR
450	223	NR	580	278	NR	710	26	NR	840	1	NR	970	0	NR
455	167	NR	585	287	NR	715	22	NR	845	0	NR	975	0	NR
460	126	NR	590	295	NR	720	19	NR	850	0	NR	980	0	NR
465	111	NR	595	298	NR	725	16	NR	855	0	NR	985	0	NR
470	86	NR	600	303	NR	730	14	NR	860	0	NR	990	0	NR
475	74	NR	605	307	NR	735	12	NR	865	0	NR	995	0	NR
480	77	NR	610	341	NR	740	10	NR	870	0	NR	1000	0	NR
485	86	NR	615	368	NR	745	8	NR	875	0	NR			

Summary

$R_f = 91.3$
 $R_g = 102$
 $CIE R_a = 94.4$
 $R_9 = 61.4$

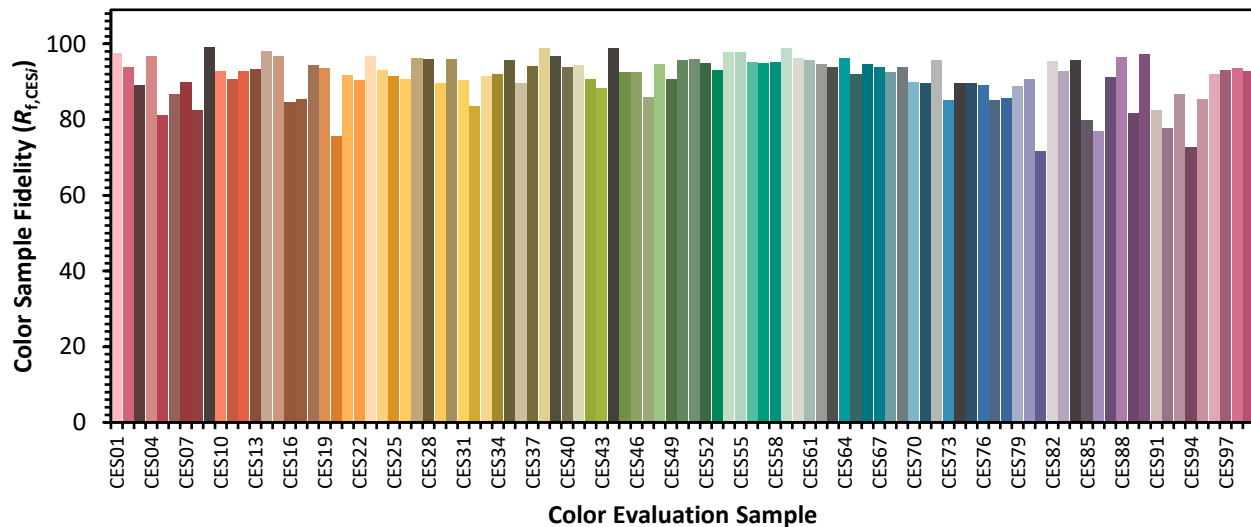


Color Vector Graphics

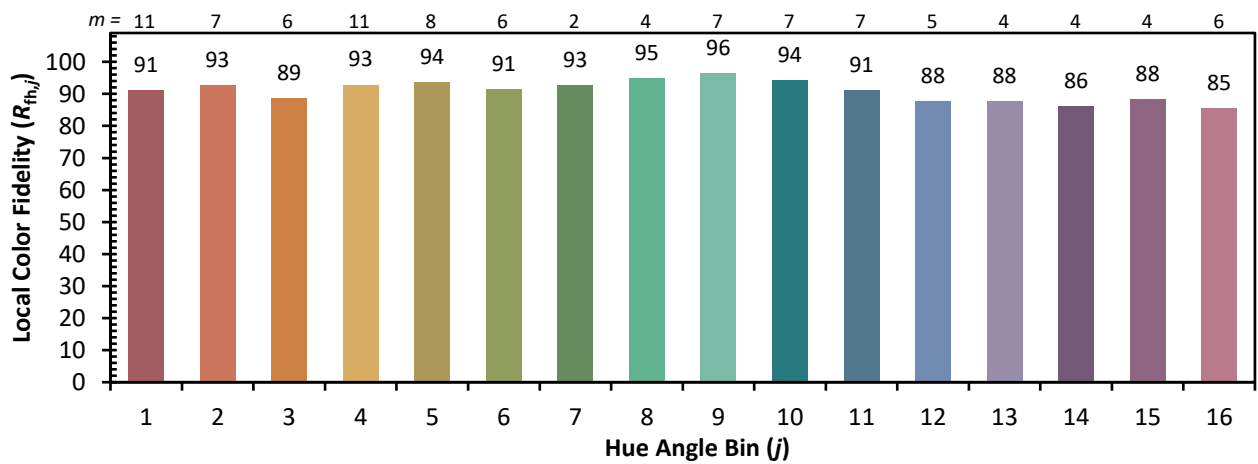
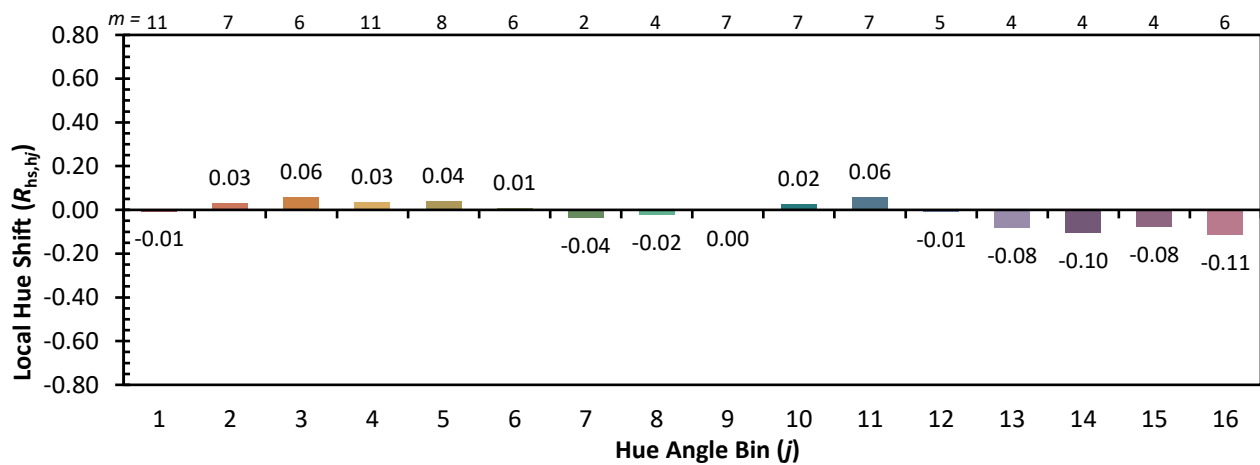
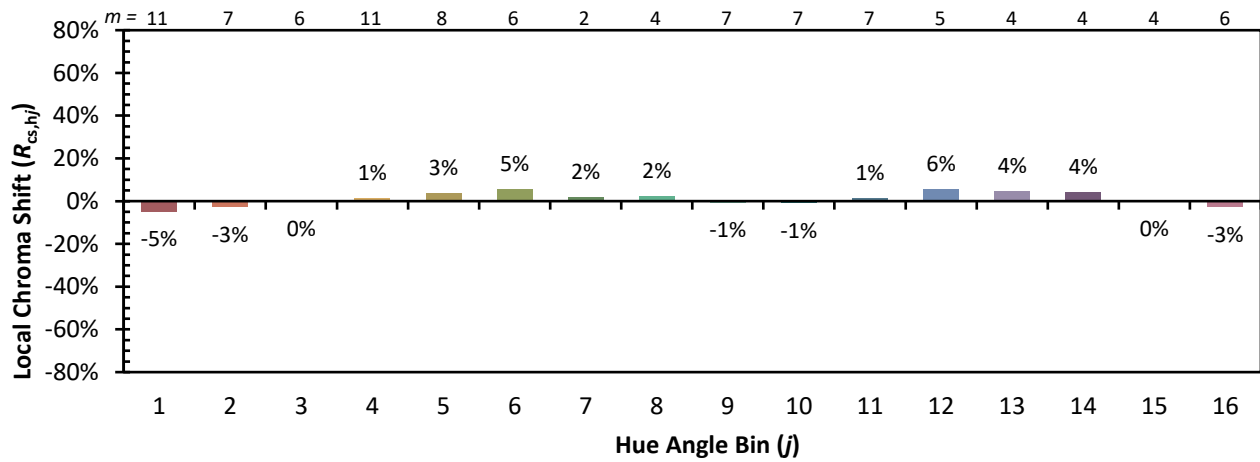


Individual Sample Fidelity Index ($R_{f,i}$)

CES01 = 86	CES26 = 91	CES51 = 96	CES76 = 89
CES02 = 63	CES27 = 96	CES52 = 95	CES77 = 85
CES03 = 32	CES28 = 96	CES53 = 93	CES78 = 86
CES04 = 70	CES29 = 90	CES54 = 98	CES79 = 89
CES05 = 51	CES30 = 96	CES55 = 98	CES80 = 91
CES06 = 51	CES31 = 90	CES56 = 95	CES81 = 72
CES07 = 44	CES32 = 84	CES57 = 95	CES82 = 95
CES08 = 42	CES33 = 91	CES58 = 95	CES83 = 93
CES09 = 29	CES34 = 92	CES59 = 99	CES84 = 96
CES10 = 76	CES35 = 96	CES60 = 96	CES85 = 80
CES11 = 59	CES36 = 90	CES61 = 96	CES86 = 77
CES12 = 65	CES37 = 94	CES62 = 95	CES87 = 91
CES13 = 44	CES38 = 99	CES63 = 94	CES88 = 96
CES14 = 74	CES39 = 97	CES64 = 96	CES89 = 82
CES15 = 72	CES40 = 94	CES65 = 92	CES90 = 97
CES16 = 48	CES41 = 94	CES66 = 95	CES91 = 82
CES17 = 50	CES42 = 91	CES67 = 94	CES92 = 78
CES18 = 57	CES43 = 88	CES68 = 93	CES93 = 87
CES19 = 72	CES44 = 99	CES69 = 94	CES94 = 73
CES20 = 67	CES45 = 93	CES70 = 90	CES95 = 85
CES21 = 86	CES46 = 93	CES71 = 90	CES96 = 92
CES22 = 79	CES47 = 86	CES72 = 96	CES97 = 93
CES23 = 92	CES48 = 95	CES73 = 85	CES98 = 94
CES24 = 91	CES49 = 91	CES74 = 90	CES99 = 93
CES25 = 72	CES50 = 96	CES75 = 90	



Color Rendition by Hue-Angle Bin



Measure Comparisons



(END OF REPORT)