

Cooper Lighting Solutions Photometric Lab  
1121 Highway 74 South  
Peachtree City, GA 30269



Scaled data based on original data using  
LM-79-2019 Approved Method: Electrical and Photometric Measurements of Solid-  
State Lighting Products

Test Report Prepared for  
Cooper Lighting Solutions

Brand: METALUX

Report Number: P1444662

Luminaire Tested: EHBR1-24-UNV-TA-L930-UPL30

Issue Date: 5/1/2026

**Test Information**

Test Method: LM-79-2019  
Report Number: P1444662  
REPORT IS A COMBINATION OF REPORTS P1444338 AND P1431635  
Test Lab: INNOVATION CENTER  
Issue Date: 5/1/2026  
Manufacturer: COOPER LIGHTING SOLUTIONS  
Product Line: METALUX  
Catalog Number: EHBR1-24-UNV-TA-L930-UPL30  
Description: Elevate Round Highbay at, 24000 lumens, 3000K 90CRI LEDs with TA lens  
Light Source: -  
Ballast/Driver: -

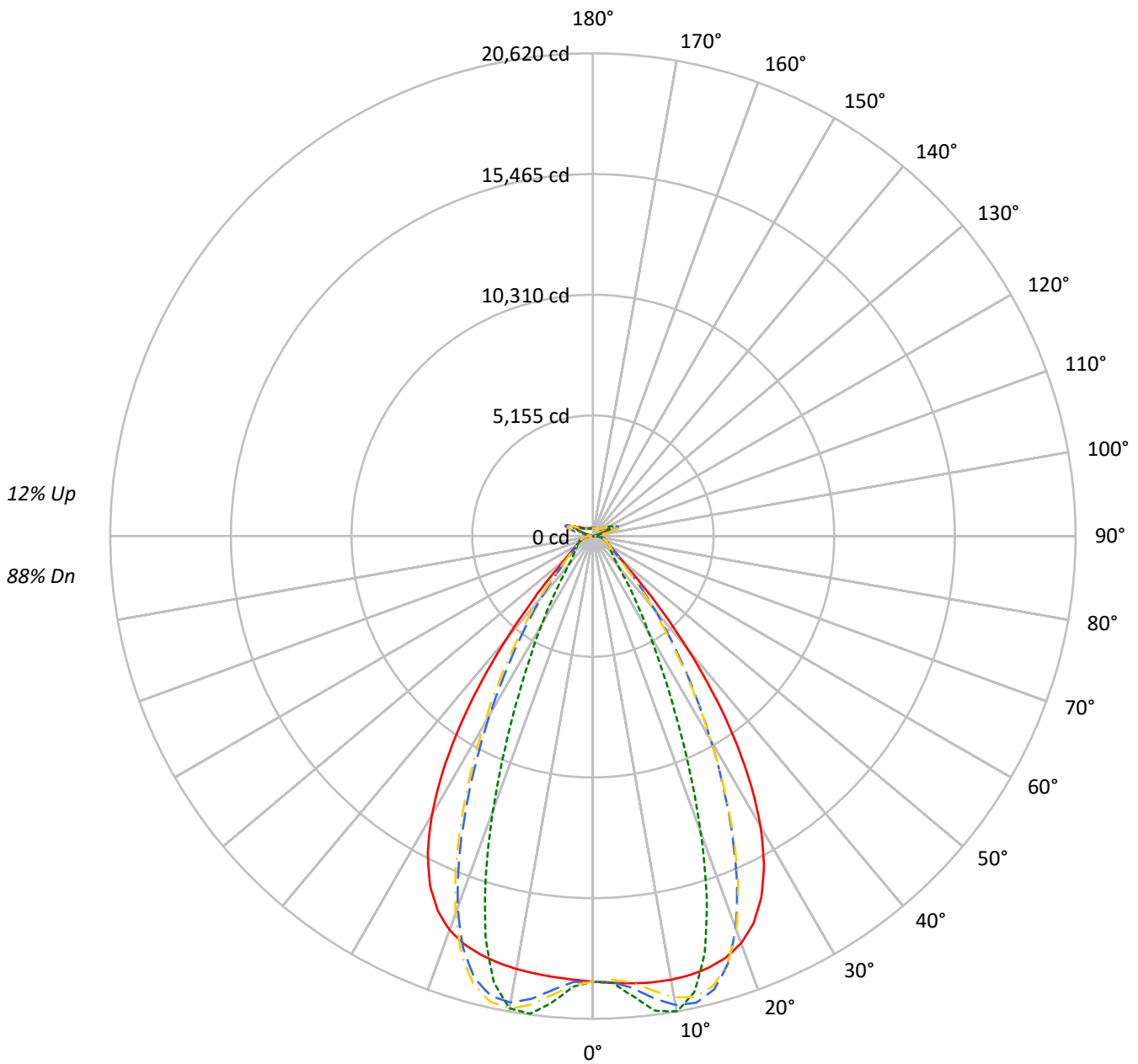
**Summary**

Lumens per Lamp: N/A  
Luminaire Lumens: 24754.1 lumens  
Efficiency: N/A  
Efficacy: 164.7 lumens/watt  
Spacing Criteria (0/90/45): 1.13 / 0.77 / 0.88  
Luminous Opening: Vertical Cylinder (Dia: 1.71' x H: 0.1')  
CIE Type: Semi-Direct

Input Watts (W): 150.3  
Input Voltage (V): NR  
Input Current (Ain): NR  
Voltage Rise (V): NR  
Power Factor: NR  
Total Harmonic Distortion (THDi): NR  
Frequency (hertz): 60  
Stabilization Time: NR  
Operation Time: NR  
Ambient Temperature (°C): NR  
Test Distance: 24 FT

TEST NUMBER: P1444662  
CATALOG NUMBER: EHBR1-24-UNV-TA-L930-UPL30

### Luminous Intensity Polar Plot



— 0°-180°    - - 45°-225°    - · - · 90°-270°    - · - · 135°-315°



TEST NUMBER: P1444662  
 CATALOG NUMBER: EHBR1-24-UNV-TA-L930-UPL30

**COEFFICIENT OF UTILIZATION - ZONAL CAVITY METHOD:**

RF	20				20				20				20				20				
RC	80				70				50				30				10			0	
RW	70	50	30	10	70	50	30	10	50	30	10	50	30	10	50	30	10	50	30	10	0
RCR																					
0	116	116	116	116	112	112	112	112	105	105	105	98	98	98	91	91	91	88			88
1	109	106	102	100	105	102	100	97	96	94	92	90	89	87	85	84	83	80			80
2	102	96	91	87	99	93	89	85	88	85	82	84	81	78	79	77	75	72			72
3	96	88	82	77	93	86	80	76	82	77	73	77	74	71	74	71	68	66			66
4	90	81	75	70	87	79	73	69	75	71	67	72	68	65	69	65	63	61			61
5	85	75	68	63	82	73	67	62	70	65	61	67	63	59	64	61	58	56			56
6	80	70	63	58	77	68	62	57	65	60	56	63	58	55	60	56	53	52			52
7	75	65	58	53	73	64	57	53	61	56	52	59	54	51	57	53	50	48			48
8	71	61	54	49	69	59	53	49	57	52	48	55	51	47	54	49	46	45			45
9	67	57	50	46	66	56	50	45	54	49	45	52	47	44	51	46	43	42			42
10	64	53	47	43	62	53	46	42	51	45	42	49	45	41	48	44	40	39			39

**AVERAGE LUMINANCE (cd/sqm):**

	0°	90°	180°	270°
0°	89383	89383	89383	89383
5°	89815	92434	88559	93646
10°	90566	97049	88393	96407
15°	91010	87975	88239	84432
20°	90069	65538	87121	60638
25°	85254	41449	82437	37608
30°	74475	24908	71591	22763
35°	57317	15630	54019	13845
40°	36258	9804	33173	9213
45°	18688	7638	18379	7513
50°	10956	6794	10620	6688
55°	8394	6427	8083	6370
60°	7102	6567	6800	6481
65°	6671	6857	6415	6623
70°	6517	7180	6192	6910
75°	6969	7615	6592	7278
80°	7212	8430	6539	7697
85°	6791	8135	5490	6965

**MAXIMUM LUMINANCE 45°-90°:**

Horizontal Angle: 25°  
 Vertical Angle: 45°  
 Luminance: 28600 cd/sqm



TEST NUMBER: P1444662  
 CATALOG NUMBER: EHBR1-24-UNV-TA-L930-UPL30

**ZONAL LUMENS:**

Zone	Lumens	% Fixture
0°-10°	1875.8	7.6
10°-20°	5276.8	21.3
20°-30°	6009.9	24.3
30°-40°	4319.6	17.5
40°-50°	1992.2	8.0
50°-60°	953.4	3.9
60°-70°	695.6	2.8
70°-80°	528.5	2.1
80°-90°	245.2	1.0
90°-100°	79.3	0.3
100°-110°	479.4	1.9
110°-120°	886.1	3.6
120°-130°	536.0	2.2
130°-140°	336.6	1.4
140°-150°	243.4	1.0
150°-160°	165.5	0.7
160°-170°	97.8	0.4
170°-180°	33.1	0.1
0°-30°	13162.4	53.2
0°-40°	17482.1	70.6
0°-60°	20427.6	82.5
0°-90°	21896.9	88.5
90°-120°	1444.9	5.8
90°-150°	2560.8	10.3
90°-180°	2857.0	11.5
0°-180°	24754.1	100.0

**CANDELA DISTRIBUTION:**

	0°	90°	180°	270°	360°	Flux
0°	19034	19034	19034	19034	19034	
5°	19177	19736	18909	19995	19177	1833
15°	19093	18457	18512	17713	19093	5380
25°	17025	8277	16462	7510	17025	7718
35°	10520	2869	9914	2541	10520	6456
45°	3024	1236	2974	1216	3024	2572
55°	1134	869	1092	861	1134	1047
65°	696	716	670	691	696	695
75°	491	536	464	513	491	510
85°	233	280	189	239	233	219
90°	72	89	27	32	72	44
95°	36	41	36	41	36	35
105°	170	222	113	222	170	227
115°	770	939	807	940	770	711
125°	571	607	647	608	571	520
135°	437	396	472	397	437	341
145°	379	374	404	377	379	239
155°	347	351	371	354	347	161
165°	339	341	352	342	339	96
175°	343	347	350	348	343	33
180°	348	348	348	348	348	



TEST NUMBER: P1444662  
 CATALOG NUMBER: EHBR1-24-UNV-TA-L930-UPL30

**CANDELA DISTRIBUTION (FULL):**

	0°	2.5°	5°	7.5°	10°	12.5°	15°	17.5°	20°	22.5°	25°
0°	19033.5	19033.5	19033.5	19033.5	19033.5	19033.5	19033.5	19033.5	19033.5	19033.5	19033.5
2.5°	19106.2	19104.7	19104.3	19103.0	19102.6	19102.6	19102.0	19100.5	19099.5	19097.3	19094.8
5°	19177.0	19176.2	19176.8	19176.9	19175.5	19172.6	19168.0	19162.2	19155.0	19148.3	19142.2
7.5°	19231.9	19233.3	19235.0	19234.6	19230.4	19223.5	19213.9	19208.6	19211.7	19222.1	19245.8
10°	19241.9	19250.1	19253.2	19252.3	19244.0	19238.0	19240.3	19260.5	19300.7	19354.1	19427.4
12.5°	19202.9	19213.0	19212.6	19209.2	19201.2	19209.4	19238.6	19298.6	19384.7	19490.3	19614.2
15°	19093.4	19106.4	19102.6	19098.4	19093.0	19119.8	19178.2	19282.5	19415.3	19564.2	19716.7
17.5°	18880.7	18896.3	18888.8	18883.9	18879.3	18929.7	19029.9	19182.6	19350.0	19518.4	19662.9
20°	18511.7	18522.2	18504.1	18495.6	18502.8	18601.5	18749.1	18944.1	19120.6	19279.8	19378.5
22.5°	17909.7	17922.8	17888.6	17884.7	17926.8	18078.4	18265.1	18483.1	18648.9	18775.1	18813.2
25°	17025.1	17038.0	16997.5	17021.7	17093.2	17299.7	17522.1	17755.2	17896.7	17990.2	17964.5
27.5°	15831.2	15842.9	15804.4	15853.9	15966.9	16238.3	16500.1	16753.0	16879.1	16944.6	16861.5
30°	14325.3	14349.7	14304.3	14373.2	14545.8	14898.1	15198.0	15481.6	15607.3	15657.2	15528.0
32.5°	12536.8	12571.5	12521.5	12624.1	12864.8	13288.0	13628.7	13945.6	14084.6	14141.6	13995.6
35°	10519.7	10569.4	10512.0	10665.9	10963.0	11434.1	11811.5	12165.2	12329.9	12410.5	12263.5
37.5°	8382.6	8429.9	8398.9	8604.2	8930.4	9418.7	9804.0	10185.6	10371.5	10492.6	10376.7
40°	6284.4	6327.7	6351.2	6586.1	6892.9	7353.1	7723.1	8100.7	8308.7	8460.7	8389.2
42.5°	4435.6	4479.2	4559.1	4785.7	5041.5	5422.5	5739.5	6078.5	6277.2	6439.4	6411.7
45°	3023.6	3074.3	3174.4	3359.9	3545.0	3818.3	4051.0	4314.6	4477.0	4625.5	4627.3
47.5°	2118.9	2154.4	2243.8	2370.5	2491.1	2833.3	2847.4	2976.9	3086.1	3197.1	3211.5
50°	1632.9	1654.4	1701.8	1772.4	1840.7	1929.6	2010.9	2104.8	2172.0	2232.8	2247.4
52.5°	1342.1	1355.8	1379.9	1418.2	1457.8	1506.1	1549.6	1601.2	1637.7	1670.4	1677.1
55°	1134.3	1145.6	1181.6	1188.8	1234.1	1243.0	1262.2	1293.7	1314.9	1334.4	1339.3
57.5°	977.6	985.7	993.4	1009.7	1023.7	1044.0	1060.3	1082.8	1096.2	1110.3	1111.5
60°	853.8	859.8	865.2	876.4	886.0	900.1	911.4	926.7	936.3	946.8	948.1
62.5°	761.7	766.0	769.6	777.1	783.8	794.7	803.6	816.5	825.4	833.6	835.4
65°	696.3	699.4	701.8	707.4	713.3	722.5	730.6	741.1	747.7	753.9	755.2
67.5°	638.3	641.3	643.7	648.8	652.9	659.8	665.2	673.1	678.1	683.1	683.1
70°	571.8	574.6	576.5	581.3	584.6	590.5	594.8	602.0	607.0	612.6	614.0
72.5°	525.9	527.5	530.0	534.3	539.0	545.3	551.2	558.5	564.6	570.4	572.8
75°	490.9	492.8	494.4	498.1	501.4	506.7	511.1	517.8	523.1	529.3	532.4
77.5°	440.4	442.5	444.0	447.7	450.5	455.6	458.8	464.8	469.3	474.9	477.7
80°	379.4	381.4	382.4	386.0	388.1	392.8	396.0	401.8	405.5	411.1	414.5
82.5°	311.7	313.7	314.2	317.6	318.8	322.7	325.0	330.9	335.4	342.7	347.8
85°	233.4	234.1	235.3	234.4	239.1	239.4	244.8	245.8	252.8	254.7	262.7
87.5°	142.7	144.8	145.9	149.1	150.5	153.8	154.8	158.3	160.1	164.1	165.9
90°	72.4	76.5	78.4	83.1	84.9	89.2	90.8	95.5	97.4	102.2	105.2
92.5°	31.9	34.0	36.2	38.5	40.7	43.3	45.7	48.0	50.3	52.8	57.2
95°	36.4	38.9	41.4	44.0	46.5	49.0	51.5	54.1	56.6	59.1	66.5
97.5°	45.9	48.1	50.3	52.5	54.6	56.9	59.0	61.2	63.4	65.5	74.2
100°	60.1	61.9	63.7	65.6	67.5	69.2	71.1	73.0	74.8	76.6	92.9
102.5°	100.0	106.5	113.1	119.6	126.2	132.7	139.3	145.8	152.4	158.9	193.3
105°	170.5	188.2	206.0	223.8	241.5	259.3	277.1	294.7	312.4	330.3	386.3
107.5°	292.3	325.2	358.1	390.9	423.8	456.6	489.5	522.3	555.1	587.9	644.7
110°	541.5	567.8	594.4	620.8	647.3	673.8	700.3	726.5	753.0	779.4	820.9



TEST NUMBER: P1444662  
 CATALOG NUMBER: EHBR1-24-UNV-TA-L930-UPL30

**CANDELA DISTRIBUTION (continued):**

	0°	2.5°	5°	7.5°	10°	12.5°	15°	17.5°	20°	22.5°	25°
112.5°	730.6	742.6	754.5	766.6	778.5	790.4	802.4	814.4	826.4	838.2	868.0
115°	770.4	774.7	778.9	783.0	787.4	791.5	795.8	799.9	804.2	808.2	828.4
117.5°	747.3	746.5	746.0	745.3	744.5	743.8	743.1	742.3	741.6	740.8	752.1
120°	695.7	692.1	688.7	684.9	681.4	677.6	674.1	670.4	666.8	662.9	667.9
122.5°	630.8	626.6	622.5	617.9	613.6	609.2	604.9	600.2	595.9	591.4	593.4
125°	570.8	566.4	562.2	557.8	553.3	548.9	544.4	539.9	535.5	530.9	532.0
127.5°	518.4	515.4	512.5	509.2	506.2	503.0	499.8	496.5	493.4	490.0	490.4
130°	484.2	481.7	478.9	476.0	473.3	470.3	467.5	464.5	461.6	458.6	459.2
132.5°	456.2	454.4	452.5	450.5	448.5	446.4	444.3	442.0	440.0	437.8	438.5
135°	437.2	435.4	433.8	432.0	430.2	428.0	426.1	424.0	422.0	419.9	420.9
137.5°	421.1	419.5	418.0	416.3	414.6	412.6	410.9	408.9	407.1	405.1	406.0
140°	406.2	404.8	403.4	401.8	400.3	398.7	397.0	395.2	393.6	391.8	392.9
142.5°	389.7	388.5	387.6	386.3	385.2	383.7	382.5	381.0	379.7	378.3	379.7
145°	378.8	377.9	377.1	376.1	375.0	373.8	372.8	371.4	370.4	369.2	370.7
147.5°	369.2	368.5	367.8	367.1	366.3	365.2	364.3	363.3	362.4	361.4	363.0
150°	360.8	360.2	359.6	358.9	358.1	357.1	356.2	355.4	354.4	353.4	355.0
152.5°	352.1	351.4	350.8	350.1	349.3	348.3	347.6	346.7	345.9	345.0	346.3
155°	346.7	345.9	345.2	344.6	343.9	343.0	342.2	341.4	340.6	339.7	340.8
157.5°	343.0	342.4	341.9	341.3	340.9	340.2	339.6	339.0	338.4	337.7	338.5
160°	341.1	340.6	340.1	339.5	338.9	338.4	337.8	337.1	336.7	336.0	336.6
162.5°	339.3	338.8	338.3	337.7	337.1	336.5	336.0	335.4	334.9	334.3	335.1
165°	339.0	338.6	338.3	338.0	337.7	337.3	336.9	336.5	336.1	335.7	336.2
167.5°	341.6	341.0	340.7	340.1	339.6	339.2	338.7	338.2	337.7	337.1	337.7
170°	342.2	341.8	341.6	341.4	341.1	340.9	340.6	340.3	340.1	339.8	340.2
172.5°	343.7	343.4	343.3	343.2	342.9	342.7	342.6	342.3	342.2	341.8	342.6
175°	343.4	343.2	343.1	343.0	342.8	342.7	342.6	342.5	342.5	342.3	342.6
177.5°	345.7	345.6	345.6	345.6	345.6	345.5	345.4	345.2	345.2	345.2	345.5
180°	347.7	347.7	347.7	347.7	347.7	347.7	347.7	347.7	347.7	347.7	347.7



TEST NUMBER: P1444662  
 CATALOG NUMBER: EHBR1-24-UNV-TA-L930-UPL30

**CANDELA DISTRIBUTION (continued):**

	27.5°	30°	32.5°	35°	37.5°	40°	42.5°	45°	47.5°	50°	52.5°
0°	19033.5	19033.5	19033.5	19033.5	19033.5	19033.5	19033.5	19033.5	19033.5	19033.5	19033.5
2.5°	19093.0	19090.7	19087.5	19083.5	19080.0	19076.0	19066.5	19063.7	19066.8	19069.0	19073.3
5°	19138.4	19139.7	19140.2	19148.9	19156.4	19175.1	19321.5	19379.7	19424.7	19453.2	19496.6
7.5°	19275.2	19319.2	19362.7	19421.2	19471.7	19539.9	19796.1	19905.2	19982.7	20038.4	20107.0
10°	19506.9	19603.0	19693.1	19798.6	19889.3	19993.2	20231.7	20337.9	20405.0	20453.9	20499.4
12.5°	19740.4	19873.7	19994.0	20111.5	20209.7	20299.8	20383.7	20420.9	20424.0	20425.6	20401.4
15°	19862.1	19989.4	20095.5	20173.2	20230.9	20256.4	20112.0	20036.3	19940.6	19861.7	19732.0
17.5°	19785.3	19861.7	19907.5	19903.1	19879.2	19799.3	19390.3	19165.4	18942.1	18740.8	18476.9
20°	19444.1	19438.2	19398.4	19285.4	19149.3	18937.8	18236.5	17832.1	17440.8	17097.3	16680.6
22.5°	18809.3	18709.4	18570.2	18326.6	18056.2	17686.4	16681.6	16086.5	15542.0	15061.0	14522.1
25°	17889.5	17684.0	17427.2	17040.6	16620.2	16081.0	14842.5	14102.4	13448.5	12881.6	12259.8
27.5°	16712.4	16402.8	16026.5	15491.4	14921.9	14231.0	12858.0	12041.2	11339.4	10731.5	10069.7
30°	15318.8	14916.2	14430.2	13766.1	13079.2	12295.7	10903.1	10075.7	9365.3	8739.9	8077.7
32.5°	13744.0	13272.4	12702.9	11957.6	11214.6	10409.0	9064.1	8263.3	7584.7	6983.1	6383.7
35°	12006.9	11501.3	10898.7	10138.6	9400.1	8616.9	7382.8	6660.7	6061.4	5529.7	5045.7
37.5°	10143.7	9647.2	9074.6	8358.1	7673.2	6963.5	5898.7	5293.6	4790.8	4349.4	3975.6
40°	8206.4	7772.0	7276.4	6657.0	6072.6	5481.6	4607.5	4127.1	3730.3	3393.7	3113.6
42.5°	6292.9	5956.2	5576.2	5086.7	4639.5	4189.4	3516.7	3160.9	2866.9	2624.6	2426.6
45°	4565.8	4340.5	4085.6	3745.4	3435.9	3122.0	2643.1	2393.1	2201.6	2045.3	1913.3
47.5°	3191.7	3061.1	3053.0	2738.6	2511.7	2319.7	2011.2	1853.3	1736.0	1641.3	1557.7
50°	2241.4	2178.2	2099.7	1987.5	1882.2	1773.6	1585.8	1490.3	1421.5	1364.2	1311.3
52.5°	1675.6	1642.8	1601.0	1541.4	1484.4	1423.3	1304.4	1243.6	1222.0	1168.6	1126.8
55°	1338.4	1319.5	1295.7	1260.8	1226.0	1212.1	1110.3	1065.1	1036.5	1015.5	992.9
57.5°	1111.7	1097.7	1083.5	1059.8	1039.8	1015.5	961.4	938.2	921.2	908.8	893.2
60°	948.3	939.9	932.0	918.1	907.2	894.1	859.8	846.7	837.8	830.4	820.4
62.5°	837.0	832.7	828.6	821.2	815.7	808.5	785.0	778.8	774.3	770.6	764.5
65°	756.6	753.5	751.2	746.3	743.6	739.4	719.2	715.0	712.3	710.9	707.4
67.5°	683.6	680.4	678.9	675.4	674.2	671.7	655.1	652.8	651.9	652.3	651.0
70°	615.3	614.0	614.7	614.1	615.7	616.1	606.2	606.1	607.1	609.3	609.5
72.5°	574.4	574.4	575.1	575.5	577.0	577.7	569.4	569.0	569.4	571.0	571.1
75°	535.5	536.1	538.2	539.0	540.7	541.0	530.0	528.8	528.8	530.3	529.9
77.5°	481.6	483.9	487.9	490.0	493.4	494.0	481.7	480.2	480.3	481.7	480.5
80°	420.4	424.9	431.3	435.8	440.9	443.1	430.3	427.3	424.5	424.1	421.5
82.5°	355.5	360.9	368.6	372.6	378.2	379.4	358.2	354.1	351.8	352.0	349.7
85°	271.4	275.5	282.4	284.7	288.2	287.8	263.6	253.3	256.0	251.7	255.0
87.5°	170.2	172.6	177.0	177.5	179.2	178.9	154.4	149.6	148.2	148.3	146.5
90°	111.0	114.5	120.1	122.0	126.3	127.8	109.9	109.3	106.1	105.4	101.5
92.5°	61.9	66.3	70.8	75.3	79.8	84.4	86.6	90.5	85.9	81.0	76.7
95°	73.9	81.2	88.6	96.0	103.4	110.7	118.1	125.5	118.6	111.7	104.8
97.5°	83.0	91.7	100.4	109.1	117.8	126.5	135.3	144.0	136.6	129.0	121.6
100°	109.1	125.4	141.6	157.8	174.0	190.3	206.6	222.9	208.6	194.3	180.0
102.5°	227.8	262.3	296.7	331.3	365.8	400.3	435.0	469.5	436.7	403.9	371.1
105°	442.3	498.1	554.1	610.0	665.9	721.8	778.1	834.0	781.6	729.1	676.8
107.5°	701.4	758.3	814.9	871.6	928.4	985.2	1042.3	1099.0	1048.0	996.7	945.7
110°	862.4	903.8	945.3	986.6	1028.0	1069.5	1111.3	1152.9	1122.1	1091.5	1060.7



TEST NUMBER: P1444662  
 CATALOG NUMBER: EHBR1-24-UNV-TA-L930-UPL30

**CANDELA DISTRIBUTION (continued):**

	27.5°	30°	32.5°	35°	37.5°	40°	42.5°	45°	47.5°	50°	52.5°
112.5°	897.6	927.2	956.9	986.6	1016.1	1045.8	1076.1	1105.8	1090.5	1075.0	1059.7
115°	848.4	868.4	888.4	908.4	928.5	948.4	969.2	989.4	984.5	979.6	974.9
117.5°	763.3	774.6	785.9	797.0	808.2	819.5	831.7	843.1	844.0	845.0	846.0
120°	672.7	677.5	682.3	687.2	691.9	696.6	702.7	707.7	711.9	716.1	720.4
122.5°	595.4	597.2	599.2	601.1	602.9	604.8	608.1	610.3	613.2	616.3	619.3
125°	533.0	534.1	535.0	535.9	536.8	537.9	540.5	541.7	542.1	542.3	542.7
127.5°	490.8	491.0	491.4	491.6	491.8	492.2	494.1	494.8	493.2	491.6	489.9
130°	459.7	460.4	460.9	461.6	462.1	462.8	465.1	466.2	463.2	460.2	457.2
132.5°	439.2	440.0	440.7	441.5	442.2	442.9	445.6	446.7	443.4	439.9	436.4
135°	421.7	422.7	423.6	424.4	425.3	426.3	429.3	430.7	427.5	424.1	420.9
137.5°	406.8	407.8	408.7	409.7	410.5	411.5	414.8	416.3	413.7	411.0	408.5
140°	394.0	395.0	396.1	397.3	398.3	399.5	403.1	404.8	402.8	400.7	398.7
142.5°	381.0	382.6	384.1	385.6	387.0	388.7	392.7	394.9	393.4	391.8	390.4
145°	372.3	374.0	375.7	377.4	379.1	380.9	385.5	387.9	387.0	386.0	385.1
147.5°	364.2	365.8	367.4	368.9	370.5	372.4	377.0	379.4	378.9	378.3	377.8
150°	356.4	358.0	359.5	361.2	362.9	364.7	369.7	372.3	371.9	371.3	370.8
152.5°	347.6	349.1	350.5	351.9	353.4	355.1	361.0	363.6	363.1	362.6	362.2
155°	341.8	343.0	344.1	345.3	346.5	347.8	354.0	356.4	356.2	355.9	355.7
157.5°	339.3	340.1	340.8	341.7	342.6	343.5	349.8	352.0	351.7	351.6	351.3
160°	337.2	337.9	338.5	339.2	339.8	340.6	346.9	349.0	348.8	348.5	348.3
162.5°	335.8	336.8	337.5	338.4	339.2	340.1	346.6	349.0	348.4	348.1	347.7
165°	336.8	337.2	337.7	338.4	338.9	339.4	345.4	347.3	347.2	346.9	346.7
167.5°	338.2	338.8	339.3	340.0	340.5	341.2	346.8	348.6	348.4	348.2	348.1
170°	340.6	341.2	341.5	342.1	342.6	343.2	347.8	349.3	349.1	348.6	348.3
172.5°	342.9	343.6	344.1	344.6	345.1	345.8	349.7	351.2	350.9	350.7	350.2
175°	343.0	343.4	343.9	344.3	344.8	345.3	348.3	349.4	349.3	349.2	349.1
177.5°	345.9	346.0	346.4	346.7	347.1	347.4	349.3	350.0	350.0	350.0	349.9
180°	347.7	347.7	347.7	347.7	347.7	347.7	347.7	347.7	347.7	347.7	347.7



TEST NUMBER: P1444662  
 CATALOG NUMBER: EHBR1-24-UNV-TA-L930-UPL30

**CANDELA DISTRIBUTION (continued):**

	55°	57.5°	60°	62.5°	65°	67.5°	70°	72.5°	75°	77.5°	80°
0°	19033.5	19033.5	19033.5	19033.5	19033.5	19033.5	19033.5	19033.5	19033.5	19033.5	19033.5
2.5°	19074.3	19081.0	19082.0	19089.8	19089.2	19098.5	19097.0	19104.7	19100.2	19106.5	19101.2
5°	19522.3	19562.9	19584.2	19623.9	19636.3	19671.9	19681.9	19714.2	19715.6	19741.2	19735.4
7.5°	20155.7	20215.6	20251.1	20300.2	20325.0	20365.8	20383.8	20414.0	20423.8	20447.7	20449.6
10°	20533.9	20563.0	20583.3	20597.0	20609.5	20615.3	20622.2	20620.3	20622.2	20619.5	20625.3
12.5°	20385.2	20342.7	20314.6	20261.5	20230.6	20171.8	20143.0	20086.5	20066.0	20017.4	20010.4
15°	19631.7	19483.7	19379.2	19227.1	19131.5	18981.9	18894.4	18759.5	18697.8	18590.5	18562.3
17.5°	18258.5	17983.7	17771.2	17498.4	17309.2	17054.4	16894.0	16683.1	16567.5	16397.4	16338.5
20°	16333.2	15926.7	15607.9	15228.0	14956.1	14617.4	14400.5	14127.1	13968.3	13759.3	13674.6
22.5°	14072.9	13566.8	13168.5	12719.8	12391.7	12014.3	11754.5	11458.5	11285.8	11058.9	10958.3
25°	11743.2	11185.0	10742.3	10269.5	9922.9	9544.5	9284.7	8994.0	8815.2	8599.7	8499.9
27.5°	9515.0	8950.1	8522.1	8082.5	7764.7	7423.3	7188.7	6934.9	6776.3	6592.4	6498.4
30°	7548.7	7050.4	6686.3	6321.5	6057.0	5779.8	5584.9	5374.5	5235.4	5077.8	4988.3
32.5°	5946.7	5562.0	5276.9	4987.4	4771.0	4539.3	4370.9	4185.3	4059.7	3919.1	3838.0
35°	4709.7	4410.8	4183.4	3945.1	3759.2	3561.8	3413.4	3253.3	3140.6	3019.4	2949.4
37.5°	3721.1	3483.5	3296.3	3098.4	2945.7	2782.1	2727.1	2543.2	2426.5	2329.8	2262.9
40°	2920.4	2731.4	2576.6	2425.1	2300.6	2176.6	2077.1	1978.9	1903.5	1834.3	1786.5
42.5°	2280.6	2143.6	2030.5	1919.7	1828.8	1738.4	1666.3	1598.7	1547.9	1502.7	1471.9
45°	1812.9	1718.8	1640.2	1562.1	1498.0	1437.7	1389.1	1346.0	1313.2	1286.0	1266.8
47.5°	1489.4	1424.9	1369.5	1316.7	1273.3	1233.8	1201.3	1190.7	1155.4	1131.6	1122.6
50°	1265.8	1226.8	1184.7	1145.8	1116.8	1087.9	1066.8	1046.1	1032.9	1022.0	1018.7
52.5°	1098.9	1069.1	1045.7	1021.1	1001.9	981.3	966.8	953.0	945.8	940.1	939.3
55°	974.8	954.0	938.5	922.0	910.5	898.4	890.9	883.6	880.4	877.5	877.8
57.5°	880.9	867.0	856.9	846.2	840.0	834.2	832.3	830.5	831.4	831.9	833.5
60°	812.5	803.5	797.1	791.0	788.4	786.5	787.9	789.5	792.8	795.5	797.9
62.5°	760.1	754.9	751.9	748.5	748.2	748.4	751.1	753.9	758.1	761.2	763.5
65°	706.1	703.1	702.1	700.1	701.1	701.8	705.2	707.2	711.4	713.9	716.8
67.5°	651.6	650.9	651.5	651.5	653.4	655.1	658.3	660.7	664.2	666.5	668.9
70°	611.3	611.6	613.1	613.4	615.4	616.5	619.3	620.9	624.1	625.9	628.9
72.5°	572.1	571.5	571.8	571.0	571.7	571.4	572.9	573.7	576.4	577.9	581.4
75°	530.5	528.7	528.3	526.4	526.5	525.1	525.8	525.7	527.5	528.2	530.7
77.5°	480.1	477.1	475.7	472.6	472.5	471.3	472.6	473.3	476.4	477.9	480.8
80°	419.8	415.2	413.0	409.4	410.0	409.8	413.0	415.3	419.1	419.8	423.5
82.5°	349.0	344.2	342.0	338.4	339.3	339.3	342.1	342.6	345.9	347.4	351.6
85°	249.9	251.7	246.7	247.0	246.0	247.9	249.9	252.3	255.0	259.6	263.2
87.5°	147.1	146.5	148.3	148.5	151.0	152.4	156.5	158.8	163.3	167.0	173.4
90°	100.0	96.1	95.8	93.5	94.3	92.0	92.9	90.5	92.1	91.1	93.4
92.5°	71.6	67.2	62.2	57.7	52.8	48.5	46.0	44.0	41.6	39.7	37.2
95°	97.9	91.0	84.1	77.3	70.4	63.5	61.0	58.5	56.0	53.5	51.0
97.5°	114.2	106.9	99.5	92.1	84.7	77.3	75.6	73.9	72.3	70.6	68.9
100°	165.7	151.4	137.1	122.8	108.5	94.3	92.9	91.6	90.3	88.9	87.5
102.5°	338.4	305.7	273.0	240.2	207.5	174.7	169.0	163.3	157.6	151.9	146.1
105°	624.3	571.8	519.4	467.1	414.7	362.3	346.7	331.0	315.4	299.8	284.1
107.5°	894.5	843.4	792.3	741.2	690.1	639.0	614.4	589.7	564.9	540.2	515.5
110°	1029.9	999.2	968.7	937.8	907.4	876.7	853.0	829.6	805.9	782.4	758.9



TEST NUMBER: P1444662  
 CATALOG NUMBER: EHBR1-24-UNV-TA-L930-UPL30

**CANDELA DISTRIBUTION (continued):**

	55°	57.5°	60°	62.5°	65°	67.5°	70°	72.5°	75°	77.5°	80°
112.5°	1044.3	1029.1	1013.7	998.4	983.1	967.9	956.4	944.9	933.5	922.0	910.4
115°	970.0	965.2	960.3	955.7	950.9	946.1	945.2	944.5	943.6	942.9	942.1
117.5°	846.9	847.9	848.8	849.9	850.9	851.9	858.2	864.2	870.5	876.8	883.1
120°	724.7	728.9	733.1	737.4	741.7	746.1	754.3	762.5	770.8	779.3	787.8
122.5°	622.3	625.2	628.3	631.3	634.4	637.4	645.5	653.8	662.0	670.4	678.9
125°	542.9	543.1	543.4	543.6	544.0	544.3	551.1	557.9	564.7	571.7	578.5
127.5°	488.3	486.6	485.0	483.4	481.7	480.1	484.2	488.3	492.4	496.5	500.6
130°	454.2	451.2	448.1	445.2	442.0	439.2	440.8	442.5	444.1	445.9	447.6
132.5°	432.8	429.4	425.8	422.3	418.7	415.2	415.3	415.4	415.4	415.6	415.9
135°	417.5	414.2	410.7	407.4	404.0	400.7	399.9	399.1	398.3	397.7	397.1
137.5°	405.8	403.2	400.6	397.9	395.2	392.5	391.2	390.3	389.1	388.2	387.2
140°	396.6	394.6	392.4	390.3	388.2	386.1	385.1	384.3	383.4	382.6	381.7
142.5°	388.8	387.3	385.7	384.3	382.7	381.1	380.2	379.3	378.5	377.7	376.9
145°	384.1	383.2	382.2	381.1	380.2	379.3	378.5	377.8	377.1	376.6	376.1
147.5°	377.2	376.7	376.1	375.4	374.8	374.2	373.7	373.4	372.9	372.6	372.1
150°	370.3	369.8	369.2	368.8	368.0	367.5	367.3	367.1	366.9	366.9	366.5
152.5°	361.6	361.3	360.7	360.3	359.7	359.1	359.0	358.9	358.7	358.6	358.2
155°	355.3	355.0	354.7	354.4	354.0	353.8	353.4	353.1	352.8	352.4	352.1
157.5°	351.0	350.8	350.4	350.2	349.8	349.5	349.2	349.0	348.6	348.3	348.0
160°	348.0	347.8	347.5	347.2	346.9	346.7	346.1	345.7	345.1	344.8	344.3
162.5°	347.3	346.8	346.5	346.0	345.5	345.1	344.8	344.4	344.2	343.9	343.5
165°	346.4	346.1	345.9	345.6	345.3	345.0	344.5	344.2	343.6	343.2	342.7
167.5°	347.7	347.5	347.3	347.1	346.7	346.4	346.0	345.6	345.1	344.7	344.2
170°	348.0	347.6	347.3	346.8	346.5	346.0	345.6	345.1	344.7	344.3	343.9
172.5°	350.0	349.8	349.3	349.1	348.6	348.3	347.9	347.5	347.2	346.7	346.6
175°	349.0	349.0	348.9	348.6	348.6	348.4	348.3	348.3	348.1	348.0	347.8
177.5°	349.9	349.8	349.8	349.7	349.6	349.6	349.3	349.1	348.9	348.6	348.5
180°	347.7	347.7	347.7	347.7	347.7	347.7	347.7	347.7	347.7	347.7	347.7



TEST NUMBER: P1444662  
 CATALOG NUMBER: EHBR1-24-UNV-TA-L930-UPL30

**CANDELA DISTRIBUTION (continued):**

	82.5°	85°	87.5°	90°	92.5°	95°	97.5°	100°	102.5°	105°	107.5°
0°	19033.5	19033.5	19033.5	19033.5	19033.5	19033.5	19033.5	19033.5	19033.5	19033.5	19033.5
2.5°	19106.6	19101.8	19104.2	19095.2	19097.3	19086.5	19085.5	19073.3	19072.2	19060.7	19056.3
5°	19753.6	19742.9	19755.0	19736.2	19739.9	19715.6	19713.5	19682.1	19671.2	19631.9	19614.9
7.5°	20464.6	20460.6	20467.9	20452.3	20451.7	20430.0	20421.1	20392.8	20375.4	20334.0	20307.6
10°	20620.3	20624.0	20618.0	20619.5	20611.1	20608.7	20600.0	20594.5	20580.3	20569.6	20553.9
12.5°	19973.5	19977.5	19952.8	19968.4	19956.1	19985.0	19982.5	20016.6	20021.8	20064.8	20081.1
15°	18478.8	18474.1	18426.7	18456.6	18440.6	18503.9	18518.1	18603.3	18648.9	18758.3	18825.5
17.5°	16220.6	16208.4	16141.7	16178.1	16159.6	16253.0	16284.3	16420.6	16505.6	16681.9	16807.5
20°	13528.8	13505.4	13427.4	13469.9	13450.9	13557.0	13601.7	13766.4	13876.0	14109.6	14275.7
22.5°	10803.5	10766.7	10690.3	10729.9	10711.9	10821.9	10880.1	11045.3	11170.9	11410.6	11604.5
25°	8356.3	8323.4	8249.5	8277.3	8270.7	8363.6	8415.4	8571.7	8695.1	8923.4	9108.5
27.5°	6373.5	6339.3	6272.6	6292.2	6285.5	6364.7	6413.5	6544.1	6650.2	6842.5	7005.0
30°	4878.0	4836.7	4780.2	4791.0	4786.4	4850.6	4896.1	5006.1	5097.1	5259.6	5399.6
32.5°	3739.0	3697.5	3645.6	3650.6	3643.8	3694.1	3731.6	3827.3	3906.6	4044.7	4166.6
35°	2860.8	2909.3	2798.3	2868.6	2795.4	2902.9	2864.2	2924.0	2992.2	3108.6	3210.2
37.5°	2199.3	2165.6	2137.0	2133.9	2133.7	2158.7	2188.1	2245.7	2305.7	2392.4	2482.0
40°	1742.8	1719.1	1700.7	1699.3	1700.7	1718.4	1740.1	1779.9	1823.9	1886.2	1952.0
42.5°	1445.5	1429.7	1418.6	1417.9	1421.4	1433.9	1449.1	1472.7	1501.3	1541.7	1586.8
45°	1251.1	1242.3	1236.2	1235.8	1237.4	1243.9	1252.7	1267.4	1285.6	1310.7	1339.3
47.5°	1114.6	1112.6	1108.7	1108.8	1107.1	1109.7	1110.7	1119.0	1128.6	1147.6	1184.9
50°	1015.4	1015.4	1012.7	1012.5	1010.0	1009.8	1007.7	1011.0	1015.5	1027.3	1039.2
52.5°	936.9	936.6	933.6	933.1	930.4	930.3	928.5	929.7	930.3	936.3	943.4
55°	875.5	873.7	869.8	868.6	867.6	869.1	868.4	868.5	867.7	870.2	872.3
57.5°	831.4	829.0	825.5	824.4	824.1	826.0	826.0	825.4	822.1	819.8	816.6
60°	796.6	794.2	790.4	789.4	789.9	792.5	792.3	790.2	785.3	781.0	775.9
62.5°	762.4	761.4	759.4	759.2	758.6	759.1	757.3	755.1	750.2	745.6	740.2
65°	716.5	717.0	715.5	715.7	714.0	713.6	711.0	708.8	703.8	699.7	694.1
67.5°	668.8	669.2	667.9	667.9	667.0	667.2	665.6	663.5	659.4	656.0	651.7
70°	629.5	630.5	629.8	630.0	628.9	628.4	625.9	623.9	619.6	616.8	612.9
72.5°	582.4	584.6	584.5	585.0	583.3	582.4	579.4	576.9	573.1	570.8	567.7
75°	531.7	534.4	535.2	536.4	534.0	532.7	529.4	527.5	524.3	522.9	520.9
77.5°	482.1	485.1	488.0	490.7	486.8	483.4	479.2	476.0	471.5	469.7	466.5
80°	426.4	431.8	438.2	443.5	436.6	429.5	422.7	417.6	411.6	409.1	405.2
82.5°	353.8	359.2	363.0	366.3	361.5	356.4	349.8	345.3	338.8	336.4	331.9
85°	268.8	275.6	277.8	279.6	276.5	273.8	267.5	259.1	255.0	248.6	245.3
87.5°	176.8	180.9	181.6	182.2	180.4	179.0	175.0	171.1	164.1	159.0	152.8
90°	91.7	92.9	89.8	89.3	88.3	89.9	87.2	87.4	83.1	82.3	78.6
92.5°	35.2	32.9	30.7	28.5	31.0	32.9	35.4	37.2	39.7	41.6	44.0
95°	48.5	45.9	43.4	40.9	43.0	44.9	47.0	48.9	51.0	52.9	55.0
97.5°	67.2	65.6	63.9	62.2	63.4	64.5	65.7	66.8	68.1	69.2	70.5
100°	86.2	84.8	83.5	82.2	82.2	82.2	82.2	82.2	82.2	82.2	82.2
102.5°	140.4	134.7	129.0	123.3	127.2	131.0	134.9	138.8	142.6	146.4	150.4
105°	268.5	252.9	237.3	221.7	236.8	251.9	267.0	282.1	297.2	312.5	327.6
107.5°	490.8	466.2	441.5	416.8	444.4	471.9	499.4	526.9	554.5	582.0	609.6
110°	735.5	711.9	688.5	665.0	694.2	723.3	752.6	781.7	811.0	840.2	869.5



TEST NUMBER: P1444662  
 CATALOG NUMBER: EHBR1-24-UNV-TA-L930-UPL30

**CANDELA DISTRIBUTION (continued):**

	82.5°	85°	87.5°	90°	92.5°	95°	97.5°	100°	102.5°	105°	107.5°
112.5°	899.0	887.6	876.2	864.8	883.6	902.4	921.1	940.1	958.9	977.8	996.5
115°	941.4	940.7	940.1	939.3	948.3	957.2	966.0	975.0	984.0	992.9	1001.9
117.5°	889.3	895.6	901.9	908.3	911.2	914.0	917.0	919.8	922.9	925.8	928.7
120°	796.2	804.6	813.2	821.7	820.6	819.4	818.2	817.1	816.1	815.0	814.1
122.5°	687.2	695.7	704.3	712.7	710.2	707.7	705.2	702.8	700.4	698.1	695.8
125°	585.7	592.7	599.9	607.0	604.5	602.0	599.6	597.2	594.7	592.4	590.3
127.5°	505.0	509.4	513.7	518.2	517.0	515.9	514.9	513.7	512.9	512.0	511.1
130°	449.6	451.5	453.7	455.6	455.9	456.3	456.8	457.2	458.0	458.5	459.2
132.5°	416.3	416.7	417.1	417.7	419.0	420.4	421.9	423.4	425.1	426.6	428.5
135°	396.6	396.2	395.8	395.5	397.5	399.4	401.6	403.7	406.1	408.4	410.9
137.5°	386.4	385.5	384.9	384.1	386.1	388.1	390.2	392.5	394.7	397.1	399.7
140°	381.0	380.3	379.9	379.3	381.3	383.2	385.3	387.5	389.8	392.1	394.6
142.5°	376.2	375.5	375.0	374.5	376.2	378.1	380.1	382.0	384.2	386.3	388.4
145°	375.6	375.1	374.7	374.4	375.6	377.0	378.4	379.8	381.5	382.9	384.7
147.5°	371.9	371.6	371.4	371.2	372.2	373.1	374.3	375.3	376.4	377.6	378.9
150°	366.5	366.3	366.3	366.3	367.0	367.6	368.3	368.9	369.7	370.4	371.4
152.5°	358.3	358.1	358.2	358.2	358.8	359.3	360.0	360.6	361.4	362.0	363.0
155°	352.0	351.8	351.6	351.4	351.6	351.8	352.1	352.3	352.7	353.0	353.3
157.5°	347.9	347.6	347.5	347.2	347.2	347.2	347.3	347.3	347.4	347.4	347.5
160°	344.0	343.4	343.1	342.7	342.9	343.0	343.2	343.3	343.5	343.8	344.0
162.5°	343.4	343.1	342.8	342.6	342.4	342.1	342.0	341.8	341.6	341.4	341.4
165°	342.3	341.8	341.5	340.9	340.9	340.9	340.9	340.9	340.8	340.8	340.9
167.5°	343.9	343.4	343.0	342.6	342.2	341.8	341.5	341.1	340.9	340.5	340.3
170°	343.6	343.2	342.8	342.5	342.3	342.1	342.0	341.8	341.8	341.7	341.7
172.5°	346.2	345.9	345.5	345.2	345.0	344.9	344.9	344.8	344.6	344.6	344.6
175°	347.7	347.6	347.5	347.4	347.1	346.9	346.7	346.6	346.5	346.2	346.0
177.5°	348.3	348.0	347.8	347.6	347.5	347.5	347.5	347.5	347.5	347.5	347.5
180°	347.7	347.7	347.7	347.7	347.7	347.7	347.7	347.7	347.7	347.7	347.7



TEST NUMBER: P1444662  
 CATALOG NUMBER: EHBR1-24-UNV-TA-L930-UPL30

**CANDELA DISTRIBUTION (continued):**

	110°	112.5°	115°	117.5°	120°	122.5°	125°	127.5°	130°	132.5°	135°
0°	19033.5	19033.5	19033.5	19033.5	19033.5	19033.5	19033.5	19033.5	19033.5	19033.5	19033.5
2.5°	19044.0	19039.0	19025.8	19019.3	19007.1	19001.0	18991.4	18985.3	18977.6	18971.9	18969.0
5°	19571.6	19547.3	19498.5	19468.5	19415.7	19381.0	19328.7	19290.3	19236.3	19196.4	19145.3
7.5°	20258.1	20220.8	20158.2	20110.9	20037.1	19980.8	19898.0	19831.9	19740.4	19664.5	19571.1
10°	20537.6	20515.8	20487.7	20457.3	20416.4	20376.3	20319.8	20262.3	20185.6	20109.2	20009.5
12.5°	20124.5	20145.0	20185.6	20204.4	20235.4	20245.9	20260.1	20253.5	20240.9	20209.7	20164.5
15°	18954.6	19040.3	19175.7	19269.5	19400.7	19492.9	19614.9	19693.4	19783.8	19837.8	19889.2
17.5°	17030.1	17195.9	17434.9	17625.6	17881.5	18089.7	18344.6	18545.0	18776.3	18953.7	19142.7
20°	14565.1	14797.3	15127.3	15407.4	15778.3	16092.8	16495.8	16833.4	17227.1	17555.3	17909.6
22.5°	11912.2	12185.3	12563.3	12901.3	13344.2	13739.8	14244.6	14691.0	15223.2	15700.1	16227.6
25°	9409.5	9677.1	10062.1	10412.1	10890.3	11326.0	11877.5	12389.6	13007.2	13583.3	14244.6
27.5°	7263.1	7500.9	7839.4	8154.4	8592.3	9020.1	9579.8	10125.8	10785.0	11404.0	12116.7
30°	5609.2	5802.1	6073.3	6326.7	6678.3	7028.1	7526.7	8031.7	8687.5	9329.1	10059.7
32.5°	4347.0	4511.4	4737.8	4943.5	5214.4	5478.2	5845.4	6248.8	6824.3	7438.7	8145.2
35°	3365.0	3505.7	3698.4	3875.7	4098.3	4307.9	4581.8	4869.8	5308.9	5825.7	6458.0
37.5°	2682.8	2740.2	2877.7	3022.8	3207.9	3380.0	3594.3	3807.3	4121.4	4529.2	5045.7
40°	2040.3	2131.3	2243.3	2357.6	2497.7	2635.7	2870.9	2984.1	3190.9	3483.6	3884.5
42.5°	1646.2	1710.3	1789.1	1868.5	1966.2	2062.3	2181.2	2302.3	2457.0	2655.2	2940.4
45°	1377.6	1419.3	1470.1	1523.1	1587.2	1652.8	1732.5	1815.6	1920.4	2042.3	2215.5
47.5°	1198.1	1221.2	1254.4	1290.5	1334.5	1379.9	1431.7	1484.6	1549.8	1622.1	1720.7
50°	1058.0	1077.3	1103.1	1127.2	1157.6	1204.1	1224.7	1253.9	1293.0	1335.6	1390.8
52.5°	956.6	969.5	985.7	999.6	1018.8	1036.1	1059.0	1079.2	1106.3	1131.8	1167.5
55°	877.8	882.4	891.6	900.5	913.8	925.7	941.4	954.6	971.9	987.1	1009.6
57.5°	816.8	817.2	821.5	826.1	834.6	842.1	852.9	861.6	873.6	883.3	896.8
60°	773.0	770.7	771.5	773.2	777.9	782.8	789.7	795.3	802.9	808.4	815.9
62.5°	736.5	732.9	732.0	731.5	733.9	735.7	739.5	742.2	746.5	748.9	752.9
65°	690.5	686.2	684.5	682.4	683.1	682.6	684.0	684.1	686.3	686.8	689.1
67.5°	648.7	645.1	642.9	640.2	639.0	637.2	636.3	634.4	634.1	632.6	632.3
70°	610.6	607.0	605.3	602.8	601.5	598.9	597.4	594.3	592.4	589.6	588.0
72.5°	566.5	564.5	564.0	562.3	561.9	560.4	559.8	557.6	556.3	553.8	552.5
75°	520.4	518.8	518.6	516.9	516.9	515.2	514.7	512.4	511.2	508.8	507.7
77.5°	465.5	463.1	462.5	460.5	461.0	460.1	460.8	459.1	458.3	455.8	455.0
80°	403.8	400.7	399.4	396.8	397.5	396.3	397.5	397.4	398.3	396.3	395.9
82.5°	330.5	327.1	326.5	324.7	325.9	326.1	328.7	327.2	327.8	326.0	326.8
85°	240.5	238.0	234.5	234.0	231.7	234.0	231.0	233.0	229.7	232.1	228.9
87.5°	149.1	143.9	141.2	137.4	136.0	132.4	130.9	128.3	129.1	127.9	128.6
90°	78.9	75.7	77.0	75.6	77.4	76.5	79.2	79.2	82.2	82.1	85.3
92.5°	46.0	48.1	52.1	56.3	60.2	64.3	68.3	72.4	76.4	80.6	84.4
95°	56.9	59.0	64.3	69.7	75.1	80.5	85.9	91.3	96.7	102.0	107.4
97.5°	71.6	72.8	78.2	83.6	88.9	94.3	99.7	105.2	110.6	116.0	121.4
100°	82.2	82.3	97.5	112.8	128.1	143.4	158.7	174.0	189.3	204.6	219.8
102.5°	154.3	158.1	196.7	235.3	273.9	312.5	351.1	389.8	428.4	467.1	505.8
105°	342.7	357.9	416.8	475.7	534.5	593.5	652.5	711.6	770.4	829.4	888.4
107.5°	637.2	664.7	718.0	771.3	824.4	877.8	931.1	984.4	1037.6	1090.8	1144.3
110°	898.6	927.9	963.6	999.2	1035.0	1070.6	1106.3	1142.1	1177.8	1213.6	1249.4



TEST NUMBER: P1444662  
 CATALOG NUMBER: EHBR1-24-UNV-TA-L930-UPL30

**CANDELA DISTRIBUTION (continued):**

	110°	112.5°	115°	117.5°	120°	122.5°	125°	127.5°	130°	132.5°	135°
112.5°	1015.3	1034.3	1055.0	1075.8	1096.6	1117.4	1138.3	1159.0	1180.0	1200.8	1221.8
115°	1010.9	1020.0	1027.9	1036.1	1044.1	1052.3	1060.4	1068.7	1076.9	1085.1	1093.2
117.5°	931.7	934.8	936.0	937.3	938.5	939.9	941.2	942.6	944.1	945.5	946.8
120°	813.1	812.2	810.8	809.4	808.0	806.7	805.6	804.3	803.1	801.8	800.6
122.5°	693.4	691.3	689.9	688.6	687.4	686.3	685.0	683.9	682.9	681.7	680.6
125°	588.0	585.9	587.1	588.2	589.4	590.6	591.8	593.1	594.4	595.6	597.0
127.5°	510.2	509.6	512.5	515.6	518.7	521.9	525.0	528.2	531.3	534.6	537.6
130°	459.9	460.8	464.7	468.7	472.7	476.8	480.8	484.9	488.9	492.9	496.9
132.5°	430.2	432.2	435.9	439.8	443.5	447.4	451.4	455.3	459.1	463.1	466.9
135°	413.3	416.0	419.4	422.9	426.4	430.1	433.5	437.2	440.6	444.2	447.6
137.5°	402.0	404.7	407.4	410.3	413.0	416.0	418.7	421.7	424.4	427.3	430.1
140°	397.0	399.6	401.0	402.8	404.4	406.0	407.5	409.2	410.7	412.5	413.9
142.5°	390.7	393.2	394.1	395.0	396.1	397.3	398.3	399.2	400.2	401.2	402.1
145°	386.3	388.2	388.2	388.3	388.4	388.5	388.5	388.7	388.7	388.8	388.8
147.5°	380.2	381.5	381.1	381.1	381.0	380.7	380.6	380.4	380.2	380.1	379.8
150°	372.2	373.2	372.7	372.4	371.8	371.4	370.9	370.5	370.0	369.6	369.0
152.5°	363.6	364.5	363.8	363.4	362.8	362.3	361.6	361.3	360.6	360.1	359.6
155°	353.6	354.0	353.7	353.4	353.2	352.8	352.4	352.4	352.2	351.8	351.6
157.5°	347.6	347.7	347.5	347.4	347.2	347.0	346.9	346.8	346.7	346.7	346.7
160°	344.1	344.4	344.2	344.0	343.8	343.6	343.5	343.4	343.4	343.4	343.4
162.5°	341.1	341.0	340.9	340.7	340.6	340.4	340.3	340.4	340.3	340.4	340.4
165°	340.9	341.1	340.7	340.4	340.1	339.9	339.6	339.4	339.3	339.2	339.1
167.5°	340.1	340.0	340.0	340.0	340.0	340.1	340.1	340.4	340.5	340.8	340.9
170°	341.6	341.7	341.4	341.3	341.1	341.0	341.0	340.9	340.9	340.9	340.7
172.5°	344.6	344.6	344.2	343.9	343.6	343.3	342.9	342.7	342.5	342.2	341.8
175°	345.8	345.6	345.4	345.2	345.0	344.8	344.7	344.4	344.2	344.1	343.9
177.5°	347.4	347.2	347.1	347.1	347.1	347.0	347.0	346.9	346.9	346.9	346.7
180°	347.7	347.7	347.7	347.7	347.7	347.7	347.7	347.7	347.7	347.7	347.7



TEST NUMBER: P1444662  
 CATALOG NUMBER: EHBR1-24-UNV-TA-L930-UPL30

**CANDELA DISTRIBUTION (continued):**

	137.5°	140°	142.5°	145°	147.5°	150°	152.5°	155°	157.5°	160°	162.5°
0°	19033.5	19033.5	19033.5	19033.5	19033.5	19033.5	19033.5	19033.5	19033.5	19033.5	19033.5
2.5°	18965.1	18964.9	18963.1	18963.9	18964.2	18965.6	18967.3	18969.0	18969.2	18970.7	18970.9
5°	19107.0	19060.1	19025.5	18987.2	18958.5	18932.7	18915.5	18901.9	18896.5	18897.9	18901.1
7.5°	19491.9	19395.0	19315.2	19224.3	19148.5	19068.3	19001.8	18938.6	18892.5	18858.2	18839.0
10°	19914.2	19796.3	19683.4	19552.0	19427.2	19294.1	19173.6	19052.2	18951.0	18863.0	18798.5
12.5°	20101.7	20018.3	19920.7	19796.7	19663.2	19509.6	19354.5	19188.3	19033.6	18890.1	18774.3
15°	19903.2	19903.4	19867.9	19808.2	19715.6	19592.9	19445.1	19271.8	19089.4	18903.2	18733.1
17.5°	19273.3	19392.2	19458.3	19500.1	19487.3	19442.1	19348.0	19214.9	19044.8	18846.5	18639.0
20°	18191.5	18471.9	18671.8	18851.5	18952.2	19019.1	19012.5	18958.3	18837.2	18668.6	18452.5
22.5°	16676.2	17146.8	17518.0	17864.2	18107.0	18304.5	18398.4	18438.3	18383.4	18265.9	18062.9
25°	14835.7	15475.4	16021.3	16551.1	16948.6	17290.2	17495.4	17640.0	17651.5	17590.1	17409.0
27.5°	12790.5	13545.7	14236.6	14940.8	15499.6	15990.6	16312.8	16548.6	16623.5	16613.7	16449.2
30°	10747.9	11540.7	12302.3	13123.4	13815.0	14442.2	14867.9	15186.8	15309.7	15333.2	15175.0
32.5°	8819.0	9600.7	10360.2	11218.6	11979.7	12698.6	13201.4	13580.2	13723.1	13756.8	13583.3
35°	7068.2	7789.4	8511.3	9343.2	10099.9	10844.4	11374.2	11770.8	11904.3	11926.7	11725.9
37.5°	5550.1	6164.5	6793.5	7540.0	8234.8	8934.1	9437.4	9810.2	9907.4	9901.4	9674.1
40°	4271.9	4749.6	5254.9	5869.5	6447.2	7038.2	7463.3	7771.4	7822.5	7784.7	7545.9
42.5°	3212.2	3557.2	3923.6	4382.4	4811.0	5253.4	5562.6	5791.3	5798.6	5738.8	5524.5
45°	2393.1	2729.7	2883.4	3160.7	3436.8	3730.9	3919.8	4061.1	4039.2	3986.6	3823.7
47.5°	1824.3	1953.6	2090.9	2262.9	2423.7	2757.5	2732.8	2959.7	2796.2	2907.7	2662.4
50°	1448.7	1521.0	1595.0	1686.2	1770.2	1857.5	1912.0	1952.7	1947.4	1929.9	1882.9
52.5°	1232.4	1254.8	1291.3	1343.1	1390.1	1437.2	1468.3	1493.5	1494.1	1487.0	1463.3
55°	1030.1	1058.5	1084.6	1118.6	1176.3	1185.2	1229.8	1220.7	1224.2	1211.9	1224.5
57.5°	908.2	924.7	939.4	959.7	976.3	995.8	1007.3	1018.4	1017.3	1014.9	1002.8
60°	821.9	831.0	839.2	850.9	860.1	871.1	876.4	882.0	880.2	876.1	865.3
62.5°	755.2	761.0	765.7	773.2	778.9	785.7	788.4	790.8	788.4	784.6	775.0
65°	689.6	693.3	696.2	702.0	705.9	711.8	714.1	716.3	714.2	711.1	703.8
67.5°	630.4	630.7	630.4	632.7	634.0	637.4	638.5	640.2	637.6	635.0	628.9
70°	585.4	584.5	583.3	584.3	584.5	586.2	586.5	586.2	583.2	578.6	571.9
72.5°	550.3	549.8	548.9	549.7	549.7	551.3	550.8	550.0	546.3	541.9	535.2
75°	505.1	504.8	503.1	503.1	501.7	502.2	500.4	499.4	495.2	491.6	485.6
77.5°	452.3	451.5	449.0	448.1	445.4	444.2	440.8	439.2	434.9	431.9	426.9
80°	393.3	392.5	389.2	387.5	383.3	380.6	375.5	372.6	367.7	364.8	359.9
82.5°	325.1	325.4	322.3	320.1	314.0	309.4	302.6	299.0	293.6	290.8	285.7
85°	231.3	228.0	229.6	229.6	225.7	221.7	216.2	212.4	207.8	205.1	201.6
87.5°	126.8	127.6	126.7	125.9	123.2	121.2	116.9	114.6	111.3	109.7	107.0
90°	79.5	76.9	71.4	68.9	63.4	59.9	53.8	50.7	45.0	43.6	40.3
92.5°	79.8	75.3	70.9	66.2	61.9	57.4	52.8	48.3	43.8	42.1	40.7
95°	100.9	94.3	87.8	81.2	74.7	68.1	61.7	55.1	48.6	47.2	45.9
97.5°	113.6	106.0	98.2	90.5	82.9	75.1	67.5	59.8	52.0	51.2	50.3
100°	202.1	184.5	166.6	148.9	131.2	113.4	95.6	77.9	60.2	59.2	58.1
102.5°	462.7	419.5	376.6	333.6	290.6	247.5	204.4	161.3	118.3	112.0	105.9
105°	823.2	758.0	692.9	627.8	562.6	497.3	432.3	367.0	301.8	280.9	259.9
107.5°	1083.0	1021.7	960.5	899.2	837.9	776.7	715.4	654.1	592.8	555.9	519.1
110°	1200.7	1152.0	1103.5	1054.8	1006.2	957.5	908.9	860.2	811.6	779.7	748.1



TEST NUMBER: P1444662  
 CATALOG NUMBER: EHBR1-24-UNV-TA-L930-UPL30

**CANDELA DISTRIBUTION (continued):**

	137.5°	140°	142.5°	145°	147.5°	150°	152.5°	155°	157.5°	160°	162.5°
112.5°	1186.1	1150.4	1114.8	1079.1	1043.5	1007.8	972.1	936.3	900.6	881.3	862.0
115°	1071.8	1050.3	1028.8	1007.3	985.8	964.2	942.7	921.1	899.5	889.3	879.0
117.5°	935.9	924.8	913.9	902.8	891.8	880.6	869.6	858.4	847.3	843.7	840.1
120°	797.4	794.0	790.4	787.1	783.6	780.2	776.6	773.2	769.6	769.9	770.3
122.5°	681.8	683.0	684.2	685.2	686.4	687.4	688.7	689.7	690.7	693.3	696.0
125°	600.0	603.0	606.2	609.2	612.1	615.2	618.3	621.1	624.2	626.8	629.5
127.5°	541.2	544.6	548.1	551.4	555.0	558.3	561.8	565.0	568.5	570.8	573.2
130°	499.9	502.8	505.8	508.7	511.7	514.5	517.4	520.4	523.3	525.1	526.8
132.5°	469.5	472.1	474.8	477.4	480.1	482.6	485.3	487.8	490.6	491.7	493.2
135°	449.7	451.5	453.5	455.3	457.4	459.3	461.3	463.2	465.3	466.1	467.0
137.5°	431.6	433.2	434.8	436.2	437.9	439.4	441.1	442.7	444.5	444.7	445.2
140°	415.6	417.2	418.9	420.5	422.4	424.0	425.9	427.7	429.4	429.8	430.2
142.5°	403.4	404.7	405.9	407.3	408.7	409.9	411.3	413.0	414.4	414.7	415.1
145°	390.4	391.9	393.5	395.0	396.6	398.3	400.2	401.9	403.7	403.8	404.0
147.5°	381.1	382.4	383.8	385.2	386.6	387.9	389.6	391.1	392.7	392.8	393.0
150°	370.5	372.0	373.5	374.9	376.5	378.1	379.8	381.5	383.4	383.7	384.1
152.5°	361.2	362.7	364.3	366.0	367.8	369.6	371.4	373.2	375.1	375.4	375.9
155°	353.2	354.8	356.5	358.1	359.8	361.5	363.3	365.1	366.9	367.5	368.0
157.5°	348.2	349.5	351.1	352.6	354.1	355.7	357.3	358.9	360.6	360.9	361.4
160°	344.7	345.9	347.3	348.6	350.0	351.4	352.8	354.2	355.7	356.0	356.5
162.5°	341.7	342.9	344.3	345.6	347.0	348.3	349.8	351.0	352.4	352.8	353.2
165°	340.0	340.9	341.9	342.8	343.8	344.8	345.8	346.8	347.8	348.3	348.9
167.5°	341.8	342.3	343.1	343.8	344.6	345.4	346.3	346.9	347.8	348.3	348.7
170°	341.5	342.0	342.7	343.4	344.2	344.9	345.6	346.2	347.1	347.5	348.0
172.5°	342.3	342.6	343.2	343.5	344.1	344.5	345.0	345.5	345.9	346.6	347.0
175°	344.2	344.3	344.6	344.8	345.0	345.2	345.5	345.9	346.1	346.5	346.9
177.5°	346.9	347.1	347.3	347.5	347.7	347.9	348.2	348.3	348.6	349.1	349.6
180°	347.7	347.7	347.7	347.7	347.7	347.7	347.7	347.7	347.7	347.7	347.7



TEST NUMBER: P1444662  
 CATALOG NUMBER: EHBR1-24-UNV-TA-L930-UPL30

**CANDELA DISTRIBUTION (continued):**

	165°	167.5°	170°	172.5°	175°	177.5°	180°	182.5°	185°	187.5°	190°
0°	19033.5	19033.5	19033.5	19033.5	19033.5	19033.5	19033.5	19033.5	19033.5	19033.5	19033.5
2.5°	18970.3	18970.0	18969.4	18968.6	18967.7	18968.3	18969.1	18971.3	18975.0	18980.6	18987.8
5°	18903.6	18907.6	18909.7	18910.1	18908.0	18906.9	18908.7	18913.9	18924.4	18942.1	18965.8
7.5°	18833.9	18838.6	18846.0	18851.5	18852.5	18851.2	18851.5	18859.6	18879.1	18913.5	18961.6
10°	18759.3	18745.1	18752.6	18766.2	18777.1	18779.1	18780.4	18790.1	18818.5	18870.4	18947.8
12.5°	18690.4	18645.6	18636.9	18649.2	18665.7	18671.1	18669.5	18673.7	18707.0	18775.7	18883.5
15°	18599.9	18515.4	18486.6	18489.7	18510.1	18517.4	18512.1	18503.9	18536.3	18620.2	18759.8
17.5°	18453.3	18317.1	18264.1	18261.8	18285.6	18292.0	18278.9	18253.5	18285.3	18390.0	18563.3
20°	18230.5	18029.4	17929.5	17913.7	17939.6	17932.0	17905.8	17867.5	17909.4	18036.7	18242.8
22.5°	17829.8	17575.2	17404.6	17349.5	17380.5	17359.8	17321.7	17272.7	17328.3	17472.9	17702.5
25°	17175.2	16881.0	16647.4	16516.3	16541.0	16504.0	16462.5	16403.0	16469.4	16635.3	16888.1
27.5°	16213.0	15873.2	15583.7	15366.7	15374.6	15326.2	15278.3	15201.4	15284.3	15480.8	15765.8
30°	14933.6	14540.4	14187.7	13892.9	13866.6	13819.5	13770.4	13669.5	13773.3	14008.4	14341.5
32.5°	13326.8	12890.2	12482.8	12110.0	12039.6	11993.8	11950.1	11834.0	11969.8	12244.0	12626.6
35°	11447.8	10982.7	10541.0	10115.2	9998.7	9952.8	9914.5	9803.3	9972.7	10271.2	10684.4
37.5°	9385.2	8910.1	8471.6	8035.0	7870.4	7808.1	7780.4	7707.5	7902.9	8198.0	8612.9
40°	7267.9	6826.0	6433.0	6047.3	5859.6	5764.2	5749.7	5736.4	5925.5	6181.5	6558.2
42.5°	5287.0	4930.6	4627.5	4332.7	4162.7	4032.5	4032.4	4072.0	4242.1	4433.9	4724.3
45°	3657.2	3418.1	3224.9	3027.9	3080.6	2821.1	2973.6	2895.3	2979.4	3103.0	3291.9
47.5°	2514.0	2383.4	2277.3	2167.3	2087.0	2010.5	2017.2	2066.6	2145.8	2219.1	2317.4
50°	1832.3	1765.8	1711.7	1654.6	1614.7	1580.9	1582.8	1604.2	1645.8	1684.5	1735.9
52.5°	1435.7	1399.0	1369.7	1338.0	1317.1	1300.4	1301.2	1311.7	1334.1	1356.2	1385.7
55°	1183.3	1179.0	1140.7	1112.4	1101.6	1090.3	1092.4	1096.5	1111.8	1124.7	1144.2
57.5°	991.7	974.5	963.1	948.2	941.3	933.4	935.2	936.7	946.9	955.6	969.6
60°	856.3	844.2	836.1	825.9	821.4	816.4	817.5	818.4	824.9	830.6	840.7
62.5°	766.4	755.5	748.5	740.6	737.4	734.0	734.8	735.1	739.2	743.4	751.0
65°	697.4	688.8	682.9	676.1	672.8	669.2	669.6	669.6	673.1	676.1	681.8
67.5°	624.4	617.9	614.1	608.7	606.5	602.9	602.9	601.7	603.9	605.2	609.0
70°	565.9	559.3	554.5	549.3	546.4	543.3	543.3	543.4	546.1	548.8	553.8
72.5°	529.7	523.4	519.1	514.6	511.9	509.2	508.8	508.5	510.4	511.9	515.2
75°	481.7	476.8	474.3	470.0	467.9	464.8	464.4	462.9	463.8	464.2	466.6
77.5°	423.6	418.9	416.9	412.6	410.8	407.3	407.1	405.6	406.3	405.7	407.7
80°	357.4	353.2	352.0	348.4	347.6	344.4	344.0	342.0	342.6	341.1	341.8
82.5°	283.5	279.6	278.7	275.5	275.5	272.6	272.4	269.6	269.6	267.1	263.2
85°	199.7	196.8	195.6	192.9	192.1	189.8	188.7	185.9	184.9	183.1	182.6
87.5°	105.4	103.6	101.9	100.7	98.3	94.2	93.8	90.9	91.2	89.1	89.2
90°	39.0	36.0	34.9	32.1	30.7	28.5	27.4	28.1	29.1	29.9	31.0
92.5°	39.2	37.7	36.3	34.8	33.2	31.7	30.2	31.7	33.2	34.8	36.3
95°	44.6	43.2	41.9	40.5	39.2	37.9	36.5	37.9	39.2	40.6	42.0
97.5°	49.5	48.7	47.9	47.0	46.2	45.3	44.5	45.4	46.3	47.1	47.9
100°	57.1	56.1	55.1	54.1	53.1	52.0	51.1	52.2	53.3	54.3	55.3
102.5°	99.7	93.5	87.3	81.1	74.9	68.7	62.5	68.7	74.9	81.2	87.4
105°	238.9	218.1	197.0	176.1	155.1	134.1	113.2	134.2	155.2	176.2	197.2
107.5°	482.1	445.4	408.5	371.7	334.6	297.8	260.9	297.8	334.7	371.7	408.6
110°	716.2	684.4	652.6	620.8	588.9	557.1	525.2	557.2	589.0	620.9	652.8



TEST NUMBER: P1444662  
 CATALOG NUMBER: EHBR1-24-UNV-TA-L930-UPL30

**CANDELA DISTRIBUTION (continued):**

	165°	167.5°	170°	172.5°	175°	177.5°	180°	182.5°	185°	187.5°	190°
112.5°	842.7	823.3	803.9	784.6	765.2	745.8	726.4	746.0	765.5	785.0	804.3
115°	868.9	858.6	848.5	838.1	827.9	817.6	807.2	817.8	828.2	838.6	849.0
117.5°	836.4	832.9	829.2	825.6	821.9	818.2	814.4	818.3	822.3	826.2	829.9
120°	770.6	770.9	771.2	771.5	771.7	771.9	772.1	772.3	772.3	772.3	772.2
122.5°	698.5	701.1	703.6	706.1	708.5	711.0	713.4	711.3	709.1	707.0	704.6
125°	632.1	634.8	637.3	639.9	642.4	645.0	647.3	645.4	643.2	641.0	638.7
127.5°	575.6	577.9	580.1	582.5	584.8	586.9	589.0	587.3	585.5	583.6	581.6
130°	528.6	530.5	532.1	533.8	535.4	536.9	538.2	537.3	536.1	535.0	533.7
132.5°	494.3	495.7	497.0	498.2	499.2	500.4	501.2	500.8	500.1	499.6	498.7
135°	467.8	468.7	469.3	470.2	470.8	471.4	471.8	471.9	471.7	471.5	471.1
137.5°	445.6	445.9	446.2	446.4	446.6	446.6	446.6	447.2	447.5	448.0	448.1
140°	430.5	431.0	431.3	431.6	431.8	431.9	431.8	432.5	432.7	433.1	433.3
142.5°	415.4	415.8	416.1	416.4	416.5	416.7	416.6	417.1	417.5	417.8	418.0
145°	404.2	404.3	404.5	404.6	404.5	404.5	404.1	405.0	405.5	406.0	406.4
147.5°	393.2	393.3	393.3	393.3	393.3	393.3	393.0	393.7	394.2	394.7	395.2
150°	384.5	385.0	385.3	385.7	385.9	386.0	386.0	386.5	386.8	387.0	387.1
152.5°	376.2	376.5	377.0	377.1	377.4	377.5	377.6	377.9	378.4	378.6	378.8
155°	368.4	368.9	369.3	369.7	370.0	370.4	370.6	370.9	371.2	371.2	371.4
157.5°	361.8	362.2	362.6	363.1	363.3	363.8	364.0	364.4	364.7	364.9	365.0
160°	356.8	357.3	357.6	358.1	358.4	358.8	359.0	359.4	359.7	359.8	360.1
162.5°	353.6	354.0	354.2	354.7	355.0	355.4	355.7	356.0	356.3	356.5	356.7
165°	349.3	349.9	350.3	350.8	351.4	351.8	352.3	352.4	352.4	352.5	352.6
167.5°	349.1	349.7	350.0	350.6	350.9	351.5	351.9	352.0	352.1	352.1	352.1
170°	348.3	348.8	349.1	349.6	350.0	350.5	350.8	350.8	350.8	350.9	350.9
172.5°	347.5	348.1	348.6	349.2	349.6	350.2	350.7	350.7	350.4	350.3	350.0
175°	347.3	347.8	348.3	348.8	349.1	349.6	350.1	349.8	349.7	349.5	349.2
177.5°	350.2	350.9	351.5	352.0	352.5	353.0	353.6	353.1	352.7	352.3	351.7
180°	347.7	347.7	347.7	347.7	347.7	347.7	347.7	347.7	347.7	347.7	347.7



TEST NUMBER: P1444662  
 CATALOG NUMBER: EHBR1-24-UNV-TA-L930-UPL30

**CANDELA DISTRIBUTION (continued):**

	192.5°	195°	197.5°	200°	202.5°	205°	207.5°	210°	212.5°	215°	217.5°
0°	19033.5	19033.5	19033.5	19033.5	19033.5	19033.5	19033.5	19033.5	19033.5	19033.5	19033.5
2.5°	18997.9	19007.5	19022.0	19035.2	19055.0	19070.6	19094.2	19112.0	19138.5	19155.8	19184.5
5°	18999.6	19036.8	19085.7	19133.4	19190.7	19242.7	19307.4	19362.6	19427.5	19480.7	19547.1
7.5°	19026.4	19098.2	19184.1	19270.6	19368.6	19460.1	19563.3	19656.7	19758.8	19845.1	19939.6
10°	19046.3	19156.8	19283.5	19410.9	19545.0	19669.5	19795.3	19904.0	20005.6	20089.2	20163.0
12.5°	19019.4	19171.7	19334.2	19491.1	19640.2	19769.1	19877.3	19960.9	20018.6	20057.8	20066.9
15°	18928.1	19111.4	19288.0	19444.2	19568.0	19663.4	19712.8	19735.9	19711.1	19669.8	19579.3
17.5°	18757.4	18950.7	19108.7	19231.9	19297.3	19323.2	19282.3	19211.1	19072.0	18917.5	18694.6
20°	18444.6	18624.7	18739.2	18806.5	18789.0	18724.3	18569.8	18382.1	18104.3	17808.3	17417.8
22.5°	17895.9	18053.3	18114.4	18119.4	18012.6	17850.7	17572.0	17250.0	16811.8	16356.3	15796.2
25°	17072.2	17210.0	17219.8	17165.6	16970.2	16707.8	16298.6	15843.0	15247.7	14640.7	13938.8
27.5°	15955.0	16087.4	16054.9	15953.9	15682.7	15331.5	14807.7	14219.1	13485.2	12768.3	11991.8
30°	14550.9	14692.3	14654.3	14524.6	14202.1	13787.0	13170.6	12486.7	11671.9	10906.2	10119.3
32.5°	12870.4	13049.2	13022.9	12899.7	12563.2	12118.9	11450.1	10724.8	9891.1	9136.6	8371.2
35°	10960.3	11177.4	11188.6	11108.1	10795.6	10356.6	9696.1	8994.1	8195.5	7483.6	6776.5
37.5°	8902.4	9154.0	9205.8	9184.1	8925.1	8537.5	7935.8	7306.0	6598.5	5974.6	5369.9
40°	6833.1	7087.9	7176.3	7202.5	7011.4	6711.2	6217.4	5709.1	5132.3	4626.7	4146.6
42.5°	4946.0	5171.9	5257.3	5311.0	5191.8	4991.5	4631.3	4262.2	3839.7	3475.0	3125.4
45°	3435.1	3594.9	3659.8	3713.9	3648.9	3536.0	3308.5	3077.6	2798.8	2560.5	2334.9
47.5°	2401.7	2489.8	2532.7	2558.9	2533.8	2474.9	2351.0	2217.3	2059.9	1920.6	1786.7
50°	1780.1	1827.1	1849.5	1864.6	1846.4	1813.6	1746.5	1673.7	1587.3	1508.4	1431.3
52.5°	1410.8	1437.6	1451.0	1459.2	1448.6	1428.6	1389.6	1346.4	1294.6	1245.8	1220.2
55°	1188.4	1187.1	1217.9	1203.0	1217.9	1184.7	1177.6	1130.2	1087.2	1056.8	1024.0
57.5°	980.1	994.1	999.9	1006.6	1002.3	996.2	979.6	962.7	940.0	921.0	900.8
60°	848.4	859.9	866.4	873.0	872.5	870.3	860.7	850.5	836.3	824.9	812.7
62.5°	757.6	767.6	774.0	780.3	780.9	779.9	772.7	765.7	756.0	748.8	740.4
65°	686.3	693.3	697.7	702.7	702.4	701.1	694.5	688.6	680.7	675.7	669.5
67.5°	611.6	616.8	620.2	625.0	625.9	626.2	622.5	619.9	616.0	614.5	612.4
70°	558.5	564.9	570.3	576.3	579.6	581.1	579.6	578.2	575.9	574.9	573.3
72.5°	518.3	523.7	527.9	533.3	536.4	538.6	537.4	536.6	534.6	534.3	533.3
75°	468.3	472.0	474.4	478.5	480.1	482.2	481.3	481.7	481.1	482.7	482.6
77.5°	408.3	411.1	412.2	415.1	415.4	417.9	418.5	421.3	423.4	427.9	430.3
80°	340.7	342.5	342.5	345.5	346.8	351.0	353.0	357.7	359.9	363.9	364.3
82.5°	264.7	262.6	264.7	263.4	267.3	272.0	272.6	276.6	277.5	280.1	278.0
85°	180.9	180.8	179.2	179.5	178.2	178.9	178.1	178.9	178.2	178.2	176.4
87.5°	86.7	87.5	85.5	86.2	84.4	85.2	83.6	84.8	83.0	83.2	80.4
90°	31.9	32.9	33.9	34.9	36.3	39.1	42.1	44.9	48.1	50.9	53.9
92.5°	37.7	39.3	40.8	42.3	43.8	48.4	52.9	57.5	62.1	66.5	71.0
95°	43.3	44.6	46.0	47.5	48.8	55.3	61.9	68.4	75.0	81.5	88.1
97.5°	48.8	49.7	50.5	51.4	52.3	60.1	67.7	75.5	83.2	90.9	98.6
100°	56.4	57.4	58.4	59.4	60.4	78.2	96.0	113.8	131.5	149.4	167.1
102.5°	93.7	99.9	106.1	112.4	118.6	161.7	204.9	247.9	291.0	334.1	377.1
105°	218.2	239.2	260.2	281.2	302.2	367.4	432.7	498.0	563.1	628.3	693.6
107.5°	445.6	482.5	519.5	556.4	593.3	654.7	716.0	777.3	838.7	900.1	961.3
110°	684.8	716.6	748.6	780.4	812.3	861.0	909.9	958.4	1007.2	1055.9	1104.6



TEST NUMBER: P1444662  
 CATALOG NUMBER: EHBR1-24-UNV-TA-L930-UPL30

**CANDELA DISTRIBUTION (continued):**

	192.5°	195°	197.5°	200°	202.5°	205°	207.5°	210°	212.5°	215°	217.5°
112.5°	823.9	843.3	862.7	882.0	901.5	937.3	973.2	1008.9	1044.8	1080.3	1116.2
115°	859.4	869.7	880.0	890.2	900.7	922.3	943.9	965.6	987.3	1008.8	1030.4
117.5°	833.7	837.5	841.2	844.9	848.6	859.9	871.0	882.2	893.5	904.6	915.7
120°	772.1	771.9	771.7	771.5	771.3	774.8	778.5	782.1	785.6	789.1	792.6
122.5°	702.5	699.9	697.7	695.2	692.8	691.7	690.7	689.7	688.8	687.7	686.7
125°	636.4	633.9	631.5	629.0	626.4	623.5	620.7	617.6	614.8	611.9	608.9
127.5°	579.8	577.5	575.5	573.3	571.0	567.7	564.4	561.1	557.9	554.4	551.1
130°	532.4	530.9	529.4	527.6	526.2	523.3	520.5	517.7	514.8	512.0	509.1
132.5°	497.9	496.8	495.9	494.7	493.7	491.0	488.7	486.0	483.5	480.9	478.5
135°	470.9	470.3	469.9	469.3	468.7	466.7	464.9	463.0	461.2	459.3	457.4
137.5°	448.3	448.2	448.2	448.1	448.0	446.5	444.9	443.4	442.0	440.4	439.0
140°	433.4	433.4	433.5	433.3	433.2	431.6	430.0	428.4	426.8	425.0	423.5
142.5°	418.1	418.2	418.2	418.1	418.1	416.9	415.7	414.5	413.1	411.9	410.7
145°	406.6	406.9	407.3	407.3	407.6	406.0	404.6	402.9	401.5	399.9	398.5
147.5°	395.6	395.8	396.2	396.4	396.7	395.4	394.2	392.9	391.7	390.3	389.2
150°	387.2	387.3	387.4	387.4	387.4	386.0	384.8	383.4	382.1	380.7	379.4
152.5°	378.9	379.1	379.3	379.4	379.5	378.2	376.8	375.3	373.8	372.3	370.9
155°	371.6	371.6	371.7	371.7	371.7	370.4	369.0	367.6	366.3	364.9	363.6
157.5°	365.2	365.3	365.5	365.5	365.6	364.5	363.3	362.1	360.9	359.7	358.5
160°	360.3	360.5	360.6	360.7	360.8	359.8	359.0	357.8	357.0	355.7	354.7
162.5°	357.0	357.2	357.3	357.4	357.5	356.5	355.7	354.7	353.7	352.5	351.6
165°	352.8	352.7	352.7	352.6	352.5	351.9	351.3	350.7	350.0	349.2	348.5
167.5°	352.3	352.2	352.2	352.1	352.0	351.5	351.3	350.7	350.1	349.7	349.1
170°	351.0	350.9	350.9	350.8	350.8	350.2	349.9	349.3	349.0	348.3	347.8
172.5°	349.9	349.6	349.4	349.2	349.0	348.6	348.3	348.0	347.7	347.4	347.0
175°	349.0	348.7	348.5	348.3	348.0	347.9	347.7	347.6	347.5	347.4	347.2
177.5°	351.4	350.9	350.4	350.0	349.6	349.4	349.3	349.1	349.1	349.0	348.8
180°	347.7	347.7	347.7	347.7	347.7	347.7	347.7	347.7	347.7	347.7	347.7



TEST NUMBER: P1444662  
 CATALOG NUMBER: EHBR1-24-UNV-TA-L930-UPL30

**CANDELA DISTRIBUTION (continued):**

	220°	222.5°	225°	227.5°	230°	232.5°	235°	237.5°	240°	242.5°	245°
0°	19033.5	19033.5	19033.5	19033.5	19033.5	19033.5	19033.5	19033.5	19033.5	19033.5	19033.5
2.5°	19202.4	19083.8	19068.2	19076.5	19096.3	19103.6	19125.0	19130.9	19152.4	19157.7	19178.4
5°	19598.6	19441.9	19449.7	19487.4	19544.5	19578.5	19634.6	19663.9	19717.4	19741.8	19790.2
7.5°	20016.4	19893.3	19931.8	19995.3	20073.3	20127.4	20194.7	20238.6	20296.7	20332.7	20379.2
10°	20221.6	20187.9	20230.1	20280.1	20324.7	20359.5	20388.0	20410.9	20425.9	20439.9	20446.0
12.5°	20065.5	20117.6	20124.9	20120.0	20090.6	20068.0	20017.4	19983.1	19922.0	19884.9	19812.3
15°	19486.7	19601.5	19538.0	19441.7	19300.9	19183.6	19017.8	18894.4	18721.8	18604.7	18431.4
17.5°	18471.1	18616.0	18450.4	18227.7	17944.5	17702.2	17400.6	17161.0	16861.1	16642.8	16362.9
20°	17041.3	17176.7	16881.4	16512.3	16074.2	15705.4	15270.7	14923.7	14519.7	14219.1	13856.4
22.5°	15261.1	15357.5	14941.5	14443.9	13885.7	13425.1	12905.2	12489.3	12028.2	11684.6	11297.8
25°	13291.6	13317.6	12818.5	12245.3	11623.2	11105.6	10550.5	10113.2	9642.9	9294.7	8915.1
27.5°	11303.8	11265.6	10726.1	10118.4	9464.0	8925.9	8384.6	7974.8	7562.9	7249.2	6922.2
30°	9427.5	9335.1	8775.0	8150.3	7515.1	7032.8	6583.4	6254.3	5926.7	5677.8	5415.3
32.5°	7707.0	7576.6	7031.4	6446.1	5910.8	5538.7	5205.4	4956.4	4691.8	4481.6	4261.3
35°	6183.1	6044.2	5561.2	5065.0	4659.9	4385.5	4123.6	3919.3	3694.7	3517.2	3326.0
37.5°	4875.2	4761.4	4356.7	3966.3	3659.8	3447.2	3232.6	3065.7	2880.0	2802.0	2597.6
40°	3763.6	3684.1	3367.7	3079.9	2849.8	2749.9	2532.1	2376.0	2237.3	2122.9	2012.1
42.5°	2935.7	2907.5	2599.6	2375.2	2213.1	2087.3	1965.9	1867.4	1771.4	1692.5	1618.0
45°	2154.3	2132.1	1995.3	1865.8	1755.4	1667.4	1585.4	1517.6	1454.9	1402.9	1355.6
47.5°	1677.6	1670.4	1591.8	1511.4	1441.9	1385.4	1332.1	1287.1	1245.5	1210.8	1199.5
50°	1364.4	1363.5	1317.4	1267.7	1218.2	1185.6	1151.5	1125.0	1098.2	1077.5	1055.5
52.5°	1159.4	1154.3	1123.1	1092.5	1063.1	1041.7	1019.9	1003.0	985.2	972.4	958.7
55°	998.1	1003.3	985.3	967.1	948.6	935.3	920.1	908.9	896.7	888.6	880.4
57.5°	886.1	893.0	883.6	873.2	862.0	853.3	842.8	835.0	826.9	821.7	816.9
60°	804.6	812.2	808.4	803.2	796.2	791.1	784.4	780.0	774.8	771.9	769.2
62.5°	735.5	745.0	743.7	741.2	736.7	733.9	730.2	728.2	724.8	723.5	722.3
65°	666.5	677.2	677.0	675.8	673.3	672.5	670.2	669.8	668.0	668.7	668.6
67.5°	612.2	621.6	623.6	625.0	625.0	625.6	625.3	626.3	626.3	627.6	628.4
70°	573.1	579.6	581.1	582.6	583.1	584.3	584.3	585.1	584.9	586.0	586.2
72.5°	533.5	542.0	543.6	544.8	544.8	546.1	545.4	545.2	543.5	543.1	542.0
75°	484.2	495.2	497.6	499.1	499.4	500.4	498.9	498.1	495.2	494.0	492.1
77.5°	432.8	444.2	445.9	446.5	445.6	445.7	442.6	440.5	436.9	435.4	433.5
80°	365.9	382.7	384.0	382.9	380.2	379.9	376.9	374.8	370.5	369.1	367.4
82.5°	278.4	298.0	300.8	302.0	299.9	300.4	297.5	296.3	292.4	291.7	289.1
85°	175.8	195.4	198.6	198.2	196.1	195.5	193.8	194.4	194.1	195.1	195.7
87.5°	80.7	99.7	104.4	102.8	102.7	101.3	98.3	99.4	101.2	102.4	102.5
90°	56.9	65.5	68.4	66.3	62.4	60.1	56.3	54.3	50.9	48.8	45.4
92.5°	75.6	80.1	84.7	80.6	76.6	72.5	68.5	64.4	60.5	56.3	52.4
95°	94.6	101.1	107.6	102.2	96.8	91.3	86.0	80.6	75.3	69.9	64.5
97.5°	106.3	113.9	121.6	116.2	110.8	105.3	100.0	94.5	89.2	83.8	78.3
100°	184.9	202.3	220.1	204.9	189.5	174.2	159.0	143.6	128.3	113.1	97.7
102.5°	420.1	463.0	506.0	467.3	428.6	390.1	351.5	312.8	274.2	235.4	196.9
105°	758.6	823.7	888.7	829.7	770.7	711.8	652.8	593.8	534.9	475.9	417.0
107.5°	1022.6	1083.4	1144.6	1091.2	1037.9	984.7	931.3	878.0	824.7	771.5	718.2
110°	1153.2	1201.3	1249.8	1214.0	1178.3	1142.4	1106.7	1070.9	1035.1	999.5	963.9



TEST NUMBER: P1444662  
 CATALOG NUMBER: EHBR1-24-UNV-TA-L930-UPL30

**CANDELA DISTRIBUTION (continued):**

	220°	222.5°	225°	227.5°	230°	232.5°	235°	237.5°	240°	242.5°	245°
112.5°	1151.8	1186.7	1222.2	1201.2	1180.4	1159.5	1138.7	1117.7	1097.0	1076.1	1055.4
115°	1051.9	1072.5	1093.8	1085.5	1077.3	1069.1	1060.8	1052.8	1044.5	1036.4	1028.3
117.5°	926.9	936.8	947.5	946.1	944.7	943.2	941.8	940.3	939.1	937.7	936.4
120°	796.2	798.4	801.5	802.6	803.9	805.1	806.3	807.5	808.7	810.0	811.3
122.5°	685.6	683.1	681.5	682.6	683.8	684.8	685.9	687.1	688.3	689.4	690.6
125°	605.9	601.4	598.0	596.6	595.5	594.1	592.9	591.4	590.4	589.1	588.0
127.5°	547.8	542.7	539.0	535.8	532.6	529.4	526.2	523.0	520.0	516.7	513.7
130°	506.3	501.6	498.3	494.2	490.3	486.2	482.2	478.2	474.1	470.1	466.2
132.5°	475.9	471.5	468.5	464.6	460.8	456.9	453.1	449.1	445.3	441.4	437.6
135°	455.6	451.6	449.3	445.7	442.5	438.9	435.4	431.8	428.4	424.8	421.4
137.5°	437.5	433.7	431.8	429.0	426.3	423.6	420.8	417.9	415.2	412.2	409.6
140°	421.8	417.9	415.8	414.3	412.9	411.2	409.7	408.1	406.6	405.1	403.4
142.5°	409.5	405.7	404.0	403.1	402.3	401.3	400.5	399.5	398.6	397.4	396.6
145°	397.0	392.8	390.8	390.7	390.9	390.8	390.8	390.8	390.8	390.6	390.6
147.5°	387.9	383.6	381.8	382.0	382.3	382.5	382.9	383.0	383.4	383.5	383.8
150°	377.9	373.2	371.0	371.5	372.0	372.5	373.0	373.5	374.0	374.5	375.0
152.5°	369.4	363.7	361.2	361.7	362.3	362.9	363.4	364.0	364.7	365.4	365.9
155°	362.0	355.9	353.2	353.4	353.7	353.9	354.1	354.5	354.9	355.1	355.6
157.5°	357.1	350.8	348.3	348.3	348.3	348.4	348.6	348.7	348.9	349.1	349.3
160°	353.7	347.5	345.0	345.0	345.0	345.1	345.1	345.1	345.3	345.5	345.8
162.5°	350.4	344.3	342.0	341.9	341.9	341.8	341.9	341.9	342.1	342.1	342.4
165°	347.8	342.6	340.6	340.7	340.9	340.9	341.1	341.4	341.7	341.8	342.2
167.5°	348.4	343.9	342.4	342.1	341.9	341.7	341.7	341.4	341.4	341.3	341.3
170°	347.2	343.6	342.1	342.2	342.4	342.4	342.4	342.5	342.6	342.6	342.7
172.5°	346.7	344.0	342.9	343.3	343.6	343.8	344.2	344.4	344.8	345.0	345.4
175°	347.0	345.4	345.0	345.0	345.1	345.3	345.5	345.6	345.8	345.9	346.3
177.5°	348.7	348.2	347.8	347.8	347.8	347.8	347.8	347.8	347.8	347.9	347.9
180°	347.7	347.7	347.7	347.7	347.7	347.7	347.7	347.7	347.7	347.7	347.7



TEST NUMBER: P1444662  
 CATALOG NUMBER: EHBR1-24-UNV-TA-L930-UPL30

**CANDELA DISTRIBUTION (continued):**

	247.5°	250°	252.5°	255°	257.5°	260°	262.5°	265°	267.5°	270°	272.5°
0°	19033.5	19033.5	19033.5	19033.5	19033.5	19033.5	19033.5	19033.5	19033.5	19033.5	19033.5
2.5°	19182.2	19204.6	19202.9	19223.7	19222.8	19242.4	19238.4	19255.5	19251.5	19266.1	19257.6
5°	19811.5	19854.0	19868.0	19906.4	19914.4	19948.7	19949.4	19976.8	19973.5	19994.8	19983.4
7.5°	20406.6	20446.4	20465.2	20495.0	20509.9	20534.6	20544.3	20564.6	20569.5	20581.5	20581.1
10°	20456.9	20456.7	20466.1	20461.9	20470.3	20465.5	20475.6	20472.0	20486.9	20483.1	20494.4
12.5°	19781.0	19713.9	19689.5	19629.2	19616.0	19564.2	19568.0	19534.8	19550.8	19530.4	19565.1
15°	18328.3	18172.7	18095.8	17960.6	17918.0	17811.1	17802.5	17731.4	17750.6	17713.4	17767.8
17.5°	16181.8	15936.8	15802.3	15604.7	15526.3	15375.0	15344.7	15253.3	15267.4	15221.4	15287.0
20°	13622.4	13326.4	13156.8	12928.3	12826.3	12646.1	12598.2	12495.9	12508.7	12462.9	12537.2
22.5°	11033.8	10724.0	10532.6	10293.0	10162.9	9993.3	9942.4	9839.7	9845.5	9802.5	9873.9
25°	8655.1	8358.0	8172.2	7954.6	7841.7	7686.3	7632.8	7540.5	7545.7	7510.3	7574.2
27.5°	6695.3	6451.6	6296.1	6113.7	6012.5	5884.7	5832.6	5755.0	5754.7	5728.7	5782.2
30°	5232.1	5028.6	4889.0	4730.3	4635.2	4519.8	4469.4	4400.0	4397.0	4378.5	4421.0
32.5°	4096.6	3915.7	3788.3	3648.6	3563.2	3464.2	3416.5	3360.8	3355.7	3338.9	3373.9
35°	3184.6	3032.2	2922.7	2805.0	2813.7	2667.7	2692.0	2578.5	2547.8	2541.1	2567.0
37.5°	2461.3	2343.3	2254.3	2166.2	2106.6	2044.8	2011.6	1981.7	1978.3	1975.5	1993.7
40°	1926.6	1843.9	1779.2	1718.8	1677.7	1640.1	1619.3	1602.9	1599.0	1596.8	1607.8
42.5°	1559.2	1503.5	1461.8	1424.9	1400.0	1379.5	1368.1	1359.0	1356.0	1356.0	1362.5
45°	1317.4	1283.5	1256.7	1233.8	1217.8	1224.8	1204.2	1215.0	1200.7	1215.5	1205.7
47.5°	1160.1	1131.3	1114.6	1098.4	1088.8	1081.0	1081.3	1081.5	1084.5	1085.0	1088.2
50°	1038.8	1022.1	1010.6	1000.2	995.2	991.1	992.5	993.5	996.6	996.7	999.1
52.5°	949.0	938.0	931.1	924.6	922.4	920.1	921.1	920.6	922.0	921.3	923.1
55°	875.9	870.7	868.6	866.2	866.5	865.9	866.3	864.0	862.5	860.8	862.4
57.5°	815.9	815.2	816.7	817.7	820.5	821.5	822.1	819.4	816.8	814.5	815.8
60°	769.8	770.8	774.5	777.5	781.4	783.3	784.4	782.9	781.0	779.1	780.3
62.5°	724.1	725.9	730.3	733.6	738.4	740.9	743.7	743.7	744.5	743.7	744.5
65°	671.3	673.4	677.4	680.1	684.6	686.8	689.6	690.1	691.6	691.3	692.6
67.5°	631.0	633.1	636.4	638.9	642.9	645.2	647.6	647.8	648.3	648.2	649.5
70°	588.2	589.1	592.1	594.3	598.2	600.5	603.4	604.3	606.0	606.3	607.7
72.5°	542.4	542.0	543.8	544.8	547.8	549.6	553.2	555.2	558.1	558.9	560.0
75°	492.6	492.3	494.3	495.2	497.7	499.6	503.6	506.2	510.8	512.7	512.2
77.5°	435.1	436.0	440.0	442.2	445.6	447.9	453.1	457.2	465.6	469.3	465.5
80°	370.5	371.6	375.7	377.8	382.2	385.0	390.9	395.8	403.2	404.9	402.8
82.5°	291.3	291.6	295.3	296.8	302.6	306.8	314.2	318.0	322.7	322.1	321.4
85°	198.6	201.3	205.9	210.5	217.5	224.3	231.3	237.0	233.0	239.4	232.2
87.5°	106.1	105.9	112.1	111.1	121.0	126.7	132.8	135.6	138.9	138.2	138.3
90°	43.7	41.4	40.8	38.4	38.2	35.7	36.1	33.7	34.4	31.6	35.6
92.5°	48.3	46.3	43.9	41.9	39.6	37.5	35.2	33.1	30.8	28.7	30.8
95°	59.2	57.1	55.2	53.0	51.1	49.0	47.1	45.0	43.0	41.0	43.5
97.5°	73.0	71.8	70.7	69.5	68.4	67.1	65.9	64.8	63.6	62.5	64.2
100°	82.4	82.4	82.4	82.4	82.3	82.3	82.3	82.3	82.3	82.3	83.7
102.5°	158.2	154.3	150.5	146.6	142.8	138.9	135.1	131.2	127.3	123.5	129.2
105°	358.0	342.9	327.7	312.6	297.5	282.4	267.3	252.2	237.0	222.0	237.6
107.5°	665.0	637.3	609.7	582.3	554.6	527.1	499.6	472.1	444.6	417.1	441.7
110°	928.1	898.9	869.7	840.4	811.2	781.9	752.7	723.5	694.4	665.1	688.7



TEST NUMBER: P1444662  
 CATALOG NUMBER: EHBR1-24-UNV-TA-L930-UPL30

**CANDELA DISTRIBUTION (continued):**

	247.5°	250°	252.5°	255°	257.5°	260°	262.5°	265°	267.5°	270°	272.5°
112.5°	1034.5	1015.5	996.7	977.8	959.0	940.2	921.3	902.6	883.8	865.0	876.4
115°	1020.2	1011.2	1002.2	993.3	984.3	975.3	966.3	957.4	948.5	939.6	940.3
117.5°	935.2	932.1	929.1	926.1	923.1	920.2	917.2	914.4	911.5	908.7	902.3
120°	812.7	813.6	814.5	815.5	816.6	817.7	818.6	819.8	820.9	822.1	813.5
122.5°	691.9	694.1	696.3	698.7	701.0	703.4	705.7	708.2	710.8	713.3	704.7
125°	586.7	588.9	591.1	593.3	595.5	598.0	600.3	602.8	605.3	607.8	600.6
127.5°	510.6	511.4	512.0	513.0	513.8	514.8	515.9	517.0	518.2	519.4	514.9
130°	462.1	461.3	460.5	459.9	459.1	458.6	458.1	457.7	457.2	457.0	455.0
132.5°	433.7	431.9	430.1	428.3	426.6	425.1	423.5	422.1	420.7	419.5	418.8
135°	417.8	415.3	412.8	410.4	408.0	405.7	403.5	401.5	399.4	397.4	397.8
137.5°	406.8	404.3	401.7	399.3	396.9	394.8	392.5	390.3	388.4	386.4	387.1
140°	401.9	399.3	396.9	394.5	392.3	390.0	387.8	385.8	383.6	381.9	382.3
142.5°	395.6	393.4	391.0	389.0	386.8	384.7	382.7	381.0	378.9	377.2	377.8
145°	390.6	388.9	387.2	385.6	384.1	382.6	381.0	379.7	378.4	377.2	377.5
147.5°	384.0	382.8	381.5	380.3	379.0	378.0	377.0	376.0	375.0	374.1	374.2
150°	375.5	374.7	373.9	373.1	372.4	371.7	371.0	370.4	369.7	369.1	369.0
152.5°	366.5	365.8	365.0	364.3	363.7	363.0	362.3	361.8	361.3	360.6	360.6
155°	355.9	355.6	355.2	355.0	354.7	354.5	354.1	354.1	353.9	353.7	353.8
157.5°	349.5	349.5	349.3	349.3	349.2	349.3	349.1	349.3	349.1	349.3	349.4
160°	346.1	345.9	345.6	345.5	345.3	345.0	345.0	344.9	344.8	344.6	345.0
162.5°	342.6	342.7	342.8	343.0	343.2	343.4	343.5	343.8	344.0	344.2	344.4
165°	342.6	342.5	342.4	342.3	342.3	342.4	342.3	342.4	342.4	342.5	342.8
167.5°	341.2	341.5	341.6	341.8	342.0	342.3	342.6	342.9	343.3	343.7	344.1
170°	342.8	342.8	342.8	342.8	342.8	342.9	343.0	343.1	343.2	343.4	343.6
172.5°	345.7	345.7	345.6	345.7	345.6	345.7	345.7	345.8	345.8	345.9	346.0
175°	346.3	346.7	346.8	347.0	347.2	347.3	347.5	347.6	347.8	348.0	348.0
177.5°	347.9	348.0	348.0	348.0	348.0	348.1	348.1	348.1	348.1	348.0	348.2
180°	347.7	347.7	347.7	347.7	347.7	347.7	347.7	347.7	347.7	347.7	347.7



TEST NUMBER: P1444662  
 CATALOG NUMBER: EHBR1-24-UNV-TA-L930-UPL30

**CANDELA DISTRIBUTION (continued):**

	275°	277.5°	280°	282.5°	285°	287.5°	290°	292.5°	295°	297.5°	300°
0°	19033.5	19033.5	19033.5	19033.5	19033.5	19033.5	19033.5	19033.5	19033.5	19033.5	19033.5
2.5°	19271.8	19262.1	19272.0	19262.0	19272.0	19260.0	19268.1	19255.1	19258.4	19245.0	19248.4
5°	20000.5	19985.0	19993.2	19973.3	19975.4	19948.7	19948.2	19917.2	19909.0	19873.7	19858.1
7.5°	20589.7	20584.7	20587.5	20574.6	20573.2	20554.9	20546.3	20520.6	20504.5	20472.0	20449.7
10°	20496.4	20511.4	20515.3	20530.6	20533.8	20549.0	20552.2	20567.3	20570.4	20581.7	20581.8
12.5°	19563.5	19614.5	19626.7	19689.7	19716.2	19788.3	19827.0	19906.4	19953.6	20032.8	20081.5
15°	17766.3	17854.5	17889.7	18012.8	18080.9	18224.4	18314.7	18479.6	18595.9	18771.1	18896.1
17.5°	15292.8	15416.1	15471.8	15638.6	15747.4	15959.4	16112.2	16363.6	16556.2	16835.7	17057.1
20°	12549.8	12686.9	12762.5	12952.8	13081.2	13328.9	13519.7	13828.6	14086.3	14440.5	14743.3
22.5°	9896.3	10026.7	10110.5	10304.2	10448.8	10707.1	10920.3	11246.4	11535.2	11934.2	12297.3
25°	7598.5	7718.0	7793.8	7968.9	8104.7	8342.1	8545.7	8859.3	9141.8	9542.1	9914.5
27.5°	5808.9	5909.1	5982.1	6131.4	6251.3	6452.6	6627.4	6886.6	7130.1	7476.4	7807.9
30°	4447.2	4536.0	4607.1	4737.1	4848.2	5022.6	5176.4	5394.2	5595.6	5871.2	6135.0
32.5°	3398.4	3474.8	3538.2	3652.0	3752.8	3909.9	4048.4	4239.3	4412.2	4646.0	4862.9
35°	2591.2	2741.5	2730.8	2887.8	2913.1	3025.9	3149.5	3316.4	3469.6	3668.2	3852.9
37.5°	2011.2	2053.5	2098.7	2168.1	2241.0	2343.7	2448.1	2652.0	2726.8	2877.0	3029.9
40°	1621.8	1650.4	1680.2	1727.2	1778.3	1850.5	1926.6	2023.9	2123.6	2245.3	2369.6
42.5°	1371.1	1387.2	1406.3	1433.8	1465.3	1511.2	1562.1	1628.0	1697.4	1783.1	1870.5
45°	1225.0	1217.3	1223.0	1237.8	1256.8	1284.6	1316.7	1357.6	1402.7	1458.2	1517.3
47.5°	1088.8	1091.9	1093.6	1101.6	1111.8	1130.5	1149.9	1177.6	1231.2	1247.5	1279.8
50°	998.9	1000.3	999.9	1004.0	1009.0	1021.2	1033.8	1052.6	1071.3	1096.2	1119.9
52.5°	923.5	925.5	925.3	927.9	930.7	938.4	946.4	959.7	971.9	987.7	1001.3
55°	863.9	866.8	868.0	870.2	871.5	875.5	878.8	885.1	890.2	899.2	907.5
57.5°	818.2	822.1	823.9	824.7	823.1	822.9	821.8	823.1	824.2	829.0	833.7
60°	782.1	785.3	785.7	785.3	782.3	780.2	776.8	775.7	775.2	777.5	780.0
62.5°	744.4	745.4	744.7	743.7	740.4	738.3	734.8	733.6	732.3	733.9	735.3
65°	692.1	693.1	692.1	691.6	688.6	686.9	683.9	683.0	681.3	681.7	681.5
67.5°	649.7	650.7	650.0	649.2	647.1	646.1	643.8	642.5	640.5	639.7	638.2
70°	607.5	608.3	607.0	606.3	603.9	602.9	600.9	600.5	598.8	598.6	596.9
72.5°	558.9	558.9	557.2	556.8	555.0	554.9	554.1	554.9	554.8	555.6	555.3
75°	509.2	508.5	506.3	506.0	504.7	505.3	504.4	505.5	505.7	507.5	507.8
77.5°	459.4	456.7	452.7	450.8	448.2	447.8	446.3	447.3	446.9	449.0	449.9
80°	396.5	393.3	388.1	385.7	382.5	381.9	380.6	381.9	381.2	383.7	385.5
82.5°	316.5	313.8	308.4	306.5	302.7	303.1	301.6	303.1	302.9	306.6	308.7
85°	234.1	232.3	226.8	221.9	216.5	213.3	210.2	209.7	208.7	210.2	211.5
87.5°	135.2	133.5	129.2	126.5	116.9	117.3	113.5	113.4	112.5	111.6	113.5
90°	36.0	39.5	40.0	43.2	44.0	47.7	48.7	52.2	53.0	56.9	58.1
92.5°	33.1	35.2	37.4	39.6	41.8	43.9	46.2	48.3	53.0	57.6	62.4
95°	46.0	48.6	51.1	53.6	56.1	58.6	61.1	63.6	70.5	77.4	84.2
97.5°	65.9	67.5	69.2	70.8	72.5	74.1	75.8	77.5	84.9	92.3	99.7
100°	85.0	86.4	87.7	89.1	90.5	91.8	93.1	94.5	108.8	123.1	137.3
102.5°	134.9	140.6	146.3	152.0	157.7	163.4	169.1	174.8	207.6	240.3	273.0
105°	253.2	268.8	284.4	300.0	315.6	331.2	346.9	362.5	414.9	467.3	519.8
107.5°	466.4	491.0	515.7	540.5	565.2	589.8	614.5	639.3	690.4	741.5	792.6
110°	712.1	735.7	759.2	782.8	806.2	829.8	853.3	877.0	907.6	938.2	968.9



TEST NUMBER: P1444662  
 CATALOG NUMBER: EHBR1-24-UNV-TA-L930-UPL30

**CANDELA DISTRIBUTION (continued):**

	275°	277.5°	280°	282.5°	285°	287.5°	290°	292.5°	295°	297.5°	300°
112.5°	887.8	899.2	910.7	922.2	933.7	945.2	956.7	968.3	983.6	998.9	1014.1
115°	941.0	941.8	942.5	943.3	944.1	944.8	945.8	946.6	951.4	956.2	960.9
117.5°	896.0	889.7	883.5	877.1	871.0	864.9	858.7	852.6	851.6	850.5	849.6
120°	805.2	796.8	788.3	779.8	771.5	763.2	755.0	746.8	742.5	738.3	734.0
122.5°	696.3	688.0	679.6	671.1	662.9	654.6	646.5	638.4	635.5	632.4	629.4
125°	593.6	586.5	579.6	572.6	565.8	559.0	552.3	545.6	545.4	544.9	544.8
127.5°	510.5	506.3	502.0	497.9	493.8	489.7	485.7	481.7	483.4	485.0	486.7
130°	453.0	451.1	449.3	447.4	445.8	444.2	442.5	441.0	444.1	447.1	450.1
132.5°	418.6	418.1	417.9	417.6	417.6	417.4	417.5	417.3	420.9	424.4	427.9
135°	398.3	398.7	399.4	399.9	400.7	401.4	402.3	403.0	406.4	409.7	413.1
137.5°	387.9	388.7	389.6	390.5	391.7	392.7	393.9	395.0	397.6	400.2	402.9
140°	383.0	383.5	384.3	385.1	386.0	386.7	387.7	388.6	390.9	392.8	395.0
142.5°	378.5	378.9	379.6	380.4	381.3	381.9	382.9	383.6	385.2	386.8	388.4
145°	377.9	378.3	378.9	379.3	379.9	380.5	381.1	381.8	382.8	383.6	384.6
147.5°	374.5	374.7	375.1	375.3	375.8	376.1	376.5	376.9	377.6	378.1	378.6
150°	369.1	369.1	369.3	369.4	369.6	369.8	370.0	370.2	370.7	371.2	371.8
152.5°	360.7	360.7	360.8	360.9	361.1	361.2	361.3	361.4	362.0	362.4	363.0
155°	354.0	354.2	354.5	354.8	355.1	355.2	355.6	355.8	356.2	356.5	356.8
157.5°	349.7	349.9	350.2	350.3	350.7	350.9	351.2	351.4	351.7	352.0	352.3
160°	345.4	345.9	346.2	346.6	347.1	347.5	347.9	348.3	348.6	348.9	349.1
162.5°	344.8	345.0	345.3	345.5	345.8	346.1	346.3	346.6	347.1	347.5	348.0
165°	343.4	343.7	344.2	344.5	345.0	345.5	345.9	346.3	346.6	346.8	347.0
167.5°	344.5	344.8	345.3	345.7	346.1	346.5	346.9	347.4	347.6	347.7	348.1
170°	344.0	344.4	344.8	345.0	345.5	345.8	346.2	346.6	347.0	347.4	347.8
172.5°	346.3	346.7	347.0	347.1	347.5	347.8	348.2	348.4	348.8	349.1	349.4
175°	348.0	348.0	348.1	348.2	348.3	348.3	348.3	348.4	348.5	348.6	348.6
177.5°	348.3	348.5	348.7	348.8	349.0	349.1	349.3	349.5	349.5	349.5	349.5
180°	347.7	347.7	347.7	347.7	347.7	347.7	347.7	347.7	347.7	347.7	347.7



TEST NUMBER: P1444662  
 CATALOG NUMBER: EHBR1-24-UNV-TA-L930-UPL30

**CANDELA DISTRIBUTION (continued):**

	302.5°	305°	307.5°	310°	312.5°	315°	317.5°	320°	322.5°	325°	327.5°
0°	19033.5	19033.5	19033.5	19033.5	19033.5	19033.5	19033.5	19033.5	19033.5	19033.5	19033.5
2.5°	19235.0	19235.8	19220.3	19219.4	19204.9	19203.1	19188.9	19184.5	19173.0	19168.9	19157.2
5°	19818.5	19799.6	19755.9	19730.3	19687.1	19658.5	19611.8	19581.4	19536.3	19502.3	19457.0
7.5°	20408.7	20379.4	20330.4	20290.6	20230.7	20183.0	20112.8	20055.4	19979.5	19913.8	19834.2
10°	20581.8	20577.3	20564.8	20546.6	20518.7	20487.5	20439.8	20390.1	20323.5	20251.3	20162.6
12.5°	20155.9	20201.9	20264.6	20301.8	20347.0	20366.8	20385.3	20380.7	20368.5	20332.0	20280.7
15°	19077.0	19206.2	19377.4	19510.0	19662.5	19773.4	19895.9	19972.2	20048.3	20083.4	20105.0
17.5°	17360.6	17605.3	17912.3	18166.5	18459.9	18695.6	18953.9	19148.4	19348.3	19491.6	19621.2
20°	15156.1	15510.6	15944.6	16328.0	16773.8	17161.2	17585.7	17934.3	18293.7	18574.6	18840.6
22.5°	12764.9	13185.9	13710.5	14196.6	14771.3	15287.8	15870.5	16377.7	16907.2	17349.7	17777.4
25°	10413.4	10875.2	11448.9	11991.2	12642.1	13242.8	13933.9	14566.0	15250.4	15844.7	16431.7
27.5°	8266.3	8719.6	9305.4	9882.6	10570.8	11211.0	11951.4	12647.9	13427.2	14145.9	14881.0
30°	6501.5	6886.0	7411.2	7970.3	8649.1	9300.6	10049.0	10765.3	11576.0	12360.7	13188.8
32.5°	5151.0	5443.9	5856.7	6329.5	6955.9	7575.9	8288.7	8980.1	9778.5	10571.1	11432.4
35°	4090.8	4319.3	4634.1	5003.0	5533.4	6067.9	6698.3	7327.1	8072.0	8824.1	9661.3
37.5°	3225.8	3411.2	3657.8	3934.9	4360.3	4799.0	5315.9	5837.2	6484.4	7151.1	7909.8
40°	2519.0	2669.1	2861.0	3067.7	3389.0	3727.0	4126.8	4531.0	5051.0	5595.9	6223.8
42.5°	1978.9	2089.6	2225.2	2376.2	2675.9	2855.4	3126.5	3418.9	3801.2	4196.7	4668.8
45°	1589.2	1664.7	1758.8	1860.1	1999.2	2151.4	2337.1	2531.7	2894.9	3073.0	3360.1
47.5°	1327.2	1377.9	1437.7	1501.5	1583.6	1672.0	1782.2	1894.7	2040.4	2191.2	2368.2
50°	1150.6	1202.2	1222.7	1255.8	1303.3	1353.9	1415.9	1478.0	1556.1	1635.2	1726.3
52.5°	1019.6	1036.5	1058.9	1079.8	1109.3	1166.8	1185.4	1217.9	1261.7	1304.5	1352.3
55°	919.7	930.5	945.1	957.8	975.5	992.6	1017.1	1038.7	1067.9	1093.7	1125.5
57.5°	841.8	848.7	858.8	867.2	878.7	888.3	902.6	914.3	931.2	945.8	965.0
60°	785.2	789.8	796.6	802.0	809.4	814.4	821.5	827.0	835.9	843.3	854.1
62.5°	739.0	741.3	745.8	749.0	753.6	756.2	760.0	762.4	767.3	771.0	777.0
65°	683.5	684.1	687.1	688.4	692.1	693.4	696.5	697.7	701.7	704.4	709.7
67.5°	638.1	636.8	636.9	635.8	636.4	635.3	635.6	634.4	636.1	636.9	640.9
70°	596.6	594.8	594.3	592.4	591.8	589.8	589.3	587.5	587.3	586.7	588.2
72.5°	556.2	555.7	555.9	554.6	554.4	553.0	553.1	552.2	553.2	553.6	555.4
75°	509.7	509.9	510.8	509.6	509.9	508.8	509.2	508.2	508.8	508.5	510.4
77.5°	453.1	454.5	457.0	456.4	457.2	456.0	456.5	455.0	455.5	454.5	455.2
80°	389.5	392.4	395.7	395.5	396.9	396.0	397.3	395.8	396.5	394.8	394.3
82.5°	313.9	316.4	319.9	320.0	323.1	323.8	327.1	327.0	329.2	327.8	326.8
85°	214.7	216.3	219.4	221.1	224.2	226.3	229.6	230.9	228.5	232.9	229.4
87.5°	112.1	116.3	113.9	119.3	118.1	123.6	122.4	127.4	126.5	130.8	130.3
90°	62.6	64.3	69.0	70.8	76.1	78.3	79.1	76.5	77.1	74.5	75.1
92.5°	66.9	71.8	76.5	81.2	85.9	90.7	86.3	81.9	77.5	73.3	68.8
95°	91.1	98.0	104.9	111.7	118.6	125.5	118.1	110.8	103.5	96.1	88.7
97.5°	107.1	114.4	121.8	129.2	136.7	144.1	135.4	126.6	117.9	109.3	100.6
100°	151.6	165.9	180.2	194.4	208.8	223.1	206.8	190.6	174.3	158.0	141.8
102.5°	305.9	338.6	371.4	404.1	436.8	469.6	435.1	400.7	366.3	331.7	297.1
105°	572.1	624.6	677.0	729.4	781.9	834.4	778.4	722.4	666.5	610.6	554.6
107.5°	843.7	894.8	946.0	997.0	1048.2	1099.4	1042.7	986.0	929.2	872.4	815.7
110°	999.7	1030.3	1061.1	1091.9	1122.5	1153.3	1111.9	1070.4	1029.0	987.5	946.1



TEST NUMBER: P1444662  
 CATALOG NUMBER: EHBR1-24-UNV-TA-L930-UPL30

**CANDELA DISTRIBUTION (continued):**

	302.5°	305°	307.5°	310°	312.5°	315°	317.5°	320°	322.5°	325°	327.5°
112.5°	1029.5	1044.9	1060.2	1075.6	1090.9	1106.3	1076.7	1047.1	1017.4	987.8	958.0
115°	965.8	970.6	975.5	980.3	985.2	990.1	970.0	950.0	930.0	910.0	889.8
117.5°	848.6	847.7	846.7	846.0	844.9	844.0	832.8	821.5	810.2	798.9	787.7
120°	729.8	725.7	721.4	717.2	713.0	708.6	703.9	699.1	694.2	689.4	684.4
122.5°	626.4	623.5	620.5	617.6	614.4	611.4	609.5	607.7	605.6	603.7	601.6
125°	544.5	544.3	544.0	543.8	543.4	543.1	542.1	541.0	539.9	539.0	537.9
127.5°	488.3	490.0	491.6	493.2	494.8	496.4	496.0	495.7	495.3	494.9	494.5
130°	453.1	456.2	459.1	462.0	464.9	467.9	467.1	466.6	465.9	465.3	464.5
132.5°	431.4	434.9	438.4	441.9	445.2	448.7	447.8	447.1	446.1	445.4	444.6
135°	416.3	419.7	422.9	426.3	429.4	432.6	431.6	430.7	429.6	428.7	427.7
137.5°	405.5	408.1	410.6	413.3	415.7	418.3	417.2	416.3	415.2	414.3	413.2
140°	396.9	398.9	400.8	403.0	404.8	406.9	405.6	404.4	403.2	402.0	400.7
142.5°	389.8	391.4	392.7	394.2	395.7	397.2	395.4	393.8	392.2	390.6	389.0
145°	385.6	386.6	387.4	388.4	389.1	390.1	388.2	386.4	384.4	382.7	380.8
147.5°	379.2	379.7	380.1	380.7	381.1	381.7	379.8	378.1	376.3	374.5	372.8
150°	372.1	372.7	373.0	373.5	373.9	374.5	372.5	370.7	368.8	367.1	365.3
152.5°	363.4	363.8	364.1	364.6	364.9	365.4	363.5	362.1	360.2	358.4	356.8
155°	356.9	357.3	357.4	357.7	357.8	358.0	356.5	355.2	353.7	352.3	350.8
157.5°	352.4	352.7	353.0	353.1	353.2	353.4	352.4	351.4	350.1	349.1	347.9
160°	349.3	349.6	349.8	350.0	350.1	350.2	349.3	348.5	347.5	346.6	345.6
162.5°	348.3	348.6	349.0	349.3	349.7	350.0	348.9	347.9	346.8	345.7	344.4
165°	347.3	347.5	347.6	347.9	347.9	348.2	347.5	346.7	345.9	345.1	344.3
167.5°	348.2	348.4	348.6	348.8	348.9	349.1	348.3	347.6	346.8	346.0	345.2
170°	348.1	348.3	348.7	349.0	349.2	349.5	348.9	348.3	347.6	347.1	346.4
172.5°	349.8	350.0	350.1	350.5	350.7	351.0	350.3	349.7	349.1	348.4	347.7
175°	348.6	348.7	348.9	348.9	348.9	349.0	348.4	348.0	347.5	346.9	346.5
177.5°	349.5	349.5	349.5	349.4	349.4	349.4	349.1	348.7	348.4	348.1	347.6
180°	347.7	347.7	347.7	347.7	347.7	347.7	347.7	347.7	347.7	347.7	347.7



TEST NUMBER: P1444662  
 CATALOG NUMBER: EHBR1-24-UNV-TA-L930-UPL30

**CANDELA DISTRIBUTION (continued):**

	330°	332.5°	335°	337.5°	340°	342.5°	345°	347.5°	350°	352.5°	355°
0°	19033.5	19033.5	19033.5	19033.5	19033.5	19033.5	19033.5	19033.5	19033.5	19033.5	19033.5
2.5°	19153.1	19144.7	19139.4	19132.5	19128.3	19123.0	19119.2	19115.8	19113.2	19110.7	19108.9
5°	19422.4	19379.5	19346.3	19310.4	19280.8	19251.3	19228.6	19209.8	19196.7	19187.0	19181.2
7.5°	19765.3	19686.9	19617.2	19543.8	19478.1	19413.4	19357.7	19309.7	19273.6	19250.2	19236.0
10°	20071.5	19966.6	19862.8	19753.6	19650.1	19549.6	19457.0	19375.4	19310.8	19267.9	19242.9
12.5°	20208.7	20119.3	20013.4	19894.9	19768.0	19639.6	19514.4	19401.5	19306.8	19243.3	19206.5
15°	20087.8	20051.2	19979.3	19887.2	19766.8	19634.0	19487.1	19349.0	19222.0	19139.5	19091.8
17.5°	19694.5	19745.8	19740.2	19705.0	19618.5	19506.8	19357.1	19201.9	19043.0	18932.9	18872.7
20°	19030.9	19191.9	19273.6	19315.5	19281.5	19209.0	19073.5	18916.0	18730.8	18587.0	18499.2
22.5°	18098.3	18382.5	18559.7	18689.2	18716.8	18692.1	18572.3	18422.6	18216.1	18043.3	17913.7
25°	16897.7	17314.1	17594.0	17813.5	17898.7	17920.7	17818.9	17670.0	17439.8	17238.5	17060.4
27.5°	15483.6	16024.6	16398.4	16693.3	16826.3	16884.1	16790.3	16638.4	16366.0	16125.7	15893.2
30°	13891.6	14533.5	14983.4	15337.0	15499.2	15575.5	15475.9	15306.3	14989.5	14700.2	14407.4
32.5°	12187.6	12890.1	13380.4	13764.4	13925.1	13996.9	13866.6	13676.0	13309.8	12969.1	12627.5
35°	10403.6	11112.6	11607.1	11980.7	12115.5	12158.8	11992.1	11771.9	11366.2	10992.3	10619.9
37.5°	8583.2	9242.8	9692.2	10027.6	10111.0	10118.5	9917.8	9674.6	9248.2	8879.4	8508.7
40°	6778.5	7334.9	7697.7	7966.2	7995.1	7969.3	7751.0	7506.3	7107.4	6777.0	6451.6
42.5°	5078.7	5498.6	5757.5	5941.5	5930.5	5879.6	5679.4	5469.1	5139.9	4888.3	4632.1
45°	3622.4	3899.3	4050.7	4158.3	4123.7	4075.1	3919.3	3771.9	3548.2	3385.7	3213.6
47.5°	2516.5	2847.2	2789.6	3000.1	2818.8	2938.5	2689.1	2551.6	2432.9	2346.5	2249.2
50°	1801.6	1877.4	1914.0	1938.9	1925.7	1907.3	1862.5	1822.4	1768.2	1728.6	1682.6
52.5°	1391.3	1429.2	1450.0	1464.9	1462.0	1455.3	1435.8	1417.9	1392.5	1375.8	1355.6
55°	1178.5	1179.1	1217.2	1200.9	1225.0	1196.7	1207.9	1176.5	1181.6	1154.6	1136.5
57.5°	979.3	994.9	1001.8	1008.6	1006.7	1005.5	997.9	994.2	985.6	983.0	977.0
60°	861.5	869.6	871.3	874.4	871.7	870.7	864.9	862.7	857.0	855.9	851.9
62.5°	780.6	784.7	784.7	784.7	781.4	778.1	771.5	768.1	763.3	762.2	759.9
65°	713.2	717.5	718.2	719.1	716.7	714.1	708.3	704.5	699.5	697.7	695.0
67.5°	643.6	648.1	649.6	652.0	650.6	650.1	646.2	644.7	641.4	640.6	638.1
70°	588.9	590.7	590.6	590.6	587.4	584.7	580.1	577.9	574.5	573.8	571.5
72.5°	556.3	557.7	556.9	555.6	551.6	547.5	542.2	538.2	533.7	530.9	527.7
75°	510.5	512.3	511.2	510.4	506.8	504.1	499.8	497.7	494.5	493.6	491.4
77.5°	454.4	455.2	453.3	453.1	450.4	448.7	445.5	444.9	442.5	442.6	440.5
80°	391.7	391.3	388.4	387.7	385.0	384.3	381.8	381.9	380.1	380.9	379.4
82.5°	322.3	320.6	316.7	315.6	312.4	312.2	310.5	311.9	310.7	312.4	311.5
85°	231.0	231.5	229.8	229.8	228.9	229.2	229.0	230.1	230.3	231.8	231.7
87.5°	128.8	130.6	130.3	132.0	131.9	133.8	134.5	137.2	137.6	140.3	140.3
90°	72.6	73.4	70.8	71.8	70.7	72.7	72.0	74.1	72.9	74.6	72.9
92.5°	64.4	60.1	55.8	51.3	49.2	46.8	45.0	42.4	40.5	38.1	35.9
95°	81.3	74.0	66.6	59.2	56.7	54.1	51.5	49.0	46.5	44.0	41.4
97.5°	91.9	83.1	74.4	65.7	63.4	61.3	59.0	56.9	54.6	52.5	50.3
100°	125.5	109.2	93.0	76.6	74.8	73.0	71.1	69.2	67.5	65.6	63.7
102.5°	262.6	228.1	193.6	159.0	152.5	145.9	139.4	132.7	126.2	119.6	113.1
105°	498.6	442.6	386.6	330.5	312.7	295.0	277.1	259.4	241.6	223.9	206.0
107.5°	758.9	702.0	645.1	588.2	555.4	522.6	489.7	456.7	423.9	390.9	358.1
110°	904.7	863.1	821.5	779.9	753.6	727.1	700.6	674.1	647.7	621.0	594.6



TEST NUMBER: P1444662  
 CATALOG NUMBER: EHBR1-24-UNV-TA-L930-UPL30

**CANDELA DISTRIBUTION (continued):**

	330°	332.5°	335°	337.5°	340°	342.5°	345°	347.5°	350°	352.5°	355°
112.5°	928.3	898.6	868.9	839.0	827.1	815.0	803.0	791.0	778.9	766.8	754.8
115°	869.8	849.7	829.6	809.2	805.1	800.9	796.6	792.2	788.0	783.7	779.3
117.5°	776.4	765.0	753.6	742.2	742.9	743.5	744.3	744.8	745.3	745.8	746.4
120°	679.5	674.6	669.7	664.8	668.4	671.9	675.6	678.9	682.4	685.7	689.2
122.5°	599.6	597.6	595.6	593.5	597.9	602.2	606.5	610.7	614.9	618.9	623.1
125°	536.8	535.7	534.6	533.3	537.8	542.1	546.4	550.5	554.8	558.8	562.9
127.5°	494.1	493.8	493.3	492.9	496.1	498.9	502.1	504.9	507.9	510.5	513.3
130°	463.8	463.1	462.5	461.8	464.5	467.2	470.0	472.5	475.2	477.5	479.9
132.5°	443.8	442.9	442.1	441.2	443.3	445.0	447.0	448.7	450.4	451.9	453.5
135°	426.8	425.6	424.7	423.6	425.4	427.2	428.9	430.4	432.1	433.5	434.9
137.5°	412.2	411.2	410.1	409.0	410.6	412.2	413.8	415.2	416.5	417.9	419.1
140°	399.6	398.3	397.2	395.8	397.3	398.6	400.0	401.2	402.4	403.4	404.6
142.5°	387.4	385.6	384.2	382.4	383.5	384.3	385.4	386.2	387.1	387.8	388.5
145°	378.9	377.0	375.2	373.4	374.2	374.8	375.6	376.4	376.9	377.4	378.0
147.5°	371.1	369.2	367.4	365.5	366.3	366.8	367.1	367.6	368.2	368.6	368.8
150°	363.4	361.4	359.7	357.7	358.2	358.7	359.0	359.5	359.9	360.2	360.5
152.5°	354.9	353.2	351.5	349.6	350.0	350.4	350.7	350.9	351.3	351.6	351.7
155°	349.3	347.8	346.3	344.7	345.1	345.4	345.6	345.9	346.1	346.3	346.5
157.5°	346.7	345.4	344.3	343.1	343.2	343.3	343.4	343.3	343.3	343.3	343.3
160°	344.7	343.5	342.6	341.5	341.5	341.6	341.7	341.6	341.5	341.4	341.4
162.5°	343.3	342.1	340.9	339.7	339.7	339.9	339.9	339.8	339.7	339.6	339.6
165°	343.5	342.6	341.8	340.8	340.7	340.6	340.5	340.2	340.1	339.8	339.6
167.5°	344.3	343.5	342.6	341.6	341.8	341.8	341.8	341.8	341.8	341.7	341.7
170°	345.8	345.0	344.3	343.5	343.4	343.4	343.3	343.1	342.9	342.7	342.6
172.5°	347.0	346.3	345.7	344.8	344.8	344.7	344.6	344.5	344.2	344.2	344.1
175°	345.9	345.3	344.7	344.2	344.1	344.1	344.0	343.9	343.7	343.7	343.5
177.5°	347.3	347.0	346.6	346.2	346.1	346.1	346.0	345.9	345.9	345.9	345.9
180°	347.7	347.7	347.7	347.7	347.7	347.7	347.7	347.7	347.7	347.7	347.7



TEST NUMBER: P1444662  
 CATALOG NUMBER: EHBR1-24-UNV-TA-L930-UPL30

**CANDELA DISTRIBUTION (continued):**

	357.5°	360°
0°	19033.5	19033.5
2.5°	19107.2	19106.2
5°	19178.2	19177.0
7.5°	19232.2	19231.9
10°	19238.6	19241.9
12.5°	19200.2	19202.9
15°	19088.1	19093.4
17.5°	18873.8	18880.7
20°	18504.6	18511.7
22.5°	17906.7	17909.7
25°	17037.4	17025.1
27.5°	15852.4	15831.2
30°	14345.8	14325.3
32.5°	12549.6	12536.8
35°	10527.8	10519.7
37.5°	8399.1	8382.6
40°	6332.5	6284.4
42.5°	4520.0	4435.6
45°	3123.7	3023.6
47.5°	2180.7	2118.9
50°	1652.9	1632.9
52.5°	1346.9	1342.1
55°	1136.4	1134.3
57.5°	978.3	977.6
60°	854.1	853.8
62.5°	761.4	761.7
65°	696.2	696.3
67.5°	638.8	638.3
70°	572.4	571.8
72.5°	526.7	525.9
75°	491.4	490.9
77.5°	441.2	440.4
80°	380.3	379.4
82.5°	312.9	311.7
85°	233.4	233.4
87.5°	142.8	142.7
90°	74.4	72.4
92.5°	33.9	31.9
95°	38.9	36.4
97.5°	48.1	45.9
100°	61.9	60.1
102.5°	106.5	100.0
105°	188.3	170.5
107.5°	325.2	292.3
110°	568.0	541.5



TEST NUMBER: P1444662  
CATALOG NUMBER: EHBR1-24-UNV-TA-L930-UPL30

**CANDELA DISTRIBUTION (continued):**

	357.5°	360°
112.5°	742.7	730.6
115°	774.8	770.4
117.5°	746.8	747.3
120°	692.3	695.7
122.5°	626.9	630.8
125°	566.8	570.8
127.5°	515.9	518.4
130°	481.9	484.2
132.5°	454.8	456.2
135°	436.0	437.2
137.5°	420.0	421.1
140°	405.4	406.2
142.5°	389.1	389.7
145°	378.4	378.8
147.5°	368.8	369.2
150°	360.6	360.8
152.5°	351.8	352.1
155°	346.6	346.7
157.5°	343.1	343.0
160°	341.2	341.1
162.5°	339.4	339.3
165°	339.3	339.0
167.5°	341.5	341.6
170°	342.3	342.2
172.5°	343.9	343.7
175°	343.4	343.4
177.5°	345.9	345.7
180°	347.7	347.7

LM-79-2019: Approved Method: Electrical and Photometric Measurements of Solid-  
State Lighting Products

Report Prepared for

Cooper Lighting Solutions

Metalux

Report Number: SP1-2506-472-5

Test Date: 08/01/2025

Luminaire Tested: EHBR-60-L930-N

Data in this report applies to families of products including EHBR-60-L930-N

**Test Information**

Test Method: LM-79-2019  
 Report Number: SP1-2506-472-5  
 Test Lab: COOPER LIGHTING SOLUTIONS  
 Photometer: SP1 - 76IN SPHERE  
 Measurement Geometry: 4π  
 Issue Date: 08/05/2025  
 Manufacturer: COOPER LIGHTING SOLUTIONS  
 Product Line: Metalux  
 Catalog Number: **EHBR-60-L930-N**  
 Description: Elevate Round Highbay at, 60000 lumens, 3000K 90CRI LEDs with N lens

**Spectral Parameters**

CCT (K): 2996  
 CIE u': 0.2519  
 CIE v': 0.5169  
 Duv: -0.0033  
 CIE x: 0.4325  
 CIE y: 0.3945  
 CIE z: 0.1730  
 Peak Wavelength (nm): 630  
 Dominant Wavelength (nm): 584  
 Purity: 48.21818  
 Rf: 91.3  
 Rg: 102

CRI (Ra):	94.4		
R1:	96.8	R9:	61.4
R2:	98.1	R10:	94.4
R3:	97.8	R11:	95.7
R4:	95.6	R12:	88.5
R5:	96.9	R13:	97.3
R6:	95.7	R14:	97.8
R7:	90.9	R15:	92.3
R8:	83.0		



**Test Conditions**

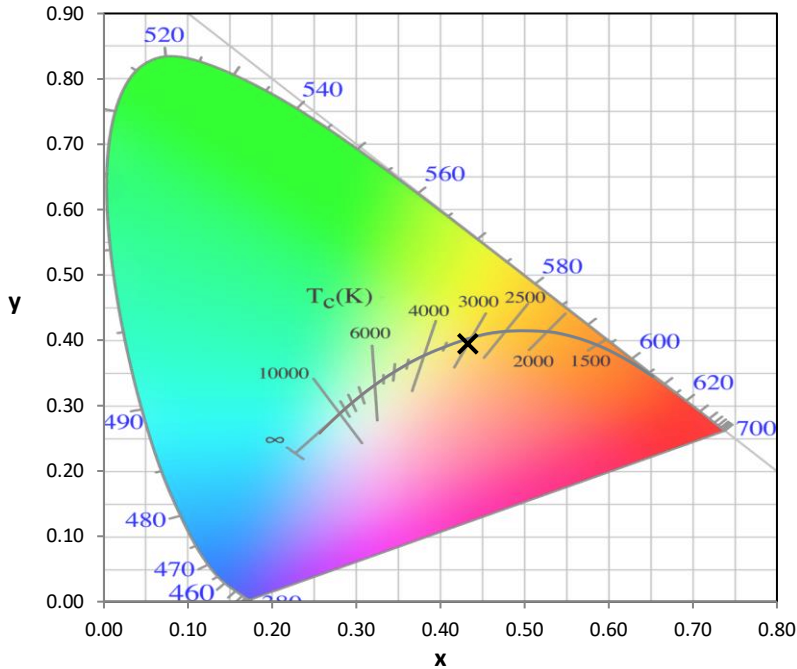
Stabilization Time: 40M  
 Operation Time: 1H 40M  
 Sphere Temperature (°C): 25.0

REPORT NUMBER: SP1-2506-472-5

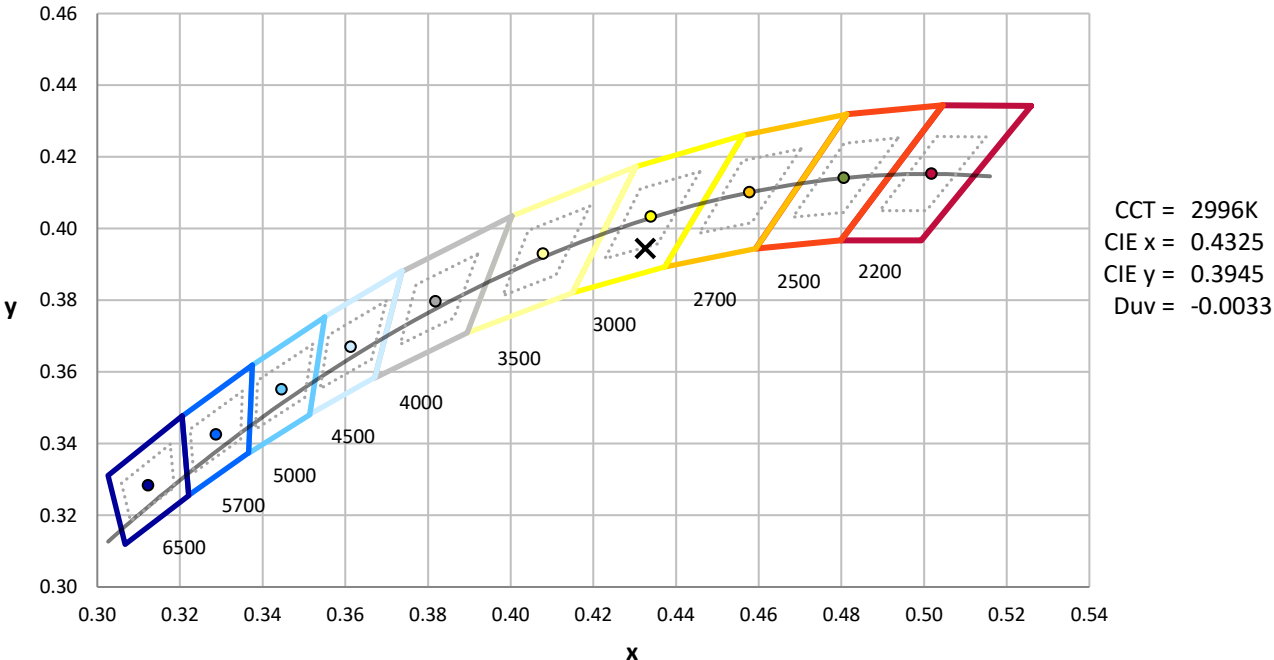
Measurement and Test Equipment			
Instrument	Identification Number	Calibration Date	Calibration Due Date
Photometer	76INCH SPHERE IN0058	6/16/2025	12/16/2025
Power Meter	XITRON INXT2011004	1/21/2025	1/21/2026
AC Power Source	CHROMA 61603 IN0063	10/22/2024	10/22/2025
DC Power Source	AGILENT E3634A IN0208	10/22/2024	10/22/2025
Sphere Thermometer	ONSET IN0085	10/22/2024	10/22/2025
Room Thermometer	ONSET IN0046	10/22/2024	10/22/2025

REPORT NUMBER: SP1-2506-472-5

CIE 1931 Chromaticity Diagram



CIE 1931 Chromaticity Diagram with 2017 ANSI 7-Step and 4-Step Quadrangles



Point lies inside the ANSI 3000K 7-step quadrangle

REPORT NUMBER: SP1-2506-472-5

**Photopic Flux vs. Wavelength**



**Photopic Lumens: NR**

λ (nm)	Power W <sup>^</sup> /nm	Lumens (φ/nm)	λ (nm)	Power W <sup>^</sup> /nm	Lumens (φ/nm)	λ (nm)	Power W <sup>^</sup> /nm	Lumens (φ/nm)	λ (nm)	Power W <sup>^</sup> /nm	Lumens (φ/nm)	λ (nm)	Power W <sup>^</sup> /nm	Lumens (φ/nm)
360	0	NR	490	101	NR	620	317	NR	750	7	NR	880	0	NR
365	0	NR	495	121	NR	625	320	NR	755	6	NR	885	0	NR
370	0	NR	500	141	NR	630	1000	NR	760	5	NR	890	0	NR
375	0	NR	505	158	NR	635	651	NR	765	4	NR	895	0	NR
380	0	NR	510	171	NR	640	207	NR	770	4	NR	900	0	NR
385	0	NR	515	182	NR	645	201	NR	775	3	NR	905	0	NR
390	0	NR	520	189	NR	650	174	NR	780	3	NR	910	0	NR
395	1	NR	525	194	NR	655	146	NR	785	2	NR	915	0	NR
400	1	NR	530	199	NR	660	124	NR	790	2	NR	920	0	NR
405	3	NR	535	205	NR	665	105	NR	795	2	NR	925	0	NR
410	4	NR	540	210	NR	670	96	NR	800	1	NR	930	0	NR
415	7	NR	545	216	NR	675	79	NR	805	1	NR	935	0	NR
420	13	NR	550	222	NR	680	67	NR	810	1	NR	940	0	NR
425	22	NR	555	230	NR	685	58	NR	815	1	NR	945	0	NR
430	37	NR	560	240	NR	690	49	NR	820	1	NR	950	0	NR
435	60	NR	565	248	NR	695	42	NR	825	1	NR	955	0	NR
440	101	NR	570	258	NR	700	36	NR	830	1	NR	960	0	NR
445	172	NR	575	268	NR	705	30	NR	835	1	NR	965	0	NR
450	223	NR	580	278	NR	710	26	NR	840	1	NR	970	0	NR
455	167	NR	585	287	NR	715	22	NR	845	0	NR	975	0	NR
460	126	NR	590	295	NR	720	19	NR	850	0	NR	980	0	NR
465	111	NR	595	298	NR	725	16	NR	855	0	NR	985	0	NR
470	86	NR	600	303	NR	730	14	NR	860	0	NR	990	0	NR
475	74	NR	605	307	NR	735	12	NR	865	0	NR	995	0	NR
480	77	NR	610	341	NR	740	10	NR	870	0	NR	1000	0	NR
485	86	NR	615	368	NR	745	8	NR	875	0	NR			

REPORT NUMBER: SP1-2506-472-5

**Scotopic Flux vs. Wavelength**



**Scotopic Lumens: NR**

**S/P: 1.44**

$\lambda$ (nm)	Power W <sup>^</sup> /nm	Lumens ( $\phi$ /nm)	$\lambda$ (nm)	Power W <sup>^</sup> /nm	Lumens ( $\phi$ /nm)	$\lambda$ (nm)	Power W <sup>^</sup> /nm	Lumens ( $\phi$ /nm)	$\lambda$ (nm)	Power W <sup>^</sup> /nm	Lumens ( $\phi$ /nm)	$\lambda$ (nm)	Power W <sup>^</sup> /nm	Lumens ( $\phi$ /nm)
360	0	NR	490	101	NR	620	317	NR	750	7	NR	880	0	NR
365	0	NR	495	121	NR	625	320	NR	755	6	NR	885	0	NR
370	0	NR	500	141	NR	630	1000	NR	760	5	NR	890	0	NR
375	0	NR	505	158	NR	635	651	NR	765	4	NR	895	0	NR
380	0	NR	510	171	NR	640	207	NR	770	4	NR	900	0	NR
385	0	NR	515	182	NR	645	201	NR	775	3	NR	905	0	NR
390	0	NR	520	189	NR	650	174	NR	780	3	NR	910	0	NR
395	1	NR	525	194	NR	655	146	NR	785	2	NR	915	0	NR
400	1	NR	530	199	NR	660	124	NR	790	2	NR	920	0	NR
405	3	NR	535	205	NR	665	105	NR	795	2	NR	925	0	NR
410	4	NR	540	210	NR	670	96	NR	800	1	NR	930	0	NR
415	7	NR	545	216	NR	675	79	NR	805	1	NR	935	0	NR
420	13	NR	550	222	NR	680	67	NR	810	1	NR	940	0	NR
425	22	NR	555	230	NR	685	58	NR	815	1	NR	945	0	NR
430	37	NR	560	240	NR	690	49	NR	820	1	NR	950	0	NR
435	60	NR	565	248	NR	695	42	NR	825	1	NR	955	0	NR
440	101	NR	570	258	NR	700	36	NR	830	1	NR	960	0	NR
445	172	NR	575	268	NR	705	30	NR	835	1	NR	965	0	NR
450	223	NR	580	278	NR	710	26	NR	840	1	NR	970	0	NR
455	167	NR	585	287	NR	715	22	NR	845	0	NR	975	0	NR
460	126	NR	590	295	NR	720	19	NR	850	0	NR	980	0	NR
465	111	NR	595	298	NR	725	16	NR	855	0	NR	985	0	NR
470	86	NR	600	303	NR	730	14	NR	860	0	NR	990	0	NR
475	74	NR	605	307	NR	735	12	NR	865	0	NR	995	0	NR
480	77	NR	610	341	NR	740	10	NR	870	0	NR	1000	0	NR
485	86	NR	615	368	NR	745	8	NR	875	0	NR			

REPORT NUMBER: SP1-2506-472-5

**Melanopic Flux vs. Wavelength**



**Melanopic Lumens: NR**

**M/P: 2.85**

λ (nm)	Power W <sup>^</sup> /nm	Lumens (φ/nm)	λ (nm)	Power W <sup>^</sup> /nm	Lumens (φ/nm)	λ (nm)	Power W <sup>^</sup> /nm	Lumens (φ/nm)	λ (nm)	Power W <sup>^</sup> /nm	Lumens (φ/nm)	λ (nm)	Power W <sup>^</sup> /nm	Lumens (φ/nm)
360	0	NR	490	101	NR	620	317	NR	750	7	NR	880	0	NR
365	0	NR	495	121	NR	625	320	NR	755	6	NR	885	0	NR
370	0	NR	500	141	NR	630	1000	NR	760	5	NR	890	0	NR
375	0	NR	505	158	NR	635	651	NR	765	4	NR	895	0	NR
380	0	NR	510	171	NR	640	207	NR	770	4	NR	900	0	NR
385	0	NR	515	182	NR	645	201	NR	775	3	NR	905	0	NR
390	0	NR	520	189	NR	650	174	NR	780	3	NR	910	0	NR
395	1	NR	525	194	NR	655	146	NR	785	2	NR	915	0	NR
400	1	NR	530	199	NR	660	124	NR	790	2	NR	920	0	NR
405	3	NR	535	205	NR	665	105	NR	795	2	NR	925	0	NR
410	4	NR	540	210	NR	670	96	NR	800	1	NR	930	0	NR
415	7	NR	545	216	NR	675	79	NR	805	1	NR	935	0	NR
420	13	NR	550	222	NR	680	67	NR	810	1	NR	940	0	NR
425	22	NR	555	230	NR	685	58	NR	815	1	NR	945	0	NR
430	37	NR	560	240	NR	690	49	NR	820	1	NR	950	0	NR
435	60	NR	565	248	NR	695	42	NR	825	1	NR	955	0	NR
440	101	NR	570	258	NR	700	36	NR	830	1	NR	960	0	NR
445	172	NR	575	268	NR	705	30	NR	835	1	NR	965	0	NR
450	223	NR	580	278	NR	710	26	NR	840	1	NR	970	0	NR
455	167	NR	585	287	NR	715	22	NR	845	0	NR	975	0	NR
460	126	NR	590	295	NR	720	19	NR	850	0	NR	980	0	NR
465	111	NR	595	298	NR	725	16	NR	855	0	NR	985	0	NR
470	86	NR	600	303	NR	730	14	NR	860	0	NR	990	0	NR
475	74	NR	605	307	NR	735	12	NR	865	0	NR	995	0	NR
480	77	NR	610	341	NR	740	10	NR	870	0	NR	1000	0	NR
485	86	NR	615	368	NR	745	8	NR	875	0	NR			

**Summary**

$R_f = 91.3$   
 $R_g = 102$   
 $CIE R_a = 94.4$   
 $R_9 = 61.4$



**Color Vector Graphics**

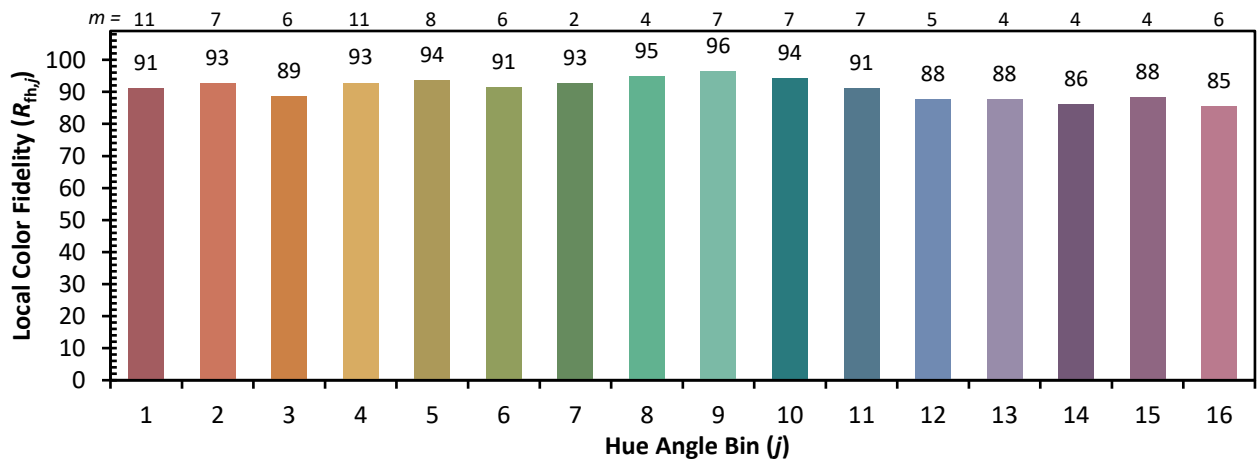
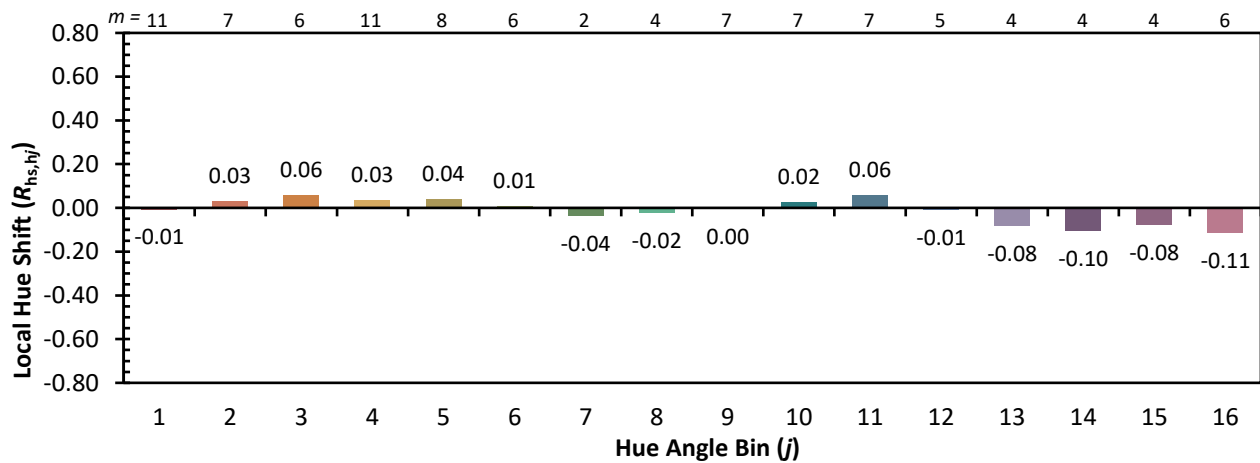
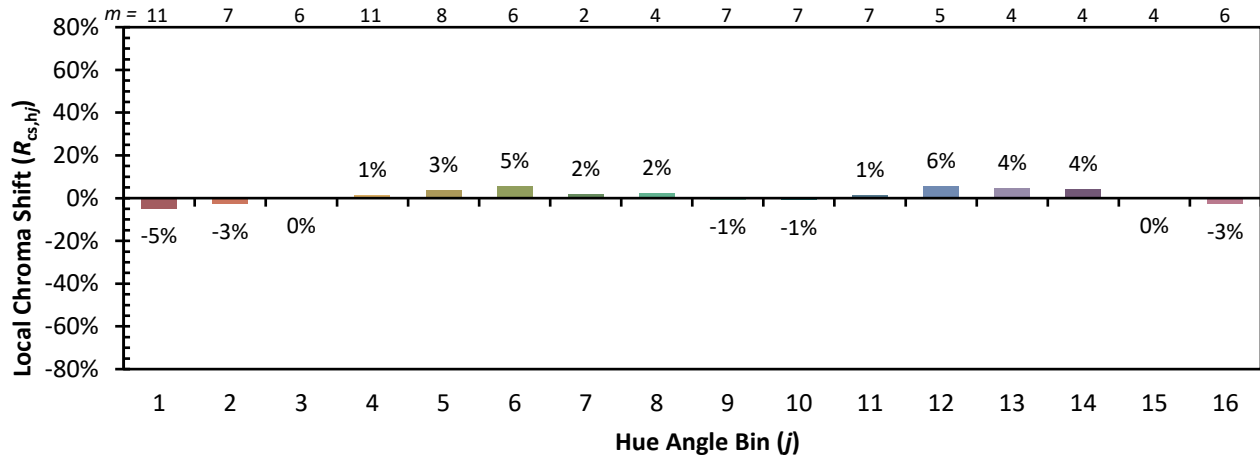


**Individual Sample Fidelity Index ( $R_{f,i}$ )**

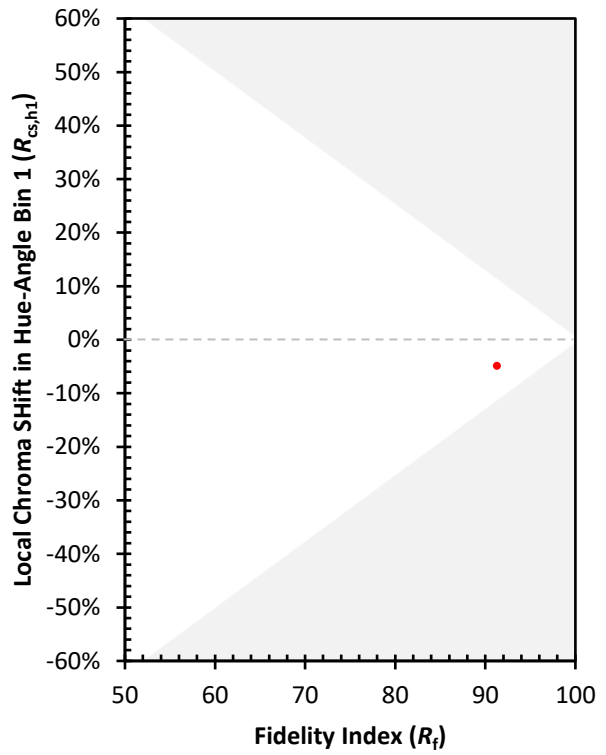
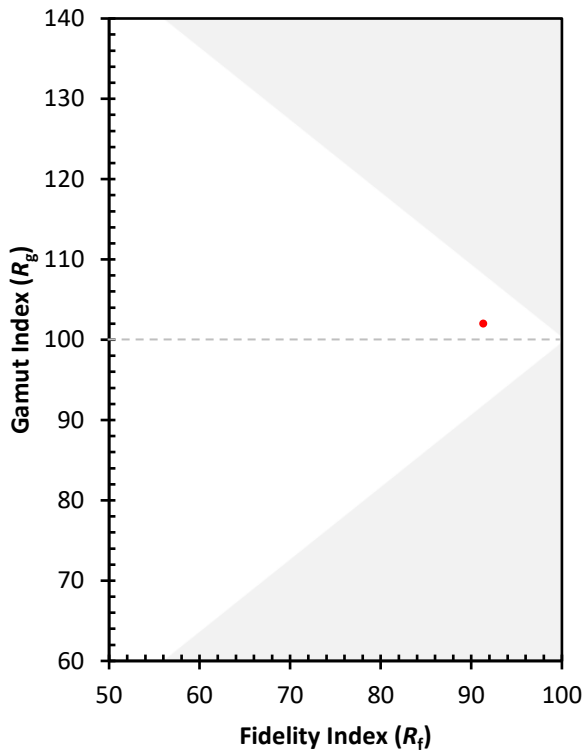
CES01 = 86	CES26 = 91	CES51 = 96	CES76 = 89
CES02 = 63	CES27 = 96	CES52 = 95	CES77 = 85
CES03 = 32	CES28 = 96	CES53 = 93	CES78 = 86
CES04 = 70	CES29 = 90	CES54 = 98	CES79 = 89
CES05 = 51	CES30 = 96	CES55 = 98	CES80 = 91
CES06 = 51	CES31 = 90	CES56 = 95	CES81 = 72
CES07 = 44	CES32 = 84	CES57 = 95	CES82 = 95
CES08 = 42	CES33 = 91	CES58 = 95	CES83 = 93
CES09 = 29	CES34 = 92	CES59 = 99	CES84 = 96
CES10 = 76	CES35 = 96	CES60 = 96	CES85 = 80
CES11 = 59	CES36 = 90	CES61 = 96	CES86 = 77
CES12 = 65	CES37 = 94	CES62 = 95	CES87 = 91
CES13 = 44	CES38 = 99	CES63 = 94	CES88 = 96
CES14 = 74	CES39 = 97	CES64 = 96	CES89 = 82
CES15 = 72	CES40 = 94	CES65 = 92	CES90 = 97
CES16 = 48	CES41 = 94	CES66 = 95	CES91 = 82
CES17 = 50	CES42 = 91	CES67 = 94	CES92 = 78
CES18 = 57	CES43 = 88	CES68 = 93	CES93 = 87
CES19 = 72	CES44 = 99	CES69 = 94	CES94 = 73
CES20 = 67	CES45 = 93	CES70 = 90	CES95 = 85
CES21 = 86	CES46 = 93	CES71 = 90	CES96 = 92
CES22 = 79	CES47 = 86	CES72 = 96	CES97 = 93
CES23 = 92	CES48 = 95	CES73 = 85	CES98 = 94
CES24 = 91	CES49 = 91	CES74 = 90	CES99 = 93
CES25 = 72	CES50 = 96	CES75 = 90	



Color Rendition by Hue-Angle Bin



Measure Comparisons



(END OF REPORT)