

Cooper Lighting Solutions Photometric Lab
1121 Highway 74 South
Peachtree City, GA 30269



Scaled data based on original data using
LM-79-2019 Approved Method: Electrical and Photometric Measurements of Solid-
State Lighting Products

Test Report Prepared for
Cooper Lighting Solutions

Brand: METALUX

Report Number: P1444647

Luminaire Tested: EHBR1-12-UNV-TA-L930-UPL36

Issue Date: 5/1/2026

Test Information

Test Method: LM-79-2019
Report Number: P1444647
REPORT IS A COMBINATION OF REPORTS P1444345 AND P1431635
Test Lab: INNOVATION CENTER
Issue Date: 5/1/2026
Manufacturer: COOPER LIGHTING SOLUTIONS
Product Line: METALUX
Catalog Number: EHBR1-12-UNV-TA-L930-UPL36
Description: Elevate Round Highbay at, 12000 lumens, 3000K 90CRI LEDs with TA lens
Light Source: -
Ballast/Driver: -

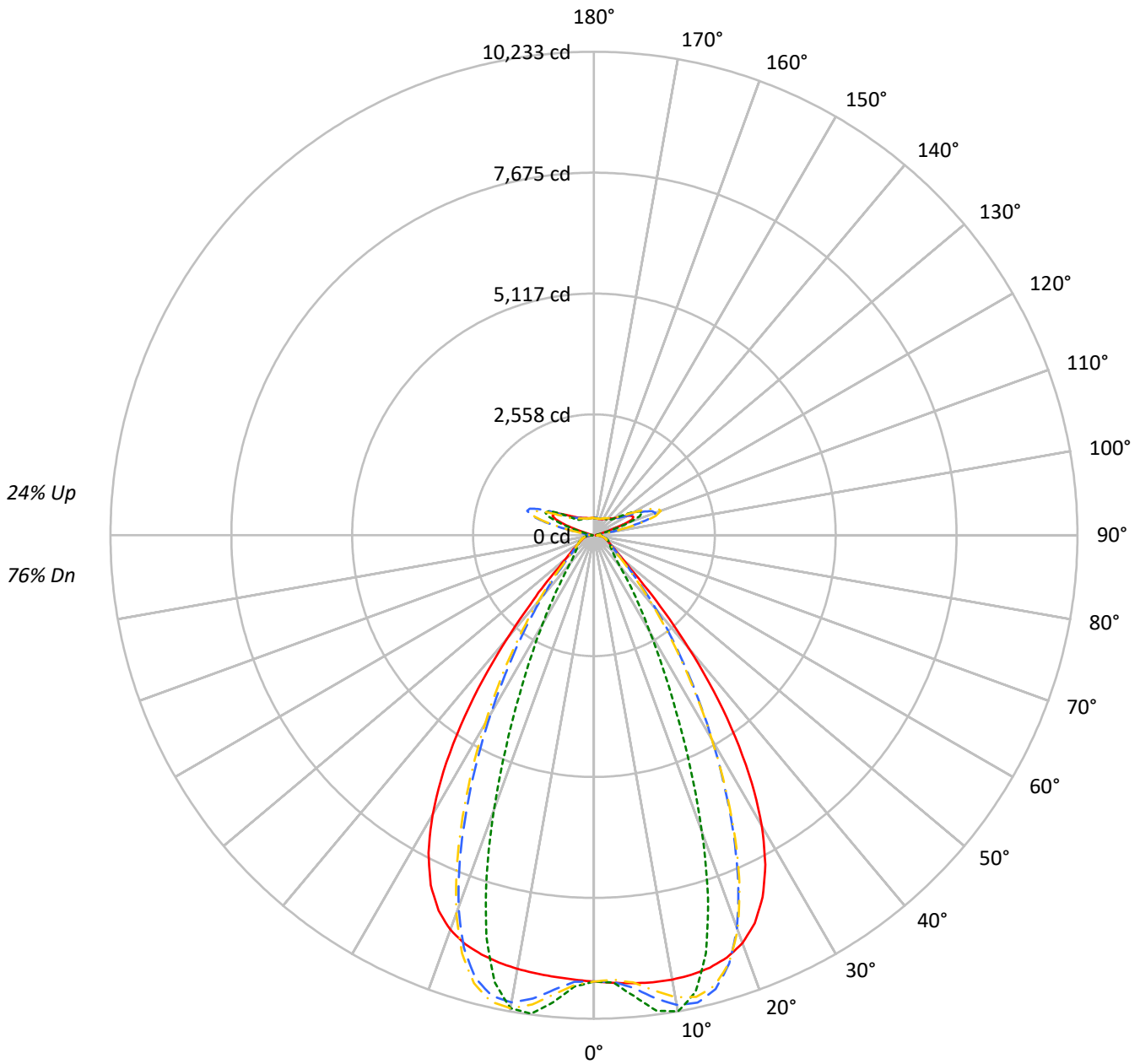
Summary

Lumens per Lamp: N/A
Luminaire Lumens: 14217.2 lumens
Efficiency: N/A
Efficacy: 152.7 lumens/watt
Spacing Criteria (0/90/45): 1.13 / 0.77 / 0.88
Luminous Opening: Vertical Cylinder (Dia: 1.71' x H: 0.1')
CIE Type: Semi-Direct

Input Watts (W): 93.1
Input Voltage (V): NR
Input Current (Ain): NR
Voltage Rise (V): NR
Power Factor: NR
Total Harmonic Distortion (THDi): NR
Frequency (hertz): 60
Stabilization Time: NR
Operation Time: NR
Ambient Temperature (°C): NR
Test Distance: 24 FT

TEST NUMBER: P1444647
CATALOG NUMBER: EHBR1-12-UNV-TA-L930-UPL36

Luminous Intensity Polar Plot



— 0°-180° - - 45°-225° ··· 90°-270° - · 135°-315°



TEST NUMBER: P1444647
 CATALOG NUMBER: EHBR1-12-UNV-TA-L930-UPL36

COEFFICIENT OF UTILIZATION - ZONAL CAVITY METHOD:

RF	20				20				20				20				20				
RC	80				70				50				30				10			0	
RW	70	50	30	10	70	50	30	10	50	30	10	50	30	10	50	30	10	50	30	10	0
RCR																					
0	113	113	113	113	108	108	108	108	98	98	98	89	89	89	80	80	80	80	80	80	76
1	106	102	99	96	101	98	95	93	90	87	86	82	80	79	75	74	73	75	74	73	69
2	99	93	88	84	94	89	85	81	82	79	76	75	73	71	69	67	66	69	67	66	63
3	93	85	79	74	88	82	76	72	75	71	68	70	66	64	65	62	60	65	62	60	57
4	87	78	71	66	83	75	69	64	70	65	61	65	61	58	60	57	55	60	57	55	52
5	81	72	65	60	78	69	63	58	65	60	56	60	56	53	56	53	50	56	53	50	48
6	76	66	59	54	73	64	58	53	60	55	51	56	52	49	53	49	47	53	49	47	45
7	72	61	55	50	69	60	53	49	56	51	47	53	48	45	50	46	43	50	46	43	41
8	68	57	50	46	65	56	49	45	52	47	43	50	45	42	47	43	40	47	43	40	38
9	64	53	47	42	62	52	46	42	49	44	40	47	42	39	44	40	38	44	40	38	36
10	61	50	44	39	59	49	43	39	46	41	38	44	40	36	42	38	35	42	38	35	34

AVERAGE LUMINANCE (cd/sqm):

	0°	90°	180°	270°
0°	44359	44359	44359	44359
5°	44574	45873	43950	46474
10°	44946	48164	43868	47845
15°	45167	43660	43791	41902
20°	44699	32525	43237	30094
25°	42310	20570	40912	18664
30°	36960	12361	35529	11297
35°	28445	7757	26809	6871
40°	17994	4866	16463	4572
45°	9275	3791	9121	3728
50°	5438	3372	5271	3319
55°	4165	3189	4012	3161
60°	3524	3258	3375	3217
65°	3311	3403	3184	3287
70°	3234	3563	3074	3428
75°	3458	3779	3271	3611
80°	3579	4184	3245	3821
85°	3369	4038	2723	3457

MAXIMUM LUMINANCE 45°-90°:

Horizontal Angle: 25°
 Vertical Angle: 45°
 Luminance: 14194 cd/sqm



TEST NUMBER: P1444647
 CATALOG NUMBER: EHBR1-12-UNV-TA-L930-UPL36

ZONAL LUMENS:

Zone	Lumens	% Fixture
0°-10°	930.9	6.5
10°-20°	2618.8	18.4
20°-30°	2982.6	21.0
30°-40°	2143.7	15.1
40°-50°	988.7	7.0
50°-60°	473.1	3.3
60°-70°	345.2	2.4
70°-80°	262.3	1.8
80°-90°	125.1	0.9
90°-100°	90.2	0.6
100°-110°	574.7	4.0
110°-120°	1062.9	7.5
120°-130°	635.6	4.5
130°-140°	389.6	2.7
140°-150°	273.8	1.9
150°-160°	181.0	1.3
160°-170°	104.3	0.7
170°-180°	34.7	0.2
0°-30°	6532.3	45.9
0°-40°	8676.0	61.0
0°-60°	10137.8	71.3
0°-90°	10870.4	76.5
90°-120°	1727.9	12.2
90°-150°	3026.9	21.3
90°-180°	3347.0	23.5
0°-180°	14217.2	100.0

CANDELA DISTRIBUTION:

	0°	90°	180°	270°	360°	Flux
0°	9446	9446	9446	9446	9446	
5°	9517	9795	9384	9923	9517	909
15°	9476	9160	9187	8791	9476	2670
25°	8449	4108	8170	3727	8449	3830
35°	5221	1424	4920	1261	5221	3204
45°	1501	613	1476	603	1501	1276
55°	563	431	542	427	563	520
65°	346	355	332	343	346	345
75°	244	266	230	254	244	253
85°	116	139	94	119	116	109
90°	50	58	28	30	50	28
95°	42	47	42	47	42	40
105°	202	265	132	265	202	269
115°	921	1130	965	1130	921	849
125°	672	725	763	726	672	612
135°	500	462	541	464	500	391
145°	421	425	451	427	421	266
155°	376	386	404	387	376	175
165°	359	365	374	365	359	102
175°	359	364	367	365	359	34
180°	364	364	364	364	364	



TEST NUMBER: P1444647
 CATALOG NUMBER: EHBR1-12-UNV-TA-L930-UPL36

CANDELA DISTRIBUTION (FULL):

	0°	2.5°	5°	7.5°	10°	12.5°	15°	17.5°	20°	22.5°	25°
0°	9445.9	9445.9	9445.9	9445.9	9445.9	9445.9	9445.9	9445.9	9445.9	9445.9	9445.9
2.5°	9482.0	9481.3	9481.1	9480.5	9480.3	9480.3	9479.9	9479.1	9478.7	9477.6	9476.4
5°	9517.2	9516.7	9517.0	9517.1	9516.4	9515.0	9512.6	9509.8	9506.2	9502.8	9499.9
7.5°	9544.4	9545.1	9545.9	9545.7	9543.7	9540.2	9535.5	9532.8	9534.4	9539.6	9551.3
10°	9549.4	9553.5	9555.0	9554.5	9550.4	9547.4	9548.6	9558.5	9578.5	9605.1	9641.4
12.5°	9530.0	9535.0	9534.8	9533.1	9529.1	9533.2	9547.8	9577.5	9620.2	9672.6	9734.1
15°	9475.7	9482.1	9480.3	9478.2	9475.5	9488.8	9517.7	9569.5	9635.4	9709.3	9785.0
17.5°	9370.1	9377.9	9374.1	9371.7	9369.4	9394.4	9444.2	9520.0	9603.0	9686.6	9758.3
20°	9187.0	9192.2	9183.2	9179.0	9182.6	9231.5	9304.8	9401.6	9489.1	9568.2	9617.2
22.5°	8888.2	8894.7	8877.8	8875.8	8896.7	8971.9	9064.6	9172.8	9255.0	9317.8	9336.6
25°	8449.2	8455.6	8435.5	8447.5	8483.0	8585.5	8695.9	8811.6	8881.8	8928.2	8915.4
27.5°	7856.6	7862.5	7843.5	7868.0	7924.1	8058.7	8188.7	8314.2	8376.7	8409.2	8368.1
30°	7109.3	7121.5	7098.9	7133.1	7218.8	7393.6	7542.5	7683.2	7745.6	7770.4	7706.2
32.5°	6221.8	6239.0	6214.2	6265.1	6384.6	6594.5	6763.7	6920.9	6989.9	7018.2	6945.7
35°	5220.7	5245.3	5216.9	5293.3	5440.7	5674.5	5861.8	6037.4	6119.1	6159.1	6086.1
37.5°	4160.1	4183.6	4168.2	4270.1	4432.0	4674.3	4865.5	5054.9	5147.2	5207.3	5149.7
40°	3118.8	3140.4	3152.0	3268.5	3420.8	3649.2	3832.8	4020.2	4123.5	4198.9	4163.4
42.5°	2201.3	2222.9	2262.6	2375.1	2502.0	2691.1	2848.3	3016.6	3115.2	3195.7	3182.0
45°	1500.6	1525.7	1575.4	1667.4	1759.3	1894.9	2010.4	2141.3	2221.9	2295.6	2296.5
47.5°	1051.5	1069.2	1113.6	1176.4	1236.3	1406.1	1413.1	1477.4	1531.5	1586.7	1593.8
50°	810.4	821.0	844.5	879.6	913.5	957.6	998.0	1044.6	1077.9	1108.1	1115.3
52.5°	666.1	672.8	684.8	703.8	723.4	747.5	769.1	794.6	812.8	828.9	832.3
55°	562.9	568.5	586.4	590.0	612.5	616.8	626.5	642.0	652.6	662.2	664.7
57.5°	485.1	489.2	493.0	501.1	508.0	518.1	526.2	537.4	544.0	551.0	551.6
60°	423.7	426.7	429.4	435.0	439.7	446.7	452.3	459.9	464.6	469.9	470.5
62.5°	378.0	380.2	381.9	385.7	389.0	394.4	398.9	405.2	409.7	413.7	414.6
65°	345.6	347.1	348.3	351.0	354.0	358.6	362.6	367.8	371.1	374.2	374.8
67.5°	316.8	318.2	319.5	322.0	324.0	327.5	330.2	334.1	336.5	339.0	339.1
70°	283.8	285.2	286.1	288.5	290.1	293.0	295.2	298.7	301.2	304.0	304.7
72.5°	261.0	261.8	263.0	265.2	267.4	270.6	273.5	277.1	280.2	283.1	284.3
75°	243.6	244.5	245.3	247.2	248.8	251.5	253.6	256.9	259.6	262.7	264.2
77.5°	218.6	219.7	220.4	222.2	223.6	226.1	227.7	230.7	232.9	235.7	237.0
80°	188.3	189.3	189.8	191.5	192.6	195.0	196.5	199.4	201.2	204.0	205.7
82.5°	154.7	155.7	155.9	157.6	158.2	160.1	161.3	164.2	166.5	170.1	172.6
85°	115.8	116.2	116.7	116.3	118.7	118.8	121.5	122.0	125.5	126.4	130.4
87.5°	70.8	71.9	72.4	74.0	74.7	76.3	76.8	78.5	79.5	81.5	82.3
90°	49.9	52.9	54.8	58.1	60.0	63.0	64.8	68.1	70.0	73.3	76.6
92.5°	36.3	38.9	41.4	44.2	46.8	49.7	52.4	55.2	57.7	60.6	65.9
95°	41.7	44.7	47.8	50.8	53.8	56.9	60.0	63.0	66.0	69.1	78.0
97.5°	52.8	55.5	58.1	60.8	63.4	66.0	68.6	71.3	73.9	76.5	87.1
100°	69.5	71.7	74.0	76.2	78.4	80.6	82.9	85.1	87.3	89.6	109.2
102.5°	117.3	125.2	133.0	141.0	148.8	156.8	164.6	172.5	180.4	188.3	229.9
105°	201.6	223.0	244.5	265.9	287.4	308.9	330.3	351.7	373.2	394.7	462.3
107.5°	348.0	387.6	427.3	467.0	506.7	546.4	586.1	625.8	665.4	705.1	773.7
110°	647.7	679.6	711.6	743.5	775.5	807.6	839.5	871.4	903.3	935.3	985.5



TEST NUMBER: P1444647
 CATALOG NUMBER: EHBR1-12-UNV-TA-L930-UPL36

CANDELA DISTRIBUTION (continued):

	0°	2.5°	5°	7.5°	10°	12.5°	15°	17.5°	20°	22.5°	25°
112.5°	874.7	889.2	903.7	918.2	932.8	947.3	961.7	976.2	990.8	1005.3	1041.3
115°	921.3	926.4	931.6	936.8	942.0	947.3	952.4	957.6	962.8	967.9	992.3
117.5°	891.5	890.7	890.1	889.4	888.6	887.9	887.2	886.5	885.8	885.0	898.9
120°	827.2	823.1	819.0	814.8	810.6	806.4	802.2	798.0	793.7	789.5	795.6
122.5°	746.7	741.8	736.8	731.8	726.7	721.7	716.7	711.6	706.5	701.5	704.2
125°	671.8	666.8	661.8	656.8	651.7	646.6	641.6	636.5	631.4	626.2	627.9
127.5°	606.2	602.8	599.4	595.9	592.4	589.0	585.4	581.9	578.4	574.9	575.6
130°	562.3	559.3	556.2	553.3	550.2	547.1	544.0	540.9	537.8	534.6	535.8
132.5°	525.9	524.0	521.9	519.9	517.8	515.6	513.6	511.3	509.2	507.1	508.4
135°	500.4	498.6	496.8	494.8	493.0	491.1	489.1	487.1	485.2	483.2	484.7
137.5°	478.4	476.8	475.2	473.5	471.8	470.1	468.4	466.6	464.8	463.0	464.5
140°	458.2	456.8	455.4	453.9	452.3	450.9	449.3	447.7	446.2	444.6	446.4
142.5°	436.0	435.1	434.1	432.9	431.9	430.7	429.5	428.4	427.2	426.1	428.2
145°	421.0	420.2	419.4	418.5	417.6	416.7	415.8	414.8	413.8	413.0	415.3
147.5°	407.6	407.0	406.4	405.7	405.2	404.4	403.8	403.0	402.3	401.5	403.7
150°	395.9	395.3	394.9	394.2	393.5	392.8	392.2	391.5	390.9	390.1	392.3
152.5°	384.1	383.5	383.0	382.3	381.8	381.1	380.5	379.7	379.1	378.4	380.3
155°	376.0	375.3	374.8	374.2	373.7	372.9	372.3	371.7	371.1	370.4	372.0
157.5°	369.8	369.5	369.2	368.7	368.3	367.9	367.5	367.0	366.6	366.3	367.4
160°	365.7	365.4	365.0	364.6	364.1	363.8	363.4	362.9	362.5	362.2	363.2
162.5°	361.6	361.3	360.8	360.5	360.1	359.6	359.2	358.9	358.4	358.0	359.2
165°	359.3	359.1	359.0	358.8	358.6	358.4	358.2	358.1	357.9	357.7	358.5
167.5°	360.6	360.2	359.8	359.5	359.1	358.8	358.4	358.1	357.7	357.3	358.1
170°	359.8	359.6	359.5	359.4	359.2	359.1	359.0	358.9	358.7	358.6	359.3
172.5°	360.6	360.4	360.3	360.3	360.1	360.0	359.9	359.8	359.8	359.7	360.4
175°	359.4	359.2	359.2	359.1	359.0	359.0	359.0	358.9	358.9	358.8	359.3
177.5°	361.5	361.4	361.4	361.4	361.4	361.4	361.4	361.3	361.3	361.3	361.7
180°	363.7	363.7	363.7	363.7	363.7	363.7	363.7	363.7	363.7	363.7	363.7



TEST NUMBER: P1444647
 CATALOG NUMBER: EHBR1-12-UNV-TA-L930-UPL36

CANDELA DISTRIBUTION (continued):

	27.5°	30°	32.5°	35°	37.5°	40°	42.5°	45°	47.5°	50°	52.5°
0°	9445.9	9445.9	9445.9	9445.9	9445.9	9445.9	9445.9	9445.9	9445.9	9445.9	9445.9
2.5°	9475.5	9474.3	9472.7	9470.8	9469.1	9467.0	9462.3	9460.9	9462.5	9463.5	9465.7
5°	9497.9	9498.7	9498.9	9503.2	9506.9	9516.2	9588.8	9617.7	9640.1	9654.2	9675.8
7.5°	9565.8	9587.7	9609.3	9638.4	9663.4	9697.3	9824.5	9878.5	9917.0	9944.7	9978.7
10°	9680.9	9728.6	9773.3	9825.6	9870.7	9922.2	10040.6	10093.3	10126.6	10150.9	10173.4
12.5°	9796.7	9862.9	9922.7	9980.9	10029.7	10074.4	10116.0	10134.5	10136.0	10136.8	10124.8
15°	9857.2	9920.3	9973.0	10011.5	10040.2	10052.9	9981.2	9943.6	9896.1	9857.0	9792.6
17.5°	9819.0	9857.0	9879.7	9877.5	9865.6	9826.0	9623.1	9511.4	9400.5	9300.6	9169.7
20°	9649.7	9646.8	9627.0	9570.9	9503.5	9398.4	9050.4	8849.6	8655.5	8485.1	8278.2
22.5°	9334.7	9285.1	9216.0	9095.1	8960.9	8777.5	8278.8	7983.4	7713.2	7474.4	7207.0
25°	8878.2	8776.2	8648.8	8456.9	8248.3	7980.7	7366.1	6998.7	6674.3	6392.9	6084.3
27.5°	8294.0	8140.4	7953.6	7688.0	7405.5	7062.6	6381.2	5975.8	5627.5	5325.8	4997.4
30°	7602.4	7402.6	7161.5	6831.8	6490.9	6102.1	5411.0	5000.4	4647.8	4337.4	4008.8
32.5°	6820.9	6586.9	6304.2	5934.3	5565.6	5165.8	4498.4	4100.9	3764.2	3465.6	3168.1
35°	5958.8	5707.8	5408.9	5031.6	4665.0	4276.4	3663.9	3305.6	3008.2	2744.3	2504.1
37.5°	5034.1	4787.7	4503.5	4147.9	3808.1	3455.8	2927.4	2627.1	2377.6	2158.5	1973.1
40°	4072.7	3857.1	3611.2	3303.7	3013.7	2720.4	2286.6	2048.2	1851.3	1684.3	1545.2
42.5°	3123.0	2955.9	2767.3	2524.4	2302.5	2079.1	1745.3	1568.7	1422.8	1302.5	1204.3
45°	2265.9	2154.1	2027.6	1858.7	1705.2	1549.3	1311.8	1187.6	1092.6	1015.1	949.5
47.5°	1584.0	1519.1	1515.2	1359.1	1246.5	1151.3	998.2	919.7	861.6	814.6	773.1
50°	1112.4	1081.0	1042.0	986.3	934.1	880.3	787.0	739.6	705.5	677.0	650.8
52.5°	831.6	815.3	794.5	765.0	736.7	706.4	647.3	617.2	606.5	580.0	559.2
55°	664.2	654.9	643.0	625.7	608.5	601.6	551.0	528.6	514.4	503.9	492.8
57.5°	551.7	544.8	537.7	526.0	516.0	503.9	477.1	465.6	457.2	451.0	443.3
60°	470.6	466.4	462.5	455.6	450.2	443.7	426.7	420.2	415.8	412.1	407.2
62.5°	415.4	413.2	411.2	407.5	404.8	401.3	389.6	386.5	384.3	382.4	379.4
65°	375.5	373.9	372.9	370.4	369.0	367.0	356.9	354.9	353.5	352.8	351.0
67.5°	339.3	337.7	336.9	335.2	334.6	333.3	325.1	323.9	323.5	323.8	323.1
70°	305.4	304.7	305.0	304.8	305.6	305.7	300.8	300.8	301.3	302.4	302.5
72.5°	285.1	285.1	285.4	285.6	286.3	286.7	282.6	282.4	282.6	283.4	283.4
75°	265.7	266.1	267.1	267.4	268.3	268.5	263.1	262.4	262.4	263.2	263.0
77.5°	239.0	240.2	242.1	243.2	244.9	245.2	239.1	238.3	238.4	239.1	238.5
80°	208.6	210.8	214.1	216.3	218.9	219.8	213.6	212.1	210.7	210.5	209.2
82.5°	176.4	179.1	183.0	184.9	187.7	188.3	177.8	175.7	174.6	174.7	173.5
85°	134.7	136.7	140.2	141.3	143.0	142.8	130.8	125.7	127.1	124.9	126.6
87.5°	84.5	85.6	87.9	88.1	88.9	88.8	76.6	74.2	73.5	73.6	72.7
90°	81.3	84.7	89.3	92.1	96.0	98.5	91.3	92.9	89.6	87.9	84.3
92.5°	71.3	76.5	81.9	87.2	92.6	97.9	102.1	107.1	101.5	95.8	90.3
95°	86.9	95.8	104.7	113.6	122.5	131.4	140.4	149.3	141.0	132.6	124.2
97.5°	97.6	108.1	118.6	129.2	139.7	150.2	160.8	171.3	162.4	153.4	144.5
100°	128.9	148.5	168.1	187.7	207.4	227.0	246.7	266.3	249.1	231.8	214.5
102.5°	271.6	313.4	355.1	396.7	438.4	480.2	521.9	563.6	524.2	484.6	445.0
105°	530.0	597.5	665.1	732.7	800.2	867.9	935.6	1003.2	940.0	876.7	813.5
107.5°	842.3	910.8	979.5	1048.0	1116.7	1185.2	1254.0	1322.6	1261.0	1199.3	1137.7
110°	1035.6	1085.8	1135.9	1186.0	1236.2	1286.4	1336.7	1386.9	1349.9	1313.0	1276.0



TEST NUMBER: P1444647
 CATALOG NUMBER: EHBR1-12-UNV-TA-L930-UPL36

CANDELA DISTRIBUTION (continued):

	27.5°	30°	32.5°	35°	37.5°	40°	42.5°	45°	47.5°	50°	52.5°
112.5°	1077.1	1113.2	1149.1	1185.0	1220.9	1256.9	1293.1	1329.1	1310.8	1292.4	1274.1
115°	1016.7	1041.1	1065.4	1089.8	1114.2	1138.5	1163.2	1187.7	1182.1	1176.4	1170.9
117.5°	912.7	926.4	940.3	954.1	967.9	981.6	995.9	1009.8	1011.3	1012.7	1014.2
120°	801.8	807.8	814.0	820.0	826.1	832.1	838.8	845.0	850.5	855.9	861.4
122.5°	706.8	709.3	711.9	714.6	717.2	719.7	723.0	725.8	729.8	733.8	737.8
125°	629.4	631.0	632.6	634.2	635.6	637.3	639.7	641.4	642.2	642.9	643.7
127.5°	576.4	577.2	577.9	578.7	579.4	580.1	581.7	582.6	581.1	579.7	578.1
130°	536.9	538.0	539.1	540.2	541.4	542.4	544.5	545.8	542.7	539.5	536.5
132.5°	509.7	511.1	512.3	513.7	515.0	516.3	518.6	520.1	516.4	512.7	508.9
135°	486.2	487.7	489.2	490.8	492.3	493.9	496.5	498.1	494.7	491.0	487.5
137.5°	466.0	467.5	469.1	470.6	472.1	473.6	476.4	478.2	475.5	472.7	470.0
140°	448.0	449.8	451.5	453.2	454.9	456.8	459.6	461.7	459.7	457.5	455.5
142.5°	430.2	432.5	434.6	436.8	439.0	441.2	444.7	447.1	445.7	444.2	442.8
145°	417.5	420.0	422.3	424.8	427.1	429.6	433.4	436.1	435.3	434.5	433.7
147.5°	405.8	408.1	410.2	412.4	414.6	417.1	420.7	423.3	422.9	422.6	422.1
150°	394.3	396.6	398.8	401.0	403.3	405.6	409.7	412.3	412.0	411.7	411.3
152.5°	382.4	384.3	386.4	388.4	390.5	392.6	396.9	399.5	399.1	398.7	398.4
155°	373.6	375.2	376.9	378.5	380.2	381.9	386.0	388.3	388.2	388.1	387.9
157.5°	368.7	369.9	371.1	372.3	373.6	374.9	378.8	380.8	380.7	380.5	380.4
160°	364.1	365.2	366.2	367.2	368.2	369.4	373.2	375.0	374.9	374.7	374.6
162.5°	360.5	361.8	363.0	364.1	365.5	366.7	370.8	372.8	372.5	372.2	371.9
165°	359.4	360.2	361.0	362.0	362.8	363.7	367.2	368.8	368.7	368.6	368.5
167.5°	359.0	359.9	360.8	361.6	362.6	363.5	366.9	368.4	368.3	368.2	368.1
170°	359.9	360.6	361.4	362.2	362.9	363.7	366.4	367.6	367.4	367.1	366.8
172.5°	361.1	361.9	362.6	363.4	364.1	364.9	367.3	368.6	368.3	368.1	367.7
175°	359.9	360.4	361.0	361.6	362.2	362.7	364.7	365.5	365.5	365.5	365.4
177.5°	362.1	362.4	362.8	363.2	363.6	364.0	365.2	365.8	365.8	365.8	365.7
180°	363.7	363.7	363.7	363.7	363.7	363.7	363.7	363.7	363.7	363.7	363.7



TEST NUMBER: P1444647
 CATALOG NUMBER: EHBR1-12-UNV-TA-L930-UPL36

CANDELA DISTRIBUTION (continued):

	55°	57.5°	60°	62.5°	65°	67.5°	70°	72.5°	75°	77.5°	80°
0°	9445.9	9445.9	9445.9	9445.9	9445.9	9445.9	9445.9	9445.9	9445.9	9445.9	9445.9
2.5°	9466.2	9469.5	9470.0	9473.9	9473.6	9478.2	9477.4	9481.3	9479.0	9482.2	9479.5
5°	9688.6	9708.7	9719.2	9738.9	9745.1	9762.7	9767.7	9783.8	9784.4	9797.2	9794.2
7.5°	10002.9	10032.6	10050.3	10074.6	10086.9	10107.1	10116.0	10131.1	10135.9	10147.8	10148.7
10°	10190.5	10205.0	10215.0	10221.9	10228.1	10231.0	10234.4	10233.5	10234.4	10233.0	10236.0
12.5°	10116.7	10095.6	10081.7	10055.3	10040.0	10010.9	9996.5	9968.6	9958.3	9934.2	9930.8
15°	9742.8	9669.4	9617.5	9542.1	9494.6	9420.3	9376.9	9309.9	9279.3	9226.1	9212.1
17.5°	9061.3	8924.9	8819.4	8684.2	8590.2	8463.7	8384.2	8279.5	8222.1	8137.7	8108.5
20°	8105.8	7904.1	7745.9	7557.3	7422.4	7254.3	7146.7	7010.9	6932.2	6828.4	6786.4
22.5°	6984.0	6732.9	6535.3	6312.6	6149.8	5962.4	5833.5	5686.6	5600.9	5488.3	5438.4
25°	5827.9	5550.9	5331.2	5096.5	4924.5	4736.8	4607.8	4463.5	4374.8	4267.8	4218.3
27.5°	4722.1	4441.7	4229.3	4011.2	3853.5	3684.0	3567.7	3441.7	3363.0	3271.6	3225.0
30°	3746.3	3499.0	3318.2	3137.3	3006.0	2868.4	2771.6	2667.3	2598.2	2520.1	2475.6
32.5°	2951.2	2760.3	2618.8	2475.1	2367.8	2252.7	2169.2	2077.1	2014.7	1944.9	1904.7
35°	2337.4	2189.0	2076.2	1957.8	1865.6	1767.7	1694.1	1614.5	1558.6	1498.5	1463.8
37.5°	1846.7	1728.8	1636.0	1537.7	1461.9	1380.7	1353.4	1262.2	1204.2	1156.3	1123.0
40°	1449.3	1355.5	1278.7	1203.6	1141.7	1080.2	1030.8	982.0	944.6	910.3	886.6
42.5°	1131.8	1063.8	1007.7	952.7	907.6	862.8	827.0	793.4	768.3	745.8	730.5
45°	899.7	853.0	814.0	775.2	743.4	713.5	689.4	668.0	651.7	638.2	628.7
47.5°	739.1	707.1	679.7	653.5	631.9	612.3	596.2	590.9	573.4	561.6	557.1
50°	628.2	608.8	588.0	568.6	554.2	539.9	529.4	519.2	512.6	507.1	505.5
52.5°	545.4	530.6	518.9	506.7	497.3	487.0	479.8	472.9	469.4	466.5	466.2
55°	483.8	473.5	465.7	457.5	451.8	445.8	442.1	438.5	436.9	435.5	435.6
57.5°	437.2	430.2	425.3	420.0	416.9	414.0	413.0	412.2	412.6	412.9	413.7
60°	403.2	398.7	395.6	392.5	391.2	390.3	391.0	391.8	393.5	394.8	396.0
62.5°	377.2	374.6	373.1	371.4	371.3	371.4	372.8	374.2	376.2	377.8	378.9
65°	350.4	349.0	348.4	347.5	347.9	348.3	350.0	351.0	353.1	354.3	355.7
67.5°	323.4	323.0	323.3	323.3	324.3	325.1	326.7	327.9	329.6	330.8	331.9
70°	303.3	303.5	304.2	304.4	305.4	305.9	307.4	308.2	309.7	310.7	312.1
72.5°	283.9	283.6	283.8	283.4	283.7	283.6	284.4	284.7	286.1	286.8	288.6
75°	263.2	262.4	262.2	261.2	261.3	260.6	260.9	260.8	261.7	262.1	263.3
77.5°	238.3	236.8	236.1	234.5	234.5	233.9	234.5	234.9	236.4	237.2	238.6
80°	208.3	206.0	205.0	203.2	203.5	203.4	205.0	206.1	208.0	208.3	210.1
82.5°	173.1	170.8	169.7	167.9	168.3	168.4	169.8	170.0	171.6	172.3	174.5
85°	124.0	124.9	122.4	122.6	122.1	123.1	124.0	125.2	126.5	128.9	130.6
87.5°	73.0	72.7	73.6	73.7	74.9	75.7	77.6	78.8	81.1	82.9	86.1
90°	82.0	78.5	76.9	74.1	73.0	70.3	69.6	67.3	66.7	65.1	65.1
92.5°	84.5	78.9	73.2	67.5	61.8	56.3	53.5	51.0	48.2	45.8	43.0
95°	115.9	107.6	99.4	91.0	82.7	74.4	71.4	68.4	65.3	62.3	59.2
97.5°	135.5	126.6	117.7	108.7	99.8	90.9	88.8	86.9	84.8	82.8	80.8
100°	197.3	180.1	162.9	145.5	128.3	111.1	109.5	107.9	106.3	104.7	103.0
102.5°	405.6	366.0	326.5	286.9	247.5	207.9	201.0	194.2	187.2	180.4	173.5
105°	750.3	687.1	623.9	560.6	497.4	434.3	415.4	396.5	377.7	358.8	340.0
107.5°	1076.1	1014.5	952.9	891.2	829.7	768.0	738.2	708.5	678.6	648.8	619.0
110°	1239.0	1202.1	1165.3	1128.2	1091.4	1054.5	1026.1	997.7	969.2	940.9	912.5



TEST NUMBER: P1444647
 CATALOG NUMBER: EHBR1-12-UNV-TA-L930-UPL36

CANDELA DISTRIBUTION (continued):

	55°	57.5°	60°	62.5°	65°	67.5°	70°	72.5°	75°	77.5°	80°
112.5°	1255.7	1237.3	1219.1	1200.7	1182.5	1164.1	1150.2	1136.5	1122.7	1108.8	1094.9
115°	1165.2	1159.6	1153.8	1148.3	1142.7	1137.1	1136.3	1135.4	1134.5	1133.7	1132.8
117.5°	1015.5	1017.0	1018.4	1020.0	1021.4	1022.8	1030.4	1038.1	1045.7	1053.2	1061.0
120°	866.8	872.2	877.7	883.2	888.6	894.1	904.2	914.5	924.7	935.0	945.2
122.5°	741.8	745.7	749.7	753.8	757.7	761.7	771.9	782.2	792.3	802.5	812.8
125°	644.3	645.1	645.8	646.4	647.2	647.9	656.5	664.9	673.4	682.1	690.5
127.5°	576.6	575.1	573.4	571.9	570.4	568.9	574.1	579.4	584.6	589.8	595.2
130°	533.3	530.1	526.8	523.8	520.6	517.5	519.9	522.2	524.6	527.0	529.4
132.5°	505.1	501.4	497.5	493.7	489.9	486.2	486.7	487.2	487.7	488.3	489.0
135°	484.0	480.4	476.8	473.3	469.6	466.2	465.6	465.2	464.6	464.2	463.7
137.5°	467.3	464.5	461.7	459.0	456.2	453.5	452.5	451.6	450.7	449.9	449.0
140°	453.3	451.3	449.0	447.0	444.8	442.8	442.0	441.4	440.6	440.0	439.3
142.5°	441.3	439.8	438.4	436.8	435.4	433.9	433.2	432.6	431.8	431.3	430.6
145°	432.9	432.0	431.1	430.4	429.5	428.7	428.2	427.7	427.3	426.9	426.5
147.5°	421.8	421.3	421.0	420.5	420.1	419.7	419.5	419.3	419.0	418.9	418.7
150°	410.8	410.5	410.1	409.7	409.3	408.9	408.9	408.9	408.9	409.0	408.9
152.5°	398.1	397.6	397.3	397.0	396.5	396.1	396.1	396.3	396.3	396.3	396.4
155°	387.7	387.6	387.5	387.3	387.1	386.9	386.8	386.7	386.5	386.3	386.1
157.5°	380.3	380.2	380.0	379.9	379.7	379.5	379.4	379.3	379.1	379.0	378.8
160°	374.5	374.4	374.2	374.1	373.9	373.8	373.5	373.1	372.8	372.4	372.1
162.5°	371.5	371.2	370.9	370.5	370.2	369.9	369.7	369.6	369.4	369.3	369.1
165°	368.3	368.2	368.0	367.9	367.8	367.7	367.3	367.0	366.6	366.3	365.9
167.5°	368.0	367.9	367.7	367.6	367.4	367.3	367.1	366.6	366.3	366.0	365.5
170°	366.5	366.2	366.0	365.5	365.3	364.9	364.7	364.3	363.9	363.7	363.2
172.5°	367.5	367.2	367.0	366.6	366.3	366.1	365.8	365.5	365.2	364.9	364.6
175°	365.3	365.3	365.3	365.1	365.1	365.0	364.9	364.9	364.8	364.8	364.7
177.5°	365.7	365.7	365.7	365.6	365.6	365.6	365.4	365.2	364.9	364.7	364.5
180°	363.7	363.7	363.7	363.7	363.7	363.7	363.7	363.7	363.7	363.7	363.7



TEST NUMBER: P1444647
 CATALOG NUMBER: EHBR1-12-UNV-TA-L930-UPL36

CANDELA DISTRIBUTION (continued):

	82.5°	85°	87.5°	90°	92.5°	95°	97.5°	100°	102.5°	105°	107.5°
0°	9445.9	9445.9	9445.9	9445.9	9445.9	9445.9	9445.9	9445.9	9445.9	9445.9	9445.9
2.5°	9482.3	9479.9	9481.0	9476.6	9477.6	9472.3	9471.7	9465.7	9465.1	9459.4	9457.3
5°	9803.3	9798.0	9804.0	9794.7	9796.6	9784.4	9783.5	9767.8	9762.4	9742.9	9734.4
7.5°	10156.1	10154.2	10157.8	10150.1	10149.8	10139.0	10134.6	10120.6	10111.8	10091.3	10078.3
10°	10233.5	10235.3	10232.3	10233.0	10228.9	10227.7	10223.4	10220.7	10213.6	10208.3	10200.4
12.5°	9912.5	9914.4	9902.2	9909.9	9903.8	9918.1	9917.0	9933.8	9936.4	9957.8	9965.9
15°	9170.6	9168.3	9144.8	9159.7	9151.6	9183.1	9190.1	9232.5	9255.0	9309.4	9342.7
17.5°	8049.9	8043.9	8010.8	8028.8	8019.6	8066.1	8081.6	8149.2	8191.4	8278.9	8341.2
20°	6714.0	6702.4	6663.8	6684.9	6675.4	6728.1	6750.3	6832.0	6886.4	7002.3	7084.7
22.5°	5361.5	5343.3	5305.3	5325.1	5316.1	5370.6	5399.6	5481.6	5543.9	5662.8	5759.1
25°	4147.0	4130.7	4094.1	4107.9	4104.6	4150.7	4176.4	4253.9	4315.2	4428.5	4520.4
27.5°	3163.0	3146.1	3112.9	3122.7	3119.3	3158.6	3182.9	3247.7	3300.4	3395.8	3476.4
30°	2420.9	2400.4	2372.3	2377.6	2375.4	2407.2	2429.9	2484.4	2529.6	2610.2	2679.7
32.5°	1855.6	1835.0	1809.2	1811.7	1808.3	1833.3	1852.0	1899.4	1938.8	2007.3	2067.8
35°	1419.8	1443.8	1388.8	1423.6	1387.3	1440.6	1421.5	1451.1	1485.0	1542.7	1593.2
37.5°	1091.5	1074.7	1060.5	1059.0	1058.9	1071.3	1085.9	1114.5	1144.3	1187.4	1231.8
40°	864.9	853.2	844.0	843.4	844.0	852.8	863.6	883.3	905.1	936.1	968.8
42.5°	717.4	709.6	704.0	703.6	705.4	711.7	719.1	730.8	745.1	765.1	787.5
45°	620.9	616.6	613.5	613.3	614.1	617.4	621.7	629.0	638.0	650.4	664.7
47.5°	553.2	552.1	550.2	550.3	549.4	550.7	551.3	555.4	560.1	569.5	588.1
50°	503.9	503.9	502.6	502.5	501.3	501.2	500.1	501.7	503.9	509.8	515.7
52.5°	464.9	464.8	463.4	463.1	461.8	461.7	460.8	461.4	461.7	464.6	468.2
55°	434.5	433.5	431.7	431.0	430.6	431.3	431.0	431.0	430.6	431.8	432.9
57.5°	412.6	411.4	409.7	409.1	409.0	409.9	409.9	409.7	408.0	406.9	405.3
60°	395.3	394.2	392.2	391.7	392.0	393.3	393.2	392.2	389.7	387.6	385.1
62.5°	378.4	377.8	376.9	376.8	376.5	376.7	375.9	374.7	372.3	370.0	367.3
65°	355.6	355.8	355.1	355.2	354.3	354.1	352.8	351.7	349.3	347.3	344.5
67.5°	331.9	332.1	331.5	331.5	331.1	331.1	330.3	329.3	327.2	325.5	323.4
70°	312.4	312.9	312.5	312.6	312.1	311.9	310.7	309.7	307.5	306.1	304.1
72.5°	289.1	290.1	290.1	290.3	289.4	289.1	287.6	286.3	284.4	283.3	281.8
75°	263.9	265.2	265.6	266.2	265.0	264.4	262.7	261.7	260.2	259.5	258.5
77.5°	239.3	240.8	242.2	243.5	241.6	239.9	237.8	236.2	234.0	233.1	231.5
80°	211.6	214.3	217.4	220.1	216.6	213.2	209.8	207.3	204.2	203.0	201.0
82.5°	175.6	178.3	180.1	181.8	179.4	176.9	173.6	171.4	168.2	166.9	164.7
85°	133.4	136.8	137.9	138.8	137.2	135.9	132.8	128.6	126.6	123.4	121.7
87.5°	87.7	89.7	90.2	90.5	89.5	88.8	86.9	84.9	81.5	78.9	75.8
90°	63.0	62.4	59.7	58.3	58.8	60.8	60.5	61.7	60.5	61.3	60.4
92.5°	40.5	37.7	35.1	32.4	35.3	37.7	40.5	43.0	45.7	48.2	51.0
95°	56.1	53.1	50.1	47.1	49.5	52.0	54.4	56.8	59.3	61.7	64.1
97.5°	78.8	76.7	74.8	72.7	74.1	75.6	77.0	78.4	79.8	81.2	82.7
100°	101.4	99.8	98.2	96.6	96.6	96.6	96.6	96.6	96.6	96.6	96.6
102.5°	166.6	159.7	152.8	146.0	150.6	155.2	160.0	164.6	169.2	173.9	178.7
105°	321.1	302.3	283.4	264.6	282.8	301.0	319.3	337.5	355.7	374.0	392.3
107.5°	589.2	559.5	529.7	499.9	533.2	566.3	599.6	632.8	665.9	699.2	732.5
110°	884.2	855.8	827.4	799.1	834.3	869.6	904.8	940.1	975.3	1010.6	1045.8



TEST NUMBER: P1444647
 CATALOG NUMBER: EHBR1-12-UNV-TA-L930-UPL36

CANDELA DISTRIBUTION (continued):

	82.5°	85°	87.5°	90°	92.5°	95°	97.5°	100°	102.5°	105°	107.5°
112.5°	1081.2	1067.4	1053.7	1039.9	1062.6	1085.2	1108.0	1130.7	1153.4	1176.1	1198.8
115°	1132.0	1131.2	1130.4	1129.6	1140.3	1151.1	1161.8	1172.6	1183.3	1194.1	1204.9
117.5°	1068.6	1076.2	1084.0	1091.6	1095.1	1098.5	1102.0	1105.5	1108.9	1112.4	1116.0
120°	955.5	965.7	976.1	986.4	985.0	983.6	982.1	980.7	979.5	978.1	976.9
122.5°	823.1	833.3	843.6	854.0	850.9	847.9	844.9	841.9	838.9	835.9	833.0
125°	699.3	707.9	716.5	725.2	722.2	719.1	716.1	713.2	710.2	707.3	704.4
127.5°	600.5	606.0	611.4	616.8	615.3	613.9	612.6	611.2	610.0	608.6	607.4
130°	531.9	534.5	537.0	539.6	539.9	540.4	540.8	541.4	541.9	542.4	543.0
132.5°	489.7	490.3	491.0	491.7	493.3	494.9	496.7	498.4	500.2	501.9	503.9
135°	463.5	463.0	462.8	462.5	464.9	467.3	469.8	472.3	474.9	477.5	480.2
137.5°	448.2	447.5	446.8	446.1	448.5	450.9	453.5	455.9	458.5	461.1	463.8
140°	438.8	438.2	437.8	437.2	439.6	442.1	444.5	447.0	449.7	452.3	454.8
142.5°	430.1	429.4	429.0	428.5	430.7	432.9	435.2	437.5	439.9	442.2	444.6
145°	426.1	425.8	425.4	425.2	426.7	428.3	430.1	431.8	433.5	435.1	437.0
147.5°	418.6	418.4	418.3	418.2	419.5	420.6	421.9	423.1	424.4	425.7	427.1
150°	409.1	409.2	409.2	409.4	410.1	410.9	411.7	412.5	413.5	414.3	415.3
152.5°	396.5	396.5	396.7	396.8	397.5	398.3	399.1	399.9	400.7	401.5	402.4
155°	386.1	386.0	385.9	385.8	386.1	386.5	386.9	387.2	387.6	388.0	388.4
157.5°	378.7	378.6	378.6	378.4	378.5	378.6	378.8	378.9	379.2	379.3	379.4
160°	371.9	371.4	371.1	370.8	371.2	371.4	371.9	372.1	372.5	372.8	373.1
162.5°	369.0	368.8	368.8	368.6	368.6	368.4	368.3	368.2	368.1	368.0	368.0
165°	365.6	365.2	364.9	364.6	364.7	364.7	364.9	365.0	365.1	365.2	365.4
167.5°	365.3	364.9	364.6	364.2	364.0	363.7	363.4	363.1	362.9	362.6	362.3
170°	363.0	362.7	362.3	362.1	362.0	361.9	361.9	361.7	361.7	361.7	361.7
172.5°	364.3	364.0	363.7	363.4	363.3	363.3	363.2	363.2	363.1	363.1	363.1
175°	364.7	364.7	364.6	364.5	364.3	364.1	363.9	363.7	363.5	363.2	363.0
177.5°	364.3	363.9	363.8	363.6	363.6	363.6	363.6	363.6	363.6	363.5	363.5
180°	363.7	363.7	363.7	363.7	363.7	363.7	363.7	363.7	363.7	363.7	363.7



TEST NUMBER: P1444647
 CATALOG NUMBER: EHBR1-12-UNV-TA-L930-UPL36

CANDELA DISTRIBUTION (continued):

	110°	112.5°	115°	117.5°	120°	122.5°	125°	127.5°	130°	132.5°	135°
0°	9445.9	9445.9	9445.9	9445.9	9445.9	9445.9	9445.9	9445.9	9445.9	9445.9	9445.9
2.5°	9451.2	9448.7	9442.1	9438.9	9432.8	9429.8	9425.0	9422.0	9418.2	9415.3	9413.9
5°	9713.0	9700.9	9676.7	9661.8	9635.6	9618.4	9592.4	9573.4	9546.6	9526.8	9501.4
7.5°	10053.7	10035.1	10004.1	9980.6	9944.0	9916.1	9875.0	9842.1	9796.7	9759.1	9712.8
10°	10192.4	10181.5	10167.6	10152.5	10132.3	10112.4	10084.3	10055.8	10017.7	9979.8	9930.3
12.5°	9987.4	9997.6	10017.7	10027.0	10042.4	10047.6	10054.6	10051.3	10045.2	10029.7	10007.2
15°	9406.8	9449.3	9516.6	9563.0	9628.1	9673.9	9734.4	9773.4	9818.3	9845.1	9870.6
17.5°	8451.7	8534.0	8652.6	8747.2	8874.2	8977.5	9104.1	9203.5	9318.3	9406.3	9500.1
20°	7228.4	7343.6	7507.3	7646.4	7830.4	7986.6	8186.5	8354.1	8549.4	8712.3	8888.1
22.5°	5911.8	6047.3	6234.9	6402.7	6622.4	6818.7	7069.3	7290.9	7555.0	7791.7	8053.4
25°	4669.7	4802.5	4993.7	5167.3	5404.6	5620.9	5894.6	6148.7	6455.2	6741.1	7069.3
27.5°	3604.6	3722.6	3890.5	4046.8	4264.2	4476.5	4754.3	5025.2	5352.4	5659.6	6013.3
30°	2783.7	2879.4	3014.1	3139.8	3314.3	3487.9	3735.4	3986.0	4311.4	4629.8	4992.4
32.5°	2157.4	2238.9	2351.3	2453.4	2587.8	2718.8	2900.9	3101.2	3386.7	3691.6	4042.3
35°	1670.0	1739.8	1835.5	1923.4	2033.9	2137.8	2273.8	2416.8	2634.7	2891.2	3205.0
37.5°	1331.5	1359.9	1428.1	1500.1	1592.0	1677.4	1783.8	1889.5	2045.3	2247.7	2504.1
40°	1012.5	1057.7	1113.3	1170.1	1239.6	1308.1	1424.8	1480.9	1583.6	1728.9	1927.8
42.5°	817.0	848.7	887.8	927.3	975.8	1023.5	1082.5	1142.6	1219.3	1317.7	1459.2
45°	683.7	704.4	729.6	755.9	787.7	820.3	859.8	901.0	953.1	1013.6	1099.5
47.5°	594.6	606.1	622.5	640.5	662.3	684.8	710.5	736.8	769.1	805.0	854.0
50°	525.1	534.6	547.4	559.5	574.5	597.6	607.8	622.3	641.7	662.8	690.2
52.5°	474.8	481.1	489.1	496.1	505.5	514.2	525.6	535.6	549.0	561.7	579.4
55°	435.6	437.9	442.5	446.9	453.5	459.4	467.1	473.7	482.3	489.9	501.0
57.5°	405.4	405.6	407.7	410.0	414.2	417.9	423.3	427.6	433.5	438.4	445.0
60°	383.6	382.5	382.9	383.7	386.0	388.4	391.9	394.7	398.4	401.2	404.9
62.5°	365.5	363.7	363.3	363.1	364.3	365.1	367.0	368.3	370.4	371.7	373.7
65°	342.6	340.5	339.7	338.7	339.1	338.8	339.4	339.5	340.6	340.9	342.0
67.5°	322.0	320.2	319.0	317.7	317.2	316.2	315.7	314.8	314.8	313.9	313.8
70°	303.0	301.3	300.4	299.2	298.5	297.3	296.5	295.0	294.0	292.6	291.8
72.5°	281.2	280.2	279.9	279.0	278.8	278.1	277.9	276.7	276.1	274.9	274.2
75°	258.3	257.5	257.5	256.6	256.5	255.7	255.5	254.3	253.7	252.5	251.9
77.5°	231.1	229.8	229.5	228.5	228.8	228.4	228.7	227.9	227.4	226.3	225.8
80°	200.4	198.8	198.2	196.9	197.3	196.7	197.3	197.2	197.7	196.7	196.5
82.5°	164.1	162.4	162.0	161.1	161.7	161.8	163.1	162.4	162.7	161.7	162.2
85°	119.4	118.1	116.4	116.1	115.0	116.1	114.7	115.7	114.0	115.1	113.6
87.5°	74.0	71.4	70.0	68.2	67.5	65.7	65.0	63.7	64.1	63.4	63.8
90°	61.7	61.1	63.7	65.0	67.8	69.2	72.4	74.3	77.7	79.6	83.1
92.5°	53.5	56.1	61.0	65.9	70.8	75.6	80.5	85.4	90.2	95.1	99.9
95°	66.6	69.0	75.5	81.9	88.4	94.9	101.4	107.9	114.4	120.8	127.3
97.5°	84.1	85.5	92.1	98.5	105.0	111.5	117.9	124.5	131.0	137.4	143.9
100°	96.6	96.7	115.1	133.6	151.9	170.4	188.8	207.3	225.7	244.2	262.6
102.5°	183.3	187.9	234.5	281.2	327.7	374.3	421.0	467.6	514.1	560.8	607.4
105°	410.5	428.7	499.8	571.0	642.1	713.2	784.3	855.5	926.5	997.7	1068.8
107.5°	765.7	798.9	863.2	927.4	991.6	1055.9	1120.2	1184.4	1248.7	1312.9	1377.3
110°	1081.1	1116.3	1159.4	1202.3	1245.4	1288.4	1331.3	1374.3	1417.4	1460.4	1503.5



TEST NUMBER: P1444647
 CATALOG NUMBER: EHBR1-12-UNV-TA-L930-UPL36

CANDELA DISTRIBUTION (continued):

	110°	112.5°	115°	117.5°	120°	122.5°	125°	127.5°	130°	132.5°	135°
112.5°	1221.5	1244.3	1269.2	1294.2	1319.2	1344.2	1369.2	1394.2	1419.3	1444.3	1469.4
115°	1215.7	1226.5	1236.0	1245.7	1255.3	1264.9	1274.6	1284.3	1293.9	1303.6	1313.3
117.5°	1119.4	1123.0	1124.4	1125.7	1127.0	1128.4	1129.8	1131.1	1132.5	1134.0	1135.3
120°	975.4	974.1	972.2	970.4	968.6	966.7	964.8	963.1	961.3	959.5	957.7
122.5°	830.1	827.2	825.3	823.5	821.7	819.9	818.2	816.4	814.7	812.9	811.1
125°	701.6	698.7	699.7	700.8	701.9	702.9	704.0	705.2	706.2	707.3	708.5
127.5°	606.2	605.0	608.2	611.6	614.9	618.2	621.7	625.0	628.3	631.7	635.0
130°	543.7	544.2	548.6	553.0	557.3	561.7	566.1	570.5	574.9	579.2	583.7
132.5°	505.6	507.6	511.6	515.8	520.1	524.3	528.4	532.6	536.8	541.1	545.2
135°	482.8	485.5	489.3	493.0	496.8	500.6	504.4	508.2	512.0	515.8	519.5
137.5°	466.4	469.1	472.1	475.0	477.9	480.9	483.9	486.8	489.8	492.7	495.7
140°	457.5	460.3	461.7	463.2	464.7	466.2	467.8	469.3	470.7	472.2	473.7
142.5°	447.0	449.5	450.3	451.3	452.0	453.0	453.9	454.7	455.5	456.4	457.2
145°	438.7	440.6	440.3	440.2	440.0	439.9	439.6	439.5	439.2	439.1	438.8
147.5°	428.4	429.8	429.3	428.9	428.5	427.9	427.6	427.1	426.6	426.1	425.7
150°	416.1	417.1	416.3	415.7	415.0	414.3	413.5	412.8	412.1	411.4	410.7
152.5°	403.2	404.1	403.3	402.6	401.9	401.2	400.4	399.7	399.0	398.2	397.5
155°	388.8	389.2	388.8	388.5	388.1	387.7	387.3	387.0	386.7	386.3	386.0
157.5°	379.6	379.8	379.6	379.4	379.1	379.0	378.7	378.6	378.5	378.3	378.2
160°	373.4	373.8	373.6	373.3	373.1	372.9	372.7	372.6	372.5	372.3	372.2
162.5°	368.0	367.9	367.7	367.5	367.2	367.1	367.0	366.9	366.6	366.5	366.4
165°	365.5	365.7	365.2	364.9	364.5	364.1	363.8	363.5	363.1	362.9	362.5
167.5°	362.1	361.9	361.9	362.0	362.0	362.0	362.1	362.2	362.2	362.3	362.4
170°	361.6	361.7	361.4	361.4	361.1	360.9	360.7	360.6	360.5	360.3	360.2
172.5°	363.1	363.1	362.7	362.3	361.9	361.5	361.1	360.8	360.4	360.0	359.6
175°	362.8	362.6	362.4	362.2	362.0	361.7	361.4	361.3	361.1	360.8	360.6
177.5°	363.5	363.4	363.3	363.3	363.3	363.3	363.3	363.2	363.2	363.2	363.1
180°	363.7	363.7	363.7	363.7	363.7	363.7	363.7	363.7	363.7	363.7	363.7



TEST NUMBER: P1444647
 CATALOG NUMBER: EHBR1-12-UNV-TA-L930-UPL36

CANDELA DISTRIBUTION (continued):

	137.5°	140°	142.5°	145°	147.5°	150°	152.5°	155°	157.5°	160°	162.5°
0°	9445.9	9445.9	9445.9	9445.9	9445.9	9445.9	9445.9	9445.9	9445.9	9445.9	9445.9
2.5°	9412.0	9411.9	9411.0	9411.4	9411.6	9412.2	9413.0	9413.9	9414.1	9414.7	9414.9
5°	9482.4	9459.2	9441.9	9423.0	9408.7	9395.9	9387.3	9380.6	9378.0	9378.6	9380.2
7.5°	9673.4	9625.4	9585.7	9540.6	9503.0	9463.2	9430.2	9398.8	9375.9	9358.9	9349.4
10°	9883.0	9824.5	9768.5	9703.3	9641.3	9575.3	9515.4	9455.2	9405.0	9361.3	9329.3
12.5°	9976.0	9934.7	9886.2	9824.6	9758.4	9682.2	9605.2	9522.7	9446.0	9374.8	9317.3
15°	9877.6	9877.7	9860.0	9830.4	9784.4	9723.6	9650.1	9564.2	9473.6	9381.3	9296.9
17.5°	9565.0	9623.9	9656.7	9677.5	9671.1	9648.7	9602.0	9536.0	9451.6	9353.1	9250.1
20°	9028.1	9167.2	9266.4	9355.6	9405.6	9438.9	9435.5	9408.6	9348.5	9264.8	9157.5
22.5°	8276.1	8509.6	8693.8	8865.7	8986.2	9084.2	9130.8	9150.5	9123.3	9065.0	8964.3
25°	7362.7	7680.1	7951.1	8214.0	8411.2	8580.8	8682.6	8754.4	8760.1	8729.6	8639.8
27.5°	6347.7	6722.4	7065.3	7414.8	7692.1	7935.9	8095.7	8212.7	8249.9	8245.0	8163.4
30°	5334.0	5727.4	6105.4	6512.9	6856.1	7167.4	7378.6	7536.9	7597.9	7609.5	7531.1
32.5°	4376.7	4764.7	5141.5	5567.6	5945.2	6302.0	6551.6	6739.6	6810.5	6827.2	6741.1
35°	3507.9	3865.8	4224.0	4636.9	5012.4	5381.9	5644.7	5841.6	5907.8	5919.0	5819.3
37.5°	2754.4	3059.4	3371.4	3742.0	4086.8	4433.8	4683.6	4868.6	4916.9	4913.8	4801.1
40°	2120.0	2357.1	2607.9	2912.9	3199.6	3492.9	3703.8	3856.8	3882.2	3863.4	3744.9
42.5°	1594.2	1765.3	1947.2	2174.8	2387.6	2607.1	2760.6	2874.1	2877.8	2848.1	2741.7
45°	1187.6	1354.7	1430.9	1568.6	1705.6	1851.6	1945.3	2015.4	2004.6	1978.4	1897.6
47.5°	905.4	969.6	1037.6	1123.0	1202.9	1368.5	1356.2	1468.8	1387.7	1443.0	1321.3
50°	719.0	754.8	791.5	836.9	878.5	921.8	948.9	969.1	966.4	957.8	934.4
52.5°	611.7	622.7	640.8	666.6	689.8	713.3	728.7	741.2	741.4	738.0	726.2
55°	511.2	525.3	538.2	555.1	583.8	588.2	610.3	605.8	607.6	601.4	607.7
57.5°	450.7	458.9	466.2	476.2	484.5	494.2	499.9	505.4	504.9	503.7	497.7
60°	407.9	412.4	416.4	422.3	426.9	432.3	435.0	437.7	436.8	434.8	429.4
62.5°	374.8	377.7	380.0	383.7	386.5	389.9	391.3	392.5	391.3	389.3	384.6
65°	342.2	344.1	345.5	348.3	350.3	353.2	354.4	355.5	354.4	352.9	349.3
67.5°	312.8	313.0	312.9	314.0	314.6	316.4	316.9	317.7	316.4	315.1	312.1
70°	290.5	290.1	289.5	290.0	290.1	291.0	291.0	291.0	289.4	287.1	283.8
72.5°	273.1	272.9	272.4	272.8	272.8	273.6	273.3	273.0	271.1	268.9	265.6
75°	250.7	250.5	249.7	249.7	249.0	249.3	248.4	247.8	245.8	243.9	241.0
77.5°	224.5	224.0	222.8	222.3	221.0	220.5	218.8	217.9	215.8	214.3	211.8
80°	195.2	194.7	193.2	192.3	190.2	188.8	186.3	184.9	182.5	181.1	178.6
82.5°	161.4	161.6	160.0	158.9	155.9	153.5	150.2	148.4	145.7	144.3	141.8
85°	114.8	113.1	114.0	113.9	112.0	110.1	107.3	105.3	103.1	101.8	100.0
87.5°	62.9	63.4	62.9	62.5	61.1	60.2	58.0	56.9	55.3	54.4	53.1
90°	78.1	74.7	69.7	66.4	61.6	57.7	52.5	48.7	43.8	42.2	39.7
92.5°	94.5	88.9	83.6	78.0	72.6	67.1	61.7	56.1	50.7	48.8	47.1
95°	119.4	111.6	103.6	95.8	87.9	80.0	72.1	64.3	56.3	54.7	53.1
97.5°	134.7	125.3	116.0	106.7	97.4	88.0	78.9	69.5	60.2	59.3	58.2
100°	241.1	219.8	198.3	176.8	155.4	133.9	112.6	91.1	69.6	68.4	67.2
102.5°	555.4	503.4	451.4	399.3	347.3	295.2	243.2	191.1	139.2	131.7	124.2
105°	990.1	911.4	832.7	754.0	675.1	596.4	517.7	438.9	360.2	334.9	309.6
107.5°	1303.1	1229.1	1155.1	1081.0	1006.9	932.8	858.9	784.7	710.6	666.1	621.6
110°	1444.6	1385.7	1327.0	1268.2	1209.3	1150.5	1091.6	1032.7	973.8	935.3	897.0



TEST NUMBER: P1444647
 CATALOG NUMBER: EHBR1-12-UNV-TA-L930-UPL36

CANDELA DISTRIBUTION (continued):

	137.5°	140°	142.5°	145°	147.5°	150°	152.5°	155°	157.5°	160°	162.5°
112.5°	1426.2	1382.9	1339.7	1296.5	1253.3	1210.0	1166.9	1123.5	1080.3	1056.9	1033.5
115°	1287.2	1261.0	1234.9	1208.6	1182.5	1156.2	1130.1	1103.8	1077.6	1065.1	1052.6
117.5°	1121.9	1108.2	1094.7	1081.0	1067.5	1053.9	1040.3	1026.6	1013.0	1008.6	1004.0
120°	953.3	948.9	944.3	940.0	935.5	931.1	926.5	922.1	917.6	917.8	918.0
122.5°	812.2	813.3	814.3	815.3	816.5	817.4	818.5	819.5	820.5	823.3	826.2
125°	711.8	715.1	718.3	721.6	724.9	728.2	731.5	734.7	738.0	740.9	743.7
127.5°	638.9	642.5	646.3	649.9	653.7	657.4	661.1	664.7	668.4	670.9	673.5
130°	586.9	590.0	593.1	596.2	599.4	602.5	605.5	608.6	611.8	613.5	615.2
132.5°	547.9	550.6	553.5	556.1	558.8	561.5	564.4	567.0	569.8	570.9	572.0
135°	521.5	523.3	525.2	527.1	529.2	530.9	532.9	534.9	536.7	537.3	537.9
137.5°	497.3	498.6	500.2	501.7	503.1	504.7	506.3	507.7	509.3	509.1	509.2
140°	475.4	477.1	478.7	480.4	482.1	483.8	485.6	487.3	489.1	489.0	489.0
142.5°	458.4	459.6	460.9	462.1	463.5	464.6	465.9	467.3	468.6	468.5	468.5
145°	440.4	442.0	443.6	445.2	446.8	448.4	450.2	451.9	453.7	453.3	453.1
147.5°	427.0	428.4	429.8	431.2	432.6	434.1	435.6	437.0	438.6	438.3	438.0
150°	412.3	413.8	415.4	417.0	418.5	420.2	421.8	423.5	425.3	425.3	425.4
152.5°	399.2	400.9	402.6	404.4	406.3	408.1	410.0	411.8	413.7	413.8	413.9
155°	387.6	389.3	391.2	393.0	394.8	396.6	398.5	400.3	402.2	402.4	402.7
157.5°	379.7	381.2	382.8	384.4	386.0	387.6	389.2	390.9	392.5	392.7	392.9
160°	373.7	374.9	376.3	377.8	379.1	380.5	381.9	383.3	384.7	385.0	385.2
162.5°	367.9	369.2	370.6	371.9	373.3	374.6	376.1	377.4	378.8	379.0	379.3
165°	363.5	364.4	365.4	366.3	367.3	368.3	369.3	370.2	371.2	371.5	371.9
167.5°	363.2	363.9	364.6	365.3	366.1	366.8	367.5	368.2	369.0	369.4	369.7
170°	360.9	361.6	362.2	363.0	363.7	364.4	365.0	365.7	366.5	366.8	367.2
172.5°	360.1	360.5	361.0	361.4	361.9	362.3	362.9	363.3	363.9	364.4	364.7
175°	360.8	361.1	361.4	361.5	361.8	362.1	362.2	362.6	362.9	363.3	363.7
177.5°	363.3	363.5	363.8	363.9	364.2	364.4	364.7	364.9	365.1	365.7	366.3
180°	363.7	363.7	363.7	363.7	363.7	363.7	363.7	363.7	363.7	363.7	363.7



TEST NUMBER: P1444647
 CATALOG NUMBER: EHBR1-12-UNV-TA-L930-UPL36

CANDELA DISTRIBUTION (continued):

	165°	167.5°	170°	172.5°	175°	177.5°	180°	182.5°	185°	187.5°	190°
0°	9445.9	9445.9	9445.9	9445.9	9445.9	9445.9	9445.9	9445.9	9445.9	9445.9	9445.9
2.5°	9414.5	9414.4	9414.2	9413.7	9413.3	9413.5	9414.0	9415.1	9416.9	9419.7	9423.3
5°	9381.5	9383.4	9384.5	9384.7	9383.7	9383.1	9384.0	9386.5	9391.8	9400.5	9412.4
7.5°	9346.9	9349.2	9352.9	9355.6	9356.2	9355.4	9355.6	9359.6	9369.3	9386.4	9410.3
10°	9309.8	9302.8	9306.5	9313.3	9318.7	9319.7	9320.3	9325.1	9339.2	9365.0	9403.4
12.5°	9275.7	9253.4	9249.1	9255.2	9263.4	9266.1	9265.4	9267.4	9283.9	9317.9	9371.5
15°	9230.7	9188.8	9174.5	9176.1	9186.2	9189.9	9187.2	9183.1	9199.2	9240.8	9310.1
17.5°	9158.0	9090.4	9064.1	9063.0	9074.7	9077.9	9071.4	9058.8	9074.6	9126.6	9212.6
20°	9047.4	8947.7	8898.1	8890.2	8903.0	8899.3	8886.4	8867.3	8888.0	8951.2	9053.5
22.5°	8848.6	8722.2	8637.5	8610.2	8625.6	8615.4	8596.4	8572.0	8599.7	8671.4	8785.4
25°	8523.7	8377.7	8261.8	8196.7	8209.0	8190.5	8170.0	8140.5	8173.4	8255.8	8381.2
27.5°	8046.2	7877.6	7733.8	7626.2	7630.1	7606.1	7582.3	7544.2	7585.3	7682.8	7824.2
30°	7411.2	7216.1	7041.1	6894.7	6881.6	6858.3	6834.0	6784.0	6835.4	6952.1	7117.4
32.5°	6613.9	6397.1	6194.9	6009.9	5975.1	5952.3	5930.6	5873.0	5940.3	6076.4	6266.3
35°	5681.3	5450.5	5231.3	5020.0	4962.1	4939.3	4920.4	4865.2	4949.3	5097.4	5302.5
37.5°	4657.7	4421.9	4204.3	3987.6	3905.9	3874.9	3861.2	3825.0	3922.1	4068.5	4274.4
40°	3606.9	3387.7	3192.5	3001.2	2908.0	2860.6	2853.5	2846.9	2940.7	3067.7	3254.7
42.5°	2623.9	2447.0	2296.6	2150.2	2065.8	2001.2	2001.2	2020.8	2105.2	2200.4	2344.6
45°	1815.0	1696.3	1600.5	1502.7	1528.8	1400.1	1475.7	1436.9	1478.6	1540.0	1633.7
47.5°	1247.7	1182.8	1130.2	1075.6	1035.8	997.7	1001.1	1025.6	1064.9	1101.3	1150.1
50°	909.3	876.3	849.5	821.2	801.3	784.6	785.5	796.1	816.8	836.0	861.5
52.5°	712.6	694.3	679.8	664.1	653.7	645.4	645.8	651.0	662.1	673.1	687.7
55°	587.3	585.1	566.1	552.1	546.7	541.1	542.2	544.1	551.8	558.1	567.8
57.5°	492.2	483.6	477.9	470.5	467.1	463.2	464.1	464.9	470.0	474.3	481.2
60°	425.0	418.9	414.9	409.8	407.6	405.1	405.7	406.2	409.4	412.2	417.2
62.5°	380.3	374.9	371.4	367.5	366.0	364.3	364.7	364.8	366.9	368.9	372.7
65°	346.1	341.8	338.9	335.5	333.9	332.1	332.3	332.3	334.1	335.5	338.4
67.5°	309.8	306.6	304.8	302.1	301.0	299.2	299.2	298.6	299.8	300.3	302.3
70°	280.8	277.6	275.2	272.6	271.2	269.7	269.7	269.7	271.0	272.3	274.8
72.5°	262.9	259.8	257.6	255.4	254.1	252.7	252.5	252.4	253.3	254.0	255.7
75°	239.1	236.6	235.3	233.3	232.2	230.7	230.4	229.7	230.2	230.4	231.6
77.5°	210.2	207.9	206.9	204.8	203.9	202.2	202.0	201.2	201.6	201.4	202.3
80°	177.4	175.3	174.7	173.0	172.5	170.9	170.7	169.8	170.0	169.3	169.7
82.5°	140.7	138.8	138.3	136.7	136.7	135.3	135.2	133.8	133.8	132.5	130.6
85°	99.1	97.7	97.0	95.7	95.4	94.2	93.6	92.2	91.8	90.9	90.6
87.5°	52.3	51.4	50.6	50.0	48.8	46.7	46.5	45.1	45.3	44.2	44.3
90°	38.3	36.0	34.7	32.3	30.9	29.0	27.6	28.8	30.1	31.4	32.7
92.5°	45.3	43.4	41.6	39.7	38.0	36.1	34.3	36.1	38.0	39.7	41.6
95°	51.4	49.8	48.2	46.6	44.9	43.3	41.7	43.3	44.9	46.7	48.3
97.5°	57.2	56.1	55.2	54.1	53.1	52.0	51.1	52.0	53.1	54.1	55.2
100°	65.9	64.7	63.5	62.3	61.0	59.9	58.6	60.0	61.1	62.4	63.6
102.5°	116.7	109.3	101.7	94.2	86.7	79.2	71.7	79.2	86.7	94.3	101.8
105°	284.3	259.0	233.6	208.3	183.0	157.6	132.3	157.7	183.0	208.3	233.7
107.5°	577.0	532.5	488.0	443.4	398.9	354.3	309.8	354.4	399.0	443.5	488.1
110°	858.5	820.0	781.6	743.2	704.7	666.2	627.7	666.2	704.7	743.2	781.7



TEST NUMBER: P1444647

CATALOG NUMBER: EHBR1-12-UNV-TA-L930-UPL36

CANDELA DISTRIBUTION (continued):

	165°	167.5°	170°	172.5°	175°	177.5°	180°	182.5°	185°	187.5°	190°
112.5°	1010.0	986.6	963.1	939.7	916.2	892.8	869.3	892.8	916.3	939.9	963.3
115°	1040.1	1027.7	1015.3	1002.8	990.2	977.8	965.2	977.8	990.4	1003.0	1015.5
117.5°	999.4	994.9	990.3	985.8	981.2	976.6	972.0	976.7	981.4	986.0	990.7
120°	918.1	918.2	918.4	918.5	918.7	918.8	918.9	918.9	918.9	918.9	918.9
122.5°	829.0	831.8	834.6	837.3	840.2	842.9	845.6	843.0	840.4	837.8	835.2
125°	746.6	749.5	752.4	755.2	757.9	760.8	763.4	760.9	758.4	755.7	753.0
127.5°	675.9	678.4	680.8	683.4	685.7	688.1	690.5	688.3	686.1	683.9	681.6
130°	616.9	618.7	620.2	622.0	623.6	625.2	626.7	625.4	624.0	622.6	621.0
132.5°	573.1	574.3	575.4	576.5	577.5	578.5	579.4	578.7	577.9	577.1	576.2
135°	538.4	538.9	539.5	539.9	540.4	540.8	541.1	541.1	540.8	540.7	540.4
137.5°	509.1	509.1	508.9	508.8	508.7	508.5	508.2	508.8	509.1	509.6	509.9
140°	488.8	488.9	488.7	488.6	488.5	488.3	488.0	488.6	489.0	489.4	489.7
142.5°	468.4	468.4	468.3	468.2	468.0	467.8	467.6	468.1	468.5	468.9	469.2
145°	452.9	452.6	452.3	452.0	451.6	451.2	450.6	451.5	452.1	452.6	453.2
147.5°	437.7	437.5	437.1	436.7	436.4	436.0	435.5	436.2	436.8	437.4	438.0
150°	425.5	425.6	425.7	425.8	425.7	425.7	425.6	425.9	426.1	426.4	426.6
152.5°	413.8	413.9	414.0	414.0	414.0	413.9	413.8	414.2	414.5	414.8	415.0
155°	402.9	403.2	403.3	403.5	403.7	403.9	404.0	404.1	404.2	404.3	404.4
157.5°	393.1	393.3	393.5	393.7	393.9	394.1	394.2	394.4	394.5	394.7	394.7
160°	385.3	385.6	385.7	386.0	386.1	386.3	386.4	386.6	386.8	386.8	386.9
162.5°	379.4	379.6	379.7	380.0	380.1	380.2	380.4	380.6	380.8	380.9	381.0
165°	372.3	372.7	373.0	373.4	373.8	374.2	374.5	374.5	374.4	374.3	374.2
167.5°	370.1	370.4	370.8	371.2	371.4	371.9	372.1	372.1	372.0	371.9	371.9
170°	367.5	367.8	368.2	368.5	368.8	369.2	369.5	369.4	369.2	369.2	369.1
172.5°	365.3	365.8	366.3	366.8	367.3	367.8	368.3	368.0	367.7	367.3	367.0
175°	364.2	364.7	365.1	365.5	366.0	366.4	367.0	366.5	366.3	365.9	365.6
177.5°	367.1	367.8	368.3	368.9	369.6	370.2	370.9	370.3	369.6	369.1	368.5
180°	363.7	363.7	363.7	363.7	363.7	363.7	363.7	363.7	363.7	363.7	363.7



TEST NUMBER: P1444647
 CATALOG NUMBER: EHBR1-12-UNV-TA-L930-UPL36

CANDELA DISTRIBUTION (continued):

	192.5°	195°	197.5°	200°	202.5°	205°	207.5°	210°	212.5°	215°	217.5°
0°	9445.9	9445.9	9445.9	9445.9	9445.9	9445.9	9445.9	9445.9	9445.9	9445.9	9445.9
2.5°	9428.3	9433.0	9440.2	9446.8	9456.6	9464.3	9476.0	9484.8	9498.0	9506.6	9520.9
5°	9429.1	9447.6	9471.8	9495.5	9524.0	9549.8	9581.9	9609.2	9641.5	9667.8	9700.9
7.5°	9442.4	9478.1	9520.7	9563.6	9612.2	9657.6	9708.9	9755.2	9805.8	9848.8	9895.6
10°	9452.3	9507.1	9569.9	9633.2	9699.8	9761.6	9824.0	9877.9	9928.4	9969.9	10006.5
12.5°	9438.9	9514.5	9595.2	9673.0	9747.0	9811.0	9864.7	9906.2	9934.9	9954.3	9958.8
15°	9393.6	9484.6	9572.3	9649.8	9711.2	9758.5	9783.0	9794.5	9782.2	9761.7	9716.8
17.5°	9308.9	9404.8	9483.2	9544.4	9576.8	9589.7	9569.4	9534.0	9465.1	9388.4	9277.7
20°	9153.7	9243.1	9299.9	9333.3	9324.6	9292.4	9215.8	9122.6	8984.8	8837.9	8644.1
22.5°	8881.4	8959.5	8989.8	8992.2	8939.3	8858.9	8720.6	8560.8	8343.4	8117.3	7839.4
25°	8472.6	8541.0	8545.8	8518.9	8422.0	8291.7	8088.7	7862.5	7567.1	7265.9	6917.6
27.5°	7918.2	7983.8	7967.8	7917.6	7783.0	7608.7	7348.8	7056.7	6692.4	6336.6	5951.3
30°	7221.3	7291.5	7272.6	7208.2	7048.2	6842.2	6536.3	6196.9	5792.5	5412.5	5022.0
32.5°	6387.3	6476.0	6463.0	6401.9	6234.9	6014.4	5682.4	5322.5	4908.8	4534.3	4154.4
35°	5439.3	5547.1	5552.7	5512.7	5357.6	5139.7	4812.0	4463.6	4067.2	3714.0	3363.1
37.5°	4418.1	4543.0	4568.6	4557.8	4429.3	4237.0	3938.4	3625.8	3274.8	2965.1	2665.0
40°	3391.1	3517.6	3561.4	3574.4	3479.6	3330.6	3085.6	2833.3	2547.1	2296.2	2057.8
42.5°	2454.6	2566.7	2609.1	2635.7	2576.6	2477.2	2298.4	2115.2	1905.5	1724.6	1551.1
45°	1704.7	1784.1	1816.3	1843.1	1810.9	1754.8	1641.9	1527.4	1388.9	1270.7	1158.7
47.5°	1191.9	1235.7	1257.0	1270.0	1257.5	1228.2	1166.8	1100.4	1022.2	953.2	886.7
50°	883.5	906.7	917.9	925.4	916.3	900.1	866.8	830.6	787.8	748.6	710.3
52.5°	700.1	713.4	720.0	724.1	718.9	709.0	689.7	668.2	642.4	618.3	605.5
55°	589.8	589.1	604.4	597.1	604.4	587.9	584.5	560.9	539.5	524.5	508.2
57.5°	486.4	493.3	496.3	499.6	497.4	494.4	486.2	477.7	466.5	457.1	447.0
60°	421.1	426.8	430.0	433.2	433.0	431.8	427.1	422.0	415.1	409.4	403.3
62.5°	376.1	381.0	384.2	387.3	387.6	387.1	383.5	380.0	375.2	371.6	367.4
65°	340.6	344.1	346.2	348.7	348.6	347.9	344.7	341.8	337.8	335.3	332.2
67.5°	303.5	306.1	307.8	310.2	310.7	310.7	309.0	307.6	305.7	304.9	304.0
70°	277.1	280.4	283.0	286.1	287.7	288.4	287.7	286.9	285.8	285.3	284.5
72.5°	257.2	259.9	262.0	264.7	266.2	267.3	266.7	266.3	265.3	265.2	264.6
75°	232.4	234.3	235.4	237.5	238.3	239.3	238.8	239.1	238.8	239.5	239.5
77.5°	202.6	204.0	204.5	206.0	206.1	207.4	207.6	209.1	210.1	212.4	213.5
80°	169.0	169.9	169.9	171.5	172.2	174.2	175.2	177.5	178.6	180.6	180.8
82.5°	131.4	130.4	131.4	130.7	132.6	134.9	135.3	137.2	137.7	139.0	138.0
85°	89.8	89.7	88.9	89.0	88.5	88.8	88.4	88.8	88.4	88.5	87.5
87.5°	43.0	43.4	42.5	42.8	41.9	42.3	41.5	42.2	41.2	41.3	39.9
90°	34.0	35.3	36.5	38.0	39.5	43.0	46.6	50.2	53.9	57.4	61.0
92.5°	43.4	45.3	47.1	48.9	50.7	56.1	61.7	67.1	72.7	78.1	83.6
95°	49.9	51.5	53.2	54.9	56.5	64.4	72.3	80.2	88.0	96.0	103.8
97.5°	56.2	57.3	58.3	59.3	60.3	69.6	79.0	88.2	97.6	106.8	116.2
100°	64.8	66.0	67.3	68.5	69.8	91.3	112.7	134.2	155.7	177.0	198.5
102.5°	109.3	116.8	124.3	131.9	139.4	191.4	243.5	295.5	347.5	399.6	451.6
105°	259.1	284.4	309.8	335.1	360.4	439.2	517.9	596.7	675.4	754.3	833.0
107.5°	532.6	577.2	621.8	666.4	711.0	785.1	859.1	933.2	1007.3	1081.4	1155.5
110°	820.2	858.6	897.2	935.7	974.2	1033.0	1092.0	1150.9	1209.7	1268.7	1327.5



TEST NUMBER: P1444647
 CATALOG NUMBER: EHBR1-12-UNV-TA-L930-UPL36

CANDELA DISTRIBUTION (continued):

	192.5°	195°	197.5°	200°	202.5°	205°	207.5°	210°	212.5°	215°	217.5°
112.5°	986.8	1010.3	1033.8	1057.2	1080.8	1124.0	1167.4	1210.6	1253.9	1297.1	1340.4
115°	1028.0	1040.5	1053.1	1065.5	1078.1	1104.4	1130.7	1156.9	1183.2	1209.3	1235.7
117.5°	995.3	999.9	1004.5	1009.1	1013.7	1027.3	1041.0	1054.7	1068.4	1082.0	1095.7
120°	918.9	918.8	918.7	918.5	918.4	922.9	927.5	932.0	936.5	941.0	945.5
122.5°	832.4	829.7	827.0	824.2	821.5	820.5	819.5	818.5	817.6	816.5	815.5
125°	750.3	747.6	744.7	742.1	739.2	736.0	732.8	729.5	726.3	723.0	719.7
127.5°	679.3	676.9	674.6	672.2	669.8	666.0	662.5	658.7	655.2	651.4	647.8
130°	619.7	618.1	616.6	614.8	613.3	610.1	607.0	604.0	600.9	597.9	594.7
132.5°	575.3	574.3	573.4	572.3	571.3	568.6	566.1	563.2	560.5	557.9	555.3
135°	540.0	539.7	539.3	538.9	538.4	536.6	534.7	532.8	531.0	529.1	527.2
137.5°	510.3	510.4	510.7	510.8	511.1	509.6	508.1	506.6	505.2	503.8	502.2
140°	490.0	490.2	490.6	490.7	490.9	489.2	487.6	485.9	484.3	482.6	480.9
142.5°	469.5	469.8	470.1	470.3	470.5	469.3	468.0	466.9	465.7	464.4	463.2
145°	453.7	454.2	454.7	455.0	455.6	453.9	452.3	450.7	449.2	447.6	446.1
147.5°	438.6	439.1	439.5	440.0	440.6	439.2	437.9	436.5	435.1	433.8	432.6
150°	426.8	426.9	427.1	427.2	427.3	425.8	424.3	422.8	421.3	419.8	418.4
152.5°	415.2	415.4	415.6	415.7	415.9	414.3	412.6	411.0	409.3	407.5	405.9
155°	404.5	404.5	404.5	404.5	404.5	402.9	401.3	399.6	398.0	396.4	394.8
157.5°	394.8	394.9	395.0	395.0	395.0	393.6	392.2	390.8	389.3	387.9	386.5
160°	387.0	387.1	387.2	387.3	387.3	386.0	385.0	383.6	382.5	381.2	380.0
162.5°	381.1	381.2	381.2	381.3	381.4	380.2	379.0	377.8	376.6	375.3	374.2
165°	374.1	374.0	373.8	373.7	373.6	372.8	372.1	371.2	370.4	369.5	368.7
167.5°	371.7	371.5	371.4	371.2	371.2	370.5	370.0	369.4	368.8	368.1	367.5
170°	368.9	368.8	368.7	368.5	368.3	367.7	367.1	366.6	366.1	365.4	364.7
172.5°	366.7	366.3	366.0	365.7	365.3	364.8	364.5	364.0	363.8	363.3	363.0
175°	365.2	364.9	364.5	364.2	363.8	363.7	363.4	363.2	363.1	362.8	362.6
177.5°	368.0	367.4	366.8	366.2	365.6	365.5	365.3	365.0	364.9	364.7	364.6
180°	363.7	363.7	363.7	363.7	363.7	363.7	363.7	363.7	363.7	363.7	363.7



TEST NUMBER: P1444647
 CATALOG NUMBER: EHBR1-12-UNV-TA-L930-UPL36

CANDELA DISTRIBUTION (continued):

	220°	222.5°	225°	227.5°	230°	232.5°	235°	237.5°	240°	242.5°	245°
0°	9445.9	9445.9	9445.9	9445.9	9445.9	9445.9	9445.9	9445.9	9445.9	9445.9	9445.9
2.5°	9529.8	9470.9	9463.2	9467.3	9477.1	9480.7	9491.3	9494.3	9505.0	9507.6	9517.8
5°	9726.4	9648.6	9652.5	9671.2	9699.5	9716.4	9744.3	9758.8	9785.3	9797.5	9821.4
7.5°	9933.8	9872.7	9891.7	9923.3	9962.0	9988.8	10022.2	10044.0	10072.8	10090.7	10113.8
10°	10035.6	10018.8	10039.8	10064.6	10086.7	10104.0	10118.2	10129.5	10137.0	10143.9	10147.0
12.5°	9958.1	9984.0	9987.5	9985.1	9970.5	9959.4	9934.2	9917.2	9886.9	9868.5	9832.5
15°	9670.9	9727.9	9696.3	9648.5	9578.7	9520.4	9438.1	9376.9	9291.2	9233.1	9147.1
17.5°	9166.9	9238.7	9156.5	9046.0	8905.5	8785.3	8635.5	8516.7	8367.8	8259.5	8120.6
20°	8457.3	8524.5	8377.9	8194.7	7977.3	7794.3	7578.5	7406.3	7205.8	7056.7	6876.7
22.5°	7573.8	7621.6	7415.1	7168.2	6891.2	6662.6	6404.6	6198.2	5969.3	5798.8	5606.9
25°	6596.4	6609.3	6361.6	6077.1	5768.3	5511.4	5236.0	5019.0	4785.6	4612.7	4424.4
27.5°	5609.8	5590.9	5323.1	5021.6	4696.7	4429.8	4161.1	3957.7	3753.3	3597.6	3435.3
30°	4678.7	4632.9	4354.8	4044.8	3729.6	3490.2	3267.2	3103.9	2941.3	2817.8	2687.5
32.5°	3824.9	3760.2	3489.5	3199.1	2933.5	2748.7	2583.3	2459.8	2328.5	2224.1	2114.9
35°	3068.5	2999.6	2759.9	2513.6	2312.6	2176.4	2046.4	1945.1	1833.6	1745.6	1650.7
37.5°	2419.4	2362.9	2162.2	1968.3	1816.3	1710.8	1604.3	1521.4	1429.3	1390.5	1289.1
40°	1867.8	1828.4	1671.3	1528.5	1414.2	1364.7	1256.6	1179.2	1110.4	1053.6	998.5
42.5°	1456.9	1442.9	1290.1	1178.7	1098.3	1035.9	975.6	926.7	879.1	840.0	803.0
45°	1069.2	1058.1	990.2	926.0	871.2	827.5	786.8	753.2	722.0	696.2	672.8
47.5°	832.6	829.0	789.9	750.1	715.6	687.5	661.0	638.8	618.1	600.9	595.3
50°	677.2	676.7	653.7	629.1	604.5	588.3	571.5	558.3	545.0	534.7	523.8
52.5°	575.3	572.8	557.4	542.2	527.6	516.9	506.2	497.7	489.0	482.6	475.8
55°	495.3	498.0	489.0	479.9	470.8	464.2	456.6	451.0	445.0	441.0	436.9
57.5°	439.7	443.2	438.5	433.4	427.8	423.5	418.2	414.4	410.4	407.8	405.5
60°	399.3	403.1	401.2	398.6	395.1	392.5	389.2	387.1	384.5	383.1	381.8
62.5°	365.0	369.7	369.0	367.9	365.6	364.2	362.3	361.4	359.7	359.0	358.4
65°	330.8	336.0	336.0	335.3	334.2	333.7	332.6	332.4	331.5	331.9	331.8
67.5°	303.8	308.4	309.5	310.2	310.2	310.5	310.4	310.8	310.8	311.5	311.9
70°	284.4	287.7	288.4	289.2	289.4	290.0	290.0	290.4	290.2	290.9	291.0
72.5°	264.8	269.0	269.7	270.4	270.4	271.0	270.6	270.5	269.7	269.6	268.9
75°	240.3	245.8	246.9	247.7	247.8	248.4	247.6	247.1	245.8	245.2	244.2
77.5°	214.8	220.5	221.3	221.5	221.1	221.2	219.7	218.6	216.8	216.1	215.1
80°	181.6	189.9	190.5	190.0	188.7	188.5	187.1	186.1	183.9	183.1	182.3
82.5°	138.2	147.9	149.3	149.9	148.8	149.1	147.7	147.0	145.1	144.7	143.5
85°	87.2	97.0	98.6	98.3	97.3	97.0	96.2	96.5	96.3	96.9	97.1
87.5°	40.1	49.5	51.8	51.1	51.0	50.3	48.7	49.4	50.3	50.8	50.9
90°	64.7	71.1	74.7	71.7	67.9	64.9	61.1	58.2	54.5	51.7	48.0
92.5°	89.0	94.5	100.0	95.1	90.3	85.4	80.6	75.7	70.8	65.9	61.1
95°	111.7	119.5	127.4	120.9	114.4	107.9	101.4	95.0	88.5	82.0	75.6
97.5°	125.5	134.7	144.0	137.5	131.1	124.5	118.0	111.6	105.1	98.6	92.1
100°	219.9	241.3	262.7	244.3	225.8	207.5	189.0	170.5	152.0	133.7	115.2
102.5°	503.6	555.5	607.5	560.9	514.3	467.7	421.1	374.5	327.9	281.2	234.6
105°	911.7	990.3	1069.0	997.8	926.7	855.6	784.5	713.3	642.2	571.0	499.9
107.5°	1229.5	1303.4	1377.3	1313.1	1248.8	1184.6	1120.3	1056.1	991.7	927.5	863.2
110°	1386.3	1445.0	1503.7	1460.6	1417.6	1374.5	1331.5	1288.5	1245.5	1202.5	1159.5



TEST NUMBER: P1444647
 CATALOG NUMBER: EHBR1-12-UNV-TA-L930-UPL36

CANDELA DISTRIBUTION (continued):

	220°	222.5°	225°	227.5°	230°	232.5°	235°	237.5°	240°	242.5°	245°
112.5°	1383.6	1426.5	1469.6	1444.4	1419.5	1394.5	1369.4	1344.4	1319.4	1294.4	1269.4
115°	1261.8	1287.5	1313.5	1303.8	1294.1	1284.5	1274.8	1265.2	1255.4	1245.9	1236.3
117.5°	1109.2	1122.3	1135.8	1134.2	1132.9	1131.4	1130.1	1128.6	1127.3	1125.9	1124.6
120°	950.0	953.9	958.2	959.8	961.7	963.4	965.3	967.1	968.9	970.6	972.5
122.5°	814.5	812.8	811.6	813.3	815.1	816.7	818.6	820.3	822.2	823.9	825.7
125°	716.5	712.4	708.9	707.8	706.8	705.6	704.5	703.4	702.3	701.2	700.2
127.5°	644.1	639.7	635.6	632.4	629.0	625.6	622.3	618.8	615.5	612.1	608.8
130°	591.7	587.7	584.4	580.0	575.7	571.1	566.9	562.4	558.0	553.7	549.3
132.5°	552.5	548.9	546.0	541.8	537.7	533.4	529.2	525.1	521.0	516.6	512.5
135°	525.3	522.5	520.3	516.5	512.9	509.1	505.3	501.5	497.8	494.0	490.3
137.5°	500.7	498.2	496.5	493.6	490.8	487.7	485.0	481.9	479.1	476.0	473.2
140°	479.3	476.5	474.6	473.2	471.8	470.3	468.8	467.3	465.9	464.4	462.9
142.5°	462.1	459.6	458.1	457.3	456.5	455.7	455.0	454.1	453.2	452.4	451.6
145°	444.5	441.6	439.8	440.0	440.2	440.5	440.7	440.9	441.1	441.4	441.6
147.5°	431.1	428.4	426.7	427.2	427.7	428.2	428.7	429.1	429.6	430.1	430.6
150°	416.8	413.6	411.6	412.3	413.0	413.8	414.6	415.4	416.1	416.8	417.5
152.5°	404.2	400.5	398.3	399.0	399.8	400.5	401.3	402.0	402.8	403.6	404.4
155°	393.0	389.0	386.8	387.1	387.4	387.8	388.1	388.5	388.9	389.3	389.8
157.5°	385.0	381.1	379.0	379.0	379.3	379.4	379.5	379.8	380.0	380.2	380.5
160°	378.7	375.0	373.0	373.0	373.3	373.4	373.5	373.7	373.9	374.1	374.4
162.5°	372.9	369.2	367.2	367.3	367.4	367.6	367.8	367.8	368.0	368.2	368.4
165°	367.8	364.7	363.3	363.6	363.9	364.2	364.5	364.9	365.2	365.6	366.0
167.5°	367.0	364.3	363.1	363.1	362.9	362.8	362.8	362.7	362.7	362.6	362.6
170°	364.1	362.0	360.9	361.0	361.2	361.4	361.4	361.6	361.7	362.0	362.2
172.5°	362.4	360.9	360.2	360.6	360.9	361.4	361.7	362.1	362.4	362.9	363.2
175°	362.4	361.4	361.2	361.3	361.5	361.7	361.9	362.2	362.3	362.5	362.9
177.5°	364.3	363.9	363.7	363.7	363.7	363.7	363.7	363.7	363.7	363.8	363.8
180°	363.7	363.7	363.7	363.7	363.7	363.7	363.7	363.7	363.7	363.7	363.7



TEST NUMBER: P1444647
 CATALOG NUMBER: EHBR1-12-UNV-TA-L930-UPL36

CANDELA DISTRIBUTION (continued):

	247.5°	250°	252.5°	255°	257.5°	260°	262.5°	265°	267.5°	270°	272.5°
0°	9445.9	9445.9	9445.9	9445.9	9445.9	9445.9	9445.9	9445.9	9445.9	9445.9	9445.9
2.5°	9519.8	9530.8	9530.0	9540.4	9539.8	9549.6	9547.7	9556.1	9554.2	9561.4	9557.1
5°	9832.0	9853.1	9860.1	9879.2	9883.1	9900.1	9900.5	9914.0	9912.4	9923.0	9917.4
7.5°	10127.4	10147.1	10156.5	10171.3	10178.7	10190.9	10195.7	10205.8	10208.2	10214.1	10214.0
10°	10152.3	10152.3	10156.8	10154.8	10159.0	10156.6	10161.7	10159.8	10167.3	10165.3	10170.9
12.5°	9816.9	9783.6	9771.4	9741.6	9735.0	9709.3	9711.2	9694.7	9702.6	9692.6	9709.8
15°	9095.9	9018.8	8980.6	8913.4	8892.4	8839.3	8835.0	8799.7	8809.3	8790.8	8817.7
17.5°	8030.7	7909.0	7842.4	7744.3	7705.4	7630.3	7615.2	7569.9	7576.9	7554.1	7586.6
20°	6760.5	6613.6	6529.5	6416.0	6365.5	6275.9	6252.2	6201.4	6207.9	6185.1	6221.9
22.5°	5475.9	5322.1	5227.1	5108.2	5043.7	4959.5	4934.2	4883.3	4886.1	4864.8	4900.2
25°	4295.4	4147.9	4055.7	3947.7	3891.7	3814.5	3788.0	3742.2	3744.7	3727.2	3758.9
27.5°	3322.8	3201.8	3124.6	3034.2	2983.9	2920.4	2894.6	2856.1	2855.9	2843.1	2869.6
30°	2596.6	2495.6	2426.3	2347.5	2300.3	2243.1	2218.0	2183.6	2182.1	2173.0	2194.1
32.5°	2033.0	1943.2	1880.0	1810.7	1768.4	1719.2	1695.6	1667.9	1665.4	1657.1	1674.4
35°	1580.4	1504.8	1450.5	1392.0	1396.4	1324.0	1336.0	1279.7	1264.4	1261.1	1274.0
37.5°	1221.5	1162.9	1118.7	1075.1	1045.4	1014.8	998.3	983.6	981.9	980.4	989.4
40°	956.1	915.1	883.0	853.0	832.6	814.0	803.6	795.5	793.6	792.5	797.9
42.5°	773.8	746.2	725.5	707.1	694.7	684.6	679.0	674.4	672.9	673.0	676.2
45°	653.7	637.0	623.6	612.3	604.4	607.8	597.6	602.9	595.9	603.2	598.4
47.5°	575.8	561.4	553.2	545.1	540.4	536.5	536.6	536.7	538.2	538.4	540.0
50°	515.5	507.2	501.5	496.4	493.9	491.8	492.5	493.1	494.6	494.7	495.8
52.5°	471.0	465.5	462.1	458.8	457.8	456.6	457.1	456.9	457.5	457.2	458.1
55°	434.7	432.1	431.0	429.9	430.1	429.7	429.9	428.8	428.1	427.2	428.0
57.5°	404.9	404.6	405.3	405.8	407.2	407.7	408.0	406.6	405.4	404.2	404.9
60°	382.0	382.6	384.3	385.9	387.8	388.7	389.2	388.5	387.6	386.7	387.2
62.5°	359.4	360.3	362.4	364.1	366.4	367.7	369.0	369.1	369.5	369.1	369.5
65°	333.1	334.2	336.1	337.6	339.8	340.9	342.2	342.5	343.3	343.1	343.7
67.5°	313.1	314.1	315.8	317.1	319.0	320.2	321.4	321.4	321.8	321.7	322.3
70°	291.9	292.4	293.9	295.0	296.9	298.1	299.4	299.9	300.8	300.8	301.6
72.5°	269.2	269.0	269.8	270.4	271.8	272.8	274.6	275.5	277.0	277.3	277.9
75°	244.5	244.3	245.3	245.8	247.0	247.9	250.0	251.2	253.5	254.4	254.2
77.5°	215.9	216.4	218.3	219.4	221.1	222.3	224.8	226.9	231.1	232.9	231.1
80°	183.9	184.4	186.4	187.5	189.6	191.1	194.0	196.4	200.1	201.0	199.9
82.5°	144.5	144.7	146.5	147.3	150.2	152.2	155.9	157.8	160.1	159.8	159.5
85°	98.6	99.9	102.2	104.4	108.0	111.3	114.8	117.6	115.7	118.8	115.2
87.5°	52.7	52.6	55.6	55.2	60.1	62.9	65.9	67.3	69.0	68.6	68.6
90°	45.3	43.1	41.7	39.5	38.3	36.0	35.0	32.9	32.1	29.7	32.9
92.5°	56.2	53.6	51.0	48.3	45.7	43.0	40.5	37.8	35.2	32.5	35.2
95°	69.1	66.7	64.2	61.8	59.3	56.9	54.4	52.0	49.5	47.1	50.2
97.5°	85.6	84.2	82.8	81.4	79.9	78.6	77.2	75.7	74.3	72.9	74.9
100°	96.8	96.8	96.8	96.8	96.7	96.7	96.7	96.7	96.7	96.7	98.3
102.5°	188.0	183.4	178.8	174.0	169.3	164.7	160.0	155.3	150.7	146.1	152.9
105°	428.8	410.5	392.4	374.1	355.8	337.6	319.4	301.1	282.9	264.7	283.5
107.5°	799.1	765.8	732.6	699.4	666.0	632.9	599.6	566.4	533.3	500.0	529.8
110°	1116.4	1081.2	1045.9	1010.7	975.4	940.2	904.9	869.7	834.4	799.2	827.5



TEST NUMBER: P1444647
 CATALOG NUMBER: EHBR1-12-UNV-TA-L930-UPL36

CANDELA DISTRIBUTION (continued):

	247.5°	250°	252.5°	255°	257.5°	260°	262.5°	265°	267.5°	270°	272.5°
112.5°	1244.4	1221.6	1198.9	1176.1	1153.5	1130.8	1108.1	1085.4	1062.8	1040.0	1053.9
115°	1226.6	1215.9	1205.0	1194.3	1183.4	1172.7	1161.9	1151.2	1140.4	1129.7	1130.5
117.5°	1123.2	1119.6	1116.2	1112.6	1109.1	1105.6	1102.2	1098.7	1095.2	1091.8	1084.2
120°	974.5	975.7	977.0	978.4	979.7	981.1	982.3	983.7	985.2	986.6	976.2
122.5°	827.5	830.4	833.3	836.2	839.1	842.2	845.2	848.2	851.2	854.2	843.9
125°	699.1	702.0	704.8	707.7	710.6	713.5	716.6	719.6	722.5	725.7	716.9
127.5°	605.5	606.8	607.9	609.2	610.4	611.8	613.1	614.4	615.9	617.4	611.9
130°	544.9	544.3	543.7	543.1	542.4	542.1	541.5	541.1	540.7	540.3	537.7
132.5°	508.3	506.4	504.7	502.7	500.9	499.2	497.5	495.8	494.1	492.6	491.8
135°	486.5	483.8	481.1	478.5	475.8	473.4	470.8	468.3	465.9	463.5	463.7
137.5°	470.2	467.6	464.9	462.2	459.6	457.1	454.6	452.0	449.6	447.3	448.0
140°	461.4	458.8	456.0	453.4	450.9	448.2	445.7	443.3	440.8	438.5	439.0
142.5°	450.7	448.3	445.8	443.5	441.1	438.8	436.5	434.3	432.0	429.9	430.4
145°	441.8	440.0	438.3	436.4	434.7	433.1	431.3	429.7	428.1	426.6	426.8
147.5°	431.0	429.7	428.4	427.0	425.7	424.5	423.2	422.0	420.8	419.6	419.7
150°	418.2	417.4	416.4	415.6	414.7	413.8	413.0	412.2	411.4	410.7	410.5
152.5°	405.1	404.3	403.4	402.6	401.8	401.0	400.2	399.5	398.8	398.0	397.9
155°	390.2	389.8	389.4	389.0	388.6	388.3	387.9	387.6	387.3	386.9	386.9
157.5°	380.7	380.5	380.2	380.2	380.1	379.9	379.7	379.7	379.4	379.4	379.5
160°	374.6	374.3	373.9	373.7	373.3	372.9	372.7	372.4	372.1	371.8	372.1
162.5°	368.6	368.8	368.8	368.8	368.9	369.0	369.1	369.2	369.3	369.5	369.6
165°	366.4	366.3	366.2	365.9	365.8	365.7	365.6	365.5	365.4	365.4	365.6
167.5°	362.6	362.8	363.0	363.2	363.4	363.7	363.9	364.3	364.5	364.8	365.1
170°	362.2	362.2	362.2	362.2	362.2	362.3	362.3	362.3	362.4	362.5	362.7
172.5°	363.7	363.7	363.6	363.7	363.6	363.7	363.7	363.7	363.7	363.8	363.9
175°	363.0	363.2	363.4	363.7	363.9	364.0	364.2	364.5	364.7	364.8	364.8
177.5°	363.8	363.8	363.8	363.8	363.8	363.9	363.9	363.9	363.9	363.8	363.9
180°	363.7	363.7	363.7	363.7	363.7	363.7	363.7	363.7	363.7	363.7	363.7



TEST NUMBER: P1444647
 CATALOG NUMBER: EHBR1-12-UNV-TA-L930-UPL36

CANDELA DISTRIBUTION (continued):

	275°	277.5°	280°	282.5°	285°	287.5°	290°	292.5°	295°	297.5°	300°
0°	9445.9	9445.9	9445.9	9445.9	9445.9	9445.9	9445.9	9445.9	9445.9	9445.9	9445.9
2.5°	9564.2	9559.3	9564.2	9559.3	9564.2	9558.4	9562.4	9556.0	9557.6	9550.9	9552.6
5°	9925.8	9918.2	9922.2	9912.3	9913.4	9900.1	9899.9	9884.5	9880.4	9862.9	9855.2
7.5°	10218.2	10215.8	10217.2	10210.8	10210.0	10201.0	10196.7	10183.9	10175.9	10159.8	10148.7
10°	10171.9	10179.4	10181.4	10188.9	10190.5	10198.0	10199.6	10207.1	10208.7	10214.2	10214.3
12.5°	9709.0	9734.3	9740.3	9771.6	9784.8	9820.5	9839.7	9879.2	9902.5	9941.9	9966.1
15°	8817.0	8860.9	8878.3	8939.4	8973.1	9044.4	9089.2	9171.1	9228.8	9315.7	9377.7
17.5°	7589.5	7650.7	7678.3	7761.1	7815.1	7920.4	7996.1	8121.0	8216.5	8355.1	8465.1
20°	6228.3	6296.3	6333.8	6428.1	6491.9	6614.8	6709.5	6862.8	6990.7	7166.5	7316.8
22.5°	4911.3	4976.0	5017.6	5113.7	5185.5	5313.7	5419.6	5581.4	5724.7	5922.7	6102.9
25°	3770.9	3830.3	3867.9	3954.8	4022.2	4140.1	4241.0	4396.7	4537.0	4735.6	4920.3
27.5°	2882.8	2932.6	2968.8	3042.9	3102.3	3202.2	3289.0	3417.7	3538.5	3710.3	3874.9
30°	2207.1	2251.1	2286.4	2350.9	2406.1	2492.7	2569.0	2677.1	2777.1	2913.8	3044.7
32.5°	1686.6	1724.4	1755.9	1812.4	1862.4	1940.4	2009.2	2103.9	2189.7	2305.6	2413.4
35°	1285.9	1360.5	1355.2	1433.2	1445.7	1501.7	1563.1	1645.8	1721.9	1820.5	1912.1
37.5°	998.1	1019.1	1041.6	1076.0	1112.2	1163.1	1215.0	1316.1	1353.3	1427.8	1503.6
40°	804.9	819.0	833.9	857.2	882.5	918.4	956.1	1004.4	1053.9	1114.3	1176.0
42.5°	680.5	688.5	697.9	711.6	727.3	750.0	775.2	807.9	842.4	884.9	928.3
45°	607.9	604.1	607.0	614.3	623.7	637.5	653.5	673.7	696.2	723.7	753.0
47.5°	540.4	541.9	542.7	546.7	551.8	561.1	570.7	584.5	611.1	619.1	635.1
50°	495.7	496.5	496.2	498.2	500.8	506.8	513.0	522.4	531.7	544.0	555.8
52.5°	458.3	459.3	459.2	460.5	461.9	465.7	469.6	476.2	482.4	490.2	496.9
55°	428.7	430.2	430.8	431.8	432.6	434.5	436.1	439.2	441.8	446.3	450.4
57.5°	406.0	408.0	408.9	409.3	408.5	408.4	407.9	408.5	409.0	411.4	413.8
60°	388.1	389.7	390.0	389.7	388.3	387.2	385.5	385.0	384.7	385.9	387.1
62.5°	369.4	370.0	369.6	369.1	367.4	366.4	364.7	364.0	363.4	364.3	364.9
65°	343.5	344.0	343.5	343.2	341.8	340.9	339.4	338.9	338.1	338.3	338.2
67.5°	322.4	322.9	322.6	322.1	321.2	320.6	319.6	318.8	317.9	317.4	316.7
70°	301.5	301.8	301.3	300.8	299.7	299.2	298.3	298.0	297.2	297.0	296.2
72.5°	277.3	277.4	276.5	276.3	275.5	275.4	275.0	275.4	275.4	275.7	275.5
75°	252.7	252.4	251.3	251.1	250.4	250.8	250.3	250.9	250.9	251.8	252.0
77.5°	228.0	226.7	224.7	223.8	222.4	222.3	221.4	222.0	221.8	222.9	223.3
80°	196.8	195.2	192.6	191.4	189.8	189.5	188.8	189.5	189.2	190.4	191.3
82.5°	157.1	155.7	153.1	152.1	150.2	150.4	149.6	150.4	150.3	152.1	153.2
85°	116.2	115.3	112.6	110.1	107.5	105.9	104.4	104.1	103.6	104.4	105.0
87.5°	67.1	66.3	64.2	62.7	58.0	58.2	56.3	56.2	55.8	55.3	56.3
90°	34.1	37.1	38.6	41.3	43.0	46.0	47.6	50.5	52.6	56.0	58.2
92.5°	37.8	40.5	43.0	45.7	48.3	51.0	53.6	56.2	61.9	67.5	73.3
95°	53.2	56.2	59.3	62.4	65.4	68.4	71.5	74.5	82.8	91.1	99.5
97.5°	76.9	79.0	81.0	83.0	85.0	87.1	89.0	91.1	100.0	108.9	117.8
100°	99.9	101.5	103.1	104.8	106.4	108.0	109.6	111.2	128.5	145.7	163.0
102.5°	159.8	166.7	173.6	180.5	187.4	194.4	201.2	208.1	247.6	287.0	326.6
105°	302.4	321.2	340.1	359.0	377.8	396.6	415.5	434.3	497.5	560.7	624.0
107.5°	559.5	589.3	619.1	649.0	678.8	708.5	738.3	768.2	829.7	891.4	953.0
110°	855.9	884.3	912.6	941.0	969.4	997.8	1026.1	1054.6	1091.6	1128.4	1165.3



TEST NUMBER: P1444647
 CATALOG NUMBER: EHBR1-12-UNV-TA-L930-UPL36

CANDELA DISTRIBUTION (continued):

	275°	277.5°	280°	282.5°	285°	287.5°	290°	292.5°	295°	297.5°	300°
112.5°	1067.6	1081.4	1095.1	1109.0	1122.7	1136.6	1150.4	1164.3	1182.6	1200.9	1219.3
115°	1131.4	1132.2	1133.0	1133.9	1134.7	1135.6	1136.5	1137.4	1143.0	1148.6	1154.2
117.5°	1076.4	1068.8	1061.2	1053.5	1045.9	1038.4	1030.7	1023.2	1021.7	1020.3	1018.8
120°	966.1	955.7	945.5	935.3	925.1	914.8	904.7	894.5	889.0	883.6	878.1
122.5°	833.7	823.3	813.2	802.9	792.7	782.5	772.4	762.3	758.3	754.3	750.3
125°	708.3	699.7	691.1	682.5	674.1	665.5	657.1	648.7	647.9	647.1	646.4
127.5°	606.5	601.2	595.9	590.6	585.3	580.1	574.9	569.7	571.3	572.7	574.3
130°	535.2	532.6	530.3	527.7	525.5	523.1	520.8	518.4	521.6	524.7	527.9
132.5°	491.2	490.6	489.9	489.2	488.7	488.3	487.7	487.3	491.1	494.8	498.6
135°	464.0	464.5	464.9	465.3	465.8	466.2	466.8	467.2	470.9	474.4	478.0
137.5°	448.8	449.4	450.3	451.1	452.0	452.8	453.8	454.7	457.4	460.2	462.9
140°	439.5	440.0	440.7	441.3	441.9	442.6	443.3	444.0	446.1	448.2	450.3
142.5°	430.9	431.4	432.0	432.6	433.3	433.9	434.5	435.2	436.7	438.1	439.7
145°	427.2	427.5	427.8	428.3	428.6	429.1	429.5	430.0	430.9	431.6	432.4
147.5°	419.8	419.9	420.1	420.3	420.5	420.7	420.9	421.1	421.4	421.8	422.3
150°	410.5	410.4	410.4	410.3	410.3	410.2	410.3	410.2	410.5	410.9	411.3
152.5°	397.8	397.7	397.6	397.4	397.4	397.4	397.3	397.3	397.6	398.1	398.4
155°	387.1	387.2	387.4	387.5	387.6	387.7	387.9	388.0	388.2	388.3	388.4
157.5°	379.6	379.7	379.9	380.0	380.2	380.2	380.3	380.5	380.7	380.8	380.9
160°	372.3	372.8	373.0	373.4	373.7	374.0	374.4	374.6	374.8	374.9	375.1
162.5°	369.7	369.8	370.0	370.1	370.2	370.4	370.4	370.6	371.0	371.2	371.6
165°	365.9	366.3	366.7	366.9	367.2	367.7	368.0	368.3	368.4	368.5	368.7
167.5°	365.5	365.7	366.1	366.4	366.8	367.1	367.5	367.8	367.9	368.0	368.1
170°	363.1	363.4	363.7	364.0	364.3	364.6	365.0	365.2	365.5	365.8	366.2
172.5°	364.3	364.5	364.7	365.0	365.3	365.5	365.9	366.2	366.4	366.7	367.0
175°	364.8	364.8	364.8	364.9	364.9	364.9	364.9	365.0	365.1	365.1	365.1
177.5°	364.1	364.4	364.6	364.7	364.9	365.2	365.4	365.5	365.5	365.5	365.5
180°	363.7	363.7	363.7	363.7	363.7	363.7	363.7	363.7	363.7	363.7	363.7



TEST NUMBER: P1444647
 CATALOG NUMBER: EHBR1-12-UNV-TA-L930-UPL36

CANDELA DISTRIBUTION (continued):

	302.5°	305°	307.5°	310°	312.5°	315°	317.5°	320°	322.5°	325°	327.5°
0°	9445.9	9445.9	9445.9	9445.9	9445.9	9445.9	9445.9	9445.9	9445.9	9445.9	9445.9
2.5°	9545.9	9546.3	9538.7	9538.2	9531.0	9530.1	9523.1	9520.9	9515.2	9513.2	9507.3
5°	9835.5	9826.1	9804.5	9791.7	9770.3	9756.1	9732.9	9717.8	9695.4	9678.6	9656.0
7.5°	10128.4	10113.9	10089.6	10069.8	10040.1	10016.4	9981.7	9953.1	9915.4	9882.8	9843.3
10°	10214.3	10212.1	10205.9	10196.9	10183.0	10167.5	10143.8	10119.2	10086.2	10050.3	10006.3
12.5°	10002.9	10025.8	10057.0	10075.4	10097.8	10107.7	10116.8	10114.5	10108.5	10090.4	10065.0
15°	9467.6	9531.6	9616.6	9682.4	9758.2	9813.1	9873.9	9911.8	9949.6	9967.0	9977.7
17.5°	8615.7	8737.2	8889.5	9015.7	9161.3	9278.3	9406.4	9502.9	9602.2	9673.3	9737.6
20°	7521.7	7697.6	7913.0	8103.2	8324.5	8516.7	8727.5	8900.4	9078.7	9218.2	9350.3
22.5°	6334.9	6543.9	6804.3	7045.4	7330.7	7587.0	7876.2	8127.9	8390.7	8610.3	8822.5
25°	5168.0	5397.1	5681.8	5950.9	6274.0	6572.2	6915.2	7228.8	7568.5	7863.4	8154.7
27.5°	4102.4	4327.4	4618.1	4904.5	5246.0	5563.7	5931.2	6276.9	6663.7	7020.3	7385.1
30°	3226.5	3417.3	3678.0	3955.5	4292.4	4615.7	4987.2	5342.6	5744.9	6134.3	6545.3
32.5°	2556.3	2701.7	2906.6	3141.2	3452.0	3759.8	4113.5	4456.7	4852.9	5246.2	5673.7
35°	2030.2	2143.5	2299.8	2482.9	2746.1	3011.4	3324.3	3636.3	4005.9	4379.2	4794.7
37.5°	1600.9	1692.9	1815.3	1952.8	2164.0	2381.7	2638.2	2896.9	3218.1	3549.0	3925.5
40°	1250.1	1324.6	1419.9	1522.4	1681.8	1849.6	2048.0	2248.6	2506.7	2777.1	3088.7
42.5°	982.0	1037.0	1104.3	1179.2	1328.0	1417.1	1551.7	1696.7	1886.5	2082.8	2317.1
45°	788.7	826.2	872.9	923.1	992.2	1067.7	1159.8	1256.5	1436.7	1525.1	1667.6
47.5°	658.6	683.8	713.5	745.2	785.9	829.8	884.5	940.3	1012.6	1087.5	1175.2
50°	571.0	596.6	606.9	623.3	646.8	671.9	702.8	733.5	772.3	811.6	856.7
52.5°	506.1	514.4	525.5	535.9	550.5	579.1	588.3	604.4	626.1	647.4	671.1
55°	456.4	461.8	469.0	475.3	484.2	492.6	504.7	515.5	530.0	542.8	558.6
57.5°	417.8	421.2	426.2	430.3	436.0	440.8	448.0	453.8	462.1	469.4	478.9
60°	389.7	392.0	395.3	398.1	401.6	404.1	407.7	410.5	414.8	418.5	423.8
62.5°	366.7	368.0	370.2	371.7	374.0	375.3	377.1	378.4	380.8	382.7	385.6
65°	339.3	339.5	340.9	341.7	343.4	344.2	345.7	346.2	348.3	349.6	352.2
67.5°	316.7	316.1	316.1	315.6	315.8	315.3	315.5	314.8	315.6	316.1	318.0
70°	296.1	295.2	295.0	294.0	293.7	292.7	292.5	291.6	291.5	291.2	291.9
72.5°	276.1	275.8	275.9	275.2	275.1	274.5	274.5	274.1	274.6	274.7	275.6
75°	253.0	253.0	253.5	252.9	253.1	252.5	252.7	252.2	252.5	252.4	253.3
77.5°	224.9	225.5	226.8	226.5	226.9	226.3	226.5	225.8	226.1	225.5	225.9
80°	193.3	194.7	196.3	196.3	197.0	196.5	197.1	196.5	196.8	195.9	195.7
82.5°	155.9	157.0	158.8	158.8	160.4	160.7	162.4	162.3	163.3	162.7	162.2
85°	106.5	107.3	108.9	109.7	111.3	112.3	113.9	114.6	113.4	115.6	113.9
87.5°	55.6	57.7	56.5	59.3	58.6	61.3	60.8	63.3	62.7	65.0	64.7
90°	61.9	64.3	68.1	70.6	74.8	77.5	76.1	73.0	71.6	68.4	67.0
92.5°	78.8	84.6	90.2	95.9	101.5	107.2	101.9	96.7	91.4	86.2	80.9
95°	107.7	116.0	124.3	132.7	141.0	149.3	140.4	131.4	122.5	113.6	104.7
97.5°	126.7	135.6	144.5	153.5	162.4	171.3	160.8	150.2	139.7	129.3	118.7
100°	180.2	197.4	214.6	231.9	249.2	266.4	246.8	227.1	207.5	187.9	168.2
102.5°	366.2	405.6	445.1	484.8	524.3	563.7	522.0	480.4	438.6	396.9	355.2
105°	687.2	750.4	813.6	876.9	940.1	1003.3	935.8	868.1	800.5	733.0	665.3
107.5°	1014.7	1076.1	1137.9	1199.5	1261.1	1322.8	1254.3	1185.6	1117.0	1048.4	979.8
110°	1202.3	1239.2	1276.2	1313.2	1350.1	1387.1	1337.0	1286.9	1236.7	1186.5	1136.4



TEST NUMBER: P1444647
 CATALOG NUMBER: EHBR1-12-UNV-TA-L930-UPL36

CANDELA DISTRIBUTION (continued):

	302.5°	305°	307.5°	310°	312.5°	315°	317.5°	320°	322.5°	325°	327.5°
112.5°	1237.5	1256.0	1274.2	1292.7	1311.0	1329.4	1293.4	1257.6	1221.5	1185.7	1149.7
115°	1159.9	1165.4	1171.1	1176.7	1182.5	1188.1	1163.6	1139.3	1114.9	1090.6	1066.2
117.5°	1017.3	1016.0	1014.6	1013.1	1011.6	1010.3	996.5	982.7	968.8	955.0	941.1
120°	872.7	867.3	861.8	856.4	850.9	845.5	839.5	833.3	827.2	821.1	814.9
122.5°	746.2	742.4	738.4	734.4	730.4	726.4	723.7	721.1	718.5	715.9	713.2
125°	645.8	645.0	644.3	643.6	642.8	642.1	640.5	638.9	637.3	635.6	634.0
127.5°	575.9	577.4	578.9	580.5	581.9	583.4	582.6	581.9	581.1	580.3	579.5
130°	531.0	534.2	537.4	540.5	543.5	546.7	545.6	544.4	543.1	542.0	540.9
132.5°	502.4	506.1	509.8	513.7	517.3	521.0	519.7	518.4	516.9	515.7	514.3
135°	481.5	485.1	488.6	492.2	495.7	499.1	497.6	496.0	494.4	492.9	491.4
137.5°	465.6	468.5	471.1	473.7	476.5	479.2	477.6	476.0	474.4	472.8	471.3
140°	452.4	454.5	456.5	458.7	460.7	462.8	460.9	459.2	457.3	455.6	453.8
142.5°	441.0	442.5	443.9	445.4	446.7	448.2	446.0	443.8	441.5	439.3	437.1
145°	433.3	434.1	434.9	435.7	436.4	437.3	434.7	432.4	429.8	427.4	424.9
147.5°	422.7	423.0	423.3	423.7	424.0	424.4	422.1	419.8	417.5	415.2	412.9
150°	411.6	412.1	412.3	412.7	413.0	413.3	411.0	408.7	406.3	404.0	401.7
152.5°	398.7	399.1	399.4	399.7	400.0	400.3	398.2	396.0	393.9	391.7	389.5
155°	388.5	388.7	388.8	388.9	389.0	389.1	387.3	385.5	383.8	381.9	380.2
157.5°	381.0	381.1	381.2	381.3	381.4	381.5	380.1	378.7	377.3	376.0	374.6
160°	375.2	375.3	375.3	375.4	375.5	375.6	374.4	373.3	372.1	371.0	369.7
162.5°	371.9	372.2	372.5	372.8	373.1	373.3	372.0	370.6	369.2	367.8	366.4
165°	368.8	368.8	368.9	369.0	369.1	369.2	368.2	367.2	366.3	365.4	364.3
167.5°	368.2	368.3	368.4	368.5	368.5	368.6	367.7	366.7	365.7	364.7	363.7
170°	366.4	366.7	367.0	367.2	367.5	367.7	367.0	366.2	365.4	364.7	363.8
172.5°	367.2	367.5	367.7	368.0	368.2	368.5	367.7	366.9	366.1	365.3	364.4
175°	365.1	365.2	365.3	365.3	365.3	365.3	364.7	364.0	363.5	362.9	362.2
177.5°	365.5	365.5	365.5	365.5	365.5	365.5	365.1	364.7	364.3	363.9	363.4
180°	363.7	363.7	363.7	363.7	363.7	363.7	363.7	363.7	363.7	363.7	363.7



TEST NUMBER: P1444647
 CATALOG NUMBER: EHBR1-12-UNV-TA-L930-UPL36

CANDELA DISTRIBUTION (continued):

	330°	332.5°	335°	337.5°	340°	342.5°	345°	347.5°	350°	352.5°	355°
0°	9445.9	9445.9	9445.9	9445.9	9445.9	9445.9	9445.9	9445.9	9445.9	9445.9	9445.9
2.5°	9505.2	9501.1	9498.5	9495.1	9493.0	9490.4	9488.5	9486.8	9485.5	9484.2	9483.3
5°	9638.9	9617.7	9601.2	9583.3	9568.7	9554.0	9542.8	9533.4	9527.0	9522.1	9519.2
7.5°	9809.1	9770.2	9735.6	9699.2	9666.5	9634.5	9606.8	9583.0	9565.0	9553.5	9546.5
10°	9961.1	9909.0	9857.5	9803.3	9751.9	9702.1	9656.0	9615.6	9583.6	9562.3	9549.9
12.5°	10029.1	9984.9	9932.3	9873.4	9810.5	9746.7	9684.6	9628.6	9581.6	9550.1	9531.8
15°	9969.2	9951.0	9915.3	9869.6	9809.8	9744.0	9671.1	9602.5	9539.5	9498.6	9474.9
17.5°	9774.0	9799.4	9796.7	9779.3	9736.2	9680.8	9606.5	9529.5	9450.6	9396.0	9366.1
20°	9444.7	9524.6	9565.0	9585.9	9569.0	9533.1	9465.8	9387.6	9295.7	9224.4	9180.8
22.5°	8981.8	9122.9	9210.8	9275.1	9288.7	9276.5	9217.1	9142.7	9040.3	8954.5	8890.2
25°	8386.0	8592.6	8731.6	8840.5	8882.8	8893.7	8843.1	8769.3	8655.0	8555.1	8466.7
27.5°	7684.2	7952.7	8138.2	8284.5	8350.6	8379.2	8332.7	8257.3	8122.1	8002.9	7887.5
30°	6894.1	7212.7	7436.0	7611.5	7692.0	7729.8	7680.4	7596.2	7439.0	7295.4	7150.1
32.5°	6048.4	6397.0	6640.4	6830.9	6910.7	6946.3	6881.6	6787.2	6605.4	6436.3	6266.8
35°	5163.1	5514.9	5760.3	5945.9	6012.7	6034.2	5951.5	5842.2	5640.8	5455.3	5270.4
37.5°	4259.6	4587.1	4810.1	4976.5	5017.9	5021.6	4921.9	4801.3	4589.6	4406.7	4222.7
40°	3364.1	3640.1	3820.2	3953.5	3967.8	3955.0	3846.7	3725.2	3527.2	3363.3	3201.8
42.5°	2520.4	2728.8	2857.3	2948.6	2943.2	2917.9	2818.6	2714.1	2550.8	2425.9	2298.9
45°	1797.7	1935.1	2010.2	2063.7	2046.5	2022.4	1945.1	1871.9	1760.9	1680.2	1594.9
47.5°	1248.9	1413.0	1384.4	1488.9	1398.9	1458.3	1334.6	1266.3	1207.4	1164.5	1116.2
50°	894.1	931.7	949.9	962.3	955.7	946.6	924.3	904.4	877.5	857.9	835.0
52.5°	690.5	709.3	719.6	727.1	725.6	722.3	712.6	703.7	691.1	682.8	672.8
55°	584.9	585.1	604.1	596.0	607.9	593.9	599.5	583.9	586.4	573.0	564.0
57.5°	486.0	493.7	497.2	500.6	499.6	499.0	495.3	493.3	489.1	487.8	484.8
60°	427.5	431.6	432.4	433.9	432.6	432.1	429.2	428.1	425.3	424.8	422.8
62.5°	387.4	389.4	389.4	389.4	387.8	386.1	382.9	381.2	378.8	378.3	377.1
65°	354.0	356.1	356.5	356.9	355.7	354.4	351.6	349.7	347.2	346.2	344.9
67.5°	319.4	321.6	322.4	323.6	322.9	322.6	320.6	319.9	318.3	317.9	316.7
70°	292.2	293.2	293.1	293.1	291.6	290.2	287.9	286.9	285.1	284.7	283.6
72.5°	276.1	276.8	276.3	275.7	273.8	271.7	269.0	267.1	264.8	263.5	261.9
75°	253.4	254.2	253.7	253.4	251.6	250.2	248.1	247.0	245.4	245.0	243.9
77.5°	225.5	225.9	225.0	224.9	223.5	222.7	221.1	220.8	219.7	219.7	218.6
80°	194.4	194.2	192.8	192.4	191.1	190.7	189.5	189.5	188.7	189.0	188.3
82.5°	160.0	159.1	157.2	156.7	155.1	154.9	154.1	154.8	154.2	155.1	154.5
85°	114.7	114.9	114.1	114.1	113.6	113.7	113.7	114.2	114.2	115.0	115.0
87.5°	63.9	64.9	64.7	65.5	65.5	66.4	66.7	68.1	68.3	69.6	69.6
90°	63.9	62.6	59.5	58.3	56.7	56.8	55.4	55.5	54.0	53.9	52.0
92.5°	75.7	70.4	65.1	59.9	57.2	54.5	52.0	49.3	46.7	44.0	41.3
95°	95.8	86.9	78.0	69.1	66.0	63.0	60.0	56.9	53.8	50.8	47.8
97.5°	108.2	97.7	87.2	76.6	74.0	71.4	68.6	66.0	63.4	60.8	58.1
100°	148.6	128.9	109.3	89.6	87.4	85.2	83.0	80.7	78.5	76.2	74.0
102.5°	313.6	271.8	230.1	188.4	180.5	172.6	164.7	156.8	148.8	141.0	133.0
105°	597.8	530.1	462.5	394.9	373.4	351.9	330.4	309.0	287.5	266.0	244.5
107.5°	911.1	842.5	773.9	705.2	665.6	625.8	586.2	546.4	506.8	467.0	427.4
110°	1086.2	1035.9	985.9	935.6	903.7	871.7	839.7	807.7	775.6	743.7	711.7



TEST NUMBER: P1444647
 CATALOG NUMBER: EHBR1-12-UNV-TA-L930-UPL36

CANDELA DISTRIBUTION (continued):

	330°	332.5°	335°	337.5°	340°	342.5°	345°	347.5°	350°	352.5°	355°
112.5°	1113.7	1077.7	1041.7	1005.7	991.1	976.6	962.1	947.5	932.9	918.4	903.8
115°	1041.7	1017.3	992.9	968.4	963.2	958.1	952.9	947.6	942.3	937.0	931.8
117.5°	927.3	913.5	899.6	885.8	886.4	887.1	887.8	888.5	889.1	889.7	890.2
120°	808.8	802.7	796.5	790.4	794.5	798.7	802.9	807.0	811.1	815.2	819.2
122.5°	710.5	707.9	705.2	702.5	707.5	712.6	717.5	722.4	727.3	732.2	737.1
125°	632.4	630.7	629.1	627.5	632.5	637.5	642.6	647.4	652.5	657.3	662.2
127.5°	578.7	577.9	577.1	576.3	579.8	583.2	586.5	589.9	593.2	596.5	599.8
130°	539.8	538.5	537.4	536.2	539.2	542.3	545.2	548.1	551.2	554.0	556.8
132.5°	512.9	511.5	510.2	508.8	510.8	512.9	514.9	516.8	518.7	520.6	522.4
135°	489.8	488.2	486.6	485.0	486.8	488.7	490.6	492.3	494.0	495.6	497.3
137.5°	469.7	468.1	466.5	464.9	466.6	468.2	469.8	471.3	472.7	474.3	475.7
140°	452.0	450.1	448.4	446.5	448.0	449.3	450.7	452.2	453.4	454.7	456.0
142.5°	434.9	432.5	430.4	428.1	429.1	430.1	431.0	431.8	432.9	433.7	434.5
145°	422.5	419.9	417.5	415.0	415.7	416.4	417.2	417.9	418.6	419.2	419.8
147.5°	410.6	408.2	405.9	403.6	404.2	404.7	405.2	405.6	406.2	406.5	407.0
150°	399.3	396.9	394.6	392.2	392.7	393.2	393.6	394.1	394.5	394.9	395.3
152.5°	387.3	385.2	382.9	380.7	381.1	381.5	381.9	382.3	382.7	383.1	383.5
155°	378.3	376.5	374.6	372.9	373.3	373.7	374.1	374.4	374.7	375.1	375.4
157.5°	373.2	371.7	370.4	368.8	369.0	369.1	369.4	369.4	369.6	369.6	369.8
160°	368.6	367.3	366.2	364.8	364.9	365.1	365.3	365.4	365.5	365.5	365.6
162.5°	365.0	363.6	362.2	360.7	360.8	361.0	361.2	361.2	361.4	361.4	361.4
165°	363.3	362.3	361.3	360.2	360.2	360.1	360.1	359.9	359.8	359.8	359.6
167.5°	362.6	361.6	360.6	359.5	359.7	359.8	359.9	360.0	360.3	360.3	360.4
170°	363.0	362.1	361.3	360.5	360.4	360.4	360.3	360.2	360.1	360.0	359.9
172.5°	363.6	362.8	362.0	361.1	361.1	361.0	361.0	360.9	360.8	360.7	360.7
175°	361.6	361.1	360.4	359.8	359.7	359.7	359.7	359.6	359.5	359.5	359.4
177.5°	363.1	362.6	362.2	361.8	361.7	361.7	361.7	361.6	361.6	361.6	361.6
180°	363.7	363.7	363.7	363.7	363.7	363.7	363.7	363.7	363.7	363.7	363.7



TEST NUMBER: P1444647
 CATALOG NUMBER: EHBR1-12-UNV-TA-L930-UPL36

CANDELA DISTRIBUTION (continued):

	357.5°	360°
0°	9445.9	9445.9
2.5°	9482.5	9482.0
5°	9517.7	9517.2
7.5°	9544.5	9544.4
10°	9547.8	9549.4
12.5°	9528.7	9530.0
15°	9473.1	9475.7
17.5°	9366.7	9370.1
20°	9183.5	9187.0
22.5°	8886.7	8888.2
25°	8455.3	8449.2
27.5°	7867.2	7856.6
30°	7119.6	7109.3
32.5°	6228.2	6221.8
35°	5224.7	5220.7
37.5°	4168.3	4160.1
40°	3142.7	3118.8
42.5°	2243.2	2201.3
45°	1550.2	1500.6
47.5°	1082.2	1051.5
50°	820.3	810.4
52.5°	668.4	666.1
55°	564.0	562.9
57.5°	485.5	485.1
60°	423.8	423.7
62.5°	377.8	378.0
65°	345.5	345.6
67.5°	317.0	316.8
70°	284.1	283.8
72.5°	261.4	261.0
75°	243.9	243.6
77.5°	219.0	218.6
80°	188.7	188.3
82.5°	155.2	154.7
85°	115.8	115.8
87.5°	70.8	70.8
90°	51.9	49.9
92.5°	38.9	36.3
95°	44.7	41.7
97.5°	55.5	52.8
100°	71.7	69.5
102.5°	125.2	117.3
105°	223.1	201.6
107.5°	387.6	348.0
110°	679.7	647.7



TEST NUMBER: P1444647
CATALOG NUMBER: EHBR1-12-UNV-TA-L930-UPL36

CANDELA DISTRIBUTION (continued):

	357.5°	360°
112.5°	889.3	874.7
115°	926.5	921.3
117.5°	890.9	891.5
120°	823.2	827.2
122.5°	742.0	746.7
125°	666.9	671.8
127.5°	603.0	606.2
130°	559.5	562.3
132.5°	524.3	525.9
135°	498.9	500.4
137.5°	477.0	478.4
140°	457.0	458.2
142.5°	435.3	436.0
145°	420.4	421.0
147.5°	407.2	407.6
150°	395.6	395.9
152.5°	383.7	384.1
155°	375.6	376.0
157.5°	369.8	369.8
160°	365.6	365.7
162.5°	361.6	361.6
165°	359.4	359.3
167.5°	360.5	360.6
170°	359.8	359.8
172.5°	360.6	360.6
175°	359.4	359.4
177.5°	361.6	361.5
180°	363.7	363.7

Cooper Lighting Solutions Photometric Lab
1121 Highway 74 South
Peachtree City, GA 30269



LM-79-2019: Approved Method: Electrical and Photometric Measurements of Solid-State Lighting Products

Report Prepared for

Cooper Lighting Solutions

Metalux

Report Number: SP1-2506-472-5

Test Date: 08/01/2025

Luminaire Tested: EHBR-60-L930-N

Data in this report applies to families of products including EHBR-60-L930-N

Test Information

Test Method: LM-79-2019
 Report Number: SP1-2506-472-5
 Test Lab: COOPER LIGHTING SOLUTIONS
 Photometer: SP1 - 76IN SPHERE
 Measurement Geometry: 4π
 Issue Date: 08/05/2025
 Manufacturer: COOPER LIGHTING SOLUTIONS
 Product Line: Metalux
 Catalog Number: **EHBR-60-L930-N**
 Description: Elevate Round Highbay at, 60000 lumens, 3000K 90CRI LEDs with N lens

Spectral Parameters

CCT (K): 2996
 CIE u': 0.2519
 CIE v': 0.5169
 Duv: -0.0033
 CIE x: 0.4325
 CIE y: 0.3945
 CIE z: 0.1730
 Peak Wavelength (nm): 630
 Dominant Wavelength (nm): 584
 Purity: 48.21818
 Rf: 91.3
 Rg: 102

CRI (Ra):	94.4		
R1:	96.8	R9:	61.4
R2:	98.1	R10:	94.4
R3:	97.8	R11:	95.7
R4:	95.6	R12:	88.5
R5:	96.9	R13:	97.3
R6:	95.7	R14:	97.8
R7:	90.9	R15:	92.3
R8:	83.0		



Test Conditions

Stabilization Time: 40M
 Operation Time: 1H 40M
 Sphere Temperature (°C): 25.0

REPORT NUMBER: SP1-2506-472-5

Measurement and Test Equipment			
Instrument	Identification Number	Calibration Date	Calibration Due Date
Photometer	76INCH SPHERE IN0058	6/16/2025	12/16/2025
Power Meter	XITRON INXT2011004	1/21/2025	1/21/2026
AC Power Source	CHROMA 61603 IN0063	10/22/2024	10/22/2025
DC Power Source	AGILENT E3634A IN0208	10/22/2024	10/22/2025
Sphere Thermometer	ONSET IN0085	10/22/2024	10/22/2025
Room Thermometer	ONSET IN0046	10/22/2024	10/22/2025

REPORT NUMBER: SP1-2506-472-5

CIE 1931 Chromaticity Diagram



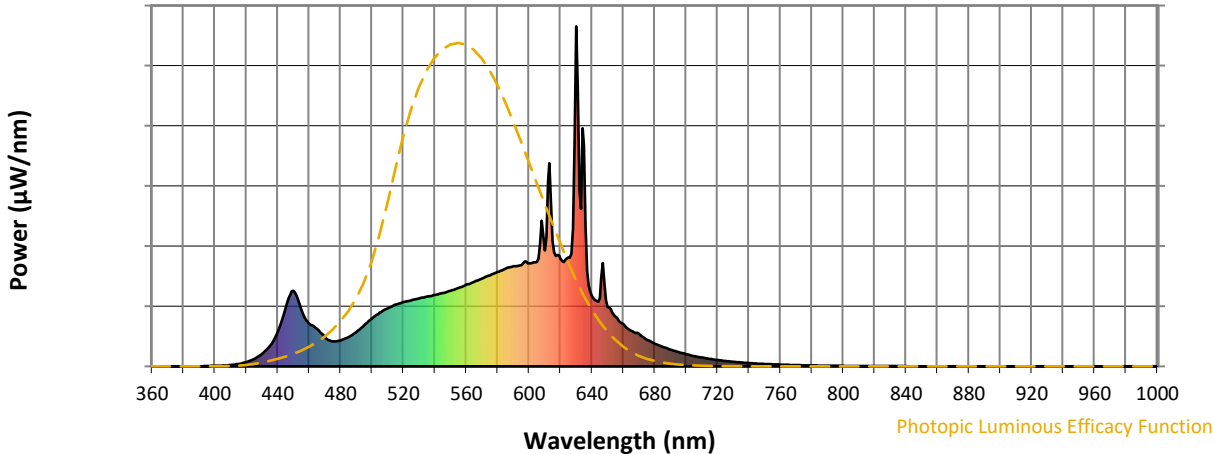
CIE 1931 Chromaticity Diagram with 2017 ANSI 7-Step and 4-Step Quadrangles



Point lies inside the ANSI 3000K 7-step quadrangle

REPORT NUMBER: SP1-2506-472-5

Photopic Flux vs. Wavelength



Photopic Lumens: NR

λ (nm)	Power W [^] /nm	Lumens (φ/nm)	λ (nm)	Power W [^] /nm	Lumens (φ/nm)	λ (nm)	Power W [^] /nm	Lumens (φ/nm)	λ (nm)	Power W [^] /nm	Lumens (φ/nm)	λ (nm)	Power W [^] /nm	Lumens (φ/nm)
360	0	NR	490	101	NR	620	317	NR	750	7	NR	880	0	NR
365	0	NR	495	121	NR	625	320	NR	755	6	NR	885	0	NR
370	0	NR	500	141	NR	630	1000	NR	760	5	NR	890	0	NR
375	0	NR	505	158	NR	635	651	NR	765	4	NR	895	0	NR
380	0	NR	510	171	NR	640	207	NR	770	4	NR	900	0	NR
385	0	NR	515	182	NR	645	201	NR	775	3	NR	905	0	NR
390	0	NR	520	189	NR	650	174	NR	780	3	NR	910	0	NR
395	1	NR	525	194	NR	655	146	NR	785	2	NR	915	0	NR
400	1	NR	530	199	NR	660	124	NR	790	2	NR	920	0	NR
405	3	NR	535	205	NR	665	105	NR	795	2	NR	925	0	NR
410	4	NR	540	210	NR	670	96	NR	800	1	NR	930	0	NR
415	7	NR	545	216	NR	675	79	NR	805	1	NR	935	0	NR
420	13	NR	550	222	NR	680	67	NR	810	1	NR	940	0	NR
425	22	NR	555	230	NR	685	58	NR	815	1	NR	945	0	NR
430	37	NR	560	240	NR	690	49	NR	820	1	NR	950	0	NR
435	60	NR	565	248	NR	695	42	NR	825	1	NR	955	0	NR
440	101	NR	570	258	NR	700	36	NR	830	1	NR	960	0	NR
445	172	NR	575	268	NR	705	30	NR	835	1	NR	965	0	NR
450	223	NR	580	278	NR	710	26	NR	840	1	NR	970	0	NR
455	167	NR	585	287	NR	715	22	NR	845	0	NR	975	0	NR
460	126	NR	590	295	NR	720	19	NR	850	0	NR	980	0	NR
465	111	NR	595	298	NR	725	16	NR	855	0	NR	985	0	NR
470	86	NR	600	303	NR	730	14	NR	860	0	NR	990	0	NR
475	74	NR	605	307	NR	735	12	NR	865	0	NR	995	0	NR
480	77	NR	610	341	NR	740	10	NR	870	0	NR	1000	0	NR
485	86	NR	615	368	NR	745	8	NR	875	0	NR			

REPORT NUMBER: SP1-2506-472-5

Scotopic Flux vs. Wavelength



Scotopic Lumens: NR

S/P: 1.44

λ (nm)	Power W [^] /nm	Lumens (ϕ /nm)	λ (nm)	Power W [^] /nm	Lumens (ϕ /nm)	λ (nm)	Power W [^] /nm	Lumens (ϕ /nm)	λ (nm)	Power W [^] /nm	Lumens (ϕ /nm)	λ (nm)	Power W [^] /nm	Lumens (ϕ /nm)
360	0	NR	490	101	NR	620	317	NR	750	7	NR	880	0	NR
365	0	NR	495	121	NR	625	320	NR	755	6	NR	885	0	NR
370	0	NR	500	141	NR	630	1000	NR	760	5	NR	890	0	NR
375	0	NR	505	158	NR	635	651	NR	765	4	NR	895	0	NR
380	0	NR	510	171	NR	640	207	NR	770	4	NR	900	0	NR
385	0	NR	515	182	NR	645	201	NR	775	3	NR	905	0	NR
390	0	NR	520	189	NR	650	174	NR	780	3	NR	910	0	NR
395	1	NR	525	194	NR	655	146	NR	785	2	NR	915	0	NR
400	1	NR	530	199	NR	660	124	NR	790	2	NR	920	0	NR
405	3	NR	535	205	NR	665	105	NR	795	2	NR	925	0	NR
410	4	NR	540	210	NR	670	96	NR	800	1	NR	930	0	NR
415	7	NR	545	216	NR	675	79	NR	805	1	NR	935	0	NR
420	13	NR	550	222	NR	680	67	NR	810	1	NR	940	0	NR
425	22	NR	555	230	NR	685	58	NR	815	1	NR	945	0	NR
430	37	NR	560	240	NR	690	49	NR	820	1	NR	950	0	NR
435	60	NR	565	248	NR	695	42	NR	825	1	NR	955	0	NR
440	101	NR	570	258	NR	700	36	NR	830	1	NR	960	0	NR
445	172	NR	575	268	NR	705	30	NR	835	1	NR	965	0	NR
450	223	NR	580	278	NR	710	26	NR	840	1	NR	970	0	NR
455	167	NR	585	287	NR	715	22	NR	845	0	NR	975	0	NR
460	126	NR	590	295	NR	720	19	NR	850	0	NR	980	0	NR
465	111	NR	595	298	NR	725	16	NR	855	0	NR	985	0	NR
470	86	NR	600	303	NR	730	14	NR	860	0	NR	990	0	NR
475	74	NR	605	307	NR	735	12	NR	865	0	NR	995	0	NR
480	77	NR	610	341	NR	740	10	NR	870	0	NR	1000	0	NR
485	86	NR	615	368	NR	745	8	NR	875	0	NR			

REPORT NUMBER: SP1-2506-472-5

Melanopic Flux vs. Wavelength



Melanopic Lumens: NR

M/P: 2.85

λ (nm)	Power W [^] /nm	Lumens (φ/nm)	λ (nm)	Power W [^] /nm	Lumens (φ/nm)	λ (nm)	Power W [^] /nm	Lumens (φ/nm)	λ (nm)	Power W [^] /nm	Lumens (φ/nm)	λ (nm)	Power W [^] /nm	Lumens (φ/nm)
360	0	NR	490	101	NR	620	317	NR	750	7	NR	880	0	NR
365	0	NR	495	121	NR	625	320	NR	755	6	NR	885	0	NR
370	0	NR	500	141	NR	630	1000	NR	760	5	NR	890	0	NR
375	0	NR	505	158	NR	635	651	NR	765	4	NR	895	0	NR
380	0	NR	510	171	NR	640	207	NR	770	4	NR	900	0	NR
385	0	NR	515	182	NR	645	201	NR	775	3	NR	905	0	NR
390	0	NR	520	189	NR	650	174	NR	780	3	NR	910	0	NR
395	1	NR	525	194	NR	655	146	NR	785	2	NR	915	0	NR
400	1	NR	530	199	NR	660	124	NR	790	2	NR	920	0	NR
405	3	NR	535	205	NR	665	105	NR	795	2	NR	925	0	NR
410	4	NR	540	210	NR	670	96	NR	800	1	NR	930	0	NR
415	7	NR	545	216	NR	675	79	NR	805	1	NR	935	0	NR
420	13	NR	550	222	NR	680	67	NR	810	1	NR	940	0	NR
425	22	NR	555	230	NR	685	58	NR	815	1	NR	945	0	NR
430	37	NR	560	240	NR	690	49	NR	820	1	NR	950	0	NR
435	60	NR	565	248	NR	695	42	NR	825	1	NR	955	0	NR
440	101	NR	570	258	NR	700	36	NR	830	1	NR	960	0	NR
445	172	NR	575	268	NR	705	30	NR	835	1	NR	965	0	NR
450	223	NR	580	278	NR	710	26	NR	840	1	NR	970	0	NR
455	167	NR	585	287	NR	715	22	NR	845	0	NR	975	0	NR
460	126	NR	590	295	NR	720	19	NR	850	0	NR	980	0	NR
465	111	NR	595	298	NR	725	16	NR	855	0	NR	985	0	NR
470	86	NR	600	303	NR	730	14	NR	860	0	NR	990	0	NR
475	74	NR	605	307	NR	735	12	NR	865	0	NR	995	0	NR
480	77	NR	610	341	NR	740	10	NR	870	0	NR	1000	0	NR
485	86	NR	615	368	NR	745	8	NR	875	0	NR			

Summary

$R_f = 91.3$
 $R_g = 102$
 $CIE R_a = 94.4$
 $R_9 = 61.4$



Color Vector Graphics

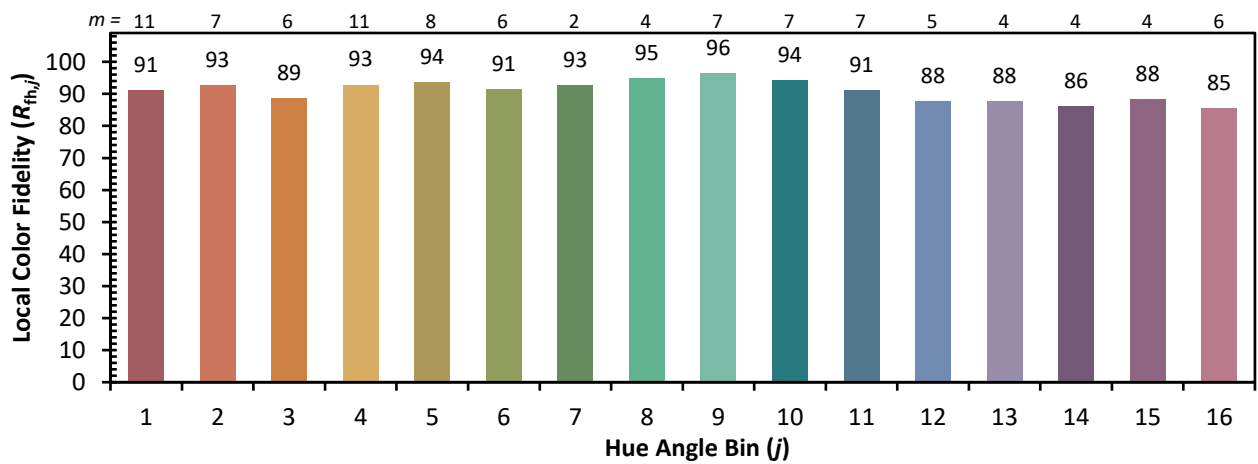
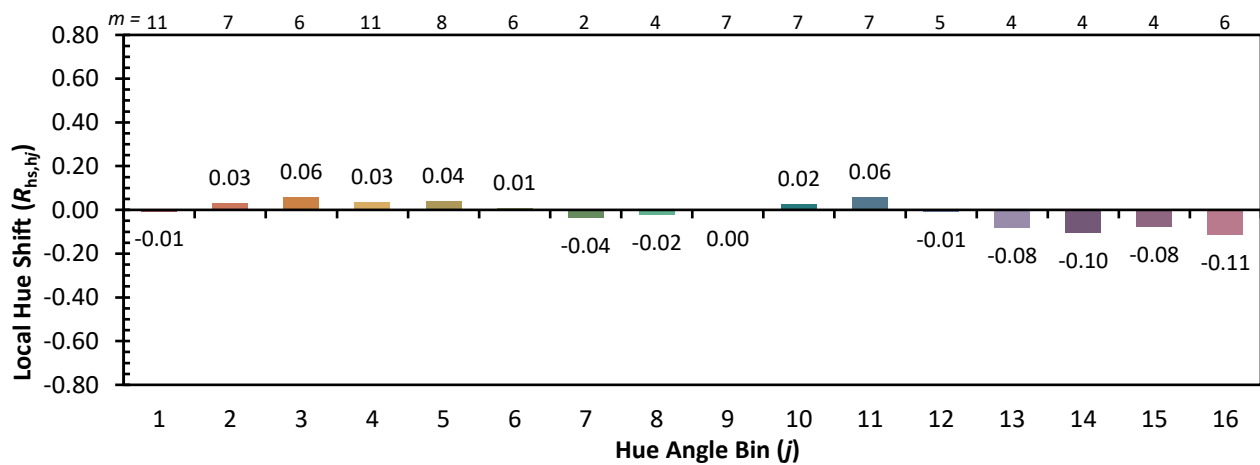
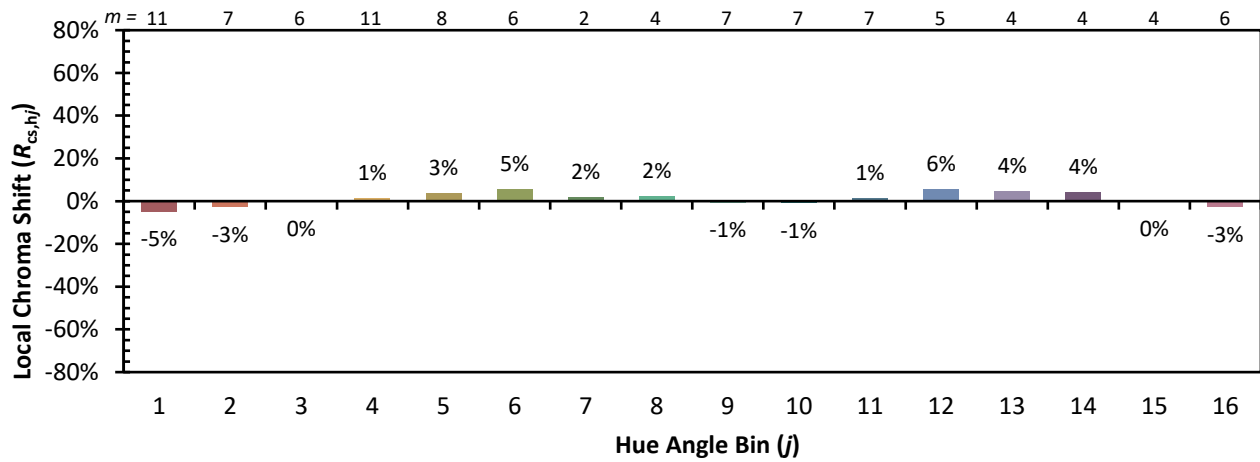


Individual Sample Fidelity Index ($R_{f,i}$)

CES01 = 86	CES26 = 91	CES51 = 96	CES76 = 89
CES02 = 63	CES27 = 96	CES52 = 95	CES77 = 85
CES03 = 32	CES28 = 96	CES53 = 93	CES78 = 86
CES04 = 70	CES29 = 90	CES54 = 98	CES79 = 89
CES05 = 51	CES30 = 96	CES55 = 98	CES80 = 91
CES06 = 51	CES31 = 90	CES56 = 95	CES81 = 72
CES07 = 44	CES32 = 84	CES57 = 95	CES82 = 95
CES08 = 42	CES33 = 91	CES58 = 95	CES83 = 93
CES09 = 29	CES34 = 92	CES59 = 99	CES84 = 96
CES10 = 76	CES35 = 96	CES60 = 96	CES85 = 80
CES11 = 59	CES36 = 90	CES61 = 96	CES86 = 77
CES12 = 65	CES37 = 94	CES62 = 95	CES87 = 91
CES13 = 44	CES38 = 99	CES63 = 94	CES88 = 96
CES14 = 74	CES39 = 97	CES64 = 96	CES89 = 82
CES15 = 72	CES40 = 94	CES65 = 92	CES90 = 97
CES16 = 48	CES41 = 94	CES66 = 95	CES91 = 82
CES17 = 50	CES42 = 91	CES67 = 94	CES92 = 78
CES18 = 57	CES43 = 88	CES68 = 93	CES93 = 87
CES19 = 72	CES44 = 99	CES69 = 94	CES94 = 73
CES20 = 67	CES45 = 93	CES70 = 90	CES95 = 85
CES21 = 86	CES46 = 93	CES71 = 90	CES96 = 92
CES22 = 79	CES47 = 86	CES72 = 96	CES97 = 93
CES23 = 92	CES48 = 95	CES73 = 85	CES98 = 94
CES24 = 91	CES49 = 91	CES74 = 90	CES99 = 93
CES25 = 72	CES50 = 96	CES75 = 90	



Color Rendition by Hue-Angle Bin



Measure Comparisons



(END OF REPORT)