

Cooper Lighting Solutions Photometric Lab
1121 Highway 74 South
Peachtree City, GA 30269



Scaled data based on original data using
LM-79-2019 Approved Method: Electrical and Photometric Measurements of Solid-
State Lighting Products

Test Report Prepared for
Cooper Lighting Solutions

Brand: METALUX

Report Number: P1444679

Luminaire Tested: EHBR1-36-UNV-TA-L930-UPL36

Issue Date: 5/1/2026

Test Information

Test Method: LM-79-2019
Report Number: P1444679
REPORT IS A COMBINATION OF REPORTS P1444349 AND P1431635
Test Lab: INNOVATION CENTER
Issue Date: 5/1/2026
Manufacturer: COOPER LIGHTING SOLUTIONS
Product Line: METALUX
Catalog Number: EHBR1-36-UNV-TA-L930-UPL36
Description: Elevate Round Highbay at, 36000 lumens, 3000K 90CRI LEDs with TA lens
Light Source: -
Ballast/Driver: -

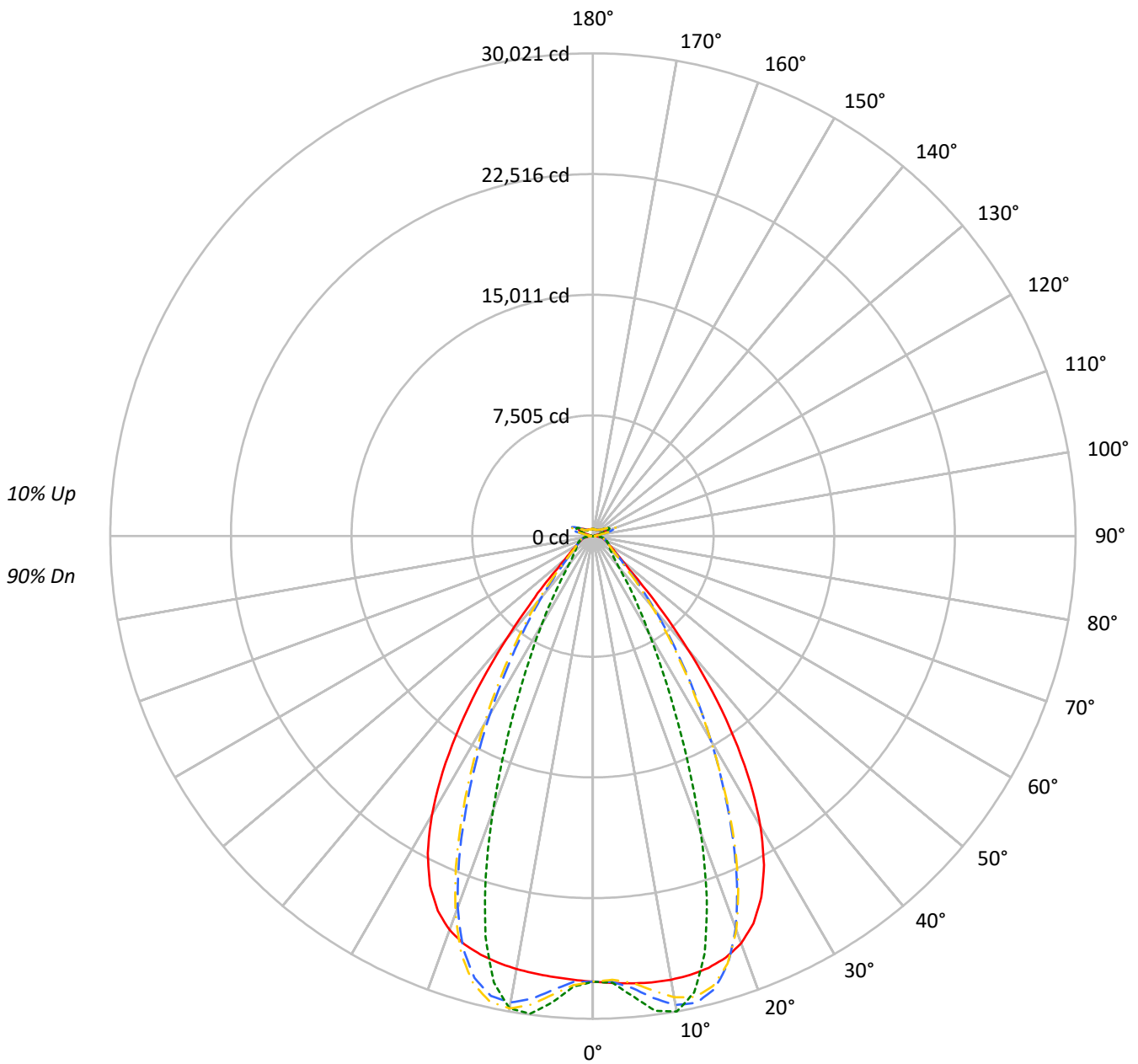
Summary

Lumens per Lamp: N/A
Luminaire Lumens: 35364.9 lumens
Efficiency: N/A
Efficacy: 160.9 lumens/watt
Spacing Criteria (0/90/45): 1.13 / 0.77 / 0.88
Luminous Opening: Vertical Cylinder (Dia: 1.71' x H: 0.1')
CIE Type: Direct

Input Watts (W): 219.8
Input Voltage (V): NR
Input Current (Ain): NR
Voltage Rise (V): NR
Power Factor: NR
Total Harmonic Distortion (THDi): NR
Frequency (hertz): 60
Stabilization Time: NR
Operation Time: NR
Ambient Temperature (°C): NR
Test Distance: 24 FT

TEST NUMBER: P1444679
CATALOG NUMBER: EHBR1-36-UNV-TA-L930-UPL36

Luminous Intensity Polar Plot



— 0°-180° - - 45°-225° - · - · 90°-270° - · - · 135°-315°



TEST NUMBER: P1444679
 CATALOG NUMBER: EHBR1-36-UNV-TA-L930-UPL36

COEFFICIENT OF UTILIZATION - ZONAL CAVITY METHOD:

RF	20				20				20				20				20				
RC	80				70				50				30				10			0	
RW	70	50	30	10	70	50	30	10	50	30	10	50	30	10	50	30	10	50	30	10	0
RCR																					
0	117	117	117	117	113	113	113	113	106	106	106	99	99	99	93	93	93	93	93	93	90
1	109	106	103	100	106	103	100	98	97	95	93	92	90	88	87	85	84	84	84	84	82
2	103	97	92	88	99	94	90	86	89	86	83	85	82	79	80	78	76	76	76	76	74
3	96	89	83	78	93	86	81	77	82	78	74	79	75	72	75	72	69	69	69	69	67
4	91	82	75	70	88	80	74	69	76	71	67	73	69	66	70	67	64	64	64	64	62
5	85	76	69	64	83	74	68	63	71	66	62	68	64	60	66	62	59	59	59	59	57
6	80	70	63	58	78	69	62	58	66	61	57	64	59	55	62	57	54	54	54	54	53
7	76	65	59	54	74	64	58	53	62	56	52	60	55	51	58	54	50	50	50	50	49
8	72	61	54	50	70	60	54	49	58	53	49	56	51	48	55	50	47	47	47	47	45
9	68	57	51	46	66	56	50	46	55	49	45	53	48	45	51	47	44	44	44	44	42
10	64	54	47	43	63	53	47	43	51	46	42	50	45	42	49	44	41	41	41	41	40

AVERAGE LUMINANCE (cd/sqm):

	0°	90°	180°	270°
0°	130138	130138	130138	130138
5°	130768	134581	128938	136344
10°	131860	141300	128698	140365
15°	132507	128087	128473	122930
20°	131137	95421	126845	88287
25°	124126	60348	120024	54755
30°	108433	36265	104233	33142
35°	83451	22756	78651	20158
40°	52790	14275	48299	13414
45°	27209	11121	26758	10938
50°	15953	9892	15463	9737
55°	12221	9358	11769	9274
60°	10341	9559	9901	9436
65°	9713	9983	9341	9643
70°	9489	10453	9017	10061
75°	10146	11087	9598	10596
80°	10499	12276	9520	11206
85°	9890	11848	7990	10143

MAXIMUM LUMINANCE 45°-90°:

Horizontal Angle: 25°
 Vertical Angle: 45°
 Luminance: 41640 cd/sqm



TEST NUMBER: P1444679
 CATALOG NUMBER: EHBR1-36-UNV-TA-L930-UPL36

ZONAL LUMENS:

Zone	Lumens	% Fixture
0°-10°	2731.1	7.7
10°-20°	7682.8	21.7
20°-30°	8750.1	24.7
30°-40°	6289.2	17.8
40°-50°	2900.6	8.2
50°-60°	1388.0	3.9
60°-70°	1012.8	2.9
70°-80°	769.4	2.2
80°-90°	355.8	1.0
90°-100°	97.7	0.3
100°-110°	580.2	1.6
110°-120°	1072.1	3.0
120°-130°	651.1	1.8
130°-140°	412.3	1.2
140°-150°	300.8	0.9
150°-160°	206.4	0.6
160°-170°	122.9	0.3
170°-180°	41.7	0.1
0°-30°	19164.0	54.2
0°-40°	25453.2	72.0
0°-60°	29741.8	84.1
0°-90°	31879.8	90.1
90°-120°	1750.0	4.9
90°-150°	3114.2	8.8
90°-180°	3485.0	9.9
0°-180°	35364.9	100.0

CANDELA DISTRIBUTION:

	0°	90°	180°	270°	360°	Flux
0°	27712	27712	27712	27712	27712	
5°	27921	28735	27530	29112	27921	2668
15°	27799	26872	26953	25790	27799	7833
25°	24788	12052	23969	10934	24788	11237
35°	15316	4177	14435	3700	15316	9400
45°	4402	1799	4329	1770	4402	3744
55°	1652	1265	1590	1253	1652	1524
65°	1014	1042	975	1006	1014	1013
75°	715	781	676	746	715	743
85°	340	407	275	349	340	319
90°	101	125	35	41	101	61
95°	45	50	45	50	45	43
105°	207	269	138	269	207	275
115°	933	1136	978	1136	933	861
125°	695	735	788	737	695	633
135°	537	483	579	486	537	420
145°	470	461	501	466	470	297
155°	433	438	463	441	433	202
165°	427	428	443	430	427	121
175°	434	438	442	439	434	41
180°	439	439	439	439	439	



TEST NUMBER: P1444679
 CATALOG NUMBER: EHBR1-36-UNV-TA-L930-UPL36

CANDELA DISTRIBUTION (FULL):

	0°	2.5°	5°	7.5°	10°	12.5°	15°	17.5°	20°	22.5°	25°
0°	27712.0	27712.0	27712.0	27712.0	27712.0	27712.0	27712.0	27712.0	27712.0	27712.0	27712.0
2.5°	27817.9	27815.6	27815.2	27813.3	27812.7	27812.7	27811.8	27809.5	27808.1	27805.0	27801.3
5°	27921.1	27919.8	27920.6	27920.8	27918.9	27914.5	27907.7	27899.4	27888.9	27879.1	27870.3
7.5°	28000.9	28002.8	28005.3	28004.8	27998.7	27988.5	27974.7	27966.9	27971.5	27986.6	28021.2
10°	28015.5	28027.4	28032.0	28030.6	28018.5	28009.8	28013.1	28042.5	28100.9	28178.9	28285.5
12.5°	27958.7	27973.3	27972.8	27968.0	27956.2	27968.1	28010.6	28098.1	28223.4	28377.1	28557.4
15°	27799.2	27818.1	27812.7	27806.5	27798.6	27837.8	27922.8	28074.5	28268.0	28484.8	28706.8
17.5°	27489.5	27512.3	27501.3	27494.1	27487.5	27560.9	27706.9	27929.1	28172.8	28418.1	28628.4
20°	26952.4	26967.7	26941.3	26928.9	26939.3	27083.1	27298.0	27581.8	27838.7	28070.6	28214.4
22.5°	26075.8	26094.8	26045.2	26039.4	26100.7	26321.4	26593.4	26910.7	27152.0	27335.9	27391.2
25°	24787.9	24806.6	24747.6	24782.8	24887.0	25187.6	25511.5	25851.0	26056.9	26193.1	26155.5
27.5°	23049.5	23066.6	23010.7	23082.6	23247.2	23642.3	24023.5	24391.6	24575.2	24670.7	24549.7
30°	20857.1	20892.6	20826.5	20926.9	21178.2	21691.0	22127.8	22540.7	22723.7	22796.2	22608.1
32.5°	18253.1	18303.6	18230.7	18380.1	18730.8	19346.7	19842.9	20304.3	20506.7	20589.6	20377.1
35°	15316.3	15388.5	15305.0	15529.2	15961.6	16647.6	17197.0	17712.1	17951.8	18069.4	17855.2
37.5°	12204.7	12273.7	12228.5	12527.5	13002.3	13713.3	14274.2	14829.8	15100.5	15276.9	15108.0
40°	9149.9	9213.0	9247.2	9589.0	10035.7	10705.9	11244.6	11794.3	12097.2	12318.5	12214.4
42.5°	6458.0	6521.6	6637.8	6967.7	7340.2	7895.0	8356.4	8850.0	9139.3	9375.4	9335.3
45°	4402.3	4476.1	4621.8	4891.9	5161.3	5559.3	5898.1	6282.0	6518.3	6734.6	6737.2
47.5°	3084.9	3136.8	3266.9	3451.4	3627.0	4125.2	4145.7	4334.3	4493.2	4654.9	4675.8
50°	2377.5	2408.7	2477.7	2580.6	2680.1	2809.4	2927.7	3064.4	3162.3	3250.9	3272.1
52.5°	1954.2	1974.0	2009.1	2064.8	2122.5	2192.8	2256.2	2331.3	2384.5	2431.9	2441.9
55°	1651.5	1668.0	1720.3	1730.9	1796.9	1809.6	1837.8	1883.5	1914.4	1942.9	1949.9
57.5°	1423.2	1435.2	1446.3	1470.0	1490.3	1519.9	1543.7	1576.5	1596.0	1616.5	1618.3
60°	1243.1	1251.8	1259.6	1276.1	1289.9	1310.5	1326.9	1349.2	1363.2	1378.6	1380.4
62.5°	1109.1	1115.3	1120.5	1131.4	1141.3	1157.1	1170.1	1188.7	1201.7	1213.6	1216.3
65°	1013.8	1018.3	1021.7	1029.9	1038.5	1052.0	1063.8	1079.0	1088.5	1097.7	1099.7
67.5°	929.4	933.6	937.2	944.7	950.7	960.6	968.6	980.0	987.2	994.5	994.7
70°	832.6	836.6	839.3	846.3	851.1	859.8	866.1	876.3	883.7	891.9	893.9
72.5°	765.7	768.0	771.6	778.0	784.6	793.9	802.4	813.1	822.1	830.5	834.0
75°	714.7	717.5	719.9	725.3	729.9	737.7	744.1	753.8	761.7	770.7	775.1
77.5°	641.2	644.4	646.4	651.9	655.9	663.4	668.1	676.8	683.1	691.4	695.4
80°	552.3	555.4	556.8	561.9	565.1	571.9	576.6	585.0	590.4	598.6	603.4
82.5°	453.9	456.7	457.5	462.4	464.1	469.8	473.2	481.7	488.3	499.0	506.4
85°	339.9	340.9	342.6	341.3	348.2	348.6	356.4	357.8	368.1	370.8	382.5
87.5°	207.8	210.8	212.4	217.1	219.1	223.9	225.4	230.4	233.1	238.9	241.6
90°	100.6	106.2	108.6	115.2	117.5	123.3	125.3	131.9	134.3	140.9	144.8
92.5°	39.3	42.0	44.5	47.4	50.0	53.3	56.2	59.1	61.8	65.0	70.3
95°	44.8	47.9	50.9	53.9	56.9	60.1	63.1	66.1	69.2	72.2	81.0
97.5°	56.4	59.1	61.7	64.3	66.9	69.6	72.2	74.9	77.4	80.0	90.5
100°	73.5	75.7	78.0	80.2	82.4	84.7	86.9	89.1	91.3	93.6	113.1
102.5°	122.1	130.0	137.9	145.8	153.6	161.5	169.4	177.2	185.1	193.0	234.5
105°	207.2	228.6	250.1	271.5	293.0	314.5	336.0	357.2	378.6	400.0	467.7
107.5°	354.7	394.2	434.0	473.6	513.4	553.0	592.7	632.3	671.8	711.3	779.9
110°	655.8	687.6	719.6	751.5	783.4	815.5	847.4	879.0	911.0	942.8	993.0



TEST NUMBER: P1444679
 CATALOG NUMBER: EHBR1-36-UNV-TA-L930-UPL36

CANDELA DISTRIBUTION (continued):

	0°	2.5°	5°	7.5°	10°	12.5°	15°	17.5°	20°	22.5°	25°
112.5°	884.5	899.0	913.4	927.9	942.4	956.6	971.1	985.5	999.9	1014.2	1050.1
115°	933.2	938.3	943.4	948.4	953.5	958.5	963.6	968.6	973.6	978.5	1002.7
117.5°	905.8	905.0	904.1	903.3	902.4	901.4	900.5	899.5	898.5	897.5	911.2
120°	844.4	840.0	835.7	831.2	826.7	822.3	817.8	813.3	808.7	804.1	810.0
122.5°	766.7	761.6	756.4	751.0	745.7	740.3	734.9	729.3	724.0	718.5	720.8
125°	695.0	689.7	684.6	679.0	673.6	668.1	662.7	657.1	651.7	645.9	647.1
127.5°	632.7	629.1	625.4	621.4	617.6	613.6	609.5	605.5	601.6	597.4	597.8
130°	592.3	589.0	585.7	582.2	578.7	575.1	571.4	567.7	564.1	560.3	560.9
132.5°	559.4	557.2	554.8	552.3	549.7	546.9	544.3	541.5	538.7	536.0	536.7
135°	537.4	535.2	533.2	530.8	528.4	525.8	523.3	520.5	518.0	515.3	516.2
137.5°	518.7	516.8	514.8	512.6	510.4	507.9	505.7	503.2	500.8	498.2	499.1
140°	501.7	499.9	498.1	496.1	494.1	492.1	489.8	487.5	485.3	482.9	484.2
142.5°	482.6	481.1	479.8	478.2	476.7	474.7	473.0	471.1	469.4	467.4	469.0
145°	470.1	468.9	467.8	466.4	465.0	463.4	462.0	460.2	458.8	457.2	458.8
147.5°	459.0	458.0	457.3	456.1	455.2	453.7	452.5	451.0	449.8	448.5	450.2
150°	449.5	448.6	447.8	446.7	445.7	444.4	443.3	442.0	440.8	439.4	441.1
152.5°	439.4	438.4	437.7	436.7	435.8	434.3	433.5	432.1	431.0	429.8	431.3
155°	433.4	432.5	431.6	430.6	429.6	428.5	427.4	426.2	425.3	424.0	425.2
157.5°	429.6	428.8	428.2	427.2	426.6	425.7	424.9	423.9	423.1	422.3	423.2
160°	427.9	427.2	426.6	425.7	424.9	424.0	423.3	422.3	421.7	420.8	421.5
162.5°	426.5	425.7	424.9	424.2	423.5	422.5	421.8	421.1	420.3	419.4	420.4
165°	426.7	426.2	425.7	425.3	424.7	424.2	423.6	423.0	422.6	422.0	422.5
167.5°	430.4	429.8	429.2	428.5	427.8	427.1	426.4	425.8	425.2	424.4	425.0
170°	431.7	431.1	430.9	430.5	430.2	429.7	429.4	429.0	428.5	428.2	428.6
172.5°	433.9	433.5	433.3	433.1	432.6	432.5	432.2	431.8	431.7	431.2	431.9
175°	433.9	433.5	433.5	433.3	433.1	432.8	432.7	432.6	432.6	432.2	432.6
177.5°	436.8	436.7	436.7	436.6	436.6	436.5	436.4	436.2	436.1	436.1	436.4
180°	439.4	439.4	439.4	439.4	439.4	439.4	439.4	439.4	439.4	439.4	439.4



TEST NUMBER: P1444679
 CATALOG NUMBER: EHBR1-36-UNV-TA-L930-UPL36

CANDELA DISTRIBUTION (continued):

	27.5°	30°	32.5°	35°	37.5°	40°	42.5°	45°	47.5°	50°	52.5°
0°	27712.0	27712.0	27712.0	27712.0	27712.0	27712.0	27712.0	27712.0	27712.0	27712.0	27712.0
2.5°	27798.6	27795.3	27790.6	27784.8	27779.8	27774.0	27760.1	27756.0	27760.6	27763.6	27770.0
5°	27864.7	27866.6	27867.3	27880.0	27890.9	27918.1	28131.3	28216.1	28281.6	28323.2	28386.3
7.5°	28063.8	28127.9	28191.3	28276.6	28350.1	28449.4	28822.4	28981.2	29094.1	29175.2	29275.1
10°	28401.3	28541.2	28672.4	28826.0	28958.1	29109.4	29456.6	29611.3	29709.0	29780.0	29846.4
12.5°	28741.3	28935.3	29110.6	29281.6	29424.6	29555.7	29677.9	29732.0	29736.6	29738.8	29703.6
15°	28918.4	29103.8	29258.3	29371.4	29455.4	29492.6	29282.3	29172.1	29032.7	28917.8	28729.0
17.5°	28806.6	28917.8	28984.6	28978.0	28943.3	28827.0	28231.6	27904.1	27578.9	27285.9	26901.6
20°	28309.8	28301.3	28243.2	28078.8	27880.7	27572.7	26551.8	25962.7	25393.3	24893.1	24286.3
22.5°	27385.6	27240.2	27037.4	26682.9	26289.1	25750.7	24287.7	23421.4	22628.5	21928.2	21143.6
25°	26046.4	25747.2	25373.3	24810.5	24198.4	23413.3	21610.1	20532.5	19580.6	18755.1	17849.9
27.5°	24332.6	23881.9	23333.9	22554.9	21725.7	20719.9	18720.8	17531.5	16509.7	15624.5	14661.1
30°	22303.6	21717.5	21009.9	20043.0	19042.8	17902.0	15874.4	14669.8	13635.6	12725.0	11760.8
32.5°	20010.6	19324.2	18494.9	17409.7	16328.1	15155.2	13197.1	12031.0	11043.0	10167.1	9294.4
35°	17481.7	16745.5	15868.2	14761.4	13686.1	12545.8	10749.1	9697.7	8825.2	8051.0	7346.3
37.5°	14768.9	14046.0	13212.1	12169.0	11171.9	10138.6	8588.3	7707.3	6975.1	6332.5	5788.4
40°	11948.3	11315.7	10594.2	9692.4	8841.4	7981.0	6708.3	6009.0	5431.2	4941.1	4533.3
42.5°	9162.2	8672.0	8118.7	7406.1	6754.9	6099.7	5120.2	4602.0	4174.1	3821.3	3533.0
45°	6647.5	6319.6	5948.5	5453.1	5002.5	4545.4	3848.3	3484.3	3205.5	2978.0	2785.6
47.5°	4646.9	4456.8	4445.1	3987.3	3656.9	3377.4	2928.3	2698.4	2527.5	2389.7	2267.9
50°	3263.4	3171.4	3057.1	2893.7	2740.3	2582.3	2308.8	2169.7	2069.7	1986.2	1909.2
52.5°	2439.7	2391.9	2331.0	2244.2	2161.2	2072.3	1899.2	1810.7	1779.2	1701.5	1640.5
55°	1948.6	1921.2	1886.5	1835.7	1785.1	1764.9	1616.4	1550.8	1509.1	1478.4	1445.7
57.5°	1618.6	1598.2	1577.7	1543.1	1513.9	1478.4	1399.6	1365.9	1341.3	1323.2	1300.4
60°	1380.6	1368.4	1356.9	1336.7	1320.8	1301.8	1251.8	1232.7	1219.8	1208.9	1194.5
62.5°	1218.5	1212.3	1206.3	1195.6	1187.5	1177.2	1143.0	1133.9	1127.4	1121.9	1113.1
65°	1101.6	1097.1	1093.8	1086.6	1082.6	1076.6	1047.2	1041.0	1037.0	1035.1	1029.9
67.5°	995.3	990.6	988.5	983.3	981.7	977.8	953.8	950.4	949.1	949.7	947.8
70°	895.9	893.9	895.0	894.2	896.4	897.1	882.5	882.4	884.0	887.0	887.4
72.5°	836.3	836.3	837.4	837.9	840.1	841.1	829.0	828.4	829.1	831.4	831.5
75°	779.7	780.5	783.7	784.6	787.2	787.8	771.7	769.9	769.9	772.2	771.4
77.5°	701.1	704.5	710.4	713.4	718.4	719.3	701.3	699.2	699.3	701.5	699.6
80°	612.1	618.6	627.9	634.4	642.0	645.1	626.6	622.2	618.1	617.5	613.7
82.5°	517.5	525.4	536.6	542.5	550.6	552.4	521.5	515.7	512.2	512.5	509.1
85°	395.1	401.1	411.3	414.5	419.5	419.1	383.8	368.7	372.7	366.4	371.3
87.5°	247.8	251.3	257.7	258.5	260.8	260.4	224.8	217.8	215.7	215.9	213.3
90°	152.6	156.9	164.4	166.6	172.3	173.8	146.9	145.7	141.4	141.1	135.7
92.5°	76.0	81.3	86.8	92.1	97.8	103.2	105.3	109.8	104.4	98.6	93.3
95°	89.9	98.8	107.7	116.7	125.6	134.5	143.4	152.3	144.0	135.6	127.3
97.5°	101.1	111.6	122.0	132.6	143.1	153.6	164.1	174.7	165.8	156.6	147.7
100°	132.8	152.4	172.0	191.6	211.2	230.8	250.5	270.1	252.9	235.4	218.2
102.5°	276.1	317.9	359.5	401.1	442.7	484.5	526.3	568.0	528.4	488.7	449.0
105°	535.2	602.8	670.3	737.6	805.1	872.7	940.5	1008.1	944.8	881.5	818.2
107.5°	848.5	917.0	985.3	1053.8	1122.4	1190.8	1259.8	1328.3	1266.6	1204.6	1143.0
110°	1042.9	1092.9	1143.0	1192.8	1242.8	1292.8	1343.4	1393.5	1356.3	1319.2	1282.2



TEST NUMBER: P1444679
 CATALOG NUMBER: EHBR1-36-UNV-TA-L930-UPL36

CANDELA DISTRIBUTION (continued):

	27.5°	30°	32.5°	35°	37.5°	40°	42.5°	45°	47.5°	50°	52.5°
112.5°	1085.7	1121.6	1157.2	1193.0	1228.5	1264.3	1301.0	1337.0	1318.3	1299.5	1281.1
115°	1026.8	1051.0	1075.1	1099.1	1123.2	1147.3	1172.5	1196.9	1190.9	1184.9	1179.0
117.5°	924.6	938.0	951.6	965.1	978.5	991.8	1006.9	1020.5	1021.5	1022.6	1023.8
120°	815.7	821.5	827.2	832.9	838.5	844.1	851.6	857.5	862.6	867.5	872.6
122.5°	723.1	725.2	727.3	729.6	731.7	733.8	738.0	740.5	744.0	747.5	751.1
125°	648.2	649.4	650.4	651.6	652.5	653.7	657.0	658.6	658.8	659.0	659.3
127.5°	598.0	598.3	598.5	598.8	598.8	599.1	601.8	602.5	600.4	598.4	596.3
130°	561.4	562.0	562.6	563.1	563.6	564.3	567.5	568.6	565.0	561.2	557.5
132.5°	537.4	538.2	538.8	539.8	540.4	541.1	544.7	546.0	541.8	537.4	533.2
135°	517.1	518.0	519.0	519.9	520.8	521.9	525.9	527.5	523.5	519.2	515.2
137.5°	500.0	500.9	501.9	503.0	503.9	504.8	509.3	511.0	507.9	504.3	501.2
140°	485.2	486.4	487.5	488.8	489.9	491.4	496.0	498.1	495.7	493.0	490.4
142.5°	470.3	472.1	473.7	475.5	477.1	479.0	484.5	487.0	485.1	483.2	481.3
145°	460.5	462.6	464.4	466.4	468.3	470.4	476.5	479.5	478.4	477.0	475.9
147.5°	451.5	453.4	455.1	456.9	458.7	460.9	467.2	470.0	469.5	468.7	467.8
150°	442.7	444.6	446.3	448.2	450.2	452.3	459.3	462.4	461.8	461.3	460.5
152.5°	432.8	434.4	436.0	437.7	439.4	441.4	449.6	452.8	452.3	451.5	451.0
155°	426.4	427.6	428.8	430.2	431.6	433.1	441.8	444.8	444.5	444.1	443.8
157.5°	424.0	424.8	425.6	426.5	427.6	428.5	437.4	440.4	440.0	439.7	439.4
160°	422.1	422.8	423.4	424.2	424.8	425.7	434.6	437.5	437.2	436.8	436.5
162.5°	421.2	422.2	423.0	423.9	424.8	425.9	435.1	438.2	437.6	437.1	436.6
165°	423.0	423.6	424.0	424.7	425.3	425.9	434.3	436.8	436.7	436.3	435.9
167.5°	425.5	426.1	426.8	427.4	428.0	428.8	436.7	439.2	439.0	438.6	438.4
170°	429.1	429.6	430.1	430.7	431.3	432.0	438.6	440.6	440.3	439.8	439.2
172.5°	432.5	433.2	433.7	434.4	435.1	435.8	441.4	443.3	443.0	442.6	442.0
175°	433.2	433.5	434.1	434.7	435.1	435.6	440.0	441.5	441.4	441.2	440.9
177.5°	436.7	437.1	437.5	437.9	438.3	438.7	441.4	442.3	442.2	442.2	442.1
180°	439.4	439.4	439.4	439.4	439.4	439.4	439.4	439.4	439.4	439.4	439.4



TEST NUMBER: P1444679
 CATALOG NUMBER: EHBR1-36-UNV-TA-L930-UPL36

CANDELA DISTRIBUTION (continued):

	55°	57.5°	60°	62.5°	65°	67.5°	70°	72.5°	75°	77.5°	80°
0°	27712.0	27712.0	27712.0	27712.0	27712.0	27712.0	27712.0	27712.0	27712.0	27712.0	27712.0
2.5°	27771.5	27781.2	27782.7	27794.0	27793.1	27806.7	27804.5	27815.6	27809.2	27818.2	27810.6
5°	28423.7	28482.9	28513.8	28571.5	28589.8	28641.5	28656.0	28703.1	28705.1	28742.5	28734.0
7.5°	29345.9	29433.1	29484.9	29556.2	29592.4	29651.9	29678.1	29722.0	29736.2	29771.1	29773.8
10°	29896.6	29938.9	29968.5	29988.4	30006.6	30015.1	30025.1	30022.4	30025.1	30021.1	30029.7
12.5°	29680.0	29618.2	29577.3	29499.8	29455.0	29369.5	29327.4	29245.1	29215.3	29144.6	29134.5
15°	28583.0	28367.5	28215.3	27993.9	27854.8	27636.9	27509.5	27313.0	27223.2	27067.0	27026.0
17.5°	26583.6	26183.6	25874.1	25477.0	25201.5	24830.4	24597.0	24289.9	24121.6	23874.0	23788.2
20°	23780.5	23188.7	22724.4	22171.3	21775.5	21282.3	20966.6	20568.4	20337.2	20033.0	19909.7
22.5°	20489.5	19752.7	19172.9	18519.5	18041.9	17492.4	17114.1	16683.2	16431.7	16101.2	15954.9
25°	17097.6	16285.0	15640.4	14952.0	14447.3	13896.4	13518.1	13094.8	12834.6	12520.9	12375.4
27.5°	13853.4	13031.0	12408.0	11767.9	11305.0	10807.9	10466.5	10097.1	9866.1	9598.2	9461.4
30°	10990.5	10265.1	9735.0	9203.8	8818.8	8415.0	8131.4	7825.1	7622.4	7393.2	7262.8
32.5°	8658.1	8098.1	7683.0	7261.4	6946.3	6609.0	6363.8	6093.6	5910.7	5706.0	5587.9
35°	6857.1	6422.0	6090.8	5743.9	5473.2	5185.8	4969.9	4736.6	4572.5	4396.2	4294.2
37.5°	5417.9	5071.8	4799.3	4511.1	4288.8	4050.8	3970.6	3702.9	3532.8	3392.1	3294.6
40°	4252.0	3976.8	3751.3	3531.0	3349.6	3169.1	3024.1	2881.1	2771.4	2670.7	2601.1
42.5°	3320.4	3121.0	2956.4	2795.0	2662.7	2531.1	2426.2	2327.7	2253.7	2187.9	2143.0
45°	2639.6	2502.5	2388.1	2274.4	2181.1	2093.2	2022.5	1959.7	1911.9	1872.4	1844.4
47.5°	2168.5	2074.7	1993.9	1917.2	1853.8	1796.3	1748.9	1733.5	1682.2	1647.5	1634.4
50°	1842.9	1786.2	1724.9	1668.3	1626.0	1583.9	1553.2	1523.1	1503.9	1487.9	1483.1
52.5°	1600.0	1556.6	1522.5	1486.6	1458.7	1428.7	1407.6	1387.5	1377.0	1368.6	1367.6
55°	1419.2	1388.9	1366.4	1342.3	1325.6	1308.0	1297.1	1286.4	1281.8	1277.6	1278.0
57.5°	1282.5	1262.3	1247.7	1232.0	1223.0	1214.5	1211.8	1209.1	1210.6	1211.1	1213.6
60°	1183.0	1169.8	1160.5	1151.6	1147.8	1145.1	1147.2	1149.6	1154.4	1158.3	1161.8
62.5°	1106.6	1099.1	1094.6	1089.8	1089.4	1089.6	1093.7	1097.7	1103.8	1108.3	1111.7
65°	1028.1	1023.7	1022.3	1019.2	1020.8	1021.7	1026.6	1029.7	1035.8	1039.3	1043.7
67.5°	948.7	947.6	948.6	948.6	951.4	953.7	958.4	961.9	967.1	970.4	973.8
70°	890.1	890.4	892.6	893.0	896.0	897.6	901.7	904.0	908.6	911.4	915.6
72.5°	833.0	832.1	832.6	831.3	832.3	831.9	834.2	835.3	839.2	841.3	846.5
75°	772.4	769.8	769.1	766.4	766.5	764.5	765.5	765.3	767.9	769.0	772.6
77.5°	699.0	694.7	692.6	688.0	687.9	686.2	688.0	689.1	693.7	695.8	700.0
80°	611.3	604.5	601.4	596.1	597.0	596.7	601.3	604.6	610.2	611.2	616.5
82.5°	508.0	501.2	497.9	492.7	493.9	494.0	498.1	498.9	503.7	505.7	511.9
85°	363.8	366.4	359.1	359.7	358.1	361.0	363.8	367.2	371.2	377.9	383.1
87.5°	214.2	213.3	215.9	216.2	219.9	221.8	227.8	231.2	237.8	243.1	252.5
90°	134.1	128.9	129.2	126.2	128.1	125.2	127.0	124.0	126.6	125.6	129.4
92.5°	87.2	81.9	75.9	70.5	64.6	59.3	56.2	54.0	51.0	48.8	45.7
95°	119.0	110.7	102.4	94.0	85.7	77.4	74.4	71.4	68.4	65.3	62.2
97.5°	138.8	129.8	120.9	111.9	103.0	94.1	92.1	90.1	88.0	86.0	84.0
100°	200.9	183.7	166.5	149.1	131.9	114.7	113.1	111.5	109.9	108.3	106.6
102.5°	409.6	370.0	330.5	290.9	251.4	211.8	205.0	198.1	191.1	184.3	177.4
105°	754.8	691.5	628.3	565.0	501.8	438.5	419.7	400.6	381.8	362.9	344.1
107.5°	1081.2	1019.5	957.8	896.1	834.5	772.8	742.9	713.2	683.1	653.4	623.5
110°	1244.8	1207.9	1170.9	1133.6	1096.7	1059.7	1031.2	1002.9	974.2	945.8	917.4



TEST NUMBER: P1444679
 CATALOG NUMBER: EHBR1-36-UNV-TA-L930-UPL36

CANDELA DISTRIBUTION (continued):

	55°	57.5°	60°	62.5°	65°	67.5°	70°	72.5°	75°	77.5°	80°
112.5°	1262.5	1243.9	1225.3	1206.9	1188.5	1169.9	1156.0	1142.2	1128.3	1114.5	1100.4
115°	1173.0	1167.1	1161.2	1155.5	1149.7	1143.8	1142.8	1141.8	1140.7	1139.9	1139.0
117.5°	1024.8	1025.9	1026.9	1028.1	1029.4	1030.5	1037.9	1045.2	1052.7	1060.3	1067.9
120°	877.6	882.6	887.6	892.8	897.8	903.0	912.8	922.9	932.8	943.0	953.1
122.5°	754.5	758.0	761.4	765.0	768.5	772.2	782.0	791.9	801.7	811.7	821.8
125°	659.3	659.4	659.6	659.7	660.0	660.3	668.4	676.4	684.6	693.0	701.1
127.5°	594.0	591.9	589.8	587.6	585.5	583.5	588.2	593.1	597.8	602.7	607.7
130°	553.7	549.9	545.9	542.3	538.3	534.7	536.6	538.3	540.3	542.3	544.4
132.5°	528.6	524.3	519.8	515.3	510.9	506.5	506.3	506.3	506.3	506.4	506.7
135°	511.0	506.8	502.5	498.3	494.0	489.9	488.8	487.7	486.7	485.7	484.8
137.5°	497.9	494.5	491.1	487.9	484.2	481.0	479.3	477.9	476.4	475.2	473.8
140°	487.5	485.0	482.2	479.5	476.8	474.3	472.7	471.7	470.3	469.4	468.2
142.5°	479.2	477.2	475.2	473.3	471.3	469.4	467.9	466.9	465.6	464.6	463.5
145°	474.5	473.3	471.9	470.7	469.4	468.1	467.0	466.1	465.2	464.4	463.7
147.5°	467.0	466.2	465.4	464.6	463.7	462.9	462.1	461.8	460.9	460.5	459.9
150°	459.6	458.9	458.1	457.5	456.6	455.9	455.5	455.1	454.7	454.7	454.2
152.5°	450.3	449.6	448.9	448.3	447.4	446.7	446.4	446.3	445.9	445.7	445.3
155°	443.3	442.8	442.4	441.9	441.3	441.0	440.5	440.0	439.6	439.2	438.6
157.5°	439.0	438.6	438.1	437.7	437.1	436.7	436.3	435.9	435.4	435.1	434.6
160°	436.1	435.8	435.3	434.9	434.4	434.1	433.4	432.9	432.1	431.6	431.0
162.5°	435.9	435.4	434.9	434.3	433.5	433.0	432.6	432.1	431.7	431.3	430.8
165°	435.5	435.1	434.7	434.3	434.0	433.6	432.9	432.4	431.7	431.1	430.4
167.5°	438.0	437.6	437.3	436.9	436.4	436.0	435.5	434.9	434.3	433.7	432.9
170°	438.9	438.3	437.9	437.2	436.7	436.1	435.7	435.0	434.4	434.0	433.3
172.5°	441.6	441.4	440.9	440.4	439.9	439.4	439.1	438.5	438.0	437.5	437.0
175°	440.8	440.8	440.7	440.3	440.2	440.0	439.9	439.8	439.5	439.4	439.2
177.5°	442.1	442.0	442.0	441.8	441.6	441.6	441.4	441.2	440.8	440.6	440.4
180°	439.4	439.4	439.4	439.4	439.4	439.4	439.4	439.4	439.4	439.4	439.4



TEST NUMBER: P1444679
 CATALOG NUMBER: EHBR1-36-UNV-TA-L930-UPL36

CANDELA DISTRIBUTION (continued):

	82.5°	85°	87.5°	90°	92.5°	95°	97.5°	100°	102.5°	105°	107.5°
0°	27712.0	27712.0	27712.0	27712.0	27712.0	27712.0	27712.0	27712.0	27712.0	27712.0	27712.0
2.5°	27818.6	27811.5	27814.9	27801.9	27805.0	27789.2	27787.8	27770.0	27768.3	27751.5	27745.3
5°	28760.4	28744.9	28762.4	28735.2	28740.6	28705.1	28702.2	28656.4	28640.5	28583.2	28558.5
7.5°	29795.7	29789.8	29800.5	29777.7	29777.0	29745.3	29732.2	29691.2	29665.8	29605.5	29567.1
10°	30022.4	30027.7	30019.0	30021.1	30008.8	30005.5	29992.8	29984.8	29964.2	29948.6	29925.5
12.5°	29080.7	29086.3	29050.4	29073.2	29055.2	29097.3	29093.8	29143.4	29150.9	29213.6	29237.4
15°	26904.3	26897.5	26828.6	26872.0	26848.8	26941.0	26961.6	27085.7	27152.0	27311.4	27409.2
17.5°	23616.5	23598.8	23501.7	23554.6	23527.8	23663.7	23709.3	23907.8	24031.5	24288.2	24471.0
20°	19697.4	19663.3	19549.8	19611.7	19584.0	19738.5	19803.6	20043.4	20203.0	20543.0	20784.8
22.5°	15729.5	15675.8	15564.5	15622.4	15596.2	15756.2	15841.0	16081.6	16264.4	16613.4	16895.7
25°	12166.4	12118.5	12011.0	12051.5	12041.7	12177.1	12252.5	12480.0	12659.7	12992.2	13261.7
27.5°	9279.6	9229.8	9132.7	9161.3	9151.5	9266.8	9337.8	9528.0	9682.5	9962.4	10199.0
30°	7102.2	7042.1	6959.7	6975.6	6968.8	7062.2	7128.6	7288.7	7421.1	7657.7	7861.5
32.5°	5443.8	5383.5	5307.7	5315.1	5305.1	5378.5	5433.1	5572.4	5687.9	5888.9	6066.4
35°	4165.3	4235.9	4074.2	4176.6	4069.9	4226.5	4170.2	4257.2	4356.5	4525.9	4673.9
37.5°	3202.1	3152.9	3111.3	3106.9	3106.7	3143.0	3185.7	3269.6	3357.1	3483.3	3613.7
40°	2537.5	2503.0	2476.1	2474.2	2476.1	2501.9	2533.5	2591.4	2655.5	2746.2	2842.0
42.5°	2104.6	2081.7	2065.5	2064.3	2069.5	2087.8	2109.8	2144.2	2185.9	2244.6	2310.4
45°	1821.6	1808.8	1799.7	1799.3	1801.6	1811.2	1823.8	1845.3	1871.7	1908.4	1949.9
47.5°	1622.9	1619.8	1614.2	1614.4	1611.8	1615.7	1617.2	1629.2	1643.3	1670.9	1725.2
50°	1478.3	1478.3	1474.4	1474.2	1470.6	1470.3	1467.3	1472.0	1478.5	1495.7	1513.1
52.5°	1364.0	1363.6	1359.4	1358.5	1354.6	1354.4	1351.8	1353.6	1354.5	1363.2	1373.6
55°	1274.7	1272.0	1266.4	1264.7	1263.2	1265.4	1264.3	1264.5	1263.4	1266.9	1270.1
57.5°	1210.6	1207.0	1201.9	1200.3	1199.9	1202.6	1202.7	1201.7	1196.9	1193.6	1189.0
60°	1159.8	1156.3	1150.7	1149.2	1150.1	1153.8	1153.6	1150.5	1143.3	1137.0	1129.8
62.5°	1110.0	1108.6	1105.7	1105.3	1104.6	1105.2	1102.6	1099.3	1092.3	1085.6	1077.7
65°	1043.2	1043.9	1041.7	1042.0	1039.4	1039.1	1035.1	1031.9	1024.8	1018.8	1010.6
67.5°	973.7	974.3	972.5	972.5	971.2	971.3	969.0	966.0	959.9	955.0	948.8
70°	916.5	918.0	917.0	917.2	915.6	915.0	911.3	908.4	902.2	898.0	892.4
72.5°	848.0	851.1	851.0	851.8	849.3	848.0	843.6	840.0	834.4	831.1	826.5
75°	774.0	778.1	779.2	781.0	777.4	775.6	770.8	767.9	763.3	761.3	758.4
77.5°	701.9	706.3	710.5	714.4	708.7	703.7	697.7	693.0	686.4	683.9	679.3
80°	620.9	628.6	638.0	645.8	635.6	625.4	615.4	608.0	599.3	595.7	589.9
82.5°	515.1	523.1	528.4	533.4	526.4	518.8	509.2	502.7	493.2	489.8	483.1
85°	391.3	401.3	404.5	407.2	402.6	398.6	389.5	377.3	371.3	362.1	357.2
87.5°	257.4	263.3	264.5	265.4	262.6	260.7	254.8	249.1	238.9	231.5	222.4
90°	127.3	129.5	125.5	125.2	123.2	125.3	121.0	120.8	114.2	112.7	106.9
92.5°	43.4	40.4	37.9	35.1	38.3	40.5	43.6	45.7	48.7	51.0	54.0
95°	59.2	56.1	53.1	50.1	52.5	55.0	57.4	59.8	62.3	64.7	67.1
97.5°	82.0	79.9	78.0	75.9	77.4	78.8	80.2	81.6	83.0	84.4	85.9
100°	105.0	103.4	101.8	100.2	100.2	100.2	100.2	100.2	100.2	100.2	100.2
102.5°	170.6	163.6	156.8	149.9	154.5	159.2	163.9	168.5	173.1	177.8	182.6
105°	325.2	306.4	287.5	268.7	286.9	305.1	323.4	341.6	359.8	378.3	396.6
107.5°	593.7	563.9	534.1	504.4	537.7	570.9	604.1	637.3	670.5	703.7	737.2
110°	889.1	860.7	832.3	804.0	839.2	874.5	909.7	945.0	980.3	1015.5	1051.0



TEST NUMBER: P1444679
 CATALOG NUMBER: EHBR1-36-UNV-TA-L930-UPL36

CANDELA DISTRIBUTION (continued):

	82.5°	85°	87.5°	90°	92.5°	95°	97.5°	100°	102.5°	105°	107.5°
112.5°	1086.7	1072.8	1059.1	1045.3	1068.0	1090.7	1113.4	1136.3	1159.0	1181.7	1204.5
115°	1138.1	1137.3	1136.5	1135.7	1146.4	1157.1	1167.8	1178.7	1189.5	1200.3	1211.1
117.5°	1075.3	1082.9	1090.7	1098.3	1101.8	1105.2	1108.8	1112.2	1115.9	1119.4	1123.1
120°	963.3	973.3	983.6	994.0	992.6	991.1	989.8	988.4	987.4	986.0	985.0
122.5°	832.0	842.1	852.5	862.7	859.7	856.7	853.7	850.8	847.9	845.2	842.4
125°	709.8	718.2	726.7	735.4	732.3	729.3	726.4	723.6	720.8	718.0	715.5
127.5°	612.9	618.1	623.4	628.7	627.3	625.8	624.7	623.4	622.4	621.4	620.4
130°	546.5	548.9	551.3	553.8	554.1	554.6	555.2	555.9	556.6	557.4	558.4
132.5°	507.1	507.5	508.0	508.6	510.2	511.8	513.7	515.6	517.7	519.6	522.1
135°	484.2	483.5	483.1	482.6	485.0	487.4	490.1	492.7	495.7	498.5	501.6
137.5°	472.7	471.7	470.9	469.9	472.3	474.7	477.4	480.0	482.8	485.8	489.0
140°	467.3	466.3	465.8	465.0	467.4	469.7	472.4	475.0	477.9	480.8	483.8
142.5°	462.8	461.7	461.1	460.5	462.5	464.7	467.2	469.5	472.2	474.7	477.6
145°	462.9	462.2	461.8	461.3	462.8	464.4	466.2	468.0	469.9	471.8	474.0
147.5°	459.5	459.1	458.8	458.6	459.8	460.9	462.2	463.5	464.9	466.4	468.0
150°	454.2	453.9	453.8	453.8	454.5	455.2	456.1	456.8	457.9	458.8	460.0
152.5°	445.3	444.9	445.1	445.0	445.6	446.3	447.1	447.8	448.7	449.5	450.6
155°	438.4	438.1	437.8	437.5	437.7	437.9	438.4	438.5	439.1	439.3	439.9
157.5°	434.3	434.0	433.7	433.4	433.4	433.3	433.4	433.4	433.6	433.5	433.6
160°	430.5	429.7	429.3	428.8	429.0	429.0	429.3	429.3	429.6	429.7	430.1
162.5°	430.4	430.1	429.7	429.4	429.1	428.7	428.5	428.1	427.9	427.7	427.6
165°	429.9	429.2	428.7	428.0	428.0	427.8	427.8	427.7	427.7	427.5	427.7
167.5°	432.5	431.8	431.2	430.7	430.2	429.7	429.4	428.8	428.5	428.0	427.7
170°	432.8	432.3	431.8	431.3	431.1	430.8	430.7	430.4	430.2	430.2	430.2
172.5°	436.7	436.2	435.7	435.3	435.1	434.9	434.8	434.7	434.5	434.5	434.4
175°	439.0	438.8	438.7	438.5	438.3	438.1	437.6	437.5	437.3	437.0	436.7
177.5°	440.0	439.6	439.4	439.2	439.2	439.2	439.2	439.2	439.2	439.1	439.0
180°	439.4	439.4	439.4	439.4	439.4	439.4	439.4	439.4	439.4	439.4	439.4



TEST NUMBER: P1444679
 CATALOG NUMBER: EHBR1-36-UNV-TA-L930-UPL36

CANDELA DISTRIBUTION (continued):

	110°	112.5°	115°	117.5°	120°	122.5°	125°	127.5°	130°	132.5°	135°
0°	27712.0	27712.0	27712.0	27712.0	27712.0	27712.0	27712.0	27712.0	27712.0	27712.0	27712.0
2.5°	27727.3	27720.0	27700.8	27691.3	27673.6	27664.6	27650.8	27641.8	27630.7	27622.3	27618.0
5°	28495.5	28460.0	28389.0	28345.3	28268.5	28218.0	28141.8	28085.9	28007.3	27949.2	27874.8
7.5°	29495.0	29440.6	29349.6	29280.6	29173.2	29091.2	28970.8	28874.4	28741.3	28630.8	28494.8
10°	29901.9	29870.2	29829.4	29785.0	29725.5	29667.2	29584.9	29501.1	29389.3	29278.2	29133.0
12.5°	29300.5	29330.4	29389.3	29416.9	29462.0	29477.3	29497.9	29488.2	29470.0	29424.6	29358.8
15°	27597.2	27721.9	27919.1	28055.6	28246.7	28380.9	28558.5	28672.8	28804.5	28883.2	28957.9
17.5°	24795.2	25036.6	25384.5	25662.1	26034.8	26337.8	26709.0	27000.8	27337.6	27595.9	27871.0
20°	21206.4	21544.3	22024.7	22432.6	22972.6	23430.5	24017.2	24508.6	25081.9	25559.8	26075.6
22.5°	17343.7	17741.2	18291.7	18783.7	19428.6	20004.6	20739.7	21389.4	22164.4	22858.7	23626.8
25°	13699.8	14089.4	14650.1	15159.6	15855.8	16490.3	17293.3	18038.7	18938.1	19776.8	20739.7
27.5°	10574.9	10921.0	11413.9	11872.5	12510.1	13133.0	13947.9	14742.8	15702.5	16603.8	17641.4
30°	8166.8	8447.6	8842.5	9211.4	9723.3	10232.7	10958.6	11693.8	12648.7	13582.7	14646.5
32.5°	6329.0	6568.4	6898.1	7197.6	7592.0	7976.1	8510.6	9098.2	9935.8	10830.5	11859.0
35°	4899.4	5104.2	5384.8	5642.8	5967.1	6272.0	6670.9	7090.3	7729.5	8482.0	9402.6
37.5°	3906.0	3989.5	4189.8	4401.2	4670.5	4921.1	5233.2	5543.2	6000.6	6594.3	7346.3
40°	2970.5	3103.1	3266.1	3432.6	3636.6	3837.5	4179.9	4344.7	4645.8	5072.0	5655.7
42.5°	2396.8	2490.0	2604.8	2720.6	2862.7	3002.7	3175.8	3352.1	3577.3	3865.9	4281.1
45°	2005.7	2066.5	2140.4	2217.6	2310.9	2406.4	2522.4	2643.5	2796.0	2973.5	3225.7
47.5°	1744.4	1778.0	1826.3	1879.0	1943.0	2009.1	2084.5	2161.6	2256.4	2361.7	2505.3
50°	1540.4	1568.5	1606.0	1641.2	1685.4	1753.1	1783.1	1825.7	1882.7	1944.6	2024.9
52.5°	1392.9	1411.6	1435.1	1455.3	1483.2	1508.6	1541.9	1571.3	1610.7	1647.9	1699.8
55°	1278.0	1284.8	1298.0	1311.1	1330.5	1347.8	1370.6	1389.8	1415.0	1437.2	1469.9
57.5°	1189.2	1189.8	1196.0	1202.8	1215.2	1226.1	1241.8	1254.5	1271.9	1286.1	1305.7
60°	1125.4	1122.0	1123.3	1125.6	1132.6	1139.7	1149.7	1157.9	1169.0	1177.0	1188.0
62.5°	1072.3	1067.0	1065.8	1065.2	1068.7	1071.2	1076.7	1080.7	1086.9	1090.4	1096.3
65°	1005.3	999.0	996.6	993.6	994.7	993.9	995.9	996.0	999.2	999.9	1003.3
67.5°	944.4	939.3	936.1	932.1	930.4	927.6	926.4	923.8	923.3	921.1	920.5
70°	889.0	883.8	881.2	877.6	875.7	872.1	869.8	865.3	862.6	858.4	856.0
72.5°	824.8	821.9	821.1	818.7	818.1	816.0	815.0	811.9	810.0	806.4	804.3
75°	757.7	755.4	755.2	752.7	752.5	750.1	749.4	746.1	744.3	740.7	739.2
77.5°	677.9	674.3	673.3	670.5	671.2	670.0	670.9	668.4	667.3	663.6	662.6
80°	587.9	583.3	581.5	577.7	578.7	577.0	578.7	578.5	579.9	577.0	576.5
82.5°	481.3	476.3	475.4	472.7	474.5	474.7	478.5	476.4	477.3	474.6	475.7
85°	350.2	346.6	341.4	340.7	337.4	340.8	336.3	339.3	334.5	337.9	333.4
87.5°	217.1	209.5	205.5	200.1	198.0	192.8	190.6	186.8	187.9	186.2	187.2
90°	106.9	101.9	103.1	100.4	102.5	100.4	103.6	103.0	106.6	105.9	109.8
92.5°	56.2	58.9	63.7	68.9	73.5	78.3	83.1	88.3	92.9	98.0	102.7
95°	69.6	72.0	78.5	84.9	91.4	97.9	104.4	110.9	117.5	123.9	130.4
97.5°	87.3	88.8	95.3	101.7	108.2	114.7	121.1	127.9	134.4	140.8	147.3
100°	100.2	100.3	118.7	137.1	155.5	174.0	192.5	210.9	229.6	248.0	266.5
102.5°	187.2	191.9	238.5	285.2	331.7	378.3	425.0	471.7	518.2	565.1	611.8
105°	414.7	433.1	504.2	575.4	646.4	717.6	788.8	860.2	931.3	1002.5	1073.7
107.5°	770.4	803.7	868.0	932.3	996.5	1060.9	1125.3	1189.7	1253.9	1318.4	1382.9
110°	1086.3	1121.6	1164.6	1207.8	1251.0	1294.0	1337.1	1380.2	1423.5	1466.6	1510.0



TEST NUMBER: P1444679
 CATALOG NUMBER: EHBR1-36-UNV-TA-L930-UPL36

CANDELA DISTRIBUTION (continued):

	110°	112.5°	115°	117.5°	120°	122.5°	125°	127.5°	130°	132.5°	135°
112.5°	1227.2	1250.1	1275.1	1300.4	1325.5	1350.6	1375.8	1401.0	1426.4	1451.6	1476.9
115°	1222.1	1233.1	1242.7	1252.7	1262.3	1272.2	1282.1	1292.2	1302.0	1312.0	1322.1
117.5°	1126.6	1130.5	1131.9	1133.5	1135.0	1136.8	1138.5	1140.3	1142.2	1143.9	1145.6
120°	983.8	982.7	981.1	979.5	977.9	976.5	975.1	973.7	972.4	971.1	969.6
122.5°	839.7	837.1	835.5	834.1	832.8	831.4	830.1	828.9	827.7	826.5	825.2
125°	712.8	710.4	711.8	713.4	714.9	716.6	718.1	719.9	721.5	723.2	724.9
127.5°	619.4	618.7	622.5	626.3	630.1	634.1	638.1	642.2	646.1	650.3	654.1
130°	559.5	560.5	565.3	570.3	575.2	580.3	585.4	590.6	595.5	600.5	605.5
132.5°	524.3	526.8	531.3	536.2	541.0	545.9	550.7	555.6	560.5	565.5	570.2
135°	504.7	508.0	512.3	516.7	521.1	525.7	530.0	534.6	539.0	543.4	547.8
137.5°	491.9	495.2	498.8	502.2	505.8	509.5	513.1	516.7	520.2	523.8	527.3
140°	486.9	490.1	492.1	494.3	496.4	498.5	500.5	502.6	504.6	506.8	508.8
142.5°	480.3	483.4	484.5	485.9	487.2	488.9	490.2	491.6	492.8	494.1	495.4
145°	476.0	478.4	478.5	478.8	479.0	479.3	479.4	479.8	479.7	480.0	480.1
147.5°	469.6	471.4	471.1	471.1	471.0	470.7	470.7	470.6	470.3	470.2	470.0
150°	461.0	462.2	461.6	461.3	460.7	460.4	459.6	459.3	458.7	458.3	457.7
152.5°	451.5	452.5	451.7	451.4	450.6	450.0	449.3	448.9	448.2	447.5	447.1
155°	440.1	440.7	440.2	440.0	439.5	439.2	438.8	438.8	438.4	438.2	437.9
157.5°	433.8	433.9	433.7	433.5	433.2	433.1	432.8	432.7	432.6	432.7	432.7
160°	430.2	430.5	430.2	429.9	429.7	429.5	429.3	429.4	429.3	429.4	429.4
162.5°	427.3	427.2	426.9	426.7	426.4	426.4	426.3	426.4	426.2	426.4	426.5
165°	427.7	427.9	427.3	427.1	426.7	426.4	426.1	426.0	425.8	425.8	425.6
167.5°	427.5	427.3	427.3	427.4	427.4	427.6	427.7	428.0	428.2	428.5	428.6
170°	430.1	430.2	429.9	429.8	429.5	429.4	429.4	429.4	429.3	429.3	429.3
172.5°	434.4	434.4	434.0	433.6	433.2	432.9	432.5	432.3	431.8	431.6	431.1
175°	436.5	436.3	436.1	435.9	435.7	435.4	435.1	434.8	434.6	434.3	434.2
177.5°	438.9	438.7	438.5	438.5	438.4	438.4	438.4	438.3	438.3	438.3	438.1
180°	439.4	439.4	439.4	439.4	439.4	439.4	439.4	439.4	439.4	439.4	439.4



TEST NUMBER: P1444679
 CATALOG NUMBER: EHBR1-36-UNV-TA-L930-UPL36

CANDELA DISTRIBUTION (continued):

	137.5°	140°	142.5°	145°	147.5°	150°	152.5°	155°	157.5°	160°	162.5°
0°	27712.0	27712.0	27712.0	27712.0	27712.0	27712.0	27712.0	27712.0	27712.0	27712.0	27712.0
2.5°	27612.5	27612.1	27609.5	27610.7	27611.2	27613.2	27615.5	27618.0	27618.5	27620.5	27620.9
5°	27819.1	27750.8	27700.3	27644.7	27602.9	27565.3	27540.3	27520.3	27512.7	27514.5	27519.2
7.5°	28379.5	28238.4	28122.1	27989.8	27879.5	27762.7	27665.9	27573.8	27506.8	27456.8	27428.8
10°	28994.4	28822.7	28658.3	28466.8	28285.3	28091.5	27915.9	27739.2	27591.8	27463.8	27369.9
12.5°	29267.2	29145.9	29003.8	28823.1	28628.8	28405.2	28179.4	27937.3	27712.2	27503.2	27334.6
15°	28978.3	28978.5	28926.7	28840.1	28705.1	28526.4	28311.2	28058.9	27793.3	27522.3	27274.7
17.5°	28061.2	28234.2	28330.5	28391.3	28372.7	28306.9	28170.0	27976.2	27728.5	27439.8	27137.7
20°	26486.2	26894.4	27185.4	27447.0	27593.7	27691.2	27681.4	27602.5	27426.1	27180.7	26866.0
22.5°	24279.9	24965.0	25505.5	26009.6	26363.1	26650.7	26787.4	26845.4	26765.5	26594.4	26298.9
25°	21600.1	22531.6	23326.5	24097.8	24676.4	25173.8	25472.6	25683.2	25699.9	25610.5	25346.9
27.5°	18622.5	19721.9	20727.9	21753.1	22566.9	23281.7	23750.8	24094.2	24203.3	24188.8	23949.5
30°	15648.6	16802.8	17911.6	19107.2	20114.1	21027.4	21647.0	22111.3	22290.2	22324.6	22094.3
32.5°	12840.1	13978.2	15084.0	16333.9	17441.9	18488.6	19220.7	19772.2	19980.3	20029.3	19776.8
35°	10291.1	11341.2	12392.1	13603.3	14705.0	15789.0	16560.4	17137.8	17332.1	17364.9	17072.4
37.5°	8080.8	8975.4	9891.1	10977.9	11989.7	13007.7	13740.6	14283.3	14424.8	14416.0	14085.2
40°	6219.6	6915.2	7651.0	8545.7	9386.8	10247.4	10866.3	11314.9	11389.3	11334.2	10986.6
42.5°	4676.8	5179.1	5712.6	6380.5	7004.6	7648.6	8098.9	8432.0	8442.6	8355.5	8043.4
45°	3484.3	3974.3	4198.1	4601.8	5003.8	5432.1	5707.0	5912.8	5880.9	5804.3	5567.1
47.5°	2656.1	2844.5	3044.2	3294.6	3528.8	4014.8	3978.8	4309.2	4071.2	4233.4	3876.3
50°	2109.2	2214.5	2322.1	2455.0	2577.4	2704.4	2783.8	2843.1	2835.3	2809.9	2741.5
52.5°	1794.5	1827.0	1880.0	1955.6	2023.9	2092.6	2137.8	2174.6	2175.3	2165.0	2130.4
55°	1499.8	1541.0	1579.2	1628.6	1712.7	1725.6	1790.5	1777.3	1782.5	1764.5	1782.8
57.5°	1322.3	1346.3	1367.8	1397.2	1421.5	1449.9	1466.6	1482.8	1481.2	1477.7	1460.0
60°	1196.6	1209.8	1221.8	1239.0	1252.2	1268.3	1276.0	1284.2	1281.5	1275.6	1259.9
62.5°	1099.7	1108.0	1114.7	1125.9	1134.0	1144.0	1148.0	1151.4	1148.0	1142.3	1128.4
65°	1004.0	1009.4	1013.7	1022.0	1027.8	1036.3	1039.7	1043.0	1039.8	1035.3	1024.8
67.5°	917.8	918.3	917.9	921.3	923.0	928.1	929.6	932.0	928.3	924.6	915.6
70°	852.4	851.0	849.3	850.7	851.0	853.4	853.9	853.4	849.1	842.5	832.7
72.5°	801.2	800.5	799.3	800.3	800.3	802.6	801.9	800.8	795.3	789.0	779.3
75°	735.5	734.9	732.5	732.6	730.6	731.3	728.6	727.1	721.0	715.7	707.0
77.5°	658.6	657.3	653.7	652.4	648.5	646.8	641.8	639.3	633.2	628.9	621.5
80°	572.6	571.3	566.8	564.2	558.0	554.1	546.7	542.5	535.4	531.2	524.0
82.5°	473.4	473.9	469.3	466.1	457.2	450.5	440.6	435.2	427.5	423.4	416.0
85°	336.7	331.9	334.4	334.2	328.7	322.8	314.8	309.1	302.5	298.6	293.5
87.5°	184.6	185.8	184.5	183.3	179.4	176.4	170.2	166.9	162.1	159.7	155.8
90°	102.1	99.2	91.9	89.0	81.9	77.4	69.3	65.6	58.0	56.1	51.7
92.5°	97.2	91.7	86.5	80.7	75.6	70.0	64.6	59.1	53.6	51.6	50.0
95°	122.4	114.7	106.8	98.9	91.0	83.1	75.3	67.5	59.5	57.9	56.3
97.5°	138.1	128.8	119.5	110.2	101.0	91.6	82.4	73.1	63.8	62.8	61.8
100°	245.1	223.7	202.2	180.7	159.4	137.9	116.6	95.1	73.7	72.4	71.3
102.5°	559.7	507.8	455.8	403.9	352.0	300.0	248.0	196.0	144.0	136.5	129.0
105°	995.0	916.4	837.9	759.3	680.5	601.8	523.3	444.5	365.8	340.6	315.3
107.5°	1308.9	1234.9	1161.2	1087.2	1013.1	939.3	865.4	791.3	717.3	672.8	628.3
110°	1451.3	1392.5	1334.0	1275.3	1216.7	1157.9	1099.2	1040.5	981.8	943.4	905.1



TEST NUMBER: P1444679
 CATALOG NUMBER: EHBR1-36-UNV-TA-L930-UPL36

CANDELA DISTRIBUTION (continued):

	137.5°	140°	142.5°	145°	147.5°	150°	152.5°	155°	157.5°	160°	162.5°
112.5°	1434.0	1390.9	1348.1	1305.0	1262.0	1218.9	1176.0	1132.8	1089.7	1066.5	1043.3
115°	1296.3	1270.3	1244.6	1218.6	1192.7	1166.8	1140.8	1114.7	1088.7	1076.5	1064.2
117.5°	1132.5	1119.3	1106.2	1092.9	1079.6	1066.2	1053.1	1039.6	1026.3	1022.1	1017.7
120°	965.9	961.9	957.7	953.7	949.7	945.7	941.5	937.3	933.1	933.6	934.1
122.5°	826.8	828.3	829.9	831.3	832.9	834.3	835.9	837.1	838.6	841.9	845.1
125°	728.8	732.5	736.4	740.2	744.0	747.8	751.6	755.2	759.0	762.2	765.6
127.5°	658.6	662.7	667.1	671.2	675.6	679.7	684.0	688.0	692.3	695.3	698.4
130°	609.5	613.0	616.8	620.3	624.2	627.8	631.4	635.0	638.8	641.1	643.4
132.5°	573.5	576.8	580.2	583.3	586.8	589.9	593.3	596.6	600.0	601.6	603.5
135°	550.4	552.7	555.3	557.6	560.3	562.6	565.2	567.7	570.2	571.4	572.6
137.5°	529.3	531.3	533.4	535.4	537.4	539.4	541.7	543.7	546.1	546.4	547.3
140°	510.9	513.0	515.2	517.3	519.5	521.7	524.2	526.4	528.9	529.3	530.1
142.5°	497.1	498.7	500.4	502.0	503.9	505.5	507.3	509.4	511.2	511.9	512.5
145°	482.1	484.1	486.1	488.0	489.9	492.1	494.5	496.7	499.0	499.4	499.8
147.5°	471.6	473.2	475.1	476.8	478.6	480.3	482.6	484.4	486.6	486.8	487.2
150°	459.6	461.3	463.2	465.0	467.0	469.0	471.1	473.3	475.8	476.4	477.0
152.5°	449.0	450.9	452.9	455.0	457.2	459.5	461.8	464.1	466.5	467.0	467.8
155°	440.0	441.7	444.0	446.1	448.2	450.3	452.7	454.9	457.2	458.0	458.8
157.5°	434.6	436.2	438.2	440.0	441.9	443.9	446.0	448.0	450.1	450.7	451.4
160°	431.0	432.6	434.3	436.0	437.7	439.5	441.4	443.1	444.9	445.5	446.1
162.5°	428.2	429.7	431.5	433.0	434.9	436.5	438.4	440.0	441.8	442.4	443.0
165°	426.9	428.0	429.4	430.5	431.8	433.0	434.4	435.6	437.0	437.5	438.4
167.5°	429.8	430.6	431.5	432.4	433.5	434.5	435.5	436.5	437.5	438.2	438.9
170°	430.2	431.0	431.8	432.6	433.6	434.5	435.3	436.2	437.4	437.8	438.5
172.5°	431.8	432.1	432.9	433.4	434.0	434.5	435.2	435.8	436.5	437.2	437.7
175°	434.5	434.8	435.1	435.2	435.6	435.9	436.3	436.7	437.0	437.5	438.0
177.5°	438.3	438.4	438.7	438.9	439.2	439.4	439.8	440.0	440.2	440.8	441.6
180°	439.4	439.4	439.4	439.4	439.4	439.4	439.4	439.4	439.4	439.4	439.4



TEST NUMBER: P1444679
 CATALOG NUMBER: EHBR1-36-UNV-TA-L930-UPL36

CANDELA DISTRIBUTION (continued):

	165°	167.5°	170°	172.5°	175°	177.5°	180°	182.5°	185°	187.5°	190°
0°	27712.0	27712.0	27712.0	27712.0	27712.0	27712.0	27712.0	27712.0	27712.0	27712.0	27712.0
2.5°	27620.0	27619.6	27618.7	27617.5	27616.2	27617.0	27618.2	27621.4	27626.9	27634.9	27645.5
5°	27523.0	27528.6	27531.8	27532.3	27529.3	27527.6	27530.3	27537.9	27553.2	27578.9	27613.6
7.5°	27421.3	27428.3	27439.0	27447.0	27448.5	27446.6	27447.0	27458.9	27487.2	27537.2	27607.3
10°	27312.8	27292.1	27303.0	27323.0	27338.7	27341.7	27343.6	27357.6	27399.0	27474.5	27587.2
12.5°	27212.5	27147.2	27134.6	27152.6	27176.6	27184.3	27182.2	27188.2	27236.6	27336.6	27493.6
15°	27080.7	26957.8	26915.7	26920.3	26950.0	26960.7	26952.9	26941.0	26988.2	27110.2	27313.5
17.5°	26867.2	26669.0	26591.8	26588.4	26623.1	26632.3	26613.2	26576.3	26622.7	26775.1	27027.5
20°	26542.8	26250.2	26104.8	26081.7	26119.4	26108.3	26070.3	26014.4	26075.4	26260.7	26560.8
22.5°	25959.5	25588.8	25340.3	25260.2	25305.3	25275.2	25219.7	25148.3	25229.3	25439.9	25774.1
25°	25006.4	24578.1	24237.9	24047.1	24083.0	24029.1	23968.6	23882.2	23978.8	24220.5	24588.3
27.5°	23605.6	23110.7	22689.2	22373.3	22385.0	22314.3	22244.6	22132.7	22253.4	22539.4	22954.3
30°	21742.7	21170.2	20656.9	20227.5	20189.1	20120.6	20049.2	19902.3	20053.4	20395.8	20880.6
32.5°	19403.3	18767.6	18174.5	17631.7	17529.3	17462.4	17398.9	17229.8	17427.6	17826.7	18383.8
35°	16667.5	15990.2	15347.3	14727.3	14557.7	14490.8	14435.2	14273.3	14520.0	14954.4	15556.1
37.5°	13664.6	12972.8	12334.3	11698.6	11458.9	11368.2	11327.8	11221.8	11506.3	11936.0	12540.1
40°	10581.7	9938.4	9366.1	8804.6	8531.3	8392.6	8371.4	8352.1	8627.2	9000.1	9548.4
42.5°	7697.7	7178.8	6737.5	6308.3	6060.6	5871.2	5871.1	5928.6	6176.3	6455.6	6878.3
45°	5324.8	4976.5	4695.3	4408.6	4485.2	4107.4	4329.4	4215.4	4337.9	4518.0	4792.9
47.5°	3660.3	3470.2	3315.7	3155.4	3038.7	2927.1	2936.9	3008.8	3124.2	3231.0	3374.0
50°	2667.7	2570.8	2492.2	2409.0	2350.9	2301.7	2304.6	2335.7	2396.3	2452.6	2527.4
52.5°	2090.3	2037.0	1994.2	1948.2	1917.7	1893.2	1894.6	1909.7	1942.4	1974.6	2017.5
55°	1722.9	1716.5	1660.9	1619.6	1604.0	1587.5	1590.5	1596.4	1618.8	1637.5	1666.0
57.5°	1443.8	1418.9	1402.2	1380.5	1370.5	1359.0	1361.6	1363.8	1378.7	1391.3	1411.7
60°	1246.7	1229.1	1217.2	1202.4	1195.9	1188.6	1190.2	1191.5	1201.2	1209.4	1224.1
62.5°	1115.8	1099.9	1089.7	1078.3	1073.6	1068.7	1069.9	1070.3	1076.2	1082.3	1093.4
65°	1015.4	1002.8	994.2	984.4	979.6	974.5	975.0	975.0	980.0	984.4	992.7
67.5°	909.1	899.7	894.2	886.3	883.0	877.8	877.7	876.1	879.4	881.1	886.8
70°	823.9	814.3	807.3	799.8	795.6	791.1	791.2	791.2	795.1	799.0	806.3
72.5°	771.2	762.1	755.8	749.2	745.3	741.4	740.7	740.3	743.0	745.3	750.1
75°	701.5	694.2	690.5	684.3	681.3	676.8	676.1	674.1	675.4	675.8	679.4
77.5°	616.8	610.0	607.0	600.7	598.1	593.1	592.7	590.5	591.4	590.7	593.5
80°	520.4	514.1	512.5	507.3	506.2	501.5	500.8	498.0	498.9	496.6	497.7
82.5°	412.8	407.0	405.8	401.1	401.1	396.8	396.6	392.5	392.5	388.8	383.1
85°	290.8	286.5	284.8	280.9	279.7	276.3	274.6	270.6	269.2	266.6	265.8
87.5°	153.5	150.8	148.4	146.6	143.2	137.1	136.6	132.4	132.7	129.7	129.9
90°	50.3	46.1	44.8	40.9	39.4	36.4	35.1	35.8	37.1	37.9	39.1
92.5°	48.2	46.3	44.6	42.7	40.9	39.0	37.2	39.0	40.9	42.7	44.6
95°	54.6	53.0	51.4	49.8	48.1	46.5	44.9	46.5	48.1	49.9	51.5
97.5°	60.8	59.7	58.7	57.7	56.7	55.6	54.6	55.7	56.8	57.7	58.8
100°	70.0	68.8	67.6	66.4	65.1	64.0	62.7	64.3	65.4	66.7	67.9
102.5°	121.6	114.2	106.6	99.1	91.6	84.1	76.6	84.1	91.6	99.2	106.7
105°	290.0	264.8	239.4	214.1	188.7	163.4	138.1	163.5	188.8	214.1	239.5
107.5°	583.8	539.5	494.9	450.5	405.8	361.4	316.8	361.4	406.0	450.6	495.1
110°	866.6	828.3	790.0	751.6	713.1	674.7	636.2	674.8	713.3	751.8	790.3



TEST NUMBER: P1444679
 CATALOG NUMBER: EHBR1-36-UNV-TA-L930-UPL36

CANDELA DISTRIBUTION (continued):

	165°	167.5°	170°	172.5°	175°	177.5°	180°	182.5°	185°	187.5°	190°
112.5°	1019.8	996.5	973.2	949.9	926.3	903.1	879.6	903.3	926.7	950.4	973.7
115°	1052.0	1039.6	1027.4	1015.1	1002.6	990.2	977.7	990.6	1003.2	1015.7	1028.3
117.5°	1013.3	1009.1	1004.7	1000.4	995.9	991.6	987.0	991.7	996.5	1001.3	1005.7
120°	934.4	935.1	935.4	935.8	936.1	936.5	936.7	936.9	936.9	936.9	936.8
122.5°	848.2	851.4	854.5	857.6	860.7	863.7	866.5	864.0	861.5	859.0	856.1
125°	768.8	772.2	775.4	778.6	781.6	784.8	787.6	785.4	782.8	780.1	777.3
127.5°	701.3	704.3	707.1	710.1	712.8	715.6	718.1	716.2	714.0	711.8	709.3
130°	645.6	648.0	650.0	652.2	654.2	656.1	657.8	656.8	655.3	654.1	652.3
132.5°	605.1	607.0	608.6	610.3	611.6	613.1	614.1	613.7	612.9	612.2	611.1
135°	573.9	575.0	576.1	577.3	578.1	579.0	579.4	579.7	579.4	579.2	578.7
137.5°	547.8	548.6	548.9	549.4	549.7	549.9	549.9	550.6	551.0	551.7	551.7
140°	530.6	531.4	531.8	532.3	532.7	533.1	532.9	533.8	534.1	534.6	534.6
142.5°	513.1	513.7	514.3	514.8	515.0	515.3	515.3	516.1	516.4	516.9	517.0
145°	500.3	500.6	500.8	501.2	501.3	501.3	500.9	502.0	502.6	503.1	503.7
147.5°	487.5	488.0	488.1	488.3	488.3	488.3	488.1	489.0	489.7	490.2	490.8
150°	477.7	478.4	478.9	479.4	479.8	480.1	480.1	480.8	481.0	481.4	481.5
152.5°	468.2	468.8	469.4	469.8	470.1	470.3	470.4	471.0	471.4	471.9	472.1
155°	459.4	460.1	460.7	461.3	461.8	462.3	462.7	463.1	463.4	463.7	463.8
157.5°	452.0	452.7	453.1	453.8	454.2	454.8	455.2	455.7	456.1	456.4	456.7
160°	446.6	447.4	447.8	448.4	449.0	449.4	449.8	450.4	450.7	451.1	451.5
162.5°	443.4	444.1	444.4	445.0	445.5	446.0	446.5	446.9	447.4	447.8	448.1
165°	439.1	439.8	440.4	441.1	441.8	442.5	443.0	443.3	443.5	443.6	443.8
167.5°	439.4	440.1	440.8	441.4	441.9	442.7	443.3	443.5	443.5	443.7	443.8
170°	439.0	439.6	440.2	440.8	441.3	442.0	442.4	442.5	442.5	442.7	442.8
172.5°	438.4	439.2	439.9	440.6	441.3	441.9	442.5	442.5	442.4	442.2	441.9
175°	438.6	439.2	439.8	440.4	440.9	441.5	442.1	441.7	441.7	441.4	441.2
177.5°	442.4	443.2	443.8	444.4	445.1	445.7	446.5	445.8	445.3	444.9	444.2
180°	439.4	439.4	439.4	439.4	439.4	439.4	439.4	439.4	439.4	439.4	439.4



TEST NUMBER: P1444679
 CATALOG NUMBER: EHBR1-36-UNV-TA-L930-UPL36

CANDELA DISTRIBUTION (continued):

	192.5°	195°	197.5°	200°	202.5°	205°	207.5°	210°	212.5°	215°	217.5°
0°	27712.0	27712.0	27712.0	27712.0	27712.0	27712.0	27712.0	27712.0	27712.0	27712.0	27712.0
2.5°	27660.2	27674.1	27695.3	27714.4	27743.3	27766.1	27800.3	27826.3	27864.9	27890.0	27932.0
5°	27662.7	27716.8	27787.9	27857.5	27941.0	28016.7	28110.9	28191.1	28285.8	28363.0	28459.9
7.5°	27701.8	27806.1	27931.2	28057.3	28199.8	28333.1	28483.4	28619.4	28768.0	28893.8	29031.2
10°	27730.6	27891.6	28076.0	28261.4	28456.7	28638.1	28821.2	28979.5	29127.3	29249.1	29356.6
12.5°	27691.5	27913.2	28149.8	28378.2	28595.3	28783.1	28940.6	29062.4	29146.3	29203.3	29216.7
15°	27558.6	27825.4	28082.6	28310.1	28490.2	28629.1	28701.0	28734.7	28698.6	28638.5	28506.7
17.5°	27310.1	27591.5	27821.5	28000.9	28096.1	28133.8	28074.2	27970.6	27768.1	27543.2	27218.6
20°	26854.6	27116.8	27283.6	27381.5	27356.0	27261.8	27036.9	26763.5	26359.2	25928.2	25359.6
22.5°	26055.7	26285.0	26373.7	26381.0	26225.7	25989.8	25584.2	25115.2	24477.4	23814.2	22998.6
25°	24856.4	25057.2	25071.2	24992.4	24708.0	24325.9	23730.1	23066.8	22200.0	21316.3	20294.3
27.5°	23230.0	23422.5	23375.4	23228.3	22833.5	22322.1	21559.4	20702.4	19633.8	18590.1	17459.6
30°	21185.5	21391.4	21336.0	21147.3	20677.7	20073.3	19175.9	18180.2	16993.8	15879.0	14733.4
32.5°	18738.8	18999.1	18960.9	18781.5	18291.4	17644.6	16670.9	15614.9	14401.1	13302.5	12188.1
35°	15957.7	16273.8	16290.2	16172.9	15718.0	15078.7	14117.2	13095.0	11932.4	10895.9	9866.3
37.5°	12961.5	13328.0	13403.3	13371.6	12994.6	12430.2	11554.2	10637.3	9607.2	8698.9	7818.3
40°	9948.8	10319.7	10448.3	10486.6	10208.4	9771.3	9052.2	8312.1	7472.5	6736.4	6037.2
42.5°	7201.2	7530.0	7654.4	7732.7	7559.0	7267.5	6743.0	6205.5	5590.4	5059.5	4550.5
45°	5001.3	5234.0	5328.6	5407.3	5312.8	5148.4	4817.1	4481.0	4074.9	3728.0	3399.5
47.5°	3496.7	3625.1	3687.4	3725.7	3689.0	3603.2	3423.0	3228.3	2999.0	2796.3	2601.4
50°	2591.9	2660.1	2692.8	2714.9	2688.2	2640.5	2543.0	2437.0	2311.1	2196.2	2083.9
52.5°	2054.0	2093.1	2112.5	2124.4	2109.1	2079.9	2023.2	1960.3	1884.8	1813.8	1776.6
55°	1730.3	1728.3	1773.2	1751.5	1773.2	1724.8	1714.6	1645.5	1582.8	1538.7	1491.0
57.5°	1427.0	1447.3	1455.9	1465.6	1459.3	1450.5	1426.4	1401.6	1368.5	1340.9	1311.4
60°	1235.2	1252.0	1261.4	1270.9	1270.3	1267.0	1253.1	1238.3	1217.7	1201.2	1183.3
62.5°	1103.1	1117.7	1126.9	1136.1	1136.9	1135.6	1125.1	1114.7	1100.6	1090.3	1078.0
65°	999.2	1009.4	1015.7	1023.0	1022.6	1020.7	1011.1	1002.6	990.9	983.8	974.7
67.5°	890.4	898.2	903.1	909.9	911.3	911.7	906.5	902.5	896.8	894.8	891.7
70°	813.1	822.4	830.4	839.1	843.8	846.0	843.8	841.8	838.5	837.0	834.6
72.5°	754.5	762.5	768.6	776.5	781.0	784.1	782.4	781.3	778.4	778.0	776.4
75°	681.8	687.3	690.8	696.8	699.1	702.1	700.8	701.5	700.5	702.8	702.7
77.5°	594.5	598.5	600.1	604.4	604.8	608.4	609.3	613.5	616.4	623.0	626.5
80°	496.1	498.6	498.6	503.0	505.0	511.1	513.9	520.8	524.0	529.9	530.4
82.5°	385.3	382.4	385.3	383.5	389.2	395.9	396.8	402.7	404.0	407.7	404.8
85°	263.4	263.2	260.8	261.3	259.5	260.4	259.3	260.5	259.4	259.5	256.8
87.5°	126.2	127.3	124.6	125.5	122.8	124.0	121.7	123.5	120.7	121.2	117.1
90°	40.1	41.3	42.3	43.7	45.3	48.7	52.2	55.6	59.5	62.7	66.4
92.5°	46.3	48.3	50.1	52.0	53.7	59.2	64.7	70.1	75.7	81.1	86.6
95°	53.1	54.7	56.4	58.3	59.9	67.8	75.7	83.6	91.4	99.4	107.2
97.5°	60.1	61.1	62.1	63.2	64.3	73.5	82.9	92.1	101.5	110.8	120.0
100°	69.2	70.4	71.6	72.9	74.1	95.6	117.1	138.6	160.0	181.3	202.8
102.5°	114.3	121.8	129.3	137.1	144.5	196.6	248.6	300.7	352.4	404.6	456.5
105°	264.9	290.2	315.8	341.1	366.4	445.2	524.0	602.8	681.3	760.1	838.8
107.5°	539.8	584.3	629.0	673.5	718.1	792.2	866.3	940.2	1014.4	1088.4	1162.2
110°	828.9	867.2	905.9	944.4	982.9	1041.6	1100.6	1159.3	1218.1	1276.8	1335.6



TEST NUMBER: P1444679
 CATALOG NUMBER: EHBR1-36-UNV-TA-L930-UPL36

CANDELA DISTRIBUTION (continued):

	192.5°	195°	197.5°	200°	202.5°	205°	207.5°	210°	212.5°	215°	217.5°
112.5°	997.4	1020.7	1044.2	1067.5	1091.0	1134.2	1177.6	1220.7	1263.8	1306.9	1350.0
115°	1040.8	1053.0	1065.5	1077.9	1090.5	1116.5	1142.6	1168.7	1194.8	1220.8	1246.9
117.5°	1010.4	1014.9	1019.5	1023.7	1028.3	1041.7	1055.2	1068.6	1082.1	1095.6	1108.9
120°	936.7	936.4	936.1	935.8	935.6	939.7	944.2	948.4	952.6	956.8	960.9
122.5°	853.4	850.4	847.5	844.5	841.5	840.1	838.9	837.5	836.3	834.8	833.6
125°	774.4	771.5	768.4	765.4	762.2	758.6	755.1	751.4	747.8	744.1	740.4
127.5°	706.9	704.2	701.7	698.8	696.1	691.9	687.9	683.7	679.9	675.5	671.5
130°	650.8	648.8	647.1	644.9	643.0	639.3	635.9	632.4	628.8	625.2	621.7
132.5°	610.0	608.6	607.5	605.9	604.5	601.3	598.4	595.0	591.8	588.6	585.6
135°	578.3	577.5	577.0	576.0	575.2	572.6	570.5	568.0	565.7	563.3	561.0
137.5°	552.0	551.7	551.6	551.3	551.2	549.1	547.3	545.3	543.4	541.5	539.6
140°	534.9	534.7	534.8	534.5	534.3	532.2	530.1	528.0	526.0	523.8	521.8
142.5°	517.1	517.1	517.1	516.9	516.8	515.1	513.7	512.0	510.4	508.8	507.2
145°	503.9	504.2	504.4	504.4	504.7	502.7	500.8	498.8	497.1	495.1	493.2
147.5°	491.3	491.5	491.8	492.0	492.4	490.7	489.3	487.5	486.1	484.4	483.0
150°	481.7	481.7	481.8	481.7	481.7	480.0	478.5	476.8	475.2	473.5	471.9
152.5°	472.3	472.5	472.7	472.8	473.0	471.2	469.5	467.8	466.1	464.1	462.4
155°	464.0	464.1	464.3	464.3	464.3	462.7	461.1	459.2	457.6	455.9	454.3
157.5°	456.9	457.1	457.2	457.4	457.5	456.1	454.7	453.2	451.8	450.4	449.0
160°	451.7	452.0	452.2	452.3	452.5	451.3	450.3	448.9	447.8	446.5	445.1
162.5°	448.4	448.7	448.9	449.0	449.2	448.0	447.0	445.7	444.6	443.2	442.0
165°	444.0	444.0	444.0	443.9	443.9	443.1	442.5	441.6	440.8	439.8	439.0
167.5°	443.9	443.8	443.9	443.7	443.8	443.2	442.8	442.2	441.6	440.9	440.3
170°	442.7	442.8	442.8	442.6	442.6	442.0	441.6	441.0	440.6	439.8	439.2
172.5°	441.7	441.5	441.3	441.1	440.8	440.3	440.0	439.6	439.3	438.9	438.5
175°	440.8	440.7	440.4	440.1	439.8	439.7	439.4	439.4	439.2	439.0	438.8
177.5°	443.9	443.3	442.7	442.2	441.6	441.5	441.5	441.2	441.2	441.0	440.8
180°	439.4	439.4	439.4	439.4	439.4	439.4	439.4	439.4	439.4	439.4	439.4



TEST NUMBER: P1444679
 CATALOG NUMBER: EHBR1-36-UNV-TA-L930-UPL36

CANDELA DISTRIBUTION (continued):

	220°	222.5°	225°	227.5°	230°	232.5°	235°	237.5°	240°	242.5°	245°
0°	27712.0	27712.0	27712.0	27712.0	27712.0	27712.0	27712.0	27712.0	27712.0	27712.0	27712.0
2.5°	27958.0	27785.3	27762.6	27774.7	27803.5	27814.1	27845.3	27853.8	27885.2	27892.8	27923.0
5°	28534.8	28306.7	28318.0	28372.9	28455.9	28505.5	28587.1	28629.8	28707.8	28743.3	28813.7
7.5°	29143.2	28964.0	29019.9	29112.4	29226.0	29304.6	29402.7	29466.6	29551.1	29603.6	29671.3
10°	29441.8	29392.7	29454.3	29527.1	29591.9	29642.6	29684.2	29717.4	29739.3	29759.7	29768.6
12.5°	29214.6	29290.6	29301.0	29294.0	29251.0	29218.2	29144.6	29094.6	29005.8	28951.6	28845.9
15°	28372.0	28539.1	28446.5	28306.4	28101.5	27930.5	27689.2	27509.5	27258.2	27087.7	26835.4
17.5°	26893.2	27104.2	26863.0	26538.9	26126.5	25773.8	25334.5	24985.9	24549.0	24231.3	23823.7
20°	24811.5	25008.6	24578.6	24041.2	23403.4	22866.5	22233.5	21728.4	21140.1	20702.4	20174.3
22.5°	22219.6	22360.0	21754.1	21029.7	20217.1	19546.4	18789.5	18184.0	17512.6	17012.3	16449.2
25°	19352.1	19390.0	18663.2	17828.7	16922.9	16169.2	15361.1	14724.5	14039.7	13532.7	12980.1
27.5°	16457.9	16402.3	15616.9	14732.0	13779.2	12995.8	12207.6	11611.0	11011.3	10554.6	10078.4
30°	13726.2	13591.7	12776.1	11866.5	10941.7	10239.5	9585.2	9106.0	8629.0	8266.7	7884.4
32.5°	11221.1	11031.3	10237.4	9385.3	8606.0	8064.1	7579.0	7216.4	6831.1	6525.1	6204.4
35°	9002.3	8800.1	8096.8	7374.4	6784.5	6385.1	6003.8	5706.3	5379.2	5121.0	4842.5
37.5°	7098.1	6932.4	6343.2	5774.8	5328.6	5019.1	4706.6	4463.5	4193.2	4079.6	3782.0
40°	5479.7	5363.9	4903.2	4484.1	4149.1	4003.7	3686.6	3459.5	3257.5	3090.9	2929.5
42.5°	4274.3	4233.3	3784.9	3458.2	3222.3	3039.1	2862.3	2718.8	2579.1	2464.3	2355.8
45°	3136.7	3104.2	2905.2	2716.5	2555.8	2427.7	2308.2	2209.6	2118.2	2042.6	1973.8
47.5°	2442.5	2432.1	2317.5	2200.5	2099.3	2017.0	1939.5	1874.0	1813.4	1762.9	1746.4
50°	1986.6	1985.3	1918.0	1845.8	1773.7	1726.1	1676.7	1637.9	1599.0	1568.7	1536.7
52.5°	1687.9	1680.7	1635.2	1590.7	1547.8	1516.6	1485.0	1460.2	1434.5	1415.8	1395.9
55°	1453.2	1460.8	1434.6	1408.0	1381.2	1361.7	1339.6	1323.3	1305.6	1293.8	1281.7
57.5°	1290.1	1300.3	1286.4	1271.4	1255.1	1242.3	1227.0	1215.7	1203.9	1196.4	1189.4
60°	1171.4	1182.5	1177.0	1169.4	1159.3	1151.7	1142.0	1135.7	1128.1	1123.9	1120.0
62.5°	1070.8	1084.7	1082.7	1079.1	1072.7	1068.4	1063.1	1060.3	1055.3	1053.4	1051.5
65°	970.4	986.0	985.7	983.9	980.3	979.1	975.8	975.2	972.6	973.7	973.4
67.5°	891.4	905.0	907.9	910.0	909.9	910.7	910.5	911.8	911.8	913.8	915.0
70°	834.4	843.8	846.0	848.4	849.0	850.8	850.8	851.9	851.7	853.3	853.4
72.5°	776.7	789.2	791.4	793.3	793.3	795.1	794.1	793.8	791.3	790.8	789.1
75°	705.1	721.0	724.5	726.7	727.1	728.6	726.5	725.1	721.0	719.3	716.5
77.5°	630.2	646.7	649.2	650.0	648.7	649.0	644.5	641.4	636.2	634.0	631.2
80°	532.7	557.1	559.0	557.5	553.7	553.0	548.7	545.7	539.5	537.4	535.0
82.5°	405.4	433.9	437.9	439.7	436.6	437.3	433.1	431.5	425.7	424.7	420.9
85°	255.9	284.5	289.2	288.5	285.4	284.7	282.2	283.0	282.6	284.1	284.9
87.5°	117.6	145.3	151.9	149.7	149.4	147.5	143.0	144.7	147.4	149.1	149.3
90°	70.0	81.8	85.2	82.9	77.8	75.1	70.4	68.1	63.8	61.5	57.2
92.5°	92.1	97.6	103.0	98.1	93.3	88.4	83.6	78.6	73.9	68.9	64.2
95°	115.1	122.7	130.6	124.1	117.6	111.1	104.6	98.2	91.7	85.2	78.8
97.5°	129.3	138.4	147.6	141.1	134.7	128.1	121.6	115.1	108.6	102.0	95.6
100°	224.3	245.3	266.7	248.3	229.7	211.4	192.9	174.4	155.9	137.6	119.1
102.5°	508.5	560.3	612.0	565.3	518.6	472.0	425.4	378.7	332.1	285.3	238.7
105°	917.4	995.7	1074.3	1002.8	931.6	860.5	789.3	718.1	646.9	575.6	504.5
107.5°	1236.2	1309.5	1383.2	1318.9	1254.5	1190.2	1125.6	1061.3	996.9	932.5	868.1
110°	1394.3	1452.1	1510.7	1467.3	1424.1	1380.7	1337.6	1294.4	1251.2	1208.2	1165.1



TEST NUMBER: P1444679
 CATALOG NUMBER: EHBR1-36-UNV-TA-L930-UPL36

CANDELA DISTRIBUTION (continued):

	220°	222.5°	225°	227.5°	230°	232.5°	235°	237.5°	240°	242.5°	245°
112.5°	1392.9	1434.9	1477.6	1452.1	1427.0	1401.6	1376.5	1351.1	1326.0	1300.6	1275.7
115°	1272.7	1297.3	1322.9	1312.7	1302.8	1292.9	1282.8	1273.0	1262.9	1253.0	1243.3
117.5°	1122.2	1133.9	1146.7	1144.8	1143.1	1141.1	1139.4	1137.5	1136.0	1134.2	1132.6
120°	965.1	967.4	971.0	972.2	973.7	974.8	976.2	977.6	979.0	980.3	981.9
122.5°	832.1	828.7	826.6	827.9	829.0	830.1	831.4	832.7	834.0	835.3	836.7
125°	736.8	730.7	726.4	724.7	723.1	721.3	719.6	717.9	716.4	714.7	713.2
127.5°	667.3	660.8	656.0	652.0	648.0	643.9	640.0	635.8	632.0	628.0	624.2
130°	618.1	611.9	607.6	602.5	597.7	592.4	587.6	582.4	577.5	572.4	567.5
132.5°	582.3	576.3	572.5	567.7	563.0	557.9	553.3	548.3	543.6	538.5	533.9
135°	558.6	553.2	550.2	545.7	541.6	537.1	532.7	528.3	524.0	519.4	515.3
137.5°	537.5	532.5	529.9	526.3	523.0	519.4	516.1	512.4	508.9	505.2	501.9
140°	519.6	514.2	511.4	509.5	507.7	505.5	503.6	501.5	499.7	497.6	495.7
142.5°	505.6	500.5	498.1	496.9	495.7	494.5	493.5	492.2	490.9	489.4	488.3
145°	491.5	485.6	482.9	482.7	482.8	482.7	482.6	482.6	482.4	482.2	482.0
147.5°	481.2	475.4	472.8	473.2	473.5	473.6	474.0	474.0	474.4	474.5	474.9
150°	470.1	463.4	460.5	461.1	461.5	462.1	462.8	463.3	464.0	464.6	465.1
152.5°	460.5	452.7	449.3	449.9	450.7	451.2	451.9	452.6	453.4	454.1	454.8
155°	452.3	443.9	440.3	440.4	440.7	441.0	441.3	441.7	442.1	442.5	443.0
157.5°	447.3	438.4	435.1	434.9	435.1	435.1	435.1	435.4	435.6	435.8	436.3
160°	443.8	435.1	431.8	431.6	431.8	431.7	431.7	431.8	432.0	432.2	432.6
162.5°	440.6	432.1	428.9	428.6	428.5	428.5	428.6	428.5	428.7	428.9	429.2
165°	438.0	430.6	427.8	427.9	428.1	428.2	428.4	428.6	428.8	429.2	429.5
167.5°	439.6	433.0	430.9	430.5	430.2	429.9	429.9	429.5	429.5	429.3	429.3
170°	438.4	433.3	431.3	431.2	431.4	431.5	431.5	431.6	431.6	431.7	431.8
172.5°	438.0	434.3	432.8	433.1	433.5	433.8	434.2	434.5	434.9	435.3	435.7
175°	438.6	436.3	435.7	435.7	435.9	436.1	436.3	436.6	436.7	436.9	437.4
177.5°	440.7	440.0	439.6	439.6	439.6	439.6	439.6	439.6	439.6	439.7	439.7
180°	439.4	439.4	439.4	439.4	439.4	439.4	439.4	439.4	439.4	439.4	439.4



TEST NUMBER: P1444679
 CATALOG NUMBER: EHBR1-36-UNV-TA-L930-UPL36

CANDELA DISTRIBUTION (continued):

	247.5°	250°	252.5°	255°	257.5°	260°	262.5°	265°	267.5°	270°	272.5°
0°	27712.0	27712.0	27712.0	27712.0	27712.0	27712.0	27712.0	27712.0	27712.0	27712.0	27712.0
2.5°	27928.6	27961.2	27958.7	27989.1	27987.6	28016.2	28010.5	28035.2	28029.5	28050.7	28038.3
5°	28844.8	28906.6	28927.1	28983.0	28994.6	29044.5	29045.6	29085.4	29080.5	29111.6	29095.1
7.5°	29711.3	29769.1	29796.6	29840.0	29861.7	29897.6	29911.7	29941.3	29948.3	29965.8	29965.3
10°	29784.5	29784.3	29797.8	29791.8	29803.9	29796.8	29811.6	29806.3	29828.2	29822.5	29839.1
12.5°	28800.4	28702.7	28667.1	28579.3	28560.1	28484.8	28490.2	28441.9	28465.2	28435.5	28486.1
15°	26685.3	26458.8	26346.9	26149.9	26088.0	25932.3	25919.7	25816.3	25844.2	25790.1	25869.1
17.5°	23559.9	23203.3	23007.5	22719.9	22605.6	22385.4	22341.3	22208.2	22228.8	22161.7	22257.3
20°	19833.6	19402.6	19155.8	18823.1	18674.6	18412.2	18342.5	18193.6	18212.3	18145.6	18253.6
22.5°	16064.8	15613.7	15334.9	14986.3	14796.7	14549.9	14475.8	14326.1	14334.7	14272.0	14375.9
25°	12601.4	12168.9	11898.3	11581.6	11417.2	11190.8	11113.0	10978.7	10986.2	10934.5	11027.8
27.5°	9748.2	9393.2	9166.9	8901.3	8753.9	8567.9	8491.9	8379.0	8378.7	8340.8	8418.8
30°	7617.6	7321.4	7118.2	6887.0	6748.6	6580.6	6507.3	6406.2	6401.9	6374.9	6436.9
32.5°	5964.4	5701.0	5515.6	5312.2	5187.9	5043.8	4974.3	4893.2	4885.8	4861.4	4912.2
35°	4636.6	4414.7	4255.4	4084.0	4096.7	3884.0	3919.4	3754.3	3709.5	3699.7	3737.5
37.5°	3583.5	3411.7	3282.2	3153.9	3067.0	2977.2	2928.8	2885.3	2880.4	2876.2	2902.7
40°	2804.9	2684.6	2590.5	2502.5	2442.7	2387.9	2357.6	2333.7	2328.1	2324.9	2340.9
42.5°	2270.2	2189.0	2128.3	2074.7	2038.3	2008.4	1991.9	1978.6	1974.1	1974.3	1983.8
45°	1918.0	1868.8	1829.7	1796.3	1773.1	1783.3	1753.2	1769.0	1748.2	1769.7	1755.5
47.5°	1689.1	1647.2	1622.9	1599.3	1585.2	1573.9	1574.4	1574.6	1579.0	1579.7	1584.3
50°	1512.4	1488.2	1471.4	1456.2	1448.9	1443.0	1445.1	1446.6	1450.9	1451.2	1454.6
52.5°	1381.7	1365.8	1355.6	1346.2	1342.9	1339.6	1341.0	1340.4	1342.3	1341.3	1344.1
55°	1275.3	1267.7	1264.6	1261.1	1261.6	1260.7	1261.3	1257.9	1255.9	1253.3	1255.6
57.5°	1188.0	1186.9	1189.1	1190.6	1194.6	1196.0	1196.9	1193.0	1189.3	1185.9	1187.9
60°	1120.7	1122.4	1127.6	1132.0	1137.7	1140.4	1142.1	1139.8	1137.1	1134.3	1136.0
62.5°	1054.4	1056.9	1063.3	1068.1	1075.1	1078.7	1082.7	1082.9	1084.0	1082.9	1084.1
65°	977.3	980.5	986.2	990.2	996.7	999.9	1004.0	1004.8	1007.0	1006.5	1008.4
67.5°	918.8	921.7	926.5	930.3	936.1	939.3	942.9	943.1	944.0	943.7	945.6
70°	856.4	857.8	862.1	865.3	871.0	874.4	878.5	879.7	882.3	882.8	884.8
72.5°	789.8	789.2	791.8	793.2	797.5	800.2	805.4	808.3	812.6	813.7	815.3
75°	717.3	716.7	719.8	721.0	724.7	727.3	733.2	737.0	743.7	746.4	745.7
77.5°	633.3	634.8	640.6	643.8	648.7	652.0	659.7	665.8	678.0	683.3	677.9
80°	539.5	541.0	547.0	550.0	556.4	560.5	569.1	576.2	587.2	589.5	586.5
82.5°	424.2	424.5	429.9	432.2	440.6	446.6	457.4	463.1	469.9	468.8	468.0
85°	289.2	293.1	299.8	306.5	316.7	326.6	336.8	345.2	339.3	348.6	338.1
87.5°	154.6	154.2	163.2	161.7	176.2	184.5	193.3	197.5	202.2	201.3	201.4
90°	55.3	52.5	51.9	48.8	48.9	45.7	46.5	43.5	44.8	41.2	46.6
92.5°	59.2	56.6	53.9	51.3	48.7	46.1	43.4	40.7	38.1	35.5	38.1
95°	72.3	69.9	67.4	64.9	62.5	60.0	57.6	55.2	52.7	50.3	53.3
97.5°	89.1	87.7	86.3	84.8	83.4	82.1	80.6	79.2	77.7	76.3	78.3
100°	100.6	100.6	100.6	100.6	100.3	100.3	100.3	100.3	100.3	100.3	101.9
102.5°	192.0	187.4	182.8	178.0	173.3	168.7	164.1	159.3	154.7	150.1	156.9
105°	433.3	415.0	396.7	378.5	360.2	341.9	323.8	305.5	287.3	269.0	287.8
107.5°	804.0	770.7	737.4	704.2	670.8	637.7	604.5	571.2	538.1	504.8	534.6
110°	1121.9	1086.6	1051.2	1016.0	980.6	945.3	910.0	874.8	839.5	804.3	832.7



TEST NUMBER: P1444679
 CATALOG NUMBER: EHBR1-36-UNV-TA-L930-UPL36

CANDELA DISTRIBUTION (continued):

	247.5°	250°	252.5°	255°	257.5°	260°	262.5°	265°	267.5°	270°	272.5°
112.5°	1250.5	1227.5	1204.7	1181.9	1159.2	1136.5	1113.7	1091.0	1068.4	1045.7	1059.5
115°	1233.3	1222.6	1211.6	1200.8	1189.8	1179.0	1168.1	1157.4	1146.6	1135.9	1136.7
117.5°	1131.0	1127.2	1123.6	1119.9	1116.2	1112.8	1109.2	1105.7	1102.3	1098.9	1091.2
120°	983.5	984.5	985.5	986.8	988.0	989.2	990.3	991.7	993.2	994.6	984.3
122.5°	838.1	840.6	843.2	846.0	848.7	851.6	854.4	857.5	860.5	863.5	853.2
125°	711.6	714.1	716.7	719.2	721.7	724.7	727.5	730.6	733.5	736.6	727.9
127.5°	620.3	621.1	621.8	622.9	623.8	625.0	626.1	627.5	628.9	630.4	625.0
130°	562.4	561.5	560.3	559.5	558.4	557.9	557.1	556.6	556.1	555.8	553.3
132.5°	529.1	526.8	524.4	522.1	520.0	518.0	516.1	514.4	512.7	511.2	510.4
135°	510.7	507.6	504.4	501.4	498.3	495.7	492.9	490.4	487.9	485.6	486.0
137.5°	498.2	495.2	492.0	489.0	485.9	483.4	480.6	477.9	475.5	473.3	474.2
140°	493.5	490.4	487.2	484.3	481.5	478.6	476.0	473.6	470.9	468.7	469.3
142.5°	486.8	484.2	481.3	478.6	475.9	473.5	471.1	468.8	466.3	464.5	465.1
145°	481.8	479.9	477.7	475.6	473.7	472.0	470.0	468.4	466.8	465.5	465.8
147.5°	475.0	473.6	471.9	470.4	468.7	467.6	466.2	465.0	463.8	462.8	462.9
150°	465.6	464.7	463.6	462.7	461.7	460.8	459.9	459.2	458.4	457.8	457.7
152.5°	455.5	454.7	453.7	452.9	452.0	451.3	450.5	449.8	449.2	448.6	448.5
155°	443.4	443.0	442.6	442.3	441.9	441.7	441.4	441.3	441.0	440.9	441.0
157.5°	436.5	436.5	436.2	436.3	436.3	436.2	436.1	436.4	436.2	436.4	436.7
160°	432.9	432.7	432.5	432.3	432.2	431.9	431.8	431.8	431.7	431.6	431.9
162.5°	429.4	429.6	429.7	430.0	430.2	430.4	430.8	431.2	431.4	431.8	432.1
165°	430.0	429.9	429.9	429.7	429.8	429.8	429.9	430.0	430.1	430.2	430.8
167.5°	429.2	429.4	429.5	429.9	430.2	430.6	430.9	431.4	431.8	432.4	432.8
170°	431.8	431.8	431.8	431.8	431.8	432.0	432.1	432.2	432.4	432.6	432.9
172.5°	436.0	436.0	435.9	436.0	435.9	436.0	436.0	436.1	436.1	436.2	436.4
175°	437.4	437.7	437.9	438.3	438.4	438.5	438.7	439.0	439.2	439.4	439.4
177.5°	439.7	439.8	439.8	439.8	439.8	439.9	439.9	439.9	439.9	439.8	440.0
180°	439.4	439.4	439.4	439.4	439.4	439.4	439.4	439.4	439.4	439.4	439.4



TEST NUMBER: P1444679
 CATALOG NUMBER: EHBR1-36-UNV-TA-L930-UPL36

CANDELA DISTRIBUTION (continued):

	275°	277.5°	280°	282.5°	285°	287.5°	290°	292.5°	295°	297.5°	300°
0°	27712.0	27712.0	27712.0	27712.0	27712.0	27712.0	27712.0	27712.0	27712.0	27712.0	27712.0
2.5°	28058.9	28044.9	28059.2	28044.7	28059.2	28041.7	28053.6	28034.7	28039.5	28019.9	28024.9
5°	29119.8	29097.5	29109.4	29080.3	29083.4	29044.5	29043.8	28998.7	28986.7	28935.3	28912.7
7.5°	29977.7	29970.4	29974.5	29955.8	29953.7	29927.2	29914.6	29877.2	29853.7	29806.3	29773.9
10°	29841.9	29863.9	29869.5	29891.8	29896.4	29918.5	29923.1	29945.2	29949.8	29966.2	29966.3
12.5°	28483.7	28558.0	28575.7	28667.4	28706.1	28811.1	28867.3	28983.0	29051.7	29167.0	29237.8
15°	25867.0	25995.5	26046.8	26225.9	26325.0	26534.1	26665.5	26905.5	27075.0	27330.0	27512.0
17.5°	22265.7	22445.2	22526.2	22769.1	22927.6	23236.3	23458.7	23824.9	24105.1	24512.0	24834.5
20°	18272.1	18471.6	18581.6	18858.7	19045.7	19406.3	19684.0	20134.0	20509.1	21024.7	21465.7
22.5°	14408.6	14598.5	14720.6	15002.5	15213.0	15589.1	15899.5	16374.4	16794.8	17375.8	17904.4
25°	11063.0	11237.1	11347.4	11602.5	11800.2	12145.8	12442.2	12898.9	13310.2	13892.9	14435.0
27.5°	8457.5	8603.3	8709.7	8927.2	9101.6	9394.7	9649.3	10026.7	10381.1	10885.3	11368.0
30°	6474.9	6604.1	6707.7	6897.1	7058.7	7312.9	7536.7	7853.8	8147.1	8548.3	8932.2
32.5°	4948.0	5059.2	5151.4	5317.2	5463.8	5692.7	5894.4	6172.3	6424.0	6764.3	7080.2
35°	3772.6	3991.5	3976.0	4204.6	4241.4	4405.6	4585.5	4828.5	5051.5	5340.8	5609.7
37.5°	2928.2	2989.7	3055.6	3156.7	3262.9	3412.4	3564.4	3861.2	3970.1	4188.8	4411.3
40°	2361.3	2402.9	2446.4	2514.7	2589.0	2694.4	2805.0	2946.6	3091.8	3269.1	3450.1
42.5°	1996.2	2019.8	2047.5	2087.7	2133.5	2200.2	2274.3	2370.3	2471.2	2596.1	2723.4
45°	1783.5	1772.4	1780.6	1802.2	1829.8	1870.3	1917.1	1976.5	2042.2	2123.1	2209.1
47.5°	1585.2	1589.8	1592.2	1604.0	1618.8	1645.9	1674.3	1714.6	1792.6	1816.3	1863.3
50°	1454.3	1456.5	1455.8	1461.6	1469.2	1486.9	1505.2	1532.6	1559.9	1596.0	1630.5
52.5°	1344.5	1347.6	1347.1	1351.1	1355.1	1366.3	1377.9	1397.2	1415.0	1438.0	1457.9
55°	1257.8	1262.0	1263.6	1266.9	1268.9	1274.8	1279.4	1288.6	1296.3	1309.3	1321.3
57.5°	1191.2	1196.9	1199.6	1200.7	1198.3	1198.0	1196.5	1198.5	1200.0	1207.0	1213.7
60°	1138.7	1143.3	1144.0	1143.3	1139.0	1135.9	1130.9	1129.4	1128.6	1132.0	1135.7
62.5°	1083.7	1085.4	1084.2	1082.9	1078.0	1075.0	1069.9	1068.0	1066.2	1068.7	1070.6
65°	1007.7	1009.1	1007.7	1006.9	1002.5	1000.1	995.8	994.4	991.9	992.6	992.1
67.5°	946.0	947.5	946.3	945.1	942.1	940.7	937.5	935.4	932.5	931.3	929.3
70°	884.5	885.6	883.8	882.8	879.3	878.0	874.9	874.3	872.0	871.4	869.0
72.5°	813.7	813.8	811.4	810.7	808.1	808.0	806.7	807.9	807.7	809.0	808.4
75°	741.3	740.3	737.2	736.7	734.7	735.6	734.3	736.1	736.3	738.9	739.3
77.5°	668.8	665.0	659.2	656.4	652.5	652.0	649.7	651.2	650.7	653.8	655.1
80°	577.2	572.6	565.1	561.5	556.9	556.2	554.1	556.2	555.1	558.7	561.2
82.5°	460.8	456.8	449.0	446.1	440.8	441.3	439.1	441.3	441.0	446.4	449.4
85°	340.9	338.2	330.2	323.1	315.2	310.6	306.0	305.2	303.9	306.0	307.9
87.5°	196.9	194.4	188.1	184.0	170.2	170.8	165.4	165.0	163.7	162.5	165.4
90°	46.6	51.3	51.6	56.0	56.7	61.6	62.6	67.3	68.1	72.9	74.3
92.5°	40.7	43.4	46.0	48.7	51.2	53.9	56.5	59.2	64.9	70.2	76.2
95°	56.3	59.3	62.4	65.5	68.5	71.6	74.6	77.6	85.9	94.2	102.6
97.5°	80.4	82.3	84.4	86.4	88.4	90.5	92.4	94.5	103.5	112.4	121.3
100°	103.6	105.2	106.8	108.5	110.1	111.7	113.3	114.9	132.3	149.5	166.8
102.5°	163.8	170.7	177.6	184.5	191.4	198.4	205.2	212.1	251.7	291.1	330.7
105°	306.7	325.5	344.5	363.3	382.2	401.0	420.0	438.8	502.1	565.2	628.7
107.5°	564.4	594.1	623.9	653.8	683.6	713.4	743.2	773.1	834.7	896.6	958.2
110°	861.0	889.5	917.9	946.3	974.6	1003.2	1031.6	1060.2	1097.3	1134.2	1171.2



TEST NUMBER: P1444679
 CATALOG NUMBER: EHBR1-36-UNV-TA-L930-UPL36

CANDELA DISTRIBUTION (continued):

	275°	277.5°	280°	282.5°	285°	287.5°	290°	292.5°	295°	297.5°	300°
112.5°	1073.3	1087.1	1100.9	1114.8	1128.6	1142.7	1156.5	1170.5	1189.0	1207.5	1226.0
115°	1137.6	1138.4	1139.4	1140.4	1141.4	1142.3	1143.5	1144.5	1150.4	1156.2	1162.0
117.5°	1083.5	1076.0	1068.5	1060.9	1053.4	1046.2	1038.7	1031.5	1030.2	1029.1	1028.0
120°	974.2	964.0	953.9	943.7	933.8	923.8	914.0	904.1	899.1	894.0	889.1
122.5°	843.0	832.9	822.9	812.8	802.9	793.1	783.4	773.7	770.1	766.6	763.2
125°	719.4	711.0	702.6	694.4	686.2	678.1	670.1	662.2	662.0	661.7	661.7
127.5°	619.8	614.6	609.6	604.6	599.9	595.1	590.4	585.7	588.0	590.0	592.3
130°	551.1	548.8	546.8	544.6	542.9	540.9	539.1	537.4	541.3	545.0	548.9
132.5°	510.2	509.7	509.6	509.3	509.3	509.4	509.6	509.6	514.1	518.4	522.9
135°	486.6	487.2	488.1	488.9	490.0	491.0	492.2	493.2	497.5	501.6	506.0
137.5°	475.2	476.1	477.4	478.6	480.1	481.5	483.1	484.5	487.9	491.3	494.6
140°	470.2	471.0	472.0	473.1	474.2	475.3	476.7	477.8	480.7	483.3	485.8
142.5°	466.0	466.6	467.6	468.7	469.7	470.8	471.9	473.0	475.1	476.8	479.2
145°	466.4	467.0	467.8	468.4	469.2	470.0	471.0	471.8	473.1	474.3	475.5
147.5°	463.3	463.6	464.1	464.6	465.3	465.8	466.2	466.8	467.7	468.4	469.3
150°	458.0	458.0	458.2	458.3	458.8	459.0	459.5	459.6	460.4	461.0	461.9
152.5°	448.8	448.8	449.0	449.0	449.4	449.7	449.8	450.1	450.8	451.4	452.1
155°	441.3	441.7	442.1	442.5	443.0	443.2	443.7	444.0	444.5	444.9	445.4
157.5°	437.0	437.3	437.7	438.0	438.4	438.8	439.2	439.5	440.0	440.3	440.8
160°	432.6	433.2	433.7	434.3	434.9	435.4	436.0	436.7	437.0	437.4	437.7
162.5°	432.6	432.9	433.4	433.6	434.1	434.4	434.8	435.1	435.9	436.3	437.0
165°	431.3	431.9	432.6	433.0	433.7	434.3	434.9	435.4	435.8	436.1	436.5
167.5°	433.5	433.8	434.5	435.1	435.7	436.2	436.8	437.4	437.7	438.0	438.4
170°	433.5	434.0	434.5	435.1	435.5	435.9	436.6	437.0	437.5	438.0	438.6
172.5°	436.9	437.3	437.6	438.0	438.4	438.9	439.3	439.7	440.1	440.5	441.0
175°	439.4	439.4	439.5	439.6	439.8	439.8	439.9	440.0	440.1	440.2	440.3
177.5°	440.1	440.4	440.6	440.8	440.9	441.2	441.4	441.6	441.6	441.6	441.6
180°	439.4	439.4	439.4	439.4	439.4	439.4	439.4	439.4	439.4	439.4	439.4



TEST NUMBER: P1444679
 CATALOG NUMBER: EHBR1-36-UNV-TA-L930-UPL36

CANDELA DISTRIBUTION (continued):

	302.5°	305°	307.5°	310°	312.5°	315°	317.5°	320°	322.5°	325°	327.5°
0°	27712.0	27712.0	27712.0	27712.0	27712.0	27712.0	27712.0	27712.0	27712.0	27712.0	27712.0
2.5°	28005.3	28006.5	27983.9	27982.8	27961.5	27958.9	27938.3	27932.0	27915.2	27909.1	27892.1
5°	28855.0	28827.5	28763.9	28726.5	28663.7	28622.1	28554.1	28509.7	28444.1	28394.5	28328.5
7.5°	29714.3	29671.6	29600.2	29542.3	29455.2	29385.6	29283.5	29200.0	29089.5	28993.8	28877.8
10°	29966.3	29959.7	29941.6	29915.1	29874.6	29828.9	29759.5	29687.1	29590.3	29485.0	29356.1
12.5°	29346.2	29413.2	29504.5	29558.6	29624.4	29653.3	29680.3	29673.5	29655.8	29602.6	29528.0
15°	27775.4	27963.5	28212.7	28405.8	28627.9	28789.3	28967.6	29078.8	29189.6	29240.8	29272.1
17.5°	25276.5	25632.7	26079.5	26449.7	26876.9	27220.0	27596.2	27879.3	28170.4	28379.0	28567.7
20°	22066.7	22582.9	23214.7	23772.9	24421.9	24986.0	25604.1	26111.5	26634.8	27044.0	27431.3
22.5°	18585.1	19198.2	19962.1	20669.7	21506.4	22258.4	23106.9	23845.3	24616.3	25260.4	25883.2
25°	15161.6	15833.9	16669.1	17458.7	18406.3	19281.0	20287.2	21207.5	22204.1	23069.3	23924.0
27.5°	12035.4	12695.4	13548.2	14388.6	15390.7	16322.7	17400.8	18414.9	19549.5	20595.8	21666.2
30°	9465.9	10025.8	10790.4	11604.4	12592.8	13541.2	14631.0	15673.9	16854.2	17996.7	19202.4
32.5°	7499.6	7926.1	8527.2	9215.5	10127.4	11030.3	12068.0	13074.7	14237.1	15391.2	16645.1
35°	5956.0	6288.7	6747.0	7284.2	8056.4	8834.7	9752.5	10668.1	11752.5	12847.6	14066.5
37.5°	4696.7	4966.6	5325.5	5729.0	6348.5	6987.2	7739.8	8498.8	9441.1	10411.8	11516.4
40°	3667.6	3886.1	4165.5	4466.5	4934.2	5426.3	6008.4	6597.0	7354.0	8147.4	9061.5
42.5°	2881.1	3042.4	3239.8	3459.7	3896.1	4157.3	4552.0	4977.7	5534.3	6110.3	6797.5
45°	2313.8	2423.8	2560.7	2708.2	2910.7	3132.4	3402.7	3686.1	4214.9	4474.2	4892.2
47.5°	1932.3	2006.1	2093.2	2186.1	2305.6	2434.5	2594.8	2758.7	2970.7	3190.4	3448.0
50°	1675.3	1750.4	1780.2	1828.4	1897.6	1971.2	2061.6	2151.9	2265.6	2380.9	2513.5
52.5°	1484.5	1509.1	1541.6	1572.1	1615.0	1698.9	1726.0	1773.2	1837.0	1899.3	1969.0
55°	1338.9	1354.9	1376.0	1394.5	1420.4	1445.2	1480.9	1512.4	1554.9	1592.5	1638.6
57.5°	1225.6	1235.7	1250.4	1262.6	1279.3	1293.2	1314.2	1331.3	1355.7	1377.0	1405.0
60°	1143.2	1150.0	1159.8	1167.7	1178.4	1185.7	1196.1	1204.1	1217.0	1227.8	1243.4
62.5°	1076.0	1079.4	1085.9	1090.5	1097.3	1101.0	1106.5	1110.0	1117.1	1122.6	1131.3
65°	995.2	996.0	1000.3	1002.3	1007.6	1009.6	1014.1	1015.7	1021.6	1025.6	1033.3
67.5°	929.1	927.2	927.3	925.8	926.5	924.9	925.4	923.8	926.1	927.3	933.2
70°	868.7	866.1	865.3	862.5	861.6	858.8	858.0	855.4	855.1	854.3	856.4
72.5°	809.8	809.1	809.3	807.4	807.2	805.2	805.3	804.1	805.4	806.0	808.7
75°	742.1	742.3	743.7	742.0	742.4	740.8	741.4	739.9	740.7	740.4	743.0
77.5°	659.8	661.8	665.3	664.6	665.8	663.9	664.7	662.6	663.2	661.8	662.7
80°	567.1	571.2	576.0	575.9	577.9	576.6	578.4	576.4	577.2	574.7	574.1
82.5°	457.2	460.6	465.8	466.0	470.5	471.3	476.3	476.1	479.3	477.3	475.9
85°	312.5	314.9	319.4	321.9	326.5	329.4	334.2	336.1	332.7	339.0	334.0
87.5°	163.2	169.2	165.8	173.8	171.9	179.9	178.2	185.6	184.1	190.5	189.7
90°	80.3	82.2	88.4	90.5	97.8	100.5	102.3	99.0	100.5	97.4	99.0
92.5°	81.5	87.5	93.1	98.8	104.4	110.2	104.9	99.6	94.4	89.2	83.9
95°	110.9	119.1	127.4	135.8	144.1	152.4	143.5	134.7	125.7	116.8	107.9
97.5°	130.2	139.1	148.0	156.9	165.9	174.8	164.3	153.8	143.3	132.9	122.3
100°	184.0	201.3	218.5	235.8	253.1	270.3	250.8	231.1	211.6	191.9	172.3
102.5°	370.4	409.9	449.5	489.1	528.6	568.2	526.6	485.1	443.3	401.7	360.0
105°	692.0	755.2	818.5	881.8	945.1	1008.6	941.0	873.5	805.9	738.6	670.9
107.5°	1020.0	1081.6	1143.5	1205.2	1266.9	1328.9	1260.4	1191.8	1123.5	1054.9	986.4
110°	1208.5	1245.5	1282.6	1319.9	1356.8	1394.2	1344.1	1294.3	1244.2	1194.1	1144.2



TEST NUMBER: P1444679
 CATALOG NUMBER: EHBR1-36-UNV-TA-L930-UPL36

CANDELA DISTRIBUTION (continued):

	302.5°	305°	307.5°	310°	312.5°	315°	317.5°	320°	322.5°	325°	327.5°
112.5°	1244.6	1263.3	1281.7	1300.5	1319.0	1337.7	1301.9	1266.3	1230.4	1194.8	1158.9
115°	1168.0	1173.9	1180.0	1185.9	1191.8	1197.8	1173.7	1149.6	1125.5	1101.4	1077.1
117.5°	1026.9	1026.1	1024.8	1023.9	1022.8	1021.8	1008.3	994.8	981.3	967.8	954.1
120°	883.9	879.1	874.1	869.1	864.1	859.1	853.4	847.7	841.9	836.1	830.2
122.5°	759.6	756.3	752.7	749.4	745.8	742.2	740.0	737.9	735.5	733.3	730.9
125°	661.6	661.3	661.1	661.0	660.7	660.6	659.4	658.3	657.0	656.0	654.5
127.5°	594.4	596.5	598.6	600.8	602.7	604.8	604.5	604.2	603.8	603.5	603.1
130°	552.5	556.5	560.2	563.8	567.4	571.2	570.4	569.8	569.1	568.4	567.8
132.5°	527.3	531.6	535.9	540.4	544.5	548.9	548.0	547.2	546.2	545.5	544.5
135°	510.0	514.3	518.2	522.4	526.3	530.3	529.2	528.3	527.1	526.1	525.1
137.5°	497.7	501.3	504.4	507.6	510.7	513.9	512.8	511.8	510.5	509.6	508.5
140°	488.4	491.0	493.5	496.1	498.6	501.1	499.7	498.4	497.0	495.7	494.2
142.5°	480.9	482.9	484.6	486.7	488.3	490.3	488.3	486.5	484.6	482.8	480.9
145°	476.8	478.1	479.3	480.4	481.3	482.6	480.4	478.5	476.0	474.1	471.9
147.5°	470.0	470.8	471.2	472.1	472.5	473.3	471.2	469.2	467.1	465.0	462.9
150°	462.3	463.1	463.7	464.3	464.8	465.4	463.3	461.2	458.8	456.8	454.7
152.5°	452.7	453.3	453.9	454.3	454.9	455.4	453.2	451.5	449.3	447.2	445.1
155°	445.7	446.1	446.4	446.7	446.8	447.2	445.4	443.8	442.1	440.4	438.6
157.5°	441.0	441.5	441.7	442.0	442.2	442.5	441.2	440.0	438.5	437.3	435.9
160°	438.1	438.4	438.7	438.9	439.2	439.3	438.2	437.3	436.1	435.0	433.7
162.5°	437.5	438.0	438.4	438.9	439.3	439.8	438.4	437.2	435.9	434.5	433.2
165°	436.7	437.1	437.4	437.7	437.8	438.1	437.2	436.4	435.4	434.6	433.5
167.5°	438.6	439.0	439.2	439.5	439.6	439.8	439.0	438.2	437.2	436.2	435.2
170°	438.9	439.3	439.8	440.2	440.6	440.8	440.2	439.5	438.7	438.0	437.1
172.5°	441.4	441.7	441.9	442.5	442.6	443.0	442.3	441.5	440.8	440.0	439.1
175°	440.3	440.5	440.7	440.7	440.7	440.8	440.1	439.5	439.0	438.4	437.7
177.5°	441.6	441.6	441.6	441.5	441.5	441.5	441.0	440.7	440.2	439.9	439.3
180°	439.4	439.4	439.4	439.4	439.4	439.4	439.4	439.4	439.4	439.4	439.4



TEST NUMBER: P1444679
 CATALOG NUMBER: EHBR1-36-UNV-TA-L930-UPL36

CANDELA DISTRIBUTION (continued):

	330°	332.5°	335°	337.5°	340°	342.5°	345°	347.5°	350°	352.5°	355°
0°	27712.0	27712.0	27712.0	27712.0	27712.0	27712.0	27712.0	27712.0	27712.0	27712.0	27712.0
2.5°	27886.1	27873.9	27866.1	27856.2	27850.2	27842.4	27836.8	27832.0	27828.1	27824.5	27821.8
5°	28278.2	28215.9	28167.5	28115.1	28072.0	28029.2	27996.0	27968.7	27949.8	27935.6	27927.1
7.5°	28777.5	28663.3	28561.9	28455.1	28359.3	28265.2	28184.0	28114.1	28061.6	28027.6	28007.0
10°	29223.3	29070.6	28919.5	28760.4	28609.8	28463.4	28328.5	28209.8	28115.8	28053.3	28016.9
12.5°	29423.1	29293.0	29138.7	28966.1	28781.3	28594.4	28412.2	28247.9	28110.0	28017.4	27964.0
15°	29247.1	29193.7	29089.0	28955.0	28779.7	28586.4	28372.4	28171.4	27986.4	27866.5	27796.9
17.5°	28674.5	28749.1	28741.1	28689.9	28563.8	28401.1	28183.1	27957.3	27725.8	27565.5	27477.9
20°	27708.3	27942.7	28061.6	28122.6	28073.1	27967.6	27770.2	27541.0	27271.3	27061.9	26934.2
22.5°	26350.5	26764.2	27022.1	27210.8	27250.9	27214.9	27040.6	26822.6	26522.0	26270.3	26081.7
25°	24602.4	25208.7	25616.2	25935.7	26059.8	26091.8	25943.6	25726.7	25391.6	25098.5	24839.3
27.5°	22543.5	23331.3	23875.4	24304.7	24498.5	24582.5	24446.0	24224.8	23828.4	23478.4	23139.9
30°	20225.6	21160.2	21815.4	22330.1	22566.3	22677.4	22532.3	22285.4	21824.1	21403.0	20976.5
32.5°	17744.6	18767.4	19481.3	20040.3	20274.4	20378.8	20189.1	19911.8	19378.6	18882.5	18385.3
35°	15147.2	16179.4	16899.4	17443.5	17639.7	17702.7	17460.1	17139.5	16548.8	16004.3	15462.1
37.5°	12496.8	13457.2	14111.5	14599.9	14721.3	14732.1	14439.8	14085.9	13464.9	12928.0	12388.3
40°	9869.4	10679.2	11207.6	11598.4	11640.6	11603.0	11285.2	10928.9	10348.0	9867.1	9393.2
42.5°	7394.4	8005.7	8382.7	8650.6	8634.6	8560.4	8269.0	7962.8	7483.5	7117.2	6744.2
45°	5274.0	5677.2	5897.6	6054.3	6004.0	5933.2	5706.4	5491.8	5166.1	4929.5	4678.9
47.5°	3663.9	4145.3	4061.5	4368.0	4104.0	4278.4	3915.2	3715.0	3542.2	3416.4	3274.8
50°	2623.1	2733.4	2786.7	2823.0	2803.7	2776.9	2711.6	2653.4	2574.4	2516.8	2449.8
52.5°	2025.7	2080.9	2111.1	2132.9	2128.7	2118.9	2090.4	2064.4	2027.5	2003.1	1973.8
55°	1715.9	1716.7	1772.3	1748.4	1783.6	1742.4	1758.6	1712.9	1720.3	1681.0	1654.7
57.5°	1425.8	1448.5	1458.6	1468.4	1465.7	1464.0	1452.9	1447.4	1435.0	1431.2	1422.3
60°	1254.2	1266.0	1268.5	1273.0	1269.2	1267.7	1259.2	1256.1	1247.8	1246.2	1240.4
62.5°	1136.6	1142.6	1142.6	1142.6	1137.6	1132.9	1123.4	1118.4	1111.3	1109.7	1106.3
65°	1038.4	1044.6	1045.7	1047.0	1043.3	1039.7	1031.2	1025.8	1018.5	1015.7	1011.8
67.5°	936.9	943.6	945.9	949.3	947.3	946.5	940.8	938.6	933.8	932.7	929.1
70°	857.4	860.1	859.9	859.9	855.3	851.3	844.6	841.4	836.4	835.4	832.1
72.5°	810.0	812.0	810.8	809.0	803.2	797.2	789.4	783.7	777.1	773.0	768.3
75°	743.4	746.0	744.3	743.2	738.0	734.0	727.8	724.6	720.0	718.6	715.4
77.5°	661.5	662.7	660.1	659.8	655.8	653.3	648.6	647.8	644.4	644.5	641.4
80°	570.4	569.7	565.4	564.5	560.5	559.5	555.8	556.1	553.4	554.5	552.3
82.5°	469.4	466.8	461.2	459.5	454.8	454.5	452.0	454.0	452.4	454.8	453.4
85°	336.3	337.1	334.6	334.6	333.3	333.6	333.5	335.0	335.2	337.5	337.4
87.5°	187.5	190.2	189.7	192.1	192.0	194.8	195.8	199.9	200.4	204.2	204.2
90°	95.9	97.8	94.6	96.8	95.4	98.6	97.9	101.2	100.1	102.7	100.6
92.5°	78.6	73.3	68.2	62.8	60.2	57.3	55.1	52.0	49.6	46.8	44.1
95°	99.0	90.1	81.2	72.3	69.2	66.1	63.1	60.1	56.9	53.9	50.9
97.5°	111.7	101.2	90.7	80.2	77.5	74.9	72.2	69.6	66.9	64.3	61.7
100°	152.6	133.0	113.4	93.7	91.4	89.2	87.0	84.7	82.5	80.2	78.0
102.5°	318.4	276.6	234.9	193.2	185.3	177.4	169.5	161.6	153.6	145.8	137.9
105°	603.4	535.8	468.2	400.6	379.1	357.6	336.1	314.6	293.1	271.6	250.1
107.5°	917.8	849.2	780.5	711.9	672.4	632.6	593.0	553.1	513.6	473.7	434.1
110°	1094.1	1044.0	993.9	943.6	911.8	879.8	847.8	815.8	783.9	751.8	719.8



TEST NUMBER: P1444679
 CATALOG NUMBER: EHBR1-36-UNV-TA-L930-UPL36

CANDELA DISTRIBUTION (continued):

	330°	332.5°	335°	337.5°	340°	342.5°	345°	347.5°	350°	352.5°	355°
112.5°	1123.1	1087.3	1051.5	1015.4	1000.9	986.4	972.0	957.4	943.0	928.3	913.9
115°	1052.9	1028.7	1004.4	980.0	975.1	969.9	964.8	959.6	954.4	949.2	943.9
117.5°	940.6	927.0	913.3	899.6	900.5	901.3	902.1	902.8	903.6	904.2	904.9
120°	824.3	818.5	812.6	806.7	811.1	815.5	819.8	824.0	828.3	832.4	836.5
122.5°	728.7	726.3	724.1	721.6	726.9	732.2	737.3	742.5	747.5	752.4	757.4
125°	653.5	652.1	651.0	649.6	655.1	660.2	665.6	670.6	675.8	680.7	685.6
127.5°	602.8	602.4	602.1	601.6	605.5	609.2	612.8	616.4	620.0	623.3	626.6
130°	567.1	566.3	565.7	564.9	568.4	571.7	575.1	578.2	581.4	584.2	587.1
132.5°	543.7	542.7	542.0	540.9	543.5	545.8	548.2	550.3	552.5	554.4	556.2
135°	524.0	522.8	521.8	520.6	522.9	525.1	527.4	529.2	531.3	532.9	534.7
137.5°	507.4	506.3	505.1	503.9	506.1	508.0	509.9	511.7	513.3	515.0	516.4
140°	493.0	491.5	490.3	488.8	490.7	492.4	494.1	495.7	497.3	498.5	499.8
142.5°	479.2	477.0	475.5	473.5	474.8	476.0	477.2	478.4	479.5	480.4	481.2
145°	469.8	467.4	465.4	463.2	464.2	465.2	466.2	467.1	467.8	468.4	469.1
147.5°	461.0	458.8	456.6	454.6	455.5	456.1	456.7	457.2	458.0	458.3	458.8
150°	452.5	450.1	447.9	445.7	446.4	446.8	447.4	447.9	448.5	448.7	449.1
152.5°	443.1	440.9	438.8	436.6	437.1	437.5	437.9	438.2	438.6	438.9	439.2
155°	436.8	435.1	433.2	431.3	431.8	432.1	432.4	432.6	432.9	433.1	433.3
157.5°	434.5	432.9	431.7	430.1	430.2	430.2	430.3	430.2	430.2	430.1	430.1
160°	432.6	431.3	430.2	428.8	428.8	428.8	428.9	428.7	428.6	428.5	428.4
162.5°	431.8	430.3	428.8	427.3	427.3	427.5	427.4	427.2	427.2	427.0	426.9
165°	432.6	431.6	430.5	429.4	429.3	429.0	428.9	428.5	428.3	427.9	427.6
167.5°	434.2	433.2	432.0	430.9	431.0	431.0	431.0	431.0	431.0	430.8	430.7
170°	436.3	435.4	434.6	433.7	433.5	433.5	433.2	433.0	432.6	432.5	432.2
172.5°	438.2	437.4	436.5	435.5	435.5	435.3	435.1	435.1	434.8	434.5	434.4
175°	437.0	436.5	435.7	435.1	434.9	434.8	434.7	434.6	434.4	434.3	434.1
177.5°	439.0	438.5	438.0	437.5	437.4	437.4	437.3	437.2	437.2	437.1	437.0
180°	439.4	439.4	439.4	439.4	439.4	439.4	439.4	439.4	439.4	439.4	439.4



TEST NUMBER: P1444679
CATALOG NUMBER: EHBR1-36-UNV-TA-L930-UPL36

CANDELA DISTRIBUTION (continued):

	357.5°	360°
0°	27712.0	27712.0
2.5°	27819.3	27817.9
5°	27922.8	27921.1
7.5°	28001.4	28000.9
10°	28010.6	28015.5
12.5°	27954.8	27958.7
15°	27791.6	27799.2
17.5°	27479.5	27489.5
20°	26942.0	26952.4
22.5°	26071.5	26075.8
25°	24805.8	24787.9
27.5°	23080.4	23049.5
30°	20887.0	20857.1
32.5°	18271.8	18253.1
35°	15328.0	15316.3
37.5°	12228.7	12204.7
40°	9219.9	9149.9
42.5°	6581.0	6458.0
45°	4548.0	4402.3
47.5°	3175.0	3084.9
50°	2406.5	2377.5
52.5°	1961.0	1954.2
55°	1654.6	1651.5
57.5°	1424.3	1423.2
60°	1243.4	1243.1
62.5°	1108.6	1109.1
65°	1013.6	1013.8
67.5°	930.0	929.4
70°	833.3	832.6
72.5°	766.8	765.7
75°	715.4	714.7
77.5°	642.3	641.2
80°	553.8	552.3
82.5°	455.5	453.9
85°	339.7	339.9
87.5°	207.9	207.8
90°	103.2	100.6
92.5°	41.8	39.3
95°	47.9	44.8
97.5°	59.1	56.4
100°	75.7	73.5
102.5°	130.0	122.1
105°	228.7	207.2
107.5°	394.3	354.7
110°	687.8	655.8



TEST NUMBER: P1444679
CATALOG NUMBER: EHBR1-36-UNV-TA-L930-UPL36

CANDELA DISTRIBUTION (continued):

	357.5°	360°
112.5°	899.2	884.5
115°	938.5	933.2
117.5°	905.4	905.8
120°	840.4	844.4
122.5°	762.0	766.7
125°	690.2	695.0
127.5°	629.7	632.7
130°	589.6	592.3
132.5°	557.9	559.4
135°	536.0	537.4
137.5°	517.5	518.7
140°	500.6	501.7
142.5°	481.9	482.6
145°	469.6	470.1
147.5°	458.7	459.0
150°	449.2	449.5
152.5°	439.2	439.4
155°	433.3	433.4
157.5°	429.7	429.6
160°	428.1	427.9
162.5°	426.7	426.5
165°	427.0	426.7
167.5°	430.5	430.4
170°	431.8	431.7
172.5°	434.2	433.9
175°	434.0	433.9
177.5°	437.0	436.8
180°	439.4	439.4

LM-79-2019: Approved Method: Electrical and Photometric Measurements of Solid-
State Lighting Products

Report Prepared for

Cooper Lighting Solutions

Metalux

Report Number: SP1-2506-472-5

Test Date: 08/01/2025

Luminaire Tested: EHBR-60-L930-N

Data in this report applies to families of products including EHBR-60-L930-N

Test Information

Test Method: LM-79-2019
 Report Number: SP1-2506-472-5
 Test Lab: COOPER LIGHTING SOLUTIONS
 Photometer: SP1 - 76IN SPHERE
 Measurement Geometry: 4π
 Issue Date: 08/05/2025
 Manufacturer: COOPER LIGHTING SOLUTIONS
 Product Line: Metalux
 Catalog Number: **EHBR-60-L930-N**
 Description: Elevate Round Highbay at, 60000 lumens, 3000K 90CRI LEDs with N lens

Spectral Parameters

CCT (K): 2996
 CIE u': 0.2519
 CIE v': 0.5169
 Duv: -0.0033
 CIE x: 0.4325
 CIE y: 0.3945
 CIE z: 0.1730
 Peak Wavelength (nm): 630
 Dominant Wavelength (nm): 584
 Purity: 48.21818
 Rf: 91.3
 Rg: 102

CRI (Ra):	94.4		
R1:	96.8	R9:	61.4
R2:	98.1	R10:	94.4
R3:	97.8	R11:	95.7
R4:	95.6	R12:	88.5
R5:	96.9	R13:	97.3
R6:	95.7	R14:	97.8
R7:	90.9	R15:	92.3
R8:	83.0		



Test Conditions

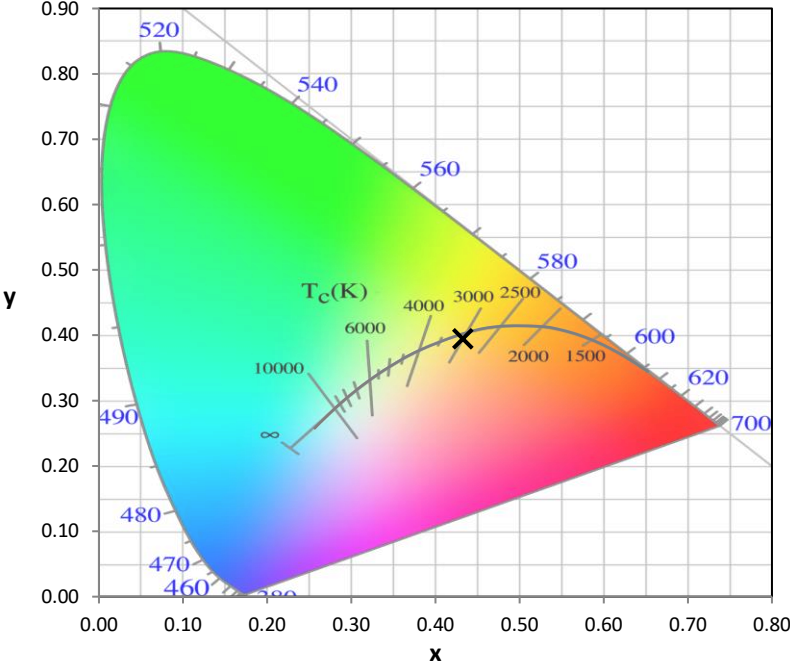
Stabilization Time: 40M
 Operation Time: 1H 40M
 Sphere Temperature (°C): 25.0

REPORT NUMBER: SP1-2506-472-5

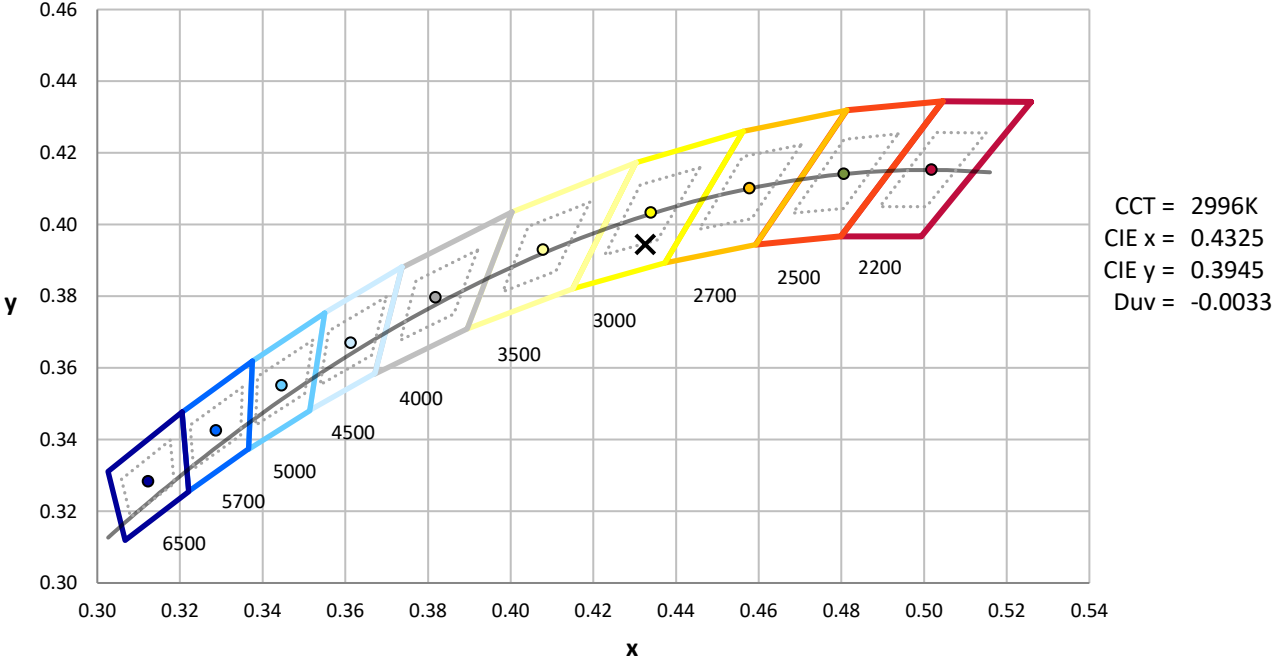
Measurement and Test Equipment			
Instrument	Identification Number	Calibration Date	Calibration Due Date
Photometer	76INCH SPHERE IN0058	6/16/2025	12/16/2025
Power Meter	XITRON INXT2011004	1/21/2025	1/21/2026
AC Power Source	CHROMA 61603 IN0063	10/22/2024	10/22/2025
DC Power Source	AGILENT E3634A IN0208	10/22/2024	10/22/2025
Sphere Thermometer	ONSET IN0085	10/22/2024	10/22/2025
Room Thermometer	ONSET IN0046	10/22/2024	10/22/2025

REPORT NUMBER: SP1-2506-472-5

CIE 1931 Chromaticity Diagram



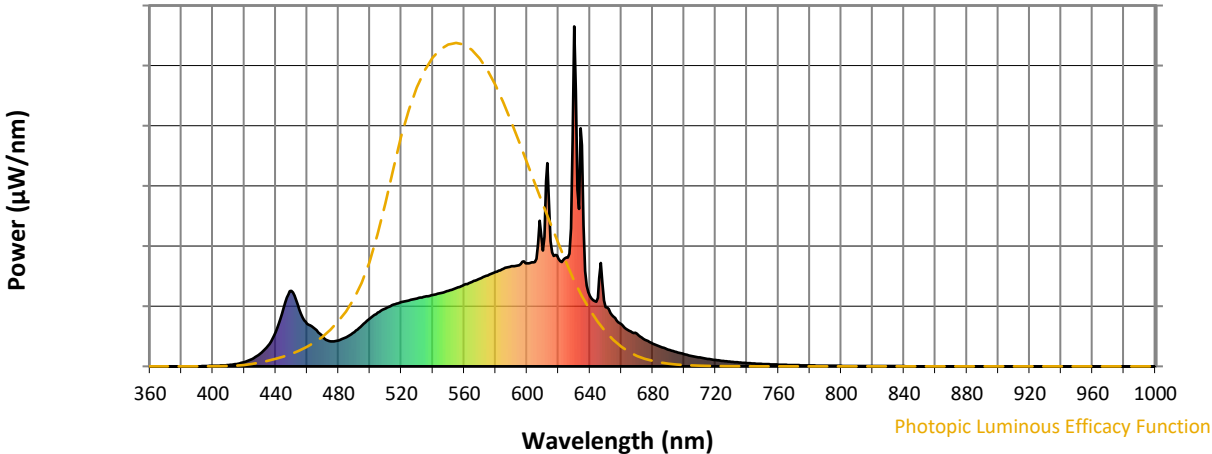
CIE 1931 Chromaticity Diagram with 2017 ANSI 7-Step and 4-Step Quadrangles



Point lies inside the ANSI 3000K 7-step quadrangle

REPORT NUMBER: SP1-2506-472-5

Photopic Flux vs. Wavelength

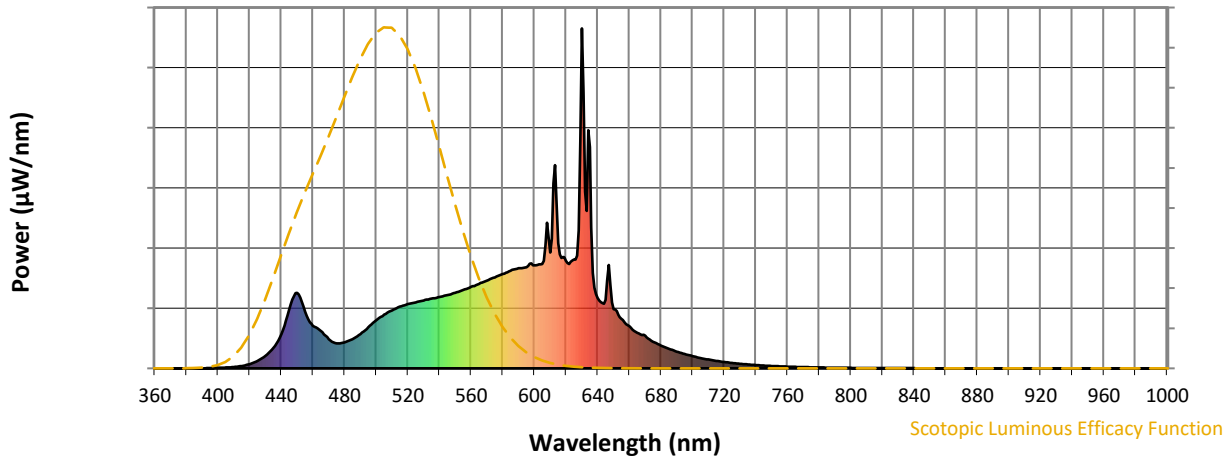


Photopic Lumens: NR

λ (nm)	Power W [^] /nm	Lumens (φ/nm)	λ (nm)	Power W [^] /nm	Lumens (φ/nm)	λ (nm)	Power W [^] /nm	Lumens (φ/nm)	λ (nm)	Power W [^] /nm	Lumens (φ/nm)	λ (nm)	Power W [^] /nm	Lumens (φ/nm)
360	0	NR	490	101	NR	620	317	NR	750	7	NR	880	0	NR
365	0	NR	495	121	NR	625	320	NR	755	6	NR	885	0	NR
370	0	NR	500	141	NR	630	1000	NR	760	5	NR	890	0	NR
375	0	NR	505	158	NR	635	651	NR	765	4	NR	895	0	NR
380	0	NR	510	171	NR	640	207	NR	770	4	NR	900	0	NR
385	0	NR	515	182	NR	645	201	NR	775	3	NR	905	0	NR
390	0	NR	520	189	NR	650	174	NR	780	3	NR	910	0	NR
395	1	NR	525	194	NR	655	146	NR	785	2	NR	915	0	NR
400	1	NR	530	199	NR	660	124	NR	790	2	NR	920	0	NR
405	3	NR	535	205	NR	665	105	NR	795	2	NR	925	0	NR
410	4	NR	540	210	NR	670	96	NR	800	1	NR	930	0	NR
415	7	NR	545	216	NR	675	79	NR	805	1	NR	935	0	NR
420	13	NR	550	222	NR	680	67	NR	810	1	NR	940	0	NR
425	22	NR	555	230	NR	685	58	NR	815	1	NR	945	0	NR
430	37	NR	560	240	NR	690	49	NR	820	1	NR	950	0	NR
435	60	NR	565	248	NR	695	42	NR	825	1	NR	955	0	NR
440	101	NR	570	258	NR	700	36	NR	830	1	NR	960	0	NR
445	172	NR	575	268	NR	705	30	NR	835	1	NR	965	0	NR
450	223	NR	580	278	NR	710	26	NR	840	1	NR	970	0	NR
455	167	NR	585	287	NR	715	22	NR	845	0	NR	975	0	NR
460	126	NR	590	295	NR	720	19	NR	850	0	NR	980	0	NR
465	111	NR	595	298	NR	725	16	NR	855	0	NR	985	0	NR
470	86	NR	600	303	NR	730	14	NR	860	0	NR	990	0	NR
475	74	NR	605	307	NR	735	12	NR	865	0	NR	995	0	NR
480	77	NR	610	341	NR	740	10	NR	870	0	NR	1000	0	NR
485	86	NR	615	368	NR	745	8	NR	875	0	NR			

REPORT NUMBER: SP1-2506-472-5

Scotopic Flux vs. Wavelength



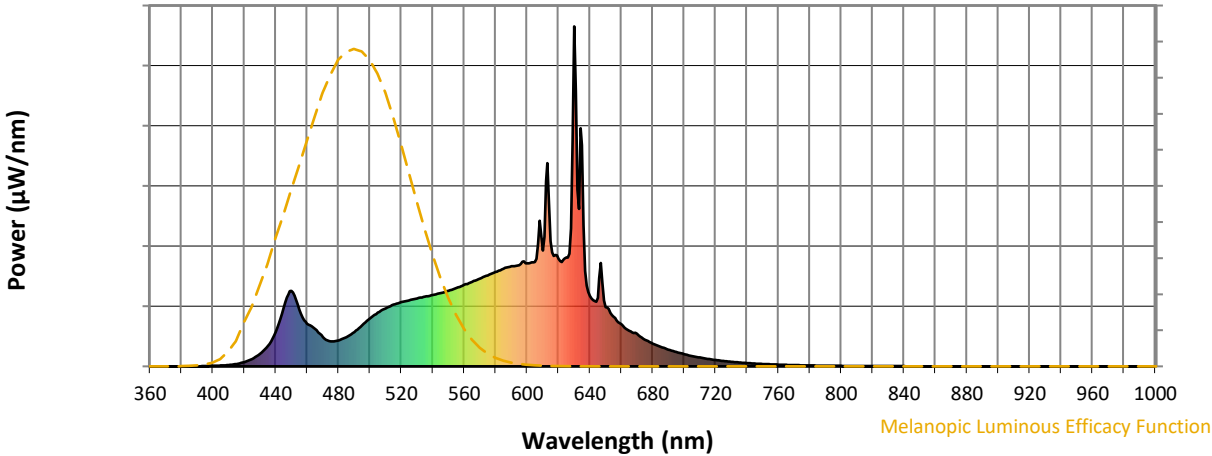
Scotopic Lumens: NR

S/P: 1.44

λ (nm)	Power W [^] /nm	Lumens (ϕ /nm)	λ (nm)	Power W [^] /nm	Lumens (ϕ /nm)	λ (nm)	Power W [^] /nm	Lumens (ϕ /nm)	λ (nm)	Power W [^] /nm	Lumens (ϕ /nm)	λ (nm)	Power W [^] /nm	Lumens (ϕ /nm)
360	0	NR	490	101	NR	620	317	NR	750	7	NR	880	0	NR
365	0	NR	495	121	NR	625	320	NR	755	6	NR	885	0	NR
370	0	NR	500	141	NR	630	1000	NR	760	5	NR	890	0	NR
375	0	NR	505	158	NR	635	651	NR	765	4	NR	895	0	NR
380	0	NR	510	171	NR	640	207	NR	770	4	NR	900	0	NR
385	0	NR	515	182	NR	645	201	NR	775	3	NR	905	0	NR
390	0	NR	520	189	NR	650	174	NR	780	3	NR	910	0	NR
395	1	NR	525	194	NR	655	146	NR	785	2	NR	915	0	NR
400	1	NR	530	199	NR	660	124	NR	790	2	NR	920	0	NR
405	3	NR	535	205	NR	665	105	NR	795	2	NR	925	0	NR
410	4	NR	540	210	NR	670	96	NR	800	1	NR	930	0	NR
415	7	NR	545	216	NR	675	79	NR	805	1	NR	935	0	NR
420	13	NR	550	222	NR	680	67	NR	810	1	NR	940	0	NR
425	22	NR	555	230	NR	685	58	NR	815	1	NR	945	0	NR
430	37	NR	560	240	NR	690	49	NR	820	1	NR	950	0	NR
435	60	NR	565	248	NR	695	42	NR	825	1	NR	955	0	NR
440	101	NR	570	258	NR	700	36	NR	830	1	NR	960	0	NR
445	172	NR	575	268	NR	705	30	NR	835	1	NR	965	0	NR
450	223	NR	580	278	NR	710	26	NR	840	1	NR	970	0	NR
455	167	NR	585	287	NR	715	22	NR	845	0	NR	975	0	NR
460	126	NR	590	295	NR	720	19	NR	850	0	NR	980	0	NR
465	111	NR	595	298	NR	725	16	NR	855	0	NR	985	0	NR
470	86	NR	600	303	NR	730	14	NR	860	0	NR	990	0	NR
475	74	NR	605	307	NR	735	12	NR	865	0	NR	995	0	NR
480	77	NR	610	341	NR	740	10	NR	870	0	NR	1000	0	NR
485	86	NR	615	368	NR	745	8	NR	875	0	NR			

REPORT NUMBER: SP1-2506-472-5

Melanopic Flux vs. Wavelength



Melanopic Lumens: NR

M/P: 2.85

λ (nm)	Power W [^] /nm	Lumens (φ/nm)	λ (nm)	Power W [^] /nm	Lumens (φ/nm)	λ (nm)	Power W [^] /nm	Lumens (φ/nm)	λ (nm)	Power W [^] /nm	Lumens (φ/nm)	λ (nm)	Power W [^] /nm	Lumens (φ/nm)
360	0	NR	490	101	NR	620	317	NR	750	7	NR	880	0	NR
365	0	NR	495	121	NR	625	320	NR	755	6	NR	885	0	NR
370	0	NR	500	141	NR	630	1000	NR	760	5	NR	890	0	NR
375	0	NR	505	158	NR	635	651	NR	765	4	NR	895	0	NR
380	0	NR	510	171	NR	640	207	NR	770	4	NR	900	0	NR
385	0	NR	515	182	NR	645	201	NR	775	3	NR	905	0	NR
390	0	NR	520	189	NR	650	174	NR	780	3	NR	910	0	NR
395	1	NR	525	194	NR	655	146	NR	785	2	NR	915	0	NR
400	1	NR	530	199	NR	660	124	NR	790	2	NR	920	0	NR
405	3	NR	535	205	NR	665	105	NR	795	2	NR	925	0	NR
410	4	NR	540	210	NR	670	96	NR	800	1	NR	930	0	NR
415	7	NR	545	216	NR	675	79	NR	805	1	NR	935	0	NR
420	13	NR	550	222	NR	680	67	NR	810	1	NR	940	0	NR
425	22	NR	555	230	NR	685	58	NR	815	1	NR	945	0	NR
430	37	NR	560	240	NR	690	49	NR	820	1	NR	950	0	NR
435	60	NR	565	248	NR	695	42	NR	825	1	NR	955	0	NR
440	101	NR	570	258	NR	700	36	NR	830	1	NR	960	0	NR
445	172	NR	575	268	NR	705	30	NR	835	1	NR	965	0	NR
450	223	NR	580	278	NR	710	26	NR	840	1	NR	970	0	NR
455	167	NR	585	287	NR	715	22	NR	845	0	NR	975	0	NR
460	126	NR	590	295	NR	720	19	NR	850	0	NR	980	0	NR
465	111	NR	595	298	NR	725	16	NR	855	0	NR	985	0	NR
470	86	NR	600	303	NR	730	14	NR	860	0	NR	990	0	NR
475	74	NR	605	307	NR	735	12	NR	865	0	NR	995	0	NR
480	77	NR	610	341	NR	740	10	NR	870	0	NR	1000	0	NR
485	86	NR	615	368	NR	745	8	NR	875	0	NR			

Summary

$R_f = 91.3$
 $R_g = 102$
 $CIE R_a = 94.4$
 $R_9 = 61.4$

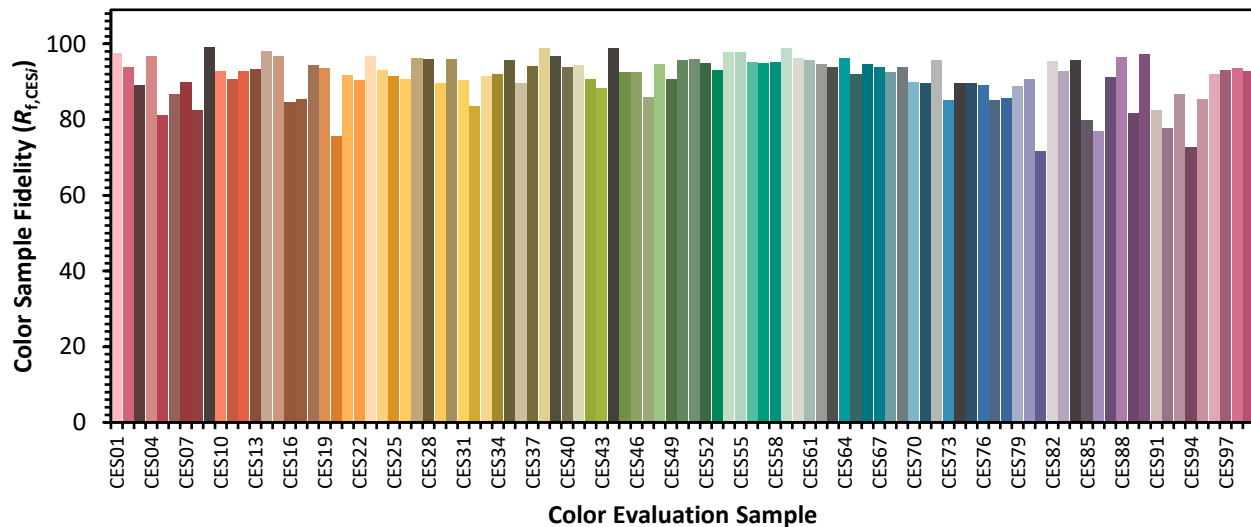


Color Vector Graphics

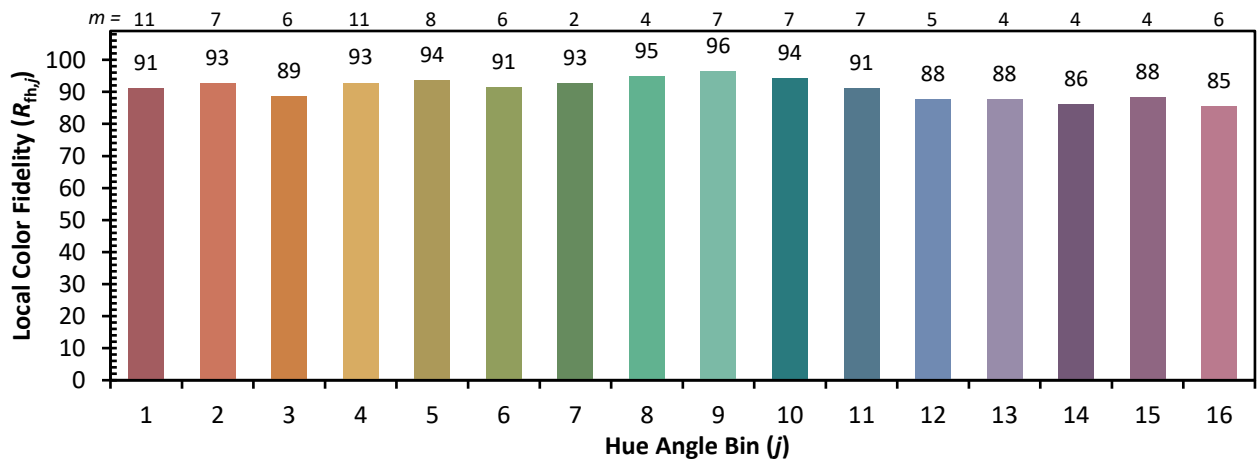
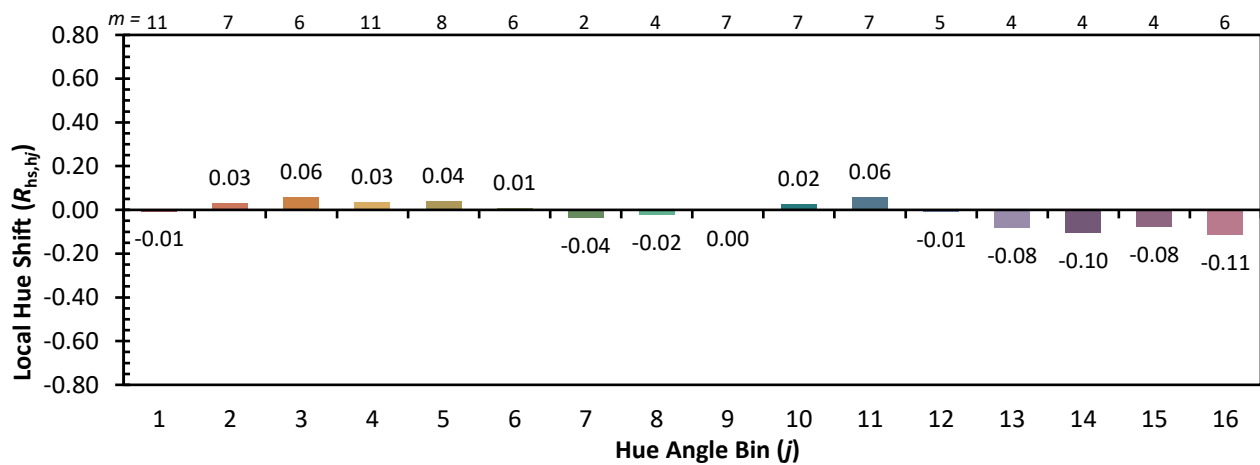
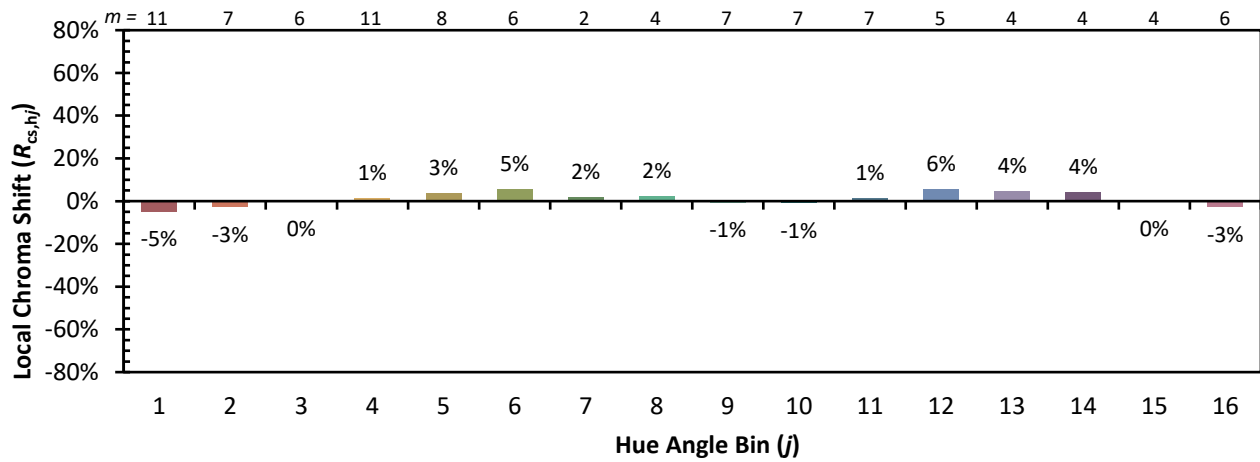


Individual Sample Fidelity Index ($R_{f,i}$)

CES01 = 86	CES26 = 91	CES51 = 96	CES76 = 89
CES02 = 63	CES27 = 96	CES52 = 95	CES77 = 85
CES03 = 32	CES28 = 96	CES53 = 93	CES78 = 86
CES04 = 70	CES29 = 90	CES54 = 98	CES79 = 89
CES05 = 51	CES30 = 96	CES55 = 98	CES80 = 91
CES06 = 51	CES31 = 90	CES56 = 95	CES81 = 72
CES07 = 44	CES32 = 84	CES57 = 95	CES82 = 95
CES08 = 42	CES33 = 91	CES58 = 95	CES83 = 93
CES09 = 29	CES34 = 92	CES59 = 99	CES84 = 96
CES10 = 76	CES35 = 96	CES60 = 96	CES85 = 80
CES11 = 59	CES36 = 90	CES61 = 96	CES86 = 77
CES12 = 65	CES37 = 94	CES62 = 95	CES87 = 91
CES13 = 44	CES38 = 99	CES63 = 94	CES88 = 96
CES14 = 74	CES39 = 97	CES64 = 96	CES89 = 82
CES15 = 72	CES40 = 94	CES65 = 92	CES90 = 97
CES16 = 48	CES41 = 94	CES66 = 95	CES91 = 82
CES17 = 50	CES42 = 91	CES67 = 94	CES92 = 78
CES18 = 57	CES43 = 88	CES68 = 93	CES93 = 87
CES19 = 72	CES44 = 99	CES69 = 94	CES94 = 73
CES20 = 67	CES45 = 93	CES70 = 90	CES95 = 85
CES21 = 86	CES46 = 93	CES71 = 90	CES96 = 92
CES22 = 79	CES47 = 86	CES72 = 96	CES97 = 93
CES23 = 92	CES48 = 95	CES73 = 85	CES98 = 94
CES24 = 91	CES49 = 91	CES74 = 90	CES99 = 93
CES25 = 72	CES50 = 96	CES75 = 90	



Color Rendition by Hue-Angle Bin



Measure Comparisons



(END OF REPORT)