

Cooper Lighting Solutions Photometric Lab  
1121 Highway 74 South  
Peachtree City, GA 30269



Scaled data based on original data using  
LM-79-2019 Approved Method: Electrical and Photometric Measurements of Solid-  
State Lighting Products

Test Report Prepared for  
Cooper Lighting Solutions

Brand: METALUX

Report Number: P1444695

Luminaire Tested: EHBR1-48-UNV-TA-L930-UPL36

Issue Date: 5/1/2026

**Test Information**

Test Method: LM-79-2019  
Report Number: P1444695  
REPORT IS A COMBINATION OF REPORTS P1444351 AND P1431635  
Test Lab: INNOVATION CENTER  
Issue Date: 5/1/2026  
Manufacturer: COOPER LIGHTING SOLUTIONS  
Product Line: METALUX  
Catalog Number: EHBR1-48-UNV-TA-L930-UPL36  
Description: Elevate Round Highbay at, 48000 lumens, 3000K 90CRI LEDs with TA lens  
Light Source: -  
Ballast/Driver: -

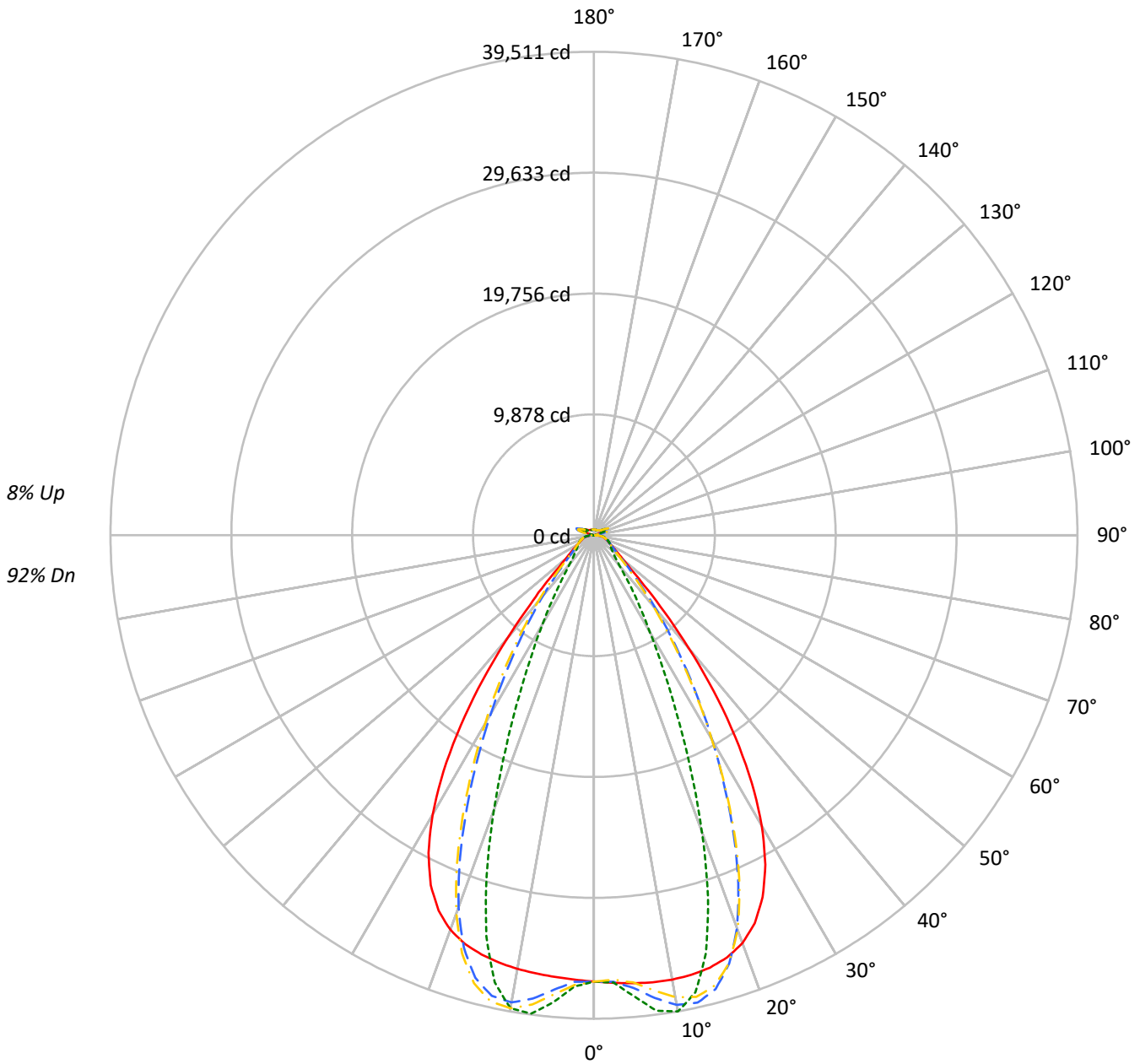
**Summary**

Lumens per Lamp: N/A  
Luminaire Lumens: 45506.9 lumens  
Efficiency: N/A  
Efficacy: 158.6 lumens/watt  
Spacing Criteria (0/90/45): 1.13 / 0.77 / 0.88  
Luminous Opening: Vertical Cylinder (Dia: 1.71' x H: 0.1')  
CIE Type: Direct

Input Watts (W): 287  
Input Voltage (V): NR  
Input Current (Ain): NR  
Voltage Rise (V): NR  
Power Factor: NR  
Total Harmonic Distortion (THDi): NR  
Frequency (hertz): 60  
Stabilization Time: NR  
Operation Time: NR  
Ambient Temperature (°C): NR  
Test Distance: 24 FT

TEST NUMBER: P1444695  
CATALOG NUMBER: EHBR1-48-UNV-TA-L930-UPL36

### Luminous Intensity Polar Plot



— 0°-180°    - - 45°-225°    - · - 90°-270°    - · - 135°-315°



TEST NUMBER: P1444695  
 CATALOG NUMBER: EHBR1-48-UNV-TA-L930-UPL36

**COEFFICIENT OF UTILIZATION - ZONAL CAVITY METHOD:**

RF	20				20				20				20				20				20
RC	80				70				50				30				10				0
RW	70	50	30	10	70	50	30	10	50	30	10	50	30	10	50	30	10	50	30	10	0
RCR																					
0	117	117	117	117	114	114	114	114	107	107	107	101	101	101	95	95	95	95	95	95	92
1	110	107	103	101	107	104	101	98	98	96	94	93	91	90	88	87	86	88	87	86	83
2	103	97	92	88	100	95	90	87	90	87	84	86	83	81	82	80	78	82	80	78	76
3	97	89	83	79	94	87	82	77	83	79	75	80	76	73	77	74	71	77	74	71	69
4	91	82	76	71	89	81	75	70	77	72	68	74	70	67	72	68	65	72	68	65	63
5	86	76	69	64	83	75	68	64	72	67	62	69	65	61	67	63	60	67	63	60	58
6	81	71	64	59	79	69	63	59	67	62	57	65	60	56	63	59	55	63	59	55	54
7	76	66	59	54	74	65	59	54	63	57	53	61	56	52	59	55	52	59	55	52	50
8	72	62	55	50	71	61	54	50	59	53	49	57	52	49	56	51	48	56	51	48	46
9	68	58	51	47	67	57	51	47	55	50	46	54	49	45	53	48	45	53	48	45	43
10	65	54	48	44	64	54	48	44	52	47	43	51	46	43	50	45	42	50	45	42	41

**AVERAGE LUMINANCE (cd/sqm):**

	0°	90°	180°	270°
0°	171276	171276	171276	171276
5°	172106	177124	169697	179444
10°	173543	185967	169380	184737
15°	174394	168577	169084	161790
20°	172591	125584	166942	116196
25°	163364	79425	157965	72064
30°	142711	47729	137183	43620
35°	109831	29949	103513	26530
40°	69478	18787	63567	17654
45°	35810	14636	35217	14395
50°	20996	13018	20352	12816
55°	16085	12317	15490	12206
60°	13610	12582	13030	12418
65°	12783	13140	12294	12691
70°	12489	13758	11866	13241
75°	13354	14590	12631	13946
80°	13818	16158	12529	14749
85°	13014	15589	10515	13349

**MAXIMUM LUMINANCE 45°-90°:**

Horizontal Angle: 25°  
 Vertical Angle: 45°  
 Luminance: 54802 cd/sqm



TEST NUMBER: P1444695  
 CATALOG NUMBER: EHBR1-48-UNV-TA-L930-UPL36

**ZONAL LUMENS:**

Zone	Lumens	% Fixture
0°-10°	3594.4	7.9
10°-20°	10111.4	22.2
20°-30°	11516.1	25.3
30°-40°	8277.3	18.2
40°-50°	3817.5	8.4
50°-60°	1826.8	4.0
60°-70°	1332.9	2.9
70°-80°	1012.7	2.2
80°-90°	466.4	1.0
90°-100°	101.3	0.2
100°-110°	582.7	1.3
110°-120°	1076.6	2.4
120°-130°	658.5	1.4
130°-140°	423.2	0.9
140°-150°	313.7	0.7
150°-160°	218.5	0.5
160°-170°	131.8	0.3
170°-180°	45.1	0.1
0°-30°	25222.0	55.4
0°-40°	33499.3	73.6
0°-60°	39143.5	86.0
0°-90°	41955.5	92.2
90°-120°	1760.6	3.9
90°-150°	3156.0	6.9
90°-180°	3551.0	7.8
0°-180°	45506.9	100.0

**CANDELA DISTRIBUTION:**

	0°	90°	180°	270°	360°	Flux
0°	36472	36472	36472	36472	36472	
5°	36747	37819	36233	38314	36747	3512
15°	36587	35367	35473	33943	36587	10309
25°	32624	15861	31545	14391	32624	14789
35°	20158	5497	18998	4869	20158	12371
45°	5794	2368	5698	2329	5794	4928
55°	2174	1664	2093	1650	2174	2006
65°	1334	1372	1283	1325	1334	1333
75°	941	1028	890	982	941	978
85°	447	536	361	459	447	420
90°	125	157	39	47	125	77
95°	46	52	46	52	46	44
105°	210	271	141	271	210	278
115°	939	1138	984	1139	939	867
125°	706	740	799	742	706	643
135°	555	492	598	496	555	433
145°	494	479	525	484	494	312
155°	461	462	491	467	461	214
165°	459	458	476	461	459	130
175°	470	474	478	475	470	45
180°	476	476	476	476	476	



TEST NUMBER: P1444695  
 CATALOG NUMBER: EHBR1-48-UNV-TA-L930-UPL36

**CANDELA DISTRIBUTION (FULL):**

	0°	2.5°	5°	7.5°	10°	12.5°	15°	17.5°	20°	22.5°	25°
0°	36472.1	36472.1	36472.1	36472.1	36472.1	36472.1	36472.1	36472.1	36472.1	36472.1	36472.1
2.5°	36611.5	36608.4	36607.9	36605.4	36604.7	36604.7	36603.5	36600.5	36598.6	36594.5	36589.7
5°	36747.3	36745.7	36746.7	36746.9	36744.3	36738.6	36729.7	36718.8	36705.0	36692.0	36680.4
7.5°	36852.4	36854.9	36858.1	36857.4	36849.5	36836.1	36817.9	36807.6	36813.7	36833.5	36879.0
10°	36871.5	36887.2	36893.3	36891.4	36875.4	36863.9	36868.4	36907.1	36984.0	37086.5	37226.9
12.5°	36796.7	36816.0	36815.3	36809.0	36793.5	36809.2	36865.2	36980.2	37145.1	37347.5	37584.8
15°	36586.9	36611.7	36604.7	36596.4	36586.2	36637.7	36749.4	36949.2	37203.9	37489.2	37781.4
17.5°	36179.3	36209.3	36194.7	36185.4	36176.8	36273.3	36465.3	36757.8	37078.6	37401.4	37678.3
20°	35472.4	35492.6	35457.8	35441.4	35455.2	35644.3	35927.3	36300.8	36638.9	36944.1	37133.3
22.5°	34318.7	34343.7	34278.4	34270.8	34351.5	34641.9	34999.9	35417.5	35735.1	35977.1	36050.0
25°	32623.6	32648.3	32570.7	32617.0	32754.1	33149.8	33576.1	34022.8	34293.8	34473.1	34423.6
27.5°	30335.8	30358.3	30284.7	30379.3	30596.0	31115.8	31617.6	32102.2	32343.7	32469.3	32310.2
30°	27450.3	27496.9	27410.0	27542.1	27872.9	28547.7	29122.6	29666.0	29906.9	30002.4	29754.8
32.5°	24023.2	24089.5	23993.7	24190.2	24651.8	25462.5	26115.5	26722.7	26989.1	27098.2	26818.6
35°	20157.9	20253.0	20143.1	20438.1	21007.3	21910.1	22633.2	23311.1	23626.6	23781.3	23499.4
37.5°	16062.8	16153.5	16094.0	16487.5	17112.5	18048.3	18786.5	19517.7	19874.0	20106.2	19883.9
40°	12042.3	12125.3	12170.3	12620.3	13208.1	14090.2	14799.1	15522.7	15921.3	16212.6	16075.5
42.5°	8499.5	8583.2	8736.2	9170.4	9660.6	10390.7	10998.0	11647.6	12028.3	12339.2	12286.3
45°	5793.9	5891.1	6082.7	6438.3	6792.8	7316.6	7762.5	8267.8	8578.8	8863.5	8866.8
47.5°	4060.1	4128.4	4299.7	4542.4	4773.6	5429.3	5456.2	5704.4	5913.5	6126.3	6153.9
50°	3129.1	3170.1	3260.9	3396.3	3527.2	3697.4	3853.3	4033.2	4161.9	4278.5	4306.3
52.5°	2571.9	2597.9	2644.2	2717.4	2793.5	2886.0	2969.5	3068.2	3138.2	3200.7	3213.8
55°	2173.7	2195.3	2264.1	2278.0	2364.9	2381.7	2418.7	2478.9	2519.6	2557.0	2566.3
57.5°	1873.2	1888.9	1903.5	1934.7	1961.5	2000.3	2031.7	2074.8	2100.5	2127.6	2129.9
60°	1636.1	1647.4	1657.9	1679.5	1697.7	1724.8	1746.4	1775.7	1794.1	1814.4	1816.7
62.5°	1459.7	1467.8	1474.7	1489.0	1502.0	1522.9	1540.0	1564.5	1581.6	1597.3	1600.8
65°	1334.3	1340.2	1344.6	1355.5	1366.8	1384.6	1400.1	1420.1	1432.7	1444.7	1447.3
67.5°	1223.2	1228.8	1233.4	1243.3	1251.2	1264.3	1274.8	1289.8	1299.3	1308.8	1309.1
70°	1095.8	1101.1	1104.6	1113.8	1120.2	1131.5	1139.9	1153.4	1163.1	1173.8	1176.5
72.5°	1007.7	1010.8	1015.5	1023.9	1032.7	1044.9	1056.1	1070.2	1081.9	1093.0	1097.7
75°	940.7	944.3	947.4	954.6	960.6	970.9	979.3	992.1	1002.4	1014.3	1020.1
77.5°	843.9	848.1	850.8	857.9	863.2	873.0	879.3	890.8	899.2	909.9	915.2
80°	726.9	730.8	732.8	739.6	743.7	752.7	758.8	769.9	777.0	787.8	794.1
82.5°	597.3	601.1	602.1	608.6	610.9	618.3	622.7	634.0	642.7	656.8	666.5
85°	447.3	448.6	450.8	449.1	458.2	458.8	469.0	471.0	484.4	488.0	503.4
87.5°	273.5	277.5	279.6	285.8	288.5	294.7	296.6	303.2	306.8	314.4	318.0
90°	124.9	131.8	134.5	142.6	145.1	152.2	154.4	162.5	165.1	173.3	177.4
92.5°	40.7	43.4	45.9	48.9	51.5	55.0	58.0	61.0	63.6	67.0	72.4
95°	46.3	49.4	52.4	55.4	58.5	61.6	64.6	67.6	70.7	73.7	82.4
97.5°	58.1	60.8	63.4	66.0	68.6	71.3	73.9	76.5	79.1	81.6	92.1
100°	75.4	77.6	79.8	82.1	84.3	86.5	88.8	91.0	93.2	95.4	115.0
102.5°	124.3	132.2	140.1	148.0	155.9	163.7	171.6	179.5	187.3	195.2	236.7
105°	209.9	231.2	252.8	274.1	295.6	317.1	338.5	359.8	381.2	402.6	470.3
107.5°	357.9	397.4	437.2	476.8	516.6	556.1	595.8	635.4	674.9	714.3	783.0
110°	659.8	691.5	723.5	755.3	787.1	819.2	851.1	882.7	914.7	946.4	996.6



TEST NUMBER: P1444695  
 CATALOG NUMBER: EHBR1-48-UNV-TA-L930-UPL36

**CANDELA DISTRIBUTION (continued):**

	0°	2.5°	5°	7.5°	10°	12.5°	15°	17.5°	20°	22.5°	25°
112.5°	889.4	903.7	918.1	932.6	946.9	961.2	975.5	989.9	1004.3	1018.5	1054.3
115°	938.9	943.9	949.1	953.9	959.0	963.9	968.9	973.8	978.8	983.6	1007.8
117.5°	912.8	911.8	910.8	910.0	908.9	907.9	906.8	905.8	904.6	903.4	917.1
120°	852.6	848.1	843.7	839.0	834.6	829.8	825.3	820.7	815.8	811.0	816.9
122.5°	776.4	771.0	765.8	760.2	754.8	749.2	743.7	737.8	732.3	726.7	728.8
125°	706.1	700.6	695.5	689.8	684.1	678.4	672.8	667.0	661.4	655.3	656.4
127.5°	645.5	641.7	637.8	633.7	629.6	625.4	621.2	616.8	612.7	608.2	608.4
130°	606.7	603.3	599.7	596.1	592.4	588.4	584.5	580.6	576.7	572.6	572.9
132.5°	575.5	573.2	570.6	567.9	565.1	562.0	559.1	555.8	552.9	549.9	550.3
135°	555.2	552.8	550.6	548.0	545.4	542.4	539.6	536.6	533.8	530.7	531.4
137.5°	538.1	535.9	533.9	531.4	529.0	526.1	523.6	520.8	518.1	515.2	515.8
140°	522.6	520.7	518.7	516.3	514.2	511.8	509.2	506.6	504.1	501.4	502.3
142.5°	504.8	503.2	501.7	499.8	498.1	495.8	493.9	491.6	489.5	487.3	488.6
145°	493.6	492.3	491.0	489.4	487.7	485.8	484.1	482.0	480.3	478.3	479.8
147.5°	483.7	482.6	481.7	480.3	479.1	477.3	475.9	474.1	472.7	471.0	472.5
150°	475.2	474.2	473.3	472.0	470.7	469.2	467.8	466.2	464.7	463.1	464.6
152.5°	465.9	464.8	464.0	462.8	461.6	459.9	458.9	457.2	455.9	454.4	455.7
155°	460.9	459.8	458.8	457.7	456.4	455.1	453.8	452.4	451.2	449.7	450.6
157.5°	458.2	457.2	456.5	455.3	454.6	453.4	452.4	451.3	450.3	449.2	449.8
160°	457.8	456.9	456.1	455.0	454.0	452.9	452.0	450.8	450.1	449.0	449.6
162.5°	457.6	456.6	455.6	454.7	453.9	452.6	451.8	450.9	449.9	448.9	449.6
165°	458.9	458.4	457.8	457.1	456.4	455.7	455.0	454.2	453.6	452.7	453.1
167.5°	463.9	463.1	462.4	461.6	460.7	459.9	459.0	458.2	457.5	456.5	457.0
170°	466.2	465.4	465.1	464.6	464.1	463.6	463.1	462.6	462.1	461.5	462.0
172.5°	469.1	468.6	468.3	468.0	467.5	467.2	466.8	466.4	466.2	465.6	466.2
175°	469.6	469.2	469.1	468.8	468.6	468.3	468.1	467.8	467.8	467.5	467.8
177.5°	472.9	472.7	472.7	472.7	472.7	472.5	472.4	472.1	471.9	471.9	472.3
180°	475.7	475.7	475.7	475.7	475.7	475.7	475.7	475.7	475.7	475.7	475.7



TEST NUMBER: P1444695  
 CATALOG NUMBER: EHBR1-48-UNV-TA-L930-UPL36

**CANDELA DISTRIBUTION (continued):**

	27.5°	30°	32.5°	35°	37.5°	40°	42.5°	45°	47.5°	50°	52.5°
0°	36472.1	36472.1	36472.1	36472.1	36472.1	36472.1	36472.1	36472.1	36472.1	36472.1	36472.1
2.5°	36586.2	36581.7	36575.7	36567.9	36561.3	36553.6	36535.4	36529.9	36536.0	36540.1	36548.5
5°	36673.1	36675.6	36676.6	36693.2	36707.5	36743.4	37024.0	37135.5	37221.7	37276.5	37359.6
7.5°	36935.2	37019.5	37102.9	37215.1	37311.9	37442.6	37933.6	38142.5	38291.1	38397.9	38529.2
10°	37379.4	37563.5	37736.1	37938.3	38112.2	38311.2	38768.2	38971.8	39100.3	39193.9	39281.2
12.5°	37826.8	38082.1	38312.8	38537.9	38726.1	38898.7	39059.3	39130.6	39136.7	39139.6	39093.3
15°	38059.8	38303.9	38507.2	38656.0	38766.6	38815.5	38538.8	38393.7	38210.3	38059.1	37810.5
17.5°	37912.7	38059.1	38147.0	38138.4	38092.6	37939.6	37156.0	36724.8	36296.9	35911.3	35405.6
20°	37258.9	37247.7	37171.3	36954.9	36694.2	36288.7	34945.0	34169.8	33420.4	32762.1	31963.5
22.5°	36042.5	35851.2	35584.3	35117.7	34599.3	33890.9	31965.4	30825.1	29781.7	28860.0	27827.4
25°	34280.1	33886.3	33394.1	32653.4	31847.8	30814.5	28441.4	27023.0	25770.3	24683.8	23492.4
27.5°	32024.4	31431.4	30710.1	29684.8	28593.5	27269.8	24638.7	23073.4	21728.6	20563.7	19295.7
30°	29354.0	28582.7	27651.3	26378.8	25062.4	23561.1	20892.6	19307.2	17945.9	16747.5	15478.6
32.5°	26336.3	25432.8	24341.4	22913.2	21489.6	19945.9	17368.8	15834.2	14533.9	13381.0	12232.5
35°	23007.8	22038.9	20884.3	19427.5	18012.5	16511.7	14147.0	12763.3	11615.0	10596.0	9668.6
37.5°	19437.4	18486.1	17388.7	16015.7	14703.5	13343.6	11303.2	10143.7	9180.1	8334.3	7618.2
40°	15725.2	14892.7	13943.2	12756.3	11636.4	10503.8	8828.9	7908.5	7148.1	6503.0	5966.4
42.5°	12058.5	11413.4	10685.2	9747.3	8890.3	8027.9	6738.8	6056.8	5493.6	5029.2	4649.9
45°	8748.8	8317.3	7828.9	7176.9	6583.8	5982.3	5064.8	4585.6	4218.8	3919.4	3666.2
47.5°	6115.9	5865.6	5850.3	5247.7	4812.9	4445.1	3854.0	3551.3	3326.5	3145.1	2984.8
50°	4295.0	4173.9	4023.5	3808.4	3606.6	3398.7	3038.6	2855.6	2723.9	2614.1	2512.7
52.5°	3210.9	3147.9	3067.8	2953.8	2844.3	2727.4	2499.6	2383.1	2341.6	2239.3	2159.1
55°	2564.6	2528.5	2482.9	2415.9	2349.4	2322.8	2127.4	2040.9	1986.2	1945.8	1902.7
57.5°	2130.3	2103.4	2076.4	2030.9	1992.4	1945.8	1842.1	1797.8	1765.2	1741.4	1711.5
60°	1817.1	1801.0	1785.8	1759.2	1738.4	1713.3	1647.4	1622.4	1605.4	1591.1	1572.1
62.5°	1603.8	1595.6	1587.7	1573.5	1563.0	1549.3	1504.3	1492.3	1483.7	1476.6	1464.9
65°	1449.8	1443.9	1439.5	1430.1	1424.8	1416.8	1378.2	1370.1	1364.8	1362.3	1355.5
67.5°	1310.0	1303.7	1300.9	1294.1	1292.0	1287.0	1255.3	1250.9	1249.1	1249.9	1247.5
70°	1179.1	1176.5	1177.9	1176.7	1179.8	1180.7	1161.5	1161.4	1163.4	1167.5	1167.8
72.5°	1100.6	1100.6	1102.2	1102.9	1105.7	1107.1	1091.1	1090.3	1091.2	1094.2	1094.3
75°	1026.1	1027.3	1031.3	1032.7	1036.0	1036.8	1015.6	1013.2	1013.4	1016.2	1015.3
77.5°	922.8	927.2	935.0	939.0	945.5	946.7	923.0	920.3	920.4	923.2	920.8
80°	805.6	814.1	826.4	834.9	845.0	849.0	824.7	818.9	813.4	812.6	807.8
82.5°	681.1	691.5	706.2	714.0	724.7	727.1	686.4	678.7	674.1	674.5	670.0
85°	520.0	527.8	541.2	545.6	552.1	551.6	505.1	485.2	490.6	482.3	488.8
87.5°	326.2	330.8	339.2	340.2	343.4	342.6	295.9	286.7	284.0	284.1	280.7
90°	186.7	191.5	200.5	202.3	208.8	209.9	173.7	171.0	166.2	166.6	160.4
92.5°	78.2	83.5	89.1	94.5	100.2	105.7	106.9	111.1	105.8	99.9	94.7
95°	91.3	100.3	109.2	118.1	127.0	135.9	144.8	153.7	145.4	137.1	128.7
97.5°	102.7	113.2	123.6	134.2	144.7	155.2	165.8	176.3	167.4	158.2	149.3
100°	134.7	154.3	173.8	193.4	213.0	232.6	252.3	271.9	254.7	237.2	219.9
102.5°	278.2	320.0	361.6	403.2	444.8	486.6	528.4	570.1	530.5	490.8	451.0
105°	537.7	605.3	672.7	740.0	807.5	875.0	942.9	1010.4	947.1	883.7	820.5
107.5°	851.4	919.9	988.2	1056.5	1125.1	1193.4	1262.6	1331.0	1269.2	1207.2	1145.5
110°	1046.5	1096.3	1146.3	1196.1	1245.9	1295.9	1346.6	1396.6	1359.4	1322.3	1285.1



TEST NUMBER: P1444695  
 CATALOG NUMBER: EHBR1-48-UNV-TA-L930-UPL36

**CANDELA DISTRIBUTION (continued):**

	27.5°	30°	32.5°	35°	37.5°	40°	42.5°	45°	47.5°	50°	52.5°
112.5°	1089.8	1125.6	1161.2	1196.7	1232.2	1267.9	1304.7	1340.6	1321.8	1303.0	1284.5
115°	1031.6	1055.8	1079.6	1103.6	1127.6	1151.4	1176.8	1201.3	1195.1	1189.0	1183.0
117.5°	930.3	943.5	957.0	970.4	983.6	996.7	1012.1	1025.7	1026.5	1027.4	1028.4
120°	822.3	828.0	833.5	839.0	844.4	849.8	857.6	863.6	868.5	873.1	878.0
122.5°	730.8	732.8	734.7	736.7	738.7	740.4	745.1	747.7	750.9	754.1	757.4
125°	657.3	658.2	659.0	660.0	660.5	661.5	665.4	666.8	666.8	666.8	666.8
127.5°	608.4	608.4	608.4	608.4	608.1	608.2	611.4	611.9	609.6	607.4	605.0
130°	573.3	573.5	573.8	574.1	574.4	574.7	578.4	579.6	575.7	571.5	567.7
132.5°	550.6	551.2	551.4	552.1	552.6	553.0	557.1	558.5	554.0	549.3	544.8
135°	531.9	532.6	533.3	533.8	534.5	535.3	540.0	541.5	537.4	532.7	528.4
137.5°	516.2	516.9	517.7	518.5	519.1	519.8	525.1	526.8	523.4	519.5	516.1
140°	503.0	503.9	504.8	505.9	506.7	507.9	513.5	515.5	512.9	509.9	507.1
142.5°	489.6	491.2	492.5	494.1	495.4	497.1	503.6	506.1	504.0	501.8	499.8
145°	481.1	483.0	484.5	486.4	488.0	490.0	497.2	500.3	498.9	497.4	496.0
147.5°	473.5	475.2	476.7	478.3	479.8	481.9	489.5	492.4	491.7	490.7	489.8
150°	465.9	467.6	469.0	470.8	472.7	474.6	483.1	486.4	485.7	485.0	484.1
152.5°	457.0	458.4	459.8	461.3	462.9	464.7	474.8	478.4	477.8	476.8	476.3
155°	451.7	452.7	453.8	455.0	456.2	457.7	468.5	471.9	471.5	471.1	470.5
157.5°	450.5	451.1	451.7	452.5	453.4	454.3	465.4	469.0	468.5	468.1	467.7
160°	449.8	450.5	450.8	451.5	452.0	452.7	464.1	467.4	467.1	466.6	466.2
162.5°	450.2	451.3	451.8	452.5	453.2	454.3	465.8	469.5	468.8	468.3	467.6
165°	453.6	453.9	454.2	454.8	455.2	455.7	466.5	469.5	469.3	468.7	468.3
167.5°	457.4	458.0	458.3	458.9	459.5	460.2	470.3	473.2	472.9	472.3	472.0
170°	462.2	462.8	463.0	463.7	464.2	464.8	473.2	475.6	475.3	474.6	474.1
172.5°	466.7	467.3	467.8	468.5	469.0	469.7	476.8	479.2	478.8	478.4	477.7
175°	468.3	468.6	469.1	469.7	470.2	470.6	476.2	477.9	477.7	477.5	477.2
177.5°	472.7	472.9	473.3	473.7	474.1	474.5	477.8	479.0	478.8	478.8	478.7
180°	475.7	475.7	475.7	475.7	475.7	475.7	475.7	475.7	475.7	475.7	475.7



TEST NUMBER: P1444695  
 CATALOG NUMBER: EHBR1-48-UNV-TA-L930-UPL36

**CANDELA DISTRIBUTION (continued):**

	55°	57.5°	60°	62.5°	65°	67.5°	70°	72.5°	75°	77.5°	80°
0°	36472.1	36472.1	36472.1	36472.1	36472.1	36472.1	36472.1	36472.1	36472.1	36472.1	36472.1
2.5°	36550.3	36563.2	36565.0	36580.1	36578.9	36596.7	36593.9	36608.4	36600.0	36612.0	36601.9
5°	37408.8	37486.7	37527.4	37603.3	37627.4	37695.4	37714.6	37776.6	37779.2	37828.4	37817.2
7.5°	38622.5	38737.3	38805.4	38899.3	38946.9	39025.2	39059.6	39117.5	39136.2	39182.1	39185.6
10°	39347.3	39403.0	39441.9	39468.1	39492.1	39503.3	39516.4	39512.8	39516.4	39511.2	39522.5
12.5°	39062.2	38980.8	38927.0	38825.2	38766.1	38653.4	38598.2	38489.9	38450.6	38357.6	38344.2
15°	37618.5	37334.9	37134.6	36843.2	36660.0	36373.3	36205.6	35947.0	35828.8	35623.2	35569.3
17.5°	34987.0	34460.6	34053.2	33530.6	33168.0	32679.6	32372.5	31968.2	31746.8	31420.8	31307.9
20°	31297.8	30518.9	29907.9	29179.9	28659.0	28009.9	27594.4	27070.3	26766.1	26365.7	26203.3
22.5°	26966.5	25996.8	25233.7	24373.7	23745.2	23021.9	22524.1	21957.0	21626.0	21191.0	20998.4
25°	22502.2	21433.0	20584.5	19678.4	19014.3	18289.3	17791.3	17234.3	16891.8	16478.9	16287.4
27.5°	18232.7	17150.2	16330.3	15487.9	14878.7	14224.5	13775.1	13288.8	12984.8	12632.3	12452.2
30°	14464.8	13510.1	12812.4	12113.3	11606.5	11075.2	10701.8	10298.7	10032.0	9730.2	9558.7
32.5°	11395.1	10658.0	10111.7	9556.9	9142.2	8698.1	8375.6	8019.9	7779.2	7509.6	7354.3
35°	9024.7	8452.0	8016.2	7559.6	7203.3	6825.1	6540.9	6233.9	6017.9	5785.8	5651.7
37.5°	7130.5	6675.1	6316.5	5937.2	5644.6	5331.2	5225.6	4873.4	4649.6	4464.4	4336.1
40°	5596.0	5233.9	4937.2	4647.1	4408.5	4170.8	3980.1	3791.9	3647.4	3514.9	3423.3
42.5°	4370.1	4107.7	3891.0	3678.5	3504.4	3331.3	3193.1	3063.5	2966.2	2879.5	2820.5
45°	3474.0	3293.6	3143.0	2993.3	2870.4	2754.9	2661.9	2579.1	2516.3	2464.3	2427.4
47.5°	2854.0	2730.5	2624.2	2523.3	2439.9	2364.1	2301.8	2281.5	2213.9	2168.4	2151.1
50°	2425.5	2350.9	2270.2	2195.7	2140.0	2084.6	2044.2	2004.5	1979.3	1958.4	1952.0
52.5°	2105.7	2048.6	2003.7	1956.6	1919.8	1880.4	1852.5	1826.1	1812.2	1801.3	1799.9
55°	1867.9	1828.0	1798.3	1766.7	1744.7	1721.5	1707.1	1693.2	1687.0	1681.5	1681.9
57.5°	1688.0	1661.4	1642.0	1621.5	1609.6	1598.5	1594.9	1591.4	1593.3	1594.1	1597.2
60°	1556.9	1539.6	1527.4	1515.6	1510.7	1507.2	1509.9	1513.0	1519.3	1524.5	1529.0
62.5°	1456.5	1446.6	1440.6	1434.3	1433.8	1434.0	1439.5	1444.7	1452.6	1458.6	1463.1
65°	1353.0	1347.4	1345.4	1341.4	1343.5	1344.6	1351.1	1355.2	1363.2	1367.9	1373.6
67.5°	1248.6	1247.2	1248.4	1248.4	1252.1	1255.2	1261.4	1266.0	1272.7	1277.1	1281.7
70°	1171.4	1171.9	1174.8	1175.3	1179.2	1181.4	1186.8	1189.8	1195.8	1199.5	1205.0
72.5°	1096.4	1095.1	1095.8	1094.1	1095.4	1094.9	1097.9	1099.3	1104.5	1107.3	1114.1
75°	1016.4	1013.1	1012.2	1008.7	1008.8	1006.2	1007.4	1007.3	1010.6	1012.0	1016.9
77.5°	919.9	914.3	911.5	905.5	905.4	903.1	905.5	907.0	913.0	915.7	921.3
80°	804.5	795.6	791.6	784.6	785.7	785.4	791.2	795.8	803.0	804.4	811.4
82.5°	668.7	659.6	655.3	648.4	650.0	650.2	655.6	656.5	662.8	665.6	673.7
85°	478.8	482.3	472.7	473.4	471.3	475.2	478.8	483.4	488.6	497.4	504.2
87.5°	282.0	280.7	284.1	284.5	289.4	291.9	299.8	304.2	313.1	319.9	332.4
90°	159.2	153.1	154.3	151.2	154.4	151.5	154.6	151.3	155.3	154.6	160.2
92.5°	88.6	83.3	77.3	71.8	65.9	60.8	57.6	55.4	52.3	50.3	47.1
95°	120.4	112.1	103.8	95.4	87.2	78.9	75.8	72.8	69.8	66.7	63.6
97.5°	140.4	131.4	122.5	113.4	104.5	95.6	93.6	91.6	89.6	87.5	85.5
100°	202.6	185.4	168.2	150.8	133.6	116.4	114.8	113.2	111.6	110.0	108.3
102.5°	411.5	371.9	332.4	292.7	253.3	213.6	206.7	199.9	192.9	186.1	179.2
105°	757.0	693.7	630.4	567.0	503.9	440.6	421.8	402.6	383.8	364.9	346.1
107.5°	1083.6	1021.9	960.2	898.4	836.8	775.0	745.2	715.4	685.4	655.6	625.8
110°	1247.6	1210.5	1173.5	1136.2	1099.3	1062.2	1033.6	1005.3	976.6	948.2	919.8



TEST NUMBER: P1444695  
 CATALOG NUMBER: EHBR1-48-UNV-TA-L930-UPL36

**CANDELA DISTRIBUTION (continued):**

	55°	57.5°	60°	62.5°	65°	67.5°	70°	72.5°	75°	77.5°	80°
112.5°	1265.8	1247.1	1228.3	1209.8	1191.4	1172.7	1158.7	1144.8	1130.9	1117.0	1103.0
115°	1176.7	1170.8	1164.7	1158.8	1153.0	1147.0	1145.9	1144.9	1143.8	1142.8	1141.9
117.5°	1029.2	1030.2	1031.0	1032.1	1033.1	1034.2	1041.5	1048.7	1056.1	1063.6	1071.2
120°	882.9	887.7	892.4	897.4	902.2	907.3	916.9	926.9	936.7	946.8	956.8
122.5°	760.6	763.9	767.0	770.5	773.8	777.3	786.7	796.5	806.2	816.1	826.2
125°	666.4	666.4	666.3	666.0	666.0	666.2	674.0	681.8	689.9	698.2	706.2
127.5°	602.5	600.0	597.5	595.2	592.7	590.5	594.8	599.6	604.0	608.8	613.6
130°	563.5	559.4	555.0	551.2	546.8	542.9	544.5	546.2	547.9	549.7	551.5
132.5°	539.9	535.3	530.5	525.7	521.0	516.2	515.8	515.5	515.2	515.2	515.2
135°	523.9	519.5	514.8	510.4	505.6	501.3	499.9	498.5	497.2	496.0	494.9
137.5°	512.6	508.8	505.2	501.7	497.7	494.2	492.2	490.6	488.7	487.4	485.7
140°	504.0	501.3	498.1	495.2	492.1	489.3	487.5	486.3	484.6	483.4	482.0
142.5°	497.3	495.2	493.0	490.8	488.5	486.3	484.7	483.4	481.8	480.7	479.3
145°	494.5	493.1	491.5	490.0	488.4	487.0	485.6	484.5	483.4	482.4	481.5
147.5°	488.8	487.8	486.8	485.7	484.6	483.6	482.6	482.1	481.0	480.5	479.7
150°	483.1	482.2	481.2	480.4	479.3	478.5	477.8	477.3	476.8	476.5	475.9
152.5°	475.2	474.4	473.6	472.9	471.9	471.0	470.4	470.2	469.7	469.4	468.8
155°	469.9	469.4	468.7	468.1	467.3	466.9	466.2	465.5	465.0	464.5	463.8
157.5°	467.1	466.6	465.9	465.5	464.7	464.2	463.7	463.1	462.4	462.0	461.3
160°	465.6	465.3	464.6	464.0	463.5	462.9	462.1	461.5	460.5	460.0	459.1
162.5°	466.9	466.2	465.5	464.7	463.9	463.3	462.7	462.1	461.5	461.0	460.4
165°	467.8	467.2	466.7	466.2	465.7	465.2	464.4	463.7	462.9	462.2	461.4
167.5°	471.5	471.1	470.6	470.2	469.5	469.0	468.4	467.6	466.9	466.2	465.2
170°	473.6	472.8	472.4	471.6	471.1	470.3	469.7	468.9	468.2	467.8	466.8
172.5°	477.2	476.9	476.3	475.8	475.1	474.6	474.2	473.6	472.9	472.4	471.9
175°	477.1	476.9	476.8	476.4	476.3	476.0	475.8	475.6	475.3	475.2	474.8
177.5°	478.7	478.5	478.5	478.3	478.2	478.2	477.8	477.7	477.3	476.9	476.8
180°	475.7	475.7	475.7	475.7	475.7	475.7	475.7	475.7	475.7	475.7	475.7



TEST NUMBER: P1444695  
 CATALOG NUMBER: EHBR1-48-UNV-TA-L930-UPL36

**CANDELA DISTRIBUTION (continued):**

	82.5°	85°	87.5°	90°	92.5°	95°	97.5°	100°	102.5°	105°	107.5°
0°	36472.1	36472.1	36472.1	36472.1	36472.1	36472.1	36472.1	36472.1	36472.1	36472.1	36472.1
2.5°	36612.4	36603.1	36607.6	36590.4	36594.5	36573.8	36571.8	36548.5	36546.2	36524.1	36515.9
5°	37852.0	37831.6	37854.6	37818.8	37825.8	37779.2	37775.3	37715.0	37694.2	37618.7	37586.2
7.5°	39214.4	39206.7	39220.7	39190.8	39189.8	39148.2	39131.0	39077.0	39043.4	38964.3	38913.6
10°	39512.8	39519.9	39508.4	39511.2	39495.0	39490.6	39473.9	39463.4	39436.2	39415.7	39385.4
12.5°	38273.5	38280.9	38233.6	38263.6	38239.9	38295.3	38290.8	38356.0	38366.0	38448.4	38479.7
15°	35409.2	35400.2	35309.5	35366.6	35336.0	35457.4	35484.5	35647.8	35735.1	35944.8	36073.6
17.5°	31082.0	31058.7	30930.9	31000.5	30965.1	31144.1	31204.1	31465.2	31628.1	31966.0	32206.7
20°	25924.0	25879.2	25729.8	25811.2	25774.8	25978.0	26063.8	26379.3	26589.5	27036.8	27355.1
22.5°	20701.8	20631.1	20484.7	20560.8	20526.3	20737.0	20848.5	21165.2	21405.8	21865.1	22236.7
25°	16012.3	15949.3	15807.8	15861.1	15848.3	16026.4	16125.6	16425.2	16661.6	17099.1	17453.9
27.5°	12213.0	12147.5	12019.6	12057.3	12044.3	12196.1	12289.6	12539.8	12743.3	13111.6	13423.1
30°	9347.2	9268.2	9159.8	9180.6	9171.7	9294.7	9382.0	9592.8	9767.2	10078.4	10346.8
32.5°	7164.7	7085.2	6985.6	6995.4	6982.2	7078.7	7150.6	7333.9	7485.8	7750.5	7984.1
35°	5481.9	5574.8	5362.1	5496.8	5356.5	5562.5	5488.4	5602.9	5733.7	5956.6	6151.4
37.5°	4214.3	4149.6	4094.9	4089.0	4088.7	4136.5	4192.8	4303.1	4418.3	4584.5	4756.1
40°	3339.6	3294.2	3258.8	3256.2	3258.8	3292.8	3334.4	3410.6	3495.0	3614.3	3740.4
42.5°	2769.9	2739.7	2718.4	2716.9	2723.7	2747.7	2776.7	2822.0	2876.9	2954.1	3040.7
45°	2397.3	2380.6	2368.7	2368.0	2371.1	2383.7	2400.4	2428.6	2463.4	2511.6	2566.3
47.5°	2136.0	2131.9	2124.5	2124.7	2121.4	2126.5	2128.4	2144.2	2162.7	2199.1	2270.6
50°	1945.6	1945.6	1940.5	1940.2	1935.4	1935.1	1931.0	1937.2	1945.9	1968.4	1991.3
52.5°	1795.2	1794.7	1789.1	1788.1	1782.9	1782.6	1779.1	1781.6	1782.7	1794.1	1807.8
55°	1677.6	1674.1	1666.8	1664.5	1662.4	1665.5	1664.1	1664.2	1662.7	1667.5	1671.5
57.5°	1593.3	1588.6	1581.8	1579.7	1579.2	1582.7	1582.8	1581.6	1575.3	1571.0	1564.8
60°	1526.4	1521.9	1514.4	1512.5	1513.6	1518.5	1518.2	1514.1	1504.7	1496.5	1486.9
62.5°	1460.9	1459.1	1455.2	1454.7	1453.7	1454.6	1451.2	1446.9	1437.5	1428.8	1418.3
65°	1372.9	1373.9	1371.0	1371.5	1368.1	1367.5	1362.4	1358.2	1348.7	1340.7	1330.1
67.5°	1281.5	1282.3	1279.9	1279.9	1278.2	1278.4	1275.3	1271.4	1263.5	1257.0	1248.7
70°	1206.2	1208.1	1206.8	1207.2	1205.0	1204.2	1199.4	1195.6	1187.4	1181.9	1174.5
72.5°	1116.1	1120.2	1120.0	1121.0	1117.8	1116.1	1110.3	1105.5	1098.2	1093.8	1087.8
75°	1018.8	1024.0	1025.5	1027.8	1023.2	1020.8	1014.5	1010.6	1004.6	1002.0	998.1
77.5°	923.8	929.5	935.1	940.2	932.8	926.2	918.2	912.2	903.4	900.1	894.0
80°	817.1	827.3	839.6	850.0	836.6	823.1	810.0	800.2	788.7	784.0	776.4
82.5°	677.9	688.4	695.4	702.0	692.8	682.9	670.1	661.7	649.2	644.7	635.8
85°	515.0	528.1	532.3	535.8	529.9	524.6	512.7	496.6	488.8	476.5	470.2
87.5°	338.7	346.6	348.1	349.2	345.7	343.1	335.3	327.8	314.4	304.7	292.7
90°	158.2	161.7	157.0	157.3	154.2	156.3	150.2	149.3	139.8	137.4	129.2
92.5°	44.7	41.7	39.2	36.4	39.7	41.8	45.0	47.1	50.2	52.3	55.4
95°	60.6	57.6	54.5	51.5	53.9	56.4	58.8	61.2	63.7	66.1	68.5
97.5°	83.5	81.5	79.5	77.4	78.9	80.3	81.7	83.1	84.5	85.9	87.5
100°	106.7	105.1	103.5	101.9	101.9	101.9	101.9	101.9	101.9	101.9	101.9
102.5°	172.3	165.4	158.5	151.7	156.3	160.9	165.7	170.3	174.9	179.6	184.5
105°	327.2	308.4	289.5	270.7	289.0	307.2	325.4	343.6	361.9	380.3	398.6
107.5°	595.8	566.1	536.3	506.5	539.9	573.1	606.3	639.6	672.7	706.0	739.5
110°	891.5	863.1	834.7	806.4	841.6	876.9	912.1	947.4	982.7	1017.9	1053.4



TEST NUMBER: P1444695  
 CATALOG NUMBER: EHBR1-48-UNV-TA-L930-UPL36

**CANDELA DISTRIBUTION (continued):**

	82.5°	85°	87.5°	90°	92.5°	95°	97.5°	100°	102.5°	105°	107.5°
112.5°	1089.2	1075.4	1061.7	1047.9	1070.6	1093.2	1116.0	1138.9	1161.6	1184.4	1207.1
115°	1140.9	1140.1	1139.3	1138.5	1149.2	1160.0	1170.7	1181.7	1192.4	1203.2	1214.2
117.5°	1078.6	1086.1	1093.9	1101.5	1105.0	1108.4	1112.1	1115.5	1119.2	1122.7	1126.5
120°	967.0	977.0	987.3	997.6	996.2	994.8	993.4	992.0	991.1	989.8	989.0
122.5°	836.2	846.3	856.7	866.9	863.9	860.8	857.9	855.0	852.3	849.5	846.9
125°	714.8	723.2	731.6	740.3	737.2	734.2	731.3	728.7	725.9	723.2	720.8
127.5°	618.8	624.0	629.1	634.4	633.0	631.6	630.6	629.2	628.3	627.5	626.6
130°	553.6	555.8	558.3	560.5	560.9	561.3	562.1	562.8	563.7	564.5	565.7
132.5°	515.6	515.7	516.2	516.7	518.3	519.9	521.9	523.8	526.1	528.1	530.9
135°	494.2	493.4	492.8	492.4	494.8	497.0	499.8	502.5	505.5	508.7	512.0
137.5°	484.5	483.4	482.4	481.2	483.6	486.0	488.8	491.5	494.5	497.5	501.0
140°	481.0	479.9	479.3	478.3	480.7	483.0	485.7	488.3	491.5	494.5	497.7
142.5°	478.4	477.1	476.5	475.8	477.7	480.0	482.6	485.0	487.7	490.4	493.4
145°	480.6	479.8	479.3	478.6	480.1	481.7	483.5	485.4	487.5	489.3	491.8
147.5°	479.2	478.6	478.4	477.9	479.2	480.2	481.6	482.8	484.4	485.9	487.7
150°	475.8	475.4	475.2	475.1	475.8	476.4	477.4	478.0	479.2	480.1	481.5
152.5°	468.7	468.2	468.4	468.1	468.7	469.3	470.1	470.8	471.7	472.5	473.7
155°	463.6	463.1	462.7	462.3	462.5	462.6	463.0	463.1	463.7	463.9	464.5
157.5°	461.1	460.5	460.3	459.7	459.6	459.5	459.6	459.5	459.7	459.5	459.6
160°	458.7	457.8	457.2	456.5	456.7	456.5	456.9	456.7	457.0	457.1	457.4
162.5°	459.9	459.4	459.0	458.5	458.2	457.6	457.3	456.8	456.5	456.3	456.2
165°	460.6	459.8	459.3	458.4	458.3	458.1	458.0	457.8	457.7	457.4	457.5
167.5°	464.7	463.9	463.2	462.5	462.1	461.3	460.9	460.4	459.9	459.5	459.2
170°	466.3	465.6	465.1	464.6	464.3	463.8	463.7	463.3	463.2	463.0	463.0
172.5°	471.3	470.8	470.3	469.8	469.5	469.3	469.1	469.0	468.7	468.7	468.6
175°	474.6	474.4	474.3	474.0	473.6	473.5	473.1	472.9	472.7	472.4	472.1
177.5°	476.3	476.0	475.8	475.6	475.4	475.4	475.4	475.4	475.4	475.3	475.2
180°	475.7	475.7	475.7	475.7	475.7	475.7	475.7	475.7	475.7	475.7	475.7



TEST NUMBER: P1444695  
 CATALOG NUMBER: EHBR1-48-UNV-TA-L930-UPL36

**CANDELA DISTRIBUTION (continued):**

	110°	112.5°	115°	117.5°	120°	122.5°	125°	127.5°	130°	132.5°	135°
0°	36472.1	36472.1	36472.1	36472.1	36472.1	36472.1	36472.1	36472.1	36472.1	36472.1	36472.1
2.5°	36492.2	36482.6	36457.4	36444.9	36421.6	36409.8	36391.5	36379.8	36365.1	36354.1	36348.4
5°	37503.3	37456.6	37363.2	37305.6	37204.6	37138.0	37037.8	36964.3	36860.7	36784.4	36686.5
7.5°	38818.7	38747.2	38627.4	38536.5	38395.3	38287.3	38128.7	38001.9	37826.8	37681.3	37502.3
10°	39354.3	39312.5	39258.8	39200.3	39122.1	39045.4	38937.1	38826.8	38679.7	38533.4	38342.3
12.5°	38562.8	38602.1	38679.7	38715.9	38775.3	38795.4	38822.6	38809.8	38785.8	38726.1	38639.4
15°	36321.0	36485.2	36744.7	36924.3	37175.7	37352.5	37586.2	37736.6	37909.9	38013.4	38111.8
17.5°	32633.3	32950.9	33408.9	33774.3	34264.7	34663.5	35152.1	35536.0	35979.3	36319.4	36681.3
20°	27909.9	28354.7	28986.9	29523.8	30234.6	30837.2	31609.3	32256.1	33010.6	33639.6	34318.4
22.5°	22826.3	23349.5	24073.9	24721.5	25570.3	26328.3	27295.7	28150.9	29170.9	30084.7	31095.4
25°	18030.4	18543.3	19281.2	19951.7	20867.9	21703.0	22759.9	23741.0	24924.6	26028.5	27295.7
27.5°	13917.8	14373.3	15021.9	15625.5	16464.7	17284.4	18357.0	19403.2	20666.2	21852.5	23218.1
30°	10748.5	11118.0	11637.7	12123.2	12796.9	13467.4	14422.7	15390.3	16647.1	17876.3	19276.4
32.5°	8329.7	8644.8	9078.7	9472.8	9991.9	10497.4	11201.0	11974.1	13076.6	14254.0	15607.8
35°	6448.1	6717.7	7087.0	7426.5	7853.3	8254.7	8779.7	9331.6	10172.9	11163.3	12374.8
37.5°	5140.8	5250.7	5514.3	5792.4	6147.0	6476.8	6887.4	7295.5	7897.5	8678.9	9668.6
40°	3909.5	4084.0	4298.5	4517.6	4786.1	5050.6	5501.2	5718.1	6114.4	6675.3	7443.5
42.5°	3154.5	3277.2	3428.2	3580.5	3767.6	3951.8	4179.7	4411.9	4708.1	5088.0	5634.4
45°	2639.7	2719.8	2817.1	2918.6	3041.5	3167.2	3319.8	3479.1	3679.9	3913.4	4245.3
47.5°	2295.8	2340.0	2403.6	2472.9	2557.1	2644.2	2743.4	2845.0	2969.7	3108.2	3297.2
50°	2027.4	2064.3	2113.7	2160.0	2218.1	2307.3	2346.7	2402.8	2477.8	2559.4	2665.0
52.5°	1833.2	1857.8	1888.8	1915.3	1952.1	1985.5	2029.3	2068.0	2119.8	2168.8	2237.0
55°	1681.9	1690.8	1708.4	1725.6	1751.0	1773.8	1803.8	1829.2	1862.2	1891.5	1934.6
57.5°	1565.1	1565.9	1574.0	1582.9	1599.3	1613.7	1634.3	1650.9	1673.9	1692.6	1718.4
60°	1481.2	1476.7	1478.3	1481.4	1490.7	1500.0	1513.2	1524.0	1538.5	1549.1	1563.5
62.5°	1411.3	1404.3	1402.7	1401.9	1406.5	1409.8	1417.0	1422.3	1430.5	1435.1	1442.8
65°	1323.1	1314.8	1311.6	1307.7	1309.1	1308.0	1310.8	1310.9	1315.1	1316.0	1320.5
67.5°	1243.1	1236.1	1231.9	1226.8	1224.5	1220.9	1219.3	1215.7	1215.2	1212.2	1211.5
70°	1170.1	1163.3	1159.7	1155.0	1152.6	1147.7	1144.8	1138.8	1135.3	1129.8	1126.7
72.5°	1085.6	1081.8	1080.7	1077.5	1076.6	1073.9	1072.7	1068.5	1066.1	1061.3	1058.7
75°	997.3	994.2	993.9	990.7	990.4	987.1	986.3	981.9	979.5	974.8	972.9
77.5°	892.1	887.5	886.1	882.4	883.3	881.7	883.0	879.6	878.2	873.5	872.0
80°	773.7	767.8	765.3	760.3	761.7	759.4	761.7	761.4	763.2	759.4	758.7
82.5°	633.4	626.9	625.7	622.2	624.5	624.8	629.8	627.1	628.2	624.6	626.1
85°	460.9	456.1	449.3	448.3	444.1	448.5	442.7	446.6	440.2	444.7	438.8
87.5°	285.8	275.7	270.5	263.3	260.6	253.7	250.9	245.9	247.4	245.1	246.4
90°	128.6	121.5	122.0	117.5	119.1	115.5	118.6	116.7	120.5	118.5	122.6
92.5°	57.6	60.2	65.1	70.2	74.9	79.7	84.5	89.6	94.3	99.4	104.0
95°	71.0	73.4	79.9	86.4	92.9	99.4	105.9	112.4	118.9	125.3	131.8
97.5°	88.9	90.4	96.9	103.3	109.8	116.3	122.7	129.5	136.0	142.4	148.9
100°	101.9	101.9	120.4	138.8	157.2	175.8	194.3	212.7	231.3	249.8	268.2
102.5°	189.1	193.7	240.3	287.0	333.6	380.2	426.9	473.7	520.2	567.1	613.8
105°	416.8	435.1	506.3	577.5	648.6	719.8	791.1	862.4	933.6	1004.8	1076.1
107.5°	772.6	805.9	870.3	934.6	998.8	1063.3	1127.7	1192.2	1256.4	1320.9	1385.5
110°	1088.7	1124.1	1167.1	1210.3	1253.6	1296.7	1339.8	1383.0	1426.4	1469.7	1513.2



TEST NUMBER: P1444695  
 CATALOG NUMBER: EHBR1-48-UNV-TA-L930-UPL36

**CANDELA DISTRIBUTION (continued):**

	110°	112.5°	115°	117.5°	120°	122.5°	125°	127.5°	130°	132.5°	135°
112.5°	1229.9	1252.9	1278.0	1303.3	1328.5	1353.7	1378.9	1404.3	1429.7	1455.1	1480.4
115°	1225.2	1236.2	1245.9	1256.0	1265.7	1275.8	1285.6	1295.9	1306.1	1316.1	1326.3
117.5°	1130.1	1134.1	1135.6	1137.3	1139.0	1140.9	1142.7	1144.7	1146.7	1148.7	1150.5
120°	987.8	986.8	985.2	983.9	982.5	981.2	980.0	978.7	977.8	976.6	975.4
122.5°	844.3	841.9	840.4	839.2	838.0	837.0	835.8	835.0	834.0	833.0	831.9
125°	718.3	716.0	717.7	719.4	721.2	723.1	724.8	727.0	728.9	730.8	732.9
127.5°	625.8	625.3	629.3	633.4	637.5	641.7	646.1	650.4	654.5	659.1	663.2
130°	566.9	568.3	573.4	578.7	583.9	589.2	594.7	600.2	605.4	610.7	616.0
132.5°	533.2	536.0	540.7	546.0	551.1	556.2	561.5	566.7	571.9	577.3	582.2
135°	515.3	518.8	523.4	528.1	532.8	537.7	542.3	547.3	551.9	556.7	561.3
137.5°	504.2	507.7	511.6	515.3	519.1	523.2	527.1	531.0	534.8	538.7	542.4
140°	501.0	504.5	506.7	509.2	511.5	513.9	516.1	518.6	520.8	523.4	525.5
142.5°	496.3	499.6	500.9	502.6	504.1	506.1	507.7	509.4	510.7	512.2	513.7
145°	494.0	496.5	496.7	497.3	497.7	498.2	498.5	499.1	499.2	499.7	499.8
147.5°	489.4	491.3	491.1	491.3	491.4	491.3	491.4	491.5	491.2	491.3	491.2
150°	482.6	483.9	483.4	483.2	482.6	482.4	481.7	481.6	481.0	480.8	480.2
152.5°	474.6	475.8	475.0	474.7	474.0	473.5	472.8	472.4	471.8	471.2	470.8
155°	464.7	465.3	464.8	464.6	464.2	463.9	463.5	463.6	463.2	463.0	462.9
157.5°	459.7	459.8	459.6	459.4	459.0	459.0	458.8	458.7	458.7	458.8	458.9
160°	457.3	457.7	457.3	457.1	456.9	456.7	456.4	456.5	456.5	456.8	456.9
162.5°	455.7	455.6	455.3	455.1	454.8	454.8	454.7	455.0	454.8	455.1	455.3
165°	457.6	457.8	457.1	457.0	456.5	456.3	456.0	455.9	455.9	455.9	455.9
167.5°	458.8	458.7	458.7	458.8	458.8	458.9	459.1	459.6	459.7	460.3	460.5
170°	462.9	463.0	462.8	462.7	462.4	462.4	462.3	462.3	462.3	462.4	462.3
172.5°	468.6	468.6	468.1	467.8	467.3	467.1	466.7	466.6	466.2	465.9	465.4
175°	471.9	471.7	471.5	471.2	471.1	470.7	470.4	470.0	469.8	469.5	469.4
177.5°	475.1	474.8	474.6	474.6	474.5	474.4	474.4	474.3	474.3	474.3	474.0
180°	475.7	475.7	475.7	475.7	475.7	475.7	475.7	475.7	475.7	475.7	475.7



TEST NUMBER: P1444695  
 CATALOG NUMBER: EHBR1-48-UNV-TA-L930-UPL36

**CANDELA DISTRIBUTION (continued):**

	137.5°	140°	142.5°	145°	147.5°	150°	152.5°	155°	157.5°	160°	162.5°
0°	36472.1	36472.1	36472.1	36472.1	36472.1	36472.1	36472.1	36472.1	36472.1	36472.1	36472.1
2.5°	36341.1	36340.7	36337.2	36338.8	36339.5	36342.1	36345.2	36348.4	36349.1	36351.6	36352.2
5°	36613.1	36523.2	36456.7	36383.5	36328.5	36279.1	36246.1	36219.9	36209.7	36212.3	36218.4
7.5°	37350.6	37165.0	37011.9	36837.7	36692.6	36538.8	36411.4	36290.3	36202.0	36136.2	36099.4
10°	38159.8	37933.8	37717.6	37465.6	37226.6	36971.6	36740.5	36507.9	36313.9	36145.5	36021.8
12.5°	38519.0	38359.2	38172.3	37934.5	37678.8	37384.4	37087.3	36768.7	36472.4	36197.3	35975.5
15°	38138.7	38139.0	38070.9	37956.8	37779.2	37544.0	37260.8	36928.7	36579.1	36222.4	35896.5
17.5°	36931.7	37159.4	37286.1	37366.3	37341.7	37255.0	37074.8	36819.7	36493.8	36113.9	35716.2
20°	34858.9	35396.0	35779.0	36123.4	36316.4	36444.7	36431.8	36328.0	36096.0	35772.8	35358.7
22.5°	31955.1	32856.7	33568.1	34231.5	34696.8	35075.2	35255.2	35331.5	35226.4	35001.3	34612.4
25°	28428.2	29654.1	30700.2	31715.5	32477.0	33131.5	33524.8	33802.0	33824.0	33706.4	33359.4
27.5°	24509.3	25956.3	27280.3	28629.5	29700.5	30641.4	31258.8	31710.6	31854.1	31835.2	31520.1
30°	20595.3	22114.3	23573.8	25147.1	26472.4	27674.4	28489.9	29101.0	29336.5	29381.7	29078.6
32.5°	16898.9	18396.9	19852.3	21497.1	22955.5	24333.2	25296.7	26022.5	26296.4	26360.9	26028.5
35°	13544.3	14926.3	16309.4	17903.5	19353.5	20780.1	21795.3	22555.3	22811.0	22854.2	22469.3
37.5°	10635.2	11812.7	13017.9	14448.2	15779.8	17119.6	18084.2	18798.3	18984.7	18973.2	18537.6
40°	8185.7	9101.1	10069.5	11247.1	12354.1	13486.7	14301.3	14891.6	14989.5	14917.0	14459.5
42.5°	6155.3	6816.3	7518.5	8397.5	9218.8	10066.5	10659.1	11097.4	11111.3	10996.7	10586.1
45°	4585.6	5230.6	5525.1	6056.5	6585.6	7149.3	7511.1	7781.9	7740.0	7639.1	7327.0
47.5°	3495.8	3743.7	4006.6	4336.1	4644.3	5283.9	5236.5	5671.3	5358.2	5571.7	5101.6
50°	2776.0	2914.6	3056.2	3231.1	3392.1	3559.3	3663.7	3741.8	3731.6	3698.1	3608.1
52.5°	2361.7	2404.6	2474.2	2573.8	2663.6	2754.1	2813.6	2862.0	2862.9	2849.4	2803.8
55°	1973.9	2028.2	2078.4	2143.4	2254.1	2271.2	2356.4	2339.2	2345.8	2322.2	2346.5
57.5°	1740.3	1771.9	1800.2	1838.9	1870.9	1908.2	1930.2	1951.4	1949.5	1944.8	1921.6
60°	1574.8	1592.3	1608.0	1630.5	1648.2	1669.2	1679.4	1690.1	1686.7	1678.8	1658.1
62.5°	1447.3	1458.2	1467.2	1481.7	1492.4	1505.5	1510.8	1515.4	1510.8	1503.4	1485.1
65°	1321.4	1328.4	1334.1	1345.1	1352.7	1363.9	1368.3	1372.6	1368.4	1362.6	1348.7
67.5°	1207.9	1208.6	1208.0	1212.5	1214.8	1221.6	1223.5	1226.7	1221.8	1216.8	1205.0
70°	1121.8	1120.0	1117.8	1119.6	1120.0	1123.3	1123.8	1123.3	1117.5	1108.8	1095.9
72.5°	1054.5	1053.5	1051.9	1053.4	1053.4	1056.4	1055.4	1054.0	1046.7	1038.4	1025.7
75°	968.0	967.2	964.0	964.1	961.5	962.4	958.9	956.9	948.9	941.8	930.5
77.5°	866.7	865.1	860.4	858.6	853.4	851.3	844.7	841.4	833.3	827.6	817.9
80°	753.7	751.9	745.9	742.5	734.4	729.2	719.5	714.0	704.6	699.1	689.7
82.5°	623.0	623.7	617.6	613.4	601.8	592.9	579.9	572.8	562.6	557.1	547.4
85°	443.1	436.7	440.1	439.9	432.6	424.8	414.3	406.9	398.3	393.1	386.2
87.5°	243.0	244.5	242.7	241.3	236.2	232.2	223.9	219.7	213.3	210.2	205.1
90°	113.7	111.0	102.5	99.9	91.6	86.9	77.4	73.6	64.9	62.8	57.4
92.5°	98.6	93.0	87.9	82.1	76.9	71.4	65.9	60.4	55.0	52.9	51.3
95°	123.9	116.2	108.3	100.4	92.5	84.7	76.8	69.0	61.0	59.4	57.8
97.5°	139.7	130.4	121.1	111.9	102.7	93.3	84.1	74.8	65.5	64.5	63.4
100°	246.8	225.5	204.1	182.6	161.3	139.8	118.5	97.0	75.7	74.5	73.3
102.5°	561.8	509.9	458.0	406.1	354.2	302.2	250.2	198.2	146.3	138.8	131.4
105°	997.5	918.8	840.4	761.7	683.1	604.4	525.9	447.1	368.5	343.3	318.0
107.5°	1311.7	1237.6	1164.0	1090.1	1016.2	942.4	868.5	794.5	720.5	676.0	631.6
110°	1454.5	1395.8	1337.4	1278.8	1220.1	1161.5	1102.9	1044.1	985.5	947.2	909.1



TEST NUMBER: P1444695  
 CATALOG NUMBER: EHBR1-48-UNV-TA-L930-UPL36

**CANDELA DISTRIBUTION (continued):**

	137.5°	140°	142.5°	145°	147.5°	150°	152.5°	155°	157.5°	160°	162.5°
112.5°	1437.7	1394.7	1352.1	1309.1	1266.2	1223.2	1180.4	1137.3	1094.2	1071.1	1047.9
115°	1300.7	1274.9	1249.2	1223.4	1197.7	1171.8	1146.1	1120.0	1094.1	1081.9	1069.7
117.5°	1137.7	1124.5	1111.6	1098.5	1085.5	1072.2	1059.1	1045.8	1032.7	1028.6	1024.3
120°	972.0	968.1	964.1	960.3	956.5	952.6	948.6	944.6	940.5	941.2	941.9
122.5°	833.8	835.5	837.4	838.9	840.9	842.4	844.3	845.6	847.2	850.7	854.1
125°	737.0	741.0	745.1	749.1	753.1	757.1	761.2	765.0	769.1	772.4	776.0
127.5°	668.0	672.4	677.1	681.4	686.1	690.5	695.0	699.2	703.7	706.9	710.3
130°	620.2	624.1	628.2	632.0	636.0	639.9	643.8	647.8	651.7	654.3	656.9
132.5°	585.7	589.4	593.1	596.4	600.2	603.6	607.3	610.8	614.5	616.4	618.5
135°	564.3	566.8	569.6	572.2	575.2	577.7	580.6	583.4	586.4	587.7	589.4
137.5°	544.8	546.9	549.4	551.5	553.9	556.2	558.7	561.0	563.7	564.4	565.6
140°	527.9	530.2	532.6	535.0	537.5	539.9	542.7	545.2	548.0	548.8	549.8
142.5°	515.6	517.4	519.3	521.0	523.3	525.1	527.2	529.5	531.7	532.6	533.6
145°	502.1	504.2	506.4	508.6	510.7	513.0	515.7	518.2	520.9	521.4	522.2
147.5°	493.0	494.7	496.7	498.7	500.6	502.6	505.0	507.1	509.6	510.2	510.8
150°	482.3	484.2	486.1	488.1	490.2	492.4	494.8	497.2	500.0	500.9	501.8
152.5°	472.8	474.8	476.9	479.3	481.7	484.1	486.6	489.1	491.8	492.6	493.6
155°	465.0	466.9	469.3	471.5	473.9	476.0	478.7	481.1	483.7	484.8	485.7
157.5°	460.9	462.6	464.6	466.8	468.7	470.9	473.3	475.3	477.7	478.5	479.3
160°	458.7	460.2	462.1	464.1	465.9	467.8	469.9	471.7	473.7	474.6	475.4
162.5°	457.1	458.8	460.7	462.3	464.4	466.2	468.2	470.0	472.0	472.7	473.5
165°	457.2	458.6	460.0	461.3	462.9	464.0	465.6	467.0	468.6	469.2	470.2
167.5°	461.8	462.7	463.6	464.6	465.9	467.0	468.1	469.2	470.5	471.2	472.0
170°	463.4	464.3	465.1	466.1	467.1	468.1	469.1	470.0	471.3	471.9	472.7
172.5°	466.2	466.5	467.4	467.8	468.6	469.1	469.9	470.6	471.3	472.1	472.7
175°	469.8	470.1	470.4	470.6	471.0	471.3	471.8	472.3	472.6	473.2	473.6
177.5°	474.2	474.4	474.6	474.8	475.2	475.4	475.8	476.0	476.3	476.9	477.7
180°	475.7	475.7	475.7	475.7	475.7	475.7	475.7	475.7	475.7	475.7	475.7



TEST NUMBER: P1444695  
 CATALOG NUMBER: EHBR1-48-UNV-TA-L930-UPL36

**CANDELA DISTRIBUTION (continued):**

	165°	167.5°	170°	172.5°	175°	177.5°	180°	182.5°	185°	187.5°	190°
0°	36472.1	36472.1	36472.1	36472.1	36472.1	36472.1	36472.1	36472.1	36472.1	36472.1	36472.1
2.5°	36351.0	36350.5	36349.4	36347.7	36346.1	36347.1	36348.7	36352.9	36360.2	36370.7	36384.5
5°	36223.4	36230.8	36235.0	36235.5	36231.8	36229.4	36233.0	36243.0	36263.1	36296.9	36342.6
7.5°	36089.5	36098.7	36112.8	36123.4	36125.4	36122.8	36123.4	36139.0	36176.2	36242.0	36334.3
10°	35946.7	35919.5	35933.9	35960.1	35980.9	35984.6	35987.2	36005.8	36060.1	36159.6	36307.9
12.5°	35814.8	35728.8	35712.1	35735.8	35767.5	35777.5	35774.8	35782.7	35846.4	35978.1	36184.7
15°	35641.2	35479.4	35424.1	35430.2	35469.3	35483.3	35473.0	35457.4	35519.4	35680.1	35947.7
17.5°	35360.3	35099.5	34997.8	34993.3	35039.1	35051.2	35026.0	34977.4	35038.5	35239.0	35571.2
20°	34933.3	34548.2	34356.8	34326.4	34376.1	34361.5	34311.4	34237.8	34318.1	34562.0	34957.0
22.5°	34165.7	33677.8	33350.7	33245.3	33304.6	33265.1	33191.9	33098.0	33204.7	33481.7	33921.6
25°	32911.3	32347.6	31899.8	31648.7	31696.0	31625.0	31545.4	31431.6	31558.8	31876.9	32361.0
27.5°	31067.6	30416.4	29861.6	29445.8	29461.1	29368.1	29276.4	29129.1	29287.9	29664.4	30210.5
30°	28615.9	27862.3	27186.7	26621.7	26571.2	26481.0	26387.1	26193.8	26392.5	26843.2	27481.3
32.5°	25537.0	24700.2	23919.7	23205.3	23070.5	22982.6	22898.9	22676.4	22936.6	23462.0	24195.1
35°	21936.3	21045.1	20198.7	19382.8	19159.5	19071.5	18998.4	18785.2	19109.9	19681.7	20473.5
37.5°	17984.1	17073.6	16233.3	15396.7	15081.2	14961.8	14908.7	14769.0	15143.7	15709.2	16504.3
40°	13926.7	13080.1	12326.9	11587.8	11228.2	11045.6	11017.7	10992.3	11354.5	11845.1	12566.8
42.5°	10131.1	9448.1	8867.3	8302.4	7976.5	7727.2	7727.0	7802.7	8128.7	8496.2	9052.7
45°	7008.0	6549.7	6179.6	5802.2	5903.0	5405.8	5697.9	5548.1	5709.2	5946.1	6308.0
47.5°	4817.3	4567.1	4363.8	4153.0	3999.3	3852.5	3865.3	3960.0	4111.7	4252.3	4440.6
50°	3511.0	3383.6	3280.0	3170.6	3094.0	3029.2	3033.1	3074.1	3153.7	3227.9	3326.4
52.5°	2751.1	2680.8	2624.6	2564.1	2523.9	2491.7	2493.5	2513.4	2556.5	2598.7	2655.2
55°	2267.6	2259.1	2186.0	2131.6	2110.9	2089.4	2093.3	2101.0	2130.4	2155.1	2192.6
57.5°	1900.2	1867.4	1845.5	1816.9	1803.7	1788.6	1792.0	1794.9	1814.5	1831.1	1858.0
60°	1640.9	1617.6	1602.0	1582.6	1573.9	1564.3	1566.4	1568.2	1580.8	1591.7	1610.9
62.5°	1468.5	1447.7	1434.1	1419.1	1413.1	1406.6	1408.1	1408.6	1416.5	1424.4	1439.0
65°	1336.3	1319.8	1308.5	1295.6	1289.2	1282.5	1283.2	1283.2	1289.8	1295.6	1306.6
67.5°	1196.5	1184.1	1176.7	1166.5	1162.2	1155.3	1155.2	1153.0	1157.3	1159.6	1167.0
70°	1084.3	1071.8	1062.4	1052.5	1047.2	1041.1	1041.2	1041.4	1046.4	1051.6	1061.3
72.5°	1015.0	1003.0	994.7	986.0	981.0	975.8	974.8	974.3	977.9	980.8	987.1
75°	923.2	913.6	908.8	900.7	896.6	890.8	889.8	887.1	888.9	889.4	894.2
77.5°	811.8	802.7	798.8	790.6	787.2	780.6	780.1	777.1	778.4	777.5	781.2
80°	684.9	676.6	674.5	667.7	666.1	660.1	659.1	655.4	656.5	653.7	655.1
82.5°	543.2	535.7	534.1	527.8	527.8	522.3	522.0	516.5	516.5	511.8	504.2
85°	382.7	377.1	374.8	369.7	368.2	363.8	361.4	356.2	354.3	350.9	349.9
87.5°	201.9	198.5	195.3	192.9	188.4	180.5	179.7	174.2	174.7	170.7	171.0
90°	56.0	50.9	49.7	45.0	43.5	40.0	38.7	39.2	40.4	41.0	42.2
92.5°	49.5	47.7	45.9	44.0	42.2	40.4	38.6	40.4	42.2	44.0	45.9
95°	56.1	54.5	52.9	51.3	49.6	48.0	46.4	48.0	49.6	51.5	53.1
97.5°	62.5	61.4	60.4	59.3	58.4	57.3	56.3	57.5	58.5	59.5	60.6
100°	72.1	70.8	69.7	68.4	67.2	66.0	64.8	66.3	67.5	68.7	70.0
102.5°	124.0	116.5	108.9	101.4	93.9	86.4	79.0	86.4	93.9	101.6	109.1
105°	292.7	267.5	242.1	216.8	191.5	166.2	140.9	166.3	191.6	216.9	242.4
107.5°	587.1	542.8	498.2	453.8	409.1	364.7	320.1	364.8	409.4	453.9	498.5
110°	870.6	832.2	794.0	755.6	717.1	678.8	640.3	678.9	717.4	755.9	794.4



TEST NUMBER: P1444695  
 CATALOG NUMBER: EHBR1-48-UNV-TA-L930-UPL36

**CANDELA DISTRIBUTION (continued):**

	165°	167.5°	170°	172.5°	175°	177.5°	180°	182.5°	185°	187.5°	190°
112.5°	1024.5	1001.3	977.9	954.8	931.2	908.1	884.5	908.3	931.8	955.4	978.8
115°	1057.6	1045.3	1033.3	1021.0	1008.5	996.2	983.6	996.7	1009.2	1021.8	1034.3
117.5°	1020.0	1016.0	1011.6	1007.4	1003.1	998.7	994.2	999.0	1003.7	1008.6	1013.0
120°	942.3	943.1	943.6	944.1	944.6	945.0	945.2	945.5	945.5	945.5	945.4
122.5°	857.5	860.8	864.0	867.3	870.6	873.7	876.6	874.2	871.6	869.0	866.2
125°	779.4	783.0	786.4	789.8	793.0	796.4	799.3	797.1	794.5	791.9	789.0
127.5°	713.5	716.7	719.8	723.1	725.8	728.7	731.4	729.5	727.3	725.0	722.5
130°	659.4	662.1	664.3	666.8	668.9	670.9	672.8	671.7	670.3	669.2	667.4
132.5°	620.4	622.6	624.6	626.5	627.9	629.7	630.7	630.5	629.7	629.1	627.8
135°	590.9	592.3	593.7	595.2	596.2	597.2	597.9	598.2	598.0	597.8	597.2
137.5°	566.4	567.5	568.1	568.9	569.3	569.8	569.9	570.8	571.1	571.8	571.8
140°	550.6	551.8	552.5	553.2	553.8	554.5	554.5	555.4	555.8	556.2	556.2
142.5°	534.5	535.5	536.3	537.2	537.5	538.1	538.2	539.1	539.4	539.9	539.9
145°	523.0	523.5	524.2	524.8	525.1	525.2	525.0	526.2	526.8	527.4	527.8
147.5°	511.4	512.2	512.5	512.9	513.2	513.5	513.4	514.3	515.0	515.5	516.1
150°	502.7	503.7	504.4	505.2	505.7	506.3	506.3	507.1	507.3	507.8	507.8
152.5°	494.3	495.1	495.8	496.5	497.0	497.4	497.6	498.2	498.8	499.3	499.5
155°	486.6	487.5	488.3	489.1	489.6	490.3	490.8	491.4	491.8	492.1	492.4
157.5°	480.1	481.1	481.7	482.6	483.1	484.0	484.5	485.1	485.6	486.1	486.4
160°	476.0	477.0	477.6	478.4	479.1	479.7	480.2	480.9	481.5	481.8	482.5
162.5°	474.2	475.0	475.4	476.2	476.8	477.6	478.1	478.7	479.3	479.9	480.2
165°	471.1	471.9	472.7	473.6	474.4	475.3	476.0	476.4	476.7	476.9	477.1
167.5°	472.7	473.6	474.3	475.1	475.7	476.7	477.4	477.7	477.8	478.1	478.3
170°	473.3	474.0	474.8	475.3	476.1	476.9	477.4	477.6	477.7	477.9	478.2
172.5°	473.5	474.4	475.1	476.0	476.7	477.5	478.2	478.3	478.2	478.0	477.8
175°	474.3	475.1	475.6	476.2	476.8	477.5	478.2	477.8	477.9	477.6	477.5
177.5°	478.5	479.3	480.0	480.6	481.4	482.0	482.7	482.1	481.7	481.1	480.5
180°	475.7	475.7	475.7	475.7	475.7	475.7	475.7	475.7	475.7	475.7	475.7



TEST NUMBER: P1444695  
 CATALOG NUMBER: EHBR1-48-UNV-TA-L930-UPL36

**CANDELA DISTRIBUTION (continued):**

	192.5°	195°	197.5°	200°	202.5°	205°	207.5°	210°	212.5°	215°	217.5°
0°	36472.1	36472.1	36472.1	36472.1	36472.1	36472.1	36472.1	36472.1	36472.1	36472.1	36472.1
2.5°	36403.9	36422.2	36450.1	36475.3	36513.4	36543.3	36588.3	36622.5	36673.3	36706.4	36761.6
5°	36407.2	36478.4	36572.1	36663.5	36773.4	36873.1	36997.1	37102.7	37227.3	37328.9	37456.4
7.5°	36458.7	36596.1	36760.7	36926.5	37114.2	37289.6	37487.4	37666.3	37861.9	38027.5	38208.3
10°	36496.7	36708.5	36951.2	37195.3	37452.2	37690.9	37932.0	38140.2	38334.8	38495.1	38636.6
12.5°	36445.2	36737.0	37048.3	37349.0	37634.7	37881.8	38089.2	38249.3	38359.9	38434.9	38452.5
15°	36270.2	36621.3	36959.8	37259.2	37496.3	37679.1	37773.8	37818.1	37770.6	37691.6	37518.0
17.5°	35943.2	36313.6	36616.2	36852.4	36977.6	37027.3	36948.9	36812.4	36545.9	36250.0	35822.7
20°	35343.7	35688.8	35908.3	36037.1	36003.6	35879.7	35583.6	35223.8	34691.6	34124.5	33376.0
22.5°	34292.2	34593.9	34710.9	34720.4	34515.9	34205.6	33671.6	33054.5	32215.0	31342.1	30268.7
25°	32713.8	32978.1	32996.6	32892.8	32518.5	32015.5	31231.6	30358.5	29217.7	28054.7	26709.6
27.5°	30573.3	30826.7	30764.7	30571.0	30051.4	29378.4	28374.6	27246.8	25840.3	24466.7	22978.7
30°	27882.4	28153.5	28080.6	27832.1	27214.1	26418.7	25237.6	23927.3	22365.7	20898.6	19390.8
32.5°	24662.3	25004.9	24954.7	24718.5	24073.6	23222.3	21940.8	20551.0	18953.4	17507.6	16040.9
35°	21002.2	21418.2	21439.7	21285.3	20686.6	19845.2	18579.8	17234.5	15704.3	14340.2	12985.2
37.5°	17058.8	17541.1	17640.2	17598.6	17102.4	16359.6	15206.6	13999.8	12644.2	11448.6	10289.8
40°	13093.6	13581.9	13751.3	13801.5	13435.3	12860.0	11913.7	10939.7	9834.5	8865.8	7945.7
42.5°	9477.5	9910.4	10074.1	10177.1	9948.5	9564.9	8874.6	8167.2	7357.6	6658.9	5989.0
45°	6582.4	6888.5	7013.0	7116.7	6992.2	6775.8	6339.8	5897.5	5363.0	4906.4	4474.1
47.5°	4602.1	4771.0	4853.1	4903.4	4855.2	4742.3	4505.1	4248.8	3947.1	3680.3	3423.8
50°	3411.2	3501.0	3544.1	3573.1	3537.9	3475.2	3346.9	3207.3	3041.6	2890.5	2742.7
52.5°	2703.3	2754.8	2780.4	2795.9	2775.8	2737.5	2662.7	2580.0	2480.7	2387.3	2338.2
55°	2277.3	2274.6	2333.7	2305.2	2333.7	2270.1	2256.6	2165.7	2083.2	2025.1	1962.3
57.5°	1878.1	1904.8	1916.1	1928.9	1920.7	1909.0	1877.3	1844.7	1801.2	1764.8	1726.0
60°	1625.7	1647.7	1660.2	1672.8	1672.0	1667.6	1649.2	1629.7	1602.5	1580.8	1557.3
62.5°	1451.8	1470.9	1483.2	1495.2	1496.3	1494.5	1480.6	1467.2	1448.6	1435.0	1418.8
65°	1315.1	1328.4	1336.8	1346.4	1345.9	1343.3	1330.7	1319.5	1304.3	1294.8	1282.9
67.5°	1171.9	1182.1	1188.5	1197.6	1199.4	1199.9	1193.0	1187.7	1180.3	1177.6	1173.5
70°	1070.2	1082.5	1092.9	1104.3	1110.5	1113.6	1110.5	1107.9	1103.5	1101.6	1098.5
72.5°	993.1	1003.5	1011.6	1022.0	1027.8	1032.0	1029.7	1028.2	1024.5	1023.9	1021.8
75°	897.4	904.6	909.1	917.0	920.1	924.0	922.2	923.2	922.0	925.0	924.8
77.5°	782.3	787.7	789.8	795.4	796.1	800.8	801.8	807.4	811.3	819.9	824.6
80°	652.8	656.2	656.2	662.0	664.6	672.6	676.4	685.5	689.7	697.3	698.0
82.5°	507.1	503.2	507.1	504.7	512.1	521.0	522.3	530.0	531.7	536.6	532.8
85°	346.7	346.5	343.4	343.9	341.6	342.6	341.3	342.8	341.4	341.6	338.1
87.5°	166.1	167.6	164.0	165.2	161.7	163.3	160.1	162.6	159.0	159.5	154.1
90°	43.0	44.2	45.1	46.3	48.0	51.3	54.8	58.2	62.1	65.3	69.0
92.5°	47.7	49.7	51.5	53.4	55.2	60.6	66.1	71.6	77.2	82.5	88.0
95°	54.7	56.3	58.0	59.9	61.5	69.4	77.3	85.2	93.0	101.0	108.8
97.5°	61.8	62.9	63.9	65.0	66.0	75.3	84.7	93.9	103.3	112.6	121.8
100°	71.2	72.4	73.7	75.0	76.3	97.8	119.2	140.7	162.2	183.4	204.9
102.5°	116.7	124.2	131.7	139.5	146.9	199.0	251.0	303.1	354.9	407.0	458.9
105°	267.8	293.1	318.7	344.0	369.3	448.1	526.8	605.6	684.1	762.8	841.6
107.5°	543.1	587.7	632.4	677.0	721.6	795.7	869.7	943.6	1017.8	1091.7	1165.5
110°	833.0	871.3	910.0	948.5	987.0	1045.7	1104.7	1163.3	1222.1	1280.8	1339.5



TEST NUMBER: P1444695  
 CATALOG NUMBER: EHBR1-48-UNV-TA-L930-UPL36

**CANDELA DISTRIBUTION (continued):**

	192.5°	195°	197.5°	200°	202.5°	205°	207.5°	210°	212.5°	215°	217.5°
112.5°	1002.4	1025.8	1049.3	1072.5	1096.0	1139.1	1182.5	1225.4	1268.6	1311.5	1354.5
115°	1046.8	1058.9	1071.5	1083.8	1096.4	1122.4	1148.3	1174.3	1200.5	1226.2	1252.3
117.5°	1017.6	1022.0	1026.6	1030.8	1035.2	1048.6	1062.0	1075.2	1088.7	1102.0	1115.3
120°	945.2	944.9	944.6	944.1	943.8	947.7	952.1	956.2	960.4	964.3	968.3
122.5°	863.4	860.3	857.4	854.2	851.1	849.5	848.2	846.6	845.3	843.6	842.1
125°	786.1	782.9	779.8	776.5	773.2	769.5	765.8	761.9	758.1	754.2	750.3
127.5°	720.2	717.3	714.7	711.7	708.7	704.3	700.1	695.7	691.6	687.1	682.9
130°	665.8	663.6	661.8	659.3	657.3	653.3	649.7	645.9	642.1	638.3	634.5
132.5°	626.6	625.2	623.8	621.9	620.5	617.0	613.9	610.2	606.9	603.4	600.2
135°	596.6	595.7	595.0	593.9	592.9	590.0	587.6	584.9	582.4	579.8	577.2
137.5°	571.9	571.5	571.3	570.9	570.4	568.1	566.1	563.8	561.8	559.5	557.5
140°	556.3	556.1	555.9	555.4	555.1	552.8	550.5	548.1	545.9	543.5	541.3
142.5°	539.9	539.8	539.7	539.2	539.1	537.1	535.5	533.7	531.9	530.0	528.4
145°	528.0	528.1	528.3	528.1	528.3	526.0	524.1	521.9	520.0	517.8	515.9
147.5°	516.5	516.6	516.9	516.9	517.3	515.3	513.9	512.0	510.5	508.7	507.1
150°	507.9	508.0	508.1	507.9	507.9	506.0	504.4	502.6	501.0	499.1	497.6
152.5°	499.7	499.8	500.1	500.2	500.4	498.6	496.9	495.0	493.2	491.3	489.6
155°	492.6	492.7	492.9	492.9	492.9	491.3	489.7	487.8	486.2	484.5	482.9
157.5°	486.7	486.9	487.2	487.4	487.5	486.0	484.6	483.2	481.7	480.3	478.9
160°	482.7	483.1	483.4	483.5	483.8	482.6	481.7	480.1	479.2	477.7	476.3
162.5°	480.7	481.0	481.3	481.5	481.7	480.5	479.6	478.4	477.2	475.7	474.5
165°	477.5	477.5	477.6	477.6	477.7	476.8	476.1	475.3	474.5	473.6	472.7
167.5°	478.5	478.4	478.6	478.5	478.6	478.0	477.7	477.1	476.5	475.9	475.2
170°	478.2	478.3	478.4	478.2	478.3	477.7	477.2	476.7	476.3	475.4	474.8
172.5°	477.7	477.6	477.4	477.3	476.9	476.5	476.3	475.9	475.6	475.2	474.8
175°	477.2	476.9	476.8	476.6	476.2	476.2	476.0	475.9	475.7	475.4	475.2
177.5°	480.2	479.8	479.2	478.6	478.2	478.0	477.9	477.7	477.7	477.6	477.4
180°	475.7	475.7	475.7	475.7	475.7	475.7	475.7	475.7	475.7	475.7	475.7



TEST NUMBER: P1444695  
 CATALOG NUMBER: EHBR1-48-UNV-TA-L930-UPL36

**CANDELA DISTRIBUTION (continued):**

	220°	222.5°	225°	227.5°	230°	232.5°	235°	237.5°	240°	242.5°	245°
0°	36472.1	36472.1	36472.1	36472.1	36472.1	36472.1	36472.1	36472.1	36472.1	36472.1	36472.1
2.5°	36795.9	36568.6	36538.6	36554.5	36592.5	36606.6	36647.6	36658.8	36700.0	36710.1	36749.7
5°	37555.1	37254.7	37269.8	37341.9	37451.3	37516.4	37623.9	37680.1	37782.7	37829.3	37922.1
7.5°	38355.7	38119.8	38193.3	38315.2	38464.6	38568.1	38697.3	38781.3	38892.6	38961.7	39050.7
10°	38748.8	38684.2	38765.1	38861.0	38946.3	39013.0	39067.7	39111.6	39140.2	39167.1	39178.8
12.5°	38449.6	38549.6	38563.4	38554.2	38497.6	38454.5	38357.6	38291.7	38174.8	38103.6	37964.5
15°	37340.7	37560.6	37438.8	37254.4	36984.7	36759.8	36442.1	36205.6	35874.8	35650.4	35318.4
17.5°	35394.5	35672.1	35354.8	34928.2	34385.5	33921.1	33343.0	32884.1	32309.2	31891.2	31354.7
20°	32654.7	32914.1	32348.2	31641.0	30801.4	30094.9	29261.7	28596.9	27822.7	27246.8	26551.7
22.5°	29243.4	29428.3	28630.9	27677.5	26607.9	25725.2	24729.1	23932.1	23048.5	22390.1	21649.0
25°	25469.6	25519.4	24562.9	23464.6	22272.5	21280.5	20216.9	19379.1	18477.9	17810.6	17083.1
27.5°	21660.5	21587.3	20553.5	19388.9	18135.0	17103.9	16066.5	15281.3	14492.2	13891.0	13264.3
30°	18065.2	17888.1	16814.7	15617.7	14400.5	13476.3	12615.1	11984.6	11356.7	10879.8	10376.9
32.5°	14768.2	14518.4	13473.6	12352.1	11326.5	10613.3	9974.7	9497.6	8990.5	8587.7	8165.6
35°	11848.1	11581.9	10656.2	9705.5	8929.2	8403.5	7901.6	7510.2	7079.7	6739.9	6373.2
37.5°	9341.9	9123.7	8348.4	7600.2	7013.0	6605.7	6194.4	5874.5	5518.7	5369.2	4977.5
40°	7211.9	7059.4	6453.2	5901.7	5460.7	5269.3	4851.9	4553.1	4287.2	4068.0	3855.6
42.5°	5625.4	5571.4	4981.4	4551.3	4240.8	3999.7	3767.0	3578.2	3394.3	3243.3	3100.5
45°	4128.2	4085.5	3823.5	3575.3	3363.7	3195.2	3038.0	2908.1	2787.8	2688.3	2597.7
47.5°	3214.6	3201.0	3050.1	2896.1	2762.9	2654.6	2552.6	2466.3	2386.6	2320.1	2298.4
50°	2614.6	2612.8	2524.3	2429.2	2334.4	2271.8	2206.6	2155.7	2104.4	2064.6	2022.4
52.5°	2221.5	2211.9	2152.2	2093.6	2037.1	1996.1	1954.4	1921.8	1887.9	1863.3	1837.1
55°	1912.6	1922.6	1888.1	1853.0	1817.7	1792.3	1763.0	1741.6	1718.3	1702.7	1686.9
57.5°	1697.9	1711.3	1693.2	1673.3	1651.8	1635.0	1614.8	1600.0	1584.4	1574.6	1565.4
60°	1541.8	1556.4	1549.1	1539.1	1525.8	1515.8	1503.0	1494.7	1484.7	1479.2	1474.0
62.5°	1409.2	1427.5	1424.9	1420.2	1411.7	1406.1	1399.2	1395.5	1388.8	1386.4	1384.0
65°	1277.1	1297.6	1297.2	1294.9	1290.2	1288.6	1284.2	1283.4	1280.0	1281.4	1281.1
67.5°	1173.1	1191.0	1194.9	1197.8	1197.6	1198.7	1198.3	1200.0	1200.0	1202.6	1204.2
70°	1098.2	1110.5	1113.6	1116.5	1117.3	1119.7	1119.7	1121.2	1120.8	1123.0	1123.3
72.5°	1022.3	1038.6	1041.7	1044.1	1044.1	1046.4	1045.1	1044.8	1041.5	1040.9	1038.5
75°	927.9	948.9	953.5	956.5	956.9	958.9	956.0	954.3	948.9	946.7	942.9
77.5°	829.4	851.1	854.4	855.5	853.7	854.2	848.2	844.2	837.2	834.4	830.7
80°	701.1	733.1	735.7	733.7	728.7	727.9	722.1	718.3	710.1	707.2	704.1
82.5°	533.5	571.1	576.4	578.7	574.6	575.6	570.0	567.8	560.3	558.9	553.9
85°	336.9	374.5	380.6	379.7	375.6	374.7	371.4	372.5	371.9	373.9	375.0
87.5°	154.8	191.1	199.9	197.1	196.7	194.1	188.3	190.4	194.0	196.2	196.4
90°	72.4	87.0	90.2	88.2	82.6	80.1	74.9	72.9	68.2	66.2	61.6
92.5°	93.5	99.0	104.4	99.5	94.7	89.8	85.0	79.9	75.3	70.2	65.6
95°	116.7	124.3	132.2	125.7	119.1	112.6	106.1	99.7	93.2	86.7	80.3
97.5°	131.1	140.2	149.3	142.8	136.3	129.7	123.2	116.8	110.3	103.6	97.2
100°	226.3	247.3	268.6	250.1	231.6	213.2	194.8	176.2	157.7	139.4	120.8
102.5°	510.8	562.5	614.3	567.5	520.8	474.1	427.5	380.8	334.2	287.4	240.8
105°	920.1	998.3	1076.8	1005.2	934.0	862.8	791.6	720.3	649.1	577.8	506.7
107.5°	1239.4	1312.5	1386.1	1321.6	1257.1	1192.8	1128.2	1063.8	999.3	934.9	870.6
110°	1398.0	1455.6	1514.0	1470.5	1427.2	1383.8	1340.5	1297.2	1254.0	1210.9	1167.7



TEST NUMBER: P1444695  
 CATALOG NUMBER: EHBR1-48-UNV-TA-L930-UPL36

**CANDELA DISTRIBUTION (continued):**

	220°	222.5°	225°	227.5°	230°	232.5°	235°	237.5°	240°	242.5°	245°
112.5°	1397.4	1438.9	1481.4	1455.8	1430.5	1405.1	1379.8	1354.3	1329.1	1303.6	1278.7
115°	1278.0	1302.0	1327.4	1317.0	1306.9	1296.9	1286.6	1276.6	1266.5	1256.5	1246.7
117.5°	1128.4	1139.4	1152.0	1149.7	1148.0	1145.7	1143.9	1141.8	1140.1	1138.3	1136.6
120°	972.3	973.8	977.1	978.1	979.4	980.3	981.5	982.6	983.8	985.0	986.3
122.5°	840.5	836.2	833.8	834.8	835.7	836.5	837.6	838.6	839.6	840.7	841.9
125°	746.5	739.6	734.7	732.8	730.9	728.9	726.8	724.9	723.1	721.2	719.4
127.5°	678.4	670.8	665.7	661.4	657.1	652.8	648.5	644.0	639.9	635.6	631.6
130°	630.8	623.5	618.7	613.3	608.2	602.6	597.5	592.1	586.7	581.4	576.2
132.5°	596.5	589.4	585.1	580.0	575.1	569.8	564.8	559.5	554.5	549.0	544.1
135°	574.5	568.0	564.5	559.7	555.4	550.5	545.8	541.1	536.6	531.6	527.3
137.5°	555.2	548.9	545.8	542.0	538.4	534.5	531.0	527.0	523.3	519.2	515.6
140°	539.0	532.2	529.1	526.8	524.9	522.4	520.3	518.0	515.9	513.6	511.3
142.5°	526.6	520.1	517.3	515.9	514.6	513.1	512.0	510.4	508.9	507.2	505.8
145°	513.9	506.7	503.7	503.3	503.2	503.0	502.7	502.4	502.2	501.8	501.4
147.5°	505.2	498.0	494.9	495.2	495.4	495.4	495.7	495.6	495.9	495.9	496.1
150°	495.7	487.3	483.9	484.4	484.8	485.3	485.8	486.3	487.0	487.4	487.9
152.5°	487.5	477.7	473.8	474.4	475.2	475.5	476.2	476.8	477.7	478.4	479.0
155°	480.8	470.2	466.0	466.0	466.2	466.5	466.8	467.2	467.6	468.0	468.5
157.5°	477.1	466.0	462.0	461.6	461.8	461.8	461.9	462.1	462.3	462.5	463.0
160°	475.0	463.9	460.0	459.6	459.7	459.6	459.6	459.6	459.8	460.0	460.5
162.5°	473.0	462.2	458.4	458.0	457.9	457.9	457.9	457.7	457.9	458.0	458.3
165°	471.7	462.2	458.8	458.8	458.8	458.8	458.9	459.1	459.4	459.6	460.0
167.5°	474.4	466.0	463.3	462.9	462.5	462.1	462.1	461.5	461.5	461.3	461.3
170°	474.1	467.4	465.0	464.9	465.1	465.1	465.0	465.1	465.1	465.1	465.3
172.5°	474.3	469.5	467.7	467.9	468.3	468.7	469.0	469.3	469.6	470.1	470.4
175°	475.1	472.1	471.4	471.3	471.6	471.8	471.9	472.2	472.4	472.6	473.1
177.5°	477.3	476.4	476.0	476.0	476.0	476.0	476.0	476.0	476.0	476.1	476.1
180°	475.7	475.7	475.7	475.7	475.7	475.7	475.7	475.7	475.7	475.7	475.7



TEST NUMBER: P1444695  
 CATALOG NUMBER: EHBR1-48-UNV-TA-L930-UPL36

**CANDELA DISTRIBUTION (continued):**

	247.5°	250°	252.5°	255°	257.5°	260°	262.5°	265°	267.5°	270°	272.5°
0°	36472.1	36472.1	36472.1	36472.1	36472.1	36472.1	36472.1	36472.1	36472.1	36472.1	36472.1
2.5°	36757.2	36800.0	36796.7	36836.8	36834.8	36872.5	36864.9	36897.4	36890.0	36917.8	36901.5
5°	37962.9	38044.4	38071.3	38144.9	38160.1	38226.0	38227.3	38279.6	38273.3	38314.2	38292.4
7.5°	39103.5	39179.6	39215.7	39272.8	39301.4	39348.6	39367.1	39406.1	39415.4	39438.4	39437.7
10°	39199.7	39199.4	39217.3	39209.3	39225.3	39216.0	39235.5	39228.5	39257.3	39249.9	39271.6
12.5°	37904.5	37775.9	37729.1	37613.6	37588.3	37489.2	37496.3	37432.7	37463.4	37424.4	37490.9
15°	35121.0	34822.8	34675.4	34416.2	34334.8	34129.8	34113.3	33977.1	34013.9	33942.7	34046.8
17.5°	31007.5	30538.1	30280.5	29901.9	29751.6	29461.8	29403.7	29228.5	29255.7	29167.3	29293.1
20°	26103.3	25536.0	25211.0	24773.3	24578.0	24232.5	24140.8	23944.8	23969.4	23881.6	24023.8
22.5°	21143.2	20549.3	20182.5	19723.6	19474.2	19149.2	19051.8	18854.8	18866.0	18783.6	18920.4
25°	16584.9	16015.6	15659.5	15242.7	15026.3	14728.4	14625.9	14449.1	14459.1	14391.1	14513.9
27.5°	12829.6	12362.5	12064.6	11715.2	11521.2	11276.3	11176.4	11027.7	11027.3	10977.4	11080.0
30°	10025.7	9635.9	9368.4	9064.1	8881.9	8660.9	8564.4	8431.3	8425.5	8390.2	8471.6
32.5°	7849.9	7503.1	7259.1	6991.4	6827.8	6638.2	6546.8	6439.9	6430.2	6398.1	6465.0
35°	6102.3	5810.3	5600.5	5375.0	5391.7	5111.8	5158.4	4941.0	4882.1	4869.2	4919.0
37.5°	4716.4	4490.2	4319.8	4150.9	4036.6	3918.3	3854.6	3797.5	3791.0	3785.5	3820.3
40°	3691.6	3533.4	3409.4	3293.6	3214.9	3142.7	3102.9	3071.5	3064.0	3059.8	3080.9
42.5°	2987.8	2881.1	2801.1	2730.5	2682.6	2643.4	2621.5	2604.1	2598.2	2598.4	2610.8
45°	2524.3	2459.5	2408.0	2364.1	2333.5	2347.0	2307.5	2328.2	2300.8	2329.1	2310.5
47.5°	2223.0	2167.9	2136.0	2104.9	2086.3	2071.5	2072.0	2072.3	2078.1	2079.0	2085.1
50°	1990.5	1958.6	1936.4	1916.6	1906.9	1899.1	1901.9	1903.8	1909.5	1910.0	1914.4
52.5°	1818.5	1797.5	1784.1	1771.8	1767.5	1763.0	1764.9	1764.1	1766.7	1765.3	1769.0
55°	1678.4	1668.6	1664.4	1659.7	1660.5	1659.2	1660.0	1655.6	1652.9	1649.5	1652.6
57.5°	1563.5	1562.2	1565.0	1566.9	1572.1	1574.0	1575.3	1570.1	1565.3	1560.8	1563.4
60°	1475.0	1477.2	1484.2	1489.8	1497.4	1500.9	1503.1	1500.1	1496.6	1492.9	1495.2
62.5°	1387.7	1391.1	1399.4	1405.8	1415.0	1419.7	1424.9	1425.2	1426.6	1425.2	1426.7
65°	1286.3	1290.5	1298.0	1303.3	1311.8	1316.0	1321.4	1322.4	1325.3	1324.7	1327.3
67.5°	1209.2	1213.0	1219.3	1224.3	1231.9	1236.3	1241.0	1241.3	1242.3	1242.1	1244.5
70°	1127.0	1128.9	1134.6	1138.8	1146.4	1150.8	1156.3	1157.9	1161.2	1161.8	1164.5
72.5°	1039.4	1038.6	1042.0	1043.9	1049.6	1053.1	1060.0	1063.8	1069.5	1071.0	1073.0
75°	944.0	943.2	947.3	948.9	953.8	957.3	965.0	970.0	978.7	982.4	981.5
77.5°	833.6	835.4	843.0	847.2	853.7	858.2	868.2	876.2	892.3	899.2	892.1
80°	710.1	712.1	720.0	723.9	732.3	737.8	749.0	758.3	772.8	775.9	771.8
82.5°	558.2	558.8	565.8	568.8	579.9	587.9	602.1	609.5	618.4	617.0	616.0
85°	380.6	385.8	394.6	403.3	416.9	429.8	443.3	454.3	446.5	458.8	444.9
87.5°	203.4	202.9	214.8	212.9	231.8	242.7	254.4	259.9	266.2	264.9	265.0
90°	60.1	56.9	56.8	53.3	54.0	50.3	52.0	48.6	50.9	46.7	53.2
92.5°	60.5	58.0	55.3	52.8	50.0	47.5	44.7	42.1	39.5	36.8	39.5
95°	73.8	71.4	68.9	66.4	64.0	61.5	59.1	56.7	54.2	51.8	54.8
97.5°	90.7	89.3	87.9	86.4	85.0	83.7	82.3	80.8	79.3	77.9	79.9
100°	102.4	102.4	102.4	102.4	102.1	102.1	102.1	102.1	102.1	102.1	103.7
102.5°	194.0	189.4	184.7	179.8	175.2	170.6	165.9	161.2	156.6	151.9	158.8
105°	435.4	417.1	398.9	380.6	362.2	344.0	325.8	307.5	289.4	271.1	289.9
107.5°	806.4	773.0	739.7	706.5	673.1	639.9	606.7	573.4	540.3	507.1	536.8
110°	1124.4	1089.2	1053.7	1018.5	983.1	947.7	912.4	877.2	841.9	806.7	835.1



TEST NUMBER: P1444695  
 CATALOG NUMBER: EHBR1-48-UNV-TA-L930-UPL36

**CANDELA DISTRIBUTION (continued):**

	247.5°	250°	252.5°	255°	257.5°	260°	262.5°	265°	267.5°	270°	272.5°
112.5°	1253.5	1230.3	1207.5	1184.7	1161.9	1139.1	1116.4	1093.7	1071.1	1048.3	1062.1
115°	1236.6	1225.8	1214.7	1203.9	1193.0	1182.0	1171.1	1160.4	1149.7	1139.0	1139.8
117.5°	1134.7	1130.9	1127.2	1123.5	1119.7	1116.2	1112.6	1109.1	1105.5	1102.3	1094.6
120°	987.8	988.7	989.6	990.8	991.9	993.2	994.2	995.6	997.0	998.4	988.1
122.5°	843.2	845.5	848.0	850.6	853.3	856.1	858.9	861.9	864.9	868.0	857.6
125°	717.5	720.0	722.3	724.8	727.1	730.0	732.8	735.8	738.7	741.9	733.1
127.5°	627.5	628.1	628.5	629.4	630.2	631.3	632.4	633.7	635.1	636.7	631.3
130°	570.9	569.7	568.3	567.3	566.0	565.3	564.6	564.0	563.5	563.2	560.8
132.5°	539.0	536.5	533.9	531.4	529.1	527.1	525.0	523.3	521.5	520.1	519.4
135°	522.3	518.9	515.6	512.3	509.1	506.4	503.4	500.9	498.4	496.1	496.7
137.5°	511.7	508.5	505.0	501.9	498.7	496.0	493.0	490.4	488.0	485.7	486.7
140°	508.9	505.6	502.2	499.1	496.2	493.2	490.5	488.1	485.2	483.3	483.9
142.5°	504.2	501.4	498.2	495.5	492.6	490.1	487.6	485.4	482.9	481.0	481.7
145°	501.1	498.9	496.6	494.4	492.4	490.7	488.5	487.0	485.4	484.2	484.5
147.5°	496.0	494.5	492.7	491.2	489.4	488.3	486.7	485.6	484.4	483.4	483.6
150°	488.3	487.4	486.2	485.2	484.2	483.3	482.4	481.7	480.9	480.3	480.3
152.5°	479.7	478.9	477.7	476.9	476.0	475.3	474.5	474.1	473.4	472.8	472.8
155°	468.9	468.5	468.1	467.8	467.5	467.4	467.0	467.0	466.8	466.8	466.9
157.5°	463.2	463.3	463.0	463.2	463.2	463.2	463.2	463.6	463.4	463.7	464.0
160°	460.9	460.7	460.5	460.5	460.4	460.2	460.3	460.2	460.3	460.2	460.6
162.5°	458.5	458.8	459.0	459.3	459.6	459.9	460.4	460.9	461.2	461.7	462.1
165°	460.5	460.5	460.4	460.3	460.5	460.5	460.6	461.0	461.1	461.4	462.0
167.5°	461.2	461.4	461.5	461.9	462.2	462.7	462.9	463.7	464.1	464.8	465.3
170°	465.2	465.2	465.2	465.2	465.2	465.4	465.6	465.7	465.9	466.2	466.6
172.5°	470.7	470.7	470.4	470.7	470.4	470.7	470.7	470.9	470.9	471.1	471.2
175°	473.0	473.5	473.6	474.1	474.1	474.3	474.4	474.7	474.9	475.2	475.2
177.5°	476.1	476.2	476.2	476.2	476.2	476.4	476.4	476.4	476.4	476.2	476.4
180°	475.7	475.7	475.7	475.7	475.7	475.7	475.7	475.7	475.7	475.7	475.7



TEST NUMBER: P1444695  
 CATALOG NUMBER: EHBR1-48-UNV-TA-L930-UPL36

**CANDELA DISTRIBUTION (continued):**

	275°	277.5°	280°	282.5°	285°	287.5°	290°	292.5°	295°	297.5°	300°
0°	36472.1	36472.1	36472.1	36472.1	36472.1	36472.1	36472.1	36472.1	36472.1	36472.1	36472.1
2.5°	36928.7	36910.2	36929.1	36909.9	36929.1	36906.1	36921.7	36896.8	36903.1	36877.3	36884.0
5°	38325.0	38295.6	38311.2	38273.0	38277.0	38226.0	38225.0	38165.5	38149.8	38082.1	38052.4
7.5°	39454.1	39444.5	39449.9	39425.2	39422.5	39387.6	39371.0	39321.8	39290.8	39228.5	39185.9
10°	39275.4	39304.1	39311.6	39340.9	39347.0	39376.1	39382.2	39411.3	39417.3	39438.8	39439.1
12.5°	37487.7	37585.5	37608.8	37729.6	37780.4	37918.5	37992.7	38144.9	38235.2	38387.1	38480.3
15°	34043.9	34213.0	34280.4	34516.2	34646.6	34921.8	35094.8	35410.8	35633.8	35969.4	36208.8
17.5°	29304.1	29540.5	29647.1	29966.8	30175.3	30581.5	30874.3	31356.2	31725.1	32260.6	32685.0
20°	24048.1	24310.7	24455.4	24820.2	25066.3	25540.9	25906.4	26498.6	26992.3	27670.9	28251.2
22.5°	18963.3	19213.2	19373.9	19745.0	20022.0	20517.1	20925.6	21550.5	22103.8	22868.4	23564.2
25°	14560.2	14789.3	14934.5	15270.1	15530.3	15985.2	16375.3	16976.4	17517.7	18284.8	18998.1
27.5°	11131.1	11322.9	11463.0	11749.1	11978.6	12364.4	12699.4	13196.3	13662.7	14326.2	14961.5
30°	8521.8	8691.8	8828.1	9077.3	9290.1	9624.5	9919.2	10336.4	10722.5	11250.5	11755.9
32.5°	6512.1	6658.5	6779.9	6998.0	7191.0	7492.2	7757.6	8123.4	8454.8	8902.6	9318.4
35°	4965.2	5253.3	5232.9	5533.7	5582.1	5798.3	6035.1	6354.9	6648.3	7029.1	7383.0
37.5°	3853.8	3934.8	4021.5	4154.6	4294.3	4491.0	4691.0	5081.8	5225.1	5512.9	5805.9
40°	3107.7	3162.5	3219.8	3309.6	3407.5	3546.0	3691.7	3878.1	4069.1	4302.4	4540.8
42.5°	2627.3	2658.3	2694.7	2747.6	2807.9	2895.8	2993.2	3119.6	3252.5	3416.7	3584.3
45°	2347.3	2332.6	2343.4	2371.9	2408.2	2461.6	2523.1	2601.3	2687.9	2794.3	2907.5
47.5°	2086.3	2092.3	2095.5	2110.9	2130.4	2166.3	2203.5	2256.6	2359.3	2390.5	2452.2
50°	1914.0	1916.8	1915.9	1923.7	1933.6	1956.9	1981.1	2017.0	2052.9	2100.5	2146.0
52.5°	1769.5	1773.5	1773.0	1778.2	1783.4	1798.1	1813.5	1838.9	1862.4	1892.7	1918.7
55°	1655.5	1661.0	1663.1	1667.5	1670.0	1677.7	1683.8	1696.0	1706.0	1723.1	1739.0
57.5°	1567.7	1575.3	1578.7	1580.3	1577.1	1576.8	1574.7	1577.3	1579.4	1588.5	1597.5
60°	1498.6	1504.7	1505.7	1504.7	1499.1	1495.0	1488.5	1486.4	1485.4	1489.8	1494.7
62.5°	1426.4	1428.5	1427.0	1425.2	1418.8	1414.9	1408.1	1405.6	1403.4	1406.5	1409.0
65°	1326.3	1328.2	1326.3	1325.2	1319.4	1316.3	1310.6	1308.7	1305.4	1306.3	1305.7
67.5°	1245.0	1247.0	1245.5	1243.9	1239.9	1238.1	1233.9	1231.1	1227.2	1225.8	1223.0
70°	1164.1	1165.6	1163.3	1161.8	1157.2	1155.5	1151.5	1150.7	1147.6	1146.9	1143.8
72.5°	1071.0	1071.1	1067.9	1066.9	1063.5	1063.4	1061.8	1063.2	1063.1	1064.7	1064.0
75°	975.6	974.3	970.3	969.6	967.0	968.2	966.4	968.8	969.0	972.6	972.9
77.5°	880.3	875.2	867.5	863.9	858.7	858.1	855.0	857.1	856.5	860.5	862.1
80°	759.7	753.5	743.7	738.9	732.9	732.0	729.2	732.0	730.6	735.4	738.7
82.5°	606.5	601.3	591.0	587.2	580.1	580.8	577.8	580.8	580.4	587.4	591.5
85°	448.6	445.1	434.6	425.3	414.8	408.8	402.8	401.7	399.9	402.8	405.2
87.5°	259.1	255.8	247.6	242.2	223.9	224.7	217.6	217.3	215.5	213.9	217.6
90°	52.6	58.2	57.9	63.0	63.3	69.1	69.7	75.3	75.5	81.1	82.2
92.5°	42.1	44.7	47.3	50.0	52.6	55.3	57.8	60.5	66.2	71.6	77.5
95°	57.8	60.9	63.9	67.0	70.0	73.1	76.1	79.1	87.4	95.7	104.1
97.5°	82.0	83.9	86.0	88.0	90.0	92.1	94.0	96.1	105.1	114.0	122.9
100°	105.3	106.9	108.5	110.2	111.8	113.4	115.0	116.7	134.1	151.3	168.6
102.5°	165.7	172.6	179.5	186.3	193.4	200.3	207.2	214.1	253.7	293.2	332.8
105°	308.8	327.6	346.7	365.5	384.3	403.2	422.1	440.9	504.3	567.5	630.9
107.5°	566.6	596.4	626.1	656.1	685.9	715.8	745.5	775.5	837.1	899.0	960.7
110°	863.4	892.0	920.4	948.8	977.1	1005.7	1034.2	1062.8	1099.9	1136.9	1174.1



TEST NUMBER: P1444695  
 CATALOG NUMBER: EHBR1-48-UNV-TA-L930-UPL36

**CANDELA DISTRIBUTION (continued):**

	275°	277.5°	280°	282.5°	285°	287.5°	290°	292.5°	295°	297.5°	300°
112.5°	1076.0	1089.8	1103.7	1117.6	1131.5	1145.6	1159.5	1173.5	1192.2	1210.6	1229.3
115°	1140.7	1141.5	1142.5	1143.5	1144.6	1145.5	1146.8	1147.9	1153.8	1159.8	1165.8
117.5°	1086.9	1079.4	1072.0	1064.4	1057.0	1049.9	1042.5	1035.4	1034.3	1033.3	1032.4
120°	978.2	968.0	957.9	947.8	938.0	928.0	918.4	908.7	903.8	899.1	894.3
122.5°	847.6	837.5	827.5	817.6	807.8	798.2	788.7	779.1	775.7	772.5	769.3
125°	724.8	716.4	708.1	700.0	692.1	684.1	676.5	668.6	668.7	668.6	669.0
127.5°	626.1	621.1	616.2	611.3	606.9	602.2	597.8	593.3	595.9	598.3	600.9
130°	558.7	556.5	554.7	552.6	551.3	549.5	548.1	546.4	550.7	554.7	558.9
132.5°	519.3	519.0	519.0	518.9	519.2	519.4	520.0	520.3	525.1	529.7	534.6
135°	497.3	498.1	499.2	500.2	501.6	502.9	504.4	505.6	510.4	514.7	519.4
137.5°	487.9	489.0	490.4	491.8	493.7	495.2	497.2	498.9	502.5	506.2	509.8
140°	484.9	485.8	487.0	488.3	489.6	491.0	492.7	494.0	497.3	500.0	502.9
142.5°	482.8	483.5	484.7	485.9	487.3	488.5	489.9	491.2	493.5	495.5	498.1
145°	485.3	485.8	486.8	487.6	488.7	489.7	490.8	491.8	493.4	494.8	496.2
147.5°	484.2	484.5	485.2	485.9	486.7	487.4	488.1	488.7	489.9	490.8	491.8
150°	480.7	480.8	481.1	481.4	482.0	482.5	483.1	483.4	484.2	485.0	486.1
152.5°	473.2	473.3	473.6	473.8	474.3	474.6	475.0	475.4	476.3	476.9	477.8
155°	467.3	467.8	468.4	468.8	469.5	469.7	470.4	470.8	471.5	472.0	472.7
157.5°	464.6	464.8	465.5	465.8	466.5	466.9	467.4	467.8	468.5	468.9	469.5
160°	461.3	462.2	462.8	463.5	464.2	464.9	465.6	466.3	466.9	467.3	467.8
162.5°	462.7	463.2	463.7	464.1	464.6	465.2	465.6	466.2	467.0	467.5	468.4
165°	462.7	463.4	464.2	464.6	465.5	466.3	467.0	467.7	468.0	468.6	469.0
167.5°	466.1	466.5	467.4	468.0	468.7	469.4	470.2	470.7	471.2	471.5	472.0
170°	467.2	467.8	468.5	469.1	469.7	470.2	471.0	471.4	472.1	472.6	473.4
172.5°	471.8	472.2	472.7	473.0	473.5	474.1	474.6	474.9	475.5	476.0	476.5
175°	475.2	475.2	475.3	475.5	475.6	475.6	475.8	476.0	476.1	476.3	476.4
177.5°	476.6	476.8	477.0	477.2	477.4	477.7	477.8	478.0	478.0	478.0	478.0
180°	475.7	475.7	475.7	475.7	475.7	475.7	475.7	475.7	475.7	475.7	475.7



TEST NUMBER: P1444695  
 CATALOG NUMBER: EHBR1-48-UNV-TA-L930-UPL36

**CANDELA DISTRIBUTION (continued):**

	302.5°	305°	307.5°	310°	312.5°	315°	317.5°	320°	322.5°	325°	327.5°
0°	36472.1	36472.1	36472.1	36472.1	36472.1	36472.1	36472.1	36472.1	36472.1	36472.1	36472.1
2.5°	36858.1	36859.7	36830.0	36828.4	36800.6	36797.0	36769.8	36761.6	36739.6	36731.6	36709.1
5°	37976.4	37940.2	37856.5	37807.3	37724.6	37669.8	37580.3	37522.0	37435.6	37370.5	37283.5
7.5°	39107.4	39051.1	38957.2	38881.1	38766.3	38674.7	38540.4	38430.5	38285.0	38159.1	38006.4
10°	39439.1	39430.4	39406.5	39371.6	39318.2	39258.2	39166.8	39071.6	38944.1	38805.6	38635.9
12.5°	38623.0	38711.1	38831.2	38902.4	38989.1	39027.1	39062.6	39053.7	39030.3	38960.3	38862.1
15°	36555.5	36803.2	37131.0	37385.2	37677.5	37890.0	38124.7	38271.0	38416.7	38484.1	38525.3
17.5°	33266.7	33735.6	34323.6	34810.8	35373.1	35824.6	36319.6	36692.3	37075.5	37350.1	37598.3
20°	29042.2	29721.5	30553.2	31287.8	32142.1	32884.4	33697.9	34365.7	35054.4	35593.0	36102.6
22.5°	24460.1	25266.9	26272.3	27203.6	28304.9	29294.6	30411.2	31383.1	32397.8	33245.6	34065.2
25°	19954.3	20839.1	21938.5	22977.6	24224.7	25376.0	26700.2	27911.6	29223.0	30361.7	31486.6
27.5°	15839.9	16708.6	17831.0	18937.1	20255.9	21482.5	22901.5	24236.0	25729.3	27106.4	28515.2
30°	12458.2	13195.0	14201.4	15272.7	16573.5	17821.7	19256.0	20628.5	22182.1	23685.7	25272.4
32.5°	9870.3	10431.6	11222.7	12128.7	13328.9	14517.1	15882.9	17207.8	18737.6	20256.6	21906.9
35°	7838.8	8276.6	8879.8	9586.8	10603.1	11627.5	12835.4	14040.3	15467.6	16908.9	18513.0
37.5°	6181.3	6536.5	7009.0	7540.0	8355.2	9195.8	10186.4	11185.3	12425.5	13703.1	15156.9
40°	4826.9	5114.6	5482.4	5878.4	6494.0	7141.7	7907.7	8682.4	9678.8	10722.9	11926.0
42.5°	3791.9	4004.2	4263.9	4553.4	5127.7	5471.5	5991.0	6551.3	7283.7	8041.8	8946.3
45°	3045.2	3190.0	3370.2	3564.3	3830.8	4122.6	4478.3	4851.4	5547.3	5888.6	6438.7
47.5°	2543.0	2640.3	2754.9	2877.2	3034.4	3204.1	3415.1	3630.8	3909.8	4199.0	4537.9
50°	2204.9	2303.7	2343.1	2406.4	2497.4	2594.3	2713.3	2832.2	2981.8	3133.5	3308.0
52.5°	1953.9	1986.1	2028.9	2069.2	2125.5	2235.9	2271.5	2333.7	2417.7	2499.7	2591.3
55°	1762.2	1783.2	1811.0	1835.3	1869.4	1902.0	1949.0	1990.4	2046.3	2095.8	2156.6
57.5°	1613.0	1626.3	1645.7	1661.6	1683.7	1702.1	1729.6	1752.1	1784.2	1812.2	1849.1
60°	1504.6	1513.5	1526.4	1536.9	1550.9	1560.6	1574.2	1584.7	1601.7	1616.0	1636.5
62.5°	1416.0	1420.7	1429.1	1435.3	1444.2	1449.0	1456.3	1460.9	1470.2	1477.4	1488.9
65°	1309.8	1310.9	1316.6	1319.2	1326.2	1328.7	1334.7	1336.8	1344.6	1349.8	1360.0
67.5°	1222.7	1220.3	1220.4	1218.5	1219.3	1217.3	1217.9	1215.7	1218.8	1220.4	1228.2
70°	1143.2	1139.9	1138.8	1135.1	1134.1	1130.3	1129.3	1125.9	1125.4	1124.4	1127.0
72.5°	1065.8	1064.9	1065.2	1062.6	1062.3	1059.7	1059.8	1058.2	1060.0	1060.8	1064.3
75°	976.8	977.0	978.7	976.5	977.1	975.0	975.8	973.7	974.8	974.5	977.9
77.5°	868.3	870.9	875.6	874.7	876.2	873.8	874.8	872.0	872.8	870.9	872.2
80°	746.4	751.9	758.2	757.9	760.6	758.8	761.3	758.5	759.7	756.4	755.6
82.5°	601.6	606.2	613.0	613.3	619.3	620.3	626.9	626.6	630.8	628.2	626.2
85°	411.3	414.5	420.4	423.6	429.7	433.5	439.9	442.5	437.8	446.2	439.6
87.5°	214.8	222.8	218.3	228.7	226.3	236.8	234.5	244.3	242.4	250.8	249.7
90°	89.2	90.7	98.1	100.1	108.7	111.6	114.9	111.4	114.5	111.3	114.3
92.5°	82.9	88.8	94.5	100.2	105.8	111.7	106.2	101.0	95.7	90.6	85.2
95°	112.4	120.7	128.9	137.3	145.6	153.9	145.0	136.2	127.3	118.3	109.4
97.5°	131.8	140.7	149.6	158.5	167.6	176.5	166.0	155.5	145.0	134.6	124.0
100°	185.8	203.1	220.3	237.6	255.0	272.2	252.6	232.9	213.5	193.8	174.2
102.5°	372.5	412.0	451.5	491.3	530.8	570.3	528.8	487.4	445.6	404.0	362.2
105°	694.2	757.6	820.8	884.2	947.5	1011.1	943.5	876.1	808.5	741.2	673.5
107.5°	1022.6	1084.2	1146.2	1207.9	1269.7	1331.7	1263.4	1194.8	1126.6	1058.0	989.5
110°	1211.4	1248.5	1285.7	1323.1	1360.1	1397.6	1347.6	1297.8	1247.8	1197.8	1147.9



TEST NUMBER: P1444695  
 CATALOG NUMBER: EHBR1-48-UNV-TA-L930-UPL36

**CANDELA DISTRIBUTION (continued):**

	302.5°	305°	307.5°	310°	312.5°	315°	317.5°	320°	322.5°	325°	327.5°
112.5°	1247.9	1266.8	1285.3	1304.2	1322.8	1341.6	1306.0	1270.5	1234.7	1199.2	1163.4
115°	1172.0	1178.0	1184.1	1190.3	1196.4	1202.4	1178.4	1154.6	1130.6	1106.6	1082.4
117.5°	1031.5	1030.8	1029.8	1029.2	1028.1	1027.3	1013.9	1000.7	987.3	973.8	960.4
120°	889.4	884.7	880.0	875.2	870.4	865.5	860.0	854.6	848.9	843.2	837.5
122.5°	766.0	763.0	759.7	756.5	753.1	749.8	747.8	745.9	743.7	741.7	739.4
125°	669.1	669.2	669.2	669.4	669.3	669.4	668.4	667.6	666.5	665.7	664.4
127.5°	603.2	605.7	608.0	610.5	612.7	615.1	614.9	615.0	614.8	614.6	614.4
130°	562.8	567.2	571.1	575.0	578.8	583.0	582.4	582.0	581.6	581.1	580.7
132.5°	539.2	543.9	548.4	553.2	557.6	562.1	561.5	561.1	560.2	559.7	559.0
135°	523.7	528.2	532.4	536.9	541.0	545.3	544.5	543.7	542.7	542.1	541.2
137.5°	513.1	517.0	520.3	523.8	527.2	530.7	529.7	528.9	527.9	527.3	526.3
140°	505.7	508.6	511.2	514.1	516.8	519.5	518.3	517.3	516.1	514.9	513.7
142.5°	500.0	502.2	504.1	506.4	508.2	510.4	508.6	507.0	505.3	503.7	502.0
145°	497.6	499.2	500.6	501.9	502.9	504.5	502.3	500.6	498.3	496.5	494.4
147.5°	492.6	493.6	494.2	495.3	495.7	496.7	494.8	492.9	490.9	488.9	486.9
150°	486.7	487.6	488.3	489.1	489.6	490.5	488.3	486.4	484.2	482.1	480.1
152.5°	478.5	479.3	480.0	480.5	481.2	481.7	479.7	478.0	475.9	473.8	471.9
155°	473.0	473.6	473.9	474.4	474.6	475.0	473.2	471.8	470.2	468.4	466.6
157.5°	469.8	470.3	470.8	471.1	471.3	471.8	470.4	469.3	467.8	466.7	465.4
160°	468.2	468.7	469.0	469.3	469.7	469.8	468.7	467.9	466.9	465.7	464.5
162.5°	468.8	469.5	470.0	470.5	471.1	471.6	470.3	469.2	467.8	466.6	465.3
165°	469.4	469.8	470.3	470.6	470.8	471.1	470.3	469.5	468.6	467.8	466.8
167.5°	472.3	472.9	473.2	473.6	473.7	474.0	473.1	472.5	471.5	470.5	469.5
170°	473.7	474.2	474.7	475.2	475.6	475.9	475.3	474.7	473.9	473.2	472.3
172.5°	476.9	477.4	477.6	478.1	478.3	478.7	478.1	477.3	476.6	475.8	474.9
175°	476.4	476.6	476.8	476.8	476.8	476.9	476.3	475.7	475.2	474.5	473.9
177.5°	478.0	478.0	478.0	477.9	477.9	477.9	477.5	477.1	476.7	476.3	475.7
180°	475.7	475.7	475.7	475.7	475.7	475.7	475.7	475.7	475.7	475.7	475.7



TEST NUMBER: P1444695  
 CATALOG NUMBER: EHBR1-48-UNV-TA-L930-UPL36

**CANDELA DISTRIBUTION (continued):**

	330°	332.5°	335°	337.5°	340°	342.5°	345°	347.5°	350°	352.5°	355°
0°	36472.1	36472.1	36472.1	36472.1	36472.1	36472.1	36472.1	36472.1	36472.1	36472.1	36472.1
2.5°	36701.2	36685.3	36675.0	36661.9	36653.9	36643.7	36636.3	36630.0	36624.8	36620.1	36616.6
5°	37217.3	37135.2	37071.6	37002.6	36946.0	36889.5	36845.9	36809.8	36785.0	36766.4	36755.3
7.5°	37874.3	37724.2	37590.7	37450.0	37324.0	37200.2	37093.3	37001.3	36932.2	36887.5	36860.3
10°	38461.1	38260.1	38061.3	37852.0	37653.6	37461.2	37283.5	37127.3	37003.6	36921.4	36873.4
12.5°	38724.2	38552.9	38349.9	38122.7	37879.5	37633.4	37393.7	37177.4	36995.9	36874.1	36803.8
15°	38492.5	38422.2	38284.4	38108.1	37877.3	37622.9	37341.4	37076.7	36833.3	36675.4	36583.9
17.5°	37738.9	37837.1	37826.5	37759.1	37593.2	37379.1	37092.2	36794.9	36490.4	36279.3	36164.0
20°	36467.2	36775.7	36932.2	37012.5	36947.3	36808.5	36548.7	36247.0	35892.1	35616.6	35448.4
22.5°	34680.1	35224.8	35564.1	35812.5	35865.1	35817.9	35588.4	35301.5	34905.9	34574.7	34326.4
25°	32379.5	33177.5	33713.8	34134.3	34297.6	34339.8	34144.6	33859.3	33418.2	33032.4	32691.4
27.5°	29669.8	30706.5	31422.7	31987.7	32242.8	32353.3	32173.7	31882.6	31360.8	30900.3	30454.8
30°	26619.1	27849.2	28711.4	29388.9	29699.8	29845.9	29655.1	29330.2	28722.9	28168.7	27607.5
32.5°	23354.0	24700.0	25639.6	26375.3	26683.4	26820.8	26571.2	26206.2	25504.4	24851.6	24197.0
35°	19935.4	21294.0	22241.5	22957.7	23215.9	23298.7	22979.5	22557.6	21780.1	21063.5	20349.9
37.5°	16447.2	17711.2	18572.3	19215.1	19374.9	19389.1	19004.5	18538.5	17721.3	17014.8	16304.4
40°	12989.2	14055.1	14750.4	15264.9	15320.3	15270.8	14852.6	14383.7	13619.2	12986.2	12362.5
42.5°	9731.9	10536.5	11032.6	11385.1	11364.2	11266.4	10882.9	10479.9	9849.1	9367.0	8876.2
45°	6941.3	7471.8	7761.8	7968.1	7901.9	7808.8	7510.3	7227.8	6799.2	6487.8	6158.0
47.5°	4822.2	5455.7	5345.4	5748.7	5401.3	5630.8	5152.8	4889.3	4661.9	4496.4	4310.0
50°	3452.3	3597.4	3667.6	3715.4	3690.0	3654.7	3568.9	3492.1	3388.2	3312.5	3224.2
52.5°	2666.1	2738.6	2778.4	2807.2	2801.6	2788.7	2751.2	2717.1	2668.4	2636.3	2597.7
55°	2258.3	2259.4	2332.5	2301.1	2347.5	2293.2	2314.6	2254.4	2264.1	2212.4	2177.8
57.5°	1876.6	1906.3	1919.7	1932.7	1929.0	1926.7	1912.2	1905.0	1888.6	1883.6	1871.9
60°	1650.7	1666.3	1669.5	1675.4	1670.4	1668.6	1657.2	1653.2	1642.2	1640.1	1632.5
62.5°	1495.8	1503.8	1503.8	1503.8	1497.3	1491.1	1478.5	1471.9	1462.5	1460.5	1456.0
65°	1366.6	1374.8	1376.2	1377.9	1373.2	1368.3	1357.2	1350.1	1340.5	1336.8	1331.7
67.5°	1233.2	1242.0	1244.9	1249.4	1246.7	1245.7	1238.1	1235.3	1229.0	1227.5	1222.7
70°	1128.4	1132.0	1131.7	1131.7	1125.7	1120.4	1111.6	1107.4	1100.8	1099.5	1095.1
72.5°	1066.1	1068.7	1067.1	1064.7	1057.1	1049.2	1038.9	1031.3	1022.7	1017.3	1011.2
75°	978.4	981.8	979.5	978.1	971.2	966.1	957.8	953.6	947.5	945.8	941.6
77.5°	870.6	872.2	868.8	868.3	863.1	859.9	853.6	852.6	848.1	848.2	844.2
80°	750.7	749.8	744.1	743.0	737.8	736.4	731.5	731.8	728.3	729.8	726.9
82.5°	617.7	614.4	607.0	604.7	598.7	598.1	594.9	597.6	595.5	598.7	596.8
85°	442.7	443.6	440.4	440.4	438.6	439.2	438.9	440.9	441.2	444.1	444.1
87.5°	246.8	250.3	249.7	252.9	252.7	256.4	257.6	263.1	263.7	268.7	268.7
90°	111.2	114.8	111.5	115.2	113.9	118.8	118.3	123.2	122.1	126.2	124.0
92.5°	79.9	74.7	69.6	64.2	61.5	58.6	56.5	53.4	51.0	48.1	45.4
95°	100.5	91.6	82.7	73.8	70.8	67.6	64.6	61.6	58.5	55.4	52.4
97.5°	113.4	102.9	92.4	81.9	79.2	76.6	73.9	71.3	68.6	66.0	63.4
100°	154.5	134.9	115.4	95.6	93.4	91.2	88.9	86.7	84.5	82.1	79.8
102.5°	320.7	278.9	237.2	195.5	187.6	179.7	171.8	163.8	155.9	148.0	140.1
105°	606.1	538.4	470.9	403.2	381.8	360.3	338.8	317.2	295.8	274.3	252.8
107.5°	921.0	852.4	783.8	715.1	675.7	635.9	596.3	556.3	516.9	476.9	437.3
110°	1097.9	1047.8	997.8	947.5	915.8	883.8	851.8	819.8	787.9	755.8	723.8



TEST NUMBER: P1444695  
 CATALOG NUMBER: EHBR1-48-UNV-TA-L930-UPL36

**CANDELA DISTRIBUTION (continued):**

	330°	332.5°	335°	337.5°	340°	342.5°	345°	347.5°	350°	352.5°	355°
112.5°	1127.6	1091.8	1056.1	1020.0	1005.7	991.1	976.8	962.3	947.7	933.1	918.6
115°	1058.2	1034.2	1009.9	985.5	980.7	975.5	970.5	965.3	960.3	955.0	949.8
117.5°	946.9	933.5	919.8	906.3	907.2	908.1	909.1	909.8	910.6	911.2	911.8
120°	831.7	826.0	820.4	814.6	819.1	823.5	828.0	832.2	836.5	840.6	844.8
122.5°	737.4	735.2	733.1	730.6	736.2	741.6	746.8	752.1	757.2	762.1	767.1
125°	663.6	662.4	661.4	660.1	665.9	671.2	676.6	681.7	687.0	691.8	696.9
127.5°	614.4	614.2	614.1	613.7	617.9	621.6	625.5	629.1	632.8	636.1	639.5
130°	580.2	579.6	579.2	578.6	582.3	585.8	589.4	592.5	595.9	598.8	601.7
132.5°	558.5	557.7	557.1	556.3	559.1	561.7	564.3	566.4	568.7	570.6	572.5
135°	540.5	539.5	538.7	537.7	540.2	542.7	545.0	547.1	549.2	550.8	552.6
137.5°	525.5	524.5	523.6	522.7	525.0	527.1	529.2	531.0	532.8	534.5	535.9
140°	512.7	511.3	510.4	509.0	511.2	512.9	514.9	516.5	518.2	519.4	520.9
142.5°	500.4	498.4	497.1	495.2	496.7	498.1	499.4	500.6	501.9	502.9	503.7
145°	492.4	490.2	488.4	486.3	487.5	488.5	489.7	490.7	491.4	492.0	492.7
147.5°	485.2	483.0	480.9	479.0	480.1	480.7	481.4	481.9	482.7	483.1	483.5
150°	478.0	475.6	473.5	471.3	472.0	472.6	473.1	473.7	474.4	474.5	475.0
152.5°	469.7	467.7	465.5	463.3	463.9	464.3	464.7	464.9	465.4	465.6	465.9
155°	464.9	463.1	461.3	459.3	459.9	460.1	460.5	460.6	460.8	460.9	461.1
157.5°	463.9	462.2	461.1	459.4	459.5	459.5	459.6	459.3	459.3	459.1	458.9
160°	463.4	462.1	460.9	459.5	459.4	459.3	459.5	459.1	459.0	458.7	458.5
162.5°	463.8	462.4	460.8	459.3	459.2	459.3	459.2	458.8	458.8	458.5	458.2
165°	465.9	464.8	463.7	462.5	462.3	462.1	462.0	461.4	461.2	460.5	460.2
167.5°	468.5	467.5	466.3	465.1	465.1	465.3	465.2	464.9	464.9	464.6	464.5
170°	471.5	470.6	469.8	468.8	468.6	468.5	468.2	467.9	467.5	467.2	466.8
172.5°	474.0	473.2	472.2	471.1	471.1	471.0	470.7	470.6	470.2	469.9	469.8
175°	473.2	472.7	471.8	471.1	471.0	470.9	470.7	470.6	470.3	470.2	469.9
177.5°	475.3	474.9	474.3	473.8	473.7	473.7	473.6	473.5	473.5	473.3	473.2
180°	475.7	475.7	475.7	475.7	475.7	475.7	475.7	475.7	475.7	475.7	475.7



TEST NUMBER: P1444695  
 CATALOG NUMBER: EHBR1-48-UNV-TA-L930-UPL36

**CANDELA DISTRIBUTION (continued):**

	357.5°	360°
0°	36472.1	36472.1
2.5°	36613.3	36611.5
5°	36749.4	36747.3
7.5°	36853.0	36852.4
10°	36865.2	36871.5
12.5°	36791.7	36796.7
15°	36576.8	36586.9
17.5°	36166.2	36179.3
20°	35458.7	35472.4
22.5°	34313.0	34318.7
25°	32647.3	32623.6
27.5°	30376.4	30335.8
30°	27489.7	27450.3
32.5°	24047.8	24023.2
35°	20173.4	20157.9
37.5°	16094.4	16062.8
40°	12134.5	12042.3
42.5°	8661.2	8499.5
45°	5985.7	5793.9
47.5°	4178.6	4060.1
50°	3167.3	3129.1
52.5°	2580.8	2571.9
55°	2177.6	2173.7
57.5°	1874.5	1873.2
60°	1636.5	1636.1
62.5°	1459.1	1459.7
65°	1334.0	1334.3
67.5°	1224.0	1223.2
70°	1096.7	1095.8
72.5°	1009.2	1007.7
75°	941.6	940.7
77.5°	845.3	843.9
80°	728.9	726.9
82.5°	599.5	597.3
85°	447.2	447.3
87.5°	273.6	273.5
90°	127.8	124.9
92.5°	43.1	40.7
95°	49.4	46.3
97.5°	60.8	58.1
100°	77.6	75.4
102.5°	132.2	124.3
105°	231.3	209.9
107.5°	397.5	357.9
110°	691.8	659.8



TEST NUMBER: P1444695  
CATALOG NUMBER: EHBR1-48-UNV-TA-L930-UPL36

**CANDELA DISTRIBUTION (continued):**

	357.5°	360°
112.5°	904.0	889.4
115°	944.2	938.9
117.5°	912.3	912.8
120°	848.6	852.6
122.5°	771.6	776.4
125°	701.4	706.1
127.5°	642.5	645.5
130°	603.9	606.7
132.5°	574.1	575.5
135°	553.8	555.2
137.5°	536.9	538.1
140°	521.6	522.6
142.5°	504.3	504.8
145°	493.2	493.6
147.5°	483.4	483.7
150°	475.0	475.2
152.5°	465.7	465.9
155°	460.9	460.9
157.5°	458.4	458.2
160°	458.0	457.8
162.5°	457.9	457.6
165°	459.5	458.9
167.5°	464.0	463.9
170°	466.4	466.2
172.5°	469.4	469.1
175°	469.8	469.6
177.5°	473.2	472.9
180°	475.7	475.7

LM-79-2019: Approved Method: Electrical and Photometric Measurements of Solid-  
State Lighting Products

Report Prepared for

Cooper Lighting Solutions

Metalux

Report Number: SP1-2506-472-5

Test Date: 08/01/2025

Luminaire Tested: EHBR-60-L930-N

Data in this report applies to families of products including EHBR-60-L930-N

**Test Information**

Test Method: LM-79-2019  
 Report Number: SP1-2506-472-5  
 Test Lab: COOPER LIGHTING SOLUTIONS  
 Photometer: SP1 - 76IN SPHERE  
 Measurement Geometry: 4π  
 Issue Date: 08/05/2025  
 Manufacturer: COOPER LIGHTING SOLUTIONS  
 Product Line: Metalux  
 Catalog Number: **EHBR-60-L930-N**  
 Description: Elevate Round Highbay at, 60000 lumens, 3000K 90CRI LEDs with N lens

**Spectral Parameters**

CCT (K): 2996  
 CIE u': 0.2519  
 CIE v': 0.5169  
 Duv: -0.0033  
 CIE x: 0.4325  
 CIE y: 0.3945  
 CIE z: 0.1730  
 Peak Wavelength (nm): 630  
 Dominant Wavelength (nm): 584  
 Purity: 48.21818  
 Rf: 91.3  
 Rg: 102

CRI (Ra):	94.4		
R1:	96.8	R9:	61.4
R2:	98.1	R10:	94.4
R3:	97.8	R11:	95.7
R4:	95.6	R12:	88.5
R5:	96.9	R13:	97.3
R6:	95.7	R14:	97.8
R7:	90.9	R15:	92.3
R8:	83.0		



**Test Conditions**

Stabilization Time: 40M  
 Operation Time: 1H 40M  
 Sphere Temperature (°C): 25.0

REPORT NUMBER: SP1-2506-472-5

Measurement and Test Equipment			
Instrument	Identification Number	Calibration Date	Calibration Due Date
Photometer	76INCH SPHERE IN0058	6/16/2025	12/16/2025
Power Meter	XITRON INXT2011004	1/21/2025	1/21/2026
AC Power Source	CHROMA 61603 IN0063	10/22/2024	10/22/2025
DC Power Source	AGILENT E3634A IN0208	10/22/2024	10/22/2025
Sphere Thermometer	ONSET IN0085	10/22/2024	10/22/2025
Room Thermometer	ONSET IN0046	10/22/2024	10/22/2025

REPORT NUMBER: SP1-2506-472-5

**CIE 1931 Chromaticity Diagram**



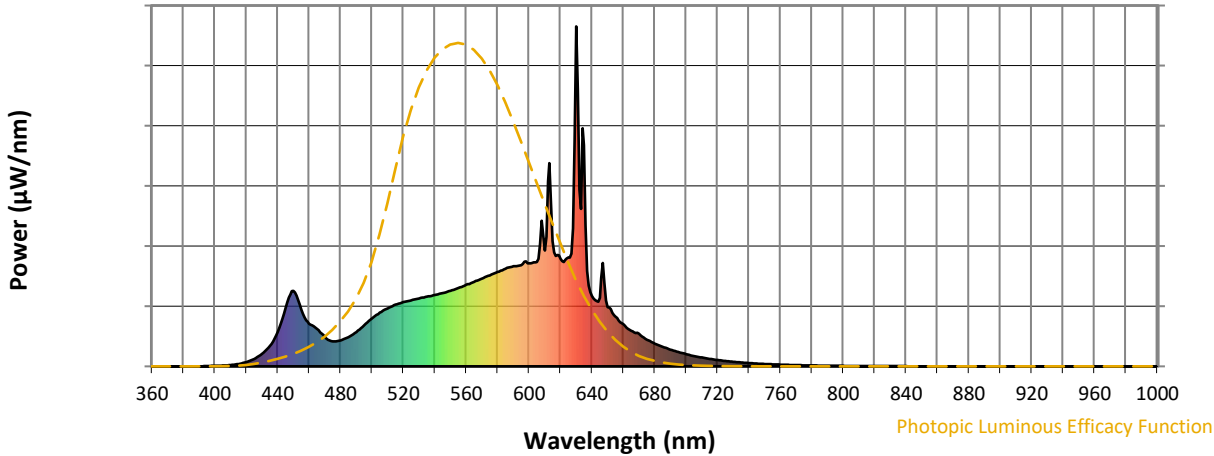
**CIE 1931 Chromaticity Diagram with 2017 ANSI 7-Step and 4-Step Quadrangles**



Point lies inside the ANSI 3000K 7-step quadrangle

REPORT NUMBER: SP1-2506-472-5

**Photopic Flux vs. Wavelength**



**Photopic Lumens: NR**

λ (nm)	Power W <sup>^</sup> /nm	Lumens (φ/nm)	λ (nm)	Power W <sup>^</sup> /nm	Lumens (φ/nm)	λ (nm)	Power W <sup>^</sup> /nm	Lumens (φ/nm)	λ (nm)	Power W <sup>^</sup> /nm	Lumens (φ/nm)	λ (nm)	Power W <sup>^</sup> /nm	Lumens (φ/nm)
360	0	NR	490	101	NR	620	317	NR	750	7	NR	880	0	NR
365	0	NR	495	121	NR	625	320	NR	755	6	NR	885	0	NR
370	0	NR	500	141	NR	630	1000	NR	760	5	NR	890	0	NR
375	0	NR	505	158	NR	635	651	NR	765	4	NR	895	0	NR
380	0	NR	510	171	NR	640	207	NR	770	4	NR	900	0	NR
385	0	NR	515	182	NR	645	201	NR	775	3	NR	905	0	NR
390	0	NR	520	189	NR	650	174	NR	780	3	NR	910	0	NR
395	1	NR	525	194	NR	655	146	NR	785	2	NR	915	0	NR
400	1	NR	530	199	NR	660	124	NR	790	2	NR	920	0	NR
405	3	NR	535	205	NR	665	105	NR	795	2	NR	925	0	NR
410	4	NR	540	210	NR	670	96	NR	800	1	NR	930	0	NR
415	7	NR	545	216	NR	675	79	NR	805	1	NR	935	0	NR
420	13	NR	550	222	NR	680	67	NR	810	1	NR	940	0	NR
425	22	NR	555	230	NR	685	58	NR	815	1	NR	945	0	NR
430	37	NR	560	240	NR	690	49	NR	820	1	NR	950	0	NR
435	60	NR	565	248	NR	695	42	NR	825	1	NR	955	0	NR
440	101	NR	570	258	NR	700	36	NR	830	1	NR	960	0	NR
445	172	NR	575	268	NR	705	30	NR	835	1	NR	965	0	NR
450	223	NR	580	278	NR	710	26	NR	840	1	NR	970	0	NR
455	167	NR	585	287	NR	715	22	NR	845	0	NR	975	0	NR
460	126	NR	590	295	NR	720	19	NR	850	0	NR	980	0	NR
465	111	NR	595	298	NR	725	16	NR	855	0	NR	985	0	NR
470	86	NR	600	303	NR	730	14	NR	860	0	NR	990	0	NR
475	74	NR	605	307	NR	735	12	NR	865	0	NR	995	0	NR
480	77	NR	610	341	NR	740	10	NR	870	0	NR	1000	0	NR
485	86	NR	615	368	NR	745	8	NR	875	0	NR			

REPORT NUMBER: SP1-2506-472-5

**Scotopic Flux vs. Wavelength**



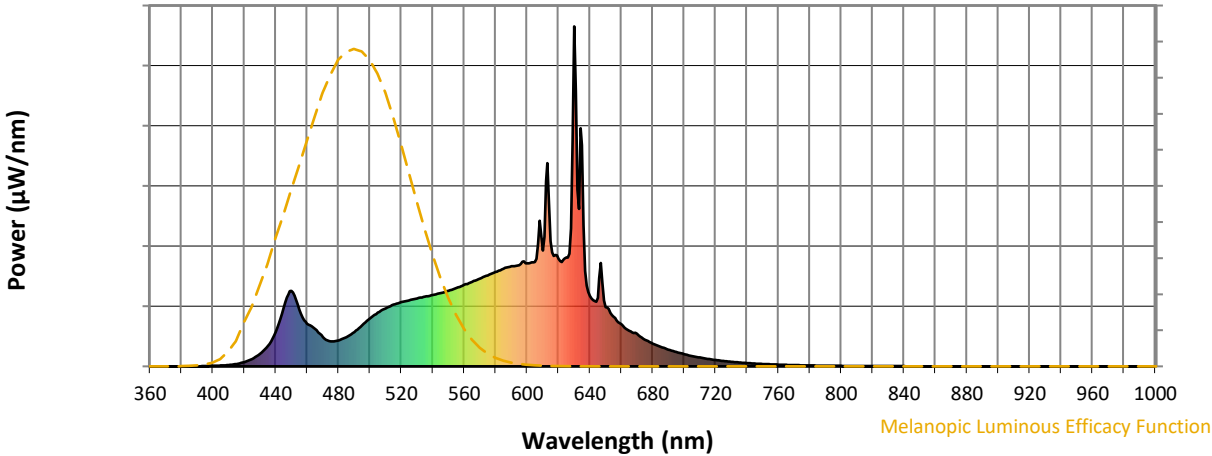
**Scotopic Lumens: NR**

**S/P: 1.44**

λ (nm)	Power W <sup>^</sup> /nm	Lumens (φ/nm)	λ (nm)	Power W <sup>^</sup> /nm	Lumens (φ/nm)	λ (nm)	Power W <sup>^</sup> /nm	Lumens (φ/nm)	λ (nm)	Power W <sup>^</sup> /nm	Lumens (φ/nm)	λ (nm)	Power W <sup>^</sup> /nm	Lumens (φ/nm)
360	0	NR	490	101	NR	620	317	NR	750	7	NR	880	0	NR
365	0	NR	495	121	NR	625	320	NR	755	6	NR	885	0	NR
370	0	NR	500	141	NR	630	1000	NR	760	5	NR	890	0	NR
375	0	NR	505	158	NR	635	651	NR	765	4	NR	895	0	NR
380	0	NR	510	171	NR	640	207	NR	770	4	NR	900	0	NR
385	0	NR	515	182	NR	645	201	NR	775	3	NR	905	0	NR
390	0	NR	520	189	NR	650	174	NR	780	3	NR	910	0	NR
395	1	NR	525	194	NR	655	146	NR	785	2	NR	915	0	NR
400	1	NR	530	199	NR	660	124	NR	790	2	NR	920	0	NR
405	3	NR	535	205	NR	665	105	NR	795	2	NR	925	0	NR
410	4	NR	540	210	NR	670	96	NR	800	1	NR	930	0	NR
415	7	NR	545	216	NR	675	79	NR	805	1	NR	935	0	NR
420	13	NR	550	222	NR	680	67	NR	810	1	NR	940	0	NR
425	22	NR	555	230	NR	685	58	NR	815	1	NR	945	0	NR
430	37	NR	560	240	NR	690	49	NR	820	1	NR	950	0	NR
435	60	NR	565	248	NR	695	42	NR	825	1	NR	955	0	NR
440	101	NR	570	258	NR	700	36	NR	830	1	NR	960	0	NR
445	172	NR	575	268	NR	705	30	NR	835	1	NR	965	0	NR
450	223	NR	580	278	NR	710	26	NR	840	1	NR	970	0	NR
455	167	NR	585	287	NR	715	22	NR	845	0	NR	975	0	NR
460	126	NR	590	295	NR	720	19	NR	850	0	NR	980	0	NR
465	111	NR	595	298	NR	725	16	NR	855	0	NR	985	0	NR
470	86	NR	600	303	NR	730	14	NR	860	0	NR	990	0	NR
475	74	NR	605	307	NR	735	12	NR	865	0	NR	995	0	NR
480	77	NR	610	341	NR	740	10	NR	870	0	NR	1000	0	NR
485	86	NR	615	368	NR	745	8	NR	875	0	NR			

REPORT NUMBER: SP1-2506-472-5

Melanopic Flux vs. Wavelength



Melanopic Lumens: NR

M/P: 2.85

λ (nm)	Power W <sup>^</sup> /nm	Lumens (φ/nm)	λ (nm)	Power W <sup>^</sup> /nm	Lumens (φ/nm)	λ (nm)	Power W <sup>^</sup> /nm	Lumens (φ/nm)	λ (nm)	Power W <sup>^</sup> /nm	Lumens (φ/nm)	λ (nm)	Power W <sup>^</sup> /nm	Lumens (φ/nm)
360	0	NR	490	101	NR	620	317	NR	750	7	NR	880	0	NR
365	0	NR	495	121	NR	625	320	NR	755	6	NR	885	0	NR
370	0	NR	500	141	NR	630	1000	NR	760	5	NR	890	0	NR
375	0	NR	505	158	NR	635	651	NR	765	4	NR	895	0	NR
380	0	NR	510	171	NR	640	207	NR	770	4	NR	900	0	NR
385	0	NR	515	182	NR	645	201	NR	775	3	NR	905	0	NR
390	0	NR	520	189	NR	650	174	NR	780	3	NR	910	0	NR
395	1	NR	525	194	NR	655	146	NR	785	2	NR	915	0	NR
400	1	NR	530	199	NR	660	124	NR	790	2	NR	920	0	NR
405	3	NR	535	205	NR	665	105	NR	795	2	NR	925	0	NR
410	4	NR	540	210	NR	670	96	NR	800	1	NR	930	0	NR
415	7	NR	545	216	NR	675	79	NR	805	1	NR	935	0	NR
420	13	NR	550	222	NR	680	67	NR	810	1	NR	940	0	NR
425	22	NR	555	230	NR	685	58	NR	815	1	NR	945	0	NR
430	37	NR	560	240	NR	690	49	NR	820	1	NR	950	0	NR
435	60	NR	565	248	NR	695	42	NR	825	1	NR	955	0	NR
440	101	NR	570	258	NR	700	36	NR	830	1	NR	960	0	NR
445	172	NR	575	268	NR	705	30	NR	835	1	NR	965	0	NR
450	223	NR	580	278	NR	710	26	NR	840	1	NR	970	0	NR
455	167	NR	585	287	NR	715	22	NR	845	0	NR	975	0	NR
460	126	NR	590	295	NR	720	19	NR	850	0	NR	980	0	NR
465	111	NR	595	298	NR	725	16	NR	855	0	NR	985	0	NR
470	86	NR	600	303	NR	730	14	NR	860	0	NR	990	0	NR
475	74	NR	605	307	NR	735	12	NR	865	0	NR	995	0	NR
480	77	NR	610	341	NR	740	10	NR	870	0	NR	1000	0	NR
485	86	NR	615	368	NR	745	8	NR	875	0	NR			

**Summary**

$R_f = 91.3$   
 $R_g = 102$   
 $CIE R_a = 94.4$   
 $R_9 = 61.4$

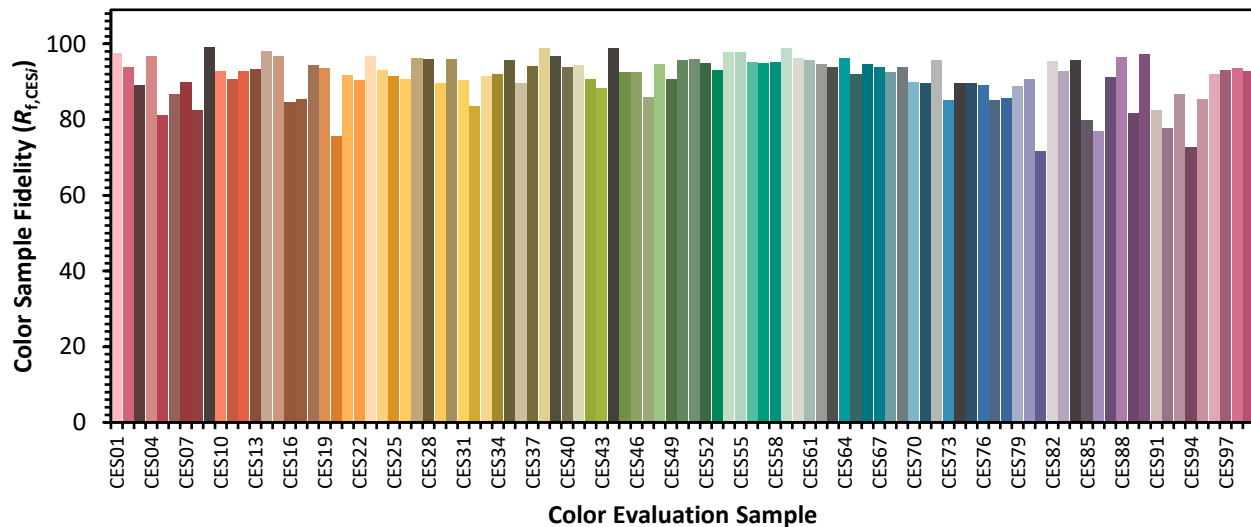


**Color Vector Graphics**

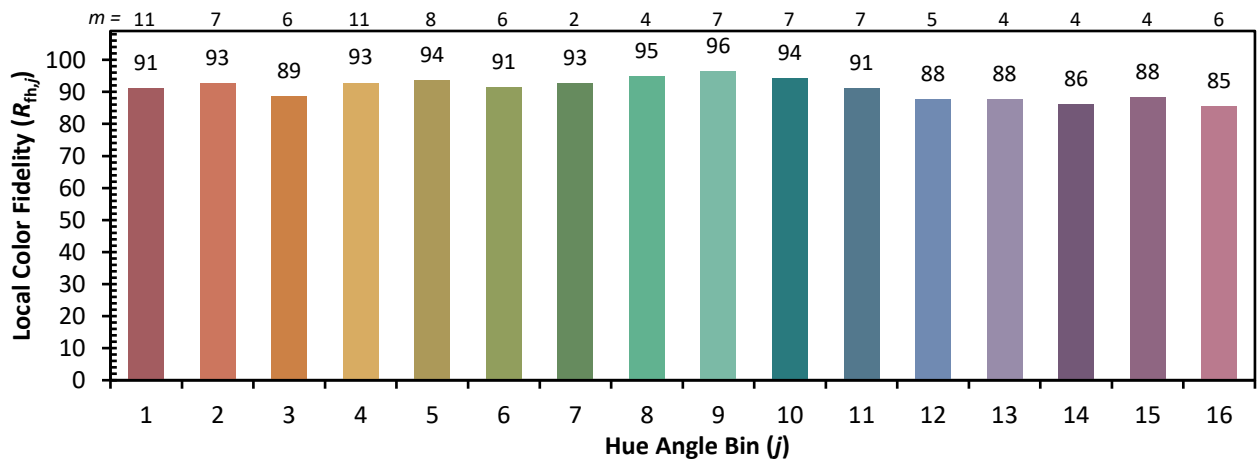
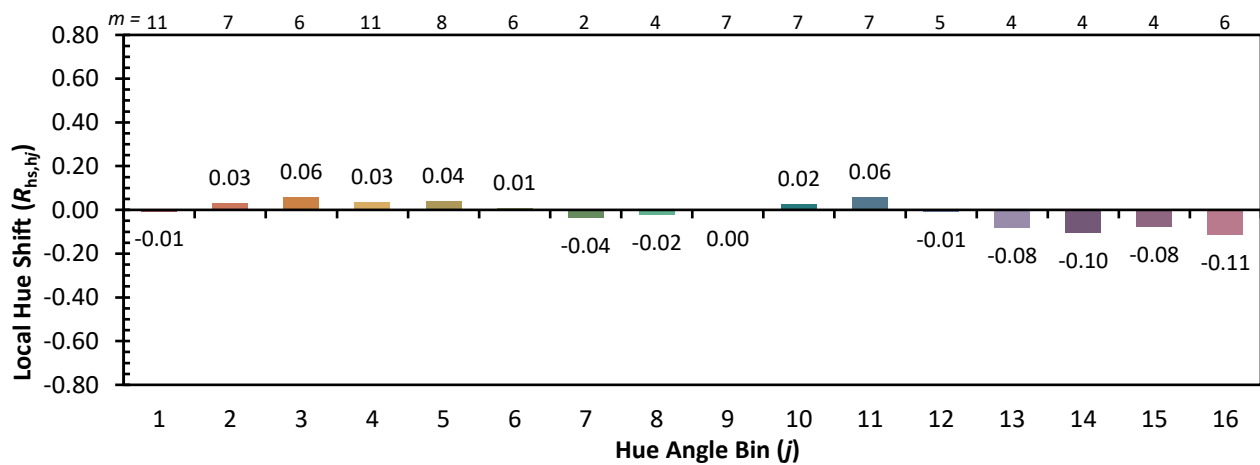
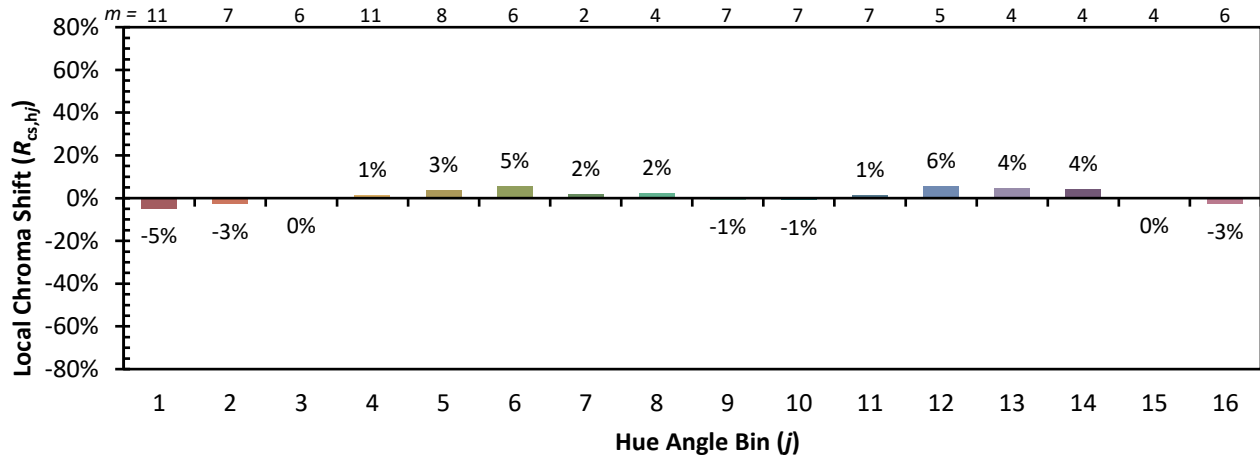


**Individual Sample Fidelity Index ( $R_{f,i}$ )**

CES01 = 86	CES26 = 91	CES51 = 96	CES76 = 89
CES02 = 63	CES27 = 96	CES52 = 95	CES77 = 85
CES03 = 32	CES28 = 96	CES53 = 93	CES78 = 86
CES04 = 70	CES29 = 90	CES54 = 98	CES79 = 89
CES05 = 51	CES30 = 96	CES55 = 98	CES80 = 91
CES06 = 51	CES31 = 90	CES56 = 95	CES81 = 72
CES07 = 44	CES32 = 84	CES57 = 95	CES82 = 95
CES08 = 42	CES33 = 91	CES58 = 95	CES83 = 93
CES09 = 29	CES34 = 92	CES59 = 99	CES84 = 96
CES10 = 76	CES35 = 96	CES60 = 96	CES85 = 80
CES11 = 59	CES36 = 90	CES61 = 96	CES86 = 77
CES12 = 65	CES37 = 94	CES62 = 95	CES87 = 91
CES13 = 44	CES38 = 99	CES63 = 94	CES88 = 96
CES14 = 74	CES39 = 97	CES64 = 96	CES89 = 82
CES15 = 72	CES40 = 94	CES65 = 92	CES90 = 97
CES16 = 48	CES41 = 94	CES66 = 95	CES91 = 82
CES17 = 50	CES42 = 91	CES67 = 94	CES92 = 78
CES18 = 57	CES43 = 88	CES68 = 93	CES93 = 87
CES19 = 72	CES44 = 99	CES69 = 94	CES94 = 73
CES20 = 67	CES45 = 93	CES70 = 90	CES95 = 85
CES21 = 86	CES46 = 93	CES71 = 90	CES96 = 92
CES22 = 79	CES47 = 86	CES72 = 96	CES97 = 93
CES23 = 92	CES48 = 95	CES73 = 85	CES98 = 94
CES24 = 91	CES49 = 91	CES74 = 90	CES99 = 93
CES25 = 72	CES50 = 96	CES75 = 90	



Color Rendition by Hue-Angle Bin



Measure Comparisons



(END OF REPORT)