

Cooper Lighting Solutions Photometric Lab
1121 Highway 74 South
Peachtree City, GA 30269



Scaled data based on original data using
LM-79-2019 Approved Method: Electrical and Photometric Measurements of Solid-
State Lighting Products

Test Report Prepared for
Cooper Lighting Solutions

Brand: METALUX

Report Number: P1444711

Luminaire Tested: EHBR1-60-UNV-TA-L930-UPL36

Issue Date: 5/1/2026

Test Information

Test Method: LM-79-2019
Report Number: P1444711
REPORT IS A COMBINATION OF REPORTS P1444353 AND P1431635
Test Lab: INNOVATION CENTER
Issue Date: 5/1/2026
Manufacturer: COOPER LIGHTING SOLUTIONS
Product Line: METALUX
Catalog Number: EHBR1-60-UNV-TA-L930-UPL36
Description: Elevate Round Highbay at, 60000 lumens, 3000K 90CRI LEDs with TA lens
Light Source: -
Ballast/Driver: -

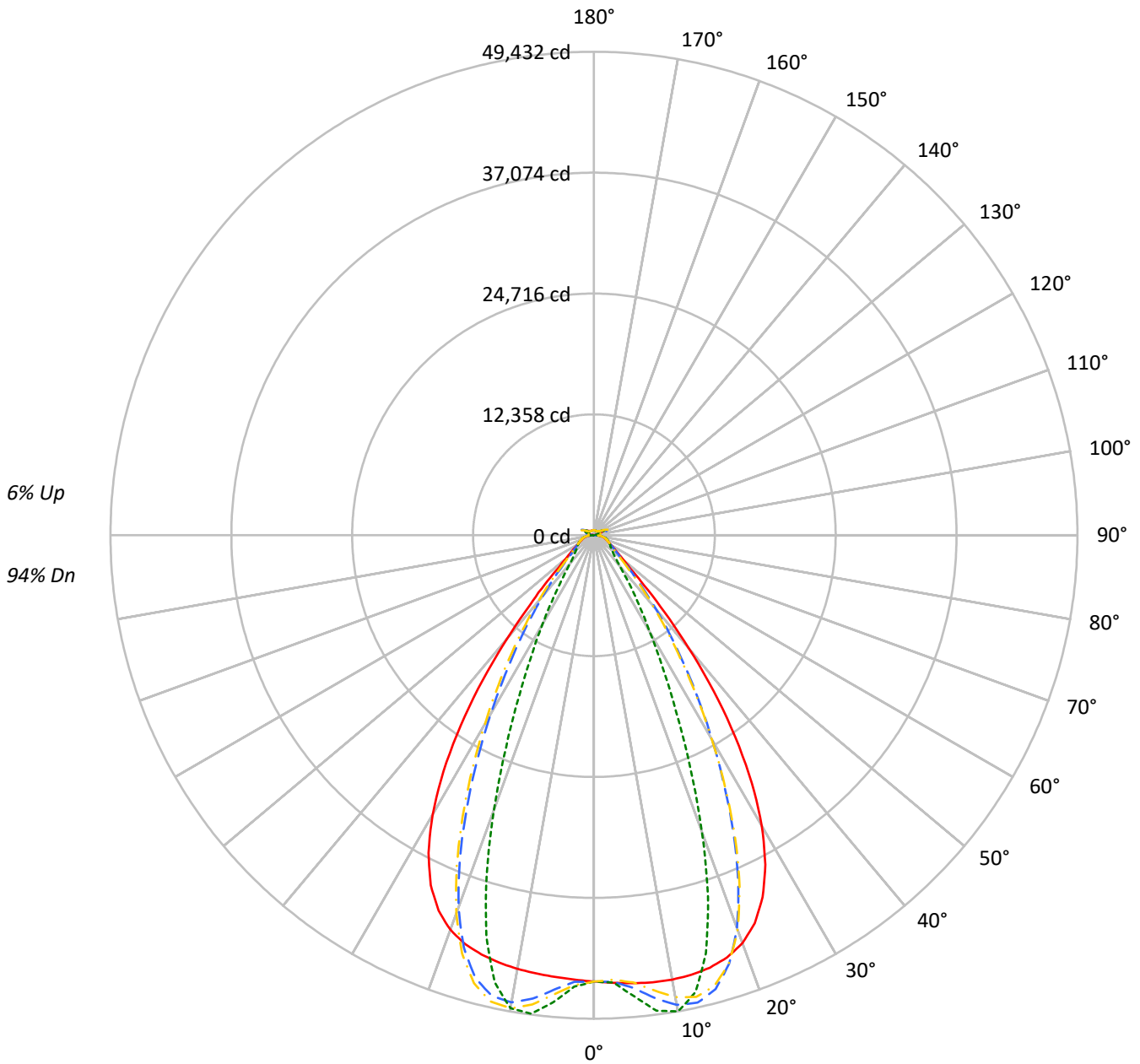
Summary

Lumens per Lamp: N/A
Luminaire Lumens: 56109.7 lumens
Efficiency: N/A
Efficacy: 156.4 lumens/watt
Spacing Criteria (0/90/45): 1.13 / 0.77 / 0.88
Luminous Opening: Vertical Cylinder (Dia: 1.71' x H: 0.1')
CIE Type: Direct

Input Watts (W): 358.8
Input Voltage (V): NR
Input Current (Ain): NR
Voltage Rise (V): NR
Power Factor: NR
Total Harmonic Distortion (THDi): NR
Frequency (hertz): 60
Stabilization Time: NR
Operation Time: NR
Ambient Temperature (°C): NR
Test Distance: 24 FT

TEST NUMBER: P1444711
CATALOG NUMBER: EHBR1-60-UNV-TA-L930-UPL36

Luminous Intensity Polar Plot



— 0°-180° - - 45°-225° - · - 90°-270° - · - 135°-315°



TEST NUMBER: P1444711
 CATALOG NUMBER: EHBR1-60-UNV-TA-L930-UPL36

COEFFICIENT OF UTILIZATION - ZONAL CAVITY METHOD:

RF	20				20				20				20				20				
RC	80				70				50				30				10			0	
RW	70	50	30	10	70	50	30	10	50	30	10	50	30	10	50	30	10	50	30	10	0
RCR																					
0	118	118	118	118	114	114	114	114	108	108	108	102	102	102	96	96	96	96	96	96	94
1	110	107	104	101	107	104	101	99	99	97	95	94	92	91	89	88	87	87	87	87	85
2	104	98	93	89	101	95	91	87	91	87	84	87	84	81	83	81	79	79	79	79	77
3	97	90	84	79	95	88	82	78	84	80	76	81	77	74	78	75	72	72	72	72	70
4	91	83	76	71	89	81	75	70	78	73	69	75	71	67	72	69	66	66	66	66	64
5	86	77	70	65	84	75	69	64	73	67	63	70	66	62	68	64	61	61	61	61	59
6	81	71	64	59	79	70	64	59	68	62	58	66	61	57	64	60	56	56	56	56	55
7	77	66	60	55	75	65	59	54	63	58	54	62	57	53	60	56	52	52	52	52	51
8	73	62	55	51	71	61	55	51	59	54	50	58	53	49	56	52	49	49	49	49	47
9	69	58	52	47	67	57	51	47	56	50	47	55	50	46	53	49	46	46	46	46	44
10	65	55	48	44	64	54	48	44	53	47	44	52	47	43	50	46	43	43	43	43	41

AVERAGE LUMINANCE (cd/sqm):

	0°	90°	180°	270°
0°	214284	214284	214284	214284
5°	215321	221599	212307	224502
10°	217118	232663	211912	231123
15°	218183	210907	211541	202415
20°	215928	157118	208861	145372
25°	204384	99368	197629	90160
30°	178545	59713	171629	54572
35°	137409	37470	129505	33192
40°	86923	23504	79528	22087
45°	44802	18311	44060	18010
50°	26268	16287	25461	16033
55°	20124	15409	19379	15271
60°	17027	15741	16302	15537
65°	15993	16438	15381	15878
70°	15625	17212	14847	16565
75°	16706	18254	15804	17448
80°	17289	20214	15675	18452
85°	16279	19503	13157	16701

MAXIMUM LUMINANCE 45°-90°:

Horizontal Angle: 25°
 Vertical Angle: 45°
 Luminance: 68564 cd/sqm



TEST NUMBER: P1444711
 CATALOG NUMBER: EHBR1-60-UNV-TA-L930-UPL36

ZONAL LUMENS:

Zone	Lumens	% Fixture
0°-10°	4497.0	8.0
10°-20°	12650.4	22.5
20°-30°	14407.8	25.7
30°-40°	10355.7	18.5
40°-50°	4776.0	8.5
50°-60°	2285.5	4.1
60°-70°	1667.6	3.0
70°-80°	1266.9	2.3
80°-90°	582.1	1.0
90°-100°	105.0	0.2
100°-110°	585.5	1.0
110°-120°	1081.2	1.9
120°-130°	666.3	1.2
130°-140°	434.5	0.8
140°-150°	327.3	0.6
150°-160°	231.3	0.4
160°-170°	141.1	0.3
170°-180°	48.6	0.1
0°-30°	31555.2	56.2
0°-40°	41910.8	74.7
0°-60°	48972.4	87.3
0°-90°	52489.0	93.5
90°-120°	1771.7	3.2
90°-150°	3199.7	5.7
90°-180°	3621.0	6.5
0°-180°	56109.7	100.0

CANDELA DISTRIBUTION:

	0°	90°	180°	270°	360°	Flux
0°	45630	45630	45630	45630	45630	
5°	45974	47315	45331	47935	45974	4393
15°	45774	44247	44380	42466	45774	12897
25°	40815	19844	39466	18005	40815	18503
35°	25220	6877	23769	6092	25220	15478
45°	7249	2963	7129	2914	7249	6165
55°	2720	2082	2619	2064	2720	2510
65°	1669	1716	1605	1657	1669	1667
75°	1177	1286	1113	1229	1177	1224
85°	560	670	452	574	560	526
90°	150	191	42	52	150	94
95°	48	53	48	53	48	46
105°	213	273	144	273	213	281
115°	945	1142	990	1142	945	873
125°	718	745	811	747	718	654
135°	574	502	617	507	574	448
145°	518	497	550	504	518	327
155°	490	488	520	494	490	228
165°	493	490	510	494	493	140
175°	507	511	516	513	507	48
180°	514	514	514	514	514	



TEST NUMBER: P1444711
 CATALOG NUMBER: EHBR1-60-UNV-TA-L930-UPL36

CANDELA DISTRIBUTION (FULL):

	0°	2.5°	5°	7.5°	10°	12.5°	15°	17.5°	20°	22.5°	25°
0°	45630.2	45630.2	45630.2	45630.2	45630.2	45630.2	45630.2	45630.2	45630.2	45630.2	45630.2
2.5°	45804.5	45800.8	45800.1	45796.9	45796.0	45796.0	45794.5	45790.8	45788.4	45783.2	45777.3
5°	45974.4	45972.4	45973.6	45974.0	45970.8	45963.6	45952.5	45938.8	45921.6	45905.3	45890.7
7.5°	46105.9	46109.1	46113.2	46112.3	46102.3	46085.5	46062.7	46049.9	46057.5	46082.3	46139.2
10°	46129.8	46149.5	46157.1	46154.7	46134.8	46120.4	46126.0	46174.4	46270.5	46398.9	46574.5
12.5°	46036.3	46060.4	46059.5	46051.6	46032.3	46051.9	46121.9	46265.8	46472.1	46725.3	47022.3
15°	45773.7	45804.8	45796.0	45785.8	45772.8	45837.3	45977.2	46227.1	46545.7	46902.7	47268.2
17.5°	45263.8	45301.4	45283.2	45271.5	45260.6	45381.4	45621.7	45987.7	46389.0	46792.7	47139.1
20°	44379.4	44404.6	44361.2	44340.7	44357.9	44594.5	44948.4	45415.8	45838.9	46220.7	46457.4
22.5°	42936.1	42967.3	42885.6	42876.2	42977.0	43340.4	43788.2	44310.7	44708.2	45010.8	45102.0
25°	40815.4	40846.2	40749.1	40807.1	40978.6	41473.5	42007.0	42565.9	42904.9	43129.2	43067.2
27.5°	37953.0	37981.1	37889.1	38007.4	38278.5	38929.0	39556.7	40162.9	40465.1	40622.2	40423.2
30°	34343.0	34401.4	34292.6	34457.9	34871.6	35716.1	36435.2	37115.1	37416.4	37536.0	37226.2
32.5°	30055.4	30138.4	30018.5	30264.4	30841.7	31856.1	32673.1	33432.7	33766.0	33902.5	33552.6
35°	25219.5	25338.6	25201.1	25570.1	26282.2	27411.7	28316.4	29164.5	29559.2	29752.6	29400.1
37.5°	20096.1	20209.6	20135.2	20627.5	21409.4	22580.2	23503.7	24418.6	24864.4	25154.7	24876.7
40°	15066.0	15170.0	15226.2	15789.2	16524.7	17628.1	18515.1	19420.3	19919.0	20283.5	20112.0
42.5°	10633.7	10738.4	10929.8	11473.0	12086.3	12999.7	13759.5	14572.3	15048.7	15437.5	15371.3
45°	7248.8	7370.3	7610.2	8054.9	8498.5	9153.8	9711.7	10343.8	10733.0	11089.1	11093.3
47.5°	5079.6	5165.0	5379.3	5683.0	5972.1	6792.5	6826.1	7136.8	7398.4	7664.6	7699.1
50°	3914.8	3966.2	4079.8	4249.0	4412.9	4625.8	4820.9	5045.9	5206.9	5352.9	5387.7
52.5°	3217.6	3250.3	3308.2	3399.8	3494.9	3610.7	3715.0	3838.7	3926.3	4004.3	4020.8
55°	2719.5	2746.5	2832.6	2850.0	2958.8	2979.7	3026.0	3101.3	3152.2	3199.1	3210.8
57.5°	2343.5	2363.1	2381.4	2420.5	2453.9	2502.7	2541.9	2595.9	2628.0	2661.8	2664.7
60°	2046.9	2061.1	2074.1	2101.2	2124.0	2157.9	2184.9	2221.6	2244.6	2270.0	2272.9
62.5°	1826.2	1836.4	1845.0	1862.9	1879.1	1905.2	1926.6	1957.3	1978.8	1998.4	2002.7
65°	1669.3	1676.8	1682.3	1695.8	1710.0	1732.2	1751.6	1776.7	1792.4	1807.5	1810.7
67.5°	1530.3	1537.4	1543.1	1555.5	1565.3	1581.9	1594.9	1613.7	1625.5	1637.5	1637.8
70°	1371.0	1377.6	1382.0	1393.5	1401.4	1415.7	1426.1	1443.0	1455.2	1468.6	1472.0
72.5°	1260.7	1264.6	1270.5	1281.0	1292.0	1307.2	1321.3	1338.8	1353.6	1367.5	1373.3
75°	1176.8	1181.4	1185.3	1194.2	1201.9	1214.7	1225.2	1241.3	1254.1	1269.0	1276.3
77.5°	1055.7	1061.0	1064.4	1073.4	1080.0	1092.3	1100.0	1114.5	1124.9	1138.4	1145.0
80°	909.5	914.4	916.7	925.2	930.4	941.8	949.4	963.2	972.1	985.6	993.5
82.5°	747.3	752.0	753.4	761.3	764.2	773.5	779.1	793.3	804.2	821.7	833.9
85°	559.5	561.2	564.0	562.0	573.3	574.0	586.8	589.2	606.1	610.5	629.8
87.5°	342.1	347.2	349.7	357.5	360.9	368.7	371.1	379.4	383.9	393.3	397.7
90°	150.3	158.5	161.6	171.2	174.0	182.5	184.7	194.4	197.4	207.3	211.6
92.5°	42.2	44.9	47.3	50.5	53.1	56.9	59.9	62.9	65.7	69.2	74.6
95°	47.9	50.9	53.9	56.9	60.0	63.1	66.1	69.2	72.2	75.2	83.9
97.5°	59.9	62.6	65.1	67.8	70.4	73.1	75.7	78.3	80.9	83.4	93.9
100°	77.4	79.7	81.9	84.1	86.4	88.6	90.8	93.0	95.3	97.5	116.9
102.5°	126.7	134.7	142.5	150.4	158.3	166.0	174.0	181.8	189.6	197.6	238.9
105°	212.7	234.0	255.7	277.0	298.4	319.9	341.4	362.5	384.0	405.3	472.9
107.5°	361.3	400.7	440.5	480.1	519.9	559.4	599.1	638.6	678.2	717.5	786.1
110°	663.9	695.5	727.5	759.3	791.2	823.2	855.0	886.5	918.5	950.2	1000.3



TEST NUMBER: P1444711
 CATALOG NUMBER: EHBR1-60-UNV-TA-L930-UPL36

CANDELA DISTRIBUTION (continued):

	0°	2.5°	5°	7.5°	10°	12.5°	15°	17.5°	20°	22.5°	25°
112.5°	894.3	908.6	923.0	937.4	951.7	965.9	980.3	994.5	1008.9	1022.9	1058.8
115°	945.0	949.9	954.9	959.8	964.8	969.6	974.5	979.3	984.3	988.8	1013.0
117.5°	920.0	918.9	918.0	917.1	915.7	914.7	913.5	912.3	911.0	909.7	923.1
120°	861.2	856.6	852.1	847.2	842.7	837.8	833.1	828.3	823.3	818.3	824.0
122.5°	786.4	780.9	775.6	769.9	764.2	758.4	752.8	746.7	741.2	735.3	737.2
125°	717.8	712.0	706.9	701.0	695.2	689.2	683.4	677.4	671.5	665.2	666.1
127.5°	658.7	654.8	650.9	646.4	642.2	637.8	633.2	628.7	624.4	619.5	619.5
130°	621.7	618.2	614.5	610.5	606.7	602.5	598.3	593.9	589.9	585.4	585.5
132.5°	592.3	589.8	587.1	584.1	581.1	577.6	574.5	571.0	567.7	564.4	564.4
135°	573.7	571.1	568.8	566.0	563.1	559.9	556.7	553.3	550.2	546.8	547.2
137.5°	558.3	556.1	553.8	551.0	548.4	545.2	542.4	539.1	536.2	532.9	533.2
140°	544.4	542.3	540.1	537.5	535.1	532.5	529.5	526.6	523.7	520.6	521.3
142.5°	528.2	526.3	524.7	522.6	520.5	517.9	515.6	512.9	510.6	507.9	509.0
145°	518.2	516.7	515.3	513.5	511.4	509.2	507.2	504.7	502.8	500.5	501.6
147.5°	509.5	508.2	507.1	505.5	504.1	502.1	500.3	498.1	496.5	494.5	495.7
150°	502.0	500.8	499.8	498.4	496.8	495.0	493.3	491.6	489.8	487.8	489.1
152.5°	493.6	492.4	491.5	490.0	488.6	486.7	485.5	483.5	482.0	480.1	481.2
155°	489.7	488.4	487.2	485.9	484.5	482.9	481.4	479.8	478.4	476.6	477.4
157.5°	488.2	486.9	486.1	484.7	483.8	482.5	481.2	479.8	478.6	477.4	477.8
160°	489.0	487.9	486.9	485.7	484.4	483.1	482.0	480.6	479.8	478.4	478.8
162.5°	490.1	489.0	487.8	486.7	485.6	484.2	483.1	482.1	480.9	479.6	480.2
165°	492.7	492.1	491.2	490.4	489.5	488.7	487.8	486.8	485.9	485.0	485.2
167.5°	498.9	498.0	497.2	496.2	495.1	494.2	493.2	492.2	491.4	490.2	490.5
170°	502.2	501.4	500.8	500.3	499.7	498.9	498.5	497.8	497.1	496.5	496.7
172.5°	505.9	505.3	504.9	504.6	503.9	503.6	503.0	502.5	502.2	501.5	502.2
175°	507.0	506.5	506.3	506.0	505.6	505.3	505.1	504.8	504.8	504.3	504.6
177.5°	510.6	510.4	510.4	510.3	510.3	510.2	510.0	509.6	509.5	509.5	509.7
180°	513.7	513.7	513.7	513.7	513.7	513.7	513.7	513.7	513.7	513.7	513.7



TEST NUMBER: P1444711
 CATALOG NUMBER: EHBR1-60-UNV-TA-L930-UPL36

CANDELA DISTRIBUTION (continued):

	27.5°	30°	32.5°	35°	37.5°	40°	42.5°	45°	47.5°	50°	52.5°
0°	45630.2	45630.2	45630.2	45630.2	45630.2	45630.2	45630.2	45630.2	45630.2	45630.2	45630.2
2.5°	45772.8	45767.3	45759.6	45750.0	45741.7	45732.1	45709.3	45702.5	45710.1	45715.2	45725.7
5°	45881.6	45884.8	45886.0	45906.8	45924.8	45969.5	46320.6	46460.2	46568.0	46636.5	46740.5
7.5°	46209.5	46315.0	46419.4	46559.7	46680.8	46844.3	47458.6	47720.0	47905.9	48039.4	48203.9
10°	46765.2	46995.6	47211.5	47464.5	47681.9	47931.1	48502.8	48757.5	48918.4	49035.4	49144.6
12.5°	47324.9	47644.4	47933.1	48214.6	48450.1	48666.0	48867.1	48956.2	48963.8	48967.6	48909.6
15°	47616.5	47921.9	48176.2	48362.5	48500.8	48562.0	48215.8	48034.2	47804.7	47615.7	47304.7
17.5°	47432.5	47615.7	47725.6	47714.8	47657.6	47466.2	46485.7	45946.3	45410.9	44928.5	44295.9
20°	46614.5	46600.5	46505.0	46234.2	45908.0	45400.7	43719.7	42749.8	41812.2	40988.6	39989.4
22.5°	45092.7	44853.3	44519.4	43935.7	43287.1	42400.8	39991.8	38565.2	37259.9	36106.6	34814.8
25°	42887.7	42395.1	41779.3	40852.6	39844.7	38552.0	35582.9	33808.5	32241.2	30881.8	29391.3
27.5°	40065.7	39323.7	38421.3	37138.6	35773.2	34117.1	30825.3	28867.0	27184.6	25727.2	24140.7
30°	36724.7	35759.6	34594.5	33002.5	31355.5	29477.2	26138.6	24155.1	22452.2	20952.8	19365.2
32.5°	32949.2	31818.8	30453.4	28666.6	26885.6	24954.3	21730.1	19810.1	18183.3	16740.9	15304.0
35°	28785.0	27572.8	26128.3	24305.8	22535.4	20657.8	17699.3	15968.1	14531.5	13256.6	12096.3
37.5°	24318.1	23127.9	21754.9	20037.3	18395.5	16694.1	14141.4	12690.7	11485.2	10427.0	9531.1
40°	19673.9	18632.3	17444.3	15959.3	14558.3	13141.3	11045.8	9894.3	8942.9	8135.9	7464.5
42.5°	15086.4	14279.2	13368.2	12194.7	11122.6	10043.7	8430.9	7577.7	6873.0	6292.1	5817.4
45°	10945.7	10405.7	9794.7	8978.9	8237.1	7484.5	6336.6	5737.1	5278.1	4903.5	4586.8
47.5°	7651.6	7338.4	7319.3	6565.4	6021.3	5561.2	4821.7	4443.0	4161.8	3934.8	3734.3
50°	5373.5	5222.0	5033.8	4764.7	4512.2	4252.2	3801.6	3572.7	3407.9	3270.4	3143.6
52.5°	4017.1	3938.4	3838.1	3695.4	3558.6	3412.4	3127.2	2981.4	2929.7	2801.7	2701.2
55°	3208.5	3163.4	3106.4	3022.5	2939.3	2906.0	2661.7	2553.4	2484.9	2434.3	2380.4
57.5°	2665.2	2631.5	2597.7	2540.9	2492.7	2434.3	2304.7	2249.1	2208.4	2178.7	2141.3
60°	2273.4	2253.2	2234.3	2200.9	2174.9	2143.5	2061.1	2029.8	2008.5	1990.6	1966.7
62.5°	2006.5	1996.2	1986.3	1968.6	1955.4	1938.3	1882.0	1867.0	1856.3	1847.3	1832.8
65°	1813.9	1806.4	1801.0	1789.2	1782.6	1772.7	1724.3	1714.1	1707.5	1704.3	1695.8
67.5°	1638.9	1631.1	1627.5	1619.1	1616.3	1610.1	1570.5	1564.9	1562.8	1563.8	1560.7
70°	1475.2	1472.0	1473.6	1472.3	1476.0	1477.2	1453.2	1453.0	1455.5	1460.6	1461.1
72.5°	1377.1	1377.1	1378.9	1379.8	1383.3	1385.0	1365.0	1364.1	1365.2	1369.0	1369.1
75°	1283.7	1285.2	1290.3	1292.0	1296.3	1297.1	1270.7	1267.6	1267.8	1271.4	1270.2
77.5°	1154.6	1160.1	1169.7	1174.8	1182.9	1184.4	1154.8	1151.3	1151.4	1155.0	1152.0
80°	1007.9	1018.6	1033.9	1044.6	1057.1	1062.1	1031.8	1024.5	1017.7	1016.7	1010.6
82.5°	852.1	865.2	883.6	893.3	906.6	909.7	858.7	849.1	843.4	843.8	838.3
85°	650.5	660.3	677.1	682.5	690.8	690.1	632.0	607.1	613.7	603.4	611.5
87.5°	408.1	413.8	424.3	425.6	429.5	428.7	370.2	358.7	355.3	355.5	351.3
90°	222.4	227.7	238.1	239.6	247.1	247.6	201.6	197.5	192.1	193.3	186.2
92.5°	80.6	85.8	91.6	97.0	102.7	108.4	108.5	112.5	107.3	101.3	96.2
95°	92.9	101.8	110.7	119.6	128.5	137.4	146.3	155.2	146.9	138.5	130.1
97.5°	104.4	115.0	125.3	135.9	146.4	156.9	167.4	178.0	169.0	159.8	150.9
100°	136.6	156.2	175.7	195.3	214.9	234.5	254.2	273.8	256.6	239.0	221.7
102.5°	280.4	322.2	363.8	405.3	446.9	488.7	530.5	572.2	532.6	492.8	453.1
105°	540.4	607.8	675.3	742.5	810.0	877.4	945.4	1012.9	949.5	886.1	822.8
107.5°	854.5	923.0	991.1	1059.4	1127.9	1196.3	1265.4	1333.9	1272.0	1209.9	1148.1
110°	1050.1	1099.8	1149.7	1199.5	1249.2	1299.1	1350.0	1399.9	1362.6	1325.4	1288.1



TEST NUMBER: P1444711
 CATALOG NUMBER: EHBR1-60-UNV-TA-L930-UPL36

CANDELA DISTRIBUTION (continued):

	27.5°	30°	32.5°	35°	37.5°	40°	42.5°	45°	47.5°	50°	52.5°
112.5°	1094.1	1129.8	1165.3	1200.7	1236.0	1271.7	1308.6	1344.6	1325.7	1306.6	1288.0
115°	1036.7	1060.8	1084.4	1108.3	1132.1	1155.8	1181.5	1205.8	1199.6	1193.1	1187.1
117.5°	936.3	949.4	962.7	975.8	988.8	1001.9	1017.6	1031.0	1031.6	1032.4	1033.2
120°	829.4	834.7	840.1	845.5	850.6	855.9	864.0	869.9	874.7	879.0	883.7
122.5°	738.9	740.7	742.4	744.2	745.9	747.5	752.5	755.1	758.0	760.9	764.1
125°	666.8	667.4	668.0	668.7	669.0	669.6	674.1	675.3	675.1	674.9	674.6
127.5°	619.2	619.0	618.7	618.5	617.9	617.6	621.5	621.9	619.3	616.8	614.1
130°	585.6	585.7	585.6	585.5	585.6	585.7	589.9	591.1	586.8	582.3	578.2
132.5°	564.5	564.8	564.7	565.2	565.3	565.4	570.2	571.5	566.9	561.8	556.9
135°	547.3	547.8	548.1	548.4	548.8	549.4	554.7	556.2	551.8	546.8	542.3
137.5°	533.3	533.7	534.1	534.7	535.0	535.5	541.5	543.1	539.6	535.4	531.8
140°	521.8	522.3	522.9	523.7	524.3	525.3	531.7	533.7	530.9	527.6	524.5
142.5°	509.7	511.1	512.1	513.5	514.5	516.1	523.5	526.1	523.8	521.3	519.1
145°	502.7	504.4	505.5	507.2	508.7	510.4	518.8	522.0	520.5	518.7	517.1
147.5°	496.5	497.9	499.1	500.6	501.9	503.9	512.8	515.8	515.0	513.7	512.7
150°	490.1	491.6	492.8	494.4	496.1	498.0	507.9	511.5	510.7	509.8	508.8
152.5°	482.3	483.4	484.7	486.1	487.5	489.1	501.2	505.1	504.5	503.3	502.7
155°	478.2	479.0	479.8	480.9	481.9	483.4	496.5	500.3	499.8	499.2	498.6
157.5°	478.2	478.6	479.1	479.7	480.4	481.2	494.8	498.9	498.2	497.8	497.3
160°	478.9	479.3	479.5	480.1	480.3	480.9	494.9	498.8	498.4	497.7	497.2
162.5°	480.6	481.6	481.9	482.5	483.0	484.0	498.1	502.3	501.5	500.8	500.0
165°	485.5	485.6	485.8	486.3	486.5	486.9	500.2	503.7	503.3	502.7	502.2
167.5°	490.8	491.2	491.4	491.9	492.3	492.9	505.3	508.7	508.3	507.7	507.3
170°	496.9	497.3	497.4	498.0	498.5	499.1	509.4	512.2	511.9	511.0	510.4
172.5°	502.4	503.0	503.5	504.1	504.6	505.2	513.9	516.6	516.2	515.7	515.0
175°	505.0	505.3	505.7	506.3	506.8	507.1	514.0	516.0	515.8	515.5	515.2
177.5°	510.1	510.4	510.7	511.2	511.5	512.0	516.1	517.3	517.1	517.1	517.0
180°	513.7	513.7	513.7	513.7	513.7	513.7	513.7	513.7	513.7	513.7	513.7



TEST NUMBER: P1444711
 CATALOG NUMBER: EHBR1-60-UNV-TA-L930-UPL36

CANDELA DISTRIBUTION (continued):

	55°	57.5°	60°	62.5°	65°	67.5°	70°	72.5°	75°	77.5°	80°
0°	45630.2	45630.2	45630.2	45630.2	45630.2	45630.2	45630.2	45630.2	45630.2	45630.2	45630.2
2.5°	45728.1	45744.1	45746.5	45765.3	45763.7	45786.0	45782.5	45800.8	45790.1	45805.2	45792.5
5°	46802.1	46899.5	46950.4	47045.5	47075.5	47160.6	47184.6	47262.2	47265.4	47327.0	47313.0
7.5°	48320.5	48464.1	48549.4	48666.9	48726.4	48824.3	48867.4	48939.9	48963.1	49020.7	49025.0
10°	49227.3	49296.9	49345.7	49378.5	49408.4	49422.5	49438.9	49434.4	49438.9	49432.4	49446.5
12.5°	48870.6	48768.8	48701.6	48574.0	48500.2	48359.3	48290.1	48154.7	48105.4	47989.1	47972.3
15°	47064.4	46709.6	46458.9	46094.4	45865.2	45506.6	45296.7	44973.1	44825.4	44568.1	44500.6
17.5°	43772.1	43113.6	42603.9	41950.1	41496.4	40885.4	40501.2	39995.4	39718.3	39310.5	39169.2
20°	39156.6	38182.2	37417.6	36506.9	35855.2	35043.2	34523.3	33867.7	33487.0	32986.1	32783.0
22.5°	33737.7	32524.5	31569.8	30493.9	29707.6	28802.6	28179.8	27470.3	27056.2	26512.0	26271.1
25°	28152.5	26814.7	25753.2	24619.7	23788.8	22881.7	22258.7	21561.8	21133.3	20616.6	20377.1
27.5°	22810.8	21456.6	20430.8	19376.8	18614.7	17796.2	17234.1	16625.6	16245.3	15804.3	15579.0
30°	18096.9	16902.4	16029.5	15154.9	14520.8	13856.1	13389.0	12884.7	12551.1	12173.4	11958.8
32.5°	14256.4	13334.2	12650.7	11956.7	11437.8	10882.2	10478.6	10033.7	9732.5	9395.3	9201.0
35°	11290.8	10574.3	10029.1	9457.8	9012.1	8538.9	8183.2	7799.3	7529.0	7238.6	7070.8
37.5°	8920.9	8351.2	7902.5	7428.0	7061.9	6669.9	6337.8	6097.1	5817.1	5585.4	5424.9
40°	7001.1	6548.2	6176.9	5814.1	5515.3	5218.1	4979.5	4744.1	4563.3	4397.6	4282.9
42.5°	5467.3	5139.1	4868.0	4602.2	4384.4	4167.8	3994.9	3832.7	3711.0	3602.6	3528.6
45°	4346.4	4120.5	3932.2	3744.9	3591.2	3446.7	3330.3	3226.8	3148.1	3083.1	3036.9
47.5°	3570.6	3416.0	3283.1	3156.8	3052.4	2957.8	2879.8	2854.4	2769.8	2712.9	2691.2
50°	3034.5	2941.2	2840.2	2747.0	2677.3	2608.0	2557.5	2507.9	2476.3	2450.1	2442.2
52.5°	2634.4	2563.0	2506.9	2447.9	2401.9	2352.5	2317.7	2284.7	2267.2	2253.6	2251.9
55°	2336.9	2287.0	2249.9	2210.3	2182.8	2153.8	2135.7	2118.2	2110.7	2103.7	2104.2
57.5°	2111.8	2078.6	2054.3	2028.7	2013.8	1999.9	1995.3	1991.0	1993.3	1994.3	1998.2
60°	1947.9	1926.2	1911.0	1896.3	1890.0	1885.6	1888.9	1892.9	1900.8	1907.2	1913.0
62.5°	1822.2	1809.8	1802.4	1794.4	1793.8	1794.1	1800.9	1807.5	1817.4	1824.9	1830.5
65°	1692.8	1685.7	1683.4	1678.3	1680.8	1682.3	1690.4	1695.5	1705.5	1711.4	1718.5
67.5°	1562.1	1560.4	1561.9	1561.9	1566.4	1570.4	1578.1	1583.9	1592.4	1597.7	1603.5
70°	1465.5	1466.2	1469.8	1470.4	1475.3	1478.0	1484.8	1488.5	1496.1	1500.7	1507.6
72.5°	1371.6	1370.1	1371.0	1368.8	1370.5	1369.8	1373.5	1375.4	1381.8	1385.4	1393.8
75°	1271.7	1267.5	1266.5	1261.9	1262.0	1258.8	1260.3	1260.2	1264.4	1266.1	1272.2
77.5°	1151.0	1143.9	1140.5	1132.9	1132.7	1129.8	1132.9	1134.8	1142.2	1145.7	1152.7
80°	1006.5	995.4	990.3	981.5	983.0	982.6	990.0	995.6	1004.7	1006.4	1015.2
82.5°	836.6	825.3	819.8	811.2	813.3	813.4	820.2	821.4	829.3	832.7	842.8
85°	599.0	603.4	591.4	592.3	589.7	594.4	599.0	604.7	611.3	622.4	630.7
87.5°	352.8	351.3	355.5	356.0	362.1	365.3	375.1	380.7	391.7	400.3	415.8
90°	185.3	178.4	180.5	177.3	182.1	179.0	183.4	179.7	185.4	185.0	192.5
92.5°	90.0	84.7	78.7	73.3	67.4	62.3	59.0	56.9	53.7	51.8	48.5
95°	121.8	113.5	105.2	96.9	88.6	80.3	77.3	74.2	71.2	68.2	65.1
97.5°	142.0	133.0	124.1	115.0	106.1	97.2	95.2	93.2	91.2	89.1	87.2
100°	204.4	187.2	170.0	152.6	135.4	118.2	116.6	115.0	113.4	111.7	110.1
102.5°	413.6	373.9	334.4	294.7	255.2	215.6	208.7	201.8	194.9	188.0	181.2
105°	759.3	695.9	632.5	569.2	506.0	442.7	423.9	404.7	385.9	367.0	348.2
107.5°	1086.2	1024.4	962.7	900.9	839.2	777.4	747.5	717.7	687.6	657.8	628.0
110°	1250.5	1213.4	1176.4	1139.0	1102.0	1064.9	1036.2	1007.9	979.1	950.7	922.3



TEST NUMBER: P1444711
 CATALOG NUMBER: EHBR1-60-UNV-TA-L930-UPL36

CANDELA DISTRIBUTION (continued):

	55°	57.5°	60°	62.5°	65°	67.5°	70°	72.5°	75°	77.5°	80°
112.5°	1269.2	1250.4	1231.5	1212.9	1194.4	1175.6	1161.6	1147.7	1133.8	1119.9	1105.7
115°	1180.7	1174.6	1168.4	1162.4	1156.4	1150.3	1149.1	1148.1	1146.9	1145.9	1144.9
117.5°	1033.8	1034.6	1035.1	1036.2	1037.1	1038.0	1045.2	1052.3	1059.6	1067.1	1074.7
120°	888.3	892.8	897.4	902.2	906.8	911.7	921.2	931.0	940.7	950.8	960.7
122.5°	767.0	769.9	772.9	776.2	779.2	782.4	791.8	801.4	810.9	820.7	830.7
125°	673.9	673.6	673.3	672.7	672.5	672.4	679.9	687.6	695.4	703.7	711.5
127.5°	611.3	608.5	605.6	603.0	600.2	597.8	601.9	606.3	610.6	615.2	619.9
130°	573.6	569.3	564.5	560.4	555.7	551.5	552.9	554.3	555.7	557.3	558.9
132.5°	551.7	546.8	541.6	536.5	531.4	526.4	525.7	525.1	524.4	524.3	524.1
135°	537.4	532.7	527.6	522.9	517.8	513.2	511.5	509.8	508.2	506.8	505.5
137.5°	527.9	523.9	520.0	516.1	511.9	508.0	505.5	503.8	501.5	500.1	498.1
140°	521.1	518.2	514.6	511.5	508.1	505.1	503.0	501.4	499.5	498.1	496.5
142.5°	516.4	513.9	511.4	509.0	506.5	504.0	502.1	500.6	498.8	497.4	495.7
145°	515.3	513.7	511.9	510.2	508.4	506.7	505.0	503.8	502.4	501.2	500.1
147.5°	511.5	510.3	509.1	507.8	506.4	505.3	504.0	503.4	502.1	501.4	500.4
150°	507.5	506.5	505.3	504.4	503.0	502.0	501.2	500.5	499.8	499.4	498.6
152.5°	501.4	500.6	499.5	498.6	497.3	496.4	495.7	495.2	494.6	494.0	493.3
155°	497.7	497.1	496.2	495.5	494.5	494.0	493.2	492.3	491.6	490.9	490.1
157.5°	496.5	495.9	495.0	494.6	493.5	492.9	492.2	491.5	490.7	490.1	489.3
160°	496.5	496.0	495.2	494.5	493.9	493.2	492.1	491.5	490.3	489.7	488.6
162.5°	499.2	498.3	497.6	496.7	495.7	495.0	494.1	493.4	492.8	492.1	491.3
165°	501.4	500.8	500.1	499.5	498.9	498.2	497.3	496.5	495.5	494.8	493.8
167.5°	506.6	506.2	505.5	504.9	504.1	503.4	502.7	501.8	500.9	500.1	498.9
170°	509.9	509.0	508.5	507.6	506.9	506.0	505.4	504.4	503.5	503.0	501.9
172.5°	514.5	514.1	513.4	512.8	512.0	511.4	510.9	510.2	509.5	508.8	508.1
175°	515.0	514.8	514.6	514.1	513.9	513.7	513.3	513.1	512.8	512.6	512.1
177.5°	517.0	516.9	516.9	516.5	516.3	516.3	516.0	515.8	515.3	515.0	514.8
180°	513.7	513.7	513.7	513.7	513.7	513.7	513.7	513.7	513.7	513.7	513.7



TEST NUMBER: P1444711
 CATALOG NUMBER: EHBR1-60-UNV-TA-L930-UPL36

CANDELA DISTRIBUTION (continued):

	82.5°	85°	87.5°	90°	92.5°	95°	97.5°	100°	102.5°	105°	107.5°
0°	45630.2	45630.2	45630.2	45630.2	45630.2	45630.2	45630.2	45630.2	45630.2	45630.2	45630.2
2.5°	45805.7	45794.0	45799.6	45778.1	45783.2	45757.3	45754.9	45725.7	45722.8	45695.2	45685.0
5°	47356.6	47331.1	47359.8	47314.9	47323.8	47265.4	47260.5	47185.1	47159.1	47064.7	47024.0
7.5°	49061.0	49051.4	49069.0	49031.5	49030.3	48978.2	48956.7	48889.1	48847.2	48748.1	48684.8
10°	49434.4	49443.3	49428.9	49432.4	49412.2	49406.5	49385.8	49372.6	49338.5	49312.9	49275.0
12.5°	47883.9	47893.2	47834.0	47871.6	47842.0	47911.1	47905.5	47987.0	47999.5	48102.7	48141.7
15°	44300.2	44289.1	44175.6	44247.1	44208.8	44360.6	44394.6	44598.9	44708.2	44970.5	45131.6
17.5°	38886.6	38857.4	38697.6	38784.7	38740.4	38964.3	39039.4	39366.1	39569.9	39992.5	40293.7
20°	32433.5	32377.4	32190.4	32292.4	32246.7	32501.1	32608.3	33003.2	33266.0	33825.7	34223.9
22.5°	25900.0	25811.6	25628.4	25723.6	25680.5	25943.9	26083.5	26479.7	26780.7	27355.4	27820.2
25°	20033.0	19954.2	19777.1	19843.8	19827.8	20050.6	20174.8	20549.5	20845.3	21392.7	21836.4
27.5°	15279.7	15197.7	15037.7	15084.8	15068.6	15258.5	15375.5	15688.6	15943.1	16403.9	16793.5
30°	11694.3	11595.4	11459.8	11485.8	11474.7	11628.6	11737.8	12001.4	12219.6	12609.1	12944.8
32.5°	8963.7	8864.3	8739.7	8751.8	8735.4	8856.1	8946.1	9175.4	9365.5	9696.7	9988.9
35°	6858.5	6974.7	6708.5	6877.1	6701.5	6959.3	6866.6	7009.8	7173.3	7452.3	7696.1
37.5°	5272.5	5191.5	5123.1	5115.8	5115.4	5175.1	5245.7	5383.6	5527.7	5735.6	5950.3
40°	4178.2	4121.4	4077.1	4073.8	4077.1	4119.6	4171.6	4267.0	4372.6	4521.8	4679.6
42.5°	3465.5	3427.7	3400.9	3399.2	3407.5	3437.7	3473.8	3530.5	3599.2	3695.9	3804.2
45°	2999.3	2978.4	2963.5	2962.7	2966.5	2982.3	3003.1	3038.4	3081.9	3142.2	3210.8
47.5°	2672.3	2667.2	2657.9	2658.3	2654.0	2660.4	2662.8	2682.6	2705.8	2751.3	2840.7
50°	2434.1	2434.1	2427.7	2427.4	2421.3	2421.0	2415.9	2423.7	2434.5	2462.8	2491.4
52.5°	2245.9	2245.3	2238.4	2237.0	2230.6	2230.3	2225.8	2228.9	2230.4	2244.6	2261.7
55°	2098.8	2094.4	2085.3	2082.4	2079.9	2083.6	2081.9	2082.1	2080.3	2086.2	2091.2
57.5°	1993.3	1987.6	1979.0	1976.4	1975.7	1980.1	1980.3	1978.8	1970.8	1965.4	1957.8
60°	1909.8	1904.0	1894.7	1892.3	1893.7	1899.8	1899.5	1894.4	1882.5	1872.2	1860.3
62.5°	1827.7	1825.4	1820.7	1820.0	1818.8	1819.8	1815.6	1810.2	1798.5	1787.5	1774.4
65°	1717.7	1718.8	1715.3	1715.8	1711.6	1710.9	1704.5	1699.2	1687.4	1677.4	1664.0
67.5°	1603.3	1604.2	1601.3	1601.3	1599.1	1599.4	1595.6	1590.7	1580.7	1572.6	1562.3
70°	1509.1	1511.6	1509.9	1510.3	1507.6	1506.6	1500.5	1495.8	1485.4	1478.7	1469.4
72.5°	1396.3	1401.4	1401.2	1402.5	1398.4	1396.3	1389.1	1383.1	1373.9	1368.4	1361.0
75°	1274.6	1281.2	1283.1	1285.9	1280.2	1277.1	1269.2	1264.4	1256.9	1253.7	1248.8
77.5°	1155.7	1162.9	1169.9	1176.3	1167.0	1158.7	1148.8	1141.2	1130.3	1126.1	1118.5
80°	1022.3	1035.1	1050.5	1063.4	1046.6	1029.7	1013.3	1001.1	986.8	980.9	971.3
82.5°	848.1	861.3	870.1	878.4	866.7	854.3	838.5	827.8	812.3	806.5	795.5
85°	644.3	660.7	665.9	670.3	662.9	656.3	641.4	621.3	611.5	596.1	588.2
87.5°	423.8	433.6	435.5	437.0	432.4	429.2	419.5	410.1	393.3	381.1	366.3
90°	190.4	195.3	190.0	190.8	186.5	188.7	180.5	178.9	166.7	163.2	152.5
92.5°	46.3	43.0	40.6	37.8	41.3	43.2	46.5	48.5	51.6	53.7	56.9
95°	62.0	59.0	56.0	52.9	55.3	57.8	60.2	62.6	65.1	67.5	70.0
97.5°	85.1	83.1	81.1	79.0	80.5	81.9	83.3	84.7	86.1	87.5	89.1
100°	108.5	106.8	105.2	103.6	103.6	103.6	103.6	103.6	103.6	103.6	103.6
102.5°	174.3	167.4	160.5	153.6	158.3	162.9	167.6	172.3	176.9	181.5	186.4
105°	329.3	310.5	291.6	272.8	291.0	309.2	327.5	345.7	363.9	382.5	400.7
107.5°	598.0	568.3	538.5	508.8	542.2	575.3	608.6	641.8	674.9	708.2	741.8
110°	894.0	865.6	837.2	808.9	844.1	879.4	914.6	949.9	985.2	1020.4	1056.0



TEST NUMBER: P1444711
 CATALOG NUMBER: EHBR1-60-UNV-TA-L930-UPL36

CANDELA DISTRIBUTION (continued):

	82.5°	85°	87.5°	90°	92.5°	95°	97.5°	100°	102.5°	105°	107.5°
112.5°	1092.0	1078.2	1064.5	1050.7	1073.4	1096.0	1118.7	1141.7	1164.5	1187.3	1210.0
115°	1144.0	1143.2	1142.4	1141.5	1152.2	1163.0	1173.7	1184.7	1195.6	1206.3	1217.3
117.5°	1082.0	1089.5	1097.3	1104.9	1108.4	1111.8	1115.4	1118.9	1122.7	1126.2	1130.1
120°	970.9	980.8	991.1	1001.5	1000.0	998.6	997.3	995.8	995.0	993.8	993.1
122.5°	840.7	850.8	861.1	871.3	868.2	865.2	862.4	859.5	856.8	854.2	851.7
125°	720.0	728.2	736.8	745.3	742.3	739.3	736.4	733.9	731.2	728.5	726.3
127.5°	625.0	630.1	635.1	640.4	638.9	637.5	636.6	635.4	634.5	633.8	633.2
130°	560.9	563.0	565.4	567.7	568.0	568.5	569.3	570.1	571.1	572.0	573.4
132.5°	524.4	524.3	524.8	525.1	526.8	528.4	530.5	532.5	535.0	537.0	540.0
135°	504.7	503.7	503.0	502.5	504.9	507.1	509.9	512.7	516.0	519.2	522.7
137.5°	496.8	495.4	494.5	493.2	495.6	498.0	500.8	503.6	506.6	509.9	513.6
140°	495.3	494.0	493.3	492.2	494.6	496.9	499.7	502.4	505.5	508.8	512.2
142.5°	494.8	493.2	492.6	491.8	493.7	495.9	498.7	501.1	503.9	506.7	509.9
145°	499.0	498.1	497.4	496.7	498.1	499.8	501.6	503.6	505.7	507.7	510.4
147.5°	499.7	499.0	498.7	498.1	499.4	500.4	501.8	503.0	504.7	506.3	508.2
150°	498.4	497.8	497.5	497.3	498.0	498.6	499.6	500.2	501.4	502.4	503.9
152.5°	493.2	492.5	492.6	492.3	492.7	493.3	494.1	494.8	495.7	496.5	497.9
155°	489.8	489.2	488.8	488.3	488.3	488.3	488.8	488.8	489.4	489.6	490.2
157.5°	489.0	488.3	488.0	487.3	487.1	486.8	486.9	486.7	487.0	486.7	486.8
160°	488.1	487.0	486.3	485.6	485.8	485.4	485.7	485.4	485.7	485.7	485.9
162.5°	490.8	490.1	489.6	488.9	488.5	487.9	487.5	486.8	486.6	486.2	486.0
165°	492.9	491.9	491.3	490.2	490.0	489.8	489.5	489.1	489.0	488.7	488.8
167.5°	498.4	497.4	496.6	495.8	495.3	494.4	494.0	493.3	492.8	492.3	492.0
170°	501.4	500.6	499.9	499.2	498.9	498.4	498.2	497.7	497.5	497.3	497.3
172.5°	507.7	507.0	506.3	505.8	505.5	505.2	505.0	504.8	504.5	504.5	504.3
175°	512.0	511.6	511.4	511.1	510.7	510.5	510.1	509.9	509.7	509.4	509.1
177.5°	514.4	513.9	513.7	513.6	513.4	513.4	513.4	513.4	513.4	513.2	513.0
180°	513.7	513.7	513.7	513.7	513.7	513.7	513.7	513.7	513.7	513.7	513.7



TEST NUMBER: P1444711
 CATALOG NUMBER: EHBR1-60-UNV-TA-L930-UPL36

CANDELA DISTRIBUTION (continued):

	110°	112.5°	115°	117.5°	120°	122.5°	125°	127.5°	130°	132.5°	135°
0°	45630.2	45630.2	45630.2	45630.2	45630.2	45630.2	45630.2	45630.2	45630.2	45630.2	45630.2
2.5°	45655.4	45643.3	45611.7	45596.1	45566.9	45552.2	45529.4	45514.7	45496.2	45482.5	45475.4
5°	46920.3	46862.0	46744.9	46672.9	46546.5	46463.4	46337.9	46245.8	46116.4	46020.7	45898.4
7.5°	48566.1	48476.5	48326.6	48212.9	48036.2	47901.1	47702.8	47544.1	47324.9	47143.0	46919.1
10°	49236.1	49183.8	49116.6	49043.5	48945.6	48849.5	48714.0	48576.1	48392.1	48209.1	47969.9
12.5°	48245.7	48295.0	48392.1	48437.3	48511.7	48536.8	48570.8	48554.9	48524.8	48450.1	48341.6
15°	45441.1	45646.6	45971.2	46195.9	46510.5	46731.5	47024.0	47212.2	47429.0	47558.5	47681.7
17.5°	40827.4	41224.8	41797.7	42254.9	42868.5	43367.5	43978.8	44459.0	45013.6	45439.0	45891.9
20°	34918.0	35474.6	36265.4	36937.2	37826.4	38580.4	39546.4	40355.6	41299.6	42086.5	42935.7
22.5°	28557.9	29212.5	30118.8	30929.0	31990.8	32939.3	34149.5	35219.5	36495.6	37638.8	38903.4
25°	22557.9	23199.5	24122.6	24961.6	26107.8	27152.6	28474.8	29702.3	31183.2	32564.1	34149.5
27.5°	17412.5	17982.4	18793.9	19549.0	20598.9	21624.6	22966.4	24275.3	25855.5	27339.6	29048.2
30°	13447.4	13909.7	14560.0	15167.4	16010.2	16849.0	18044.3	19254.8	20827.2	22365.1	24116.7
32.5°	10421.2	10815.5	11358.3	11851.4	12500.8	13133.3	14013.5	14980.9	16360.2	17833.2	19526.9
35°	8067.2	8404.4	8866.5	9291.3	9825.3	10327.4	10984.3	11674.7	12727.3	13966.4	15482.1
37.5°	6431.6	6569.1	6898.8	7246.9	7690.4	8103.1	8616.9	9127.4	9880.5	10858.1	12096.3
40°	4891.2	5109.5	5377.8	5652.1	5987.8	6318.8	6882.4	7153.9	7649.7	8351.6	9312.6
42.5°	3946.5	4100.1	4289.0	4479.6	4713.6	4944.1	5229.2	5519.6	5890.3	6365.7	7049.2
45°	3302.6	3402.6	3524.5	3651.4	3805.2	3962.5	4153.3	4352.8	4603.9	4896.1	5311.3
47.5°	2872.3	2927.7	3007.1	3093.9	3199.3	3308.2	3432.3	3559.3	3715.3	3888.7	4125.1
50°	2536.4	2582.7	2644.4	2702.4	2775.1	2886.8	2935.9	3006.1	3100.0	3202.0	3334.2
52.5°	2293.4	2324.3	2362.9	2396.3	2442.3	2484.1	2538.9	2587.2	2652.2	2713.3	2798.8
55°	2104.2	2115.4	2137.4	2158.9	2190.7	2219.2	2256.8	2288.4	2329.8	2366.5	2420.3
57.5°	1958.1	1959.2	1969.3	1980.5	2000.9	2018.9	2044.7	2065.5	2094.3	2117.6	2149.9
60°	1853.1	1847.5	1849.6	1853.5	1865.0	1876.7	1893.2	1906.7	1924.9	1938.0	1956.1
62.5°	1765.7	1756.9	1754.8	1753.9	1759.6	1763.8	1772.8	1779.4	1789.7	1795.5	1805.1
65°	1655.3	1645.0	1640.9	1636.1	1637.8	1636.5	1639.9	1640.1	1645.3	1646.5	1652.1
67.5°	1555.1	1546.5	1541.3	1534.8	1532.0	1527.4	1525.4	1521.0	1520.3	1516.6	1515.7
70°	1463.8	1455.4	1451.0	1445.1	1442.0	1435.9	1432.2	1424.8	1420.4	1413.4	1409.5
72.5°	1358.1	1353.4	1352.0	1348.0	1347.0	1343.6	1342.1	1336.8	1333.8	1327.9	1324.5
75°	1247.7	1243.9	1243.5	1239.4	1239.0	1235.0	1234.0	1228.4	1225.6	1219.6	1217.1
77.5°	1116.2	1110.4	1108.7	1103.9	1105.1	1103.1	1104.8	1100.6	1098.7	1092.8	1090.9
80°	968.0	960.6	957.5	951.3	952.9	950.0	952.9	952.6	954.8	950.0	949.2
82.5°	792.5	784.3	782.8	778.4	781.3	781.6	787.9	784.5	785.9	781.4	783.3
85°	576.7	570.6	562.1	561.0	555.5	561.2	553.8	558.7	550.8	556.3	548.9
87.5°	357.5	345.0	338.4	329.5	326.1	317.4	313.9	307.6	309.5	306.6	308.2
90°	151.3	141.9	141.7	135.2	136.6	131.2	134.3	131.1	134.9	131.6	136.1
92.5°	59.0	61.7	66.4	71.7	76.3	81.1	85.8	91.2	95.7	100.9	105.4
95°	72.4	74.9	81.4	87.8	94.3	100.8	107.4	113.9	120.4	126.8	133.3
97.5°	90.5	92.0	98.5	104.9	111.4	117.9	124.3	131.2	137.7	144.1	150.6
100°	103.6	103.8	122.3	140.7	159.1	177.6	196.1	214.5	233.2	251.7	270.1
102.5°	191.1	195.7	242.3	289.1	335.6	382.2	429.0	475.8	522.3	569.3	616.0
105°	418.9	437.3	508.4	579.7	650.7	722.0	793.3	864.8	936.0	1007.3	1078.5
107.5°	774.9	808.4	872.7	937.1	1001.3	1065.8	1130.3	1194.8	1259.1	1323.7	1388.4
110°	1091.3	1126.7	1169.8	1213.1	1256.4	1299.5	1342.7	1386.0	1429.5	1472.8	1516.4



TEST NUMBER: P1444711
 CATALOG NUMBER: EHBR1-60-UNV-TA-L930-UPL36

CANDELA DISTRIBUTION (continued):

	110°	112.5°	115°	117.5°	120°	122.5°	125°	127.5°	130°	132.5°	135°
112.5°	1232.7	1255.8	1280.9	1306.3	1331.6	1356.9	1382.2	1407.6	1433.2	1458.8	1484.3
115°	1228.4	1239.5	1249.2	1259.4	1269.2	1279.4	1289.5	1299.8	1310.2	1320.3	1330.7
117.5°	1133.6	1137.8	1139.4	1141.2	1143.0	1145.1	1147.1	1149.2	1151.5	1153.7	1155.6
120°	991.9	991.0	989.7	988.5	987.2	986.1	985.2	984.1	983.3	982.5	981.4
122.5°	849.1	846.9	845.6	844.5	843.6	842.8	841.9	841.3	840.5	839.8	839.0
125°	724.0	721.9	723.8	725.7	727.7	729.8	731.9	734.4	736.5	738.8	741.2
127.5°	632.4	632.2	636.5	640.8	645.2	649.7	654.4	659.1	663.5	668.4	672.7
130°	574.9	576.4	581.7	587.4	592.9	598.6	604.4	610.3	615.7	621.4	627.0
132.5°	542.5	545.6	550.6	556.2	561.6	567.1	572.6	578.2	583.8	589.5	594.7
135°	526.3	530.0	534.9	539.9	544.9	550.3	555.2	560.5	565.3	570.6	575.4
137.5°	516.9	520.8	525.0	529.1	533.1	537.5	541.7	546.0	550.0	554.3	558.3
140°	515.8	519.5	521.9	524.8	527.4	530.0	532.5	535.4	537.8	540.7	543.1
142.5°	513.0	516.6	518.0	520.1	521.8	524.1	525.9	527.8	529.4	531.2	532.8
145°	512.7	515.4	515.8	516.7	517.2	518.0	518.5	519.3	519.5	520.2	520.6
147.5°	510.1	512.1	512.0	512.4	512.7	512.7	513.0	513.2	513.1	513.3	513.4
150°	505.0	506.5	506.1	506.1	505.6	505.5	504.9	504.8	504.4	504.2	503.8
152.5°	498.9	500.0	499.2	499.0	498.4	498.0	497.3	497.1	496.5	495.9	495.7
155°	490.4	491.0	490.6	490.4	489.9	489.8	489.3	489.5	489.2	489.1	488.9
157.5°	486.9	486.9	486.7	486.5	486.1	486.1	485.8	485.8	485.8	486.1	486.3
160°	485.8	486.0	485.7	485.4	485.2	485.0	484.8	485.0	485.0	485.4	485.6
162.5°	485.5	485.3	485.0	484.8	484.5	484.5	484.5	484.9	484.8	485.1	485.4
165°	488.8	489.0	488.2	488.2	487.7	487.5	487.3	487.3	487.3	487.5	487.5
167.5°	491.6	491.5	491.5	491.6	491.6	491.8	492.0	492.6	492.8	493.5	493.7
170°	497.3	497.3	497.1	497.0	496.7	496.7	496.7	496.7	496.8	497.0	497.0
172.5°	504.3	504.3	503.9	503.5	503.0	502.9	502.4	502.4	502.0	501.8	501.4
175°	508.8	508.7	508.5	508.2	508.0	507.7	507.4	506.9	506.7	506.4	506.3
177.5°	512.9	512.5	512.3	512.3	512.1	512.0	512.0	511.9	511.9	511.9	511.5
180°	513.7	513.7	513.7	513.7	513.7	513.7	513.7	513.7	513.7	513.7	513.7



TEST NUMBER: P1444711
 CATALOG NUMBER: EHBR1-60-UNV-TA-L930-UPL36

CANDELA DISTRIBUTION (continued):

	137.5°	140°	142.5°	145°	147.5°	150°	152.5°	155°	157.5°	160°	162.5°
0°	45630.2	45630.2	45630.2	45630.2	45630.2	45630.2	45630.2	45630.2	45630.2	45630.2	45630.2
2.5°	45466.3	45465.7	45461.4	45463.4	45464.2	45467.4	45471.4	45475.4	45476.3	45479.5	45480.2
5°	45806.5	45694.1	45610.8	45519.4	45450.5	45388.7	45347.4	45314.6	45301.9	45305.1	45312.7
7.5°	46729.2	46497.0	46305.4	46087.6	45906.0	45713.7	45554.2	45402.7	45292.2	45209.9	45163.9
10°	47741.6	47458.9	47188.3	46873.1	46574.1	46255.0	45966.0	45675.0	45432.2	45221.6	45066.9
12.5°	48191.0	47991.1	47757.2	47459.8	47139.8	46771.6	46399.7	46001.1	45630.5	45286.4	45008.9
15°	47715.2	47715.6	47630.4	47487.7	47265.4	46971.1	46616.9	46201.4	45764.1	45317.8	44910.0
17.5°	46205.1	46490.1	46648.6	46748.8	46718.1	46609.6	46384.2	46065.1	45657.3	45182.0	44684.5
20°	43611.8	44283.8	44762.9	45193.9	45435.4	45595.9	45579.7	45449.9	45159.6	44755.3	44237.2
22.5°	39979.0	41106.9	41997.0	42827.0	43409.1	43882.5	44107.6	44203.2	44071.6	43790.0	43303.5
25°	35566.5	37100.2	38408.9	39679.1	40631.9	41450.7	41942.9	42289.5	42317.1	42170.0	41735.9
27.5°	30663.5	32473.8	34130.3	35818.4	37158.2	38335.4	39107.7	39673.1	39852.6	39828.9	39434.8
30°	25766.8	27667.2	29493.1	31461.5	33119.5	34623.4	35643.6	36408.2	36702.8	36759.2	36380.1
32.5°	21142.2	23016.3	24837.1	26895.0	28719.5	30443.2	31648.5	32556.7	32899.3	32980.0	32564.1
35°	16945.3	18674.3	20404.6	22399.1	24213.1	25997.9	27268.1	28218.8	28538.8	28592.7	28111.3
37.5°	13305.6	14778.7	16286.5	18076.0	19742.0	21418.2	22625.0	23518.6	23751.6	23737.3	23192.3
40°	10241.2	11386.4	12597.9	14071.2	15456.2	16873.2	17892.3	18631.0	18753.4	18662.7	18090.3
42.5°	7700.8	8527.9	9406.2	10506.0	11533.7	12594.2	13335.5	13883.9	13901.4	13758.0	13244.3
45°	5737.1	6544.1	6912.4	7577.4	8239.2	8944.5	9397.2	9735.9	9683.5	9557.3	9166.8
47.5°	4373.5	4683.6	5012.6	5424.9	5810.5	6610.7	6551.4	7095.3	6703.6	6970.8	6382.6
50°	3473.0	3646.4	3823.6	4042.4	4243.9	4453.0	4583.8	4681.3	4668.7	4626.7	4514.1
52.5°	2954.7	3008.3	3095.6	3220.0	3332.5	3445.6	3520.0	3580.6	3581.8	3564.8	3507.9
55°	2469.5	2537.5	2600.3	2681.6	2820.1	2841.4	2948.1	2926.5	2934.9	2905.3	2935.6
57.5°	2177.3	2216.9	2252.2	2300.6	2340.7	2387.4	2414.9	2441.5	2439.0	2433.2	2404.1
60°	1970.3	1992.1	2011.7	2040.0	2062.0	2088.4	2101.0	2114.6	2110.1	2100.3	2074.5
62.5°	1810.7	1824.3	1835.6	1853.7	1867.1	1883.5	1890.2	1895.9	1890.2	1880.8	1858.0
65°	1653.2	1662.1	1669.1	1682.8	1692.3	1706.4	1711.9	1717.3	1712.1	1704.8	1687.4
67.5°	1511.2	1512.0	1511.4	1516.9	1519.8	1528.2	1530.8	1534.7	1528.6	1522.3	1507.6
70°	1403.5	1401.2	1398.6	1400.8	1401.2	1405.3	1406.0	1405.3	1398.0	1387.2	1371.1
72.5°	1319.2	1318.1	1316.0	1317.9	1317.9	1321.6	1320.4	1318.5	1309.6	1299.1	1283.2
75°	1211.0	1210.2	1206.1	1206.2	1202.9	1204.1	1199.7	1197.2	1187.2	1178.4	1164.2
77.5°	1084.3	1082.3	1076.4	1074.2	1067.8	1065.1	1056.8	1052.7	1042.5	1035.5	1023.3
80°	943.0	940.8	933.1	928.9	918.8	912.3	900.1	893.3	881.6	874.7	862.8
82.5°	779.4	780.3	772.7	767.4	752.9	741.7	725.5	716.7	703.8	697.0	684.9
85°	554.4	546.4	550.6	550.3	541.2	531.5	518.3	509.0	498.2	491.7	483.2
87.5°	304.1	305.9	303.7	301.8	295.4	290.5	280.2	274.8	266.9	263.0	256.6
90°	125.8	123.3	113.6	111.3	101.8	96.8	85.9	82.1	72.0	69.9	63.4
92.5°	100.0	94.5	89.4	83.5	78.4	72.9	67.5	61.9	56.5	54.4	52.8
95°	125.4	117.7	109.8	101.9	94.0	86.2	78.4	70.6	62.6	61.0	59.4
97.5°	141.5	132.2	122.9	113.7	104.4	95.1	86.0	76.6	67.4	66.4	65.3
100°	248.8	227.5	206.0	184.6	163.3	141.9	120.6	99.1	77.8	76.5	75.4
102.5°	563.9	512.0	460.2	408.3	356.5	304.5	252.6	200.6	148.7	141.2	133.8
105°	999.9	921.3	843.0	764.4	685.7	607.1	528.7	449.9	371.3	346.1	320.8
107.5°	1314.5	1240.6	1167.0	1093.2	1019.3	945.6	871.7	797.7	723.8	679.4	635.0
110°	1457.8	1399.2	1340.9	1282.3	1223.9	1165.3	1106.7	1048.1	989.5	951.2	913.2



TEST NUMBER: P1444711
 CATALOG NUMBER: EHBR1-60-UNV-TA-L930-UPL36

CANDELA DISTRIBUTION (continued):

	137.5°	140°	142.5°	145°	147.5°	150°	152.5°	155°	157.5°	160°	162.5°
112.5°	1441.6	1398.7	1356.2	1313.3	1270.6	1227.6	1184.9	1141.9	1099.0	1075.9	1052.8
115°	1305.3	1279.6	1254.1	1228.4	1202.8	1177.1	1151.5	1125.4	1099.7	1087.6	1075.6
117.5°	1143.1	1130.1	1117.4	1104.4	1091.6	1078.4	1065.5	1052.3	1039.3	1035.4	1031.1
120°	978.3	974.6	970.8	967.2	963.6	959.9	956.0	952.3	948.4	949.2	950.0
122.5°	841.1	843.1	845.2	846.9	849.2	850.9	853.0	854.4	856.3	859.9	863.5
125°	745.5	749.8	754.2	758.4	762.6	766.9	771.3	775.1	779.5	783.0	787.0
127.5°	677.9	682.5	687.5	692.1	697.0	701.6	706.4	710.9	715.7	719.1	722.8
130°	631.6	635.6	640.0	644.0	648.5	652.7	656.8	661.0	665.1	668.1	671.0
132.5°	598.6	602.5	606.5	610.2	614.3	617.8	621.8	625.6	629.7	631.8	634.3
135°	578.7	581.6	584.7	587.4	590.8	593.6	596.7	599.8	603.1	604.8	606.8
137.5°	560.9	563.3	566.1	568.5	571.1	573.5	576.5	579.1	582.1	583.1	584.7
140°	545.6	548.3	550.9	553.5	556.2	558.9	562.0	564.8	567.9	569.0	570.5
142.5°	535.0	536.9	539.1	541.1	543.5	545.5	548.0	550.5	553.1	554.4	555.6
145°	523.0	525.2	527.7	530.0	532.4	535.0	537.9	540.7	543.6	544.5	545.6
147.5°	515.3	517.1	519.4	521.5	523.7	525.8	528.5	530.9	533.6	534.6	535.5
150°	506.0	507.9	510.1	512.1	514.5	516.9	519.5	522.2	525.3	526.5	527.6
152.5°	497.8	499.8	502.2	504.7	507.1	509.7	512.6	515.3	518.3	519.3	520.7
155°	491.2	493.2	495.7	498.1	500.7	503.0	505.9	508.5	511.3	512.7	513.8
157.5°	488.3	490.1	492.4	494.7	496.8	499.1	501.7	504.0	506.6	507.6	508.7
160°	487.5	489.1	491.2	493.3	495.3	497.4	499.7	501.7	503.9	504.9	506.0
162.5°	487.4	489.1	491.3	493.0	495.2	497.2	499.5	501.3	503.6	504.4	505.5
165°	489.0	490.5	492.1	493.4	495.2	496.5	498.3	499.8	501.6	502.2	503.5
167.5°	495.1	496.1	497.2	498.3	499.8	500.9	502.2	503.4	504.8	505.7	506.7
170°	498.1	499.0	499.9	501.1	502.2	503.3	504.4	505.3	506.8	507.5	508.4
172.5°	502.2	502.5	503.4	503.9	504.7	505.3	506.3	506.9	507.7	508.7	509.4
175°	506.8	507.1	507.4	507.6	507.9	508.3	508.8	509.5	509.8	510.4	511.0
177.5°	511.7	511.9	512.1	512.3	512.9	513.0	513.5	513.7	513.9	514.5	515.3
180°	513.7	513.7	513.7	513.7	513.7	513.7	513.7	513.7	513.7	513.7	513.7



TEST NUMBER: P1444711
 CATALOG NUMBER: EHBR1-60-UNV-TA-L930-UPL36

CANDELA DISTRIBUTION (continued):

	165°	167.5°	170°	172.5°	175°	177.5°	180°	182.5°	185°	187.5°	190°
0°	45630.2	45630.2	45630.2	45630.2	45630.2	45630.2	45630.2	45630.2	45630.2	45630.2	45630.2
2.5°	45478.6	45478.1	45476.6	45474.6	45472.5	45473.7	45475.7	45481.0	45490.2	45503.4	45520.6
5°	45319.0	45328.2	45333.5	45334.2	45329.5	45326.5	45331.0	45343.5	45368.7	45410.9	45468.2
7.5°	45151.5	45163.0	45180.7	45193.9	45196.4	45193.1	45193.9	45213.5	45260.0	45342.3	45457.8
10°	44972.8	44938.8	44956.7	44989.5	45015.6	45020.4	45023.6	45046.7	45114.7	45239.1	45424.7
12.5°	44807.7	44700.2	44679.4	44709.0	44748.6	44761.2	44757.7	44767.7	44847.3	45012.1	45270.6
15°	44590.6	44388.2	44319.0	44326.6	44375.5	44393.1	44380.2	44360.6	44438.3	44639.3	44974.0
17.5°	44239.2	43912.8	43785.7	43780.1	43837.2	43852.4	43821.0	43760.1	43836.6	44087.5	44503.0
20°	43704.9	43223.2	42983.7	42945.7	43007.7	42989.6	42926.9	42834.9	42935.4	43240.5	43734.6
22.5°	42744.6	42134.1	41725.0	41593.1	41667.4	41617.8	41526.4	41408.8	41542.2	41888.9	42439.2
25°	41175.3	40469.9	39909.8	39595.6	39654.8	39566.0	39466.4	39324.0	39483.2	39881.1	40486.8
27.5°	38868.6	38053.8	37359.8	36839.6	36858.7	36742.4	36627.7	36443.4	36642.0	37113.0	37796.2
30°	35801.3	34858.4	34013.3	33306.3	33243.1	33130.3	33012.8	32770.9	33019.6	33583.4	34381.8
32.5°	31949.2	30902.5	29925.9	29032.1	28863.5	28753.4	28648.7	28370.4	28695.9	29353.2	30270.5
35°	27444.5	26329.3	25270.6	24249.8	23970.4	23860.3	23768.8	23502.2	23908.4	24623.7	25614.4
37.5°	22499.8	21360.7	20309.5	19262.7	18868.0	18718.7	18652.3	18477.5	18946.2	19653.7	20648.4
40°	17423.6	16364.5	15422.1	14497.5	14047.6	13819.1	13784.2	13752.4	14205.5	14819.4	15722.2
42.5°	12675.0	11820.5	11093.8	10387.1	9979.4	9667.3	9667.3	9761.9	10169.8	10629.6	11325.8
45°	8767.7	8194.3	7731.3	7259.0	7385.2	6763.2	7128.7	6941.2	7142.7	7439.1	7891.9
47.5°	6027.0	5713.9	5459.6	5195.8	5003.5	4819.8	4835.9	4954.3	5144.2	5320.0	5555.6
50°	4392.7	4233.2	4103.6	3966.6	3870.9	3789.9	3794.6	3845.9	3945.7	4038.4	4161.6
52.5°	3441.9	3354.0	3283.6	3207.8	3157.7	3117.4	3119.6	3144.5	3198.4	3251.3	3322.0
55°	2837.0	2826.3	2734.8	2666.9	2641.0	2614.0	2618.9	2628.7	2665.4	2696.3	2743.1
57.5°	2377.4	2336.3	2308.9	2273.0	2256.6	2237.7	2241.9	2245.6	2270.2	2290.9	2324.6
60°	2052.8	2023.8	2004.3	1979.9	1969.2	1957.1	1959.8	1962.0	1977.8	1991.3	2015.5
62.5°	1837.3	1811.2	1794.3	1775.5	1767.8	1759.7	1761.6	1762.3	1772.1	1782.1	1800.4
65°	1671.9	1651.2	1637.2	1620.9	1613.0	1604.5	1605.4	1605.4	1613.7	1620.9	1634.6
67.5°	1496.9	1481.4	1472.3	1459.4	1454.0	1445.4	1445.2	1442.5	1447.9	1450.8	1460.1
70°	1356.6	1340.9	1329.2	1316.8	1310.1	1302.5	1302.7	1302.8	1309.1	1315.7	1327.7
72.5°	1269.9	1254.8	1244.5	1233.7	1227.3	1220.8	1219.6	1219.0	1223.5	1227.1	1235.0
75°	1155.0	1143.0	1136.9	1126.8	1121.7	1114.5	1113.3	1109.9	1112.1	1112.8	1118.6
77.5°	1015.7	1004.3	999.4	989.2	984.9	976.6	976.0	972.2	973.9	972.8	977.3
80°	856.9	846.6	843.8	835.4	833.4	825.7	824.6	820.0	821.4	817.8	819.5
82.5°	679.7	670.2	668.2	660.3	660.3	653.5	653.1	646.2	646.2	640.3	630.7
85°	478.7	471.9	468.9	462.5	460.6	455.1	452.2	445.6	443.3	439.0	437.6
87.5°	252.6	248.3	244.4	241.3	235.7	225.7	224.9	218.0	218.5	213.6	214.0
90°	61.9	56.0	54.8	49.3	47.7	43.8	42.5	42.7	43.8	44.2	45.4
92.5°	51.1	49.2	47.4	45.5	43.8	41.9	40.1	41.9	43.8	45.5	47.4
95°	57.7	56.1	54.5	52.9	51.2	49.6	48.0	49.6	51.2	53.1	54.7
97.5°	64.3	63.3	62.3	61.2	60.2	59.2	58.2	59.3	60.3	61.3	62.4
100°	74.1	72.9	71.7	70.5	69.2	68.1	66.8	68.4	69.6	70.8	72.1
102.5°	126.5	119.0	111.4	103.9	96.4	88.9	81.5	88.9	96.4	104.1	111.6
105°	295.5	270.4	245.0	219.7	194.4	169.0	143.7	169.2	194.5	219.8	245.3
107.5°	590.5	546.3	501.7	457.2	412.6	368.1	323.6	368.3	412.9	457.4	502.0
110°	874.7	836.4	798.1	759.8	721.3	683.0	644.5	683.1	721.6	760.1	798.6



TEST NUMBER: P1444711
 CATALOG NUMBER: EHBR1-60-UNV-TA-L930-UPL36

CANDELA DISTRIBUTION (continued):

	165°	167.5°	170°	172.5°	175°	177.5°	180°	182.5°	185°	187.5°	190°
112.5°	1029.4	1006.3	983.0	959.8	936.3	913.2	889.6	913.5	936.9	960.6	984.0
115°	1063.5	1051.3	1039.3	1027.0	1014.7	1002.4	989.9	1003.0	1015.5	1028.1	1040.7
117.5°	1027.0	1023.1	1018.8	1014.7	1010.5	1006.2	1001.7	1006.5	1011.3	1016.3	1020.5
120°	950.5	951.6	952.2	952.7	953.4	953.9	954.2	954.6	954.6	954.6	954.4
122.5°	867.1	870.6	874.0	877.4	880.8	884.1	887.0	884.7	882.1	879.6	876.7
125°	790.5	794.5	797.9	801.6	804.9	808.5	811.3	809.3	806.7	804.1	801.1
127.5°	726.3	729.7	732.9	736.4	739.4	742.5	745.2	743.5	741.2	739.0	736.4
130°	673.7	676.8	679.1	681.9	684.2	686.4	688.4	687.5	686.1	684.9	683.1
132.5°	636.5	639.0	641.3	643.4	645.0	647.1	648.2	648.0	647.2	646.6	645.3
135°	608.6	610.3	612.0	613.9	615.1	616.3	617.0	617.6	617.3	617.1	616.4
137.5°	585.7	587.3	588.2	589.2	589.9	590.6	590.8	591.8	592.2	592.9	592.8
140°	571.6	573.1	574.2	575.1	576.0	576.8	576.9	578.1	578.4	578.9	578.7
142.5°	556.9	558.2	559.4	560.5	561.1	561.9	562.1	563.1	563.5	563.9	563.9
145°	546.7	547.6	548.6	549.5	549.9	550.3	550.2	551.5	552.1	552.7	553.1
147.5°	536.5	537.5	538.1	538.8	539.3	539.7	539.8	540.7	541.5	542.0	542.4
150°	528.9	530.0	531.1	532.1	532.8	533.5	533.7	534.5	534.9	535.3	535.3
152.5°	521.6	522.6	523.5	524.4	525.1	525.7	526.0	526.7	527.4	528.0	528.2
155°	514.9	516.1	517.0	518.1	518.7	519.6	520.2	521.0	521.5	521.8	522.1
157.5°	509.6	510.8	511.7	512.7	513.4	514.4	515.1	515.9	516.4	517.1	517.4
160°	506.8	508.0	508.7	509.7	510.5	511.4	512.0	512.9	513.6	514.1	514.8
162.5°	506.3	507.3	507.8	508.8	509.6	510.5	511.2	512.0	512.7	513.4	513.9
165°	504.6	505.6	506.4	507.5	508.6	509.6	510.3	511.0	511.3	511.7	512.0
167.5°	507.5	508.6	509.3	510.4	511.0	512.1	513.0	513.5	513.7	514.1	514.4
170°	509.1	510.0	510.9	511.6	512.4	513.4	513.9	514.3	514.5	514.8	515.2
172.5°	510.2	511.2	512.0	512.9	513.7	514.6	515.4	515.6	515.6	515.5	515.3
175°	511.6	512.4	513.0	513.7	514.4	515.1	515.8	515.5	515.7	515.4	515.4
177.5°	516.1	517.1	517.8	518.5	519.3	519.9	520.7	520.1	519.6	519.2	518.6
180°	513.7	513.7	513.7	513.7	513.7	513.7	513.7	513.7	513.7	513.7	513.7



TEST NUMBER: P1444711
 CATALOG NUMBER: EHBR1-60-UNV-TA-L930-UPL36

CANDELA DISTRIBUTION (continued):

	192.5°	195°	197.5°	200°	202.5°	205°	207.5°	210°	212.5°	215°	217.5°
0°	45630.2	45630.2	45630.2	45630.2	45630.2	45630.2	45630.2	45630.2	45630.2	45630.2	45630.2
2.5°	45544.9	45567.8	45602.5	45634.2	45681.8	45719.3	45775.6	45818.4	45881.9	45923.2	45992.4
5°	45549.0	45638.1	45755.3	45869.6	46007.1	46131.9	46286.9	46419.1	46574.9	46702.1	46861.6
7.5°	45613.4	45785.2	45991.2	46198.7	46433.4	46652.9	46900.3	47124.2	47369.0	47576.1	47802.4
10°	45660.9	45925.9	46229.5	46534.8	46856.4	47155.0	47456.6	47717.1	47960.7	48161.1	48338.2
12.5°	45596.5	45961.6	46351.1	46727.2	47084.7	47393.8	47653.2	47853.6	47991.9	48085.8	48107.8
15°	45377.5	45816.9	46240.3	46614.9	46911.5	47140.3	47258.7	47314.1	47254.6	47155.9	46938.7
17.5°	44968.4	45431.8	45810.4	46105.9	46262.6	46324.7	46226.6	46055.9	45722.5	45352.3	44817.7
20°	44218.4	44650.2	44924.8	45085.9	45044.0	44888.9	44518.6	44068.4	43402.6	42693.1	41756.6
22.5°	42902.9	43280.3	43426.6	43438.7	43182.7	42794.5	42126.5	41354.4	40304.0	39212.1	37869.1
25°	40928.2	41258.8	41281.9	41152.1	40683.8	40054.6	39073.7	37981.4	36554.2	35099.1	33416.3
27.5°	38250.2	38567.3	38489.6	38247.3	37597.3	36755.2	35499.4	34088.3	32328.7	30610.2	28748.7
30°	34883.6	35222.7	35131.6	34820.7	34047.6	33052.4	31574.7	29935.3	27981.8	26146.2	24259.8
32.5°	30854.9	31283.6	31220.7	30925.3	30118.5	29053.4	27450.0	25711.2	23712.5	21903.8	20068.7
35°	26275.8	26796.3	26823.2	26630.0	25881.1	24828.3	23245.1	21562.1	19647.7	17940.9	16245.8
37.5°	21342.3	21945.6	22069.6	22017.6	21396.7	20467.5	19024.9	17515.2	15819.1	14323.4	12873.6
40°	16381.5	16992.2	17204.2	17267.1	16808.9	16089.2	14905.3	13686.7	12304.0	11092.0	9940.8
42.5°	11857.4	12398.9	12603.6	12732.5	12446.5	11966.6	11103.0	10218.0	9205.0	8330.9	7492.8
45°	8235.2	8618.2	8774.0	8903.6	8748.0	8477.1	7931.8	7378.3	6709.7	6138.3	5597.6
47.5°	5757.7	5968.9	6071.8	6134.7	6074.3	5933.1	5636.3	5315.6	4938.2	4604.3	4283.4
50°	4267.7	4380.1	4434.0	4470.3	4426.3	4347.9	4187.2	4012.6	3805.3	3616.2	3431.4
52.5°	3382.1	3446.5	3478.5	3498.1	3472.9	3424.8	3331.3	3227.8	3103.5	2986.7	2925.3
55°	2849.2	2845.8	2919.7	2884.0	2919.7	2840.1	2823.3	2709.5	2606.3	2533.6	2455.0
57.5°	2349.7	2383.1	2397.3	2413.2	2402.9	2388.3	2348.6	2307.9	2253.4	2207.9	2159.4
60°	2033.9	2061.5	2077.0	2092.8	2091.8	2086.3	2063.3	2038.9	2005.0	1977.8	1948.3
62.5°	1816.4	1840.3	1855.6	1870.7	1872.0	1869.9	1852.4	1835.6	1812.4	1795.3	1775.0
65°	1645.3	1662.1	1672.5	1684.5	1683.8	1680.6	1664.9	1650.8	1631.8	1619.9	1605.0
67.5°	1466.2	1478.8	1487.0	1498.4	1500.5	1501.2	1492.6	1486.0	1476.7	1473.3	1468.2
70°	1338.8	1354.3	1367.3	1381.6	1389.4	1393.1	1389.4	1386.0	1380.6	1378.2	1374.4
72.5°	1242.4	1255.4	1265.6	1278.6	1285.9	1291.2	1288.3	1286.4	1281.7	1281.0	1278.3
75°	1122.7	1131.7	1137.5	1147.3	1151.2	1156.1	1153.8	1155.0	1153.5	1157.2	1157.1
77.5°	978.8	985.4	988.1	995.2	995.9	1001.8	1003.2	1010.1	1015.0	1025.8	1031.6
80°	816.8	821.0	821.0	828.3	831.5	841.5	846.2	857.5	862.8	872.4	873.3
82.5°	634.5	629.6	634.5	631.5	640.7	652.0	653.5	663.1	665.3	671.4	666.7
85°	433.8	433.5	429.5	430.2	427.3	428.7	427.0	428.9	427.2	427.3	422.9
87.5°	207.8	209.7	205.1	206.7	202.3	204.2	200.4	203.4	198.9	199.5	192.8
90°	46.2	47.2	47.9	49.2	51.0	54.2	57.7	61.0	65.0	68.0	71.6
92.5°	49.2	51.2	52.9	54.8	56.6	62.0	67.5	73.0	78.7	83.9	89.5
95°	56.3	57.9	59.6	61.6	63.2	71.1	79.0	86.9	94.7	102.7	110.5
97.5°	63.7	64.8	65.8	66.8	68.0	77.3	86.6	95.9	105.2	114.5	123.7
100°	73.3	74.6	75.8	77.2	78.4	99.9	121.4	142.8	164.3	185.5	207.0
102.5°	119.2	126.7	134.2	142.0	149.5	201.6	253.6	305.7	357.3	409.5	461.4
105°	270.7	296.0	321.7	347.0	372.3	451.1	529.9	608.6	687.1	765.8	844.5
107.5°	546.7	591.3	636.0	680.6	725.1	799.3	873.2	947.1	1021.2	1095.2	1168.9
110°	837.4	875.5	914.4	952.9	991.4	1049.9	1108.9	1167.5	1226.2	1284.9	1343.5



TEST NUMBER: P1444711
 CATALOG NUMBER: EHBR1-60-UNV-TA-L930-UPL36

CANDELA DISTRIBUTION (continued):

	192.5°	195°	197.5°	200°	202.5°	205°	207.5°	210°	212.5°	215°	217.5°
112.5°	1007.6	1031.0	1054.5	1077.6	1101.1	1144.1	1187.5	1230.5	1273.6	1316.3	1359.3
115°	1053.1	1065.2	1077.7	1090.0	1102.5	1128.5	1154.4	1180.3	1206.3	1232.0	1258.0
117.5°	1025.1	1029.5	1034.0	1038.1	1042.5	1055.7	1069.1	1082.3	1095.6	1108.8	1121.9
120°	954.2	953.7	953.4	952.7	952.4	956.2	960.5	964.3	968.5	972.2	976.1
122.5°	873.9	870.6	867.6	864.3	861.2	859.3	857.9	856.0	854.8	852.8	851.2
125°	798.1	794.9	791.7	788.3	784.7	780.9	777.0	773.0	768.9	764.8	760.8
127.5°	734.0	731.0	728.2	725.0	721.9	717.3	712.9	708.2	704.0	699.2	694.7
130°	681.4	679.0	677.2	674.4	672.3	667.9	664.2	660.1	656.1	652.0	647.9
132.5°	644.1	642.4	640.9	638.8	637.2	633.4	630.1	626.1	622.5	618.8	615.3
135°	615.8	614.8	613.9	612.5	611.2	608.1	605.5	602.6	599.8	596.9	594.1
137.5°	592.9	592.3	591.8	591.2	590.6	588.0	585.8	583.3	580.9	578.4	576.2
140°	578.8	578.3	578.1	577.5	576.8	574.3	571.8	569.2	566.8	564.2	561.7
142.5°	563.8	563.5	563.3	562.7	562.2	560.1	558.3	556.3	554.3	552.2	550.4
145°	553.2	553.1	553.2	552.8	553.0	550.5	548.4	545.9	544.0	541.6	539.6
147.5°	542.9	542.9	543.1	543.0	543.3	541.2	539.7	537.6	536.0	534.1	532.5
150°	535.5	535.5	535.6	535.3	535.1	533.2	531.6	529.6	528.1	526.0	524.4
152.5°	528.4	528.5	528.8	528.8	529.0	527.2	525.4	523.5	521.7	519.6	517.9
155°	522.5	522.7	522.8	522.8	522.8	521.2	519.6	517.8	516.1	514.4	512.8
157.5°	517.8	518.1	518.5	518.6	518.8	517.4	516.0	514.5	513.1	511.6	510.2
160°	515.1	515.6	516.0	516.1	516.4	515.2	514.4	512.8	511.9	510.4	509.0
162.5°	514.4	514.9	515.3	515.4	515.7	514.5	513.7	512.4	511.2	509.6	508.5
165°	512.5	512.5	512.8	512.8	512.9	512.1	511.5	510.7	509.9	508.8	508.0
167.5°	514.6	514.6	515.0	514.8	515.0	514.4	514.3	513.6	512.9	512.3	511.7
170°	515.2	515.3	515.5	515.4	515.6	515.0	514.5	514.0	513.7	512.8	512.1
172.5°	515.4	515.2	515.1	515.1	514.8	514.4	514.2	513.7	513.6	513.1	512.8
175°	515.2	515.0	514.8	514.6	514.4	514.4	514.1	514.1	513.9	513.7	513.5
177.5°	518.3	517.8	517.2	516.8	516.3	516.1	516.1	515.9	516.1	515.9	515.7
180°	513.7	513.7	513.7	513.7	513.7	513.7	513.7	513.7	513.7	513.7	513.7



TEST NUMBER: P1444711
 CATALOG NUMBER: EHBR1-60-UNV-TA-L930-UPL36

CANDELA DISTRIBUTION (continued):

	220°	222.5°	225°	227.5°	230°	232.5°	235°	237.5°	240°	242.5°	245°
0°	45630.2	45630.2	45630.2	45630.2	45630.2	45630.2	45630.2	45630.2	45630.2	45630.2	45630.2
2.5°	46035.2	45750.9	45713.3	45733.3	45780.9	45798.4	45849.6	45863.7	45915.2	45928.0	45977.5
5°	46985.0	46609.3	46628.1	46718.3	46855.2	46936.7	47071.1	47141.4	47269.9	47328.2	47444.2
7.5°	47986.7	47691.6	47783.6	47936.0	48123.0	48252.5	48414.1	48519.2	48658.4	48744.8	48856.3
10°	48478.5	48397.7	48498.9	48618.9	48725.5	48809.1	48877.6	48932.4	48968.2	49001.9	49016.6
12.5°	48104.2	48229.3	48246.6	48235.0	48164.3	48110.3	47989.1	47906.8	47760.4	47671.3	47497.3
15°	46716.8	46992.0	46839.6	46609.0	46271.4	45990.0	45592.6	45296.7	44882.9	44602.1	44186.8
17.5°	44282.0	44629.3	44232.2	43698.5	43019.6	42438.7	41715.4	41141.2	40422.1	39899.0	39227.8
20°	40854.3	41178.8	40470.7	39585.9	38535.6	37651.7	36609.2	35777.5	34808.9	34088.3	33218.7
22.5°	36586.4	36817.6	35820.1	34627.3	33289.1	32184.8	30938.5	29941.4	28835.9	28012.2	27084.9
25°	31864.8	31927.3	30730.7	29356.4	27865.0	26623.9	25293.4	24245.0	23117.6	22282.7	21372.7
27.5°	27099.4	27007.8	25714.4	24257.4	22688.6	21398.6	20100.8	19118.5	18131.0	17379.0	16595.0
30°	22601.3	22379.8	21036.9	19539.2	18016.3	16860.2	15782.8	14993.9	14208.3	13611.7	12982.5
32.5°	18476.5	18164.0	16856.8	15453.7	14170.5	13278.2	12479.3	11882.4	11248.0	10744.1	10216.0
35°	14823.0	14490.1	13332.0	12142.5	11171.3	10513.6	9885.7	9396.0	8857.4	8432.2	7973.6
37.5°	11687.6	11414.6	10444.6	9508.6	8774.0	8264.2	7749.9	7349.6	6904.5	6717.4	6227.4
40°	9022.7	8832.0	8073.5	7383.5	6831.9	6592.5	6070.3	5696.3	5363.7	5089.4	4823.7
42.5°	7037.9	6970.4	6232.3	5694.1	5305.7	5004.0	4713.0	4476.7	4246.7	4057.6	3879.0
45°	5164.8	5111.4	4783.6	4473.0	4208.3	3997.5	3800.8	3638.3	3487.9	3363.2	3250.0
47.5°	4021.8	4004.7	3815.9	3623.4	3456.6	3321.2	3193.5	3085.6	2985.9	2902.6	2875.5
50°	3271.1	3268.9	3158.1	3039.2	2920.5	2842.3	2760.7	2696.9	2632.9	2583.0	2530.2
52.5°	2779.4	2767.3	2692.6	2619.1	2548.7	2497.2	2445.2	2404.4	2362.0	2331.2	2298.4
55°	2392.7	2405.5	2362.1	2318.3	2274.2	2242.2	2205.7	2178.8	2149.7	2130.3	2110.5
57.5°	2124.2	2141.0	2118.2	2093.5	2066.6	2045.5	2020.4	2001.8	1982.3	1970.0	1958.5
60°	1928.9	1947.1	1938.0	1925.5	1908.9	1896.4	1880.3	1870.1	1857.5	1850.5	1844.1
62.5°	1763.1	1786.0	1782.7	1776.8	1766.1	1759.3	1750.5	1745.9	1737.6	1734.6	1731.5
65°	1597.7	1623.5	1622.9	1620.1	1614.1	1612.2	1606.7	1605.7	1601.5	1603.2	1602.8
67.5°	1467.7	1490.1	1495.0	1498.5	1498.4	1499.7	1499.2	1501.4	1501.4	1504.6	1506.6
70°	1373.9	1389.4	1393.1	1396.9	1397.8	1400.9	1400.9	1402.7	1402.3	1405.0	1405.3
72.5°	1279.0	1299.5	1303.2	1306.2	1306.2	1309.1	1307.6	1307.0	1303.0	1302.1	1299.3
75°	1161.0	1187.2	1192.9	1196.6	1197.2	1199.7	1196.1	1193.9	1187.2	1184.4	1179.7
77.5°	1037.6	1064.9	1068.9	1070.3	1068.1	1068.7	1061.2	1056.1	1047.4	1043.9	1039.3
80°	877.1	917.2	920.5	918.0	911.6	910.7	903.3	898.6	888.4	884.8	880.9
82.5°	667.5	714.5	721.1	724.0	718.9	720.0	713.2	710.4	701.0	699.3	693.0
85°	421.4	468.5	476.2	475.1	470.0	468.7	464.7	466.1	465.3	467.8	469.1
87.5°	193.6	239.1	250.1	246.6	246.0	242.8	235.5	238.3	242.7	245.5	245.7
90°	75.1	92.3	95.4	93.7	87.6	85.2	79.5	77.9	72.8	71.1	66.1
92.5°	94.9	100.4	105.9	101.0	96.2	91.3	86.4	81.5	76.7	71.7	67.0
95°	118.4	125.9	133.8	127.3	120.7	114.2	107.7	101.3	94.8	88.3	81.9
97.5°	133.0	142.0	151.1	144.6	138.2	131.5	125.0	118.6	112.1	105.4	99.0
100°	228.5	249.3	270.6	252.2	233.6	215.2	196.8	178.1	159.7	141.3	122.7
102.5°	513.3	564.8	616.5	569.7	522.9	476.2	429.6	382.9	336.3	289.4	242.8
105°	923.0	1000.9	1079.3	1007.7	936.5	865.3	794.0	722.7	651.4	580.0	508.9
107.5°	1242.8	1315.6	1389.0	1324.5	1260.0	1195.6	1130.9	1066.5	1001.9	937.4	873.0
110°	1402.0	1459.2	1517.4	1473.8	1430.5	1386.9	1343.6	1300.2	1256.9	1213.7	1170.5



TEST NUMBER: P1444711
 CATALOG NUMBER: EHBR1-60-UNV-TA-L930-UPL36

CANDELA DISTRIBUTION (continued):

	220°	222.5°	225°	227.5°	230°	232.5°	235°	237.5°	240°	242.5°	245°
112.5°	1402.1	1443.1	1485.4	1459.6	1434.3	1408.6	1383.2	1357.7	1332.4	1306.8	1281.8
115°	1283.4	1306.9	1332.1	1321.5	1311.3	1301.0	1290.6	1280.6	1270.2	1260.1	1250.2
117.5°	1135.0	1145.3	1157.4	1155.0	1153.0	1150.5	1148.6	1146.3	1144.5	1142.4	1140.6
120°	979.9	980.7	983.6	984.3	985.3	986.0	986.9	987.8	988.9	989.8	991.0
122.5°	849.3	844.2	841.3	842.0	842.8	843.2	844.1	844.7	845.6	846.4	847.4
125°	756.7	748.7	743.6	741.2	739.0	736.7	734.4	732.1	730.1	728.0	725.9
127.5°	690.1	681.5	675.8	671.2	666.7	661.9	657.4	652.6	648.2	643.5	639.3
130°	644.0	635.6	630.4	624.6	619.3	613.3	607.9	602.1	596.4	590.8	585.3
132.5°	611.5	603.2	598.4	593.1	587.9	582.1	576.9	571.2	565.9	560.1	554.9
135°	591.2	583.4	579.5	574.3	569.8	564.6	559.6	554.6	549.7	544.4	539.8
137.5°	573.5	566.0	562.6	558.4	554.6	550.4	546.6	542.3	538.3	533.8	530.0
140°	559.1	551.1	547.4	545.0	542.9	540.1	537.7	535.1	532.8	530.2	527.7
142.5°	548.4	540.6	537.4	535.8	534.3	532.5	531.3	529.5	527.8	525.8	524.2
145°	537.4	528.7	525.3	524.7	524.6	524.2	523.7	523.3	522.8	522.2	521.8
147.5°	530.3	521.6	518.1	518.3	518.4	518.1	518.5	518.1	518.4	518.2	518.3
150°	522.3	512.3	508.3	508.8	509.1	509.6	510.0	510.4	511.1	511.3	511.8
152.5°	515.8	503.9	499.4	499.8	500.6	500.9	501.5	502.2	503.0	503.7	504.3
155°	510.5	497.6	492.8	492.7	492.9	493.2	493.4	493.9	494.2	494.7	495.2
157.5°	508.4	494.8	490.1	489.7	489.8	489.8	489.8	490.0	490.2	490.4	491.0
160°	507.6	494.0	489.4	489.0	489.1	488.9	488.7	488.8	489.0	489.1	489.6
162.5°	507.0	493.8	489.3	488.8	488.5	488.4	488.4	488.1	488.3	488.3	488.7
165°	506.9	495.2	491.2	491.0	491.0	490.9	491.0	491.1	491.3	491.6	491.9
167.5°	510.8	500.4	497.3	496.7	496.2	495.7	495.7	495.0	495.0	494.7	494.7
170°	511.4	503.1	500.4	500.2	500.4	500.3	500.1	500.1	500.1	500.1	500.3
172.5°	512.1	506.2	504.0	504.3	504.7	504.9	505.3	505.6	506.0	506.4	506.8
175°	513.3	509.6	508.8	508.7	508.9	509.1	509.3	509.6	509.7	509.9	510.4
177.5°	515.6	514.5	514.0	514.0	514.0	514.0	514.0	514.0	514.0	514.2	514.2
180°	513.7	513.7	513.7	513.7	513.7	513.7	513.7	513.7	513.7	513.7	513.7



TEST NUMBER: P1444711
 CATALOG NUMBER: EHBR1-60-UNV-TA-L930-UPL36

CANDELA DISTRIBUTION (continued):

	247.5°	250°	252.5°	255°	257.5°	260°	262.5°	265°	267.5°	270°	272.5°
0°	45630.2	45630.2	45630.2	45630.2	45630.2	45630.2	45630.2	45630.2	45630.2	45630.2	45630.2
2.5°	45986.8	46040.4	46036.3	46086.4	46083.8	46131.1	46121.5	46162.3	46153.0	46187.8	46167.4
5°	47495.2	47597.3	47630.9	47722.9	47742.0	47824.3	47826.0	47891.5	47883.6	47934.8	47907.6
7.5°	48922.2	49017.5	49062.6	49134.1	49169.8	49229.0	49252.2	49300.9	49312.5	49341.3	49340.4
10°	49042.6	49042.3	49064.6	49054.6	49074.6	49063.1	49087.4	49078.7	49114.7	49105.3	49132.6
12.5°	47422.2	47261.4	47202.7	47058.3	47026.7	46902.7	46911.5	46832.0	46870.4	46821.5	46904.8
15°	43939.7	43566.6	43382.4	43058.0	42956.1	42699.8	42679.0	42508.7	42554.7	42465.5	42595.8
17.5°	38793.5	38206.2	37883.8	37410.2	37222.1	36859.6	36786.9	36567.6	36601.7	36491.3	36648.5
20°	32657.8	31948.1	31541.5	30993.7	30749.4	30317.2	30202.5	29957.3	29988.1	29878.1	30056.1
22.5°	26452.1	25709.2	25250.3	24676.1	24364.1	23957.6	23835.7	23589.3	23603.3	23500.1	23671.2
25°	20749.4	20037.1	19591.6	19070.1	18799.4	18426.6	18298.5	18077.3	18089.8	18004.8	18158.3
27.5°	16051.1	15466.7	15093.9	14656.8	14414.2	14107.7	13982.8	13796.7	13796.3	13733.8	13862.2
30°	12543.1	12055.4	11720.7	11340.1	11112.1	10835.6	10714.9	10548.4	10541.2	10496.9	10598.9
32.5°	9821.0	9387.2	9082.0	8746.9	8542.3	8305.1	8190.7	8057.0	8044.8	8004.7	8088.4
35°	7634.5	7269.2	7006.8	6724.7	6745.5	6395.4	6453.6	6181.7	6108.0	6091.9	6154.1
37.5°	5900.6	5617.7	5404.4	5193.2	5050.2	4902.2	4822.5	4751.0	4742.9	4736.0	4779.5
40°	4618.6	4420.6	4265.4	4120.5	4022.2	3931.8	3882.0	3842.7	3833.4	3828.2	3854.5
42.5°	3738.1	3604.4	3504.5	3416.0	3356.2	3307.1	3279.7	3257.9	3250.6	3250.8	3266.4
45°	3158.1	3077.1	3012.7	2957.8	2919.6	2936.3	2886.8	2912.8	2878.6	2913.9	2890.6
47.5°	2781.2	2712.2	2672.3	2633.4	2610.2	2591.6	2592.3	2592.7	2599.9	2601.1	2608.7
50°	2490.3	2450.5	2422.7	2397.8	2385.8	2376.0	2379.4	2381.9	2389.1	2389.5	2395.1
52.5°	2275.1	2248.9	2232.1	2216.7	2211.3	2205.7	2208.1	2207.1	2210.3	2208.6	2213.1
55°	2099.9	2087.5	2082.2	2076.5	2077.3	2075.8	2076.9	2071.3	2067.9	2063.7	2067.5
57.5°	1956.1	1954.4	1957.9	1960.3	1966.9	1969.3	1970.8	1964.4	1958.3	1952.8	1956.0
60°	1845.4	1848.0	1856.9	1863.9	1873.4	1877.8	1880.5	1876.8	1872.4	1867.8	1870.5
62.5°	1736.1	1740.3	1750.8	1758.8	1770.2	1776.1	1782.7	1783.1	1784.8	1783.1	1785.0
65°	1609.2	1614.5	1624.0	1630.6	1641.2	1646.5	1653.2	1654.4	1658.1	1657.3	1660.5
67.5°	1512.9	1517.6	1525.5	1531.8	1541.3	1546.7	1552.6	1553.0	1554.3	1554.0	1557.0
70°	1410.0	1412.5	1419.5	1424.8	1434.2	1439.8	1446.6	1448.6	1452.8	1453.5	1456.9
72.5°	1300.4	1299.5	1303.6	1306.1	1313.2	1317.5	1326.2	1330.9	1338.0	1339.8	1342.4
75°	1181.0	1180.0	1185.1	1187.2	1193.2	1197.6	1207.3	1213.6	1224.5	1229.1	1227.9
77.5°	1042.9	1045.3	1054.8	1060.0	1068.1	1073.6	1086.2	1096.2	1116.3	1125.1	1116.2
80°	888.4	890.9	900.7	905.6	916.3	923.0	937.0	948.7	966.8	970.7	965.6
82.5°	698.4	699.1	707.9	711.6	725.5	735.5	753.2	762.5	773.7	772.0	770.7
85°	476.2	482.6	493.6	504.7	521.5	537.8	554.6	568.4	558.6	574.0	556.7
87.5°	254.5	253.8	268.7	266.4	290.1	303.7	318.2	325.2	333.0	331.4	331.6
90°	65.1	61.7	61.8	58.0	59.3	55.2	57.7	53.9	57.3	52.5	60.1
92.5°	62.0	59.4	56.8	54.2	51.5	48.9	46.3	43.6	41.0	38.3	41.0
95°	75.4	73.0	70.5	67.9	65.5	63.0	60.6	58.2	55.7	53.3	56.3
97.5°	92.5	91.1	89.6	88.2	86.8	85.5	84.0	82.6	81.0	79.6	81.6
100°	104.3	104.3	104.3	104.3	103.9	103.9	103.9	103.9	103.9	103.9	105.5
102.5°	196.1	191.4	186.8	181.9	177.2	172.6	168.0	163.3	158.6	154.0	160.9
105°	437.6	419.4	401.0	382.7	364.4	346.1	327.9	309.7	291.5	273.2	292.0
107.5°	808.9	775.5	742.1	708.9	675.5	642.3	609.1	575.9	542.7	509.5	539.2
110°	1127.2	1091.8	1056.4	1021.2	985.7	950.3	915.0	879.8	844.5	809.3	837.7



TEST NUMBER: P1444711
 CATALOG NUMBER: EHBR1-60-UNV-TA-L930-UPL36

CANDELA DISTRIBUTION (continued):

	247.5°	250°	252.5°	255°	257.5°	260°	262.5°	265°	267.5°	270°	272.5°
112.5°	1256.5	1233.2	1210.4	1187.5	1164.7	1142.0	1119.3	1096.5	1073.9	1051.2	1065.0
115°	1240.0	1229.1	1218.0	1207.1	1196.2	1185.1	1174.3	1163.6	1152.8	1142.1	1142.9
117.5°	1138.6	1134.7	1130.9	1127.1	1123.3	1119.7	1116.1	1112.6	1109.0	1105.7	1098.1
120°	992.4	993.2	993.9	995.0	996.1	997.3	998.2	999.6	1001.0	1002.4	992.1
122.5°	848.5	850.7	853.0	855.5	858.1	860.8	863.5	866.5	869.6	872.6	862.3
125°	723.8	726.0	728.1	730.6	732.7	735.5	738.2	741.2	744.2	747.3	738.6
127.5°	634.9	635.3	635.6	636.3	636.9	637.9	638.9	640.2	641.6	643.2	637.8
130°	579.7	578.3	576.7	575.4	574.0	573.3	572.5	571.8	571.2	571.0	568.6
132.5°	549.4	546.5	543.8	541.1	538.6	536.6	534.2	532.5	530.8	529.3	528.7
135°	534.4	530.9	527.3	523.7	520.3	517.6	514.5	512.0	509.5	507.2	507.9
137.5°	525.9	522.4	518.6	515.3	511.9	509.1	506.1	503.4	501.0	498.8	499.8
140°	525.1	521.5	517.8	514.5	511.5	508.5	505.5	503.1	500.4	498.4	499.0
142.5°	522.3	519.4	516.0	513.1	510.0	507.5	504.9	502.7	500.1	498.4	499.2
145°	521.1	518.9	516.4	514.1	512.0	510.2	507.9	506.3	504.7	503.7	504.0
147.5°	518.1	516.5	514.5	512.9	511.0	509.8	508.2	507.1	506.0	505.1	505.3
150°	512.0	511.1	509.8	508.8	507.7	506.8	505.8	505.2	504.4	503.9	503.9
152.5°	504.9	504.1	503.0	502.2	501.2	500.6	499.8	499.3	498.7	498.2	498.1
155°	495.7	495.2	494.8	494.5	494.1	494.2	493.9	494.0	493.8	493.8	494.0
157.5°	491.2	491.3	491.0	491.4	491.4	491.5	491.5	491.9	491.8	492.4	492.7
160°	490.1	490.0	489.9	489.9	489.9	489.8	489.9	489.9	490.1	490.2	490.7
162.5°	488.9	489.4	489.6	489.9	490.4	490.8	491.3	491.9	492.3	493.0	493.4
165°	492.4	492.4	492.4	492.3	492.5	492.7	492.9	493.3	493.4	494.0	494.7
167.5°	494.5	494.8	494.8	495.3	495.7	496.2	496.5	497.3	497.8	498.7	499.2
170°	500.1	500.1	500.1	500.1	500.1	500.5	500.6	500.7	500.9	501.4	501.8
172.5°	507.1	507.1	506.7	507.1	506.7	507.1	507.1	507.2	507.2	507.3	507.5
175°	510.4	510.8	511.0	511.4	511.4	511.6	511.8	512.0	512.2	512.6	512.6
177.5°	514.2	514.4	514.4	514.4	514.4	514.5	514.5	514.5	514.5	514.4	514.5
180°	513.7	513.7	513.7	513.7	513.7	513.7	513.7	513.7	513.7	513.7	513.7



TEST NUMBER: P1444711
 CATALOG NUMBER: EHBR1-60-UNV-TA-L930-UPL36

CANDELA DISTRIBUTION (continued):

	275°	277.5°	280°	282.5°	285°	287.5°	290°	292.5°	295°	297.5°	300°
0°	45630.2	45630.2	45630.2	45630.2	45630.2	45630.2	45630.2	45630.2	45630.2	45630.2	45630.2
2.5°	46201.4	46178.2	46201.9	46177.9	46201.9	46173.1	46192.6	46161.5	46169.5	46137.1	46145.4
5°	47948.3	47911.5	47931.1	47883.2	47888.3	47824.3	47823.2	47748.8	47729.2	47644.4	47607.2
7.5°	49360.9	49348.9	49355.7	49324.9	49321.3	49277.7	49256.9	49195.3	49156.6	49078.7	49025.4
10°	49137.3	49173.3	49182.7	49219.3	49227.0	49263.3	49270.9	49307.3	49314.9	49341.8	49342.1
12.5°	46900.8	47023.1	47052.3	47203.4	47267.0	47439.8	47532.5	47722.9	47836.0	48025.9	48142.6
15°	42592.3	42803.8	42888.2	43183.1	43346.3	43690.6	43906.9	44302.3	44581.3	45001.2	45300.7
17.5°	36662.4	36958.0	37091.4	37491.4	37752.3	38260.4	38626.8	39229.6	39691.2	40361.1	40892.2
20°	30086.5	30415.1	30596.2	31052.5	31360.4	31954.1	32411.4	33152.3	33770.1	34619.0	35345.0
22.5°	23724.9	24037.6	24238.6	24702.8	25049.6	25668.8	26179.9	26961.9	27654.0	28610.6	29481.1
25°	18216.3	18502.7	18684.5	19104.4	19430.0	19999.0	20487.1	21239.1	21916.4	22876.0	23768.6
27.5°	13926.1	14166.1	14341.3	14699.3	14986.5	15469.1	15888.3	16509.8	17093.4	17923.6	18718.4
30°	10661.6	10874.3	11044.8	11356.6	11622.8	12041.2	12409.8	12931.9	13414.9	14075.5	14707.7
32.5°	8147.2	8330.4	8482.2	8755.2	8996.7	9373.4	9705.6	10163.2	10577.7	11138.0	11658.2
35°	6212.0	6572.3	6546.8	6923.3	6983.8	7254.1	7550.4	7950.6	8317.7	8794.1	9236.8
37.5°	4821.5	4922.8	5031.4	5197.7	5372.7	5618.7	5869.0	6357.9	6537.1	6897.2	7263.7
40°	3888.0	3956.5	4028.2	4140.7	4263.1	4436.4	4618.8	4852.0	5090.9	5382.8	5680.9
42.5°	3287.0	3325.7	3371.4	3437.5	3513.0	3622.8	3744.7	3902.9	4069.1	4274.6	4484.3
45°	2936.7	2918.3	2931.8	2967.4	3012.9	3079.7	3156.6	3254.5	3362.8	3495.9	3637.5
47.5°	2610.2	2617.6	2621.7	2641.0	2665.4	2710.1	2756.8	2823.3	2951.6	2990.8	3068.0
50°	2394.6	2398.1	2397.0	2406.8	2419.1	2448.2	2478.5	2523.4	2568.4	2628.0	2684.8
52.5°	2213.9	2218.9	2218.2	2224.6	2231.2	2249.7	2268.8	2300.6	2330.0	2367.8	2400.6
55°	2071.1	2078.0	2080.7	2086.2	2089.4	2099.0	2106.7	2121.8	2134.4	2155.8	2175.6
57.5°	1961.3	1970.8	1975.2	1977.1	1973.2	1972.7	1970.1	1973.3	1975.9	1987.4	1998.6
60°	1875.0	1882.5	1883.7	1882.5	1875.4	1870.3	1862.2	1859.7	1858.4	1863.9	1870.1
62.5°	1784.4	1787.2	1785.3	1783.1	1775.0	1770.1	1761.6	1758.6	1755.7	1759.6	1762.9
65°	1659.3	1661.7	1659.3	1658.0	1650.7	1646.8	1639.7	1637.3	1633.3	1634.3	1633.6
67.5°	1557.7	1560.0	1558.2	1556.3	1551.3	1548.9	1543.6	1540.2	1535.3	1533.5	1530.1
70°	1456.4	1458.3	1455.4	1453.5	1447.7	1445.5	1440.6	1439.6	1435.7	1434.9	1431.0
72.5°	1339.8	1340.0	1336.0	1334.7	1330.6	1330.4	1328.3	1330.2	1330.0	1332.1	1331.3
75°	1220.7	1219.0	1213.9	1213.0	1209.8	1211.3	1209.1	1212.0	1212.4	1216.8	1217.3
77.5°	1101.3	1095.0	1085.3	1080.8	1074.4	1073.6	1069.8	1072.3	1071.5	1076.6	1078.5
80°	950.4	942.8	930.4	924.6	916.9	915.7	912.3	915.7	914.0	919.9	924.2
82.5°	758.8	752.2	739.4	734.7	725.8	726.6	723.0	726.6	726.2	734.9	740.0
85°	561.2	556.9	543.7	532.0	519.0	511.4	503.9	502.6	500.4	503.9	507.0
87.5°	324.2	320.1	309.8	303.1	280.2	281.2	272.2	271.8	269.6	267.5	272.2
90°	58.8	65.3	64.4	70.3	70.1	76.9	77.2	83.7	83.3	89.6	90.3
92.5°	43.6	46.3	48.8	51.5	54.1	56.8	59.3	62.0	67.7	73.0	79.0
95°	59.3	62.4	65.4	68.5	71.6	74.6	77.6	80.6	88.9	97.2	105.6
97.5°	83.8	85.6	87.7	89.6	91.7	93.7	95.7	97.8	106.8	115.8	124.7
100°	107.1	108.7	110.3	112.0	113.6	115.2	116.8	118.4	136.0	153.2	170.5
102.5°	167.7	174.7	181.5	188.4	195.4	202.4	209.2	216.1	255.8	295.2	334.8
105°	310.9	329.7	348.8	367.6	386.5	405.3	424.4	443.2	506.5	569.7	633.2
107.5°	569.0	598.8	628.5	658.6	688.3	718.3	748.0	778.0	839.6	901.6	963.3
110°	866.0	894.6	923.0	951.5	979.8	1008.4	1036.9	1065.6	1102.8	1139.8	1177.0



TEST NUMBER: P1444711
 CATALOG NUMBER: EHBR1-60-UNV-TA-L930-UPL36

CANDELA DISTRIBUTION (continued):

	275°	277.5°	280°	282.5°	285°	287.5°	290°	292.5°	295°	297.5°	300°
112.5°	1078.8	1092.6	1106.5	1120.5	1134.4	1148.6	1162.5	1176.7	1195.4	1213.9	1232.7
115°	1143.8	1144.6	1145.7	1146.7	1147.9	1148.9	1150.3	1151.4	1157.6	1163.6	1169.7
117.5°	1090.5	1083.0	1075.7	1068.1	1060.8	1053.8	1046.6	1039.6	1038.6	1037.7	1037.0
120°	982.3	972.1	962.1	952.0	942.4	932.5	923.0	913.5	908.9	904.2	899.8
122.5°	852.3	842.3	832.4	822.6	813.0	803.5	794.1	784.8	781.7	778.7	775.8
125°	730.3	722.1	713.9	705.9	698.2	690.5	683.0	675.5	675.8	675.9	676.6
127.5°	632.8	627.9	623.1	618.5	614.2	609.7	605.6	601.3	604.3	607.0	609.9
130°	566.6	564.6	563.0	561.1	560.0	558.5	557.2	555.9	560.6	564.8	569.4
132.5°	528.7	528.6	528.8	529.0	529.5	530.0	530.9	531.5	536.6	541.5	546.7
135°	508.6	509.6	510.9	512.0	513.7	515.3	517.1	518.6	523.7	528.4	533.4
137.5°	501.2	502.4	504.0	505.6	507.8	509.6	511.9	513.8	517.8	521.8	525.7
140°	500.3	501.2	502.8	504.2	505.7	507.4	509.5	511.1	514.5	517.6	520.7
142.5°	500.4	501.2	502.5	504.0	505.5	507.0	508.7	510.2	512.8	514.9	517.8
145°	505.0	505.6	506.9	507.8	509.0	510.2	511.6	512.9	514.6	516.1	517.8
147.5°	505.9	506.4	507.2	508.1	509.1	510.0	510.8	511.7	513.0	514.1	515.3
150°	504.4	504.7	505.2	505.5	506.3	506.9	507.8	508.2	509.3	510.1	511.4
152.5°	498.8	498.9	499.4	499.7	500.4	500.8	501.3	501.9	503.0	503.7	504.7
155°	494.5	495.2	495.8	496.4	497.2	497.5	498.4	498.9	499.8	500.4	501.3
157.5°	493.3	493.7	494.6	494.8	495.7	496.3	496.9	497.4	498.2	498.8	499.5
160°	491.6	492.5	493.2	494.0	494.9	495.7	496.5	497.3	498.1	498.6	499.2
162.5°	494.1	494.8	495.5	496.0	496.7	497.3	497.9	498.5	499.6	500.1	501.2
165°	495.5	496.3	497.3	497.8	498.9	499.8	500.5	501.4	501.8	502.5	503.0
167.5°	500.1	500.6	501.7	502.4	503.3	504.0	504.9	505.6	506.3	506.6	507.3
170°	502.6	503.2	503.9	504.7	505.4	505.9	506.9	507.4	508.2	508.8	509.7
172.5°	508.1	508.7	509.2	509.6	510.2	510.8	511.4	511.8	512.5	512.9	513.6
175°	512.6	512.6	512.8	512.9	513.1	513.1	513.3	513.7	513.8	513.9	514.1
177.5°	514.7	515.0	515.2	515.3	515.5	515.8	516.0	516.1	516.1	516.1	516.1
180°	513.7	513.7	513.7	513.7	513.7	513.7	513.7	513.7	513.7	513.7	513.7



TEST NUMBER: P1444711
 CATALOG NUMBER: EHBR1-60-UNV-TA-L930-UPL36

CANDELA DISTRIBUTION (continued):

	302.5°	305°	307.5°	310°	312.5°	315°	317.5°	320°	322.5°	325°	327.5°
0°	45630.2	45630.2	45630.2	45630.2	45630.2	45630.2	45630.2	45630.2	45630.2	45630.2	45630.2
2.5°	46113.2	46115.1	46078.0	46075.9	46041.1	46036.7	46002.7	45992.4	45964.8	45954.8	45926.7
5°	47512.2	47466.9	47362.2	47300.6	47197.1	47128.6	47016.7	46943.6	46835.6	46754.1	46645.3
7.5°	48927.1	48856.8	48739.3	48644.0	48500.4	48385.8	48217.9	48080.3	47898.3	47740.8	47549.7
10°	49342.1	49331.3	49301.4	49257.7	49191.0	49115.9	49001.5	48882.3	48722.9	48549.7	48337.3
12.5°	48321.0	48431.3	48581.6	48670.7	48779.2	48826.7	48871.1	48860.0	48830.8	48743.2	48620.4
15°	45734.5	46044.3	46454.6	46772.5	47138.2	47404.2	47697.7	47880.6	48063.1	48147.4	48199.0
17.5°	41619.9	42206.5	42942.1	43551.8	44255.1	44820.1	45439.4	45905.6	46385.0	46728.5	47039.1
20°	36334.6	37184.6	38225.0	39144.1	40212.8	41141.6	42159.4	42994.9	43856.5	44530.2	45167.9
22.5°	30602.0	31611.4	32869.2	34034.4	35412.1	36650.3	38047.4	39263.3	40532.8	41593.5	42618.9
25°	24964.8	26071.8	27447.2	28747.2	30307.6	31747.8	33404.6	34920.0	36560.9	37985.5	39392.8
27.5°	19817.2	20904.1	22308.2	23692.1	25342.1	26876.8	28651.9	30321.5	32189.9	33912.8	35675.2
30°	15586.5	16508.3	17767.3	19107.6	20735.0	22296.7	24091.1	25808.4	27751.9	29633.1	31618.3
32.5°	12348.6	13050.9	14040.8	15174.1	16675.7	18162.3	19871.0	21528.7	23442.7	25342.9	27407.6
35°	9807.1	10354.9	11109.6	11994.0	13265.6	14547.0	16058.4	17565.9	19351.5	21154.8	23161.6
37.5°	7733.4	8177.9	8768.9	9433.3	10453.2	11505.0	12744.2	13993.9	15545.5	17143.9	18962.7
40°	6039.0	6398.8	6858.9	7354.5	8124.6	8935.0	9893.3	10862.5	12109.0	13415.4	14920.6
42.5°	4744.1	5009.5	5334.6	5696.7	6415.2	6845.5	7495.3	8196.3	9112.7	10061.1	11192.8
45°	3809.9	3991.1	4216.4	4459.3	4792.7	5157.7	5602.8	6069.5	6940.1	7367.1	8055.5
47.5°	3181.6	3303.3	3446.7	3599.7	3796.3	4008.6	4272.6	4542.5	4891.6	5253.3	5677.4
50°	2758.5	2882.1	2931.4	3010.7	3124.5	3245.7	3394.5	3543.3	3730.6	3920.3	4138.6
52.5°	2444.5	2484.8	2538.3	2588.8	2659.2	2797.3	2841.9	2919.7	3024.7	3127.4	3242.1
55°	2204.7	2230.9	2265.7	2296.2	2338.8	2379.5	2438.4	2490.2	2560.2	2622.1	2698.2
57.5°	2018.0	2034.7	2058.9	2078.8	2106.5	2129.5	2164.0	2192.0	2232.3	2267.2	2313.4
60°	1882.4	1893.5	1909.8	1922.8	1940.4	1952.4	1969.5	1982.7	2004.0	2021.7	2047.4
62.5°	1771.6	1777.4	1788.0	1795.6	1806.8	1812.8	1822.0	1827.7	1839.4	1848.4	1862.7
65°	1638.7	1640.1	1647.2	1650.4	1659.1	1662.3	1669.8	1672.5	1682.1	1688.7	1701.5
67.5°	1529.8	1526.7	1526.9	1524.4	1525.5	1523.0	1523.7	1521.0	1524.8	1526.9	1536.5
70°	1430.4	1426.1	1424.8	1420.2	1418.9	1414.1	1412.7	1408.5	1408.0	1406.7	1410.0
72.5°	1333.4	1332.3	1332.6	1329.4	1329.0	1325.8	1326.0	1324.0	1326.2	1327.2	1331.5
75°	1222.0	1222.4	1224.5	1221.7	1222.5	1219.8	1220.8	1218.3	1219.6	1219.1	1223.5
77.5°	1086.4	1089.6	1095.5	1094.3	1096.2	1093.2	1094.5	1090.9	1091.9	1089.6	1091.3
80°	933.8	940.6	948.5	948.2	951.6	949.4	952.4	949.1	950.4	946.3	945.3
82.5°	752.7	758.4	766.9	767.3	774.7	776.1	784.3	784.0	789.3	785.9	783.5
85°	514.6	518.5	526.0	530.0	537.6	542.3	550.3	553.5	547.8	558.2	549.9
87.5°	268.7	278.7	273.1	286.1	283.1	296.3	293.4	305.6	303.3	313.7	312.3
90°	98.4	99.7	108.2	110.1	120.2	123.1	128.0	124.5	129.0	125.8	130.5
92.5°	84.3	90.4	96.0	101.7	107.3	113.1	107.7	102.5	97.2	92.1	86.7
95°	113.9	122.2	130.5	138.8	147.1	155.4	146.5	137.8	128.9	119.9	111.0
97.5°	133.6	142.5	151.4	160.3	169.4	178.3	167.8	157.3	146.8	136.4	125.8
100°	187.7	205.1	222.3	239.5	256.9	274.1	254.7	235.0	215.6	195.9	176.3
102.5°	374.6	414.1	453.7	493.4	532.9	572.6	531.0	489.7	447.9	406.4	364.7
105°	696.6	760.0	823.3	886.7	950.0	1013.7	946.2	878.8	811.3	744.0	676.4
107.5°	1025.3	1086.9	1149.0	1210.7	1272.6	1334.7	1266.5	1198.0	1129.8	1061.3	992.8
110°	1214.4	1251.6	1288.9	1326.4	1363.5	1401.0	1351.1	1301.5	1251.6	1201.6	1151.8



TEST NUMBER: P1444711
 CATALOG NUMBER: EHBR1-60-UNV-TA-L930-UPL36

CANDELA DISTRIBUTION (continued):

	302.5°	305°	307.5°	310°	312.5°	315°	317.5°	320°	322.5°	325°	327.5°
112.5°	1251.3	1270.5	1289.0	1308.1	1326.8	1345.8	1310.2	1274.9	1239.1	1203.8	1168.0
115°	1176.1	1182.2	1188.6	1194.8	1201.1	1207.3	1183.5	1159.6	1135.8	1112.1	1087.8
117.5°	1036.3	1035.9	1034.9	1034.6	1033.6	1033.1	1019.9	1006.8	993.5	980.3	966.9
120°	895.1	890.6	886.1	881.6	877.0	872.3	867.1	861.7	856.2	850.7	845.2
122.5°	772.7	770.0	766.9	764.0	760.9	757.7	755.9	754.3	752.3	750.5	748.3
125°	677.0	677.3	677.7	678.2	678.3	678.7	677.8	677.3	676.4	675.8	674.8
127.5°	612.5	615.3	617.9	620.7	623.1	625.8	625.8	626.1	626.2	626.3	626.3
130°	573.6	578.3	582.6	586.7	590.7	595.3	594.8	594.8	594.6	594.3	594.1
132.5°	551.7	556.6	561.5	566.7	571.2	576.0	575.6	575.5	574.8	574.7	574.2
135°	538.0	542.8	547.2	552.1	556.4	561.0	560.3	559.8	559.1	558.7	558.1
137.5°	529.2	533.4	537.1	540.8	544.3	548.1	547.3	546.8	546.0	545.6	544.9
140°	523.8	526.9	529.8	532.9	535.8	538.8	537.7	537.0	535.9	535.0	534.0
142.5°	520.1	522.5	524.5	527.1	529.1	531.5	529.8	528.4	526.9	525.5	524.0
145°	519.4	521.2	522.7	524.3	525.4	527.2	525.2	523.6	521.5	519.9	517.9
147.5°	516.3	517.6	518.3	519.5	520.1	521.2	519.4	517.6	515.8	513.9	512.0
150°	512.0	513.3	513.9	514.9	515.6	516.6	514.5	512.7	510.5	508.6	506.7
152.5°	505.5	506.5	507.2	507.9	508.7	509.4	507.3	505.7	503.7	501.6	499.8
155°	501.6	502.4	502.8	503.5	503.7	504.1	502.3	501.0	499.4	497.7	495.9
157.5°	499.9	500.6	501.2	501.4	501.8	502.3	501.1	500.0	498.6	497.4	496.1
160°	499.8	500.3	500.7	501.1	501.6	501.8	500.7	500.0	498.9	497.8	496.5
162.5°	501.7	502.6	503.0	503.7	504.4	504.9	503.7	502.5	501.3	500.0	498.7
165°	503.5	504.0	504.6	505.0	505.2	505.7	504.9	504.2	503.2	502.5	501.4
167.5°	507.7	508.3	508.7	509.2	509.4	509.6	508.8	508.3	507.3	506.4	505.5
170°	510.0	510.5	511.2	511.9	512.2	512.6	512.0	511.4	510.6	510.0	509.1
172.5°	514.1	514.6	514.8	515.4	515.6	516.1	515.4	514.6	514.0	513.2	512.3
175°	514.1	514.3	514.6	514.6	514.6	514.8	514.2	513.6	513.0	512.4	511.8
177.5°	516.1	516.1	516.1	516.0	516.0	516.0	515.5	515.2	514.7	514.4	513.7
180°	513.7	513.7	513.7	513.7	513.7	513.7	513.7	513.7	513.7	513.7	513.7



TEST NUMBER: P1444711
 CATALOG NUMBER: EHBR1-60-UNV-TA-L930-UPL36

CANDELA DISTRIBUTION (continued):

	330°	332.5°	335°	337.5°	340°	342.5°	345°	347.5°	350°	352.5°	355°
0°	45630.2	45630.2	45630.2	45630.2	45630.2	45630.2	45630.2	45630.2	45630.2	45630.2	45630.2
2.5°	45916.8	45896.8	45884.0	45867.6	45857.6	45844.9	45835.6	45827.6	45821.2	45815.3	45810.9
5°	46562.5	46459.8	46380.1	46293.9	46223.0	46152.4	46097.9	46052.7	46021.6	45998.3	45984.4
7.5°	47384.5	47196.6	47029.5	46853.7	46696.1	46541.0	46407.4	46292.2	46205.8	46149.8	46115.8
10°	48118.6	47867.1	47618.4	47356.6	47108.4	46867.5	46645.3	46449.8	46295.1	46192.3	46132.2
12.5°	48447.7	48233.4	47979.5	47695.2	47391.0	47083.2	46783.1	46512.6	46285.4	46133.1	46045.2
15°	48157.9	48069.9	47897.6	47676.9	47388.2	47070.0	46717.7	46386.6	46082.0	45884.5	45770.0
17.5°	47215.1	47337.9	47324.7	47240.3	47032.7	46764.8	46405.9	46033.9	45653.0	45389.0	45244.7
20°	45624.0	46010.0	46205.8	46306.3	46224.7	46051.0	45726.0	45348.6	44904.5	44559.8	44349.5
22.5°	43388.2	44069.6	44494.2	44804.9	44870.8	44811.6	44524.7	44165.7	43670.6	43256.3	42945.7
25°	40509.9	41508.2	42179.2	42705.4	42909.7	42962.4	42718.2	42361.2	41809.4	41326.8	40900.1
27.5°	37119.8	38416.9	39312.9	40019.7	40338.8	40477.1	40252.4	39888.2	39235.3	38659.2	38101.8
30°	33303.1	34842.0	35920.8	36768.4	37157.4	37340.2	37101.4	36694.8	35935.2	35241.8	34539.7
32.5°	29218.1	30902.1	32077.6	32998.1	33383.5	33555.5	33243.1	32786.5	31908.5	31091.7	30272.9
35°	24941.1	26640.9	27826.4	28722.3	29045.3	29149.0	28749.5	28221.8	27249.0	26352.5	25459.7
37.5°	20577.0	22158.4	23235.8	24039.9	24239.8	24257.8	23776.5	23193.5	22171.1	21287.2	20398.3
40°	16250.7	17584.3	18454.2	19097.8	19167.2	19105.3	18582.0	17995.4	17038.9	16247.0	15466.7
42.5°	12175.5	13182.2	13802.9	14243.9	14217.7	14095.4	13615.6	13111.3	12322.2	11719.0	11105.0
45°	8684.2	9348.0	9710.8	9968.9	9886.0	9769.6	9396.2	9042.7	8506.5	8116.9	7704.2
47.5°	6033.0	6825.7	6687.6	7192.3	6757.5	7044.6	6446.7	6117.0	5832.4	5625.5	5392.3
50°	4319.1	4500.7	4588.5	4648.4	4616.5	4572.4	4465.1	4369.0	4239.0	4144.2	4033.8
52.5°	3335.5	3426.3	3476.1	3512.1	3505.0	3488.9	3442.1	3399.3	3338.4	3298.4	3250.0
55°	2825.4	2826.7	2918.2	2878.9	2936.9	2868.9	2895.7	2820.5	2832.6	2768.0	2724.6
57.5°	2347.8	2385.0	2401.7	2417.9	2413.4	2410.5	2392.4	2383.3	2362.9	2356.5	2342.0
60°	2065.2	2084.6	2088.7	2096.1	2089.9	2087.5	2073.3	2068.2	2054.5	2052.0	2042.3
62.5°	1871.4	1881.4	1881.4	1881.4	1873.3	1865.4	1849.7	1841.5	1829.8	1827.3	1821.7
65°	1709.7	1720.0	1721.7	1723.9	1718.0	1711.9	1698.1	1689.1	1677.0	1672.5	1666.1
67.5°	1542.8	1553.8	1557.5	1563.1	1559.7	1558.5	1549.1	1545.5	1537.6	1535.7	1529.8
70°	1411.7	1416.3	1415.9	1415.8	1408.4	1401.8	1390.8	1385.5	1377.3	1375.6	1370.1
72.5°	1333.8	1337.0	1334.9	1332.1	1322.5	1312.6	1299.8	1290.3	1279.5	1272.7	1265.2
75°	1224.0	1228.3	1225.6	1223.7	1215.1	1208.7	1198.3	1193.1	1185.5	1183.3	1178.0
77.5°	1089.2	1091.3	1086.8	1086.4	1079.8	1075.7	1067.9	1066.6	1061.0	1061.2	1056.1
80°	939.3	938.0	931.0	929.6	923.0	921.3	915.2	915.6	911.2	913.1	909.5
82.5°	772.8	768.6	759.3	756.6	749.0	748.3	744.3	747.7	744.9	749.0	746.6
85°	553.8	555.0	551.0	551.0	548.8	549.5	549.1	551.6	552.0	555.7	555.5
87.5°	308.8	313.2	312.3	316.4	316.3	320.8	322.3	329.1	329.9	336.2	336.2
90°	127.3	132.5	129.1	134.6	133.3	139.8	139.6	146.1	145.2	150.7	148.4
92.5°	81.5	76.2	71.0	65.7	63.0	60.1	58.0	54.8	52.5	49.5	46.9
95°	102.1	93.2	84.3	75.4	72.4	69.2	66.1	63.1	60.0	56.9	53.9
97.5°	115.3	104.8	94.3	83.8	81.1	78.5	75.7	73.1	70.4	67.8	65.1
100°	156.6	137.0	117.5	97.7	95.4	93.2	91.0	88.8	86.5	84.1	81.9
102.5°	323.1	281.3	239.6	197.9	190.0	182.1	174.2	166.2	158.3	150.4	142.5
105°	608.9	541.3	473.7	406.1	384.6	363.1	341.7	320.1	298.6	277.1	255.7
107.5°	924.3	855.7	787.1	718.5	679.0	639.3	599.6	559.7	520.2	480.3	440.7
110°	1101.9	1051.8	1001.8	951.6	919.9	887.9	855.9	823.9	792.0	759.9	727.9



TEST NUMBER: P1444711
 CATALOG NUMBER: EHBR1-60-UNV-TA-L930-UPL36

CANDELA DISTRIBUTION (continued):

	330°	332.5°	335°	337.5°	340°	342.5°	345°	347.5°	350°	352.5°	355°
112.5°	1132.4	1096.6	1060.9	1024.8	1010.6	996.0	981.8	967.2	952.8	938.1	923.7
115°	1063.8	1039.9	1015.7	991.4	986.6	981.5	976.6	971.3	966.4	961.1	955.8
117.5°	953.6	940.2	926.7	913.2	914.2	915.2	916.2	917.0	917.8	918.4	919.1
120°	839.5	833.9	828.5	822.7	827.4	831.9	836.5	840.8	845.2	849.3	853.4
122.5°	746.5	744.4	742.6	740.2	745.9	751.4	756.8	762.2	767.4	772.3	777.2
125°	674.1	673.2	672.4	671.2	677.1	682.6	688.1	693.3	698.7	703.6	708.6
127.5°	626.5	626.5	626.6	626.5	630.8	634.7	638.7	642.3	646.3	649.6	652.8
130°	593.9	593.5	593.4	593.1	596.9	600.5	604.4	607.6	611.1	613.9	616.8
132.5°	573.9	573.4	573.1	572.5	575.5	578.2	581.0	583.2	585.7	587.5	589.5
135°	557.6	556.9	556.3	555.5	558.3	561.0	563.5	565.6	567.9	569.5	571.4
137.5°	544.4	543.6	543.0	542.2	544.8	547.1	549.3	551.3	553.1	554.9	556.3
140°	533.3	532.0	531.5	530.2	532.5	534.5	536.6	538.3	540.2	541.5	542.9
142.5°	522.6	520.8	519.7	517.9	519.6	521.1	522.6	523.9	525.3	526.2	527.0
145°	516.1	514.0	512.5	510.4	511.8	512.9	514.2	515.3	516.1	516.7	517.5
147.5°	510.4	508.3	506.3	504.5	505.8	506.4	507.2	507.8	508.8	509.1	509.6
150°	504.7	502.3	500.2	498.1	498.9	499.5	500.1	500.8	501.4	501.6	502.1
152.5°	497.7	495.7	493.6	491.4	491.9	492.3	492.7	493.0	493.4	493.6	493.9
155°	494.2	492.4	490.6	488.6	489.2	489.4	489.7	489.9	489.9	489.9	490.1
157.5°	494.7	493.0	491.8	490.1	490.1	490.1	490.2	489.7	489.7	489.4	489.1
160°	495.6	494.1	493.0	491.6	491.5	491.3	491.4	490.8	490.7	490.2	489.9
162.5°	497.3	495.8	494.2	492.6	492.5	492.6	492.4	491.9	491.8	491.4	491.0
165°	500.6	499.5	498.4	497.2	497.0	496.6	496.5	495.7	495.5	494.8	494.2
167.5°	504.4	503.4	502.2	500.8	500.8	500.9	500.8	500.5	500.4	499.8	499.8
170°	508.3	507.3	506.5	505.5	505.3	505.1	504.7	504.4	503.9	503.6	503.0
172.5°	511.3	510.5	509.6	508.5	508.5	508.3	507.9	507.8	507.2	506.9	506.8
175°	511.0	510.4	509.5	508.8	508.7	508.5	508.4	508.2	507.9	507.7	507.3
177.5°	513.4	512.9	512.3	511.9	511.7	511.7	511.5	511.3	511.3	511.2	511.0
180°	513.7	513.7	513.7	513.7	513.7	513.7	513.7	513.7	513.7	513.7	513.7



TEST NUMBER: P1444711
 CATALOG NUMBER: EHBR1-60-UNV-TA-L930-UPL36

CANDELA DISTRIBUTION (continued):

	357.5°	360°
0°	45630.2	45630.2
2.5°	45806.9	45804.5
5°	45977.2	45974.4
7.5°	46106.7	46105.9
10°	46121.9	46129.8
12.5°	46029.9	46036.3
15°	45761.2	45773.7
17.5°	45247.4	45263.8
20°	44362.3	44379.4
22.5°	42928.9	42936.1
25°	40845.0	40815.4
27.5°	38003.9	37953.0
30°	34392.2	34343.0
32.5°	30086.2	30055.4
35°	25238.9	25219.5
37.5°	20135.6	20096.1
40°	15181.4	15066.0
42.5°	10836.1	10633.7
45°	7488.7	7248.8
47.5°	5227.9	5079.6
50°	3962.6	3914.8
52.5°	3228.9	3217.6
55°	2724.4	2719.5
57.5°	2345.2	2343.5
60°	2047.4	2046.9
62.5°	1825.4	1826.2
65°	1668.9	1669.3
67.5°	1531.3	1530.3
70°	1372.2	1371.0
72.5°	1262.6	1260.7
75°	1178.0	1176.8
77.5°	1057.6	1055.7
80°	911.8	909.5
82.5°	750.0	747.3
85°	559.5	559.5
87.5°	342.3	342.1
90°	153.5	150.3
92.5°	44.6	42.2
95°	50.9	47.9
97.5°	62.6	59.9
100°	79.7	77.4
102.5°	134.7	126.7
105°	234.2	212.7
107.5°	400.9	361.3
110°	695.9	663.9



TEST NUMBER: P1444711
CATALOG NUMBER: EHBR1-60-UNV-TA-L930-UPL36

CANDELA DISTRIBUTION (continued):

	357.5°	360°
112.5°	909.0	894.3
115°	950.2	945.0
117.5°	919.6	920.0
120°	857.2	861.2
122.5°	781.8	786.4
125°	713.1	717.8
127.5°	655.9	658.7
130°	619.1	621.7
132.5°	591.0	592.3
135°	572.5	573.7
137.5°	557.2	558.3
140°	543.5	544.4
142.5°	527.7	528.2
145°	517.9	518.2
147.5°	509.2	509.5
150°	501.9	502.0
152.5°	493.5	493.6
155°	489.8	489.7
157.5°	488.4	488.2
160°	489.3	489.0
162.5°	490.5	490.1
165°	493.4	492.7
167.5°	499.1	498.9
170°	502.5	502.2
172.5°	506.3	505.9
175°	507.1	507.0
177.5°	511.0	510.6
180°	513.7	513.7

LM-79-2019: Approved Method: Electrical and Photometric Measurements of Solid-State Lighting Products

Report Prepared for

Cooper Lighting Solutions

Metalux

Report Number: SP1-2506-472-5

Test Date: 08/01/2025

Luminaire Tested: EHBR-60-L930-N

Data in this report applies to families of products including EHBR-60-L930-N

Test Information

Test Method: LM-79-2019
 Report Number: SP1-2506-472-5
 Test Lab: COOPER LIGHTING SOLUTIONS
 Photometer: SP1 - 76IN SPHERE
 Measurement Geometry: 4π
 Issue Date: 08/05/2025
 Manufacturer: COOPER LIGHTING SOLUTIONS
 Product Line: Metalux
 Catalog Number: **EHBR-60-L930-N**
 Description: Elevate Round Highbay at, 60000 lumens, 3000K 90CRI LEDs with N lens

Spectral Parameters

CCT (K): 2996
 CIE u': 0.2519
 CIE v': 0.5169
 Duv: -0.0033
 CIE x: 0.4325
 CIE y: 0.3945
 CIE z: 0.1730
 Peak Wavelength (nm): 630
 Dominant Wavelength (nm): 584
 Purity: 48.21818
 Rf: 91.3
 Rg: 102

CRI (Ra):	94.4		
R1:	96.8	R9:	61.4
R2:	98.1	R10:	94.4
R3:	97.8	R11:	95.7
R4:	95.6	R12:	88.5
R5:	96.9	R13:	97.3
R6:	95.7	R14:	97.8
R7:	90.9	R15:	92.3
R8:	83.0		



Test Conditions

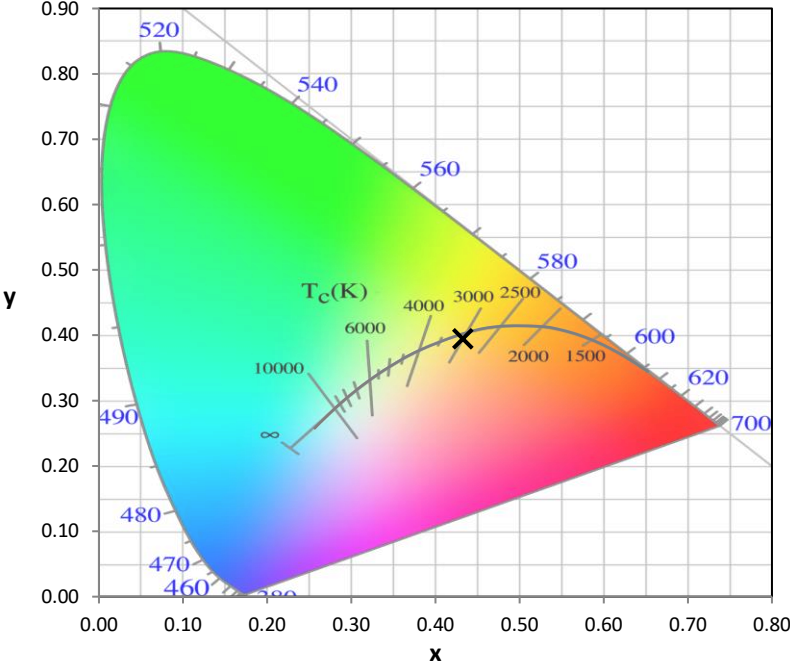
Stabilization Time: 40M
 Operation Time: 1H 40M
 Sphere Temperature (°C): 25.0

REPORT NUMBER: SP1-2506-472-5

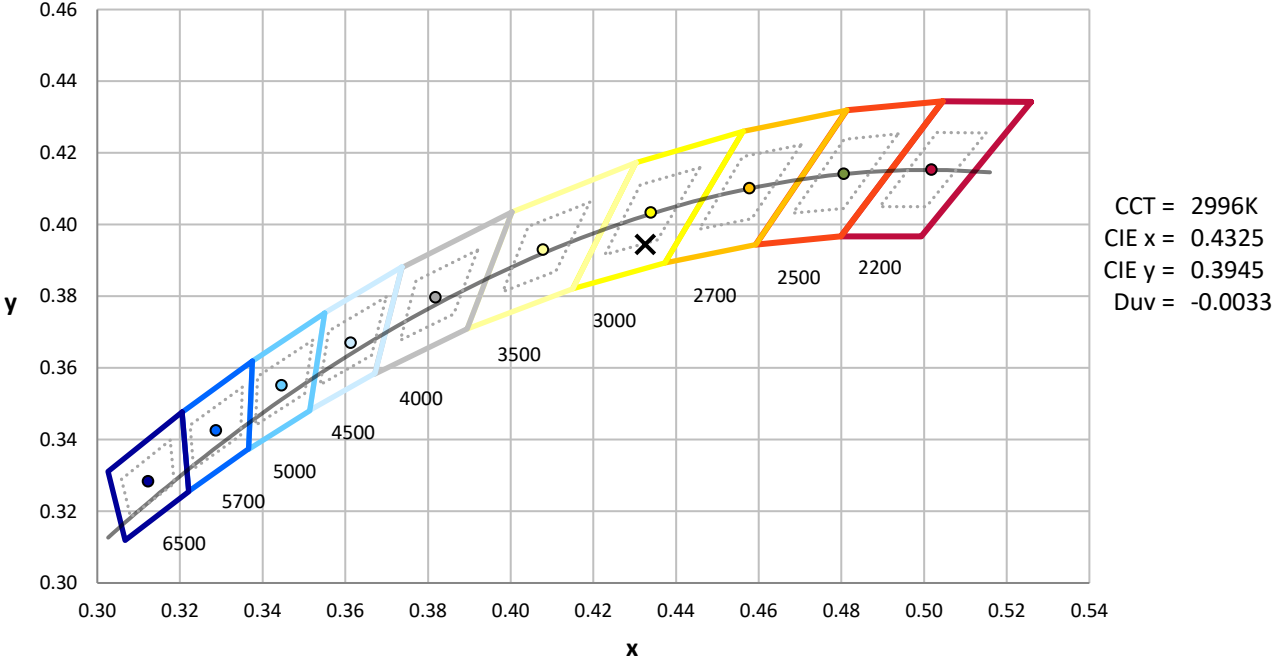
Measurement and Test Equipment			
Instrument	Identification Number	Calibration Date	Calibration Due Date
Photometer	76INCH SPHERE IN0058	6/16/2025	12/16/2025
Power Meter	XITRON INXT2011004	1/21/2025	1/21/2026
AC Power Source	CHROMA 61603 IN0063	10/22/2024	10/22/2025
DC Power Source	AGILENT E3634A IN0208	10/22/2024	10/22/2025
Sphere Thermometer	ONSET IN0085	10/22/2024	10/22/2025
Room Thermometer	ONSET IN0046	10/22/2024	10/22/2025

REPORT NUMBER: SP1-2506-472-5

CIE 1931 Chromaticity Diagram



CIE 1931 Chromaticity Diagram with 2017 ANSI 7-Step and 4-Step Quadrangles



CCT = 2996K
 CIE x = 0.4325
 CIE y = 0.3945
 Duv = -0.0033

Point lies inside the ANSI 3000K 7-step quadrangle

REPORT NUMBER: SP1-2506-472-5

Photopic Flux vs. Wavelength



Photopic Lumens: NR

λ (nm)	Power W [^] /nm	Lumens (φ/nm)	λ (nm)	Power W [^] /nm	Lumens (φ/nm)	λ (nm)	Power W [^] /nm	Lumens (φ/nm)	λ (nm)	Power W [^] /nm	Lumens (φ/nm)	λ (nm)	Power W [^] /nm	Lumens (φ/nm)
360	0	NR	490	101	NR	620	317	NR	750	7	NR	880	0	NR
365	0	NR	495	121	NR	625	320	NR	755	6	NR	885	0	NR
370	0	NR	500	141	NR	630	1000	NR	760	5	NR	890	0	NR
375	0	NR	505	158	NR	635	651	NR	765	4	NR	895	0	NR
380	0	NR	510	171	NR	640	207	NR	770	4	NR	900	0	NR
385	0	NR	515	182	NR	645	201	NR	775	3	NR	905	0	NR
390	0	NR	520	189	NR	650	174	NR	780	3	NR	910	0	NR
395	1	NR	525	194	NR	655	146	NR	785	2	NR	915	0	NR
400	1	NR	530	199	NR	660	124	NR	790	2	NR	920	0	NR
405	3	NR	535	205	NR	665	105	NR	795	2	NR	925	0	NR
410	4	NR	540	210	NR	670	96	NR	800	1	NR	930	0	NR
415	7	NR	545	216	NR	675	79	NR	805	1	NR	935	0	NR
420	13	NR	550	222	NR	680	67	NR	810	1	NR	940	0	NR
425	22	NR	555	230	NR	685	58	NR	815	1	NR	945	0	NR
430	37	NR	560	240	NR	690	49	NR	820	1	NR	950	0	NR
435	60	NR	565	248	NR	695	42	NR	825	1	NR	955	0	NR
440	101	NR	570	258	NR	700	36	NR	830	1	NR	960	0	NR
445	172	NR	575	268	NR	705	30	NR	835	1	NR	965	0	NR
450	223	NR	580	278	NR	710	26	NR	840	1	NR	970	0	NR
455	167	NR	585	287	NR	715	22	NR	845	0	NR	975	0	NR
460	126	NR	590	295	NR	720	19	NR	850	0	NR	980	0	NR
465	111	NR	595	298	NR	725	16	NR	855	0	NR	985	0	NR
470	86	NR	600	303	NR	730	14	NR	860	0	NR	990	0	NR
475	74	NR	605	307	NR	735	12	NR	865	0	NR	995	0	NR
480	77	NR	610	341	NR	740	10	NR	870	0	NR	1000	0	NR
485	86	NR	615	368	NR	745	8	NR	875	0	NR			

REPORT NUMBER: SP1-2506-472-5

Scotopic Flux vs. Wavelength



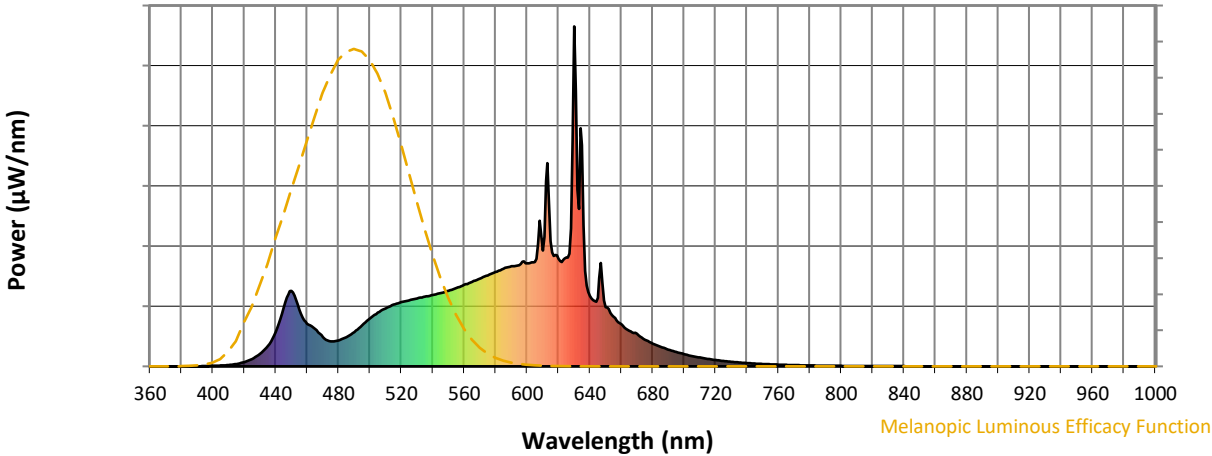
Scotopic Lumens: NR

S/P: 1.44

λ (nm)	Power W [^] /nm	Lumens (φ/nm)	λ (nm)	Power W [^] /nm	Lumens (φ/nm)	λ (nm)	Power W [^] /nm	Lumens (φ/nm)	λ (nm)	Power W [^] /nm	Lumens (φ/nm)	λ (nm)	Power W [^] /nm	Lumens (φ/nm)
360	0	NR	490	101	NR	620	317	NR	750	7	NR	880	0	NR
365	0	NR	495	121	NR	625	320	NR	755	6	NR	885	0	NR
370	0	NR	500	141	NR	630	1000	NR	760	5	NR	890	0	NR
375	0	NR	505	158	NR	635	651	NR	765	4	NR	895	0	NR
380	0	NR	510	171	NR	640	207	NR	770	4	NR	900	0	NR
385	0	NR	515	182	NR	645	201	NR	775	3	NR	905	0	NR
390	0	NR	520	189	NR	650	174	NR	780	3	NR	910	0	NR
395	1	NR	525	194	NR	655	146	NR	785	2	NR	915	0	NR
400	1	NR	530	199	NR	660	124	NR	790	2	NR	920	0	NR
405	3	NR	535	205	NR	665	105	NR	795	2	NR	925	0	NR
410	4	NR	540	210	NR	670	96	NR	800	1	NR	930	0	NR
415	7	NR	545	216	NR	675	79	NR	805	1	NR	935	0	NR
420	13	NR	550	222	NR	680	67	NR	810	1	NR	940	0	NR
425	22	NR	555	230	NR	685	58	NR	815	1	NR	945	0	NR
430	37	NR	560	240	NR	690	49	NR	820	1	NR	950	0	NR
435	60	NR	565	248	NR	695	42	NR	825	1	NR	955	0	NR
440	101	NR	570	258	NR	700	36	NR	830	1	NR	960	0	NR
445	172	NR	575	268	NR	705	30	NR	835	1	NR	965	0	NR
450	223	NR	580	278	NR	710	26	NR	840	1	NR	970	0	NR
455	167	NR	585	287	NR	715	22	NR	845	0	NR	975	0	NR
460	126	NR	590	295	NR	720	19	NR	850	0	NR	980	0	NR
465	111	NR	595	298	NR	725	16	NR	855	0	NR	985	0	NR
470	86	NR	600	303	NR	730	14	NR	860	0	NR	990	0	NR
475	74	NR	605	307	NR	735	12	NR	865	0	NR	995	0	NR
480	77	NR	610	341	NR	740	10	NR	870	0	NR	1000	0	NR
485	86	NR	615	368	NR	745	8	NR	875	0	NR			

REPORT NUMBER: SP1-2506-472-5

Melanopic Flux vs. Wavelength



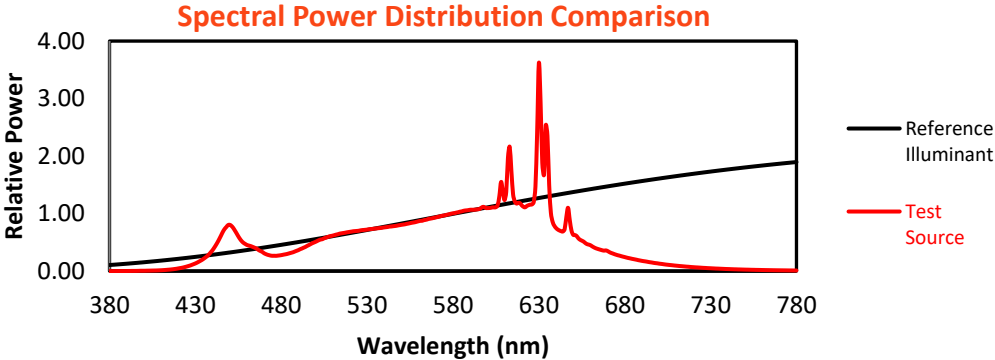
Melanopic Lumens: NR

M/P: 2.85

λ (nm)	Power W [^] /nm	Lumens (φ/nm)	λ (nm)	Power W [^] /nm	Lumens (φ/nm)	λ (nm)	Power W [^] /nm	Lumens (φ/nm)	λ (nm)	Power W [^] /nm	Lumens (φ/nm)	λ (nm)	Power W [^] /nm	Lumens (φ/nm)
360	0	NR	490	101	NR	620	317	NR	750	7	NR	880	0	NR
365	0	NR	495	121	NR	625	320	NR	755	6	NR	885	0	NR
370	0	NR	500	141	NR	630	1000	NR	760	5	NR	890	0	NR
375	0	NR	505	158	NR	635	651	NR	765	4	NR	895	0	NR
380	0	NR	510	171	NR	640	207	NR	770	4	NR	900	0	NR
385	0	NR	515	182	NR	645	201	NR	775	3	NR	905	0	NR
390	0	NR	520	189	NR	650	174	NR	780	3	NR	910	0	NR
395	1	NR	525	194	NR	655	146	NR	785	2	NR	915	0	NR
400	1	NR	530	199	NR	660	124	NR	790	2	NR	920	0	NR
405	3	NR	535	205	NR	665	105	NR	795	2	NR	925	0	NR
410	4	NR	540	210	NR	670	96	NR	800	1	NR	930	0	NR
415	7	NR	545	216	NR	675	79	NR	805	1	NR	935	0	NR
420	13	NR	550	222	NR	680	67	NR	810	1	NR	940	0	NR
425	22	NR	555	230	NR	685	58	NR	815	1	NR	945	0	NR
430	37	NR	560	240	NR	690	49	NR	820	1	NR	950	0	NR
435	60	NR	565	248	NR	695	42	NR	825	1	NR	955	0	NR
440	101	NR	570	258	NR	700	36	NR	830	1	NR	960	0	NR
445	172	NR	575	268	NR	705	30	NR	835	1	NR	965	0	NR
450	223	NR	580	278	NR	710	26	NR	840	1	NR	970	0	NR
455	167	NR	585	287	NR	715	22	NR	845	0	NR	975	0	NR
460	126	NR	590	295	NR	720	19	NR	850	0	NR	980	0	NR
465	111	NR	595	298	NR	725	16	NR	855	0	NR	985	0	NR
470	86	NR	600	303	NR	730	14	NR	860	0	NR	990	0	NR
475	74	NR	605	307	NR	735	12	NR	865	0	NR	995	0	NR
480	77	NR	610	341	NR	740	10	NR	870	0	NR	1000	0	NR
485	86	NR	615	368	NR	745	8	NR	875	0	NR			

Summary

$R_f = 91.3$
 $R_g = 102$
 CIE $R_a = 94.4$
 $R_9 = 61.4$



Color Vector Graphics

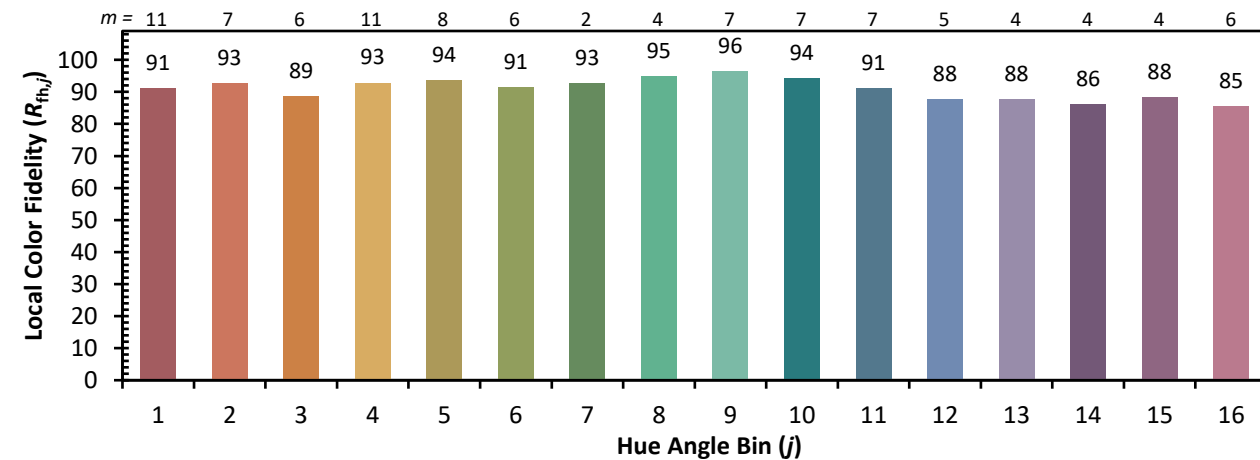
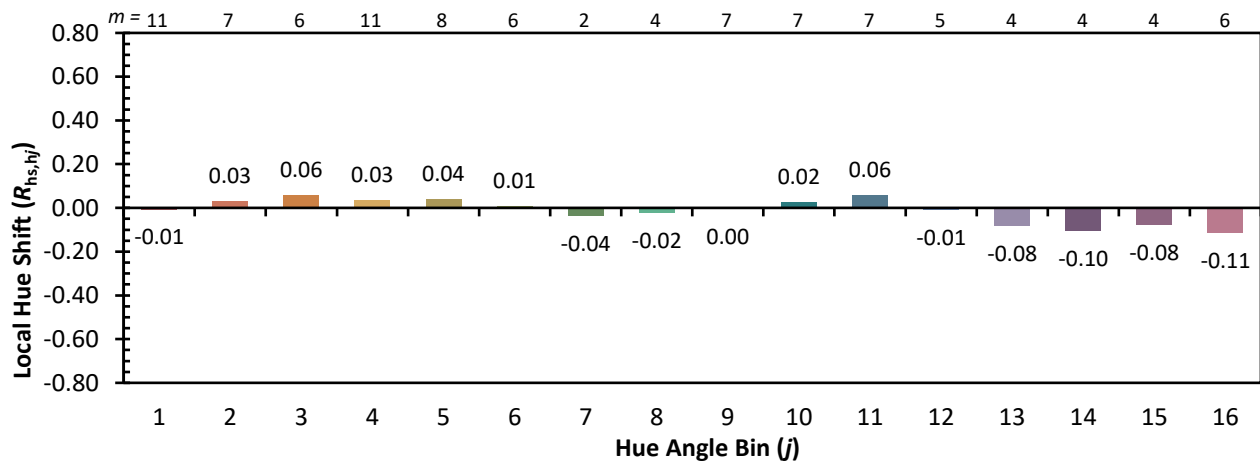
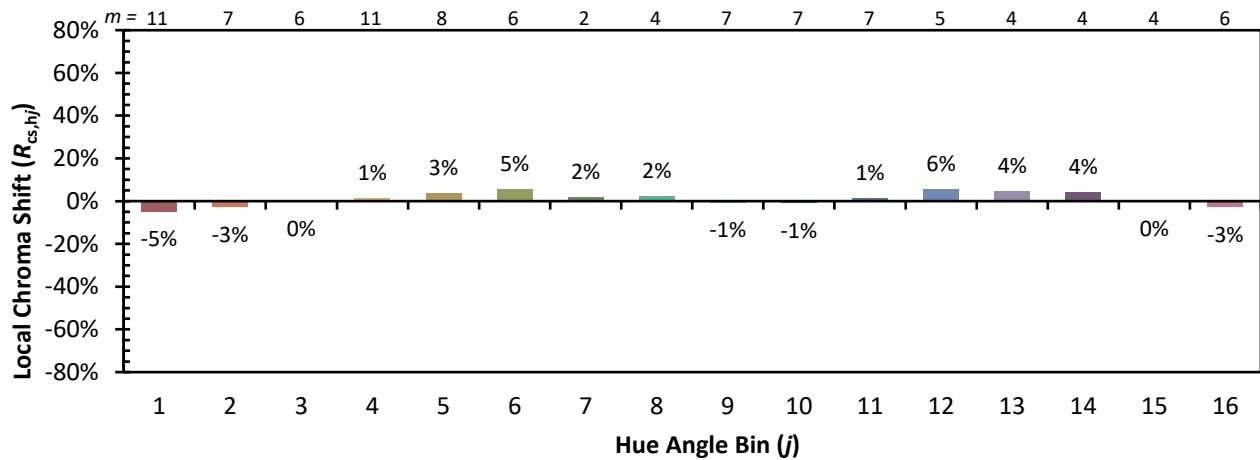


Individual Sample Fidelity Index ($R_{f,i}$)

CES01 = 86	CES26 = 91	CES51 = 96	CES76 = 89
CES02 = 63	CES27 = 96	CES52 = 95	CES77 = 85
CES03 = 32	CES28 = 96	CES53 = 93	CES78 = 86
CES04 = 70	CES29 = 90	CES54 = 98	CES79 = 89
CES05 = 51	CES30 = 96	CES55 = 98	CES80 = 91
CES06 = 51	CES31 = 90	CES56 = 95	CES81 = 72
CES07 = 44	CES32 = 84	CES57 = 95	CES82 = 95
CES08 = 42	CES33 = 91	CES58 = 95	CES83 = 93
CES09 = 29	CES34 = 92	CES59 = 99	CES84 = 96
CES10 = 76	CES35 = 96	CES60 = 96	CES85 = 80
CES11 = 59	CES36 = 90	CES61 = 96	CES86 = 77
CES12 = 65	CES37 = 94	CES62 = 95	CES87 = 91
CES13 = 44	CES38 = 99	CES63 = 94	CES88 = 96
CES14 = 74	CES39 = 97	CES64 = 96	CES89 = 82
CES15 = 72	CES40 = 94	CES65 = 92	CES90 = 97
CES16 = 48	CES41 = 94	CES66 = 95	CES91 = 82
CES17 = 50	CES42 = 91	CES67 = 94	CES92 = 78
CES18 = 57	CES43 = 88	CES68 = 93	CES93 = 87
CES19 = 72	CES44 = 99	CES69 = 94	CES94 = 73
CES20 = 67	CES45 = 93	CES70 = 90	CES95 = 85
CES21 = 86	CES46 = 93	CES71 = 90	CES96 = 92
CES22 = 79	CES47 = 86	CES72 = 96	CES97 = 93
CES23 = 92	CES48 = 95	CES73 = 85	CES98 = 94
CES24 = 91	CES49 = 91	CES74 = 90	CES99 = 93
CES25 = 72	CES50 = 96	CES75 = 90	



Color Rendition by Hue-Angle Bin



Measure Comparisons



(END OF REPORT)