

Cooper Lighting Solutions Photometric Lab
1121 Highway 74 South
Peachtree City, GA 30269



Scaled data based on original data using
LM-79-2019 Approved Method: Electrical and Photometric Measurements of Solid-
State Lighting Products

Test Report Prepared for
Cooper Lighting Solutions

Brand: METALUX

Report Number: P1444680

Luminaire Tested: EHBR1-36-UNV-TA-L930-UPL40

Issue Date: 5/1/2026

Test Information

Test Method: LM-79-2019
Report Number: P1444680
REPORT IS A COMBINATION OF REPORTS P1444358 AND P1431635
Test Lab: INNOVATION CENTER
Issue Date: 5/1/2026
Manufacturer: COOPER LIGHTING SOLUTIONS
Product Line: METALUX
Catalog Number: EHBR1-36-UNV-TA-L930-UPL40
Description: Elevate Round Highbay at, 36000 lumens, 3000K 90CRI LEDs with TA lens
Light Source: -
Ballast/Driver: -

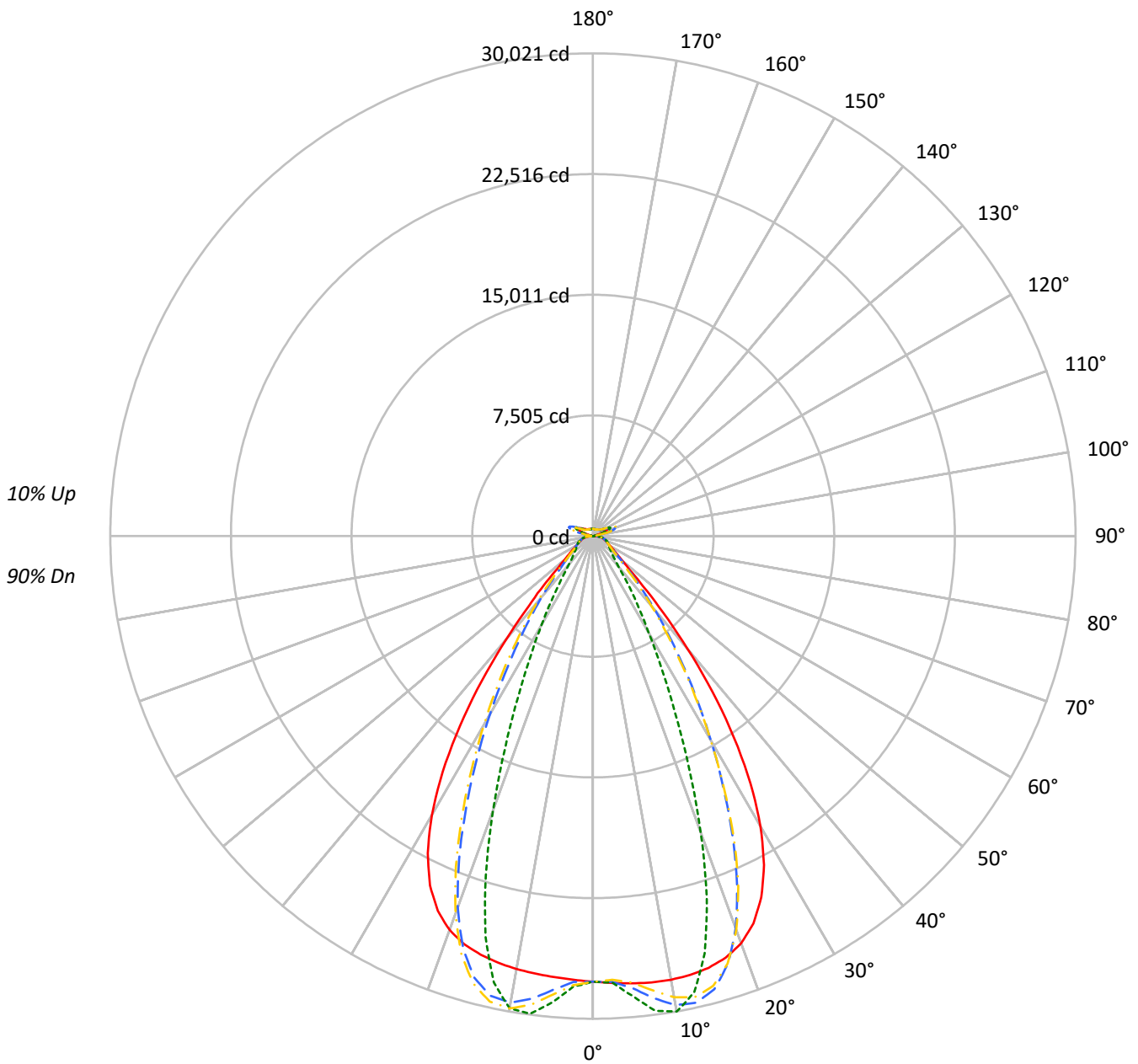
Summary

Lumens per Lamp: N/A
Luminaire Lumens: 35540.4 lumens
Efficiency: N/A
Efficacy: 160.1 lumens/watt
Spacing Criteria (0/90/45): 1.13 / 0.77 / 0.88
Luminous Opening: Vertical Cylinder (Dia: 1.71' x H: 0.1')
CIE Type: Semi-Direct

Input Watts (W): 222
Input Voltage (V): NR
Input Current (Ain): NR
Voltage Rise (V): NR
Power Factor: NR
Total Harmonic Distortion (THDi): NR
Frequency (hertz): 60
Stabilization Time: NR
Operation Time: NR
Ambient Temperature (°C): NR
Test Distance: 24 FT

TEST NUMBER: P1444680
CATALOG NUMBER: EHBR1-36-UNV-TA-L930-UPL40

Luminous Intensity Polar Plot



— 0°-180° - - 45°-225° - - - 90°-270° - · - 135°-315°



TEST NUMBER: P1444680
 CATALOG NUMBER: EHBR1-36-UNV-TA-L930-UPL40

COEFFICIENT OF UTILIZATION - ZONAL CAVITY METHOD:

RF	20				20				20				20				20				
RC	80				70				50				30				10			0	
RW	70	50	30	10	70	50	30	10	50	30	10	50	30	10	50	30	10	50	30	10	0
RCR																					
0	117	117	117	117	113	113	113	113	105	105	105	99	99	99	93	93	93	93	93	93	90
1	109	106	103	100	106	103	100	97	97	95	93	91	90	88	86	85	84	86	85	84	81
2	103	97	92	88	99	94	90	86	89	85	82	84	82	79	80	78	76	80	78	76	74
3	96	89	83	78	93	86	81	77	82	78	74	78	75	72	75	72	69	75	72	69	67
4	90	82	75	70	88	80	74	69	76	71	67	73	69	65	70	66	63	70	66	63	61
5	85	75	69	64	83	74	68	63	71	65	61	68	63	60	65	61	58	65	61	58	57
6	80	70	63	58	78	69	62	58	66	61	56	64	59	55	61	57	54	61	57	54	52
7	76	65	58	54	74	64	58	53	62	56	52	60	55	51	58	53	50	58	53	50	48
8	72	61	54	50	70	60	54	49	58	52	48	56	51	48	54	50	47	54	50	47	45
9	68	57	51	46	66	56	50	46	54	49	45	53	48	44	51	47	44	51	47	44	42
10	64	54	47	43	63	53	47	43	51	46	42	50	45	42	48	44	41	48	44	41	40

AVERAGE LUMINANCE (cd/sqm):

	0°	90°	180°	270°
0°	130138	130138	130138	130138
5°	130768	134581	128938	136344
10°	131860	141300	128698	140365
15°	132507	128087	128473	122930
20°	131137	95421	126845	88287
25°	124126	60348	120024	54755
30°	108433	36265	104233	33142
35°	83451	22756	78651	20158
40°	52790	14275	48299	13414
45°	27209	11121	26758	10938
50°	15953	9892	15463	9737
55°	12221	9358	11769	9274
60°	10341	9559	9901	9436
65°	9713	9983	9341	9643
70°	9489	10453	9017	10061
75°	10146	11087	9598	10596
80°	10499	12276	9520	11206
85°	9890	11848	7990	10143

MAXIMUM LUMINANCE 45°-90°:

Horizontal Angle: 25°
 Vertical Angle: 45°
 Luminance: 41640 cd/sqm



TEST NUMBER: P1444680
 CATALOG NUMBER: EHBR1-36-UNV-TA-L930-UPL40

ZONAL LUMENS:

Zone	Lumens	% Fixture
0°-10°	2731.1	7.7
10°-20°	7682.8	21.6
20°-30°	8750.1	24.6
30°-40°	6289.2	17.7
40°-50°	2900.6	8.2
50°-60°	1388.0	3.9
60°-70°	1012.8	2.8
70°-80°	769.4	2.2
80°-90°	356.1	1.0
90°-100°	102.3	0.3
100°-110°	610.8	1.7
110°-120°	1128.7	3.2
120°-130°	684.7	1.9
130°-140°	432.5	1.2
140°-150°	314.7	0.9
150°-160°	215.3	0.6
160°-170°	127.9	0.4
170°-180°	43.4	0.1
0°-30°	19164.0	53.9
0°-40°	25453.2	71.6
0°-60°	29741.8	83.7
0°-90°	31880.1	89.7
90°-120°	1841.8	5.2
90°-150°	3273.7	9.2
90°-180°	3660.0	10.3
0°-180°	35540.4	100.0

CANDELA DISTRIBUTION:

	0°	90°	180°	270°	360°	Flux
0°	27712	27712	27712	27712	27712	
5°	27921	28735	27530	29112	27921	2668
15°	27799	26872	26953	25790	27799	7833
25°	24788	12052	23969	10934	24788	11237
35°	15316	4177	14435	3700	15316	9400
45°	4402	1799	4329	1770	4402	3744
55°	1652	1265	1590	1253	1652	1524
65°	1014	1042	975	1006	1014	1013
75°	715	781	676	746	715	743
85°	340	407	275	349	340	319
90°	102	126	36	42	102	62
95°	47	53	47	53	47	45
105°	218	283	145	283	218	289
115°	982	1196	1029	1196	982	906
125°	730	774	828	775	730	665
135°	563	507	607	510	563	440
145°	491	483	524	487	491	310
155°	452	457	483	460	452	210
165°	444	446	461	448	444	126
175°	451	456	460	457	451	43
180°	457	457	457	457	457	



TEST NUMBER: P1444680
 CATALOG NUMBER: EHBR1-36-UNV-TA-L930-UPL40

CANDELA DISTRIBUTION (FULL):

	0°	2.5°	5°	7.5°	10°	12.5°	15°	17.5°	20°	22.5°	25°
0°	27712.0	27712.0	27712.0	27712.0	27712.0	27712.0	27712.0	27712.0	27712.0	27712.0	27712.0
2.5°	27817.9	27815.6	27815.2	27813.3	27812.7	27812.7	27811.8	27809.5	27808.1	27805.0	27801.3
5°	27921.1	27919.8	27920.6	27920.8	27918.9	27914.5	27907.7	27899.4	27888.9	27879.1	27870.3
7.5°	28000.9	28002.8	28005.3	28004.8	27998.7	27988.5	27974.7	27966.9	27971.5	27986.6	28021.2
10°	28015.5	28027.4	28032.0	28030.6	28018.5	28009.8	28013.1	28042.5	28100.9	28178.9	28285.5
12.5°	27958.7	27973.3	27972.8	27968.0	27956.2	27968.1	28010.6	28098.1	28223.4	28377.1	28557.4
15°	27799.2	27818.1	27812.7	27806.5	27798.6	27837.8	27922.8	28074.5	28268.0	28484.8	28706.8
17.5°	27489.5	27512.3	27501.3	27494.1	27487.5	27560.9	27706.9	27929.1	28172.8	28418.1	28628.4
20°	26952.4	26967.7	26941.3	26928.9	26939.3	27083.1	27298.0	27581.8	27838.7	28070.6	28214.4
22.5°	26075.8	26094.8	26045.2	26039.4	26100.7	26321.4	26593.4	26910.7	27152.0	27335.9	27391.2
25°	24787.9	24806.6	24747.6	24782.8	24887.0	25187.6	25511.5	25851.0	26056.9	26193.1	26155.5
27.5°	23049.5	23066.6	23010.7	23082.6	23247.2	23642.3	24023.5	24391.6	24575.2	24670.7	24549.7
30°	20857.1	20892.6	20826.5	20926.9	21178.2	21691.0	22127.8	22540.7	22723.7	22796.2	22608.1
32.5°	18253.1	18303.6	18230.7	18380.1	18730.8	19346.7	19842.9	20304.3	20506.7	20589.6	20377.1
35°	15316.3	15388.5	15305.0	15529.2	15961.6	16647.6	17197.0	17712.1	17951.8	18069.4	17855.2
37.5°	12204.7	12273.7	12228.5	12527.5	13002.3	13713.3	14274.2	14829.8	15100.5	15276.9	15108.0
40°	9149.9	9213.0	9247.2	9589.0	10035.7	10705.9	11244.6	11794.3	12097.2	12318.5	12214.4
42.5°	6458.0	6521.6	6637.8	6967.7	7340.2	7895.0	8356.4	8850.0	9139.3	9375.4	9335.3
45°	4402.3	4476.1	4621.8	4891.9	5161.3	5559.3	5898.1	6282.0	6518.3	6734.6	6737.2
47.5°	3084.9	3136.8	3266.9	3451.4	3627.0	4125.2	4145.7	4334.3	4493.2	4654.9	4675.8
50°	2377.5	2408.7	2477.7	2580.6	2680.1	2809.4	2927.7	3064.4	3162.3	3250.9	3272.1
52.5°	1954.2	1974.0	2009.1	2064.8	2122.5	2192.8	2256.2	2331.3	2384.5	2431.9	2441.9
55°	1651.5	1668.0	1720.3	1730.9	1796.9	1809.6	1837.8	1883.5	1914.4	1942.9	1949.9
57.5°	1423.2	1435.2	1446.3	1470.0	1490.3	1519.9	1543.7	1576.5	1596.0	1616.5	1618.3
60°	1243.1	1251.8	1259.6	1276.1	1289.9	1310.5	1326.9	1349.2	1363.2	1378.6	1380.4
62.5°	1109.1	1115.3	1120.5	1131.4	1141.3	1157.1	1170.1	1188.7	1201.7	1213.6	1216.3
65°	1013.8	1018.3	1021.7	1029.9	1038.5	1052.0	1063.8	1079.0	1088.5	1097.7	1099.7
67.5°	929.4	933.6	937.2	944.7	950.7	960.6	968.6	980.0	987.2	994.5	994.7
70°	832.6	836.6	839.3	846.3	851.1	859.8	866.1	876.3	883.7	891.9	893.9
72.5°	765.7	768.0	771.6	778.0	784.6	793.9	802.4	813.1	822.1	830.5	834.0
75°	714.7	717.5	719.9	725.3	729.9	737.7	744.1	753.8	761.7	770.7	775.1
77.5°	641.2	644.4	646.4	651.9	655.9	663.4	668.1	676.8	683.1	691.4	695.4
80°	552.3	555.4	556.8	561.9	565.1	571.9	576.6	585.0	590.4	598.6	603.4
82.5°	453.9	456.7	457.5	462.4	464.1	469.8	473.2	481.7	488.3	499.0	506.4
85°	339.9	340.9	342.6	341.3	348.2	348.6	356.4	357.8	368.1	370.8	382.5
87.5°	207.8	210.8	212.4	217.1	219.1	223.9	225.4	230.4	233.1	238.9	241.6
90°	101.9	107.6	110.1	116.7	119.1	125.0	127.1	133.8	136.3	142.9	147.0
92.5°	41.1	43.8	46.5	49.6	52.4	55.8	58.9	61.9	64.8	68.1	73.7
95°	47.0	50.2	53.4	56.6	59.8	62.9	66.1	69.3	72.5	75.7	85.0
97.5°	59.1	61.8	64.6	67.4	70.1	73.0	75.7	78.5	81.3	83.9	95.1
100°	77.1	79.4	81.8	84.1	86.4	88.8	91.2	93.5	95.9	98.2	118.8
102.5°	128.2	136.5	144.9	153.2	161.5	169.8	178.1	186.3	194.7	203.0	246.7
105°	217.9	240.4	263.2	285.6	308.2	330.9	353.5	375.8	398.4	421.0	492.3
107.5°	373.1	414.8	456.6	498.5	540.3	582.0	623.8	665.6	707.2	748.8	821.2
110°	690.3	723.8	757.5	791.2	824.7	858.4	892.0	925.4	959.1	992.6	1045.5



TEST NUMBER: P1444680
 CATALOG NUMBER: EHBR1-36-UNV-TA-L930-UPL40

CANDELA DISTRIBUTION (continued):

	0°	2.5°	5°	7.5°	10°	12.5°	15°	17.5°	20°	22.5°	25°
112.5°	931.1	946.2	961.5	976.8	992.0	1007.1	1022.3	1037.5	1052.8	1067.8	1105.5
115°	982.1	987.5	993.0	998.2	1003.6	1008.9	1014.2	1019.5	1024.8	1030.0	1055.6
117.5°	953.2	952.3	951.5	950.5	949.5	948.5	947.6	946.5	945.5	944.4	958.9
120°	888.2	883.5	879.0	874.2	869.6	864.9	860.3	855.5	850.8	845.9	852.1
122.5°	806.2	800.7	795.3	789.5	784.1	778.3	772.8	766.8	761.3	755.5	758.0
125°	730.3	724.8	719.3	713.6	707.8	702.1	696.4	690.6	684.8	678.9	680.2
127.5°	664.3	660.5	656.7	652.5	648.6	644.4	640.2	636.0	631.9	627.5	628.0
130°	621.7	618.2	614.7	611.0	607.4	603.6	599.8	595.8	592.2	588.2	588.9
132.5°	586.5	584.2	581.8	579.2	576.6	573.5	571.0	567.9	565.2	562.3	563.1
135°	563.1	560.9	558.7	556.2	553.8	551.1	548.5	545.6	543.1	540.2	541.4
137.5°	543.2	541.2	539.1	536.9	534.7	532.0	529.7	527.2	524.7	522.0	523.1
140°	525.0	523.2	521.2	519.2	517.2	515.0	512.7	510.4	508.0	505.6	507.0
142.5°	504.6	503.0	501.7	500.0	498.5	496.5	494.8	492.8	491.1	489.1	490.8
145°	491.2	490.0	488.9	487.5	486.0	484.3	482.9	481.0	479.6	478.0	479.8
147.5°	479.4	478.5	477.7	476.5	475.5	474.0	472.7	471.3	470.1	468.7	470.6
150°	469.2	468.3	467.4	466.4	465.3	464.0	462.8	461.6	460.4	458.9	460.8
152.5°	458.4	457.4	456.6	455.6	454.7	453.2	452.3	451.0	449.8	448.6	450.2
155°	451.9	451.0	450.0	449.1	448.1	446.9	445.7	444.7	443.6	442.4	443.7
157.5°	447.8	447.0	446.3	445.4	444.7	443.8	442.9	442.0	441.1	440.3	441.3
160°	445.7	445.0	444.3	443.5	442.7	441.7	441.0	440.1	439.4	438.5	439.2
162.5°	444.1	443.3	442.5	441.7	440.9	440.0	439.2	438.5	437.7	436.8	437.9
165°	444.1	443.6	443.1	442.6	442.1	441.6	441.0	440.4	440.0	439.3	440.0
167.5°	447.8	447.2	446.5	445.8	445.1	444.5	443.7	443.1	442.5	441.6	442.4
170°	449.0	448.4	448.2	447.8	447.4	447.0	446.7	446.3	445.8	445.5	446.0
172.5°	451.2	450.8	450.6	450.4	449.9	449.8	449.5	449.1	449.0	448.5	449.3
175°	451.1	450.7	450.6	450.5	450.3	450.0	449.9	449.8	449.8	449.4	449.8
177.5°	454.1	453.9	453.9	453.9	453.9	453.8	453.7	453.5	453.4	453.4	453.7
180°	456.8	456.8	456.8	456.8	456.8	456.8	456.8	456.8	456.8	456.8	456.8



TEST NUMBER: P1444680
 CATALOG NUMBER: EHBR1-36-UNV-TA-L930-UPL40

CANDELA DISTRIBUTION (continued):

	27.5°	30°	32.5°	35°	37.5°	40°	42.5°	45°	47.5°	50°	52.5°
0°	27712.0	27712.0	27712.0	27712.0	27712.0	27712.0	27712.0	27712.0	27712.0	27712.0	27712.0
2.5°	27798.6	27795.3	27790.6	27784.8	27779.8	27774.0	27760.1	27756.0	27760.6	27763.6	27770.0
5°	27864.7	27866.6	27867.3	27880.0	27890.9	27918.1	28131.3	28216.1	28281.6	28323.2	28386.3
7.5°	28063.8	28127.9	28191.3	28276.6	28350.1	28449.4	28822.4	28981.2	29094.1	29175.2	29275.1
10°	28401.3	28541.2	28672.4	28826.0	28958.1	29109.4	29456.6	29611.3	29709.0	29780.0	29846.4
12.5°	28741.3	28935.3	29110.6	29281.6	29424.6	29555.7	29677.9	29732.0	29736.6	29738.8	29703.6
15°	28918.4	29103.8	29258.3	29371.4	29455.4	29492.6	29282.3	29172.1	29032.7	28917.8	28729.0
17.5°	28806.6	28917.8	28984.6	28978.0	28943.3	28827.0	28231.6	27904.1	27578.9	27285.9	26901.6
20°	28309.8	28301.3	28243.2	28078.8	27880.7	27572.7	26551.8	25962.7	25393.3	24893.1	24286.3
22.5°	27385.6	27240.2	27037.4	26682.9	26289.1	25750.7	24287.7	23421.4	22628.5	21928.2	21143.6
25°	26046.4	25747.2	25373.3	24810.5	24198.4	23413.3	21610.1	20532.5	19580.6	18755.1	17849.9
27.5°	24332.6	23881.9	23333.9	22554.9	21725.7	20719.9	18720.8	17531.5	16509.7	15624.5	14661.1
30°	22303.6	21717.5	21009.9	20043.0	19042.8	17902.0	15874.4	14669.8	13635.6	12725.0	11760.8
32.5°	20010.6	19324.2	18494.9	17409.7	16328.1	15155.2	13197.1	12031.0	11043.0	10167.1	9294.4
35°	17481.7	16745.5	15868.2	14761.4	13686.1	12545.8	10749.1	9697.7	8825.2	8051.0	7346.3
37.5°	14768.9	14046.0	13212.1	12169.0	11171.9	10138.6	8588.3	7707.3	6975.1	6332.5	5788.4
40°	11948.3	11315.7	10594.2	9692.4	8841.4	7981.0	6708.3	6009.0	5431.2	4941.1	4533.3
42.5°	9162.2	8672.0	8118.7	7406.1	6754.9	6099.7	5120.2	4602.0	4174.1	3821.3	3533.0
45°	6647.5	6319.6	5948.5	5453.1	5002.5	4545.4	3848.3	3484.3	3205.5	2978.0	2785.6
47.5°	4646.9	4456.8	4445.1	3987.3	3656.9	3377.4	2928.3	2698.4	2527.5	2389.7	2267.9
50°	3263.4	3171.4	3057.1	2893.7	2740.3	2582.3	2308.8	2169.7	2069.7	1986.2	1909.2
52.5°	2439.7	2391.9	2331.0	2244.2	2161.2	2072.3	1899.2	1810.7	1779.2	1701.5	1640.5
55°	1948.6	1921.2	1886.5	1835.7	1785.1	1764.9	1616.4	1550.8	1509.1	1478.4	1445.7
57.5°	1618.6	1598.2	1577.7	1543.1	1513.9	1478.4	1399.6	1365.9	1341.3	1323.2	1300.4
60°	1380.6	1368.4	1356.9	1336.7	1320.8	1301.8	1251.8	1232.7	1219.8	1208.9	1194.5
62.5°	1218.5	1212.3	1206.3	1195.6	1187.5	1177.2	1143.0	1133.9	1127.4	1121.9	1113.1
65°	1101.6	1097.1	1093.8	1086.6	1082.6	1076.6	1047.2	1041.0	1037.0	1035.1	1029.9
67.5°	995.3	990.6	988.5	983.3	981.7	977.8	953.8	950.4	949.1	949.7	947.8
70°	895.9	893.9	895.0	894.2	896.4	897.1	882.5	882.4	884.0	887.0	887.4
72.5°	836.3	836.3	837.4	837.9	840.1	841.1	829.0	828.4	829.1	831.4	831.5
75°	779.7	780.5	783.7	784.6	787.2	787.8	771.7	769.9	769.9	772.2	771.4
77.5°	701.1	704.5	710.4	713.4	718.4	719.3	701.3	699.2	699.3	701.5	699.6
80°	612.1	618.6	627.9	634.4	642.0	645.1	626.6	622.2	618.1	617.5	613.7
82.5°	517.5	525.4	536.6	542.5	550.6	552.4	521.5	515.7	512.2	512.5	509.1
85°	395.1	401.1	411.3	414.5	419.5	419.1	383.8	368.7	372.7	366.4	371.3
87.5°	247.8	251.3	257.7	258.5	260.8	260.4	224.8	217.8	215.7	215.9	213.3
90°	155.0	159.5	167.2	169.4	175.3	177.0	150.3	149.3	144.9	144.4	138.9
92.5°	79.7	85.3	91.1	96.7	102.6	108.4	110.8	115.5	109.9	103.6	98.1
95°	94.5	103.8	113.2	122.6	132.0	141.3	150.8	160.1	151.4	142.6	133.8
97.5°	106.1	117.3	128.2	139.4	150.4	161.6	172.6	183.8	174.4	164.7	155.3
100°	139.6	160.2	180.8	201.6	222.2	242.8	263.6	284.3	266.1	247.7	229.6
102.5°	290.5	334.5	378.4	422.2	466.1	510.1	554.1	598.0	556.3	514.5	472.7
105°	563.4	634.6	705.8	776.6	847.8	919.0	990.4	1061.6	995.0	928.3	861.6
107.5°	893.3	965.5	1037.6	1109.6	1181.9	1254.1	1326.6	1398.9	1333.9	1268.6	1203.7
110°	1098.2	1150.7	1203.5	1256.1	1308.7	1361.3	1414.7	1467.4	1428.3	1389.2	1350.3



TEST NUMBER: P1444680
 CATALOG NUMBER: EHBR1-36-UNV-TA-L930-UPL40

CANDELA DISTRIBUTION (continued):

	27.5°	30°	32.5°	35°	37.5°	40°	42.5°	45°	47.5°	50°	52.5°
112.5°	1143.1	1180.9	1218.5	1256.1	1293.7	1331.5	1370.0	1407.9	1388.2	1368.5	1349.1
115°	1080.9	1106.4	1131.8	1157.1	1182.5	1207.9	1234.4	1260.2	1253.8	1247.6	1241.4
117.5°	973.0	987.3	1001.6	1015.8	1029.9	1044.1	1059.9	1074.3	1075.3	1076.5	1077.8
120°	858.1	864.3	870.3	876.3	882.2	888.3	896.0	902.4	907.7	913.0	918.3
122.5°	760.3	762.7	765.0	767.4	769.6	771.9	776.2	778.9	782.6	786.4	790.2
125°	681.4	682.6	683.8	685.0	686.0	687.2	690.7	692.3	692.7	692.9	693.2
127.5°	628.3	628.6	628.8	629.1	629.2	629.6	632.3	633.1	630.9	628.8	626.6
130°	589.5	590.1	590.7	591.4	592.1	592.7	596.0	597.2	593.4	589.5	585.6
132.5°	563.8	564.7	565.4	566.5	567.2	568.0	571.7	573.1	568.7	564.2	559.7
135°	542.3	543.3	544.3	545.4	546.3	547.5	551.5	553.3	549.2	544.8	540.5
137.5°	524.0	525.1	526.0	527.3	528.3	529.3	533.8	535.7	532.4	528.7	525.5
140°	508.2	509.5	510.7	512.0	513.3	514.8	519.6	521.8	519.2	516.5	513.7
142.5°	492.3	494.1	495.9	497.8	499.6	501.5	507.1	509.8	507.9	505.8	503.9
145°	481.7	483.8	485.8	488.0	490.0	492.3	498.5	501.6	500.5	499.1	497.9
147.5°	472.0	474.0	475.9	477.7	479.7	482.0	488.4	491.4	490.8	489.9	489.2
150°	462.5	464.5	466.3	468.3	470.5	472.7	479.8	483.1	482.5	481.8	481.1
152.5°	451.9	453.6	455.3	457.2	458.9	461.0	469.4	472.7	472.2	471.4	470.9
155°	444.9	446.3	447.5	449.1	450.5	452.2	460.9	464.0	463.7	463.4	463.0
157.5°	442.2	443.0	443.9	444.9	446.1	447.1	456.0	459.1	458.8	458.4	458.1
160°	440.0	440.8	441.4	442.3	443.0	443.9	453.0	455.8	455.6	455.2	454.8
162.5°	438.8	439.9	440.8	441.8	442.8	443.9	453.1	456.4	455.8	455.2	454.7
165°	440.5	441.1	441.6	442.3	442.9	443.6	452.1	454.7	454.5	454.1	453.8
167.5°	442.9	443.6	444.2	444.9	445.6	446.5	454.4	457.0	456.7	456.4	456.1
170°	446.5	447.1	447.5	448.2	448.8	449.6	456.2	458.2	458.0	457.3	456.9
172.5°	449.8	450.6	451.2	451.9	452.5	453.3	458.9	460.9	460.6	460.2	459.6
175°	450.4	450.8	451.4	452.1	452.5	453.1	457.5	458.9	458.8	458.7	458.4
177.5°	454.1	454.4	454.8	455.3	455.7	456.1	458.8	459.7	459.6	459.6	459.6
180°	456.8	456.8	456.8	456.8	456.8	456.8	456.8	456.8	456.8	456.8	456.8



TEST NUMBER: P1444680
 CATALOG NUMBER: EHBR1-36-UNV-TA-L930-UPL40

CANDELA DISTRIBUTION (continued):

	55°	57.5°	60°	62.5°	65°	67.5°	70°	72.5°	75°	77.5°	80°
0°	27712.0	27712.0	27712.0	27712.0	27712.0	27712.0	27712.0	27712.0	27712.0	27712.0	27712.0
2.5°	27771.5	27781.2	27782.7	27794.0	27793.1	27806.7	27804.5	27815.6	27809.2	27818.2	27810.6
5°	28423.7	28482.9	28513.8	28571.5	28589.8	28641.5	28656.0	28703.1	28705.1	28742.5	28734.0
7.5°	29345.9	29433.1	29484.9	29556.2	29592.4	29651.9	29678.1	29722.0	29736.2	29771.1	29773.8
10°	29896.6	29938.9	29968.5	29988.4	30006.6	30015.1	30025.1	30022.4	30025.1	30021.1	30029.7
12.5°	29680.0	29618.2	29577.3	29499.8	29455.0	29369.5	29327.4	29245.1	29215.3	29144.6	29134.5
15°	28583.0	28367.5	28215.3	27993.9	27854.8	27636.9	27509.5	27313.0	27223.2	27067.0	27026.0
17.5°	26583.6	26183.6	25874.1	25477.0	25201.5	24830.4	24597.0	24289.9	24121.6	23874.0	23788.2
20°	23780.5	23188.7	22724.4	22171.3	21775.5	21282.3	20966.6	20568.4	20337.2	20033.0	19909.7
22.5°	20489.5	19752.7	19172.9	18519.5	18041.9	17492.4	17114.1	16683.2	16431.7	16101.2	15954.9
25°	17097.6	16285.0	15640.4	14952.0	14447.3	13896.4	13518.1	13094.8	12834.6	12520.9	12375.4
27.5°	13853.4	13031.0	12408.0	11767.9	11305.0	10807.9	10466.5	10097.1	9866.1	9598.2	9461.4
30°	10990.5	10265.1	9735.0	9203.8	8818.8	8415.0	8131.4	7825.1	7622.4	7393.2	7262.8
32.5°	8658.1	8098.1	7683.0	7261.4	6946.3	6609.0	6363.8	6093.6	5910.7	5706.0	5587.9
35°	6857.1	6422.0	6090.8	5743.9	5473.2	5185.8	4969.9	4736.6	4572.5	4396.2	4294.2
37.5°	5417.9	5071.8	4799.3	4511.1	4288.8	4050.8	3970.6	3702.9	3532.8	3392.1	3294.6
40°	4252.0	3976.8	3751.3	3531.0	3349.6	3169.1	3024.1	2881.1	2771.4	2670.7	2601.1
42.5°	3320.4	3121.0	2956.4	2795.0	2662.7	2531.1	2426.2	2327.7	2253.7	2187.9	2143.0
45°	2639.6	2502.5	2388.1	2274.4	2181.1	2093.2	2022.5	1959.7	1911.9	1872.4	1844.4
47.5°	2168.5	2074.7	1993.9	1917.2	1853.8	1796.3	1748.9	1733.5	1682.2	1647.5	1634.4
50°	1842.9	1786.2	1724.9	1668.3	1626.0	1583.9	1553.2	1523.1	1503.9	1487.9	1483.1
52.5°	1600.0	1556.6	1522.5	1486.6	1458.7	1428.7	1407.6	1387.5	1377.0	1368.6	1367.6
55°	1419.2	1388.9	1366.4	1342.3	1325.6	1308.0	1297.1	1286.4	1281.8	1277.6	1278.0
57.5°	1282.5	1262.3	1247.7	1232.0	1223.0	1214.5	1211.8	1209.1	1210.6	1211.1	1213.6
60°	1183.0	1169.8	1160.5	1151.6	1147.8	1145.1	1147.2	1149.6	1154.4	1158.3	1161.8
62.5°	1106.6	1099.1	1094.6	1089.8	1089.4	1089.6	1093.7	1097.7	1103.8	1108.3	1111.7
65°	1028.1	1023.7	1022.3	1019.2	1020.8	1021.7	1026.6	1029.7	1035.8	1039.3	1043.7
67.5°	948.7	947.6	948.6	948.6	951.4	953.7	958.4	961.9	967.1	970.4	973.8
70°	890.1	890.4	892.6	893.0	896.0	897.6	901.7	904.0	908.6	911.4	915.6
72.5°	833.0	832.1	832.6	831.3	832.3	831.9	834.2	835.3	839.2	841.3	846.5
75°	772.4	769.8	769.1	766.4	766.5	764.5	765.5	765.3	767.9	769.0	772.6
77.5°	699.0	694.7	692.6	688.0	687.9	686.2	688.0	689.1	693.7	695.8	700.0
80°	611.3	604.5	601.4	596.1	597.0	596.7	601.3	604.6	610.2	611.2	616.5
82.5°	508.0	501.2	497.9	492.7	493.9	494.0	498.1	498.9	503.7	505.7	511.9
85°	363.8	366.4	359.1	359.7	358.1	361.0	363.8	367.2	371.2	377.9	383.1
87.5°	214.2	213.3	215.9	216.2	219.9	221.8	227.8	231.2	237.8	243.1	252.5
90°	137.1	131.8	131.9	128.8	130.5	127.5	129.2	126.1	128.6	127.4	131.1
92.5°	91.7	86.0	79.7	74.0	67.7	62.2	59.0	56.6	53.5	51.2	47.9
95°	125.1	116.3	107.6	98.8	90.1	81.4	78.2	74.9	71.7	68.5	65.4
97.5°	146.0	136.5	127.2	117.7	108.3	98.9	96.8	94.6	92.5	90.4	88.2
100°	211.4	193.2	175.1	156.8	138.8	120.6	118.9	117.2	115.5	113.8	112.0
102.5°	431.1	389.5	347.9	306.2	264.6	222.9	215.7	208.3	201.1	193.8	186.6
105°	794.8	728.1	661.5	594.8	528.3	461.6	441.7	421.7	401.8	381.9	362.2
107.5°	1138.6	1073.6	1008.6	943.6	878.7	813.7	782.2	750.9	719.2	687.9	656.6
110°	1311.0	1271.9	1233.0	1193.9	1154.9	1116.0	1085.9	1056.1	1026.0	996.0	966.1



TEST NUMBER: P1444680
 CATALOG NUMBER: EHBR1-36-UNV-TA-L930-UPL40

CANDELA DISTRIBUTION (continued):

	55°	57.5°	60°	62.5°	65°	67.5°	70°	72.5°	75°	77.5°	80°
112.5°	1329.5	1310.0	1290.4	1270.9	1251.6	1232.0	1217.4	1202.8	1188.2	1173.6	1158.8
115°	1235.1	1229.0	1222.7	1216.7	1210.7	1204.5	1203.4	1202.4	1201.3	1200.4	1199.4
117.5°	1078.9	1080.1	1081.1	1082.5	1083.8	1085.1	1092.9	1100.6	1108.5	1116.5	1124.4
120°	923.6	929.0	934.3	939.8	945.1	950.6	960.9	971.5	981.9	992.7	1003.5
122.5°	793.8	797.7	801.2	805.1	808.9	812.7	823.1	833.5	843.8	854.4	865.1
125°	693.3	693.5	693.8	693.9	694.2	694.6	703.1	711.7	720.3	729.2	737.9
127.5°	624.4	622.1	620.0	617.8	615.5	613.5	618.5	623.6	628.7	634.0	639.1
130°	581.6	577.7	573.6	569.8	565.7	561.9	563.8	565.8	567.8	570.0	572.3
132.5°	555.0	550.5	545.8	541.2	536.6	532.0	531.9	531.9	531.9	532.1	532.4
135°	536.1	531.8	527.4	522.9	518.5	514.3	513.1	512.0	511.0	509.9	509.0
137.5°	522.0	518.6	515.0	511.7	507.9	504.6	502.8	501.4	499.8	498.7	497.2
140°	510.9	508.2	505.4	502.5	499.8	497.1	495.6	494.4	493.2	492.1	490.9
142.5°	501.7	499.7	497.6	495.7	493.5	491.6	490.1	489.0	487.8	486.7	485.6
145°	496.5	495.2	493.9	492.5	491.2	489.9	488.8	487.9	487.0	486.1	485.5
147.5°	488.4	487.5	486.7	485.9	485.0	484.2	483.4	483.1	482.2	481.8	481.2
150°	480.3	479.5	478.7	478.2	477.2	476.5	476.0	475.8	475.3	475.2	474.9
152.5°	470.1	469.5	468.7	468.1	467.2	466.5	466.2	466.1	465.7	465.5	465.1
155°	462.5	462.1	461.6	461.2	460.5	460.3	459.7	459.2	458.8	458.4	457.9
157.5°	457.7	457.3	456.8	456.4	455.8	455.5	455.0	454.7	454.1	453.8	453.3
160°	454.5	454.1	453.7	453.2	452.8	452.4	451.7	451.2	450.5	449.9	449.2
162.5°	454.0	453.5	452.9	452.3	451.5	451.0	450.6	450.1	449.7	449.3	448.8
165°	453.3	453.0	452.5	452.2	451.8	451.5	450.7	450.1	449.5	449.0	448.2
167.5°	455.7	455.4	455.0	454.7	454.1	453.8	453.2	452.6	452.0	451.4	450.6
170°	456.5	455.8	455.5	454.8	454.3	453.7	453.2	452.5	452.0	451.5	450.8
172.5°	459.3	458.9	458.5	458.0	457.4	457.0	456.6	456.1	455.6	455.0	454.6
175°	458.3	458.2	458.1	457.8	457.7	457.5	457.3	457.2	457.0	456.9	456.6
177.5°	459.6	459.5	459.5	459.3	459.1	459.1	458.8	458.6	458.3	458.0	457.8
180°	456.8	456.8	456.8	456.8	456.8	456.8	456.8	456.8	456.8	456.8	456.8



TEST NUMBER: P1444680
 CATALOG NUMBER: EHBR1-36-UNV-TA-L930-UPL40

CANDELA DISTRIBUTION (continued):

	82.5°	85°	87.5°	90°	92.5°	95°	97.5°	100°	102.5°	105°	107.5°
0°	27712.0	27712.0	27712.0	27712.0	27712.0	27712.0	27712.0	27712.0	27712.0	27712.0	27712.0
2.5°	27818.6	27811.5	27814.9	27801.9	27805.0	27789.2	27787.8	27770.0	27768.3	27751.5	27745.3
5°	28760.4	28744.9	28762.4	28735.2	28740.6	28705.1	28702.2	28656.4	28640.5	28583.2	28558.5
7.5°	29795.7	29789.8	29800.5	29777.7	29777.0	29745.3	29732.2	29691.2	29665.8	29605.5	29567.1
10°	30022.4	30027.7	30019.0	30021.1	30008.8	30005.5	29992.8	29984.8	29964.2	29948.6	29925.5
12.5°	29080.7	29086.3	29050.4	29073.2	29055.2	29097.3	29093.8	29143.4	29150.9	29213.6	29237.4
15°	26904.3	26897.5	26828.6	26872.0	26848.8	26941.0	26961.6	27085.7	27152.0	27311.4	27409.2
17.5°	23616.5	23598.8	23501.7	23554.6	23527.8	23663.7	23709.3	23907.8	24031.5	24288.2	24471.0
20°	19697.4	19663.3	19549.8	19611.7	19584.0	19738.5	19803.6	20043.4	20203.0	20543.0	20784.8
22.5°	15729.5	15675.8	15564.5	15622.4	15596.2	15756.2	15841.0	16081.6	16264.4	16613.4	16895.7
25°	12166.4	12118.5	12011.0	12051.5	12041.7	12177.1	12252.5	12480.0	12659.7	12992.2	13261.7
27.5°	9279.6	9229.8	9132.7	9161.3	9151.5	9266.8	9337.8	9528.0	9682.5	9962.4	10199.0
30°	7102.2	7042.1	6959.7	6975.6	6968.8	7062.2	7128.6	7288.7	7421.1	7657.7	7861.5
32.5°	5443.8	5383.5	5307.7	5315.1	5305.1	5378.5	5433.1	5572.4	5687.9	5888.9	6066.4
35°	4165.3	4235.9	4074.2	4176.6	4069.9	4226.5	4170.2	4257.2	4356.5	4525.9	4673.9
37.5°	3202.1	3152.9	3111.3	3106.9	3106.7	3143.0	3185.7	3269.6	3357.1	3483.3	3613.7
40°	2537.5	2503.0	2476.1	2474.2	2476.1	2501.9	2533.5	2591.4	2655.5	2746.2	2842.0
42.5°	2104.6	2081.7	2065.5	2064.3	2069.5	2087.8	2109.8	2144.2	2185.9	2244.6	2310.4
45°	1821.6	1808.8	1799.7	1799.3	1801.6	1811.2	1823.8	1845.3	1871.7	1908.4	1949.9
47.5°	1622.9	1619.8	1614.2	1614.4	1611.8	1615.7	1617.2	1629.2	1643.3	1670.9	1725.2
50°	1478.3	1478.3	1474.4	1474.2	1470.6	1470.3	1467.3	1472.0	1478.5	1495.7	1513.1
52.5°	1364.0	1363.6	1359.4	1358.5	1354.6	1354.4	1351.8	1353.6	1354.5	1363.2	1373.6
55°	1274.7	1272.0	1266.4	1264.7	1263.2	1265.4	1264.3	1264.5	1263.4	1266.9	1270.1
57.5°	1210.6	1207.0	1201.9	1200.3	1199.9	1202.6	1202.7	1201.7	1196.9	1193.6	1189.0
60°	1159.8	1156.3	1150.7	1149.2	1150.1	1153.8	1153.6	1150.5	1143.3	1137.0	1129.8
62.5°	1110.0	1108.6	1105.7	1105.3	1104.6	1105.2	1102.6	1099.3	1092.3	1085.6	1077.7
65°	1043.2	1043.9	1041.7	1042.0	1039.4	1039.1	1035.1	1031.9	1024.8	1018.8	1010.6
67.5°	973.7	974.3	972.5	972.5	971.2	971.3	969.0	966.0	959.9	955.0	948.8
70°	916.5	918.0	917.0	917.2	915.6	915.0	911.3	908.4	902.2	898.0	892.4
72.5°	848.0	851.1	851.0	851.8	849.3	848.0	843.6	840.0	834.4	831.1	826.5
75°	774.0	778.1	779.2	781.0	777.4	775.6	770.8	767.9	763.3	761.3	758.4
77.5°	701.9	706.3	710.5	714.4	708.7	703.7	697.7	693.0	686.4	683.9	679.3
80°	620.9	628.6	638.0	645.8	635.6	625.4	615.4	608.0	599.3	595.7	589.9
82.5°	515.1	523.1	528.4	533.4	526.4	518.8	509.2	502.7	493.2	489.8	483.1
85°	391.3	401.3	404.5	407.2	402.6	398.6	389.5	377.3	371.3	362.1	357.2
87.5°	257.4	263.3	264.5	265.4	262.6	260.7	254.8	249.1	238.9	231.5	222.4
90°	128.9	131.0	126.8	126.5	124.7	126.7	122.6	122.4	115.9	114.5	108.9
92.5°	45.4	42.2	39.6	36.7	40.0	42.3	45.5	47.9	51.1	53.5	56.6
95°	62.2	59.0	55.8	52.6	55.2	57.7	60.2	62.8	65.3	67.9	70.5
97.5°	86.1	83.9	81.8	79.7	81.2	82.7	84.1	85.6	87.2	88.7	90.2
100°	110.3	108.6	106.9	105.2	105.2	105.2	105.2	105.2	105.2	105.2	105.2
102.5°	179.3	172.1	164.8	157.6	162.5	167.4	172.3	177.2	182.1	187.1	192.0
105°	342.3	322.4	302.6	282.8	301.9	321.2	340.3	359.6	378.7	398.3	417.4
107.5°	625.1	593.8	562.4	531.0	566.1	601.1	636.1	671.1	706.0	741.1	776.4
110°	936.2	906.4	876.5	846.7	883.8	920.9	958.1	995.1	1032.4	1069.5	1106.9



TEST NUMBER: P1444680
 CATALOG NUMBER: EHBR1-36-UNV-TA-L930-UPL40

CANDELA DISTRIBUTION (continued):

	82.5°	85°	87.5°	90°	92.5°	95°	97.5°	100°	102.5°	105°	107.5°
112.5°	1144.3	1129.9	1115.3	1100.8	1124.7	1148.6	1172.5	1196.6	1220.6	1244.6	1268.4
115°	1198.5	1197.6	1196.8	1195.9	1207.2	1218.5	1229.9	1241.3	1252.6	1263.9	1275.4
117.5°	1132.3	1140.3	1148.4	1156.5	1160.2	1163.8	1167.5	1171.1	1175.1	1178.8	1182.5
120°	1014.3	1024.8	1035.7	1046.6	1045.0	1043.5	1042.2	1040.7	1039.5	1038.1	1037.0
122.5°	875.8	886.5	897.4	908.2	905.0	901.7	898.6	895.5	892.6	889.6	886.7
125°	747.0	755.8	764.9	774.0	770.7	767.5	764.4	761.5	758.5	755.5	752.8
127.5°	644.7	650.3	655.7	661.4	659.9	658.4	657.2	655.8	654.6	653.6	652.6
130°	574.6	577.0	579.7	582.2	582.6	583.1	583.7	584.4	585.2	586.0	587.0
132.5°	532.8	533.3	533.8	534.4	536.1	537.8	539.9	541.8	544.0	546.0	548.6
135°	508.4	507.8	507.2	506.8	509.4	511.9	514.6	517.4	520.5	523.5	526.7
137.5°	496.1	494.9	494.1	493.2	495.7	498.2	501.0	503.8	506.7	509.8	513.1
140°	489.9	489.1	488.4	487.6	490.2	492.6	495.4	498.1	501.2	504.2	507.3
142.5°	484.8	483.8	483.1	482.5	484.6	487.0	489.6	492.0	494.8	497.4	500.4
145°	484.7	484.0	483.5	483.0	484.6	486.3	488.2	490.1	492.1	494.0	496.4
147.5°	480.8	480.4	480.1	479.9	481.1	482.4	483.7	485.0	486.6	488.1	489.7
150°	474.9	474.5	474.4	474.4	475.2	476.0	476.9	477.7	478.7	479.6	480.9
152.5°	465.2	464.8	465.0	464.9	465.5	466.2	467.1	467.8	468.8	469.6	470.9
155°	457.7	457.3	457.1	456.8	457.0	457.2	457.6	457.9	458.4	458.8	459.2
157.5°	453.1	452.7	452.4	452.1	452.1	452.0	452.1	452.2	452.3	452.3	452.4
160°	448.8	448.1	447.5	447.1	447.3	447.4	447.5	447.6	448.0	448.2	448.4
162.5°	448.4	448.1	447.7	447.4	447.1	446.7	446.5	446.1	445.9	445.7	445.6
165°	447.6	447.0	446.5	445.7	445.7	445.7	445.6	445.4	445.5	445.3	445.4
167.5°	450.1	449.5	448.9	448.3	447.9	447.3	447.0	446.5	446.0	445.6	445.4
170°	450.3	449.8	449.2	448.8	448.6	448.2	448.2	447.9	447.7	447.6	447.6
172.5°	454.1	453.7	453.1	452.8	452.6	452.3	452.3	452.2	452.0	452.0	451.9
175°	456.4	456.3	456.2	456.0	455.7	455.5	455.1	454.9	454.7	454.4	454.2
177.5°	457.4	457.1	456.8	456.6	456.5	456.5	456.5	456.5	456.5	456.4	456.4
180°	456.8	456.8	456.8	456.8	456.8	456.8	456.8	456.8	456.8	456.8	456.8



TEST NUMBER: P1444680
 CATALOG NUMBER: EHBR1-36-UNV-TA-L930-UPL40

CANDELA DISTRIBUTION (continued):

	110°	112.5°	115°	117.5°	120°	122.5°	125°	127.5°	130°	132.5°	135°
0°	27712.0	27712.0	27712.0	27712.0	27712.0	27712.0	27712.0	27712.0	27712.0	27712.0	27712.0
2.5°	27727.3	27720.0	27700.8	27691.3	27673.6	27664.6	27650.8	27641.8	27630.7	27622.3	27618.0
5°	28495.5	28460.0	28389.0	28345.3	28268.5	28218.0	28141.8	28085.9	28007.3	27949.2	27874.8
7.5°	29495.0	29440.6	29349.6	29280.6	29173.2	29091.2	28970.8	28874.4	28741.3	28630.8	28494.8
10°	29901.9	29870.2	29829.4	29785.0	29725.5	29667.2	29584.9	29501.1	29389.3	29278.2	29133.0
12.5°	29300.5	29330.4	29389.3	29416.9	29462.0	29477.3	29497.9	29488.2	29470.0	29424.6	29358.8
15°	27597.2	27721.9	27919.1	28055.6	28246.7	28380.9	28558.5	28672.8	28804.5	28883.2	28957.9
17.5°	24795.2	25036.6	25384.5	25662.1	26034.8	26337.8	26709.0	27000.8	27337.6	27595.9	27871.0
20°	21206.4	21544.3	22024.7	22432.6	22972.6	23430.5	24017.2	24508.6	25081.9	25559.8	26075.6
22.5°	17343.7	17741.2	18291.7	18783.7	19428.6	20004.6	20739.7	21389.4	22164.4	22858.7	23626.8
25°	13699.8	14089.4	14650.1	15159.6	15855.8	16490.3	17293.3	18038.7	18938.1	19776.8	20739.7
27.5°	10574.9	10921.0	11413.9	11872.5	12510.1	13133.0	13947.9	14742.8	15702.5	16603.8	17641.4
30°	8166.8	8447.6	8842.5	9211.4	9723.3	10232.7	10958.6	11693.8	12648.7	13582.7	14646.5
32.5°	6329.0	6568.4	6898.1	7197.6	7592.0	7976.1	8510.6	9098.2	9935.8	10830.5	11859.0
35°	4899.4	5104.2	5384.8	5642.8	5967.1	6272.0	6670.9	7090.3	7729.5	8482.0	9402.6
37.5°	3906.0	3989.5	4189.8	4401.2	4670.5	4921.1	5233.2	5543.2	6000.6	6594.3	7346.3
40°	2970.5	3103.1	3266.1	3432.6	3636.6	3837.5	4179.9	4344.7	4645.8	5072.0	5655.7
42.5°	2396.8	2490.0	2604.8	2720.6	2862.7	3002.7	3175.8	3352.1	3577.3	3865.9	4281.1
45°	2005.7	2066.5	2140.4	2217.6	2310.9	2406.4	2522.4	2643.5	2796.0	2973.5	3225.7
47.5°	1744.4	1778.0	1826.3	1879.0	1943.0	2009.1	2084.5	2161.6	2256.4	2361.7	2505.3
50°	1540.4	1568.5	1606.0	1641.2	1685.4	1753.1	1783.1	1825.7	1882.7	1944.6	2024.9
52.5°	1392.9	1411.6	1435.1	1455.3	1483.2	1508.6	1541.9	1571.3	1610.7	1647.9	1699.8
55°	1278.0	1284.8	1298.0	1311.1	1330.5	1347.8	1370.6	1389.8	1415.0	1437.2	1469.9
57.5°	1189.2	1189.8	1196.0	1202.8	1215.2	1226.1	1241.8	1254.5	1271.9	1286.1	1305.7
60°	1125.4	1122.0	1123.3	1125.6	1132.6	1139.7	1149.7	1157.9	1169.0	1177.0	1188.0
62.5°	1072.3	1067.0	1065.8	1065.2	1068.7	1071.2	1076.7	1080.7	1086.9	1090.4	1096.3
65°	1005.3	999.0	996.6	993.6	994.7	993.9	995.9	996.0	999.2	999.9	1003.3
67.5°	944.4	939.3	936.1	932.1	930.4	927.6	926.4	923.8	923.3	921.1	920.5
70°	889.0	883.8	881.2	877.6	875.7	872.1	869.8	865.3	862.6	858.4	856.0
72.5°	824.8	821.9	821.1	818.7	818.1	816.0	815.0	811.9	810.0	806.4	804.3
75°	757.7	755.4	755.2	752.7	752.5	750.1	749.4	746.1	744.3	740.7	739.2
77.5°	677.9	674.3	673.3	670.5	671.2	670.0	670.9	668.4	667.3	663.6	662.6
80°	587.9	583.3	581.5	577.7	578.7	577.0	578.7	578.5	579.9	577.0	576.5
82.5°	481.3	476.3	475.4	472.7	474.5	474.7	478.5	476.4	477.3	474.6	475.7
85°	350.2	346.6	341.4	340.7	337.4	340.8	336.3	339.3	334.5	337.9	333.4
87.5°	217.1	209.5	205.5	200.1	198.0	192.8	190.6	186.8	187.9	186.2	187.2
90°	108.9	104.1	105.4	102.9	105.2	103.3	106.7	106.2	110.0	109.4	113.5
92.5°	59.0	61.8	66.8	72.3	77.2	82.3	87.3	92.8	97.7	103.0	107.9
95°	73.0	75.6	82.4	89.2	96.1	102.9	109.8	116.7	123.5	130.3	137.1
97.5°	91.7	93.2	100.1	106.8	113.7	120.6	127.3	134.5	141.3	148.1	155.0
100°	105.2	105.3	124.8	144.2	163.5	183.0	202.5	221.9	241.5	260.9	280.4
102.5°	196.9	201.8	250.9	300.0	349.1	398.3	447.4	496.5	545.6	594.9	644.1
105°	436.7	455.9	530.8	605.8	680.7	755.7	830.6	905.8	980.8	1055.8	1130.8
107.5°	811.3	846.4	914.1	981.9	1049.5	1117.3	1185.1	1252.9	1320.6	1388.4	1456.4
110°	1144.0	1181.2	1226.6	1271.9	1317.5	1362.7	1408.2	1453.5	1499.2	1544.5	1590.2



TEST NUMBER: P1444680
 CATALOG NUMBER: EHBR1-36-UNV-TA-L930-UPL40

CANDELA DISTRIBUTION (continued):

	110°	112.5°	115°	117.5°	120°	122.5°	125°	127.5°	130°	132.5°	135°
112.5°	1292.4	1316.5	1342.9	1369.4	1395.9	1422.3	1448.9	1475.4	1502.1	1528.7	1555.3
115°	1286.9	1298.5	1308.6	1319.1	1329.3	1339.6	1350.1	1360.6	1371.1	1381.5	1392.1
117.5°	1186.3	1190.4	1191.8	1193.6	1195.1	1197.0	1198.8	1200.6	1202.5	1204.4	1206.1
120°	1035.8	1034.5	1032.8	1031.2	1029.4	1027.9	1026.4	1024.9	1023.5	1022.0	1020.5
122.5°	883.8	881.1	879.4	877.9	876.3	874.9	873.6	872.3	870.9	869.7	868.2
125°	750.0	747.4	748.9	750.4	752.0	753.8	755.3	757.2	758.9	760.7	762.5
127.5°	651.5	650.7	654.6	658.6	662.7	666.8	670.8	675.1	679.1	683.5	687.5
130°	588.1	589.2	594.2	599.5	604.5	609.9	615.1	620.5	625.6	630.9	636.1
132.5°	550.8	553.4	558.1	563.3	568.2	573.4	578.3	583.5	588.5	593.8	598.6
135°	530.0	533.4	537.9	542.4	547.1	551.8	556.3	561.1	565.6	570.2	574.8
137.5°	516.1	519.6	523.3	526.9	530.6	534.4	538.2	542.0	545.6	549.4	553.0
140°	510.5	513.9	515.9	518.3	520.3	522.6	524.6	526.8	528.8	531.2	533.2
142.5°	503.3	506.4	507.6	509.0	510.4	512.1	513.5	514.9	516.2	517.6	518.8
145°	498.5	500.9	501.0	501.3	501.5	501.8	501.9	502.2	502.2	502.3	502.4
147.5°	491.5	493.2	492.9	492.9	492.7	492.4	492.4	492.3	491.8	491.7	491.6
150°	481.9	483.3	482.6	482.3	481.6	481.2	480.5	480.1	479.4	479.1	478.4
152.5°	471.8	472.8	471.9	471.6	470.8	470.2	469.4	468.9	468.1	467.5	467.0
155°	459.6	460.1	459.6	459.3	458.9	458.6	458.1	458.0	457.8	457.4	457.2
157.5°	452.6	452.7	452.5	452.3	452.0	451.8	451.6	451.5	451.4	451.5	451.5
160°	448.6	449.0	448.6	448.3	448.2	447.9	447.7	447.7	447.6	447.8	447.8
162.5°	445.3	445.2	444.9	444.6	444.4	444.4	444.2	444.3	444.2	444.3	444.4
165°	445.6	445.7	445.1	444.9	444.5	444.1	443.8	443.6	443.5	443.4	443.3
167.5°	445.0	444.9	444.9	444.9	444.9	445.1	445.2	445.6	445.7	446.1	446.2
170°	447.5	447.6	447.4	447.2	447.0	446.9	446.8	446.7	446.7	446.6	446.6
172.5°	451.9	451.9	451.5	451.0	450.6	450.3	449.8	449.6	449.2	448.9	448.4
175°	453.9	453.7	453.5	453.2	453.1	452.7	452.5	452.1	451.9	451.6	451.5
177.5°	456.3	456.1	455.9	455.9	455.8	455.7	455.7	455.6	455.6	455.6	455.5
180°	456.8	456.8	456.8	456.8	456.8	456.8	456.8	456.8	456.8	456.8	456.8



TEST NUMBER: P1444680
 CATALOG NUMBER: EHBR1-36-UNV-TA-L930-UPL40

CANDELA DISTRIBUTION (continued):

	137.5°	140°	142.5°	145°	147.5°	150°	152.5°	155°	157.5°	160°	162.5°
0°	27712.0	27712.0	27712.0	27712.0	27712.0	27712.0	27712.0	27712.0	27712.0	27712.0	27712.0
2.5°	27612.5	27612.1	27609.5	27610.7	27611.2	27613.2	27615.5	27618.0	27618.5	27620.5	27620.9
5°	27819.1	27750.8	27700.3	27644.7	27602.9	27565.3	27540.3	27520.3	27512.7	27514.5	27519.2
7.5°	28379.5	28238.4	28122.1	27989.8	27879.5	27762.7	27665.9	27573.8	27506.8	27456.8	27428.8
10°	28994.4	28822.7	28658.3	28466.8	28285.3	28091.5	27915.9	27739.2	27591.8	27463.8	27369.9
12.5°	29267.2	29145.9	29003.8	28823.1	28628.8	28405.2	28179.4	27937.3	27712.2	27503.2	27334.6
15°	28978.3	28978.5	28926.7	28840.1	28705.1	28526.4	28311.2	28058.9	27793.3	27522.3	27274.7
17.5°	28061.2	28234.2	28330.5	28391.3	28372.7	28306.9	28170.0	27976.2	27728.5	27439.8	27137.7
20°	26486.2	26894.4	27185.4	27447.0	27593.7	27691.2	27681.4	27602.5	27426.1	27180.7	26866.0
22.5°	24279.9	24965.0	25505.5	26009.6	26363.1	26650.7	26787.4	26845.4	26765.5	26594.4	26298.9
25°	21600.1	22531.6	23326.5	24097.8	24676.4	25173.8	25472.6	25683.2	25699.9	25610.5	25346.9
27.5°	18622.5	19721.9	20727.9	21753.1	22566.9	23281.7	23750.8	24094.2	24203.3	24188.8	23949.5
30°	15648.6	16802.8	17911.6	19107.2	20114.1	21027.4	21647.0	22111.3	22290.2	22324.6	22094.3
32.5°	12840.1	13978.2	15084.0	16333.9	17441.9	18488.6	19220.7	19772.2	19980.3	20029.3	19776.8
35°	10291.1	11341.2	12392.1	13603.3	14705.0	15789.0	16560.4	17137.8	17332.1	17364.9	17072.4
37.5°	8080.8	8975.4	9891.1	10977.9	11989.7	13007.7	13740.6	14283.3	14424.8	14416.0	14085.2
40°	6219.6	6915.2	7651.0	8545.7	9386.8	10247.4	10866.3	11314.9	11389.3	11334.2	10986.6
42.5°	4676.8	5179.1	5712.6	6380.5	7004.6	7648.6	8098.9	8432.0	8442.6	8355.5	8043.4
45°	3484.3	3974.3	4198.1	4601.8	5003.8	5432.1	5707.0	5912.8	5880.9	5804.3	5567.1
47.5°	2656.1	2844.5	3044.2	3294.6	3528.8	4014.8	3978.8	4309.2	4071.2	4233.4	3876.3
50°	2109.2	2214.5	2322.1	2455.0	2577.4	2704.4	2783.8	2843.1	2835.3	2809.9	2741.5
52.5°	1794.5	1827.0	1880.0	1955.6	2023.9	2092.6	2137.8	2174.6	2175.3	2165.0	2130.4
55°	1499.8	1541.0	1579.2	1628.6	1712.7	1725.6	1790.5	1777.3	1782.5	1764.5	1782.8
57.5°	1322.3	1346.3	1367.8	1397.2	1421.5	1449.9	1466.6	1482.8	1481.2	1477.7	1460.0
60°	1196.6	1209.8	1221.8	1239.0	1252.2	1268.3	1276.0	1284.2	1281.5	1275.6	1259.9
62.5°	1099.7	1108.0	1114.7	1125.9	1134.0	1144.0	1148.0	1151.4	1148.0	1142.3	1128.4
65°	1004.0	1009.4	1013.7	1022.0	1027.8	1036.3	1039.7	1043.0	1039.8	1035.3	1024.8
67.5°	917.8	918.3	917.9	921.3	923.0	928.1	929.6	932.0	928.3	924.6	915.6
70°	852.4	851.0	849.3	850.7	851.0	853.4	853.9	853.4	849.1	842.5	832.7
72.5°	801.2	800.5	799.3	800.3	800.3	802.6	801.9	800.8	795.3	789.0	779.3
75°	735.5	734.9	732.5	732.6	730.6	731.3	728.6	727.1	721.0	715.7	707.0
77.5°	658.6	657.3	653.7	652.4	648.5	646.8	641.8	639.3	633.2	628.9	621.5
80°	572.6	571.3	566.8	564.2	558.0	554.1	546.7	542.5	535.4	531.2	524.0
82.5°	473.4	473.9	469.3	466.1	457.2	450.5	440.6	435.2	427.5	423.4	416.0
85°	336.7	331.9	334.4	334.2	328.7	322.8	314.8	309.1	302.5	298.6	293.5
87.5°	184.6	185.8	184.5	183.3	179.4	176.4	170.2	166.9	162.1	159.7	155.8
90°	105.7	102.6	95.1	92.1	84.6	79.9	71.6	67.7	60.0	58.0	53.5
92.5°	102.1	96.4	90.9	84.8	79.4	73.6	67.8	62.1	56.3	54.1	52.5
95°	128.9	120.6	112.3	103.9	95.6	87.2	79.0	70.7	62.4	60.7	59.0
97.5°	145.3	135.5	125.7	115.9	106.0	96.2	86.5	76.7	66.9	65.9	64.8
100°	257.8	235.3	212.7	190.1	167.5	144.9	122.4	99.8	77.3	76.0	74.7
102.5°	589.3	534.5	479.8	425.1	370.4	315.6	260.9	206.0	151.3	143.4	135.5
105°	1047.9	964.9	882.3	799.4	716.5	633.5	550.8	467.8	384.9	358.3	331.7
107.5°	1378.5	1300.5	1222.7	1144.8	1066.9	989.1	911.1	833.1	755.2	708.3	661.4
110°	1528.3	1466.5	1404.8	1342.9	1281.2	1219.3	1157.3	1095.6	1033.6	993.2	952.9



TEST NUMBER: P1444680
 CATALOG NUMBER: EHBR1-36-UNV-TA-L930-UPL40

CANDELA DISTRIBUTION (continued):

	137.5°	140°	142.5°	145°	147.5°	150°	152.5°	155°	157.5°	160°	162.5°
112.5°	1510.1	1464.7	1419.6	1374.1	1328.9	1283.4	1238.2	1192.7	1147.3	1122.8	1098.2
115°	1365.0	1337.5	1310.3	1283.1	1255.6	1228.3	1201.0	1173.5	1146.0	1133.2	1120.2
117.5°	1192.3	1178.3	1164.5	1150.5	1136.4	1122.3	1108.4	1094.2	1080.1	1075.7	1071.1
120°	1016.5	1012.2	1007.9	1003.6	999.3	995.0	990.7	986.2	981.8	982.3	982.7
122.5°	869.9	871.4	873.1	874.5	876.2	877.5	879.2	880.4	882.0	885.3	888.7
125°	766.5	770.4	774.5	778.4	782.2	786.2	790.2	793.9	797.9	801.2	804.8
127.5°	692.1	696.4	701.1	705.4	709.9	714.2	718.8	722.9	727.4	730.5	733.8
130°	640.2	643.8	647.9	651.5	655.5	659.3	663.1	666.8	670.8	673.2	675.6
132.5°	602.1	605.6	609.0	612.3	616.0	619.3	622.6	626.1	629.7	631.4	633.2
135°	577.5	579.9	582.5	584.9	587.7	590.1	592.8	595.4	598.0	599.2	600.4
137.5°	555.0	557.1	559.3	561.3	563.5	565.5	567.8	570.0	572.4	572.7	573.5
140°	535.4	537.6	539.8	542.0	544.3	546.5	549.0	551.3	553.9	554.4	555.1
142.5°	520.6	522.2	524.0	525.7	527.5	529.2	531.1	533.2	535.1	535.8	536.3
145°	504.6	506.5	508.7	510.6	512.7	514.9	517.4	519.6	522.0	522.4	522.7
147.5°	493.2	494.9	496.8	498.6	500.6	502.2	504.5	506.5	508.7	508.9	509.3
150°	480.4	482.2	484.1	485.9	488.1	490.2	492.4	494.6	497.2	497.8	498.3
152.5°	468.9	471.0	473.0	475.2	477.6	479.9	482.3	484.7	487.2	487.7	488.3
155°	459.3	461.2	463.4	465.6	467.9	470.1	472.5	474.8	477.2	478.0	478.7
157.5°	453.4	455.1	457.1	459.0	461.1	463.1	465.3	467.3	469.5	470.2	470.8
160°	449.4	451.1	452.9	454.6	456.4	458.2	460.1	462.0	463.8	464.4	465.0
162.5°	446.1	447.8	449.6	451.2	453.1	454.8	456.7	458.5	460.4	460.9	461.5
165°	444.6	445.7	447.2	448.3	449.7	450.8	452.3	453.5	455.0	455.6	456.4
167.5°	447.4	448.2	449.1	450.0	451.3	452.3	453.3	454.3	455.4	456.0	456.7
170°	447.5	448.3	449.2	450.1	451.2	452.1	453.0	453.9	455.0	455.5	456.2
172.5°	449.0	449.5	450.2	450.7	451.4	452.0	452.6	453.2	453.9	454.7	455.3
175°	451.8	452.1	452.3	452.6	452.9	453.2	453.7	454.1	454.4	454.9	455.5
177.5°	455.6	455.9	456.1	456.3	456.7	456.9	457.2	457.4	457.7	458.3	459.0
180°	456.8	456.8	456.8	456.8	456.8	456.8	456.8	456.8	456.8	456.8	456.8



TEST NUMBER: P1444680
 CATALOG NUMBER: EHBR1-36-UNV-TA-L930-UPL40

CANDELA DISTRIBUTION (continued):

	165°	167.5°	170°	172.5°	175°	177.5°	180°	182.5°	185°	187.5°	190°
0°	27712.0	27712.0	27712.0	27712.0	27712.0	27712.0	27712.0	27712.0	27712.0	27712.0	27712.0
2.5°	27620.0	27619.6	27618.7	27617.5	27616.2	27617.0	27618.2	27621.4	27626.9	27634.9	27645.5
5°	27523.0	27528.6	27531.8	27532.3	27529.3	27527.6	27530.3	27537.9	27553.2	27578.9	27613.6
7.5°	27421.3	27428.3	27439.0	27447.0	27448.5	27446.6	27447.0	27458.9	27487.2	27537.2	27607.3
10°	27312.8	27292.1	27303.0	27323.0	27338.7	27341.7	27343.6	27357.6	27399.0	27474.5	27587.2
12.5°	27212.5	27147.2	27134.6	27152.6	27176.6	27184.3	27182.2	27188.2	27236.6	27336.6	27493.6
15°	27080.7	26957.8	26915.7	26920.3	26950.0	26960.7	26952.9	26941.0	26988.2	27110.2	27313.5
17.5°	26867.2	26669.0	26591.8	26588.4	26623.1	26632.3	26613.2	26576.3	26622.7	26775.1	27027.5
20°	26542.8	26250.2	26104.8	26081.7	26119.4	26108.3	26070.3	26014.4	26075.4	26260.7	26560.8
22.5°	25959.5	25588.8	25340.3	25260.2	25305.3	25275.2	25219.7	25148.3	25229.3	25439.9	25774.1
25°	25006.4	24578.1	24237.9	24047.1	24083.0	24029.1	23968.6	23882.2	23978.8	24220.5	24588.3
27.5°	23605.6	23110.7	22689.2	22373.3	22385.0	22314.3	22244.6	22132.7	22253.4	22539.4	22954.3
30°	21742.7	21170.2	20656.9	20227.5	20189.1	20120.6	20049.2	19902.3	20053.4	20395.8	20880.6
32.5°	19403.3	18767.6	18174.5	17631.7	17529.3	17462.4	17398.9	17229.8	17427.6	17826.7	18383.8
35°	16667.5	15990.2	15347.3	14727.3	14557.7	14490.8	14435.2	14273.3	14520.0	14954.4	15556.1
37.5°	13664.6	12972.8	12334.3	11698.6	11458.9	11368.2	11327.8	11221.8	11506.3	11936.0	12540.1
40°	10581.7	9938.4	9366.1	8804.6	8531.3	8392.6	8371.4	8352.1	8627.2	9000.1	9548.4
42.5°	7697.7	7178.8	6737.5	6308.3	6060.6	5871.2	5871.1	5928.6	6176.3	6455.6	6878.3
45°	5324.8	4976.5	4695.3	4408.6	4485.2	4107.4	4329.4	4215.4	4337.9	4518.0	4792.9
47.5°	3660.3	3470.2	3315.7	3155.4	3038.7	2927.1	2936.9	3008.8	3124.2	3231.0	3374.0
50°	2667.7	2570.8	2492.2	2409.0	2350.9	2301.7	2304.6	2335.7	2396.3	2452.6	2527.4
52.5°	2090.3	2037.0	1994.2	1948.2	1917.7	1893.2	1894.6	1909.7	1942.4	1974.6	2017.5
55°	1722.9	1716.5	1660.9	1619.6	1604.0	1587.5	1590.5	1596.4	1618.8	1637.5	1666.0
57.5°	1443.8	1418.9	1402.2	1380.5	1370.5	1359.0	1361.6	1363.8	1378.7	1391.3	1411.7
60°	1246.7	1229.1	1217.2	1202.4	1195.9	1188.6	1190.2	1191.5	1201.2	1209.4	1224.1
62.5°	1115.8	1099.9	1089.7	1078.3	1073.6	1068.7	1069.9	1070.3	1076.2	1082.3	1093.4
65°	1015.4	1002.8	994.2	984.4	979.6	974.5	975.0	975.0	980.0	984.4	992.7
67.5°	909.1	899.7	894.2	886.3	883.0	877.8	877.7	876.1	879.4	881.1	886.8
70°	823.9	814.3	807.3	799.8	795.6	791.1	791.2	791.2	795.1	799.0	806.3
72.5°	771.2	762.1	755.8	749.2	745.3	741.4	740.7	740.3	743.0	745.3	750.1
75°	701.5	694.2	690.5	684.3	681.3	676.8	676.1	674.1	675.4	675.8	679.4
77.5°	616.8	610.0	607.0	600.7	598.1	593.1	592.7	590.5	591.4	590.7	593.5
80°	520.4	514.1	512.5	507.3	506.2	501.5	500.8	498.0	498.9	496.6	497.7
82.5°	412.8	407.0	405.8	401.1	401.1	396.8	396.6	392.5	392.5	388.8	383.1
85°	290.8	286.5	284.8	280.9	279.7	276.3	274.6	270.6	269.2	266.6	265.8
87.5°	153.5	150.8	148.4	146.6	143.2	137.1	136.6	132.4	132.7	129.7	129.9
90°	52.0	47.8	46.3	42.3	40.8	37.8	36.4	37.2	38.5	39.3	40.6
92.5°	50.5	48.7	46.7	44.8	42.9	41.0	39.0	41.0	42.9	44.8	46.7
95°	57.3	55.6	53.8	52.1	50.4	48.7	47.1	48.7	50.4	52.2	53.9
97.5°	63.7	62.6	61.6	60.5	59.4	58.4	57.3	58.5	59.5	60.6	61.7
100°	73.4	72.2	70.8	69.6	68.4	67.0	65.8	67.3	68.6	69.9	71.1
102.5°	127.7	119.9	111.9	104.1	96.2	88.3	80.4	88.3	96.2	104.2	112.0
105°	304.9	278.4	251.7	225.1	198.4	171.7	145.1	171.8	198.5	225.2	251.9
107.5°	614.5	567.8	520.9	474.0	427.0	380.2	333.2	380.2	427.2	474.1	521.0
110°	912.3	872.0	831.6	791.2	750.6	710.1	669.6	710.2	750.8	791.3	831.9



TEST NUMBER: P1444680
 CATALOG NUMBER: EHBR1-36-UNV-TA-L930-UPL40

CANDELA DISTRIBUTION (continued):

	165°	167.5°	170°	172.5°	175°	177.5°	180°	182.5°	185°	187.5°	190°
112.5°	1073.6	1049.0	1024.5	999.9	975.2	950.6	925.8	950.8	975.5	1000.4	1025.0
115°	1107.3	1094.2	1081.3	1068.3	1055.2	1042.1	1028.9	1042.5	1055.7	1068.9	1082.2
117.5°	1066.4	1062.0	1057.2	1052.7	1048.0	1043.4	1038.6	1043.6	1048.5	1053.6	1058.3
120°	983.1	983.7	984.1	984.4	984.8	985.2	985.3	985.6	985.6	985.6	985.4
122.5°	891.9	895.3	898.6	901.9	905.0	908.2	911.2	908.6	905.8	903.3	900.2
125°	808.1	811.6	815.0	818.4	821.5	824.9	827.8	825.5	822.7	819.9	817.0
127.5°	736.8	739.8	742.9	746.0	748.7	751.7	754.3	752.3	749.9	747.6	745.0
130°	677.8	680.3	682.4	684.8	686.7	688.8	690.5	689.4	687.9	686.6	684.8
132.5°	634.9	636.8	638.5	640.1	641.5	643.0	644.1	643.7	642.9	642.1	641.0
135°	601.7	602.9	603.9	605.2	606.0	606.9	607.3	607.6	607.3	607.1	606.5
137.5°	574.0	574.7	575.1	575.5	575.8	575.9	575.9	576.7	577.1	577.8	577.9
140°	555.6	556.3	556.8	557.1	557.7	557.9	557.8	558.7	559.1	559.5	559.5
142.5°	537.0	537.5	538.1	538.5	538.8	539.1	539.1	539.8	540.2	540.6	540.8
145°	523.2	523.5	523.6	524.0	524.0	524.0	523.6	524.7	525.3	526.0	526.5
147.5°	509.6	510.0	510.0	510.2	510.2	510.2	509.9	510.8	511.5	512.1	512.7
150°	499.1	499.8	500.2	500.7	501.2	501.4	501.4	502.1	502.4	502.7	502.8
152.5°	488.9	489.5	489.9	490.4	490.8	490.9	491.0	491.6	492.1	492.5	492.7
155°	479.3	480.1	480.7	481.3	481.7	482.3	482.6	483.1	483.4	483.6	483.8
157.5°	471.4	472.1	472.6	473.2	473.6	474.3	474.6	475.2	475.5	475.9	476.1
160°	465.5	466.2	466.7	467.3	467.8	468.3	468.7	469.3	469.6	470.0	470.3
162.5°	462.0	462.6	462.9	463.6	464.0	464.6	465.0	465.4	465.9	466.3	466.6
165°	457.1	457.9	458.5	459.3	459.9	460.7	461.2	461.5	461.6	461.8	461.9
167.5°	457.2	458.0	458.6	459.3	459.8	460.6	461.2	461.4	461.4	461.6	461.6
170°	456.6	457.3	457.9	458.5	459.0	459.7	460.1	460.3	460.3	460.5	460.5
172.5°	455.9	456.7	457.4	458.2	458.8	459.6	460.2	460.2	459.9	459.8	459.5
175°	456.0	456.7	457.2	458.0	458.4	459.0	459.6	459.3	459.2	458.9	458.7
177.5°	459.9	460.7	461.4	462.1	462.9	463.5	464.2	463.6	463.0	462.5	461.9
180°	456.8	456.8	456.8	456.8	456.8	456.8	456.8	456.8	456.8	456.8	456.8



TEST NUMBER: P1444680
 CATALOG NUMBER: EHBR1-36-UNV-TA-L930-UPL40

CANDELA DISTRIBUTION (continued):

	192.5°	195°	197.5°	200°	202.5°	205°	207.5°	210°	212.5°	215°	217.5°
0°	27712.0	27712.0	27712.0	27712.0	27712.0	27712.0	27712.0	27712.0	27712.0	27712.0	27712.0
2.5°	27660.2	27674.1	27695.3	27714.4	27743.3	27766.1	27800.3	27826.3	27864.9	27890.0	27932.0
5°	27662.7	27716.8	27787.9	27857.5	27941.0	28016.7	28110.9	28191.1	28285.8	28363.0	28459.9
7.5°	27701.8	27806.1	27931.2	28057.3	28199.8	28333.1	28483.4	28619.4	28768.0	28893.8	29031.2
10°	27730.6	27891.6	28076.0	28261.4	28456.7	28638.1	28821.2	28979.5	29127.3	29249.1	29356.6
12.5°	27691.5	27913.2	28149.8	28378.2	28595.3	28783.1	28940.6	29062.4	29146.3	29203.3	29216.7
15°	27558.6	27825.4	28082.6	28310.1	28490.2	28629.1	28701.0	28734.7	28698.6	28638.5	28506.7
17.5°	27310.1	27591.5	27821.5	28000.9	28096.1	28133.8	28074.2	27970.6	27768.1	27543.2	27218.6
20°	26854.6	27116.8	27283.6	27381.5	27356.0	27261.8	27036.9	26763.5	26359.2	25928.2	25359.6
22.5°	26055.7	26285.0	26373.7	26381.0	26225.7	25989.8	25584.2	25115.2	24477.4	23814.2	22998.6
25°	24856.4	25057.2	25071.2	24992.4	24708.0	24325.9	23730.1	23066.8	22200.0	21316.3	20294.3
27.5°	23230.0	23422.5	23375.4	23228.3	22833.5	22322.1	21559.4	20702.4	19633.8	18590.1	17459.6
30°	21185.5	21391.4	21336.0	21147.3	20677.7	20073.3	19175.9	18180.2	16993.8	15879.0	14733.4
32.5°	18738.8	18999.1	18960.9	18781.5	18291.4	17644.6	16670.9	15614.9	14401.1	13302.5	12188.1
35°	15957.7	16273.8	16290.2	16172.9	15718.0	15078.7	14117.2	13095.0	11932.4	10895.9	9866.3
37.5°	12961.5	13328.0	13403.3	13371.6	12994.6	12430.2	11554.2	10637.3	9607.2	8698.9	7818.3
40°	9948.8	10319.7	10448.3	10486.6	10208.4	9771.3	9052.2	8312.1	7472.5	6736.4	6037.2
42.5°	7201.2	7530.0	7654.4	7732.7	7559.0	7267.5	6743.0	6205.5	5590.4	5059.5	4550.5
45°	5001.3	5234.0	5328.6	5407.3	5312.8	5148.4	4817.1	4481.0	4074.9	3728.0	3399.5
47.5°	3496.7	3625.1	3687.4	3725.7	3689.0	3603.2	3423.0	3228.3	2999.0	2796.3	2601.4
50°	2591.9	2660.1	2692.8	2714.9	2688.2	2640.5	2543.0	2437.0	2311.1	2196.2	2083.9
52.5°	2054.0	2093.1	2112.5	2124.4	2109.1	2079.9	2023.2	1960.3	1884.8	1813.8	1776.6
55°	1730.3	1728.3	1773.2	1751.5	1773.2	1724.8	1714.6	1645.5	1582.8	1538.7	1491.0
57.5°	1427.0	1447.3	1455.9	1465.6	1459.3	1450.5	1426.4	1401.6	1368.5	1340.9	1311.4
60°	1235.2	1252.0	1261.4	1270.9	1270.3	1267.0	1253.1	1238.3	1217.7	1201.2	1183.3
62.5°	1103.1	1117.7	1126.9	1136.1	1136.9	1135.6	1125.1	1114.7	1100.6	1090.3	1078.0
65°	999.2	1009.4	1015.7	1023.0	1022.6	1020.7	1011.1	1002.6	990.9	983.8	974.7
67.5°	890.4	898.2	903.1	909.9	911.3	911.7	906.5	902.5	896.8	894.8	891.7
70°	813.1	822.4	830.4	839.1	843.8	846.0	843.8	841.8	838.5	837.0	834.6
72.5°	754.5	762.5	768.6	776.5	781.0	784.1	782.4	781.3	778.4	778.0	776.4
75°	681.8	687.3	690.8	696.8	699.1	702.1	700.8	701.5	700.5	702.8	702.7
77.5°	594.5	598.5	600.1	604.4	604.8	608.4	609.3	613.5	616.4	623.0	626.5
80°	496.1	498.6	498.6	503.0	505.0	511.1	513.9	520.8	524.0	529.9	530.4
82.5°	385.3	382.4	385.3	383.5	389.2	395.9	396.8	402.7	404.0	407.7	404.8
85°	263.4	263.2	260.8	261.3	259.5	260.4	259.3	260.5	259.4	259.5	256.8
87.5°	126.2	127.3	124.6	125.5	122.8	124.0	121.7	123.5	120.7	121.2	117.1
90°	41.8	43.1	44.1	45.5	47.2	50.8	54.5	58.1	62.2	65.8	69.6
92.5°	48.7	50.6	52.6	54.4	56.4	62.2	67.9	73.7	79.6	85.2	91.0
95°	55.7	57.4	59.1	61.0	62.7	71.0	79.4	87.7	96.1	104.4	112.7
97.5°	63.0	64.1	65.1	66.2	67.4	77.2	87.0	96.8	106.6	116.5	126.2
100°	72.5	73.8	75.0	76.5	77.7	100.3	123.0	145.5	168.2	190.7	213.3
102.5°	120.0	127.9	135.8	143.9	151.9	206.7	261.5	316.4	370.9	425.8	480.5
105°	278.6	305.2	332.2	358.9	385.5	468.5	551.5	634.5	717.3	800.2	883.2
107.5°	568.1	615.1	662.0	709.0	756.0	834.0	912.0	990.1	1068.1	1146.1	1223.8
110°	872.6	912.9	953.7	994.2	1034.8	1096.6	1158.7	1220.6	1282.6	1344.4	1406.3



TEST NUMBER: P1444680
 CATALOG NUMBER: EHBR1-36-UNV-TA-L930-UPL40

CANDELA DISTRIBUTION (continued):

	192.5°	195°	197.5°	200°	202.5°	205°	207.5°	210°	212.5°	215°	217.5°
112.5°	1049.9	1074.5	1099.2	1123.8	1148.6	1194.0	1239.8	1285.2	1330.6	1376.0	1421.5
115°	1095.4	1108.3	1121.5	1134.6	1147.8	1175.2	1202.8	1230.3	1257.8	1285.2	1312.6
117.5°	1063.2	1068.0	1072.8	1077.3	1082.1	1096.3	1110.5	1124.6	1138.9	1153.1	1167.2
120°	985.3	985.1	984.8	984.4	984.3	988.6	993.4	997.7	1002.3	1006.7	1011.1
122.5°	897.3	894.2	891.1	888.0	884.9	883.4	882.2	880.7	879.6	878.0	876.8
125°	813.9	810.8	807.6	804.4	801.1	797.4	793.6	789.8	786.0	782.3	778.5
127.5°	742.5	739.6	737.1	734.0	731.2	726.8	722.6	718.3	714.2	709.7	705.4
130°	683.1	681.0	679.3	677.0	675.0	671.1	667.6	663.8	660.2	656.4	652.8
132.5°	639.8	638.5	637.3	635.6	634.2	630.8	627.7	624.3	620.9	617.6	614.4
135°	606.2	605.4	604.8	603.8	603.0	600.4	598.1	595.5	593.1	590.6	588.2
137.5°	578.1	577.9	577.8	577.6	577.5	575.4	573.4	571.4	569.4	567.4	565.4
140°	559.8	559.7	559.7	559.5	559.4	557.1	555.0	552.9	550.7	548.5	546.4
142.5°	540.9	541.0	540.9	540.7	540.7	538.9	537.4	535.8	534.1	532.5	530.9
145°	526.8	527.1	527.4	527.4	527.7	525.6	523.7	521.6	519.8	517.8	515.8
147.5°	513.3	513.5	513.9	514.1	514.5	512.8	511.2	509.5	508.0	506.2	504.7
150°	503.0	503.1	503.1	503.1	503.1	501.3	499.7	498.0	496.3	494.4	492.8
152.5°	493.0	493.2	493.3	493.5	493.7	491.8	490.0	488.2	486.4	484.3	482.6
155°	484.0	484.1	484.2	484.2	484.2	482.6	480.9	479.0	477.3	475.4	473.7
157.5°	476.3	476.5	476.7	476.8	476.9	475.4	473.9	472.5	471.0	469.4	467.8
160°	470.6	470.9	471.1	471.2	471.4	470.2	469.0	467.6	466.5	465.0	463.7
162.5°	467.0	467.2	467.4	467.6	467.8	466.5	465.4	464.1	462.9	461.3	460.1
165°	462.1	462.0	462.1	461.9	461.9	461.0	460.4	459.5	458.7	457.6	456.8
167.5°	461.8	461.6	461.7	461.5	461.6	461.0	460.6	459.9	459.3	458.6	458.0
170°	460.5	460.5	460.5	460.3	460.3	459.6	459.2	458.6	458.1	457.2	456.6
172.5°	459.3	458.9	458.8	458.6	458.2	457.8	457.4	457.1	456.7	456.3	455.8
175°	458.3	458.0	457.9	457.5	457.2	457.1	456.8	456.8	456.5	456.4	456.1
177.5°	461.4	460.9	460.2	459.6	459.1	458.9	458.8	458.7	458.7	458.4	458.2
180°	456.8	456.8	456.8	456.8	456.8	456.8	456.8	456.8	456.8	456.8	456.8



TEST NUMBER: P1444680
 CATALOG NUMBER: EHBR1-36-UNV-TA-L930-UPL40

CANDELA DISTRIBUTION (continued):

	220°	222.5°	225°	227.5°	230°	232.5°	235°	237.5°	240°	242.5°	245°
0°	27712.0	27712.0	27712.0	27712.0	27712.0	27712.0	27712.0	27712.0	27712.0	27712.0	27712.0
2.5°	27958.0	27785.3	27762.6	27774.7	27803.5	27814.1	27845.3	27853.8	27885.2	27892.8	27923.0
5°	28534.8	28306.7	28318.0	28372.9	28455.9	28505.5	28587.1	28629.8	28707.8	28743.3	28813.7
7.5°	29143.2	28964.0	29019.9	29112.4	29226.0	29304.6	29402.7	29466.6	29551.1	29603.6	29671.3
10°	29441.8	29392.7	29454.3	29527.1	29591.9	29642.6	29684.2	29717.4	29739.3	29759.7	29768.6
12.5°	29214.6	29290.6	29301.0	29294.0	29251.0	29218.2	29144.6	29094.6	29005.8	28951.6	28845.9
15°	28372.0	28539.1	28446.5	28306.4	28101.5	27930.5	27689.2	27509.5	27258.2	27087.7	26835.4
17.5°	26893.2	27104.2	26863.0	26538.9	26126.5	25773.8	25334.5	24985.9	24549.0	24231.3	23823.7
20°	24811.5	25008.6	24578.6	24041.2	23403.4	22866.5	22233.5	21728.4	21140.1	20702.4	20174.3
22.5°	22219.6	22360.0	21754.1	21029.7	20217.1	19546.4	18789.5	18184.0	17512.6	17012.3	16449.2
25°	19352.1	19390.0	18663.2	17828.7	16922.9	16169.2	15361.1	14724.5	14039.7	13532.7	12980.1
27.5°	16457.9	16402.3	15616.9	14732.0	13779.2	12995.8	12207.6	11611.0	11011.3	10554.6	10078.4
30°	13726.2	13591.7	12776.1	11866.5	10941.7	10239.5	9585.2	9106.0	8629.0	8266.7	7884.4
32.5°	11221.1	11031.3	10237.4	9385.3	8606.0	8064.1	7579.0	7216.4	6831.1	6525.1	6204.4
35°	9002.3	8800.1	8096.8	7374.4	6784.5	6385.1	6003.8	5706.3	5379.2	5121.0	4842.5
37.5°	7098.1	6932.4	6343.2	5774.8	5328.6	5019.1	4706.6	4463.5	4193.2	4079.6	3782.0
40°	5479.7	5363.9	4903.2	4484.1	4149.1	4003.7	3686.6	3459.5	3257.5	3090.9	2929.5
42.5°	4274.3	4233.3	3784.9	3458.2	3222.3	3039.1	2862.3	2718.8	2579.1	2464.3	2355.8
45°	3136.7	3104.2	2905.2	2716.5	2555.8	2427.7	2308.2	2209.6	2118.2	2042.6	1973.8
47.5°	2442.5	2432.1	2317.5	2200.5	2099.3	2017.0	1939.5	1874.0	1813.4	1762.9	1746.4
50°	1986.6	1985.3	1918.0	1845.8	1773.7	1726.1	1676.7	1637.9	1599.0	1568.7	1536.7
52.5°	1687.9	1680.7	1635.2	1590.7	1547.8	1516.6	1485.0	1460.2	1434.5	1415.8	1395.9
55°	1453.2	1460.8	1434.6	1408.0	1381.2	1361.7	1339.6	1323.3	1305.6	1293.8	1281.7
57.5°	1290.1	1300.3	1286.4	1271.4	1255.1	1242.3	1227.0	1215.7	1203.9	1196.4	1189.4
60°	1171.4	1182.5	1177.0	1169.4	1159.3	1151.7	1142.0	1135.7	1128.1	1123.9	1120.0
62.5°	1070.8	1084.7	1082.7	1079.1	1072.7	1068.4	1063.1	1060.3	1055.3	1053.4	1051.5
65°	970.4	986.0	985.7	983.9	980.3	979.1	975.8	975.2	972.6	973.7	973.4
67.5°	891.4	905.0	907.9	910.0	909.9	910.7	910.5	911.8	911.8	913.8	915.0
70°	834.4	843.8	846.0	848.4	849.0	850.8	850.8	851.9	851.7	853.3	853.4
72.5°	776.7	789.2	791.4	793.3	793.3	795.1	794.1	793.8	791.3	790.8	789.1
75°	705.1	721.0	724.5	726.7	727.1	728.6	726.5	725.1	721.0	719.3	716.5
77.5°	630.2	646.7	649.2	650.0	648.7	649.0	644.5	641.4	636.2	634.0	631.2
80°	532.7	557.1	559.0	557.5	553.7	553.0	548.7	545.7	539.5	537.4	535.0
82.5°	405.4	433.9	437.9	439.7	436.6	437.3	433.1	431.5	425.7	424.7	420.9
85°	255.9	284.5	289.2	288.5	285.4	284.7	282.2	283.0	282.6	284.1	284.9
87.5°	117.6	145.3	151.9	149.7	149.4	147.5	143.0	144.7	147.4	149.1	149.3
90°	73.3	85.4	88.9	86.4	81.2	78.3	73.4	70.9	66.5	64.0	59.5
92.5°	96.8	102.5	108.3	103.1	98.0	92.9	87.8	82.5	77.5	72.3	67.3
95°	121.0	129.1	137.4	130.6	123.7	116.8	110.0	103.2	96.3	89.5	82.7
97.5°	136.0	145.5	155.2	148.4	141.6	134.7	127.8	121.0	114.2	107.2	100.4
100°	235.9	258.1	280.6	261.2	241.7	222.3	202.9	183.4	164.0	144.6	125.1
102.5°	535.2	589.8	644.4	595.2	546.1	496.9	447.8	398.7	349.6	300.2	251.2
105°	966.0	1048.5	1131.3	1056.1	981.1	906.1	831.1	756.1	681.1	606.0	531.0
107.5°	1301.9	1379.1	1456.7	1388.9	1321.1	1253.4	1185.4	1117.8	1049.9	982.0	914.3
110°	1468.2	1529.1	1590.9	1545.1	1499.8	1454.1	1408.7	1363.1	1317.7	1272.4	1227.0



TEST NUMBER: P1444680
 CATALOG NUMBER: EHBR1-36-UNV-TA-L930-UPL40

CANDELA DISTRIBUTION (continued):

	220°	222.5°	225°	227.5°	230°	232.5°	235°	237.5°	240°	242.5°	245°
112.5°	1466.7	1511.0	1556.0	1529.2	1502.7	1476.0	1449.5	1422.8	1396.4	1369.7	1343.4
115°	1339.9	1365.9	1392.9	1382.2	1371.9	1361.3	1350.8	1340.5	1329.9	1319.4	1309.3
117.5°	1181.2	1193.6	1207.2	1205.3	1203.4	1201.4	1199.7	1197.7	1196.1	1194.3	1192.5
120°	1015.5	1018.0	1021.9	1023.2	1024.7	1026.1	1027.6	1029.0	1030.5	1032.0	1033.6
122.5°	875.3	871.8	869.7	871.0	872.2	873.5	874.9	876.2	877.6	879.0	880.5
125°	774.7	768.4	763.9	762.1	760.5	758.6	756.8	755.2	753.5	751.8	750.3
127.5°	701.1	694.4	689.4	685.2	681.1	676.8	672.7	668.5	664.5	660.3	656.4
130°	648.9	642.6	638.1	632.9	627.8	622.4	617.3	612.0	606.8	601.5	596.4
132.5°	611.1	604.9	600.9	595.9	591.0	585.8	580.9	575.8	570.8	565.6	560.7
135°	585.7	580.3	577.2	572.6	568.3	563.6	559.0	554.4	549.9	545.1	540.8
137.5°	563.4	558.1	555.5	551.9	548.4	544.7	541.2	537.4	533.7	529.9	526.4
140°	544.2	538.7	535.8	533.9	531.9	529.7	527.7	525.6	523.6	521.6	519.4
142.5°	529.2	524.0	521.6	520.3	519.2	517.8	516.8	515.4	514.2	512.5	511.3
145°	513.9	508.0	505.3	505.1	505.3	505.1	505.0	505.0	504.9	504.7	504.6
147.5°	503.0	497.0	494.4	494.8	495.0	495.2	495.7	495.7	496.2	496.4	496.7
150°	490.9	484.2	481.1	481.8	482.3	483.0	483.6	484.2	484.9	485.5	486.0
152.5°	480.6	472.7	469.2	469.9	470.7	471.2	471.9	472.7	473.6	474.4	475.1
155°	471.8	463.2	459.6	459.6	460.0	460.3	460.6	461.1	461.5	461.9	462.4
157.5°	466.2	457.2	453.8	453.6	453.8	453.9	453.9	454.1	454.4	454.6	455.1
160°	462.3	453.4	450.1	449.9	450.1	450.0	450.1	450.2	450.5	450.6	451.0
162.5°	458.7	450.0	446.8	446.5	446.5	446.5	446.5	446.5	446.7	446.8	447.2
165°	455.7	448.3	445.5	445.6	445.8	445.8	446.1	446.4	446.6	446.9	447.4
167.5°	457.2	450.6	448.4	448.1	447.8	447.4	447.4	447.1	447.1	446.8	446.8
170°	455.8	450.6	448.7	448.6	448.9	448.9	448.9	449.0	449.0	449.0	449.3
172.5°	455.4	451.5	450.1	450.4	450.8	451.1	451.5	451.9	452.3	452.7	453.1
175°	455.9	453.6	453.0	453.0	453.2	453.4	453.7	453.9	454.1	454.3	454.7
177.5°	458.1	457.3	457.0	457.0	457.0	457.0	457.0	457.0	457.0	457.1	457.1
180°	456.8	456.8	456.8	456.8	456.8	456.8	456.8	456.8	456.8	456.8	456.8



TEST NUMBER: P1444680
 CATALOG NUMBER: EHBR1-36-UNV-TA-L930-UPL40

CANDELA DISTRIBUTION (continued):

	247.5°	250°	252.5°	255°	257.5°	260°	262.5°	265°	267.5°	270°	272.5°
0°	27712.0	27712.0	27712.0	27712.0	27712.0	27712.0	27712.0	27712.0	27712.0	27712.0	27712.0
2.5°	27928.6	27961.2	27958.7	27989.1	27987.6	28016.2	28010.5	28035.2	28029.5	28050.7	28038.3
5°	28844.8	28906.6	28927.1	28983.0	28994.6	29044.5	29045.6	29085.4	29080.5	29111.6	29095.1
7.5°	29711.3	29769.1	29796.6	29840.0	29861.7	29897.6	29911.7	29941.3	29948.3	29965.8	29965.3
10°	29784.5	29784.3	29797.8	29791.8	29803.9	29796.8	29811.6	29806.3	29828.2	29822.5	29839.1
12.5°	28800.4	28702.7	28667.1	28579.3	28560.1	28484.8	28490.2	28441.9	28465.2	28435.5	28486.1
15°	26685.3	26458.8	26346.9	26149.9	26088.0	25932.3	25919.7	25816.3	25844.2	25790.1	25869.1
17.5°	23559.9	23203.3	23007.5	22719.9	22605.6	22385.4	22341.3	22208.2	22228.8	22161.7	22257.3
20°	19833.6	19402.6	19155.8	18823.1	18674.6	18412.2	18342.5	18193.6	18212.3	18145.6	18253.6
22.5°	16064.8	15613.7	15334.9	14986.3	14796.7	14549.9	14475.8	14326.1	14334.7	14272.0	14375.9
25°	12601.4	12168.9	11898.3	11581.6	11417.2	11190.8	11113.0	10978.7	10986.2	10934.5	11027.8
27.5°	9748.2	9393.2	9166.9	8901.3	8753.9	8567.9	8491.9	8379.0	8378.7	8340.8	8418.8
30°	7617.6	7321.4	7118.2	6887.0	6748.6	6580.6	6507.3	6406.2	6401.9	6374.9	6436.9
32.5°	5964.4	5701.0	5515.6	5312.2	5187.9	5043.8	4974.3	4893.2	4885.8	4861.4	4912.2
35°	4636.6	4414.7	4255.4	4084.0	4096.7	3884.0	3919.4	3754.3	3709.5	3699.7	3737.5
37.5°	3583.5	3411.7	3282.2	3153.9	3067.0	2977.2	2928.8	2885.3	2880.4	2876.2	2902.7
40°	2804.9	2684.6	2590.5	2502.5	2442.7	2387.9	2357.6	2333.7	2328.1	2324.9	2340.9
42.5°	2270.2	2189.0	2128.3	2074.7	2038.3	2008.4	1991.9	1978.6	1974.1	1974.3	1983.8
45°	1918.0	1868.8	1829.7	1796.3	1773.1	1783.3	1753.2	1769.0	1748.2	1769.7	1755.5
47.5°	1689.1	1647.2	1622.9	1599.3	1585.2	1573.9	1574.4	1574.6	1579.0	1579.7	1584.3
50°	1512.4	1488.2	1471.4	1456.2	1448.9	1443.0	1445.1	1446.6	1450.9	1451.2	1454.6
52.5°	1381.7	1365.8	1355.6	1346.2	1342.9	1339.6	1341.0	1340.4	1342.3	1341.3	1344.1
55°	1275.3	1267.7	1264.6	1261.1	1261.6	1260.7	1261.3	1257.9	1255.9	1253.3	1255.6
57.5°	1188.0	1186.9	1189.1	1190.6	1194.6	1196.0	1196.9	1193.0	1189.3	1185.9	1187.9
60°	1120.7	1122.4	1127.6	1132.0	1137.7	1140.4	1142.1	1139.8	1137.1	1134.3	1136.0
62.5°	1054.4	1056.9	1063.3	1068.1	1075.1	1078.7	1082.7	1082.9	1084.0	1082.9	1084.1
65°	977.3	980.5	986.2	990.2	996.7	999.9	1004.0	1004.8	1007.0	1006.5	1008.4
67.5°	918.8	921.7	926.5	930.3	936.1	939.3	942.9	943.1	944.0	943.7	945.6
70°	856.4	857.8	862.1	865.3	871.0	874.4	878.5	879.7	882.3	882.8	884.8
72.5°	789.8	789.2	791.8	793.2	797.5	800.2	805.4	808.3	812.6	813.7	815.3
75°	717.3	716.7	719.8	721.0	724.7	727.3	733.2	737.0	743.7	746.4	745.7
77.5°	633.3	634.8	640.6	643.8	648.7	652.0	659.7	665.8	678.0	683.3	677.9
80°	539.5	541.0	547.0	550.0	556.4	560.5	569.1	576.2	587.2	589.5	586.5
82.5°	424.2	424.5	429.9	432.2	440.6	446.6	457.4	463.1	469.9	468.8	468.0
85°	289.2	293.1	299.8	306.5	316.7	326.6	336.8	345.2	339.3	348.6	338.1
87.5°	154.6	154.2	163.2	161.7	176.2	184.5	193.3	197.5	202.2	201.3	201.4
90°	57.5	54.4	53.8	50.6	50.7	47.3	48.1	44.9	46.3	42.4	47.9
92.5°	62.0	59.3	56.5	53.8	51.0	48.2	45.4	42.6	39.8	37.1	39.8
95°	75.8	73.3	70.8	68.1	65.5	63.0	60.4	57.8	55.3	52.8	56.0
97.5°	93.6	92.1	90.5	89.1	87.6	86.1	84.6	83.1	81.5	80.0	82.2
100°	105.7	105.7	105.7	105.7	105.4	105.4	105.4	105.4	105.4	105.4	107.1
102.5°	202.0	197.1	192.2	187.2	182.3	177.3	172.4	167.5	162.6	157.7	164.9
105°	456.1	436.9	417.6	398.4	379.1	359.9	340.7	321.5	302.3	283.1	303.0
107.5°	846.7	811.6	776.5	741.5	706.4	671.5	636.5	601.4	566.5	531.5	562.8
110°	1181.5	1144.2	1107.1	1069.9	1032.7	995.5	958.4	921.3	884.2	847.0	876.9



TEST NUMBER: P1444680
 CATALOG NUMBER: EHBR1-36-UNV-TA-L930-UPL40

CANDELA DISTRIBUTION (continued):

	247.5°	250°	252.5°	255°	257.5°	260°	262.5°	265°	267.5°	270°	272.5°
112.5°	1316.9	1292.7	1268.7	1244.7	1220.8	1196.8	1172.8	1148.9	1125.1	1101.2	1115.7
115°	1298.7	1287.3	1275.8	1264.4	1252.9	1241.5	1230.1	1218.8	1207.5	1196.2	1197.1
117.5°	1190.9	1186.9	1183.1	1179.2	1175.4	1171.7	1167.9	1164.4	1160.6	1157.1	1148.9
120°	1035.3	1036.5	1037.6	1038.8	1040.1	1041.5	1042.7	1044.1	1045.7	1047.2	1036.3
122.5°	882.0	884.7	887.5	890.4	893.4	896.3	899.3	902.5	905.8	909.0	898.1
125°	748.6	751.2	754.0	756.8	759.4	762.5	765.6	768.8	771.9	775.2	766.0
127.5°	652.3	653.2	654.0	655.1	656.1	657.4	658.6	660.0	661.5	663.1	657.3
130°	591.1	590.1	589.0	588.1	587.0	586.4	585.7	585.1	584.6	584.2	581.6
132.5°	555.7	553.3	550.9	548.5	546.3	544.2	542.2	540.4	538.6	537.0	536.2
135°	536.1	532.8	529.4	526.4	523.2	520.3	517.4	514.9	512.2	509.7	510.2
137.5°	522.7	519.4	516.1	513.0	509.8	507.1	504.2	501.4	498.9	496.5	497.4
140°	517.3	514.0	510.7	507.8	504.7	501.8	498.9	496.5	493.7	491.4	491.9
142.5°	509.9	507.2	504.1	501.4	498.5	495.9	493.4	491.1	488.4	486.5	487.1
145°	504.4	502.3	500.1	497.9	495.9	494.1	492.0	490.3	488.6	487.3	487.5
147.5°	496.8	495.4	493.5	492.1	490.4	489.1	487.6	486.5	485.1	484.1	484.2
150°	486.7	485.7	484.5	483.5	482.6	481.7	480.8	480.0	479.2	478.5	478.4
152.5°	475.8	474.9	473.9	473.0	472.1	471.3	470.5	469.8	469.2	468.5	468.4
155°	462.9	462.4	462.0	461.7	461.3	461.1	460.6	460.6	460.3	460.2	460.3
157.5°	455.3	455.3	455.0	455.1	455.0	455.0	454.8	455.1	454.9	455.1	455.4
160°	451.4	451.2	450.8	450.7	450.6	450.3	450.1	450.1	449.9	449.8	450.2
162.5°	447.4	447.6	447.7	448.0	448.2	448.4	448.8	449.2	449.4	449.8	450.1
165°	447.8	447.7	447.6	447.5	447.6	447.5	447.6	447.8	447.8	448.0	448.5
167.5°	446.7	447.0	447.2	447.4	447.7	448.2	448.5	449.0	449.5	450.0	450.5
170°	449.3	449.3	449.3	449.3	449.3	449.5	449.6	449.7	449.8	450.1	450.4
172.5°	453.5	453.5	453.3	453.5	453.3	453.5	453.5	453.6	453.6	453.7	453.9
175°	454.7	455.1	455.4	455.6	455.7	456.0	456.2	456.4	456.6	456.9	456.9
177.5°	457.1	457.2	457.2	457.2	457.2	457.2	457.2	457.2	457.2	457.2	457.3
180°	456.8	456.8	456.8	456.8	456.8	456.8	456.8	456.8	456.8	456.8	456.8



TEST NUMBER: P1444680
 CATALOG NUMBER: EHBR1-36-UNV-TA-L930-UPL40

CANDELA DISTRIBUTION (continued):

	275°	277.5°	280°	282.5°	285°	287.5°	290°	292.5°	295°	297.5°	300°
0°	27712.0	27712.0	27712.0	27712.0	27712.0	27712.0	27712.0	27712.0	27712.0	27712.0	27712.0
2.5°	28058.9	28044.9	28059.2	28044.7	28059.2	28041.7	28053.6	28034.7	28039.5	28019.9	28024.9
5°	29119.8	29097.5	29109.4	29080.3	29083.4	29044.5	29043.8	28998.7	28986.7	28935.3	28912.7
7.5°	29977.7	29970.4	29974.5	29955.8	29953.7	29927.2	29914.6	29877.2	29853.7	29806.3	29773.9
10°	29841.9	29863.9	29869.5	29891.8	29896.4	29918.5	29923.1	29945.2	29949.8	29966.2	29966.3
12.5°	28483.7	28558.0	28575.7	28667.4	28706.1	28811.1	28867.3	28983.0	29051.7	29167.0	29237.8
15°	25867.0	25995.5	26046.8	26225.9	26325.0	26534.1	26665.5	26905.5	27075.0	27330.0	27512.0
17.5°	22265.7	22445.2	22526.2	22769.1	22927.6	23236.3	23458.7	23824.9	24105.1	24512.0	24834.5
20°	18272.1	18471.6	18581.6	18858.7	19045.7	19406.3	19684.0	20134.0	20509.1	21024.7	21465.7
22.5°	14408.6	14598.5	14720.6	15002.5	15213.0	15589.1	15899.5	16374.4	16794.8	17375.8	17904.4
25°	11063.0	11237.1	11347.4	11602.5	11800.2	12145.8	12442.2	12898.9	13310.2	13892.9	14435.0
27.5°	8457.5	8603.3	8709.7	8927.2	9101.6	9394.7	9649.3	10026.7	10381.1	10885.3	11368.0
30°	6474.9	6604.1	6707.7	6897.1	7058.7	7312.9	7536.7	7853.8	8147.1	8548.3	8932.2
32.5°	4948.0	5059.2	5151.4	5317.2	5463.8	5692.7	5894.4	6172.3	6424.0	6764.3	7080.2
35°	3772.6	3991.5	3976.0	4204.6	4241.4	4405.6	4585.5	4828.5	5051.5	5340.8	5609.7
37.5°	2928.2	2989.7	3055.6	3156.7	3262.9	3412.4	3564.4	3861.2	3970.1	4188.8	4411.3
40°	2361.3	2402.9	2446.4	2514.7	2589.0	2694.4	2805.0	2946.6	3091.8	3269.1	3450.1
42.5°	1996.2	2019.8	2047.5	2087.7	2133.5	2200.2	2274.3	2370.3	2471.2	2596.1	2723.4
45°	1783.5	1772.4	1780.6	1802.2	1829.8	1870.3	1917.1	1976.5	2042.2	2123.1	2209.1
47.5°	1585.2	1589.8	1592.2	1604.0	1618.8	1645.9	1674.3	1714.6	1792.6	1816.3	1863.3
50°	1454.3	1456.5	1455.8	1461.6	1469.2	1486.9	1505.2	1532.6	1559.9	1596.0	1630.5
52.5°	1344.5	1347.6	1347.1	1351.1	1355.1	1366.3	1377.9	1397.2	1415.0	1438.0	1457.9
55°	1257.8	1262.0	1263.6	1266.9	1268.9	1274.8	1279.4	1288.6	1296.3	1309.3	1321.3
57.5°	1191.2	1196.9	1199.6	1200.7	1198.3	1198.0	1196.5	1198.5	1200.0	1207.0	1213.7
60°	1138.7	1143.3	1144.0	1143.3	1139.0	1135.9	1130.9	1129.4	1128.6	1132.0	1135.7
62.5°	1083.7	1085.4	1084.2	1082.9	1078.0	1075.0	1069.9	1068.0	1066.2	1068.7	1070.6
65°	1007.7	1009.1	1007.7	1006.9	1002.5	1000.1	995.8	994.4	991.9	992.6	992.1
67.5°	946.0	947.5	946.3	945.1	942.1	940.7	937.5	935.4	932.5	931.3	929.3
70°	884.5	885.6	883.8	882.8	879.3	878.0	874.9	874.3	872.0	871.4	869.0
72.5°	813.7	813.8	811.4	810.7	808.1	808.0	806.7	807.9	807.7	809.0	808.4
75°	741.3	740.3	737.2	736.7	734.7	735.6	734.3	736.1	736.3	738.9	739.3
77.5°	668.8	665.0	659.2	656.4	652.5	652.0	649.7	651.2	650.7	653.8	655.1
80°	577.2	572.6	565.1	561.5	556.9	556.2	554.1	556.2	555.1	558.7	561.2
82.5°	460.8	456.8	449.0	446.1	440.8	441.3	439.1	441.3	441.0	446.4	449.4
85°	340.9	338.2	330.2	323.1	315.2	310.6	306.0	305.2	303.9	306.0	307.9
87.5°	196.9	194.4	188.1	184.0	170.2	170.8	165.4	165.0	163.7	162.5	165.4
90°	48.1	52.9	53.3	57.8	58.6	63.6	64.8	69.6	70.5	75.5	77.0
92.5°	42.6	45.4	48.1	51.0	53.7	56.5	59.3	62.0	68.0	73.7	79.9
95°	59.2	62.4	65.6	68.7	71.9	75.1	78.3	81.5	90.3	99.0	107.7
97.5°	84.4	86.4	88.6	90.7	92.9	95.0	97.1	99.3	108.7	118.2	127.5
100°	108.8	110.5	112.2	114.0	115.7	117.4	119.1	120.7	139.2	157.3	175.5
102.5°	172.3	179.5	186.8	194.0	201.4	208.6	215.9	223.1	264.8	306.5	348.1
105°	322.8	342.6	362.6	382.4	402.3	422.1	442.0	461.9	528.5	595.1	661.9
107.5°	594.2	625.6	656.9	688.3	719.7	751.1	782.5	814.0	878.9	944.1	1009.0
110°	906.7	936.7	966.5	996.6	1026.4	1056.4	1086.3	1116.4	1155.5	1194.4	1233.3



TEST NUMBER: P1444680
 CATALOG NUMBER: EHBR1-36-UNV-TA-L930-UPL40

CANDELA DISTRIBUTION (continued):

	275°	277.5°	280°	282.5°	285°	287.5°	290°	292.5°	295°	297.5°	300°
112.5°	1130.3	1144.8	1159.4	1174.0	1188.6	1203.3	1217.9	1232.6	1252.1	1271.6	1291.1
115°	1198.0	1198.8	1199.8	1200.9	1201.9	1202.9	1204.1	1205.2	1211.4	1217.4	1223.6
117.5°	1140.9	1132.9	1125.0	1117.1	1109.2	1101.5	1093.7	1086.0	1084.7	1083.4	1082.3
120°	1025.7	1015.0	1004.3	993.4	983.0	972.4	962.1	951.7	946.4	941.0	935.8
122.5°	887.4	876.8	866.2	855.5	845.1	834.7	824.5	814.2	810.5	806.7	803.0
125°	757.0	748.1	739.3	730.6	721.9	713.4	704.9	696.5	696.2	695.9	695.8
127.5°	652.0	646.4	641.1	635.9	630.8	625.7	620.8	615.7	618.0	620.2	622.5
130°	579.2	576.8	574.7	572.3	570.4	568.4	566.4	564.5	568.6	572.5	576.6
132.5°	535.9	535.4	535.2	535.0	535.0	535.0	535.1	535.0	539.8	544.2	548.9
135°	510.8	511.3	512.3	513.1	514.4	515.3	516.5	517.5	522.0	526.2	530.9
137.5°	498.5	499.5	500.7	502.1	503.6	505.0	506.6	508.0	511.6	515.1	518.5
140°	492.9	493.6	494.8	495.8	497.0	498.1	499.5	500.6	503.7	506.3	509.0
142.5°	488.1	488.6	489.7	490.8	491.9	492.9	494.1	495.2	497.3	499.2	501.5
145°	488.2	488.7	489.6	490.1	491.0	491.8	492.8	493.6	494.9	496.1	497.4
147.5°	484.6	484.9	485.4	485.9	486.6	487.1	487.5	488.1	489.0	489.8	490.6
150°	478.5	478.6	478.9	478.9	479.3	479.7	480.1	480.2	480.9	481.7	482.5
152.5°	468.7	468.7	468.8	468.9	469.2	469.5	469.5	469.9	470.6	471.1	471.9
155°	460.5	461.0	461.3	461.7	462.2	462.4	462.9	463.2	463.7	464.1	464.6
157.5°	455.7	456.0	456.4	456.7	457.2	457.5	458.0	458.2	458.8	459.0	459.5
160°	450.9	451.5	452.0	452.6	453.2	453.7	454.4	455.0	455.4	455.7	456.1
162.5°	450.6	450.9	451.4	451.6	452.1	452.4	452.8	453.1	453.9	454.4	455.0
165°	449.1	449.7	450.4	450.8	451.5	452.1	452.7	453.2	453.6	453.9	454.3
167.5°	451.1	451.5	452.3	452.8	453.4	453.9	454.6	455.1	455.5	455.7	456.1
170°	451.0	451.5	452.1	452.5	453.1	453.5	454.1	454.6	455.1	455.6	456.2
172.5°	454.4	454.7	455.2	455.5	456.0	456.4	456.9	457.2	457.7	458.1	458.6
175°	456.9	456.9	457.0	457.1	457.2	457.2	457.3	457.5	457.6	457.7	457.8
177.5°	457.6	457.8	458.0	458.2	458.4	458.6	458.8	459.0	459.0	459.0	459.0
180°	456.8	456.8	456.8	456.8	456.8	456.8	456.8	456.8	456.8	456.8	456.8



TEST NUMBER: P1444680
 CATALOG NUMBER: EHBR1-36-UNV-TA-L930-UPL40

CANDELA DISTRIBUTION (continued):

	302.5°	305°	307.5°	310°	312.5°	315°	317.5°	320°	322.5°	325°	327.5°
0°	27712.0	27712.0	27712.0	27712.0	27712.0	27712.0	27712.0	27712.0	27712.0	27712.0	27712.0
2.5°	28005.3	28006.5	27983.9	27982.8	27961.5	27958.9	27938.3	27932.0	27915.2	27909.1	27892.1
5°	28855.0	28827.5	28763.9	28726.5	28663.7	28622.1	28554.1	28509.7	28444.1	28394.5	28328.5
7.5°	29714.3	29671.6	29600.2	29542.3	29455.2	29385.6	29283.5	29200.0	29089.5	28993.8	28877.8
10°	29966.3	29959.7	29941.6	29915.1	29874.6	29828.9	29759.5	29687.1	29590.3	29485.0	29356.1
12.5°	29346.2	29413.2	29504.5	29558.6	29624.4	29653.3	29680.3	29673.5	29655.8	29602.6	29528.0
15°	27775.4	27963.5	28212.7	28405.8	28627.9	28789.3	28967.6	29078.8	29189.6	29240.8	29272.1
17.5°	25276.5	25632.7	26079.5	26449.7	26876.9	27220.0	27596.2	27879.3	28170.4	28379.0	28567.7
20°	22066.7	22582.9	23214.7	23772.9	24421.9	24986.0	25604.1	26111.5	26634.8	27044.0	27431.3
22.5°	18585.1	19198.2	19962.1	20669.7	21506.4	22258.4	23106.9	23845.3	24616.3	25260.4	25883.2
25°	15161.6	15833.9	16669.1	17458.7	18406.3	19281.0	20287.2	21207.5	22204.1	23069.3	23924.0
27.5°	12035.4	12695.4	13548.2	14388.6	15390.7	16322.7	17400.8	18414.9	19549.5	20595.8	21666.2
30°	9465.9	10025.8	10790.4	11604.4	12592.8	13541.2	14631.0	15673.9	16854.2	17996.7	19202.4
32.5°	7499.6	7926.1	8527.2	9215.5	10127.4	11030.3	12068.0	13074.7	14237.1	15391.2	16645.1
35°	5956.0	6288.7	6747.0	7284.2	8056.4	8834.7	9752.5	10668.1	11752.5	12847.6	14066.5
37.5°	4696.7	4966.6	5325.5	5729.0	6348.5	6987.2	7739.8	8498.8	9441.1	10411.8	11516.4
40°	3667.6	3886.1	4165.5	4466.5	4934.2	5426.3	6008.4	6597.0	7354.0	8147.4	9061.5
42.5°	2881.1	3042.4	3239.8	3459.7	3896.1	4157.3	4552.0	4977.7	5534.3	6110.3	6797.5
45°	2313.8	2423.8	2560.7	2708.2	2910.7	3132.4	3402.7	3686.1	4214.9	4474.2	4892.2
47.5°	1932.3	2006.1	2093.2	2186.1	2305.6	2434.5	2594.8	2758.7	2970.7	3190.4	3448.0
50°	1675.3	1750.4	1780.2	1828.4	1897.6	1971.2	2061.6	2151.9	2265.6	2380.9	2513.5
52.5°	1484.5	1509.1	1541.6	1572.1	1615.0	1698.9	1726.0	1773.2	1837.0	1899.3	1969.0
55°	1338.9	1354.9	1376.0	1394.5	1420.4	1445.2	1480.9	1512.4	1554.9	1592.5	1638.6
57.5°	1225.6	1235.7	1250.4	1262.6	1279.3	1293.2	1314.2	1331.3	1355.7	1377.0	1405.0
60°	1143.2	1150.0	1159.8	1167.7	1178.4	1185.7	1196.1	1204.1	1217.0	1227.8	1243.4
62.5°	1076.0	1079.4	1085.9	1090.5	1097.3	1101.0	1106.5	1110.0	1117.1	1122.6	1131.3
65°	995.2	996.0	1000.3	1002.3	1007.6	1009.6	1014.1	1015.7	1021.6	1025.6	1033.3
67.5°	929.1	927.2	927.3	925.8	926.5	924.9	925.4	923.8	926.1	927.3	933.2
70°	868.7	866.1	865.3	862.5	861.6	858.8	858.0	855.4	855.1	854.3	856.4
72.5°	809.8	809.1	809.3	807.4	807.2	805.2	805.3	804.1	805.4	806.0	808.7
75°	742.1	742.3	743.7	742.0	742.4	740.8	741.4	739.9	740.7	740.4	743.0
77.5°	659.8	661.8	665.3	664.6	665.8	663.9	664.7	662.6	663.2	661.8	662.7
80°	567.1	571.2	576.0	575.9	577.9	576.6	578.4	576.4	577.2	574.7	574.1
82.5°	457.2	460.6	465.8	466.0	470.5	471.3	476.3	476.1	479.3	477.3	475.9
85°	312.5	314.9	319.4	321.9	326.5	329.4	334.2	336.1	332.7	339.0	334.0
87.5°	163.2	169.2	165.8	173.8	171.9	179.9	178.2	185.6	184.1	190.5	189.7
90°	83.1	85.2	91.6	93.8	101.2	104.1	105.7	102.2	103.6	100.3	101.8
92.5°	85.6	92.0	97.9	103.9	109.9	115.9	110.3	104.8	99.2	93.7	88.1
95°	116.5	125.3	134.0	142.8	151.5	160.2	150.9	141.5	132.2	122.8	113.4
97.5°	136.9	146.3	155.7	165.0	174.6	183.9	172.8	161.7	150.6	139.6	128.5
100°	193.6	211.8	229.9	248.1	266.3	284.5	263.9	243.1	222.5	201.8	181.1
102.5°	390.0	431.5	473.2	514.9	556.5	598.2	554.4	510.7	466.7	422.8	378.9
105°	728.6	795.3	861.9	928.6	995.2	1062.1	990.9	919.8	848.6	777.6	706.4
107.5°	1074.1	1139.0	1204.2	1269.2	1334.2	1399.4	1327.3	1255.1	1183.0	1110.8	1038.6
110°	1272.5	1311.6	1350.7	1389.8	1428.9	1468.2	1415.4	1362.8	1310.2	1257.4	1204.7



TEST NUMBER: P1444680
 CATALOG NUMBER: EHBR1-36-UNV-TA-L930-UPL40

CANDELA DISTRIBUTION (continued):

	302.5°	305°	307.5°	310°	312.5°	315°	317.5°	320°	322.5°	325°	327.5°
112.5°	1310.6	1330.3	1349.7	1369.5	1388.9	1408.6	1370.9	1333.4	1295.5	1258.0	1220.2
115°	1229.9	1236.0	1242.3	1248.7	1254.7	1261.1	1235.7	1210.3	1184.9	1159.4	1133.9
117.5°	1081.1	1080.1	1078.8	1077.8	1076.6	1075.5	1061.3	1047.1	1032.7	1018.5	1004.1
120°	930.3	925.1	919.8	914.6	909.2	903.9	897.8	891.9	885.6	879.6	873.3
122.5°	799.3	795.6	791.9	788.3	784.4	780.6	778.2	776.0	773.4	771.1	768.5
125°	695.6	695.4	695.1	694.9	694.6	694.4	693.0	691.9	690.5	689.4	687.9
127.5°	624.6	626.9	629.0	631.2	633.2	635.4	634.9	634.7	634.2	633.9	633.4
130°	580.3	584.5	588.2	592.2	595.8	599.8	598.9	598.2	597.5	596.7	596.0
132.5°	553.5	557.9	562.5	567.1	571.4	575.9	575.0	574.2	573.0	572.2	571.1
135°	535.0	539.4	543.5	548.0	552.0	556.2	554.9	553.9	552.6	551.6	550.4
137.5°	521.8	525.4	528.7	532.0	535.2	538.6	537.3	536.3	534.9	534.0	532.6
140°	511.6	514.4	516.9	519.6	522.1	524.8	523.3	521.9	520.3	518.9	517.4
142.5°	503.4	505.5	507.2	509.3	511.2	513.1	510.9	509.0	507.1	505.1	503.1
145°	498.7	500.1	501.3	502.5	503.4	504.7	502.4	500.3	497.8	495.7	493.2
147.5°	491.3	492.2	492.6	493.4	493.9	494.7	492.4	490.3	488.2	485.8	483.7
150°	482.9	483.8	484.3	484.9	485.5	486.1	483.8	481.6	479.2	476.9	474.7
152.5°	472.6	473.1	473.7	474.2	474.8	475.2	473.0	471.1	468.8	466.6	464.4
155°	464.9	465.4	465.6	466.0	466.1	466.4	464.5	462.9	461.0	459.3	457.3
157.5°	459.7	460.2	460.5	460.7	460.9	461.2	459.8	458.5	457.1	455.7	454.2
160°	456.4	456.7	457.1	457.2	457.5	457.7	456.5	455.5	454.3	453.1	451.7
162.5°	455.6	456.1	456.6	457.0	457.5	458.0	456.5	455.2	453.9	452.4	450.9
165°	454.6	454.9	455.2	455.6	455.6	455.9	454.9	454.1	453.1	452.2	451.2
167.5°	456.4	456.7	457.0	457.2	457.3	457.5	456.6	455.8	454.7	453.8	452.7
170°	456.4	457.0	457.4	457.8	458.2	458.5	457.8	457.1	456.2	455.5	454.6
172.5°	458.9	459.4	459.6	460.0	460.3	460.6	459.8	459.0	458.2	457.4	456.5
175°	457.8	458.0	458.1	458.1	458.1	458.2	457.6	457.0	456.4	455.7	455.0
177.5°	459.0	459.0	459.0	458.9	458.9	458.9	458.5	458.0	457.7	457.2	456.7
180°	456.8	456.8	456.8	456.8	456.8	456.8	456.8	456.8	456.8	456.8	456.8



TEST NUMBER: P1444680
 CATALOG NUMBER: EHBR1-36-UNV-TA-L930-UPL40

CANDELA DISTRIBUTION (continued):

	330°	332.5°	335°	337.5°	340°	342.5°	345°	347.5°	350°	352.5°	355°
0°	27712.0	27712.0	27712.0	27712.0	27712.0	27712.0	27712.0	27712.0	27712.0	27712.0	27712.0
2.5°	27886.1	27873.9	27866.1	27856.2	27850.2	27842.4	27836.8	27832.0	27828.1	27824.5	27821.8
5°	28278.2	28215.9	28167.5	28115.1	28072.0	28029.2	27996.0	27968.7	27949.8	27935.6	27927.1
7.5°	28777.5	28663.3	28561.9	28455.1	28359.3	28265.2	28184.0	28114.1	28061.6	28027.6	28007.0
10°	29223.3	29070.6	28919.5	28760.4	28609.8	28463.4	28328.5	28209.8	28115.8	28053.3	28016.9
12.5°	29423.1	29293.0	29138.7	28966.1	28781.3	28594.4	28412.2	28247.9	28110.0	28017.4	27964.0
15°	29247.1	29193.7	29089.0	28955.0	28779.7	28586.4	28372.4	28171.4	27986.4	27866.5	27796.9
17.5°	28674.5	28749.1	28741.1	28689.9	28563.8	28401.1	28183.1	27957.3	27725.8	27565.5	27477.9
20°	27708.3	27942.7	28061.6	28122.6	28073.1	27967.6	27770.2	27541.0	27271.3	27061.9	26934.2
22.5°	26350.5	26764.2	27022.1	27210.8	27250.9	27214.9	27040.6	26822.6	26522.0	26270.3	26081.7
25°	24602.4	25208.7	25616.2	25935.7	26059.8	26091.8	25943.6	25726.7	25391.6	25098.5	24839.3
27.5°	22543.5	23331.3	23875.4	24304.7	24498.5	24582.5	24446.0	24224.8	23828.4	23478.4	23139.9
30°	20225.6	21160.2	21815.4	22330.1	22566.3	22677.4	22532.3	22285.4	21824.1	21403.0	20976.5
32.5°	17744.6	18767.4	19481.3	20040.3	20274.4	20378.8	20189.1	19911.8	19378.6	18882.5	18385.3
35°	15147.2	16179.4	16899.4	17443.5	17639.7	17702.7	17460.1	17139.5	16548.8	16004.3	15462.1
37.5°	12496.8	13457.2	14111.5	14599.9	14721.3	14732.1	14439.8	14085.9	13464.9	12928.0	12388.3
40°	9869.4	10679.2	11207.6	11598.4	11640.6	11603.0	11285.2	10928.9	10348.0	9867.1	9393.2
42.5°	7394.4	8005.7	8382.7	8650.6	8634.6	8560.4	8269.0	7962.8	7483.5	7117.2	6744.2
45°	5274.0	5677.2	5897.6	6054.3	6004.0	5933.2	5706.4	5491.8	5166.1	4929.5	4678.9
47.5°	3663.9	4145.3	4061.5	4368.0	4104.0	4278.4	3915.2	3715.0	3542.2	3416.4	3274.8
50°	2623.1	2733.4	2786.7	2823.0	2803.7	2776.9	2711.6	2653.4	2574.4	2516.8	2449.8
52.5°	2025.7	2080.9	2111.1	2132.9	2128.7	2118.9	2090.4	2064.4	2027.5	2003.1	1973.8
55°	1715.9	1716.7	1772.3	1748.4	1783.6	1742.4	1758.6	1712.9	1720.3	1681.0	1654.7
57.5°	1425.8	1448.5	1458.6	1468.4	1465.7	1464.0	1452.9	1447.4	1435.0	1431.2	1422.3
60°	1254.2	1266.0	1268.5	1273.0	1269.2	1267.7	1259.2	1256.1	1247.8	1246.2	1240.4
62.5°	1136.6	1142.6	1142.6	1142.6	1137.6	1132.9	1123.4	1118.4	1111.3	1109.7	1106.3
65°	1038.4	1044.6	1045.7	1047.0	1043.3	1039.7	1031.2	1025.8	1018.5	1015.7	1011.8
67.5°	936.9	943.6	945.9	949.3	947.3	946.5	940.8	938.6	933.8	932.7	929.1
70°	857.4	860.1	859.9	859.9	855.3	851.3	844.6	841.4	836.4	835.4	832.1
72.5°	810.0	812.0	810.8	809.0	803.2	797.2	789.4	783.7	777.1	773.0	768.3
75°	743.4	746.0	744.3	743.2	738.0	734.0	727.8	724.6	720.0	718.6	715.4
77.5°	661.5	662.7	660.1	659.8	655.8	653.3	648.6	647.8	644.4	644.5	641.4
80°	570.4	569.7	565.4	564.5	560.5	559.5	555.8	556.1	553.4	554.5	552.3
82.5°	469.4	466.8	461.2	459.5	454.8	454.5	452.0	454.0	452.4	454.8	453.4
85°	336.3	337.1	334.6	334.6	333.3	333.6	333.5	335.0	335.2	337.5	337.4
87.5°	187.5	190.2	189.7	192.1	192.0	194.8	195.8	199.9	200.4	204.2	204.2
90°	98.5	100.3	96.9	98.8	97.3	100.5	99.7	102.9	101.7	104.3	102.0
92.5°	82.6	77.0	71.6	65.9	63.2	60.2	57.7	54.5	52.0	49.0	46.2
95°	104.0	94.6	85.2	75.8	72.6	69.3	66.1	62.9	59.8	56.6	53.4
97.5°	117.5	106.3	95.3	84.1	81.4	78.6	75.7	73.0	70.1	67.4	64.6
100°	160.4	139.7	119.1	98.3	96.0	93.6	91.3	88.9	86.5	84.1	81.8
102.5°	335.1	291.0	247.1	203.2	194.9	186.5	178.2	169.9	161.5	153.2	144.9
105°	635.2	563.9	492.8	421.5	398.9	376.2	353.7	331.0	308.3	285.7	263.2
107.5°	966.4	894.0	821.8	749.4	707.7	665.9	624.1	582.2	540.5	498.6	456.7
110°	1152.0	1099.2	1046.4	993.4	959.9	926.3	892.5	858.8	825.3	791.4	757.6



TEST NUMBER: P1444680
 CATALOG NUMBER: EHBR1-36-UNV-TA-L930-UPL40

CANDELA DISTRIBUTION (continued):

	330°	332.5°	335°	337.5°	340°	342.5°	345°	347.5°	350°	352.5°	355°
112.5°	1182.5	1144.7	1106.9	1068.9	1053.8	1038.4	1023.2	1007.9	992.6	977.1	962.0
115°	1108.3	1082.8	1057.2	1031.5	1026.3	1020.8	1015.5	1009.9	1004.5	999.0	993.4
117.5°	989.9	975.4	961.0	946.6	947.5	948.3	949.2	950.0	950.8	951.4	952.2
120°	867.2	860.9	854.8	848.5	853.2	857.7	862.4	866.7	871.2	875.5	879.8
122.5°	766.2	763.5	761.2	758.5	764.2	769.7	775.2	780.5	785.9	791.0	796.3
125°	686.7	685.3	684.0	682.5	688.2	693.8	699.3	704.6	710.1	715.2	720.4
127.5°	633.1	632.6	632.3	631.7	635.8	639.7	643.5	647.1	651.0	654.4	657.8
130°	595.2	594.4	593.7	592.8	596.4	599.8	603.5	606.7	610.1	613.0	616.1
132.5°	570.2	569.2	568.4	567.2	570.0	572.3	574.9	576.9	579.3	581.2	583.3
135°	549.3	548.0	546.9	545.6	548.0	550.3	552.6	554.6	556.7	558.4	560.3
137.5°	531.6	530.2	529.1	527.7	530.0	532.0	533.9	535.8	537.5	539.3	540.7
140°	516.1	514.5	513.1	511.5	513.4	515.3	517.0	518.6	520.3	521.6	522.9
142.5°	501.2	498.9	497.3	495.1	496.5	497.8	499.0	500.2	501.4	502.2	503.1
145°	491.0	488.5	486.4	484.1	485.0	486.0	487.1	488.1	488.8	489.4	490.2
147.5°	481.6	479.3	477.0	474.8	475.7	476.4	476.9	477.5	478.3	478.7	479.1
150°	472.4	469.9	467.6	465.2	465.9	466.4	466.9	467.5	468.1	468.4	468.7
152.5°	462.2	460.0	457.7	455.4	455.9	456.4	456.7	457.1	457.5	457.9	458.1
155°	455.6	453.6	451.7	449.7	450.2	450.6	450.7	451.1	451.4	451.6	451.7
157.5°	452.7	451.1	449.8	448.1	448.2	448.3	448.3	448.2	448.3	448.2	448.2
160°	450.6	449.2	447.9	446.5	446.5	446.6	446.6	446.5	446.5	446.3	446.1
162.5°	449.4	448.0	446.4	444.8	444.8	444.9	444.9	444.8	444.7	444.6	444.4
165°	450.2	449.0	448.0	446.7	446.6	446.4	446.3	445.8	445.7	445.3	444.9
167.5°	451.6	450.6	449.4	448.2	448.2	448.3	448.3	448.3	448.2	448.2	448.1
170°	453.8	452.8	452.0	451.0	450.8	450.7	450.5	450.3	449.9	449.8	449.5
172.5°	455.6	454.7	453.9	452.8	452.8	452.6	452.4	452.3	452.1	451.8	451.7
175°	454.3	453.7	452.9	452.3	452.1	452.0	451.9	451.8	451.6	451.5	451.3
177.5°	456.3	455.9	455.3	454.8	454.7	454.7	454.6	454.5	454.5	454.4	454.3
180°	456.8	456.8	456.8	456.8	456.8	456.8	456.8	456.8	456.8	456.8	456.8



TEST NUMBER: P1444680
 CATALOG NUMBER: EHBR1-36-UNV-TA-L930-UPL40

CANDELA DISTRIBUTION (continued):

	357.5°	360°
0°	27712.0	27712.0
2.5°	27819.3	27817.9
5°	27922.8	27921.1
7.5°	28001.4	28000.9
10°	28010.6	28015.5
12.5°	27954.8	27958.7
15°	27791.6	27799.2
17.5°	27479.5	27489.5
20°	26942.0	26952.4
22.5°	26071.5	26075.8
25°	24805.8	24787.9
27.5°	23080.4	23049.5
30°	20887.0	20857.1
32.5°	18271.8	18253.1
35°	15328.0	15316.3
37.5°	12228.7	12204.7
40°	9219.9	9149.9
42.5°	6581.0	6458.0
45°	4548.0	4402.3
47.5°	3175.0	3084.9
50°	2406.5	2377.5
52.5°	1961.0	1954.2
55°	1654.6	1651.5
57.5°	1424.3	1423.2
60°	1243.4	1243.1
62.5°	1108.6	1109.1
65°	1013.6	1013.8
67.5°	930.0	929.4
70°	833.3	832.6
72.5°	766.8	765.7
75°	715.4	714.7
77.5°	642.3	641.2
80°	553.8	552.3
82.5°	455.5	453.9
85°	339.7	339.9
87.5°	207.9	207.8
90°	104.5	101.9
92.5°	43.7	41.1
95°	50.2	47.0
97.5°	61.8	59.1
100°	79.4	77.1
102.5°	136.5	128.2
105°	240.5	217.9
107.5°	414.9	373.1
110°	724.0	690.3



TEST NUMBER: P1444680
CATALOG NUMBER: EHBR1-36-UNV-TA-L930-UPL40

CANDELA DISTRIBUTION (continued):

	357.5°	360°
112.5°	946.4	931.1
115°	987.6	982.1
117.5°	952.7	953.2
120°	883.9	888.2
122.5°	801.1	806.2
125°	725.3	730.3
127.5°	661.1	664.3
130°	618.7	621.7
132.5°	584.9	586.5
135°	561.7	563.1
137.5°	541.9	543.2
140°	523.9	525.0
142.5°	503.9	504.6
145°	490.8	491.2
147.5°	479.1	479.4
150°	468.9	469.2
152.5°	458.1	458.4
155°	451.8	451.9
157.5°	447.9	447.8
160°	445.9	445.7
162.5°	444.2	444.1
165°	444.4	444.1
167.5°	447.9	447.8
170°	449.1	449.0
172.5°	451.5	451.2
175°	451.2	451.1
177.5°	454.3	454.1
180°	456.8	456.8

LM-79-2019: Approved Method: Electrical and Photometric Measurements of Solid-State Lighting Products

Report Prepared for

Cooper Lighting Solutions

Metalux

Report Number: SP1-2506-472-5

Test Date: 08/01/2025

Luminaire Tested: EHBR-60-L930-N

Data in this report applies to families of products including EHBR-60-L930-N

Test Information

Test Method: LM-79-2019
 Report Number: SP1-2506-472-5
 Test Lab: COOPER LIGHTING SOLUTIONS
 Photometer: SP1 - 76IN SPHERE
 Measurement Geometry: 4π
 Issue Date: 08/05/2025
 Manufacturer: COOPER LIGHTING SOLUTIONS
 Product Line: Metalux
 Catalog Number: **EHBR-60-L930-N**
 Description: Elevate Round Highbay at, 60000 lumens, 3000K 90CRI LEDs with N lens

Spectral Parameters

CCT (K): 2996
 CIE u': 0.2519
 CIE v': 0.5169
 Duv: -0.0033
 CIE x: 0.4325
 CIE y: 0.3945
 CIE z: 0.1730
 Peak Wavelength (nm): 630
 Dominant Wavelength (nm): 584
 Purity: 48.21818
 Rf: 91.3
 Rg: 102

CRI (Ra):	94.4		
R1:	96.8	R9:	61.4
R2:	98.1	R10:	94.4
R3:	97.8	R11:	95.7
R4:	95.6	R12:	88.5
R5:	96.9	R13:	97.3
R6:	95.7	R14:	97.8
R7:	90.9	R15:	92.3
R8:	83.0		



Test Conditions

Stabilization Time: 40M
 Operation Time: 1H 40M
 Sphere Temperature (°C): 25.0

REPORT NUMBER: SP1-2506-472-5

Measurement and Test Equipment			
Instrument	Identification Number	Calibration Date	Calibration Due Date
Photometer	76INCH SPHERE IN0058	6/16/2025	12/16/2025
Power Meter	XITRON INXT2011004	1/21/2025	1/21/2026
AC Power Source	CHROMA 61603 IN0063	10/22/2024	10/22/2025
DC Power Source	AGILENT E3634A IN0208	10/22/2024	10/22/2025
Sphere Thermometer	ONSET IN0085	10/22/2024	10/22/2025
Room Thermometer	ONSET IN0046	10/22/2024	10/22/2025

REPORT NUMBER: SP1-2506-472-5

CIE 1931 Chromaticity Diagram



CIE 1931 Chromaticity Diagram with 2017 ANSI 7-Step and 4-Step Quadrangles



CCT = 2996K
 CIE x = 0.4325
 CIE y = 0.3945
 Duv = -0.0033

Point lies inside the ANSI 3000K 7-step quadrangle

REPORT NUMBER: SP1-2506-472-5

Photopic Flux vs. Wavelength



Photopic Lumens: NR

λ (nm)	Power W [^] /nm	Lumens (φ/nm)	λ (nm)	Power W [^] /nm	Lumens (φ/nm)	λ (nm)	Power W [^] /nm	Lumens (φ/nm)	λ (nm)	Power W [^] /nm	Lumens (φ/nm)	λ (nm)	Power W [^] /nm	Lumens (φ/nm)
360	0	NR	490	101	NR	620	317	NR	750	7	NR	880	0	NR
365	0	NR	495	121	NR	625	320	NR	755	6	NR	885	0	NR
370	0	NR	500	141	NR	630	1000	NR	760	5	NR	890	0	NR
375	0	NR	505	158	NR	635	651	NR	765	4	NR	895	0	NR
380	0	NR	510	171	NR	640	207	NR	770	4	NR	900	0	NR
385	0	NR	515	182	NR	645	201	NR	775	3	NR	905	0	NR
390	0	NR	520	189	NR	650	174	NR	780	3	NR	910	0	NR
395	1	NR	525	194	NR	655	146	NR	785	2	NR	915	0	NR
400	1	NR	530	199	NR	660	124	NR	790	2	NR	920	0	NR
405	3	NR	535	205	NR	665	105	NR	795	2	NR	925	0	NR
410	4	NR	540	210	NR	670	96	NR	800	1	NR	930	0	NR
415	7	NR	545	216	NR	675	79	NR	805	1	NR	935	0	NR
420	13	NR	550	222	NR	680	67	NR	810	1	NR	940	0	NR
425	22	NR	555	230	NR	685	58	NR	815	1	NR	945	0	NR
430	37	NR	560	240	NR	690	49	NR	820	1	NR	950	0	NR
435	60	NR	565	248	NR	695	42	NR	825	1	NR	955	0	NR
440	101	NR	570	258	NR	700	36	NR	830	1	NR	960	0	NR
445	172	NR	575	268	NR	705	30	NR	835	1	NR	965	0	NR
450	223	NR	580	278	NR	710	26	NR	840	1	NR	970	0	NR
455	167	NR	585	287	NR	715	22	NR	845	0	NR	975	0	NR
460	126	NR	590	295	NR	720	19	NR	850	0	NR	980	0	NR
465	111	NR	595	298	NR	725	16	NR	855	0	NR	985	0	NR
470	86	NR	600	303	NR	730	14	NR	860	0	NR	990	0	NR
475	74	NR	605	307	NR	735	12	NR	865	0	NR	995	0	NR
480	77	NR	610	341	NR	740	10	NR	870	0	NR	1000	0	NR
485	86	NR	615	368	NR	745	8	NR	875	0	NR			

REPORT NUMBER: SP1-2506-472-5

Scotopic Flux vs. Wavelength



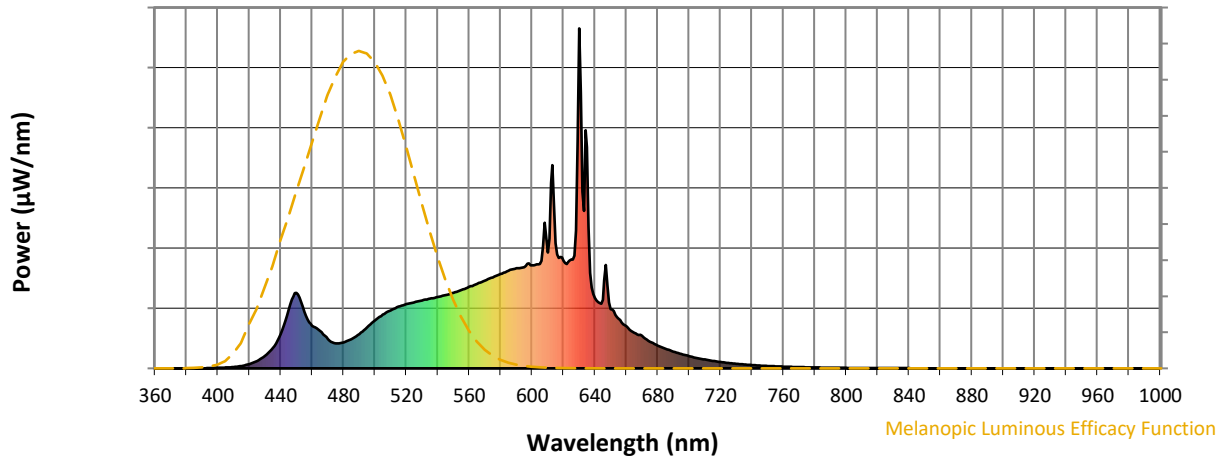
Scotopic Lumens: NR

S/P: 1.44

λ (nm)	Power W [^] /nm	Lumens (φ/nm)	λ (nm)	Power W [^] /nm	Lumens (φ/nm)	λ (nm)	Power W [^] /nm	Lumens (φ/nm)	λ (nm)	Power W [^] /nm	Lumens (φ/nm)	λ (nm)	Power W [^] /nm	Lumens (φ/nm)
360	0	NR	490	101	NR	620	317	NR	750	7	NR	880	0	NR
365	0	NR	495	121	NR	625	320	NR	755	6	NR	885	0	NR
370	0	NR	500	141	NR	630	1000	NR	760	5	NR	890	0	NR
375	0	NR	505	158	NR	635	651	NR	765	4	NR	895	0	NR
380	0	NR	510	171	NR	640	207	NR	770	4	NR	900	0	NR
385	0	NR	515	182	NR	645	201	NR	775	3	NR	905	0	NR
390	0	NR	520	189	NR	650	174	NR	780	3	NR	910	0	NR
395	1	NR	525	194	NR	655	146	NR	785	2	NR	915	0	NR
400	1	NR	530	199	NR	660	124	NR	790	2	NR	920	0	NR
405	3	NR	535	205	NR	665	105	NR	795	2	NR	925	0	NR
410	4	NR	540	210	NR	670	96	NR	800	1	NR	930	0	NR
415	7	NR	545	216	NR	675	79	NR	805	1	NR	935	0	NR
420	13	NR	550	222	NR	680	67	NR	810	1	NR	940	0	NR
425	22	NR	555	230	NR	685	58	NR	815	1	NR	945	0	NR
430	37	NR	560	240	NR	690	49	NR	820	1	NR	950	0	NR
435	60	NR	565	248	NR	695	42	NR	825	1	NR	955	0	NR
440	101	NR	570	258	NR	700	36	NR	830	1	NR	960	0	NR
445	172	NR	575	268	NR	705	30	NR	835	1	NR	965	0	NR
450	223	NR	580	278	NR	710	26	NR	840	1	NR	970	0	NR
455	167	NR	585	287	NR	715	22	NR	845	0	NR	975	0	NR
460	126	NR	590	295	NR	720	19	NR	850	0	NR	980	0	NR
465	111	NR	595	298	NR	725	16	NR	855	0	NR	985	0	NR
470	86	NR	600	303	NR	730	14	NR	860	0	NR	990	0	NR
475	74	NR	605	307	NR	735	12	NR	865	0	NR	995	0	NR
480	77	NR	610	341	NR	740	10	NR	870	0	NR	1000	0	NR
485	86	NR	615	368	NR	745	8	NR	875	0	NR			

REPORT NUMBER: SP1-2506-472-5

Melanopic Flux vs. Wavelength



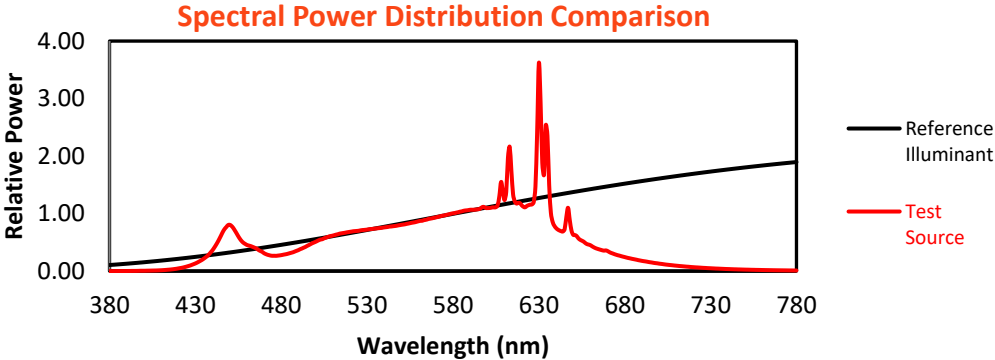
Melanopic Lumens: NR

M/P: 2.85

λ (nm)	Power W [^] /nm	Lumens (φ/nm)	λ (nm)	Power W [^] /nm	Lumens (φ/nm)	λ (nm)	Power W [^] /nm	Lumens (φ/nm)	λ (nm)	Power W [^] /nm	Lumens (φ/nm)	λ (nm)	Power W [^] /nm	Lumens (φ/nm)
360	0	NR	490	101	NR	620	317	NR	750	7	NR	880	0	NR
365	0	NR	495	121	NR	625	320	NR	755	6	NR	885	0	NR
370	0	NR	500	141	NR	630	1000	NR	760	5	NR	890	0	NR
375	0	NR	505	158	NR	635	651	NR	765	4	NR	895	0	NR
380	0	NR	510	171	NR	640	207	NR	770	4	NR	900	0	NR
385	0	NR	515	182	NR	645	201	NR	775	3	NR	905	0	NR
390	0	NR	520	189	NR	650	174	NR	780	3	NR	910	0	NR
395	1	NR	525	194	NR	655	146	NR	785	2	NR	915	0	NR
400	1	NR	530	199	NR	660	124	NR	790	2	NR	920	0	NR
405	3	NR	535	205	NR	665	105	NR	795	2	NR	925	0	NR
410	4	NR	540	210	NR	670	96	NR	800	1	NR	930	0	NR
415	7	NR	545	216	NR	675	79	NR	805	1	NR	935	0	NR
420	13	NR	550	222	NR	680	67	NR	810	1	NR	940	0	NR
425	22	NR	555	230	NR	685	58	NR	815	1	NR	945	0	NR
430	37	NR	560	240	NR	690	49	NR	820	1	NR	950	0	NR
435	60	NR	565	248	NR	695	42	NR	825	1	NR	955	0	NR
440	101	NR	570	258	NR	700	36	NR	830	1	NR	960	0	NR
445	172	NR	575	268	NR	705	30	NR	835	1	NR	965	0	NR
450	223	NR	580	278	NR	710	26	NR	840	1	NR	970	0	NR
455	167	NR	585	287	NR	715	22	NR	845	0	NR	975	0	NR
460	126	NR	590	295	NR	720	19	NR	850	0	NR	980	0	NR
465	111	NR	595	298	NR	725	16	NR	855	0	NR	985	0	NR
470	86	NR	600	303	NR	730	14	NR	860	0	NR	990	0	NR
475	74	NR	605	307	NR	735	12	NR	865	0	NR	995	0	NR
480	77	NR	610	341	NR	740	10	NR	870	0	NR	1000	0	NR
485	86	NR	615	368	NR	745	8	NR	875	0	NR			

Summary

$R_f = 91.3$
 $R_g = 102$
 $CIE R_a = 94.4$
 $R_9 = 61.4$



Color Vector Graphics

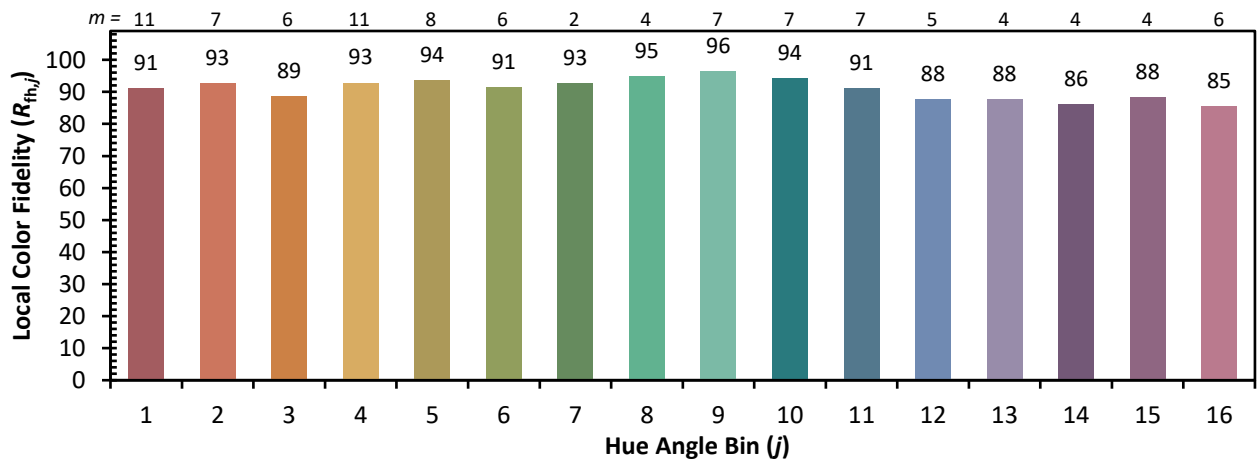
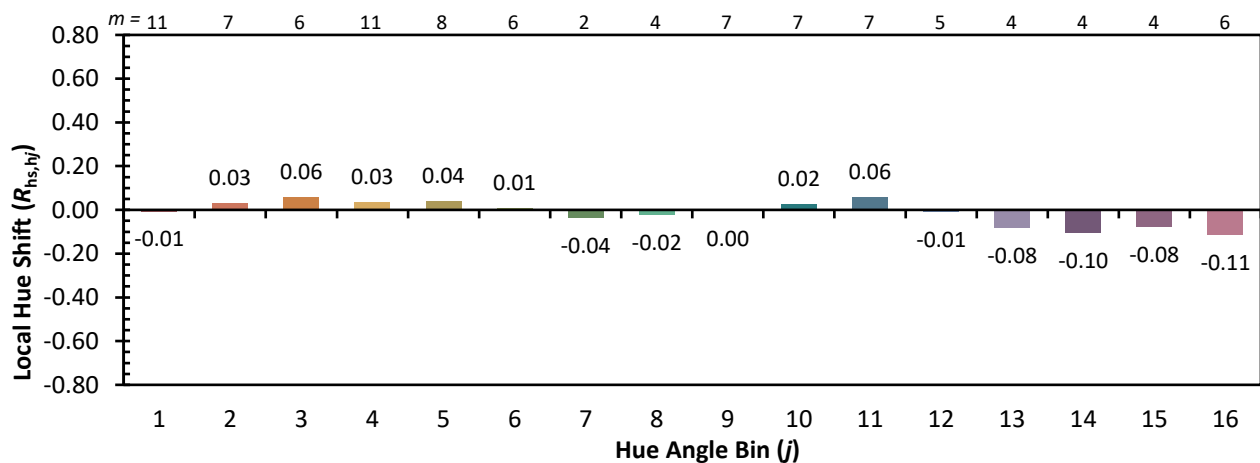
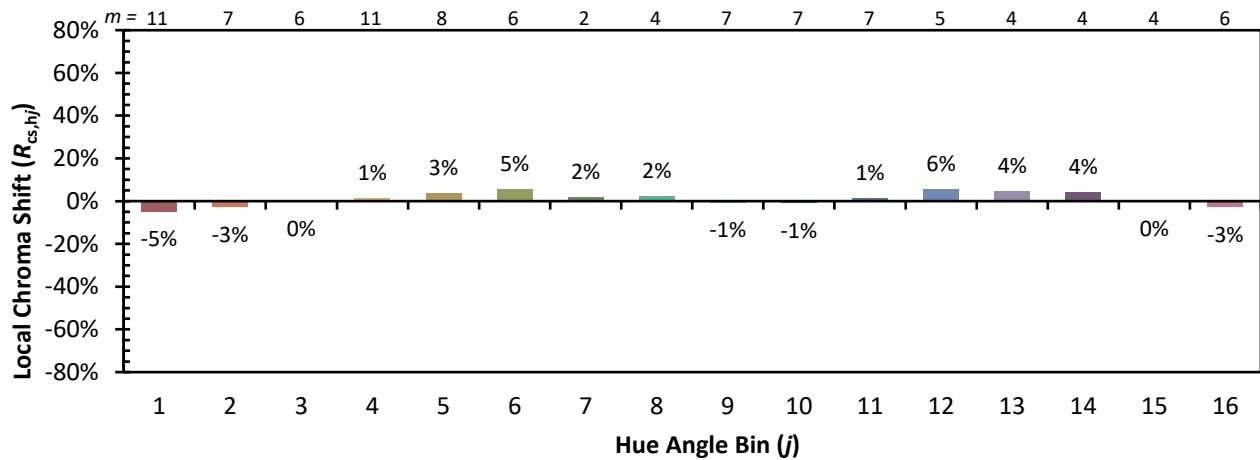


Individual Sample Fidelity Index ($R_{f,i}$)

CES01 = 86	CES26 = 91	CES51 = 96	CES76 = 89
CES02 = 63	CES27 = 96	CES52 = 95	CES77 = 85
CES03 = 32	CES28 = 96	CES53 = 93	CES78 = 86
CES04 = 70	CES29 = 90	CES54 = 98	CES79 = 89
CES05 = 51	CES30 = 96	CES55 = 98	CES80 = 91
CES06 = 51	CES31 = 90	CES56 = 95	CES81 = 72
CES07 = 44	CES32 = 84	CES57 = 95	CES82 = 95
CES08 = 42	CES33 = 91	CES58 = 95	CES83 = 93
CES09 = 29	CES34 = 92	CES59 = 99	CES84 = 96
CES10 = 76	CES35 = 96	CES60 = 96	CES85 = 80
CES11 = 59	CES36 = 90	CES61 = 96	CES86 = 77
CES12 = 65	CES37 = 94	CES62 = 95	CES87 = 91
CES13 = 44	CES38 = 99	CES63 = 94	CES88 = 96
CES14 = 74	CES39 = 97	CES64 = 96	CES89 = 82
CES15 = 72	CES40 = 94	CES65 = 92	CES90 = 97
CES16 = 48	CES41 = 94	CES66 = 95	CES91 = 82
CES17 = 50	CES42 = 91	CES67 = 94	CES92 = 78
CES18 = 57	CES43 = 88	CES68 = 93	CES93 = 87
CES19 = 72	CES44 = 99	CES69 = 94	CES94 = 73
CES20 = 67	CES45 = 93	CES70 = 90	CES95 = 85
CES21 = 86	CES46 = 93	CES71 = 90	CES96 = 92
CES22 = 79	CES47 = 86	CES72 = 96	CES97 = 93
CES23 = 92	CES48 = 95	CES73 = 85	CES98 = 94
CES24 = 91	CES49 = 91	CES74 = 90	CES99 = 93
CES25 = 72	CES50 = 96	CES75 = 90	



Color Rendition by Hue-Angle Bin



Measure Comparisons



(END OF REPORT)