

Cooper Lighting Solutions Photometric Lab
1121 Highway 74 South
Peachtree City, GA 30269



Scaled data based on original data using
LM-79-2019 Approved Method: Electrical and Photometric Measurements of Solid-
State Lighting Products

Test Report Prepared for
Cooper Lighting Solutions

Brand: METALUX

Report Number: P1444688

Luminaire Tested: EHBR1-42-UNV-TA-L930-UPL40

Issue Date: 5/1/2026

Test Information

Test Method: LM-79-2019
Report Number: P1444688
REPORT IS A COMBINATION OF REPORTS P1444359 AND P1431635
Test Lab: INNOVATION CENTER
Issue Date: 5/1/2026
Manufacturer: COOPER LIGHTING SOLUTIONS
Product Line: METALUX
Catalog Number: EHBR1-42-UNV-TA-L930-UPL40
Description: Elevate Round Highbay at, 42000 lumens, 3000K 90CRI LEDs with TA lens
Light Source: -
Ballast/Driver: -

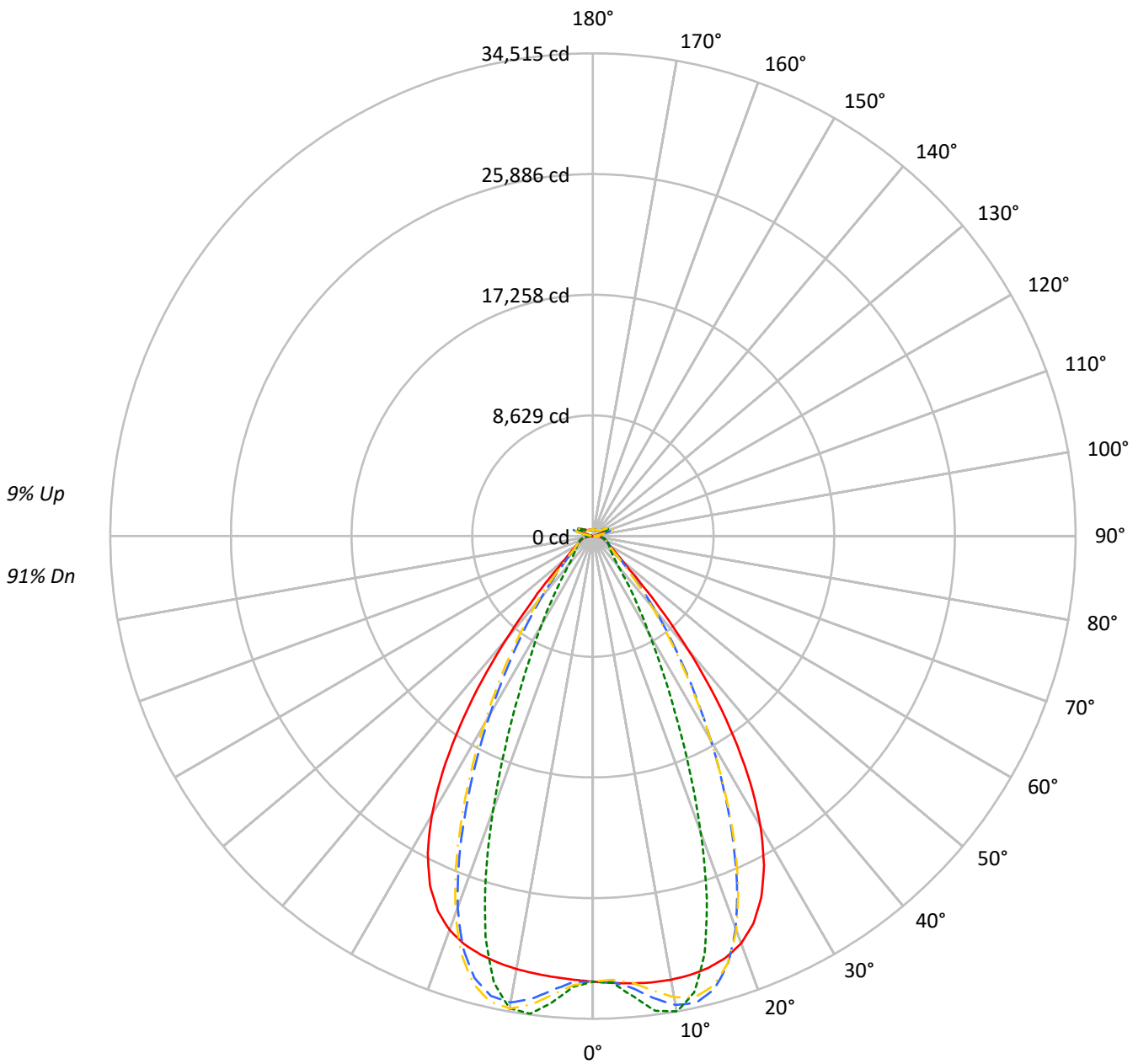
Summary

Lumens per Lamp: N/A
Luminaire Lumens: 40342.8 lumens
Efficiency: N/A
Efficacy: 158.2 lumens/watt
Spacing Criteria (0/90/45): 1.13 / 0.77 / 0.88
Luminous Opening: Vertical Cylinder (Dia: 1.71' x H: 0.1')
CIE Type: Direct

Input Watts (W): 255
Input Voltage (V): NR
Input Current (Ain): NR
Voltage Rise (V): NR
Power Factor: NR
Total Harmonic Distortion (THDi): NR
Frequency (hertz): 60
Stabilization Time: NR
Operation Time: NR
Ambient Temperature (°C): NR
Test Distance: 24 FT

TEST NUMBER: P1444688
CATALOG NUMBER: EHBR1-42-UNV-TA-L930-UPL40

Luminous Intensity Polar Plot



— 0°-180° - - 45°-225° - · - · 90°-270° - · - · 135°-315°



TEST NUMBER: P1444688
 CATALOG NUMBER: EHBR1-42-UNV-TA-L930-UPL40

COEFFICIENT OF UTILIZATION - ZONAL CAVITY METHOD:

RF	20				20				20				20				20				20
RC	80				70				50				30				10				0
RW	70	50	30	10	70	50	30	10	50	30	10	50	30	10	50	30	10	50	30	10	0
RCR																					
0	117	117	117	117	113	113	113	113	106	106	106	100	100	100	94	94	94	94	94	94	91
1	110	106	103	100	106	103	100	98	97	95	93	92	90	89	87	86	85	85	85	85	82
2	103	97	92	88	100	94	90	86	90	86	83	85	82	80	81	79	77	77	77	77	74
3	97	89	83	78	94	87	81	77	83	78	75	79	75	72	76	73	70	70	70	70	68
4	91	82	75	70	88	80	74	70	77	72	68	73	69	66	71	67	64	64	64	64	62
5	85	76	69	64	83	74	68	63	71	66	62	69	64	61	66	62	59	59	59	59	57
6	80	70	64	59	78	69	63	58	67	61	57	64	59	56	62	58	55	55	55	55	53
7	76	66	59	54	74	64	58	54	62	57	53	60	55	52	58	54	51	51	51	51	49
8	72	61	55	50	70	60	54	50	58	53	49	57	52	48	55	51	47	47	47	47	46
9	68	57	51	47	66	57	50	46	55	49	46	53	48	45	52	47	44	44	44	44	43
10	65	54	48	43	63	53	47	43	52	46	43	50	46	42	49	45	42	42	42	42	40

AVERAGE LUMINANCE (cd/sqm):

	0°	90°	180°	270°
0°	149618	149618	149618	149618
5°	150342	154726	148238	156752
10°	151597	162450	147962	161376
15°	152341	147260	147702	141331
20°	150766	109703	145831	101502
25°	142706	69381	137989	62951
30°	124664	41693	119836	38104
35°	95942	26162	90424	23175
40°	60692	16411	55529	15421
45°	31281	12785	30763	12575
50°	18341	11373	17778	11195
55°	14051	10759	13530	10662
60°	11889	10991	11383	10849
65°	11166	11478	10739	11086
70°	10910	12019	10366	11565
75°	11665	12745	11034	12183
80°	12071	14114	10945	12884
85°	11368	13617	9185	11659

MAXIMUM LUMINANCE 45°-90°:

Horizontal Angle: 25°
 Vertical Angle: 45°
 Luminance: 47873 cd/sqm



TEST NUMBER: P1444688
 CATALOG NUMBER: EHBR1-42-UNV-TA-L930-UPL40

ZONAL LUMENS:

Zone	Lumens	% Fixture
0°-10°	3139.9	7.8
10°-20°	8832.8	21.9
20°-30°	10059.9	24.9
30°-40°	7230.6	17.9
40°-50°	3334.7	8.3
50°-60°	1595.8	4.0
60°-70°	1164.4	2.9
70°-80°	884.6	2.2
80°-90°	408.5	1.0
90°-100°	104.0	0.3
100°-110°	612.0	1.5
110°-120°	1130.8	2.8
120°-130°	688.2	1.7
130°-140°	437.6	1.1
140°-150°	320.8	0.8
150°-160°	221.1	0.5
160°-170°	132.1	0.3
170°-180°	45.0	0.1
0°-30°	22032.5	54.6
0°-40°	29263.1	72.5
0°-60°	34193.6	84.8
0°-90°	36651.1	90.8
90°-120°	1846.8	4.6
90°-150°	3293.5	8.2
90°-180°	3692.0	9.2
0°-180°	40342.8	100.0

CANDELA DISTRIBUTION:

	0°	90°	180°	270°	360°	Flux
0°	31860	31860	31860	31860	31860	
5°	32100	33036	31651	33469	32100	3068
15°	31960	30894	30987	29650	31960	9005
25°	28498	13855	27556	12571	28498	12919
35°	17609	4802	16596	4254	17609	10807
45°	5061	2069	4977	2035	5061	4305
55°	1899	1454	1828	1441	1899	1753
65°	1166	1198	1121	1157	1166	1164
75°	822	898	777	858	822	854
85°	391	468	316	401	391	367
90°	113	142	38	45	113	70
95°	48	53	48	54	48	46
105°	219	284	146	284	219	291
115°	985	1197	1032	1198	985	909
125°	736	776	833	778	736	670
135°	572	511	616	515	572	446
145°	502	491	535	496	502	317
155°	465	468	496	472	465	216
165°	459	460	477	463	459	131
175°	468	473	477	474	468	45
180°	474	474	474	474	474	



TEST NUMBER: P1444688
 CATALOG NUMBER: EHBR1-42-UNV-TA-L930-UPL40

CANDELA DISTRIBUTION (FULL):

	0°	2.5°	5°	7.5°	10°	12.5°	15°	17.5°	20°	22.5°	25°
0°	31860.0	31860.0	31860.0	31860.0	31860.0	31860.0	31860.0	31860.0	31860.0	31860.0	31860.0
2.5°	31981.7	31979.2	31978.6	31976.4	31975.8	31975.8	31974.7	31972.1	31970.5	31966.9	31962.7
5°	32100.4	32098.9	32099.8	32100.0	32097.8	32092.8	32085.0	32075.5	32063.5	32052.1	32041.9
7.5°	32192.1	32194.4	32197.2	32196.6	32189.6	32178.0	32162.0	32153.0	32158.4	32175.7	32215.4
10°	32208.9	32222.6	32227.9	32226.3	32212.3	32202.3	32206.2	32239.9	32307.1	32396.7	32519.3
12.5°	32143.6	32160.3	32159.8	32154.2	32140.7	32154.4	32203.4	32303.8	32447.9	32624.6	32832.0
15°	31960.3	31981.9	31975.8	31968.6	31959.6	32004.6	32102.2	32276.8	32499.2	32748.5	33003.7
17.5°	31604.3	31630.5	31617.7	31609.5	31601.9	31686.2	31854.0	32109.6	32389.8	32671.7	32913.6
20°	30986.7	31004.2	30974.0	30959.6	30971.7	31136.9	31384.0	31710.4	32005.7	32272.3	32437.6
22.5°	29978.9	30000.7	29943.7	29937.1	30007.4	30261.2	30573.9	30938.8	31216.3	31427.5	31491.3
25°	28498.2	28519.7	28451.9	28492.4	28612.2	28957.7	29330.2	29720.4	29957.2	30113.7	30070.5
27.5°	26499.6	26519.2	26455.0	26537.7	26727.0	27181.1	27619.3	28042.6	28253.7	28363.4	28224.4
30°	23979.0	24019.8	23943.8	24059.2	24348.2	24937.7	25439.9	25914.6	26125.0	26208.5	25992.1
32.5°	20985.3	21043.3	20959.6	21131.2	21534.4	22242.6	22813.1	23343.5	23576.2	23671.4	23427.2
35°	17608.8	17692.0	17595.9	17853.6	18350.8	19139.4	19771.2	20363.3	20638.9	20774.0	20527.7
37.5°	14031.5	14110.7	14058.8	14402.5	14948.5	15765.9	16410.8	17049.6	17360.8	17563.6	17369.5
40°	10519.5	10592.0	10631.3	11024.4	11537.8	12308.3	12927.7	13559.8	13907.9	14162.3	14042.7
42.5°	7424.7	7497.8	7631.4	8010.7	8438.9	9076.7	9607.2	10174.7	10507.3	10778.8	10732.6
45°	5061.2	5146.2	5313.6	5624.2	5933.8	6391.3	6780.9	7222.3	7493.9	7742.7	7745.6
47.5°	3546.6	3606.3	3755.9	3968.0	4169.9	4742.6	4766.2	4983.1	5165.8	5351.6	5375.7
50°	2733.4	2769.2	2848.6	2966.8	3081.2	3229.8	3366.0	3523.2	3635.6	3737.5	3761.9
52.5°	2246.7	2269.5	2309.8	2373.8	2440.2	2521.0	2593.9	2680.2	2741.4	2795.9	2807.4
55°	1898.8	1917.6	1977.8	1989.9	2065.8	2080.5	2112.9	2165.4	2200.9	2233.6	2241.8
57.5°	1636.3	1650.0	1662.8	1690.0	1713.4	1747.4	1774.8	1812.5	1834.9	1858.6	1860.5
60°	1429.2	1439.1	1448.2	1467.1	1483.0	1506.6	1525.5	1551.2	1567.2	1585.0	1586.9
62.5°	1275.1	1282.2	1288.2	1300.7	1312.1	1330.3	1345.3	1366.7	1381.6	1395.3	1398.4
65°	1165.5	1170.7	1174.6	1184.1	1194.0	1209.5	1223.0	1240.6	1251.5	1262.0	1264.3
67.5°	1068.5	1073.5	1077.5	1086.0	1092.9	1104.5	1113.6	1126.7	1135.0	1143.3	1143.6
70°	957.3	961.9	964.9	972.9	978.5	988.5	995.8	1007.5	1016.1	1025.3	1027.8
72.5°	880.3	882.9	887.1	894.4	902.1	912.7	922.5	934.8	945.1	954.8	958.9
75°	821.7	824.9	827.6	833.8	839.2	848.2	855.5	866.7	875.6	886.1	891.1
77.5°	737.2	740.8	743.2	749.4	754.1	762.6	768.1	778.1	785.5	794.9	799.5
80°	635.0	638.4	640.1	646.0	649.6	657.6	662.9	672.5	678.7	688.1	693.7
82.5°	521.8	525.1	526.0	531.6	533.6	540.1	544.0	553.9	561.4	573.7	582.3
85°	390.7	391.9	393.8	392.4	400.3	400.7	409.7	411.3	423.2	426.2	439.7
87.5°	238.8	242.4	244.2	249.6	252.0	257.5	259.1	264.8	268.1	274.6	277.7
90°	113.4	119.7	122.4	129.7	132.2	138.8	140.9	148.2	150.9	158.4	162.5
92.5°	41.8	44.6	47.1	50.3	53.1	56.6	59.7	62.8	65.7	69.1	74.7
95°	47.7	50.9	54.1	57.3	60.5	63.6	66.8	70.0	73.3	76.5	85.7
97.5°	59.9	62.6	65.4	68.2	70.9	73.8	76.5	79.3	82.1	84.7	95.9
100°	78.0	80.3	82.7	85.0	87.3	89.7	92.1	94.4	96.8	99.1	119.7
102.5°	129.3	137.6	146.0	154.3	162.5	170.7	179.2	187.3	195.7	204.0	247.7
105°	219.1	241.7	264.4	286.9	309.5	332.1	354.8	377.0	399.7	422.2	493.5
107.5°	374.6	416.3	458.1	500.0	541.8	583.5	625.3	667.0	708.7	750.3	822.6
110°	692.1	725.7	759.3	792.9	826.5	860.2	893.8	927.2	960.9	994.3	1047.2



TEST NUMBER: P1444688
 CATALOG NUMBER: EHBR1-42-UNV-TA-L930-UPL40

CANDELA DISTRIBUTION (continued):

	0°	2.5°	5°	7.5°	10°	12.5°	15°	17.5°	20°	22.5°	25°
112.5°	933.4	948.4	963.8	978.9	994.2	1009.2	1024.5	1039.5	1054.8	1069.8	1107.5
115°	984.9	990.1	995.7	1000.8	1006.2	1011.4	1016.8	1022.0	1027.3	1032.4	1058.0
117.5°	956.5	955.5	954.7	953.7	952.6	951.6	950.7	949.4	948.4	947.3	961.6
120°	892.0	887.3	882.8	878.0	873.3	868.5	863.9	859.0	854.2	849.2	855.4
122.5°	810.8	805.1	799.8	793.9	788.4	782.5	777.0	770.8	765.3	759.4	761.7
125°	735.5	729.9	724.5	718.7	712.8	707.0	701.1	695.3	689.4	683.4	684.7
127.5°	670.3	666.5	662.6	658.4	654.3	649.9	645.7	641.4	637.2	632.6	633.0
130°	628.4	625.0	621.4	617.6	613.9	609.9	606.1	602.0	598.1	593.9	594.6
132.5°	594.2	591.8	589.3	586.5	583.8	580.7	578.0	574.7	571.9	568.9	569.5
135°	571.6	569.2	567.0	564.4	561.9	559.0	556.2	553.3	550.5	547.5	548.5
137.5°	552.4	550.3	548.1	545.8	543.5	540.7	538.2	535.5	532.9	530.0	530.9
140°	534.9	533.0	530.9	528.8	526.8	524.3	521.9	519.4	516.9	514.4	515.6
142.5°	515.1	513.5	512.1	510.3	508.7	506.6	504.7	502.5	500.6	498.5	500.1
145°	502.3	501.1	499.8	498.3	496.8	494.9	493.4	491.4	489.8	488.0	489.7
147.5°	491.1	490.0	489.1	488.0	486.8	485.2	483.8	482.3	480.9	479.3	481.1
150°	481.3	480.4	479.4	478.5	477.1	475.8	474.4	473.0	471.7	470.2	471.9
152.5°	471.0	469.9	469.1	468.0	466.9	465.4	464.3	462.9	461.6	460.3	461.7
155°	465.0	463.9	462.9	462.0	460.8	459.6	458.2	457.1	455.9	454.5	455.7
157.5°	461.3	460.5	459.6	458.7	458.0	457.0	456.0	454.9	453.9	453.1	453.9
160°	459.9	459.1	458.2	457.3	456.5	455.4	454.7	453.6	452.9	451.9	452.5
162.5°	458.8	457.9	457.1	456.2	455.3	454.3	453.4	452.7	451.8	450.8	451.7
165°	459.3	458.8	458.2	457.7	457.1	456.5	455.9	455.2	454.6	453.9	454.5
167.5°	463.7	462.9	462.3	461.5	460.7	460.0	459.2	458.4	457.8	456.9	457.5
170°	465.3	464.7	464.4	464.0	463.5	463.0	462.7	462.2	461.7	461.3	461.8
172.5°	467.8	467.4	467.1	467.0	466.4	466.2	465.9	465.5	465.3	464.8	465.6
175°	468.0	467.7	467.6	467.3	467.0	466.9	466.7	466.5	466.5	466.2	466.5
177.5°	471.1	471.1	471.1	471.0	471.0	470.8	470.7	470.4	470.3	470.3	470.7
180°	474.0	474.0	474.0	474.0	474.0	474.0	474.0	474.0	474.0	474.0	474.0



TEST NUMBER: P1444688
 CATALOG NUMBER: EHBR1-42-UNV-TA-L930-UPL40

CANDELA DISTRIBUTION (continued):

	27.5°	30°	32.5°	35°	37.5°	40°	42.5°	45°	47.5°	50°	52.5°
0°	31860.0	31860.0	31860.0	31860.0	31860.0	31860.0	31860.0	31860.0	31860.0	31860.0	31860.0
2.5°	31959.6	31955.7	31950.5	31943.7	31937.9	31931.2	31915.3	31910.5	31915.8	31919.4	31926.7
5°	32035.6	32037.8	32038.6	32053.1	32065.7	32097.0	32342.1	32439.5	32514.8	32562.7	32635.3
7.5°	32264.5	32338.2	32411.0	32509.0	32593.6	32707.8	33136.7	33319.2	33448.9	33542.2	33657.0
10°	32652.5	32813.4	32964.1	33140.8	33292.6	33466.6	33865.8	34043.6	34155.9	34237.6	34313.9
12.5°	33043.4	33266.4	33468.0	33664.6	33828.9	33979.7	34120.1	34182.3	34187.6	34190.3	34149.7
15°	33246.9	33460.1	33637.7	33767.8	33864.4	33907.0	33665.4	33538.6	33378.3	33246.4	33029.2
17.5°	33118.5	33246.4	33323.1	33315.5	33275.6	33141.9	32457.3	32080.7	31706.9	31370.1	30928.3
20°	32547.3	32537.5	32470.8	32281.8	32054.0	31699.8	30526.1	29848.9	29194.2	28619.1	27921.5
22.5°	31484.8	31317.5	31084.5	30676.8	30224.1	29605.2	27923.1	26927.1	26015.7	25210.5	24308.5
25°	29945.1	29601.2	29171.3	28524.2	27820.5	26917.8	24844.8	23605.8	22511.5	21562.4	20521.6
27.5°	27974.7	27456.6	26826.6	25931.0	24977.7	23821.3	21523.0	20155.6	18980.8	17963.2	16855.6
30°	25642.1	24968.2	24154.6	23043.1	21893.1	20581.7	18250.5	16865.6	15676.6	14629.7	13521.3
32.5°	23005.8	22216.6	21263.3	20015.7	18772.1	17423.6	15172.4	13831.9	12696.0	11688.9	10685.6
35°	20098.3	19252.0	18243.3	16970.9	15734.7	14423.7	12358.1	11149.3	10146.2	9256.1	8446.0
37.5°	16979.4	16148.4	15189.7	13990.4	12844.2	11656.2	9873.8	8861.0	8019.2	7280.3	6654.8
40°	13736.7	13009.5	12180.0	11143.2	10164.9	9175.5	7712.5	6908.5	6244.1	5680.7	5211.9
42.5°	10533.6	9970.1	9334.0	8514.7	7766.0	7012.7	5886.6	5290.9	4798.9	4393.3	4061.8
45°	7642.5	7265.5	6838.9	6269.3	5751.3	5225.8	4424.3	4005.8	3685.3	3423.8	3202.6
47.5°	5342.5	5123.8	5110.5	4584.1	4204.2	3883.0	3366.6	3102.2	2905.9	2747.4	2607.4
50°	3751.9	3646.1	3514.7	3326.8	3150.5	2968.9	2654.3	2494.5	2379.5	2283.5	2195.0
52.5°	2804.8	2749.9	2679.8	2580.2	2484.7	2382.5	2183.5	2081.7	2045.5	1956.1	1886.0
55°	2240.2	2208.8	2168.9	2110.4	2052.3	2029.0	1858.4	1782.8	1735.0	1699.8	1662.1
57.5°	1860.9	1837.4	1813.7	1774.1	1740.5	1699.8	1609.1	1570.5	1541.9	1521.2	1495.1
60°	1587.3	1573.2	1560.0	1536.8	1518.6	1496.7	1439.1	1417.3	1402.4	1389.9	1373.2
62.5°	1401.0	1393.7	1387.0	1374.5	1365.3	1353.4	1314.1	1303.6	1296.2	1289.8	1279.7
65°	1266.5	1261.3	1257.5	1249.3	1244.7	1237.7	1203.9	1196.8	1192.3	1189.9	1184.1
67.5°	1144.3	1138.9	1136.4	1130.5	1128.5	1124.2	1096.5	1092.7	1091.1	1091.8	1089.8
70°	1030.0	1027.8	1028.9	1028.0	1030.6	1031.4	1014.7	1014.5	1016.3	1019.8	1020.2
72.5°	961.5	961.5	962.8	963.4	965.9	967.1	953.1	952.4	953.3	955.8	955.9
75°	896.3	897.4	900.9	902.1	905.0	905.7	887.2	885.1	885.3	887.7	886.9
77.5°	806.1	810.0	816.7	820.3	825.9	827.0	806.3	803.9	804.0	806.5	804.3
80°	703.7	711.2	721.9	729.4	738.1	741.6	720.4	715.3	710.6	709.9	705.6
82.5°	595.0	604.1	616.9	623.7	633.0	635.1	599.6	592.9	588.9	589.2	585.3
85°	454.2	461.1	472.7	476.6	482.4	481.8	441.3	423.9	428.5	421.3	426.9
87.5°	284.9	288.9	296.2	297.2	300.0	299.3	258.4	250.4	248.1	248.2	245.2
90°	171.1	175.8	184.3	186.3	192.6	194.0	163.0	161.3	156.6	156.4	150.6
92.5°	80.6	86.3	92.1	97.8	103.7	109.5	111.6	116.1	110.5	104.3	98.8
95°	95.2	104.5	113.9	123.3	132.7	142.0	151.5	160.9	152.1	143.2	134.5
97.5°	106.9	118.1	128.9	140.1	151.1	162.3	173.3	184.5	175.1	165.5	156.1
100°	140.4	161.1	181.7	202.5	223.0	243.6	264.4	285.1	266.9	248.6	230.4
102.5°	291.5	335.5	379.4	423.2	467.0	511.0	555.1	599.0	557.2	515.4	473.7
105°	564.5	635.7	706.9	777.8	848.9	920.1	991.6	1062.7	996.0	929.4	862.6
107.5°	894.7	966.9	1038.9	1111.0	1183.2	1255.3	1328.0	1400.2	1335.1	1269.9	1204.8
110°	1099.8	1152.3	1205.0	1257.7	1310.2	1362.8	1416.2	1469.0	1429.8	1390.6	1351.6



TEST NUMBER: P1444688
 CATALOG NUMBER: EHBR1-42-UNV-TA-L930-UPL40

CANDELA DISTRIBUTION (continued):

	27.5°	30°	32.5°	35°	37.5°	40°	42.5°	45°	47.5°	50°	52.5°
112.5°	1145.0	1182.8	1220.4	1257.9	1295.4	1333.1	1371.8	1409.6	1389.9	1370.1	1350.7
115°	1083.1	1108.8	1134.0	1159.3	1184.7	1209.9	1236.5	1262.2	1255.8	1249.6	1243.2
117.5°	975.7	990.0	1004.1	1018.3	1032.3	1046.5	1062.3	1076.7	1077.7	1078.8	1080.0
120°	861.3	867.3	873.2	879.3	885.0	891.1	898.9	905.2	910.6	915.6	920.9
122.5°	764.0	766.3	768.4	770.7	772.9	775.0	779.6	782.3	785.8	789.5	793.2
125°	685.6	686.8	687.9	689.0	689.8	690.9	694.7	696.2	696.4	696.5	696.8
127.5°	633.2	633.3	633.5	633.8	633.6	633.9	636.8	637.5	635.4	633.1	630.7
130°	595.1	595.5	596.0	596.6	597.2	597.7	601.2	602.5	598.5	594.4	590.4
132.5°	570.2	570.9	571.4	572.4	573.0	573.6	577.5	579.0	574.5	569.8	565.2
135°	549.2	550.3	551.1	552.0	552.8	553.9	558.2	560.0	555.7	551.2	546.8
137.5°	531.7	532.7	533.5	534.6	535.4	536.5	541.3	543.1	539.7	535.9	532.6
140°	516.7	517.8	518.9	520.2	521.2	522.7	527.9	530.0	527.4	524.5	521.6
142.5°	501.4	503.1	504.8	506.6	508.2	510.1	516.1	518.8	516.9	514.6	512.7
145°	491.4	493.4	495.3	497.4	499.4	501.5	508.3	511.4	510.2	508.8	507.4
147.5°	482.5	484.3	486.0	487.9	489.8	492.0	498.9	502.0	501.4	500.4	499.6
150°	473.5	475.3	477.1	479.0	481.1	483.3	491.0	494.5	493.8	493.1	492.3
152.5°	463.3	464.9	466.5	468.4	470.1	472.0	481.3	484.8	484.2	483.4	482.9
155°	457.0	458.2	459.4	460.8	462.1	463.8	473.5	476.8	476.5	476.1	475.7
157.5°	454.7	455.5	456.3	457.2	458.3	459.3	469.3	472.7	472.2	471.9	471.5
160°	453.1	453.9	454.4	455.2	455.9	456.6	467.0	470.0	469.7	469.3	468.9
162.5°	452.5	453.6	454.4	455.4	456.3	457.3	467.7	471.2	470.6	470.0	469.5
165°	455.0	455.5	455.9	456.5	457.1	457.8	467.3	470.2	469.9	469.5	469.1
167.5°	458.0	458.7	459.2	459.9	460.5	461.3	470.3	473.0	472.7	472.3	472.0
170°	462.1	462.8	463.1	463.7	464.4	465.1	472.5	474.8	474.5	473.8	473.4
172.5°	466.1	466.8	467.4	468.0	468.6	469.4	475.7	477.9	477.6	477.1	476.6
175°	467.0	467.4	467.9	468.7	469.1	469.6	474.6	476.2	476.0	475.9	475.6
177.5°	471.1	471.3	471.8	472.2	472.7	473.0	476.1	477.1	477.0	477.0	476.9
180°	474.0	474.0	474.0	474.0	474.0	474.0	474.0	474.0	474.0	474.0	474.0



TEST NUMBER: P1444688
 CATALOG NUMBER: EHBR1-42-UNV-TA-L930-UPL40

CANDELA DISTRIBUTION (continued):

	55°	57.5°	60°	62.5°	65°	67.5°	70°	72.5°	75°	77.5°	80°
0°	31860.0	31860.0	31860.0	31860.0	31860.0	31860.0	31860.0	31860.0	31860.0	31860.0	31860.0
2.5°	31928.4	31939.6	31941.2	31954.3	31953.2	31968.8	31966.3	31979.2	31971.7	31982.2	31973.4
5°	32678.3	32746.2	32781.8	32848.2	32869.1	32928.6	32945.3	32999.5	33001.7	33044.8	33035.0
7.5°	33738.4	33838.7	33898.2	33980.3	34021.8	34090.2	34120.3	34170.8	34187.1	34227.3	34230.4
10°	34371.6	34420.3	34454.2	34477.1	34498.0	34507.9	34519.3	34516.2	34519.3	34514.8	34524.6
12.5°	34122.5	34051.5	34004.4	33915.4	33863.8	33765.5	33717.2	33622.6	33588.3	33507.0	33495.3
15°	32861.4	32613.6	32438.6	32184.1	32024.1	31773.7	31627.2	31401.3	31298.1	31118.5	31071.4
17.5°	30562.7	30102.9	29747.0	29290.5	28973.7	28547.1	28278.8	27925.6	27732.3	27447.4	27348.9
20°	27340.0	26659.6	26125.8	25490.0	25034.9	24467.9	24105.0	23647.1	23381.4	23031.6	22889.8
22.5°	23556.5	22709.3	22042.7	21291.5	20742.4	20110.6	19675.7	19180.4	18891.3	18511.3	18343.0
25°	19656.7	18722.7	17981.5	17190.0	16609.9	15976.5	15541.6	15054.9	14755.8	14395.0	14227.8
27.5°	15927.1	14981.5	14265.2	13529.4	12997.2	12425.7	12033.2	11608.3	11342.8	11034.9	10877.6
30°	12635.6	11801.6	11192.2	10581.5	10138.8	9674.7	9348.5	8996.4	8763.5	8499.8	8349.9
32.5°	9954.1	9310.3	8833.0	8348.4	7986.1	7598.2	7316.4	7005.8	6795.5	6560.0	6424.3
35°	7883.6	7383.3	7002.6	6603.7	6292.4	5962.1	5713.7	5445.6	5256.9	5054.2	4937.0
37.5°	6228.8	5831.0	5517.8	5186.4	4930.8	4657.1	4564.9	4257.2	4061.6	3899.8	3787.8
40°	4888.3	4572.1	4312.8	4059.5	3851.0	3643.4	3476.8	3312.5	3186.2	3070.5	2990.4
42.5°	3817.5	3588.3	3399.0	3213.4	3061.2	2910.0	2789.4	2676.1	2591.1	2515.4	2463.8
45°	3034.7	2877.0	2745.5	2614.8	2507.5	2406.5	2325.2	2253.1	2198.1	2152.6	2120.5
47.5°	2493.1	2385.1	2292.4	2204.1	2131.2	2065.1	2010.8	1993.0	1934.0	1894.2	1879.1
50°	2118.8	2053.6	1983.1	1918.0	1869.4	1821.0	1785.7	1751.1	1729.0	1710.7	1705.1
52.5°	1839.4	1789.6	1750.4	1709.2	1677.0	1642.5	1618.2	1595.2	1583.0	1573.5	1572.3
55°	1631.7	1596.8	1570.9	1543.3	1524.0	1503.8	1491.2	1479.0	1473.7	1468.9	1469.2
57.5°	1474.6	1451.3	1434.4	1416.5	1406.0	1396.4	1393.2	1390.1	1391.8	1392.5	1395.2
60°	1360.0	1344.9	1334.3	1324.0	1319.6	1316.6	1318.9	1321.6	1327.2	1331.6	1335.7
62.5°	1272.3	1263.6	1258.5	1252.9	1252.4	1252.7	1257.4	1262.0	1269.0	1274.2	1278.1
65°	1181.9	1177.0	1175.3	1171.8	1173.5	1174.6	1180.3	1183.9	1190.8	1194.9	1199.9
67.5°	1090.7	1089.5	1090.6	1090.6	1093.8	1096.5	1101.9	1105.9	1111.8	1115.6	1119.6
70°	1023.3	1023.7	1026.2	1026.7	1030.1	1032.0	1036.8	1039.3	1044.6	1047.8	1052.6
72.5°	957.7	956.6	957.3	955.7	956.9	956.5	959.0	960.3	964.8	967.2	973.2
75°	887.9	885.0	884.3	881.1	881.2	878.9	880.0	879.9	882.9	884.0	888.3
77.5°	803.6	798.6	796.3	791.0	790.9	788.8	791.0	792.3	797.5	800.0	804.8
80°	702.8	695.0	691.4	685.3	686.4	686.0	691.3	695.1	701.5	702.7	708.8
82.5°	584.1	576.2	572.5	566.4	567.8	567.9	572.6	573.5	579.1	581.4	588.5
85°	418.2	421.3	413.0	413.5	411.7	415.0	418.2	422.2	426.9	434.5	440.4
87.5°	246.3	245.2	248.2	248.5	252.8	255.0	261.9	265.8	273.5	279.5	290.3
90°	149.0	143.2	143.7	140.6	142.9	140.0	142.3	139.0	142.1	141.2	145.7
92.5°	92.3	86.6	80.3	74.6	68.4	62.9	59.6	57.2	54.1	51.9	48.5
95°	125.7	116.9	108.2	99.5	90.7	82.0	78.8	75.6	72.4	69.2	66.0
97.5°	146.8	137.3	128.0	118.4	109.0	99.6	97.5	95.4	93.2	91.1	88.9
100°	212.2	194.0	175.9	157.6	139.6	121.4	119.7	118.0	116.3	114.6	112.8
102.5°	432.1	390.4	348.8	307.1	265.5	223.8	216.5	209.2	202.0	194.7	187.5
105°	795.9	729.1	662.5	595.8	529.2	462.5	442.6	422.7	402.8	382.9	363.1
107.5°	1139.8	1074.7	1009.7	944.7	879.7	814.8	783.2	751.9	720.3	688.9	657.7
110°	1312.3	1273.2	1234.2	1195.1	1156.2	1117.1	1087.1	1057.2	1027.1	997.2	967.2



TEST NUMBER: P1444688
 CATALOG NUMBER: EHBR1-42-UNV-TA-L930-UPL40

CANDELA DISTRIBUTION (continued):

	55°	57.5°	60°	62.5°	65°	67.5°	70°	72.5°	75°	77.5°	80°
112.5°	1331.1	1311.5	1291.8	1272.4	1252.9	1233.3	1218.7	1204.0	1189.5	1174.9	1160.1
115°	1236.9	1230.7	1224.4	1218.3	1212.2	1206.0	1204.8	1203.9	1202.7	1201.8	1200.7
117.5°	1081.0	1082.1	1083.1	1084.3	1085.6	1086.8	1094.6	1102.2	1110.1	1118.0	1126.0
120°	926.1	931.4	936.6	941.9	947.2	952.6	962.9	973.4	983.8	994.5	1005.3
122.5°	796.7	800.4	803.9	807.6	811.4	815.1	825.3	835.7	846.0	856.5	867.3
125°	696.7	696.8	697.0	697.0	697.0	697.4	705.8	714.2	722.8	731.6	740.3
127.5°	628.4	625.9	623.6	621.4	618.9	616.8	621.7	626.6	631.6	636.8	642.0
130°	586.3	582.2	577.9	574.0	569.7	565.8	567.6	569.5	571.4	573.4	575.7
132.5°	560.3	555.7	550.9	546.1	541.3	536.6	536.5	536.3	536.1	536.2	536.4
135°	542.2	537.9	533.2	528.6	524.0	519.6	518.4	517.0	516.0	514.8	513.8
137.5°	529.0	525.3	521.7	518.2	514.4	510.8	508.9	507.4	505.6	504.5	502.8
140°	518.6	515.9	512.9	509.9	507.0	504.2	502.6	501.4	499.9	498.8	497.4
142.5°	510.4	508.2	506.0	503.9	501.6	499.6	498.1	496.8	495.5	494.3	493.1
145°	506.0	504.6	503.1	501.6	500.2	498.9	497.6	496.6	495.7	494.7	493.9
147.5°	498.7	497.7	496.9	496.0	494.8	494.0	493.2	492.7	491.7	491.3	490.6
150°	491.4	490.6	489.7	489.0	487.9	487.2	486.7	486.3	485.8	485.6	485.1
152.5°	481.9	481.2	480.4	479.7	478.7	478.0	477.6	477.4	476.9	476.8	476.2
155°	475.2	474.6	474.1	473.6	472.8	472.5	471.9	471.3	470.9	470.4	469.8
157.5°	471.1	470.5	470.0	469.6	468.9	468.5	467.9	467.5	466.9	466.5	466.0
160°	468.5	468.1	467.5	467.0	466.6	466.1	465.4	464.7	463.9	463.4	462.5
162.5°	468.7	468.0	467.4	466.8	465.9	465.4	464.8	464.3	463.8	463.4	462.8
165°	468.7	468.1	467.7	467.2	466.9	466.4	465.6	465.0	464.2	463.7	462.9
167.5°	471.6	471.2	470.8	470.4	469.8	469.4	468.8	468.1	467.4	466.7	465.9
170°	472.9	472.2	471.8	471.1	470.5	469.9	469.4	468.7	467.9	467.5	466.7
172.5°	476.1	475.8	475.2	474.8	474.1	473.6	473.3	472.7	472.1	471.5	471.1
175°	475.5	475.3	475.2	474.9	474.8	474.5	474.3	474.2	473.9	473.8	473.5
177.5°	476.9	476.8	476.8	476.6	476.4	476.4	476.1	475.9	475.6	475.2	475.0
180°	474.0	474.0	474.0	474.0	474.0	474.0	474.0	474.0	474.0	474.0	474.0



TEST NUMBER: P1444688
 CATALOG NUMBER: EHBR1-42-UNV-TA-L930-UPL40

CANDELA DISTRIBUTION (continued):

	82.5°	85°	87.5°	90°	92.5°	95°	97.5°	100°	102.5°	105°	107.5°
0°	31860.0	31860.0	31860.0	31860.0	31860.0	31860.0	31860.0	31860.0	31860.0	31860.0	31860.0
2.5°	31982.5	31974.4	31978.3	31963.3	31966.9	31948.8	31947.1	31926.7	31924.7	31905.5	31898.2
5°	33065.5	33047.6	33067.7	33036.4	33042.6	33001.7	32998.4	32945.7	32927.5	32861.7	32833.1
7.5°	34255.5	34248.8	34261.1	34234.9	34234.0	34197.6	34182.7	34135.4	34106.1	34037.0	33992.8
10°	34516.2	34522.4	34512.3	34514.8	34500.6	34496.7	34482.2	34473.0	34449.3	34431.3	34404.9
12.5°	33433.6	33440.1	33398.7	33424.9	33404.3	33452.6	33448.7	33505.6	33514.3	33586.4	33613.7
15°	30931.4	30923.6	30844.4	30894.4	30867.5	30973.6	30997.3	31140.0	31216.3	31399.4	31511.8
17.5°	27151.5	27131.1	27019.5	27080.3	27049.4	27205.8	27258.2	27486.3	27628.6	27923.7	28134.0
20°	22645.7	22606.6	22476.0	22547.2	22515.3	22692.9	22767.8	23043.5	23227.0	23617.9	23895.9
22.5°	18084.0	18022.2	17894.3	17960.8	17930.7	18114.6	18212.0	18488.7	18698.9	19100.1	19424.7
25°	13987.5	13932.5	13808.8	13855.3	13844.1	13999.8	14086.4	14348.1	14554.6	14936.8	15246.7
27.5°	10668.6	10611.3	10499.7	10532.6	10521.2	10653.8	10735.6	10954.2	11131.8	11453.5	11725.6
30°	8165.2	8096.2	8001.5	8019.6	8011.9	8119.3	8195.6	8379.6	8532.0	8803.9	9038.3
32.5°	6258.6	6189.2	6102.3	6110.7	6099.2	6183.5	6246.4	6406.5	6539.2	6770.4	6974.4
35°	4788.7	4869.8	4684.0	4801.7	4679.2	4859.1	4794.4	4894.4	5008.6	5203.5	5373.6
37.5°	3681.4	3624.8	3577.0	3572.0	3571.7	3613.4	3662.6	3759.0	3859.6	4004.7	4154.7
40°	2917.3	2877.7	2846.7	2844.4	2846.7	2876.3	2912.7	2979.3	3053.0	3157.2	3267.5
42.5°	2419.6	2393.3	2374.6	2373.4	2379.3	2400.3	2425.5	2465.1	2513.0	2580.6	2656.1
45°	2094.2	2079.6	2069.1	2068.6	2071.3	2082.3	2096.9	2121.4	2151.8	2194.0	2241.8
47.5°	1865.9	1862.3	1855.8	1856.1	1853.1	1857.6	1859.3	1873.1	1889.2	1921.0	1983.5
50°	1699.6	1699.6	1695.1	1694.9	1690.6	1690.4	1686.8	1692.3	1699.8	1719.5	1739.5
52.5°	1568.1	1567.7	1562.9	1561.9	1557.4	1557.2	1554.1	1556.3	1557.4	1567.2	1579.2
55°	1465.5	1462.4	1456.0	1454.0	1452.2	1454.8	1453.6	1453.8	1452.5	1456.6	1460.1
57.5°	1391.8	1387.8	1381.7	1379.9	1379.5	1382.6	1382.7	1381.6	1376.1	1372.3	1367.0
60°	1333.4	1329.4	1322.9	1321.3	1322.2	1326.5	1326.3	1322.7	1314.4	1307.2	1298.8
62.5°	1276.2	1274.5	1271.2	1270.8	1269.9	1270.6	1267.6	1263.9	1255.7	1248.0	1239.0
65°	1199.3	1200.1	1197.7	1198.0	1195.0	1194.6	1190.1	1186.5	1178.2	1171.2	1161.9
67.5°	1119.4	1120.1	1118.1	1118.1	1116.5	1116.8	1114.0	1110.6	1103.7	1098.0	1090.8
70°	1053.7	1055.4	1054.2	1054.6	1052.6	1052.0	1047.7	1044.4	1037.2	1032.5	1026.0
72.5°	975.0	978.5	978.4	979.2	976.4	975.0	969.9	965.7	959.2	955.5	950.3
75°	890.0	894.5	895.9	897.8	893.8	891.7	886.1	882.9	877.5	875.3	871.9
77.5°	806.9	812.0	816.8	821.4	814.9	809.1	802.1	796.8	789.2	786.3	781.0
80°	713.8	722.7	733.5	742.5	730.7	719.0	707.5	699.0	688.9	684.8	678.2
82.5°	592.2	601.3	607.5	613.3	605.2	596.5	585.4	578.0	567.1	563.1	555.4
85°	449.8	461.3	465.0	468.0	462.9	458.2	447.9	433.8	426.9	416.3	410.6
87.5°	295.9	302.7	304.1	305.1	301.9	299.7	292.9	286.3	274.6	266.2	255.8
90°	143.6	146.2	141.8	141.6	139.3	141.4	136.4	135.9	128.1	126.2	119.4
92.5°	46.0	42.9	40.2	37.3	40.7	43.0	46.3	48.5	51.7	54.1	57.2
95°	62.8	59.6	56.4	53.2	55.8	58.3	60.9	63.4	65.9	68.5	71.1
97.5°	86.8	84.7	82.5	80.4	81.9	83.4	84.8	86.4	87.9	89.4	91.0
100°	111.1	109.4	107.7	106.0	106.0	106.0	106.0	106.0	106.0	106.0	106.0
102.5°	180.2	173.0	165.7	158.4	163.3	168.2	173.1	178.0	183.0	187.9	192.9
105°	343.3	323.4	303.6	283.7	302.9	322.1	341.3	360.6	379.7	399.1	418.3
107.5°	626.1	594.7	563.4	532.0	567.2	602.1	637.2	672.2	707.1	742.1	777.3
110°	937.4	907.5	877.7	847.8	885.0	922.1	959.2	996.3	1033.5	1070.6	1108.0



TEST NUMBER: P1444688
 CATALOG NUMBER: EHBR1-42-UNV-TA-L930-UPL40

CANDELA DISTRIBUTION (continued):

	82.5°	85°	87.5°	90°	92.5°	95°	97.5°	100°	102.5°	105°	107.5°
112.5°	1145.6	1131.1	1116.6	1102.1	1126.0	1149.8	1173.7	1197.9	1221.8	1245.8	1269.7
115°	1199.8	1198.9	1198.1	1197.2	1208.6	1219.9	1231.2	1242.6	1254.0	1265.3	1276.8
117.5°	1133.9	1141.8	1149.9	1158.0	1161.7	1165.3	1169.1	1172.7	1176.6	1180.3	1184.1
120°	1016.0	1026.5	1037.4	1048.2	1046.7	1045.2	1044.0	1042.5	1041.3	1039.9	1038.9
122.5°	877.9	888.5	899.3	910.1	906.9	903.7	900.6	897.6	894.7	891.7	888.8
125°	749.3	758.1	767.2	776.3	773.1	769.9	766.7	763.9	760.9	757.9	755.3
127.5°	647.5	653.1	658.5	664.1	662.6	661.0	660.0	658.6	657.4	656.4	655.5
130°	577.9	580.3	583.0	585.4	585.8	586.3	587.0	587.7	588.6	589.4	590.5
132.5°	536.8	537.2	537.7	538.2	539.9	541.6	543.8	545.7	548.0	550.0	552.8
135°	513.1	512.4	511.9	511.4	514.0	516.5	519.2	522.0	525.1	528.4	531.6
137.5°	501.7	500.5	499.6	498.5	501.1	503.6	506.4	509.2	512.2	515.3	518.8
140°	496.5	495.5	494.8	493.9	496.5	498.9	501.7	504.5	507.6	510.7	513.9
142.5°	492.2	491.1	490.4	489.7	491.8	494.2	496.9	499.3	502.2	504.8	507.9
145°	493.1	492.3	491.8	491.3	492.8	494.5	496.5	498.3	500.4	502.3	504.8
147.5°	490.1	489.6	489.4	489.1	490.3	491.5	492.9	494.1	495.8	497.3	499.0
150°	485.0	484.7	484.6	484.5	485.3	486.0	487.0	487.7	488.8	489.8	491.1
152.5°	476.2	475.9	476.0	475.8	476.5	477.1	478.0	478.7	479.7	480.5	481.7
155°	469.5	469.2	468.8	468.5	468.7	468.9	469.3	469.5	470.1	470.3	470.9
157.5°	465.7	465.3	465.0	464.6	464.5	464.4	464.5	464.5	464.6	464.6	464.7
160°	462.1	461.3	460.7	460.2	460.5	460.4	460.6	460.6	460.9	461.2	461.3
162.5°	462.4	462.0	461.6	461.2	460.9	460.5	460.2	459.7	459.5	459.2	459.1
165°	462.1	461.5	460.9	460.2	460.1	460.0	459.8	459.6	459.6	459.5	459.6
167.5°	465.4	464.6	464.0	463.4	462.9	462.2	462.0	461.4	460.9	460.5	460.3
170°	466.2	465.5	465.0	464.5	464.3	463.9	463.8	463.5	463.3	463.2	463.2
172.5°	470.5	470.0	469.5	469.1	468.9	468.7	468.6	468.4	468.2	468.2	468.0
175°	473.4	473.1	473.0	472.7	472.5	472.2	471.9	471.8	471.5	471.1	471.0
177.5°	474.6	474.3	474.0	473.8	473.7	473.7	473.7	473.7	473.7	473.6	473.5
180°	474.0	474.0	474.0	474.0	474.0	474.0	474.0	474.0	474.0	474.0	474.0



TEST NUMBER: P1444688
 CATALOG NUMBER: EHBR1-42-UNV-TA-L930-UPL40

CANDELA DISTRIBUTION (continued):

	110°	112.5°	115°	117.5°	120°	122.5°	125°	127.5°	130°	132.5°	135°
0°	31860.0	31860.0	31860.0	31860.0	31860.0	31860.0	31860.0	31860.0	31860.0	31860.0	31860.0
2.5°	31877.6	31869.2	31847.1	31836.2	31815.8	31805.6	31789.6	31779.4	31766.4	31756.9	31751.9
5°	32760.8	32720.0	32638.3	32588.1	32499.8	32441.7	32354.1	32289.9	32199.4	32132.7	32047.2
7.5°	33909.9	33847.3	33742.7	33663.3	33540.0	33445.6	33307.1	33196.4	33043.4	32916.3	32760.0
10°	34377.7	34341.2	34294.2	34243.3	34174.8	34107.8	34013.2	33916.8	33788.4	33660.6	33493.6
12.5°	33686.3	33720.6	33788.4	33820.1	33871.8	33889.5	33913.2	33902.1	33881.1	33828.9	33753.2
15°	31727.9	31871.4	32098.1	32255.0	32474.7	32629.0	32833.1	32964.6	33116.0	33206.4	33292.3
17.5°	28506.6	28784.1	29184.1	29503.3	29931.8	30280.1	30707.0	31042.3	31429.5	31726.5	32042.8
20°	24380.5	24769.1	25321.4	25790.4	26411.2	26937.7	27612.1	28177.2	28836.3	29385.7	29978.6
22.5°	19939.8	20396.8	21029.6	21595.3	22336.8	22998.9	23843.9	24591.1	25482.0	26280.2	27163.3
25°	15750.4	16198.4	16843.0	17428.7	18229.1	18958.5	19881.8	20738.8	21772.8	22737.0	23843.9
27.5°	12157.8	12555.7	13122.4	13649.6	14382.6	15098.8	16035.7	16949.6	18052.9	19089.1	20282.1
30°	9389.2	9712.1	10166.0	10590.2	11178.7	11764.4	12598.9	13444.1	14542.0	15615.8	16838.8
32.5°	7276.3	7551.6	7930.6	8274.9	8728.4	9170.0	9784.5	10459.9	11423.0	12451.5	13634.1
35°	5632.7	5868.2	6190.7	6487.4	6860.3	7210.8	7669.4	8151.5	8886.4	9751.6	10810.0
37.5°	4490.7	4586.7	4817.0	5060.0	5369.6	5657.8	6016.5	6373.0	6898.8	7581.4	8446.0
40°	3415.1	3567.6	3755.0	3946.3	4180.9	4411.9	4805.5	4995.0	5341.2	5831.3	6502.3
42.5°	2755.6	2862.8	2994.7	3127.7	3291.2	3452.1	3651.2	3853.9	4112.7	4444.6	4921.9
45°	2305.9	2375.9	2460.9	2549.5	2656.8	2766.6	2899.9	3039.1	3214.5	3418.6	3708.5
47.5°	2005.5	2044.2	2099.6	2160.2	2233.8	2309.8	2396.5	2485.1	2594.1	2715.2	2880.3
50°	1771.1	1803.3	1846.4	1886.9	1937.6	2015.6	2050.0	2098.9	2164.5	2235.7	2328.0
52.5°	1601.4	1622.9	1649.9	1673.1	1705.3	1734.4	1772.7	1806.4	1851.8	1894.6	1954.2
55°	1469.2	1477.1	1492.4	1507.4	1529.6	1549.5	1575.7	1597.8	1626.8	1652.4	1690.0
57.5°	1367.2	1367.9	1375.0	1382.8	1397.1	1409.6	1427.7	1442.2	1462.3	1478.6	1501.1
60°	1293.8	1290.0	1291.4	1294.1	1302.1	1310.3	1321.8	1331.3	1343.9	1353.2	1365.8
62.5°	1232.8	1226.7	1225.3	1224.6	1228.6	1231.6	1237.8	1242.4	1249.6	1253.7	1260.3
65°	1155.7	1148.5	1145.7	1142.4	1143.6	1142.6	1145.0	1145.1	1148.8	1149.6	1153.5
67.5°	1085.9	1079.8	1076.1	1071.7	1069.6	1066.4	1065.1	1062.0	1061.5	1058.9	1058.3
70°	1022.0	1016.2	1013.1	1008.9	1006.8	1002.6	1000.0	994.8	991.7	986.8	984.2
72.5°	948.3	945.0	944.0	941.2	940.5	938.1	937.0	933.4	931.2	927.1	924.7
75°	871.2	868.4	868.2	865.4	865.1	862.4	861.6	857.7	855.7	851.6	849.8
77.5°	779.3	775.3	774.1	770.8	771.6	770.2	771.4	768.4	767.2	763.0	761.7
80°	675.8	670.7	668.5	664.2	665.3	663.4	665.3	665.1	666.7	663.4	662.7
82.5°	553.3	547.6	546.5	543.5	545.6	545.7	550.1	547.8	548.7	545.6	546.9
85°	402.6	398.4	392.5	391.7	387.9	391.7	386.7	390.1	384.6	388.4	383.3
87.5°	249.6	240.9	236.2	230.0	227.7	221.6	219.1	214.8	216.1	214.1	215.2
90°	119.1	113.4	114.3	110.9	113.1	110.4	113.8	112.6	116.6	115.4	119.6
92.5°	59.6	62.4	67.5	72.9	77.8	82.9	88.0	93.4	98.3	103.6	108.5
95°	73.6	76.2	83.1	89.8	96.7	103.6	110.5	117.4	124.2	131.0	137.9
97.5°	92.5	94.0	100.9	107.6	114.5	121.4	128.1	135.2	142.0	148.8	155.7
100°	106.0	106.1	125.6	145.0	164.3	183.9	203.4	222.8	242.3	261.7	281.2
102.5°	197.8	202.7	251.8	300.9	350.0	399.1	448.3	497.5	546.6	595.8	645.1
105°	437.5	456.9	531.7	606.8	681.6	756.7	831.7	906.8	981.9	1056.9	1131.8
107.5°	812.3	847.5	915.2	982.9	1050.6	1118.5	1186.3	1254.0	1321.7	1389.6	1457.6
110°	1145.1	1182.4	1227.7	1273.2	1318.7	1364.0	1409.5	1454.9	1500.5	1545.9	1591.7



TEST NUMBER: P1444688
 CATALOG NUMBER: EHBR1-42-UNV-TA-L930-UPL40

CANDELA DISTRIBUTION (continued):

	110°	112.5°	115°	117.5°	120°	122.5°	125°	127.5°	130°	132.5°	135°
112.5°	1293.7	1317.8	1344.2	1370.8	1397.3	1423.9	1450.4	1477.0	1503.7	1530.4	1557.0
115°	1288.4	1300.0	1310.2	1320.6	1330.9	1341.3	1351.8	1362.4	1373.0	1383.5	1394.1
117.5°	1187.9	1192.1	1193.5	1195.4	1197.0	1198.9	1200.7	1202.7	1204.6	1206.7	1208.4
120°	1037.6	1036.5	1034.8	1033.3	1031.6	1030.2	1028.7	1027.3	1026.0	1024.7	1023.3
122.5°	886.0	883.4	881.7	880.3	878.8	877.5	876.3	875.2	873.9	872.7	871.4
125°	752.6	750.1	751.7	753.3	755.1	756.8	758.5	760.6	762.4	764.2	766.2
127.5°	654.5	653.8	657.8	662.0	666.1	670.4	674.6	679.0	683.1	687.7	691.8
130°	591.6	592.9	598.0	603.5	608.6	614.1	619.5	625.0	630.3	635.7	641.1
132.5°	555.0	557.8	562.7	567.9	573.0	578.3	583.4	588.8	593.9	599.3	604.3
135°	535.0	538.5	543.1	547.9	552.6	557.5	562.1	567.1	571.7	576.6	581.2
137.5°	522.0	525.5	529.3	533.2	536.9	540.9	544.8	548.8	552.5	556.4	560.2
140°	517.2	520.8	522.8	525.3	527.6	529.9	532.0	534.4	536.6	539.1	541.1
142.5°	510.9	514.2	515.3	516.9	518.5	520.2	521.8	523.3	524.7	526.1	527.5
145°	507.0	509.5	509.6	510.0	510.4	510.7	510.9	511.2	511.4	511.7	511.8
147.5°	500.8	502.7	502.4	502.4	502.3	502.2	502.2	502.2	501.8	501.7	501.6
150°	492.1	493.5	492.8	492.6	492.0	491.6	491.0	490.7	490.0	489.7	489.1
152.5°	482.7	483.8	482.9	482.6	481.8	481.3	480.5	480.1	479.3	478.7	478.2
155°	471.1	471.8	471.3	471.0	470.6	470.3	469.8	469.7	469.5	469.2	469.0
157.5°	464.9	465.0	464.8	464.6	464.2	464.1	463.9	463.7	463.7	463.7	463.8
160°	461.4	461.8	461.5	461.3	461.1	460.8	460.6	460.5	460.5	460.7	460.8
162.5°	458.8	458.7	458.3	458.0	457.9	457.9	457.7	457.9	457.8	457.9	458.0
165°	459.7	459.9	459.2	459.0	458.7	458.3	458.0	457.8	457.8	457.7	457.6
167.5°	459.9	459.7	459.7	459.8	459.8	460.0	460.1	460.5	460.7	461.2	461.3
170°	463.1	463.2	462.9	462.8	462.6	462.5	462.4	462.3	462.4	462.3	462.3
172.5°	468.0	468.0	467.6	467.1	466.8	466.5	466.1	465.8	465.4	465.2	464.7
175°	470.6	470.4	470.3	470.0	469.8	469.5	469.3	468.7	468.6	468.3	468.1
177.5°	473.4	473.1	473.0	473.0	472.9	472.7	472.7	472.7	472.7	472.7	472.4
180°	474.0	474.0	474.0	474.0	474.0	474.0	474.0	474.0	474.0	474.0	474.0



TEST NUMBER: P1444688
 CATALOG NUMBER: EHBR1-42-UNV-TA-L930-UPL40

CANDELA DISTRIBUTION (continued):

	137.5°	140°	142.5°	145°	147.5°	150°	152.5°	155°	157.5°	160°	162.5°
0°	31860.0	31860.0	31860.0	31860.0	31860.0	31860.0	31860.0	31860.0	31860.0	31860.0	31860.0
2.5°	31745.6	31745.2	31742.1	31743.5	31744.2	31746.4	31749.1	31751.9	31752.5	31754.8	31755.2
5°	31983.2	31904.6	31846.6	31782.7	31734.5	31691.3	31662.5	31639.6	31630.8	31633.0	31638.4
7.5°	32627.4	32465.3	32331.4	32179.4	32052.6	31918.3	31807.0	31701.1	31624.0	31566.6	31534.5
10°	33334.3	33136.8	32947.9	32727.8	32519.1	32296.2	32094.5	31891.3	31721.8	31574.7	31466.7
12.5°	33648.0	33508.4	33345.2	33137.5	32914.0	32657.0	32397.4	32119.1	31860.2	31619.9	31426.1
15°	33315.9	33316.1	33256.6	33156.9	33001.7	32796.3	32548.9	32258.8	31953.5	31641.9	31357.2
17.5°	32261.5	32460.4	32571.1	32641.1	32619.5	32543.9	32386.5	32163.6	31879.0	31547.0	31199.7
20°	30450.8	30919.9	31254.5	31555.3	31723.9	31836.0	31824.8	31734.1	31531.4	31249.1	30887.3
22.5°	27914.2	28701.8	29323.2	29902.7	30309.2	30639.8	30797.0	30863.6	30771.8	30575.2	30235.5
25°	24833.4	25904.2	26817.9	27704.8	28370.1	28941.8	29285.4	29527.5	29546.7	29444.0	29140.9
27.5°	21410.0	22674.0	23830.5	25009.1	25944.7	26766.6	27305.8	27700.6	27826.0	27809.4	27534.2
30°	17990.9	19317.8	20592.7	21967.1	23124.8	24174.8	24887.2	25421.0	25626.7	25666.1	25401.4
32.5°	14762.0	16070.5	17341.8	18778.7	20052.7	21256.1	22097.8	22731.8	22971.0	23027.4	22737.0
35°	11831.6	13038.8	14246.9	15639.5	16906.2	18152.3	19039.2	19703.0	19926.4	19964.1	19627.9
37.5°	9290.3	10318.9	11371.6	12621.1	13784.3	14954.7	15797.2	16421.2	16583.9	16573.9	16193.4
40°	7150.6	7950.2	8796.2	9824.8	10791.9	11781.2	12492.8	13008.5	13094.0	13030.7	12631.0
42.5°	5376.9	5954.4	6567.7	7335.5	8053.0	8793.5	9311.2	9694.1	9706.3	9606.1	9247.4
45°	4005.8	4569.2	4826.4	5290.7	5752.8	6245.2	6561.3	6797.8	6761.2	6673.1	6400.5
47.5°	3053.7	3270.2	3499.9	3787.8	4057.0	4615.7	4574.3	4954.1	4680.5	4867.1	4456.5
50°	2425.0	2546.0	2669.7	2822.5	2963.1	3109.2	3200.4	3268.6	3259.8	3230.5	3151.8
52.5°	2063.1	2100.5	2161.4	2248.3	2326.9	2405.8	2457.8	2500.0	2500.9	2489.0	2449.3
55°	1724.3	1771.8	1815.5	1872.4	1969.1	1983.9	2058.4	2043.3	2049.3	2028.6	2049.7
57.5°	1520.3	1547.9	1572.5	1606.3	1634.3	1666.9	1686.1	1704.7	1702.9	1698.9	1678.5
60°	1375.7	1391.0	1404.6	1424.4	1439.7	1458.2	1467.0	1476.4	1473.3	1466.5	1448.5
62.5°	1264.3	1273.8	1281.6	1294.4	1303.6	1315.1	1319.8	1323.8	1319.8	1313.3	1297.3
65°	1154.3	1160.4	1165.4	1175.0	1181.6	1191.4	1195.3	1199.0	1195.4	1190.3	1178.2
67.5°	1055.1	1055.7	1055.3	1059.1	1061.2	1067.1	1068.8	1071.5	1067.3	1063.0	1052.6
70°	979.9	978.4	976.5	978.0	978.4	981.2	981.7	981.2	976.2	968.6	957.4
72.5°	921.1	920.3	918.9	920.2	920.2	922.8	922.0	920.6	914.4	907.1	896.0
75°	845.5	845.0	842.1	842.2	839.9	840.7	837.7	835.9	828.9	822.8	812.8
77.5°	757.1	755.7	751.6	750.0	745.5	743.7	737.9	735.0	728.0	723.0	714.5
80°	658.4	656.9	651.5	648.6	641.5	637.0	628.5	623.7	615.5	610.7	602.4
82.5°	544.2	544.8	539.5	535.8	525.7	517.8	506.5	500.4	491.5	486.7	478.2
85°	387.0	381.5	384.4	384.3	377.8	371.2	361.9	355.4	347.8	343.4	337.4
87.5°	212.3	213.6	212.1	210.8	206.3	202.8	195.7	191.9	186.3	183.6	179.1
90°	111.2	108.2	100.1	97.2	89.2	84.4	75.5	71.6	63.2	61.2	56.1
92.5°	102.7	97.0	91.5	85.5	80.0	74.2	68.4	62.7	56.9	54.7	53.1
95°	129.6	121.3	113.0	104.6	96.3	88.0	79.8	71.4	63.1	61.4	59.7
97.5°	146.1	136.3	126.5	116.7	106.8	97.0	87.3	77.5	67.7	66.7	65.6
100°	258.7	236.2	213.6	191.0	168.4	145.8	123.4	100.8	78.2	77.0	75.7
102.5°	590.3	535.5	480.8	426.1	371.4	316.6	262.0	207.1	152.4	144.5	136.6
105°	1049.0	966.1	883.5	800.5	717.7	634.8	552.1	469.0	386.1	359.6	332.9
107.5°	1379.8	1301.9	1224.1	1146.3	1068.3	990.6	912.5	834.6	756.7	709.8	663.0
110°	1529.8	1468.1	1406.4	1344.5	1282.8	1220.9	1159.1	1097.3	1035.4	995.0	954.8



TEST NUMBER: P1444688
 CATALOG NUMBER: EHBR1-42-UNV-TA-L930-UPL40

CANDELA DISTRIBUTION (continued):

	137.5°	140°	142.5°	145°	147.5°	150°	152.5°	155°	157.5°	160°	162.5°
112.5°	1511.8	1466.5	1421.5	1376.1	1330.8	1285.5	1240.3	1194.8	1149.4	1125.0	1100.5
115°	1367.0	1339.6	1312.6	1285.3	1257.9	1230.8	1203.5	1175.9	1148.6	1135.8	1122.8
117.5°	1194.7	1180.8	1167.0	1153.1	1139.1	1125.1	1111.3	1097.2	1083.2	1078.7	1074.2
120°	1019.4	1015.2	1010.9	1006.7	1002.5	998.3	994.1	989.7	985.2	985.9	986.5
122.5°	873.2	874.8	876.7	878.1	879.9	881.3	883.2	884.5	886.1	889.5	893.0
125°	770.4	774.4	778.6	782.6	786.5	790.6	794.7	798.5	802.6	806.0	809.8
127.5°	696.7	701.1	705.8	710.2	714.9	719.3	724.0	728.2	732.8	736.0	739.5
130°	645.3	649.1	653.3	657.0	661.1	665.1	669.0	672.9	676.8	679.4	682.0
132.5°	607.9	611.6	615.2	618.5	622.3	625.8	629.2	632.8	636.5	638.4	640.4
135°	584.1	586.5	589.3	591.8	594.8	597.3	600.1	602.9	605.7	607.0	608.4
137.5°	562.3	564.5	566.9	569.0	571.3	573.4	575.9	578.2	580.7	581.2	582.2
140°	543.4	545.8	548.1	550.4	552.9	555.2	557.8	560.3	562.9	563.6	564.4
142.5°	529.4	531.0	532.9	534.7	536.6	538.4	540.6	542.7	544.8	545.6	546.3
145°	514.0	516.1	518.3	520.3	522.5	524.9	527.5	529.8	532.4	532.8	533.3
147.5°	503.3	505.1	507.1	508.9	511.0	512.8	515.1	517.3	519.5	520.0	520.4
150°	491.1	493.0	494.8	496.9	499.1	501.4	503.6	505.9	508.6	509.4	510.1
152.5°	480.2	482.3	484.4	486.7	489.1	491.5	494.0	496.5	499.2	499.8	500.6
155°	471.1	473.1	475.3	477.7	480.1	482.3	484.8	487.2	489.8	490.7	491.5
157.5°	465.8	467.6	469.6	471.7	473.8	475.9	478.2	480.2	482.6	483.4	484.0
160°	462.5	464.2	466.1	467.8	469.8	471.6	473.6	475.5	477.5	478.2	478.9
162.5°	459.8	461.6	463.5	465.0	467.0	468.9	470.9	472.7	474.6	475.2	476.0
165°	458.9	460.3	461.7	462.9	464.4	465.5	467.1	468.4	470.0	470.5	471.5
167.5°	462.5	463.3	464.3	465.3	466.6	467.6	468.8	469.8	471.0	471.7	472.4
170°	463.2	464.1	465.0	466.0	467.0	468.0	469.0	469.8	471.1	471.6	472.3
172.5°	465.4	465.8	466.5	467.0	467.8	468.3	469.0	469.7	470.4	471.2	471.9
175°	468.6	468.8	469.1	469.4	469.6	470.1	470.4	471.0	471.2	471.9	472.4
177.5°	472.6	472.8	473.0	473.2	473.7	473.9	474.2	474.4	474.8	475.4	476.1
180°	474.0	474.0	474.0	474.0	474.0	474.0	474.0	474.0	474.0	474.0	474.0



TEST NUMBER: P1444688
 CATALOG NUMBER: EHBR1-42-UNV-TA-L930-UPL40

CANDELA DISTRIBUTION (continued):

	165°	167.5°	170°	172.5°	175°	177.5°	180°	182.5°	185°	187.5°	190°
0°	31860.0	31860.0	31860.0	31860.0	31860.0	31860.0	31860.0	31860.0	31860.0	31860.0	31860.0
2.5°	31754.1	31753.8	31752.7	31751.4	31750.0	31750.8	31752.2	31755.8	31762.2	31771.4	31783.5
5°	31642.8	31649.2	31652.9	31653.4	31650.1	31648.0	31651.1	31659.9	31677.4	31706.9	31746.8
7.5°	31525.8	31533.9	31546.2	31555.3	31557.1	31554.9	31555.3	31569.1	31601.5	31659.0	31739.6
10°	31401.0	31377.3	31389.8	31412.7	31430.8	31434.2	31436.5	31452.6	31500.1	31587.0	31716.5
12.5°	31285.8	31210.6	31196.1	31216.8	31244.4	31253.3	31250.8	31257.8	31313.4	31428.4	31609.0
15°	31134.2	30992.8	30944.5	30949.8	30983.9	30996.2	30987.2	30973.6	31027.8	31168.1	31401.9
17.5°	30888.8	30660.9	30572.1	30568.2	30608.1	30618.7	30596.8	30554.3	30607.7	30782.9	31073.0
20°	30515.8	30179.4	30012.1	29985.6	30029.0	30016.3	29972.5	29908.2	29978.5	30191.4	30536.5
22.5°	29845.2	29419.0	29133.3	29041.2	29093.1	29058.4	28994.6	28912.6	29005.7	29247.7	29632.0
25°	28749.5	28257.0	27865.9	27646.5	27687.9	27625.9	27556.3	27456.9	27568.0	27845.9	28268.8
27.5°	27138.9	26570.0	26085.4	25722.2	25735.6	25654.3	25574.3	25445.6	25584.3	25913.2	26390.2
30°	24997.3	24339.0	23748.8	23255.3	23211.1	23132.3	23050.3	22881.4	23055.0	23448.6	24006.1
32.5°	22307.7	21576.8	20894.9	20270.8	20153.1	20076.3	20003.1	19808.8	20036.1	20495.0	21135.5
35°	19162.3	18383.8	17644.5	16931.7	16736.7	16659.8	16596.0	16409.7	16693.4	17192.8	17884.5
37.5°	15709.9	14914.6	14180.5	13449.7	13174.1	13069.8	13023.4	12901.5	13228.6	13722.7	14417.2
40°	12165.6	11426.1	10768.0	10122.5	9808.3	9648.8	9624.5	9602.2	9918.6	10347.2	10977.6
42.5°	8850.0	8253.4	7746.0	7252.5	6967.8	6750.0	6749.8	6816.0	7100.8	7421.9	7908.0
45°	6121.8	5721.4	5398.1	5068.4	5156.6	4722.2	4977.4	4846.5	4987.2	5194.2	5510.3
47.5°	4208.1	3989.5	3812.0	3627.8	3493.5	3365.3	3376.5	3459.2	3591.7	3714.5	3879.0
50°	3067.0	2955.7	2865.3	2769.6	2702.7	2646.2	2649.5	2685.3	2755.0	2819.7	2905.7
52.5°	2403.2	2341.8	2292.7	2239.8	2204.8	2176.6	2178.1	2195.5	2233.2	2270.2	2319.5
55°	1980.8	1973.4	1909.5	1862.0	1844.0	1825.1	1828.5	1835.4	1861.0	1882.6	1915.3
57.5°	1659.9	1631.2	1612.1	1587.0	1575.6	1562.4	1565.4	1568.0	1585.1	1599.6	1623.1
60°	1433.3	1413.0	1399.4	1382.4	1374.8	1366.5	1368.4	1369.9	1380.9	1390.4	1407.2
62.5°	1282.8	1264.6	1252.8	1239.7	1234.4	1228.7	1230.0	1230.5	1237.3	1244.3	1257.0
65°	1167.3	1152.9	1143.1	1131.7	1126.2	1120.3	1120.9	1120.9	1126.7	1131.7	1141.4
67.5°	1045.2	1034.3	1028.0	1019.0	1015.2	1009.2	1009.1	1007.2	1011.0	1013.0	1019.5
70°	947.2	936.2	928.1	919.5	914.8	909.4	909.6	909.7	914.0	918.7	927.1
72.5°	886.7	876.2	868.9	861.4	856.9	852.4	851.6	851.1	854.2	856.7	862.4
75°	806.5	798.1	793.8	786.8	783.2	778.1	777.3	774.9	776.4	777.0	781.1
77.5°	709.2	701.2	697.9	690.6	687.7	681.9	681.5	678.8	680.0	679.1	682.3
80°	598.3	591.1	589.2	583.3	581.9	576.6	575.8	572.6	573.5	571.0	572.2
82.5°	474.5	467.9	466.5	461.1	461.1	456.3	456.0	451.2	451.2	447.0	440.4
85°	334.3	329.5	327.4	322.9	321.6	317.8	315.7	311.1	309.5	306.6	305.6
87.5°	176.4	173.3	170.7	168.5	164.6	157.6	157.0	152.2	152.6	149.1	149.4
90°	54.7	50.0	48.7	44.3	42.8	39.5	38.1	38.8	40.0	40.7	42.2
92.5°	51.2	49.3	47.3	45.4	43.5	41.6	39.7	41.6	43.5	45.4	47.3
95°	58.0	56.3	54.5	52.8	51.2	49.5	47.8	49.5	51.2	53.0	54.7
97.5°	64.5	63.4	62.4	61.3	60.2	59.2	58.1	59.3	60.4	61.5	62.6
100°	74.4	73.2	71.8	70.6	69.3	68.0	66.7	68.2	69.5	70.8	72.0
102.5°	128.8	120.9	113.0	105.2	97.2	89.4	81.5	89.4	97.2	105.3	113.2
105°	306.2	279.7	253.1	226.4	199.7	173.1	146.4	173.1	199.8	226.5	253.3
107.5°	616.1	569.3	522.4	475.5	428.5	381.7	334.7	381.9	428.8	475.7	522.7
110°	914.2	873.9	833.5	793.0	752.5	712.1	671.6	712.2	752.7	793.3	833.8



TEST NUMBER: P1444688
 CATALOG NUMBER: EHBR1-42-UNV-TA-L930-UPL40

CANDELA DISTRIBUTION (continued):

	165°	167.5°	170°	172.5°	175°	177.5°	180°	182.5°	185°	187.5°	190°
112.5°	1075.9	1051.4	1026.7	1002.2	977.5	952.9	928.1	953.2	977.9	1002.7	1027.4
115°	1110.0	1096.9	1084.1	1071.1	1058.0	1044.9	1031.8	1045.3	1058.6	1071.8	1085.1
117.5°	1069.6	1065.2	1060.5	1056.0	1051.4	1046.8	1042.0	1047.0	1051.9	1057.1	1061.7
120°	986.8	987.6	988.0	988.4	988.8	989.2	989.4	989.6	989.6	989.6	989.5
122.5°	896.3	899.8	903.2	906.5	909.7	913.0	915.9	913.4	910.7	908.0	905.0
125°	813.1	816.8	820.3	823.7	827.0	830.5	833.3	831.0	828.2	825.5	822.5
127.5°	742.6	745.7	748.8	752.1	754.9	757.9	760.6	758.6	756.2	753.9	751.3
130°	684.2	687.0	689.2	691.6	693.7	695.8	697.7	696.4	694.9	693.8	691.9
132.5°	642.2	644.2	646.1	647.8	649.3	650.9	652.0	651.6	650.8	650.0	648.8
135°	609.7	611.1	612.2	613.6	614.5	615.5	616.0	616.3	616.0	615.9	615.2
137.5°	582.8	583.6	584.2	584.8	585.1	585.4	585.4	586.2	586.6	587.3	587.4
140°	565.2	566.0	566.6	567.1	567.7	568.1	567.9	568.9	569.3	569.7	569.8
142.5°	547.2	547.9	548.5	549.1	549.5	549.8	549.8	550.6	551.1	551.4	551.6
145°	534.0	534.3	534.7	535.1	535.2	535.3	535.0	536.1	536.7	537.4	537.9
147.5°	520.9	521.4	521.6	521.9	521.9	522.0	521.9	522.7	523.5	524.2	524.6
150°	511.0	511.7	512.2	512.9	513.5	513.7	513.8	514.5	514.9	515.2	515.3
152.5°	501.3	501.9	502.5	503.0	503.5	503.8	503.9	504.5	505.1	505.5	505.6
155°	492.2	493.1	493.8	494.5	494.9	495.5	496.0	496.5	496.8	497.1	497.3
157.5°	484.7	485.6	486.1	486.8	487.4	488.1	488.5	489.1	489.4	489.9	490.1
160°	479.4	480.3	480.8	481.5	482.1	482.6	483.2	483.7	484.2	484.5	485.0
162.5°	476.5	477.2	477.6	478.3	478.9	479.5	480.0	480.6	481.0	481.5	481.8
165°	472.2	473.1	473.7	474.6	475.4	476.2	476.8	477.2	477.3	477.6	477.7
167.5°	473.0	473.9	474.4	475.2	475.8	476.7	477.3	477.7	477.7	477.9	477.9
170°	472.8	473.6	474.3	474.9	475.5	476.2	476.7	476.8	476.9	477.1	477.2
172.5°	472.5	473.4	474.1	475.0	475.6	476.4	477.1	477.1	476.8	476.8	476.4
175°	472.8	473.6	474.2	474.9	475.3	476.0	476.8	476.4	476.3	476.0	475.9
177.5°	476.9	477.8	478.5	479.2	480.1	480.7	481.4	480.8	480.2	479.7	479.1
180°	474.0	474.0	474.0	474.0	474.0	474.0	474.0	474.0	474.0	474.0	474.0



TEST NUMBER: P1444688
 CATALOG NUMBER: EHBR1-42-UNV-TA-L930-UPL40

CANDELA DISTRIBUTION (continued):

	192.5°	195°	197.5°	200°	202.5°	205°	207.5°	210°	212.5°	215°	217.5°
0°	31860.0	31860.0	31860.0	31860.0	31860.0	31860.0	31860.0	31860.0	31860.0	31860.0	31860.0
2.5°	31800.5	31816.4	31840.8	31862.8	31896.0	31922.2	31961.5	31991.4	32035.8	32064.6	32112.9
5°	31803.3	31865.5	31947.3	32027.2	32123.2	32210.3	32318.6	32410.8	32519.6	32608.5	32719.8
7.5°	31848.2	31968.3	32112.0	32256.9	32420.8	32574.1	32746.9	32903.2	33074.0	33218.6	33376.6
10°	31881.5	32066.5	32278.4	32491.6	32716.1	32924.7	33135.2	33317.2	33487.2	33627.1	33750.7
12.5°	31836.5	32091.4	32363.3	32625.9	32875.6	33091.4	33272.6	33412.5	33509.1	33574.6	33589.9
15°	31683.6	31990.3	32286.0	32547.5	32754.6	32914.4	32997.0	33035.8	32994.3	32925.3	32773.7
17.5°	31398.0	31721.4	31985.8	32192.1	32301.6	32344.9	32276.4	32157.3	31924.4	31666.0	31292.7
20°	30874.2	31175.7	31367.5	31480.0	31450.7	31342.4	31083.8	30769.5	30304.7	29809.2	29155.4
22.5°	29955.7	30219.3	30321.5	30329.8	30151.2	29880.1	29413.7	28874.5	28141.1	27378.7	26441.1
25°	28577.0	28807.8	28824.0	28733.3	28406.3	27967.0	27282.1	26519.5	25522.9	24507.0	23332.0
27.5°	26707.1	26928.5	26874.3	26705.1	26251.2	25663.3	24786.5	23801.3	22572.6	21372.7	20072.9
30°	24356.5	24593.3	24529.7	24312.6	23772.7	23077.9	22046.2	20901.5	19537.4	18255.9	16938.7
32.5°	21543.6	21842.9	21799.0	21592.7	21029.4	20285.7	19166.3	17952.2	16556.7	15293.6	14012.5
35°	18346.3	18709.7	18728.5	18593.7	18070.7	17335.7	16230.2	15055.2	13718.4	12526.7	11343.1
37.5°	14901.6	15323.0	15409.5	15373.1	14939.7	14290.8	13283.7	12229.5	11045.2	10000.9	8988.6
40°	11437.9	11864.4	12012.3	12056.2	11736.4	11233.8	10407.2	9556.3	8590.9	7744.6	6940.9
42.5°	8279.0	8657.2	8800.2	8890.1	8690.5	8355.3	7752.4	7134.5	6427.2	5816.8	5231.6
45°	5750.0	6017.4	6126.2	6216.8	6108.0	5918.9	5538.2	5151.7	4684.8	4285.9	3908.4
47.5°	4020.2	4167.7	4239.4	4283.3	4241.2	4142.6	3935.4	3711.5	3448.0	3214.9	2990.8
50°	2979.8	3058.3	3095.8	3121.2	3090.6	3035.8	2923.6	2801.7	2656.9	2525.0	2395.9
52.5°	2361.4	2406.4	2428.7	2442.4	2424.8	2391.3	2326.0	2253.7	2167.0	2085.4	2042.5
55°	1989.4	1987.0	2038.6	2013.7	2038.6	1983.0	1971.3	1891.8	1819.8	1769.0	1714.1
57.5°	1640.6	1663.9	1673.8	1685.0	1677.7	1667.6	1639.9	1611.4	1573.4	1541.6	1507.7
60°	1420.1	1439.4	1450.2	1461.2	1460.5	1456.7	1440.6	1423.7	1399.9	1380.9	1360.3
62.5°	1268.3	1284.9	1295.6	1306.1	1307.1	1305.6	1293.4	1281.6	1265.4	1253.5	1239.3
65°	1148.8	1160.4	1167.7	1176.1	1175.7	1173.5	1162.5	1152.7	1139.3	1131.0	1120.7
67.5°	1023.7	1032.6	1038.3	1046.2	1047.7	1048.2	1042.2	1037.6	1031.0	1028.6	1025.2
70°	934.8	945.6	954.7	964.7	970.1	972.7	970.1	967.8	963.9	962.3	959.6
72.5°	867.5	876.6	883.7	892.7	897.8	901.5	899.5	898.2	894.9	894.4	892.6
75°	783.9	790.2	794.2	801.0	803.7	807.2	805.7	806.5	805.4	808.0	807.9
77.5°	683.4	688.0	689.9	694.9	695.4	699.5	700.4	705.2	708.7	716.3	720.3
80°	570.3	573.3	573.3	578.3	580.6	587.5	590.8	598.8	602.4	609.2	609.7
82.5°	443.0	439.6	443.0	440.9	447.4	455.2	456.3	462.9	464.6	468.7	465.4
85°	302.9	302.6	300.0	300.4	298.4	299.3	298.2	299.4	298.3	298.4	295.3
87.5°	145.1	146.4	143.2	144.3	141.2	142.7	139.9	142.0	138.8	139.4	134.7
90°	43.2	44.5	45.4	46.8	48.6	52.0	55.8	59.3	63.4	67.0	70.8
92.5°	49.3	51.2	53.2	55.1	57.0	62.8	68.5	74.3	80.3	85.8	91.6
95°	56.5	58.2	59.9	61.8	63.4	71.7	80.1	88.4	96.8	105.1	113.4
97.5°	63.8	64.9	65.9	67.0	68.3	78.1	87.9	97.7	107.5	117.4	127.0
100°	73.5	74.8	76.0	77.4	78.7	101.3	124.0	146.5	169.1	191.7	214.3
102.5°	121.2	129.0	137.0	145.1	153.0	207.8	262.7	317.5	372.1	426.9	481.7
105°	279.9	306.6	333.6	360.2	386.8	469.8	552.9	635.8	718.6	801.5	884.5
107.5°	569.7	616.7	663.6	710.6	757.6	835.6	913.6	991.7	1069.7	1147.6	1225.4
110°	874.6	914.8	955.7	996.2	1036.8	1098.6	1160.6	1222.5	1284.5	1346.2	1408.2



TEST NUMBER: P1444688
 CATALOG NUMBER: EHBR1-42-UNV-TA-L930-UPL40

CANDELA DISTRIBUTION (continued):

	192.5°	195°	197.5°	200°	202.5°	205°	207.5°	210°	212.5°	215°	217.5°
112.5°	1052.3	1076.9	1101.6	1126.1	1150.9	1196.4	1242.1	1287.4	1333.0	1378.1	1423.6
115°	1098.2	1111.2	1124.4	1137.4	1150.5	1178.1	1205.5	1233.0	1260.4	1287.8	1315.2
117.5°	1066.6	1071.4	1076.2	1080.6	1085.4	1099.6	1113.7	1127.8	1142.0	1156.2	1170.2
120°	989.4	989.1	988.8	988.4	988.1	992.5	997.1	1001.4	1005.9	1010.3	1014.6
122.5°	902.0	898.8	895.8	892.6	889.4	887.8	886.6	885.0	883.8	882.2	880.8
125°	819.4	816.2	813.1	809.7	806.4	802.6	798.7	794.8	790.9	787.1	783.1
127.5°	748.8	745.9	743.2	740.1	737.2	732.7	728.4	724.0	719.7	715.2	710.9
130°	690.2	688.0	686.3	683.8	681.8	677.7	674.1	670.2	666.5	662.6	658.8
132.5°	647.8	646.3	645.0	643.2	641.8	638.2	635.0	631.5	628.1	624.6	621.3
135°	614.9	614.0	613.4	612.2	611.3	608.6	606.2	603.6	601.1	598.4	595.9
137.5°	587.5	587.3	587.2	586.9	586.6	584.4	582.4	580.2	578.2	575.9	573.9
140°	570.0	569.9	569.7	569.4	569.2	566.9	564.6	562.4	560.2	557.9	555.6
142.5°	551.7	551.7	551.6	551.3	551.2	549.3	547.8	546.0	544.2	542.5	540.8
145°	538.2	538.4	538.7	538.6	538.9	536.6	534.8	532.5	530.7	528.5	526.6
147.5°	525.2	525.4	525.8	526.0	526.3	524.4	522.9	521.0	519.5	517.7	516.1
150°	515.5	515.5	515.6	515.5	515.4	513.6	512.0	510.2	508.6	506.5	504.9
152.5°	505.9	506.1	506.3	506.4	506.6	504.8	503.0	501.1	499.2	497.3	495.4
155°	497.5	497.6	497.8	497.8	497.8	496.1	494.4	492.5	490.8	489.0	487.3
157.5°	490.4	490.7	490.8	491.0	491.1	489.6	488.1	486.7	485.1	483.5	482.0
160°	485.2	485.6	485.8	485.9	486.2	485.0	483.9	482.4	481.4	479.8	478.5
162.5°	482.2	482.6	482.8	482.9	483.2	481.9	480.8	479.5	478.3	476.8	475.5
165°	477.9	477.8	478.0	477.8	477.9	477.0	476.3	475.4	474.6	473.6	472.8
167.5°	478.1	478.0	478.2	478.0	478.1	477.5	477.2	476.4	475.8	475.1	474.4
170°	477.3	477.2	477.3	477.1	477.2	476.6	476.0	475.4	475.1	474.1	473.5
172.5°	476.3	476.0	475.9	475.7	475.3	474.9	474.6	474.3	473.9	473.5	473.0
175°	475.5	475.2	475.1	474.8	474.4	474.4	474.1	474.1	473.8	473.6	473.4
177.5°	478.6	478.2	477.5	476.9	476.4	476.2	476.1	476.0	476.0	475.7	475.5
180°	474.0	474.0	474.0	474.0	474.0	474.0	474.0	474.0	474.0	474.0	474.0



TEST NUMBER: P1444688
 CATALOG NUMBER: EHBR1-42-UNV-TA-L930-UPL40

CANDELA DISTRIBUTION (continued):

	220°	222.5°	225°	227.5°	230°	232.5°	235°	237.5°	240°	242.5°	245°
0°	31860.0	31860.0	31860.0	31860.0	31860.0	31860.0	31860.0	31860.0	31860.0	31860.0	31860.0
2.5°	32142.8	31944.3	31918.0	31932.0	31965.2	31977.5	32013.2	32023.0	32059.1	32067.9	32102.5
5°	32806.0	32543.6	32556.7	32619.8	32715.3	32772.3	32866.1	32915.2	33004.9	33045.6	33126.6
7.5°	33505.4	33299.3	33363.5	33469.9	33600.6	33691.0	33803.8	33877.2	33974.4	34034.7	34112.5
10°	33848.8	33792.3	33863.0	33946.7	34021.3	34079.6	34127.4	34165.7	34190.7	34214.2	34224.5
12.5°	33587.4	33674.8	33686.8	33678.7	33629.4	33591.7	33507.0	33449.5	33347.4	33285.1	33163.7
15°	32618.7	32810.9	32704.5	32543.4	32307.7	32111.2	31833.7	31627.2	31338.2	31142.2	30852.2
17.5°	30918.7	31161.2	30883.9	30511.3	30037.2	29631.6	29126.6	28725.7	28223.5	27858.3	27389.7
20°	28525.4	28752.0	28257.6	27639.8	26906.4	26289.2	25561.4	24980.7	24304.3	23801.3	23194.0
22.5°	25545.5	25706.9	25010.4	24177.5	23243.2	22472.1	21601.9	20905.8	20133.9	19558.7	18911.3
25°	22248.7	22292.3	21456.9	20497.4	19456.0	18589.4	17660.4	16928.4	16141.2	15558.3	14922.9
27.5°	18921.4	18857.5	17954.4	16937.1	15841.7	14940.9	14034.8	13348.9	12659.5	12134.4	11587.0
30°	15780.7	15626.0	14688.4	13642.7	12579.4	11772.1	11019.9	10469.0	9920.6	9504.0	9064.7
32.5°	12900.8	12682.5	11769.8	10790.1	9894.1	9271.1	8713.4	8296.6	7853.6	7501.8	7133.0
35°	10349.8	10117.3	9308.8	8478.1	7800.1	7340.8	6902.4	6560.5	6184.4	5887.6	5567.3
37.5°	8160.5	7970.0	7292.6	6639.1	6126.2	5770.3	5411.1	5131.6	4820.9	4690.2	4348.0
40°	6299.9	6166.7	5637.1	5155.3	4770.2	4603.0	4238.3	3977.3	3745.0	3553.5	3368.1
42.5°	4914.0	4866.9	4351.5	3975.7	3704.6	3493.9	3290.7	3125.8	2965.2	2833.1	2708.4
45°	3606.2	3568.8	3340.1	3123.2	2938.4	2791.1	2653.8	2540.3	2435.3	2348.3	2269.2
47.5°	2808.1	2796.2	2664.4	2529.9	2413.5	2318.9	2229.7	2154.4	2084.7	2026.6	2007.7
50°	2284.0	2282.4	2205.1	2122.1	2039.2	1984.5	1927.6	1883.1	1838.3	1803.5	1766.7
52.5°	1940.6	1932.2	1880.0	1828.8	1779.5	1743.6	1707.2	1678.8	1649.1	1627.7	1604.8
55°	1670.7	1679.5	1649.3	1618.8	1587.9	1565.6	1540.1	1521.3	1501.0	1487.4	1473.6
57.5°	1483.1	1494.9	1479.0	1461.6	1442.9	1428.2	1410.7	1397.7	1384.1	1375.5	1367.5
60°	1346.8	1359.5	1353.2	1344.5	1332.9	1324.1	1312.9	1305.7	1297.0	1292.2	1287.6
62.5°	1231.1	1247.0	1244.7	1240.6	1233.2	1228.3	1222.2	1219.0	1213.2	1211.1	1209.0
65°	1115.6	1133.5	1133.2	1131.2	1127.0	1125.6	1121.9	1121.1	1118.2	1119.4	1119.1
67.5°	1024.8	1040.4	1043.8	1046.3	1046.2	1047.1	1046.7	1048.2	1048.2	1050.6	1052.0
70°	959.2	970.1	972.7	975.4	976.1	978.1	978.1	979.5	979.1	981.0	981.2
72.5°	893.0	907.3	909.9	912.0	912.0	914.0	913.0	912.6	909.8	909.2	907.2
75°	810.6	828.9	832.9	835.5	835.9	837.7	835.2	833.7	828.9	827.0	823.7
77.5°	724.5	743.6	746.3	747.3	745.8	746.2	740.9	737.4	731.4	728.9	725.7
80°	612.5	640.5	642.7	640.9	636.5	635.8	630.7	627.5	620.2	617.7	615.1
82.5°	466.1	498.9	503.5	505.5	502.0	502.8	498.0	496.0	489.4	488.3	483.9
85°	294.3	327.0	332.5	331.7	328.1	327.3	324.5	325.4	324.8	326.6	327.6
87.5°	135.2	167.0	174.7	172.2	171.8	169.6	164.5	166.4	169.4	171.5	171.5
90°	74.5	87.8	91.3	88.9	83.5	80.6	75.6	73.3	68.5	66.2	61.6
92.5°	97.4	103.1	108.9	103.7	98.6	93.5	88.4	83.1	78.2	72.9	67.9
95°	121.7	129.9	138.2	131.4	124.4	117.5	110.7	103.9	97.0	90.2	83.4
97.5°	136.8	146.4	156.0	149.2	142.4	135.5	128.6	121.8	115.0	108.0	101.2
100°	236.9	259.1	281.5	262.1	242.6	223.2	203.8	184.3	164.9	145.5	125.9
102.5°	536.3	590.8	645.5	596.2	547.1	497.9	448.8	399.6	350.5	301.2	252.2
105°	967.2	1049.8	1132.5	1057.2	982.2	907.2	832.1	757.2	682.1	607.0	532.1
107.5°	1303.4	1380.6	1458.1	1390.3	1322.4	1254.6	1186.6	1118.9	1051.1	983.2	915.5
110°	1470.0	1530.7	1592.4	1546.7	1501.2	1455.5	1410.0	1364.4	1319.1	1273.6	1228.3



TEST NUMBER: P1444688
 CATALOG NUMBER: EHBR1-42-UNV-TA-L930-UPL40

CANDELA DISTRIBUTION (continued):

	220°	222.5°	225°	227.5°	230°	232.5°	235°	237.5°	240°	242.5°	245°
112.5°	1468.9	1512.9	1557.8	1531.0	1504.4	1477.6	1451.0	1424.3	1397.9	1371.1	1344.8
115°	1342.4	1368.2	1395.1	1384.3	1373.9	1363.2	1352.6	1342.1	1331.6	1321.0	1310.9
117.5°	1184.1	1196.3	1209.7	1207.6	1205.7	1203.6	1201.8	1199.7	1198.0	1196.2	1194.4
120°	1018.8	1021.1	1024.8	1026.0	1027.4	1028.6	1030.1	1031.3	1032.7	1034.2	1035.8
122.5°	879.3	875.4	873.0	874.3	875.5	876.5	877.9	878.9	880.3	881.6	883.0
125°	779.3	772.6	767.9	765.9	764.2	762.2	760.2	758.4	756.7	754.9	753.2
127.5°	706.3	699.1	693.9	689.7	685.4	681.0	676.7	672.5	668.3	663.9	659.9
130°	655.0	648.1	643.4	638.0	632.8	627.2	621.9	616.6	611.1	605.8	600.4
132.5°	617.8	611.1	606.9	601.8	596.8	591.4	586.4	581.1	575.9	570.6	565.6
135°	593.3	587.3	584.0	579.2	574.8	570.0	565.2	560.4	555.9	550.9	546.5
137.5°	571.7	565.9	563.1	559.3	555.7	551.9	548.3	544.2	540.6	536.5	532.9
140°	553.3	547.2	544.1	542.1	540.0	537.7	535.7	533.3	531.3	529.2	526.8
142.5°	539.1	533.3	530.7	529.3	528.2	526.6	525.5	524.1	522.7	521.0	519.6
145°	524.5	518.0	515.1	514.8	514.9	514.7	514.5	514.5	514.3	513.9	513.7
147.5°	514.4	507.7	504.9	505.2	505.5	505.5	505.9	506.0	506.3	506.5	506.8
150°	503.0	495.5	492.2	492.9	493.3	494.0	494.5	495.0	495.7	496.3	496.8
152.5°	493.3	484.5	480.8	481.4	482.2	482.7	483.4	484.2	485.0	485.8	486.5
155°	485.2	475.6	471.7	471.8	472.1	472.3	472.7	473.1	473.6	473.9	474.4
157.5°	480.3	470.3	466.5	466.2	466.4	466.4	466.6	466.8	467.0	467.2	467.8
160°	477.0	467.1	463.5	463.2	463.3	463.3	463.3	463.4	463.7	463.8	464.2
162.5°	474.0	464.3	460.8	460.5	460.4	460.4	460.5	460.4	460.5	460.5	461.0
165°	471.7	463.3	460.2	460.2	460.4	460.4	460.5	460.8	461.2	461.3	461.8
167.5°	473.6	466.2	463.7	463.4	463.0	462.7	462.7	462.2	462.2	462.0	462.0
170°	472.7	466.8	464.6	464.6	464.8	464.8	464.7	464.9	464.9	464.9	465.2
172.5°	472.6	468.2	466.6	466.9	467.3	467.6	468.0	468.4	468.8	469.2	469.6
175°	473.2	470.5	469.9	469.8	470.1	470.3	470.5	470.7	471.0	471.1	471.7
177.5°	475.5	474.6	474.2	474.2	474.2	474.2	474.2	474.2	474.2	474.4	474.4
180°	474.0	474.0	474.0	474.0	474.0	474.0	474.0	474.0	474.0	474.0	474.0



TEST NUMBER: P1444688
 CATALOG NUMBER: EHBR1-42-UNV-TA-L930-UPL40

CANDELA DISTRIBUTION (continued):

	247.5°	250°	252.5°	255°	257.5°	260°	262.5°	265°	267.5°	270°	272.5°
0°	31860.0	31860.0	31860.0	31860.0	31860.0	31860.0	31860.0	31860.0	31860.0	31860.0	31860.0
2.5°	32109.0	32146.4	32143.6	32178.5	32176.8	32209.7	32203.1	32231.5	32225.1	32249.3	32235.1
5°	33162.2	33233.4	33257.0	33321.2	33334.5	33392.1	33393.2	33438.9	33433.3	33469.1	33450.1
7.5°	34158.6	34225.1	34256.6	34306.5	34331.4	34372.8	34389.0	34422.9	34431.1	34451.2	34450.6
10°	34242.6	34242.4	34258.0	34251.0	34264.9	34256.9	34273.9	34267.8	34292.9	34286.5	34305.5
12.5°	33111.3	32999.0	32958.0	32857.1	32835.1	32748.5	32754.6	32699.1	32725.9	32691.8	32749.9
15°	30679.7	30419.2	30290.5	30064.0	29993.0	29814.0	29799.4	29680.6	29712.6	29650.4	29741.3
17.5°	27086.4	26676.4	26451.3	26120.6	25989.3	25736.2	25685.4	25532.4	25556.1	25479.0	25588.8
20°	22802.4	22306.8	22023.0	21640.5	21470.0	21168.1	21088.1	20916.8	20938.3	20861.6	20985.8
22.5°	18469.5	17950.8	17630.3	17229.5	17011.6	16727.8	16642.6	16470.6	16480.4	16408.3	16527.8
25°	14487.7	13990.4	13679.3	13315.1	13126.1	12865.9	12776.4	12621.9	12630.7	12571.3	12678.5
27.5°	11207.2	10799.2	10539.0	10233.8	10064.3	9850.3	9763.1	9633.2	9632.9	9589.3	9678.8
30°	8757.8	8417.3	8183.7	7917.9	7758.7	7565.7	7481.4	7365.2	7360.1	7329.2	7400.4
32.5°	6857.2	6554.3	6341.2	6107.3	5964.4	5798.7	5719.0	5625.5	5617.0	5589.0	5647.5
35°	5330.6	5075.6	4892.3	4695.3	4709.8	4465.4	4506.0	4316.1	4264.7	4253.5	4296.9
37.5°	4119.9	3922.4	3773.5	3626.0	3526.1	3422.8	3367.2	3317.3	3311.6	3306.8	3337.2
40°	3224.8	3086.5	2978.3	2877.0	2808.3	2745.2	2710.5	2683.0	2676.5	2672.9	2691.3
42.5°	2610.0	2516.7	2446.9	2385.1	2343.3	2309.1	2290.0	2274.7	2269.6	2269.8	2280.7
45°	2205.1	2148.5	2103.5	2065.1	2038.5	2050.2	2015.7	2033.8	2009.9	2034.6	2018.3
47.5°	1941.9	1893.8	1865.9	1838.7	1822.6	1809.5	1810.0	1810.3	1815.3	1816.1	1821.5
50°	1738.8	1710.9	1691.6	1674.2	1665.8	1658.9	1661.4	1663.1	1668.0	1668.4	1672.3
52.5°	1588.5	1570.2	1558.5	1547.7	1544.0	1540.1	1541.8	1541.0	1543.3	1542.1	1545.2
55°	1466.2	1457.5	1453.9	1449.9	1450.4	1449.4	1450.1	1446.2	1443.8	1440.9	1443.6
57.5°	1365.8	1364.6	1367.1	1368.8	1373.3	1375.0	1376.1	1371.6	1367.4	1363.4	1365.7
60°	1288.5	1290.4	1296.5	1301.4	1308.0	1311.1	1313.0	1310.4	1307.4	1304.2	1306.1
62.5°	1212.2	1215.2	1222.5	1228.0	1236.0	1240.2	1244.7	1245.0	1246.2	1245.0	1246.3
65°	1123.6	1127.3	1133.9	1138.5	1145.9	1149.6	1154.3	1155.2	1157.8	1157.1	1159.4
67.5°	1056.4	1059.7	1065.2	1069.5	1076.1	1080.0	1084.1	1084.3	1085.2	1085.1	1087.1
70°	984.5	986.1	991.1	994.8	1001.4	1005.3	1010.0	1011.4	1014.4	1014.8	1017.2
72.5°	908.0	907.3	910.3	911.9	916.9	919.9	926.0	929.3	934.2	935.5	937.3
75°	824.7	823.9	827.5	828.9	833.1	836.2	842.9	847.3	855.0	858.2	857.4
77.5°	728.1	729.8	736.4	740.1	745.8	749.6	758.4	765.4	779.4	785.5	779.3
80°	620.2	622.0	628.9	632.3	639.7	644.5	654.3	662.4	675.0	677.8	674.2
82.5°	487.6	488.2	494.2	496.9	506.5	513.5	526.0	532.4	540.2	539.1	538.1
85°	332.5	337.0	344.7	352.4	364.1	375.5	387.2	396.8	390.1	400.7	388.7
87.5°	177.7	177.2	187.6	186.0	202.5	212.1	222.3	227.1	232.5	231.4	231.5
90°	59.7	56.6	56.1	52.8	53.1	49.5	50.7	47.3	49.1	45.0	51.1
92.5°	62.6	60.0	57.1	54.4	51.6	48.8	46.0	43.2	40.5	37.7	40.5
95°	76.5	74.0	71.5	68.8	66.2	63.7	61.1	58.5	56.1	53.5	56.7
97.5°	94.4	92.9	91.3	89.9	88.4	86.9	85.4	83.9	82.3	80.7	82.9
100°	106.5	106.5	106.5	106.5	106.3	106.3	106.3	106.3	106.3	106.3	108.0
102.5°	203.0	198.1	193.2	188.1	183.2	178.2	173.3	168.4	163.5	158.6	165.8
105°	457.1	437.9	418.6	399.4	380.1	360.9	341.7	322.5	303.3	284.1	304.0
107.5°	847.8	812.6	777.6	742.6	707.5	672.5	637.5	602.5	567.6	532.5	563.9
110°	1182.7	1145.5	1108.2	1071.1	1033.9	996.7	959.6	922.4	885.3	848.2	878.0



TEST NUMBER: P1444688
 CATALOG NUMBER: EHBR1-42-UNV-TA-L930-UPL40

CANDELA DISTRIBUTION (continued):

	247.5°	250°	252.5°	255°	257.5°	260°	262.5°	265°	267.5°	270°	272.5°
112.5°	1318.3	1294.0	1270.1	1246.1	1222.0	1198.0	1174.1	1150.2	1126.3	1102.4	1117.0
115°	1300.4	1288.9	1277.4	1265.9	1254.5	1243.0	1231.6	1220.2	1208.9	1197.6	1198.5
117.5°	1192.6	1188.6	1184.8	1180.9	1177.0	1173.3	1169.5	1166.0	1162.1	1158.7	1150.5
120°	1037.5	1038.4	1039.5	1040.7	1042.0	1043.3	1044.5	1045.9	1047.4	1049.0	1038.1
122.5°	884.5	887.0	889.8	892.7	895.5	898.4	901.5	904.7	907.9	911.1	900.2
125°	751.4	754.0	756.7	759.3	762.0	765.0	768.1	771.3	774.3	777.7	768.5
127.5°	655.7	656.5	657.2	658.2	659.1	660.3	661.7	662.9	664.4	666.1	660.3
130°	595.1	593.9	592.7	591.7	590.6	589.9	589.2	588.6	588.1	587.7	585.2
132.5°	560.3	557.9	555.4	552.9	550.5	548.5	546.4	544.6	542.8	541.2	540.4
135°	541.5	538.2	534.8	531.6	528.3	525.4	522.4	519.9	517.2	514.7	515.3
137.5°	529.1	525.8	522.3	519.2	515.9	513.1	510.1	507.3	504.8	502.4	503.4
140°	524.6	521.2	517.8	514.7	511.7	508.8	505.8	503.3	500.5	498.2	498.9
142.5°	518.2	515.3	512.1	509.4	506.4	503.8	501.3	498.9	496.3	494.3	495.0
145°	513.5	511.3	509.0	506.8	504.7	503.0	500.8	499.1	497.4	496.1	496.4
147.5°	506.8	505.3	503.4	501.9	500.2	498.9	497.3	496.2	494.8	493.9	494.0
150°	497.4	496.4	495.2	494.2	493.2	492.3	491.4	490.6	489.8	489.1	489.1
152.5°	487.3	486.4	485.3	484.4	483.5	482.7	481.9	481.3	480.6	480.0	479.9
155°	474.9	474.4	474.0	473.8	473.4	473.3	472.8	472.8	472.5	472.4	472.5
157.5°	467.9	467.9	467.7	467.8	467.8	467.8	467.7	467.9	467.8	468.1	468.3
160°	464.6	464.4	464.1	464.1	463.8	463.7	463.6	463.6	463.5	463.4	463.8
162.5°	461.2	461.5	461.6	461.8	462.1	462.4	462.8	463.2	463.5	463.9	464.3
165°	462.2	462.2	462.1	462.0	462.1	462.1	462.1	462.5	462.4	462.8	463.3
167.5°	461.9	462.1	462.3	462.6	462.9	463.4	463.7	464.2	464.7	465.4	465.8
170°	465.1	465.1	465.1	465.1	465.1	465.4	465.4	465.5	465.7	466.1	466.3
172.5°	469.9	469.9	469.7	469.9	469.7	469.9	469.9	470.1	470.1	470.2	470.3
175°	471.6	472.0	472.3	472.6	472.7	472.9	473.1	473.3	473.6	473.8	473.8
177.5°	474.4	474.4	474.4	474.4	474.4	474.5	474.5	474.5	474.5	474.4	474.6
180°	474.0	474.0	474.0	474.0	474.0	474.0	474.0	474.0	474.0	474.0	474.0



TEST NUMBER: P1444688
 CATALOG NUMBER: EHBR1-42-UNV-TA-L930-UPL40

CANDELA DISTRIBUTION (continued):

	275°	277.5°	280°	282.5°	285°	287.5°	290°	292.5°	295°	297.5°	300°
0°	31860.0	31860.0	31860.0	31860.0	31860.0	31860.0	31860.0	31860.0	31860.0	31860.0	31860.0
2.5°	32258.8	32242.7	32259.2	32242.4	32259.2	32239.1	32252.7	32231.0	32236.5	32214.0	32219.8
5°	33478.6	33452.8	33466.6	33433.1	33436.6	33392.1	33391.2	33339.2	33325.6	33266.4	33240.4
7.5°	34464.9	34456.5	34461.2	34439.7	34437.3	34406.8	34392.3	34349.2	34322.2	34267.8	34230.6
10°	34308.8	34333.9	34340.4	34366.1	34371.3	34396.7	34402.1	34427.5	34432.7	34451.5	34451.8
12.5°	32747.2	32832.6	32853.0	32958.4	33002.8	33123.6	33188.3	33321.2	33400.2	33532.8	33614.2
15°	29738.8	29886.6	29945.5	30151.4	30265.3	30505.7	30656.8	30932.9	31127.7	31420.9	31629.9
17.5°	25598.5	25804.9	25898.0	26177.3	26359.5	26714.3	26970.1	27391.0	27713.3	28181.0	28551.8
20°	21007.1	21236.5	21362.9	21681.5	21896.5	22311.1	22630.4	23147.7	23579.0	24171.8	24678.7
22.5°	16565.2	16783.5	16924.0	17248.1	17490.1	17922.5	18279.4	18825.3	19308.7	19976.6	20584.3
25°	12719.0	12919.0	13045.9	13339.1	13566.4	13963.8	14304.6	14829.6	15302.6	15972.5	16595.7
27.5°	9723.5	9891.0	10013.4	10263.3	10463.8	10800.9	11093.5	11527.5	11934.9	12514.6	13069.5
30°	7444.1	7592.7	7711.7	7929.4	8115.3	8407.5	8664.8	9029.4	9366.6	9827.8	10269.2
32.5°	5688.6	5816.5	5922.5	6113.0	6281.7	6544.8	6776.7	7096.1	7385.6	7776.8	8140.0
35°	4337.4	4588.9	4571.1	4834.0	4876.2	5065.1	5271.9	5551.3	5807.6	6140.2	6449.4
37.5°	3366.5	3437.2	3513.0	3629.3	3751.3	3923.1	4097.8	4439.2	4564.4	4815.8	5071.7
40°	2714.7	2762.5	2812.6	2891.1	2976.6	3097.6	3224.9	3387.8	3554.6	3758.4	3966.5
42.5°	2295.0	2322.1	2353.9	2400.1	2452.8	2529.6	2614.7	2725.1	2841.1	2984.6	3131.0
45°	2050.5	2037.7	2047.1	2071.9	2103.6	2150.3	2204.1	2272.4	2348.0	2440.9	2539.8
47.5°	1822.6	1827.7	1830.6	1844.0	1861.0	1892.3	1924.9	1971.3	2060.9	2088.2	2142.1
50°	1672.0	1674.5	1673.6	1680.5	1689.1	1709.4	1730.5	1762.0	1793.3	1834.9	1874.6
52.5°	1545.8	1549.2	1548.8	1553.3	1557.9	1570.8	1584.1	1606.3	1626.9	1653.3	1676.1
55°	1446.1	1451.0	1452.8	1456.6	1458.9	1465.6	1470.9	1481.5	1490.3	1505.2	1519.0
57.5°	1369.4	1376.1	1379.1	1380.5	1377.7	1377.3	1375.6	1377.9	1379.6	1387.7	1395.4
60°	1309.1	1314.4	1315.2	1314.4	1309.4	1306.0	1300.3	1298.5	1297.6	1301.4	1305.7
62.5°	1246.0	1247.9	1246.5	1245.0	1239.3	1235.9	1230.0	1227.9	1225.9	1228.6	1230.8
65°	1158.6	1160.3	1158.6	1157.6	1152.5	1149.8	1144.8	1143.2	1140.4	1141.1	1140.7
67.5°	1087.6	1089.2	1088.0	1086.7	1083.1	1081.5	1077.8	1075.4	1072.0	1070.7	1068.4
70°	1016.9	1018.2	1016.2	1014.8	1010.8	1009.3	1005.9	1005.2	1002.4	1001.9	999.1
72.5°	935.5	935.6	932.8	932.0	929.0	928.9	927.5	928.8	928.7	930.1	929.5
75°	852.3	851.1	847.6	846.9	844.7	845.8	844.3	846.2	846.5	849.5	849.9
77.5°	768.9	764.5	757.8	754.6	750.2	749.5	747.0	748.7	748.1	751.7	753.1
80°	663.6	658.3	649.6	645.5	640.2	639.4	637.0	639.4	638.2	642.3	645.3
82.5°	529.8	525.2	516.2	512.9	506.8	507.4	504.7	507.4	507.1	513.1	516.7
85°	391.9	388.8	379.6	371.4	362.3	357.1	351.9	350.9	349.4	351.9	354.0
87.5°	226.3	223.5	216.3	211.6	195.7	196.3	190.1	189.7	188.2	186.8	190.1
90°	51.0	56.1	56.3	61.1	61.8	67.2	68.2	73.3	74.0	79.4	80.7
92.5°	43.2	46.0	48.7	51.6	54.4	57.1	59.9	62.6	68.6	74.3	80.6
95°	59.9	63.1	66.3	69.4	72.6	75.8	79.0	82.3	91.0	99.7	108.5
97.5°	85.2	87.2	89.3	91.4	93.6	95.7	97.8	100.0	109.5	119.0	128.3
100°	109.7	111.4	113.1	114.9	116.6	118.3	119.9	121.6	140.0	158.1	176.3
102.5°	173.1	180.4	187.7	194.9	202.4	209.6	216.9	224.1	265.8	307.4	349.1
105°	323.8	343.6	363.6	383.4	403.2	423.1	443.0	462.9	529.6	596.2	662.9
107.5°	595.3	626.6	658.0	689.4	720.8	752.2	783.6	815.1	880.1	945.2	1010.2
110°	907.9	937.8	967.7	997.7	1027.6	1057.6	1087.5	1117.7	1156.7	1195.7	1234.7



TEST NUMBER: P1444688
 CATALOG NUMBER: EHBR1-42-UNV-TA-L930-UPL40

CANDELA DISTRIBUTION (continued):

	275°	277.5°	280°	282.5°	285°	287.5°	290°	292.5°	295°	297.5°	300°
112.5°	1131.6	1146.0	1160.7	1175.3	1189.9	1204.6	1219.3	1234.0	1253.7	1273.1	1292.7
115°	1199.4	1200.3	1201.3	1202.3	1203.4	1204.4	1205.6	1206.8	1213.0	1219.1	1225.4
117.5°	1142.5	1134.5	1126.7	1118.7	1110.9	1103.2	1095.5	1087.9	1086.7	1085.4	1084.3
120°	1027.6	1016.9	1006.2	995.4	985.0	974.5	964.2	953.9	948.6	943.4	938.2
122.5°	889.5	878.9	868.4	857.8	847.4	837.1	827.0	816.8	813.2	809.4	805.9
125°	759.5	750.7	741.9	733.2	724.8	716.2	707.9	699.5	699.5	699.2	699.3
127.5°	655.0	649.6	644.2	639.1	634.1	629.1	624.2	619.3	621.7	624.2	626.6
130°	582.8	580.5	578.4	576.1	574.4	572.5	570.6	568.8	573.2	577.0	581.4
132.5°	540.2	539.8	539.7	539.5	539.7	539.7	540.1	540.1	545.0	549.6	554.5
135°	515.9	516.5	517.6	518.5	519.8	520.9	522.3	523.4	528.1	532.5	537.2
137.5°	504.5	505.5	506.9	508.3	510.0	511.4	513.3	514.8	518.5	522.1	525.7
140°	499.8	500.6	501.8	503.0	504.3	505.5	507.1	508.4	511.5	514.2	517.1
142.5°	496.0	496.6	497.8	498.9	500.2	501.3	502.7	503.9	506.0	508.0	510.4
145°	497.2	497.6	498.6	499.3	500.3	501.2	502.2	503.1	504.6	505.8	507.2
147.5°	494.5	494.8	495.4	496.0	496.7	497.3	497.9	498.5	499.5	500.4	501.3
150°	489.3	489.4	489.8	489.9	490.4	490.8	491.2	491.6	492.3	493.1	493.9
152.5°	480.2	480.2	480.5	480.7	480.9	481.3	481.5	481.9	482.6	483.3	484.1
155°	472.8	473.4	473.8	474.2	474.8	475.0	475.6	476.0	476.5	477.0	477.6
157.5°	468.8	469.0	469.6	469.9	470.4	470.8	471.2	471.6	472.2	472.6	473.0
160°	464.6	465.2	465.7	466.5	467.1	467.7	468.4	469.0	469.5	469.9	470.3
162.5°	464.8	465.3	465.7	466.1	466.5	467.0	467.4	467.8	468.7	469.1	469.9
165°	464.0	464.6	465.4	465.8	466.6	467.2	467.8	468.5	468.8	469.4	469.7
167.5°	466.5	467.0	467.8	468.4	469.1	469.6	470.3	470.9	471.3	471.6	472.0
170°	467.0	467.5	468.1	468.7	469.3	469.7	470.4	470.9	471.5	471.9	472.7
172.5°	470.9	471.2	471.8	472.0	472.6	473.1	473.6	473.9	474.4	475.0	475.3
175°	473.8	473.8	473.9	474.1	474.2	474.2	474.3	474.5	474.6	474.8	474.9
177.5°	474.9	475.1	475.2	475.5	475.7	475.9	476.1	476.3	476.3	476.3	476.3
180°	474.0	474.0	474.0	474.0	474.0	474.0	474.0	474.0	474.0	474.0	474.0



TEST NUMBER: P1444688
 CATALOG NUMBER: EHBR1-42-UNV-TA-L930-UPL40

CANDELA DISTRIBUTION (continued):

	302.5°	305°	307.5°	310°	312.5°	315°	317.5°	320°	322.5°	325°	327.5°
0°	31860.0	31860.0	31860.0	31860.0	31860.0	31860.0	31860.0	31860.0	31860.0	31860.0	31860.0
2.5°	32197.2	32198.6	32172.6	32171.2	32146.9	32143.8	32120.1	32112.9	32093.7	32086.7	32067.1
5°	33174.1	33142.4	33069.3	33026.3	32954.1	32906.2	32828.1	32777.1	32701.6	32644.7	32568.8
7.5°	34162.0	34112.9	34030.8	33964.3	33864.1	33784.1	33666.8	33570.6	33443.7	33333.7	33200.3
10°	34451.8	34444.2	34423.3	34392.8	34346.2	34293.8	34214.0	34130.7	34019.3	33898.5	33750.1
12.5°	33738.8	33815.8	33920.8	33983.0	34058.7	34091.9	34122.9	34115.1	34094.7	34033.5	33947.8
15°	31932.8	32149.2	32435.6	32657.6	32913.0	33098.6	33303.6	33431.4	33558.7	33617.5	33653.5
17.5°	29059.9	29469.5	29983.2	30408.8	30899.9	31294.4	31726.8	32052.3	32387.0	32626.9	32843.8
20°	25369.7	25963.1	26689.5	27331.2	28077.5	28726.0	29436.6	30020.0	30621.6	31092.0	31537.2
22.5°	21366.9	22071.7	22950.0	23763.6	24725.5	25590.1	26565.5	27414.5	28300.9	29041.5	29757.5
25°	17431.0	18203.9	19164.2	20071.8	21161.3	22167.0	23323.9	24381.9	25527.7	26522.3	27504.9
27.5°	13836.8	14595.7	15576.1	16542.3	17694.4	18766.0	20005.5	21171.2	22475.7	23678.6	24909.3
30°	10882.8	11526.4	12405.5	13341.4	14477.6	15568.1	16821.0	18019.9	19377.0	20690.5	22076.6
32.5°	8622.1	9112.4	9803.6	10594.9	11643.4	12681.4	13874.4	15031.7	16368.2	17695.0	19136.6
35°	6847.5	7230.0	7756.9	8374.5	9262.3	10157.1	11212.3	12264.8	13511.6	14770.7	16171.9
37.5°	5399.7	5710.0	6122.7	6586.6	7298.7	8033.0	8898.3	9770.9	10854.3	11970.3	13240.2
40°	4216.5	4467.8	4789.1	5135.0	5672.7	6238.6	6907.8	7584.4	8454.8	9366.9	10418.0
42.5°	3312.5	3497.8	3724.7	3977.5	4479.2	4779.6	5233.4	5722.8	6362.7	7024.9	7815.0
45°	2660.1	2786.6	2944.0	3113.6	3346.4	3601.2	3912.0	4237.9	4845.7	5143.9	5624.5
47.5°	2221.5	2306.4	2406.5	2513.4	2650.7	2798.9	2983.2	3171.7	3415.4	3667.9	3964.1
50°	1926.1	2012.4	2046.8	2102.1	2181.6	2266.3	2370.2	2474.1	2604.8	2737.2	2889.7
52.5°	1706.8	1734.9	1772.3	1807.5	1856.8	1953.1	1984.3	2038.6	2111.9	2183.6	2263.7
55°	1539.4	1557.7	1582.0	1603.2	1633.0	1661.4	1702.5	1738.7	1787.5	1830.8	1884.0
57.5°	1409.0	1420.7	1437.6	1451.5	1470.7	1486.9	1510.9	1530.5	1558.6	1583.0	1615.3
60°	1314.3	1322.1	1333.4	1342.5	1354.8	1363.2	1375.1	1384.3	1399.2	1411.6	1429.6
62.5°	1237.0	1241.0	1248.4	1253.7	1261.5	1265.8	1272.2	1276.2	1284.3	1290.5	1300.6
65°	1144.1	1145.1	1150.1	1152.3	1158.5	1160.7	1165.9	1167.7	1174.5	1179.2	1188.0
67.5°	1068.1	1066.0	1066.2	1064.4	1065.2	1063.4	1063.8	1062.0	1064.7	1066.2	1072.8
70°	998.7	995.8	994.8	991.6	990.7	987.4	986.4	983.5	983.1	982.1	984.5
72.5°	931.1	930.2	930.4	928.2	927.9	925.7	925.8	924.5	926.0	926.7	929.7
75°	853.3	853.4	855.0	853.0	853.5	851.7	852.4	850.6	851.6	851.2	854.2
77.5°	758.5	760.8	764.9	764.1	765.4	763.3	764.2	761.7	762.5	760.8	761.9
80°	652.0	656.8	662.3	662.0	664.4	662.9	665.0	662.7	663.6	660.8	660.1
82.5°	525.6	529.6	535.5	535.8	540.9	541.8	547.6	547.4	551.1	548.7	547.1
85°	359.3	362.0	367.2	370.1	375.3	378.6	384.3	386.5	382.5	389.8	384.0
87.5°	187.6	194.6	190.7	199.8	197.7	206.8	204.9	213.3	211.7	219.0	218.1
90°	87.3	89.3	96.2	98.4	106.4	109.3	111.7	108.1	110.1	106.8	109.1
92.5°	86.3	92.6	98.6	104.5	110.5	116.6	110.9	105.4	99.8	94.4	88.8
95°	117.2	126.0	134.7	143.5	152.2	160.9	151.6	142.2	132.9	123.5	114.1
97.5°	137.7	147.1	156.5	165.8	175.4	184.7	173.6	162.5	151.4	140.4	129.3
100°	194.4	212.7	230.8	249.0	267.2	285.3	264.8	244.0	223.5	202.8	182.1
102.5°	390.9	432.4	474.2	515.9	557.5	599.2	555.4	511.7	467.7	423.9	380.0
105°	729.7	796.3	863.0	929.7	996.4	1063.3	992.1	921.1	849.9	778.9	707.7
107.5°	1075.3	1140.2	1205.4	1270.4	1335.6	1400.8	1328.7	1256.5	1184.5	1112.2	1040.1
110°	1273.9	1313.0	1352.2	1391.3	1430.5	1469.8	1417.0	1364.4	1311.8	1259.2	1206.4



TEST NUMBER: P1444688
 CATALOG NUMBER: EHBR1-42-UNV-TA-L930-UPL40

CANDELA DISTRIBUTION (continued):

	302.5°	305°	307.5°	310°	312.5°	315°	317.5°	320°	322.5°	325°	327.5°
112.5°	1312.1	1332.0	1351.4	1371.2	1390.7	1410.5	1372.9	1335.4	1297.6	1260.1	1222.4
115°	1231.7	1238.0	1244.3	1250.7	1256.9	1263.3	1237.9	1212.6	1187.3	1161.9	1136.4
117.5°	1083.3	1082.4	1081.1	1080.3	1079.1	1078.1	1064.0	1049.9	1035.6	1021.3	1007.1
120°	932.9	927.8	922.6	917.4	912.2	906.9	901.0	895.1	888.9	882.9	876.8
122.5°	802.3	798.8	795.2	791.7	787.9	784.2	781.9	779.7	777.3	775.1	772.5
125°	699.2	699.0	698.9	698.9	698.7	698.6	697.3	696.2	695.0	693.9	692.6
127.5°	628.8	631.3	633.5	635.8	638.0	640.3	639.9	639.7	639.4	639.1	638.8
130°	585.2	589.6	593.5	597.4	601.2	605.4	604.6	604.0	603.4	602.8	602.1
132.5°	559.2	563.8	568.4	573.2	577.6	582.2	581.4	580.7	579.6	579.0	578.0
135°	541.5	546.0	550.2	554.8	558.9	563.3	562.1	561.2	560.0	559.2	558.0
137.5°	529.1	532.9	536.3	539.8	543.0	546.5	545.3	544.4	543.1	542.3	541.0
140°	519.8	522.7	525.2	528.2	530.8	533.5	532.1	530.9	529.3	528.1	526.6
142.5°	512.4	514.6	516.4	518.6	520.6	522.7	520.5	518.7	516.9	515.0	513.1
145°	508.6	510.1	511.3	512.7	513.7	515.1	512.8	510.7	508.3	506.3	503.9
147.5°	502.0	503.0	503.5	504.4	504.9	505.8	503.6	501.5	499.4	497.2	495.0
150°	494.4	495.4	495.9	496.6	497.3	498.0	495.7	493.5	491.2	489.0	486.7
152.5°	484.8	485.4	486.0	486.6	487.2	487.7	485.6	483.6	481.4	479.3	477.0
155°	477.8	478.5	478.6	479.2	479.3	479.6	477.7	476.1	474.3	472.5	470.5
157.5°	473.4	473.9	474.3	474.4	474.7	475.1	473.6	472.4	471.0	469.6	468.1
160°	470.7	471.1	471.4	471.7	472.0	472.1	471.0	470.0	468.8	467.6	466.2
162.5°	470.4	471.1	471.6	471.9	472.6	473.0	471.6	470.3	469.0	467.6	466.1
165°	470.1	470.4	470.8	471.1	471.2	471.6	470.6	469.8	468.7	467.8	466.9
167.5°	472.3	472.7	473.0	473.4	473.5	473.7	472.7	472.0	471.0	470.1	469.0
170°	472.9	473.5	474.0	474.4	474.8	475.1	474.4	473.7	472.8	472.1	471.2
172.5°	475.8	476.3	476.5	476.8	477.1	477.6	476.8	476.0	475.2	474.4	473.5
175°	474.9	475.0	475.2	475.2	475.2	475.3	474.7	474.1	473.5	472.8	472.1
177.5°	476.3	476.3	476.3	476.2	476.2	476.2	475.8	475.3	475.0	474.5	473.9
180°	474.0	474.0	474.0	474.0	474.0	474.0	474.0	474.0	474.0	474.0	474.0



TEST NUMBER: P1444688
 CATALOG NUMBER: EHBR1-42-UNV-TA-L930-UPL40

CANDELA DISTRIBUTION (continued):

	330°	332.5°	335°	337.5°	340°	342.5°	345°	347.5°	350°	352.5°	355°
0°	31860.0	31860.0	31860.0	31860.0	31860.0	31860.0	31860.0	31860.0	31860.0	31860.0	31860.0
2.5°	32060.1	32046.2	32037.2	32025.8	32018.8	32009.9	32003.4	31997.9	31993.4	31989.2	31986.2
5°	32510.9	32439.3	32383.6	32323.4	32273.9	32224.6	32186.6	32155.1	32133.3	32117.0	32107.3
7.5°	33084.9	32953.7	32837.1	32714.3	32604.2	32495.9	32402.6	32322.2	32261.9	32222.8	32199.1
10°	33597.5	33421.9	33248.2	33065.5	32892.0	32724.0	32568.8	32432.3	32324.3	32252.5	32210.6
12.5°	33827.3	33677.7	33500.3	33301.8	33089.4	32874.5	32665.0	32476.1	32317.5	32211.1	32149.7
15°	33624.9	33563.4	33443.1	33289.0	33087.5	32865.3	32619.3	32388.1	32175.5	32037.5	31957.6
17.5°	32966.6	33052.4	33043.1	32984.2	32839.3	32652.2	32401.6	32142.0	31875.9	31691.6	31590.9
20°	31855.7	32125.2	32261.9	32332.0	32275.1	32153.9	31926.9	31663.3	31353.3	31112.7	30965.8
22.5°	30294.6	30770.3	31066.8	31283.8	31329.8	31288.5	31088.1	30837.4	30491.8	30202.5	29985.6
25°	28284.9	28982.0	29450.5	29817.9	29960.5	29997.4	29826.8	29577.5	29192.3	28855.3	28557.4
27.5°	25917.9	26823.6	27449.0	27942.7	28165.4	28262.0	28105.1	27850.8	27395.0	26992.7	26603.5
30°	23253.0	24327.5	25080.7	25672.5	25944.1	26071.7	25905.0	25621.1	25090.7	24606.7	24116.4
32.5°	20400.8	21576.5	22397.3	23040.0	23309.1	23429.2	23211.1	22892.3	22279.2	21708.9	21137.2
35°	17414.5	18601.2	19429.0	20054.6	20280.0	20352.5	20073.5	19705.0	19025.8	18399.9	17776.4
37.5°	14367.4	15471.5	16223.7	16785.2	16924.8	16937.3	16601.2	16194.2	15480.3	14863.1	14242.5
40°	11346.6	12277.8	12885.2	13334.6	13383.0	13339.7	12974.4	12564.8	11897.0	11344.0	10799.2
42.5°	8501.2	9204.1	9637.4	9945.4	9927.1	9841.7	9506.8	9154.6	8603.7	8182.5	7753.7
45°	6063.5	6527.0	6780.3	6960.5	6902.7	6821.3	6560.6	6313.8	5939.4	5667.4	5379.2
47.5°	4212.4	4765.8	4669.5	5021.8	4718.2	4918.7	4501.2	4271.1	4072.3	3927.8	3765.0
50°	3015.7	3142.5	3203.8	3245.6	3223.3	3192.6	3117.6	3050.5	2959.7	2893.6	2816.4
52.5°	2329.0	2392.4	2427.1	2452.2	2447.2	2436.0	2403.3	2373.5	2331.0	2303.0	2269.2
55°	1972.7	1973.7	2037.5	2010.1	2050.6	2003.2	2021.8	1969.3	1977.8	1932.7	1902.3
57.5°	1639.3	1665.3	1676.9	1688.3	1685.1	1683.1	1670.4	1664.0	1649.8	1645.4	1635.2
60°	1442.0	1455.5	1458.3	1463.6	1459.2	1457.5	1447.7	1444.1	1434.6	1432.8	1426.0
62.5°	1306.7	1313.6	1313.6	1313.6	1307.9	1302.5	1291.5	1285.7	1277.6	1275.8	1271.9
65°	1193.8	1201.0	1202.1	1203.7	1199.6	1195.3	1185.6	1179.3	1171.0	1167.7	1163.3
67.5°	1077.2	1084.9	1087.5	1091.4	1089.1	1088.2	1081.6	1079.1	1073.6	1072.2	1068.1
70°	985.7	988.9	988.6	988.5	983.4	978.7	971.1	967.4	961.6	960.5	956.6
72.5°	931.2	933.6	932.1	930.1	923.4	916.5	907.5	900.9	893.4	888.6	883.3
75°	854.6	857.6	855.7	854.4	848.4	843.9	836.7	833.0	827.7	826.2	822.5
77.5°	760.5	761.9	758.9	758.5	753.9	751.1	745.6	744.7	740.8	740.9	737.4
80°	655.8	655.0	650.0	649.1	644.5	643.3	639.0	639.3	636.2	637.5	635.0
82.5°	539.6	536.6	530.1	528.3	522.9	522.5	519.6	522.0	520.2	522.9	521.3
85°	386.7	387.6	384.7	384.7	383.2	383.6	383.4	385.2	385.4	388.0	387.9
87.5°	215.6	218.7	218.1	220.9	220.8	224.0	225.0	229.7	230.4	234.7	234.7
90°	105.7	108.3	104.9	107.6	106.1	110.1	109.3	113.4	112.1	115.4	113.1
92.5°	83.2	77.6	72.2	66.6	63.8	60.8	58.5	55.2	52.7	49.6	46.8
95°	104.7	95.4	85.9	76.5	73.3	70.0	66.8	63.6	60.5	57.3	54.1
97.5°	118.3	107.1	96.1	84.9	82.2	79.4	76.5	73.8	70.9	68.2	65.4
100°	161.4	140.7	120.0	99.3	97.0	94.5	92.2	89.9	87.5	85.0	82.7
102.5°	336.1	292.1	248.2	204.2	196.0	187.6	179.3	170.9	162.5	154.3	146.0
105°	636.5	565.2	494.0	422.8	400.1	377.5	354.9	332.2	309.6	286.9	264.4
107.5°	967.9	895.5	823.3	751.0	709.3	667.6	625.7	583.7	542.1	500.1	458.2
110°	1153.8	1101.0	1048.2	995.3	961.8	928.1	894.3	860.7	827.2	793.3	759.5



TEST NUMBER: P1444688
 CATALOG NUMBER: EHBR1-42-UNV-TA-L930-UPL40

CANDELA DISTRIBUTION (continued):

	330°	332.5°	335°	337.5°	340°	342.5°	345°	347.5°	350°	352.5°	355°
112.5°	1184.6	1146.8	1109.0	1071.1	1056.0	1040.6	1025.5	1010.2	994.9	979.5	964.2
115°	1110.9	1085.4	1059.8	1034.2	1029.0	1023.5	1018.2	1012.7	1007.3	1001.7	996.2
117.5°	992.9	978.5	964.1	949.8	950.6	951.5	952.5	953.3	954.1	954.7	955.5
120°	870.6	864.5	858.4	852.2	857.0	861.5	866.3	870.6	875.1	879.4	883.7
122.5°	770.3	767.7	765.5	762.8	768.6	774.1	779.7	785.1	790.5	795.6	800.9
125°	691.5	690.2	689.0	687.5	693.3	698.9	704.5	709.9	715.3	720.5	725.7
127.5°	638.6	638.2	638.0	637.5	641.7	645.5	649.5	653.1	657.0	660.4	664.0
130°	601.3	600.6	600.1	599.3	603.0	606.5	610.3	613.5	616.9	619.9	623.1
132.5°	577.3	576.3	575.5	574.5	577.4	579.8	582.4	584.6	587.0	588.9	591.0
135°	557.1	555.8	554.9	553.7	556.2	558.6	561.0	563.0	565.2	566.9	568.7
137.5°	540.1	538.9	537.8	536.6	538.9	541.0	543.1	544.9	546.8	548.5	549.9
140°	525.4	523.9	522.7	521.1	523.1	525.0	526.8	528.4	530.2	531.5	532.9
142.5°	511.2	509.1	507.5	505.5	506.9	508.2	509.6	510.7	512.0	512.9	513.7
145°	501.7	499.3	497.3	494.9	496.1	497.1	498.2	499.2	499.9	500.6	501.4
147.5°	493.1	490.7	488.5	486.3	487.4	488.1	488.6	489.2	490.0	490.5	490.8
150°	484.4	481.9	479.7	477.4	478.0	478.6	479.1	479.8	480.3	480.7	481.0
152.5°	474.8	472.7	470.3	468.0	468.6	469.0	469.4	469.7	470.2	470.5	470.7
155°	468.8	466.9	465.0	462.9	463.5	463.7	464.0	464.4	464.6	464.8	464.9
157.5°	466.6	465.0	463.7	462.0	462.0	462.1	462.2	462.1	462.1	462.0	461.8
160°	465.2	463.7	462.4	461.1	461.0	461.1	461.2	460.8	460.9	460.5	460.4
162.5°	464.6	463.1	461.5	459.9	459.8	460.0	459.9	459.7	459.6	459.5	459.3
165°	466.0	464.7	463.7	462.4	462.3	462.1	462.0	461.4	461.3	460.7	460.4
167.5°	467.9	466.9	465.6	464.4	464.4	464.6	464.5	464.4	464.4	464.1	464.1
170°	470.4	469.5	468.7	467.7	467.4	467.3	467.0	466.8	466.4	466.2	465.9
172.5°	472.6	471.7	470.8	469.6	469.6	469.5	469.3	469.2	468.8	468.6	468.5
175°	471.4	470.8	469.9	469.3	469.2	469.1	468.9	468.8	468.6	468.5	468.2
177.5°	473.5	473.1	472.5	472.0	471.9	471.9	471.8	471.7	471.7	471.5	471.4
180°	474.0	474.0	474.0	474.0	474.0	474.0	474.0	474.0	474.0	474.0	474.0



TEST NUMBER: P1444688
 CATALOG NUMBER: EHBR1-42-UNV-TA-L930-UPL40

CANDELA DISTRIBUTION (continued):

	357.5°	360°
0°	31860.0	31860.0
2.5°	31983.3	31981.7
5°	32102.2	32100.4
7.5°	32192.7	32192.1
10°	32203.4	32208.9
12.5°	32139.1	32143.6
15°	31951.4	31960.3
17.5°	31592.8	31604.3
20°	30974.8	30986.7
22.5°	29973.9	29978.9
25°	28518.9	28498.2
27.5°	26535.2	26499.6
30°	24013.4	23979.0
32.5°	21006.8	20985.3
35°	17622.4	17608.8
37.5°	14059.1	14031.5
40°	10600.0	10519.5
42.5°	7566.0	7424.7
45°	5228.8	5061.2
47.5°	3650.2	3546.6
50°	2766.8	2733.4
52.5°	2254.4	2246.7
55°	1902.2	1898.8
57.5°	1637.5	1636.3
60°	1429.6	1429.2
62.5°	1274.5	1275.1
65°	1165.3	1165.5
67.5°	1069.2	1068.5
70°	958.1	957.3
72.5°	881.6	880.3
75°	822.5	821.7
77.5°	738.5	737.2
80°	636.6	635.0
82.5°	523.6	521.8
85°	390.6	390.7
87.5°	239.0	238.8
90°	116.1	113.4
92.5°	44.3	41.8
95°	50.9	47.7
97.5°	62.6	59.9
100°	80.3	78.0
102.5°	137.6	129.3
105°	241.8	219.1
107.5°	416.4	374.6
110°	725.8	692.1



TEST NUMBER: P1444688
CATALOG NUMBER: EHBR1-42-UNV-TA-L930-UPL40

CANDELA DISTRIBUTION (continued):

	357.5°	360°
112.5°	948.7	933.4
115°	990.4	984.9
117.5°	956.0	956.5
120°	887.8	892.0
122.5°	805.8	810.8
125°	730.6	735.5
127.5°	667.2	670.3
130°	625.5	628.4
132.5°	592.6	594.2
135°	570.1	571.6
137.5°	551.1	552.4
140°	533.9	534.9
142.5°	514.5	515.1
145°	501.9	502.3
147.5°	490.8	491.1
150°	481.1	481.3
152.5°	470.7	471.0
155°	464.9	465.0
157.5°	461.5	461.3
160°	460.1	459.9
162.5°	458.9	458.8
165°	459.8	459.3
167.5°	463.7	463.7
170°	465.5	465.3
172.5°	468.1	467.8
175°	468.1	468.0
177.5°	471.4	471.1
180°	474.0	474.0

LM-79-2019: Approved Method: Electrical and Photometric Measurements of Solid-
State Lighting Products

Report Prepared for

Cooper Lighting Solutions

Metalux

Report Number: SP1-2506-472-5

Test Date: 08/01/2025

Luminaire Tested: EHBR-60-L930-N

Data in this report applies to families of products including EHBR-60-L930-N

Test Information

Test Method: LM-79-2019
 Report Number: SP1-2506-472-5
 Test Lab: COOPER LIGHTING SOLUTIONS
 Photometer: SP1 - 76IN SPHERE
 Measurement Geometry: 4π
 Issue Date: 08/05/2025
 Manufacturer: COOPER LIGHTING SOLUTIONS
 Product Line: Metalux
 Catalog Number: **EHBR-60-L930-N**
 Description: Elevate Round Highbay at, 60000 lumens, 3000K 90CRI LEDs with N lens

Spectral Parameters

CCT (K): 2996
 CIE u': 0.2519
 CIE v': 0.5169
 Duv: -0.0033
 CIE x: 0.4325
 CIE y: 0.3945
 CIE z: 0.1730
 Peak Wavelength (nm): 630
 Dominant Wavelength (nm): 584
 Purity: 48.21818
 Rf: 91.3
 Rg: 102

CRI (Ra):	94.4		
R1:	96.8	R9:	61.4
R2:	98.1	R10:	94.4
R3:	97.8	R11:	95.7
R4:	95.6	R12:	88.5
R5:	96.9	R13:	97.3
R6:	95.7	R14:	97.8
R7:	90.9	R15:	92.3
R8:	83.0		



Test Conditions

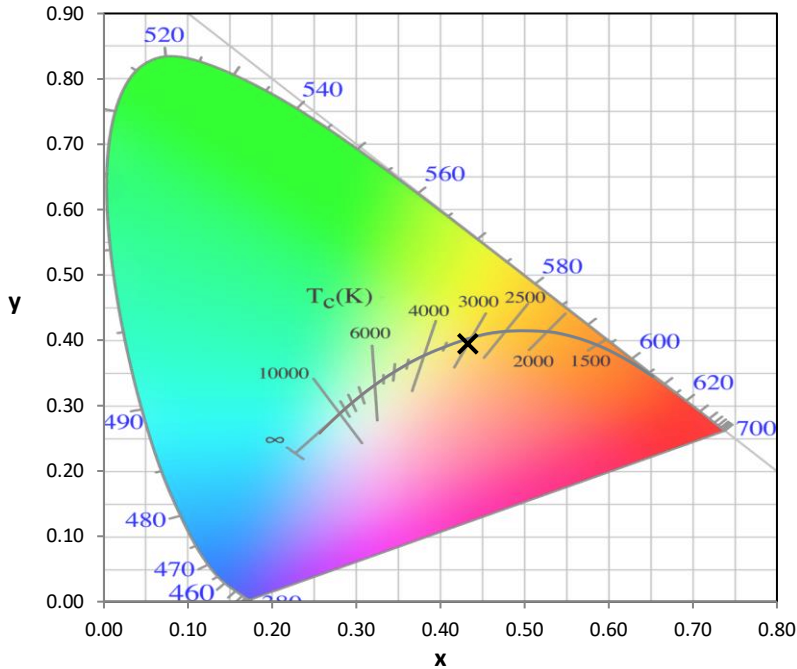
Stabilization Time: 40M
 Operation Time: 1H 40M
 Sphere Temperature (°C): 25.0

REPORT NUMBER: SP1-2506-472-5

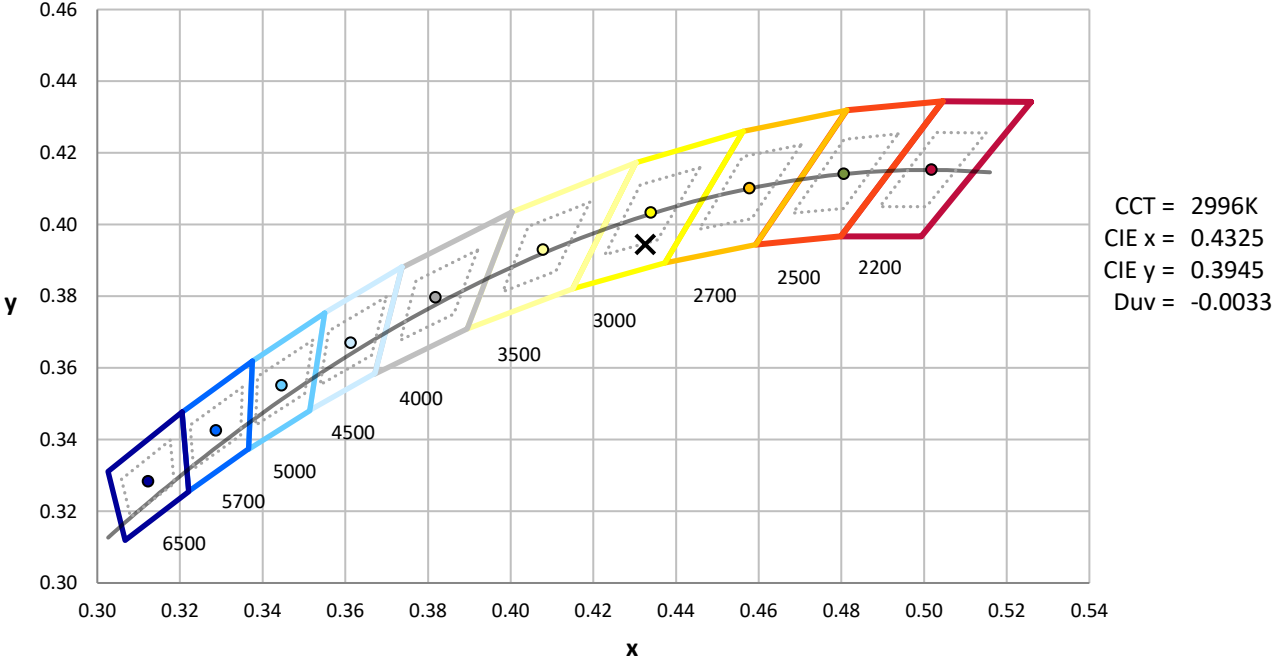
Measurement and Test Equipment			
Instrument	Identification Number	Calibration Date	Calibration Due Date
Photometer	76INCH SPHERE IN0058	6/16/2025	12/16/2025
Power Meter	XITRON INXT2011004	1/21/2025	1/21/2026
AC Power Source	CHROMA 61603 IN0063	10/22/2024	10/22/2025
DC Power Source	AGILENT E3634A IN0208	10/22/2024	10/22/2025
Sphere Thermometer	ONSET IN0085	10/22/2024	10/22/2025
Room Thermometer	ONSET IN0046	10/22/2024	10/22/2025

REPORT NUMBER: SP1-2506-472-5

CIE 1931 Chromaticity Diagram



CIE 1931 Chromaticity Diagram with 2017 ANSI 7-Step and 4-Step Quadrangles



Point lies inside the ANSI 3000K 7-step quadrangle

REPORT NUMBER: SP1-2506-472-5

Photopic Flux vs. Wavelength



Photopic Lumens: NR

λ (nm)	Power W [^] /nm	Lumens (φ/nm)	λ (nm)	Power W [^] /nm	Lumens (φ/nm)	λ (nm)	Power W [^] /nm	Lumens (φ/nm)	λ (nm)	Power W [^] /nm	Lumens (φ/nm)	λ (nm)	Power W [^] /nm	Lumens (φ/nm)
360	0	NR	490	101	NR	620	317	NR	750	7	NR	880	0	NR
365	0	NR	495	121	NR	625	320	NR	755	6	NR	885	0	NR
370	0	NR	500	141	NR	630	1000	NR	760	5	NR	890	0	NR
375	0	NR	505	158	NR	635	651	NR	765	4	NR	895	0	NR
380	0	NR	510	171	NR	640	207	NR	770	4	NR	900	0	NR
385	0	NR	515	182	NR	645	201	NR	775	3	NR	905	0	NR
390	0	NR	520	189	NR	650	174	NR	780	3	NR	910	0	NR
395	1	NR	525	194	NR	655	146	NR	785	2	NR	915	0	NR
400	1	NR	530	199	NR	660	124	NR	790	2	NR	920	0	NR
405	3	NR	535	205	NR	665	105	NR	795	2	NR	925	0	NR
410	4	NR	540	210	NR	670	96	NR	800	1	NR	930	0	NR
415	7	NR	545	216	NR	675	79	NR	805	1	NR	935	0	NR
420	13	NR	550	222	NR	680	67	NR	810	1	NR	940	0	NR
425	22	NR	555	230	NR	685	58	NR	815	1	NR	945	0	NR
430	37	NR	560	240	NR	690	49	NR	820	1	NR	950	0	NR
435	60	NR	565	248	NR	695	42	NR	825	1	NR	955	0	NR
440	101	NR	570	258	NR	700	36	NR	830	1	NR	960	0	NR
445	172	NR	575	268	NR	705	30	NR	835	1	NR	965	0	NR
450	223	NR	580	278	NR	710	26	NR	840	1	NR	970	0	NR
455	167	NR	585	287	NR	715	22	NR	845	0	NR	975	0	NR
460	126	NR	590	295	NR	720	19	NR	850	0	NR	980	0	NR
465	111	NR	595	298	NR	725	16	NR	855	0	NR	985	0	NR
470	86	NR	600	303	NR	730	14	NR	860	0	NR	990	0	NR
475	74	NR	605	307	NR	735	12	NR	865	0	NR	995	0	NR
480	77	NR	610	341	NR	740	10	NR	870	0	NR	1000	0	NR
485	86	NR	615	368	NR	745	8	NR	875	0	NR			

REPORT NUMBER: SP1-2506-472-5

Scotopic Flux vs. Wavelength



Scotopic Lumens: NR

S/P: 1.44

λ (nm)	Power W [^] /nm	Lumens (φ/nm)	λ (nm)	Power W [^] /nm	Lumens (φ/nm)	λ (nm)	Power W [^] /nm	Lumens (φ/nm)	λ (nm)	Power W [^] /nm	Lumens (φ/nm)	λ (nm)	Power W [^] /nm	Lumens (φ/nm)
360	0	NR	490	101	NR	620	317	NR	750	7	NR	880	0	NR
365	0	NR	495	121	NR	625	320	NR	755	6	NR	885	0	NR
370	0	NR	500	141	NR	630	1000	NR	760	5	NR	890	0	NR
375	0	NR	505	158	NR	635	651	NR	765	4	NR	895	0	NR
380	0	NR	510	171	NR	640	207	NR	770	4	NR	900	0	NR
385	0	NR	515	182	NR	645	201	NR	775	3	NR	905	0	NR
390	0	NR	520	189	NR	650	174	NR	780	3	NR	910	0	NR
395	1	NR	525	194	NR	655	146	NR	785	2	NR	915	0	NR
400	1	NR	530	199	NR	660	124	NR	790	2	NR	920	0	NR
405	3	NR	535	205	NR	665	105	NR	795	2	NR	925	0	NR
410	4	NR	540	210	NR	670	96	NR	800	1	NR	930	0	NR
415	7	NR	545	216	NR	675	79	NR	805	1	NR	935	0	NR
420	13	NR	550	222	NR	680	67	NR	810	1	NR	940	0	NR
425	22	NR	555	230	NR	685	58	NR	815	1	NR	945	0	NR
430	37	NR	560	240	NR	690	49	NR	820	1	NR	950	0	NR
435	60	NR	565	248	NR	695	42	NR	825	1	NR	955	0	NR
440	101	NR	570	258	NR	700	36	NR	830	1	NR	960	0	NR
445	172	NR	575	268	NR	705	30	NR	835	1	NR	965	0	NR
450	223	NR	580	278	NR	710	26	NR	840	1	NR	970	0	NR
455	167	NR	585	287	NR	715	22	NR	845	0	NR	975	0	NR
460	126	NR	590	295	NR	720	19	NR	850	0	NR	980	0	NR
465	111	NR	595	298	NR	725	16	NR	855	0	NR	985	0	NR
470	86	NR	600	303	NR	730	14	NR	860	0	NR	990	0	NR
475	74	NR	605	307	NR	735	12	NR	865	0	NR	995	0	NR
480	77	NR	610	341	NR	740	10	NR	870	0	NR	1000	0	NR
485	86	NR	615	368	NR	745	8	NR	875	0	NR			

REPORT NUMBER: SP1-2506-472-5

Melanopic Flux vs. Wavelength



Melanopic Lumens: NR

M/P: 2.85

λ (nm)	Power W [^] /nm	Lumens (φ/nm)	λ (nm)	Power W [^] /nm	Lumens (φ/nm)	λ (nm)	Power W [^] /nm	Lumens (φ/nm)	λ (nm)	Power W [^] /nm	Lumens (φ/nm)	λ (nm)	Power W [^] /nm	Lumens (φ/nm)
360	0	NR	490	101	NR	620	317	NR	750	7	NR	880	0	NR
365	0	NR	495	121	NR	625	320	NR	755	6	NR	885	0	NR
370	0	NR	500	141	NR	630	1000	NR	760	5	NR	890	0	NR
375	0	NR	505	158	NR	635	651	NR	765	4	NR	895	0	NR
380	0	NR	510	171	NR	640	207	NR	770	4	NR	900	0	NR
385	0	NR	515	182	NR	645	201	NR	775	3	NR	905	0	NR
390	0	NR	520	189	NR	650	174	NR	780	3	NR	910	0	NR
395	1	NR	525	194	NR	655	146	NR	785	2	NR	915	0	NR
400	1	NR	530	199	NR	660	124	NR	790	2	NR	920	0	NR
405	3	NR	535	205	NR	665	105	NR	795	2	NR	925	0	NR
410	4	NR	540	210	NR	670	96	NR	800	1	NR	930	0	NR
415	7	NR	545	216	NR	675	79	NR	805	1	NR	935	0	NR
420	13	NR	550	222	NR	680	67	NR	810	1	NR	940	0	NR
425	22	NR	555	230	NR	685	58	NR	815	1	NR	945	0	NR
430	37	NR	560	240	NR	690	49	NR	820	1	NR	950	0	NR
435	60	NR	565	248	NR	695	42	NR	825	1	NR	955	0	NR
440	101	NR	570	258	NR	700	36	NR	830	1	NR	960	0	NR
445	172	NR	575	268	NR	705	30	NR	835	1	NR	965	0	NR
450	223	NR	580	278	NR	710	26	NR	840	1	NR	970	0	NR
455	167	NR	585	287	NR	715	22	NR	845	0	NR	975	0	NR
460	126	NR	590	295	NR	720	19	NR	850	0	NR	980	0	NR
465	111	NR	595	298	NR	725	16	NR	855	0	NR	985	0	NR
470	86	NR	600	303	NR	730	14	NR	860	0	NR	990	0	NR
475	74	NR	605	307	NR	735	12	NR	865	0	NR	995	0	NR
480	77	NR	610	341	NR	740	10	NR	870	0	NR	1000	0	NR
485	86	NR	615	368	NR	745	8	NR	875	0	NR			

Summary

$R_f = 91.3$
 $R_g = 102$
 $CIE R_a = 94.4$
 $R_9 = 61.4$



Color Vector Graphics

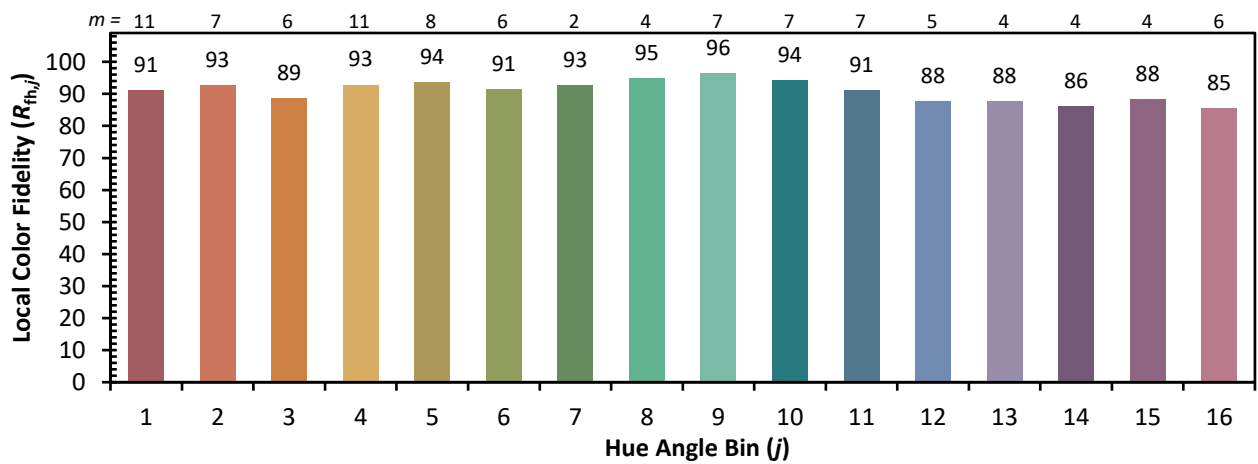
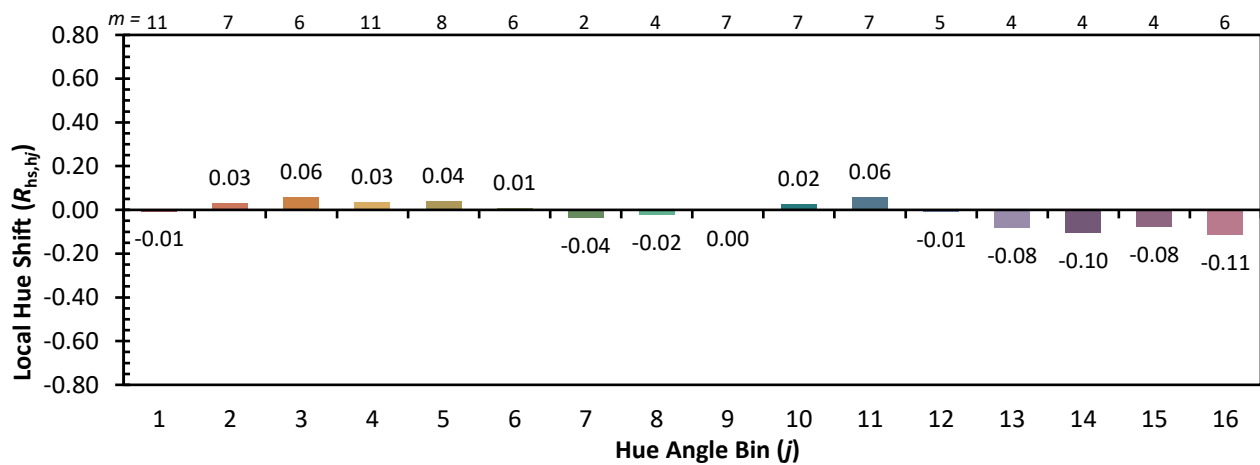
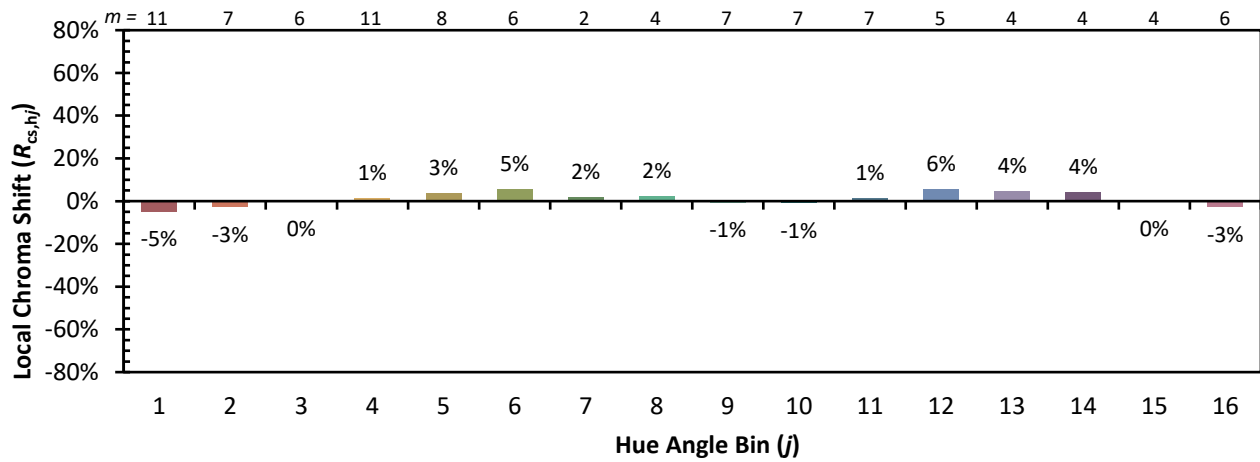


Individual Sample Fidelity Index ($R_{f,i}$)

CES01 = 86	CES26 = 91	CES51 = 96	CES76 = 89
CES02 = 63	CES27 = 96	CES52 = 95	CES77 = 85
CES03 = 32	CES28 = 96	CES53 = 93	CES78 = 86
CES04 = 70	CES29 = 90	CES54 = 98	CES79 = 89
CES05 = 51	CES30 = 96	CES55 = 98	CES80 = 91
CES06 = 51	CES31 = 90	CES56 = 95	CES81 = 72
CES07 = 44	CES32 = 84	CES57 = 95	CES82 = 95
CES08 = 42	CES33 = 91	CES58 = 95	CES83 = 93
CES09 = 29	CES34 = 92	CES59 = 99	CES84 = 96
CES10 = 76	CES35 = 96	CES60 = 96	CES85 = 80
CES11 = 59	CES36 = 90	CES61 = 96	CES86 = 77
CES12 = 65	CES37 = 94	CES62 = 95	CES87 = 91
CES13 = 44	CES38 = 99	CES63 = 94	CES88 = 96
CES14 = 74	CES39 = 97	CES64 = 96	CES89 = 82
CES15 = 72	CES40 = 94	CES65 = 92	CES90 = 97
CES16 = 48	CES41 = 94	CES66 = 95	CES91 = 82
CES17 = 50	CES42 = 91	CES67 = 94	CES92 = 78
CES18 = 57	CES43 = 88	CES68 = 93	CES93 = 87
CES19 = 72	CES44 = 99	CES69 = 94	CES94 = 73
CES20 = 67	CES45 = 93	CES70 = 90	CES95 = 85
CES21 = 86	CES46 = 93	CES71 = 90	CES96 = 92
CES22 = 79	CES47 = 86	CES72 = 96	CES97 = 93
CES23 = 92	CES48 = 95	CES73 = 85	CES98 = 94
CES24 = 91	CES49 = 91	CES74 = 90	CES99 = 93
CES25 = 72	CES50 = 96	CES75 = 90	



Color Rendition by Hue-Angle Bin



Measure Comparisons



(END OF REPORT)