

Cooper Lighting Solutions Photometric Lab
1121 Highway 74 South
Peachtree City, GA 30269



Scaled data based on original data using
LM-79-2019 Approved Method: Electrical and Photometric Measurements of Solid-
State Lighting Products

Test Report Prepared for
Cooper Lighting Solutions

Brand: METALUX

Report Number: P1433256

Luminaire Tested: EHBR1-42-UNV-TASM-L930-UPL40

Issue Date: 3/20/2026

Test Information

Test Method: LM-79-2019
Report Number: P1433256
REPORT IS A COMBINATION OF REPORTS P1431810 AND P1431635
Test Lab: INNOVATION CENTER
Issue Date: 3/20/2026
Manufacturer: COOPER LIGHTING SOLUTIONS
Product Line: METALUX
Catalog Number: EHBR1-42-UNV-TASM-L930-UPL40
Description: Elevate Round Highbay at, 42000 lumens, 3000K 90CRI LEDs with TASM lens
Light Source: -
Ballast/Driver: -

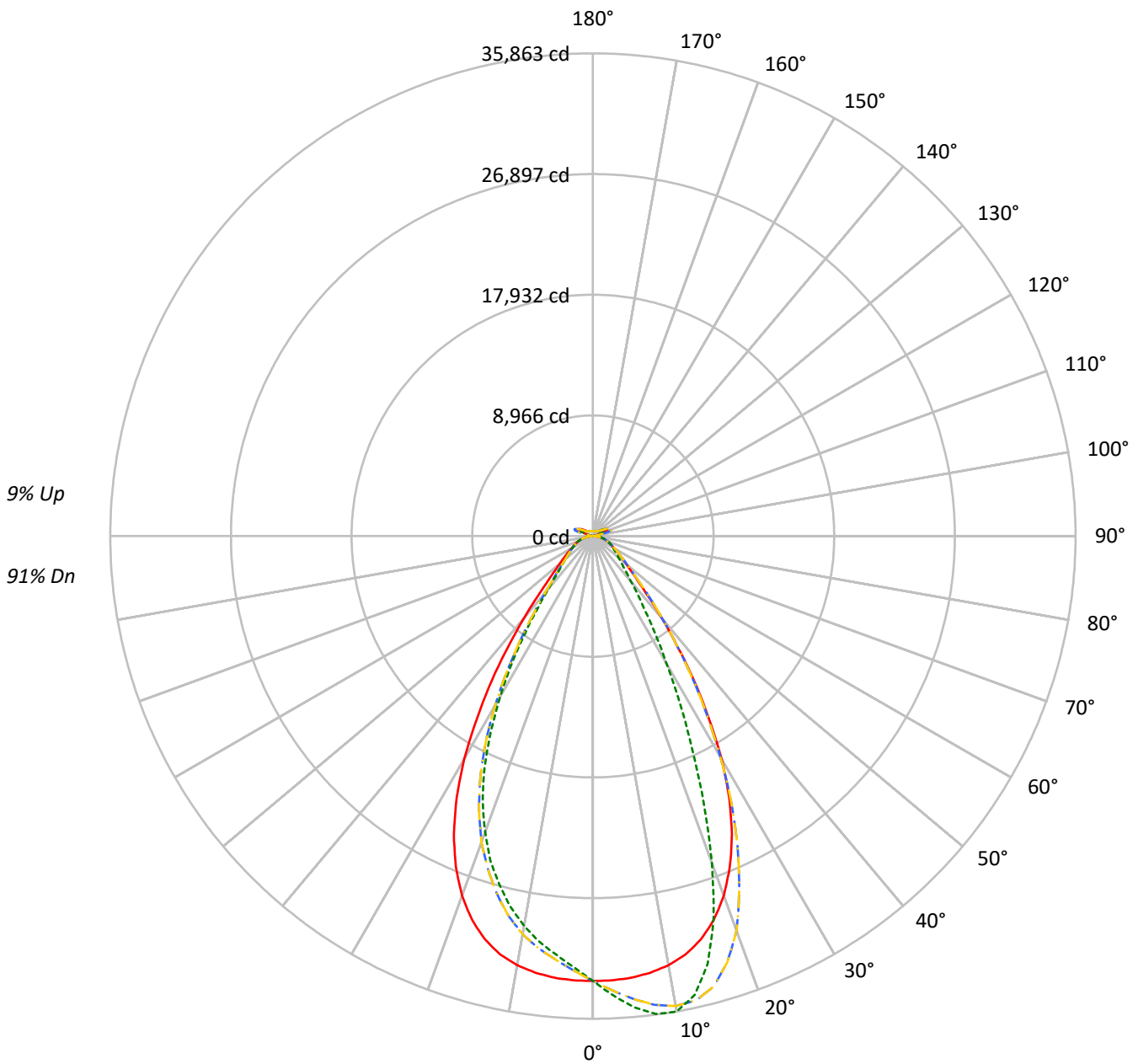
Summary

Lumens per Lamp: N/A
Luminaire Lumens: 40412.4 lumens
Efficiency: N/A
Efficacy: 158.5 lumens/watt
Spacing Criteria (0/90/45): 0.99 / 0.84 / 0.9
Luminous Opening: Vertical Cylinder (Dia: 1.71' x H: 0.1')
CIE Type: Direct

Input Watts (W): 255
Input Voltage (V): NR
Input Current (A_{in}): NR
Voltage Rise (V): NR
Power Factor: NR
Total Harmonic Distortion (THDi): NR
Frequency (hertz): 60
Stabilization Time: NR
Operation Time: NR
Ambient Temperature (°C): NR
Test Distance: 24 FT

TEST NUMBER: P1433256
CATALOG NUMBER: EHBR1-42-UNV-TASM-L930-UPL40

Luminous Intensity Polar Plot



— 0°-180° - - 45°-225° - · - · 90°-270° - · - · 135°-315°



TEST NUMBER: P1433256
 CATALOG NUMBER: EHBR1-42-UNV-TASM-L930-UPL40

COEFFICIENT OF UTILIZATION - ZONAL CAVITY METHOD:

RF	20				20				20				20				20				20
RC	80				70				50				30				10				0
RW	70	50	30	10	70	50	30	10	50	30	10	50	30	10	50	30	10	50	30	10	0
RCR																					
0	117	117	117	117	113	113	113	113	106	106	106	100	100	100	94	94	94	94	94	94	91
1	110	106	103	100	106	103	100	98	98	95	93	92	91	89	88	86	85	85	85	85	83
2	103	97	92	88	100	94	90	86	90	86	83	85	82	80	81	79	77	77	77	77	74
3	96	89	82	78	93	86	81	76	82	78	74	79	75	72	75	72	70	70	70	70	68
4	90	81	75	70	88	80	74	69	76	71	67	73	69	65	70	67	64	64	64	64	62
5	85	75	68	63	83	74	67	63	71	65	61	68	64	60	66	62	59	59	59	59	57
6	80	70	63	58	78	68	62	57	66	60	56	64	59	55	62	57	54	54	54	54	52
7	76	65	58	53	74	64	57	53	62	56	52	60	55	51	58	53	50	50	50	50	48
8	71	61	54	49	70	60	53	49	58	52	48	56	51	47	54	50	47	47	47	47	45
9	68	57	50	46	66	56	50	45	54	49	45	53	48	44	51	47	44	44	44	44	42
10	64	53	47	43	63	53	47	42	51	46	42	50	45	41	49	44	41	41	41	41	39

AVERAGE LUMINANCE (cd/sqm):

	0°	90°	180°	270°
0°	155209	155209	155209	155209
5°	154264	164571	154264	146258
10°	152367	168795	152367	138422
15°	147869	156864	147869	127864
20°	138294	125783	138294	113891
25°	122402	87150	122402	95445
30°	99385	56697	99385	71412
35°	71283	36719	71283	47541
40°	46086	25308	46086	29982
45°	29242	19604	29242	21363
50°	21716	16659	21716	17794
55°	17729	15175	17729	15707
60°	15352	14456	15352	14543
65°	13995	13941	13995	13882
70°	13265	13660	13265	13483
75°	12406	13215	12406	12819
80°	10898	12476	10898	11662
85°	7050	8909	7050	8493

MAXIMUM LUMINANCE 45°-90°:

Horizontal Angle: 22.5°
 Vertical Angle: 45°
 Luminance: 41112 cd/sqm



TEST NUMBER: P1433256
 CATALOG NUMBER: EHBR1-42-UNV-TASM-L930-UPL40

ZONAL LUMENS:

Zone	Lumens	% Fixture
0°-10°	3142.6	7.8
10°-20°	8549.7	21.2
20°-30°	10027.0	24.8
30°-40°	6973.2	17.3
40°-50°	3465.3	8.6
50°-60°	2072.6	5.1
60°-70°	1458.8	3.6
70°-80°	939.7	2.3
80°-90°	304.6	0.8
90°-100°	92.7	0.2
100°-110°	604.6	1.5
110°-120°	1116.9	2.8
120°-130°	663.9	1.6
130°-140°	401.7	1.0
140°-150°	278.1	0.7
150°-160°	181.7	0.4
160°-170°	104.5	0.3
170°-180°	34.8	0.1
0°-30°	21719.2	53.7
0°-40°	28692.4	71.0
0°-60°	34230.3	84.7
0°-90°	36933.5	91.4
90°-120°	1814.2	4.5
90°-150°	3157.9	7.8
90°-180°	3479.0	8.6
0°-180°	40412.4	100.0

CANDELA DISTRIBUTION:

	0°	90°	180°	270°	360°	Flux
0°	33051	33051	33051	33051	33051	
5°	32938	35138	32938	31228	32938	3126
15°	31022	32909	31022	26825	31022	8670
25°	24444	17404	24444	19060	24444	11066
35°	13083	6739	13083	8725	13083	8167
45°	4731	3172	4731	3456	4731	3871
55°	2396	2051	2396	2123	2396	2191
65°	1461	1455	1461	1449	1461	1467
75°	874	931	874	903	874	917
85°	242	306	242	292	242	269
90°	26	30	26	26	26	23
95°	49	47	49	43	49	52
105°	278	142	278	211	278	374
115°	1189	1016	1189	965	1189	1083
125°	761	797	761	697	761	701
135°	481	556	481	510	481	382
145°	436	456	436	424	436	273
155°	388	405	388	377	388	181
165°	366	378	366	359	366	104
175°	365	372	365	359	365	35
180°	365	365	365	365	365	



TEST NUMBER: P1433256
 CATALOG NUMBER: EHBR1-42-UNV-TASM-L930-UPL40

CANDELA DISTRIBUTION (FULL):

	0°	22.5°	45°	67.5°	90°	112.5°	135°	157.5°	180°	202.5°	225°
0°	33050.6	33050.6	33050.6	33050.6	33050.6	33050.6	33050.6	33050.6	33050.6	33050.6	33050.6
2.5°	33031.4	33458.4	33804.1	34032.3	34145.0	34032.3	33804.1	33458.4	33031.4	32606.8	32315.0
5°	32937.8	33793.0	34517.5	34991.6	35138.5	34991.6	34517.5	33793.0	32937.8	32129.6	31593.6
7.5°	32714.0	34046.5	35123.0	35676.4	35811.5	35676.4	35123.0	34046.5	32714.0	31570.0	30892.6
10°	32372.5	34206.4	35450.3	35846.9	35862.9	35846.9	35450.3	34206.4	32372.5	30831.2	30032.4
12.5°	31827.8	34149.4	35340.6	35210.4	34914.8	35210.4	35340.6	34149.4	31827.8	29928.9	28921.1
15°	31022.1	33811.6	34645.8	33586.6	32909.3	33586.6	34645.8	33811.6	31022.1	28710.5	27541.7
17.5°	29886.8	33179.5	33195.6	31100.3	29822.3	31100.3	33195.6	33179.5	29886.8	27220.6	25933.4
20°	28423.5	32165.6	31198.7	27366.2	25852.1	27366.2	31198.7	32165.6	28423.5	25459.2	24196.2
22.5°	26589.0	30798.4	28417.9	23610.0	21544.3	23610.0	28417.9	30798.4	26589.0	23411.0	22096.5
25°	24443.5	29123.3	25426.5	19517.1	17403.8	19517.1	25426.5	29123.3	24443.5	20970.4	19781.8
27.5°	21919.9	26999.9	22240.9	15948.6	13998.9	15948.6	22240.9	26999.9	21919.9	18450.5	17236.4
30°	19116.7	24278.0	18925.9	12701.2	10905.7	12701.2	18925.9	24278.0	19116.7	15619.5	14532.4
32.5°	15978.3	21610.1	15742.3	10176.9	8656.0	10176.9	15742.3	21610.1	15978.3	12918.1	11782.0
35°	13082.9	18272.0	12871.5	7996.6	6739.2	7996.6	12871.5	18272.0	13082.9	10367.8	9252.3
37.5°	10267.4	15118.2	10260.6	6439.2	5466.2	6439.2	10260.6	15118.2	10267.4	8060.5	7155.0
40°	7987.9	11821.1	8039.4	5140.2	4386.5	5140.2	8039.4	11821.1	7987.9	6133.0	5553.6
42.5°	6052.4	9039.0	6319.0	4218.7	3725.9	4218.7	6319.0	9039.0	6052.4	4832.2	4398.4
45°	4731.2	6651.7	4934.4	3559.2	3171.8	3559.2	4934.4	6651.7	4731.2	3891.4	3600.1
47.5°	3852.9	5140.8	3999.3	3052.9	2781.4	3052.9	3999.3	5140.8	3852.9	3291.5	3073.4
50°	3236.4	3944.7	3320.7	2665.0	2482.7	2665.0	3320.7	3944.7	3236.4	2818.6	2673.0
52.5°	2780.2	3217.1	2827.9	2374.9	2252.2	2374.9	2827.9	3217.1	2780.2	2466.0	2375.5
55°	2395.9	2704.6	2459.2	2135.6	2050.8	2135.6	2459.2	2704.6	2395.9	2194.5	2127.6
57.5°	2104.1	2294.3	2135.6	1931.7	1875.3	1931.7	2135.6	2294.3	2104.1	1952.8	1916.8
60°	1845.6	1986.9	1884.7	1753.9	1737.8	1753.9	1884.7	1986.9	1845.6	1757.0	1733.4
62.5°	1646.6	1735.9	1666.5	1594.0	1579.7	1594.0	1666.5	1735.9	1646.6	1578.5	1582.8
65°	1460.8	1543.8	1489.3	1450.2	1455.1	1450.2	1489.3	1543.8	1460.8	1429.1	1436.0
67.5°	1316.9	1360.3	1336.8	1314.5	1320.0	1314.5	1336.8	1360.3	1316.9	1286.0	1296.5
70°	1163.9	1210.3	1186.2	1189.3	1198.6	1189.3	1186.2	1210.3	1163.9	1154.6	1162.7
72.5°	1017.6	1053.6	1045.5	1053.0	1062.9	1053.0	1045.5	1053.6	1017.6	1016.3	1017.0
75°	873.9	901.1	904.9	915.4	930.9	915.4	904.9	901.1	873.9	864.6	875.7
77.5°	717.0	748.0	759.8	774.0	797.0	774.0	759.8	748.0	717.0	723.2	728.9
80°	573.3	587.5	613.5	624.1	656.3	624.1	613.5	587.5	573.3	562.8	570.8
82.5°	419.5	432.6	454.9	474.7	493.3	474.7	454.9	432.6	419.5	414.6	415.3
85°	242.3	262.2	277.1	300.6	306.2	300.6	277.1	262.2	242.3	247.9	242.3
87.5°	84.9	91.1	104.1	113.4	114.1	113.4	104.1	91.1	84.9	86.8	78.7
90°	25.6	43.5	74.9	42.2	29.9	42.2	74.9	43.5	25.6	44.8	69.8
92.5°	33.2	58.8	105.6	55.6	39.6	55.6	105.6	58.8	33.2	58.2	112.0
95°	49.3	72.3	134.4	61.3	47.2	61.3	134.4	72.3	49.3	77.4	156.1
97.5°	76.1	89.6	151.7	65.2	56.9	65.2	151.7	89.6	76.1	94.7	179.2
100°	101.1	101.1	276.4	74.8	64.5	74.8	276.4	101.1	101.1	116.5	279.1
102.5°	152.9	197.7	640.0	148.4	78.0	148.4	640.0	197.7	152.9	218.2	592.1
105°	277.8	451.2	1125.9	380.7	142.0	380.7	1125.9	451.2	277.8	456.4	1054.8
107.5°	525.5	841.1	1450.3	749.4	328.2	749.4	1450.3	841.1	525.5	807.7	1391.5
110°	840.4	1175.1	1582.8	1026.0	662.4	1026.0	1582.8	1175.1	840.4	1109.2	1458.7



TEST NUMBER: P1433256
 CATALOG NUMBER: EHBR1-42-UNV-TASM-L930-UPL40

CANDELA DISTRIBUTION (continued):

	0°	22.5°	45°	67.5°	90°	112.5°	135°	157.5°	180°	202.5°	225°
112.5°	1093.9	1309.5	1546.4	1137.4	915.8	1137.4	1546.4	1309.5	1093.9	1224.4	1397.3
115°	1188.6	1290.4	1381.3	1133.4	1015.6	1133.4	1381.3	1290.4	1188.6	1195.6	1247.5
117.5°	1148.2	1180.9	1193.1	1064.4	1021.4	1064.4	1193.1	1180.9	1148.2	1075.3	1059.3
120°	1036.9	1023.5	1005.5	962.6	963.9	962.6	1005.5	1023.5	1036.9	939.0	884.5
122.5°	897.4	868.5	850.0	859.5	885.1	859.5	850.0	868.5	897.4	799.4	758.4
125°	761.0	732.2	741.2	771.2	797.4	771.2	741.2	732.2	761.0	679.0	668.8
127.5°	646.4	633.0	662.4	696.2	718.6	696.2	662.4	633.0	646.4	594.6	605.4
130°	564.4	567.7	606.7	635.5	649.6	635.5	606.7	567.7	564.4	539.5	565.8
132.5°	513.2	528.0	565.1	590.0	598.3	590.0	565.1	528.0	513.2	506.2	538.2
135°	481.2	503.0	536.9	552.9	556.1	552.9	536.9	503.0	481.2	483.8	513.2
137.5°	462.7	484.4	510.0	522.8	519.5	522.8	510.0	484.4	462.7	469.0	491.5
140°	451.7	473.6	485.0	499.8	497.1	499.8	485.0	473.6	451.7	455.6	472.8
142.5°	440.8	460.7	466.5	477.3	474.0	477.3	466.5	460.7	440.8	444.7	456.2
145°	435.6	450.5	446.0	460.0	455.5	460.0	446.0	450.5	435.6	437.0	443.3
147.5°	426.1	437.0	431.2	443.3	438.8	443.3	431.2	437.0	426.1	426.1	428.5
150°	415.1	422.8	414.5	428.5	427.9	428.5	414.5	422.8	415.1	413.2	415.7
152.5°	400.4	408.1	400.4	416.3	415.1	416.3	400.4	408.1	400.4	398.4	401.0
155°	388.2	392.0	388.2	404.1	404.8	404.1	388.2	392.0	388.2	387.6	388.8
157.5°	379.8	382.4	380.4	394.5	395.1	394.5	380.4	382.4	379.8	379.8	380.4
160°	372.8	376.6	375.3	387.4	388.0	387.4	375.3	376.6	372.8	374.0	374.6
162.5°	370.1	370.1	369.5	381.6	382.8	381.6	369.5	370.1	370.1	370.1	372.1
165°	366.3	368.1	365.5	374.5	377.7	374.5	365.5	368.1	366.3	367.5	367.5
167.5°	365.5	363.7	364.9	372.4	375.6	372.4	364.9	363.7	365.5	366.9	366.9
170°	362.3	363.0	362.3	369.8	373.0	369.8	362.3	363.0	362.3	364.3	365.5
172.5°	364.2	364.2	362.2	367.9	372.9	367.9	362.2	364.2	364.2	365.5	367.4
175°	365.4	364.1	363.4	367.2	372.3	367.2	363.4	364.1	365.4	364.7	364.7
177.5°	363.5	364.7	366.0	369.7	376.8	369.7	366.0	364.7	363.5	364.7	364.7
180°	364.7	364.7	364.7	364.7	364.7	364.7	364.7	364.7	364.7	364.7	364.7



TEST NUMBER: P1433256

CATALOG NUMBER: EHBR1-42-UNV-TASM-L930-UPL40

CANDELA DISTRIBUTION (continued):

	247.5°	270°	292.5°	315°	337.5°	360°
0°	33050.6	33050.6	33050.6	33050.6	33050.6	33050.6
2.5°	32090.6	32069.5	32090.6	32315.0	32606.8	33031.4
5°	31345.0	31228.5	31345.0	31593.6	32129.6	32937.8
7.5°	30476.7	30409.2	30476.7	30892.6	31570.0	32714.0
10°	29562.6	29409.6	29562.6	30032.4	30831.2	32372.5
12.5°	28435.9	28233.3	28435.9	28921.1	29928.9	31827.8
15°	27003.1	26825.2	27003.1	27541.7	28710.5	31022.1
17.5°	25465.5	25304.4	25465.5	25933.4	27220.6	29886.8
20°	23534.3	23407.9	23534.3	24196.2	25459.2	28423.5
22.5°	21508.4	21390.0	21508.4	22096.5	23411.0	26589.0
25°	19124.8	19060.3	19124.8	19781.8	20970.4	24443.5
27.5°	16549.2	16439.5	16549.2	17236.4	18450.5	21919.9
30°	13917.7	13736.1	13917.7	14532.4	15619.5	19116.7
32.5°	11343.9	11213.1	11343.9	11782.0	12918.1	15978.3
35°	8856.2	8725.4	8856.2	9252.3	10367.8	13082.9
37.5°	6900.9	6669.7	6900.9	7155.0	8060.5	10267.4
40°	5233.8	5196.6	5233.8	5553.6	6133.0	7987.9
42.5°	4260.8	4159.8	4260.8	4398.4	4832.2	6052.4
45°	3496.0	3456.4	3496.0	3600.1	3891.4	4731.2
47.5°	3006.4	3023.7	3006.4	3073.4	3291.5	3852.9
50°	2641.3	2651.9	2641.3	2673.0	2818.6	3236.4
52.5°	2372.4	2363.1	2372.4	2375.5	2466.0	2780.2
55°	2134.5	2122.6	2134.5	2127.6	2194.5	2395.9
57.5°	1926.2	1934.8	1926.2	1916.8	1952.8	2104.1
60°	1740.2	1748.3	1740.2	1733.4	1757.0	1845.6
62.5°	1583.5	1588.5	1583.5	1582.8	1578.5	1646.6
65°	1443.4	1449.0	1443.4	1436.0	1429.1	1460.8
67.5°	1309.5	1309.5	1309.5	1296.5	1286.0	1316.9
70°	1183.7	1183.1	1183.7	1162.7	1154.6	1163.9
72.5°	1032.5	1047.4	1032.5	1017.0	1016.3	1017.6
75°	885.6	903.0	885.6	875.7	864.6	873.9
77.5°	736.9	763.5	736.9	728.9	723.2	717.0
80°	584.4	613.5	584.4	570.8	562.8	573.3
82.5°	431.9	453.7	431.9	415.3	414.6	419.5
85°	257.2	291.9	257.2	242.3	247.9	242.3
87.5°	82.4	105.3	82.4	78.7	86.8	84.9
90°	41.0	25.6	41.0	69.8	44.8	25.6
92.5°	62.1	37.1	62.1	112.0	58.2	33.2
95°	71.6	42.9	71.6	156.1	77.4	49.3
97.5°	79.3	55.0	79.3	179.2	94.7	76.1
100°	92.8	72.3	92.8	279.1	116.5	101.1
102.5°	196.5	122.3	196.5	592.1	218.2	152.9
105°	413.5	210.6	413.5	1054.8	456.4	277.8
107.5°	739.9	364.2	739.9	1391.5	807.7	525.5
110°	981.9	679.1	981.9	1458.7	1109.2	840.4



TEST NUMBER: P1433256

CATALOG NUMBER: EHBR1-42-UNV-TASM-L930-UPL40

CANDELA DISTRIBUTION (continued):

	247.5°	270°	292.5°	315°	337.5°	360°
112.5°	1054.8	917.3	1054.8	1397.3	1224.4	1093.9
115°	1014.6	965.2	1014.6	1247.5	1195.6	1188.6
117.5°	926.2	932.6	926.2	1059.3	1075.3	1148.2
120°	824.4	863.4	824.4	884.5	939.0	1036.9
122.5°	730.9	777.1	730.9	758.4	799.4	897.4
125°	650.3	697.0	650.3	668.8	679.0	761.0
127.5°	594.6	625.9	594.6	605.4	594.6	646.4
130°	551.1	578.0	551.1	565.8	539.5	564.4
132.5°	521.0	538.2	521.0	538.2	506.2	513.2
135°	494.7	509.5	494.7	513.2	483.8	481.2
137.5°	472.3	485.1	472.3	491.5	469.0	462.7
140°	452.4	463.3	452.4	472.8	455.6	451.7
142.5°	431.9	439.6	431.9	456.2	444.7	440.8
145°	417.8	423.6	417.8	443.3	437.0	435.6
147.5°	405.6	409.4	405.6	428.5	426.1	426.1
150°	393.3	397.2	393.3	415.7	413.2	415.1
152.5°	380.5	385.0	380.5	401.0	398.4	400.4
155°	372.1	376.6	372.1	388.8	387.6	388.2
157.5°	367.6	370.8	367.6	380.4	379.8	379.8
160°	363.8	366.3	363.8	374.6	374.0	372.8
162.5°	359.2	361.8	359.2	372.1	370.1	370.1
165°	358.6	359.2	358.6	367.5	367.5	366.3
167.5°	357.3	359.2	357.3	366.9	366.9	365.5
170°	357.9	358.5	357.9	365.5	364.3	362.3
172.5°	359.1	359.8	359.1	367.4	365.5	364.2
175°	358.5	359.0	358.5	364.7	364.7	365.4
177.5°	360.9	361.5	360.9	364.7	364.7	363.5
180°	364.7	364.7	364.7	364.7	364.7	364.7



TEST NUMBER: P1433256
 CATALOG NUMBER: EHBR1-42-UNV-TASM-L930-UPL40

CIE UGR TABLE:

Reflectances:											
Ceiling		0.7	0.7	0.5	0.5	0.3	0.7	0.7	0.5	0.5	0.3
Wall		0.5	0.3	0.5	0.3	0.3	0.5	0.3	0.5	0.3	0.3
Reference plane		0.2	0.2	0.2	0.2	0.2	0.2	0.2	0.2	0.2	0.2
Room dimensions		Viewed crosswise					Viewed endwise				
X=2H	Y=2H	18.01	19.09	18.53	19.58	20.11	17.33	18.41	17.85	18.90	19.43
	3H	19.56	20.52	20.09	21.02	21.60	19.18	20.14	19.71	20.64	21.22
	4H	20.19	21.09	20.75	21.61	22.20	19.96	20.86	20.51	21.37	21.97
	6H	20.67	21.50	21.24	22.03	22.63	20.60	21.42	21.16	21.96	22.56
	8H	20.82	21.60	21.40	22.16	22.77	20.82	21.60	21.40	22.15	22.76
	12H	20.90	21.64	21.47	22.19	22.82	20.95	21.69	21.53	22.24	22.87
4H	2H	18.43	19.32	18.98	19.84	20.43	17.90	18.80	18.46	19.32	19.91
	3H	20.22	20.96	20.78	21.53	22.13	19.96	20.70	20.52	21.27	21.87
	4H	21.00	21.66	21.58	22.24	22.88	20.87	21.53	21.45	22.11	22.75
	6H	21.61	22.18	22.21	22.78	23.45	21.64	22.21	22.24	22.81	23.47
	8H	21.80	22.34	22.42	22.94	23.61	21.91	22.44	22.52	23.04	23.71
	12H	21.91	22.38	22.54	23.01	23.68	22.07	22.55	22.70	23.18	23.85
8H	4H	21.24	21.78	21.85	22.38	23.04	21.15	21.68	21.76	22.28	22.95
	6H	21.98	22.42	22.63	23.07	23.74	22.05	22.48	22.69	23.13	23.80
	8H	22.25	22.64	22.91	23.30	23.99	22.40	22.79	23.06	23.45	24.13
	12H	22.43	22.77	23.08	23.40	24.16	22.65	22.99	23.30	23.63	24.39
12H	4H	21.25	21.73	21.88	22.35	23.02	21.16	21.63	21.78	22.26	22.93
	6H	22.03	22.42	22.69	23.07	23.76	22.09	22.48	22.75	23.14	23.83
	8H	22.34	22.68	23.00	23.32	24.08	22.50	22.84	23.15	23.47	24.23

LM-79-2019: Approved Method: Electrical and Photometric Measurements of Solid-State Lighting Products

Report Prepared for

Cooper Lighting Solutions

Metalux

Report Number: SP1-2506-472-5

Test Date: 08/01/2025

Luminaire Tested: EHBR-60-L930-N

Data in this report applies to families of products including EHBR-60-L930-N

Test Information

Test Method: LM-79-2019
 Report Number: SP1-2506-472-5
 Test Lab: COOPER LIGHTING SOLUTIONS
 Photometer: SP1 - 76IN SPHERE
 Measurement Geometry: 4π
 Issue Date: 08/05/2025
 Manufacturer: COOPER LIGHTING SOLUTIONS
 Product Line: Metalux
 Catalog Number: **EHBR-60-L930-N**
 Description: Elevate Round Highbay at, 60000 lumens, 3000K 90CRI LEDs with N lens

Spectral Parameters

CCT (K): 2996
 CIE u': 0.2519
 CIE v': 0.5169
 Duv: -0.0033
 CIE x: 0.4325
 CIE y: 0.3945
 CIE z: 0.1730
 Peak Wavelength (nm): 630
 Dominant Wavelength (nm): 584
 Purity: 48.21818
 Rf: 91.3
 Rg: 102

CRI (Ra):	94.4		
R1:	96.8	R9:	61.4
R2:	98.1	R10:	94.4
R3:	97.8	R11:	95.7
R4:	95.6	R12:	88.5
R5:	96.9	R13:	97.3
R6:	95.7	R14:	97.8
R7:	90.9	R15:	92.3
R8:	83.0		



Test Conditions

Stabilization Time: 40M
 Operation Time: 1H 40M
 Sphere Temperature (°C): 25.0

REPORT NUMBER: SP1-2506-472-5

Measurement and Test Equipment			
Instrument	Identification Number	Calibration Date	Calibration Due Date
Photometer	76INCH SPHERE IN0058	6/16/2025	12/16/2025
Power Meter	XITRON INXT2011004	1/21/2025	1/21/2026
AC Power Source	CHROMA 61603 IN0063	10/22/2024	10/22/2025
DC Power Source	AGILENT E3634A IN0208	10/22/2024	10/22/2025
Sphere Thermometer	ONSET IN0085	10/22/2024	10/22/2025
Room Thermometer	ONSET IN0046	10/22/2024	10/22/2025

REPORT NUMBER: SP1-2506-472-5

CIE 1931 Chromaticity Diagram



CIE 1931 Chromaticity Diagram with 2017 ANSI 7-Step and 4-Step Quadrangles



Point lies inside the ANSI 3000K 7-step quadrangle

REPORT NUMBER: SP1-2506-472-5

Photopic Flux vs. Wavelength



Photopic Lumens: NR

λ (nm)	Power W [^] /nm	Lumens (φ/nm)	λ (nm)	Power W [^] /nm	Lumens (φ/nm)	λ (nm)	Power W [^] /nm	Lumens (φ/nm)	λ (nm)	Power W [^] /nm	Lumens (φ/nm)	λ (nm)	Power W [^] /nm	Lumens (φ/nm)
360	0	NR	490	101	NR	620	317	NR	750	7	NR	880	0	NR
365	0	NR	495	121	NR	625	320	NR	755	6	NR	885	0	NR
370	0	NR	500	141	NR	630	1000	NR	760	5	NR	890	0	NR
375	0	NR	505	158	NR	635	651	NR	765	4	NR	895	0	NR
380	0	NR	510	171	NR	640	207	NR	770	4	NR	900	0	NR
385	0	NR	515	182	NR	645	201	NR	775	3	NR	905	0	NR
390	0	NR	520	189	NR	650	174	NR	780	3	NR	910	0	NR
395	1	NR	525	194	NR	655	146	NR	785	2	NR	915	0	NR
400	1	NR	530	199	NR	660	124	NR	790	2	NR	920	0	NR
405	3	NR	535	205	NR	665	105	NR	795	2	NR	925	0	NR
410	4	NR	540	210	NR	670	96	NR	800	1	NR	930	0	NR
415	7	NR	545	216	NR	675	79	NR	805	1	NR	935	0	NR
420	13	NR	550	222	NR	680	67	NR	810	1	NR	940	0	NR
425	22	NR	555	230	NR	685	58	NR	815	1	NR	945	0	NR
430	37	NR	560	240	NR	690	49	NR	820	1	NR	950	0	NR
435	60	NR	565	248	NR	695	42	NR	825	1	NR	955	0	NR
440	101	NR	570	258	NR	700	36	NR	830	1	NR	960	0	NR
445	172	NR	575	268	NR	705	30	NR	835	1	NR	965	0	NR
450	223	NR	580	278	NR	710	26	NR	840	1	NR	970	0	NR
455	167	NR	585	287	NR	715	22	NR	845	0	NR	975	0	NR
460	126	NR	590	295	NR	720	19	NR	850	0	NR	980	0	NR
465	111	NR	595	298	NR	725	16	NR	855	0	NR	985	0	NR
470	86	NR	600	303	NR	730	14	NR	860	0	NR	990	0	NR
475	74	NR	605	307	NR	735	12	NR	865	0	NR	995	0	NR
480	77	NR	610	341	NR	740	10	NR	870	0	NR	1000	0	NR
485	86	NR	615	368	NR	745	8	NR	875	0	NR			

REPORT NUMBER: SP1-2506-472-5

Scotopic Flux vs. Wavelength



Scotopic Lumens: NR

S/P: 1.44

λ (nm)	Power W [^] /nm	Lumens (φ/nm)	λ (nm)	Power W [^] /nm	Lumens (φ/nm)	λ (nm)	Power W [^] /nm	Lumens (φ/nm)	λ (nm)	Power W [^] /nm	Lumens (φ/nm)	λ (nm)	Power W [^] /nm	Lumens (φ/nm)
360	0	NR	490	101	NR	620	317	NR	750	7	NR	880	0	NR
365	0	NR	495	121	NR	625	320	NR	755	6	NR	885	0	NR
370	0	NR	500	141	NR	630	1000	NR	760	5	NR	890	0	NR
375	0	NR	505	158	NR	635	651	NR	765	4	NR	895	0	NR
380	0	NR	510	171	NR	640	207	NR	770	4	NR	900	0	NR
385	0	NR	515	182	NR	645	201	NR	775	3	NR	905	0	NR
390	0	NR	520	189	NR	650	174	NR	780	3	NR	910	0	NR
395	1	NR	525	194	NR	655	146	NR	785	2	NR	915	0	NR
400	1	NR	530	199	NR	660	124	NR	790	2	NR	920	0	NR
405	3	NR	535	205	NR	665	105	NR	795	2	NR	925	0	NR
410	4	NR	540	210	NR	670	96	NR	800	1	NR	930	0	NR
415	7	NR	545	216	NR	675	79	NR	805	1	NR	935	0	NR
420	13	NR	550	222	NR	680	67	NR	810	1	NR	940	0	NR
425	22	NR	555	230	NR	685	58	NR	815	1	NR	945	0	NR
430	37	NR	560	240	NR	690	49	NR	820	1	NR	950	0	NR
435	60	NR	565	248	NR	695	42	NR	825	1	NR	955	0	NR
440	101	NR	570	258	NR	700	36	NR	830	1	NR	960	0	NR
445	172	NR	575	268	NR	705	30	NR	835	1	NR	965	0	NR
450	223	NR	580	278	NR	710	26	NR	840	1	NR	970	0	NR
455	167	NR	585	287	NR	715	22	NR	845	0	NR	975	0	NR
460	126	NR	590	295	NR	720	19	NR	850	0	NR	980	0	NR
465	111	NR	595	298	NR	725	16	NR	855	0	NR	985	0	NR
470	86	NR	600	303	NR	730	14	NR	860	0	NR	990	0	NR
475	74	NR	605	307	NR	735	12	NR	865	0	NR	995	0	NR
480	77	NR	610	341	NR	740	10	NR	870	0	NR	1000	0	NR
485	86	NR	615	368	NR	745	8	NR	875	0	NR			

REPORT NUMBER: SP1-2506-472-5

Melanopic Flux vs. Wavelength



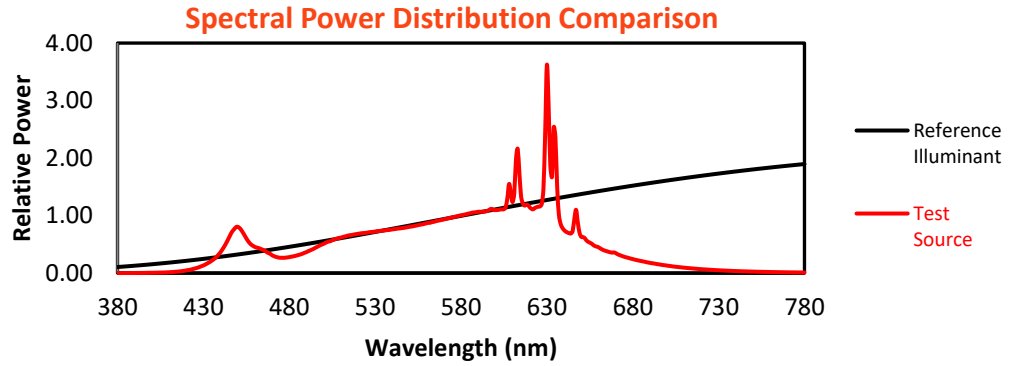
Melanopic Lumens: NR

M/P: 2.85

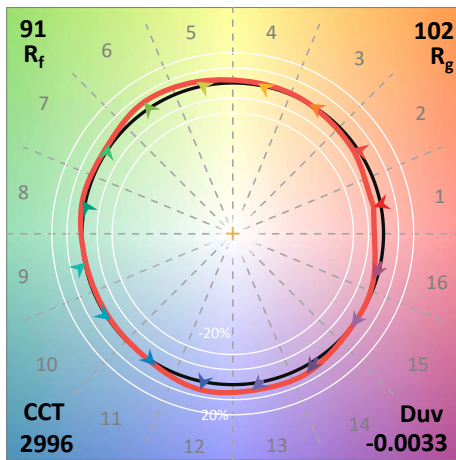
λ (nm)	Power W [^] /nm	Lumens (φ/nm)	λ (nm)	Power W [^] /nm	Lumens (φ/nm)	λ (nm)	Power W [^] /nm	Lumens (φ/nm)	λ (nm)	Power W [^] /nm	Lumens (φ/nm)	λ (nm)	Power W [^] /nm	Lumens (φ/nm)
360	0	NR	490	101	NR	620	317	NR	750	7	NR	880	0	NR
365	0	NR	495	121	NR	625	320	NR	755	6	NR	885	0	NR
370	0	NR	500	141	NR	630	1000	NR	760	5	NR	890	0	NR
375	0	NR	505	158	NR	635	651	NR	765	4	NR	895	0	NR
380	0	NR	510	171	NR	640	207	NR	770	4	NR	900	0	NR
385	0	NR	515	182	NR	645	201	NR	775	3	NR	905	0	NR
390	0	NR	520	189	NR	650	174	NR	780	3	NR	910	0	NR
395	1	NR	525	194	NR	655	146	NR	785	2	NR	915	0	NR
400	1	NR	530	199	NR	660	124	NR	790	2	NR	920	0	NR
405	3	NR	535	205	NR	665	105	NR	795	2	NR	925	0	NR
410	4	NR	540	210	NR	670	96	NR	800	1	NR	930	0	NR
415	7	NR	545	216	NR	675	79	NR	805	1	NR	935	0	NR
420	13	NR	550	222	NR	680	67	NR	810	1	NR	940	0	NR
425	22	NR	555	230	NR	685	58	NR	815	1	NR	945	0	NR
430	37	NR	560	240	NR	690	49	NR	820	1	NR	950	0	NR
435	60	NR	565	248	NR	695	42	NR	825	1	NR	955	0	NR
440	101	NR	570	258	NR	700	36	NR	830	1	NR	960	0	NR
445	172	NR	575	268	NR	705	30	NR	835	1	NR	965	0	NR
450	223	NR	580	278	NR	710	26	NR	840	1	NR	970	0	NR
455	167	NR	585	287	NR	715	22	NR	845	0	NR	975	0	NR
460	126	NR	590	295	NR	720	19	NR	850	0	NR	980	0	NR
465	111	NR	595	298	NR	725	16	NR	855	0	NR	985	0	NR
470	86	NR	600	303	NR	730	14	NR	860	0	NR	990	0	NR
475	74	NR	605	307	NR	735	12	NR	865	0	NR	995	0	NR
480	77	NR	610	341	NR	740	10	NR	870	0	NR	1000	0	NR
485	86	NR	615	368	NR	745	8	NR	875	0	NR			

Summary

$R_f = 91.3$
 $R_g = 102$
 CIE $R_a = 94.4$
 $R_9 = 61.4$



Color Vector Graphics

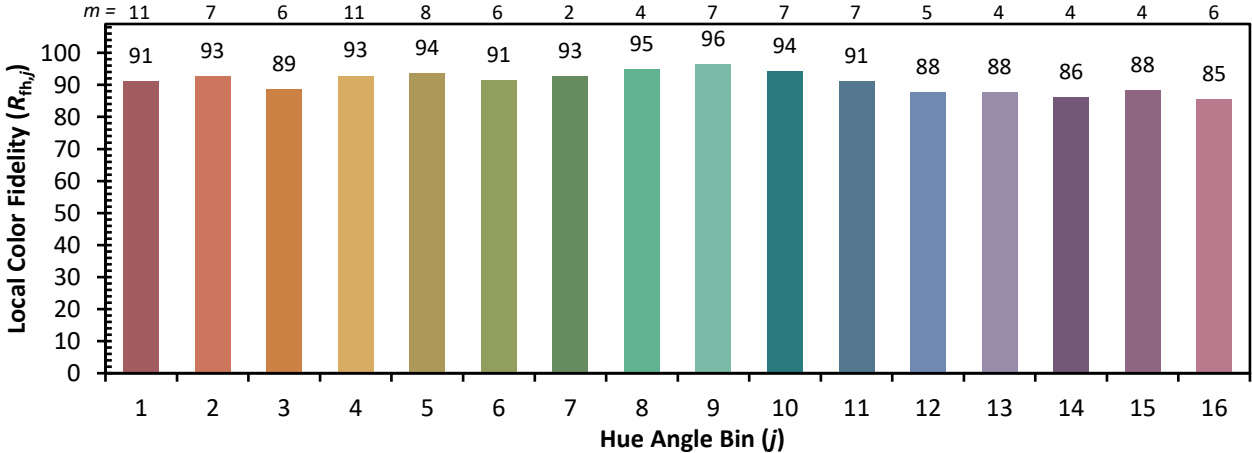
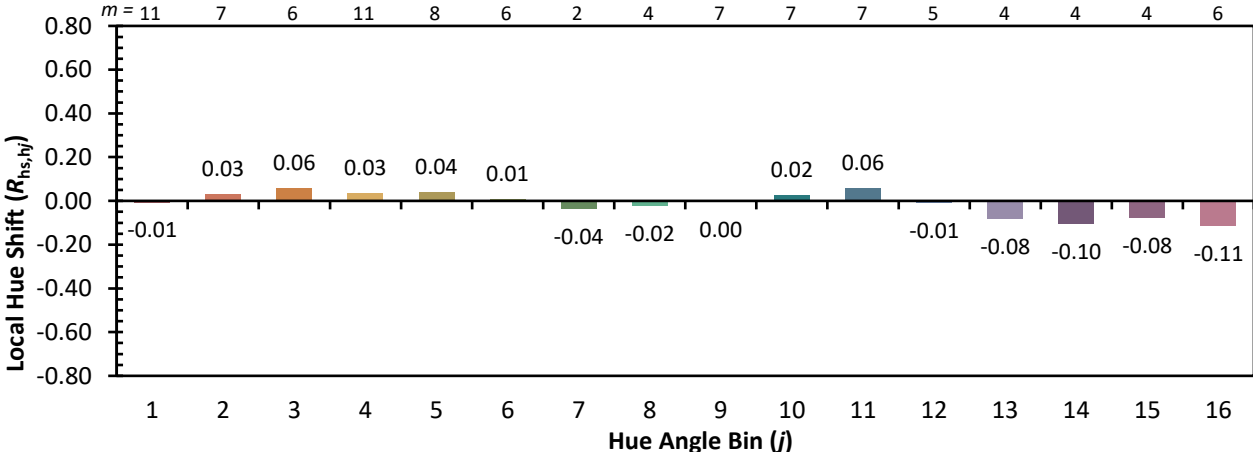
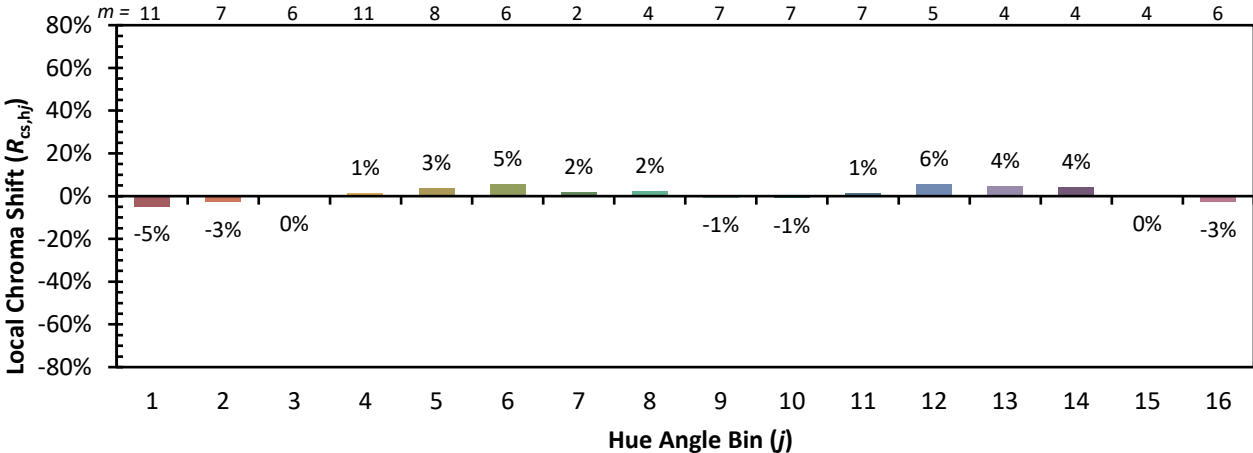


Individual Sample Fidelity Index ($R_{f,i}$)

CES01 = 86	CES26 = 91	CES51 = 96	CES76 = 89
CES02 = 63	CES27 = 96	CES52 = 95	CES77 = 85
CES03 = 32	CES28 = 96	CES53 = 93	CES78 = 86
CES04 = 70	CES29 = 90	CES54 = 98	CES79 = 89
CES05 = 51	CES30 = 96	CES55 = 98	CES80 = 91
CES06 = 51	CES31 = 90	CES56 = 95	CES81 = 72
CES07 = 44	CES32 = 84	CES57 = 95	CES82 = 95
CES08 = 42	CES33 = 91	CES58 = 95	CES83 = 93
CES09 = 29	CES34 = 92	CES59 = 99	CES84 = 96
CES10 = 76	CES35 = 96	CES60 = 96	CES85 = 80
CES11 = 59	CES36 = 90	CES61 = 96	CES86 = 77
CES12 = 65	CES37 = 94	CES62 = 95	CES87 = 91
CES13 = 44	CES38 = 99	CES63 = 94	CES88 = 96
CES14 = 74	CES39 = 97	CES64 = 96	CES89 = 82
CES15 = 72	CES40 = 94	CES65 = 92	CES90 = 97
CES16 = 48	CES41 = 94	CES66 = 95	CES91 = 82
CES17 = 50	CES42 = 91	CES67 = 94	CES92 = 78
CES18 = 57	CES43 = 88	CES68 = 93	CES93 = 87
CES19 = 72	CES44 = 99	CES69 = 94	CES94 = 73
CES20 = 67	CES45 = 93	CES70 = 90	CES95 = 85
CES21 = 86	CES46 = 93	CES71 = 90	CES96 = 92
CES22 = 79	CES47 = 86	CES72 = 96	CES97 = 93
CES23 = 92	CES48 = 95	CES73 = 85	CES98 = 94
CES24 = 91	CES49 = 91	CES74 = 90	CES99 = 93
CES25 = 72	CES50 = 96	CES75 = 90	



Color Rendition by Hue-Angle Bin



Measure Comparisons



(END OF REPORT)