

Cooper Lighting Solutions Photometric Lab
1121 Highway 74 South
Peachtree City, GA 30269



Scaled data based on original data using
LM-79-2019 Approved Method: Electrical and Photometric Measurements of Solid-
State Lighting Products

Test Report Prepared for
Cooper Lighting Solutions

Brand: METALUX

Report Number: P1444712

Luminaire Tested: EHBR1-60-UNV-TA-L930-UPL40

Issue Date: 5/1/2026

Test Information

Test Method: LM-79-2019
Report Number: P1444712
REPORT IS A COMBINATION OF REPORTS P1444362 AND P1431635
Test Lab: INNOVATION CENTER
Issue Date: 5/1/2026
Manufacturer: COOPER LIGHTING SOLUTIONS
Product Line: METALUX
Catalog Number: EHBR1-60-UNV-TA-L930-UPL40
Description: Elevate Round Highbay at, 60000 lumens, 3000K 90CRI LEDs with TA lens
Light Source: -
Ballast/Driver: -

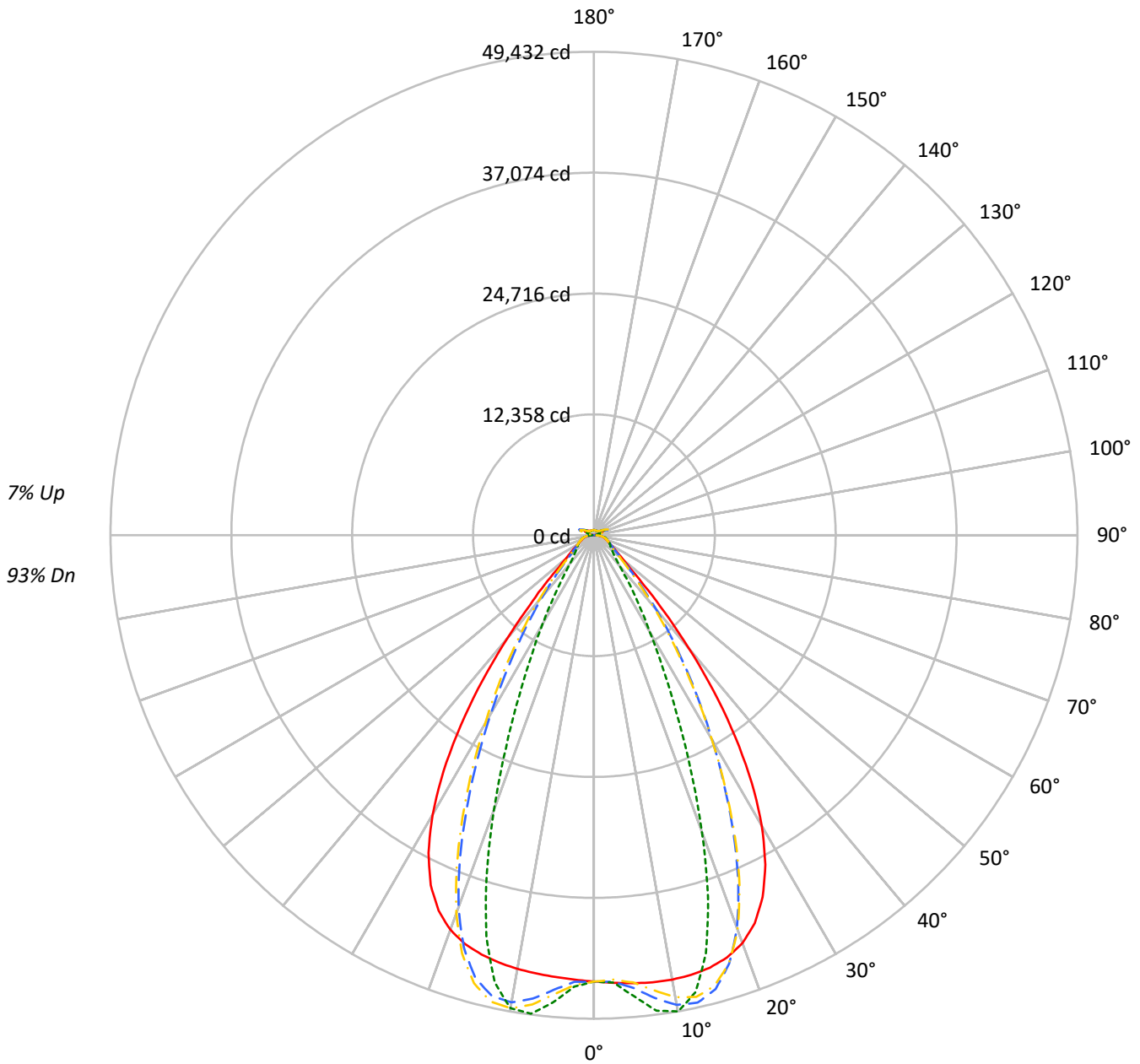
Summary

Lumens per Lamp: N/A
Luminaire Lumens: 56285.3 lumens
Efficiency: N/A
Efficacy: 155.9 lumens/watt
Spacing Criteria (0/90/45): 1.13 / 0.77 / 0.88
Luminous Opening: Vertical Cylinder (Dia: 1.71' x H: 0.1')
CIE Type: Direct

Input Watts (W): 361
Input Voltage (V): NR
Input Current (Ain): NR
Voltage Rise (V): NR
Power Factor: NR
Total Harmonic Distortion (THDi): NR
Frequency (hertz): 60
Stabilization Time: NR
Operation Time: NR
Ambient Temperature (°C): NR
Test Distance: 24 FT

TEST NUMBER: P1444712
CATALOG NUMBER: EHBR1-60-UNV-TA-L930-UPL40

Luminous Intensity Polar Plot



— 0°-180° - - 45°-225° - · - · 90°-270° - · - · 135°-315°



TEST NUMBER: P1444712
 CATALOG NUMBER: EHBR1-60-UNV-TA-L930-UPL40

COEFFICIENT OF UTILIZATION - ZONAL CAVITY METHOD:

RF	20				20				20				20				20				
RC	80				70				50				30				10			0	
RW	70	50	30	10	70	50	30	10	50	30	10	50	30	10	50	30	10	50	30	10	0
RCR																					
0	117	117	117	117	114	114	114	114	107	107	107	101	101	101	96	96	96	96	96	96	93
1	110	107	104	101	107	104	101	99	99	96	94	94	92	90	89	88	87	87	87	87	84
2	103	98	93	89	101	95	91	87	91	87	84	87	84	81	83	81	79	79	79	79	76
3	97	90	84	79	94	88	82	78	84	79	76	81	77	74	77	74	72	72	72	72	70
4	91	83	76	71	89	81	75	70	78	73	69	75	71	67	72	69	66	66	66	66	64
5	86	76	70	65	84	75	69	64	72	67	63	70	65	62	68	64	61	61	61	61	59
6	81	71	64	59	79	70	63	59	68	62	58	65	61	57	63	59	56	56	56	56	54
7	77	66	59	55	75	65	59	54	63	58	54	61	57	53	60	55	52	52	52	52	50
8	73	62	55	51	71	61	55	50	59	54	50	58	53	49	56	52	49	49	49	49	47
9	69	58	52	47	67	57	51	47	56	50	46	54	49	46	53	49	45	45	45	45	44
10	65	55	48	44	64	54	48	44	53	47	43	51	46	43	50	46	43	43	43	43	41

AVERAGE LUMINANCE (cd/sqm):

	0°	90°	180°	270°
0°	214284	214284	214284	214284
5°	215321	221599	212307	224502
10°	217118	232663	211912	231123
15°	218183	210907	211541	202415
20°	215928	157118	208861	145372
25°	204384	99368	197629	90160
30°	178545	59713	171629	54572
35°	137409	37470	129505	33192
40°	86923	23504	79528	22087
45°	44802	18311	44060	18010
50°	26268	16287	25461	16033
55°	20124	15409	19379	15271
60°	17027	15741	16302	15537
65°	15993	16438	15381	15878
70°	15625	17212	14847	16565
75°	16706	18254	15804	17448
80°	17289	20214	15675	18452
85°	16279	19503	13157	16701

MAXIMUM LUMINANCE 45°-90°:

Horizontal Angle: 25°
 Vertical Angle: 45°
 Luminance: 68564 cd/sqm



TEST NUMBER: P1444712
 CATALOG NUMBER: EHBR1-60-UNV-TA-L930-UPL40

ZONAL LUMENS:

Zone	Lumens	% Fixture
0°-10°	4497.0	8.0
10°-20°	12650.4	22.5
20°-30°	14407.8	25.6
30°-40°	10355.7	18.4
40°-50°	4776.0	8.5
50°-60°	2285.5	4.1
60°-70°	1667.6	3.0
70°-80°	1266.9	2.3
80°-90°	582.4	1.0
90°-100°	109.6	0.2
100°-110°	616.1	1.1
110°-120°	1137.8	2.0
120°-130°	699.8	1.2
130°-140°	454.8	0.8
140°-150°	341.2	0.6
150°-160°	240.3	0.4
160°-170°	146.1	0.3
170°-180°	50.3	0.1
0°-30°	31555.2	56.1
0°-40°	41910.8	74.5
0°-60°	48972.4	87.0
0°-90°	52489.3	93.3
90°-120°	1863.5	3.3
90°-150°	3359.3	6.0
90°-180°	3796.0	6.7
0°-180°	56285.3	100.0

CANDELA DISTRIBUTION:

	0°	90°	180°	270°	360°	Flux
0°	45630	45630	45630	45630	45630	
5°	45974	47315	45331	47935	45974	4393
15°	45774	44247	44380	42466	45774	12897
25°	40815	19844	39466	18005	40815	18503
35°	25220	6877	23769	6092	25220	15478
45°	7249	2963	7129	2914	7249	6165
55°	2720	2082	2619	2064	2720	2510
65°	1669	1716	1605	1657	1669	1667
75°	1177	1286	1113	1229	1177	1224
85°	560	670	452	574	560	526
90°	152	192	44	54	152	94
95°	50	55	50	56	50	48
105°	223	287	151	287	223	295
115°	994	1202	1041	1202	994	918
125°	753	784	852	786	753	686
135°	600	527	645	531	600	468
145°	539	518	573	525	539	340
155°	508	508	540	513	508	236
165°	510	508	528	512	510	145
175°	524	528	533	530	524	50
180°	531	531	531	531	531	



TEST NUMBER: P1444712
 CATALOG NUMBER: EHBR1-60-UNV-TA-L930-UPL40

CANDELA DISTRIBUTION (FULL):

	0°	2.5°	5°	7.5°	10°	12.5°	15°	17.5°	20°	22.5°	25°
0°	45630.2	45630.2	45630.2	45630.2	45630.2	45630.2	45630.2	45630.2	45630.2	45630.2	45630.2
2.5°	45804.5	45800.8	45800.1	45796.9	45796.0	45796.0	45794.5	45790.8	45788.4	45783.2	45777.3
5°	45974.4	45972.4	45973.6	45974.0	45970.8	45963.6	45952.5	45938.8	45921.6	45905.3	45890.7
7.5°	46105.9	46109.1	46113.2	46112.3	46102.3	46085.5	46062.7	46049.9	46057.5	46082.3	46139.2
10°	46129.8	46149.5	46157.1	46154.7	46134.8	46120.4	46126.0	46174.4	46270.5	46398.9	46574.5
12.5°	46036.3	46060.4	46059.5	46051.6	46032.3	46051.9	46121.9	46265.8	46472.1	46725.3	47022.3
15°	45773.7	45804.8	45796.0	45785.8	45772.8	45837.3	45977.2	46227.1	46545.7	46902.7	47268.2
17.5°	45263.8	45301.4	45283.2	45271.5	45260.6	45381.4	45621.7	45987.7	46389.0	46792.7	47139.1
20°	44379.4	44404.6	44361.2	44340.7	44357.9	44594.5	44948.4	45415.8	45838.9	46220.7	46457.4
22.5°	42936.1	42967.3	42885.6	42876.2	42977.0	43340.4	43788.2	44310.7	44708.2	45010.8	45102.0
25°	40815.4	40846.2	40749.1	40807.1	40978.6	41473.5	42007.0	42565.9	42904.9	43129.2	43067.2
27.5°	37953.0	37981.1	37889.1	38007.4	38278.5	38929.0	39556.7	40162.9	40465.1	40622.2	40423.2
30°	34343.0	34401.4	34292.6	34457.9	34871.6	35716.1	36435.2	37115.1	37416.4	37536.0	37226.2
32.5°	30055.4	30138.4	30018.5	30264.4	30841.7	31856.1	32673.1	33432.7	33766.0	33902.5	33552.6
35°	25219.5	25338.6	25201.1	25570.1	26282.2	27411.7	28316.4	29164.5	29559.2	29752.6	29400.1
37.5°	20096.1	20209.6	20135.2	20627.5	21409.4	22580.2	23503.7	24418.6	24864.4	25154.7	24876.7
40°	15066.0	15170.0	15226.2	15789.2	16524.7	17628.1	18515.1	19420.3	19919.0	20283.5	20112.0
42.5°	10633.7	10738.4	10929.8	11473.0	12086.3	12999.7	13759.5	14572.3	15048.7	15437.5	15371.3
45°	7248.8	7370.3	7610.2	8054.9	8498.5	9153.8	9711.7	10343.8	10733.0	11089.1	11093.3
47.5°	5079.6	5165.0	5379.3	5683.0	5972.1	6792.5	6826.1	7136.8	7398.4	7664.6	7699.1
50°	3914.8	3966.2	4079.8	4249.0	4412.9	4625.8	4820.9	5045.9	5206.9	5352.9	5387.7
52.5°	3217.6	3250.3	3308.2	3399.8	3494.9	3610.7	3715.0	3838.7	3926.3	4004.3	4020.8
55°	2719.5	2746.5	2832.6	2850.0	2958.8	2979.7	3026.0	3101.3	3152.2	3199.1	3210.8
57.5°	2343.5	2363.1	2381.4	2420.5	2453.9	2502.7	2541.9	2595.9	2628.0	2661.8	2664.7
60°	2046.9	2061.1	2074.1	2101.2	2124.0	2157.9	2184.9	2221.6	2244.6	2270.0	2272.9
62.5°	1826.2	1836.4	1845.0	1862.9	1879.1	1905.2	1926.6	1957.3	1978.8	1998.4	2002.7
65°	1669.3	1676.8	1682.3	1695.8	1710.0	1732.2	1751.6	1776.7	1792.4	1807.5	1810.7
67.5°	1530.3	1537.4	1543.1	1555.5	1565.3	1581.9	1594.9	1613.7	1625.5	1637.5	1637.8
70°	1371.0	1377.6	1382.0	1393.5	1401.4	1415.7	1426.1	1443.0	1455.2	1468.6	1472.0
72.5°	1260.7	1264.6	1270.5	1281.0	1292.0	1307.2	1321.3	1338.8	1353.6	1367.5	1373.3
75°	1176.8	1181.4	1185.3	1194.2	1201.9	1214.7	1225.2	1241.3	1254.1	1269.0	1276.3
77.5°	1055.7	1061.0	1064.4	1073.4	1080.0	1092.3	1100.0	1114.5	1124.9	1138.4	1145.0
80°	909.5	914.4	916.7	925.2	930.4	941.8	949.4	963.2	972.1	985.6	993.5
82.5°	747.3	752.0	753.4	761.3	764.2	773.5	779.1	793.3	804.2	821.7	833.9
85°	559.5	561.2	564.0	562.0	573.3	574.0	586.8	589.2	606.1	610.5	629.8
87.5°	342.1	347.2	349.7	357.5	360.9	368.7	371.1	379.4	383.9	393.3	397.7
90°	151.6	159.9	163.0	172.7	175.6	184.2	186.5	196.3	199.3	209.3	213.9
92.5°	44.0	46.8	49.4	52.8	55.5	59.3	62.6	65.8	68.7	72.3	78.0
95°	50.0	53.2	56.4	59.6	62.8	65.9	69.2	72.4	75.6	78.8	88.0
97.5°	62.6	65.3	68.1	70.8	73.6	76.5	79.2	82.0	84.7	87.3	98.5
100°	81.0	83.3	85.7	88.0	90.4	92.8	95.1	97.4	99.8	102.1	122.6
102.5°	132.9	141.2	149.5	157.8	166.1	174.3	182.8	190.9	199.3	207.5	251.1
105°	223.4	245.9	268.7	291.0	313.7	336.3	359.0	381.1	403.8	426.2	497.5
107.5°	379.7	421.3	463.1	505.0	546.8	588.4	630.2	671.9	713.5	755.0	827.3
110°	698.4	731.7	765.4	799.0	832.5	866.2	899.7	932.9	966.6	1000.0	1052.8



TEST NUMBER: P1444712
 CATALOG NUMBER: EHBR1-60-UNV-TA-L930-UPL40

CANDELA DISTRIBUTION (continued):

	0°	2.5°	5°	7.5°	10°	12.5°	15°	17.5°	20°	22.5°	25°
112.5°	940.9	955.8	971.1	986.2	1001.4	1016.3	1031.5	1046.5	1061.7	1076.5	1114.2
115°	993.9	999.1	1004.5	1009.6	1014.9	1020.0	1025.2	1030.2	1035.5	1040.3	1065.8
117.5°	967.3	966.3	965.3	964.2	962.9	961.8	960.6	959.2	958.0	956.6	970.8
120°	905.0	900.1	895.4	890.2	885.5	880.4	875.6	870.6	865.4	860.1	866.2
122.5°	825.9	820.0	814.6	808.4	802.6	796.5	790.7	784.2	778.5	772.3	774.3
125°	753.1	747.1	741.7	735.5	729.4	723.2	717.1	710.9	704.6	698.2	699.2
127.5°	690.4	686.3	682.2	677.5	673.2	668.5	663.9	659.2	654.7	649.6	649.7
130°	651.1	647.3	643.6	639.3	635.4	631.0	626.7	622.1	618.0	613.3	613.5
132.5°	619.4	616.8	614.1	611.0	607.9	604.3	601.2	597.4	594.1	590.6	590.8
135°	599.5	596.8	594.4	591.4	588.5	585.2	581.9	578.4	575.2	571.8	572.3
137.5°	582.8	580.5	578.1	575.3	572.6	569.3	566.4	563.1	560.1	556.7	557.1
140°	567.7	565.6	563.2	560.6	558.2	555.4	552.4	549.5	546.4	543.3	544.1
142.5°	550.2	548.2	546.6	544.4	542.3	539.8	537.4	534.7	532.4	529.6	530.9
145°	539.3	537.8	536.4	534.5	532.5	530.1	528.2	525.6	523.6	521.3	522.6
147.5°	529.9	528.6	527.5	526.0	524.4	522.4	520.5	518.5	516.7	514.7	516.1
150°	521.7	520.5	519.4	518.1	516.4	514.6	512.9	511.2	509.3	507.3	508.8
152.5°	512.6	511.3	510.4	509.0	507.5	505.5	504.3	502.4	500.8	498.9	500.1
155°	508.2	507.0	505.6	504.5	503.0	501.4	499.8	498.2	496.7	494.9	495.9
157.5°	506.3	505.1	504.2	502.9	501.9	500.6	499.2	497.9	496.6	495.4	495.9
160°	506.8	505.7	504.7	503.5	502.2	500.8	499.8	498.4	497.5	496.1	496.5
162.5°	507.7	506.5	505.4	504.2	503.0	501.7	500.6	499.6	498.4	497.1	497.8
165°	510.1	509.5	508.6	507.8	506.9	506.1	505.2	504.2	503.3	502.3	502.7
167.5°	516.3	515.3	514.5	513.6	512.4	511.6	510.4	509.5	508.7	507.5	507.9
170°	519.4	518.6	518.1	517.6	516.9	516.2	515.8	515.1	514.4	513.7	514.1
172.5°	523.2	522.6	522.2	521.9	521.1	520.9	520.3	519.8	519.4	518.8	519.5
175°	524.2	523.7	523.5	523.2	522.8	522.5	522.3	522.0	522.0	521.5	521.8
177.5°	527.9	527.7	527.7	527.6	527.6	527.5	527.3	526.9	526.8	526.8	527.0
180°	531.1	531.1	531.1	531.1	531.1	531.1	531.1	531.1	531.1	531.1	531.1



TEST NUMBER: P1444712
 CATALOG NUMBER: EHBR1-60-UNV-TA-L930-UPL40

CANDELA DISTRIBUTION (continued):

	27.5°	30°	32.5°	35°	37.5°	40°	42.5°	45°	47.5°	50°	52.5°
0°	45630.2	45630.2	45630.2	45630.2	45630.2	45630.2	45630.2	45630.2	45630.2	45630.2	45630.2
2.5°	45772.8	45767.3	45759.6	45750.0	45741.7	45732.1	45709.3	45702.5	45710.1	45715.2	45725.7
5°	45881.6	45884.8	45886.0	45906.8	45924.8	45969.5	46320.6	46460.2	46568.0	46636.5	46740.5
7.5°	46209.5	46315.0	46419.4	46559.7	46680.8	46844.3	47458.6	47720.0	47905.9	48039.4	48203.9
10°	46765.2	46995.6	47211.5	47464.5	47681.9	47931.1	48502.8	48757.5	48918.4	49035.4	49144.6
12.5°	47324.9	47644.4	47933.1	48214.6	48450.1	48666.0	48867.1	48956.2	48963.8	48967.6	48909.6
15°	47616.5	47921.9	48176.2	48362.5	48500.8	48562.0	48215.8	48034.2	47804.7	47615.7	47304.7
17.5°	47432.5	47615.7	47725.6	47714.8	47657.6	47466.2	46485.7	45946.3	45410.9	44928.5	44295.9
20°	46614.5	46600.5	46505.0	46234.2	45908.0	45400.7	43719.7	42749.8	41812.2	40988.6	39989.4
22.5°	45092.7	44853.3	44519.4	43935.7	43287.1	42400.8	39991.8	38565.2	37259.9	36106.6	34814.8
25°	42887.7	42395.1	41779.3	40852.6	39844.7	38552.0	35582.9	33808.5	32241.2	30881.8	29391.3
27.5°	40065.7	39323.7	38421.3	37138.6	35773.2	34117.1	30825.3	28867.0	27184.6	25727.2	24140.7
30°	36724.7	35759.6	34594.5	33002.5	31355.5	29477.2	26138.6	24155.1	22452.2	20952.8	19365.2
32.5°	32949.2	31818.8	30453.4	28666.6	26885.6	24954.3	21730.1	19810.1	18183.3	16740.9	15304.0
35°	28785.0	27572.8	26128.3	24305.8	22535.4	20657.8	17699.3	15968.1	14531.5	13256.6	12096.3
37.5°	24318.1	23127.9	21754.9	20037.3	18395.5	16694.1	14141.4	12690.7	11485.2	10427.0	9531.1
40°	19673.9	18632.3	17444.3	15959.3	14558.3	13141.3	11045.8	9894.3	8942.9	8135.9	7464.5
42.5°	15086.4	14279.2	13368.2	12194.7	11122.6	10043.7	8430.9	7577.7	6873.0	6292.1	5817.4
45°	10945.7	10405.7	9794.7	8978.9	8237.1	7484.5	6336.6	5737.1	5278.1	4903.5	4586.8
47.5°	7651.6	7338.4	7319.3	6565.4	6021.3	5561.2	4821.7	4443.0	4161.8	3934.8	3734.3
50°	5373.5	5222.0	5033.8	4764.7	4512.2	4252.2	3801.6	3572.7	3407.9	3270.4	3143.6
52.5°	4017.1	3938.4	3838.1	3695.4	3558.6	3412.4	3127.2	2981.4	2929.7	2801.7	2701.2
55°	3208.5	3163.4	3106.4	3022.5	2939.3	2906.0	2661.7	2553.4	2484.9	2434.3	2380.4
57.5°	2665.2	2631.5	2597.7	2540.9	2492.7	2434.3	2304.7	2249.1	2208.4	2178.7	2141.3
60°	2273.4	2253.2	2234.3	2200.9	2174.9	2143.5	2061.1	2029.8	2008.5	1990.6	1966.7
62.5°	2006.5	1996.2	1986.3	1968.6	1955.4	1938.3	1882.0	1867.0	1856.3	1847.3	1832.8
65°	1813.9	1806.4	1801.0	1789.2	1782.6	1772.7	1724.3	1714.1	1707.5	1704.3	1695.8
67.5°	1638.9	1631.1	1627.5	1619.1	1616.3	1610.1	1570.5	1564.9	1562.8	1563.8	1560.7
70°	1475.2	1472.0	1473.6	1472.3	1476.0	1477.2	1453.2	1453.0	1455.5	1460.6	1461.1
72.5°	1377.1	1377.1	1378.9	1379.8	1383.3	1385.0	1365.0	1364.1	1365.2	1369.0	1369.1
75°	1283.7	1285.2	1290.3	1292.0	1296.3	1297.1	1270.7	1267.6	1267.8	1271.4	1270.2
77.5°	1154.6	1160.1	1169.7	1174.8	1182.9	1184.4	1154.8	1151.3	1151.4	1155.0	1152.0
80°	1007.9	1018.6	1033.9	1044.6	1057.1	1062.1	1031.8	1024.5	1017.7	1016.7	1010.6
82.5°	852.1	865.2	883.6	893.3	906.6	909.7	858.7	849.1	843.4	843.8	838.3
85°	650.5	660.3	677.1	682.5	690.8	690.1	632.0	607.1	613.7	603.4	611.5
87.5°	408.1	413.8	424.3	425.6	429.5	428.7	370.2	358.7	355.3	355.5	351.3
90°	224.8	230.3	240.9	242.5	250.1	250.8	205.0	201.0	195.6	196.6	189.4
92.5°	84.2	89.8	95.9	101.6	107.6	113.5	114.0	118.2	112.7	106.4	101.1
95°	97.4	106.8	116.1	125.6	134.9	144.3	153.7	163.1	154.3	145.4	136.7
97.5°	109.5	120.7	131.5	142.7	153.7	164.9	175.9	187.1	177.7	167.9	158.5
100°	143.4	164.1	184.6	205.3	225.8	246.5	267.3	287.9	269.7	251.3	233.1
102.5°	294.9	338.9	382.7	426.4	470.3	514.3	558.3	602.2	560.5	518.6	476.8
105°	568.5	639.7	710.8	781.5	852.6	923.8	995.3	1066.4	999.7	932.9	866.2
107.5°	899.3	971.5	1043.3	1115.3	1187.4	1259.5	1332.3	1404.4	1339.3	1273.9	1208.8
110°	1105.4	1157.7	1210.3	1262.7	1315.1	1367.6	1421.3	1473.9	1434.6	1395.3	1356.2



TEST NUMBER: P1444712
 CATALOG NUMBER: EHBR1-60-UNV-TA-L930-UPL40

CANDELA DISTRIBUTION (continued):

	27.5°	30°	32.5°	35°	37.5°	40°	42.5°	45°	47.5°	50°	52.5°
112.5°	1151.4	1189.1	1226.7	1263.9	1301.2	1338.8	1377.7	1415.5	1395.6	1375.6	1356.0
115°	1090.8	1116.2	1141.2	1166.3	1191.5	1216.5	1243.4	1269.1	1262.5	1255.9	1249.5
117.5°	984.7	998.7	1012.7	1026.5	1040.2	1054.2	1070.6	1084.8	1085.4	1086.3	1087.2
120°	871.8	877.6	883.2	889.0	894.3	900.1	908.5	914.8	919.7	924.5	929.5
122.5°	776.2	778.2	780.0	782.0	783.8	785.6	790.7	793.5	796.6	799.9	803.2
125°	699.9	700.6	701.3	702.1	702.5	703.2	707.8	709.1	709.0	708.7	708.5
127.5°	649.4	649.3	649.0	648.9	648.3	648.1	652.0	652.5	649.9	647.2	644.5
130°	613.6	613.7	613.7	613.8	614.0	614.1	618.5	619.7	615.2	610.6	606.2
132.5°	591.0	591.4	591.4	592.0	592.2	592.3	597.2	598.6	593.8	588.5	583.4
135°	572.5	573.1	573.4	573.9	574.3	575.1	580.4	582.1	577.5	572.4	567.6
137.5°	557.3	557.9	558.2	559.0	559.4	560.0	566.1	567.8	564.1	559.8	556.2
140°	544.8	545.4	546.1	547.0	547.6	548.8	555.3	557.4	554.5	551.2	547.9
142.5°	531.7	533.1	534.3	535.8	537.0	538.6	546.2	548.9	546.6	544.0	541.7
145°	523.8	525.6	526.9	528.8	530.4	532.3	540.8	544.1	542.6	540.8	539.1
147.5°	516.9	518.5	519.9	521.4	522.9	525.1	534.0	537.2	536.4	535.0	534.1
150°	509.9	511.5	512.9	514.5	516.4	518.4	528.4	532.2	531.4	530.4	529.4
152.5°	501.4	502.6	503.9	505.5	507.0	508.8	521.0	525.0	524.3	523.2	522.6
155°	496.7	497.7	498.5	499.8	500.8	502.5	515.5	519.5	519.0	518.5	517.8
157.5°	496.4	496.8	497.3	498.1	498.9	499.8	513.5	517.7	516.9	516.5	516.0
160°	496.8	497.3	497.5	498.1	498.5	499.1	513.3	517.1	516.8	516.1	515.5
162.5°	498.2	499.2	499.7	500.4	501.0	502.0	516.1	520.5	519.7	518.9	518.2
165°	503.0	503.1	503.4	503.9	504.1	504.7	517.9	521.5	521.1	520.5	520.0
167.5°	508.1	508.7	508.8	509.5	509.8	510.5	522.9	526.4	526.0	525.4	525.1
170°	514.3	514.8	514.9	515.4	516.0	516.7	526.9	529.9	529.5	528.5	528.0
172.5°	519.8	520.5	521.0	521.6	522.0	522.7	531.5	534.2	533.9	533.3	532.6
175°	522.2	522.6	523.0	523.7	524.2	524.6	531.5	533.4	533.3	533.0	532.6
177.5°	527.5	527.6	528.1	528.5	529.0	529.3	533.5	534.8	534.6	534.6	534.5
180°	531.1	531.1	531.1	531.1	531.1	531.1	531.1	531.1	531.1	531.1	531.1



TEST NUMBER: P1444712
 CATALOG NUMBER: EHBR1-60-UNV-TA-L930-UPL40

CANDELA DISTRIBUTION (continued):

	55°	57.5°	60°	62.5°	65°	67.5°	70°	72.5°	75°	77.5°	80°
0°	45630.2	45630.2	45630.2	45630.2	45630.2	45630.2	45630.2	45630.2	45630.2	45630.2	45630.2
2.5°	45728.1	45744.1	45746.5	45765.3	45763.7	45786.0	45782.5	45800.8	45790.1	45805.2	45792.5
5°	46802.1	46899.5	46950.4	47045.5	47075.5	47160.6	47184.6	47262.2	47265.4	47327.0	47313.0
7.5°	48320.5	48464.1	48549.4	48666.9	48726.4	48824.3	48867.4	48939.9	48963.1	49020.7	49025.0
10°	49227.3	49296.9	49345.7	49378.5	49408.4	49422.5	49438.9	49434.4	49438.9	49432.4	49446.5
12.5°	48870.6	48768.8	48701.6	48574.0	48500.2	48359.3	48290.1	48154.7	48105.4	47989.1	47972.3
15°	47064.4	46709.6	46458.9	46094.4	45865.2	45506.6	45296.7	44973.1	44825.4	44568.1	44500.6
17.5°	43772.1	43113.6	42603.9	41950.1	41496.4	40885.4	40501.2	39995.4	39718.3	39310.5	39169.2
20°	39156.6	38182.2	37417.6	36506.9	35855.2	35043.2	34523.3	33867.7	33487.0	32986.1	32783.0
22.5°	33737.7	32524.5	31569.8	30493.9	29707.6	28802.6	28179.8	27470.3	27056.2	26512.0	26271.1
25°	28152.5	26814.7	25753.2	24619.7	23788.8	22881.7	22258.7	21561.8	21133.3	20616.6	20377.1
27.5°	22810.8	21456.6	20430.8	19376.8	18614.7	17796.2	17234.1	16625.6	16245.3	15804.3	15579.0
30°	18096.9	16902.4	16029.5	15154.9	14520.8	13856.1	13389.0	12884.7	12551.1	12173.4	11958.8
32.5°	14256.4	13334.2	12650.7	11956.7	11437.8	10882.2	10478.6	10033.7	9732.5	9395.3	9201.0
35°	11290.8	10574.3	10029.1	9457.8	9012.1	8538.9	8183.2	7799.3	7529.0	7238.6	7070.8
37.5°	8920.9	8351.2	7902.5	7428.0	7061.9	6669.9	6337.8	6097.1	5817.1	5585.4	5424.9
40°	7001.1	6548.2	6176.9	5814.1	5515.3	5218.1	4979.5	4744.1	4563.3	4397.6	4282.9
42.5°	5467.3	5139.1	4868.0	4602.2	4384.4	4167.8	3994.9	3832.7	3711.0	3602.6	3528.6
45°	4346.4	4120.5	3932.2	3744.9	3591.2	3446.7	3330.3	3226.8	3148.1	3083.1	3036.9
47.5°	3570.6	3416.0	3283.1	3156.8	3052.4	2957.8	2879.8	2854.4	2769.8	2712.9	2691.2
50°	3034.5	2941.2	2840.2	2747.0	2677.3	2608.0	2557.5	2507.9	2476.3	2450.1	2442.2
52.5°	2634.4	2563.0	2506.9	2447.9	2401.9	2352.5	2317.7	2284.7	2267.2	2253.6	2251.9
55°	2336.9	2287.0	2249.9	2210.3	2182.8	2153.8	2135.7	2118.2	2110.7	2103.7	2104.2
57.5°	2111.8	2078.6	2054.3	2028.7	2013.8	1999.9	1995.3	1991.0	1993.3	1994.3	1998.2
60°	1947.9	1926.2	1911.0	1896.3	1890.0	1885.6	1888.9	1892.9	1900.8	1907.2	1913.0
62.5°	1822.2	1809.8	1802.4	1794.4	1793.8	1794.1	1800.9	1807.5	1817.4	1824.9	1830.5
65°	1692.8	1685.7	1683.4	1678.3	1680.8	1682.3	1690.4	1695.5	1705.5	1711.4	1718.5
67.5°	1562.1	1560.4	1561.9	1561.9	1566.4	1570.4	1578.1	1583.9	1592.4	1597.7	1603.5
70°	1465.5	1466.2	1469.8	1470.4	1475.3	1478.0	1484.8	1488.5	1496.1	1500.7	1507.6
72.5°	1371.6	1370.1	1371.0	1368.8	1370.5	1369.8	1373.5	1375.4	1381.8	1385.4	1393.8
75°	1271.7	1267.5	1266.5	1261.9	1262.0	1258.8	1260.3	1260.2	1264.4	1266.1	1272.2
77.5°	1151.0	1143.9	1140.5	1132.9	1132.7	1129.8	1132.9	1134.8	1142.2	1145.7	1152.7
80°	1006.5	995.4	990.3	981.5	983.0	982.6	990.0	995.6	1004.7	1006.4	1015.2
82.5°	836.6	825.3	819.8	811.2	813.3	813.4	820.2	821.4	829.3	832.7	842.8
85°	599.0	603.4	591.4	592.3	589.7	594.4	599.0	604.7	611.3	622.4	630.7
87.5°	352.8	351.3	355.5	356.0	362.1	365.3	375.1	380.7	391.7	400.3	415.8
90°	188.3	181.3	183.2	179.9	184.5	181.3	185.6	181.8	187.3	186.9	194.2
92.5°	94.5	88.8	82.4	76.8	70.5	65.1	61.8	59.4	56.2	54.1	50.6
95°	128.0	119.1	110.4	101.7	92.9	84.2	81.0	77.8	74.6	71.4	68.3
97.5°	149.2	139.7	130.4	120.8	111.4	102.0	99.9	97.8	95.6	93.5	91.3
100°	214.9	196.8	178.7	160.3	142.2	124.0	122.4	120.7	119.0	117.3	115.5
102.5°	435.1	393.4	351.8	310.0	268.4	226.6	219.4	212.1	204.9	197.6	190.3
105°	799.3	732.5	665.8	599.0	532.5	465.8	445.9	425.8	405.9	386.0	366.3
107.5°	1143.6	1078.5	1013.5	948.4	883.4	818.3	786.8	755.4	723.7	692.3	661.0
110°	1316.7	1277.4	1238.5	1199.2	1160.2	1121.1	1090.9	1061.1	1030.9	1000.9	971.0



TEST NUMBER: P1444712
 CATALOG NUMBER: EHBR1-60-UNV-TA-L930-UPL40

CANDELA DISTRIBUTION (continued):

	55°	57.5°	60°	62.5°	65°	67.5°	70°	72.5°	75°	77.5°	80°
112.5°	1336.2	1316.4	1296.5	1277.0	1257.5	1237.7	1223.0	1208.3	1193.8	1179.1	1164.2
115°	1242.8	1236.5	1230.0	1223.6	1217.5	1211.0	1209.7	1208.7	1207.4	1206.4	1205.4
117.5°	1087.9	1088.8	1089.4	1090.6	1091.6	1092.5	1100.2	1107.6	1115.3	1123.3	1131.2
120°	934.3	939.3	944.1	949.2	954.1	959.3	969.3	979.6	989.9	1000.6	1011.2
122.5°	806.3	809.6	812.7	816.2	819.6	823.0	832.9	843.0	853.1	863.4	874.0
125°	707.9	707.7	707.4	706.9	706.7	706.7	714.7	722.9	731.2	739.9	748.2
127.5°	641.7	638.7	635.8	633.2	630.2	627.8	632.3	636.9	641.5	646.5	651.3
130°	601.6	597.1	592.3	587.9	583.1	578.7	580.1	581.7	583.3	585.0	586.8
132.5°	578.1	573.0	567.7	562.3	557.1	551.9	551.3	550.7	550.1	549.9	549.7
135°	562.5	557.8	552.5	547.5	542.3	537.5	535.8	534.1	532.5	531.0	529.7
137.5°	552.1	548.0	543.9	539.9	535.6	531.6	529.1	527.3	525.0	523.5	521.5
140°	544.5	541.4	537.8	534.5	531.1	527.9	525.8	524.2	522.3	520.9	519.2
142.5°	539.0	536.4	533.8	531.4	528.7	526.2	524.3	522.7	521.0	519.5	517.8
145°	537.4	535.7	533.8	532.0	530.2	528.5	526.8	525.6	524.3	522.9	521.9
147.5°	532.9	531.6	530.4	529.2	527.7	526.6	525.3	524.7	523.4	522.7	521.7
150°	528.2	527.1	525.9	525.1	523.5	522.6	521.8	521.1	520.3	520.0	519.3
152.5°	521.2	520.4	519.3	518.4	517.1	516.1	515.4	515.0	514.4	513.9	513.1
155°	516.9	516.3	515.4	514.7	513.7	513.2	512.4	511.5	510.9	510.2	509.4
157.5°	515.3	514.6	513.7	513.3	512.2	511.6	510.9	510.2	509.4	508.8	508.0
160°	514.9	514.4	513.6	512.9	512.2	511.5	510.4	509.7	508.7	508.0	506.9
162.5°	517.3	516.4	515.6	514.8	513.7	513.0	512.1	511.4	510.8	510.1	509.3
165°	519.3	518.6	517.9	517.3	516.8	516.1	515.1	514.3	513.3	512.6	511.5
167.5°	524.3	523.9	523.2	522.7	521.9	521.1	520.4	519.5	518.6	517.8	516.7
170°	527.6	526.6	526.0	525.2	524.4	523.5	522.9	521.9	521.0	520.5	519.4
172.5°	532.1	531.7	530.9	530.4	529.5	529.0	528.4	527.7	527.0	526.2	525.7
175°	532.5	532.3	532.1	531.6	531.4	531.1	530.8	530.6	530.2	530.0	529.6
177.5°	534.5	534.3	534.3	534.0	533.8	533.8	533.4	533.2	532.8	532.5	532.2
180°	531.1	531.1	531.1	531.1	531.1	531.1	531.1	531.1	531.1	531.1	531.1



TEST NUMBER: P1444712
 CATALOG NUMBER: EHBR1-60-UNV-TA-L930-UPL40

CANDELA DISTRIBUTION (continued):

	82.5°	85°	87.5°	90°	92.5°	95°	97.5°	100°	102.5°	105°	107.5°
0°	45630.2	45630.2	45630.2	45630.2	45630.2	45630.2	45630.2	45630.2	45630.2	45630.2	45630.2
2.5°	45805.7	45794.0	45799.6	45778.1	45783.2	45757.3	45754.9	45725.7	45722.8	45695.2	45685.0
5°	47356.6	47331.1	47359.8	47314.9	47323.8	47265.4	47260.5	47185.1	47159.1	47064.7	47024.0
7.5°	49061.0	49051.4	49069.0	49031.5	49030.3	48978.2	48956.7	48889.1	48847.2	48748.1	48684.8
10°	49434.4	49443.3	49428.9	49432.4	49412.2	49406.5	49385.8	49372.6	49338.5	49312.9	49275.0
12.5°	47883.9	47893.2	47834.0	47871.6	47842.0	47911.1	47905.5	47987.0	47999.5	48102.7	48141.7
15°	44300.2	44289.1	44175.6	44247.1	44208.8	44360.6	44394.6	44598.9	44708.2	44970.5	45131.6
17.5°	38886.6	38857.4	38697.6	38784.7	38740.4	38964.3	39039.4	39366.1	39569.9	39992.5	40293.7
20°	32433.5	32377.4	32190.4	32292.4	32246.7	32501.1	32608.3	33003.2	33266.0	33825.7	34223.9
22.5°	25900.0	25811.6	25628.4	25723.6	25680.5	25943.9	26083.5	26479.7	26780.7	27355.4	27820.2
25°	20033.0	19954.2	19777.1	19843.8	19827.8	20050.6	20174.8	20549.5	20845.3	21392.7	21836.4
27.5°	15279.7	15197.7	15037.7	15084.8	15068.6	15258.5	15375.5	15688.6	15943.1	16403.9	16793.5
30°	11694.3	11595.4	11459.8	11485.8	11474.7	11628.6	11737.8	12001.4	12219.6	12609.1	12944.8
32.5°	8963.7	8864.3	8739.7	8751.8	8735.4	8856.1	8946.1	9175.4	9365.5	9696.7	9988.9
35°	6858.5	6974.7	6708.5	6877.1	6701.5	6959.3	6866.6	7009.8	7173.3	7452.3	7696.1
37.5°	5272.5	5191.5	5123.1	5115.8	5115.4	5175.1	5245.7	5383.6	5527.7	5735.6	5950.3
40°	4178.2	4121.4	4077.1	4073.8	4077.1	4119.6	4171.6	4267.0	4372.6	4521.8	4679.6
42.5°	3465.5	3427.7	3400.9	3399.2	3407.5	3437.7	3473.8	3530.5	3599.2	3695.9	3804.2
45°	2999.3	2978.4	2963.5	2962.7	2966.5	2982.3	3003.1	3038.4	3081.9	3142.2	3210.8
47.5°	2672.3	2667.2	2657.9	2658.3	2654.0	2660.4	2662.8	2682.6	2705.8	2751.3	2840.7
50°	2434.1	2434.1	2427.7	2427.4	2421.3	2421.0	2415.9	2423.7	2434.5	2462.8	2491.4
52.5°	2245.9	2245.3	2238.4	2237.0	2230.6	2230.3	2225.8	2228.9	2230.4	2244.6	2261.7
55°	2098.8	2094.4	2085.3	2082.4	2079.9	2083.6	2081.9	2082.1	2080.3	2086.2	2091.2
57.5°	1993.3	1987.6	1979.0	1976.4	1975.7	1980.1	1980.3	1978.8	1970.8	1965.4	1957.8
60°	1909.8	1904.0	1894.7	1892.3	1893.7	1899.8	1899.5	1894.4	1882.5	1872.2	1860.3
62.5°	1827.7	1825.4	1820.7	1820.0	1818.8	1819.8	1815.6	1810.2	1798.5	1787.5	1774.4
65°	1717.7	1718.8	1715.3	1715.8	1711.6	1710.9	1704.5	1699.2	1687.4	1677.4	1664.0
67.5°	1603.3	1604.2	1601.3	1601.3	1599.1	1599.4	1595.6	1590.7	1580.7	1572.6	1562.3
70°	1509.1	1511.6	1509.9	1510.3	1507.6	1506.6	1500.5	1495.8	1485.4	1478.7	1469.4
72.5°	1396.3	1401.4	1401.2	1402.5	1398.4	1396.3	1389.1	1383.1	1373.9	1368.4	1361.0
75°	1274.6	1281.2	1283.1	1285.9	1280.2	1277.1	1269.2	1264.4	1256.9	1253.7	1248.8
77.5°	1155.7	1162.9	1169.9	1176.3	1167.0	1158.7	1148.8	1141.2	1130.3	1126.1	1118.5
80°	1022.3	1035.1	1050.5	1063.4	1046.6	1029.7	1013.3	1001.1	986.8	980.9	971.3
82.5°	848.1	861.3	870.1	878.4	866.7	854.3	838.5	827.8	812.3	806.5	795.5
85°	644.3	660.7	665.9	670.3	662.9	656.3	641.4	621.3	611.5	596.1	588.2
87.5°	423.8	433.6	435.5	437.0	432.4	429.2	419.5	410.1	393.3	381.1	366.3
90°	192.0	196.9	191.3	192.0	187.9	190.1	182.1	180.5	168.5	164.9	154.4
92.5°	48.2	44.9	42.3	39.4	43.0	45.1	48.5	50.6	53.9	56.2	59.4
95°	65.1	61.8	58.6	55.4	58.0	60.5	63.1	65.7	68.2	70.8	73.3
97.5°	89.2	87.1	84.9	82.8	84.3	85.8	87.2	88.8	90.3	91.8	93.4
100°	113.8	112.1	110.4	108.7	108.7	108.7	108.7	108.7	108.7	108.7	108.7
102.5°	183.0	175.8	168.5	161.3	166.2	171.1	176.0	180.9	185.9	190.8	195.9
105°	346.4	326.5	306.7	286.9	306.0	325.3	344.4	363.7	382.8	402.4	421.6
107.5°	629.5	598.1	566.8	535.4	570.6	605.5	640.6	675.6	710.5	745.5	780.9
110°	941.1	911.3	881.4	851.6	888.7	925.8	963.0	1000.0	1037.3	1074.4	1111.9



TEST NUMBER: P1444712
 CATALOG NUMBER: EHBR1-60-UNV-TA-L930-UPL40

CANDELA DISTRIBUTION (continued):

	82.5°	85°	87.5°	90°	92.5°	95°	97.5°	100°	102.5°	105°	107.5°
112.5°	1149.7	1135.2	1120.7	1106.2	1130.1	1153.9	1177.8	1202.1	1226.0	1250.1	1274.0
115°	1204.4	1203.5	1202.7	1201.8	1213.1	1224.4	1235.7	1247.2	1258.6	1270.0	1281.5
117.5°	1139.0	1146.9	1155.0	1163.1	1166.8	1170.4	1174.2	1177.8	1181.8	1185.6	1189.5
120°	1021.9	1032.3	1043.2	1054.0	1052.5	1051.0	1049.7	1048.2	1047.2	1045.8	1045.1
122.5°	884.5	895.1	906.0	916.7	913.5	910.3	907.3	904.2	901.5	898.6	896.0
125°	757.2	765.8	774.9	783.9	780.7	777.5	774.5	771.7	768.9	766.0	763.6
127.5°	656.8	662.3	667.5	673.1	671.6	670.0	669.2	667.8	666.8	665.9	665.3
130°	589.0	591.2	593.8	596.1	596.5	597.0	597.8	598.6	599.7	600.6	602.1
132.5°	550.1	550.1	550.5	551.0	552.7	554.4	556.6	558.7	561.2	563.4	566.5
135°	528.8	527.9	527.1	526.7	529.2	531.7	534.4	537.4	540.8	544.2	547.8
137.5°	520.2	518.6	517.8	516.4	519.0	521.5	524.4	527.4	530.5	534.0	537.7
140°	517.9	516.7	516.0	514.8	517.4	519.8	522.7	525.6	528.8	532.3	535.8
142.5°	516.8	515.3	514.6	513.8	515.8	518.2	521.0	523.5	526.6	529.4	532.7
145°	520.8	519.8	519.2	518.5	520.0	521.7	523.6	525.7	527.9	530.0	532.7
147.5°	521.0	520.3	520.0	519.4	520.7	521.9	523.3	524.5	526.4	528.0	529.9
150°	519.1	518.4	518.2	518.0	518.7	519.4	520.4	521.0	522.3	523.3	524.8
152.5°	513.0	512.4	512.5	512.1	512.7	513.3	514.2	514.9	515.9	516.7	518.1
155°	509.0	508.5	508.0	507.5	507.6	507.7	508.0	508.1	508.8	509.0	509.6
157.5°	507.7	507.0	506.7	506.0	505.8	505.5	505.6	505.5	505.7	505.5	505.6
160°	506.3	505.4	504.6	503.9	504.0	503.8	503.9	503.8	504.0	504.1	504.3
162.5°	508.8	508.1	507.6	506.9	506.5	505.9	505.5	504.8	504.6	504.2	504.0
165°	510.6	509.7	509.0	507.9	507.8	507.6	507.2	506.9	506.8	506.5	506.5
167.5°	516.1	515.1	514.3	513.5	512.9	512.0	511.6	511.0	510.4	509.8	509.6
170°	518.8	518.0	517.4	516.7	516.4	515.9	515.7	515.2	515.0	514.8	514.8
172.5°	525.1	524.4	523.8	523.3	523.0	522.7	522.5	522.3	521.9	521.9	521.8
175°	529.4	529.1	528.9	528.5	528.2	527.9	527.6	527.4	527.1	526.8	526.6
177.5°	531.7	531.4	531.1	530.9	530.8	530.8	530.8	530.8	530.8	530.6	530.4
180°	531.1	531.1	531.1	531.1	531.1	531.1	531.1	531.1	531.1	531.1	531.1



TEST NUMBER: P1444712
 CATALOG NUMBER: EHBR1-60-UNV-TA-L930-UPL40

CANDELA DISTRIBUTION (continued):

	110°	112.5°	115°	117.5°	120°	122.5°	125°	127.5°	130°	132.5°	135°
0°	45630.2	45630.2	45630.2	45630.2	45630.2	45630.2	45630.2	45630.2	45630.2	45630.2	45630.2
2.5°	45655.4	45643.3	45611.7	45596.1	45566.9	45552.2	45529.4	45514.7	45496.2	45482.5	45475.4
5°	46920.3	46862.0	46744.9	46672.9	46546.5	46463.4	46337.9	46245.8	46116.4	46020.7	45898.4
7.5°	48566.1	48476.5	48326.6	48212.9	48036.2	47901.1	47702.8	47544.1	47324.9	47143.0	46919.1
10°	49236.1	49183.8	49116.6	49043.5	48945.6	48849.5	48714.0	48576.1	48392.1	48209.1	47969.9
12.5°	48245.7	48295.0	48392.1	48437.3	48511.7	48536.8	48570.8	48554.9	48524.8	48450.1	48341.6
15°	45441.1	45646.6	45971.2	46195.9	46510.5	46731.5	47024.0	47212.2	47429.0	47558.5	47681.7
17.5°	40827.4	41224.8	41797.7	42254.9	42868.5	43367.5	43978.8	44459.0	45013.6	45439.0	45891.9
20°	34918.0	35474.6	36265.4	36937.2	37826.4	38580.4	39546.4	40355.6	41299.6	42086.5	42935.7
22.5°	28557.9	29212.5	30118.8	30929.0	31990.8	32939.3	34149.5	35219.5	36495.6	37638.8	38903.4
25°	22557.9	23199.5	24122.6	24961.6	26107.8	27152.6	28474.8	29702.3	31183.2	32564.1	34149.5
27.5°	17412.5	17982.4	18793.9	19549.0	20598.9	21624.6	22966.4	24275.3	25855.5	27339.6	29048.2
30°	13447.4	13909.7	14560.0	15167.4	16010.2	16849.0	18044.3	19254.8	20827.2	22365.1	24116.7
32.5°	10421.2	10815.5	11358.3	11851.4	12500.8	13133.3	14013.5	14980.9	16360.2	17833.2	19526.9
35°	8067.2	8404.4	8866.5	9291.3	9825.3	10327.4	10984.3	11674.7	12727.3	13966.4	15482.1
37.5°	6431.6	6569.1	6898.8	7246.9	7690.4	8103.1	8616.9	9127.4	9880.5	10858.1	12096.3
40°	4891.2	5109.5	5377.8	5652.1	5987.8	6318.8	6882.4	7153.9	7649.7	8351.6	9312.6
42.5°	3946.5	4100.1	4289.0	4479.6	4713.6	4944.1	5229.2	5519.6	5890.3	6365.7	7049.2
45°	3302.6	3402.6	3524.5	3651.4	3805.2	3962.5	4153.3	4352.8	4603.9	4896.1	5311.3
47.5°	2872.3	2927.7	3007.1	3093.9	3199.3	3308.2	3432.3	3559.3	3715.3	3888.7	4125.1
50°	2536.4	2582.7	2644.4	2702.4	2775.1	2886.8	2935.9	3006.1	3100.0	3202.0	3334.2
52.5°	2293.4	2324.3	2362.9	2396.3	2442.3	2484.1	2538.9	2587.2	2652.2	2713.3	2798.8
55°	2104.2	2115.4	2137.4	2158.9	2190.7	2219.2	2256.8	2288.4	2329.8	2366.5	2420.3
57.5°	1958.1	1959.2	1969.3	1980.5	2000.9	2018.9	2044.7	2065.5	2094.3	2117.6	2149.9
60°	1853.1	1847.5	1849.6	1853.5	1865.0	1876.7	1893.2	1906.7	1924.9	1938.0	1956.1
62.5°	1765.7	1756.9	1754.8	1753.9	1759.6	1763.8	1772.8	1779.4	1789.7	1795.5	1805.1
65°	1655.3	1645.0	1640.9	1636.1	1637.8	1636.5	1639.9	1640.1	1645.3	1646.5	1652.1
67.5°	1555.1	1546.5	1541.3	1534.8	1532.0	1527.4	1525.4	1521.0	1520.3	1516.6	1515.7
70°	1463.8	1455.4	1451.0	1445.1	1442.0	1435.9	1432.2	1424.8	1420.4	1413.4	1409.5
72.5°	1358.1	1353.4	1352.0	1348.0	1347.0	1343.6	1342.1	1336.8	1333.8	1327.9	1324.5
75°	1247.7	1243.9	1243.5	1239.4	1239.0	1235.0	1234.0	1228.4	1225.6	1219.6	1217.1
77.5°	1116.2	1110.4	1108.7	1103.9	1105.1	1103.1	1104.8	1100.6	1098.7	1092.8	1090.9
80°	968.0	960.6	957.5	951.3	952.9	950.0	952.9	952.6	954.8	950.0	949.2
82.5°	792.5	784.3	782.8	778.4	781.3	781.6	787.9	784.5	785.9	781.4	783.3
85°	576.7	570.6	562.1	561.0	555.5	561.2	553.8	558.7	550.8	556.3	548.9
87.5°	357.5	345.0	338.4	329.5	326.1	317.4	313.9	307.6	309.5	306.6	308.2
90°	153.3	144.0	144.0	137.7	139.3	134.0	137.3	134.3	138.3	135.2	139.8
92.5°	61.8	64.5	69.5	75.1	79.9	85.0	90.0	95.6	100.4	105.9	110.7
95°	75.8	78.4	85.3	92.1	98.9	105.8	112.7	119.6	126.5	133.2	140.1
97.5°	94.9	96.4	103.3	110.1	116.9	123.8	130.6	137.8	144.6	151.4	158.3
100°	108.7	108.9	128.3	147.8	167.1	186.6	206.0	225.5	245.2	264.6	284.0
102.5°	200.8	205.7	254.8	304.0	353.1	402.2	451.4	500.6	549.7	599.1	648.3
105°	440.8	460.1	535.0	610.1	684.9	760.1	835.1	910.4	985.4	1060.5	1135.6
107.5°	815.8	851.0	918.9	986.7	1054.3	1122.2	1190.1	1257.9	1325.7	1393.7	1461.9
110°	1148.9	1186.3	1231.7	1277.3	1322.9	1368.3	1413.8	1459.3	1505.1	1550.7	1596.6



TEST NUMBER: P1444712
 CATALOG NUMBER: EHBR1-60-UNV-TA-L930-UPL40

CANDELA DISTRIBUTION (continued):

	110°	112.5°	115°	117.5°	120°	122.5°	125°	127.5°	130°	132.5°	135°
112.5°	1297.9	1322.2	1348.7	1375.4	1402.0	1428.7	1455.3	1482.1	1509.0	1535.9	1562.7
115°	1293.2	1304.9	1315.1	1325.8	1336.2	1346.9	1357.5	1368.3	1379.2	1389.8	1400.8
117.5°	1193.3	1197.7	1199.3	1201.3	1203.0	1205.3	1207.3	1209.5	1211.9	1214.2	1216.1
120°	1043.9	1042.9	1041.5	1040.1	1038.7	1037.6	1036.5	1035.3	1034.3	1033.5	1032.3
122.5°	893.2	890.9	889.4	888.3	887.1	886.2	885.3	884.7	883.7	882.9	882.0
125°	761.1	758.9	760.9	762.8	764.9	767.1	769.1	771.7	774.0	776.3	778.7
127.5°	664.5	664.2	668.6	673.2	677.7	682.4	687.1	692.0	696.5	701.6	706.1
130°	603.5	605.1	610.6	616.6	622.2	628.2	634.0	640.2	645.8	651.8	657.6
132.5°	569.1	572.3	577.5	583.3	588.8	594.6	600.3	606.1	611.8	617.7	623.1
135°	551.5	555.4	560.4	565.7	570.9	576.4	581.5	587.0	592.0	597.4	602.4
137.5°	541.2	545.2	549.5	553.8	557.9	562.5	566.9	571.3	575.4	579.9	584.0
140°	539.4	543.3	545.7	548.8	551.3	554.1	556.7	559.6	562.0	565.1	567.5
142.5°	536.0	539.7	541.1	543.1	545.0	547.3	549.1	551.1	552.9	554.6	556.2
145°	535.1	538.0	538.3	539.1	539.8	540.5	540.9	541.6	542.0	542.5	543.0
147.5°	531.9	534.0	533.9	534.2	534.4	534.4	534.7	534.9	534.7	534.9	535.0
150°	526.0	527.6	527.0	527.0	526.5	526.3	525.8	525.7	525.1	525.0	524.4
152.5°	519.1	520.3	519.4	519.3	518.6	518.1	517.4	517.1	516.4	515.9	515.5
155°	509.8	510.4	510.0	509.7	509.4	509.1	508.7	508.8	508.6	508.3	508.1
157.5°	505.7	505.7	505.5	505.3	504.9	504.8	504.7	504.6	504.6	504.8	505.0
160°	504.2	504.5	504.1	503.9	503.7	503.4	503.2	503.3	503.3	503.8	503.9
162.5°	503.5	503.3	503.0	502.7	502.5	502.5	502.4	502.8	502.8	503.0	503.3
165°	506.6	506.8	506.0	505.9	505.5	505.3	505.0	504.9	505.0	505.1	505.2
167.5°	509.2	509.0	509.0	509.2	509.2	509.4	509.6	510.2	510.4	511.1	511.2
170°	514.7	514.8	514.5	514.4	514.2	514.2	514.1	514.1	514.3	514.4	514.4
172.5°	521.8	521.8	521.3	520.9	520.5	520.2	519.8	519.7	519.4	519.1	518.6
175°	526.2	526.0	525.9	525.6	525.4	525.0	524.8	524.2	524.0	523.7	523.5
177.5°	530.2	529.9	529.7	529.7	529.5	529.4	529.4	529.2	529.2	529.2	528.9
180°	531.1	531.1	531.1	531.1	531.1	531.1	531.1	531.1	531.1	531.1	531.1



TEST NUMBER: P1444712
 CATALOG NUMBER: EHBR1-60-UNV-TA-L930-UPL40

CANDELA DISTRIBUTION (continued):

	137.5°	140°	142.5°	145°	147.5°	150°	152.5°	155°	157.5°	160°	162.5°
0°	45630.2	45630.2	45630.2	45630.2	45630.2	45630.2	45630.2	45630.2	45630.2	45630.2	45630.2
2.5°	45466.3	45465.7	45461.4	45463.4	45464.2	45467.4	45471.4	45475.4	45476.3	45479.5	45480.2
5°	45806.5	45694.1	45610.8	45519.4	45450.5	45388.7	45347.4	45314.6	45301.9	45305.1	45312.7
7.5°	46729.2	46497.0	46305.4	46087.6	45906.0	45713.7	45554.2	45402.7	45292.2	45209.9	45163.9
10°	47741.6	47458.9	47188.3	46873.1	46574.1	46255.0	45966.0	45675.0	45432.2	45221.6	45066.9
12.5°	48191.0	47991.1	47757.2	47459.8	47139.8	46771.6	46399.7	46001.1	45630.5	45286.4	45008.9
15°	47715.2	47715.6	47630.4	47487.7	47265.4	46971.1	46616.9	46201.4	45764.1	45317.8	44910.0
17.5°	46205.1	46490.1	46648.6	46748.8	46718.1	46609.6	46384.2	46065.1	45657.3	45182.0	44684.5
20°	43611.8	44283.8	44762.9	45193.9	45435.4	45595.9	45579.7	45449.9	45159.6	44755.3	44237.2
22.5°	39979.0	41106.9	41997.0	42827.0	43409.1	43882.5	44107.6	44203.2	44071.6	43790.0	43303.5
25°	35566.5	37100.2	38408.9	39679.1	40631.9	41450.7	41942.9	42289.5	42317.1	42170.0	41735.9
27.5°	30663.5	32473.8	34130.3	35818.4	37158.2	38335.4	39107.7	39673.1	39852.6	39828.9	39434.8
30°	25766.8	27667.2	29493.1	31461.5	33119.5	34623.4	35643.6	36408.2	36702.8	36759.2	36380.1
32.5°	21142.2	23016.3	24837.1	26895.0	28719.5	30443.2	31648.5	32556.7	32899.3	32980.0	32564.1
35°	16945.3	18674.3	20404.6	22399.1	24213.1	25997.9	27268.1	28218.8	28538.8	28592.7	28111.3
37.5°	13305.6	14778.7	16286.5	18076.0	19742.0	21418.2	22625.0	23518.6	23751.6	23737.3	23192.3
40°	10241.2	11386.4	12597.9	14071.2	15456.2	16873.2	17892.3	18631.0	18753.4	18662.7	18090.3
42.5°	7700.8	8527.9	9406.2	10506.0	11533.7	12594.2	13335.5	13883.9	13901.4	13758.0	13244.3
45°	5737.1	6544.1	6912.4	7577.4	8239.2	8944.5	9397.2	9735.9	9683.5	9557.3	9166.8
47.5°	4373.5	4683.6	5012.6	5424.9	5810.5	6610.7	6551.4	7095.3	6703.6	6970.8	6382.6
50°	3473.0	3646.4	3823.6	4042.4	4243.9	4453.0	4583.8	4681.3	4668.7	4626.7	4514.1
52.5°	2954.7	3008.3	3095.6	3220.0	3332.5	3445.6	3520.0	3580.6	3581.8	3564.8	3507.9
55°	2469.5	2537.5	2600.3	2681.6	2820.1	2841.4	2948.1	2926.5	2934.9	2905.3	2935.6
57.5°	2177.3	2216.9	2252.2	2300.6	2340.7	2387.4	2414.9	2441.5	2439.0	2433.2	2404.1
60°	1970.3	1992.1	2011.7	2040.0	2062.0	2088.4	2101.0	2114.6	2110.1	2100.3	2074.5
62.5°	1810.7	1824.3	1835.6	1853.7	1867.1	1883.5	1890.2	1895.9	1890.2	1880.8	1858.0
65°	1653.2	1662.1	1669.1	1682.8	1692.3	1706.4	1711.9	1717.3	1712.1	1704.8	1687.4
67.5°	1511.2	1512.0	1511.4	1516.9	1519.8	1528.2	1530.8	1534.7	1528.6	1522.3	1507.6
70°	1403.5	1401.2	1398.6	1400.8	1401.2	1405.3	1406.0	1405.3	1398.0	1387.2	1371.1
72.5°	1319.2	1318.1	1316.0	1317.9	1317.9	1321.6	1320.4	1318.5	1309.6	1299.1	1283.2
75°	1211.0	1210.2	1206.1	1206.2	1202.9	1204.1	1199.7	1197.2	1187.2	1178.4	1164.2
77.5°	1084.3	1082.3	1076.4	1074.2	1067.8	1065.1	1056.8	1052.7	1042.5	1035.5	1023.3
80°	943.0	940.8	933.1	928.9	918.8	912.3	900.1	893.3	881.6	874.7	862.8
82.5°	779.4	780.3	772.7	767.4	752.9	741.7	725.5	716.7	703.8	697.0	684.9
85°	554.4	546.4	550.6	550.3	541.2	531.5	518.3	509.0	498.2	491.7	483.2
87.5°	304.1	305.9	303.7	301.8	295.4	290.5	280.2	274.8	266.9	263.0	256.6
90°	129.4	126.7	116.8	114.3	104.4	99.3	88.2	84.2	74.0	71.7	65.1
92.5°	104.9	99.2	93.7	87.6	82.3	76.5	70.7	65.0	59.2	56.9	55.3
95°	131.8	123.6	115.3	106.9	98.6	90.3	82.2	73.8	65.5	63.8	62.1
97.5°	148.6	138.8	129.0	119.4	109.5	99.7	90.1	80.3	70.5	69.4	68.4
100°	261.5	239.1	216.5	193.9	171.5	148.8	126.5	103.8	81.4	80.1	78.8
102.5°	593.5	538.8	484.2	429.5	375.0	320.2	265.6	210.7	156.0	148.1	140.3
105°	1052.8	969.8	887.4	804.5	721.7	638.9	556.2	473.2	390.4	363.9	337.2
107.5°	1384.1	1306.2	1228.6	1150.9	1073.0	995.4	917.4	839.5	761.7	714.9	668.1
110°	1534.8	1473.1	1411.7	1349.9	1288.4	1226.7	1164.8	1103.1	1041.4	1001.0	961.0



TEST NUMBER: P1444712
 CATALOG NUMBER: EHBR1-60-UNV-TA-L930-UPL40

CANDELA DISTRIBUTION (continued):

	137.5°	140°	142.5°	145°	147.5°	150°	152.5°	155°	157.5°	160°	162.5°
112.5°	1517.7	1472.5	1427.7	1382.4	1337.4	1292.2	1247.1	1201.8	1156.5	1132.2	1107.8
115°	1373.9	1346.8	1319.9	1292.9	1265.7	1238.7	1211.7	1184.1	1157.0	1144.3	1131.6
117.5°	1202.8	1189.0	1175.7	1162.0	1148.3	1134.4	1120.9	1107.0	1093.2	1089.0	1084.5
120°	1028.9	1025.0	1021.0	1017.1	1013.2	1009.3	1005.2	1001.2	997.0	997.8	998.7
122.5°	884.3	886.2	888.5	890.2	892.4	894.1	896.3	897.7	899.7	903.4	907.2
125°	783.2	787.7	792.2	796.6	800.9	805.3	809.9	813.9	818.4	822.1	826.2
127.5°	711.5	716.3	721.5	726.3	731.4	736.2	741.2	745.8	750.8	754.3	758.2
130°	662.3	666.4	671.1	675.2	679.9	684.1	688.5	692.8	697.1	700.2	703.2
132.5°	627.2	631.3	635.3	639.1	643.4	647.1	651.2	655.1	659.4	661.6	664.1
135°	605.8	608.7	611.9	614.8	618.3	621.1	624.3	627.5	630.9	632.6	634.6
137.5°	586.5	589.1	591.9	594.4	597.2	599.6	602.6	605.4	608.4	609.4	610.9
140°	570.2	572.9	575.5	578.2	581.0	583.8	586.9	589.8	593.0	594.0	595.5
142.5°	558.6	560.4	562.7	564.8	567.1	569.2	571.8	574.3	577.0	578.3	579.4
145°	545.5	547.7	550.3	552.6	555.1	557.8	560.8	563.6	566.6	567.5	568.5
147.5°	536.9	538.9	541.2	543.2	545.6	547.7	550.5	553.0	555.7	556.7	557.6
150°	526.8	528.8	530.9	533.1	535.7	538.2	540.7	543.5	546.7	547.9	548.9
152.5°	517.8	519.9	522.3	524.9	527.5	530.1	533.1	535.9	539.0	539.9	541.3
155°	510.5	512.6	515.1	517.7	520.4	522.8	525.7	528.4	531.3	532.6	533.8
157.5°	507.1	509.0	511.2	513.7	516.0	518.4	521.0	523.4	526.0	527.0	528.1
160°	505.8	507.7	509.7	511.9	514.0	516.1	518.4	520.6	522.8	523.8	524.9
162.5°	505.3	507.2	509.4	511.2	513.5	515.5	517.8	519.8	522.1	522.9	524.0
165°	506.7	508.2	509.9	511.2	513.0	514.3	516.2	517.7	519.6	520.2	521.6
167.5°	512.7	513.7	514.8	516.0	517.5	518.6	520.1	521.2	522.7	523.5	524.5
170°	515.4	516.4	517.4	518.6	519.7	520.9	522.0	522.9	524.4	525.1	526.0
172.5°	519.4	519.9	520.7	521.3	522.1	522.7	523.6	524.3	525.1	526.1	526.9
175°	524.1	524.3	524.7	525.0	525.2	525.7	526.2	526.8	527.2	527.8	528.4
177.5°	529.1	529.3	529.5	529.7	530.3	530.5	530.9	531.1	531.4	532.0	532.8
180°	531.1	531.1	531.1	531.1	531.1	531.1	531.1	531.1	531.1	531.1	531.1



TEST NUMBER: P1444712
 CATALOG NUMBER: EHBR1-60-UNV-TA-L930-UPL40

CANDELA DISTRIBUTION (continued):

	165°	167.5°	170°	172.5°	175°	177.5°	180°	182.5°	185°	187.5°	190°
0°	45630.2	45630.2	45630.2	45630.2	45630.2	45630.2	45630.2	45630.2	45630.2	45630.2	45630.2
2.5°	45478.6	45478.1	45476.6	45474.6	45472.5	45473.7	45475.7	45481.0	45490.2	45503.4	45520.6
5°	45319.0	45328.2	45333.5	45334.2	45329.5	45326.5	45331.0	45343.5	45368.7	45410.9	45468.2
7.5°	45151.5	45163.0	45180.7	45193.9	45196.4	45193.1	45193.9	45213.5	45260.0	45342.3	45457.8
10°	44972.8	44938.8	44956.7	44989.5	45015.6	45020.4	45023.6	45046.7	45114.7	45239.1	45424.7
12.5°	44807.7	44700.2	44679.4	44709.0	44748.6	44761.2	44757.7	44767.7	44847.3	45012.1	45270.6
15°	44590.6	44388.2	44319.0	44326.6	44375.5	44393.1	44380.2	44360.6	44438.3	44639.3	44974.0
17.5°	44239.2	43912.8	43785.7	43780.1	43837.2	43852.4	43821.0	43760.1	43836.6	44087.5	44503.0
20°	43704.9	43223.2	42983.7	42945.7	43007.7	42989.6	42926.9	42834.9	42935.4	43240.5	43734.6
22.5°	42744.6	42134.1	41725.0	41593.1	41667.4	41617.8	41526.4	41408.8	41542.2	41888.9	42439.2
25°	41175.3	40469.9	39909.8	39595.6	39654.8	39566.0	39466.4	39324.0	39483.2	39881.1	40486.8
27.5°	38868.6	38053.8	37359.8	36839.6	36858.7	36742.4	36627.7	36443.4	36642.0	37113.0	37796.2
30°	35801.3	34858.4	34013.3	33306.3	33243.1	33130.3	33012.8	32770.9	33019.6	33583.4	34381.8
32.5°	31949.2	30902.5	29925.9	29032.1	28863.5	28753.4	28648.7	28370.4	28695.9	29353.2	30270.5
35°	27444.5	26329.3	25270.6	24249.8	23970.4	23860.3	23768.8	23502.2	23908.4	24623.7	25614.4
37.5°	22499.8	21360.7	20309.5	19262.7	18868.0	18718.7	18652.3	18477.5	18946.2	19653.7	20648.4
40°	17423.6	16364.5	15422.1	14497.5	14047.6	13819.1	13784.2	13752.4	14205.5	14819.4	15722.2
42.5°	12675.0	11820.5	11093.8	10387.1	9979.4	9667.3	9667.3	9761.9	10169.8	10629.6	11325.8
45°	8767.7	8194.3	7731.3	7259.0	7385.2	6763.2	7128.7	6941.2	7142.7	7439.1	7891.9
47.5°	6027.0	5713.9	5459.6	5195.8	5003.5	4819.8	4835.9	4954.3	5144.2	5320.0	5555.6
50°	4392.7	4233.2	4103.6	3966.6	3870.9	3789.9	3794.6	3845.9	3945.7	4038.4	4161.6
52.5°	3441.9	3354.0	3283.6	3207.8	3157.7	3117.4	3119.6	3144.5	3198.4	3251.3	3322.0
55°	2837.0	2826.3	2734.8	2666.9	2641.0	2614.0	2618.9	2628.7	2665.4	2696.3	2743.1
57.5°	2377.4	2336.3	2308.9	2273.0	2256.6	2237.7	2241.9	2245.6	2270.2	2290.9	2324.6
60°	2052.8	2023.8	2004.3	1979.9	1969.2	1957.1	1959.8	1962.0	1977.8	1991.3	2015.5
62.5°	1837.3	1811.2	1794.3	1775.5	1767.8	1759.7	1761.6	1762.3	1772.1	1782.1	1800.4
65°	1671.9	1651.2	1637.2	1620.9	1613.0	1604.5	1605.4	1605.4	1613.7	1620.9	1634.6
67.5°	1496.9	1481.4	1472.3	1459.4	1454.0	1445.4	1445.2	1442.5	1447.9	1450.8	1460.1
70°	1356.6	1340.9	1329.2	1316.8	1310.1	1302.5	1302.7	1302.8	1309.1	1315.7	1327.7
72.5°	1269.9	1254.8	1244.5	1233.7	1227.3	1220.8	1219.6	1219.0	1223.5	1227.1	1235.0
75°	1155.0	1143.0	1136.9	1126.8	1121.7	1114.5	1113.3	1109.9	1112.1	1112.8	1118.6
77.5°	1015.7	1004.3	999.4	989.2	984.9	976.6	976.0	972.2	973.9	972.8	977.3
80°	856.9	846.6	843.8	835.4	833.4	825.7	824.6	820.0	821.4	817.8	819.5
82.5°	679.7	670.2	668.2	660.3	660.3	653.5	653.1	646.2	646.2	640.3	630.7
85°	478.7	471.9	468.9	462.5	460.6	455.1	452.2	445.6	443.3	439.0	437.6
87.5°	252.6	248.3	244.4	241.3	235.7	225.7	224.9	218.0	218.5	213.6	214.0
90°	63.7	57.7	56.3	50.7	49.1	45.1	43.8	44.0	45.3	45.6	47.0
92.5°	53.4	51.5	49.5	47.7	45.7	43.8	41.9	43.8	45.7	47.7	49.5
95°	60.4	58.7	56.9	55.3	53.6	51.9	50.2	51.9	53.6	55.4	57.1
97.5°	67.3	66.2	65.1	64.1	63.0	61.9	60.9	62.0	63.1	64.2	65.2
100°	77.5	76.3	74.9	73.7	72.4	71.1	69.9	71.5	72.8	74.1	75.3
102.5°	132.5	124.7	116.7	108.9	101.0	93.1	85.2	93.1	101.0	109.1	116.9
105°	310.5	284.0	257.4	230.7	204.0	177.3	150.7	177.5	204.2	230.9	257.7
107.5°	621.2	574.6	527.6	480.8	433.8	386.9	340.0	387.1	434.1	480.9	527.9
110°	920.5	880.1	839.7	799.4	758.8	718.4	677.9	718.6	759.2	799.7	840.3



TEST NUMBER: P1444712
 CATALOG NUMBER: EHBR1-60-UNV-TA-L930-UPL40

CANDELA DISTRIBUTION (continued):

	165°	167.5°	170°	172.5°	175°	177.5°	180°	182.5°	185°	187.5°	190°
112.5°	1083.3	1058.9	1034.3	1009.8	985.2	960.6	935.9	961.0	985.8	1010.6	1035.2
115°	1118.8	1105.9	1093.2	1080.2	1067.2	1054.3	1041.1	1054.8	1068.1	1081.3	1094.6
117.5°	1080.1	1076.0	1071.4	1067.1	1062.5	1058.0	1053.3	1058.4	1063.3	1068.6	1073.1
120°	999.1	1000.2	1000.8	1001.4	1002.1	1002.5	1002.9	1003.2	1003.2	1003.2	1003.1
122.5°	910.8	914.6	918.1	921.7	925.2	928.7	931.7	929.3	926.5	923.9	920.8
125°	829.8	833.9	837.6	841.4	844.8	848.6	851.5	849.4	846.7	843.9	840.8
127.5°	761.7	765.2	768.6	772.3	775.3	778.6	781.4	779.6	777.2	774.8	772.2
130°	705.9	709.1	711.6	714.4	716.7	719.1	721.1	720.1	718.6	717.5	715.5
132.5°	666.4	668.9	671.1	673.3	674.9	677.0	678.2	678.0	677.2	676.5	675.1
135°	636.5	638.2	639.8	641.8	643.0	644.2	644.9	645.5	645.2	645.0	644.2
137.5°	611.9	613.4	614.4	615.3	616.0	616.6	616.8	617.8	618.3	619.0	619.0
140°	596.6	598.0	599.1	600.0	601.0	601.7	601.8	602.9	603.4	603.7	603.7
142.5°	580.8	582.0	583.2	584.2	584.9	585.6	585.8	586.8	587.3	587.6	587.7
145°	569.6	570.5	571.4	572.3	572.6	573.0	572.9	574.3	574.9	575.5	575.9
147.5°	558.5	559.5	560.0	560.7	561.2	561.5	561.6	562.5	563.3	563.9	564.4
150°	550.3	551.4	552.4	553.4	554.2	554.8	555.0	555.8	556.2	556.6	556.6
152.5°	542.3	543.2	544.1	545.0	545.8	546.3	546.5	547.2	548.1	548.6	548.8
155°	534.9	536.0	537.0	538.1	538.7	539.6	540.2	540.9	541.5	541.7	542.1
157.5°	529.1	530.2	531.1	532.1	532.8	533.8	534.5	535.3	535.8	536.6	536.8
160°	525.7	526.9	527.6	528.6	529.4	530.3	530.9	531.8	532.5	533.0	533.7
162.5°	524.8	525.9	526.3	527.4	528.2	529.1	529.7	530.6	531.2	531.9	532.5
165°	522.6	523.7	524.5	525.7	526.7	527.8	528.4	529.2	529.4	529.9	530.1
167.5°	525.3	526.5	527.1	528.3	528.9	530.0	530.9	531.4	531.7	532.0	532.2
170°	526.8	527.7	528.5	529.3	530.1	531.1	531.7	532.0	532.2	532.5	532.8
172.5°	527.6	528.7	529.5	530.6	531.3	532.3	533.1	533.3	533.2	533.2	532.9
175°	529.0	529.9	530.5	531.3	531.8	532.6	533.3	533.1	533.2	533.0	532.9
177.5°	533.7	534.7	535.5	536.1	537.0	537.6	538.4	537.8	537.4	536.8	536.2
180°	531.1	531.1	531.1	531.1	531.1	531.1	531.1	531.1	531.1	531.1	531.1



TEST NUMBER: P1444712
 CATALOG NUMBER: EHBR1-60-UNV-TA-L930-UPL40

CANDELA DISTRIBUTION (continued):

	192.5°	195°	197.5°	200°	202.5°	205°	207.5°	210°	212.5°	215°	217.5°
0°	45630.2	45630.2	45630.2	45630.2	45630.2	45630.2	45630.2	45630.2	45630.2	45630.2	45630.2
2.5°	45544.9	45567.8	45602.5	45634.2	45681.8	45719.3	45775.6	45818.4	45881.9	45923.2	45992.4
5°	45549.0	45638.1	45755.3	45869.6	46007.1	46131.9	46286.9	46419.1	46574.9	46702.1	46861.6
7.5°	45613.4	45785.2	45991.2	46198.7	46433.4	46652.9	46900.3	47124.2	47369.0	47576.1	47802.4
10°	45660.9	45925.9	46229.5	46534.8	46856.4	47155.0	47456.6	47717.1	47960.7	48161.1	48338.2
12.5°	45596.5	45961.6	46351.1	46727.2	47084.7	47393.8	47653.2	47853.6	47991.9	48085.8	48107.8
15°	45377.5	45816.9	46240.3	46614.9	46911.5	47140.3	47258.7	47314.1	47254.6	47155.9	46938.7
17.5°	44968.4	45431.8	45810.4	46105.9	46262.6	46324.7	46226.6	46055.9	45722.5	45352.3	44817.7
20°	44218.4	44650.2	44924.8	45085.9	45044.0	44888.9	44518.6	44068.4	43402.6	42693.1	41756.6
22.5°	42902.9	43280.3	43426.6	43438.7	43182.7	42794.5	42126.5	41354.4	40304.0	39212.1	37869.1
25°	40928.2	41258.8	41281.9	41152.1	40683.8	40054.6	39073.7	37981.4	36554.2	35099.1	33416.3
27.5°	38250.2	38567.3	38489.6	38247.3	37597.3	36755.2	35499.4	34088.3	32328.7	30610.2	28748.7
30°	34883.6	35222.7	35131.6	34820.7	34047.6	33052.4	31574.7	29935.3	27981.8	26146.2	24259.8
32.5°	30854.9	31283.6	31220.7	30925.3	30118.5	29053.4	27450.0	25711.2	23712.5	21903.8	20068.7
35°	26275.8	26796.3	26823.2	26630.0	25881.1	24828.3	23245.1	21562.1	19647.7	17940.9	16245.8
37.5°	21342.3	21945.6	22069.6	22017.6	21396.7	20467.5	19024.9	17515.2	15819.1	14323.4	12873.6
40°	16381.5	16992.2	17204.2	17267.1	16808.9	16089.2	14905.3	13686.7	12304.0	11092.0	9940.8
42.5°	11857.4	12398.9	12603.6	12732.5	12446.5	11966.6	11103.0	10218.0	9205.0	8330.9	7492.8
45°	8235.2	8618.2	8774.0	8903.6	8748.0	8477.1	7931.8	7378.3	6709.7	6138.3	5597.6
47.5°	5757.7	5968.9	6071.8	6134.7	6074.3	5933.1	5636.3	5315.6	4938.2	4604.3	4283.4
50°	4267.7	4380.1	4434.0	4470.3	4426.3	4347.9	4187.2	4012.6	3805.3	3616.2	3431.4
52.5°	3382.1	3446.5	3478.5	3498.1	3472.9	3424.8	3331.3	3227.8	3103.5	2986.7	2925.3
55°	2849.2	2845.8	2919.7	2884.0	2919.7	2840.1	2823.3	2709.5	2606.3	2533.6	2455.0
57.5°	2349.7	2383.1	2397.3	2413.2	2402.9	2388.3	2348.6	2307.9	2253.4	2207.9	2159.4
60°	2033.9	2061.5	2077.0	2092.8	2091.8	2086.3	2063.3	2038.9	2005.0	1977.8	1948.3
62.5°	1816.4	1840.3	1855.6	1870.7	1872.0	1869.9	1852.4	1835.6	1812.4	1795.3	1775.0
65°	1645.3	1662.1	1672.5	1684.5	1683.8	1680.6	1664.9	1650.8	1631.8	1619.9	1605.0
67.5°	1466.2	1478.8	1487.0	1498.4	1500.5	1501.2	1492.6	1486.0	1476.7	1473.3	1468.2
70°	1338.8	1354.3	1367.3	1381.6	1389.4	1393.1	1389.4	1386.0	1380.6	1378.2	1374.4
72.5°	1242.4	1255.4	1265.6	1278.6	1285.9	1291.2	1288.3	1286.4	1281.7	1281.0	1278.3
75°	1122.7	1131.7	1137.5	1147.3	1151.2	1156.1	1153.8	1155.0	1153.5	1157.2	1157.1
77.5°	978.8	985.4	988.1	995.2	995.9	1001.8	1003.2	1010.1	1015.0	1025.8	1031.6
80°	816.8	821.0	821.0	828.3	831.5	841.5	846.2	857.5	862.8	872.4	873.3
82.5°	634.5	629.6	634.5	631.5	640.7	652.0	653.5	663.1	665.3	671.4	666.7
85°	433.8	433.5	429.5	430.2	427.3	428.7	427.0	428.9	427.2	427.3	422.9
87.5°	207.8	209.7	205.1	206.7	202.3	204.2	200.4	203.4	198.9	199.5	192.8
90°	47.9	49.0	49.7	51.1	52.9	56.3	60.0	63.4	67.6	71.0	74.9
92.5°	51.5	53.5	55.4	57.3	59.3	65.1	70.8	76.5	82.5	88.0	93.8
95°	58.9	60.6	62.3	64.3	66.0	74.3	82.7	91.0	99.4	107.6	116.0
97.5°	66.7	67.7	68.8	69.9	71.1	80.9	90.7	100.5	110.3	120.2	129.8
100°	76.7	78.0	79.2	80.7	82.0	104.6	127.3	149.8	172.4	194.9	217.5
102.5°	124.9	132.8	140.7	148.9	156.8	211.6	266.5	321.3	375.8	430.7	485.4
105°	284.4	311.0	338.1	364.7	391.4	474.4	557.4	640.4	723.1	805.9	888.9
107.5°	575.1	622.0	669.1	716.0	763.0	841.1	918.9	996.9	1075.0	1152.9	1230.5
110°	881.1	921.3	962.2	1002.7	1043.3	1105.0	1167.0	1228.8	1290.7	1352.5	1414.2



TEST NUMBER: P1444712
 CATALOG NUMBER: EHBR1-60-UNV-TA-L930-UPL40

CANDELA DISTRIBUTION (continued):

	192.5°	195°	197.5°	200°	202.5°	205°	207.5°	210°	212.5°	215°	217.5°
112.5°	1060.2	1084.8	1109.5	1133.9	1158.7	1204.0	1249.7	1295.0	1340.5	1385.5	1430.8
115°	1107.8	1120.5	1133.7	1146.6	1159.8	1187.3	1214.5	1241.9	1269.2	1296.4	1323.8
117.5°	1077.9	1082.6	1087.4	1091.6	1096.4	1110.4	1124.4	1138.3	1152.3	1166.4	1180.2
120°	1002.9	1002.4	1002.1	1001.4	1001.0	1005.1	1009.7	1013.7	1018.1	1022.1	1026.2
122.5°	917.8	914.4	911.3	907.8	904.6	902.6	901.2	899.2	898.0	896.0	894.4
125°	837.6	834.2	830.9	827.3	823.7	819.7	815.6	811.4	807.1	803.0	798.8
127.5°	769.6	766.5	763.6	760.2	757.0	752.2	747.7	742.8	738.3	733.4	728.7
130°	713.6	711.2	709.3	706.5	704.3	699.7	695.9	691.5	687.4	683.2	679.0
132.5°	674.0	672.3	670.7	668.5	666.8	662.9	659.4	655.4	651.7	647.8	644.1
135°	643.7	642.6	641.7	640.3	639.0	635.8	633.2	630.1	627.3	624.2	621.4
137.5°	619.0	618.5	618.0	617.5	616.8	614.3	611.9	609.4	607.0	604.4	602.1
140°	603.7	603.4	603.0	602.5	601.9	599.2	596.7	594.0	591.5	588.9	586.3
142.5°	587.6	587.3	587.1	586.5	586.1	583.9	582.1	580.0	577.9	575.9	574.0
145°	576.1	576.0	576.2	575.8	575.9	573.4	571.3	568.7	566.8	564.3	562.1
147.5°	564.9	564.9	565.2	565.1	565.4	563.3	561.6	559.5	557.9	555.8	554.2
150°	556.9	556.9	556.9	556.7	556.5	554.5	552.8	550.8	549.2	547.0	545.3
152.5°	549.0	549.2	549.4	549.5	549.7	547.8	545.9	543.9	542.0	539.9	538.1
155°	542.4	542.6	542.8	542.8	542.8	541.1	539.4	537.5	535.8	533.9	532.2
157.5°	537.2	537.5	537.9	538.1	538.2	536.7	535.2	533.8	532.3	530.6	529.1
160°	534.0	534.5	534.9	535.0	535.3	534.1	533.1	531.5	530.6	528.9	527.6
162.5°	532.9	533.4	533.8	534.0	534.2	533.0	532.0	530.8	529.5	527.8	526.6
165°	530.6	530.5	530.9	530.8	530.9	530.0	529.4	528.5	527.7	526.7	525.9
167.5°	532.5	532.5	532.8	532.6	532.8	532.2	532.1	531.3	530.7	530.0	529.3
170°	532.9	533.0	533.2	533.1	533.3	532.6	532.2	531.6	531.2	530.2	529.6
172.5°	533.0	532.6	532.6	532.5	532.3	531.8	531.6	531.2	530.9	530.5	530.0
175°	532.6	532.4	532.3	532.0	531.7	531.7	531.5	531.5	531.2	531.0	530.8
177.5°	535.8	535.4	534.7	534.2	533.8	533.6	533.5	533.3	533.5	533.3	533.1
180°	531.1	531.1	531.1	531.1	531.1	531.1	531.1	531.1	531.1	531.1	531.1



TEST NUMBER: P1444712
 CATALOG NUMBER: EHBR1-60-UNV-TA-L930-UPL40

CANDELA DISTRIBUTION (continued):

	220°	222.5°	225°	227.5°	230°	232.5°	235°	237.5°	240°	242.5°	245°
0°	45630.2	45630.2	45630.2	45630.2	45630.2	45630.2	45630.2	45630.2	45630.2	45630.2	45630.2
2.5°	46035.2	45750.9	45713.3	45733.3	45780.9	45798.4	45849.6	45863.7	45915.2	45928.0	45977.5
5°	46985.0	46609.3	46628.1	46718.3	46855.2	46936.7	47071.1	47141.4	47269.9	47328.2	47444.2
7.5°	47986.7	47691.6	47783.6	47936.0	48123.0	48252.5	48414.1	48519.2	48658.4	48744.8	48856.3
10°	48478.5	48397.7	48498.9	48618.9	48725.5	48809.1	48877.6	48932.4	48968.2	49001.9	49016.6
12.5°	48104.2	48229.3	48246.6	48235.0	48164.3	48110.3	47989.1	47906.8	47760.4	47671.3	47497.3
15°	46716.8	46992.0	46839.6	46609.0	46271.4	45990.0	45592.6	45296.7	44882.9	44602.1	44186.8
17.5°	44282.0	44629.3	44232.2	43698.5	43019.6	42438.7	41715.4	41141.2	40422.1	39899.0	39227.8
20°	40854.3	41178.8	40470.7	39585.9	38535.6	37651.7	36609.2	35777.5	34808.9	34088.3	33218.7
22.5°	36586.4	36817.6	35820.1	34627.3	33289.1	32184.8	30938.5	29941.4	28835.9	28012.2	27084.9
25°	31864.8	31927.3	30730.7	29356.4	27865.0	26623.9	25293.4	24245.0	23117.6	22282.7	21372.7
27.5°	27099.4	27007.8	25714.4	24257.4	22688.6	21398.6	20100.8	19118.5	18131.0	17379.0	16595.0
30°	22601.3	22379.8	21036.9	19539.2	18016.3	16860.2	15782.8	14993.9	14208.3	13611.7	12982.5
32.5°	18476.5	18164.0	16856.8	15453.7	14170.5	13278.2	12479.3	11882.4	11248.0	10744.1	10216.0
35°	14823.0	14490.1	13332.0	12142.5	11171.3	10513.6	9885.7	9396.0	8857.4	8432.2	7973.6
37.5°	11687.6	11414.6	10444.6	9508.6	8774.0	8264.2	7749.9	7349.6	6904.5	6717.4	6227.4
40°	9022.7	8832.0	8073.5	7383.5	6831.9	6592.5	6070.3	5696.3	5363.7	5089.4	4823.7
42.5°	7037.9	6970.4	6232.3	5694.1	5305.7	5004.0	4713.0	4476.7	4246.7	4057.6	3879.0
45°	5164.8	5111.4	4783.6	4473.0	4208.3	3997.5	3800.8	3638.3	3487.9	3363.2	3250.0
47.5°	4021.8	4004.7	3815.9	3623.4	3456.6	3321.2	3193.5	3085.6	2985.9	2902.6	2875.5
50°	3271.1	3268.9	3158.1	3039.2	2920.5	2842.3	2760.7	2696.9	2632.9	2583.0	2530.2
52.5°	2779.4	2767.3	2692.6	2619.1	2548.7	2497.2	2445.2	2404.4	2362.0	2331.2	2298.4
55°	2392.7	2405.5	2362.1	2318.3	2274.2	2242.2	2205.7	2178.8	2149.7	2130.3	2110.5
57.5°	2124.2	2141.0	2118.2	2093.5	2066.6	2045.5	2020.4	2001.8	1982.3	1970.0	1958.5
60°	1928.9	1947.1	1938.0	1925.5	1908.9	1896.4	1880.3	1870.1	1857.5	1850.5	1844.1
62.5°	1763.1	1786.0	1782.7	1776.8	1766.1	1759.3	1750.5	1745.9	1737.6	1734.6	1731.5
65°	1597.7	1623.5	1622.9	1620.1	1614.1	1612.2	1606.7	1605.7	1601.5	1603.2	1602.8
67.5°	1467.7	1490.1	1495.0	1498.5	1498.4	1499.7	1499.2	1501.4	1501.4	1504.6	1506.6
70°	1373.9	1389.4	1393.1	1396.9	1397.8	1400.9	1400.9	1402.7	1402.3	1405.0	1405.3
72.5°	1279.0	1299.5	1303.2	1306.2	1306.2	1309.1	1307.6	1307.0	1303.0	1302.1	1299.3
75°	1161.0	1187.2	1192.9	1196.6	1197.2	1199.7	1196.1	1193.9	1187.2	1184.4	1179.7
77.5°	1037.6	1064.9	1068.9	1070.3	1068.1	1068.7	1061.2	1056.1	1047.4	1043.9	1039.3
80°	877.1	917.2	920.5	918.0	911.6	910.7	903.3	898.6	888.4	884.8	880.9
82.5°	667.5	714.5	721.1	724.0	718.9	720.0	713.2	710.4	701.0	699.3	693.0
85°	421.4	468.5	476.2	475.1	470.0	468.7	464.7	466.1	465.3	467.8	469.1
87.5°	193.6	239.1	250.1	246.6	246.0	242.8	235.5	238.3	242.7	245.5	245.7
90°	78.5	95.9	99.2	97.3	91.0	88.4	82.5	80.7	75.5	73.6	68.4
92.5°	99.6	105.3	111.1	106.0	100.9	95.7	90.6	85.4	80.4	75.1	70.1
95°	124.3	132.3	140.6	133.8	126.8	119.9	113.1	106.3	99.5	92.6	85.8
97.5°	139.6	149.1	158.8	151.9	145.2	138.1	131.3	124.5	117.6	110.6	103.8
100°	240.1	262.1	284.5	265.1	245.5	226.2	206.7	187.1	167.7	148.4	128.8
102.5°	540.0	594.4	648.8	599.6	550.4	501.1	452.0	402.9	353.8	304.3	255.3
105°	971.5	1053.8	1136.4	1061.0	986.0	910.9	835.8	760.8	685.6	610.4	535.5
107.5°	1308.5	1385.2	1462.5	1394.5	1326.6	1258.8	1190.7	1122.9	1054.9	986.9	919.2
110°	1476.0	1536.1	1597.6	1551.7	1506.1	1460.2	1414.7	1368.9	1323.3	1277.9	1232.4



TEST NUMBER: P1444712
 CATALOG NUMBER: EHBR1-60-UNV-TA-L930-UPL40

CANDELA DISTRIBUTION (continued):

	220°	222.5°	225°	227.5°	230°	232.5°	235°	237.5°	240°	242.5°	245°
112.5°	1475.9	1519.2	1563.9	1536.7	1510.0	1483.0	1456.3	1429.4	1402.8	1375.8	1349.5
115°	1350.6	1375.6	1402.1	1391.0	1380.4	1369.4	1358.6	1348.0	1337.2	1326.5	1316.1
117.5°	1193.9	1205.0	1217.9	1215.5	1213.4	1210.9	1208.8	1206.4	1204.6	1202.4	1200.5
120°	1030.2	1031.3	1034.5	1035.2	1036.4	1037.2	1038.3	1039.2	1040.4	1041.5	1042.8
122.5°	892.5	887.3	884.4	885.2	886.0	886.6	887.6	888.2	889.2	890.2	891.2
125°	794.5	786.4	781.1	778.7	776.4	774.0	771.6	769.3	767.3	765.0	763.0
127.5°	723.9	715.1	709.2	704.4	699.7	694.8	690.1	685.3	680.7	675.8	671.5
130°	674.9	666.3	661.0	655.0	649.4	643.2	637.6	631.7	625.8	620.0	614.2
132.5°	640.3	631.8	626.8	621.3	615.9	610.0	604.5	598.7	593.1	587.2	581.7
135°	618.4	610.5	606.5	601.2	596.4	591.1	585.9	580.7	575.6	570.2	565.3
137.5°	599.4	591.6	588.2	584.0	580.0	575.7	571.8	567.2	563.1	558.5	554.6
140°	583.7	575.6	571.8	569.4	567.1	564.4	561.9	559.2	556.8	554.2	551.5
142.5°	571.9	564.1	560.9	559.2	557.8	555.8	554.6	552.8	551.1	548.9	547.2
145°	559.9	551.2	547.7	547.1	547.1	546.5	546.2	545.7	545.4	544.7	544.3
147.5°	552.1	543.1	539.7	539.9	539.9	539.8	540.1	539.9	540.1	540.0	540.1
150°	543.1	533.1	529.0	529.5	529.9	530.4	530.9	531.2	531.9	532.3	532.7
152.5°	535.8	523.8	519.3	519.8	520.6	521.0	521.6	522.4	523.2	523.9	524.5
155°	530.0	516.9	512.0	512.0	512.2	512.5	512.8	513.2	513.7	514.0	514.6
157.5°	527.3	513.6	508.8	508.4	508.5	508.5	508.6	508.8	509.0	509.2	509.8
160°	526.1	512.4	507.8	507.3	507.4	507.2	507.1	507.1	507.4	507.6	508.0
162.5°	525.1	511.7	507.2	506.7	506.5	506.3	506.3	506.1	506.3	506.3	506.7
165°	524.6	512.9	508.8	508.7	508.8	508.6	508.8	508.8	509.1	509.3	509.7
167.5°	528.4	517.9	514.8	514.3	513.7	513.3	513.3	512.6	512.6	512.2	512.2
170°	528.8	520.5	517.8	517.6	517.8	517.7	517.5	517.6	517.6	517.5	517.8
172.5°	529.5	523.5	521.3	521.6	522.0	522.2	522.7	523.0	523.5	523.8	524.3
175°	530.6	526.9	526.0	526.0	526.2	526.4	526.7	526.8	527.1	527.3	527.8
177.5°	533.1	531.9	531.4	531.4	531.4	531.4	531.4	531.4	531.4	531.6	531.6
180°	531.1	531.1	531.1	531.1	531.1	531.1	531.1	531.1	531.1	531.1	531.1



TEST NUMBER: P1444712
 CATALOG NUMBER: EHBR1-60-UNV-TA-L930-UPL40

CANDELA DISTRIBUTION (continued):

	247.5°	250°	252.5°	255°	257.5°	260°	262.5°	265°	267.5°	270°	272.5°
0°	45630.2	45630.2	45630.2	45630.2	45630.2	45630.2	45630.2	45630.2	45630.2	45630.2	45630.2
2.5°	45986.8	46040.4	46036.3	46086.4	46083.8	46131.1	46121.5	46162.3	46153.0	46187.8	46167.4
5°	47495.2	47597.3	47630.9	47722.9	47742.0	47824.3	47826.0	47891.5	47883.6	47934.8	47907.6
7.5°	48922.2	49017.5	49062.6	49134.1	49169.8	49229.0	49252.2	49300.9	49312.5	49341.3	49340.4
10°	49042.6	49042.3	49064.6	49054.6	49074.6	49063.1	49087.4	49078.7	49114.7	49105.3	49132.6
12.5°	47422.2	47261.4	47202.7	47058.3	47026.7	46902.7	46911.5	46832.0	46870.4	46821.5	46904.8
15°	43939.7	43566.6	43382.4	43058.0	42956.1	42699.8	42679.0	42508.7	42554.7	42465.5	42595.8
17.5°	38793.5	38206.2	37883.8	37410.2	37222.1	36859.6	36786.9	36567.6	36601.7	36491.3	36648.5
20°	32657.8	31948.1	31541.5	30993.7	30749.4	30317.2	30202.5	29957.3	29988.1	29878.1	30056.1
22.5°	26452.1	25709.2	25250.3	24676.1	24364.1	23957.6	23835.7	23589.3	23603.3	23500.1	23671.2
25°	20749.4	20037.1	19591.6	19070.1	18799.4	18426.6	18298.5	18077.3	18089.8	18004.8	18158.3
27.5°	16051.1	15466.7	15093.9	14656.8	14414.2	14107.7	13982.8	13796.7	13796.3	13733.8	13862.2
30°	12543.1	12055.4	11720.7	11340.1	11112.1	10835.6	10714.9	10548.4	10541.2	10496.9	10598.9
32.5°	9821.0	9387.2	9082.0	8746.9	8542.3	8305.1	8190.7	8057.0	8044.8	8004.7	8088.4
35°	7634.5	7269.2	7006.8	6724.7	6745.5	6395.4	6453.6	6181.7	6108.0	6091.9	6154.1
37.5°	5900.6	5617.7	5404.4	5193.2	5050.2	4902.2	4822.5	4751.0	4742.9	4736.0	4779.5
40°	4618.6	4420.6	4265.4	4120.5	4022.2	3931.8	3882.0	3842.7	3833.4	3828.2	3854.5
42.5°	3738.1	3604.4	3504.5	3416.0	3356.2	3307.1	3279.7	3257.9	3250.6	3250.8	3266.4
45°	3158.1	3077.1	3012.7	2957.8	2919.6	2936.3	2886.8	2912.8	2878.6	2913.9	2890.6
47.5°	2781.2	2712.2	2672.3	2633.4	2610.2	2591.6	2592.3	2592.7	2599.9	2601.1	2608.7
50°	2490.3	2450.5	2422.7	2397.8	2385.8	2376.0	2379.4	2381.9	2389.1	2389.5	2395.1
52.5°	2275.1	2248.9	2232.1	2216.7	2211.3	2205.7	2208.1	2207.1	2210.3	2208.6	2213.1
55°	2099.9	2087.5	2082.2	2076.5	2077.3	2075.8	2076.9	2071.3	2067.9	2063.7	2067.5
57.5°	1956.1	1954.4	1957.9	1960.3	1966.9	1969.3	1970.8	1964.4	1958.3	1952.8	1956.0
60°	1845.4	1848.0	1856.9	1863.9	1873.4	1877.8	1880.5	1876.8	1872.4	1867.8	1870.5
62.5°	1736.1	1740.3	1750.8	1758.8	1770.2	1776.1	1782.7	1783.1	1784.8	1783.1	1785.0
65°	1609.2	1614.5	1624.0	1630.6	1641.2	1646.5	1653.2	1654.4	1658.1	1657.3	1660.5
67.5°	1512.9	1517.6	1525.5	1531.8	1541.3	1546.7	1552.6	1553.0	1554.3	1554.0	1557.0
70°	1410.0	1412.5	1419.5	1424.8	1434.2	1439.8	1446.6	1448.6	1452.8	1453.5	1456.9
72.5°	1300.4	1299.5	1303.6	1306.1	1313.2	1317.5	1326.2	1330.9	1338.0	1339.8	1342.4
75°	1181.0	1180.0	1185.1	1187.2	1193.2	1197.6	1207.3	1213.6	1224.5	1229.1	1227.9
77.5°	1042.9	1045.3	1054.8	1060.0	1068.1	1073.6	1086.2	1096.2	1116.3	1125.1	1116.2
80°	888.4	890.9	900.7	905.6	916.3	923.0	937.0	948.7	966.8	970.7	965.6
82.5°	698.4	699.1	707.9	711.6	725.5	735.5	753.2	762.5	773.7	772.0	770.7
85°	476.2	482.6	493.6	504.7	521.5	537.8	554.6	568.4	558.6	574.0	556.7
87.5°	254.5	253.8	268.7	266.4	290.1	303.7	318.2	325.2	333.0	331.4	331.6
90°	67.3	63.6	63.8	59.8	61.1	56.8	59.3	55.3	58.7	53.7	61.4
92.5°	64.9	62.2	59.3	56.7	53.8	51.1	48.2	45.4	42.7	39.9	42.7
95°	79.0	76.4	73.9	71.1	68.5	66.0	63.4	60.9	58.4	55.8	59.0
97.5°	97.0	95.4	93.9	92.5	91.0	89.5	88.0	86.5	84.8	83.3	85.5
100°	109.3	109.3	109.3	109.3	109.0	109.0	109.0	109.0	109.0	109.0	110.7
102.5°	206.0	201.1	196.2	191.1	186.2	181.3	176.4	171.5	166.6	161.7	168.9
105°	460.5	441.3	421.9	402.7	383.3	364.1	344.9	325.7	306.5	287.3	307.2
107.5°	851.6	816.4	781.3	746.2	711.0	676.1	641.1	606.1	571.1	536.1	567.5
110°	1186.8	1149.5	1112.2	1075.1	1037.8	1000.5	963.4	926.3	889.2	852.0	881.9



TEST NUMBER: P1444712
 CATALOG NUMBER: EHBR1-60-UNV-TA-L930-UPL40

CANDELA DISTRIBUTION (continued):

	247.5°	250°	252.5°	255°	257.5°	260°	262.5°	265°	267.5°	270°	272.5°
112.5°	1322.9	1298.5	1274.4	1250.4	1226.3	1202.3	1178.4	1154.5	1130.6	1106.7	1121.2
115°	1305.4	1293.9	1282.3	1270.8	1259.3	1247.7	1236.3	1225.0	1213.6	1202.3	1203.2
117.5°	1198.5	1194.4	1190.4	1186.5	1182.5	1178.6	1174.8	1171.2	1167.4	1163.9	1155.8
120°	1044.2	1045.1	1045.9	1047.0	1048.2	1049.6	1050.6	1052.0	1053.5	1055.0	1044.1
122.5°	892.4	894.8	897.3	900.0	902.7	905.6	908.4	911.6	914.8	918.1	907.2
125°	760.8	763.2	765.5	768.1	770.4	773.4	776.3	779.5	782.6	785.9	776.7
127.5°	666.9	667.4	667.7	668.4	669.2	670.3	671.5	672.7	674.2	675.9	670.1
130°	608.4	606.9	605.3	604.0	602.6	601.8	601.0	600.4	599.7	599.5	597.0
132.5°	576.0	573.1	570.2	567.5	564.9	562.8	560.3	558.6	556.7	555.2	554.5
135°	559.8	556.1	552.3	548.8	545.2	542.3	539.1	536.6	533.8	531.4	532.0
137.5°	550.3	546.6	542.8	539.3	535.8	532.9	529.7	526.9	524.4	522.0	523.1
140°	548.9	545.1	541.4	538.0	534.8	531.7	528.5	526.0	523.2	521.0	521.7
142.5°	545.4	542.4	538.8	535.8	532.6	530.0	527.3	525.0	522.2	520.4	521.2
145°	543.7	541.4	538.8	536.4	534.1	532.3	530.0	528.3	526.6	525.4	525.8
147.5°	539.9	538.3	536.1	534.6	532.6	531.3	529.7	528.6	527.3	526.4	526.6
150°	533.1	532.0	530.8	529.7	528.5	527.6	526.7	526.0	525.1	524.6	524.6
152.5°	525.2	524.3	523.2	522.3	521.3	520.6	519.8	519.3	518.6	518.1	518.0
155°	515.1	514.6	514.2	513.9	513.5	513.6	513.1	513.3	513.0	513.0	513.2
157.5°	510.0	510.1	509.8	510.2	510.1	510.3	510.2	510.6	510.5	511.1	511.4
160°	508.6	508.5	508.2	508.3	508.2	508.1	508.2	508.3	508.4	508.5	508.9
162.5°	506.9	507.4	507.6	507.9	508.4	508.8	509.3	509.9	510.3	511.0	511.4
165°	510.2	510.2	510.1	510.1	510.4	510.4	510.6	511.2	511.2	511.7	512.4
167.5°	512.0	512.4	512.5	512.9	513.2	513.8	514.2	514.9	515.4	516.3	516.9
170°	517.6	517.6	517.6	517.6	517.6	517.9	518.1	518.2	518.4	518.9	519.3
172.5°	524.5	524.5	524.2	524.5	524.2	524.5	524.5	524.7	524.7	524.8	525.0
175°	527.7	528.2	528.4	528.8	528.8	529.1	529.2	529.4	529.7	530.0	530.0
177.5°	531.6	531.7	531.7	531.7	531.7	531.9	531.9	531.9	531.9	531.7	531.9
180°	531.1	531.1	531.1	531.1	531.1	531.1	531.1	531.1	531.1	531.1	531.1



TEST NUMBER: P1444712
 CATALOG NUMBER: EHBR1-60-UNV-TA-L930-UPL40

CANDELA DISTRIBUTION (continued):

	275°	277.5°	280°	282.5°	285°	287.5°	290°	292.5°	295°	297.5°	300°
0°	45630.2	45630.2	45630.2	45630.2	45630.2	45630.2	45630.2	45630.2	45630.2	45630.2	45630.2
2.5°	46201.4	46178.2	46201.9	46177.9	46201.9	46173.1	46192.6	46161.5	46169.5	46137.1	46145.4
5°	47948.3	47911.5	47931.1	47883.2	47888.3	47824.3	47823.2	47748.8	47729.2	47644.4	47607.2
7.5°	49360.9	49348.9	49355.7	49324.9	49321.3	49277.7	49256.9	49195.3	49156.6	49078.7	49025.4
10°	49137.3	49173.3	49182.7	49219.3	49227.0	49263.3	49270.9	49307.3	49314.9	49341.8	49342.1
12.5°	46900.8	47023.1	47052.3	47203.4	47267.0	47439.8	47532.5	47722.9	47836.0	48025.9	48142.6
15°	42592.3	42803.8	42888.2	43183.1	43346.3	43690.6	43906.9	44302.3	44581.3	45001.2	45300.7
17.5°	36662.4	36958.0	37091.4	37491.4	37752.3	38260.4	38626.8	39229.6	39691.2	40361.1	40892.2
20°	30086.5	30415.1	30596.2	31052.5	31360.4	31954.1	32411.4	33152.3	33770.1	34619.0	35345.0
22.5°	23724.9	24037.6	24238.6	24702.8	25049.6	25668.8	26179.9	26961.9	27654.0	28610.6	29481.1
25°	18216.3	18502.7	18684.5	19104.4	19430.0	19999.0	20487.1	21239.1	21916.4	22876.0	23768.6
27.5°	13926.1	14166.1	14341.3	14699.3	14986.5	15469.1	15888.3	16509.8	17093.4	17923.6	18718.4
30°	10661.6	10874.3	11044.8	11356.6	11622.8	12041.2	12409.8	12931.9	13414.9	14075.5	14707.7
32.5°	8147.2	8330.4	8482.2	8755.2	8996.7	9373.4	9705.6	10163.2	10577.7	11138.0	11658.2
35°	6212.0	6572.3	6546.8	6923.3	6983.8	7254.1	7550.4	7950.6	8317.7	8794.1	9236.8
37.5°	4821.5	4922.8	5031.4	5197.7	5372.7	5618.7	5869.0	6357.9	6537.1	6897.2	7263.7
40°	3888.0	3956.5	4028.2	4140.7	4263.1	4436.4	4618.8	4852.0	5090.9	5382.8	5680.9
42.5°	3287.0	3325.7	3371.4	3437.5	3513.0	3622.8	3744.7	3902.9	4069.1	4274.6	4484.3
45°	2936.7	2918.3	2931.8	2967.4	3012.9	3079.7	3156.6	3254.5	3362.8	3495.9	3637.5
47.5°	2610.2	2617.6	2621.7	2641.0	2665.4	2710.1	2756.8	2823.3	2951.6	2990.8	3068.0
50°	2394.6	2398.1	2397.0	2406.8	2419.1	2448.2	2478.5	2523.4	2568.4	2628.0	2684.8
52.5°	2213.9	2218.9	2218.2	2224.6	2231.2	2249.7	2268.8	2300.6	2330.0	2367.8	2400.6
55°	2071.1	2078.0	2080.7	2086.2	2089.4	2099.0	2106.7	2121.8	2134.4	2155.8	2175.6
57.5°	1961.3	1970.8	1975.2	1977.1	1973.2	1972.7	1970.1	1973.3	1975.9	1987.4	1998.6
60°	1875.0	1882.5	1883.7	1882.5	1875.4	1870.3	1862.2	1859.7	1858.4	1863.9	1870.1
62.5°	1784.4	1787.2	1785.3	1783.1	1775.0	1770.1	1761.6	1758.6	1755.7	1759.6	1762.9
65°	1659.3	1661.7	1659.3	1658.0	1650.7	1646.8	1639.7	1637.3	1633.3	1634.3	1633.6
67.5°	1557.7	1560.0	1558.2	1556.3	1551.3	1548.9	1543.6	1540.2	1535.3	1533.5	1530.1
70°	1456.4	1458.3	1455.4	1453.5	1447.7	1445.5	1440.6	1439.6	1435.7	1434.9	1431.0
72.5°	1339.8	1340.0	1336.0	1334.7	1330.6	1330.4	1328.3	1330.2	1330.0	1332.1	1331.3
75°	1220.7	1219.0	1213.9	1213.0	1209.8	1211.3	1209.1	1212.0	1212.4	1216.8	1217.3
77.5°	1101.3	1095.0	1085.3	1080.8	1074.4	1073.6	1069.8	1072.3	1071.5	1076.6	1078.5
80°	950.4	942.8	930.4	924.6	916.9	915.7	912.3	915.7	914.0	919.9	924.2
82.5°	758.8	752.2	739.4	734.7	725.8	726.6	723.0	726.6	726.2	734.9	740.0
85°	561.2	556.9	543.7	532.0	519.0	511.4	503.9	502.6	500.4	503.9	507.0
87.5°	324.2	320.1	309.8	303.1	280.2	281.2	272.2	271.8	269.6	267.5	272.2
90°	60.3	66.9	66.1	72.2	72.1	79.0	79.4	86.0	85.7	92.1	92.9
92.5°	45.4	48.2	51.0	53.8	56.6	59.3	62.1	64.9	70.8	76.5	82.8
95°	62.2	65.4	68.6	71.7	74.9	78.2	81.4	84.6	93.3	102.0	110.8
97.5°	87.8	89.7	91.9	94.0	96.2	98.3	100.4	102.6	112.1	121.6	130.9
100°	112.4	114.1	115.8	117.5	119.2	120.9	122.6	124.3	142.8	160.9	179.1
102.5°	176.2	183.4	190.7	197.9	205.4	212.6	219.9	227.2	268.9	310.6	352.2
105°	327.0	346.8	366.9	386.7	406.5	426.4	446.4	466.2	533.0	599.6	666.5
107.5°	598.8	630.2	661.6	693.0	724.4	756.0	787.3	818.9	883.8	949.1	1014.1
110°	911.7	941.8	971.6	1001.7	1031.6	1061.6	1091.6	1121.9	1161.0	1200.0	1239.1



TEST NUMBER: P1444712
 CATALOG NUMBER: EHBR1-60-UNV-TA-L930-UPL40

CANDELA DISTRIBUTION (continued):

	275°	277.5°	280°	282.5°	285°	287.5°	290°	292.5°	295°	297.5°	300°
112.5°	1135.8	1150.3	1165.0	1179.7	1194.4	1209.2	1223.9	1238.8	1258.5	1278.0	1297.8
115°	1204.1	1205.0	1206.2	1207.2	1208.4	1209.5	1210.9	1212.1	1218.6	1224.9	1231.3
117.5°	1147.9	1139.9	1132.2	1124.4	1116.6	1109.1	1101.5	1094.1	1093.1	1092.1	1091.3
120°	1033.8	1023.1	1012.5	1001.7	991.6	981.1	971.2	961.1	956.2	951.2	946.5
122.5°	896.7	886.1	875.7	865.3	855.1	845.1	835.2	825.4	822.1	818.7	815.7
125°	767.9	759.3	750.6	742.1	733.9	725.7	717.7	709.8	710.1	710.1	710.8
127.5°	665.0	659.7	654.5	649.7	645.1	640.3	636.0	631.4	634.3	637.2	640.1
130°	594.7	592.7	590.9	588.8	587.5	585.9	584.5	583.1	588.0	592.3	597.2
132.5°	554.5	554.3	554.5	554.6	555.2	555.6	556.5	557.0	562.3	567.4	572.7
135°	532.8	533.7	535.1	536.3	538.1	539.5	541.5	543.0	548.2	553.0	558.3
137.5°	524.4	525.8	527.4	529.1	531.2	533.1	535.4	537.4	541.5	545.6	549.6
140°	523.0	523.8	525.5	526.9	528.5	530.1	532.3	533.9	537.5	540.6	543.9
142.5°	522.5	523.2	524.6	526.1	527.7	529.1	530.9	532.4	535.0	537.3	540.2
145°	526.8	527.4	528.7	529.5	530.9	532.0	533.4	534.7	536.5	538.0	539.8
147.5°	527.2	527.7	528.5	529.4	530.4	531.3	532.1	533.0	534.3	535.5	536.6
150°	525.0	525.3	525.9	526.0	526.9	527.6	528.4	528.8	529.9	530.8	532.0
152.5°	518.6	518.8	519.2	519.5	520.2	520.6	521.0	521.7	522.7	523.5	524.5
155°	513.7	514.5	515.1	515.6	516.4	516.8	517.7	518.1	519.0	519.6	520.5
157.5°	512.0	512.4	513.3	513.6	514.5	515.0	515.6	516.1	516.9	517.5	518.2
160°	509.9	510.8	511.4	512.4	513.3	513.9	514.9	515.7	516.4	516.9	517.6
162.5°	512.1	512.9	513.5	514.0	514.7	515.3	515.9	516.5	517.6	518.2	519.2
165°	513.3	514.0	515.0	515.6	516.7	517.5	518.3	519.2	519.6	520.3	520.8
167.5°	517.8	518.3	519.4	520.1	521.0	521.8	522.7	523.4	524.0	524.3	525.1
170°	520.1	520.7	521.5	522.2	522.9	523.5	524.4	525.0	525.8	526.4	527.3
172.5°	525.6	526.1	526.8	527.1	527.7	528.4	529.0	529.3	530.0	530.6	531.1
175°	530.0	530.0	530.2	530.4	530.6	530.6	530.8	531.1	531.3	531.4	531.6
177.5°	532.2	532.4	532.5	532.8	533.0	533.2	533.4	533.6	533.6	533.6	533.6
180°	531.1	531.1	531.1	531.1	531.1	531.1	531.1	531.1	531.1	531.1	531.1



TEST NUMBER: P1444712
 CATALOG NUMBER: EHBR1-60-UNV-TA-L930-UPL40

CANDELA DISTRIBUTION (continued):

	302.5°	305°	307.5°	310°	312.5°	315°	317.5°	320°	322.5°	325°	327.5°
0°	45630.2	45630.2	45630.2	45630.2	45630.2	45630.2	45630.2	45630.2	45630.2	45630.2	45630.2
2.5°	46113.2	46115.1	46078.0	46075.9	46041.1	46036.7	46002.7	45992.4	45964.8	45954.8	45926.7
5°	47512.2	47466.9	47362.2	47300.6	47197.1	47128.6	47016.7	46943.6	46835.6	46754.1	46645.3
7.5°	48927.1	48856.8	48739.3	48644.0	48500.4	48385.8	48217.9	48080.3	47898.3	47740.8	47549.7
10°	49342.1	49331.3	49301.4	49257.7	49191.0	49115.9	49001.5	48882.3	48722.9	48549.7	48337.3
12.5°	48321.0	48431.3	48581.6	48670.7	48779.2	48826.7	48871.1	48860.0	48830.8	48743.2	48620.4
15°	45734.5	46044.3	46454.6	46772.5	47138.2	47404.2	47697.7	47880.6	48063.1	48147.4	48199.0
17.5°	41619.9	42206.5	42942.1	43551.8	44255.1	44820.1	45439.4	45905.6	46385.0	46728.5	47039.1
20°	36334.6	37184.6	38225.0	39144.1	40212.8	41141.6	42159.4	42994.9	43856.5	44530.2	45167.9
22.5°	30602.0	31611.4	32869.2	34034.4	35412.1	36650.3	38047.4	39263.3	40532.8	41593.5	42618.9
25°	24964.8	26071.8	27447.2	28747.2	30307.6	31747.8	33404.6	34920.0	36560.9	37985.5	39392.8
27.5°	19817.2	20904.1	22308.2	23692.1	25342.1	26876.8	28651.9	30321.5	32189.9	33912.8	35675.2
30°	15586.5	16508.3	17767.3	19107.6	20735.0	22296.7	24091.1	25808.4	27751.9	29633.1	31618.3
32.5°	12348.6	13050.9	14040.8	15174.1	16675.7	18162.3	19871.0	21528.7	23442.7	25342.9	27407.6
35°	9807.1	10354.9	11109.6	11994.0	13265.6	14547.0	16058.4	17565.9	19351.5	21154.8	23161.6
37.5°	7733.4	8177.9	8768.9	9433.3	10453.2	11505.0	12744.2	13993.9	15545.5	17143.9	18962.7
40°	6039.0	6398.8	6858.9	7354.5	8124.6	8935.0	9893.3	10862.5	12109.0	13415.4	14920.6
42.5°	4744.1	5009.5	5334.6	5696.7	6415.2	6845.5	7495.3	8196.3	9112.7	10061.1	11192.8
45°	3809.9	3991.1	4216.4	4459.3	4792.7	5157.7	5602.8	6069.5	6940.1	7367.1	8055.5
47.5°	3181.6	3303.3	3446.7	3599.7	3796.3	4008.6	4272.6	4542.5	4891.6	5253.3	5677.4
50°	2758.5	2882.1	2931.4	3010.7	3124.5	3245.7	3394.5	3543.3	3730.6	3920.3	4138.6
52.5°	2444.5	2484.8	2538.3	2588.8	2659.2	2797.3	2841.9	2919.7	3024.7	3127.4	3242.1
55°	2204.7	2230.9	2265.7	2296.2	2338.8	2379.5	2438.4	2490.2	2560.2	2622.1	2698.2
57.5°	2018.0	2034.7	2058.9	2078.8	2106.5	2129.5	2164.0	2192.0	2232.3	2267.2	2313.4
60°	1882.4	1893.5	1909.8	1922.8	1940.4	1952.4	1969.5	1982.7	2004.0	2021.7	2047.4
62.5°	1771.6	1777.4	1788.0	1795.6	1806.8	1812.8	1822.0	1827.7	1839.4	1848.4	1862.7
65°	1638.7	1640.1	1647.2	1650.4	1659.1	1662.3	1669.8	1672.5	1682.1	1688.7	1701.5
67.5°	1529.8	1526.7	1526.9	1524.4	1525.5	1523.0	1523.7	1521.0	1524.8	1526.9	1536.5
70°	1430.4	1426.1	1424.8	1420.2	1418.9	1414.1	1412.7	1408.5	1408.0	1406.7	1410.0
72.5°	1333.4	1332.3	1332.6	1329.4	1329.0	1325.8	1326.0	1324.0	1326.2	1327.2	1331.5
75°	1222.0	1222.4	1224.5	1221.7	1222.5	1219.8	1220.8	1218.3	1219.6	1219.1	1223.5
77.5°	1086.4	1089.6	1095.5	1094.3	1096.2	1093.2	1094.5	1090.9	1091.9	1089.6	1091.3
80°	933.8	940.6	948.5	948.2	951.6	949.4	952.4	949.1	950.4	946.3	945.3
82.5°	752.7	758.4	766.9	767.3	774.7	776.1	784.3	784.0	789.3	785.9	783.5
85°	514.6	518.5	526.0	530.0	537.6	542.3	550.3	553.5	547.8	558.2	549.9
87.5°	268.7	278.7	273.1	286.1	283.1	296.3	293.4	305.6	303.3	313.7	312.3
90°	101.2	102.7	111.4	113.4	123.7	126.6	131.4	127.7	132.1	128.7	133.2
92.5°	88.4	94.8	100.8	106.8	112.7	118.8	113.2	107.6	102.0	96.6	91.0
95°	119.5	128.3	137.1	145.8	154.5	163.3	153.9	144.6	135.3	125.9	116.5
97.5°	140.3	149.7	159.1	168.4	178.0	187.4	176.3	165.2	154.1	143.2	132.1
100°	197.2	215.6	233.7	251.8	270.1	288.3	267.8	247.0	226.5	205.9	185.1
102.5°	394.2	435.7	477.4	519.2	560.8	602.6	558.8	515.3	471.2	427.5	383.5
105°	733.2	800.0	866.7	933.5	1000.1	1067.2	996.1	925.1	854.0	783.0	711.8
107.5°	1079.3	1144.3	1209.7	1274.7	1339.9	1405.3	1333.3	1261.2	1189.3	1117.1	1045.0
110°	1278.5	1317.7	1357.0	1396.3	1435.5	1475.0	1422.4	1370.0	1317.5	1264.9	1212.3



TEST NUMBER: P1444712
 CATALOG NUMBER: EHBR1-60-UNV-TA-L930-UPL40

CANDELA DISTRIBUTION (continued):

	302.5°	305°	307.5°	310°	312.5°	315°	317.5°	320°	322.5°	325°	327.5°
112.5°	1317.4	1337.5	1357.0	1377.1	1396.8	1416.7	1379.2	1342.0	1304.3	1266.9	1229.3
115°	1238.0	1244.3	1251.0	1257.6	1264.0	1270.6	1245.5	1220.3	1195.2	1170.1	1144.6
117.5°	1090.5	1090.0	1088.9	1088.5	1087.5	1086.8	1072.9	1059.1	1044.9	1031.0	1016.9
120°	941.5	936.6	931.8	927.1	922.1	917.2	911.5	905.9	900.0	894.2	888.3
122.5°	812.4	809.3	806.0	802.9	799.4	796.1	794.1	792.4	790.2	788.3	785.9
125°	711.0	711.3	711.7	712.1	712.2	712.5	711.5	710.9	709.9	709.2	708.1
127.5°	642.7	645.7	648.3	651.1	653.7	656.4	656.3	656.6	656.6	656.7	656.6
130°	601.4	606.3	610.7	615.1	619.2	623.9	623.4	623.3	623.0	622.6	622.3
132.5°	577.9	583.0	588.1	593.4	598.1	603.1	602.6	602.4	601.6	601.4	600.8
135°	563.0	567.9	572.5	577.6	582.1	586.8	586.0	585.5	584.6	584.2	583.4
137.5°	553.3	557.6	561.4	565.2	568.8	572.7	571.8	571.3	570.3	570.0	569.1
140°	547.0	550.3	553.1	556.4	559.4	562.5	561.3	560.4	559.3	558.3	557.1
142.5°	542.5	545.0	547.2	549.7	551.9	554.3	552.4	550.9	549.4	547.8	546.2
145°	541.4	543.2	544.8	546.4	547.5	549.3	547.2	545.5	543.2	541.5	539.3
147.5°	537.6	539.0	539.7	540.8	541.5	542.6	540.6	538.7	536.8	534.8	532.7
150°	532.6	534.0	534.6	535.5	536.3	537.3	535.0	533.1	530.9	528.7	526.8
152.5°	525.4	526.3	527.1	527.7	528.5	529.2	527.1	525.3	523.2	521.0	519.0
155°	520.9	521.7	522.0	522.7	522.9	523.4	521.4	520.1	518.3	516.6	514.6
157.5°	518.6	519.4	519.9	520.2	520.5	521.0	519.7	518.6	517.1	515.9	514.4
160°	518.1	518.6	519.1	519.4	520.0	520.2	519.1	518.2	517.1	515.9	514.5
162.5°	519.8	520.7	521.2	521.8	522.6	523.1	521.8	520.5	519.3	517.9	516.4
165°	521.3	521.9	522.4	522.8	523.0	523.5	522.7	521.9	520.9	520.1	519.1
167.5°	525.4	526.0	526.4	526.9	527.1	527.4	526.5	526.0	524.9	524.0	522.9
170°	527.6	528.2	528.9	529.4	529.9	530.2	529.6	529.0	528.1	527.5	526.6
172.5°	531.7	532.3	532.5	533.0	533.3	533.7	533.0	532.2	531.5	530.7	529.8
175°	531.6	531.7	532.1	532.1	532.1	532.3	531.7	531.0	530.4	529.8	529.1
177.5°	533.6	533.6	533.6	533.4	533.4	533.4	533.0	532.5	532.2	531.7	531.1
180°	531.1	531.1	531.1	531.1	531.1	531.1	531.1	531.1	531.1	531.1	531.1



TEST NUMBER: P1444712
 CATALOG NUMBER: EHBR1-60-UNV-TA-L930-UPL40

CANDELA DISTRIBUTION (continued):

	330°	332.5°	335°	337.5°	340°	342.5°	345°	347.5°	350°	352.5°	355°
0°	45630.2	45630.2	45630.2	45630.2	45630.2	45630.2	45630.2	45630.2	45630.2	45630.2	45630.2
2.5°	45916.8	45896.8	45884.0	45867.6	45857.6	45844.9	45835.6	45827.6	45821.2	45815.3	45810.9
5°	46562.5	46459.8	46380.1	46293.9	46223.0	46152.4	46097.9	46052.7	46021.6	45998.3	45984.4
7.5°	47384.5	47196.6	47029.5	46853.7	46696.1	46541.0	46407.4	46292.2	46205.8	46149.8	46115.8
10°	48118.6	47867.1	47618.4	47356.6	47108.4	46867.5	46645.3	46449.8	46295.1	46192.3	46132.2
12.5°	48447.7	48233.4	47979.5	47695.2	47391.0	47083.2	46783.1	46512.6	46285.4	46133.1	46045.2
15°	48157.9	48069.9	47897.6	47676.9	47388.2	47070.0	46717.7	46386.6	46082.0	45884.5	45770.0
17.5°	47215.1	47337.9	47324.7	47240.3	47032.7	46764.8	46405.9	46033.9	45653.0	45389.0	45244.7
20°	45624.0	46010.0	46205.8	46306.3	46224.7	46051.0	45726.0	45348.6	44904.5	44559.8	44349.5
22.5°	43388.2	44069.6	44494.2	44804.9	44870.8	44811.6	44524.7	44165.7	43670.6	43256.3	42945.7
25°	40509.9	41508.2	42179.2	42705.4	42909.7	42962.4	42718.2	42361.2	41809.4	41326.8	40900.1
27.5°	37119.8	38416.9	39312.9	40019.7	40338.8	40477.1	40252.4	39888.2	39235.3	38659.2	38101.8
30°	33303.1	34842.0	35920.8	36768.4	37157.4	37340.2	37101.4	36694.8	35935.2	35241.8	34539.7
32.5°	29218.1	30902.1	32077.6	32998.1	33383.5	33555.5	33243.1	32786.5	31908.5	31091.7	30272.9
35°	24941.1	26640.9	27826.4	28722.3	29045.3	29149.0	28749.5	28221.8	27249.0	26352.5	25459.7
37.5°	20577.0	22158.4	23235.8	24039.9	24239.8	24257.8	23776.5	23193.5	22171.1	21287.2	20398.3
40°	16250.7	17584.3	18454.2	19097.8	19167.2	19105.3	18582.0	17995.4	17038.9	16247.0	15466.7
42.5°	12175.5	13182.2	13802.9	14243.9	14217.7	14095.4	13615.6	13111.3	12322.2	11719.0	11105.0
45°	8684.2	9348.0	9710.8	9968.9	9886.0	9769.6	9396.2	9042.7	8506.5	8116.9	7704.2
47.5°	6033.0	6825.7	6687.6	7192.3	6757.5	7044.6	6446.7	6117.0	5832.4	5625.5	5392.3
50°	4319.1	4500.7	4588.5	4648.4	4616.5	4572.4	4465.1	4369.0	4239.0	4144.2	4033.8
52.5°	3335.5	3426.3	3476.1	3512.1	3505.0	3488.9	3442.1	3399.3	3338.4	3298.4	3250.0
55°	2825.4	2826.7	2918.2	2878.9	2936.9	2868.9	2895.7	2820.5	2832.6	2768.0	2724.6
57.5°	2347.8	2385.0	2401.7	2417.9	2413.4	2410.5	2392.4	2383.3	2362.9	2356.5	2342.0
60°	2065.2	2084.6	2088.7	2096.1	2089.9	2087.5	2073.3	2068.2	2054.5	2052.0	2042.3
62.5°	1871.4	1881.4	1881.4	1881.4	1873.3	1865.4	1849.7	1841.5	1829.8	1827.3	1821.7
65°	1709.7	1720.0	1721.7	1723.9	1718.0	1711.9	1698.1	1689.1	1677.0	1672.5	1666.1
67.5°	1542.8	1553.8	1557.5	1563.1	1559.7	1558.5	1549.1	1545.5	1537.6	1535.7	1529.8
70°	1411.7	1416.3	1415.9	1415.8	1408.4	1401.8	1390.8	1385.5	1377.3	1375.6	1370.1
72.5°	1333.8	1337.0	1334.9	1332.1	1322.5	1312.6	1299.8	1290.3	1279.5	1272.7	1265.2
75°	1224.0	1228.3	1225.6	1223.7	1215.1	1208.7	1198.3	1193.1	1185.5	1183.3	1178.0
77.5°	1089.2	1091.3	1086.8	1086.4	1079.8	1075.7	1067.9	1066.6	1061.0	1061.2	1056.1
80°	939.3	938.0	931.0	929.6	923.0	921.3	915.2	915.6	911.2	913.1	909.5
82.5°	772.8	768.6	759.3	756.6	749.0	748.3	744.3	747.7	744.9	749.0	746.6
85°	553.8	555.0	551.0	551.0	548.8	549.5	549.1	551.6	552.0	555.7	555.5
87.5°	308.8	313.2	312.3	316.4	316.3	320.8	322.3	329.1	329.9	336.2	336.2
90°	129.8	134.9	131.4	136.6	135.3	141.7	141.4	147.8	146.8	152.2	149.8
92.5°	85.5	79.8	74.4	68.8	66.0	62.9	60.7	57.3	54.9	51.8	48.9
95°	107.1	97.8	88.3	79.0	75.7	72.4	69.2	65.9	62.8	59.6	56.4
97.5°	121.0	109.9	98.8	87.7	84.9	82.2	79.2	76.5	73.6	70.8	68.1
100°	164.4	143.7	123.2	102.3	100.0	97.6	95.3	92.9	90.5	88.0	85.7
102.5°	339.8	295.8	251.8	207.9	199.6	191.2	183.0	174.5	166.1	157.8	149.5
105°	640.7	569.4	498.3	427.0	404.4	381.8	359.2	336.5	313.9	291.2	268.7
107.5°	972.9	900.5	828.4	756.0	714.4	672.6	630.7	588.8	547.2	505.2	463.3
110°	1159.7	1107.1	1054.3	1001.4	968.0	934.4	900.6	866.9	833.4	799.5	765.8



TEST NUMBER: P1444712
 CATALOG NUMBER: EHBR1-60-UNV-TA-L930-UPL40

CANDELA DISTRIBUTION (continued):

	330°	332.5°	335°	337.5°	340°	342.5°	345°	347.5°	350°	352.5°	355°
112.5°	1191.7	1154.0	1116.3	1078.4	1063.4	1048.0	1033.0	1017.7	1002.4	986.9	971.8
115°	1119.3	1094.0	1068.6	1042.9	1037.8	1032.4	1027.2	1021.7	1016.4	1010.9	1005.4
117.5°	1002.9	988.6	974.4	960.2	961.2	962.2	963.3	964.1	964.9	965.5	966.4
120°	882.4	876.3	870.6	864.5	869.5	874.1	879.0	883.5	888.0	892.3	896.8
122.5°	784.0	781.6	779.7	777.2	783.2	788.9	794.6	800.2	805.8	810.8	816.1
125°	707.4	706.3	705.4	704.2	710.2	716.1	721.8	727.3	733.0	738.1	743.4
127.5°	656.8	656.7	656.8	656.6	661.1	665.1	669.3	673.1	677.3	680.7	684.1
130°	622.0	621.6	621.4	620.9	625.0	628.7	632.8	636.1	639.7	642.7	645.9
132.5°	600.4	599.8	599.5	598.8	602.0	604.6	607.7	609.8	612.5	614.4	616.5
135°	582.9	582.0	581.5	580.5	583.3	586.1	588.7	590.9	593.3	595.0	597.0
137.5°	568.5	567.6	566.9	566.0	568.6	571.0	573.3	575.3	577.4	579.2	580.7
140°	556.3	555.0	554.3	553.0	555.3	557.4	559.5	561.2	563.3	564.5	566.0
142.5°	544.6	542.7	541.5	539.6	541.4	542.9	544.4	545.7	547.2	548.1	548.9
145°	537.4	535.1	533.4	531.3	532.6	533.7	535.1	536.3	537.1	537.7	538.6
147.5°	531.0	528.8	526.8	524.7	526.0	526.8	527.5	528.1	529.1	529.5	529.9
150°	524.5	522.1	519.9	517.7	518.5	519.1	519.6	520.4	521.0	521.3	521.7
152.5°	516.9	514.7	512.5	510.2	510.7	511.2	511.5	511.9	512.3	512.6	512.8
155°	512.9	511.0	509.1	507.0	507.6	507.9	508.0	508.3	508.4	508.5	508.6
157.5°	512.9	511.2	509.9	508.1	508.1	508.2	508.2	507.8	507.8	507.6	507.2
160°	513.5	512.0	510.7	509.3	509.2	509.1	509.1	508.6	508.5	508.0	507.7
162.5°	514.9	513.5	511.8	510.1	510.0	510.1	509.9	509.5	509.3	508.9	508.6
165°	518.2	516.9	515.9	514.5	514.4	514.0	513.8	513.1	512.9	512.1	511.6
167.5°	521.9	520.8	519.5	518.1	518.1	518.2	518.1	517.8	517.7	517.2	517.1
170°	525.8	524.7	523.9	522.8	522.6	522.4	522.0	521.7	521.1	520.9	520.3
172.5°	528.8	527.9	526.9	525.8	525.8	525.6	525.2	525.1	524.5	524.2	524.1
175°	528.3	527.6	526.7	526.0	525.9	525.7	525.6	525.4	525.1	524.9	524.5
177.5°	530.7	530.3	529.6	529.2	529.0	529.0	528.8	528.6	528.6	528.4	528.3
180°	531.1	531.1	531.1	531.1	531.1	531.1	531.1	531.1	531.1	531.1	531.1



TEST NUMBER: P1444712
CATALOG NUMBER: EHBR1-60-UNV-TA-L930-UPL40

CANDELA DISTRIBUTION (continued):

	357.5°	360°
0°	45630.2	45630.2
2.5°	45806.9	45804.5
5°	45977.2	45974.4
7.5°	46106.7	46105.9
10°	46121.9	46129.8
12.5°	46029.9	46036.3
15°	45761.2	45773.7
17.5°	45247.4	45263.8
20°	44362.3	44379.4
22.5°	42928.9	42936.1
25°	40845.0	40815.4
27.5°	38003.9	37953.0
30°	34392.2	34343.0
32.5°	30086.2	30055.4
35°	25238.9	25219.5
37.5°	20135.6	20096.1
40°	15181.4	15066.0
42.5°	10836.1	10633.7
45°	7488.7	7248.8
47.5°	5227.9	5079.6
50°	3962.6	3914.8
52.5°	3228.9	3217.6
55°	2724.4	2719.5
57.5°	2345.2	2343.5
60°	2047.4	2046.9
62.5°	1825.4	1826.2
65°	1668.9	1669.3
67.5°	1531.3	1530.3
70°	1372.2	1371.0
72.5°	1262.6	1260.7
75°	1178.0	1176.8
77.5°	1057.6	1055.7
80°	911.8	909.5
82.5°	750.0	747.3
85°	559.5	559.5
87.5°	342.3	342.1
90°	154.8	151.6
92.5°	46.5	44.0
95°	53.2	50.0
97.5°	65.3	62.6
100°	83.3	81.0
102.5°	141.2	132.9
105°	246.0	223.4
107.5°	421.5	379.7
110°	732.1	698.4



TEST NUMBER: P1444712
CATALOG NUMBER: EHBR1-60-UNV-TA-L930-UPL40

CANDELA DISTRIBUTION (continued):

	357.5°	360°
112.5°	956.2	940.9
115°	999.4	993.9
117.5°	966.9	967.3
120°	900.7	905.0
122.5°	820.9	825.9
125°	748.2	753.1
127.5°	687.3	690.4
130°	648.2	651.1
132.5°	618.0	619.4
135°	598.1	599.5
137.5°	581.6	582.8
140°	566.8	567.7
142.5°	549.7	550.2
145°	539.1	539.3
147.5°	529.6	529.9
150°	521.6	521.7
152.5°	512.5	512.6
155°	508.3	508.2
157.5°	506.6	506.3
160°	507.1	506.8
162.5°	508.0	507.7
165°	510.8	510.1
167.5°	516.5	516.3
170°	519.8	519.4
172.5°	523.5	523.2
175°	524.3	524.2
177.5°	528.3	527.9
180°	531.1	531.1

LM-79-2019: Approved Method: Electrical and Photometric Measurements of Solid-
State Lighting Products

Report Prepared for

Cooper Lighting Solutions

Metalux

Report Number: SP1-2506-472-5

Test Date: 08/01/2025

Luminaire Tested: EHBR-60-L930-N

Data in this report applies to families of products including EHBR-60-L930-N

Test Information

Test Method: LM-79-2019
 Report Number: SP1-2506-472-5
 Test Lab: COOPER LIGHTING SOLUTIONS
 Photometer: SP1 - 76IN SPHERE
 Measurement Geometry: 4π
 Issue Date: 08/05/2025
 Manufacturer: COOPER LIGHTING SOLUTIONS
 Product Line: Metalux
 Catalog Number: **EHBR-60-L930-N**
 Description: Elevate Round Highbay at, 60000 lumens, 3000K 90CRI LEDs with N lens

Spectral Parameters

CCT (K): 2996
 CIE u': 0.2519
 CIE v': 0.5169
 Duv: -0.0033
 CIE x: 0.4325
 CIE y: 0.3945
 CIE z: 0.1730
 Peak Wavelength (nm): 630
 Dominant Wavelength (nm): 584
 Purity: 48.21818
 Rf: 91.3
 Rg: 102

CRI (Ra):	94.4		
R1:	96.8	R9:	61.4
R2:	98.1	R10:	94.4
R3:	97.8	R11:	95.7
R4:	95.6	R12:	88.5
R5:	96.9	R13:	97.3
R6:	95.7	R14:	97.8
R7:	90.9	R15:	92.3
R8:	83.0		



Test Conditions

Stabilization Time: 40M
 Operation Time: 1H 40M
 Sphere Temperature (°C): 25.0

REPORT NUMBER: SP1-2506-472-5

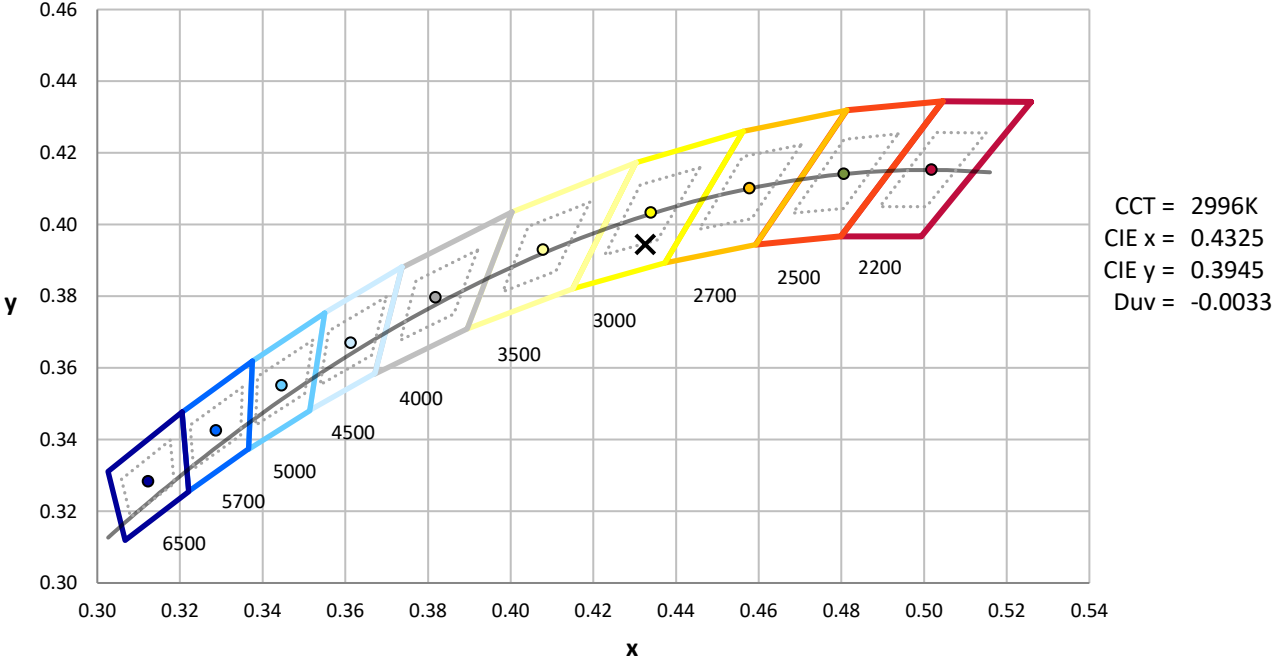
Measurement and Test Equipment			
Instrument	Identification Number	Calibration Date	Calibration Due Date
Photometer	76INCH SPHERE IN0058	6/16/2025	12/16/2025
Power Meter	XITRON INXT2011004	1/21/2025	1/21/2026
AC Power Source	CHROMA 61603 IN0063	10/22/2024	10/22/2025
DC Power Source	AGILENT E3634A IN0208	10/22/2024	10/22/2025
Sphere Thermometer	ONSET IN0085	10/22/2024	10/22/2025
Room Thermometer	ONSET IN0046	10/22/2024	10/22/2025

REPORT NUMBER: SP1-2506-472-5

CIE 1931 Chromaticity Diagram



CIE 1931 Chromaticity Diagram with 2017 ANSI 7-Step and 4-Step Quadrangles



Point lies inside the ANSI 3000K 7-step quadrangle

REPORT NUMBER: SP1-2506-472-5

Photopic Flux vs. Wavelength

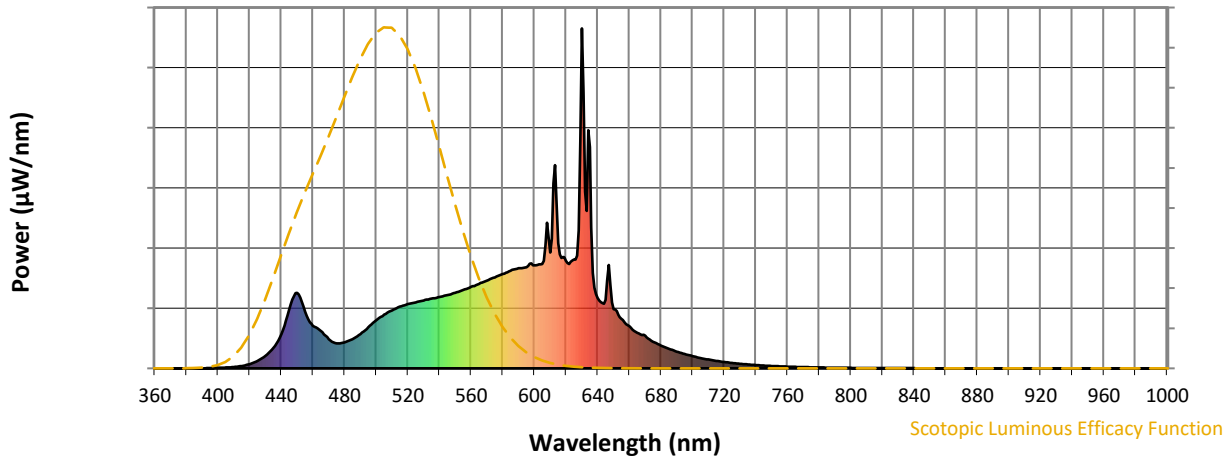


Photopic Lumens: NR

λ (nm)	Power W [^] /nm	Lumens (φ/nm)	λ (nm)	Power W [^] /nm	Lumens (φ/nm)	λ (nm)	Power W [^] /nm	Lumens (φ/nm)	λ (nm)	Power W [^] /nm	Lumens (φ/nm)	λ (nm)	Power W [^] /nm	Lumens (φ/nm)
360	0	NR	490	101	NR	620	317	NR	750	7	NR	880	0	NR
365	0	NR	495	121	NR	625	320	NR	755	6	NR	885	0	NR
370	0	NR	500	141	NR	630	1000	NR	760	5	NR	890	0	NR
375	0	NR	505	158	NR	635	651	NR	765	4	NR	895	0	NR
380	0	NR	510	171	NR	640	207	NR	770	4	NR	900	0	NR
385	0	NR	515	182	NR	645	201	NR	775	3	NR	905	0	NR
390	0	NR	520	189	NR	650	174	NR	780	3	NR	910	0	NR
395	1	NR	525	194	NR	655	146	NR	785	2	NR	915	0	NR
400	1	NR	530	199	NR	660	124	NR	790	2	NR	920	0	NR
405	3	NR	535	205	NR	665	105	NR	795	2	NR	925	0	NR
410	4	NR	540	210	NR	670	96	NR	800	1	NR	930	0	NR
415	7	NR	545	216	NR	675	79	NR	805	1	NR	935	0	NR
420	13	NR	550	222	NR	680	67	NR	810	1	NR	940	0	NR
425	22	NR	555	230	NR	685	58	NR	815	1	NR	945	0	NR
430	37	NR	560	240	NR	690	49	NR	820	1	NR	950	0	NR
435	60	NR	565	248	NR	695	42	NR	825	1	NR	955	0	NR
440	101	NR	570	258	NR	700	36	NR	830	1	NR	960	0	NR
445	172	NR	575	268	NR	705	30	NR	835	1	NR	965	0	NR
450	223	NR	580	278	NR	710	26	NR	840	1	NR	970	0	NR
455	167	NR	585	287	NR	715	22	NR	845	0	NR	975	0	NR
460	126	NR	590	295	NR	720	19	NR	850	0	NR	980	0	NR
465	111	NR	595	298	NR	725	16	NR	855	0	NR	985	0	NR
470	86	NR	600	303	NR	730	14	NR	860	0	NR	990	0	NR
475	74	NR	605	307	NR	735	12	NR	865	0	NR	995	0	NR
480	77	NR	610	341	NR	740	10	NR	870	0	NR	1000	0	NR
485	86	NR	615	368	NR	745	8	NR	875	0	NR			

REPORT NUMBER: SP1-2506-472-5

Scotopic Flux vs. Wavelength



Scotopic Lumens: NR

S/P: 1.44

λ (nm)	Power W [^] /nm	Lumens (φ/nm)	λ (nm)	Power W [^] /nm	Lumens (φ/nm)	λ (nm)	Power W [^] /nm	Lumens (φ/nm)	λ (nm)	Power W [^] /nm	Lumens (φ/nm)	λ (nm)	Power W [^] /nm	Lumens (φ/nm)
360	0	NR	490	101	NR	620	317	NR	750	7	NR	880	0	NR
365	0	NR	495	121	NR	625	320	NR	755	6	NR	885	0	NR
370	0	NR	500	141	NR	630	1000	NR	760	5	NR	890	0	NR
375	0	NR	505	158	NR	635	651	NR	765	4	NR	895	0	NR
380	0	NR	510	171	NR	640	207	NR	770	4	NR	900	0	NR
385	0	NR	515	182	NR	645	201	NR	775	3	NR	905	0	NR
390	0	NR	520	189	NR	650	174	NR	780	3	NR	910	0	NR
395	1	NR	525	194	NR	655	146	NR	785	2	NR	915	0	NR
400	1	NR	530	199	NR	660	124	NR	790	2	NR	920	0	NR
405	3	NR	535	205	NR	665	105	NR	795	2	NR	925	0	NR
410	4	NR	540	210	NR	670	96	NR	800	1	NR	930	0	NR
415	7	NR	545	216	NR	675	79	NR	805	1	NR	935	0	NR
420	13	NR	550	222	NR	680	67	NR	810	1	NR	940	0	NR
425	22	NR	555	230	NR	685	58	NR	815	1	NR	945	0	NR
430	37	NR	560	240	NR	690	49	NR	820	1	NR	950	0	NR
435	60	NR	565	248	NR	695	42	NR	825	1	NR	955	0	NR
440	101	NR	570	258	NR	700	36	NR	830	1	NR	960	0	NR
445	172	NR	575	268	NR	705	30	NR	835	1	NR	965	0	NR
450	223	NR	580	278	NR	710	26	NR	840	1	NR	970	0	NR
455	167	NR	585	287	NR	715	22	NR	845	0	NR	975	0	NR
460	126	NR	590	295	NR	720	19	NR	850	0	NR	980	0	NR
465	111	NR	595	298	NR	725	16	NR	855	0	NR	985	0	NR
470	86	NR	600	303	NR	730	14	NR	860	0	NR	990	0	NR
475	74	NR	605	307	NR	735	12	NR	865	0	NR	995	0	NR
480	77	NR	610	341	NR	740	10	NR	870	0	NR	1000	0	NR
485	86	NR	615	368	NR	745	8	NR	875	0	NR			

REPORT NUMBER: SP1-2506-472-5

Melanopic Flux vs. Wavelength



Melanopic Lumens: NR

M/P: 2.85

λ (nm)	Power W [^] /nm	Lumens (φ/nm)	λ (nm)	Power W [^] /nm	Lumens (φ/nm)	λ (nm)	Power W [^] /nm	Lumens (φ/nm)	λ (nm)	Power W [^] /nm	Lumens (φ/nm)	λ (nm)	Power W [^] /nm	Lumens (φ/nm)
360	0	NR	490	101	NR	620	317	NR	750	7	NR	880	0	NR
365	0	NR	495	121	NR	625	320	NR	755	6	NR	885	0	NR
370	0	NR	500	141	NR	630	1000	NR	760	5	NR	890	0	NR
375	0	NR	505	158	NR	635	651	NR	765	4	NR	895	0	NR
380	0	NR	510	171	NR	640	207	NR	770	4	NR	900	0	NR
385	0	NR	515	182	NR	645	201	NR	775	3	NR	905	0	NR
390	0	NR	520	189	NR	650	174	NR	780	3	NR	910	0	NR
395	1	NR	525	194	NR	655	146	NR	785	2	NR	915	0	NR
400	1	NR	530	199	NR	660	124	NR	790	2	NR	920	0	NR
405	3	NR	535	205	NR	665	105	NR	795	2	NR	925	0	NR
410	4	NR	540	210	NR	670	96	NR	800	1	NR	930	0	NR
415	7	NR	545	216	NR	675	79	NR	805	1	NR	935	0	NR
420	13	NR	550	222	NR	680	67	NR	810	1	NR	940	0	NR
425	22	NR	555	230	NR	685	58	NR	815	1	NR	945	0	NR
430	37	NR	560	240	NR	690	49	NR	820	1	NR	950	0	NR
435	60	NR	565	248	NR	695	42	NR	825	1	NR	955	0	NR
440	101	NR	570	258	NR	700	36	NR	830	1	NR	960	0	NR
445	172	NR	575	268	NR	705	30	NR	835	1	NR	965	0	NR
450	223	NR	580	278	NR	710	26	NR	840	1	NR	970	0	NR
455	167	NR	585	287	NR	715	22	NR	845	0	NR	975	0	NR
460	126	NR	590	295	NR	720	19	NR	850	0	NR	980	0	NR
465	111	NR	595	298	NR	725	16	NR	855	0	NR	985	0	NR
470	86	NR	600	303	NR	730	14	NR	860	0	NR	990	0	NR
475	74	NR	605	307	NR	735	12	NR	865	0	NR	995	0	NR
480	77	NR	610	341	NR	740	10	NR	870	0	NR	1000	0	NR
485	86	NR	615	368	NR	745	8	NR	875	0	NR			

Summary

$R_f = 91.3$
 $R_g = 102$
 $CIE R_a = 94.4$
 $R_9 = 61.4$



Color Vector Graphics

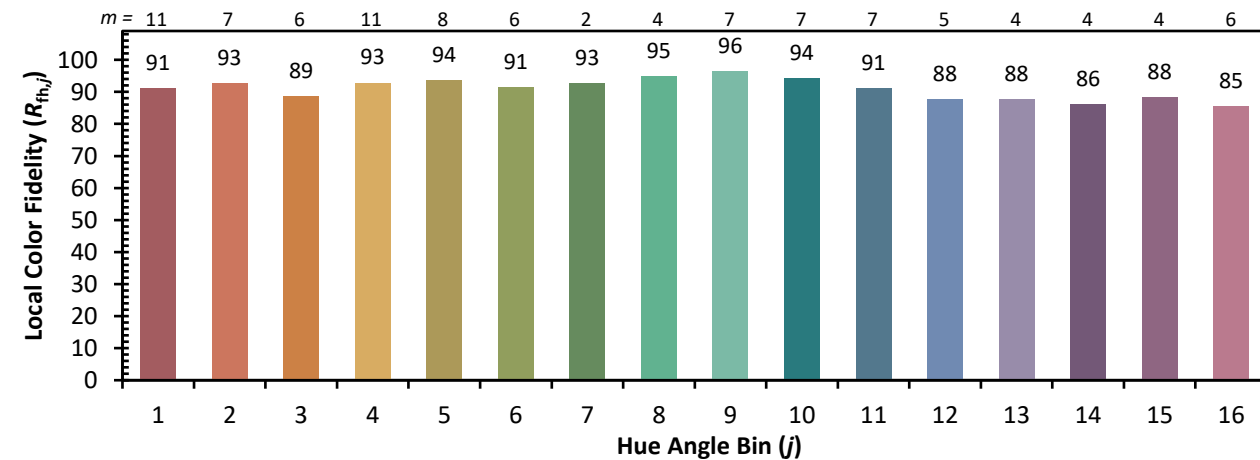
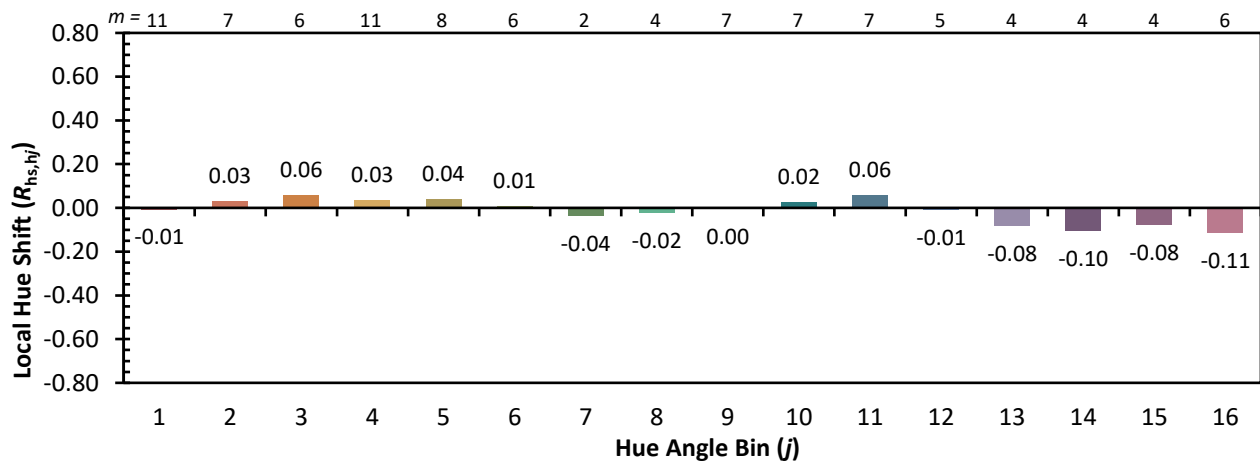
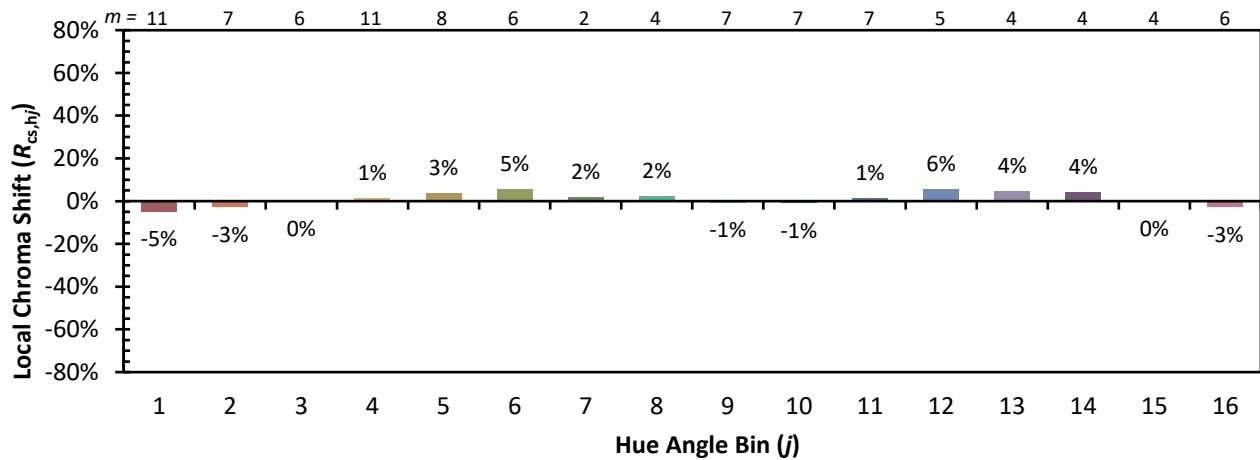


Individual Sample Fidelity Index ($R_{f,i}$)

CES01 = 86	CES26 = 91	CES51 = 96	CES76 = 89
CES02 = 63	CES27 = 96	CES52 = 95	CES77 = 85
CES03 = 32	CES28 = 96	CES53 = 93	CES78 = 86
CES04 = 70	CES29 = 90	CES54 = 98	CES79 = 89
CES05 = 51	CES30 = 96	CES55 = 98	CES80 = 91
CES06 = 51	CES31 = 90	CES56 = 95	CES81 = 72
CES07 = 44	CES32 = 84	CES57 = 95	CES82 = 95
CES08 = 42	CES33 = 91	CES58 = 95	CES83 = 93
CES09 = 29	CES34 = 92	CES59 = 99	CES84 = 96
CES10 = 76	CES35 = 96	CES60 = 96	CES85 = 80
CES11 = 59	CES36 = 90	CES61 = 96	CES86 = 77
CES12 = 65	CES37 = 94	CES62 = 95	CES87 = 91
CES13 = 44	CES38 = 99	CES63 = 94	CES88 = 96
CES14 = 74	CES39 = 97	CES64 = 96	CES89 = 82
CES15 = 72	CES40 = 94	CES65 = 92	CES90 = 97
CES16 = 48	CES41 = 94	CES66 = 95	CES91 = 82
CES17 = 50	CES42 = 91	CES67 = 94	CES92 = 78
CES18 = 57	CES43 = 88	CES68 = 93	CES93 = 87
CES19 = 72	CES44 = 99	CES69 = 94	CES94 = 73
CES20 = 67	CES45 = 93	CES70 = 90	CES95 = 85
CES21 = 86	CES46 = 93	CES71 = 90	CES96 = 92
CES22 = 79	CES47 = 86	CES72 = 96	CES97 = 93
CES23 = 92	CES48 = 95	CES73 = 85	CES98 = 94
CES24 = 91	CES49 = 91	CES74 = 90	CES99 = 93
CES25 = 72	CES50 = 96	CES75 = 90	



Color Rendition by Hue-Angle Bin



Measure Comparisons



(END OF REPORT)