

Cooper Lighting Solutions Photometric Lab
1121 Highway 74 South
Peachtree City, GA 30269



Scaled data based on original data using
LM-79-2019 Approved Method: Electrical and Photometric Measurements of Solid-
State Lighting Products

Test Report Prepared for
Cooper Lighting Solutions

Brand: METALUX

Report Number: P1444722

Luminaire Tested: EHBR1-18-UNV-TA-L935-UPL12

Issue Date: 5/1/2026

Test Information

Test Method: LM-79-2019
Report Number: P1444722
REPORT IS A COMBINATION OF REPORTS P1444301 AND P1431635
Test Lab: INNOVATION CENTER
Issue Date: 5/1/2026
Manufacturer: COOPER LIGHTING SOLUTIONS
Product Line: METALUX
Catalog Number: EHBR1-18-UNV-TA-L935-UPL12
Description: Elevate Round Highbay at, 18000 lumens, 3500K 90CRI LEDs with TA lens
Light Source: -
Ballast/Driver: -

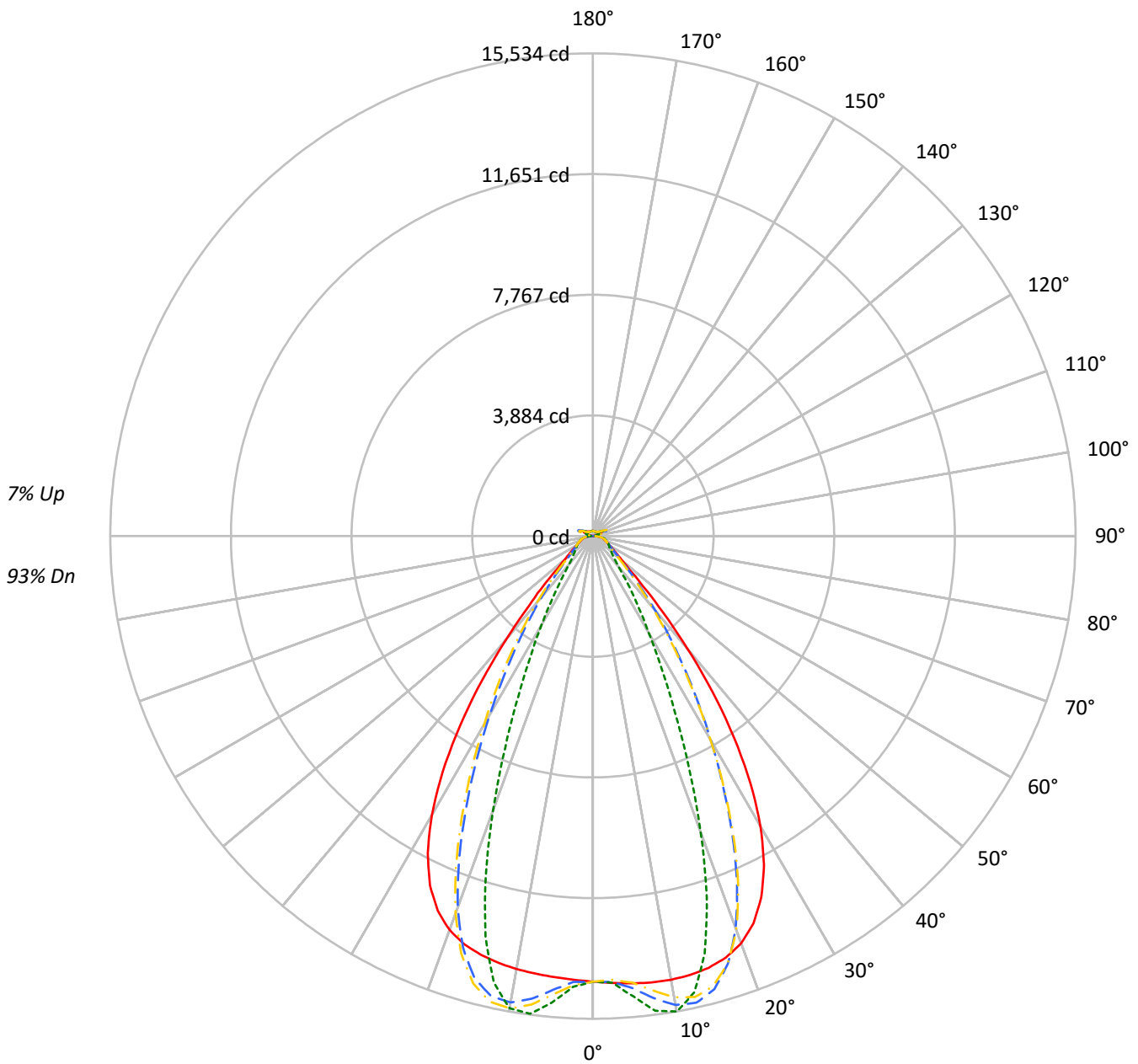
Summary

Lumens per Lamp: N/A
Luminaire Lumens: 17697.0 lumens
Efficiency: N/A
Efficacy: 173.3 lumens/watt
Spacing Criteria (0/90/45): 1.13 / 0.77 / 0.88
Luminous Opening: Vertical Cylinder (Dia: 1.71' x H: 0.1')
CIE Type: Direct

Input Watts (W): 102.1
Input Voltage (V): NR
Input Current (Ain): NR
Voltage Rise (V): NR
Power Factor: NR
Total Harmonic Distortion (THDi): NR
Frequency (hertz): 60
Stabilization Time: NR
Operation Time: NR
Ambient Temperature (°C): NR
Test Distance: 24 FT

TEST NUMBER: P1444722
CATALOG NUMBER: EHBR1-18-UNV-TA-L935-UPL12

Luminous Intensity Polar Plot



— 0°-180° - - 45°-225° - · - · 90°-270° - · - · 135°-315°



TEST NUMBER: P1444722
 CATALOG NUMBER: EHBR1-18-UNV-TA-L935-UPL12

COEFFICIENT OF UTILIZATION - ZONAL CAVITY METHOD:

RF	20				20				20				20				20				
RC	80				70				50				30				10			0	
RW	70	50	30	10	70	50	30	10	50	30	10	50	30	10	50	30	10	50	30	10	0
RCR																					
0	117	117	117	117	114	114	114	114	107	107	107	101	101	101	96	96	96	96	96	96	93
1	110	107	104	101	107	104	101	99	99	96	94	94	92	90	89	88	87	87	87	87	84
2	103	98	93	89	101	95	91	87	91	87	84	87	84	81	83	81	79	79	79	79	76
3	97	90	84	79	94	88	82	78	84	79	76	80	77	74	77	74	72	72	72	72	70
4	91	83	76	71	89	81	75	70	78	73	69	75	71	67	72	69	66	66	66	66	64
5	86	76	70	65	84	75	69	64	72	67	63	70	65	62	68	64	61	61	61	61	59
6	81	71	64	59	79	70	63	59	68	62	58	65	61	57	63	59	56	56	56	56	54
7	77	66	59	55	75	65	59	54	63	58	54	61	56	53	60	55	52	52	52	52	50
8	73	62	55	51	71	61	55	50	59	54	50	58	53	49	56	52	49	49	49	49	47
9	69	58	52	47	67	57	51	47	56	50	46	54	49	46	53	49	45	45	45	45	44
10	65	55	48	44	64	54	48	44	53	47	43	51	46	43	50	46	43	43	43	43	41

AVERAGE LUMINANCE (cd/sqm):

	0°	90°	180°	270°
0°	67338	67338	67338	67338
5°	67664	69637	66717	70549
10°	68229	73114	66593	72630
15°	68564	66277	66476	63608
20°	67855	49374	65634	45683
25°	64227	31226	62104	28332
30°	56107	18765	53934	17149
35°	43180	11775	40697	10430
40°	27316	7386	24991	6941
45°	14079	5754	13846	5660
50°	8254	5118	8001	5038
55°	6324	4842	6089	4799
60°	5350	4946	5123	4882
65°	5026	5166	4833	4990
70°	4911	5409	4666	5206
75°	5250	5736	4966	5484
80°	5433	6353	4925	5800
85°	5115	6127	4134	5249

MAXIMUM LUMINANCE 45°-90°:

Horizontal Angle: 25°
 Vertical Angle: 45°
 Luminance: 21546 cd/sqm



TEST NUMBER: P1444722
 CATALOG NUMBER: EHBR1-18-UNV-TA-L935-UPL12

ZONAL LUMENS:

Zone	Lumens	% Fixture
0°-10°	1413.2	8.0
10°-20°	3975.4	22.5
20°-30°	4527.6	25.6
30°-40°	3254.2	18.4
40°-50°	1500.9	8.5
50°-60°	718.2	4.1
60°-70°	524.0	3.0
70°-80°	398.1	2.2
80°-90°	183.0	1.0
90°-100°	34.7	0.2
100°-110°	195.3	1.1
110°-120°	360.6	2.0
120°-130°	221.7	1.3
130°-140°	144.0	0.8
140°-150°	108.0	0.6
150°-160°	76.0	0.4
160°-170°	46.2	0.3
170°-180°	15.9	0.1
0°-30°	9916.1	56.0
0°-40°	13170.4	74.4
0°-60°	15389.4	87.0
0°-90°	16494.7	93.2
90°-120°	590.6	3.3
90°-150°	1064.3	6.0
90°-180°	1202.0	6.8
0°-180°	17697.0	100.0

CANDELA DISTRIBUTION:

	0°	90°	180°	270°	360°	Flux
0°	14339	14339	14339	14339	14339	
5°	14447	14869	14245	15063	14447	1381
15°	14384	13904	13946	13345	14384	4053
25°	12826	6236	12402	5658	12826	5814
35°	7925	2161	7469	1914	7925	4864
45°	2278	931	2240	916	2278	1937
55°	855	654	823	648	855	789
65°	525	539	504	521	525	524
75°	370	404	350	386	370	385
85°	176	211	142	180	176	165
90°	48	60	14	17	48	30
95°	16	18	16	18	16	15
105°	71	91	48	91	71	94
115°	315	381	330	381	315	291
125°	238	248	270	249	238	217
135°	190	167	204	168	190	148
145°	171	164	181	166	171	108
155°	161	160	171	162	161	75
165°	161	160	167	162	161	46
175°	166	167	169	168	166	16
180°	168	168	168	168	168	



TEST NUMBER: P1444722
 CATALOG NUMBER: EHBR1-18-UNV-TA-L935-UPL12

CANDELA DISTRIBUTION (FULL):

	0°	2.5°	5°	7.5°	10°	12.5°	15°	17.5°	20°	22.5°	25°
0°	14339.1	14339.1	14339.1	14339.1	14339.1	14339.1	14339.1	14339.1	14339.1	14339.1	14339.1
2.5°	14394.0	14392.8	14392.6	14391.6	14391.3	14391.3	14390.8	14389.6	14388.9	14387.2	14385.4
5°	14447.3	14446.7	14447.1	14447.2	14446.2	14444.0	14440.5	14436.1	14430.8	14425.6	14421.1
7.5°	14488.7	14489.7	14490.9	14490.7	14487.5	14482.2	14475.1	14471.1	14473.4	14481.2	14499.1
10°	14496.2	14502.4	14504.7	14504.0	14497.7	14493.2	14495.0	14510.1	14540.4	14580.8	14635.9
12.5°	14466.8	14474.3	14474.1	14471.6	14465.6	14471.7	14493.7	14538.9	14603.8	14683.3	14776.6
15°	14384.3	14394.0	14391.3	14388.1	14384.0	14404.3	14448.2	14526.7	14626.9	14739.1	14853.9
17.5°	14224.0	14235.9	14230.1	14226.5	14223.0	14261.0	14336.5	14451.5	14577.6	14704.6	14813.3
20°	13946.1	13954.0	13940.3	13933.9	13939.3	14013.8	14125.0	14271.8	14404.7	14524.7	14599.1
22.5°	13492.5	13502.4	13476.8	13473.8	13505.4	13619.6	13760.3	13924.6	14049.5	14144.5	14173.2
25°	12826.1	12835.8	12805.3	12823.6	12877.4	13032.9	13200.6	13376.2	13482.7	13553.2	13533.8
27.5°	11926.7	11935.4	11906.5	11943.8	12029.0	12233.4	12430.6	12621.1	12716.1	12765.5	12702.9
30°	10792.2	10810.5	10776.3	10828.3	10958.3	11223.7	11449.7	11663.3	11758.0	11795.6	11698.3
32.5°	9444.9	9471.0	9433.3	9510.5	9691.9	10010.7	10267.4	10506.2	10610.8	10653.8	10543.8
35°	7925.1	7962.6	7919.4	8035.3	8259.1	8614.0	8898.3	9164.9	9288.9	9349.7	9238.9
37.5°	6315.1	6350.8	6327.4	6482.2	6727.9	7095.7	7385.9	7673.4	7813.6	7904.8	7817.5
40°	4734.5	4767.1	4784.8	4961.7	5192.8	5539.6	5818.4	6102.8	6259.5	6374.0	6320.1
42.5°	3341.6	3374.5	3434.6	3605.4	3798.1	4085.1	4323.9	4579.3	4729.0	4851.2	4830.4
45°	2277.9	2316.1	2391.4	2531.2	2670.6	2876.6	3051.9	3250.5	3372.8	3484.7	3486.0
47.5°	1596.2	1623.1	1690.4	1785.8	1876.7	2134.5	2145.1	2242.7	2324.9	2408.6	2419.4
50°	1230.2	1246.4	1282.1	1335.3	1386.8	1453.7	1514.9	1585.7	1636.3	1682.1	1693.1
52.5°	1011.1	1021.4	1039.6	1068.4	1098.3	1134.6	1167.4	1206.3	1233.8	1258.3	1263.5
55°	854.6	863.1	890.1	895.6	929.8	936.3	950.9	974.6	990.6	1005.3	1008.9
57.5°	736.5	742.6	748.4	760.6	771.2	786.4	798.7	815.7	825.8	836.5	837.4
60°	643.2	647.7	651.8	660.3	667.5	678.1	686.6	698.1	705.4	713.4	714.3
62.5°	573.9	577.1	579.8	585.4	590.6	598.7	605.4	615.0	621.8	628.0	629.4
65°	524.6	526.9	528.7	532.9	537.4	544.3	550.4	558.3	563.3	568.0	569.0
67.5°	480.9	483.2	484.9	488.8	491.9	497.1	501.2	507.1	510.8	514.6	514.7
70°	430.9	432.9	434.3	437.9	440.4	444.8	448.2	453.4	457.3	461.5	462.6
72.5°	396.2	397.4	399.2	402.6	406.0	410.7	415.2	420.7	425.3	429.7	431.6
75°	369.8	371.2	372.5	375.3	377.7	381.7	385.0	390.1	394.1	398.8	401.1
77.5°	331.8	333.4	334.4	337.3	339.3	343.2	345.7	350.2	353.5	357.7	359.8
80°	285.8	287.3	288.1	290.8	292.4	295.9	298.4	302.7	305.4	309.7	312.2
82.5°	234.8	236.3	236.7	239.3	240.2	243.1	244.8	249.3	252.7	258.2	262.0
85°	175.8	176.4	177.2	176.6	180.2	180.4	184.4	185.2	190.4	191.9	197.9
87.5°	107.5	109.1	109.9	112.4	113.4	115.8	116.6	119.2	120.6	123.6	125.0
90°	47.7	50.3	51.3	54.3	55.2	57.9	58.7	61.7	62.7	65.9	67.2
92.5°	14.0	14.9	15.7	16.8	17.7	18.8	19.8	20.8	21.8	22.9	24.7
95°	15.9	16.9	17.9	18.9	19.8	20.9	21.9	22.9	23.9	24.9	27.8
97.5°	19.8	20.7	21.5	22.4	23.3	24.1	25.0	25.9	26.7	27.6	31.2
100°	25.6	26.4	27.1	27.9	28.6	29.4	30.1	30.9	31.6	32.4	38.8
102.5°	42.1	44.7	47.3	49.9	52.6	55.2	57.9	60.5	63.1	65.7	79.6
105°	70.8	77.9	85.1	92.2	99.3	106.6	113.7	120.8	128.0	135.0	157.6
107.5°	120.3	133.4	146.7	160.0	173.2	186.5	199.8	212.9	226.2	239.4	262.3
110°	221.3	231.9	242.6	253.2	263.9	274.5	285.1	295.6	306.3	316.9	333.6



TEST NUMBER: P1444722
 CATALOG NUMBER: EHBR1-18-UNV-TA-L935-UPL12

CANDELA DISTRIBUTION (continued):

	0°	2.5°	5°	7.5°	10°	12.5°	15°	17.5°	20°	22.5°	25°
112.5°	298.2	303.0	307.7	312.6	317.4	322.1	326.9	331.7	336.4	341.1	353.1
115°	315.0	316.7	318.4	319.9	321.7	323.3	324.9	326.5	328.2	329.6	337.7
117.5°	306.5	306.2	305.9	305.5	305.1	304.8	304.4	304.0	303.5	303.2	307.7
120°	286.8	285.2	283.8	282.1	280.6	279.0	277.4	275.9	274.3	272.5	274.4
122.5°	261.7	259.8	258.0	256.1	254.2	252.4	250.5	248.5	246.6	244.7	245.3
125°	238.5	236.6	234.9	232.9	231.0	229.1	227.2	225.2	223.2	221.2	221.5
127.5°	218.7	217.4	216.1	214.6	213.3	211.7	210.3	208.8	207.4	205.7	205.8
130°	206.2	205.0	203.7	202.5	201.2	199.8	198.4	197.0	195.7	194.2	194.3
132.5°	196.1	195.3	194.4	193.5	192.5	191.3	190.3	189.2	188.2	187.0	187.1
135°	189.8	188.9	188.2	187.2	186.3	185.3	184.3	183.2	182.1	181.0	181.2
137.5°	184.4	183.8	183.1	182.1	181.3	180.2	179.4	178.2	177.3	176.2	176.4
140°	179.6	179.0	178.3	177.5	176.6	175.8	174.8	173.9	172.9	171.9	172.2
142.5°	174.1	173.5	172.9	172.3	171.7	170.8	170.0	169.2	168.5	167.6	168.0
145°	170.6	170.1	169.7	169.0	168.4	167.8	167.1	166.2	165.7	165.0	165.4
147.5°	167.7	167.2	166.9	166.3	165.9	165.2	164.7	164.0	163.5	162.8	163.2
150°	165.0	164.6	164.3	163.9	163.3	162.8	162.2	161.6	161.1	160.4	160.9
152.5°	162.1	161.7	161.4	161.0	160.5	159.9	159.5	158.9	158.4	157.8	158.2
155°	160.7	160.3	159.9	159.5	159.1	158.6	158.1	157.6	157.1	156.5	156.9
157.5°	160.1	159.7	159.3	159.0	158.7	158.2	157.8	157.4	157.1	156.6	156.8
160°	160.2	159.9	159.5	159.2	158.8	158.3	158.0	157.6	157.2	156.8	157.0
162.5°	160.5	160.1	159.7	159.4	159.1	158.6	158.2	158.0	157.6	157.2	157.3
165°	161.1	161.0	160.7	160.4	160.1	159.9	159.6	159.3	159.1	158.7	158.9
167.5°	163.1	162.8	162.6	162.2	162.0	161.7	161.3	161.0	160.9	160.4	160.6
170°	164.2	164.0	163.8	163.6	163.4	163.2	163.0	162.8	162.6	162.4	162.5
172.5°	165.4	165.1	165.0	165.0	164.8	164.6	164.5	164.3	164.2	164.0	164.2
175°	165.7	165.5	165.4	165.3	165.2	165.1	165.0	165.0	165.0	164.8	164.9
177.5°	166.9	166.8	166.8	166.8	166.8	166.7	166.7	166.6	166.5	166.5	166.5
180°	167.8	167.8	167.8	167.8	167.8	167.8	167.8	167.8	167.8	167.8	167.8



TEST NUMBER: P1444722
 CATALOG NUMBER: EHBR1-18-UNV-TA-L935-UPL12

CANDELA DISTRIBUTION (continued):

	27.5°	30°	32.5°	35°	37.5°	40°	42.5°	45°	47.5°	50°	52.5°
0°	14339.1	14339.1	14339.1	14339.1	14339.1	14339.1	14339.1	14339.1	14339.1	14339.1	14339.1
2.5°	14384.0	14382.3	14379.9	14376.8	14374.2	14371.2	14364.0	14361.9	14364.3	14365.9	14369.2
5°	14418.2	14419.2	14419.6	14426.1	14431.8	14445.8	14556.1	14600.0	14633.9	14655.4	14688.1
7.5°	14521.2	14554.4	14587.2	14631.3	14669.3	14720.7	14913.7	14995.9	15054.3	15096.3	15147.9
10°	14695.9	14768.3	14836.1	14915.6	14984.0	15062.2	15241.9	15321.9	15372.4	15409.2	15443.6
12.5°	14871.8	14972.1	15062.8	15151.4	15225.3	15293.2	15356.4	15384.4	15386.7	15387.9	15369.7
15°	14963.4	15059.4	15139.2	15197.8	15241.3	15260.5	15151.7	15094.6	15022.5	14963.1	14865.3
17.5°	14905.6	14963.1	14997.7	14994.2	14976.3	14916.1	14608.0	14438.5	14270.2	14118.7	13919.9
20°	14648.5	14644.1	14614.1	14529.0	14426.5	14267.1	13738.8	13434.1	13139.3	12880.6	12566.6
22.5°	14170.3	14095.0	13990.1	13806.7	13602.9	13324.3	12567.3	12119.0	11708.8	11346.4	10940.5
25°	13477.4	13322.6	13129.1	12837.8	12521.1	12114.9	11181.8	10624.3	10131.7	9704.5	9236.1
27.5°	12590.5	12357.3	12073.8	11670.7	11241.7	10721.2	9686.8	9071.4	8542.7	8084.7	7586.2
30°	11540.7	11237.4	10871.2	10370.9	9853.4	9263.1	8214.0	7590.7	7055.5	6584.4	6085.5
32.5°	10354.2	9999.0	9569.9	9008.5	8448.7	7841.8	6828.6	6225.3	5714.0	5260.8	4809.3
35°	9045.6	8664.7	8210.7	7638.0	7081.7	6491.7	5562.0	5018.0	4566.4	4165.9	3801.2
37.5°	7641.9	7267.9	6836.4	6296.6	5780.7	5246.1	4443.9	3988.0	3609.2	3276.7	2995.1
40°	6182.4	5855.2	5481.8	5015.2	4574.9	4129.6	3471.1	3109.3	2810.3	2556.7	2345.8
42.5°	4740.8	4487.2	4200.9	3832.1	3495.3	3156.2	2649.4	2381.3	2159.8	1977.2	1828.1
45°	3439.7	3269.9	3078.0	2821.6	2588.5	2352.0	1991.3	1802.9	1658.7	1540.9	1441.4
47.5°	2404.5	2306.1	2300.1	2063.2	1892.2	1747.6	1515.2	1396.2	1307.8	1236.5	1173.5
50°	1688.6	1641.0	1581.8	1497.3	1418.0	1336.2	1194.6	1122.7	1070.9	1027.7	987.9
52.5°	1262.3	1237.7	1206.1	1161.3	1118.3	1072.3	982.7	936.9	920.6	880.4	848.9
55°	1008.3	994.1	976.2	949.8	923.6	913.2	836.5	802.4	780.9	765.0	748.0
57.5°	837.5	826.9	816.3	798.5	783.3	765.0	724.2	706.8	694.0	684.6	672.9
60°	714.4	708.1	702.1	691.6	683.5	673.6	647.7	637.9	631.2	625.5	618.0
62.5°	630.5	627.3	624.2	618.7	614.5	609.1	591.4	586.7	583.3	580.5	576.0
65°	570.0	567.6	566.0	562.3	560.2	557.0	541.8	538.6	536.5	535.5	532.9
67.5°	515.0	512.5	511.4	508.8	507.9	506.0	493.5	491.8	491.0	491.4	490.4
70°	463.6	462.6	463.0	462.7	463.9	464.2	456.7	456.6	457.4	459.0	459.1
72.5°	432.8	432.8	433.3	433.6	434.7	435.2	429.0	428.7	429.1	430.2	430.2
75°	403.4	403.9	405.5	406.0	407.3	407.6	399.3	398.3	398.4	399.5	399.1
77.5°	362.8	364.5	367.6	369.1	371.8	372.2	362.9	361.8	361.8	363.0	362.0
80°	316.8	320.1	324.9	328.3	332.2	333.8	324.2	321.9	319.8	319.5	317.6
82.5°	267.8	271.9	277.7	280.7	284.9	285.9	269.8	266.8	265.0	265.2	263.5
85°	204.5	207.5	212.8	214.5	217.1	216.9	198.6	190.8	192.9	189.6	192.1
87.5°	128.2	130.1	133.3	133.8	135.0	134.7	116.4	112.7	111.7	111.8	110.4
90°	70.7	72.5	75.9	76.4	78.8	79.0	64.6	63.4	61.6	61.9	59.7
92.5°	26.6	28.4	30.4	32.2	34.2	36.0	36.2	37.4	35.7	33.7	32.0
95°	30.8	33.8	36.8	39.7	42.7	45.7	48.7	51.7	48.9	46.1	43.3
97.5°	34.7	38.2	41.7	45.1	48.7	52.2	55.7	59.3	56.3	53.2	50.2
100°	45.4	51.9	58.5	65.0	71.6	78.1	84.7	91.3	85.6	79.7	74.0
102.5°	93.5	107.4	121.3	135.2	149.1	163.0	177.0	191.0	177.6	164.4	151.1
105°	180.2	202.7	225.3	247.7	270.2	292.8	315.5	338.0	316.9	295.6	274.5
107.5°	285.0	308.0	330.7	353.5	376.3	399.1	422.3	445.1	424.4	403.7	383.2
110°	350.3	367.0	383.6	400.3	416.9	433.6	450.5	467.2	454.8	442.3	429.9



TEST NUMBER: P1444722
 CATALOG NUMBER: EHBR1-18-UNV-TA-L935-UPL12

CANDELA DISTRIBUTION (continued):

	27.5°	30°	32.5°	35°	37.5°	40°	42.5°	45°	47.5°	50°	52.5°
112.5°	365.0	376.9	388.8	400.6	412.4	424.3	436.7	448.6	442.4	436.0	429.8
115°	345.7	353.7	361.6	369.7	377.7	385.6	394.2	402.2	400.1	398.1	396.0
117.5°	312.0	316.5	320.9	325.4	329.6	334.2	339.2	343.9	344.0	344.3	344.6
120°	276.2	278.1	279.8	281.7	283.4	285.2	287.9	289.8	291.5	292.9	294.6
122.5°	246.0	246.5	247.2	247.8	248.3	248.9	250.6	251.4	252.4	253.4	254.5
125°	221.8	222.0	222.2	222.5	222.6	222.8	224.3	224.7	224.7	224.6	224.5
127.5°	205.7	205.6	205.6	205.6	205.4	205.3	206.6	206.7	205.9	205.0	204.2
130°	194.3	194.4	194.4	194.4	194.4	194.6	195.9	196.3	195.0	193.4	192.1
132.5°	187.2	187.2	187.2	187.4	187.5	187.6	189.2	189.6	188.0	186.4	184.8
135°	181.3	181.4	181.5	181.7	181.9	182.1	183.8	184.3	182.9	181.3	179.7
137.5°	176.4	176.6	176.7	176.9	177.1	177.3	179.2	179.7	178.5	177.2	176.0
140°	172.4	172.6	172.9	173.1	173.4	173.7	175.8	176.5	175.5	174.6	173.5
142.5°	168.3	168.8	169.1	169.6	170.0	170.5	172.9	173.7	173.0	172.2	171.5
145°	165.8	166.3	166.8	167.4	167.9	168.5	171.2	172.2	171.7	171.1	170.7
147.5°	163.5	164.0	164.5	165.0	165.5	166.1	168.9	170.0	169.7	169.3	169.0
150°	161.3	161.8	162.2	162.8	163.4	164.0	167.2	168.4	168.1	167.8	167.5
152.5°	158.5	159.0	159.4	159.9	160.3	161.0	164.8	166.0	165.8	165.4	165.3
155°	157.1	157.4	157.7	158.1	158.4	159.0	163.0	164.3	164.1	164.0	163.8
157.5°	157.0	157.2	157.2	157.6	157.8	158.1	162.4	163.8	163.5	163.3	163.2
160°	157.1	157.2	157.2	157.5	157.6	157.9	162.2	163.5	163.4	163.2	163.0
162.5°	157.4	157.9	158.0	158.2	158.3	158.7	163.1	164.5	164.2	164.0	163.9
165°	159.0	159.0	159.1	159.3	159.4	159.5	163.7	164.9	164.8	164.5	164.4
167.5°	160.6	160.8	160.9	161.0	161.1	161.4	165.2	166.3	166.2	166.0	165.9
170°	162.6	162.7	162.8	163.0	163.1	163.3	166.6	167.5	167.3	167.0	166.9
172.5°	164.3	164.5	164.7	164.9	165.0	165.2	168.0	168.8	168.8	168.6	168.4
175°	165.0	165.1	165.3	165.5	165.6	165.8	167.9	168.6	168.5	168.4	168.3
177.5°	166.7	166.8	166.9	167.0	167.2	167.3	168.7	169.0	168.9	168.9	168.8
180°	167.8	167.8	167.8	167.8	167.8	167.8	167.8	167.8	167.8	167.8	167.8



TEST NUMBER: P1444722
 CATALOG NUMBER: EHBR1-18-UNV-TA-L935-UPL12

CANDELA DISTRIBUTION (continued):

	55°	57.5°	60°	62.5°	65°	67.5°	70°	72.5°	75°	77.5°	80°
0°	14339.1	14339.1	14339.1	14339.1	14339.1	14339.1	14339.1	14339.1	14339.1	14339.1	14339.1
2.5°	14369.9	14375.0	14375.7	14381.6	14381.2	14388.2	14387.1	14392.8	14389.4	14394.1	14390.1
5°	14707.5	14738.1	14754.0	14783.9	14793.4	14820.1	14827.6	14852.0	14853.0	14872.4	14868.0
7.5°	15184.6	15229.7	15256.5	15293.4	15312.2	15342.9	15356.5	15379.2	15386.6	15404.6	15406.0
10°	15469.6	15491.4	15506.7	15517.1	15526.5	15530.9	15536.0	15534.7	15536.0	15534.0	15538.5
12.5°	15357.5	15325.5	15304.4	15264.3	15241.0	15196.8	15175.0	15132.4	15117.0	15080.4	15075.2
15°	14789.8	14678.4	14599.6	14485.0	14413.0	14300.3	14234.4	14132.7	14086.3	14005.4	13984.2
17.5°	13755.3	13548.4	13388.2	13182.7	13040.2	12848.1	12727.4	12568.4	12481.4	12353.2	12308.9
20°	12304.9	11998.6	11758.4	11472.2	11267.4	11012.3	10848.9	10642.8	10523.2	10365.8	10302.0
22.5°	10602.0	10220.8	9920.7	9582.6	9335.6	9051.1	8855.4	8632.5	8502.4	8331.3	8255.6
25°	8846.9	8426.4	8092.9	7736.7	7475.6	7190.5	6994.8	6775.7	6641.0	6478.7	6403.5
27.5°	7168.2	6742.7	6420.3	6089.2	5849.6	5592.4	5415.8	5224.5	5105.1	4966.4	4895.6
30°	5686.9	5311.5	5037.2	4762.4	4563.2	4354.3	4207.5	4049.0	3944.2	3825.4	3758.0
32.5°	4480.1	4190.2	3975.4	3757.4	3594.3	3419.8	3292.9	3153.0	3058.4	2952.5	2891.4
35°	3548.1	3323.0	3151.7	2972.1	2832.0	2683.4	2571.5	2450.9	2366.0	2274.7	2222.0
37.5°	2803.4	2624.4	2483.3	2334.3	2219.1	2096.0	2054.5	1916.0	1828.0	1755.2	1704.8
40°	2200.1	2057.7	1941.1	1827.1	1733.2	1639.7	1564.8	1490.8	1434.0	1381.9	1345.9
42.5°	1718.1	1615.0	1529.8	1446.2	1377.8	1309.7	1255.4	1204.4	1166.2	1132.1	1108.9
45°	1365.8	1294.9	1235.7	1176.9	1128.6	1083.1	1046.5	1014.0	989.3	968.9	954.4
47.5°	1122.0	1073.5	1031.7	992.0	959.3	929.4	905.0	897.0	870.4	852.5	845.7
50°	953.5	924.3	892.6	863.3	841.3	819.6	803.6	788.1	778.2	769.9	767.4
52.5°	827.8	805.5	787.8	769.2	754.8	739.3	728.3	718.0	712.5	708.2	707.7
55°	734.4	718.7	707.0	694.6	685.9	676.8	671.1	665.7	663.3	661.1	661.3
57.5°	663.6	653.2	645.6	637.5	632.8	628.4	627.0	625.6	626.4	626.7	627.9
60°	612.1	605.3	600.5	595.9	593.9	592.6	593.6	594.8	597.4	599.4	601.2
62.5°	572.6	568.7	566.4	563.9	563.6	563.8	565.9	568.0	571.2	573.4	575.2
65°	531.9	529.7	529.0	527.4	528.2	528.7	531.2	532.8	535.9	537.8	540.0
67.5°	490.9	490.3	490.9	490.9	492.2	493.5	495.9	497.8	500.4	502.1	503.9
70°	460.5	460.8	461.9	462.0	463.6	464.5	466.6	467.8	470.1	471.6	473.7
72.5°	431.1	430.6	430.9	430.1	430.7	430.4	431.6	432.2	434.2	435.3	438.0
75°	399.6	398.3	398.0	396.5	396.6	395.6	396.1	396.0	397.3	397.9	399.8
77.5°	361.7	359.5	358.4	356.0	355.9	355.0	356.0	356.5	358.9	360.1	362.3
80°	316.3	312.8	311.2	308.4	308.9	308.8	311.1	312.9	315.8	316.2	319.0
82.5°	262.9	259.3	257.7	255.0	255.6	255.6	257.8	258.1	260.6	261.7	264.8
85°	188.2	189.6	185.8	186.1	185.3	186.8	188.2	190.1	192.1	195.6	198.2
87.5°	110.8	110.4	111.8	111.8	113.7	114.8	117.9	119.6	123.1	125.8	130.7
90°	59.3	57.1	57.6	56.6	58.1	57.1	58.5	57.2	58.9	58.7	61.1
92.5°	29.9	28.2	26.1	24.3	22.3	20.6	19.5	18.9	17.8	17.0	16.0
95°	40.6	37.8	35.1	32.3	29.5	26.7	25.7	24.7	23.7	22.7	21.7
97.5°	47.2	44.3	41.3	38.3	35.3	32.4	31.7	31.0	30.4	29.6	29.0
100°	68.1	62.4	56.6	50.8	45.0	39.2	38.7	38.2	37.6	37.1	36.5
102.5°	137.9	124.7	111.6	98.2	85.1	71.8	69.5	67.2	64.9	62.6	60.3
105°	253.3	232.2	211.0	190.0	168.8	147.6	141.4	135.0	128.7	122.4	116.1
107.5°	362.5	341.8	321.2	300.6	280.1	259.4	249.3	239.5	229.4	219.4	209.5
110°	417.3	404.9	392.6	380.1	367.7	355.4	345.9	336.3	326.7	317.2	307.8



TEST NUMBER: P1444722
 CATALOG NUMBER: EHBR1-18-UNV-TA-L935-UPL12

CANDELA DISTRIBUTION (continued):

	55°	57.5°	60°	62.5°	65°	67.5°	70°	72.5°	75°	77.5°	80°
112.5°	423.5	417.3	411.0	404.7	398.5	392.3	387.6	382.9	378.4	373.7	369.0
115°	393.9	391.9	389.8	387.8	385.8	383.7	383.4	383.1	382.7	382.3	382.1
117.5°	344.9	345.0	345.2	345.6	345.9	346.2	348.6	351.0	353.5	356.0	358.5
120°	296.1	297.5	299.1	300.7	302.4	304.0	307.2	310.4	313.7	317.0	320.5
122.5°	255.5	256.5	257.5	258.7	259.7	260.8	263.9	267.1	270.4	273.6	277.1
125°	224.4	224.2	224.1	224.0	223.9	224.0	226.5	229.0	231.7	234.4	237.1
127.5°	203.3	202.4	201.5	200.7	199.7	198.9	200.3	201.8	203.3	204.8	206.5
130°	190.5	189.2	187.6	186.3	184.7	183.4	183.8	184.3	184.8	185.4	185.9
132.5°	183.1	181.5	179.8	178.1	176.5	174.8	174.6	174.5	174.3	174.2	174.2
135°	178.1	176.6	174.9	173.4	171.7	170.2	169.7	169.1	168.7	168.1	167.8
137.5°	174.7	173.6	172.2	171.0	169.6	168.4	167.6	166.9	166.2	165.8	165.1
140°	172.4	171.5	170.3	169.2	168.2	167.2	166.5	166.0	165.3	165.0	164.4
142.5°	170.6	169.8	169.0	168.1	167.4	166.6	165.9	165.4	165.0	164.4	164.0
145°	170.1	169.5	168.9	168.4	167.8	167.2	166.7	166.3	165.9	165.5	165.2
147.5°	168.6	168.2	167.8	167.5	167.0	166.6	166.2	166.0	165.6	165.4	165.0
150°	167.1	166.8	166.3	166.1	165.7	165.3	165.0	164.9	164.6	164.5	164.3
152.5°	164.9	164.6	164.2	164.0	163.6	163.2	163.0	163.0	162.7	162.5	162.3
155°	163.5	163.2	163.0	162.8	162.5	162.3	162.1	161.8	161.6	161.3	161.1
157.5°	163.0	162.8	162.5	162.3	162.1	161.8	161.6	161.4	161.1	161.0	160.7
160°	162.9	162.7	162.4	162.2	162.0	161.8	161.4	161.1	160.9	160.6	160.3
162.5°	163.5	163.2	163.0	162.8	162.4	162.1	161.9	161.7	161.4	161.2	161.0
165°	164.1	164.0	163.8	163.5	163.3	163.1	162.8	162.5	162.2	162.1	161.7
167.5°	165.7	165.6	165.3	165.1	164.9	164.7	164.4	164.2	164.0	163.6	163.3
170°	166.8	166.4	166.2	166.0	165.8	165.5	165.2	165.0	164.7	164.5	164.1
172.5°	168.2	168.0	167.8	167.7	167.4	167.2	166.9	166.8	166.6	166.3	166.1
175°	168.2	168.2	168.1	167.9	167.9	167.9	167.8	167.7	167.6	167.5	167.3
177.5°	168.8	168.8	168.8	168.8	168.7	168.7	168.5	168.4	168.4	168.2	168.1
180°	167.8	167.8	167.8	167.8	167.8	167.8	167.8	167.8	167.8	167.8	167.8



TEST NUMBER: P1444722
 CATALOG NUMBER: EHBR1-18-UNV-TA-L935-UPL12

CANDELA DISTRIBUTION (continued):

	82.5°	85°	87.5°	90°	92.5°	95°	97.5°	100°	102.5°	105°	107.5°
0°	14339.1	14339.1	14339.1	14339.1	14339.1	14339.1	14339.1	14339.1	14339.1	14339.1	14339.1
2.5°	14394.3	14390.7	14392.4	14385.6	14387.2	14379.1	14378.4	14369.2	14368.3	14359.6	14356.3
5°	14881.7	14873.7	14882.7	14868.6	14871.4	14853.0	14851.5	14827.8	14819.7	14789.9	14777.2
7.5°	15417.3	15414.3	15419.8	15408.0	15407.7	15391.3	15384.5	15363.3	15350.1	15319.0	15299.1
10°	15534.7	15537.4	15532.9	15534.0	15527.7	15525.9	15519.3	15515.2	15504.5	15496.4	15484.5
12.5°	15047.4	15050.3	15031.7	15043.5	15034.2	15055.9	15054.2	15079.8	15083.8	15116.1	15128.4
15°	13921.2	13917.8	13882.1	13904.5	13892.5	13940.2	13950.9	14015.1	14049.5	14131.8	14182.5
17.5°	12220.0	12210.9	12160.7	12188.0	12174.1	12244.4	12268.1	12370.7	12434.7	12567.5	12662.2
20°	10192.1	10174.5	10115.7	10147.8	10133.5	10213.3	10247.0	10371.1	10453.8	10629.6	10754.8
22.5°	8139.0	8111.2	8053.6	8083.5	8070.0	8152.8	8196.7	8321.2	8415.8	8596.4	8742.5
25°	6295.4	6270.5	6214.9	6235.9	6230.8	6300.9	6339.9	6457.6	6550.6	6722.6	6862.0
27.5°	4801.6	4775.8	4725.5	4740.4	4735.3	4794.9	4831.7	4930.1	5010.1	5154.9	5277.4
30°	3674.9	3643.8	3601.2	3609.4	3605.9	3654.2	3688.6	3771.4	3840.0	3962.4	4067.9
32.5°	2816.8	2785.6	2746.4	2750.3	2745.1	2783.1	2811.3	2883.4	2943.1	3047.2	3139.0
35°	2155.3	2191.8	2108.1	2161.1	2105.9	2186.9	2157.8	2202.8	2254.2	2341.9	2418.4
37.5°	1656.9	1631.4	1609.9	1607.6	1607.6	1626.2	1648.4	1691.8	1737.1	1802.4	1869.8
40°	1313.0	1295.1	1281.2	1280.2	1281.2	1294.5	1310.9	1340.9	1374.1	1420.9	1470.5
42.5°	1089.0	1077.2	1068.7	1068.2	1070.8	1080.3	1091.7	1109.4	1131.0	1161.5	1195.4
45°	942.6	936.0	931.3	931.0	932.3	937.1	943.7	954.8	968.5	987.4	1008.9
47.5°	839.8	838.2	835.3	835.4	834.0	836.0	836.8	843.0	850.3	864.5	892.7
50°	764.9	764.9	762.9	762.8	760.9	760.8	759.2	761.7	765.0	773.9	782.9
52.5°	705.8	705.6	703.4	702.9	701.0	700.9	699.5	700.4	700.9	705.4	710.7
55°	659.5	658.2	655.3	654.4	653.6	654.7	654.3	654.3	653.7	655.5	657.2
57.5°	626.4	624.6	621.8	621.1	620.8	622.3	622.3	621.8	619.3	617.7	615.2
60°	600.2	598.4	595.4	594.6	595.1	597.0	596.9	595.3	591.6	588.3	584.6
62.5°	574.3	573.6	572.2	571.9	571.5	571.9	570.5	568.8	565.2	561.7	557.7
65°	539.8	540.2	539.0	539.2	537.8	537.6	535.6	534.0	530.3	527.1	523.0
67.5°	503.8	504.1	503.2	503.2	502.6	502.7	501.4	499.8	496.8	494.1	491.0
70°	474.3	475.0	474.5	474.6	473.7	473.5	471.6	470.0	466.9	464.7	461.8
72.5°	438.8	440.4	440.3	440.7	439.5	438.8	436.5	434.7	431.8	430.1	427.7
75°	400.5	402.6	403.2	404.1	402.3	401.3	398.9	397.3	395.0	394.0	392.4
77.5°	363.2	365.4	367.6	369.7	366.7	364.2	361.0	358.6	355.2	353.9	351.5
80°	321.2	325.3	330.1	334.2	328.9	323.6	318.4	314.6	310.1	308.2	305.3
82.5°	266.6	270.6	273.4	276.1	272.4	268.5	263.5	260.1	255.2	253.4	250.0
85°	202.5	207.6	209.3	210.6	208.3	206.3	201.6	195.2	192.1	187.3	184.8
87.5°	133.1	136.2	136.9	137.3	135.9	134.9	131.9	128.9	123.6	119.8	115.1
90°	60.4	61.9	60.1	60.4	59.1	59.8	57.3	56.8	53.0	52.0	48.6
92.5°	15.2	14.1	13.4	12.4	13.6	14.2	15.3	16.0	17.0	17.8	18.9
95°	20.7	19.6	18.6	17.6	18.4	19.2	20.0	20.8	21.6	22.4	23.2
97.5°	28.3	27.6	26.9	26.3	26.7	27.2	27.7	28.2	28.6	29.1	29.6
100°	36.0	35.4	34.9	34.3	34.3	34.3	34.3	34.3	34.3	34.3	34.3
102.5°	58.0	55.7	53.4	51.1	52.7	54.2	55.7	57.3	58.9	60.5	62.1
105°	109.8	103.5	97.2	90.9	97.0	103.0	109.2	115.3	121.4	127.5	133.7
107.5°	199.6	189.6	179.7	169.8	180.8	192.0	203.0	214.1	225.2	236.3	247.4
110°	298.3	288.8	279.3	269.9	281.7	293.5	305.3	317.0	328.7	340.5	352.5



TEST NUMBER: P1444722
 CATALOG NUMBER: EHBR1-18-UNV-TA-L935-UPL12

CANDELA DISTRIBUTION (continued):

	82.5°	85°	87.5°	90°	92.5°	95°	97.5°	100°	102.5°	105°	107.5°
112.5°	364.3	359.8	355.2	350.6	358.2	365.7	373.3	381.0	388.5	396.2	403.9
115°	381.7	381.5	381.2	380.9	384.6	388.1	391.7	395.3	399.0	402.5	406.3
117.5°	361.1	363.5	366.2	368.7	369.9	371.0	372.2	373.4	374.6	375.8	377.1
120°	323.8	327.2	330.6	334.1	333.6	333.2	332.6	332.2	331.9	331.5	331.2
122.5°	280.3	283.7	287.1	290.6	289.6	288.6	287.5	286.6	285.8	284.9	284.0
125°	240.0	242.7	245.6	248.4	247.4	246.4	245.4	244.5	243.6	242.8	242.0
127.5°	208.2	209.9	211.5	213.3	212.8	212.4	212.0	211.6	211.3	211.1	210.8
130°	186.6	187.3	188.1	188.9	189.1	189.2	189.4	189.6	190.1	190.3	190.8
132.5°	174.3	174.3	174.5	174.6	175.1	175.6	176.4	177.0	177.8	178.5	179.5
135°	167.5	167.2	167.0	166.9	167.7	168.4	169.3	170.2	171.2	172.3	173.5
137.5°	164.7	164.2	163.9	163.5	164.3	165.1	166.0	166.9	167.9	169.0	170.3
140°	164.0	163.6	163.4	163.0	163.8	164.6	165.5	166.4	167.5	168.5	169.7
142.5°	163.6	163.1	162.9	162.7	163.3	164.0	165.0	165.8	166.7	167.6	168.8
145°	164.9	164.5	164.4	164.1	164.7	165.2	165.8	166.4	167.0	167.7	168.6
147.5°	164.9	164.6	164.5	164.3	164.7	165.1	165.5	165.9	166.5	167.0	167.7
150°	164.3	164.0	164.0	164.0	164.1	164.3	164.7	164.9	165.3	165.6	166.1
152.5°	162.3	162.1	162.1	162.0	162.1	162.4	162.7	162.9	163.2	163.5	163.9
155°	161.0	160.8	160.7	160.5	160.6	160.6	160.8	160.7	161.0	161.0	161.2
157.5°	160.6	160.4	160.2	160.1	160.1	159.9	160.0	159.9	159.9	159.9	160.0
160°	160.1	159.8	159.6	159.3	159.3	159.2	159.3	159.2	159.3	159.4	159.4
162.5°	160.8	160.6	160.4	160.2	160.1	159.9	159.8	159.6	159.5	159.4	159.3
165°	161.3	161.1	160.9	160.5	160.5	160.4	160.3	160.2	160.2	160.1	160.1
167.5°	163.1	162.8	162.7	162.3	162.1	161.9	161.8	161.5	161.3	161.1	161.1
170°	164.0	163.8	163.6	163.3	163.2	163.0	163.0	162.9	162.8	162.7	162.7
172.5°	165.9	165.8	165.6	165.4	165.3	165.1	165.1	165.0	165.0	165.0	164.9
175°	167.3	167.2	167.1	167.0	166.9	166.8	166.8	166.7	166.6	166.4	166.4
177.5°	167.9	167.9	167.9	167.8	167.7	167.7	167.7	167.7	167.7	167.6	167.6
180°	167.8	167.8	167.8	167.8	167.8	167.8	167.8	167.8	167.8	167.8	167.8



TEST NUMBER: P1444722
 CATALOG NUMBER: EHBR1-18-UNV-TA-L935-UPL12

CANDELA DISTRIBUTION (continued):

	110°	112.5°	115°	117.5°	120°	122.5°	125°	127.5°	130°	132.5°	135°
0°	14339.1	14339.1	14339.1	14339.1	14339.1	14339.1	14339.1	14339.1	14339.1	14339.1	14339.1
2.5°	14347.1	14343.3	14333.3	14328.5	14319.3	14314.7	14307.5	14302.9	14297.1	14292.8	14290.5
5°	14744.6	14726.2	14689.5	14666.9	14627.2	14601.0	14561.5	14532.6	14491.9	14461.9	14423.4
7.5°	15261.8	15233.6	15186.5	15150.8	15095.3	15052.8	14990.5	14940.7	14871.8	14814.6	14744.3
10°	15472.3	15455.9	15434.8	15411.8	15381.0	15350.9	15308.3	15264.9	15207.1	15149.6	15074.4
12.5°	15161.1	15176.6	15207.1	15221.3	15244.6	15252.6	15263.2	15258.2	15248.8	15225.3	15191.3
15°	14279.8	14344.3	14446.3	14516.9	14615.8	14685.3	14777.2	14836.3	14904.4	14945.2	14983.8
17.5°	12829.9	12954.8	13134.9	13278.4	13471.3	13628.1	13820.3	13971.2	14145.4	14279.1	14421.4
20°	10972.9	11147.8	11396.4	11607.4	11886.9	12123.8	12427.3	12681.6	12978.3	13225.5	13492.4
22.5°	8974.3	9179.9	9464.8	9719.4	10053.0	10351.1	10731.4	11067.6	11468.7	11827.9	12225.3
25°	7088.8	7290.3	7580.4	7844.1	8204.4	8532.6	8948.2	9333.8	9799.2	10233.2	10731.4
27.5°	5471.9	5651.0	5905.9	6143.3	6473.2	6795.5	7217.1	7628.5	8125.1	8591.4	9128.3
30°	4225.8	4371.0	4575.4	4766.3	5031.2	5294.8	5670.4	6050.7	6544.9	7028.1	7578.6
32.5°	3274.8	3398.7	3569.3	3724.3	3928.4	4127.2	4403.8	4707.7	5141.2	5604.0	6136.3
35°	2535.1	2641.0	2786.2	2919.7	3087.6	3245.4	3451.8	3668.7	3999.5	4388.9	4865.2
37.5°	2021.1	2064.3	2167.9	2277.3	2416.7	2546.4	2707.8	2868.3	3104.9	3412.1	3801.2
40°	1537.0	1605.7	1690.0	1776.1	1881.6	1985.7	2162.8	2248.1	2403.9	2624.5	2926.4
42.5°	1240.2	1288.4	1347.8	1407.7	1481.2	1553.7	1643.3	1734.5	1851.0	2000.4	2215.2
45°	1037.8	1069.3	1107.5	1147.4	1195.7	1245.2	1305.2	1367.8	1446.8	1538.6	1669.1
47.5°	902.6	920.0	944.9	972.2	1005.4	1039.6	1078.6	1118.5	1167.5	1222.0	1296.3
50°	797.1	811.6	831.0	849.2	872.1	907.1	922.6	944.7	974.1	1006.2	1047.7
52.5°	720.7	730.4	742.6	753.1	767.5	780.6	797.8	813.1	833.5	852.7	879.5
55°	661.3	664.8	671.7	678.4	688.4	697.4	709.2	719.1	732.1	743.6	760.6
57.5°	615.3	615.7	618.8	622.4	628.8	634.4	642.6	649.1	658.1	665.4	675.6
60°	582.3	580.6	581.2	582.4	586.0	589.7	594.9	599.2	604.9	609.1	614.7
62.5°	554.9	552.1	551.5	551.1	553.0	554.3	557.1	559.2	562.4	564.2	567.3
65°	520.1	516.9	515.6	514.2	514.7	514.3	515.3	515.3	517.1	517.4	519.1
67.5°	488.7	486.0	484.3	482.3	481.4	480.0	479.4	478.0	477.7	476.5	476.3
70°	460.0	457.3	456.0	454.1	453.2	451.3	450.1	447.7	446.4	444.2	442.9
72.5°	426.8	425.3	424.9	423.6	423.3	422.3	421.7	420.1	419.2	417.3	416.2
75°	392.1	390.9	390.7	389.4	389.4	388.1	387.8	386.0	385.1	383.3	382.5
77.5°	350.7	348.9	348.4	346.9	347.3	346.7	347.2	345.9	345.3	343.4	342.9
80°	304.2	301.8	300.9	298.9	299.5	298.5	299.5	299.4	300.1	298.5	298.3
82.5°	249.1	246.4	246.0	244.6	245.5	245.6	247.6	246.5	247.0	245.6	246.2
85°	181.2	179.3	176.6	176.3	174.6	176.4	174.0	175.6	173.1	174.8	172.5
87.5°	112.4	108.4	106.3	103.5	102.4	99.8	98.6	96.7	97.2	96.3	96.9
90°	48.3	45.4	45.4	43.4	44.0	42.3	43.2	42.3	43.6	42.7	44.1
92.5°	19.5	20.4	21.9	23.7	25.3	26.9	28.5	30.3	31.8	33.5	35.1
95°	24.0	24.8	27.0	29.2	31.4	33.5	35.6	37.8	40.0	42.1	44.3
97.5°	30.1	30.5	32.7	34.9	37.1	39.2	41.3	43.6	45.8	47.9	50.1
100°	34.3	34.4	40.6	46.8	52.9	59.2	65.3	71.4	77.7	83.8	90.0
102.5°	63.6	65.2	80.8	96.3	111.9	127.5	143.0	158.7	174.3	189.9	205.6
105°	139.8	145.9	169.7	193.4	217.2	241.0	264.6	288.5	312.3	336.2	359.9
107.5°	258.6	269.7	291.3	312.7	334.2	355.6	377.3	398.7	420.3	441.7	463.4
110°	364.3	376.0	390.4	404.9	419.3	433.7	448.2	462.6	477.1	491.5	506.0



TEST NUMBER: P1444722
 CATALOG NUMBER: EHBR1-18-UNV-TA-L935-UPL12

CANDELA DISTRIBUTION (continued):

	110°	112.5°	115°	117.5°	120°	122.5°	125°	127.5°	130°	132.5°	135°
112.5°	411.4	419.1	427.5	436.0	444.4	452.9	461.3	469.8	478.3	486.8	495.3
115°	409.9	413.6	416.8	420.3	423.5	426.9	430.2	433.7	437.1	440.5	443.9
117.5°	378.2	379.6	380.1	380.7	381.3	382.0	382.7	383.4	384.1	384.8	385.5
120°	330.8	330.5	330.1	329.6	329.3	328.8	328.5	328.1	327.8	327.5	327.2
122.5°	283.0	282.3	282.0	281.5	281.2	280.9	280.6	280.3	280.1	279.8	279.5
125°	241.2	240.4	241.1	241.7	242.4	243.1	243.7	244.5	245.3	246.0	246.7
127.5°	210.5	210.4	211.8	213.3	214.8	216.3	217.7	219.2	220.8	222.3	223.8
130°	191.2	191.8	193.5	195.4	197.1	199.0	200.8	202.8	204.6	206.5	208.3
132.5°	180.3	181.4	183.0	184.7	186.5	188.3	190.1	192.0	193.8	195.7	197.3
135°	174.6	175.9	177.5	179.1	180.7	182.5	184.1	185.9	187.4	189.2	190.8
137.5°	171.4	172.7	174.0	175.3	176.6	178.1	179.5	180.9	182.2	183.5	184.9
140°	170.8	172.0	172.7	173.7	174.6	175.5	176.2	177.2	177.9	178.9	179.6
142.5°	169.7	170.8	171.3	171.9	172.6	173.3	173.8	174.5	175.0	175.6	176.1
145°	169.3	170.2	170.4	170.6	170.8	171.0	171.2	171.4	171.5	171.7	171.8
147.5°	168.3	168.9	168.9	169.0	169.0	169.1	169.2	169.2	169.1	169.2	169.2
150°	166.5	166.9	166.8	166.8	166.6	166.6	166.4	166.3	166.1	166.1	165.9
152.5°	164.2	164.6	164.3	164.3	164.0	163.9	163.7	163.6	163.3	163.1	163.0
155°	161.2	161.5	161.3	161.3	161.1	161.1	160.9	161.0	160.9	160.8	160.7
157.5°	159.9	159.9	159.8	159.8	159.7	159.6	159.6	159.6	159.6	159.7	159.8
160°	159.4	159.5	159.3	159.3	159.2	159.2	159.2	159.2	159.2	159.3	159.3
162.5°	159.2	159.2	159.0	159.0	158.9	158.9	158.9	159.0	159.0	159.1	159.2
165°	160.1	160.2	160.1	160.0	159.9	159.7	159.7	159.6	159.7	159.7	159.7
167.5°	161.0	160.9	160.9	161.0	161.0	161.1	161.1	161.3	161.3	161.5	161.6
170°	162.7	162.7	162.6	162.5	162.5	162.5	162.5	162.4	162.5	162.5	162.5
172.5°	164.9	164.9	164.8	164.6	164.5	164.4	164.3	164.2	164.1	164.0	164.0
175°	166.3	166.2	166.1	166.1	166.0	165.9	165.9	165.7	165.6	165.6	165.5
177.5°	167.5	167.4	167.3	167.3	167.3	167.2	167.2	167.2	167.2	167.2	167.1
180°	167.8	167.8	167.8	167.8	167.8	167.8	167.8	167.8	167.8	167.8	167.8



TEST NUMBER: P1444722
 CATALOG NUMBER: EHBR1-18-UNV-TA-L935-UPL12

CANDELA DISTRIBUTION (continued):

	137.5°	140°	142.5°	145°	147.5°	150°	152.5°	155°	157.5°	160°	162.5°
0°	14339.1	14339.1	14339.1	14339.1	14339.1	14339.1	14339.1	14339.1	14339.1	14339.1	14339.1
2.5°	14287.6	14287.5	14286.1	14286.7	14287.0	14288.0	14289.3	14290.5	14290.8	14291.8	14292.0
5°	14394.6	14359.2	14333.1	14304.3	14282.7	14263.3	14250.3	14240.0	14236.0	14237.0	14239.4
7.5°	14684.5	14611.6	14551.4	14482.9	14425.9	14365.4	14315.3	14267.7	14233.0	14207.1	14192.7
10°	15002.7	14913.8	14828.8	14729.8	14635.8	14535.5	14444.7	14353.3	14276.9	14210.8	14162.1
12.5°	15143.9	15081.0	15007.6	14914.1	14813.6	14697.8	14581.0	14455.8	14339.3	14231.1	14143.9
15°	14994.4	14994.5	14967.8	14922.9	14853.0	14760.6	14649.3	14518.7	14381.3	14241.0	14112.9
17.5°	14519.8	14609.4	14659.1	14690.7	14681.0	14647.0	14576.1	14475.8	14347.7	14198.4	14042.0
20°	13704.9	13916.0	14066.7	14202.1	14277.9	14328.3	14323.4	14282.5	14191.3	14064.2	13901.5
22.5°	12563.3	12917.7	13197.4	13458.3	13641.2	13790.0	13860.7	13890.8	13849.4	13760.9	13608.0
25°	11176.7	11658.7	12069.9	12469.1	12768.5	13025.8	13180.5	13289.4	13298.0	13251.8	13115.4
27.5°	9635.9	10204.8	10725.3	11255.8	11676.9	12046.8	12289.5	12467.2	12523.6	12516.1	12392.2
30°	8097.1	8694.3	9268.1	9886.7	10407.7	10880.3	11201.0	11441.2	11533.8	11551.5	11432.3
32.5°	6643.9	7232.8	7805.0	8451.7	9025.0	9566.7	9945.5	10230.8	10338.5	10363.9	10233.2
35°	5325.0	5868.3	6412.1	7038.8	7608.9	8169.7	8568.9	8867.7	8968.2	8985.2	8833.9
37.5°	4181.3	4644.2	5118.0	5680.3	6203.9	6730.6	7109.9	7390.7	7463.9	7459.4	7288.2
40°	3218.3	3578.2	3958.8	4421.8	4857.1	5302.4	5622.6	5854.7	5893.2	5864.7	5684.9
42.5°	2420.0	2679.8	2955.9	3301.5	3624.4	3957.7	4190.7	4363.0	4368.5	4323.5	4162.0
45°	1802.9	2056.5	2172.2	2381.2	2589.2	2810.8	2953.0	3059.5	3043.0	3003.4	2880.7
47.5°	1374.4	1471.9	1575.2	1704.8	1825.9	2077.4	2058.7	2229.8	2106.6	2190.5	2005.7
50°	1091.4	1145.9	1201.5	1270.3	1333.6	1399.4	1440.4	1471.1	1467.1	1453.9	1418.5
52.5°	928.5	945.4	972.8	1011.9	1047.3	1082.8	1106.2	1125.2	1125.6	1120.2	1102.4
55°	776.0	797.4	817.1	842.7	886.2	892.9	926.4	919.7	922.3	912.9	922.5
57.5°	684.2	696.6	707.8	723.0	735.6	750.3	758.9	767.2	766.4	764.6	755.5
60°	619.2	626.0	632.2	641.0	647.9	656.3	660.3	664.5	663.1	660.0	651.9
62.5°	569.0	573.3	576.8	582.6	586.8	591.9	594.0	595.8	594.0	591.0	583.9
65°	519.5	522.3	524.5	528.8	531.8	536.2	538.0	539.6	538.0	535.7	530.3
67.5°	474.9	475.2	474.9	476.7	477.6	480.3	481.1	482.3	480.4	478.4	473.7
70°	441.0	440.3	439.5	440.2	440.3	441.7	441.8	441.7	439.3	435.9	430.9
72.5°	414.6	414.2	413.6	414.1	414.1	415.3	414.9	414.4	411.6	408.2	403.2
75°	380.6	380.3	379.0	379.0	378.0	378.4	377.0	376.2	373.0	370.3	365.8
77.5°	340.8	340.1	338.2	337.5	335.5	334.7	332.1	330.8	327.6	325.4	321.6
80°	296.3	295.6	293.2	291.9	288.8	286.7	282.9	280.7	277.1	274.9	271.2
82.5°	244.9	245.2	242.8	241.2	236.6	233.1	227.9	225.2	221.1	219.1	215.3
85°	174.2	171.7	173.0	172.9	170.0	167.0	162.9	160.0	156.5	154.5	151.8
87.5°	95.5	96.2	95.4	94.9	92.8	91.3	88.1	86.4	83.8	82.7	80.6
90°	40.9	40.0	36.9	36.0	33.0	31.3	27.8	26.5	23.3	22.7	20.6
92.5°	33.3	31.4	29.6	27.7	26.0	24.2	22.3	20.5	18.7	17.9	17.5
95°	41.7	39.2	36.5	33.9	31.2	28.5	26.0	23.4	20.8	20.2	19.7
97.5°	47.1	44.0	40.9	37.8	34.6	31.5	28.5	25.4	22.3	21.9	21.6
100°	82.8	75.8	68.6	61.4	54.3	47.1	40.0	32.8	25.7	25.4	24.9
102.5°	188.2	170.8	153.5	136.1	118.8	101.4	84.2	66.8	49.5	46.9	44.5
105°	333.7	307.3	281.2	255.0	228.7	202.5	176.3	149.9	123.7	115.3	106.9
107.5°	438.8	414.0	389.4	364.8	340.1	315.5	290.8	266.1	241.4	226.6	211.8
110°	486.4	466.9	447.5	427.9	408.3	388.7	369.1	349.6	330.1	317.2	304.5



TEST NUMBER: P1444722
 CATALOG NUMBER: EHBR1-18-UNV-TA-L935-UPL12

CANDELA DISTRIBUTION (continued):

	137.5°	140°	142.5°	145°	147.5°	150°	152.5°	155°	157.5°	160°	162.5°
112.5°	481.0	466.8	452.5	438.1	424.0	409.6	395.3	380.9	366.6	358.8	351.1
115°	435.4	426.9	418.3	409.8	401.1	392.5	384.0	375.3	366.7	362.7	358.6
117.5°	381.2	376.9	372.6	368.2	363.9	359.5	355.2	350.8	346.4	345.0	343.7
120°	326.1	324.9	323.6	322.3	321.1	319.8	318.5	317.2	315.9	316.1	316.4
122.5°	280.2	280.9	281.5	282.0	282.8	283.3	284.0	284.5	285.1	286.3	287.5
125°	248.2	249.5	251.1	252.4	253.8	255.1	256.7	257.9	259.3	260.5	261.7
127.5°	225.5	226.9	228.6	230.1	231.7	233.2	234.8	236.3	237.8	238.9	240.2
130°	209.7	211.1	212.5	213.9	215.3	216.7	218.1	219.5	220.8	221.8	222.7
132.5°	198.7	199.9	201.2	202.4	203.7	204.9	206.3	207.5	208.8	209.5	210.4
135°	191.8	192.7	193.8	194.7	195.8	196.7	197.7	198.7	199.8	200.4	200.9
137.5°	185.8	186.5	187.4	188.2	189.1	189.8	190.8	191.6	192.6	192.9	193.4
140°	180.5	181.3	182.2	183.1	183.9	184.7	185.8	186.7	187.7	188.1	188.5
142.5°	176.8	177.4	178.1	178.7	179.5	180.2	181.0	181.7	182.5	183.0	183.4
145°	172.6	173.3	174.2	174.9	175.6	176.5	177.5	178.4	179.3	179.6	180.0
147.5°	169.9	170.5	171.3	171.9	172.7	173.3	174.2	174.9	175.9	176.2	176.4
150°	166.7	167.3	168.0	168.7	169.5	170.2	171.1	172.0	172.9	173.3	173.7
152.5°	163.8	164.5	165.2	166.0	166.9	167.7	168.7	169.6	170.5	170.8	171.2
155°	161.5	162.1	163.0	163.8	164.6	165.4	166.3	167.1	168.0	168.5	168.8
157.5°	160.4	161.0	161.8	162.5	163.2	164.0	164.9	165.6	166.4	166.8	167.0
160°	160.0	160.6	161.2	161.9	162.5	163.2	164.0	164.7	165.3	165.7	165.9
162.5°	159.7	160.4	161.1	161.6	162.3	163.0	163.7	164.4	165.0	165.3	165.7
165°	160.2	160.7	161.2	161.7	162.1	162.6	163.1	163.6	164.2	164.5	164.9
167.5°	162.1	162.3	162.8	163.1	163.6	163.9	164.4	164.8	165.2	165.5	165.9
170°	162.9	163.2	163.5	163.9	164.3	164.6	165.0	165.3	165.8	166.0	166.2
172.5°	164.1	164.3	164.6	164.8	165.0	165.2	165.5	165.8	165.9	166.3	166.5
175°	165.7	165.7	165.9	165.9	165.9	166.1	166.3	166.4	166.6	166.8	166.9
177.5°	167.2	167.3	167.3	167.4	167.6	167.7	167.7	167.8	167.9	168.1	168.3
180°	167.8	167.8	167.8	167.8	167.8	167.8	167.8	167.8	167.8	167.8	167.8



TEST NUMBER: P1444722
 CATALOG NUMBER: EHBR1-18-UNV-TA-L935-UPL12

CANDELA DISTRIBUTION (continued):

	165°	167.5°	170°	172.5°	175°	177.5°	180°	182.5°	185°	187.5°	190°
0°	14339.1	14339.1	14339.1	14339.1	14339.1	14339.1	14339.1	14339.1	14339.1	14339.1	14339.1
2.5°	14291.5	14291.4	14290.9	14290.3	14289.6	14290.0	14290.6	14292.3	14295.2	14299.3	14304.7
5°	14241.4	14244.3	14246.0	14246.1	14244.7	14243.8	14245.1	14249.1	14257.0	14270.2	14288.3
7.5°	14188.8	14192.4	14197.9	14202.1	14202.8	14201.8	14202.1	14208.2	14222.8	14248.7	14285.0
10°	14132.6	14121.9	14127.6	14137.8	14146.1	14147.5	14148.5	14155.8	14177.2	14216.3	14274.6
12.5°	14080.7	14046.9	14040.4	14049.7	14062.1	14066.1	14065.0	14068.1	14093.1	14144.9	14226.2
15°	14012.5	13948.9	13927.1	13929.6	13944.9	13950.4	13946.4	13940.2	13964.6	14027.8	14132.9
17.5°	13902.1	13799.5	13759.5	13757.8	13775.7	13780.6	13770.7	13751.6	13775.6	13854.4	13984.9
20°	13734.1	13582.8	13507.6	13495.6	13515.1	13509.4	13489.7	13460.8	13492.3	13588.2	13743.5
22.5°	13432.3	13240.6	13112.0	13070.5	13093.8	13078.3	13049.5	13012.6	13054.6	13163.5	13336.5
25°	12939.2	12717.5	12541.6	12442.8	12461.4	12433.5	12402.2	12357.4	12407.5	12532.5	12722.9
27.5°	12214.3	11958.3	11740.2	11576.7	11582.8	11546.2	11510.2	11452.2	11514.6	11662.6	11877.4
30°	11250.4	10954.2	10688.6	10466.5	10446.5	10411.1	10374.2	10298.2	10376.3	10553.5	10804.3
32.5°	10040.0	9711.0	9404.2	9123.3	9070.3	9035.6	9002.7	8915.3	9017.6	9224.2	9512.5
35°	8624.4	8274.0	7941.3	7620.4	7532.7	7498.1	7469.3	7385.5	7513.1	7738.0	8049.3
37.5°	7070.5	6712.5	6382.2	6053.3	5929.2	5882.3	5861.4	5806.5	5953.8	6176.1	6488.7
40°	5475.3	5142.5	4846.3	4555.8	4414.4	4342.6	4331.6	4321.6	4464.0	4656.9	4940.7
42.5°	3983.1	3714.6	3486.2	3264.1	3136.0	3037.9	3037.9	3067.7	3195.8	3340.4	3559.2
45°	2755.2	2575.1	2429.5	2281.1	2320.8	2125.3	2240.2	2181.3	2244.6	2337.8	2480.0
47.5°	1894.0	1795.6	1715.7	1632.8	1572.3	1514.7	1519.6	1556.9	1616.5	1671.8	1745.9
50°	1380.3	1330.3	1289.5	1246.5	1216.5	1191.0	1192.5	1208.6	1239.9	1269.0	1307.7
52.5°	1081.6	1054.0	1031.9	1008.0	992.2	979.7	980.3	988.2	1005.1	1021.7	1043.9
55°	891.6	888.2	859.4	838.1	829.9	821.4	822.9	826.0	837.5	847.3	862.0
57.5°	747.1	734.1	725.5	714.3	709.1	703.2	704.5	705.7	713.4	719.9	730.5
60°	645.1	636.0	629.8	622.2	618.8	615.0	615.9	616.6	621.5	625.7	633.3
62.5°	577.3	569.2	563.8	557.9	555.6	553.0	553.6	553.8	556.8	560.0	565.7
65°	525.4	518.9	514.4	509.4	506.9	504.2	504.5	504.5	507.1	509.4	513.7
67.5°	470.4	465.5	462.7	458.6	456.9	454.3	454.2	453.3	455.0	455.9	458.9
70°	426.3	421.4	417.7	413.8	411.7	409.3	409.4	409.4	411.4	413.5	417.2
72.5°	399.1	394.3	391.1	387.6	385.6	383.6	383.3	383.0	384.5	385.6	388.1
75°	363.0	359.2	357.3	354.1	352.5	350.2	349.8	348.8	349.5	349.7	351.6
77.5°	319.2	315.6	314.0	310.9	309.5	306.9	306.7	305.5	306.1	305.7	307.2
80°	269.3	266.0	265.2	262.6	261.9	259.5	259.1	257.7	258.1	257.0	257.5
82.5°	213.6	210.6	210.0	207.5	207.5	205.4	205.2	203.0	203.0	201.2	198.2
85°	150.5	148.3	147.4	145.4	144.7	143.0	142.1	140.0	139.3	137.9	137.5
87.5°	79.4	78.0	76.8	75.9	74.0	71.0	70.7	68.5	68.7	67.2	67.2
90°	20.0	18.1	17.8	16.0	15.4	14.1	13.8	13.9	14.2	14.4	14.9
92.5°	16.9	16.2	15.7	15.0	14.4	13.9	13.2	13.9	14.4	15.0	15.7
95°	19.1	18.6	18.1	17.6	17.0	16.5	16.0	16.5	17.0	17.6	18.1
97.5°	21.3	20.9	20.6	20.2	19.9	19.6	19.2	19.7	20.0	20.3	20.7
100°	24.6	24.1	23.7	23.3	22.9	22.5	22.1	22.6	23.0	23.4	23.8
102.5°	42.0	39.4	37.0	34.4	31.9	29.5	26.9	29.5	31.9	34.5	37.1
105°	98.3	90.0	81.6	73.1	64.6	56.2	47.8	56.2	64.6	73.1	81.7
107.5°	196.9	182.1	167.2	152.4	137.4	122.5	107.7	122.6	137.5	152.4	167.3
110°	291.7	279.0	266.1	253.3	240.5	227.7	214.8	227.8	240.6	253.4	266.3



TEST NUMBER: P1444722
 CATALOG NUMBER: EHBR1-18-UNV-TA-L935-UPL12

CANDELA DISTRIBUTION (continued):

	165°	167.5°	170°	172.5°	175°	177.5°	180°	182.5°	185°	187.5°	190°
112.5°	343.3	335.5	327.8	320.0	312.1	304.4	296.6	304.5	312.3	320.3	328.1
115°	354.6	350.5	346.5	342.4	338.2	334.2	330.0	334.3	338.5	342.8	346.9
117.5°	342.3	341.0	339.5	338.2	336.7	335.3	333.8	335.4	337.0	338.6	340.1
120°	316.6	316.9	317.1	317.3	317.5	317.7	317.8	317.8	317.8	317.8	317.8
122.5°	288.7	289.8	290.8	292.0	293.2	294.2	295.2	294.4	293.6	292.7	291.7
125°	262.9	264.2	265.3	266.6	267.6	268.8	269.7	269.1	268.3	267.4	266.3
127.5°	241.4	242.4	243.5	244.6	245.7	246.6	247.5	247.0	246.2	245.4	244.6
130°	223.6	224.6	225.3	226.2	227.0	227.8	228.4	228.0	227.6	227.2	226.6
132.5°	211.0	211.8	212.5	213.3	213.8	214.4	214.8	214.7	214.4	214.3	213.8
135°	201.5	202.1	202.6	203.2	203.6	203.9	204.2	204.3	204.2	204.2	203.9
137.5°	193.7	194.2	194.5	194.8	195.0	195.2	195.2	195.6	195.7	195.9	195.9
140°	188.9	189.2	189.7	189.9	190.2	190.4	190.5	190.8	191.0	191.1	191.1
142.5°	183.8	184.2	184.5	184.8	185.1	185.3	185.3	185.6	185.8	185.9	186.0
145°	180.2	180.5	180.8	181.1	181.2	181.3	181.3	181.6	181.8	182.1	182.3
147.5°	176.7	177.0	177.2	177.4	177.5	177.5	177.6	177.9	178.2	178.4	178.5
150°	174.1	174.5	174.7	175.0	175.3	175.5	175.6	175.8	176.0	176.0	176.1
152.5°	171.6	171.8	172.1	172.4	172.7	172.7	172.8	173.1	173.4	173.5	173.6
155°	169.2	169.6	169.8	170.2	170.4	170.7	170.8	171.1	171.2	171.4	171.5
157.5°	167.4	167.8	168.0	168.3	168.5	168.8	169.0	169.3	169.5	169.7	169.8
160°	166.2	166.6	166.9	167.1	167.4	167.7	167.9	168.1	168.4	168.5	168.8
162.5°	165.9	166.2	166.4	166.7	166.9	167.2	167.5	167.8	167.9	168.1	168.3
165°	165.1	165.5	165.8	166.1	166.4	166.8	167.0	167.2	167.3	167.5	167.6
167.5°	166.0	166.4	166.7	167.0	167.1	167.5	167.9	167.9	168.0	168.2	168.2
170°	166.5	166.9	167.0	167.3	167.6	167.8	167.9	168.0	168.2	168.3	168.4
172.5°	166.8	167.1	167.4	167.7	167.9	168.2	168.5	168.6	168.6	168.5	168.5
175°	167.1	167.4	167.7	167.9	168.1	168.3	168.6	168.4	168.5	168.4	168.4
177.5°	168.7	168.9	169.2	169.4	169.7	169.8	170.1	169.9	169.8	169.6	169.4
180°	167.8	167.8	167.8	167.8	167.8	167.8	167.8	167.8	167.8	167.8	167.8



TEST NUMBER: P1444722
 CATALOG NUMBER: EHBR1-18-UNV-TA-L935-UPL12

CANDELA DISTRIBUTION (continued):

	192.5°	195°	197.5°	200°	202.5°	205°	207.5°	210°	212.5°	215°	217.5°
0°	14339.1	14339.1	14339.1	14339.1	14339.1	14339.1	14339.1	14339.1	14339.1	14339.1	14339.1
2.5°	14312.4	14319.5	14330.5	14340.4	14355.3	14367.1	14384.9	14398.3	14418.2	14431.3	14453.0
5°	14313.7	14341.7	14378.5	14414.4	14457.6	14496.8	14545.6	14587.1	14636.0	14676.0	14726.1
7.5°	14333.9	14387.9	14452.6	14517.9	14591.6	14660.6	14738.3	14808.7	14885.5	14950.7	15021.8
10°	14348.8	14432.1	14527.5	14623.4	14724.5	14818.4	14913.1	14995.0	15071.5	15134.5	15190.2
12.5°	14328.6	14443.4	14565.7	14683.9	14796.3	14893.3	14974.9	15037.9	15081.3	15110.9	15117.8
15°	14259.7	14397.9	14530.9	14648.6	14741.8	14813.8	14850.9	14868.3	14849.7	14818.6	14750.4
17.5°	14131.2	14276.9	14395.8	14488.7	14537.9	14557.5	14526.6	14473.0	14368.2	14251.8	14083.9
20°	13895.6	14031.2	14117.5	14168.2	14155.0	14106.2	13989.8	13848.3	13639.2	13416.2	13121.9
22.5°	13482.1	13600.7	13646.7	13650.5	13570.1	13448.0	13238.1	12995.5	12665.4	12322.3	11900.3
25°	12861.6	12965.5	12972.7	12932.0	12784.8	12587.0	12278.9	11935.5	11487.1	11029.8	10501.0
27.5°	12020.0	12119.6	12095.2	12019.1	11814.8	11550.3	11155.6	10712.2	10159.2	9619.2	9034.2
30°	10962.1	11068.6	11040.0	10942.3	10699.4	10386.6	9922.2	9407.1	8793.2	8216.4	7623.6
32.5°	9696.1	9830.8	9811.0	9718.2	9464.6	9130.0	8626.1	8079.7	7451.6	6883.2	6306.5
35°	8257.1	8420.7	8429.1	8368.4	8133.0	7802.2	7304.7	6775.8	6174.2	5637.9	5105.2
37.5°	6706.7	6896.3	6935.3	6918.9	6723.9	6431.9	5978.5	5504.0	4971.1	4501.1	4045.5
40°	5147.9	5339.7	5406.3	5426.1	5282.2	5056.0	4683.9	4301.0	3866.5	3485.7	3123.8
42.5°	3726.2	3896.3	3960.7	4001.2	3911.3	3760.5	3489.1	3210.9	2892.6	2617.9	2354.6
45°	2587.9	2708.3	2757.2	2797.9	2749.0	2664.0	2492.6	2318.6	2108.5	1928.9	1759.0
47.5°	1809.3	1875.7	1908.0	1927.8	1908.8	1864.5	1771.1	1670.5	1551.8	1447.0	1346.1
50°	1341.1	1376.4	1393.4	1404.8	1390.9	1366.3	1315.8	1261.0	1195.8	1136.4	1078.4
52.5°	1062.8	1083.1	1093.1	1099.3	1091.3	1076.3	1046.9	1014.4	975.3	938.6	919.3
55°	895.4	894.3	917.5	906.3	917.5	892.5	887.2	851.5	819.0	796.2	771.5
57.5°	738.4	748.9	753.3	758.3	755.1	750.5	738.0	725.2	708.1	693.8	678.6
60°	639.1	647.8	652.7	657.6	657.4	655.6	648.4	640.8	630.1	621.5	612.2
62.5°	570.8	578.3	583.1	587.8	588.3	587.6	582.1	576.8	569.5	564.2	557.8
65°	517.1	522.3	525.6	529.4	529.1	528.1	523.2	518.8	512.8	509.1	504.4
67.5°	460.8	464.8	467.3	470.8	471.6	471.7	469.0	466.9	464.0	463.0	461.4
70°	420.7	425.5	429.7	434.1	436.6	437.8	436.6	435.6	433.9	433.1	431.9
72.5°	390.4	394.5	397.7	401.8	404.1	405.8	404.9	404.2	402.8	402.6	401.7
75°	352.8	355.6	357.5	360.5	361.7	363.3	362.6	363.0	362.4	363.6	363.6
77.5°	307.6	309.7	310.5	312.8	313.0	314.9	315.2	317.4	318.9	322.4	324.2
80°	256.7	258.0	258.0	260.3	261.3	264.5	265.9	269.5	271.2	274.2	274.4
82.5°	199.4	197.9	199.4	198.4	201.4	204.8	205.4	208.4	209.1	211.0	209.5
85°	136.3	136.2	135.0	135.2	134.3	134.7	134.2	134.8	134.2	134.3	132.9
87.5°	65.3	65.9	64.4	65.0	63.5	64.2	63.0	63.9	62.5	62.7	60.5
90°	15.0	15.4	15.8	16.1	16.7	17.8	18.9	20.0	21.4	22.4	23.7
92.5°	16.2	16.9	17.6	18.1	18.8	20.6	22.4	24.3	26.1	27.9	29.7
95°	18.6	19.1	19.7	20.3	20.8	23.5	26.1	28.7	31.4	34.1	36.7
97.5°	21.1	21.5	21.8	22.1	22.5	25.6	28.7	31.8	34.9	38.1	41.1
100°	24.3	24.7	25.1	25.6	25.9	33.1	40.2	47.4	54.6	61.8	69.0
102.5°	39.5	42.1	44.6	47.2	49.8	67.2	84.6	101.9	119.1	136.5	153.9
105°	90.1	98.5	107.1	115.6	124.0	150.3	176.6	202.9	229.1	255.4	281.7
107.5°	182.3	197.1	212.1	226.9	241.8	266.6	291.3	315.9	340.7	365.4	390.1
110°	279.2	292.0	304.9	317.8	330.6	350.2	369.9	389.4	409.0	428.7	448.3



TEST NUMBER: P1444722
 CATALOG NUMBER: EHBR1-18-UNV-TA-L935-UPL12

CANDELA DISTRIBUTION (continued):

	192.5°	195°	197.5°	200°	202.5°	205°	207.5°	210°	212.5°	215°	217.5°
112.5°	336.0	343.8	351.7	359.4	367.2	381.7	396.1	410.5	424.9	439.1	453.5
115°	351.1	355.1	359.4	363.4	367.6	376.3	384.9	393.6	402.2	410.8	419.5
117.5°	341.6	343.1	344.6	345.9	347.4	351.8	356.4	360.7	365.2	369.6	374.0
120°	317.8	317.6	317.5	317.3	317.1	318.4	319.8	321.2	322.7	323.9	325.2
122.5°	290.8	289.8	288.8	287.7	286.7	286.0	285.6	284.9	284.5	284.0	283.4
125°	265.4	264.3	263.2	262.1	260.9	259.7	258.4	257.0	255.7	254.4	253.0
127.5°	243.8	242.8	241.9	240.8	239.8	238.3	236.8	235.3	233.8	232.4	230.8
130°	226.0	225.3	224.6	223.7	223.0	221.7	220.4	219.1	217.7	216.4	215.1
132.5°	213.4	212.9	212.4	211.7	211.2	209.9	208.8	207.5	206.4	205.1	204.0
135°	203.7	203.4	203.2	202.7	202.3	201.3	200.5	199.5	198.6	197.7	196.8
137.5°	195.9	195.8	195.7	195.4	195.3	194.4	193.7	192.9	192.1	191.3	190.6
140°	191.1	191.0	190.9	190.7	190.5	189.7	188.9	188.0	187.2	186.4	185.6
142.5°	185.9	185.9	185.8	185.6	185.4	184.7	184.3	183.5	182.9	182.3	181.6
145°	182.3	182.3	182.4	182.2	182.3	181.4	180.8	179.9	179.4	178.5	177.9
147.5°	178.7	178.7	178.8	178.8	178.9	178.2	177.7	177.0	176.6	175.8	175.4
150°	176.2	176.2	176.1	176.1	176.0	175.5	174.9	174.2	173.7	173.0	172.6
152.5°	173.7	173.7	173.7	173.7	173.8	173.3	172.7	172.0	171.4	170.8	170.2
155°	171.6	171.7	171.7	171.7	171.7	171.1	170.6	170.0	169.5	168.8	168.3
157.5°	169.9	170.0	170.1	170.2	170.2	169.8	169.3	168.8	168.3	167.9	167.4
160°	168.8	169.0	169.1	169.1	169.3	168.9	168.6	168.1	167.8	167.3	166.8
162.5°	168.5	168.7	168.8	168.8	168.9	168.6	168.2	167.9	167.4	166.9	166.5
165°	167.7	167.7	167.8	167.8	167.8	167.5	167.3	167.0	166.8	166.5	166.2
167.5°	168.3	168.3	168.4	168.4	168.4	168.2	168.2	167.9	167.7	167.5	167.3
170°	168.5	168.5	168.5	168.6	168.6	168.4	168.1	167.9	167.9	167.5	167.3
172.5°	168.4	168.4	168.3	168.3	168.2	168.1	167.9	167.9	167.8	167.7	167.5
175°	168.3	168.2	168.1	168.1	167.9	167.9	167.9	167.9	167.9	167.9	167.8
177.5°	169.3	169.2	168.9	168.8	168.7	168.6	168.6	168.6	168.6	168.5	168.4
180°	167.8	167.8	167.8	167.8	167.8	167.8	167.8	167.8	167.8	167.8	167.8



TEST NUMBER: P1444722
 CATALOG NUMBER: EHBR1-18-UNV-TA-L935-UPL12

CANDELA DISTRIBUTION (continued):

	220°	222.5°	225°	227.5°	230°	232.5°	235°	237.5°	240°	242.5°	245°
0°	14339.1	14339.1	14339.1	14339.1	14339.1	14339.1	14339.1	14339.1	14339.1	14339.1	14339.1
2.5°	14466.5	14377.1	14365.3	14371.6	14386.5	14392.1	14408.1	14412.5	14428.8	14432.7	14448.3
5°	14764.9	14646.8	14652.7	14681.2	14724.1	14749.8	14792.0	14814.1	14854.5	14872.8	14909.2
7.5°	15079.7	14987.0	15015.9	15063.7	15122.6	15163.2	15214.0	15247.1	15290.8	15318.0	15352.9
10°	15234.2	15208.8	15240.6	15278.4	15311.9	15338.2	15359.7	15376.9	15388.1	15398.7	15403.3
12.5°	15116.7	15156.0	15161.3	15157.7	15135.5	15118.6	15080.4	15054.6	15008.6	14980.6	14925.9
15°	14680.6	14767.1	14719.2	14646.7	14540.7	14452.2	14327.3	14234.4	14104.3	14016.1	13885.6
17.5°	13915.5	14024.6	13899.9	13732.2	13518.8	13336.3	13109.0	12928.5	12702.6	12538.2	12327.3
20°	12838.3	12940.3	12717.8	12439.8	12109.7	11831.9	11504.4	11243.0	10938.6	10712.2	10438.9
22.5°	11497.2	11569.8	11256.3	10881.6	10461.0	10114.0	9722.4	9409.0	9061.7	8802.7	8511.3
25°	10013.5	10033.1	9657.0	9225.2	8756.5	8366.5	7948.4	7619.0	7264.7	7002.3	6716.4
27.5°	8515.9	8487.1	8080.7	7622.9	7129.8	6724.4	6316.7	6008.0	5697.6	5461.3	5214.9
30°	7102.4	7032.8	6610.8	6140.2	5661.6	5298.3	4959.7	4711.8	4464.9	4277.4	4079.7
32.5°	5806.2	5708.0	5297.2	4856.3	4453.1	4172.6	3921.6	3734.0	3534.7	3376.3	3210.3
35°	4658.1	4553.5	4189.6	3815.7	3510.6	3303.8	3106.5	2952.6	2783.4	2649.8	2505.6
37.5°	3672.8	3587.0	3282.2	2988.1	2757.2	2597.0	2435.4	2309.6	2169.8	2110.9	1956.9
40°	2835.4	2775.5	2537.1	2320.3	2146.9	2071.7	1907.6	1790.1	1685.5	1599.3	1515.8
42.5°	2211.6	2190.4	1958.5	1789.4	1667.3	1572.5	1481.0	1406.8	1334.5	1275.1	1219.0
45°	1623.1	1606.2	1503.2	1405.6	1322.4	1256.2	1194.4	1143.3	1096.0	1056.9	1021.3
47.5°	1263.9	1258.4	1199.2	1138.6	1086.2	1043.6	1003.6	969.7	938.3	912.1	903.6
50°	1028.0	1027.2	992.4	955.1	917.7	893.2	867.5	847.5	827.4	811.7	795.1
52.5°	873.4	869.6	846.1	823.0	800.9	784.8	768.4	755.6	742.3	732.6	722.3
55°	751.9	755.9	742.3	728.5	714.6	704.6	693.2	684.7	675.6	669.4	663.3
57.5°	667.5	672.8	665.7	657.8	649.4	642.8	634.9	629.1	622.9	619.0	615.5
60°	606.2	611.9	609.1	605.1	599.9	595.9	590.9	587.7	583.7	581.5	579.5
62.5°	554.0	561.2	560.2	558.4	555.0	552.9	550.1	548.6	546.1	545.1	544.2
65°	502.1	510.2	510.0	509.1	507.3	506.6	504.9	504.6	503.3	503.8	503.6
67.5°	461.2	468.2	469.8	470.9	470.8	471.3	471.1	471.8	471.8	472.8	473.5
70°	431.8	436.6	437.8	438.9	439.3	440.2	440.2	440.8	440.7	441.5	441.7
72.5°	402.0	408.4	409.5	410.5	410.5	411.4	410.9	410.7	409.5	409.2	408.3
75°	364.8	373.0	374.9	376.0	376.2	377.0	375.9	375.2	373.0	372.2	370.7
77.5°	326.1	334.6	335.9	336.3	335.6	335.8	333.4	331.9	329.2	328.1	326.6
80°	275.6	288.2	289.3	288.5	286.5	286.1	283.9	282.4	279.1	278.1	276.8
82.5°	209.7	224.5	226.6	227.5	225.9	226.3	224.1	223.2	220.2	219.8	217.8
85°	132.4	147.2	149.6	149.3	147.6	147.3	146.0	146.5	146.2	147.0	147.5
87.5°	60.8	75.1	78.6	77.5	77.3	76.3	74.0	74.9	76.2	77.1	77.2
90°	24.8	30.4	31.4	30.7	28.7	27.9	26.0	25.6	23.9	23.3	21.7
92.5°	31.6	33.4	35.3	33.6	32.0	30.4	28.7	27.0	25.5	23.7	22.2
95°	39.3	41.9	44.5	42.3	40.2	38.0	35.8	33.7	31.5	29.4	27.2
97.5°	44.2	47.3	50.3	48.1	46.0	43.7	41.5	39.4	37.3	35.1	32.9
100°	76.1	83.0	90.2	84.0	77.8	71.6	65.4	59.3	53.1	46.9	40.8
102.5°	171.1	188.3	205.6	190.1	174.5	158.9	143.3	127.7	112.1	96.4	80.9
105°	307.9	334.0	360.2	336.2	312.5	288.7	264.9	241.2	217.3	193.5	169.8
107.5°	414.7	439.0	463.6	442.0	420.5	399.0	377.4	355.9	334.4	312.8	291.4
110°	467.8	486.9	506.4	491.8	477.4	462.9	448.5	433.9	419.4	405.0	390.6



TEST NUMBER: P1444722
 CATALOG NUMBER: EHBR1-18-UNV-TA-L935-UPL12

CANDELA DISTRIBUTION (continued):

	220°	222.5°	225°	227.5°	230°	232.5°	235°	237.5°	240°	242.5°	245°
112.5°	467.8	481.5	495.7	487.1	478.5	470.1	461.6	453.1	444.6	436.2	427.8
115°	428.1	435.9	444.4	440.8	437.5	434.0	430.6	427.2	423.8	420.4	417.2
117.5°	378.4	381.8	386.0	385.3	384.6	383.8	383.1	382.4	381.7	381.1	380.5
120°	326.6	326.8	327.8	328.1	328.5	328.7	329.1	329.4	329.7	330.1	330.5
122.5°	282.8	281.1	280.2	280.4	280.8	281.0	281.2	281.5	281.9	282.1	282.5
125°	251.7	249.1	247.4	246.7	246.0	245.3	244.5	243.7	243.1	242.4	241.8
127.5°	229.3	226.6	224.7	223.2	221.8	220.1	218.7	217.2	215.7	214.1	212.7
130°	213.8	211.0	209.4	207.5	205.7	203.7	201.9	200.2	198.3	196.4	194.6
132.5°	202.7	200.0	198.5	196.8	195.0	193.2	191.5	189.6	187.8	186.0	184.3
135°	195.8	193.3	192.1	190.3	188.9	187.2	185.4	183.9	182.3	180.5	179.0
137.5°	189.7	187.3	186.2	184.8	183.6	182.3	181.0	179.6	178.3	176.8	175.6
140°	184.7	182.2	181.0	180.3	179.5	178.6	177.8	177.1	176.3	175.5	174.6
142.5°	181.0	178.5	177.5	177.0	176.6	175.9	175.6	175.0	174.5	173.7	173.2
145°	177.1	174.4	173.3	173.1	173.1	172.9	172.8	172.7	172.6	172.4	172.3
147.5°	174.6	171.9	170.8	170.8	170.8	170.8	170.8	170.8	170.8	170.8	170.8
150°	171.7	168.7	167.4	167.6	167.7	167.9	167.9	168.1	168.3	168.4	168.6
152.5°	169.5	165.7	164.2	164.4	164.7	164.8	165.0	165.2	165.5	165.7	165.9
155°	167.6	163.5	162.0	162.0	162.0	162.1	162.1	162.3	162.4	162.6	162.8
157.5°	166.7	162.4	161.0	160.9	160.8	160.9	160.9	160.9	161.0	161.1	161.1
160°	166.3	162.1	160.6	160.5	160.4	160.4	160.4	160.3	160.4	160.5	160.6
162.5°	165.9	161.8	160.4	160.2	160.1	160.1	160.1	160.0	160.1	160.1	160.1
165°	165.9	162.2	160.9	160.8	160.9	160.8	160.9	160.9	161.0	161.1	161.2
167.5°	166.9	163.7	162.7	162.6	162.4	162.2	162.2	162.1	162.1	162.0	162.0
170°	167.1	164.4	163.6	163.6	163.7	163.5	163.5	163.6	163.6	163.5	163.6
172.5°	167.3	165.4	164.8	164.9	165.0	165.0	165.2	165.2	165.4	165.5	165.7
175°	167.7	166.6	166.3	166.2	166.2	166.3	166.4	166.4	166.5	166.6	166.8
177.5°	168.4	168.0	167.9	167.9	167.9	167.9	167.9	167.9	167.9	167.9	167.9
180°	167.8	167.8	167.8	167.8	167.8	167.8	167.8	167.8	167.8	167.8	167.8



TEST NUMBER: P1444722
 CATALOG NUMBER: EHBR1-18-UNV-TA-L935-UPL12

CANDELA DISTRIBUTION (continued):

	247.5°	250°	252.5°	255°	257.5°	260°	262.5°	265°	267.5°	270°	272.5°
0°	14339.1	14339.1	14339.1	14339.1	14339.1	14339.1	14339.1	14339.1	14339.1	14339.1	14339.1
2.5°	14451.2	14468.1	14466.8	14482.5	14481.8	14496.6	14493.6	14506.4	14503.4	14514.4	14508.0
5°	14925.2	14957.3	14967.9	14996.8	15002.8	15028.7	15029.2	15049.8	15047.3	15063.4	15054.9
7.5°	15373.7	15403.6	15417.8	15440.3	15451.5	15470.1	15477.4	15492.7	15496.3	15505.4	15505.1
10°	15411.5	15411.4	15418.5	15415.3	15421.6	15417.9	15425.6	15422.8	15434.2	15431.3	15439.8
12.5°	14902.3	14851.7	14833.3	14787.9	14778.0	14739.1	14741.8	14716.9	14728.9	14713.5	14739.7
15°	13807.9	13690.7	13632.8	13530.9	13498.9	13418.3	13411.8	13358.3	13372.7	13344.7	13385.7
17.5°	12190.8	12006.2	11904.9	11756.1	11697.0	11583.1	11560.1	11491.3	11502.0	11467.2	11516.7
20°	10262.6	10039.6	9911.9	9739.7	9662.9	9527.1	9491.1	9414.0	9423.6	9389.1	9445.0
22.5°	8312.5	8079.0	7934.8	7754.4	7656.4	7528.6	7490.3	7412.9	7417.3	7384.9	7438.6
25°	6520.4	6296.6	6156.6	5992.7	5907.6	5790.5	5750.2	5680.8	5684.7	5657.9	5706.2
27.5°	5044.0	4860.4	4743.3	4605.9	4529.7	4433.3	4394.1	4335.6	4335.4	4315.8	4356.2
30°	3941.6	3788.4	3683.2	3563.6	3491.9	3405.1	3367.1	3314.8	3312.5	3298.6	3330.7
32.5°	3086.2	2949.9	2853.9	2748.7	2684.4	2609.9	2573.9	2531.8	2528.0	2515.4	2541.8
35°	2399.1	2284.3	2201.8	2113.2	2119.7	2009.8	2028.0	1942.5	1919.4	1914.3	1933.9
37.5°	1854.3	1765.3	1698.4	1631.9	1587.0	1540.5	1515.5	1493.0	1490.5	1488.3	1502.0
40°	1451.4	1389.1	1340.5	1294.9	1264.0	1235.6	1219.9	1207.6	1204.6	1203.0	1211.3
42.5°	1174.7	1132.6	1101.3	1073.5	1054.7	1039.3	1030.7	1023.8	1021.5	1021.5	1026.4
45°	992.4	967.0	946.8	929.4	917.5	922.7	907.2	915.3	904.6	915.7	908.3
47.5°	874.0	852.3	839.8	827.6	820.2	814.4	814.6	814.7	817.1	817.4	819.8
50°	782.6	770.0	761.3	753.5	749.7	746.6	747.7	748.5	750.7	750.9	752.6
52.5°	714.9	706.7	701.4	696.6	694.9	693.2	693.9	693.5	694.6	694.1	695.5
55°	659.9	656.0	654.4	652.6	652.8	652.3	652.6	650.9	649.8	648.5	649.7
57.5°	614.7	614.1	615.3	616.0	618.1	618.8	619.3	617.3	615.4	613.7	614.7
60°	579.9	580.8	583.5	585.8	588.8	590.1	590.9	589.7	588.4	586.9	587.8
62.5°	545.5	546.9	550.1	552.7	556.3	558.1	560.2	560.3	560.8	560.3	560.9
65°	505.7	507.4	510.4	512.4	515.8	517.4	519.5	519.9	521.0	520.8	521.8
67.5°	475.4	476.9	479.4	481.4	484.3	486.1	487.9	488.0	488.4	488.3	489.3
70°	443.1	443.8	446.1	447.7	450.7	452.4	454.6	455.2	456.5	456.8	457.8
72.5°	408.7	408.4	409.7	410.4	412.7	414.0	416.7	418.3	420.4	421.1	421.8
75°	371.1	370.9	372.4	373.0	374.9	376.4	379.4	381.4	384.8	386.3	385.8
77.5°	327.7	328.5	331.4	333.1	335.6	337.4	341.3	344.5	350.7	353.6	350.7
80°	279.1	280.0	283.0	284.6	287.9	290.0	294.5	298.1	303.8	305.1	303.4
82.5°	219.5	219.7	222.4	223.6	227.9	231.1	236.7	239.6	243.2	242.6	242.2
85°	149.6	151.6	155.2	158.6	163.9	169.0	174.3	178.6	175.6	180.4	174.9
87.5°	79.9	79.8	84.5	83.7	91.2	95.4	100.1	102.2	104.7	104.1	104.2
90°	21.3	20.1	20.1	18.9	19.3	17.9	18.7	17.5	18.5	16.9	19.3
92.5°	20.5	19.7	18.8	17.9	16.9	16.2	15.2	14.3	13.5	12.6	13.5
95°	25.0	24.2	23.4	22.5	21.7	20.9	20.1	19.3	18.5	17.7	18.7
97.5°	30.7	30.3	29.8	29.3	28.8	28.4	27.9	27.4	26.8	26.4	27.0
100°	34.6	34.6	34.6	34.6	34.5	34.5	34.5	34.5	34.5	34.5	35.1
102.5°	65.3	63.7	62.2	60.6	59.1	57.5	55.9	54.4	52.8	51.3	53.6
105°	146.0	139.9	133.8	127.6	121.5	115.5	109.4	103.2	97.2	91.1	97.3
107.5°	269.9	258.8	247.6	236.6	225.4	214.3	203.2	192.1	181.0	169.9	179.9
110°	376.2	364.3	352.6	340.8	328.9	317.2	305.4	293.7	281.9	270.1	279.5



TEST NUMBER: P1444722
 CATALOG NUMBER: EHBR1-18-UNV-TA-L935-UPL12

CANDELA DISTRIBUTION (continued):

	247.5°	250°	252.5°	255°	257.5°	260°	262.5°	265°	267.5°	270°	272.5°
112.5°	419.4	411.6	404.0	396.3	388.6	381.1	373.5	365.9	358.4	350.7	355.4
115°	413.8	410.1	406.5	402.8	399.2	395.5	391.9	388.3	384.7	381.1	381.4
117.5°	379.8	378.6	377.3	376.0	374.8	373.7	372.4	371.2	370.1	369.0	366.4
120°	331.0	331.2	331.4	331.9	332.3	332.6	332.9	333.4	333.9	334.3	330.9
122.5°	282.8	283.6	284.3	285.2	286.1	287.0	287.9	288.9	289.9	290.9	287.5
125°	241.1	241.8	242.5	243.4	244.2	245.1	246.0	247.1	248.0	249.1	246.2
127.5°	211.3	211.4	211.5	211.8	212.1	212.4	212.7	213.3	213.7	214.2	212.4
130°	192.8	192.2	191.8	191.3	191.0	190.7	190.4	190.1	190.1	189.9	189.1
132.5°	182.4	181.5	180.6	179.8	179.0	178.3	177.5	177.0	176.4	175.9	175.6
135°	177.3	176.1	174.9	173.7	172.7	171.7	170.8	169.9	169.1	168.3	168.6
137.5°	174.2	173.1	171.8	170.8	169.7	168.8	167.7	166.9	166.0	165.2	165.6
140°	173.8	172.6	171.4	170.3	169.3	168.3	167.4	166.6	165.6	165.0	165.2
142.5°	172.7	171.7	170.7	169.6	168.6	167.8	166.9	166.1	165.3	164.8	165.0
145°	172.0	171.3	170.5	169.7	169.0	168.5	167.8	167.2	166.7	166.3	166.5
147.5°	170.8	170.3	169.6	169.1	168.5	168.1	167.6	167.2	166.8	166.6	166.6
150°	168.7	168.4	167.9	167.7	167.2	166.9	166.7	166.4	166.1	166.0	165.9
152.5°	166.1	165.9	165.5	165.2	164.9	164.7	164.4	164.2	164.0	163.9	163.9
155°	163.0	162.8	162.7	162.5	162.4	162.4	162.3	162.3	162.3	162.2	162.3
157.5°	161.2	161.2	161.2	161.3	161.3	161.4	161.3	161.5	161.5	161.7	161.8
160°	160.8	160.8	160.7	160.7	160.7	160.7	160.6	160.7	160.7	160.8	161.0
162.5°	160.2	160.4	160.4	160.5	160.7	160.8	161.0	161.2	161.3	161.5	161.7
165°	161.3	161.2	161.2	161.2	161.3	161.3	161.3	161.6	161.6	161.7	162.0
167.5°	161.9	162.1	162.1	162.1	162.2	162.4	162.6	162.8	163.0	163.2	163.4
170°	163.6	163.6	163.6	163.6	163.6	163.7	163.8	163.8	163.9	164.0	164.1
172.5°	165.8	165.8	165.7	165.8	165.7	165.8	165.8	165.8	165.8	165.9	165.9
175°	166.7	166.9	167.0	167.0	167.1	167.2	167.3	167.3	167.4	167.5	167.5
177.5°	167.9	167.9	167.9	167.9	167.9	168.0	168.0	168.0	168.0	167.9	168.0
180°	167.8	167.8	167.8	167.8	167.8	167.8	167.8	167.8	167.8	167.8	167.8



TEST NUMBER: P1444722
 CATALOG NUMBER: EHBR1-18-UNV-TA-L935-UPL12

CANDELA DISTRIBUTION (continued):

	275°	277.5°	280°	282.5°	285°	287.5°	290°	292.5°	295°	297.5°	300°
0°	14339.1	14339.1	14339.1	14339.1	14339.1	14339.1	14339.1	14339.1	14339.1	14339.1	14339.1
2.5°	14518.7	14511.4	14518.8	14511.3	14518.8	14509.8	14515.9	14506.2	14508.6	14498.5	14501.1
5°	15067.6	15056.0	15062.2	15047.1	15048.8	15028.7	15028.3	15004.9	14998.7	14972.1	14960.4
7.5°	15511.6	15507.7	15509.9	15500.2	15499.1	15485.4	15478.8	15459.5	15447.4	15422.8	15406.1
10°	15441.3	15452.6	15455.5	15467.1	15469.4	15480.9	15483.3	15494.7	15497.0	15505.6	15505.7
12.5°	14738.5	14776.9	14786.1	14833.5	14853.6	14907.8	14936.9	14996.8	15032.4	15092.0	15128.7
15°	13384.5	13451.0	13477.5	13570.2	13621.5	13729.7	13797.6	13921.8	14009.6	14141.5	14235.6
17.5°	11521.1	11614.0	11655.8	11781.6	11863.6	12023.3	12138.4	12327.8	12472.8	12683.4	12850.3
20°	9454.6	9557.9	9614.8	9758.2	9855.0	10041.5	10185.2	10418.1	10612.1	10878.9	11107.1
22.5°	7455.5	7553.7	7617.0	7762.8	7871.7	8066.3	8226.9	8472.7	8690.2	8990.9	9264.3
25°	5724.4	5814.5	5871.6	6003.5	6105.8	6284.7	6438.0	6674.3	6887.2	7188.7	7469.2
27.5°	4376.2	4451.6	4506.7	4619.2	4709.5	4861.1	4992.9	5188.2	5371.5	5632.5	5882.2
30°	3350.3	3417.2	3470.8	3568.8	3652.4	3783.9	3899.8	4063.8	4215.6	4423.2	4621.8
32.5°	2560.3	2617.8	2665.5	2751.3	2827.2	2945.6	3050.0	3193.7	3324.1	3500.1	3663.6
35°	1952.1	2065.3	2057.3	2175.6	2194.7	2279.6	2372.7	2498.5	2613.9	2763.5	2902.6
37.5°	1515.1	1547.0	1581.1	1633.4	1688.3	1765.6	1844.3	1997.9	2054.3	2167.4	2282.6
40°	1221.8	1243.3	1265.9	1301.2	1339.6	1394.1	1451.4	1524.7	1599.8	1691.6	1785.2
42.5°	1032.9	1045.1	1059.4	1080.3	1103.9	1138.4	1176.8	1226.4	1278.7	1343.3	1409.2
45°	922.9	917.1	921.4	932.5	946.8	967.8	992.0	1022.7	1056.8	1098.6	1143.1
47.5°	820.2	822.6	823.9	829.9	837.5	851.7	866.4	887.2	927.5	939.9	964.2
50°	752.5	753.6	753.3	756.3	760.2	769.4	778.9	793.0	807.1	825.8	843.7
52.5°	695.7	697.3	697.1	699.1	701.1	706.9	712.9	723.0	732.2	744.1	754.3
55°	650.8	653.0	653.8	655.5	656.5	659.6	662.0	666.8	670.7	677.5	683.6
57.5°	616.3	619.3	620.7	621.3	620.1	619.9	619.1	620.1	620.9	624.6	628.0
60°	589.2	591.6	591.9	591.6	589.4	587.8	585.2	584.4	583.9	585.8	587.7
62.5°	560.7	561.7	561.0	560.3	557.8	556.2	553.6	552.6	551.7	553.0	553.9
65°	521.4	522.1	521.4	521.0	518.7	517.5	515.2	514.5	513.3	513.5	513.3
67.5°	489.5	490.2	489.7	489.1	487.5	486.7	485.1	484.0	482.4	481.9	480.8
70°	457.7	458.2	457.3	456.8	455.0	454.3	452.7	452.4	451.2	450.9	449.7
72.5°	421.1	421.1	419.8	419.4	418.1	418.1	417.5	418.0	418.0	418.6	418.4
75°	383.6	383.0	381.5	381.2	380.2	380.7	379.9	380.8	381.0	382.4	382.6
77.5°	346.0	344.1	341.1	339.6	337.6	337.3	336.2	337.0	336.7	338.3	339.0
80°	298.6	296.3	292.4	290.6	288.1	287.8	286.7	287.8	287.2	289.1	290.4
82.5°	238.5	236.4	232.4	230.8	228.1	228.4	227.2	228.4	228.2	230.9	232.6
85°	176.4	175.0	170.8	167.2	163.1	160.7	158.3	158.0	157.2	158.3	159.3
87.5°	101.9	100.6	97.3	95.3	88.1	88.4	85.6	85.4	84.7	84.1	85.6
90°	19.0	21.0	20.8	22.7	22.7	24.8	25.1	27.1	27.0	29.1	29.3
92.5°	14.3	15.2	16.1	16.9	17.9	18.8	19.6	20.5	22.4	24.2	26.2
95°	19.7	20.8	21.8	22.7	23.7	24.8	25.8	26.8	29.6	32.4	35.2
97.5°	27.8	28.4	29.1	29.7	30.5	31.1	31.8	32.4	35.5	38.5	41.5
100°	35.6	36.2	36.7	37.3	37.8	38.3	38.9	39.4	45.2	51.0	56.7
102.5°	55.9	58.2	60.5	62.8	65.1	67.3	69.7	72.0	85.3	98.4	111.7
105°	103.7	109.9	116.3	122.5	128.9	135.1	141.6	147.8	168.9	190.1	211.2
107.5°	189.8	199.8	209.7	219.7	229.7	239.6	249.5	259.6	280.1	300.9	321.4
110°	289.0	298.5	308.0	317.5	327.0	336.4	346.0	355.6	368.0	380.4	392.8



TEST NUMBER: P1444722
 CATALOG NUMBER: EHBR1-18-UNV-TA-L935-UPL12

CANDELA DISTRIBUTION (continued):

	275°	277.5°	280°	282.5°	285°	287.5°	290°	292.5°	295°	297.5°	300°
112.5°	360.0	364.5	369.2	373.9	378.6	383.2	387.9	392.6	398.9	405.0	411.4
115°	381.7	382.0	382.4	382.6	382.9	383.3	383.7	384.2	386.2	388.2	390.3
117.5°	363.9	361.4	358.8	356.4	353.8	351.5	349.0	346.8	346.4	346.0	345.9
120°	327.6	324.3	320.9	317.4	314.2	310.9	307.7	304.5	303.0	301.4	299.8
122.5°	284.2	280.9	277.5	274.2	271.0	267.7	264.6	261.6	260.5	259.5	258.4
125°	243.3	240.6	237.9	235.1	232.6	229.9	227.4	224.9	225.0	225.0	225.2
127.5°	210.7	209.1	207.5	205.8	204.4	202.9	201.5	200.0	200.9	201.9	202.7
130°	188.4	187.8	187.2	186.5	186.2	185.6	185.2	184.7	186.3	187.6	189.2
132.5°	175.6	175.6	175.6	175.7	175.8	176.0	176.3	176.4	178.1	179.7	181.4
135°	168.8	169.0	169.5	169.8	170.4	170.8	171.4	171.9	173.6	175.1	176.7
137.5°	166.0	166.5	166.9	167.6	168.2	168.8	169.6	170.2	171.5	172.7	174.0
140°	165.6	165.9	166.3	166.9	167.3	167.9	168.5	169.0	170.2	171.1	172.2
142.5°	165.4	165.6	166.0	166.5	167.0	167.5	168.0	168.5	169.3	170.0	171.0
145°	166.7	166.9	167.3	167.6	167.9	168.4	168.8	169.1	169.7	170.2	170.8
147.5°	166.8	166.9	167.2	167.5	167.9	168.1	168.3	168.6	169.0	169.4	169.8
150°	166.0	166.2	166.4	166.4	166.7	166.9	167.1	167.3	167.7	167.9	168.2
152.5°	164.0	164.1	164.2	164.3	164.5	164.7	164.8	165.0	165.3	165.6	165.9
155°	162.5	162.7	162.9	163.0	163.3	163.4	163.7	163.9	164.1	164.3	164.6
157.5°	162.0	162.1	162.3	162.5	162.7	162.9	163.1	163.2	163.5	163.7	163.9
160°	161.2	161.5	161.7	162.1	162.3	162.5	162.8	163.1	163.3	163.5	163.7
162.5°	161.9	162.1	162.3	162.5	162.7	162.9	163.0	163.2	163.6	163.8	164.0
165°	162.2	162.4	162.8	163.0	163.3	163.6	163.8	164.1	164.2	164.5	164.7
167.5°	163.7	163.9	164.2	164.4	164.7	165.0	165.1	165.4	165.6	165.7	165.9
170°	164.4	164.6	164.8	165.0	165.3	165.4	165.7	165.9	166.2	166.4	166.6
172.5°	166.1	166.2	166.4	166.6	166.8	166.9	167.1	167.3	167.6	167.8	167.9
175°	167.5	167.5	167.6	167.6	167.7	167.7	167.8	167.9	167.9	167.9	167.9
177.5°	168.1	168.1	168.2	168.3	168.4	168.4	168.5	168.6	168.6	168.6	168.6
180°	167.8	167.8	167.8	167.8	167.8	167.8	167.8	167.8	167.8	167.8	167.8



TEST NUMBER: P1444722
 CATALOG NUMBER: EHBR1-18-UNV-TA-L935-UPL12

CANDELA DISTRIBUTION (continued):

	302.5°	305°	307.5°	310°	312.5°	315°	317.5°	320°	322.5°	325°	327.5°
0°	14339.1	14339.1	14339.1	14339.1	14339.1	14339.1	14339.1	14339.1	14339.1	14339.1	14339.1
2.5°	14490.9	14491.6	14479.9	14479.2	14468.3	14466.9	14456.2	14453.0	14444.3	14441.2	14432.4
5°	14930.6	14916.4	14883.5	14864.1	14831.6	14810.1	14774.9	14752.0	14718.0	14692.3	14658.2
7.5°	15375.2	15353.1	15316.1	15286.2	15241.2	15205.1	15152.4	15109.1	15052.0	15002.5	14942.4
10°	15505.7	15502.2	15492.8	15479.1	15458.2	15434.5	15398.6	15361.1	15311.1	15256.6	15189.9
12.5°	15184.7	15219.4	15266.7	15294.7	15328.7	15343.7	15357.7	15354.1	15345.0	15317.4	15278.8
15°	14371.9	14469.3	14598.2	14698.1	14813.0	14896.6	14988.9	15046.4	15103.7	15130.2	15146.4
17.5°	13079.0	13263.3	13494.4	13686.0	13907.1	14084.6	14279.2	14425.8	14576.4	14684.3	14782.0
20°	11418.0	11685.1	12012.1	12301.0	12636.8	12928.6	13248.4	13511.0	13781.8	13993.5	14193.9
22.5°	9616.6	9933.8	10329.1	10695.2	11128.2	11517.3	11956.3	12338.4	12737.4	13070.6	13392.9
25°	7845.1	8193.0	8625.2	9033.7	9524.1	9976.7	10497.3	10973.6	11489.2	11936.8	12379.1
27.5°	6227.5	6569.1	7010.3	7445.2	7963.7	8446.0	9003.8	9528.5	10115.6	10657.0	11210.8
30°	4898.0	5187.6	5583.3	6004.5	6516.0	7006.7	7570.6	8110.2	8721.0	9312.2	9936.0
32.5°	3880.5	4101.2	4412.3	4768.5	5240.3	5707.4	6244.4	6765.3	7366.8	7963.9	8612.8
35°	3081.9	3254.0	3491.2	3769.1	4168.7	4571.3	5046.3	5520.0	6081.2	6647.8	7278.5
37.5°	2430.2	2569.9	2755.6	2964.4	3284.9	3615.4	4004.8	4397.5	4885.1	5387.4	5959.0
40°	1897.8	2010.8	2155.4	2311.1	2553.1	2807.8	3109.0	3413.5	3805.2	4215.8	4688.8
42.5°	1490.8	1574.2	1676.3	1790.2	2015.9	2151.2	2355.4	2575.7	2863.6	3161.6	3517.3
45°	1197.3	1254.2	1325.0	1401.3	1506.1	1620.8	1760.6	1907.4	2180.9	2315.1	2531.4
47.5°	999.9	1038.0	1083.1	1131.2	1193.0	1259.7	1342.6	1427.5	1537.1	1650.8	1784.1
50°	866.9	905.7	921.2	946.1	981.8	1020.0	1066.7	1113.5	1172.3	1232.0	1300.6
52.5°	768.2	780.8	797.7	813.5	835.6	879.0	893.1	917.5	950.5	982.7	1018.8
55°	692.8	701.0	712.0	721.5	734.9	747.8	766.3	782.5	804.5	823.9	847.9
57.5°	634.2	639.4	647.0	653.3	662.0	669.1	680.0	688.8	701.5	712.5	727.0
60°	591.6	595.0	600.2	604.2	609.8	613.5	618.9	623.0	629.7	635.3	643.4
62.5°	556.8	558.6	561.8	564.3	567.8	569.7	572.5	574.3	578.1	580.9	585.4
65°	515.0	515.3	517.6	518.6	521.4	522.4	524.8	525.6	528.6	530.7	534.6
67.5°	480.7	479.8	479.8	479.0	479.4	478.6	478.8	478.0	479.2	479.8	482.9
70°	449.4	448.2	447.7	446.3	445.8	444.4	443.9	442.7	442.5	442.0	443.1
72.5°	419.0	418.6	418.7	417.7	417.6	416.6	416.7	416.1	416.7	417.1	418.5
75°	384.0	384.1	384.8	383.9	384.2	383.3	383.6	382.8	383.3	383.1	384.5
77.5°	341.4	342.4	344.2	343.9	344.5	343.5	344.0	342.9	343.1	342.4	343.0
80°	293.5	295.6	298.1	298.0	299.0	298.4	299.3	298.3	298.6	297.4	297.1
82.5°	236.6	238.4	241.0	241.1	243.4	243.9	246.4	246.3	248.0	247.0	246.2
85°	161.7	163.0	165.3	166.6	168.9	170.4	172.9	173.9	172.1	175.5	172.8
87.5°	84.5	87.6	85.8	89.9	89.0	93.1	92.2	96.1	95.3	98.6	98.2
90°	31.9	32.4	35.2	35.7	39.1	40.0	41.5	40.3	41.7	40.6	42.0
92.5°	28.0	30.0	31.9	33.8	35.7	37.7	35.9	34.1	32.4	30.6	28.8
95°	37.9	40.7	43.4	46.2	48.9	51.8	48.8	45.9	42.9	39.9	37.0
97.5°	44.5	47.4	50.4	53.4	56.4	59.4	55.8	52.3	48.8	45.3	41.9
100°	62.5	68.2	74.0	79.8	85.6	91.4	84.9	78.3	71.8	65.2	58.6
102.5°	124.9	138.1	151.4	164.6	177.7	191.1	177.1	163.2	149.4	135.5	121.5
105°	232.4	253.6	274.7	295.8	316.9	338.2	315.8	293.2	270.6	248.2	225.6
107.5°	342.0	362.7	383.5	404.0	424.6	445.4	422.5	399.7	376.9	354.0	331.3
110°	405.3	417.6	430.1	442.6	455.1	467.6	450.9	434.3	417.6	401.0	384.2



TEST NUMBER: P1444722
 CATALOG NUMBER: EHBR1-18-UNV-TA-L935-UPL12

CANDELA DISTRIBUTION (continued):

	302.5°	305°	307.5°	310°	312.5°	315°	317.5°	320°	322.5°	325°	327.5°
112.5°	417.5	423.9	430.1	436.5	442.7	449.1	437.1	425.3	413.4	401.5	389.6
115°	392.3	394.3	396.4	398.6	400.7	402.7	394.8	386.7	378.8	370.9	362.7
117.5°	345.6	345.5	345.1	345.0	344.7	344.5	340.1	335.7	331.2	326.7	322.3
120°	298.3	296.8	295.3	293.7	292.2	290.6	288.8	287.0	285.2	283.4	281.4
122.5°	257.4	256.5	255.4	254.4	253.3	252.2	251.7	251.1	250.4	249.7	249.1
125°	225.3	225.4	225.5	225.6	225.7	225.8	225.5	225.2	225.0	224.7	224.3
127.5°	203.7	204.6	205.5	206.3	207.1	207.9	207.9	207.9	208.0	208.0	208.0
130°	190.5	192.1	193.5	194.8	196.1	197.6	197.5	197.4	197.3	197.2	197.1
132.5°	183.1	184.6	186.3	188.0	189.4	191.0	190.9	190.8	190.5	190.4	190.2
135°	178.3	179.8	181.3	182.9	184.3	185.8	185.5	185.3	185.2	185.0	184.7
137.5°	175.3	176.5	177.6	178.9	180.1	181.3	181.0	180.9	180.5	180.4	180.2
140°	173.2	174.2	175.1	176.2	177.0	178.0	177.7	177.4	177.1	176.7	176.4
142.5°	171.7	172.5	173.1	174.0	174.6	175.5	174.8	174.4	173.9	173.4	172.8
145°	171.3	171.9	172.4	172.9	173.3	173.8	173.2	172.6	171.9	171.4	170.7
147.5°	170.1	170.5	170.8	171.1	171.3	171.7	171.0	170.4	169.8	169.2	168.5
150°	168.5	168.9	169.1	169.4	169.7	169.9	169.3	168.6	167.9	167.2	166.6
152.5°	166.1	166.5	166.7	166.9	167.1	167.4	166.7	166.2	165.4	164.8	164.1
155°	164.7	165.0	165.0	165.3	165.3	165.5	164.9	164.5	163.9	163.3	162.8
157.5°	164.0	164.2	164.4	164.5	164.7	164.8	164.4	164.0	163.5	163.1	162.6
160°	163.9	164.0	164.1	164.2	164.4	164.5	164.0	163.9	163.5	163.1	162.7
162.5°	164.3	164.6	164.8	164.9	165.1	165.3	165.0	164.6	164.1	163.7	163.2
165°	164.8	165.0	165.1	165.3	165.3	165.5	165.1	165.0	164.7	164.4	164.0
167.5°	166.0	166.2	166.3	166.5	166.6	166.7	166.3	166.2	165.9	165.6	165.3
170°	166.8	166.9	167.2	167.3	167.5	167.6	167.4	167.2	166.9	166.8	166.5
172.5°	168.0	168.2	168.3	168.4	168.5	168.8	168.5	168.2	168.0	167.8	167.5
175°	167.9	168.0	168.1	168.1	168.1	168.2	168.0	167.9	167.6	167.4	167.2
177.5°	168.6	168.6	168.6	168.6	168.6	168.6	168.5	168.3	168.2	168.0	167.9
180°	167.8	167.8	167.8	167.8	167.8	167.8	167.8	167.8	167.8	167.8	167.8



TEST NUMBER: P1444722
 CATALOG NUMBER: EHBR1-18-UNV-TA-L935-UPL12

CANDELA DISTRIBUTION (continued):

	330°	332.5°	335°	337.5°	340°	342.5°	345°	347.5°	350°	352.5°	355°
0°	14339.1	14339.1	14339.1	14339.1	14339.1	14339.1	14339.1	14339.1	14339.1	14339.1	14339.1
2.5°	14429.2	14423.0	14419.0	14413.8	14410.6	14406.6	14403.7	14401.2	14399.2	14397.3	14396.0
5°	14632.1	14599.9	14574.9	14547.8	14525.5	14503.3	14486.1	14472.0	14462.2	14454.9	14450.5
7.5°	14890.4	14831.4	14778.9	14723.7	14674.1	14625.3	14583.4	14547.2	14520.0	14502.4	14491.7
10°	15121.2	15042.2	14963.9	14881.7	14803.7	14728.0	14658.2	14596.7	14548.1	14515.8	14496.9
12.5°	15224.6	15157.3	15077.4	14988.1	14892.4	14795.7	14701.5	14616.5	14545.1	14497.2	14469.5
15°	15133.5	15105.9	15051.7	14982.3	14891.6	14791.7	14680.9	14576.9	14481.1	14419.1	14383.1
17.5°	14837.2	14875.8	14871.7	14845.1	14780.0	14695.8	14582.9	14466.1	14346.4	14263.4	14218.0
20°	14337.2	14458.5	14520.0	14551.7	14526.0	14471.4	14369.3	14250.7	14111.1	14002.8	13936.7
22.5°	13634.6	13848.8	13982.2	14079.8	14100.6	14081.9	13991.7	13879.0	13723.4	13593.2	13495.6
25°	12730.1	13043.9	13254.7	13420.0	13484.3	13500.9	13424.1	13311.9	13138.5	12986.9	12852.7
27.5°	11664.8	12072.4	12354.0	12576.1	12676.4	12719.9	12649.2	12534.7	12329.6	12148.5	11973.4
30°	10465.5	10949.0	11288.1	11554.3	11676.6	11734.1	11659.0	11531.2	11292.6	11074.6	10854.0
32.5°	9181.7	9711.0	10080.3	10369.6	10490.7	10544.7	10446.5	10303.1	10027.2	9770.5	9513.2
35°	7837.7	8371.9	8744.4	9026.0	9127.4	9160.0	9034.5	8868.6	8562.9	8281.2	8000.6
37.5°	6466.3	6963.2	7301.8	7554.5	7617.3	7623.0	7471.7	7288.5	6967.2	6689.4	6410.1
40°	5106.7	5525.8	5799.1	6001.4	6023.3	6003.8	5839.4	5655.0	5354.4	5105.5	4860.4
42.5°	3826.1	4142.5	4337.5	4476.1	4467.8	4429.4	4278.7	4120.2	3872.2	3682.7	3489.7
45°	2729.0	2937.6	3051.6	3132.7	3106.6	3070.0	2952.7	2841.6	2673.1	2550.7	2421.0
47.5°	1895.9	2144.9	2101.6	2260.1	2123.5	2213.8	2025.8	1922.2	1832.9	1767.8	1694.5
50°	1357.2	1414.3	1441.9	1460.7	1450.8	1436.9	1403.1	1372.9	1332.0	1302.3	1267.6
52.5°	1048.2	1076.7	1092.3	1103.6	1101.5	1096.4	1081.7	1068.2	1049.1	1036.5	1021.3
55°	887.8	888.3	917.0	904.7	922.9	901.5	910.0	886.3	890.1	869.8	856.2
57.5°	737.8	749.4	754.7	759.9	758.4	757.5	751.8	748.9	742.5	740.6	735.9
60°	649.0	655.1	656.4	658.7	656.7	656.0	651.6	649.9	645.7	644.9	641.8
62.5°	588.1	591.2	591.2	591.2	588.7	586.2	581.2	578.7	575.0	574.3	572.4
65°	537.3	540.5	541.1	541.7	539.9	538.0	533.6	530.7	527.0	525.6	523.6
67.5°	484.8	488.2	489.4	491.2	490.1	489.8	486.8	485.7	483.2	482.6	480.7
70°	443.6	445.1	445.0	444.9	442.6	440.5	437.0	435.4	432.8	432.2	430.6
72.5°	419.2	420.2	419.5	418.6	415.6	412.5	408.5	405.5	402.0	400.0	397.5
75°	384.6	386.0	385.1	384.6	381.8	379.8	376.6	374.9	372.5	371.9	370.2
77.5°	342.3	343.0	341.5	341.4	339.3	338.1	335.6	335.2	333.4	333.4	331.9
80°	295.2	294.7	292.6	292.1	290.0	289.5	287.6	287.8	286.3	286.9	285.8
82.5°	242.9	241.5	238.6	237.7	235.4	235.2	233.9	234.9	234.1	235.4	234.6
85°	174.0	174.4	173.1	173.1	172.5	172.7	172.6	173.4	173.5	174.6	174.6
87.5°	97.1	98.4	98.2	99.4	99.3	100.8	101.3	103.4	103.7	105.7	105.7
90°	41.0	42.4	41.3	43.1	42.6	44.6	44.5	46.5	46.2	47.9	47.1
92.5°	27.0	25.3	23.6	21.8	20.8	19.9	19.2	18.1	17.4	16.4	15.5
95°	34.0	31.0	28.0	25.0	24.0	22.9	21.9	20.9	19.8	18.9	17.9
97.5°	38.3	34.8	31.3	27.7	26.8	26.0	25.0	24.1	23.3	22.4	21.5
100°	52.0	45.5	39.0	32.4	31.6	30.9	30.1	29.4	28.6	27.9	27.1
102.5°	107.7	93.8	79.8	65.9	63.3	60.6	58.0	55.3	52.6	49.9	47.3
105°	203.1	180.5	157.9	135.3	128.2	121.0	113.8	106.7	99.4	92.3	85.1
107.5°	308.3	285.4	262.6	239.6	226.5	213.2	199.9	186.6	173.4	160.1	146.8
110°	367.6	350.8	334.2	317.4	306.8	296.1	285.4	274.7	264.2	253.4	242.7



TEST NUMBER: P1444722
 CATALOG NUMBER: EHBR1-18-UNV-TA-L935-UPL12

CANDELA DISTRIBUTION (continued):

	330°	332.5°	335°	337.5°	340°	342.5°	345°	347.5°	350°	352.5°	355°
112.5°	377.8	365.8	353.8	341.8	337.0	332.2	327.4	322.5	317.8	312.8	308.0
115°	354.7	346.8	338.6	330.4	328.9	327.2	325.6	323.8	322.1	320.4	318.7
117.5°	317.8	313.3	308.8	304.3	304.5	304.9	305.3	305.5	305.7	305.9	306.2
120°	279.5	277.7	275.9	273.9	275.5	277.0	278.5	280.0	281.4	282.8	284.2
122.5°	248.3	247.6	247.0	246.2	248.2	250.0	251.8	253.6	255.2	256.9	258.5
125°	224.0	223.8	223.5	223.0	225.0	226.9	228.7	230.5	232.1	233.7	235.5
127.5°	208.0	208.0	208.0	207.9	209.4	210.6	212.0	213.2	214.5	215.6	216.7
130°	197.0	196.8	196.8	196.7	197.9	199.1	200.4	201.5	202.6	203.6	204.6
132.5°	190.1	189.9	189.8	189.6	190.6	191.5	192.3	193.0	194.0	194.6	195.1
135°	184.5	184.3	184.1	183.7	184.7	185.5	186.3	187.1	187.8	188.3	189.0
137.5°	180.0	179.6	179.5	179.2	180.0	180.7	181.5	182.1	182.7	183.3	183.8
140°	176.0	175.6	175.4	175.0	175.6	176.4	177.0	177.6	178.2	178.6	179.1
142.5°	172.3	171.7	171.4	170.8	171.3	171.7	172.2	172.7	173.1	173.5	173.7
145°	170.0	169.4	168.8	168.0	168.5	168.8	169.3	169.7	169.8	170.0	170.4
147.5°	167.9	167.2	166.6	165.9	166.4	166.6	166.9	167.0	167.4	167.5	167.7
150°	165.9	165.1	164.4	163.7	164.0	164.1	164.4	164.6	164.8	164.9	165.0
152.5°	163.5	162.7	162.1	161.3	161.5	161.6	161.8	161.9	162.1	162.1	162.2
155°	162.2	161.6	161.1	160.3	160.5	160.6	160.6	160.8	160.8	160.9	160.8
157.5°	162.1	161.6	161.1	160.6	160.6	160.7	160.6	160.5	160.5	160.5	160.3
160°	162.3	161.9	161.5	161.0	161.0	161.0	160.9	160.8	160.8	160.6	160.5
162.5°	162.8	162.2	161.8	161.2	161.2	161.2	161.1	161.1	161.1	160.9	160.7
165°	163.7	163.4	163.0	162.6	162.5	162.4	162.3	162.1	162.1	161.8	161.7
167.5°	165.0	164.6	164.2	163.8	163.8	163.8	163.8	163.7	163.6	163.4	163.4
170°	166.2	165.9	165.6	165.2	165.1	165.1	165.0	164.9	164.8	164.6	164.5
172.5°	167.1	166.9	166.6	166.1	166.1	166.1	166.0	165.9	165.8	165.7	165.7
175°	166.9	166.7	166.4	166.2	166.1	166.1	166.0	166.0	165.9	165.9	165.8
177.5°	167.7	167.6	167.3	167.2	167.2	167.2	167.1	167.0	167.0	167.0	166.9
180°	167.8	167.8	167.8	167.8	167.8	167.8	167.8	167.8	167.8	167.8	167.8



TEST NUMBER: P1444722
 CATALOG NUMBER: EHBR1-18-UNV-TA-L935-UPL12

CANDELA DISTRIBUTION (continued):

	357.5°	360°
0°	14339.1	14339.1
2.5°	14394.7	14394.0
5°	14448.2	14447.3
7.5°	14488.9	14488.7
10°	14493.7	14496.2
12.5°	14464.8	14466.8
15°	14380.4	14384.3
17.5°	14218.9	14224.0
20°	13940.8	13946.1
22.5°	13490.3	13492.5
25°	12835.4	12826.1
27.5°	11942.6	11926.7
30°	10807.7	10792.2
32.5°	9454.5	9444.9
35°	7931.3	7925.1
37.5°	6327.6	6315.1
40°	4770.7	4734.5
42.5°	3405.3	3341.6
45°	2353.3	2277.9
47.5°	1642.8	1596.2
50°	1245.2	1230.2
52.5°	1014.6	1011.1
55°	856.1	854.6
57.5°	737.0	736.5
60°	643.4	643.2
62.5°	573.6	573.9
65°	524.5	524.6
67.5°	481.2	480.9
70°	431.2	430.9
72.5°	396.8	396.2
75°	370.2	369.8
77.5°	332.4	331.8
80°	286.6	285.8
82.5°	235.6	234.8
85°	175.8	175.8
87.5°	107.6	107.5
90°	48.7	47.7
92.5°	14.8	14.0
95°	16.9	15.9
97.5°	20.7	19.8
100°	26.4	25.6
102.5°	44.7	42.1
105°	77.9	70.8
107.5°	133.5	120.3
110°	232.0	221.3



TEST NUMBER: P1444722
CATALOG NUMBER: EHBR1-18-UNV-TA-L935-UPL12

CANDELA DISTRIBUTION (continued):

	357.5°	360°
112.5°	303.1	298.2
115°	316.8	315.0
117.5°	306.3	306.5
120°	285.4	286.8
122.5°	260.0	261.7
125°	237.0	238.5
127.5°	217.7	218.7
130°	205.3	206.2
132.5°	195.7	196.1
135°	189.3	189.8
137.5°	184.2	184.4
140°	179.4	179.6
142.5°	173.9	174.1
145°	170.5	170.6
147.5°	167.5	167.7
150°	165.0	165.0
152.5°	162.1	162.1
155°	160.8	160.7
157.5°	160.1	160.1
160°	160.3	160.2
162.5°	160.5	160.5
165°	161.4	161.1
167.5°	163.1	163.1
170°	164.3	164.2
172.5°	165.5	165.4
175°	165.7	165.7
177.5°	166.9	166.9
180°	167.8	167.8

LM-79-2019: Approved Method: Electrical and Photometric Measurements of Solid-
State Lighting Products

Report Prepared for

Cooper Lighting Solutions

Metalux

Report Number: SP1-2506-472-6

Test Date: 08/01/2025

Luminaire Tested: EHBR-60-L935-N

Data in this report applies to families of products including EHBR-60-L935-N

Test Information

Test Method: LM-79-2019
 Report Number: SP1-2506-472-6
 Test Lab: COOPER LIGHTING SOLUTIONS
 Photometer: SP1 - 76IN SPHERE
 Measurement Geometry: 4π
 Issue Date: 08/05/2025
 Manufacturer: COOPER LIGHTING SOLUTIONS
 Product Line: Metalux
 Catalog Number: **EHBR-60-L935-N**
 Description: Elevate Round Highbay at, 60000 lumens, 3500K 90CRI LEDs with N lens

Spectral Parameters

CCT (K): 3406
 CIE u': 0.2394
 CIE v': 0.5094
 Duv: -0.0028
 CIE x: 0.4076
 CIE y: 0.3856
 CIE z: 0.2068
 Peak Wavelength (nm): 630
 Dominant Wavelength (nm): 582
 Purity: 38.0517
 Rf: 91.3
 Rg: 100

CRI (Ra):	94.6		
R1:	96.6	R9:	63.8
R2:	98.4	R10:	94.7
R3:	98.1	R11:	96.6
R4:	95.8	R12:	80.9
R5:	96.2	R13:	97.4
R6:	95.4	R14:	98.3
R7:	91.8	R15:	93.1
R8:	84.4		



Test Conditions

Stabilization Time: 35M
 Operation Time: 1H 35M
 Sphere Temperature (°C): 25.0

REPORT NUMBER: SP1-2506-472-6

Measurement and Test Equipment			
Instrument	Identification Number	Calibration Date	Calibration Due Date
Photometer	76INCH SPHERE IN0058	6/16/2025	12/16/2025
Power Meter	XITRON INXT2011004	1/21/2025	1/21/2026
AC Power Source	CHROMA 61603 IN0063	10/22/2024	10/22/2025
DC Power Source	AGILENT E3634A IN0208	10/22/2024	10/22/2025
Sphere Thermometer	ONSET IN0085	10/22/2024	10/22/2025
Room Thermometer	ONSET IN0046	10/22/2024	10/22/2025

REPORT NUMBER: SP1-2506-472-6

CIE 1931 Chromaticity Diagram



CIE 1931 Chromaticity Diagram with 2017 ANSI 7-Step and 4-Step Quadrangles



Point lies inside the ANSI 3500K 4-step quadrangle

REPORT NUMBER: SP1-2506-472-6

Photopic Flux vs. Wavelength

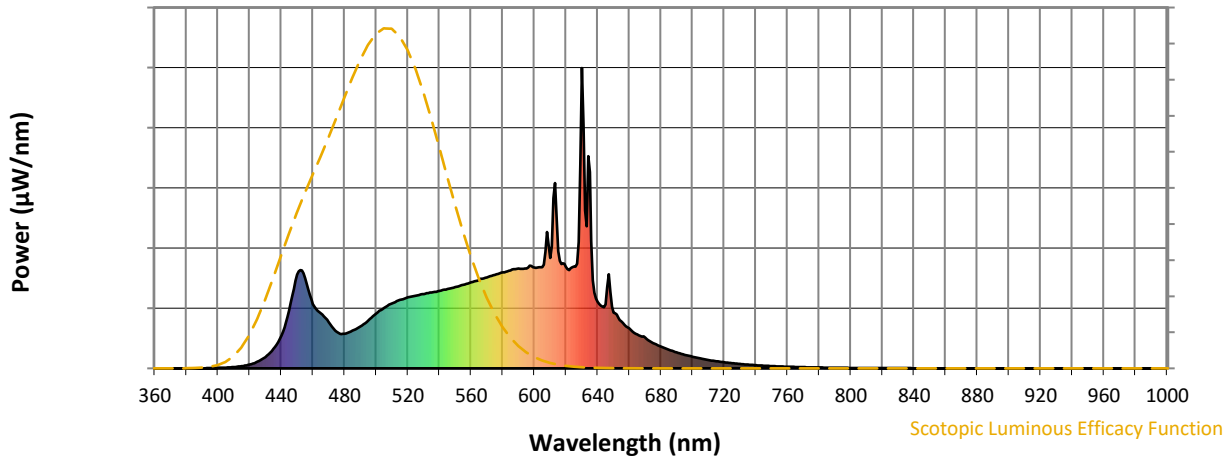


Photopic Lumens: NR

λ (nm)	Power W [^] /nm	Lumens (ϕ /nm)	λ (nm)	Power W [^] /nm	Lumens (ϕ /nm)	λ (nm)	Power W [^] /nm	Lumens (ϕ /nm)	λ (nm)	Power W [^] /nm	Lumens (ϕ /nm)	λ (nm)	Power W [^] /nm	Lumens (ϕ /nm)
360	0	NR	490	140	NR	620	338	NR	750	8	NR	880	0	NR
365	0	NR	495	159	NR	625	339	NR	755	7	NR	885	0	NR
370	0	NR	500	182	NR	630	1000	NR	760	5	NR	890	0	NR
375	0	NR	505	202	NR	635	653	NR	765	5	NR	895	0	NR
380	0	NR	510	216	NR	640	222	NR	770	4	NR	900	0	NR
385	0	NR	515	228	NR	645	214	NR	775	3	NR	905	0	NR
390	0	NR	520	236	NR	650	185	NR	780	3	NR	910	0	NR
395	1	NR	525	242	NR	655	157	NR	785	3	NR	915	0	NR
400	2	NR	530	248	NR	660	133	NR	790	2	NR	920	0	NR
405	3	NR	535	253	NR	665	113	NR	795	2	NR	925	0	NR
410	4	NR	540	258	NR	670	103	NR	800	2	NR	930	0	NR
415	7	NR	545	264	NR	675	85	NR	805	1	NR	935	0	NR
420	13	NR	550	270	NR	680	72	NR	810	1	NR	940	0	NR
425	22	NR	555	278	NR	685	62	NR	815	1	NR	945	0	NR
430	38	NR	560	286	NR	690	53	NR	820	1	NR	950	0	NR
435	65	NR	565	295	NR	695	45	NR	825	1	NR	955	0	NR
440	108	NR	570	303	NR	700	39	NR	830	1	NR	960	0	NR
445	193	NR	575	311	NR	705	33	NR	835	1	NR	965	0	NR
450	312	NR	580	319	NR	710	28	NR	840	1	NR	970	0	NR
455	300	NR	585	326	NR	715	24	NR	845	0	NR	975	0	NR
460	214	NR	590	332	NR	720	20	NR	850	0	NR	980	0	NR
465	184	NR	595	333	NR	725	17	NR	855	0	NR	985	0	NR
470	153	NR	600	336	NR	730	15	NR	860	0	NR	990	0	NR
475	122	NR	605	337	NR	735	12	NR	865	0	NR	995	0	NR
480	115	NR	610	367	NR	740	10	NR	870	0	NR	1000	0	NR
485	125	NR	615	390	NR	745	9	NR	875	0	NR			

REPORT NUMBER: SP1-2506-472-6

Scotopic Flux vs. Wavelength



Scotopic Lumens: NR

S/P: 1.62

λ (nm)	Power W [^] /nm	Lumens (ϕ /nm)	λ (nm)	Power W [^] /nm	Lumens (ϕ /nm)	λ (nm)	Power W [^] /nm	Lumens (ϕ /nm)	λ (nm)	Power W [^] /nm	Lumens (ϕ /nm)	λ (nm)	Power W [^] /nm	Lumens (ϕ /nm)
360	0	NR	490	140	NR	620	338	NR	750	8	NR	880	0	NR
365	0	NR	495	159	NR	625	339	NR	755	7	NR	885	0	NR
370	0	NR	500	182	NR	630	1000	NR	760	5	NR	890	0	NR
375	0	NR	505	202	NR	635	653	NR	765	5	NR	895	0	NR
380	0	NR	510	216	NR	640	222	NR	770	4	NR	900	0	NR
385	0	NR	515	228	NR	645	214	NR	775	3	NR	905	0	NR
390	0	NR	520	236	NR	650	185	NR	780	3	NR	910	0	NR
395	1	NR	525	242	NR	655	157	NR	785	3	NR	915	0	NR
400	2	NR	530	248	NR	660	133	NR	790	2	NR	920	0	NR
405	3	NR	535	253	NR	665	113	NR	795	2	NR	925	0	NR
410	4	NR	540	258	NR	670	103	NR	800	2	NR	930	0	NR
415	7	NR	545	264	NR	675	85	NR	805	1	NR	935	0	NR
420	13	NR	550	270	NR	680	72	NR	810	1	NR	940	0	NR
425	22	NR	555	278	NR	685	62	NR	815	1	NR	945	0	NR
430	38	NR	560	286	NR	690	53	NR	820	1	NR	950	0	NR
435	65	NR	565	295	NR	695	45	NR	825	1	NR	955	0	NR
440	108	NR	570	303	NR	700	39	NR	830	1	NR	960	0	NR
445	193	NR	575	311	NR	705	33	NR	835	1	NR	965	0	NR
450	312	NR	580	319	NR	710	28	NR	840	1	NR	970	0	NR
455	300	NR	585	326	NR	715	24	NR	845	0	NR	975	0	NR
460	214	NR	590	332	NR	720	20	NR	850	0	NR	980	0	NR
465	184	NR	595	333	NR	725	17	NR	855	0	NR	985	0	NR
470	153	NR	600	336	NR	730	15	NR	860	0	NR	990	0	NR
475	122	NR	605	337	NR	735	12	NR	865	0	NR	995	0	NR
480	115	NR	610	367	NR	740	10	NR	870	0	NR	1000	0	NR
485	125	NR	615	390	NR	745	9	NR	875	0	NR			

REPORT NUMBER: SP1-2506-472-6

Melanopic Flux vs. Wavelength



Melanopic Lumens: NR M/P: 3.3

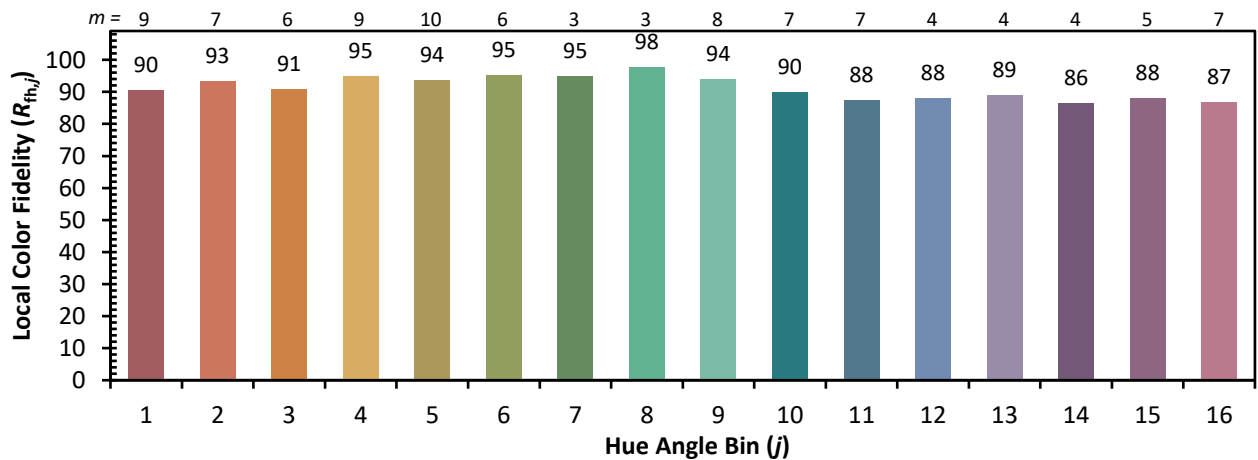
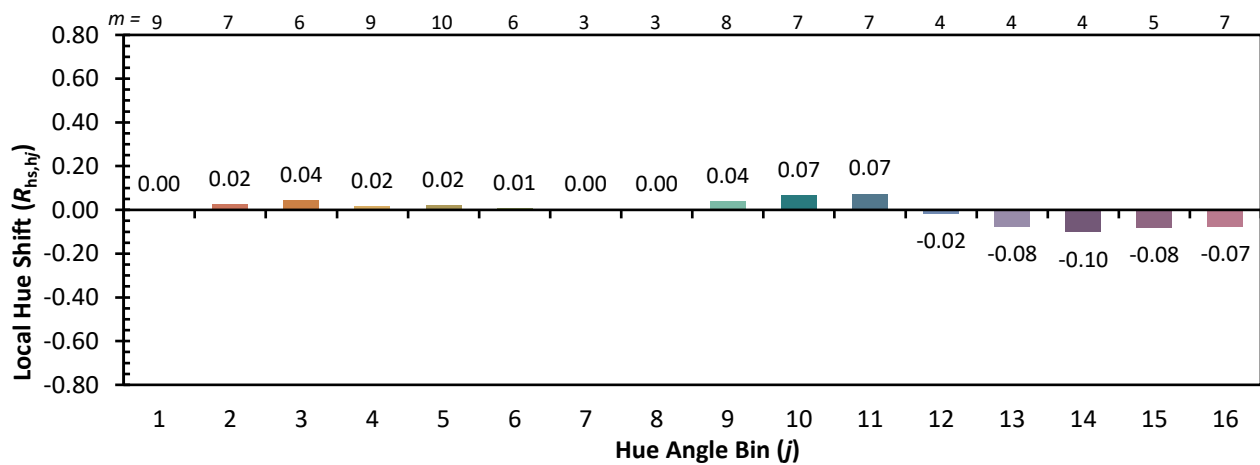
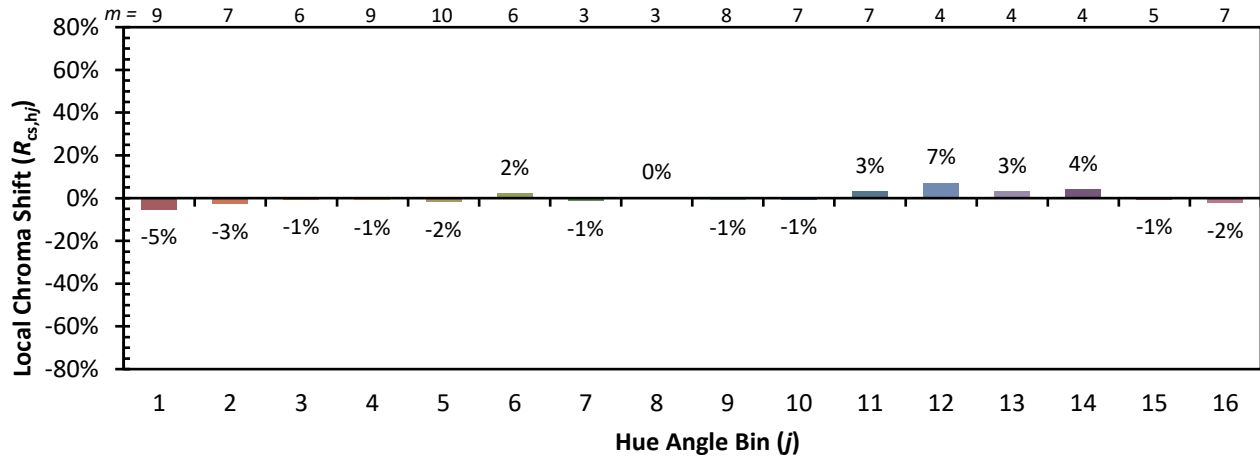
λ (nm)	Power W [^] /nm	Lumens (φ/nm)	λ (nm)	Power W [^] /nm	Lumens (φ/nm)	λ (nm)	Power W [^] /nm	Lumens (φ/nm)	λ (nm)	Power W [^] /nm	Lumens (φ/nm)	λ (nm)	Power W [^] /nm	Lumens (φ/nm)
360	0	NR	490	140	NR	620	338	NR	750	8	NR	880	0	NR
365	0	NR	495	159	NR	625	339	NR	755	7	NR	885	0	NR
370	0	NR	500	182	NR	630	1000	NR	760	5	NR	890	0	NR
375	0	NR	505	202	NR	635	653	NR	765	5	NR	895	0	NR
380	0	NR	510	216	NR	640	222	NR	770	4	NR	900	0	NR
385	0	NR	515	228	NR	645	214	NR	775	3	NR	905	0	NR
390	0	NR	520	236	NR	650	185	NR	780	3	NR	910	0	NR
395	1	NR	525	242	NR	655	157	NR	785	3	NR	915	0	NR
400	2	NR	530	248	NR	660	133	NR	790	2	NR	920	0	NR
405	3	NR	535	253	NR	665	113	NR	795	2	NR	925	0	NR
410	4	NR	540	258	NR	670	103	NR	800	2	NR	930	0	NR
415	7	NR	545	264	NR	675	85	NR	805	1	NR	935	0	NR
420	13	NR	550	270	NR	680	72	NR	810	1	NR	940	0	NR
425	22	NR	555	278	NR	685	62	NR	815	1	NR	945	0	NR
430	38	NR	560	286	NR	690	53	NR	820	1	NR	950	0	NR
435	65	NR	565	295	NR	695	45	NR	825	1	NR	955	0	NR
440	108	NR	570	303	NR	700	39	NR	830	1	NR	960	0	NR
445	193	NR	575	311	NR	705	33	NR	835	1	NR	965	0	NR
450	312	NR	580	319	NR	710	28	NR	840	1	NR	970	0	NR
455	300	NR	585	326	NR	715	24	NR	845	0	NR	975	0	NR
460	214	NR	590	332	NR	720	20	NR	850	0	NR	980	0	NR
465	184	NR	595	333	NR	725	17	NR	855	0	NR	985	0	NR
470	153	NR	600	336	NR	730	15	NR	860	0	NR	990	0	NR
475	122	NR	605	337	NR	735	12	NR	865	0	NR	995	0	NR
480	115	NR	610	367	NR	740	10	NR	870	0	NR	1000	0	NR
485	125	NR	615	390	NR	745	9	NR	875	0	NR			

Individual Sample Fidelity Index ($R_{f,i}$)

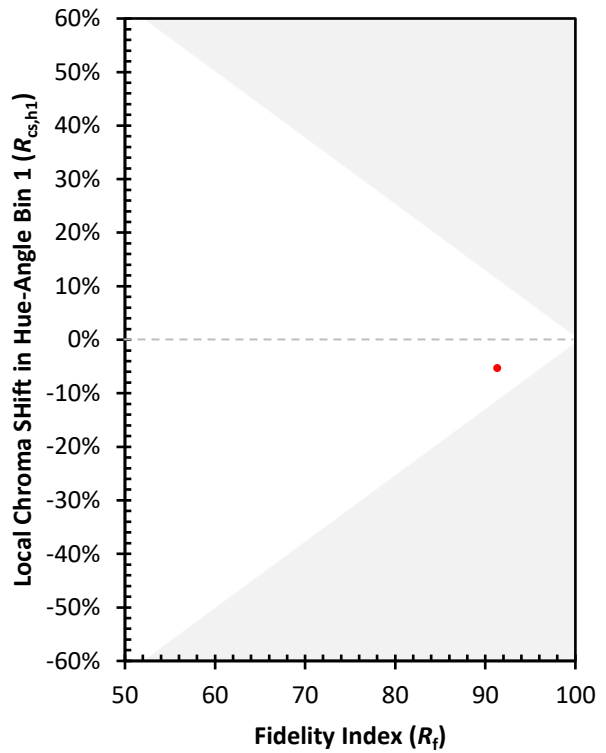
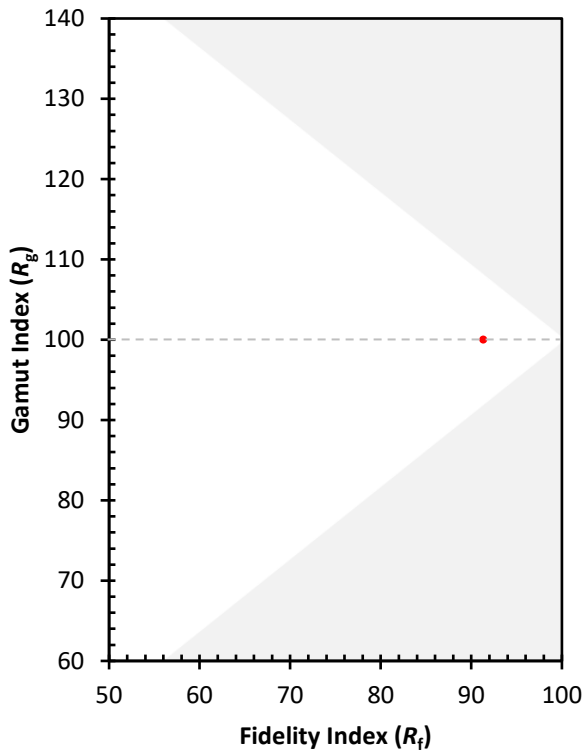
CES01 = 86	CES26 = 94	CES51 = 97	CES76 = 90
CES02 = 63	CES27 = 92	CES52 = 98	CES77 = 86
CES03 = 31	CES28 = 97	CES53 = 98	CES78 = 86
CES04 = 70	CES29 = 97	CES54 = 93	CES79 = 90
CES05 = 50	CES30 = 92	CES55 = 92	CES80 = 91
CES06 = 51	CES31 = 97	CES56 = 96	CES81 = 74
CES07 = 43	CES32 = 89	CES57 = 94	CES82 = 96
CES08 = 41	CES33 = 99	CES58 = 95	CES83 = 94
CES09 = 29	CES34 = 94	CES59 = 98	CES84 = 95
CES10 = 75	CES35 = 97	CES60 = 92	CES85 = 79
CES11 = 58	CES36 = 81	CES61 = 93	CES86 = 79
CES12 = 64	CES37 = 96	CES62 = 86	CES87 = 92
CES13 = 44	CES38 = 87	CES63 = 94	CES88 = 98
CES14 = 74	CES39 = 99	CES64 = 91	CES89 = 84
CES15 = 72	CES40 = 97	CES65 = 90	CES90 = 96
CES16 = 48	CES41 = 96	CES66 = 89	CES91 = 75
CES17 = 49	CES42 = 94	CES67 = 88	CES92 = 76
CES18 = 56	CES43 = 93	CES68 = 89	CES93 = 86
CES19 = 71	CES44 = 99	CES69 = 90	CES94 = 74
CES20 = 67	CES45 = 97	CES70 = 88	CES95 = 83
CES21 = 86	CES46 = 97	CES71 = 83	CES96 = 92
CES22 = 78	CES47 = 91	CES72 = 94	CES97 = 96
CES23 = 91	CES48 = 91	CES73 = 83	CES98 = 95
CES24 = 90	CES49 = 96	CES74 = 90	CES99 = 92
CES25 = 71	CES50 = 98	CES75 = 85	



Color Rendition by Hue-Angle Bin



Measure Comparisons



(END OF REPORT)