

Cooper Lighting Solutions Photometric Lab
1121 Highway 74 South
Peachtree City, GA 30269



Scaled data based on original data using
LM-79-2019 Approved Method: Electrical and Photometric Measurements of Solid-
State Lighting Products

Test Report Prepared for
Cooper Lighting Solutions

Brand: METALUX

Report Number: P1444762

Luminaire Tested: EHBR1-48-UNV-TA-L935-UPL12

Issue Date: 5/1/2026

Test Information

Test Method: LM-79-2019
Report Number: P1444762
REPORT IS A COMBINATION OF REPORTS P1444306 AND P1431635
Test Lab: INNOVATION CENTER
Issue Date: 5/1/2026
Manufacturer: COOPER LIGHTING SOLUTIONS
Product Line: METALUX
Catalog Number: EHBR1-48-UNV-TA-L935-UPL12
Description: Elevate Round Highbay at, 48000 lumens, 3500K 90CRI LEDs with TA lens
Light Source: -
Ballast/Driver: -

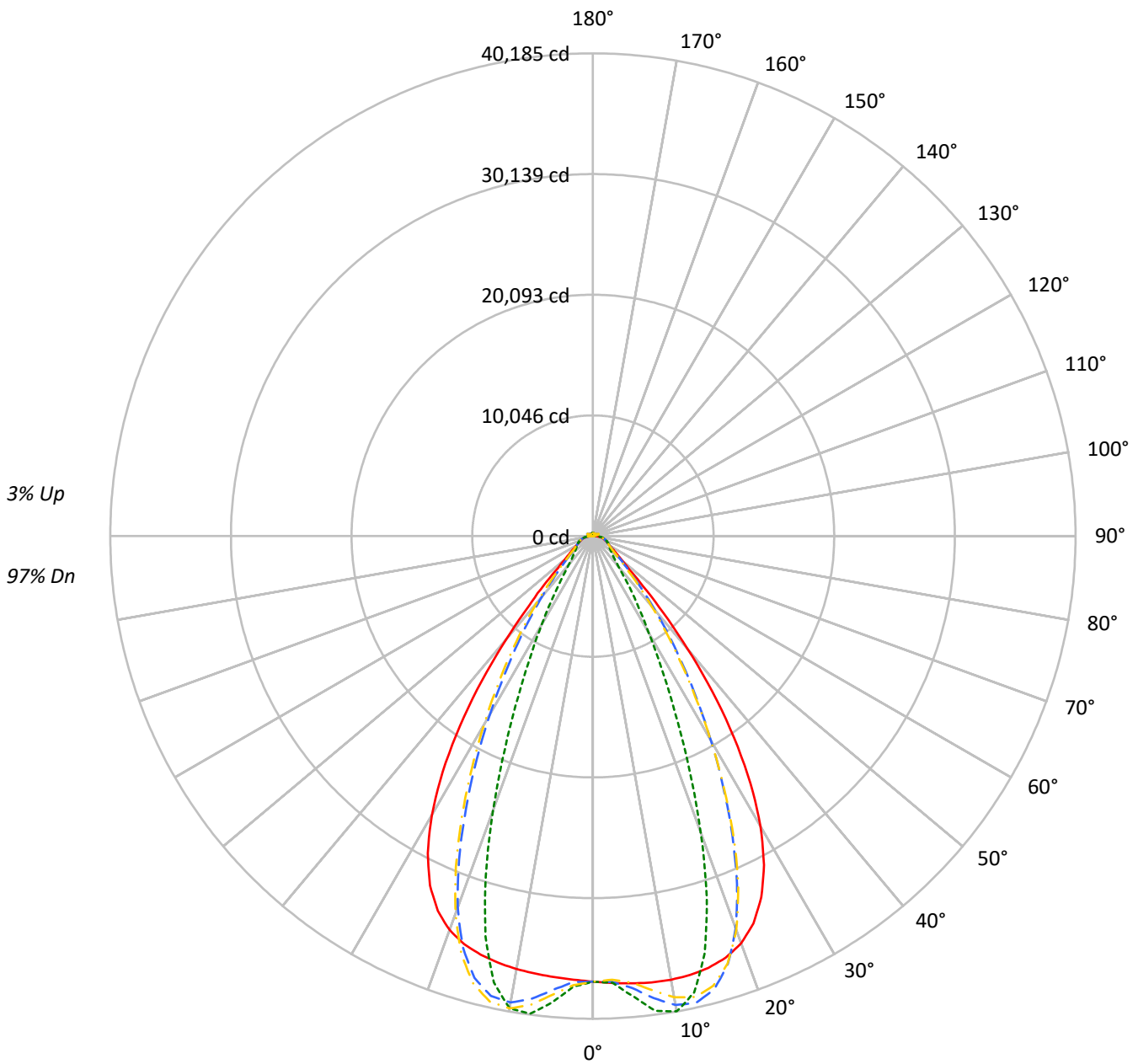
Summary

Lumens per Lamp: N/A
Luminaire Lumens: 44041.3 lumens
Efficiency: N/A
Efficacy: 165.6 lumens/watt
Spacing Criteria (0/90/45): 1.13 / 0.77 / 0.88
Luminous Opening: Vertical Cylinder (Dia: 1.71' x H: 0.1')
CIE Type: Direct

Input Watts (W): 266
Input Voltage (V): NR
Input Current (Ain): NR
Voltage Rise (V): NR
Power Factor: NR
Total Harmonic Distortion (THDi): NR
Frequency (hertz): 60
Stabilization Time: NR
Operation Time: NR
Ambient Temperature (°C): NR
Test Distance: 24 FT

TEST NUMBER: P1444762
CATALOG NUMBER: EHBR1-48-UNV-TA-L935-UPL12

Luminous Intensity Polar Plot



— 0°-180° - - 45°-225° - · - · 90°-270° - · - · 135°-315°



TEST NUMBER: P1444762
 CATALOG NUMBER: EHBR1-48-UNV-TA-L935-UPL12

COEFFICIENT OF UTILIZATION - ZONAL CAVITY METHOD:

RF	20				20				20				20				20				
RC	80				70				50				30				10			0	
RW	70	50	30	10	70	50	30	10	50	30	10	50	30	10	50	30	10	50	30	10	0
RCR																					
0	118	118	118	118	115	115	115	115	109	109	109	104	104	104	99	99	99	99	99	99	97
1	111	108	105	102	108	105	103	100	101	98	96	96	95	93	92	91	90	92	91	90	88
2	104	99	94	90	102	97	92	88	93	89	86	89	86	84	86	84	81	86	84	81	79
3	98	91	85	80	96	89	83	79	86	81	77	83	79	76	80	77	74	80	77	74	72
4	92	84	77	72	90	82	76	72	80	74	70	77	73	69	75	71	68	75	71	68	66
5	87	78	71	66	85	76	70	65	74	69	65	72	67	64	70	66	63	70	66	63	61
6	82	72	65	60	80	71	65	60	69	64	59	67	63	59	66	61	58	66	61	58	56
7	78	67	61	56	76	66	60	56	65	59	55	63	58	55	62	57	54	62	57	54	52
8	74	63	56	52	72	62	56	52	61	55	51	60	54	51	58	54	50	58	54	50	49
9	70	59	53	48	68	59	52	48	57	52	48	56	51	47	55	50	47	55	50	47	46
10	66	56	49	45	65	55	49	45	54	49	45	53	48	44	52	47	44	52	47	44	43

AVERAGE LUMINANCE (cd/sqm):

	0°	90°	180°	270°
0°	174196	174196	174196	174196
5°	175039	180143	172590	182503
10°	176501	189137	172268	187886
15°	177366	171451	171967	164548
20°	175533	127725	169788	118176
25°	166148	80779	160657	73292
30°	145143	48542	139522	44363
35°	111703	30460	105278	26982
40°	70662	19107	64650	17955
45°	36421	14885	35817	14641
50°	21353	13241	20699	13034
55°	16359	12526	15754	12414
60°	13842	12796	13252	12631
65°	13001	13363	12503	12908
70°	12702	13993	12069	13466
75°	13581	14840	12847	14183
80°	14053	16433	12742	15000
85°	13235	15857	10695	13576

MAXIMUM LUMINANCE 45°-90°:

Horizontal Angle: 25°
 Vertical Angle: 45°
 Luminance: 55737 cd/sqm



TEST NUMBER: P1444762
 CATALOG NUMBER: EHBR1-48-UNV-TA-L935-UPL12

ZONAL LUMENS:

Zone	Lumens	% Fixture
0°-10°	3655.7	8.3
10°-20°	10283.8	23.4
20°-30°	11712.4	26.6
30°-40°	8418.4	19.1
40°-50°	3882.5	8.8
50°-60°	1858.0	4.2
60°-70°	1355.7	3.1
70°-80°	1029.9	2.3
80°-90°	470.4	1.1
90°-100°	44.0	0.1
100°-110°	202.0	0.5
110°-120°	372.1	0.8
120°-130°	241.0	0.5
130°-140°	172.3	0.4
140°-150°	141.6	0.3
150°-160°	107.6	0.2
160°-170°	69.3	0.2
170°-180°	24.6	0.1
0°-30°	25651.9	58.2
0°-40°	34070.3	77.4
0°-60°	39810.8	90.4
0°-90°	42666.7	96.9
90°-120°	618.1	1.4
90°-150°	1173.0	2.7
90°-180°	1375.0	3.1
0°-180°	44041.3	100.0

CANDELA DISTRIBUTION:

	0°	90°	180°	270°	360°	Flux
0°	37094	37094	37094	37094	37094	
5°	37374	38463	36851	38967	37374	3571
15°	37210	35970	36078	34521	37210	10484
25°	33180	16132	32083	14636	33180	15041
35°	20502	5590	19322	4952	20502	12582
45°	5893	2408	5795	2369	5893	5012
55°	2211	1693	2129	1678	2211	2041
65°	1357	1395	1305	1347	1357	1355
75°	957	1045	905	999	957	995
85°	455	545	368	467	455	427
90°	111	144	23	31	111	71
95°	20	21	20	22	20	19
105°	78	96	55	96	78	101
115°	330	388	346	389	330	306
125°	268	261	300	263	268	243
135°	236	192	252	196	236	183
145°	232	209	244	215	232	146
155°	232	225	244	230	232	108
165°	245	240	252	243	245	69
175°	258	259	262	260	258	25
180°	262	262	262	262	262	



TEST NUMBER: P1444762
 CATALOG NUMBER: EHBR1-48-UNV-TA-L935-UPL12

CANDELA DISTRIBUTION (FULL):

	0°	2.5°	5°	7.5°	10°	12.5°	15°	17.5°	20°	22.5°	25°
0°	37093.8	37093.8	37093.8	37093.8	37093.8	37093.8	37093.8	37093.8	37093.8	37093.8	37093.8
2.5°	37235.5	37232.5	37231.9	37229.4	37228.6	37228.6	37227.4	37224.4	37222.5	37218.2	37213.4
5°	37373.7	37372.0	37373.0	37373.3	37370.7	37364.9	37355.8	37344.7	37330.6	37317.5	37305.6
7.5°	37480.5	37483.1	37486.4	37485.7	37477.6	37464.0	37445.4	37435.0	37441.2	37461.4	37507.6
10°	37500.0	37516.0	37522.1	37520.2	37504.0	37492.3	37496.8	37536.2	37614.4	37718.7	37861.4
12.5°	37424.0	37443.5	37442.8	37436.4	37420.7	37436.6	37493.6	37610.6	37778.2	37984.1	38225.4
15°	37210.5	37235.8	37228.6	37220.2	37209.8	37262.2	37375.8	37579.0	37838.1	38128.3	38425.4
17.5°	36796.0	36826.5	36811.6	36802.2	36793.4	36891.6	37086.9	37384.4	37710.6	38038.9	38320.5
20°	36077.1	36097.5	36062.2	36045.5	36059.6	36251.9	36539.7	36919.6	37263.4	37573.9	37766.3
22.5°	34903.6	34929.1	34862.7	34855.0	34937.0	35232.4	35596.4	36021.2	36344.3	36590.3	36664.5
25°	33179.7	33204.8	33125.9	33173.0	33312.4	33714.8	34148.4	34602.7	34878.4	35060.7	35010.3
27.5°	30852.9	30875.7	30800.9	30897.1	31117.5	31646.2	32156.6	32649.4	32895.0	33022.7	32861.0
30°	27918.2	27965.6	27877.2	28011.6	28348.0	29034.3	29619.0	30171.7	30416.7	30513.8	30262.0
32.5°	24432.7	24500.2	24402.7	24602.6	25072.0	25896.5	26560.7	27178.2	27449.2	27560.1	27275.7
35°	20501.5	20598.2	20486.5	20786.5	21365.3	22283.6	23019.0	23708.5	24029.3	24186.7	23900.0
37.5°	16336.6	16428.8	16368.3	16768.5	17404.2	18356.0	19106.7	19850.4	20212.8	20448.9	20222.8
40°	12247.6	12332.0	12377.7	12835.4	13433.2	14330.3	15051.3	15787.3	16192.7	16488.9	16349.5
42.5°	8644.4	8729.5	8885.1	9326.7	9825.2	10567.8	11185.5	11846.2	12233.4	12549.5	12495.7
45°	5892.7	5991.6	6186.4	6548.0	6908.6	7441.3	7894.9	8408.7	8725.0	9014.6	9018.0
47.5°	4129.3	4198.8	4372.9	4619.8	4854.9	5521.8	5549.2	5801.7	6014.3	6230.7	6258.7
50°	3182.4	3224.2	3316.5	3454.2	3587.3	3760.5	3919.0	4102.0	4232.8	4351.5	4379.7
52.5°	2615.8	2642.2	2689.3	2763.8	2841.1	2935.2	3020.1	3120.5	3191.7	3255.3	3268.6
55°	2210.7	2232.7	2302.7	2316.8	2405.2	2422.3	2460.0	2521.1	2562.6	2600.6	2610.0
57.5°	1905.1	1921.1	1935.9	1967.6	1994.9	2034.4	2066.3	2110.2	2136.3	2163.9	2166.2
60°	1664.0	1675.5	1686.1	1708.2	1726.6	1754.2	1776.1	1806.0	1824.7	1845.3	1847.6
62.5°	1484.6	1492.8	1499.9	1514.4	1527.6	1548.8	1566.2	1591.2	1608.6	1624.5	1628.1
65°	1357.0	1363.0	1367.6	1378.6	1390.1	1408.2	1423.9	1444.3	1457.1	1469.3	1472.0
67.5°	1244.0	1249.7	1254.5	1264.5	1272.5	1285.9	1296.5	1311.8	1321.4	1331.1	1331.4
70°	1114.5	1119.9	1123.4	1132.8	1139.3	1150.8	1159.3	1173.1	1182.9	1193.8	1196.5
72.5°	1024.9	1028.0	1032.9	1041.4	1050.3	1062.7	1074.1	1088.4	1100.4	1111.6	1116.4
75°	956.7	960.4	963.5	970.9	977.0	987.4	996.0	1009.0	1019.5	1031.6	1037.5
77.5°	858.3	862.6	865.3	872.5	877.9	887.9	894.3	906.0	914.5	925.5	930.8
80°	739.3	743.3	745.3	752.2	756.4	765.6	771.7	783.1	790.2	801.2	807.6
82.5°	607.5	611.3	612.4	618.9	621.3	628.8	633.3	644.9	653.6	668.0	677.8
85°	454.9	456.2	458.5	456.8	466.0	466.6	477.0	479.0	492.7	496.3	512.0
87.5°	278.2	282.2	284.3	290.7	293.4	299.7	301.6	308.3	312.0	319.8	323.4
90°	110.8	116.7	118.4	125.4	126.9	133.0	134.2	141.2	142.8	150.1	152.2
92.5°	17.8	18.7	19.4	20.7	21.6	23.2	24.6	25.7	26.6	28.3	30.2
95°	19.8	20.8	21.8	22.7	23.7	24.8	25.8	26.8	27.8	28.8	31.6
97.5°	24.2	25.1	25.9	26.8	27.7	28.5	29.5	30.4	31.2	31.9	35.4
100°	30.5	31.3	32.0	32.8	33.5	34.3	35.0	35.8	36.5	37.3	43.7
102.5°	47.9	50.6	53.2	55.8	58.5	61.1	63.8	66.3	69.0	71.6	85.3
105°	77.8	84.7	92.1	99.1	106.2	113.5	120.6	127.5	134.7	141.7	164.3
107.5°	128.6	141.7	155.1	168.3	181.5	194.7	207.9	221.1	234.2	247.2	270.1
110°	231.6	242.0	252.7	263.2	273.7	284.3	294.9	305.2	315.9	326.3	343.0



TEST NUMBER: P1444762
 CATALOG NUMBER: EHBR1-48-UNV-TA-L935-UPL12

CANDELA DISTRIBUTION (continued):

	0°	2.5°	5°	7.5°	10°	12.5°	15°	17.5°	20°	22.5°	25°
112.5°	310.6	315.2	319.8	324.6	329.4	333.8	338.5	343.1	347.8	352.3	364.1
115°	329.9	331.4	333.1	334.3	336.0	337.3	338.8	340.1	341.7	342.9	350.7
117.5°	324.5	323.9	323.4	322.8	322.1	321.6	320.9	320.1	319.4	318.7	323.0
120°	308.2	306.2	304.6	302.5	300.8	298.7	296.9	294.9	292.8	290.7	292.4
122.5°	286.6	284.4	282.5	280.1	277.9	275.5	273.3	270.5	268.4	265.9	266.0
125°	267.5	265.2	263.3	260.8	258.3	255.9	253.5	251.0	248.5	245.7	245.5
127.5°	251.8	250.1	248.4	246.4	244.5	242.4	240.4	238.2	236.3	233.8	233.4
130°	243.5	242.1	240.4	238.5	236.7	234.6	232.6	230.5	228.5	226.2	225.6
132.5°	237.9	236.7	235.4	233.9	232.3	230.3	228.7	226.6	224.9	223.0	222.3
135°	235.9	234.6	233.5	231.9	230.4	228.5	226.7	224.8	223.0	221.0	220.5
137.5°	234.7	233.6	232.5	230.8	229.4	227.4	225.9	223.9	222.1	220.1	219.6
140°	233.8	232.8	231.6	230.0	228.7	227.0	225.2	223.5	221.7	219.8	219.3
142.5°	232.0	230.9	229.9	228.6	227.4	225.7	224.2	222.4	220.9	219.2	218.9
145°	231.7	230.8	230.0	228.8	227.5	225.9	224.6	222.9	221.6	220.0	219.7
147.5°	231.7	230.8	230.2	229.1	228.1	226.6	225.4	223.9	222.7	221.2	221.1
150°	231.7	231.0	230.4	229.4	228.3	227.0	225.9	224.6	223.3	222.0	221.8
152.5°	231.0	230.2	229.7	228.7	227.8	226.3	225.6	224.1	223.0	221.8	221.6
155°	232.2	231.5	230.6	229.8	228.8	227.8	226.6	225.6	224.5	223.3	223.1
157.5°	234.5	233.6	232.9	231.9	231.3	230.2	229.3	228.4	227.5	226.5	226.1
160°	237.7	236.9	236.2	235.4	234.5	233.4	232.6	231.7	231.0	229.9	229.8
162.5°	241.3	240.4	239.5	238.7	238.0	236.9	236.2	235.5	234.6	233.7	233.4
165°	245.1	244.5	243.9	243.2	242.4	241.8	241.1	240.3	239.6	238.7	238.5
167.5°	250.1	249.4	249.0	248.2	247.4	246.9	246.1	245.3	244.9	244.0	243.8
170°	253.8	253.0	252.7	252.2	251.7	251.1	250.7	250.1	249.6	249.1	249.0
172.5°	256.8	256.2	255.9	255.7	255.1	254.9	254.4	254.0	253.8	253.2	253.3
175°	258.5	258.0	257.9	257.7	257.4	257.1	256.9	256.7	256.7	256.3	256.2
177.5°	260.7	260.5	260.5	260.4	260.4	260.2	260.1	259.8	259.7	259.7	259.7
180°	262.1	262.1	262.1	262.1	262.1	262.1	262.1	262.1	262.1	262.1	262.1



TEST NUMBER: P1444762
 CATALOG NUMBER: EHBR1-48-UNV-TA-L935-UPL12

CANDELA DISTRIBUTION (continued):

	27.5°	30°	32.5°	35°	37.5°	40°	42.5°	45°	47.5°	50°	52.5°
0°	37093.8	37093.8	37093.8	37093.8	37093.8	37093.8	37093.8	37093.8	37093.8	37093.8	37093.8
2.5°	37209.8	37205.3	37199.1	37191.2	37184.5	37176.7	37158.1	37152.6	37158.8	37162.9	37171.5
5°	37298.2	37300.8	37301.8	37318.6	37333.2	37369.7	37655.1	37768.5	37856.2	37911.9	37996.4
7.5°	37564.8	37650.5	37735.4	37849.5	37947.9	38080.9	38580.2	38792.7	38943.8	39052.4	39186.0
10°	38016.5	38203.8	38379.3	38585.0	38761.8	38964.3	39429.0	39636.1	39766.8	39862.0	39950.8
12.5°	38471.6	38731.2	38965.9	39194.8	39386.2	39561.7	39725.1	39797.6	39803.8	39806.8	39759.7
15°	38708.6	38956.8	39163.6	39314.9	39427.4	39477.2	39195.7	39048.1	38861.6	38707.9	38455.0
17.5°	38559.0	38707.9	38797.2	38788.4	38741.9	38586.3	37789.3	37350.8	36915.6	36523.4	36009.1
20°	37894.0	37882.6	37804.9	37584.8	37319.6	36907.3	35540.7	34752.3	33990.1	33320.6	32508.3
22.5°	36656.8	36462.3	36190.8	35716.3	35189.0	34468.6	32510.3	31350.6	30289.3	29351.9	28301.8
25°	34864.4	34463.9	33963.3	33210.0	32390.7	31339.8	28926.2	27483.6	26209.6	25104.5	23892.8
27.5°	32570.3	31967.1	31233.6	30190.8	29080.8	27734.6	25058.6	23466.7	22098.9	20914.2	19624.6
30°	29854.4	29069.9	28122.7	26828.4	25489.6	23962.7	21248.7	19636.3	18251.8	17033.0	15742.4
32.5°	26785.2	25866.3	24756.3	23303.8	21855.9	20285.9	17664.9	16104.1	14781.6	13609.1	12441.0
35°	23400.0	22414.6	21240.3	19758.7	18319.5	16793.1	14388.2	12980.8	11813.0	10776.6	9833.4
37.5°	19768.8	18801.3	17685.1	16288.7	14954.2	13571.0	11495.9	10316.6	9336.5	8476.4	7748.0
40°	15993.3	15146.6	14180.9	12973.7	11834.8	10682.8	8979.4	8043.3	7269.9	6613.8	6068.1
42.5°	12264.1	11607.9	10867.3	9913.4	9041.8	8164.8	6853.7	6160.0	5587.2	5115.0	4729.1
45°	8898.0	8459.0	7962.4	7299.2	6696.1	6084.3	5151.1	4663.8	4290.7	3986.2	3728.7
47.5°	6220.1	5965.5	5950.1	5337.2	4894.9	4520.9	3919.7	3611.8	3383.2	3198.7	3035.7
50°	4368.2	4245.1	4092.1	3873.3	3668.1	3456.6	3090.4	2904.2	2770.4	2658.6	2555.5
52.5°	3265.6	3201.6	3120.1	3004.1	2892.8	2773.9	2542.2	2423.7	2381.6	2277.5	2195.9
55°	2608.3	2571.6	2525.2	2457.1	2389.4	2362.3	2163.7	2075.7	2020.0	1979.0	1935.1
57.5°	2166.6	2139.2	2111.7	2065.5	2026.4	1979.0	1873.5	1828.4	1795.3	1771.1	1740.7
60°	1848.1	1831.7	1816.3	1789.2	1768.1	1742.5	1675.5	1650.1	1632.8	1618.3	1598.9
62.5°	1631.1	1622.8	1614.8	1600.3	1589.6	1575.7	1530.0	1517.7	1509.0	1501.8	1489.9
65°	1474.5	1468.5	1464.1	1454.5	1449.1	1441.0	1401.7	1393.5	1388.0	1385.5	1378.6
67.5°	1332.3	1326.0	1323.1	1316.2	1314.0	1308.9	1276.7	1272.2	1270.4	1271.2	1268.8
70°	1199.2	1196.5	1198.0	1196.8	1199.9	1200.8	1181.3	1181.2	1183.2	1187.4	1187.7
72.5°	1119.4	1119.4	1120.9	1121.7	1124.6	1125.9	1109.7	1108.9	1109.8	1112.9	1113.0
75°	1043.5	1044.8	1048.9	1050.3	1053.7	1054.4	1032.9	1030.5	1030.7	1033.5	1032.6
77.5°	938.5	943.0	950.9	955.0	961.6	962.9	938.8	936.0	936.1	939.0	936.5
80°	819.3	828.0	840.5	849.1	859.4	863.5	838.7	832.8	827.3	826.5	821.6
82.5°	692.7	703.3	718.3	726.2	737.0	739.5	698.1	690.3	685.5	686.0	681.5
85°	528.8	536.8	550.4	554.9	561.6	561.0	513.7	493.5	498.9	490.5	497.1
87.5°	331.7	336.4	344.9	346.0	349.2	348.5	300.9	291.6	288.8	288.9	285.5
90°	159.5	162.4	169.5	169.2	173.7	172.8	134.0	129.2	126.1	128.2	123.8
92.5°	32.5	34.3	36.4	38.3	40.5	42.5	40.2	40.9	39.3	37.2	35.8
95°	34.6	37.6	40.6	43.5	46.5	49.5	52.5	55.5	52.7	49.8	47.0
97.5°	39.0	42.5	46.0	49.4	52.9	56.5	60.0	63.5	60.5	57.3	54.3
100°	50.3	56.8	63.3	69.8	76.3	82.8	89.5	96.0	90.3	84.2	78.5
102.5°	99.1	112.9	126.8	140.6	154.4	168.3	182.4	196.3	183.0	169.6	156.2
105°	186.7	209.3	231.7	253.9	276.2	298.8	321.7	344.0	322.8	301.5	280.4
107.5°	292.7	315.6	338.1	360.6	383.4	406.0	429.4	452.2	431.3	410.4	389.7
110°	359.5	375.8	392.3	408.8	425.1	441.6	458.9	475.4	462.8	450.1	437.5



TEST NUMBER: P1444762
 CATALOG NUMBER: EHBR1-48-UNV-TA-L935-UPL12

CANDELA DISTRIBUTION (continued):

	27.5°	30°	32.5°	35°	37.5°	40°	42.5°	45°	47.5°	50°	52.5°
112.5°	375.6	387.4	399.1	410.4	421.9	433.6	446.5	458.3	451.7	445.0	438.6
115°	358.3	366.2	373.6	381.3	388.9	396.4	405.6	413.6	411.1	408.7	406.2
117.5°	326.9	330.9	335.0	339.1	342.9	346.9	352.8	357.2	356.9	356.7	356.5
120°	293.6	295.0	296.3	297.7	298.9	300.1	303.7	305.5	306.6	307.5	308.6
122.5°	266.2	266.3	266.3	266.4	266.5	266.4	269.2	269.8	270.2	270.5	271.0
125°	245.3	244.8	244.4	244.2	243.5	243.2	246.0	246.1	245.4	244.6	244.0
127.5°	232.7	231.9	231.2	230.6	229.6	228.9	231.5	231.4	229.9	228.4	226.9
130°	225.0	224.3	223.6	223.0	222.3	221.7	224.5	224.7	222.7	220.3	218.3
132.5°	221.6	221.1	220.2	219.8	219.2	218.4	221.6	221.9	219.7	217.2	215.0
135°	219.8	219.2	218.6	218.0	217.4	217.0	220.5	220.9	218.8	216.3	214.2
137.5°	218.7	218.2	217.7	217.2	216.6	216.2	220.1	220.7	218.9	216.7	214.9
140°	218.8	218.2	217.8	217.5	217.0	216.8	221.1	221.8	220.2	218.6	216.9
142.5°	218.2	218.2	217.9	217.9	217.5	217.5	222.5	223.4	222.1	220.7	219.4
145°	219.3	219.3	219.2	219.2	219.2	219.3	224.9	226.2	225.3	224.1	223.0
147.5°	220.5	220.5	220.4	220.4	220.3	220.8	226.9	228.2	227.6	226.6	225.9
150°	221.5	221.5	221.3	221.5	221.8	222.1	229.0	230.8	230.1	229.5	228.8
152.5°	221.3	221.3	221.2	221.2	221.3	221.7	230.4	232.5	232.0	231.2	230.8
155°	222.9	222.7	222.5	222.5	222.4	222.8	232.4	234.7	234.3	233.8	233.3
157.5°	225.9	225.5	225.1	225.1	225.0	225.0	235.4	238.0	237.5	237.1	236.6
160°	229.2	229.0	228.6	228.5	228.1	228.0	238.8	241.4	241.1	240.5	240.1
162.5°	233.0	233.2	232.7	232.6	232.3	232.5	243.2	246.0	245.3	244.9	244.4
165°	238.3	237.8	237.5	237.5	237.2	237.0	247.2	249.7	249.4	248.9	248.4
167.5°	243.4	243.3	243.0	242.9	242.7	242.8	252.2	254.6	254.3	253.7	253.4
170°	248.7	248.7	248.4	248.4	248.4	248.5	256.5	258.4	258.2	257.6	257.3
172.5°	253.2	253.3	253.3	253.3	253.3	253.5	260.2	262.0	261.7	261.4	260.9
175°	256.2	256.2	256.3	256.5	256.5	256.7	261.9	263.2	263.0	262.7	262.5
177.5°	259.8	259.8	259.9	260.0	260.2	260.3	263.5	264.3	264.1	264.1	264.0
180°	262.1	262.1	262.1	262.1	262.1	262.1	262.1	262.1	262.1	262.1	262.1



TEST NUMBER: P1444762
 CATALOG NUMBER: EHBR1-48-UNV-TA-L935-UPL12

CANDELA DISTRIBUTION (continued):

	55°	57.5°	60°	62.5°	65°	67.5°	70°	72.5°	75°	77.5°	80°
0°	37093.8	37093.8	37093.8	37093.8	37093.8	37093.8	37093.8	37093.8	37093.8	37093.8	37093.8
2.5°	37173.4	37186.4	37188.3	37203.6	37202.4	37220.5	37217.7	37232.5	37223.8	37236.1	37225.7
5°	38046.4	38125.6	38167.1	38244.3	38268.7	38337.9	38357.5	38420.6	38423.2	38473.2	38461.8
7.5°	39280.8	39397.6	39466.8	39562.4	39610.8	39690.4	39725.4	39784.3	39803.3	39850.0	39853.6
10°	40018.0	40074.6	40114.2	40140.9	40165.2	40176.7	40190.0	40186.4	40190.0	40184.7	40196.1
12.5°	39728.0	39645.3	39590.5	39486.9	39426.9	39312.3	39256.1	39146.0	39106.0	39011.4	38997.8
15°	38259.7	37971.3	37767.5	37471.2	37284.8	36993.3	36822.7	36559.7	36439.5	36230.4	36175.6
17.5°	35583.4	35048.0	34633.6	34102.2	33733.4	33236.6	32924.3	32513.1	32288.0	31956.3	31841.6
20°	31831.3	31039.1	30417.7	29677.3	29147.5	28487.4	28064.8	27531.7	27222.3	26815.1	26650.0
22.5°	27426.2	26440.0	25663.8	24789.2	24150.0	23414.3	22908.0	22331.3	21994.6	21552.2	21356.3
25°	22885.8	21798.3	20935.4	20013.8	19338.4	18601.0	18094.6	17528.0	17179.7	16759.7	16565.1
27.5°	18543.5	17442.6	16608.7	15751.9	15132.3	14466.9	14009.9	13515.4	13206.1	12847.7	12664.5
30°	14711.4	13740.4	13030.7	12319.7	11804.3	11263.9	10884.2	10474.3	10203.0	9896.0	9721.6
32.5°	11589.3	10839.7	10284.0	9719.8	9298.0	8846.4	8518.3	8156.6	7911.8	7637.6	7479.7
35°	9178.6	8596.1	8152.9	7688.5	7326.1	6941.5	6652.4	6340.1	6120.4	5884.4	5748.0
37.5°	7252.0	6788.9	6424.2	6038.4	5740.8	5422.1	5314.7	4956.4	4728.9	4540.5	4410.0
40°	5691.4	5323.1	5021.3	4726.3	4483.6	4241.9	4047.9	3856.5	3709.6	3574.8	3481.7
42.5°	4444.5	4177.7	3957.3	3741.2	3564.1	3388.0	3247.6	3115.7	3016.7	2928.6	2868.5
45°	3533.2	3349.7	3196.5	3044.4	2919.4	2801.8	2707.3	2623.1	2559.2	2506.3	2468.7
47.5°	2902.6	2777.0	2669.0	2566.3	2481.4	2404.4	2341.0	2320.4	2251.7	2205.4	2187.8
50°	2466.8	2391.0	2308.9	2233.1	2176.5	2120.1	2079.0	2038.7	2013.0	1991.7	1985.2
52.5°	2141.6	2083.6	2037.9	1989.9	1952.5	1912.4	1884.1	1857.2	1843.1	1832.0	1830.6
55°	1899.8	1859.2	1829.0	1796.8	1774.4	1750.8	1736.2	1722.0	1715.8	1710.2	1710.6
57.5°	1716.8	1689.7	1670.0	1649.2	1637.0	1625.8	1622.1	1618.5	1620.4	1621.2	1624.4
60°	1583.4	1565.9	1553.4	1541.5	1536.4	1532.9	1535.6	1538.8	1545.2	1550.5	1555.1
62.5°	1481.3	1471.2	1465.2	1458.7	1458.2	1458.5	1464.0	1469.3	1477.4	1483.5	1488.0
65°	1376.1	1370.4	1368.4	1364.3	1366.4	1367.6	1374.2	1378.3	1386.4	1391.2	1397.0
67.5°	1269.9	1268.5	1269.7	1269.7	1273.4	1276.6	1282.9	1287.6	1294.4	1298.9	1303.6
70°	1191.4	1191.9	1194.8	1195.4	1199.3	1201.5	1207.0	1210.0	1216.2	1219.9	1225.5
72.5°	1115.1	1113.8	1114.5	1112.7	1114.1	1113.5	1116.6	1118.0	1123.3	1126.2	1133.1
75°	1033.8	1030.4	1029.5	1025.9	1026.0	1023.3	1024.6	1024.4	1027.9	1029.2	1034.2
77.5°	935.6	929.9	927.1	920.9	920.8	918.5	920.9	922.5	928.5	931.3	937.1
80°	818.2	809.2	805.1	797.9	799.1	798.7	804.7	809.4	816.7	818.1	825.2
82.5°	680.1	670.9	666.5	659.4	661.1	661.3	666.8	667.7	674.1	676.9	685.2
85°	487.0	490.5	480.7	481.4	479.4	483.3	487.0	491.6	496.9	505.9	512.8
87.5°	286.8	285.5	288.9	289.4	294.4	296.9	304.9	309.4	318.4	325.4	338.1
90°	124.3	119.9	122.9	121.6	126.6	125.4	130.1	128.0	133.5	134.1	141.2
92.5°	33.4	31.9	29.5	27.9	25.7	24.4	22.9	22.6	21.2	20.8	19.5
95°	44.3	41.5	38.8	36.0	33.3	30.5	29.5	28.5	27.4	26.4	25.4
97.5°	51.3	48.4	45.4	42.2	39.2	36.3	35.6	34.9	34.3	33.5	32.9
100°	72.5	66.8	61.0	55.2	49.4	43.7	43.1	42.6	42.1	41.5	41.0
102.5°	143.0	129.6	116.5	103.1	90.0	76.6	74.3	72.0	69.7	67.4	65.1
105°	259.0	237.7	216.5	195.3	174.2	153.0	146.7	140.1	133.9	127.5	121.3
107.5°	368.9	348.0	327.4	306.7	286.0	265.3	255.2	245.3	235.1	225.1	215.3
110°	424.5	412.0	399.6	386.8	374.4	361.9	352.2	342.7	333.0	323.4	314.0



TEST NUMBER: P1444762
 CATALOG NUMBER: EHBR1-48-UNV-TA-L935-UPL12

CANDELA DISTRIBUTION (continued):

	55°	57.5°	60°	62.5°	65°	67.5°	70°	72.5°	75°	77.5°	80°
112.5°	432.0	425.4	418.8	412.4	406.0	399.5	394.8	390.0	385.4	380.6	375.7
115°	403.7	401.3	399.0	396.6	394.4	392.1	391.5	391.1	390.4	390.0	389.7
117.5°	356.3	356.1	355.8	355.8	355.7	355.7	357.9	360.0	362.3	364.7	367.2
120°	309.6	310.6	311.5	312.7	313.8	315.0	317.8	320.8	323.7	327.0	330.3
122.5°	271.4	271.8	272.1	272.7	273.2	273.8	276.3	279.2	282.0	285.0	288.3
125°	243.0	242.2	241.4	240.5	239.7	239.3	241.2	243.3	245.5	248.0	250.3
127.5°	225.1	223.4	221.7	220.2	218.4	217.1	217.8	218.8	219.6	220.8	222.0
130°	216.0	213.8	211.3	209.3	206.7	204.7	204.6	204.5	204.4	204.5	204.5
132.5°	212.4	210.1	207.5	205.0	202.6	200.1	199.1	198.3	197.4	196.9	196.2
135°	211.7	209.5	206.9	204.6	202.0	199.8	198.5	197.2	196.0	195.0	194.0
137.5°	212.9	210.9	208.8	206.9	204.6	202.7	201.0	199.8	198.2	197.3	195.9
140°	215.1	213.5	211.5	209.8	208.0	206.4	204.8	203.8	202.4	201.5	200.3
142.5°	217.8	216.4	215.0	213.5	212.1	210.6	209.4	208.2	207.0	206.0	204.9
145°	222.0	220.9	219.7	218.6	217.3	216.3	215.0	214.2	213.1	212.2	211.5
147.5°	225.0	224.1	223.2	222.3	221.3	220.4	219.4	218.9	217.8	217.2	216.4
150°	227.9	227.1	226.2	225.7	224.6	223.9	223.1	222.5	221.7	221.3	220.6
152.5°	229.8	229.2	228.5	227.9	227.0	226.2	225.6	225.1	224.5	224.0	223.3
155°	232.7	232.1	231.4	230.8	230.0	229.6	228.9	228.2	227.7	227.1	226.5
157.5°	236.1	235.6	234.8	234.5	233.7	233.1	232.6	232.0	231.3	230.8	230.2
160°	239.5	239.2	238.5	237.9	237.4	236.8	236.0	235.6	234.8	234.4	233.6
162.5°	243.8	243.2	242.6	242.1	241.4	240.8	240.2	239.6	239.0	238.5	237.8
165°	247.9	247.3	246.8	246.2	245.8	245.3	244.5	244.0	243.3	242.8	242.1
167.5°	252.9	252.5	252.0	251.5	250.9	250.3	249.8	249.2	248.6	248.0	247.2
170°	256.9	256.2	255.9	255.3	254.9	254.2	253.7	253.0	252.5	252.1	251.3
172.5°	260.6	260.4	259.8	259.6	258.9	258.6	258.2	257.8	257.3	256.9	256.5
175°	262.4	262.2	262.1	261.7	261.6	261.3	261.0	260.8	260.6	260.5	260.0
177.5°	264.0	263.8	263.8	263.6	263.5	263.5	263.2	263.1	263.0	262.7	262.7
180°	262.1	262.1	262.1	262.1	262.1	262.1	262.1	262.1	262.1	262.1	262.1



TEST NUMBER: P1444762
 CATALOG NUMBER: EHBR1-48-UNV-TA-L935-UPL12

CANDELA DISTRIBUTION (continued):

	82.5°	85°	87.5°	90°	92.5°	95°	97.5°	100°	102.5°	105°	107.5°
0°	37093.8	37093.8	37093.8	37093.8	37093.8	37093.8	37093.8	37093.8	37093.8	37093.8	37093.8
2.5°	37236.4	37227.0	37231.5	37214.1	37218.2	37197.2	37195.2	37171.5	37169.1	37146.7	37138.3
5°	38497.2	38476.5	38499.9	38463.4	38470.6	38423.2	38419.2	38357.8	38336.7	38260.0	38226.9
7.5°	39882.8	39875.0	39889.3	39858.8	39857.8	39815.5	39798.0	39743.1	39708.9	39628.4	39576.9
10°	40186.4	40193.5	40181.8	40184.7	40168.2	40163.7	40146.8	40136.1	40108.4	40087.6	40056.8
12.5°	38925.9	38933.5	38885.3	38915.9	38891.8	38948.0	38943.5	39009.8	39019.9	39103.8	39135.6
15°	36012.7	36003.7	35911.4	35969.5	35938.3	36061.7	36089.4	36255.4	36344.3	36557.5	36688.5
17.5°	31611.9	31588.1	31458.1	31528.9	31492.9	31674.9	31736.0	32001.6	32167.3	32510.8	32755.6
20°	26365.8	26320.3	26168.3	26251.2	26214.1	26420.9	26508.0	26829.0	27042.7	27497.7	27821.4
22.5°	21054.7	20982.8	20833.9	20911.3	20876.2	21090.5	21203.8	21526.0	21770.7	22237.8	22615.7
25°	16285.3	16221.2	16077.3	16131.5	16118.4	16299.6	16400.5	16705.2	16945.6	17390.6	17751.4
27.5°	12421.1	12354.5	12224.5	12262.8	12249.6	12404.0	12499.1	12753.6	12960.5	13335.1	13651.9
30°	9506.6	9426.2	9315.9	9337.1	9328.0	9453.1	9541.9	9756.3	9933.6	10250.2	10523.1
32.5°	7286.8	7206.0	7104.6	7114.6	7101.2	7199.3	7272.5	7458.9	7613.4	7882.6	8120.2
35°	5575.4	5669.8	5453.5	5590.5	5447.9	5657.3	5582.0	5698.5	5831.4	6058.2	6256.3
37.5°	4286.1	4220.3	4164.7	4158.7	4158.4	4207.0	4264.3	4376.5	4493.6	4662.6	4837.2
40°	3396.6	3350.3	3314.4	3311.7	3314.4	3348.9	3391.2	3468.7	3554.5	3675.9	3804.1
42.5°	2817.1	2786.4	2764.8	2763.2	2770.1	2794.6	2824.0	2870.1	2925.9	3004.5	3092.5
45°	2438.2	2421.2	2409.1	2408.4	2411.6	2424.3	2441.3	2470.0	2505.4	2554.4	2610.0
47.5°	2172.4	2168.2	2160.7	2161.0	2157.5	2162.8	2164.7	2180.7	2199.6	2236.5	2309.3
50°	1978.8	1978.8	1973.5	1973.3	1968.4	1968.1	1963.9	1970.3	1979.1	2002.0	2025.3
52.5°	1825.8	1825.3	1819.6	1818.5	1813.3	1813.0	1809.4	1811.9	1813.1	1824.7	1838.6
55°	1706.2	1702.6	1695.2	1692.8	1690.8	1693.8	1692.5	1692.6	1691.0	1695.9	1700.0
57.5°	1620.4	1615.7	1608.7	1606.6	1606.1	1609.6	1609.8	1608.6	1602.1	1597.8	1591.5
60°	1552.5	1547.8	1540.2	1538.3	1539.4	1544.4	1544.1	1539.9	1530.3	1522.0	1512.2
62.5°	1485.8	1483.9	1480.0	1479.5	1478.5	1479.4	1476.0	1471.5	1462.0	1453.1	1442.5
65°	1396.3	1397.3	1394.4	1394.8	1391.4	1390.9	1385.6	1381.3	1371.7	1363.6	1352.8
67.5°	1303.4	1304.1	1301.8	1301.8	1299.9	1300.2	1297.0	1293.1	1285.0	1278.4	1269.9
70°	1226.8	1228.7	1227.4	1227.8	1225.5	1224.7	1219.8	1215.9	1207.6	1202.1	1194.5
72.5°	1135.1	1139.3	1139.1	1140.1	1136.8	1135.1	1129.2	1124.4	1116.9	1112.4	1106.4
75°	1036.1	1041.5	1043.0	1045.4	1040.6	1038.2	1031.8	1027.9	1021.7	1019.1	1015.1
77.5°	939.5	945.4	951.0	956.3	948.7	941.9	933.9	927.7	918.8	915.5	909.2
80°	831.0	841.4	853.9	864.5	850.9	837.1	823.8	813.9	802.2	797.4	789.7
82.5°	689.4	700.1	707.3	714.0	704.6	694.5	681.6	672.9	660.3	655.6	646.7
85°	523.8	537.1	541.4	545.0	538.9	533.6	521.4	505.1	497.1	484.6	478.2
87.5°	344.5	352.5	354.0	355.2	351.6	348.9	341.1	333.3	319.8	309.9	297.7
90°	140.5	145.5	142.0	143.7	139.4	140.3	132.8	130.6	119.8	116.1	106.5
92.5°	18.9	17.6	16.9	15.9	17.4	17.7	19.1	19.5	20.8	21.2	22.6
95°	24.4	23.3	22.3	21.3	22.1	22.9	23.7	24.6	25.3	26.1	26.9
97.5°	32.2	31.5	30.8	30.2	30.6	31.1	31.6	32.1	32.5	33.0	33.7
100°	40.4	39.9	39.3	38.8	38.8	38.8	38.8	38.8	38.8	38.8	38.8
102.5°	62.8	60.5	58.2	55.9	57.5	59.0	60.5	62.1	63.7	65.3	67.0
105°	114.9	108.7	102.3	96.1	102.1	108.2	114.4	120.5	126.5	132.9	139.0
107.5°	205.1	195.1	185.3	175.3	186.5	197.7	208.7	219.8	230.9	242.0	253.3
110°	304.4	295.0	285.5	276.1	287.9	299.6	311.4	323.2	335.0	346.8	358.8



TEST NUMBER: P1444762
 CATALOG NUMBER: EHBR1-48-UNV-TA-L935-UPL12

CANDELA DISTRIBUTION (continued):

	82.5°	85°	87.5°	90°	92.5°	95°	97.5°	100°	102.5°	105°	107.5°
112.5°	371.1	366.5	361.9	357.3	364.9	372.4	380.0	387.9	395.4	403.2	410.8
115°	389.3	389.0	388.7	388.5	392.1	395.6	399.2	403.0	406.7	410.2	414.1
117.5°	369.5	371.9	374.5	377.0	378.2	379.3	380.7	381.8	383.2	384.5	385.9
120°	333.5	336.6	340.1	343.5	343.0	342.6	342.1	341.7	341.7	341.3	341.4
122.5°	291.5	294.6	298.1	301.4	300.4	299.5	298.5	297.6	297.0	296.3	295.6
125°	253.0	255.6	258.3	261.1	260.1	259.1	258.1	257.6	256.9	256.1	255.7
127.5°	223.5	225.0	226.4	228.1	227.7	227.2	227.1	226.8	226.8	226.9	226.9
130°	204.8	205.3	206.0	206.5	206.6	206.7	207.4	207.7	208.5	208.9	209.9
132.5°	196.1	195.7	195.7	195.6	196.1	196.7	197.6	198.4	199.7	200.6	202.3
135°	193.4	192.8	192.3	192.0	192.8	193.4	194.6	195.7	197.0	198.6	200.2
137.5°	195.2	194.4	193.8	193.0	193.9	194.7	195.8	196.9	198.3	199.8	201.6
140°	199.6	198.7	198.3	197.6	198.4	199.0	200.1	201.2	202.7	204.1	205.7
142.5°	204.2	203.3	202.8	202.5	202.9	203.7	204.8	205.7	207.0	208.2	209.8
145°	210.7	210.0	209.7	209.2	209.5	210.1	210.8	211.6	212.5	213.3	214.7
147.5°	215.9	215.3	215.1	214.6	215.0	215.3	215.8	216.3	217.1	217.8	218.7
150°	220.4	219.8	219.4	219.2	219.4	219.5	220.0	220.1	220.6	221.1	221.9
152.5°	223.1	222.4	222.4	222.1	222.1	222.1	222.4	222.6	223.0	223.2	224.0
155°	226.2	225.8	225.3	225.0	224.9	224.7	224.9	224.7	225.0	225.0	225.2
157.5°	229.9	229.4	229.1	228.6	228.4	227.9	227.9	227.8	227.8	227.4	227.5
160°	233.2	232.6	232.0	231.5	231.3	230.9	230.9	230.6	230.5	230.4	230.4
162.5°	237.4	236.8	236.5	235.9	235.6	235.0	234.7	234.2	233.9	233.7	233.6
165°	241.4	240.8	240.4	239.5	239.4	239.1	238.6	238.4	238.2	237.8	237.6
167.5°	246.9	246.2	245.7	245.1	244.7	244.1	243.9	243.4	243.1	242.7	242.7
170°	251.0	250.4	250.1	249.6	249.3	248.9	248.8	248.3	248.2	248.1	248.1
172.5°	256.0	255.7	255.3	255.0	254.7	254.4	254.2	254.1	253.9	253.9	253.7
175°	259.8	259.6	259.5	259.2	258.9	258.8	258.8	258.7	258.6	258.3	258.3
177.5°	262.3	262.2	262.1	262.0	261.8	261.8	261.8	261.8	261.8	261.7	261.6
180°	262.1	262.1	262.1	262.1	262.1	262.1	262.1	262.1	262.1	262.1	262.1



TEST NUMBER: P1444762
 CATALOG NUMBER: EHBR1-48-UNV-TA-L935-UPL12

CANDELA DISTRIBUTION (continued):

	110°	112.5°	115°	117.5°	120°	122.5°	125°	127.5°	130°	132.5°	135°
0°	37093.8	37093.8	37093.8	37093.8	37093.8	37093.8	37093.8	37093.8	37093.8	37093.8	37093.8
2.5°	37114.3	37104.5	37078.8	37066.1	37042.4	37030.4	37011.9	36999.9	36984.9	36973.8	36968.0
5°	38142.6	38095.1	38000.0	37941.5	37838.8	37771.1	37669.1	37594.4	37489.0	37411.4	37311.8
7.5°	39480.4	39407.6	39285.8	39193.4	39049.7	38939.9	38778.7	38649.7	38471.6	38323.6	38141.6
10°	40025.1	39982.6	39928.0	39868.5	39788.9	39710.9	39600.8	39488.6	39339.0	39190.2	38995.9
12.5°	39220.1	39260.1	39339.0	39375.8	39436.2	39456.7	39484.3	39471.4	39446.9	39386.2	39298.1
15°	36940.1	37107.1	37371.0	37553.7	37809.4	37989.1	38226.9	38379.9	38556.1	38661.4	38761.4
17.5°	33189.5	33512.6	33978.4	34350.0	34848.8	35254.4	35751.3	36141.8	36592.6	36938.4	37306.6
20°	28385.6	28838.0	29481.0	30027.0	30749.9	31362.9	32148.1	32805.9	33573.3	34213.0	34903.4
22.5°	23215.3	23747.5	24484.2	25142.9	26006.1	26777.0	27761.0	28630.8	29668.1	30597.5	31625.4
25°	18337.8	18859.3	19609.9	20291.8	21223.6	22072.9	23147.8	24145.7	25349.5	26472.2	27761.0
27.5°	14155.0	14618.3	15278.0	15891.8	16745.3	17579.1	18669.9	19734.0	21018.5	22225.0	23613.9
30°	10931.7	11307.5	11836.1	12329.9	13015.1	13697.0	14668.6	15652.7	16930.9	18181.1	19605.0
32.5°	8471.7	8792.1	9233.4	9634.3	10162.2	10676.4	11391.9	12178.3	13299.5	14497.0	15873.8
35°	6558.0	6832.2	7207.8	7553.1	7987.2	8395.4	8929.3	9490.6	10346.3	11353.6	12585.7
37.5°	5228.4	5340.2	5608.3	5891.1	6251.8	6587.2	7004.8	7419.8	8032.1	8826.8	9833.4
40°	3976.2	4153.6	4371.8	4594.6	4867.7	5136.7	5595.0	5815.6	6218.6	6789.1	7570.4
42.5°	3208.2	3333.0	3486.6	3641.5	3831.8	4019.2	4251.0	4487.1	4788.3	5174.8	5730.4
45°	2684.7	2766.1	2865.1	2968.3	3093.3	3221.2	3376.3	3538.4	3742.6	3980.1	4317.7
47.5°	2335.0	2379.9	2444.6	2515.1	2600.7	2689.3	2790.1	2893.5	3020.3	3161.2	3353.4
50°	2062.0	2099.5	2149.7	2196.9	2255.9	2346.7	2386.7	2443.7	2520.0	2603.0	2710.5
52.5°	1864.4	1889.4	1921.0	1948.0	1985.4	2019.4	2063.9	2103.2	2156.0	2205.7	2275.2
55°	1710.6	1719.7	1737.5	1755.0	1780.8	1804.0	1834.6	1860.3	1894.0	1923.8	1967.5
57.5°	1591.8	1592.6	1600.8	1609.9	1626.6	1641.2	1662.2	1679.1	1702.4	1721.5	1747.7
60°	1506.4	1501.9	1503.5	1506.7	1516.1	1525.5	1539.0	1550.0	1564.7	1575.5	1590.2
62.5°	1435.4	1428.2	1426.6	1425.7	1430.5	1433.8	1441.2	1446.5	1454.9	1459.6	1467.4
65°	1345.6	1337.2	1333.9	1330.0	1331.4	1330.3	1333.1	1333.2	1337.5	1338.5	1343.0
67.5°	1264.2	1257.2	1252.9	1247.7	1245.4	1241.7	1240.0	1236.4	1235.9	1232.9	1232.2
70°	1190.0	1183.1	1179.5	1174.7	1172.2	1167.3	1164.3	1158.2	1154.7	1149.0	1145.9
72.5°	1104.1	1100.2	1099.1	1095.8	1094.9	1092.2	1090.9	1086.7	1084.2	1079.4	1076.7
75°	1014.3	1011.1	1010.8	1007.6	1007.3	1003.9	1003.1	998.6	996.2	991.4	989.4
77.5°	907.3	902.6	901.3	897.4	898.4	896.7	898.1	894.6	893.2	888.4	886.8
80°	786.9	780.9	778.4	773.3	774.6	772.4	774.6	774.4	776.2	772.4	771.6
82.5°	644.2	637.6	636.3	632.8	635.2	635.4	640.5	637.8	638.9	635.2	636.8
85°	468.8	463.9	457.0	456.0	451.6	456.2	450.3	454.3	447.7	452.3	446.3
87.5°	290.7	280.4	275.1	267.8	265.0	258.0	255.1	250.1	251.6	249.2	250.6
90°	104.6	96.2	94.5	87.6	87.2	81.3	82.1	78.0	79.7	75.4	77.4
92.5°	22.9	23.8	25.4	27.4	28.7	30.4	31.9	33.9	35.3	37.2	38.5
95°	27.7	28.5	30.7	32.9	35.1	37.3	39.4	41.6	43.8	46.0	48.1
97.5°	34.2	34.6	36.8	39.0	41.1	43.3	45.4	47.9	50.0	52.2	54.4
100°	38.8	38.9	45.0	51.2	57.4	63.7	69.8	76.0	82.4	88.5	94.7
102.5°	68.5	70.1	85.6	101.2	116.8	132.4	148.1	163.9	179.5	195.2	210.9
105°	145.1	151.3	175.0	198.9	222.7	246.5	270.4	294.4	318.2	342.1	366.0
107.5°	264.5	275.6	297.3	318.8	340.2	361.9	383.6	405.2	426.8	448.5	470.4
110°	370.6	382.6	397.0	411.6	426.2	440.7	455.3	469.9	484.7	499.3	514.2



TEST NUMBER: P1444762
 CATALOG NUMBER: EHBR1-48-UNV-TA-L935-UPL12

CANDELA DISTRIBUTION (continued):

	110°	112.5°	115°	117.5°	120°	122.5°	125°	127.5°	130°	132.5°	135°
112.5°	418.5	426.3	434.9	443.6	452.2	460.9	469.5	478.3	487.1	495.9	504.6
115°	417.9	421.8	425.2	428.9	432.3	436.0	439.6	443.5	447.4	451.1	454.9
117.5°	387.2	388.9	389.5	390.5	391.4	392.6	393.5	394.8	396.0	397.2	398.2
120°	341.2	341.1	341.1	341.1	341.0	341.1	341.2	341.3	341.7	341.9	342.0
122.5°	295.0	294.7	294.6	294.7	294.9	295.2	295.5	296.0	296.4	296.7	297.0
125°	255.2	255.0	256.2	257.4	258.7	260.0	261.2	262.9	264.3	265.7	267.3
127.5°	227.0	227.6	229.6	231.7	233.8	236.0	238.3	240.6	242.8	245.3	247.4
130°	210.8	212.0	214.3	217.1	219.5	222.2	224.9	227.8	230.2	232.9	235.6
132.5°	203.5	205.3	207.5	210.2	212.6	215.3	218.1	220.7	223.3	226.1	228.5
135°	201.9	203.9	206.2	208.6	211.1	213.7	216.1	218.8	221.1	223.6	225.9
137.5°	203.2	205.1	207.3	209.3	211.3	213.7	215.8	218.1	220.1	222.2	224.2
140°	207.4	209.3	210.6	212.4	213.9	215.6	217.0	218.8	220.1	222.0	223.2
142.5°	211.2	213.0	213.9	215.2	216.4	218.0	219.2	220.4	221.5	222.6	223.6
145°	215.8	217.2	217.9	218.7	219.4	220.1	220.8	221.6	222.1	222.7	223.2
147.5°	219.7	220.7	221.0	221.6	222.1	222.4	222.9	223.4	223.5	224.0	224.4
150°	222.4	223.2	223.2	223.6	223.6	223.9	223.9	224.2	224.2	224.5	224.5
152.5°	224.3	225.0	224.7	225.0	224.8	224.8	224.7	224.8	224.7	224.7	224.8
155°	225.2	225.5	225.3	225.4	225.2	225.2	225.0	225.4	225.3	225.4	225.5
157.5°	227.3	227.3	227.2	227.2	226.9	227.0	227.0	227.0	227.1	227.6	227.8
160°	230.1	230.1	229.8	229.8	229.8	229.7	229.7	229.8	229.9	230.5	230.7
162.5°	233.1	233.0	232.7	232.7	232.7	232.7	232.8	233.2	233.2	233.7	233.9
165°	237.6	237.7	237.4	237.5	237.4	237.3	237.4	237.5	237.8	238.0	238.4
167.5°	242.4	242.4	242.4	242.5	242.5	242.6	242.8	243.3	243.4	244.0	244.2
170°	248.0	248.1	247.9	247.9	247.9	248.0	248.0	248.1	248.3	248.5	248.5
172.5°	253.7	253.7	253.6	253.4	253.3	253.3	253.2	253.3	253.2	253.1	253.0
175°	258.1	258.0	257.9	257.9	257.9	257.6	257.6	257.2	257.1	257.1	257.0
177.5°	261.5	261.2	261.0	261.0	260.9	260.8	260.8	260.7	260.7	260.7	260.4
180°	262.1	262.1	262.1	262.1	262.1	262.1	262.1	262.1	262.1	262.1	262.1



TEST NUMBER: P1444762
 CATALOG NUMBER: EHBR1-48-UNV-TA-L935-UPL12

CANDELA DISTRIBUTION (continued):

	137.5°	140°	142.5°	145°	147.5°	150°	152.5°	155°	157.5°	160°	162.5°
0°	37093.8	37093.8	37093.8	37093.8	37093.8	37093.8	37093.8	37093.8	37093.8	37093.8	37093.8
2.5°	36960.6	36960.2	36956.6	36958.2	36958.9	36961.6	36964.7	36968.0	36968.7	36971.2	36971.8
5°	37237.2	37145.7	37078.1	37003.7	36947.8	36897.5	36863.9	36837.3	36827.0	36829.6	36835.8
7.5°	37987.2	37798.5	37642.7	37465.7	37318.0	37161.7	37032.1	36908.9	36819.1	36752.2	36714.8
10°	38810.3	38580.4	38360.5	38104.3	37861.2	37601.8	37366.8	37130.2	36932.9	36761.6	36635.8
12.5°	39175.5	39013.0	38823.0	38581.1	38321.0	38021.7	37719.4	37395.4	37094.1	36814.3	36588.7
15°	38788.8	38789.1	38719.8	38603.8	38423.2	38183.9	37896.0	37558.2	37202.6	36839.8	36508.4
17.5°	37561.2	37792.8	37921.6	38003.2	37978.2	37890.0	37706.7	37447.3	37115.9	36729.4	36325.0
20°	35453.1	35999.3	36388.8	36739.1	36935.4	37065.9	37052.8	36947.2	36711.2	36382.6	35961.4
22.5°	32499.8	33416.7	34140.3	34815.0	35288.2	35673.1	35856.1	35933.8	35826.8	35597.9	35202.4
25°	28912.8	30159.6	31223.5	32256.1	33030.6	33696.2	34096.3	34378.2	34400.5	34280.9	33928.1
27.5°	24927.0	26398.7	27745.3	29117.5	30206.8	31163.7	31791.6	32251.1	32397.1	32377.9	32057.4
30°	20946.4	22491.3	23975.6	25575.8	26923.6	28146.1	28975.5	29597.1	29836.5	29882.5	29574.2
32.5°	17187.0	18710.4	20190.7	21863.6	23346.8	24748.0	25727.9	26466.1	26744.6	26810.2	26472.2
35°	13775.2	15180.7	16587.4	18208.7	19683.4	21134.3	22166.8	22939.7	23199.9	23243.7	22852.3
37.5°	10816.5	12014.0	13239.7	14694.5	16048.7	17411.4	18392.4	19118.7	19308.3	19296.6	18853.5
40°	8325.3	9256.2	10241.2	11438.8	12564.7	13716.6	14545.0	15145.5	15245.0	15171.3	14706.0
42.5°	6260.2	6932.5	7646.6	8540.6	9376.0	10238.1	10840.8	11286.6	11300.7	11184.2	10766.6
45°	4663.8	5319.8	5619.2	6159.8	6697.9	7271.1	7639.2	7914.5	7871.9	7769.3	7451.9
47.5°	3555.3	3807.5	4074.9	4410.0	4723.4	5374.0	5325.8	5768.0	5449.5	5666.6	5188.6
50°	2823.3	2964.2	3108.3	3286.2	3449.9	3620.0	3726.2	3805.6	3795.3	3761.2	3669.6
52.5°	2402.0	2445.5	2516.4	2617.7	2709.0	2801.0	2861.6	2910.8	2911.7	2898.0	2851.6
55°	2007.5	2062.8	2113.8	2179.9	2292.6	2309.9	2396.6	2379.0	2385.8	2361.8	2386.5
57.5°	1770.0	1802.1	1830.9	1870.2	1902.7	1940.7	1963.1	1984.7	1982.7	1978.0	1954.3
60°	1601.7	1619.4	1635.4	1658.3	1676.3	1697.6	1708.0	1718.9	1715.4	1707.4	1686.4
62.5°	1472.0	1483.0	1492.2	1507.0	1517.8	1531.2	1536.6	1541.2	1536.6	1529.0	1510.4
65°	1343.9	1351.1	1356.9	1368.0	1375.7	1387.1	1391.7	1396.0	1391.8	1385.9	1371.7
67.5°	1228.4	1229.2	1228.6	1233.2	1235.5	1242.4	1244.4	1247.6	1242.7	1237.5	1225.5
70°	1140.9	1139.1	1136.9	1138.7	1139.1	1142.4	1143.0	1142.4	1136.5	1127.7	1114.6
72.5°	1072.5	1071.5	1069.8	1071.4	1071.4	1074.4	1073.4	1071.9	1064.6	1056.1	1043.2
75°	984.5	983.7	980.5	980.6	977.8	978.8	975.2	973.2	965.1	957.9	946.4
77.5°	881.5	879.9	875.1	873.2	868.0	865.8	859.1	855.8	847.5	841.7	831.8
80°	766.6	764.8	758.6	755.2	746.9	741.6	731.8	726.2	716.6	711.0	701.4
82.5°	633.6	634.3	628.1	623.8	612.0	603.0	589.7	582.6	572.2	566.6	556.8
85°	450.6	444.2	447.6	447.4	439.9	432.0	421.4	413.8	405.0	399.8	392.8
87.5°	247.2	248.7	246.9	245.4	240.2	236.2	227.8	223.4	217.0	213.8	208.5
90°	70.9	70.6	64.4	64.3	58.3	55.9	48.9	47.4	41.1	40.0	35.4
92.5°	36.7	34.9	33.3	31.2	29.6	27.8	25.9	24.1	22.3	21.4	21.1
95°	45.5	43.1	40.4	37.8	35.1	32.4	29.9	27.3	24.7	24.1	23.6
97.5°	51.4	48.2	45.1	42.2	39.1	36.0	33.0	29.8	26.7	26.4	26.0
100°	87.6	80.7	73.5	66.3	59.2	52.0	45.0	37.9	30.9	30.5	30.1
102.5°	193.5	176.3	159.1	141.8	124.7	107.3	90.1	72.7	55.5	52.9	50.5
105°	339.9	313.6	287.8	261.6	235.4	209.2	183.2	156.8	130.7	122.4	113.9
107.5°	445.9	421.3	397.0	372.5	347.8	323.5	298.9	274.3	249.7	234.9	220.2
110°	494.8	475.4	456.2	436.9	417.5	398.1	378.7	359.3	339.9	327.2	314.8



TEST NUMBER: P1444762
 CATALOG NUMBER: EHBR1-48-UNV-TA-L935-UPL12

CANDELA DISTRIBUTION (continued):

	137.5°	140°	142.5°	145°	147.5°	150°	152.5°	155°	157.5°	160°	162.5°
112.5°	490.7	476.7	463.0	448.7	434.9	420.6	406.7	392.5	378.3	370.8	363.3
115°	446.8	438.6	430.4	422.2	414.0	405.8	397.5	389.0	380.6	376.9	373.0
117.5°	394.5	390.5	386.8	382.9	379.0	374.9	371.1	367.0	362.9	361.9	360.8
120°	341.8	341.1	340.1	339.4	338.7	338.0	337.1	336.2	335.2	335.9	336.6
122.5°	298.5	299.6	301.0	302.0	303.3	304.3	305.7	306.5	307.6	309.3	311.0
125°	269.4	271.4	273.5	275.5	277.4	279.4	281.6	283.3	285.4	286.9	288.8
127.5°	250.0	252.1	254.5	256.6	258.9	261.1	263.4	265.3	267.5	269.3	271.2
130°	237.8	239.8	242.1	244.1	246.2	248.2	250.2	252.4	254.4	256.0	257.8
132.5°	230.5	232.6	234.6	236.4	238.5	240.4	242.4	244.3	246.5	247.9	249.5
135°	227.9	229.3	231.1	232.7	234.6	236.0	237.8	239.6	241.5	242.8	244.3
137.5°	225.8	227.1	228.8	230.1	231.8	233.2	235.0	236.5	238.5	239.4	240.9
140°	224.7	226.0	227.6	229.0	230.6	231.9	233.9	235.5	237.3	238.5	239.7
142.5°	225.0	225.9	227.2	228.4	229.8	231.0	232.6	234.1	235.7	237.0	238.2
145°	224.5	225.7	227.0	228.2	229.5	230.8	232.7	234.2	235.9	236.9	238.2
147.5°	225.4	226.3	227.6	228.7	229.9	231.0	232.7	234.0	235.6	236.7	237.7
150°	225.6	226.5	227.6	228.6	229.8	231.1	232.7	234.0	235.9	236.9	237.9
152.5°	225.8	226.7	227.8	229.0	230.3	231.7	233.1	234.6	236.3	237.2	238.3
155°	226.6	227.4	228.7	229.8	231.2	232.3	233.8	235.2	236.7	237.8	238.7
157.5°	228.8	229.5	230.7	231.8	232.9	234.1	235.6	236.7	238.2	239.0	239.8
160°	231.6	232.4	233.5	234.6	235.6	236.8	238.0	239.1	240.3	241.2	242.0
162.5°	234.8	235.9	236.9	237.8	239.0	240.1	241.3	242.4	243.5	244.2	245.0
165°	239.2	240.0	240.9	241.6	242.5	243.2	244.3	245.1	246.2	246.7	247.6
167.5°	245.1	245.5	246.2	246.8	247.6	248.2	249.1	249.8	250.7	251.3	252.0
170°	249.1	249.7	250.1	250.7	251.4	252.0	252.6	253.1	254.0	254.5	255.0
172.5°	253.4	253.6	254.1	254.4	254.8	255.1	255.6	256.1	256.5	257.0	257.4
175°	257.4	257.4	257.7	257.8	257.9	258.1	258.5	258.8	258.9	259.3	259.5
177.5°	260.5	260.6	260.6	260.7	261.0	261.1	261.2	261.3	261.6	261.7	262.0
180°	262.1	262.1	262.1	262.1	262.1	262.1	262.1	262.1	262.1	262.1	262.1



TEST NUMBER: P1444762
 CATALOG NUMBER: EHBR1-48-UNV-TA-L935-UPL12

CANDELA DISTRIBUTION (continued):

	165°	167.5°	170°	172.5°	175°	177.5°	180°	182.5°	185°	187.5°	190°
0°	37093.8	37093.8	37093.8	37093.8	37093.8	37093.8	37093.8	37093.8	37093.8	37093.8	37093.8
2.5°	36970.6	36970.2	36969.0	36967.3	36965.6	36966.6	36968.3	36972.5	36979.9	36990.6	37004.7
5°	36840.8	36848.4	36852.6	36853.2	36849.3	36847.0	36850.6	36860.8	36881.3	36915.6	36962.1
7.5°	36704.7	36714.0	36728.4	36739.1	36741.1	36738.5	36739.1	36755.0	36792.9	36859.8	36953.7
10°	36559.4	36531.8	36546.4	36573.0	36594.2	36598.0	36600.7	36619.5	36674.8	36775.9	36926.7
12.5°	36425.3	36337.8	36320.9	36345.0	36377.2	36387.4	36384.6	36392.6	36457.5	36591.3	36801.5
15°	36248.7	36084.1	36027.9	36034.1	36073.9	36088.1	36077.7	36061.7	36124.8	36288.3	36560.4
17.5°	35963.0	35697.8	35594.4	35589.8	35636.3	35648.6	35623.1	35573.6	35635.8	35839.7	36177.5
20°	35528.7	35137.1	34942.4	34911.5	34962.0	34947.2	34896.3	34821.4	34903.1	35151.2	35552.8
22.5°	34748.0	34251.8	33919.2	33812.0	33872.3	33832.1	33757.7	33662.2	33770.6	34052.4	34499.8
25°	33472.3	32898.9	32443.6	32188.2	32236.3	32164.1	32083.1	31967.4	32096.7	32420.2	32912.6
27.5°	31597.2	30934.8	30370.6	29947.7	29963.2	29868.7	29775.4	29625.6	29787.1	30170.1	30725.5
30°	29103.7	28337.2	27650.1	27075.5	27024.1	26932.4	26836.9	26640.3	26842.4	27300.7	27949.7
32.5°	25972.3	25121.3	24327.4	23600.8	23463.8	23374.3	23289.2	23062.9	23327.6	23861.9	24607.6
35°	22310.2	21403.8	20543.0	19713.2	19486.1	19396.6	19322.2	19105.4	19435.7	20017.2	20822.5
37.5°	18290.6	17364.6	16510.1	15659.1	15338.3	15216.8	15162.8	15020.8	15401.8	15977.0	16785.6
40°	14164.1	13303.1	12537.0	11785.4	11419.6	11233.9	11205.5	11179.7	11548.0	12047.0	12781.0
42.5°	10303.8	9609.2	9018.4	8443.9	8112.5	7858.9	7858.7	7935.7	8267.3	8641.0	9207.0
45°	7127.5	6661.3	6284.9	5901.1	6003.6	5498.0	5795.1	5642.6	5806.5	6047.5	6415.5
47.5°	4899.4	4644.9	4438.2	4223.8	4067.4	3918.2	3931.2	4027.5	4181.8	4324.8	4516.3
50°	3570.8	3441.2	3335.9	3224.6	3146.8	3080.9	3084.8	3126.5	3207.5	3282.9	3383.1
52.5°	2798.0	2726.5	2669.3	2607.8	2566.9	2534.2	2536.0	2556.2	2600.1	2643.0	2700.5
55°	2306.2	2297.6	2223.2	2167.9	2146.9	2125.0	2129.0	2136.9	2166.8	2191.9	2229.9
57.5°	1932.6	1899.2	1876.9	1847.8	1834.4	1819.1	1822.5	1825.5	1845.5	1862.3	1889.7
60°	1668.8	1645.2	1629.3	1609.5	1600.8	1591.0	1593.1	1595.0	1607.7	1618.8	1638.4
62.5°	1493.5	1472.3	1458.6	1443.3	1437.2	1430.5	1432.1	1432.6	1440.6	1448.7	1463.5
65°	1359.0	1342.3	1330.9	1317.7	1311.2	1304.4	1305.0	1305.0	1311.8	1317.7	1328.9
67.5°	1216.9	1204.2	1196.8	1186.4	1182.0	1175.0	1174.9	1172.6	1177.0	1179.4	1186.9
70°	1102.8	1090.0	1080.5	1070.5	1065.0	1058.9	1059.0	1059.1	1064.2	1069.6	1079.3
72.5°	1032.3	1020.1	1011.6	1002.9	997.7	992.4	991.4	990.9	994.6	997.5	1003.9
75°	939.0	929.2	924.3	916.0	911.9	906.0	905.0	902.3	904.1	904.6	909.4
77.5°	825.7	816.4	812.4	804.1	800.7	793.9	793.4	790.3	791.7	790.8	794.5
80°	696.6	688.2	686.0	679.1	677.5	671.3	670.3	666.6	667.7	664.8	666.2
82.5°	552.5	544.8	543.2	536.8	536.8	531.2	530.9	525.3	525.3	520.5	512.8
85°	389.2	383.6	381.2	376.0	374.5	370.0	367.6	362.3	360.4	356.9	355.8
87.5°	205.4	201.8	198.7	196.2	191.6	183.5	182.8	177.2	177.6	173.7	173.9
90°	34.9	30.7	30.5	26.6	26.0	23.5	23.1	22.7	22.8	22.6	22.8
92.5°	20.5	19.8	19.3	18.7	18.0	17.5	16.9	17.5	18.0	18.7	19.3
95°	23.0	22.5	22.0	21.5	20.9	20.4	19.8	20.4	20.9	21.7	22.2
97.5°	25.7	25.4	25.0	24.7	24.4	24.0	23.7	24.2	24.6	24.8	25.2
100°	29.7	29.3	28.9	28.5	28.1	27.6	27.3	27.9	28.4	28.7	29.2
102.5°	48.0	45.5	43.1	40.5	38.0	35.5	33.0	35.5	38.0	40.7	43.2
105°	105.4	97.2	88.7	80.3	71.8	63.4	54.9	63.4	71.9	80.4	89.0
107.5°	205.3	190.7	175.8	161.1	146.0	131.2	116.4	131.4	146.3	161.2	176.1
110°	302.0	289.2	276.5	263.7	251.0	238.3	225.4	238.4	251.2	264.0	276.9



TEST NUMBER: P1444762
 CATALOG NUMBER: EHBR1-48-UNV-TA-L935-UPL12

CANDELA DISTRIBUTION (continued):

	165°	167.5°	170°	172.5°	175°	177.5°	180°	182.5°	185°	187.5°	190°
112.5°	355.6	347.9	340.2	332.7	324.8	317.3	309.4	317.6	325.4	333.3	341.1
115°	369.2	365.3	361.6	357.7	353.6	349.7	345.5	350.1	354.3	358.5	362.7
117.5°	359.6	358.7	357.5	356.4	355.1	353.9	352.6	354.2	355.7	357.5	358.8
120°	337.0	337.8	338.3	338.8	339.3	339.7	340.0	340.2	340.2	340.2	340.1
122.5°	312.6	314.3	315.7	317.3	318.8	320.1	321.3	320.7	319.8	319.0	317.8
125°	290.5	292.5	294.0	295.7	297.2	298.8	299.9	299.5	298.7	297.8	296.6
127.5°	273.0	274.6	276.2	278.1	279.4	280.8	282.0	281.6	280.9	280.1	279.1
130°	259.3	261.1	262.4	263.9	265.2	266.3	267.2	267.1	266.6	266.4	265.6
132.5°	250.9	252.6	254.0	255.3	256.2	257.5	258.0	258.3	258.0	257.9	257.2
135°	245.7	247.0	248.2	249.7	250.5	251.4	252.0	252.4	252.3	252.3	251.8
137.5°	242.0	243.3	244.3	245.3	246.1	246.8	247.2	247.8	247.9	248.3	248.0
140°	240.9	242.3	243.3	244.3	245.3	246.1	246.4	247.1	247.2	247.3	247.1
142.5°	239.5	240.6	241.8	242.9	243.6	244.3	244.8	245.3	245.5	245.6	245.5
145°	239.3	240.3	241.4	242.4	243.0	243.6	243.8	244.6	244.8	245.1	245.1
147.5°	238.7	240.0	240.6	241.5	242.2	242.8	243.2	243.6	244.0	244.2	244.3
150°	239.1	240.2	241.0	241.9	242.7	243.3	243.5	244.2	244.3	244.5	244.4
152.5°	239.3	240.2	241.0	241.7	242.5	243.1	243.3	243.9	244.3	244.6	244.7
155°	239.6	240.5	241.4	242.2	242.7	243.4	244.0	244.5	245.0	245.3	245.5
157.5°	240.6	241.6	242.3	243.1	243.6	244.5	245.1	245.7	246.2	246.7	247.0
160°	242.6	243.6	244.2	245.0	245.7	246.3	246.9	247.6	248.2	248.5	249.1
162.5°	245.7	246.5	247.0	247.8	248.4	249.1	249.7	250.3	251.0	251.5	251.9
165°	248.3	249.1	249.7	250.5	251.1	252.0	252.5	253.0	253.4	254.0	254.2
167.5°	252.5	253.2	253.8	254.5	255.0	255.8	256.4	256.9	257.1	257.6	257.9
170°	255.6	256.2	256.8	257.2	257.9	258.5	258.8	259.1	259.6	259.8	260.2
172.5°	257.9	258.5	258.9	259.6	260.0	260.6	261.0	261.4	261.6	261.7	261.7
175°	259.8	260.4	260.7	261.0	261.4	261.7	262.2	262.1	262.5	262.4	262.6
177.5°	262.5	262.9	263.2	263.4	263.8	264.0	264.3	264.1	264.1	263.9	263.7
180°	262.1	262.1	262.1	262.1	262.1	262.1	262.1	262.1	262.1	262.1	262.1



TEST NUMBER: P1444762
 CATALOG NUMBER: EHBR1-48-UNV-TA-L935-UPL12

CANDELA DISTRIBUTION (continued):

	192.5°	195°	197.5°	200°	202.5°	205°	207.5°	210°	212.5°	215°	217.5°
0°	37093.8	37093.8	37093.8	37093.8	37093.8	37093.8	37093.8	37093.8	37093.8	37093.8	37093.8
2.5°	37024.5	37043.0	37071.4	37097.0	37135.7	37166.2	37212.0	37246.8	37298.4	37332.1	37388.3
5°	37027.8	37100.2	37195.5	37288.5	37400.2	37501.6	37627.7	37735.1	37861.8	37965.2	38094.8
7.5°	37080.2	37219.9	37387.3	37555.9	37746.8	37925.3	38126.4	38308.4	38507.3	38675.7	38859.6
10°	37118.8	37334.2	37581.0	37829.3	38090.6	38333.4	38578.5	38790.3	38988.3	39151.2	39295.2
12.5°	37066.4	37363.2	37679.8	37985.6	38276.2	38527.5	38738.4	38901.3	39013.8	39090.1	39107.9
15°	36888.4	37245.5	37589.8	37894.3	38135.4	38321.4	38417.7	38462.7	38414.4	38334.1	38157.5
17.5°	36555.9	36932.5	37240.3	37480.5	37607.9	37658.4	37578.7	37439.9	37168.8	36867.9	36433.3
20°	35946.1	36297.1	36520.4	36651.4	36617.3	36491.3	36190.2	35824.2	35282.9	34706.2	33944.9
22.5°	34876.7	35183.6	35302.5	35312.2	35104.2	34788.6	34245.6	33617.9	32764.1	31876.3	30784.6
25°	33271.4	33540.2	33559.0	33453.4	33072.8	32561.2	31763.9	30876.0	29715.7	28532.9	27164.9
27.5°	31094.4	31352.2	31289.1	31092.1	30563.6	29879.1	28858.2	27711.2	26280.7	24883.7	23370.4
30°	28357.7	28633.4	28559.2	28306.6	27678.0	26869.0	25667.8	24335.1	22747.0	21254.9	19721.4
32.5°	25082.7	25431.1	25380.0	25139.8	24483.9	23618.1	22314.8	20901.3	19276.4	17806.0	16314.3
35°	21360.2	21783.3	21805.2	21648.1	21039.3	20183.5	18896.5	17528.3	15972.0	14584.6	13206.6
37.5°	17349.6	17840.1	17940.9	17898.5	17393.9	16638.5	15465.8	14238.4	12859.7	11643.8	10465.2
40°	13316.8	13813.4	13985.7	14036.8	13664.4	13079.2	12116.8	11126.2	10002.2	9016.9	8081.1
42.5°	9639.1	10079.3	10245.8	10350.6	10118.1	9727.9	9025.9	8306.4	7483.0	6772.4	6091.1
45°	6694.6	7005.9	7132.5	7238.0	7111.4	6891.3	6447.9	5998.0	5454.4	4990.1	4550.4
47.5°	4680.6	4852.3	4935.9	4987.0	4938.0	4823.1	4581.9	4321.2	4014.4	3743.0	3482.1
50°	3469.3	3560.7	3604.5	3634.0	3598.2	3534.4	3403.9	3262.0	3093.5	2939.8	2789.5
52.5°	2749.3	2801.7	2827.7	2843.6	2823.1	2784.2	2708.1	2624.0	2522.9	2428.0	2378.0
55°	2316.1	2313.4	2373.5	2344.5	2373.5	2308.8	2295.1	2202.7	2118.7	2059.6	1995.7
57.5°	1910.1	1937.3	1948.8	1961.7	1953.4	1941.5	1909.3	1876.1	1831.9	1794.9	1755.4
60°	1653.4	1675.8	1688.5	1701.3	1700.5	1696.0	1677.3	1657.5	1629.9	1607.7	1583.8
62.5°	1476.6	1496.0	1508.5	1520.7	1521.8	1520.0	1505.9	1492.2	1473.3	1459.5	1443.0
65°	1337.5	1351.1	1359.6	1369.4	1368.8	1366.2	1353.4	1342.0	1326.5	1316.9	1304.8
67.5°	1191.9	1202.2	1208.8	1218.0	1219.8	1220.4	1213.3	1208.0	1200.4	1197.7	1193.5
70°	1088.4	1100.9	1111.5	1123.1	1129.5	1132.5	1129.5	1126.7	1122.3	1120.4	1117.2
72.5°	1010.0	1020.6	1028.9	1039.5	1045.4	1049.6	1047.3	1045.7	1041.9	1041.4	1039.2
75°	912.7	920.0	924.6	932.6	935.8	939.8	938.0	939.0	937.7	940.8	940.6
77.5°	795.7	801.1	803.3	809.0	809.6	814.4	815.5	821.1	825.1	833.9	838.6
80°	664.0	667.4	667.4	673.3	675.9	684.1	687.9	697.1	701.4	709.2	709.9
82.5°	515.8	511.8	515.8	513.3	520.9	529.9	531.2	539.0	540.8	545.8	541.9
85°	352.7	352.4	349.2	349.8	347.4	348.5	347.1	348.7	347.2	347.4	343.9
87.5°	168.9	170.5	166.8	168.0	164.4	166.0	162.9	165.4	161.7	162.2	156.7
90°	22.7	22.9	22.9	23.2	23.9	24.7	25.8	26.7	28.3	29.1	30.4
92.5°	19.8	20.7	21.3	21.8	22.5	24.3	26.1	28.0	29.9	31.6	33.4
95°	22.7	23.2	23.7	24.6	25.1	27.7	30.4	33.0	35.6	38.3	41.0
97.5°	25.8	26.2	26.5	26.8	27.3	30.4	33.5	36.6	39.7	42.9	45.9
100°	29.6	30.1	30.5	31.1	31.4	38.6	45.8	52.9	60.1	67.2	74.3
102.5°	45.8	48.3	50.8	53.6	56.1	73.5	90.9	108.2	125.3	142.7	160.1
105°	97.4	105.9	114.7	123.1	131.5	157.8	184.2	210.4	236.5	262.7	288.9
107.5°	191.1	205.9	221.1	235.9	250.8	275.5	300.1	324.7	349.5	374.1	398.5
110°	290.0	302.6	315.7	328.5	341.4	360.8	380.5	399.9	419.4	438.9	458.3



TEST NUMBER: P1444762
 CATALOG NUMBER: EHBR1-48-UNV-TA-L935-UPL12

CANDELA DISTRIBUTION (continued):

	192.5°	195°	197.5°	200°	202.5°	205°	207.5°	210°	212.5°	215°	217.5°
112.5°	349.0	356.8	364.7	372.2	380.1	394.3	408.8	422.9	437.3	451.2	465.4
115°	366.9	370.6	374.9	378.8	382.9	391.4	399.8	408.3	416.8	425.1	433.6
117.5°	360.4	361.7	363.2	364.2	365.5	369.8	374.0	378.0	382.3	386.5	390.5
120°	340.0	339.6	339.3	338.8	338.5	339.3	340.6	341.6	342.7	343.5	344.4
122.5°	316.9	315.5	314.3	313.0	311.6	310.5	309.7	308.6	307.9	306.8	305.8
125°	295.6	294.0	292.7	291.2	289.7	287.9	286.3	284.3	282.5	280.7	278.9
127.5°	278.2	276.8	275.6	274.1	272.6	270.4	268.5	266.5	264.6	262.4	260.4
130°	264.8	263.7	262.7	261.1	260.1	258.0	256.3	254.3	252.3	250.5	248.5
132.5°	256.7	255.8	254.9	253.5	252.6	250.7	249.1	247.1	245.3	243.4	241.8
135°	251.4	250.6	250.1	249.1	248.2	246.3	245.0	243.3	241.8	240.4	238.8
137.5°	247.9	247.2	246.7	246.0	245.3	243.7	242.5	241.0	239.8	238.3	237.1
140°	246.9	246.4	245.9	245.3	244.5	243.2	241.9	240.4	239.1	237.6	236.4
142.5°	245.2	244.8	244.3	243.7	243.2	241.8	241.0	239.8	238.6	237.5	236.5
145°	244.8	244.4	244.3	243.7	243.4	242.2	241.2	239.8	238.9	237.6	236.6
147.5°	244.3	244.0	243.9	243.6	243.5	242.4	241.7	240.6	240.0	238.8	238.2
150°	244.5	244.5	244.3	244.1	243.9	243.0	242.4	241.4	240.8	239.8	239.3
152.5°	244.8	244.9	244.9	244.9	245.0	244.3	243.6	242.8	242.1	241.3	240.6
155°	245.8	245.9	246.1	246.1	246.1	245.5	245.0	244.3	243.7	243.1	242.5
157.5°	247.2	247.5	247.8	248.0	248.1	247.6	247.2	246.6	246.2	245.6	245.2
160°	249.4	249.8	250.1	250.2	250.5	250.1	250.0	249.3	249.1	248.5	247.9
162.5°	252.3	252.7	253.0	253.1	253.4	253.0	252.9	252.5	252.1	251.4	251.0
165°	254.7	254.8	255.1	255.2	255.4	255.1	255.0	254.7	254.4	254.1	253.9
167.5°	258.2	258.2	258.7	258.8	258.9	258.8	258.9	258.6	258.4	258.2	258.0
170°	260.5	260.7	260.8	260.9	261.1	260.9	260.8	260.7	260.8	260.2	260.0
172.5°	261.9	262.0	262.1	262.3	262.2	262.1	262.1	262.0	261.9	261.8	261.7
175°	262.6	262.6	262.7	262.7	262.7	262.7	262.7	262.7	262.7	262.7	262.6
177.5°	263.8	263.8	263.6	263.5	263.5	263.4	263.4	263.4	263.6	263.5	263.4
180°	262.1	262.1	262.1	262.1	262.1	262.1	262.1	262.1	262.1	262.1	262.1



TEST NUMBER: P1444762
 CATALOG NUMBER: EHBR1-48-UNV-TA-L935-UPL12

CANDELA DISTRIBUTION (continued):

	220°	222.5°	225°	227.5°	230°	232.5°	235°	237.5°	240°	242.5°	245°
0°	37093.8	37093.8	37093.8	37093.8	37093.8	37093.8	37093.8	37093.8	37093.8	37093.8	37093.8
2.5°	37423.1	37191.9	37161.4	37177.6	37216.2	37230.5	37272.2	37283.7	37325.5	37335.9	37376.1
5°	38195.2	37889.7	37905.0	37978.5	38089.7	38155.9	38265.2	38322.4	38426.7	38474.1	38568.5
7.5°	39009.5	38769.6	38844.4	38968.3	39120.2	39225.6	39356.9	39442.4	39555.6	39625.8	39716.3
10°	39409.3	39343.6	39425.9	39523.4	39610.1	39678.0	39733.6	39778.2	39807.3	39834.7	39846.7
12.5°	39105.0	39206.7	39220.8	39211.3	39153.8	39110.0	39011.4	38944.4	38825.5	38753.1	38611.6
15°	37977.2	38200.9	38077.0	37889.5	37615.1	37386.3	37063.2	36822.7	36486.3	36258.1	35920.5
17.5°	35997.9	36280.2	35957.4	35523.6	34971.6	34499.3	33911.4	33444.6	32860.0	32434.8	31889.2
20°	33211.3	33475.2	32899.6	32180.3	31326.5	30607.9	29760.5	29084.4	28297.0	27711.2	27004.3
22.5°	29741.9	29929.9	29118.9	28149.3	27061.4	26163.7	25150.6	24340.0	23441.4	22771.7	22018.0
25°	25903.7	25954.4	24981.6	23864.6	22652.2	21643.2	20561.5	19709.4	18792.8	18114.2	17374.3
27.5°	22029.7	21955.3	20903.8	19719.4	18444.1	17395.4	16340.4	15541.8	14739.2	14127.8	13490.4
30°	18373.1	18193.0	17101.3	15883.9	14645.9	13706.1	12830.2	12188.9	11550.3	11065.3	10553.7
32.5°	15020.0	14765.9	13703.2	12562.6	11519.5	10794.2	10144.7	9659.5	9143.8	8734.1	8304.8
35°	12050.0	11779.3	10837.9	9870.9	9081.4	8546.8	8036.3	7638.2	7200.3	6854.7	6481.9
37.5°	9501.1	9279.2	8490.7	7729.7	7132.5	6718.3	6300.0	5974.6	5612.8	5460.7	5062.3
40°	7334.8	7179.8	6563.2	6002.3	5553.8	5359.1	4934.6	4630.7	4360.3	4137.3	3921.3
42.5°	5721.3	5666.4	5066.3	4628.9	4313.1	4067.9	3831.2	3639.2	3452.2	3298.6	3153.4
45°	4198.6	4155.2	3888.7	3636.2	3421.0	3249.6	3089.8	2957.6	2835.4	2734.1	2641.9
47.5°	3269.4	3255.5	3102.1	2945.5	2810.0	2699.9	2596.1	2508.4	2427.2	2359.6	2337.6
50°	2659.2	2657.4	2567.4	2470.7	2374.2	2310.5	2244.3	2192.4	2140.3	2099.8	2056.9
52.5°	2259.4	2249.6	2188.9	2129.2	2071.9	2030.1	1987.8	1954.6	1920.1	1895.0	1868.4
55°	1945.2	1955.4	1920.2	1884.6	1848.7	1822.8	1793.1	1771.2	1747.6	1731.7	1715.7
57.5°	1726.8	1740.4	1722.0	1701.8	1680.0	1662.8	1642.4	1627.3	1611.5	1601.4	1592.1
60°	1568.0	1582.9	1575.5	1565.3	1551.8	1541.7	1528.6	1520.2	1510.0	1504.4	1499.2
62.5°	1433.3	1451.8	1449.2	1444.4	1435.8	1430.1	1423.0	1419.3	1412.5	1410.1	1407.6
65°	1298.9	1319.7	1319.3	1317.0	1312.2	1310.6	1306.1	1305.3	1301.9	1303.2	1302.9
67.5°	1193.1	1211.3	1215.3	1218.2	1218.0	1219.1	1218.7	1220.5	1220.5	1223.1	1224.7
70°	1116.9	1129.5	1132.5	1135.5	1136.4	1138.8	1138.8	1140.3	1139.9	1142.2	1142.4
72.5°	1039.7	1056.3	1059.4	1061.9	1061.9	1064.2	1062.9	1062.6	1059.2	1058.6	1056.2
75°	943.8	965.1	969.8	972.8	973.2	975.2	972.3	970.6	965.1	962.9	959.0
77.5°	843.5	865.6	869.0	870.1	868.3	868.7	862.6	858.6	851.5	848.6	844.9
80°	713.1	745.6	748.3	746.2	741.1	740.3	734.4	730.5	722.2	719.3	716.1
82.5°	542.6	580.9	586.2	588.6	584.4	585.4	579.7	577.5	569.8	568.4	563.4
85°	342.6	380.8	387.1	386.2	382.0	381.1	377.8	378.8	378.2	380.3	381.4
87.5°	157.4	194.4	203.3	200.5	200.0	197.4	191.5	193.7	197.3	199.6	199.8
90°	31.4	43.7	44.4	44.6	41.1	40.8	37.6	38.0	35.3	35.5	33.1
92.5°	35.3	37.2	39.0	37.3	35.7	34.1	32.4	30.6	29.2	27.4	25.9
95°	43.6	46.0	48.6	46.4	44.0	41.9	39.7	37.6	35.4	33.3	31.1
97.5°	48.9	51.8	54.7	52.6	50.4	48.1	46.0	43.9	41.7	39.3	37.2
100°	81.5	88.1	95.1	88.9	82.7	76.5	70.3	64.1	57.9	51.8	45.5
102.5°	177.2	194.2	211.4	195.6	180.0	164.2	148.6	133.0	117.5	101.6	86.1
105°	314.9	340.7	366.7	342.5	318.7	294.7	270.9	247.1	223.2	199.2	175.5
107.5°	423.1	446.7	470.9	449.2	427.5	405.9	384.1	362.4	340.8	319.0	297.5
110°	477.6	495.9	515.0	500.1	485.5	470.7	456.1	441.2	426.6	412.1	397.5



TEST NUMBER: P1444762
 CATALOG NUMBER: EHBR1-48-UNV-TA-L935-UPL12

CANDELA DISTRIBUTION (continued):

	220°	222.5°	225°	227.5°	230°	232.5°	235°	237.5°	240°	242.5°	245°
112.5°	479.4	492.0	505.6	496.6	487.9	479.1	470.3	461.4	452.8	444.0	435.6
115°	441.7	448.2	456.0	452.0	448.3	444.5	440.6	436.9	433.1	429.4	426.0
117.5°	394.5	396.2	399.7	398.3	397.2	395.9	394.7	393.5	392.5	391.5	390.5
120°	345.3	343.7	343.9	343.4	343.3	342.9	342.8	342.4	342.3	342.1	342.1
122.5°	304.7	300.9	299.0	298.5	298.1	297.5	297.3	296.8	296.6	296.3	296.2
125°	277.0	272.0	269.2	267.7	266.4	264.8	263.3	261.8	260.6	259.2	257.9
127.5°	258.2	252.9	250.0	247.7	245.4	243.0	240.7	238.4	236.3	233.8	231.8
130°	246.7	241.2	238.3	235.6	233.1	230.2	227.8	225.1	222.4	219.8	217.2
132.5°	239.8	234.2	231.5	228.9	226.6	223.9	221.4	218.6	216.1	213.3	210.9
135°	237.2	231.7	229.2	226.7	224.6	222.1	219.6	217.2	214.9	212.2	210.2
137.5°	235.6	229.9	227.7	225.6	223.8	221.6	219.8	217.6	215.5	213.2	211.4
140°	234.9	229.0	226.9	225.5	224.2	222.6	221.2	219.8	218.3	216.9	215.3
142.5°	235.3	229.5	227.3	226.3	225.5	224.2	223.5	222.3	221.3	219.9	218.9
145°	235.6	229.2	227.1	226.4	226.1	225.5	225.0	224.4	224.0	223.2	222.7
147.5°	237.0	230.5	228.2	228.0	227.8	227.4	227.3	226.8	226.7	226.3	226.0
150°	238.2	230.7	228.2	228.2	228.0	228.0	228.0	227.9	228.0	227.9	227.9
152.5°	239.6	230.7	227.9	227.9	228.1	227.9	228.1	228.2	228.5	228.7	228.8
155°	241.5	231.8	228.7	228.4	228.4	228.4	228.4	228.6	228.7	228.8	229.0
157.5°	244.3	233.9	230.8	230.4	230.3	230.2	230.2	230.2	230.3	230.4	230.7
160°	247.4	236.9	233.8	233.4	233.2	233.0	232.8	232.7	232.7	232.8	233.0
162.5°	250.3	240.1	237.1	236.6	236.3	236.1	236.0	235.6	235.7	235.6	235.8
165°	253.3	244.3	241.4	240.9	240.8	240.4	240.4	240.2	240.3	240.2	240.4
167.5°	257.5	249.3	247.1	246.6	246.2	245.8	245.8	245.3	245.3	245.0	245.0
170°	259.7	253.2	251.2	251.1	251.1	250.9	250.7	250.7	250.6	250.3	250.4
172.5°	261.5	256.8	255.3	255.2	255.4	255.4	255.6	255.5	255.7	255.8	255.9
175°	262.5	259.8	259.1	258.9	258.9	259.0	259.1	259.1	259.2	259.3	259.6
177.5°	263.6	262.7	262.4	262.4	262.4	262.4	262.4	262.4	262.4	262.6	262.6
180°	262.1	262.1	262.1	262.1	262.1	262.1	262.1	262.1	262.1	262.1	262.1



TEST NUMBER: P1444762
 CATALOG NUMBER: EHBR1-48-UNV-TA-L935-UPL12

CANDELA DISTRIBUTION (continued):

	247.5°	250°	252.5°	255°	257.5°	260°	262.5°	265°	267.5°	270°	272.5°
0°	37093.8	37093.8	37093.8	37093.8	37093.8	37093.8	37093.8	37093.8	37093.8	37093.8	37093.8
2.5°	37383.7	37427.3	37424.0	37464.7	37462.7	37501.0	37493.3	37526.4	37518.9	37547.1	37530.5
5°	38610.0	38692.9	38720.2	38795.1	38810.6	38877.5	38878.9	38932.1	38925.7	38967.3	38945.1
7.5°	39770.0	39847.4	39884.1	39942.2	39971.3	40019.3	40038.2	40077.8	40087.3	40110.7	40110.0
10°	39867.9	39867.6	39885.7	39877.7	39893.9	39884.5	39904.3	39897.2	39926.4	39918.9	39941.0
12.5°	38550.6	38419.8	38372.2	38254.7	38229.1	38128.3	38135.4	38070.8	38102.0	38062.3	38129.9
15°	35719.6	35416.4	35266.4	35002.8	34920.0	34711.6	34694.7	34556.2	34593.7	34521.3	34627.1
17.5°	31536.1	31058.6	30796.6	30411.6	30258.7	29964.0	29904.9	29726.7	29754.3	29664.5	29792.4
20°	26548.3	25971.3	25640.8	25195.6	24996.9	24645.5	24552.3	24353.0	24378.0	24288.6	24433.3
22.5°	21503.6	20899.6	20526.5	20059.8	19806.2	19475.7	19376.5	19176.2	19187.6	19103.8	19242.9
25°	16867.6	16288.6	15926.5	15502.5	15282.4	14979.4	14875.2	14695.4	14705.6	14636.4	14761.3
27.5°	13048.3	12573.2	12270.2	11914.9	11717.6	11468.5	11366.9	11215.6	11215.3	11164.5	11268.8
30°	10196.6	9800.1	9528.1	9218.6	9033.3	8808.5	8710.4	8575.1	8569.2	8533.2	8616.0
32.5°	7983.7	7631.0	7382.9	7110.6	6944.2	6751.3	6658.4	6549.7	6539.8	6507.2	6575.2
35°	6206.3	5909.4	5695.9	5466.6	5483.6	5199.0	5246.3	5025.2	4965.3	4952.2	5002.8
37.5°	4796.7	4566.7	4393.4	4221.7	4105.4	3985.1	3920.3	3862.2	3855.6	3850.0	3885.4
40°	3754.6	3593.6	3467.5	3349.7	3269.7	3196.3	3155.7	3123.8	3116.2	3112.0	3133.5
42.5°	3038.7	2930.2	2848.9	2777.0	2728.3	2688.4	2666.1	2648.5	2642.5	2642.7	2655.3
45°	2567.4	2501.5	2449.1	2404.4	2373.3	2387.0	2346.8	2367.9	2340.1	2368.8	2349.8
47.5°	2260.9	2204.8	2172.4	2140.7	2121.9	2106.8	2107.3	2107.6	2113.6	2114.5	2120.6
50°	2024.5	1992.0	1969.5	1949.2	1939.5	1931.5	1934.3	1936.3	1942.1	1942.5	1947.1
52.5°	1849.5	1828.2	1814.6	1802.0	1797.6	1793.1	1795.0	1794.2	1796.8	1795.4	1799.2
55°	1707.0	1697.0	1692.8	1688.0	1688.8	1687.5	1688.3	1683.8	1681.1	1677.6	1680.8
57.5°	1590.2	1588.8	1591.7	1593.6	1598.9	1600.8	1602.1	1596.9	1592.0	1587.4	1590.1
60°	1500.2	1502.3	1509.5	1515.2	1522.9	1526.5	1528.7	1525.7	1522.1	1518.4	1520.6
62.5°	1411.3	1414.8	1423.3	1429.7	1439.1	1443.9	1449.2	1449.5	1450.9	1449.5	1451.0
65°	1308.2	1312.5	1320.2	1325.5	1334.2	1338.5	1343.9	1344.9	1347.9	1347.3	1349.9
67.5°	1229.8	1233.7	1240.1	1245.2	1252.9	1257.4	1262.2	1262.4	1263.5	1263.2	1265.7
70°	1146.2	1148.1	1153.9	1158.2	1165.9	1170.4	1176.0	1177.6	1181.0	1181.6	1184.3
72.5°	1057.1	1056.3	1059.8	1061.7	1067.5	1071.1	1078.1	1081.9	1087.7	1089.2	1091.3
75°	960.1	959.3	963.4	965.1	970.0	973.6	981.5	986.5	995.4	999.1	998.2
77.5°	847.8	849.7	857.4	861.6	868.3	872.8	883.0	891.1	907.5	914.6	907.3
80°	722.2	724.2	732.2	736.2	744.8	750.3	761.8	771.2	786.0	789.1	785.0
82.5°	567.7	568.4	575.4	578.5	589.7	597.9	612.3	619.8	628.9	627.5	626.5
85°	387.1	392.3	401.3	410.2	424.0	437.1	450.8	462.0	454.1	466.6	452.5
87.5°	206.9	206.4	218.4	216.5	235.7	246.9	258.8	264.4	270.7	269.5	269.5
90°	33.7	31.7	32.8	30.5	32.5	30.0	32.9	30.7	34.3	31.3	36.4
92.5°	24.1	23.4	22.4	21.7	20.6	19.9	18.9	17.9	17.1	16.2	17.1
95°	28.9	28.1	27.3	26.4	25.6	24.8	24.0	23.2	22.4	21.6	22.6
97.5°	35.0	34.5	34.1	33.5	33.1	32.6	32.2	31.6	31.1	30.6	31.3
100°	39.3	39.3	39.3	39.3	39.1	39.1	39.1	39.1	39.1	39.1	39.6
102.5°	70.3	68.8	67.2	65.5	64.0	62.4	60.8	59.3	57.7	56.2	58.5
105°	151.5	145.5	139.3	133.1	126.9	120.8	114.7	108.6	102.5	96.4	102.7
107.5°	276.1	264.8	253.6	242.5	231.3	220.1	209.1	198.0	186.9	175.8	185.8
110°	382.9	371.1	359.1	347.3	335.4	323.6	311.8	300.0	288.2	276.4	285.9



TEST NUMBER: P1444762
 CATALOG NUMBER: EHBR1-48-UNV-TA-L935-UPL12

CANDELA DISTRIBUTION (continued):

	247.5°	250°	252.5°	255°	257.5°	260°	262.5°	265°	267.5°	270°	272.5°
112.5°	427.0	418.9	411.2	403.5	395.7	388.2	380.5	372.9	365.3	357.7	362.4
115°	422.3	418.5	414.6	410.9	407.2	403.3	399.7	396.1	392.5	388.9	389.2
117.5°	389.5	388.0	386.6	385.2	383.7	382.5	381.2	380.0	378.8	377.8	375.2
120°	342.2	342.1	342.0	342.3	342.5	342.9	342.9	343.4	343.9	344.3	340.9
122.5°	296.0	296.3	296.7	297.4	298.0	298.7	299.5	300.5	301.5	302.5	299.1
125°	256.6	256.9	257.2	257.8	258.0	258.9	259.7	260.8	261.6	262.7	259.8
127.5°	229.8	229.4	228.8	228.8	228.7	228.8	229.0	229.4	229.8	230.5	228.7
130°	214.6	213.6	212.5	211.7	210.7	210.3	209.9	209.5	209.3	209.2	208.5
132.5°	208.3	206.8	205.3	203.9	202.7	201.7	200.7	200.1	199.4	199.0	198.8
135°	207.5	205.6	203.9	202.3	200.7	199.7	198.2	197.4	196.5	195.8	196.3
137.5°	209.2	207.5	205.6	204.2	202.6	201.5	200.0	199.1	198.3	197.6	198.2
140°	213.8	212.1	210.3	208.8	207.5	206.2	205.0	204.2	203.0	202.7	203.0
142.5°	217.7	216.4	214.7	213.3	212.0	211.0	210.0	209.2	208.2	207.8	208.2
145°	222.0	220.9	219.6	218.5	217.6	217.0	215.9	215.5	215.0	214.8	215.1
147.5°	225.5	224.9	223.8	223.1	222.1	221.8	221.1	220.8	220.3	220.2	220.4
150°	227.8	227.3	226.7	226.2	225.7	225.4	225.0	224.9	224.6	224.6	224.7
152.5°	228.9	228.7	228.0	227.8	227.4	227.2	226.9	227.0	226.9	226.9	226.9
155°	229.2	229.0	228.9	228.9	228.8	229.0	228.9	229.2	229.2	229.5	229.6
157.5°	230.8	230.9	230.9	231.2	231.3	231.6	231.7	232.1	232.2	232.7	232.9
160°	233.4	233.6	233.6	233.8	233.9	234.1	234.4	234.6	234.9	235.2	235.6
162.5°	235.9	236.3	236.5	236.7	237.1	237.4	237.8	238.4	238.6	239.2	239.6
165°	240.4	240.5	240.5	240.7	241.0	241.2	241.4	242.0	242.2	242.6	243.1
167.5°	244.9	245.1	245.1	245.2	245.4	245.8	246.0	246.4	246.8	247.4	247.8
170°	250.2	250.2	250.2	250.2	250.2	250.5	250.7	250.8	251.0	251.3	251.6
172.5°	255.9	255.9	255.6	255.9	255.6	255.9	255.9	256.0	256.0	256.2	256.3
175°	259.4	259.8	259.8	260.0	259.9	260.0	260.1	260.1	260.2	260.5	260.5
177.5°	262.6	262.7	262.7	262.7	262.7	262.8	262.8	262.8	262.8	262.7	262.7
180°	262.1	262.1	262.1	262.1	262.1	262.1	262.1	262.1	262.1	262.1	262.1



TEST NUMBER: P1444762
 CATALOG NUMBER: EHBR1-48-UNV-TA-L935-UPL12

CANDELA DISTRIBUTION (continued):

	275°	277.5°	280°	282.5°	285°	287.5°	290°	292.5°	295°	297.5°	300°
0°	37093.8	37093.8	37093.8	37093.8	37093.8	37093.8	37093.8	37093.8	37093.8	37093.8	37093.8
2.5°	37558.2	37539.3	37558.6	37539.1	37558.6	37535.2	37551.0	37525.7	37532.2	37505.9	37512.7
5°	38978.3	38948.3	38964.3	38925.4	38929.5	38877.5	38876.5	38816.1	38800.1	38731.2	38701.0
7.5°	40126.6	40116.8	40122.4	40097.3	40094.5	40058.9	40042.1	39992.0	39960.5	39897.2	39853.8
10°	39944.8	39974.1	39981.7	40011.5	40017.7	40047.2	40053.5	40083.0	40089.2	40111.0	40111.3
12.5°	38126.7	38226.2	38249.9	38372.7	38424.4	38564.8	38640.3	38795.1	38887.0	39041.4	39136.2
15°	34624.2	34796.1	34864.8	35104.6	35237.2	35517.0	35693.0	36014.3	36241.2	36582.5	36826.0
17.5°	29803.6	30044.0	30152.5	30477.6	30689.7	31102.8	31400.6	31890.6	32265.9	32810.5	33242.2
20°	24458.0	24725.1	24872.3	25243.3	25493.6	25976.3	26348.0	26950.2	27452.4	28142.6	28732.7
22.5°	19286.5	19540.7	19704.1	20081.5	20363.3	20866.8	21282.2	21917.8	22480.6	23258.2	23965.9
25°	14808.4	15041.3	15189.1	15530.4	15795.1	16257.6	16654.4	17265.8	17816.3	18596.4	19321.9
27.5°	11320.9	11515.9	11658.4	11949.4	12182.8	12575.1	12915.9	13421.2	13895.6	14570.4	15216.5
30°	8667.0	8840.0	8978.5	9232.0	9448.5	9788.5	10088.3	10512.6	10905.2	11442.2	11956.3
32.5°	6623.1	6772.0	6895.4	7117.3	7313.6	7619.9	7889.9	8261.9	8598.9	9054.3	9477.2
35°	5049.8	5342.8	5322.1	5628.0	5677.2	5897.1	6137.9	6463.2	6761.7	7148.9	7508.8
37.5°	3919.5	4001.9	4090.1	4225.4	4367.5	4567.5	4771.0	5168.4	5314.2	5606.9	5904.8
40°	3160.6	3216.4	3274.7	3366.0	3465.6	3606.5	3754.6	3944.3	4138.5	4375.8	4618.2
42.5°	2672.0	2703.6	2740.6	2794.4	2855.8	2945.1	3044.3	3172.8	3307.9	3475.0	3645.4
45°	2387.4	2372.4	2383.4	2412.3	2449.3	2503.6	2566.1	2645.7	2733.7	2841.9	2957.1
47.5°	2121.9	2128.0	2131.2	2146.9	2166.8	2203.2	2241.1	2295.1	2399.5	2431.2	2494.0
50°	1946.6	1949.5	1948.5	1956.5	1966.6	1990.2	2014.9	2051.4	2087.9	2136.3	2182.5
52.5°	1799.7	1803.8	1803.2	1808.5	1813.8	1828.8	1844.4	1870.2	1894.1	1925.0	1951.4
55°	1683.7	1689.3	1691.5	1695.9	1698.5	1706.3	1712.5	1724.9	1735.1	1752.5	1768.6
57.5°	1594.4	1602.1	1605.7	1607.2	1604.0	1603.7	1601.6	1604.2	1606.3	1615.6	1624.7
60°	1524.2	1530.3	1531.3	1530.3	1524.6	1520.5	1513.8	1511.8	1510.7	1515.2	1520.2
62.5°	1450.7	1452.8	1451.3	1449.5	1443.0	1439.0	1432.1	1429.6	1427.3	1430.5	1433.0
65°	1348.9	1350.8	1348.9	1347.8	1341.9	1338.7	1332.9	1331.0	1327.7	1328.6	1328.0
67.5°	1266.2	1268.2	1266.7	1265.1	1261.1	1259.2	1254.9	1252.1	1248.1	1246.7	1243.8
70°	1183.9	1185.5	1183.1	1181.6	1177.0	1175.1	1171.2	1170.3	1167.2	1166.4	1163.3
72.5°	1089.2	1089.3	1086.1	1085.1	1081.6	1081.5	1079.9	1081.3	1081.3	1082.9	1082.2
75°	992.2	990.9	986.8	986.1	983.5	984.7	982.9	985.3	985.5	989.2	989.5
77.5°	895.3	890.1	882.3	878.6	873.3	872.7	869.6	871.7	871.1	875.2	876.8
80°	772.6	766.4	756.4	751.5	745.4	744.5	741.6	744.5	743.0	747.9	751.3
82.5°	616.8	611.5	601.1	597.2	590.0	590.7	587.7	590.7	590.3	597.5	601.6
85°	456.2	452.7	442.0	432.5	421.9	415.7	409.7	408.6	406.8	409.7	412.1
87.5°	263.6	260.2	251.9	246.3	227.8	228.6	221.3	221.0	219.2	217.5	221.3
90°	34.5	38.8	37.2	41.0	39.9	44.3	43.7	47.9	46.3	50.3	49.5
92.5°	17.9	18.9	19.8	20.6	21.5	22.4	23.2	24.1	26.0	27.6	29.8
95°	23.6	24.7	25.6	26.6	27.6	28.7	29.7	30.7	33.5	36.3	39.1
97.5°	32.1	32.6	33.4	34.0	34.7	35.3	36.1	36.7	39.8	42.8	45.8
100°	40.2	40.7	41.2	41.8	42.3	42.9	43.4	44.0	49.9	55.7	61.4
102.5°	60.8	63.1	65.3	67.7	70.1	72.4	74.8	77.0	90.5	103.6	116.8
105°	109.0	115.3	121.8	128.1	134.4	140.7	147.1	153.4	174.6	195.8	217.1
107.5°	195.7	205.6	215.6	225.7	235.6	245.7	255.6	265.7	286.4	307.2	327.9
110°	295.4	305.0	314.5	324.0	333.5	343.1	352.7	362.4	375.0	387.5	400.1



TEST NUMBER: P1444762
 CATALOG NUMBER: EHBR1-48-UNV-TA-L935-UPL12

CANDELA DISTRIBUTION (continued):

	275°	277.5°	280°	282.5°	285°	287.5°	290°	292.5°	295°	297.5°	300°
112.5°	367.1	371.6	376.4	381.1	385.9	390.7	395.5	400.4	406.9	413.2	419.8
115°	389.5	389.8	390.4	390.7	391.3	391.6	392.4	393.0	395.3	397.6	400.1
117.5°	372.7	370.3	368.0	365.5	363.2	361.2	359.0	357.0	357.0	357.0	357.3
120°	337.9	334.5	331.4	328.0	325.1	322.0	319.3	316.5	315.4	314.4	313.4
122.5°	295.9	292.7	289.7	286.6	283.7	281.0	278.3	275.7	275.2	274.8	274.4
125°	257.2	254.7	252.2	249.8	247.7	245.6	243.7	241.7	242.4	243.2	244.2
127.5°	227.2	225.9	224.6	223.3	222.5	221.5	220.8	220.0	221.7	223.4	225.1
130°	208.2	207.8	207.7	207.5	207.8	207.8	208.2	208.4	210.7	212.9	215.3
132.5°	199.3	199.6	200.1	200.7	201.5	202.3	203.4	204.3	206.8	209.1	211.7
135°	196.8	197.4	198.4	199.2	200.6	201.7	203.0	204.2	206.8	209.0	211.5
137.5°	199.0	199.8	200.8	201.8	203.3	204.5	206.1	207.4	209.5	211.4	213.5
140°	203.7	204.4	205.4	206.4	207.5	208.6	210.1	211.2	213.3	214.7	216.4
142.5°	209.1	209.5	210.4	211.4	212.5	213.4	214.7	215.6	217.2	218.3	220.1
145°	215.6	216.1	217.0	217.5	218.5	219.4	220.3	221.2	222.4	223.4	224.5
147.5°	221.0	221.3	222.1	222.8	223.6	224.2	225.0	225.6	226.7	227.5	228.3
150°	225.1	225.5	225.9	226.3	227.0	227.8	228.5	228.9	229.7	230.3	231.2
152.5°	227.5	227.8	228.2	228.6	229.1	229.7	230.2	230.8	231.6	232.0	232.7
155°	230.0	230.6	231.1	231.6	232.2	232.5	233.2	233.6	234.3	234.8	235.6
157.5°	233.5	233.7	234.5	234.7	235.5	235.8	236.4	236.8	237.5	237.9	238.5
160°	236.2	236.8	237.3	237.9	238.5	239.0	239.6	240.3	240.8	241.3	241.8
162.5°	240.2	240.7	241.3	241.6	242.2	242.7	243.2	243.7	244.5	244.9	245.5
165°	243.7	244.2	244.9	245.3	246.1	246.6	247.2	247.8	248.2	248.7	249.1
167.5°	248.3	248.7	249.5	249.9	250.5	251.1	251.6	252.1	252.6	252.9	253.4
170°	252.1	252.5	253.0	253.5	254.0	254.3	255.0	255.3	255.9	256.3	256.9
172.5°	256.7	256.9	257.3	257.5	257.9	258.3	258.7	258.8	259.4	259.8	260.0
175°	260.5	260.5	260.6	260.8	260.8	260.8	261.0	261.3	261.4	261.6	261.7
177.5°	262.8	262.8	262.9	263.0	263.1	263.1	263.2	263.3	263.3	263.3	263.3
180°	262.1	262.1	262.1	262.1	262.1	262.1	262.1	262.1	262.1	262.1	262.1



TEST NUMBER: P1444762
 CATALOG NUMBER: EHBR1-48-UNV-TA-L935-UPL12

CANDELA DISTRIBUTION (continued):

	302.5°	305°	307.5°	310°	312.5°	315°	317.5°	320°	322.5°	325°	327.5°
0°	37093.8	37093.8	37093.8	37093.8	37093.8	37093.8	37093.8	37093.8	37093.8	37093.8	37093.8
2.5°	37486.4	37488.0	37457.8	37456.1	37427.9	37424.2	37396.6	37388.3	37365.9	37357.7	37334.9
5°	38623.8	38586.9	38501.8	38451.7	38367.6	38311.9	38220.9	38161.5	38073.7	38007.5	37919.0
7.5°	39774.0	39716.8	39621.3	39543.9	39427.1	39334.0	39197.4	39085.5	38937.6	38809.6	38654.2
10°	40111.3	40102.5	40078.2	40042.7	39988.4	39927.4	39834.4	39737.5	39607.9	39467.1	39294.4
12.5°	39281.3	39370.9	39493.1	39565.5	39653.7	39692.3	39728.5	39719.4	39695.6	39624.4	39524.6
15°	37178.6	37430.5	37763.9	38022.4	38319.8	38535.8	38774.6	38923.3	39071.6	39140.1	39182.0
17.5°	33833.7	34310.6	34908.6	35404.2	35976.0	36435.2	36938.7	37317.7	37707.5	37986.7	38239.2
20°	29537.3	30228.2	31073.9	31821.1	32689.9	33444.9	34272.3	34951.5	35651.9	36199.7	36718.0
22.5°	24877.0	25697.6	26720.1	27667.3	28787.4	29793.9	30929.6	31918.0	32950.0	33812.2	34645.9
25°	20294.4	21194.3	22312.5	23369.2	24637.7	25808.5	27155.3	28387.3	29721.2	30879.3	32023.3
27.5°	16109.9	16993.4	18134.9	19259.9	20601.1	21848.7	23291.8	24649.1	26167.9	27568.4	29001.3
30°	12670.6	13419.9	14443.4	15533.0	16856.0	18125.5	19584.2	20980.2	22560.2	24089.4	25703.2
32.5°	10038.5	10609.4	11414.0	12335.4	13556.1	14764.6	16153.6	17501.1	19057.0	20601.9	22280.3
35°	7972.4	8417.7	9031.2	9750.2	10783.9	11825.7	13054.2	14279.7	15731.2	17197.1	18828.5
37.5°	6286.7	6647.9	7128.5	7668.5	8497.7	9352.6	10360.1	11376.0	12637.3	13936.7	15415.2
40°	4909.2	5201.8	5575.8	5978.6	6604.7	7263.4	8042.5	8830.4	9843.7	10905.7	12129.3
42.5°	3856.5	4072.4	4336.6	4631.0	5215.1	5564.8	6093.2	6663.0	7407.9	8178.9	9098.8
45°	3097.1	3244.4	3427.6	3625.0	3896.1	4192.9	4554.7	4934.1	5641.8	5988.9	6548.4
47.5°	2586.4	2685.3	2801.8	2926.3	3086.1	3258.7	3473.3	3692.7	3976.4	4270.5	4615.3
50°	2242.4	2343.0	2383.0	2447.5	2540.0	2638.5	2759.5	2880.5	3032.7	3186.9	3364.4
52.5°	1987.2	2019.9	2063.4	2104.5	2161.8	2274.0	2310.2	2373.5	2458.9	2542.3	2635.5
55°	1792.3	1813.6	1841.8	1866.6	1901.3	1934.4	1982.2	2024.3	2081.2	2131.5	2193.4
57.5°	1640.5	1654.1	1673.7	1689.9	1712.4	1731.1	1759.1	1781.9	1814.7	1843.1	1880.6
60°	1530.2	1539.3	1552.5	1563.1	1577.4	1587.2	1601.0	1611.7	1629.0	1643.5	1664.4
62.5°	1440.2	1444.9	1453.5	1459.7	1468.8	1473.7	1481.1	1485.8	1495.3	1502.6	1514.3
65°	1332.1	1333.2	1339.0	1341.6	1348.8	1351.3	1357.4	1359.6	1367.5	1372.8	1383.1
67.5°	1243.6	1241.1	1241.2	1239.2	1240.1	1238.0	1238.7	1236.4	1239.6	1241.2	1249.1
70°	1162.7	1159.3	1158.2	1154.5	1153.4	1149.6	1148.5	1145.1	1144.6	1143.5	1146.2
72.5°	1084.0	1083.1	1083.3	1080.7	1080.4	1077.8	1077.9	1076.3	1078.1	1078.9	1082.4
75°	993.4	993.7	995.4	993.2	993.8	991.6	992.4	990.3	991.4	991.1	994.6
77.5°	883.1	885.8	890.6	889.6	891.1	888.7	889.7	886.8	887.7	885.8	887.1
80°	759.1	764.7	771.1	770.8	773.6	771.7	774.3	771.5	772.6	769.3	768.5
82.5°	611.9	616.6	623.5	623.7	629.8	630.9	637.6	637.3	641.6	638.9	636.9
85°	418.4	421.5	427.5	430.9	437.0	440.8	447.4	450.0	445.3	453.8	447.1
87.5°	218.4	226.6	222.1	232.6	230.1	240.8	238.5	248.4	246.5	255.0	254.0
90°	54.9	54.7	60.5	60.5	67.6	68.7	74.1	72.7	77.9	76.7	81.8
92.5°	31.4	33.6	35.5	37.4	39.3	41.4	39.5	37.7	36.0	34.3	32.4
95°	41.8	44.6	47.3	50.1	52.8	55.6	52.7	49.8	46.8	43.8	40.9
97.5°	48.8	51.7	54.7	57.6	60.8	63.8	60.3	56.7	53.2	49.8	46.3
100°	67.2	73.1	78.9	84.6	90.5	96.3	89.8	83.2	76.9	70.2	63.7
102.5°	130.2	143.5	156.7	170.1	183.3	196.6	182.8	169.1	155.3	141.4	127.4
105°	238.3	259.6	280.8	302.0	323.2	344.8	322.3	299.9	277.3	255.0	232.5
107.5°	348.8	369.4	390.4	411.0	431.9	452.9	430.2	407.5	384.9	362.2	339.4
110°	412.9	425.4	438.1	450.9	463.5	476.4	459.9	443.5	427.0	410.5	393.9



TEST NUMBER: P1444762
 CATALOG NUMBER: EHBR1-48-UNV-TA-L935-UPL12

CANDELA DISTRIBUTION (continued):

	302.5°	305°	307.5°	310°	312.5°	315°	317.5°	320°	322.5°	325°	327.5°
112.5°	426.2	433.0	439.4	446.2	452.7	459.3	447.7	436.2	424.4	412.9	401.2
115°	402.6	404.9	407.4	410.0	412.4	414.8	407.2	399.6	392.0	384.4	376.4
117.5°	357.5	357.9	358.0	358.5	358.5	358.8	354.7	350.8	346.7	342.6	338.4
120°	312.3	311.5	310.6	309.6	308.5	307.4	306.2	305.0	303.4	302.0	300.4
122.5°	274.0	273.8	273.3	273.0	272.4	272.0	271.9	271.9	271.6	271.4	271.1
125°	244.9	245.8	246.5	247.3	248.1	248.8	249.0	249.3	249.6	250.0	250.0
127.5°	226.7	228.4	229.9	231.6	233.0	234.6	235.0	235.8	236.4	236.9	237.4
130°	217.3	219.8	221.9	223.9	225.9	228.1	228.5	229.1	229.6	230.1	230.6
132.5°	214.1	216.4	218.7	221.2	223.3	225.6	226.0	226.7	226.9	227.5	227.9
135°	213.8	216.1	218.2	220.6	222.5	224.7	225.0	225.5	225.8	226.4	226.7
137.5°	215.3	217.4	219.2	221.1	222.8	224.7	224.9	225.4	225.6	226.2	226.5
140°	218.1	219.7	221.1	222.9	224.2	225.9	226.0	226.3	226.5	226.7	226.8
142.5°	221.3	222.8	223.9	225.4	226.4	227.9	227.6	227.6	227.6	227.6	227.5
145°	225.5	226.8	227.7	228.7	229.3	230.5	230.1	230.0	229.7	229.6	229.2
147.5°	229.0	229.9	230.5	231.3	231.7	232.6	232.2	231.9	231.7	231.2	230.8
150°	231.7	232.6	233.1	233.7	234.1	234.9	234.4	234.0	233.5	233.0	232.7
152.5°	233.4	234.0	234.6	234.9	235.5	235.9	235.4	235.2	234.5	233.9	233.5
155°	235.8	236.5	236.7	237.3	237.5	237.8	237.2	237.1	236.6	236.1	235.6
157.5°	238.8	239.4	239.8	240.1	240.4	240.8	240.4	240.2	239.7	239.5	239.0
160°	242.2	242.6	243.0	243.3	243.7	243.8	243.5	243.5	243.3	242.9	242.4
162.5°	245.9	246.5	246.9	247.2	247.7	248.1	247.8	247.6	247.2	246.9	246.4
165°	249.5	250.0	250.4	250.8	251.0	251.3	251.1	251.1	250.8	250.7	250.3
167.5°	253.7	254.3	254.6	255.0	255.1	255.4	255.1	255.3	255.0	254.7	254.4
170°	257.1	257.5	257.9	258.2	258.5	258.7	258.7	258.6	258.3	258.1	257.9
172.5°	260.4	260.8	260.8	261.1	261.2	261.6	261.5	261.2	261.0	260.8	260.5
175°	261.7	261.8	262.1	262.1	262.1	262.2	262.0	261.8	261.6	261.4	261.2
177.5°	263.3	263.3	263.3	263.2	263.2	263.2	263.1	262.9	262.8	262.7	262.4
180°	262.1	262.1	262.1	262.1	262.1	262.1	262.1	262.1	262.1	262.1	262.1



TEST NUMBER: P1444762
 CATALOG NUMBER: EHBR1-48-UNV-TA-L935-UPL12

CANDELA DISTRIBUTION (continued):

	330°	332.5°	335°	337.5°	340°	342.5°	345°	347.5°	350°	352.5°	355°
0°	37093.8	37093.8	37093.8	37093.8	37093.8	37093.8	37093.8	37093.8	37093.8	37093.8	37093.8
2.5°	37326.8	37310.6	37300.2	37286.8	37278.7	37268.3	37260.8	37254.4	37249.1	37244.3	37240.7
5°	37851.7	37768.2	37703.5	37633.3	37575.8	37518.3	37474.0	37437.3	37412.0	37393.1	37381.8
7.5°	38519.9	38367.2	38231.4	38088.4	37960.2	37834.3	37725.6	37632.0	37561.7	37516.2	37488.6
10°	39116.7	38912.2	38710.0	38497.2	38295.4	38099.7	37919.0	37760.1	37634.3	37550.8	37501.9
12.5°	39384.3	39210.1	39003.6	38772.5	38525.2	38274.9	38031.1	37811.1	37626.5	37502.6	37431.1
15°	39148.6	39077.1	38937.0	38757.6	38523.0	38264.2	37977.9	37708.7	37461.1	37300.5	37207.4
17.5°	38382.2	38482.0	38471.2	38402.7	38233.9	38016.2	37724.4	37422.1	37112.4	36897.7	36780.5
20°	37088.8	37402.6	37561.7	37643.4	37577.1	37435.9	37171.7	36864.8	36503.9	36223.7	36052.7
22.5°	35271.2	35825.2	36170.3	36422.9	36476.5	36428.4	36195.1	35903.2	35500.9	35164.0	34911.5
25°	32931.5	33743.0	34288.5	34716.1	34882.3	34925.1	34726.6	34436.4	33987.8	33595.4	33248.6
27.5°	30175.5	31229.9	31958.3	32533.0	32792.3	32904.8	32722.1	32426.0	31895.4	31427.0	30973.9
30°	27072.9	28323.9	29200.8	29889.8	30206.0	30354.7	30160.5	29830.1	29212.5	28648.9	28078.1
32.5°	23752.1	25121.0	26076.6	26824.9	27138.2	27278.0	27024.1	26652.9	25939.1	25275.2	24609.5
35°	20275.2	21657.0	22620.6	23349.0	23611.6	23695.9	23371.1	22942.1	22151.3	21422.5	20696.8
37.5°	16727.6	18013.1	18888.9	19542.6	19705.1	19719.6	19328.5	18854.5	18023.4	17304.8	16582.3
40°	13210.6	14294.7	15001.8	15525.1	15581.4	15531.1	15105.8	14628.9	13851.3	13207.6	12573.2
42.5°	9897.7	10716.1	11220.6	11579.2	11557.9	11458.4	11068.5	10658.5	10017.0	9526.7	9027.5
45°	7059.6	7599.1	7894.1	8103.9	8036.6	7941.9	7638.4	7351.0	6915.1	6598.3	6262.9
47.5°	4904.4	5548.7	5436.5	5846.7	5493.4	5726.7	5240.7	4972.7	4741.4	4573.1	4383.5
50°	3511.1	3658.8	3730.1	3778.8	3752.9	3717.0	3629.8	3551.6	3446.0	3368.9	3279.2
52.5°	2711.6	2785.3	2825.8	2855.0	2849.3	2836.3	2798.1	2763.4	2713.9	2681.3	2641.9
55°	2296.8	2297.9	2372.2	2340.3	2387.5	2332.3	2354.0	2292.8	2302.7	2250.1	2214.9
57.5°	1908.5	1938.8	1952.4	1965.6	1961.9	1959.6	1944.8	1937.5	1920.8	1915.7	1903.8
60°	1678.8	1694.7	1697.9	1704.0	1698.9	1697.0	1685.4	1681.3	1670.2	1668.1	1660.3
62.5°	1521.3	1529.4	1529.4	1529.4	1522.8	1516.5	1503.7	1497.0	1487.5	1485.4	1480.9
65°	1389.9	1398.3	1399.6	1401.4	1396.6	1391.7	1380.3	1373.1	1363.3	1359.6	1354.4
67.5°	1254.2	1263.2	1266.1	1270.7	1268.0	1267.0	1259.3	1256.4	1249.9	1248.4	1243.6
70°	1147.6	1151.3	1151.0	1150.9	1144.9	1139.5	1130.6	1126.3	1119.6	1118.2	1113.8
72.5°	1084.2	1086.9	1085.2	1082.9	1075.1	1067.1	1056.6	1048.9	1040.1	1034.7	1028.4
75°	995.1	998.5	996.2	994.8	987.7	982.6	974.1	969.9	963.7	961.9	957.6
77.5°	885.5	887.1	883.6	883.1	877.8	874.5	868.2	867.1	862.6	862.6	858.6
80°	763.5	762.6	756.8	755.7	750.3	749.0	744.0	744.3	740.7	742.2	739.3
82.5°	628.3	624.8	617.3	615.0	608.9	608.3	605.1	607.8	605.6	608.9	607.0
85°	450.3	451.2	447.9	447.9	446.1	446.6	446.4	448.5	448.7	451.7	451.6
87.5°	251.1	254.6	254.0	257.2	257.0	260.8	262.0	267.5	268.2	273.3	273.3
90°	80.8	86.4	85.1	91.0	90.7	96.8	97.5	103.5	103.5	108.8	107.7
92.5°	30.6	28.9	27.3	25.4	24.5	23.4	23.0	21.6	21.0	19.8	18.9
95°	37.9	34.9	31.9	28.9	27.9	26.8	25.8	24.8	23.7	22.7	21.8
97.5°	42.8	39.2	35.7	32.2	31.3	30.5	29.5	28.5	27.7	26.8	25.9
100°	57.1	50.6	44.1	37.4	36.7	36.0	35.2	34.4	33.7	32.8	32.0
102.5°	113.7	99.8	85.8	71.9	69.2	66.6	64.0	61.2	58.5	55.8	53.2
105°	210.1	187.4	165.0	142.4	135.2	128.1	120.9	113.7	106.4	99.2	92.1
107.5°	316.7	293.7	270.9	248.0	234.9	221.6	208.4	195.0	181.8	168.4	155.2
110°	377.4	360.8	344.2	327.5	317.0	306.3	295.6	284.9	274.4	263.7	253.0



TEST NUMBER: P1444762
 CATALOG NUMBER: EHBR1-48-UNV-TA-L935-UPL12

CANDELA DISTRIBUTION (continued):

	330°	332.5°	335°	337.5°	340°	342.5°	345°	347.5°	350°	352.5°	355°
112.5°	389.4	377.7	365.9	353.8	349.2	344.4	339.8	334.9	330.2	325.2	320.4
115°	368.6	360.9	352.9	344.9	343.6	341.9	340.4	338.7	337.2	335.5	333.8
117.5°	334.3	330.1	325.8	321.6	322.0	322.5	323.2	323.5	323.8	324.0	324.4
120°	298.8	297.3	295.9	294.3	296.2	297.8	299.7	301.2	302.8	304.2	305.7
122.5°	271.0	270.6	270.4	269.9	272.3	274.4	276.4	278.5	280.3	282.0	283.8
125°	250.3	250.4	250.6	250.5	253.0	255.2	257.4	259.3	261.2	262.8	264.6
127.5°	238.0	238.5	239.2	239.5	241.5	243.0	244.8	246.2	247.8	248.9	250.1
130°	231.1	231.4	232.0	232.4	234.1	235.8	237.5	238.8	240.3	241.3	242.4
132.5°	228.5	228.8	229.3	229.6	231.2	232.6	233.9	234.8	236.0	236.6	237.3
135°	227.2	227.5	227.9	228.1	229.6	231.0	232.2	233.2	234.3	234.8	235.5
137.5°	226.9	227.1	227.6	227.8	229.1	230.3	231.5	232.4	233.3	234.0	234.6
140°	227.1	227.2	227.6	227.6	228.8	229.9	231.0	231.8	232.7	233.2	233.7
142.5°	227.5	227.2	227.5	227.2	228.2	229.0	229.8	230.6	231.2	231.7	231.9
145°	228.9	228.6	228.5	228.1	228.8	229.5	230.3	230.8	231.2	231.4	231.7
147.5°	230.8	230.2	229.8	229.4	230.2	230.6	231.0	231.3	231.8	231.9	232.1
150°	232.1	231.4	230.8	230.3	230.8	231.0	231.3	231.7	232.0	231.9	232.1
152.5°	232.8	232.2	231.6	230.8	231.2	231.3	231.5	231.4	231.6	231.6	231.6
155°	235.1	234.5	233.9	233.1	233.4	233.4	233.4	233.4	233.2	233.1	232.9
157.5°	238.5	237.8	237.5	236.8	236.8	236.7	236.6	236.2	236.1	235.8	235.4
160°	242.2	241.6	241.3	240.6	240.4	240.3	240.2	239.7	239.5	239.1	238.6
162.5°	246.0	245.4	244.8	244.3	244.1	244.0	243.7	243.3	243.1	242.6	242.2
165°	250.1	249.7	249.3	248.7	248.5	248.2	248.2	247.6	247.3	246.7	246.3
167.5°	254.0	253.7	253.3	252.7	252.6	252.5	252.3	252.0	251.7	251.2	251.1
170°	257.6	257.2	256.9	256.5	256.2	256.1	255.9	255.6	255.1	254.9	254.4
172.5°	260.1	259.8	259.4	258.8	258.8	258.7	258.4	258.3	257.9	257.6	257.5
175°	260.9	260.7	260.2	260.0	259.8	259.8	259.6	259.5	259.2	259.0	258.8
177.5°	262.2	262.1	261.7	261.6	261.5	261.5	261.3	261.2	261.2	261.0	260.9
180°	262.1	262.1	262.1	262.1	262.1	262.1	262.1	262.1	262.1	262.1	262.1



TEST NUMBER: P1444762
 CATALOG NUMBER: EHBR1-48-UNV-TA-L935-UPL12

CANDELA DISTRIBUTION (continued):

	357.5°	360°
0°	37093.8	37093.8
2.5°	37237.4	37235.5
5°	37375.8	37373.7
7.5°	37481.1	37480.5
10°	37493.6	37500.0
12.5°	37418.8	37424.0
15°	37200.3	37210.5
17.5°	36782.6	36796.0
20°	36063.1	36077.1
22.5°	34897.9	34903.6
25°	33203.8	33179.7
27.5°	30894.2	30852.9
30°	27958.3	27918.2
32.5°	24457.7	24432.7
35°	20517.3	20501.5
37.5°	16368.8	16336.6
40°	12341.3	12247.6
42.5°	8808.9	8644.4
45°	6087.7	5892.7
47.5°	4249.9	4129.3
50°	3221.3	3182.4
52.5°	2624.8	2615.8
55°	2214.7	2210.7
57.5°	1906.5	1905.1
60°	1664.4	1664.0
62.5°	1483.9	1484.6
65°	1356.8	1357.0
67.5°	1244.8	1244.0
70°	1115.4	1114.5
72.5°	1026.4	1024.9
75°	957.6	956.7
77.5°	859.7	858.3
80°	741.3	739.3
82.5°	609.7	607.5
85°	454.8	454.9
87.5°	278.2	278.2
90°	112.7	110.8
92.5°	18.4	17.8
95°	20.8	19.8
97.5°	25.1	24.2
100°	31.3	30.5
102.5°	50.6	47.9
105°	84.9	77.8
107.5°	141.8	128.6
110°	242.3	231.6



TEST NUMBER: P1444762
CATALOG NUMBER: EHBR1-48-UNV-TA-L935-UPL12

CANDELA DISTRIBUTION (continued):

	357.5°	360°
112.5°	315.5	310.6
115°	331.6	329.9
117.5°	324.5	324.5
120°	306.8	308.2
122.5°	285.0	286.6
125°	266.0	267.5
127.5°	251.0	251.8
130°	242.7	243.5
132.5°	237.6	237.9
135°	235.6	235.9
137.5°	234.6	234.7
140°	233.7	233.8
142.5°	232.0	232.0
145°	231.8	231.7
147.5°	231.7	231.7
150°	231.8	231.7
152.5°	231.1	231.0
155°	232.6	232.2
157.5°	234.7	234.5
160°	238.1	237.7
162.5°	241.6	241.3
165°	245.6	245.1
167.5°	250.3	250.1
170°	254.0	253.8
172.5°	257.0	256.8
175°	258.7	258.5
177.5°	260.9	260.7
180°	262.1	262.1

Cooper Lighting Solutions Photometric Lab
1121 Highway 74 South
Peachtree City, GA 30269



LM-79-2019: Approved Method: Electrical and Photometric Measurements of Solid-State Lighting Products

Report Prepared for

Cooper Lighting Solutions

Metalux

Report Number: SP1-2506-472-6

Test Date: 08/01/2025

Luminaire Tested: EHBR-60-L935-N

Data in this report applies to families of products including EHBR-60-L935-N

Test Information

Test Method: LM-79-2019
 Report Number: SP1-2506-472-6
 Test Lab: COOPER LIGHTING SOLUTIONS
 Photometer: SP1 - 76IN SPHERE
 Measurement Geometry: 4π
 Issue Date: 08/05/2025
 Manufacturer: COOPER LIGHTING SOLUTIONS
 Product Line: Metalux
 Catalog Number: **EHBR-60-L935-N**
 Description: Elevate Round Highbay at, 60000 lumens, 3500K 90CRI LEDs with N lens

Spectral Parameters

CCT (K): 3406
 CIE u': 0.2394
 CIE v': 0.5094
 Duv: -0.0028
 CIE x: 0.4076
 CIE y: 0.3856
 CIE z: 0.2068
 Peak Wavelength (nm): 630
 Dominant Wavelength (nm): 582
 Purity: 38.0517
 Rf: 91.3
 Rg: 100

CRI (Ra):	94.6		
R1:	96.6	R9:	63.8
R2:	98.4	R10:	94.7
R3:	98.1	R11:	96.6
R4:	95.8	R12:	80.9
R5:	96.2	R13:	97.4
R6:	95.4	R14:	98.3
R7:	91.8	R15:	93.1
R8:	84.4		



Test Conditions

Stabilization Time: 35M
 Operation Time: 1H 35M
 Sphere Temperature (°C): 25.0

REPORT NUMBER: SP1-2506-472-6

Measurement and Test Equipment			
Instrument	Identification Number	Calibration Date	Calibration Due Date
Photometer	76INCH SPHERE IN0058	6/16/2025	12/16/2025
Power Meter	XITRON INXT2011004	1/21/2025	1/21/2026
AC Power Source	CHROMA 61603 IN0063	10/22/2024	10/22/2025
DC Power Source	AGILENT E3634A IN0208	10/22/2024	10/22/2025
Sphere Thermometer	ONSET IN0085	10/22/2024	10/22/2025
Room Thermometer	ONSET IN0046	10/22/2024	10/22/2025

REPORT NUMBER: SP1-2506-472-6

CIE 1931 Chromaticity Diagram



CIE 1931 Chromaticity Diagram with 2017 ANSI 7-Step and 4-Step Quadrangles



Point lies inside the ANSI 3500K 4-step quadrangle

REPORT NUMBER: SP1-2506-472-6

Photopic Flux vs. Wavelength

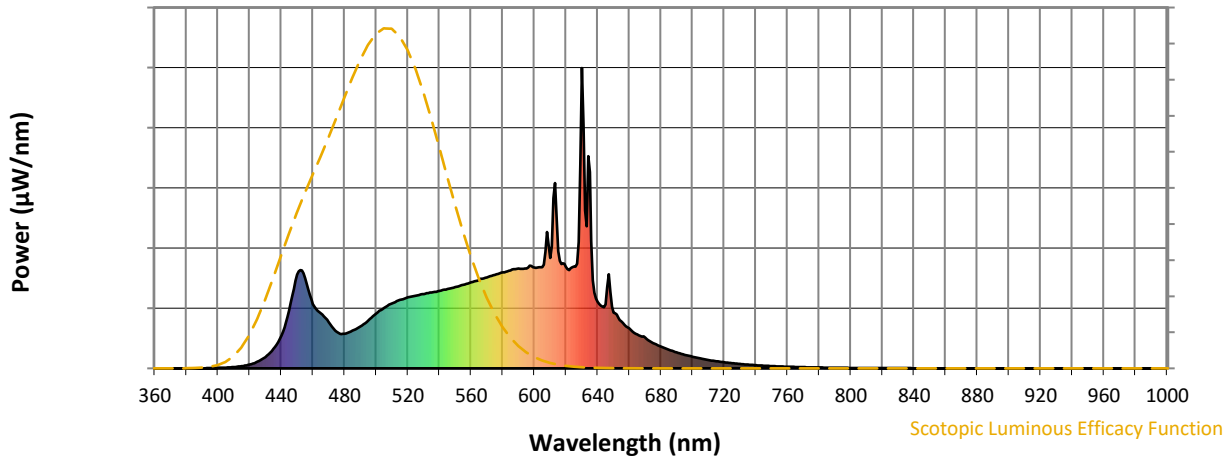


Photopic Lumens: NR

λ (nm)	Power W [^] /nm	Lumens (φ/nm)	λ (nm)	Power W [^] /nm	Lumens (φ/nm)	λ (nm)	Power W [^] /nm	Lumens (φ/nm)	λ (nm)	Power W [^] /nm	Lumens (φ/nm)	λ (nm)	Power W [^] /nm	Lumens (φ/nm)
360	0	NR	490	140	NR	620	338	NR	750	8	NR	880	0	NR
365	0	NR	495	159	NR	625	339	NR	755	7	NR	885	0	NR
370	0	NR	500	182	NR	630	1000	NR	760	5	NR	890	0	NR
375	0	NR	505	202	NR	635	653	NR	765	5	NR	895	0	NR
380	0	NR	510	216	NR	640	222	NR	770	4	NR	900	0	NR
385	0	NR	515	228	NR	645	214	NR	775	3	NR	905	0	NR
390	0	NR	520	236	NR	650	185	NR	780	3	NR	910	0	NR
395	1	NR	525	242	NR	655	157	NR	785	3	NR	915	0	NR
400	2	NR	530	248	NR	660	133	NR	790	2	NR	920	0	NR
405	3	NR	535	253	NR	665	113	NR	795	2	NR	925	0	NR
410	4	NR	540	258	NR	670	103	NR	800	2	NR	930	0	NR
415	7	NR	545	264	NR	675	85	NR	805	1	NR	935	0	NR
420	13	NR	550	270	NR	680	72	NR	810	1	NR	940	0	NR
425	22	NR	555	278	NR	685	62	NR	815	1	NR	945	0	NR
430	38	NR	560	286	NR	690	53	NR	820	1	NR	950	0	NR
435	65	NR	565	295	NR	695	45	NR	825	1	NR	955	0	NR
440	108	NR	570	303	NR	700	39	NR	830	1	NR	960	0	NR
445	193	NR	575	311	NR	705	33	NR	835	1	NR	965	0	NR
450	312	NR	580	319	NR	710	28	NR	840	1	NR	970	0	NR
455	300	NR	585	326	NR	715	24	NR	845	0	NR	975	0	NR
460	214	NR	590	332	NR	720	20	NR	850	0	NR	980	0	NR
465	184	NR	595	333	NR	725	17	NR	855	0	NR	985	0	NR
470	153	NR	600	336	NR	730	15	NR	860	0	NR	990	0	NR
475	122	NR	605	337	NR	735	12	NR	865	0	NR	995	0	NR
480	115	NR	610	367	NR	740	10	NR	870	0	NR	1000	0	NR
485	125	NR	615	390	NR	745	9	NR	875	0	NR			

REPORT NUMBER: SP1-2506-472-6

Scotopic Flux vs. Wavelength



Scotopic Lumens: NR

S/P: 1.62

λ (nm)	Power W [^] /nm	Lumens (φ/nm)	λ (nm)	Power W [^] /nm	Lumens (φ/nm)	λ (nm)	Power W [^] /nm	Lumens (φ/nm)	λ (nm)	Power W [^] /nm	Lumens (φ/nm)	λ (nm)	Power W [^] /nm	Lumens (φ/nm)
360	0	NR	490	140	NR	620	338	NR	750	8	NR	880	0	NR
365	0	NR	495	159	NR	625	339	NR	755	7	NR	885	0	NR
370	0	NR	500	182	NR	630	1000	NR	760	5	NR	890	0	NR
375	0	NR	505	202	NR	635	653	NR	765	5	NR	895	0	NR
380	0	NR	510	216	NR	640	222	NR	770	4	NR	900	0	NR
385	0	NR	515	228	NR	645	214	NR	775	3	NR	905	0	NR
390	0	NR	520	236	NR	650	185	NR	780	3	NR	910	0	NR
395	1	NR	525	242	NR	655	157	NR	785	3	NR	915	0	NR
400	2	NR	530	248	NR	660	133	NR	790	2	NR	920	0	NR
405	3	NR	535	253	NR	665	113	NR	795	2	NR	925	0	NR
410	4	NR	540	258	NR	670	103	NR	800	2	NR	930	0	NR
415	7	NR	545	264	NR	675	85	NR	805	1	NR	935	0	NR
420	13	NR	550	270	NR	680	72	NR	810	1	NR	940	0	NR
425	22	NR	555	278	NR	685	62	NR	815	1	NR	945	0	NR
430	38	NR	560	286	NR	690	53	NR	820	1	NR	950	0	NR
435	65	NR	565	295	NR	695	45	NR	825	1	NR	955	0	NR
440	108	NR	570	303	NR	700	39	NR	830	1	NR	960	0	NR
445	193	NR	575	311	NR	705	33	NR	835	1	NR	965	0	NR
450	312	NR	580	319	NR	710	28	NR	840	1	NR	970	0	NR
455	300	NR	585	326	NR	715	24	NR	845	0	NR	975	0	NR
460	214	NR	590	332	NR	720	20	NR	850	0	NR	980	0	NR
465	184	NR	595	333	NR	725	17	NR	855	0	NR	985	0	NR
470	153	NR	600	336	NR	730	15	NR	860	0	NR	990	0	NR
475	122	NR	605	337	NR	735	12	NR	865	0	NR	995	0	NR
480	115	NR	610	367	NR	740	10	NR	870	0	NR	1000	0	NR
485	125	NR	615	390	NR	745	9	NR	875	0	NR			

REPORT NUMBER: SP1-2506-472-6

Melanopic Flux vs. Wavelength

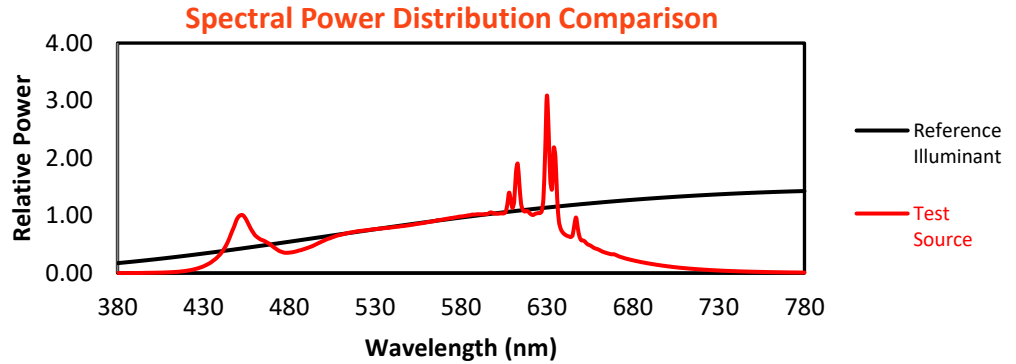


Melanopic Lumens: NR M/P: 3.3

λ (nm)	Power W [^] /nm	Lumens (φ/nm)	λ (nm)	Power W [^] /nm	Lumens (φ/nm)	λ (nm)	Power W [^] /nm	Lumens (φ/nm)	λ (nm)	Power W [^] /nm	Lumens (φ/nm)	λ (nm)	Power W [^] /nm	Lumens (φ/nm)
360	0	NR	490	140	NR	620	338	NR	750	8	NR	880	0	NR
365	0	NR	495	159	NR	625	339	NR	755	7	NR	885	0	NR
370	0	NR	500	182	NR	630	1000	NR	760	5	NR	890	0	NR
375	0	NR	505	202	NR	635	653	NR	765	5	NR	895	0	NR
380	0	NR	510	216	NR	640	222	NR	770	4	NR	900	0	NR
385	0	NR	515	228	NR	645	214	NR	775	3	NR	905	0	NR
390	0	NR	520	236	NR	650	185	NR	780	3	NR	910	0	NR
395	1	NR	525	242	NR	655	157	NR	785	3	NR	915	0	NR
400	2	NR	530	248	NR	660	133	NR	790	2	NR	920	0	NR
405	3	NR	535	253	NR	665	113	NR	795	2	NR	925	0	NR
410	4	NR	540	258	NR	670	103	NR	800	2	NR	930	0	NR
415	7	NR	545	264	NR	675	85	NR	805	1	NR	935	0	NR
420	13	NR	550	270	NR	680	72	NR	810	1	NR	940	0	NR
425	22	NR	555	278	NR	685	62	NR	815	1	NR	945	0	NR
430	38	NR	560	286	NR	690	53	NR	820	1	NR	950	0	NR
435	65	NR	565	295	NR	695	45	NR	825	1	NR	955	0	NR
440	108	NR	570	303	NR	700	39	NR	830	1	NR	960	0	NR
445	193	NR	575	311	NR	705	33	NR	835	1	NR	965	0	NR
450	312	NR	580	319	NR	710	28	NR	840	1	NR	970	0	NR
455	300	NR	585	326	NR	715	24	NR	845	0	NR	975	0	NR
460	214	NR	590	332	NR	720	20	NR	850	0	NR	980	0	NR
465	184	NR	595	333	NR	725	17	NR	855	0	NR	985	0	NR
470	153	NR	600	336	NR	730	15	NR	860	0	NR	990	0	NR
475	122	NR	605	337	NR	735	12	NR	865	0	NR	995	0	NR
480	115	NR	610	367	NR	740	10	NR	870	0	NR	1000	0	NR
485	125	NR	615	390	NR	745	9	NR	875	0	NR			

Summary

$R_f = 91.3$
 $R_g = 100$
 $CIE R_a = 94.6$
 $R_9 = 63.8$



Color Vector Graphics

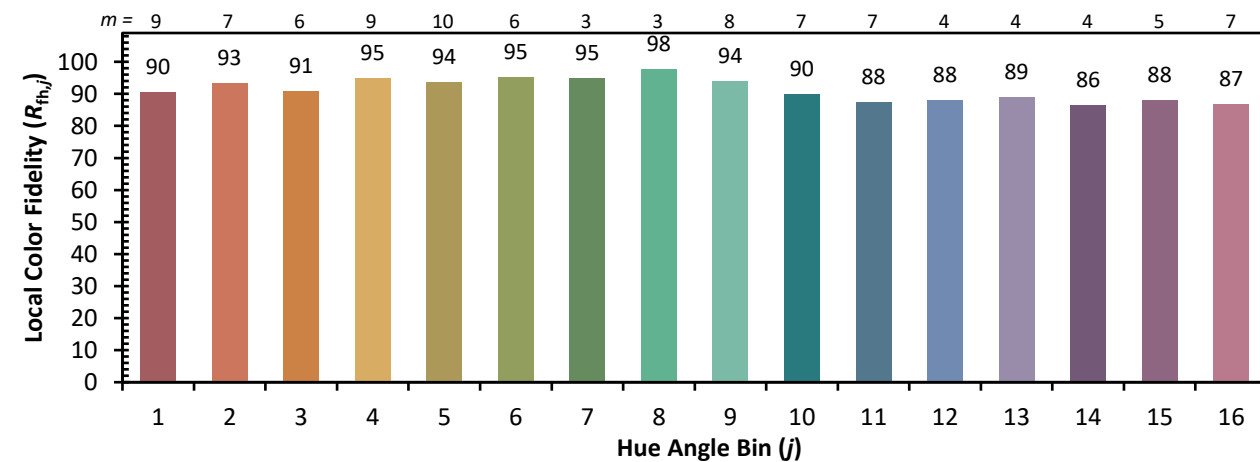
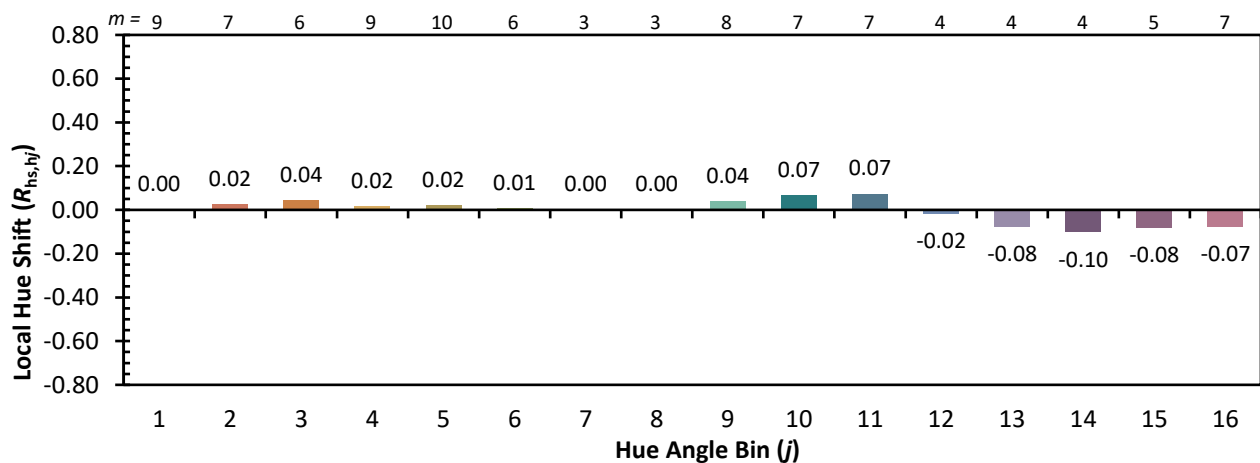
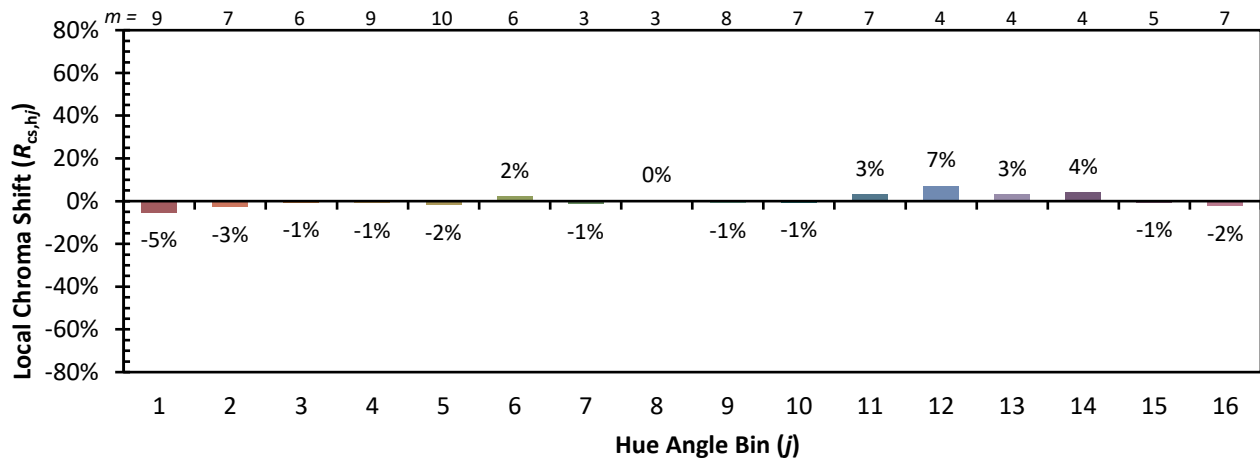


Individual Sample Fidelity Index ($R_{f,i}$)

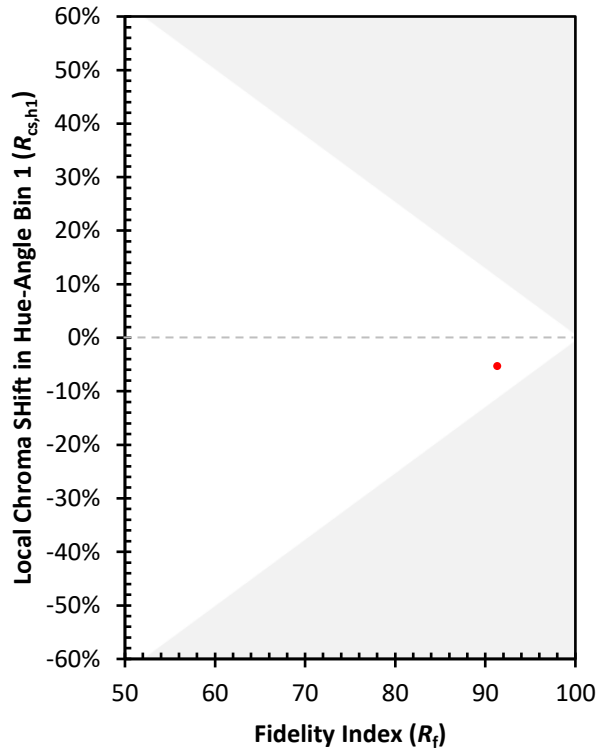
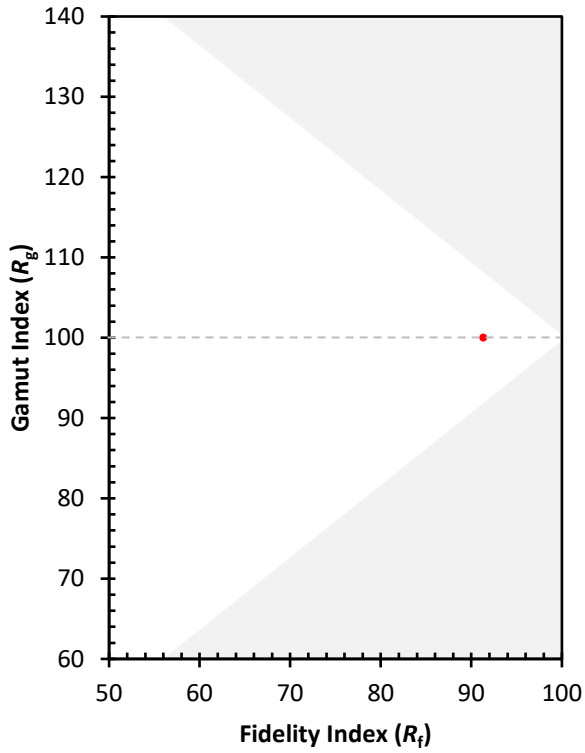
CES01 = 86	CES26 = 94	CES51 = 97	CES76 = 90
CES02 = 63	CES27 = 92	CES52 = 98	CES77 = 86
CES03 = 31	CES28 = 97	CES53 = 98	CES78 = 86
CES04 = 70	CES29 = 97	CES54 = 93	CES79 = 90
CES05 = 50	CES30 = 92	CES55 = 92	CES80 = 91
CES06 = 51	CES31 = 97	CES56 = 96	CES81 = 74
CES07 = 43	CES32 = 89	CES57 = 94	CES82 = 96
CES08 = 41	CES33 = 99	CES58 = 95	CES83 = 94
CES09 = 29	CES34 = 94	CES59 = 98	CES84 = 95
CES10 = 75	CES35 = 97	CES60 = 92	CES85 = 79
CES11 = 58	CES36 = 81	CES61 = 93	CES86 = 79
CES12 = 64	CES37 = 96	CES62 = 86	CES87 = 92
CES13 = 44	CES38 = 87	CES63 = 94	CES88 = 98
CES14 = 74	CES39 = 99	CES64 = 91	CES89 = 84
CES15 = 72	CES40 = 97	CES65 = 90	CES90 = 96
CES16 = 48	CES41 = 96	CES66 = 89	CES91 = 75
CES17 = 49	CES42 = 94	CES67 = 88	CES92 = 76
CES18 = 56	CES43 = 93	CES68 = 89	CES93 = 86
CES19 = 71	CES44 = 99	CES69 = 90	CES94 = 74
CES20 = 67	CES45 = 97	CES70 = 88	CES95 = 83
CES21 = 86	CES46 = 97	CES71 = 83	CES96 = 92
CES22 = 78	CES47 = 91	CES72 = 94	CES97 = 96
CES23 = 91	CES48 = 91	CES73 = 83	CES98 = 95
CES24 = 90	CES49 = 96	CES74 = 90	CES99 = 92
CES25 = 71	CES50 = 98	CES75 = 85	



Color Rendition by Hue-Angle Bin



Measure Comparisons



(END OF REPORT)