

Cooper Lighting Solutions Photometric Lab
1121 Highway 74 South
Peachtree City, GA 30269



Scaled data based on original data using
LM-79-2019 Approved Method: Electrical and Photometric Measurements of Solid-
State Lighting Products

Test Report Prepared for
Cooper Lighting Solutions

Brand: METALUX

Report Number: P1444770

Luminaire Tested: EHBR1-54-UNV-TA-L935-UPL12

Issue Date: 5/1/2026

Test Information

Test Method: LM-79-2019
Report Number: P1444770
REPORT IS A COMBINATION OF REPORTS P1444307 AND P1431635
Test Lab: INNOVATION CENTER
Issue Date: 5/1/2026
Manufacturer: COOPER LIGHTING SOLUTIONS
Product Line: METALUX
Catalog Number: EHBR1-54-UNV-TA-L935-UPL12
Description: Elevate Round Highbay at, 54000 lumens, 3500K 90CRI LEDs with TA lens
Light Source: -
Ballast/Driver: -

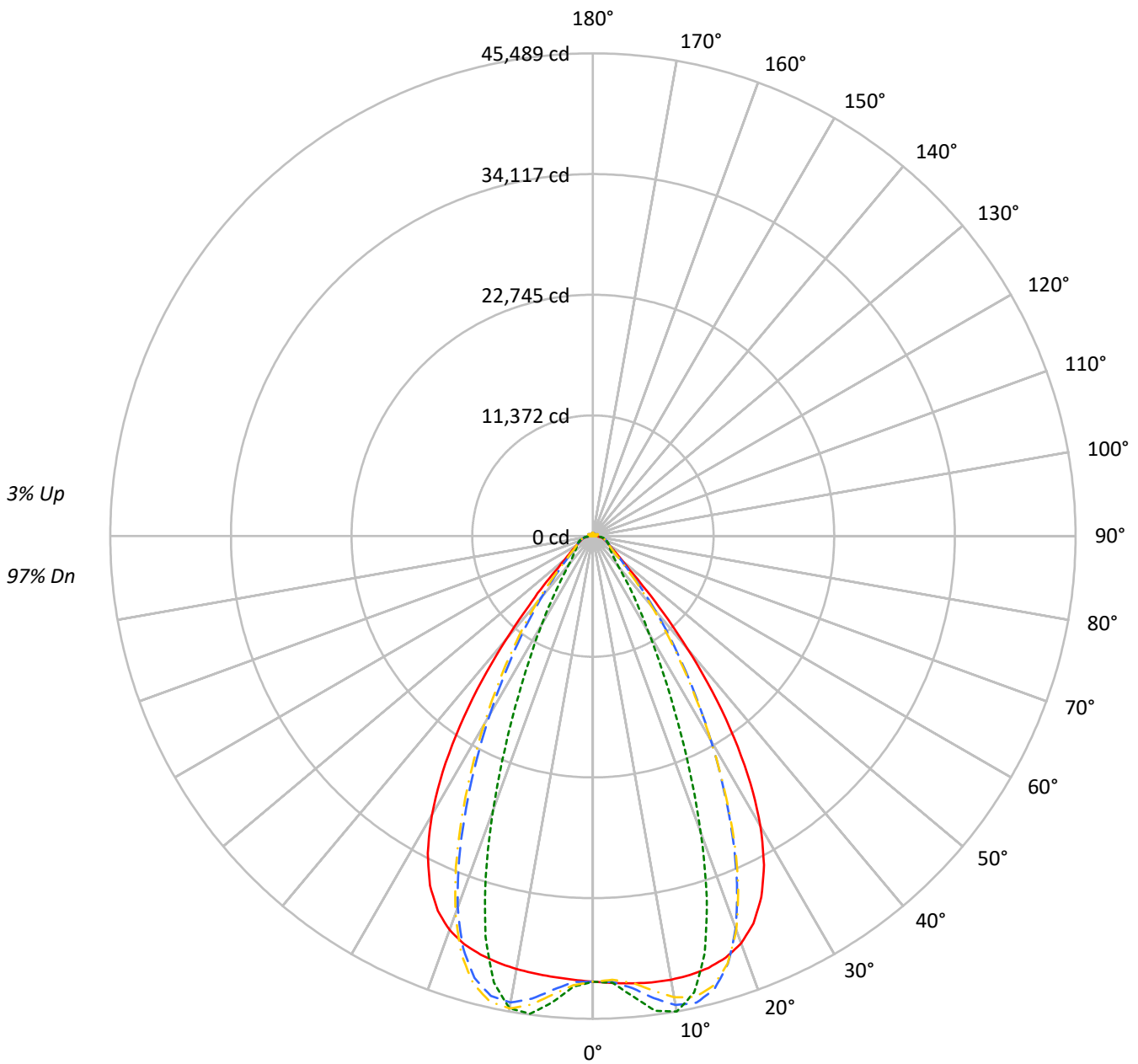
Summary

Lumens per Lamp: N/A
Luminaire Lumens: 49710.3 lumens
Efficiency: N/A
Efficacy: 163.8 lumens/watt
Spacing Criteria (0/90/45): 1.13 / 0.77 / 0.88
Luminous Opening: Vertical Cylinder (Dia: 1.71' x H: 0.1')
CIE Type: Direct

Input Watts (W): 303.4
Input Voltage (V): NR
Input Current (Ain): NR
Voltage Rise (V): NR
Power Factor: NR
Total Harmonic Distortion (THDi): NR
Frequency (hertz): 60
Stabilization Time: NR
Operation Time: NR
Ambient Temperature (°C): NR
Test Distance: 24 FT

TEST NUMBER: P1444770
CATALOG NUMBER: EHBR1-54-UNV-TA-L935-UPL12

Luminous Intensity Polar Plot



— 0°-180° - - 45°-225° - · - · 90°-270° - · - · 135°-315°



TEST NUMBER: P1444770
 CATALOG NUMBER: EHBR1-54-UNV-TA-L935-UPL12

COEFFICIENT OF UTILIZATION - ZONAL CAVITY METHOD:

RF	20				20				20				20				20				
RC	80				70				50				30				10			0	
RW	70	50	30	10	70	50	30	10	50	30	10	50	30	10	50	30	10	50	30	10	0
RCR																					
0	118	118	118	118	115	115	115	115	110	110	110	104	104	104	99	99	99	99	99	99	97
1	111	108	105	102	108	105	103	100	101	99	97	97	95	93	93	91	90	93	91	90	88
2	105	99	94	90	102	97	92	88	93	89	86	89	86	84	86	84	82	86	84	82	80
3	98	91	85	80	96	89	84	79	86	81	78	83	79	76	80	77	74	80	77	74	73
4	92	84	77	72	90	82	76	72	80	75	71	77	73	69	75	71	68	75	71	68	67
5	87	78	71	66	85	76	70	66	74	69	65	72	67	64	70	66	63	70	66	63	61
6	82	72	65	61	81	71	65	60	69	64	60	68	63	59	66	62	58	66	62	58	57
7	78	67	61	56	76	67	60	56	65	59	55	63	58	55	62	58	54	62	58	54	53
8	74	63	56	52	72	62	56	52	61	55	51	60	55	51	58	54	50	58	54	50	49
9	70	59	53	48	69	59	52	48	57	52	48	56	51	48	55	51	47	55	51	47	46
10	66	56	49	45	65	55	49	45	54	49	45	53	48	45	52	48	44	52	48	44	43

AVERAGE LUMINANCE (cd/sqm):

	0°	90°	180°	270°
0°	197191	197191	197191	197191
5°	198146	203924	195372	206595
10°	199800	214104	195008	212688
15°	200780	194084	194667	186269
20°	198704	144585	192201	133776
25°	188081	91442	181865	82967
30°	164303	54950	157939	50219
35°	126448	34481	119175	30544
40°	79990	21629	73184	20325
45°	41229	16850	40546	16574
50°	24172	14988	23431	14754
55°	18519	14180	17833	14052
60°	15668	14486	15002	14298
65°	14717	15127	14153	14611
70°	14378	15840	13661	15244
75°	15374	16798	14542	16057
80°	15909	18602	14424	16981
85°	14984	17946	12107	15368

MAXIMUM LUMINANCE 45°-90°:

Horizontal Angle: 25°
 Vertical Angle: 45°
 Luminance: 63094 cd/sqm



TEST NUMBER: P1444770
 CATALOG NUMBER: EHBR1-54-UNV-TA-L935-UPL12

ZONAL LUMENS:

Zone	Lumens	% Fixture
0°-10°	4138.3	8.3
10°-20°	11641.3	23.4
20°-30°	13258.6	26.7
30°-40°	9529.6	19.2
40°-50°	4395.1	8.8
50°-60°	2103.2	4.2
60°-70°	1534.6	3.1
70°-80°	1165.9	2.3
80°-90°	532.2	1.1
90°-100°	46.0	0.1
100°-110°	203.4	0.4
110°-120°	374.6	0.8
120°-130°	245.1	0.5
130°-140°	178.4	0.4
140°-150°	148.8	0.3
150°-160°	114.4	0.2
160°-170°	74.3	0.1
170°-180°	26.5	0.1
0°-30°	29038.1	58.4
0°-40°	38567.8	77.6
0°-60°	45066.1	90.7
0°-90°	48298.8	97.2
90°-120°	624.0	1.3
90°-150°	1196.4	2.4
90°-180°	1412.0	2.8
0°-180°	49710.3	100.0

CANDELA DISTRIBUTION:

	0°	90°	180°	270°	360°	Flux
0°	41990	41990	41990	41990	41990	
5°	42307	43541	41715	44111	42307	4043
15°	42123	40718	40840	39078	42123	11868
25°	37560	18261	36318	16568	37560	17027
35°	23208	6328	21873	5606	23208	14243
45°	6671	2726	6560	2682	6671	5673
55°	2503	1916	2410	1899	2503	2310
65°	1536	1579	1477	1525	1536	1534
75°	1083	1183	1024	1131	1083	1126
85°	515	617	416	528	515	484
90°	124	162	25	34	124	80
95°	21	22	21	22	21	19
105°	79	97	56	98	79	103
115°	333	390	349	390	333	309
125°	274	264	306	266	274	249
135°	246	197	262	202	246	191
145°	245	219	257	225	245	154
155°	248	239	260	244	248	115
165°	263	257	271	260	263	74
175°	278	279	282	280	278	26
180°	282	282	282	282	282	



TEST NUMBER: P1444770
 CATALOG NUMBER: EHBR1-54-UNV-TA-L935-UPL12

CANDELA DISTRIBUTION (FULL):

	0°	2.5°	5°	7.5°	10°	12.5°	15°	17.5°	20°	22.5°	25°
0°	41990.4	41990.4	41990.4	41990.4	41990.4	41990.4	41990.4	41990.4	41990.4	41990.4	41990.4
2.5°	42150.8	42147.4	42146.8	42143.9	42143.0	42143.0	42141.7	42138.2	42136.1	42131.3	42125.8
5°	42307.3	42305.4	42306.4	42306.8	42303.8	42297.3	42287.1	42274.5	42258.5	42243.6	42230.2
7.5°	42428.2	42431.2	42434.9	42434.1	42424.9	42409.5	42388.5	42376.7	42383.7	42406.5	42458.8
10°	42450.3	42468.3	42475.3	42473.1	42454.8	42441.6	42446.7	42491.2	42579.7	42697.9	42859.4
12.5°	42364.2	42386.3	42385.5	42378.2	42360.5	42378.5	42442.9	42575.4	42765.2	42998.2	43271.5
15°	42122.6	42151.2	42143.0	42133.6	42121.7	42181.0	42309.7	42539.7	42832.9	43161.5	43497.7
17.5°	41653.3	41687.9	41671.1	41660.3	41650.4	41761.5	41982.6	42319.4	42688.6	43060.3	43379.0
20°	40839.5	40862.6	40822.6	40803.8	40819.7	41037.4	41363.0	41793.2	42182.5	42533.8	42751.7
22.5°	39511.2	39540.0	39464.8	39456.1	39548.8	39883.3	40295.4	40776.2	41142.0	41420.5	41504.4
25°	37559.7	37588.0	37498.7	37552.1	37709.9	38165.3	38656.2	39170.5	39482.6	39688.9	39632.0
27.5°	34925.7	34951.5	34866.8	34975.8	35225.2	35823.7	36401.4	36959.3	37237.4	37382.0	37198.8
30°	31603.6	31657.3	31557.2	31709.3	32090.0	32867.1	33528.9	34154.6	34431.9	34541.9	34256.8
32.5°	27658.0	27734.4	27624.1	27850.3	28381.6	29315.0	30066.8	30765.9	31072.6	31198.2	30876.2
35°	23207.8	23317.4	23190.9	23530.4	24185.8	25225.1	26057.7	26838.1	27201.4	27379.4	27054.9
37.5°	18493.1	18597.5	18529.1	18982.1	19701.7	20779.0	21628.9	22470.8	22881.0	23148.2	22892.4
40°	13864.3	13959.8	14011.7	14529.7	15206.6	16222.0	17038.2	17871.3	18330.1	18665.6	18507.8
42.5°	9785.5	9881.8	10058.0	10557.8	11122.3	11962.8	12662.0	13409.9	13848.3	14206.1	14145.2
45°	6670.6	6782.4	7003.1	7412.4	7820.6	8423.6	8937.0	9518.7	9876.8	10204.5	10208.4
47.5°	4674.4	4753.0	4950.2	5229.7	5495.8	6250.7	6281.7	6567.5	6808.3	7053.2	7085.0
50°	3602.5	3649.8	3754.4	3910.2	4060.9	4256.8	4436.3	4643.4	4791.6	4925.9	4958.0
52.5°	2961.0	2991.1	3044.3	3128.6	3216.1	3322.7	3418.7	3532.4	3613.1	3685.0	3700.1
55°	2502.6	2527.5	2606.7	2622.6	2722.8	2742.0	2784.7	2853.9	2900.8	2943.8	2954.6
57.5°	2156.6	2174.6	2191.5	2227.4	2258.2	2303.1	2339.1	2388.8	2418.4	2449.4	2452.2
60°	1883.6	1896.7	1908.7	1933.6	1954.6	1985.8	2010.6	2044.4	2065.5	2088.9	2091.5
62.5°	1680.5	1689.9	1697.8	1714.3	1729.3	1753.2	1773.0	1801.1	1820.9	1838.9	1843.0
65°	1536.1	1543.0	1548.1	1560.6	1573.7	1594.1	1611.9	1634.9	1649.4	1663.3	1666.2
67.5°	1408.3	1414.8	1420.0	1431.4	1440.4	1455.7	1467.7	1484.9	1495.8	1506.9	1507.2
70°	1261.6	1267.7	1271.8	1282.4	1289.6	1302.7	1312.4	1328.0	1339.1	1351.4	1354.5
72.5°	1160.2	1163.7	1169.2	1178.9	1188.9	1203.0	1215.8	1232.1	1245.6	1258.3	1263.8
75°	1083.0	1087.1	1090.8	1099.0	1106.0	1117.9	1127.5	1142.2	1154.1	1167.8	1174.5
77.5°	971.6	976.4	979.5	987.7	993.8	1005.1	1012.3	1025.5	1035.2	1047.6	1053.7
80°	836.9	841.4	843.6	851.4	856.2	866.6	873.7	886.4	894.5	907.0	914.3
82.5°	687.7	692.1	693.3	700.6	703.2	711.8	716.9	730.0	740.0	756.2	767.4
85°	515.0	516.5	519.0	517.2	527.6	528.2	540.0	542.2	557.8	561.8	579.5
87.5°	314.9	319.5	321.8	329.0	332.1	339.2	341.4	349.0	353.3	362.0	366.1
90°	124.4	131.1	132.9	140.7	142.3	149.3	150.5	158.2	160.1	168.2	170.5
92.5°	18.6	19.5	20.2	21.6	22.5	24.2	25.6	26.8	27.7	29.5	31.4
95°	20.6	21.6	22.6	23.6	24.6	25.6	26.6	27.6	28.6	29.6	32.4
97.5°	25.1	26.0	26.8	27.7	28.6	29.5	30.4	31.3	32.1	32.9	36.4
100°	31.6	32.4	33.1	33.9	34.6	35.3	36.1	36.9	37.6	38.3	44.8
102.5°	49.2	51.8	54.5	57.1	59.7	62.3	65.1	67.5	70.1	72.8	86.5
105°	79.3	86.3	93.6	100.6	107.8	115.0	122.2	129.0	136.1	143.2	165.8
107.5°	130.4	143.5	156.8	170.0	183.3	196.5	209.7	222.8	235.9	248.9	271.8
110°	233.7	244.1	254.8	265.4	275.9	286.5	297.0	307.2	317.9	328.4	344.9



TEST NUMBER: P1444770
 CATALOG NUMBER: EHBR1-54-UNV-TA-L935-UPL12

CANDELA DISTRIBUTION (continued):

	0°	2.5°	5°	7.5°	10°	12.5°	15°	17.5°	20°	22.5°	25°
112.5°	313.2	317.8	322.5	327.3	332.0	336.3	341.1	345.7	350.3	354.7	366.4
115°	333.2	334.5	336.2	337.5	339.1	340.4	341.8	343.0	344.6	345.7	353.5
117.5°	328.4	327.7	327.2	326.6	325.8	325.2	324.6	323.7	322.8	322.0	326.3
120°	312.7	310.8	309.1	307.0	305.1	303.0	301.2	299.0	296.8	294.6	296.2
122.5°	291.9	289.7	287.8	285.2	283.0	280.4	278.2	275.3	273.1	270.5	270.4
125°	273.7	271.3	269.4	266.8	264.2	261.7	259.2	256.5	253.9	251.1	250.7
127.5°	258.8	257.1	255.4	253.2	251.2	249.1	246.9	244.5	242.5	239.9	239.3
130°	251.6	250.1	248.2	246.2	244.3	242.2	239.9	237.6	235.6	233.1	232.3
132.5°	246.9	245.6	244.2	242.5	240.8	238.6	236.9	234.6	232.8	230.8	229.9
135°	245.8	244.3	243.2	241.5	239.9	237.8	235.8	233.7	231.8	229.6	228.9
137.5°	245.5	244.3	243.1	241.3	239.7	237.6	235.9	233.7	231.7	229.7	228.8
140°	245.5	244.3	243.0	241.4	239.8	238.1	236.1	234.2	232.1	230.1	229.5
142.5°	244.5	243.3	242.3	240.7	239.4	237.5	235.8	233.8	232.2	230.2	229.8
145°	244.9	243.9	243.0	241.6	240.2	238.5	237.0	235.0	233.6	231.8	231.4
147.5°	245.5	244.5	243.9	242.5	241.5	239.8	238.5	236.7	235.4	233.8	233.6
150°	246.1	245.3	244.5	243.4	242.3	240.8	239.5	238.1	236.7	235.2	234.9
152.5°	245.9	244.9	244.3	243.3	242.2	240.6	239.7	238.2	237.0	235.6	235.2
155°	247.6	246.7	245.8	244.9	243.8	242.6	241.4	240.2	239.1	237.7	237.5
157.5°	250.4	249.4	248.7	247.6	246.9	245.7	244.7	243.6	242.6	241.5	241.1
160°	254.4	253.5	252.7	251.7	250.7	249.5	248.7	247.6	246.9	245.7	245.3
162.5°	258.7	257.7	256.8	255.9	255.0	253.8	253.0	252.1	251.2	250.1	249.8
165°	263.1	262.6	261.7	260.9	260.2	259.4	258.7	257.7	256.9	255.9	255.8
167.5°	268.9	268.0	267.5	266.7	265.8	265.2	264.4	263.5	263.0	262.0	261.7
170°	273.1	272.3	271.8	271.4	270.7	270.1	269.6	269.0	268.4	267.7	267.5
172.5°	276.4	275.8	275.5	275.3	274.6	274.3	273.8	273.3	273.1	272.4	272.5
175°	278.4	278.0	277.9	277.5	277.2	276.9	276.8	276.4	276.4	276.0	275.9
177.5°	280.8	280.7	280.7	280.5	280.5	280.3	280.1	279.9	279.7	279.7	279.7
180°	282.4	282.4	282.4	282.4	282.4	282.4	282.4	282.4	282.4	282.4	282.4



TEST NUMBER: P1444770
 CATALOG NUMBER: EHBR1-54-UNV-TA-L935-UPL12

CANDELA DISTRIBUTION (continued):

	27.5°	30°	32.5°	35°	37.5°	40°	42.5°	45°	47.5°	50°	52.5°
0°	41990.4	41990.4	41990.4	41990.4	41990.4	41990.4	41990.4	41990.4	41990.4	41990.4	41990.4
2.5°	42121.7	42116.6	42109.6	42100.7	42093.1	42084.2	42063.2	42057.0	42064.0	42068.7	42078.3
5°	42221.8	42224.8	42225.9	42245.0	42261.5	42302.7	42625.8	42754.2	42853.5	42916.5	43012.2
7.5°	42523.6	42620.7	42716.7	42845.9	42957.3	43107.7	43673.0	43913.5	44084.6	44207.6	44358.8
10°	43035.0	43246.9	43445.6	43678.4	43878.6	44107.8	44633.9	44868.3	45016.3	45124.0	45224.6
12.5°	43550.0	43844.0	44109.7	44368.8	44585.4	44784.1	44969.2	45051.2	45058.2	45061.6	45008.2
15°	43818.3	44099.3	44333.5	44504.7	44632.1	44688.4	44369.9	44202.8	43991.5	43817.6	43531.3
17.5°	43649.0	43817.6	43918.7	43908.7	43856.2	43680.0	42777.6	42281.4	41788.8	41344.7	40762.5
20°	42896.3	42883.3	42795.4	42546.3	42246.1	41779.2	40232.3	39339.8	38476.9	37719.1	36799.7
22.5°	41495.8	41275.5	40968.3	40431.1	39834.3	39018.6	36801.9	35489.0	34287.8	33226.6	32037.8
25°	39466.6	39013.4	38446.8	37593.9	36666.5	35476.9	32744.6	31111.7	29669.4	28418.5	27046.9
27.5°	36869.8	36187.0	35356.5	34176.2	32919.7	31395.7	28366.6	26564.4	25016.1	23675.0	22215.1
30°	33795.4	32907.3	31835.0	30370.0	28854.4	27125.9	24053.6	22228.4	20661.2	19281.5	17820.5
32.5°	30321.0	29280.8	28024.3	26380.0	24741.0	22963.8	19996.7	18230.0	16732.9	15405.6	14083.3
35°	26488.9	25373.4	24044.1	22367.0	20737.8	19010.0	16287.5	14694.4	13372.4	12199.2	11131.4
37.5°	22378.4	21283.1	20019.6	18439.0	16928.2	15362.5	13013.3	11678.4	10569.1	9595.3	8770.8
40°	18104.6	17146.0	16052.8	14686.3	13397.0	12093.1	10164.8	9105.1	8229.6	7486.9	6869.2
42.5°	13883.0	13140.2	12301.9	11222.0	10235.4	9242.5	7758.4	6973.2	6324.7	5790.2	5353.4
45°	10072.6	9575.7	9013.4	8262.7	7580.0	6887.5	5831.1	5279.5	4857.1	4512.4	4221.0
47.5°	7041.3	6753.1	6735.5	6041.7	5541.0	5117.6	4437.1	4088.6	3829.9	3621.0	3436.4
50°	4944.8	4805.4	4632.2	4384.6	4152.3	3913.0	3498.3	3287.6	3136.1	3009.6	2892.8
52.5°	3696.6	3624.2	3532.0	3400.6	3274.7	3140.2	2877.8	2743.6	2696.0	2578.1	2485.7
55°	2952.6	2911.0	2858.7	2781.4	2704.8	2674.2	2449.4	2349.7	2286.7	2240.2	2190.5
57.5°	2452.6	2421.6	2390.5	2338.2	2293.8	2240.2	2120.8	2069.8	2032.3	2004.9	1970.5
60°	2092.0	2073.5	2056.1	2025.4	2001.4	1972.5	1896.7	1867.9	1848.3	1831.8	1809.8
62.5°	1846.5	1836.9	1827.9	1811.6	1799.4	1783.7	1731.9	1718.0	1708.2	1700.0	1686.6
65°	1669.2	1662.4	1657.4	1646.4	1640.4	1631.2	1586.7	1577.4	1571.3	1568.3	1560.6
67.5°	1508.1	1501.0	1497.7	1489.9	1487.5	1481.7	1445.2	1440.2	1438.1	1439.1	1436.3
70°	1357.5	1354.5	1356.0	1354.9	1358.2	1359.3	1337.3	1337.1	1339.5	1344.1	1344.5
72.5°	1267.2	1267.2	1269.0	1269.7	1272.9	1274.6	1256.2	1255.3	1256.4	1259.8	1259.9
75°	1181.3	1182.8	1187.4	1188.9	1192.8	1193.6	1169.3	1166.5	1166.7	1170.0	1168.9
77.5°	1062.4	1067.6	1076.4	1081.1	1088.6	1090.0	1062.8	1059.5	1059.6	1062.9	1060.1
80°	927.5	937.3	951.5	961.3	972.8	977.5	949.5	942.8	936.5	935.6	930.0
82.5°	784.2	796.1	813.2	821.9	834.3	837.1	790.2	781.3	776.1	776.5	771.4
85°	598.6	607.7	623.1	628.1	635.7	635.1	581.6	558.7	564.7	555.2	562.7
87.5°	375.5	380.8	390.4	391.7	395.3	394.5	340.7	330.1	327.0	327.1	323.2
90°	178.6	181.7	189.6	189.2	194.2	193.0	148.8	143.3	139.9	142.5	137.6
92.5°	33.7	35.4	37.8	39.6	41.9	44.0	41.1	41.6	40.2	37.9	36.6
95°	35.4	38.4	41.4	44.3	47.3	50.3	53.3	56.3	53.5	50.7	47.9
97.5°	40.0	43.5	46.9	50.3	53.8	57.4	60.9	64.4	61.4	58.1	55.1
100°	51.4	57.9	64.3	70.9	77.3	83.8	90.5	97.0	91.3	85.2	79.5
102.5°	100.2	114.1	128.0	141.7	155.5	169.4	183.5	197.5	184.1	170.7	157.2
105°	188.2	210.6	233.0	255.1	277.6	300.1	322.9	345.4	324.1	302.8	281.6
107.5°	294.4	317.2	339.6	362.2	384.9	407.6	431.0	453.7	432.9	411.8	391.2
110°	361.4	377.7	394.2	410.6	426.9	443.3	460.7	477.2	464.5	451.7	439.1



TEST NUMBER: P1444770
 CATALOG NUMBER: EHBR1-54-UNV-TA-L935-UPL12

CANDELA DISTRIBUTION (continued):

	27.5°	30°	32.5°	35°	37.5°	40°	42.5°	45°	47.5°	50°	52.5°
112.5°	377.8	389.6	401.2	412.6	424.0	435.6	448.5	460.4	453.8	446.9	440.5
115°	361.0	368.8	376.2	383.8	391.4	398.7	408.1	416.1	413.5	410.9	408.4
117.5°	330.1	334.1	338.1	342.0	345.7	349.6	355.7	360.0	359.6	359.4	359.2
120°	297.4	298.6	299.8	301.2	302.2	303.3	307.2	308.9	309.9	310.7	311.7
122.5°	270.5	270.5	270.4	270.4	270.3	270.1	273.2	273.7	274.0	274.3	274.6
125°	250.2	249.7	249.2	248.8	248.1	247.5	250.6	250.6	249.9	249.0	248.2
127.5°	238.5	237.6	236.7	236.0	234.8	234.0	236.8	236.7	235.1	233.5	231.7
130°	231.5	230.8	229.8	229.0	228.3	227.6	230.7	230.8	228.7	226.1	224.0
132.5°	229.0	228.4	227.3	226.8	225.9	225.0	228.6	228.8	226.6	223.9	221.5
135°	228.0	227.3	226.6	225.8	225.0	224.5	228.4	228.7	226.5	223.9	221.6
137.5°	227.9	227.2	226.5	225.9	225.1	224.6	228.9	229.5	227.6	225.2	223.3
140°	228.8	228.0	227.5	227.0	226.4	226.0	230.8	231.5	229.9	228.1	226.2
142.5°	229.0	228.8	228.3	228.2	227.8	227.7	233.2	234.1	232.7	231.1	229.8
145°	230.8	230.8	230.4	230.4	230.2	230.2	236.5	237.8	236.8	235.5	234.4
147.5°	232.8	232.7	232.4	232.3	232.2	232.6	239.3	240.7	240.0	239.0	238.2
150°	234.5	234.4	234.1	234.1	234.3	234.5	242.4	244.3	243.5	242.8	242.0
152.5°	234.8	234.7	234.6	234.5	234.4	234.7	244.5	246.8	246.2	245.3	244.9
155°	237.0	236.7	236.5	236.4	236.2	236.6	247.3	249.9	249.4	248.9	248.3
157.5°	240.7	240.3	239.7	239.6	239.5	239.4	251.1	254.0	253.4	253.0	252.5
160°	244.8	244.4	243.9	243.7	243.3	243.2	255.3	258.1	257.8	257.2	256.7
162.5°	249.2	249.3	248.9	248.5	248.2	248.3	260.4	263.6	262.8	262.3	261.8
165°	255.3	254.8	254.4	254.3	253.9	253.7	265.3	267.9	267.6	267.0	266.6
167.5°	261.2	261.1	260.7	260.5	260.2	260.3	271.0	273.5	273.3	272.6	272.3
170°	267.2	267.2	266.8	266.7	266.7	266.8	275.8	278.0	277.7	277.0	276.7
172.5°	272.4	272.4	272.4	272.4	272.4	272.4	280.1	282.0	281.8	281.3	280.9
175°	275.9	275.8	275.9	276.1	276.1	276.2	282.1	283.6	283.4	283.0	282.8
177.5°	279.9	279.8	280.0	280.1	280.2	280.3	284.0	284.8	284.7	284.7	284.5
180°	282.4	282.4	282.4	282.4	282.4	282.4	282.4	282.4	282.4	282.4	282.4



TEST NUMBER: P1444770
 CATALOG NUMBER: EHBR1-54-UNV-TA-L935-UPL12

CANDELA DISTRIBUTION (continued):

	55°	57.5°	60°	62.5°	65°	67.5°	70°	72.5°	75°	77.5°	80°
0°	41990.4	41990.4	41990.4	41990.4	41990.4	41990.4	41990.4	41990.4	41990.4	41990.4	41990.4
2.5°	42080.5	42095.3	42097.4	42114.8	42113.3	42133.9	42130.6	42147.4	42137.6	42151.5	42139.8
5°	43068.9	43158.5	43205.3	43292.8	43320.5	43398.8	43420.9	43492.3	43495.3	43551.9	43539.0
7.5°	44466.1	44598.3	44676.8	44784.9	44839.6	44929.8	44969.4	45036.0	45057.5	45110.4	45114.5
10°	45300.6	45364.8	45409.5	45439.7	45467.3	45480.2	45495.3	45491.3	45495.3	45489.4	45502.3
12.5°	44972.4	44878.7	44816.8	44699.4	44631.5	44501.8	44438.1	44313.5	44268.2	44161.2	44145.8
15°	43310.2	42983.7	42753.1	42417.6	42206.7	41876.7	41683.5	41385.8	41249.8	41013.1	40951.0
17.5°	40280.6	39674.6	39205.5	38603.9	38186.4	37624.2	37270.5	36805.1	36550.2	36174.9	36044.9
20°	36033.2	35136.5	34433.0	33594.9	32995.2	32247.9	31769.5	31166.1	30815.8	30354.9	30168.0
22.5°	31046.7	29930.3	29051.6	28061.5	27337.9	26505.1	25932.0	25279.2	24898.0	24397.2	24175.5
25°	25907.0	24675.8	23699.0	22655.9	21891.3	21056.5	20483.2	19841.9	19447.6	18972.1	18751.8
27.5°	20991.3	19745.1	18801.1	17831.3	17129.9	16376.6	15859.4	15299.5	14949.4	14543.6	14336.3
30°	16653.3	15554.2	14750.9	13946.0	13362.6	12750.9	12321.0	11857.0	11549.9	11202.4	11004.9
32.5°	13119.2	12270.6	11641.6	11002.9	10525.5	10014.2	9642.8	9233.3	8956.2	8645.8	8467.0
35°	10390.2	9730.9	9229.1	8703.5	8293.2	7857.8	7530.5	7177.1	6928.4	6661.2	6506.8
37.5°	8209.3	7685.0	7272.2	6835.5	6498.6	6137.8	6016.3	5610.8	5353.1	5139.9	4992.2
40°	6442.7	6025.8	5684.2	5350.2	5075.4	4801.8	4582.3	4365.6	4199.3	4046.8	3941.3
42.5°	5031.2	4729.2	4479.7	4235.1	4034.6	3835.3	3676.3	3527.0	3415.0	3315.2	3247.2
45°	3999.6	3791.9	3618.5	3446.2	3304.7	3171.7	3064.7	2969.4	2897.1	2837.2	2794.7
47.5°	3285.8	3143.5	3021.2	2905.0	2809.0	2721.8	2650.1	2626.7	2549.0	2496.5	2476.5
50°	2792.5	2706.6	2613.7	2527.9	2463.8	2400.0	2353.5	2307.9	2278.8	2254.7	2247.3
52.5°	2424.2	2358.6	2307.0	2252.6	2210.3	2164.9	2132.8	2102.4	2086.5	2073.8	2072.2
55°	2150.5	2104.6	2070.4	2034.0	2008.6	1982.0	1965.4	1949.3	1942.4	1935.9	1936.4
57.5°	1943.4	1912.7	1890.5	1866.9	1853.2	1840.4	1836.1	1832.1	1834.3	1835.2	1838.9
60°	1792.4	1772.5	1758.6	1745.0	1739.2	1735.2	1738.2	1741.9	1749.2	1755.1	1760.4
62.5°	1676.8	1665.5	1658.6	1651.3	1650.7	1651.0	1657.2	1663.3	1672.4	1679.3	1684.4
65°	1557.8	1551.3	1549.1	1544.4	1546.7	1548.1	1555.6	1560.2	1569.4	1574.9	1581.5
67.5°	1437.4	1435.9	1437.3	1437.3	1441.5	1445.1	1452.3	1457.6	1465.4	1470.3	1475.6
70°	1348.6	1349.3	1352.5	1353.1	1357.7	1360.1	1366.4	1369.7	1376.8	1381.0	1387.4
72.5°	1262.2	1260.9	1261.6	1259.6	1261.2	1260.5	1264.0	1265.7	1271.6	1274.8	1282.6
75°	1170.3	1166.4	1165.4	1161.3	1161.4	1158.5	1159.8	1159.6	1163.5	1165.2	1170.7
77.5°	1059.1	1052.6	1049.5	1042.6	1042.4	1039.7	1042.6	1044.2	1051.1	1054.3	1060.7
80°	926.3	916.0	911.3	903.2	904.6	904.2	911.0	916.1	924.5	926.1	934.2
82.5°	769.8	759.4	754.4	746.5	748.4	748.5	754.8	755.9	763.1	766.3	775.6
85°	551.2	555.2	544.3	545.0	542.6	547.0	551.2	556.5	562.6	572.7	580.5
87.5°	324.6	323.2	327.1	327.5	333.2	336.2	345.1	350.3	360.4	368.3	382.7
90°	138.2	133.4	136.9	135.6	141.4	140.2	145.5	143.2	149.5	150.4	158.4
92.5°	34.1	32.7	30.3	28.7	26.5	25.2	23.7	23.4	21.9	21.7	20.2
95°	45.1	42.3	39.6	36.8	34.1	31.3	30.3	29.3	28.2	27.2	26.2
97.5°	52.1	49.2	46.2	43.1	40.2	37.2	36.5	35.8	35.2	34.4	33.8
100°	73.5	67.8	62.0	56.1	50.3	44.6	44.0	43.5	43.0	42.4	41.9
102.5°	144.1	130.7	117.6	104.2	91.1	77.7	75.4	73.1	70.8	68.5	66.2
105°	260.2	238.9	217.7	196.5	175.4	154.1	147.8	141.2	135.0	128.6	122.4
107.5°	370.2	349.4	328.6	308.1	287.3	266.6	256.4	246.5	236.3	226.3	216.4
110°	426.2	413.6	401.1	388.3	375.9	363.3	353.6	344.0	334.3	324.6	315.2



TEST NUMBER: P1444770
 CATALOG NUMBER: EHBR1-54-UNV-TA-L935-UPL12

CANDELA DISTRIBUTION (continued):

	55°	57.5°	60°	62.5°	65°	67.5°	70°	72.5°	75°	77.5°	80°
112.5°	433.8	427.2	420.5	414.0	407.7	401.1	396.3	391.5	386.9	382.1	377.1
115°	405.8	403.3	400.9	398.5	396.2	393.8	393.3	392.8	392.1	391.6	391.4
117.5°	358.8	358.5	358.1	358.0	357.9	357.8	359.9	361.9	364.2	366.6	369.0
120°	312.5	313.3	314.1	315.3	316.3	317.4	320.0	323.0	325.8	329.2	332.4
122.5°	274.8	275.1	275.3	275.8	276.1	276.5	279.1	281.9	284.6	287.6	290.8
125°	247.0	246.1	245.2	244.2	243.2	242.6	244.3	246.3	248.5	250.9	253.1
127.5°	229.8	227.9	226.0	224.4	222.4	221.0	221.5	222.4	223.1	224.2	225.3
130°	221.4	219.1	216.3	214.3	211.5	209.4	209.0	208.7	208.5	208.5	208.5
132.5°	218.8	216.3	213.5	210.8	208.2	205.6	204.5	203.5	202.3	201.7	201.0
135°	218.9	216.6	213.8	211.3	208.5	206.2	204.6	203.3	201.9	200.8	199.7
137.5°	221.1	219.0	216.7	214.6	212.2	210.1	208.2	206.8	205.1	204.1	202.6
140°	224.2	222.6	220.4	218.5	216.5	214.8	213.1	211.9	210.4	209.3	208.0
142.5°	228.0	226.5	224.9	223.3	221.7	220.1	218.7	217.4	216.1	215.0	213.7
145°	233.1	231.9	230.7	229.4	228.0	226.9	225.4	224.5	223.3	222.2	221.5
147.5°	237.2	236.1	235.1	234.2	233.0	231.9	230.8	230.3	229.0	228.4	227.5
150°	241.0	240.1	239.1	238.5	237.3	236.5	235.6	234.9	233.9	233.6	232.7
152.5°	243.9	243.2	242.3	241.7	240.6	239.8	239.1	238.5	237.8	237.3	236.4
155°	247.5	246.9	246.2	245.5	244.5	244.1	243.3	242.5	241.9	241.3	240.5
157.5°	251.9	251.2	250.4	250.0	249.1	248.4	247.8	247.2	246.4	245.9	245.2
160°	256.1	255.6	254.9	254.2	253.6	253.0	252.1	251.5	250.8	250.2	249.3
162.5°	261.1	260.4	259.8	259.2	258.3	257.8	256.9	256.4	255.8	255.1	254.3
165°	265.9	265.3	264.6	264.0	263.6	262.9	262.1	261.6	260.8	260.2	259.3
167.5°	271.6	271.2	270.5	270.1	269.4	268.7	268.2	267.5	266.8	266.1	265.3
170°	276.3	275.6	275.2	274.5	274.0	273.3	272.7	272.0	271.4	271.0	270.1
172.5°	280.5	280.2	279.7	279.4	278.7	278.2	277.9	277.3	276.9	276.2	275.9
175°	282.6	282.5	282.3	281.9	281.7	281.3	281.1	280.9	280.6	280.4	280.0
177.5°	284.5	284.3	284.3	284.0	283.9	283.9	283.6	283.5	283.4	283.1	283.0
180°	282.4	282.4	282.4	282.4	282.4	282.4	282.4	282.4	282.4	282.4	282.4



TEST NUMBER: P1444770
 CATALOG NUMBER: EHBR1-54-UNV-TA-L935-UPL12

CANDELA DISTRIBUTION (continued):

	82.5°	85°	87.5°	90°	92.5°	95°	97.5°	100°	102.5°	105°	107.5°
0°	41990.4	41990.4	41990.4	41990.4	41990.4	41990.4	41990.4	41990.4	41990.4	41990.4	41990.4
2.5°	42151.9	42141.2	42146.3	42126.5	42131.3	42107.4	42105.2	42078.3	42075.7	42050.3	42040.8
5°	43579.1	43555.6	43582.1	43540.9	43548.9	43495.3	43490.7	43421.3	43397.4	43310.6	43273.0
7.5°	45147.6	45138.8	45154.9	45120.4	45119.3	45071.4	45051.6	44989.4	44950.8	44859.6	44801.4
10°	45491.3	45499.4	45486.1	45489.4	45470.7	45465.5	45446.4	45434.3	45403.0	45379.4	45344.6
12.5°	44064.4	44072.9	44018.5	44053.0	44025.8	44089.5	44084.3	44159.3	44170.9	44265.7	44301.7
15°	40766.6	40756.4	40651.9	40717.7	40682.4	40822.2	40853.4	41041.4	41142.0	41383.3	41531.6
17.5°	35784.9	35757.9	35610.8	35691.0	35650.2	35856.3	35925.3	36226.1	36413.6	36802.5	37079.6
20°	29846.3	29794.8	29622.7	29716.5	29674.5	29908.6	30007.2	30370.6	30612.4	31127.6	31494.0
22.5°	23834.0	23752.6	23584.1	23671.8	23632.1	23874.5	24002.9	24367.5	24644.5	25173.3	25601.2
25°	18435.1	18362.6	18199.6	18260.9	18246.1	18451.2	18565.5	18910.4	19182.5	19686.3	20094.6
27.5°	14060.9	13985.4	13838.2	13881.6	13866.7	14041.4	14149.1	14437.2	14671.4	15095.5	15454.0
30°	10761.6	10670.5	10545.7	10569.6	10559.4	10701.0	10801.5	11044.2	11244.9	11603.3	11912.2
32.5°	8248.7	8157.2	8042.5	8053.7	8038.6	8149.7	8232.5	8443.5	8618.5	8923.2	9192.1
35°	6311.4	6418.3	6173.4	6328.5	6166.9	6404.1	6318.8	6450.7	6601.2	6857.9	7082.1
37.5°	4851.9	4777.4	4714.4	4707.7	4707.4	4762.3	4827.2	4954.2	5086.8	5278.1	5475.7
40°	3844.9	3792.6	3751.8	3748.9	3751.8	3790.9	3838.8	3926.7	4023.7	4161.1	4306.3
42.5°	3189.0	3154.3	3129.7	3128.0	3135.8	3163.5	3196.8	3248.9	3312.1	3401.1	3500.7
45°	2760.1	2740.8	2727.1	2726.3	2730.0	2744.4	2763.5	2796.0	2836.1	2891.6	2954.6
47.5°	2459.1	2454.4	2445.9	2446.2	2442.3	2448.3	2450.4	2468.7	2490.0	2531.8	2614.1
50°	2240.0	2240.0	2234.1	2233.8	2228.2	2227.8	2223.2	2230.4	2240.4	2266.3	2292.7
52.5°	2066.8	2066.2	2059.8	2058.5	2052.7	2052.3	2048.3	2051.1	2052.5	2065.5	2081.3
55°	1931.4	1927.4	1919.0	1916.3	1914.0	1917.4	1915.9	1916.0	1914.3	1919.8	1924.4
57.5°	1834.3	1829.1	1821.1	1818.7	1818.1	1822.2	1822.4	1820.9	1813.7	1808.7	1801.6
60°	1757.5	1752.1	1743.6	1741.4	1742.7	1748.2	1747.9	1743.2	1732.4	1722.8	1711.9
62.5°	1682.0	1679.8	1675.4	1674.8	1673.7	1674.6	1670.7	1665.7	1655.0	1644.9	1632.9
65°	1580.6	1581.7	1578.5	1578.9	1575.0	1574.4	1568.5	1563.7	1552.8	1543.6	1531.3
67.5°	1475.4	1476.2	1473.6	1473.6	1471.5	1471.9	1468.3	1463.8	1454.6	1447.1	1437.6
70°	1388.8	1390.9	1389.4	1389.9	1387.4	1386.4	1380.8	1376.4	1367.0	1360.8	1352.2
72.5°	1285.0	1289.6	1289.4	1290.6	1286.8	1285.0	1278.3	1272.8	1264.2	1259.3	1252.5
75°	1172.9	1179.0	1180.7	1183.3	1178.0	1175.2	1167.9	1163.5	1156.6	1153.7	1149.1
77.5°	1063.5	1070.2	1076.6	1082.5	1073.9	1066.3	1057.1	1050.2	1040.2	1036.3	1029.3
80°	940.8	952.6	966.7	978.6	963.2	947.6	932.5	921.3	908.1	902.6	893.9
82.5°	780.4	792.6	800.7	808.3	797.6	786.2	771.6	761.8	747.4	742.2	732.0
85°	592.9	608.1	612.9	616.8	610.1	604.0	590.3	571.7	562.7	548.6	541.3
87.5°	390.0	399.1	400.7	402.1	398.0	395.0	386.1	377.4	362.0	350.7	337.1
90°	157.7	163.5	159.6	161.6	156.7	157.6	149.0	146.5	134.2	129.9	118.9
92.5°	19.7	18.3	17.6	16.6	18.2	18.4	19.9	20.2	21.6	21.9	23.4
95°	25.2	24.1	23.1	22.1	22.9	23.7	24.6	25.4	26.1	26.9	27.7
97.5°	33.1	32.4	31.7	31.1	31.5	32.0	32.5	33.0	33.4	33.9	34.5
100°	41.3	40.8	40.2	39.7	39.7	39.7	39.7	39.7	39.7	39.7	39.7
102.5°	63.9	61.6	59.3	57.0	58.5	60.1	61.6	63.2	64.8	66.3	68.1
105°	116.0	109.8	103.4	97.2	103.2	109.3	115.5	121.5	127.6	134.0	140.1
107.5°	206.3	196.3	186.4	176.5	187.7	198.8	209.9	221.0	232.1	243.2	254.5
110°	305.7	296.3	286.8	277.3	289.1	300.9	312.7	324.5	336.3	348.1	360.2



TEST NUMBER: P1444770
 CATALOG NUMBER: EHBR1-54-UNV-TA-L935-UPL12

CANDELA DISTRIBUTION (continued):

	82.5°	85°	87.5°	90°	92.5°	95°	97.5°	100°	102.5°	105°	107.5°
112.5°	372.5	368.0	363.3	358.7	366.3	373.9	381.5	389.4	397.0	404.8	412.4
115°	390.9	390.6	390.4	390.1	393.7	397.2	400.9	404.6	408.3	411.8	415.8
117.5°	371.3	373.7	376.3	378.8	380.0	381.1	382.5	383.6	385.0	386.4	387.8
120°	335.6	338.6	342.0	345.5	345.0	344.6	344.2	343.8	343.8	343.5	343.6
122.5°	293.9	297.0	300.4	303.7	302.7	301.7	300.8	300.0	299.5	298.8	298.2
125°	255.9	258.3	261.0	263.8	262.8	261.8	260.8	260.3	259.7	258.9	258.7
127.5°	226.9	228.3	229.7	231.3	230.8	230.4	230.3	230.0	230.0	230.2	230.5
130°	208.7	209.2	209.8	210.3	210.4	210.5	211.2	211.5	212.4	212.9	214.1
132.5°	200.8	200.3	200.3	200.1	200.7	201.2	202.2	203.0	204.4	205.4	207.2
135°	198.9	198.2	197.8	197.4	198.2	198.8	199.9	201.1	202.6	204.2	205.9
137.5°	201.8	200.8	200.3	199.5	200.3	201.1	202.2	203.4	204.7	206.4	208.3
140°	207.2	206.2	205.8	205.0	205.8	206.5	207.6	208.7	210.2	211.8	213.5
142.5°	213.0	211.9	211.4	211.0	211.4	212.2	213.4	214.3	215.7	216.9	218.6
145°	220.6	219.7	219.4	218.9	219.2	219.8	220.5	221.3	222.2	223.1	224.6
147.5°	226.9	226.2	225.9	225.4	225.8	226.1	226.6	227.0	227.9	228.7	229.7
150°	232.6	231.7	231.4	231.1	231.3	231.4	231.8	231.9	232.5	232.9	233.8
152.5°	236.2	235.4	235.4	235.0	234.9	235.0	235.3	235.5	235.8	236.1	236.9
155°	240.2	239.7	239.3	238.8	238.6	238.5	238.6	238.5	238.7	238.7	239.0
157.5°	244.8	244.3	243.9	243.3	243.1	242.6	242.5	242.4	242.4	241.9	242.0
160°	249.0	248.2	247.6	247.1	246.8	246.3	246.3	245.9	245.8	245.7	245.6
162.5°	253.9	253.2	252.8	252.1	251.9	251.2	250.9	250.3	250.0	249.7	249.5
165°	258.6	258.0	257.4	256.6	256.3	255.9	255.5	255.1	255.0	254.5	254.4
167.5°	264.9	264.0	263.6	262.8	262.5	261.7	261.6	261.0	260.7	260.2	260.2
170°	269.7	269.1	268.7	268.2	267.8	267.4	267.2	266.7	266.6	266.5	266.5
172.5°	275.5	275.0	274.6	274.3	273.9	273.6	273.4	273.3	273.0	273.0	272.8
175°	279.8	279.5	279.3	279.1	278.8	278.7	278.5	278.4	278.3	278.2	278.2
177.5°	282.6	282.5	282.4	282.3	282.1	282.1	282.1	282.1	282.1	282.0	281.9
180°	282.4	282.4	282.4	282.4	282.4	282.4	282.4	282.4	282.4	282.4	282.4



TEST NUMBER: P1444770
 CATALOG NUMBER: EHBR1-54-UNV-TA-L935-UPL12

CANDELA DISTRIBUTION (continued):

	110°	112.5°	115°	117.5°	120°	122.5°	125°	127.5°	130°	132.5°	135°
0°	41990.4	41990.4	41990.4	41990.4	41990.4	41990.4	41990.4	41990.4	41990.4	41990.4	41990.4
2.5°	42013.6	42002.6	41973.5	41959.1	41932.2	41918.6	41897.7	41884.1	41867.1	41854.6	41848.0
5°	43177.6	43124.0	43016.3	42949.9	42833.7	42757.2	42641.7	42557.0	42437.8	42349.9	42237.2
7.5°	44692.2	44609.7	44471.8	44367.2	44204.6	44080.2	43897.7	43751.7	43550.0	43382.6	43176.5
10°	45308.8	45260.6	45198.7	45131.5	45041.4	44952.9	44828.3	44701.3	44532.0	44363.6	44143.6
12.5°	44397.4	44442.7	44532.0	44573.7	44642.1	44665.3	44696.5	44681.8	44654.2	44585.4	44485.6
15°	41816.4	42005.5	42304.3	42510.9	42800.6	43004.0	43273.0	43446.2	43645.7	43764.9	43878.2
17.5°	37570.8	37936.5	38463.7	38884.3	39449.1	39908.2	40470.8	40912.7	41423.0	41814.6	42231.3
20°	32132.7	32644.9	33372.7	33990.9	34809.1	35503.0	36391.9	37136.6	38005.3	38729.3	39510.9
22.5°	26279.9	26882.4	27716.4	28461.9	29439.0	30311.8	31425.6	32410.1	33584.5	34636.5	35800.3
25°	20758.5	21348.9	22198.4	22970.5	24025.3	24986.8	26203.5	27333.1	28695.8	29966.6	31425.6
27.5°	16023.5	16548.0	17294.8	17989.7	18955.8	19899.6	21134.5	22339.0	23793.1	25158.9	26731.1
30°	12374.7	12800.2	13398.5	13957.6	14733.1	15505.0	16604.9	17718.9	19165.9	20581.1	22193.0
32.5°	9590.0	9952.8	10452.3	10906.1	11503.7	12085.7	12895.7	13785.9	15055.1	16410.7	17969.3
35°	7423.7	7734.1	8159.2	8550.1	9041.6	9503.7	10108.1	10743.4	11712.0	12852.3	14247.1
37.5°	5918.6	6045.1	6348.6	6668.9	7077.1	7456.7	7929.6	8399.3	9092.3	9992.0	11131.4
40°	4501.0	4701.9	4948.9	5201.2	5510.2	5814.8	6333.5	6583.2	7039.5	7685.4	8569.8
42.5°	3631.8	3773.0	3946.9	4122.3	4337.6	4549.8	4812.2	5079.3	5420.5	5857.9	6487.0
45°	3039.1	3131.3	3243.3	3360.2	3501.6	3646.3	3822.1	4005.5	4236.6	4505.5	4887.6
47.5°	2643.2	2694.2	2767.3	2847.1	2944.0	3044.3	3158.5	3275.4	3419.0	3578.5	3796.1
50°	2334.2	2376.7	2433.5	2486.8	2553.8	2656.5	2701.8	2766.3	2852.7	2946.6	3068.2
52.5°	2110.6	2138.8	2174.5	2205.2	2247.5	2285.9	2336.3	2380.8	2440.7	2496.9	2575.5
55°	1936.4	1946.7	1966.9	1986.7	2015.9	2042.2	2076.8	2105.9	2144.0	2177.7	2227.2
57.5°	1802.0	1802.9	1812.2	1822.4	1841.3	1857.8	1881.6	1900.8	1927.2	1948.7	1978.4
60°	1705.3	1700.2	1702.0	1705.6	1716.2	1726.9	1742.1	1754.7	1771.2	1783.4	1800.1
62.5°	1624.9	1616.7	1614.9	1614.0	1619.2	1623.1	1631.4	1637.5	1647.0	1652.2	1661.1
65°	1523.3	1513.8	1510.0	1505.6	1507.2	1506.0	1509.0	1509.2	1514.0	1515.1	1520.3
67.5°	1431.1	1423.1	1418.3	1412.4	1409.8	1405.5	1403.7	1399.6	1399.0	1395.7	1394.8
70°	1347.1	1339.3	1335.2	1329.8	1327.0	1321.3	1318.0	1311.1	1307.1	1300.7	1297.1
72.5°	1249.8	1245.5	1244.2	1240.5	1239.5	1236.4	1235.1	1230.2	1227.4	1221.9	1218.8
75°	1148.1	1144.6	1144.2	1140.5	1140.3	1136.5	1135.5	1130.5	1127.7	1122.3	1120.0
77.5°	1027.1	1021.8	1020.3	1015.9	1017.0	1015.1	1016.7	1012.8	1011.1	1005.7	1003.9
80°	890.7	883.9	881.1	875.3	877.0	874.2	877.0	876.6	878.6	874.2	873.5
82.5°	729.2	721.8	720.4	716.4	719.0	719.3	725.1	721.9	723.2	719.1	720.8
85°	530.7	525.0	517.2	516.2	511.3	516.3	509.6	514.2	506.8	512.0	505.2
87.5°	329.0	317.5	311.4	303.2	300.0	292.1	288.8	283.0	284.8	282.1	283.7
90°	116.7	107.1	105.0	97.2	96.5	89.6	90.5	85.6	87.4	82.4	84.6
92.5°	23.7	24.6	26.1	28.2	29.5	31.1	32.6	34.7	36.0	38.0	39.2
95°	28.5	29.4	31.5	33.7	35.9	38.1	40.2	42.4	44.6	46.8	48.9
97.5°	35.0	35.4	37.6	39.8	42.0	44.1	46.2	48.8	50.9	53.1	55.3
100°	39.7	39.9	46.0	52.2	58.4	64.7	70.8	76.9	83.4	89.5	95.7
102.5°	69.6	71.1	86.7	102.3	117.9	133.5	149.2	165.0	180.5	196.3	212.1
105°	146.2	152.4	176.2	200.1	223.9	247.7	271.5	295.6	319.5	343.4	367.3
107.5°	265.6	276.9	298.5	320.1	341.6	363.3	385.0	406.6	428.2	449.9	471.9
110°	372.0	383.9	398.4	413.0	427.7	442.2	456.9	471.5	486.3	500.9	515.9



TEST NUMBER: P1444770
 CATALOG NUMBER: EHBR1-54-UNV-TA-L935-UPL12

CANDELA DISTRIBUTION (continued):

	110°	112.5°	115°	117.5°	120°	122.5°	125°	127.5°	130°	132.5°	135°
112.5°	420.0	428.0	436.4	445.3	453.8	462.6	471.3	480.1	489.0	497.8	506.7
115°	419.6	423.6	426.9	430.7	434.2	437.9	441.7	445.6	449.5	453.3	457.2
117.5°	389.1	390.9	391.5	392.6	393.4	394.9	395.8	397.2	398.5	399.9	400.9
120°	343.4	343.4	343.4	343.5	343.5	343.7	344.0	344.2	344.7	345.0	345.3
122.5°	297.6	297.4	297.4	297.6	297.9	298.3	298.7	299.4	299.8	300.4	300.8
125°	258.3	258.2	259.4	260.8	262.1	263.7	265.0	266.8	268.4	270.1	271.7
127.5°	230.7	231.3	233.4	235.6	237.9	240.4	242.7	245.3	247.6	250.3	252.5
130°	215.1	216.3	218.8	221.7	224.3	227.2	230.0	233.1	235.7	238.6	241.4
132.5°	208.5	210.4	212.8	215.6	218.2	221.1	224.0	226.9	229.7	232.7	235.2
135°	207.8	209.9	212.4	215.0	217.5	220.4	223.0	225.9	228.2	231.0	233.5
137.5°	210.0	212.1	214.4	216.6	218.8	221.4	223.6	226.0	228.2	230.6	232.7
140°	215.3	217.3	218.8	220.8	222.4	224.2	225.7	227.8	229.2	231.2	232.7
142.5°	220.1	222.1	223.0	224.5	225.9	227.6	228.8	230.3	231.5	232.7	233.8
145°	225.8	227.4	228.1	229.0	229.8	230.8	231.5	232.4	232.9	233.7	234.3
147.5°	230.8	231.8	232.1	232.9	233.4	233.8	234.5	235.0	235.2	235.8	236.3
150°	234.4	235.3	235.4	235.8	235.9	236.3	236.3	236.6	236.6	237.0	237.1
152.5°	237.3	237.9	237.6	238.0	237.8	237.9	237.7	238.0	237.8	237.9	238.1
155°	239.0	239.3	239.1	239.2	239.0	239.1	238.9	239.3	239.3	239.3	239.5
157.5°	241.9	241.8	241.7	241.7	241.4	241.5	241.5	241.6	241.6	242.2	242.4
160°	245.3	245.3	245.0	245.0	244.9	244.8	244.8	245.1	245.2	245.7	246.0
162.5°	249.1	248.9	248.6	248.6	248.5	248.6	248.8	249.1	249.2	249.7	250.1
165°	254.3	254.4	254.0	254.1	254.0	254.0	254.0	254.2	254.6	254.9	255.2
167.5°	260.0	259.9	259.9	260.0	260.0	260.2	260.4	261.0	261.1	261.7	261.9
170°	266.3	266.5	266.2	266.3	266.3	266.3	266.4	266.5	266.7	267.0	267.0
172.5°	272.8	272.8	272.7	272.5	272.4	272.4	272.4	272.4	272.4	272.4	272.3
175°	277.9	277.8	277.7	277.7	277.6	277.3	277.3	277.0	276.9	276.9	276.8
177.5°	281.7	281.3	281.2	281.2	281.1	280.9	280.9	280.7	280.7	280.7	280.4
180°	282.4	282.4	282.4	282.4	282.4	282.4	282.4	282.4	282.4	282.4	282.4



TEST NUMBER: P1444770
 CATALOG NUMBER: EHBR1-54-UNV-TA-L935-UPL12

CANDELA DISTRIBUTION (continued):

	137.5°	140°	142.5°	145°	147.5°	150°	152.5°	155°	157.5°	160°	162.5°
0°	41990.4	41990.4	41990.4	41990.4	41990.4	41990.4	41990.4	41990.4	41990.4	41990.4	41990.4
2.5°	41839.6	41839.1	41835.1	41837.0	41837.7	41840.7	41844.3	41848.0	41848.7	41851.7	41852.4
5°	42152.7	42049.2	41972.6	41888.4	41825.1	41768.2	41730.2	41700.0	41688.3	41691.3	41698.3
7.5°	43001.8	42788.2	42611.8	42411.4	42244.2	42067.3	41920.5	41781.0	41679.4	41603.7	41561.4
10°	43933.5	43673.3	43424.3	43134.2	42859.0	42565.4	42299.5	42031.6	41808.3	41614.5	41472.0
12.5°	44347.0	44163.1	43947.8	43674.1	43379.6	43040.8	42698.6	42331.8	41990.7	41674.0	41418.6
15°	43909.2	43909.6	43831.1	43699.7	43495.3	43224.5	42898.5	42516.1	42113.7	41703.0	41327.8
17.5°	42519.5	42781.7	42927.6	43019.8	42991.5	42891.8	42684.3	42390.6	42015.4	41578.0	41120.2
20°	40133.1	40751.5	41192.4	41588.9	41811.1	41958.8	41944.0	41824.6	41557.3	41185.4	40708.6
22.5°	36790.0	37828.0	38647.1	39410.8	39946.5	40382.2	40589.3	40677.2	40556.2	40297.1	39849.4
25°	32729.5	34140.9	35345.2	36514.1	37390.9	38144.4	38597.2	38916.2	38941.6	38806.2	38406.8
27.5°	28217.6	29883.5	31407.8	32961.3	34194.3	35277.5	35988.2	36508.5	36673.8	36651.9	36289.2
30°	23711.4	25460.3	27140.6	28952.0	30477.7	31861.6	32800.5	33504.1	33775.2	33827.1	33478.3
32.5°	19455.8	21180.4	22856.0	24749.8	26428.7	28014.8	29124.1	29959.8	30275.0	30349.3	29966.6
35°	15593.6	17184.6	18777.0	20612.4	22281.7	23924.2	25093.0	25968.0	26262.3	26312.0	25869.0
37.5°	12244.3	13599.9	14987.4	16634.2	18167.3	19709.8	20820.3	21642.6	21857.0	21843.8	21342.4
40°	9424.3	10478.2	11593.0	12948.8	14223.3	15527.3	16465.1	17144.8	17257.5	17174.0	16647.3
42.5°	7086.5	7847.7	8656.0	9668.0	10613.7	11589.6	12271.9	12776.5	12792.6	12660.6	12187.8
45°	5279.5	6022.1	6361.1	6972.9	7582.1	8231.0	8647.6	8959.2	8911.0	8794.9	8435.7
47.5°	4024.6	4310.0	4612.8	4992.2	5347.0	6083.4	6028.8	6529.4	6168.8	6414.7	5873.5
50°	3196.0	3355.5	3518.6	3719.9	3905.3	4097.8	4218.1	4307.9	4296.3	4257.7	4154.0
52.5°	2719.0	2768.4	2848.7	2963.2	3066.7	3170.8	3239.2	3295.0	3296.0	3280.5	3228.1
55°	2272.5	2335.1	2392.8	2467.7	2595.2	2614.8	2712.9	2693.1	2700.8	2673.6	2701.4
57.5°	2003.6	2040.1	2072.6	2117.1	2154.0	2196.9	2222.3	2246.7	2244.3	2239.1	2212.3
60°	1813.1	1833.2	1851.3	1877.3	1897.5	1921.8	1933.5	1945.9	1941.8	1932.8	1909.0
62.5°	1666.2	1678.9	1689.1	1705.9	1718.2	1733.4	1739.3	1744.7	1739.3	1730.8	1709.8
65°	1521.4	1529.4	1536.0	1548.6	1557.3	1570.2	1575.4	1580.4	1575.5	1568.9	1552.8
67.5°	1390.7	1391.4	1390.8	1395.9	1398.6	1406.4	1408.7	1412.2	1406.6	1400.9	1387.4
70°	1291.5	1289.4	1287.0	1289.0	1289.4	1293.2	1293.9	1293.2	1286.5	1276.6	1261.8
72.5°	1214.0	1212.9	1211.0	1212.8	1212.8	1216.2	1215.1	1213.4	1205.1	1195.4	1180.9
75°	1114.4	1113.6	1109.9	1110.1	1106.9	1108.0	1104.0	1101.6	1092.5	1084.3	1071.3
77.5°	997.9	996.0	990.5	988.5	982.6	980.1	972.5	968.8	959.4	952.9	941.7
80°	867.7	865.7	858.7	854.8	845.5	839.5	828.4	821.9	811.3	804.9	793.9
82.5°	717.3	718.0	711.0	706.2	692.8	682.6	667.6	659.5	647.7	641.5	630.3
85°	510.1	502.8	506.7	506.4	498.0	489.1	477.0	468.4	458.4	452.5	444.6
87.5°	279.8	281.5	279.5	277.8	271.9	267.4	257.9	252.9	245.6	242.0	236.1
90°	77.3	77.1	70.3	70.3	63.7	61.2	53.4	51.9	44.9	43.8	38.6
92.5°	37.4	35.6	34.1	31.9	30.5	28.6	26.7	24.9	23.1	22.1	21.9
95°	46.3	43.9	41.2	38.6	35.9	33.3	30.8	28.2	25.6	25.0	24.5
97.5°	52.4	49.2	46.1	43.1	40.0	36.9	34.0	30.8	27.7	27.4	27.0
100°	88.7	81.8	74.6	67.4	60.3	53.1	46.1	39.0	32.0	31.6	31.2
102.5°	194.7	177.5	160.2	143.0	125.9	108.5	91.4	74.0	56.7	54.2	51.8
105°	341.1	314.9	289.1	263.0	236.8	210.6	184.7	158.3	132.2	123.9	115.5
107.5°	447.5	422.9	398.6	374.1	349.5	325.2	300.6	276.1	251.4	236.7	222.1
110°	496.5	477.2	458.1	438.8	419.4	400.1	380.7	361.4	342.0	329.4	316.9



TEST NUMBER: P1444770
 CATALOG NUMBER: EHBR1-54-UNV-TA-L935-UPL12

CANDELA DISTRIBUTION (continued):

	137.5°	140°	142.5°	145°	147.5°	150°	152.5°	155°	157.5°	160°	162.5°
112.5°	492.8	478.9	465.1	451.0	437.1	423.0	409.1	395.0	380.8	373.4	365.9
115°	449.3	441.1	433.0	424.9	416.7	408.6	400.4	391.9	383.6	379.8	376.2
117.5°	397.3	393.5	389.9	386.1	382.2	378.2	374.5	370.5	366.5	365.5	364.5
120°	345.1	344.6	343.7	343.1	342.5	341.9	341.1	340.2	339.3	340.1	340.9
122.5°	302.4	303.7	305.3	306.2	307.8	308.9	310.3	311.2	312.4	314.3	316.0
125°	274.0	276.1	278.3	280.4	282.5	284.7	286.9	288.8	291.0	292.7	294.7
127.5°	255.3	257.5	260.0	262.3	264.8	267.1	269.5	271.5	273.9	275.7	277.9
130°	243.9	246.0	248.4	250.5	252.8	255.0	257.2	259.5	261.6	263.5	265.3
132.5°	237.4	239.5	241.8	243.7	246.1	248.0	250.2	252.2	254.7	256.1	257.9
135°	235.6	237.2	239.2	240.8	242.9	244.5	246.4	248.4	250.5	252.0	253.7
137.5°	234.5	235.9	237.7	239.2	241.1	242.5	244.5	246.1	248.2	249.3	251.1
140°	234.2	235.7	237.4	238.9	240.6	242.2	244.3	245.9	248.0	249.2	250.8
142.5°	235.3	236.4	237.8	239.1	240.6	241.9	243.7	245.3	247.2	248.6	250.0
145°	235.7	236.9	238.5	239.6	241.0	242.5	244.5	246.2	248.1	249.3	250.7
147.5°	237.4	238.4	239.7	240.9	242.3	243.3	245.3	246.7	248.5	249.8	250.9
150°	238.3	239.2	240.4	241.4	242.8	244.3	245.9	247.4	249.4	250.6	251.7
152.5°	239.1	240.1	241.3	242.6	243.9	245.4	247.1	248.7	250.4	251.4	252.8
155°	240.6	241.4	242.8	244.1	245.5	246.7	248.3	249.9	251.5	252.7	253.8
157.5°	243.4	244.2	245.5	246.7	248.0	249.2	250.9	252.1	253.6	254.6	255.5
160°	247.0	247.9	249.1	250.2	251.4	252.6	254.0	255.1	256.4	257.4	258.3
162.5°	251.1	252.1	253.2	254.1	255.5	256.7	258.0	259.1	260.4	261.1	262.1
165°	256.1	257.0	258.1	258.8	259.8	260.6	261.7	262.7	263.8	264.4	265.4
167.5°	262.9	263.4	264.1	264.7	265.7	266.4	267.5	268.1	269.0	269.7	270.4
170°	267.7	268.3	268.7	269.5	270.2	270.8	271.4	272.0	273.0	273.5	274.2
172.5°	272.6	272.8	273.4	273.7	274.2	274.4	275.1	275.5	275.9	276.6	277.0
175°	277.2	277.2	277.4	277.5	277.7	277.9	278.3	278.6	278.9	279.2	279.4
177.5°	280.5	280.6	280.6	280.7	281.1	281.1	281.3	281.4	281.7	281.9	282.2
180°	282.4	282.4	282.4	282.4	282.4	282.4	282.4	282.4	282.4	282.4	282.4



TEST NUMBER: P1444770
 CATALOG NUMBER: EHBR1-54-UNV-TA-L935-UPL12

CANDELA DISTRIBUTION (continued):

	165°	167.5°	170°	172.5°	175°	177.5°	180°	182.5°	185°	187.5°	190°
0°	41990.4	41990.4	41990.4	41990.4	41990.4	41990.4	41990.4	41990.4	41990.4	41990.4	41990.4
2.5°	41850.9	41850.5	41849.1	41847.2	41845.4	41846.5	41848.3	41853.1	41861.5	41873.7	41889.5
5°	41704.1	41712.6	41717.4	41718.1	41713.7	41711.1	41715.1	41726.6	41749.8	41788.8	41841.3
7.5°	41550.0	41560.5	41576.8	41588.9	41591.3	41588.3	41588.9	41606.9	41649.7	41725.5	41831.8
10°	41385.5	41354.3	41370.8	41400.9	41424.9	41429.2	41432.2	41453.5	41516.0	41630.6	41801.3
12.5°	41233.6	41134.7	41115.5	41142.7	41179.2	41190.8	41187.6	41196.7	41270.1	41421.6	41659.5
15°	41033.8	40847.5	40783.9	40790.9	40835.8	40852.1	40840.2	40822.2	40893.6	41078.6	41386.6
17.5°	40710.4	40410.0	40293.0	40287.9	40340.5	40354.5	40325.6	40269.6	40339.9	40570.8	40953.2
20°	40218.8	39775.4	39555.1	39520.0	39577.2	39560.5	39502.8	39418.2	39510.6	39791.3	40246.0
22.5°	39335.0	38773.2	38396.8	38275.4	38343.7	38298.1	38213.9	38105.8	38228.6	38547.6	39054.0
25°	37890.9	37241.8	36726.4	36437.2	36491.7	36410.0	36318.3	36187.3	36333.7	36699.9	37257.3
27.5°	35768.2	35018.4	34379.7	33901.1	33918.6	33811.6	33706.0	33536.4	33719.2	34152.7	34781.4
30°	32945.5	32078.0	31300.2	30649.6	30591.4	30487.6	30379.5	30156.9	30385.7	30904.6	31639.2
32.5°	29400.8	28437.5	27538.8	26716.3	26561.2	26459.8	26363.5	26107.4	26406.9	27011.9	27855.9
35°	25255.3	24229.2	23254.9	22315.5	22058.4	21957.1	21872.9	21627.5	22001.3	22659.6	23571.2
37.5°	20705.1	19656.8	18689.5	17726.3	17363.0	17225.6	17164.4	17003.6	17434.9	18086.0	19001.4
40°	16033.9	15059.2	14191.9	13341.1	12927.0	12716.8	12684.7	12655.4	13072.3	13637.3	14468.1
42.5°	11664.0	10877.7	10208.9	9558.6	9183.4	8896.3	8896.1	8983.3	9358.6	9781.7	10422.4
45°	8068.3	7540.7	7114.5	6680.0	6796.1	6223.8	6560.1	6387.4	6573.0	6845.8	7262.4
47.5°	5546.2	5258.2	5024.1	4781.3	4604.3	4435.4	4450.2	4559.1	4733.8	4895.7	5112.5
50°	4042.2	3895.5	3776.3	3650.2	3562.1	3487.6	3492.0	3539.1	3630.9	3716.2	3829.7
52.5°	3167.3	3086.4	3021.7	2952.0	2905.8	2868.7	2870.7	2893.6	2943.3	2992.0	3057.0
55°	2610.7	2600.9	2516.7	2454.2	2430.3	2405.4	2409.9	2419.0	2452.7	2481.3	2524.3
57.5°	2187.7	2149.9	2124.7	2091.7	2076.6	2059.2	2063.1	2066.5	2089.1	2108.2	2139.2
60°	1889.1	1862.3	1844.5	1822.0	1812.0	1801.0	1803.5	1805.5	1820.0	1832.4	1854.7
62.5°	1690.7	1666.7	1651.2	1633.8	1626.9	1619.4	1621.2	1621.7	1630.8	1639.9	1656.8
65°	1538.5	1519.5	1506.6	1491.6	1484.3	1476.5	1477.3	1477.3	1484.9	1491.6	1504.2
67.5°	1377.5	1363.2	1354.9	1343.0	1338.0	1330.1	1329.9	1327.4	1332.4	1335.1	1343.6
70°	1248.4	1234.0	1223.2	1211.9	1205.6	1198.6	1198.7	1198.9	1204.7	1210.8	1221.8
72.5°	1168.5	1154.8	1145.2	1135.3	1129.4	1123.4	1122.3	1121.8	1125.9	1129.2	1136.5
75°	1062.9	1051.9	1046.3	1036.9	1032.2	1025.5	1024.4	1021.3	1023.3	1024.0	1029.4
77.5°	934.7	924.3	919.7	910.2	906.3	898.7	898.1	894.6	896.3	895.1	899.4
80°	788.5	779.1	776.5	768.7	766.9	759.9	758.8	754.6	755.9	752.6	754.2
82.5°	625.5	616.8	614.9	607.7	607.7	601.3	601.0	594.6	594.6	589.2	580.5
85°	440.6	434.2	431.5	425.6	423.9	418.8	416.1	410.0	407.8	404.0	402.8
87.5°	232.5	228.5	224.9	222.1	217.0	207.7	207.0	200.6	201.0	196.6	196.9
90°	38.1	33.4	33.2	28.9	28.3	25.5	25.2	24.6	24.7	24.3	24.6
92.5°	21.3	20.7	20.1	19.5	18.9	18.3	17.7	18.3	18.9	19.5	20.1
95°	23.9	23.4	22.9	22.4	21.8	21.3	20.8	21.3	21.8	22.5	23.0
97.5°	26.7	26.4	26.0	25.6	25.4	25.0	24.7	25.2	25.6	25.8	26.2
100°	30.8	30.4	30.0	29.5	29.2	28.7	28.4	29.0	29.5	29.8	30.3
102.5°	49.4	46.9	44.4	41.9	39.3	36.9	34.3	36.9	39.3	42.0	44.5
105°	106.9	98.7	90.3	81.8	73.3	64.9	56.5	65.1	73.5	82.0	90.5
107.5°	207.1	192.5	177.6	163.0	147.8	133.1	118.3	133.3	148.2	163.1	178.0
110°	304.2	291.4	278.7	266.0	253.2	240.5	227.7	240.6	253.5	266.3	279.1



TEST NUMBER: P1444770
 CATALOG NUMBER: EHBR1-54-UNV-TA-L935-UPL12

CANDELA DISTRIBUTION (continued):

	165°	167.5°	170°	172.5°	175°	177.5°	180°	182.5°	185°	187.5°	190°
112.5°	358.2	350.6	343.0	335.4	327.5	320.0	312.1	320.3	328.1	336.2	343.9
115°	372.4	368.5	364.8	361.0	356.9	353.0	348.8	353.5	357.6	361.9	366.1
117.5°	363.4	362.5	361.4	360.3	359.0	357.9	356.5	358.3	359.8	361.6	362.9
120°	341.4	342.3	343.0	343.4	344.0	344.5	344.8	345.1	345.1	345.1	344.9
122.5°	317.8	319.6	321.0	322.7	324.2	325.6	326.9	326.3	325.5	324.7	323.5
125°	296.4	298.5	300.2	302.0	303.5	305.3	306.3	306.1	305.3	304.3	303.1
127.5°	279.8	281.6	283.2	285.2	286.7	288.1	289.4	289.1	288.4	287.6	286.5
130°	266.9	268.9	270.4	272.1	273.3	274.6	275.5	275.5	275.1	274.8	273.9
132.5°	259.5	261.3	262.8	264.4	265.4	266.7	267.4	267.7	267.5	267.3	266.6
135°	255.2	256.7	258.0	259.7	260.6	261.7	262.2	262.7	262.7	262.7	262.1
137.5°	252.3	254.0	255.0	256.2	257.1	257.9	258.4	259.0	259.1	259.6	259.2
140°	252.1	253.6	255.0	255.9	257.1	258.0	258.4	259.1	259.3	259.4	259.1
142.5°	251.4	252.8	254.1	255.3	256.2	257.1	257.7	258.2	258.4	258.5	258.3
145°	252.0	253.1	254.4	255.6	256.3	257.0	257.3	258.1	258.3	258.6	258.6
147.5°	252.1	253.5	254.3	255.4	256.1	256.8	257.2	257.8	258.1	258.3	258.4
150°	253.1	254.3	255.3	256.3	257.2	257.9	258.1	258.8	259.1	259.2	259.2
152.5°	253.9	254.9	255.9	256.7	257.6	258.1	258.5	259.1	259.7	259.9	260.0
155°	254.8	255.9	256.8	257.7	258.3	259.1	259.8	260.4	260.8	261.1	261.5
157.5°	256.4	257.5	258.3	259.2	259.8	260.8	261.4	262.2	262.7	263.3	263.6
160°	259.1	260.2	260.8	261.7	262.5	263.3	263.9	264.6	265.3	265.7	266.4
162.5°	262.8	263.8	264.3	265.2	266.0	266.7	267.4	268.2	268.8	269.4	269.9
165°	266.2	267.1	267.7	268.6	269.5	270.3	270.8	271.5	271.9	272.5	272.9
167.5°	271.1	272.0	272.5	273.3	273.8	274.7	275.4	276.0	276.3	276.8	277.2
170°	274.7	275.4	276.1	276.6	277.3	278.0	278.3	278.7	279.2	279.6	280.0
172.5°	277.4	278.2	278.7	279.4	279.9	280.4	281.0	281.3	281.6	281.7	281.8
175°	279.8	280.3	280.7	281.1	281.4	281.8	282.3	282.3	282.7	282.7	282.9
177.5°	282.6	283.1	283.5	283.7	284.0	284.2	284.6	284.4	284.4	284.2	284.0
180°	282.4	282.4	282.4	282.4	282.4	282.4	282.4	282.4	282.4	282.4	282.4



TEST NUMBER: P1444770
 CATALOG NUMBER: EHBR1-54-UNV-TA-L935-UPL12

CANDELA DISTRIBUTION (continued):

	192.5°	195°	197.5°	200°	202.5°	205°	207.5°	210°	212.5°	215°	217.5°
0°	41990.4	41990.4	41990.4	41990.4	41990.4	41990.4	41990.4	41990.4	41990.4	41990.4	41990.4
2.5°	41912.0	41932.9	41965.0	41994.1	42037.9	42072.4	42124.3	42163.6	42222.2	42260.1	42323.8
5°	41915.7	41997.8	42105.6	42210.7	42337.3	42452.1	42594.8	42716.4	42859.9	42976.9	43123.6
7.5°	41975.0	42133.1	42322.7	42513.6	42729.6	42931.6	43159.3	43365.3	43590.5	43781.1	43989.3
10°	42018.7	42262.6	42541.9	42823.0	43118.8	43393.7	43671.1	43910.9	44135.1	44319.4	44482.4
12.5°	41959.4	42295.4	42653.8	42999.9	43328.9	43613.4	43852.1	44036.5	44163.8	44250.2	44270.4
15°	41757.9	42162.2	42551.9	42896.6	43169.5	43380.1	43489.0	43540.1	43485.3	43394.4	43194.6
17.5°	41381.4	41807.9	42156.3	42428.2	42572.5	42629.6	42539.3	42382.2	42075.3	41734.7	41242.8
20°	40691.3	41088.6	41341.3	41489.6	41451.1	41308.3	40967.5	40553.2	39940.6	39287.6	38425.9
22.5°	39480.7	39828.0	39962.7	39973.7	39738.3	39380.9	38766.2	38055.7	37089.1	36084.2	34848.4
25°	37663.5	37967.8	37989.1	37869.5	37438.6	36859.6	35957.0	34951.8	33638.3	32299.4	30750.8
27.5°	35199.1	35490.9	35419.4	35196.5	34598.2	33823.4	32667.7	31369.2	29750.0	28168.5	26455.5
30°	32101.1	32413.1	32329.3	32043.3	31331.7	30415.9	29056.1	27547.5	25749.7	24060.6	22324.7
32.5°	28393.8	28788.3	28730.4	28458.5	27716.0	26735.9	25260.5	23660.4	21821.1	20156.6	18467.9
35°	24179.9	24658.9	24683.6	24505.9	23816.6	22847.8	21390.9	19842.2	18080.5	16509.9	14949.9
37.5°	19639.9	20195.2	20309.2	20261.3	19690.0	18834.9	17507.4	16118.1	14557.3	13180.8	11846.7
40°	15074.7	15636.8	15831.8	15889.8	15468.1	14805.8	13716.3	12594.9	11322.6	10207.2	9147.9
42.5°	10911.6	11409.9	11598.3	11716.9	11453.7	11012.1	10217.3	9403.0	8470.8	7666.4	6895.1
45°	7578.3	7930.7	8074.1	8193.5	8050.1	7801.0	7299.1	6789.8	6174.5	5648.8	5151.0
47.5°	5298.4	5492.8	5587.4	5645.3	5589.8	5459.8	5186.7	4891.6	4544.3	4237.1	3941.7
50°	3927.3	4030.7	4080.2	4113.7	4073.2	4001.0	3853.2	3692.6	3501.8	3327.8	3157.7
52.5°	3112.2	3171.6	3201.0	3219.0	3195.8	3151.7	3065.6	2970.3	2855.9	2748.4	2692.0
55°	2621.9	2618.8	2686.8	2654.0	2686.8	2613.5	2598.1	2493.4	2398.4	2331.5	2259.1
57.5°	2162.2	2193.0	2206.1	2220.7	2211.3	2197.8	2161.2	2123.8	2073.7	2031.8	1987.1
60°	1871.7	1897.0	1911.4	1925.9	1924.9	1919.9	1898.8	1876.3	1845.0	1820.0	1792.9
62.5°	1671.5	1693.5	1707.6	1721.5	1722.8	1720.7	1704.7	1689.1	1667.8	1652.1	1633.4
65°	1514.0	1529.4	1539.1	1550.2	1549.6	1546.6	1532.1	1519.2	1501.6	1490.7	1477.0
67.5°	1349.3	1360.9	1368.4	1378.8	1380.8	1381.4	1373.5	1367.5	1358.9	1355.8	1351.1
70°	1232.1	1246.2	1258.2	1271.4	1278.6	1282.0	1278.6	1275.5	1270.5	1268.3	1264.7
72.5°	1143.3	1155.3	1164.6	1176.7	1183.3	1188.2	1185.6	1183.8	1179.5	1178.9	1176.3
75°	1033.2	1041.5	1046.7	1055.7	1059.3	1063.8	1061.8	1062.9	1061.5	1064.9	1064.8
77.5°	900.7	906.8	909.3	915.8	916.5	921.9	923.2	929.5	934.1	944.0	949.3
80°	751.6	755.5	755.5	762.2	765.2	774.4	778.7	789.1	793.9	802.8	803.6
82.5°	583.9	579.4	583.9	581.0	589.7	599.9	601.3	610.2	612.2	617.8	613.5
85°	399.1	398.9	395.3	395.9	393.3	394.5	393.0	394.6	393.1	393.3	389.2
87.5°	191.2	193.0	188.8	190.1	186.2	188.0	184.4	187.2	183.0	183.6	177.4
90°	24.4	24.6	24.5	24.7	25.6	26.3	27.4	28.2	29.8	30.5	31.8
92.5°	20.7	21.5	22.1	22.7	23.3	25.1	26.9	28.8	30.7	32.4	34.3
95°	23.5	24.0	24.6	25.5	26.0	28.6	31.3	33.9	36.5	39.2	41.9
97.5°	26.8	27.2	27.5	27.8	28.4	31.4	34.6	37.7	40.8	44.0	46.9
100°	30.8	31.3	31.6	32.3	32.6	39.8	46.9	54.1	61.3	68.3	75.5
102.5°	47.1	49.7	52.2	54.9	57.5	74.9	92.3	109.6	126.7	144.1	161.3
105°	99.0	107.4	116.3	124.7	133.1	159.4	185.8	212.1	238.0	264.3	290.6
107.5°	193.0	207.8	223.0	237.8	252.7	277.4	302.0	326.6	351.4	376.0	400.3
110°	292.4	304.9	318.0	330.9	343.8	363.1	382.7	402.1	421.6	441.1	460.4



TEST NUMBER: P1444770
 CATALOG NUMBER: EHBR1-54-UNV-TA-L935-UPL12

CANDELA DISTRIBUTION (continued):

	192.5°	195°	197.5°	200°	202.5°	205°	207.5°	210°	212.5°	215°	217.5°
112.5°	351.8	359.5	367.4	374.9	382.8	397.1	411.5	425.6	439.9	453.8	467.9
115°	370.2	374.0	378.2	382.1	386.3	394.7	403.0	411.5	420.0	428.1	436.7
117.5°	364.3	365.7	367.2	368.1	369.4	373.6	377.8	381.8	386.0	390.1	394.2
120°	344.8	344.3	344.0	343.4	343.0	343.9	345.0	345.9	347.0	347.8	348.5
122.5°	322.6	321.0	319.8	318.3	316.9	315.8	314.9	313.7	313.0	311.7	310.7
125°	302.0	300.4	299.1	297.5	295.8	294.0	292.3	290.2	288.3	286.4	284.4
127.5°	285.7	284.1	282.9	281.2	279.7	277.4	275.4	273.2	271.2	268.8	266.7
130°	273.2	271.9	270.9	269.2	268.2	265.8	264.0	261.9	259.8	257.9	255.8
132.5°	266.0	264.9	264.0	262.6	261.5	259.4	257.9	255.6	253.7	251.7	249.9
135°	261.7	260.8	260.2	259.0	257.9	256.0	254.6	252.8	251.1	249.5	247.9
137.5°	259.1	258.2	257.7	256.9	256.0	254.3	253.0	251.3	250.1	248.3	247.1
140°	258.9	258.3	257.8	257.0	256.2	254.7	253.2	251.6	250.2	248.7	247.3
142.5°	257.9	257.5	256.9	256.2	255.5	254.0	253.2	251.9	250.6	249.4	248.2
145°	258.3	257.9	257.7	256.9	256.7	255.2	254.1	252.7	251.8	250.4	249.3
147.5°	258.5	258.0	257.9	257.6	257.4	256.2	255.5	254.3	253.6	252.4	251.7
150°	259.3	259.2	259.0	258.7	258.5	257.5	256.9	255.9	255.3	254.2	253.6
152.5°	260.1	260.2	260.2	260.1	260.2	259.6	258.8	258.0	257.3	256.4	255.8
155°	261.7	261.9	262.0	262.0	262.0	261.5	260.9	260.3	259.8	259.0	258.5
157.5°	263.9	264.2	264.5	264.6	264.8	264.4	263.9	263.4	262.9	262.3	261.8
160°	266.7	267.2	267.5	267.6	268.0	267.6	267.5	266.8	266.6	266.0	265.4
162.5°	270.4	270.8	271.1	271.3	271.5	271.2	271.1	270.7	270.3	269.5	269.1
165°	273.4	273.5	274.0	274.1	274.3	274.0	273.9	273.6	273.3	273.0	272.7
167.5°	277.5	277.6	278.1	278.2	278.3	278.2	278.5	278.1	277.9	277.7	277.5
170°	280.2	280.5	280.7	280.9	281.1	280.9	280.8	280.6	280.7	280.1	280.0
172.5°	282.0	282.1	282.2	282.5	282.5	282.4	282.3	282.2	282.2	282.1	282.0
175°	282.9	282.9	283.0	283.1	283.0	283.1	283.1	283.2	283.1	283.1	283.0
177.5°	284.2	284.2	284.0	283.9	283.9	283.8	283.9	283.9	284.0	284.0	283.9
180°	282.4	282.4	282.4	282.4	282.4	282.4	282.4	282.4	282.4	282.4	282.4



TEST NUMBER: P1444770
 CATALOG NUMBER: EHBR1-54-UNV-TA-L935-UPL12

CANDELA DISTRIBUTION (continued):

	220°	222.5°	225°	227.5°	230°	232.5°	235°	237.5°	240°	242.5°	245°
0°	41990.4	41990.4	41990.4	41990.4	41990.4	41990.4	41990.4	41990.4	41990.4	41990.4	41990.4
2.5°	42363.1	42101.5	42067.0	42085.3	42129.1	42145.2	42192.4	42205.3	42252.8	42264.5	42310.1
5°	43237.2	42891.5	42908.7	42991.8	43117.7	43192.7	43316.5	43381.2	43499.3	43553.0	43659.8
7.5°	44159.0	43887.4	43972.1	44112.3	44284.4	44403.6	44552.2	44649.0	44777.1	44856.7	44959.2
10°	44611.5	44537.1	44630.4	44740.7	44838.9	44915.8	44978.8	45029.2	45062.2	45093.1	45106.7
12.5°	44267.1	44382.3	44398.2	44387.5	44322.4	44272.7	44161.2	44085.4	43950.8	43868.8	43708.6
15°	42990.5	43243.6	43103.4	42891.1	42580.5	42321.6	41955.9	41683.5	41302.7	41044.4	40662.2
17.5°	40749.8	41069.4	40704.1	40212.9	39588.1	39053.5	38387.9	37859.5	37197.7	36716.4	36098.7
20°	37595.5	37894.2	37242.5	36428.4	35461.8	34648.3	33689.1	32923.8	32032.3	31369.2	30569.0
22.5°	33668.0	33880.8	32962.8	31865.2	30633.7	29617.6	28470.6	27553.1	26535.8	25777.7	24924.5
25°	29323.1	29380.6	28279.4	27014.8	25642.4	24500.3	23275.8	22311.1	21273.6	20505.3	19667.9
27.5°	24937.7	24853.5	23663.3	22322.5	20878.8	19691.7	18497.5	17593.5	16684.8	15992.7	15271.3
30°	20798.5	20594.6	19358.8	17980.7	16579.3	15515.3	14523.8	13797.9	13075.0	12526.0	11946.9
32.5°	17002.7	16715.2	15512.2	14221.0	13040.2	12219.1	11483.9	10934.6	10350.8	9887.1	9401.1
35°	13640.7	13334.3	12268.6	11174.0	10280.2	9675.0	9097.2	8646.5	8150.8	7759.6	7337.5
37.5°	10755.3	10504.2	9611.5	8750.2	8074.1	7605.1	7131.6	6763.3	6353.7	6181.6	5730.6
40°	8303.1	8127.5	7429.5	6794.6	6286.9	6066.6	5586.1	5241.9	4935.9	4683.5	4438.9
42.5°	6476.5	6414.4	5735.2	5239.9	4882.5	4604.9	4337.1	4119.6	3908.0	3734.0	3569.7
45°	4752.8	4703.7	4402.0	4116.2	3872.7	3678.6	3497.6	3348.1	3209.7	3095.0	2990.7
47.5°	3701.0	3685.3	3511.6	3334.4	3180.9	3056.2	2938.8	2839.4	2747.6	2671.0	2646.2
50°	3010.2	3008.2	2906.2	2796.8	2687.5	2615.5	2540.5	2481.9	2422.9	2376.9	2328.5
52.5°	2557.7	2546.6	2477.8	2410.3	2345.4	2298.1	2250.1	2212.6	2173.6	2145.3	2115.0
55°	2201.9	2213.5	2173.7	2133.4	2092.8	2063.3	2029.8	2005.1	1978.2	1960.4	1942.2
57.5°	1954.8	1970.2	1949.3	1926.4	1901.7	1882.4	1859.2	1842.1	1824.2	1812.8	1802.2
60°	1775.0	1791.8	1783.4	1771.9	1756.6	1745.1	1730.4	1720.8	1709.3	1703.0	1697.0
62.5°	1622.5	1643.5	1640.5	1635.1	1625.3	1618.9	1610.8	1606.6	1599.0	1596.2	1593.4
65°	1470.3	1494.0	1493.5	1490.8	1485.4	1483.6	1478.6	1477.6	1473.7	1475.3	1475.0
67.5°	1350.6	1371.2	1375.7	1379.0	1378.8	1380.1	1379.6	1381.6	1381.6	1384.6	1386.4
70°	1264.2	1278.6	1282.0	1285.4	1286.4	1289.2	1289.2	1290.9	1290.4	1292.9	1293.2
72.5°	1177.0	1195.8	1199.3	1202.1	1202.1	1204.7	1203.2	1202.8	1199.1	1198.3	1195.6
75°	1068.4	1092.5	1097.7	1101.2	1101.6	1104.0	1100.7	1098.7	1092.5	1090.0	1085.6
77.5°	954.9	979.9	983.6	984.9	982.9	983.4	976.6	971.9	963.9	960.6	956.4
80°	807.2	844.1	847.1	844.7	839.0	838.0	831.3	826.9	817.5	814.2	810.6
82.5°	614.2	657.5	663.6	666.2	661.5	662.6	656.3	653.7	645.0	643.5	637.7
85°	387.8	431.1	438.2	437.1	432.5	431.4	427.6	428.9	428.1	430.4	431.7
87.5°	178.2	220.1	230.2	226.9	226.4	223.5	216.8	219.2	223.3	225.9	226.1
90°	32.8	46.5	47.2	47.6	43.8	43.5	40.1	40.6	37.9	38.2	35.5
92.5°	36.2	38.0	39.8	38.2	36.5	34.9	33.3	31.4	30.0	28.2	26.7
95°	44.5	46.8	49.4	47.2	45.0	42.8	40.6	38.5	36.3	34.2	32.0
97.5°	49.9	52.8	55.7	53.6	51.4	49.0	46.9	44.8	42.6	40.3	38.2
100°	82.7	89.2	96.2	90.0	83.7	77.6	71.4	65.2	59.0	52.8	46.5
102.5°	178.5	195.4	212.5	196.8	181.2	165.4	149.8	134.1	118.5	102.7	87.2
105°	316.5	342.1	368.1	343.9	319.9	296.1	272.2	248.3	224.4	200.4	176.6
107.5°	424.9	448.4	472.5	450.7	429.1	407.4	385.6	363.9	342.1	320.4	298.8
110°	479.8	497.8	516.8	501.8	487.2	472.3	457.7	442.7	428.1	413.6	399.1



TEST NUMBER: P1444770
 CATALOG NUMBER: EHBR1-54-UNV-TA-L935-UPL12

CANDELA DISTRIBUTION (continued):

	220°	222.5°	225°	227.5°	230°	232.5°	235°	237.5°	240°	242.5°	245°
112.5°	482.0	494.2	507.8	498.7	489.9	481.0	472.2	463.2	454.6	445.7	437.2
115°	444.6	450.8	458.5	454.4	450.6	446.6	442.7	439.0	435.1	431.3	427.9
117.5°	398.1	399.4	402.6	401.1	400.0	398.5	397.2	396.0	394.9	393.7	392.6
120°	349.4	347.3	347.3	346.8	346.5	345.9	345.7	345.2	345.0	344.8	344.7
122.5°	309.4	305.2	303.0	302.4	301.9	301.1	300.7	300.2	299.7	299.3	299.1
125°	282.4	276.9	273.9	272.3	270.7	269.0	267.4	265.6	264.3	262.8	261.5
127.5°	264.5	258.6	255.3	253.0	250.5	247.9	245.5	243.0	240.7	238.1	236.0
130°	253.8	247.6	244.5	241.6	239.0	235.9	233.3	230.5	227.6	224.9	222.1
132.5°	247.9	241.5	238.5	235.9	233.4	230.4	227.9	224.9	222.1	219.2	216.7
135°	246.1	239.9	237.2	234.5	232.3	229.6	226.9	224.3	221.9	219.1	216.9
137.5°	245.3	239.1	236.6	234.3	232.4	230.1	228.1	225.8	223.6	221.0	219.1
140°	245.7	239.2	236.6	235.2	233.8	232.1	230.6	228.9	227.4	225.8	224.0
142.5°	247.0	240.4	238.1	236.9	236.0	234.6	233.8	232.6	231.5	229.8	228.7
145°	248.2	241.0	238.6	237.8	237.5	236.8	236.3	235.6	235.0	234.1	233.6
147.5°	250.5	243.1	240.6	240.4	240.1	239.5	239.5	238.8	238.7	238.2	237.9
150°	252.4	244.1	241.3	241.3	241.0	241.0	241.0	240.7	240.9	240.7	240.6
152.5°	254.8	244.7	241.5	241.4	241.7	241.5	241.6	241.8	242.1	242.2	242.3
155°	257.5	246.5	243.0	242.7	242.6	242.7	242.6	242.8	242.9	243.1	243.3
157.5°	261.0	249.3	245.9	245.4	245.3	245.2	245.1	245.1	245.2	245.3	245.6
160°	264.8	253.0	249.5	249.1	248.9	248.6	248.4	248.2	248.3	248.4	248.6
162.5°	268.5	256.9	253.7	253.1	252.6	252.4	252.3	251.9	252.0	251.9	252.1
165°	272.2	261.9	258.7	258.1	258.0	257.7	257.5	257.3	257.3	257.2	257.4
167.5°	276.9	267.7	265.2	264.7	264.3	263.8	263.8	263.2	263.2	262.8	262.8
170°	279.6	272.4	270.2	269.9	270.0	269.7	269.5	269.5	269.4	269.1	269.2
172.5°	281.7	276.4	274.7	274.7	274.9	274.8	275.0	274.9	275.1	275.2	275.3
175°	283.0	279.8	279.1	278.9	278.9	279.0	279.1	279.1	279.1	279.2	279.5
177.5°	284.0	283.1	282.8	282.8	282.8	282.8	282.8	282.8	282.8	283.0	283.0
180°	282.4	282.4	282.4	282.4	282.4	282.4	282.4	282.4	282.4	282.4	282.4



TEST NUMBER: P1444770
 CATALOG NUMBER: EHBR1-54-UNV-TA-L935-UPL12

CANDELA DISTRIBUTION (continued):

	247.5°	250°	252.5°	255°	257.5°	260°	262.5°	265°	267.5°	270°	272.5°
0°	41990.4	41990.4	41990.4	41990.4	41990.4	41990.4	41990.4	41990.4	41990.4	41990.4	41990.4
2.5°	42318.6	42367.9	42364.2	42410.3	42408.0	42451.4	42442.7	42480.1	42471.6	42503.7	42484.8
5°	43706.7	43800.6	43831.5	43916.2	43933.8	44009.6	44011.2	44071.3	44064.1	44111.2	44086.1
7.5°	45019.9	45107.5	45149.1	45214.9	45247.8	45302.1	45323.5	45368.3	45379.1	45405.5	45404.7
10°	45130.7	45130.4	45151.0	45141.7	45160.1	45149.5	45171.9	45163.8	45197.0	45188.4	45213.5
12.5°	43639.6	43491.6	43437.5	43304.6	43275.5	43161.5	43169.5	43096.4	43131.7	43086.8	43163.3
15°	40434.8	40091.5	39921.9	39623.4	39529.7	39293.8	39274.7	39118.0	39160.3	39078.3	39198.1
17.5°	35699.1	35158.6	34862.0	34426.1	34253.1	33919.4	33852.5	33650.8	33682.1	33580.5	33725.2
20°	30052.9	29399.7	29025.6	28521.5	28296.7	27898.9	27793.4	27567.7	27596.0	27494.9	27658.6
22.5°	24342.2	23658.5	23236.2	22707.8	22420.7	22046.5	21934.3	21707.7	21720.5	21625.6	21783.1
25°	19094.3	18438.8	18028.9	17549.0	17299.8	16956.8	16838.9	16635.3	16646.8	16568.5	16709.8
27.5°	14770.8	14233.0	13889.9	13487.7	13264.4	12982.4	12867.4	12696.2	12695.8	12638.3	12756.4
30°	11542.6	11093.8	10785.8	10435.5	10225.7	9971.3	9860.1	9707.1	9700.3	9659.6	9753.5
32.5°	9037.6	8638.4	8357.5	8049.2	7860.9	7642.5	7537.4	7414.3	7403.1	7366.2	7443.2
35°	7025.5	6689.3	6447.9	6188.3	6207.4	5885.2	5938.8	5688.6	5620.7	5605.9	5663.2
37.5°	5429.9	5169.6	4973.4	4779.0	4647.3	4511.2	4437.8	4372.0	4364.5	4358.2	4398.3
40°	4250.1	4068.0	3925.2	3791.9	3701.3	3618.2	3572.3	3536.2	3527.6	3522.8	3547.1
42.5°	3439.9	3316.9	3224.9	3143.5	3088.5	3043.4	3018.2	2998.0	2991.3	2991.5	3005.8
45°	2906.2	2831.6	2772.4	2721.8	2686.6	2702.0	2656.6	2680.5	2649.0	2681.6	2660.1
47.5°	2559.4	2495.8	2459.1	2423.3	2402.0	2384.9	2385.5	2385.8	2392.5	2393.6	2400.6
50°	2291.7	2254.9	2229.4	2206.5	2195.5	2186.5	2189.6	2192.0	2198.5	2198.9	2204.1
52.5°	2093.6	2069.4	2054.0	2039.9	2034.9	2029.8	2032.0	2031.0	2034.0	2032.4	2036.6
55°	1932.4	1921.0	1916.2	1910.9	1911.6	1910.3	1911.2	1906.0	1902.9	1899.0	1902.7
57.5°	1800.1	1798.5	1801.8	1804.0	1810.0	1812.2	1813.7	1807.7	1802.1	1797.0	1799.9
60°	1698.1	1700.6	1708.7	1715.2	1724.0	1728.0	1730.5	1727.1	1723.0	1718.9	1721.3
62.5°	1597.6	1601.5	1611.2	1618.4	1629.0	1634.5	1640.5	1640.9	1642.4	1640.9	1642.5
65°	1480.9	1485.7	1494.4	1500.5	1510.3	1515.1	1521.4	1522.5	1525.9	1525.1	1528.1
67.5°	1392.2	1396.6	1403.9	1409.6	1418.3	1423.3	1428.7	1429.1	1430.3	1430.0	1432.8
70°	1297.6	1299.8	1306.3	1311.1	1319.8	1325.0	1331.2	1333.0	1336.9	1337.6	1340.6
72.5°	1196.7	1195.8	1199.7	1201.9	1208.4	1212.5	1220.4	1224.7	1231.2	1233.0	1235.3
75°	1086.9	1086.0	1090.6	1092.5	1098.1	1102.1	1111.0	1116.8	1126.8	1131.1	1130.0
77.5°	959.7	961.9	970.6	975.4	982.9	988.1	999.6	1008.7	1027.2	1035.4	1027.1
80°	817.5	819.8	828.8	833.4	843.2	849.4	862.3	873.1	889.7	893.3	888.6
82.5°	642.7	643.3	651.5	654.8	667.6	676.8	693.2	701.7	712.0	710.4	709.2
85°	438.2	444.1	454.3	464.4	479.9	494.9	510.3	523.0	514.0	528.2	512.3
87.5°	234.2	233.6	247.2	245.1	266.9	279.5	292.8	299.3	306.4	305.0	305.2
90°	36.4	34.3	35.5	33.1	35.4	32.6	36.0	33.6	37.8	34.3	40.2
92.5°	24.9	24.2	23.2	22.5	21.4	20.8	19.7	18.8	17.9	17.0	17.9
95°	29.8	29.0	28.2	27.2	26.4	25.6	24.8	24.0	23.2	22.4	23.4
97.5°	36.0	35.5	35.1	34.5	34.1	33.6	33.2	32.6	32.0	31.5	32.2
100°	40.3	40.3	40.3	40.3	40.1	40.1	40.1	40.1	40.1	40.1	40.6
102.5°	71.4	69.9	68.3	66.6	65.1	63.4	61.9	60.4	58.8	57.3	59.5
105°	152.7	146.6	140.5	134.3	128.1	122.0	115.9	109.8	103.7	97.6	103.9
107.5°	277.3	266.2	254.9	243.8	232.6	221.4	210.4	199.3	188.2	177.1	187.1
110°	384.4	372.5	360.5	348.8	336.8	324.9	313.1	301.4	289.6	277.8	287.2



TEST NUMBER: P1444770
 CATALOG NUMBER: EHBR1-54-UNV-TA-L935-UPL12

CANDELA DISTRIBUTION (continued):

	247.5°	250°	252.5°	255°	257.5°	260°	262.5°	265°	267.5°	270°	272.5°
112.5°	428.6	420.4	412.8	405.0	397.2	389.7	382.0	374.4	366.9	359.3	363.9
115°	424.1	420.3	416.5	412.7	408.9	405.0	401.3	397.7	394.2	390.5	390.8
117.5°	391.6	390.0	388.6	387.1	385.6	384.4	383.1	381.9	380.7	379.7	377.1
120°	344.7	344.5	344.3	344.6	344.7	345.0	345.0	345.6	346.0	346.5	343.0
122.5°	298.8	299.0	299.4	300.0	300.5	301.3	301.9	303.0	304.0	305.0	301.5
125°	259.9	260.1	260.4	260.8	261.0	261.9	262.6	263.7	264.5	265.6	262.7
127.5°	233.7	233.3	232.7	232.6	232.2	232.4	232.5	232.9	233.4	233.9	232.1
130°	219.3	218.2	217.0	216.1	215.1	214.5	214.2	213.6	213.3	213.3	212.8
132.5°	213.8	212.2	210.5	209.1	207.7	206.7	205.6	205.0	204.4	203.9	203.8
135°	214.0	212.1	210.2	208.4	206.6	205.6	204.2	203.4	202.4	201.7	202.3
137.5°	216.8	215.0	213.0	211.4	209.6	208.5	207.0	206.1	205.3	204.6	205.2
140°	222.5	220.6	218.7	217.1	215.6	214.3	213.1	212.3	211.1	210.8	211.1
142.5°	227.4	226.0	224.2	222.8	221.3	220.2	219.2	218.4	217.3	217.1	217.5
145°	232.7	231.6	230.2	229.0	228.0	227.4	226.2	225.9	225.3	225.2	225.5
147.5°	237.3	236.6	235.4	234.7	233.7	233.3	232.6	232.3	231.8	231.8	231.9
150°	240.4	240.0	239.3	238.8	238.3	238.0	237.5	237.5	237.2	237.2	237.3
152.5°	242.4	242.1	241.5	241.3	240.8	240.7	240.4	240.4	240.4	240.4	240.4
155°	243.5	243.3	243.3	243.2	243.1	243.3	243.3	243.6	243.6	243.9	244.1
157.5°	245.7	245.9	245.9	246.2	246.3	246.7	246.7	247.2	247.4	248.0	248.2
160°	249.0	249.2	249.2	249.6	249.7	250.0	250.2	250.6	250.9	251.2	251.7
162.5°	252.1	252.6	252.8	253.0	253.6	253.9	254.3	255.0	255.3	255.9	256.4
165°	257.5	257.6	257.7	257.8	258.2	258.4	258.6	259.2	259.5	260.0	260.6
167.5°	262.7	262.9	262.9	263.0	263.3	263.7	263.9	264.4	264.8	265.6	265.9
170°	268.9	268.9	268.9	268.9	268.9	269.3	269.4	269.5	269.7	270.2	270.4
172.5°	275.3	275.3	275.0	275.3	275.0	275.3	275.3	275.4	275.4	275.6	275.7
175°	279.3	279.7	279.8	280.0	279.9	280.0	280.1	280.1	280.1	280.4	280.4
177.5°	283.0	283.0	283.0	283.0	283.0	283.2	283.2	283.2	283.2	283.0	283.1
180°	282.4	282.4	282.4	282.4	282.4	282.4	282.4	282.4	282.4	282.4	282.4



TEST NUMBER: P1444770
 CATALOG NUMBER: EHBR1-54-UNV-TA-L935-UPL12

CANDELA DISTRIBUTION (continued):

	275°	277.5°	280°	282.5°	285°	287.5°	290°	292.5°	295°	297.5°	300°
0°	41990.4	41990.4	41990.4	41990.4	41990.4	41990.4	41990.4	41990.4	41990.4	41990.4	41990.4
2.5°	42516.1	42494.8	42516.5	42494.4	42516.5	42490.1	42508.0	42479.4	42486.7	42457.0	42464.6
5°	44123.6	44089.7	44107.8	44063.7	44068.4	44009.6	44008.5	43940.0	43922.0	43844.0	43809.8
7.5°	45423.6	45412.5	45418.8	45390.4	45387.1	45347.0	45327.9	45271.2	45235.6	45163.8	45114.8
10°	45217.8	45251.0	45259.5	45293.3	45300.3	45333.8	45340.7	45374.2	45381.3	45406.0	45406.3
12.5°	43159.8	43272.2	43299.1	43438.2	43496.6	43655.7	43741.0	43916.2	44020.3	44195.1	44302.5
15°	39194.8	39389.5	39467.2	39738.5	39888.7	40205.6	40404.6	40768.5	41025.3	41411.6	41687.2
17.5°	33737.9	34010.0	34132.8	34500.8	34741.0	35208.5	35545.7	36100.4	36525.2	37141.7	37630.3
20°	27686.6	27989.0	28155.7	28575.6	28858.9	29405.3	29826.1	30507.9	31076.4	31857.6	32525.7
22.5°	21832.5	22120.2	22305.2	22732.4	23051.4	23621.3	24091.6	24811.2	25448.2	26328.5	27129.5
25°	16763.2	17026.8	17194.2	17580.5	17880.2	18403.8	18852.9	19545.0	20168.3	21051.2	21872.6
27.5°	12815.3	13036.1	13197.3	13526.8	13791.0	14235.2	14620.9	15192.9	15729.9	16493.8	17225.2
30°	9811.2	10007.0	10163.8	10450.8	10695.7	11080.7	11419.9	11900.4	12344.8	12952.7	13534.6
32.5°	7497.3	7665.9	7805.7	8056.8	8279.0	8625.8	8931.4	9352.5	9734.0	10249.5	10728.2
35°	5716.4	6048.1	6024.6	6370.9	6426.7	6675.6	6948.2	7316.3	7654.2	8092.6	8500.0
37.5°	4436.9	4530.1	4630.1	4783.2	4944.1	5170.5	5400.8	5850.7	6015.7	6347.0	6684.3
40°	3577.9	3640.9	3706.9	3810.4	3923.0	4082.6	4250.3	4464.9	4684.8	4953.5	5227.8
42.5°	3024.8	3060.5	3102.5	3163.4	3232.7	3333.8	3446.0	3591.6	3744.6	3933.6	4126.6
45°	2702.5	2685.5	2698.1	2730.7	2772.6	2834.0	2904.8	2995.0	3094.6	3217.0	3347.4
47.5°	2402.0	2408.8	2412.6	2430.3	2452.7	2493.9	2536.9	2598.1	2716.2	2752.2	2823.3
50°	2203.6	2206.9	2205.7	2214.8	2226.1	2253.0	2280.8	2322.2	2363.6	2418.4	2470.7
52.5°	2037.2	2041.9	2041.3	2047.2	2053.3	2070.2	2087.8	2117.1	2144.2	2179.0	2209.1
55°	1905.9	1912.3	1914.8	1919.8	1922.7	1931.6	1938.5	1952.6	1964.1	1983.9	2002.1
57.5°	1804.9	1813.7	1817.6	1819.4	1815.8	1815.3	1813.0	1815.9	1818.3	1828.9	1839.1
60°	1725.4	1732.4	1733.4	1732.4	1725.8	1721.2	1713.7	1711.3	1710.2	1715.2	1720.8
62.5°	1642.1	1644.6	1642.9	1640.9	1633.4	1628.9	1621.2	1618.3	1615.6	1619.2	1622.2
65°	1527.0	1529.2	1527.0	1525.7	1519.0	1515.5	1508.9	1506.7	1503.0	1504.0	1503.3
67.5°	1433.5	1435.6	1433.9	1432.2	1427.6	1425.3	1420.5	1417.4	1412.9	1411.2	1408.1
70°	1340.2	1341.9	1339.3	1337.6	1332.3	1330.2	1325.8	1324.8	1321.2	1320.4	1316.9
72.5°	1233.0	1233.2	1229.4	1228.3	1224.5	1224.3	1222.4	1224.1	1224.0	1225.8	1225.1
75°	1123.3	1121.8	1117.1	1116.2	1113.3	1114.7	1112.7	1115.3	1115.7	1119.7	1120.1
77.5°	1013.4	1007.7	998.8	994.6	988.6	987.9	984.5	986.8	986.0	990.7	992.5
80°	874.6	867.6	856.2	850.8	843.8	842.7	839.5	842.7	841.2	846.6	850.5
82.5°	698.2	692.2	680.4	676.0	668.0	668.7	665.2	668.7	668.2	676.3	681.0
85°	516.5	512.4	500.3	489.6	477.6	470.6	463.8	462.5	460.5	463.8	466.6
87.5°	298.4	294.6	285.1	278.9	257.9	258.8	250.5	250.1	248.1	246.2	250.5
90°	37.9	42.6	40.6	44.9	43.6	48.6	47.7	52.4	50.5	54.8	53.7
92.5°	18.8	19.7	20.6	21.4	22.3	23.2	24.0	24.9	26.8	28.4	30.6
95°	24.4	25.5	26.5	27.5	28.5	29.5	30.5	31.5	34.3	37.1	39.9
97.5°	33.1	33.5	34.3	34.9	35.6	36.3	37.0	37.6	40.8	43.8	46.8
100°	41.1	41.7	42.2	42.8	43.3	43.9	44.4	45.0	50.9	56.7	62.4
102.5°	61.9	64.2	66.4	68.8	71.2	73.5	75.9	78.1	91.5	104.7	117.9
105°	110.2	116.5	123.0	129.2	135.6	141.8	148.3	154.5	175.8	196.9	218.2
107.5°	196.9	206.9	216.9	226.9	236.9	247.1	256.9	267.0	287.8	308.6	329.3
110°	296.7	306.3	315.9	325.5	335.0	344.6	354.2	364.0	376.6	389.1	401.7



TEST NUMBER: P1444770
 CATALOG NUMBER: EHBR1-54-UNV-TA-L935-UPL12

CANDELA DISTRIBUTION (continued):

	275°	277.5°	280°	282.5°	285°	287.5°	290°	292.5°	295°	297.5°	300°
112.5°	368.6	373.1	377.9	382.7	387.5	392.3	397.2	402.0	408.6	415.0	421.6
115°	391.3	391.5	392.1	392.4	393.0	393.4	394.3	394.9	397.3	399.6	402.1
117.5°	374.6	372.2	369.9	367.5	365.3	363.3	361.2	359.2	359.3	359.4	359.8
120°	340.1	336.7	333.6	330.3	327.4	324.5	321.7	319.1	318.1	317.1	316.3
122.5°	298.5	295.3	292.3	289.2	286.4	283.8	281.2	278.7	278.3	278.2	277.9
125°	260.2	257.8	255.3	253.0	251.0	249.0	247.2	245.3	246.2	247.1	248.2
127.5°	230.8	229.5	228.3	227.1	226.4	225.5	225.0	224.2	226.1	228.0	229.9
130°	212.4	212.2	212.2	212.0	212.4	212.6	213.1	213.4	216.1	218.2	220.9
132.5°	204.4	204.7	205.4	206.0	207.0	208.0	209.3	210.3	213.0	215.4	218.2
135°	202.7	203.5	204.6	205.6	207.1	208.3	209.8	211.2	214.0	216.3	219.1
137.5°	206.1	206.9	208.1	209.3	210.8	212.1	213.9	215.3	217.6	219.8	222.1
140°	212.0	212.6	213.8	214.9	216.1	217.3	219.1	220.3	222.5	224.1	225.9
142.5°	218.4	218.9	220.0	221.0	222.2	223.3	224.8	225.8	227.5	228.8	230.8
145°	226.1	226.7	227.7	228.3	229.4	230.4	231.5	232.5	233.7	234.8	236.1
147.5°	232.6	233.0	233.8	234.6	235.6	236.4	237.1	237.9	239.1	239.9	240.9
150°	237.8	238.3	238.8	239.2	240.0	240.8	241.6	242.2	243.1	243.8	244.7
152.5°	241.2	241.4	242.0	242.4	243.1	243.7	244.3	244.9	245.8	246.3	247.2
155°	244.5	245.2	245.8	246.2	247.1	247.3	248.2	248.6	249.4	250.0	250.8
157.5°	248.9	249.1	250.0	250.3	251.1	251.5	252.1	252.6	253.4	253.9	254.5
160°	252.3	253.0	253.5	254.2	255.0	255.4	256.1	256.9	257.5	257.9	258.6
162.5°	256.9	257.6	258.2	258.7	259.3	259.9	260.4	261.0	261.9	262.3	263.1
165°	261.3	261.7	262.6	263.0	263.8	264.5	265.0	265.7	266.2	266.8	267.3
167.5°	266.6	266.9	267.8	268.3	269.0	269.5	270.2	270.7	271.4	271.6	272.3
170°	271.0	271.4	272.0	272.5	273.1	273.4	274.2	274.5	275.3	275.6	276.2
172.5°	276.1	276.4	276.8	277.1	277.4	278.0	278.3	278.6	279.1	279.5	279.9
175°	280.4	280.4	280.6	280.8	280.9	280.9	281.1	281.3	281.5	281.7	281.9
177.5°	283.2	283.2	283.3	283.4	283.5	283.5	283.6	283.7	283.7	283.7	283.7
180°	282.4	282.4	282.4	282.4	282.4	282.4	282.4	282.4	282.4	282.4	282.4



TEST NUMBER: P1444770
 CATALOG NUMBER: EHBR1-54-UNV-TA-L935-UPL12

CANDELA DISTRIBUTION (continued):

	302.5°	305°	307.5°	310°	312.5°	315°	317.5°	320°	322.5°	325°	327.5°
0°	41990.4	41990.4	41990.4	41990.4	41990.4	41990.4	41990.4	41990.4	41990.4	41990.4	41990.4
2.5°	42434.9	42436.7	42402.5	42400.6	42368.5	42364.5	42333.3	42323.8	42298.4	42289.2	42263.4
5°	43722.3	43680.6	43584.3	43527.6	43432.4	43369.4	43266.3	43199.1	43099.7	43024.6	42924.6
7.5°	45024.4	44959.6	44851.5	44763.9	44631.7	44526.2	44371.7	44245.1	44077.6	43932.7	43756.8
10°	45406.3	45396.3	45368.8	45328.6	45267.2	45198.1	45092.9	44983.2	44836.4	44677.0	44481.5
12.5°	44466.7	44568.1	44706.5	44788.5	44888.2	44932.0	44972.9	44962.6	44935.7	44855.0	44742.1
15°	42086.4	42371.5	42749.1	43041.7	43378.3	43622.9	43893.1	44061.4	44229.3	44306.8	44354.3
17.5°	38300.0	38839.8	39516.8	40077.8	40725.1	41245.0	41814.9	42243.9	42685.1	43001.1	43287.0
20°	33436.4	34218.5	35175.9	36021.7	37005.2	37859.9	38796.4	39565.3	40358.2	40978.2	41565.1
22.5°	28160.9	29089.8	30247.4	31319.6	32587.4	33726.9	35012.5	36131.4	37299.7	38275.7	39219.4
25°	22973.4	23992.2	25257.9	26454.1	27890.0	29215.4	30740.1	32134.6	33644.6	34955.6	36250.6
27.5°	18236.5	19236.7	20528.8	21802.3	23320.7	24732.9	26366.5	27902.9	29622.2	31207.7	32829.6
30°	14343.2	15191.4	16350.1	17583.5	19081.0	20518.2	22169.5	23749.7	25538.3	27269.4	29096.2
32.5°	11363.6	12009.9	12920.8	13963.7	15345.5	16713.6	18286.0	19811.4	21572.7	23321.4	25221.4
35°	9024.8	9528.9	10223.4	11037.3	12207.4	13386.8	14777.5	16164.7	17807.9	19467.3	21314.1
37.5°	7116.6	7525.5	8069.4	8680.9	9619.4	10587.2	11727.6	12877.7	14305.5	15776.5	17450.2
40°	5557.2	5888.4	6311.9	6767.8	7476.5	8222.2	9104.2	9996.0	11143.1	12345.3	13730.5
42.5°	4365.6	4610.0	4909.0	5242.3	5903.5	6299.4	6897.4	7542.5	8385.8	9258.5	10300.0
45°	3506.0	3672.6	3880.1	4103.6	4410.5	4746.3	5155.9	5585.4	6386.5	6779.5	7412.9
47.5°	2927.9	3039.7	3171.7	3312.5	3493.5	3688.9	3931.7	4180.2	4501.4	4834.3	5224.5
50°	2538.5	2652.3	2697.5	2770.6	2875.2	2986.8	3123.8	3260.7	3433.0	3607.6	3808.5
52.5°	2249.5	2286.6	2335.9	2382.3	2447.2	2574.2	2615.2	2686.8	2783.4	2877.9	2983.5
55°	2028.8	2052.9	2085.0	2113.0	2152.3	2189.8	2243.9	2291.6	2355.9	2412.9	2483.0
57.5°	1857.1	1872.5	1894.7	1913.1	1938.5	1959.6	1991.3	2017.1	2054.2	2086.5	2128.9
60°	1732.3	1742.5	1757.5	1769.4	1785.6	1796.6	1812.4	1824.5	1844.1	1860.4	1884.1
62.5°	1630.3	1635.6	1645.3	1652.4	1662.7	1668.3	1676.7	1682.0	1692.7	1700.9	1714.1
65°	1508.0	1509.2	1515.7	1518.7	1526.8	1529.8	1536.6	1539.1	1548.0	1554.0	1565.7
67.5°	1407.7	1405.0	1405.1	1402.8	1403.9	1401.5	1402.2	1399.6	1403.3	1405.1	1414.0
70°	1316.3	1312.4	1311.1	1306.9	1305.7	1301.3	1300.0	1296.1	1295.7	1294.4	1297.6
72.5°	1227.1	1226.0	1226.3	1223.4	1223.0	1220.1	1220.2	1218.4	1220.4	1221.3	1225.4
75°	1124.5	1124.8	1126.8	1124.2	1125.0	1122.5	1123.4	1121.1	1122.3	1121.9	1125.9
77.5°	999.7	1002.7	1008.1	1007.0	1008.7	1005.9	1007.2	1003.9	1004.8	1002.7	1004.2
80°	859.4	865.5	872.9	872.6	875.7	873.7	876.4	873.3	874.6	870.9	869.9
82.5°	692.7	698.0	705.8	706.0	712.9	714.2	721.8	721.4	726.2	723.2	721.0
85°	473.6	477.1	484.0	487.7	494.8	499.1	506.4	509.4	504.1	513.7	506.1
87.5°	247.2	256.5	251.3	263.3	260.5	272.6	270.0	281.2	279.1	288.7	287.4
90°	59.8	59.5	65.8	65.9	73.8	74.9	81.1	79.7	85.6	84.5	90.5
92.5°	32.2	34.4	36.3	38.2	40.2	42.2	40.3	38.5	36.8	35.2	33.3
95°	42.6	45.4	48.1	50.9	53.7	56.5	53.5	50.7	47.7	44.7	41.8
97.5°	49.8	52.7	55.6	58.6	61.7	64.7	61.2	57.6	54.1	50.8	47.3
100°	68.2	74.1	79.9	85.6	91.6	97.3	90.9	84.3	77.9	71.3	64.8
102.5°	131.3	144.6	157.9	171.3	184.4	197.8	184.0	170.3	156.4	142.7	128.7
105°	239.5	260.8	282.1	303.3	324.6	346.1	323.7	301.4	278.8	256.6	234.0
107.5°	350.2	370.9	392.0	412.6	433.5	454.5	431.9	409.1	386.6	363.9	341.2
110°	414.6	427.1	439.8	452.6	465.3	478.3	461.8	445.5	429.1	412.6	396.0



TEST NUMBER: P1444770
 CATALOG NUMBER: EHBR1-54-UNV-TA-L935-UPL12

CANDELA DISTRIBUTION (continued):

	302.5°	305°	307.5°	310°	312.5°	315°	317.5°	320°	322.5°	325°	327.5°
112.5°	428.1	434.9	441.4	448.3	454.9	461.5	450.0	438.5	426.8	415.4	403.7
115°	404.8	407.2	409.8	412.5	414.9	417.5	409.9	402.3	394.8	387.3	379.3
117.5°	360.0	360.6	360.7	361.4	361.5	361.9	357.9	354.1	350.0	346.0	342.0
120°	315.4	314.7	313.9	313.0	312.0	311.1	310.0	308.8	307.3	306.0	304.4
122.5°	277.5	277.6	277.2	277.0	276.6	276.2	276.2	276.3	276.2	276.2	275.9
125°	249.1	250.1	251.1	252.1	252.9	253.8	254.0	254.5	254.9	255.3	255.5
127.5°	231.7	233.6	235.3	237.0	238.5	240.4	240.9	241.8	242.4	243.2	243.7
130°	223.1	225.8	228.0	230.1	232.2	234.7	235.2	236.0	236.6	237.2	237.8
132.5°	220.8	223.2	225.7	228.4	230.6	233.0	233.6	234.4	234.6	235.6	236.1
135°	221.4	223.9	226.0	228.8	230.8	233.1	233.6	234.1	234.6	235.3	235.7
137.5°	224.0	226.2	228.1	230.2	231.9	234.0	234.3	235.0	235.3	236.0	236.5
140°	227.7	229.5	231.1	232.9	234.5	236.2	236.5	236.8	237.1	237.5	237.6
142.5°	232.0	233.6	234.7	236.5	237.5	239.1	238.9	239.0	239.2	239.3	239.3
145°	237.2	238.5	239.5	240.6	241.4	242.6	242.4	242.4	242.0	242.1	241.8
147.5°	241.7	242.8	243.3	244.3	244.6	245.7	245.3	245.2	245.0	244.6	244.3
150°	245.3	246.2	246.9	247.4	248.1	248.9	248.4	248.1	247.5	247.2	246.8
152.5°	247.8	248.5	249.1	249.6	250.1	250.7	250.1	250.1	249.3	248.8	248.3
155°	251.1	251.9	252.1	252.8	253.0	253.4	252.8	252.7	252.2	251.8	251.2
157.5°	255.0	255.6	256.0	256.3	256.7	257.1	256.9	256.6	256.1	256.0	255.5
160°	259.0	259.5	259.9	260.3	260.8	260.9	260.6	260.8	260.4	260.0	259.6
162.5°	263.5	264.2	264.6	264.9	265.5	265.8	265.6	265.5	265.0	264.7	264.3
165°	267.8	268.3	268.7	269.2	269.4	269.8	269.6	269.5	269.3	269.3	268.9
167.5°	272.6	273.3	273.5	274.0	274.2	274.4	274.3	274.4	274.1	273.9	273.6
170°	276.5	276.9	277.5	277.8	278.1	278.2	278.3	278.2	278.0	277.8	277.5
172.5°	280.2	280.7	280.8	281.1	281.1	281.5	281.4	281.1	281.1	280.8	280.5
175°	281.9	282.0	282.3	282.3	282.3	282.5	282.3	282.1	281.9	281.7	281.5
177.5°	283.7	283.7	283.7	283.6	283.6	283.6	283.5	283.3	283.2	283.0	282.8
180°	282.4	282.4	282.4	282.4	282.4	282.4	282.4	282.4	282.4	282.4	282.4



TEST NUMBER: P1444770
 CATALOG NUMBER: EHBR1-54-UNV-TA-L935-UPL12

CANDELA DISTRIBUTION (continued):

	330°	332.5°	335°	337.5°	340°	342.5°	345°	347.5°	350°	352.5°	355°
0°	41990.4	41990.4	41990.4	41990.4	41990.4	41990.4	41990.4	41990.4	41990.4	41990.4	41990.4
2.5°	42254.2	42235.8	42224.0	42208.9	42199.7	42188.1	42179.5	42172.1	42166.2	42160.8	42156.7
5°	42848.3	42753.9	42680.6	42601.2	42536.0	42470.9	42420.8	42379.3	42350.7	42329.2	42316.4
7.5°	43604.9	43431.9	43278.2	43116.3	42971.2	42828.6	42705.6	42599.6	42520.2	42468.6	42437.3
10°	44280.3	44049.0	43820.0	43579.1	43350.7	43129.1	42924.6	42744.7	42602.3	42507.7	42452.5
12.5°	44583.2	44386.0	44152.3	43890.7	43610.7	43327.5	43051.4	42802.4	42593.4	42453.2	42372.3
15°	44316.5	44235.6	44077.0	43873.9	43608.2	43315.4	42991.2	42686.5	42406.2	42224.4	42119.1
17.5°	43448.9	43561.9	43549.7	43472.1	43281.1	43034.6	42704.2	42362.0	42011.4	41768.4	41635.8
20°	41984.8	42339.9	42520.2	42612.6	42537.6	42377.8	42078.6	41731.3	41322.6	41005.5	40811.9
22.5°	39927.3	40554.3	40945.0	41231.0	41291.6	41237.2	40973.1	40642.7	40187.2	39806.0	39520.0
25°	37278.7	38197.2	38814.8	39298.9	39486.9	39535.4	39310.8	38982.2	38474.5	38030.3	37637.7
27.5°	34158.9	35352.5	36177.0	36827.5	37121.2	37248.5	37041.7	36706.4	36105.7	35575.5	35062.6
30°	30646.7	32062.8	33055.5	33835.5	34193.4	34361.7	34142.0	33767.8	33068.8	32430.7	31784.6
32.5°	26887.5	28437.2	29518.9	30365.9	30720.6	30878.9	30591.4	30171.2	29363.3	28611.6	27858.1
35°	22951.7	24515.8	25606.7	26431.2	26728.5	26823.8	26456.3	25970.6	25075.4	24250.5	23428.8
37.5°	18935.7	20391.0	21382.4	22122.4	22306.3	22322.8	21879.9	21343.5	20402.6	19589.1	18771.3
40°	14954.4	16181.7	16982.2	17574.4	17638.3	17581.3	17099.8	16560.0	15679.8	14951.0	14233.0
42.5°	11204.3	12130.7	12701.8	13107.7	13083.6	12971.0	12529.5	12065.5	11339.4	10784.2	10219.2
45°	7991.5	8602.2	8936.2	9173.8	9097.5	8990.2	8646.7	8321.4	7827.9	7469.3	7089.7
47.5°	5551.8	6281.2	6154.2	6618.6	6218.5	6482.7	5932.5	5629.1	5367.2	5176.8	4962.2
50°	3974.6	4141.7	4222.5	4277.6	4248.3	4207.7	4108.8	4020.5	3900.8	3813.7	3712.1
52.5°	3069.5	3153.0	3198.8	3232.0	3225.4	3210.7	3167.5	3128.1	3072.1	3035.2	2990.7
55°	2600.0	2601.3	2685.4	2649.3	2702.7	2640.1	2664.7	2595.5	2606.7	2547.2	2507.2
57.5°	2160.5	2194.8	2210.2	2225.0	2220.9	2218.2	2201.6	2193.1	2174.4	2168.6	2155.2
60°	1900.5	1918.3	1922.1	1928.9	1923.1	1921.0	1907.9	1903.3	1890.6	1888.3	1879.5
62.5°	1722.1	1731.3	1731.3	1731.3	1723.8	1716.7	1702.2	1694.6	1683.9	1681.5	1676.3
65°	1573.3	1582.8	1584.4	1586.4	1581.0	1575.4	1562.6	1554.4	1543.3	1539.1	1533.1
67.5°	1419.8	1429.8	1433.3	1438.4	1435.3	1434.2	1425.5	1422.2	1414.9	1413.2	1407.7
70°	1299.1	1303.3	1303.0	1302.8	1296.1	1290.0	1279.8	1275.0	1267.4	1265.9	1260.9
72.5°	1227.4	1230.3	1228.4	1225.8	1216.9	1208.0	1196.1	1187.4	1177.4	1171.2	1164.2
75°	1126.4	1130.3	1127.7	1126.1	1118.1	1112.2	1102.7	1097.9	1090.9	1088.9	1084.1
77.5°	1002.4	1004.2	1000.1	999.7	993.6	989.9	982.7	981.5	976.4	976.6	971.9
80°	864.4	863.2	856.7	855.5	849.4	847.9	842.3	842.5	838.4	840.2	836.9
82.5°	711.2	707.3	698.8	696.2	689.3	688.6	684.9	688.0	685.5	689.3	687.1
85°	509.6	510.7	507.0	507.0	505.0	505.6	505.3	507.6	507.9	511.4	511.3
87.5°	284.1	288.2	287.4	291.2	291.0	295.2	296.6	302.8	303.6	309.3	309.3
90°	89.3	95.9	94.5	101.3	101.1	108.0	108.9	115.8	115.9	121.9	120.7
92.5°	31.4	29.7	28.1	26.2	25.3	24.1	23.8	22.3	21.8	20.6	19.7
95°	38.8	35.8	32.8	29.8	28.8	27.6	26.6	25.6	24.6	23.6	22.6
97.5°	43.8	40.2	36.7	33.2	32.3	31.4	30.4	29.5	28.6	27.7	26.8
100°	58.2	51.7	45.2	38.5	37.8	37.1	36.3	35.5	34.8	33.9	33.1
102.5°	114.9	101.1	87.1	73.1	70.5	67.9	65.3	62.4	59.7	57.1	54.5
105°	211.6	189.0	166.5	143.9	136.8	129.6	122.4	115.2	107.9	100.8	93.6
107.5°	318.4	295.5	272.7	249.8	236.7	223.4	210.2	196.8	183.6	170.2	157.0
110°	379.6	363.0	346.3	329.5	319.2	308.5	297.8	287.1	276.6	265.8	255.1



TEST NUMBER: P1444770
 CATALOG NUMBER: EHBR1-54-UNV-TA-L935-UPL12

CANDELA DISTRIBUTION (continued):

	330°	332.5°	335°	337.5°	340°	342.5°	345°	347.5°	350°	352.5°	355°
112.5°	392.0	380.2	368.5	356.5	351.8	347.0	342.4	337.5	332.9	327.8	323.1
115°	371.6	363.9	356.0	348.0	346.8	345.0	343.7	342.0	340.4	338.7	337.0
117.5°	338.0	333.7	329.5	325.3	325.7	326.3	327.0	327.4	327.6	327.8	328.3
120°	303.0	301.5	300.3	298.6	300.6	302.3	304.3	305.8	307.4	308.8	310.3
122.5°	275.8	275.5	275.4	275.0	277.4	279.7	281.8	283.9	285.8	287.4	289.1
125°	255.9	256.2	256.5	256.5	259.0	261.3	263.6	265.5	267.5	269.1	270.9
127.5°	244.4	245.2	245.9	246.2	248.4	250.0	251.9	253.2	255.0	256.0	257.3
130°	238.5	238.8	239.6	240.1	241.9	243.7	245.5	246.9	248.4	249.4	250.4
132.5°	236.7	237.2	237.8	238.3	240.0	241.4	242.9	243.8	245.1	245.7	246.4
135°	236.4	236.7	237.4	237.6	239.3	240.7	242.1	243.1	244.3	244.8	245.5
137.5°	237.0	237.4	237.9	238.2	239.7	241.0	242.3	243.2	244.2	244.9	245.4
140°	238.2	238.3	238.8	238.9	240.3	241.4	242.6	243.5	244.5	245.0	245.5
142.5°	239.4	239.2	239.6	239.4	240.4	241.4	242.3	243.0	243.7	244.2	244.4
145°	241.6	241.3	241.4	241.1	241.8	242.5	243.3	244.1	244.3	244.5	245.0
147.5°	244.2	243.7	243.3	243.0	244.0	244.3	244.9	245.1	245.8	245.9	246.1
150°	246.3	245.7	245.2	244.6	245.2	245.4	245.7	246.2	246.4	246.4	246.6
152.5°	247.8	247.2	246.6	245.9	246.2	246.2	246.4	246.4	246.6	246.5	246.5
155°	250.8	250.1	249.6	248.8	249.1	249.1	249.0	249.0	248.8	248.7	248.4
157.5°	255.0	254.2	254.0	253.2	253.1	253.1	253.0	252.4	252.3	252.0	251.5
160°	259.4	258.8	258.4	257.9	257.6	257.4	257.2	256.7	256.5	255.9	255.5
162.5°	263.8	263.3	262.7	262.1	261.8	261.7	261.5	260.9	260.8	260.2	259.8
165°	268.6	268.3	267.9	267.2	267.0	266.7	266.6	265.9	265.6	265.0	264.6
167.5°	273.3	272.9	272.4	271.8	271.7	271.5	271.4	271.0	270.6	270.1	269.9
170°	277.2	276.9	276.6	276.2	275.8	275.7	275.3	275.1	274.6	274.3	273.8
172.5°	280.1	279.8	279.3	278.8	278.8	278.6	278.3	278.2	277.7	277.4	277.2
175°	281.1	280.9	280.3	280.1	280.1	279.9	279.7	279.5	279.2	279.1	278.8
177.5°	282.6	282.5	282.0	281.9	281.8	281.8	281.6	281.4	281.4	281.3	281.1
180°	282.4	282.4	282.4	282.4	282.4	282.4	282.4	282.4	282.4	282.4	282.4



TEST NUMBER: P1444770
 CATALOG NUMBER: EHBR1-54-UNV-TA-L935-UPL12

CANDELA DISTRIBUTION (continued):

	357.5°	360°
0°	41990.4	41990.4
2.5°	42153.0	42150.8
5°	42309.7	42307.3
7.5°	42429.0	42428.2
10°	42442.9	42450.3
12.5°	42358.3	42364.2
15°	42111.0	42122.6
17.5°	41638.2	41653.3
20°	40823.7	40839.5
22.5°	39504.6	39511.2
25°	37586.9	37559.7
27.5°	34972.5	34925.7
30°	31648.9	31603.6
32.5°	27686.3	27658.0
35°	23225.7	23207.8
37.5°	18529.5	18493.1
40°	13970.4	13864.3
42.5°	9971.8	9785.5
45°	6891.4	6670.6
47.5°	4810.9	4674.4
50°	3646.5	3602.5
52.5°	2971.3	2961.0
55°	2507.1	2502.6
57.5°	2158.2	2156.6
60°	1884.1	1883.6
62.5°	1679.8	1680.5
65°	1535.9	1536.1
67.5°	1409.2	1408.3
70°	1262.7	1261.6
72.5°	1161.9	1160.2
75°	1084.1	1083.0
77.5°	973.2	971.6
80°	839.1	836.9
82.5°	690.2	687.7
85°	514.8	515.0
87.5°	314.9	314.9
90°	126.4	124.4
92.5°	19.2	18.6
95°	21.6	20.6
97.5°	26.0	25.1
100°	32.4	31.6
102.5°	51.8	49.2
105°	86.5	79.3
107.5°	143.7	130.4
110°	244.4	233.7



TEST NUMBER: P1444770
CATALOG NUMBER: EHBR1-54-UNV-TA-L935-UPL12

CANDELA DISTRIBUTION (continued):

	357.5°	360°
112.5°	318.1	313.2
115°	334.9	333.2
117.5°	328.3	328.4
120°	311.3	312.7
122.5°	290.5	291.9
125°	272.3	273.7
127.5°	258.1	258.8
130°	250.8	251.6
132.5°	246.7	246.9
135°	245.6	245.8
137.5°	245.4	245.5
140°	245.4	245.5
142.5°	244.5	244.5
145°	245.0	244.9
147.5°	245.5	245.5
150°	246.2	246.1
152.5°	246.0	245.9
155°	248.0	247.6
157.5°	250.9	250.4
160°	254.8	254.4
162.5°	259.0	258.7
165°	263.7	263.1
167.5°	269.1	268.9
170°	273.3	273.1
172.5°	276.8	276.4
175°	278.6	278.4
177.5°	281.1	280.8
180°	282.4	282.4

Cooper Lighting Solutions Photometric Lab
1121 Highway 74 South
Peachtree City, GA 30269



LM-79-2019: Approved Method: Electrical and Photometric Measurements of Solid-State Lighting Products

Report Prepared for

Cooper Lighting Solutions

Metalux

Report Number: SP1-2506-472-6

Test Date: 08/01/2025

Luminaire Tested: EHBR-60-L935-N

Data in this report applies to families of products including EHBR-60-L935-N

Test Information

Test Method: LM-79-2019
 Report Number: SP1-2506-472-6
 Test Lab: COOPER LIGHTING SOLUTIONS
 Photometer: SP1 - 76IN SPHERE
 Measurement Geometry: 4π
 Issue Date: 08/05/2025
 Manufacturer: COOPER LIGHTING SOLUTIONS
 Product Line: Metalux
 Catalog Number: **EHBR-60-L935-N**
 Description: Elevate Round Highbay at, 60000 lumens, 3500K 90CRI LEDs with N lens

Spectral Parameters

CCT (K): 3406
 CIE u': 0.2394
 CIE v': 0.5094
 Duv: -0.0028
 CIE x: 0.4076
 CIE y: 0.3856
 CIE z: 0.2068
 Peak Wavelength (nm): 630
 Dominant Wavelength (nm): 582
 Purity: 38.0517
 Rf: 91.3
 Rg: 100

CRI (Ra): 94.6
 R1: 96.6
 R2: 98.4
 R3: 98.1
 R4: 95.8
 R5: 96.2
 R6: 95.4
 R7: 91.8
 R8: 84.4
 R9: 63.8
 R10: 94.7
 R11: 96.6
 R12: 80.9
 R13: 97.4
 R14: 98.3
 R15: 93.1



Test Conditions

Stabilization Time: 35M
 Operation Time: 1H 35M
 Sphere Temperature (°C): 25.0

REPORT NUMBER: SP1-2506-472-6

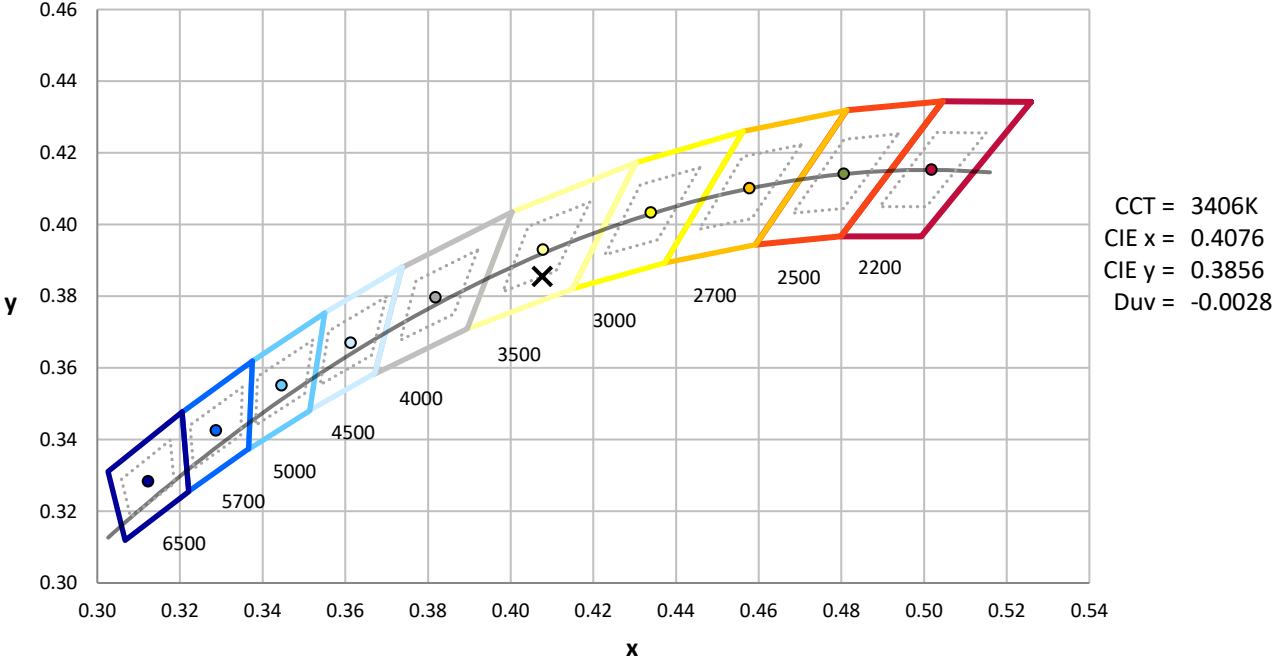
Measurement and Test Equipment			
Instrument	Identification Number	Calibration Date	Calibration Due Date
Photometer	76INCH SPHERE IN0058	6/16/2025	12/16/2025
Power Meter	XITRON INXT2011004	1/21/2025	1/21/2026
AC Power Source	CHROMA 61603 IN0063	10/22/2024	10/22/2025
DC Power Source	AGILENT E3634A IN0208	10/22/2024	10/22/2025
Sphere Thermometer	ONSET IN0085	10/22/2024	10/22/2025
Room Thermometer	ONSET IN0046	10/22/2024	10/22/2025

REPORT NUMBER: SP1-2506-472-6

CIE 1931 Chromaticity Diagram



CIE 1931 Chromaticity Diagram with 2017 ANSI 7-Step and 4-Step Quadrangles



Point lies inside the ANSI 3500K 4-step quadrangle

REPORT NUMBER: SP1-2506-472-6

Photopic Flux vs. Wavelength

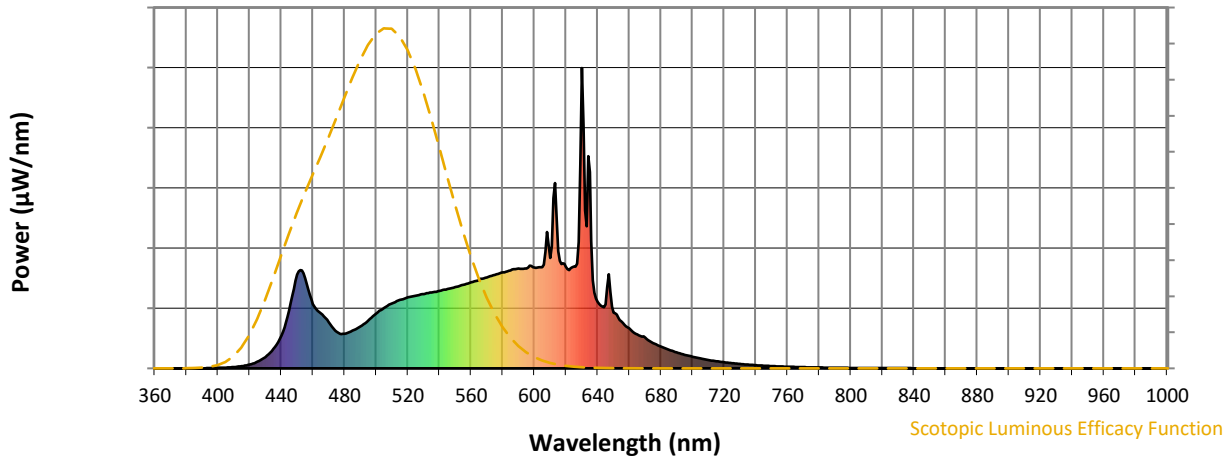


Photopic Lumens: NR

λ (nm)	Power W [^] /nm	Lumens (φ/nm)	λ (nm)	Power W [^] /nm	Lumens (φ/nm)	λ (nm)	Power W [^] /nm	Lumens (φ/nm)	λ (nm)	Power W [^] /nm	Lumens (φ/nm)	λ (nm)	Power W [^] /nm	Lumens (φ/nm)
360	0	NR	490	140	NR	620	338	NR	750	8	NR	880	0	NR
365	0	NR	495	159	NR	625	339	NR	755	7	NR	885	0	NR
370	0	NR	500	182	NR	630	1000	NR	760	5	NR	890	0	NR
375	0	NR	505	202	NR	635	653	NR	765	5	NR	895	0	NR
380	0	NR	510	216	NR	640	222	NR	770	4	NR	900	0	NR
385	0	NR	515	228	NR	645	214	NR	775	3	NR	905	0	NR
390	0	NR	520	236	NR	650	185	NR	780	3	NR	910	0	NR
395	1	NR	525	242	NR	655	157	NR	785	3	NR	915	0	NR
400	2	NR	530	248	NR	660	133	NR	790	2	NR	920	0	NR
405	3	NR	535	253	NR	665	113	NR	795	2	NR	925	0	NR
410	4	NR	540	258	NR	670	103	NR	800	2	NR	930	0	NR
415	7	NR	545	264	NR	675	85	NR	805	1	NR	935	0	NR
420	13	NR	550	270	NR	680	72	NR	810	1	NR	940	0	NR
425	22	NR	555	278	NR	685	62	NR	815	1	NR	945	0	NR
430	38	NR	560	286	NR	690	53	NR	820	1	NR	950	0	NR
435	65	NR	565	295	NR	695	45	NR	825	1	NR	955	0	NR
440	108	NR	570	303	NR	700	39	NR	830	1	NR	960	0	NR
445	193	NR	575	311	NR	705	33	NR	835	1	NR	965	0	NR
450	312	NR	580	319	NR	710	28	NR	840	1	NR	970	0	NR
455	300	NR	585	326	NR	715	24	NR	845	0	NR	975	0	NR
460	214	NR	590	332	NR	720	20	NR	850	0	NR	980	0	NR
465	184	NR	595	333	NR	725	17	NR	855	0	NR	985	0	NR
470	153	NR	600	336	NR	730	15	NR	860	0	NR	990	0	NR
475	122	NR	605	337	NR	735	12	NR	865	0	NR	995	0	NR
480	115	NR	610	367	NR	740	10	NR	870	0	NR	1000	0	NR
485	125	NR	615	390	NR	745	9	NR	875	0	NR			

REPORT NUMBER: SP1-2506-472-6

Scotopic Flux vs. Wavelength



Scotopic Lumens: NR

S/P: 1.62

λ (nm)	Power W [^] /nm	Lumens (ϕ /nm)	λ (nm)	Power W [^] /nm	Lumens (ϕ /nm)	λ (nm)	Power W [^] /nm	Lumens (ϕ /nm)	λ (nm)	Power W [^] /nm	Lumens (ϕ /nm)	λ (nm)	Power W [^] /nm	Lumens (ϕ /nm)
360	0	NR	490	140	NR	620	338	NR	750	8	NR	880	0	NR
365	0	NR	495	159	NR	625	339	NR	755	7	NR	885	0	NR
370	0	NR	500	182	NR	630	1000	NR	760	5	NR	890	0	NR
375	0	NR	505	202	NR	635	653	NR	765	5	NR	895	0	NR
380	0	NR	510	216	NR	640	222	NR	770	4	NR	900	0	NR
385	0	NR	515	228	NR	645	214	NR	775	3	NR	905	0	NR
390	0	NR	520	236	NR	650	185	NR	780	3	NR	910	0	NR
395	1	NR	525	242	NR	655	157	NR	785	3	NR	915	0	NR
400	2	NR	530	248	NR	660	133	NR	790	2	NR	920	0	NR
405	3	NR	535	253	NR	665	113	NR	795	2	NR	925	0	NR
410	4	NR	540	258	NR	670	103	NR	800	2	NR	930	0	NR
415	7	NR	545	264	NR	675	85	NR	805	1	NR	935	0	NR
420	13	NR	550	270	NR	680	72	NR	810	1	NR	940	0	NR
425	22	NR	555	278	NR	685	62	NR	815	1	NR	945	0	NR
430	38	NR	560	286	NR	690	53	NR	820	1	NR	950	0	NR
435	65	NR	565	295	NR	695	45	NR	825	1	NR	955	0	NR
440	108	NR	570	303	NR	700	39	NR	830	1	NR	960	0	NR
445	193	NR	575	311	NR	705	33	NR	835	1	NR	965	0	NR
450	312	NR	580	319	NR	710	28	NR	840	1	NR	970	0	NR
455	300	NR	585	326	NR	715	24	NR	845	0	NR	975	0	NR
460	214	NR	590	332	NR	720	20	NR	850	0	NR	980	0	NR
465	184	NR	595	333	NR	725	17	NR	855	0	NR	985	0	NR
470	153	NR	600	336	NR	730	15	NR	860	0	NR	990	0	NR
475	122	NR	605	337	NR	735	12	NR	865	0	NR	995	0	NR
480	115	NR	610	367	NR	740	10	NR	870	0	NR	1000	0	NR
485	125	NR	615	390	NR	745	9	NR	875	0	NR			

REPORT NUMBER: SP1-2506-472-6

Melanopic Flux vs. Wavelength



Melanopic Lumens: NR M/P: 3.3

λ (nm)	Power W [^] /nm	Lumens (φ/nm)	λ (nm)	Power W [^] /nm	Lumens (φ/nm)	λ (nm)	Power W [^] /nm	Lumens (φ/nm)	λ (nm)	Power W [^] /nm	Lumens (φ/nm)	λ (nm)	Power W [^] /nm	Lumens (φ/nm)
360	0	NR	490	140	NR	620	338	NR	750	8	NR	880	0	NR
365	0	NR	495	159	NR	625	339	NR	755	7	NR	885	0	NR
370	0	NR	500	182	NR	630	1000	NR	760	5	NR	890	0	NR
375	0	NR	505	202	NR	635	653	NR	765	5	NR	895	0	NR
380	0	NR	510	216	NR	640	222	NR	770	4	NR	900	0	NR
385	0	NR	515	228	NR	645	214	NR	775	3	NR	905	0	NR
390	0	NR	520	236	NR	650	185	NR	780	3	NR	910	0	NR
395	1	NR	525	242	NR	655	157	NR	785	3	NR	915	0	NR
400	2	NR	530	248	NR	660	133	NR	790	2	NR	920	0	NR
405	3	NR	535	253	NR	665	113	NR	795	2	NR	925	0	NR
410	4	NR	540	258	NR	670	103	NR	800	2	NR	930	0	NR
415	7	NR	545	264	NR	675	85	NR	805	1	NR	935	0	NR
420	13	NR	550	270	NR	680	72	NR	810	1	NR	940	0	NR
425	22	NR	555	278	NR	685	62	NR	815	1	NR	945	0	NR
430	38	NR	560	286	NR	690	53	NR	820	1	NR	950	0	NR
435	65	NR	565	295	NR	695	45	NR	825	1	NR	955	0	NR
440	108	NR	570	303	NR	700	39	NR	830	1	NR	960	0	NR
445	193	NR	575	311	NR	705	33	NR	835	1	NR	965	0	NR
450	312	NR	580	319	NR	710	28	NR	840	1	NR	970	0	NR
455	300	NR	585	326	NR	715	24	NR	845	0	NR	975	0	NR
460	214	NR	590	332	NR	720	20	NR	850	0	NR	980	0	NR
465	184	NR	595	333	NR	725	17	NR	855	0	NR	985	0	NR
470	153	NR	600	336	NR	730	15	NR	860	0	NR	990	0	NR
475	122	NR	605	337	NR	735	12	NR	865	0	NR	995	0	NR
480	115	NR	610	367	NR	740	10	NR	870	0	NR	1000	0	NR
485	125	NR	615	390	NR	745	9	NR	875	0	NR			

Summary

$R_f = 91.3$
 $R_g = 100$
 $CIE R_a = 94.6$
 $R_9 = 63.8$

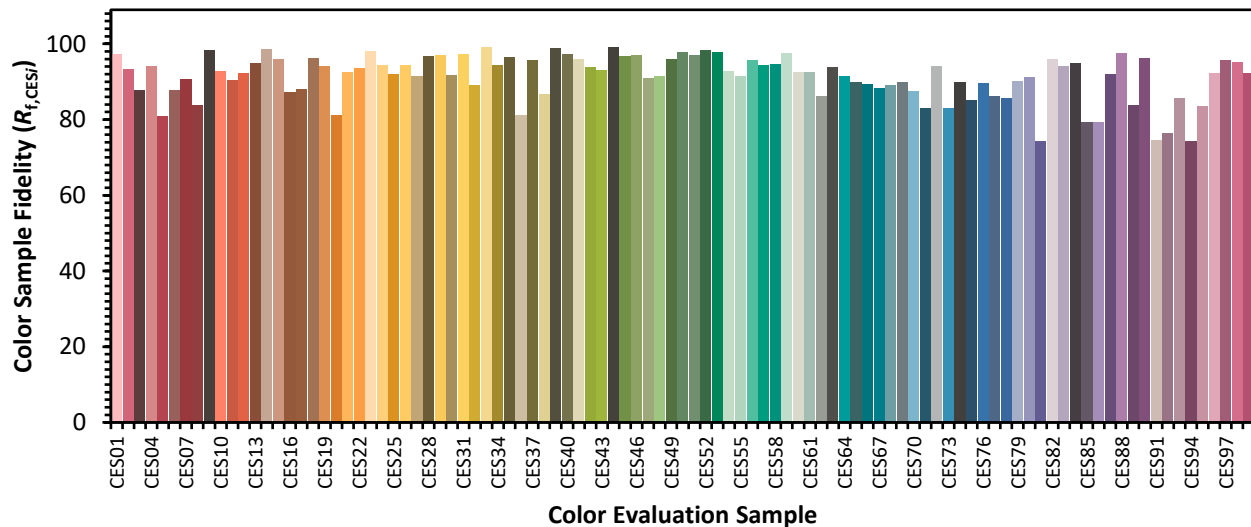


Color Vector Graphics

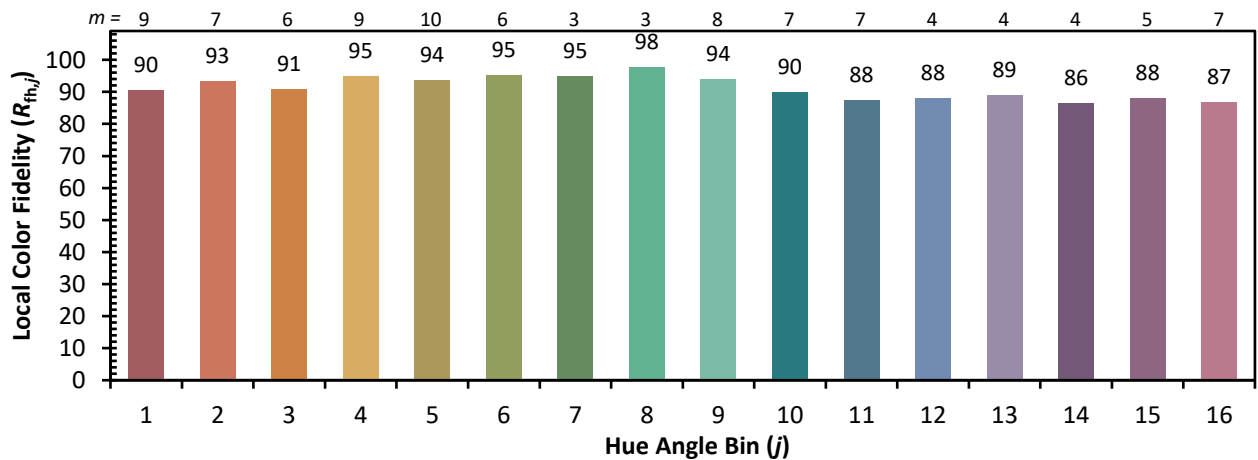
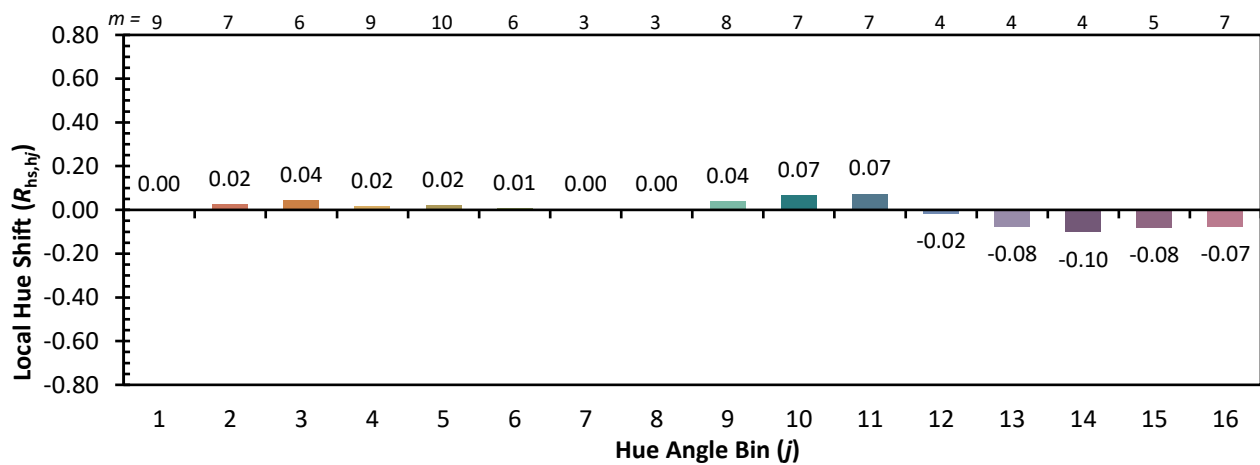
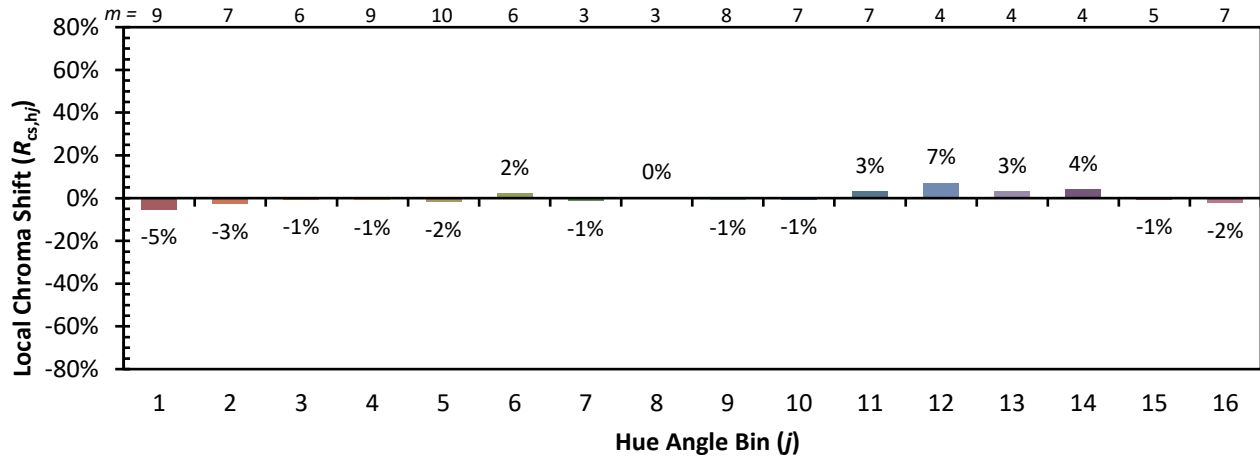


Individual Sample Fidelity Index ($R_{f,i}$)

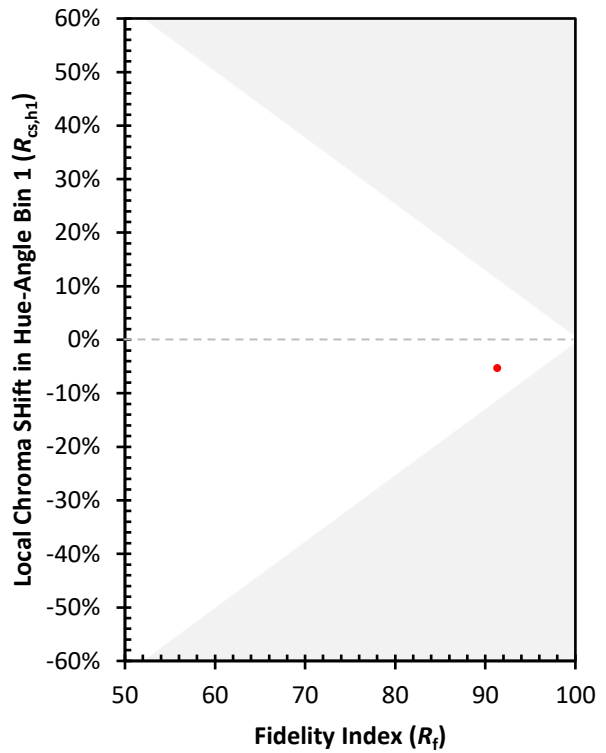
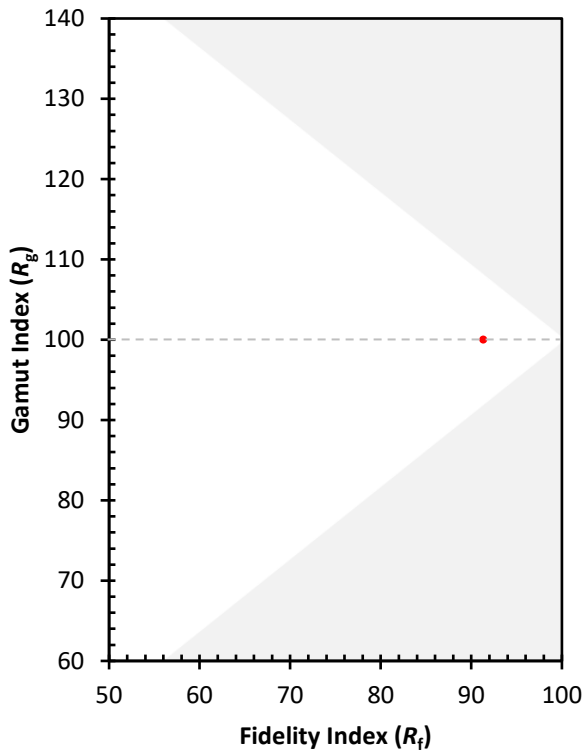
CES01 = 86	CES26 = 94	CES51 = 97	CES76 = 90
CES02 = 63	CES27 = 92	CES52 = 98	CES77 = 86
CES03 = 31	CES28 = 97	CES53 = 98	CES78 = 86
CES04 = 70	CES29 = 97	CES54 = 93	CES79 = 90
CES05 = 50	CES30 = 92	CES55 = 92	CES80 = 91
CES06 = 51	CES31 = 97	CES56 = 96	CES81 = 74
CES07 = 43	CES32 = 89	CES57 = 94	CES82 = 96
CES08 = 41	CES33 = 99	CES58 = 95	CES83 = 94
CES09 = 29	CES34 = 94	CES59 = 98	CES84 = 95
CES10 = 75	CES35 = 97	CES60 = 92	CES85 = 79
CES11 = 58	CES36 = 81	CES61 = 93	CES86 = 79
CES12 = 64	CES37 = 96	CES62 = 86	CES87 = 92
CES13 = 44	CES38 = 87	CES63 = 94	CES88 = 98
CES14 = 74	CES39 = 99	CES64 = 91	CES89 = 84
CES15 = 72	CES40 = 97	CES65 = 90	CES90 = 96
CES16 = 48	CES41 = 96	CES66 = 89	CES91 = 75
CES17 = 49	CES42 = 94	CES67 = 88	CES92 = 76
CES18 = 56	CES43 = 93	CES68 = 89	CES93 = 86
CES19 = 71	CES44 = 99	CES69 = 90	CES94 = 74
CES20 = 67	CES45 = 97	CES70 = 88	CES95 = 83
CES21 = 86	CES46 = 97	CES71 = 83	CES96 = 92
CES22 = 78	CES47 = 91	CES72 = 94	CES97 = 96
CES23 = 91	CES48 = 91	CES73 = 83	CES98 = 95
CES24 = 90	CES49 = 96	CES74 = 90	CES99 = 92
CES25 = 71	CES50 = 98	CES75 = 85	



Color Rendition by Hue-Angle Bin



Measure Comparisons



(END OF REPORT)