

Cooper Lighting Solutions Photometric Lab
1121 Highway 74 South
Peachtree City, GA 30269



Scaled data based on original data using
LM-79-2019 Approved Method: Electrical and Photometric Measurements of Solid-
State Lighting Products

Test Report Prepared for
Cooper Lighting Solutions

Brand: METALUX

Report Number: P1444731

Luminaire Tested: EHBR1-24-UNV-TA-L935-UPL15

Issue Date: 5/1/2026

Test Information

Test Method: LM-79-2019
Report Number: P1444731
REPORT IS A COMBINATION OF REPORTS P1444311 AND P1431635
Test Lab: INNOVATION CENTER
Issue Date: 5/1/2026
Manufacturer: COOPER LIGHTING SOLUTIONS
Product Line: METALUX
Catalog Number: EHBR1-24-UNV-TA-L935-UPL15
Description: Elevate Round Highbay at, 24000 lumens, 3500K 90CRI LEDs with TA lens
Light Source: -
Ballast/Driver: -

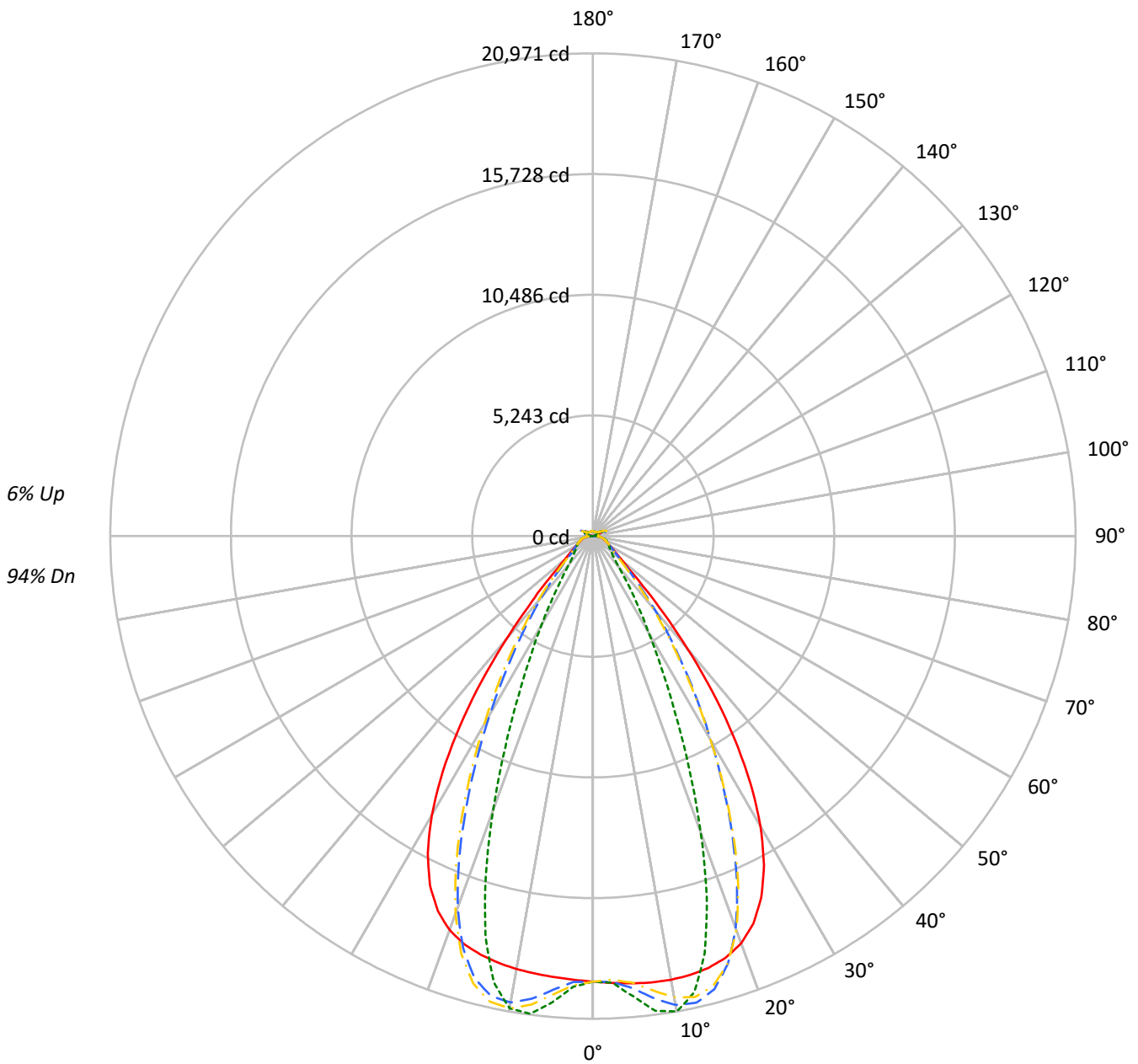
Summary

Lumens per Lamp: N/A
Luminaire Lumens: 23760.3 lumens
Efficiency: N/A
Efficacy: 172.7 lumens/watt
Spacing Criteria (0/90/45): 1.13 / 0.77 / 0.88
Luminous Opening: Vertical Cylinder (Dia: 1.71' x H: 0.1')
CIE Type: Direct

Input Watts (W): 137.6
Input Voltage (V): NR
Input Current (Ain): NR
Voltage Rise (V): NR
Power Factor: NR
Total Harmonic Distortion (THDi): NR
Frequency (hertz): 60
Stabilization Time: NR
Operation Time: NR
Ambient Temperature (°C): NR
Test Distance: 24 FT

TEST NUMBER: P1444731
CATALOG NUMBER: EHBR1-24-UNV-TA-L935-UPL15

Luminous Intensity Polar Plot



— 0°-180° - - 45°-225° ··· 90°-270° - · 135°-315°



TEST NUMBER: P1444731
 CATALOG NUMBER: EHBR1-24-UNV-TA-L935-UPL15

COEFFICIENT OF UTILIZATION - ZONAL CAVITY METHOD:

RF	20				20				20				20				20				
RC	80				70				50				30				10			0	
RW	70	50	30	10	70	50	30	10	50	30	10	50	30	10	50	30	10	50	30	10	0
RCR																					
0	118	118	118	118	114	114	114	114	108	108	108	102	102	102	96	96	96	96	96	96	94
1	110	107	104	101	107	104	101	99	99	97	95	94	92	91	90	88	87	87	87	87	85
2	104	98	93	89	101	95	91	87	91	87	84	87	84	82	83	81	79	79	79	79	77
3	97	90	84	79	95	88	82	78	84	80	76	81	77	74	78	75	72	72	72	72	70
4	92	83	76	71	89	81	75	71	78	73	69	75	71	68	73	69	66	66	66	66	64
5	86	77	70	65	84	75	69	64	73	67	63	70	66	62	68	64	61	61	61	61	59
6	81	71	64	60	79	70	64	59	68	62	58	66	61	57	64	60	56	56	56	56	55
7	77	66	60	55	75	65	59	55	63	58	54	62	57	53	60	56	52	52	52	52	51
8	73	62	55	51	71	61	55	51	60	54	50	58	53	49	57	52	49	49	49	49	47
9	69	58	52	47	67	58	51	47	56	50	47	55	50	46	53	49	46	46	46	46	44
10	65	55	48	44	64	54	48	44	53	47	44	52	47	43	50	46	43	43	43	43	41

AVERAGE LUMINANCE (cd/sqm):

	0°	90°	180°	270°
0°	90907	90907	90907	90907
5°	91346	94010	90068	95242
10°	92109	98704	89900	98051
15°	92561	89474	89743	85872
20°	91604	66655	88606	61672
25°	86707	42155	83842	38249
30°	75745	25333	72811	23152
35°	58294	15896	54940	14081
40°	36876	9971	33738	9370
45°	19007	7768	18691	7640
50°	11144	6910	10801	6802
55°	8537	6537	8221	6478
60°	7224	6678	6917	6591
65°	6785	6974	6524	6735
70°	6628	7303	6298	7028
75°	7088	7744	6705	7402
80°	7334	8575	6649	7828
85°	6907	8275	5583	7085

MAXIMUM LUMINANCE 45°-90°:

Horizontal Angle: 25°
 Vertical Angle: 45°
 Luminance: 29087 cd/sqm



TEST NUMBER: P1444731
 CATALOG NUMBER: EHBR1-24-UNV-TA-L935-UPL15

ZONAL LUMENS:

Zone	Lumens	% Fixture
0°-10°	1907.8	8.0
10°-20°	5366.7	22.6
20°-30°	6112.3	25.7
30°-40°	4393.2	18.5
40°-50°	2026.2	8.5
50°-60°	969.6	4.1
60°-70°	707.5	3.0
70°-80°	537.5	2.3
80°-90°	246.9	1.0
90°-100°	43.4	0.2
100°-110°	240.8	1.0
110°-120°	444.7	1.9
120°-130°	274.3	1.2
130°-140°	179.4	0.8
140°-150°	135.4	0.6
150°-160°	95.9	0.4
160°-170°	58.6	0.2
170°-180°	20.2	0.1
0°-30°	13386.8	56.3
0°-40°	17780.0	74.8
0°-60°	20775.8	87.4
0°-90°	22267.6	93.7
90°-120°	728.9	3.1
90°-150°	1318.0	5.5
90°-180°	1493.0	6.3
0°-180°	23760.3	100.0

CANDELA DISTRIBUTION:

	0°	90°	180°	270°	360°	Flux
0°	19358	19358	19358	19358	19358	
5°	19504	20073	19231	20336	19504	1864
15°	19419	18771	18828	18015	19419	5471
25°	17315	8418	16743	7638	17315	7849
35°	10699	2918	10084	2584	10699	6566
45°	3075	1257	3024	1236	3075	2615
55°	1154	883	1111	876	1154	1065
65°	708	728	681	703	708	707
75°	499	546	472	521	499	519
85°	237	284	192	244	237	223
90°	63	81	18	22	63	40
95°	20	22	20	22	20	19
105°	88	112	59	112	88	116
115°	389	469	407	470	389	359
125°	296	307	334	308	296	269
135°	237	207	255	209	237	185
145°	215	205	228	208	215	135
155°	203	202	216	205	203	94
165°	205	204	212	205	205	58
175°	211	212	214	213	211	20
180°	214	214	214	214	214	



TEST NUMBER: P1444731
 CATALOG NUMBER: EHBR1-24-UNV-TA-L935-UPL15

CANDELA DISTRIBUTION (FULL):

	0°	2.5°	5°	7.5°	10°	12.5°	15°	17.5°	20°	22.5°	25°
0°	19357.9	19357.9	19357.9	19357.9	19357.9	19357.9	19357.9	19357.9	19357.9	19357.9	19357.9
2.5°	19431.9	19430.3	19430.0	19428.6	19428.3	19428.3	19427.6	19426.1	19425.1	19422.8	19420.3
5°	19503.9	19503.1	19503.7	19503.7	19502.4	19499.4	19494.7	19488.8	19481.5	19474.7	19468.5
7.5°	19559.8	19561.1	19562.8	19562.5	19558.2	19551.2	19541.5	19536.0	19539.2	19549.7	19573.8
10°	19569.9	19578.2	19581.4	19580.4	19572.0	19565.9	19568.3	19588.8	19629.6	19684.0	19758.5
12.5°	19530.2	19540.5	19540.1	19536.6	19528.5	19536.8	19566.6	19627.6	19715.1	19822.5	19948.5
15°	19418.8	19432.1	19428.3	19423.9	19418.5	19445.7	19505.1	19611.1	19746.3	19897.7	20052.8
17.5°	19202.5	19218.4	19210.7	19205.7	19201.1	19252.3	19354.3	19509.5	19679.8	19851.1	19998.1
20°	18827.3	18838.0	18819.6	18810.9	18818.2	18918.5	19068.7	19267.0	19446.5	19608.4	19708.9
22.5°	18214.9	18228.3	18193.6	18189.6	18232.4	18386.5	18576.5	18798.2	18966.7	19095.2	19133.9
25°	17315.3	17328.4	17287.2	17311.8	17384.6	17594.6	17820.8	18057.9	18201.8	18296.9	18270.7
27.5°	16101.0	16112.9	16073.8	16124.1	16239.1	16515.0	16781.3	17038.5	17166.8	17233.4	17148.9
30°	14569.5	14594.3	14548.1	14618.2	14793.7	15152.0	15457.1	15745.5	15873.4	15924.1	15792.7
32.5°	12750.5	12785.8	12734.9	12839.2	13084.1	13514.5	13861.0	14183.3	14324.7	14382.6	14234.2
35°	10699.0	10749.5	10691.1	10847.7	11149.8	11629.0	12012.8	12372.6	12540.1	12622.1	12472.5
37.5°	8525.5	8573.6	8542.1	8750.9	9082.6	9579.3	9971.1	10359.3	10548.3	10671.5	10553.6
40°	6391.5	6435.6	6459.5	6698.3	7010.4	7478.5	7854.8	8238.8	8450.3	8605.0	8532.2
42.5°	4511.2	4555.6	4636.8	4867.3	5127.5	5514.9	5837.3	6182.1	6384.2	6549.1	6521.0
45°	3075.2	3126.7	3228.5	3417.1	3605.4	3883.3	4120.1	4388.2	4553.3	4704.4	4706.2
47.5°	2155.0	2191.1	2282.0	2410.9	2533.6	2881.6	2895.9	3027.7	3138.7	3251.6	3266.2
50°	1660.8	1682.6	1730.8	1802.6	1872.1	1962.5	2045.1	2140.7	2209.0	2270.9	2285.7
52.5°	1365.0	1378.9	1403.5	1442.3	1482.7	1531.8	1576.0	1628.5	1665.7	1698.8	1705.7
55°	1153.7	1165.2	1201.7	1209.0	1255.2	1264.1	1283.7	1315.7	1337.3	1357.1	1362.1
57.5°	994.2	1002.5	1010.3	1026.9	1041.1	1061.8	1078.4	1101.3	1114.9	1129.2	1130.5
60°	868.4	874.4	880.0	891.4	901.1	915.4	926.9	942.5	952.3	963.0	964.2
62.5°	774.7	779.1	782.7	790.3	797.2	808.3	817.3	830.4	839.4	847.8	849.7
65°	708.2	711.3	713.7	719.4	725.4	734.9	743.1	753.7	760.4	766.8	768.1
67.5°	649.2	652.2	654.6	659.9	664.1	671.0	676.6	684.6	689.6	694.7	694.8
70°	581.6	584.4	586.3	591.2	594.6	600.5	605.0	612.2	617.3	623.0	624.5
72.5°	534.8	536.5	539.0	543.4	548.1	554.6	560.6	568.0	574.3	580.1	582.6
75°	499.3	501.2	502.8	506.6	509.9	515.3	519.8	526.6	532.0	538.4	541.4
77.5°	447.9	450.1	451.5	455.3	458.1	463.4	466.7	472.7	477.3	483.0	485.8
80°	385.8	387.9	388.9	392.5	394.7	399.5	402.8	408.7	412.4	418.1	421.5
82.5°	317.0	319.0	319.6	323.0	324.2	328.2	330.5	336.5	341.1	348.6	353.7
85°	237.4	238.1	239.3	238.4	243.2	243.5	249.0	250.0	257.1	259.0	267.2
87.5°	145.1	147.3	148.4	151.6	153.1	156.4	157.4	161.0	162.9	166.9	168.8
90°	63.4	66.9	68.2	72.1	73.4	76.9	77.9	82.0	83.3	87.5	89.3
92.5°	17.5	18.6	19.6	20.8	21.9	23.5	24.7	26.0	27.2	28.6	30.8
95°	19.8	21.0	22.3	23.5	24.7	26.0	27.3	28.5	29.7	31.0	34.6
97.5°	24.7	25.7	26.8	27.9	29.0	30.1	31.2	32.3	33.4	34.3	38.7
100°	32.0	32.9	33.8	34.7	35.6	36.6	37.5	38.4	39.3	40.2	48.2
102.5°	52.2	55.5	58.7	61.9	65.2	68.4	71.7	74.9	78.1	81.4	98.3
105°	87.6	96.3	105.3	114.0	122.8	131.7	140.5	149.1	158.0	166.8	194.6
107.5°	148.6	165.0	181.3	197.6	213.9	230.1	246.4	262.7	278.9	295.1	323.3
110°	273.2	286.1	299.3	312.3	325.5	338.7	351.7	364.6	377.8	390.8	411.4



TEST NUMBER: P1444731
 CATALOG NUMBER: EHBR1-24-UNV-TA-L935-UPL15

CANDELA DISTRIBUTION (continued):

	0°	2.5°	5°	7.5°	10°	12.5°	15°	17.5°	20°	22.5°	25°
112.5°	367.9	373.8	379.7	385.6	391.4	397.3	403.2	409.1	415.0	420.7	435.4
115°	388.8	390.9	393.0	394.8	397.0	398.9	401.0	402.8	404.9	406.7	416.6
117.5°	378.7	378.1	377.8	377.4	376.9	376.4	375.9	375.4	374.9	374.3	379.8
120°	354.5	352.6	350.7	348.8	346.9	344.8	343.0	341.0	338.9	336.8	339.1
122.5°	323.8	321.6	319.5	317.0	314.8	312.3	310.1	307.4	305.2	302.7	303.5
125°	295.8	293.5	291.3	288.8	286.4	284.0	281.6	279.1	276.7	274.1	274.4
127.5°	271.5	269.9	268.4	266.5	264.7	262.9	261.1	259.1	257.5	255.4	255.4
130°	256.6	255.1	253.6	251.9	250.2	248.6	246.9	245.0	243.3	241.4	241.4
132.5°	244.5	243.5	242.4	241.1	239.9	238.5	237.2	235.6	234.3	232.9	232.9
135°	237.0	235.9	234.9	233.8	232.7	231.2	229.9	228.6	227.2	225.8	225.9
137.5°	230.8	229.9	228.9	227.9	226.7	225.3	224.1	222.8	221.5	220.1	220.2
140°	225.2	224.3	223.4	222.3	221.3	220.1	219.0	217.7	216.6	215.3	215.4
142.5°	218.6	217.8	217.2	216.3	215.3	214.3	213.3	212.2	211.3	210.2	210.5
145°	214.6	214.0	213.3	212.6	211.8	210.8	210.0	209.0	208.2	207.2	207.6
147.5°	211.2	210.6	210.1	209.5	208.8	208.0	207.3	206.4	205.6	204.8	205.3
150°	208.1	207.6	207.2	206.6	205.9	205.2	204.5	203.7	202.9	202.1	202.7
152.5°	204.7	204.2	203.7	203.2	202.6	201.8	201.3	200.5	199.8	199.0	199.4
155°	203.2	202.7	202.1	201.6	201.0	200.4	199.8	199.0	198.4	197.7	197.9
157.5°	202.6	202.0	201.7	201.1	200.8	200.2	199.7	199.1	198.6	198.0	198.1
160°	203.0	202.6	202.2	201.7	201.1	200.6	200.1	199.5	199.1	198.5	198.7
162.5°	203.6	203.1	202.7	202.1	201.7	201.1	200.7	200.2	199.8	199.2	199.4
165°	204.7	204.4	204.0	203.7	203.4	203.0	202.7	202.2	201.8	201.4	201.6
167.5°	207.4	206.9	206.6	206.2	205.7	205.4	205.0	204.6	204.2	203.7	203.8
170°	208.8	208.5	208.2	208.0	207.7	207.5	207.2	206.9	206.6	206.4	206.5
172.5°	210.4	210.1	209.9	209.8	209.5	209.4	209.2	208.9	208.8	208.5	208.8
175°	210.9	210.6	210.5	210.4	210.3	210.2	210.1	209.9	209.9	209.7	209.8
177.5°	212.4	212.3	212.3	212.3	212.3	212.2	212.1	211.9	211.9	211.9	212.0
180°	213.6	213.6	213.6	213.6	213.6	213.6	213.6	213.6	213.6	213.6	213.6



TEST NUMBER: P1444731
 CATALOG NUMBER: EHBR1-24-UNV-TA-L935-UPL15

CANDELA DISTRIBUTION (continued):

	27.5°	30°	32.5°	35°	37.5°	40°	42.5°	45°	47.5°	50°	52.5°
0°	19357.9	19357.9	19357.9	19357.9	19357.9	19357.9	19357.9	19357.9	19357.9	19357.9	19357.9
2.5°	19418.5	19416.1	19412.8	19408.8	19405.2	19401.2	19391.5	19388.6	19391.8	19394.0	19398.4
5°	19464.6	19466.0	19466.4	19475.3	19482.9	19501.9	19650.8	19710.0	19755.8	19784.8	19828.9
7.5°	19603.7	19648.5	19692.7	19752.3	19803.7	19873.0	20133.6	20244.5	20323.3	20380.0	20449.8
10°	19839.5	19937.2	20028.8	20136.1	20228.4	20334.0	20576.6	20684.6	20752.9	20802.5	20848.8
12.5°	20076.9	20212.4	20334.9	20454.3	20554.2	20645.8	20731.1	20769.0	20772.2	20773.8	20749.1
15°	20200.6	20330.1	20438.1	20517.0	20575.8	20601.7	20454.9	20377.8	20280.5	20200.3	20068.3
17.5°	20122.5	20200.3	20246.8	20242.3	20218.0	20136.8	19720.8	19492.1	19264.9	19060.3	18791.8
20°	19775.6	19769.6	19729.1	19614.1	19475.7	19260.6	18547.4	18136.0	17738.1	17388.7	16964.9
22.5°	19129.9	19028.3	18886.7	18639.0	18363.9	17987.9	16965.9	16360.7	15806.9	15317.7	14769.6
25°	18194.5	17985.5	17724.3	17331.1	16903.5	16355.1	15095.5	14342.7	13677.8	13101.2	12468.8
27.5°	16997.3	16682.4	16299.7	15755.4	15176.2	14473.6	13077.2	12246.4	11532.7	10914.4	10241.3
30°	15579.9	15170.5	14676.2	14000.8	13302.1	12505.3	11088.9	10247.4	9525.0	8888.9	8215.4
32.5°	13978.2	13498.7	12919.4	12161.4	11405.8	10586.5	9218.6	8404.1	7713.9	7102.1	6492.5
35°	12211.6	11697.4	11084.5	10311.4	9560.3	8763.7	7508.7	6774.3	6164.8	5624.0	5131.7
37.5°	10316.6	9811.6	9229.2	8500.6	7804.0	7082.2	5999.3	5383.9	4872.4	4423.5	4043.4
40°	8346.3	7904.5	7400.4	6770.5	6176.1	5575.0	4686.0	4197.5	3793.9	3451.6	3166.7
42.5°	6400.1	6057.7	5671.3	5173.4	4718.6	4260.8	3576.6	3214.7	2915.8	2669.3	2467.9
45°	4643.6	4414.5	4155.2	3809.2	3494.4	3175.2	2688.2	2433.9	2239.2	2080.2	1945.9
47.5°	3246.1	3113.2	3105.1	2785.2	2554.5	2359.3	2045.5	1884.9	1765.6	1669.3	1584.3
50°	2279.6	2215.3	2135.5	2021.4	1914.3	1803.9	1612.8	1515.7	1445.8	1387.4	1333.7
52.5°	1704.2	1670.8	1628.3	1567.7	1509.7	1447.6	1326.7	1264.8	1242.8	1188.6	1146.0
55°	1361.2	1342.0	1317.8	1282.3	1246.9	1232.8	1129.2	1083.2	1054.2	1032.8	1009.8
57.5°	1130.6	1116.4	1102.0	1077.9	1057.5	1032.8	977.7	954.2	936.9	924.3	908.4
60°	964.4	955.9	947.8	933.7	922.6	909.3	874.4	861.1	852.1	844.5	834.4
62.5°	851.2	846.9	842.7	835.2	829.6	822.3	798.4	792.0	787.5	783.7	777.5
65°	769.5	766.4	764.0	759.1	756.2	752.0	731.5	727.1	724.4	723.0	719.4
67.5°	695.2	692.0	690.4	686.9	685.7	683.1	666.2	663.9	663.0	663.4	662.1
70°	625.8	624.5	625.2	624.6	626.2	626.6	616.5	616.4	617.5	619.7	619.8
72.5°	584.2	584.2	584.9	585.3	586.8	587.6	579.1	578.7	579.1	580.8	580.9
75°	544.6	545.2	547.4	548.1	549.9	550.2	539.1	537.8	537.8	539.4	538.9
77.5°	489.8	492.1	496.2	498.4	501.8	502.5	490.0	488.4	488.5	490.0	488.7
80°	427.6	432.1	438.7	443.2	448.5	450.6	437.7	434.6	431.8	431.3	428.7
82.5°	361.5	367.1	374.9	378.9	384.6	385.9	364.3	360.2	357.8	358.0	355.6
85°	276.0	280.1	287.2	289.6	293.1	292.7	268.1	257.6	260.4	255.9	259.4
87.5°	173.1	175.6	180.0	180.5	182.3	181.9	157.1	152.2	150.7	150.8	149.0
90°	93.9	96.0	100.4	101.1	104.1	104.2	84.7	82.9	80.8	81.2	78.3
92.5°	33.4	35.4	37.8	40.1	42.4	44.7	44.7	46.3	44.1	41.7	39.7
95°	38.3	42.0	45.7	49.3	53.0	56.6	60.4	64.0	60.5	57.1	53.7
97.5°	43.1	47.3	51.7	56.0	60.4	64.6	69.0	73.3	69.7	65.8	62.2
100°	56.3	64.3	72.3	80.5	88.5	96.5	104.6	112.7	105.6	98.4	91.4
102.5°	115.4	132.6	149.6	166.8	183.8	201.0	218.2	235.4	219.1	202.7	186.3
105°	222.3	250.0	277.7	305.3	333.1	360.7	388.7	416.5	390.4	364.3	338.3
107.5°	351.4	379.5	407.6	435.6	463.8	491.9	520.3	548.4	523.0	497.6	472.1
110°	431.9	452.3	472.8	493.2	513.7	534.1	555.0	575.6	560.3	545.0	529.6



TEST NUMBER: P1444731
 CATALOG NUMBER: EHBR1-24-UNV-TA-L935-UPL15

CANDELA DISTRIBUTION (continued):

	27.5°	30°	32.5°	35°	37.5°	40°	42.5°	45°	47.5°	50°	52.5°
112.5°	450.0	464.6	479.3	493.8	508.3	522.9	538.2	552.9	545.1	537.3	529.6
115°	426.3	436.3	446.0	455.8	465.6	475.4	486.0	495.9	493.3	490.7	488.1
117.5°	385.2	390.5	396.1	401.4	406.8	412.2	418.6	424.2	424.3	424.7	425.0
120°	341.3	343.5	345.7	347.8	350.0	352.1	355.6	357.9	359.8	361.7	363.5
122.5°	304.3	305.0	305.7	306.3	307.0	307.7	309.8	310.9	312.0	313.2	314.5
125°	274.6	275.0	275.2	275.3	275.4	275.8	277.6	278.1	278.1	277.8	277.8
127.5°	255.2	255.1	255.0	254.9	254.6	254.6	256.0	256.3	255.2	254.1	253.0
130°	241.4	241.4	241.4	241.4	241.4	241.4	243.3	243.7	241.9	240.1	238.3
132.5°	233.0	233.0	233.0	233.2	233.2	233.2	235.3	235.7	233.8	231.7	229.7
135°	225.9	226.2	226.3	226.3	226.4	226.8	228.9	229.6	227.7	225.7	223.8
137.5°	220.2	220.5	220.6	220.8	220.9	221.1	223.7	224.3	222.8	221.1	219.6
140°	215.6	215.9	216.2	216.4	216.6	217.1	219.8	220.6	219.4	218.1	216.8
142.5°	210.8	211.4	211.8	212.4	212.7	213.3	216.4	217.5	216.6	215.5	214.6
145°	208.1	208.7	209.3	209.8	210.4	211.1	214.6	216.0	215.3	214.6	213.9
147.5°	205.6	206.1	206.6	207.2	207.7	208.5	212.3	213.5	213.2	212.6	212.2
150°	203.0	203.6	204.1	204.7	205.5	206.2	210.4	211.9	211.5	211.1	210.6
152.5°	199.8	200.3	200.8	201.4	201.9	202.7	207.7	209.4	209.0	208.5	208.3
155°	198.2	198.7	198.9	199.4	199.8	200.4	205.8	207.5	207.3	207.0	206.7
157.5°	198.4	198.5	198.7	198.9	199.3	199.6	205.4	207.0	206.7	206.6	206.3
160°	198.8	198.9	198.9	199.2	199.3	199.6	205.5	207.1	206.9	206.6	206.4
162.5°	199.6	199.9	200.0	200.3	200.5	200.8	206.8	208.6	208.2	207.9	207.6
165°	201.6	201.7	201.7	201.9	202.0	202.2	207.7	209.3	209.2	208.9	208.6
167.5°	203.8	204.1	204.1	204.4	204.4	204.7	209.9	211.4	211.2	210.9	210.8
170°	206.5	206.7	206.7	206.9	207.1	207.4	211.7	212.9	212.8	212.4	212.2
172.5°	208.8	209.2	209.4	209.5	209.7	210.0	213.6	214.8	214.6	214.4	214.1
175°	210.0	210.1	210.3	210.5	210.7	210.9	213.8	214.6	214.5	214.4	214.3
177.5°	212.2	212.3	212.4	212.5	212.7	212.9	214.7	215.2	215.2	215.2	215.1
180°	213.6	213.6	213.6	213.6	213.6	213.6	213.6	213.6	213.6	213.6	213.6



TEST NUMBER: P1444731
 CATALOG NUMBER: EHBR1-24-UNV-TA-L935-UPL15

CANDELA DISTRIBUTION (continued):

	55°	57.5°	60°	62.5°	65°	67.5°	70°	72.5°	75°	77.5°	80°
0°	19357.9	19357.9	19357.9	19357.9	19357.9	19357.9	19357.9	19357.9	19357.9	19357.9	19357.9
2.5°	19399.4	19406.2	19407.2	19415.2	19414.6	19424.1	19422.5	19430.3	19425.8	19432.1	19426.8
5°	19855.0	19896.4	19918.0	19958.4	19971.1	20007.2	20017.4	20050.3	20051.6	20077.7	20071.8
7.5°	20499.3	20560.2	20596.3	20646.2	20671.5	20713.0	20731.3	20762.0	20771.9	20796.3	20798.2
10°	20883.9	20913.5	20934.1	20948.1	20960.8	20966.7	20973.7	20971.8	20973.7	20971.0	20976.9
12.5°	20732.6	20689.4	20660.9	20606.8	20575.5	20515.7	20486.3	20428.8	20408.0	20358.6	20351.5
15°	19966.3	19815.8	19709.5	19554.9	19457.6	19305.4	19216.4	19079.2	19016.5	18907.4	18878.7
17.5°	18569.7	18290.3	18074.1	17796.7	17604.3	17345.1	17182.0	16967.5	16849.9	16676.9	16617.0
20°	16611.6	16198.2	15873.9	15487.5	15211.0	14866.5	14646.0	14367.9	14206.3	13993.8	13907.7
22.5°	14312.7	13798.0	13393.0	12936.6	12603.0	12219.0	11954.8	11653.9	11478.2	11247.4	11145.1
25°	11943.3	11375.7	10925.4	10444.5	10092.1	9707.2	9443.0	9147.3	8965.5	8746.3	8644.7
27.5°	9677.1	9102.6	8667.4	8220.3	7897.0	7549.8	7311.3	7053.1	6891.8	6704.8	6609.1
30°	7677.3	7170.6	6800.3	6429.2	6160.2	5878.3	5680.1	5466.2	5324.6	5164.4	5073.4
32.5°	6048.0	5656.9	5366.8	5072.5	4852.3	4616.7	4445.4	4256.7	4128.9	3985.9	3903.4
35°	4789.9	4486.0	4254.7	4012.3	3823.3	3622.5	3471.6	3308.7	3194.1	3070.9	2999.7
37.5°	3784.6	3542.8	3352.5	3151.2	2995.9	2829.6	2773.5	2586.6	2467.8	2369.5	2301.4
40°	2970.1	2778.0	2620.5	2466.5	2339.8	2213.7	2112.5	2012.6	1935.9	1865.6	1816.9
42.5°	2319.5	2180.2	2065.2	1952.4	1860.0	1768.1	1694.7	1626.0	1574.3	1528.3	1497.0
45°	1843.8	1748.1	1668.2	1588.7	1523.5	1462.2	1412.8	1368.9	1335.6	1307.9	1288.3
47.5°	1514.7	1449.2	1392.8	1339.2	1295.0	1254.8	1221.7	1210.9	1175.1	1150.9	1141.7
50°	1287.3	1247.7	1204.9	1165.4	1135.8	1106.4	1085.0	1063.9	1050.5	1039.4	1036.0
52.5°	1117.6	1087.3	1063.5	1038.5	1019.0	998.0	983.3	969.2	961.9	956.1	955.4
55°	991.4	970.2	954.5	937.7	926.0	913.7	906.1	898.6	895.5	892.5	892.7
57.5°	895.9	881.8	871.5	860.7	854.3	848.4	846.5	844.6	845.6	846.1	847.7
60°	826.3	817.1	810.7	804.5	801.8	799.9	801.4	803.0	806.4	809.1	811.5
62.5°	773.0	767.8	764.7	761.2	761.0	761.1	763.9	766.8	771.0	774.2	776.5
65°	718.2	715.1	714.1	712.0	713.0	713.7	717.2	719.3	723.5	726.1	729.1
67.5°	662.7	662.0	662.6	662.6	664.5	666.2	669.5	672.0	675.5	677.8	680.3
70°	621.7	622.0	623.6	623.8	625.9	627.0	629.9	631.4	634.7	636.6	639.6
72.5°	581.9	581.2	581.6	580.7	581.4	581.1	582.7	583.5	586.2	587.8	591.3
75°	539.5	537.7	537.3	535.4	535.5	534.0	534.7	534.6	536.5	537.2	539.7
77.5°	488.2	485.2	483.8	480.6	480.5	479.4	480.6	481.4	484.5	486.1	489.0
80°	427.0	422.3	420.1	416.4	417.0	416.8	420.0	422.3	426.2	427.0	430.7
82.5°	354.9	350.1	347.8	344.1	345.0	345.0	347.9	348.5	351.8	353.3	357.5
85°	254.1	255.9	250.9	251.2	250.1	252.1	254.1	256.6	259.4	264.0	267.6
87.5°	149.6	149.0	150.8	151.0	153.6	155.0	159.2	161.5	166.1	169.8	176.4
90°	77.9	75.0	76.0	74.7	76.7	75.4	77.3	75.8	78.1	78.0	81.2
92.5°	37.0	35.0	32.4	30.2	27.7	25.7	24.3	23.5	22.1	21.4	20.0
95°	50.2	46.9	43.4	40.0	36.6	33.2	31.9	30.6	29.5	28.2	26.9
97.5°	58.5	54.8	51.1	47.4	43.7	40.1	39.2	38.4	37.5	36.7	35.9
100°	84.2	77.0	70.0	62.8	55.7	48.7	48.0	47.3	46.7	46.0	45.3
102.5°	170.1	153.8	137.6	121.3	105.0	88.7	85.9	83.1	80.2	77.4	74.6
105°	312.2	286.1	260.1	234.1	208.2	182.1	174.4	166.4	158.7	150.9	143.2
107.5°	446.6	421.3	395.9	370.4	345.0	319.7	307.4	295.2	282.8	270.5	258.3
110°	514.2	498.8	483.7	468.2	453.1	437.8	426.0	414.4	402.6	390.9	379.2



TEST NUMBER: P1444731
 CATALOG NUMBER: EHBR1-24-UNV-TA-L935-UPL15

CANDELA DISTRIBUTION (continued):

	55°	57.5°	60°	62.5°	65°	67.5°	70°	72.5°	75°	77.5°	80°
112.5°	521.8	514.2	506.4	498.7	491.0	483.3	477.6	471.8	466.2	460.4	454.6
115°	485.5	483.1	480.4	478.0	475.6	473.0	472.5	472.1	471.6	471.1	470.7
117.5°	425.2	425.6	425.8	426.2	426.6	426.9	429.9	432.8	435.8	438.9	441.9
120°	365.4	367.3	369.1	371.1	373.0	375.0	378.9	382.9	386.8	391.0	395.2
122.5°	315.7	316.9	318.0	319.4	320.7	321.9	325.7	329.7	333.6	337.7	341.7
125°	277.5	277.3	277.2	277.0	276.8	276.8	279.9	283.0	286.2	289.6	292.7
127.5°	251.9	250.6	249.5	248.4	247.2	246.2	247.9	249.7	251.4	253.3	255.2
130°	236.4	234.6	232.7	230.9	228.9	227.2	227.8	228.3	228.9	229.6	230.2
132.5°	227.5	225.5	223.3	221.2	219.2	217.0	216.7	216.4	216.2	216.1	215.9
135°	221.7	219.9	217.7	215.7	213.6	211.7	211.0	210.3	209.5	209.0	208.5
137.5°	218.0	216.3	214.7	213.1	211.4	209.7	208.6	207.9	207.0	206.4	205.6
140°	215.4	214.1	212.6	211.4	209.9	208.6	207.7	207.1	206.4	205.7	205.0
142.5°	213.4	212.5	211.4	210.4	209.4	208.4	207.5	206.8	206.1	205.5	204.9
145°	213.2	212.5	211.8	211.0	210.3	209.6	208.9	208.4	207.7	207.3	206.8
147.5°	211.7	211.3	210.7	210.2	209.6	209.1	208.5	208.3	207.7	207.5	207.0
150°	210.2	209.8	209.3	208.9	208.3	207.8	207.5	207.3	206.9	206.8	206.4
152.5°	207.7	207.5	207.0	206.6	206.1	205.6	205.4	205.2	204.9	204.7	204.3
155°	206.4	206.1	205.7	205.5	205.0	204.8	204.5	204.1	203.8	203.5	203.1
157.5°	206.0	205.7	205.4	205.2	204.7	204.5	204.2	203.9	203.6	203.3	202.9
160°	206.1	205.9	205.6	205.3	205.0	204.7	204.3	203.9	203.5	203.2	202.8
162.5°	207.3	206.9	206.6	206.3	205.8	205.6	205.2	204.8	204.6	204.3	203.9
165°	208.4	208.1	207.8	207.5	207.3	207.0	206.6	206.3	205.8	205.5	205.0
167.5°	210.4	210.3	210.0	209.8	209.5	209.1	208.8	208.5	208.1	207.7	207.4
170°	211.9	211.6	211.4	211.0	210.7	210.4	210.0	209.6	209.3	209.0	208.6
172.5°	213.9	213.8	213.4	213.3	212.9	212.6	212.4	212.1	211.8	211.4	211.4
175°	214.2	214.2	214.1	213.8	213.8	213.6	213.4	213.4	213.3	213.2	213.0
177.5°	215.1	215.0	215.0	214.9	214.8	214.8	214.6	214.5	214.3	214.2	214.1
180°	213.6	213.6	213.6	213.6	213.6	213.6	213.6	213.6	213.6	213.6	213.6



TEST NUMBER: P1444731
 CATALOG NUMBER: EHBR1-24-UNV-TA-L935-UPL15

CANDELA DISTRIBUTION (continued):

	82.5°	85°	87.5°	90°	92.5°	95°	97.5°	100°	102.5°	105°	107.5°
0°	19357.9	19357.9	19357.9	19357.9	19357.9	19357.9	19357.9	19357.9	19357.9	19357.9	19357.9
2.5°	19432.3	19427.4	19429.8	19420.6	19422.8	19411.8	19410.9	19398.4	19397.3	19385.6	19381.1
5°	20090.3	20079.4	20091.7	20072.7	20076.4	20051.6	20049.5	20017.5	20006.5	19966.5	19949.2
7.5°	20813.4	20809.3	20816.7	20800.9	20800.3	20778.2	20769.2	20740.4	20722.7	20680.6	20653.8
10°	20971.8	20975.5	20969.5	20971.0	20962.4	20959.9	20951.2	20945.5	20931.1	20920.3	20904.2
12.5°	20314.0	20318.0	20292.9	20308.8	20296.2	20325.6	20323.2	20357.8	20363.1	20406.8	20423.4
15°	18793.7	18789.0	18740.8	18771.2	18754.9	18819.3	18833.8	18920.4	18966.7	19078.0	19146.4
17.5°	16497.1	16484.7	16416.9	16453.9	16435.0	16530.0	16561.9	16700.5	16786.9	16966.2	17094.0
20°	13759.4	13735.6	13656.3	13699.5	13680.2	13788.1	13833.6	14001.1	14112.5	14350.1	14519.0
22.5°	10987.7	10950.2	10872.5	10912.8	10894.5	11006.4	11065.6	11233.6	11361.3	11605.1	11802.3
25°	8498.7	8465.3	8390.2	8418.4	8411.6	8506.2	8558.8	8717.8	8843.3	9075.5	9263.8
27.5°	6482.2	6447.4	6379.5	6399.5	6392.6	6473.2	6522.9	6655.6	6763.6	6959.2	7124.4
30°	4961.2	4919.2	4861.6	4872.7	4868.0	4933.2	4979.6	5091.4	5184.0	5349.2	5491.6
32.5°	3802.7	3760.5	3707.7	3712.9	3705.9	3757.1	3795.3	3892.5	3973.2	4113.6	4237.6
35°	2909.6	2958.9	2846.0	2917.5	2843.1	2952.4	2913.0	2973.8	3043.2	3161.5	3265.0
37.5°	2236.8	2202.5	2173.4	2170.3	2170.1	2195.5	2225.4	2283.9	2345.0	2433.2	2524.3
40°	1772.5	1748.4	1729.6	1728.3	1729.6	1747.7	1769.8	1810.2	1855.0	1918.3	1985.2
42.5°	1470.2	1454.1	1442.8	1442.1	1445.6	1458.4	1473.8	1497.8	1526.9	1567.9	1613.8
45°	1272.4	1263.5	1257.3	1256.9	1258.5	1265.1	1274.0	1289.0	1307.5	1333.0	1362.1
47.5°	1133.6	1131.6	1127.6	1127.7	1125.9	1128.7	1129.6	1138.1	1147.9	1167.2	1205.1
50°	1032.7	1032.7	1030.0	1029.8	1027.2	1027.1	1024.9	1028.2	1032.9	1044.8	1056.9
52.5°	952.8	952.6	949.6	949.0	946.3	946.1	944.3	945.6	946.2	952.3	959.5
55°	890.4	888.6	884.7	883.4	882.4	883.9	883.2	883.3	882.5	885.0	887.2
57.5°	845.6	843.2	839.5	838.4	838.2	840.1	840.1	839.4	836.1	833.8	830.6
60°	810.2	807.7	803.8	802.8	803.4	806.0	805.8	803.6	798.7	794.3	789.1
62.5°	775.4	774.4	772.4	772.1	771.6	772.0	770.2	767.9	762.9	758.3	752.8
65°	728.7	729.2	727.7	727.9	726.2	725.8	723.1	720.9	715.8	711.6	705.9
67.5°	680.2	680.6	679.3	679.3	678.4	678.6	676.9	674.9	670.6	667.1	662.8
70°	640.2	641.2	640.5	640.8	639.6	639.1	636.6	634.5	630.2	627.4	623.4
72.5°	592.4	594.6	594.5	595.0	593.3	592.4	589.3	586.8	582.9	580.5	577.4
75°	540.7	543.5	544.3	545.5	543.1	541.8	538.5	536.5	533.2	531.8	529.7
77.5°	490.3	493.4	496.3	499.0	495.1	491.6	487.3	484.2	479.5	477.7	474.5
80°	433.7	439.1	445.6	451.1	444.0	436.9	429.9	424.7	418.6	416.1	412.1
82.5°	359.8	365.3	369.1	372.6	367.7	362.4	355.7	351.2	344.6	342.1	337.5
85°	273.3	280.3	282.5	284.4	281.2	278.4	272.1	263.6	259.4	252.9	249.5
87.5°	179.8	184.0	184.7	185.3	183.4	182.1	178.0	174.0	166.9	161.7	155.4
90°	80.4	82.4	80.2	80.6	78.8	79.7	76.1	75.5	70.3	68.8	64.2
92.5°	19.1	17.9	16.8	15.7	17.1	17.9	19.3	20.0	21.3	22.1	23.5
95°	25.6	24.5	23.2	21.9	22.9	23.9	24.9	25.9	26.9	27.9	28.9
97.5°	35.1	34.2	33.4	32.5	33.1	33.7	34.3	34.9	35.4	36.1	36.7
100°	44.7	44.0	43.3	42.7	42.7	42.7	42.7	42.7	42.7	42.7	42.7
102.5°	71.8	68.9	66.1	63.3	65.2	67.1	69.0	70.9	72.9	74.8	76.8
105°	135.4	127.7	119.9	112.2	119.7	127.2	134.7	142.2	149.6	157.3	164.9
107.5°	246.0	233.7	221.5	209.3	223.0	236.6	250.3	263.9	277.6	291.2	305.1
110°	367.6	355.9	344.3	332.6	347.1	361.6	376.1	390.6	405.1	419.6	434.2



TEST NUMBER: P1444731
 CATALOG NUMBER: EHBR1-24-UNV-TA-L935-UPL15

CANDELA DISTRIBUTION (continued):

	82.5°	85°	87.5°	90°	92.5°	95°	97.5°	100°	102.5°	105°	107.5°
112.5°	448.9	443.3	437.6	432.0	441.3	450.6	460.0	469.5	478.7	488.1	497.5
115°	470.3	469.9	469.7	469.3	473.7	478.2	482.5	487.1	491.6	496.0	500.6
117.5°	444.9	448.0	451.2	454.3	455.8	457.2	458.7	460.1	461.7	463.1	464.7
120°	399.3	403.3	407.6	411.8	411.3	410.7	410.1	409.6	409.2	408.8	408.5
122.5°	345.8	349.9	354.2	358.4	357.1	355.8	354.7	353.6	352.5	351.4	350.4
125°	296.4	299.6	303.3	306.7	305.4	304.2	303.1	302.0	300.8	299.7	298.9
127.5°	257.3	259.3	261.4	263.6	263.0	262.4	262.1	261.5	261.2	260.8	260.7
130°	231.0	231.9	232.9	233.7	233.9	234.1	234.5	234.7	235.3	235.6	236.2
132.5°	216.1	216.1	216.2	216.3	217.0	217.7	218.5	219.4	220.4	221.3	222.6
135°	208.1	207.7	207.4	207.2	208.2	209.1	210.3	211.4	212.7	214.1	215.5
137.5°	205.0	204.5	204.0	203.5	204.5	205.5	206.6	207.7	209.1	210.4	212.0
140°	204.5	204.0	203.7	203.3	204.3	205.2	206.3	207.5	208.7	210.1	211.5
142.5°	204.5	203.8	203.5	203.2	203.9	204.8	205.9	206.9	208.2	209.4	210.6
145°	206.4	205.9	205.6	205.4	205.9	206.6	207.4	208.1	209.1	209.8	210.9
147.5°	206.7	206.5	206.3	206.1	206.6	207.0	207.6	208.1	208.8	209.5	210.3
150°	206.3	206.0	205.9	205.8	206.1	206.4	206.7	207.1	207.5	207.9	208.5
152.5°	204.3	204.0	204.0	203.9	204.1	204.3	204.6	204.9	205.3	205.6	206.3
155°	203.0	202.8	202.6	202.4	202.4	202.5	202.7	202.7	202.8	202.9	203.2
157.5°	202.8	202.6	202.4	202.1	202.0	201.9	201.9	201.8	201.8	201.7	201.8
160°	202.6	202.1	201.8	201.6	201.6	201.5	201.5	201.4	201.5	201.6	201.6
162.5°	203.7	203.5	203.2	202.9	202.7	202.5	202.4	202.1	201.9	201.7	201.7
165°	204.6	204.3	204.0	203.6	203.5	203.4	203.2	203.1	203.0	202.9	202.9
167.5°	207.1	206.6	206.4	206.0	205.7	205.4	205.2	204.9	204.7	204.5	204.4
170°	208.5	208.1	207.8	207.5	207.4	207.2	207.1	206.9	206.8	206.7	206.7
172.5°	211.1	210.8	210.5	210.4	210.2	210.0	210.0	209.9	209.7	209.7	209.7
175°	212.9	212.8	212.7	212.5	212.4	212.3	212.2	212.1	212.0	211.8	211.7
177.5°	213.9	213.7	213.6	213.5	213.4	213.4	213.4	213.4	213.4	213.3	213.3
180°	213.6	213.6	213.6	213.6	213.6	213.6	213.6	213.6	213.6	213.6	213.6



TEST NUMBER: P1444731
 CATALOG NUMBER: EHBR1-24-UNV-TA-L935-UPL15

CANDELA DISTRIBUTION (continued):

	110°	112.5°	115°	117.5°	120°	122.5°	125°	127.5°	130°	132.5°	135°
0°	19357.9	19357.9	19357.9	19357.9	19357.9	19357.9	19357.9	19357.9	19357.9	19357.9	19357.9
2.5°	19368.6	19363.5	19350.1	19343.5	19331.1	19324.8	19315.1	19308.9	19301.1	19295.3	19292.3
5°	19905.3	19880.5	19830.8	19800.3	19746.6	19711.4	19658.2	19619.1	19564.2	19523.6	19471.7
7.5°	20603.4	20565.4	20501.8	20453.7	20378.6	20321.3	20237.2	20169.9	20076.9	19999.7	19904.7
10°	20887.7	20865.5	20837.0	20806.0	20764.5	20723.7	20666.2	20607.7	20529.6	20452.0	20350.5
12.5°	20467.5	20488.4	20529.6	20548.8	20580.3	20591.0	20605.5	20598.7	20585.9	20554.2	20508.2
15°	19277.7	19364.9	19502.6	19597.9	19731.4	19825.1	19949.2	20029.1	20121.1	20176.0	20228.2
17.5°	17320.4	17489.0	17732.1	17926.0	18186.3	18398.0	18657.3	18861.1	19096.4	19276.8	19468.9
20°	14813.4	15049.5	15385.1	15670.1	16047.3	16367.1	16777.0	17120.3	17520.7	17854.5	18214.9
22.5°	12115.3	12393.0	12777.4	13121.2	13571.6	13974.0	14487.4	14941.4	15482.7	15967.7	16504.2
25°	9569.8	9842.0	10233.6	10589.5	11075.9	11519.1	12080.0	12600.8	13229.0	13814.8	14487.4
27.5°	7386.9	7628.8	7973.1	8293.4	8738.7	9173.9	9743.1	10298.4	10968.8	11598.4	12323.3
30°	5704.8	5901.0	6176.8	6434.6	6792.1	7147.9	7655.0	8168.6	8835.6	9488.1	10231.2
32.5°	4421.1	4588.3	4818.6	5027.8	5303.3	5571.6	5945.1	6355.4	6940.6	7565.5	8284.0
35°	3422.4	3565.5	3761.4	3941.7	4168.2	4381.3	4659.9	4952.8	5399.4	5925.0	6568.1
37.5°	2728.5	2786.9	2926.7	3074.4	3262.6	3437.6	3655.6	3872.2	4191.7	4606.4	5131.7
40°	2075.0	2167.7	2281.5	2397.8	2540.3	2680.6	2919.8	3034.9	3245.3	3543.0	3950.7
42.5°	1674.3	1739.4	1819.5	1900.4	1999.7	2097.4	2218.4	2341.6	2498.8	2700.5	2990.5
45°	1401.1	1443.5	1495.2	1549.1	1614.3	1681.0	1762.0	1846.6	1953.1	2077.1	2253.2
47.5°	1218.6	1242.0	1275.7	1312.5	1357.2	1403.5	1456.1	1509.9	1576.2	1649.7	1750.0
50°	1076.1	1095.7	1121.9	1146.4	1177.3	1224.6	1245.6	1275.3	1315.1	1358.4	1414.5
52.5°	972.9	986.0	1002.5	1016.6	1036.1	1053.8	1077.1	1097.6	1125.1	1151.1	1187.4
55°	892.7	897.4	906.8	915.8	929.3	941.5	957.4	970.9	988.4	1003.9	1026.8
57.5°	830.7	831.1	835.5	840.2	848.9	856.5	867.4	876.2	888.5	898.4	912.0
60°	786.1	783.8	784.6	786.3	791.1	796.1	803.2	808.9	816.6	822.1	829.8
62.5°	749.1	745.4	744.5	744.0	746.5	748.3	752.1	754.9	759.2	761.7	765.8
65°	702.2	697.9	696.2	694.1	694.8	694.2	695.7	695.8	698.0	698.5	700.9
67.5°	659.7	656.1	653.8	651.1	649.9	648.0	647.1	645.2	644.9	643.4	643.0
70°	621.0	617.4	615.6	613.0	611.8	609.1	607.6	604.4	602.5	599.6	598.0
72.5°	576.2	574.2	573.6	571.9	571.4	570.0	569.4	567.1	565.8	563.3	561.9
75°	529.3	527.7	527.5	525.8	525.7	523.9	523.5	521.1	520.0	517.4	516.3
77.5°	473.5	471.0	470.4	468.3	468.8	467.9	468.7	466.9	466.1	463.6	462.8
80°	410.7	407.5	406.2	403.6	404.3	403.0	404.3	404.1	405.0	403.0	402.7
82.5°	336.2	332.7	332.1	330.3	331.4	331.6	334.3	332.8	333.3	331.5	332.4
85°	244.6	242.1	238.5	238.0	235.6	238.0	234.9	237.0	233.7	236.0	232.8
87.5°	151.6	146.4	143.6	139.8	138.3	134.7	133.1	130.5	131.3	130.1	130.8
90°	63.7	59.7	59.6	56.7	57.3	55.0	56.2	54.8	56.5	54.9	56.8
92.5°	24.3	25.4	27.4	29.5	31.4	33.4	35.3	37.5	39.3	41.5	43.3
95°	29.9	30.9	33.5	36.3	38.9	41.5	44.3	46.9	49.6	52.3	54.9
97.5°	37.3	37.9	40.5	43.2	45.9	48.6	51.2	54.1	56.7	59.5	62.1
100°	42.7	42.8	50.4	57.9	65.5	73.1	80.8	88.3	96.0	103.5	111.1
102.5°	78.7	80.6	99.7	118.9	138.1	157.2	176.4	195.6	214.8	234.1	253.3
105°	172.3	179.9	209.1	238.4	267.5	296.9	326.2	355.6	384.8	414.2	443.5
107.5°	318.7	332.4	358.8	385.3	411.7	438.3	464.8	491.2	517.8	544.3	570.9
110°	448.7	463.3	481.1	498.8	516.6	534.4	552.0	569.9	587.8	605.5	623.5



TEST NUMBER: P1444731
 CATALOG NUMBER: EHBR1-24-UNV-TA-L935-UPL15

CANDELA DISTRIBUTION (continued):

	110°	112.5°	115°	117.5°	120°	122.5°	125°	127.5°	130°	132.5°	135°
112.5°	506.8	516.3	526.7	537.1	547.5	557.9	568.4	578.8	589.3	599.8	610.3
115°	505.1	509.7	513.7	517.9	521.9	526.0	530.3	534.6	538.8	543.0	547.2
117.5°	466.1	467.8	468.6	469.3	470.0	470.9	471.7	472.7	473.6	474.5	475.4
120°	407.9	407.7	407.1	406.7	406.0	405.7	405.3	404.9	404.5	404.1	403.8
122.5°	349.3	348.4	347.9	347.5	347.0	346.8	346.4	346.2	345.9	345.6	345.3
125°	297.9	297.1	297.9	298.6	299.5	300.4	301.3	302.4	303.3	304.2	305.2
127.5°	260.3	260.3	262.0	263.9	265.6	267.5	269.5	271.4	273.2	275.3	277.1
130°	236.7	237.5	239.6	242.0	244.3	246.7	249.1	251.5	253.8	256.2	258.5
132.5°	223.7	225.0	226.9	229.3	231.5	233.8	236.1	238.5	240.7	243.2	245.3
135°	217.0	218.6	220.6	222.7	224.8	227.0	229.0	231.3	233.3	235.5	237.5
137.5°	213.3	215.0	216.7	218.4	220.1	222.0	223.6	225.4	227.0	228.8	230.6
140°	213.0	214.5	215.5	216.7	217.9	219.0	220.0	221.1	222.2	223.4	224.4
142.5°	211.9	213.4	214.1	214.9	215.6	216.6	217.3	218.2	218.8	219.6	220.2
145°	211.9	213.1	213.3	213.5	213.9	214.2	214.3	214.7	214.9	215.2	215.3
147.5°	211.0	211.9	211.8	212.0	212.2	212.2	212.3	212.4	212.4	212.5	212.5
150°	209.0	209.6	209.5	209.5	209.3	209.2	209.1	209.0	208.8	208.8	208.5
152.5°	206.6	207.1	206.7	206.7	206.5	206.3	206.0	205.9	205.6	205.5	205.3
155°	203.3	203.6	203.4	203.3	203.1	202.9	202.8	202.9	202.8	202.7	202.7
157.5°	201.8	201.8	201.7	201.7	201.6	201.5	201.5	201.5	201.5	201.6	201.7
160°	201.5	201.7	201.5	201.4	201.3	201.2	201.2	201.2	201.2	201.4	201.5
162.5°	201.5	201.4	201.3	201.2	201.1	201.0	201.1	201.3	201.2	201.4	201.5
165°	202.9	203.0	202.7	202.7	202.5	202.4	202.4	202.4	202.4	202.4	202.5
167.5°	204.3	204.2	204.2	204.2	204.2	204.3	204.4	204.6	204.7	205.0	205.1
170°	206.6	206.7	206.6	206.6	206.5	206.5	206.5	206.4	206.5	206.6	206.5
172.5°	209.7	209.7	209.5	209.4	209.2	209.0	208.9	208.9	208.7	208.6	208.5
175°	211.5	211.4	211.4	211.3	211.2	211.0	211.0	210.8	210.7	210.6	210.5
177.5°	213.3	213.1	213.0	213.0	213.0	212.9	212.9	212.8	212.8	212.8	212.6
180°	213.6	213.6	213.6	213.6	213.6	213.6	213.6	213.6	213.6	213.6	213.6



TEST NUMBER: P1444731
 CATALOG NUMBER: EHBR1-24-UNV-TA-L935-UPL15

CANDELA DISTRIBUTION (continued):

	137.5°	140°	142.5°	145°	147.5°	150°	152.5°	155°	157.5°	160°	162.5°
0°	19357.9	19357.9	19357.9	19357.9	19357.9	19357.9	19357.9	19357.9	19357.9	19357.9	19357.9
2.5°	19288.4	19288.1	19286.3	19287.1	19287.5	19288.9	19290.6	19292.3	19292.6	19294.0	19294.3
5°	19432.7	19385.0	19349.8	19310.9	19281.7	19255.4	19237.9	19224.1	19218.6	19220.0	19223.2
7.5°	19824.1	19725.6	19644.4	19552.0	19474.9	19393.4	19325.7	19261.4	19214.5	19179.6	19160.1
10°	20253.6	20133.7	20018.9	19885.2	19758.3	19623.0	19500.4	19377.0	19274.0	19184.5	19118.9
12.5°	20444.3	20359.5	20260.3	20134.1	19998.3	19842.2	19684.4	19515.4	19358.0	19212.1	19094.4
15°	20242.5	20242.7	20206.5	20145.9	20051.6	19926.8	19776.6	19600.3	19414.7	19225.4	19052.4
17.5°	19601.8	19722.7	19790.0	19832.5	19819.4	19773.5	19677.8	19542.4	19369.4	19167.8	18956.7
20°	18501.6	18786.8	18990.0	19172.8	19275.3	19343.3	19336.5	19281.4	19158.3	18986.8	18767.0
22.5°	16960.5	17439.0	17816.6	18168.7	18415.6	18616.5	18712.0	18752.6	18696.8	18577.3	18370.8
25°	15088.6	15739.2	16294.4	16833.3	17237.5	17584.9	17793.6	17940.7	17952.4	17889.9	17705.8
27.5°	13008.5	13776.6	14479.2	15195.4	15763.8	16263.2	16590.9	16830.7	16906.8	16896.9	16729.6
30°	10931.1	11737.4	12512.0	13347.1	14050.5	14688.4	15121.3	15445.7	15570.6	15594.6	15433.7
32.5°	8969.3	9764.3	10536.8	11409.8	12183.9	12915.0	13426.5	13811.7	13957.0	13991.3	13814.8
35°	7188.7	7922.2	8656.3	9502.5	10272.1	11029.2	11568.1	11971.4	12107.2	12130.0	11925.8
37.5°	5644.7	6269.6	6909.3	7668.5	8375.2	9086.4	9598.3	9977.4	10076.3	10070.1	9839.0
40°	4344.7	4830.6	5344.4	5969.5	6557.1	7158.2	7590.5	7903.9	7955.8	7917.4	7674.5
42.5°	3267.0	3617.9	3990.5	4457.1	4893.0	5342.9	5657.4	5890.1	5897.5	5836.7	5618.7
45°	2433.9	2776.3	2932.5	3214.6	3495.3	3794.5	3986.6	4130.3	4108.0	4054.6	3888.9
47.5°	1855.4	1986.9	2126.5	2301.4	2465.0	2804.5	2779.3	3010.1	2843.9	2957.3	2707.7
50°	1473.4	1546.9	1622.1	1715.0	1800.4	1889.2	1944.6	1985.9	1980.6	1962.8	1915.0
52.5°	1253.5	1276.2	1313.3	1366.0	1413.8	1461.7	1493.4	1519.0	1519.6	1512.3	1488.2
55°	1047.6	1076.5	1103.1	1137.6	1196.4	1205.4	1250.7	1241.5	1245.1	1232.5	1245.4
57.5°	923.7	940.5	955.5	976.0	993.0	1012.8	1024.5	1035.8	1034.7	1032.2	1019.9
60°	835.9	845.2	853.5	865.5	874.8	885.9	891.4	897.1	895.2	891.0	880.0
62.5°	768.1	774.0	778.7	786.4	792.1	799.1	801.8	804.3	801.8	797.9	788.2
65°	701.3	705.1	708.1	713.9	717.9	723.9	726.2	728.5	726.3	723.3	715.8
67.5°	641.1	641.4	641.1	643.5	644.8	648.3	649.4	651.1	648.5	645.9	639.6
70°	595.4	594.5	593.3	594.3	594.5	596.2	596.5	596.2	593.1	588.5	581.7
72.5°	559.7	559.2	558.3	559.1	559.1	560.7	560.2	559.4	555.6	551.1	544.3
75°	513.7	513.4	511.7	511.7	510.3	510.8	508.9	507.9	503.6	499.9	493.9
77.5°	460.1	459.1	456.6	455.7	453.0	451.8	448.4	446.6	442.3	439.3	434.1
80°	400.1	399.1	395.9	394.1	389.8	387.1	381.9	378.9	374.0	371.1	366.1
82.5°	330.6	331.0	327.8	325.6	319.4	314.7	307.8	304.1	298.6	295.7	290.6
85°	235.2	231.8	233.6	233.5	229.6	225.5	219.9	216.0	211.4	208.6	205.0
87.5°	129.0	129.8	128.9	128.1	125.3	123.3	118.9	116.6	113.2	111.6	108.9
90°	52.5	51.5	47.4	46.5	42.4	40.4	35.8	34.3	30.0	29.2	26.4
92.5°	41.1	38.8	36.8	34.3	32.3	30.0	27.8	25.6	23.3	22.4	21.8
95°	51.7	48.4	45.2	42.0	38.7	35.4	32.4	29.1	25.8	25.2	24.5
97.5°	58.3	54.5	50.6	46.9	43.1	39.2	35.4	31.6	27.8	27.4	27.0
100°	102.4	93.6	84.8	76.0	67.2	58.5	49.7	40.8	32.1	31.5	31.1
102.5°	231.9	210.5	189.2	167.9	146.7	125.3	104.0	82.6	61.3	58.2	55.1
105°	411.2	378.8	346.7	314.4	282.0	249.7	217.5	185.1	152.8	142.4	132.0
107.5°	540.5	510.2	479.8	449.5	419.2	388.9	358.5	328.1	297.7	279.4	261.2
110°	599.4	575.3	551.3	527.3	503.3	479.3	455.1	431.1	407.0	391.2	375.7



TEST NUMBER: P1444731
 CATALOG NUMBER: EHBR1-24-UNV-TA-L935-UPL15

CANDELA DISTRIBUTION (continued):

	137.5°	140°	142.5°	145°	147.5°	150°	152.5°	155°	157.5°	160°	162.5°
112.5°	592.7	575.2	557.7	540.1	522.5	504.9	487.3	469.7	452.0	442.5	433.0
115°	536.8	526.2	515.8	505.2	494.7	484.1	473.6	462.9	452.3	447.4	442.4
117.5°	470.2	464.9	459.7	454.3	449.1	443.6	438.4	433.0	427.6	426.0	424.3
120°	402.5	401.1	399.5	398.1	396.4	395.0	393.4	391.9	390.3	390.6	391.0
122.5°	346.2	347.0	347.9	348.7	349.5	350.2	351.1	351.7	352.5	354.0	355.6
125°	307.0	308.8	310.5	312.3	314.0	315.9	317.6	319.2	321.1	322.6	324.2
127.5°	279.2	281.1	283.2	285.2	287.2	289.1	291.2	292.9	295.0	296.4	297.9
130°	260.4	262.0	263.8	265.6	267.4	269.1	270.7	272.5	274.3	275.4	276.7
132.5°	246.9	248.5	250.1	251.7	253.4	254.9	256.6	258.1	259.8	260.8	261.7
135°	238.8	240.1	241.4	242.4	243.9	245.1	246.3	247.7	249.1	249.8	250.6
137.5°	231.7	232.7	233.8	234.7	235.9	236.9	238.2	239.2	240.5	240.9	241.6
140°	225.5	226.6	227.7	228.7	229.9	230.9	232.2	233.5	234.6	235.2	235.7
142.5°	221.2	222.0	222.9	223.7	224.8	225.5	226.6	227.7	228.8	229.3	229.8
145°	216.3	217.3	218.2	219.2	220.2	221.4	222.6	223.8	225.0	225.3	225.8
147.5°	213.3	214.1	215.0	215.9	216.7	217.6	218.8	219.8	220.9	221.2	221.7
150°	209.5	210.4	211.2	212.1	213.1	214.2	215.2	216.3	217.6	218.1	218.5
152.5°	206.2	207.1	208.0	209.0	210.1	211.2	212.4	213.5	214.7	215.2	215.7
155°	203.6	204.5	205.5	206.6	207.5	208.6	209.7	210.9	212.0	212.6	213.1
157.5°	202.5	203.3	204.2	205.2	206.1	207.1	208.1	209.1	210.2	210.5	211.0
160°	202.3	202.9	203.8	204.6	205.6	206.4	207.4	208.2	209.2	209.5	210.0
162.5°	202.3	203.0	203.9	204.6	205.6	206.4	207.4	208.1	209.1	209.5	209.9
165°	203.1	203.7	204.4	204.9	205.6	206.2	206.9	207.5	208.3	208.6	209.2
167.5°	205.7	206.1	206.6	207.0	207.6	208.2	208.7	209.2	209.8	210.2	210.5
170°	207.0	207.4	207.7	208.2	208.7	209.2	209.5	210.0	210.6	210.9	211.4
172.5°	208.7	208.9	209.4	209.5	209.8	210.1	210.4	210.8	211.1	211.5	211.8
175°	210.7	210.8	211.0	211.1	211.2	211.4	211.5	211.8	212.0	212.2	212.4
177.5°	212.7	212.8	212.9	213.0	213.3	213.3	213.5	213.6	213.8	214.1	214.3
180°	213.6	213.6	213.6	213.6	213.6	213.6	213.6	213.6	213.6	213.6	213.6



TEST NUMBER: P1444731
 CATALOG NUMBER: EHBR1-24-UNV-TA-L935-UPL15

CANDELA DISTRIBUTION (continued):

	165°	167.5°	170°	172.5°	175°	177.5°	180°	182.5°	185°	187.5°	190°
0°	19357.9	19357.9	19357.9	19357.9	19357.9	19357.9	19357.9	19357.9	19357.9	19357.9	19357.9
2.5°	19293.7	19293.4	19292.8	19291.9	19291.0	19291.6	19292.4	19294.7	19298.5	19304.1	19311.4
5°	19225.9	19229.9	19232.0	19232.4	19230.3	19229.1	19231.0	19236.3	19247.0	19264.9	19289.1
7.5°	19154.9	19159.7	19167.2	19172.8	19173.8	19172.5	19172.8	19181.1	19200.9	19235.8	19284.8
10°	19079.0	19064.6	19072.2	19086.1	19097.2	19099.2	19100.5	19110.4	19139.2	19192.1	19270.7
12.5°	19009.0	18963.4	18954.6	18967.1	18983.9	18989.3	18987.8	18992.0	19025.8	19095.7	19205.4
15°	18916.9	18831.0	18801.7	18804.9	18825.6	18833.1	18827.6	18819.3	18852.3	18937.6	19079.6
17.5°	18767.8	18629.3	18575.4	18573.0	18597.3	18603.8	18590.4	18564.6	18597.0	18703.5	18879.7
20°	18541.2	18336.8	18235.2	18219.0	18245.4	18237.7	18211.1	18172.1	18214.7	18344.1	18553.7
22.5°	18133.7	17874.8	17701.2	17645.2	17676.8	17655.7	17617.0	17567.1	17623.7	17770.8	18004.2
25°	17468.0	17168.8	16931.1	16797.8	16822.9	16785.3	16743.1	16682.6	16750.1	16918.9	17175.9
27.5°	16489.4	16143.7	15849.3	15628.6	15636.7	15587.4	15538.7	15460.5	15544.8	15744.7	16034.5
30°	15188.2	14788.2	14429.6	14129.8	14102.9	14055.1	14005.1	13902.5	14008.0	14247.2	14585.9
32.5°	13554.0	13109.9	12695.6	12316.5	12244.9	12198.2	12153.8	12035.7	12173.8	12452.7	12841.8
35°	11642.9	11169.9	10720.7	10287.7	10169.1	10122.4	10083.5	9970.4	10142.7	10446.3	10866.5
37.5°	9545.2	9061.9	8616.0	8171.9	8004.5	7941.2	7913.0	7838.8	8037.6	8337.8	8759.8
40°	7391.7	6942.4	6542.6	6150.3	5959.5	5862.5	5847.7	5834.2	6026.5	6286.8	6669.9
42.5°	5377.2	5014.6	4706.4	4406.6	4233.6	4101.2	4101.1	4141.4	4314.4	4509.4	4804.8
45°	3719.6	3476.3	3279.8	3079.5	3133.1	2869.2	3024.2	2944.7	3030.2	3155.9	3348.0
47.5°	2556.8	2424.1	2316.1	2204.2	2122.6	2044.8	2051.6	2101.8	2182.3	2256.9	2356.9
50°	1863.5	1795.9	1740.9	1682.8	1642.2	1607.8	1609.8	1631.6	1673.9	1713.2	1765.5
52.5°	1460.2	1422.8	1393.0	1360.9	1339.6	1322.5	1323.4	1334.0	1356.9	1379.3	1409.3
55°	1203.5	1199.1	1160.2	1131.4	1120.4	1108.9	1111.0	1115.1	1130.7	1143.9	1163.7
57.5°	1008.6	991.2	979.5	964.3	957.4	949.3	951.1	952.6	963.1	971.9	986.2
60°	870.9	858.6	850.3	840.0	835.4	830.3	831.5	832.4	839.0	844.8	855.0
62.5°	779.4	768.4	761.2	753.3	750.0	746.5	747.4	747.6	751.8	756.1	763.8
65°	709.3	700.5	694.5	687.6	684.3	680.7	681.0	681.0	684.6	687.6	693.4
67.5°	635.1	628.4	624.6	619.1	616.8	613.2	613.1	612.0	614.2	615.5	619.4
70°	575.5	568.8	563.9	558.7	555.8	552.6	552.6	552.7	555.4	558.1	563.3
72.5°	538.7	532.3	527.9	523.4	520.6	517.9	517.4	517.2	519.1	520.6	523.9
75°	490.0	484.9	482.3	478.0	475.9	472.7	472.3	470.8	471.7	472.1	474.6
77.5°	430.9	426.1	424.0	419.6	417.8	414.3	414.0	412.5	413.2	412.7	414.6
80°	363.5	359.2	358.0	354.4	353.6	350.3	349.8	347.8	348.5	346.9	347.7
82.5°	288.3	284.3	283.5	280.1	280.1	277.2	277.1	274.2	274.2	271.6	267.6
85°	203.1	200.1	198.9	196.2	195.4	193.0	191.9	189.1	188.1	186.3	185.7
87.5°	107.2	105.3	103.7	102.4	100.0	95.8	95.4	92.4	92.7	90.6	90.7
90°	25.8	23.3	22.8	20.5	19.8	18.1	17.7	17.7	18.2	18.3	18.9
92.5°	21.0	20.3	19.6	18.9	18.0	17.3	16.6	17.3	18.0	18.9	19.6
95°	23.8	23.2	22.5	21.8	21.2	20.5	19.8	20.5	21.2	21.9	22.6
97.5°	26.6	26.1	25.7	25.3	24.8	24.5	24.0	24.6	24.9	25.4	25.8
100°	30.5	30.1	29.5	29.1	28.5	28.1	27.6	28.3	28.7	29.3	29.7
102.5°	52.1	49.0	46.0	42.9	39.8	36.7	33.6	36.7	39.8	43.0	46.0
105°	121.6	111.3	100.9	90.5	80.1	69.7	59.3	69.8	80.2	90.5	101.1
107.5°	242.9	224.8	206.5	188.2	169.8	151.6	133.3	151.6	169.9	188.2	206.6
110°	359.8	344.1	328.3	312.6	296.7	281.1	265.2	281.1	296.9	312.8	328.5



TEST NUMBER: P1444731
 CATALOG NUMBER: EHBR1-24-UNV-TA-L935-UPL15

CANDELA DISTRIBUTION (continued):

	165°	167.5°	170°	172.5°	175°	177.5°	180°	182.5°	185°	187.5°	190°
112.5°	423.4	413.9	404.3	394.9	385.2	375.7	366.0	375.9	385.5	395.3	404.8
115°	437.5	432.4	427.6	422.5	417.5	412.5	407.3	412.7	417.8	423.0	428.1
117.5°	422.6	421.0	419.3	417.5	415.8	414.1	412.3	414.3	416.2	418.2	420.0
120°	391.3	391.6	391.9	392.2	392.4	392.6	392.8	393.0	393.0	393.0	392.9
122.5°	357.0	358.5	359.9	361.4	362.7	364.1	365.3	364.3	363.3	362.3	361.0
125°	325.6	327.3	328.7	330.3	331.6	333.2	334.3	333.5	332.4	331.4	330.1
127.5°	299.4	300.7	302.2	303.6	304.9	306.2	307.2	306.5	305.6	304.7	303.7
130°	277.8	279.1	280.1	281.3	282.2	283.2	284.0	283.6	283.0	282.6	281.8
132.5°	262.7	263.7	264.6	265.6	266.3	267.0	267.5	267.5	267.2	266.9	266.4
135°	251.4	252.1	252.7	253.5	254.0	254.6	254.9	255.0	255.0	254.9	254.6
137.5°	242.1	242.6	243.2	243.5	243.9	244.1	244.3	244.6	244.8	245.2	245.1
140°	236.3	236.9	237.4	237.8	238.3	238.5	238.6	239.1	239.3	239.4	239.4
142.5°	230.4	230.9	231.4	231.9	232.2	232.6	232.7	233.0	233.2	233.3	233.4
145°	226.3	226.7	227.0	227.4	227.7	227.9	227.8	228.4	228.7	228.8	229.0
147.5°	222.1	222.6	222.9	223.1	223.3	223.6	223.6	224.0	224.2	224.5	224.8
150°	219.1	219.6	220.1	220.5	220.8	221.1	221.1	221.5	221.7	221.9	221.9
152.5°	216.2	216.5	217.1	217.3	217.7	217.9	218.1	218.3	218.7	218.9	219.0
155°	213.5	214.1	214.4	214.9	215.2	215.5	215.8	216.1	216.3	216.4	216.6
157.5°	211.4	211.9	212.3	212.7	213.0	213.4	213.7	214.1	214.3	214.6	214.7
160°	210.4	210.9	211.2	211.6	212.0	212.4	212.6	213.0	213.3	213.4	213.7
162.5°	210.3	210.7	210.9	211.4	211.7	212.1	212.4	212.7	213.0	213.3	213.4
165°	209.5	210.0	210.4	210.8	211.3	211.6	212.0	212.3	212.4	212.5	212.7
167.5°	210.9	211.4	211.6	212.1	212.4	212.8	213.2	213.3	213.5	213.6	213.7
170°	211.6	212.0	212.3	212.6	213.0	213.3	213.6	213.7	213.8	214.0	214.1
172.5°	212.1	212.5	212.9	213.3	213.5	214.0	214.3	214.4	214.3	214.4	214.3
175°	212.7	213.1	213.3	213.6	213.8	214.2	214.5	214.3	214.4	214.3	214.3
177.5°	214.6	215.1	215.3	215.6	215.9	216.1	216.4	216.2	216.1	215.9	215.6
180°	213.6	213.6	213.6	213.6	213.6	213.6	213.6	213.6	213.6	213.6	213.6



TEST NUMBER: P1444731
 CATALOG NUMBER: EHBR1-24-UNV-TA-L935-UPL15

CANDELA DISTRIBUTION (continued):

	192.5°	195°	197.5°	200°	202.5°	205°	207.5°	210°	212.5°	215°	217.5°
0°	19357.9	19357.9	19357.9	19357.9	19357.9	19357.9	19357.9	19357.9	19357.9	19357.9	19357.9
2.5°	19321.8	19331.5	19346.2	19359.6	19379.8	19395.7	19419.6	19437.8	19464.7	19482.3	19511.5
5°	19323.5	19361.3	19411.0	19459.5	19517.8	19570.7	19636.5	19692.6	19758.7	19812.7	19880.3
7.5°	19350.8	19423.7	19511.1	19599.1	19698.7	19791.8	19896.7	19991.7	20095.6	20183.4	20279.5
10°	19371.0	19483.4	19612.1	19741.8	19878.2	20004.8	20132.7	20243.3	20346.6	20431.6	20506.7
12.5°	19343.6	19498.5	19663.7	19823.3	19974.9	20106.1	20216.1	20301.1	20359.9	20399.7	20409.0
15°	19250.7	19437.1	19616.8	19775.6	19901.5	19998.6	20048.8	20072.3	20047.1	20005.1	19913.0
17.5°	19077.1	19273.7	19434.4	19559.8	19626.2	19652.6	19611.0	19538.6	19397.1	19240.0	19013.2
20°	18759.0	18942.2	19058.7	19127.1	19109.2	19043.4	18886.4	18695.4	18412.9	18111.9	17714.7
22.5°	18200.9	18361.0	18423.1	18428.2	18319.6	18155.0	17871.5	17544.0	17098.4	16635.1	16065.4
25°	17363.2	17503.4	17513.3	17458.2	17259.5	16992.6	16576.4	16113.1	15507.6	14890.3	14176.3
27.5°	16227.0	16361.6	16328.6	16225.8	15950.0	15592.8	15060.1	14461.5	13715.0	12986.0	12196.2
30°	14798.9	14942.7	14904.0	14772.2	14444.2	14022.0	13395.1	12699.6	11870.8	11092.1	10291.8
32.5°	13089.7	13271.6	13244.9	13119.6	12777.3	12325.4	11645.2	10907.6	10059.7	9292.3	8513.9
35°	11147.1	11367.9	11379.3	11297.4	10979.6	10533.1	9861.4	9147.4	8335.2	7611.2	6892.0
37.5°	9054.1	9310.1	9362.7	9340.6	9077.2	8683.0	8071.0	7430.5	6711.0	6076.5	5461.4
40°	6949.6	7208.7	7298.6	7325.3	7130.9	6825.6	6323.4	5806.4	5219.8	4705.6	4217.2
42.5°	5030.3	5260.1	5346.9	5401.5	5280.3	5076.6	4710.3	4334.9	3905.1	3534.2	3178.7
45°	3493.6	3656.1	3722.2	3777.2	3711.1	3596.3	3364.9	3130.1	2846.5	2604.2	2374.7
47.5°	2442.6	2532.2	2575.9	2602.5	2577.0	2517.1	2391.1	2255.1	2095.0	1953.3	1817.2
50°	1810.5	1858.2	1881.0	1896.4	1877.8	1844.5	1776.3	1702.3	1614.4	1534.1	1455.7
52.5°	1434.8	1462.1	1475.7	1484.0	1473.3	1452.9	1413.2	1369.4	1316.6	1267.0	1241.0
55°	1208.7	1207.3	1238.7	1223.5	1238.7	1204.9	1197.7	1149.5	1105.7	1074.8	1041.5
57.5°	996.8	1011.0	1017.0	1023.8	1019.3	1013.2	996.3	979.1	956.0	936.7	916.1
60°	862.8	874.5	881.1	887.8	887.4	885.1	875.3	865.0	850.6	839.0	826.6
62.5°	770.6	780.7	787.2	793.6	794.2	793.2	785.9	778.7	768.8	761.6	753.0
65°	698.0	705.1	709.6	714.6	714.4	713.0	706.3	700.3	692.3	687.2	680.9
67.5°	622.0	627.4	630.8	635.6	636.6	636.9	633.2	630.4	626.5	625.0	622.8
70°	568.0	574.5	580.1	586.1	589.5	591.0	589.5	588.0	585.7	584.7	583.0
72.5°	527.1	532.6	536.9	542.4	545.5	547.8	546.5	545.8	543.7	543.4	542.3
75°	476.3	480.1	482.5	486.7	488.3	490.4	489.5	490.0	489.3	491.0	490.9
77.5°	415.3	418.1	419.2	422.2	422.5	425.0	425.6	428.5	430.6	435.2	437.7
80°	346.5	348.3	348.3	351.4	352.7	357.0	359.0	363.8	366.1	370.1	370.5
82.5°	269.2	267.1	269.2	267.9	271.8	276.6	277.2	281.3	282.2	284.9	282.8
85°	184.0	183.9	182.3	182.5	181.3	181.9	181.2	181.9	181.3	181.3	179.5
87.5°	88.2	89.0	87.0	87.6	85.8	86.6	85.0	86.3	84.4	84.7	81.8
90°	19.1	19.6	19.8	20.4	21.1	22.5	23.8	25.2	26.8	28.2	29.6
92.5°	20.3	21.1	21.9	22.7	23.4	25.6	27.9	30.1	32.4	34.6	36.9
95°	23.3	23.9	24.6	25.5	26.1	29.4	32.6	35.8	39.1	42.3	45.6
97.5°	26.3	26.7	27.2	27.6	28.1	31.9	35.7	39.6	43.4	47.2	50.9
100°	30.4	30.8	31.4	31.8	32.4	41.1	50.0	58.8	67.6	76.5	85.3
102.5°	49.2	52.3	55.4	58.5	61.6	83.0	104.4	125.8	147.1	168.5	189.8
105°	111.5	121.9	132.3	142.7	153.2	185.5	218.0	250.3	282.6	314.9	347.3
107.5°	225.0	243.3	261.7	280.0	298.3	328.7	359.1	389.5	420.0	450.4	480.6
110°	344.5	360.2	376.1	391.9	407.8	431.9	456.1	480.2	504.3	528.4	552.4



TEST NUMBER: P1444731
 CATALOG NUMBER: EHBR1-24-UNV-TA-L935-UPL15

CANDELA DISTRIBUTION (continued):

	192.5°	195°	197.5°	200°	202.5°	205°	207.5°	210°	212.5°	215°	217.5°
112.5°	414.6	424.1	433.8	443.2	452.9	470.7	488.4	506.1	523.8	541.4	559.0
115°	433.2	438.2	443.4	448.4	453.5	464.1	474.8	485.5	496.2	506.7	517.4
117.5°	421.9	423.7	425.5	427.2	429.0	434.4	439.8	445.3	450.8	456.2	461.6
120°	392.8	392.6	392.4	392.2	392.0	393.5	395.3	396.9	398.5	400.1	401.7
122.5°	359.9	358.5	357.3	355.9	354.6	353.8	353.2	352.5	351.8	351.2	350.5
125°	328.9	327.5	326.2	324.7	323.3	321.7	320.0	318.4	316.8	315.0	313.3
127.5°	302.6	301.4	300.3	298.9	297.6	295.6	293.9	291.9	290.1	288.2	286.3
130°	281.1	280.1	279.3	278.1	277.2	275.4	273.9	272.3	270.5	268.9	267.2
132.5°	265.9	265.2	264.6	263.7	263.0	261.4	260.0	258.4	256.9	255.3	254.0
135°	254.4	254.0	253.6	253.0	252.5	251.2	250.1	248.9	247.7	246.5	245.3
137.5°	245.1	244.8	244.6	244.3	244.1	243.0	242.1	241.0	240.1	239.0	238.1
140°	239.4	239.2	239.0	238.7	238.5	237.5	236.4	235.4	234.4	233.2	232.3
142.5°	233.3	233.2	233.0	232.7	232.6	231.7	231.0	230.1	229.3	228.4	227.8
145°	229.0	229.0	229.0	228.8	228.9	227.9	227.0	226.0	225.2	224.2	223.3
147.5°	224.9	224.9	225.0	224.9	225.0	224.1	223.5	222.7	222.0	221.1	220.5
150°	221.9	221.9	221.9	221.8	221.7	221.0	220.2	219.5	218.8	218.0	217.2
152.5°	219.0	219.1	219.2	219.2	219.2	218.6	217.8	217.0	216.3	215.4	214.7
155°	216.8	216.8	216.9	216.9	216.9	216.3	215.5	214.8	214.1	213.4	212.7
157.5°	214.9	215.0	215.2	215.3	215.3	214.8	214.2	213.6	213.0	212.4	211.7
160°	213.9	214.1	214.3	214.3	214.4	213.9	213.6	212.9	212.6	211.9	211.4
162.5°	213.7	213.9	214.1	214.2	214.3	213.7	213.4	212.9	212.4	211.7	211.3
165°	213.0	213.0	213.1	213.1	213.1	212.7	212.5	212.2	211.8	211.4	211.1
167.5°	214.0	214.0	214.1	214.1	214.1	213.8	213.8	213.5	213.3	213.0	212.7
170°	214.3	214.3	214.3	214.3	214.3	214.1	213.9	213.7	213.6	213.2	212.9
172.5°	214.3	214.3	214.3	214.3	214.2	214.0	213.8	213.6	213.5	213.4	213.3
175°	214.3	214.2	214.1	214.0	213.9	213.9	213.8	213.8	213.7	213.7	213.6
177.5°	215.5	215.3	215.1	215.0	214.8	214.7	214.7	214.6	214.6	214.5	214.4
180°	213.6	213.6	213.6	213.6	213.6	213.6	213.6	213.6	213.6	213.6	213.6



TEST NUMBER: P1444731
 CATALOG NUMBER: EHBR1-24-UNV-TA-L935-UPL15

CANDELA DISTRIBUTION (continued):

	220°	222.5°	225°	227.5°	230°	232.5°	235°	237.5°	240°	242.5°	245°
0°	19357.9	19357.9	19357.9	19357.9	19357.9	19357.9	19357.9	19357.9	19357.9	19357.9	19357.9
2.5°	19529.8	19409.1	19393.2	19401.7	19421.8	19429.2	19451.0	19457.0	19478.8	19484.3	19505.3
5°	19932.7	19773.3	19781.3	19819.6	19877.6	19912.2	19969.2	19999.1	20053.5	20078.3	20127.5
7.5°	20357.6	20232.4	20271.5	20336.1	20415.4	20470.4	20539.0	20583.5	20642.6	20679.3	20726.6
10°	20566.2	20532.0	20574.9	20625.8	20671.1	20706.5	20735.5	20758.8	20774.1	20788.3	20794.5
12.5°	20407.5	20460.6	20467.9	20462.9	20433.0	20410.1	20358.6	20323.7	20261.6	20223.8	20150.1
15°	19818.9	19935.6	19871.0	19773.1	19629.9	19510.5	19342.0	19216.4	19040.9	18921.8	18745.6
17.5°	18785.9	18933.3	18764.9	18538.4	18250.4	18004.0	17697.2	17453.5	17148.5	16926.5	16641.8
20°	17331.8	17469.5	17169.1	16793.7	16348.2	15973.1	15530.9	15178.1	14767.2	14461.5	14092.6
22.5°	15521.2	15619.3	15196.1	14690.1	14122.4	13653.9	13125.2	12702.2	12233.2	11883.8	11490.3
25°	13518.2	13544.6	13037.0	12454.0	11821.3	11294.9	10730.3	10285.6	9807.3	9453.1	9067.1
27.5°	11496.5	11457.6	10908.9	10290.8	9625.3	9078.1	8527.5	8110.7	7691.8	7372.8	7040.2
30°	9588.2	9494.3	8924.5	8289.2	7643.2	7152.7	6695.6	6360.9	6027.7	5774.6	5507.6
32.5°	7838.4	7705.8	7151.2	6556.0	6011.6	5633.1	5294.1	5040.9	4771.8	4558.0	4334.0
35°	6288.5	6147.2	5655.9	5151.3	4739.3	4460.2	4193.9	3986.1	3757.6	3577.2	3382.7
37.5°	4958.3	4842.5	4431.0	4033.9	3722.2	3506.0	3287.7	3118.0	2929.1	2849.8	2641.9
40°	3827.8	3746.9	3425.1	3132.4	2898.3	2796.8	2575.2	2416.5	2275.4	2159.1	2046.4
42.5°	2985.7	2957.1	2643.9	2415.6	2250.9	2122.9	1999.4	1899.2	1801.6	1721.4	1645.6
45°	2191.1	2168.4	2029.4	1897.6	1785.3	1695.8	1612.5	1543.5	1479.7	1426.8	1378.7
47.5°	1706.2	1698.9	1618.9	1537.1	1466.4	1409.0	1354.8	1309.0	1266.7	1231.4	1219.9
50°	1387.7	1386.8	1339.8	1289.3	1239.0	1205.8	1171.2	1144.1	1117.0	1095.8	1073.5
52.5°	1179.1	1174.0	1142.2	1111.2	1081.3	1059.4	1037.3	1020.1	1002.0	989.0	975.0
55°	1015.1	1020.4	1002.1	983.5	964.8	951.2	935.8	924.4	911.9	903.7	895.4
57.5°	901.2	908.2	898.6	888.1	876.7	867.8	857.1	849.2	841.0	835.7	830.8
60°	818.3	826.0	822.1	816.9	809.8	804.5	797.8	793.3	788.1	785.1	782.3
62.5°	748.0	757.7	756.3	753.8	749.3	746.4	742.6	740.7	737.1	735.8	734.6
65°	677.8	688.7	688.5	687.3	684.8	683.9	681.7	681.2	679.4	680.1	680.0
67.5°	622.6	632.2	634.2	635.7	635.6	636.2	636.0	637.0	637.0	638.3	639.1
70°	582.9	589.5	591.0	592.6	593.0	594.3	594.3	595.1	594.9	596.0	596.2
72.5°	542.6	551.2	552.9	554.1	554.1	555.4	554.7	554.5	552.8	552.4	551.2
75°	492.5	503.6	506.1	507.6	507.9	508.9	507.5	506.5	503.6	502.5	500.5
77.5°	440.2	451.8	453.5	454.1	453.2	453.3	450.2	448.0	444.4	442.8	440.9
80°	372.1	389.2	390.5	389.4	386.7	386.4	383.3	381.2	376.9	375.4	373.7
82.5°	283.1	303.1	305.9	307.2	305.0	305.5	302.5	301.4	297.4	296.6	294.0
85°	178.8	198.8	202.0	201.6	199.4	198.8	197.1	197.8	197.4	198.4	199.0
87.5°	82.1	101.4	106.1	104.6	104.4	103.0	100.0	101.1	103.0	104.1	104.2
90°	31.1	38.2	39.6	38.9	36.3	35.3	32.9	32.4	30.3	29.5	27.6
92.5°	39.1	41.3	43.6	41.6	39.6	37.6	35.6	33.5	31.6	29.5	27.6
95°	48.8	51.8	55.1	52.5	49.7	47.0	44.4	41.7	39.1	36.4	33.7
97.5°	54.8	58.5	62.3	59.6	56.9	54.2	51.5	48.9	46.1	43.4	40.7
100°	94.1	102.6	111.4	103.8	96.2	88.5	81.0	73.3	65.8	58.2	50.6
102.5°	211.1	232.3	253.5	234.3	215.1	195.9	176.7	157.5	138.4	119.0	99.9
105°	379.5	411.7	443.8	414.5	385.1	355.8	326.5	297.2	267.9	238.5	209.3
107.5°	511.1	541.0	571.2	544.6	518.1	491.6	465.0	438.6	412.0	385.5	359.0
110°	576.6	600.0	623.9	606.0	588.2	570.3	552.4	534.6	516.8	499.0	481.4



TEST NUMBER: P1444731
 CATALOG NUMBER: EHBR1-24-UNV-TA-L935-UPL15

CANDELA DISTRIBUTION (continued):

	220°	222.5°	225°	227.5°	230°	232.5°	235°	237.5°	240°	242.5°	245°
112.5°	576.6	593.4	610.8	600.2	589.7	579.2	568.8	558.2	547.9	537.4	527.0
115°	527.8	537.5	547.8	543.4	539.3	535.0	530.7	526.6	522.3	518.1	514.1
117.5°	466.9	471.1	476.1	475.1	474.3	473.2	472.4	471.4	470.7	469.8	469.0
120°	403.3	403.5	404.7	404.9	405.3	405.7	406.0	406.4	406.8	407.2	407.7
122.5°	349.7	347.5	346.3	346.5	346.8	347.0	347.3	347.6	347.9	348.3	348.7
125°	311.7	308.4	306.2	305.2	304.3	303.3	302.4	301.4	300.5	299.6	298.8
127.5°	284.4	280.8	278.4	276.5	274.5	272.7	270.7	268.7	266.9	265.0	263.3
130°	265.6	262.1	259.9	257.6	255.2	252.9	250.5	248.2	245.7	243.4	241.1
132.5°	252.3	248.9	246.9	244.6	242.4	240.1	237.9	235.6	233.3	230.9	228.8
135°	244.2	240.8	239.2	237.0	235.2	233.0	230.9	228.8	226.8	224.6	222.7
137.5°	237.0	233.8	232.3	230.6	229.0	227.3	225.7	224.0	222.3	220.4	218.9
140°	231.2	227.8	226.3	225.2	224.4	223.1	222.2	221.1	220.1	219.1	218.0
142.5°	226.9	223.6	222.2	221.5	220.9	220.2	219.6	218.9	218.2	217.3	216.6
145°	222.5	218.8	217.3	217.1	217.1	216.8	216.6	216.4	216.3	215.9	215.7
147.5°	219.7	215.9	214.5	214.5	214.6	214.4	214.6	214.5	214.6	214.4	214.5
150°	216.4	212.2	210.5	210.7	210.8	211.0	211.3	211.3	211.5	211.7	211.8
152.5°	213.9	208.7	206.9	207.1	207.4	207.5	207.8	208.0	208.4	208.7	208.9
155°	211.8	206.3	204.3	204.3	204.4	204.5	204.6	204.6	204.8	205.0	205.3
157.5°	211.0	205.2	203.3	203.1	203.1	203.1	203.2	203.2	203.3	203.4	203.6
160°	210.8	205.1	203.1	202.9	202.9	202.9	202.8	202.7	202.8	202.9	203.1
162.5°	210.6	205.0	203.1	202.9	202.8	202.7	202.7	202.6	202.7	202.7	202.8
165°	210.6	205.7	204.0	203.9	203.9	203.9	203.9	203.9	204.0	204.1	204.3
167.5°	212.4	207.9	206.6	206.4	206.2	205.9	205.9	205.6	205.6	205.6	205.6
170°	212.6	209.2	207.9	207.9	208.0	207.9	207.8	207.9	207.9	207.8	207.9
172.5°	213.0	210.4	209.5	209.7	209.9	210.0	210.2	210.2	210.4	210.5	210.7
175°	213.5	212.0	211.6	211.5	211.6	211.7	211.8	211.8	211.9	212.0	212.3
177.5°	214.4	214.0	213.7	213.7	213.7	213.7	213.7	213.7	213.7	213.8	213.8
180°	213.6	213.6	213.6	213.6	213.6	213.6	213.6	213.6	213.6	213.6	213.6



TEST NUMBER: P1444731
 CATALOG NUMBER: EHBR1-24-UNV-TA-L935-UPL15

CANDELA DISTRIBUTION (continued):

	247.5°	250°	252.5°	255°	257.5°	260°	262.5°	265°	267.5°	270°	272.5°
0°	19357.9	19357.9	19357.9	19357.9	19357.9	19357.9	19357.9	19357.9	19357.9	19357.9	19357.9
2.5°	19509.2	19531.9	19530.2	19551.4	19550.4	19570.4	19566.4	19583.7	19579.7	19594.5	19585.9
5°	20149.1	20192.4	20206.7	20245.8	20253.8	20288.7	20289.4	20317.3	20313.9	20335.6	20324.1
7.5°	20754.5	20794.9	20814.0	20844.4	20859.5	20884.6	20894.5	20915.2	20920.1	20932.3	20931.9
10°	20805.6	20805.4	20814.9	20810.7	20819.2	20814.3	20824.6	20820.9	20836.1	20832.2	20843.8
12.5°	20118.1	20049.9	20025.1	19963.8	19950.4	19897.7	19901.5	19867.8	19884.0	19863.3	19898.6
15°	18640.7	18482.5	18404.3	18266.7	18223.5	18114.7	18105.9	18033.7	18053.2	18015.4	18070.7
17.5°	16457.6	16208.4	16071.7	15870.7	15791.0	15637.1	15606.3	15513.3	15527.7	15480.8	15547.5
20°	13854.6	13553.5	13381.0	13148.7	13045.0	12861.6	12813.0	12708.9	12722.0	12675.4	12750.9
22.5°	11221.9	10906.8	10712.1	10468.5	10336.1	10163.7	10111.9	10007.4	10013.3	9969.6	10042.2
25°	8802.6	8500.5	8311.5	8090.2	7975.3	7817.3	7762.9	7669.0	7674.3	7638.3	7703.3
27.5°	6809.4	6561.6	6403.4	6218.0	6115.0	5985.0	5932.0	5853.1	5852.8	5826.3	5880.8
30°	5321.2	5114.3	4972.3	4810.9	4714.2	4596.8	4545.6	4475.0	4471.9	4453.2	4496.4
32.5°	4166.4	3982.4	3852.9	3710.8	3624.0	3523.3	3474.8	3418.0	3412.9	3395.8	3431.4
35°	3238.9	3083.9	2972.5	2852.9	2861.6	2713.2	2737.8	2622.5	2591.2	2584.4	2610.8
37.5°	2503.3	2383.2	2292.7	2203.1	2142.5	2079.7	2045.9	2015.5	2012.1	2009.2	2027.6
40°	1959.4	1875.4	1809.6	1748.1	1706.3	1668.0	1646.9	1630.2	1626.2	1624.1	1635.2
42.5°	1585.8	1529.2	1486.7	1449.2	1423.8	1403.0	1391.4	1382.2	1379.1	1379.1	1385.7
45°	1339.8	1305.4	1278.1	1254.8	1238.6	1245.7	1224.7	1235.7	1221.2	1236.2	1226.3
47.5°	1179.9	1150.6	1133.6	1117.1	1107.4	1099.5	1099.7	1099.9	1103.0	1103.5	1106.7
50°	1056.5	1039.6	1027.8	1017.3	1012.2	1008.0	1009.4	1010.5	1013.5	1013.7	1016.1
52.5°	965.1	954.0	946.9	940.4	938.1	935.8	936.8	936.3	937.7	937.0	938.9
55°	890.8	885.6	883.4	881.0	881.3	880.7	881.0	878.7	877.2	875.5	877.1
57.5°	829.8	829.1	830.7	831.6	834.5	835.5	836.1	833.4	830.7	828.4	829.7
60°	782.9	784.0	787.7	790.8	794.8	796.7	797.8	796.2	794.3	792.4	793.6
62.5°	736.5	738.3	742.7	746.1	751.0	753.5	756.3	756.4	757.1	756.4	757.2
65°	682.7	684.9	688.9	691.7	696.2	698.5	701.3	701.9	703.4	703.0	704.4
67.5°	641.8	643.9	647.2	649.8	653.8	656.2	658.6	658.8	659.4	659.3	660.5
70°	598.2	599.2	602.2	604.4	608.4	610.8	613.7	614.6	616.3	616.7	618.0
72.5°	551.7	551.2	553.0	554.0	557.1	558.9	562.6	564.6	567.6	568.4	569.5
75°	501.0	500.7	502.7	503.6	506.2	508.1	512.2	514.8	519.5	521.4	521.0
77.5°	442.5	443.5	447.5	449.7	453.2	455.5	460.8	465.0	473.6	477.3	473.5
80°	376.9	377.9	382.1	384.2	388.7	391.5	397.5	402.5	410.1	411.8	409.7
82.5°	296.3	296.6	300.4	301.9	307.8	312.0	319.6	323.5	328.2	327.5	326.9
85°	202.0	204.7	209.5	214.1	221.2	228.1	235.3	241.1	237.0	243.5	236.2
87.5°	107.9	107.7	114.0	113.0	123.1	128.9	135.0	137.9	141.3	140.6	140.7
90°	27.1	25.6	25.7	24.1	24.7	22.9	24.1	22.5	23.9	21.9	25.1
92.5°	25.6	24.6	23.4	22.4	21.2	20.3	19.1	18.0	16.9	15.9	16.9
95°	31.1	30.1	29.1	28.0	27.0	26.0	25.0	24.0	23.0	22.0	23.3
97.5°	38.1	37.5	36.9	36.3	35.7	35.2	34.5	34.0	33.4	32.8	33.6
100°	43.0	43.0	43.0	43.0	42.9	42.9	42.9	42.9	42.9	42.9	43.5
102.5°	80.7	78.8	76.9	75.0	73.1	71.1	69.2	67.2	65.3	63.4	66.3
105°	180.0	172.5	165.0	157.4	149.9	142.5	135.0	127.4	120.0	112.5	120.2
107.5°	332.6	318.8	305.2	291.5	277.8	264.1	250.5	236.8	223.2	209.5	221.8
110°	463.5	449.0	434.4	419.9	405.3	390.8	376.3	361.8	347.3	332.8	344.5



TEST NUMBER: P1444731
 CATALOG NUMBER: EHBR1-24-UNV-TA-L935-UPL15

CANDELA DISTRIBUTION (continued):

	247.5°	250°	252.5°	255°	257.5°	260°	262.5°	265°	267.5°	270°	272.5°
112.5°	516.6	507.1	497.7	488.2	478.8	469.6	460.2	450.9	441.6	432.2	437.8
115°	509.9	505.4	500.8	496.4	491.9	487.3	482.8	478.5	474.0	469.6	469.9
117.5°	468.2	466.6	465.0	463.4	462.0	460.4	459.0	457.5	456.2	454.7	451.5
120°	408.2	408.5	408.8	409.2	409.7	410.2	410.5	411.0	411.7	412.2	407.9
122.5°	349.0	350.0	350.9	351.9	353.0	354.1	355.2	356.4	357.6	358.9	354.6
125°	297.9	298.8	299.7	300.6	301.5	302.7	303.8	305.0	306.2	307.5	304.0
127.5°	261.4	261.6	261.7	261.9	262.2	262.6	263.1	263.6	264.2	264.8	262.6
130°	238.8	238.2	237.5	237.1	236.5	236.1	235.8	235.6	235.3	235.2	234.3
132.5°	226.5	225.4	224.1	223.0	222.0	221.1	220.1	219.5	218.7	218.2	217.9
135°	220.4	219.0	217.4	216.1	214.6	213.4	212.2	211.2	210.1	209.2	209.5
137.5°	217.2	215.7	214.1	212.7	211.4	210.1	208.8	207.7	206.7	205.8	206.3
140°	216.9	215.3	213.9	212.5	211.3	210.0	208.8	207.8	206.6	205.9	206.2
142.5°	215.9	214.7	213.3	212.1	210.8	209.6	208.6	207.7	206.6	205.9	206.3
145°	215.5	214.5	213.4	212.5	211.7	210.9	210.0	209.5	208.7	208.3	208.5
147.5°	214.4	213.7	212.9	212.3	211.4	210.9	210.4	209.9	209.5	209.0	209.1
150°	212.0	211.5	211.1	210.6	210.2	209.9	209.5	209.2	208.9	208.6	208.6
152.5°	209.2	208.8	208.4	208.0	207.6	207.4	207.0	206.8	206.6	206.4	206.4
155°	205.5	205.3	205.1	205.0	204.8	204.9	204.7	204.8	204.7	204.7	204.8
157.5°	203.7	203.7	203.7	203.7	203.7	203.9	203.8	204.1	204.0	204.3	204.4
160°	203.4	203.3	203.2	203.3	203.3	203.2	203.3	203.4	203.5	203.5	203.7
162.5°	202.9	203.1	203.2	203.4	203.6	203.7	203.9	204.2	204.4	204.6	204.8
165°	204.5	204.5	204.5	204.5	204.6	204.6	204.6	204.8	204.9	205.1	205.4
167.5°	205.5	205.6	205.6	205.8	205.9	206.1	206.3	206.6	206.8	207.2	207.5
170°	207.9	207.9	207.9	207.9	207.9	208.0	208.1	208.2	208.3	208.5	208.6
172.5°	210.8	210.8	210.7	210.8	210.7	210.8	210.8	210.9	210.9	211.0	211.1
175°	212.2	212.4	212.5	212.6	212.7	212.8	212.9	213.0	213.1	213.2	213.2
177.5°	213.8	213.9	213.9	213.9	213.9	214.0	214.0	214.0	214.0	213.9	214.0
180°	213.6	213.6	213.6	213.6	213.6	213.6	213.6	213.6	213.6	213.6	213.6



TEST NUMBER: P1444731
 CATALOG NUMBER: EHBR1-24-UNV-TA-L935-UPL15

CANDELA DISTRIBUTION (continued):

	275°	277.5°	280°	282.5°	285°	287.5°	290°	292.5°	295°	297.5°	300°
0°	19357.9	19357.9	19357.9	19357.9	19357.9	19357.9	19357.9	19357.9	19357.9	19357.9	19357.9
2.5°	19600.3	19590.4	19600.5	19590.3	19600.5	19588.3	19596.6	19583.3	19586.7	19573.0	19576.5
5°	20341.4	20325.7	20334.0	20313.7	20315.9	20288.7	20288.3	20256.7	20248.4	20212.4	20196.6
7.5°	20940.6	20935.6	20938.4	20925.3	20923.9	20905.3	20896.5	20870.4	20854.0	20820.9	20798.3
10°	20845.8	20861.1	20865.0	20880.6	20883.8	20899.2	20902.5	20917.9	20921.1	20932.5	20932.7
12.5°	19897.0	19948.8	19961.3	20025.3	20052.3	20125.6	20164.9	20245.8	20293.7	20374.3	20423.8
15°	18069.1	18158.8	18194.6	18319.8	18389.1	18535.1	18626.9	18794.5	18912.9	19091.1	19218.2
17.5°	15553.4	15678.9	15735.5	15905.2	16015.8	16231.4	16386.8	16642.6	16838.4	17122.6	17347.9
20°	12763.7	12903.1	12980.0	13173.6	13304.2	13556.1	13750.1	14064.3	14326.4	14686.6	14994.6
22.5°	10065.0	10197.6	10282.8	10479.8	10626.9	10889.6	11106.4	11438.1	11731.8	12137.7	12506.9
25°	7728.0	7849.5	7926.7	8104.8	8242.9	8484.3	8691.3	9010.4	9297.7	9704.8	10083.5
27.5°	5907.9	6009.8	6084.1	6235.9	6357.8	6562.5	6740.4	7004.0	7251.6	7603.8	7941.0
30°	4523.0	4613.3	4685.6	4817.9	4930.8	5108.3	5264.7	5486.2	5691.0	5971.3	6239.5
32.5°	3456.4	3534.0	3598.5	3714.2	3816.7	3976.5	4117.5	4311.6	4487.4	4725.1	4945.8
35°	2635.3	2788.2	2777.4	2937.1	2962.8	3077.4	3203.1	3372.9	3528.7	3730.7	3918.6
37.5°	2045.5	2088.5	2134.5	2205.1	2279.2	2383.6	2489.9	2697.2	2773.3	2926.0	3081.5
40°	1649.4	1678.5	1708.9	1756.6	1808.6	1882.1	1959.4	2058.4	2159.8	2283.6	2410.0
42.5°	1394.5	1410.9	1430.3	1458.3	1490.3	1537.0	1588.7	1655.8	1726.3	1813.5	1902.4
45°	1245.8	1238.0	1243.8	1258.9	1278.2	1306.5	1339.2	1380.7	1426.6	1483.0	1543.2
47.5°	1107.4	1110.5	1112.2	1120.4	1130.7	1149.8	1169.5	1197.7	1252.2	1268.8	1301.6
50°	1015.9	1017.4	1016.9	1021.1	1026.2	1038.7	1051.4	1070.6	1089.6	1114.9	1139.0
52.5°	939.2	941.3	941.0	943.8	946.6	954.4	962.5	976.0	988.4	1004.6	1018.4
55°	878.6	881.6	882.8	885.0	886.4	890.5	893.7	900.2	905.4	914.6	923.0
57.5°	832.1	836.1	838.0	838.7	837.1	836.9	835.8	837.2	838.3	843.2	847.9
60°	795.4	798.7	799.1	798.7	795.7	793.5	790.0	789.0	788.4	790.8	793.3
62.5°	757.1	758.1	757.4	756.4	753.0	750.9	747.4	746.1	744.8	746.5	747.8
65°	703.9	704.9	703.9	703.4	700.3	698.6	695.6	694.6	692.9	693.3	693.1
67.5°	660.8	661.8	661.1	660.3	658.1	657.1	654.8	653.5	651.4	650.6	649.1
70°	617.8	618.7	617.4	616.7	614.2	613.2	611.1	610.8	609.1	608.8	607.1
72.5°	568.4	568.4	566.7	566.3	564.5	564.4	563.6	564.4	564.3	565.1	564.7
75°	517.9	517.2	515.0	514.6	513.3	513.9	513.0	514.2	514.3	516.2	516.4
77.5°	467.2	464.5	460.4	458.5	455.8	455.4	453.9	454.9	454.5	456.7	457.6
80°	403.2	400.0	394.7	392.3	389.0	388.5	387.1	388.5	387.7	390.3	392.1
82.5°	321.9	319.1	313.7	311.7	307.9	308.2	306.7	308.2	308.1	311.8	314.0
85°	238.1	236.3	230.7	225.7	220.1	217.0	213.8	213.3	212.3	213.8	215.1
87.5°	137.5	135.8	131.4	128.6	118.9	119.3	115.5	115.3	114.4	113.5	115.5
90°	24.6	27.3	26.9	29.4	29.3	32.2	32.3	35.0	34.7	37.4	37.6
92.5°	18.0	19.1	20.2	21.2	22.3	23.4	24.5	25.6	27.9	30.0	32.5
95°	24.6	25.7	27.0	28.3	29.5	30.7	32.0	33.3	36.7	40.1	43.5
97.5°	34.4	35.3	36.2	37.0	37.8	38.7	39.5	40.3	44.0	47.7	51.3
100°	44.2	44.9	45.5	46.2	46.9	47.5	48.2	48.9	56.0	63.1	70.1
102.5°	69.1	72.0	74.8	77.6	80.4	83.3	86.1	88.9	105.2	121.4	137.7
105°	128.0	135.7	143.5	151.2	159.0	166.7	174.6	182.3	208.4	234.3	260.5
107.5°	234.0	246.2	258.5	270.8	283.0	295.4	307.6	319.9	345.3	370.7	396.2
110°	356.1	367.9	379.5	391.3	402.9	414.6	426.2	438.1	453.3	468.6	484.0



TEST NUMBER: P1444731
 CATALOG NUMBER: EHBR1-24-UNV-TA-L935-UPL15

CANDELA DISTRIBUTION (continued):

	275°	277.5°	280°	282.5°	285°	287.5°	290°	292.5°	295°	297.5°	300°
112.5°	443.6	449.2	455.0	460.7	466.5	472.2	478.0	483.8	491.5	499.1	506.8
115°	470.3	470.7	471.1	471.5	472.0	472.4	473.0	473.5	476.0	478.5	481.1
117.5°	448.5	445.4	442.3	439.3	436.3	433.4	430.4	427.6	427.2	426.8	426.6
120°	404.0	399.9	395.7	391.5	387.5	383.6	379.7	375.8	373.9	372.0	370.1
122.5°	350.6	346.5	342.4	338.4	334.5	330.5	326.7	322.9	321.7	320.5	319.2
125°	300.5	297.2	293.8	290.6	287.3	284.2	281.1	278.1	278.2	278.3	278.6
127.5°	260.5	258.6	256.6	254.7	252.9	251.1	249.4	247.7	249.0	250.1	251.3
130°	233.4	232.6	231.9	231.1	230.7	230.1	229.6	229.1	231.0	232.8	234.7
132.5°	218.0	217.9	218.0	218.1	218.3	218.5	219.0	219.2	221.3	223.3	225.5
135°	209.8	210.2	210.8	211.2	211.9	212.5	213.3	214.0	216.2	218.0	220.1
137.5°	206.9	207.4	208.0	208.7	209.6	210.4	211.4	212.2	213.8	215.4	217.1
140°	206.7	207.0	207.6	208.3	209.0	209.5	210.4	211.2	212.6	213.9	215.3
142.5°	206.8	207.2	207.7	208.3	209.0	209.5	210.4	210.9	212.0	213.0	214.1
145°	208.8	209.1	209.6	210.0	210.5	211.1	211.6	212.2	213.0	213.5	214.3
147.5°	209.4	209.6	210.0	210.3	210.7	211.1	211.4	211.8	212.4	212.9	213.3
150°	208.8	208.9	209.2	209.4	209.7	210.0	210.3	210.5	211.0	211.4	211.9
152.5°	206.6	206.7	206.9	207.1	207.4	207.5	207.7	208.0	208.5	208.8	209.3
155°	205.0	205.3	205.6	205.8	206.2	206.3	206.6	206.9	207.3	207.5	207.9
157.5°	204.6	204.8	205.2	205.3	205.6	205.9	206.2	206.4	206.7	207.0	207.3
160°	204.1	204.5	204.7	205.0	205.5	205.7	206.1	206.5	206.7	207.0	207.3
162.5°	205.2	205.5	205.7	205.9	206.2	206.6	206.7	207.0	207.5	207.7	208.2
165°	205.8	206.1	206.6	206.8	207.3	207.6	207.9	208.3	208.5	208.8	209.0
167.5°	207.8	208.0	208.5	208.7	209.1	209.4	209.7	210.1	210.4	210.4	210.8
170°	208.9	209.3	209.5	209.7	210.1	210.3	210.6	210.9	211.3	211.5	211.9
172.5°	211.3	211.5	211.8	211.8	212.1	212.4	212.6	212.8	213.1	213.3	213.5
175°	213.2	213.2	213.3	213.3	213.4	213.4	213.4	213.6	213.7	213.8	213.8
177.5°	214.1	214.2	214.3	214.3	214.4	214.5	214.6	214.7	214.7	214.7	214.7
180°	213.6	213.6	213.6	213.6	213.6	213.6	213.6	213.6	213.6	213.6	213.6



TEST NUMBER: P1444731
 CATALOG NUMBER: EHBR1-24-UNV-TA-L935-UPL15

CANDELA DISTRIBUTION (continued):

	302.5°	305°	307.5°	310°	312.5°	315°	317.5°	320°	322.5°	325°	327.5°
0°	19357.9	19357.9	19357.9	19357.9	19357.9	19357.9	19357.9	19357.9	19357.9	19357.9	19357.9
2.5°	19562.8	19563.7	19547.9	19547.0	19532.2	19530.4	19516.0	19511.5	19499.9	19495.7	19483.7
5°	20156.3	20137.1	20092.7	20066.6	20022.7	19993.6	19946.1	19915.1	19869.3	19834.7	19788.6
7.5°	20756.6	20726.7	20676.9	20636.5	20575.6	20527.0	20455.7	20397.3	20320.1	20253.3	20172.3
10°	20932.7	20928.0	20915.4	20896.9	20868.5	20836.7	20788.2	20737.6	20669.9	20596.5	20506.3
12.5°	20499.4	20546.2	20610.0	20647.8	20693.9	20714.0	20732.8	20728.1	20715.7	20678.5	20626.4
15°	19402.1	19533.6	19707.7	19842.5	19997.7	20110.4	20235.1	20312.6	20390.0	20425.8	20447.7
17.5°	17656.6	17905.4	18217.6	18476.2	18774.6	19014.2	19277.0	19474.7	19678.1	19823.9	19955.6
20°	15414.4	15775.0	16216.4	16606.3	17059.7	17453.7	17885.5	18240.0	18605.5	18891.3	19161.8
22.5°	12982.4	13410.7	13944.2	14438.5	15023.0	15548.3	16141.0	16656.9	17195.4	17645.4	18080.5
25°	10590.9	11060.6	11644.1	12195.6	12857.5	13468.5	14171.5	14814.3	15510.4	16114.8	16711.8
27.5°	8407.2	8868.2	9464.0	10051.0	10751.0	11402.1	12155.1	12863.4	13656.1	14387.0	15134.7
30°	6612.3	7003.4	7537.5	8106.1	8796.6	9459.1	10220.3	10948.8	11773.3	12571.4	13413.6
32.5°	5238.8	5536.7	5956.6	6437.4	7074.4	7705.1	8429.9	9133.2	9945.1	10751.3	11627.3
35°	4160.5	4392.9	4713.1	5088.3	5627.7	6171.4	6812.5	7452.0	8209.6	8974.6	9826.0
37.5°	3280.8	3469.3	3720.1	4002.0	4434.7	4880.8	5406.5	5936.7	6594.9	7273.0	8044.7
40°	2561.9	2714.6	2909.8	3120.0	3446.8	3790.5	4197.1	4608.2	5137.1	5691.3	6329.9
42.5°	2012.6	2125.3	2263.1	2416.7	2721.5	2904.1	3179.8	3477.1	3865.9	4268.3	4748.3
45°	1616.3	1693.1	1788.7	1891.8	2033.3	2188.1	2376.9	2574.9	2944.2	3125.4	3417.4
47.5°	1349.8	1401.4	1462.2	1527.1	1610.5	1700.5	1812.6	1927.0	2075.1	2228.6	2408.6
50°	1170.3	1222.7	1243.6	1277.2	1325.5	1377.0	1440.1	1503.2	1582.6	1663.1	1755.7
52.5°	1037.0	1054.2	1076.9	1098.2	1128.2	1186.7	1205.6	1238.7	1283.2	1326.8	1375.4
55°	935.3	946.4	961.3	974.1	992.2	1009.5	1034.5	1056.4	1086.1	1112.3	1144.7
57.5°	856.1	863.2	873.4	881.9	893.6	903.4	918.0	929.9	947.0	961.9	981.5
60°	798.6	803.3	810.2	815.7	823.2	828.3	835.5	841.1	850.1	857.7	868.6
62.5°	751.6	754.0	758.5	761.8	766.5	769.1	772.9	775.4	780.3	784.2	790.2
65°	695.2	695.8	698.8	700.1	703.9	705.2	708.4	709.6	713.6	716.5	721.8
67.5°	649.0	647.7	647.8	646.7	647.2	646.1	646.4	645.2	646.9	647.8	651.8
70°	606.8	605.0	604.4	602.5	601.9	599.9	599.4	597.5	597.4	596.7	598.2
72.5°	565.7	565.2	565.4	564.0	563.8	562.5	562.6	561.7	562.6	563.0	564.9
75°	518.4	518.6	519.5	518.2	518.6	517.5	517.9	516.9	517.4	517.2	519.1
77.5°	460.9	462.2	464.8	464.2	465.0	463.8	464.3	462.8	463.2	462.2	463.0
80°	396.2	399.1	402.4	402.2	403.7	402.8	404.0	402.6	403.2	401.5	401.1
82.5°	319.3	321.7	325.4	325.5	328.6	329.3	332.7	332.6	334.8	333.3	332.4
85°	218.3	220.0	223.1	224.9	228.0	230.1	233.5	234.8	232.4	236.8	233.3
87.5°	114.0	118.3	115.8	121.4	120.1	125.7	124.4	129.6	128.6	133.0	132.5
90°	41.1	41.6	45.2	46.0	50.2	51.4	53.5	52.0	54.1	52.7	54.7
92.5°	34.7	37.2	39.5	41.9	44.1	46.6	44.3	42.1	40.1	38.0	35.7
95°	46.9	50.3	53.7	57.2	60.5	64.0	60.4	56.7	53.1	49.4	45.8
97.5°	55.0	58.6	62.4	66.0	69.8	73.4	69.1	64.7	60.5	56.2	51.8
100°	77.2	84.5	91.5	98.6	105.8	112.8	104.9	96.8	88.7	80.7	72.5
102.5°	154.1	170.4	186.7	202.9	219.2	235.5	218.4	201.5	184.3	167.1	150.0
105°	286.4	312.5	338.5	364.6	390.6	416.8	389.1	361.4	333.6	306.0	278.2
107.5°	421.6	446.9	472.5	497.8	523.3	548.8	520.8	492.6	464.6	436.4	408.3
110°	499.3	514.6	529.9	545.4	560.7	576.1	555.6	535.1	514.7	494.1	473.6



TEST NUMBER: P1444731
 CATALOG NUMBER: EHBR1-24-UNV-TA-L935-UPL15

CANDELA DISTRIBUTION (continued):

	302.5°	305°	307.5°	310°	312.5°	315°	317.5°	320°	322.5°	325°	327.5°
112.5°	514.6	522.3	530.0	537.9	545.5	553.4	538.8	524.2	509.6	495.0	480.4
115°	483.7	486.2	488.8	491.4	493.9	496.6	486.8	477.0	467.1	457.4	447.5
117.5°	426.3	426.1	425.7	425.7	425.2	425.1	419.7	414.2	408.8	403.3	397.9
120°	368.2	366.4	364.5	362.8	360.9	358.9	356.8	354.6	352.4	350.1	347.8
122.5°	318.0	316.9	315.8	314.5	313.2	312.0	311.2	310.6	309.7	309.0	308.2
125°	278.7	279.0	279.1	279.2	279.4	279.5	279.2	279.0	278.6	278.4	278.1
127.5°	252.3	253.6	254.6	255.8	256.8	257.9	257.9	258.1	258.1	258.2	258.2
130°	236.6	238.4	240.2	241.9	243.6	245.5	245.3	245.3	245.3	245.2	245.1
132.5°	227.6	229.6	231.7	233.8	235.6	237.7	237.5	237.5	237.2	237.2	237.0
135°	222.1	224.0	225.9	227.9	229.7	231.6	231.3	231.2	230.8	230.8	230.5
137.5°	218.6	220.3	221.8	223.4	224.9	226.4	226.1	225.9	225.6	225.5	225.2
140°	216.4	217.8	219.0	220.3	221.5	222.8	222.4	222.1	221.6	221.2	220.8
142.5°	215.1	216.1	217.0	218.0	218.9	219.9	219.2	218.5	218.0	217.4	216.8
145°	215.0	215.7	216.3	217.0	217.4	218.2	217.3	216.7	215.8	215.2	214.4
147.5°	213.8	214.3	214.5	215.1	215.3	215.9	215.1	214.3	213.6	212.9	212.1
150°	212.2	212.6	212.9	213.3	213.6	214.1	213.2	212.4	211.5	210.7	210.0
152.5°	209.6	209.9	210.2	210.5	210.8	211.2	210.3	209.7	208.8	208.0	207.2
155°	208.0	208.4	208.5	208.8	208.9	209.1	208.4	207.9	207.1	206.5	205.7
157.5°	207.5	207.7	208.0	208.1	208.3	208.5	208.0	207.5	207.0	206.5	205.9
160°	207.5	207.7	207.9	208.1	208.3	208.4	207.9	207.6	207.2	206.7	206.2
162.5°	208.4	208.6	208.9	209.2	209.5	209.7	209.2	208.7	208.3	207.7	207.1
165°	209.3	209.5	209.6	209.9	209.9	210.2	209.8	209.5	209.1	208.8	208.5
167.5°	210.9	211.2	211.4	211.5	211.6	211.8	211.4	211.3	210.8	210.5	210.1
170°	212.1	212.2	212.5	212.7	212.9	213.1	212.8	212.6	212.3	212.0	211.7
172.5°	213.8	213.9	214.0	214.3	214.3	214.6	214.3	214.0	213.7	213.3	213.1
175°	213.8	213.9	214.1	214.1	214.1	214.2	213.9	213.6	213.4	213.2	212.9
177.5°	214.7	214.7	214.7	214.6	214.6	214.6	214.4	214.3	214.1	213.9	213.7
180°	213.6	213.6	213.6	213.6	213.6	213.6	213.6	213.6	213.6	213.6	213.6



TEST NUMBER: P1444731
 CATALOG NUMBER: EHBR1-24-UNV-TA-L935-UPL15

CANDELA DISTRIBUTION (continued):

	330°	332.5°	335°	337.5°	340°	342.5°	345°	347.5°	350°	352.5°	355°
0°	19357.9	19357.9	19357.9	19357.9	19357.9	19357.9	19357.9	19357.9	19357.9	19357.9	19357.9
2.5°	19479.6	19471.0	19465.6	19458.6	19454.4	19449.0	19445.1	19441.7	19438.9	19436.5	19434.6
5°	19753.4	19709.8	19676.0	19639.5	19609.4	19579.4	19556.3	19537.2	19524.0	19514.1	19508.2
7.5°	20102.2	20022.4	19951.6	19877.0	19810.1	19744.3	19687.6	19638.8	19602.1	19578.3	19563.9
10°	20413.6	20306.9	20201.4	20090.3	19985.0	19882.9	19788.6	19705.7	19640.0	19596.4	19570.9
12.5°	20553.2	20462.3	20354.5	20234.0	20104.9	19974.3	19847.1	19732.2	19635.9	19571.3	19533.9
15°	20430.2	20392.9	20319.8	20226.2	20103.7	19968.7	19819.2	19678.9	19549.6	19465.8	19417.2
17.5°	20030.2	20082.3	20076.7	20040.9	19952.9	19839.3	19687.0	19529.2	19367.6	19255.6	19194.4
20°	19355.3	19519.1	19602.1	19644.8	19610.2	19536.5	19398.6	19238.5	19050.0	18903.9	18814.6
22.5°	18406.8	18695.8	18876.0	19007.8	19035.8	19010.7	18888.9	18736.6	18526.6	18350.8	18219.0
25°	17185.7	17609.2	17893.9	18117.2	18203.8	18226.2	18122.6	17971.1	17737.0	17532.3	17351.2
27.5°	15747.6	16297.8	16677.9	16977.8	17113.1	17171.9	17076.5	16922.0	16645.0	16400.6	16164.1
30°	14128.4	14781.2	15238.8	15598.5	15763.4	15841.0	15739.7	15567.2	15245.0	14950.8	14653.0
32.5°	12395.3	13109.8	13608.4	13999.0	14162.5	14235.4	14102.9	13909.2	13536.7	13190.2	12842.8
35°	10580.9	11302.0	11804.9	12185.0	12322.0	12366.0	12196.6	11972.6	11560.0	11179.7	10800.9
37.5°	8729.5	9400.4	9857.4	10198.6	10283.4	10291.0	10086.8	9839.5	9405.8	9030.8	8653.7
40°	6894.1	7459.9	7829.0	8101.9	8131.4	8105.1	7883.2	7634.3	7228.5	6892.5	6561.6
42.5°	5165.3	5592.3	5855.6	6042.8	6031.6	5979.8	5776.2	5562.3	5227.5	4971.7	4711.1
45°	3684.1	3965.7	4119.7	4229.2	4194.0	4144.6	3986.1	3836.2	3608.7	3443.4	3268.4
47.5°	2559.4	2895.7	2837.2	3051.2	2866.8	2988.6	2734.9	2595.1	2474.4	2386.5	2287.6
50°	1832.3	1909.4	1946.6	1972.0	1958.5	1939.8	1894.2	1853.4	1798.3	1758.1	1711.2
52.5°	1415.1	1453.6	1474.7	1489.9	1486.9	1480.1	1460.3	1442.1	1416.2	1399.3	1378.7
55°	1198.6	1199.2	1238.0	1221.4	1245.9	1217.1	1228.4	1196.5	1201.7	1174.2	1155.8
57.5°	996.0	1011.8	1018.9	1025.8	1023.9	1022.6	1014.9	1011.1	1002.4	999.8	993.6
60°	876.1	884.4	886.1	889.3	886.6	885.6	879.6	877.4	871.6	870.5	866.5
62.5°	793.9	798.1	798.1	798.1	794.7	791.4	784.7	781.2	776.3	775.2	772.8
65°	725.3	729.7	730.4	731.3	728.9	726.2	720.4	716.5	711.5	709.6	706.8
67.5°	654.6	659.2	660.7	663.2	661.7	661.2	657.2	655.6	652.3	651.5	649.0
70°	598.9	600.8	600.7	600.6	597.5	594.6	590.0	587.8	584.3	583.6	581.2
72.5°	565.8	567.2	566.4	565.1	561.0	556.8	551.4	547.4	542.8	539.9	536.7
75°	519.2	521.0	520.0	519.1	515.4	512.7	508.4	506.2	502.9	502.0	499.7
77.5°	462.1	463.0	461.0	460.9	458.1	456.3	453.1	452.4	450.1	450.2	448.0
80°	398.4	398.0	395.0	394.3	391.5	390.8	388.3	388.5	386.5	387.4	385.8
82.5°	327.8	326.1	322.1	321.0	317.8	317.5	315.8	317.2	316.0	317.8	316.8
85°	234.9	235.5	233.7	233.7	232.8	233.1	232.9	234.0	234.2	235.7	235.6
87.5°	131.0	132.9	132.5	134.2	134.1	136.1	136.8	139.6	139.9	142.7	142.7
90°	53.4	55.6	54.3	56.6	56.1	58.8	58.8	61.5	61.2	63.5	62.5
92.5°	33.5	31.4	29.4	27.1	26.0	24.7	24.0	22.6	21.7	20.4	19.3
95°	42.1	38.4	34.7	31.1	29.8	28.5	27.3	26.0	24.7	23.5	22.3
97.5°	47.5	43.2	38.9	34.5	33.4	32.4	31.2	30.1	29.0	27.9	26.8
100°	64.4	56.4	48.4	40.2	39.3	38.4	37.5	36.6	35.6	34.7	33.8
102.5°	133.0	115.7	98.6	81.5	78.2	75.0	71.8	68.4	65.2	61.9	58.7
105°	250.4	222.7	194.9	167.0	158.2	149.4	140.6	131.8	122.9	114.1	105.3
107.5°	380.1	351.9	323.7	295.5	279.2	262.9	246.6	230.2	214.0	197.6	181.3
110°	453.2	432.6	412.0	391.4	378.4	365.3	352.1	339.0	325.8	312.6	299.5



TEST NUMBER: P1444731
 CATALOG NUMBER: EHBR1-24-UNV-TA-L935-UPL15

CANDELA DISTRIBUTION (continued):

	330°	332.5°	335°	337.5°	340°	342.5°	345°	347.5°	350°	352.5°	355°
112.5°	465.7	451.1	436.3	421.5	415.7	409.8	403.9	397.9	391.9	385.8	379.9
115°	437.7	427.7	417.8	407.8	405.9	403.8	401.8	399.6	397.6	395.4	393.3
117.5°	392.3	386.9	381.3	375.8	376.2	376.6	377.0	377.4	377.7	377.9	378.2
120°	345.5	343.2	341.0	338.7	340.6	342.5	344.4	346.0	347.9	349.6	351.3
122.5°	307.4	306.5	305.8	304.8	307.2	309.5	311.7	313.9	316.0	318.0	320.1
125°	277.8	277.3	277.1	276.6	279.1	281.3	283.6	285.8	287.9	289.9	292.0
127.5°	258.3	258.3	258.4	258.3	260.2	261.7	263.4	264.9	266.5	267.8	269.2
130°	245.0	244.9	244.8	244.7	246.2	247.8	249.4	250.8	252.1	253.3	254.6
132.5°	236.9	236.7	236.6	236.4	237.6	238.6	239.9	240.8	241.8	242.5	243.4
135°	230.4	229.9	229.8	229.5	230.7	231.8	232.8	233.7	234.6	235.3	236.0
137.5°	225.0	224.7	224.4	224.1	225.1	226.1	227.0	227.9	228.7	229.5	230.0
140°	220.6	220.1	219.8	219.3	220.3	221.1	222.1	222.7	223.5	224.0	224.6
142.5°	216.3	215.5	215.1	214.3	215.1	215.6	216.3	216.9	217.3	217.8	218.2
145°	213.7	212.9	212.2	211.4	212.0	212.4	212.9	213.4	213.7	214.0	214.3
147.5°	211.4	210.6	209.8	209.0	209.5	209.9	210.2	210.4	210.8	211.0	211.2
150°	209.1	208.2	207.4	206.5	206.8	207.1	207.4	207.6	207.8	207.9	208.1
152.5°	206.3	205.5	204.6	203.7	204.0	204.2	204.4	204.5	204.6	204.6	204.7
155°	205.1	204.3	203.6	202.7	203.0	203.1	203.2	203.4	203.3	203.3	203.4
157.5°	205.3	204.6	204.1	203.5	203.5	203.5	203.5	203.3	203.2	203.1	203.0
160°	205.8	205.2	204.7	204.1	204.0	204.0	204.0	203.8	203.7	203.6	203.5
162.5°	206.6	206.0	205.4	204.7	204.6	204.7	204.6	204.5	204.3	204.1	204.0
165°	208.1	207.5	207.2	206.6	206.5	206.4	206.3	206.0	205.8	205.6	205.4
167.5°	209.7	209.3	208.8	208.2	208.3	208.3	208.2	208.1	207.9	207.7	207.6
170°	211.4	210.9	210.6	210.2	210.1	210.0	209.9	209.7	209.5	209.4	209.2
172.5°	212.6	212.3	212.0	211.4	211.4	211.4	211.3	211.2	210.9	210.8	210.7
175°	212.5	212.4	211.9	211.6	211.5	211.5	211.4	211.4	211.2	211.2	211.0
177.5°	213.5	213.3	213.1	212.9	212.8	212.8	212.7	212.6	212.6	212.6	212.5
180°	213.6	213.6	213.6	213.6	213.6	213.6	213.6	213.6	213.6	213.6	213.6



TEST NUMBER: P1444731
 CATALOG NUMBER: EHBR1-24-UNV-TA-L935-UPL15

CANDELA DISTRIBUTION (continued):

	357.5°	360°
0°	19357.9	19357.9
2.5°	19432.9	19431.9
5°	19505.1	19503.9
7.5°	19560.0	19559.8
10°	19566.6	19569.9
12.5°	19527.5	19530.2
15°	19413.5	19418.8
17.5°	19195.5	19202.5
20°	18820.0	18827.3
22.5°	18212.0	18214.9
25°	17327.8	17315.3
27.5°	16122.6	16101.0
30°	14590.4	14569.5
32.5°	12763.6	12750.5
35°	10707.3	10699.0
37.5°	8542.2	8525.5
40°	6440.5	6391.5
42.5°	4597.1	4511.2
45°	3177.0	3075.2
47.5°	2217.9	2155.0
50°	1681.1	1660.8
52.5°	1369.8	1365.0
55°	1155.8	1153.7
57.5°	995.0	994.2
60°	868.6	868.4
62.5°	774.4	774.7
65°	708.0	708.2
67.5°	649.7	649.2
70°	582.1	581.6
72.5°	535.6	534.8
75°	499.7	499.3
77.5°	448.7	447.9
80°	386.8	385.8
82.5°	318.2	317.0
85°	237.4	237.4
87.5°	145.2	145.1
90°	64.7	63.4
92.5°	18.4	17.5
95°	21.0	19.8
97.5°	25.7	24.7
100°	32.9	32.0
102.5°	55.5	52.2
105°	96.4	87.6
107.5°	165.0	148.6
110°	286.3	273.2



TEST NUMBER: P1444731
CATALOG NUMBER: EHBR1-24-UNV-TA-L935-UPL15

CANDELA DISTRIBUTION (continued):

	357.5°	360°
112.5°	373.9	367.9
115°	391.0	388.8
117.5°	378.4	378.7
120°	352.8	354.5
122.5°	321.9	323.8
125°	293.8	295.8
127.5°	270.4	271.5
130°	255.4	256.6
132.5°	244.0	244.5
135°	236.6	237.0
137.5°	230.4	230.8
140°	224.9	225.2
142.5°	218.3	218.6
145°	214.4	214.6
147.5°	211.0	211.2
150°	208.1	208.1
152.5°	204.6	204.7
155°	203.3	203.2
157.5°	202.7	202.6
160°	203.2	203.0
162.5°	203.7	203.6
165°	205.0	204.7
167.5°	207.4	207.4
170°	208.9	208.8
172.5°	210.5	210.4
175°	210.9	210.9
177.5°	212.5	212.4
180°	213.6	213.6

Cooper Lighting Solutions Photometric Lab
1121 Highway 74 South
Peachtree City, GA 30269



LM-79-2019: Approved Method: Electrical and Photometric Measurements of Solid-State Lighting Products

Report Prepared for

Cooper Lighting Solutions

Metalux

Report Number: SP1-2506-472-6

Test Date: 08/01/2025

Luminaire Tested: EHBR-60-L935-N

Data in this report applies to families of products including EHBR-60-L935-N

Test Information

Test Method: LM-79-2019
 Report Number: SP1-2506-472-6
 Test Lab: COOPER LIGHTING SOLUTIONS
 Photometer: SP1 - 76IN SPHERE
 Measurement Geometry: 4π
 Issue Date: 08/05/2025
 Manufacturer: COOPER LIGHTING SOLUTIONS
 Product Line: Metalux
 Catalog Number: **EHBR-60-L935-N**
 Description: Elevate Round Highbay at, 60000 lumens, 3500K 90CRI LEDs with N lens

Spectral Parameters

CCT (K): 3406
 CIE u': 0.2394
 CIE v': 0.5094
 Duv: -0.0028
 CIE x: 0.4076
 CIE y: 0.3856
 CIE z: 0.2068
 Peak Wavelength (nm): 630
 Dominant Wavelength (nm): 582
 Purity: 38.0517
 Rf: 91.3
 Rg: 100

CRI (Ra): 94.6
 R1: 96.6
 R2: 98.4
 R3: 98.1
 R4: 95.8
 R5: 96.2
 R6: 95.4
 R7: 91.8
 R8: 84.4
 R9: 63.8
 R10: 94.7
 R11: 96.6
 R12: 80.9
 R13: 97.4
 R14: 98.3
 R15: 93.1



Test Conditions

Stabilization Time: 35M
 Operation Time: 1H 35M
 Sphere Temperature (°C): 25.0

REPORT NUMBER: SP1-2506-472-6

Measurement and Test Equipment			
Instrument	Identification Number	Calibration Date	Calibration Due Date
Photometer	76INCH SPHERE IN0058	6/16/2025	12/16/2025
Power Meter	XITRON INXT2011004	1/21/2025	1/21/2026
AC Power Source	CHROMA 61603 IN0063	10/22/2024	10/22/2025
DC Power Source	AGILENT E3634A IN0208	10/22/2024	10/22/2025
Sphere Thermometer	ONSET IN0085	10/22/2024	10/22/2025
Room Thermometer	ONSET IN0046	10/22/2024	10/22/2025

REPORT NUMBER: SP1-2506-472-6

CIE 1931 Chromaticity Diagram



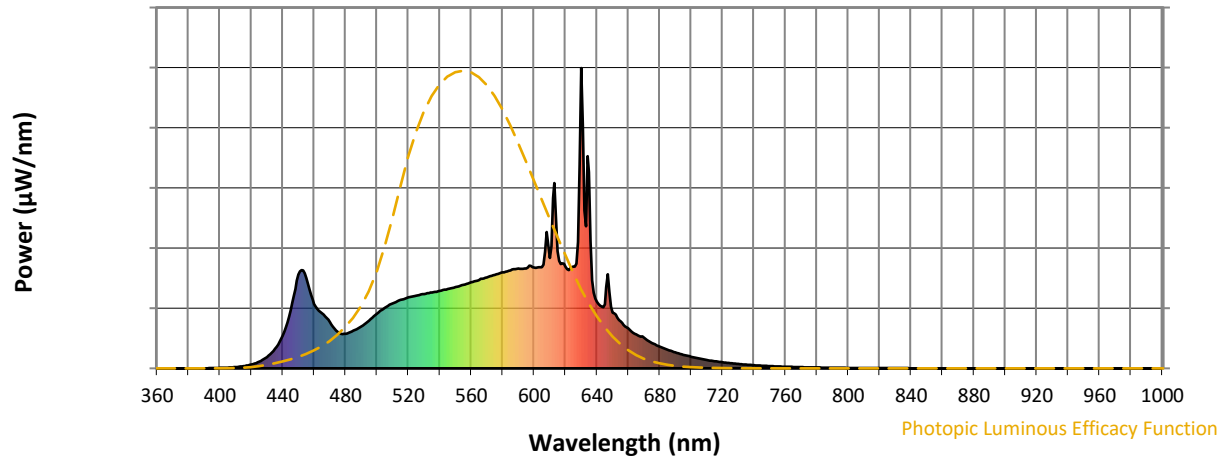
CIE 1931 Chromaticity Diagram with 2017 ANSI 7-Step and 4-Step Quadrangles



Point lies inside the ANSI 3500K 4-step quadrangle

REPORT NUMBER: SP1-2506-472-6

Photopic Flux vs. Wavelength



Photopic Lumens: NR

λ (nm)	Power W [^] /nm	Lumens (φ/nm)	λ (nm)	Power W [^] /nm	Lumens (φ/nm)	λ (nm)	Power W [^] /nm	Lumens (φ/nm)	λ (nm)	Power W [^] /nm	Lumens (φ/nm)	λ (nm)	Power W [^] /nm	Lumens (φ/nm)
360	0	NR	490	140	NR	620	338	NR	750	8	NR	880	0	NR
365	0	NR	495	159	NR	625	339	NR	755	7	NR	885	0	NR
370	0	NR	500	182	NR	630	1000	NR	760	5	NR	890	0	NR
375	0	NR	505	202	NR	635	653	NR	765	5	NR	895	0	NR
380	0	NR	510	216	NR	640	222	NR	770	4	NR	900	0	NR
385	0	NR	515	228	NR	645	214	NR	775	3	NR	905	0	NR
390	0	NR	520	236	NR	650	185	NR	780	3	NR	910	0	NR
395	1	NR	525	242	NR	655	157	NR	785	3	NR	915	0	NR
400	2	NR	530	248	NR	660	133	NR	790	2	NR	920	0	NR
405	3	NR	535	253	NR	665	113	NR	795	2	NR	925	0	NR
410	4	NR	540	258	NR	670	103	NR	800	2	NR	930	0	NR
415	7	NR	545	264	NR	675	85	NR	805	1	NR	935	0	NR
420	13	NR	550	270	NR	680	72	NR	810	1	NR	940	0	NR
425	22	NR	555	278	NR	685	62	NR	815	1	NR	945	0	NR
430	38	NR	560	286	NR	690	53	NR	820	1	NR	950	0	NR
435	65	NR	565	295	NR	695	45	NR	825	1	NR	955	0	NR
440	108	NR	570	303	NR	700	39	NR	830	1	NR	960	0	NR
445	193	NR	575	311	NR	705	33	NR	835	1	NR	965	0	NR
450	312	NR	580	319	NR	710	28	NR	840	1	NR	970	0	NR
455	300	NR	585	326	NR	715	24	NR	845	0	NR	975	0	NR
460	214	NR	590	332	NR	720	20	NR	850	0	NR	980	0	NR
465	184	NR	595	333	NR	725	17	NR	855	0	NR	985	0	NR
470	153	NR	600	336	NR	730	15	NR	860	0	NR	990	0	NR
475	122	NR	605	337	NR	735	12	NR	865	0	NR	995	0	NR
480	115	NR	610	367	NR	740	10	NR	870	0	NR	1000	0	NR
485	125	NR	615	390	NR	745	9	NR	875	0	NR			

REPORT NUMBER: SP1-2506-472-6

Scotopic Flux vs. Wavelength



Scotopic Lumens: NR

S/P: 1.62

λ (nm)	Power W [^] /nm	Lumens (φ/nm)	λ (nm)	Power W [^] /nm	Lumens (φ/nm)	λ (nm)	Power W [^] /nm	Lumens (φ/nm)	λ (nm)	Power W [^] /nm	Lumens (φ/nm)	λ (nm)	Power W [^] /nm	Lumens (φ/nm)
360	0	NR	490	140	NR	620	338	NR	750	8	NR	880	0	NR
365	0	NR	495	159	NR	625	339	NR	755	7	NR	885	0	NR
370	0	NR	500	182	NR	630	1000	NR	760	5	NR	890	0	NR
375	0	NR	505	202	NR	635	653	NR	765	5	NR	895	0	NR
380	0	NR	510	216	NR	640	222	NR	770	4	NR	900	0	NR
385	0	NR	515	228	NR	645	214	NR	775	3	NR	905	0	NR
390	0	NR	520	236	NR	650	185	NR	780	3	NR	910	0	NR
395	1	NR	525	242	NR	655	157	NR	785	3	NR	915	0	NR
400	2	NR	530	248	NR	660	133	NR	790	2	NR	920	0	NR
405	3	NR	535	253	NR	665	113	NR	795	2	NR	925	0	NR
410	4	NR	540	258	NR	670	103	NR	800	2	NR	930	0	NR
415	7	NR	545	264	NR	675	85	NR	805	1	NR	935	0	NR
420	13	NR	550	270	NR	680	72	NR	810	1	NR	940	0	NR
425	22	NR	555	278	NR	685	62	NR	815	1	NR	945	0	NR
430	38	NR	560	286	NR	690	53	NR	820	1	NR	950	0	NR
435	65	NR	565	295	NR	695	45	NR	825	1	NR	955	0	NR
440	108	NR	570	303	NR	700	39	NR	830	1	NR	960	0	NR
445	193	NR	575	311	NR	705	33	NR	835	1	NR	965	0	NR
450	312	NR	580	319	NR	710	28	NR	840	1	NR	970	0	NR
455	300	NR	585	326	NR	715	24	NR	845	0	NR	975	0	NR
460	214	NR	590	332	NR	720	20	NR	850	0	NR	980	0	NR
465	184	NR	595	333	NR	725	17	NR	855	0	NR	985	0	NR
470	153	NR	600	336	NR	730	15	NR	860	0	NR	990	0	NR
475	122	NR	605	337	NR	735	12	NR	865	0	NR	995	0	NR
480	115	NR	610	367	NR	740	10	NR	870	0	NR	1000	0	NR
485	125	NR	615	390	NR	745	9	NR	875	0	NR			

REPORT NUMBER: SP1-2506-472-6

Melanopic Flux vs. Wavelength



Melanopic Lumens: NR M/P: 3.3

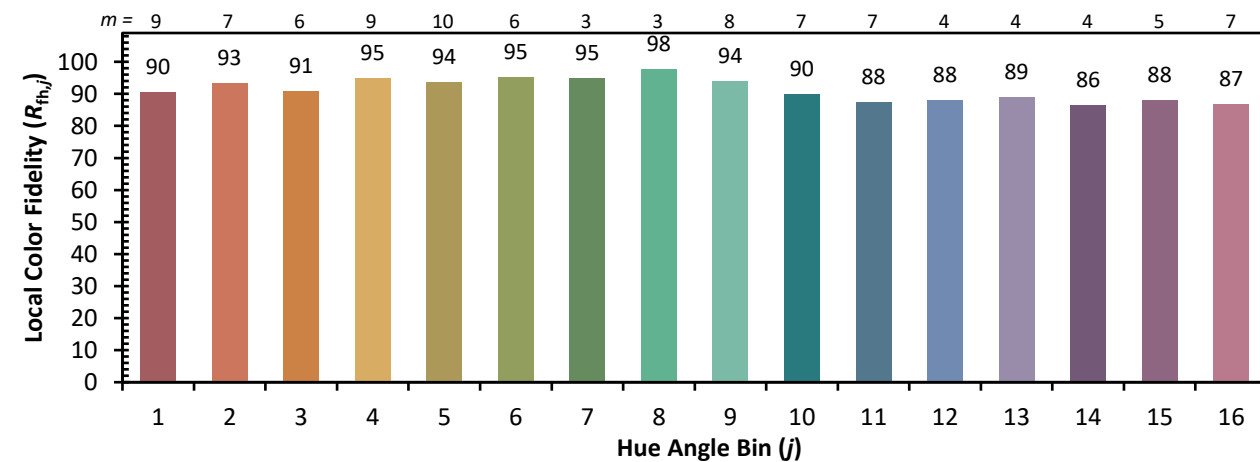
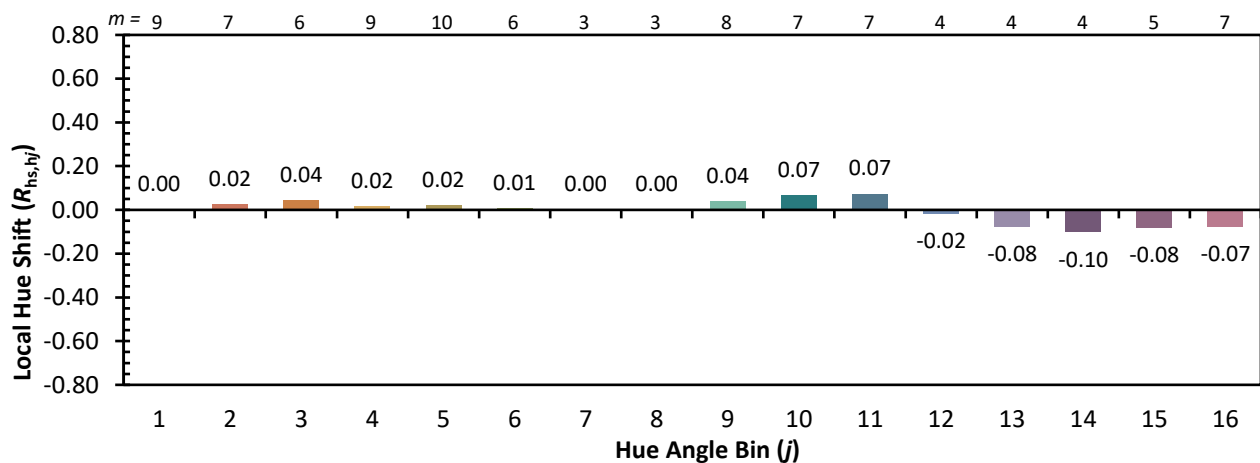
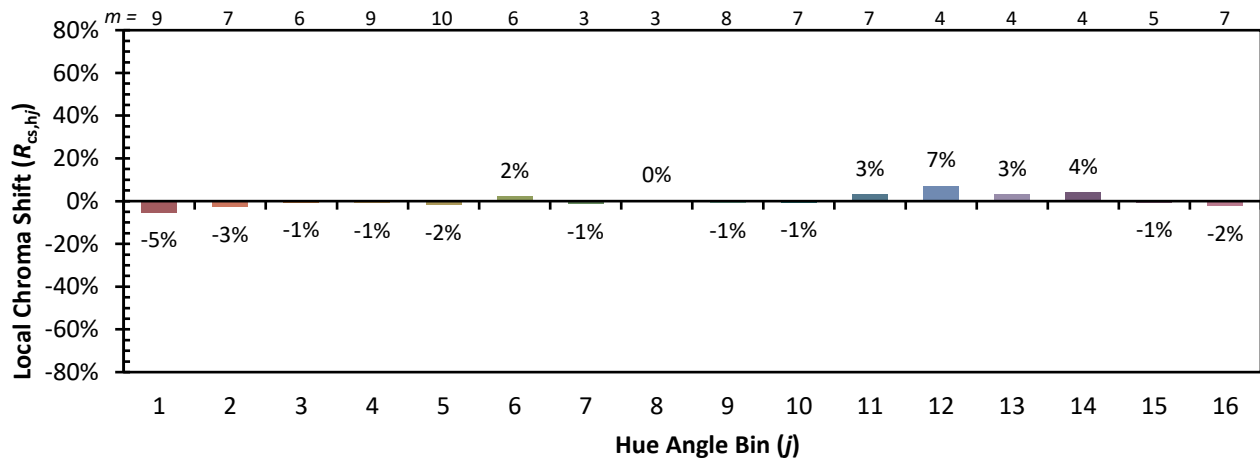
λ (nm)	Power W [^] /nm	Lumens (φ/nm)	λ (nm)	Power W [^] /nm	Lumens (φ/nm)	λ (nm)	Power W [^] /nm	Lumens (φ/nm)	λ (nm)	Power W [^] /nm	Lumens (φ/nm)	λ (nm)	Power W [^] /nm	Lumens (φ/nm)
360	0	NR	490	140	NR	620	338	NR	750	8	NR	880	0	NR
365	0	NR	495	159	NR	625	339	NR	755	7	NR	885	0	NR
370	0	NR	500	182	NR	630	1000	NR	760	5	NR	890	0	NR
375	0	NR	505	202	NR	635	653	NR	765	5	NR	895	0	NR
380	0	NR	510	216	NR	640	222	NR	770	4	NR	900	0	NR
385	0	NR	515	228	NR	645	214	NR	775	3	NR	905	0	NR
390	0	NR	520	236	NR	650	185	NR	780	3	NR	910	0	NR
395	1	NR	525	242	NR	655	157	NR	785	3	NR	915	0	NR
400	2	NR	530	248	NR	660	133	NR	790	2	NR	920	0	NR
405	3	NR	535	253	NR	665	113	NR	795	2	NR	925	0	NR
410	4	NR	540	258	NR	670	103	NR	800	2	NR	930	0	NR
415	7	NR	545	264	NR	675	85	NR	805	1	NR	935	0	NR
420	13	NR	550	270	NR	680	72	NR	810	1	NR	940	0	NR
425	22	NR	555	278	NR	685	62	NR	815	1	NR	945	0	NR
430	38	NR	560	286	NR	690	53	NR	820	1	NR	950	0	NR
435	65	NR	565	295	NR	695	45	NR	825	1	NR	955	0	NR
440	108	NR	570	303	NR	700	39	NR	830	1	NR	960	0	NR
445	193	NR	575	311	NR	705	33	NR	835	1	NR	965	0	NR
450	312	NR	580	319	NR	710	28	NR	840	1	NR	970	0	NR
455	300	NR	585	326	NR	715	24	NR	845	0	NR	975	0	NR
460	214	NR	590	332	NR	720	20	NR	850	0	NR	980	0	NR
465	184	NR	595	333	NR	725	17	NR	855	0	NR	985	0	NR
470	153	NR	600	336	NR	730	15	NR	860	0	NR	990	0	NR
475	122	NR	605	337	NR	735	12	NR	865	0	NR	995	0	NR
480	115	NR	610	367	NR	740	10	NR	870	0	NR	1000	0	NR
485	125	NR	615	390	NR	745	9	NR	875	0	NR			

Individual Sample Fidelity Index ($R_{f,i}$)

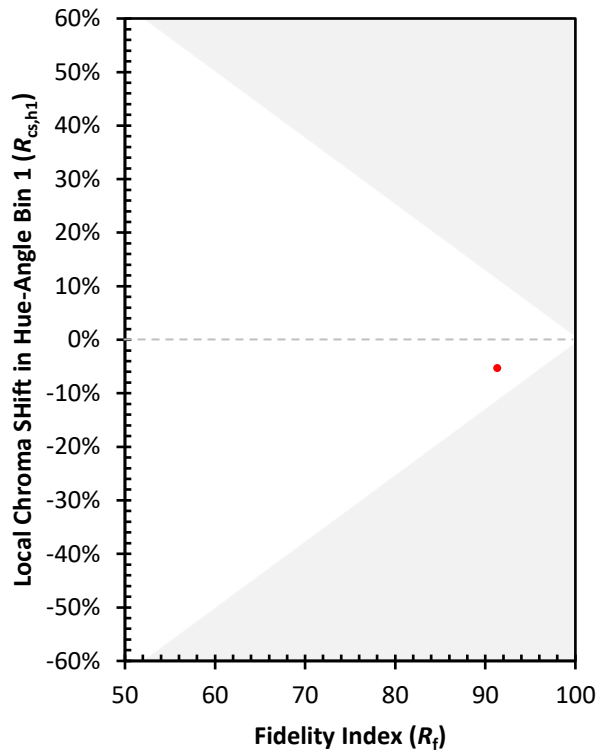
CES01 = 86	CES26 = 94	CES51 = 97	CES76 = 90
CES02 = 63	CES27 = 92	CES52 = 98	CES77 = 86
CES03 = 31	CES28 = 97	CES53 = 98	CES78 = 86
CES04 = 70	CES29 = 97	CES54 = 93	CES79 = 90
CES05 = 50	CES30 = 92	CES55 = 92	CES80 = 91
CES06 = 51	CES31 = 97	CES56 = 96	CES81 = 74
CES07 = 43	CES32 = 89	CES57 = 94	CES82 = 96
CES08 = 41	CES33 = 99	CES58 = 95	CES83 = 94
CES09 = 29	CES34 = 94	CES59 = 98	CES84 = 95
CES10 = 75	CES35 = 97	CES60 = 92	CES85 = 79
CES11 = 58	CES36 = 81	CES61 = 93	CES86 = 79
CES12 = 64	CES37 = 96	CES62 = 86	CES87 = 92
CES13 = 44	CES38 = 87	CES63 = 94	CES88 = 98
CES14 = 74	CES39 = 99	CES64 = 91	CES89 = 84
CES15 = 72	CES40 = 97	CES65 = 90	CES90 = 96
CES16 = 48	CES41 = 96	CES66 = 89	CES91 = 75
CES17 = 49	CES42 = 94	CES67 = 88	CES92 = 76
CES18 = 56	CES43 = 93	CES68 = 89	CES93 = 86
CES19 = 71	CES44 = 99	CES69 = 90	CES94 = 74
CES20 = 67	CES45 = 97	CES70 = 88	CES95 = 83
CES21 = 86	CES46 = 97	CES71 = 83	CES96 = 92
CES22 = 78	CES47 = 91	CES72 = 94	CES97 = 96
CES23 = 91	CES48 = 91	CES73 = 83	CES98 = 95
CES24 = 90	CES49 = 96	CES74 = 90	CES99 = 92
CES25 = 71	CES50 = 98	CES75 = 85	



Color Rendition by Hue-Angle Bin



Measure Comparisons



(END OF REPORT)