

Cooper Lighting Solutions Photometric Lab
1121 Highway 74 South
Peachtree City, GA 30269



Scaled data based on original data using
LM-79-2019 Approved Method: Electrical and Photometric Measurements of Solid-
State Lighting Products

Test Report Prepared for
Cooper Lighting Solutions

Brand: METALUX

Report Number: P1444763

Luminaire Tested: EHBR1-48-UNV-TA-L935-UPL15

Issue Date: 5/1/2026

Test Information

Test Method: LM-79-2019
Report Number: P1444763
REPORT IS A COMBINATION OF REPORTS P1444315 AND P1431635
Test Lab: INNOVATION CENTER
Issue Date: 5/1/2026
Manufacturer: COOPER LIGHTING SOLUTIONS
Product Line: METALUX
Catalog Number: EHBR1-48-UNV-TA-L935-UPL15
Description: Elevate Round Highbay at, 48000 lumens, 3500K 90CRI LEDs with TA lens
Light Source: -
Ballast/Driver: -

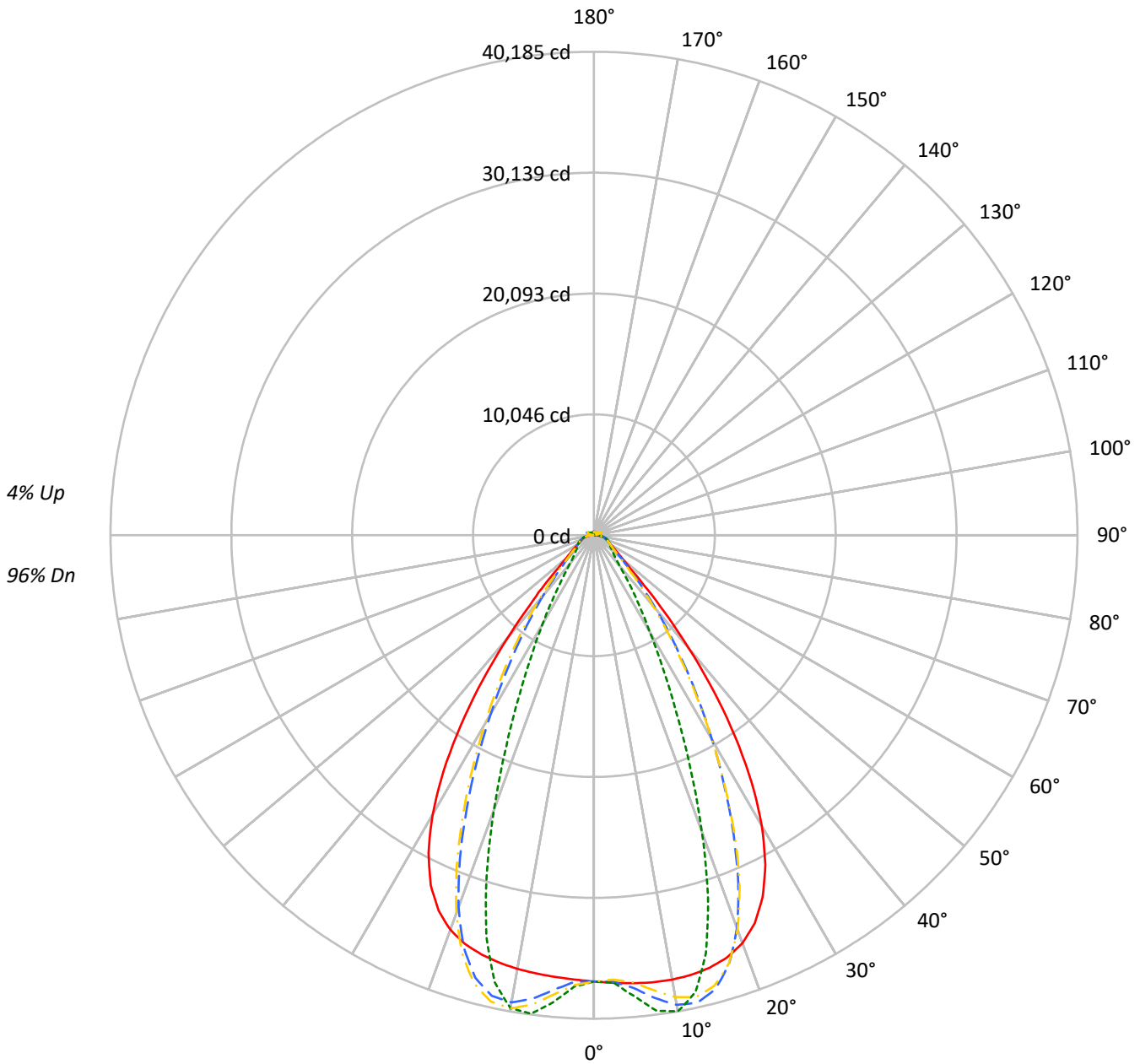
Summary

Lumens per Lamp: N/A
Luminaire Lumens: 44294.1 lumens
Efficiency: N/A
Efficacy: 165.3 lumens/watt
Spacing Criteria (0/90/45): 1.13 / 0.77 / 0.88
Luminous Opening: Vertical Cylinder (Dia: 1.71' x H: 0.1')
CIE Type: Direct

Input Watts (W): 267.9
Input Voltage (V): NR
Input Current (Ain): NR
Voltage Rise (V): NR
Power Factor: NR
Total Harmonic Distortion (THDi): NR
Frequency (hertz): 60
Stabilization Time: NR
Operation Time: NR
Ambient Temperature (°C): NR
Test Distance: 24 FT

TEST NUMBER: P1444763
CATALOG NUMBER: EHBR1-48-UNV-TA-L935-UPL15

Luminous Intensity Polar Plot



— 0°-180° - - 45°-225° - · - 90°-270° - · - 135°-315°



TEST NUMBER: P1444763
 CATALOG NUMBER: EHBR1-48-UNV-TA-L935-UPL15

COEFFICIENT OF UTILIZATION - ZONAL CAVITY METHOD:

RF	20				20				20				20				20				
RC	80				70				50				30				10			0	
RW	70	50	30	10	70	50	30	10	50	30	10	50	30	10	50	30	10	50	30	10	0
RCR																					
0	118	118	118	118	115	115	115	115	109	109	109	104	104	104	99	99	99	99	99	99	96
1	111	108	105	102	108	105	102	100	100	98	96	96	94	93	92	91	89	89	89	89	87
2	104	98	94	89	102	96	92	88	92	89	86	89	86	83	85	83	81	81	81	81	79
3	98	90	85	80	96	89	83	79	85	81	77	82	79	75	80	77	74	74	74	74	72
4	92	83	77	72	90	82	76	71	79	74	70	77	72	69	74	71	68	68	68	68	66
5	87	77	71	66	85	76	70	65	74	68	64	72	67	63	70	66	62	62	62	62	61
6	82	72	65	60	80	71	65	60	69	63	59	67	62	59	65	61	58	58	58	58	56
7	78	67	60	56	76	66	60	55	65	59	55	63	58	54	62	57	54	54	54	54	52
8	73	63	56	52	72	62	56	51	61	55	51	59	54	51	58	53	50	50	50	50	49
9	70	59	52	48	68	58	52	48	57	51	48	56	51	47	55	50	47	47	47	47	45
10	66	56	49	45	65	55	49	45	54	48	45	53	48	44	52	47	44	44	44	44	42

AVERAGE LUMINANCE (cd/sqm):

	0°	90°	180°	270°
0°	174196	174196	174196	174196
5°	175039	180143	172590	182503
10°	176501	189137	172268	187886
15°	177366	171451	171967	164548
20°	175533	127725	169788	118176
25°	166148	80779	160657	73292
30°	145143	48542	139522	44363
35°	111703	30460	105278	26982
40°	70662	19107	64650	17955
45°	36421	14885	35817	14641
50°	21353	13241	20699	13034
55°	16359	12526	15754	12414
60°	13842	12796	13252	12631
65°	13001	13363	12503	12908
70°	12702	13993	12069	13466
75°	13581	14840	12847	14183
80°	14053	16433	12742	15000
85°	13235	15857	10695	13576

MAXIMUM LUMINANCE 45°-90°:

Horizontal Angle: 25°
 Vertical Angle: 45°
 Luminance: 55737 cd/sqm



TEST NUMBER: P1444763
 CATALOG NUMBER: EHBR1-48-UNV-TA-L935-UPL15

ZONAL LUMENS:

Zone	Lumens	% Fixture
0°-10°	3655.7	8.3
10°-20°	10283.8	23.2
20°-30°	11712.4	26.4
30°-40°	8418.4	19.0
40°-50°	3882.5	8.8
50°-60°	1858.0	4.2
60°-70°	1355.7	3.1
70°-80°	1029.9	2.3
80°-90°	470.8	1.1
90°-100°	50.7	0.1
100°-110°	246.1	0.6
110°-120°	453.7	1.0
120°-130°	289.3	0.7
130°-140°	201.4	0.5
140°-150°	161.6	0.4
150°-160°	120.6	0.3
160°-170°	76.6	0.2
170°-180°	27.0	0.1
0°-30°	25651.9	57.9
0°-40°	34070.3	76.9
0°-60°	39810.8	89.9
0°-90°	42667.2	96.3
90°-120°	750.4	1.7
90°-150°	1402.7	3.2
90°-180°	1627.0	3.7
0°-180°	44294.1	100.0

CANDELA DISTRIBUTION:

	0°	90°	180°	270°	360°	Flux
0°	37094	37094	37094	37094	37094	
5°	37374	38463	36851	38967	37374	3571
15°	37210	35970	36078	34521	37210	10484
25°	33180	16132	32083	14636	33180	15041
35°	20502	5590	19322	4952	20502	12582
45°	5893	2408	5795	2369	5893	5012
55°	2211	1693	2129	1678	2211	2041
65°	1357	1395	1305	1347	1357	1355
75°	957	1045	905	999	957	995
85°	455	545	368	467	455	427
90°	113	146	25	33	113	72
95°	23	25	23	25	23	22
105°	93	116	65	117	93	122
115°	400	475	419	476	400	371
125°	318	317	358	318	318	290
135°	273	227	292	231	273	213
145°	262	240	276	246	262	165
155°	259	253	273	257	259	120
165°	270	265	279	268	270	77
175°	283	284	288	286	283	27
180°	287	287	287	287	287	



TEST NUMBER: P1444763
 CATALOG NUMBER: EHBR1-48-UNV-TA-L935-UPL15

CANDELA DISTRIBUTION (FULL):

	0°	2.5°	5°	7.5°	10°	12.5°	15°	17.5°	20°	22.5°	25°
0°	37093.8	37093.8	37093.8	37093.8	37093.8	37093.8	37093.8	37093.8	37093.8	37093.8	37093.8
2.5°	37235.5	37232.5	37231.9	37229.4	37228.6	37228.6	37227.4	37224.4	37222.5	37218.2	37213.4
5°	37373.7	37372.0	37373.0	37373.3	37370.7	37364.9	37355.8	37344.7	37330.6	37317.5	37305.6
7.5°	37480.5	37483.1	37486.4	37485.7	37477.6	37464.0	37445.4	37435.0	37441.2	37461.4	37507.6
10°	37500.0	37516.0	37522.1	37520.2	37504.0	37492.3	37496.8	37536.2	37614.4	37718.7	37861.4
12.5°	37424.0	37443.5	37442.8	37436.4	37420.7	37436.6	37493.6	37610.6	37778.2	37984.1	38225.4
15°	37210.5	37235.8	37228.6	37220.2	37209.8	37262.2	37375.8	37579.0	37838.1	38128.3	38425.4
17.5°	36796.0	36826.5	36811.6	36802.2	36793.4	36891.6	37086.9	37384.4	37710.6	38038.9	38320.5
20°	36077.1	36097.5	36062.2	36045.5	36059.6	36251.9	36539.7	36919.6	37263.4	37573.9	37766.3
22.5°	34903.6	34929.1	34862.7	34855.0	34937.0	35232.4	35596.4	36021.2	36344.3	36590.3	36664.5
25°	33179.7	33204.8	33125.9	33173.0	33312.4	33714.8	34148.4	34602.7	34878.4	35060.7	35010.3
27.5°	30852.9	30875.7	30800.9	30897.1	31117.5	31646.2	32156.6	32649.4	32895.0	33022.7	32861.0
30°	27918.2	27965.6	27877.2	28011.6	28348.0	29034.3	29619.0	30171.7	30416.7	30513.8	30262.0
32.5°	24432.7	24500.2	24402.7	24602.6	25072.0	25896.5	26560.7	27178.2	27449.2	27560.1	27275.7
35°	20501.5	20598.2	20486.5	20786.5	21365.3	22283.6	23019.0	23708.5	24029.3	24186.7	23900.0
37.5°	16336.6	16428.8	16368.3	16768.5	17404.2	18356.0	19106.7	19850.4	20212.8	20448.9	20222.8
40°	12247.6	12332.0	12377.7	12835.4	13433.2	14330.3	15051.3	15787.3	16192.7	16488.9	16349.5
42.5°	8644.4	8729.5	8885.1	9326.7	9825.2	10567.8	11185.5	11846.2	12233.4	12549.5	12495.7
45°	5892.7	5991.6	6186.4	6548.0	6908.6	7441.3	7894.9	8408.7	8725.0	9014.6	9018.0
47.5°	4129.3	4198.8	4372.9	4619.8	4854.9	5218.8	5549.2	5801.7	6014.3	6230.7	6258.7
50°	3182.4	3224.2	3316.5	3454.2	3587.3	3760.5	3919.0	4102.0	4232.8	4351.5	4379.7
52.5°	2615.8	2642.2	2689.3	2763.8	2841.1	2935.2	3020.1	3120.5	3191.7	3255.3	3268.6
55°	2210.7	2232.7	2302.7	2316.8	2405.2	2422.3	2460.0	2521.1	2562.6	2600.6	2610.0
57.5°	1905.1	1921.1	1935.9	1967.6	1994.9	2034.4	2066.3	2110.2	2136.3	2163.9	2166.2
60°	1664.0	1675.5	1686.1	1708.2	1726.6	1754.2	1776.1	1806.0	1824.7	1845.3	1847.6
62.5°	1484.6	1492.8	1499.9	1514.4	1527.6	1548.8	1566.2	1591.2	1608.6	1624.5	1628.1
65°	1357.0	1363.0	1367.6	1378.6	1390.1	1408.2	1423.9	1444.3	1457.1	1469.3	1472.0
67.5°	1244.0	1249.7	1254.5	1264.5	1272.5	1285.9	1296.5	1311.8	1321.4	1331.1	1331.4
70°	1114.5	1119.9	1123.4	1132.8	1139.3	1150.8	1159.3	1173.1	1182.9	1193.8	1196.5
72.5°	1024.9	1028.0	1032.9	1041.4	1050.3	1062.7	1074.1	1088.4	1100.4	1111.6	1116.4
75°	956.7	960.4	963.5	970.9	977.0	987.4	996.0	1009.0	1019.5	1031.6	1037.5
77.5°	858.3	862.6	865.3	872.5	877.9	887.9	894.3	906.0	914.5	925.5	930.8
80°	739.3	743.3	745.3	752.2	756.4	765.6	771.7	783.1	790.2	801.2	807.6
82.5°	607.5	611.3	612.4	618.9	621.3	628.8	633.3	644.9	653.6	668.0	677.8
85°	454.9	456.2	458.5	456.8	466.0	466.6	477.0	479.0	492.7	496.3	512.0
87.5°	278.2	282.2	284.3	290.7	293.4	299.7	301.6	308.3	312.0	319.8	323.4
90°	112.7	118.6	120.5	127.6	129.2	135.5	136.9	143.9	145.7	153.1	155.4
92.5°	20.4	21.5	22.5	23.9	25.0	26.9	28.5	29.8	31.0	32.8	35.2
95°	22.8	24.1	25.4	26.6	27.8	29.1	30.4	31.5	32.8	34.1	37.5
97.5°	28.1	29.2	30.3	31.4	32.4	33.5	34.6	35.7	36.8	37.7	42.1
100°	35.8	36.7	37.6	38.5	39.4	40.4	41.3	42.2	43.1	44.0	52.0
102.5°	56.8	60.1	63.4	66.5	69.8	73.0	76.3	79.4	82.7	85.9	102.8
105°	93.1	101.7	110.8	119.4	128.2	137.0	145.8	154.3	163.2	171.9	199.8
107.5°	155.2	171.4	187.7	204.0	220.3	236.5	252.8	269.0	285.1	301.2	329.4
110°	281.1	294.0	307.2	320.1	333.1	346.3	359.4	372.0	385.2	398.1	418.6



TEST NUMBER: P1444763
 CATALOG NUMBER: EHBR1-48-UNV-TA-L935-UPL15

CANDELA DISTRIBUTION (continued):

	0°	2.5°	5°	7.5°	10°	12.5°	15°	17.5°	20°	22.5°	25°
112.5°	377.6	383.3	389.1	395.0	400.8	406.5	412.3	418.0	423.9	429.4	443.9
115°	400.4	402.3	404.4	406.0	408.1	409.8	411.7	413.5	415.4	417.0	426.8
117.5°	392.6	392.0	391.4	390.9	390.1	389.4	388.7	388.0	387.2	386.4	391.7
120°	371.1	369.0	367.0	364.6	362.6	360.2	358.1	355.8	353.4	350.9	353.1
122.5°	343.3	340.8	338.5	335.7	333.2	330.4	327.8	324.6	322.1	319.3	319.7
125°	318.3	315.7	313.4	310.6	307.7	304.9	302.1	299.2	296.4	293.2	293.1
127.5°	297.4	295.5	293.6	291.3	289.1	286.9	284.6	282.0	280.0	277.2	276.9
130°	285.7	284.0	282.0	280.0	278.0	275.7	273.4	271.1	268.9	266.4	265.8
132.5°	277.1	275.8	274.3	272.6	270.9	268.8	267.1	264.7	262.9	261.0	260.4
135°	273.0	271.5	270.3	268.6	267.0	264.9	263.0	261.0	259.1	256.9	256.6
137.5°	270.0	268.7	267.5	265.8	264.2	262.1	260.4	258.4	256.5	254.4	254.0
140°	267.5	266.3	265.0	263.3	261.9	260.1	258.3	256.4	254.6	252.5	252.2
142.5°	263.7	262.6	261.6	260.1	258.8	257.1	255.6	253.7	252.1	250.3	250.2
145°	262.3	261.3	260.4	259.2	257.9	256.2	254.8	253.1	251.8	250.1	250.0
147.5°	261.1	260.2	259.5	258.4	257.3	255.9	254.6	253.0	251.8	250.3	250.4
150°	260.1	259.4	258.7	257.7	256.5	255.3	254.0	252.8	251.4	250.1	250.1
152.5°	258.4	257.6	256.9	255.9	255.0	253.6	252.8	251.3	250.1	248.9	248.9
155°	258.9	258.1	257.2	256.4	255.3	254.3	253.1	252.1	251.0	249.7	249.6
157.5°	260.6	259.7	259.0	257.9	257.3	256.3	255.4	254.4	253.5	252.5	252.2
160°	263.5	262.7	261.9	261.0	260.1	259.0	258.2	257.2	256.6	255.5	255.4
162.5°	266.6	265.6	264.8	263.9	263.2	262.2	261.5	260.7	259.8	258.8	258.7
165°	270.1	269.5	268.9	268.2	267.5	266.8	266.1	265.3	264.6	263.7	263.7
167.5°	275.2	274.4	273.9	273.2	272.4	271.8	271.0	270.3	269.7	268.8	268.7
170°	278.6	277.9	277.5	277.1	276.5	276.0	275.5	275.0	274.4	273.9	273.9
172.5°	281.6	281.1	280.8	280.5	280.0	279.7	279.2	278.9	278.6	278.1	278.2
175°	283.2	282.8	282.7	282.4	282.1	281.9	281.7	281.4	281.4	281.1	281.1
177.5°	285.5	285.3	285.3	285.2	285.2	285.0	284.9	284.7	284.5	284.5	284.6
180°	287.1	287.1	287.1	287.1	287.1	287.1	287.1	287.1	287.1	287.1	287.1



TEST NUMBER: P1444763
 CATALOG NUMBER: EHBR1-48-UNV-TA-L935-UPL15

CANDELA DISTRIBUTION (continued):

	27.5°	30°	32.5°	35°	37.5°	40°	42.5°	45°	47.5°	50°	52.5°
0°	37093.8	37093.8	37093.8	37093.8	37093.8	37093.8	37093.8	37093.8	37093.8	37093.8	37093.8
2.5°	37209.8	37205.3	37199.1	37191.2	37184.5	37176.7	37158.1	37152.6	37158.8	37162.9	37171.5
5°	37298.2	37300.8	37301.8	37318.6	37333.2	37369.7	37655.1	37768.5	37856.2	37911.9	37996.4
7.5°	37564.8	37650.5	37735.4	37849.5	37947.9	38080.9	38580.2	38792.7	38943.8	39052.4	39186.0
10°	38016.5	38203.8	38379.3	38585.0	38761.8	38964.3	39429.0	39636.1	39766.8	39862.0	39950.8
12.5°	38471.6	38731.2	38965.9	39194.8	39386.2	39561.7	39725.1	39797.6	39803.8	39806.8	39759.7
15°	38708.6	38956.8	39163.6	39314.9	39427.4	39477.2	39195.7	39048.1	38861.6	38707.9	38455.0
17.5°	38559.0	38707.9	38797.2	38788.4	38741.9	38586.3	37789.3	37350.8	36915.6	36523.4	36009.1
20°	37894.0	37882.6	37804.9	37584.8	37319.6	36907.3	35540.7	34752.3	33990.1	33320.6	32508.3
22.5°	36656.8	36462.3	36190.8	35716.3	35189.0	34468.6	32510.3	31350.6	30289.3	29351.9	28301.8
25°	34864.4	34463.9	33963.3	33210.0	32390.7	31339.8	28926.2	27483.6	26209.6	25104.5	23892.8
27.5°	32570.3	31967.1	31233.6	30190.8	29080.8	27734.6	25058.6	23466.7	22098.9	20914.2	19624.6
30°	29854.4	29069.9	28122.7	26828.4	25489.6	23962.7	21248.7	19636.3	18251.8	17033.0	15742.4
32.5°	26785.2	25866.3	24756.3	23303.8	21855.9	20285.9	17664.9	16104.1	14781.6	13609.1	12441.0
35°	23400.0	22414.6	21240.3	19758.7	18319.5	16793.1	14388.2	12980.8	11813.0	10776.6	9833.4
37.5°	19768.8	18801.3	17685.1	16288.7	14954.2	13571.0	11495.9	10316.6	9336.5	8476.4	7748.0
40°	15993.3	15146.6	14180.9	12973.7	11834.8	10682.8	8979.4	8043.3	7269.9	6613.8	6068.1
42.5°	12264.1	11607.9	10867.3	9913.4	9041.8	8164.8	6853.7	6160.0	5587.2	5115.0	4729.1
45°	8898.0	8459.0	7962.4	7299.2	6696.1	6084.3	5151.1	4663.8	4290.7	3986.2	3728.7
47.5°	6220.1	5965.5	5950.1	5337.2	4894.9	4520.9	3919.7	3611.8	3383.2	3198.7	3035.7
50°	4368.2	4245.1	4092.1	3873.3	3668.1	3456.6	3090.4	2904.2	2770.4	2658.6	2555.5
52.5°	3265.6	3201.6	3120.1	3004.1	2892.8	2773.9	2542.2	2423.7	2381.6	2277.5	2195.9
55°	2608.3	2571.6	2525.2	2457.1	2389.4	2362.3	2163.7	2075.7	2020.0	1979.0	1935.1
57.5°	2166.6	2139.2	2111.7	2065.5	2026.4	1979.0	1873.5	1828.4	1795.3	1771.1	1740.7
60°	1848.1	1831.7	1816.3	1789.2	1768.1	1742.5	1675.5	1650.1	1632.8	1618.3	1598.9
62.5°	1631.1	1622.8	1614.8	1600.3	1589.6	1575.7	1530.0	1517.7	1509.0	1501.8	1489.9
65°	1474.5	1468.5	1464.1	1454.5	1449.1	1441.0	1401.7	1393.5	1388.0	1385.5	1378.6
67.5°	1332.3	1326.0	1323.1	1316.2	1314.0	1308.9	1276.7	1272.2	1270.4	1271.2	1268.8
70°	1199.2	1196.5	1198.0	1196.8	1199.9	1200.8	1181.3	1181.2	1183.2	1187.4	1187.7
72.5°	1119.4	1119.4	1120.9	1121.7	1124.6	1125.9	1109.7	1108.9	1109.8	1112.9	1113.0
75°	1043.5	1044.8	1048.9	1050.3	1053.7	1054.4	1032.9	1030.5	1030.7	1033.5	1032.6
77.5°	938.5	943.0	950.9	955.0	961.6	962.9	938.8	936.0	936.1	939.0	936.5
80°	819.3	828.0	840.5	849.1	859.4	863.5	838.7	832.8	827.3	826.5	821.6
82.5°	692.7	703.3	718.3	726.2	737.0	739.5	698.1	690.3	685.5	686.0	681.5
85°	528.8	536.8	550.4	554.9	561.6	561.0	513.7	493.5	498.9	490.5	497.1
87.5°	331.7	336.4	344.9	346.0	349.2	348.5	300.9	291.6	288.8	288.9	285.5
90°	163.0	166.0	173.4	173.4	178.2	177.4	138.8	134.2	131.0	132.9	128.2
92.5°	37.9	40.0	42.5	44.9	47.4	49.8	47.9	48.9	46.9	44.4	42.6
95°	41.2	44.9	48.6	52.2	55.9	59.5	63.3	66.9	63.4	60.0	56.6
97.5°	46.4	50.7	54.9	59.3	63.6	67.9	72.2	76.6	73.0	69.0	65.3
100°	60.1	68.2	76.0	84.2	92.2	100.2	108.3	116.4	109.3	102.0	94.9
102.5°	119.7	136.9	154.0	170.9	188.0	205.2	222.4	239.5	223.2	206.7	190.3
105°	227.4	255.0	282.7	310.1	337.8	365.4	393.5	421.2	395.1	369.0	342.9
107.5°	357.4	385.5	413.3	441.2	469.3	497.2	525.9	553.9	528.4	502.7	477.2
110°	439.0	459.1	479.5	499.8	520.1	540.4	561.6	582.0	566.5	551.0	535.5



TEST NUMBER: P1444763
 CATALOG NUMBER: EHBR1-48-UNV-TA-L935-UPL15

CANDELA DISTRIBUTION (continued):

	27.5°	30°	32.5°	35°	37.5°	40°	42.5°	45°	47.5°	50°	52.5°
112.5°	458.2	472.7	487.2	501.4	515.7	530.1	545.8	560.4	552.3	544.3	536.5
115°	436.1	446.0	455.3	464.9	474.4	483.9	494.9	504.8	501.8	498.9	496.1
117.5°	396.8	401.8	407.0	412.1	417.1	422.1	429.2	434.6	434.4	434.4	434.3
120°	354.8	356.7	358.5	360.4	362.1	363.7	367.9	370.1	371.7	373.0	374.5
122.5°	320.0	320.4	320.6	320.8	321.1	321.3	324.3	325.2	325.8	326.6	327.4
125°	292.9	292.7	292.5	292.3	291.7	291.7	294.6	294.7	294.2	293.5	292.9
127.5°	276.2	275.6	275.0	274.3	273.4	273.0	275.5	275.5	273.9	272.4	270.6
130°	265.4	264.7	264.2	263.7	263.2	262.6	265.6	265.8	263.6	261.0	258.8
132.5°	259.8	259.4	258.7	258.4	257.9	257.2	260.6	260.9	258.5	255.8	253.2
135°	255.9	255.7	255.1	254.6	254.1	254.0	257.6	258.0	255.7	253.0	250.6
137.5°	253.2	253.0	252.5	252.2	251.7	251.4	255.6	256.2	254.2	251.9	249.9
140°	251.8	251.5	251.1	251.1	250.6	250.7	255.1	255.9	254.3	252.4	250.6
142.5°	249.8	249.9	249.8	250.0	249.8	250.0	255.1	256.2	255.0	253.3	252.1
145°	249.8	250.1	250.1	250.2	250.3	250.8	256.5	258.0	257.0	255.9	254.8
147.5°	250.0	250.1	250.2	250.4	250.5	251.1	257.4	258.9	258.3	257.3	256.6
150°	250.0	250.1	250.1	250.5	251.0	251.4	258.6	260.5	259.8	259.2	258.5
152.5°	248.8	248.9	249.0	249.2	249.5	250.0	258.8	261.1	260.7	259.8	259.4
155°	249.5	249.5	249.4	249.6	249.6	250.1	259.9	262.4	261.9	261.5	260.9
157.5°	252.1	251.8	251.6	251.6	251.7	251.7	262.2	264.9	264.4	264.0	263.6
160°	255.0	254.9	254.5	254.5	254.2	254.2	265.1	267.7	267.5	266.9	266.5
162.5°	258.5	258.7	258.3	258.3	258.1	258.3	269.2	272.1	271.4	271.0	270.4
165°	263.4	263.1	262.9	262.8	262.7	262.7	272.9	275.4	275.2	274.6	274.2
167.5°	268.5	268.5	268.1	268.2	268.0	268.2	277.7	280.1	279.9	279.2	279.0
170°	273.6	273.7	273.5	273.5	273.6	273.8	281.8	283.8	283.6	283.0	282.6
172.5°	278.2	278.3	278.4	278.4	278.5	278.8	285.5	287.4	287.1	286.8	286.2
175°	281.1	281.1	281.2	281.5	281.6	281.7	287.0	288.4	288.2	287.9	287.7
177.5°	284.8	284.8	284.9	285.0	285.2	285.4	288.6	289.5	289.3	289.3	289.2
180°	287.1	287.1	287.1	287.1	287.1	287.1	287.1	287.1	287.1	287.1	287.1



TEST NUMBER: P1444763
 CATALOG NUMBER: EHBR1-48-UNV-TA-L935-UPL15

CANDELA DISTRIBUTION (continued):

	55°	57.5°	60°	62.5°	65°	67.5°	70°	72.5°	75°	77.5°	80°
0°	37093.8	37093.8	37093.8	37093.8	37093.8	37093.8	37093.8	37093.8	37093.8	37093.8	37093.8
2.5°	37173.4	37186.4	37188.3	37203.6	37202.4	37220.5	37217.7	37232.5	37223.8	37236.1	37225.7
5°	38046.4	38125.6	38167.1	38244.3	38268.7	38337.9	38357.5	38420.6	38423.2	38473.2	38461.8
7.5°	39280.8	39397.6	39466.8	39562.4	39610.8	39690.4	39725.4	39784.3	39803.3	39850.0	39853.6
10°	40018.0	40074.6	40114.2	40140.9	40165.2	40176.7	40190.0	40186.4	40190.0	40184.7	40196.1
12.5°	39728.0	39645.3	39590.5	39486.9	39426.9	39312.3	39256.1	39146.0	39106.0	39011.4	38997.8
15°	38259.7	37971.3	37767.5	37471.2	37284.8	36993.3	36822.7	36559.7	36439.5	36230.4	36175.6
17.5°	35583.4	35048.0	34633.6	34102.2	33733.4	33236.6	32924.3	32513.1	32288.0	31956.3	31841.6
20°	31831.3	31039.1	30417.7	29677.3	29147.5	28487.4	28064.8	27531.7	27222.3	26815.1	26650.0
22.5°	27426.2	26440.0	25663.8	24789.2	24150.0	23414.3	22908.0	22331.3	21994.6	21552.2	21356.3
25°	22885.8	21798.3	20935.4	20013.8	19338.4	18601.0	18094.6	17528.0	17179.7	16759.7	16565.1
27.5°	18543.5	17442.6	16608.7	15751.9	15132.3	14466.9	14009.9	13515.4	13206.1	12847.7	12664.5
30°	14711.4	13740.4	13030.7	12319.7	11804.3	11263.9	10884.2	10474.3	10203.0	9896.0	9721.6
32.5°	11589.3	10839.7	10284.0	9719.8	9298.0	8846.4	8518.3	8156.6	7911.8	7637.6	7479.7
35°	9178.6	8596.1	8152.9	7688.5	7326.1	6941.5	6652.4	6340.1	6120.4	5884.4	5748.0
37.5°	7252.0	6788.9	6424.2	6038.4	5740.8	5422.1	5314.7	4956.4	4728.9	4540.5	4410.0
40°	5691.4	5323.1	5021.3	4726.3	4483.6	4241.9	4047.9	3856.5	3709.6	3574.8	3481.7
42.5°	4444.5	4177.7	3957.3	3741.2	3564.1	3388.0	3247.6	3115.7	3016.7	2928.6	2868.5
45°	3533.2	3349.7	3196.5	3044.4	2919.4	2801.8	2707.3	2623.1	2559.2	2506.3	2468.7
47.5°	2902.6	2777.0	2669.0	2566.3	2481.4	2404.4	2341.0	2320.4	2251.7	2205.4	2187.8
50°	2466.8	2391.0	2308.9	2233.1	2176.5	2120.1	2079.0	2038.7	2013.0	1991.7	1985.2
52.5°	2141.6	2083.6	2037.9	1989.9	1952.5	1912.4	1884.1	1857.2	1843.1	1832.0	1830.6
55°	1899.8	1859.2	1829.0	1796.8	1774.4	1750.8	1736.2	1722.0	1715.8	1710.2	1710.6
57.5°	1716.8	1689.7	1670.0	1649.2	1637.0	1625.8	1622.1	1618.5	1620.4	1621.2	1624.4
60°	1583.4	1565.9	1553.4	1541.5	1536.4	1532.9	1535.6	1538.8	1545.2	1550.5	1555.1
62.5°	1481.3	1471.2	1465.2	1458.7	1458.2	1458.5	1464.0	1469.3	1477.4	1483.5	1488.0
65°	1376.1	1370.4	1368.4	1364.3	1366.4	1367.6	1374.2	1378.3	1386.4	1391.2	1397.0
67.5°	1269.9	1268.5	1269.7	1269.7	1273.4	1276.6	1282.9	1287.6	1294.4	1298.9	1303.6
70°	1191.4	1191.9	1194.8	1195.4	1199.3	1201.5	1207.0	1210.0	1216.2	1219.9	1225.5
72.5°	1115.1	1113.8	1114.5	1112.7	1114.1	1113.5	1116.6	1118.0	1123.3	1126.2	1133.1
75°	1033.8	1030.4	1029.5	1025.9	1026.0	1023.3	1024.6	1024.4	1027.9	1029.2	1034.2
77.5°	935.6	929.9	927.1	920.9	920.8	918.5	920.9	922.5	928.5	931.3	937.1
80°	818.2	809.2	805.1	797.9	799.1	798.7	804.7	809.4	816.7	818.1	825.2
82.5°	680.1	670.9	666.5	659.4	661.1	661.3	666.8	667.7	674.1	676.9	685.2
85°	487.0	490.5	480.7	481.4	479.4	483.3	487.0	491.6	496.9	505.9	512.8
87.5°	286.8	285.5	288.9	289.4	294.4	296.9	304.9	309.4	318.4	325.4	338.1
90°	128.5	124.0	126.8	125.3	130.1	128.7	133.1	131.0	136.2	136.8	143.7
92.5°	39.7	37.9	35.1	33.0	30.5	28.6	27.0	26.4	24.8	24.3	22.7
95°	53.1	49.8	46.3	42.9	39.5	36.1	34.8	33.5	32.4	31.1	29.8
97.5°	61.6	58.0	54.3	50.5	46.8	43.1	42.3	41.5	40.6	39.8	39.0
100°	87.6	80.5	73.4	66.3	59.2	52.1	51.5	50.8	50.1	49.5	48.8
102.5°	174.1	157.6	141.4	125.1	108.9	92.4	89.6	86.8	83.9	81.1	78.3
105°	316.7	290.5	264.5	238.3	212.4	186.3	178.5	170.5	162.8	155.0	147.3
107.5°	451.6	426.1	400.7	375.1	349.8	324.3	312.0	299.7	287.2	275.0	262.7
110°	519.8	504.4	489.1	473.5	458.2	442.9	431.0	419.4	407.4	395.7	384.0



TEST NUMBER: P1444763
 CATALOG NUMBER: EHBR1-48-UNV-TA-L935-UPL15

CANDELA DISTRIBUTION (continued):

	55°	57.5°	60°	62.5°	65°	67.5°	70°	72.5°	75°	77.5°	80°
112.5°	528.4	520.5	512.4	504.6	496.9	489.0	483.3	477.4	471.7	465.8	459.9
115°	493.1	490.4	487.6	484.9	482.3	479.4	478.8	478.4	477.6	477.1	476.7
117.5°	434.1	434.2	434.0	434.1	434.2	434.3	437.1	439.8	442.7	445.6	448.6
120°	375.9	377.5	378.8	380.4	381.9	383.6	387.2	391.1	394.7	398.8	402.8
122.5°	328.0	328.8	329.4	330.4	331.2	332.1	335.4	339.1	342.8	346.6	350.5
125°	292.0	291.3	290.7	289.8	289.1	288.8	291.3	294.1	297.0	300.2	303.1
127.5°	268.9	267.0	265.3	263.7	261.8	260.3	261.5	262.9	264.1	265.7	267.3
130°	256.2	253.9	251.1	248.9	246.2	243.9	243.9	244.1	244.2	244.4	244.7
132.5°	250.4	247.8	245.0	242.2	239.5	236.7	235.8	235.0	234.2	233.7	233.1
135°	247.9	245.5	242.6	240.0	237.3	234.7	233.5	232.1	230.9	229.8	228.9
137.5°	247.7	245.4	243.2	241.1	238.5	236.5	234.7	233.5	231.9	230.9	229.6
140°	248.7	246.9	244.8	243.0	240.9	239.2	237.6	236.6	235.2	234.2	233.0
142.5°	250.2	248.9	247.2	245.8	244.2	242.7	241.4	240.2	238.9	237.9	236.8
145°	253.6	252.6	251.3	250.1	249.0	247.9	246.5	245.6	244.5	243.6	242.9
147.5°	255.7	254.9	254.0	253.0	252.0	251.1	250.1	249.5	248.4	247.9	247.1
150°	257.6	256.9	255.9	255.3	254.2	253.5	252.8	252.1	251.4	251.1	250.2
152.5°	258.4	257.9	257.1	256.5	255.6	254.8	254.1	253.7	253.1	252.7	251.9
155°	260.3	259.8	259.0	258.5	257.7	257.2	256.6	255.9	255.3	254.8	254.1
157.5°	263.0	262.5	261.7	261.4	260.6	260.0	259.5	258.9	258.2	257.8	257.1
160°	265.9	265.6	264.8	264.3	263.7	263.2	262.4	261.9	261.1	260.7	259.9
162.5°	269.8	269.3	268.7	268.1	267.4	266.8	266.2	265.6	265.0	264.5	263.8
165°	273.6	273.1	272.5	272.0	271.5	271.0	270.3	269.7	269.0	268.5	267.7
167.5°	278.4	278.1	277.5	277.1	276.4	275.9	275.3	274.7	274.1	273.4	272.7
170°	282.1	281.6	281.2	280.6	280.1	279.5	279.0	278.3	277.7	277.3	276.6
172.5°	285.9	285.8	285.2	284.9	284.2	283.9	283.5	283.0	282.5	282.0	281.8
175°	287.6	287.4	287.3	286.9	286.8	286.5	286.2	286.0	285.8	285.7	285.2
177.5°	289.2	289.0	289.0	288.8	288.7	288.7	288.4	288.3	288.1	287.9	287.8
180°	287.1	287.1	287.1	287.1	287.1	287.1	287.1	287.1	287.1	287.1	287.1



TEST NUMBER: P1444763
 CATALOG NUMBER: EHBR1-48-UNV-TA-L935-UPL15

CANDELA DISTRIBUTION (continued):

	82.5°	85°	87.5°	90°	92.5°	95°	97.5°	100°	102.5°	105°	107.5°
0°	37093.8	37093.8	37093.8	37093.8	37093.8	37093.8	37093.8	37093.8	37093.8	37093.8	37093.8
2.5°	37236.4	37227.0	37231.5	37214.1	37218.2	37197.2	37195.2	37171.5	37169.1	37146.7	37138.3
5°	38497.2	38476.5	38499.9	38463.4	38470.6	38423.2	38419.2	38357.8	38336.7	38260.0	38226.9
7.5°	39882.8	39875.0	39889.3	39858.8	39857.8	39815.5	39798.0	39743.1	39708.9	39628.4	39576.9
10°	40186.4	40193.5	40181.8	40184.7	40168.2	40163.7	40146.8	40136.1	40108.4	40087.6	40056.8
12.5°	38925.9	38933.5	38885.3	38915.9	38891.8	38948.0	38943.5	39009.8	39019.9	39103.8	39135.6
15°	36012.7	36003.7	35911.4	35969.5	35938.3	36061.7	36089.4	36255.4	36344.3	36557.5	36688.5
17.5°	31611.9	31588.1	31458.1	31528.9	31492.9	31674.9	31736.0	32001.6	32167.3	32510.8	32755.6
20°	26365.8	26320.3	26168.3	26251.2	26214.1	26420.9	26508.0	26829.0	27042.7	27497.7	27821.4
22.5°	21054.7	20982.8	20833.9	20911.3	20876.2	21090.5	21203.8	21526.0	21770.7	22237.8	22615.7
25°	16285.3	16221.2	16077.3	16131.5	16118.4	16299.6	16400.5	16705.2	16945.6	17390.6	17751.4
27.5°	12421.1	12354.5	12224.5	12262.8	12249.6	12404.0	12499.1	12753.6	12960.5	13335.1	13651.9
30°	9506.6	9426.2	9315.9	9337.1	9328.0	9453.1	9541.9	9756.3	9933.6	10250.2	10523.1
32.5°	7286.8	7206.0	7104.6	7114.6	7101.2	7199.3	7272.5	7458.9	7613.4	7882.6	8120.2
35°	5575.4	5669.8	5453.5	5590.5	5447.9	5657.3	5582.0	5698.5	5831.4	6058.2	6256.3
37.5°	4286.1	4220.3	4164.7	4158.7	4158.4	4207.0	4264.3	4376.5	4493.6	4662.6	4837.2
40°	3396.6	3350.3	3314.4	3311.7	3314.4	3348.9	3391.2	3468.7	3554.5	3675.9	3804.1
42.5°	2817.1	2786.4	2764.8	2763.2	2770.1	2794.6	2824.0	2870.1	2925.9	3004.5	3092.5
45°	2438.2	2421.2	2409.1	2408.4	2411.6	2424.3	2441.3	2470.0	2505.4	2554.4	2610.0
47.5°	2172.4	2168.2	2160.7	2161.0	2157.5	2162.8	2164.7	2180.7	2199.6	2236.5	2309.3
50°	1978.8	1978.8	1973.5	1973.3	1968.4	1968.1	1963.9	1970.3	1979.1	2002.0	2025.3
52.5°	1825.8	1825.3	1819.6	1818.5	1813.3	1813.0	1809.4	1811.9	1813.1	1824.7	1838.6
55°	1706.2	1702.6	1695.2	1692.8	1690.8	1693.8	1692.5	1692.6	1691.0	1695.9	1700.0
57.5°	1620.4	1615.7	1608.7	1606.6	1606.1	1609.6	1609.8	1608.6	1602.1	1597.8	1591.5
60°	1552.5	1547.8	1540.2	1538.3	1539.4	1544.4	1544.1	1539.9	1530.3	1522.0	1512.2
62.5°	1485.8	1483.9	1480.0	1479.5	1478.5	1479.4	1476.0	1471.5	1462.0	1453.1	1442.5
65°	1396.3	1397.3	1394.4	1394.8	1391.4	1390.9	1385.6	1381.3	1371.7	1363.6	1352.8
67.5°	1303.4	1304.1	1301.8	1301.8	1299.9	1300.2	1297.0	1293.1	1285.0	1278.4	1269.9
70°	1226.8	1228.7	1227.4	1227.8	1225.5	1224.7	1219.8	1215.9	1207.6	1202.1	1194.5
72.5°	1135.1	1139.3	1139.1	1140.1	1136.8	1135.1	1129.2	1124.4	1116.9	1112.4	1106.4
75°	1036.1	1041.5	1043.0	1045.4	1040.6	1038.2	1031.8	1027.9	1021.7	1019.1	1015.1
77.5°	939.5	945.4	951.0	956.3	948.7	941.9	933.9	927.7	918.8	915.5	909.2
80°	831.0	841.4	853.9	864.5	850.9	837.1	823.8	813.9	802.2	797.4	789.7
82.5°	689.4	700.1	707.3	714.0	704.6	694.5	681.6	672.9	660.3	655.6	646.7
85°	523.8	537.1	541.4	545.0	538.9	533.6	521.4	505.1	497.1	484.6	478.2
87.5°	344.5	352.5	354.0	355.2	351.6	348.9	341.1	333.3	319.8	309.9	297.7
90°	142.8	147.6	144.0	145.6	141.3	142.4	135.0	133.0	122.4	118.7	109.3
92.5°	21.9	20.5	19.5	18.3	20.0	20.6	22.2	22.7	24.2	24.8	26.4
95°	28.5	27.4	26.1	24.8	25.8	26.8	27.8	28.8	29.8	30.8	31.8
97.5°	38.2	37.3	36.4	35.6	36.2	36.8	37.3	38.0	38.5	39.2	39.9
100°	48.1	47.5	46.8	46.1	46.1	46.1	46.1	46.1	46.1	46.1	46.1
102.5°	75.5	72.6	69.8	67.0	68.9	70.8	72.7	74.6	76.6	78.5	80.6
105°	139.5	131.8	124.0	116.3	123.8	131.2	138.8	146.3	153.7	161.5	169.0
107.5°	250.3	238.1	225.9	213.6	227.5	241.1	254.8	268.4	282.0	295.6	309.6
110°	372.4	360.7	349.1	337.4	351.9	366.4	380.9	395.4	409.9	424.4	439.2



TEST NUMBER: P1444763
 CATALOG NUMBER: EHBR1-48-UNV-TA-L935-UPL15

CANDELA DISTRIBUTION (continued):

	82.5°	85°	87.5°	90°	92.5°	95°	97.5°	100°	102.5°	105°	107.5°
112.5°	454.2	448.5	442.8	437.2	446.5	455.9	465.2	474.8	484.1	493.6	502.9
115°	476.2	475.8	475.6	475.2	479.6	484.1	488.4	493.0	497.6	502.0	506.6
117.5°	451.5	454.5	457.7	460.9	462.3	463.7	465.3	466.7	468.4	469.8	471.6
120°	406.9	410.7	414.9	419.2	418.6	418.0	417.5	417.0	416.8	416.4	416.5
122.5°	354.5	358.5	362.7	366.9	365.6	364.3	363.3	362.2	361.3	360.3	359.5
125°	306.5	309.7	313.1	316.6	315.3	314.0	313.0	312.1	311.1	310.1	309.6
127.5°	269.3	271.2	273.0	275.2	274.6	274.0	273.9	273.3	273.3	273.2	273.3
130°	245.3	245.9	246.9	247.5	247.7	247.9	248.4	248.9	249.6	250.1	251.1
132.5°	233.1	232.7	232.7	232.7	233.4	234.1	235.1	236.1	237.5	238.5	240.4
135°	228.3	227.7	227.1	226.8	227.8	228.6	229.9	231.2	232.8	234.6	236.4
137.5°	228.8	227.9	227.3	226.5	227.5	228.5	229.8	231.0	232.7	234.4	236.4
140°	232.2	231.4	230.9	230.2	231.2	232.0	233.3	234.6	236.2	237.8	239.6
142.5°	236.1	235.1	234.6	234.2	234.8	235.7	237.0	238.1	239.6	241.0	242.7
145°	242.1	241.4	241.0	240.4	240.9	241.6	242.4	243.3	244.5	245.4	246.9
147.5°	246.5	246.0	245.7	245.3	245.8	246.2	246.8	247.2	248.2	249.0	250.1
150°	250.1	249.5	249.1	249.0	249.2	249.3	249.9	250.1	250.6	251.1	252.1
152.5°	251.7	251.1	251.1	250.7	250.8	250.9	251.2	251.5	251.9	252.2	253.0
155°	253.9	253.4	253.0	252.6	252.5	252.4	252.6	252.5	252.7	252.8	253.0
157.5°	256.9	256.3	256.0	255.5	255.3	255.0	255.0	254.8	254.8	254.4	254.5
160°	259.6	258.8	258.3	257.8	257.7	257.3	257.3	256.9	256.9	256.9	256.9
162.5°	263.4	262.8	262.5	261.9	261.7	261.0	260.8	260.2	259.9	259.7	259.6
165°	267.0	266.4	265.9	265.1	264.9	264.6	264.3	264.0	263.8	263.5	263.4
167.5°	272.4	271.6	271.1	270.4	270.1	269.5	269.2	268.7	268.5	268.1	268.0
170°	276.2	275.6	275.3	274.8	274.5	274.1	274.0	273.5	273.4	273.3	273.3
172.5°	281.3	280.9	280.5	280.1	279.9	279.6	279.4	279.3	279.1	279.1	278.9
175°	285.0	284.8	284.7	284.4	284.1	284.0	283.9	283.8	283.7	283.4	283.3
177.5°	287.4	287.2	287.1	287.0	286.9	286.9	286.9	286.9	286.9	286.8	286.6
180°	287.1	287.1	287.1	287.1	287.1	287.1	287.1	287.1	287.1	287.1	287.1



TEST NUMBER: P1444763
 CATALOG NUMBER: EHBR1-48-UNV-TA-L935-UPL15

CANDELA DISTRIBUTION (continued):

	110°	112.5°	115°	117.5°	120°	122.5°	125°	127.5°	130°	132.5°	135°
0°	37093.8	37093.8	37093.8	37093.8	37093.8	37093.8	37093.8	37093.8	37093.8	37093.8	37093.8
2.5°	37114.3	37104.5	37078.8	37066.1	37042.4	37030.4	37011.9	36999.9	36984.9	36973.8	36968.0
5°	38142.6	38095.1	38000.0	37941.5	37838.8	37771.1	37669.1	37594.4	37489.0	37411.4	37311.8
7.5°	39480.4	39407.6	39285.8	39193.4	39049.7	38939.9	38778.7	38649.7	38471.6	38323.6	38141.6
10°	40025.1	39982.6	39928.0	39868.5	39788.9	39710.9	39600.8	39488.6	39339.0	39190.2	38995.9
12.5°	39220.1	39260.1	39339.0	39375.8	39436.2	39456.7	39484.3	39471.4	39446.9	39386.2	39298.1
15°	36940.1	37107.1	37371.0	37553.7	37809.4	37989.1	38226.9	38379.9	38556.1	38661.4	38761.4
17.5°	33189.5	33512.6	33978.4	34350.0	34848.8	35254.4	35751.3	36141.8	36592.6	36938.4	37306.6
20°	28385.6	28838.0	29481.0	30027.0	30749.9	31362.9	32148.1	32805.9	33573.3	34213.0	34903.4
22.5°	23215.3	23747.5	24484.2	25142.9	26006.1	26777.0	27761.0	28630.8	29668.1	30597.5	31625.4
25°	18337.8	18859.3	19609.9	20291.8	21223.6	22072.9	23147.8	24145.7	25349.5	26472.2	27761.0
27.5°	14155.0	14618.3	15278.0	15891.8	16745.3	17579.1	18669.9	19734.0	21018.5	22225.0	23613.9
30°	10931.7	11307.5	11836.1	12329.9	13015.1	13697.0	14668.6	15652.7	16930.9	18181.1	19605.0
32.5°	8471.7	8792.1	9233.4	9634.3	10162.2	10676.4	11391.9	12178.3	13299.5	14497.0	15873.8
35°	6558.0	6832.2	7207.8	7553.1	7987.2	8395.4	8929.3	9490.6	10346.3	11353.6	12585.7
37.5°	5228.4	5340.2	5608.3	5891.1	6251.8	6587.2	7004.8	7419.8	8032.1	8826.8	9833.4
40°	3976.2	4153.6	4371.8	4594.6	4867.7	5136.7	5595.0	5815.6	6218.6	6789.1	7570.4
42.5°	3208.2	3333.0	3486.6	3641.5	3831.8	4019.2	4251.0	4487.1	4788.3	5174.8	5730.4
45°	2684.7	2766.1	2865.1	2968.3	3093.3	3221.2	3376.3	3538.4	3742.6	3980.1	4317.7
47.5°	2335.0	2379.9	2444.6	2515.1	2600.7	2689.3	2790.1	2893.5	3020.3	3161.2	3353.4
50°	2062.0	2099.5	2149.7	2196.9	2255.9	2346.7	2386.7	2443.7	2520.0	2603.0	2710.5
52.5°	1864.4	1889.4	1921.0	1948.0	1985.4	2019.4	2063.9	2103.2	2156.0	2205.7	2275.2
55°	1710.6	1719.7	1737.5	1755.0	1780.8	1804.0	1834.6	1860.3	1894.0	1923.8	1967.5
57.5°	1591.8	1592.6	1600.8	1609.9	1626.6	1641.2	1662.2	1679.1	1702.4	1721.5	1747.7
60°	1506.4	1501.9	1503.5	1506.7	1516.1	1525.5	1539.0	1550.0	1564.7	1575.5	1590.2
62.5°	1435.4	1428.2	1426.6	1425.7	1430.5	1433.8	1441.2	1446.5	1454.9	1459.6	1467.4
65°	1345.6	1337.2	1333.9	1330.0	1331.4	1330.3	1333.1	1333.2	1337.5	1338.5	1343.0
67.5°	1264.2	1257.2	1252.9	1247.7	1245.4	1241.7	1240.0	1236.4	1235.9	1232.9	1232.2
70°	1190.0	1183.1	1179.5	1174.7	1172.2	1167.3	1164.3	1158.2	1154.7	1149.0	1145.9
72.5°	1104.1	1100.2	1099.1	1095.8	1094.9	1092.2	1090.9	1086.7	1084.2	1079.4	1076.7
75°	1014.3	1011.1	1010.8	1007.6	1007.3	1003.9	1003.1	998.6	996.2	991.4	989.4
77.5°	907.3	902.6	901.3	897.4	898.4	896.7	898.1	894.6	893.2	888.4	886.8
80°	786.9	780.9	778.4	773.3	774.6	772.4	774.6	774.4	776.2	772.4	771.6
82.5°	644.2	637.6	636.3	632.8	635.2	635.4	640.5	637.8	638.9	635.2	636.8
85°	468.8	463.9	457.0	456.0	451.6	456.2	450.3	454.3	447.7	452.3	446.3
87.5°	290.7	280.4	275.1	267.8	265.0	258.0	255.1	250.1	251.6	249.2	250.6
90°	107.6	99.2	97.9	91.2	91.0	85.4	86.5	82.7	84.6	80.5	82.7
92.5°	27.0	28.1	30.0	32.4	34.1	36.1	38.0	40.3	42.1	44.3	46.0
95°	32.8	33.8	36.4	39.2	41.8	44.4	47.2	49.8	52.5	55.2	57.8
97.5°	40.5	41.1	43.7	46.4	49.0	51.8	54.4	57.4	60.0	62.7	65.3
100°	46.1	46.2	53.8	61.4	69.0	76.7	84.3	91.8	99.7	107.2	114.8
102.5°	82.5	84.4	103.5	122.7	141.9	161.1	180.4	199.7	218.9	238.3	257.5
105°	176.5	184.1	213.3	242.7	271.9	301.3	330.6	360.2	389.4	418.9	448.2
107.5°	323.2	337.0	363.5	390.0	416.5	443.1	469.8	496.3	522.9	549.5	576.3
110°	453.7	468.4	486.2	504.0	522.0	539.8	557.7	575.6	593.7	611.6	629.8



TEST NUMBER: P1444763
 CATALOG NUMBER: EHBR1-48-UNV-TA-L935-UPL15

CANDELA DISTRIBUTION (continued):

	110°	112.5°	115°	117.5°	120°	122.5°	125°	127.5°	130°	132.5°	135°
112.5°	512.3	522.0	532.4	543.1	553.6	564.2	574.7	585.4	596.2	607.0	617.6
115°	511.4	516.1	520.1	524.6	528.8	533.2	537.5	542.2	546.8	551.2	555.8
117.5°	473.1	475.1	475.9	476.9	477.9	479.2	480.3	481.5	482.9	484.2	485.2
120°	416.1	415.9	415.6	415.6	415.2	415.2	415.2	415.2	415.3	415.4	415.4
122.5°	358.6	358.1	357.8	357.8	357.7	357.9	358.0	358.5	358.5	358.8	358.9
125°	308.9	308.4	309.7	310.9	312.2	313.7	314.9	316.7	318.1	319.6	321.2
127.5°	273.2	273.6	275.9	278.2	280.5	283.0	285.5	288.1	290.4	293.2	295.6
130°	252.1	253.2	255.9	258.9	261.7	264.7	267.7	271.0	273.7	276.8	279.7
132.5°	241.7	243.6	246.1	249.1	251.9	254.9	257.9	260.8	263.7	266.9	269.5
135°	238.3	240.4	243.0	245.7	248.4	251.3	254.0	256.9	259.5	262.3	264.9
137.5°	238.2	240.3	242.6	244.9	247.1	249.7	252.0	254.4	256.6	259.0	261.2
140°	241.4	243.5	245.1	246.9	248.5	250.2	251.8	253.6	255.0	256.9	258.4
142.5°	244.3	246.2	247.2	248.6	249.8	251.4	252.7	254.0	255.0	256.2	257.3
145°	248.2	249.7	250.2	251.1	251.8	252.5	253.0	253.9	254.3	255.0	255.4
147.5°	251.1	252.2	252.4	253.0	253.5	253.8	254.1	254.6	254.8	255.2	255.5
150°	252.6	253.5	253.4	253.8	253.7	253.9	253.9	254.1	254.0	254.3	254.2
152.5°	253.4	254.1	253.8	254.0	253.8	253.7	253.6	253.6	253.4	253.4	253.4
155°	253.1	253.4	253.2	253.2	253.0	253.0	252.9	253.1	253.0	253.0	253.1
157.5°	254.4	254.4	254.3	254.2	254.0	254.0	254.0	254.0	254.1	254.5	254.7
160°	256.6	256.7	256.4	256.3	256.2	256.1	256.1	256.3	256.4	256.9	257.0
162.5°	259.1	259.0	258.8	258.7	258.6	258.7	258.8	259.1	259.1	259.5	259.8
165°	263.4	263.5	263.0	263.1	262.9	262.8	262.9	263.0	263.3	263.5	263.7
167.5°	267.7	267.6	267.6	267.8	267.8	267.9	268.1	268.6	268.7	269.3	269.5
170°	273.2	273.3	273.1	273.1	273.0	273.1	273.1	273.2	273.3	273.5	273.5
172.5°	278.9	278.9	278.7	278.5	278.3	278.3	278.2	278.3	278.2	278.1	277.9
175°	283.1	283.0	283.0	282.9	282.8	282.5	282.5	282.1	282.0	282.0	281.9
177.5°	286.5	286.2	286.0	286.0	285.9	285.8	285.8	285.7	285.7	285.7	285.4
180°	287.1	287.1	287.1	287.1	287.1	287.1	287.1	287.1	287.1	287.1	287.1



TEST NUMBER: P1444763
 CATALOG NUMBER: EHBR1-48-UNV-TA-L935-UPL15

CANDELA DISTRIBUTION (continued):

	137.5°	140°	142.5°	145°	147.5°	150°	152.5°	155°	157.5°	160°	162.5°
0°	37093.8	37093.8	37093.8	37093.8	37093.8	37093.8	37093.8	37093.8	37093.8	37093.8	37093.8
2.5°	36960.6	36960.2	36956.6	36958.2	36958.9	36961.6	36964.7	36968.0	36968.7	36971.2	36971.8
5°	37237.2	37145.7	37078.1	37003.7	36947.8	36897.5	36863.9	36837.3	36827.0	36829.6	36835.8
7.5°	37987.2	37798.5	37642.7	37465.7	37318.0	37161.7	37032.1	36908.9	36819.1	36752.2	36714.8
10°	38810.3	38580.4	38360.5	38104.3	37861.2	37601.8	37366.8	37130.2	36932.9	36761.6	36635.8
12.5°	39175.5	39013.0	38823.0	38581.1	38321.0	38021.7	37719.4	37395.4	37094.1	36814.3	36588.7
15°	38788.8	38789.1	38719.8	38603.8	38423.2	38183.9	37896.0	37558.2	37202.6	36839.8	36508.4
17.5°	37561.2	37792.8	37921.6	38003.2	37978.2	37890.0	37706.7	37447.3	37115.9	36729.4	36325.0
20°	35453.1	35999.3	36388.8	36739.1	36935.4	37065.9	37052.8	36947.2	36711.2	36382.6	35961.4
22.5°	32499.8	33416.7	34140.3	34815.0	35288.2	35673.1	35856.1	35933.8	35826.8	35597.9	35202.4
25°	28912.8	30159.6	31223.5	32256.1	33030.6	33696.2	34096.3	34378.2	34400.5	34280.9	33928.1
27.5°	24927.0	26398.7	27745.3	29117.5	30206.8	31163.7	31791.6	32251.1	32397.1	32377.9	32057.4
30°	20946.4	22491.3	23975.6	25575.8	26923.6	28146.1	28975.5	29597.1	29836.5	29882.5	29574.2
32.5°	17187.0	18710.4	20190.7	21863.6	23346.8	24748.0	25727.9	26466.1	26744.6	26810.2	26472.2
35°	13775.2	15180.7	16587.4	18208.7	19683.4	21134.3	22166.8	22939.7	23199.9	23243.7	22852.3
37.5°	10816.5	12014.0	13239.7	14694.5	16048.7	17411.4	18392.4	19118.7	19308.3	19296.6	18853.5
40°	8325.3	9256.2	10241.2	11438.8	12564.7	13716.6	14545.0	15145.5	15245.0	15171.3	14706.0
42.5°	6260.2	6932.5	7646.6	8540.6	9376.0	10238.1	10840.8	11286.6	11300.7	11184.2	10766.6
45°	4663.8	5319.8	5619.2	6159.8	6697.9	7271.1	7639.2	7914.5	7871.9	7769.3	7451.9
47.5°	3555.3	3807.5	4074.9	4410.0	4723.4	5374.0	5325.8	5768.0	5449.5	5666.6	5188.6
50°	2823.3	2964.2	3108.3	3286.2	3449.9	3620.0	3726.2	3805.6	3795.3	3761.2	3669.6
52.5°	2402.0	2445.5	2516.4	2617.7	2709.0	2801.0	2861.6	2910.8	2911.7	2898.0	2851.6
55°	2007.5	2062.8	2113.8	2179.9	2292.6	2309.9	2396.6	2379.0	2385.8	2361.8	2386.5
57.5°	1770.0	1802.1	1830.9	1870.2	1902.7	1940.7	1963.1	1984.7	1982.7	1978.0	1954.3
60°	1601.7	1619.4	1635.4	1658.3	1676.3	1697.6	1708.0	1718.9	1715.4	1707.4	1686.4
62.5°	1472.0	1483.0	1492.2	1507.0	1517.8	1531.2	1536.6	1541.2	1536.6	1529.0	1510.4
65°	1343.9	1351.1	1356.9	1368.0	1375.7	1387.1	1391.7	1396.0	1391.8	1385.9	1371.7
67.5°	1228.4	1229.2	1228.6	1233.2	1235.5	1242.4	1244.4	1247.6	1242.7	1237.5	1225.5
70°	1140.9	1139.1	1136.9	1138.7	1139.1	1142.4	1143.0	1142.4	1136.5	1127.7	1114.6
72.5°	1072.5	1071.5	1069.8	1071.4	1071.4	1074.4	1073.4	1071.9	1064.6	1056.1	1043.2
75°	984.5	983.7	980.5	980.6	977.8	978.8	975.2	973.2	965.1	957.9	946.4
77.5°	881.5	879.9	875.1	873.2	868.0	865.8	859.1	855.8	847.5	841.7	831.8
80°	766.6	764.8	758.6	755.2	746.9	741.6	731.8	726.2	716.6	711.0	701.4
82.5°	633.6	634.3	628.1	623.8	612.0	603.0	589.7	582.6	572.2	566.6	556.8
85°	450.6	444.2	447.6	447.4	439.9	432.0	421.4	413.8	405.0	399.8	392.8
87.5°	247.2	248.7	246.9	245.4	240.2	236.2	227.8	223.4	217.0	213.8	208.5
90°	75.9	75.4	68.9	68.5	62.2	59.6	52.2	50.6	43.9	42.7	38.0
92.5°	43.8	41.5	39.6	37.1	35.1	32.8	30.6	28.4	26.1	25.1	24.7
95°	54.6	51.5	48.3	45.0	41.8	38.5	35.4	32.2	28.9	28.3	27.6
97.5°	61.6	57.8	53.9	50.3	46.5	42.7	38.9	35.1	31.3	30.8	30.5
100°	106.1	97.4	88.6	79.8	71.1	62.3	53.7	44.8	36.2	35.6	35.2
102.5°	236.1	214.9	193.6	172.4	151.3	129.9	108.6	87.2	66.0	62.9	59.8
105°	416.0	383.6	351.7	319.5	287.2	255.0	222.9	190.4	158.2	147.9	137.5
107.5°	546.2	515.8	485.7	455.5	425.2	395.2	364.8	334.4	304.2	285.9	267.8
110°	605.9	582.0	558.2	534.3	510.4	486.5	462.5	438.6	414.6	399.0	383.6



TEST NUMBER: P1444763
 CATALOG NUMBER: EHBR1-48-UNV-TA-L935-UPL15

CANDELA DISTRIBUTION (continued):

	137.5°	140°	142.5°	145°	147.5°	150°	152.5°	155°	157.5°	160°	162.5°
112.5°	600.3	583.0	565.8	548.3	531.0	513.5	496.2	478.7	461.1	451.8	442.5
115°	545.7	535.4	525.2	514.9	504.7	494.4	484.2	473.6	463.1	458.4	453.6
117.5°	480.6	475.6	470.7	465.8	460.9	455.7	450.7	445.6	440.5	439.1	437.7
120°	414.7	413.6	412.5	411.4	410.2	409.1	407.9	406.7	405.3	406.0	406.8
122.5°	360.4	361.6	363.1	364.2	365.5	366.6	368.1	368.9	370.1	372.0	373.9
125°	323.6	325.8	328.1	330.4	332.5	334.8	337.1	339.1	341.4	343.1	345.3
127.5°	298.4	300.7	303.4	305.8	308.4	310.9	313.4	315.6	318.1	320.0	322.1
130°	282.2	284.4	286.9	289.0	291.4	293.7	295.8	298.2	300.4	302.2	304.1
132.5°	271.7	274.0	276.2	278.2	280.5	282.5	284.8	286.9	289.2	290.7	292.3
135°	266.9	268.5	270.4	272.1	274.2	275.7	277.6	279.6	281.6	282.9	284.4
137.5°	262.8	264.3	266.1	267.5	269.3	270.7	272.6	274.2	276.2	277.2	278.6
140°	259.9	261.5	263.0	264.6	266.3	267.7	269.7	271.4	273.3	274.4	275.7
142.5°	258.8	259.8	261.2	262.4	264.0	265.2	266.8	268.5	270.2	271.4	272.5
145°	256.8	258.1	259.5	260.8	262.2	263.7	265.6	267.3	269.1	270.0	271.2
147.5°	256.5	257.6	258.8	260.1	261.4	262.7	264.3	265.8	267.5	268.5	269.5
150°	255.4	256.5	257.6	258.8	260.1	261.6	263.1	264.6	266.6	267.6	268.6
152.5°	254.5	255.6	256.8	258.1	259.6	261.0	262.6	264.3	266.0	266.9	268.0
155°	254.3	255.3	256.7	258.0	259.5	260.8	262.4	263.9	265.6	266.6	267.5
157.5°	255.8	256.7	257.9	259.2	260.4	261.7	263.3	264.6	266.1	266.9	267.7
160°	258.1	258.9	260.2	261.4	262.6	263.7	265.1	266.2	267.5	268.5	269.3
162.5°	260.8	261.9	263.1	264.0	265.4	266.5	267.8	268.9	270.3	270.9	271.7
165°	264.6	265.5	266.5	267.3	268.3	269.0	270.2	271.0	272.2	272.7	273.6
167.5°	270.4	271.0	271.5	272.3	273.2	273.9	274.7	275.4	276.4	277.1	277.7
170°	274.3	274.8	275.3	275.9	276.6	277.2	277.9	278.4	279.4	279.9	280.5
172.5°	278.3	278.5	279.1	279.4	279.8	280.1	280.7	281.2	281.7	282.2	282.7
175°	282.2	282.3	282.6	282.7	282.8	283.0	283.4	283.8	284.0	284.3	284.6
177.5°	285.5	285.6	285.7	285.8	286.1	286.2	286.4	286.5	286.8	287.0	287.3
180°	287.1	287.1	287.1	287.1	287.1	287.1	287.1	287.1	287.1	287.1	287.1



TEST NUMBER: P1444763
 CATALOG NUMBER: EHBR1-48-UNV-TA-L935-UPL15

CANDELA DISTRIBUTION (continued):

	165°	167.5°	170°	172.5°	175°	177.5°	180°	182.5°	185°	187.5°	190°
0°	37093.8	37093.8	37093.8	37093.8	37093.8	37093.8	37093.8	37093.8	37093.8	37093.8	37093.8
2.5°	36970.6	36970.2	36969.0	36967.3	36965.6	36966.6	36968.3	36972.5	36979.9	36990.6	37004.7
5°	36840.8	36848.4	36852.6	36853.2	36849.3	36847.0	36850.6	36860.8	36881.3	36915.6	36962.1
7.5°	36704.7	36714.0	36728.4	36739.1	36741.1	36738.5	36739.1	36755.0	36792.9	36859.8	36953.7
10°	36559.4	36531.8	36546.4	36573.0	36594.2	36598.0	36600.7	36619.5	36674.8	36775.9	36926.7
12.5°	36425.3	36337.8	36320.9	36345.0	36377.2	36387.4	36384.6	36392.6	36457.5	36591.3	36801.5
15°	36248.7	36084.1	36027.9	36034.1	36073.9	36088.1	36077.7	36061.7	36124.8	36288.3	36560.4
17.5°	35963.0	35697.8	35594.4	35589.8	35636.3	35648.6	35623.1	35573.6	35635.8	35839.7	36177.5
20°	35528.7	35137.1	34942.4	34911.5	34962.0	34947.2	34896.3	34821.4	34903.1	35151.2	35552.8
22.5°	34748.0	34251.8	33919.2	33812.0	33872.3	33832.1	33757.7	33662.2	33770.6	34052.4	34499.8
25°	33472.3	32898.9	32443.6	32188.2	32236.3	32164.1	32083.1	31967.4	32096.7	32420.2	32912.6
27.5°	31597.2	30934.8	30370.6	29947.7	29963.2	29868.7	29775.4	29625.6	29787.1	30170.1	30725.5
30°	29103.7	28337.2	27650.1	27075.5	27024.1	26932.4	26836.9	26640.3	26842.4	27300.7	27949.7
32.5°	25972.3	25121.3	24327.4	23600.8	23463.8	23374.3	23289.2	23062.9	23327.6	23861.9	24607.6
35°	22310.2	21403.8	20543.0	19713.2	19486.1	19396.6	19322.2	19105.4	19435.7	20017.2	20822.5
37.5°	18290.6	17364.6	16510.1	15659.1	15338.3	15216.8	15162.8	15020.8	15401.8	15977.0	16785.6
40°	14164.1	13303.1	12537.0	11785.4	11419.6	11233.9	11205.5	11179.7	11548.0	12047.0	12781.0
42.5°	10303.8	9609.2	9018.4	8443.9	8112.5	7858.9	7858.7	7935.7	8267.3	8641.0	9207.0
45°	7127.5	6661.3	6284.9	5901.1	6003.6	5498.0	5795.1	5642.6	5806.5	6047.5	6415.5
47.5°	4899.4	4644.9	4438.2	4223.8	4067.4	3918.2	3931.2	4027.5	4181.8	4324.8	4516.3
50°	3570.8	3441.2	3335.9	3224.6	3146.8	3080.9	3084.8	3126.5	3207.5	3282.9	3383.1
52.5°	2798.0	2726.5	2669.3	2607.8	2566.9	2534.2	2536.0	2556.2	2600.1	2643.0	2700.5
55°	2306.2	2297.6	2223.2	2167.9	2146.9	2125.0	2129.0	2136.9	2166.8	2191.9	2229.9
57.5°	1932.6	1899.2	1876.9	1847.8	1834.4	1819.1	1822.5	1825.5	1845.5	1862.3	1889.7
60°	1668.8	1645.2	1629.3	1609.5	1600.8	1591.0	1593.1	1595.0	1607.7	1618.8	1638.4
62.5°	1493.5	1472.3	1458.6	1443.3	1437.2	1430.5	1432.1	1432.6	1440.6	1448.7	1463.5
65°	1359.0	1342.3	1330.9	1317.7	1311.2	1304.4	1305.0	1305.0	1311.8	1317.7	1328.9
67.5°	1216.9	1204.2	1196.8	1186.4	1182.0	1175.0	1174.9	1172.6	1177.0	1179.4	1186.9
70°	1102.8	1090.0	1080.5	1070.5	1065.0	1058.9	1059.0	1059.1	1064.2	1069.6	1079.3
72.5°	1032.3	1020.1	1011.6	1002.9	997.7	992.4	991.4	990.9	994.6	997.5	1003.9
75°	939.0	929.2	924.3	916.0	911.9	906.0	905.0	902.3	904.1	904.6	909.4
77.5°	825.7	816.4	812.4	804.1	800.7	793.9	793.4	790.3	791.7	790.8	794.5
80°	696.6	688.2	686.0	679.1	677.5	671.3	670.3	666.6	667.7	664.8	666.2
82.5°	552.5	544.8	543.2	536.8	536.8	531.2	530.9	525.3	525.3	520.5	512.8
85°	389.2	383.6	381.2	376.0	374.5	370.0	367.6	362.3	360.4	356.9	355.8
87.5°	205.4	201.8	198.7	196.2	191.6	183.5	182.8	177.2	177.6	173.7	173.9
90°	37.4	33.1	32.7	28.7	28.1	25.4	24.9	24.6	24.9	24.7	25.1
92.5°	23.8	23.1	22.4	21.7	20.8	20.1	19.4	20.1	20.8	21.7	22.4
95°	26.9	26.3	25.6	24.9	24.3	23.6	22.9	23.6	24.3	25.1	25.7
97.5°	30.0	29.5	29.2	28.7	28.3	27.9	27.5	28.1	28.5	28.9	29.4
100°	34.6	34.2	33.6	33.2	32.6	32.2	31.6	32.4	32.9	33.4	33.9
102.5°	56.8	53.7	50.7	47.6	44.5	41.4	38.3	41.4	44.5	47.8	50.8
105°	127.2	116.9	106.5	96.1	85.7	75.3	64.9	75.4	85.8	96.2	106.8
107.5°	249.5	231.5	213.2	195.0	176.6	158.3	140.0	158.5	176.8	195.1	213.4
110°	367.8	352.1	336.4	320.7	304.9	289.3	273.4	289.4	305.2	321.0	336.8



TEST NUMBER: P1444763
 CATALOG NUMBER: EHBR1-48-UNV-TA-L935-UPL15

CANDELA DISTRIBUTION (continued):

	165°	167.5°	170°	172.5°	175°	177.5°	180°	182.5°	185°	187.5°	190°
112.5°	433.0	423.6	414.0	404.8	395.1	385.7	376.0	386.0	395.6	405.4	414.9
115°	448.9	444.0	439.4	434.5	429.4	424.5	419.4	425.0	430.1	435.3	440.5
117.5°	436.1	434.9	433.2	431.8	430.1	428.6	426.9	428.9	430.8	433.0	434.6
120°	407.1	407.9	408.5	408.9	409.5	409.8	410.1	410.4	410.4	410.4	410.3
122.5°	375.7	377.6	379.2	381.0	382.7	384.3	385.6	384.8	383.7	382.7	381.4
125°	347.1	349.3	351.1	353.0	354.6	356.5	357.8	357.3	356.2	355.1	353.7
127.5°	324.0	325.8	327.7	329.7	331.2	332.7	334.1	333.5	332.6	331.7	330.5
130°	305.6	307.6	309.0	310.7	312.0	313.2	314.2	314.0	313.4	313.1	312.1
132.5°	293.7	295.6	296.9	298.4	299.4	300.6	301.3	301.4	301.2	301.0	300.2
135°	285.9	287.1	288.3	289.8	290.7	291.6	292.1	292.6	292.5	292.4	291.8
137.5°	279.7	281.0	282.0	283.0	283.7	284.3	284.7	285.3	285.5	285.9	285.7
140°	276.9	278.2	279.2	280.1	281.1	282.0	282.2	283.0	283.1	283.2	283.0
142.5°	273.8	275.0	276.1	277.2	277.9	278.6	279.0	279.6	279.8	279.9	279.8
145°	272.4	273.3	274.3	275.3	275.9	276.4	276.5	277.4	277.7	277.9	278.0
147.5°	270.4	271.6	272.4	273.2	273.7	274.4	274.7	275.3	275.5	275.8	276.0
150°	269.7	270.8	271.7	272.6	273.3	274.0	274.2	274.8	275.0	275.3	275.2
152.5°	268.9	269.8	270.7	271.4	272.2	272.7	273.0	273.5	274.0	274.3	274.4
155°	268.5	269.4	270.2	271.0	271.5	272.3	272.8	273.3	273.8	274.1	274.3
157.5°	268.5	269.5	270.2	271.0	271.5	272.4	273.0	273.6	274.1	274.6	274.9
160°	269.9	270.9	271.4	272.3	273.0	273.6	274.2	274.9	275.4	275.8	276.4
162.5°	272.4	273.3	273.7	274.5	275.2	275.9	276.4	277.1	277.7	278.2	278.6
165°	274.4	275.2	275.7	276.5	277.2	278.1	278.6	279.1	279.5	280.0	280.2
167.5°	278.3	279.1	279.5	280.2	280.8	281.6	282.2	282.7	283.0	283.3	283.6
170°	281.1	281.7	282.2	282.7	283.4	284.0	284.4	284.7	285.0	285.3	285.7
172.5°	283.0	283.8	284.2	284.9	285.3	285.9	286.4	286.8	286.9	287.0	287.0
175°	284.9	285.6	285.8	286.2	286.6	287.0	287.5	287.4	287.7	287.6	287.7
177.5°	287.8	288.3	288.6	288.8	289.3	289.5	289.8	289.6	289.6	289.4	289.1
180°	287.1	287.1	287.1	287.1	287.1	287.1	287.1	287.1	287.1	287.1	287.1



TEST NUMBER: P1444763
 CATALOG NUMBER: EHBR1-48-UNV-TA-L935-UPL15

CANDELA DISTRIBUTION (continued):

	192.5°	195°	197.5°	200°	202.5°	205°	207.5°	210°	212.5°	215°	217.5°
0°	37093.8	37093.8	37093.8	37093.8	37093.8	37093.8	37093.8	37093.8	37093.8	37093.8	37093.8
2.5°	37024.5	37043.0	37071.4	37097.0	37135.7	37166.2	37212.0	37246.8	37298.4	37332.1	37388.3
5°	37027.8	37100.2	37195.5	37288.5	37400.2	37501.6	37627.7	37735.1	37861.8	37965.2	38094.8
7.5°	37080.2	37219.9	37387.3	37555.9	37746.8	37925.3	38126.4	38308.4	38507.3	38675.7	38859.6
10°	37118.8	37334.2	37581.0	37829.3	38090.6	38333.4	38578.5	38790.3	38988.3	39151.2	39295.2
12.5°	37066.4	37363.2	37679.8	37985.6	38276.2	38527.5	38738.4	38901.3	39013.8	39090.1	39107.9
15°	36888.4	37245.5	37589.8	37894.3	38135.4	38321.4	38417.7	38462.7	38414.4	38334.1	38157.5
17.5°	36555.9	36932.5	37240.3	37480.5	37607.9	37658.4	37578.7	37439.9	37168.8	36867.9	36433.3
20°	35946.1	36297.1	36520.4	36651.4	36617.3	36491.3	36190.2	35824.2	35282.9	34706.2	33944.9
22.5°	34876.7	35183.6	35302.5	35312.2	35104.2	34788.6	34245.6	33617.9	32764.1	31876.3	30784.6
25°	33271.4	33540.2	33559.0	33453.4	33072.8	32561.2	31763.9	30876.0	29715.7	28532.9	27164.9
27.5°	31094.4	31352.2	31289.1	31092.1	30563.6	29879.1	28858.2	27711.2	26280.7	24883.7	23370.4
30°	28357.7	28633.4	28559.2	28306.6	27678.0	26869.0	25667.8	24335.1	22747.0	21254.9	19721.4
32.5°	25082.7	25431.1	25380.0	25139.8	24483.9	23618.1	22314.8	20901.3	19276.4	17806.0	16314.3
35°	21360.2	21783.3	21805.2	21648.1	21039.3	20183.5	18896.5	17528.3	15972.0	14584.6	13206.6
37.5°	17349.6	17840.1	17940.9	17898.5	17393.9	16638.5	15465.8	14238.4	12859.7	11643.8	10465.2
40°	13316.8	13813.4	13985.7	14036.8	13664.4	13079.2	12116.8	11126.2	10002.2	9016.9	8081.1
42.5°	9639.1	10079.3	10245.8	10350.6	10118.1	9727.9	9025.9	8306.4	7483.0	6772.4	6091.1
45°	6694.6	7005.9	7132.5	7238.0	7111.4	6891.3	6447.9	5998.0	5454.4	4990.1	4550.4
47.5°	4680.6	4852.3	4935.9	4987.0	4938.0	4823.1	4581.9	4321.2	4014.4	3743.0	3482.1
50°	3469.3	3560.7	3604.5	3634.0	3598.2	3534.4	3403.9	3262.0	3093.5	2939.8	2789.5
52.5°	2749.3	2801.7	2827.7	2843.6	2823.1	2784.2	2708.1	2624.0	2522.9	2428.0	2378.0
55°	2316.1	2313.4	2373.5	2344.5	2373.5	2308.8	2295.1	2202.7	2118.7	2059.6	1995.7
57.5°	1910.1	1937.3	1948.8	1961.7	1953.4	1941.5	1909.3	1876.1	1831.9	1794.9	1755.4
60°	1653.4	1675.8	1688.5	1701.3	1700.5	1696.0	1677.3	1657.5	1629.9	1607.7	1583.8
62.5°	1476.6	1496.0	1508.5	1520.7	1521.8	1520.0	1505.9	1492.2	1473.3	1459.5	1443.0
65°	1337.5	1351.1	1359.6	1369.4	1368.8	1366.2	1353.4	1342.0	1326.5	1316.9	1304.8
67.5°	1191.9	1202.2	1208.8	1218.0	1219.8	1220.4	1213.3	1208.0	1200.4	1197.7	1193.5
70°	1088.4	1100.9	1111.5	1123.1	1129.5	1132.5	1129.5	1126.7	1122.3	1120.4	1117.2
72.5°	1010.0	1020.6	1028.9	1039.5	1045.4	1049.6	1047.3	1045.7	1041.9	1041.4	1039.2
75°	912.7	920.0	924.6	932.6	935.8	939.8	938.0	939.0	937.7	940.8	940.6
77.5°	795.7	801.1	803.3	809.0	809.6	814.4	815.5	821.1	825.1	833.9	838.6
80°	664.0	667.4	667.4	673.3	675.9	684.1	687.9	697.1	701.4	709.2	709.9
82.5°	515.8	511.8	515.8	513.3	520.9	529.9	531.2	539.0	540.8	545.8	541.9
85°	352.7	352.4	349.2	349.8	347.4	348.5	347.1	348.7	347.2	347.4	343.9
87.5°	168.9	170.5	166.8	168.0	164.4	166.0	162.9	165.4	161.7	162.2	156.7
90°	25.1	25.5	25.5	25.9	26.7	27.9	29.2	30.5	32.2	33.4	34.8
92.5°	23.1	24.0	24.8	25.6	26.3	28.5	30.8	33.0	35.3	37.5	39.8
95°	26.5	27.1	27.7	28.7	29.4	32.6	35.9	39.1	42.3	45.6	48.9
97.5°	30.0	30.5	30.9	31.3	31.8	35.6	39.4	43.3	47.1	50.9	54.7
100°	34.5	35.0	35.5	36.2	36.7	45.5	54.4	63.2	72.0	80.7	89.5
102.5°	54.0	57.1	60.2	63.5	66.6	88.0	109.4	130.8	151.9	173.3	194.6
105°	117.2	127.6	138.2	148.6	159.1	191.4	223.9	256.2	288.3	320.6	352.9
107.5°	231.8	250.1	268.6	286.9	305.3	335.7	366.0	396.4	426.9	457.2	487.2
110°	352.9	368.4	384.6	400.3	416.2	440.1	464.3	488.3	512.4	536.4	560.3



TEST NUMBER: P1444763
 CATALOG NUMBER: EHBR1-48-UNV-TA-L935-UPL15

CANDELA DISTRIBUTION (continued):

	192.5°	195°	197.5°	200°	202.5°	205°	207.5°	210°	212.5°	215°	217.5°
112.5°	424.7	434.2	443.9	453.3	463.0	480.5	498.3	515.8	533.5	550.8	568.3
115°	445.6	450.3	455.4	460.3	465.5	476.0	486.4	496.9	507.5	517.8	528.4
117.5°	436.5	438.2	440.0	441.4	443.1	448.4	453.6	458.8	464.1	469.3	474.5
120°	410.1	409.8	409.5	408.9	408.7	409.8	411.5	412.7	414.2	415.5	416.7
122.5°	380.2	378.6	377.2	375.6	374.0	372.9	372.0	370.9	370.1	369.0	367.9
125°	352.4	350.7	349.2	347.4	345.7	343.7	341.8	339.7	337.6	335.5	333.4
127.5°	329.5	327.8	326.6	324.8	323.2	320.7	318.6	316.2	314.0	311.6	309.3
130°	311.3	310.0	309.1	307.2	306.2	303.8	301.9	299.7	297.5	295.5	293.3
132.5°	299.6	298.6	297.6	296.3	295.3	293.2	291.5	289.2	287.3	285.2	283.4
135°	291.6	290.8	290.1	289.1	288.2	286.3	284.8	283.0	281.4	279.8	278.2
137.5°	285.5	284.9	284.4	283.8	283.0	281.4	280.1	278.5	277.2	275.6	274.3
140°	282.9	282.4	281.9	281.2	280.6	279.1	277.7	276.2	274.8	273.2	271.8
142.5°	279.5	279.1	278.7	278.1	277.6	276.2	275.3	274.0	272.8	271.5	270.4
145°	277.8	277.5	277.3	276.8	276.6	275.3	274.1	272.7	271.6	270.3	269.1
147.5°	276.0	275.7	275.7	275.3	275.3	274.2	273.3	272.3	271.4	270.3	269.5
150°	275.2	275.2	275.1	274.8	274.6	273.6	272.8	271.9	271.1	270.0	269.3
152.5°	274.4	274.5	274.6	274.6	274.7	273.9	273.1	272.2	271.4	270.4	269.6
155°	274.6	274.7	274.9	274.9	274.9	274.3	273.5	272.7	272.0	271.3	270.5
157.5°	275.2	275.4	275.7	275.9	276.0	275.4	274.8	274.3	273.6	273.0	272.4
160°	276.7	277.1	277.3	277.5	277.8	277.2	277.1	276.2	276.1	275.3	274.6
162.5°	279.1	279.4	279.7	279.9	280.1	279.6	279.4	278.9	278.4	277.6	277.2
165°	280.8	280.9	281.1	281.2	281.4	281.1	280.9	280.5	280.1	279.8	279.4
167.5°	284.0	284.0	284.4	284.5	284.7	284.4	284.5	284.2	284.0	283.7	283.4
170°	285.9	286.1	286.3	286.3	286.5	286.2	286.1	285.9	285.9	285.4	285.1
172.5°	287.2	287.2	287.4	287.5	287.4	287.2	287.2	287.0	286.9	286.9	286.7
175°	287.8	287.7	287.8	287.8	287.7	287.8	287.7	287.7	287.6	287.6	287.5
177.5°	289.2	289.1	288.8	288.8	288.7	288.6	288.6	288.5	288.7	288.6	288.5
180°	287.1	287.1	287.1	287.1	287.1	287.1	287.1	287.1	287.1	287.1	287.1



TEST NUMBER: P1444763
 CATALOG NUMBER: EHBR1-48-UNV-TA-L935-UPL15

CANDELA DISTRIBUTION (continued):

	220°	222.5°	225°	227.5°	230°	232.5°	235°	237.5°	240°	242.5°	245°
0°	37093.8	37093.8	37093.8	37093.8	37093.8	37093.8	37093.8	37093.8	37093.8	37093.8	37093.8
2.5°	37423.1	37191.9	37161.4	37177.6	37216.2	37230.5	37272.2	37283.7	37325.5	37335.9	37376.1
5°	38195.2	37889.7	37905.0	37978.5	38089.7	38155.9	38265.2	38322.4	38426.7	38474.1	38568.5
7.5°	39009.5	38769.6	38844.4	38968.3	39120.2	39225.6	39356.9	39442.4	39555.6	39625.8	39716.3
10°	39409.3	39343.6	39425.9	39523.4	39610.1	39678.0	39733.6	39778.2	39807.3	39834.7	39846.7
12.5°	39105.0	39206.7	39220.8	39211.3	39153.8	39110.0	39011.4	38944.4	38825.5	38753.1	38611.6
15°	37977.2	38200.9	38077.0	37889.5	37615.1	37386.3	37063.2	36822.7	36486.3	36258.1	35920.5
17.5°	35997.9	36280.2	35957.4	35523.6	34971.6	34499.3	33911.4	33444.6	32860.0	32434.8	31889.2
20°	33211.3	33475.2	32899.6	32180.3	31326.5	30607.9	29760.5	29084.4	28297.0	27711.2	27004.3
22.5°	29741.9	29929.9	29118.9	28149.3	27061.4	26163.7	25150.6	24340.0	23441.4	22771.7	22018.0
25°	25903.7	25954.4	24981.6	23864.6	22652.2	21643.2	20561.5	19709.4	18792.8	18114.2	17374.3
27.5°	22029.7	21955.3	20903.8	19719.4	18444.1	17395.4	16340.4	15541.8	14739.2	14127.8	13490.4
30°	18373.1	18193.0	17101.3	15883.9	14645.9	13706.1	12830.2	12188.9	11550.3	11065.3	10553.7
32.5°	15020.0	14765.9	13703.2	12562.6	11519.5	10794.2	10144.7	9659.5	9143.8	8734.1	8304.8
35°	12050.0	11779.3	10837.9	9870.9	9081.4	8546.8	8036.3	7638.2	7200.3	6854.7	6481.9
37.5°	9501.1	9279.2	8490.7	7729.7	7132.5	6718.3	6300.0	5974.6	5612.8	5460.7	5062.3
40°	7334.8	7179.8	6563.2	6002.3	5553.8	5359.1	4934.6	4630.7	4360.3	4137.3	3921.3
42.5°	5721.3	5666.4	5066.3	4628.9	4313.1	4067.9	3831.2	3639.2	3452.2	3298.6	3153.4
45°	4198.6	4155.2	3888.7	3636.2	3421.0	3249.6	3089.8	2957.6	2835.4	2734.1	2641.9
47.5°	3269.4	3255.5	3102.1	2945.5	2810.0	2699.9	2596.1	2508.4	2427.2	2359.6	2337.6
50°	2659.2	2657.4	2567.4	2470.7	2374.2	2310.5	2244.3	2192.4	2140.3	2099.8	2056.9
52.5°	2259.4	2249.6	2188.9	2129.2	2071.9	2030.1	1987.8	1954.6	1920.1	1895.0	1868.4
55°	1945.2	1955.4	1920.2	1884.6	1848.7	1822.8	1793.1	1771.2	1747.6	1731.7	1715.7
57.5°	1726.8	1740.4	1722.0	1701.8	1680.0	1662.8	1642.4	1627.3	1611.5	1601.4	1592.1
60°	1568.0	1582.9	1575.5	1565.3	1551.8	1541.7	1528.6	1520.2	1510.0	1504.4	1499.2
62.5°	1433.3	1451.8	1449.2	1444.4	1435.8	1430.1	1423.0	1419.3	1412.5	1410.1	1407.6
65°	1298.9	1319.7	1319.3	1317.0	1312.2	1310.6	1306.1	1305.3	1301.9	1303.2	1302.9
67.5°	1193.1	1211.3	1215.3	1218.2	1218.0	1219.1	1218.7	1220.5	1220.5	1223.1	1224.7
70°	1116.9	1129.5	1132.5	1135.5	1136.4	1138.8	1138.8	1140.3	1139.9	1142.2	1142.4
72.5°	1039.7	1056.3	1059.4	1061.9	1061.9	1064.2	1062.9	1062.6	1059.2	1058.6	1056.2
75°	943.8	965.1	969.8	972.8	973.2	975.2	972.3	970.6	965.1	962.9	959.0
77.5°	843.5	865.6	869.0	870.1	868.3	868.7	862.6	858.6	851.5	848.6	844.9
80°	713.1	745.6	748.3	746.2	741.1	740.3	734.4	730.5	722.2	719.3	716.1
82.5°	542.6	580.9	586.2	588.6	584.4	585.4	579.7	577.5	569.8	568.4	563.4
85°	342.6	380.8	387.1	386.2	382.0	381.1	377.8	378.8	378.2	380.3	381.4
87.5°	157.4	194.4	203.3	200.5	200.0	197.4	191.5	193.7	197.3	199.6	199.8
90°	36.2	48.7	49.8	49.7	46.0	45.4	42.0	42.1	39.2	39.1	36.4
92.5°	42.0	44.2	46.5	44.5	42.5	40.5	38.5	36.3	34.5	32.4	30.5
95°	52.0	55.0	58.3	55.6	52.7	50.1	47.5	44.8	42.1	39.5	36.8
97.5°	58.5	62.1	65.7	63.1	60.4	57.6	54.9	52.3	49.6	46.8	44.0
100°	98.2	106.6	115.2	107.6	100.0	92.4	84.8	77.0	69.5	61.9	54.3
102.5°	215.8	236.8	257.9	238.6	219.4	200.0	180.9	161.7	142.6	123.1	104.0
105°	385.0	416.8	448.9	419.3	389.9	360.5	331.2	301.8	272.4	243.0	213.7
107.5°	517.6	547.0	576.9	550.2	523.6	496.9	470.2	443.6	417.0	390.3	363.8
110°	584.2	607.0	630.6	612.4	594.6	576.3	558.4	540.4	522.4	504.6	486.7



TEST NUMBER: P1444763
 CATALOG NUMBER: EHBR1-48-UNV-TA-L935-UPL15

CANDELA DISTRIBUTION (continued):

	220°	222.5°	225°	227.5°	230°	232.5°	235°	237.5°	240°	242.5°	245°
112.5°	585.7	601.5	618.6	607.6	597.0	586.2	575.5	564.7	554.2	543.4	533.1
115°	538.5	547.1	556.8	552.1	547.7	543.2	538.5	534.1	529.6	525.1	521.0
117.5°	479.5	482.3	486.8	485.2	484.2	482.6	481.4	480.1	479.1	477.9	476.9
120°	417.9	416.6	417.2	416.9	416.9	416.7	416.7	416.5	416.5	416.6	416.7
122.5°	366.7	362.9	360.9	360.6	360.3	360.0	359.8	359.5	359.4	359.4	359.4
125°	331.4	326.2	323.1	321.6	320.2	318.6	316.9	315.5	314.1	312.7	311.4
127.5°	306.9	301.3	298.1	295.6	293.0	290.5	287.9	285.3	283.0	280.4	278.2
130°	291.3	285.6	282.4	279.4	276.6	273.4	270.6	267.6	264.6	261.7	258.8
132.5°	281.2	275.4	272.5	269.7	267.0	264.0	261.2	258.2	255.3	252.2	249.5
135°	276.4	270.7	268.2	265.4	263.0	260.2	257.5	254.8	252.2	249.2	247.0
137.5°	272.7	267.0	264.6	262.4	260.3	257.9	255.9	253.6	251.3	248.8	246.7
140°	270.4	264.3	262.0	260.5	259.2	257.4	256.0	254.4	253.0	251.3	249.8
142.5°	269.2	263.3	261.0	259.9	259.0	257.9	257.0	255.8	254.7	253.3	252.2
145°	268.0	261.5	259.3	258.7	258.4	257.8	257.3	256.8	256.3	255.6	255.0
147.5°	268.3	261.6	259.3	259.2	259.0	258.6	258.6	258.1	258.1	257.7	257.5
150°	268.2	260.5	257.9	258.0	257.9	257.9	258.0	257.9	258.1	258.0	258.0
152.5°	268.5	259.4	256.5	256.6	256.9	256.8	257.0	257.1	257.5	257.8	257.9
155°	269.5	259.6	256.3	256.0	256.1	256.1	256.2	256.3	256.5	256.7	256.9
157.5°	271.4	260.9	257.8	257.3	257.3	257.2	257.2	257.2	257.3	257.4	257.8
160°	274.0	263.5	260.2	259.8	259.7	259.5	259.3	259.1	259.2	259.3	259.6
162.5°	276.3	266.1	262.9	262.5	262.2	262.0	261.9	261.6	261.7	261.6	261.8
165°	278.8	269.7	266.7	266.4	266.3	266.0	265.9	265.7	265.8	265.8	266.0
167.5°	283.0	274.7	272.4	271.9	271.5	271.1	271.1	270.5	270.5	270.3	270.3
170°	284.8	278.3	276.2	276.1	276.2	276.0	275.8	275.8	275.7	275.5	275.6
172.5°	286.4	281.7	280.1	280.1	280.3	280.4	280.6	280.5	280.7	280.9	281.1
175°	287.4	284.6	284.0	283.8	283.9	284.0	284.0	284.0	284.1	284.2	284.6
177.5°	288.6	287.8	287.4	287.4	287.4	287.4	287.4	287.4	287.4	287.6	287.6
180°	287.1	287.1	287.1	287.1	287.1	287.1	287.1	287.1	287.1	287.1	287.1



TEST NUMBER: P1444763
 CATALOG NUMBER: EHBR1-48-UNV-TA-L935-UPL15

CANDELA DISTRIBUTION (continued):

	247.5°	250°	252.5°	255°	257.5°	260°	262.5°	265°	267.5°	270°	272.5°
0°	37093.8	37093.8	37093.8	37093.8	37093.8	37093.8	37093.8	37093.8	37093.8	37093.8	37093.8
2.5°	37383.7	37427.3	37424.0	37464.7	37462.7	37501.0	37493.3	37526.4	37518.9	37547.1	37530.5
5°	38610.0	38692.9	38720.2	38795.1	38810.6	38877.5	38878.9	38932.1	38925.7	38967.3	38945.1
7.5°	39770.0	39847.4	39884.1	39942.2	39971.3	40019.3	40038.2	40077.8	40087.3	40110.7	40110.0
10°	39867.9	39867.6	39885.7	39877.7	39893.9	39884.5	39904.3	39897.2	39926.4	39918.9	39941.0
12.5°	38550.6	38419.8	38372.2	38254.7	38229.1	38128.3	38135.4	38070.8	38102.0	38062.3	38129.9
15°	35719.6	35416.4	35266.4	35002.8	34920.0	34711.6	34694.7	34556.2	34593.7	34521.3	34627.1
17.5°	31536.1	31058.6	30796.6	30411.6	30258.7	29964.0	29904.9	29726.7	29754.3	29664.5	29792.4
20°	26548.3	25971.3	25640.8	25195.6	24996.9	24645.5	24552.3	24353.0	24378.0	24288.6	24433.3
22.5°	21503.6	20899.6	20526.5	20059.8	19806.2	19475.7	19376.5	19176.2	19187.6	19103.8	19242.9
25°	16867.6	16288.6	15926.5	15502.5	15282.4	14979.4	14875.2	14695.4	14705.6	14636.4	14761.3
27.5°	13048.3	12573.2	12270.2	11914.9	11717.6	11468.5	11366.9	11215.6	11215.3	11164.5	11268.8
30°	10196.6	9800.1	9528.1	9218.6	9033.3	8808.5	8710.4	8575.1	8569.2	8533.2	8616.0
32.5°	7983.7	7631.0	7382.9	7110.6	6944.2	6751.3	6658.4	6549.7	6539.8	6507.2	6575.2
35°	6206.3	5909.4	5695.9	5466.6	5483.6	5199.0	5246.3	5025.2	4965.3	4952.2	5002.8
37.5°	4796.7	4566.7	4393.4	4221.7	4105.4	3985.1	3920.3	3862.2	3855.6	3850.0	3885.4
40°	3754.6	3593.6	3467.5	3349.7	3269.7	3196.3	3155.7	3123.8	3116.2	3112.0	3133.5
42.5°	3038.7	2930.2	2848.9	2777.0	2728.3	2688.4	2666.1	2648.5	2642.5	2642.7	2655.3
45°	2567.4	2501.5	2449.1	2404.4	2373.3	2387.0	2346.8	2367.9	2340.1	2368.8	2349.8
47.5°	2260.9	2204.8	2172.4	2140.7	2121.9	2106.8	2107.3	2107.6	2113.6	2114.5	2120.6
50°	2024.5	1992.0	1969.5	1949.2	1939.5	1931.5	1934.3	1936.3	1942.1	1942.5	1947.1
52.5°	1849.5	1828.2	1814.6	1802.0	1797.6	1793.1	1795.0	1794.2	1796.8	1795.4	1799.2
55°	1707.0	1697.0	1692.8	1688.0	1688.8	1687.5	1688.3	1683.8	1681.1	1677.6	1680.8
57.5°	1590.2	1588.8	1591.7	1593.6	1598.9	1600.8	1602.1	1596.9	1592.0	1587.4	1590.1
60°	1500.2	1502.3	1509.5	1515.2	1522.9	1526.5	1528.7	1525.7	1522.1	1518.4	1520.6
62.5°	1411.3	1414.8	1423.3	1429.7	1439.1	1443.9	1449.2	1449.5	1450.9	1449.5	1451.0
65°	1308.2	1312.5	1320.2	1325.5	1334.2	1338.5	1343.9	1344.9	1347.9	1347.3	1349.9
67.5°	1229.8	1233.7	1240.1	1245.2	1252.9	1257.4	1262.2	1262.4	1263.5	1263.2	1265.7
70°	1146.2	1148.1	1153.9	1158.2	1165.9	1170.4	1176.0	1177.6	1181.0	1181.6	1184.3
72.5°	1057.1	1056.3	1059.8	1061.7	1067.5	1071.1	1078.1	1081.9	1087.7	1089.2	1091.3
75°	960.1	959.3	963.4	965.1	970.0	973.6	981.5	986.5	995.4	999.1	998.2
77.5°	847.8	849.7	857.4	861.6	868.3	872.8	883.0	891.1	907.5	914.6	907.3
80°	722.2	724.2	732.2	736.2	744.8	750.3	761.8	771.2	786.0	789.1	785.0
82.5°	567.7	568.4	575.4	578.5	589.7	597.9	612.3	619.8	628.9	627.5	626.5
85°	387.1	392.3	401.3	410.2	424.0	437.1	450.8	462.0	454.1	466.6	452.5
87.5°	206.9	206.4	218.4	216.5	235.7	246.9	258.8	264.4	270.7	269.5	269.5
90°	36.8	34.7	35.6	33.2	35.1	32.4	35.2	32.8	36.3	33.1	38.4
92.5°	28.4	27.5	26.2	25.3	24.0	23.2	21.9	20.8	19.8	18.7	19.8
95°	34.2	33.2	32.2	31.1	30.1	29.1	28.1	27.1	26.1	25.1	26.4
97.5°	41.4	40.9	40.2	39.7	39.1	38.5	37.9	37.3	36.6	36.1	36.9
100°	46.7	46.7	46.7	46.7	46.4	46.4	46.4	46.4	46.4	46.4	47.0
102.5°	84.7	82.7	80.8	78.8	76.9	74.9	73.0	71.1	69.2	67.2	70.1
105°	184.3	176.8	169.3	161.8	154.1	146.6	139.1	131.6	124.2	116.6	124.3
107.5°	337.4	323.6	309.9	296.2	282.4	268.7	255.1	241.4	227.9	214.2	226.4
110°	468.8	454.2	439.5	425.0	410.4	395.8	381.3	366.8	352.3	337.8	349.5



TEST NUMBER: P1444763
 CATALOG NUMBER: EHBR1-48-UNV-TA-L935-UPL15

CANDELA DISTRIBUTION (continued):

	247.5°	250°	252.5°	255°	257.5°	260°	262.5°	265°	267.5°	270°	272.5°
112.5°	522.6	512.8	503.3	493.9	484.3	475.1	465.7	456.3	447.0	437.7	443.3
115°	516.5	511.9	507.2	502.7	498.1	493.4	488.9	484.5	480.1	475.6	476.0
117.5°	475.7	473.9	472.3	470.6	468.9	467.3	465.9	464.4	462.9	461.6	458.4
120°	417.0	417.0	417.1	417.4	417.6	418.2	418.3	418.8	419.4	420.0	415.7
122.5°	359.4	359.9	360.6	361.4	362.3	363.3	364.3	365.4	366.7	368.0	363.7
125°	310.0	310.6	311.1	311.8	312.3	313.5	314.5	315.7	316.8	318.2	314.7
127.5°	275.8	275.5	275.2	275.2	275.2	275.4	275.8	276.2	276.8	277.5	275.3
130°	255.9	254.9	253.7	253.0	251.9	251.4	251.0	250.6	250.3	250.2	249.4
132.5°	246.6	245.1	243.3	241.9	240.4	239.5	238.2	237.5	236.6	236.2	235.9
135°	244.0	242.0	240.1	238.3	236.5	235.2	233.6	232.6	231.5	230.6	231.1
137.5°	244.3	242.5	240.4	238.8	237.0	235.6	234.0	232.9	231.9	231.0	231.7
140°	248.1	246.2	244.2	242.5	241.0	239.5	238.2	237.2	235.8	235.3	235.6
142.5°	251.0	249.5	247.6	246.2	244.6	243.3	242.2	241.3	240.1	239.5	240.0
145°	254.4	253.2	251.8	250.6	249.6	248.7	247.5	247.1	246.3	246.1	246.3
147.5°	257.0	256.2	255.1	254.3	253.3	252.8	252.1	251.6	251.1	250.9	251.1
150°	258.0	257.5	256.9	256.3	255.7	255.4	255.0	254.7	254.4	254.3	254.4
152.5°	258.1	257.8	257.1	256.8	256.3	256.1	255.8	255.8	255.6	255.5	255.6
155°	257.1	256.9	256.8	256.8	256.6	256.9	256.7	256.9	256.9	257.1	257.2
157.5°	257.9	258.0	257.9	258.2	258.3	258.6	258.7	259.1	259.1	259.6	259.8
160°	259.9	260.0	260.0	260.3	260.4	260.5	260.8	261.0	261.3	261.5	261.8
162.5°	261.9	262.3	262.5	262.7	263.1	263.4	263.8	264.4	264.6	265.2	265.6
165°	266.2	266.3	266.3	266.4	266.6	266.8	267.0	267.5	267.7	268.2	268.6
167.5°	270.2	270.4	270.4	270.5	270.8	271.1	271.3	271.8	272.2	272.8	273.2
170°	275.4	275.4	275.4	275.4	275.4	275.7	275.9	276.0	276.2	276.5	276.8
172.5°	281.1	281.1	280.8	281.1	280.8	281.1	281.1	281.2	281.2	281.4	281.5
175°	284.4	284.8	284.9	285.1	285.0	285.1	285.2	285.3	285.4	285.7	285.7
177.5°	287.6	287.7	287.7	287.7	287.7	287.9	287.9	287.9	287.9	287.7	287.8
180°	287.1	287.1	287.1	287.1	287.1	287.1	287.1	287.1	287.1	287.1	287.1



TEST NUMBER: P1444763
 CATALOG NUMBER: EHBR1-48-UNV-TA-L935-UPL15

CANDELA DISTRIBUTION (continued):

	275°	277.5°	280°	282.5°	285°	287.5°	290°	292.5°	295°	297.5°	300°
0°	37093.8	37093.8	37093.8	37093.8	37093.8	37093.8	37093.8	37093.8	37093.8	37093.8	37093.8
2.5°	37558.2	37539.3	37558.6	37539.1	37558.6	37535.2	37551.0	37525.7	37532.2	37505.9	37512.7
5°	38978.3	38948.3	38964.3	38925.4	38929.5	38877.5	38876.5	38816.1	38800.1	38731.2	38701.0
7.5°	40126.6	40116.8	40122.4	40097.3	40094.5	40058.9	40042.1	39992.0	39960.5	39897.2	39853.8
10°	39944.8	39974.1	39981.7	40011.5	40017.7	40047.2	40053.5	40083.0	40089.2	40111.0	40111.3
12.5°	38126.7	38226.2	38249.9	38372.7	38424.4	38564.8	38640.3	38795.1	38887.0	39041.4	39136.2
15°	34624.2	34796.1	34864.8	35104.6	35237.2	35517.0	35693.0	36014.3	36241.2	36582.5	36826.0
17.5°	29803.6	30044.0	30152.5	30477.6	30689.7	31102.8	31400.6	31890.6	32265.9	32810.5	33242.2
20°	24458.0	24725.1	24872.3	25243.3	25493.6	25976.3	26348.0	26950.2	27452.4	28142.6	28732.7
22.5°	19286.5	19540.7	19704.1	20081.5	20363.3	20866.8	21282.2	21917.8	22480.6	23258.2	23965.9
25°	14808.4	15041.3	15189.1	15530.4	15795.1	16257.6	16654.4	17265.8	17816.3	18596.4	19321.9
27.5°	11320.9	11515.9	11658.4	11949.4	12182.8	12575.1	12915.9	13421.2	13895.6	14570.4	15216.5
30°	8667.0	8840.0	8978.5	9232.0	9448.5	9788.5	10088.3	10512.6	10905.2	11442.2	11956.3
32.5°	6623.1	6772.0	6895.4	7117.3	7313.6	7619.9	7889.9	8261.9	8598.9	9054.3	9477.2
35°	5049.8	5342.8	5322.1	5628.0	5677.2	5897.1	6137.9	6463.2	6761.7	7148.9	7508.8
37.5°	3919.5	4001.9	4090.1	4225.4	4367.5	4567.5	4771.0	5168.4	5314.2	5606.9	5904.8
40°	3160.6	3216.4	3274.7	3366.0	3465.6	3606.5	3754.6	3944.3	4138.5	4375.8	4618.2
42.5°	2672.0	2703.6	2740.6	2794.4	2855.8	2945.1	3044.3	3172.8	3307.9	3475.0	3645.4
45°	2387.4	2372.4	2383.4	2412.3	2449.3	2503.6	2566.1	2645.7	2733.7	2841.9	2957.1
47.5°	2121.9	2128.0	2131.2	2146.9	2166.8	2203.2	2241.1	2295.1	2399.5	2431.2	2494.0
50°	1946.6	1949.5	1948.5	1956.5	1966.6	1990.2	2014.9	2051.4	2087.9	2136.3	2182.5
52.5°	1799.7	1803.8	1803.2	1808.5	1813.8	1828.8	1844.4	1870.2	1894.1	1925.0	1951.4
55°	1683.7	1689.3	1691.5	1695.9	1698.5	1706.3	1712.5	1724.9	1735.1	1752.5	1768.6
57.5°	1594.4	1602.1	1605.7	1607.2	1604.0	1603.7	1601.6	1604.2	1606.3	1615.6	1624.7
60°	1524.2	1530.3	1531.3	1530.3	1524.6	1520.5	1513.8	1511.8	1510.7	1515.2	1520.2
62.5°	1450.7	1452.8	1451.3	1449.5	1443.0	1439.0	1432.1	1429.6	1427.3	1430.5	1433.0
65°	1348.9	1350.8	1348.9	1347.8	1341.9	1338.7	1332.9	1331.0	1327.7	1328.6	1328.0
67.5°	1266.2	1268.2	1266.7	1265.1	1261.1	1259.2	1254.9	1252.1	1248.1	1246.7	1243.8
70°	1183.9	1185.5	1183.1	1181.6	1177.0	1175.1	1171.2	1170.3	1167.2	1166.4	1163.3
72.5°	1089.2	1089.3	1086.1	1085.1	1081.6	1081.5	1079.9	1081.3	1081.3	1082.9	1082.2
75°	992.2	990.9	986.8	986.1	983.5	984.7	982.9	985.3	985.5	989.2	989.5
77.5°	895.3	890.1	882.3	878.6	873.3	872.7	869.6	871.7	871.1	875.2	876.8
80°	772.6	766.4	756.4	751.5	745.4	744.5	741.6	744.5	743.0	747.9	751.3
82.5°	616.8	611.5	601.1	597.2	590.0	590.7	587.7	590.7	590.3	597.5	601.6
85°	456.2	452.7	442.0	432.5	421.9	415.7	409.7	408.6	406.8	409.7	412.1
87.5°	263.6	260.2	251.9	246.3	227.8	228.6	221.3	221.0	219.2	217.5	221.3
90°	36.6	41.1	39.6	43.6	42.6	47.3	46.8	51.2	49.8	53.9	53.4
92.5°	20.8	21.9	23.0	24.0	25.1	26.2	27.3	28.4	30.7	32.7	35.3
95°	27.6	28.8	30.1	31.4	32.6	33.8	35.1	36.3	39.8	43.1	46.6
97.5°	37.8	38.6	39.4	40.2	41.1	42.0	42.8	43.6	47.3	51.0	54.7
100°	47.8	48.4	49.0	49.8	50.4	51.0	51.8	52.4	59.7	66.8	73.9
102.5°	72.9	75.8	78.6	81.4	84.4	87.3	90.1	92.9	109.3	125.5	141.7
105°	132.1	139.8	147.8	155.5	163.3	171.0	178.9	186.6	212.8	238.7	265.0
107.5°	238.6	250.9	263.1	275.5	287.8	300.1	312.3	324.7	350.1	375.7	401.2
110°	361.1	373.0	384.6	396.3	407.9	419.8	431.5	443.5	458.9	474.2	489.7



TEST NUMBER: P1444763
 CATALOG NUMBER: EHBR1-48-UNV-TA-L935-UPL15

CANDELA DISTRIBUTION (continued):

	275°	277.5°	280°	282.5°	285°	287.5°	290°	292.5°	295°	297.5°	300°
112.5°	449.1	454.7	460.6	466.3	472.2	478.1	484.0	489.9	497.8	505.5	513.4
115°	476.4	476.7	477.4	477.8	478.5	478.9	479.7	480.4	483.2	485.9	488.7
117.5°	455.3	452.3	449.4	446.5	443.6	440.9	438.2	435.6	435.5	435.3	435.5
120°	411.9	407.8	403.9	399.8	396.1	392.3	388.7	385.1	383.6	382.1	380.7
122.5°	359.7	355.7	351.8	348.1	344.4	340.9	337.4	334.0	333.2	332.4	331.7
125°	311.3	308.2	305.0	302.0	299.2	296.5	293.8	291.2	291.8	292.5	293.4
127.5°	273.3	271.6	269.9	268.3	267.0	265.6	264.5	263.2	265.1	266.8	268.7
130°	248.8	248.2	248.0	247.4	247.6	247.4	247.5	247.5	250.1	252.5	255.1
132.5°	236.4	236.6	237.0	237.5	238.3	239.0	240.1	240.9	243.7	246.2	249.1
135°	231.7	232.3	233.3	234.1	235.5	236.6	238.0	239.2	242.1	244.4	247.2
137.5°	232.6	233.3	234.4	235.5	237.0	238.2	239.8	241.2	243.4	245.6	247.9
140°	236.5	237.0	238.1	239.1	240.3	241.4	242.9	244.0	246.2	247.9	249.7
142.5°	240.9	241.4	242.4	243.3	244.4	245.4	246.7	247.7	249.2	250.6	252.4
145°	247.0	247.4	248.3	249.0	250.0	250.9	251.9	252.8	254.0	255.0	256.1
147.5°	251.6	252.0	252.7	253.4	254.2	254.9	255.6	256.2	257.3	258.1	259.0
150°	254.9	255.1	255.6	256.0	256.8	257.4	258.1	258.6	259.3	259.9	260.9
152.5°	256.1	256.3	256.8	257.2	257.8	258.2	258.8	259.3	260.1	260.6	261.4
155°	257.7	258.2	258.8	259.2	259.8	260.1	260.8	261.2	261.9	262.5	263.2
157.5°	260.4	260.7	261.4	261.7	262.4	262.7	263.3	263.7	264.4	264.8	265.4
160°	262.5	263.2	263.7	264.2	264.8	265.4	266.0	266.6	267.2	267.6	268.2
162.5°	266.2	266.7	267.3	267.6	268.2	268.7	269.2	269.7	270.5	270.9	271.6
165°	269.3	269.8	270.5	270.9	271.7	272.4	272.9	273.5	273.9	274.4	274.9
167.5°	273.8	274.2	275.0	275.3	276.0	276.5	277.2	277.6	278.2	278.4	279.0
170°	277.2	277.8	278.3	278.7	279.2	279.6	280.2	280.6	281.2	281.6	282.2
172.5°	281.9	282.2	282.6	282.7	283.0	283.6	284.0	284.1	284.7	285.0	285.4
175°	285.7	285.7	285.8	285.9	286.0	286.0	286.2	286.5	286.6	286.8	286.9
177.5°	287.9	287.9	288.0	288.1	288.2	288.3	288.4	288.5	288.5	288.5	288.5
180°	287.1	287.1	287.1	287.1	287.1	287.1	287.1	287.1	287.1	287.1	287.1



TEST NUMBER: P1444763
 CATALOG NUMBER: EHBR1-48-UNV-TA-L935-UPL15

CANDELA DISTRIBUTION (continued):

	302.5°	305°	307.5°	310°	312.5°	315°	317.5°	320°	322.5°	325°	327.5°
0°	37093.8	37093.8	37093.8	37093.8	37093.8	37093.8	37093.8	37093.8	37093.8	37093.8	37093.8
2.5°	37486.4	37488.0	37457.8	37456.1	37427.9	37424.2	37396.6	37388.3	37365.9	37357.7	37334.9
5°	38623.8	38586.9	38501.8	38451.7	38367.6	38311.9	38220.9	38161.5	38073.7	38007.5	37919.0
7.5°	39774.0	39716.8	39621.3	39543.9	39427.1	39334.0	39197.4	39085.5	38937.6	38809.6	38654.2
10°	40111.3	40102.5	40078.2	40042.7	39988.4	39927.4	39834.4	39737.5	39607.9	39467.1	39294.4
12.5°	39281.3	39370.9	39493.1	39565.5	39653.7	39692.3	39728.5	39719.4	39695.6	39624.4	39524.6
15°	37178.6	37430.5	37763.9	38022.4	38319.8	38535.8	38774.6	38923.3	39071.6	39140.1	39182.0
17.5°	33833.7	34310.6	34908.6	35404.2	35976.0	36435.2	36938.7	37317.7	37707.5	37986.7	38239.2
20°	29537.3	30228.2	31073.9	31821.1	32689.9	33444.9	34272.3	34951.5	35651.9	36199.7	36718.0
22.5°	24877.0	25697.6	26720.1	27667.3	28787.4	29793.9	30929.6	31918.0	32950.0	33812.2	34645.9
25°	20294.4	21194.3	22312.5	23369.2	24637.7	25808.5	27155.3	28387.3	29721.2	30879.3	32023.3
27.5°	16109.9	16993.4	18134.9	19259.9	20601.1	21848.7	23291.8	24649.1	26167.9	27568.4	29001.3
30°	12670.6	13419.9	14443.4	15533.0	16856.0	18125.5	19584.2	20980.2	22560.2	24089.4	25703.2
32.5°	10038.5	10609.4	11414.0	12335.4	13556.1	14764.6	16153.6	17501.1	19057.0	20601.9	22280.3
35°	7972.4	8417.7	9031.2	9750.2	10783.9	11825.7	13054.2	14279.7	15731.2	17197.1	18828.5
37.5°	6286.7	6647.9	7128.5	7668.5	8497.7	9352.6	10360.1	11376.0	12637.3	13936.7	15415.2
40°	4909.2	5201.8	5575.8	5978.6	6604.7	7263.4	8042.5	8830.4	9843.7	10905.7	12129.3
42.5°	3856.5	4072.4	4336.6	4631.0	5215.1	5564.8	6093.2	6663.0	7407.9	8178.9	9098.8
45°	3097.1	3244.4	3427.6	3625.0	3896.1	4192.9	4554.7	4934.1	5641.8	5988.9	6548.4
47.5°	2586.4	2685.3	2801.8	2926.3	3086.1	3258.7	3473.3	3692.7	3976.4	4270.5	4615.3
50°	2242.4	2343.0	2383.0	2447.5	2540.0	2638.5	2759.5	2880.5	3032.7	3186.9	3364.4
52.5°	1987.2	2019.9	2063.4	2104.5	2161.8	2274.0	2310.2	2373.5	2458.9	2542.3	2635.5
55°	1792.3	1813.6	1841.8	1866.6	1901.3	1934.4	1982.2	2024.3	2081.2	2131.5	2193.4
57.5°	1640.5	1654.1	1673.7	1689.9	1712.4	1731.1	1759.1	1781.9	1814.7	1843.1	1880.6
60°	1530.2	1539.3	1552.5	1563.1	1577.4	1587.2	1601.0	1611.7	1629.0	1643.5	1664.4
62.5°	1440.2	1444.9	1453.5	1459.7	1468.8	1473.7	1481.1	1485.8	1495.3	1502.6	1514.3
65°	1332.1	1333.2	1339.0	1341.6	1348.8	1351.3	1357.4	1359.6	1367.5	1372.8	1383.1
67.5°	1243.6	1241.1	1241.2	1239.2	1240.1	1238.0	1238.7	1236.4	1239.6	1241.2	1249.1
70°	1162.7	1159.3	1158.2	1154.5	1153.4	1149.6	1148.5	1145.1	1144.6	1143.5	1146.2
72.5°	1084.0	1083.1	1083.3	1080.7	1080.4	1077.8	1077.9	1076.3	1078.1	1078.9	1082.4
75°	993.4	993.7	995.4	993.2	993.8	991.6	992.4	990.3	991.4	991.1	994.6
77.5°	883.1	885.8	890.6	889.6	891.1	888.7	889.7	886.8	887.7	885.8	887.1
80°	759.1	764.7	771.1	770.8	773.6	771.7	774.3	771.5	772.6	769.3	768.5
82.5°	611.9	616.6	623.5	623.7	629.8	630.9	637.6	637.3	641.6	638.9	636.9
85°	418.4	421.5	427.5	430.9	437.0	440.8	447.4	450.0	445.3	453.8	447.1
87.5°	218.4	226.6	222.1	232.6	230.1	240.8	238.5	248.4	246.5	255.0	254.0
90°	59.0	58.9	64.9	65.3	72.5	73.8	78.9	77.2	82.3	80.8	85.7
92.5°	37.4	40.0	42.3	44.7	46.9	49.5	47.1	45.0	42.9	40.9	38.5
95°	50.0	53.4	56.8	60.3	63.6	67.1	63.4	59.8	56.2	52.5	48.9
97.5°	58.4	62.0	65.7	69.3	73.2	76.9	72.5	68.2	63.9	59.6	55.3
100°	80.9	88.2	95.3	102.3	109.6	116.6	108.7	100.6	92.7	84.7	76.5
102.5°	158.2	174.6	190.9	207.3	223.5	239.8	222.9	206.0	188.8	171.7	154.6
105°	291.0	317.2	343.2	369.4	395.4	421.9	394.2	366.5	338.9	311.3	283.5
107.5°	426.8	452.2	477.9	503.4	528.9	554.7	526.8	498.7	470.8	442.7	414.6
110°	505.3	520.7	536.2	551.9	567.3	583.0	562.6	542.3	522.0	501.6	481.2



TEST NUMBER: P1444763
 CATALOG NUMBER: EHBR1-48-UNV-TA-L935-UPL15

CANDELA DISTRIBUTION (continued):

	302.5°	305°	307.5°	310°	312.5°	315°	317.5°	320°	322.5°	325°	327.5°
112.5°	521.3	529.5	537.3	545.4	553.3	561.4	547.1	532.7	518.2	503.9	489.4
115°	491.7	494.4	497.3	500.3	503.1	506.0	496.5	487.1	477.5	467.9	458.1
117.5°	435.6	435.8	435.8	436.2	436.0	436.2	431.1	426.1	420.9	415.6	410.5
120°	379.2	377.8	376.5	375.1	373.6	372.0	370.3	368.6	366.6	364.6	362.6
122.5°	331.0	330.4	329.7	329.0	328.1	327.4	327.0	326.8	326.3	325.9	325.4
125°	294.0	294.8	295.5	296.2	296.8	297.5	297.5	297.8	297.8	298.1	298.0
127.5°	270.3	272.2	273.7	275.5	277.0	278.7	279.1	279.9	280.2	280.7	281.1
130°	257.4	260.0	262.3	264.6	266.7	269.3	269.5	270.0	270.4	270.8	271.2
132.5°	251.8	254.4	256.9	259.8	262.1	264.6	265.0	265.5	265.6	266.1	266.4
135°	249.8	252.2	254.6	257.3	259.4	261.8	262.1	262.5	262.5	263.0	263.2
137.5°	249.8	252.2	254.1	256.2	258.1	260.2	260.3	260.7	260.7	261.2	261.3
140°	251.4	253.3	254.9	256.7	258.3	260.0	260.0	260.2	260.1	260.2	260.1
142.5°	253.8	255.2	256.5	258.0	259.2	260.7	260.2	260.0	259.8	259.7	259.4
145°	257.2	258.4	259.4	260.5	261.0	262.3	261.7	261.5	260.8	260.6	260.1
147.5°	259.8	260.6	261.1	262.0	262.4	263.3	262.7	262.3	261.8	261.2	260.7
150°	261.4	262.2	262.7	263.4	263.8	264.6	263.9	263.4	262.7	262.0	261.5
152.5°	262.0	262.6	263.1	263.6	264.1	264.6	263.8	263.5	262.7	261.9	261.2
155°	263.5	264.1	264.4	264.9	265.1	265.5	264.7	264.5	263.8	263.2	262.5
157.5°	265.7	266.3	266.7	267.0	267.3	267.7	267.3	266.9	266.4	266.0	265.5
160°	268.5	269.0	269.4	269.6	270.1	270.2	269.8	269.7	269.4	268.9	268.4
162.5°	272.0	272.5	272.9	273.3	273.8	274.2	273.8	273.4	273.0	272.6	272.0
165°	275.3	275.7	276.2	276.5	276.7	277.1	276.8	276.7	276.2	276.1	275.7
167.5°	279.2	279.9	280.1	280.5	280.7	281.0	280.6	280.7	280.2	280.0	279.5
170°	282.5	282.8	283.2	283.6	283.9	284.0	284.0	283.9	283.5	283.2	283.0
172.5°	285.8	286.0	286.1	286.5	286.6	286.9	286.8	286.5	286.2	285.9	285.6
175°	286.9	287.0	287.3	287.3	287.3	287.4	287.1	286.9	286.7	286.4	286.1
177.5°	288.5	288.5	288.5	288.4	288.4	288.4	288.2	288.0	287.9	287.7	287.4
180°	287.1	287.1	287.1	287.1	287.1	287.1	287.1	287.1	287.1	287.1	287.1



TEST NUMBER: P1444763
 CATALOG NUMBER: EHBR1-48-UNV-TA-L935-UPL15

CANDELA DISTRIBUTION (continued):

	330°	332.5°	335°	337.5°	340°	342.5°	345°	347.5°	350°	352.5°	355°
0°	37093.8	37093.8	37093.8	37093.8	37093.8	37093.8	37093.8	37093.8	37093.8	37093.8	37093.8
2.5°	37326.8	37310.6	37300.2	37286.8	37278.7	37268.3	37260.8	37254.4	37249.1	37244.3	37240.7
5°	37851.7	37768.2	37703.5	37633.3	37575.8	37518.3	37474.0	37437.3	37412.0	37393.1	37381.8
7.5°	38519.9	38367.2	38231.4	38088.4	37960.2	37834.3	37725.6	37632.0	37561.7	37516.2	37488.6
10°	39116.7	38912.2	38710.0	38497.2	38295.4	38099.7	37919.0	37760.1	37634.3	37550.8	37501.9
12.5°	39384.3	39210.1	39003.6	38772.5	38525.2	38274.9	38031.1	37811.1	37626.5	37502.6	37431.1
15°	39148.6	39077.1	38937.0	38757.6	38523.0	38264.2	37977.9	37708.7	37461.1	37300.5	37207.4
17.5°	38382.2	38482.0	38471.2	38402.7	38233.9	38016.2	37724.4	37422.1	37112.4	36897.7	36780.5
20°	37088.8	37402.6	37561.7	37643.4	37577.1	37435.9	37171.7	36864.8	36503.9	36223.7	36052.7
22.5°	35271.2	35825.2	36170.3	36422.9	36476.5	36428.4	36195.1	35903.2	35500.9	35164.0	34911.5
25°	32931.5	33743.0	34288.5	34716.1	34882.3	34925.1	34726.6	34436.4	33987.8	33595.4	33248.6
27.5°	30175.5	31229.9	31958.3	32533.0	32792.3	32904.8	32722.1	32426.0	31895.4	31427.0	30973.9
30°	27072.9	28323.9	29200.8	29889.8	30206.0	30354.7	30160.5	29830.1	29212.5	28648.9	28078.1
32.5°	23752.1	25121.0	26076.6	26824.9	27138.2	27278.0	27024.1	26652.9	25939.1	25275.2	24609.5
35°	20275.2	21657.0	22620.6	23349.0	23611.6	23695.9	23371.1	22942.1	22151.3	21422.5	20696.8
37.5°	16727.6	18013.1	18888.9	19542.6	19705.1	19719.6	19328.5	18854.5	18023.4	17304.8	16582.3
40°	13210.6	14294.7	15001.8	15525.1	15581.4	15531.1	15105.8	14628.9	13851.3	13207.6	12573.2
42.5°	9897.7	10716.1	11220.6	11579.2	11557.9	11458.4	11068.5	10658.5	10017.0	9526.7	9027.5
45°	7059.6	7599.1	7894.1	8103.9	8036.6	7941.9	7638.4	7351.0	6915.1	6598.3	6262.9
47.5°	4904.4	5548.7	5436.5	5846.7	5493.4	5726.7	5240.7	4972.7	4741.4	4573.1	4383.5
50°	3511.1	3658.8	3730.1	3778.8	3752.9	3717.0	3629.8	3551.6	3446.0	3368.9	3279.2
52.5°	2711.6	2785.3	2825.8	2855.0	2849.3	2836.3	2798.1	2763.4	2713.9	2681.3	2641.9
55°	2296.8	2297.9	2372.2	2340.3	2387.5	2332.3	2354.0	2292.8	2302.7	2250.1	2214.9
57.5°	1908.5	1938.8	1952.4	1965.6	1961.9	1959.6	1944.8	1937.5	1920.8	1915.7	1903.8
60°	1678.8	1694.7	1697.9	1704.0	1698.9	1697.0	1685.4	1681.3	1670.2	1668.1	1660.3
62.5°	1521.3	1529.4	1529.4	1529.4	1522.8	1516.5	1503.7	1497.0	1487.5	1485.4	1480.9
65°	1389.9	1398.3	1399.6	1401.4	1396.6	1391.7	1380.3	1373.1	1363.3	1359.6	1354.4
67.5°	1254.2	1263.2	1266.1	1270.7	1268.0	1267.0	1259.3	1256.4	1249.9	1248.4	1243.6
70°	1147.6	1151.3	1151.0	1150.9	1144.9	1139.5	1130.6	1126.3	1119.6	1118.2	1113.8
72.5°	1084.2	1086.9	1085.2	1082.9	1075.1	1067.1	1056.6	1048.9	1040.1	1034.7	1028.4
75°	995.1	998.5	996.2	994.8	987.7	982.6	974.1	969.9	963.7	961.9	957.6
77.5°	885.5	887.1	883.6	883.1	877.8	874.5	868.2	867.1	862.6	862.6	858.6
80°	763.5	762.6	756.8	755.7	750.3	749.0	744.0	744.3	740.7	742.2	739.3
82.5°	628.3	624.8	617.3	615.0	608.9	608.3	605.1	607.8	605.6	608.9	607.0
85°	450.3	451.2	447.9	447.9	446.1	446.6	446.4	448.5	448.7	451.7	451.6
87.5°	251.1	254.6	254.0	257.2	257.0	260.8	262.0	267.5	268.2	273.3	273.3
90°	84.4	89.9	88.4	94.0	93.6	99.5	100.1	105.9	105.9	110.9	109.8
92.5°	36.3	34.3	32.3	29.9	28.8	27.5	26.9	25.3	24.5	23.1	22.0
95°	45.1	41.5	37.8	34.2	32.9	31.5	30.4	29.1	27.8	26.6	25.4
97.5°	50.9	46.7	42.3	38.0	36.9	35.8	34.6	33.5	32.4	31.4	30.3
100°	68.4	60.4	52.5	44.2	43.3	42.4	41.5	40.6	39.6	38.5	37.6
102.5°	137.7	120.5	103.3	86.2	82.9	79.7	76.5	73.1	69.8	66.5	63.4
105°	255.9	228.1	200.4	172.6	163.8	154.9	146.1	137.2	128.3	119.5	110.8
107.5°	386.5	358.4	330.2	302.0	285.9	269.5	253.2	236.7	220.6	204.1	187.8
110°	460.8	440.4	419.9	399.2	386.4	373.2	360.1	346.9	333.8	320.6	307.4



TEST NUMBER: P1444763
 CATALOG NUMBER: EHBR1-48-UNV-TA-L935-UPL15

CANDELA DISTRIBUTION (continued):

	330°	332.5°	335°	337.5°	340°	342.5°	345°	347.5°	350°	352.5°	355°
112.5°	474.8	460.3	445.7	431.0	425.2	419.3	413.6	407.6	401.6	395.5	389.6
115°	448.5	438.8	429.0	419.0	417.3	415.2	413.4	411.2	409.4	407.2	405.1
117.5°	405.2	400.0	394.5	389.3	389.8	390.4	391.0	391.4	391.8	392.1	392.3
120°	360.5	358.5	356.6	354.6	356.7	358.7	360.9	362.6	364.6	366.2	368.1
122.5°	325.1	324.5	324.1	323.3	326.0	328.5	330.9	333.3	335.6	337.6	339.8
125°	298.3	298.1	298.2	298.0	300.9	303.4	306.0	308.2	310.6	312.6	314.8
127.5°	281.7	282.0	282.7	282.9	285.2	286.9	288.9	290.6	292.4	293.7	295.3
130°	271.5	271.8	272.3	272.5	274.5	276.4	278.4	279.9	281.5	282.7	284.0
132.5°	266.8	267.0	267.4	267.5	269.3	270.7	272.4	273.3	274.6	275.3	276.2
135°	263.7	263.7	264.0	264.1	265.6	267.3	268.5	269.6	270.9	271.5	272.3
137.5°	261.7	261.7	261.9	262.0	263.5	264.8	266.0	267.1	268.1	269.0	269.5
140°	260.4	260.2	260.5	260.3	261.7	262.8	264.1	264.9	266.0	266.5	267.2
142.5°	259.2	258.8	258.8	258.4	259.5	260.3	261.2	262.0	262.7	263.2	263.6
145°	259.7	259.0	258.8	258.2	259.0	259.8	260.5	261.1	261.6	261.8	262.1
147.5°	260.4	259.7	259.0	258.5	259.3	259.8	260.2	260.6	261.0	261.2	261.4
150°	260.8	259.8	259.1	258.4	258.8	259.2	259.5	259.9	260.2	260.2	260.4
152.5°	260.4	259.7	258.8	257.9	258.3	258.5	258.7	258.7	258.8	258.8	258.8
155°	261.9	261.1	260.4	259.5	259.8	259.8	259.9	259.9	259.8	259.7	259.6
157.5°	264.8	264.0	263.7	262.8	262.8	262.7	262.7	262.3	262.1	261.8	261.5
160°	268.0	267.4	266.9	266.2	266.0	265.8	265.8	265.4	265.2	264.7	264.4
162.5°	271.4	270.9	270.1	269.5	269.3	269.2	269.0	268.5	268.3	267.8	267.5
165°	275.3	274.8	274.4	273.7	273.5	273.3	273.2	272.6	272.4	271.7	271.4
167.5°	279.1	278.7	278.2	277.5	277.4	277.4	277.2	276.9	276.6	276.2	276.0
170°	282.6	282.1	281.9	281.3	281.1	281.0	280.7	280.4	280.0	279.7	279.2
172.5°	285.1	284.8	284.3	283.7	283.7	283.5	283.2	283.1	282.7	282.4	282.3
175°	285.8	285.6	285.0	284.8	284.6	284.5	284.3	284.2	284.0	283.8	283.5
177.5°	287.2	287.0	286.6	286.4	286.3	286.3	286.1	286.0	286.0	285.9	285.8
180°	287.1	287.1	287.1	287.1	287.1	287.1	287.1	287.1	287.1	287.1	287.1



TEST NUMBER: P1444763
CATALOG NUMBER: EHBR1-48-UNV-TA-L935-UPL15

CANDELA DISTRIBUTION (continued):

	357.5°	360°
0°	37093.8	37093.8
2.5°	37237.4	37235.5
5°	37375.8	37373.7
7.5°	37481.1	37480.5
10°	37493.6	37500.0
12.5°	37418.8	37424.0
15°	37200.3	37210.5
17.5°	36782.6	36796.0
20°	36063.1	36077.1
22.5°	34897.9	34903.6
25°	33203.8	33179.7
27.5°	30894.2	30852.9
30°	27958.3	27918.2
32.5°	24457.7	24432.7
35°	20517.3	20501.5
37.5°	16368.8	16336.6
40°	12341.3	12247.6
42.5°	8808.9	8644.4
45°	6087.7	5892.7
47.5°	4249.9	4129.3
50°	3221.3	3182.4
52.5°	2624.8	2615.8
55°	2214.7	2210.7
57.5°	1906.5	1905.1
60°	1664.4	1664.0
62.5°	1483.9	1484.6
65°	1356.8	1357.0
67.5°	1244.8	1244.0
70°	1115.4	1114.5
72.5°	1026.4	1024.9
75°	957.6	956.7
77.5°	859.7	858.3
80°	741.3	739.3
82.5°	609.7	607.5
85°	454.8	454.9
87.5°	278.2	278.2
90°	114.6	112.7
92.5°	21.2	20.4
95°	24.1	22.8
97.5°	29.2	28.1
100°	36.7	35.8
102.5°	60.1	56.8
105°	101.9	93.1
107.5°	171.5	155.2
110°	294.3	281.1



TEST NUMBER: P1444763
CATALOG NUMBER: EHBR1-48-UNV-TA-L935-UPL15

CANDELA DISTRIBUTION (continued):

	357.5°	360°
112.5°	383.6	377.6
115°	402.6	400.4
117.5°	392.5	392.6
120°	369.5	371.1
122.5°	341.4	343.3
125°	316.5	318.3
127.5°	296.3	297.4
130°	284.6	285.7
132.5°	276.7	277.1
135°	272.6	273.0
137.5°	269.7	270.0
140°	267.2	267.5
142.5°	263.7	263.7
145°	262.3	262.3
147.5°	261.0	261.1
150°	260.2	260.1
152.5°	258.5	258.4
155°	259.2	258.9
157.5°	260.8	260.6
160°	263.8	263.5
162.5°	266.9	266.6
165°	270.6	270.1
167.5°	275.3	275.2
170°	278.9	278.6
172.5°	281.9	281.6
175°	283.4	283.2
177.5°	285.8	285.5
180°	287.1	287.1

Cooper Lighting Solutions Photometric Lab
1121 Highway 74 South
Peachtree City, GA 30269



LM-79-2019: Approved Method: Electrical and Photometric Measurements of Solid-State Lighting Products

Report Prepared for

Cooper Lighting Solutions

Metalux

Report Number: SP1-2506-472-6

Test Date: 08/01/2025

Luminaire Tested: EHBR-60-L935-N

Data in this report applies to families of products including EHBR-60-L935-N

Test Information

Test Method: LM-79-2019
 Report Number: SP1-2506-472-6
 Test Lab: COOPER LIGHTING SOLUTIONS
 Photometer: SP1 - 76IN SPHERE
 Measurement Geometry: 4π
 Issue Date: 08/05/2025
 Manufacturer: COOPER LIGHTING SOLUTIONS
 Product Line: Metalux
 Catalog Number: **EHBR-60-L935-N**
 Description: Elevate Round Highbay at, 60000 lumens, 3500K 90CRI LEDs with N lens

Spectral Parameters

CCT (K): 3406
 CIE u': 0.2394
 CIE v': 0.5094
 Duv: -0.0028
 CIE x: 0.4076
 CIE y: 0.3856
 CIE z: 0.2068
 Peak Wavelength (nm): 630
 Dominant Wavelength (nm): 582
 Purity: 38.0517
 Rf: 91.3
 Rg: 100

CRI (Ra):	94.6		
R1:	96.6	R9:	63.8
R2:	98.4	R10:	94.7
R3:	98.1	R11:	96.6
R4:	95.8	R12:	80.9
R5:	96.2	R13:	97.4
R6:	95.4	R14:	98.3
R7:	91.8	R15:	93.1
R8:	84.4		



Test Conditions

Stabilization Time: 35M
 Operation Time: 1H 35M
 Sphere Temperature (°C): 25.0

REPORT NUMBER: SP1-2506-472-6

Measurement and Test Equipment			
Instrument	Identification Number	Calibration Date	Calibration Due Date
Photometer	76INCH SPHERE IN0058	6/16/2025	12/16/2025
Power Meter	XITRON INXT2011004	1/21/2025	1/21/2026
AC Power Source	CHROMA 61603 IN0063	10/22/2024	10/22/2025
DC Power Source	AGILENT E3634A IN0208	10/22/2024	10/22/2025
Sphere Thermometer	ONSET IN0085	10/22/2024	10/22/2025
Room Thermometer	ONSET IN0046	10/22/2024	10/22/2025

REPORT NUMBER: SP1-2506-472-6

CIE 1931 Chromaticity Diagram



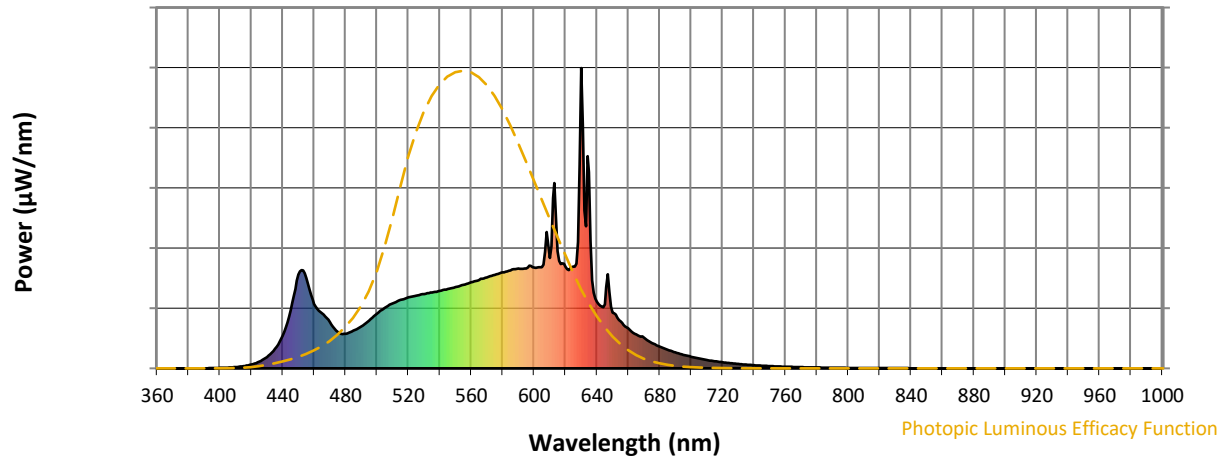
CIE 1931 Chromaticity Diagram with 2017 ANSI 7-Step and 4-Step Quadrangles



Point lies inside the ANSI 3500K 4-step quadrangle

REPORT NUMBER: SP1-2506-472-6

Photopic Flux vs. Wavelength



Photopic Lumens: NR

λ (nm)	Power W [^] /nm	Lumens (ϕ /nm)	λ (nm)	Power W [^] /nm	Lumens (ϕ /nm)	λ (nm)	Power W [^] /nm	Lumens (ϕ /nm)	λ (nm)	Power W [^] /nm	Lumens (ϕ /nm)	λ (nm)	Power W [^] /nm	Lumens (ϕ /nm)
360	0	NR	490	140	NR	620	338	NR	750	8	NR	880	0	NR
365	0	NR	495	159	NR	625	339	NR	755	7	NR	885	0	NR
370	0	NR	500	182	NR	630	1000	NR	760	5	NR	890	0	NR
375	0	NR	505	202	NR	635	653	NR	765	5	NR	895	0	NR
380	0	NR	510	216	NR	640	222	NR	770	4	NR	900	0	NR
385	0	NR	515	228	NR	645	214	NR	775	3	NR	905	0	NR
390	0	NR	520	236	NR	650	185	NR	780	3	NR	910	0	NR
395	1	NR	525	242	NR	655	157	NR	785	3	NR	915	0	NR
400	2	NR	530	248	NR	660	133	NR	790	2	NR	920	0	NR
405	3	NR	535	253	NR	665	113	NR	795	2	NR	925	0	NR
410	4	NR	540	258	NR	670	103	NR	800	2	NR	930	0	NR
415	7	NR	545	264	NR	675	85	NR	805	1	NR	935	0	NR
420	13	NR	550	270	NR	680	72	NR	810	1	NR	940	0	NR
425	22	NR	555	278	NR	685	62	NR	815	1	NR	945	0	NR
430	38	NR	560	286	NR	690	53	NR	820	1	NR	950	0	NR
435	65	NR	565	295	NR	695	45	NR	825	1	NR	955	0	NR
440	108	NR	570	303	NR	700	39	NR	830	1	NR	960	0	NR
445	193	NR	575	311	NR	705	33	NR	835	1	NR	965	0	NR
450	312	NR	580	319	NR	710	28	NR	840	1	NR	970	0	NR
455	300	NR	585	326	NR	715	24	NR	845	0	NR	975	0	NR
460	214	NR	590	332	NR	720	20	NR	850	0	NR	980	0	NR
465	184	NR	595	333	NR	725	17	NR	855	0	NR	985	0	NR
470	153	NR	600	336	NR	730	15	NR	860	0	NR	990	0	NR
475	122	NR	605	337	NR	735	12	NR	865	0	NR	995	0	NR
480	115	NR	610	367	NR	740	10	NR	870	0	NR	1000	0	NR
485	125	NR	615	390	NR	745	9	NR	875	0	NR			

REPORT NUMBER: SP1-2506-472-6

Scotopic Flux vs. Wavelength



Scotopic Lumens: NR

S/P: 1.62

λ (nm)	Power W [^] /nm	Lumens (φ/nm)	λ (nm)	Power W [^] /nm	Lumens (φ/nm)	λ (nm)	Power W [^] /nm	Lumens (φ/nm)	λ (nm)	Power W [^] /nm	Lumens (φ/nm)	λ (nm)	Power W [^] /nm	Lumens (φ/nm)
360	0	NR	490	140	NR	620	338	NR	750	8	NR	880	0	NR
365	0	NR	495	159	NR	625	339	NR	755	7	NR	885	0	NR
370	0	NR	500	182	NR	630	1000	NR	760	5	NR	890	0	NR
375	0	NR	505	202	NR	635	653	NR	765	5	NR	895	0	NR
380	0	NR	510	216	NR	640	222	NR	770	4	NR	900	0	NR
385	0	NR	515	228	NR	645	214	NR	775	3	NR	905	0	NR
390	0	NR	520	236	NR	650	185	NR	780	3	NR	910	0	NR
395	1	NR	525	242	NR	655	157	NR	785	3	NR	915	0	NR
400	2	NR	530	248	NR	660	133	NR	790	2	NR	920	0	NR
405	3	NR	535	253	NR	665	113	NR	795	2	NR	925	0	NR
410	4	NR	540	258	NR	670	103	NR	800	2	NR	930	0	NR
415	7	NR	545	264	NR	675	85	NR	805	1	NR	935	0	NR
420	13	NR	550	270	NR	680	72	NR	810	1	NR	940	0	NR
425	22	NR	555	278	NR	685	62	NR	815	1	NR	945	0	NR
430	38	NR	560	286	NR	690	53	NR	820	1	NR	950	0	NR
435	65	NR	565	295	NR	695	45	NR	825	1	NR	955	0	NR
440	108	NR	570	303	NR	700	39	NR	830	1	NR	960	0	NR
445	193	NR	575	311	NR	705	33	NR	835	1	NR	965	0	NR
450	312	NR	580	319	NR	710	28	NR	840	1	NR	970	0	NR
455	300	NR	585	326	NR	715	24	NR	845	0	NR	975	0	NR
460	214	NR	590	332	NR	720	20	NR	850	0	NR	980	0	NR
465	184	NR	595	333	NR	725	17	NR	855	0	NR	985	0	NR
470	153	NR	600	336	NR	730	15	NR	860	0	NR	990	0	NR
475	122	NR	605	337	NR	735	12	NR	865	0	NR	995	0	NR
480	115	NR	610	367	NR	740	10	NR	870	0	NR	1000	0	NR
485	125	NR	615	390	NR	745	9	NR	875	0	NR			

REPORT NUMBER: SP1-2506-472-6

Melanopic Flux vs. Wavelength



Melanopic Lumens: NR M/P: 3.3

λ (nm)	Power W [^] /nm	Lumens (φ/nm)	λ (nm)	Power W [^] /nm	Lumens (φ/nm)	λ (nm)	Power W [^] /nm	Lumens (φ/nm)	λ (nm)	Power W [^] /nm	Lumens (φ/nm)	λ (nm)	Power W [^] /nm	Lumens (φ/nm)
360	0	NR	490	140	NR	620	338	NR	750	8	NR	880	0	NR
365	0	NR	495	159	NR	625	339	NR	755	7	NR	885	0	NR
370	0	NR	500	182	NR	630	1000	NR	760	5	NR	890	0	NR
375	0	NR	505	202	NR	635	653	NR	765	5	NR	895	0	NR
380	0	NR	510	216	NR	640	222	NR	770	4	NR	900	0	NR
385	0	NR	515	228	NR	645	214	NR	775	3	NR	905	0	NR
390	0	NR	520	236	NR	650	185	NR	780	3	NR	910	0	NR
395	1	NR	525	242	NR	655	157	NR	785	3	NR	915	0	NR
400	2	NR	530	248	NR	660	133	NR	790	2	NR	920	0	NR
405	3	NR	535	253	NR	665	113	NR	795	2	NR	925	0	NR
410	4	NR	540	258	NR	670	103	NR	800	2	NR	930	0	NR
415	7	NR	545	264	NR	675	85	NR	805	1	NR	935	0	NR
420	13	NR	550	270	NR	680	72	NR	810	1	NR	940	0	NR
425	22	NR	555	278	NR	685	62	NR	815	1	NR	945	0	NR
430	38	NR	560	286	NR	690	53	NR	820	1	NR	950	0	NR
435	65	NR	565	295	NR	695	45	NR	825	1	NR	955	0	NR
440	108	NR	570	303	NR	700	39	NR	830	1	NR	960	0	NR
445	193	NR	575	311	NR	705	33	NR	835	1	NR	965	0	NR
450	312	NR	580	319	NR	710	28	NR	840	1	NR	970	0	NR
455	300	NR	585	326	NR	715	24	NR	845	0	NR	975	0	NR
460	214	NR	590	332	NR	720	20	NR	850	0	NR	980	0	NR
465	184	NR	595	333	NR	725	17	NR	855	0	NR	985	0	NR
470	153	NR	600	336	NR	730	15	NR	860	0	NR	990	0	NR
475	122	NR	605	337	NR	735	12	NR	865	0	NR	995	0	NR
480	115	NR	610	367	NR	740	10	NR	870	0	NR	1000	0	NR
485	125	NR	615	390	NR	745	9	NR	875	0	NR			

Summary

$R_f = 91.3$
 $R_g = 100$
 $CIE R_a = 94.6$
 $R_9 = 63.8$

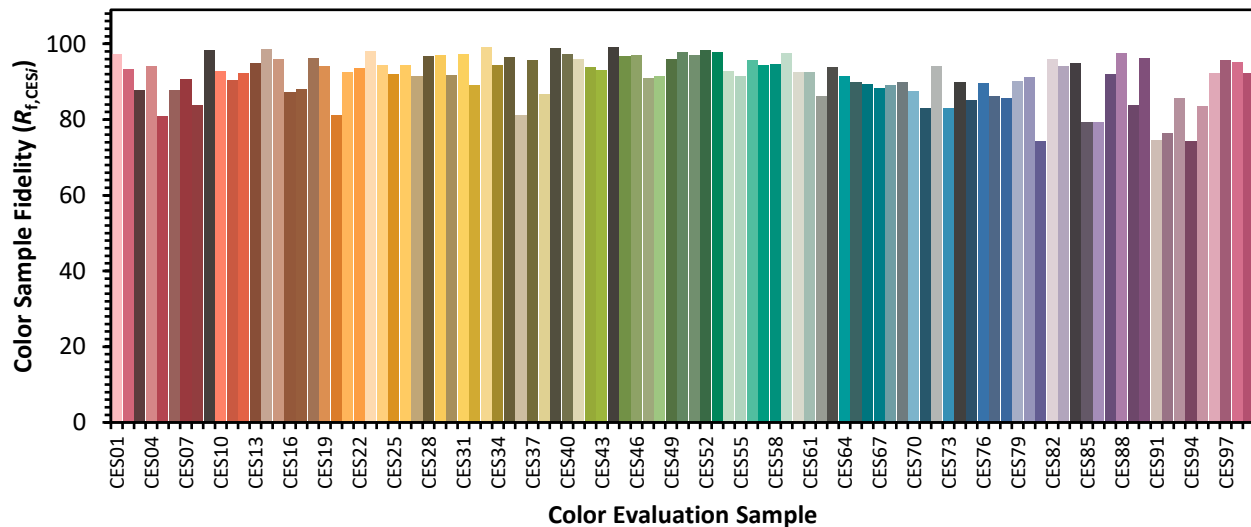


Color Vector Graphics

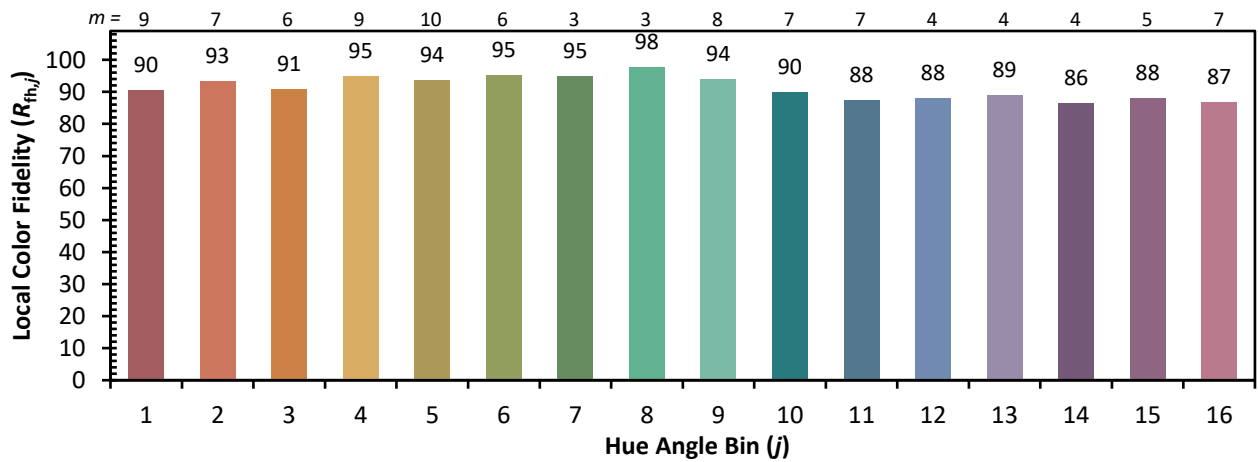
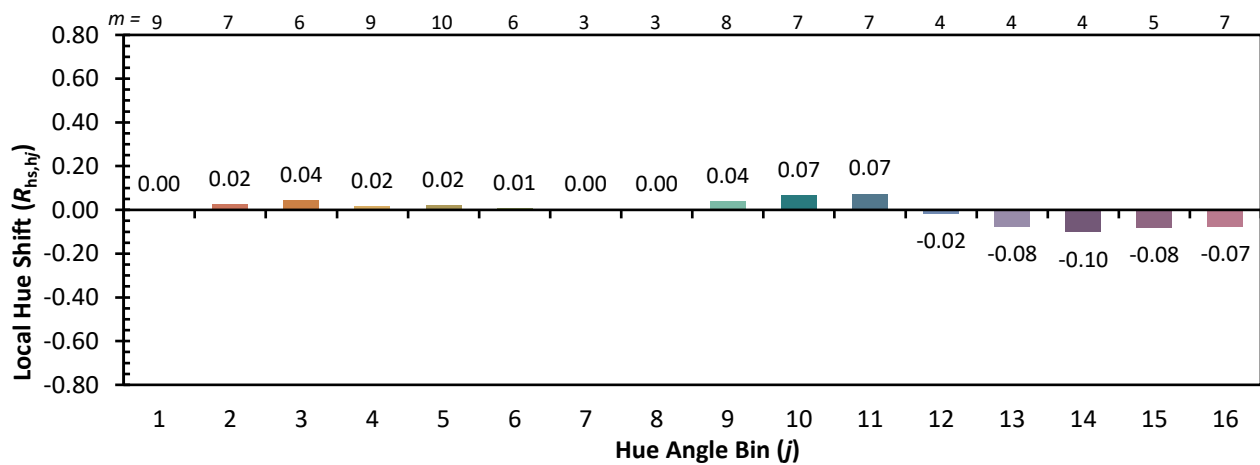
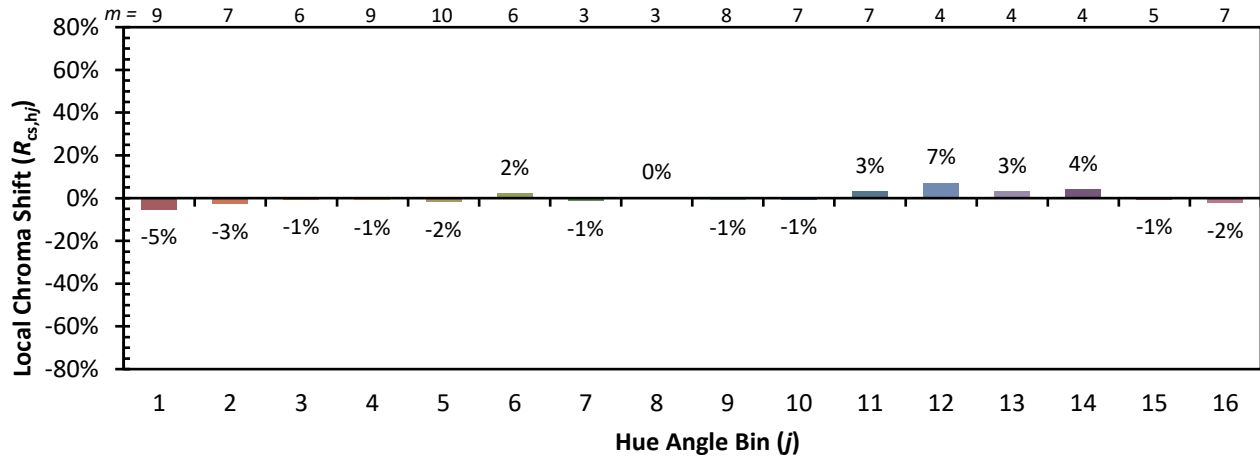


Individual Sample Fidelity Index ($R_{f,i}$)

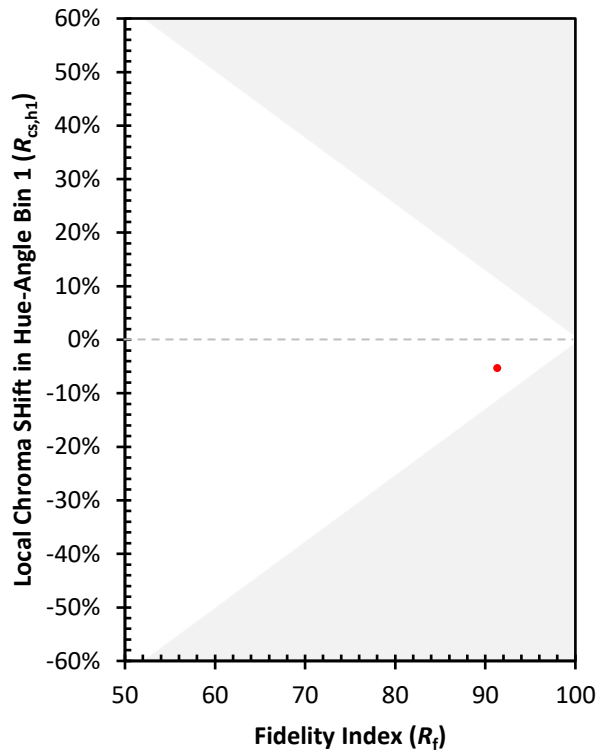
CES01 = 86	CES26 = 94	CES51 = 97	CES76 = 90
CES02 = 63	CES27 = 92	CES52 = 98	CES77 = 86
CES03 = 31	CES28 = 97	CES53 = 98	CES78 = 86
CES04 = 70	CES29 = 97	CES54 = 93	CES79 = 90
CES05 = 50	CES30 = 92	CES55 = 92	CES80 = 91
CES06 = 51	CES31 = 97	CES56 = 96	CES81 = 74
CES07 = 43	CES32 = 89	CES57 = 94	CES82 = 96
CES08 = 41	CES33 = 99	CES58 = 95	CES83 = 94
CES09 = 29	CES34 = 94	CES59 = 98	CES84 = 95
CES10 = 75	CES35 = 97	CES60 = 92	CES85 = 79
CES11 = 58	CES36 = 81	CES61 = 93	CES86 = 79
CES12 = 64	CES37 = 96	CES62 = 86	CES87 = 92
CES13 = 44	CES38 = 87	CES63 = 94	CES88 = 98
CES14 = 74	CES39 = 99	CES64 = 91	CES89 = 84
CES15 = 72	CES40 = 97	CES65 = 90	CES90 = 96
CES16 = 48	CES41 = 96	CES66 = 89	CES91 = 75
CES17 = 49	CES42 = 94	CES67 = 88	CES92 = 76
CES18 = 56	CES43 = 93	CES68 = 89	CES93 = 86
CES19 = 71	CES44 = 99	CES69 = 90	CES94 = 74
CES20 = 67	CES45 = 97	CES70 = 88	CES95 = 83
CES21 = 86	CES46 = 97	CES71 = 83	CES96 = 92
CES22 = 78	CES47 = 91	CES72 = 94	CES97 = 96
CES23 = 91	CES48 = 91	CES73 = 83	CES98 = 95
CES24 = 90	CES49 = 96	CES74 = 90	CES99 = 92
CES25 = 71	CES50 = 98	CES75 = 85	



Color Rendition by Hue-Angle Bin



Measure Comparisons



(END OF REPORT)